

The Worldwide TV-FM DX Association

Serving the VHF-UHF Enthusiast



VHF-UHF DIGEST

E-ZINE VERSION

OCTOBER 2002

The VHF-UHF Digest is the official publication of the Worldwide TV-FM DX Association dedicated to the observation and study of the propagation of long distance television and FM broadcasting signals at VHF and UHF. The WTFDA is governed by a board of directors: TOM BRYANT, GREG CONIGLIO, BRUCE HALL, DAVE JANOWIAK AND MIKE BUGAJ.

MEMBERSHIPS ENDING IN OCT 2002

Check this list. This is your last issue unless you renew for another year.

Robert Delaney	Keith Short
Edward Sirovy	Larry Weil
Steve Branch	Jeff Kitsko
Eric Nagel	Chris Carter
Mituhiro Hukunaga	

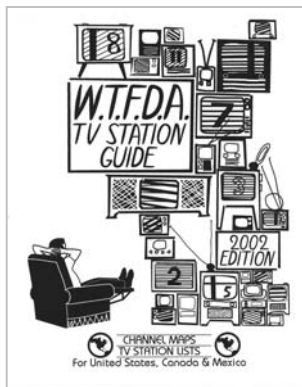
WTFDA membership stands at 276 as of 7/22/02. Mail your renewal check to WTFDA, P.O. Box 501, Somersville, CT USA 06072 today!

CONTENTS

Page Two
Mailbox
Satellite News... George Jensen
TV News... Doug Smith
FM News ... Steven Wiseblood
Western TV DX... Victor Frank
Southern FM DX... John Zondlo
Eastern TV DX... Matt Sittel
Northern FM DX... Keith McGinnis
Photo News... Jeff Kruszka
Special Announcement
Editors and Addresses

In spite of the poor E skip season, we still have some great DX for you in this issue. In some places the poor skip season was replaced with a good tropo season. Rick Shaftan has some great TV DX loggings to Illinois and Iowa in early September so be sure to check out Matt Sittel's column. Don't forget to check page 34 for the announcement of our new WTFDA convention co-ordinator and information on next year's WTFDA convention.

Enjoy this issue of the VHF-UHF Digest!



The 2002 WTFDA TV STATION GUIDE

Yes, it's still available!
Help us sell them all!
Just \$23 US will buy
you one. Mail your
check or money order
today. Make it payable
to Dave Janowiak and
mail it to John Ebeling,

9209 Vincent Avenue S., Bloomington, MN
55431-2157. <http://fmdx.usclargo.com/tvg.html>



We'll Give You The Shirt Off Our Backs If you'll just send us \$12.00!

We have some WTFDA Convention 2002 T shirts for sale and you can get one if you act now! Just send a check or money order for \$12 payable to Dave Janowiak and mail it to WTFDA, P.O. Box 501, Somersville, CT 06072 and we'll send you one. Don't forget to tell us what size you want. Currently in stock have L and XL sizes.

This offer ends 12-31-2002. Place your order NOW!



The Mailbox

P.O. Box 501, Somersville, CT USA 06072
MIKE BUGAJ MBUGAJ@SNET.NET

OCTOBER 2002

Welcome to the Mailbox for October. E skip is finished for the year and we might have some tropo hanging around depending on the weather. All in all though, it's time to find your ice scraper and your heavy jacket unless you happen to live in some warm climate like perhaps Phoenix or Sarasota.

Although I didn't make it to the convention in Oklahoma City, I did manage to make it to Buffalo, NY, on the 8th of September to a get-together hosted by Bob Cooper. I have corresponded with Bob quite a bit over the past couple of years and it was an honor to meet him in person. Bob gave me huge binders full of copies of every DX Horizon magazine printed except the first issue (and if you happen to have that first issue, Bob wants to know because he wants to make a copy of it for his library). We also have copies of Bob's TV DX logs from Oklahoma City and copies of TV Horizon Magazine.

I arrived there about 1:30pm and by that time everybody else had moved out of the heat into the house. It was nice to see Dave Nieman, Frank Merrill and Bob Seybold one more time and it was great to meet Jeff Kadet, Guy Falsetti (and amazingly he looked like I thought he would look like), Rich Wertman and Jim Renfrew. I had hoped to see Saul Chernos again but the brakes on his car weren't co-operating. I also was looking for Scott Fybush but Scott later emailed that he had come down with something, most likely contagious, and decided to stay home.

It was a nice afternoon and evening. Nobody had any complaints and we had some good DX conversation. I hope to see everyone again!

MEMBERS AND MORE

Glancing into our stack of stuff this month we find another new member! Welcome to William Hein of Topsham, VT. Topsham is in northern Vermont and could

be a good location for Dxing if you live on a mountaintop.

Also we have a new member living in Havana, Cuba. Jesus Esperale is his name and he's receiving the paper VUD. We'll have more from Jesus in a bit.

Thanks to the following folks for staying around for another year: **Jim Paige**(MI), **Steve Sprachman**(NY), **Ron Wing**(KS), **Mike Friedel**(TX), **Doug Smith**(TN), **Paul Swearingen**(KS), **Dennis Smith**(CA), **George Hamer**(NY), **Jim Renfrew**(NY), **Jeff Lehmann**(MA), **Charles Tumosa**(MD), **William Lindsay**(WA), **Bob Smolarek**(NJ), **Wolfgang Schneider**(CA), **Glenn Hauser**(OK), **James Snow**(GA), **Melvin Dishong**(GA), **FJ Issard**(ON) and **Howard Fountain**(CA). Thank you much!

Here's a note from our new member from Havana: " Hi my friend, about my experiences on the TVDXing here. Since I was a child I used to pick up many far distant tv channels here in my area. For example: The months of May, June and first half of July, is a good time to pick up far distant VHF lower channels coming from any states east of the Mississippi river, and also from Texas, Kansas, Louisiana, Arkansas and at times (not so usual) Oklahoma too.

That's the time to pick up them all. There are years that are better for the tv signal reception than others. Texas is a good place to get signals from. Here is always a tv channel from Texas trying to "come in", at times fighting vs another channels may be from Tennessee or somewhere from the Eastern US on the same frequency. It is amazing to notice on how long a signal has bounced to reach here, really. Of course, the signals come with many fadings, although there are some times that some one becomes very clear as local for some minutes.

One of the tv channels that are always trying to say his Good Morning to me , or his Good Afternoons, are: KRGV channel 5 Weslaco, South Texas near the Mexican border. The hours of the day for me to have them appearing on my tv are , from 8 to 11 in the mornings (the best time) and then, from 3 to 6 or 7 pm before dusk. There are many channels also coming from Illinois and Missouri. For example: KSDK channel 5 St Louis Missouri is almost familiar to

me, also: KYTV channel 3 Springfield Missouri, which also identifies itself as KY3. This station has kept its identification logo design without changing for many years. I think that the most interesting of it all, is that I have always picked them up using a local conic tv antenna which by the way has not been, at times, on very good conditions...so it has always been amazing to me to be able to get them.

I live in the City of Havana, and not near the coast. Outside the city the tv reception might be better of course, especially on the coast.

Central Cuba is a good region to pick up them too, including the City of Cienfuegos on the south central coast of the country.

I would like to share this note with another TVDXers. Have a nice day my friend.



ONE OF THE EARLIEST UHF STATIONS

This from Wayne Johnson on the WTFDA list: "Hey Guys, Here's an article that came out in the Peoria Journal Star about our local TV Station WEEK. It was originally on Channel 43 but now is on 25. I didn't realize that it was one of the first UHF licenses in the country.

1952: Aug. 29 The owners of radio station WEEK yesterday afternoon got permission to broadcast television programs in Peoria, and the station said today it hopes to be on the air by the first of the year.

The station is the first in the area to receive a TV permit and will broadcast on ultra high frequency (UHF) channel 43 under the call letters WEEK-TV.

There are no commercial UHF stations operating anywhere in the country at this time, and virtually every television set now on the market or in the home must have an adapter attached to it for UHF reception.

Local TV dealers say any set can be adapted to pick up UHF signals and the cost for converting the sets probably will be less than \$30.

The West Central Broadcasting Co., which owns WEEK radio, got its TV permit from the Federal Communications Commission when another company, Trans-American Television Corp. of Philadelphia, seeking the same channel withdrew its application.

Fred Mueller, manager of WEEK, said he could predict no exact date when the station will begin broadcasting from the WEEK radio

studio in the Commercial National Bank building (now National City Bank).

Kinescope recording is a type of film that some television stations use to broadcast network programs several days after they are recorded when no connection with the network exists. Mueller said WEEK-TV will "make every effort" to get kinescope recordings when the station goes on the air, and that the company plans to build a studio at 2907 Springfield Road in East Peoria, along with a 457-foot transmitter tower. He said only when this is done will the station be equipped to broadcast "live" programs.

(The new WEEK-TV station went on the air at 6:30 p.m. on Sunday, Feb. 1, 1953, in black and white on Channel 43, but not in the downtown bank building radio studios. The station had already been built on Springfield Road in East Peoria.)



Jeff Kadet (L.) and Bob Cooper (R.)

A DIFFERENT LOOK?

You might find a slightly different look to the VUD this issue as we try to figure out a way to make pictures and graphics look a little better than they have been. We've changed the process just a little in the hope that we can lighten up the photos a bit more. What will be the result? Well, we will all find out together.

Although the convention photos were on the dark side, those of you who get the eVUD got to see them all in color. There are now around 55 people who subscribe to the eVUD. Most of them get it in addition to their paper VUD and a couple of them subscribe to it exclusively. We have one member in Japan and one in Australia who download it every month.

LAST BUT NOT LEAST

Well, how about some statistics. Once again this month we find the club with about 275 members, give or take a couple. Not only do we have members in the USA, Canada and Mexico, but also in Germany, Australia, Japan, El Salvador, Cuba and Jamaica. I hope I didn't forget anyone. That's it and CU all next month!



SATELLITE NEWS

George W. Jensen
4604 Antanna Ave., Baltimore, MD 21206-4220
SCISATMAN@AOL.COM

OCTOBER 2002

Another month and column and a few more satellites to do a run-down on. Not too many changes to be concerned with this month - though NFL Sunday Ticket is noted in this month's rundown. Many 4DTV - Digicipher changes on PanAmSat at 58 West - they will be shown when that bird is featured in a few months - there is continuous change on this bird.

And now to **Galaxy 3** - 95 West - C and KuBand - 24 16 watt C Band transponders and 24 50 watt KuBand transponders primarily directed to Latin America. Was orbited in 1995 with a 12 year life. Format is Odds/Horizontal, Evens/Vertical.

Here are the video services - transponder 1 - occ. Superior Livestock Auctions, 16 - HBO Plus East VC2, 17 - More Max East VC2, 19 - HBO Signature East VC2, 20 - HBO Plus West VC2. Normally the remaining transponders are for occasional feeds. NFL Sunday Ticket in VC2 Pay-Per-View is found on the following transponders - 1, 2, 3, 4, 5, 9, 22, 23, 4DTV - 400, 401, 402, 403, and 404. On the KuBand side Xpdr 24 0 CCTV 4 - Peking is noted.

Next is **Telstar 6** at 93 West with 24 C and 26 KuBand transponders, orbited in February 1999 with a 15 year life. The format is Vertical/Evens and Horizontal/Odd transponders. Most services are in a Compressed Digital Encrypted format with most of them being Fox and CBS. 2 noted exceptions are - 15 - National TV Liquidators and 18 - CBS TV News, New York - both of these on the C Band side.

Lastly is **Galaxy 11** at 91 West with 24 16 watt C Band transponders and 40 50 watt KuBand transponders. Launched in April 2000 with a 12 to 15 year life. The polarity format is Odds/Horizontal and Evens/Vertical. The services are as follows. 3 - BET Services Digicipher Encrypted, 6 - The Game Show Network VC2, 7 - The Golf Channel VC2, 10 - Shop At Home and Shop At Home in MPEG2 - 3917V/2666, 12 - WE - Women's Entertainment Television VC2, 13 - Digicipher suite, Ovation, NBA, Bloomberg, etc., 14 - Independent Film Channel VC2, 18 - Fox News Channel VC2, 19 - KJLA Ch 57 - Ventura California MPEG2 4094H/4440, 24 - Digicipher Plex - International Channel Plex. 400 - NBA Television, 500 - Ovation, 601 - Bloomberg, 602 - NUE New Urban Entertainment, 603 - KTVD - Ch 20 - Denver, Colorado, 750 - International Channel, 751 - TV 5 - Paris, France, 752 - CCTV4 - Peking, China, 753 and 754 - Unidentified, 780 - Access Television Network 1, 781 - Access Television Network 2. Audio Subcarrier on Xpdr 14 - RAI - Rome, Italy. Feeds predominate on the KuBand side with the exception of Xpdr 18 - Primedia Channel in MPEG2 12060V/26700.

That's all for this month - Let me know what you are catching. 73's and Good DX.

TV News

October 2002

Douglas E. Smith W9WI
 1385 Old Clarksville Pike
 Pleasant View, TN 37146-8098
 W9WI@w9wi.com http://www.w9wi.com

Abbreviations:

AF Applied for (a new station)
 aux Auxiliary (backup) transmitter
 CC Call change
 CL City-of-license change
 DE Station deleted
 FC Programming (format) change
 LC License to cover (for changes or new station)
 NO Not on the air
 NS New station granted permit
 NW New station on the air
 PC Power (or tower height) change on the air
 PG Power (or tower height) change granted
 PR Power (or tower height) change requested

QC Channel change on the air
 QG Channel change granted
 QR Channel change requested
 RA Returned to the air
 ROA Request of applicant
 SI Off the air ("silent")
 STA Special Temporary Authority
 XC Transmitter site change on the air
 XG Transmitter site change granted
 XR Transmitter site change requested

DTV stations *in italics*; full-license stations in **boldface**.

News:

Alabama:

Dothan 46 W46DI NS 20kw,
 31-16-07/85-23-13
 Greensboro 3 WDVZ-LP PC>3kw,
 32-52-40/87-36-53
 Huntsville 41 WZDX-DT PG>400kw/518m,
 34-44-12/86-31-59
 Huntsville 67 W67CO PG>25.7kw

Alaska:

Kenai 6 K06MF PC>1.44kw

Arkansas:

El Dorado 25 K57GF QR from ch. 57
 El Dorado 38 K53FB QR from ch. 53
 El Dorado 40 K36DR QR from ch. 36
 El Dorado 48 K27FF QR from ch. 27,
 75kw, 34-47-57/92-29-59;
 Fayetteville 15 KHOG-DT CL to Little Rock
 Fort Smith 10 KFDF-CA NW 180kw/266m
 QC from ch. 46,
 3kw
 Pine Bluff 39 KASN-DT NW 1000kw/590m

Arizona:

Holbrook 11 KPHZ FC to Telemundo
 Kingman 23 K60AX QC from ch. 60
 Kingman 41 K41FT QC from K66AK,
 1.13kw
 L. Havasu City 43 K43GJ QC from K62BN,
 2.21kw
 L. Havasu City 45 KLHU-CA PC>1.4kw,
 34-36-09/114-22-13
 L. Havasu City 46 K46GI QC from K54AN,
 2.34kw
 Phoenix 34 KTVW-DT NW 200kw/510m
 Phoenix 41 KPSW-LP PC>45.9kw; FC to
 Telemundo
 Phoenix 58 KPHZ-LP FC to Telemundo

California:

Alturas 47 K47EH PG>29.2kw; CL to
 Eureka
Bakersfield 17 KGET-TV CC from KGET
Bakersfield 55 KUVI-DT NW 250kw/387m
Barstow 44 KHIZ-DT PR 513kw/500m
Concord 63 KTNC-DT PR<10kw/145m,

38-01-15/121-59-13

Fresno 41 KQJA-LP QC from ch. 68,
 150kw,
 37-04-22/119-25-5
Hanford 20 KFTV-DT NW 3350kw/580m
Hesperia 18 KSCI-2 NW 5.5kw,
 34-21-08/117-40-27
 Indio 8 KVPS-LP CC from K08MX
 Litchfield 50 K50HJ NS 255w,
 40-07-01/120-19-06
 Los Angeles 33 KSMV-LP PC>22.8kw
 Modesto 61 KACA-LP CC from K61FI
Monterey 46 KION-TV CC from KION
 Redding 40 K34DF QR *dismissed*
 73.3568
 Sacramento 47 KRJR-LP CC from K47DQ
 San Diego 20 K31FC QR from ch. 31
dismissed
 San Diego 34 KSDX-LP QR from ch. 29
reinstated
 San Diego 36 K36GI QG from K31FC,
 3.42kw,
 32-41-47/116-56-0
 S Luis Obispo 42 KPXA-LP CC from K42EL
 Sanger 36 KFRE-DT PG>600m,
 37-04-37/119-26-01
Sanger 59 KFRE-TV PG>4600kw/641m,
37-04-37/119-26-01
 Santa Barbara 64 KSGA-LP QC from ch. 59,
 64.4kw,
 34-01-20/117-17-46; CL
 to San Bernardino;
 petition to deny LC
 Santa Maria 40 KWSM-LP QG from ch. 62,
 150kw,
 34-54-37/120-11-08
 Stockton 52 KDTS-CA CC from K52CK
 Ventura 49 KJLA-DT PG 1000kw/949m,
 34-13-35/118-03-58
 Visalia 50 KNXT-DT NS 185kw/834m

Colorado:

Akron 11 K11UW NS 258w,
 40-16-52/103-05-55
Denver 7 KMGH-TV PR 358m,

Denver	17 KMGH-DT	39-43-51/105-13-54 PR 1000kw/295m, 39-43-51/105-13-54	Coeur d'Alene	47 KQUP-LP	<i>rescinded</i> CC from K47EJ; FC to UPN // KQUP-24?
Denver	20 KTVD	PR<341m, 39-43-51/105-13-54	Sun Valley	5 KIDA	PG>78kw/558m, 43-38-36/114-23-49
Denver	66 K66FB	PG>36.6kw			
Eagle Pass	16 K16FM	NS 10.3kw, 37-29-29/106-48-01	Illinois:		
Estes Park	23 K23GJ	QG from K38DM, 50kw, 38-44-41/104-51-48, CL to Colorado Springs	Chicago	19 WGN-DT	NW 229kw/478m (aux backup)
Estes Park	27 K27GF	QG from K65AA, 38kw, 39-54-48/105-17-33, CL to Denver	Palatine	68 W36AO	QC from ch. 36, 12.6kw
Idalia	14 K14LB	NS 590w, 39-43-50/102-28-56	Rochelle	46 new-LP	AF dismissed - settlement agreement
Idalia	20 K20HM	NS 590w, 39-43-50/102-28-56	Indiana:		
Idalia	22 K22GQ	NS 590w, 39-43-50/102-28-56	Clarksville	45 WJYL-CA	QC from ch. 26, 42kw
Pleasant Valley	18 K18GM	NS 214w, 40-30-35/102-06-51	Fort Wayne	15 WANE-TV	PC 2450kw/252m
Pleasant Valley	24 K24FU	NS 214w, 40-30-35/102-06-51	Indianapolis	44 WTBU-DT	NS 301kw/167m, 39-53-20/86-12-07
			Indianapolis	45 WXIN-DT	PG>700kw
Florida:			Iowa:		
Destin	48 new	NS 3100kw/159m, 30-46-01/86-35-07. Amended from channel 64.	Des Moines	4 WBXF-CA	PG>750w
Destin	64 new	AF dismissed (5 applications)	Ottumwa	30 K45EE	QR from ch. 45
Gainesville	29 W29CV	NS 15kw, 29-25-05/82-32-17	Ottumwa	39 K65GA	QR from ch. 65, 150kw, 39-04-50/95-43-37; CL to Topeka, KS
Hollywood	47 WAMI-DT	PG<575kw, 25-59-09/80-11-37	Ottumwa	45 K67GH	QR from ch. 67
Lakeland	14 WLWA-LP	PR<500w, 28-03-58/81-59-00 *dismissed* but PG>17.7kw, 28-05-05/81-49-14	Ottumwa	46 K53FC	QR from ch. 53
Marathon	29 new-LP	NS 40kw, 24-41-29/81-06-31	Kansas:		
Miami	24 WLTV-DT	NW 500kw/257m	Garden City	47 KGKT-LP	CC from K47HK
Naples	23 WXDT-LP	QC from ch. 15, 20kw	Lawrence	38 KMCI	PG>5000kw/326m, 38-58-42/94-32-02
Naples	39 WZDT-LP	QC from ch. 52, 20kw	Kentucky:		
Naples	56 W56DW	PG>74.4kw	Hazard	16 WKHA-DT	NW 53.2kw/369m
Palm Beach	19 WWHB-CA	CC from WINQ-LP	Louisville	47 WAVE-DT	PG>392m, 38-22-08/85-49-48
Panama City	8 WJHG-DT	PR<52kw/253m	Talbert	18 W51CK	QR from ch. 51 dismissed ROA
Pensacola	7 WRBD-LP	QG from ch. 8, 3kw, 30-26-38/87-14-37	Talbert	23 W23CK	QR from ch. 54 dismissed ROA
St. Petersburg	36 W36CO	QC from W60BK, 3.8kw, 28-03-06/82-44-11	Louisiana:		
Stuart	48 WTCN-CA	QG from ch. 16, 60kw, 27-01-32/80-10-43	Alexandria	41 K43EI	QR from ch. 43, 150kw, 32-27-57/95-08-52; CL to Longview, TX
Tallahassee	45 WVUP-CA	FC; sold to relig.org Vero	New Orleans	59 K59DG	PG>90.9kw
Beach	10 WWCI-CA	PC>3kw	Shreveport	25 KLTS-DT	NS 57kw/258m
Georgia:			Maryland:		
Atlanta	32 WANN-LP	PG<12kw	Towson	16 WMJF-LP	PG>3.5kw
Atlanta	36 WATL	PC<313m, 33-48-26/84-20-22	Michigan:		
Savannah	50 WGSA-LP	PG<60kw, 32-02-48/81-04-42	Crystal	29 W22BH	QG from ch. 22 dismissed 73.3568(a)(1) Also W68CN->33, W24BS->34, W45BC->42, W55BZ->47.
Savannah	57 W57CT	PC>35.4kw	Detroit	23 W68CH	QC from ch. 68, 15kw, 42-22-40/83-14-32
Hawaii:					
Hilo	18 KHVO-DT	PG>50kw			
Honolulu	5 KFVE	FC; drops UPN, WB only			
Idaho:					
Boise	47 K47BE	PG>59.6kw			
Boise	51 K64EJ	QG from ch. 64			

Houghton Lake 34 W57CQ QR from ch. 57,
100kw,
40-23-24/86-51-53; CL to
Lafayette, IN

Petoskey 18 W18BX NW 4kw,
45-28-40/84-57-04

Also W20BQ, W23BM, W25CD,
W31BI, W36CD, W39CB, W51CR,
W53BN, W55CL, W57CP, W62CR,
W64CK, W66CY, and W68DH.

Pinconning 9 W44BO QR dismissed
73.3568a1

Pinconning 58 W58CW QG from ch. 11,
250w, 43-42-02/83-59-17;
CL to Cadillac

Minnesota:

Alexandria 21 K21GN NS 1.56kw,
45-55-59/95-26-50
(KSAX-42, ABC)

**Chisholm 11 KRIIPG>200m,
47-51-39/92-56-46; CL
from International Falls**

Grand Marais 63 K63BI PC<500w,
47-46-04/90-20-47

Jackson 59 K59FN PG>5kw

Rochester 56 K60DS QC from ch. 60;
75kw

St. Cloud 13 WCMN-LP PG>3kw,
45-32-28/94-47-48

St. James 24 K24CP PG>2kw

St. James 26 K26CS PG>2kw

Mississippi:

Columbus 35 WCBI-DT NW 708kw/584m

Jackson 10 WBMS-LP PG>3kw

Pontotoc 23 W23CL NS 5kw,
34-15-10/88-57-36
UBN/TBN

Missouri:

Carthage 5 K05KD PG>3kw,
37-04-37/94-32-16; CL to
Joplin

**Kansas City 41 KSHB-TV PG>3980kw/306m,
38-58-42/94-32-02**

Springfield 41 K52DH QC from ch. 52,
76kw, 37-13-08/92-56-56

Springfield 49 K49DG PG>19.3kw

St. Louis 39 KETC-DT NW 125kw/278m

St. Louis 51 K40FF QR from ch. 40,
70kw, 38-34-24/90-19-30

Montana:

Broadus 6 K06AA PG>390w

Broadus 8 K08JV PG>630w

Helena 21 KHBB-LP CC from K21DU

Nebraska:

Lincoln 31 KLKN-DT NW, 3.2kw/52m,
40-46-47/96-42-17

Lincoln 58 K58GD QG from ch. 39,
30kw, 40-43-40/96-36-50

Omaha 67 KVSS-LP CC from K67FM

Nevada:

Eureka 21 K63CH QC from ch. 63

Las Vegas 31 KNBX-LP PG>2.1kw

Las Vegas 57 K57FA PG>150kw

Winnemucca 2 KPMP-LP CC from K02PP

New Hampshire:

Claremont 17 W17CI QC from ch. 69

**Merrimack 60 WPXB FC?; sold to NBC
(Telemundo?)**

Waterville Vly. 55 W55CZ QG from ch. 53,
27kw

New Jersey:

Atlantic City 44 WWAC-DT NW, 200kw/212m,
39-43-41/74-50-39

Atlantic City 49 WWSI-DT NW 130kw/296m,
39-37-53/74-21-12

**Atlantic City 53 WWAC-TV requests deletion,
to be DTV only**

New Mexico:

Alamogordo 31 K31GJ QC from K32FC

Albuquerque 35 KQDF-LP CC from K35FC

Taos 33 K33BN PG>9.23kw

Tucumcari 35 K35FP QC from ch. 67,
660w

New York:

Deer Park 39 WNYN-LP QC from ch. 51,
50kw, 40-44-50/73-56-38
in NYC

Kingston 48 WRNN-DT NS 950kw/378m,
41-29-18/73-56-56

Manhattan 17 WEBR-CA PR>10kw dismissed

New York 26 WNXV-LP PG 20kw,
40-44-50/73-56-38

Plainview 17 W17CR QG from W33BV

**Syracuse 3 WSTM-TV PG 41.9kw/396m,
42-56-42/76-07-07**

North Carolina:

Charlotte 52 W52CW PG>15kw

Fayetteville 66 W66DF PG>37.1kw

Greenville 60 W60CV PG>33.9kw

Lumberton 67 W67DU PG>23.4kw

Raleigh 13 WBXU-CA PC>1.04kw,
35-47-14/78-43-36

Tryon 19 W19CR QG from ch. 24,
300w

Wanchese 6 WMTO-LP NW, 600w,
35-50-48/75-37-19

Wilmington 10 WILM-LP XC
34-13-21/77-54-10

North Dakota:

Fargo 23 KFME-DT NW 93.05kw/322m,
47-00-45/97-11-41

Ohio:

Lima 65 WLMO-LP CC from W65DP

Toledo 19 WTVG-DT PG<222m

Oklahoma:

Elk City 29 K29EI QC from ch. 52,
1kw

Grove 54 KELF-LP PR<800w dismissed
ROA

Hollis 53 K53AV PG>1.1kw

Norman 46 KOCM FC to Daystar

Tulsa 51 KOPE-LP PC>7.15kw,
36-05-41/95-52-00

Oregon:

Baker City 55 K55JS NS 4.9kw,
44-35-57/117-46-58

Brookings 49 KBSC-LP FC, drops UPN

Cave Junction 48 K48GO QC from ch. 61,
1.1kw

Eugene 4 K04DR XG
44-02-01/123-00-25

Eugene	23 KEVU-LP	PC<19.4kw, 44-00-04/123-06-45; drops UPN	Texas: Amarillo	43 KTXD-LP	PC>150kw, 35-18-55/101-50-03
Eugene	36 K36FJ	QC from ch. 63, 16kw	Austin	20 KADF-LP	CC from K20EP
Eugene	41 KORY-CA	PC>112kw	Beaumont	22 KEBQ-LP	QC from ch. 21, 138.2kw
Medford	35 KTVL-DT	PG<10.2kw/1008m	Brownsville	39 K64FM	QR from ch. 64
Milton-Freewater	23 K23FH	QC from ch. 63	Bryan	23 K63DL	QR from ch. 63
Milton-Freewater	35 K35FO	QC from ch. 65	Conroe	42 KTBU-DT	PG>597m
Newberg	51 KOXO-CA	QC from ch. 66, 150kw	Corpus Christi	28 KORO	PG>287m, 27-42-28/97-37-59
Pendleton	16 KORX-CA	PC>36kw	Corpus Christi	57 K57FC	PG>94.4kw
Portland	35 KORK-CA	QC from ch. 62, 105kw, 45-29-24/122-41-53	Freeport	20 K30DN	QR from ch. 30
Portland	38 KKEI-CA	QC from ch. 56, 111kw	Georgetown	28 KHPX-CA	QC from ch. 48, 7.4kw, 30-36-04/97-39-34
Prineville	16 K16EM	PC<660w	Houston	30 K30CV	PG<27.1kw, 29-33-44/95-30-35
Roseburg	36 KTVC	FC to UPN	Irving	48 KSTR-DT	NW 225kw/535m
Roseburg	49 K49FV	QC from K14HA, 1.5kw	Killeen	16 K16CY	PG>150kw, 30-52-44/97-43-27
Salem	33 KWBP-DT	NS 750kw/523m, 45-30-58/122-43-59)	Lubbock	9 KCBD-DT	NW 15kw/232m
Salem	36 KORS-LP	QC from ch. 55, 150kw	Lubbock	30 KGLR-LP	QC from ch. 40
Tri City	22 K19AD	QG <i>dismissed</i> 73.3568(a)(1)	Lubbock	51 KBZO-LP	PG>60kw, 33-31-33/101-52-07
Pennsylvania:			Mullin	17 K63AY	QG from ch. 63; moves to Dallas?
Butler	60 W60BL	PR>49kw, 40-47-19/79-32-05 <i>returned</i> 73.3566	Mullin	26 K67BL	QG from ch. 67; moves to Dallas?
Chambersburg	51 W51CY	PC>60kw, 39-41-47/77-30-50	Mullin	28 K28HU	QG from K69BS, 6.44kw, 32-35-19/96-58-05; CL to De Soto, (Dallas) TX
Clearfield	3 WPSX-TV	PG 42.4kw/395m	Mullin	31 K31GL	QG from K65BC, 150kw, 32-35-19/96-58-05; CL to De Soto, (Dallas) TX
Erie	16 WSEE-DT	NS 200kw/279m, 42-02-16/80-03-44 <i>but rescinded</i>	Round Rock	15 KHPZ-CA	QC from ch. 64, 10.6kw, 30-36-04/97-39-34
Philadelphia	35 WYBE	PG 1000kw/343m, 40-02-30/75-14-11	San Antonio	2 KBNB-LP	CC from K02MX
Pittsburgh	69 WPTG-LP	PG>11.2kw	San Antonio	4 WOAI-TV	CC from KMOL-TV
Scranton	26 W26CD	QC from ch. 67	San Antonio	44 KGMM-LP	QR from ch. 58 <i>dismissed</i> ROA
South Carolina:			San Marcos	38 KTXU-LP	PG<10.9kw, 30-14-59/97-54-09; CL to West Lake Hills, (Austin) TX
Charleston	21 W21BX	QC from ch. 44, 30kw	Sweetwater	39 K39GJ	NS 10kw, 32-29-11/100-22-05
Orangeburg	55 W55CQ	QG from ch. 52, 14.2kw	Waco	34 KWBU-TV	PC>1950kw/319m, 31-19-17/97-20-40
South Dakota:			Weslaco	13 KRGV-DT	NW 57kw/445m, 26-06-02/97-50-21
Brookings	40 K54FU	QC from ch. 54, 13.5kw	Utah:		
Rapid City	33 K33CO	PG>33.1kw	Huntsville	58 K58FT	PG<430w
Rapid City	52 KCPL-LP	CC from K52IA	Leamington	38 K38HK	NS 770w, 39-31-55/112-18-47
Tennessee:			Leamington	42 K42FR	NS 770w, 39-31-55/112-18-47
Acton	31 W34BU	QR from ch. 34	Logan	3 KCVB-CA	QC from ch. 12, 290w, 41-45-54/111-50-52
Acton	47 W41BT	QR from ch. 41, 150kw, 34-37-39/90-01-27; CL to Senatobia, MS <i>dismissed</i>	Peoa	36 K36GK	NS 490w, 40-43-21/111-21-46
Chattanooga	61 WDSI	FC; drops UPN, Fox only	St. George	18 KUEW-DT	NW 1.62kw/67m, 37-03-50/113-34-20 becomes second
Cookeville	57 W57CZ	PG>42.2kw			
Jackson	36 W64BZ	QR from ch. 64			
Jackson	39 W54BU	QR from ch. 54			
Jackson	49 W49CG	NS 5kw, 35-31-55/88-46-10			
Knoxville	43 WTNZ	PG 1960kw/531m, 36-00-13/83-56-35			
Lenoir City	38 WDTT-LP	CC from W38AQ			
Nashville	20 WVIE-LP	PG<21kw, 36-16-05/86-47-45			
Nashville	58 WNAB	PC>434m, 36-15-50/86-47-39 (WUXP-30 tower)			

DTV-only station

Virginia:

Richmond 25 WTVR-DT PR<410kw/347m, 37-30-45/77-36-05
 Roanoke 43 WRKV-LP QG from ch. 65, 50kw, 37-10-43/80-09-45

Washington:

Bellingham 24 KBCB PR 3390kw/771m dismissed but granted 3090kw/757m
 Camas 19 KOXI-CA PC<25.7kw but also PG>150kw; already on the air

Pullman 24 KQUP CC from KBGC; FC to UPN?

Seattle 53 K53HZ QG from K68DL
 Spokane 22 KSKN FC; drops UPN, WB only

Tacoma 11 KSTW PC<232m
 Walla Walla 9 KBKI FC to Spanish? (sold to same Hispanic company as K14JH)

Yakima 14 K14JH FC to Spanish? (sold to Hispanic company)

West Virginia:

Huntington 36 W36CR QC from W19BK
 Wheeling 56 W56DX PR>70.9kw dismissed 73.3568

Wisconsin:

Green Bay 49 W49CB PG>22.3kw
 Hayward 14 W14CW NS 13kw, 45-59-52/91-24-14 (WDIO-10, ABC)
 Hayward 31 K31GH NW 16.4kw, 45-59-52/91-24-14 (KQDS-21, Fox)

Janesville 57 WBUW

Madison 38 W38CT CC from WHPN; FC to WB QG from W33AX, 14.1kw, 43-03-09/89-28-42
 Waupaca 66 W66DC PG>27.4kw

Wyoming:

Douglas 9 K09XL NS 50w, 42-45-47/105-25-12
 Sheridan 7 K07HC QC from ch. 9

U.S. POSSESSIONS:

Puerto Rico:
 Ponce 19 WKPV-DT PG>1000kw/288m

CANADA:

Ontario:
 Toronto 44 new NS 179kw, "OMNI.2" Asian ethnic. Already on the air but at reduced power.
 Toronto 53 CITY-DT AF 600w, 43-38-33/79-23-15

Thanks to Keith Smith, Joel Nelson, John Zeis, Tom Yingling, Mike Bugaj, and Tom Bryant for information in this month's column. Note that many TBN LPTVs are almost exactly doubling their power.

There will be some notable programming changes on many Canadian stations in the near future. In northern Ontario, southeastern Saskatchewan, and central Saskatchewan, "dual-stick" operations have sold their CBC affiliates to the CBC itself. The "MCTV-CBC" stations commonly seen by E-skip will be no more. The stations involved:

<i>To relay CBLT [5] Toronto:</i>	<i>To relay CBKT [4] Regina:</i>	<i>To relay CBKST [11] Saskatoon:</i>
<i>CFCL-TV-3 [2] Kapsukasing, ON</i>	<i>CFSS-TV [3] Warmley, SK</i>	<i>CKBI-TV-5 [4] Big River, SK</i>
<i>CFCL-TV-2 [2] Kearns, ON</i>	<i>CHSS-TV-2 [6] Wynyard, SK</i>	<i>CKBI-TV-3 [4] Greenwater L, SK</i>
<i>CHNB-TV [4] North Bay, ON</i>	<i>CKOS-TV [5] Yorkton, SK</i>	<i>CKBI-TV-2 [7] N. Battleford, SK</i>
<i>CJIC-TV [5] Sault Ste. Marie, ON</i>		<i>CKBI-TV [5] Prince Albert, SK</i>
<i>CKNC-TV [9] Sudbury, ON</i>		<i>CKBI-TV-6 [2] Spiritwood, SK</i>
<i>CFCL-TV [6] Timmins, ON</i>		<i>CKBI-TV-7 [13] Tisdale, SK</i>

Back in July, you read of the establishment of procedures for regular commercial DTV service in Canada. The CRTC now has its first application for a commercial DTV station. CITY-57 Toronto has requested a DTV facility on its assigned channel 53. It's only 600 watts but the CN Tower location will provide coverage of all of Toronto and the close-in suburbs. Canadian DTV regulations allow for non-simulcast programming on DTV stations as long as it's high-definition. CITY-DT plans up to 14 hours a week of such programming.

Also in Toronto, note the new (analog) station authorized on channel 44. Call letters are not yet known, but Saul Chernos is already seeing the station on the air. (Five days after the CRTC approved their application!) Saul believes it's on relatively low power.

Some (U.S.) applications are listed above as dismissed because of "73.3568". This is a FCC regulation that requires applicants to follow up on their applications - if the Commission asks for further information and the applicant ignores the request, the application can be dismissed. One application is dismissed because of "73.3566". This is a similar rule which allows dismissal of "defective" applications if a request for correction is ignored. ("defective" might include someone who applies for channel 90, or who specifies a negative power, or a tower site in Mexico, etc.. In general, they're applications which could not be granted even if they were the only applicant for the channel.)

Tom Bryant (and some of my co-workers!) noticed WNAB-58 no longer peaks to the south of Nashville. Its signal now peaks from the direction of the WUXP-30 tower northwest of town. Changes in the spacing regulations, coincident with the enactment of the DTV technical regulations, made this move possible. Under the old rules, that site would have been too close to WFTE-58 Salem, Indiana. (Louisville)

Calvin Glover, by way of Publisher Mike Bugaj, updates us on new LPTV WMTO-6 Wanchese, North Carolina. As of late August, they were testing with color bars and occasional scenes of the Manteo waterfront. Fifteen miles from the station in Kill Devil Hills, Calvin receives a stable (but weak) picture on rabbit ears. It's much better with his "real" antenna!

Tom found a message on the Internet listing stations that carry WB network programs in high-definition. WATL Atlanta, WBZL Miami, WGN Chicago, WLVI Boston, WTTV/WTTK Indianapolis, WXMI Grand Rapids, KDAF Dallas, KHQB Houston, KSWB San Diego, KTLA Los Angeles, and KTWB Seattle are all already carrying network shows in HD. WPIX New York is also listed but I'm pretty sure their DTV is still off the air after last year's attack. Later this year, WBDC Washington, WPHL Philadelphia, and WTXH Hartford expect to begin HD broadcasts. WEWB Albany, WNOL New Orleans, and KWGN Denver will follow suit early in 2003.

John Zeis saw WWAC-DT for the first time on 4 September. Their DTV is located in the general vicinity of Hammonton, about midway between Atlantic City and Philadelphia and well to the northwest of their analog transmitter. I would presume WILF Williamsport, PA makes it impossible for their analog transmitter to move any closer to Philadelphia. Anyway, WWAC has applied to remove their analog signal from the air and become a DTV-only station. If granted they would become the first station to drop analog after having started as an analog outlet, and the third DTV-only station after WTPX-46 and KUEW-18.

A post from Bill Hepburn on the WTFDA mailing list clarifies the regulations for Canadian stations to ID. "The broadcasting stations for which a call sign has been issued must identify according to the technical requirements in this document." Which seems to imply there exist some stations for which a call sign has not been issued. The requirements demand an aural or visual ID within 10 minutes of the top of the hour, or at the beginning and end of any program more than an hour in length. Which is in fact stricter than the U.S. regulation. Rebroadcasting stations (translators) are to be identified by the primary station at least daily. However, stations operating on unprotected channels (very low-powered translators) need not ID at all.

Joel Nelson saw a news item on the KLKE-8 website indicating their DTV station on channel 31 is now on the air. The coverage map on the story indicates the transmitter is in Lincoln proper. They hold special temporary authority to operate at the listed low power from a site in the city, probably their studio location.

October is the peak of fall tropo season. *Good luck!*

FM NEWS

Steven C. Wiseblood
28 LBJ Blvd.
Brownsville, TX 78521
stevenwisebl@hotmail.com

OCTOBER 2002



ABBREVIATIONS:

AFA: American Family Association
CC: **call letter** change&: satellite programming
CL: **city of license** change
CX: a **construction permit** has been **canceled**
C1,C2,etc: a change in status to that
FM license **class**
DA: **directional antenna**
DE: station has been **deleted**
FC: **format change**
GA: **granted amendment** to the table of
FM allocations
GE: **granted extension** of construction permit
GX: **granted replacement** of expired permit
LC: **license to cover** filed
(means station is ready to come on air)
MC: **multiple-city** legal ID
NC: **no change** yet on a reported change/permit

ND: **non-directional** antenna
NO: **not on the air**
NS: **new station** granted
NW: **new station** signs on
OSA: **one-step application** granted for change
PA: **proposed amendment** to change FM
table of allocation
PC: **power change** on the air ("**>**" for increase,
"**<**" for decrease, when known)
PG: **power change** granted ("**>**" for increase,
"**<**" for decrease, when known)
QC: **frequency change** occurred
QG: **frequency change** granted
RA: silent station **returns to air**
RE: station **requests extension** on permit
RX: station **requests replacement** of expired permit
SG: **slogan change** or update
SI: **station is silent**
XA: **dismissed amendment** to FM allocations
XC: **transmitter site change** occurred
XG: **transmitter site change** granted



ALABAMA:

Citronella: WQUA 102.1 FC to "**Radio Disney**" (Mobile)
Eufaula: WRVX 97.9 FC to Contemporary Christian,
SC "**Praise 98**"
Headland: WZND 105.3 CC (ex WBCD)
"**105.3 The Zone**" (Dothan)

ALASKA:

Anchorage: 88.5 NS 11kW 95ft
Educational Media Foundation

ARIZONA:

Fountain Hills: KBIE 89.1 NW AFA -
southern gospel (Phoenix)

ARKANSAS:

DeQueen: KBPU 88.3 NW religion

CALIFORNIA:

Felton:KTEE 93.7 CC (ex KHIP) FC to Smooth Jazz
Gonzales: KHIP 104.3 CC (ex KTEE, KMBY),
FC to Classic Rock, SC "**104.3 the Hippo**"
Healsburg: KTOL 96.7 NW modern rock, "**The Tool**"
Lompoc: KSMY 106.7 FC to Hot AC,
SC "**My 106.7**" (Santa Maria)
Riverside: KELT 92.7 FC to country, //KFRG,
SC to "**K-Frog**"
Roseville: KXOA 93.7 FC to Classic Rock, keeps
Howard Stern mornings.
Salinas: KEBV 97.9 FC to Hot AC,
SC to "**97.9 on Fire**"
Seaside: KMBY 103.9 CC (ex KTEE),
FC to Modern Rock

COLORADO:

Loveland: NS 89.7 80kW, 528ft, Colorado Christian
Univ.

Steamboat Springs: KLBV 89.3 NS
Srasburg: KAGM 102.3 FC to dance //KXDC 102.1

CONNECTICUT:

Waterbury: WMRQ 104.1 adds Bubba the Love Sponge

DELAWARE:"

Laurel: WQJH 95.3 FC to Hot AC, //WZEB 101.7
"**B101.7 & 95.3**"

FLORIDA:

Woodville: WKEP 97.9 NS

GEORGIA:

Waynesboro: WTHB 100.9 CC (ex WAEJ),
FC to black gospel (Augusta)

IDAHO:

American Falls:KORR 104.1 FC to hot AC(Idaho Falls)
Idaho Falls: KPLV 105.5 FC to hot AC
Wallace: KSIL 100.7 RA variety (Spokane)

ILLINOIS:

Christopher: WXLT 103.5 FC to alternative rock
Colombia: KMJM 104.9 SC "**Majic 104.9**" (St. Louis)
Jerseyville: WMLL 104.1 FC to 80's/90's mix
SG "**104-1 The Mall, Flashbacks of the 80's & 90's**"
Mount Vernon: WVSI 88.9 NW Classical, Variety
//WSIU 91.9
Mount Vernon: WIBV 102.1 FC to mModern Rock
SG "**102-1 The Alien**"
Streator: WYYS 106.1 FC to soft AC

INDIANA:

Ellettsville: WHCC 105.1 CC (ex WGCT)
Mitchell: 88.1 WMBL NW religion
Nappanee: WAMG 95.7 CC (ex WLRX),
SG to "**Magic 95.7**"

IOWA:

Okoboji: KPJI 90.7 NW //KWIT 90.3

Spirit Lake: KJIA 88.9 NW Religion, //KJLY

KANSAS:

Bronson: KBJQ 88.3 NW Cont. Christian
Hays: KZAN 91.7 NW Classical/NPR/news
Junction City: KJCK 97.5 (QC ex 94.5)
Riley: KACZ 96.3 NW top 40 adds Rick Dees (Manhattan)
Topeka: WIBW 94.5 QC (ex 97.3)

KENTUCKY:

Hopkinsville: WZZP 97.5 FC to modern rock, SC to "**Z-97.5**".
Ledbetter: WHMR 90.1 NS
Louisville: WXMA 102.3, CC (ex WULV); FC to Hot AC, SC to "**The New Max 102.3**"
Moorehead: WBMK 88.5 NW Cont. Christian

LOUISIANA:

Lacombe: WXXF 94.7 CC (ex WYLA), SC "**The Extreme**" (New Orleans)
Monroe: KXRR 106.1 CC (ex KMYX) FC Classic rock SC "**106-X**"
Rayville: KMYX 92.3 CC (ex KXRR) FC modern country (Monroe)

MAINE:

Kennebunkport: WQEZ 104.7 adds Bob & Sheri

MARYLAND:

Halfway: WDLR 96.7 CC (ex WQCM), FC to Urban/top 40, SC to "**Wild 96.7**"

MICHIGAN:

Burton: WTAC 89.7 SC "**The Light**", contemporary Christian
Hancock: WGLI 98.7 NS
Holton: WSHN 100.1 SC "**Sunny FM**" (Muskegon)
Schoolcraft: WOFR 89.5 CC (ex WBMX)

MINNESOTA:

Austin: KNSE 90.1 NW
Duluth: WNCB 89.5 QC (ex 89.3)
New Prague: KRDS 95.5 CC (ex KCHK)
Northfield: WCAL 89.3 FC to Classical SC to "**Classical 89.3**", //KMSE 88.7
North Mankato: KDOG 96.7 FC to hot AC
Pillager: KBKK 95.9 adds Bill O'Reilly, FC to Country, SC "**KS-96**".
Rochester: KMSE 88.7 FC to Classical, //WCAL)
Willmar: KKLW 90.9 NW
Worthington: KITN 93.5 FC to Classic Hits, SC "**The Eagle**"

MISSISSIPPI:

Laurel: WMXI 98.1 RA, Hot AC "**98-X**" (Hattiesburg)

MISSOURI:

Chaffee: KREZ 104.7 CC (ex KYRX)
Festus KTBK 89.3 FC to Cont. Christian adds 91.9 relay nr St. Louis
Florissant: KFTK 97.1 SG "**97.1 FM Talk**" (St. Louis)
Lee's Summit: KCSX 97.3 XC from Moberly (Kansas City)
Marble Hill: KYRX 97.3 CC (ex KREZ)
Mount Vernon: KHTO 106.7 FC to modern rock, SC as "**The End**." (Springfield)
St. Charles: KCLC 89.1 FC to Adult Alternative rock
St. Louis: KLOU 103.3 FC to soft Classic Hits, SG "**St. Louis Super Hits**"

Waynesville: KFBD 97.9 FC to classic rock

MONTANA:

Billings: KBLW 90.1 (ex KBVS), FC to religion

NEBRASKA:

Nebraska City: KNCY 103.1 QC (ex 94.7)
Scottsbluff: KMOR 92.9 FC to Classic Rock

NEVADA:

Pioche: KBZB 98.9 FC to country, SC "**The Bull**"

NEW HAMPSHIRE:

Jackson: WEVJ 99.5 NW NPR news, talk, //WEVO

NEW YORK:

Hyde Park: WCZX 97.7 FC to Classic Hits SC to "**Mix 97**"
Patterson: WDBY-105.5 CC (ex WAXP), SC to "**Y-105**".
Scotia: WHTR 93.7 FC to Modern Rock, SC to "**K-Rock**" (Albany)
Wurtsboro: WZAD 97.3 FC to Classic Hits, SC to "**Mix 97**".

NORTH CAROLINA:

Hickory: WXRC 95.7 FC to Classic Hits. SC to "**95.7 the Ride**"
High Point: WHPU 90.3 (ex WWIH)
Williamstown: WIAM 98.9 CC (ex WDRP)

OHIO:

Fort Shawnee: WZRZ 107.5 CC (ex WBUK) FC to modern rock, SC to "**X-107.5**"
North Baltimore: WPFZ 107.7 CC (ex WIMJ)
Ottawa: WBUK 106.3 CC (ex WQTL)
Paulding: WKSD 99.7 FC to oldies days, ESPN Sports (7pm-6am)
Xenia: WZLR 95.3 CC (ex WDTP); SC to "**The Point**"

OKLAHOMA:

Kingfisher: KLGH 105.3 FC to modern rock, SC "**K-Spy**" (Oklahoma City)

PENNSYLVANIA:

Greencastle: WQCM 94.3 CC (ex WIHR), FC to modern rock (Chambersburg)
Hagerstown: WDLR 96.7 CC (ex WQCM)

SOUTH CAROLINA:

Bluffton: WWVW 106.9 FC to modern AC, SC as "**Wave 106.9**"
Hilton Head Island: WFXH 106.1 FC to modern rock
Lake City: WWFN 100.1 FC to top 40, SC to "**Z-100**" (Florence)
Newberry: WGVC 106.3 FC to oldies

SOUTH DAKOTA:

Rapid City: KQPR 89.9 NW

TENNESSEE:

Livingston: WLQK 95.9 FC to lite AC, SC to "**Lite Rock 95.9**" (Cookeville)
Union City: 88.9 NS 6kW, 115ft, Broadcasting for the Challenged

TEXAS:

Amarillo: KPQZ 100.9 RA variety
Corpus Christi: KWRC 88.7 CC (ex KFGG)
SC to "**Worldwide Worship**", Christian Contemp.
Hondo: KRIO 105.9 CC (ex KMFR)
Pearsall: KMFR 104.1 CC (ex KRIO, KMMG),
classic rock (San Antonio)
Shamrock: KBKH 92.7 FC to oldies
Tahoka: KAMZ 103.5 FC to regional Mexican (Lubbock)
Victoria: KAYK 88.5 NW religion

UTAH

North Ogden: 88.7 NS 8kW, 918ft
Educational Media Foundation
Price: KWSA 100.9 CC (ex KPRQ)

VERMONT:

Bellows Falls: WZSH 107.1 FC to Country.
SC to "**Bob Country**"
Springfield: WXKK 93.5 FC to hot AC, SC "**XL-92**",
//WGXL
Waterbury: WLKC 103.3 modern AC, //WXAL 93.7
White River Junction: WSSH 95.3 FC to Country
SC to "**Bob Country**"

VIRGINIA:

Broadway: WBHB 96.1 FC to oldies, SC "**Oldies 96.1**",
(Harrisonburg)
New Market: WLTK 103.3 FC to Contemporary
Christian,
SC "**Light 103.3**" (Harrisonburg)
Radford: WWBU 101.7 CC (ex WBXW),
FC to Classic Country, SC "**Bubba 101.7**"
Richmond: WRXL 102.1 FC to Modern Rock,
SC "**New Rock 102.1 - The X.**"

WASHINGTON:

Aberdeen: KJET 105.7 FC to Hot AC.
Walla Walla: KRKL 93.3 CC (ex KTWY)

WEST VIRGINIA:

Grafton: WDKL 95.9 CC (ex WTBZ), SC "**K-love**"
FC to contemp. Christian (Morgantown)

WISCONSIN:

Fond Du Lac: 91.7 NS 10kW, 305ft,
Cornerstone Community Radio

WYOMING:

Orchard Valley: KWYC 90.3 NS 38kW, 400ft,
Educational Media Foundation



BRITISH COLUMBIA

Prince George: CKPG-550AM requests 99.3/9.3kw.

ALBERTA:

Calgary: CIQX 103.1 NW Smooth Jazz "**The Breeze**"
Edmonton: CKRA 96.3 FC to hot AC
Lloydminster: CKSA-1080AM requests 95.9/100kw, with
relayer at
Bonnyville, AB on 101.3/25kw. To continue with country
format.

NOVA SCOTIA:

Halifax: CIEZ 96.5 FC to classic hits



ONTARIO:

Fort Erie: CKEY 101.1 FC to dance/top 40,
SC to "**Wild 101.1**" (Buffalo)
Niagra Falls: CFLZ 105.1 SC to "**The River**"

73's de Steve AB5GP

IBOC UPDATE

(Posted on the Soundoff list by Tom Bryant)

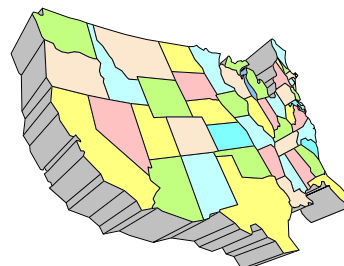
FCC Commissioner Kathleen Abernathy (R) told the NAB Radio Show's FCC Policymakers' Breakfast 9/13 that a Report and Order is likely to come out this fall on setting a digital radio standard. The FCC has received technical reports on tests of iBiquity's HD Radio (IBOC), and Abernathy says it's time to act.

The timing of the endorsement and a means for allowing early adopters like Radio One (RBR e-paper 9-13) to go on the air may be approved in October or November, with final rules issued early next year, she said.

Because iBiquity has completed both its AM and FM IBOC testing, the National Radio Systems Committee (NRSC) has issued reports supporting the technology, and the FCC has accepted comments on those reports, "It's time for us to do our job," Abernathy commented.

WESTERN TV DX

VICTOR FRANK
12450 SKYLINE BLVD.
WOODSIDE, CA 94062-4554
frank@horizon.sri.com



Dennis Park Smith, 3605 San Remo Drive, Santa Barbara, CA 93105-2523 (805)687-7803

This report is for August 2002. As in July, tropo DX along the southern California coast to San Diego/Tijuana on TV-FM (200mi/320km) existed for the entire month. The air boundary varied from high to low elevation (the lower elevation the boundary is, the better the tropo for my low elevation).

Temperatures continued hot inland, which also means the air layer above the boundary along the cool moist coast was hot and dry helping the tropo. "VHF" in the list below refers mostly to KFMB-8 and KGTV-10, San Diego, whose transmitters are at a lower elevation than all the other San Diego/Tijuana TVs, so the lower air boundary was favorable for those two in particular.

Aug 1-4 am: Poor
Aug 4 eve: Poor, improving (boundary lowering)
Aug 5-7am: VHF fair, UHF poor " "
Aug 7 eve-14: VHF very good/excellent, UHF fair "
Aug 15-23: Poor (boundary higher)
Aug 24-27: Fair (UHF good Aug 27 eve) (lower)
Aug 28: Poor (boundary higher)
Aug 29 am: Very poor
Aug 29 eve-31: Fair to good, variable (lower)

Best of DX to all, Dennis

William Eckberg, 1032 Sterling Rd., Dixon, IL 61021

August 2002	CDT			
1 tr	0100	KGIN	11 NE	458
2 Es	2245	KMID	2 TX	967
3 tr	0355	WOAC	67 OH	417
7 tr	0300	WCFT	33 AL	593
	0315	WFIQ	36 AL	483
	0320	WUNF	33 NC	558
	0325	WLFG	68 VA	487
	0355	WIAT	42 AL	582
	0400	WZDX	54 AL	503
		WAFF	48 AL	503
	0425	WTCI	45 TN	512
	0500	WAAY	31 AL	503
	0505	WHNT	19 AL	503
	0600	WUXP	30 TN	408
	0810	WKDH	45 MS	535
	0900	WXVT	15 MS	570
		KLRT	16 AR	503
	1000	KWBM	31 AR	424
	1005	KWBF	42 AR	503
8 tr	0055	WOAC	67 OH	417
	0100	WLFG	68 VA	487
	0125	WOIO	19 OH	401
	0155	WLMT	30 TN	451
	0230	KARD	14 LA	651
	0235	KFXK	51 TX	697

0250 KETK 56 LA 747

0300	KFAA	51	AR	444	
	0310	KSHV	45	LA	681
	0320	WNTZ	48	MS	709
	0525	KSAX	42	MN	404
9 tr	0235	KSAX	42	MN	404
20 tr	2140	WMMF	68	WI	Fon Du Lac 148

A stagnant air mass settled over the south on August 7 and 8. Tropo was seen from NC to TX to 750 miles. The opening went deep into MS, LA, and TX from 0230 to 0330 on August 8.

The number of Es loggings was one-third those logged in 2001. Many openings were into areas not seen frequently, especially Canada.

Mike Cherry, VE7SKA <mcherry@saltspring.com>

We had a some Au & AuEs Saturday night (September 7 local). While conditions on 6M & low-band TV were good, neither FM-broadcast nor 2M opened

September 8, 2002 GMT

AuEs	0159	CBWFT3	MB	85°
	0200	CKND22	MB	85°
	0329	CFSS 3	SK	80°
	0330	CKCK 2	SK	80°

AuEs signals weren't in for long during both openings, but signal strengths were unusually stable & strong while they lasted.

73 for now - Mike VE7SKA (CN88)

Patrick Dyer, WA5IYX <pjdyer@swbell.net>

Subject: Sep 7 magstorm effects

There was a large CME impact some time before 1800Z. Southern American amateurs on 50 MHz and FM elevator music (from Chile) were observed, but this is a log of what I heard/saw of Channel 2.

2016 checking Ch 2 MASSIVE CCI from south - at first the QSB seemed too fast for F2, but no audio or evidence of Ch 3, etc signals, and it also lacked the usual severe ghosting common to F2

2020 50.750 Ch A2 Spanish audio spur
2042 much as prior, Ch A2 still a mess - multiple CCI beats/sources; becoming more convinced that it has to be F2 now

2100 ditto (unable to get a true azimuth peak due to KBEJ-2 50 mi nnw)

2107 Ch A2 CCI finally started fading down

2108 some

2117 HC8/b way down, 50.750/.740 Sp TV audio spur dribbles se still

2119 whatever it was, CCI to Ch 2 now GONE (sure wish that I'd thought to check Ch 2 earlier than 2016z :<) (better yet if no KBEJ on!)

2152 50.750 HUGE Ch A2 Spanish audio spur (40 over 9) now
 2200+ that suddenly gone - either vy rapid f/out or their t/off

73, Pat - WA5IYX

Jeff Kruszka, 5024 S. Braxton Ave., Baton Rouge, LA 70817

Equipment: 1992 Zenith "Sentry 2" 13" color TV, Channel Master 4228A screened 8-bay w/CM Spartan 3 #0071 preamp and RG-11 coax for UHF, Channel Master 1114 Crossfire w/CM #0040 preamp, MFC D6367 double cavity notch filter for 88.5 MHz, and RG-6 for VHF, both @20 ft. AGL.

<u>August 2002</u>		CT		
2	Es	1211	Cuba	3 CU
		1221	Cuba	5 CU TP
		1222	WFOR	4 FL 745
		2036	KOAA	5 CO
unid 4 TV Azteca-13				
3	Es	1130	KDUH	4 NE 1050
		1147	KLNE	3 NE 860
4	Es	1724	WFOR	4 FL 745
		1854	WTVJ	6 FL 745
7	Es	1749	unid 3, 4 SS brief	
17	Es	1851	unid SS 3-5	
		1900	XHG	4 JAL 1020
18	Es	0953	XHIT	4 CHI
25	tr	0040	KRRT	35 TX 475
		0042	KNVA	54 TX 395
		0043	KXAN	36 TX 395
		0044	KWEX	41TX 445
		0045	KEYE	42TX 395
	Es	1907	unid 3 CBS brief	

And so we draw a close to the worst E-skip season ever. I guess I should be happy I got one more new logging. Maybe tropo will return someday and get me out of the "blues" (on Bill Hepburn's maps, hi!).

Danny Oglethorpe, P.O. Box 17452, Shreveport, LA 71138-0452 Email: doglethorpe@yahoo.com
 Es: Highlights only

<u>JULY 2002</u>		UTC		
22	Es	1715	YSR	2 El Salvador 1324
		2147	WCBS	2 NY 1238
26	Es	2205	Great Lakes area and east.	
29	Es	0200	WTVH	5 NY 1212
		0335	WSJK	2 TN "2/15" 665
		2131	XHHHN	2 OAX Supered
			"XHHHNCH2"	upper right 1038

<u>AUGUST 2002</u>		UTC		
2	Es	1559	XHG	4 JAL 1003
		1629	XHSLT	2 SLP Supered
			ID upper right	835
		1715	Cuba	2, 5 TP
		1745	XEFB	2 NL Logo 611
		2315	Much Es to west, northwest, and north.	
3	Es	0035	KCBS	2 CA Brief 1420
		1610	KDKA	2 PA 945
			WSJK	2 TN "2/15" 665
		1659	KTWO	2 WY 996

1715 Denver 2, 4 806

		1810	KOAA	5 CO "5/30" 734
		1817	KNAZ	2 AZ 1045
		1830	KPHO	5 AZ 1065
		1759	KACV	2 TX 501
5	Es	2130	WUND	2 NC 1031
		2210	WCBC	2 SC 805
		2217	WESH	2 FL 789
		2230	Miami	2, 4 939
		2300	Cuba	2
		2330	XHQRO	2 QROO 891
9	Es	0120	KVOA	4 AZ 1004
		0125	XHPDT	2 SON (ID0125,0155)1159
17	Es	2120	WUND	2 NC 1031
		2205	KNAZ	2 AZ 1045
		2235	XHGV	4 VER "RTV"logo 930
		2243	XHTV	4 DF "4tv" 958
		2328	XHAGU	2 AGS Supered calls lower right 896
		2330	XEWO	2 JAL 1003
18	Es	1338	XEFB	2 NL 611
		1430	XHDI	5 DUR Supered ID upper right 875
		1442	XELN	4COAH Big calls top 752

My list of Mexican TV IDs (along with ID material) from the summer can be found on the Web at:
<http://www.geocities.com/doglethorpe/mexsum2002.html>

Dave Pomeroy, 2321 SE Libra Ct., Topeka, Kansas 66605-3505

<u>May 23, 2002</u>		
2130	Es	CBKFT-2* 3 Prince Albert, SA
		CFQC-3 Stranraer, SA 1077

<u>June 5, 2002</u>		
0650	Tr	WICS-20 Springfield, IL
		WQPT-24 Moline, IL 320
		KYOU-15 Ottumwa, IA
		KWKB-20 Iowa City, IA 293

<u>June 14, 2002</u>		
2145	Es	CKSA-2 Lloydminster, AB
		WPVI-6 Philadelphia, PA
		CFRN-3 Edmonton, AB
		WJAC-6 Johnstown, PA
2220		KYW-3 Philadelphia, PA
		KREM-2 Spokane, WA
2245		CICT-2* Calgary, AB

<u>June 15, 2002</u>		
0600	Tr	KXFA-48 Cedar Rapids, IA
		KWKB-20 Iowa City, IA
		25-34-52-62 Oklahoma City, OK
0900		KDSM-DT 16 Des Moines, IA (overKTAJ-16) 220
		1100 Es XEFB-2 Monterrey, NL

<u>June 18, 2002</u>		
2020	Tr	KJTL-18 Wichita Falls, TX 374
		KXII-DT* 20 Sherman, TX 350
		UNID-DT 27 DTV snow on KSNT-27 KFOR-DT?
		KXTX-39 Dallas, TX
		KCHM-CA* 59 Oklahoma City, OK
2100		9-14-25-34-43-52-62 Oklahoma City, OK (KAUT-43 over local KTLJ-43 LPTV)
		KOTV-6 Tulsa, OK
		KQOK-30 Shawnee, OK
2200		KDFW-DT 35 Dallas, TX
		KTXA-21 Dallas, TX
2205		KXAS-DT 41 Ft. Worth, TX
		KDAF-DT 32 Dallas, TX

	KDTX-58	Dallas, TX		2230	KSTC-DT 44* Minneapolis, MN	
	KOCO-5	Oklahoma City, OK	259	2235	KMWB-DT 22* Minneapolis, MN	
	KPXD-68	Arlington, TX			WCCO-4 Minneapolis, MN	
	KTLM-40	Rio Grande City, TX	880	2240	K41??-41 (with KARE-11)	
2225	KTAB-32	Abilene, TX	515	2240	KSTP-DT 50* Minneapolis, MN	
	KSWO-7	Lawton, OK	373		(over KPXE-50)	
	KDSM-DT 16	Des Moines, IA			K56??-56 Rochester, MN	TBN
	KHBS-DT*21	Ft. Smith, AR	277	2300	KTIN-21 Ft. Dodge, IA	
<u>June 19, 2002</u>						
	0300	KDFI-27 Dallas, TX (KSNT-27 off)			KYIN-24 Mason City, IA	334
<u>July 1, 2002</u>						
	0615	KWKB-20 Iowa City, IA			WFTC-DT 21 Minneapolis, MN	
<u>July 6, 2002</u>						
	0900	WXIN-59 WHMB-40 Indianapolis, IN	507		WIWB-14 Suring, WI "WB-14"	547
		KOMU-DT*36 Columbia, MO		2235	WYOW-34* Eagle River, WI	569
<u>July 30, 2002</u>						
	0530	KWKB-20 Iowa City, IA			KWCV-DT 31 Wichita, KS	130
	0550	KBSH-7 Hays, KS	199		KFXA-28 Cedar Rapids, IA	283
		KBSD-6 Ensign, KS	272	<u>August 8, 2002</u>		
	0558	KDCK-21* Dodge City, KS	259	0000	KMSP-9 Minneapolis, MN	437
		KSNC-2 Great Bend, KS	173		WXOW-19 LaCrosse, WI	398
		K22CP-22 Salina, KS	KAKE-10	0200	WKOW-27 Madison, WI (KSNT-27 off)	
		K20BU-20 Russell, KS	KAKE-10	0630	KMEG-14 Sioux City, IA	
		K63DM-63* Guymon, OK	KAMR-4	0700	KTCI-17 St. Paul, MN	
		K64BS-64 Concordia, KS	KOOD-9	<u>August 11, 2002</u>		
		KTVG-17 Grand Island, NE	214	0630	WICS-20 Springfield, IL	334
		K65DS-65* Guymon, OK		<u>August 14, 2002</u>		
0630	KSMN-20	Worthington, MN		0500	KGIN-11 Grand Island, NE	200
	K45AU-45	Follett, TX		0630	KOED-11 Tulsa, OK	207
0700	K59GF-59	Guymon, OK			KDIN-11 Des Moines, IA	220
	K53BE-53*	Guymon, OK	TBN		(KTWU-11 off for DTV installation)	
	K58AX-58*	Buffalo, OK	KWET-12	<u>September 5, 2002</u>		
		(seen earlier with KWCH-12)		0620	WICS-20 Springfield, IL	334
<u>July 31, 2002</u>						
	2000	KSMN-20 Worthington, MN		0630	KMEG-14 Sioux City, IA	248
<u>August 7, 2002</u>						
	2115	WHO-DT 19* Des Moines, IA	220		KPWB-23 Ames, IA	222
		(over KCPT-19)			KSMN-20 Worthington, MN	337
	2125	KXLT-47 Rochester, MN		<u>September 12, 2002</u>		
		KWWL-DT 55* Waterloo, IA		0930	KAKE-DT 21* Wichita, KS	
		(wiped out local LPTV 55)		1030	4-40 Ft. Smith, AR	
		KFXA-28 KPXR-48 Cedar Rapids, IA	300	KDCK-21 reception was long sought after. The station is very low power and was seen only after local TBN switched from 21 to 55 and before KAKE-DT 21 went on the air. I suspect it is the only time KDCK-21 will be seen here. Nearby KTAJ-16 will also operate on DTV channel 21. KAKE-DT was seen testing with color bars with KAKE-DT call and channel 21 Wichita written out. DTV's are on channel 31 in Lincoln and Des Moines, but I have not seen them here yet. Most reception from Des Moines, Lincoln, Omaha, Wichita, Joplin, Springfield (MO), etc. are not listed unless new or unusual for some reason.		
	2135	KSTC-45 Minneapolis, MN	437			
		KMSP-DT 26 Minneapolis, MN				
		KARE-DT 35 Minneapolis, MN				
		KTTC-DT 36 Rochester, MN				
		KSMQ-15 Austin, MN	350			
	2150	WCCO-DT 32 Minneapolis, MN				
		WFTG-29 Minneapolis, MN				
		(over KCWE-29)				
	2200	WOI-5 Ames, IA				
	2210	WEAU-DT 39* Eau Claire, WI	458			
	2220	KDSM-DT 16 Des Moines, IA				

METEOR SHOWER GUIDE

We have no major showers peaking in October but we have several minor showers peaking. The Eta Cetids peaks Oct 1-5, the October Cygnids peaks Oct 4-9, the October Cetids peaks on the 5th and 6th, the Delta Aurigids peaks Oct. 6-15, the Arietids peaks on Oct. 8 and 9, the Draconids peaks Oct 9 and 10, the Northern Piscids peaks on Oct 12th and 13th, the Epsilon Geminids peaks Oct. 18 –19, the Orionids peaks on Oct 20th. They aren't major showers, but they should be enough to keep the hard-core MS Dxers looking. Happy hunting.

SOUTHERN FM DX

John Zondlo
4009 Driftwood Circle
Yukon, OK 73099
sfm@fmdxweb.com
Deadline: 10th

For DXers in AL, AZ, AR, CA, CO, DE, DC, FL, GA, HI, KS, KY, LA, MD, MS, MO, NV,
NM, NC, OK, SC, TN, TX, UT, VA, WV, Cuba & Mexico

October 2002

Adam Rivers – DXing from 503 32nd St. –
Ocean City, MD, facing Isle of Wight Bay –
patriotsrule417@yahoo.com -
<http://adamskewlsite.freesevers.com>

8/10-15 every day Tr (note #1)

WBZO	103.1	NY	Bay Shore
WBLI	106.1	NY	Patchogue
WALK	97.5	NY	Patchogue, o/local
WRZE	96.3	MA	Nantucket
WWBB	101.5	RI	Providence
WWLI	105.1	RI	Providence
WPLM	99.1	MA	Plymouth
WCIB	101.9	MA	Falmouth
WPTE	94.9	VA	Norfolk
WNVZ	104.5	VA	Norfolk
WESR	103.3	VA	Onley
WEHM	96.7	NY	Southampton
WFCC	107.5	MA	Chatham, o/local WKHI
WPXC	102.9	MA	Hyannis
WWRX	103.7	RI	Westerly, o/local WMGM
WHFM	95.3	NY	Southampton
WPST	97.5	NJ	Trenton, o/local WICO
WWDE	101.3	VA	Hampton
WCXL	104.1	NC	Kill Devil Hills



8/9 Tr

1922 WAEB 104.1 PA Allentown

8/10 Tr

2042 WQXR 96.3 NY New York
2142 WLIF 101.9 MD Baltimore
2128 WWMX 106.5 MD Baltimore

8/11 Tr

1625 WWOC 94.5 NC Hatteras
1636 WXEZ 94.1 VA Yorktown
1742 WWHV 102.1 VA Virginia Beach
1816 WYNY 107.1 NY Hampton Bays
1817 WBMW 106.5 CT Ledyard
1818 WTYD 100.9 CT New London
1821 WPLM 99.1 MA Plymouth
1824 WBZO 103.1 NY Bay Shore
1826 WXXP 105.3 NY Calverton
2059 WSKQ 97.9 NY New York, full \$
2101 WAXQ 104.3 NY New York, full \$
2103 WWPR 105.1 NY New York, full \$
2105 WQCD 101.9 NY New York, full \$
2106 WXPB 88.5 PA Philadelphia, RDS-6
2111 WXRK 92.3 NY New York
2121 WICE 98.3 VA Clarksville
2130 WPLJ 95.5 NY New York
2136 WLTW 106.7 NY New York
2145 WJKS 101.7 NJ Canton, o/local
2234 WMZQ 98.7 DC Washington

8/12 Tr

1706 WVOD 99.1 NC Manteo
2253 WHTZ 100.3 NJ Newark, o/local
2257 WAFJ 99.1 MD Annapolis

8/13 Tr

0941 WAAI 100.9 MD Hurlock
WBBO 98.5 NJ Monmouth
1746 WHTZ 100.3 NJ Newark
2042 WCEI 96.7 MD Easton
2158 WTOP 107.7 VA Warrenton, thru local
2219 WQSR 102.7 MD Baltimore

8/14 Tr

1802 WQGN 105.5 CT Groton, o/local WGBZ
2200 WWZZ 104.1 MD Waldorf

8/15 Tr

0301 WKCI 101.3 CT Hamden, (note #2)
0325 WLAN 96.9 PA Lancaster
0327 WZZO 95.1 PA Bethlehem



Note #1: Phenomenal tropo 24/7 on those days. Other days were completely dead band, with Atlantic City stations not even making it into the radio.

Note #2: Amazed by hearing one of my locals. Heard CHR on 95.7 and rock on 99.1 and presume they are WKSS and WPLR, but I am not going to make the loggings because I do not have proof.

William McGuire – 2412 59th Pl. –
Cheverly, MD 20785-2918

DX-398

8/11 Tr

2237 WWIN 95.9 MD Glen Burnie, "Majic 95.9"
2242 WZBH 93.5 DE Georgetown, "The Beach"
2255 WKOC 93.7 VA Chesapeake, "The Coast"



2305 WXMD 92.5 MD Pocomoke City, "Max 93.5"
2310 WSTW 93.7 DE Wilmington, "WSTW.com"
2330 WOGL 98.1 PA Philadelphia, "Oldies 98.1"
2336 WRBG 101.7 DE Ocean View, "The new B-101.7"

2353 WMGM 103.7 NJ Atlantic City, "Classic Rock 103.7"
8/12 Tr
 0047 WESR 103.3 VA Onley, "Serving the Shore"
 0055 WTKU 98.3 NJ Ocean City, "Cool 98.3"
 0100 WAFL 97.7 DE Milford, "Eagle 97.7"
 0130 WNVZ 104.5 VA Norfolk, "Z-104"
 0137 WTDK 107.1 MD Federalsburg, "The Duck"
 2250 WOCQ 103.9 MD Berlin, ID
 2255 WLWV 105.5 MD Salisbury, ID
 2320 WMGK 102.9 PA Philadelphia
 2335 WJJZ 106.1 PA Philadelphia
 2340 WAFX 106.9 VA Suffolk, "The Fox"
 2350 WIXM 97.3 NJ Millville, "Mix 97.3"
 2355 WFPG 96.9 NJ Atlantic City, Delilah
8/13 Tr
 0000 WOSC 95.9 DE Bethany Beach, ID
 2105 WXCX 103.7 MD Havre de Grace, k, ID
 2307 WAAI 100.9 MD Hurlock, k, ID
 2333 WKOC 93.7 VA Chesapeake, "The Coast"
8/14 Tr
 2142 WICO 97.5 MD Salisbury, "Cat Country"
 2340 WZBZ 105.5 NJ Cape May Court House, "South Jersey's hip hop and R&B station, the Buzz"
 2346 WQIC 100.1 PA Lebanon, ID
 2350 WYCR 98.5 PA York, Top 40, "YCR"
 2358 WALK 97.5 NY Patchogue, "Long Island's Best Variety," ID
8/15 Tr
 0020 WDAS 105.3 PA Philadelphia, ID
 0040 WEZN 99.9 CT Bridgeport, "Star 99.9"
 0045 WLEV 100.7 PA Allentown, "My 100.7"
8/17 Tr
 0815 WTVR 98.1 VA Richmond, "Lite 98"
 0825 WWWW 97.5 VA Charlottesville, "3WV"
8/22 Tr
 2135 WXCX 103.7 MD Havre de Grace, ID, wx
8/24 Tr
 2154 WZBH 93.5 DE Georgetown, "The Beach"
9/2 Tr
 2115 WTRG 100.7 NC Rocky Mount, "Oldies 100.7"
9/7 Tr
 2335 WPST 97.5 NJ Trenton, "97.5 PST"
9/8 Tr
 0020 WSTW 93.7 DE Wilmington, RDS "WSTW"

0030 WNJO 94.5 NJ Trenton, "The Hawk"
 0032 WFPG 96.9 NJ Atlantic City, "Lite Rock 96.9," ID
 0050 WSNL 104.5 PA Philadelphia, "Sunny 104.5"
 0054 WEMG 104.9 NJ Egg Harbor, SS mx
 0100 WDSB 92.9 DE Smyrna, ID
 0107 WMMR 93.3 PA Philadelphia, "Rock MMR"
 0114 WTKU 98.3 NJ Ocean City
 0120 WEZN 99.9 CT Bridgeport, "Star 99.9"
 0130 WKXW 101.5 NJ Trenton, "New Jersey 101.5"
 0146 WMOS 104.7 NY Montauk, "The Wolf"
9/8 Tr
 2225 WRAR 105.5 VA Tappahannock, promo
 2230 WIOQ 102.1 PA Philadelphia, promo, "Q-102"
 2320 WLEV 100.7 PA Allentown, "My 100.7"
 2328 WZEB 101.7 DE Ocean View, Rick Dees

John Zondlo – 4009 Driftwood Circle – Yukon, OK 73099 – CDT – all new

8/8 Tr
 0600 KBQC 88.5 KS Independence, AFR, ID
8/18 Tr
 0803 KDXT 107.1 TX Benbrook, "La Musica Romantica"



From the Editor

Looks like the season has pretty much ground to a halt in these parts. DXers out east and in the Great Lakes area had some good tropes in late August and early September, but they were a no show here.

Good time to get ready for some of the meteor showers coming up. Be sure to report what you hear to SFM.



SOME THINGS JUST GO TOGETHER

...a quiet morning...
 ...a little bit of tropo...
 ...a hot cup of coffee...
 ...and the VHF-UHF Digest...
 Good to the very last page

Eastern TV-DX

Matthew C. Sittel
15013 Eureux Circle
Bellevue, NE 68123
mcsittel@cox.net

October, 2002

November, 2002 column deadline: Oct. 12

Eastern TV-DX is for reporters from the following states: AL, CT, DE, FL, GA, IN, KY, MA, MD, ME, MI, NC, NH, NJ, NY, OH, PA, RI, SC, TN, VA, VT and WV, plus Washington, DC. Also for reporters from the following Canadian provinces: NB, NF, NS, ON, PEI and PQ. Overseas reports are also welcome!

Things are starting to cool down, meteorologically speaking... but not the tropo! Two DXers check in with some incredible catches. Rick Shaftan had Iowa on UHF at over 860 miles. Not to be outdone, Roy Barstow checks in with a trio of Florida loggings, the fustest of which is just over 1100 miles! Read more about the DX-fest those two enjoyed below!

William McGuire, 2412 59th Place, Cheverly, MD 20785-2918 Equipment: Admiral 13" color TV.

8/11 tr				2045 WBOC-16	MD	Salisbury, CBS
2300 WHYY-12	DE	Wilmington, ID		8/17 tr		
8/14 tr				0700 WWBT-12	VA	Richmond, NBC
2025 WCAU-10	PA	Philadelphia, NBC		0700 WAVY-10	VA	Portsmouth
2200 WGAL-8	PA	Lancaster, NBC		"Wavy News 10"		
2315 WMGM-40	NJ	Wildwood, nx		0700 WGNT-27	VA	Portsmouth
2320 WTXF-29	PA	Philadelphia		0730 WRIC-8	VA	Petersburg, logo
2325 WPSG-57	PA	Philadelphia, UPN		0840 WTVR-6	VA	Richmond
2330 WPHL-17	PA	Philadelphia		"News 6", "wtvr.com"		
8/15 tr				0845 WNCN-17	NC	Goldboro, NBC
0042 WLIW-21	NY	Garden City, PBS				

Rick Shaftan, Sparta, NJ

8/31 Es				1100 WWTO-35	IL	La Salle, TBN 743
2024 KCEN-6	TX	Temple, NBC	1422	1105 unID-55, - offset, religious?		
9/1 tr				1110 unID-5, - offset		
1331 WYPX-55	NY	Amsterdam, PAX	137	1120 KIIN-12	IA	Iowa City 866
9/5 tr				1125 unID-19, z offset		
0910 WLNS-6	MI	Lansing	513	1130 WVCY-30	WI	Milwaukee 694
0915 WCMU-14	MI	Mount Pleasant	546	1133 unID-22, + offset		
0920 WDCQ-19	MI	University Ctr.	508	1135 unID-27, + offset, PBS sounded		
0925 WGBA-26	WI	Green Bay, NBC	26 715	Like cooking show which does		
0930 unID-29, - offset				not match WQEC which seems too		
0935 unID-23, - offset				far south (how about WBGU? - mcs)		
0940 unID-31, z offset, PAX @			1143	1143 WCPX-38	IL	Chicago
0945 WMVS-10	WI	Milwaukee	694	1145 unID-40, + offset, P. Allen Smith		
0948 WIFR-23	IL	Freeport, ad	754	1150 WHME-46	IN	South Bend, rel 598
0950 WGVU-35	MI	Grand Rapids	592	1152 unID-47, - offset		
0952 WQRF-39	IL	Rockford	753	1155 unID-53, - offset		
0954 unID-43, - offset				1158 WHBF-4	IL	Rock Island 821
1015 WMAQ-5`	IL	Chicago, nx@1200	674	CBS, prev. on E-skip (!!-mcs)		
1025 unID-18, - offset, religious				1202 unID-6, z offset		
1030 unID-20, z offset, PBS, rel@1205				1203 KWQC-6	IA	Davenport 821
1035 KWKB-20	IA	Iowa City	867	previously on Es		
1040 WCIU-26	IL	Chicago, calls	674	1205 WQAD-8	IL	East Moline 818
1045 unID-30, + offset				1208 WLS-7	IL	Chicago 674
1050 WFLD-32	IL	Chicago	674	1210 WHOI-19	IL	Peoria, HOI nx 780
1055 WNIT-34	IN	South Bend, PBS	600	1230 unID-23, - offset, rel.		
				1253 unID-19, + offset, court show		
				1255 WICS-20	IL	Springfield, nx 783

Note the mileage on KWKB, which is my record, although if I had WQEC it would top KWKB. WHBF and KWQC are my first TVs on both trop and E-skip. TV log up to 572. Rick.

<http://www.egrabow.com/dx/>

Equipment: RS XR-VU110XR (stuck pointed north)

6/22 Es

1430 unID-2 PBS

1455 unID-2 ABC

7/22 tr

0600	WLNE-6 MA New Bedford	111
	WJAR-10 RI Providence	118
	WPRI-12 RI Providence	119
	WVEC-13 VA Hampton	330
	unID-14 Telefutura	
	WHRO-15t VA Hampton	31
	WUVN-18t CT Hartford	71
	WWLP-22 MA Springfield	93
	WNJS-23 NJ Camden	120

WUNI-27t MA Worcester	128
WBRE-28 PA Wilkes-Barre	152
WTFX-29 PA Philadelphia	127
WGGB-40 MA Springfield	104
WVTA-41 VT Windsor	187
unID-52 not WNJT?	
WTBY-54 NY Poughkeepsie	83
WNJB-58 NJ New Brunswick	79
WUTF-66t MA Marlborough	137

7/26 tr

2200	WWLP-22 MA Springfield	93
	WXXA-23 NY Albany (nice)	138
	WRGB-6 NY Schenectady	139
	WGGB-40 MA Springfield	104
	WEWB-45 NY Schenectady	139
	WRNN-62 NY Kingston	107

The DX section of my website has been updated. All logs are kept in an Excel file, so they can be sorted any way I want. Consequently, I have re-calculated my statistics.

I finally got Vermont! I was wondering when that was going to happen, shame I couldn't load my VCR in time. WVTA is my 117th tropo catch, my northernmost tropo city, my first non-tentative catch on channel 41 (over local WXTV), and my first new station since 5/25/01.

I hoped to DX during my vacation in Florida (early August), but it was a total bust, oh well. 73's and good DX, Ryan.

Roy Barstow, P.O. Box 2488, Teaticket, MA 02536

6/4 tr

0000	WMMP-36 SC Charleston	780
0005	WUNJ-39 NC Wilmington	660
	WYDO-14 NC Greenville	

6/5 tr

0005	WJCL-22 GA Savannah	884
0025	WJWJ-16 SC Beaufort	825
	WPXU-35 NC Jacksonville	
	WJPM-33 SC Florence	708
	W51??-51 NC Wilmington	
	WTAT-24 SC Charleston	779
0100	WUNU-31 NC Lumberton	
	WUNP-36 NC Roanoke Rapids	
	WRAZ-50 NC Raleigh	
	WLFL-22 NC Raleigh	
	WFXB-43 SC Myrtle Beach	699
	WRPX-47 NC Rocky Mount	
	W34CQ-34 SC Myrtle Beach	
	TBN, from ch. 66	
0200	WEBA-14 SC Allendale	827
	WUNM-19 NC Jacksonville	
	WHMC-23 SC Conway	702
	WPDE-15 SC Florence	688
0300	WEPX-38 NC Greenville	
	WSFX-26 NC Wilmington	
	WCTI-12 NC New Bern	
	WFPX-62 NC Fayetteville	
	WNCN-17 NC Goldsboro	
0410	WLTX-19 SC Columbia	757
	WNCT-9 NC Greenville	

6/9 tr

0030	CBHFT8-34 NS Weymouth	
	CBHFT5-46 NS Middleton	

	CBHT10-24 NS Weymouth	
	CBHT7-52 NS Digby	
0110	WPXU-35 NC Jacksonville	
	WLFL-22 NC Raleigh	
	WRAZ-50 NC Raleigh	
	WHMC-23 SC Conway	
	WUNM-19 NC Jacksonville	
	WUNP-36 NC Roanoke Rapids	
	WUNJ-39 NC Wilmington	
	W51??-51 NC Wilmington, TBN	
0200	WHIG-LP-57 NC Rocky Mount	565
	WNCN-17 NC Goldsboro	
	WUNK-25 NC Greenville	
	WSFX-26 NC Wilmington	
	W60CU-60 NC Greenville	
	CIHF10-45 NS Yarmouth	
	W65CP-65 VA Chesapeake	
0425	W34AX-34 NC Henderson	575

7/1 tr

0020	WYDO-14 NC Greenville	
0100	WAVY-10 xltrs on 41,45,63,66,69	
	WVEC-13 VA Hampton	
	CIHF10-45 NS Yarmouth	
0215	CBHT10-24 NS Weymouth	
	CBHT7-52 NS Digby	
	Above 2 w/WTVD-11 news-odd	
	CIHF-8 NS Halifax	
	CIHF6-9 NS Bridgewater	
0310	WRAY-30 NC Wilson	
	WCTI-12 NC New Bern	
	W19BH-19 VA Virginia Beach, MTV2	
0400	CBHT2-7 NS Shelburne	
1800	W18BB-18 NC Elizabeth City	
	running PBS stuff	
	W52AB-52 VA Craddockville	
	W56CS-56 VA Portsmouth	
2300	W18BS-18 VA Hampton	450
	W39BW-39 VA Newport News	

W65CP-65 VA Chesapeake
W66BZ-66 VA Suffolk
WFXI-8 NC Morehead City
WITN-7 NC Washington

7/2 tr

0030 WTVD-11 NC Durham
W51??-51 NC Wilmington
WHMC-23 SC Conway
W36BK-36 VA Mappsville
0220 WRLH-35 VA Richmond
0245 WJCL-22 GA Savannah 884
in all night
W???-39 NJN L/R, could it be NC?
0330 WTAT-24 SC Charleston 779

7/9 tr

0600 WYDO-14 NC Greenville
WRAY-30 NC Wilson
WNCN-17 NC Goldsboro
0615 WTVI-42 NC Charlotte
WCVW-57 VA Richmond
WMBC-63 NJ Newton, TBN
W39??-39 VA Richmond, TBN
WLFL-22 NC Raleigh
WTVD-11 NC Durham
WPDE-15 SC Florence
WCCB-18 NC Charlotte
W34AX-34 NC Henderson
0710 unID-48, - offset, 679.730 MHz,
religious, "Vision for Life"
toward Raleigh, NC or DC-who?
0730 WRAZ-50 NC Raleigh, in so
strong, all over the rotor dial

7/18 tr

0005 WPXU-35 NC Jacksonville
WEPX-38 NC Greenville
0115 W51??-51 NC Wilmington
unID-51, - offset, down coast
with Jenny Jones (Roy, offset
fits WOGX-FL, and my Jan. 2002
TV Guide from there checks
with Jenny at 0100!-mcs)
1000 WUNU-31 NC Lumberton
WUNJ-39 NC Wilmington
WPDE-15 SC Florence

7/21 tr

2030 CBHFT5-46 NS Middleton
CBHT7-52 NS Digby
CBHT3-11 NS Yarmouth
DC+Baltimore also in
WUNP-36 NC Roanoke Rapids
WCVE-23 VA Richmond
WRLH-35 VA Richmond
W39BW-39 VA Newport News
2220 WBPB-60 PA Bethlehem
in a lot lately
WRAY-30 NC Wilson
CBHFT-13 NS Halifax
WWBT-12 VA Richmond
WFME-66 NJ West Milford
WFMZ-69 PA Allentown

7/22 tr

0045 CIHF-8 NS Halifax
CIHF9-10 NS Shelburne, 3.9kW
CBHT2-7 NS Shelburne
0105 CIHF2-42 PEI Charlottetown
WEWE-LP-24 MD Ocean City

7/24 tr

1830 WLLB-LP-15 ME Portland
America's Store, from ch. 45

7/27 tr

0215 CIHF-8 NS Halifax
CBHT11-12 NS Mulgrave

Under local WPRI-12
CBHFT5-46 NS Middleton
CBAFT-7 NB Moncton
0250 CBCT-13 PEI Charlottetown
"CBC Charlottetown PEI"
seen clearly in frame bar

7/29 tr

2155 WPXU-35 NC Jacksonville
2300 WKCF-18 FL Clermont 1073
18 inside circle L/R
2305 WOFL-35 FL Orlando 1072
2358 WOPX-56 FL Melbourne 1107
news-breaking up 56 Boston

7/30 tr

0100 WMMP-36 SC Charleston 780
WHMC-23 SC Conway
WTAT-24 SC Charleston
UnIDs on 22 and 65 toward FL

8/1 tr

0602 W34??-34 DC?
ID as TV 58 Washington, DC
WNCN-17 NC Goldsboro
0610 WRAY-30 NC Wilson
2200 WEPX-38 NC Greenville
2300 WAVY-10 xltrs 35,36,41,45,63,65

8/4 tr

0645 WTVI-42 NC Charlotte 700
WCVW-57 VA Richmond
0715 WCNC-36 NC Charlotte
JZY-46 NC Belmont
0750 WWWB-55 SC Rock Hill 731
2200 CBHT3-11 NS Yarmouth
CBHT7-52 NS Digby
CBHFT5-46 NS Middleton 377
CBCT-13 PEI Charlottetown
2215 CIHF10-45 NS Yarmouth

8/5 tr

0545 CBHFT8-34 NS Weymouth
CBHFT-13 NS Halifax

8/11 tr

0245 CIHF6-9 NS Bridgewater
CIHF-8 NS Halifax
0310 CBHT2-7 NS Shelburne
0400 WPXW-66 VA Manassas
2130 WPME-35 ME Lewiston
WPXT-51 ME Portland
Above 2 local, many in from E. ME

8/12 tr

0100 CIHF7-11 NS Sydney 605
0200 WJCL-22 GA Savannah 884
in at a good level
WJPM-33 SC Florence
WUNP-36 NC Roanoke Rapids
0220 unID-26 ACN, maybe WSFX-NC?
WEPX-38 NC Greenville
WHMC-23 SC Conway
WTAT-24 SC Charleston
unID-39, - offset with SC PBS
logo B/R, could this be WUNJ-NC?
0325 WYDO-14 NC Greenville
WLFL-22 NC Raleigh
0450 WUPV-65 VA Ashland
0500 WWMP-36 SC Charleston
0510 W18BB-18 NC Elizabeth City
2100 WWBT-12 VA Richmond
WFXI-8 NC Morehead City
W56CS-56 VA Portsmouth
WNCN-17 NC Goldsboro
WTVD-11 NC Durham
2300 WNCT-9 NC Greenville
8/13 tr
0105 WSFX-26 NC Wilmington

WEBA-14	SC	Allendale	827	unID-34	WIAV	58	U/R	z	offset
Under	WYDO-NC			who?					
0145	W34CQ-34	SC	Myrtle Beach	0830	WRAZ-50	NC	Raleigh		
0200	WCTI-12	NC	New Bern		WRAY-30	NC	Wilson, in strong		
	WLFL-22	NC	Raleigh		WRPX-47	NC	Rocky Mount		
	WUNU-31	NC	Lumberton	0900	WJHJ-LP-19	VA	Williamsburg		
	WJPM-33	SC	Florence		DC/Balt. and E. PA		in good later		
0230	WJCL-22	GA	Savannah	<u>8/17 tr</u>					
	WITV-7	SC	Charleston 778	2000	W22BM-22	NJ	Elizabeth City,		
	Their distinctive	SC	floating	MTV2					
	across screen			<u>8/18 tr</u>					
	WRAY-30	NC	Wilson	2100	W18BB-18	NC	Elizabeth City		
	WUNK-25	NC	Greenville		WYDO-14	NC	Greenville		
	WNCT-9	NC	Greenville		W39BW-39	VA	Newport News		
0450	CBHT3-11	NS	Yarmouth	<u>8/19 tr</u>					
	CBCT-13	PEI	Charlottetown	0800	CITS-36	ON	Hamilton		
	GA to PEI	this	AM		Crossroads,		under and over	WETM	
	CBHFT5-46	NS	Middleton		WOKR-13	NY	Rochester		
	CBHFT8-34	NS	Weymouth	0945	WPXJ-51	NY	Batavia		
	CBAFT5-31	PEI	Charlottetown		WUTV-29	NY	Buffalo, Fox	29	
	CIHF2-42	PEI	Charlottetown	L/R					
0505	CIHF10-45	NS	Yarmouth	1000	WNLO-23	NY	Buffalo		
2340	CBHFT-13	NS	Halifax	1015	WNYB-49	NY	Buffalo		
<u>8/14 tr</u>				2100	CBHT7-52	NS	Digby		
0045	WVIR-29	VA	Charlottesville		most consistent	NS	this season		
	W51??-51	NC	Wilmington	<u>8/24 tr</u>					
	W55CH-55	VA	Charlottesville	0840	W36AX-36	VT	Manchester		
0105	CBHT2-7	NS	Shelburne		W67DF-67	MA	Springfield		
0245	WPDE-15	SC	Florence	<u>8/26 tr</u>					
				PM			good down coast to NC		

How does that song go, give me those lazy, hazy days of summer. While our lawns were turning brown for lack of rain there were a few of those stagnant moisture-laden high pressure systems banked off the NC coastline. And when those winds off the back of that high comes from the southwest in comes loads of DX.

WHRO-15 Hampton, VA was in 3 days straight with local quality signals day and night. With the strength of some of those signals, one living in an apartment in NYC with rabbit ears for an antenna had to have at least picked up many from VA and NC. I do not remember in my 50 years of TV DXing the strong quality of many signals from NC and SC.

Thanks to Mike Bugaj for sending me that Bill Hepburn tropo index map for July 30. Kind of makes me want to buy a computer.

Bob Seybold, 1865 W. Main Rd., Silver Creek, NY 14136

I haven't sent in a report for quite some time so I thought I better let everybody know I am still DXing. It has not been a good year in some respects. I had a stroke back in March, lost a daughter, 43, and had another daughter lose her husband, 51, so it has been a little rough (on behalf of WTFDA, please accept our deepest sympathies on your losses-mcs). I am okay now and doing well at this time. Still actually working but at slower pace and under medication.

Now to DX. It has been a very poor E-skip season here. I got in on the big June 13-14 opening and saw stations from Florida, Georgia, Alabama, Arkansas, Louisiana, Texas, Mississippi, Oklahoma, Kansas, Colorado, Nebraska, Dakotas, Wyoming in that opening. Channels 2-6 were several deep much of the time and very strong. Openings lasted hours. Then there was only an occasional opening on channels 2 and 3 for a long period. There was a good opening in late July and several small openings in August. However these were some small openings in late August which is a little unusual.

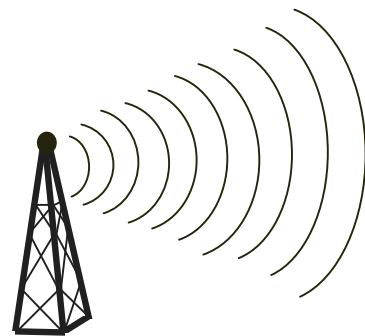
Not much tropo till lately when there was some good tropo on steady basis from Sept. 6-9 including Ft. Wayne U's, South Bend U's, Angola, IN 63, Chicago U's, WLFI-18 Lafayette, IN, Lima OH U's, WEMT-39 Greeneville, TN, Kentucky 18 and 38, Pittsburgh U's, many Canadian U's and lots of Michigan U's, also new Detroit 18, Detroit 33, Toledo 34 (LP, shopping). Ft. Wayne has been in 4 days in a row.

So recent tropo has brightened the season a bit. Got to see Bob Cooper and others in small gathering in Albion, NY. Thanks to Dave Nieman for that-I enjoyed it. 73's Bob Seybold.

That's all for this month...if you've seen some TV DX, please share it with all of us! 73s Matt.

Northern FM DX

Northern FM DX



Keith McGinnis
387 Shirley Street, Winthrop, MA 02152
longwave@attbi.com 617-846-5760

For Dxers in the following states CT, IA, ID, IL, IN, MA, ME, MI, MN, MT, ND, NE, NH, NJ, NY, OH, OR, PA, RI, SD, VT, WA, WI, WY Please submit by the 10th of each month. If possible please submit in the formats shown below.

MORRIS SORENSEN - Winnipeg MB **SMosor@aol.com**

Equipment: Realistic DX-392 with whip
Underlined are new Mileage is after location
Times are CDT

July 12 Tropo

0917 CBWX 95.7 Fisher Branch MB
CBC Radio On E// CBW-990

July 14 Tropo

1030 KAUJ 100.9 Grafton ND
"Oldies 101" 103 mi.
1100 KNDR 104.7 Mandan ND
Christian 274 mi.
1833 KLZZ 99.1 Walker MN
"Classic Rock Z-99" 227 mi.

July 15 Tropo

1003 KQHT 96.1 Crookston MN
149 mi.
1020 KFNW 97.9 Fargo ND
209 mi.
1025 KGIM 103.7 Redfield SD
"Pleasant Country 103" 353 mi. N
1036 KHRT 106.9 Minot ND
Christian 221 mi. N
1053 KSJZ 93.3 Jamestown ND
"Kiss 93.3" 219 mi. N

July 20 Tropo

0003 KPHR 106.3 Ortonville MN
"The new Power 106.3" 319 mi. N
0030 KKWS 105.9 Wadena MN
"Superstation K-106" 256 mi.

August 5 Tropo

0959 KZLT 104.3 E Grand Forks MN
136 mi (Tough next to super local
CFQX 104.1)
2020 KLLZ 99.1 Walker MN
227 mi.

2217 KXGT 95.5 Jamestown ND
oldies 219 mi. (mixing with KKZY
Bemidji MN)
2224 KYYX 97.1 Minot ND
"Kicks-FM" 221 mi. (mixing w KYCK
Crookston MN)
2231 KIKV 100.7 Alexandria MN
"100.7 Kick" 290 mi.

August 6 Tropo

1007 KKBJ 103.7 Bemidji MN
"Mix 103.7" 196 mi. N

ROGER GRAVELLE – St Thomas **Ontario**

9 Element FM Antenna 55ft High

August 19 Tropo

0800 CKYC 93.7 Owen Sound ON
Country...."Country 93"
0801 Unid 90.7
Very Strong Signal same heading as
above

RICK SHAFTAN – Sparta NJ

*Equipment: Realistic STA-2280; Conrad
RDS Manager; Two APS 14s Stagger
Stacked with two FM 13s*

August 31 Eskip

1720 KDQN 92.1 DeQueen AR
RDS PI 1999, KDQN 92.1 1169
253d
1724 KJBR 93.7 Marked Tree AR
Biggest Deals under the biggest
American Flag in Arkansas 936
252d
1728 KISR 93.7 Fort Smith AR
Ad for Pauley Toyota 1133
257d
1730 KOMA 92.5 Okla City OK
Oldies RDS PI 3630 1290
261d

1732 KHTA 92.5 Wake Village TX
Religious, def. KHTA 1187
251d

1734 KHPQ 92.1 Clinton AR
Highway 65 North in Harbor Square
1032 255d
1915 @KUAP 89.7 Pine
Bluff AR Musical Marching
Machine of the Mid-South, 870
Area Code. Band is from Pine Bluff
1057 250d

1919 KCBI 90.9 Dallas TX
RDS PI 156A1360 252d

1921 KZPS 92.5 Dallas TX
"in North Dallas" 1360 252d

1924 KNON 89.3 Dallas TX
"Extreme Underwear in Dallas" 1360
252d

1928 KVTT 91.7 Dallas TX
877-YES-CBMI 1360 252d

1931 KKZN 93.3 Haltom City TX
The New 93.3, The Bone 1360
253d

1933 @KYYK 98.3 Palestine TX
Lonestar 981320 248d

1935 Unid 99.3
Country

1936 KXAR 101.7 Hope AR
Morse Furniture in Texarkana, serving
the Arklatex 1165 251d

1938 KHTE 96.5 England AR
Hot 96.51055 250d

1942 KLNO 94.1 Fort Worth TX
Spanish, ad for a Honda place in
Irving1360 252d

1946 Unid 95.3
Dallas Tornadoes v. Royals

1948 KSCH 95.9 Sulphur Spg TX
Dixie Chicks Concert on 10/19 in
Dallas, Star 95.9 and 96.9 1272
252d

1950 Unid 95.9 Urban Rap

2021 Unid 91.3 Religion

2027 Unid 92.1 92-KDLQ?

September 1 Trop

1053 @WCKM 98.5 Lake George NY
98.5 CKM. Ad for Glens Falls Civic
Center

1105 @WRFM93.5 Remsen NY
Warm 93.5 Ad for Stickleys in
Fayetteville thru local WSBG 161
350d

1110 @WKBE 100.3 Warrensburg NY
Listening to today's rock 100.3 The
Point

1218 WFFG 107.1 Cornith NY
Tri-Counties Country, 10 in a row,
Froggy 107.1

1302 @WBAR 94.7 Lake Luzerne NY
Charles Stanley @ 1230. // Internet
163 16d

1402 @WLJH 90.9 Glens Falls NY
Sound of Life, 845-phone 172
23d

September 5 Supertrop

0850 WODJ 107.3 Greenville MI
"in Grand Rapids", Oldies 107.3 with
Michael, in the Morning, prev on Ms
566 287d

0855 WOOD 105.7 Grand Rapids MI
RDS PI 7B0F, Star 105.7 570
285d

0904 @WVCY 107.7 Milwaukee WI
Religion, in for several hours 701
285d

0956 @WSNX 104.5 Muskegon MI
Urban, ID 104.5 WSNX 602
289d

0958 @WLZR 102.9 Milwaukee WI
414-799-1030, Bob & Brian network
697 286d

1010 @WRIT 95.7 Milwaukee WI
Oldies 95.7, lamenting Brewers loss
last night

1122 @WZFS 106.7 Des Plaines IL
106.7 The Fish 691 283d

BILL NOLLMAN – Farmington CT

*Equipment: Yamaha T-85, Conrad RDS
Manager and PC software. Probe 9 until
8/3, APS-13 after.*

March 14 Tropo

2100 WCHR 105.7 Manahawkin NJ
// B98/5 / 105/7 The Hawk-7/02
170

April 16 GW

W202BK89.7 Vernon CT
"// WSGG Norfolk, CT - SS "
20

May 2 Tropo

1440 CBL 94.1 Toronto ON
CBC-2 Classical - Stereo
350

May 3 MS

0500 WGFA 94.1 Watseka IL
RDS ID Only - Text ----R WATERS
6502 750

May 17 Eskip

2040 WOCG 90.1 Huntsville AL
Lite of TN Valley PS-CRL RDS EEEE
875

2044 WMSU 92.1 Starkville MS
Power 92 1025

2045	WKUL	92.1	Cullman	AL	2018	KKQY	101.9	Hills City	KS
	Atlanta Braves BB					Y-102 The Country Bull			
	900					1400			
<u>June 10 Tropo</u>					2038	KSKG	99.9	Salina	KS
2049	WMRV	105.7	Endicott	NY		RDS ID Only PS=EAGLE999			A492
	Star 105/7 - So Tier's #1 Hit Music					1290			
	Stn.		190		2039	KNDY	103.1	Marysville	KS
2100	WYCY	105.3	Hawley	PA		Satellite Cntry			1225
	Sunny 105/3 - Lakes Region				2040	KCFN	91.1	Wichita	KS
	120					RDS ID Only - also on 90.7-unID			
2048	CKBY	105.3	Ottawa	ON		15D7 1300			
	Y-105 Todays Best Country				2047	KCIY	106.5	Liberty / KC	MO
	300					Smooth Jazz 106.5 The City			
2114	CFMX	103.1	Cobourg	ON		1140			
	Classical heard - no id on tape				2050	KWBZ	107.5	Monroe City	MO
	300					The Breeze		980	
<u>June 14 Eskip</u>					2056	KMJK	107.3	Lexington/KC	MO
1814	KREP	92.1	Belleville	KS		Magic 107.3		1140	
	KR-92		1275		2103	KFBZ	105.3	Hayesville	KS
1815	KMZA	92.1	Seneca	KS		105/3 The Buzz			1100
	1200				2103	KXKU	106.1	Lyons	KS
1825	KTTN	92.3	Trenton	MO		Kix 106		1330	
	1075				2110	KRES	104.7	Moberly	MO
1833	KOKX	95.3	Keokuk	IA		RDS ID Only - BB Game PS=KRES			
	Cool 95.33613		950			3D5E 1020			
1842	KUTT	99.5	Fairbury	NE	2124	KUDL	98.1	Kansas City	KS
	1250					Delilah - cmmls - no id on tape			
1843	KYYS	99.7	Kansas City	MO		1140			
	99.7KY F001		1140		2127	WTBG	90.9	Warrensburg	MO
1850	KMAJ	107.7	Topeka	KS		The Bridge		1100	
	Magic 107.7		1200		2137	KDNS	94.1	Downs	KS
1857	WKAY	105.3	Knoxville	IL		KD Country 94			1325
	105.3 Kay FM		900		<u>June 30 Tropo</u>				
1902	KILJ	105.5	Mt. Pleasant	IA	2145	WSMU	91.1	North Dartmouth	
	KJ-5 Star KJ-105.5					MA			105
	950				<u>July 4 Tropo</u>				
1908	KSUX	105.7	Winnebago	NE	1330	CKGE	94.9	Oshawa	ON
	"K-Sioux (Sioux City, IA)"					Magic at 94.9			340
	1190				<u>July 5 Tropo</u>				
1915	KCKS	94.9	Concordia	KS	2122	WVPR	89.5	Windsor	VT
	94/9 Kiss FM		1280			~WPKN		130	
1920	KZDY	96.3	Cawker Center	KS	2140	CBFX	100.7	Montreal	QU
	Oldies 96.3 (99% sure not TN)					FF - reading heard only - no id		360'N	
	1325					270			
1925	KZLS	107.9	Great Bend	KS	<u>July 13 Tropo</u>				
	Star 107.9		1360		0927	WJYY	105.5	Concord	NH
1932	KHOK	100.7	Hoisington	KS		120			
	Eagle Radio		1360		0933	WKXL	102.3	Concord	NH
1933	KCLY	100.9	Clay Center	KS		Outlaw 102.3		120	
	The Links 100.9 FM KCLY				<u>July 21 Tropo</u>				
	1260				2110	WGBZ	105.5	Cape May Courths	
1938	KVGB	104.3	Great Bend	KS		NJ The Buzz			230
	RDS ID Only PS=KVGB				2215	WZBH	93.5	Georgetown	DE
	1360					The Beach		250	
1945	KSRZ	104.5	Omaha	NE					
	Star 104.5		1180						
2000	KSJQ	92.7	Savannah	MO					
	Q-Country 92.7								
	1130								
2016	KVSV	105.5	Beloit	KS					
	FM 105.5		1300						

2225	WKOE 106.3 Hot 106/3	Ocean City 200	NJ	2047	WBKK 97.7 Classical 97.7 WBKK 110	Amsterdam	NY
<u>July 26 Tropo</u>				2105	WBUG 101.1 Bug Country - Pure Ctry - Satellite 130	Fort Plain	NY
1935	WJAN 95.1 Cat Country 95.1 & 95.5 100	Sunderland	VT	2152	WKXZ 93.9 94-KXZ ~WRSI	Norwich	NY 150
1954	WRSY 101.5 //93.9 The River	Marlboro	VT 85	<u>August 11 Tropo</u>			
2051	WBHG 101.5 Big 101.5	Meredith 150	NH	1045	WMEX 106.5 Oldies 106.5 150	Farmington	NH
<u>July 28 Eskip</u>				1100	WNHI 93.3 I-93 140	Belmont	NH
2045	WJBB 92.7 B-93	Haleyville 950	AL	2100	WOCM 98.1 Ocean 98 260	Selbyville	DE
<u>July 29 Eskip</u>				2125	WQHQ 104.7 Q-105 - Delilah	Ocean City	MD 265
1714	KLGR 97.7 Pure Gold KLGR 1125	Redwood Falls	MN	<u>August 11 Tropo</u>			
1715	WDDC 100.1 Hometown Country 840	Portage	WI		WZGC 92.9 MS RDS ID - Z-93 825	Atlanta	GA 974A
1719	KMFX 102.5 Fox Country 102.5 980	Lake City	MN	<u>August 12 Tropo</u>			
1720	KJAM 103.1 K-Jam FM 103	Madison	SD 1225	2000	WSDH 91.5 //WBUR 90.9 Boston-NPR 120	Sandwich	MA
<u>August 4 Tropo & GW</u>				2105	WNHW 97.1 480	Hatteras	NC
0840	CFCA 105.3 ON Cool 105	Kitchner/Waterloo	410	<u>August 12 MS</u>			
1009	WTSS 102.5 KC Kasem - no id on tape - per Mike 330	Buffalo	NY		WHRM 90.9 MS by RDS ID Only ! 850	Wausau	WI 68EA
1009	WRBY 102.5 Bob 102.5	Rome	NY 170	<u>August 12 GW</u>			
1605	WPKF 96.1 Kiss FM	Poughkeepsie	NY 60		Pirate 94.1 SS Pirate - No DJ	Hartford Area	CT
2000	WFFG 107.1 Froggy	Corinth	NY 120	<u>August 15 Tropo</u>			
<u>August 7 Tropo</u>				0240	WFRS 88.9 WJMJ off air63A8	Smithtown	NY 60
1754	CHOI 98.1 ""Schwah""	Quebec City	QU 380	<u>August 31 Tropo</u>			
<u>August 9 Tropo</u>				2200	WCYI 93.9 94WCYY // 94.3	Lewiston	ME 215
2030	WNYV 94.1 Lakes Region Radio 130	Whitehall	NY	2209	WJJB 95.5 mono - sports talk 210	Topsham	ME
2050	WCZX 97.7 Oldies 97	Hyde Park	NY 60	2219	WBYY 98.7 98.7 The Bay 150	Somersworth	NH
<u>August 10 Tropo</u>				2237	WQSS 102.5 The Peak 255	Camden	ME
2046	CHOM 97.7 ""Shome"" - EE Classic Rock" 270	Montreal	QU	2237	WPKQ 103.7 210	Berlin	NH
				2243	WMEK 99.9 Kiss 99/9	Auburn	ME 210

2246 WTPL 107.7 Hillsboro NH
107/7 The Pulse 110
2247 WBQI 107.7 Bar Harbor ME
no ID - Classical 300
2319 WMCM 103.3 Rockland ME
Real Country 250
2325 WRED 95.9 Saco ME
175
2328 WUBB 95.3 York Center ME
B-95.3 150
2349 WWAY 100.7 Wilmington VT
101 The Fox 80
2354 WPNH 100.1 Plymouth NH
The Planet 150

September 1 Tropo

0005 WCFR 96.3 Walpole NH
Oldies 104 //104.3 WWOD - VT
100
0921 WKSQ 94.5 Ellsworth ME
Kiss 94.5 295
0945 WHQO 107.9 Skowhegan ME
800-833-TALK - no id on tape.
260
1000 WMEH 90.9 Bangor ME
Maine Public Radio
295
1215 WEBB 98.5 Waterville ME
B-98.5 255
1219 WBFB 104.7 Belfast ME
after midnight - K
270
1830 CBZ 101.5 Frederickton NB
CBC-EE Stereo //95.5 Moncton 35'N
425
1836 CHSJ 94.1 St. John NB
EE 420
1858 CJMO 103.1 Moncton NB
C-103 EE 500
1901 CBA 95.5 Moncton NB
//101.5 - Fredericton CBC - EE
500
1913 CFQM 103.9 Moncton NB
Magic 104 - 45'N
500

KEITH MCGINNIS – WINTHROP MA
*Equipment: Yamaha T-85; Conrad RDS
Manager; APS 9*

July 21 Tropo

0058 WKYS 93.9 Washington DC
R&BID local mentions
2122 WKLR 96.5 Fort Lee VA
classic rock// to what Jeff Lehmann
was hearing
2223 WCEI 96.7 Easton MD
aclocal ads ID

July 22 Tropo

0731 WRKS 98.7 New York NY
urban "kiss"

July 29 E skip

1622 KTWA 92.7 Ottumwa IA
AC
1626 WKSC 103.5 Chicago IL
Top 40The New Kiss 103.5
1637 WDLM 89.3 East Moline IL
religlocal mentions
1644 KZIA 102.9 Cedar Rapids IA
Top 40Z102.9
1655 WXXY/WYXX 103.1 Morris/
Highland Pk IL SS Spanish .one or
the other
1702 KIIC 97.9 Lamoni IA
c/wClassic Country...ID into news
1705 KIAI 93.9 Mason City IA
c/wThe Country Moose
1707 KMCH 94.7 Manchester IA
local mentions and ads...then KMCH
ID
1707 KMCR 97.9 Montgomery City
MO easy list
1719 KYCK 97.1 Crookston MN
c/wBuck's Roadhouse...Grand Forks
1723 KFMC 106.5 Fairmount MN
hot aclocal mentions
1725 WMMM105.5 Verona WI
AAA105.5 Triple M...local wx
1727 KNWS 101.9 Waterloo IA
religCedar Rapid/Waterloo mentions

August 11 Tropo

2140 WMID 102.3 Cape May NJ
Standards ID

August 13 Tropo

2110 WRXS 106.9 Ocean City MD
top 40X106.9
2250 WWZK 94.3 Avalon NJ
oldiesOldies 94
2310 WZCZT 98.7 Villas NJ
mod ACThe Coast

August 31 Tropo

0100 WEVN 90.7 Keene NH
NPRMentions of other NHPR stations
2150 WPKQ 103.7 N Conway NH
country// WOKQ

September 1 Tropo

1155 WKLL 94.9 Frankfort NY
mod rockModern Rock
1240 WPEL 96.5 Montrose PA
religious program about
Israel...matches website

1325 WFRD 99.3 Hanover NH
rock""99 Rock""

1331 WZXV (T)99.7 Palmyra NY
religentative program matched
website

2055 CIOK 100.5 St. John NB
oldies ID

2105 WVOM 103.9 Howland ME
talk

2109 CJOM 103.1 Moncton NB
classic rock""Moncton's classic
Rock""

2215 CBH 102.7 Halifax NS
CBC

September 2 Tropo

0030 CJYC 98.9 St John NB
rockID with mentions of St John

September 8 Tropo

1100 WWDC 101.1 Washington DC
rock ID

1109 WMMJ 102.3 Washington DC
R&B"ID ""majic 102.3""

1120 WQSR 102.7 Baltimore MD
oldies ID

1152 WARW 94.7 Washington DC
classic rockID

1159 WHUR 96.3 Washington DC
R&BID...mentions of Howard Univ

1205 WPTP 96.5 Philadelphia PA
80's oldies"ID""The Point""

1210 WUSL 98.9 Philadelphia PA
urban

1233 WCSP 90.1 Washington DC
CSPAN// to website

September 18 Tropo

2202 WVIA 89.9 Scranton PA
local mentions into ID

2238 WRSI 93.9 Turner Falls MA
"The River"

2242 WLZX 99.3 Northampton MA
"Lazer 99.3"

2244 WZRT 97.1 Rutland VT
local ads....."Z97"

2249 WTSA 96.7 Brattleboro VT
local mentions

2255 WQBJ 103.5 Cobbleskill NY
"The Edge"

ADAM RIVERS - Chicopee MA

Email: patriotsrule417@yahoo.com

<http://adamskewlsite.freesevers.com>

Sherwood S-7250 tuner w/ 110kHz

filters RS antenna wire and Conrad

RDS manager

New are underlined

August 16 Tropo

2208 WQGN105.5 Groton CT

2214 WKPE 104.7 Orleans MA

2217 WBLI 106.1 Patchogue NY
rare this year

August 19 Tropo

2206 WRBY 102.5 Utica NY

2227 WQEZ 104.7 Kennebunkport
ME

August 21 Tropo

2258 WMEP 90.1 Portland ME \$

2308 WCSH 87.7 Portland ME

2310 WCYY 94.3 Biddeford ME (1)

2321 WBUR 90.9 Boston MA

August 23 Tropo

2210 WBOT 97.7 Brockton MA
rare

2211 WFNX 101.7 Lynn MA
rare

2212 WAKX 102.7 Narragansett RI
rare

2214 WFHN 107.1 Fairhaven MA
rare

2219 WCYY 94.3 Biddeford ME

2234 new RDS on WBMX "MIX 98-5"

August 24 Tropo

1014 new RDS on WEVO "NHPR"

1152 new RDS on WBOS "WBOS-FM"

August 31 Tropo

1120 WQEZ 104.7 Kennebunkport
ME

1740 WVPS 107.9 Burlington VT

2152 WHRB 95.3 Cambridge MA
o/local WPVQ

2153 WCYY 94.3 Biddeford ME

2206 WSUF 89.9 Noyack NY

2208 WBOT 97.7 Brockton MA

2217 WCLZ 98.9 Brunswick ME

2230 WMEK 99.9 Auburn ME
(2)

2234 WMME 92.3 Augusta ME
(3)

2243 WTHT 107.5 Lewiston ME

2311 WZRT 97.1 Rutland VT

2348 WJYY 105.5 Concord NH

September 1 Tropo

1202 WFRG 104.3 Utica NY

1601 WMNR 88.1 Monroe CT

1609 WMRV 105.7 Endicott NY

1610 WVPS 107.9 Burlington VT
\$

1653 WNYQ 105.7 Queensbury NY

1654 WEZF 92.9 Burlington VT

1659	<u>WAXB</u>	105.5	Patterson	NY
1700	<u>WOKO</u>	98.9	Burlington	VT
1835	<u>WGNY</u>	103.1	Newburgh	NY
2010	<u>WGXL</u>	92.3	Hanover	NH
2012	<u>CJYC</u>	98.9	St. John	NB
	(5)			
2019	<u>CJXL</u>	96.9	Moncton	NB
	(6)			
2031	<u>CFQM</u>	103.9	Moncton	NB
2041	<u>WKSQ</u>	94.5	Ellsworth	ME
	(7)			
2042	<u>CHSJ</u>	94.1	St. John	NB
	(8)			
2046	<u>WBFB</u>	104.7	Belfast	ME
	(7)			
2056	<u>CJMO</u>	103.1	Moncton	NB
2100	<u>WSHU</u>	91.1	Fairfield	CT
	(9)			
2103	<u>WJYY</u>	105.5	Concord	NH
2107	<u>CHWV</u>	97.3	St. John	NB
2116	<u>CBAF</u>	102.3	St. John	NB
2134	<u>WQCB</u>	106.5	Brewer	ME
2141	<u>WLOB</u>	96.3	Rumford	ME
2200	<u>CBCH</u>	104.7	Charlottetown	PEI
	(10)			
2206	<u>WNSX</u>	97.7	Winter Harbor	ME
	(7)			
2236	<u>WXXK</u>	93.5	Springfield	VT
2238	<u>WBQI</u>	107.7	Bar Harbor	ME
	(7)			
2307	<u>CBZ</u>	101.5	Fredericton	NB

September 3 Tropo

1738	<u>WCTW</u>	98.5	Catskill	NY
1825	<u>WFTN</u>	94.1	Franklin	NH

September 4 Eskip (11)

1555	<u>WQIL</u>	101.3	Chauncey	GA
1557	<u>WNUQ</u>	101.7	Albany	GA
1603	<u>WESP</u>	102.5	Dothan	AL

September 5 Tropo

1436	<u>WHRL</u>	103.1	Albany	NY
	(12)			
1446	<u>WFRG</u>	104.3	Utica	NY
1447	<u>WMRV</u>	105.7	Endicott	NY

(1) - Tried for this one for awhile, then got a few days in a row.

(2) - "Maine's Kiss 99.9".. Amazed by this catch, over semi-locals WCAT and WEZN

(3) - "92MOOSE". At the time, it was my longest tropo catch into Maine- that changed quickly. Never thought I would get these guys.
(4) - Best tropo opening of my life. Started off to the west, and well, the rest of the story is right there.

(5) - "C-98, New Brunswick's Rock And Roll". Thought I was hearing things. Was in stereo for 2 or 3 hours.

(6) - Something kept interfering prior to getting CJYC with WTKK; it was country; and turned

out to be "XL-96, Today's Best Country" from Moncton. It temporarily stood as my best tropo catch.

(7) - Never thought I would get my locals from Southwest Harbor, Maine- my family's usual summer destination.

(8) - Stayed in the longest with many local mentions and very steady stereo.

(9) - Odd that something would suddenly come up from this angle.

(10) - My farthest tropo catch. 527 miles. And I am using this little antenna with this little radio. Thanks to Doug Smith for lding this one for me.

(11) - My first skip in quite a while, was brief and during homework.

(12) - This was the one station I was dying to get for a long time. Finally got it with "Channel 103-1, the new rock alternative"

MIKE BUGAJ, ENFIELD, CT

Carver TX-11/APS-13/Probe-9/Onkyo T450 w/RDS with Bolin phase box and RDS Mgr. New are underlined.

June 30 Tr

2300 WSMU -91.1 MA Dartmouth, NEW!
2306 WWOC- 94.5 NC Water country
2325 WNHW- 97.1 NC Hatteras
2330 WOCN- 98.1 MD Shelbyville

July 1 Tr

0010 WRSF-105.7 NC Colombia
2305 WPTE- 94.9 VA Norfolk

July 21 Tr

2020 WRVQ- 94.5 VA Richmond, in solid
2022 WTVR- 98.1 VA Richmond lite 98.1
2355 WASH- 97.1 DC Washington wash-FM

July 25 Tr

1335 WNKI-106.1 NY Corning, rare
1840 WRFM- 93.5 NY Remsen Utica ads. rare

July 26 Tr

2055 WRTI- 90.1 PA Philadelphia rare also

July 28 Es

2022 WBLX- 92.9 AL Mobile
2028 WTLT- 93.5 FL Naples, the new lite 93.5
2048 WUSJ- 96.3 MS Jackson
2051 WTXT- 98.1 AL Fayetteville 98TXT
2030 WTUG- 92.9 AL Tuscaloosa
2115 KDQN- 92.1 AR Dequeen RDS
KDQN92.1

July 29 Es

1706 WOLX- 94.9 WI Baraboo good times, gt oldies
1708 KITN- 93.5 MN Worthington
1713 WERN- 88.7 WI Madison RDS=WERN
1716 KIAQ- 96.9 IA Clarion RDS=KIAQ-FM
1722 KJLY-100.7 IA Eagle Grove
1724 WGLR- 97.7 WI Lancaster 97-7 country
1727 KISD- 98.7 MN Pipestone

1729 KDOG- 96.7 MN N. Mankato, 96-7
KDOG

1730 KDOM- 94.3 MN Windom, area ads

1737 KAGE- 95.3 MN Winoma

Tr

2250 WCAN- 93.3 NT Canajaharie
RDS=WCAN

July 31 Es

1848 WZTA- 94.9 FL Miami zeta

1857 WCMQ- 92.1 FL Hialeah, spanish

1858 WMCU- 89.7 FL Miami, religious

August

3 Tr

1010 CFCA-105.3 ON Kitchener, Cool FM

1012 CKPC- 92.1 ON Brantford, FM92.1 oldies
show

1022 CHYM- 96.7 ON Kitchener Chime-FM
Sunday oldies

1050 CBL- 94.1 ON Toronto, classical

1056 CING- 95.3 ON Hamilton, energy FM

10 Tr

0903 WSBG- 93.5 PA Stroudsburg

0908 WRBT- 94.9 PA Harrisburg, Bob94.9
country

11 Tr

0015 Norfolk and coastal NC (WWOC/WRSF)

0936 WRED- 95.9 ME Saco Rick Dees top 40

2000 super tropo down to Norfolk and coastal
NC

super signals, too bad none of them needed.

12 Es

2050 KOLL- 94.9 AR Little Rock Cool 95

2054 KIPR- 92.3 AR Poplar Bluff

2056 WHRK- 97.1 TN Memphis V101.1 and
K97 jams

2057 WSRR- 98.1 TN Millington STar 98-1

2058 KJMS-101.1 TN Memphis V101.1

2101 WWTN- 99.7 TN Manchester, Nash's talk
leader

2105 WYDE-101.1 AL Cullman

2109 WKOR- 94.9 MS Columbus K94.9

19 Tr

0702 WTSR 102.5 NY Buffalo, super strong

0705 WNED 94.5 NY Buffalo, BBC News,
classical, ID around 0730

0714 WYCY 105.3 NY Hawley, RDS showing
SUNNY105, strong

22 Tr

1916 WLBW 92.1 DE Fenwick Island, the
Wave, oldies

25 Es

2047 WCMQ 92.3 FL Hialeah, Spanish

2048 WMCU 89.7 FL Miami, religious

30 Tr

2147 WRFY 102.5 PA Reading, a regular via
T. Scatter, this time

was super strong showing it's RDS as
Y102WRFY.

31 Tr

1634 WGXL 92.3 NH Hanover, XL-92

1744 WPKQ 103.7 NH N. Conway //WOKQ-
97.5. This is rare here because of WKNE and
Westerly, RI.

1755 WMCM 103.3 ME Rockland, Real
Country 103.3 (WODS phased)

1758 WQSS 102.5 ME Camden (WCRB
phased)

1810 WJYY 105.5 NH Concord, NH's Hot Hits
105-5 JYY

2157 WQEZ 104.7 ME Kennebunkport

2240 WFTN 94.1 NH Franklin, Mix 94.1

2243 WCYI 93.9 ME Lewiston, Portland's
alternative

2246 WNHI 93.3 NH Belmont

2300 WTPL 107.7 NY Hillsboro, very rare here.

September

1st Tr

1115 WQNY 103.7 NY Ithaca "At 103.7 this is
Q Country"

1120 WYNK 106.1 NY Corning, Wink 106

1126 WRZK 107.3 NY Utica, calls not easy
because of WAAF

1132 WBKT 95.3 NY Norwich

1135 WKXZ 93.9 NY Norwich

1256 WLTB 101.7 NY Johnson City, Magic
101.7 & 102.5

2054 CBAF 102.3 NB Fredricton, French

2056 CHSJ 94.1 NB St. John

2105 CBA 95.5 NB Moncton, jazz

2105 WVOM 103.9 ME Howland, the Voice of
Maine

2110 CJMO 103.1 NB Moncton, C103 is
Moncton's Classic Rock

2115 CBCH 104.7 PEI Charlottetown, ID at
10pm, jazz//CBH 102.7

2120 CBZ 101.5 NB Fredricton, jazz CBC R.
Two

2125 CFRQ 104.3 NS Halifax, weak, but IDed
and local ads

2125 CBH 102.7 NS Halifax, jazz

2235 WQCB 106.5 ME Brewer

2243 WCME 96.7 ME Boothbay Harbor
w/Matt Drudge

2248 WJBB 95.5 ME Topsham with baseball

5 Tr

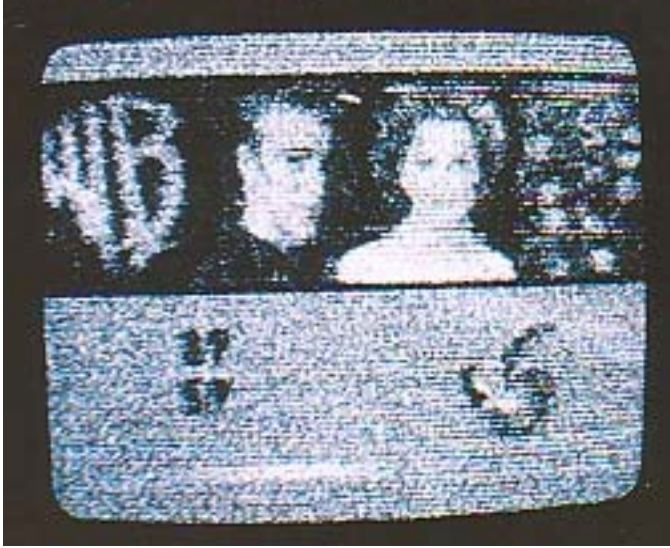
0704 WOOD 105.7 MI Grand Rapids, star
105.7 with RDS viewed!

0818 WZFS 106.7 IL Des Plaines, 106.7 the
Fish New Tropo State!!

0820 WBYT 100.3 IN Elkhart B-100 r/b Doug
Banks morning show.

October 2002

We finish off Danny Oglethorpe's long-haul tropo photos from May, from Shreveport, LA:



WTVK-46 Naples, FL
841 mi Tr seen AM 5/1/02
"cable channel 6"



WRDQ-27 Orlando, FL
784 mi Tr seen 5/1/02
@2150 CT



WJCL-22 Savannah, GA
742 mi Tr seen AM 5/2/02



WRBW-65 Orlando, FL
784 mi Tr seen 5/2/02
@0200 CT

WPBA-30 Atlanta, GA
551 mi Tr seen 5/2/02
@0220 CT

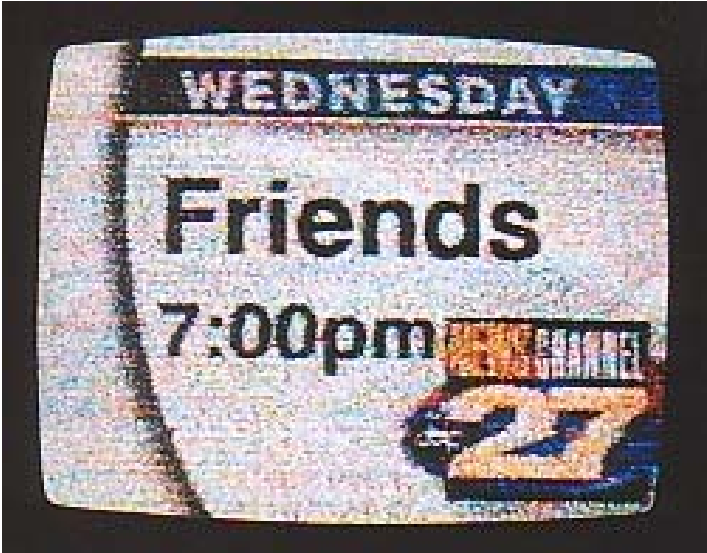




WHSB-63 Monroe, GA
590 mi Tr seen AM 5/2/02



WTJP-60 Gadsden, AL
461 mi Tr seen 5/2/02
@0133 CT



WTXL-27 Tallahassee, FL
577 mi Tr seen 3/27/02
@0830 CT

Here's another recent catch from FL, this time a little further away, from frequent contributor Roy Barstow of Teaticket, MA:

WKCF-18 Clermont, FL
1096 mi Tr seen 7/29/02
@2300 ET
"Wow!" - jtk

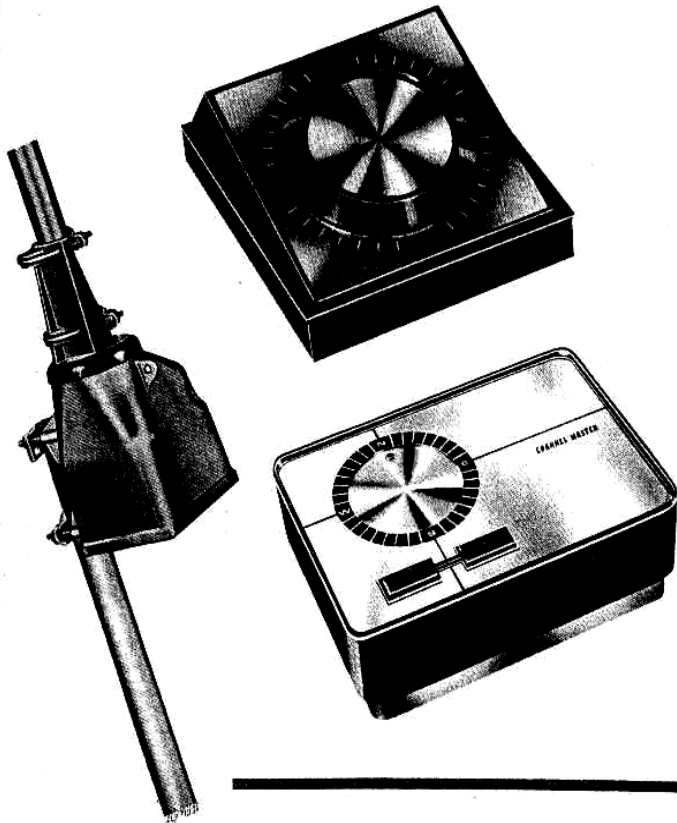


I'll have some of my May Gulf tropo photos next month.

73's, Jeff

CHANNEL MASTER COLOROTORS

The industry's finest heavy duty rotators
for precise on target antenna location!



Model 9512: Automatic Rotator. Two motors in synchronization place the antenna within the precise degree of station location. Heavy duty built-in thrust bearings and brake pads move the antenna under heavy loads, and keep it on target in severe winds. Fool proof operation, can't be knocked out of line by reversing directions.

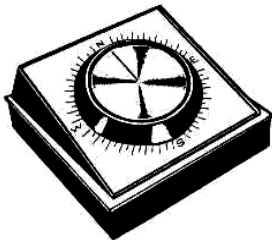
Model 9513: Semi-Automatic Antenna Rotator. The only semi-automatic in the trade that uses two motors in synchronization for precise antenna aiming. Pushbutton controls provide up to 6 times the indicator travel than manual control.

Channel Master Colorotors Cut Hidden Wiring Costs by Using Three Conductor Instead of Four or Five Conductor Cable. Use Black Jac 3 Conductor Rotor Wire Model 9538.

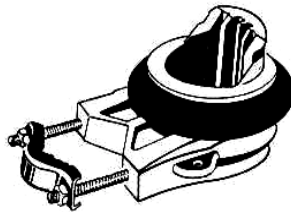
SPECIFICATIONS

● Rotation Speed: 1 RPM ● Gear Ratio: 3200 to 1 ● Built in Thrust Bearing ● Permanent Lubrication ● Preassembled mounting hardware included ● 115 volts, 60 cycle AC

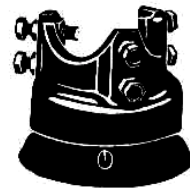
Models are also available for 220 volt 50-60 cycle systems.



Model 9526A: Automatic Colorotor Control Unit. Converts most 1 RPM manuals to automatic.



Model 9523: Rotor Alignment Bearing. Provides tough-weather protection by stabilizing heavy-duty antenna installations, even where severe winds prevail.



Model 9525: Ball Bearing Guy Ring.

MODEL	DESCRIPTION	PRICE
9512	Automatic Rotator	
9513	Semi-Automatic Antenna Rotator	
9526A	Automatic Colorotor Control Unit	
9523	Rotor Alignment Bearing	
9525	Ball Bearing Guy Ring	

NEW CONVENTION CO-ORDINATOR NAMED

Jim Thomas has assumed the duties of Convention Co-ordinator, a post that had been previously filled by Tom Bryant. Jim has informed us that he has received bids for the 2003 WTFDA convention and that the host and location for next year's gathering have been selected. Scott Fybush will be the convention host in 2003. The exact site for the convention has not yet been finalized, however, it will be in Western New York state. We'll give you more details as we receive them.

Sign Up/Renewal form

Name_____

Address_____ Apt #_____

City_____ State/Prov_____ Zip_____

Country_____ Interests: TV () FM () 30-50() Weather()

email address_____

Sign me up/renew me for: 1 year () 2 years () More ()

Yearly dues \$24 to US addresses, \$26 to Canada and Mexico

\$38 to the rest of the world (payable in U.S. Funds)

Mail your dues to: WTFDA, P.O. Box 501, Somersville, CT USA 06072

Make your checks/money orders payable to: DAVE JANOWIAK

And *thanks* for your support of the WTFDA!

Return this form with your dues or make a copy of it and return that.

Editors and Submissions

Send your reports and station info to these folks.

THE MAILBOX and all general club correspondence:

Mike Bugaj at WTFDA, PO Box 501, Somersville, CT 06072

mbugaj@snet.net

SATELLITE NEWS

George Jensen, 4604 Antana Ave., Baltimore, MD 20206-4220

scisatman@aol.com

TV NEWS

Doug Smith, 1385 Old Clarksville Pike, Pleasant View, TN 37146-8098

w9wi@w9wi.com

FM NEWS

Steven Wiseblood, 28 LBJ Blvd., Brownsville, TX 78521

stevenwisebl@hotmail.com

PHOTO NEWS

Jeff Kruszka, 5024 S. Braxton Ave., Baton Rouge, LA 70817

jkruszka@bellsouth.net

TV TIME TUNNEL

Tom Bryant, 849 Todd Preis Dr., Nashville, TN 37221-2607

tjbdx@comcast.net

EASTERN TV DX

Matt Sittel, 15013 Eureux Circle, Bellevue, NE 68123

mcsittel@cox.net

WESTERN TV DX

Victor Frank, 12450 Skyline Blvd., Woodside, CA 94062-4554

frank@horizon.sri.com

SOUTHERN FM

John Zondlo, 4889 Driftwood Cir., Yukon, OK 73099

sfm@fmdxweb.com

NORTHERN FM

Keith McGinnis, 387 Shirley Street, Winthrop, MA 02152

longwave@attbi.com

WTFDA://ONLINE

Saul Chernos, 57 Berkeley St., Toronto, ON M5A 2W5

schernos@sympatico.ca

VERIFICATIONS AND QSL SIGNERS

Tom Yingling, 221 Pinewood Road, Baltimore, MD 21222-2345

ka3tcc@erols.com

TV and FM STATISTICS

Fred Nordquist, 7945 Boxford Road, Clay, NY 13041

nordquis@twcnny.rr.com

Please Remember To Make Your Renewal Checks Payable to Dave Janowiak
Checks made payable to WTFDA may be returned and your renewal may be delayed.