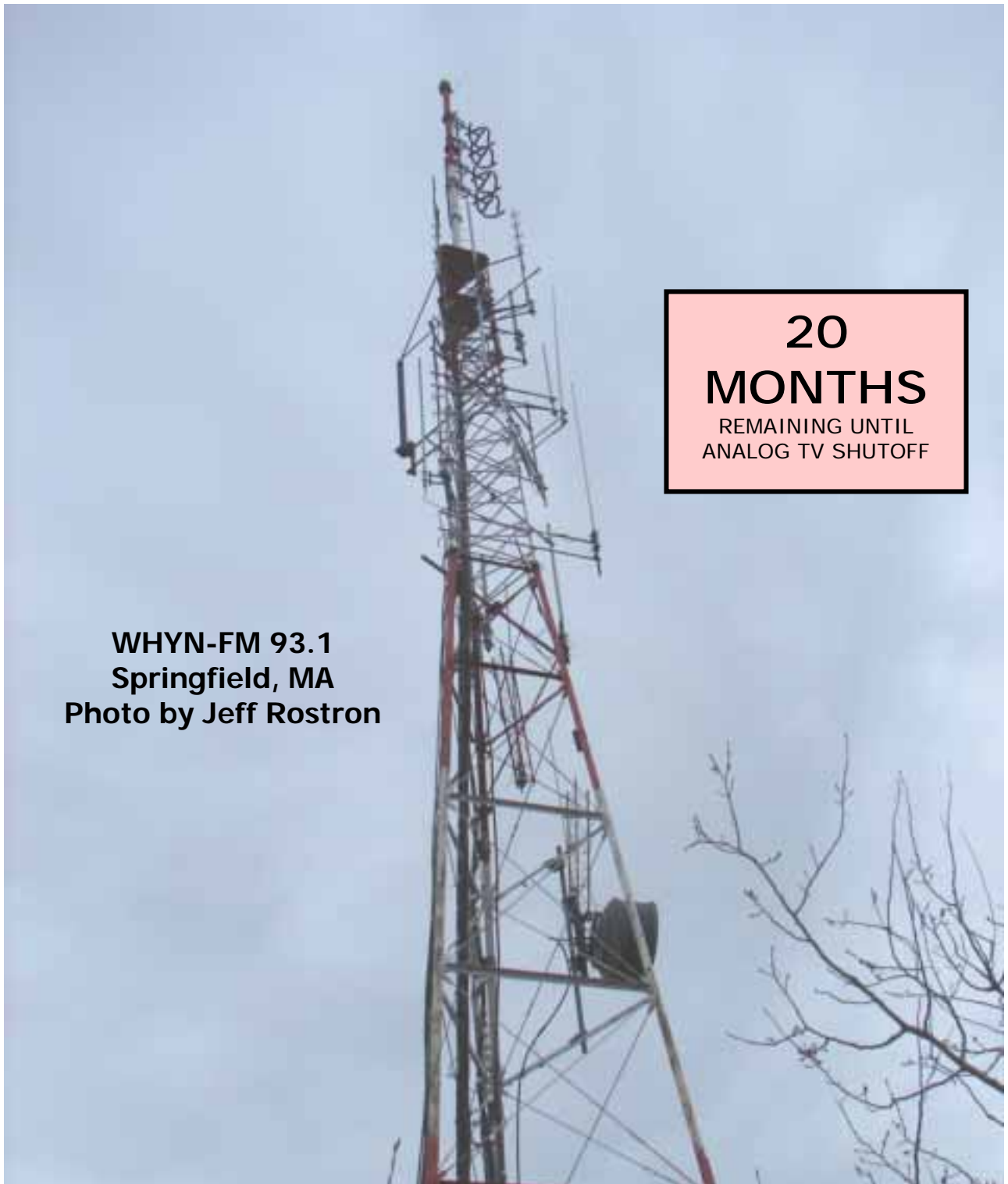


# Vhf-Uhf DIGEST

The Official Publication of the Worldwide TV-FM DX Association

JUNE 2007

The Magazine for TV and FM DXers



**20**  
**MONTHS**  
REMAINING UNTIL  
ANALOG TV SHUTOFF

**WHYN-FM 93.1**  
**Springfield, MA**  
Photo by Jeff Rostron



**MAY E-SKIP**  
**AN EARLY START TO THE SEASON!**  
Details Inside

# THE WORLDWIDE TV-FM DX ASSOCIATION

*Serving the UHF-VHF Enthusiast*

THE VHF-UHF DIGEST IS THE OFFICIAL PUBLICATION OF THE WORLDWIDE TV-FM DX ASSOCIATION DEDICATED TO THE OBSERVATION AND STUDY OF THE PROPAGATION OF LONG DISTANCE TELEVISION AND FM BROADCASTING SIGNALS AT VHF AND UHF. WTFDA IS GOVERNED BY A BOARD OF DIRECTORS: DOUG SMITH, GREG CONIGLIO, BRUCE HALL, KEITH MCGINNIS AND MIKE BUGAJ.



*Editor and publisher:* **Mike Bugaj**

*Treasurer:* **Keith McGinnis** wtfda.org Webmaster: **Tim McVey**  
wtfda.info Site Administrator: **Chris Cervantez**

*Editorial Staff:* **Dave Williams, Jeff Kruszka, Keith McGinnis, Fred Nordquist, Nick Langan, Doug Smith, Chris Kadlec, Peter Baskind and John Zondlo,**

Our website: [www.wtfda.org](http://www.wtfda.org); Our forums: [www.wtfda.info](http://www.wtfda.info)

JUNE 2007



Finally! For those of you online with an email address, we now offer a quick, convenient and secure way to join or renew your membership in the WTFDA from our page at:

<http://fmdx.usclargo.com/join.html>

Dues are \$25 if paid to our Paypal account. But of course you can always renew by check or money order for the usual price of just \$24. Either way, it's still a bargain!

## VUDS ON A CD!

Every VUD from Jan 1980 to December 1989 is on this disk. You'll need Adobe Reader to read them. Why have a box of old VUDs taking up space when you can have this. **It's yours for just \$8.00 per disk.** Send your check or money order for \$8.00 to WTFDA, P.O. 501, Somersville, CT 06072. Make it payable to **WTFDA.**



## CONTENTS

Page Two	2
Mailbox	3
TV News...Doug Smith	4
FM News...Chris Kadlec	14
Western TV DX (Short Version)...Dave W.	20
Eastern TV DX...Nick Langan	21
Southern FM DX...John Zondlo	23
Northern FM DX...Keith McGinnis	25
Photo News...Jeff Kruszka	36
Installing Antenna at Jim Renfrew's	37
Editors and Submissions	39

Dave left his column on the wrong computer, so Western TVDX will return next month. Peter should also be back with more 50mhz goodies.

## And now... eVUDS ON CD!

All eVUDs from 09/01 through 12/05 are on this disc (except 8/02 which was not published). Follow the changes from day one to the present form. **You can have it for just \$6.00** (\$5.00 plus a dollar shipping).

Use the same address as for VUDs on CD shown on the opposite column.



## Frank Aden Hosts the 1<sup>st</sup> NRC/WTFDA Convention!

**Friday, August 31, 2007 through Sunday, September 2, 2007**  
**At the Rodeway Inn, 1115 North Curtis Road, Boise, ID 83706**  
**(208) 376-2700**

*The First ever Combined National Radio Club/WTFDA Convention!*  
*Registration for all is \$15, spouses are \$10 and kids under 14 are free. The cutoff date for registering with the club(s) is August 15, 2007; with the hotel, August 20, 2007.*

**PLEASE SEND YOUR REGISTRATION TO EITHER CLUB**



# The Mailbox

P.O. Box 501, Somersville, CT USA 06072  
MIKE BUGAJ MBUGAJ@SNET.NET

---

## THE FUN HAS BEGUN

From looking at the posts on the WTFDA's tvfmdx email list, we can see that the 2007 E skip season began earlier than usual in many places in North America this year. Skip hit the FM band with widespread openings on May 6,9,11,22 and 25. I've seen reports from much of the United States. This early start is very encouraging, so if you haven't started checking, this is a good time to begin.

## MEMBERS AND MORE

This month we welcome **Michael Glass** to the WTFDA. Michael lives in Indianapolis and joined using Paypal. There can't be an easier way to join the WTFDA. If you've never used Paypal, try it!

Renewals were received from the period 4/16 to 5/14 from the following members: **Eric Fader** (NY), **John Hanna** (IL), **Nick Langan** (NJ), **Fred Nordquist** (SC), **Ken Onyschuk** (IL), **Fritze Prentice** (AR), **Gary Hickerson** (OK), **CT Day** (RI), **Roger Gravelle** (ON), **Gray Fulk** (NC), **Sheryl Paszkiewicz** (WI), **Neil Griffin** (FL), **William Eckberg** (IL), **George Mileon** (MA), **Andy Bolin** (IL), **Jerry Bond** (NY), **Eric Bueneman** (MO), **Randy Zerr** (FL), **Rob Ross** (ON), **Dave Williams** (OR), **Dan Oetting** (MD), **Dave Sinclair** (BC) and **John Marx** (WI). Thank you all for supporting the WTFDA and helping to keep the WTFDA alive and vibrant.

I have more renewals and some new WTFDA members (yes, plural) in my stack of stuff here, but we will get to those next month.

Here's an interesting letter from veteran TV Dyer **Bill Draeb**: "I'm surprised you're preaching "gloom and doom" when all the low-band stations in the "lower 48" decide to pull the plug on their analog stations. For someone who has been plagued by WBAY-2 for the last 54 years (much of that time 24/7), it will be interesting to see what else is there instead of logging WEDU-3 for the umpteenth time. So, bring on Cuba, South America, Mexico, Central America and whatever else gets covered up by stations in the 1000 mile range. I'll be waiting for that 2Es, F2 or TE opening with bated breath. But I suppose if you prefer quantity to stations versus quality, then you'll be disappointed."

Bill, I see your point. You fellows in the midwest will no doubt have your share of TV

skip openings when the analogs go off the air. Right off the top of my head I think of Jeff Kadet in IL, who always has his share of Mexicans and Puerto Rico via e-skip in the summertime.

But then you can consider the DXers farther north, where receiving a Mexican via Es is a rarity. I think you will need to have some amount of "quantity" just to people interested. If a DXer only "sees" Es on his television only two or three times in a season, will that be enough to keep him interested in the hobby, even if the skip he sees is two or three hop from somewhere in Central or South America? I don't know the answer. We will have to find out.

**Bill Eckberg** sends this note along with his renewal: "The tower has been cranked down for a year. Ch2-6 skip is about all that is left. TV bands are loaded here with analog and digital signals. Perhaps things will improve in 2009." Well, Bill, we can always hope. And if we all hang in here for a few short months, we will all find out the answer together. Perhaps things will improve for TV DXing.

## PHASER NEWS!

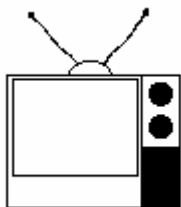
News from **Andy Bolin**: "Just a note to let you all know the Radio Shack 15-678 attenuator has been discontinued. For the moment, you may be able to find old stock 15-678s at your local RS. Otherwise, for a small quantity, check with me or try part number 15-578 or 15-678 on Ebay.

If you have old scratchy sounding attenuators, KEEP THEM! They can be modified with a military grade control for a lifetime of service.

As for FM phasers, as long as I find parts at hamfests, I'll build them. But that source is shrinking by the year.

## THE POSTAGE INCREASE

The way the new rates work, it should cost us a few pennies LESS to send out a 2 oz VUD in an envelope. That's the good news. The 3 oz rate is also a bit less, but another new, higher rate begins at 3.5 oz instead of 4 oz, so VUDs over 3.5 oz will cost us 92¢ to mail. Where once I knew how many pages it took to jump a VUD from 2 to 3 oz., I'll now have to learn how many pages it will take to bump the VUD over 3.5 oz. More fun. See you all next month.



# TV News

Douglas E. Smith  
 1389 Old Clarksville Pike  
 Pleasant View, TN  
 37146-8098  
[w9wi@w9wi.com](mailto:w9wi@w9wi.com)  
<http://www.w9wi.com>

June 2007

### Abbreviations:

AF	Applied For (a new station)	NW	New station on the air
Aux	Auxiliary (backup) transmitter	PA	Proposed Amendment
CC	Callsign change	PC	Power (and/or tower height) change on the air
CL	City-of-license change	PG	Power change granted
DC	Converted to DTV	PR	Power change requested
DCC	Digital Companion Channel	QC	Channel (?frequency??) change on the air
NS	Granted flash-cut to DTV	QG	Channel change granted
DCC		QR	Channel change requested
DE	License/permit deleted	RE	Reinstated (previously-dismissed app.)
DR	Requests flash-cut to DTV	ROA	Request of Applicant
FC	Programming (?format??) change	SI	Off the air (?silent??)
FTP	Failure to Prosecute	STA	Special Temporary Authority
GA	Granted amendment (to table of channel allotments)	XC	Transmitter site changed
LC	License to Cover	XG	Transmitter site change granted
MX	Mutually Exclusive	XR	Transmitter site change requested
NDA	Non-directional antenna		
NS	Permit granted for new station		

### News:

(full-power analog stations in **bold face**; LPTV and translators in regular type; full-power digital stations in **bold italics**; low-power digital stations in regular italics)



#### Puerto Rico:

Mayaguez 26 NEW-LP AF dismissed (WMTJ-40)



#### U.S. Virgin Islands:

Frederik-sted 42 WEON-LD DG from ch. 60, 15kw, 17-41-50/64-52-58



#### Alabama:

Cullman 38 WCQT-LD DG 2kw  
 Dothan 5 WJUN-LP PG>1.18kw, 31-14-54/85-23-20  
 Mont-gomery 34 WFRZ-LD DG 15kw  
 Priceville 51 WYAM-LP QC from ch. 56, 72.2kw; PR<23.5kw

#### Alaska:

Anchorage 18 KYEX-LP PR>40kw; PG (increase antenna height above sea

level by nearly 5,000 feet without moving tower??!!)  
**Anchorage 26 960916KE AF 50kw/ 208m -DT (goes with analog CP on ch. 9)**  
**Juneau 11 KJUD-DT PG 140w/ -290m, 58-18-05/ 134-26-26**  
 Juneau 17 K17HC PR<100w (make STA permanent)

#### Arizona:

Flagstaff 20 KAFL-LP CC from K20IQ  
 Kingman 20 K20ID QC from K55GG, 790w  
 Littlefield 39 NEW-LP AF RE 150kw, 36-53-00/113-55-29  
 Peach Spring 46 NEW-LP AF RE 49kw, 36-00-02/113-38-24  
 Phoenix 46 KDTP-CA AF DCC 15kw, 33-20-01/112-03-45  
 Prescott 50 KPVY-LP CC from K50JJ  
 Prescott 50 KPVY-LP CC from K50JJ  
 Tucson 7 K07YX QG from K54FW, 50w  
**Tucson 23 KVOA-DT PG 405kw/ 1123m**  
 Tucson 41 KUDF-LP AF DCC 2.2kw, 32-14-56/111-06-59

#### Arkansas:

El Dorado 32 K32HT PR<1kw, reduce

El Dorado	47	K47JG	antenna height 160m PR<1kw, reduce antenna height 55m	Chico	59	KSGO-LP	CC from K59IG
Eureka Springs	22	K18EG	QG from ch. 18, 10kw	Cloverdale	40	KQRM-LP	CC from K40IB
<b>Fort Smith</b>	<b>21</b>	<b>KHBS-DT</b>	<b>To add Lat TV on subchannel</b>	Daggett	26	K26FO	FC; sold by TBN
Fort Smith	32	K32GH	FC to Lat TV	<b>El Centro</b>	<b>48</b>	<b>KECY-DT</b>	<b>NW 67kw/ 414m; PG&gt;950kw</b>
Harrison	8	KTKO-LP	QG from zero offset to plus	Eureka	35	KBVQ-LP	CC from KEAZ-LP
Harrison	36	K36JE	QG from K23DU, 11.9kw	<b>Eureka</b>	<b>43</b>	<b>K43KY-D</b>	<b>DG from K69IE, 4kw</b>
Hindsville	59	KRBF-CA	FC to Lat TV	Fresno	11	K11WC	QG from K15ET, 3kw
Little Rock	14	KHUG-LP	FC to Lat TV	<b>Fresno</b>	<b>11</b>	<b>K15ET</b>	<b>AF DCC 300w, 37-32-01/ 120-01-50 (but analog already has permit to move to ch 11?)</b>
<b>Little Rock</b>	<b>44</b>	<b>KWBF-DT</b>	<b>To add Lat TV on subchannel</b>	Fresno	31	KBID-LP	PG 150kw/ 973m, 37-04-25/ 119-25-52
Little Rock	50	KHTE-LP	PR<1kw	Gonzales	2	KOTR-LP	PC>3kw, 36-32-06/ 121-37-09
Searcy	18	KTWN-LD	DG from ch. 43, 15kw, 35-02-13/ 92-01-02	<b>Greenfield</b>	<b>20</b>	<b>KSCZ-LP</b>	<b>AF DCC 15kw, 36- 45-23/ 121-30-05</b>
Springdale	4	KJBW-CA	PG>2.1kw	<b>Joshua Tree</b>	<b>21</b>	<b>K14JT</b>	<b>AF RE DCC 900w, 34-04-32/ 115-57- 18</b>
<b>Springdale</b>	<b>57</b>	<b>KWOG</b>	<b>CC from KSBN</b>	<b>La Jolla</b>	<b>15</b>	<b>K59AL</b>	<b>AF DCC 15kw, 32- 41-53/ 116-56-03</b>
<b>California:</b>				<b>Los Angeles</b>	<b>57</b>	<b>KSMV-LP</b>	<b>AF DCC 600w, 34-13-36/ 118-03-57</b>
Altadena	10	W51DY	AF DCC 30w, 34- 13-36/ 118-03-57	Maricopa	38	KNXT-LP	PG<65kw, 35-26-16/ 118-44-28; increase tower height 531m
Arroyo Grande	8	KAGP-LP	PC>3kw, 34-54-37/ 120-11-08; increase antenna height ~750m	Modesto	34	KACA-LP	QG from ch. 61, 150kw, 37-43-45/ 121-11-49
Arroyo Grande	20	KSSY-LP	QC from ch. 66, 20kw, 35-06-25/ 120-30-58; FC to Spanish religion	Monterey	27	K27IE	FC; sold by TBN
Atascadero	39	KASC-CA	AF DCC 15kw, 35- 26-47/ 120-42-58	<b>Morro Bay</b>	<b>9</b>	<b>K09UF-D</b>	<b>DG 4w</b>
Bakersfield	6	NEW-LP	AF RE 3kw, 35-19-12/ 118-47-22	Palm Desert	43	KDUO-LP	PR<9.5kw, 33-52-03/ 116-25-58; PG; NW
<b>Bakersfield</b>	<b>13</b>	<b>KBVJ-LD</b>	<b>CC from K13??</b>	Palm Springs	3	KVTU-LP	QC from ch. 8, 240w, 34-14-18/ 117-04-32; CC from KSPP-LP
Banning	10	KMRZ-LP	QR from ch. 69, 300w, 34-12-48/ 118-03-41 dismissed; going for ch. 12 at Moreno Valley instead; CC from K69JA	Palm Springs	20	K20HZ	FC to Lat TV
Barstow	6	K26FO	QR from ch. 26, 1kw; CL from Daggett	<b>Palm Springs</b>	<b>27</b>	<b>K100U</b>	<b>AF DCC 200w, 33-56-25/ 116-39-55</b>
Big Bear Lake	35	KPCD-LP	QG from ch. 40	<b>Palm Springs</b>	<b>35</b>	<b>KYAV-LP</b>	<b>AF DCC 15kw, 33- 51-56/ 116-25-58</b>
<b>Bishop</b>	<b>20</b>	<b>KBBC-TV</b>	<b>CC for NS</b>	<b>Palmdale</b>	<b>8</b>	<b>KFLA-LD</b>	<b>CC from K08NZ- DR 300w, 34-21-08/ 117-40-27, CL from Ridgecrest dismissed; QG from ch. 67, 3kw, 35-26-10/ 117-48- 56 while remaining in Ridgecrest rescinded</b>
Caliente	43	K43IR	NW 22kw, 35-15-21/ 118-37-39	<b>Palmdale</b>	<b>12</b>	<b>K67AO</b>	<b>AF DCC 15kw, 35- 26-47/ 120-42-58</b>
Cathedral City	29	KPSP-LP	AF DCC 15kw, 33- 51-56/ 116-25-58	Poway	48	KUAN-LP	CC from K48AL
Cedarville	51	K51KJ	QG from K71AF, 575w				
Cherry Valley	51	KILA-LP	CC from K51HZ				
Chico	15	K15HV	QG from K51ID, 50kw				
Chico	30	K35HY	DR from ch. 35, 15kw/780m, 39-57-45/ 121-42-40				
<b>Chico</b>	<b>43</b>	<b>KHSL-DT</b>	<b>PG&gt;235kw/ 469m</b>				



Redding	4	K04PY	PG 10w, 40-39-14/ 122-31-12				107-51-08
Redding	40	KBVS-LP	CC from K40KA				PG 100w/ 1314m, 39-05-15/ 108-13-40
Redding	42	KQXS-LD	DG 14kw, 41-24-04/ 122-15-14				
Redding	52	K52JT	NS 5kw, 40-35-06/ 122-25-08				
Redding	58	KKDJ-LP	NW 29.3kw, 40-39-16/ 122-31-13				
Riverside	10	KZSW-LP	AF DCC 10w, 33- 57-44/ 117-16-48				
Sacramento	15	KMUM-CA	XR 38-42-26/ 121- 28-37 dismissed ROA				
San Luis Obispo	48	K47GD	AF DCC 15kw, 35- 21-37/ 120-39-20				
San Luis Obispo	60	KPXA-LP	CC from K60GN				
Santa Barbara	10	K10PV-D	DG 100w from K59CD				
Santa Maria	29	KQMM-CA	AF DCC 15kw, 34- 54-36/ 120-11-10				
Tahoe	36	K23DT	AF DCC 100w, 39-18-38/ 119-53-01				
Ukiah	42	K42HE	PR>150kw, 39-19-23/ 123-16-19; CL from Fort Bragg				
Ventura	23	KIMG-LP	FC to Lat TV				
<b>Colorado:</b>							
Aurora	20	KDEO-LD	DG from ch. 23, 5w; CL from Denver				
Boulder	46	K46JX	QG from K54DK, 1kw, 39-57-38/ 105-12-44				
Denver	17	KZCO-LP	AF DCC 8.8kw, 39-40-24/ 105-13-03				
Denver	38	KHDT-LP	QG from ch. 45, 10w				
Denver	61	K61AA	PC>150kw, 39-54-48/ 105-17-33; CL from Estes Park				
Dove Creek	48	K48BK	PR<920w, 37-21-58/ 108-08-42 dismissed but refiled				
Estes Park	39	K39JT	PR<100w, 40-21-38/ 105-31-12; PG				
Estes Park	26	K26HQ	PR<100w, 40-21-38/ 105-31-12; PG				
Estes Park	42	K42GS	PR<100w, 40-21-38/ 105-31-12; PG				
Genoa	36	NEW-LP	AF RE 49kw, 39-39-36/ 103-24-37				
Glenwood Springs	7	K07GD	DC 4w				
Montrose	21	K28AD	AF DCC 250w, 38-31-00/				
Powderhorn	69	K69AO					
<b>Pueblo</b>	<b>48</b>	<b>960920YN</b>	<b>AF dismissed</b>				
San Luis Valley	32	K32IK-D	DG 1.1kw from K55CL				
<b>Connecticut:</b>							
<b>Hartford</b>	<b>24</b>	<b>WEDH</b>	<b>PC&gt;1200kw/ 517m, 41-42-13/ 72-49-57 (WTIC- 61 twr)</b>				
Springfield	34	WESA-LP	QG from ch. 12, 45kw, 42-07-12/ 72-24-25; CL from Granby (FCC says Springfield, CT but probably means Springfield, MA)				
<b>Delaware:</b>							
Rehoboth Beach	59	WRDE-LP	NW 160w, 38-44-51/ 75-11-21; PR>20.5kw				
<b>Florida:</b>							
Fort Myers	4	WEVU-CA	FC to Lat TV				
Gainesville	56	W56EJ	FC to Lat TV				
Jacksonville	23	WUBF-LP	QG from ch. 69, 11.5kw, 30-21-08/ 81-43-04				
Key West	18	W18DO	NS 2kw, 24-33-18/ 81-48-06				
Lealman	43	W43CE	FC to Lat TV				
<b>Miami</b>	<b>4</b>	<b>WFOR-TV</b>	<b>PG&lt;57kw, DA (aux)</b>				
Miami	9	WJAN-CA	AF DCC 10w, 25- 57-59/ 80-12-44				
Miami	48	WFUN-LP	DR 15kw/199m, 25-59-09/ 80-11-37; DG				
<b>Naples</b>	<b>46</b>	<b>WXCW</b>	<b>CC from WTVK</b>				
Ocala	42	W42DJ	QG from W29AB, 55kw				
Panama City	6	W06CQ	PG 1kw, 30-19-42/ 85-41-22; NW				
Panama City	10	WGOM-	CC from W36BU				
Panama City	12	W12DE	PG 100w, 30-13-30/ 85-37-20; NW				
Panama City	17	WEWA-LP	CC from W17CG				
Panama City	39	WPAF-LP	QG from ch. 2, 75kw				
Panama City	41	WGOX-LP	CC from W41CP				
Port St. Lucie	35	WSLF-LP	FC to Lat TV				
Rock Harbor	64	W64AN	PR>35kw, 25-32-24/ 80-28-07 dismissed				
Wewa-hitchka	17	WEWA-LP	PG>150kw, 30-08-33/ 85-25-28; CL from Panama City				
Williston	35	W56EJ	QR RE from ch. 56, 150kw, 29-21-32/ 82-19-43				

**Georgia:**

Atlanta 22 WSKC-CD DG 800w  
 Atlanta 40 WIRE-CA PG>55kw,  
 33-44-41/  
 84-21-36  
 Atlanta 47 W38CU AF DCC 10kw, 33-  
 55-00/  
 84-12-07  
 Atlanta 55 WYGA-CA FC to Lat TV  
 Columbus 11 WWCG- PG<2.5kw  
 Columbus 61 W61DU PR<1kw,  
 32-31-52/  
 84-57-31  
**Macon 4 WMAZ-DTNW 7kw/181m**  
**Macon 16 WGXA-DTNW 1000kw/  
 216m**  
 Marietta 49 W49DE PG>23.8kw,  
 34-03-58/  
 84-27-14  
**Savannah 9 WVAN-TV NS 47kw/ 169m  
 (aux)**  
 Savannah 43 W43CK-D DG 15kw  
 Toccoa 10 W10CX-D DG from W68AF,  
 180w  
 Young Harris 12 W04BJ-D PR<5w,  
 34-52-27/  
 83-48-38

**Hawaii:**

**Honolulu 32 KBFD PR<134kw**  
**Wailuku 12 KMAU PR 51kw/ 747m,  
 20-39-37/  
 156-21-46**  
 Wailuku 34 KUNT-LD CC from K34JG-  
 Wailuku 49 KHIW-LP CC from K49IV

**Idaho:**

Glenns Ferry 50 K50KM-D NS DCC for  
 K04EN  
 Lewiston 27 KIDQ-LP QC from ch. 61  
 Preston 26 K25HG AF DCC 100w,  
 42-07-30/  
 111-46-30  
 Priest Lake 42 K42GT QC from K57CM,  
 48-35-36/  
 116-54-33  
 Rexburg 43 K43JD-D DC 20w

**Illinois:**

**Peoria 40 WHOI-DT NW 82.46kw/  
 160m**  
 Sugar Grove 40 W40CN-D DG 15kw

**Indiana:**

**Bloomington 48 WTTV-DT PG 750kw/ 357m**  
 Chesterton 4 WAAA-LP CC from W04CQ  
 Columbia 6 W27CT DR from ch. 27,  
 300w, 39-26-09/  
 84-40-24  
 dismissed;  
 PR>150kw on ch.  
 27 dismissed  
**Fort Wayne 19 WISE-DT PG 285kw/ 239m;  
 PC**  
 Lafayette 43 WAJN-LP PG>9.55kw, CL  
 from Brookston  
**South Bend 22 WSBT-TV PG<2750kw/  
 332m**  
**South Bend 30 WSBT-DT PG 229kw/ 332m**  
**Iowa:**  
 Ames 26 K56GD QR from ch. 56,  
 8.4kw

Estherville 48 KBVI-LP CC from K48JZ  
**Iowa City 25 KWKB-DTNW 1000kw/  
 419m**

**Newton 39 KFPX PR 116kw/ 154m**  
 Ottumwa 31, K31ED, XR 40-55-45/  
 45, K45EE, 92-23-03  
 49, K49DX, dismissed  
 53, K53FC,  
 55, K55GS,  
 58, K58ER,  
 67 K67GH  
 Rock Rapids 25 K25AA PG>126kw  
 Spencer 17 K55FL AF DCC 15kw, 43-  
 15-20/  
 94-58-35  
 Spencer 34 KBVK-LP AF DCC 15kw, 43-  
 13-47/  
 95-07-58; CC from  
 K13YV

**Kansas:**

**Great Bend 22 KSNC-DT PR<500kw/  
 284m**  
 Manhattan 52 K52HZ PR>100kw; PG  
 Pittsburg 20 KJCJ-LP QG from ch. 54,  
 20kw, 37-14-34/  
 94-30-21  
 Topeka 25 K32GY AF DCC 1kw, 38-  
 53-46/  
 95-10-29  
 Wichita 49 KGPT-CA PG>11.13kw

**Kentucky:**

Bowling 60, WKUW- PG>150kw,  
 Green 64 LP, 36-57-37/  
 WKUT-LP 86-32-49; CL from  
 Glasgow  
 Jamestown 2 W02CO PG 350w,  
 37-09-29/  
 85-09-50  
 Lexington 62 WBLU-LP PG>42kw  
**Louisville 41 WDRB PG<3990kw**

**Louisiana:**

Baton Rouge 39 WBXH-CA QR from ch. 46,  
 2.9kw,  
 30-26-36/  
 91-10-54  
 Lake Charles 63 K63HF XG 30-16-05/  
 93-14-45  
 Morgan City 7 KJUN-CD DG 4w  
 New Orleans 43 K43KO-D NS DCC 500w for  
 K47JO  
 Winnfield 46 K44HN QR from ch. 44,  
 CL from Tullos  
 dismissed

**Maine:**

Calais 8 W08EC-D DG 300w from  
 W57AQ

**Maryland:**

Ocean City 26 W26DN QG from W63DC,  
 20kw, 38-23-12/  
 75-17-27  
 Salisbury 11 W11CX PR to reduce  
 antenna height  
 45m  
 Salisbury 29 W23DF AF DCC 5kw,  
 38-22-52/  
 75-10-32  
 Salisbury 7 W07DJ PR to reduce  
 antenna height  
 45m

**Michigan:**

Grand Rapids 29 WUHQ-LP FC to Lat TV  
**Jackson 34 WHTV-DT PG>13.6kw/263m**  
 Marquette 45 W45CY NS 5kw, 46-30-51/87-28-58  
 Pickford 43 W43CM NS 12kw, 46-05-05/84-24-23  
 Saginaw 42 W42DI QG from W46CR, 46kw, 43-37-45/84-10-10

**Minnesota:**

Albert Lea 40 K54HA QC from ch. 54, 10.7kw  
 Alexandria 51 K51JY QG from K65HD, 1.45kw  
 Austin 44 KBVD-LP CC from K44JE  
 Bemidji 48 K48KI NS 9kw, 47-28-59/94-53-24 (3Abn)  
 Granite Falls 23 K63AU QR from ch. 63 dismissed  
 Granite Falls 48, K67AN, AF DCC 1.5kw, 44-48-17/50 K45DJ 95-34-49  
 Granite Falls 49 K69DP AF DCC 250w, 44-48-17/95-34-49  
 Hackensack 44 K44HZ-D DG 5kw  
 Jackson 17 K16GL AF DCC 20w, 43-36-12/94-59-33  
 Jackson 34 K23FO AF DCC 15kw  
 Lake Crystal 43 K43JE-D DG 15kw  
 Mankato 28 K28IO PR<10w, 44-10-11/94-02-58; PG  
 Redwood 56 W56EL QG from W64AC, 900w, 44-32-59/94-58-00  
 Falls  
 Rochester 51 K51KI-D DG from K58GC, 1kw  
 Royalton 30 K30IN PR<100w, 45-49-45/94-17-45  
 St. James 33 K30FN AF DCC 20w  
 St. James 34 K35DC AF DCC 1.5kw, 44-06-25/94-35-44  
 Walker 27, K27JF, QG from K67BZ, 51 K51KE 850w

**Mississippi:**

Gulfport 22 W36CU AF DCC 15kw, 30-26-59/88-49-03  
 Hattiesburg 42 W42CW PR<120w; PG  
 Jackson 39 WJKO-LP AF DCC 15kw, 32-16-35/90-17-41  
 Jackson 53 WJMF-LP FC to Lat TV  
 Meridian 27, W27DD, QG from W43BM, 35 W35CQ W34CH, 1.1kw, 32-11-47/89-10-32  
 Meridian 40 WMRQ-LPCC from W40BX  
 Meridian 52, W52CS, PG>1.1kw, 59 W59DE 32-11-47/89-10-32  
 Tupelo 8 WTVA-DT QR from ch. 57, 8kw/542m dismissed

Tupelo 24 W24DJ NS 31.6kw, 34-19-26/83-42-43

**Missouri:**

Columbia 32 KZOU-LP QC from ch. 11, 33.1kw, 38-47-28/92-17-43  
 Jefferson City 44 K63HG AF DCC 1kw, 38-35-39/92-14-58  
 Kansas City 25 KCDN-LP AF DCC 15kw, 39-01-20/94-30-49  
 Kansas City 40 KUKC-LP PG>150kw  
 Kirksville 4 K04PX PG 100 40-15-42/92-34-49  
 Springfield 47 K47LH QG from K49DG, 19.5kw

**Montana:**

Bozeman 54 KHJT-LP PR<165w  
 Ferndale 24 K06EL QR from ch. 6, 550w/283m, 48-04-45/114-02-16  
 Helena 34 KJJC-LP PR>20kw dismissed  
 Howard 46 K06JU AF DCC 250w, 46-19-15/106-59-46  
 Joplin 27 K48AI AF DCC 15kw, 48-51-17/111-08-27  
 Kalispell 22 K18AJ AF DCC 15kw, 48-09-58/114-19-51  
 Missoula 36 KTMF-DT NW 5.1kw/ 618m  
 Missoula 40 KECI-DT NW 5.7kw/ 626m  
 Red Lodge 35 K39HD AF DCC 15kw, 45-07-19/109-16-11

**Nebraska:**

McCook 29 KUVR-LD PR<4.7kw  
 McCook 42 KBVZ-LP CC from K42FV  
 Neligh 50 K50IO DR 350w  
 North Platte 25 K25KA-D DG 2.28kw from K57CZ  
 Ogallala 42 KBVL-LD CC from K42HH-D  
 Omaha 19 K61GA AF DCC 10kw, 41-15-26/95-59-01  
 Scottsbluff 16 KTUW-DT To add Lat TV on subchannel  
 South Sioux City 25 KAZW-LP AF DCC 15kw, 42-28-21/96-25-20

**Nevada:**

Carson City 32 K32GW-D DG from ch. 57, 15kw  
 Carson City 32 K57CV QR from ch. 57, 15kw  
 Elko 43 KBVG-LP CC from K43KV  
 Ely 23 KBVH-LP CC from K23JL  
 Hawthorne 6 KBVE-LP CC from K06OS  
 Imlay 41 K41GI-D DC 190w, 40-34-50/118-13-01  
 Las Vegas 63 KEGS-LP FC to Lat TV  
 Laughlin 26 K26IX QG from K67HO, 150kw



Pahrump 45 K31HV AF DCC 15kw, 35-58-02/  
115-30-05

Pahrump 46 KPVM-LP AF DCC 15kw, 36-12-25/  
115-57-35

Reno 25 KRRI-LP FC to Lat TV

Reno 36 K36JF QG from K52FF,  
134kw

Winne-mucca 14 K14MR-D NW 200w,  
41-00-38/  
117-45-40  
(WWOR-9)

Winne-mucca 15, K15AL-D, DC 200w  
23, K23FR-D,  
49 K49BK-D

**New Jersey:**

Atlantic City 45 W45CP QC from W60CX,  
22.3kw

**Secaucus 9 WWOR-TV NW 104kw/  
223m,  
40-51-53/  
74-12-03 (aux)**

**New Mexico:**

Alamogordo 19 KVBA-LP QG from ch. 63,  
9.9kw

Alamogordo 50 NEW-LP AF dismissed

Albu-querque 33 KQDF-LP AF DCC 15kw, 35-12-50/  
106-27-01

Albu-querque 47 K47LQ PG>62.8kw  
(database says  
K47JQ - Public  
Notice says  
K47LQ)

Capulin 48 K62AR QC from ch. 62,  
940w

Espanola 49 K49KF-D PR<343w

Gallup 10 K10PW-D DG from K67BP,  
300w, 35-32-08/  
108-44-28

Las Cruces 35 KCWF-CA QR from ch. 61,  
15kw dismissed

Los Alamos 49 K49KF-D DG from K44HO,  
694w, 35-53-09/  
106-23-13; CL  
from Espanola

Silver City 4 KSIL-LP PG<4w

**New York:**

Auburn 32 WNNY-LP QG from ch. 52,  
7.5kw; CL from  
Moravia

**Buffalo 32 WNLO-DT PC<303m**

Gloversville 48 WFNy-CA AF DCC 600w,  
43-06-09/  
74-22-17

**New York 5 WNYW NW 49.8kw/  
218m,  
40-51-53/  
74-12-03 (aux)**

Port Jervis 9, W55DK, AF DCC 20w,  
10, W34DI, 300w, 5kw,  
59 W52DW 41-12-30/  
74-21-23

Syracuse 46 W46EA QG from W30AJ,  
39.7kw,  
42-56-42/  
76-07-08

Westvale 6 WMBO-LP QG from ch. 60,  
300w, 43-03-30/  
76-10-00; CL from  
Syracuse

**North Carolina:**

Bakersville 40 W42AX AF DCC 500w,  
36-02-01/  
82-12-08

Biscoe 30 W30CR QG from W29BC,  
13.8kw

Bryson City 46 W46AX DR 500w

Cullowhee 47 W47DM-D DG from W23AF  
1kw

**Edenton 20 WUND-DT NW 543kw/ 489m**

Fayetteville 34 W34DS-D DG 15kw from  
W45CO

Lumberton 35 W35CC-D DG 8kw

Manteo 45 W45CL NW 10.8kw,  
35-51-52/  
75-39-01

Reidsville 39 WGSR-LP QC from ch. 14,  
7kw

Sparta 50 W50DV-D DG from W35AD,  
600w

Zionville 30 W30CS-D DG 600w from  
W59AK

**North Dakota:**

**Fargo 19 KVRR-DT NW 1000kw/  
349m**

**Fargo 44 KVLy-DT NW 356kw/ 576m,  
47-20-32/  
97-17-20**

**Ohio:**

**Akron 30 WBNX-DT NW 1000kw/  
334m**

**Cleveland 8 WJW NS 61.5kw/ 257m  
(aux)**

Dayton 22 W22DE QG from W66AQ,  
54kw, 39-43-15/  
84-15-39

**Oklahoma:**

Hollis 30 K30JV QG from K57BB,  
10kw

Hollis 35 K35JC QG from K55BQ,  
5kw

Lawton 64 K64GJ FC to Lat TV

Norman 11 KUOK-CA FC to Lat TV

Sayre 17 K17IN QG from K58CS,  
1kw; CL from  
Erick

**Tulsa 49 KGEB-DT NW 50kw/ 182m**

**Woodward 35 KUOK-DT AF 8kw/197m**

**Oregon:**

Bend 43 KUBN-LP QG from ch. 50,  
33kw

Black Butte 53 K11LY QR from ch. 11,  
Ranch 15kw

Chemult 36 K06LI AF RE DCC 250w

**Eugene 44 KEZI-DT NW 13.5kw/ 458m  
(makes STA  
facility  
permanent)**

Klamath Falls 41 K41ID-D DG 2kw,  
42-12-16/  
121-41-14

La Pine 9 K11GQ QC from ch. 11,  
200w, 43-39-00/  
121-25-44

Medford 32 K32DY PC<11kw,  
42-17-54/  
122-44-57

Medford 44 K44IA PG>13.4kw,  
42-17-44/  
122-48-15

Myrtle Point	55	K55FM	PC<50w, 43-03-50/ 124-07-54				dismissed
Prineville	47	K47LM	QG from K52AK, 2.43kw		Amarillo	29	K29GD PR<1kw
<b>Roseburg</b>	<b>18</b>	<b>KTVC-DT</b>	<b>To add Lat TV on subchannel</b>		Amarillo	38	K38IP PR<1kw
Sunriver	24	K57CH	QG from ch. 57, 4kw		Amarillo	48	K48LB QG from K59HG, 30kw
Terrebonne	34	K34JR	QG from K65AE, 140w		Atlanta	20	KAQC-LP CC from K20HL
Terrebonne	45	K45KM	QR from ch. 60, 21kw, 44-04-40/ 121-19-49; QG; CC from K60BQ		Austin	31	KTFO-CA CC from KAKW- CA
The Dalles	7	K07YV	QG from K64BK, 150w		<b>Austin</b>	<b>49</b>	<b>KNVA-DT NW 197kw/ 396m</b>
Tillamook	23	K23JK	QG from K52ET, 1kw		<b>Borger</b>	<b>31</b>	<b>KEYU-DT To add Lat TV on subchannel</b>
Tolo	3	K03EI	PC>1kw, 42-22-41/ 122-50-43		Britton	26	KODF-LP PR>100kw, reduce tower height 150m
<b>Pennsylvania:</b>					<b>Brownsville</b>	<b>27</b>	<b>KBDF-LP AF DCC 15kw, 26- 07-27/ 97-29-19</b>
<i>Erie</i>	38	<i>W38DY-D</i>	<i>DG 15kw, 42-02-16/ 80-03-44 from W48CH</i>		College Station	34	KUTW-LP QC from ch. 35, 150kw, 30-24-51/ 96-25-52
<b>South Carolina:</b>					Corpus Christi	19	KDCP-LP PR<10kw, 27-45-32/ 97-36-26
<b>Hardeeville</b>	<b>28</b>	<b>WTGS</b>	<b>PC&lt;453m, 32-02-45/ 81-20-27</b>		Corpus Christi	24	KCCX-LP PR>9kw, 27-47-26/ 97-27-02
Orangeburg	45	W45DE	QC from W55CQ, 14.7kw, 33-31-36/ 80-49-44		Corpus Christi	33	KCCG-LP PR<2.6kw, 27-47-46/ 97-23-47 dismissed
<b>South Dakota:</b>					Crockett	45	K45HZ PG 1kw, 31-14-40/ 95-19-54; NW
Rapid City	40	K40IV	NS 14kw, 44-03-08/ 103-14-32 (3Abn)		De Soto	31	K31GL PR<100kw
<b>Tennessee:</b>					De Leon	38	K38IO PG 100w, 32-11-05/ 98-31-38; NW
<i>Gatlinburg</i>	28	<i>WJDP-LD</i>	<i>CC from WDLY- LP</i>		Denison	7	K07XZ PG 500w, 33-52-20/ 96-28-12; NW
<i>Gatlinburg</i>	36	<i>WDLY-LP</i>	<i>CC from WDW- LP</i>		<b>Eagle Pass</b>	<b>18</b>	<b>KVAW-DT NW 50kw/85m (rare case where DTV power is greater than analog, 50kw vs. 13)</b>
<i>Jackson</i>	39	<i>WJTD-LD</i>	<i>AF DCC 20w, 35- 39-50/ 88-47-23</i>		<i>Freeport</i>	10	<i>K30DN AF DCC 300w, 29-16-33/ 95-22-45</i>
Knoxville	24	WDTT-LP	QG from ch. 38, 56kw, 35-59-44/ 83-57-23; CL from Lenoir City		<i>Gainesville</i>	28	<i>K61HP AF DCC 1.5kw, 33-50-45/ 97-06-15</i>
<b>Knoxville</b>	<b>31</b>	<b>WBIR-DT</b>	<b>NW 840kw/ 530m, 36-00-13/ 83-56-35</b>		<i>Greenville</i>	6	<i>K23DI AF DCC 50w, 33- 02-01/ 96-09-44</i>
<i>Lebanon</i>	12	<i>W11BD</i>	<i>DR from ch. 11 dismissed</i>		Greenville	53	KZFW-LP CC from KNOK- LP
Nashville	26	WNTU-LP	CC from WGAP- LP		Harper	17	K17GZ NW 100w, 30-20-29/ 99-13-23
<b>Nashville</b>	<b>56</b>	<b>WTVF-DT</b>	<b>PC&gt;1000kw/ 406m</b>		<b>Houston</b>	<b>20</b>	<b>KTXH NS 2500kw/ 536m, 29-33-44/ 95-30-35 (aux)</b>
<b>Texas:</b>					<b>Houston</b>	<b>26</b>	<b>KRIV NS 2500kw/ 536m, 29-33-44/ 95-30-35 (aux)</b>
Abilene	5	KTXF-LP	PR 665w/164m, 33-30-38/ 99-44-29		Houston	33	KBPX-LP PR>150kw, 30-32-06/ 95-01-04 dismissed
<i>Amarillo</i>	17	<i>K17HI-D</i>	<i>DG 1.5kw</i>		Jasper	54	K54JK PR>11.8kw, 30-55-10/
Amarillo	22	KEAT-LP	FC to Lat TV				
Amarillo	24	KDAX-LP	QR from ch. 13, 14.25kw, 35-15-41/ 101-52-52				

			93-58-12; FC (sold by TBN but will remain religious)		Victoria	30	KCPV-LP	96-58-39 QG from ch. 55, 2kw, 28-47-23/96-56-20
Kingsville-Alice	48	K38EB	AF DCC 15kw, 27-40-10/97-54-59		Victoria	34	KTJA-CA (or KUVM-CA?)	AF DCC 15kw, 28-46-43/96-58-09
Lubbock	47	K48GB	AF DCC 15kw, 33-30-08/101-52-20		<b>Wichita Falls</b>	<b>15</b>	<b>KJTL-DT</b>	<b>PG 1000kw/263m</b>
Lufkin	27	KETK-LP	AF DCC 15kw, 31-21-55/94-45-59; CC from KLSB-LP		<b>Utah:</b>			
Mason	34	K34HW	PG 100w, 30-47-08/99-18-40; NW		Duchesne	40	K40HS-D	DG 35w
Mullin	61	KAXW-LP	CC from K61VC		East Price	38, 40	K05GX, K04IW	AF DCC 6w, 39-36-38/110-48-47
New Boston	20	KAQC-LP	CC from K20HL		Enterprise	44	K34FW	AF DCC 90w, 37-30-22/113-39-36
New Braunfels	14	KNTA-LP	QG from ch. 62, 10kw		Logan	17	K50IB	AF DCC 300w, 41-12-00/111-52-55
<b>Odessa</b>	<b>30</b>	<b>KWWT</b>	<b>PG&lt;270kw/151m, 32-02-52/102-17-46</b>		Logan	26	KCVB-CA	AF DCC 60w, 41-33-04/111-56-06
<b>Odessa</b>	<b>43</b>	<b>KMLM-DT</b>	<b>PG 6.89kw/123m; NW</b>		Myton	14	K14LW-D	DG 320w
Pampa	34	KZFB-LP	NW 120kw, 35-23-00/101-18-41 (TBN)		Park City	56	K56IQ	NW 710w, 40-51-18/111-28-44 (KPNZ-24)
Paris	13	K13YP	PG 1kw, 33-38-46/95-31-35; NW		<b>Price</b>	<b>3</b>	<b>KCBU-DT</b>	<b>To add Lat TV on subchannel</b>
Paris	51	K64GQ	QR from ch. 64, 15kw, 33-22-02/95-40-26		Price	17	K17GT-D	DG 30w
Plainview	31	K31IK	FC; sold to KEYU-31 (Univision)		Price	25	K25IV	NS 150kw, 39-32-42/110-48-56
Port Arthur	32	KAZP-LD	CC from K32HZ-		Rockville	34	K40FU	AF DCC 130w, 37-09-09/113-01-52
Port Arthur	45	KAZP-LP	CC from K45JB		Salt Lake City	27	KUBX-LP	QG from ch. 58, 100kw
Raymond-ville	46	KRYM-LP	QG from ch. 55, 100w, 26-29-51/97-46-04		Santa Clara	49	K49AS-D	DG 150w, 37-09-19/113-52-57
Rio Grande City	6	KRGT-LP	PR>1.25kw dismissed; going for 20kw on ch. 30 instead		St. George	25	K25JS-D	NW 130w, 37-03-48/113-34-23 (KTVX-4)
Royse City	53	KZFW-LP	PC>50kw, 32-50-36/96-33-48; CL from Greenville; CC from KNOK-		St. George	39	K33GE	AF DCC 600w, 37-30-50/113-34-22
San Angelo	40	KAEM-LP	CC from K40JA; was briefly KUVM-LP		Virgin	23	K64BE	AF DCC 400w, 37-13-54/113-12-31
Sherman	34	KADY-LP	NW 10kw, 33-40-48/96-35-05 (LatTV, in Spanish); CC from K34HQ		Washington	52	K52KG-D	NW 250w, 37-09-15/113-53-00 (KTVX-4)
Smith Hill	13	K13YN	PG 150w, 33-30-24/94-12-26; NW		<b>Vermont:</b>			
Snyder	44	K44FG-D	DG 4w		Rutland	20	W20CS	QG from W69AR, 724w
Texarkana	5	K05LQ	PG 500w, 33-35-06/94-02-28; NW		<b>Virginia:</b>			
Texarkana	66	K66GF	PG 150kw, 33-35-06/94-02-28; NW		Charlottes-ville	13	W13DD	PG 1kw, 38-16-30/78-27-37
<b>Uvalde</b>	<b>26</b>	<b>KPXL-DT</b>	<b>AF 228kw/ 521m (apparently request for DTV ch. 20 failed)</b>		Charlottes-ville	14	W14CY	PR<15kw (but tower height increased 900m), 38-28-44/78-24-58; PG
Van Horn	34	NEW-LP	AF dismissed		<b>Charlottes-ville</b>	<b>32</b>	<b>WVIR-DT</b>	<b>NW 1000kw/368m</b>
Victoria	10	K10PL	XR 28-50-29/		Fairfax	6	W06CJ	QC from W42BE, 3kw, 38-53-45/

77-08-08  
 Gate City 7 WKIN-LP CC from WKTP-LP  
 Martinsville 40 WYAT-LP PG<17.75kw  
 Roanoke 25 WEDD-LP QG from ch. 54, 150kw, 37-11-35/80-09-23  
 Yorktown 19 WYSJ-CA NW 150kw, 37-04-41/76-26-47

**Washington:**  
 Baker Flats 43 K43LA QG from K57BA  
 Centralia 29 K29IA-D DG 1.1kw from K53AZ  
 Dryden 43 K43LB QG from K57AY  
 Ellensburg 17, K17IL, QG from  
 19 K19HL K69BE, K63BZ, 1.1kw, 46-53-15/120-26-29  
 Grays River 29 K29IB QG from K63AW, 1.39kw  
 Grays River 31 K31IR QG from K59BX, 1.9kw, 46-27-40/123-32-58  
 Longview 28, K28IH, NW 2.2kw, 31 K31HK 46-10-55/122-57-00 (KOPB-10, KRCW-32)  
 Point Pulley 47 K47LG-D DG from K67GJ, 1.1kw  
 Prosser 10 K10NQ PG>1.1kw  
 Richland 36 KBWU-LP QG from ch. 66, 50kw, but rescinded  
 Seattle 58 KUSE-LP FC to Lat TV  
**Spokane 34 KGPX-DT AF 104kw/ 450m (apparently request for DTV ch. 43 failed)**  
 Walla Walla 34 K14HT AF DCC 300w, 45-49-54/118-15-38  
 Yakima 45 KDHW-LP PR RE 36kw, 46-31-59/120-29-31; XG 46-31-49/120-29-30

**West Virginia:**  
 Beckley 2 WCIR-LP PG 3kw, 37-47-53/81-06-50; CC from W02CN  
**Oak Hill 50 WOAY-DT NW 600kw/ 200m, 37-57-26/81-09-03**  
 Romney 69 W69AC PR<1kw

**Wisconsin:**  
 Eau Claire 20 W20CR QG from W41CX, 9.5kw  
 Sheboygan 29 W16BS QR from ch. 16, 50kw, 43-31-14/87-56-11  
 Wausau 4 KBVW-LP CC from W04DI

**Wyoming:**  
 Casper 31 K31HT PR>15w  
**Cheyenne 11 KDEV-DT To add Lat TV on subchannel**  
 Cheyenne 14 K14LV NW 11.2kw,

41-10-01/  
 104-45-21 (TBN)  
 Cheyenne 47 K47IU PR>22.9kw, 41-09-34/104-43-19; FC to religion  
 Cody 34 K34HZ PR<50w, 44-29-48/109-09-07  
 Jackson 34 K50BL AF DCC 3w, 43-27-45/110-45-03  
**Lander 8 KCWC-DT NW 60kw/ 432m**  
 Meeteetse 29 K63BO AF DCC 1kw, 44-08-45/108-54-15  
 Sheridan 6 K06AT FC; sold to KSVI-6  
 Sunlight Basin 29 K11QL AF DCC 400w, 44-45-25/109-22-21

The FCC has approved the applications of 32 stations to not build out their interim DTV facilities. These stations will flash-cut to DTV operation on their permanent DTV channel.

In most cases, these stations are in small markets. In many cases, the stations' interim DTV channels are outside core. (above channel 51) 25 of the stations are "satellites" – stations that relay some other station – a category of operation that was singled out as eligible for flash-cutting.

The stations in question:

Station	City	A	B
KVTH-26	Hot Springs, Ark.	14	26
KVTJ-48	Jonesboro, Ark.	49	48
KGMD-9	Hilo, Hawaii	8	9
KHVO-13	Hilo, Hawaii	18	13
KAIL-7	Wailuku, Hawaii	36	7
KMAU-12	Wailuku, Hawaii	29	12
KMEB-10	Wailuku, Hawaii	30	10
KWHM-21	Wailuku, Hawaii	45	21
KBSD-6	Ensign, Kans.	5	6
KUPK-13	Garden City, Kans.	18	13
KBSL-10	Goodland, Kans.	14	10
KBSH-7	Hays, Kans.	10	7
WBKP-5	Calumet, Mich.	11	5
KBRR-10	Thief River Falls, Minn.	32	10
KPOB-15	Poplar Bluff, Mo.	18	15
WHLT-22	Hattiesburg, Miss.	58	22
KYUS-3	Miles City, Mont.	13	3
WDAZ-8	Devils Lake, N.D.	59	8
KQCD-7	Dickinson, N.D.	18	7
KGFE-2	Grand Forks, N.D.	56	15
KJRR-7	Jamestown, N.D.	18	7
KMCY-14	Minot, N.D.	15	14
KMOT-10	Minot, N.D.	58	10
KUMV-8	Williston, N.D.	52	8
KOBF-12	Farmington, N.M.	17	12
KENV-10	Ely, Nev.	8	10
KWNV-7	Winnemucca, Nev.	12	7

Station	City	A	B
WENY-36	Elmira, N.Y.	55	36
WVPX-23	Akron, O.	59	23
WMEI-60	Arecibo, P.R.	61	14
WECN-64	Naranjito, P.R.	65	18
KJWY-2	Jackson, Wyo.	14	2

**A:** Interim DTV channel (which will go unused)

**B:** Permanent DTV channel

At the same time, the Commission launched their 3<sup>rd</sup> Review of the DTV Transition. They propose these actions: (among others)

- Limit future extensions of time to build DTV facilities.
- Offer expedited processing of applications for operation on a station's post-transition channel.
- Consider allowing reduced analog power when necessary to facilitate building of post-transition DTV facilities.
- Consider allowing stations to cease analog operation altogether, before transition, to facilitate building of post-transition DTV facilities.
- Consider allowing stations to switch early, ceasing analog operations *before* Transition Day and switching to DTV-only operation.
- Require stations to file a form by December 1<sup>st</sup> detailing the station's digital progress and a plan for completing transition.
- Require stations whose permanent DTV facilities are on a different channel from their interim operation to complete construction by February 17, 2009. (Transition Day)
- Refuse applications to increase power on permanent DTV assignments until all initial facilities have been built.

These points are not final; they're proposals put out for public comment. I suspect they'll be adopted pretty much intact though.

One thing to note here is that, contrary to what I'd expected, stations will be expected to vacate their interim DTV channels immediately on Transition Day.

This will cause some *interesting* logistical issues for many stations. Those whose permanent DTV channels are different from their interim assignments will have to build a DTV facility on the new channel, but cannot test it on the air. (they'd better hope it works on February 17<sup>th</sup>!)

(a quick scan of the FCC document – it's HUGE – suggests stations will be allowed to test their permanent DTV facilities in advance, but it will often require careful cooperation of competing stations – which will be required to go off the air, or at least accept serious interference, for such testing to proceed.)

Another order disposed of 145 applications for additional time to complete DTV construction. Most were granted:

- WABC, WNBC, WNJU, and WNYE in New York cited the 9/11 attack as grounds for extension.

- 29 extensions were required by delays in the Commission's own actions.

- Hurricanes were cited by WPAN, KVHP, WGNO, and WSTE. The latter station was not directly affected by the storms, but crews scheduled to install WSTE's DTV equipment were diverted to New Orleans.

- Five Denver stations had problems (to say the least!) obtaining local approval for their antennas at their existing analog site. Congress finally stepped in, overruling local zoning authorities. KPAZ in Phoenix also cited problems with local approvals.

- Twelve stations cited unexpected technical and mechanical issues.

- Nine stations had problems acquiring previously-ordered equipment on time.

- Five stations cited problems with contractors or weather.

- 70 stations cited financial issues. One (KNLC St. Louis) recently sold co-owned KNLJ; this sale may have raised enough cash to complete DTV construction in St. Louis.

- Finally, two stations cited other problems.

Two California stations – KCET and KICU- were denied extensions of their permits to increase DTV power to "maximized" facilities with greater coverage than their analog signals. However, these stations will not be sanctioned as they did build DTV facilities that "replicate" their analog coverage.

Three stations were "denied" extensions outright. Since KECY and WTVA's interim DTV facilities are on different channels from their permanent operation – and the FCC has de-emphasized construction of interim operations – the stations will simply be formally admonished and expected to complete construction within 30 days of adoption of this report.

The third station, KJUD in Juneau, Alaska, told the Commission it couldn't complete its DTV facility until co-owned KIMO Anchorage did so. However, other filings indicate KIMO-DT was complete in July 2006. KJUD's interim DTV channel is the same as its permanent assignment. The Commission has extended KJUD-DT's permit for six months anyway, but formally admonished the station and imposed extra reporting requirements.

Another report shows the status of the transition:

Markets	# Stns	On Air	Full Pwr	STA
All	1,723	1,603	1,215	388
Top 10	40	40	38	2
Top 30	119	119	110	9
Non-comm.	373	348		

21 stations do not have a DTV permit or license at this point.

With regard to viewers, the report states that there are roughly 18,700,000 homes that receive only over-the-air analog TV. (another 1,300,000 receive only over-the-air TV but have digital capability) These 18.7 million homes have 44.2 million analog sets. Another 23.5 million TV sets in homes that have cable/satellite are not connected to the cable/satellite service.

Whew. (I hope y'all bought stock in the Hammermill Paper Company before I printed all this stuff...)

Good DX!

# WTFDA FM NEWS

Bringing you the most recent FM changes in the U.S. and Canada!

CHRIS KADLEC, EDITOR  
3860 SHOREWOOD DR.  
FREMONT, MI 49412-9604  
beaglebass@beaglebass.com  
www.beaglebass.com/dx\_index.htm



## JUN 2007

### INDEX OF ABBREVIATIONS

AF applied for (a new station)  
 AFA American Family Association  
 Aux Auxiliary antenna (backup)  
 CC call letter change  
 CL city of license change  
 CX a construction permit has been cancelled  
 C1-C5 change in status to that FM license class  
 DA directional antenna  
 DE station has been deleted  
 FC format change  
 GA granted amendment to table of FM allocations  
 GE granted extension of construction permit  
 GX granted replacement of expired permit  
 LC license to cover filed (ready to come on air)  
 MC multiple-city ID  
 NC no change yet on a reported change or permit  
 ND non-directional antenna  
 NO not on the air

NS new station granted  
 NW new station signs on  
 OSA one step application granted for change  
 PA proposed amendment change to FM allocation table  
 PC power change on the air (> = increase, < = decrease)  
 PG power change granted (> = increase, < = decrease)  
 PR power change requested  
 QC frequency change occurred  
 QG frequency change granted  
 QR frequency change requested  
 RA silent station returns to the air  
 RE station requests an extension on permit  
 ROA request of applicant  
 RX station requests replacement of expired permit  
 SC slogan change or update  
 SI station is silent  
 SOA signed on the air  
 XA dismissed amendment to FM allocations  
 XC transmitter site change occurred  
 XG transmitter site change granted

## UNITED STATES and CANADA

### CANADA

#### Alberta / AB

Calgary 97.7 NEW / QR from 100.3, 100kw/299m for new folk/acoustic station  
 Olds 96.5 CKLJ-FM / QR from 97.7, 35kw/125m. Requests permission to operate on both 96.5 and 97.7 for 90 days.

#### New Brunswick / NB

Moncton 105.1 CITA-FM / QR from 105.9, 880w/83m, displaced by CBA's move from 1070 AM to 106.1.

#### Ontario / ON

Sarnia 100.9 CHOK / QR from 1070 AM, 615w/143m (amendment from 103.3)  
 Timmins 105.7 NEW / AF 37.8kw/99m, to relay CBBX-FM Sudbury (Espace Musique)

### UNITED STATES

#### Alabama / AL

Andalusia 91.5 WSTF / PR>20.5kw  
 Arab 92.7 WAFN-FM / PR 1.35kw/202m, 34-20-41/86-26-23  
 Auburn 104.5 WAUF-LP / QR from 94.3  
 Heflin 91.7 WPIL / PR>620w/38m  
 New Hope 103.5 NEW / AF 750w/282m, 34-40-36/86-22-54  
 New Hope 103.5 NEW / AF 750w/282m, 34-40-36/86-22-54  
 Piedmont 88.3 WJCK / PC<295m, 33-50-12/85-43-59  
 Pine Level 97.5 170945 / AF 6kw/100m, 31-58-32/85-58-27  
 Soettsboro 98.3 WKEA-FM / PC>11kw/150m, 34-32-00/85-55-20  
 St. Florian 102.7 NEW / AF 10kw/141m, 34-45-27/87-30-05  
 Tuscaloosa 103.3 WUAC-LP / NW ?w/72m, 33-09-36/87-30-54

Tuscaloosa 103.3 WUAC-LP / PG>72m, 33-09-36/87-30-54; NW

#### Alaska / AK

Akiachak 92.7 NEW / AF 50w/15m, 60-54-36/161-25-57 (Yupit School District) (Class D station, not normally authorized in Lower 48 states)

#### Arizona / AZ

Chino Valley 92.5 171022 / AF 1.5kw/174m, 34-42-53/112-31-33  
 Ehrenberg 95.7 KWPS-LP / CX, DE ROA  
 Flagstaff 93.9 KMGN / PR<98kw/452m  
 Globe 94.1 KRDE / PR>4.7kw  
 Heber 105.5 NEW / AF 100kw/123m, 34-20-22/110-17-25  
 Huachuca City 101.7 NEW / AF 6kw/-14m, 31-38-06/110-19-57  
 Lk. Havasu City 89.3 KAIH / PG 1.7kw-V/-67m, 34-27-52/114-16-02 rescinded ROA; PG 1.2kw instead, at same coordinates  
 Lk. Havasu City 89.3 KAIH / NW 1.7kw-V/-67m, 34-27-52/114-16-02  
 Morristown 99.5 KRPH / PG 50kw/150m; CL from Yarnell  
 Overgaard 94.7 NEW / AF 100kw/234m, 34-44-53/110-33-37  
 Parker 97.3 170952 / AF 25kw/37m, 34-00-11/114-13-40  
 Pinetop 106.7 951109MG / NS 55.4kw/378m, 34-15-06/109-35-06; one competing application dismissed  
 Rio Rico 100.5 NEW / AF 6kw/25m, 31-28-51/110-49-24  
 Safford 94.5 KXKQ / QR from 94.3  
 Salome 101.9 KVGG / CC for NS  
 Snowflake 99.7 170947 / AF 20kw/239m, 34-12-20/109-56-26  
 Taylor 103.5 NEW / AF 15kw/255m, 34-12-22/109-56-32  
 Tubac 98.1 NEW / AF 270w/461m, 31-42-17/110-55-25; CL from Patagonia  
 Tucson 104.1 KQTH / CC from KZPT

#### Arkansas / AR



<b>Arkadelphia</b>	93.5 NEW / AF 3.3kw/275m, 34-13-02/93-15-54
<b>Bearden</b>	92.7 NEW / AF 6kw/100m, 33-40-09/92-39-24
<b>Bismarck</b>	93.5 NEW / AF 3.3kw/275m, 34-13-02/93-15-54; req. modification of CL from Arkadelphia
<b>Blytheville</b>	91.5 KAIA / CC from KOUX
<b>Bono</b>	99.3 NEW / AF 8.6kw/161m, 36-01-16/90-37-03; CL from Paragould
<b>Centerton</b>	88.5 KGSF / req. CL from Anderson, Mo.
<b>Jonesboro</b>	100.5 KEGI / CC from KDEZ
<b>Melbourne</b>	90.3 KLRM / CC from KAEN
<b>Ozark</b>	96.7 KDYN-FM / PC>10kw/148m
<b>Rison</b>	98.9 NEW / AF 6kw/100m, 33-55-26/92-09-31
<b>Viola</b>	94.3 KSMZ / NW 8.1kw/174m, 36-19-30/91-58-41

### California / CA

<b>Adelanto</b>	92.7 KAJL / CC from KELT
<b>Baker</b>	94.9 KHRQ / PR>1.45kw/404m, 35-26-10/115-55-25
<b>Bayside</b>	91.5 KNHM / PR>500w/525m, 40-43-38/123-58-22
<b>Burney</b>	92.9 NEW / AF 6kw/-145m, 40-53-03/121-37-49
<b>Cazadero</b>	106.3 KGRP / CL granted from Jenner
<b>Fountain Valley</b>	92.7 KJLL-FM / CC from KLIT
<b>Indian Wells</b>	95.5 KAJR / CC for NS
<b>Inyokern</b>	88.5 KZLU / PR>1kw/396m
<b>Johannesburg</b>	100.9 KRAJ / PR 1.48kw/399m, 35-28-38/117-41-59
<b>Johannesburg</b>	103.9 KEDD / PC<6kw/100m, 34-58-45/118-10-02
<b>Kingsburg</b>	106.3 KSXE / CC from KFYE
<b>McKinleyville</b>	95.1 NEW / AF 2.45kw/317m, 40-49-32/124-00-05
<b>Merced</b>	106.3 KNAH / CC from KHPO
<b>Modesto</b>	106.9 KEQP-LP / PG 100m, 37-39-00/121-01-24
<b>Mt. Shasta</b>	107.9 KKLC / PG>13kw/633m, 40-54-23/121-49-39
<b>Occidental</b>	107.3 KOWS-LP / PC 3w/173m, 38-24-44/122-57-25
<b>Occidental</b>	107.3 KOWS-LP / PC 173m, 38-24-44/122-57-25
<b>Ridgecrest</b>	104.9 KLOA-FM / PR>5.8kw/419m, 35-30-03/117-40-16
<b>San Diego</b>	88.3 KSDS / PC>3kw-V/75m
<b>San Francisco</b>	95.7 KBWF / CC from KMAX-FM
<b>Shasta Lake</b>	96.5 KIHP-LP / NW 100w/-32m, 40-43-01/122-19-49
<b>Shasta Lake</b>	96.5 KIHP-LP / QC from 93.9, -32m, 40-43-01/122-19-49
<b>Tecopa</b>	105.9 NEW / AF 80kw/93m, 36-31-16/116-16-50
<b>Thousand Oaks</b>	92.7 KHJL / CC from KMLT
<b>Willow Creek</b>	98.7 NEW / AF 265w/820m, 40-52-28/123-43-52

### Colorado / CO

<b>Arriba</b>	105.3 NEW / AF 200w-H/63m, 39-18-52/103-18-22
<b>Aspen</b>	93.5 NEW / AF 21kw/109m, 39-18-56/106-57-32
<b>Breckenridge</b>	102.1 KSMT / QC from 102.3, 6kw/-64m
<b>Colorado Sps.</b>	94.3 KILO / PC>79kw/670m
<b>Colorado Sps.</b>	94.3 KILO / PC<59.2kw/670m
<b>Colorado Sps.</b>	107.9 KWIR-LP / CC for NS
<b>Crowley</b>	97.3 NEW / AF 50kw-H/80m, 38-07-30/103-37-30; CL from Stratton and freq. from 97.1 (this is a move of 167km/104mi.)
<b>Dinosaur</b>	100.3 NEW / PA, class CO
<b>Eaton</b>	88.9 KEZF / CC from KKGN
<b>Fort Morgan</b>	104.5 NEW / AF 25kw-H/62m, 40-16-30/103-38-33; CL from Flagler (a move of 118km/73mi.)
<b>Fort Morgan</b>	104.5 NEW / AF 25kw-H/62m, 40-16-30/103-38-33; CL from Flagler
<b>Fowler</b>	99.3 KPCR / PG>100kw/187m, 37-54-08/104-16-00; CL from Burlington
<b>Fruita</b>	99.9 KEKB / PR 79kw/470m, 39-03-56/108-44-52

<b>Gypsum</b>	102.5 KQZR / PR<240w/851m, 39-46-30/106-50-45; CL from Craig
<b>Hillrose</b>	92.7 NEW / AF 5.3kw/53m, 40-14-17/103-23-51; CL from Cheyenne Wells (a move of 181km/113mi.)
<b>La Junta</b>	94.7 KFVR-FM / QR from 106.5
<b>Limon</b>	92.3 NEW / AF 26kw-H/82m, 39-06-20/103-40-30; CL from Hugo
<b>Limon</b>	92.3 NEW / AF 26kw/82m, 39-06-20/103-40-30; CL from Hugo
<b>New Castle</b>	94.5 KJEB / PR>90kw-H/211m, 39-47-32/107-37-57
<b>Poncha Sps.</b>	97.5 KWUZ / PG>30w/892m, 38-27-11/106-01-02
<b>Redlands</b>	106.1 KRZX / PG<1.55kw/383m, 39-04-01/108-44-39; CL from Monticello, Ut.
<b>Starkville</b>	91.7 981208ME / AF 370w/303m, 36-59-33/104-28-24
<b>Sterling</b>	97.5 NEW / NS 16kw/178m, 40-27-14/103-08-27

### Connecticut / CT

<b>Enfield</b>	107.7 WACC-LP / PC<12m, 41-58-24/72-35-05
----------------	---

### Florida / FL

<b>Clewiston</b>	99.5 WAFC-FM / PG<6kw/100m, 26-45-42/80-04-42
<b>Destin</b>	101.1 WCQQ-LP / NW 100w-H/3m, 30-23-36/86-33-13 (Calvary Chapel)
<b>Destin</b>	101.1 WCQQ-LP / CC for NS
<b>Dunnellon</b>	105.7 WRLE-LP / QR from 94.9
<b>Key West</b>	96.7 NEW / AF 42.6kw/150m, 24-40-35/81-30-41
<b>Lehigh Acres</b>	107.1 WCKT / CC from WZJZ
<b>Lynn Haven</b>	104.3 WWHV / CC for NS
<b>Melbourne</b>	93.1 WGRV-LP / CC from WGRZ-LP
<b>Palm Bay</b>	107.9 WAET-LP / CC from WGRV-LP; was briefly WGRZ-LP
<b>Palm City</b>	100.1 WJPP-LP / NW 100w/13m, 27-11-57/80-13-30
<b>Palm City</b>	100.1 WJPP-LP / PR>30m, 27-13-15/80-15-50
<b>Palm City</b>	100.1 WJPP-LP / PG>30m, 27-13-15/80-15-50
<b>Port Charlotte</b>	100.1 WZJZ / CC from WCKT
<b>Seaside</b>	107.1 WTHA-LP / PC>35m, 30-19-44/86-07-28

### Georgia / GA

<b>Boynton</b>	103.7 WBFC-LP / PC 129m, 34-53-27/85-10-07
<b>Cusseta</b>	103.7 930701ME / AF RE; NS 6kw/46m, 32-18-39/84-45-45
<b>Cuthbert</b>	91.9 990224MA / AF 6kw/62m, 31-45-18/84-47-26 (AFR)
<b>Folkston</b>	92.5 WFJO / PC 3.2kw/140m, 30-43-38/81-56-14
<b>Greenville</b>	95.7 WIOL / PG<2.8kw/148m, 32-35-23/84-41-44
<b>Lavonia</b>	92.1 WSGC-FM / PR>5.6kw/103m, 34-22-51/83-07-28, CL from Elberton
<b>Lincolnton</b>	98.7 NEW / AF 6kw/100m, 33-40-37/82-29-32
<b>Patterson</b>	107.1 NEW / AF 6kw/100m, 31-22-44/82-08-35; CL from Mattox
<b>Pineview</b>	93.1 NEW / AF 6kw/100m, 31-58-33/83-27-25
<b>Plainville</b>	104.9 NEW / AF 1.8kw/185m, 34-20-35/85-02-20
<b>Savannah</b>	88.1 WLXP / PC 5.5kw/104m, 32-03-48/81-02-56
<b>Savannah</b>	102.1 WZAT / PC<405m, 32-03-29/81-20-19
<b>Thomaston</b>	101.1 WTGA-FM / PG 1.67kw/191m, 33-00-12/84-23-12
<b>Wadley</b>	93.3 NEW / AF 6kw/91m, 32-50-55/82-24-10
<b>Woodbury</b>	94.5 171035 / AF 2.75kw/150m, 32-50-40/84-37-25
<b>Young Harris</b>	95.1 170937 / AF 200w/483m, 34-56-26/83-55-08

### Hawai'i / HI

Keaau 105.3 KBGX / PG 28kw/28m, 19-43-18/155-27-23  
 Volcano 107.7 KKOA / PC>25.26kw  
 Wailea-Makena 96.7 NEW / AF 5.8kw-H/207m, 20-41-16/156-22-13; CL from Kailua-Kona (a move of 117km/73mi.)

**Idaho / ID**

Franklin 99.1 KNYN / PR<1.8kw/72m, 41-52-17/111-48-31; CL from Fort Bridger, WY dismissed ROA  
 Fruitland 99.5 KWEI-FM / PR>22kw  
 Hazelton 94.3 KTPZ / CC from KMPA  
 Mountain Home 99.1 KTPD / CC from KTPZ  
 Twin Falls 102.1 KIRQ / CC from KISY  
 Victor 103.7 KVRG / PR>2.2kw

**Illinois / IL**

Abingdon 106.1 NEW / AF 2.8kw/148m, 40-55-57/90-16-51  
 Cambridge 93.9 WYEC / PR 4.2kw/120m, 41-22-56/90-10-47; CL from Kewanee  
 Carpentersville 88.1 990319MH / AF 2kw-V/33m, 42-06-21/88-22-37  
 Decatur 89.5 NEW / AF dismissed (mutually exclusive with WJMU)  
 Kewanee 93.9 WYEC / PG 3.4kw/135m, 41-22-56/90-10-47  
 Macomb 100.1 WKAI / PR<6kw/97m, 40-26-59/90-42-27  
 Monee 88.9 WOTW / CC from WJCG  
 Monee 88.9 WOTW / PR>67m, 41-26-23/87-44-29

**Indiana / IN**

Columbia City 106.3 WVBB / CC from WSHY  
 Greenwood 106.7 WTLC-FM / PC>6kw/99m  
 Huntington 102.9 WGL-FM / CC from WWGL  
 Muncie 88.3 WKMV / CC from WWMU  
 Orland 91.3 WCKZ / CC from WBNI-FM  
 Plymouth 89.3 WIKV / CC from WRXH  
 Plymouth 94.3 WZOC / PR 25kw/100m, 41-37-19/86-35-00  
 Roanoke 94.1 WBNI-FM / CC from WCKZ  
 Rochester 88.5 WQKV / CC from WHNI  
 Warsaw 98.3 WIOE-LP / PG 100w/24m, 41-14-17/85-50-52

**Iowa / IA**

Ames 88.5 KURE / PG>630w/22m, 42-01-47/93-38-51  
 Ames 88.5 KURE / QG from 91.9 (or from CP for 88.3) 630w/22m, 42-01-47/93-38-51; QC  
 Ames 88.5 KURE / PC>1kw/23m, 42-01-47/93-38-51  
 Anamosa 95.7 KKSX / CC for NS  
 Burlington 98.3 KCDM-LP / PC>30m, 40-48-44/91-06-49  
 Clear Lake 103.7 KLKK / PC>100m, 43-07-15/93-11-36  
 Emmetsburg 100.1 KUYU / PC>16kw  
 Manson 99.7 KXFT / CC for NS  
 North English 97.1 NEW / AF 6kw/100m, 41-27-15/92-07-30  
 Treynor 95.3 KCSI / PR>22.5kw/105m, 41-14-43/95-41-32, CL from Red Oak dismissed ROA (suspect it'll be refiled, contingent on KRKR-94.9 application)

**Kansas / KS**

Chanute 105.5 KKOY-FM / PC>8kw/178m, 37-35-59/95-39-10  
 Fort Scott 103.9 KOMB / PR 25kw/100m, 37-54-28/94-46-02  
 Oberlin 91.3 KRLE / CC from KOEN  
 Wichita 99.9 NEW-LP / AF dismissed

**Kentucky / KY**

Burgin 105.9 NEW / AF 1.1kw/144m, 37-47-18/84-42-50 (K-Love)  
 Burgin 105.9 NEW / AF 1.1kw/144m, 37-47-18/84-42-50 (K-Love)

Jenkins 94.3 WIFX-FM / PC 6.3kw/410m, 37-09-59/82-37-13  
 Mayfield 102.1 WLLE / PC>50kw/144m, 36-45-58/88-38-50; CL from Clinton  
 Morgantown 99.1 NEW / AF 6kw/56m, 37-17-38/86-44-30  
 Salyersville 106.5 WRLV-FM / PR>14kw/133m, 37-46-38/83-18-29  
 Science Hill 106.1 NEW / AF 3.1kw/141m, 37-07-24/84-33-06  
 Shelbyville 101.7 WKRD-FM / CC from WLPP

**Louisiana / LA**

Hodge 94.1 KRLQ / PG<35kw, 32-24-35/92-53-49  
 Leesville 92.7 170938 / AF 6kw/89m, 31-09-31/93-11-03  
 New Orleans 97.1 WEZB / PR>100kw/451m, 29-55-28/90-02-02 dismissed ROA

**Maine / ME**

Gorham 90.9 WMPG / PR>4.5kw/195m, 43-44-38/70-20-05  
 Monticello 94.7 170487 / AF 5.2kw/101m, 46-20-30/67-49-04 (Allan Weiner)  
 Monticello 94.7 NEW / AF 6kw/95m, 46-20-30/67-49-04 (Allan Weiner)  
 Westbrook 100.9 WYNZ / PC<93m, 43-41-26/70-19-05  
 Winslow 95.3 WWSA / PR>27.8kw

**Maryland / MD**

Baltimore 104.3 WSMJ / PG 13kw/294m, 39-20-10/76-38-59  
 Hagerstown 91.7 WZXH / CC for NS  
 Takoma Park 91.9 WGTS / PG<27kw-H/50m, 38-59-12/77-00-04  
 Waldorf 104.1 WPRS-FM / CC from WXGG

**Massachusetts / MA**

Orleans 104.7 WOCN-FM / CC from WKPE-FM  
 S. Yarmouth 103.9 WKPE-FM / CC from WOCN-FM  
 Truro 102.3 WCDJ / PG>3kw/41m, 42-01-24/70-04-34

**Michigan / MI**

Belding 90.9 WSLI / PG>14kw/76m, 43-05-12/85-18-59  
 Frederic 95.3 NEW / AF 3.3kw/136m, 44-52-43/84-40-50  
 Harrison 92.1 WTWS / CC from WVXH  
 Kalamazoo 106.5 WVFM / CC from WQLR  
 Paradise 94.7 NEW / AF 13kw/140m, 46-45-42/84-59-26

**Minnesota / MN**

Barnesville 95.1 KBVB / CC from KRVI  
 Princeton 89.7 990518MB / NS 50kw-V/32m, 45-35-54/93-33-18 (WPCS)  
 Windom 88.1 KRLP / CC from KQRW

**Mississippi / MS**

Bay St. Louis 107.9 WZKX / PR>465m, 30-45-05/89-03-24  
 Friars Point 98.7 WNEV / CC for NS  
 Greenwood 103.3 170950 / AF 6kw/100m, 33-32-21/90-02-08  
 Holly Springs 96.5 NEW / AF 6kw/243m, 34-41-32/89-32-33  
 Lumberton 95.3 WZNF / PR>100kw/435m, 30-45-05/89-03-24  
 Marietta 97.9 NEW / AF 5kw/109m, 34-30-25/88-25-36  
 Newton 97.9 WHTU / CC from WYHL  
 Senatobia 88.9 WMSB / CC from WKNA  
 Vardaman 99.5 170951 / AF 6kw/100m, 33-46-37/89-15-23

**Missouri / MO**

Cape Girardeau 107.9 KHIS-LP / NW 100w/29m, 37-17-14/89-33-31

Clayton 90.3 KWUR / PC 9w/29m, 38-38-55/90-18-28  
Doolittle 104.5 NEW / AF 3.9kw/124m, 37-56-21/91-56-45  
Grandin 104.5 NEW / AF 6kw/100m, 36-49-04/90-43-12  
Jackson 89.9 970508MD / AF 9.9kw-V/100m, 37-21-35/89-52-37  
Leadwood 107.1 NEW / AF 2kw/174m, 37-48-01/90-33-48 (modification from 106.9 at Marquand)  
Lowry City 104.9 NEW / AF 6kw/100m, 38-02-54/93-38-30  
Madison 97.3 NEW / AF 25kw/100m, 39-28-52/92-10-13  
Mansfield 95.9 KTRI-FM / PC>8.9kw/165m, 37-17-10/92-36-55  
Marceline 99.1 NEW / AF 25kw/100m, 39-48-20/92-52-05  
Poplar Bluff 88.7 980204ME / AF 50kw-V/126m, 36-50-50/90-19-52  
Wheatland 102.3 165956 / NS 4.73kw/110m, 37-55-54/93-24-06

#### Montana / MT

Arlee 90.3 KJFT / NW 110w/581m, 47-01-04/114-00-49 (CSN)  
Arlee 90.3 KJFT / PR>125w  
Darby 107.9 KHDV / PG 14kw/110m, 46-13-46/114-14-01  
Lewistown 107.9 NEW / AF 3kw/588m, 47-10-40/109-32-07  
Pablo 102.1 KCTP-LP / QR from 106.7; -107m, 47-35-47/114-06-39

#### Nebraska / NE

Firth 93.7 NEW / AF 6kw/69m, 40-35-57/96-37-15 (VSS Catholic)  
Hyannis 97.9 NEW / AF 100kw/186m, 42-01-28/102-00-22  
Kimball 92.3 KYOY / QR from 100.1, 800w-H/-7m, 41-15-42/103-40-06  
Kimball 100.1 KYOY / CC from KBFZ  
Pierce 97.5 NEW / AF 30kw/103m, 42-17-38/97-25-52  
Valley 94.9 KRKR / QR from 95.1, PR<6kw/100m, 41-16-06/96-11-40, CL from Lincoln dismissed ROA but refilled  
Wayne 104.9 KCTY / CC from KTCH-FM  
Wilber 89.9 KFLV / NW 5.8kw/157m, 40-31-06/96-46-06 (K-Love)  
Wilber 89.9 KFLV / PC 5.8kw/157m, 40-31-06/96-46-06

#### Nevada / NV

Las Vegas 88.9 KNPR / PC 22kw/1190m, 35-57-55/115-29-59  
Las Vegas 106.5 KSNE-FM / PG>457m

#### New Hampshire / NH

Colebrook 97.1 NEW / AF 1.8kw-V/-42m, 44-52-41/71-28-50; CL from Pittsburg (K-Love). I didn't think vertical-only was permitted above 92MHz.  
Groveton 101.5 NEW / AF 6kw/97m, 44-37-50/71-17-34  
Swanzey 93.5 WTSM / PG>2.3kw/159m, 42-54-53/72-19-52; CL from Springfield, Vt.

#### New Mexico / NM

Alamogordo 91.7 KUPR / PC 1.4kw/512m, 32-49-47/105-53-10  
Alamogordo 94.3 KYEE / PG>38.5kw/426m, 32-49-40/105-53-40  
Albuquerque 89.9 KUNM / PC>18.5kw/1252m  
Artesia 92.9 KTZA / PG 100kw/332m, 32-47-38/104-12-29  
Farmington 91.7 KUUT / CC from KUSW  
Flora Vista 88.1 KUSW / CC from KUUT  
Hobbs 90.9 KLIT / CC for NS  
Hobbs 91.7 990301MC / NS 250w/53m, 32-42-47/103-05-29

Hobbs 91.7 990421MA / AF dismissed (73.509: prohibited signal overlap)  
Hobbs 96.5 KLMA / PC>100kw/108m, 32-28-10/103-09-36  
Las Cruces 103.9 KGRT-FM / PR 6kw/46m, 32-18-33/106-49-24  
Las Vegas 93.7 NEW / AF 26kw/4m, 35-30-41/105-15-18 (request to move to 104.5 not yet acted on)  
Socorro 89.5 KVLK / NW 10kw-H/49m, 34-23-44/107-00-42  
Tucumcari 91.7 KVLP / CC from KTUR

#### New York / NY

Calcium 94.1 WZNY / PG>12.5kw/100m, 43-57-13/75-50-34; CL from Old Forge  
Ithaca 91.7 WICB / PC>4.1kw/41m  
Lake Luzerne 94.7 WBAR-FM / PC>940w/253m  
Pulaski 101.7 WSCP-FM / FC; sold to K-Love  
Ravena 94.5 WBOE / FC: sold to K-Love  
Saranac Lake 93.3 WSLP / NW 12kw/-63m, 44-15-36/74-01-22  
Scotia 93.7 WOBB / FC; sold to K-Love  
Truxton 88.7 WXXC / XR 42-44-19/76-00-17 dismissed; CX, DE  
Vestal 103.3 WMXW / PC 520w/335m, 42-03-40/75-56-45  
Watertown 90.1 WKWV / PR 400w/207m, 43-57-15/75-43-45

#### North Carolina / NC

Buxton 99.9 WHDX / PR<110w  
Buxton 101.5 WHDZ / PR<110w  
Enfield 107.3 WBOB / CC from WJGR  
Garysburg 103.1 NEW / AF 6kw/97m, 36-30-13/77-44-20  
Newport 103.3 WMGV / PR<290m  
Wade 90.7 WZRL / NW 3kw/108m, 35-13-54/78-22-11

#### North Dakota / ND

Fargo 93.7 WDAY-FM / PC<307m, 47-00-36/97-11-41  
Fargo 101.9 KRWK / PR 96kw/305m, 47-00-37/97-11-40  
Hope 104.7 KMXW / CC from KDAM  
Jamestown 89.9 990331MA / NS 400w/47m, 46-53-30/98-42-46  
Williston 88.7 NEW / AF dismissed (WPCS)

#### Ohio / OH

Cleveland 98.5 WNCX / PG 16kw/293m, 41-20-28/81-44-24  
Grove City 88.1 WWGV / CC for NS  
Hicksville 106.7 WFGA / PR 2.8kw/150m, 41-25-24/84-51-36  
Ironton 107.1 WBKS / app to use old main (3kw/38m, 38-32-22/82-40-17) as aux dismissed ROA  
Johnstown 103.1 WVKO-FM / XG 40-13-44/82-39-36 (correction only)  
Lima 104.9 WEGE / CC from WUZZ-FM  
Munroe Falls 98.1 WKDD / req. CL from Canton  
North Canton 101.7 WHOF / PC>6kw/81m, 40-49-22/81-25-41; CL from Dover  
S. Vienna 88.3 WOAR / CC from WVSO  
Troy 96.9 WOKL / PR>6kw/95m, 39-56-49/84-11-29  
Wapakoneta 92.1 WWSR / CC from WZOO  
West Union 103.1 WRAC / PG>6kw/100m, 38-52-14/83-45-55

#### Oklahoma / OK

Ada 89.5 KTGS / PC 5.8kw/177m  
Arnett 104.9 NEW / AF 50kw/150m, 36-01-46/99-58-30  
Healdton 97.7 KICM / PC>50kw/150m, 34-20-57/97-27-24  
Lawton 90.3 KQRS / PG>13.5kw/96m, 34-46-34/98-19-05  
Pawhuska 94.5 NEW / AF 1.05kw/90m, 36-44-56/96-17-51  
Sayre 101.7 NEW / AF 50kw/100m, 35-13-35/99-30-27

Stuart 89.9 KLRB / QR from 89.3; 31.2kw/94m

#### Oregon / OR

Florence 104.7 KDUK-FM / PR 68kw/707m, 44-17-28/123-32-18  
Gladstone 93.1 KRYP / CC from KTRO-FM  
Hermiston 100.1 KQFM / QR from 100.5, 94m, 45-51-57/119-18-42  
Keno 98.5 NEW / AF dismissed (2 applications) but both reinstated

#### Pennsylvania / PA

Gap 92.9 WLAL-LP / CC from WPAG-LP; was briefly WLIZ-LP  
Middletown 91.1 WMSS / PR>1.68kw/-8m dismissed ROA; going for 560w/22m at new site instead  
Middletown 91.1 WMSS / PG>560w/22m, 40-12-44/76-44-46  
Moon Twp. 104.3 WOGF / req. CL from East Liverpool, Ohio  
Nanty Glo 91.7 WPKV / CC from WLGW  
Philadelphia 104.5 WUBA / FC to modern rock  
Pittsburgh 93.7 WTZN-FM / CC from WRKZ  
Pittsburgh 101.5 WORD-FM / PC 43kw/161m  
Saegertown 94.3 WUZZ / CC from WHUZ  
Shenandoah 91.5 WDAH / PG>5.6kw/214m, 40-50-58/76-06-55  
Sykesville 95.9 NEW / AF 1.52kw/196m, 41-02-43/78-42-11

#### Puerto Rico / PR

Vieques 106.1 WVIS / PG 32kw/148m, 18-19-19/65-17-59; CL from Christiansted, U.S. Virgin Islands

#### Rhode Island / RI

Narragansett P. 102.7 WAKX / FC; sold to RI Public Radio (WRNI-1290) in Narragansett Pier

#### South Carolina / SC

Hartsville 95.9 WHEZ-LP / QC from 95.3, 27m  
Pendleton 95.9 NEW / AF 6kw/100m, 34-37-15/82-53-32  
Socastee 99.5 WRNN-FM / CC from WRNN  
Wedgefield 95.5 WIBZ / PG 3.9kw/125m, 34-01-49/80-27-43

#### South Dakota / SD

Hermosa 90.9 KWRC / PR 625w/390m, 43-44-41/103-28-52; CL from Rapid City  
Rapid City 88.3 KLMP / CC from KTPT  
Rapid City 97.9 KTPT / CC from KLMP  
Sioux Falls 90.1 KSFS / PR>27kw  
Spearfish 90.9 KOAR / CC from KSPF  
Wall 107.5 NEW / AF 100kw-H/146m, 44-05-50/102-35-48 (has requested amendment to 107.7MHz)

#### Tennessee / TN

Henderson 95.7 WFKX / P4.4kw/117m  
Humboldt 105.3 WLSZ / PR>4.7kw/95m  
Jackson 98.7 WLCD-LP / CC from WJKR-LP  
La Follette 104.9 WQLA / CC from WGLH  
Oliver Springs 106.1 NEW / AF 190w/532m, 36-06-29/84-20-08 (site is near Knoxville)  
Pasquo 98.9 WRFN-LP / PG 7w/107m, 36-02-30/86-59-31  
Pigeon Forge 106.3 / AF 500w/340m, 35-42-13/83-33-57  
Pulaski 98.3 WKSR-FM / PC>18kw/115m, 35-09-00/87-17-45  
Union City 88.9 WTAI / CC from WUKV  
Waynesboro 101.3 NEW / AF 25kw/100m, 35-16-05/87-46-05; CL from Linden. Appears that the same applicant then filed for the same frequency back in Linden, same parameters but at 35-39-45/87-44-25.

#### Texas / TX

Abilene 92.5 KULL / PC 27.5kw/202m, 32-16-35/99-35-38  
Alice 88.3 980707ME / NS 23.7kw-V/89m, 27-53-55/98-05-55 (Family Radio)  
Aspermont 93.1 NEW / AF 50kw/150m, 33-11-52/100-14-25  
Ballinger 95.5 NEW / AF 25kw/90m, 31-40-11/100-19-28  
Balmorhea 104.5 NEW / AF 100kw/451m, 30-44-06/103-42-27  
Benavides 107.7 NEW / AF 4kw/36m, 27-39-55/98-23-05  
Benjamin 95.3 NEW / AF 13kw/140m, 33-46-28/99-48-21  
Big Lake 98.3 KPDB / PG 50kw/131m, 31-11-45/101-25-40  
Big Wells 102.1 NEW / AF 2.8kw/148m, 28-33-45/99-34-01  
Breckenridge 100.1 KBWM / CC for NS  
Brenham 94.1 KLTR / CC from KULF  
Bruni 106.5 NEW / AF 6kw/100m, 27-32-41/98-52-28 (Paulino Bernal Evangelism)  
Burnet 106.9 KHLE / PC 2.1kw/171m, 30-44-29/98-19-05  
Caldwell 107.3 KHTZ / CC from KLTR  
Cameron 103.9 KJXJ / CC from KXCS  
Centerville 103.5 KKEV / CC for NS  
Childress 104.1 NEW / AF 50kw/77m, 34-13-41/100-18-17  
Christine 96.9 NEW / PA, class C3  
Cotulla 96.3 NEW / AF 8.5kw/171m, 28-21-18/99-16-33  
Cuney 94.3 NEW / AF 2.05kw/172m, 32-08-38/95-19-59; CL from Grapeland (move of 68km/42mi.)  
Dalhart 96.1 KXIT-FM / PR>245m, 35-44-23/102-14-56  
Dilley 93.7 NEW / AF 6kw/100m, 28-38-28/99-08-04  
Dripping Sps. 104.9 KXBT / CC from KXXS  
El Paso 89.5 KKLY / PR>3.5kw/369m, 31-47-43/106-28-52  
El Paso 89.5 KKLY / PG>3.5kw/369m, 31-47-43/106-28-52  
Eldorado 104.9 NEW / AF 6kw/92m, 30-51-55/100-35-36  
Eldorado 106.5 NEW / AF 6kw/84m, 30-49-56/100-37-27  
Elgin 92.5 KXXS / CC from KKLK  
Encinal 102.5 170502 / AF 6kw/100m, 28-06-32/99-26-52  
Floresville 89.7 KWCB / PR>100kw/183m, 28-57-39/98-15-30  
Ganado 104.7 KULF / CC from KZAM  
Gatesville 98.3 KYAR / PC 200w/73m  
George West 106.3 NEW / AF 3kw/142m, 28-24-53/98-16-40  
Hamilton 107.7 NEW / AF 2.1kw/170m, 31-47-57/98-08-12  
Hebbronville 98.7 NEW / AF 13kw/140m, 27-29-44/98-43-31  
Hereford 90.9 KRLH / CC from KHRE  
Hewitt 106.7 NEW / AF 21.5kw/108m, 31-24-45/97-12-40  
Hunt 99.9 NEW / NS 14.5kw/61m, 30-05-08/99-16-23  
Ingram 96.5 KAKI / PG>13.5kw/100m, 30-07-04/99-11-40  
Junction 103.3 NEW / AF 18kw/118m, 30-19-52/99-54-41  
Karnes City 103.1 KTXK / PR 48.5kw/150m, 28-51-26/97-58-49  
Kerrville 92.3 KRNH / PC>20kw/203m, 30-03-42/99-03-43  
Kilgore 97.1 NEW-LP / "Low Power FM applications for original construction permit application idle"?? 20070430CGP  
Leakey 107.7 NEW / AF 1.9kw/181m, 29-41-34/99-48-56  
Lovelady 104.3 KHMR / CC for NS  
Madisonville 101.3 KKLK / CC for NS  
Marfa 98.9 KKLK-LP / CC for NS  
Mason 99.7 NEW / NS 6kw/85m, 30-44-48/99-14-58  
Mason 101.7 NEW / AF 8.2kw/172m, 30-42-03/99-13-59  
Matador 92.1 NEW / AF 41kw/164m, 34-12-35/100-40-15

Mountain H. 102.1 NEW / AF 6kw/100m, 30-15-07/99-29-04 in Mountain Home; CL from Camp Wood  
 Navasota 92.5 KMBV / CC from KHTZ  
 Olney 104.3 KAHA / PR>150m, 33-23-21/98-38-34  
 Pineland 99.1 NEW / AF 6kw/100m, 31-09-19/93-58-07  
 Sabinal 107.1 NEW / AF 14kw/135m, 29-27-41/99-21-59  
 Savoy 107.3 NEW / AF 2.3kw/163m, 33-37-30/96-20-04  
 Taylor 104.3 KLOB / CC from KXBT  
 Trent 92.1 NEW / AF 15.5kw/128m, 32-37-32/100-07-10; CL from Sweetwater  
 Turkey 107.5 170986 / AF 40kw/166m, 34-28-11/100-46-15  
 Uvalde 95.5 KABC-LP / NW 100w/1m, 29-13-01/99-47-14

**Utah / UT**

Smithfield 96.7 KKEX / req. CL from Preston, Ida. dismissed ROA

**Vermont / VT**

Westminster 101.9 WVRR / QG from 101.7, 1.05kw/236m, 43-02-00/72-22-04; CL from Newport, N.H.

**Virginia / VA**

Arlington 105.1 WAVA-FM / PC 33kw/184m, 38-53-30/77-07-55  
 Hampton 103.7 WRPC-LP / NW 100w/16m, 37-03-12/76-24-03  
 Hampton 103.7 WRPC-LP / XR 37-05-07/76-25-37  
 Hollywood 103.7 NEW-LP / AF dismissed  
 Nassawadox 105.9 NEW / NS 6kw/100m, 37-36-27/75-49-36  
 Richlands 97.7 WRIC-FM / PC>3.2kw/229m  
 White Stone 104.9 WIGO-FM / CC from WIGO

**Washington / WA**

Ellensburg 103.1 KQBE / PG>393m, 46-53-15/120-26-29  
 Oroville 93.1 KGTC-LP / NW 48-56-06/119-26-08, facilities unknown  
 Port Angeles 95.5 NEW-LP / AF RE 100w/-102m, 48-06-45/123-31-50 (Calvary Chapel); NS  
 Pullman 90.7 KZUU / PR<30m, 46-43-51/117-09-42  
 Seattle 90.3 KEXP-FM / PC>4.7kw

**West Virginia / WV**

Barrackville 93.1 WFGM-FM / CC from WBVQ  
 Bridgeport 104.1 WDCI / PG<990w/77m  
 Cohen 105.5 WKQV / req. CL from Richwood  
 Glenville 107.7 NEW / AF 1.55kw/199m, 38-54-23/80-49-48  
 Moundsville 96.5 WRKP / FC; sold to K-Love  
 Petersburg 101.7 WELD-FM / PG 280w/455m, 38-58-58/78-54-30

**Wisconsin / WI**

Antigo 106.1 WACD / PR>50kw/150m, 45-23-54/89-10-44  
 Appleton 101.9 WDTS-LP / CX, DE ROA  
 Brookfield 106.9 WFMR / PG 4.4kw/116m, 43-02-49/87-58-52  
 Ephraim 106.9 NEW / AF 6kw/75m, 45-08-54/87-08-22  
 Rosholt 100.5 NEW / AF 25kw/93m, 44-45-09/89-22-40  
 Two Rivers 98.9 970130MD / AF RE 6kw/100m, 44-03-43/87-39-45

**Wyoming / WY**

Bairoil 94.9 NEW / AF 25kw/100m, 42-10-55/107-20-27

Casper 89.1 KLWC / PR 2.7kw-V/564m, 42-44-03/106-20-00  
 Casper 96.7 KMGW / PR>554m  
 Cheyenne 88.1 KAIX / CC from KWYH  
 Douglas 92.5 KDAD / PR<5.3kw/437m, 42-45-30/106-19-23  
 Douglas 100.5 KTED / QR from 100.9, 10kw/437m  
 Jackson 88.3 KMLT / CC from KNIL  
 Newcastle 99.5 KRKI / PG>100kw/224m, 43-51-24/103-45-50  
 Orchard Valley 90.3 KWYC / PR>34kw  
 Reliance 98.7 NEW / AF 8kw/168m, 41-39-24/109-09-32  
 Sheridan 89.9 KVLZ / CC from KSHW  
 Sinclair 101.3 NEW / AF 51kw/250m, 41-48-46/107-19-00  
 Upton 93.5 NEW / NS 2kw/8m, 44-06-42/104-37-40

**AUXILIARY CHANGES**

**Alabama / AL**

Birmingham 94.5 WYSF / NW 50kw/274m (aux)  
 Birmingham 99.5 WZRR / NW 50kw/256m (aux)  
 Northport 100.5 WJOX / NS 35kw/248m, 33-05-42/87-15-16 (aux)  
 Northport 100.5 WJOX / NW 35kw/248m (aux)

**Arkansas / AR**

Bryant 93.3 KKSP / NS 280w/167m, 34-44-38/92-16-32 (aux)  
 England 96.5 KHTE-FM / PR>172m (aux)  
 Lonoke 106.3 KOLL / PR>170m (aux)  
 Russellville 100.9 KWKK / NW 280w/-10m, 35-16-52/93-07-32 (aux)

**California / CA**

Hanford 103.7 KRZR / NW 9kw/137m (aux)  
 San Bernardino 95.1 KFRG / PR 1.66kw/146m (aux)  
 Santa Cruz 88.1 KZSC / NW 300w/129m (aux)

**Colorado / CO**

Colorado Sps. 94.3 KILO / AF 16.6kw/643m (aux)

**Florida / FL**

Sarasota 106.5 WCTQ / NS 5kw/99m (aux)  
 Sarasota 106.5 WCTQ / NW 5kw/99m (aux)

**Illinois / IL**

Chicago 94.7 WZZN / PR 20.5kw/164m, 41-49-05/87-59-19 (aux, presumably)  
 Springfield 103.7 WDBR / NS 27.5kw/89m (aux)

**Indiana / IN**

Greenwood 106.7 WTLC-FM / NW 900w/87m, 39-46-32/86-09-10 (aux)  
 Jeffersonville 95.7 WQMF / AF 5kw/190m, 38-08-16/85-56-06 (aux)  
 Jeffersonville 95.7 WQMF / NS 5kw/190m (aux)

**Kentucky / KY**

Bowling Green 88.9 WKYU-FM / AF 980w/192m (aux)  
 Murray 91.3 WKMS-FM / NW 36.5kw/185m (aux)

**Massachusetts / MA**

Provincetown 92.1 WOMR / AF 563w/14m, 42-03-27/70-10-40 (aux)

**Mississippi / MS**

Hattiesburg 104.5 WXRR / NW 64kw/131m (aux)  
 Sandersville 94.3 WKZW / NW 13kw/131m (aux)

**Nevada / NV**

Las Vegas 88.9 KNPR / NW 2kw/1188m (aux)

**New Mexico / NM**

Hobbs 94.1 KZOR / NW 1kw/28m, 32-42-23/103-08-10 (aux)  
Hobbs 102.9 KIXN / NW 1kw/28m, 32-42-23/103-08-10 (aux)

**New York / NY**

Rochester 100.5 WDWI / NW 2kw/135m (aux)

**North Carolina / NC**

Creedmoor 99.9 WCMC-FM / AF 10kw/150m (aux)

**Ohio / OH**

Cincinnati 94.1 WVMX / PG 16kw/183m, 39-06-18/84-33-24 (aux)  
Cleveland 100.7 WMMS / AF 17.33kw/176m, 41-21-32/81-40-00 (aux)  
Columbus 94.7 WSNY / PC>50kw (aux)  
Ironton 107.1 WBKS / AF 3kw/44m, 38-32-21/82-40-30 (aux)  
Ironton 107.1 WBKS / NS 3kw/44m, 38-32-21/82-40-30 (aux)

**Oklahoma / OK**

Broken Arrow 92.1 KTBT / AF 15.6kw/101m (aux)  
Oklahoma City 92.5 KOMA / NS 12kw/299m, 35-32-51/97-29-30 (aux)  
Oklahoma City 104.1 KMGL / NS 12kw/305m, 35-32-51/97-29-30 (aux)

**Oregon / OR**

Gold Hill 100.3 KRWQ / NW 1.25kw/289m, 42-27-11/123-03-22 (aux)

**Pennsylvania / PA**

Pittsburgh 101.5 WORD-FM / NW 28kw/158m (aux)

**South Carolina / SC**

Columbia 97.5 WCOS-FM / PR<278m (aux)

**Texas / TX**

Burnet 106.9 KHLE / NW 900w/163m, 30-44-29/98-19-05 (aux)

**SOURCES**

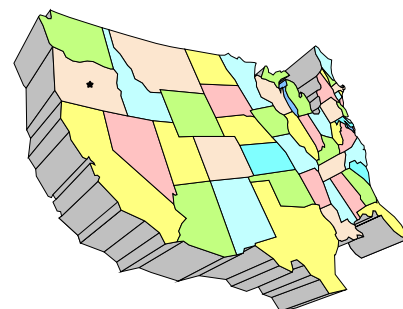
**Government:** Canadian Radio-Television and Telecommunications Commission (CRTC), Federal Communications Commission (FCC)  
**Individuals:** Doug Smith

This report includes a total of 470 changes to the FM dial. Of these, 41 are auxiliary changes.

-Chris Kadlec  
FM News Editor

# WESTERN TV DX

**DAVE WILLIAMS**  
**3525 SW Timber Ave**  
**REDMOND, OR 97756**  
**beansdad@bendcable.com (541) 420-4704**



The season has gotten off to an excellent start here with FM Es openings to AZ, CO, SD, BC, and SK and neighboring states/provinces so far, the highlight being more low-powered Canadian Es (91.7 CITT Saskatoon, 50 w, 98.1 CFMQ Hudson Bay SK, 38 w, and a cleanup of stations in the Ft St John/Dawson Creek area of northern BC). No new loggings on TV, but approximately 8 days of decent TV skip so far.

Keep those Western DX reports coming! Mine was the only one this month and with my laptop "out", I had nothing to report. Dave

### WTFDA EMAIL REFLECTORS

Enhance your DXing experience! Entertaining and informational.

*For WTFDA members and guests on the wtfda.info server*

The WTFDA list...send an email to [tvfmdx-subscribe@wtfda.info](mailto:tvfmdx-subscribe@wtfda.info) 190 users

The WTFDA AM DX list...send to [amdx-subscribe@wtfda.info](mailto:amdx-subscribe@wtfda.info) 85 users

TWO GREAT DOMAINS AT ONE GREAT PRICE!

<http://www.wtfda.info>  
<http://www.wtfda.org>

VISIT OUR FORUMS AT WTFDA.INFO AND OUR WEBSITE AT WTFDA.ORG





# Eastern U.S. TV DX

Featuring reports from AL, CT, DC, DE, FL, GA, IN, KY, MA, MD, ME, MI, NC, NH, NJ, NY, OH, PA, RI, SC, TN, VA, VT, and WV, along with the Canadian Provinces of NB, NF, NS, ON, PEI, and PQ.

Send reports by the 15<sup>th</sup> of each month to:

Nick Langan  
 1040 Riverview Drive  
 Florence, NJ 08518  
 E-mail: [nick.langan@gmail.com](mailto:nick.langan@gmail.com)

## The Editor's Note

Well, what do you know, us DX-starved Easterners got rewarded in May, as the 2007 E-Skip season started fast and furiously. Many of the past years have featured late starts to widespread activity, some as late as June, so to see reports coming in as early as the first week of the month was great. The middle of the month's E-Skip seemed to retreat into a null, but things have gotten active again in the last few weeks. Let's hope it's a sign of DX to come!

And a reminder that this column isn't possible without...you! As the E-Skip commences, no matter how long or short your logs may be, feel free to send them into me. I and our readers would love to see what you are logging!

**Doug Smith W9WI**  
 Pleasant View (Nashville, TN) EM66  
<http://www.w9wi.com>

### 5/4 Es

1136 unID 3, 5 Weak Spanish

### 5/9 Es

0943 unID 3, 4 Sesame Street on Ch. 3  
 1122 KOCT 6 NM Carlsbad KOAT-7  
 ID

### 5/11 Es

1040 unIDs 2, 3 50 MHz open to Buffalo

**Says Doug:** "(log of unIDs not carefully kept since 5/11. Kill-3 seen at least once.)"



**Robert Grant (N8NU)** 231 E Temperance Rd. Temperance, MI 48182  
 E-mail: [Rg3d@yahoo.com](mailto:Rg3d@yahoo.com) (expect delays, no home Internet access)  
 Temperance is in SE corner of MI. (EN81fs)  
 Receiver: Sylvania (Funai) 6427GFF 27" color analog/digital SDTV.  
 Antenna: Channel Master Advantage 3020 on chimney at about 33'

Alternate receiver: Sanyo 21T63 12" B&W analog, antenna Winegard PR-7084 at about 15' on rear (South) deck. All times EDT

### 5/3 Tr

1955 WNYB 26 NY Jamestown 226  
 WIVB-DT 39 NY Buffalo 260

### 5/6 Es

1845 KCWXt 2 TX Fredericksburg T  
 (CW bug, about 2 Hz to WJBK as usual)  
 1947 KPRC 2 TX Houston 1075  
 unID 2 ABC  
 1954 KATC 3 LA Lafayette 948  
 2001 KIII 3 TX Corpus Christi 1313  
 2035 KASAt 2 NM Santa Fe T  
 (Fox, + offset, but bug looked like KR??)

### 5/7 Tr

0545 WWTW 9 MI Cadillac 187  
 WTLW-DT 47 OH Lima 78

0600 WZZM-DT 39 MI Grand Rapids 161

(many other Tr in, but gotta go)

1855 WNYB 26 NY Jamestown 226

### 5/9 Es

2240 KCWXt 2 TX Fredericksburg T  
 2247 KIII 3 TX Corpus Christi 1313  
 2250 unID 2 zero offset, NBC

### 5/10 Tr

1815 WNYB 26 NY Jamestown 226  
 Es

1840 KCWX 2 TX Fredericksburg 1162  
 KDTN 2 TX Denton 973  
 WOAt 4 TX San Antonio T

1848 KDFW 4 TX Dallas 973  
 2015 KPRC 2 TX Houston 1075  
 KBTXt 3 TX Bryan T

2025 KIII 3 TX Corpus Christi 1313  
 KBTvt 4 TX Port Arthur T  
 NBC // WDIV, non-zero offset  
 unID 2 + offset, yet different  
 Fox 2 bug than that seen on 5-6  
 2245 WPBT 2 FL Miami 1107  
 unID 2 carrier freq 55.2418 (!)  
 2259 WQAI 4 TX San Antonio 1193  
 2300 KBTX 3 TX Bryan 1040  
 2310 WESH 2 FL Miami 1107  
 2318 WFOR 4 FL Miami 1106  
5/12 Es  
 1736 WEDU 3 FL Tampa 965

**Says Robert:** "A mixed bag as winter finally gave way to spring. The lake tropo duct to Buffalo that was very frequent last spring has been much rarer this year. Es seems to have gotten a nice early start, and the 10 May opening was quite persistent for a May opening (KCWX was still in at 0100 the next day), and a ham on 10m in SC stated he had worked the opening on 2m. Up here, however, I have yet to see the MUF hit channel 6 (if it hits 5, I usually can't tell, with WLMB-DT only 24 miles away) High MUF is hard to come by here, in 7 Es seasons, I've only logged 4 stations by Es on channel 6. Amusing to see the old WQAI call sign back on San Antonio 4. I must have confused you all with my past tentative loggings of KMOL."

**Fred Nordquist**

147 Travis Hill Rd - Moncks Corner SC 29461  
 Equipment: Ant: UHF: CM 7' screened dish at 30'  
 RX: 2 Panasonic 13" 83 Ch Color TVs & RS Accurian STB  
 Email: [nordquis@homexpressway.net](mailto:nordquis@homexpressway.net).  
 Statistics Web Page:  
<http://web.infoave.net/~fmjordanquist/statistics.html>

3/3 Tr  
 2005 WUSF 16 FL Tampa PBS  
 2100 WRDS-LP 66 FL Largo IND

3/12 Tr  
 2116 W57CT 43 GA Savannah TBN

3/13 Tr  
 0947 WLXI 61 NC Greensboro TBN

1000 WUPV 65 VA Ashland CW  
 1030 WRPX 47 NC Rocky Mount ION  
 2246 WJGV-LP 48 FL Palatka IND  
 2335 WFLA 8 FL Tampa NBC  
3/27 Tr

0842 WTVJ 6 FL Miami NBC  
 2121 WTCE 21 FL Fort Pierce TBN  
3/28 Tr

0835 WZVN 26 FL Naples ABC  
 1745 WRBW-DT 41 FL Orlando MYTV  
 2100 WJXT 4 FL Jacksonville IND  
 2112 WOPX-DT 48 FL Melbourne ION  
 2335 WESH 2 FL Daytona Beach NBC  
3/31 GW

1458 W55CQ 45 SC Orangeburg TBN  
4/14 GW

0157 W67DP 67 SC Columbia WKTZ-63  
4/14 Tr

0110 WBPI-CA 49 GA Augusta  
 WHT/Insp.

4/29 GW

2325 WJWJ-DT 44 SC Beauport PBS-ETV

4/29 Tr

2225 WKCF-DT 17 FL Clermont  
 2227 WMVJ-LP 29 FL Melbourne SS-Telemundo  
 2237 WSCF-LP 31 FL Melbourne

4/30 Es

1935 WIPM 3 PR Mayaguez SS-TUTV-PBS

5/2 Tr

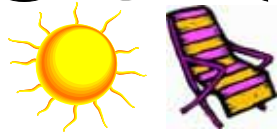
2359 WGPU 30 FL Fort Myers PBS

5/3 Tr

0052 WCLF-DT 21 FL Clearwater  
 0052 WOTF-DT 20 FL Melbourne  
 0113 W21AU 21 FL Orlando SS



# SOUTHERN FM DX



**John Zondlo**  
**4009 Driftwood Circle**  
**Yukon, OK 73099**  
**jzondlo@cox.net**  
**Deadline: 15th**

For DXers in AL, AZ, AR, CA, CO, DE, DC, FL, GA, HI, KS, KY, LA, MD, MS, MO, NV,  
 NM, NC, OK, SC, TN, TX, UT, VA, WV, Cuba & Mexico

## June 2007

**Fred Nordquist** – 147 Travis Hill Road –  
 Moncks Corner, SC (33.21756N 79.95798W)

Denon TU1500RD, RDS chip tapped for direct  
 connect to PC serial port, RDSDec v3 SW, main  
 antenna APS 13 @ 23' AGL w/rotor, roof tripod,  
 phase antenna Stereo Probe 9 w/rotor @ 20'  
 (pole mast), homebrew phaser.

### 1/5 Tr

2203 WQLI 92.3 GA Meigs 288

### 1/8 Es

1811 KJIR 91.7 MO Hannibal, RDS PI 623B,  
 "The Cross," rel 781  
 1813 KKOT 93.5 NE Columbus, "The Hawk" 1126  
 1823 KBLR 97.3 NE Blair, "Country Leader  
 97.3" 1061  
 1835 KTFC 103.3 IA Sioux City, rel 1094  
 1835 KLLT 104.9 IA Spencer, RDS PI 2E3D,  
 DPS "Lite 104.9" 1101  
 1840 KSUX 105.7 NE Winnebago, RDS PI 41A7,  
 "Superpig," k 1099  
 1840 KTLB 105.9 IA Twin Lakes, "The Eagle"  
 1026  
 1843 KBBK 107.3 NE Lincoln, "Magic 107.3" 1052  
 1900 KEXL 106.7 NE Norfolk, "106.7 The X" 1138  
 1907 KLOU 103.3 MO St. Louis 684  
 1915 KBEQ 104.3 MO Kansas City, RDS PI 131C,  
 "Q104," k 904  
 1925 KTXN 98.7 TX Victoria, "Texas Radio  
 98.7" 1055  
 1930 KMDL 97.3 LA Kaplan, "The Dawg" 740  
 1940 KQUR 94.9 TX Laredo, "Old School" 1228  
 2012 KHFTI 89.5 VC Fortin de las Flores, SS,  
 "Radio Formula" 1443

### 1/14 Tr

2311 WROV 96.3 VA Martinville, RDS PI 830D,  
 PS 963ROV, "96.3 ROV"  
 269

### 1/22 Tr

1700 WPNG 101.9 GA Pearson, "Freedom 101.9"  
 214

### 2/25 Tr

2343 WTNT 94.9 FL Tallahassee, RDS PI  
 EEEE, "94 TNT" 311

### 2/26 Tr

0050 WJLU 89.7 FL New Smyrna Beach, rel,  
 Cornerstone Ministry 297

### 3/1 Tr

0140 WWGR 101.9 FL Fort Myers, RDS PI 8F6D,  
 "Gator Country 101.9" 480  
 0147 WPBZ 103.1 FL Indiantown, RDS PI 7C77,  
 DPS 103.1 The Buzz 428  
 0225 WPOI 101.5 FL St. Petersburg, RDS PI  
 7DB8, "101.5 The Point"  
 497

### 3/13 Tr

2054 WDVV 89.7 NC Wilmington, rel, "The Dove"  
 129  
 2112 WBPL-lp 92.7 NC Wilmington, Catholic rel 134  
 2123 W240AS 95.9 NC Wilmington, FBN rel 140  
 2225 WAZO 107.5 NC Southport, "Z107.5" 129  
3/15 Tr  
 1427 WJSJ 105.3 FL Fernandina Beach, "Smooth  
 Jazz 105" 211  
3/26 Tr  
 0112 WERO 93.3 NC Washington, "Bob 93.3" 208  
3/27 Gw  
 0001 W225AJ 92.9 SC John's Island, CSN rel 33  
3/27 Tr  
 2315 WKGR 98.7 FL Fort Pierce, RDS PI 1F18,  
 PS GATOR, "Gator" 428  
3/28 Tr  
 0022 WSYR 94.7 FL Gifford, "Star 94.7" 392  
 0130 WLRN 91.3 FL Miami 500  
3/31 Gw  
 0848 W201CH 88.1 SC South Charleston, CSN//  
 KEFX, rel 29  
4/8 Tr  
 2239 WPZS 100.9 NC Albemarle, RDS PI 7EE0,  
 "Praise 100.9," rel 150  
 2300 WLYU 100.9 GA Lyons, RDS PI 7438,  
 "Y101," 161  
4/11 Tr  
 0837 WXJZ 100.9 FL Gainesville, j 284  
5/2 Tr  
 0831 WPOZ 88.3 FL Union Park, RDS PI 7DC9,  
 PS Z88.3, "Z88.3" 326  
5/2 Es  
 1655 90.3 CU Havana, Radio Progreso,  
 RDS PI 9006, PS  
 PROGRESSO, "Radio  
 Progreso" 712  
5/3 Tr  
 0836 WSMR 89.1 FL Sarasota, "Light 89.1,"  
 rel 446  
 0844 WAYL 91.9 FL St. Augustine, rel 246  
 Here are 3 additional SS Es loggings from last  
 summer with recent ID help from Jim Thomas:  
5/26/06 Es  
 1047 HING 94.1 DR San Cristobal, "Fidelity,"  
 SS 1190  
 1104 HILT 98.5 DR Santo Domingo, "Rumba  
 FM," SS 1193  
 1104 CMKA 98.5 CU Sagua De Tanamo, SS,  
 "Radio Progreso" 967  
6/29 Es  
 1055 CBFX-1 104.3 QC Trois-Rivieres, RDS PI  
 B705, FF, "Escape,"  
 thanks to Doug Smith  
 for RDS ID  
5/7 Es



1803 WCMN	107.3	PR	Aricebo, SS, "Toco de tu Y 107.3" 1306	1246 CBLG	89.1	ON	Ontario CBC EE 951 Geraldton, northern Ontario CBC EE
1820 WXLX	103.7	PR	Lajas, SS, "Cadena la X" 1315	1247 CBEB	89.7	ON	Manitouwadge, northern Ontario CBC EE 1140
1822 WNIK	106.5	PR	Aricebo, SS 1306	1250 CBON2690.3		ON	Hearst, FF Radio Canada 1149
1824 WVOZ	107.7	PR	Carolina, "Reggaeton," SS 1352	1255 CINN	91.1	ON	Hearst, FF 1149
1835 HIBG	93.1	DR	Moca, SS, "93.1 Concierto" 1115	1300 CBCC	91.9	ON	Hearst, northern Ontario CBC EE 1149
1838 HILZ	88.7	DR	Higüey, "La Voz de la Luz," 1225	1305 WRGZ	96.7	MI	Rogers City, /WATZ 99.3 862
1847 HIAE	91.3	DR	Santo Domingo, "La 91 FM," SS 1193	1312 CBON2597.1		ON	Timmins, FF Radio Canada 1025
1850 HIMD	91.7	DR	Santo Domingo, "Melody FM," SS 1193	1316 WNAK	99.9	MI	Rogers City, "99.9 The Wave" 867
1851 HIAM	91.9	DR	La Romana, RDS PI FFFF, SS, "Amor FM" 1227	1322 CFMN	102.3	ON	Marathon, FF 1126
1905 WIOB	97.5	PR	Mayaguez, SS, "Cadena Estereotempo" 1297	1328 CBON21	104.9	ON	Gogoma, FF Radio Canada 1011
<u>5/11 Es</u>				1331 CJMX	105.3	ON	Sudbury, EE 919
1055 CHMT	93.1	ON	Timmins, EE, "The Moose" 1056	1357 CFCA	105.3	ON	Kitchener, "EZ Rock" 704
1058 WJPD	92.3	MI	Ishpeming, k 1000	1406 CKGN	89.7	ON	Kapuskasing, FF 1126
1105 WOSQ	92.3	WI	Spencer 974	1422 WKAP	100.9	ON	Kapuskasing 1124
1120 WOJB	88.9	WI	Reserve 1061	<u>5/12 Tr</u>			
1140 KFBN	88.7	ND	Fargo, "Heaven 88.7" 1312	2126 WWIO	88.9	GA	Brunswick, Georgia Public Radio, NPR 166
1145 KFNL	92.7	ND	Kindred 1274	<u>5/15 Es</u>			
1155 KKSR	96.7	MN	Sartell, "Kiss 96.7" 1136	2202 KRTU	91.7	TX	San Antonio 1121
1155 KKCC	96.7	MN	Bagley 1252	Totals now at 939. Above all new to log. Thanks to Randy Zerr and Jim Thomas for SS unID help.			
1200 WIMK	93.1	MI	Iron Mountain, "The Bear," r 970				
1207 CBQT	88.3	ON	Thunder Bay, CBC EE 1162				
1212 KBFN	88.3	MN	Brainerd, MPR NPR 1189				
1215 WELY	94.5	MN	Ely 1187				
1241 CBSM	89.5	ON	Sault Ste. Marie, northern				

## TELEVISION'S PIRATES: HIDING BEHIND YOUR PICTURE TUBE

BY BOB COOPER

What is a Television Pirate?



By Oxford definition, a pirate is "a person who infringes another's copyright or other business rights" and/or "someone who broadcasts without official authorization." Television programming carries copyright, television stations travel a years-long pathway seeking "official authorization" before broadcasting. Alas, not every television station has waited for, nor even sought, authorization, and it goes without saying, contacting those who's copyright might be violated by their transmissions. Many figures in recent history (Winston Churchill) met our definition.

Tens of thousand have been driven by their intense desire to have, for their own, access to television. Cable TV began as piracy. Satellite TV was driven by rampant piracy. And now the Internet is spooked by those who would "broadcast" with authorization. This is their story.

**ORDER YOUR 928 PAGE COPY FROM BOB RIGHT NOW!**

Send your check or money order for \$20 (payable to WTFDA) to WTFDA, P.O. Box 501, Somersville, CT 06072. **US ORDERS ONLY.**

Paypal order are also accepted. Send \$21.50 (to cover Paypal fees, etc.) To [mbugaj@snet.net](mailto:mbugaj@snet.net).

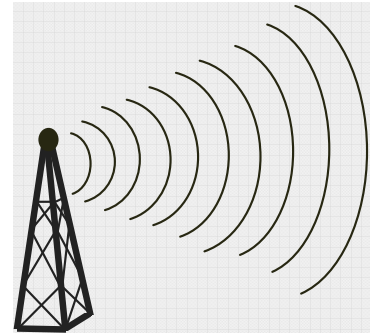
??



You haven't ordered?

Well shiver me timbers!! Go to it!

# Northern FM DX



Keith McGinnis  
 6 Ritter Road, Hingham, MA 02043  
 longwave@comcast.net 781-875-1944

For Dxers in the following states: CT IA ID IL IN MA ME MI MN MT ND NE NH NJ NY OH OR  
 PA RI SD VT WA WI WY and all of Canada. Please submit by the 10<sup>th</sup> of each month. If possible  
 please submit in the formats shown Below.

**EDITORS NOTE: PLEASE NOTE THAT ANY TYPEWRITTEN OR HANDWRITTEN REPORTS  
 MIGHT BE DELAYED TILL A LATER ISSUE AS TIME PERMITS. ALSO PLEASE KEEP  
 REPORTS AS RECENT AS POSSIBLE (THE LAST 3 MONTHS SHOULD WORK FINE). THANK  
 YOU.**

**John Ebeling Bloomington, MN**

**Equipment: Pioneer TX-9500 FM Tuners with modified IF's**

**Stereo Probe 9 antennas: one with rotor. One vertically mounted FM dipole**

**Conrad RDS decoders Various tape recorders**

January 20, Tr

1300	K279AZ	103.7	Cottage Grove	MN	(K-Love xltr)	19 miles
1300	K260BA	99.9	Coon Rapids	MN	" " "	25

March 12, Tr

1758	KIKD	106.7	Lake City	IA	191	
------	------	-------	-----------	----	-----	--

March 27, Tropo

1300	W239AM	95.7	Hudson	WI	(KNXR xltr)	31
------	--------	------	--------	----	-------------	----

May 11, E-skip

0935	WEGX	92.9	Dillon	SC	RDS: Eagle	1034
0947	WVCO	94.9	Loris	SC	1071	
0950	WSSX	95.1	Charleston	SC	1100	
0955	WRAE	88.7	Raeford	NC	1108	
1000	WPIR	88.1	Hickory	NC	891	
1030	WRNS	95.1	Kinston	NC	RDS ID	1063
1100	WJYJ	90.5	Fredericksburg	VA	935	
1120	WYPR	88.1	Baltimore	MD	939	
1125	WZBH	93.5	Georgetown	DE	1017	
1127	WTGB	94.7	Bethesda	MD	RDS: The Globe	927
1130	WAFL	97.7	Millford	DE	1008	
1133	WOCM	98.1	Selbyville	DE	1033	
1134	WLZL	99.1	Annapolis	MD	RDS: El Zol	955
1145	WARM	103.3	York	PA	RDS: Warm 103	910
1150	WQHQ	104.3	Ocean City	MD	RDS: Q105	1044
1152	WPUR	107.3	Atlantic City	NJ	1039	
1200	WHYY	90.9	Philadelphia	PA	988	
1201	WAYV	95.1	Atlantic City	NJ	1039	
1208	WIXM	97.3	Millville	NJ	RDS: Jersey 101.5 (odd)	1009
1231	WPRB	103.3	Princeton	NJ	998	
1240	WAWZ	99.1	Zarephath	NJ	RDS: Star 99.1	997
1300	WLIU	88.3	Southampton	NY	1075	

1305	WEHM	92.9	Southampton	NY	1075	
1307	WPLR	99.1	New Haven	CT	1057	
1316	WTIC	96.5	Hartford	CT	RDS: 96 TIC	1059

**Paul LaFreniere**  
**Grand Marais, MN**

May 6, 2007 Es All times CDT

1811	WFSQ	91.5	Tallahassee	FL	RDS=WFSQ WFSU.ORG
1813	WJGL	96.9	Jacksonville	FL	RDS=969EAGLE
1814	WRUM	100.3	Orlando	FL	RDS=RUMBA
1818	WFUS	103.5	Bradenton	FL	RDS=US 103.5
1819	WCCP	104.9	Clemson	SC	RDS=SPORTS
1820	WXXL	106.7	Tavares	FL	RDS=XL 106.7
1823	WFYV	104.5	Atlantic Beach	FL	RDS=ROCK 105
1824	WQXZ	98.3	Pinehurst	GA	RDS=WQXZ OLDIES 98.3
1825	WRBQ	104.7	Tampa	FL	RDS=Q 105
1826	WRJY	104.1	Brunswick	GA	RDS=WRJY
1827	WQYK	99.5	St. Petersburg	FL	RDS=WQYK
1829	WPEZ	93.7	Jeffersonville	GA	Local ads. Z 93.7 slogans
1830	WOGK	93.7	Ocala	FL	Local ads
1832	WSOS	94.1	St. Augustine	FL	RDS=SUNNY
1833	WXTB	97.9	Clearwater	FL	RDS=98 ROCK
1834	WMUV	100.7	Brunswick	GA	RDS=WMUV
1836	WLOQ	103.1	Winter Park	FL	RDS=WLOQ
1840	unid	96.1	unid		RDS=WETE 96.1
1843	WDJR	96.9	Enterprise	AL	Big Dog Country 96.9 slogans
1851	WYYX	97.7	Bonifay	FL	RDS=97X NEW ROCK 97X
1854	unid	99.1	unid		99.1 The Breeze slogan

May 11, 2007 Es

0922	WAYT	88.1	Thomasville	GA	Local talk
0930	WMAW	88.1	Meridian	MS	RDS=MPB
1003	WAVF	96.1	Hanahan	SC	RDS=KNC88.1
1008	WEZL	103.5	Charleston	SC	RDS=1035WEZL
1016	WRBA	95.9	Springfield	FL	Local ads
1029	WRNS	95.1	Kinston	NC	RDS=WRNS
1038	WAFJ	88.3	Belvedere	SC	I.D, "88.3 WAFJ"
1044	WSUY	96.9	Charleston	SC	RDS=SUNNY969
1046	WGZO	103.1	Parris Island	SC	RDS=DRIVE FM
1048	WQPW	95.7	Valdosta	GA	RDS=THE MIX
1052	WFXE	104.9	Columbus	GA	Local ads
1056	WZMJ	93.1	Batesburg	SC	Local ads
1113	WSSX	95.1	Charleston	SC	RDS=95 SX
1120	WTHZ	94.1	Lexington	NC	Local ads
1124	WSPX	94.5	Bowman	SC	Gospel 94.5
1128	WRHT	96.3	Morehead City	NC	RDS=THUNDER
1130	WFLB	96.5	Laurinburg	NC	RDS=THE DRIVE
1135	WWHA	94.1	Oriental	NC	RDS=The HOT FM
1140	WGBT	94.5	Eden	NC	SS LaPreciosa
1143	WRVA	100.7	Rocky Mount	NC	RDS=THE RIVER
1144	WQDR	94.7	Raleigh	NC	94.7 QDR
1145	WRAL	101.5	Raleigh	NC	RDS=MIX101.5
1146	WZFX	99.1	Whiteville	NC	RDS=Foxy 99
1148	WRCQ	103.5	Dunn	NC	RDS=WRCQ
1149	WFWZ	95.5	Pinetops	NC	Power 95-5
1150	WBBB	96.1	Raleigh	NC	RDS=WBBB
1151	WMGV	103.3	Newport	NC	RDS=WMGV
1152	unid	105.1			RDS=THE COAST
1156	WRDU	106.1	Wilson	NC	RDS=ROOSTER
1158	WILT	98.7	Jacksonville	NC	RDS=WILL FM



1202	WRHD	103.7	Williamston	NC	RDS=THUNDER
1202	WSFL	106.5	New Bern	NC	RDS=WSFL
1206	WKSK	101.9	South Hill	VA	Kiss FM
1210	WOWI	102.9	Norfolk	VA	RDS=WOWI
1211	WSNZ	102.7	Appomattox	VA	RDS=SUNNY-FM
1216	WNCT	107.9	Greenville	NC	RDS=WNCT
1217	WKNC	88.1	Raleigh	NC	RDS=KNC88.1
1220	WCMC	99.9	Creedmoor	NC	Local ads
1221	WPTF	94.9	Virginia Beach	VA	RDS=POINT
1222	WKUS	105.3	Norfolk	VA	RDS=KISS
1225	WXNR	99.5	Grifton	NC	99.5 The X
1227	WXMM	100.5	Norfolk	VA	RDS=MAX FM
1228	WWDE	101.3	Hampton	VA	RDS=2WD
1230	WAFX	106.9	Suffolk	VA	RDS=THE FOX
1234	WESR	103.3	Virginia Beach	VA	Local ads
1240	WBQK	107.9	West Point	VA	RDS=WBACH
1242	WFMI	100.9	Southern Shores	NC	Rejoice
1246	WVBW	92.9	Suffolk	VA	RDS=THE WAVE
1247	WPYA	93.7	Chesapeake	VA	RDS=BOB FM
1248	WLFV	93.1	Ettrick	VA	93-7 The Wolf
1252	WRQX	107.3	Washington	DC	RDS=WRQX-FM
1255	WBBC	93.5	Blackstone	VA	Bobcat
1258	WPRS	104.1	Waldorf	MD	Praise 104.1
1259	WJZW	105.9	Woodbridge	VA	RDS=WJZW-FM
1300	WJFK	106.7	Manassas	VA	RDS=WJFK
1308	WKYS	93.9	Washington	DC	I.D.
1309	WTGB	94.7	Bethesda	MD	RDS=THE GLOBE
1310	WPGC	95.5	Morningside	MD	RDS=WPGC95.5
1311	WCMS	94.5	Hatteras	NC	RDS=WCMS
1314	WASH	97.1	Washington	DC	RDS=WASH FM
1316	WTOP	103.5	Washington	DC	RDS=WTOP
1318	WICO	97.5	Salisbury	MD	RDS=CAT 97.5
1320	WIYY	97.9	Baltimore	MD	RDS=98 ROCK
1321	WHFS	105.7	Catonsville	MD	RDS=1057 HFS
1322	WAFL	97.7	Milford	DE	Eagle 97-7
1323	WGBG	98.5	Seaford	DE	RDS=98.5 BIG
1324	WWMX	106.5	Baltimore	MD	RDS=MIX
1325	WSBY	98.9	Salisbury	MD	RDS=MAGIC
1326	WLZL	99.1	Annapolis	MD	RDS=EL ZOL
1330	WTDK	107.1	Federalsburg	MD	107.1 The Duck
1332	WGH	97.3	Newport News	VA	RDS=THE EAGLE
1337	WKHI	107.5	Fruitland	MD	107-5 Joe FM
1338	WOCQ	103.9	Berlin	MD	RDS=OC 104
1342	WXKW	97.3	Millville	NJ	RDS=JERSEY
1344	WWFG	99.9	Ocean City	MD	RDS=FROGGY
1349	WEZW	93.1	Wildwood Crest	NJ	RDS=WTTH
1352	WSTW	93.7	Wilmington	DE	RDS=93.7WSTW
1354	WFPG	96.9	Atlantic City	NJ	RDS=LITE ROCK
1358	WVLT	92.1	Vineland	NJ	Cruisin' 92.1
1359	WYSP	94.1	Philadelphia	PA	RDS=94.1WYSP
1403	WXMD	92.5	Pocomoke City	MD	RDS=MAX 92.5
1408	WRNR	103.1	Grasonville	MD	RDS=WRNR
1409	WQHQ	104.7	Ocean City	MD	RDS=Q-105
1418	WISX	106.1	Philadelphia	PA	RDS=WISX
1420	WPST	94.5	Trenton	NJ	RDS=94.5 PST
1423	WRDX	94.7	Dover	DE	River
1423	WIOQ	102.1	Philadelphia	PA	RDS=Q102
1425	unid	92.5	unid		RDS=DRIVE
1431	WLAN	96.9	Lancaster	PA	RDS=FM97WLAN
1437	WTTH	96.1	Margate City	NJ	Local ads
1439	WOGL	98.1	Philadelphia	PA	RDS=WOGL
1440	WAEB	104.1	Allentown	PA	RDS=B 104
1442	WKMK	98.5	Ocean Acres	NJ	Jersey Country
1446	WODE	99.9	Easton	PA	RDS=THE HAWK
1450	WJJZ	97.5	Burlington	NJ	Smooth Jazz

1453	WRAT	95.9	Point Pleasant	NJ	RDS=RAT ROCK
1501	WCIH	88.1	Elmira	NY	RDS=WCIH
1502	WWZY	107.1	Long Branch	NJ	RDS=THE BREEZE
1503	WFNY	92.3	New York City	NY	I.D. Fre FM
1506	WPAT	93.1	Paterson	NJ	SS Amor 93.1
1507	WNYC	93.9	New York City	NY	NPR All Things
1509	WBGO	88.3	Newark	NJ	Jazz 88 NYC traffic

---

**Jeff Lehmann    Hanson, MA**  
**Sangean HDT-1 Tuner, APS-13 Antenna**

@=New

May 9 Es

1627	WYCT	98.7	Pensacola	FL	Cat Country 98.7	1209
1629	WBAM	98.9	Montgomery	AL	Bama Country 98.9	1091
1645	WGSY	100.1	Phenix City	AL	"Sunny 100, RDS"	1016
1649	WRRX	106.1	Gulf Breeze	FL	Magic 106.1	1210
@1655	WAAO	103.7	Andalusia	AL	1134	
1658	WZNS	96.5	Fort Walton Beach	FL	Z96	1186
1702	WUWF	88.1	Pensacola	FL	HD	1202
@1737	WFFF	96.7	Columbia	MS	RDS	1283
1740	WKGC	90.7	Panama City	FL	RDS	1165
1748	WPRF	94.9	Reserve	LA	Praise FM 94.9	1367
@1818	WKBU	95.7	New Orleans	LA	Bayou 95.7	1353

May 22 Es

1701	KYNF	94.9	Prairie Grove	AR	Y 94-9	1327
@1701	KSBH	94.9	Coushatta	LA	94-9 The River	1413
@1702	KHBZ	94.7	Oklahoma City	OK	94.7 The Buzz	1491
@1703	KEWL	95.1	New Boston	TX	Kool 95.1	1410
@1704	KOMA	92.5	Oklahoma City	OK	matches song on yes.com	1493
1706	WIVG	96.1	Tunica	MS	Spanish	1156
@1707	KMRX	96.1	El Dorado	AR	"Mix 96, RDS"	1251
@1708	KJMT	97.1	Calico Rock	AR	Talk	1213
@1708	KQUS	97.5	Hot Springs	AR	RDS	1311
@1711	KVSB	103.5	Anadarko	OK	Power 103.5	1559(!)
@1712	KHGG	103.1	Waldron	AR	Sports Hog	1333
@1715	KESN	103.3	Allen	TX	"ESPN Radio, HD"	1525
@1716	KARN	102.9	Sheridan	AR	RDS	1272
@1721	KZBB	97.9	Poteau	OK	"B98, RDS"	1366
1723	KHLR	94.9	Maumelle	AR	Hallelujah 94.9	1266
1724	KZLE	93.1	Batesville	AR	1193	
@1727	KTCS	99.9	Fort Smith	AR	RDS	1366
@1732	KENA	102.1	Mena	AR	1365	
@1840	KVDP	89.1	Dry Prong	LA	1391	
@1846	WPAS	89.1	Pascagoula	MS	AFR	1255
@1851	KLSA	90.7	Alexandria	LA	RDS	1393
@1901	WATU	89.1	Port Gibson	MS	AFR	1287

---

**Rick Shaftan    Sparta NJ**  
**Realistic STA-2280, Boston Acoustics HD Radio**  
**Main antenna: Two APS-14s 30' AGL stagger stacked**  
**Phasing antenna: Two APS-13s 30' AGL stagger stacked**  
**Bolin Phase Box.**  
**Antennas are 990' ASL**

@ = New. First # at end is bearing, second is mileage.

May 6 Es

1841	????	89.7			Gospel		
1858	@KAKO	91.3	Ada	OK	"91.3 KAKO Ada, AFR"	259	1275
1859	@KVAZ	91.5	Henryetta	OK	You're listening to the Gospel Station 91.5 KVAZ Henryetta		
1900	????	89.3			"89.3 Cray-say fm.org, into Gospel." Tape on WTFDA site.		
1901	KWGS	89.5	Tulsa	OK	RDS PI 4ACG 261	1184	
1902	KFXI	92.1	Marlow	OK	Probably with Country	259	1343
1903	KTBT	92.1	Broken Arrow	OK	Probably the one with rap	262	1200
1904	KOMA	92.5	Oklahoma City	OK	Nice DT signal261	1290	
1905	????	92.9			Fasttrax USA		
1906	KAMO	94.3	Rogers	AR	"Country, almost definitely this one"		260
1910	KKNG	93.3	Newcastle	OK	RDS PI 2BCO 260	1309	
1912	@KSPQ	93.9	West Plains	MO	Q-94 Jack FM 259	965	
1930	KQCV	95.1	Shawnee	OK	Religion thru strong ZZO	259	1242
1940	KFXT	90.7	Sulphur	OK	Solid Gospel 91 KFXT	256	1294
1946	KNOR	93.7	Krum	TX	SS/Mexican	255	1360

May 9 Es

1547	WRLX	92.1	West Palm Beach	FL	RDS PI 1EC4 199	1025	
1659	KSJY	89.9	St. Martinville	LA	AFR 237	1275	
1700	WBRH	90.3	Baton Rouge	LA	Jazz 237	1175	
1702	WMAW	88.1	Meridian	MS	HD RDS PI 75EB	237	1006
1703	@W202BS	88.3	Columbia	MS	Sonlife Radio 237	1083	
1704	WJSM	88.5	Baton Rouge	LA	Sonlife Radio //	88.3	237 1175
1705	????	89.7			"AFR, Today's Radio for Life"		
1706	KSLU	90.9	Hammond	LA	HD RDS PI A4BA	236	1142
1707	@KPAE	91.5	Erwinville	LA	Traffic referring to	the I-10/I-12 split	
1708	WJMG	92.1	Hattiesburg	MS	"Black, 5 lites" 235	1052	
1715	WPAE	89.7	Centreville	MS	RDS PI 7C48 PS 1108	238	1141
1717	????	88.1			AFR		
1719	????	90.7			AFR		
1720	WDVW	92.3	LaPlace	LA	Diva 92.3	235	1180
1721	????	93.1			R & B		
1722	WQUE	93.3	New Orleans	LA	Q-93 HD RDS PI 101E	233	1152
1722	KRDJ	93.7	New Iberia	LA	Classic Rock Rock	93.7	237 1196
1723	WEMX	94.1	Kentwood	LA	Max 94.1 RDS PI 33D5		
1724	WKZW	94.3	Sandersville	MS	KZ 94.3236	1042	
1725	WPRF	94.9	Reserve	LA	Praise FM 94.9	235	1165
1726	WBBN	95.9	Taylorville	MA	Golden Eagle Baseball Team www.southernmiss.com	237	1046
1727	WXHB	96.5	Richton	MS	Religion	234	1024
1727	????	96.7			Rap		
1727	????	96.7			Different Black Station		
1728	WEZB	97.1	New Orleans	LA	B-97 We play all the hits.	233	1152
1729	????	97.9			National Ads		
1730	WYLD	98.5	New Orleans	LA	Hip Hop	233	1146
1730	WRNO	99.5	New Orleans	LA	The New995fm.com	233	1146
1731	KMEZ	102.9	Belle Chasse	LA	Bad Boy Radio Show	233	1147
1732	WKBU	105.3	Kenner	LA	Weather warnings for Southern LA parishes		
1733	????	106.1			106.1 DaVinci. Upbeat and Uplifting (tape posted on WTFDA site)		
1733	KCIL	107.5	Houma	LA	3000 KCIL Listener Points	234	1205
1755	WJDB	95.5	Thomasville	AL	Cedar Ridge Houses on Highway 43 in Thomasville	233	968
1757	WAQY	91.7	Gulfport	MS	AFN News	233	1074
1800	WWOZ	90.7	New Orleans	LA	RDS PI 0000	233	1152
1800	WMAH	90.3	Biloxi	MS	RDS PI 75EB MPB	233	1066
1800	WWNO	89.9	New Orleans	LA	RDS PI F001	233	1152

1802	WTUL	91.5	New Orleans	LA	Lafayette Square	mention	233	1155
1803	WQYZ	92.5	Ocean Springs	MS	Black Gospel/Religion		232	1077
1804	KLRZ	100.3	LaRose	LA	Cajun Mx	233	1185	
1830	????	92.9			Check n Go ad			

May 11 Es

1114	KSMS	90.5	Point Lookout	MO	Central Missouri U & Station IDs		259	1046
1129	KIGL	93.3	Seligman	MO	RDS 1F33	260	1095	
1130	KSPQ	93.9	West Plains	MO	West Plains Ads	259	965	
1131	@K233AU	94.5	Tulsa	OK	Silver Dollar City's Bluegrass and "BBQ, Craig West on Broadway and 97th near Trek Bicycle, Johnny Guarino and" Red Robin			
1132	KYNF	94.9	Prairie Grove	AR	NW Arkansas Weather	258	1122	
1133	KQCV	95.1	Shawnee	OK	Religion	258	1242	
1134	@KEMX	94.5	Locust Grove	OK	We Believe XOJ	260	1155	
1135	KHBZ	94.7	Oklahoma City	OK	The Buzz - HD260	1295		
1136	KSEC	95.7	Bentonville	AR	SS Talk259	1100		
1138	KRAV	96.5	Tulsa	OK	HD Mix 96.5 RDS PI BCF9	261	1201	
1139	????	98.9			Melissa Etheridge			
1140	@KOMC	100.1	Kimberling City	MO	HD RDS PI 3632 Soft Rock	259	1060	
1142	KATT	100.5	Oklahoma City	OK	Metal	260	1295	
1145	KJSR	103.3	Tulsa	OK	Tulsa ads	260	1183	
1146	@KVSP	103.5	Anadarko	OK	Black RDS PI 4957	261	1357	
1149	@KREK	104.9	Bristow	OK	Bolin Motors in Bristow	260	1231	
1150	????	104.7			Freebird			
1151	KKCM	102.3	Sand Springs	OK	Worship	261	1200	
1152	KBEZ	92.9	Tulsa	OK	HD	261	1201	
1153	KWEN	95.5	Tulsa	OK	RDS PI 4A8D Brooks & Dunn	261	1201	
1154	KKBL	95.9	Monett	MO	Bayou Lunch Box in Monett	261	1070	
1155	KXXY	96.1	Oklahoma City	OK	Ernest Tubb 96.1 KXY	261	1289	
1156	KMOD	97.5	Tulsa	OK	HD Tulsa's Digital Rock RDS PI 1F21			
1157	KVOO	98.5	Tulsa	OK	Today's KVOO	261	1201	
1157	KWTO	98.7	Springfield	MO	Springfield Cardinals info	261	1035	
1158	????	99.5			King of Hearts			
1158	KBTN	99.7	Neosho	MO	Jim Reeves	262	1099	
1159	????	100.1			Country			
1159	KIZS	101.5	Collinsville	OK	SS	261	1181	
1159	????	104.7			Rocket Man			
1200	????	104.7			Black Religion			
1225	@WRLJ	88.3	White Hall	IL	Your Christian Family "Station for Central Illinois, WLUJ"	268	837	
1228	????	89.3			Grand Platte and Missouri Rivers			
1228	WIPA	89.3	Pittsfield	IL	"Classical, 91.9 WUIS" Springfield	269	847	
1229	KJTY	88.1	Topeka	KS	Joy 88	270	1115	
1230	????	88.5			Two stations			
1231	KCUR	89.3	Kansas City	MO	RDS PI 1761 Classical	269	1055	
1232	KANU	91.5	Lawrence	KS	KANU-FM HD	269	1098	
1233	KJIR	91.7	Hannibal	MO	The Cross RDS PI 623B	270	890	
1234	KMFC	92.1	Centralia	MO	Preacher	268	933	
1235	KCCV	92.3	Olathe	MO	Religion // 92.5	269	1076	
1235	KCVT	92.5	Silver Lake	KS	Religion // 92.3	270	1129	
1237	KMXV	93.3	Kansas City	MO	Mix 93.3 HD RDS PI 321B	269	1057	
1238	????	93.7			"Home Auto in Addling, homeauto.com"			
1239	KSSZ	93.9	Fayette	MO	RDS PI 4175 The Eagle O'Reilly	268	951	
1239	KFKF	94.1	Kansas City	MO	RDS PI 1E3D	269	1057	
1240	WIBW	94.5	Topeka	KS	HD RDS PI 69F8	270	1138	
1240	KCMO	94.9	Kansas City	MO	RDS PI 168E	269	1057	
1240	KDKD	95.3	Clinton	MO	95.3 KDKD	266	1038	
1240	????	95.7			Country			
1240	KRBZ	96.5	Kansas City	MO	RDS PI 3D17 The Buzz	269	1067	
1242	KCXM	97.3	Lee's Summit	MO	Sports Talk	269	1054	
1243	@WBBA	97.5	Pittsfield	IL	HD WBBA Talk RDS PI 5766	269	855	
1243	KJCK	97.5	Junction City	KS	Power Hits	271	1181	
1244	KUDL	98.1	Kansas City	MO	RDS PI 4529	269	1067	

1245	@KCHI	98.5	Chillicothe	MO	78 degrees in Chillicothe	271	1002
1246	KQRC	98.9	Leavenworth	KS	Missouri and Kansas Licensed Mortgage Broker	269	1067
1246	KYYS	99.7	Kansas City	MO	HD 99.7 KY RDS PI 51E2	269	1067
1247	KBBM	100.1	Jefferson City	MO	"Weather for Jefferson City," Columbia and Chavelle	266	957
1247	KMZU	100.7	Carrollton	MO	Paul Harvey RDS PI 324E	270	994
1248	KCFX	101.1	Harrisonville	MO	HD - KCFX The Fox Eagles RDS PI 15E1		
1249	KMKF	101.5	Manhattan	KS	Metal	271	1155
1249	KGOZ	101.7	Gallatin	MO	Z-101.7 Missouri	272	1004
1250	KSRC	102.1	Kansas City	MO	RDS PI 164E. KCTV promo	269	1054
1251	????	102.7			Soul/Oldies		
1251	KQTP	102.9	St. Mary's	KS	US 103	270	1122
1251	KPRS	103.3	Kansas City	KS	Hot 103	913-281-3232	269 1057
1253	@KRLI	103.9	Malta Bend	MO	"Standards, later ad for" Rhodes Funeral Home serving the Brookfield area	270	994
1253	KNZA	103.9	Hiawatha	KS	Rhonda Smith of Hiawatha in Birthday list		
1254	KRES	104.7	Moberly	MO	RDS PI 3D5E	270	956
1254	@WGEM	105.1	Quincy	IL	Boortz	271	878
1255	@KKJO	105.5	St. Joseph	MO	The Country Kitchen on Frederick and I-29		
1257	WDAF	106.5	Liberty	MO	HD -- The Wolf RDS PI 1630	269	1067
1258	@WPWQ	106.7	Mt. Sterling	IL	Hollies	270	859
1259	KTPK	106.9	Topeka	KS	Classic Country	270	1131
1300	KMAJ	107.7	Topeka	KS	"7th & Kansas, Downtown Topeka"	1302	????
		88.3			RDS PI 80FI		
1304	KANU	91.5	Lawrence	KS	HD	269	1098
1306	WQKQ	92.1	Carthage	IL	HD KQ92	273	865
1306	KBEQ	104.3	Kansas City	MO	Q-104. Number one in Kansas City	269	1055
1307	KMMO	102.9	Marshall	MO	We're at 79 at KMMO. We'll have the latest River Stage information for you shortly		
1308	????	102.7			464-1027		
1309	@WDQX	102.3	Morton	IL	"HD 102.3 Max FM. "A six pack of Rock"		
1311	KCKC	102.1	Kansas City	MO	HD Star 102.1 RDS PI 164E	269	1054
1313	@KLZA	101.3	Falls City	NE	Pawnee City Water Improvement Project		
1314	KRRY	100.9	Canton	MO	"210 Spring Street in Quincy, Central Welding Supply	271	894
1316	KMEM	100.5	Memphis	MO	Tri County Electric Cooperative. Later with x Paul Harvey	274	916
1317	KGOR	99.9	Omaha	NE	Log into KGOR.COM	278	1109
1325	KZEN	100.3	Central City	NE	KZ Country Kitchen	279	1193
1325	KMXD	100.3	Des Moines	IA	Abba	280	982
1328	KXIA	101.1	Marshalltown	IA	Best Country Kix	280	947
1333	KSIB	101.3	Creston	IA	"76 at 12:33, Medicap Pharmacy in Creston"		
1333	@KKYY	101.3	Whiting	IA	Located in Sioux City & Le Mars	282	1109
1334	KXKT	103.7	Glenwood	IA	HD-KXKT o/local WNNJ	278	1109
1335	KKSI	101.5	Eddyville	IA	Mountain Dew Bloomfield Speedway		
1337	KLTQ	101.9	Lincoln	NE	Light Rock. Less Talk for your workday. The Light	101.9	277 1120
1339	@KGBI	100.7	Omaha	NE	KGBI Safe for the whole family	277	1120
1340	@WCSJ	103.1	Morris	IL	Call 942-xx56	276	712
1341	KZIA	102.9	Cedar Rapids	IA	HD-KZIA-FM and channels 1, 2 and 3		
1342	KIOS	91.5	Omaha	NE	"UNID RDS 0000, HD XXXX"	278	1108
1344	KSRZ	104.5	Omaha	NE	HD KSRZ	278	1109
1344	????	104.9			Paul Harvey		
1347	KCCQ	105.1	Ames	IA	Metal	281	983
1348	KNOD	105.3	Harlan	IA	Paul Harvey	279	1068
1350	#WPPN	106.7	Des Plaines	IL	HD-WPPN SS, previously on trop		
1351	KTLB	105.9	Twin Lakes	IA	"Farm Prices, Farmnet." Classic Hits	105.9	
					The Eagle	283	1035
1352	KOKZ	105.7	Waterloo	IA	"Cool 105.7, Silver Eagle" Harley Davidson in Waterloo	282	903
1355	KSUX	105.7	Winnebago	NE	RDS PI 41A7 SUPERPIG	282	1129
1359	KDCR	88.5	Sioux Center	IA	Sioux Center	285	1110
1359	WERN	88.7	Madison	WI	WERN Madison RDS PI 60FF	285	776
1400	KJIA	88.9	Spirit Lake	IA	Wx for Mankato, New Ulm and Spirit Lake		

1400	KXNE	89.3	Norfolk	NE	NET Radio K212AV 90.3 Columbus		
1401	@WEZY	92.1	Racine	WI	"...Italian Restaurant in Kenosha..." Weather near the lake and inland. Lite Rock 92.1		
1402	@WHLK	93.1	DeForest	WI	"Hendrix, Fire, per yes.com" 286 761		
1403	KKYA	93.1	Yankton	SD	HD KK93 Jennie's Antiques East of Crofton		
1405	@WEKZ	93.7	Monroe	WI	Ace's Lube & Road Equipment in Freeport		
1406	KIAI	93.9	Mason City	IA	HD-KIA FM RDS PI 2528 93.9 The Country Moose 285 956		
1406	KKEZ	94.5	Fort Dodge	IA	100000 watts of power this is Mix 94.5. Last heard in 1981. 282 1011		
1407	@KMCH	94.7	Manchester	IA	2007 Delaware County Fair 283 867		
1408	KJCY	95.5	St. Ansgar	IA	Contemporary Christian 286 944		
1413	KDOM	94.3	Windom	MN	Conservation project at Talcott Lake		
1414	WRQT	95.7	LaCrosse	WI	The more and more I listen to One-X the more and more I really dig it. Promo for Wienerfest at the Southside Fair Grounds		
	(LaCrosse)	288					
1415	@WMAD	96.3	Sauk City	WI	"Madison Mortgage. Beltline I-39 and the Rock River Bridge 286 780		
1416	KIAQ	96.9	Clarion	IA	The reason you bought your radio in the first place, Hot Country 97 283 1008		
1416	WCOW	97.1	Sparta	WI	Sparta Clinic for Gundersen Lutheran Hospital RDS PI 5B72 289 849		
1417	????	97.3			Madonna		
1420	KNXR	97.5	Rochester	MN	Turn it on 97.5 KNXR 289 923		
1421	WFDL	97.7	Lomira	WI	RDS PI 6235 SUNNY977.COM 289 727		
1423	@KBEW	98.1	Blue Earth	MN	Ad for Five Lakes Center 287 1009		
1424	KQYB	98.3	Spring Grove	MN	RDS PI 3CB1 288 891		
1425	KISD	98.7	Pipestone	MN	Beatles 288 1101		
1426	WVCX	98.9	Tomah	WI	Rel 289 829		
1428	@KWNO	99.3	Rushford	MN	"166 W. 2nd Street, Winona." CD Country		
		289 892					
1429	@WPKR	99.5	Omro	WI	60 years of service so come in and thank us...Highway 41 290 740		
1430	KSJN	99.5	Minneapolis	MN	Classical 292 978		
1431	@WIZD	99.9	Rudolph	WI	RDS PI 6C55 VALLEY 292 795		
1434	KTLK	100.3	Minneapolis	MN	RDS PI 1F24 Rush Limbaugh 292 978		
1444	KEEY	102.1	St. Paul	MN	HD-K102 292 978		
1444	KQIC	102.5	Willmar	MN	HD-Q102 RDS PI 3B12 293 1067		
1445	WLTE	102.9	Minneapolis	MN	"RDS PI 73A6, LITE-FM" 293 972		
1445	????	103.5			R-E-S-P-E-C-T		
1449	????	104.3			Classic Hits 104.3 The Fox		
1451	KCLD	104.9	St. Cloud	MN	St. Cloud Subaru 294 1044		
1451	@KDDG	105.5	Albany	MN	John Denver. Minnesota's Country "Tradition, Bob" 294 1049		
1452	KMXK	94.9	Cold Spring	MN	RDS PI 3210 294 1038		
1455	@WQRB	95.1	Bloomer	WI	Hear the new music first on...country B-95 into Brooks and Dunn 293 894		
1457	KDJS	95.3	Willmar	MN	HD-KDJS RDS PI 18E8 292 1074		
1458	WDRK	99.9	Cornell	WI	99.9 The Carp with Korn 294 890		
1501	KFML	94.1	Little Falls	MN	Central Minnesota's Music Station FM 94 KFML. Last heard in 1981 296 1042		
1504	KSKK	94.7	Staples	MN	Fleetwood Mac 298 1065		
1507	KBEK	95.5	Mora	MN	"Pine City, Cambridge and Princeton"		
1508	@KKOK	95.7	Morris	MN	Currently here at the studio we have a temperature of 70 degrees at KKOK		
1508	WJMC	96.1	Rice Lake	WI	#1 New Holland Dealer in Rice Lake and St. Croix Falls. 296 915		
1510	KDKK	97.5	Park Rapids	MN	Hermans Hermits, Roger Whittaker		
1512	WWJO	98.1	St. Cloud	MN	RDS PI 8FB8 98 Country 295 1025		
1518	KDNW	97.3	Duluth	MN	Sounds Christian 301 954		
1519	@WJJH	96.7	Ashland	WI	Little Caesar's in Ashland and Ironwood, North Star Ford 301 993		
1521	WKLK	96.5	Cloquet	MN	Hermantown. Geanealogical Society of Carlton County 300 967		



1523	KQDS	94.9	Duluth	MN	RDS PI 3AA0	301	954
1525	WRJO	94.5	Eagle River	WI	Tomorrow night at the Eagle River Inn		
1527	@WIMK	93.1	Iron Mountain	MI	Where the UP Rocks. Later with ad for Birchwood Mall in Kingsford	301	749
1531	KGPZ	96.1	Coleraine	MN	RDS PI 2177. KGPZ, your 100,000 watt home for real country.	302	1018
1532	KMFY	96.9	Grand Rapids	MN	Today's Hits and Forgotten Oldies, KMFY		
1534	@KLDJ	101.7	Duluth	MN	Cool 101 Weather. 50 in Duluth	301	954
1538	KUMD	103.3	Duluth	MN	// Internet. Last heard 1981.	301	955
1539	WHBM	90.3	Park Falls	WI	RDS PI 674A	299	853
1540	KUWS	91.3	Superior	WI	"RDS PI 471E, Science Friday"	301	954
1541	WBSZ	93.3	Ashland	WI	Sweetness on Main in Downtown Ashland		
1541	WTBX	93.9	Hibbing	MN	93.9 WTBX	302	1007
1542	KDAL	95.7	Duluth	MN	Jim Croce	301	954
1545	WBJI	98.3	Blackduck	MN	"Reed's Sporting Goods, Paul" "Bunyan Transit, Acme Rents and Bluewater Bait and Sports"	301	1090
1546	KTCO	98.9	Duluth	MN	Cat Country 98.9 KTCO	301	954
1547	WUSZ	99.9	Virginia	MN	Tim McGraw	302	1005
1551	KKZY	95.5	Bemidji	MN	Paul Bunyan Playhouse in Bemidji		
1555	@WUPK	94.1	Marquette	MI	This Friday through Sunday in Ishpeming		
1558	WTIP	90.7	Grand Marais	MN	Buckwheat Zydeco then news on fire at Ham Lake	306	902
1559	CBQQ	90.5	Fort Frances	ON	cbc.ca	305	1068
1600	CKSB-9	89.1	Fort Frances	ON	FF	305	1068
1620	CBON-20	89.3	Thunder Bay	ON	FF	311	811
1841	@CMBV	92.9	Havana	CU	"R. Taino, confirmed by everyone else"		
1912	MORE-FM	94.9	Nassau	BAH	HD-MORE FM	188	1080

May 22 Es

1100	KAYT	88.1	Jena	LA	Black Gospel	242	1187
1103	KUHF	88.7	Houston	TX	HD KUHF-HD	243	1410
1105	@KVDP	89.1	Dry Prong	LA	Focus on the Family	242	1185
1108	KKBQ	92.9	Pasadena	TX	93-Q	243	1411
1112	@KMXH	93.9	Alexandria	LA	Mix 93.9	241	1199
1113	@WPRL	91.7	Lorman	MS	Black Gospel	241	1109
1114	WATU	89.3	Port Gibson	MS	AFR parallel to another AFR on same x frequency	241	1081
1115	@KAVK	89.3	Many	LA	Parallel to the other AFR on that freq. Audio ID later that day. Pronounced MAN-ee		
1116	WMAU	88.9	Bude	MS	MPN	239	1114
1116	WPAE	89.7	Centreville	MS	HD - RDS PI 7C48 THE WORD	238	1141
1117	@WYAB	93.1	Yazoo City	MS	Little Deuce Coupe	242	1029
1122	WQLJ	93.7	Oxford	MS	Q-93.7 82 in Oxford	246	943
1122	KRDJ	93.7	New Iberia	LA	RDS PI 3D3B	237	1196
1128	????	95.5			"Reggae, could be Christian"		
1128	KAFX	95.5	Diboll	TX	RDS PI A199	246	1298
1129	????	95.7			"Sounded Like Classic Rock,"		95.7 The...
1130	KNBB	97.7	Dubach	LA	Sports Talk	246	1146
1132	WDFX	98.3	Cleveland	MS	FRC	246	1007
1142	KTUX	98.9	Carthage	TX	Barksdale Federal Credit Union	247	1223
1142	@KPCH	99.3	Ruston	LA	Groovin with the songs of "the 60s and 70s, the Peach 99.3 FM"	245	1155
1143	????	99.5			Country		
1144	KMJJ	99.7	Shreveport	LA	Black	247	1203
1145	@KSHN	99.9	Liberty	TX	On the Bypass at 90 in Liberty.	242	1344
1146	????	99.9			"Swap and Shop Program: " "Good Morning Eric, I've got a..."		
1148	@KGPQ	99.9	Monticello	AR	A public service of "the Arkansas x Broadcasters Association"	247	1065
1150	????	100.1			"Black " "...to qualified Low Income..."		
1151	????	100.7			Joshua Jordan with the Washington Report		

1152	@WDMS	100.7	Greenville	MS	"Delta Irrigation and Supply," Hwy 82 x Leland. The Delta's Country Music Giant		
1157	KRMD	101.1	Shreveport	LA	Hillary and Derek in the Morning	248	1207
1158	KNUE	101.5	Tyler	TX	RDS PI 3460	248	1273
1159	????	102.1			Blue Hippo		
1200	WAFR	88.3	Tupelo	MS	AFR for Northeast Mississippi	244	890
1201	????	89.3			AFR		
1201	KYFL	89.5	Monroe	LA	"...for Christ, this is KYFL Monroe"		
1202	KDAQ	89.9	Shreveport	LA	Red River Radio RDS PI 17FC	248	1207
1202	@WMAV	90.3	Oxford	MS	"This is MPB, WMAV-FM Oxford"	245	943
1203	KLSA	90.7	Alexandria	LA	RDS PI 2EE0	242	1187
1204	????	92.3			High Maintenance Woman		
1204	KCUL	92.3	Marshall	TX	SS	248	1235
1204	KTYL	93.1	Tyler	TX	RDS PI 44A7	248	1273
1205	KCXY	95.3	East Camden	AR	RDS PI 17B6 South Arkansas' Own Y-95		
1206	KTTG	96.3	Mena	AR	RDS PI 4420	254	1136
1208	KOYE	96.7	Frankston	TX	Mexican	248	1304
1208	????	97.1			Police		
1208	WBAQ	97.9	Greenville	MS	Muzak	245	1040
1210	@KWDO	99.1	Waldo	AR	"Magnolia's Country 99.1," Mornings with Dan Gregory	249	1145
1212	????	99.3			Six Flags		
1213	????	99.7			KJMS-HD		
1217	KKDA	104.5	Dallas	TX	I-45 Downtown Ramp in Dallas	252	1359
1217	@KFLI	104.7	Des Arc	AR	"...of White County, 501-305-3421"	251	1013
1217	????	104.9			todaystrandbandoldschool.com		
1218	KLLI	105.3	Dallas	TX	Live 105.3 Free FM	252	1360
1218	KHKS	106.1	Denton	TX	106.1 Kiss FM RDS PI 11F8252		1360
1219	KVIL	103.7	Highland Park	TX	HD-KVIL-FM 1 and 2	252	1360
1219	KYGL	106.3	Texarkana	AR	Eagle 106.3	250	1185
1220	KOOI	106.5	Jacksonville	TX	Trinity Methodist 903-510-7100	248	1298
1221	KISX	107.3	Whitehouse	TX	Hot 107.3 Jamz RDS PI 270B	249	1284
1221	@KMVK	107.5	Fort Worth	TX	Movin 107.5	252	1360
1222	????	107.7			Georgia Pacific Career Day at the Camden-Woodbox Plant		
1223	@KJBX	106.7	Trumann	AR	Mix	252	937
1223	????	105.7			Country		
1225	????	105.7			105.7 Kix. INXS		
1239	@KZRB	103.5	New Boston	TX	KZRB 103.5. The Rib Shack in Texarkana	AR	
1253	KWOZ	103.3	Mountain Home	AR	Arkansas Country 103.3 KWOZ	255	1000
1254	KESN	103.3	Allen	TX	Text 71755	254	1319
1300	KZLE	101.7	Azle	TX	SS	255	1355
1302	KSMS	90.5	Point Lookout	MO	RDS PI 40D4	259	1046
1306	KFPW	94.5	Barling	AR	2810 Midland & I-540, Fox 94.5 RDS PI 1ED0		
1306	KKAJ	95.7	Ardmore	OK	Paul Harvey	256	1318
1706	KOBC	90.7	Joplin	MO	The advantage is in the music, 90.7 Christ x Centered Radio KOBC	262	1091
1706	@KSMU	91.1	Springfield	MO	836-5646 or go to coba...edu	261	1034
1706	KOSU	91.7	Stillwater	OK	RDS PI 36E0	262	1260
1708	????	94.1			HD KXPY-FM RDS PI 0000		
1710	KPFW	94.5	Barling	AR	Ingraham	256	1039
1720	KQUS	97.5	Hot Springs	AR	RDS PI 3C5A	252	1109
1722	WMC	99.7	Memphis	TN	RDS PI 999E	249	920
1723	KTCS	99.9	Fort Smith	AR	RDS PI 4272 Arkklahoma's Best Country		
1727	KLSZ	100.7	Fort Smith	AR	ZZ Top, Tuesday Night Trivia at Lost Beach	256	1140
1729	KMCO	101.3	McAlester	OK	"John Tall Travel Plaza," "South George Night Expressway, McAlester"	256	1216
1730	@KCTT	101.7	Yellville	AR	Oldies 101.7	257	1015
1733	@KTFX	101.7	Warner	OK	Okie Country 101.7	258	1173
1833	W202BS	88.3	Columbia	MS	Swaggert	237	1083
1835	KQXY	94.1	Beaumont	TX	Q-94	241	1317
1856	KQBU	93.3	Port Arthur	TX	SS	242	1344
1857	WQUE	93.3	New Orleans	LA	Four Locations on the North Shore and the South Shore Q-93	233	1152
1858	KRVS	88.7	Lafayette	LA	HD KRVS Lafayette-Lake Charles	238	1228
1859	KAVK	89.3	Many	LA	89.3 KAVK Many	244	1229
1900	WPRL	91.7	Lorman	MS	Black Gospel	241	1109

1902	KCOL	92.5	Groves	TX	RDS PI 16BF 241	1316
1905	KLSA	90.7	Alexandria	LA	RDS PI 2EE0 242	1187
1920	????	88.1			NPR. RDS C001	

Count up to 2973

## Jerry Bond Rochester, NY

**Equipment: 2004 Trailblazer with RDS for DX and it seems fairly sensitive.**

### 5/9 Es (times EDT)

1545	WJIS	88.1	Bradenton	FL	Joy-FM	
1549	WAYJ	88.7	Ft. Myers	FL	pledge drive	
1550	WSRX	89.5	Naples	FL	Praise FM w/legal ID @1555, SW Florida's first contemporary Christian radio station	
1605	WMFE	90.7	Orlando	FL	traffic report, NPR	
1617	UNID	92.1			SS	
1621	WINK	96.9	Ft. Myers	FL	RDS- WINK-FM Best Variety	
1621	WRXK	96.1	Bonita Springs	FL	local spots	
1624	WPCV	97.5	Winter Haven	FL	97 Country, spot for Travis Tritt concert	
1629	WWGR	101.9	Ft. Myers	FL	RDS-WWGR-101.9, Gator Country	
1632	WOMX	105.1	Orlando	FL	presumed with spot for TV show on "CW18"	
1655	WEJF	90.3	Palm Bay	FL	mention of JoyceMeyer.org, ID @1459 folo by Prime Time America show	
1700	WSOR	90.9	Naples	FL	RDS-WSOR	
1703	WRWA	88.7	Dothan	AL	Troy Univ Public Radio, local and state news	
1719	WKGC	90.7	Panama City	FL	NPR - Gulf Coast Community College, Bay County Comm. Calendar	

### May 11 Es

0920	WAYJ	88.7	Ft. Myers	FL	Way FM	
1109	KSWP	90.9	Lufkin	TX	ID	
1115	KLSA	90.7	Alexandria	LA	Red River Radio, Louisiana weather jingle- It's Southern Gospel	
1121	UNID	92.1			AFR	
1132	UNID	91.7			K-LOVE	
1142	UNID	88.9				
1150	KRUF	94.5	Shreveport	LA	K-94.5, local spot	
1259	KWHF	95.9	Harrisburg	AR	ID	
1302	WSTO	96.1	Evansville	IN	Hot 96 and mention of hot96.com	
1303	KHLS	96.3	Blytheville	AR	c/w, wx, stock rpt from A.G. Edwards office	
1304	WHRK	97.1	Memphis	TN	K-97, Memphis R and B station	
1305	UNID	97.3			Paul Harvey	
1305	KQUS	97.5	Hot Springs	AR	Paul Harvey, RDS - US97	
1306	KURB	98.5	Little Rock	AR	B 98.5 and mention of B98.com	
1307	KTCS	99.9	Ft. Smith	AR	Arkansas Auctions summary	
1315	UNID	88.7			AFR	
1318	KUAR	89.1	Little Rock	AR	NPR, Univ. of Ark.sponsors next show	
1319	KRPS	89.9	Pittsburgh	KS	classical, fr campus of Pittsburgh State Univ.	
1321	UNID	90.3			RDS- MPB	
1324	WDJC	93.7	Birmingham	AL	ID, spot for S & S Appliance	
1326	KKLR	94.5	Poplar Bluff	MO	"94 country KKLR" jingle	
1328	KYLS	95.9	Ironton	MO	spot for Hefners Appliance in Farmington	
1330	UNID	93.7			Hits of the 80's,90's and now- "The New 93.7"	
1333	WMAE	89.5	Booneville	MS	RDS - MPB	
1339	KRZK	106.3	Branson	MO	KRZK-Branson's hometown radio station	
1342	KBCN	104.3	Marshall	AR	c/w, local spots	
1352	KPFM	105.5	Mountain Home	AR	US Bank and other local spots	
1358	KJMT	97.1	Calico Rock	AR	Mountain Talk 97	
1359	KTJJ	98.5	Farmington	MO	legal ID, ABC News, RDS- Boot	
1427	KLIR	101.1	Columbus	NE	"Clear 101-KLIR" jingle	
1430	KGHN	90.7	Kirkville	MO	The Spirit FM	
1437	KAAN	95.5	Bethany	MO	local spots and promos	
1440	KZBK	96.9	Brookfield	MO	Today's hits - KZBK-The Z	



# PHOTO-NEWS

Jeff Kruszka, Editor  
 12516 Short Springs Dr.  
 Pearland, TX 77584  
 jkruszka@sbcglobal.net

June 2007

EVEN BETTER IN **COLOR!** CHECK OUT THE eVUD

We hear again from Steve Rich of Indianapolis, IN. Equipment: See November 2006 VUD.



WBIR-DT-31 Knoxville, TN  
 297 mi Tr seen 1/2/07  
 @1930 ET



WVLT-DT-30 Knoxville, TN  
 297 mi Tr seen 1/2/07  
 @1942 ET



WDEF-12 Chattanooga, TN  
 335 mi Tr seen 1/2/07  
 @1952 ET



WPGH-53 Pittsburgh, PA  
 325 mi Tr seen 12/20/06  
 @0800 ET



WTOV-DT-57 Steubenville, OH  
 292 mi Tr seen 12/20/06  
 @0817 ET

Folks, last month was my first month without any photos to print (ever, I think). So if you have something recent you'd like to contribute, please send it to me! Thanks - jk



# Jim's Spring Antenna Project

Jim Renfrew, Scott Fybush, Rick Lucas and Jerry Bond Do An Install at Jim's House in May 2007



Fybush, Lucas and Bond getting FM and UHF antennas ready for Jim's roof. (5/12/07)



Renfrew, Lucas and Bond pass it on! Note: Fybush on the ground during entire installation.



Bonding with chimney that will soon be stopped by antenna placement.



Renfrew and Lucas demonstrating high-altitude acrobatics..



Look Ma! No Hands!!

*the* **BIG 10**  
*is terrific!*  
**CHANNEL MASTER'S**

fabulous new  
**10 ELEMENT YAGI**

**12DB** single  
**14 1/2 DB** stacked

the highest gains in TV antenna history

**The BIG 10 — with 10 Terrific Features!**

- 10 Elements — more signal, less noise, less rear pickup.
- Highest gain of any Yagi ever developed.
- Over 10% more gain than any 8 element Yagi.
- The antenna can be stacked, with 70% additional gain over single bay.
- Includes the famous Z-match system.
- You don't pay for stacking here.
- Excellent SWR when match is off installation.
- "Beam Guard" to prevent undesirable "beams" which cause picture flicker.
- Two piece "Jaw-Lid" construction for simplified erection, handling, and installation.
- Completely preassembled.

Low Band  
High Band

- The original fan antenna
- The most widely used VHF antenna in the nation
- The highest gain broad-band VHF antenna yet developed

there is only **one**  
**SUPER FAN**

and  
**CHANNEL MASTER**  
makes it!

Now available in seamless or lattice tubing

And... for complete VHF-UHF coverage...

Channel Master Tech  
Introduces a VHF Super Fan with an additional 100 triangular dipoles

- Complete VHF-UHF coverage
- 82 dBSensitivity Performance (10)
- No wiring

**CHANNEL MASTER'S**  
**ULTRA FAN SERIES**  
Single Model 412 Stacked Model 412



## SIGN UP/Renewal form

Name \_\_\_\_\_

Address \_\_\_\_\_ Apt # \_\_\_\_\_

City \_\_\_\_\_ State/Prov \_\_\_\_\_ Zip \_\_\_\_\_

Country \_\_\_\_\_ Interests: TV ( ) FM ( ) 30-50( ) Weather( )

email address \_\_\_\_\_

Sign me up/renew me for: 1 year ( ) 2 years ( ) More ( )

Yearly dues \$24 (US), \$26 to (CANADA), \$10 (Electronic VUD)  
(Students get a discounted rate of \$15 yearly for the paper VUD.)

**Mail your dues to: WTFDA, P.O. Box 501, Somersville, CT USA 06072**

**Make your checks/money orders payable to: WTFDA**

**And *thanks* for your support of the WTFDA!**

Return this form with your dues or make a copy of it and return that.

### WTFDA BOARD OF DIRECTORS

Mike Bugaj, use the WTFDA Mailing address listed below	mbugaj@snet.net
Doug Smith, 1385 Old Clarksville Pike, Pleasant View, TN 37146-8098	w9wi@w9wi.com
Greg Coniglio, 11825 Genesee St., Alden, NY 14004	wgrc@rochester.rr.com
Bruce Hall, 5 Stirton Ave., Brantford, ON N3T 1E2	dbruceaa@hotmail.com
Keith McGinnis, 6 Ritter Road, Hingham, MA 02043	longwave@comcast.net

\*\*\*\*\*

#### THE MAILBOX and all general club correspondence:

Mike Bugaj at WTFDA, PO Box 501, Somersville, CT 06072	mbugaj@snet.net
--	-----------------

#### TV NEWS

Doug Smith, 1389 Old Clarksville Pike, Pleasant View, TN 37146-8098	w9wi@w9wi.com
---	---------------

#### FM NEWS

Chris Kadlec, 3860 Shorewood Dr., Fremont, MI 49412	ckadlec@beaglebass.com
---	------------------------

#### PHOTO NEWS

Jeff Kruszka, 12516 Short Springs Dr., Pearland, TX 77584	jkruszka@sbcglobal.net
---	------------------------

#### EASTERN TV DX

Nick Langan, 1040 Riverview Dr., Florence, NJ 08516	nick.langan@gmail.com
---	-----------------------

#### WESTERN TV DX

Dave Williams, 3525 SW Timber Ave., Redmond, OR 97756	beansdad@bendcable.com
---	------------------------

#### SOUTHERN FM

John Zondlo, 4009 Driftwood Cir., Yukon, OK 73099	sfm@fmdxweb.com
---	-----------------

#### NORTHERN FM

Keith McGinnis, 6 Ritter Rd., Hingham, MA 02043	longwave@comcast.net
---	----------------------

#### TV and FM STATISTICS

Fred Nordquist, 147 Travis Hill Road, Moncks Corner, SC	nordquis@homexpressway.net
---	----------------------------

#### 6 METER/2 METER

Peter Baskind, 3225 Forest Hill-Irene Rd, Germantown, TN 38138	n4li@arrl.net
--	---------------

<u>WEBSITE</u> Tim McVey Webmaster <a href="http://www.anarc.org/wtfda/">http://www.anarc.org/wtfda/</a>	tkmcvey@erols.com
--	-------------------

SEE IT IN **C O L O R**  
**the eVUD!**



**THE WORLDWIDE TV-FM DX ASSOCIATION  
THE VHF- UHF DIGEST  
P.O. Box 501, SOMERSVILLE, CT 06072**

Opinions expressed in this publication are those of the individual contributor and do not necessarily reflect the views of the publisher or board of directors. We reserve the right to edit material to meet publishing standards. Unless previously agreed upon in writing, all material submitted for publication in the VHF-UHF Digest becomes the property of the WTFDA. Reproduction of material from the VHF-UHF Digest without permission of the WTFDA is prohibited. Individuals and other organizations are granted such permission providing proper credits is given to the source.



***Established 1967***



## **FIRST CLASS MAIL**

**NOW! JOIN AND RENEW USING PAYPAL!**

Now you can pay for your dues by check, money order and ONLINE with Paypal! If you have a Paypal account you'll be done in a matter of seconds! Pay at our Paypal webpage at <http://fmdx.usclargo.com/join.html> or send your dues to [mbugaj@snet.net](mailto:mbugaj@snet.net)