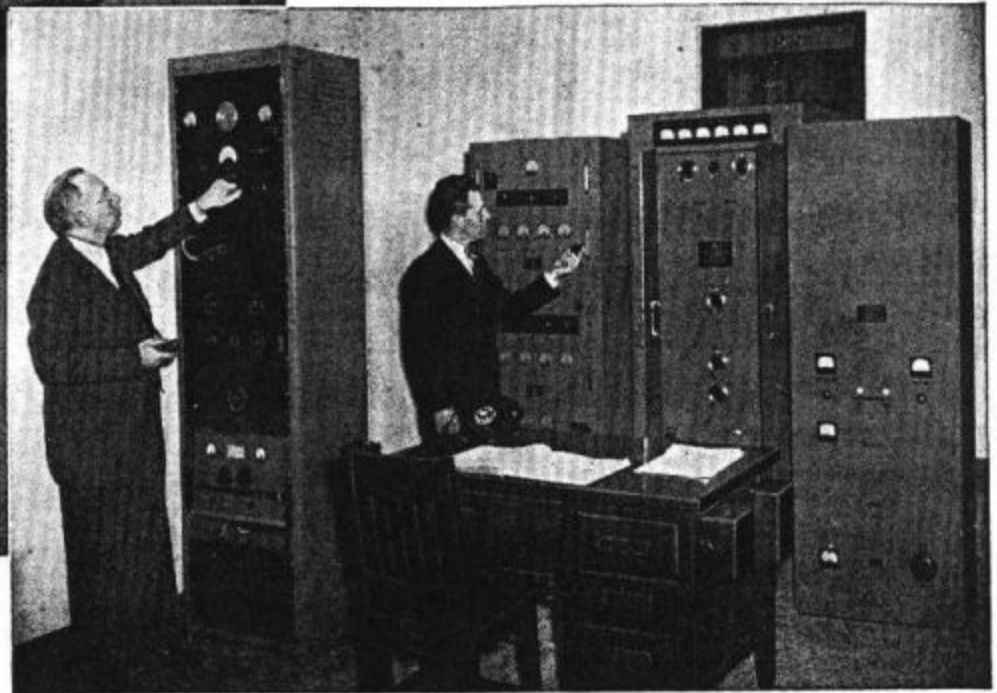
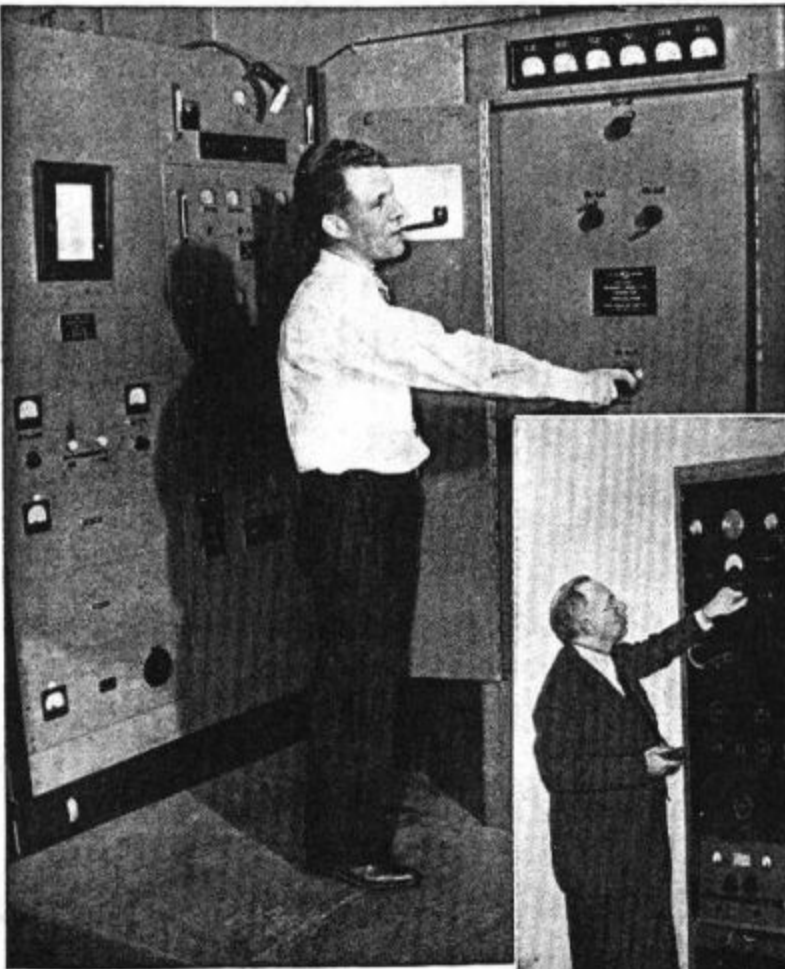


# W2XQR

## Broadcasts Concert Music on FM

RUSSELL D. VALENTINE

Specially Written for *Radio-Craft*



Above—Russell D. Valentine, chief engineer for WQXR, New York, and its FM affiliate, W2XQR, keeps an eye on FM operations. Right—John V. L. Hogan (left) and Russell D. Valentine, the engineers responsible for W2XQR, line up the FM transmitter atop New York's Chanin Building.

**A**LTHOUGH it has been operating for less than three months from its new home, about seven hundred feet above sea level from atop New York's Chanin Building, W2XQR, New York, has already shown results which justify the belief of its founder, Radio Engineer John V. L. Hogan, that a major FM station, specializing in *concert music*, would find rapid acceptance among New York listeners.

W2XQR was the first FM station directly affiliated with a standard broadcaster in the New York area, and its parent station, WQXR, was the first in this area actively associated with the new FM technique.

But, because it was located rather unfavorably in Long Island City, where it had been established for purely experimental purposes, it was not until December 15, 1941, that W2XQR really began functioning in a way which services its community adequately. On that date, it began broadcasting from the 54th floor of the Chanin Building at Lexington Avenue and 42nd Street.

The new location gives W2XQR a radiation increased about *sixteen* times over that of its former site, despite the fact that the station still operates at 1,000 watts. Shortly, we hope, we shall increase W2XQR's power to 10,000 watts and begin use of our permanent call letters, W59NY, with full commercial operation.

WQXR and W2XQR have made FM history in several ways. WQXR "fed" its programs of good music to the first FM station, Major Armstrong's W2XMN in Alpine, N. J., and thus became the first station to have its programs and artists heard on the new band.

In the meantime, Mr. Hogan, president of

the Interstate Broadcasting Company and an internationally famous radio engineer and inventor, applied for an experimental FM license of his own. On October 3, 1939, the construction permit for that station was granted by the FCC. A transmitter was installed at once at Mr. Hogan's laboratory in Long Island City. Broadcasting from W2XQR began on December 11, 1939, making W2XQR the first local FM station to begin regular programming on the new band.

Because fine music, played through transcriptions and by artists in person, had proven such successful program material for WQXR, the plans for the operation of W2XQR, from the beginning, were drawn around the idea of providing, through this improved transmission technique, more and more programs of fine symphonic music.

FM, making noiseless and faithful reproduction of tones and overtones possible over larger areas for a given amount of power, is most ideally suited, we find, as a medium for the transmission of good music, because in good music *exceptional fidelity* is required.

From these early days of experimental FM operation, W2XQR attracted an increasingly large audience to its broadcasts of WQXR's musical programs each evening, although the need for increasing its coverage began to make itself felt.

At the same time, WQXR "crusaded" for public recognition of frequency modulation. Back in September of 1939, at the time when no one but radio engineers realized the possibilities of the new invention, WQXR was broadcasting the "Treasury of Music" programs, sponsored by Stromberg-

Carlson, and on that series, was presenting the first messages to the public about FM. These were, incidentally, the first advertising messages on FM used anywhere.

Later, Stromberg-Carlson and WQXR cooperated to broadcast the first commercial program over a group of FM stations. This was organized on November 28th of last year, and has been operating several nights a week ever since when the "Treasury of Music" program is on the air, from 7:30 to 8 p.m. WQXR originates the program and feeds it to W2XQR and W2XMN. W2XMN in turn *beams* the program to W65H (FM station) in Hartford, Conn.

W2XQR, now, as it awaits its commercial license and increase in power, continues to broadcast WQXR's programs over 45.9 megacycles from 5 to 10 p.m. daily. Most of these programs are musical or news commentary. W2XQR was probably the first FM station to broadcast a full symphonic program when it, along with WQXR, on November 27, 1939, transmitted the NBC Symphony Orchestra playing from the stage of Madison Square Garden.

The rapid public acceptance of frequency modulation, and the increasing interest being shown through sale of receivers, mail received at W2XQR and through other sources, makes W2XQR's future a bright one. Mr. Hogan, one of the earliest entrants into the FM field, has said on many occasions that "FM has demonstrated its ability to render an excellent broadcast service. Its future now depends almost entirely upon its acceptance by the listening public."

There is no longer any doubt about that acceptance, even though FM is still supplementary to regular broadcasting service.