

Vhf-Uhf DIGEST

The Official Publication of the Worldwide TV-FM DX Association

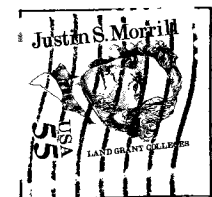
JANUARY 2000

HAPPY MILLENNIUM!!!

Logos include: KINCOM 104, Country 105 MDX 92.1, Q-94FM, MIX 99.9, CITE 107.5 FM, KEZR FM, KNDR, KLZ FM, KSKV 32.1, KOTB, KINE 105.1 FM, KRCC 91.5-FM, KQ 106, KCEP FM 88.1, KRSL/KCAY, K-LAW 101, WNUA 95.5, KIIM 99.5, KRST 92.3, Kony 101.5, KNUE 101.5, KRBZ 108, MISS 103, ALABAMA 100, and 100.



WORLDWIDE TV-FM DX ASSOCIATION
PO BOX 501 - SOMERSVILLE, CT 06072



OPINIONS EXPRESSED IN THIS PUBLICATION ARE THOSE OF THE INDIVIDUAL CONTRIBUTORS AND DO NOT NECESSARILY REFLECT THE VIEWS OF THE PUBLISHER OR BOARD OF DIRECTORS. WE RESERVE THE RIGHT TO EDIT MATERIAL TO MEET PUBLISHING STANDARDS. UNLESS PREVIOUSLY AGREED UPON IN WRITING, ALL MATERIAL SUBMITTED FOR PUBLICATION IN THE WF-UHF DIGEST BECOMES THE PROPERTY OF W.T.F.D.A.

REPRODUCTION OF MATERIAL FROM THE WF-UHF DIGEST WITHOUT PERMISSION OF W.T.F.D.A. IS PROHIBITED. INDIVIDUALS AND OTHER ORGANIZATIONS ARE GRANTED SUCH PERMISSION PROVIDING PROPER CREDIT IS GIVEN TO THE SOURCE.

ANNUAL DUES: \$24/year: U.S. addresses
\$26/year* to Canada
\$38/year* for airmail service to all other
U.S. funds) countries. (*Payable in U.S. funds)

first class mail

11/2000
BILL NOLLMAN
11 HIDDEN OAK DR
FARMINGTON CT 06032

06032-2735 06

06032-2735 06

WORLDWIDE TV-FM DX ASSOCIATION

Serving the VHF-UHF Enthusiast

THE VHF-UHF DIGEST IS THE OFFICIAL PUBLICATION OF THE WORLDWIDE TV-FM DX ASSOCIATION, DEDICATED TO THE OBSERVATION AND STUDY OF THE PROPAGATION OF LONG DISTANCE TELEVISION AND FM BROADCASTING SIGNALS AT VHF AND UHF. WTFDA IS GOVERNED BY A BOARD OF DIRECTORS: TOM BRYANT, GREG CONIGLIO, BRUCE HALL, DAVE JANOWIAK, AND BILL THOMPSON.

Editor/Publisher: Bill Thompson

Circulation: Mike Bugaj Comptroller: Dave Janowiak

Editorial Staff: Tom Bryant, Greg Coniglio, Victor Frank, George W. Jensen, Jeff Kruszka, Fred Nordquist, Doug Smith, Thomas J. Yingling, Jr., John Zondlo

ANARC Representative: Jim Thomas Back Issues: Dave Nieman

Original Cover Design: Harry Hayes

FROM THE STAFF:

IT'S HERE (almost)... After months of planning, Jim Thomas and the club's marketing team have the "TV STATION GUIDE" ready for the presses. Doug Smith compiled more than 250 pages of maps of transmitter locations along with other data. John Ebeling will be handling distribution. Be on the lookout for a sample page and details of the guide's contents in the February VUD. Members who have previewed the maps are unanimous in their praise. **Now, the best news. Between February 1 and March 1 the guide will be available at the special pre-publication price of \$17.95.** After March 1 the cost goes up to \$19.95 for hobbyists and \$23.95 retail [prices include shipping and handling]. Please mail your order (including payment) to WTFDA at the club's Somerville, CT address.

SKIP BRIEFS: Between the end of the 'normal' skip season and mid-December there have been an unusually high number of E-skip loggings. A British DXer, quite by accident, taped audio on U.S. channel 6; and while the propagation mode is uncertain, the catch was confirmed to be WECT-tv (NC). While none of the meteor showers produced much useable DX, there has been a lot of east coast to west coast F2 activity just below channel 2. There's more detail on all of these items elsewhere in this issue.

WTFDA WEB PAGE: You're invited to take a look at our updated web site. Webmaster Tim McVey has put a lot of time into re-working the original data, adding color and java features, and giving the overall appearance a sharp new look. The 'home' page was intentionally kept simple to enable fast loading. Be sure to check the links. There is a lot more material to be added as time permits. The URL has changed to <<http://www.anarc.org/wtfda/>>. Again, thanks to David Austin for his service as webmaster. Thanks also to Ralph Brandi of ANARC for assisting Tim McVey make the transition. [Here's a reminder for those who have links to the club page on their personal pages; be sure to change the URL.]

SPEAKING OF ANARC: The Association of North American Radio Clubs will again host the "Winterfest" DXer gathering in Kulpsville, PA March 10-12. More information is available at <<http://www.trsc.com/winterfest.html>>.

WANTED: ETVDX Column Editor. Please apply to any member of the Board of Directors. This is an excellent time to assume a post of this nature as the reports are generally quite sparse at this time of the year. You'll get plenty of advice and support from other editors.

2



WTFDA MAILBOX

P.O. Box 501
Somerville, CT 06072

Mike Bugaj

lkon@netcom.com

HAPPY Y2K...JANUARY 2000

Well, its January and here we are. This is the month that comes around once in a thousand years. How am I ever going to get used to writing 2000 on my checks? I can see where I will be voiding out quite a few of them until my hand remembers what year it is. Hope everyone has a really fine New Year, free from any Y2K glitches. It's time to tell you the names of the two newest WTFDA members. Welcome aboard to



Harley Steward of Erie, PA. And next we have Jorge Aloy in La Plata, Argentina who joins the club thanks to an anonymous WTFDAer who read about the Buddy System in the VUD. We are really glad to have both of you in the club. I hope you enjoy it here. Moving now to renewals, we have Marvin Shults, Lenny Goldberg, Matt Sittel, John Jefferson, George Rogers, John Adams, John Rieger, Mike Collins, John Kosinski, Randall Trapp, Dave Pomeroy, Mituhiro Hukunaga, David Wurl, Rick Shaftan, Ted Liszewski and James Roggentine. Thank you all for being here. And thanks to everybody who subscribed to the WTFDA email list. Currently (Dec 12th) we have 80 folks on the list, about 70 of them WTFDA

members. I think most everyone is finding this list an invaluable aid to their enjoyment of the hobby, besides being lots of fun. I would encourage anyone with a computer who has not yet done so to consider subscribing. I only have two pages here to do what I do, and we have only so many pages in the VUD. But on the WTFDA list we can really go deep into things and explore topics in a much greater detail. You will be surprised at what you see there. Also, we are now into year three of IRC Chat! Who would have believed it! If you haven't been on IRC for a while, why not drop in for a little while and say hi. The usual gang of die-hard chatters is almost always there, and we'd like to see everyone old and new drop in for a while.

ANYBODY NEED A DISH? This came in from Rich Wertman posted on the WTFDA list regarding parabolic orders from WTFDA members: "In a previous letter, I mentioned that if I can get an order for 100 pieces (100 antennas-mb) Antennacraft will make them. I estimate the cost to run from \$100-\$115 plus UPS shipping. I suggest those of you who don't want to be stuck with a corner reflector or a bowtie the rest of your lives consider ordering one, or maybe two, just in case the first one blows down. So far response has been low...only a few responded." Rich also goes on to mention that Antennacraft will only do this if the order is for one size antenna and one size only. So, Rich cannot order a mixture of 5 foot and 7 foot dishes. However, if you need a 5 foot dish please email Rich at Rwantenna@aol.com and he will try to help you find one.

GREAT LOOKING VUD! From Bruce Elving: "Just a note to commend on an excellent VHF-UHF Digest! I could not put the issue down, and spent about an hour and a half with it at that sitting. I was glad to see Tom Yingling's QSL column back after over a year--even if I was the only reporter!

Bill Hepburn's article on tropo DX that was reprinted off the web was excellent. I spent most of the day Nov. 11 enjoying WIAA *88.7 Interlochen MI, here at my location west of Duluth MN. I kept pondering if it was tropo scatter, enhanced tropo or tropospheric ducting. It was always in, but signal varied from excellent stereo to almost nothing. Nothing else was heard at that distance. If I pay more attention to 88.7 I may find this to be a "regular" at 560 km.

Bill Draeb failed to note on p. 15 that WAUN 92.7 Kewaunee IL finally embraced stereo! This was one of the area's long monophonic holdouts. I had to call engineer Lyre R. Evans of Green Bay to confirm its stereo status. (Bruce's comments continue on the next page).

IRC CHAT...Tues/Fri nights @10pm EST on IRCnet, channel #wtfidx. Be there!
Topica.com, named one of 100 best websites by PC Magazine.
WTFDA@topica.com...it's DX, friends, discussion and fun! Subscribe today!

3

I think the filter article by Bruce Carter was a high point of the issue. I have been told, however, that the grounds are the two outer leads of the filter, and it makes no difference how they are set in the socket. And I take issue with the statement that DXers are only interested in the FM signal component only through the stereo range, not the 57 through 99 kHz SCS range. Not true! There are several of us who regularly DX subcarriers! I have found the use of 110 kHz filters does not rule out SCS. But I usually use "wide" mode in my tuner for SCS listening. Filters can be changed from the top of the radio circuit board, as is necessary when replacing the single filter in the G-E Superadio. I have never been able to lift that board and unsolder/solder from the under side. One has to cut the old filter near the top of the legs, saving enough of the three legs to solder a new filter in place. But I am glad to have a handy reference to the Toko filters' numbers.

88.75, or BELIEVE IT OR NOT! Here is one of the most bizarre DX tales ever told. And the most amazing thing about it is that it's TRUE! If you are on the WTFDA list you already know about this, but if you are not, you are in for a treat. This is the story of one Mark Hattam. Mark lives in London and is a systems manager for BBC News. He is also an FM DXer.

Mark tends to FM DX down at the bottom of the FM band due to the terrible congestion on the rest of the FM band in London. 87.9 is a good DXable skip frequency in London and Mark had his tuner set there all summer looking for skip (yes, there ARE stations on 87.9 in Europe...and high power ones at that!) Well, on Monday, Nov 29th, 1999 at 11:15am local time in London, Mark heard something while parked on 87.7. It was a meteor burst, and he got it on tape. He put it up on the web and I (and a lot of other people) listened to it. It said, "...we are feeling right now at 5:36. You're looking at a live picture...our guest...from our channel 4 studios..." That's what I heard. And Mark sent out an SOS to myself, among others, and I posted this on the WTFDA list, and he posted it on various reflectors and newsgroups.

What was it that Mark heard at 11:15am London time? Well, Mark heard U.S. channel six audio! What he heard was one meteor burst, with, for a short time, another burst (...our guest...) overriding it. And believe it or not, the two words, our guest, have been positively IDed by WECT-6's chief engineer in Wilmington, NC as their evening news anchor who also does their morning show.

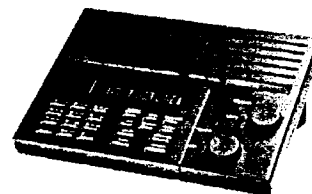
Now what about the rest of his reception? A person in Los Angeles came up with the answer. The audio, as I heard it, does not say "channel 4 studios", but "channel 4 seismo-cam". The man's voice is Kent Schocknek of KNBC-4 in Los Angeles. What we heard was a probable videotape of an earthquake occurring in Los Angeles. This may have been part of a local NBC outlet's early morning news, or possibly part of a documentary on earthquakes on some PBS station. At this time nobody knows.

So how did that signal make it all the way to England? It's anybody's guess, but Mark speculates. "There is a big high pressure over the SE USA, and it was 6:15am, i.e. in the pre-dawn period. I'd have to assume there was an inversion or duct over the sea which carried the signal a fair way across the Atlantic. When that ran out, the signal became line of sight to the horizon and perhaps just needed one meteor ping to get it here, though two is also possible. There were a fair number of "pinging" meteors all that day."

Mark's incredible reception has resulted in two major discoveries. The first discovery is to our European FM DX friends.. They have just discovered that our channel 6 audio is possible by multi-hop Es to Europe. They have never really given this much thought before. The second discovery is to DXers in the eastern USA. That discovery is that 87.9 is a very probable frequency for multiple hop Es from Europe! This frequency is completely empty in the United States, and is the home to many high power FM stations on the continent (50kw and over). Spain, France Portugal and Germany are all possible with multi-hop Es!

DXers in the WTFDA, working with FM DXers in the British TV-FM Circle, now are seriously looking for and awaiting the time when Es signals from one continent are received on the other. It may not be as difficult as once thought. And it has just been done by MS.

LAST BUT NOT... Lots of F2 in the air. Los Angeles to New England has been common. We have more about that in another report in the VUD. WNEW-102.7 began IBOC testing in early November. Karl Zuk described the sound of the datastream on the adjacent frequencies of 102.5 and 102.9 as a "Bee Attack". Karl also said "it sounds like hat SCA injection would be if it were heavily compressed at 80%. Another nail in the DX coffin." Joe Fela also commented "...Sunday morning around 0100 with the DX coming in, it was very obvious and annoying both above and below 102.7" and noted that using a MR-78 in narrow mode did not even help the situation. Recently WNEW has discontinued IBOC testing. TEP (Trans Equatorial Propagation) has been reported from South Africa into Europe, and also by DXers in Brazil and Argentina into the Caribbean region. Some TEP audio clips are available for listening on the 4th eb. The audio levels are amazing for 5,000 mile skip. That's it, be good and WRITE! -Mike



WTFDA ScanLog 30-50mhz loggings!

F2 HITS THE U.S.A.

It has been a long time coming, but F2 skip has finally appeared on the scanners of WTFDA members on both coasts. The Thanksgiving holiday gave most of us a four day weekend, and luckily the F2 layer co-operated giving us skip for all four days. Bill Hepburn wrote that this was the strongest F2 he had heard in years. Randy Miltier also picked up some east coast stations on 30mhz via F2.

November 25, Thanksgiving Day, was a great day for F2 on the east coast. F2 began around 12:30pm here in CT and stayed in until 1830 with six hours of the California Highway Patrol. CHIPs were heard on the following frequencies:

- 42.6200 mentioning Fremont, Oakland
- 42.4400 mentioning Culver City, West Los Angeles and possibly another transmitter
Breaking in from northern Calif (mentioning Delano and San Francisco)
- 42.1200 One station IDing as Bishop, another with much LA/OC addresses.
- 42.4200
- 42.4000 Two stations, one Mt. Shasta, another Ventura, mentioning Simi Valley.
- 42.4600
- 42.5200 station IDing as LA info, LA dispatch.
- 42.5400 mentioning Monterey, Hollister
- 42.6000 station IDing as Golden Gate.
- 42.3400
- 42.0200 briefly at 1700. No idea who.

More F2 on Nov 26th. French 2-way stations on 35.1500, 35.3600, 35.2000, 35.2650. This was in at 1100 tune-in and out soon thereafter. Nevada police heard on 42.8800 with NV Highway routes and Las Vegas addresses. This opening quit at 4:45pm, earlier than on the 25th.

Saturday the 27th brought more F2 beginning around 10am tune-in. 33mhz was full of Spanish on 33.4250, 33.3750 and 33.3750, and Southern USA on 33.6000 and 33.3750. Some Calif F2 was heard, but less than the previous two days.

The 28th brought more F2, with Spanish on 33.4750 and 35.3400 and December 3rd had much Spanish. 42.1200 had Spanish instead of the Calif police. NV was in on 42.8800 but Spanish was heard on 42.8200 and 42.4200 around 2pm EST.

On Dec 4 Fred Nordquist posted on the WTFDA list about 2 stations QRming each other on 30.4500. One turned out to be a second harmonic of BBC shortwave audio. The other IDed as Cleared Creek Munition Control, most likely Ft. Hood TX via F2. Jeff Kadet posted about the 48.2504 video buzz from Equatorial Guinea being widely heard in the Southern U.S.

Some Los Angeles area F2 was heard again on Dec 7th around 4pm, and on the 8th Spanish was noted here in CT on 42.140, El Centro was heard on 42.920, Bakersfield on 42.600, and two stations QRming each other on 42.880 were NV police and CA Highway Patrol. 42.940 was noted with heavy traffic, noted on a frequency list as being a link from CA to NV highway patrol units. Bill Nollman noted Ft. Hood TX on 30.400 earlier in the day on the 8th.

December 8th brought San Diego HP on 42.920. The 11th brought in a pager on 33.340 calling itself Meridian Mail. Also around 1400 Jeff Kadet posted an F2 alert, noting that hams on the East Coast and West Coasts were talking to each other on 50mhz. He asked that ch2 be monitored for F2 skip, but nothing unusual was noted here. -MB

WTFDA SPECIAL REPORT

Greg Coniglio
90 Slate Creek Dr. #3
Cheektowaga, New York 14227
Coniglio@localnet.com
www.geocities.com/~warcr

1999 FM E-Skip Summary

"ending the millenium on a positive note"

THE TOP 10 SKIP DAYS OF 1999:

DATE	TOT	#REP	AVG	MUF	HIGH	TV RANK
JUNE 26	659	19	34.70	107.9	88	3
JULY 6	579	23	25.17	107.9	113	9
JULY 7	228	18	12.67	107.9	60	8
JUNE 20	205	13	15.77	107.9	71	-
JULY 4	197	13	15.15	107.9	39	7
MAY 23	176	13	13.54	107.9	58	-
JULY 1	136	15	9.07	106.7	31	2
JUNE 17	102	7	14.57	107.9	53	-
JUNE 23	100	9	11.11	107.5	26	4
JUNE 18	85	11	7.72	105.9	17	5

KEY:
TOT: total no. of FM loggings
#REP: number of DXers reporting skip
AVG: average number of loggings per DXer (tot / rep)
MUF: maximum useable freq.
HIGH: the most loggings reported by one DXer for that day

KEY:

TOT: total no. of FM loggings for month
#DAYS: no. days with FM Es that month
AVG: average number of loggings per DXer (tot / days)
AVG MUF: average MUF for month
RANK: This month/year's ranking compared to the past 19 seasons.
PCT: This year's # of loggings compared to the average for that month over 1981-1999

SKIP RESULTS BY MONTH:

MONTH	TOT	#DAYS	AVG	AVG MUF	RANK	PCT
JANUARY	8	2	4.00	102.00	-	0.0%
APRIL	0	0	0.00	-	19 th	0.0%
MAY	409	16	25.56	100.50	12 th	74.0%
JUNE	1415	16	88.49	102.70	8 th	97.3%
JULY	1319	17	77.59	102.70	9 th	118.5%
AUGUST	27	4	6.75	93.85	18 th	13.4%
TOTAL '99	3178	55	57.78	101.39	9th	93.6%

SEASON BREAKDOWN BY MUF

MUF	Openings	% season	JAN	MAY	JUNE	JULY	AUGUST
107.9 +	0	0.00%	0	0	0	0	0
Up to 107.9	10	18.18%	0	4	3	3	0
Up to 105.1	22	40.00%	0	5	8	9	0
Up to 100.1	30	54.54%	1	9	10	10	0
Up to 98.5	33	60.00%	2	9	11	11	0
Up to 96.1	39	70.90%	2	10	13	13	1
Up to 92.1	54	98.18%	2	16	16	17	3
Up to 88.1	55	100.00%	2	16	16	17	4

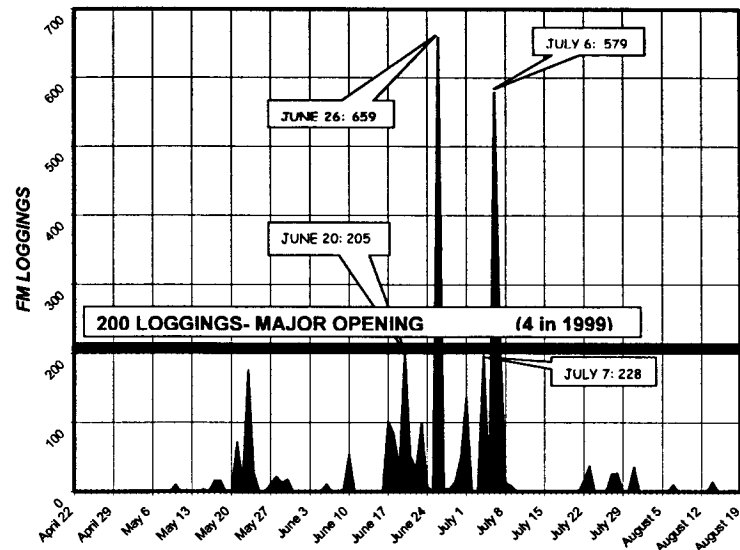
KEY:

MUF: Maximum Useable Frequency for FM skip
OPENINGS: The number of days on which FM skip MUF reached that high in 1998
% SEASON: The percentage of total FM skip days that saw an MUF this high
MAY, JUNE, JULY, AUGUST: The number of days during this month on which the MUF got this high

Skip loggings are taken from DX reports in Northern and Southern FM DX columns, up to and including the December 1998 VUD. Rankings are in comparison to the period 1981 - 1999 (the past 18 years).
NOTE: Many thanks to Roy Barstow, who kindly provided VUDs from the period 1972 - 1979 to add to my records. I have completed going through most of these VUDs, but have not incorporated them into the all time records yet. The updates may appear in another Special Report soon. If you have VUDs in the period 1979 - 1982, before 1972, or August 1978 and August 1979, and are interested in lending

SPECIAL REPORT - 1999 FM E-SKIP REPORT

FM LOGGINGS PER DAY CHARTED:



E-SKIP TOTALS FROM RECENT SUMMERS-

YEAR	TOTAL	# DAYS	AVER	APR	MAY	JUN	JUL	AUG	SEP
1999	3178	55	57.78	0	409	1415	1319	27	0
1998	2361	60	39.35	46	488	1101	366	330	0
1997	1371	45	30.47	0	66	672	349	284	0
1996	2743	67	40.94	3	489	959	1180	104	0
1995	3746	74	50.62	2	406	891	2249	143	0
1994	8567	84	101.99	227	1454	5158	1574	153	1
1993	2688	55	48.87	0	57	1762	809	46	11
1992	2674	44	48.61	0	840	1523	140	99	0
1991	4003	78	51.32	0	483	1064	1929	356	10
1990	4980	68	73.24	0	2019	1603	1258	74	13
1989	3848	74	52.00	1	581	550	2031	531	0
1988	1965	67	29.33	0	357	1186	307	33	0
1987	4922	82	60.02	59	209	2661	1686	300	0
1986	2951	73	40.42	21	802	978	469	573	18
1985	1786	64	27.91	0	170	842	614	11	66
1984	1639	87	18.84	40	550	515	332	72	11
1983	3856	76	50.74	0	373	1525	1714	112	0
1982	4333	74	57.77	20	425	2038	1508	334	0
1981	3366	59	57.05	1	424	1085	1625	228	0

The final skip season of the millenium was not a bang, but nor was it a whimper. Compared to the strong skip seasons during the late 1980's and early 1990's, it wasn't that great, but on the other hand it was certainly the best season since 1995. What made the season was a strong showing right during the middle. April and May, and late July & August, were a disappointment. However, the period from June 26 - July 7 provided some outstanding openings, especially July 6th and June 26th, both of which will rank among the top openings of all time. DXers in many areas had high MUFs those openings for an extended period of time. The top three openings, and five of the top ten, came from that period. In fact, if you extend the range back a week to June 17 - July 7, nine of the top ten openings fall within that period. So on July 7, 1999, the season was looking to be a great one. Unfortunately, the bottom dropped out after that, making the year close out as "slightly above average", but better than recent years.

Special Report: 1999 TV Es summary

Top openings:

Date:	Total:	Reporters:	Average:	MUF:	High:	FM Rank:
19 June	95	14	6.79	6	18	
1 July	75	9	8.33	FM	29	7
26 June	74	12	6.17	FM	21	1
23 June	73	15	4.87	FM	20	9
18 June	72	15	4.80	FM	14	10
10 June	68	12	5.67	6	14	
4 July	63	9	7.00	FM	22	5
7 July	56	11	5.09	FM	11	3
6 July	50	13	3.85	FM	12	2
22 June	49	9	5.44	6	13	

Total: Total number of Idd Es loggings made during 1999 and reported to Eastern or Western TV DX.

Reporters: Number of DXers reporting at least one Es signal (including uniDs) on this day.

Average: Average number of loggings per reporter.

MUF: Highest channel or frequency on which Es signals (not necessarily TV) were reported on this day.

High: Maximum number of Idd TV Es loggings by any one reporter.

FM Rank: The rank of this date (in total number of Es loggings) in Greg Coniglio's FM Es summary.

Monthly Breakdown:

Month:	Es Loggings:	Es Days:	Loggings per day:
January	23	9	2.56
February	5	3	1.67
March	16	4	4.00
April	4	2	2.00
May	259	20	12.95
June	706	24	29.42
July	470	15	31.33
August	80	3	26.67
September	3	1	3.00
October	0	0	0.00
November	6	4	1.50
December (1998)	33	11	3.00

Annual Breakdown:

Year:	Es Loggings:	Es Days:	Loggings per day:
1999	1,605	96	16.72
1998	1,958	139	14.09
1997	1,396	136	10.26
1996	2,954	178	16.60
1995	3,391	160	

Pests:

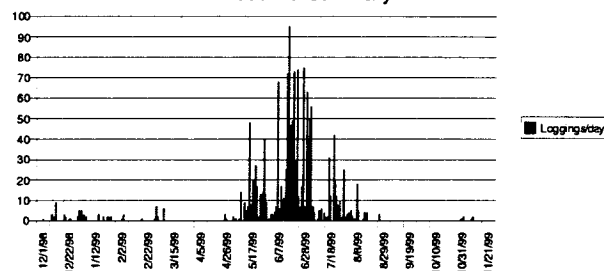
# Loggings:	Stations:
10	Channel 2: WPBT, KWGN
9	Channel 2: KTVO
8	Channel 3: WEDU, KENW
7	Channel 2: WESH, WCBF, WDIQ, CKCK, KMID, KGAN, KNAZ Channel 3: KSWK, KMTV, KOTA Channel 4: WFOR Channel 5: WRAL
6	Channel 2: WMAR, KPRC, KDTN, WUND, WBRZ, WFMY Channel 3: WFSB, KIMT, KLNE Channel 4: KDBC, KPRY

Pests, by channel:

Channel:	Stations:	DXers:
2	WPBT, KWGN	10
3	WEDU, KENW	8
4	WFOR	7
5	WRAL	7
6	KPLO, KSVI	3

This year, "pests" were calculated by how many different DXers logged the station in question at least once. The idea was to show how common certain stations are around the country, rather than which stations are most often seen by more active (or luckier!) DXers.

1999 Es Summary



1999 had the fewest Es days reported of any year since I began keeping statistics; the total number of loggings was also down from 1998, though not as bad as 1997 or 1993.

On the other hand, I think the Es we did have was of higher quality. Bob Seybold reported skip to channel 13 on July 5th. Russ Miller and Roy Barstow both reported trans-Atlantic skip (on three different channels, to four different countries) on four days. Mike Cherry reported trans-Pacific skip to eastern Russia on July 9. Mike also logged Alaska on three days. And Frank Merrill logged a 230-watt translator on channel 6.

Here's hoping for a happy, skip-filled holiday season for everybody!

Douglas E. Smith, W9WI
1385 Old Clarksville Pike
Pleasant View, TN 37146-8098
w9wi@bellsouth.net



MILLENNIUM CRYSTAL BALL

(Based on vibes, gut feelings, intuition, and a little common sense, it seems appropriate to venture boldly (and probably foolhardily) into the hazy world of predictions. For what it's worth, here's what I think might happen as broadcasting transitions into the new century.)

By: Tom Bryant

Assuming that you are reading this, my first prediction has already come to pass. That is (was) that the Y2K bug turned out to have a lot less impact than the hype promised; and that while there were a few minor glitches, no serious problems resulted.

HDTV will be handed a major setback in the first half of this year. Amid fears of serious problems anticipated with the approved system, the FCC will put a 'freeze' on all HDTV development until further field testing is undertaken. With opposition to the current system from a large number of broadcasters AND the Pentagon, there is bound to be some sort of action. My prediction is that testing will determine that the European system is superior to our (U.S.) initial choice. This will mean that stations which have invested in digital transmitters will either have to modify them (if possible) or start from scratch. In the long run, this setback will

10

further delay widespread implementation of HDTV; possibly by as much as five years.

Other HDTV thoughts include the possibility that because of the extremely high cost of receivers; and what appears to be vast viewer indifference toward the new technology, the elimination of analog transmissions could easily be as much as 15 to 20 years down the line.

Expect a war between broadcasters and the FCC when the time comes to relinquish analog channels. I'm not a lawyer, but it seems that there are enough loopholes in the terms of this ruling that there is cause for station owners to feel that BOTH of the allocations could possibly remain theirs to use. If that premise gets torpedoed, the next battleground will be a move to swap the digital service back to the "old" channel when it's time to shut down analog transmissions. From what I'm seeing, a lot of stations seem to think this is an option.

A final television prediction. When the curtain drops on analog there will be a lot less stations on the air than at present. My reading is that LPTV will all but disappear, and many small market (full power) operations will shut down. The bottom line simply will not allow HDTV conversion for outlets that are barely paying for themselves at present.

FM (and AM as well) may fare a bit better than television in the switch to digital transmission, mainly because the enormous push that was behind the premature television entry does not seem to be evident where the audio services are concerned. The big reason for waiting in this area is to see if IBOC (In-Band On-Channel) transmission is practical. Considering the already crowded (in some cases overcrowded) status of the FM band, IBOC would solve what station owners and operators perceive as a multitude of problems.

Most broadcasters don't want to change channels or frequencies. They're afraid, among other things, of losing their identity. Also, they are not thrilled about the expense of any more transmission equipment than absolutely essential.

While it was extremely difficult to shoehorn in enough additional television channels to provide an HDTV frequency for every existing full power operation, the task WAS accomplished. There will likely be interference problems as a result; but it is workable. A similar process for either FM or AM is almost unthinkable. Considering

the close proximity of existing transmitters (particularly FM) there are few if any localities where "drop-in" channels could be created.

Where does that lead radio if IBOC doesn't pan out? Look to Canada for the answer.

With the move already beginning, Canada is years ahead of the United States when it comes to broadcasting catching up with technology.

Hold that thought while you consider the following.

Think about it for a moment. Radio transmission is virtually unchanged from its earliest form. Yes, we've done some tweaking and refining since KDKA came on in 1922...or the early FM experiments of the 30s and 40s...but essentially nothing has changed.

The advent of digital technology has already pervaded the recording industry, is making inroads in video production and recording, and is up and running on satellite feeds and some cable companies. Over the air transmission is the last remaining analog step in what can otherwise be an all digital chain.

Now, back to Canada and their approach. Rather than waiting for IBOC to be validated, the governing body set forth a long range plan that will eventually move most if not all audio transmissions to an entirely new chunk of spectrum. Their approach, when fully implemented, will generally put all stations on common ground. There will be no such thing as clear channels, or high power giants.

Without going into a lot of detail, the coverage area for each station is very small compared to what we're used to in the analog world; however with additional transmitters at strategic locations, the system works much like the cell phone network. Thus, as long as you are in range of a tower you have a rock solid signal...which is passed from tower to tower until you reach the end of the coverage area.

The downside of this is coverage in isolated rural areas. I suppose this has been discussed and considered; and I would venture a guess that the opinion was that service is already horrible in the boonies; and that total elimination really wouldn't make much difference.

How something along the lines of the Canadian plan would work for the U.S. is a matter of opinion. Personally it strikes me as making way too much sense to be accepted here.

I don't know how the Canadian regulators overrode opposition by the high-rollers in Canadian radio ownership, but obviously they did. Could it happen here? I suppose, but not without one monster of a political bloodletting.

The likelihood of full power facilities allowing their flea-powered competitors to be elevated to their technical stature is absurd. Not without a fight; and a prolonged run through the court system.

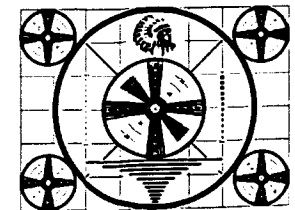
The big guys LIKE being big. Because they are big most of them have enormous financial war chests to fight off encroachment. I suspect every major operator in the country is prepared to dole out huge chunks of cash to the best lawmakers money can buy!

What about DXing all this new digital stuff once it gets here; assuming that it will eventually arrive? Jeff Kadet has already proven that HDTV is DX-able. Based on his UHF findings, the same will hold true for the handful of HDTV stations licensed to channels 2-13. Ditto for FM. AM may be a bit weirder. It's all definitely going to be different. Will it be as challenging, as much fun? I suspect a lot of us will answer no. Perhaps that's because as old timers we are stuck in the era of vacuum tubes and circular test patterns. The younger crowd might not give much thought to the changes...in fact they'll probably enjoy pioneering these new frontiers.

Now...the kicker! My final prediction for the millennium. It causes everything that I've written here to become instantly irrelevant.

While it's not likely that many of us will be around to see it happen, I predict that before the turn of the next century there will be NO terrestrial delivery of signals for the purpose of mass entertainment. It will all (including local insertions) be accomplished either by satellite delivery...or a new method of global transmission yet to be developed.

If you think that idea is far fetched, imagine how totally insane an accurate prediction of today's technology would have seemed in 1922.



11



Jeff Kruszka, Editor
5024 S. Braxton Ave.
Baton Rouge, LA 70817
JKruszka@worldnet.att.net

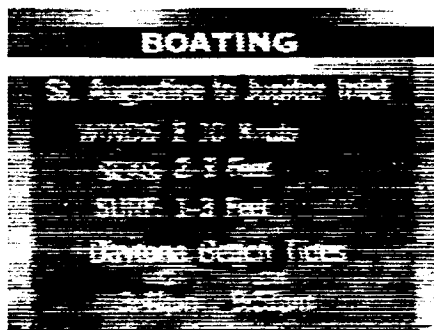
January 2000

WELCOME NEW CONTRIBUTOR! Here's some E-skip photos submitted by Aaron Mitterling of Ft. Wayne, IN. Thanks, Aaron! Hope you'll become a regular contributor. Aaron e-mailed his photos to me, which I printed on Kodak photo paper. You can send me your photos, too, to the e-mail address above.

Equipment: 6-el. RS FM antenna for FM and TV. 1983 RCA color TV, 1997 Orion color TV.



KPRC-2 Houston, TX
969 mi Es seen 6/10/99



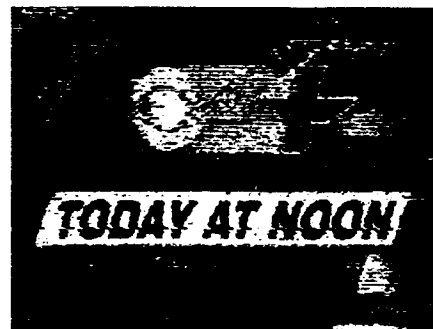
WESH-2 Daytona Beach, FL
851 mi Es seen 6/21/99



WGBH-2 Boston, MA
735 mi Es seen 6/26/99



KMOL-4 San Antonio, TX
1098 mi Es seen 5/30/99



WFOR-4 Miami, FL
1092 mi Es seen 6/21/99



KLBY-4 Colby, KS
693 mi Es seen 7/1/99
"KAKE-10 News"



SATELLITE NEWS

GEORGE W JENSEN
4604 ANNTANA AVE
BALTIMORE MD 21206-4220

I hope everyone's holiday was peaceful, pleasant and joyous. Another short column this month - but changes are coming. First - there are several new birds recently or soon to be placed in orbit -

Satcom C1 - to be replaced by GE 7 AT LAST
Galaxy 10 - location to be announced possibly - Galaxy 9 and SBS 5 - as there is no C/Ku combo at this location of 123 W.

Spacenet 4 will be replaced by GE Americom 4 - C and Ku - this is an aging bird whose Ku capabilities are very limited and will be expanded by the new GE 4.
Galaxy 6 will be replaced by Galaxy 11 - which will give this slot a C and Ku replacement - G6 - has no Ku band.

I now have MPEG2 capabilities with an additional PANSAT 1000 receiver. When I figure out how it works as a slave to the 4DTV - 100's of new channels should be opened up for DX or viewing enjoyment.

Now to the changes - brief though they are.
First - almost all FOX Sports channels are now no longer analog. Don't know where they are. - will keep you informed.
Anik E2 - Ku-band is undergoing a major programming download shift. When this stabilized - I will inform you of programming locations. Jeff Kitsko has been of great help in informing me of these changes. OF PARTICULAR NOTE -
Tele St. Pierre and Micquelon is now downlinked on 4DTV channel 321 in NTSC. I am sure that there are amny DX'ers on the East Coast that would love to have DXed this one on terrestrial DX - but it was in SECAM format with French channelling and less than 1KW ERP.

That's all for this time - see you in 30 - Y2K notwithstanding.

"73's
George

TV News

Douglas E. Smith W9WI
1385 Old Clarksville Pike
Pleasant View, TN 37146-8098
W9WI@bellsouth.net

January 2000
non-commercial station
nc no change

<http://personal.bellsouth.net/~w9wi>

Applications for new stations

These are applications for new DTV stations, showing their analog and digital channels:

AK Anchorage	KTUU 2=>18 KIMO 13=>30 KYES 5=>22 KDMD 33=>32 KTBY 4=>20 KATN 2=>18 KJUD 8=>11 KUBD 4=>13	El Centro Eureka Fresno Hanford Los Angeles Modesto Monterey Ontario Oxnard Palm Springs Sacramento Salinas San Francisco San Jose Sanger Santa Ana Santa Barbara Santa Maria Santa Rosa Stockton 29 Palms Ventura	KVYE 7=>22 KEYC 9=>48 KBVU 29=>28 KIEM 3=>16 KVIQ 6=>17 KFNS 30=>9 KJEO 47=>14 KAIL 53=>7 KFTV 21=>20 KCOP 13=>66 KMEX 34=>35 KUVS 19=>18 KSMS 67=>31 KHSC 46=>47 KADY 63=>24 KMIR 36=>24 KESQ 42=>52 KMAX 31=>21 KCB 35=>13 KTSF 26=>27 KCNS 38=>39 KKPX 65=>41 KMSG 59=>36 KTBN 40=>23 KEYT 3=>27 KCOY 12=>19 KFTY 50=>54 KFTL 64=>62 KQCA 58=>46 KVMD 31=>23 KJLA 57=>49	Key West Lakeland Lake Worth Melbourne Miami Naples Orange Park Orlando Palm Beach Panama City Panama C Bch. Pensacola St. Petersburg Tallahassee Tampa Tequesta Tice Venice W Palm Beach GA Albany Atlanta	WJWB 17=>34 WTEV 47=>19 WWFD 8=>12 WEYS 22=>3 WMOR 32=>19 WPXP 67=>36 WBSF 43=>20 WPXM 35=>26 WLTV 23=>24 WBFS 33=>32 WSVN 7=>8 WTVK 46=>45 WJXX 25=>10 WFTV 9=>7 WRDQ 27=>14 WFGC 61=>49 WMBB 13=>19 WPCT 46=>47 WJTC 44=>45 WHBR 33=>34 WEAR 3=>17 WTOG 44=>59 WTXL 27=>22 WTWC 40=>2 WFTS 28=>29 WPBF 25=>16 WRXY 59=>33 WBSV 62=>25 WFLX 29=>28 WALB 10=>17 WTBS 17=>20 WUPA 69=>43 WFXG 54=>51 WGS 34=>35 WBSG 21=>24 WTVM 9=>47 WXTX 54=>49 WLTZ 38=>35 WGNM 64=>50 WGXA 24=>16 WMGT 41=>40 WHSG 63=>44 WPGA 58=>32 WSAV 3=>39 WTOC 11=>15 WNEG 32=>24	HI Wailuku	KOGG15=>16 KGMV 3=>24	IA Burlington Cedar Rapids	KJMH 6=>41 KGAN 2=>51 KCRG 9=>52 KFAX 28=>27 KLJB 18=>49 KDSM 17=>16 KFXB 40=>43 KYOU 15=>14 KPTH 44=>49 KTIV 4=>41 KWVL 7=>55	Davenport Des Moines Dubuque Ottumwa Sioux City	ID Boise	KBCI 2=>28 KTVB 7=>26 KNIN 9=>10 KIDK 3=>36 KLEW 3=>32 KTRV 12=>44 KIVI 6=>24 KXTF 35=>34	Caldwell Idaho Falls Lewiston Nampa	IL Aurora Bloomington Champaign Decatur	WEHS 60=>59 WYZZ 43=>28 WCID 15=>40 WAND 17=>18 WBUI 23=>22 WHSL 46=>47 WIFR 23=>41 WSIL 3=>34 WGBO 66=>53 WQAD 8=>38 WMBD 31=>30 WAOE 59=>39 WHOI 25=>40 WTRJ 16=>32 WGM 10=>54 WTVO 17=>16 WREX 13=>54 WRSP 55=>44 WICS 20=>42 WCCU 27=>26	E. St. Louis Freeport Harrisburg Joliet Moline Peoria	IN Bloomington Elkhart Evansville	WTTV 4=>53 WSIV 28=>58 WTVW 7=>28 WEVV 44=>45 WFIE 14=>46 WFFT 55=>36 WPTA 21=>24 WKJG 33=>19 WXIN 59=>45 WLFI 18=>11 WNDY 23=>32 WFTE 58=>51 WHME 46=>48 WBAK 38=>39 WTHI 10=>24 WTWO 2=>36	Fort Wayne	KS Colby Garden City Hutchinson Lawrence Pittsburg Salina Topeka Wichita	KLBY 4=>17 KUPK 13=>18 KSCC 36=>35 KMCI 38=>36 KOAM 7=>30 KAAS 18=>17 WIBW 13=>44 KAKE 10=>21 KSAS 24=>26 KWCV 33=>31	KY Bowling Green Danville Harlan Lexington Louisville Madisonville Morehead Paducah LA Alexandria Baton Rouge Columbia Lafayette Lake Charles New Orleans Shreveport Slidell West Monroe	WKNT 40=>16 WBKO 13=>33 WDKY 56=>4 WAGV 44=>51 WTVQ 36=>40 WAVE 3=>47 WBNA 21=>8 WDRB 41=>49 WWAZ 19=>20 WAOE 67=>21 WDKA 49=>50 KALB 5=>35 KLAX 31=>32 WAFB 9=>46 WGNM 44=>45 KAQY 11=>57 KATC 3=>28 KADN 15=>16 KLFY 10=>56 KPLC 7=>?? WVUE 8=>29 WHNO 20=>14 KMSS 33=>34 KSLA 12=>17 KSHV 45=>44 WUPL 54=>24 KARD 14=>36 KMCT 39=>38 WCDC 19=>36 WBPX 68=>32 WSBK 38=>39 WFXT 25=>31 WMFP 62=>18 WLNE 6=>49 WLWC 28=>22 WWLP 22=>11 WDPX 58=>40 WUTB 24=>41 WHAG 25=>55 WJAL 68=>16 WMDT 47=>53 Salisbury Bangor WABI 5=>19 WMTW 8=>46 WGME 13=>38 WAGM 8=>16 WV 44=>13 WBKB 11=>13 WOTV 41=>20 WNEM 5=>22 WWTW 9=>40 WGKI 33=>47 WBKP 5=>18 WTOM 4=>14 WJMN 3=>48 WSMH 66=>16 WJRT 12=>36 WZZM 13=>39 WDHS 8=>22 WHTV 18=>34 WLLA 64=>45 WLAJ 53=>51 WSYM 47=>38 WLUC 6=>35 WILX 10=>57 WEYI 25=>30 WGTO 8=>56 WWUP 10=>49 WPBN 7=>50 WGTV 29=>31 WGKU 45=>59	MN Alexandria Austin Duluth Hibbing Mankato Minneapolis Redwood Falls Rochester Thief River Fls Walker Columbia Hannibal Jefferson City Joplin Kansas City Kirkville Poplar Bluff Springfield St. Joseph St. Louis MS Biloxi Columbus Greenville Hattiesburg Holly Springs Jackson Laurel Meridian Natchez West Point MT Billings Bozeman Butte Great Falls Helena Kalispell Miles City Missoula NC Asheville Durham Fayetteville Greensboro Greenville Hickory Jacksonville Lexington Morehead City Wilmington	KCCO 7=>24 KSAX 42=>14 KAAL 6=>33 WDSE 8=>38 KQDS 21=>17 WDIO 10=>43 KDLH 3=>33 WIRT 13=>36 KEYC 12=>38 KMSP 9=>26 KVBM 45=>44 KMWB 23=>22 KRWF 43=>27 KXLT 47=>46 KTTC 10=>36 KBRR 10=>57 KCCW 12=>20 KBSI 23=>22 KFVS 12=>57 KMIZ 17=>22 KHQA 7=>29 KRCG 13=>12 KNLJ 25=>20 KODE 12=>43 KSNF 16=>46 KCTV 5=>24 KCWE 29=>31 KSHB 41=>42 KTVO 3=>33 KPOB 15=>18 KSPR 33=>19 KDEB 27=>28 KTAJ 16=>21 KQTV 2=>53 KPLR 11=>26 KNCL 24=>14 WLOX 13=>39 WCBI 4=>35 WXVT 15=>17 WHLT 22=>58 WBUY 40=>41 WJTV 12=>52 WDAM 7=>28 WTOK 11=>49 WNTZ 48=>49 WLOV 7=>16 KSVI 6=>18 KULR 8=>11 KCTZ 7=>16 KTVM 6=>2 KXLF 4=>15 KQYB 18=>19 KTGF 16=>45 KTVH 12=>14 KMIF 10=>29 KCFW 9=>38 KYUS 3=>13 KPAX 8=>35 KTMF 23=>36 WASV 62=>45 WRDC 28=>27 WKFT 40=>38 WUPN 48=>33 WNCT 9=>10 WYDO 14=>21 WHKY 14=>34 WFXZ 35=>40 WFBX 20=>19 WFXI 8=>24 WEST 6=>54
------------------------	--	---	---	--	---	----------------------	--------------------------	---	--	---	--------------------	--	--	--	---	--	---	---	------------	---	--	---	---	---	--

Construction permits granted for new (NTSC) stations

IA Waterloo ch. 22-, 500kW/301m, 42-24-35N/92-05-10W, to William M. Smith.
 NY Ithaca ch. 52z, 100kW/145m, 42-21-49N/76-36-20W, to Ithaca 52, Inc.

Technical changes on the air

CA	Hanford	KFTV 21	MI	Escanaba	WJMN 3
	San Francisco	KRON 4		Kalamazoo	WLLA 64
		KCNS 38	MN	Rochester	KXLT 47
	San Jose	KNTV 11	MS	Jackson	WAPT 16
	Ventura	KJLA 57	NC	Asheville	WUNF 33
CT	New Haven	WTNH 8	NE	Lincoln	KLKN 8
FL	Daytona Beach	WESH 2	NH	Littleton	WLED 49
	Orlando	WFTV 9	NV	Las Vegas	KVWB 21
		WKMG 6	NY	Rochester	WOKR 13
	Tallahassee	WTWC 40		Utica	WFVX 33
GA	Rome	WPXA 14	OK	Oklahoma C.	KOPX 62
IA	Cedar Rapids	KFXA 28			KOKH 25
	Davenport	KLJB 18	PA	Allentown	WFMZ 69
IL	Champaign	WICD 15	PR	Humacao	WVSN 68
	Springfield	WICS 20	TX	Arlington	KPXD 68
	South Bend	WNDU 16		San Antonio	KSAT 12
LA	Monroe	KLTM 13	UT	Salt Lake City	KUTV 2
MD	Hagerstown	WHPB 31	VA	Virginia Beach	WVBT 43
ME	Augusta	WCBB 10	WI	Chippewa FIs	WEUX 48
	Orono	WMEB 12		Milwaukee	WITI 6
	Portland	WCSH 6	WV	Lewisburg	WVSX 59

Applications to change existing stations

St	Ch	ERP	HAAT	City	Call	Latitude	Longitude
CA	64z	5000		Barstow	KHIZ		
CA	10z		227	San Diego	KGTV		
CA	66z			Vallejo	KPST	37-45-19	122-27-06
CT	3+		269	Hartford	WFSB		
FL	22z		399	Clearwater	WCLF	27-49-10	82-15-39
FL	2-			Daytona Beach	WESH	28-56-17	81-18-57
FL	40+		269	Tallahassee	WTWC	30-35-12	84-14-11
IA	18+		309	Davenport	KLJB	41-19-39	90-22-46
IL	15-		401	Champaign	WICD	40-04-10	87-54-46
IL	20+	1510	436	Springfield	WICS	39-48-16	89-27-40
MA	5-	61.7	353	Boston	WCVB		
MA	44z	1100		Boston	WGBX		
ME	10-		304	Augusta	WCBB	44-09-15	70-00-37
ME	12-		290	Orono	WMEB	44-45-45	68-33-58
ME	6-			Portland	WCSH	43-51-30	70-42-41
NH	49+			Littleton	WLED	44-21-10	71-44-15
NH	60+	5000		Merrimack	WPXB		
OR	8-		524	Portland	KGW	45-31-21	122-44-45
PA	69z	5000	330	Allentown	WFMZ		
RI	69-	4370	375	Block Island	WPXQ	41-34-09	71-37-48
TX	4-			Port Arthur	KBTB	30-09-20	93-59-10
VA	35+			Richmond	WRLH	37-30-22	77-42-03

WI	19+			La Crosse	WXOW	43-48-23	91-22-02
----	-----	--	--	-----------	------	----------	----------

There was one application to change a construction permit this month. KWHY-DT [42] Los Angeles has requested a change in HAAT from 873m to 917m at the same tower location.

New-station permits expired, dismissed, etc.:

St	City	Ch	# permits	St	City	Ch	# permits
IA	Waterloo	22	5	NY	Ithaca	52	2
NY	Arcade	62	1				

Call changes

AL Tuskegee KBPN [22] => WBMM
KY Campbellsville WGRB [34] => WWWW
NY Schenectady WMHQ [45] => WEWB
OK Tulsa KWMJ [53] => KGEB

Programming changes

Call	Location	Programming
WBMM [22]	Tuskegee, AL	new station sold to Pax.
WPAN [53]	Ft. Walton Beach, FL	adds VCC and ACN shopping overnight.
KASY [50]	Albuquerque, NM	drops UPN (which moves to KTEL-LP [53]).
KBGD [18]	Farwell, TX	new station sold to Prime Time Christian; to be religious.

Forum & Other Stuff

Thanks to John Broomall, Chip Kelley, and Jeff Kadet for information appearing elsewhere in this column.

John writes that WFNA-LP [32] will not be A1. W26BT should be on the air by the time you read this, with HSN, replacing long-dark W56CD. W20AU is moving to channel 4. (Presumably, its programming is taking over W04DB. They will technically be two different licenses.)

Jeff forwarded an item that could confuse the DXer... Under the new TV duopoly rules, NBC affiliate WTLV [12] Jacksonville, FL is buying the ABC affiliate there, WJXX [25]. WTLV newscasts will air on both stations. (And note that WJXX has a satellite, WBSG [21], which will also presumably carry the WTLV programs)

And I thought 250 DTV applications last month was a lot... I estimate over 700 in this month's *VUD*. As of 1997, there were roughly 1,500 TV stations in the USA, so that leaves about 500 DTV applications left to appear, assuming everybody applies. This is likely to continue for a month or so, and then the FCC will start acting on the applications which will eat even more space...

As the F2 season heats up, I would like to suggest people take advantage of F2 DX now. Unlike the U.S., European countries do not appear to be planning on using VHF for DTV. Indeed, some low-band VHF transmitters are already off the air - notably in Ireland and Spain. It does appear the high-powered transmitters in Germany will survive this sunspot peak, but probably not the next one. VHF transmitters in Eastern Europe and Russia will be around longer, but unfortunately that's a pretty difficult F2 path from North America.

Speaking of trans-Atlantic DX, DXer Mark Hattam in the U.K. seems to have logged an American TV station by *meteor-scatter*! If you have audio capability in your computer, take a look at <http://www.dxradio.demon.co.uk/unid.html>. (and if you know what station is in this recording, please let Mark know!) A couple of people have indicated they believe this is a recording of KNBC [4] coverage of an earthquake a few years ago, so it would appear likely this was an NBC affiliate carrying archival footage. Maybe someone can figure out which NBC affiliate?

FM NEWS

JANUARY 2000

EDITOR: GREG CONIGLIO
90 SLATE CREEK DRIVE APT. #3
CHEEKTOWAGA, NEW YORK 14227
E-MAIL: coniglio@localnet.com
WEB: http://www.geocities.com/~wgrc

JANUARY 2000

FM NEWS PAGE 2

Most of the information appearing in this column is courtesy of:
M STREET JOURNAL - 54 MUSIC SQUARE EAST SUITE 201 - NASHVILLE, TENN. 37203
PHONE: (609) 883-3321, FAX: (609) 883-5696, E-MAIL: MstreetTom@aol.com

KEY TO ABBREVIATIONS:
&: satellite programming
AF: New frequency allocation **accepted for filing** for a new FM license
AFA: American Family Association
CC: call letter change
CL: city of license change
CX: a construction permit has been canceled
C1, C2, etc.: a change in status to that FM license class
DA: directional antenna
DE: station has been deleted
FC: format change
GA: granted amendment to the table of FM allocations
GE: granted extension of construction permit

GX: granted replacement of expired permit
LC: license to cover filed (means station is ready to come on air)
MC: multiple-city legal ID
NC: no change yet on a reported change/permit
ND: non-directional antenna
NO: not on the air
NS: new station granted
NW: new station signs on
OSA: one-step application granted for change
PA: proposed amendment to change FM table of allocation
PC: power change on the air (> for increase, < for decrease, when known)

PG: power change granted (> for increase, < for decrease, when known)
QC: frequency change occurred
QG: frequency change granted
RA: silent station returns to air
RE: station requests extension on permit
RX: station requests replacement of expired permit
SG: slogan change or update
SI: station is silent
XA: dismissed amendment to FM allocations
XC: transmitter site change occurred
XG: transmitter site change granted

COLORADO:

Antonio: K207DA 89.3 NS-10w: KTLF
Cardiff: K216ES 91.1 NS-10w: KTLF
Colona: K216EU 91.1 NS-19w: KTLF
Estes Park: KRKI 102.1 PC> 25 kW, 171 ft, class C3, XC: 40-17-34 / 105-33-05
La Junta: KRLJ 89.1 CC (NS)
Lamar: KSNZ 93.3 CC (ex KSEC)
Monte Vista: KSLV 95.3 adds Jones soft A/C
Walsenburg: KSPK 102.3 PC> 100 kW, 430 ft, C1

DELAWARE:

Bethany Beach: WOSC 95.9 FC tok rock '96 Rock, Delaware's Pure Rock'



FLORIDA:

Carabelle: WOCY 106.5 inc. to 482 ft.
Ft. Myers: WGCC 92.1 RA with so. Gospel (&)
Ft. Walton Bch: WPSM 91.1 inc. to 148 ft, XC: 30-24-42 / 86-37-13
Gainesville: W204BL 88.7 NS-55w, DA: KLOV-FM
Gifford: WAVV 94.7 PC< 22.5 kW, 354 ft.
Holly Hill: WEAZ 88.1 NW, cont. Christian // WPOZ (Daytona)
Key West: WKY 93.5 CC (ex WKRY) 'Key 93'
Navarre: WGCX 95.7 NW, cont. Christian
Okeechobee: WWFR 91.7 PG 3 kW, 292 ft, CL:
Stuart, FL, XG: 27-07-20 / 80-23-21
San Carlos Park: WDRR 98.5 PC< 18.5 kW
Santa Rosa Bch: WWAV 102.1 adds Bob & Tom
Tice: WJGO 102.9 inc. to 466'
Vero Beach: WCZR 101.7 CC (ex WBBE), FC to talk // WZZR (Fort Pierce)

GEORGIA:

Blue Ridge: W203BA 88.5 NS-10w: KAWZ-ID
Hogansville: WMAX 98.1 PC> 25 kW, 328', DA
Martinez: WPRW 107.7 CC (ex WUUS) 'Power'
Ringgold: WMPZ 93.7 FC to a/c (Chattanooga)
Sparta: WPMA 102.7 NW, religion // WLPE
Sparta: *NS 88.7 2 kW, (v), 135 ft.
Sparta: WMGZ 97.7 PC> 8.5 kW, 554 ft, C3, CL:
Eatontown, GA, XC: 33-20-11 / 83-13-41

HAWAII:

Honolulu: KDNN 98.5 CC (ex KKLV)
Honolulu: KAHA 105.9 CC (ex KMKP)
Lihue-Kauai: KAWV98.1 NW, religion

IDAHO:

Hayden: KHTQ 94.5 PC< 83 kW, 2181', DA
Payette: KQXR 100.3 PC> 100 kW

ILLINOIS:

Arlington Hts: WKIE 92.7 PG< 1.8 kW, 380 ft, XG: 42-08-14 / 87-58-57
Cairo: WBEL 88.5 PG> 34 kW, 643 ft, C1, XG: 36-59-32 / 88-59-19 (xmtr is in KY)
Canton: WBYS 107.9 PC> 25 kW, 269 ft.
Carlinville: WXL 95.1 OSA to B1, 25 kW, 328 ft, XG: 37-43-31 / 89-15-25

ILLINOIS:

Crete: WYAA 102.3 FC to religion (Chicago), PC< 1050w, 499 ft, XC: 41-19-32 / 87-37-15
Knoxville: WBDW 105.3 PG 3.1 kW, 456 ft, XG: 40-56-34 / 90-20-39
Lansing: WYBA 106.3 FC to black gospel 'Power 106' (Chicago)
Morrison: WZZT 102.7 QC from 95.1, PC> 6 kW, 328'
Oglesby: WALS 102.1 PG> 1.5 kW, 466 ft, XG: 41-17-32 / 89-07-59
Seelyville: WWSY 95.9 CC (ex WTHC) 'Sunny'
Springfield: WCST 90.5 PG> 3.8 kW, 0 ft.
Tower Hill: WRAN 98.3 XC: 39-18-22 / 88-26-08
Univ Park: W207BI 89.3 NS-13w: WWGN (DA)

INDIANA:

Chesterton: WAJW 89.5 NW, variety // WFMU
Indianapolis: WTLC 105.7 adds Tom Joyner
Linton: *NS 90.1 400w, 141 ft.
Marengo: WKLO 89.9 NW, southern Gospel (sign on expected 1/15/2000)
Oxford: *NS 91.3 AF (Pensacola Chr. College)
Rushville: WRRC 94.3 XG: 39-42-22 / 85-29-41
Shelbyville: WENS 97.1 dec. to 731 ft, XC: 39-40-06 / 86-01-44

IOWA:

Mt. Pleasant: KAYP 89.9 PG< 16.5 kW (v), 328 ft, class C3, ND, XG: 40-47-59 / 91-32-35, CL to Burlington, IA
Sageville: KIYX 106.1 adds Delilah (Dubuque)

KANSAS:

Healy: K203DF 88.5 NS-226w: KJIL 99.1
Independence: KBQC 88.5 CC (NS)
Salina: KCVS 90.7 QG to 91.7, PG> 11.5 kW, 748 ft, C2, XG: 38-39-58 / 97-41-30

KENTUCKY:

Bowling Green: *NS 91.7 AF
Harlan: WTUK 105.1 FC to hot AC in Jan.
Hawesville: WXXM 97.1 PC< 4 kW, 403 ft, DA, CL: Whitesville, KY, XC: 37-41-50 / 86-59-28
Ledbetter: *NS 90.1 AF
Monticello: WMKZ 93.1 PC> 1450w, 676 ft.
Mt. Sterling: WMST 105.5 RA with country // AM
Murray: WKMS 91.3 XC: 36-55-17 / 88-05-48 (moves main xmtr to auxiliary site)
Paris: *NS 90.7 AF
Russellville: WZTO 101.1 CC (ex WJZC) 'The One'

LOUISIANA:

Donaldsonville: KKAY 104.9 FC to rhythmic oldies // WTGE (Baton Rouge)
Folsom: WSJZ 104.7 CC (ex WYLY), FC to smooth jazz and urban AC mix (New Orleans)
Jackson: WBJJ 104.5 LC
Leesville: KJAE 92.7 QG to 93.5, PG> 7.5 kW, C3
Norco: *NS 91.1 AF



UNITED STATES

ALABAMA:

Grove Hill: WFOV 106.1 NW, classic country (&) and Rush Limbaugh 11am-2pm (Jackson)
Jackson: WHOD 94.5 PC> 30 kW, 640 ft, C2, XC: 31-28-59 / 87-47-27
Northport: WLXY 100.7 adds Rick & Bubba

ALASKA:

Anchorage: KKRO 102.1 FC to classic rock
Anchorage: KMXS 103.1 PG> 51 kW, 19' C1, DA
Deadhorse: *NS 88.1 90w, 105 ft.
Girdwood: KEUL 88.9 NW, variety
Houston: KADX 94.7 FC to talk 'Extreme Radio'
Houston: KJHA 88.7 PC> 340w, -125 ft.
Houston: KAQX 96.3 NW, Christmas music
Juneau: K217DO 91.3 NS-250w: KLOV-FM
Sterling: *NS 90.1 AF (Alaska Ed. Radio)
Unalaska: K202DB 88.3 NS-250w(v): WJCG-KY

ARIZONA:

Clifton: K218CY 91.5 NS-10w: KAWZ-ID
L. Havasu City: KBBC 96.7 NW, adult stds (&)
Winslow: KFMR 95.1 LC



ARKANSAS:

Booneville: *NS 89.7 AF
Conway: KMJX 105.1 FC to classic rock
Dermott: KRKD 105.7 CC (ex KDTL)
El Dorado: *NS 88.9 AF
Forrest City: KARH 88.1 NW, AFA cont. Christian
Fort Smith: *NS 89.7 AF
Van Buren: *NS 89.9 AF

CALIFORNIA:

Avalon: KLIT 92.7 FC to soft AC // KELT, PA: to 92.7 - A CL: Fountain Valley, CA
Coarsegold: K218CZ 91.5 NS-10w(v), DA: KTLW
Ft. Bragg: KLLK 93.5 QC from 96.7, PC> 890w, 2873 ft., class B, XC: 39-30-59 / 123-05-21, CL: Willits, CA
Hams Station: *NS 90.1 100w(v)
Lompoc: KAOH 105.1 NW, adult alternative
McFarland: K209DN 89.7 NS-10w: KCZO
Modesto: KEJC 93.9 PC< 4 kW, 403 ft, DA
Morro Bay: KKAL 99.7 CC (ex KWWV)
Oakhurst: KAAT 103.1 dec. to -194 ft, XG: 37-27-10 / 119-37-54
Paradise: KZAP 96.7 FC to rock // KFMM
Rio Dell: KMGX 107.3 PC> 3.3 kW
Riverside: KELT 92.7 FC to soft AC, PA: to 92.7 - A: Adelanto, CA
Santa Ana: KALI 106.3 inc. to 328 ft., XG: 33-45-24 / 117-51-23
Santa Margarita: KWWV 106.1 CC (ex KKAL)
Santa Rosa: KZST 100.1 inc. to 246 ft.
Squaw Vly: K215DH 90.9 NS-10w, DA: KTLW
Temecula: KTMK 94.5 CC (NS)
Weaverville: KAWX 103.1 LC
Westwood: K212DK 90.3 NS-10w(v): KEFX-ID

MAINE:

Camden: WMEP 90.5 CC (NS)
 Orono: WMEB 91.9 PG> 600w, 171 ft,
 XG: 44-55-08 / 68-00-40
 Portland: WMEA 90.1 PC< 24.5 kW
 Winter Hbr: WAKN 97.7 NW, classic rock

**MARYLAND:**

Cambridge: WFBR 94.3 XG: 38-37-49 / 76-03-24
 Federalsburg: WTDK 107.1 FC to classic rock (&)
 Salisbury: WSBY 98.9 FC to urban AC "Magic
 98.9" (&), Tom Joyner (Ocean City)
 Westminster: WZBA 100.7 CC (ex WGRX), FC to
 rock AC (Baltimore)

MASSACHUSETTS:

Brockton: WBOT 97.7 RA with urban "Hot 97"
 Harwichport: WYST 93.5 FC to WW1 oldies (&)
 Mashpee: WWKJ 101.1 FC to classic rock, keeps
 Bob & Tom (Cape Cod), PC> 6 kW, 272 ft,
 XC: 41-36-13 / 70-29-21
 Northampton: WEIB 106.3 FC to smooth jazz /
 urban AC mix "The Cutting Edge Blend" also
 mixes in some soft rock (Springfield)
 Truro: WCDJ 102.3 reported SI
 Turners Falls: WPVQ 93.9 PG> 4.3 kW, 390 ft,
 XG: 42-34-17 / 72-38-42
 W. Yarmouth: WXTK 95.1 adds news block 6-9am

MICHIGAN:

Camey: *** 99.9 PA: add class A
 Caro: WIDL 92.1 FC to ABC hot AC (&)
 Detroit: WKQI 95.5 dec. to 426 ft., XC: 42-28-
 23 / 83-11-59
 E. Tawas: *NS 91.3 AF
 Gwinn: *** 100.3 GA: add class C3
 Monroe: WJOF 88.1 10 kW (v), 246', DA, CC
 (NS)
 Stephenson: WMXG 106.3 PC> 50 kW

MINNESOTA:

Albert Lea: *NS 90.1 AF
 Brainerd: WJJY 106.7 inc. to 450'
 Hayfield: *NS 90.1 AF
 Moose Lake: KBFH 107.1 NW, oldies // WKLK (&)
 new format expected soon
 Rochester: *NS 89.9 AF
 Starbuck: KAYF 97.3 XG: 45-31-42 / 95-32-52
 Windom: *NS 89.9 AF

MISSISSIPPI:

Byhalia: WYLT 94.9 FC to K-Love Christian (&)
 Corinth: WXRZ 94.3 PC> 25 kW, 328 ft, C3,
 XC: 34-48-36 / 88-34-45
 Indianola: *NS 88.7 AF
 Natchez: WASM 91.1 NW, AFA cont. Christian
 Natchez: WNJJ 97.3 CC (ex WTRC), FC to
 urban "Jams 97.3", adds Doug Banks
 Tchula: WNGN 106.3 NW, urban AC // WGNL (&)

MISSOURI:

Cape Girardeau: KRCU 90.9 PG> 6.5 kW (v), 695
 ft, DA, C2, XG: 37-24-19 / 89-34-06
 Festus: KTBJ 89.3 PG> 25 kW, 397 ft, class B,
 DA, XG: 38-10-58 / 90-00-25

Missouri:

Kansas City: KSRC 102.1 FC to Christmas Music,
 to return to AC after the holidays
 Palmyra: KICK 97.9 PG< 43 kW< 531 ft,
 XG: 39-45-26 / 91-29-58
 W. Plains: *NS 90.9 AF

MONTANA:

Dillon: *NS 90.9 AF

NEBRASKA:

Kirtland: KAZX 102.9 NW, Christmas music

NEVADA:

Ely: KHIX 96.7 PG 33 kW, 1597 ft, CL:
 Carlin, NV
 Rietop town: K217DN 91.3 NS-10w: KAWZ-ID
 Tonopah: K290DO89.7 NS-10w: KAWZ-ID

NEW HAMPSHIRE:

Bedford: WQLL 96.5 PC> 730w, 935 ft, DA
 Peterborough: WNHQ 92.1 FC to modern rock //
 WFNX (Manchester)
 Plymouth: WPNH 100.1 PG< 390w, 1273 ft, XG: 43-
 44-17 / 71-47-30

NEW JERSEY:

Cape May: WWUJ 89.1 NW, classical // WWFM
 Hazlet: WCNJ 89.3 FC to Asian Indian

NEW MEXICO:

Carlsbad: K207CZ 89.3 NS-10w: KLVN
 Chama: KFLH 95.9 CC (ex KYJY), NW, Jones
 soft AC (&), and regional Mexican programming
 in the PM drive
 Fruitland: KTGW 91.7 CC (NS)
 Las Cruces: KBOU 89.7 NW, Moody religion (&)
 Maljamar: KWMM 105.1 adds ABC country (&)
 Rio Rancho: KZKL 101.7 PG> 5.8 kW, 112 ft,
 XG: 35-11-26 / 106-28-46
 Roswell: *NS 89.1 AF

NEW YORK:

Arcade: *NS 89.5 AF (CSN Int'l)
 Argyle: WNGN 91.9 PG> 2 kW, DA
 Baldwinsville: W207BH 89.3 NS-4w: WCIY
 Corning: WCBA 98.7 FC to ABC A/C (&)
 Hornell: WSPA 88.7 NW, info classical and jazz
 // WSKG 89.3 Binghamton
 Lockport: W211BH 90.1 NS-19w(v): KEAR-CA
 Mt. Kisco: WFAF 106.3 CC (ex WZZN), FC to a/c //
 WFAF 103.9
 Newport Village: WBGK 99.7 NW, religion
 Poughkeepsie: WRNQ 92.1 PG<520w, 1040 ft, DA,
 XG: 41-43-09 / 73-59-47
 Saugerties: WRKW 92.9 LC
 Skaneateles: W213BB 90.5 NS-10w: WXXC
 Watertown: *NS 90.1 1 kW, 499 ft
 Watertown: WRVJ 91.7 noted // CBO 91.5 (CBC
 Radio 1 Ottawa) in drive time

NORTH CAROLINA:

Asheville: W292CJ 106.3 on air // WMIT 106.9
 Buxton: *NS 90.5 5.9 kW, 154 ft
 Greensboro: WNAA 90.1 noted with WFMY-2 news
 New Bern: *NS 88.5 AF (Craven CC)
 Wilmington: WHQR 91.3 PG> 60 kW, DA

NORTH DAKOTA:

Kindred: KULW 92.7 CC (ex KPHT) "Kool"
 Mayville: KMAV 105.5 PC> 25 kW, 328', C3,
 XC: 47-29-57 / 97-21-03

OHIO:

Chillicothe: WFCB 94.3 FC to a/c
 Hamilton: WYGY 96.5 FC to Christmas music, to
 return to normal "Young Country"
 Kent: WNIR 100.1 PG> 4.2 kW, 394 ft.
 Kettering: WLQT 99.9 PG< 28 kW, 656 ft,
 XG: 39-43-19 / 84-12-36
 Lima: WUZZ 104.9 CC (ex WAJC), FC to
 classic hits
 Pemberville: W205BP 88.9 NS-38w: KAWZ-ID
 Richwood: WJZK 104.3 CC (ex WZJZ) "Jazz"

OKLAHOMA:

Ardmore: *NS 91.1 250w, 167 ft. (AFA)
 Coalgate: KBNB 105.5 CC (ex KOFY)
 Duncan: K205DQ 88.9 NS-140w(v): KVRB
 Lawton: KJRF 91.1 CC (NS)
 McAlester: KBCW 91.9 LC
 Paul's Valley: KGOK 97.7 PG> 25 kW, 328 ft,
 XG: 34-21-00 / 97-27-35, CL: Healdton, OK
 Sallisaw: KKBD 95.9 CC (ex KMXJ), FC to
 classic rock "Big Dog" (Fort Smith, AR)

OREGON:

Brookings: K211DU 90.1 NS-10w: KAWZ-ID
 Grants Pass: KAPK 91.1 PG> 500 w
 Island City: K213DB 90.5 NS-10w(v), DA: KEFX
 Newport: KLCO 90.5 PG< 2.5 kW (v), 321 ft,
 XG: 44-45-24 / 124-02-50
 Portland: KINK 101.9 dec. to 1542 ft.

PENNSYLVANIA:

Charlertoi: WOGI 98.3 CC (ex WZKT)
 Ephrata: WIOV 105.1 PG< 11 kW, 1017ft.
 Ephrata: WRTL 90.7 PG> 850w(v), 869', DA
 Erie: WFGO 94.7 PC> 1.7 kW, 613 ft, XC: 42-
 02-26 / 80-04-05
 Philadelphia: WLCE 104.5 CC (ex WYXR) "Alice"
 Philadelphia: WYSP 94.1 PC< 15 kW, 469 ft,
 XC: 40-03-33 / 75-14-21
 Reading: WXAC 91.3 noted SI
 W. Chester: WCUR 91.7 NW, variety

SOUTH CAROLINA:

Cross Hill: WBDQ 94.1 NW, talk & sports
 Laurens: *NS 91.5 AF
 Murrell's Inlet: WMBJ 88.3, CC (ex WHGB), FC to
 cont. Christian // WLFJ
 Newberry: WGVG 106.3 CC (ex WDXZ) "Groovin'
 Carolina"
 S. Charleston: W201CH 88.1 NS-13w(v), DA: KEFX
 Spartanburg: WSPA 98.9 dec. to 1902 ft.

SOUTH DAKOTA:

Aberdeen: KOAA 94.9 inc. to 446 ft.
 Clear Lake: KDBX 107.1 NW, adult alternative
 Freeman: *NS 90.5 9 kW, 807 ft, (VCY
 America)
 Volga: KKQQ 102.3 FC to JRN CD country (&)
 and adds Nashville Nights
 Watertown: KSDR 92.9 adds After Midnight

TENNESSEE:

Baxter: WBXE 93.7 FC to rock "B Rock 9-3-7"
 Bristol: W249AK 97.7 on // WRKZ 105.9
 Cookeville: W265BC 100.9 NS on w/WKXD 106.9
 Erwin: WXIS 103.9 FC to dance "Jammin"
 Goodlettsville: WRQO 97.1 45 kW, 518 ft, NW, hot
 AC "Star 97" (Nashville)
 Lebanon: *NS 91.5 AF
 Lenoir City: WLIL 93.5 noted in MONO
 Loudon: WNOX 99.1 in MONO // WNOX-AM 990
 McKenzie: *NS 89.3 AF
 New Johnsonville: WHYQ 89.7 CC (NS)
 Oak Ridge: WNFZ 94.3 PC> 2550w, 505 ft,
 XG: 35-53-10 / 84-08-11
 Ripley: WAUV 89.7 NW, AFA cont. Christian
 Spencer: *NS 90.1 30w, 590 ft.

**TEXAS:**

Abilene: KKHR 106.3 FC to tejano "Star 106.3"
 Amarillo: KAEZ 105.7 FC to cont. Christian
 Amarillo: KBUY 94.1 FC to hot AC "The Mix"
 Amarillo: KXLV 89.1 CC (ex KLMN) "K-Love"
 Anson: KFQX 98.1 FC to a/c (Abilene)
 Benavides: KXTM 107.7 NW, Tejano
 Bowie: KRJT 100.7 PG> 100 kW, 1896 ft, class
 C, XG: 33-33-37 / 96-57-34, CL: Highland
 Village, TX
 Brownwood: KOXE 101.3 QC from 101.5, inc. to
 577 ft.
 Carthage: KTUX 98.9 FC to classic rock, no
 longer "99X" (Shreveport)
 Center: KDET 100.5 QC from 102.3, PC<2050w,
 568', XC: 31-43-34 / 94-15-27
 Edna: KGUL 96.1 NW, c/w & classic rock //
 KTXM
 Hempstead: KEZB105.3 FM, CW and classic rock
 "Texas Thunder" format
 Hereford: *NS 88.7 AF
 Hondo: KRBH 98.5 NW, country // KWVG-FM
 Lindale: *** 95.7 PA: add class A
 Lubbock: KONE 101.1 FC to classic rock
 Lytle: KZLV 91.3 PG> 3.8 kW
 Madisonville: KAAG 96.1 PA: to 96.1 - C2, CL:
 College Station, TX
 Marble Falls: KBAE 104.9 PG> 9.5 kW, 804 ft,
 class C2, XG: 30-26-34 / 98-14-48
 Mesquite: KEOM 88.5 ran Christmas music in
 Dec. but expected to return to clas. hits
 Olney: KRZB 97.5 inc. to 492 ft, XG: 33-51-40 /
 98-38-52, CL: Archer City, TX
 Ore City: KAZE 106.9 CC (ex KKLK), RA with
 urban // KBLZ (Longview), CL from
 Daingerfield, TX, PC> 8.2 kW, 502', C3, XC:
 32-41-54 / 94-37-04, SG "The Blaze"
 Perryton: KEYE 96.1 QC from 95.9, PC> 8.5 kW,
 400 ft, C3, XC: 36-21-54 / 100-46-48
 Pecos: KKLY 97.3 NW, classic cntry // KKJW
 Pilot Pt: KTCY 104.9 FC to regional Mexican,
 PC> 16 kW, 1755', C1, XC: 33-33-37 / 96-57-
 34

Texas:

Plainview: KPMB 88.5 CC (NS)
 Rocksprings: *** 92.5 PA: add class A
 Rudolph: KBPO 90.7 CC (ex KTER)
 San Angelo: KELI 98.7 FC to oldies "Magic 98"
 Santa Ana: *** 105.5 PA: add class C3
 Seymour: *** 92.3 GA: add class C2
 Shiner: *** 94.3 PA: add class C3
 Silsbee: KWDX 101.7 OSA to C3, 11.5 kW, 482 ft, XG: 30-24-08 / 94-03-15
 Temple: KBDE 89.9 NW, AFA cont. Christian (&)
 Winona: KBLZ 102.7 CC (ex KBKV), NW, urban "The Blaze" (Tyler)

UTAH:

Richfield: KRFD 97.5 NW, oldies
 Roy: KWKD 107.9 FC to Christmas music, CC (ex KSNU)

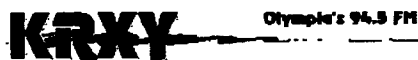
Wellsville: K201FT 88.1 NS-19w(DA); KEFX-ID

VERMONT:

Woodstock: WCMK 91.7 QG to 91.5, 1 kW, 905 ft, DA, C3

VIRGINIA:

Bristol: W213AN 90.5 on air // WAFR-MS
 Danville: W219CL 91.7 NS-10w: WRXT
 Norfolk: WHRV 89.5 PG< 22 kW, 751 ft, XG: 36-48-32 / 76-30-12
 Suffolk: WWSO 92.9 CC (ex WFOG) "Soul Classics"
 Waynesboro: W246AN 97.1 on air // WWWW 97.5



WASHINGTON:

Ariel: K220HS 91.9 NS-1w, DA: KEFX-ID
 Bellingham: KISM 92.9 FC to rock
 Delphi: K220HN 91.9 NS-1w, DA: KEFX-ID
 Etna: K216ET 91.1 NS-3w(v), DA: KAWZ-ID
 Fall City: K258AM 91.1 NS-3w: KAWZ-ID
 Mount Vernon: *NS 91.7 170w, 1279 ft, DA
 Naches: KREW 99.3 PG>790w, 899 ft.
 Pasco: KGDN 101.3 PC< 2750 ft, 1001 ft, XG: 46-05-47 / 119-11-36
 Raymond: KFMY 97.7 OSA to C2, 43 kW, 1368 ft, DA, XG: 46-54-05 / 123-25-07
 Seattle: KZOK 102.5 PG< 68 kW, 2290 ft, XG: 47-30-17 / 121-58-04
 Shelton: KRXY 94.5 PC 710w, 954 ft.
 Vancouver: KKLQ 105.9 OSA to 81 kW, 1079 ft, class C

WEST VIRGINIA:

Middlebourne: *NS 91.5 AF

WISCONSIN:

Alma: W206BA 89.1 NS-250w: KFSI
 Barron: WAQE 97.7 CC (ex WKFX), FC to hot AC "Star 97.7"
 Cleveland: WKTT 98.1 PC> 5.8 kW, 292 ft, XG: 43-59-03 / 87-45-55
 Milwaukee: WWTI 94.5 PC< 14 kW, 955 ft.
 Rice Lake: WKFX 99.1 CC (ex WAQE), FC to classic hits "The Fox", QC from 97.7, PC> 44 kW, 22', C2, XG: 45-22-23 / 91-55-22

Wisconsin:

Sister Bay: WHND 89.7 LC
 Sister Bay: WHDI 91.9 LC
 Wausau: WYCO 107.9 FC to hot AC "Y108"

WYOMING:

Casper: K214DH 90.7 NS-10w: KSKD-FM
 Douglas: *NS 91.7 450w, -53', U of Wyo.
 Evanston: *NS 88.7 AF
 Evanston: KOTB 106.1 JRN hot AC "B106" (&)
 Glendo: KYOD 100.1 CC (ex KUUY)
 Jackson: *NS 91.1 AF
 Jackson: KBHJ 93.3 LC
 Laramie: KKRR 98.7 CC (ex KBPV)
 Lost Cabin: KSXZ 99.1 CC (NS)

AMERICAN SAMOA:

Leone: KNWJ 93.9 NW, religion, CC (ex KHJP)
 Pago Pago: KHJS 93.1 NW, hot AC "93 KHJ"

N. MARIANNA ISLANDS:

Garpan: KWAW 100.3 NW, standards & ethnic (Chamorro & Phillipine music)

PUERTO RICO:

San German: WZGX 91.7 PG> 5 kW (v), 364 ft, DA, XG: 18-04-08 / 67-02-54

VIRGIN ISLANDS:

Frederiksted: WMYP 98.3 CC (ex WREY)



CANADA

ALBERTA:

Suffield CFB: *NS 104.1 to carry "SSVC" from Britian (equivalent of US Armed Forces Radio), and originate 50 hrs/wk of programming, 1,524 w.

BRITISH COLUMBIA:

Houston: CHBV AM QG to 106.5 - 923w, // CFBV 100%
 Mackenzie: CKKN 105.7 FC to hot AC // CKKN 101.3
 Macleod: CKKN 92.5 FC to hot AC // CKKN 101.3
 Price George: CKKN 101.3 FC to hot AC
 Vancouver: C- 94.5 traffic station granted move from Port Mann Bridge to Lion's Gate Bridge (about 19km), PG< 27w (station has traffic reports and calls from in-car commuters)
 Vancouver: CFSR 104.9 PG< 14 kW from 15 kW (as built parameters)



MANITOBA:

Brandon: CKSB8 99.5 PG> 21.7 kW
 Brandon: CBWV 97.9 PG> 90 kW
 Brandon: CBWS 92.7 PG> 90 kW

Manitoba:

Fox Lake: *NS 93.5 23w wanted // CINC-FM
 Gillam: *NS 95.7 37w wanted // CINC-FM
 Manitoba Lake: *NS93.5 37w wanted // CINC-FM
 Swan River: *NS 93.3 250w
 The Pas: *NS 96.1 42w English/native station wanted at Opaskwayak Cree Nation

NEW BRUNSWICK:

Fredericton: CJPN 90.5 PC> 1,560 watts

NORTHWEST TERRITORIES:

Yellowknife: *NS 93.3 164w French stn wanted

NOVA SCOTIA:

Port Hawkesbury: CIGO 1410 QG to 101.5, 19 kW

ONTARIO:

Chatham: CKUE 94.3 NW, modern rock
 Christian Island: *NS 94.7 900w, to be English/Native community station
 Collingwood: CKCB 95.1 FC to local AC
 Elliot Lake: CKNR 94.1 FC to oldies (&)
 Kapuskasing: — ?? community stn denied
 Kirkland Lake: CJKL 101.5 QC from 560, 23 kW
 London: CBCL 93.5 wants PG< 69.3 kW (needed to open freq. for Toronto station)
 Orangeville: CIDC 103.5 wants PG< 30.7 kW, XG
 Oshawa: C??? ??? app for community station was DENIED
 Smiths Falls: CJET 630 wants 92.3, 9.3 kW
 Timmins: CKYK 104.1 QC from 620, PC> 3.5 kW, CC (ex CKOY)
 Toronto: *NS 106.3 35w Applications: app. To be // CHIM-FM Timmins (cont. Christian), 63w // CJKX 95.9 Ajax (this and 93.5 app for this relay are mutually exclusive), 92w app for ethnic format., 92w ethnic format, CHKT 1430 also wants this freq. (1430w)
 Toronto: CIRV 88.9 wants PG> 1880w
 Toronto: *NS 93.5 applications: 1430w cont. Christian application, also 240w urban app., 298w, urban contemporary, 253w app for station aimed at homosexual community, 457w, French community station, 205w app // CJKX 95.9 Ajax (country), 23w Cont. Christian
 Toronto: *NS 106.5 305w app for English & Aboriginal lang. Format
 Toronto: *NS 1466.678 app for five stations with "smaller coverage areas" for digital radio, to operate on CN Tower
 Windsor: *NS 1484.208 to relay CIDR 93.9 / CIMX 88.7 / CKLW 800 / CKWW 580 (digital radio)



QUÉBEC:

Amos: *NS 88.3 32.4 kW, // CBFX-FM
 Sherbrooke: CBF10 101.1 wants to originate 6 1/2 hrs. of programming per week. Relaying Sherbrooke would be CBF-11 Asbestos, CBF-6 Lac Megantic, and CBF-12 Victoriaville. (Call changes may result)
 Trois-Rivieres: CBF8 88.1 wants to originate 5 hrs. a week of programming. (call chg may result)

SASKATCHEWAN:

N. Battleford: CJLR 88.1 new xmtr here: 94.7, 49w
 N. Battleford: *NS 97.9 100 kW pop station app
 Beardys 1st Nation Reserve: CJLR 88.1 new xmtr here, on 97.3, 27.2 watts
 Prince Albert: *NS 101.5 100 kW country stn wanted

CENTRAL & SOUTH AMERICAN INFORMATION (Alexei Marrero Cruz)

COLOMBIA:

Bogotá: HJYJ 97.3 "Orientes Stereo" Cadena RCN
 Bogotá: HJRV 95.7 "Amor Stereo" Cd. RCN
 Bogotá: HJCK 89.9 "El Mundo" Cd. RCN
 Bucaramanga: — 98.5 "R. Universidad Nacional"
 Medellín: — 92.4 "R. Bolivariana"

COSTA RICA:

Heredia: TIPJ 106.7 "Victoria Stereo"
 Limon: — 107.9 "R. Atlantida"
 Puerto Limon: TIQQ 98.3 "R. Casino"
 Puntarenas: — 107.9 "Radio Bahia"
 Puntarenas: TIAW 102.3 "R. Puntarenas"
 San Jose: TIHB 94.3 "Radio Reloj", "Permanente como el sol"
 San Jose: — 95.9 "EM-96 Radio Clasica"
 San Jose: TIWW 96.8 "Cadena de Emisoras Colombia"
 San Jose: TILX 98.8 // TIWW 96.8 above
 San Jose: TIFC 97.1 "R. Faro del Caribe", religious
 San Jose: TIRN 101.5 "R. Nacional"
 San Jose: TIUCR 96.7 "Radio V.C.R."
 San Jose: TITNT 95.1 "R. Monumental" also 93.5
 San Marcos: TICLS 100.3 "Radio Cristal"

CUBA:

Ciego de Avila: — 98.1 "Radio Surco"
 Gramma: CMKX 95.3 "Radio Bayamo"
 Habana: — 101.5 "Radio Reloj" (news and hour every minute)
 Habana: — 101.9 "Habana Radio" (variety)
 Habana: — 93.3 "Radio Taino" (tourist)
 Habana: — 102.7 "Radio Rebelde"
 Habana: CMBC 98.5 "Radio Progreso"
 Holguín: — 89.1 "Radio Taino"
 Holguín: CMKO 97.9 "Stereo Holguín"
 Las Tunas City: CMKG 94.5 "Radio Victoria"
 Santiago de Cuba: 101.3 "Radio Taino" (tourist)
 Santiago de Cuba: CMKW 93.5 "Radio Mambi"
 Santiago de Cuba: CMKC 101.4
 Varadero: — 93.5 "Radio Taino"

DOMINICAN REPUBLIC:

Hato Mayor: HIBD107.1 "FM La Romana"
 Hiana: HIGP 92.1 "Radio Popular Hits 92"
 Las Vegas: -- 99.1 "Fuerza 99" (Bachatas mx)
 Las Vegas del Cibao: HIJK 100.7 "Super K",
 merengue y salsa
 Las Vegas: -- 103.1 "El Mostro Musical"
 Montecristi: -- 105.7 "FM Independencia"
 Santiago: HIJM 101.9 "Amistad FM"
 Santiago: HIUA 106.5 "Radio Clarin" "La que no
 repierde en el camino"
 Santo Domingo: HILB 91.1 "La 91" (CPN Canal 33)
 Mx en Ingles
 Santo Domingo: HIAT 98.1 "FM Universal"
 "Cubriendo mas radios"
 Santo Domingo: HIBE 102.1 "Radio Mil"
 Santo Domingo: -- 97.5 "Clasica 97" mx clasica
 Santiago del Cibao: -- 98.3 "Turbo 98"

EQUADOR:

Canar: -- 94.3 "Radio Ingapirca"
 Guayaquil: -- 100.1 "Radio La Prensa"
 Guayaquil: -- 101.7 "Radio Telequil FM"
 Latacunga: -- 97.3 "Radio Latacunga" // 102.1
 Quito: -- 97.1 "Radio Centro FM"
 Rio Bamba: -- 91.7 "Radio Bamba" Cadena
 ERPE

EL SALVADOR:

San Salvador: YSKL 100.1 "Radio Cadena YSKL"
 QTH: 4^a calle Oriente 528, San Salvador, Ph#
 +503 81-4111, Fax: +503 803-22-8809:
 Pdente: Manuel Antonio Flores

FRENCH GUYANA:

Cayenne: -- 98.7 "RFM 98"
 Kourou: -- 90.3 "RFM 90"
 Ste-Laurent du Maroni: -- 98.7 "RFM 98"

GUADALOUPE:

-- 103.1 "R. Guadeloupe"
 -- 98.2 "R. Bass Tierra"

GUATEMALA:

Antigua: TGAD 97.1 "R. Monumental" // 1260
 "Radio Cadena Nuevo Mundo"
 Antigua: -- 98.5 "Sagran Cadena" // 910
 Guatemala: -- 96.0 "Radio Sonora" (West 93.5,
 East 99.9)
 Guatemala: -- 97.3 "R. Alfa Sigma"
 Guatemala: -- 88.1 "Fabuestereo"
 Guatemala: -- 88.5 "Galaxia Superstereo"
 Guatemala: -- 89.7 "St. Cadena Sidera",
 "Emisoras Unidas" // 670
 Guatemala: -- 90.3 "R. Sideral"
 Guatemala: -- 90.9 "Exitos" (G) La Radio que
 Llega
 Guatemala: -- 91.3 "Radio Luz" religious
 Guatemala: -- 91.7 "Femenina" (G) "Feminina
 otra emisora de arco"
 Guatemala: -- 92.3 "Radio Universidad"
 Guatemala: -- 92.7 "Stereo Cristal" cadena
 nuevo mundo
 Guatemala: -- 93.7 "Stereo Amor"
 Guatemala: -- 94.1 "Jazz 94"
 Guatemala: -- 94.5 "Stereo Rubmos" // 1210

Guatemala:

Guatemala: -- 94.9 "FM 95" "La Super
 Estacion"
 Guatemala: -- 95.9 "Radio Ranchera" // 850
 Guatemala: -- 96.3 "Sistema Estaciones Nuevo
 Mundo" // 880
 Guatemala: -- 97.3 "97.3 FM Alda Super
 Stereo", "La radio para sentir"
 Guatemala: -- 97.7 "FM Romantica"
 Guatemala: -- 98.1 "Doble S" "Emisora dider
 en FM" (mx dance conection)
 Guatemala: -- 98.5 "R. Mundial" // 700 (tropical)
 Guatemala: -- 99.7 "Gonga"
 Guatemala: -- 100.5 "R. Cultural TGN" // 730,
 3300, y 5955 AM
 Guatemala: -- 100.9 "R. Excel"
 Guatemala: -- 101.3 "FM Fresca"
 Guatemala: -- 102.1 "Stereo 102" "musica son
 sentido, para tu sentidos"
 Guatemala: -- 102.5 "FM Fama" "FAMA, con los
 exitos de ayer en ingles"
 Guatemala: -- 102.9 "Metrostereo" "una radio
 para ver"
 Guatemala: -- 103.7 "Radio Fiesta" // 1150
 Guatemala: -- 104.5 "Radio Faro" (mx classic)
 Guatemala: -- 104.9 "Tropicálida #1"
 Guatemala: -- 105.7 "Radio Adventista Mundial"
 (religious) Cadena Union Radio
 Guatemala: -- 106.1 "Maxima 106.1" (salsa y
 tropical)
 Guatemala: -- 106.5 "Executiva" "La FM
 Ambiental"
 Guatemala: -- 107.3 "Doble V" // 1100, 640
 Quetzaltenango: -- 87.7 "Teleonce" (Sonido de TV)
 Quetzaltenango: -- 91.1 "Sheila Stereo" of
 "Romance Stereo"
 Quetzaltenango: -- 92.5 "R. Tecum Uman" // 710
 Quetzaltenango: -- 99.4 "R. Fraternidad" // 770
 Quetzaltenango: -- 100.3 "Stereo 100"
 Quetzaltenango: -- 101.5 "Stereo Alegre", sig "La
 Grande"
 Quetzaltenango: TGSP 102.3 "FM Clase 102"
 Quetzaltenango: -- 104.7 "Siglo Laser", "La nueva
 imagen de los exitos"
 Quetzaltenango: -- 106.3 "Stereo Vida" (Religious)
HAITI:
 Port-au-Prince: -- 89.3 "Radio Port Prince"
HONDURAS:
 San Pedro Sula: HRVC 103.7 "Stereo Luz"
 San Pedro Sula: -- 99.1 "Radio América"
 Tegucigalpa: HRLP 94.7 "Radio América"
 Tegucigalpa: HRTG 102.5 "Stereo 102"
MÉXICO:
 Cancún: XHNUC 101.5 "Radio Tuguesa"
 Cancún: -- 105.9 "Radio Cultural"
 Merida: -- 103.9 "R. Universidad Autónoma
 de Yucatan" // 1390 (UNAM)
 Merida: XHMRA 99.3 "FM Digital 99.3"
 Merida: -- 92.4 "Stereo Maya" // 97.7
 Merida: -- 92.9 "Solidaridad FM 92-9"
 Merida: XHMRI 93.7 "FM Super Stereo"
 Merida: XHGL 97.7 "Stereo Maya"
 Merida: XHMT 98.5 "Stereo Amistad"

México:

Mexico City: -- 96.1 "R. Universidad Autónoma
 de Yucatan" // 11860 (UNAM)
 Mexico City: -- 92.9 "Tropi-Q"
 Mexico City: XHVIP 88.1 "FM 88" (EE & SS)
 Mexico City: XHMF 88.9 "Azul 89", exitos, balads
 y rock de los 70's
 Mexico City: XEOY 89.7 "Stereo Mil", clasica fasil
 Mexico City: XEDA 90.5 "Pulsar FM"
 Mexico City: XHFO 92.1 "Cristal 92.1" (baladas)
 Mexico City: XEJP 93.7 "Stereo Joya" (Fina
 romantica e intrumental)
 Mexico City: XHIMER 94.5 "FM Opus 94" (clasica)
 Mexico City: XHSH 95.4 "Stereo Amistad 95.3" (jazz,
 new age, pop)
 Mexico City: XEW 96.9 "Magia Digital" (int'l pop)
 Mexico City: XERC 97.7 "Stereo 97.7" (modern intl)
 Mexico City: XHDL 98.5 "Radio Activa" (juvenil intl)
 Mexico City: XHPOP 99.3 "FM Digital 99" (exitos en
 Ingles)
 Mexico City: XHMM 100.1 "FM Stereo 100"
 Oaxaca: -- 87.7 "Canal 13" TV
 Oaxaca: XHOCA 89.7 "La Grande de Oaxaca"
 (ACIR)
 Oaxaca: XHNR 98.5 "FM TV" "TV gusto musical"
 Oaxaca: XHOQ 100.1 "Stereo Vida"
 Tabasco: XHVB 97.3 "FM Superstereo 97"
 Villahermosa: -- 87.7 TV
 Villahermosa: XHSAT 90.1 "Radio ACIR"
 Villahermosa: XHJAP 90.9 "Digital 91" "La
 consentida"
 Villahermosa: -- 94.9 "R. Tabasco FM" // 1230
 Villahermosa: XHOP 96.5 "Stereo Amistad", QTH:
 Avenida Gregorio Mendez 1504.
 Fraccionamiento Lidia Ester, Código Postal
 86040, TABASCO, Villahermosa"
 Villahermosa: XHLI 98.3 "Li Stereo 98.3"

JAMAICA:

Kingston: -- 106.1 "Power 106 FM"
 Montego Bay: -- 105.5 "Auri FM" (also 92.5)
 Montego Bay: -- 101.7 "Christian Radio"

MARTINICA:

-- 100.6 "R. Canal Antillas"
 -- 99.9 "R. Intertropical"
 -- 106.2 "R. AS FM"

PANAMA:

Panama: -- 107.7 "R. Universidad Stereo"
 Panama: -- 96.1 "r. KW Continente" (& 95.1)
 Panama: -- 101.9 "Radio Mia" Cadena
 National Panama
 Colón: -- 102.3 "R. Vol del Trópico"

ST-PIERRE-ET-MIQUELON:

-- 102.1 "R. Atlantic"

SANT BARTHOLOME:

-- 98.7 "R. sant Barth" also 103.7

SANT MARTIN:

-- 100.7 "R. Sant Barth"

SANTA LUCIA ISLAND:

-- 101.1 "R. Caribe Internacional"

VENEZUELA:

Caracas: -- 97.7 "Emisora Cultural de
 Caracas"
 Caracas: -- 100.5 "La Primera"
 Caracas: -- 104.5 "R. Universitaria (UNICE"
 Caracas: -- 96.7 "Pedevesa FM" (Pedevesa
 petroleo y gas)
 Caracas: -- 102.9 "R. Luz 102.9"
 Caracas: -- 89.3 "Radio Vox 89.3 FM"
 Caracas: -- 106.9 "Imaginación FM"
 Caracas: -- 98.1 "98.1 FM Super Stereo"
 Caracas: -- 103.9 "Radio Premio"
 Caracas: -- 107.9 "FM Cosmopolitan"
 Maracaibo: -- 92.9 "R. Futuro FM" sig "Esta
 max Arriba" "Los 10 avilidos del lobo" latin pop
 Maracaibo: -- 88.9 "FM Selva" "exitos de
 Muerca Criolla"
 Maracay: -- 93.9 "Stereo Mar"
 Maracay: -- 103.9 "Victoria FM"
 Maturin: -- 95.5 "R. Maturin FM 95.5"

PIRATE WATCH:

- **HARTFORD, CT.** The FCC recently shut down "Radio Avivamiento", a Spanish language religious pirate on 97.1. The operator, Reverend Samuel Girona, has asked a federal judge to intervene on his behalf, citing freedom of speech and religion. It's up to U.S. District Judge Alvin Thompson. And in other pirate news from Connecticut, Mike Bugaj writes on November 29th to let us know that "Prayze 105.3" has returned to the air. They had been shut down over a year ago (11/24/98). According to a news report on WVIT-TV30, the station won a court battle regarding their right to stay on the air, and thus decided to return to the air. The U.S. Attorney does not agree with the ruling, however, and threatens to hold all personnel at the station in contempt. The station has spent over \$150,000 in legal fees to stay on the air. The transmitter is located on an office building in Bloomfield, a mile or so north of the Hartford city limits, and gets out well for about ten miles.
- **LANCASTER, PA.** On a drive through the area, Doug Smith noted the 106.3 Spanish-language pirate here off the air.
- **PITTSBURGH, PA.** The FCC, with cooperation from the FBI, closed down Mark Lange's "Radio Carson", which operated on 91.7.
- **RICHMOND, PA.** The FCC shuts down an unlicensed station on 91.7 here, again. The station is operated by Khalid Kubweza (formerly known as Anthony Marshall). The Enforcement Bureau got a four-count federal indictment against him, since "previous actions have failed

to deter the operation of an unauthorized FM station from the Kubweza residence". He has had equipment seized as far back as September 1995.

Lots of action at the CRTC this month. Look above for all of the action on new stations in Toronto (and this does not include a lot of applications for 740 kHz not listed here). The date for reviewing all of these items has been set as January 31, 2000. In addition, there has been action on the digital front- check out Toronto and Windsor above as well.

The wealth of Central and South American information this month comes from Alexei Marrero Cruz, of Holguin, CUBA. Alexei was very kind to send us this information both about FM stations on his island, and also DX catches via Tropo and E-skip to the south. This information is extremely valuable due to the lack of other reliable sources for this area. His address is: *Alexei Marrero Cruz - c/Máximo Gómez #47 - San Andrés, Holguin 84200 CUBA.* Thanks for your contribution! These listings also made me to realize that my "Clip Art CD" does not contain the flag for every nation, like I thought it did, so that is why you don't see flags by each country!

NORTHERN FM DX

JANUARY 2000

DEADLINE: The 5th of the month before publication
LOG CUTOFF: 4 months from postmark
COLUMN REPORTING AREA: See map to the right (also includes Europe & Asia)

EDITOR: GREG CONIGLIO
 90 SLATE CREEK DRIVE APT. #3
 CHEEKTOWAGA, NEW YORK 14227
 E-MAIL: coniglio@localnet.com
 WEB: <http://www.geocities.com/~wgrc>



Another small column this month, with only Saul Chemos checking in this time, with some skip and trop from last millenium, ha! Seriously, though, Saul got in on some of the impressive ES during early July, and some nice late-summer and early-autumn Tropo openings. If you've had some DX, let's hear from you next time! Hope you have a Happy Millenium!!

SAUL CHERNOS - 57 BERKELEY ST - TORONTO, ONTARIO CANADA M5A 2W5

(416) 364-0725 Internet: schemos@torfree.net, TO: Toronto, BR: Burnt River

JULY 1999 DX

July 1 Es (En route from BR to TO via Zephyr)

- 1615 WRMF 97.9 FL Palm Beach
- 1625 WWKA 92.3 FL Orlando
- 1630 WCMQ 92.3 FL Hialeah SS
- 1645 WCLB 95.5 FL Fort Pierce

July 1 Es (TO - Airport)

- 1700 WMFE 90.7 FL Orlando
- 1741 WDEC 94.7 GA Americus "Stn for best hits & best variety"
- 1753 KSCB 107.5 KS Liberal
- 1755 KACV 89.9 TX Amarillo "FM-90"
- 1756 KPRE 98.7 TX Amarillo "Power 98.7"
- 1803 KSMX 107.5 NM Clovis NEW STATE
- 1811 KSSA 105.9 KS Ingalls SS
- 1817 KZBZ 104.9 KS Salina "Breezy 104.9" mr
- 1821 KBHT 93.5 TX Crockett oldies
- 1841 KSEC 93.3 CO Lamar "The Heat 93.3" r
- 1858 KQLS 100.3 KS Colby

July 4 Es (TO - Aurora East)

- 2136 KLGD 104.9 TX Tulia (ID as KTUE & // AM 1260)
- 2144 KATP 101.9 TX Amarillo "All New Cat Country"
- 2145 KQFX 104.3 TX Borger SS
- 2148 KPQZ 100.9 TX Amarillo SS
- 2150 KACV 89.9 TX Amarillo "FM-90"

July 4 Es (Between TO & BR)

- 2153 KGNC 97.9 TX Amarillo
- 2215 KOEZ 92.3 KS Newton
- 2216 KDGS 93.9 KS Andover rap, "Power 93.9"
- 2223 KYQQ 106.5 KS Arkansas City
- 2226 KANS 92.9 KS Osage City
- 2233 KSPG 98.7 KS Clearwater

July 5 Tr (BR)

- 0555 WYUL 94.7 NY Chateaugay
- 0611 CBCP 98.7 ON Peterborough (ex-93.5)
- 0611 CBCL 93.5 ON London CBC Radio One

NORTHERN FM DX

July 6 Es (BR)

- 0945 WDMG 99.5 GA Douglas
- 0950 WCHV 95.1 GA Harlem
- 0953 WVOH 93.5 GA Hazelhurst
- 0954 WPBH 94.5 FL Parker
- 0955 WBYZ 94.5 GA Baxley
- 1000 WJYE 95.3 GA Nashville "Light 95.3"
- 1001 WMGR 97.3 GA Bainbridge
- 1006 unID 104.9 The New Cat Country
- 1008 WAZX 101.9 GA Cleveland SS
- 1009 WOYS 100.5 FL Apalachicola
- 1015 WKHX 101.5 GA Marietta "Kix-101.5" k
- 1017 WRRX 97.7 FL Micanopy "97-X"
- 1018 WYYX 97.7 FL Bonifay Howard Stern
- 1022 WVRK 102.9 GA Columbus "Rock 103"
- 1023 WCGQ 107.3 GA Columbus "Q-107"
- 1025 WLWI 92.3 AL Montgomery "I-92" k
- 1026 WMEZ 94.1 FL Pensacola
- 1027 WDJR 96.9 AL Enterprise
- 1028 WFSY 98.5 FL Panama City "Sunny 98.5"
- 1037 unID 92.3 GA "Light 92"
- 1040 WRJM 93.7 AL Geneva / Ozark "The Rose WRJM"
- 1045 WOOF 99.7 AL Dothan "Woof FM"
- 1047 WTKX 101.5 FL Pensacola "TK-101"
- 1051 WHMA 100.5 AL Anniston
- 1053 WWRO 100.7 FL Pensacola "Arrow 100.7"

ARROW 100.7 FM

Covering Pensacola, FL and Mobile, AL

- 1054 WXBW 102.7 FL Milton
- 1102 WYVC 102.3 AL Camden
- 1108 WJZD 94.5 MS Long Beach
- 1111 WKNN 99.1 MS Pascagoula "K-99" k
- 1112 WOSM 103.1 FL Tallahassee (may be old calls) (Saul, this is Ocean Springs, MS -gc)
- 1113 KKND 106.7 LA New Orleans Howard Stern
- 1117 WOKK 97.1 MS Meridian
- 1120 WQUE 93.3 LA New Orleans "Q-93"
- 1125 WRNO 99.5 LA New Orleans
- 1129 WTYX 94.7 MS Jackson
- 1810 WMGB 93.7 GA Jeffersonville severe storm warning
- 1811 WMTM 93.9 GA Moultrie "Power 94"
- 1816 W222AB 92.3 GA Thomasville 42-watt relay WFSQ-FL
- 1822 WKCN 99.3 GA Lumpkin "Kissin' 99.3"
- 1825 WZBQ 94.1 AL Carrollton
- 1827 WQGL 93.5 AL Butler
- 1828 WEBZ 93.5 FL Port St. Joe "Classic Rock 93-1/2"
- 1829 WVNA 100.3 AL Tusculumbia
- 1830 WWTN 99.7 TN Manchester
- 1831 WAKH 105.7 MS McComb
- 1832 unID 107.5 g SRN news
- 1833 WXKO 100.1 GA Forsyth-Macon
- 1834 WZRW 95.1 MS Marion
- 1840 WCNA 95.9 MS Potts Camp
- 1841 WMJY 93.7 MS Biloxi
- 1842 WAQY 91.7 MS Saucier
- 1845 KIKI 93.5 TX Greenville "T-93.5...rhythm of TX"
- 1846 KSCS 96.3 TX Fort Worth
- 1849 KPCH 97.7 LA Dubach m

July 6 Es cont.

- 1850 WXTB 97.9 FL Clearwater "98 Rock, the rock stn"
- 1852 KZPS 92.5 TX Dallas
- 1858 WLZA 96.1 MS Eupora "Laser 96, best hits 60s 70s 80s"
- 1900 KKDA 104.5 TX Dallas "K-104"
- 1901 KYNG 105.3 TX Dallas
- 1902 WYFA 107.1 GA Waynesboro g
- 1903 KDMX 102.9 TX Dallas
- 1904 KTXQ 102.1 TX Fort Worth
- 1905 KLUV 98.7 TX Dallas "98.7 Oldies R." (Over two CBCs!)
- 1907 WBLE 100.5 MS Batesville "Country 101"
- 1912 WSIX 98.1 TN Nashville "The Big 98" k
- 1945 KLIS 96.7 TX Palestine
- 1946 KZMZ 96.9 LA Alexandria
- 2028 KCTO 103.1 LA Columbia "103.1 The Gator"
- 2029 KOOJ 93.7 LA New Iberia "Cool 93.7"
- 2031 KKRW 93.7 TX Houston "Arrow 93.7"
- 2125 KMCO 101.3 OK McAlester
- 2127 KBXX 97.9 TX Houston "97.9 The Box"
- 2133 WABB 97.5 AL Mobile
- 2216 KRUF 94.5 LA Shreveport "K-94.5" rp
- 2217 KLKL 92.1 LA Benton "Oldies 92.1 Cool"
- 2221 KSMB 94.5 LA Lafayette
- 2226 WTBK 94.7 AL Brundidge
- 2229 WJMI 99.7 MS Jackson
- 2230 KLSA 90.7 LA Alexandria Red River Radio
- 2340 WARO 94.5 FL Naples up
- 2345 WHTQ 96.5 FL Orlando
- July 7 TrEs (Between Havelock and PQ border)**
- 0950 CKOL 93.5 ON Campbellford (ex-98.7)
- 1055 WMSL 88.9 GA Athens "The Masterful Music Stn"
- 1058 WUOG 90.5 GA Athens
- 1104 WMAW 88.1 MS Meridian
- 1245 WCKW 92.3 LA Laplace
- 1355 KDEW 97.3 AR DeWitt
- July 17 Tr (TO)**
- 1330 106.3 ON Toronto Molson Indy temp station (downtown)
- 1445 CJLE 100.3 ON Barrie g testing (due on 15 Aug) (up 404)
- 1500 CBCP 98.7 ON Peterborough (in with // Owen Sound CBC)
- July 17 Tr (BR)**
- 1630 CJLE 100.3 ON Barrie g testing
- July 18 Tr (BR)**
- 0620 WMKC 102.9 MI St. Ignace
- 0630 CBPO 88.9 ON Parry Sound Env-Can Weather station
- 0659 WKLZ 98.9 MI Petoskey
- 2337 WVBR 93.5 NY Ithaca pr
- July 18 Es (BR)**
- 1924 KSCN 96.9 TX Pittsburg "Country 96.9"
- 1927 KQSR 94.7 OK Oklahoma City
- July 19 Tr (BR)**
- 2257 CBF 100.7 PQ Montreal CBC Stereo FF
- 2300 CJLA 104.9 PQ Mirabel Radio Fusion FF
- 2301 CIGL 105.7 PQ Laval FF
- 2301 CTFE 107.3 PQ Montreal Radio Rock Detente FF mr
- 2302 CIRA 91.3 PQ Montreal FF talk
- 2303 CBM 93.5 PQ Montreal CBC Radio Two (only echoes CBCL w/nx)
- 2315 CKOI 96.9 PQ Verdun FF r

July 19 Tr cont

- 2317 CKUT 90.3 PQ Montreal punk rock FF
2324 CITE1 102.7 PQ Sherbrooke // 107.3
2330 CKDX 88.5 ON Newmarket k "The Cat"
...
2336 CHOM 97.7 PQ Montreal up EE

July 20 Tr (BR)

- 0008 CFLG 104.5 ON Cornwall
0113 WLEW 102.1 MI Bad Axe "cruise 102" r
0629 WGNA 107.7 NY Albany

July 23 Tr (TO - Dufferin then uptown Toronto)

- 0031 WCCW 107.5 MI Traverse City "Oldies 107.5"
0042 WMUS 106.9 MI Muskegon "107-MUS" k
0056 WQBx 104.9 MI Alma "B-105" rp
...
2355 CB?? 106.3 ON Toronto "test xmsn from
CBC-R in TO on 106.3"

July 27 Es (BR)

- 1910 KERA 90.1 TX Dallas
1917 KXKC 99.1 LA New Iberia
1920 WQUE 93.3 LA New Orleans

July 27 Tr (BR)

- 2305 WBCT 93.7 MI Grand Rapids www.b93.com r
2320 WODJ 107.3 MI Greenville "Oldies 107.3"
2324 WLAV 96.9 MI Grand Rapids
2325 WCUZ 101.3 MI Grand Rapids k

July 28 Tr (BR)

- 0013 WMUS 106.9 MI Muskegon k After Midnight
0940 WCMU 89.5 MI Mount Pleasant NPR
July 31 Tr (TO - East)
0128 WZKZ 101.9 NY Alfred k
0233 WCIZ 93.3 NY Watertown "Z-93" r
0330 WNBQ 92.3 PA Mansfield mono "best hits of
80s, 90s" satellite
0345 WCKR 92.1 NY Hornell k
0923 WBRR 100.1 PA Bradford



Your GREAT Music Station

AUGUST 1999 DX

Aug 1 Tr (TO - Dufferin)

- 0138 WZLE 104.9 OH Lorain "The all new Kiss 104-
9" rp
0144 WQBx 104.9 MI Alma "Q-105" r
0157 WGRT 102.3 MI Port Huron r
0252 CKHC 90.7 ON Brampton OC-\$ (Humber
College ex-91.7)

Aug 12 Tr (TO - Downtown)

- 1830 91.9 CBC 106.3 test heard here, no
91.9 mentioned!



Aug 16 Tr (TO - Dufferin)

- 0037 WMKC 102.9 MI St. Ignace "Big Country" k
0052 WBNS 97.1 OH Columbus "Oldies B-97"
0055 WCOL 92.3 OH Columbus
0100 WVCX 98.9 WI Tomah
0104 WCOW 97.1 WI Sparta "Cow 97" k
0126 WRQK 106.9 OH Canton "Rock 107"
0134 WGSQ 94.7 TN Cookeville k After Midnight
(NEW TR STATE) (nice catch! -grc)
0209 WVKW 104.9 MI Battle Creek "Keener 104.9"
oldies
0225 WZOO 102.5 OH Edgewood "102 Zoo" rp
0234 WIHC 97.9 MI Newberry Hot Country show,
k
0400 WMBI 90.1 IL Chicago g
0443 CBON-23 104.9 ON Gogama French CBC
2154 CJLA 104.9 PQ Mirabel "Radio Fusion" FF
up
2158 WKQZ 93.3 MI Midland "Z-93" pr
2201 WUIS 91.9 IL Springfield j ID // Pittsfield
2209 WLUP 97.9 IL Chicago "The Loop"
2212 WODJ 107.3 MI Greenville "Oldies 107"
2214 WGDN 103.1 MI Gladwin "103 Country" k
2215 WYLL 106.7 IL Des Plaines gt
2220 WKXK 94.7 IL Chicago
2223 WTMX 101.9 IL Skokie "Music for .next
millenium, the Mix" r
2225 WWCCK 105.5 MI Flint "CK-105"
2228 WLIT 93.9 IL Chicago "93.9 Light FM" 2
230 WGNB 89.3 MI Zeeland g
2231 KDHX 88.1 MO St. Louis SS (Lunes Latina
show)
2237 WAZY 96.5 IN Lafayette
2243 WOVE 98.9 MI Vassar
2245 WFUR 102.9 MI Grand Rapids g (Messianic
Times - Jewish)
2246 WBCH 100.1 MI Hastings k mention 1220-AM
2251 WKLQ 94.5 MI Holland r "94.5-KLQ"
2254 WUPS 98.5 MI Houghton Lake "98.5-UPS"
2255 WVAZ 102.7 IL Oak Park "V-103"
2300 WQLR 106.5 MI Kalamazoo "Q-106.5"
2317 WCLX 93.9 MI Mio "The Zone"
2318 WYCA 92.3 IN Hammond black gt
2320 WKJF 92.9 MI Cadillac "WTCM" ID k
2328 WNIB 97.1 IL Chicago c
2329 WIOT 104.7 OH Toledo Rockline show
2338 WOJO 105.1 IL Evanston SS
2339 WOOD 105.7 MI Grand Rapids "Easy 105.7" m
2340 WRVF 101.5 OH Toledo "101-5 The River"
2342 WCRZ 107.9 MI Flint "Cars 108"
2345 WYBA 106.3 IL Lansing "106.3 FM"
2350 WZOC 94.3 IN Plymouth "Oldies 94.3" oldies
2355 KSHE 94.7 MO restwood "K-She 95, the
Rock of St.Louis" LOUD
Aug 17 Tr (TO - Dufferin)
0000 WILL 90.9 IL Urbana c
0001 KSD 93.7 MO St. Louis
0003 unID 101.9 Con-man country show
0017 WHST 106.1 MI Tawas City

August 17 Tr cont

- 0030 WBMI 105.5 MI West Branch "Cool 105"
0031 WGTG 97.7 MI Sandusky "WGTG-FM-97"
0042 WZKZ 101.9 NY Alfred k "KZ-102"
0046 WZNX 106.7 IL Decatur "106.7 The Fox"
www.wznx.com
0058 WAUS 90.7 MI Berrien Springs
0103 WSAE 106.9 MI Spring Arbor g mx
0106 WQHK 105.1 IN Decatur After Midnight k
0119 WSHW 99.7 IN Frankfort "Shine 99"
0120 WXKO 100.9 IL Pana k
0142 WNCI 97.9 OH Columbus
0158 WVPE 88.1 IN Elkhart
0208 WBTU 93.3 IN Kendallville k
0210 WQTE 95.3 MI Adrian "Q-95-Country"
0215 WBYP 98.9 OH Van Wert "The Bear"
0220 WLRW 94.5 IL Champaign "Mix-94.5"
0230 WGNR 97.9 IN Anderson g
0239 WMRI 106.9 IN Marion "We play yopur light
rock favorites"
0248 WMEE 97.3 IN Fort Wayne u/CJEZ
0250 WFRR 93.7 IN Waiton g mx
0300 WYJZ 100.9 IN Lebanon "Indie's Smooth
Jazz"
0303 WGNJ 89.3 IL St. Joseph g
0304 WDIF 94.3 OH Marion r 80s/90s
0315 WPLT 96.3 MI Detroit "Planet 96.3" u/CFMX1
0322 WERK 104.9 IN Muncie 101.7-104.9 dual ID
0323 WKXA 100.5 OH Findlay
0335 WLEZ 102.7 IN Terre Haute "We play your
lite rock favorites"
0340 WMMG 100.7 IN Terre Haute "Continuous Hit
Music" u/CHIN
0342 WMRN 106.9 OH Marion k After Midnight
"Buckeye Country"
0348 WMDH 102.5 IN New Castle "Warming up the
Country"
0353 WRQN 93.5 OH Bowling Green
0359 WFI 90.1 IN Indianapolis
0400 WGTE 91.3 OH Toledo
0407 94.7 "Lite Rock 4cast for summer its always
95"
0410 WFBQ 94.7 IN Indianapolis pr
0414 WBUK 107.5 OH Fort Shawnee "The Big
Buck" 0421 unID104.9 The New Magic 104.9" r
(Not WAJC orKMJM)
0428 WTTS 92.3 IN Bloomington
0430 WHKW 98.9 IN Salem "The Hawk"
0443 WBZX 99.7 OH Columbus "The Blitz" pr
0444 99.7 Mix Music, Don McLean
0452 WQIO 93.7 OH Mount Vernon "93-Q"
0517 unID 104.9 America in the Morning
0530 WVPN 89.9 WV Wheeling WV
Public Radio
Aug 20 Es (BR)
0922 WTJT 90.1 FL Crestview g
0932 WTSU 89.9 AL Troy
1001 WFSW 89.1 FL Panama City



Aug 31 Tr (TO - Dufferin)

- 2237 CBON-21 104.9 ON Gogama CBC FF mono
(Eglinton & Allen Rds)
2240 WCCW 107.5 MI Traverse City "Oldies
107.5"
2250 CB_ 100.9 ON Wingham testing (loop tape //
106.3)
2258 CFRH 88.1 ON Penetanguishene new-to-air
FF
2308 CHGO 104.3 PQ Val D'Or \$ r Expos baseball
2310 KIAI 93.9 IA Mason City "KIA the Country
Moose" k
2315 WRVN 102.7 WI Suring g-mx
2321 WDOR 93.9 WI Sturgeon Bay Brewers
baseball
2325 WATQ 106.7 WI Chetek "Moose Country
106.7"
2326 KUNI 90.9 IA Cedar Falls World Cafe
program
2338 KOEL 92.3 IA Oelwein k
2340 CBON-25 97.1 ON Timmins CBC FF mono //
104.9, 860
2350 WCCN 107.5 WI Neillsville
2351 KROC 106.9 MN Rochester pr
2355 WJPD 92.3 MI Ishpeming Brewers baseball
2359 WCAL 89.3 MN Northfield ID as KMSE
88.7 Rochester
SEPTEMBER 1999 DX
Sep 1 Tr (TO - Dufferin)
0000 WHHI 91.3 WI Highland NPR
0001 CJKQ 92.1 ON Timmins "Today's best music
Q-92" pr
0005 WGFM 105.1 MI Cheboygan "N'ern MI's
Classic Rock, the Bear"
0036 WCOW 97.1 WI Sparta "Country Cow" k
0040 CJKL 101.5 ON Kirkland Lake TESTING
"101.5 the new CJKL"
0043 CJMV 102.7 PQ Val D'Or
0055 WOJB 88.9 WI Hayward w/CIRV
0058 WOFM 94.7 WI Mosinee o
0125 CBCY 102.3 ON Haileybury CBC-R-1 // 99.1
0140 unID 97.1 "Froggy 97.1 FM" w/ dance music
0146 WIMI 97.7 MI Ironwood rm
0208 WUPM 106.9 MI Ironwood up
0214 WRJO 94.5 WI Eagle River "Oldies Radio"
0215 WBYB 94.3 MI Leland "B-94.3" 1356
CHQI 90.7 ON Niagara on the Lake TIS (at
Davisville/MtPist)
Sep 3 Tr (TO - Dufferin)
0051 CJKX-1 89.9 ON Sunderland at 50 watts low
power // 95.9
0200 WWWW 106.7 MI Detroit tone "something
evil's gonna happen" (format change to follow)
0206 WRQN 93.5 OH Bowling Green "Oldies 93.5"
o
0223 CKTR 104.9 ON North Bay TIS (31 watts, very
weak)
Sep 4 Tr (TO - Bluffs/Dufferin)
0820 WVOQ 103.9 NY Mexico
0941 CBON-21 104.9 ON Gogama FF CBC
mono
0959 WWWW 106.7 MI Detroit "The new Alice
106.7" rp
1018 CBPO 88.9 ON Parry Sound Environment
Canada weather 20w



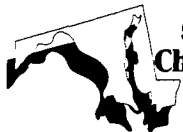
Southern FM DX

John Zondlo - 4009 Driftwood Circle - Yukon, OK 73099

jpzondlo@aol.com - Deadline: 10th

For DXers in AL, AR, AZ, CA, CO, DE, DC, FL, GA, HI, KS, KY, LA, MD, MS, NC, NV, OK, SC, TN, TX, UT, VA, WV, Cuba & Mexico

January 2000



Gus Mancuso
5706 Greenleaf Rd.
Cheverly, MD 20785-1112
(301) 583-0531
EDT

10/30 Tr
2338 **WEBE** 107.9 CT Westport, cutting in and out w/local WFSI. Added bonus: they were playing song from my "oldie want list," Shalamar's "Everybody Clap Your Hands!"

11/25 Tr (EST)
???? **W249BE** 97.7 VA Alexandria, WJYJ translator, station #400, using car radio, moved car until WMDM was nulled



Doug Smith - W9WI
1385 Old Clarksville Pike
Pleasant View, TN 37146-8098
w9wi@bellsouth.net CST

Technics ST-G50 tuner, big Radio Shack VHF-TV antenna at 15'

11/22 Tr
0721 **WBGL** 91.7 IL Champaign 265
0730 **WILL** 90.9 IL Urbana, local underwriting 266
0749 **WIAI** 99.1 IL Danville, Urbana ads 262
0752 **WHQQ** 98.9 IL Neoga, Effingham ad & "Double Q 98-9" 209
0757 **WQUL** 97.7 IL West Frankfort 139
12/3 Gw
0900 **WRQQ** 97.1 TN Goodlettsville, legal ID 19

Yes, a new local....and a nasty pest. They're unnullable, and cause considerable trouble for 97.3, one of my most productive channels. Which would be OK if they had a worthwhile format, but that's a bit much to expect these days. E-skip noted on November 6 and 17, but only into TV, and no IDs.



FM DX Web

Your resource for FM DXing



Pat Dyer - WA5IYX
5315 Silvertip Drive
San Antonio, TX 78228-2744
pjdyer@swbell.net
<http://home.swbell.net/pjdyer/index.html>
CST

Realistic TM-1001 tuner (2 IF mod w/150 kHz filters) into Allied 426, 52 ohm step-attenuator box used to reduce local intermod/overload when needed, 6 element Archer antenna at 20' with rotor

9/11/99 Tr (CDT)
0824 **KSJL** 92.5 TX Devine, ID 47
12/10/98 Es
2039 **XHJC** 91.5 BCN Mexicali, town ID 1019
2051 **XHITZ** 90.3 BCN Tijuana, area ad 1112
2053 **XETRA** 91.9 BCN Tijuana, area ad 1112
12/20/98 Tr
1942 **KMCM** 96.9 TX Odessa, "97 Gold" 284
1950 **KVRP** 95.5 TX Haskell, ID 265
1956 **KOOK** 93.5 TX Junction, ID 112
1/17 Tr
1020 **KOBI** 104.3 TX Taylor, "Beat 104.3," area ads 100
1020 **XHGTS** 107.3 TM Nuevo Laredo, "Radio Impatico" 147

1/19 Tr
1800 **XHCLQ** 107.1 CL Monclova, ID 245
1/27 Tr
0125 **WKZB** 93.5 AL Butler, area ads 628
0142 **WQSB** 105.1 AL Albertville, "Q-105" 805
0149 **WCKW** 92.3 LA LaPlace, ID 473
0156 **KYKS** 105.1 TX Lufkin, "Kicks 105" 269
0252 **WKSJ** 94.9 AL Mobile, "KSJ" 659
0254 **XHNLO** 97.1 TM Nuevo Laredo, local ad 147
2/7 Tr
0848 **KPCH** 97.7 LA Dubach, ID 406
0851 **KQID** 93.1 LA Alexandria, "Q-93" 409
0853 **KUEZ** 99.3 TX Lufkin, local ad 265
0855 **KAVX** 91.9 TX Lufkin, ID 269
0856 **KZMZ** 96.9 LA Lafayette, ID 388
0858 **KSYR** 95.7 LA Minden, "Star 95.7," area ad 368

0900 **KJLO** 104.1 LA Monroe, local ad 444
0941 **KYKS** 105.1 TX Lufkin, "Kicks 105" 269
4/2 Tr (CDT)
0215 **KRKZ** 93.5 OK Altus (RDS) 347
0221 **KSYE** 91.5 OK Frederick (RDS) 338
0224 **KVOD** 98.5 OK Tulsa, local ads 485
0227 **KLID** 101.7 TX Temple, ID, rel 144
0414 **KJSR** 103.3 OK Tulsa, "Star 103," area ads 483
0431 **KEMM** 103.3 TX Commerce, "KIM 103.3" 297

Southern FM DX

Dyer continued
4/8 Tr (CDT)
0820 **WYNK** 101.5 LA Baton Rouge, ID 443
4/9 Tr (CDT)
0115 **KCCC** 107.3 TX Ingleside, local ads, o 138
0340 **WCKW** 92.3 LA LaPlace, ID 473
1928 **KSMB** 94.5 LA Lafayette, ID 387
4/10 Tr (CDT)
0030 **WCKW** 92.3 LA LaPlace, ID 473
0125 **WDGL** 98.1 LA Baton Rouge, "Eagle 98.1" 446
0210 **WKSJ** 94.9 AL Mobile, "95 KSJ" 659
0222 **WYXX** 97.7 FL Bonifay, "99-X," area ads 788
0250 **WMMO** 98.9 FL Orlando, ID 1041

An extremely poor winter Es season. The new semi-local on 92.5 is going to be devastating for DXing on that channel. It used to be one of my primary ones for meteor scatter. The RDS feature has proven useful in catching a few tropo IDs, but far too few US stations utilize it. 73, Pat - WA5IYX

January 2000



From the editor

Well, here we are, a new millenium and a great new year to add lots of new stations to your logbook! Hope you all had Es over the holidays. And be sure to keep checking for F2 during the sunspot maximum.

Be sure to check out the newly-revised FM DX Web at <http://members.aol.com/fmdxweb>. You'll see even more changes as we roll through the next year, so check back often. Also, see the new, better than ever edition of the WTFDA website. Tim McVey has some great ideas for the site, so go there often.

See y'all next month!

NORTHERN FM DX continued from page 31

JANUARY 2000

Sep 5 Tr (TO - Guildwood)
1745 **W209BF** 89.7 NY Albion g translator WCOU 88.3
1806 **WZNE** 94.1 NY Brighton "94.1 The Zone" pr
0059 **WWDL** 104.9 PA Scranton
0100 **WVIA** 89.9 PA Scranton mention NPR
0123 **WNBQ** 92.3 PA Mansfield "Best hits of 80s, 90s & today"
0135 **WENJ** 104.9 NJ Egg Harbor City SS music, dual ID w/ Philly
0150 **W238AB** 95.5 NY Rochester /WNRV 95.1
0152 **WENY** 92.7 NY Elmira "Y-92.7"
0230 **WFLR** 95.9 NY Dundee
0309 **WHST** 106.1 MI Tawas City (CIMJ off) "Your hometown station"
0354 **WJLB** 97.9 MI Detroit (for some reason never logged here)



WFLR
1570 AM 95.9 FM

THE WORLDWIDE TV-FM
DX ASSOCIATION:

OCTOBER 1999 DX

Oct 3 Tr (TO - Highway 7 & Dufferin)
1235 **LP** 106.3 ON Vaughan Vaughan
Secondary School Radio Rav-FM
Oct 5 Tr (TO - Highway 401 east end)
0100 **PIR** 104.9 ON Pickering "104.9 the original nuclear radio p

Oct 5 Tr (BR)

0246 **CFRH** 88.1 ON Penetanguishene FF
0247 **CJKX-1** 89.9 ON Sunderland k, "KX-96" //95.9

NOVEMBER 1999 DX

Nov 12 Tr (TO - Dufferin)
1400 **CKUE** 94.3 ON Chatham rp (new-to-air, at reduced power)

Nov 26 MS/Tr (TO - Aurora area ... CN Tower stations off briefly)

0203 **CKCN** 94.1 PQ Sept Iles MS Burst with FF
0215 **CBEG** 90.3 ON Sarnia CBC Radio 1
0220 **CBCS** 99.9 ON Sudbury CBC Radio 1
0228 **CKNR** 94.1 ON Elliot Lake r



Serving VHF-UHF DX enthusiasts all over the earth since 1967!

WESTERN TV-DX

January 2000

Dennis Park Smith, 3703 Dixon Street, Santa Barbara, CA 93105-2419 (805)687-7803

This report is for November 1999. There has been further gradual Autumn cooling, but still some stable periods with layer ducting along the southern California coast, allowing occasional 200 mi (395km) tropo DX to San Diego/Tijuana received with only an indoor whip and bowtie antenna.

Nov 1 Poor
 Nov 2-4am Fair+ (some stns occ. good)
 Nov 4 eve Poor (approaching cold wx front)
 Nov 5-6 Very poor
 Nov 7-9 None (rain, Nov 7 night)
 Nov 10 Very poor (sunny & mild)
 Nov 11 Poor, improving
 Nov 12 Fair
 Nov 12 eve-Nov 14 aft: Out of town, in Wasco
 Nov 14 eve Fair, deteriorating (appr cold wx front)
 Nov 15 Very poor
 Nov 16-22 None
 Nov 23 Very poor (cool but calm, stable)
 Nov 24 am Poor
 Nov 24am-Nov 27 aft: Out of town, in Wasco
 Nov 27 eve Poor
 Nov 28-29 Fair
 Nov 30 Poor, eve down to very poor
 (Cold wx front, dispersing layers)
 Dec 1 None

The Nov 2-4 am fair-good signals included ch 3 CCI under local KEYT-3 S.B. (15 mi) from XHTJB-3 Tijuana (200 mi).

In Wasco, on Nov 12-14, some winter "Tule-fog" tropo was evident (though not optimum) with good signals from such as KXTV-10 & KOVR-13 Sacramento/Stockton (215 mi) and KUVS-19 Modesto (175 mi), best seen in some years as I haven't gotten to Wasco much in winter. Wasco tropo Nov 24-27 was almost non-existent with only poor signals as far as K56DZ Fresno (100 mi) and KNSO-51 Merced (150 mi), on 4-bay UHF & 1-bay VHF conicals at 16 & 10 feet AG.

Best of DX to all.

Dennis

Mike Cherry, VE7SKA, Box 631 Ganges PO, Salt Spring Is. BC V8K 2W2 CANADA

Nov. 11, 2300Z+: We've had a variety of propagation & today the 45 MHz ZL (New Zealand) video was strong enough to observe (albeitly weakly) on the Kenwood RZ-1 rcvr & 5" b&w monitor.

Victor Frank
 12450 Skyline Blvd.
 Woodside, CA 94062-4554
 e-mail frank@horizon.sri.com
 (650)851-7031

November 1999 UTC
 14Es 0329 CKND-TV2 2 TV 85° MB

Danny Oglethorpe, P.O. Box 17452, Shreveport, LA 71138
 Email: doglethorpe@yahoo.com
 VHF: Winegard CA-5254 VHF antenna @ 18 feet
 AGL

November 1999	GMT	
2 Es 1958 WJBK	2 MI	904
5 Es 2131 XHG	4 JAL	1003
6 Es 0059 KNAZ	2 AZ	1045
9 Es 1513 WSJK	2 TN	665
	1600 CHB	2 ON
	WJBK	2 MI
	1750 WESH	2 FL
	1810 Miami	2, 4
18Es 1745 Minneapolis-St Paul 2, 4, 5		870
29Es 0050 XHAP	2 GUER	1142
30Es 0023 XHFM	2 VER	900

Jeff Kruszka, 5024 S. Braxton Ave., Baton Rouge, LA 70817

November 1999	CST	
5 Es 1844 unid 4 NBC to W.		
20 tr 2123 KATV	7 AR	305
27 tr 2335 XHMEYI	7 YUC TV Azteca, due S.	
	2345 KVEO	23TX NBC, local ads, ID
	2347 KXAN	36TX NBC
	2348 KVDA	60TX Telemundo, weak
28 tr 0000 KTLM	40TX Telemundo, ID	545
	0049 KRRT	35TX TX ads
	0101 KPXL	26TX Pax, ID, difficult thru WGNO
	0154 KVUE	24TX floating o/KLPB

Fernando Garcia, San Salvador 415, Rincon de la Sierra Cd Guadalupe, NL, 67181 MEXICO
 ac001984@acnet.net,

Equipment: Sony KV-27EXR15, Screened CM 7'dish 85', RG11, UA900 amp. Sony KV-13TR27, CM 1110 30', CM 8 bay UHF array 60'. 1800' ASL, only tropo 500+ miles.

List of logs during November 1999.

WALA	10	AL	Mobile	831
WPMI	15	AL	Mobile	838
WMPV	21	AL	Mobile	842
WEIQ	42	AL	Mobile	825
W50CF	50	AL	Mobile	817

Western TV DX F. Garcia's report continues

WXPX	66	FL	Bradenton	1115
WFTX	36	FL	Cape Coral	1142
WKCF	18	FL	Clemont	1192
WTGL	52	FL	Cocoa	1200
WHDT-LP	55	FL	Coral Springs	1236
WSCV	51	FL	Fort Lauderdale	1242
WBBH	20	FL	Fort Myers	1144
WGCU	30	FL	Fort Myers	1144
W67BY	67	FL	Fort Myers	1143
WPAN	53	FL	Fort Walton Beach	869
WAWD	58	FL	Fort Walton Beach	897
W58BU	58	FL	Hallandale	1243
WGFL	53	FL	High Springs	1112
WAMI	69	FL	Hollywood	1242
WPXP	67	FL	Lake Worth	1248
WMOR	32	FL	Lakeland	1135
WACX	55	FL	Leesburg	1180
WBSF	43	FL	Melbourne	1200
WOPX	56	FL	Melbourne	1189
WLRN	17	FL	Miami	1242
WLTV	23	FL	Miami	1242
WBFS	33	FL	Miami	1242
WPXM	35	FL	Miami	1237
WBZL	39	FL	Miami	1243
WJAN-LP	41	FL	Miami	1230
WHFT	45	FL	Miami	1244
WZVN	26	FL	Naples	1153
WTVK	46	FL	Naples	1153
WOGX	51	FL	Ocala	1123
WMFE	24	FL	Orlando	1191
WOFL	35	FL	Orlando	1191
WRBW	65	FL	Orlando	1192
WFGC	61	FL	Palm Beach	1248
WFSG	56	FL	Panama City	929
WSRE	23	FL	Pensacola	857
WHBR	33	FL	Pensacola	838
WJTC	44	FL	Pensacola	842
W24AT	24	FL	Sarasota	1102
WWSB	40	FL	Sarasota	1108
WTTA	38	FL	St. Petersburg	1116
WTOG	44	FL	St. Petersburg	1116
W60BK	60	FL	St. Petersburg	1093
WTXL	27	FL	Tallahassee	1031
WTVT	13	FL	Tampa	1117
WUSF	16	FL	Tampa	1116
WFTS	28	FL	Tampa	1116
WFTS-DT29		FL	Tampa	
WBHS	50	FL	Tampa	1116
WVEA-LP	61	FL	Tampa	1104
WPBF	25	FL	Tequesta	1228
WRXY	49	FL	Tice	1142
W56CN	56	FL	Venice	1106
WBSV	62	FL	Venice	1107
WFLX	29	FL	West Palm Beach	1238
WXEL	42	FL	West Palm Beach	1238
WFXL	31	GA	Albany	1066
KALB	5	LA	Alexandria	599
KLPA	25	LA	Alexandria	619
KLAX	31	LA	Alexandria	618

K47DW	47	LA	Alexandria	611
WAFB	9	LA	Baton Rouge	638
WLPB	27	LA	Baton Rouge	638
WVLA	33	LA	Baton Rouge	633
WGMB	44	LA	Baton Rouge	633
K46CR	46	LA	Baton Rouge	645
K56DR	46	LA	Baton Rouge	633
K67GL	67	LA	Bunkie	614
K69HD	69	LA	Church Point	586
KFAM-LP	65	LA	Crowley	572
K81GO	61	LA	Hicks	581
K30EM	30	LA	Houma	644
KATC	3	LA	Lafayette	566
KADN	15	LA	Lafayette	586
KLFT-LP	21	LA	Lafayette	592
KLPB	24	LA	Lafayette	567
K46DG	46	LA	Lafayette	587
KLTL	18	LA	Lake Charles	548
KVHP	29	LA	Lake Charles	530
K51EC	51	LA	Lake Charles	532
K52EV	52	LA	Leesville	574
KWBJ-LP	39	LA	Morgan City	618
K49DE	49	LA	New Iberia	596
K55HA	55	LA	New Iberia	596
WHNO	20	LA	New Orleans	688
WGNO	26	LA	New Orleans	694
WLAE	32	LA	New Orleans	694
WNOL	38	LA	New Orleans	694
WPXL	49	LA	New Orleans	688
K59DG	59	LA	New Orleans	688
KLAF-LP	62	LA	Opelousas	600
K66FI	66	LA	Opelousas	599
KMSS	33	LA	Shreveport	615
WUPL	54	LA	Slidell	705
KARD	14	LA	West Monroe	659
WMAH	19	MS	Biloxi	770
WMAU	17	MS	Bude	697
WXXV	25	MS	Gulfport	764
WAPT	16	MS	Jackson	754
W36AC	36	MS	Mccomb	710
WTOK	11	MS	Meridian	834
WMAW	14	MS	Meridian	807
WMDN	24	MS	Meridian	834
WGBC	30	MS	Meridian	834
W63BK	63	MS	Meridian	834
WNTZ	48	MS	Natchez	670
KDFI	27	TX	Dallas	518
KDAF	33	TX	Dallas	518
KXTX	39	TX	Dallas	518
KDTX	58	TX	Dallas	518
KMPX	29	TX	Decatur	537
KTXA	21	TX	Fort Worth	518
KUVN-LP	31	TX	Fort Worth	521
KFWD	52	TX	Fort Worth	522
KETK	56	TX	Jacksonville	532
KLDT	55	TX	Lake Dallas	544
KFXK	51	TX	Longview	557

This was the best November ever for 1,000 miles openings with up to five days : 3, 8, 27-29 (Thanksgiving weekend)