

The Worldwide TV-FM-DX Assn.

Opinions expressed in this publication are those of the individual contributor and do not necessarily reflect the views of the publisher or WTFDA Board of Directors. We reserve the right to edit material to meet publishing standards. Unless previously agreed upon in writing, all material submitted for publication in the *VHF-UHF Digest* becomes the property of the WTFDA.

Reproduction of material from the *VHF-UHF Digest* without the permission of the WTFDA is prohibited. Individuals and other organizations are granted such permission providing proper credit is given to the source.

Worldwide TV-FM DX Association
The VHF-UHF Digest
P. O. Box 501
Somersville, CT 06072

Annual Dues, (payable in U. S. funds: \$24/year: U. S. addresses; \$26/year to Canada; \$38/year for airmail service to all other countries).

Editor/Publisher: Paul Swearingen - 2840 SE Illinois - Topeka, KS 66605-1427 (plsBCBDXER@aol.com)

Circulation: Mike Bugaj - P. O. Box 501 - Somersville, CT 06072 (Mbugaj@snet.net)

Comptroller: Dave Janowiak

Editorial Staff: Tom Bryant, Greg Coniglio, Victor Frank, George W. Jensen, Jeff Kruzka, Keith McGinnis, Fred Nordquist, Matt Sittel, Doug Smith, Thomas J. Yingling, Jr., John Zondlo



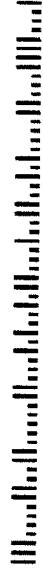
MEMBER

WTFDA Board of Directors: Tom Bryant, Mike Bugaj, Greg Coniglio, Bruce Hall, Dave Janowiak
ANARC rep: Jim Thomas
Back Issues: Dave Nieman
Original Cover Design: Harry Hayes
WTFDA Web Site: <http://www.anarc.org>

Chat Site: <http://www.delphi.com/wfda>, Tues/Fri at 10 pm EST.

E-Mail Reflector: send an e-mail to WTFDA-subscribe@topica.com

First-Class Mail
U. S. Postage
PAID
Topeka, KS
Permit #598



11/01/2001

Bill Nollman

11 HIDDEN OAK DR
FARMINGTON CT 06032-2735

Vhf-Uhf DIGEST

The Official Publication of the Worldwide TV-FM DX Association

May 2001

Veteran VUD
Editor/Publisher
Bill Thompson
Steps Down
After 23 years

Worldwide TV-FM DX Association

Serving the VHF-UHF Enthusiast

The *VHF-UHF Digest* is the official publication of the Worldwide TV-FM DX Association, dedicated to the observation and study of the propagation of long distance television and broadcasting signals at VHF AND UHF. WTFDA is governed by a board of directors:

Tom Bryant, Mike Bugaj, Greg Coniglio, Bruce Hall, and Dave Janowiak.

Our address on the Internet is <http://www.anarc.org/wtfda>

WTFDA VUD Era Ends With Thompson Departure

Twenty-three years of continuous service in any capacity is a long time; in fact, almost unheard-of these days; but that's how long Bill Thompson headed up layout, editing, and publishing duties for the *VHF-UHF Digest*. Over the years, he contributed a lot of tech columns under a variety of names and was continually seeking others out to do the same. When not DX'ing, Bill works with the 911 Dispatching Unit for Erie County (Buffalo) New York.

On April second, members of the WTFDA Board of Directors received an e-mail from Bill (also a Board member) which stated that health considerations were forcing him to resign as VUD Publisher/Editor at once. He also relinquished his position as a Board member.

While most of you were shocked by the news, the Board was aware of Bill's health situation and his plan to step down from 'active duty' by the end of the year. Thus, we were already in the process of looking for a successor. On the other hand, the immediacy of his announcement was a shocker to us as well.

This will be very dated by the time you read it (since the most recent update was April 5), but in response to those who have asked how he's doing, Bill said at that time that his cardiologists tell him that his prognosis is excellent.

Replacing Thompson on the Board of Directors is Communications/ Circulation Manager Mike Bugaj of Enfield, CT. Mike was already sort of ex-officio to the Board, and it was a natural move to appoint him to fill Bill's recently vacated post.

A side note of interest is that for the first time ever (with the recent on-line debut of Dave Janowiak) all five WTFDA board members now have e-mail capability. That hookup couldn't have happened at a more convenient time due to the exchange necessary to keep the club moving forward and solving newly created problems as they arose.

Of major concern was the fact that the in-progress search for a VUD Publisher/Editor had not come up with any firm leads. It's no secret that publishing the bulletin is the biggest job in the club, and one that's generally extremely difficult to fill. We had a few ideas that would have kept the VUD coming to you ... but none was long term, and no one really wanted the job full time.

An appeal for help was part of an information package sent to on-line members; and from it, came a 'feeler' from club member Paul Swearingen of Topeka, KS. Subsequent discussion resulted in an interim arrangement whereby the VUD would be assembled and published under Paul's guidance and mailed from Topeka.

If Swearingen's name isn't familiar to you, it probably should be. Paul has been the Publisher of the National Radio Club's *DX News* for the past 13 years. Prior to that he contributed various columns to that bulletin.

Among other things, Paul has been a school teacher (English, journalism, Spanish) for about 25 years, at one time worked as a radio DJ, has experience in newspaper editing and photography and various sales positions, including even selling cemetery lots, and as a personnel manager for a large department store (recently defunct). He also is an AM and TV DX'er, at least sometimes. You might also recall that he was one of Doug Smith's predecessors as a DX columnist for *Monitoring Times*. Your Board members like the cemetery gig best! (Small marker stones would be great for anchoring temporary masts on DXpeditions!)

While much is changing in a very short time, our primary concern has been to keep the *VHF-UHF Digest* arriving in your mailbox without interruption. Barring any glitches, that has happened. You are reading this, aren't you?

You may notice some differences in the layout and overall "look" of the VUD this month. That's because the shift to publishing in Topeka also involves a number of technological changes. With this issue we will have moved from a paper 'print-ready' assembly process to an all-electronic transfer protocol. In the long run it should allow for more uniform on-time mailings, later-breaking news, and a

more consistent overall appearance.

On behalf of our nearly 300 members, the Board wishes to thank Bill Thompson for his MANY years of dedicated service to the WTFDA. He has worked unselfishly for the good of the hobby and this organization and will be missed as an active participant in the governing process. On the other hand, he's earned his retirement; and we hope he'll enjoy it to the fullest and in rapidly-restored good health.

Thanks also to Mike Bugaj for accepting the Board appointment. In case you didn't know, he's a go-getter and will keep us all on our toes as we thread our way through this time of major changes in the DXing hobby.

Thanks to Paul Swearingen for surprising everyone with his offer to help us out. If there is anyone else more capable or qualified to wear the Editor/Publisher's hat, we can't imagine who it would be, anywhere in DX-dom.

Finally, while the kudos are being handed out, we (your Board) are going to pat ourselves on the back for a job well done in disseminating news of these changes to as much of the membership as possible. We regret that we couldn't tell you about the new publisher right away, but there was a certain amount of negotiating that had to be resolved before that information could be released.

With no panic, no danger of folding, and no political coup d'etat, the WTFDA has moved through another period of transition intact. If you experience any problems or inconveniences as a result of the restructuring, please let us know. After all, it's your club, and we're here to make sure it serves you as efficiently as possible.

Thanks to all of you for your support. -*The WTFDA Board of Directors*

From the Publisher: The note from the BoD above says that my volunteering to take over the VUD publishing duties surprised everyone ... and you know, it kind of surprised me, too. Although I've been a member of the WTFDA for over 20 years (since September, 1980), I really haven't contributed very much to the VUD except for a few loggings here and there. Of course, there's that "day job" to eat up perhaps 60 hours or more per week; I stay busy another 20 or so publishing the National Radio Club's *DX News*, and I also repair, upgrade, and sell Macintoshes on the side ... sort of a hobby gone bad. And in my spare time I eat and sleep, of course. DX'ing? Once in a while, and mostly AM as well as TV DX, which can be spectacular here in the heartland during e-skip time.

I should add that as a matter of expedience and convenience, the VUD will be published using some of the National Radio Club's equipment and software, and as such the two clubs are entering into a cooperative agreement with the WTFDA compensating the NRC with a nominal fee for that use. Also, we're investigating the possible promotion of each other's products and services in each others' bulletins, much as IRCA and NRC have done for years. Finally, we feel that only good things can come from this new cooperation between the two clubs.

As a volunteer, I receive nothing but satisfaction and the knowledge that, finally, I'm contributing something positive to the club. And if anyone whispers the "M" word, please be advised that at no time has anyone even thought of merging the two clubs. Many of you belong to several clubs and are able to separate your activities and loyalties; so can I, even though I happen to have published *DX News* for some 13 years and have been chosen by the WTFDA BoD to publish the VUD, at least temporarily through August. And anyone who wants to step forward and nominate her/himself for my position, please do so at once! I frankly have plenty to do (see above) and would be very happy to pass along the VUD to anyone qualified to put it out. The day job kicks in after the August issue, and I may just not have enough time to continue as VUD publisher.

So - keep on DX'ing; send in those reports; and let's get on with it! -Paul Swearingen

Frank Aden hosts Convention 2001

at the Super 8 Motel near the airport, Boise, Idaho
July 27, 28, 29, 2001

Room rate is \$62.10 for a double bed.

Phone the Super 8 at 208-344-8871 and tell them Frank sent you for room discount.

Convention Fee: \$20.00

Visit the Convention website at <http://welcome.to/boise2001>
E-mail Frank for more info at WTFDA2001@aol.com or
write Frank at 4096 Marcia Place - Boise, Idaho 83704



WTFDA MAILBOX

P.O. Box 501

Somersville, CT 06072

Mike Bugaj

MAY 2001

Glad to have you back for another edition of the Mailbox. Yes it's May. It's time to start thinking about tropo and sporadic E again. The skip season is right around the corner; in fact, in some places it may have already arrived! Keep your televisions glued to channel 2 or 3 and watch for signs of skip. And if you have a computer, subscribe to the WTFDA list for the warmer months. I guarantee you, if there's skip anywhere in North America, you'll know about it when it happens!

And now...on with the show.

IN THIS MONTH'S MAIL

We have two new members this time around. A big welcome goes out to Mark Durenberger in Grand Junction, CO. I don't really know Mark well, but I hear from other DXers that he's a pretty famous guy, so I feel honored to have him with us. Next I want to say hi and welcome to Wayne Johnson. Wayne lives in Peoria, IL and comes to us after visiting the WTFDA website. Tim McVey, by the way, has updated the site with corrected links and it looks great. Mark and Wayne, it's great having you with us!

Back with us for another year are Fred Drobny(CA), Luis Franceschi(PR), Paul Crego(NY), Bill Thompson(NY), Bill Dvorak(WI), David Cox(AL), Joseph Smith(NY), Thomas Leu(OH), David Nieman(NY), John Broomal(GA), Carlton Howington(FL), Scott Steenhusen(KS), Pete Taylor(WA), James Ivil(WV), Gus Mancuso(MD), Phil Sullivan(MA), Leslie Green(LA), James Brown(VA), Dennis Elya(MO), Rich Wertman(NY), Alex Morros Cruz(CUBA) and Bill Draeb(WI). Thank you all for staying with us through thick and thin. And thanks to Luis for the PR station logos!

Wayne Johnson writes, "It's great to know there are folks out there who are interested in this fascinating hobby and people I can bounce questions off of." Bounce away, Wayne!

Luke Steele has turned up at a new location. Luke has settled in at Mountain Grove, MO where he now works at KELE AM and FM. Luke wants a career in radio, and let's hope that this job leads eventually to something that makes him as famous as the "Real Don" Steele!

KEEPING IN TOUCH WITH YOU
Basically now we have two groups of people in

Mbugaj@snet.net

the WTFDA: those with computers and those without. Those with computers can be broken down into two groups: those on the WTFDA list and those who aren't. So then we end up with three groups...those on the list, those not on the list and those who don't have e-mail at all.

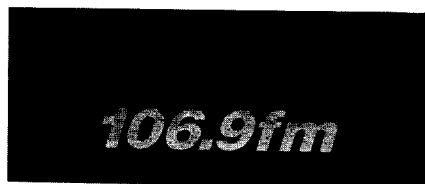
The challenge we have is how to inform everyone in the club when a major problem occurs, either with the VUD or in some other area. Those folks on the WTFDA list get the information immediately. The rest of you don't.

One thing I've done to help the situation is to create a mailing list for those WTFDA members with computers who don't want to join the WTFDA list for various reasons (not interested, too much e-mail volume, etc). I've started a list called "WTFDA News". The purpose of this list is to get information to you in a timely manner, and by "timely" I mean as fast as the WTFDA list folks get it. The e-mail volume on this list will be very low. I will post once or twice a month as needed. You will not drown in e-mail. We will not discuss anything. The purpose of this list is simply to keep you in the loop. To subscribe to this list, send an e-mail to WTFDA2-subscribe@topica.com. In times when everything in the club is rolling along smoothly you might even forget that you've subscribed to it. But I won't.

The biggest challenge of all is how to communicate quickly with those in the club without computers. In the case of a delayed VUD we don't want anyone thinking that the club has gone under for any reason. And sometimes after weeks have gone by without a VUD, people start to wonder. This is where you come in. How do we accomplish this? Send me a note at PO Box 501 and we'll talk it over. All ideas are welcome.

CHANNEL MASTER DROPS PROBE-9

Recently we've been informed that Channel Master has discontinued their popular Probe 9 FM antenna. This comes as a shock to FM DXers and audiophiles who want a good performing antenna at an affordable price. Currently the only available FM antennas we know of are the APS-9 and 13 from Antenna Performance Specialists, the Radio



Shack 6 element outdoor antenna, and the Winegard CA 6065. Of the four mentioned, the two APS antenna are the best bet for FM DXing.

PSST! BUDDY WANNA BUY A DTV?

This note from Jim Ayers: "Wanted to tell you how much I enjoyed the features on propagation in the March VUD. Very interesting! Also the "You know you've seen too much E-skip when..." feature struck some chords in me.

Bob Cooper's article was quite intriguing. I recently saw my first decoded HDTV. Was at a local Hi-Fi Buys where I was treated to reception of two of my four local DTs. WGNX-DT(19) was identified as "19-1" while WAGA-DT (27) was identified as "5-3" in reference to their analog channel 5. I read some comments from Doug Smith about how some DT stations will bill themselves by their analog channel. Note that WAGA-DT's simulcast programming was on "5-3". The salesman explained that "5-1" and "5-2" may be used for paging or other purposes. It was Saturday morning and there was no actual high definition programming being broadcast, just lower quality simulcasts of the analog channels. The salesman told me the CBS is broadcasting all of their primetime schedule in hi-def.



My other two local DTs (channels 10 and 39) could not be found by this decoder. We were only about 10 miles from most of the transmitters, but who knows what quality of antenna they were using at Hi-Fi Buys. I know when the DTs are on the air (via the dark snow), and rarely are any of them off, so I'm assuming that the other DTs were on and the reliable 8-VSB technology just couldn't decode them at 10 miles. I didn't leave the store wanting to buy an HDTV system."

HOW I STARTED DXING

Eric Bueneman steps up to the plate:

"I began discovering distant stations on the AM broadcast band in 1976. At the tender age of ten, I tuned across the AM band to hear WBBM Chicago, IL on 780 kHz. Later on, I would be able to hear WMAQ on 670 kHz (which is now WSCR) from the same city, even during the daytime. Ditto with WLS on 890 kHz. Then, I would tune across the AM band at night, and pick up such stations as WLW Cincinnati, OH on 700 kHz, WSB Atlanta, GA on 750 kHz, WBZ Boston, MA on 1030 kHz, WHAM Rochester, NY on 1180 kHz and even WABC New York, NY on 770 kHz. I still remember listening to Dan Ingram on WABC the night John Lennon was murdered (December 8, 1980).

I began discovering distant FM stations in 1979. Both of my older brothers listened to KSHE Crestwood, MO on 94.7 MHz. I tuned across the FM band, and was able to hear KTJJ Farmington, MO on 98.5 MHz (they were the only 100 kW FM

within 100 miles carrying the St. Louis Cardinals baseball games) and WIBI Carlinville, IL on 91.1 MHz. A year earlier, I would discover TV stations from outside St. Louis; Columbia, MO's KOMU-8 and KCBJ-17 (now KMIZ); Jefferson City's KRCG-13, Cape Girardeau's KFVS-12, Hannibal's KHQA-7 and Quincy's WGEM-10, just to name a few.

The moment the DXing bug hit was in 1980, when I heard CMKV Urbano Noris, Cuba on 600 kHz. They were a 150 kW station, easily heard next to local WRTH Wood River, IL (now KFNS) on 590 kHz. Back then, they relayed Radio Moscow until 11:00 p.m. local time (midnight EST), then switched to the Voice of Cuba, which was the AM adjunct of Radio Havana. I bought a Realistic DX-60 portable receiver in 1981, and immediately began DXing the shortwave bands. Before too long, I was also DXing the AM BCB; later, I would begin DXing the FM BCB and broadcast television. I upgraded my TV antenna from rabbit ears to an Archer VU-110 in 1983. When I moved to Georgia in 1988, I bought another VU-110. I only stayed there less than four years, even proving the theory that rabbit ears are fairly good DX antennas (John Broomall proved that theory right when he was living in Waleska and Woodstock).

I moved to my present QTH in 1992. I bought a rotor in 1994 (which I had to replace three years later), and upgraded to my present VU-210XR in July 1998. As of this writing, my logbook at this QTH consists of 700 AM stations, 644 FM stations, and 407 TV stations. I started DXing the NOAA Weather Radio bands this past Christmas, and already have 13 stations in the logbook."

LAST BUT NOT LEAST

Sign up for the Topica reflector for the season. Send an e-mail to WTFDA-subscribe@topica.com. Make the most of this DX season. CU next month -Mike

Conventions: The IRCA/DecalcoMania convention will be held on August 24-26 2001 at the Best Western Airport Inn, 10232 Natural Bridge Rd, St Louis MO 63134. DecalcoMania member Mike Sanburn (PO Box 1256, Bellflower CA) is your host (mikesanburn@hotmail.com). For reservations 1-800-872-0070 or (314) 427-5955. Rates are \$73/night (up to 4 people/room). Registration is \$35/person. (from "The AM DX Newsflash")

The National Radio Club convention will be held in Pittsburgh, PA August 31-September 3. For more info, send an SASE to John Malicky - 995 Shadycrest Rd - Pittsburgh, PA 15216-3046.

The Northland Antique Radio Club is holding "Radio Daze 2001" on May 18-19 at the Comfort Inn of Plymouth, MN (1-763-559-1222). For more info, mail an SASE to NARC - P. O. Box 18362 - Minneapolis, MN 55418 or access <<www.geocities.com/TelevisionCity/4544/>>. Registrations should be in before May 12.

Finally, according to Ernie Wesolowski, the Conrad Family "Reunion", scheduled for May 18-20 in Waterloo, IA, has been canceled.

Douglas E. Smith W9WI
1385 Old Clarksville Pike
Pleasant View, TN 37146-8098
W9WI@w9wi.com http://www.w9wi.com

Abbreviations:

AF Applied for (a new station)	NW New station on the air
CA Class A status request/grant	PA Proposed amendment to the table of allocations
CC Call change	PC Power (or tower height) change on the air
CL City-of-license change	PG Power (or tower height) change granted
DE Station deleted	QC Channel change on the air
FC Programming (format) change	QG Channel change granted
GA Granted amendment to the table of allocations	SI Off the air ("silent")
LC License to cover (for changes or new station)	XC Transmitter site change on the air
NO Not on the air	XG Transmitter site change granted
NS New station granted permit	

News:

Alaska:					
Anchorage	18 KTUU-DT	NS 50kw/42m, 611133/1495401	Little Rock	59 KHUG-LP	req. QG from ch. 14, PG>20kw, XG 344620/922127
Anchorage	24 KAKM-DT	NS 50kw/39m, 611133/1495401	Pine Bluff	24 KVTN-DT	AF 1000kw/356m, 343155/920241
Anchorage	32 KDMD-DT	NS 50kw/39m, 611133/1495401	Arkansas:		
Anchorage	35 KCFT-LP	req. PG> 50kw	Pine Bluff	24 KVTN-DT	AF 131kw/182m, 343155/920241
Anchorage	38 K25FM	req. QG from ch. 25	Pine Bluff	24 KVTN-DT	AF 725kw/356m, 343155/920241
Anchorage	45 K27FJ	req. QG from ch. 45	Arizona:		
Fairbanks	7 KFXF	req. LC for PG> 39.8kw	Douglas	3 KBGF	PG>9m, XG 312208/1093145
Fairbanks	35 K22EY	req. QG from ch. 22	Lake Havasu C.45	KLHU-CA	CC from K45AJ, PG> 1.4kw, XG 342941/1142059
Fairbanks	39 K24EG	req. QG from ch. 24	California:		
Fairbanks	41 K26EL	req. QG from ch. 26	Concord	42 KTNC-TV	FC to Azteca
Fairbanks	43 K28ES	req. QG from ch. 28	E. Los Angeles	64 KHIZ-1	AF 90kw, 341250/1180343, booster of Barstow
Kenai	6 K06MF	req. PG> 1.44kw	Eureka	11 KEET-DT	NS 40kw/550m, 404339/1235817
Palme	12 K12OW	req. PG> 3kw, XG 614334/1492546	Eureka	27 K27FX	granted LC; also K31EW<K48GP, K57HB, K59FW, K63GK
Arkansas:			Fort Bragg	8 KFWU	FC to Azteca
Batesville	22 K22ES	granted LC; also K28FO, K30EC, K35EA, K67GR, K69GT	Hanford	20 KFTV-DT	NS 350kw/580m, 370422/1192550
El Dorado	46 K46DT	granted LC; also K48EP, K50EK, K53FB, K69HO	Indio	5 KEVC-CA	CC from K05JY
Fayetteville	9 KAFT-DT	GA x-ch. 45	Los Angeles	35 KMEX-DT	NS 400kw/972m, 341336/1180359
Jonesboro	9 KAIT-DT	NS 18kw/531m, 355322/905608	Los Angeles	65 KTTV-DT	PG>1000kw
Little Rock	5 KETS-DT	GA x-ch. 47	Merced	5 KNSO-DT	GA x-ch. 38
Little Rock	20 KKYK-LP	req. QG from ch. 22, PG>150kw	Mojave	24 K24FG	QG from ch. 68, PG< 9.5kw, XG 343245/1181248
Little Rock	32 KARK-DT	NS 989kw/474m, 344757/922959	Ontario	29 KHSC-DT	GA x-ch. 47
Little Rock	50 KHTE-LP	req. QG from ch. 44/46, PG>50kw	Palm Springs	66 K66BM	PG> 10kw
Little Rock	50 KKYK-LP	QG DISMISSED from ch. 22	Redding	47 K47G	granted LC for QG from ch. 4
Little Rock	57 KHUG-LP	QG DISMISSED from ch. 14	Sacramento	31 KMAX-TV	PG > 560m, XG 381554/1212924
Little Rock	59 KHTE-LP	QG DISMISSED from ch. 44/46			

Sacramento	33 KCSO-LP	req. QG from ch. 60, PG> 261.2kw	Georgia:		
Sacramento	8 KBTV-LP	granted LC for PG>	Atlanta	43 WUPA-DT	NS 1000kw/335m, 334441/842136
San Jose	49 KSTS-DT	NS 200kw/688m, 372957/1215216	Augusta	18 WAAU-LP	granted LC, PG> 50kw, XG 332613/820532
San Luis Obispo	44 KFUL-LP	CC from K44FD	Augusta	30 WAGT-DT	AF 200kw/485m, 332516/815019
San Mateo	59 KCSM-DT	NS 107kw/380m, 374107/1222601	Baxley	35 WGSA-DT	NS 1000kw/364m, 320005/815115
California:			Columbus	35 WLTX-DT	NS 959kw/377m, 322728/845308
Santa Barbara	46 K46GC	req. LC for QG from ch. 66, PG> 15.3kw, XG 342757/1194038	Lafayette	41 WLFW-LP	CC from W41CG
Santa Barbara	51 KBAB-LP	req. QG from ch. 38, PG> 3.57kw, XG 342758/1194037; CC from K38DK	Macon	4 WMAZ-DT	GA x-ch. 45
Santa Barbara	59 KSGA-LP	CC from K59FV	Ringgold	63 WRNG-LP	CC from W63CP
Santa Maria	25 KLFA-LP	CC from K25FV	Rome	51 WPXA-DT	NS 1000kw/595m, 341848/843855
Santa Maria	33 KTAS	FC to Telemundo	Summerville	21 WSUT-LP	CC from W21BV
Simi Valley	44 KSMV-LP	CC from K44DT	Hawaii:		
Colorado:			Glenwood	22 KBLO-LP	CC from K22EL
Colorado Sprs.	22 KXRM-DT	NS 850kw/665m, 384443/1045140	Haleakala	24 KUKO-LP	FC to religion
Denver	36 KUVC-LP	CC from K36FB	Honolulu	38 KALO	req. PG> 206kw/579m, 212333/1580543
Fort Collins	21 KFCT-DT	AF 525kw/233m, 403832/1044905	Maui	59 KUPA-LP	FC to religion
Pagosa Springs	43 K43GT	QG from ch. 56; PG> 0.44kw; XG 371132/1070557	Wailuku	51 KAUI-LP	CC from K51EM
District of Columbia:			Idaho:		
Washington	39 WJLA-DT	PG>1000kw	Boise	26 KTVB-DT	NS 871kw/808m, 434516/1160556
Washington	47 WMDO-CA	CC from WMDO-LP	Boise	41 K60FH	QG RESCINDED
Washington	51 WBDC-DT	NS 110kw/247m, 385744/770136	Boise	39 new	PA x-ch. 14z Nampa 13 KTRV-DT GA x-ch. 44
Florida:			Preston	19 K19EW	QG from ch. 20, PG>0.77kw. Also K25HG, K27GM, K29EY, K31FR, K33GF, K35GJ, K39FS
Fort Lauderdale	51 WSCV	req. PG> 304m, XG 255909/801137	Illinois:		
Gainesville	36 WUFT-DT	NS 938kw/202m, 294234/822340	Chicago	19 WGN-DT	req. LC 475kw/453m, 415244/873810
Inverness	15 W15CB	QG from ch. 61	Chicago	38 WCPX	req. LC for PG> 479m, XG 415244/873808
Jacksonville	34 WJWB-DT	NS 1000kw/283m, 301636/813347	Chicago	43 WCPX-DT	req. LC for NS 200kw/510m, 415244/873808
Miami	20 WLRN-DT	AF 750kw/301m, 255846/801146	Danville	31 W68AA	req. QG
Naples	41 WZVN-DT	NS 280kw/458m, 264930/814555	Freeport	41 WIFR-DT	NS 49.6kw/219m, 421748/891015
New Smyrna Bc	33 WCEU-DT	NS 500kw/471m, 283512/810458	Galesburg	53 new	PA x-ch. 67
Ocala	31 WOGX-DT	AF 500kw/259m, 292132/821943	Urbana	27 WCCU	req. XG 401846/875500
Panama City	8 WJHG-DT	GA x-ch. 42	Indiana:		
Panama City	44 W50BP	req. QG, PG> 50kw, XG 301141/855001	Kokomo	50 WKGK-LP	PG DISMISSED
Tallahassee	2 WTWC-DT	AF 7kw/544m, 304051/835821	South Bend	12 W12BK	FC to religion, PG> 3kw
Tampa	34 WUSF-DT	NS 475kw/453m, 275052/821548	Kansas:		
Vero Beach	57 W57DM	req. LC (for QG from ch. 69), granted	Lawrence	38 KMCI	PG>5000kw DISMISSED
			Kentucky:		
			Bowling Green	40 WNKY	CC from WKNL
			Lebanon	6 W06AY	req. PG>0.28kw
			Lexington	39 WLEX-DT	GA x-ch. 22

Louisiana:

New Iberia 53 new PA x-ch. 36
 Shreveport 50 K50GK req. LC for QG from ch. 61, granted
 Shreveport 59 K59GO req. LC for QG from ch. 65, granted

Massachusetts:

Boston 30 WBZ-DT req. LC 600kw/390m, 421837/711414

Maryland:

Hagerstown 68 WJAL FC to Univision? Sold to Entravision.

Maryland:

Towson 16 WMJF-LP granted LC for QG from ch. 61 & PG> 1.22kw

Maine:

Bango 9 WBAN-LP CC from W09CI

Michigan:

Bay City 22 W22CC req. PG<0.25kw
 Bay City 46 new PA x-ch. 61+
 Berrien Springs 25 WYGN-LP FC to WBND-LP (ABC)
 Houghton Lake 61 W61CS req. PG<0.01kw, 441725/844440
 Jackson 18 WHTV granted LC for PG> 200kw/274m, 422513/843125
 Mount Pleasant 29 W29CQ QG from ch. 61; CL to Lansing; XG 424033/843000; PG 38.6kw.
 Mount Pleasant 29 W29C CL granted to Grand
 Rapids, QG from ch. 62 to 29z, XG 425713/854155, PG 41.9kw
 Mount Pleasant 56 WCMU-DT AF 200kw/360m, 434511/851240
 Petoskey 34 W16BN QG DISMISSED (Canadian objection)
 Petoskey 41 W14CG QG DISMISSED (Canadian objection)
 Sault Ste Marie 49 WWUP-DT NS 950kw/370m, 460336/840557

Minnesota:

Bemidji 18 KAWE-DT NS 50kw/252m, 474203/942915
 Chisholm 11 KRIL PA from International Falls
 Crookston 16 new AF (DTV), 105kw, 475838/963618
 Duluth 8 WDSE-TV req. LC for PG> 295m
 Worthington 50 K50GN QG from ch. 50 to 29+, PG 13.6kw

Missouri:

Cape Girardeau 22 KBSI-DT NS 1000kw/541m, 372423/893344
 Marshfield 56 new PA

Mississippi:

Biloxi 16 WMAH-DT NS 150kw/477m, 304518/885644
 Greenville 44 WDTL-TV req. LC for NS, 500kw/86m, 331704/911303

Montana:

Bozeman 13 KBZK-DT GA x-ch. 16
 Butte 33 KTVM-DT GA x-ch. 2

North Carolina:

Charlotte 34 WSOC-DT NS 1000kw/348m, 351541/804338
 Charlotte 6 W34BN QG DISMISSED
 Hickory 14 WHKY-TV PG>1285kw
 Jacksonville 18 WUNM-DT GA x-ch. 44
 Raleigh 53 WRAL-DT PG 1000kw/629m

North Dakota:

Grand Forks 35 KXJC-LP req. PG>60kw
 Williston 11 KXMD-TV req. PG<100kw/291m, 480845/1035320

New Jersey:

Atlantic C. 44 WWAC-DT GA x-ch. 50
 Wildwood 36 WMGM-DT NS 200kw/128m, 390728/744556

New Mexico:

Albuquerque 48 KLUZ-LP CC from K48AM
 Albuquerque 50 KASY-TV req. PG<1399kw/1287m, 351248/1062700
 Albuquerque 35 KNME-DT GA x-ch. 25
 Carlsbad 25 KTEL-TV granted LC for XG 322609/1041114
 Cimarron 28 K28GF granted LC for QG from ch. 60, PG> 1.2kw
 Santa Fe 19 KW BQ req. PG<1422kw/1275m, XG 351248/1062700
 Santa Fe 29 KW BQ-DT AF 245kw/1275m, 351248/1062700
 Silver City 6 KOBG-TV granted LC, PG>6kw/502m
 Tecolote 45 K45FM granted LC for PG>1.17kw, 352405/1051121

Nevada:

Hawthorne 30 K30FS granted LC for QG from ch. 63 & PG<1.91kw
 Henderson 9 KVVU-DT AF 1000kw/359m, 360026/1150023
 Las Vegas 12 KTNV-DT NS 16kw/610m, 355643/1150232
 Las Vegas 27 KELV-LP CC from K27AF; FC to Spanish independent
 Laughlin 47 KNLT-LP CC from K47EG

New York:

Albany 12 WNYT-DT AF 9.1kw/436m, 423731/740038
 Binghamton 42 WSKG-DT AF, NS 49kw/375m, 420322/755639

Buffalo 4 WIVB-TV PG<80kw/396m, 423933/783733
 New York 26 W26CE QG from ch. 19, XG 405350/725456
 Poughkeepsie 42 W42AE PG> 19.3kw/269.4m
 Riverhead 57 WLNY-DT NS 500kw/181m, 405350/725456
 Rocheste 45 WROC-DT NS 891kw/132m, 430807/773502

Ohio:

Athens 20 WOUB-TV req. LC & PG<242m, XG 391852/820859
 Cambridge 44 WOUC-TV req. PG>871kw/390m
 Cincinnati 25 WBQC-CA CC from WBQC-LP
 Cincinnati 33 WSTR-DT AF 1000kw/337m, 391201/843122
 Lima 8 WLIO-DT GA x-ch. 20
 Newark 24 WSFJ-DT AF 1000kw/214m, 400445/824141
 Zanesville 16 W36AY QG DISMISSED

Oklahoma:

Lawton 23 KSWO-DT NS 1000kw/300m, 341255/984313
 Poteau 50 K59GJ req. QG & PG<21.2kw

Oregon:

Bend 51 new PA
 Coos Bay 44 K44FH granted LC for QG from ch. 67
 Eugene 14 KEZI-DT NS 474kw/486m, 440657/1225957
 Eugene 17 KMTR-DT NS 72.7kw/506m, 440657/1225957
 Eugene 21 K21FS QG from ch. 69 to 21-, PG 776w, XG 441152/1225908
 Glide 24 K24FH QG from ch. 68 to 24-, PG 792w, XG 432218/1230348

Pennsylvania:

Dillsburg 40 W40AF req. QG to ch. 35+, XG 401819/770028
 Jeannette 19 WNPA req. PG>340m, 401052/790746
 Philadelphia 32 WPSG-DT NS 107kw/297m, 400221/751413

Puerto Rico:

Aguadilla 34 WELU-DT AF 50.1kw/296m, 181846/671109
 San Juan 21 WJPX-DT NS 50kw/564m, 181645/655114

South Carolina:

Charleston 40 WTAT-DT NS 1000kw/540m, 325624/794145

South Dakota:

Brookings 40 K40FZ QG from ch. 15, PG>13.5kw
 Rapid City 21 KNBN granted LC, PG>500kw/211m

Sioux Falls 26 KCPO-LP req. QG from ch. 7, PG>7.57kw, XG 433203/964421
 Sioux Falls 36 KAUN granted LC 3020kw/356m, 433019/963420

Tennessee:

Clarksville 49 WCKV-LP QG from ch. 69, PG>15.9kw, XG 362601/872524
 Lebanon 11 W11BD req. PG>3kw
 Memphis 3 WREG-TV req. PG<297m, 351032/894956
 Memphis 59 WJRJ-LP FC to religion

Texas:

Amarillo 22 KEAT-LP CC from K22FP
 Beaumont 22 K21DT req. QG & PG>138.2kw
 Big Spring 46 KBSP-LP granted LC for QG from ch. 30
 Brownsville 23 KVEO req. XG 260602/975020
 Conroe 5 KPXB-DT NS 8kw/603m, 293344/953035
 Corpus Christi 21 K21F NW, STA, 150kw. FC to AIN.
 Dallas 19 KLEG-LP CC from K19DW; FC to Spanish independent

Texas:

Dallas 35 KDFW-DT AF, NS 1000kw/510m, 323506/965841
 Huntsville 7 KHXL-LP req. LC for QG from ch. 5, PG>2.4kw
 La Vernia 46 KQVE-LP FC to religion
 Laredo 61 K61GY LC DISMISSED
 Lubbock 14 KUPT-LP QG from ch. 22, PG<12kw
 Plano 29 KMPX PA from Decatur
 San Angelo 31 KEUS-LP CC from K31DM
 San Antonio 10 K02MX req. QG from ch. 2, PG>3kw
 San Antonio 23 KHCE PG>2032kw/333m, 291715/981522
 San Marcos 58 K58ET granted LC for PG<8.77kw
 Weslaco 13 KRGV-DT NS 57kw/445m, 260602/975021

Utah:

Bloomington 33 K33GE QG from ch. 59, PG>0.74kw
 Garfield Co. 36 K36FW QG from ch. 55, PG>0.73kw
 Hatch 36 K36FV QG from ch. 56, PG<0.35kw
 Heber City 25 K25HF QG from ch. 40, XG 403345/112830
 Logan 41 K41GQ QG from ch. 53, PG<2.6kw
 Logan 43 K43G QG from ch. 55, PG>2.8kw
 Logan 45 K45GL QG from ch. 57, PG>2.8kw
 Logan 47 K43GY QG from ch. 59, PG>2.8kw
 Myton 21 K21FT QG from ch. 69, PG<7kw
 Price 19 K19EX QG from ch. 18, PG<0.3kw, XG 393147/1110304
 Roosevelt 38 K38GO QG from ch. 19, PG<1.12kw
 Salt Lake City 46 KJZZ-DT NS 200kw/1267m, 403933/1121207
 Salt Lake City 59 K59GS QG from ch. 46
 St. George 9 KUSG-DT NS 3.2kw/43m, 370348/1133423
 St. George 32 K32FQ QG from ch. 51, PG<0.74kw

10

St. George 34 K34FS QG from ch. 53, PG>0.74kw
 St. George 44 K44FZ QG from ch. 11, PG>0.74kw
 St. George 46 K46GE QG from ch. 13, PG>0.74kw
 Summit County 41 K41GS QG from ch. 59, PG>0.81kw
 Woodland 44 K44FY QG from ch. 32, XG 403359/
 1111431

Virginia:

Appomattox 4 W04CI FC to ?? (NOT WDRL)
 Ashland 65 WUPV granted LC for PG>2690kw/
 262m
 Concord 33 W33AD FC to ?? (NOT WDRL)
 Danville 55 WYAT-LP FC to ?? (NOT WDRL)
 Lynchburg 2 WDRG-LP FC to ?? (NOT WDRL)

Virginia:

Manassas 66 WPXW granted LC for PG<3400kw/
 190m
 Portsmouth 50 WGNT-DT AF 800kw/264m, 364843/
 762745
 Richmond 25 WTVR-DT NS 1000kw/224m, 373400/
 772836
 Roanoke 54 W54BT FC to WDRL-24

Washington:

Richland 38 KTNW-DT NS 47.6kw/361m, 460612/
 1190740

Wisconsin:

Eau Claire 39 WEAU-DT NS 988kw/583m, 443950/
 905740
 Green Bay 5 WFRV-TV PG (changes in antenna)
 La Crosse 41 WKBT-DT AF 1kw/445m, 440528/
 912016

West Virginia:

Huntington 47 WOVK-DT GA x-ch. 54
 Morgantown 33 WNPB-DT NS 144kw/438m, 394145/
 794545

Wyoming:

Caspe 13 KCWY req. LC for NS, 7.7kw/554m,
 424426/1062134;

Wyoming:

Jackson 11 KBEO PG<16.3kw/331m

CANADA**British Columbia:**

Blackpool 13 CH???? NS 10w, Know Blackpool
 5 CH???? NS 10w,
 CHKM
 Blackpool 6 CH???? NS 10w, CFJC
 New Denve 10 CH???? NS 10w, KIRO
 New Denve 11 CH???? NS 10w, KCTS
 New Denve 13 CH???? NS 10w, KOMO
 New Denve 3 CH???? NS 10w, CHAN
 New Denve 6 CH???? NS 10w, KING
 New Denve 8 CH4418 QG from ch. 19, PG< 10w
 (KNOW)

Quebec:

Rouyn 8 CIVA-TV-1 PG< 122.8kw
 Val d'O 12 CIVA-TV PG< 104.5kw

Forum & Other Stuff

Thanks to Mel Eleazer (owner/GM of WDRL-24), Fernando Garcia, Neil Griffin, Chip Kelley, Fred Hoffman (of Corpus Christi LPTVs KXPX-14, KTOV-7, and K21FR), and John Lentz for information in this month's column. More LPTV modifications have been filed, but are not listed due to lack of space. KVTN-DT has requested three different sets of facilities, I have no idea which one they intend to use. (They probably don't either)

Welcome to new VUD publisher Paul Swearingen. Paul has done a fantastic job with the National Radio Club's *DX News*; I'm sure he'll do a similarly excellent job with our *VHF-UHF Digest*. (Thanks, Doug, I'll do my best! -pls) Of course, we also owe outgoing publisher Bill Thompson a huge vote of thanks for his years of service to the club.. And I think another vote of thanks is due to the WTFDA Board of Directors for rapidly filling this position and ensuring continuity in our operations. This kind of turnover has caused serious problems for other clubs.

John Lentz in Milwaukee sent a quick note adding another station to the list of those carrying the Milwaukee Brewers baseball games. Besides WCGV-24, WISN-12 is also carrying these games. Now we just have to hope the wind dies down so that Miller Park doesn't lose any more roofing material!

Chip ran across the URL <http://www.caller.com/2001/April/05/today/ricardob/22221.html> which points to an article about new LPTV station K21FR. A web search on the call letters of associated stations KXPX-LP [14] and KTOV-LP [7] turned up the personal website of the stations' chief engineer, and an e-mail turned up further information. K21FR is operating under special temporary authorization (STA). It's requesting the callsign KCBO-LP for its permanent operation - this callsign is currently assigned to a Coast Guard ship, which will have to give it up before the LPTV station can claim it.

Neil Griffin found two websites with information about wireless-cable operations in southern Minnesota. Check out <http://www.swmncoop.com/tv.htm> and <http://www.fedtel.net/tv.html> for information. Further north in the Gopher State, note that new station KRIL-11 has requested to change its city of license from International Falls to Chisholm. The move would put the station in the Minnesota Iron Range, as competition to WDIO-10 satellite WIRT-13. Reports are that KRIL will be a satellite of NBC affiliate KBJR-6 Superior. Another city-of-license change has been requested in Texas, for KMPX-29. This change, from Decatur to Plano, will not require a change in transmitter location.

Fernando Garcia notes that XHFOX-17 is airing a 30-minute local newscast at 9pm. For several days, its test pattern identified the station as "VHFOX"... a problem since corrected.

Note another application for a DTV-only station, on channel 16 at Crookston, Minnesota. Also note several applications to amend the NTSC Table of Allocations, including some to add new channels. (Channel 51 at Bend, Oregon and channel 56 at Marshfield, Missouri)

Here's hoping for a big skip season this year!

FM NEWS

April 2001

Most of the information appearing in this column is courtesy of:

M STREET JOURNAL - 54 MUSIC SQUARE EAST SUITE 201 - NASHVILLE, TENN.

37203

PHONE: (609) 883-3321, FAX: (609) 883-5696, E-MAIL:

MstreetTom@aol.com

**KEY TO ABBREVIATIONS:**

&: satellite programming
 AF: New frequency allocation **accepted for filing** for a new FM license
 AFA: American Family Association

CC: **call letter change**

CL: **city of license change**

CX: **a construction permit** has been **cancelled**

C1,C2,etc: a change in status to that FM license **class**

DA: **directional antenna**

DE: station has been **deleted**

FC: **format change**

GA: **granted amendment** to the table of FM allocations

GE: **granted extension** of construction permit

GX: **granted replacement** of expired permit

LC: **license to cover** filed (means station is ready to come on air)

MC: **multiple-city** legal ID

NC: **no change** yet on a reported change/permit

ND: **non-directional** antenna

NO: **not on the air**

NS: **new station** granted

NW: **new station** signs on

OSA: **one-step application** granted for change

PA: **proposed amendment** to change FM table of allocation

PC: **power change** on the air (">" for increase, "<" for decrease, when known)

PG: **power change** granted (">" for increase, "<" for decrease, when known)

QC: **frequency change** occurred

QG: **frequency change** granted

RA: silent station **returns to air**

RE: station **requests extension** on permit

RX: station **requests replacement** of expired permit

SG: **slogan change** or update

SI: **station is silent**

XA: **dismissed amendment** to FM allocations

XC: **transmitter site change** occurred

XG: **transmitter site change** granted

**UNITED STATES****ALABAMA:**

Birmingham: WVSU91.1
 PG> 500w, 413 ft, DA, XG:
 33-27-47 / 86-46-08

Eufaula: WIOL 92.7 PC> 39 kW, 538 ft.,
 FC to modern AC

Eufaula: WRVX 97.9 CC (ex WDMT)

Ozark: WJRL 103.9 CC (ex WQLS), FC to

ABC Real Country (&)

Talladega: WSSY 97.5 PC> 2 kW

Troy: WTSU 89.9 PG< 46 kW, 768 ft.

ALASKA:

Anchorage: KNIK 105.3 QG to 105.7, PG< 14
 kW, 1069 ft, XG: 61-20-11 / 149-30-48

Anchorage: KKRO 102.1 FC to modern AC

ARIZONA:

Flagstaff: KJTA 89.9 LC

Hotevilla: KUYI 89.1 LC

Nogales: KOFH 99.1 LC

Tuscon: KCEE 97.1 FC to oldies

Tuscon: KWFM 92.9 FC to country

ARKANSAS:

Bentonville: KAPG 88.1 NW, AFA cont. Chris-
 tian (&)

Booneville: KRBK 104.7 FC to WW1 oldies (&)
 CC (ex KEZU)

Eudora: KAVH 101.5 LC

Fayetteville: KUAF 91.3 class C, PG> 100 kW,
 1089 ft, DA, XG: 35-51-12 / 94-01-32

Hampton: KBPW 88.1 PG> 60 kW (V), C1,
 338', XG: 33-32-11 / 92-28-07

Harrisburg: KKEY 95.9 PG> 50 kW, C2, 492
 ft, XG: 35-47-35 / 90-47-26

CALIFORNIA:

Brawley: KSEH 94.5 CC (ex KWST), FC to
 Excel Spanish CHR (&) (El Centro)

Compton: KJLH 102.3 PC> 5.6 kW

Crescent City: KCRE 94.3 PC> 25 kW, -305 ft,
 XC: 41-45-35 / 124-09-49

Dunsmuir: KZRO 100.1 inc. to 233', XC: 41-17-
 30 / 122-14-21

Goleta: KKSBB 106.3 FC to oldies
 (S.Barbara)

Hydesville: KSLG 94.1 CC (ex KBLG), NW,
 modern rock (Eureka)

Kings Bch: KSRN 107.7 XC: 39-18-48 / 89-30-
 51

Lakeport: KXBX 98.3 PC> 4.8 kW, 367 ft.

Los Altos: KFFG 97.7 PC> 3.3 kW

12

CALIFORNIA:
 McFarland: KPSP 102.9 CC (ex KSUV), FC to Spanish CHR (Bakersfield)
 Manteca: KMRQ 96.7 CC (ex KKME) "Rock 96.7"
 Newberry Sps:KIQQ 103.7 LC
 Porterville: KIOO 99.7 adds Mark & Brian
 San Fran: KFOG 104.5 PC> 13.5 kW, 928 ft, XC: 37-45-20 / 122-27-05
 San Luis Obispo:KLRM 97.1 CC (ex KWQH), FC to romantica
 Santa Monica:KSSC103.1 CC (ex KACD)
 Santa Ynez: KRAZ 105.9 LC
 Temecula: KFXM 103.5 LC
COLORADO:
 Alamosa: KASF 90.9 PG> 1.1 kW, 89', class A
 Grand Junction:KMOZ100.7 CC (ex KSNJ) "Moose Country"
 Greeley: KDJM 92.5 CL to Bloomfield, CO
 La Junta: KKIK 106.5 LC
 Morrison: KLVW 91.1 CC (ex KWBI)
CONNECTICUT:
 Brookfield: WAXB-1 105.5 NS-90w: WAXB
 Hartford: WZMX 93.7 FC to urban
 New Haven: WPLR 99.1 XG: 41-25-22 / 72-57-06
 Pomfret: WBVC 91.1 NW, variety
DISTRICT OF COLUMBIA:
 Washington: WJMO 99.5 FC coming soon
FLORIDA:
 Big Pine Key:WWUS 104.1 inc. to 453 ft.
 Lafayette: WYZR 99.9 CC (ex WWFO) FC to rock "The Rock" (Tallahassee)
 Marathon: WWWW 97.7 XG: 24-40-01 / 81-25-00
 Naples: WBGY 88.1 LC
 Newberry: WHHZ 100.5 CC (ex WRKG), FC to CHR "Z100" (Gainesville)
 Panama City:WQJM 100.1 FC to a/c (but plays no current music)
 Sparta: WJDS 88.7 LC
GEORGIA:
 Athens: WMSL 88.9 PC> 20 kW, 299 ft, DA
 Cordele: WAEF 90.3 XG: 31-38-44 / 83-44-58
 Hazelhurst: WVOH 93.5 PG< 25 kW, class C3 (downgrade from C2)
 Jeffersonville:WMGB 93.7 PG> 100 kW, C1, 679 ft, XC: 32-45-12 / 83-33-46
 Marietta: WKHX 101.5 XC: 33-48-27 / 84-20-27
 Montezuma: WEGF 95.1 PG> 46 kW, 390', C2
 Peachtree City:WLDA 96.7 FC to urban contmp., PC> 2150w, 551 ft.
 Pt.Wentworth:WLFS 91.9 CC (ex WLFH)
IDAHO:

Coeur D'Alene:KBIB 102.3 LC
 Lewiston: KTVY 105.1 FC to CHR
 Post Falls: KCDA 103.1 PC> 9.4 kW, C1, CL from Coeur D'Alene, ID, XC: 47-34-14 / 117-04-55
 Twin Falls: KAWZ 88.9 PC> 100 kW, C, 991 ft, DA,XC: 42-43-47 / 114-24-52
 Wallace: KSIL 100.7 LC
ILLINOIS:

Cairo: WBEL 88.5 PG> 40 kW, 558' (v)
 Carbondale:WCIL 101.5 PC> 86 kW, C1, 1050 ft,XC: 37-37-38 / 89-43-16
 Carlinville:WTSG 90.1 PC> 5 kW
 Cartersville:WUEZ95.1 CC (ex WXLT) FC to soft AC
 Chicago: WDRV 97.1 CC (ex WNIB), FC to classic hits "The Drive"
 Christopher: WXL 103.5 CC (ex WUEZ), FC to classic rock
 Crete: WYCA 102.3 CC (ex WVJM) FC to R & B oldies (Chicago)
 Decatur: WDWZ 95.1 FC to WW1 hot country (&)
 DuQuoin: WAWJ 90.1 LC
 Freeport: W214BP 90.7 NS-75w: WNEE
 Freeport: WFPS 92.1 PC> 3.6 kW, 423 ft.
 Herrin: WVZA 92.7 FC to CHR "Kiss FM"
 Lansing: WYBA 106.3 CC (ex WVJM), FC to religion (Chicago)
 Mt.Vernon: WAJT 102.1 FC to Spanish
 Normal: WIHN 96.7 adds Lytle & Lamb // WWCT 105.7 (Bloomington)
 Peru: WBZG 100.9 adds Bob & Tom
 Spring Valley: WIVQ 103.3 CC (ex WAIV) "Q103"
 Springfield: WSCT 90.5 PC> 3.8 kW, 410 ft, XC: 39-38-38 / 89-30-51

INDIANA:
 Attica: WSHW 95.7 FC to classic rock
 Auburn: WEJE 102.3 CC (ex WCKZ), FC to modern rock (Fort Wayne)
 Churubrusco:WWWWD 96.3 CC (ex WEJE), FC to CD Country (&) (Fort Wayne)
 Danville: WEDJ 107.1 FC to Spanish (Indy)
 Delphi: WNJY 102.9 PG> 2750w, 489 ft XG: 40-30-12 / 86-43-30
 Edinburg: WYGB 102.9 adds Young & Elder (AM)
 Hammond: WYBA 92.3 CC (ex WYCA), FC to urban contemporary (Chicago)
 Indianapolis: WTLC 105.7 PC< 6 kW, 279 ft, DA, XC: 39-46-32 / 86-09-10
 Lafayette: WAZY 96.5 FC to hot AC
 New Albany: WLSY 94.7 PG> 3.3 kW, 394 ft.
 Roann: WMYK 101.9 PC< 3.6 kW, 423 ft, DA, LC
 Roanoke: WCKZ 94.1 CC (ex WYSR), FC to R&B
 Terre Haute: WLEZ 102.7 FC to soft AC
IOWA:
 Adel: *NS 88.9 10 kW, 154 ft

Burlington: KAYP 89.9 PC 9 kW (v), 450 ft.
 Castana: KMAP 107.5 LC
 Decorah: KVIK 104.7 PC< 1950w, 584 ft, XC: 43-17-13 / 91-53-04
 Forest City: KIOV 107.3 to C2, 492 ft, DA, XG: 43-03-06 / 93-32-57
 Spirit Lake: *NS 88.9 50 kW, 272 ft.
KANSAS:
 Arkansas City:KAXR 91.3 LC
 Galena: KCAR 104.3 CC (ex KBGZ) "The Car"
 Great Bend: *NS 91.9 1.8 kW, 259 ft.
 Ingalls: KBGU 96.3 inc. to 699 ft.
KENTUCKY:
 Radcliff: WASE 103.5 PC< 3.5 kW, 774ft XC: 37-52-45 / 85-43-03
 Sayersville: WRLV 97.3 PG> 10 kW, C3, 308 ft, XC: 37-45-27 / 83-03-50
 Smiths Grove:WUHU 107.1 CC (ex WBLG)
 Westport: W215B0 90.9 NS-2w: KAWZ-ID
LOUISIANA:
 Basile: KQIS 102.1 FC to hoc AC
 Gibsland: KBEP 104.5 LC
 Jena: KAYT 88.1 LC
 Jonesville: KTYX 105.1 LC
 Shreveport: KBED 102.9 LC
MAINE:
 Machias: WALZ 95.3 adds classic country in morning drive
 Winter Harbor:WNSX 97.7 FC to classic rock // WFZX (Bangor)
MARYLAND:
 Glen Burnie: WWIN 95.9 adds Tom Joyner
 Pocomoke City:WZJZ 92.5 LC
 Westminster: WZBA 100.7 PG> 27 kW, 659 ft, DA, XG: 39-27-01 / 76-46-37
MASSACHUSETTS:
 Harwichport: WDVV 93.5 CC (ex WYST), FC to modern rock (Cape Cod) "The Vault"
 Mashpee: WTWW 101.1 CC (ex WWKJ), FC to hot AC (Cape Cod) "The Wave"
 Turners Falls:WPVQ 93.9 PG< 570w, 761 ft.
MICHIGAN:
 Alma: WQBX 104.9 PC> 6 kW
 Charlotte: WQTX 92.7 CC (ex WWIC) "The Ticket"
 Detroit: WDVD 96.3 CC (ex WPLT)
 Honor: WAIR 100.7 PG> 4650w, 371 ft, XG: 44-39-41 / 85-48-53
 Jackson: WVIC 94.1 CC (ex WXIK), FC to classic hits (Lansing)
 Mt.Pleasant: WMHW 91.5 PG> 340w
MINNESOTA:
 Cambridge: WGVY 105.3 FC to R&B oldies // KZNRCC (ex KZNT)
 Duluth: KDNI 90.5 PC> 2 kW, 728 ft.

Eden Prairie: WGVZ 105.7 FC to R&B oldies // KZNR (Minneapolis) CC (ex KZNS)
 Lakeville: KZNR 105.1 FC to R&B oldies "Z105"
MISSISSIPPI:
 Biloxi: WMAH 90.3 inc. to 1414 ft., XC: 30-45-18 / 88-56-44
 Booneville: WMAE 89.5 dec. to 653 ft.
 Bude: WMAU 88.9 XC: 31-22-22 / 90-45-04
 Mississippi State: WMAB 89.9 PC> 63 kW, 1083'
 Petal: WZLD 106.3 CC (ex WMFM), FC to urban (Laurel)
 Prentiss: WJCU 104.9 CC (ex WBFL)
 Water Valley: WTNM 105.5 PC< 4.7 kW, 371 ft.
MISSOURI:
 Hannibal: KGRC 92.9 inc. to 495 ft.
 Jefferson City:KJCC 104.1 PC< 5.3 kW, 348 ft, XC: 38-33-50 / 92-11-21
 Kennett: KTMO 98.9 PG< 40 kW, 1135 ft, CL to Munford, TN, XG: 35-28-03 / 90-11-27
 Palmyra: KICK 97.9 PC< 43 kW, 518 ft.
 Sparta: KMXH 96.5 FC to rhythmic CHR
MONTANA:
 Baker: KJJM 100.5 LC
 Billings: KZRV 107.5 LC
NEBRASKA:
 Beatrice: KQIQ 88.3 LC
 Bridgeport: KAWQ 101.3 inc. to 1112 ft.
 Fremont: KFMT 105.5 PG> 3.2 kW, 453 ft, XG: 41-24-40 / 96-31-57
 Lincoln: KKUL 105.3 PG> 6 kW
 Wilber: KFLV 89.9 LC
NEVADA:
 Las Vegas: KRRN 105.1 FC to Entravision Spanish hits (&)
 Sparks:KRZQ 100.9 drops
 Howard Stern (Reno)
NEW HAMPSHIRE:
 Hinsdale:WYRY 104.9 PG> 4.1 kW, 400 w, DA, XG: 42-46-33 / 72-27-17
 Laconia: WLNH 98.3 PC> 15.5 kW, 407 ft, DA
NEW JERSEY:
 Avalon: WWZK 94.3 CC (ex WCZT), FC to oldies (&) (Cape May)
 Long Branch: WWZY 107.1 PG< 625w, 541 ft,XG: 40-24-11 / 74-02-40
 Villas: WCZT 98.7 CC (ex WWZK), FC to a/c
NEW MEXICO:
 Alamogordo: KUPR 91.7 LC
 Albuquerque: KHFM 96.3 FC coming soon
 Helen: *NS 90.9 4.6 kW, 1899 ft.
 Hobbs: KLMA 96.5 PC> 25 kW, C3, 328 ft, XC: 32-46-08 / 103-07-00
 Raton: KBKZ 96.5 LC
 Roswell: KSFX 100.5 inc. to 328 ft, XG: 33-24-49 / 104-22-49



14
 Rudio: KIDX 101.5 PC> 920w, C2
 Santa Fe: KHFM 95.5 CC (ex KMMG), FC to classical

NEW YORK:
 Argyle: WNGN 91.9 PC> 2 kW
 Brighton: WZNE 94.1 FC to modern rock (Roch)
 Carhage: WTOJ 103.1 PC> 1.8 kW
 Chautegway: WYUL 94.7 PC> 50 kW, 449 ft, DA, XC: 44-44-56 / 74-13-09
 Corinth: WHTR 93.5 CC (ex WZZM), FC to oldies (&) (Glens Falls)
 Hudson: WZCR 93.5 CC (ex WTHK) "Cruisin' 93.5"
 Hudson Falls: WFFG 107.1 CC (ex WHTR), FC to country (Glens Falls)
 Jamestown: WUBJ 88.1 PC> 3.7 kW, 384 ft.
 Norwood: WYSI 96.1 FC to ABC AC // WVLF
 Queensbury: WNYQ 105.7 PC< 1550w, 1296 ft, XC: 43-25-12 / 73-45-39

NORTH CAROLINA:

FOXFIRE: W205CA 88.9 NS-40w: WCPE 89.7
 Gaston: WLGQ 97.9 FC to rhythmic oldies
 Goldsboro: WKIX 102.3 CC (ex WEQR)
 Goldsboro: WYMY 96.9 CC (ex WKIX)
 Harrisburg: WCCJ 92.7 FC to urban
 High Point: WVBZ 100.3 CC (ex WHSL) "The Buz-zard"
 Hope Mills: WCCG 104.5 FC to urban
 Salisbury: WEND 106.5 adds Bob & Tom (Apr. 16)
 Semora: WKVE 106.7 CC (ex WPXX), FC to K-Love cont. Christian (&) "K-Love"
 Wilmington: WHQR 91.3 PC> 100 kW, class C
 Wrightsville Beach: WFXZ 93.7 LC

OKLAHOMA:
 Coalgate: KNOR 105.5 LC
 Durant: KLBC 106.3 QC from 107.1, C3, PC> 21 kW, 358 ft, DA
 Woodward: KAZY 95.9 LC

OREGON:
 Hood River: *NS 90.1 150w, 1102 ft.
 Milton-Freewater: KLR 88.5 LC
 Salem: KRSK 105.1 PG< 97 kW, 1889 ft.
 Welches: *NS 90.3 310w, 1738 ft.

PENNSYLVANIA:
 Cambridge Sps: WXXO 104.5 FC to hot AC // WOXX
 Franklin: WOXX 99.3 FC to hot AC "Kiss"
 Harrisburg: WWKL 99.3 PC<1350w, 679 ft.
 Oil City: WGYI 98.5 FC to country // WGY
 Tunkhannock: WEMR 107.7 FC to AC // WMGS 92.9 (Scranton)

RHODE ISLAND:

Middletown: WZRI 100.3 FC to 80's hits
 Wakefield: WZRA 99.7 FC to 80's hits // WZRI
SOUTH CAROLINA:
 Kingstree: WWKT 99.3 PG< 19 kW, 377 ft, XG: 33-47-51 / 80-07-54

Seneca: WPEK 98.1 FC to CHR "Q98" adds Young & Elder
 Surfside Bch: WYAK 103.1
SOUTH DAKOTA:
 Sioux Falls: KMXC 97.3 inc. to 830', XC: 43-43-46 / 97-05-14

TENNESSEE:
 Karns: WMYU 93.1 CC (ex WWST)
 Loudon: WKVL 105.3 FC to 80's hits (Knoxville)
 Maynardville: WASJ 88.3 NW, cont. Christian // WYLV
 New Johnsonville: WAYW 89.7 CC (ex WHYQ) "Way FM"
 Oak Ridge: WOKI 100.3 FC to adult alternative
 Sevierville: WWST 102.1 CC (ex WMYU) "Star 102.1" (Knoxville)
 Tullahoma: WTML 91.5 LC

TEXAS:
 Alice: KNDK 102.9 FC to rhythmic CHR
 Baird: KAGT 95.1 inc. to 741', XG: 32-17-06 / 99-38-39

Bishop: KFLZ 106.9 FC to Span. Cont. Christian
 Brownwood: KXYL 96.9 QC from 104.1
 Clifton: KWOW 104.1 QC from 103.3, PC> 16 kW now class C2
 Colorado City: KAUM 107.1 QC from 106.3
 Flower Mound: KMEO 96.7 PG< 89.7 kW
 Texas:
 Granbury: KDXT 106.7 PC< 99 kW, 1339 ft, XC: 32-16-31 / 98-01-22

Gregory: KPUS 104.5 CC (ex KKPN), FC to adult rock (&) (Corpus Christi)
 Hebronville: KAZF 91.9 LC
 Hudson: *NS 96.3 6 kW, 328 ft.
 Odessa: KWBI 99.1 CC (ex KLVW), SI, to return with commercial Christian programming
 Pearsall: KMFR 95.3 CC (ex KITE)
 Portland: KRAD 105.5 FC to CHR (Corpus C.)

Refugio: KTKY 106.1 reported SI
 Tahoka: KAMZ 95.3 FC to rhythmic oldies
 Uvalde: KVOU 104.9 CC (ex KYUF)
 Vernon: KVCW 103.1 QC from 102.3
 Victoria: KITE 95.1 CC (ex KRNK), FC to oldies
 Victoria: KEPG 100.9 PG> 6 kW, 272 ft., FC to rhythmic CHR
 Waco: KWBU 107.1 QG to 103.3, 2750w, 492 ft, XG: 31-26-27 / 97-10-41

W. Odessa: KLVV 88.7 NW, K-Love cont. Christian (&)
 Wichita Falls: KWFS 102.3 QC from 103.3
UTAH:
 Coalville: KCUA 92.5 FC to adult alt. // KPCW

Park City: KPCW 91.9 FC to adult alternative
 Randolph: KWKD 102.3 PC> 89 kW, 2076 ft.
 Roy: KFVR 107.9 FC to CHR // KYKN-FM
 Salt Lake City: KUER 90.1 FC to news-talk and jazz

VIRGINIA:
 Abingdon: WFHG 92.7 NW, talk // WFHG-AM
 Alberta: WAQD 103.1 LC
 Chester: WDYL 101.1 PG< 4 kW, 367 ft XG: 37-26-21 / 77-25-57

Front Royal: WZR 95.3 CC (ex WDRV)
 Petersburg: WPZE 99.3 CC (ex WPLZ)
 Petersburg: WARV 100.3 FC to country "Cat Country" (Richmond)
 Richmond: WPLZ 105.7 CC (ex WJRV), reported SI, then RA with R&B oldies // WPZE-FM
 Ruckersville: WHITE 101.9 CC (ex WVSU) "Hot 101.9"

Wise: WISE 90.5 PG> 220w

WASHINGTON:
 Dishman: KSPO 106.5 PC 2.2 kW, 541 ft., XC: 47-41-39 / 117-70-03 (?)

Opportunity: KNFR 96.1 PC> 64 kW, 2421'
 Seattle: KZOK 102.5 PC< 63 kW, 2346 ft.
 Wenatchee: KKR 104.9 PG> 6.5 kW

WEST VIRGINIA:
 Clarksburg: WPD 104.9 PG> 7.4 kW, B1, 597 ft, DA, XG: 39-15-22 / 80-06-46
 Dunbar: WZJO 94.5 CC (ex WBES) FC to rhythmic oldies (Charleston) "Jo 94.5"
 Mannington: WGYE 102.7 CC (ex WTUS) "Froggy Country"

WISCONSIN:
 Altoona: WISM 98.1 inc. to 328 ft, DA, XC: 44-46-39 / 91-28-28
 Appleton: WLFM 91.1 PG>1750w, 371 ft, DA,

XG: 44-15-37 / 88-22-00
 Dickeyville: *NS 101.1 6 kW, 328 ft.
 Park Falls: WCQM 98.3 PC> 100 kW, 443 ft, XC: 45-52-56 / 90-26-15
 Shell Lake: WGMO 95.3 adds Steve & DC (AM)
 Whitehall: WHTL 102.3 XG: 44-24-45 / 41-16-53

WYOMING:
 Albin: KKA 107.3 LC
 Gillette: KLWD 91.9 LC
 Pine Bluffs: KASX 105.3 PG< 23 kW, 728 ft.
 Thermopolis: KDNO 101.7 PG< 16.5 kW, 1899 ft.

LOW POWER FM NEWS:

Amendments to the policy are in effect now, prohibiting ANY operator of a "pirate" station from being granted one of the new LPFM licenses. The previous chairman, Bill Kennard, would have allowed them the chance had they shut their license off when asked to by the FCC, but this policy changes under new Chairman Michael Powell. In another action, the FCC guaranteed 3rd adjacent channel protection to existing stations.

Bill Draeb has located the tower of the new WRKU 102.1 in Forestville, WI. It's not right in town but 4 miles to the ENE, towards Lake Michigan. He notes the height to be about 499' (as in the VUD), and a directional antenna with a loop to the WSW back towards town. He describe the location as "a mile W of County Hwy S and about 1/2 mile north of Carnot Road. The road to get to the xmtr is a private driveway which leads into the yard of a farmer and behind his barn".

Ken Onyschuk writes with news on yet more Chicagoland FM changes, which are detailed above in the Illinois and Indiana sections. Personally, he's not too pleased with the switch to 80's music on 95.9 Aurora, as he enjoyed the old WKKD format of pop oldies. He describes the new "The Drive" WDRV 97.1 as a mix of pop oldies and classic rock-pop hits from the mid 1960s to early 1980s, going after listeners from WJMK and WXRT. The new urban WYCA 92.3 also aims to draw listeners away from the #1 station in the market: WGCI 107.5. Thanks for your comments, Ken!



Worldwide TV-FM DX Association

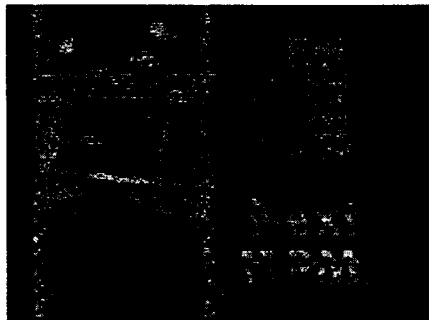
Volunteer! Don't just sit there and read the VUD - participate! WTFDA is your club and always in need of feature and technical material. Let's hear from you today!

PHOTO-NEWS

Jeff Kruszka, Editor
5024 S. Braxton Ave.
Baton Rouge, LA 70817
jkruszka@bellsouth.net

May 2001

Here's the rest of Matt Sittel's photos for this round from Bellevue, NE. E-mail me your photos to the address above!

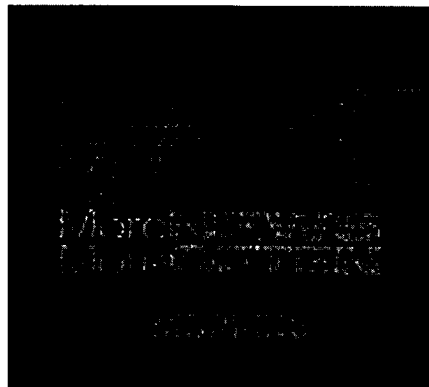


WOTV-41 Battle Creek, MI
548 mi Tr seen 8/25/00
@2157 CDT

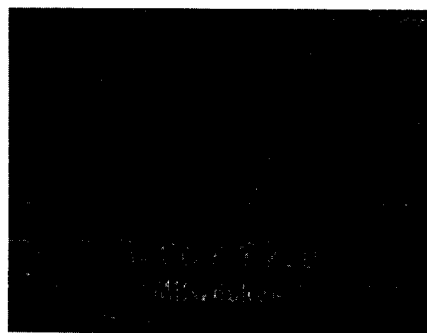
WHME-46 S. Bend, IN
508 Mi Tr seen 8/25/00
@2259 CDT



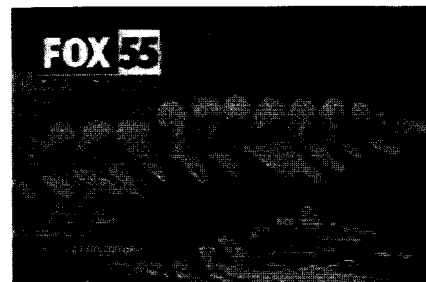
KRWF-43 Redwood Falls, MN
236 mi Tr seen 8/11/00
@0610 CDT



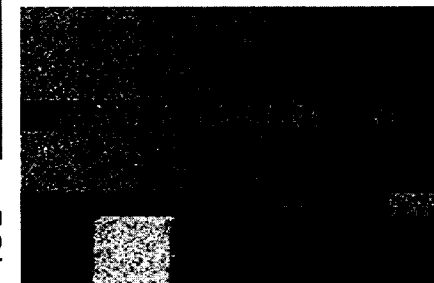
WVCY-30 Milwaukee, WI
434 mi Tr seen 8/15/00
@2230 CDT



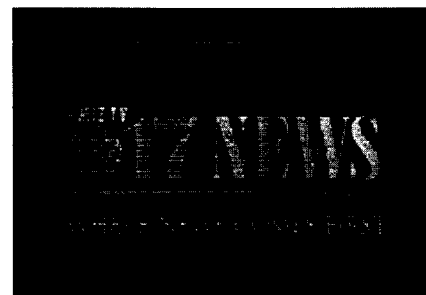
KFXB-40 Dubuque, IA
291 mi Tr seen 8/15/00
@2204 CDT



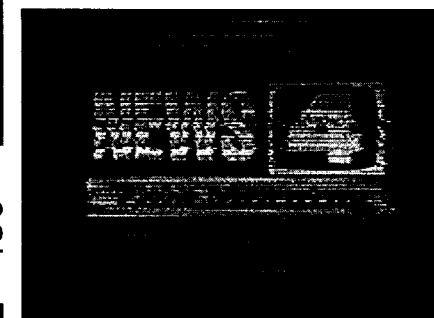
WFXS-55 Wittenberg, WI
427 mi Tr seen 8/25/00
@1659 CDT



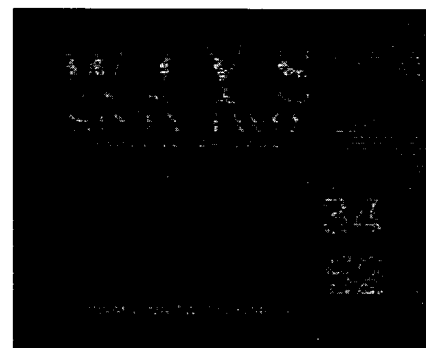
W63CU Milwaukee, WI
430 mi Tr seen 8/25/00
@2206 CDT



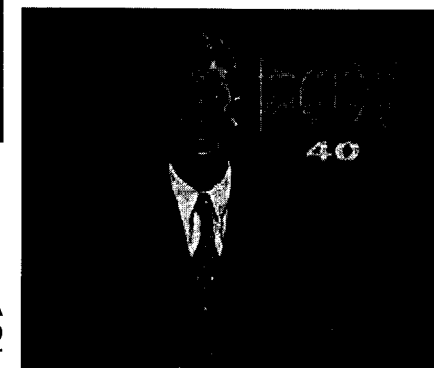
KMIZ-17 Columbia, MO
240 mi Tr seen 8/11/00
@2200 CDT



KMOV-4 St. Louis, MO
347 mi Tr seen 8/30/00
@0630 CDT



WJYS-62 Hammond, IN
424 mi Tr seen 8/25/00
@1959 CDT





A U.S. Television Chronology

(part six)

(Reprinted and edited, with permission, from data assembled by Jeff Miller. This and other historic broadcast-related items can be found at <<http://members.aol.com/jeff560/jeff.html>>).

(This timeline of U. S. television broadcasting history is a work in progress. If you can suggest any improvements in this list, please send them to: <JeffM@sanctum.com>).

May 21, 1945. FCC announces allocation of spectrum above 25 MHz with exception of 44-108 MHz but delays decision as to placement of FM for propagation studies to be made by FCC and industry engineers. The 44-108 MHz spectrum is to be allocated, following tests, on one of the following three alternatives: Alternative 1: 44- 48 Amateur; 48-50 Facsimile; 50-54 Educational FM broadcasting; 54-68 Commercial FM broadcasting; 68-74 Television; 74-78 Non-Government fixed & mobile -aero markers on 75 MHz to remain as long as required; 78-108 Television, fixed, mobile [shared].

Alternative 2: 44-56 Television; 56-60 Amateur [the same as pre-WW2]; 60-66 Television; fixed; mobile [shared]; 66-68 Facsimile; 68-72 Educational FM broad- casting; 72-86 Commercial FM broad- casting, aero markers remain on 75 MHz as long as required; 86-92 Television; 92-104 Television, fixed, mobile [shared]; 104-108 Non-Gov-

ernment fixed and mobile. Alternative 3: 44-50 Television, fixed, mobile [shared] 50-54 Amateur; 54-78 Television, fixed, mobile [shared] aero markers remain on 75 MHz as long as required; 78-84 Tele- vision; 84-88 Educational FM broad- casting; 88-102 Commercial FM broadcasting; 102-104 Facsimile; 104-108 Non-Government fixed and mobile.

June 4, 1945. In joint request, FM Broadcasters Inc. and Television Broadcasters Association ask FCC to allocate 44-108 MHz immediately: FM to get 50-54 MHz for educational use, 54-68 MHz for commercial operation; TV to receive 68-74 MHz and 78-108 MHz.

June 27, 1945. FCC allocates 88-92 educational FM; 92-106 commercial FM; 106-108 facsimile broadcasting; 92.1-93.9 community; 94.1-103.9 metro; 104.1-105.9 rural; TV channel 1 44-50; TV channel 2-6 according to the present scheme.

Aug. 9, 1945. WABD New York and WTTG Washington are linked for a network broadcast, according to Alan E. Ruiters, biographer of Allen B. Dumont.

Sept. 20, 1945. WABD(TV) signs off, channel 4, 78-84 MHz; plans to return Dec. 15 on channel 5, 76-82 MHz

Sept. 24, 1945. Broadcasting reports FCC distributes 13 VHF channels among 140 markets.

1946. The beginning of network television as WNBT begins feeding its programs to Philadelphia and Schenectady on a more-or-less regular basis. (Some programs were fed from New York to both cities as early as 1941.)

Jan. 31, 1946. WTZR Chicago IL (Zenith).

Feb. 4, 1946. Broadcasting reports CBS demonstrates color-television film program broadcast from its new UHF transmitter; says with industry cooperation color for the home can be available within a year.

Feb. 18, 1946. Broadcasting reports first Washington-New York telecast through AT&T coaxial cable is termed success by engineers and viewers.

Feb. 25, 1946. New TV channel assignments go into effect; among the changes: WCBW from 60-66 to (2) and WNBT from 50-56 to (4).

Mar. 1, 1946. Modern channel allocation system goes into effect with channel 1 44-50 MHz, channel 2 54-60 MHz, etc.; WCBW(TV) and

WNBT(TV) go off the air for channel conversions (WNBT resumes May 9 on channel 4)

Apr. 22, 1946. Broadcasting reports CBS color-television program is successfully transmitted over 450-mile coaxial cable link from New York to Washington and back.

May 9, 1946. First variety show premieres, "Hour Glass", on NBC. The show ran 10 months.

June 19, 1946. First televised heavyweight title fight (Joe Louis vs Billy Conn), broadcast from Yankee Stadium, is seen by the largest television audience to see a fight. 141,000.

Sept. 6, 1946. W9XBK changes its call to WBKB(TV) Chicago IL, ch. 4.

Oct. 2, 1946. "Faraway Hill" airs on the DuMont network, becoming the first TV network soap opera.

Nov. 1946. WTTG Washington (DuMont) begins operation; however, the 1954 *Telecasting Yearbook* gives Jan. 1 1947 and *Broadcasting* magazine gives January 1947. The call stands for Thomas T. Goldsmith, DuMont's chief engineer. (Station was originally W3XWT. Starting May 28, 1945, it had given test pattern and recorded announcements asking for reception reports. None was received for 3 months. The U. S. Navy finally picked it up while monitoring for "suspicious" radio signals.)

Nov. 1, 1946. WCBW changes call to WCBS-TV.

Nov. 4, 1946. Broadcasting reports RCA demonstrates all-electronic system of color TV.

Nov. 11, 1946. Broadcasting reports Bristol-Myers is the first advertiser to sponsor a television network program, "Geographically Speaking", which started Oct. 27 on NBC-TV's two-station network.

Dec. 24, 1946. The first church service telecast, Grace Episcopal Church in New York, on WABD on the New York-Philadelphia-Washington network.

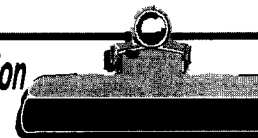
1947. The following stations are listed with 1947 start dates in the *1950 Broadcasting Yearbook*: ch. 4, WNBW, Washington, DC; ch. 7, WMAL-TV, Washington, DC; ch. 2, WMAR-TV, Baltimore, MD; ch. 4, WWJ-TV, Detroit, MI; ch. 5, KSD-TV, St. Louis, MO; ch. 5,

WABD, New York, NY; ch. 5, WEWS, Cleveland, OH; ch. 6, WFIL-TV, Philadelphia, PA; ch. 3, WTMJ-TV, Milwaukee, WI

(This extensive chronicle of the beginnings of television will continue next month here in "TV TIME TUNNEL".)

Registration Form

Boise Convention
7/27-29/2001



\$20

Name _____

Address _____

City _____ St/Pr _____ Zip/PC _____

E-Mail Address _____

This \$20 registration fee includes snacks, beverages, and hospitality room costs for the duration of the convention. MEALS AND LODGING ARE NOT INCLUDED. The Saturday evening meal and business meeting will be at a Perkins Restaurant, and is an individual 'out-of-pocket' expense.

Please return this form and your \$20 check as soon as possible. Make checks payable to Frank Aden.

Mail to: Frank Aden
4096 Marcia Place
Boise, ID 83704

Eastern TV-DX

May 2001

Eastern TV-DX is for reporters from the following states: AL, CT, DE, FL, GA, IN, KY, MA, MD, ME, MI, NC, NH, NJ, NY, OH, PA, RI, SC, TN, VA, VT and WV, plus Washington, DC. Also for reporters from the following Canadian provinces: NB, NF, NS, ON, PEI and PQ. Foreign reports are also welcome!

It's time to start thinking about skip! Last year things were hopping by this time. Get in the habit of checking often and hopefully you'll be rewarded with some great skip this season. It doesn't hurt to check year-round though, as two DXers (well, three, including me, but that's for WTVDX) saw skip on February 20. Read on!

Roy Barstow, PO Box 2488, Teaticket, MA 02536

Equipment: Fuba XC391D modified UHF antenna at 54' w/.875 hardline. B/T VHF high-band at 49', B/T VHF low-band at 43'. VHF have RG-8 cables, all three with Titan II amps.

7/5/2000 Es

0808 YNIC-2 NICARAGUA Managua<1>
2235

2/20/2001 tr

1700	WHRO-15	VA Hampton	457
to	WGNT-27	VA Portsmouth	455
1800	WTVZ-33	VA Norfolk	457
	WVBT-33	VA Virginia Beach	456
	WQAV-34	NJ Atlantic City	250
	W24BI-24	VA Virginia Beach	460
	W41AC-41	VA Onancock	420
	W44AD-44	VA Onancock	420
	W52AB-52	VA Craddockville	430
	W60AL-60	VA Onancock	420
	<u>WWSJ-62</u>	NJ Atlantic City	250

2/20/2001 Es

1900	WUFT-5	FL Gainesville	1051
2000	WKRQ-5	AL Mobile	1215
2000	WTVY-4	AL Dothan <2>	1115

Notes:

1. Thanks to Jeff Kruszka with his uncanny ability to track down and ID this catch last summer. It is interesting to note that July 5, 2000 was the top opening for both FM and TV DXers. Seems like when there are more Es clouds around, there are more chances of 2Es to occur. Thirteen hours

before this catch, I had WKAQ-2 San Juan, PR coming in. Also after PR, there is another unknown SS on the same tape. Jeff is working on this one also. During widespread Es openings, if more DXers would try pointing their antennas south or southeast, more Latin and South American stations would be caught. Especially those along the east coast. A 2Es hop hitting the smooth surface of the ocean loses less signal strength. (Having largely a water path between MA and Venezuela couldn't hurt either, hi-mcs)

2. Off-season Es and tropo on the same day. Es was in also during the morning.

Saul Chernos, 57 Berkeley St., Toronto, ON M5A 2W5 Canada (416) 364-0725

2/20/2001 Es (Burnt River)

1815	WCBD-2	SC Charleston
	Tornado alert or drill, local wx	
1822	WESH-2	FL Daytona Beach

This off-season Es caught me by surprise. Lucky I was at Burnt River for AM DXpedition. With earlier stuff on FM this same day, it was my first February Es ever, and first off-season Es to hit the top of the FM band. This stuff appeared in the evening on the same day I had up to 107.9 on the car radio. Logged this with a portable TV with 5-inch screen and 2-bay Radio Shack antenna. Both are easy relogs.

That's it for this month... only one thing's missing here: YOUR REPORT! Please support ETVDX. 73s Matt.

Need to renew? Send in a contribution? Ask someone a question? Replace a missing VUD? Perhaps even complain? Just look at the back page - all the necessary information is right there!

Matthew C. Sittel
15013 Eureux Circle
Bellevue, NE 68123
mcsittel@home.com

Deadline: last day of month

Keith McGinnis
387 Shirley St.
Hinthrop MA 02152
longwave@mediaone.net

617-846-5760 deadline 5th of each month

Northern FM DX

Frank Merrill - Box 669 - Macomb IL 61455

Equipment: Tandberg 3000-A Tuner (from the 70s), w/ non amplified CM 4408 (Probe 9) antennas: One at 45 feet (for some tropo and Es), or this antenna phased against a second one at similar height, with Andy Bolin phase box (for, almost exclusively, tropo), or a third 4408 mounted at 8 feet (for nearly all Es reception). McIntosh MR78 still ailing in standby mode.

This report can be considered very late , as the 2000 FM-DX season was perhaps my best season ever. This seems to be true only on the plains and prairies starting at IL and going west; feedback from DX'ers further east (IN, OH, etc) indicate only a typical, or perhaps even a substandard FM DX season. Indeed nearly all the good FM Tr openings here ignored the swath from Northeast clockwise to South. Most of the good ES was from the SW-W or, sometimes, the Far West. The opening of Sept 7, while great on TV, involved only a nominal amount of Canadian FM reception, not a big deal for people situated east of IL. I am still self-employed, selling old records through the mail (nearly all 45s). I work far beyond 40 hour weeks. The copious amounts of DX this summer caused a catastrophic meltdown with my schedule; as a result I am only now (12/6) doing sales I should have done in October.

((WKAI 6 SSW)) denotes phasing of a local, semi-local, or DX which would have blocked this reception. If no direction is shown, it means that the DX logging was the result of phasing a stronger station which was also within the front love of the FM Yagi. In these cases the logging would have been impossible without phasing on this date; this is probably true of most "off-front beam" phasings as well. The number shown is mileage to the station I phased. Underlined are new. All times are Central. Mileage is at the far right.

April 3 Tropo

1735	WXM83 162.525	West Burlington	IA
	Burlington status SE IA Temps (note 1)		40

May 2 Tropo

159	W228BB 93.5	Jacksonville	IL	with
	WLGM Springfield (89.7)	legal ID	55	

May 3 Es

2014	CHKF 94.7	Calgary	ALB	program-
	ming in German		1346	
2014	CKUA 93.7	Calgary	ALB	pre-
	sumed, classical		1346	
2056	CJSI 88.9	Calgary	ALB	
	relog."right here on CJSI 88.9 Shine FM"		1346	

May 8 Tropo

522	KXKZ 107.5	Ruston/Munroe	LA	558
	536 KTST 101.9	Oklahoma City	OK	
	508			

May 24 Tropo

331	KDAA 97.5	Rolla	MO((WBBA,
	59))	K Day 97 promo	182

May 24 Es

1047	WSOR 90.9	Naples	FL	1114
1057	WTLT 93.5	Naples	FL	promo
	"The New Light"			1114
1059	WKEZ 96.9	Tavernier	FL	
	Tavernier ad "EZ 96.9" fighting WINK1219			
1140	WMKL 91.7	Key Largo	FL	305-662-
	7736 or "callfm.com"			1217
1140	WVIJ 91.7	Port Charlotte	FL	WVIJ
	briefly thru g station (WMKL?)			1053
1140	WLPJ 91.5	New Port Richey	FL	956
	1148 WLDI 95.5	Fort Pierce	FL	1077
1150	WSUN 97.1	Holiday	FL	Tampa
	Bay's best oldies..Oldies 97.1			958
1153	WMGR 97.3	Bainbridge	GA	Legal ID
	743			
1155	WCCL 97.7	Punta Rassa	FL	the
	music that can change your life WCCL			1088
	1156WVOJ 99.1	Avon Park	FL	
	local ads "OJ Country OJ-99"			1031
1200	WTUF 106.3	Boston	GA	dueling
	IDs with WJST (below)			772
1200	WJST 106.3	Ft Myers	FL	1085
	1208 WTRS 102.3	Dunnellon	FL	915
1218	WKZY 106.9	Cross City	FL	Alachua
	County foster parents			860
1223	WVRQ 107.9	Valdosta	GA	Valdosta
	Ad (Q108 heard later)			783
1225	WOMX 105.1	Orlando	FL	Mix
	105.1 jobs with 407 #-Orange cnty			ad978
1237	WDBN 107.5	Wrightsville	GA	Dublin
	commercial 693			
1243	WKBX 106.3	Kingsland	GA	K-Bay
	106 Hot Country Hits			836
1252	UNID 97.9	It the Wiz 97.9 y'all		
	editor's note....I believe the Unid is WIIZ (Blackville			
	SC/Augusta GA...playing R&B)			
May 25 Tropo				
300	KJIR 90.7	Hannibal	MO	legal ID
	contemporary g			64

May 25 Es
 819 WIRP 88.3 Pennusco FL Spanish
 305 phone # Hialeah stuff (note 2)1165
 830 WMKL 91.7 Key Largo FL Call FM
 the New 91-seven FM KL/Miami 1217
 921 WKEZ 96.9 Tavernier FL Easy
 96.9 WKEZ1219

May 28 Es
 Brief Es MUF WCCL 97.7 1845-1855

May 30 Tropo
 223 KKJO 105.5 St Joseph MO ((KZZT
 118)) K-Joe promo, St Joe Honda 226
 300 KTRI 95.9 Mansfield MO Legal ID
 "Legends 95.9" oldies 253
 432 KTOZ 95.5 Pleasant hope MO Car
 dealer on Independence Ave Alice 95.5 250
 1258 KGKS 93.9 Scott City MO Kiss
 93.9.....the Zimmer Radio Group 228
 1745 WBKR 92.5 Owensboro KY burying
 WKXQ (24 miles) no phasing 266
 1803 WJOD 103.3 Asbury IA New
 Country 103 WJOD 150

May 30 Es
 1953 KMDX 105.7 San Angelo TX San
 Angelo's beat music Mix 105 KMDX827
 1959 XHEC 91.9 Sabinas CU
 2029 XHAHC 90.9 Chihuahua Clad Super
 Estrellar slogan

May 31 Tropo Scatter (with WGEM off)
 1239 KOSP 105.1 Willard MO 105.1
 KOSP ...kosp.com...Ozark ad .oldies267

June 1 Tropo
 256 WUSV 95.9 Livingston TN 404
 335 WTFM 98.5 Kingsport TN opening
 was better on TV 516

June 7 Groundwave
 1210 WXJ92 162.5 Macomb IL Full ID
 (another one bites the dust) (note 1) 6
 1224 WXF90 162.525 Jacksonville IL
 Full ID with city-sounded like co-id (note 1) 55

June 7 Tropo
 2028 KQSR 94.7 Oklahoma City OK 508
 2341 KR XO 107.7 Oklahoma City OK 508

June 7 Es
 1200 XHH 100.7 Cd Juarez CI 1069
 2033 KOOL 93.1 Las Vegas NV 1359
 2037 KBRE 94.9 Cedar City UT 1217
 2037 KZHK 95.9 Cedar City UT95.9 The
 Hawk ...St George advert 1217

2040 KXPT 97.1 Las Vegas NV MGM
 Grand, Stardust and othe local ads1359
 2047 KBZB 98.9 Pioche NV KBZB
 insert between songs (note 3) 1285
 2052 KREC 98.1 Brian Head UT ad for
 casino N of SLC St George area ads1204
 2101 KFMS 101.9 Las Vegas NV Kiss FM
 1359
 2107 KJUL 104.3 North Las Vegas NV KJUL
 jingle....light oldies 1357
 2116 KONY 101.1 Kanab UT 1201
 2121 KXTE 107.5 Pahrump NV Xtreme
 radio...LV mentions and ads rock 1404
 2124 KSNE 106.5 Las Vegas NV local ad
 Sunny 106.5//Delilah 1359
 2133 KCEP 88.1 Las Vegas NV local
 mentions Power 88 (rap) local phone1359
 2142 KLUC 98.5 Las Vegas NVcall 363-
 9898 to win tix from 98.5 KLUC 1359

June 8 Tropo
 1 KAZY 95.9 Winfield KS Legal ID
 405
 11 KVOO 98.5 Tulsa OK 413
 29 KTHS 107.1 Berryville AR nearly a
 pest this year 323
 220 KMG 99.1 Fort Smith AR 405
 448 KJMM 105.3 Bixby OK Tulsa,
 Okmulgee etal Jams 105..more jams421
 507 KFAY 98.3 Fayetteville AR ((KFMI
 136)) "is KFAY Bentonville AR"
 513 KMEQ 96.7 Flower Mound TX lengthy
 promo 644
 521 KESM 105.5 El Dorado MO ((KZZT
 188)) call letter 253
 545 KKBL 95.9 Monnett MO rare
 301
 612 KBXR 102.3 Columbia MO promo
 for "BXR Lunch on Rye" 136
 648 KPFM 105.5 Mountain Home AR The
 Power FM ads for Mtn Home etc 299
 704 KEY1 103.5 San Marcos TX ((KWXD
 305)) only 2nd time via tropo 838
 731 KKID 92.9 Salem MO ((KGRC
 64)) St James ad..KKID trivia 199
 802 KZRB 103.5 New Boston TX ((KWXD
 305)) KZRB B 103 525

June 9 Es
 6 Calgary assumed 88.9; 93.7; 94.7; 95.9; 96.9;
 102.1; 103.9
 18 Medicine Hat 97.3; 98.3

June 10 Es
 1213 WRWA 88.7 Troy AL call
 letters co iding with an 89.9 station653

June 11 Es
 733 UNID 94.7 (MUF at this time)c&w
 (Miami up to 93.9)
 932 XHPP 93.5 Panuco VE La

Poderosauna emisora del Grupo del Norte
 943 XHRW 97.7 Tampico TA
Tampico" at tune in 1329
 953 XHTOP 94.5 Tampico TA 1329
 1000 Valley 93.1 (Mexico); 96.1; 96.9

June 13 Es
 XHAA 93.1 too busy to mark down time

June 14 Es
 1020 Mexicans; MUF 101.3 which decreased as I
 chased it downward....no IDs
 1031 XHCTO 93.1 DurangoEstereo Recuerdo..G
 Palacio advert (note 4) 1270
 1107 XHQQ 93.3 Monterrey NL 110

June 16 Es
 1002 XHRP 94.7 Saltillo CU 1199

June 17 Es
 2141 KDKB 93.3 Mesa AZ very
 brief foray into FM this was the MUF1266

June 21 Es
 2150 WIMI 93.1 Miami FL call
 letters etc1161
 2221 Unid 98.9 Jim Bohannon talk

June 22 Tropo
 344 KHCR 97.7 Potosi MO ((WMOI
 32) more music on 97.7 KHCR 174
 359 KKDY 102.5 West Plains MO Hot
 Country KKDY West Plains 265
 403 K276DY103.1 Rolla MO Legal ID
 KCVO/KCVQ/KCVJ 182
 432 KPWB 104.9 Piedmont MO KPWB
 Clearwater lake country 228
 440 KKLH 104.7 Marshfield MO ((WLMD
 7)) Classic Hit Station 104.7 KLH 252
 446 KBQF 104.1 Jefferson City MO asking
 for workers, J.C. and Columbia #s 153
 508 KMIS 106.5 New Madrid MO ((WKXX
 130)) Country 106.5 // over phone 273
 600 KOSP 105.1 Willard MO Legal ID
 ate WGEM no phasing 267
 606 KKID 92.9 Salem MO call
 letters said many times 199
 711 KELE 92.5 Mountain Grove MO ((WKXQ
 24)) KELE local and area news 245
 739 KHOM 100.9 Salem AR ((KRRY
 51)) local mentions call letters 289
 800 KNLN 90.9 Vienna MO partial
 legal ID 165
 832 KTTK 90.7 Leganon MO a spon-
 sor of KTTK is ?? in Lebanon 219
 923 KMAC 99.7 Gainesville MO ((99.7
 spur from WKAI 6)) local news 283
 1003 KFCM 98.3 Cherokee Village AR ((KFMZ
 136)) Cave City Pagent 299

June 24 Tropo
 415 WXL22 162.425 Princeton IL
 Princeton forecast WXL22 in Bureau Cnty 90
 419 WXK24 162.45 Pontiac IL Pontiac-
 Kankakee-Wateksa-Morris 111
 433 WXL99 162.45 Kirksville MO WXL99
 in Kirksville102

June 24 Es
 1233 XHEPR 99.1 Juarez CI EI
 Paso's Classic 99.1 the Bandit 1070
 1334 WCIF 106.3 Melbourne FL Legal ID
 1029
 1530 KLDE 94.5 Houston TX telling
 you to tum to 107.5 to hear oldies now 801

1549 XHAVO 101.5 Reynosa TA
 Reynosa/Rio Bravo ads "La Comadre" 1084
 Unid 101.7 strong Mexican Radio Fin De
 Semana

June 25 Es
 730 WSMR 89.1 Sarasota FL Legal ID
 1018
 731 MUF to WIRK 107.9
 835 KHID 88.1 McAllen TX 1067
 939 XKPT 97.1 Las Vegas NV 1359
 1254 KZBQ 93.7 Pocatello ID 1137
 1301 KCVI 101.5 Blackfoot ID 1132
 1303 KGIM 98.1 Rexburg ID KGIM
 Rexburg-Idaho Falls Oldies 98.1 1107
 1303 KSKI 103.7 Sun Valley ID (note 6)
 1235
 1308 KIKX 104.7 Ketchum ID drilling
 thru 7 mile local WLMD (note 6) 1236
 1316 KBJX 106.3 Shelley ID long
 "Kiss 106" promo confirmed by phone1122
 1317 KWYS 102.9 Island Park ID
 Yellowstone Country 1080
 1328 KOBB 93.7 Bozeman MT 1090
 1331 KAML 96.9 Gillette WY 802
 1338 KCMT 96.3 Billings MT bunch of
 Billings ads..listen to the Zone 970
 1346 KCTR 102.9 Billings MT Cat
 Country 103 970
 1351 KSCY 96.7 Belgrade MT Special
 Olympics PSA...Big Sky Bank 1098
 1352 KQRV 96.9 Deer Lodge MT no
 longer on 96.5...The River 97FM...ads1181
 1358 KBYU 89.1 Provo UT Legal ID
 1105
 1435 KEZJ 95.7 Twin Falls ID 1241
 1535 KGGI 93.3 Missoula MT 1249
 1553 KAAK 98.9 Great Falls MT 1135

June 26 Es
 943 KBAT 93.3 Midland TX 864
 944 KJAK 92.7 Slaton TX hear it
 Sat at 4 on KJAK 776
 953 El Paso/Juarez to 102.1 MUF

June 28 Es
 1047 KPAS 103.1 Fabens TX rare!
 legal ID some sort of test? 1065

June 29 Es
 1922 WIMI 93.1 Miami FL assumed
 due to format
 1931 MUF briefly to 106.3
 1938 WCCL 97.7 Punta Rassa FL also
 classical
 1940 WCNK 98.7 Key West FL
 2004 Unid 96.7 Possible 2-Es..Spanish talking
 for about 2 min. Cuba?? but no 95.9. Intend to
 have Bruce Elving's daughter listen to it.

June 30 Es
 1958 KGFC 88.9 Great Falls MT4 station
 legal ID (Havre/Plains/Helena/GF)1135
 1959 KUFM 89.1 Missoula MTMissoula
 sponsor; revised KUFM sched 1249
 2006 KEWU 89.5 Pullman WArelig...no
 talk or phone # Spokane TV in 1395
 at the same time Tentative

July 3 Es
 0931-0949 South Florida apparent MUF 98.3 (Goulds)

July 4 Es
 1919 WCCL 97.7 Punta Rassa FL
 1936 WIRK 107.9 hanging chad FL
 1939 WDRR 98.5 San Carlos Park FL Dream
 98.5 w/your favorite smooth jazz 1090
 1956 WQNU 105.5 Naples Park FL Hot
 Country Q15 local mentions 1090
 1956 Unid 105.3más música — at tune in—
 no idea—Spanish
 2004 WGCU 90.1 Fort Myers FL Patriotic
 music by Naples Pops on WGCU1081

July 5 Es (Raging Skip Storm Warning)
 1615 KIVY 92.7 Crockett TX begin-
 ning of opening686
 1619 KAJI 94.1 Point Comfort TX Oldies
 94.1 KAJI880
 1630 KPVA 101.1 Padre Island TX noted in
 mono with horrible tinny audio 1067
 1646 KNDA 102.9 Alice TX Docu-
 copy in Corpus C.....into Tejano 974
 1646 KBFM 104.1 Edinburg TX eating
 local WMQX for lunch 1069
 1652 KCCG 107.3 Ingleside TX Corpus
 C's Groovin Oldies 107.3 945
 1704 XH..... 93.9 Ciudad Alemán TA
 Tejano...birthday announcements Roma TX
 1097
 1730 WQCS 88.9 Fort Pierce FL fighting
 Salasa program (WDNA ?) 1077
 1739 WGUF 98.9 Marco FL 1131
 1823 WMEZ 94.1 Pensacola FL
 Pensacola car dealership ad 720
 1850 ???? 93.5 somebody goofed nothing but

white noise via Es
 1852 KSMB 94.5 Lafayette LA music
 94.5 KSMB at fade in 710
 1853 KMAR 95.9 Winnsboro LA long in
 house promo Classic Country 95 nine575
 1854 KFTE 96.5 Breaux Bridge LA Planet
 radio 96.5..Lafayette's new rock 707
 1858 KFXZ 106.3 Maurice LA spoken
 religion tentative 712
 1904 KOOJ 93.7 New Iberia LA 499-
 0937 (call Cool 93.7) 725
 1908 KYKR 95.1 Port Arthur TX formerly
 via Tropo751
 1910 KXKC 99.1 New Iberia LA ...wel-
 come to the Cajun Dome...then calls 725
 1913 XHNRI 93.7 Merida YU call
 letters and "super estereo" 1348
 1920 WXCT 100.7 Baton Rouge LA I'm
 Jimmy Brooks ...Tiger Country 696
 1930 XHCER 100.7 Cerralvo NL Radio
 Nuevo Leon 100.7 FM 1118
 1939 XHNA 105.9 Matamoros TA
 Maquiladora NA...en el grupo Matamoros ??
 1081
 1944 XHMDR103.1 Tampico TA
 presumed...in mono Spanish 1329
 1955 XHRK 95.7 Monterrey NL
 Sabrosita1161
 1955 KHER 94.3 Crystal City TXTejano in
 mono....calls 966
 1957 XHVIR 101.7 Ciudad Victoria Tocomplete
 legal ID1257
 1958 XHCHL 99.1 China NLcomplete
 legal ID (them and XECT 1190) 1140
 2003 XH..... 103.3 ???? NL Radio
 Neuvo Leon (which one???)
 2011 XHPSP 106.3 Piedras Negras CU Fiesta
 Mexicana 106.3 FM 986
 2021 KBAE 104.9 Marble Falls TX Real
 Country K BAY 810
 2026 XHMNR106.1 Monterrey NLlocal ads
 2028 Unid 106.5 probable Mexican
 2028 Unid 104.9 probable doemstic (religious
 phone in show - Spanish)
 2043 W?734 162.4 Rio Grande City ??broadcast-
 ing from Brownsville on 162.55 and Western
 Valley on 162.400not part of FM totals
 2109 XHUNI 102.5 Ciudad Victoria TA Radio
 Universidad1257
 2119 XHSL 99.7 Monterrey NL PSA —
 gobierno de estado de Nuevo Leon1161
 2131 XH.... 92.3 TACiudad Victoria adsnew
 station??
 2148 XHCAO 89.1 Reynosa TA legal ID
 at strange time 1084

July 5 Tropo
 1656 KCSX 97.3 Moberly MO KCSX
 Kickin 97.3118
 1829 KNWC 96.5 Sioux Falls SDnoted on
 skip antenna pointed south 377

1844 KSOB 95.7 Dell Rapids SD more
 music coming up on 95.7 KSOB 388

July 6 Es
 1201 XHMN 107.7 Monterrey NL full legal
 ID1161
 1204 KCTI 106.3 Gonzales TX commu-
 nity calendar...Gonzalez High School848
 1212 KTKL 105.7 beeville TX legal ID
 925
 1225 KVLY 107.9 Edinburg TX 1069
 1230 KBMI 97.7 Roma TX Spanish
 — "97.7 en Roma, Tejas" 1093
 1232 KYTX 97.9 Beeville TX the
 greatest music of all time KYTX 97.9925
 1249 KVCQ 97.7 Cuero TAlocal call
 ins on Tradio, job promos 870
 1310 XHNLO 97.1 Nuevo Laredo NL Estereo
 Recuerdo; Grupo Del Norte 1028
 1321 XHAHU 103.3 Anahuac NL Radio
 Nuevo Leon Anahuac 1092
 1341 UNID 97.7 (Note 7)
 1352 KYUF 104.9 Uvalde TX Cowboy
 store in Downtown Uvalde 933
 1353 XHVUN 104.3 Villa Union CU full legal
 ID, mentions 50,000 watts 1015

July 8 Es
 919 WPBX 88.3 Southampton NY Morning
 Edition promo "here on WPBX" 938
 937 WQXR 96.3 New York NYassumed
 // classical860

July 9 Tropo
 59 WPFR 93.9 Clinton IN ((WYXY
 72)) "We praise him 24 hours a day
 on WPFR FM Clinton at 93.9, WPFR AM Terre Haute
 at 1480, and WKZI Casey at 800" 181
 118 WHKO 99.1 Dayton OH climbing
 over huge WIAI IL without phasing343
 123 WQMF 95.7 Jeffersonville IN likewise
 against Effingham....rare 303
 149 WJZA 103.5 Lancaster OH WJZA
 and WJZK 103.5 and 104.3 class A429
 306 Unid 101.7 with Sports Overnight America
 after USA News

July 10 Es
 2006 KWES 93.5 Ruidoso NM 964
 2015 KROL 99.5 Las Cruces NMthe Rock
 of Love KROL (massive signal) 1041
 2022 KPUR 107.1 Canyon TX 722
 2024 KZRK 107.9 Canyon TX 1550
 AM..Amarillo's new choice for talk 722
 2027 KAEZ 105.7 Amarillo TX The
 Breeze the new 105.7 local ads 708
 2035 KEND 106.5 Roswell NMapparent
 slogan now "UFO Country" 908
 2043 KLGd 104.9 Tulia TX general
 manager at KLG...Dove Media Sta733
 2044 KMVR 104.9 Mesilla Park NMlocal ads

and phone #s (called...confirmed) 1059
 2048 KSMX 107.5 Clovis NM 107.5
 KSMX jingle 807
 2100 KSPK 102.3 Walsenburg COcalls (not
 legal ID) and mentions of So Colo 783
 2100 KAZX 102.9 Kirtland NMLegal ID
 & 107.7 mention 989
 2104 KPSA 106.1 Carlsbad NMLegal ID
 in English936
 2105 KMMW 105.1 Maljamar NM All
 around SE NM we're Triple Cash Cntry 896
 2107 UNID 104.9 K-105 The Car K-105 oldies
 2118 KTZA 92.9 Artesia NM Bring
 Demo Tapes KZ 93 (Note 8) 925
 2143 KLEA 101.7 Lovington NM Spoken
 promo for Oldies 101.7 (confirmed)873
 editor's note...I believe the Unid is KNFL
 Logan UT....K105 The Kar

July 12 Es
 1951 KXYS 100.7 Abilene TX the New
 Kiss 100.7; ad; then legal ID 748
 2000 KCSE 96.5 Sterling City TXLegal ID;
 Sunny 96.5820
 2001 KVRP 95.5 Haskell TXLegal ID
 AM-FM 710

July 13 Es
 1059 KCFM 94.1 Okmulgee OK great
 classical music 94.1 KCFM 441
 1338 KXXY 96.1 Oklahoma City OK 508
 1426 WXX85 162.4 Oklahoma City OK Okla-
 homa weather, legal ID; new Noaa state 508
 1453 KVRO 98.1 Stillwater OK promo
 for AM 780 KSPI (Stillwater) 458
 1500 KGOU 106.3 Norman OKLegal ID
 515
 1529 KQCV 95.1 Shawnee OK many
 relig promos KQCV 95.1 & AM 800491
 1652 KFAY 98.3 Fayetteville AR eating
 KFMZ-MO have they raised power?357
 1758 KCTY 106.9 Plattsmouth NEFreeform
 Radio 106.9 The City (confirmed) 276
 1840 KCSC 90.1 Edmond OK dual ID
 also mentioned KBCW 91.9 498
 1913 KNCY 94.7 Auburn NE Auburn
 and NE sponsors...Legion baseball273
 1938 KLZA 101.3 Falls City NE Sunny
 101.3 weather; address Box 101 260
 1952 KKBZ 99.3 Clarinda IA
 Shenandoah 4 Clarinda 0...99.3 The Buzz 230
 1956 KLIR 101.1 Columbus NE 356
 2205 KKBD 95.9 Sallisaw OK no
 phasing..legal ID 411
 2335 WVTI 96.1 Holland NE 285

July 14 Tropo
 58 KTHS 107.1 Berryville ARLegal ID
 along with AM 1480 323
 134 KFXI 92.1 Marlow-Lawton OK((WQKQ
 29)) Foxy 92 KFXI cw 565

July 15 Tropo	1058 WPCV 97.5 Lakeland FL 991
1844 KSWI 95.7 Atlantic IA occa-	1105 WDBT 95.5 Jackson MS 564
sional KS-95 Atlantic Audobon ID's236	1109 WQUE 93.3 New Orleans LA 725
2000 KQLX 106.1 Lisbon ND 544	1110 WTIX 94.3 Galliano LAWTIX Tix
2014 KDBX 107.1 Clear Lake SD X-107	FM jingle.776
Sioux Falls Holiday Package 412	1111 WFFF 96.7 Columbia MSStar 96.7
2047 KYCK 97.1 Crookston MN 586	WFFF (faded in for 5 seconds) 637
2149 KBVU 97.5 Alta IA The	1113 WTGG 96.5 Amite LA
Edge where music melts your ears289	Hammond advert; Tangee 96.5; wx; oldies 675
2202 WDAY 93.7 Fargo ND WDAY	1114 W??? 96.9 Heinz (Hines) Comm College
FM Fargo-Moorehead Y 94 539	ad
2227 WVMJ 96.7 Arthur ND Fargo	1115 WEZB 97.1 New Orleans LA 260-
Advert; Real Radio 96.7 (Note 9) 548	9797; N O hit music B 97 (note 8) 725
2234 KTWB 101.9 Sioux Falls SDtrying for	1117 WQNZ 95.1 Natchez MS former
Fargo, though not needed 377	tropo QNZ615
July 16 Tropo	1120 KMDL 97.3 Lafayette LA 710
410 KJOE 106.1 Slayton MN (Note	1121 KRVE 96.1 Brusly LA The
10)357	River...sponsoring Operation Fee 700
2100 KYTC 102.7 Northwood IA KYTC	1656 UNID 93.3 CORoky Mountain News
Nortwood-Mason City-Albert Lea 245	July 22 Es
2127 KYBB 102.7 Canton SD Pink	1930 WAIA 93.3 Callahan 870heard on
Floyd parallel on phone 363	car radio 6 mi north of Macomb 870
July 16 Es	July 26 Es
2001 XHHB 94.7 Hermosillo SO last half	1934 Unid 95.1 The New 95-one Sunny 95
of legal ID Radio Sonora 1394	August 3 Es
2006 XHAHC 90.9 Chihuahua CI call	2200 XHAAA 93.1 Reynosa TA Super
letters "Super Estrellar" 1199	Estrellar1084
2020 KQRX 95.1 Midland TX95X with	August 4 Es
Death metal format 864	1656 CBJ3 93.1 Dolbeau QU 1077
2059 XHQT 102.7 Nogales SO Estereo	1800 CHCN 94.1 Sept Illes QU
Rey (Note 11) 1298	tentative...top of the hour dead air r1358
July 17 Tropo	1803 CKYK 95.5 Alma QUtentative
128 WCBF 102.1 Clinton 240Cool Fox	no ID French news 1092
94.3 and 102.1 (Note 12) 240	1829 CBJ 93.7 Chicoutimi QU huge
2254 KGRD 105.3 Orchard 413religious	CBC French 1st heard on 91.9 yrs ago1113
413	1829 CBMI 93.7 Baie Comeau QU CBC
July 18 Tropo	Radio One fighting with above English 1258
133 KMIT 105.9 Mitchell SD Strong	1915 CKBW2 93.1 Shelbourne NS quickly
439	faded into WMGX-Maine 1319
144 KKLS 104.7 Sioux Falls SDfirst time	1920 WRED 95.9 Saco ME 1059
heard with local WLMD no phase 377	1943 CHIK 98.9 Quebec QU Radio
149 KIXX 96.1 Watertown SDLegal ID	Energy "quatre-vingt-dix-neuf, Chik"1067
449	1949 C??? 100.9 promo "Cool"...no legal ID
359 KAYL 101.7 Storm Lake IA ((KBKB	1959 CFEL 102.1 Montmagmy QU CFEL
43)) 101.7 KAYL Storm Lake 280	calls but no legal ID 1101
July 21 Es	2000 CIGB 102.3 Trois Rivieres QULegal ID
1034 WFFN 95.3 Cordova ALGuthrie's	(for CIGB and a few other stations)997
of Jasper500	2001 WMEF 106.5 Fort Kent ME Maine
1042 WACG 90.7 Augusta GA broad-	Public Radio along with 106.1 1196
casting from ? State U; Augusta funder 681	2004 CIRA 100.3 Sherbrooke QU French;
1047 WYSF 96.5 Birmingham AL Prior	News talking about RC Sherbrooke1009
Tropo...Alabaster ad 524	2007 CJFP 103.7 Riviere Du Loup QU
1049 WAAC 92.9 Valdosta GA Best	tentative....French..baseball 1165
Country C-93 783	August 15 Tropo
1054 WRBA 95.9 Springfield FL 767	2127 KLRX 96.1 Madrid 190 Clear

96.1 Ames clear choice for classic hits 190	43 KIXX 96.1 Watertown SD 449
2134 KIXX 96.1 Watertown 449 ((KMXG	100 KMGK 107.1 Glenwood MN 431
100)) 449	107 KMGM 105.5 Montevideo MN no
2154 KGRD 105.3 Orchard 413 again	phasing 403
trying for KIWA 413	112 KSDN 94.1 Aberdeen SD
2259 KDBX 107.1 Clear Lake 412Legal ID	((KRNA))526
412	202 KGGK 98.3 Wessington SpringsSDLegal ID
2319 KRCH 101.7 Rochester 264 ((KBKB	(five cities which rotate) (Note 13) 455
43)) Owatonna ads 264	209 WKFX 99.1 Rice lake WI WKFX
August 16 Tropo	and into Led Zeppelin 353
50 KKLS 104.7 Sioux Falls SD through	238 WWJO 98.1 St. Cloud MN over
non phased WLMD, again 377	everything...no phasing 394
August 17 Tropo	301 KDJS 95.3 Willmar MNLegal ID
1458 KHME 101.1 Winona MN call	392
letters 254	322 KZIO 104.3 Two Harbors MNAssumed
August 18 Tropoadult standards 456
0 WBZN 107.7 Fairbury IL	333 WHDG 97.5 Rhinelander WI over
Bloomington-Normal's 107.7 The Buzz 110	WZOK no phase 364
8 WMIT 106.9 Black Mountain NC as-	333 WAXX 104.5 Eau Claire WI no trace
sumed; traditional religion 564	KDAT-IA305
21 WIMZ 103.5 Knoxville TN 475	400 KKQQ 102.3 Volga SDLegal ID
24 WQUT 101.5 Johnson City TN	417
((WBNQ))530	422 KLIZ 107.5 Brainerd MN 445
30 WFGW 101.5 Fort Branch IN	453 KDDG 105.5 Albany MN The
((WBNQ)) rare 224	Edge St. Cloud's alternative 409
200 WWWY 104.9 Columbus IN 266	521 KNBZ 97.7 Redfield SD ((WMOI
211 WSLQ 99.1 Roanoke VA com-	30)) Z 97 KNBZ FM 503
pletely atop...no phasing 617	528 KJJY 106.7 Brainerd MN 445
254 WTFM 98.5 Kingsport TN ((WACF	549 WIXK 107.1 New Richmond WI 336
168)) 516	600 KCFB 91.5 St. Cloud MNSt Cloud
August 24 Tropo	weather 0601 Legal ID 394
1930 KYVA 93.1 Yankton SDNiobrara	606 KDOM 94.3 Windom MNLegal ID
ad...buring KWCC 385rare 328
1933 KMXC 97.3 Sioux Falls SDMix 97.3	614 WXM41162.425 Watertown SD
buried Des Moines 377	Glacial Lake region..South Shore ND transm
1946 KPHR 106.3 Ortonville MN Many	449
Ortonville ads, calls, Vikings game446	623 KQAA 94.9 Aberdeen SD((WAAG
1952 KDBX 107.1 Clear Lake SD becom-	38)) KQAA Cool 95 oldies 526
ing a pest this year 412	636 KJKJ 96.5 Rochester MN KJ
2029 KGRD 105.3 Orchard NE 413	Country...on the water (confirmed)264
2031 KKWS 105.9 Wadena MN 470	700 KLDJ 101.7 Duluth MN Cool
2041 KVHT 106.3 Vermillion SD with	101.7 local wx Grand Marais ad 444
Yankton women's basketball 362	708 KLZZ 103.7 Waite Park MN ((WLLR
2052 KJOE 106.1 Slayton MN 357	75)) 103-seven the Loon 397
2113 KSOB 95.7 Dell Rapids SD 388	716 KQRN 107.3 Mitchell SD ((KGRS
2113 KNEN 94.7 Norfolk NE 367	39)) 439
2125 KBRK 93.7 Brookings SD 412	727 KKKR 106.9 Dassel MN ((KROC
2148 KGGK 98.3 Wessington SpringsSD Mitchell	264)) Today's Hot Country KARP375 appar-
car ad SD mentions....oldies 455	ently simulcasting with the 96.3 up there
2311 KARZ 107.5 Marshall MN faint	751 KIWA 105.3 Sheldon IA At
Marshall mention 380	last....Sheldon & Sioux Ctr ads 327
2359 KWCM 88.5 Appleton MN after	806 KKKR 106.9 Dassel MN(note 14)
BBC half ID "...CM Appleton" 426	375
August 25 Tropo	920 WWWH36162.45 Mitchell SD SD
41 KYCK 97.1 Crookston MNLegal ID	Weather ID439
586	1929 WXN85 162.4 Fairfield IA Fairfield
	forecast ID75
	955 KCLD 104.7 St. Cloud MN through
	WLMD no phase 394
	959 WHMH 101.7 Sauk Rapids MN ((KBKB
	43)) rockin101.com 395

28
 1006 KOLV 100.1 Olivia MN ((WKAI 6)) fax the name of your business 370 to 235-9111; k100.com
 1058 KRQC 93.3 Bennington NE K-Rock 93.3; NE football; Council Bluff ad 301
 1106 KLQP 92.1 Madison MN no phasing 422
 1109 KZSE 90.7 Rochester MNtentative MN politics 264
 1122 KCHK 95.5 New Prague MNbriefly on top 318
 2347 KISP 101.5 Blair NE buying KKSI IA no phase 295
 August 26 Tropo
 349 KHK 106.9 Rock Valley IA no phase...Hawk Country Legal ID 366
 351 KIWA 105.3 Sheldon IA calls 327
 527 WZZY 98.3 Winchester IN((WWHP 107)) WZZY Winchester 300
 August 27 Tropo
 30 KXNP 103.5 North Platte NE 530
 137 KMIT 105.9 Mitchell SD 439
 137 KGGK 98.3 Wessington SpringsSD incredibly strong 455
 218 KKPR 98.9 Kearney NE 442
 407 KSUX 105.7 Winnebago NE K-Sioux 105.7 325
 411 KGRD 105.3 Orchard NE 418
 411 KSYZ 107.7 Grand Island NE 404
 1448 KGGK 98.3 Wessington SpringsSD 455
 1700 KSKB 99.1 Brooklyn IA(note 15) 128
 1700 KVCX 101.5 Gregory SD totally ontop 491
 1942 WATQ 106.7 Chetek WIlocal ads ...WI's News Talk 106.7 WATQ 340
 2155 KYCK 97.1 Crookston MN 586
 August 28 Tropo
 2244 WCBF 102.1 Clinton KY with WJEQ on
 2300 WUSV 95.9 Livingston TN((WOLG 91)) Legal ID
 2309 WGIC 98.5 Cookeville TN((WACF 168)) Magic 98-five
 August 29 Tropo
 120 WCBL 99.1 Benton KY promo "Tiger (?) baseball WCBL"
 140 WKNK 99.1 Edmonton KY ((KFUO 128)) voice of ctrl and sthm KY
 300 WGKY 95.9 Wickliffe KY((WOLG 91)) WGKY Wickliffe/Cairo/Paducah/Mayfield bringing you the best in Classic Country
 2059 KWMM 98.7 Osage IA KWMM Osage FM 98.7 a Cumulus Station
 2128 WMUS 106.9 Muskegon MI

2147 WWJR 106.5 Sheboygan Falls WI ((KCQQ 75)) "JR 106.5 & Sheboygan Wx"
 2200 WKTT 98.1 Cleveland WI((WMGN 194)) WKTT Cleveland etal
 2203 WOFM 94.7 Mosinee WI ((KZEG 85))
 2208 WDUX 92.7 Waupaca WI ((WLSR 38))
 2244 WWWX 96.9 Oshkosh WI ((WXL 75)) Precision Mobile in Oshkosh
 2332 WATQ 106.7 Chetek WI
 August 30 Tropo
 34 WWIB 103.7 Hallie WI ((WLLR 75)) trying for KLKK IA 335
 43 WKFX 99.1 Rice Lake WI 353
 202 KVOE 104.9 Emporia KS KS mentions ..assume this & not Salina 327
 245 KSJQ 92.7 Savannah MO Country 92.7 KSJQ223
 551 WWG90162.425 Janesville WI Full ID (not in FM totals) 176
 601 KREZ 97.3 Marble Hill MO Soft Rock 97.3 KREZ (5 cities legal ID) 250
 633 KOTT 107.7 Otterville MOfocus on family...promo and legal ID 173
 645 WNNO 106.9 Wisconsin Dells WI WNNO jingle 225
 713 WDCC 100.1 Portage WI ((WKAI 6)) your home town station 223
 752 WDOR 93.9 Sturgeon Bay WI 346
 800 WEMI 91.9 Appleton WI Legal ID 288
 803 WJMQ 92.3 Clintonville WI ((WIL 128)) only second time 304
 823 KJMO 100.1 Jefferson City MO through WKAI 6 miles without phase 153
 901 WWSP 89.9 Stevens Point WI((WORT 194)) blues here on 90FM WWSP 287
 1052 WUDU 106.3 South Bend IN((WGCY 121)) Mix 106 245
 1846 WJPD 92.3 Ishpeming MI ((KOEL 167)) Your home for Packers ftbl 444
 1903 WMXG 106.3 Stevenson MI Legal ID 376
 1917 WGKL 105.5 Gladstone MI More of the Coolest oldies...Cool 105.5 414
 2031 KLKK 103.7 Clear Lake IA Clear Lake you're rockin with the Fox 232
 2200 KKWS 105.9 Wadena MN Legal ID 470
 2340 WWIS 99.7 Black River Falls WI ((KBOB 70)) Legal ID not common here 272
 August 31 Tropo
 0 KLMJ 104.9 Hampton IA Legal ID 206
 16 UNID 92.9 possible WECL Elk Mound WI Cool 92.9 promo ((KATD 142))
 28 KSDR 92.9 Watertown SD((KATD)) 449

225 162.55 St. Paul MN Twin Cities Temp334
 409 KEMB 100.1 Emittsburg IA Hit Radio...Hot 100 (phone confirm) 277
 533 WBUM 104.3 Baraga MI 451
 533 KWRT 93.1 Boonville MO recently started "Casino 93" slogan 150
 610 WIKB 99.1 Iron River MIway atop everythin402
 621 WKQS 101.9 Negaunee MI ((WDEZ 311)) "Sunny 102 WKQS its 7:21" 445
 635 WMQT 107.7 Ishpeming MI 444
 653 WCQM 98.3 Sault Ste Marie MI NPR programming 524
 1858 WECB 104.3 Seymour WI scarce Class A 305
 1913 WAPL 105.7 Appleton WI 288
 2103 WCKC 107.1 Cadillac MI Triple Legal ID (WGFM 98.1 WGFM 105.1) 376
 2109 WNCY 100.3 Neenah WI Log on today...wncy.com 281
 2112 WTCM 103.5 Traverse City MI 394
 2302 WODJ 107.3 Greenville MIonly 2nd time here 337
 September 1 Tropo
 159 WLKM 95.9 Three Rivers MI This is ?? WLKM-FM Three Rivers 281
 202 CFPL 95.9 London ONLondon's Best Rock FM 96 510
 317 WKRK 97.1 Detroit MI 416
 525 WXM36 162.55 Lancaster MO Legal ID 110
 September 2 Tropo
 831 Unid 107.1 ((WEAL 51)) "107.1 The Voice the best hits"
 848 WTCD 96.9 Indianola MS ((WXL 75)) end sthm Garden Show 484
 912 WXJ61 162.425 Joplin MO ID "transmitting from a tower in Neosho" 318
 939 KUSO 92.7 Albion NE NE Nebraska's country leader US 92 392
 September 4 Tropo
 303 162.4 St. Joseph MO conditions in St Joseph 226
 303 KID77 162.55 Kansas City MO KC Intl Airport conditions (note 16) 228
 2000 KTLO 97.9 Mountain Home AR ((KICK 64)) KTLO FM 97.9 Mtn Home 299
 2105 KOMT 107.5 Mountain Home AR adult standards calls 299
 2311 KVOO 98.5 Tulsa OK 413
 2316 KWMO 97.7 Shell Knob MO KQMO between oldies..no phase on WMOI 318
 2327 KTCN 100.9 Eureka Springs ARend New Life Evang. (phone confirm) 325
 September 5 Tropo
 2 KURB 98.5 Little Rock AR 404

122 KLEC 106.3 Lonoke AR lake106.3.com...Little Rock concert ad 397
 152 KMOQ 107.1 Baxter Springs KS Legal ID 322
 156 UNID 107.1 The Voice 107.1 (see also Sept 2)
 206 UNID 107.1 (Note 17) Sunny 107 window stickers at Sonic restrnt
 325 KXKZ 107.5 Ruston LA overrunning KOMT AR 558
 400 KWLW 107.1 Many LALA's U.S. Country KWLW Many 634
 610 KVKI 96.5 Shreveport LA working our way up to 105 degrees 575
 620 KUSN 98.1 Dearing KS US 98 local wx350
 641 KDMM 105.7 Herington KS 358
 708 KKBD 95.9 Sallisaw OK Big Dog 95.9phone # 411
 730 KIZB 92.1 Broken Arrow OK Tulsa ads and wx412
 759 KBVA 106.5 Bella Vista AR This is KBVA Bella Vista 106.5 FM 337
 802 KMCK 105.7 Siloam Springs AR KMCK Siloam Springs Power 105.7 362
 826 KSOK 95.9 Winfield KS noted with k format and new calls 405
 914 KEWL 95.1 New Boston TX Cool 95.1 ...Mt Pleasant ad...Paul Harvey 525
 954 KYGL 106.3 Texarkana AR Texarkana's Classic Rock Eagle 106.3 519
 1000 KWLW 107.1 Many LA 634
 1047 KPWW 95.9 Hooks TX Power 95.9 female DJ local ads(ph confirm) 521 editors note...I believe that the Sunny 107 unid is KKSy Searcy AR
 September 6 Tropo
 20 WCXT 105.3 Hart MI 315
 532 KLDE 107.5 Lake Jackson TX 834
 559 WIAA 88.7 Interlochen MI Legal ID 384
 2222 KWSJ 98.7 Clearwater KS Smooth Jazz 98 jobs announcement 420
 2243 KSKU 97.1 Hutchinson KS ((KXOK 132)) New music 97.1 KSKU 422
 2354 KFDI 101.3 Wichita KS 406
 September 7 Tropo
 207 UNID 102.5 ???((WGNN 122)) The New Star 102.5
 220 WМУZ 103.5 Detroit MI 413
 353 CHUM 104.5 Toronto ON local ads and mentions 620
 407 CILQ 107.1 Toronto ON music parallel to Canadian Sat Subscriptn 620
 431 CBL 94.1 Toronto ON ((WGFA 156)) classical // to Sat 620
 431 CBL 99.1 Toronto ON 620

720 WFJX 105.7 Columbus OH((WWCT 59)) 105-seven The Fox 406

Note 1 (April 3 and later dates) These wx stations ARE NOT included in my FM totals, but are kept separately as their own totals. All were heard on the Icom R 7000 (usually used for TV dxng) as I own no other decent receiver that covers this band. I am completely "winging it" on these newfangled assignments; my only list is from the 1980s and is not very user friendly. I suspect that these new assignments are not 1000 watt stations, or at least not all of them; Burlington IA and Jacksonville IL on 162.525 are only about 90 miles apart, which is closer than anything I ever saw on the main freqs of 162.400; 475 and 550.

Note 2 (May 25) It saddened me to log this station, because I was hoping southern FL would never get an 88.3! Why? Because I always figured it to be a ripe frequency for 2ES from somewhere, and indeed once about 10 or 11 years ago I did hear Spanish here during a south FL opening. Perhaps a Cuban (which may not be 2ES depending on where). I doubt I'll have another shot at whatever that one was. Today's reception had them with a morning show that had a character/sidekick in it. Definitely unusual for religious radio in any language.

Note 3 (June 7) I've seen things showing them as "CP" as recently as two or three months ago, but those call letters are on the tape of the reception. What gives? Testing?

Note 4 (June 14) New estado for me, #9 I think. Hmm, wasn't Recuerdo the slogan for XHAAA way back when? The Gomez Palacio ad was amid man Torreón ads and mentions, including "aquien Torreón". Apparently they actually program from Coahuila. Where is the transmitter? Nevertheless, I count political units as licensed, not from the transmitter site. Otherwise, what would I have to do with WCIL 101.5 when they move Xmtr to MO (to go full C)? Would I have to remove it from my IL totals and put in my MO totals? If I was living in Idaho and heard WCIL FM on skip, would I have to call them up and ask where their transmitter is before deciding where to count it?

Note 5 (June 25) 103.7 had an ad for Horseshoe Bar & Grill "1 mile east of the airports" and 104.7 had an "idahojob.com" ad. This is one of the rare (and, actually, pretty trivial in the overall scheme of things) times I have actually been happy about the 1996 Telecommunications Act which has allowed massive corporations to buy up almost everything. This time I had only to make one phone call to resolve these two UNIDs. It should be noted that this opening was a virtual clone of an Es opening noted in Toledo OH 19 years ago today right down to the same hour.

Note 7 (July 6) Programming the "Jammin' oldies" format, but calling themselves "Jammin' Oldies...Jammin' 92.5" so must be simulcast. Gave a phone number ending in 5955. Again

this was heard on 97.7 with, basically, south TX coming in. Ideas?

Note 8 (July 10 and July 21) I am glad, at last, to log these two stations. Neither station has ever been logged me. There aren't all that many "old, major power stations" that have always been within my Es range but never logged.

Note 9 (July 15) This logging also confirmed via telephone call to them. Actually I was "ok" with the Fargo ad but I also wanted to find out if my listing was correct. They confirmed their power is still 5kw - Class A. I never expected to log a ND Class A via tropo, as there just aren't very many.

Note 10 (July 16) What's the deal with this guy? They do have nice height, but only 13kw power. Yet they are often one of the first SW MN's to come in via tropo, despite closer Mason City 100kw same direction. Heard much more often than the two times listed this report.

Note 11 (July 16) I confirmed this by calling their "competition" on the AZ side! I played a tape for a girl at KZNO 98.3 and she said I had the Mexican station. If it had not been for KUAT-6 a few minutes earlier, I would have been baffled, as it was a very spotty, strange and nonspecific ES opening

Note 12 (July 17) WJEQ 102.7 did not come back on with any "real" power until the 18th. They are the same direction as WCBF, and only 3 miles away. They desensitize the receiver in that direction in that part of the band, and/or mix with KLOU 103.3 (a real powerhouse). This can be phased, but I usually then end up with KJFM-MO and/or WDNL-IL.

Note 13 (August 25) Did this station just upgrade their power? I was looking for them hard, without a trace, on July 15 & 16—they should have been there. It can be seen that they appeared several times in late August.

Note 14 (August 25) I thought this was impossible, but this "not much more than a Class A" was taking out KROC without phasing. KROC has one of the most incredible signals of any FM anywhere - compare to the likes of WILL 90.9. They have a local signal in Waterloo IA.

Note 15 (August 27) This one sure had me fooled - I certainly couldn't figure out who was playing Polkas here from the NW! I was hoping for Huron SD. They came out of the show, a pre-taped show which mentioned the four stations it's carried on. WPIO 89.3, two other Floridians (all religious)...and KSKB! After legal ID, KSKB went into their much more typical religious format.

Note 16 (September 4) As usual, these are not part of my FM totals. My only NOAA station list is hopelessly out of date as previously stated.

Note 17 (September 5) Who are these guys???? Both believed from the deep south; a subsequent November check (en route to Florida) showed KBHI Miner MO not to be on the air, nor are either of these WKRV Vandalia IL (I was careful about that). The Sunny 107 mention of Sonic restaurants does imply the South. I do see Bald Knob AR listed as Sun 107. Fortunately I have these taped.



CONVENTION 2001

WORLDWIDE TV FM DX ASSOCIATION

July 27-29

The 2001 Convention will be held at the SUPER EIGHT in Boise Idaho, 2773 Elder St. 83705. from July 27-29 2001.

Room rates will be \$62.10 for a double. To make reservations call the local # at 208-344-8871, mention "Frank Aden" and they will then make the reservation under your name.



SUPER 8 LODGE — BOISE

2773 Elder Street • Boise, ID 83705 • PHONE 208-344-8871

Convention fee will be \$20.00, the Banquet, which will be held at the nearby Perkins will be extra and you can order anything off the menu.

Convention activities will include station tours, a DXpedition, TV history quiz, auction and DX seminars.

Boise is located with a days drive to several National Parks, Yellowstone, Grand Teton, Crater Lake and the new Great Basin, also nearby is Hells Canyon, Craters of the Moon National Monument and the Sawtooth National Recreation Area.

For more information and or to send auction items, contact Frank Aden at: WTFDA2001@aol.com or write to: 4096 Marcia Place, Boise ID 83704

