

The Worldwide TV-FM DX Association

Serving the VHF-UHF Enthusiast



VHF-UHF DIGEST

E-ZINE VERSION

MARCH 2002

The VHF-UHF Digest is the official publication of the Worldwide TV-FM DX Association dedicated to the observation and study of the propagation of long distance television and FM broadcasting signals at VHF and UHF. The WTFDA is governed by a board of directors: TOM BRYANT, GREG CONIGLIO, BRUCE HALL, DAVE JANOWIAK AND MIKE BUGAJ.

WHEN IS YOUR MEMBERSHIP UP?

In order to keep your VUD arriving at your home without interruption, look for your name on this list. Your membership ends on the last day of the month shown. Renew *early!*

March

Edward Cotton	Aaron Mitterling
Bill Draeb	Gerard Hart
Bill Dvorak	Thomas Leu
Pat Dyer	Jim Pizzi
Carlton Howington	Joseph Smith Jr
Scott Steenhusen	Richard Steinberger
Phil Sullivan	Peter V. Taylor
David Cox	Allan Dunn
Frank Drobny	Dave Nieman
Ryan Grabow	William Hepburn
Paul Crego	Luis Franceschi
Joseph Kureth Jr.	Alex Cruz

April

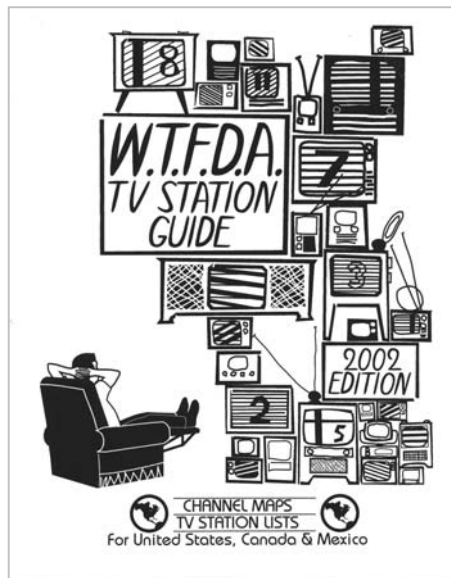
Eric Fader	John Hourigan
Dan Oetting	William Thompson
Larry Weisberg	James Ivil
Leslie Green	Timiothy Clampit
Robert Fischer	Tom Christman
Ben Cox	Milton C. Bay
Doug Gault	Barry Shinall
Wayne Johnson	

CONTENTS

Page Two
Mailbox
FM News...Greg Coniglio
TV News...Doug Smith
Western TV DX...Victor Frank
Eastern TV DX...Matt Sittel
Southern FM DX...John Zondlo
Photo News...Jeff Kruszka
TV Statistics...Fred Nordquist
Northern FM DX...Keith McGinnis
Satellite News...George Jensen
Mid-Latitude SpE Part III...Mike Hawk
CA Highway Patrol Freqs
Sign-up/Renewal Form and addresses

This month we continue with Mike Hawk's article on Sporadic E. We also provide a list for those of you interested in 42mhz skip of CHP frequencies that includes each office's ID number. Last month Fred gave us the FM statistics; this month it's TV Stats. If you are overdue for an update...do it now!

So, find yourself a comfortable chair, adjust the lamp, turn off the television and enjoy this issue of the VHF-UHF Digest.



The 2002 WTFDA TV Station Guide IS NOW READY For Skip Season!

You just can't get any better than this! Over 400 pages of listings by channels and by plots on channel maps...full power, LPTVs, translators and DTV stations. The WTFDA Station Guide has it all! Make your check or money order for \$23.00 (US funds for those outside the USA) payable to **Dave Janowiak** and mail it to:

John Ebeling
9209 Vincent Avenue South
Bloomington, MN 55431-2157

Order now! Supplies are limited! Don't be left out!

For even more info see us online at: <http://fmdx.usclargo.com/TVG.html>



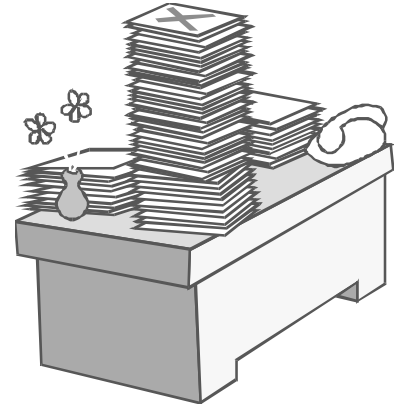
The Mailbox

P.O. Box 501, Somersville, CT USA 06072
MIKE BUGAJ MBUGAJ@SNET.NET

MARCH 2002

Well, it's March and we are back for another month. It has been a weird winter here weather-wise and DX has been down the drain since the last E skip opening we had on January 4th. F2 skip has been abundant on 42mhz with almost daily reception of the CA Highway Patrol. The Midwest has had a bit of tropo now and again which is more than I can say for the US East Coast. But all in all, it has been a blah month almost everywhere.

Some of you may have noticed that the photos in the January VUD were more than slightly on the "dark" side. What happened was that due to unforeseen circumstances I was forced to use output from an inkjet printer for those pages. That situation should be permanently corrected by the time you read this.



MEMBERS AND MORE

First off let's welcome **J. Conway Dabney** to the WTFDA. Conway lives down in Oxford, MS and is a long-time Dixer. We'll have more from JC a little later on. We have a huge pile of renewals this month, so here we go. Taking a deep breath, we have **Dan Dankert**(CA), **S. Kaimbridge Hood**(MA), **Steve Chudoff**(PA), **Paul Mitschler**(KS), **Paul Crego**(NY), **Joe Kureth**(MD), **Wally Dickson**(MA), **James Nahirniak**(MI), **Jim Pizzi**(CA), **Paul Hansen**(MA), **Eldon Geiman**(PA), **Brian Farnsworth**(WV), **Dave Allen**(IN), **Charles Burnham**(NY), **Roger Sabella**(IL), **Morris Sorensen**(MB) and **Peter Oprisko**(IN). Thank you all for staying with us and especially thank you to those of you who sent in a check for two years dues. I guess, all in all, I'm not doing too bad a job.

Here is part of an interesting email from Mr. Dabney: "I am 61 years old and have been dxing since I was 11 years old, started in 1952 when we got our first TV.. Actually when I was 2 years old I remember switching our radio to a band than no one ever listened to and listened to the police. It was frightening because I thought they were talking to me. I built my first FM radio in 1959 and I have been a fanatic all of my life. Boy, do I have some stories to tell!

Back then I didn't know about tropo and E skip. However, I did know that during the summer months something happened just about every day. Ch2-6 would be so cluttered that I would have to go (to) the FM just to see where the signals were coming from. And frequently the entire FM spectrum would be open. During the springtime I learned that about 2 days after a cold front passed I would start receiving FM from Texas, Oklahoma, etc and over the following days it would spread to Canada, especially Sault Ste. Marie, then on to the east coast. If a high pressure settled over the area I would receive FM from Dallas while in Oxford and it would last not only for days but throughout the day. What an experience, especially considering that at the time, 59-62, there was only one FM station in MS, WJDX-102.9, a couple of weak stations in Memphis and my favorite was in Little Rock.

My most consistent target from Gulfport was WSYR, Syracuse. From Jackson it was ch2 in Casper, WY. From Clearwater it was Mexico City.

Anyway, I have never known a soul who was interested in Dxing. I thought I was the only eccentric person fascinated by the phenomena. It is a pleasure to have someone to communicate with. For some reason or another, no one seems to understand why I keep a TV on and tuned to channel 2 when nothing is being received but static (boy are you in the right place –Mike). I am sure I have finally found others who understand and who are equally weird. (You nailed it, Conway. This club is many folks' DX Nirvana –Mike

TV GUIDE DID WHAT?

From **Jim Ayers**, “Found something to muse about in the dead of winter...My wife was flipping through TV Guide this past weekend and commented to me that she didn’t recognize the channels listed on a certain page. I looked at it and quickly identified it as a page from some S. Alabama/W. Georgia/Florida panhandle listings. Thought that was interesting here in Atlanta. I’d never seen TV Guide slip up before with listings from some other edition. I wondered if that other edition got our Atlanta listings. (No, your listings probably showed up in the Anchorage, AK TV Guide – Mike)

FILTER MADNESS

This arrived from **Bruce Elving**: “Recently I took delivery of four types of filters for better FM selectivity from Steve Solomon. For my \$30 he supplied a rich variety and they came very promptly (Steve is a good man, and honest to boot. It’s a trait of the McVie clan –Mike).

The 110 khz SNR filters were said to be like Muratas. I have no Muratas to compare them with, but my tuner, the Fanfare FT-1 FM, has socket positions to install three filters in. Therefore, changing filters was, as they say, a “snap”.

I found the SNR somewhat better than the shiny-surfaced Token filters, but not quite as good as the 110 khz Toko filters that I already had. The 150s (SNR) seemed to do the job very well—for 150s. I tested using WRVM-1092.7 Suring, WI, adjacent to local KRBR 102.5 Superior, WI-Duluth, MN, plus other adjacents, some on a lower channel to a local. I think the SNR and Token filters exhibited good channel centeredness, but were somewhat deficient in extreme selectivity tests. Filters of the same model (or having the same part number) can vary one from another. I had previously culled the three best filters for my tuner from among the Tokos I had, but Steve’s selection enabled the variety to increase. Thus I installed three of his Toko filters to replace the three I had.

It’s good to have a source like Steve around. I recently tried to order Toko filters from Digi-Key (a parts distributor in MN) and found the price had increased substantially in the “10 plus” category. So buy your filters now before prices go up even more.”

So, folks, it seems that Bruce doesn’t care much for the SNR filters and prefers the Toko filters. I, on the other hand, think they are great and I have them in my Carver TX-11 and my Sony ST-5130. So, rather than have you scratching your head and wondering whom to believe, you will have to try some of each and make that determination for yourself. Experimenting with these little ceramic filters is a great way to pass the time in the winter when you can’t find any DX even if your life depended on it. Have fun!

LAST MONTH’S F2 COVER PICS

Bob Cooper weighs in with some comments about the F2 photos on the VUD cover last month: “Some observations concerning Rick’s F2 photos on VUD February front cover. #1) The signal levels here are not strong - as F2 goes. While I am certain many (possibly including Rick) may have had greater signal strengths, what we see here is an artifact of (a) not a big signal, and more important, (b) A sharp cut-off of the F2 MUF. Assume for discussion the MUF was 58 MHz. That means the last 1.25 MHz of video IF and video amplifier had NO signal there. No signal equals noise, which equals a grainy appearance. This is especially apparent in the bottom image. The top image also has a RF artifact running through the fellow’s face - about nose level. This would be some sort of non-TV signal appearing in the channel 2 passband at about 56 or 56.25 MHz. It is modulated (the lines are distorted) and it may have been local - like a baby monitor operating within channel 2. More likely it was F2 propagated.

The sharp cut off of the MUF also contributes to the lack of image detail which is common with F layer signals. The ghosting (vertical lines in both images) are caused by the multi-path - the signal was bouncing off of many different spots and the slightly longer ones were delayed in time from the primary enough to create the ghosting (vertical lines) seen.

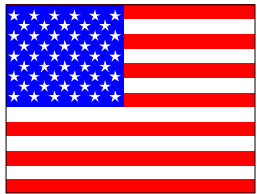
The actual signal level at the video carrier frequency (55.25 +/-) may in fact have been VERY strong, but as the MUF was reached (someplace up to and including 59.75 for the audio subcarrier), at the actual MUF there is an almost complete collapse of the transmission path - suddenly everything above a cut-off point in frequency simply fails to propagate and leaves the receiver wondering “what do I do with all of this unused bandwidth?” The answer can be (1) nothing in which case noise appears as an artifact in the image, or in a co-channel situation, (2) you could actually have the ground wave (terrestrial) signal sneaking through with its own video information for (only) that portion of the channel above MUF - creating a horrible mess! Good job Rick, and Mike for publishing same!” That’s all from here. CU Next month! –Mike

FM NEWS

EDITOR: GREG CONIGLIO
 90 SLATE CREEK DRIVE APT. #3
 CHEEKTOWAGA, NEW YORK 14227
 E-MAIL: coniglio@adelphia.net
 WEB: <http://www.geocities.com/~wgrc>

Most of the information appearing in this column is courtesy of:
M STREET JOURNAL – P.O. BOX 422 – LITTLETON, NEW HAMPSHIRE 03561
PHONE: (609) 883-3321, FAX: (609) 883-5696, E-MAIL: MstreetTom@aol.com

<p>KEY TO ABBREVIATIONS: &: satellite programming AF: New frequency allocation accepted for filing for a new FM license AFA: American Family Association CC: call letter change CL: city of license change CX: a construction permit has been canceled C1,C2,etc: a change in status to that FM license class DA: directional antenna DE: station has been deleted FC: format change GA: granted amendment to the table of FM allocations GE: granted extension of</p>	<p>construction permit GX: granted replacement of expired permit LC: license to cover filed (means station is ready to come on air) MC: multiple-city legal ID NC: no change yet on a reported change/permit ND: non-directional antenna NO: not on the air NS: new station granted NW: new station signs on OSA: one-step application granted for change PA: proposed amendment to change FM table of allocation PC: power change on the air (">" for increase, "<" for decrease, when known)</p>	<p><i>Ital. Calls: LPFM station</i> PG: power change granted (">" for increase, "<" for decrease, when known) QC: frequency change occurred QG: frequency change granted RA: silent station returns to air RE: station requests extension on permit RX: station requests replacement of expired permit SG: slogan change or update SI: station is silent XA: dismissed amendment to FM allocations XC: transmitter site change occurred XG: transmitter site change granted</p>
--	--	---



United States

ALABAMA:

Greensboro: WDGM 99.1 NW, ABC oldies (&)

ARIZONA:

Grand Canyon: KNAG 90.3 LC
 Wickenburg: KSWG 94.1 QG to 96.3

ARKANSAS:

Benton: KHKN 106.7 CC (ex KDDK), "Kickin' Country"
 Mountain Home: KPFM 105.5 PC 19 kW, 797 ft, XC: 36-29-13 / 92-29-39

CALIFORNIA:

Bishop: KWTW 88.5 LC
 Carlsbad: KOCL 95.7 CC (ex KJQY), "Kool 95.7"
 Chico: KMXI 95.1 FC to AC
 Grass Valley: KNCO 94.3 PG> 660w
 Jackson: KNGT 94.3 PG> 510w
 San Jose: KEZR 106.5 PC 42 kW, 538 ft, XC: 37-12-33 / 121-46-30
 Shingletown: KKXS 96.1 PC 450w, 1135 ft.
 Turlock: KEFC 100.5 LC

COLORADO:

Aspen: KSPN 103.1 dec to -85 ft.
 Rifle: KZKS 105.3 FC to classic rock
 Rocky Ford: KOOO 95.5 XC: 37-58-43 / 103-34-48
 Silverton: KBNG 103.7 PG 4.1 kW, 1575', CL: Ridgway, CO, XG: 38-23-15 / 107-40-31

CONNECTICUT:

S. Kent: WGSK 90.1 PG 77w, 128 ft.

FLORIDA:

Dade City: WTMP 96.1 CC (ex WMGG) "Boss of the Bay Jams"
 Miami: WPYM 93.1 CC (ex WTMI) "Party 93.1"
 Ocala: WMFQ 92.9 XC: 29-04-45 / 82-5-31
 St. Petersburg: WPOI 101.5 CC (ex WFJO) "101.5 The Point"

GEORGIA:

Cartersville: WCCV 91.7 PC> 7.3 kW, DA, XC: 34-11-35 / 84-45-31
 Fayetteville: WPZE 97.5 CC (ex WEGF) "Praise 97.5"
 Gray: WYNF 96.5 FC coming (Macon)
 Jesup: WTLD 90.5 NW, religion, inc. to 171 ft, XG: 31-35-49 / 81-56-14
 Savannah: WAEV 97.3 FC to CHR "Kiss 97.3"
 Sylvester: WZBN 102.1 CC (ex WWSG) "Blazin' 102.1"



ILLINOIS:

Cairo: WBEL 88.5 PC> 55 kW
Chicago: WJMK 104.3 XC: 41-52-44 / 87-38-8
Decatur: WYDS 93.1 PC 4.6 kW, 367 ft, DA,
XC: 39-47-11 / 88-59-29
Elmwood Park: WCKG 105.9 inc. to 1581, XC: 41-
52-44 / 87-38-8
Genoa: WYCH 106.3 PC> 6 kW, 213', XC: 42-04-
28 / 88-49-24
Lincolnshire: WAES 88.1 LC

INDIANA:

Columbus: WINN 104.9 CC (ex WWWY), I FC to
oldies
Corydon: WGZB 96.5 PG 2650w, 499' XG: 38-10-
25 / 85-54-50
Ft. Wayne: WBNI 89.1 FC to classical & jazz
New Carlisle: WZUW 102.3 CC (ex WGTC) "The
Pulse"
North Vernon: WWWY 106.1 CC (ex WINN), FC to
classic hits "Rockin' Hits Y-106"
Orland: WBOI 91.3 NW, news, talk, jazz
Vincennes: WATI 98.9 PC< 4.5 kW, XC: 38-41-47 /
87-26-27

IOWA:

Catana: KILV 107.5 CC (ex KMAP) "K-Love"

KANSAS:

Kansas City: KFKF 94.1 adds Lia evenings

LOUISIANA:

Laplace: WCKW 92.3 FC to hot AC

MAINE:

Dexter: WGUY 102.1 FC to smooth jazz "Smooth
Jazz 102.1" (Bangor)
Fairfield: WCTB 93.5 PG< 9.5 kW, XG: 44-44-42
/ 69-41-34
Saco: WRED 95.9 PG> 4.1 kW, 397 ft, XG:
43-32-33 / 70-24-17

MARYLAND:

Ocean City: WSDL 90.7 PC> 18.5 kW

MASSACHUSETTS:

Mashpee: WTUV 101.1 FC to oldies (Cape Cod)
Newburyport: WNEF 91.7 NW, folk & urban //
WUMB

MICHIGAN:

Detroit: WGPR 107.5 FC to progressive R&B,
adds jazz also
Frankenmuth: WZRZ 93.7 NW, dance "Club 93.7"
Harrisville: WJOJ 89.7 NW, cont. Christian "Joy
89.7" (Northeastern Mich)
Honor: WAIR 100.7 NW, // WKVK, CHR //
WKPK, CHR "The Peak" (Traverse City)
Houghton: WHKB 102.3 PC 6 kW, 328 ft, XC: 47-8-
6, 88-33-53
Newberry: WIHC 97.9 FC to classic rock // WGFM



MINNESOTA:

Cambridge: WGVY 105.3 FC to adult alt. // WGVX
"Drive 105" (Mnpls)

Crosby: KUAL 101.5 CC (ex KTCF), FC to oldies
"Kool 101.5"

Eden Prairie: WGVZ 105.7 FC to adult It. // WGVX
"Drive 105" (Mnpls)

Grand Marais: WMLS 88.7 NW, classical // KSJN

Lake City: KLCH 94.9 NW, hot AC

Lakeville: WGVX 105.1 FC to adult alt. "Drive 105"

Nisswa: KBLB 93.3 CC (ex KBPQ), NW,
country "B93"

MISSISSIPPI:

Oxford: WAVI 91.5 PG> 8.3 kW, C3, 575', DA

West Point: WKBB 100.9 PG> 25 kW, C3, 328 ft,
XG: 33-40-43 / 88-48-18

MISSOURI:

Kansas City: KBEQ 104.3 adds after Midnite

Springfield: KTTS 94.7 FC to classic country

NEBRASKA:

Imperial: KURK 102.9 dec. 988', class C0

Lincoln: KKUL 105.3 PC> 6 kW, 328 ft.

Lincoln: KLTQ 101.9 CC (ex KZFX), FC to soft
AC "Lite Rock 101.9"

NEW HAMPSHIRE:

Conway: WBMC 104.5 CC (ex WVMJ), FC to hot
AC "Magic 104"

NEW JERSEY:

S.Toms River: *NS 90.3 130w, 266 ft, DA

NEW MEXICO:

Albuquerque: KKRK 101.3 CC (ex KCHQ) "101.3
The Range"

NEW YORK:

Lake Placid: WLPW 105.5 PG> 25 kW, -194 ft,
class C3

Ravena: WRCZ 94.5 CC (ex WKLI) "94 Rock"

NORTH CAROLINA:

Leland: WKXS 95.1 dec. to 135 ft.

New Bern: WAAE 91.9 PG> 3.5 kW

NORTH DAKOTA:

Hope: KCHY 104.7 PG> 100 kW, C1, 702 ft,
XG: 47-03-15 / 97-24-44

OHIO:

Hillsville: WFJZ 106.7 NW, smooth jazz

Mt. Vernon: WQIO 93.7 FC to soft AC

Pleasant City: WBIK 92.1 LC

Wauseon: WXQQ 96.9 PG 2.7 kW, 492', XG: 41-
33-29 / 84-11-08

OKLAHOMA:

Lawton: KVRW 107.3 XG: 34-17-52 / 97-09-12

Lone Grove: KYNZ 106.7 PG 24.6 kW, C3, 335',
DA, XG: 34-17-52 / 97-09-12

OREGON:

Hood River: KQHR 90.1 NW, variety

Lake Oswego: KLTH 106.7 CC (ex KKJZ), FC to
soft AC "K-Lite" (Portland)



PENNSYLVANIA:

Bellefonte: WZWW 95.3 PC< 790w, XC: 40-53-35 / 77-51-48

Port Matilda: WJHT 107.9 CC (ex WNCL) "Hot 107.9"

Warwick: WBMP 88.1 NW, cont. Christian // WBYO "Word FM"

SOUTH CAROLINA:

Bishopville: WKHT 93.7 PC 5 kW, 358 ft, XC: 34-07-10 / 80-8-49

Goose Creek: WSSC 94.3 FC to urban "Power 94", PC 25 kW, 328 ft, DA, XC: 32-49-04 / 79-50-8

Kingstree: WWKT 99.3 PC 19 kW, 377' XG: 33-47-51 / 80-07-04

Pageland: WRML 102.3 PG 6 kW, 318', XG: 34-49-04 / 80-19-21

Richburg: WRBK 90.3 PG> 4.4 kW, C3, 538 ft, DA, XG: 34-41-46 / 81-1-23

SOUTH DAKOTA:

Freeman: KVCF 90.5 LC

TENNESSEE:

Elizabethton: WPJO 99.3 FC to hot AC "Mix 99.3"

Maryville: WTXM 95.7 FC to hot AC // WRMX "Mix 106.7" (Knoxville)

Tullahoma: WUSX 93.3 CC (ex WXMR), FC to country "US 93"

TEXAS:

Atlanta: KNRB 100.1 FC to religion

Beaumont: KKTT 97.5 CC (ex KAYD) "Power 97.5"

Centerville: KTCJ 105.9 RA with country

Coleman: KXCT 102.3 CC (ex KSTA) "Texas Country Kix"

Corsicana: KDOS 107.9 CC (ex KDXX) "Amor"

Gainesville: KDXX 107.9 CC (ex KDOS) "Amor"

Granbury: KDXT 106.7 QG to 107.1, C1, PG< 74 kW, CL: Benbrook, TX, 1050', XG: 32-35-10 / 97-49-52

Haltom City: KDBN 93.3 CC (ex KKMR) "The Bone"

Hempstead: KEZB 105.3 new format coming

Kilgore: KKTX 96.1 PC 50 kW, 492 ft, XC: 32-22-14 / 94-56-20

Lampassas: KHHL 98.9 FC to regional Mexican // KXXS "Radio Exitos"

Linden: KIXK 99.3 RA with urban // KAZE

Pearsall: KMMG 104.1 LC

Tyler: KTYL 93.1 FC to hot AC "Mix 93.1"

Wichita Falls: KQXC 103.9 CC (ex KKTT) "Hot 103.9"

UTAH:

Tremonton: KBNZ 104.9 CC (ex KENT) "K105 the KAR, Cruisin' Classics"

VIRGINIA:

Chester: WDYL 101.1 PC 4 kW, 367', XC: 37-26-21 / 77-25-27

Exmore: WKHI 107.5 PG 18.5 kW, 340', CL: Fruitland, MD, XG: 38-11-54 / 75-40-50

WASHINGTON:

Eatonville: KFNN 104.9 PC 17 kW, class C3, 407'

WEST VIRGINIA:

New Martinsville: WETZ 103.9 PC 2.5 kW, 502 ft, XC: 39-39-10 / 80-54-47

WISCONSIN:

Durand: WYLT 95.9 CC (ex WRDN) "Lite 95.9", FC to sft AC

Evansville: WKPO105.9 FC to dance "Hot 105.9"

Madison: WSUM 91.7 NW, variety

Stevens Point: WSPT 97.9 FC to hot AC



CANADA

BRITISH COLUMBIA:

Vancouver: CBUF 90.9 app for 287w Chaine Culterelle station (which was denied 94.5)

MANITOBA:

Winnipeg: *NS 106.3 changes application to be for 107.9

NOVA SCOTIA:

Eastern Passage: *NS 94.7 50w grant, community station

QUÉBEC:

Donnacona: CKNU 100.9 wants XG to Mont-Belair, PQ, and PG< 2.2 kW (probably with hgt increase)

Les Mechins: CHRM 104.1 granted transmitter here at 49 watts

Quebec: *NS 91.9 app for classical station (commercial), amended to 5.3 kW, up from 2,367w

SASKATCHEWAN:

Nipawin: *NS 94.7 granted a/c, oldies, classic rock station, 14.8 kW

- **Chip Kelly** notes that when Clear Channel revamped its' Detroit Clear Channel CHR station, WKQI 95.5, it did not go with its usual "Kiss FM" slogan for its Top 40 stations, but rather is now known as "Channel 95-5, Detroit's Hit Music Channel." Sounds like they decided not to take on cross-town WDMK "Kiss" over that handle, as they've done in other locations (such as Bakersfield, for example). Farther south, Chip notes that in Lake Charles, La., Apex has registered the Internet domains of "la92.9com" and "kbig99.com". KHLA 99.5 recently applied to change calls to KBXG, and KJEF 92.9 is now KHLA. The web URLs would seem to indicate what the plans are!

(continued next page)

- **Ralph Strobel** writes with some news from the Muncie area. He notes 106.7 Hillsville, OH newly on the air, serving Fort Wayne, IN with smooth jazz, in stereo (also noted in FM NEWS Ohio section). He has also been tracking a local pirate on 107.5. He heard them on Sundays fro 1030-1200, and from 1800-1915. It is located at the South Side Church of the Nazarene, at 3500 W. Fuson Rd. in Muncie. A sign on each side of the church parking lot invites people to tune in to 107.5. Signal is mono and carries well for about 2 miles. It is 6 miles from Ralph's QTH. Ralph also notes he's been Dxing 107.5 for MS, with LPFM applications nearby pending. He's already got one on 94.3, WCWC-LP in Marion, playing gr\$. Though it's only 29 mi. from Muncie, Plymouth-South Bend is stronger. Thanks for the updates, Ralph!
- **The CRTC** is soliciting applications for new FM stations in St. John's, NF, and Kitchener-Waterloo, ON. The release also notes that Canada's easternmost province is now officially named "Newfoundland and Labrador". As Doug Smith (who provided us with this information) states, "I'll be sticking with NF" 😊
- **Bruce Elving** writes to note another typo in FM NEWS, namely, the fact that the home of WSPA-FM 98.9 is "Spartanburg", not "Spartansburg" as I mis-typed it. I was aware of that, and have even been there, so there's no excuse! Thanks for keeping me on my toes, Bruce! Bruce has also kindly sent an Fmedia! For me to review for information for the column, which I have not had a chance to do, but will review soon.

WTFDA 2002 FINANCIAL REPORT

Opening balance on January 1, 2001	\$5631
Receipts:	
Revenues from dues, tv station guides	
Samples and auction:	\$6463
Expenses:	
VUD Publishing (Jan. 2001 – Dec 2001)	\$6403
Miscellaneous (Stamps, memberships P.O. Box rental, subscriptions, awards, Guide mailings and photo work):	\$237
	\$6640
Operating Margin (receipts minus expenses):	-\$177
Closing Balance on 12-31-01	\$5454

NOTE

In 2001, the WTFDA showed a loss of \$177. Compared to 2000, the 2001 final tally resulted from stable membership, higher VUD publishing expenses, lower miscellaneous expenses and lack of significant revenue from the 2000 TV Station Guides (we sold out the remaining guides). This financial performance seems acceptable in light of the two publisher changes and lack of significant income beyond renewals. Club balance of \$5454 is the second highest in history. With the expected revenue stream from the new station guides, 2002 will likely be a profitable year. Your club remains on solid ground financially and, as noted by the publisher recently, membership renewal is outstanding.

Submitted 2-1-02 by Dave Janowiak, WTFDA Treasurer

TV News

March 2002

Douglas E. Smith W9WI
1385 Old Clarksville Pike
Pleasant View, TN 37146-8098
W9WI@w9wi.com http://www.w9wi.com

Abbreviations:

AF	Applied for (a new station)	PC	Power (or tower height) change on the air
CA	Class A status request/grant	PG	Power (or tower height) change granted
CC	Call change	PR	Power (or tower height) change requested
CL	City-of-license change	QC	Channel change on the air
DE	Station deleted	QG	Channel change granted
FC	Programming (format) change	QR	Channel change requested
GA	Granted amendment to the table of allocations	SI	Off the air ("silent")
LC	License to cover (for changes or new station)	XC	Transmitter site change on the air
NO	Not on the air	XG	Transmitter site change granted
NS	New station granted permit	XR	Transmitter
NW	New station on the air	*	999 watts
PA	Proposed amendment to the table of allocations		

News:

Alaska:

Anchorage	K39EP, K43EY, K44EQ, K46EN, K49EE, K50EP, K52FI, K53FN, K63FT, K64FA, K65GM, K67GT, K68FF all request XG 61-20-11/149-30-48. K39EP also requests QG from minus offset to none.
Fairbanks	K13XD 13 PC>3kw
Kodiak	K11UQ 11 XC 57-48-04/152-22-55
Nome	K16FF 16 NS 15kw, 64-30-07/165-24-26
Nome	K26GT 26 NS 15kw, 64-30-07/165-24-26

Alabama:

Birmingham	W27CM 24 QR from ch. 27, 3.5kw, 33-29-03/86-48-25
Decatur	W66DH 66 QC from W22BF, 10.8kw
Demopolis	W28CE 15 QR from ch. 28 dismissed
Demopolis	new 25 LP dismissed (defective application, interference protection to other LPTVs)
Dothan	W55CW 55 NS 18kw, 31-16-07/85-23-13
Gulf Shores	WBPG 55 NW 3750kw/308m, 30-36-37/87-36-26
Mobile	WMPV-DT 20 NS 500kw/436m
Prichard	WRBM-LP 46 QG from ch. 60, 37.9kw

Arkansas:

Batesville	K15FW 15 NS 10kw, 35-46-48/91-38-24
Batesville	K26GX 26 NS 10kw, 35-46-48/91-38-24
Batesville	K33GV 33 NS 10kw, 35-46-48/91-38-24
Corning	K55JL 55 NS 4kw, 36-25-14/90-34-54
Eureka Springs	KWBS-TV 34 PG>3236kw/213m
Fort Smith	K16ER 16 QC from K27DI, 7.5kw
Little Rock	K34FH 34 QC from K33DE
Little Rock	KLRA-LP 58 PC>50kw, 34-46-20/92-21-27
Mountain Home	K26GS 26 NS 18.1kw, 36-21-00/92-24-12

Arizona:

Camp Verde	K18DD 46 QR from ch. 18
Camp Verde	new 20 LP app dismissed
Dolan Springs	K35EI 35 QC to minus offset
Douglas	K38FH 38 PC<2kw, 31-29-08/109-57-21
Flagstaff	K56HF 56 NS 3kw, 35-11-25/111-38-01
Fredonia	K58GU 58 NS * 36-59-14/112-30-11
Ganado	K09XH 9 NW, 280w, 35-40-40/109-33-28
Green Valley	KXGR 46 FC - sold to Univision

Hotevilla	K55IZ 55 NS * 35-55-50/110-39-11
Hotevilla	K57IO 57 NS * 35-55-50/110-39-11
Phoenix	K49DF 57 QR from ch. 49 dismissed

Arizona:

Phoenix	KPHO-DT 17 PG>940kw/507m
Phoenix	KPHZ-LP 58 PC>23.6kw
Phoenix	KTVP-LP 22 QR from ch. 56, 42kw, 33-19-58/112-03-59
Shiprock	K32FK 32 QC from ch. 61, 1.78kw, 36-27-30/109-05-37
Yuma	new 6 new LP dismissed

California:

Blythe	K31FE 31 QC from ch. 67
Coalinga	K42DT 43 QR from ch. 42, 50kw, 36-45-23/121-30-05 near Salinas
Fresno	KMSG-LP 11 QG from ch. 55, 3kw
Fresno	KQJA-LP 41 QG from ch. 68, 150kw, 37-04-22/119-25-51
Indio	K06MB 6 PR>3kw but dismissed
Lake City	K55JA 55 NS 500w, 41-38-14/120-05-31
Lakeport	K15FJ 15 QG from K60FP, 0.93kw
Lancaster	K26GN 26 QC from K54DN, 4.6kw
Long Beach	KSCI 18 PC 2583kw/899m, 34-12-48/118-03-41
Los Angeles	KLCS-DT 41 NS 162kw/901m
Los Angeles	KNLA-LP 67 QG from ch. 68, 1.58kw
Los Angeles	KSMV-LP 33 QC from ch. 44, 11.6kw, 34-13-36/118-03-57
Modesto	KUVS 19 PC>576m, 38-07-07/120-43-27
Palm Springs	KYAV-LP 12 PC>990w
Porterville	KPXF-DT 48 PG 197kw/804m
Ravendale	K53HD 53 NS *, 40-47-43/120-22-14
Riverside	KBLM-LP 25 PC>6kw
Sacramento	KMAX-TV 31 PC 560m, 38-15-54/121-29-24
Sacramento	KMMK-LP 14 QG from ch. 62, 1.1kw, 38-37-49/120-51-20
San Diego	K63EN 63 PC>0.8kw, 32-44-05/117-09-34, already on air
San Diego	KSDX-LP 34 QR from ch. 29 dismissed

Sanger Stockton	KMSG-TV 59 K22GF 22	PR>5000kw dismissed QG from K52CK, 2kw, 37-53-34/121-53-57	Rock Harbor	W56AZ 56	25-32-24/80-28-06, to minus offset
Trinidad	K58GS 58	NS *, 41-05-58/124-07-35	Rock Harbor	W64AN 30	QR from ch. 56, 147kw, 25-32-24/80-28-06
Colorado: Alamosa Anton	K50HB 50 K57IL 57	NS 5kw, 37-28-10/105-51-49 NS 480w, 39-51-17/103-20-38	St. Petersburg	W60BK 36	QR from ch. 64, 50kw, 25-32-24/80-28-06
Colorado: Bayfield	K50FS 50	NW, 1.2kw, 37-11-03/107-29-07	Tallahassee	WBXT-LP 43	QR from ch. 60, 3.8kw, 28-03-06/82-44-11
Durango	KTLL-TV 33	NW 166kw/122m, 37-15-46/107-53-45	Tallahassee	WTWC-DT 2	PG>9.2kw/583m
Holyoke	K15FD 15	QG from ch. 63, 3.46kw	Tampa	WRMD-LP 49	QR from ch. 57, 49.7kw
Holyoke	K17EU 17	QC from ch. 65, 3.46kw	Georgia:		
Holyoke	K19EG 19	QG from ch. 67, 3.46kw	Atlanta	WAGA-DT 27	NS 1000kw/332m
Holyoke	K21FF 21	QG from ch. 61, 3.46kw	Atlanta	WATC 57	PC 3160kw
Julesburg	K55JC 55	QG from K41AB, 670w	Hazlehurst	W56DU 56	QC from ch. 63
Julesburg	new 57	NS 665w, 40-54-19/102-22-32	Macon	WGNM 64	PC>1150kw/223m, 32-45-51/83-33-32
Redstone	K18GD 18	NW 50w, 39-14-18/107-13-28	Hawaii:		
Windcliff	K55AU 45	QR from ch. 55, 12.1kw, 39-54-48/105-17-33 near Denver	Hilo	K52HB 52	NS 20kw, 19-35-07/155-07-15 (TBN)
Windcliff	K55IO 55	QG from K69AT, 13kw, 39-54-48/105-17-33	Kailua	KKAI 50	CC for NS
Wray	K44FM 44	QC from ch. 56, 620w	Kailua-Kona	K54GY 54	NS 10kw, 19-43-05/155-55-05 (TBN)
Wray	K54HL 54	NS 615w,	Kaneohe	KPXO-DT 41	PR<80kw
Wray	K56HG 56	NS 615w,	Iowa:		
Wray	K58GV 58	NS 615w, 40-03-15/102-13-32 (All three above)	Davenport	KQCT-DT 34	NS 150kw/102m, 41-28-29/90-26-45
Yuma	K32AB, K34AC, K36AC, K38AD, K40CG all PC>2.69kw		Davenport	WBQD-LP 26	QC from ch. 65, 26kw, 41-28-29/90-26-45
Connecticut: Norwich	WEDN 53	PG<630kw/204m, 41-31-14/72-10-03	Des Moines	K29EA 29	QC from K35CF, 10kw
District of Columbia: Washington	WDCA-DT 35	PG<500kw/254m	Waterloo	KWWL-DT 55	NW 1000kw/574m, 42-24-02/91-50-36
Delaware: Rehoboth Beach	W25CY 25	NS 5kw, 38-44-53/75-11-00	Idaho:		
Florida: Fort Pierce Gainesville	WTVX-DT 50 WBXG-LP 33	NS 704kw/438m QG from ch. 31, 23.6kw, 29-38-37/82-25-09	Arco	K52HE 52	NS 500w, 43-34-49/113-16-40
Inglis	WYKE-LP 26	PR>39.2kw	Juliaetta	K13FA 48	QC from ch. 13, <5w
Jacksonville	WJEB-DT 44	NS 1000kw/300m, 30-16-51/81-34-12	Juliaetta	K36CI 41	QC from ch. 36, <5w
Jacksonville	WWRJ-LP 27	QC from ch. 38, 11.9kw	Lewiston	K58GL 58	NS 3.5kw, 46-27-30/117-06-01 (TBN)
Lake City	WJXE-LP 45	QR from ch.15 dismissed	Stanley	K52HP 52	NS *, 44-11-06/114-55-02
Marathon	W34CV 34	QG from W24CA, 18.5kw, 25-32-24/80-28-09	Twin Falls	KSAW-LP 52	QC from ch. 68, 23.5kw
Marianna	WBIF 51	NW 5000kw/339m, 30-30-41/85-29-24	Illinois:		
Matecumbe	W43CB 43	QG from W32AB, 120.5kw, 25-32-24/80-28-09	Effingham	WEIL-LP 54	QC from ch. 41, 18.8kw
Miami	W55BV 57	QR from ch. 55, 147kw	Quincy	W18CJ 18	QC from ch. 40, 21.3kw
Miami	WFOR-DT 22	NW, 956kw/310m	Rochelle	W08DS 8	NS 7w, 41-55-11/89-07-04
Miami	WHDT-LP 44	QC from ch. 55, 1.56kw, 25-58-15/80-12-32	Springfield	W08DP 8	QC from ch. 65, 140w, 39-49-44/89-35-44
Palm Beach	WFGC-DT 49	NS 900kw/294m, 26-35-17/80-12-31	Indiana:		
Panama City	W54CU 54	PR<10.6kw, 30-11-41/85-37-51	Angola	WINM-DT 12	NS 16.5kw/132m
Panama City	WPCY-LP 26	QC from ch. 20, 100kw, 30-11-41/85-50-01	Evansville	WNIN 9	PR>304m, 37-59-01/87-16-13
Rock Harbor	W54BB 54	PR>147kw,	Hammond	WJYS-DT 36	NS 50kw/455m, 41-52-44/87-38-10
			Jeffersonville	WVHF-LP 16	QC from ch. 5 (W05BE), 15kw, 38-22-09/85-49-46
			Kansas:		
			Chanute	K53GU 53	NS 2.5kw, 37-41-15/95-24-49 (TBN)
			Emporia	K52GZ 52	NS 10kw, 38-31-47/96-05-10
			Emporia	K59GT 59	NS 4kw, 38-31-47/96-05-09
			Pittsburg	KOAM-DT 13	QG from ch. 30, 4.2kw/340m
			Wichita	K59DA 47	QR from ch. 59, 8.3kw
			Kentucky:		
			Corbin	WVTN-LP 48	NW, 10.1kw, 36-59-01/84-08-01
			Covington	WCVN-DT 24	NW 53.5kw/117m
			Glasgow	W57DO 57	NS 1kw, 36-58-37/85-53-48
			Glasgow	W62DC 62	NS 20kw, 36-58-37/85-53-48

				Mt. Pleasant	W32BT	32	PR>18kw, 43-37-38/84-50-18
				Mt. Pleasant	W60CO	60	QC from ch. 25, 240w, 43-41-56/84-46-11
Hazard	WKHA-DT 16	NW	53.2kw/369m	Petoskey	W20BQ, W23BM, W25CD, W36CD, W39CB, W51CR, W53BN, W55CL, W57CP, W62CR, W64CK, W66CY, W68DH all PG>4kw, 45-28-40/84-57-04		
Lexington	WBLU-LP 10	QG	from ch. 62, 3kw	Petoskey	W34CR	34	QC from W16BN
Lexington	WKYT-DT 13	QG	from ch. 59, 30kw/282m	Petoskey	W41CK	41	QC from W14CG
Lexington	WTVQ-DT 40	NW	61kw/136m	Sault Ste. Marie	W48BZ	25	QR to ch. 25 dismissed
Louisville	WHAS-DT 55	NW	1000kw/370m	Sault Ste. Marie	W50CA	35	PR>49kw, 42-29-12/83-29-49 near Detroit. QR to ch. 28 dismissed.
Morehead	WKMR-DT 15	NW	51.4kw/289m	Sault Ste. Marie	W52CB	18	QR from ch. 52, 45kw, 42-53-42/78-00-56 near Geneseo, NY. QR to ch. 42 dismissed.
<u>Louisiana:</u>				Sault Ste. Marie	W56DI	20	QR from ch. 56 dismissed
Baton Rouge	KPBN-LP 11	CC	from KTTE-LP	Sault Ste. Marie	W58CO	32	QR from ch. 58 dismissed
Baton Rouge	WBXH-CA 39	QG	from ch. 46, 140kw	Traverse City	W54CR	54	QC from ch. 40, 9.6kw
Baton Rouge	WLFT-LP 30	QG	from ch. 52, 50kw, 30-23-04/91-03-27	Traverse City	W25CU	25	QC from W19BZ
Monroe	W69EF 69	NS	19.55kw, 32-29-42/92-11-10	<u>Minnesota:</u>			
<u>Massachusetts:</u>				Albert Lea	K54HA	54	NS 10kw, 43-37-40/93-21-50
Boston	WCVB-DT 20	NW	625kw/390m	Albert Lea	K67HL	67	NS 10kw, 43-37-40/93-21-50
Boston	WSBK-DT 39	NS	135kw/390m, 42-18-37/71-14-14	Brainerd	K59GU	59	NS 10kw, 46-19-55/94-10-27
New Bedford	WLNE-DT 49	NS	380kw/264m, 41-51-54/71-17-15	Duluth	K69GI	69	NS 9.77kw, 46-51-06/92-17-03
Norwell	WWDP-DT 52	PR	<310kw/247m	Redwood Falls	K46FY	46	QC from K15CE, 840w
Vineyard Hav.	WDPX 58	PR	>1665kw/153m, 41-41-20/70-20-49	Redwood Falls	K48GQ	48	QC from K21DJ, 850w
<u>Maryland:</u>				Redwood Falls	K52GU	52	QC from K25DN, 850w
Annapolis	W61BY 61	NW	4kw, 38-58-13/76-30-28	Redwood Falls	K54GH	54	QC from K34DB, 890w, 44-32-59/94-58-00 (All four above)
Annapolis	W63BP 63	NW	18kw, 38-58-13/76-30-28	Rochester	K58GC	58	QC from ch. 21, 29kw
<u>Maine:</u>				Willmar	K17FA	17	QC from ch. 34, 1kw
Poland Spring	WMTW-TV 8	PC	316kw/608m, 43-50-44/70-45-43	Willmar	K20GD	20	QC from ch. 50, 1.1kw
Portland	W32CA 32	QG	from ch. 18, 25kw, 43-44-38/70-20-05	Willmar	K36FL	36	QC from K62FG, 1.3kw
Presque Isle	WMEM-TV 10	PC	<281kw/353m	Willmar	K39FE	39	QC from K38CV, 1.3kw
<u>Michigan:</u>				Willmar	K52GK	52	QC from ch. 66, 1.5kw
Bay City	WNEM-DT 22	PG	>960kw/275m	Willmar	K54GG	54	QC from ch. 40, 1.4kw
Berrien Springs	WYGN-LP 25	PG	>47.4kw, 41-36-59/86-11-44	Winona	K64FY	64	NS 1.5kw, 44-01-52/91-38-32 (TBN)
Calumet	WBKP-DT 11	QR	from ch. 18, 96.2kw/388m, 46-26-17/88-02-58	<u>Missouri:</u>			
Crystal Falls	WUPT-CA 25	QC	from ch. 49	Branson	K17DL	17	PC>20.5kw, 36-44-52/93-16-37
Flint	W54DA 54	QC	from ch. 30, 100w, 43-07-09/83-40-38	Branson	KNJD-LP	59	QC from ch. 19, 10.5kw
Houghton Lake	W31BN 26	QR	from ch. 31, 25kw, 41-38-41/85-59-11 near Elkhart, IN	Jefferson City	K68GD	68	NS 22.13kw, 38-32-26/92-05-41
Houghton Lake	W36CE 50	QR	from ch. 36, 14.6kw, 41-06-13/85-11-28 near Fort Wayne, IN	Joplin	K47HR	47	PG>25kw, 37-03-10/94-23-20, to minus offset
Houghton Lake	W50CD 48	QR	from ch. 50, 37.2kw, 41-08-12/83-54-24 near Findlay, OH	Joplin	KJDS-LP	20	QC from ch. 48, 49kw, 37-04-37/94-32-15
Houghton Lake	W52CO 28	QR	from ch. 52, 41.3kw, 41-17-29/84-32-15	Kansas City	KCTV-DT 24		PG>820kw
Houghton Lake	W55CH 33	QR	from ch. 55, 49kw, 40-38-03/84-12-29 near Lima, OH	Rolla	K16FE	16	NS 10kw, 37-57-51/91-45-48
Houghton Lake	W57CQ 43	QR	from ch. 57, 100kw, 40-23-24/86-51-53 near Lafayette, IN	Rolla	K38HF	38	NS 10kw, 37-57-51/91-45-48
Iron Mountain	WDHS 8	PC	>316kw/171m	Rolla	K59GW	59	NS 10kw, 37-57-51/91-45-48
Ishpeming	WBUP 10	PG	294m RESCINDED	Springfield	K52DH	41	QR from ch. 52, 76kw, 37-13-08/92-56-56
Kalamazoo	W26BX 26	QC	from ch. 24, 5.3kw	Springfield	KYTV-DT 44		NW 967kw/628m, 37-10-26/92-56-27
Marquette	W31CJ 31	NS	6kw, 46-30-51/87-28-58	St. Charles	K59GP	59	QC from K34BR, 14.9kw, 38-45-07/90-37-23
Marquette	WMQF 19	PR	<500kw/248m, 46-36-14/87-37-15	Warrensburg	KMOS-TV 6		NW 100kw/235m, 38-44-47/93-16-30 (aux. backup)
Mt. Pleasant	W25CT 25	QG	to ch. 60, Kalamazoo DISMISSED	<u>Mississippi:</u>			
				Cleveland	W56DY	56	NS 2kw, 33-44-01/90-42-50 (TBN)
				Cleveland	W61DO	61	NS 20kw, 33-44-01/90-42-50 (TBN)
				Columbus	W12CY	12	NS 1kw,

Las Vegas	KTUD-LP 25	PG>88.9kw			
Laughlin	KMCC-DT 32	NS 51.3kw/-167m, 35-09-32/114-34-28		42-12-07/120-34-23	
Lovelock	K24FF 24	QC from K60DM, 4kw	Portland	KKEI-CA 38	QG from ch. 56, 111kw
Reno	KAME-DT 20	PR<53kw, directional	Richland	K08KW 8	PG>40w, 44-51-21/117-09-24
Reno	KNRV-LP 41	QC from ch. 55, 23.48kw, 39-18-38/119-53-01	Roseburg	K57FS 47	QR from ch. 57, 3.8kw, 43-12-08/123-22-54
Reno	KRNV-DT 7	QR from ch. 34, 16.8kw/857m, 39-18-57/119-53-00	<u>Pennsylvania:</u>		
Round Mountain	K55HQ 24	QR from ch. 55	Altoona	WTAJ-DT 32	NS 1000kw/323m, 40-34-01/78-26-30
Round Mountain	K58FM 18	QR from ch. 58	Erie	W32CK 32	NS 1kw, 42-04-47/79-57-02
Round Mountain	K61GL 27	QR from ch. 61	Philadelphia	WPHL-DT 54	NS 500kw/354m, 40-02-30/75-14-11
Round Mountain	K63FP 39	QR from ch. 63	Philadelphia	WYBE-DT 34	NS 500kw/343m
Silver Springs	K35FL 35	QC from K67ET, 1.21kw, 39-29-05/119-18-07	Pittsburgh	W29AV 27	QR from ch. 29 dismissed
Walker Lake	K17FR 17	NS 1.77kw, 38-36-27/118-34-28	Pittsburgh	WQEX 16	PG>1700kw/297m, 40-23-34/79-46-54
			Scranton	WQPX-DT 32	PR>400kw/491m
<u>New York:</u>			<u>Rhode Island:</u>		
Buffalo	WGRZ-DT 33	NS 534kw/278m	Providence	WSBE-DT 21	NS 50kw/263m, 41-51-54/71-17-15
Glens Falls	W47CM 47	QC from W14AZ, 20.2kw			
New York	WNXY-LP 20	QG from ch. 26, 2.5kw, 41-09-07/73-47-10	<u>South Carolina:</u>		
<u>Ohio:</u>			Charleston	WTBD-LP 22	FC to HTVN
Ashland	W33BW 33	QG from ch. 59, 30kw, 40-44-50/82-18-54	Columbia	WACH 57	PR>2766kw/484m, 34-06-58/80-45-51
Cambridge	W63CZ 63	NS 8kw, 40-00-41/81-35-21	Columbia	WOLO-TV 25	PC>5000kw/509m, 34-06-58/80-45-51
Centerville	WWRD-LP 32	QR from ch. 55, 40kw, 39-42-47/84-15-16	Sumter	WQHB 63	PG>1312kw/374m, 34-06-58/80-45-51
Cincinnati	WOTH-LP 57	QC from ch. 39 (W39CG), 50kw, 39-07-30/84-29-56	<u>South Dakota:</u>		
<u>Ohio:</u>			Aberdeen	K53HE 53	NS *, 45-31-55/98-47-05
Cleveland	WJW 8	NS 61.5kw/257m (aux. backup)	Aberdeen	K55JD 55	NS *, 45-31-55/98-47-05
Dayton	WKEF-DT 51	NW 138kw/351m, 39-43-28/84-15-18	Bowdle	K54HM 54	NS *, 45-28-53/99-38-40
Springfield	WBDT-DT 18	NS 35kw/291m, 39-43-28/84-15-18	Buffalo	K59HA 59	NS *, 45-30-47/103-38-38
<u>Oklahoma:</u>			Edgemont	K59HD 59	NS *, 43-18-15/103-49-20
Ada	K54IB 54	NS 40kw, 34-34-38/96-39-36	Faith	K53GW 53	NS *, 45-03-14/102-15-49
Ada	K57IQ 57	NS 63kw, 34-21-34/96-33-34	Faith	K55JJ 55	NS *, 45-03-14/102-15-49
Beaver	K34GD 34	QG from ch. 56, 830w, 36-48-45/100-32-10	<u>South Dakota:</u>		
Boise City	K20GZ 20	QG from K55BV, 110w	Gettysburg	K53GZ 53	NS *, 44-56-13/100-03-55
Buffalo	K48HM 48	QG from K58AX, 5.18kw, 36-43-46/99-42-59	Gettysburg	K58GO 58	NS *, 44-56-13/100-06-55
Byron	K54HJ 54	NS *, 36-53-56/98-08-21	Madison	K43GX 43	QC from K27DB, 8.1kw, 43-56-01/97-07-54
Clinton	K61HJ 61	NS 4kw, 35-31-25/98-58-55	Murdo	K44GG 44	NW, 720w, 43-56-16/100-40-42
Colbert	K56HE 56	NS 2kw, 33-51-04/96-30-57	Murdo	K57IJ 57	NS *, 43-56-16/100-40-43
Durant	K66FY 66	NS 20kw, 33-54-57/96-26-57	Phillip	K57II 57	NS *, 43-58-15/101-42-21
Frederick	K34GC 34	QG from ch. 56, 830w	Rapid City	K63GP 63	NS 13.74kw, 44-02-49/103-14-47
Idabel	K23GA 23	QG from K63BA	Rapid City	K68GF 68	NS 8.02kw, 44-02-49/103-14-47
Lawton	K49GC 49	QC from K27AZ, 26.4kw	Rapid City	KNBN-LP 44	QG from ch. 27, 27kw
Muskogee	K25GJ 25	QC from ch. 58, 10.6kw	Ridgeview	K54HH 54	NS *, 45-01-53/100-54-22
Oklahoma City	KTOU-LP 21	QC from ch. 22, 41.61kw, 35-23-14/97-29-57	Ridgeview	K57IS 57	NS *, 45-01-53/100-54-22
Oklahoma City	KOHC-LP 38	QG from ch. 7, 50kw, 35-21-46/97-26-58	Sioux Falls	KCPO-LP 26	QC from ch. 7, 7.57kw, 43-32-03/96-44-21
Rosston	K54HR 54	NS *, 36-52-57/99-53-29	Springfield	K33GX 33	NS 13.7kw, 42-48-26/97-58-46 (KDLV-5 NBC)
Tahlequah	K52GX 52	QC from K45ER, <3.1kw	<u>Tennessee:</u>		
Tulsa	KJRH-DT 56	NW, 800kw/505m	Acton	W32BG 51	QR to ch. 51 dismissed
<u>Oregon:</u>			Clarksville	WCKV-LP 49	NW, 15.9kw, 36-26-01/87-25-24
Ashland	K63GS 63	NS 160w, 42-09-53/122-38-52	Dyersburg	WDYR-LP 33	PG>12kw
Corvallis	KOAC-TV 7	PC<357m	Knoxville	WTNZ-DT 34	NS 460kw/531m, 36-00-13/83-56-36
Elgin	K26FV 26	QC from K68AH	Memphis	WJRJ-LP 19	QG from ch. 59, 25kw, 35-14-02/90-00-34
Elgin	K33FS 33	QC from K62BK, 250w	Memphis	WMC-DT 52	NW 790kw/341m, 35-16-33/89-46-38
Elgin	K39FD 39	QC from K66BO	Nashville	WTVF-DT 56	NW, 405kw/405m
Klamath Falls	KDKF-DT 29	NS 10kw/691m	Tazewell	new 48	FC to CTN religion
La Grande	K29EL 29	QC from K60DL, 300w			
La Grande	K35GA 35	QC from K64BB, 300w	<u>Texas:</u>		
Lakeview	K07NR 7	PG>1.15kw,	Alpine	K58HD 58	NS *, 30-00-39/103-31-55

Amarillo	K59HG	59	NS 2kw, 35-15-39/101-52-52	Henrieville	K09XF	9	QC from K10KA
Amarillo	K69IH	69	NS 36.14kw, 35-05-09/101-54-48	Henrieville	K11UM	11	QC from K08IT
Amarillo	KCPN-LP	33	QC from ch. 65, 41.1kw	Henrieville	K13XL	13	QC from K12KQ
Big Spring	K56HD	56	NS 15kw, 32-13-13/101-26-25	Manti	K29EM	29	QC from K30AH, 460w, 39-19-23/111-46-23
Bracketville	new	56	AF LP dismissed	Manti	K31FN	31	QC from K32AJ, 460w, 39-19-23/111-46-23
Conroe	KPXB	49	PR>5000kw/589m, 29-34-15/95-30-37 in south Houston tower farm	Ogden	K56GR	56	QC from K64CJ, 23kw
Conroe	KTBU	55	requests XG to 29-33-44/95-30-35 in south Houston tower farm, 552m, directional	Salt Lake City	K68FY	45	QR from ch. 68, 50kw
Corpus Christi	K61HH	61	NS 50kw, 27-45-10/97-27-19	Salt Lake City	KUTV-DT	34	NW, 523.1kw/922m
Corpus Christi	KCRP-CA	41	FC to Telefutera	St. George	K67HK	67	NS 1.3kw, 37-03-50/113-34-23 (TBN)
Corpus Christi	KZTV	10	PC>290m, 27-42-28/97-37-59	Wayne County	K39FO	39	QC from K13CY, 10w, 38-30-38/111-47-05
El Dorado	K59HJ	59	NS *, 30-58-03/100-49-03	Virginia:			
El Paso	KTFN	65	CC from KKWB	Harrisonburg	W58DF	58	NS 20kw, 38-29-23/78-51-50
Encinal	new	56	LP app dismissed (Mexican objection)	Norfolk	WVEC-DT	41	NW 1000kw/344m
Fort Worth	KVFW-LP	38	QC from ch. 65, 37.5kw, 32-35-21/96-58-12	Richmond	WCVE-DT	42	NS 160kw/327m
Fort Stockton	K56GZ	56	NS *, 30-52-53/102-51-10	Richmond	WRLH-DT	26	PR<800kw/328m, 37-30-45/77-36-05
Greenville	KTAQ-DT	46	NS 600kw/510m, 32-35-21/96-58-12 in the Dallas tower farm	Winchester	WAZF-CA	23	QG from ch. 28, 7.7kw, 39-11-40/78-10-18
Harlingen	KTIZ-LP	52	PR>150kw dismissed	Winchester	WAZW-CA	47	QG from ch. 48, 10kw, 39-11-40/78-10-18
Hereford	K58GM	58	NS 5kw, 34-51-02/102-23-40	Wytheville	WKPZ-LP	41	QG from ch. 3 (W03AJ), 280w
Junction	K31GA	31	NS 25kw, 30-28-45/99-45-12	Washington:			
Kress	K36CC	36	PG<930w, 34-32-12/101-44-25	Puyallup	K54GS	54	QG from K69FL
Lajitas	new	56	LP dismissed (Mexican objection)	Richland	KTNW	31	PG>387m
Livingston	KCTL-LP	25	QC from ch. 66, 10.4kw	Washington:			
Lufkin	new	39	AF LP dismissed	Spokane	K09FZ	11	QR from ch. 9, 0.5kw, 47-34-34/117-17-58
Matador	K42ES	42	QC from ch. 66, 110w, 33-58-54/100-54-48	Spokane	KHBA-LP	52	QR from ch. 63, 47-34-45/117-17-48
Matador	K45FE	45	QC from ch. 64, 550w, 33-58-54/100-54-48	Tacoma	KSTW	11	PG<232m
				Walla Walla	KBKI	9	NW 1.86kw/388m, 45-59-23/118-10-31
				Yakima	K27GY	27	QG from K14JH, 50kw, 46-31-58/120-29-26
				Yakima	KIMA-DT	33	NS 1000kw/279m
Texas:				Wisconsin:			
McAllen	KLIA-LP	32	PR>150kw dismissed	Chippewa Falls	W59DR	56	NS 6kw, 44-53-05/91-23-27
McAllen	KSTI-LP	25	QR from ch. 69 dismissed	Chippewa Falls	W61DM	61	NS 20kw, 44-55-43/91-32-32
Midland	KUPB	18	PC<3720kw/202m, 31-54-48/102-02-39	Chippewa Falls	W68DP	68	NS 20kw, 44-55-43/91-32-32
Plainview	K59GC	44	QR from ch. 59, 20.8kw, but dismissed	Green Bay	WFRV-DT	56	NW 115kw/365m, 44-20-01/87-58-56
San Antonio	KNIC-CA	17	FC to Telefutera	Ino	W53CF	53	NS *, 46-31-27/91-16-19
San Antonio	KSAA-LP	28	QG from ch. 19, 14.5kw, 29-26-30/98-30-23, already on air	Ino	W59DT	59	NS *, 46-31-27/91-16-19
San Marcos	KTXU-LP	38	QC from K58ET, 1.25kw, 30-03-33/97-48-42; PR>19.9kw, 30-19-23/97-47-58	La Crosse	WXOW-TV	19	directional ant. removed
Seminole	K53GA	17	QR from ch. 53, 6.8kw, 32-43-30/102-38-01	LaCrosse	K61HK	61	NS 6kw, 43-45-17/91-17-47
Seminole	K58GN	58	NS 10kw, 32-43-54/102-38-53 (TBN)	Mayville	WWRS-TV	52	NS 41kw/167m, 43-26-11/88-31-34 (aux. backup)
Sheffield	K54HP	54	NS *, 30-37-41/101-55-41	Wausau	WAOW-TV	9	PC<368m
Snyder	K26DW	49	QR from ch. 26, 41.6kw, but dismissed	West Virginia:			
Snyder	K52HR	52	NS *, 32-53-19/100-55-18	Bluefield	WLFB-DT	14	NS 600kw/386m
Texarkana	K41EQ	41	QC from ch. 52	Wyoming:			
Uvalde	K53HH	53	NS *, 29-16-35/99-41-45	Alcova	K55JG	55	NS *, 42-31-57/106-48-54
Victoria	KVIT-LP	34	QR from ch. 28, 40kw, 29-34-16/95-30-38 in Houston tower farm, but dismissed	Atlantic City	K54HE	54	NS 500w, 42-34-42/108-42-48
				Clareton	K53HI	53	NS *, 43-43-51/104-48-00
				Gillette	K56GW	56	NS *, 43-43-27/105-52-56
				Glendo	K56HI	56	NS *, 42-30-13/104-59-57
				Glendo	K58GQ	58	NS *, 42-30-13/104-59-57
				Greybull	K54HZ	54	NS *, 44-27-01/108-02-58
Utah:							
Aneth	K52HG	52	NS *, 37-14-46/109-13-00				
Fremont	K17FQ	17	NW, 10w, 38-25-58/111-37-57				

Greybull K56GY 56 NS *, 44-27-01/108-02-58
 Hulett K54HD 54 NS *, 44-41-49/104-37-09
 Jackson new 22 AF LP dismissed
 Laramie K52HA 52 NS 2k41-17-17/105-26-44
 Shoshoni K52HT 52 NS *, 43-26-17/107-59-40
 Shoshoni K56HC 56 NS *, 43-26-17/107-59-40

Mayaguez WORA 5 FC to Univision
 Ponce WSUR 9 FC to Univision
 San Juan WKAQ-DT 28 NW, 924kw/826m

U.S. Virgin Islands:

Christiansted W52DG 52 NS 2.5kw,
 17-43-46/64-41-16 (TBN)
 Frederiksted W60CY 60 NS 10kw,
 17-41-43/64-52-57

Canada:

British Columbia:

Holberg CBUT-21 2 DE

U.S. Possessions:

American Samoa:

Pago Pago K11UU 11 NS 3kw,
 14-21-14/170-44-18

Puerto Rico:

Caguas WLII 11 FC to Univision

Forum & Other Stuff

Long-haul LPTV moves again, this time in Michigan. Or, I should say, from Michigan. I know we have quite a few members in Indiana and Ohio; some of you will be getting new low-power locals. Western DXers will also note a bunch of new LPTV permits, mostly in channels 52-59. I suppose their owners figure they'll be able to find new channels below 52 when the DTV transition is complete. Many of these stations were licensed to a small handful of people, with the same power. Where you see an asterisk in the listings, it means the station is authorized for 999 watts. Next to this small group, TBN was the next most successful bidder for these permits. TBN won more than one permit in some places - in at least one town, they got three. You might expect some of them to carry TBN's Spanish-language network - I suspect they'll sell most of the rest.

DTV is really getting rolling now too. Note 26 new DTs on the air this month. (Some of them have probably been operating for awhile but just now filed for a permanent operating license) Expect this trend to accelerate as we approach the May deadline for most commercial stations to begin operation. (But note that waivers for those stations unable to meet the deadline are expected to be fairly easy to get) Here in Nashville, tower work appears complete for WZTV, WUXP, WKRN, and WNPT's digital facilities. It's hard to say how much of the rest is done though. I note that many of the new DTVs are NBC affiliates - presumably they rushed to get a signal on the air for the Olympics.

There are now trustworthy rumors that some (quite a few!) stations have built DTV facilities, operated them just long enough to prove that they work, and then shut them off. If true, you can expect a large stampede of new signals to appear on the deadline date. Operating a DTV station is an expensive proposition; electricity to operate a 100-kilowatt UHF transmitter is not cheap.

Dennis Smith wrote from California with a couple of questions. First, let me review the affiliation situation in San Francisco. (This is important if you're within skip range of KRON-4, or any S.F. radio stations which might carry ads for the station)

<u>Station:</u>	<u>Network, pre-2001</u>	<u>Network during 2001</u>	<u>Network, post-2001</u>
KRON-4, San Francisco	NBC	NBC	Independent
KNTV-11, San Jose	ABC	Independent (or WB?)	NBC

So effective the first of this year, KRON-4 becomes an independent station, while KNTV-11 becomes the NBC affiliate for the Bay Area. KNTV has arranged carriage on channel 3 on most area cable systems, and calls itself "NBC3" on the air.

KNTV is licensed to San Jose, not San Francisco. Their transmitter is located to the south of San Jose, in the mountains between that city and Monterey Bay. Channel 11 was able to double their power when they dropped their ABC affiliation - they had been running less than the FCC-allowed maximum to avoid excessive coverage overlap with ABC-owned station KGO-7. But due to hilly terrain their signal is still spotty in northern parts of the Bay Area. Viewers in San Francisco proper without cable are having problems receiving the station. NBC considered installing temporary translators in problem areas, but dropped the plan. (My guess is they couldn't find any suitable channels - or the FCC nixed the plan - or there were just too many trouble spots to be filled by a reasonable number of translators..)

They've been actively promoting cable subscriptions. Viewers with digital TVs have had another option; before NBC bought the station, KNTV was co-owned with WB affiliate KBWB-20, which does transmit from the North Bay. KBWB was carrying KNTV on a second virtual channel of their DTV transmitter, and KNTV was carrying KBWB on their second virtual channel. This arrangement continued through the Olympics, making it possible for DTV owners in San Francisco to see the games on DTV channel 19. This situation is not likely to continue forever though, and in any case it only helps the small number of viewers with DTV sets.

In the long term, NBC is considering moving KNTV's transmitter further north. It can't go all the way to the Mt. Sutro site used by the other San Francisco stations - it would be too close to KEET-DT in Eureka. (And their DTV facility on channel 12 too close to KHSL analog in Chico) Sites between Hayward and Pleasanton are being discussed. And NBC is

still talking about permanent translators. I think it's unlikely this can be done, unless they buy existing KBIT-LP 28 (the only LP station in the North Bay) and use it. In any case, that wouldn't solve the upcoming DTV coverage problem. I would not rule out NBC buying one of the smaller full-license UHF's. Channels 26, 42, 54, and 66 all operate from further north and might be reasonable options.

Dennis' other question was about cable-only TV stations. "Is it perfectly legal for a cable-only station to take up operations and push out an on-air station on a cable system?" In Santa Barbara, KTLA-5 was removed from the system and cable-only "KWCA" replaced it.

Yes, this is perfectly legal. As long as the cable system carries all stations that qualify for "must-carry" protection, it is free to carry (or not carry) as many other stations as it wants. KTLA doesn't operate in the Santa Barbara market, and doesn't deliver an adequate signal to the cable headend to qualify for carriage protection. Most cable-only channels are national in scope, but there is nothing in the regulations to prevent a system from establishing a local cable-only outlet. In fact, this is happening (with the WB network) in many markets around the country. Sometimes, it's done in conjunction with a local over-the-air affiliate of some other network; for example, in Madison, Wis. WISC-3 operates the cable-only WB affiliate. (Actually it's not cable-only; DTV owners can see the station on WISC's second virtual channel.)

Also in the Santa Barbara area, Dennis' local K46GC is off the air. It broadcast a blank screen & silence for two weeks, then disappeared completely. KTSB-LP 43 has joined the new Telefutera network, after carrying Home Shopping Espanol, followed by a day of test pattern, then a day of previews for Telefutera programs. He's also seeing plenty of Telefutera promotions on Univision. The two networks are co-owned; expect more of this cross-promotion. One of the most often-mentioned features of Telefutera programming are popular U.S. movies with the sound dubbed in Spanish.

The call letters of WMTW-8 stand for "Mount Washington", their New Hampshire transmitter site. This station is the ABC affiliate covering Portland, Maine from the highest point in the East. (And the place that claims to have the "world's worst weather") I guess they'll have to change their call letters now - the station is no longer operating from the mountain. The new transmitter site is near Sebago, Maine northwest of Portland, near the other Portland stations. Those of you who DX by transmitter location need to take note; this station will now count as Maine rather than New Hampshire.

The Mt. Washington site delivered a signal to a large unserved area of northern New England. However, the signal in Portland itself was inferior to that of channels 6 and 13, whose transmitters were much closer to the city. I would imagine the cost of maintaining the transmitter site was rather high as well. They had to generate their own electricity, and maintain two full-time transmitter engineers on the mountain. (Whose duties reportedly included chipping ice off the door and rescuing stupid hikers who thought they could climb the mountain in winter..)

METEOR SHOWER GUIDE

Here is a list of upcoming meteor showers for the month of March.

SHOWER	RUNNING DATES	PEAK	TYPE
Pi Virginids	<u>Feb 13 - April 8</u>	<u>March 13-18</u>	minor
Leonids - Ursids	March 18 - April 7	March 10-11	minor
March Aquarids	Feb?? - April ??	March 15-18	minor-daytime
Gamma Normids	March 11-21	March 16-17	minor
Delta Mensids	March 14-21	March 18-19	minor
Eta Virginids	Feb 24 - March 27	March 18-19	minor
Beta Leonids	Feb 14 - April 25	March 19-21	minor
Theta Virginids	March 10 - April 21	March 20-21	minor
Eta Draconids	March 22 - April 8	March 29-31	minor

OKLAHOMA CITY JULY 26,27,28
WTFDA CONVENTION 2002

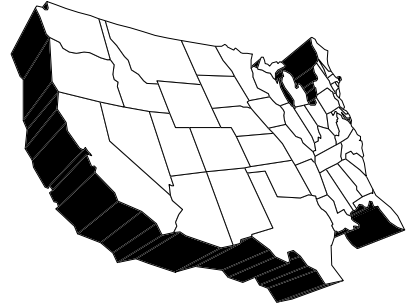
WESTERN TV DX

VICTOR FRANK

12450 SKYLINE BLVD.

WOODSIDE, CA 94062-4554

frank@horizon.sri.com



Jeff Kruszka, 5024 S. Braxton Ave., Baton Rouge, LA 70817

Tropo: No relogs under 400 miles; no LPTV relogs under 200 miles.

January 2002

1 Es 1745 unid SS 5
 2 Es 1751 unid SS 4
 4 Es 1749 unid SS 3-5
 unid FF 4!
 1812 CKVR 3 ON 1130
 1826 WPSX 3 PA ID 975
 1829 WKYC 3 OH 890
 1918 KOAA 5 CO 940
 1958 KENW 3 NM ID 760
 2000 KNME 5 NM ID 955
 unid NBC floating on 2 - KNAZ?
 5 Es 2019 unids 3-5 575
 2232 WFTT 50 FL HSN, weak 550
 9 tr 2154 WFTX 36 FL "Fox 4" 620
 2218 WGCU 30 FL PBS 620
 2225 WXPX 66 FL Pax 560
 WVEA 62 FL 575
 2228 WFXL 31 GA 415
 2300 WFTT 50 FL 550
 2305 WOPX 56 FL Pax over local
 655
 16 tr 2017 WFTX 36 FL Fox 620
 2023 WFTT 50 FL SS, Telefutera 550
 2027 WUSF 16 FL PBS 550
 27 tr 0149 WJSP 28 GA 390
 0200 WTLH 49 GA "Fox 49" 390
 1100 WASV 62 NC ID in color! 610
 1122 WXIA 11 GA NBC
 1134 WPBA 30 GA 455
 1138 WATL 36 GA 455
 1225 WCIQ 7 AL 375
 29 Es 1832 unid 4 SS
 1839 HRTG 5 HND pink "5" lower
 right
 1160
 1844 XHCHF 6 QR supered ID upper
 left 855

Some nice tropo to FL and points east this month, with the highlight being a surprise logging of WASV-62, in from 11 am to 12 noon! They were probably in earlier but I didn't check. The Es on 1/29 was also unexpected, and short-lived. I was able to catch both HRTG and XHCHF on tape. I ID'ed the HRTG pink "5" logo after checking out their website.

JANUARY 2002 UTC

3 Es 1435 XHQ 2 SINALOA XHQ-3 ID
 1501 KVOA 4 AZ 1004
 1510 KWGN 2 CO WB2 806
 2020 Guadalajara JAL 2, 4, 5 1003
 2330 KDBC 4 TX 746
 4 Es 0000 KNAZ 2 AZ 1045
 0025 XHI 2 SONORA 1026
 2245 WUNC 2 NC 1031
 2300 WSKY 4 NC 1063
 2310 WUNC 4 NC 875
 2359 Buffalo NY 2, 4 1091
 5 Es 0001 WDTN 2 OH 735
 0043 KNAZ 2 AZ
 0050 KCSG 4 UT PAX 1151
 0105 XEFB 2 NL Note # 1 611
 0115 Cd Juarez CHIHUAHUA/
 El Paso TX 2, 4, 5
 0118 KVOA 4 AZ
 0155 Chihuahua CHIH 2, 4 778
 1440 WUND 2 NC
 WFMY 2 NC 838
 WUNC 4 NC
 WSKY 4 NC
 WRAL 5 NC 896
 2225 KNAZ 2 AZ
 2340 KCSG 4 UT
 10 tr 0520 Laredo TX 8, 13 481
 11Es 2310 KNAZ 2 AZ
 13Es 0115 KNAZ 2 AZ
 1525 XHCH 2 CHIHUAHUA
 1530 KGFE 2 NC Prairie ID 1086
 1612 Hermosillo SONORA 2, 4 1047
 31Es 2000 WBAY 2 WI Brief 892

Note # 1 Fernando confirmed that XEFB was running "Primer Impacto" at the time.

Dennis Park Smith, 3605 San Remo Drive, Santa Barbara, CA 93105-2523 (805)687-7803

This report is for January 2002. Once again tropo conditions along the southern-California coast to San Diego/Tijuana on TV-FM (250mi-320km) were quite poor. There wasn't much rain this time, but cold temperatures apparently kept conditions down.

Danny Oglethorpe, P.O. Box 17452, Shreveport, LA 71138-0452
Email: doglethorpe@yahoo.com

Dec 29-Jan 1: None (Dec 29 rain)
 Jan 2: Very poor (light rain early)
 Jan 3: None
 Jan 4-6: Very poor
 Jan 7-8: Poor
 Jan 9 am: Very poor
 Jan 9 eve-12: None
 Jan 13-14: Poor
 Jan 15-18 am: None
 Jan 18 eve: Very poor
 Jan 19-20 am: None
 Jan 20 eve: Very poor
 Jan 21 am-aft: Poor
 Jan 21 eve: Very poor
 Jan 22-24 am: None (Windy Jan 22-23)
 Jan 24 eve-25am: Very poor
 Jan 25 eve: Poor+
 Jan 26: Very poor
 Jan 27-31: None (Rain Jan 27, much colder)

Best of DX to all. Dennis

Frank W. Merrill, P.O. Box 669, Macomb, IL 61455

Equipment: Icom R-7000 with video adaptor, or Zenith 1310 (13-inch color) late 70's TV. Antenna very old (20 years?) Winegard 8100 VHF-UHF —whatever preceded the 8200—at 40 feet, with RG-11 lead.

May 2001

02Es 0920 Monterrey NL 2,4
 0929 KBEJ 2 TX "KENS Eyewitness News" 841
 03Es 1227 CFCL2 2 ON 660
 04Es Evening: WCBP/WPBT/KNAZ/WESH Cuba (+) 2
 KIII/WWAY 3
 2210 KGBT 4 TX Apparent MUF
 10Es 1208 WBRZ 2 LA
 KBTW 4 TX
 1329 KIII 3 TX
 13Es 1000 XEPM 2 CI
 1130 KTXT 5 TX
 KENW 3 NM
 1216 XEJ 5 CI
 14Es 2000 FL's 2
 18Es 1010 KBME 3 ND
 KWSE 4 ND
 KFYZ 5 ND
 1056 KTVQ 2 MT
 1100 KOTA 3 SD
 KHMT 4 MT
 KSVI 6 MT
 1126 KENW 3 NM
 KDBC 4 TX
 XEJ 5 CI
 1800 WDIQ 2 AL
 WEDU 3 FL
 1814 KPRC 2 TX
 WEAR 3 FL
 WKRG 5 AL
 1829 KOTA 3 SD

KIHMT 4 MT
 KTVQ 2 MT
 24Es 2130 XEPM 2 CI ad for XHJUB SS & 18 logo
 25Es 1041 XEFB 2 NL
 1130 WESH 2 FL
 WEDU 2 FL
 1600 KBEJ 2 TX
 1715 KMID 2 TX
 KWAB 4 TX
 1728 KFOX 3 TX
 1820 KUTV 2 UT
 1827 KENW 3 NM
 1833 KPRC 2 TX
 1835 KTVX 4 UT
 1845 KSNCT 2 KS "KSN" (do they still use this:?)
 1857 KSWK 3 KS
 1903 KOB 4 NM
 1914 KSL 5 UT
 26Es 1052 KNAZ 2 AZ
 1059 WESH 2 FL
 1110 KVBC 3 NV
 1236 KNME 5 NM
 1443 KFQX 4 CO 10 slide 954
 1457 KRMA 6 CO
 1500 KCNC 4 CO
 1532 WFSB 3 CT
 1600 WLNE 6 MA
 1753 WCSH 6 ME rare!
 1825 WRGB 6 NY
 1901 WCVB 5 MA missed many— busy on FM!

28Es 1200 WBRZ 2 LA
 WWL 4 LA
 1223 KVOA 4 AZ
 1228 KNAZ 2 AZ
 1311 XHHUPN 2 TA
 1316 WKRG 5 AL
 1556 WPBT 2 FL
 29Es 0625 CKCK 2 SA round TP
 0630 CFQCI 3 SA same
 0635 CBKMT 4 SA 3/4 CB "CBC Sask"
 2000 KIII 3 TX
 KBEJ 2 TX
 KMOL 4 TX
 KENS 5 TX

June 2001

08Es 1215 WBRZ 2 LA
 unID Mexicans 2-6
 1720 KWGN 2
 KOTA 3
 KCNC 4
 1812 XHCH 2 CI NOTE 1 1199
 1845 XHFIt 5 "XEW"
 1853 X___ 3 "XEW"
 1956 X___ 3 "XHGC"
 10Es 0150 WGBH 2 MA
 WBZ 4 MA
 11Es 1845 KTVQ 2 MT
 12tr 0650 some U's OK/Dallas-Fort Worth
 Es 1210 WBRZ 2 LA
 13tr 0000-0300 U's to OK City, AR-29, Tulsa (47 o/WTVP), KPTM-42 NE snowfree

All fade by 0330					WQHS 61 OH
Es	XEFB	2 NL			Appalachians 47(CCI),57,68 opening
	KASA	2			quickly died.
14Es	1730 KNAZ	2 AZ		03Es	2105 WPBT 2 FL
16Es	1600 CKRN	4 QU with ID		09Es	KENW 3 NM
	1633 WNYW	5 NY			KBME 3 ND
	1700 CBMT	6 QU			XEPM 2 CI
	WFIL	6 PA			KDBC 4 TX
	1722 WABI	5 ME			XEJ 5 CI
	WFSB	3 CT		11Es	1136 KIII 3 TX
	2000 WPBT	2 FL		12Es	0730 WDIQ 2 AL
	WEDU	3 FL			WEDU 3 AL
17Es	1255 KTVQ	2 MT (also 2000)			1000 KBTV 4 TX
	1300 KHMT	4 MT (also 2000)			KFDM 6 TX
	1400 KXLF	4 MT			1100 KBEJ 2 TX
18Es	1555 WESH	2 FL		13Es	1230 WUND 2 NC
19Es	1455 KTVK	3 AZ			WTKR 3 VA
	1500 KTVQ	2 MT			Multiple clouds, many unIDs
20Es	2000 WPBT	2 FL		14Es	0232 WLBZ 2 ME
	2200 XEFB	2 NL			0810 WESH 2 FL
21Es	1050 WEDU	3 FL			1000 WPBT 2 FL
	1100 FL's	2 FL			WEDU 3 FL
21Es	1100 KRGV	5 TX			1130 WFOR 4 FL
	1125 KIII	3 TX			WTVJ 6 FL
	1300 KDBC	4			1152 XHWX 4 NL
	XEJ	5			1400 WKRG 5 AL
	1330 KOB	4 NM		15Es	1300 KIII 3 FL
	KNME	5 NM			1630 WEDU 3 FL
	KUAT	6 AZ			1735 WLBZ 2 ME
	1340 KMID	2 TX			WESH 2 FL
	1510 KBME	3 ND			1753 WFSB 3 CT
	KWSE	4 ND		16Es	1313 KOAA 5 CO
	1515 WWL	4 LA			1330 KREX 5 CO
	1755 KTWO	2 WY			KREG 3 CO
	CFRN	3 AB	1405		KFQX 4 CO
	1900 KWGN	2 CO			KWGN 2 CO
	KFQX	4 CO			1935 KRMA 6 CO
	1908 KTVX	4 UT		17Es	0450 WUND 2 NC
	1930 WFSB	3 CT			1950 CFSS 3 SA "got busy on FM"
22Es	1300 XEFB	2 NL		17tr	2141 KABY 9 SD (CCI) 526
26Es	1600 WUND	2 NC			2244 KESD 8 SD 412
	WMAR	2 MD		17Es	2352 WUND 2 NC
27Es	1119 WTKR	3 VA		18Es	1903 KOB 4 NM
	1127 WMAR	2 MD			1918 KASA 2 NM
	WHSV	3 VA			KNAZ 2 AZ
	1200 XEFB	2 NL			1929 XHY 2 YU
	1215 WUND	2 NC			1945 XEJ 5 CI
	WUNC	4 NC			2000 KTVK 3 AZ
	1230 WRAL	5 NC			KVOA 4 AZ
	1500 KUIAT	6 AZ			KPHO 5 AZ
	1501 WEDU	3 FL		20tr	2153 KUON 12 NE & Topeka, Omaha
	1600 XEPM	2 CI			2206 <u>W48</u> 48 IL Sterling, WQPT-24
	KDBC	4 TX			"matched Simpsons on KMCI-38"
	1630 XEJ	5 CI		<u>106</u>	
	WPTV	5 CI		21tr	0100 <u>KPWB</u> 23 IA (ID slide) 188
	1652 KRGV	5 TX			0254 WHBQ 13 TN 380
	1702 WWL	4 LA			0302 WPXX 50TN 380
	1832 KOCT	6 NM		21Es	1500 XEFB 2 NL
	KTVK	3 AZ			1700 WEDU 3 FL
	1850 KVBC	3 NV	1359		2000 CITO 3 ON
	1900 KPHO	5 AZ		22Es	1150 WFSB 3 CT
<u>July 2001</u>					1200 WBZ 4 MA
02tr	2200-2230			24Es	1830 WESH 2 FL
	WOSU	34 OH		25Es	1548 WPBT 2 FL
	WWHO	53 OH		27Es	1800?CBFT 2 QU

30tr 0145 K32 32 MN (3/4 CB "KQDS-TV/Fox") nothing listed
 KSAX 42 MN
 KWCM 10 MN
 0230 KESD 8 SD on top
 0240 KABY 9 SD (CCI)
 KTEJ 19 AR
 0258 WMMF 68 WI Fond du Lac 257
 Family Net, www.mxtv.org
 0305 WGTU 29 MI
 WTVS 56 MI
 1430 KAUN 36 SD is PAX
 1730 KIVLY 11 ND
 KELO 11 SD
 1801 KEYC 12 MN on top of KIIN
 2335 K60DS 60 MN Rochester TBN
 31tr 0038 K21FA 21 MN Rochester 3ABN
 not the IL this time
 KAWB 22 MN
 (overnight)
 KBJRt 6 WI
 WIRTt 13 MN
 "unusual CCI these, still needed"
 1800 Strong U's to N.E. IN
 1959 WNMU 13 MI
 2014 WKGB 53 KY

August 2001
 01tr 0330 WDCQ 19 MI
 0400 W48 48 Note 2 Grand
 Rapids
 0503 WBAY 2 WI
 03tr 0550 KSTP 5 MN totally on top
 0609 KTCA 2 MN "tpt"
 fighting KGAN, only 2nd time ever
 1800 WEAU 13 WI snowfree
 WLUK 11 WI snowfree
 WWTV 9 MI
 WPNE 38 WI +many more
 "raging FM opening"
 04tr 2012 AR 29,34; MN 42,43
 2017 KVLV 11 ND CCI, briefly
 05tr 0500 KWBM 31 AR Harrison 320
 Shop at home, 31+, failed to ID
 KATV 7 AR
 KGEB 53 What's this? Tulsa?
 AR 29,40,51
 0545 K52DH 52+ MO Springfield 263
 1102 K 45 LA 575
 2120 blasting UHF's KS/NE/MN/WI/MI
 out to mid-300's
 06tr 2300 Detroit U's over Chicago's
 WXYZ 7 MI on top
 WNWO 24 OH
 WBGU 27 OH snowfree
 Fort Wayne U's
 2337 WTOL 11 OH on top
 WQHS 61 OH
 07tr 0005 W68 68 OH Toledo TBN
 Erie PA CCI 66
 0014 WQLN 54 PA
 0047 WIVT 34 NY Note 3 775
 0120 W57DC57 IN Lafayette TBN 199
 CFMT1 69 ON
 0156 CBEFT 54 ON
 CHCH1 51 ON

0210 WTVG 13 OH
 0244 WICU 12 PA "trying"
 2018 KHNE 29 NE rare
 KXNE 19 NE Omaha, strong
 2200 WWHO 53 OH pointing NW
 08tr 0056 KUSD 2 SD very rare 362
 0135 KABY 9 SD
 0142 K56GF 56 SD Sioux Falls 377
 KLKE 24 NE
 0225 KAWB 22 MN nearly snowfree
 445
 0322 KCCW 12 MN rare 499
 09Es 1340 KBEJ 2 TX
 1600 KNAZ 2 AZ
 14Es 0800 WUND 2 NC
 22Es 1600 WMAR 2 MD
 KY W 3 PA
 WRAL 5 NC
 1620 WTKR 3 VA
 1625 WCBS 2 NY
 WNBC 4 NY
 1730 XHHUPN 2 TA
 WKRG 5 AL
 1912 XEPM 2 CI
 23Es 1800 KFQX 4 CO
 1826 KSVI 6 MT
 1830 KYUS 3 MT Billings-8 news
 KTVQ 2 MT
 KOUS 4 MT
 KFBB 5 MT
 1845 KXLF 4 MT
 1850 KOTA 3 SD
 1900 KREG 3 CO
 KREX 5 CO
 2000 KTVK 3 AZ
 2016 KWGN 2 CO
 26tr 2316 KWCV 33 KS Note 4 406
 2342 KUPKt 13 KS nontypical "z-to-
 who" CCI (13-), also Hays-7 CCI
 2347 KPTS 8 KS way atop 422
 only 2nd time ever
 27tr 0015 KOOD 9 KS 475
 probably them, full CB test
 0113 K57GY 57 NE Omaha KPTM-42
242
 KAAS 18 KS
 0133 KWCH 12 KS "fully watchable"
 0136 K22 22 NE Lincoln KSNB-4
 KSNB 4 NE
 0148 KHGI 13 NE
 28tr 0315 MI 29,33
 WYOW 34 WI all weak
 2025 KELO 11 SD opening soon died
 29tr 0118 WDNI-LP 65 IN Note 5 234
 0435 W 24 Note 6

December 2001
 11tr 1800 CBEFT 54 ON nearly snowfree
 WWJ 62 MI atop WJYS
 CCI Erie-6 Numerous
 U's Lansing/Cleve./Toledo (include. TBN68)
 1910 CHCH1 51 ON
 15tr 2030-2130
 WNPT 8 TN "NPT" on top-rare
 TN's 28,39,53,61, etc.
 AL's 33,40,42, etc.

CCI WSNB 47 VA
KY's 44,57,35(WKHA),29(WKSO)
Windy, with rain enroute!

26Es 0400 KENS 5 TX
0407 WUND 2 NC
0416 WTKR 3 VA
WFSB 3 CT
0426 WBZ 4 MA
WCVB 5 MA
0430 WGBH 2 MA
WMAR 2 MD

January 2002

22tr 0502 WVUT 22 IN strong
0506 W08 8 3/4 CB Springfield
WSEC-14/ Channel 65 has moved . . .
0510 WPTA 21 IN no lo-band tr at all.

Notes and Observations

1. 08 June, 1812: "XHCH-TV Canal 2 Chihuahua, Chih." In upper left. Also noted 1842 and 1912 (yes, this guy stuck around). Running TV Azteca-13 network. Apparently these generated ID's are on a 1/2-hour "c lock." Funny how this should be so strong after eluding me so many years. Power increase? Also, is it my imagination, or are Mexicans ID'ing better than, say, 5 to 8 years ago?
2. 01 August, 0400: Has the Grand Rap[ids]-61 moved here? Content was 3ABN. WXMI-17 overpowering at the time.
3. 07 August 0047: According to the Hepburn propagation map, this should not have possibly come in, but it did! How? A bent path, maybe?
4. 23 August, 2316: Had a PSA for Kansas anti-DUI organization (MADD?). Also had constant "WB 33" "Cable 5" logo which I recognized from Matt Sittel's photo I had seen in Madison the preceding weekend!
5. 29 August, 0118: This had constant crawls for their co-owned 100.9 (Lebanon) and 106.7 (Greenwood) stations, and sometimes their call letters. This is extremely unusual for an LPTV!
6. 29 August, 0435: "America One TV" directly toward Chicago. Something from that area (probably a west suburban LPTV) is suspected. Anybody know?

Hello all! I hope to see as many as possible in OK City, but I'll know later—the date could unfortunately be one or two weeks too early. The DX season ended quite a while ago, but it took me all the way to

February, finally to reach a period without constantly-segued deadlines. Therefore I finally tackled this project of summarizing the season's DX, which was preceded by the enormous project of transferring FM DX Ids from a backlog of two years of DX which, of course, included the superb 2000 season. I just now figured out the "channel-logs" for the 2001 season. Except for Channels 5 & 6, it was basically on any given calendar date, regardless of how many times it was seen that day, with these results:

Channel 2 WPBT/WESH (tie), 9 different dates. (Geez, do these guys always have to win?), XEFB, 7 dates.

Channel 3 WEDU, 9 dates; KIII/WFSB, 6 dates each. (Oh! Channel 2 almost "lost", for the first time ever!)

Channel 4 KDBC/KFQX (tie), 4 different dates.

Channel 5 XEJ, 6 dates; WKRG, 4 dates.

A common winner, WPTV, seen only once!

Channel 6 KUAT/KSVI/KRMA, 2 dates

each. Usual winner, KRIS, not seen at all!

KRMA is quite unusual! And why is KUAT always at least somewhat a contender, but I can't find a good FM opening to Tucson?

Am looking forward to the coming season, though it's not as much fun as back in the "good old days" of the 1980's, when all-nighties were still few (and even rarer on weekends, when even VHF channels could go entirely vacant), LPTVs were sparse, DTV wasn't even a dream yet, and some channels were so vacant (51,58,etc.) that no signal may show up for two to three years. However, good openings can, amazingly, still overcome the clutter. I hope the upcoming DX season treats you well in all respects, on and off the dials.



The **WTFDA TV STATION GUIDE** for 2002 is **HERE!**

Order your copy now. Be ready for skip season!

Eastern TV-DX

Matthew C. Sittel
15013 Eureux Circle
Bellevue, NE 68123
mcsittel@cox.net

March 2002

April, 2002 column deadline: Mar. 12

Eastern TV-DX is for reporters from the following states: AL, CT, DE, FL, GA, IN, KY, MA, MD, ME, MI, NC, NH, NJ, NY, OH, PA, RI, SC, TN, VA, VT and WV, plus Washington, DC. Also for reporters from the following Canadian provinces: NB, NF, NS, ON, PEI and PQ. Overseas reports are also welcome!

Please note the e-mail address change. The old e-mail address will probably no longer work by the time you read this in the VUD. Just change home.com to cox.net on my e-mail (and web page, for that matter).

Some great DX reports this time, including Central America skip, meteor IDs on channel 13, and F2 IDed from Venezuela! Read on...

Jim Ayers, 2497 Wind Forest Court, Norcross, GA 30071

jimayers@radier.net

1/27 tr

0900	WDKA-49	KY Paducah	357
	WKMA-35	KY Madisonville	291
	WEHT-25	KY Henderson	330

First sign of DX activity since late summer. Just relogs, but farther than any trop from all of last year.

Jim Gill, Bradenton, FL

jgill002@tampabay.rr.com

Late Dec. 2001

1700	WCBS-2	NY New York
	WNBC-4	NY New York
	WRC-4	DC Washington
	WMAR-2	MD Baltimore

1/3 Es

late CIII2-20N Bancroft

aft. CBFT-2 PQ Montreal

1/4 Es

1300	XHVIZ-3	TB Villahermosa
	YNTC-2	NIC Managua
	YSR-2	ES San Salvador
1900	KGAN-2	IA Cedar Rapids

The equipment used is a 19" Sony, a 55" Mitsubishi projection TV... hooked to a Channel Master 3020 at 25 feet above ground/no per-amp...also have an ICOM R-8500 hooked up to the antenna to monitor WESH-2. That will tell me what the conditions are for DXing. Daytona is on the other side of the state from me, so it's a good indicator. My location is in Bradenton, FL, 3 miles north of Sarasota, 50 miles south of Tampa. I've been a member of WTFDA for about 20 years, but just got computerized in November. Now I can pursue the DX a lot easier. Who knows, maybe I'll be able to find time to send in reports more often now!! (I hope so; your Central American skip is out of reach for most of the U.S. reporters... it's fun to hear about!-mcs)

Doug Smith, Pleasant View, TN

w9wi@w9wi.com, <http://www.w9wi.com>

1/28 tr

0052	WBIH-29	AL Selma	266
		continuous ID	
	WBIQ-10	AL Birmingham, APT	201
	WCOV-20	AL Montgomery, ID	284
	WTTO-21	AL Homewood	202
	WLMT-30	TN Memphis, WUXP	off
	WNCF-32	AL Montgomery	294
	WGCL-46	GA Atlanta, ID	bug 237
	WHSG-63	GA Monroe	253
	WVTM-13	AL Birmingham	201
0110	WIAT-42	AL Birmingham	202
0130	unID-22	ABC who? (WJCL?-mcs)	

0132	WACS-25	GA Dawson	340
	WTLH-49	GA Bainbridge	418
		floater under WCKV-LP	
	WOIL-CA-47t	AL Talladega, Daystar	
0200	WAAY-31	AL Huntsville	120
		overloading the TV!	
	WMCF-45	AL Montgomery	280
	W51BY-51	AL Birmingham	203
	WTJP-60	ID w/xltrs.	
0219	WAIQ-26	AL Montgomery, APT	281
0240		southern DX rapidly disappearing	
		in favor of Lexington and Cincy	

Been awhile since I've seen three new ones in one night via tropo. Stations on 28 and 69 with unID bars were very frustrating (probably Columbus, GA and Atlanta). Would sure love to know who the ABC was on 22-my guess is W22BS in Tupelo switched from WTV-9 to WKDH-45.

John Vervoort, 217-79 Street, Brooklyn, NY 11209-3607

Equipment: RCA XL100 (13"), Radio Shack indoor antenna and Archer amplifier.

1/28 tr

0849	KYW-3	PA	Philadelphia	83	0855	WYBE-35	PA	Philadelphia	83
0850	WTNH-8	CT	New Haven	85	0855	unID-36			
0850	WCAU-10	PA	Philadelphia	83	0856	WBPT-43	CT	Bridgeport	69
0850	WHYY-12	DE	Wilmington	110	0857	WEDW-49	CT	Bridgeport	69
0851	WPHL-17	PA	Philadelphia	83	0857	WNJT-52	NJ	Trenton	51
0851	WTXX-20	CT	Waterbury	99	0858	WPSG-57	PA	Philadelphia	83
0852	WYOU-22	PA	Scranton	137	0858	WPPX-61	DE	Wilmington	110
0853	WNJS-23	NJ	Camden	83	0859	WACI-62	NJ	Atlantic City	114
0853	WEDH-24	CT	Hartford	129	0859	WMBC-63	NJ	Newton	67
0854	WTFX-29	PA	Philadelphia	83	0900	WUVP-65	NJ	Vineland	117
					0900	WFME-66	NJ	West Milford	66

The last week of January is normally the coldest time of year, technically speaking, however you'd never know it with the jet stream running along the Canadian border. For the next 2 days I'm going to be on the prowl for even stronger tropo.

Roy Barstow, P.O. Box 2488, Teaticket, MA 02536

1/4 Es

1800	WSB-2	GA	Atlanta			W18BS-18	VA	Hampton	
	WTWO-2	IN	Terre Haute		0130	WRAZ-50	NC	Raleigh	
	KYTV-3	MO	Springfield		0330	W18BB-18	NC	Elizabeth City	490
1915	WCBI-4	MS	Columbus			W41AC-41	VA	Onancock	
	KMOV-4	MO	St. Louis			W44AD-44	VA	Onancock	
	WEAR-3	FL	Pensacola			W56CS-56	VA	Portsmouth	
2100	WPBT-2	FL	Miami			W65CP-65	VA	Chesapeake	
	WEDU-3	FL	Tampa			WEPX-38	NC	Greenville	
2140	WESH-2	FL	Daytona Beach			W19BM-19	VA	Virginia Beach	
						WLFL-22	NC	Raleigh	591
						WKFT-40	NC	Fayetteville	616
1/14 MS					0500	WCTI-12	NC	New Bern	
0215	WXGA-8	GA	Waycross	975	1/29 tr				
1/16 MS					0030	most of above stations plus			
0533	WTVG-13	OH	Toledo	660		WUNJ-39	NC	Wilmington	660
	first ID for ch. 13 MS, 22 frames				0100	WTAT-24	SC	Charleston	779
1/27 tr						WUNP-36	NC	Roanoke Rapids	
0015	15/27/33/43/49		eastern Virginia			WUNM-19	NC	Jacksonville	
	W60AL-60	VA	Onancock			WPXU-35	NC	Jacksonville	57
	W24BI-24	VA	Virginia Beach			WRPX-47	NC	Rocky Mount	
	W52AB-52	VA	Craddockville		0240	unID-35		CBS News, -	
	W39BW-39	VA	Newport News			offset. Who?			
	WNLO-45	VA	Virginia Beach			WYDO-14	NC	Greenville	
0100	W63AM-63	VA	Craddockville			WRAY-30	NC	Wilson	575
	W35BH-35	VA	Virginia Beach			WFXI-8	NC	Morehead City	
	WJHJ-19	VA	Williamsburg						
	WNCN-17	NC	Goldsboro	592					

Not much Es this winter but MS always a nice guest this time of year. Some good tropo, not normal for January. At times with warm weather it's like spring DX.

William Hepburn, Brampton, ON

vem3ont22@rogers.com

7/2/2001 Es

2235	KWGN-2	CO	Denver	1335	0920	MUF ch. 6			
2250	KCNC-4	CO	Denver	1335	2147	WPBT-2	FL	Miami	1223
2252	KNOP-2	NE	North Platte	1079	7/13 Es				
7/7 Es					1208	WDIQ-2	AL	Dozier	910
2053	WPBT-2	FL	Miami	1223	1220	KPRC-2	TX	Houston	1302
7/10 Es					1245	MUF ch. 5			
1631	KPRC-2	TX	Houston	1302	7/14 Es				
1633	KBEJ-2	TX	Fredericksburg		1226	WTVY-4	AL	Dothan	938
1634	MUF ch. 3				1227	MUF ch. 6			
7/12 Es					1227	WEDU-3	FL	Tampa	1102
0842	KPRC-2	TX	Houston	1302	1227	WESH-2	FL	Daytona Beach	
0847	KBEJ-2	TX	Fredericksburg			1020			
	1392				1229	WPBT-2	FL	Miami	1223
					1252	MUF 116.0 MHz			

1400 WDIQ-2 AL Dozier 910
 1726 WBRZ-2 LA BatonRouge 1115
 1730 WDIQ-2 AL Dozier 910
 1734 WWL-4t LA New Orleans
 1933 CJCJN-4 NF Grand Falls 1200
 1937 MUF ch. 6
 1943 CJOM-3 NF Argentia 1267
 2010 CBGAT22-2 PQ Riv.-Au-Renard
 817
7/31 Es
 2303 MUF ch. 2, west
8/8 MS, tr
 0206 unID-2
 2231 WNYS-43 NY Syracuse, WB43 187
8/9 MS
 0337 unID-2
8/13 Es
 2312 MUF ch. 5
 2313 CJCJN-4 NF Grand Falls 1200
 2314 WLBZ-2 ME Bangor 554
 2316 CBGAT14-2 PQ Carleton 724
 2340 CJBR-2 PQ Rimouski 615
8/14 Es
 0001 CBAT-4t NB Fredericton
 Fredericton TP
 0016 CKCW-2t NB Moncton
 0025 CBIT2-2t NS Cheticamp
8/22 Es
 1836 KJRH-2 OK Tulsa 992
 1836 MUF ch. 3
 1901 KPRC-2 TX Houston 1302
8/23 Es
 1128 MUF ch. 3
 1130 WBRZ-2 LA Baton Rouge 1115
9/3 tr
 0245 WMTV-15t WI Madison
 0309 WFRV-5t WI Green Bay
9/4 tr
 2117 KRIN-32 IA Waterloo 617
9/5 tr
 0429 WMTV-15 WI Madison 490
 0432 WQRF-39t IL Rockford
 2159 WLKY-32 KY Louisville 483
 2201 WBKI-34t KY Campbellsville
 2216 WFTE-58 IN Salem 484
 2218 WKMJ-68 KY Louisville 483
9/6 tr
 2352 CFGS-34 PQ Hull, TQS, ex. ch49
 231
10/2 tr
 0927 W46CR-46 MI Saginaw, 3ABN 239
11/2 F2
 1421 unID-NZ1 NZ video buzz, 45.26
11/3 F2
 1419 unID-NZ1 NZ video buzz, 45.26
11/4 F2
 1148 unID-E2 video buzz 48.252
 1222 unID-E2 video buzz 48.249
11/5 Au
 2252 hash 2-4, 7, 8
11/12 F2

1124 unID-E2 video buzz 45.251
11/17 F2
 1202 unID-E2 video?
11/19 F2
 1750 unID-NZ1 NZ video buzz, 45.24/26
11/23 F2
 1200 unID-E2 video buzz 48.26
12/3 F2
 1012 unID-E2 video buzz 48.26
12/8 F2
 1137 unID-E2 video buzz 48.25
12/13 F2
 1016 unID-E2 video buzz 48.25
12/26 Es
 2113 WWL-4 LA New Orleans 1105
 2133 WBRZ-2 LA Baton Rouge 1115
12/27 Es
 0319 KXAS-5 TX Fort Worth
 1203
 0322 KDTN-2 TX Denton 1203
 0322 KDFW-4 TX Dallas 1204
 0334 KPRC-2 TX Houston 1302
 0344 WBRZ-2 LA Baton Rouge 1115
 0344 WEDU-3 FL Tampa 1102
 0348 WWL-4 LA New Orleans 1105
 0356 WPBT-2t FL Miami
 0411 MUF 93.7 MHz
12/31 F2
 1818 unID-4 CCI
12/31 F2
 0950 YVVA-2 VENEZUELA Caracas
2418
 RCTV ID
 1031 F2 fade-out
1/1/2002 MS
 0930 unID-2
1/2 F2
 1013 unID-E2 weak video 48.24
1/4 F2
 0857 unID-E2 video buzz
 48.25/26
 0928 unID-R1 weak video 49.75
 0929 unID-R1 video buzz 49.76
 0939 unID-R1 video buzz 49.74
1/4 Es
 1927 WEDU-3 FL Tampa 1102
 1929 WESH-2 FL Daytona Beach 1020
 1931 MUF 90.5 MHz
1/14 F2
 1015 unID-E2 video buzz 48.25
1/18 F2
 0939 unID-E2 video buzz 48.26
1/19 F2
 0928 unID-E2 video buzz 48.26
1/24 F2
 0858 unID-E2 video buzz 48.25
1/30 F2
 0947 unID-E2 video buzz 48.25
1/31 F2
 0936 unID-E2 video, colour? 48.24
 0936 unID-E2 video buzz 48.26

Dec. 31, 2001 turned out to be a big day for me! After seeing E-mail reports of Caribbean F2 on Dec. 30, I set my VCR to tape while at work.. Review of the tape netted an ID on Channel 2 from RCTV Caracas, Venezuela!! It becomes my most distant catch on the American channels at 2,418 miles! This was my first F2 video ID on channel 2, and first video of any kind on 2 since 12/11/1981 (probable ch. E3).

TV equipment:

Rx 1: VCR - Samsung SV-5000W World TV Signal Rx

Rx 2: TV - Panasonic PC-29XF40R (29")

Rx 3: Audio - Icom IC-R100 com rx

Ant - CM VHF & UHF h.yagis @ 47' w/10dB RS VHF & 28dB Anteco UHF amps.+10dB RS UHFamp@rcvr.

That's all for this month. Seen any good TV DX? Tell us all about it; send a report! 73s Matt.

SOUTHERN FM DX



John Zondlo
4009 Driftwood Circle
Yukon, OK 73099
Jpzondlo@aol.com
Deadline: 10th

For DXers in AL, AZ, AR, CA, CO, DE, DC, FL, GA, HI, KS, KY, LA, MD, MS, MO, NV,
NM, NC, OK, SC, TN, TX, UT, VA, WV, Cuba & Mexico
March 2002

Dan Oetting -107 S. Tartan Dr. - Elkton, MD 21921 - EST

1/4 Es

1930 WKNA 88.9 MS Senatobia, NPR, ID

1934 WOWL 91.9 MS Burnsville, "Fun 91," mentioned luka, Corinth & Hwy 72

1940 MUF peaks at 95.9

1949 KBMQ 88.7 LA Monroe, gr, "The Cross." The station gave out their toll free number, so I called and asked where they were. They said, "Monroe, Louisiana, why?" I said, "I am hearing you on skip right now on the Maryland/Delaware border." They were flippin' out and said that I made their night...simple pleasures.

1954 WWXQ 92.5 AL Trinity, o, ad, "Oldies 92 & 4"

2000 WAFR 88.3 MS Tupelo, g, ID

2002 WQPR 88.7 AL Muscle Shoals, ID

2015 Skip gone

1/5 Es

0830 KUHF 88.7 TX Houston

Thanks to Joe Fela for the Es tip off. Dove in around 1925 and noted Es as high as 95.9 at one point. Got 6 new ones out of the deal. Not bad for January ☺.

Doug Smith – W9WI – 1385 Old Clarksville Pike –

Pleasant View, TN 37146-8098 - w9wi@w9wi.com - www.w9wi.com - CST

Technics ST-G50 tuner, big Radio Shack VHF-TV antenna at 15'

1/28 Tr

0112 WZBQ 94.1 AL Carrollton, "94-1 ZBQ" 227

0123 WEZZ 97.7 AL Clanton, "...on WEZZ 97.7" 247

0132 WTID 101.7 AL Reform, "Tuscaloosa's Tide 101-7" 223

0148 WTNT 104.1 FL Tallahassee, "104.1 WTNT" 433

0154 WZHT 105.7 AL Troy, "Hot 105.7" 310

0205 WMPS 107.5 TN Germantown, "107.5 The Pig" 173

0230 unID 107.5 ?? ??, "Magic 107.5," hot AC w/WRVW off....Atlanta?

0239 WECO 101.3 TN Wartburg, call ID and Crossville ad 138

WMPS 107.5 was running a hilarious song, "81 Hillbillies in a Haunted House"



From the Editor

Glad to see some other folks are getting some DX! The mid-winter Es season was pretty meager here. See y'all next month!

WTFDA 2002 – Oklahoma City

Time to make your reservation for this year's convention at the Hampton Inn, I-40/Garth Brooks in Yukon, OK, July 26-28. Our special rate is \$55/night. You will need to call the Hampton Inn direct at (405) 350-6400 to make your reservation. Be sure to mention that you'll be there for the WTFDA convention.

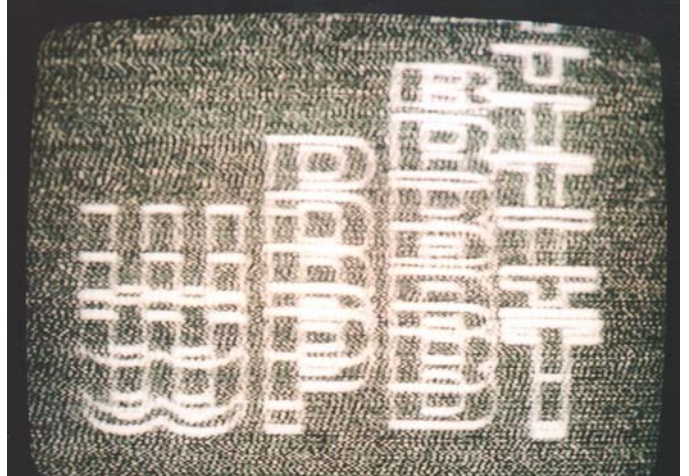
What's on tap for the convention? There's an early-bird trip to the Bricktown entertainment district Thursday, July 25. We'll have station tours, a banquet Saturday night, and lots of time to talk and DX. If you have suggestions for seminars, send them along! For more info, check out the WTFDA 2002 page at Fmdxweb.com or write to me at the Southern FM DX address above. Hope to see you at WTFDA 2002!

March 2002

We continue with more great E-skip photos from Aaron Mitterling of Ft. Wayne, IN:



WPBT-2 Miami, FL
1100 mi Es seen 5/22/01



WPBT-2 Miami, FL
1100 mi Es seen 5/22/01
*"70's style logo
seen at beginning
of show"*



WESH-2 Daytona Beach, FL
900 mi Es seen 6/21/01



WEDU-3 Tampa, FL
930 mi Es seen 6/21/01

WEAR-3 Pensacola, FL
750 mi Es seen 6/27/01

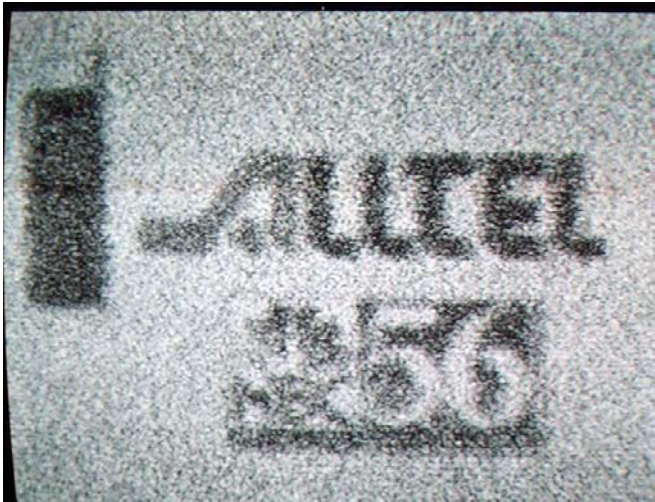




KFDX-3 Wichita Falls, TX
880 mi Es seen 6/25/01

Now for some photos from our own TV News editor, Doug Smith, of Pleasant View, TN:

Equipment: 19" Radio Shack TV, "190-mile" VHF and "75-mile" UHF RS antennas at 15', ChannelMaster (7475?) preamp for UHF.



KETK-56 Jacksonville, TX
556 mi Tr seen
12/5/01
@0040 CT
"this local WTVE DT"



KOLR-10 Springfield, MO
328 mi Tr seen 12/5/01
@0830 CT



WBIH-29 Selma, AL
266 mi Tr seen 1/28/02
@0100 CT
"with phone # cut off?"



WIAT-42 Birmingham, AL
202 mi Tr seen 1/28/02
@0110 CT

STATISTICS

Fred Nordquist
7945 Boxford Road
Clav. NY 13041

Featuring FM/TV Scoreboards, All Time Distance Records,
States Stats and Personal Best Statistics of FM/TV DXers.

March 2002

TV SCOREBOARD

nordquis@twcny.rr.com

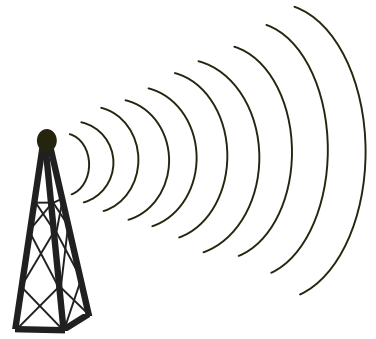
<u>FNAME</u>	<u>LNAME</u>	<u>LOCATION</u>	<u>TOTAL</u>	<u>UHF</u>	<u>LPTV</u>	<u>HDTV</u>	<u>ES</u>	<u>MS</u>	<u>AU</u>	<u>USA</u>	<u>DC</u>	<u>CN</u>	<u>MX</u>	<u>FO</u>	<u>TPU</u>
JEFF	KADET	IL MACOMB	1837	1294	670	31	276	8	0	45	+	7	14	8	72
BOB	SEYBOLD	NY DUNKIRK	1406	818	242		224	30	6	49	+	7	3	5	65
FRANK	MERRILL	IL MACOMB	1390	887	393		247	21	0	45	+	7	12	3	68
WILLIAM	DRAEB	WI KEWAUNEE	1131	580	191		210	113	1	43	+	7	2	1	54
ROY	BARSTOW	MA TEATICKET	756	472	170		143	92	1	37	+	7	0	5	50
FERNANDO	GARCIA	NL MONTERREY	756	512	201		111	0	0	31		0	8	5	44
GARY	SIEGEL	OH TOLEDO	673	329	61		156	0	0	39	+	6	2	2	50
WILLIAM	HEPBURN	ON BRAMPTON	644	417	89		135	1	0	38	+	7	0	1	47
FRED	NORDQUIST	NY CLAY	626	276	56		81	3	0	36	+	6	0	1	44
MIKE	LAPINSKI	NY JAMESTOWN	581	409	77		70	1	0	37	+	6	0	3	47
JEFF	KRUSZKA	LA BATON ROUGE	579	354	101		131	0	0	35	+	1	9	4	50
DAVID	NIEMAN	NY ROCK CITY	577	425	95		55	0	0	37	+	5	0	0	43
DAVID	NIEMAN	NY AKRON	556	366	77		90	5	0	37	+	7	0	0	45
RICHARD	SHAFTAN	NJ SPARTA	550	291	59	10	146	0	0	37	+	6	0	1	45
MATT	SITTEL	NE BELLEVUE	502	337	155		95	0	0	41	+	4	5	0	51
DANNY	OGLETHORPE	LA SHREVEPORT	494	203	43		162	3	0	38	+	4	18	2	63
PAT	DYER	TX SAN ANTONIO	488	155	13		199	64	0	42	+	5	18	5	71
DOUG	SMITH	TN PLEASANT VIEW	470	233	38		56	1	0	36		2	5	1	44
GREG	CONIGLIO	NY WILLIAMSVILLE	448	271	43		93	0	0	35		6	0	2	43
TOM	BRYANT	TN NASHVILLE	383	184	18		78	3	0	30		4	4	1	39
MATT	SITTEL	FL TALLAHASSEE	378	208	25		97	0	0	28		2	5	4	39
ERIC	BUENEMAN	MO HAZELWOOD	356	234	33		44	0	0	32	+	5	3	0	41
RUSS	EDMUNDS	ME JONESPORT	219	34	10					13		5			18
JOHN	JEFFERSON	CA ANTIOCH	206	106	-		75	1	0	16		4	4	0	24
MATT	SITTEL	NC RALEIGH	185	109	15		44	0	0	24	+	1	3	0	27
BOB	SMOLAREK	NJ OLDWICK	166	116	15		20	0	0	25	+	0	0	0	26
RANDY	MILTIER	CA SAN JOSE	126	38	2		70	2	0	16		3	3	0	22
DANNY	BUNTIN	OK STILLWATER	123	90	6		6	0	0	22		2	0	0	24
PAUL	MOUNT	NJ MONMOUTH	95	67	5		2	0	0	12	+	0	0	0	13
RICHARD	STEINBERGER	MA HUDSON	93	56	5		6	0	0	14		1	0	0	15
JIM	RENFREW,	NY ROCHESTER	92	35	4		34	0	0	17		3	0	0	20
MIKE	HAWK	NE OMAHA	82	48	7		5	0	0	11		2	0	0	13
PETER	GIACOPELLI	NY MASSAPEQUA	61	27			16			59		1			
SHEL	REMINGTON	HI KEAAU	11	2	2		0	0	0	1		0	1	0	2

COLUMN DEFINITIONS: are as follows: Total = Total number of TV stations logged from DXers location (All loggings should be received within 25 mile radius of this location to count.) Freq. changes count as a station, call letter changes DO NOT count. Also count a station only once regardless if logged by different propagation modes. UHF = All stations logged from CHANNELS 14 TO 83. LPTV=Low PowerTV/Translators logged. HDTV=High Density TV stations logged. Es=Total number of stations logged by E-skip. MS=Total by meteor scatter. Au=Total via Aurora. USA=Total number of states and the "+" = Washington, DC. CN=Number of Canadian provinces logged. MX=Number of Mexican states logged. PO=Number of foreign countries, but not Canada/Mexico. TPU (Total number of political units)=Sum of USA CN MX and FO. YB = The year you began DXing from this location. The detail Statistics databases are located at <http://www.home.twcny.rr.com/nordquistsyr/>. Other groundrules for computing log totals are included in VUD Issue 4/99 or at http://www.anarc.org/wtfdarecords_standards.htm. Note: Many of you need to get current and submit your latest Scoreboard stats. Also submit any distance records, states stats and personal best statistics. 73 - Fred.

Northern FM DX

Northern FM DX

Keith McGinnis
 387 Shirley Street, Winthrop, MA 02152
 longwave@mediaone.net



FRANK W. MERRILL Box 669 Macomb IL 61455

Equipment: Tandberg 3001A Tuner (McIntosh MR 78 has been repaired but no DX since then...gain was down 10-15 db) 3 Channel Master Stereo Probe 9's..one at 8 feet used for most Eskip and the other two at 45 feet used with Bolin Phase Box All times are Central (local) and underlined are new

					172	<u>KLWV</u>	88.7	West Odessa TX	
<u>May 2nd 2001 Es</u>									apparent MUF very strong K Love Prgmng 888
1041	Unid	93.1							
	Unid Mexican (or domestic Spanish) also 92.3								
									<u>May 26th 2001 Es</u>
<u>May 13th 2001 GW</u>					1200	<u>KQOL</u>	93.1	Las Vegas NV	
									1359
1200	<u>WCEZ</u>	93.9	Carthage IL		1200	<u>KGLX</u>	99.1	Gallup NM	
	"Your Listening to WCEZ Carthage (testing) 28								these two while driving around Macomb 1041
<u>May 13th 2001 Es</u>					1212	<u>KXTM</u>	107.5	Pharump NV	
1200	<u>KRTN</u>	93.9	Raton NM	ID					"Extreme" 1404
	broke thru WCEZ 780 (see note 1)				1215	<u>KXXQ</u>	100.7	Grants NM	
1203	<u>KMXR</u>	93.9	Corpus Christi TX						Calls 1008
	"Corpus Christi's only choice for Oldies" 955				1217	<u>KEOT</u>	99.7	St George UT	
1216	Unid	93.1	El Paso TX						"99.7 Coyote Country" & local ad 1256
<u>May 18th 2001 Es</u>					1222	<u>KRFM</u>	96.5	Show Low AZ	
1101	Unid	93.7							1147
	"93.7 K-Dove" likely uneded				1225	<u>KIVA</u>	103.7	Window Rock AZ	
1106	<u>KYTI</u>	93.7	Sheridan WY						"Rockin Oldies, KIVA" 1053
	"Kicks 93" Sheridan ad; etc 881				1228	<u>KYLZ</u>	106.3	Los Lunas NM	
1116	<u>KEZQ</u>	92.9	W Yellowstone MT						"Wild 106" R&B/dance 962
	"from Big Sky to...we've got you covered KEZQ" 1077				1249	<u>KEFE</u>	107.5	Los Alamos NM	
1126	<u>KSII</u>	93.1	El Paso TX						907
	1068				1251	<u>KFMQ</u>	106.1	Gallup NM	
1846	<u>KXLB</u>	100.7	Livington MT						Window Rock ad; Gallup schools 1041
	KBZK-26 Weather Promo "MT's Country leader" 1067				1256	<u>KAHM</u>	102.1	Prescott Vly AZ	
2050	<u>KHOY</u>	88.1	Laredo TX						1254
	Pledge announcement				1257	<u>KRQS</u>	101.3	Albuquerque NM	
<u>May 21st 2001 Es</u>									"Smooth Jazz 101.3 The Horizon" 949
1105	<u>XHAAA</u>	93.1	Reynosa TA		1300	<u>KOAZ</u>	101.7	Springeville AZ	
	1084								"Springville-Show Low" at tune in 1112
<u>May 25th 2001 Es</u>					1303	<u>KXTC</u>	99.9	Thoreau NM	
1719	<u>KGNZ</u>	88.1	Abilene TX						Calls 1018
	748				1309	<u>KKLD</u>	98.3	Prescott Vly AZ	
									"Yavapai Country's KKLD" oldies 1254
					1324	<u>KBOM</u>	94.7	Santa Fe NM	
									"The Oldies Station K-BOMB" local ad 916
					1325	<u>KZUA</u>	92.1	Holbrook AZ	
									1133
					1332	Unid	107.5		
									"Colt Country 107.5"
					1332	<u>KSED</u>	107.5	Sedona AZ	
									"No AZ's Country leader" local ads 1217
					1342	<u>KQST</u>	102.9	Sedona AZ	
									"AZ's hottest hit music, 24/7 The Q 102.9" 1217

1345	KAZX	102.9	Kirtland	NM	1837	WVES	99.3	Accomac	VA
	989					Local ads; Shorebirds Baseball on WVES netwk 826			
1352	KWUF	106.3	Pagosa Spgs	CO	1840	WRXL	102.1	Richmond	VA
	907	(see note 2)				XL102 Morning Crew; 1-866-WINHOGS; WRXL.com 738			
1403	KUYI	88.1	Hoteville	AZ	1849	WEXM	106.1	Exmore	VA
	Calls and talk after song; news 1150					822 (see note 4)			
1406	KPRH	88.3	Montrose	CO	1850	WBOP	106.3	Churchville	VA
	Concert Promo for Classical Sta 103.3 & 88.3 928					relog -rare 634			
1415	KXXI	93.7	Gallup	NM	1852	Unid	102.5		
	1041					"Country OK-100" What is this??? Quickly lost to			
1420	KILO	94.3	Colorado Spg	CO		WCRM (MA) as NE returns			
	"KILO" promo 761				1854	WCTW	98.5	Catskill	NY
1422	KXAZ	93.3	Page	AZ		"The CAT" Hudson Valley weather 880			
	93.3 FM" ads after Paul Harvey; wx 1146				1856	WHAJ	98.3	Greenfield	MA
1434	KKCS	101.9	Colorado Spg	CO		"Oldies 98.3 WHAJ" briefly over what was WTRY 946			
	"CS 102 Colorado Springs" 761				1859	WVKX	97.9	Enfield	CT
1436	KWGL	105.7	Ouray	CO		Legal ID "Kicks 97.9 WCKZ Enfield-Springfield" 945			
	for Montrose Pizzeria 925				1900	WTRY	98.3	Rotterdam	NY
1455	KMTS	99.1	Glenwood Spg	CO		Legal ID 875			
	"the best country 99.1 KMTS" local ad 883				1901	WHWK	98.1	Binghamton	NY
1500	KKCH	92.7	Glenwood Spg	CO		"98.1 The Hawk WHWK Binghamton etc" long id 775			
	"KKCH FM...and K222AJ at 92.3 FM" 883				1903	WRKS	98.7	New York	NY
1532	WHJY	94.1	Providence	RI		Legal ID 874			
	1006				1907	WBLS	107.5	New York	NY
1559	WCTK	98.1	New Bedford	MA		"The Flavo-Zone mix on 107.5 WBLS" 874			
	Local mentions 1032				1908	WTJM	105.1	New York	NY
1600	WKZE	98.1	Salisbury	CT		"NY's best music Jammin 105" 874			
	Legal ID 903				1910	WBLI	106.1	Patchogue	NY
1715	WODS	103.3	Boston	MA		"106.1 B L I" 927			
	1022				1911	WRCN	103.9	Riverhead	NY
1734	WTRY	98.3	Rotterdam	NY		Local mentions and local ads 944			
	"great oldies 98.3 WTRY" also see 1900 875				1914	WAXQ	104.3	New York	NY
1741	WBMX	98.5	Boston	MA		"This is NYC's only classic rock station Q104.3" 874			
	Local mentions 1022				1918	WFAF	106.3	Mount Kisco	NY
1745	WVVC	100.7	Utica	NY		Jingle; Westchester Radio WFAF 887			
	"Family Life netwk reaching out across NY" 816				1922	WAVT	101.9	Pottsville	PA
1748	WHEB	100.3	Portsmouth	NH		Pottsville Bdcst Co.; pbcradio.com 759			
	1041				1925	WPLR	99.1	New Haven	CT
1748	WQAR	101.3	Stillwater	NY		"WPLR Smith and Barber..." 928			
	Local ads 895				1943	WNYR	98.5	Waterloo	NY
1751	WQBJ	103.5	Cobleskill	NY		"Winner 98.5 WNYR" 732			
	"The Edge" (Frank had this as tentative...it's a keeper)				<u>May 28th 2001 Es</u>				
1753	WGLV	104.3	Hartford	VT	1302	WYLA	94.7	Lacombe	LA
	Twin State pool ad & other local ads "oldies 104" 966					"New Orleans' smooth jazz 94.9 WSJZ— 94.7 on the North Shore and live on the web at wsjz.com" weather			
1755	Unid	107.5			<u>May 29th 2001 Es</u>				
	Country (Frank this is probably WTHT..editor)				2055	KKBA	92.7	Kingsville	TX
1757	WEBB	98.5	Waterville	ME		"K BAY" (was this ever really on 92.5??) 984			
	"ME 98.5" country 1108				<u>June 12th 2001 Tropo</u>				
1759	WBQQ	99.3	Kennebunk	ME	0736	KRIG	104.9	Nowata	OK
	Sanford ad 1054					"Winners of contest in SE KS" 373 (see note 5)			
1801	WLZW	98.7	Utica	NY	0741	KBRS	104.9	Springdale	AR
	Central NY/Utica Ads 816					"104.9 The Edge" AC 501 local ads 350			
1808	WWWA	95.3	Winslow	ME	<u>June 16th 2001 Es</u>				
	1108								
1820	WNOR	98.7	Norfolk	VA					
	822								
1832	WKOC	93.7	Chesapeake	VA					
	"93.7 The Coast" ..too generic to confirm or log 820								
1834	WRVQ	94.5	Richmond	VA					
	738								

1605 WPBX 88.3 Southampton NY
 "The Splendid Table" from MN Public Radio

938

1605 WCWP 88.1 Brookville NY
 same prgm as above confirmed by phone

896

1621 WEHM 96.7 Easthampton NY
 "96.7 E H M" 969

1624 WBBO 98.5 Ocean Acres NJ
 "B98.5" local ads & mentions Tom's River
 etc 866

1634 WBHX 99.7 Tuckerton NJ "If
 its classic & it rocks it must be WBHX" 866

1637 WSNJ 107.7 Bridgeton NJ
 821

1637 WJBR 99.5 Wilmington DE
 801

1642 WRKZ 106.7 Hershey PA
 "106.7 Cat Country" relog 738

1653 WLEV 100.7 Allentown PA
 Local ads Bucks County; Lehigh County ;
 WLEV 797

1656 WPUR 107.3 Atlantic City NJ
 "New Cat Country" Millville and Menlo Pk
 ads 864

1658 WHTG 106.3 Eatontown NJ "G
 106.3 Shore Traffic"

1659 WCOD 106.1 Hyannis MA
 Legal ID 1065

1703 WKJY 98.3 Hempstead NY "K
 Joy's Best Mx weekend" Jingles, etc 895

1705 WAWZ 99.1 Zarephath NJ
 Two legal ID's.....been after this for years
 845

1705 WBAI 99.5 New York NY
 Concert ad..... liquidsoundlounge.com
 streaming 874

1708 WCBS 101.1 New York NY
 874

1708 WEMG 104.9 Egg Harbor NJ
 Strong spanish....presumed 850

1712 WBZH 103.1 Freeland PA
 "Concert sponsored by WOLF TV (56)
 jingles 780

1717 WOCT 104.3 Baltimore MD
 "the new Baltimore 104.3 classic rock" 749

1722 WPLM 99.1 Plymouth MA
 1044

1724 Unid 87.9
 Spanish briefly..weak...a Pirate???

1800 CJBR 89.1 Rimouski PQ FF
 actually used CJBR calls after R Canada
 1223

June 18th 2001 GW

1800 WKAY 105.3 Knoxville IL
 "105.3 Kay FM" Galesburg ad..wrecks cool
 freq 33

1804 WXAJ 99.7 Hillsboro IL
 "WXAJ FM Hillsboro-Springfield-Decatur"
 100

June 21st 2001 Es

1102 WEOW 92.7 Key West FL
 Legal ID 1214 (see note 6)

1103 Merida YU
 92.9; 93.7; 98.5; 99.3

June 27th 2001 Es

1158 WHRV 89.5 Norfolk VA
 Legal ID; announcements 822

1215 Unid 97.5
 "K97.5...Jams" So TX also in on TV
 nothing makes
 sense in either area.....(Editors note...more
 than likely
 WQOK South Boston VA which ID's as
 K97.5 with R&B)

1220 WNCU 90.7 Durham NC
 "This is WNCU 90.7 FM" and promo 709

1459 KVMV 96.9 McAllen TX
 Legal ID 1078

1500 KKRW 93.7 Houston TX
 Legal ID 784

1500 KIWW 96.1 Harlingen TX
 1066

1501 KZRC 92.5 Markham TX
 850

1600 WAVV 94.7 Marathon FL
 1222

1647 WWLL 105.7 Sebring FL
 "Wheels 105.7" 1039

1652 WQYK 99.5 St. Petersburg FL
 990

1700 WVJ 91.7 Port Charlotte FL
 "Victory 91.7" Legal ID 1053

1702 Unid 96.7
 "Visit us on the web 967thebuzz.com"
 (Editors note... x
 the website is for KBZZ Morgan City LA)

1832 XHCDS 94.5 Delicias CI
 "Fiesta Mexicana Delicias Chihuahua"
 1199

1850 KLUC 98.5 Las Vegas NV
 Calls twice in promo 1359

1905 KHWY 98.9 Essex CA
 "FM 98 & 99 your Highway stations" local
 ment 1411

1950 WRDX 94.7 Dover DE
 808

???? WAGP 88.7 Beaufort SC
 Calls...forgot to mark down time 785

June 28th 2001 Es

1304 XHAAA 93.1
 Heard near Jackson Michigan

1400
 Corpus Christi Stations from Royal Park MI

July 2nd 2001 Tropo

2239 WAJT 102.1 Mount Vernon IL
 "Classic Hits radio the all new 102.1 WAJT"

175

July 12th 2001 Es

1000 KLDN 88.9 Lufkin TX
 Red River Radio Netwk Legal ID (4 stations)
 670

1004 KPFT 90.1 Houston TX
 Legal ID 784

1006 KRST 92.1 Seabrook TX "K-
 ARTS"

1026 Unid 93.5
 "en la nueva Radio Luz 93.5 FM"

1030 XHTLN 94.1 Nuevo Laredo TA
 "Super Estellar" 1028
 1042 Unid 88.3
 "massiveradio.net" (Editors note...this is
 KYLT "M88"
 from Albuquerque NM)
 1101 XHEC 91.9 Sobiras CU
 Legal ID 1056

July 14th 2001 Es

1119 CM?? 96.7 Havana Cuba
 1292 (see note 7)
 1130 WAIL 99.5 Key West FL
 1214
 1153 XET 94.1 Monterrey NL "la
 Caliente 94.1" 1161
 1200 KBNR 1080 Brownsville TX
 Legal ID Spanish Only
 1400 XHAAA 93.1 Reynosa TA
 1084

July 16th 2001 Es

1330 KJYE 92.3 Grand Jct CO
 954
 1933 KDAG 96.9 Aztec NM
 968
 2009 Unid 93.1
 "US 93" country

July 17th 2001 Es

2002 Albertan's on 97.3; 98.3; 99.3; 107.7
 2022 Unid 95.7
 religious / country
 2022 Unid 95.7
 classical
 2028 CJSI 88.9 Calgary AB
 1346
 2030 KVGA 88.1 MT
 tentative unmanned dead carrier during
 NPR ID breaks
 2030 CHLB 95.5 Lethbridge AB
 1256 (see note 8)
 2031 CBR 102.1 Calgary AB
 presumed 1346
 2040 CFMY 96.1 Medicine Hat AB
 1177
 2048 KTZZ 93.7 Conrad MT
 "You're listening to Montan's ZZ93" 1160
 2100 KPQX 92.5 Havre MT
 Legal ID 1092
 2124 KBLL 99.5 Helena MT
 "Helena's hot new country 99.5 KBLL"
 1151
 2130 KZLO 99.9 Bozeman MT
 "1st with today's hot new country KZLO 99.9
 The Fox" (see note 9)
 2136 KZMQ 100.3 Greybull WY
 Poor in a mess..calls after a country song
 929

July 17th 2001 Tropo

2141 KSDR 92.9 Watertown SD on
 the skip antenna only 449

2201 WMNW 96.3 Atlanta IL
 "The All New Classic Rock 96.3 WMNW
 Atlanta" 75
 2202 WDQZ 99.5 Lexington IL
 Legal ID 103
 2244 KMIT 105.9 Mitchell SD
 439
 2244 KJOE 106.1 Slayton MN
 this and the previous station really get out
 357

July 18th 2001 Tropo

0003 KDBX 107.1 Clear Lake SD
 "X107.1 KDBX Clear
 Lake/Brookings/Watertown" 415
 1603 WBIZ 100.7 Eau Claire WI
 with KKRQ phased Legal ID 305

July 21st 2001 Tropo

0254 KFEB 107.5 Campbell MO
 phased thru KDAM "SE MO's 107.5" ; Legal
 ID 275
 0359 KBMV 107.1 Birch Tree MO
 This is my long running mystery "107.1 The
 Point" 243

July 30th 2001 Tropo

0145 KGGK 98.3 Wessngtn Spg SD
 455
 0208 WBUM 104.3 Baroga MI
 presumed w/ relig teaching
 0230 KDJS 95.3 Willmar MN
 392
 0320 WOBE 100.7 Crystal Falls MI
 ads; WOBE promo; oldies 4122
 2313 KBGY 107.5 Faribault MN
 "MN's Great Country 107.5 KBGY"
 2329 KLCX 107.7 St. Charles MN
 "and that's your wx on Oldies 107.7 KLCX"
 260

July 31st 2001 Tropo

0040 WSCD 100.5 Cloquet MN
 presumed...talk...mono 442
 0310 KKCB 105.1 Duluth MN
 446
 0310 KZIO 104.3 Two Harbors MN
 presumed Adult Standards 456
 0325 KQCR 98.9 Parkersburg IA
 phased thru WHTS-"you're listening to the
 Heart.." 184
 1253 WIVR 101.7 Kentland IN
 "Y107 River Country" local mentions jingles
 169
 1259 WAWF 88.3 Kankakee IL
 "You're listening to 88.3FM WAWF
 Kankae" AFA 154
 2025 WWIB 103.7 Hallie WI
 with WLLR phased 340

August 1st 2001 Tropo

0433 WKZC 94.9 Scottville MI
 with WAAG phased "New Country Z95"
 local ads 330

0441 WSTQ 97.7 Streator IL
with WMOI phased 106
0520 CJQM 104.3 Sault Ste Maire ON "Q
104" local mentions 526
0527 WMTE 101.5 Manistee MI
with WIBA phased 194 (see note 10)
0539 WYTZ 97.5 Bridgeman MI
with WZOK phased 150
0642 WZOC 94.3 Plymouth IN
"oldies 94.3..6:42/7:42 in Michigan....rare
236

August 3rd 2001 Tropo

0530 KNSR 88.9 St. Cloud MN
blasting in 394
0627 KLCX 107.7 St. Charles MN
"Good Times Great Oldies 107.7 KLCX"
260
0629 KZSE 90.7 Rochester MN
weather.....Legal ID 264 (see note 11)
0634 KCRB 88.5 Bemidji MN
MN weather...into showtune show 529
0654 KBHP 101.1 Bemidji MN
529
0655 KKZY 95.5 Bemidji MN
"63 degrees at our KZY studios....." 529
0700 KKEQ 107.1 Fosston MN
554 (see note 12)
0709 WBJI 98.3 Blackduck MN
Bemidji ad..."Real Country Weather"....539
0714 KLLZ 99.1 Walker MN
with KEEZ phased.."Z99 NE MN classic
rock sta" 499
0800 WBJI 98.3 Blackduck MN
Legal ID 539
0807 KKBJ 103.7 Bemidji MN
with WLLR phased...weather...local ads
Mix 103 529
0810 KQRS 92.5 St. Paul MN
with WKXQ phased 336
0824 KOKK 101.9 Walker MN
with KNWS phased ...local ads 499
1840 WQLH 98.5 Green Bay WI
ate up WXXQ-IL 311
1848 WJZJ 95.5 Glen Arbor MI
"the Zone Northern MI's modern rock" 385
1855 WGFN 98.1 Glen Arbor MI
Local lumber ad..No MI wx on The Bear
(see note 13)
1859 WBNZ 99.3 Frankfort MI
"99.3 WBNZ Frankfort-Benzonia...." 367
1901 WJZJ 95.5 Glen Arbor MI
"The Zone" and Legal ID 385
1914 WKMQ 96.7 Loves Park IL
"Oldies 96,7 WKMQ'...jingle 154
1931 WKLA 106.3 Ludington MI
324
1931 WBUM 104.3 Baroga MI
was in and out all week 451
2059 KAYP 89.9 Burlington IA
"this is KAYP Burlington" AFA pgm 39
(see note 14)
2236 WIKB 99.1 Iron River MI
402
2318 WEGZ 105.9 Washburn WI
431

August 4th 2001 Tropo

0100 WCQM 98.3 Park Falls WI
Legal ID 379

August 5th 2001 Tropo

1559 KESD 88.3 Brookings SD
Legal ID 412
2127 KFME 105.1 Garden City MO
with WGEM phased "the E crusier" "E FM"
229

August 6th 2001 Tropo

0330 Unids
Northern MI 103.9...105.9
0352 WKLQ 94.5 Hollard MI
with WKTJ phased 285
1953 WLKG 96.1 Lake Geneva WI
with KMXD phased "WLKG Lake Geneva"
188
2000 WMSE 91.7 Milwaukee WI no
phasing 228 (see note 15)
2146 WKCH 106.5 Whitewater WI
with KCQQ phased.."So WI offical Beatles
sta" 193
2159 "Cool FM K106" WKCH Whitewater's
only"(see note 16)

August 7th 2001 Tropo

0102 WZTY 103.7 Hartford MI
Legal ID 263
0134 WSMK 99.1 Buchanan MI
with WIAI phased "99.1 WSMK" dance
(see note 17)
0206 WFPS 92.1 Freeport IL
Country 138
0221 WMUZ 103.5 Detroit MI
416
0221 Unid 105.9
briefly probably WDTJ urban format with
WCKG x
phased then WJOT (IN) faded in and
stayed
0551 Unid 102.3
"102 The Groove" probably WYBA relog
2036 KFMT 105.5 Fremont NE
with KILJ phased local ads "Gold Radio
105.5" 312
2104 KPNO 90.9 Norfolk NE
with KUNI phased 367
2204 KRBI 105.5 St. Peter MN
with KILJ phased "River 105" local ads etc
313
2212 KLOW 107.3 Forest City IA
with KBKB phased 248

August 8th 2001 Tropo

0116 KMIT 105.9 Mitchell SD
439
0159 KRSD 88.1 Sioux Falls SD
"Programming on KRSD.....Minn Public
Radio" 377
0224 KKHG 107.9 Flambeau SD
380
0600 KTLB 105.9 Twin Lakes IA
Legal ID "The Beach" 245

August 22nd 2001 Tropo

0101 KBMV 107.1 Birch Tree MO
 Legal ID..... "107.1 The Point" 243
 0402 KBHI 107.1 Miner MO
 "The Zone at 107-1 KBHI Miner...." 255
 0420 WWSI 88.9 Mount Vernon IL
 "WSIU....pledges wanted" 175
 0428 WXLT 103.5 Christopher IL
 "103-5 The X...real rock for So ILL" 192
 1838 Unid 92.1
 Es—"FMK magic" FL lottery ad
 1838 Unid 100.3
 Es—"Coast 100"

August 23rd 2001 Es (very choppy event)

1831 KBEX 105.1 Billings MT
 "Rock n Roll classics" Billings ad 970
 1838 KRSQ 101.9 Laurel MT
 982 (see note 20)
 1848 KXLB 100.7 Livingston MT
 1067
 1848 Unid 102.1
 NPR probably needed Bozeman
 1849 KONY 101.1 St. George UT
 1201
 1854 KGFT 100.7 Pueblo CO
 Legal ID religion 760
 1856 KRTZ 98.7 Cortez CO
 987
 1908 KXAZ 93.3 Page AZ
 1146
 1908 KNMI 88.9 Farmington NM
 981
 1914 KVRH 92.3 Salida CO ad
 including Hwy 50 in Salida "now KVR.." 828
 1916 KCVI 101.5 Blackfoot ID
 "Idaho's rock station K Bear 101" 1132
 1918 KKFG 104.5 Bloomfield MN
 970
 1920 Unid 105.1
 "Your win anything station K F O X"
 1921 Unid 107.5
 "Colt Country 107.5" (Editors note ..this
 appears to be
 KSED Sedona AZ)
 1922 KNYN 99.1 Fort Bridger WY
 "Big O Tires of Evanston...." 1032
 1926 KGLX 99.1 Gallup NM
 "Gallup's only choice for hot new country"
 1041
 1930 KAHM 102.1 Prescott AZ
 1263

Notes:

1. May 13 (1200) It's not too often that you notice that you have a brand new local and then hear needed DX through it! The ID's were about 5 seconds apart and I happened to be in a semi-null for WCEZ.
2. May 26 (1352) "Eric Clapton..Broken Down...on KWUF 106.3." Running a remote from the First Annual Pagosa Fiber Fest (?) from fairgrounds on Route 84. Nice surprise only 255 watts.
3. May 26 (1808) "You're listening to Rye and Bradley here on the Hit Mix, Worship 95.3 FM." Confirmed by a phone call.
4. May 26 (1849) Oak City Furniture ad with the address of 5300 Virginia Beach Blvd. All I see for them is a CP. They must be on seving the Hampton Roads market probably has antenna well south of Exmore.
5. June 12 (0736 to 0804) These two heard on the MR-78, as it "gets on to" 104.9 better. These strong enough to overcome the signal deficit, which has since been fixed.

1936 KLIX 96.5 Twin Falls ID
 1241
 1936 KVNA 97.5 Flagstaff AZ
 1201
 1937 KEZJ 95.7 Twin Falls ID
 1241
 1944 KODJ 94.1 Salt Lake City UT
 "Super Hits KODJ" 1113
 1951 KSFI 100.3 Salt Lake City UT
 1113
 2000 KWKD 102.3 Randolph UT
 1085 Legal ID (see note 21)
 2030 KCPX 105.7 Centerville UT
 "Ford in Bountiful" 1111
 2038 KOSY 106.5 Spanish Fork UT
 Cottonwood Mall ad..."Delilah on Cozy
 106.5" 1106

August 27th 2001 Tropo

0035 KVSV 105.5 Beloit KS
 totally on top no phase no sign of KZZT
 399
 0125 KTMX 104.9 York NE
 "the best mix of music on KTMX Mix 105"
 365
 0145 Unid 96.3
 with KRNQ phased probable KZDY-Kansas
 0209 KCKS 94.9 Concordia KS wx
 for No KS/So NE "Kiss 94.9" 375
 0214 KCSI 95.3 Red Oak IA
 with KOKX phased "County Sunshine
 KCSI" 242

December 11th 2001 Tropo

1811 WLEN 103.9 Adrian MI
 "Lenawee Country WLEN" 359
 1902 WVXI 106.3 Crawfordsville IN
 Crawfordsville-Lebanon ID 201
 1910 WXKE 103.9 Fort Wayne IN
 292

December 15th 2001 Tropo

2200 WSIX 97.9 Nashville TN
 local weather 364

December 26th 2001 Es

0358 KITE 93.3 Port Lavaca TX
 "KITE 93.3 Good Times Oldies" 881
 0404 KZFM 95.5 Corpus Christi TX "Z
 95" 955

6. June 21 (1102) Hello?! When did this happen? I had no idea they had moved here from 92.5, nor have I ever noticed anything about such a move.
7. July 14 (1119) Spanish, with "Super Joven" (super youth) program, rock and Cuban music. At 1120 mention of "La Habana". Website check at Jeff K's shows them with such a program.
8. July 17 (2030) "K 95, today's best country and all-time favorites" gave their phone # 328-4491...ad for a boat place in Brooks.
9. July 17 (2130) No interference from WKAI 100.1. They've cleared it up! Used to kill 99.7 to 100.5 so badly I once heard it Monomouth (30 miles) on 100.5! Somebody got smart, realizing it detracted from 100.1 coverage. That may be why, in fact, I heard so many 100.1s 1998-2000.
10. August 1 (0527) "Good times and great oldies, we're Oldies 101.5" after a Manfred Mann oldie.
11. August 3 (0629) This is the first time I've managed to ID one of the MN's here after numerous tries. In the past "Murphy" has always assured that KWMV-MO would fade in at ID time.
12. August 3 (0700) "Q 107 is KKEQ Fosston-Bemidji-Grand Forks, today's Christian music for Northwestern MN and eastern ND."
13. August 3 (1855) Recognized "The Bear" slogan from the Legal ID (for this, Sheboygan 107.1 and WCKC 107.1) heard on WCKC in 2000. Extremely strong, but very temporary, duct to that small area.
14. August 3 (2059) Wasn't this supposed to be licensed to Mt. Pleasant?
15. August 6 (2000) Weather; legal ID; Milwaukee School of Engineering (thus WMSE calls); phone # for requests; list of previous set of songs. At Last! Was at, or near, the top of "my want list" (KAVV 97.7 AZ probably higher) partly because they're often my station of choice when I go to Milwaukee. Depending on who's on you can hear punk, bluegrass, rap....
16. August 6 (2146-2159) After the legal ID, they ran a 1 day old weather tape giving the August 5 date. Oops!
17. August 7 (0134) I logged this a few years ago but I eventually "de-logged" it when I realized I hadn't been paying close attention and perhaps only had WFMK, which indeed was them. This time I'm sure.
18. August 7 (2104) Legal ID, "Christian radio for NE Nebraska" (Co-ID with 91.9 Columbus which I couldn't find). A "made-to-order" ID! I called them, supsecting I was hearing them, and asked if he could toss in a legal ID after the news. He did!!
19. August 8 (0224) "You've got the Hog 107-9, anything else is just a boar..." Empire Road Rally promo and other local mentions
20. August 23 (1838) "Hot 101.9" various area ads including Magic City Speedway ("Get read Billings1") I am assuming this is Laurel from 101.7 but I can't find such a move, and "HOT" slogan implies assumed call letters may have changed.
21. August 23 (2000) "KWKD Randolph-Salt Lake City-Provo-Ogden, Utah's new rock 102-3 The Blaze." Totally blasting in.

Hello to all. I hope to see a lot of you in Oklahoma City, but I could suffer the misfortune of it being 1 or 2 weeks "too early". Though I missed some of the great openings (June 28 comes to mind quickly), I seemed to note that this season, tropo wise, was quite similar to 2000. Again no significant tropo into Indiana/ Ohio areas. Instead a lot of northerly stuff. The multiple cloud May 26 event was amazing. The August 23 event even more amazing, though not as much from its quality as from its extreme reception area—nearly the entire U.S. Mountain Time Zone was coming in—One of the widest "simultaneous" areas I've ever seen. Loosing 95.9 was a bummer, but I knew it was coming. At rough count I've logged 62 there, probably still my highest total, but I've done well on 106.3 recently. I'll be loosing 106.3 within the year too. Ah..so many stations on the air and still nothing really innovative or different. I have no computer yet, so listening to WFMV, WCBN, KPIG, etc, is no option. WWHP 98.3 (a pale KPIG imitator) is a little too weak/far. This report badly delayed because I get backed up. Then the DX piles up and it turns into a massive project. First I had to go through 2 years of tapes, transferring probably 300 or more FM ID's. All the local content doesn't make for a very interesting tape if the station is never mentioned, such as WLZW 98.7. Somehow, someday, noting which stations have made it to tape will itself be another massive project. The 2 years of tapes had FM from 45 states, with only WV/OR/WA missing among the 48 contiguous. I think originally it took me a lot more than 2 years to hear 45 states.

73, and may the upcoming DX season be good to you in all respects, on and off the dials.

Rick Shaftan Sparta NJ shaftan@ptd.net

Equipment: Realistic STA-2280; Conrad RDS Manager; Two Aps 14s Stagger stacked with two FM 13s. New w/@ First # at end is mileage, second is bearing. Note that the opening moved right around 1820.

December 16th 2001 Es

1722	WAYF	88.1	W Palm Beach FL	Way FM 1030	200d
1727	WXEL	90.7	W Palm Beach FL	Ad for Palm Beach Co. Atty, WXEL ID 1048	200d
1731	WTMI	93.1	Miami FL	Classical	1088 199d
1731	@WEAT	104.3	W Palm Beach FL	Frampton, Sunny 104.3	1048 200d
1732	WIRK	107.9	W Palm Beach FL	We're Blowing Up Stuff All Day on WIRK 1035	200d

1740	@WPBZ	103.1	Indiantown	FL	40 Minutes of non-stop Buzz Tunes	1017	200d
1745	WBGG	105.9	Ft Lauderdale	FL	Coral Springs Honda ad	1085	199d
1747	????	97.7			Original Lady Marmalade		
1758	????	96.9			Stop and Smell the Roses, prob relog of Tavares, FL		
1800	WIRP	88.3	Pennsuco	FL	SS and ID in/out of WBGO w/ment of FL	1098	200d
1803	WPSC	88.7	Wayne	NJ	s/off		
1819	WZTA	94.9	Miami Beach	FL	Fairbanks Dodge on Hwy 441	1088	199d
1824	WAYJ	88.7	Fort Myers	FL	Way FM, Fort Myers mentions	1095	204d
1825	????	90.3			Rel		
1827	WSMR	89.1	Sarasota	FL	Serving the Gulf Coast, WSMR Sarasota	1057	207d
1835	WIKX	92.9	Punta Gorda	FL	Country 1063	205d	
1837	WWRM	94.9	Tampa	FL	Lame Mx	1088	208d
1839	@WBVM	90.5	Tampa	FL	Silent Night // Internet #2244	1008	208dPM

FRED NORDQUIST - 7945 Boxford Road - Clay NY 13041 (ELT)

email: nordquis@twcny.rr.com FM DX REPORT - RX: Carver TX-11a w/IF Filter mod Ant: SP9s at 35'AGL & 12' AGL (vert pol for Es). *=new to log

Conrad RDS Mgr w/PC SW (RDSS0389). FM DX for period 7/15/01 - 1/4/02.

2058 *WSDL 90.7 Ocean City NJ
ID NPR (336)

July 15th 2001 Es

1951 brief - No IDs.

August 6th 2001 MS

July 16th 2001 Es 2035-2114 AL MUF 101.9

0732 WRWA 88.7 Dothan AL
RDS PI=BA02 PS=WRWA (969)

2035 WVAS 90.7 Montgomery AL
RDS PI=EEEE PS=WVAS (927)

August 12th 2001 MS

2045 *WHHY 101.9 Montgomery AL
ID

1614 *WVXU 91.7 Cincinnati OH
RDS PI=4E28 Text="tune in 91.7" (518)

July 17th 2001 Es 2107-2144 ND

August 13th 2001 MS

2110 UNID 90.1
PI=EEEE PS="CRL RDS" w/text msg
2144 KPNE 91.7 N Platte ND
RDS PI=38F2 PS=KPNE (1270)

1952 WRWA 88.7 Dothan AL

August 17th 2001 Es 21142-2229 AR/OK MUF: 95/5

July 21st 2001 Es 0945-1117 FL & 2000-2034 GA

0945 WWKA 92.3 Orlando FL
k92fm (1051)
2000 *WZGC 92.9 Atlanta GA
RDS PI=974A PS=Z93 (787)

2200 KIPR 92.3 Pine Bluff AR
RDS PI=26B7 PS=Power 92 (1055)
2213 *KARG 91.7 Poteau OK
relig RDS PI=11C0 (1138)
2229 KKPT 94.1 Little Rock AR
RDS PI=4E28 (1043)

July 22nd 2001 Es 1246 no IDs (PTA Houston TX)

August 21st 2001 Es 2218 no IDS.

July 22nd 2001 Tropo

August 22nd 2001 Tropo

1200 *WNBQ 92.3 Coudersport PA
RDS PI=7726 (135)

1820 *WZKZ 101.9 Alfred NY
ID (104)

July 27th 2001 Es

September 9th 2001 Strong Tropo to east

2102 KQSD 91.9 Lowry SD
RDS PI=3CIT PS=KQSD (1187)

2020 WGBH 89.7 Boston MA
RDS PI=64A1 PS=WGBH-FM (263)

July 29th 2001 MS (1st RDS log via MS)

2030 WHHY 94.1 Providence RI
94-HHY r (257)

~1200 KDSU 91.9 Fargo ND
PI=19D4 PS=KDSU (1042)

2039 *WPRO 92.3 Providence RI
RDS PI=7E0C PS=PRO-FM

2200 *WCTK 98.1 New Bedford MA
ID Cat Country (285)

2220 *WMYY 97.3 Scholharie NY
relig (97)

August 5th 2001 Tropo

October 2nd 2001 Tropo

2012 *CHCQ 100.1 Belleville ON
Q100 k (new to air) (95)

October 6th 2001 Ms

2300 *WEPR 90.1 Greenville SC
RDS PI=A6CF (663)

October 18th 2001 Tropo

2130 *CBCD 92.5 Pembroke ON
RDS PI=CB21 PS=CBC-R1 (192)

November 13th 2001 Ms

---- WRWA 88.7 AL
on RDS PI=EEEE PS=WRWA

2202 KCFN 91.1 Wichita KS
RDS PI=15D7 PS=KCFN (1177)

November 19th 2001 Ms

0551 WJCH 91.9 Joliet IL
RDS PI=F000 PS=WJCH-FM (620)

January 4th 2002 Es 1930-2002 FL MUF:94.7

1930 WRWA 88.7 Dothan AL
RDS PI=EEEE PS=WRWA
1935 *WTBF 94.7 Brundidge AL
RDS PI=EEEE PS=WTBF k (951)
1952 WMEZ 94.1 Pensacola FL
ID (1072)

Matthew Sittel, 15013 Eureux Circle, Bellevue, NE 68123

<http://members.home.net/mcsittel/dx.htm>

mcsittel@home.com

Equipment: Yamaha TX-900 tuner w/modified filters, Winegard PR-5030 VHF/FM antenna at 32 feet, Conrad RDS unit.

November 18th 2001 MS

0301 WBFO 88.7 Buffalo NY
"...at 5AM on WBFO..." 885

0311 CIMX 88.7 Windsor ON
"...this is 89X..." 672

0515 KODA 99.1 Houston TX
"...Houston's Sunny 99.1..." 785

0521 KXKC 99.1 New Iberia LA
calls 802

1253 KATW 101.5 Lewiston ID
"...good morning...101.5 Kat FM, the Kat..." 1113

1328 KUPI 99.1 Idaho Falls ID
"...Radiator King, 1774 N. Woodruff..."
838 typed this address on
www.google.com and up came
Idaho Falls listing!

1346 unID 99.1
old k mx, "722-9998" radio station phone
number

November 18th 2001 Tropo

1247 KKSI 101.5 Eddyville IA
"101.5 Kiss FM" 173

November 18th 2001 Es

2135 XHCAO 89.1 Reynosa TA
SS, mention of AM 620 1045

2139 unID 90.1
"Solo Hits"

2139 unID 91.9 SS

December 6th 2001 GW

1559 KBLR 97.3 NE Blair
101.5 now an open frequency thanks to
this station move! 31

November 18 was my best ever experience with meteor scatter. We lucked out and got a moment of clear sky so my wife and I could watch the meteors outside (saw about 35 in 10 minutes), and then once it clouded over I hit the dials and logged a few stations. My MS log total here is now 7, with 3 of those also having been logged by E-skip. Overall the log total is now 624. 73s Matt.

Adam Rivers Chicopee, MA patriotsrule417@yahoo.com

Website: <http://adamskewlsite.freesevers.com>

January 4th 2002 Es

1908 WNNX 99.7 Atlanta GA 863 miles.

1928 WJMI 99.7 Jackson MS 1185 miles. Best catch ever.

Satellite News

George W. Jensen
4604 Anntana Ave.
Baltimore, MD 21206-4220
SCISATMAN@AOL.COM

A short column this month - still waiting for F1 Ku to settle down before beginning that monster. Basically here are a few changes.....

AMC 1 - was called GE Americom 1 - Transponder 16 - was Univision in VC2 - delete this - 408 is Fox Sports 2 - 409 is Fox Sports North? 750 and 751 WERE Gems East and West and are now Telemundo 2 East and West - 753 is now DEUTSCHES Welle which will probably leave 22 on analogue - 822 is Deutsches Welle radio service. On the Ku Band side - ALL NBC feeds are now in some form of MPEG format . 780 - Add - America's Collectibles network

AMC 4 is the new name of G E Americom 4 - there are several deletes here - 12 - Hollywood Treasures Network and 19 WPCB - Pennsylvanis - both of these may have moved to some kind of MPEG format elsewhere.

Galaxy 4 - 7 - delete Warner Brothers feeds - are now in MPEG elsewhere. On the Ku Band side - a few changes in the DMX music service - 840 - Hard Rock, 843 - Classic R and B - 844 - Traditional Country - 848 - Swing - 849 - Lite Jazz.

On Telstar 5 - add - Transponder 1 - National TV Liquidators and delete 19 - America's Collectibles Network.

Galaxy 11 - delete 601 - Recovery Network and add here - Bloomberg also add 602 - NUE - New Urban Entertainment which may be about to self-destruct due to bankruptcy.

AMC3 - is the new name for G E Americom 3

AMC2 - is the new name for G E Americom 2 - delete from this one transponder 4 - Cadena De Milagro which is now else where in MPEG and Analogue. On the Ku Band - add 400 ASCN - American Sports Cable Network in HDTV

AMC5 - is the new name of G E Americom 5. SBS 6 - 100 - GWNS - whatever that is - has been colorbars in the past and 102 - The Newborn Channel.

That's all for this time around - see you in 30. '73's and great DX.

ps -

E-Mail me if you spot any changes I have missed @
scisatman@aol.com



Q. I have an Icom R-7100 receiver on the way. Can someone please tell me exactly what the TVR-7100 TV/FM adapter does. Is it worth buying one?

A. The Icom TVR-7100 TV/FM adapter demodulates the 10mhz IF signal from a jack on the rear of the receiver. It then converts that signal into composite video that you can view on a video monitor. In other words, if you're purchasing the Icom R7100 to DX TV signals, then you'll need this accessory. Without it, you can only listen to them.

BTW, when you get the Icom, I suggest programming the 83 TV channels into the memory, starting with position #2. This way, the memory lines up with the channel numbers.

You have to program in the aural center frequency for each channel. For example, channel 2 is 49.75mhz. The TVR-7100 uses the audio frequency rather than the visual carrier frequency.

I don't recommend using the audio output jacks of the TVR-7100 for audio reception. Instead just use the audio output of the receiver itself. This way, you can use the FM narrow setting to determine the offset of the stations audio carrier. This is a HUGE help in identifying a station.

For example, on channel 2, if you use the FM narrow setting and then tune for the best sounding audio, it will likely be one of three settings: 49.750 (Center) No offset, 49.740 Minus (-) offset 49.760 Positive(+) offset.

Mid-Latitude Sporadic-E – A Review-Part III

Michael Hawk - November 12, 2001

Ken Neubeck, WB2AMU, proposed that this potential sub-cycle of Es is related to the latitudinal location of sunspots on the sun.¹ During the approximately 11 year solar cycle, not only do the quantity of sunspots change, but the location of sunspot groupings also changes. Beginning at the solar minimum, sunspots are primarily located at about 30° latitude on both sides of the solar equator. As the cycle progresses, the locations of the spots slowly converge to the solar equator. At the end of the cycle, a transitional period occurs where spot groupings may exist at both 5° and 30°.

Neubeck believes that during these transition periods, Es peaks will be diminished, and there will be more occurrences of Es during abnormal months. The end result being less Es than normal for the year.

I would hesitate to start to draw conclusions based on an 11 year study – which would only constitute 2 Es cycles, if in fact they exist. Neubeck's theory has been largely discarded as a "casual observation" rather than something to pursue in the scientific community, due to lack of long-term data, a concrete scientific explanation of how sunspot location would impact Es, and lack of scientific data or loose correlation of sunspot latitude to any cycles of ionization on Earth.

2.7 Sunspot Cycle

By overlaying a graph of the 2800 MHz solar flux (a measure of solar radiation intensity), Dyer's graph showed no correlation to the solar flux. This is opposite of normal F region propagation, where the quantity and intensity of propagation at higher frequencies is directly related to the amount of sunspots.

Sunspots appear as dark spots on the sun's surface, and are relatively cool in temperature. They can range from 750 km in diameter to tens of thousands. The important aspect of a sunspot with regards to propagation is the area that surrounds the spot. These areas have much increased radiation. If many spots exist on the sun, the total radiation emitted increases substantially, leading to higher ionization levels on earth, which improves F region and normal E region propagation. However, it does not appear that this impacts Es directly.

2.8 Worldwide Occurrence

As already mentioned, the Es season is reversed in the southern hemisphere. Also, the amount of time Es occurs is not constant through common latitudes. Generally, Es is more common in the temperate latitudes closer to the tropics. Many amateurs in the USA have made the common observation that Florida and Mexico seem to be the most common "pests" in Es DX'ing. However, even "southern latitude" generalization is not 100% accurate. Long-term studies have indicated a large increase in occurrence near Japan.²

3.0 POSSIBLE Es MECHANISMS

3.1 Introduction

For decades, professionals and amateurs alike have been baffled by the cause of Es. Even the intense study during the IGY³, the advent of rocket exploration of the ionosphere, ionosonde deployment, and other technological advances have only brought up more questions than they have answered. Because of the extreme difficulty encountered by scientists in isolating the mechanism which causes Es, it is fairly apparent that it must be a complicated series of events, requiring the right "ingredients" for the final product of Es to result.

Some of the following possible mechanisms have been touched on already. Of course, ionization by the sun's ionization is likely a base "ingredient" as well.

3.2 Ionospheric Wind Shear

The wind shear theory of sporadic-E formation is generally credited to J.D. Whitehead of the University of Queensland, Australia. The basic theory is based on the east-west winds in the E region. These winds are caused by gravity waves, and can result in vertical movement. Vertical shears can compress ions into a thin layer, resulting in high density ionization. This effect seems to particularly apply to the metallic ions of Fe⁺ (Iron) and Mg⁺ (Magnesium). This is because the

¹ See K. Neubeck, "Sporadic-E and Auroral Propagation", World Radio, March 1993 pp 19-28

² EK Smith, "Temperate Zone Sporadic E Maps (foEs > 7 MHz)," Radio Science, Vol 13 (1978), pp 571-575

³ The IGY was the International Geophysical Year. Solar Cycle 19, peaking in the late 1950's, was the largest cycle on record. Scientists, in anticipation of a high intensity peak, declared the peak year the IGY. This was done to raise awareness within the scientific community, and led to intense study of solar-terrestrial relations. No other time period has brought such significant advances in the study of radio wave propagation.

recombination rate of these ions is greater than other molecular ions, allowing them to remain charged (ionized) long enough to be pooled together into highly dense thin sheets.

The theory identifies a relation between the horizontal component of the Earth's magnetic field as impacting the probability as to whether Es will form under shearing conditions.

The shearing effects in the E region are well documented. Additionally, many experiments on horizontal winds and electron density have given support to this theory with respect to mid-latitude Es.

The theory does not explain other types of Es as well as it does mid-latitude Es. However, this is not of much concern to DX'ers, as we primarily observe the "true" Es type that occurs in the mid-latitudes.

The windshear theory, when combined with tidal winds, is widely regarded as an accurate and plausible explanation of Es. A 1998 review of the theory by JD Mathews (Journal of Atmospheric and Terrestrial Physics, Vol 60, pp 413-435) has once again reaffirmed the theory.

3.3 Thunderstorms and Associated Phenomena

The possible correlation of Es to thunderstorms is a theory that refuses to die. This theory can be traced as far back as the 1920's. In 1933, Naismith and Appleton had some success in finding a correlation. These scientists are well known for their ground breaking ionospheric study and documentation, so the possible correlation was not taken lightly. However, in 1938 they concluded that the results from 1933 might have been inaccurate. The theory was rejuvenated in the 1950's when a study in India showed a possible correlation to squall-line thunderstorms (but not super-cells).

No studies intending to link thunderstorms to sporadic-E have resulted in conclusive data. For years, the scientific community doubted any possible relation, given the simple fact that thunderstorms occur in the troposphere (0-14 km altitude), and Es occurs at 100 km. In between the troposphere and the ionosphere's E region exist invisible barriers where the medium of the atmosphere radically changes. These transition zones, named the tropopause and stratopause, prevent certain interactions between layers from occurring due to the change atomic content, wind, temperature, and other attributes.

Additionally, thunderstorms are generally localized events. On the other hand, Es "outbreaks" frequently occur, in which Es clouds are reported over large portions of the planet. As much as 1/6 of the Earth may be within line of site of an Es cloud capable of $f_oE_s > 6$ MHz during these outbreaks. Similarly, long term observations of data collected from ionosondes also don't indicate a correlation between thunderstorm frequency and Es frequency.

The thunderstorm correlation theory primarily hangs on in amateur circles. Ionospheric researchers quickly point to the fact that the diurnal, monthly, and yearly characteristics of thunderstorms do not match sporadic-E closely at all. Similarly, the worldwide distribution of Es does not match that of thunderstorms.

But, as with most areas of sporadic-E, the analysis is not that simple. In recent years, it has been discovered that a higher level of interaction does occur between lower and upper layers of the earth's atmosphere. In fact, one aspect has been reported and well documented in mainstream media – sprites and blue jets (sometimes referred to as upward lightning).

Red sprites are optical phenomenon that occurs directly above a thunderstorm, associated with it's lightning. They can extend to about 90-95 km altitude – right to the E region, but not into the E region. The duration of a sprite is only 3-10 milliseconds, as measured by high-speed photometers. Sprites are rarely visible to the human eye. It is estimated that sprites occur in conjunction with less than 1% of lightning strokes in a thunderstorm. The true mechanism of a sprite is not known.

Blue Jets are similarly related to thunderstorms, and are only visible with special television systems. Blue Jets only reach altitudes of 45-50 km, and emanate from the tops of "thunderheads" in a cone shape.

The discovery of sprites and blue jets in the early 1990's shows that there may be many more undiscovered interactions between activities in the troposphere and stratosphere (and the ionosphere).

Supporting these possibilities was the discovery of Elves and TIPP's – Trans-Ionospheric Pulse Pairs. Elves (Emission of Light and Very Low Frequency perturbations due to EMP Sources) appear like a halo in the lower ionosphere, and propagate downwards. They seem to precede sprites.

It appears that TIPP's source is a positive bipolar breakdown – an event associated with thunderstorms. The impact of TIPP's on the ionosphere's ionization density and ability to propagate radio waves is not clear.

All of these newly discovered interactions have renewed focus on the effects of weather in the ionosphere. To date, no direct or indirect correlation between these events and Es has been identified.

3.4 Other Weather

J.D. Whitehead's research concluded that according to the wind shear theory, gravity waves associated with tropospheric weather might have some influence on Es. The late Mel Wilson, W2BOC, believed that weather could play an important role in the development of Es.⁴ He stated that "birthplaces" of Es clouds were often associated with fronts or low pressure systems, and could produce a series of clouds. His study primarily focuses on the theory that whatever the catalyst at the birthplace is, it creates a series of clouds that generally move to the northwest. Not much evidence of weather being the catalyst is provided in his study.

3.5 Meteor and Cometary Origin

Theory suggests that meteors should play some role in the formation of Es, though likely very indirect. Many of the ions found by rocket investigation of the E region, and Es formations, have meteoric origin. As mentioned before, metallic ions appear to be a necessary component, due to their slower recombination rates. Meteors are a major source of these metallic ions.

Studies have investigated the occurrence of random meteors and total meteors for correlations to Es. Random meteors, which occur in great numbers every day of the year, have a marked increase in the June-August period. Investigation of this in closer details reveals the peak is several weeks after the Es peak in the Northern hemisphere. Additionally, there is no secondary peak of meteors in the northern hemisphere winter months, as there is with Es. This simple analysis quickly discounts a meteor-related Es catalyst or mechanism.

In relatively recent studies, a proposal of a cometary origin of Es has come to light.⁵ Dr. G. Neil Spokes, amateur radio operator and amateur astronomer, built this theory around data collected in other studies. The 11-year study of Es at 88 MHz by Pat Dyer and Emil Pocock (referenced earlier in this article) showed that some dates seemed more favorable for Es. The logical conclusion that Dr. Spokes suggested for a phenomenon that strictly follows the calendar was an astronomical one.

Dr. Spokes proposes that gases or tiny particles associated with comet paths were the cause. This was not such a large leap in thought, as it is already known that comets leave debris in their paths around the sun. When the earth encounters this debris, meteor showers result.

Unfortunately, the data from the Dyer/Pocock study does not easily identify periods of time when auroral activity⁶ may have prevented Es observation, or provide for an offset for our periodic calendar adjustments. This could account for small changes in the data, lessening (or increasing) the appearance of year-to-year daily correlations.

As it stands, mathematical studies using random number generators skewed towards a late June peak provide similar results as the data collected. This isn't to say that there is absolutely no chance that there is an astronomical relation – it just shows that "only" 11 years of data is tough to use as a basis for building an astronomically-based theory.

3.6 Geomagnetic Activity

Correlation between auroral activity and auroral zone Es has been *proven* to exist, but no correlation has been shown for temperate zone (mid-latitude) Es. Many of these studies make use of the planetary A and K indices (24 and 3 hour measures of auroral activity). As previously mentioned, the A index is difficult to accurately use, since it is a measure of activity over the last 24 hours, and thus, significant activity that occurred several hours ago and "inflate" the result of the A index. The A index is often not reflective of current conditions.

And unfortunately, the studies which utilized the K index as comparative data over-simplified the data by either concluding that an index of "2" or greater constituted disturbed conditions (4 would have been more accurate), or by using only 2 or 3 K index data points from a given 24 hour period.⁷

The area of geomagnetic activity and its effect on mid-latitude Es (whether as a catalyst or inhibitor) is an area in need of a long term conclusive study.

Again, a correlation has been shown to exist for high-latitude Es and auroral activity. During very intense geomagnetic storms, not only can auroral propagation/scatter occur, but Es-like propagation can occur within the auroral zone. This type of Es is discussed in more detail in the Section 4.

⁴ Midlatitude Intense Sporadic-E Propagation, QST, December 1970

⁵ Technical Correspondence, QST, April 1993

⁶ The Dyer/Pocock study reveals no correlation between Es and the A index, a 24 hour measure of auroral activity. This does not mean that auroral activity does not inhibit mid-latitude Es, as the A index is, by its nature, a lagging indicator and often not reflective of real-time conditions.

⁷ See Neubeck, World Radio March 1993

California Highway Patrol Frequencies

Great Help for Iding those CHP Stations via F2 and E Skip

Dispatch Centre	ID	Base		
			Truckee	80 42.48
			Donner Pass	109 42.48
			San Jose	24 42.5
			Oroville	35 42.5
			Williams	39 42.5
			Yuba- Sutter	43 42.5
			West Valley	56 42.5
			Bakersfield	69 42.5
			Willows	93 42.5
			Altadena	98 42.5
			Chico	104 42.5
			Modesto	48 42.52
			Sonora	61 42.52
			East LA	82 42.52
			Humboldt	16 42.54
			Hollister- Gilroy	23 42.54
			Santa Cruz	26 42.54
			Santa Barbara	29 42.54
			Grass Valley	42 42.54
			Placerville	44 42.54
			Auburn	45 42.54
			Crescent City	95 42.54
			Garberville	105 42.54
			Gilroy	135 42.54
			Buellton	3 42.56
			Clearlake	7 42.56
			Templeton	9 42.56
			Victorville	12 42.56
			Santa Maria	14 42.56
			Ukiah	18 42.56
			San Andreas	49 42.56
			Stockton	62 42.56
			Barstow	73 42.56
			South LA	77 42.56
			Amador	94 42.56
			Tracy	103 42.56
			Morongo Basin	106 42.56
			Needles	114 42.56
			San luis Obispo	28 42.56
			Solano	22 42.6
			Fort Tejon	102 42.6
			Buttonwillow	117 42.6
			Cordelia	127 42.6
			Grapevine	129 42.6
			Hayward	25 42.62
			Dublin	118 42.62
			Nimitz	126 42.62
			Mission (S.F)	128 42.62
			Santa Rosa	17 42.88
			Los Banos	30 42.88
			Mariposa	63 42.88
			Merced	64 42.88
			Madera	66 42.88
			Baldwin Park	81 42.88
			Contra Costa	19 42.92
			El Centro	85 42.92
			Winterhaven	116 42.92
			Calexico	133 42.92
San Bernardino	75	39.26		
Arrowhead	101	39.26		
Capistrano	113	39.36		
San Diego	87	39.4		
Santa Ana	86	39.44		
El Cajon	108	39.6		
Riverside	74	39.68		
Westminster	55	39.72		
Oceanside	92	39.8		
Temecula	115	39.8		
San Onofre	132	39.8		
Rainbow	134	39.8		
Cucamonga	123	39.88		
Quincy	20	42.08		
Susanville	38	42.08		
Alturas	60	42.08		
Fresno	65	42.08		
Redwood City	91	42.08		
Chowchilla River	140	42.08		
North Sacramento	46	42.12		
Mojave	59	42.12		
Mojave Inspection	59	42.12		
Bishop	72	42.12		
Santa Fe Springs	83	42.12		
Oakland	96	42.12		
Marin	34	42.16		
Alturas	60	42.34		
Bridgeport	71	42.34		
West Valley(L.A.)	56	42.36		
Yreka	41	42.4		
Mt. Shasta	52	42.4		
Dunsmuir	84	42.4		
Conejo	137	42.4		
Ventura	31	42.4		
Napa	21	42.42		
Newhall	78	42.42		
Antelope Valley	89	42.42		
Castaic	130	42.42		
Blythe	6	42.44		
San Francisco	32	42.44		
Red Bluff	36	42.44		
Redding	37	42.44		
Porterville	40	42.44		
Visalia	67	42.44		
Hanford	68	42.44		
Indio	76	42.44		
West LA	79	42.44		
Coalinga	88	42.44		
Trinity River	90	42.44		
San Geronio	97	42.44		
Desert Hills	131	42.44		
King City	8	42.46		
Central LA	15	42.46		
Monterey	27	42.46		
Woodland	47	42.46		
S. Sacramento	112	42.46		
S. Lake Tahoe	13	42.48		
Gold Run	70	42.48		

Reprinted from the Skywaves list from a post
by Paul Logan of Lisnaskea, N. Ireland.

Sign up/Renewal Form

Name_____

Address_____ Apt #_____

City_____ State/Prov_____ Zip_____

Country_____ Interests: TV () FM () 30-50() Weather()

email address_____

Sign me up/renew me for: 1 year () 2 years () More ()

Yearly dues \$24 to US addresses, \$26 to Canada and Mexico
\$38 to the rest of the world (payable in U.S. Funds)

Mail your dues to: WTFDA, P.O. Box 501, Somersville, CT USA 06072

Make your checks/money orders payable to: DAVE JANOWIAK

And *thanks* for your support of the WTFDA!

Return this form with your dues or make a copy of it and return that.

Editors and Submissions

Send your reports and station info to these folks.

THE MAILBOX and all general club correspondence:

Mike Bugaj at WTFDA, PO Box 501, Somersville, CT 06072

mbugaj@snet.net

SATELLITE NEWS

George Jensen, 4604 Antana Ave., Baltimore, MD 20206-4220

scisatman@aol.com

TV NEWS

Doug Smith, 1385 Old Clarksville Pike, Pleasant View, TN 37146-8098

w9wi@w9wi.com

FM NEWS

Greg Coniglio, 90 Slate Creek Dr., Apt#3, Cheektowaga, NY 14227

coniglio@adelphia.net

PHOTO NEWS

Jeff Kruszka, 5024 S. Braxton Ave., Baton Rouge, LA 70817

jkruszka@bellsouth.net

TV TIME TUNNEL

Tom Bryant, 849 Todd Preis Dr., Nashville, TN 37221-2607

tjbdx@home.com

EASTERN TV DX

Matt Sittel, 15013 Eureux Circle, Bellevue, NE 68123

mcsittel@cox.net

WESTERN TV DX

Victor Frank, 12450 Skyline Blvd., Woodside, CA 94062-4554

frank@horizon.sri.com

SOUTHERN FM

John Zondlo, 4889 Driftwood Cir., Yukon, OK 73099

jpzondlo@aol.com

NORTHERN FM

Keith McGinnis, 387 Shirley Street, Winthrop, MA 02152

longwave@mediaone.net

WTFDA://ONLINE

Saul Chernos, 57 Berkeley St., Toronto, ON M5A 2W5

schernos@sympatico.ca

VERIFICATIONS AND QSL SIGNERS

Tom Yingling, 221 Pinewood Road, Baltimore, MD 21222-2345

ka3tcc@erols.com

TV and FM STATISTICS

Fred Nordquist, 7945 Boxford Road, Clay, NY 13041

nordquis@twcnny.rr.com

Please Remember To Make Your Renewal Checks Payable to **Dave Janowiak**
Checks made payable to WTFDA may be returned and your renewal may be delayed.