

The Worldwide TV-FM DX Association

Serving the VHF-UHF Enthusiast



VHF-UHF DIGEST

E-ZINE VERSION

AUGUST 2002

The VHF-UHF Digest is the official publication of the Worldwide TV-FM DX Association dedicated to the observation and study of the propagation of long distance television and FM broadcasting signals at VHF and UHF. The WTFDA is governed by a board of directors: TOM BRYANT, GREG CONIGLIO, BRUCE HALL, DAVE JANOWIAK AND MIKE BUGAJ.

MEMBERSHIP ENDING IN AUGUST 2002

Check this list. This is your last issue unless you re-up.

Howard Fountain	Roosevelt Crawford
George Greene	Dennis Smith
Bob Smolarek	Steve Sprachman
John Tudenham	Ron Wing
Melvin Dishong	Scott Fybush
Steve French	Glenn Hauser
Eugene Hinton	James Roseman
Jeff Lehmann	Mike Friedel

WTFDA membership stands at 276 as of 7/22/02.

If you have a computer, hang out at the place where many of your fellow Dxers reside. That place is the WTFDA list at Topica.com. Want to



know when tropo is up? You'll find out. The Topica list takes out the guesswork. Subscribe now by sending an email to WTFDA-subscribe@

topica.com. Your logbook will love you for it! Have a great tropo season!

CONTENTS

Page Two	2
Mailbox	3
TV News...Doug Smith	5
Western TV dX...Victor Frank	13
Eastern TV DX...Matt Sittel	17
Southern FM DX...John Zondlo	20
Northern FM DX...Keith McGinnis	23
Satellite News – George Jensen	35
Photo News... Jeff Kruszka	36
Small Stations Reel from DTV Upgrade	39
DTV Interference	41
Editors and addresses, etc.	43

Well, we should be deep into skip season right about now, but for the most part the Es has left us behind. We've still been able to dig up some DX for you all and you can read it in the twelve pages that comprise Northern FM DX.

It's also very possible that we'll have FM News back with us again next month.

To make our VUD complete we have two articles on digital television. One concerns the cost of switching over to digital and how some small stations can't afford it. The other concerns interference between NTSC and digital TV signals. Good reading!

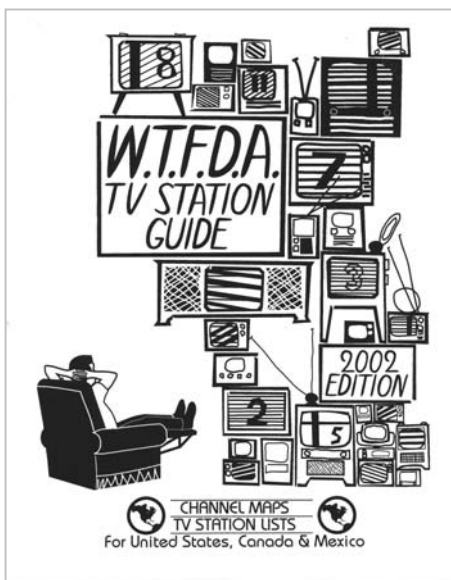
The 2002 WTFDA TV Station Guide GREAT FOR IDING TROPO CATCHES!

You just can't get any better than this! Over 400 pages of listings by channels and by plots on channel maps...full power, LPTVs, translators and DTV stations. The WTFDA Station Guide has it all! Make your check or money order for \$23.00 (US funds for those outside the USA) payable to **Dave Janowiak** and mail it to:

John Ebeling
9209 Vincent Avenue South
Bloomington, MN 55431-2157

Order now! Supplies are limited! Don't be left out!

For even more info see us online at: <http://fmdx.usclargo.com/tvg.html>





The Mailbox

P.O. Box 501, Somersville, CT USA 06072
MIKE BUGAJ MBUGAJ@SNET.NET

SUMMER 2002 – THE ES SEASON THAT WASN'T ?

Well, it looked promising. It started slow and we had two really great FM openings in the middle of June. And then it just quit, leaving us all shaking our heads and wondering why it left. The remaining openings hung around channel 2 or perhaps channel 4. One or two went into FM for a few minutes and then dropped out of sight and by the Fourth of July it was about over.

The east coast fared better than the west coast. Phoenix had a great year in 2001 but it had an almost total lack of E skip this year. Ashland OR had no Es since the beginning of June.

I think most of us are still in a state of shock. In my opinion, the only worse year for summer skip was 1984. I'll never forget 1984 for the lack of skip openings and I'll never forget this summer either.

MEMBERS AND MORE

Let's get started as usual with new members to the club. Welcome to **Rick Lucas** in Rochester, NY and **Mark Clark** in Phoenixville, PA. Once again Rochester comes through with another WTFDAer. I think we must have five or six there right now. Mark Clark writes "Your website was very impressive and I found your technical articles very informative. Thanks so much for covering this interesting part of the radio/tv hobby." Thanks Mark. I hope when things slow down this winter we can get more old VUD reprints up on the website again.

Turning to the renewal side, thanks go to these folks for writing a check for another year in the WTFDA: **John Griffiths(ON)**, **Keith McGinnis(MA)**, **Rick Lewis(AZ)**, **Frank Aden(ID)**, **Greg Coniglio(NY)**, **Alan Michalek(MA)**, **Jacob Norlund(MN)**, **Kermit D. Reid(GA)**, **Benjamin Greenlaw(ME)**, **Ralph Strobel(IN)**, **Ken Bedley(ON)**, **Steven Ponder(TX)**, **Tim Cronin(IL)**, **John Marx(WI)**, **Mike Femyer(AZ)**, **Bob Timmerman(IN)**, **Paul Mount(NJ)**, **John Johnson(MT)**, **Stan Weisbeck(WA)**, **William McGuire(MD)**, **David Austin(SC)**, **Pete Giacomelli(NY)**, **Niel Wolfish(ON)**, **Guy Falsetti(NY)** and **George Mileon(MA)**. Thank you all for staying with us despite the lack of E skip!

NEED A ROTOR?

Let's face it. It's just not easy to find an affordable rotor anymore. When your rotor dies, what can you do? Well you can run to Radio Shack and buy one of theirs and hope that it will last a few months. Or better yet, you can go email/call/write Rich Wertman. Rich has four Channel Master 9515B remote controlled HD rotors with 99 memories. The price for the 9515B is \$149.95 plus UPS shipping. If all you need is a 9515 drive motor (w/hardware), Rich has two of them and it's \$99.95 plus UPS charges. These take three wire conductors. Email Rich at rwsvcinc@localnet.com. Or write him at 6150 Crosby Rd., Lockport, NY 14094 or give him a call at 716-434-9216.

We hope everyone had a great time in Oklahoma City at the WTFDA Convention. I know John Zondlo put a great deal of work into it. In the next VUD we should have a convention wrap-up for you and maybe pictures too. We'll see how they come out. Stay tuned.

FMEDIA

As long as we're here talking about services that our members provide, let's not forget **Bruce Elving**. Bruce is the publisher of the FM Atlas, a book that is considered a "must" by many FM Dxers. As a companion to the FM Atlas, Bruce also publishes a monthly newsletter called Fmedia! which lists new FM stations coming on the air, facilities changes, call letters changes, news of translators, SCA, "Selected AM Happenings," "nonIDs/multi city IDs," and formats, noting which stations are stereo and which suffer from the disease of being monophonic. Fmedia usually runs about 8 pages filled with information. There is also a FM Forum.

If you're a person who just absolutely HAS to be in the know, Fmedia could be for you. The subscribing rate for FMedia! is \$26/year for DXers, and \$75/year for broadcasters and others gainfully employed in the media. Contact Bruce Elving for more information. His email address is fmAtlas@aol.com.

GROWING UP IN PASCAGOULA

From **Peter Baskind**, "When I was a kid growing up in Pascagoula, MS -- one of the best DX locations in America, as I could see the Gulf outside my bedroom window -- our cable system was given fits by trop, and even an occasional E-skip opening.

The biggest issues came up on the system's attempts to pipe in New Orleans signals. New Orleans is about 100 miles out, so a high-gain antenna was obviously needed. When WYES-12 went off (they are 24 hours now, of course. I watched them late into the night studying for exams at Tulane Law School), one would often see snow-free signals from KBMT/Beaumont. Occasionally, Beaumont would not be seen, but you would get KSAT/San Antonio (about 600 miles out), although its bearing is not too far off Beaumont's.

Likewise, the antenna pointed at WGNO-26 would often bring in KRIV/Houston, and occasionally then-WEVU Naples, FL* (although the antenna was pointing the wrong way). Over the Gulf, the Naples signal at 500 miles could get so strong, it would override New Orleans.

Just as an aside, channel 26 from Naples was my first DX catch ever. I was attempting to watch New Orleans on a hand-help bow-tie, and couldn't figure out why I was getting ABC. Sure was strong. You know...I really miss Gulf Trop."

HDTV IN NEW YORK

From **Karl Zuk**, "The only HDTV presence noted here are Fox on 44 and CBS on 56. The PBS 61 outlet barely makes it to my office about 25 blocks from the transmitter site. LOL. I recently saw a demo of a DirecTV feed of HDNet in a store. When motion artifacts are apparent in high definition, noise reduction becomes a very necessary ingredient. Nothing like very distinct blurry pixels. Boy, this technology still has a long, long way to go. You simply need much more bandwidth or a very clever algorithm (or both) to make this fly right. I also found it ridiculous that HDNet fills large holes in their schedule with film to HD transfers of old TV shows like Hogan's Heroes. I really like NTSC more and more. It works and is relatively simple."

The head of Sony Broadcast America, Ed Grebow, is said to be leaving Sony to head the broadcaster's consortium promoting the discovery of a new site for a master antenna for the NYC area. Why someone in this important position would want to take on such a challenging and potentially thankless job is a mystery to me. Ed has also worked for CBS and Chyron Corporation (the character generator people). The two sites now being proposed are Governor's Island and a site in (I think) Jersey City, NJ. It seems no one wants any part of the new tower structure. NYC mayor Bloomberg has nixed every concept so far.

And that's it for this month. See you all in September. Thanks for reading.-Mike

METEOR SHOWER GUIDE

We have a few showers peaking in August. The Alpha Capricornids Peak on Aug 1-2, the Southern Iota Aquarids peak on the 6-7th, the Upsilon Pegasids peak on the 8-9th, the Gamma Leonids peak on the 25th and 26th and the Northern Iota Aquarids peak on the 25th and 26th. Also bear in mind that four more minor showers peak from the 8th to the 18th (two of them on the 13th and 14th) besides the majors, so be prepared for some meteor bursts showing up on your receiver during the month of August

TV News

August 2002

Douglas E. Smith W9WI
1385 Old Clarksville Pike
Pleasant View, TN 37146-8098
W9WI@w9wi.com http://www.w9wi.com

Abbreviations:

AF	Applied for (a new station)	QC	Channel change on the air
CC	Call change	QG	Channel change granted
CL	City-of-license change	QR	Channel change requested
CX	Permit cancelled	RA	Returned to the air
DE	Station deleted	ROA	Request of applicant
FC	Programming (format) change	SI	Off the air ("silent")
LC	License to cover (for changes or new station)	STA	Special Temporary Authority
NO	Not on the air	XC	Transmitter site change on the air
NS	New station granted permit	XG	Transmitter site change granted
NW	New station on the air		
PC	Power (or tower height) change on the air		
PG	Power (or tower height) change granted		
PR	Power (or tower height) change requested		

DTV stations *in italics*; full-license stations in **boldface**.

News:

Alabama:

Decatur 43 WMJN-LP XG
34-35-31/87-06-10
**Gadsden 26 WTJP QR from ch. 60,
1200kw/331m**
Hamilton 46 W46DF NS 11.8kw,
34-05-03/87-58-49
**Huntsville 31 WAAY-TV PG<1120kw/540m,
34-44-12/86-31-59**
*Huntsville 41 WZDX-DT PR>400kw/518m,
34-44-12/86-31-59*
**Huntsville 54 WZDX PR>2400kw/518m,
34-44-12/86-31-59**
**Selma 29 WBIH NW 1450kw/131m,
32-16-16/87-14-31**
**Troy 48 WRJM-TV QR from ch. 67,
2800kw/343m**
Tuscaloosa 11 W11CU NS 3kw,
33-24-53/88-08-25
**Tuskegee 22 WBMM NW 2820kw/341m,
32-04-05/85-56-41,
Pax**

Alaska:

Eagle River 14 K14LA QG from ch. 16
Seward 34 K34GJ NS 150kw,
60-07-16/149-25-25

Arizona:

Camp Verde 19 K19FD NS 1.22kw,
34-27-51/111-52-17
Camp Verde 46 K46GW QG from K18DD
Casas Adobes 49 K64BV QR from ch. 64
dismissed ROA
Cottonwood 58 K58AV PR<2.9kw
**Flagstaff 4 KTFL NW 63kw/487m,
34-58-04/111-30-30,
FN network**
Flagstaff 22 KNAZ-DT PG<885kw/465m
Fortuna 41 K41EM PC<1.8kw
Hilltop 36 KKAX-LP PR<7.5kw,
35-04-53/113-54-14;
CC from K36AX
Kingman 6 KMOH-TV PC>592m, DA
Kingman 49 K49GE CC from K68AK

Lake Havasu C. 31 K47FQ QR from ch. 47,
2.21kw
Phoenix 18 K18GH CC from K49DF

Phoenix 53 K53GF CC from K67FE
Arizona:
Safford 15 K15GC NS 31.6kw,
32-49-46/109-45-16
Show Low 16 K16FJ NS 300w,
34-12-16/109-56-21
(KAZT-7)
Sierra Vista 33 K33CG PR>90w dismissed,
Mexican objection
Tucson 34 KTAZ-CA QG from ch. 25,
9.9kw

Arkansas:

Batesville 35 K57FV QR from ch. 57,
150kw,
37-12-48/93-17-43
near Springfield,MO
Batesville 63 K63GT NS 10kw,
35-46-48/91-38-24
(TBN)
El Dorado 27 KTVE-DT NS 823kw/582m
*Fort Smith 18 KFSM-DT PG>1000kw/285m,
35-49-49/94-09-24*
*Fort Smith 18 KFSM-DT PR 115kw,
29-26-29/98-30-22*
Fulton 62 K62FY NS 150kw,
33-36-45/93-46-45
Hope 50 KTSS-LP QC from ch. 55
Mountain Home 7 K07XL NS 100w,
36-20-56/92-23-57
Mountain Home 41 K41HC CC from K43CJ
Pine Bluff 38 KASN PC<590m
Springdale 39 KSBN-DT PG>316kw/114m
Springdale 57 KSBN-TV PG 182kw/98m
California:
29 Palms 16 K16FI QG from K63CG
Bakersfield 4 KMMB-LP sold to Univision;
FC to Telefutera?
Bakersfield 8 K08MM QC from ch. 9
Bakersfield 31 KABE-CA QR from ch. 39,

Bakersfield	46 K46GV	60kw QG from ch. 67, 73.7kw, 35-26-17/118-44-22	San Francisco	27 KTSF-DT	32-41-47/116-56-09 dismissed ROA NS 220kw/400m, DA (aux. backup)
Bakersfield	52 KSUV-LP	sold to Univision; FC to Telefutera?	San Francisco	45 KBHK-DT	PC>400kw
Chico	15 K15CX	PC>21.9kw, 39-27-46/121-34-49	San Martin	52 KMCE-LP	CC from K52BY
			Santa Barbara	51 KBAB-LP	QC from ch. 38, 3.57kw, 34-27-58/119-40-37
			Santa Clara	22 KAXT-CA	PG>56kw
California:					
Coalinga	27 KGMC-LP	QG from ch. 48, 9.82kw	California:		
Corona	52 KVEA	PR>907m, 34-12-48/118-03-41	Santa Maria	46 K46GF	QG from K27EI, 29.4kw
Delano	14 K14IK	PR<3kw, 35-16-15/118-44-28 dismissed ROA	Stockton	46 KQCA-DT	PR<600kw/587m, non-DA
		(move to Bakersfield)	Colorado:		
Delano	31 K14IK	QR from ch. 14, 50kw, 35-26-16/118-44-28 dismissed ROA	Bayfield	46 K46FM	QC from ch. 65, 1.41kw; FC to] KOB-4
Eureka	20 K63GK	QR from ch. 63, 150kw, 45-41-30/122-21-40 near Portland, Oregon	Colorado Sprs.	30 K30AA	PC>10kw
			Cortez	20 K20DI	PG>920w, 37-21-01/108-08-01
Eureka	29 K69IE	QR from ch. 69, 40kw, 39-35-02/119-47-51 near Reno, NV	Denver	2 KWGN-TV	AF 50kw/232m, 39-43-58/105-14-07 (aux. backup)
			Denver	48 K33DN	QR from ch. 33, 15.5kw, 39-44-37/104-59-18
Eureka	39 K52FK	QR from ch. 52, 22.8kw, 37-04-29/119-25-52 near Fresno	Grand Junction	5 KREX-TV	PC>100kw/428m, 39-03-58/108-44-46
Fresno	4 KVHF-LP	PC>3kw	Grand Junction	27 KGJT-LP	PG>47kw
Indio	6 K06MB	PR>3kw dismissed, Mexican objection	Holyoke	15 K15FD	QG from ch. 63, 740w
Mariposa	27 K27GZ	QC from ch. 13, 250w, 37-31-59/120-01-33	Holyoke	19 K19EG	QG from ch. 67, 740w
National City	9 K61GH	QR from ch. 61 dismissed, Mexican objection	Sweetwater Ck	36 K36DB	PG<50w, 39-38-38/106-32-14
Porterville	61 KPXF	PG<2400kw/814m, DA; already on. FC to Telefutera.	Trinidad	34 K34GI	NS 840w, 37-07-04/104-31-53
Red Bluff	27 K27HC	PR>50kw	Yuma	32 K32AB	PG<540w
Red Bluff	49 KMCA-LP	PC<140w, 40-15-32/122-05-20	Yuma	34 K34AC	PG<540w
Red Bluff	59 K59HP	NS 1.5kw, 40-12-36/122-14-49 (TBN)	Yuma	36 K36AC	PG<540w
Red Bluff	64 K64GD	NS 9kw, 40-12-36/122-14-49 (TBN)	Yuma	38 K38AD	PG<540w
Redding	5 K05LB	NS 300w, 40-36-40/122-22-51	Connecticut:		
Sacramento	14 KMMK-LP	QC from ch. 62, 1.1kw, 38-37-49/120-51-20	Hartford	38 WHCT-LP	PR 41.7kw, 41-47-48/72-47-52
Sacramento	33 KCSO-LP	QC from ch. 60, 130.6kw, 38-07-10/120-43-27	Delaware:		
Sacramento	45 K45HC	QG from ch. 69, 150kw, 38-16-25/121-30-11	Rehoboth Beach	68 W68DR	NS 5.5kw, 38-44-53/75-11-00 (TBN)
Salinas	8 KSBW	XC 36-45-23/121-30-05, 224kw/750m	Florida:		
San Diego	29 KSDX-LP	PR<7.4kw	Big Pine	27 W52BB	QR from ch. 52, 4kw, 24-33-18/81-48-07
San Diego	31 K31FC	PR>3.42kw,	Destin	48 new	PR 5000kw/138m, 30-30-52/86-13-12
			Fort Myers	15 WBBH-DT	PR>453m, 26-49-21/81-45-47
			High Springs	53 WGFL	FC to CBS/UPN
			Hollywood	47 WAMI-DT	PR<297m, 25-59-09/80-11-37
			Inglis	47 WYKE-LP	QR from ch. 49, 50kw
			Jacksonville	30 WAWS	PG>4000kw/307m

Jacksonville	42 WJXT-DT	NW, 976kw/294m			1kw
Jacksonville	45 W45BZ	QG from ch. 67, 50kw, 30-16-51/81-34-12	Vidalia	19 WPHJ-CA	PR<31.4kw
Lakeland	14 WLWA-LP	PR>17.7kw, 28-05-05/81-49-14	Vidalia	38 W38DC	NS 150kw, 32-12-20/82-29-39
Miami	38 WPMF-LP	QR from ch. 61, 14kw	Hawaii:		
Miami	53 WLMF-LP	QC from ch. 13, 15.8kw, 25-28-15/80-12-32	Hilo	18 KHVO-DT	PR>50kw, non-DA
Naples	23 WXDT-LP	QG from ch. 15, 20kw	Honolulu	40 KITV-DT	PR>1000kw/-1.6m
Naples	39 WZDT-LP	QG from ch. 52, 20kw	Kailua-Kona	58 K58HL	NS 10kw, 19-42-56/155-55-00
Palm Beach	43 WINQ-LP	QR from ch. 19, 150kw, 27-01-31/80-10-43, already granted	Idaho:		
			Ashton	13 K09VD	QR from ch. 9
			Boise	20 KITL-LP	CC from K20GS
			Boise	31 K31FD	QC from ch. 25
Florida:					
Panama City	54 W54CU	QC from ch. 68, 10.6kw, 30-11-41/85-37-51	Idaho:		
			Boise	39 new	NS 2590kw/812m, 43-45-18/116-05-52
Pensacola	44 WJTC	PG>457m			(Boise tower farm); one competing application dismissed.
Rock Harbor	16 W16CC	QG from W67AP, 115kw, 25-59-35/80-10-26, CL to West Gate, FL			Modified from ch. 14.
Rock Harbor	27 W61AI	QR from ch. 61 dismissed ROA	Boise	49 K49GX	QG from K56FQ, 18.7kw
Stuart	48 WTCN-CA	QR from ch. 15, 60kw, 27-01-32/80-10-43	Boise	51 K64EJ	QR from ch. 64, 150kw, 43-44-23/116-08-14
Tampa	47 WFTT-DT	PR>1000kw/317m			NS 13kw, 42-26-08/113-37-24 (TBN)
Tampa	56 W56EB	QC from W68CF, 65kw, 27-49-10/82-15-38	Burley	53 K53HS	QR from ch. 9, 1kw
			Driggs	51 K09UZ	NS 5kw, 46-25-02/116-58-31
			Lewiston	61 K61HN	NS 80w, 42-15-10/111-43-45
Georgia:					
Albany	57 W57DQ	NS 10kw, 31-53-52/84-18-53	Preston	7 K07XM	NS 1.8kw, 41-53-00/112-04-42
Athens	54 W54DH	QG from ch. 42, 5kw	Preston	40 K40GZ	QG from K68FM
Atlanta	4 W04DB	QG from W20AU, 2.5kw	Rexburg	39 K39GI	
Atlanta	32 WANN-LP	CC from WFNA-LP			
Atlanta	43 WUPA-DT	NW, 1000kw/335m, 33-44-40/84-21-36	Illinois:		
Augusta	30 WAGT-DT	PG>400kw/483m, 33-24-20/81-50-01	Johnston City	15 W15BU	QC from ch. 17, 12.9kw
Bainbridge	49 WTLH	PC>5000kw/597m, 30-40-51/83-58-21	Quincy	38 W69DF	QR from ch. 69, 34.5kw, 43-05-15/87-54-13, the WCGV/WVCY tower in Milwaukee
Colquitt	17 W51CQ	QR from ch. 51, 60kw, 32-03-26/81-08-46 near Savannah	Rochelle	65 W65EC	NS 2kw, 41-55-11/89-07-04
Colquitt	29 W47BX	QR from ch. 47, 110kw, 32-47-35/80-02-03 near Charleston, SC	Rochelle	68 W68DQ	NS 500w, 41-55-11/89-07-04
Colquitt	42 W69DO	QR from ch. 69, 75kw, 32-45-12/83-33-46 near Macon	Rockford	51 WCFC-CA	PC>49.4kw
			Salem	29 W29CI	QC from ch. 28
			Springfield	36 new-DT	PR 200kw/85m, 39-41-29/89-41-27
			Indiana:		
Columbus	62 W62DG	NS 20kw, 32-25-58/84-57-02	Clarksville	45 WJYL-CA	QC from ch. 26, 42kw
Macon	4 WMAZ-DT	QG from ch. 45, 14kw/181m	Fort Wayne	24 WPTA-DT	PG>489kw
Macon	32 WDMA-LP	PR>32kw, 32-50-43/83-40-14			
Tifton	12 W12DA	NS 100w, 31-34-00/82-58-15			
Tifton	38 W51AR	QG from ch. 51, PG<55kw			
Indianapolis	31 WKOGLP				

Iowa:			Annapolis	49 W63BP	QR from ch. 63, 59.2kw, 38-56-24/77-04-54, WRC-4 tower in Washington
Davenport	16 K16EL	QC from ch. 66, 16kw			
Des Moines	17 KDSM-TV	PG>3030kw/612m, DA, 41-48-47/93-36-56			
Iowa City	20 KWKB	PC>5000kw/441m	Baltimore	11 WBAL-TV	NW 100kw/286m (aux. backup)
Ottumwa	51 K51FJ	QC from ch. 36, 10w, 40-57-50/92-23-51	Baltimore	45 WBFF	PG>1765kw/382m
Storm Lake	53 K53HW	NS 10kw, 42-40-50/95-11-22 (KPTH-44)	Baltimore Ocean City	59 WBAL-DT 58 W58DH	PG<513kw NS 6.3kw, 38-18-15/75-12-15 (TBN)
			Salisbury	49 W49CE	NS 50kw, 38-23-12/75-17-26
Kansas:			Salisbury	69 W69EH	NS 20kw, 38-23-49/75-38-49
Colby	43 K43HP	NS 25kw, 39-21-50/101-03-55			
Dodge City	21 KDCK-DT	AF 8.42kw/99m; already granted	Massachusetts:		
Dodge City	43 K43HN	NS 20kw, 37-45-36/100-05-53 (TBN)	Boston	5 WCVB-TV	NW 60.3kw/228m (aux. backup)
Hutchinson	29 KPTS-DT	PR<146kw/217m, 38-03-21/97-46-35	Norwell	46 WWDP	FC to home shop.
Lakin	8 KSWK-DT	QG from ch. 23, 100kw/149m, DA			
Kansas:			Michigan:		
Lawrence	36 KMCI-DT	PR<291m, 38-58-42/94-32-02	Alpena	11 WBKB-TV	XG 44-42-11/83-31-26
Lawrence	38 KMCI	PR>5000kw/326m, 38-58-42/94-32-01, new KSHB-41 tower near KC	Escanaba	54 W54DG	NS 2kw, 45-46-56/87-06-04 (TBN)
Manhattan	52 K52HZ	NS 20kw, 39-13-34/96-37-00	Grand Rapids	13 WZZM-TV	PG 257kw/324m
Overland Park	27 K27FR	CC from K68DK	Mount Pleasant	29 W60CO	QR from ch. 60, 15.1kw, 42-16-28/85-39-12, CL to Kalamazoo
Pittsburg	14 new	NS 2950kw/301m, 37-22-05/94-27-59 (site is in Missouri); one competing application dismissed.	Mount Pleasant	56 W56DR	PR<240w, 43-41-56/84-46-110 dismissed
Wichita	26 KSAS-DT	PG>350kw/303m	Pinconning	36 W57CS	QR from ch. 57, 15kw, 42-16-28/85-39-12, CL to Alpena PC<250w
Kentucky:			Pinconning	57 W57CS	
Bowling Green	13 WBKO	XG 37-03-49/86-26-07	Minnesota:		
Danville	56 WDKY-TV	PR>5000kw/360m, 37-58-09/84-22-09	Aitkin	39 K39GG	NS 14.3kw, 46-32-07/93-50-26 (KQDS-21)
Lebanon	6 W06AY	PG>1kw	Breezy Point	46 KLKS-LP	QR from ch. 14
Talbert	23 W23CK	QG from W54CI, 50kw, 37-11-46/80-09-17, CL to Roanoke, VA	Correll	38 K38HG	NS 45kw, 45-24-35/96-10-46
Talbert	23 W54CI	QR from ch. 54 <u>rescinded</u>	Crookston	16 new-DT	NS 105kw, 47-58-38/96-36-18 (KGFE-2) (1 competing application dismissed)
Louisiana:			Frost	14 K14KD	QC from K18EY, 1.25kw
Baton Rouge	58 K58GB	CC from K56DR	Frost	36 K36FI	QC from ch. 33, 1.51kw
Natchitoches	27 KNYS-LP	CC from K27FK	Grand Marais	67 K67CT	PC>2.6kw, 47-46-04/90-20-47
Maine:			Jackson	53 K53HR	PG>3kw; CC from
Portland	32 W32CA	QC from ch. 18, 25kw, 43-44-38/70-20-05			
York Center	47 W47CL	QG from ch. 63, 15.1kw, 43-03-11/70-46-02			
Maryland:					
Annapolis	31 W61BY	QR from ch. 61, 59.2kw, 38-56-24/77-04-54, WRC-4 tower in Washington			

			Norfolk	57 K57IY	40-12-52/100-39-51 NS 6kw, 42-01-52/97-21-28
Jackson	57 K57IX	K53EV??? PG>3kw; CC from K57GE???	Omaha	17 KYNE-DT	PG<200kw/117m, 41-15-28/96-00-32
Mankato	8 K08NI	NS 3kw, 43-56-13/94-24-38 (KTTC-10) but already <u>rescinded</u> .	Sidney	46 K46GT	NS 19.5kw, 41-03-09/102-58-36
Park Rapids	32 K32FY	QC from K24CV, 13.9kw, 46-55-51/95-00-27	Sidney	48 K48HR	NS 19.5kw, 41-03-09/102-58-36
St. James	14 K14KE	QC from ch. 38, 980w	Nevada: Austin	41 K41HH	CC from K58EV
Walker	67 K67BZ	PC>670w, 47-05-36/94-34-37	Dayton	45 K13PD	QC from ch. 13, 500w
Walker	69 K69CP	PC>670w, 47-05-36/94-34-37	Eureka Henderson	51 K51GR 46 K46GX	QG from K60AQ QG from K60AN, 720w, 35-59-44/114-51-46
Mississippi:					
<u>Columbus</u>	43 WMAA-DT	PG<81kw/204m	Las Vegas	3 KVBC	PR<386m, non-DA,
Corinth	60 W60DB	NS 10kw, 34-54-51/88-30-42 (TBN)	Las Vegas Wells	13 KTNV 43 K43HQ	36-00-31/115-00-17 PG to go non-DA NS 920w, 41-11-40/114-56-36
Greenville	44 WDTL-TV	CX, DE	Wells	45 K45HA	NS 920w, 41-11-40/114-56-36
Jackson	40 WDBD	PG<4000kw	Yerington	49 K49FZ	QC from K13QS, 320w
Natchez	48 WNTZ	PR>5000kw/549m, 31-52-33/90-54-35			
Tupelo	65 W65ED	NS 20kw, 34-28-28/88-43-41 (TBN)	New Jersey: East Orange	34 W34CP	CC from W23BA
Tylertown	5 W05CK	NS 190w, 31-08-27/90-04-09	New Mexico: Alamogordo	31 K31GJ	QG from K32FC
Missouri:			Artesia	29 K29FM	NS 1.2kw, 33-50-39/104-23-35 (KENW-3)
<u>Columbia</u>	36 KOMU-DT	NW, 1000kw/225m			
Missouri:					
Jefferson City	28 K28HP	NS 50kw, 38-33-50/92-11-21	New Mexico: Gallup	39 K39EW	NW 800w, 35-32-08/108-44-30; FC to KOB-4
Kansas City	41 KSHB-TV	PR>3980kw/306m, 38-58-42/94-32-02	Las Cruces	53 K46DH	QR from ch. 46 dismissed, Mexican objection
<i>Kansas City</i>	42 KSHB-DT	PR<276m, DA, 38-58-42/94-32-01	Lordsburg	36 K02KP	QG from ch. 2, 570w, 32-18-58/108-45-18
Rolla	7 K07XK	PG>3kw; CC from K07SD???	Mount Dora	59 K59HR	NS 999w, 36-31-28/103-29-21
Springfield	41 K41FQ	QG from K52DH, 76kw, 37-13-08/92-56-56	Quemado	6 K06KP	FC; sold to Emmis
Washington	54 K54GW	QG from ch. 67, 150kw, 38-37-39/90-11-21;	Santa Rosa	34 K34GL	NS 609w, 34-57-20/104-40-53
West Plains	38 K38HE	CL to St. Louis PR<30.1kw, 36-45-02/91-51-51	Truth or Conseq	25 K54CC	QR from ch. 54, 650w
Montana:					
<u>Bozeman</u>	8 KUSM-DT	NS 160kw/249m, 45-40-24/110-52-02	New York: Albany	52 W52DF	QG from W64BH, 1kw, already moved
Bozeman	32 KBTZ-LP	CC from KMZV-LP	Binghamton	4 WIVT-DT	NS 1kw/275m
Bozeman	34 K34FI	PC<260w, 45-41-46/111-02-43	Buffalo	2 WGRZ-TV	PG<93.3kw/311m
<i>Butte</i>	19 KWYB-DT	NS 125kw/585m	Buffalo	39 WIVB-DT	NW 790kw/417m
Havre	9 K09HZ	QR to ch. 8 dismissed; CX, DE	Deer Park	39 WNYN-LP	QG from ch. 51, 50kw, 40-44-50/73-56-38 in Manhattan
Missoula	17 KMMF	PG<589kw/628m, 46-48-08/113-58-19	Hamburg	13 WDTB-LP	QR from ch. 39 dismissed ROA
Nebraska:					
<u>Lincoln</u>	40 KUON-DT	PG 500kw/225m, 41-08-18/96-27-19			
McCook	12 KSNK-DT	PG>13.6kw/177m			
McCook	40 K40GX	NS 20kw,			

New York	2 WCBS	PC>45kw	Portland	66 KOXO-CA	FC to home shop.
New York	11 WPIX	AF24kw/244m	Prineville	16 K16EM	PR<660w
40-57-39/73-55-23 (aux. backup)	(Westchester Co.)		Prineville	40 K58GK	QR from ch. 58, 27.1kw
New York	26 WNXV-LP	PR<20kw	Roseburg	33 K33FE	QC from ch. 29
New York	32 WXNY-LP	PG>25kw, 40-44-50/73-56-38	Roseburg	47 K47HT	QG from K57FS, 3.8kw, 43-12-08/123-22-54
New York	48 WKOB-LP	QR from ch. 53, 4.61kw	Roseburg	49 K49FV	QG from K14HA, 1.5kw
Nyack	20 WRNN-LP	QG from ch. 57, 2.5kw but already rescinded			
<u>Poughkeepsie</u>	27 WTBY-DT	PR<358m	<u>Pennsylvania:</u>		
Rochester	42 W59BV	QC from ch. 59, 11.9kw	Bethlehem	60 WBPH-TV	PR 2950kw/286m, 40-33-52/75-26-24, already granted & on the air
Syracuse	3 WSTM-TV	PR 41.9kw/396m, 42-56-42/76-07-07	Brookville	45 W45BT	QC from ch. 51, 7.2kw
Utica	51 W41AE	QC from ch. 41, 8.3kw	Jeannette	19 WNPA	PG>340m
Watertown	23 W23BP	PR<650w, 43-58-04/75-48-23			
<u>North Carolina:</u>			<u>South Carolina:</u>		
Brevard	68 W68DM	QC from ch. 59	Charleston	34 WCIV-DT	PG>600kw/522m
Greensboro	48 WUPN-TV	PC>1700kw/579m, 35-52-03/79-49-26	Charleston	47 WCSC-DT	PG to go non-DA
Manteo	56 W56EC	NS 10.8kw, 35-51-52/75-39-01	Columbia	17 WLTX-DT	PG>500m
Raleigh	44 WHOA-LP	QG from ch. 60, 15kw, 35-30-39/78-37-28	Florence	45 W66DE	QR from ch. 66 dismissed ROA
Rocky Mount	33 WHIG-LP	QG from ch. 57, 8.9kw	Johnston	56 W56EE	QG from W33CA, 49.4kw, 33-36-41/81-56-30
Wilmington	10 WILM-LP	PG<70w, 34-13-21/77-54-10	<u>South Dakota:</u>		
Wilmington	51 W51CW	CC from W20AL	Mitchell	5 KDLV-TV	XC 43-45-33/98-24-44
Winston-Salem	32 WUNL-DT	PG<198kw	Pierre	34 K34GM	NS 8kw, 44-22-15/100-24-16 (3Abn)
<u>North Dakota:</u>			Porcupine	32 K32GA	NS 150kw, 43-10-48/102-19-25
Dickinson	38 K38HA	NW 8.76kw, 46-55-08/102-43-47 (KXND-24)	Rapid City	52 K52IA	NS 150kw, 44-01-19/103-15-35
			Willow Lake	57 K57IZ	NS 999w, 44-35-14/97-40-46
<u>Ohio:</u>			<u>Tennessee:</u>		
Bucyrus	32 W32CR	QG from W54AF, 7kw, 40-01-02/83-01-11	Cookeville	36 WNPX-DT	PR>435m, 36-16-03/86-47-44
Cleveland	26 WVIZ-DT	NS 100kw/313m	Knoxville	6 WATE-TV	PG>548m
Toledo	29 WGTE-DT	PG>200kw	Knoxville	17 WKOP-DT	PG>553m, 35-59-44/83-57-23
<u>Oklahoma:</u>			Knoxville	46 W46DC	QC from ch. 60, 25kw
Durant	53 K53HT	NS 10kw, (TBN) 33-54-56/96-26-55	Murfreesboro	39 WHTN	PG to change DA pattern, correct coordinates to 36-04-58/86-25-52
Norman	46 KOCM	FC to religion (NS)			
Ponca City	54 K68EH	QC from ch. 68, 33.2kw			
<u>Oregon:</u>			<u>Texas:</u>		
Burns	41 K52FX	QR from ch. 52, 9.45kw, 43-34-26/119-07-47	Abilene	7 K07XN	NS 1kw, 32-28-34/99-42-22 (Abilene Christian University)
Burns	43 K71AT	QR from ch. 71, 9.45kw, 43-34-26/119-07-47	Big Spring	10 K10HH	PC>70w
Canyonville	32 K32ET	QC from ch. 38	Bryan	28 KYLE	FC to Fox/WB
Eugene	23 KEVU-LP	PG<19.4kw	Bryan	34 KRHD-LP	FC to ABC (noWB)
Madras	34 K66BC	QR from ch. 66, 17.4kw, 44-34-46/121-09-07	Corpus Christi	7 KTOV-LP	PR>3kw dismissed
Medford	35 KTVL-DT	PR<10.2kw/1008m	Corpus Christi	21 K21GM	NS 150kw,
Portland	43 KATU-DT	PR 1000kw/301m rescinded			

Dallas	27 KDFI	27-47-46/97-23-47 PR>517m, non-DA, 32-32-36/96-57-32			43-26-15/72-27-08
Del Rio	30 new-LP	AF dismissed	Virginia:	Blackwater	14 WAPG-CA QR from ch. 51, 5kw
Farwell	18 KPTF	NW 5000kw/101m, 34-21-48/103-13-05, GLC religion		Bridgewater	31 W31CE QC from ch. 30, 27kw
Fredericksburg	44 KHPF-CA	QG from ch. 58, 30-15-35/98-53-13	Bristol	5 WCYB-TV	PC 71.7kw/741m
Gainesville	69 K69IL	NS 150kw, 33-50-45/97-06-15	<i>Charlottesville</i>	<i>11 WVPT-DT-1</i>	<i>AF 40w, 37-59-00/78-29-02 (WVPT-DT)</i>
Jasper	66 KVHP-LP	CC from K66GA	Chesapeake	5 WJGN-CA	QC from ch. 40, 3kw,
La Feria	30 KFTN-LP	PR>150kw dismissed, Mexican objection			36-51-39/76-21-13; CC from W05CH
Laredo	25 KZLD-LP	PR>150kw dismissed, Mexican objection	Chesapeake	23 WITD-CA	PR>65kw, 36-49-14/76-30-41
Laredo	49 new-LP	AF 32kw, 27-31-47/99-26-25 reinstated	<i>Fulks Run</i>	<i>21 WVPY-DT-1</i>	<i>AF 100w, 38-36-31/78-54-07 (WVPY-DT)</i>
Lubbock	51 KBZO-LP	PR>60kw, 33-31-33/101-52-07	Luray	16 WAZC-LP	PC>2.1kw, 38-38-27/78-36-51
Matador	40 K40FK	PR>550w dismissed ROA	<i>Luray</i>	<i>21 WVPY-DT-2</i>	<i>AF 100w, 38-36-05/78-37-57 (WVPY-DT)</i>
McAllen	21 K67HC	QR from ch. 67 dismissed, Mexican objection	Norfolk	30 W30BV	QC from ch. 67, 36-46-32/76-23-11
Midland	4 K04PF	NS 3kw, 31-57-58/102-07-01	Richmond	39 W40BP	QC from ch. 40, 31kw
Midland	40 K40FJ	QC from ch. 31, 21.7kw	Washington:		
Mullin	28 K69BS	QR from ch. 69, 6.44kw, 32-35-19/96-58-05	Ellensburg	49 KWWA-LP	PG>36kw
Mullin	31 K65BC	QR from ch. 65, 5kw, 32-32-36/96-57-33			
Plainview	44 K44GL	QG from K59GC, 20.8kw	Washington:		
Quanah	39 K39GH	NS 750w, 34-12-41/99-44-05	Grand Coulee	40 K40GW	NS 150kw, 47-58-37/118-59-38
Quanah	41 K41HQ	NS 750w, 34-12-41/99-44-05	Lynden	30 K30GW	NS 31.7kw, 48-54-26/122-13-20
Randado	56 new-LP	dismissed, Mexican objection	Point Roberts	55 K55JP	NS 60.4kw, 48-59-36/123-02-43
San Angelo	51 K51GQ	NS 13.78kw, 31-35-21/100-31-00 (GLC religion)	Walla Walla	9 KBKI	PG>316kw/436m
San Antonio	4 WOAI-TV	CC from KMOL	West Virginia:		
			Clarksburg	62 W62DF	NS 6kw, 39-18-02/80-20-37 (TBN)
			<i>Huntington</i>	<i>47 WOWK-DT</i>	<i>NW, 920kw/389m</i>
Texas:			Wisconsin:		
<i>San Antonio</i>	<i>38 KVDA-DT</i>	<i>NS 1000kw/414m</i>	Adams	18 W18CM	PR<14kw, 44-01-13/89-33-29 dismissed ROA
San Marcos	38 KTXU-LP	QR from ch. 58 dismissed ROA			
Texarkana	41 K41EQ	QC from ch. 52	Hayward	31 K31GH	NS 16kw, 45-59-52/91-24-14 (KQDS-21) (already on the air with STA)
Waco	25 KXXV	FC to ABC (drops WB)			
Waco	44 KWKT	FC to Fox/WB	Janesville	65 W65EE	QG from W19BH, 20.3kw, 42-41-09/89-09-05
Utah:			Sister Bay	55 W55AO	PC>1.64kw, 45-14-19/87-05-27
Kanarrville	47 K47HU	NS 68w, 37-29-13/113-12-18			
New Castle	51 K51GS	NS 246w, 37-42-14/113-44-29			
Price	3 new	PG 70kw/658m, 39-45-22/110-59-22	Wyoming:		
Salt Lake City	5 KSL-TV	PR 33.6kw/1157m			
Vermont:					
Burlington	41 W41CO	QG from W16AL, 1kw			
<i>Hartford</i>	<i>25 WNNE-DT</i>	<i>PR 188kw/651m,</i>			

Cheyenne	8 K08NK	NS 3kw, 41-10-01/104-45-21			18-24-23/69-09-07 (city s/b Aguadilla)
Sheridan	9 K09XK	NS 850w, 44-37-20/107-06-57	<i>Naranjito</i>	65 WECN-DT	NS 250kw/221m
Shoshoni	30 K30GV	NS 1.188kw, 43-27-00/108-14-00	<u>CANADA:</u>		
			<u>Ontario:</u>		
			Toronto	44 new	NS 179kw "CFMT Too", ethnic
<u>U.S. Possessions:</u>					
<u>Guam:</u>			<u>Quebec:</u>		
<i>Agana</i>	4 KAXM-DT	AF 40w/282m <i>dismissed</i>	Carleton	44 CFTF-TV-8	NS 50.4kw
Agana	10 new	AF dismissed	Quebec	11 CBVT	PG<132kw, move to Mont-Belair
			Sainte-Famille	55 CBVT-10	NS 4.4kw
<u>Puerto Rico:</u>					
Aguadilla	20 W20CF	NS 5kw,			

Thanks to John Broomall, Rick Lucas, Dave Williams, and John Johnson for information in this month's column.

John Broomall works for WATC-57, a non-commercial religious station in Atlanta. A few months back, they added W42AO Athens (moving to channel 54) as a translator. Now, WATC has another one. WHDS-LP channel 32 in Savannah joins the group.

Also in the translator department, John Johnson reports new K09XJ on the air in Sheridan, Wyoming. (FCC DB says K09XK. Such discrepancies are not unusual.) It's a translator of John's employer KTVQ-2. (John celebrated his 30th year with KTVQ in May. Most stations won't let anyone stay that long. Congrats!)

Temporarily, there was another KTVQ translator in Sheridan. New station KBNM-7 is on the air but the studio is not yet complete. KBNM has been simulcasting KTVQ, possibly with inserted character-generator IDs. (I suppose with the rare tropo in that area it's unlikely any DXer is going to see it...) Once the studios are complete KBNM plans to be a NBC affiliate.

Rick Lucas confirms that W59BV Rochester has moved to channel 42. I'm sure it has new call letters but we probably won't know what they are until next month.

K48BL is a locally-programmed LPTV in the Bend, Oregon area. Dave Williams reports it temporarily moved to channel 42 (without bothering to change the IDs), then moved back to 48. Oregon Public Broadcasting took over channel 42, which is now carrying KOPB-10 Portland. Best I can tell from the FCC records, channels 42 and 48 are still co-owned. My first guess is that the commercial owners are leasing the translator to OPB; second guess is that the translator has been sold to OPB but the sale hasn't yet reached the FCC database.

The new channel 44 station in Toronto had already been authorized from a non-technical standpoint. But another applicant was deemed more deserving of the channel 52 assignment. The grant to CFMT was contingent upon finding another channel that would be technically acceptable. Early word was that channel 69 would be used. (As the nearest other channel 69 station, in London, also belongs to CFMT) They seem to have changed their minds.

The KMOL=>WOAI-TV call change in Texas is not yet official. <http://www.100000watts.com> reports that the change will happen by the end of the year. Clear Channel recently (re-)acquired the station; WOAI-AM is where Clear Channel got its start. The TV station had been sold separately from the radio in 1965.

Note new full-power analog stations authorized in Pittsburg, Kansas (channel 14); Boise, Idaho (channel 39); and Destin, Florida. (channel 48) Also, new full-power analog stations on the air in Flagstaff, Arizona (KTFL-4, FN, already DXed by skip by several DXers) and Tuskegee, Alabama. (WBMM-22, Pax) KREX-5 Grand Junction, Colorado has had a substantial power increase - and more importantly, tower-height increase. It ceases to be one of the tougher skip catches, and will probably be widely seen next summer if we have a skip season. (<ouch>) East Coast DXers will probably notice WBPH-60 Bethlehem, PA has also increased power quite a bit.

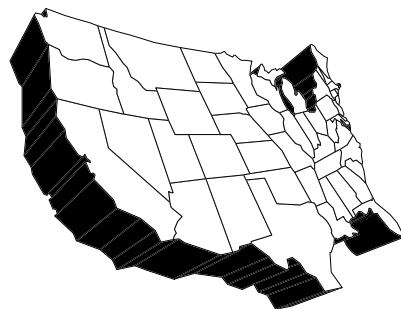
In the DTV department, stations keep popping up. Note this month a new DTV-only station authorized in Crookston, Minnesota on channel 16. This one belongs to Prairie Public TV out of North Dakota. Shenandoah Valley Educational TV in western Virginia has applied for on-channel boosters for two of their DTV stations. On channel 11, a booster at Charlottesville will relay their WVPT-DT Staunton. Channel 21 boosters at Fulks Run and Luray will relay their WVPY-DT Front Royal.

I'm not sure why WDTL-44 was reported last month as applying for a license to cover. This month, the FCC says the permit has been cancelled and the callsign deleted. This confusion, too, has happened before...

Not much of a skip season this year. Some interesting tropo reported though. Hopefully the tropo season will make up for what we missed this summer... Good DX!

WESTERN TV DX

VICTOR FRANK
12450 SKYLINE BLVD.
WOODSIDE, CA 94062-4554
frank@horizon.sri.com



Dennis Park Smith, 3605 San Remo Drive, Santa Barbara, CA 93105-2523 (805)687-7803

This report is for June 2002. At Santa Barbara, tropo DX along the southern California coast, to San Diego/Tijuana on TV-FM (250-mi/320km) existed practically the entire month. The air boundary existed the entire month, but was quite high elevation much of the time (the lower elevation the boundary is, the better the tropo for my low elevation). Temperatures were quite high inland, which also means the air layer above the boundary along the cool moist coast was hot and dry which helps the tropo.

Jun 1: Poor
 Jun 2 – 3: None
 Jun 4: Fair
 Jun 5: Good
 Jun 6: Fair (Existing layer deepening;
 Jun 7: Poor i.e., boundary increasing
 Jun 8: Very poor elevation)
 Jun 9 – 12: None
 Jun 13 am: Poor
 Jun 13 eve: Good (Boundary down to lower
 Jun 14 am: Poor elev)
 Jun 14 eve: Good
 Jun 15 am: Fair
 Jun 15 eve – 17 am: Good+
 Jun 17 eve – 18: Fair
 Jun 19: Poor
 Jun 20 – 21 am: None
 Jun 21 eve – 23 am: Poor
 Jun 24 am: Poor
 Jun 24 eve – 26: Fair
 Jun 27 – 31: Poor

Best of DX to all, Dennis

Morris Sorensen, Winnipeg MB

DXing with circa 1983 RCA b&w portable and Channel Master indoor antenna from circa late 1950's

June 2002 CDT
 11 Es 2030 WGRZ 2 NY Buffalo 995
 13 Es 1600 KTVI 2 MO St. Louis 849
 1700 WTWO 2 IN Terre Haute 864
 1900 CBFTt 2 QU Montreal if so 1134
 15 Es 2300 KUTV 2 UT Salt Lake City 954
 17 Es 1558 KASA 2 NM Santa Fe 1078
 22 Tr 2200 CKND2 2 MB Minnedosa

Mike Cherry, VE7SKA <mcherry@saltspring.com>

It's been a generally poor Es year here.

June 2002 UTC
 20 Es 0230 KSWK 3 KS 135°
 0240 KWGN 2 CO 130°
 0256 KCNC 4 CO 130°
 0259 KREG 3 CO 130°

July 2002
 16 Es 2259 KREG 3 CO 125°

73 for now - Mike VE7SKA(CN88)

Matthew C. Sittel, 15013 Eureux Circle, Bellevue, NE 68123
 mcsittel@cox.net
<http://members.cox.net/mcsittel/beltvdx.htm>

Equipment: Winegard PR-9032 UHF antenna at 35', Winegard AP-4700 UHFpre-amp., Winegard PR-5030 VHF antenna at 32', MFC traps for channels 3, 6, 7 and 26.

6/1 Es
 1112 CICT-2 AB Calgary 1113
 1948 XEFB-2 NL Monterrey 1096
 2051 *KTFL-4* AZ Flagstaff 947
 FamilyNet logo in lower right
 2056 KNAZ-2 AZ Flagstaff, ID 947
 2129 KTVN-2 NV Reno, logo 1260
 2135 KVVU-5 NV Henderson 1088
 CMN Telethon: "647-2002 UMC"
 2204 KSL-5 UT Salt Lake City 851
 CMN Telethon, logo on desk
 2208 KTVX-4 UT Salt Lake City 850
 Supered logo in lower right
 2320 KCSG-4 UT Cedar City, calls 948

6/2 Es
 0000 KTVU-2 CA Oakland, nx 1430

6/7 tr
 0620 10/21 MO Springfield 312
 0624 19/31 WI La Crosse 299
 0659 WQPT-24 IL Moline, sign-on 289

6/8 Es
 1213 unID-2 NBC to the east
 2104 unID-2, possibly UPN

6/9 Es
 1500 unID-2 NBC

6/10 Es
 2130 KASA-2 NM Santa Fe 701

6/11 Es
 2200 unID-2 CBC

6/12 tr
 0630 5/9/29 MN Minneapolis 309
 0638 WHWC-28 WI Menomonie 342
 0658 KEYC-12 MN Mankato 211
 0659 KARE-11 MN Minneapolis 309

6/13 tr
 0620 KXLT-47 MN Rochester 272

6/13 Es
 1159 *WPTZ-5* NY North Pole 1150

1224 CFCM-4 PQ Quebec, TVA 1284
6/14 Es
 1128 XEJ-5 CH Ciudad Juarez 874
 1132 KDBC-4 TX El Paso, promo 870
 1429 KUTV-2 UT Salt Lake City 849
 1759 WDTV-5 WV Weston, lottery 831
 1800-2100 MUF 107.9 to PA/NJ/MD/NY
 2201 CKAL-5 AB Calgary, A-Ch. 1111
6/15 Es
 1029 KGBT-4 TX Harlingen, ID 1039
 1059 KBEJ-2 TX Fredericksburg 773
6/16 Es
 2127 unID-2 NBC to SW
6/17 Es
 1229 KRNV-4 NV Reno, local ad 1259
 1231 KUTV-2 UT Salt Lake City 849
 1234 KTVX-4 UT Salt Lake City 850
 1259 KOTI-2 OR Klamath Falls 1327
6/19 tr
 2155 21/27 WI Madison 355
 6/21 Es
 1311 KUTV-2 UT Salt Lake City 849
6/22 Es
 2029 WUND-2 NC Columbia, UNC-TV 1116
 2047 WDIQ-2 AL Dozier, APT 846
6/23 Es
 1018 WESH-2 FL Daytona Beach 1176
 1029 WPBT-2 FL Miami 1380
6/23 tr
 1815 KDNL-30 MO St. Louis, ABC 344
 2140 WICS-20 IL Springfield, NBC 352
 2212 KMIZ-17 MO Columbia 240
6/25 tr
 0608 KDNL-30 MO St. Louis, ABC 344
6/28 Es
 2142 unID-2 NBC to east
6/30 Es
 1329 KUTV-2 UT Salt Lake City 849
 1329 KTVN-2 NV Reno, area ad 1260
7/4 Es
 0959 WKTV-2 NY Utica, ID 1083
7/4 tr
 0900 17/23/29 MN Minneapolis 309
 2234 10/47 MN Rochester 248
 2257 25/31/47 IL Peoria 334

A rather disappointing season so far for skip and tropes; much less activity than last year. 73s Matt.

Jeff Kruszka, 5024 S. Braxton Ave., Baton Rouge, LA 70817

June 2002 CT
 3 tr 0856 WABW 14 GA
 WJSP 28 GA
 0858 WFGX 35 FL
 0907 WFTX 36 FL
 8 Es 1215 WTAE 4 PA
 1229 WIVB 4 NY
 1330 CKVR 3 ON
 12 Es 1126 YSut 4 ES
 1145 HRTG 5 HND
 1708 WWAY 3 NC
 1825 WPSX 3 PA
 1830 WDTV 5 WV
 1834 WTAE 4 PA
 13 Es 0853 WAVE 3 KY
 0854 WSMV 4 TN NEW
 1730 HRTG 5 HND 1160
 1735 HRCV 3 HND 1160

14 Es 0925 KDLO 3 SD 1025
 1009 KBME 3 ND 1240
 1012 WSKY 4 NC 970NEW
 1032 WIVB 4 NY 1095
 1039 WWAY 3 NC 810
 1040 WTAE 4 PA 930
 1105 WRAL 5 NC 810
 1116 WTTG 5 DC 985
 1129 WPSX 3 PA 975
 1149 CKVR 3 ON 1130
 1719 WTOM 4 MI 1110
 1721 CITO 3 ON 1350
 15 Es 1059 KOAA 5 CO 940
 16 Es 1230 WTAE 4 PA 930
 1236 WPSX 3 PA 975
 19 Es 1733 KTVK 3 AZ 1245
 1803 KDBC 4 TX 910
 1924 KVOA 4 AZ 1175
 2009 XHIT 4 CH 905
 21 tr 0817 KTEJ 19 AR 370
 Es 0923 unid SS 3, 4, 5 brief
 22 Es 0940 CKVR 3 ON 1130
 2038 unid CBC 3, 4, 5
 2053 WPSX 3 PA 975
 23 Es 0930 unid SS 4, 5 brief
 24 Es 1120 KTVK 3 AZ 1245
 1130 KPHO 5 AZ 1245
 25 Es 0958 WIVB 4 NY 1095
 27 Es 1059 WWAY 3 NC 810
 28 tr 0106 WJXF-LP 49 MS 135NEW
 Es 1425 Cuba 3, 4, 5 w/ test patterns
 Cuba 2 CU
 TP floating on WBRZ?
 29 Es 1640 unid SS 3 very brief

The worst year of E-skip ever continues. I have now gone two months without a major opening (4+ hrs straight, MUF ch. 6+). These used to be commonplace, some lasting all day long. What is going on? The skip openings thus far have been VERY brief, I mean sometimes only a few minutes, if not less than a minute (the opening on 6/29). And what I have gotten thus far has been repetitive – WTAE, WPSX, WIVB, WWAY, KTVK. Even Honduras came in two days in a row. And I have yet to see MN, IA, NE, KS, and WY this season.

Jeff Kadet, K1MOD, Box 20, Macomb, IL 61455

DTV pix at <http://www.oldtvguides.com/DXPhotos/>

4/13/02 CST/CDT
 0320 KYTV-DT-44 Springfield, MO (257 mi)
 pgm 1 nbc
 pgm 2 informercial
 0402 unID 36+ shop at home to kc
 K40CO storm lake, IA (kmeg-14) (270)
 best ever
 K16EL -16 Davenport, IA (ex-ch. 66) 3ABN
 (75)
 0909 KJRH-DT-56 Tulsa, OK (408)
 1 (KJRH Digital Television)
4/14
 0057 WISC-DT-50 Madison, WI (190)
 1 (WISC-DT)
 2 (WB14)
 0241 WFTC-DT-21 Minneapolis, MN (336)
 1 (DATA)
 2 (WFTC-SD)
 3 (WFTC-HD)

WFRV-DT-56 Green Bay, WI (306)
 1 (WFRV-TV5-DT)
 0410 WDJT-DT-46 Milwaukee, WI (190)
 1 (WDJT-DT High Definition Digital Television Channel)
 2 (WDJT-DT Standard Definition Digital Television Channel 1)
5/5
 2300 WKDH-45 Houston, MS (462)
 2300 KFVS-DT-57 Cape Girardeau, MO (225)
 2315 WLOV-27 (468)
 2318 WNCF-32 (610)
WDBB-17 (514)
 2325 WPTY-DT-25 Memphis, TN (369) o/WEEK!
 2335 WIIQ-41 (580)
 2340 WGIQ-43 (670)
 2355 WPXA-DT-51 Rome, GA (523)
 1 (WPXA Digital Television)
WJSP-28 (621)

5/6
 0006 WSBDT-39 (575)
WMAV-18 s/off (429)
WMAW-14 (581)
 0030 WHSL-DT-47 East St. Louis, IL (125)
 0055 WKEF-DT-51 Dayton, OH (343)
 1 (WKEF_22_High_Definition_TV)
 2 (WKEF_22_Standard_Definition_TV)

0100 WAND-DT-18 Decatur, IL (73)
 0115 WLTZ-38 (639)
 0035 W31BX-31 (wand-17) Danville, IL (162) ex-ch.68
6/8/02
 0141 W29CI Salem, IL ex-ch. 28 3ABN (155)
6/11
 1415 MCTV-2
CBC-2
CTV-3 (Two of them; all ads not //)
FFC-4
CTV-5
CBC-5
 1455 CFCL-6
6/12
 1717 WPBT-2
 1745 "Tele- "-2 dancing, ph # on screen Cuba
 1756 WTIG-CA-2 Naples, FL (1114) first LPTV by Es! (see note #1)
TV AZTECA-2
WEDU-3
WTVJ- 6
 1849 KPRC-2
XE-4 cartoons
 1755 tWOCX-CA-5 FL
WUFT-5
WPTV-5
WESH-2

6/13
 0830 WGBH-2
WFSB-3
WBZ-4
WLNE-6
 0856 WLBZ-2
 0910 WCBS-2
 1515 KXMA-2
 1555 CBC-3
CBC-4

6/14
 0900 KIII-3
WPBT-2
WESH-2

MEXICANS-2
 1034 WFOR-4
 1050 KOCT-6
XEJ-5
WEDU-3
KENW-3
WPTV-5
 1255 KNAZ-2
PBS-6
 1800 KDKA-2 (560) (see note #2)
WBZ-4
WFSB-3
WLNE-6
WCVB-5
 1727 WMAR-2
6/15
 1230 KXMA-2
KBME-3
KWSE-4
 1400 KNAZ-2
KTFL-4+ Flagstaff, AZ (1201)
KTVK-3
6/16
 1200 S.FL CHS. 2-6
6/17
 0400 KDSM-DT-16 Des Moines, IA (173)
 1003 WSKY-4 Manteo, NC Shopping (873)
WUND-2
WTKR-3
 1500 KMID-2
XE 2
6/19
 1815 KWWL-DT-55 Waterloo, IA (167)
 1 (KWWL DTV)
KPXR-DT-47 Cedar Rapids, IA (171)
 1 (KPXR-DT)
6/20
 0245 KOMU-DT-36 Columbia, MO (136)
 (KOMU DIGITAL)
KASA-2
 MS KPRC-2
6/21
 0800 WESH
WPBT
6/22
 0930 CBC-2
GLOBAL-2
 1000 WUND-2
EVE WGBH
WUND
 2100 WESH
WEDU
6/23
 0300 KSMO-DT-47 Kansas City, MO (228)
 1 (KSMO STANDARD DEFINITION)
6/25
 0755 WPBT
WEDU
WPTV
 1115 KSWK-3 588 MI (see note #3)
 1149 KOAA-5
 1225 KUPN-3
 1230 KCWC-4
 1245 KTWO-2
 1300 KOTA-3
KTVQ-2
6/26
 1230 KTVQ-2
KHMT-4
6/28
 0930 XEFB-2

KDBC-4
1000 KENW-3
1030 KTVK-3
KNAZ
KUAT-6
1128 KVOA-4
1157 KASA-2

7/2
0300 WLFI-DT-11 Lafayette. IN (199)

7/3
1000 XEFB-2
SHOP-2
WPBT-2

7/6
0924 WUPA-69 (575)
0945 WKPD-DT-41 Paducah, KY (258)
0952 WKRN-DT-27 Nashville, TN (358)
1 (WKRN-DT)

7/7
0305 KMWB-DT-22 Minneapolis, MN (338)
1 (KMWB-DT)
0342 UNID 65+ W/ KTCA-2
1000 WMAW-14 (581)

7/13
0300 WPWR-DT-51 Chicago, IL (188)
1500 MS WUND-2 (839)

Note #1: Saw WTIG-CA in huge call letters moving to the left under WPBT!

Note #2: In well for almost an hour all by itself while the rest of the channels had New England stations.

WGBH was confirmed as being on the air. Ultra rare and Frank still needs it (he was out-of-town).

Note #3: darn rare short skip

DTV station total at 72, NTSC at 1831.
I think this may be the suckiest Es season in recorded history. I did work CY9DH and FS/W6JKV on 6m for countries #94 and 95.

73, Jeff

SMALL TV STATIONS REEL...Continued from page 40.

Stations bear digital risk

Underlying station owners' arguments is their feeling that they're taking most of the risks in the DTV transition.

For example, only a few cable operators have agreed to carry local stations' DTV programs. And TV makers still charge top prices for sets with DTV converters, dampening consumer interest.

"This is not really an orderly transition," Duhamel says.

"Smaller markets need a substantial amount of time, because there's no demand for DTV here. We're out there as the Lone Ranger. Cable isn't doing anything. Set manufacturers are sitting on their hands. Return on investment is so far out there that this thing is crazy from a financial viewpoint."

Despite their problems, small stations don't expect to get much more relief from the government.

Federal officials plan to get tough with DTV laggards. The FCC denied 71 of the 843 requests for six-month extensions from the May 1 deadline. Regulators also threatened, in sanctions proposed last month, to yank the licenses from stations that they see as stalling.

"For the most part, people are trying to get on with digital," Chesson says. Although there have been "some bumps in the road," progress has been "slow but steady, and we have to keep in perspective that it's a massive transition. These things don't happen overnight."

Still, the NAB wants to goose the process and shift some of the risk: The powerful lobby group is asking Congress to require cable operators to carry local stations' DTV broadcasts, as well as the current analog ones. It also wants to require TV manufacturers to include DTV tuners in all new sets.

Because stations must pay for DTV transmission even though there's no market for it yet, "we have no safety net," Fritts says. "We have to have this transition work. It's time for Congress to complete the circle. Without Congress acting, (small-market stations) have no hope. The FCC has been sensitive to the concerns of Congress and now we have to sensitize Congress to the concerns of small and rural markets."

Without dramatic change, station owners in the smaller markets will have little choice but to plead for even more time.

"We need to be flexible about the date when we go (from low power) to full power," Bongarten says. "It's really a question mark as to when the consumers and manufacturers will be in sync. If there isn't greater demand, then the FCC will have to take a closer look at what they're doing."

Eastern TV-DX

Matthew C. Sittel
15013 Eureux Circle
Bellevue, NE 68123
mcsittel@cox.net

August, 2002

September, 2002 column deadline: Aug. 12

Eastern TV-DX is for reporters from the following states: AL, CT, DE, FL, GA, IN, KY, MA, MD, ME, MI, NC, NH, NJ, NY, OH, PA, RI, SC, TN, VA, VT and WV, plus Washington, DC. Also for reporters from the following Canadian provinces: NB, NF, NS, ON, PEI and PQ. Overseas reports are also welcome!

I have a number of reports this time, but I doubt that will happen next month. Skip has been non-existent as of late for just about everyone. June 14 was a superb opening; a number of you Easterners had a pipeline to my backyard stations here in metro Omaha! But where is the skip now? Who knows... we can only hope it makes an appearance soon. In the meantime, here are some recent reports of DX, back when there was some...

Adam Rivers, Chicopee, MA * NEW REPORTER *

patriotsrule417@yahoo.com
<http://adamskewlsite.freesevers.com>

6/22 Es

1054	WDIQ-2	AL	Dozier "APT"
1056	WTVY-4t	AL	Dothan, CBS

Jim Ayers, 2497 Wind Forest Court, Norcross, GA 30071

jimayers@raider.net

6/3 GW

WTBS-DT-20 GA Atlanta
10

WATL-DT-25 GA Atlanta
10
WANN-LP-32 GA Atlanta
(back on with dead air)

Now 28 locals on-air, including 7 digitals, four new signals on-air in past month, and eight more on the way.

Peter Giacopelli, KB2DY, 30 Peconic Drive, Massapequa, NY 11758-8317
dypete@aol.com

Equipment: Mitsubishi 21" TV, dipole antenna, ICOM R-7100 receiver.

6/3 Es

1900	<u>KMTV-3</u>	NE	Omaha	1176
1915	<u>WOWT-6</u>	NE	Omaha	1176

William McGuire, 2412 59th Place, Cheverly, MD 20785-2918

Equipment: Admiral 13" color TV.

6/5 tr

2230	WGAL-8	PA	Lancaster, NBC
2250	WHYY-12	DE	Wilmington, ID
2320	WBOC-16	MD	Salisbury, ID

6/6 tr

0010	WCAU-10	PA	Philadelphia, NBC 10
1655	WWBT-12	VA	Richmond, ad
1710	WVIR-29	VA	Charlottesville NBC, "29 News"

6/10 tr

2320	WGAL-8	PA	Lancaster, ID
2335	WMDT-47	MD	Salisbury, nx

6/23 tr

2300	WWBT-12	VA	Richmond, NBC 12
------	---------	----	------------------

2320	WTVR-6	VA	Richmond, nx
------	--------	----	--------------

6/24 tr

0910	WVIR-29	VA	Charlottesville
------	---------	----	-----------------

6/25 tr

0925	WRLH-35	VA	Richmond, Fox
2300	WCVW-57	VA	Richmond, PBS

6/29 tr

0815	WGAL-8	PA	Lancaster, ID
0825	WHRO-15	VA	Hampton, ID
0830	WAVY-10	VA	Portsmouth, ID
0833	WTVZ-33	VA	Norfolk, WB

6/30 tr

2300	WHYY-12	DE	Wilmington, ID
2305	WPHL-17	PA	Philadelphia

6/3 Es

1114 KUSD-2 SD Vermillion
SD Public TV, PBS
1133 KDUH-4 NE Scottsbluff, ABC
1157 KPLO-6 SD Reliance, Keloland

6/4 Es

1833 KGFE-2 ND Grand Forks
Prairie Public
1841 KSRE-6 ND Minot
1859 WDAY-6 ND Fargo
1910 KXJB-4 ND Valley City
1915 KFYR-5 ND Bismarck, CBS
1918 KWSE-4 ND Williston
1919 KPRY-4 SD Pierre
1955 CKCK2-6 SK Willow Bunch

6/9 Es

1239 KGFE-2 ND Grand Forks
1252 WDIQ-2 AL Dozier, APT

6/11 Es

1145 WBRZ-2 LA Baton Rouge, ABC
1200 KARK-4 AR Little Rock
News 4 Arkansas
1505 KSNB-4 NE Superior, Fox 4/17
1523 WOWT-6 NE Omaha, NBC
1525 KHAS-5 NE Hastings
1559 KWNB-6 NE Hayes Center, NTV6
1635 WDAF-4 MO Kansas City

1638 KTIV-4 IA Sioux City, NBC
1659 KTWO-2 WY Casper, K2, NBC

6/12 Es

2100 WPBT-2 FL Miami, PBS

6/13 Es

1200 KOTV-6 OK Tulsa
1300 KCTV-5 MO Kansas City
1309 KWNB-6 NE Hayes Center

6/17 Es

1054 WBRZ-2 LA Baton Rouge, ABC

6/18 Es

1150 KGFE-2 ND Grand Forks
1227 CKND2-2 MB Minnedosa

6/20 Es

1856 WESH-2 FL Daytona Beach

6/21 Es

0828 WESH-2 FL Daytona Beach
0848 WBRZ-2 LA Baton Rouge
0851 WPBT-2 FL Miami, PBS

6/22 Es

1000 WESH-2 FL Daytona Beach, NBC
1057 WJXT-4 FL Jacksonville, CBS
1100 WEDU-3 FL Tampa
1129 WUFT-5 FL Gainesville
1959 WDIQ-2 AL Dozier, APT, PBS
2030 KAMR-4 TX Amarillo

Very few openings and generally short-lived and barely exceeding channel 3, except for a few cases when the openings were among my best ever. Very little in between. 73s, Saul.

Keith K. Smith, 910 N. Larch St. #7, Lansing, MI 48906

vgmc@webtv.netseventysixfifty@hotmail.com

(517) 485-7346 (please, 1-8PM Su-Fr only)

<http://community.webtv.net/vgmc/KKSTV>

Equipment: GPX 12" B&W TV, whip and Philips Magnavox dipole (override) for VHF, round for UHF.

6/9 tr

0728 WWTV-9 MI Cadillac 104
WGVU-35 MI Grand Rapids70
WGVK-52 MI Kalamazoo 64
(the two above at once... rate)
WTLJ-54 MI Muskegon 70
0806 WCMU-14 MI Mt. Pleasant59
WDCQ-19 MI University Ctr.63
WGTE-30 OH Toledo 94
50/56 MI Detroit 65

(same tower)
0906 WZZM-13 MI Grand Rapids104
WNDU-16 IN South Bend 116
unID-2 PBS "Barney"

6/16 Es

1200 WPBT-2 FL Miami 1187
hollow logo,McLaughlin Group@1130

6/18 tr

0813 WANE-15 IN Fort Wayne 119
16/22 IN South Bend 116
unID-34 PBS,probablySouth Bend
WFWA-39 IN Fort Wayne 118
0816 WHME-46 IN South Bend 115
50/56 MI Detroit 65
WWJ-62 MI Detroit 73
WWTV-9 MI Cadillac 104
0818 WJBK-2 MI Detroit 71
0900 WCMU-14 MI Mount Pleasant59
calls with Nike discus throw logo

0947 unIDs-2, 3 CTV "Canada AM"

1000 CBAFT1-5 NB Fredericton 948

1006 CBAT-4 NB Saint John 927
"Sesame Park"

1030 CBGAT14-2 PQ Carleton 966

6/21 Es

0940 WPBT-2 FL Miami 1187
1042 KWGN-2 CO Denver 1093
1100 KSWK-3 KS Lakin 936

heavy CCI o/WWMT and on their
cable feed to Lansing also!

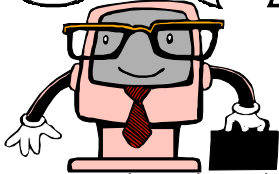
1200 KENW-3 NM Portales 1214

6/25 Es

1008 unID-2 garden show?
1036 KPRC-2 TX Houston 1096
1110 KBEJ-2 TX Fredericksburg 1168
1118 unID-2 PBS Clifford
1152 KJRH-2 OK Tulsa 754
1221 unID-2 PBS JayJaytheJetPlane
1230 KACV-2 TX Amarillo 1057
KFOR-4 OK Oklahoma City852
My1st ID by on-screen URL alone!
1253 KSWK-3 KS Lakin 936
1302 KSNW-3 KS Wichita765
1307 KSNC-2 KS Great Bend 803

DC plug was hot by then... had to unplug for a while and sleep before night job. I don't think I've ever had so many Es IDs in that short of a timeframe ever! Even 3-4 deep at one time! No matter what anyone else says, it was an increDXble month for me. 7 via tropo, a whopping 14 by Es!! 73, Keith K. Smith.

SOUTHERN FM DX



John Zondlo
4009 Driftwood Circle
Yukon, OK 73099
sfm@fmdxweb.com
Deadline: 10th

For DXers in AL, AZ, AR, CA, CO, DE, DC, FL, GA, HI, KS, KY, LA, MD, MS, MO, NV,
NM, NC, OK, SC, TN, TX, UT, VA, WV, Cuba & Mexico

August 2002

Doug Smith – W9WI

1385 Old Clarksville Pike

Pleasant View, TN 37146-8098

w9wi@w9wi.com - www.w9wi.com - CDT

6/13 Es

0915 unID 92.7 ?? ??, ad for Ramada Inn in Bangor ME w/phone # (207) 547-6961; "theclassicrockstation.com". There's a 92.9 in Bangor, & ad sounded aimed at tourists, not locals. Suspect New Brunswick.

0921 CHTD 98.1 NB Saint Stephen, "98.1 The Tide," local ads 1202
Tentative Maritimes on 98.3, 90.9, 91.3 (classical) and 92.7 (FF)

0931 CKYQ 95.7 PQ Plessisville, ad for "Bingo Victoriaville" 1043

0937 CHOM 97.7 PQ Montreal, "The all new Shome 97-7" 941

Tentative Quebec stations on 100.7, 100.9, 101.5 (classical), 101.3 (w/The Guess Who)

0945 CIEL 103.7 PQ Riviere-du-Loup, Notre-Dame-du-Lac ads and former CJFP calls (maybe this call change hasn't happened, but it's listed as CIEL in Industry Canada database) 1187

CBOt 91.5 ON Ottawa, CBC mono, Interview w/Gov. General Adrienne Clarkson

0953 CJET 92.3 ON Smiths Falls, "Country 92," local ad 829

CFQR 92.5 PQ Montreal, local ad in EE 941

0955 CJMF 93.3 PQ Quebec, "FM Quatre-vingt-treize" 1076

0956 CKKL 93.9 ON Ottawa, legal ID 857

1006 CBCW 98.5 ON Whitney, CBC EE talk & Ottawa wx, only 162 watts 778

1029 CKFX 101.9 ON North Bay, "Nettie's North Bay Hyundai, 2575 Trout Lake Road" 790

1032 CJMV 102.7 PQ Val d'Or, talk re: local library, ads for Amos and Abitibi, "Energy" slogan 952

1040 CHOA 96.5 PQ Rouyn-Noranda, "Rock Détente," Abitibi talk 915

1054 CINI 95.3 PQ Mistassini, EE ad w/native accent, Chibougamau

1100 unID 88.3 PQ ??, Chaine Culturell ID
unIDs 89.9, 90.9, 91.5 FF talk

unID 93.5 ?? ??, modern r, EE, mono

unID 99.9 ?? ??, CBC EE talk

1120 CBON21 104.9 ON Gogama, "Radio-Canada," CBON calls 836

1125 unID 104.1 ?? ??, FF AC, distorted and low

1133 CJRQ 92.7 ON Sudbury, "Ontario Liquidators" ad 764

1142 CFNO 93.1 ON Marathon, ad for "Club 147" in the "Soo area" 853

1144 unID 103.5 ?? ??, native language talk

1147 CKGN 89.7 ON Kapuskasing, calls 929

1154 unID 100.5 ?? ??, k, mono, low audio, native-language talk

unID 102.3 ?? ??, rel AC with lots of hum, CHIM Timmins?

1200 CHYK 104.1 ON Timmins, r, FF talk ment Timmins, low 12C 931

1202 CBCC 91.9 ON Hearst, CBC EE nx 931

6/14 Es

1047 WWRM 94.9 FL Tampa, legal ID whispered & VERY fast 656

1054 WMNF 88.5 FL Tampa, event at Francis Wilson Playhouse 656

1108 Cuba? 92.3 FL SS talk, stereo, about USA-Poland World Cup game

1119 unID 89.5 ?? ??, "Love 89," rel soft AC

1128 KEPC 89.7 CO Colorado Springs, local wx 980

1134 KKMG 98.9 CO Pueblo, "98.9 Magic FM" 984

Tentative Colorado 88.5, 88.7, 90.1

1140 KKCH 92.7 CO Glenwood Springs, ads for forest-fire cleanup firm and sales execs for "AGM Rocky Mountain Broadcasting" w/Avon CO address 1121

1144 KPLO 94.5 SD Reliance, call ID 840

1145 KRKSt 94.7 CO Boulder, rel talk

1146 KLXS 95.3 SD Pierre, "XS95" 886

KXPKt 96.5 CO Evergreen, SS talk

1149 KBCO 97.3 CO Boulder, calls 1015

1157 KCSU 90.5 CO Fort Collins, "90.5 KCSU, thanks for listening" 1016

1715 unid 94.1 ON ??, "Canadian Hot 20," suspect CKNR

CBF15 88.3 PQ L'Annonciation, Radio-Canada mono 933

1800	<u>KAXE</u>	91.7	MN	Grand Rapids, legal ID 816	UnIDs 96.9//97.3 in FF
1803	<u>CBON7</u>	94.9	ON	Espanola, Radio-Canada 737	1951 CBQht 100.9 ON Dryden, CBC Radio One 1953 unID 103.1 ?? ??, FF (!)
1804	<u>KGPZ</u>	96.1	MN	Coleraine, "FM 96.1 K-G-P-Z" 817	2000CBC 89.5//89.7 but split at TOH. 89.5 solicited transmission problem reports to CBC Technical Fault Centre; 89.7 ran local event announcements for Confederation College and something in Ear Falls
1818	<u>WWJO</u>	98.1	MN	St. Cloud, ad for Tim Woreye Ford in St. Cloud 742	2005 unIDs 99.1, 102.1, 102.9, 103.1 FF, none parallel
1819	<u>WBJI</u>	98.3	MN	Blackduck, ad for busn 5 miles south of Walker on Hwy 371 779	2020 <u>CHAS</u> 100.5 ON Sault Ste. Marie, "100.5 Easy Rock," Canadian Temps, "925-Win Challenge" 717
	CBWt	98.3	MB	Winnipeg, Canadian nx in stereo	2021 <u>WSUE</u> 101.3 MI Sault Ste Marie, local ad 706
1820	<u>KZPK</u>	98.9	MN	Paynesville, Waite Park ad 740	2022 <u>CJKL</u> 101.5 ON Kirkland Lake, local ad 882
1822	<u>KPRW</u>	99.5	MN	Perham, "The Lakes" 822	2037 <u>WGMO</u> 95.3 WI Shell Lake, "The Classic Rock Station, 95GMO 667
1823	<u>WHMH</u>	101.7	MN	Sauk Rapids, St. Cloud ad 733	WHWlt 95.7 MI Marquette, easy listening UnID 95.9 ?? ??, jazz
1828	KCRBt	88.5	MN	Bemidji, MN wx, break and DTMF cue tones for local ID but only dead air	2041 <u>WAQE</u> 99.1 WI Barron, "Hey Spooner!" 675
	CBWSt	92.7	MB	Brandon, c, in most of nite	2047 <u>WHWC</u> 88.3 WI Menomonie, RDS ID "WHWC," PI 6962, WI Public Radio talk 646
1834	<u>KJJK</u>	96.5	MN	Fergus Falls, local ad 820	<u>WRFW</u> 88.7 WI River Falls, WPR talk// WHWC 88.3 but no RDS 653
1836	<u>KLLZ</u>	99.1	MN	Walker, tstorm warning for northern Cass County 847	unID 91.9 WI ??, WPR talk //WHWC 88.3 & WRFW 88.7, probably WHDI Sister Bay but WLBL Wausau also possible
	CKSB8t	99.5		, FF	2054 <u>KBLB</u> 93.3 MN Nisswa, warning of hail in Aitkin 788
1841	<u>KSRQ</u>	90.1	MN	Thief River Falls, "The new KSRQ Music Machine" 930	2056 <u>KMFY</u> 96.9 MN Grand Rapids, ad for Matavan Motors on Hwy 169 South 816
	unID	91.1	??	??, c, WAY OVER local WRVU!	2100 <u>KSJN</u> 99.5 MN Minneapolis, legal ID 675 unID 95.9 ?? ??, easy listening
1845	<u>CJEL</u>	93.5	MB	Morden-Winkler, Winkler ad, Pembina Valley forecast, Canadian temps, "The Eagle 93.5 FM" 1037	2117 <u>KEYA</u> 88.5 ND Belcourt, wx, calls 1070
1846	unID	94.3	??	??, r over local WDBL only 12 miles away! Suspect CHIQ Winnipeg	2120 <u>WKMJ</u> 93.5 MI Hancock, "93 WKMJ" 742
1852	<u>KYNU</u>	98.3	ND	Carrington, RDS ID "98.3 KYNU," PI 15F1 807	<u>6/25 Es</u>
	UnID	102.1	??	??, "Come on in K102" – Minneapolis?	1105 <u>KUWZt</u> 90.5 WY Rock Springs, "Wyoming Public Radio" // 90.5 1041
1902	<u>WPFf</u>	90.5	WI	Sturgeon Bay, RDS ID "WPFf," PI 7CCB, rel r 587	KUWR 91.9 WY Laramie, "Wyoming Public Radio" // 90.5 1041
1903	<u>WJPD</u>	92.3	MI	Ishpeming, RDS ID "WJPD," PI 6DF5, k 698	1128 <u>KILIt</u> 90.1 SD Porcupine, native-language talk 931
1906	<u>KKWQ</u>	92.5	MN	Warroad, notice to Lake of the Woods residents 954	1133 <u>KRCS</u> 93.1 SD Sturgis, ad for local special event "Rockin' Main Street" 1021
1916	CKNRt	94.1	ON	Elliot Lake, Expos vs Blue Jays bb, mono	1137 <u>KPLO</u> 94.5 SD Reliance, "94 Country KPLO" 840
1931	CKGN	89.7	ON	Kapuskasing, local talk in FF 929	1140 <u>KAML</u> 96.9 WY Gillette, local fireworks ad, "Mix 96-9" 1105
1933	<u>WBCM</u>	93.5	MI	Boyne City, "WTCM forecast" 626	<u>KGWY</u> 100.7 WY Gillette, Sheridan ad 1108
	CBON19t	97.3	??	??, FF, mono	1141 <u>KPSDt</u> 97.1 SD Faith, c, fighting w/local WRQQ
1938	<u>WCMZt</u>	98.3	MI	Sault Ste. Marie, NPR-style talk	1200 <u>K206BN</u> 89.1 MT Ashland, KEMC network ID (1) 1165
1939	<u>WUSZ</u>	99.9	MN	Virginia, "Ranger GM on the Beltline in Hibbing," unID w/oldtime radio underneath 815	1202 <u>KTSD</u> 91.1 SD Reliance, SD Public Radio News 839
1940	WBIZt	100.7	WI	Eau Claire, "Z-100 Days of summer"	1206 <u>KYDT</u> 103.1 WY Sundance, "KBFS-KYDT" 1065
	KSJZt	93.3	ND	Jamestown, "The Hot FM Z93," k	1219 <u>KLXS</u> 95.3 SD Pierre, local ads 886
1947	<u>KBKK</u>	95.9	MN	Pillager, "on highway 10 in Little Falls," Breezy Point ad 775	1220 <u>KZZI</u> 95.9 SD Belle Fourche, local ads, one of which was later heard on KYDT 103.1 also 1034

1221 KDZN 96.5 MT Glendive, "...downtown Glendive" 1168
 KIQK 104.1 SD Rapid City, "Kick 104," SD Lottery ad 999
 1232 KSQYt 95.1 SD Deadwood, hard r 1034
 1241 KKRY 92.5 MT Miles City, local ads & PSA 1178
 1322 KEYA 88.5 ND Belcourt, calls, annmnt of KLND 89.5 looking for a new station manager (2) 1070
 6/14 Tr
 1248 KFUO 99.1 MO St. Louis, RDS calls "KFUO FM," PI 1F4A 232
 6/27 Tr
 0956 WJLY 88.3 IL Ramsey, "This is my Christian radio station WJLY, Ramsey." Sounds Like it was in fact the owner reading the ID <grin> 218
 6/27 Gw
 0959 WAUV 89.7 TN Ripley, legal ID in APR programming 139
 6/27 Es
 1001 KBNLt 89.9 TX Laredo, SS talk about Mexican politics, MUF briefly 92.5
 7/7 Tr
 0915 KXMO 95.3 MO Owensville, "95.3 KXMO" 265
 0917 KHCR 97.7 MO Potosi, "97.7 Joy FM" (3) 229
 0926 KTTR 99.7 MO St. James, legal ID w/KTTR-AM 276
 0935 KMXF 101.9 AR Lowell, Rogers & I-540 ads, FM #1200 382
 0954 unID 92.9 ?? ??, way over local WJXA w/CHR
 KSPQ 93.9 MO West Plains, local ad & PSA 269
 0958 KKPT 94.1 AR Little Rock, legal ID 322
 1004 KKID 95.9 MO Salem, Bonne Terre church program 258
 1008 KCMQ 96.7 MO Columbia, "...on 96-7 KCMQ" 316
 1025 KTXY 106.9 MO Jefferson City, Columbia ad 333
 1031 KSIV 91.5 MO St. Louis, calls 230
 1034 KBFC 93.5 AR Forrest City, calls 232
 KCWD 96.1 AR Harrison, "Hits 96 for Harrison & the Ozarks" 333
 1044 KUNQ 99.3 MO Houston, "KUNQ Talent Review" 278
 1046 KPOC 103.9 AR Pocohantas, legal ID 215
 1054 KRZK 106.3 MO Branson, "KRZK weather," 337
 unID 107.1 ?? ??, "The Point," satellite CHR

domain which specifies phone numbers and addresses in this area.

William McGuire – 2412 59th Pl.
 Cheverly, MD 20785-2918

DX-398

6/11 Tr

2120 WICO 97.5 MD Salisbury, local ads, wx, "Cat Country"

2133 WZBH 93.5 DE Georgetown, "The Beach"

2245 WFAL 104.5 VA Falmouth, "Thunder 104.5"

6/12 Tr

2100 WRAR 105.5 VA Tappahannock, ID, ABC nx

2114 WARX 106.9 MD Hagerstown, "Oldies 106.9"

2118 WESM 91.3 MD Princess Anne, black Gospel mx

2125 WTMD 89.7 MD Towson, ID, AP nx promo

2136 WAFX 106.9 VA Suffolk, "The Fox"

2149 WQHQ 104.7 MD Ocean City, Delilah

2152 WNVZ 104.5 VA Norfolk, "Z-104"

6/26 Tr

1810 WLTE 97.5 WV Martinsburg, "Lite 97.5," ID

6/27 Tr

1940 WAYZ 104.7 MD Hagerstown, local ad, SID

2055 WSTW 93.7 DE Wilmington, local ad, SID

6/28 Tr

2032 WFAL 104.5 VA Falmouth, k, "Thunder 104.5"

2037 WCEM 106.3 MD Cambridge, music festival promo, "The Heat"

6/30 Tr

2120 WQHQ 104.7 MD Ocean City, Delilah

2125 WAFX 106.9 VA Suffolk, "The Fox"

2135 WXCX 103.7 MD Havre de Grace, k, ID

2207 WRAR 105.5 VA Tappahannock, ID

7/2 Tr

0022 WDSO 92.9 DE Smyrna, k, After Midnite

0029 WICO 97.5 MD Salisbury

0100 WAFB 97.7 DE Milford, PSA, ID

0105 WOGL 98.1 PA Philadelphia, o

0110 WMGK 102.9 PA Philadelphia, "Classic Rock 102.9"

0130 WMGM 103.7 NJ Atlantic City, "Classic Rock 103.7"

0133 WLCE 104.5 PA Philadelphia, "Alice 104.5"

0136 WLVW 105.5 MD Salisbury, "The Wave"

0140 WZBH 93.5 DE Georgetown, "The Beach"

0149 WWFG 99.9 MD Ocean City, k, "Froggy 99.9"

7/3 Tr

0001 WARX 106.9 MD Hagerstown, o

0007 WTDK 107.1 MD Federalsburg, o, "The Duck"

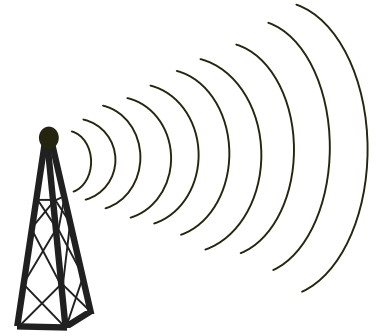
0015 WWIN 95.9 MD Glen Burnie, "Magic 95.9"

Notes:

1. No full power KEMC relayers on 89.1, but two translators; the other is K206BA Red Lodge. That's further away and less powerful, and there's no way to tell it from K206BN, so I'm going to count this one. 222 watts.
2. Logged on car radio about 7 miles south of home.
3. Plenty of local announcements but none give any indication of where the station is! Neither does their website on www.joyfonline.org. IDed by the "whois" information for the Internet



Northern FM DX



Keith McGinnis
387 Shirley Street, Winthrop, MA 02152
longwave@attbi.com 617-846-5760

For Dxers in the following states **CT, IA, ID, IL, IN, MA, ME, MI, MN, MT, ND, NE, NH, NJ, NY, OH, OR, PA, RI, SD, VT, WA, WI, WY** Please submit by the 10th of each month. If possible please submit in the formats shown below.

JOHN EBELING 9209 Vincent Ave. South Bloomington MN 55431
liebeling@aol.com Underlined are new.

The Following is DX from Alborn MN

Jan 5 Tr

2100 WXCX 105.7 Siren WI

Jan 17 Tr

2250 KBFH 106.9 Moose Lake MN
 ex 107.1)

Feb 23 Tr

1001 KBLB 93.3 Nisswa MN
 "B-93.3"

Jun 11 Es

1215	<u>WVTF</u>	89.1	Roanoke	VA
	935 miles			
1225	<u>WDCE</u>	90.1	Richmond	VA
	1015			
1230	<u>WTEB</u>	89.3	New Bern	NC
	1154			
1239	<u>WWCC</u>	94.5	Eden	NC
	984			
1245	<u>WBRF</u>	98.1	Galax	VA
	934			
1246	<u>WQSM</u>	98.1	Fayetteville	NC
	1092			
1248	<u>WZFX</u>	99.1	Whiteville	NC
1139				'fox 99'
1251	<u>WSTS</u>	100.9	Fairmont	NC
	1116			
1255	<u>WKXU</u>	101.1	Burlington	NC
	1018			
1256	<u>WWQQ</u>	101.3	Wilmington	NC
	1172			
1257	<u>WIKS</u>	101.9	New Bern	NC
	1154			
1258	<u>WPIR</u>	88.1	Hickory	NC
	973			
1300	<u>WAGO</u>	88.7	Snow Hill	NC
1300	<u>WFDD</u>	88.5	Winston Salem	NC
	988			
1304	<u>WDCE</u>	90.1	Richmond	VA
	1015			
1321	<u>WMQX</u>	93.1	Winston Salem	NC
	988			
1322	<u>WKHT</u>	93.7	Bishopville	SC
	1093			
1326	<u>WKKJ</u>	94.3	Chillicothe	OH
	719	Note 1		

1328	<u>WIFX</u>	94.3	Jenkins	KY
	'foxy 94'	952		
1335	<u>WJMH</u>	102.1	Reidsville	NC
	'102jams.com'	994		
1340	<u>WRYV</u>	101.5	Gallipolis	OH
	773			
1342	<u>WNMF</u>	99.5	New Martinsville	WV
	779			
1348	<u>WTFM</u>	98.5	Kingsport	TN
1400	<u>WRVL</u>	88.3	Lynchburg	VA
	956			

Jun 13 Es

1130	<u>WRTC</u>	89.3	Hartford	CT
	1049			
1132	<u>WNJO</u>	94.5	Trenton	NJ
	'the hawk'	1009		
1137	<u>WPLJ</u>	95.5	New York	NY
	1023			
1141	<u>WQHT</u>	97.1	New York	NY
	1023			
1143	<u>WCAV</u>	97.7	Brockton	MA
	'hot 97.7'	1117		
1144	<u>WNED</u>	94.5	Buffalo	NY
	729			
1145	<u>WCTY</u>	97.7	Norwich	CT
	1084			
1148	<u>WPKX</u>	97.9	Enfield	CT
	1046			
1155	<u>WCTK</u>	98.1	New Bedford	MA
	kat country'	1134		
1200	<u>WFCR</u>	88.5	Amherst	MA
	1038			
1202	<u>WFCC</u>	107.5	Chatham	MA
	1178			
1205	<u>WROR</u>	105.7	Framingham	MA
	RDS:'drama'	1092		
1207	<u>WFRY</u>	97.5	Watertown	NY
	'froggy 97'	835		
1213	<u>WOKQ</u>	97.5	Dover	NH
	1090			

Jun 14 Es

1045	unid	88.3		
	817-556-2078?	sounded like KICO		
1047	<u>KAZC</u>	88.3	Tishomingo	OK
	'the gospel station'	907		
1049	<u>KNON</u>	89.3	Dallas	TX
	1007			
1051	<u>KLBJ</u>	93.7	Austin	TX
	1189			
1100	<u>KEPX</u>	89.5	Eagle Pass	TX
	Spanish	1334		

1101	KGMZ 1074	88.1	Abilene	TX	1901	WETS 909	89.5	Johnson City	TN
1103	<u>KLWV</u> 'K-Love'	88.7	West Odessa	TX	1902	WVTF 935	89.1	Roanoke	VA
1130	KTXT 1047	88.1	Lubbock	TX	1930	WFCH 1189	88.5	Charleston	SC
1610	WKOQ 'cool 98.7'	98.7	Jacksonville	NC	1932	WWWZ 1169	93.3	Summerville	SC
1615	<u>WSLQ</u> 'Q 99'	99.1	Roanoke	VA	1932	WLPT RDS	88.3 1209	Jessup	GA
1618	WSTS 1116	100.9	Fairmont	NC	1936	WAGC talk SCA	90.7	Agusta 1090	GA +
1620	WRAL +m on SCA (rare)	101.5	Raleigh	NC	2018	WJSP 1061	88.1	Warm Spgs	GA
1622	<u>WQIL</u> 1149	101.3	Chauncey	GA	2020	WRWA 1157	88.7	Dothan	AL
1625	WIKS 1154	101.9	New Bern	NC	<u>Jun 15 Es</u>				
1627	<u>WYSC</u> 'star 102.7'	102.7	McRae	GA	1052	KGNZ 1074	88.1	Abilene	TX
1630	WYAV 'wave 104.1'	104.1	Myrtle Beach	SC	<u>Jul 4 Es</u>				
1630	<u>WDAV</u> 1002	89.9	Davidson	NC	2305	unid gospel	89.5 'air one'		
1637	<u>WJZX</u> smooth jazz	99.7	Port Royal	SC	Note 1: One never knows on a skip opening!!				
1641	WDMG 1191	99.5	Douglas	GA	The following are from Bloomington MN				
1649	<u>WXJZ</u> 1304	104.9	High Springs	FL	<u>Nov 18 2001 MB</u>				
1657	WRCQ 'rock 103'	103.5	Dunn	NC	0400	<u>KZJH</u> 863	95.3	Jackson	WY
1700	WUWF 1182	88.1	Pensacola	FL	a logging from 2001, which will be added into this years totals. Via tape, help was provided in IDing this station.				
1711	WIKS 'kiss fm'	101.9	New Bern	NC	<u>Jan 27 Tr</u>				
1713	<u>WQLS</u> 1136	103.9	Ozark	AL	1500	<u>KBLB</u> 125 miles	93.3	Nisswa	MN
1721	WWSK 1129	107.1	Mullins	SC	<u>Jun 4 Es</u>				
1725	<u>WTSH</u> 'south 107'	107.1	Rockmart	GA	1730	KSWB 936	90.9	Lufkin	TX
1726	<u>WPBT</u> 'the point'	106.9	Birmingham	AL	1750	<u>KLSA</u> 937	90.7	Alexandria	LA
1730	WTIF 1180	107.5	Omega	GA	<u>Jun 25 Es</u>				
1757	<u>WLOW</u> 1201	107.9	Hilton Head Island	SC	0845	<u>WZLA</u> 'LA 92.9'	92.9 939	Abbeville	SC
1800	WYFA 1112	107.1	Waynesboro	GA	0902	<u>WRWA</u> (RDS ID)	88.7 1035	Dothan	AL
1803	WSSS 'star 104.7'	104.7	Charlotte	NC	0905	<u>WPAE</u> 958	89.7	Centerville	MS
1807	WFSH 'the fish'	104.7	Athens	GA	0942	<u>WYYW</u> 'Y95'	95.1 894	Marion	MS
1815	WWSK 1129	107.1	Mullins	SC	1123	<u>KKBQ</u> 1051	92.9	Pasadena	TX
1820	WSFM 1186	107.5	Southport	NC	1127	<u>KKTX</u> 864	96.1	Kilgore	TX
1823	<u>WEND</u> 1005	106.5	Salisbury	NC	1128	<u>KLAK</u> 766	97.5	Durant	OK
1826	<u>WCCG</u> 1094	104.5	Hope Mills	NC	1131	KVET 1035	98.1	Austin	TX
1827	<u>WKAK</u> 1157	104.5	Albany	GA	1134	<u>KTSH</u> (RDS ID)	99.7 754	Tishomingo	OK
1827	WRFQ 1192	104.5	Mt. Pleasant	SC	<u>Jul 15 Tr</u>				
1835	WCOS 1084	97.5	Columbia	SC	0855	<u>K204DS</u> (freq chg)	88.7	Glencoe	MN
1841	WKOQ 'kool 98.7'	98.7	Jacksonville	NC					
1844	WHLZ 1127	92.5	Manning	SC					
1846	<u>WSFU</u> 'power 94'	94.1	Union Spgs	AL					
1900	WMHK 1084	89.7	Columbia	SC					
1900	<u>WFHE</u> 973	90.3	Hickory	NC					

SAUL CHERNOS Burnt River and Toronto ON - 416-364-0725 / 705-454-9636 - schernos@sympatico.ca Underlined are new.

Jun 3 Es (BR)

1153	<u>KILI</u>	90.1	SD Porcupine	<u>Kili FM Radio, drumming</u>
1159	KPLO	94.5	SD Reliance	94 Country
1200	KKMK	93.9	SD Rapid City	
1201	<u>KTSD</u>	91.1	SD Reliance	

Jun 4 Es (BR)

1835	KYCK	97.1	MN Crookston	97-Kick
1837	KYYX	97.1	ND Minot	
1842	<u>WVIV</u>	93.9	MS Pearl	SEE NOTE 1
1843	KNOX	94.7	ND Grand Forks	94-7 Rooster Country
1852	<u>KQZZ</u>	96.7	ND Devils Lake	Classic Rock Q-97
1900	<u>KDVL</u>	102.5	ND Devils Lake	RDS: KDVL
1904	<u>KFNW</u>	97.9	ND Fargo	Life 97.9, g
1906	<u>KHRT</u>	106.9	ND Minot	K-Hort, g
1907	<u>KVOX</u>	99.9	MN Moorhead	Froggy 99.9, k
1908	<u>KACL</u>	98.7	ND Bismarck	Cool 98.7
1922	KTHC	95.1	MT Sidney	Power 95, RDS: KTHC
1925	KSDN	94.1	SD Aberdeen	94-dot-1 The Rock
1926	KKRY	92.5	MT Miles City	
1927	<u>KBYZ</u>	96.5	ND Bismarck	
1928	KMPR	88.9	ND Minot	ND Public Radio
1928	KUND	89.3	ND Grand Forks	//88.9
1929	KMPR	89.9	ND Dickinson	//88.9
1929	KCND	90.5	ND Bismarck	//88.9
1932	KMHA	91.3	ND New Town	Native drumming later in opening
1938	KQDY	94.5	ND Bismarck	KQ, k
1940	<u>KKDQ</u>	99.3	MN Thief R Falls	
1941	<u>KAUJ</u>	100.9	ND Grafton	Oldies
1945	<u>CHSN</u>	102.3	SA Estevan	Sun 102.3 FM
1949	<u>KNTN</u>	102.7	MN Thief R Falls	MN Public Radio
1952	<u>KZPR</u>	105.3	ND Minot	
1959	KPPR	89.5	ND Williston	ND Public Radio
2000	KYYZ	96.1	ND Williston	
2008	<u>KLAN</u>	93.5	MT Glasgow	k
2010	CBWV	97.9	MB Brandon	CBC
2040	<u>KXGT</u>	95.5	ND Jamestown	
2120	<u>KPSD</u>	97.1	SD Faith	Jazz
2140	<u>KGVA</u>	88.1	MT Ft Belknap	Native drumming

Jun 7 Tr (BR -- Dump)

1950	<u>WVIN</u>	98.3	NY Bath	V-98.3, m
2200	<u>WBJA</u>	102.1	NY Albion	Calvary Satellite Network g

Jun 8 Tr (BR)

0130	WKLQ	94.5	MI Holland	94-5 KLQ, pr
0135	<u>WEEG</u>	97.3	MI Essexville	Eagle 97.3, Saginaw's Classic Rock
0141	<u>WTLZ</u>	107.1	MI Saginaw	The best new music, Hot 107
0159	<u>WTRK</u>	89.1	MI Bay City	WTRK The Rock, wtrk.com, gr
0200	<u>WQHZ</u>	102.3	PA Erie	Z-102, rp

Jun 9 Tr (BR)

0110	WFBQ	94.7	IN Indianapolis	Q-95, rp
0115	<u>WTUE</u>	104.7	OH Dayton	104.7 WTUE, rp (Prev Au)

Jun 11 Es (BR)

1159	KMUW	89.1	KS Wichita	
1350	KANR	92.7	KS Belle Plaine	
1420	KJCK	94.5	KS Junction City	The Big Cat 94.5, k
1421	KZRD	93.9	KS Dodge City	The Buzzard
1422	<u>KCLY</u>	100.9	KS Clay Center	The Lynx
1423	<u>KBGL</u>	106.9	KS Larned	Eagle Radio
1426	KYEZ	93.7	KS Salina	KY-94
1428	KGGG	94.7	KS Sterling	Oldies 94.7
1430	<u>KDNS</u>	94.1	KS Downs	

1431	<u>KQNA</u>	92.5	KS Phillipsburg	
1432	<u>KIIC</u>	97.9	IA Lamoni	I-98 Classic Radio
1433	<u>KZLS</u>	107.9	KS Great Bend	
1434	<u>KSKG</u>	99.9	KS Salina	RDS: EAGLE999, k
1436	<u>KCKS</u>	94.9	KS Concordia	Best Hits Best Variety Kiss FM 94.9
1440	<u>KMKF</u>	101.5	KS Manhattan	
1441	<u>KKBZ</u>	99.3	IA Clarinda	
1442	<u>KHAZ</u>	99.5	KS Hays	k
1443	<u>KHOK</u>	100.7	KS Hoisington	Eagle Radio
1444	<u>KKQY</u>	101.9	KS Hill City	The Country Bull Y-102, Eagle Radio owners
1445	<u>KVSV</u>	105.5	KS Beloit	
1446	<u>KJLS</u>	103.3	KS Hays	103.3 Mix FM, Eagle Radio owners
1448	<u>KVGB</u>	104.3	KS Great Bend	
1453	<u>KQNS</u>	95.5	KS Lindsborg	
1453	<u>KSAJ</u>	98.5	KS Abilene	
1456	<u>KSKL</u>	94.5	KS Scott City	RDS: KSKL
1459	<u>KLNE</u>	88.7	NE Lexington	RDS: KLNE
1501	<u>KZDY</u>	96.3	KS Cawker City	Oldies 96
1503	<u>KWGB</u>	97.9	KS Colby	RDS: KWGB
1510	<u>KBBX</u>	97.7	NE Nebraska City	SS Ranchero
1518	<u>KNCY</u>	94.7	NE Auburn	(Prev MS)
1520	<u>KREP</u>	92.1	KS Belleville	
1521	<u>KILS</u>	92.7	KS Minneapolis	
1522	<u>KLIQ</u>	94.5	NE Hastings	The Breeze 94.5
1529	<u>KATR</u>	98.3	CO Otis	
1530	<u>KGCR</u>	107.7	KS Goodland	g
1531	<u>KCTY</u>	106.9	NE Plattsmouth	
1533	<u>KMTY</u>	97.7	NE Holdrege	
1537	<u>KIOA</u>	93.3	IA Des Moines	
1539	<u>KQCH</u>	94.1	NE Omaha	94.1 Jams
1541	<u>KWPN</u>	107.9		NE West Point
1542	<u>KDSN</u>	107.1	IA Denison	
1542	<u>KIBZ</u>	106.3	NE Lincoln	The Blaze
1544	<u>KROR</u>	101.5	NE Hastings	Rock 101.5
1550	<u>KZKX</u>	96.9	NE Seward	96-Kix...Lincoln's Concert Authority
1551	<u>KEXL</u>	106.7	NE Norfolk	
1553	<u>KAYL</u>	101.7	IA Storm Lake	RDS: KAYL
1554	<u>KAMI</u>	104.5	NE Cozad	104-1/2-FM
1556	<u>KIOD</u>	105.3	NE McCook	k, RDS: COYOTE
1557	<u>KTCH</u>	104.9	NE Wayne	Oldies 104.9 FM
1558	<u>KJLT</u>	94.9	NE North Platte	g
1602	<u>KKPR</u>	98.9	NE Kearney	Power 99
1606	<u>KICX</u>	96.1	NE McCook	
1607	<u>KUCV</u>	90.9	NE Lincoln	
1610	<u>KNEN</u>	94.7	NE Norfolk	RDS: KNEN--FM
1615	<u>KSWN</u>	93.9	NE McCook	The Prairie's Dr. Laura is scary but it's good, 93 dot 9
1617	<u>KKYY</u>	101.3	IA Whiting	
1619	<u>KBBN</u>	98.3	NE Broken Bow	RDS: KBBN--FM
1620	<u>KAYA</u>	91.3	NE Hubbard	g
1622	<u>KSEZ</u>	97.9	IA Sioux City	Z-98
1625	<u>KPNE</u>	91.7	NE North Platte	RDS: KPNE
1628	<u>KKOT</u>	93.5	NE Columbus	

Jun 13 Es (BR)

1028	<u>WERO</u>	93.3	NC Washington	Bob 93-3
1035	<u>WTHZ</u>	94.1	NC Lexington	Hits 94
1040	<u>WSCI</u>	89.3	SC Charleston	RDS: WSCI
1043	<u>WLZA</u>	96.1	MS Eupora	Laser 96, m
1049	<u>WMSR</u>	94.9	TN Collinwood	Star 94
1050	<u>WGGC</u>	95.1	KY Glasgow	
1052	<u>KCDI</u>	93.3	AR Bryant	CD country
1053	<u>KBKG</u>	93.5	AR Corning	The Light 93.5 & 1260
1054	<u>WAYM</u>	88.7	TN Columbia	Christian hit radio FM 88.7 Way FM
1055	<u>WTYX</u>	94.7	MS Jackson	
1058	<u>WCVK</u>	90.7	KY Bowling Green	
1059	<u>WDNX</u>	89.1	TN Olive Hill	
1100	<u>WKYU</u>	88.9	KY Bowling Green	The Pub R Service of w'rn KY, WKYU 88.9
1101	<u>WMAE</u>	89.5	MS Booneville	PRM, WMAE ID
1102	<u>WAUP</u>	91.7	TN Clarksville	
1103	<u>WJNS</u>	92.1	MS Yazoo City	QTH, black gospel
1106	<u>WMAV</u>	90.3	MS Oxford	PRM
1110	<u>WYNU</u>	92.3	TN Milan	RDS: WYNU, r
1120	<u>WYPL</u>	89.3	TN Memphis	RDS: WYPL Memphis Public Library FM
1131	<u>KARG</u>	91.7	OK Poteau	RDS: KARG, AFR g
1132	<u>KUNQ</u>	99.3	MO Houston	
1133	<u>KTCS</u>	99.9	AR Ft Smith	RDS: KTCS

1137	<u>KELE</u>	92.5	MO Mtn Grove
1138	<u>KAMO</u>	94.3	AR Rogers US-94
1140	<u>KTTS</u>	94.7	MO Springfield k, RDS: 94.7KTTS
1146	<u>KIPR</u>	92.3	AR Pine Bluff
1147	<u>KOLX</u>	94.5	AR Barling The Outlaw 94.5, k
1150	<u>KTTK</u>	90.7	MO Lebanon
1151	<u>KOBC</u>	90.7	MO Joplin 90.7 KOBC (jingle)
1152	<u>KEMX</u>	94.5	OK Locust Grove
1153	<u>KZBB</u>	97.9	OK Poteau
1154	<u>KAMS</u>	95.1	AR Mammoth Sprgs
1157	<u>KLVV</u>	88.7	OK Ponca City Today's Christian music, KLVV
1158	<u>KBGM</u>	91.1	MO Park Hills
1159	<u>KBVV</u>	91.1	OK Enid
1201	<u>KVOO</u>	98.5	OK Tulsa RDS: KVOO--FM
1204	<u>KKIX</u>	103.9	AR Fayetteville Kix 104, k
1205	<u>KSJM</u>	107.9	KS Winfield KSJM 107.9 Jams...rhythm & soul of Wichita
1206	<u>KOSU</u>	91.7	OK Stillwater RDS: KOSU91.7
1207	<u>KOMA</u>	92.5	OK Oklahoma City
1206	<u>KOTE</u>	93.5	KS Eureka Oldies 93.5, RDS: KOTE
1207	<u>KOMC</u>	100.1	MO Kimberlg City
1210	<u>KRZK</u>	106.3	MO Branson 106.3 KRZK jingle, k
1214	<u>KBVA</u>	106.5	AR Springdale
1216	<u>KMCK</u>	105.7	AR Siloam Sprgs Power 105.7
1217	<u>KMOD</u>	97.5	OK Tulsa RDS: KMOD
1218	<u>KYOO</u>	99.1	MO Half Way
1219	<u>KCFX</u>	101.1	MO Harrisonville 101 The Fox
1220	<u>KMRX</u>	101.3	OK Collinsville Live 101.5
1222	<u>KJEL</u>	103.7	MO Lebanon
1224	<u>KJMK</u>	93.9	MO Webb City
1225	<u>KCMQ</u>	96.7	MO Columbia RDS: KCMQ
1226	<u>KCLR</u>	99.3	MO Boonville RDS; KCLR
1228	<u>KLRQ</u>	96.1	MO Clinton RDS: KLRQ
1229	<u>KDKD</u>	95.3	MO Clinton k
1230	<u>KJCK</u>	94.5	KS Junction City The Big Cat
1231	<u>KSSZ</u>	93.9	MO Fayette RDS: EAGLE
1232	<u>KVCY</u>	107.7	KS Fort Scott g
1231	<u>WJEQ</u>	102.7	IL Macomb
1233	<u>WGLO</u>	95.5	IL Pekin 95-5 GLO...classic rock
1235	<u>WQUB</u>	90.3	IL Quincy c, RDS: QU RADIO
1236	<u>KCFN</u>	91.1	KS Wichita RDS: KCFN
1237	<u>KILS</u>	92.7	KS Minneapolis
1238	<u>KICK</u>	97.9	MO Palmyra 97-9 Kick-FM, k
1239	<u>KUDL</u>	98.1	KS Kansas City 98-1 KUDL
1240	<u>KYYS</u>	99.7	MO Kansas City KY-Rocker, RDS: 99.7 KY
1242	<u>KGOZ</u>	101.7	MO Gallatin Z-101.7 more variety less repetition
1243	<u>KSNP</u>	97.7	KS Burlington Thunder Country KSNP
1245	<u>KFKF</u>	94.1	KS Kansas City Kansas City's best Country KFKF 94.1
1247	<u>KNGM</u>	91.9	KS Emporia g
1248	<u>KBUZ</u>	90.3	KS Topeka RDS: KBUZ
1249	<u>KOKX</u>	95.3	IA Keokuk RDS: KOKX, Elvis music
1250	<u>KSKG</u>	99.9	KS Salina RDS: EAGLE999
1252	<u>KRZZ</u>	96.3	KS Derby Classic Rock 96-3 KRZZ
1253	<u>KICT</u>	95.1	KS Wichita
1254	<u>KZEG</u>	94.7	IA Clinton
1256	<u>KRNW</u>	88.9	MO Chillicothe KXCV-KRNW news
1258	<u>KCKS</u>	94.9	KS Concordia 94-9 Kiss FM, KCKS Concordia-Salina
1300	<u>WNIE</u>	89.1	IL Freeport
1301	<u>KHCD</u>	89.5	KS Salina ID for 90.1 KHCC, 89.5 KHCD, 90.9 KHCT
1302	<u>KAAN</u>	95.5	MO Bethany RDS: KAAAN
1304	<u>WERN</u>	88.7	WI Madison RDS: WERN, NPR
1306	<u>KIWR</u>	89.7	IA Council Bluffs All express request lunch 89-7 the River
1307	<u>WSUP</u>	90.5	WI Platteville
1310	<u>KBLR</u>	97.3	NE Blair Blair Radio 97.3
1311	<u>KKOT</u>	93.5	NE Columbus 93.5 The Hawk
1318	<u>KIAI</u>	93.9	IA Mason City Moose
1319	<u>KSOU</u>	93.9	IA Sioux Center
1322	<u>WBOG</u>	94.5	WI Tomah Berry 94
1325	<u>KITN</u>	93.5	MN Worthington 93-KITN
1327	<u>KMNE</u>	90.3	NE Bassett RDS: KMNE
1329	<u>KQAL</u>	89.5	MN Winona RDS: KQAL--FM, j
1330	<u>KWOA</u>	95.1	MN Worthington The all-new KO-95, mr
1343	<u>KELO</u>	92.5	SD Sioux Falls
1345	<u>KNSG</u>	94.7	MN Springfield 94.7 The Country Hog
1347	Unid	92.1	St. Paul MN political ad
1355	<u>KDJS</u>	95.3	MN Willmar K-95
1400	<u>WJMC</u>	96.1	WI Rice Lake WWWWJMC, NW WI's country sta (prev Au)
1401	<u>KSJR</u>	90.1	MN Collegeville (Prev Au & MS)
1405	<u>KBLB</u>	93.3	MN Nisswa

1407	<u>KCCD</u>	90.3	MN Moorhead	
1410	<u>KRVI</u>	95.1	MN Detroit Lakes	95.1 The River

Jun 13 Tr-GW (TO - Downtown)

1703	CIUT	89.5	ON Toronto	Spur on 89.5 (SEE NOTE 2)
------	------	------	------------	---------------------------

Jun 14 Es (TO - Eglinton & Oakwood)

1815	<u>KOLX</u>	94.5	AR Barling	The Outlaw 94-5, k
1819	<u>KCTI</u>	101.7	AR Yellville	
1830	<u>KSYE</u>	91.5	OK Frederick	IDs as KCBI Ft Worth TX traffic, g-mx (SEE NOTE 3)
1834	<u>KKNG</u>	93.3	OK Newcastle	King traffic
1853	<u>KOMG</u>	92.9	MO Ozark	
1859	<u>KQCV</u>	95.1	OK Shawnee	g
1900	<u>KARX</u>	95.7	TX Amarillo	95.7 The Car
1905	KPRF	98.7	TX Amarillo	Power 98.7
1906	KOMX	100.3	TX Pampa	TSN (TX) news
1909	KTTK	90.7	MO Lebanon	g

Jun 15 MS (BR)

1906	<u>WACG</u>	90.7	GA Augusta	...GA Public Radio at 90.7... (prev Es)
------	-------------	------	------------	---

Jun 16 MS (BR)

0053	<u>KIAK</u>	96.9	IA Clarion	RDS: KIAK--FM (SEE NOTE 4) (prev Es)
0756	<u>WGKS</u>	96.9	KY Paris	...Kiss FM, with a sure fire...

Jun 21 Es (BR)

0946	WJIS	88.1	FL Bradenton	Joy FM, g
------	------	------	--------------	-----------

Jun 21 Tr (BR)

2336	<u>WWCK1</u>	105.5	MI Flint	CFBK off, w/CHRY, WTKV, WMJQ
2341	WCSB	89.3	OH Cleveland	Bootleg taped concert Phil & Friends (ex-Grateful Dead)

Jun 22 Es (BR)

1007	WJIS	88.1	FL Bradenton	Joy FM, g-mx
1019	WQCS	88.9	FL Fort Pierce	Into NPR Car Talk
1020	<u>WCNO</u>	89.9	FL Palm City	Local g phone-in
1049	WINK	96.9	FL Fort Myers	RDS: WINK96.9
1109	<u>WKES</u>	91.1	FL Lakeland	Dual WKES-WKZM ID
1119	<u>WLPT</u>	88.3	GA Jesup	g-talk, RDS: WLPT
1123	<u>WAQV</u>	90.9	FL Crystal River	Joy FM
1128	WUFT	89.1	FL Gainesville	

Jun 23 Tr (BR -- East Hill)

0100	<u>WRGR</u>	102.3	NY Tupper Lake	Dual ID w/WLPW, Best air in Adirondacks, r
------	-------------	-------	----------------	--

Jun 24 Tr (BR -- Cottage then East Hill)

0718	CJQQ	92.1	ON Timmins	Q-92, r
0800	<u>CBFZ</u>	103.1	PQ Temiskaming	Radio Canada FF (Also WTOJ-NY) (SEE NOTE 5)
0805	<u>WSKU</u>	105.5	NY Little Falls	Dual 105.5-97.9 ID
0804	<u>WVOA</u>	103.9	NY Mexico	g
0813	<u>WGNA</u>	107.7	NY Albany	Capital Region Traffic, Country 107-7 WTAJ-FM
0815	CHOA	96.5	PQ Rouyn	FF, Abitibi mentioned
0820	<u>WBGK</u>	99.7	NY Newport Vill	Bug Country, 99.7-101.1, QTH, k
0827	WZRT	97.1	VT Rutland	
0835	WAMC	90.3	NY Albany	
0853	<u>CIME2</u>	101.3	PQ Mt Tremblant	FF ballads
0904	<u>CBFX4</u>	89.9	PQ Rouyn	La Chaine Culturelle, FF (SEE NOTE 5)

Jun 25 Tr (BR -- Cottage then Dump)

0100	WNTQ	93.1	NY Syracuse	93-Q rp, nearly pinning dial w/CHAY
0149	WBCM	93.5	MI Boyne City	WTCM ID, k
0158	<u>WSKS</u>	97.9	NY Whitesboro	97.9-105.5 Central NY's Kiss FM, pop-rock

0219	WGNA	107.7	NY Albany	k
0225	<u>WKVU</u>	100.7	NY Utica	Christian Music K-Love 800-877-5600
0233	<u>WQBJ</u>	103.5	NY Cobleskill	Rock Radio The Edge
0237	<u>WRFM</u>	93.5	NY Remsen	Warm 93.5

NOTE 1 - Odd to log MS in this decidedly midwestern opening. Heard an ad for Mississippi Congressman George Irvin.

NOTE 2 - CIUT's transmitter problems have gone on for weeks, and have seen the station signal suffer seriously. It's barely audible at Burnt River ON, whereas normally it blocks weak tropo.

NOTE 3 KSYE 91.5 OK Frederick heard IDing as KCBI Ft Worth TX with Dallas-Forth Worth traffic. Confirmed with station engineer.

NOTE 4: I left the radio on 96.9, fell asleep for a couple hours, woke up at 0053 and saw the following on the RDS readout: KIAK--FM. This is the first DX logging I have ever made in my sleep.

NOTE 5: CBFZ and CBFX4 are fairly new to air, easily in the last half year to year.

A couple incredibly good skip openings. But "couple" is the operative word, here. May and June have been fairly productive for nice tropo catches in the under-500-mile category. I use a Sangean ATS909 portable with RDS readout, and a Toyota car radio, No tower or rotor but make up with moderately high ground. 73's - Saul

Editors note: I really thought I had heard it all in terms of places to dx but Saul's logs from the DUMP (June 7 and 25) really had me rolling on floor.

MATTHEW SITTEL, 15013 Eureux Circle, Bellevue, NE 68123

<http://members.home.net/mcsittel/dx.htm>

mcsittel@home.com

Equipment: Yamaha TX-900 tuner w/modified filters, Winegard PR-5030 VHF/FM antenna at 32 feet, Conrad RDS unit. Underlined are new.

Jan 5 Es

0829	WSMR	89.1	FL Sarasota	calls
		1221		
0832	WAYJ	88.7	FL Fort Myers	WayFM.com
		1286		
0838	WGCU	90.1	FL Fort Myers	calls
		1286		
0844	<u>WSOR</u>	90.9	FL Naples	"SW Florida"
		1317		
0849	WARO	94.5	FL Naples	Ft. Myers ad
		1317		

March 30 Tr

1024	<u>KKYY</u>	101.3	IA Whiting	Y 101.3 72
------	-------------	-------	------------	------------

April 13 Tr

0742	<u>KMKE</u>	101.5	KS Manhattan	K-Rock 136
------	-------------	-------	--------------	------------

April 15 Tr

0651	<u>KWCC</u>	93.1	IA Muscatine	93 Country 255
------	-------------	------	--------------	----------------

June 1 Es

2139	KYOT	95.5	AZ Phoenix	calls 1033
2155	KQOL	93.1	NV Las Vegas	Kool 93.11090
2157	<u>KVEG</u>	97.5	NV Mesquite	Hot 97.51020
2159	<u>KNAU</u>	88.7	AZ Flagstaff	calls 946

2159	<u>KCPW</u>	88.3	UT Salt Lake City	ID
		832		
2209	KUUU	92.1	UT Tooele	U-92
	Utah's Beat	856		
2213	<u>KJZS</u>	92.1	NV Sparks	Smooth Jazz 92.1
		1255		
2223	<u>KSSD</u>	92.5	UT Cedar City	loc. ment.
		944		
2253	KNHK	92.9	NV Reno	calls
		1261		
2257	KWPS	88.7	NV Lund Nevada	Pub. Radio
		1021		
2259	KBYU	89.1	UT Provo	calls
		825		
2300	<u>KNIS</u>	91.3	NV Carson City	ID, Pilgrim
		1263		
2304	<u>KDSS</u>	92.7	NV Ely	Coyote Radio,
	RDS	1008		
2324	<u>KVMR</u>	89.5	CA Nevada City	loc. ment.
		1328		
2325	KKTO	90.5	CA Tahoe City	Capital P.R.
		1285		
2327	<u>KGBY</u>	92.5	CA Sacramento	Y 92.5
		1363		
2329	<u>KXPR</u>	90.9	CA Sacramento	calls
		1363		

June 13 Es

1146	WYYY	94.5	NY Syracuse	Watertown ad
		1023		
1155	<u>WKSQ</u>	94.5	ME Ellsworth	Kiss 94.51400
1201	<u>WHOM</u>	94.9	NH Mt. Washington	calls
		1266		
1203	<u>CFGL</u>	105.7	PQ Laval	RDS: "La Plus"
		1157		

1207	<u>CHJM</u>	99.7	PQ	St.-Georges-de-Beauce		1902	<u>WJJZ</u>	106.1	PA	Philadelphia	
	1316						RDS:"WJJZ"			1089	
1208	<u>CHRI</u>	99.1	ON	Ottawa	calls 1061	1904	<u>WRFY</u>	102.5	PA	Reading	Rock Hits Y102
1210	<u>WYSI</u>	96.7	NY	Canton	Yes FM1080		1049				
1213	<u>WEZF</u>	92.9	VT	Burlington	Star 92.91192	1910	<u>WLTJ</u>	92.9	PA	Pittsburgh	LiteRock92.9
1215	<u>CITE</u>	107.3	PQ	Montreal	PI: 4A2D	833					
	1166					1911	<u>WWKL</u>	92.1	PA	Palmyra	Hot 92 1012
1217	<u>CITE</u>	107.5	PQ	Quebec	1291	1916	<u>WLTW</u>	106.7	NY	New York	106.7 Lite FM
1221	<u>CJFM</u>	95.9	PQ	Montreal	Mix 96 1166		1144				
1223	<u>CHVR</u>	96.7	ON	Pembroke	Star 96 FM	1917	<u>WPDJ</u>	104.9	WV	Clarksburg	local ad 844
999						1918	<u>WMGK</u>	102.9	PA	Philadelphia	PI: 74FE1087
1233	<u>CIGB</u>	102.3	PQ	Trois-Rivieres	calls	1920	<u>WBAB</u>	102.3	NY	Babylon	calls 1177
	1223					1920	<u>WIOQ</u>		102.1	PA	Philadelphia
1241	<u>CHIK</u>	98.9	PQ	Quebec	1291		Q102			1087	
1250	<u>CJBR</u>	89.1	PQ	Rimouski	Radio-Canada	1922	<u>WKXW</u>	101.5	NJ	Trenton	PI: 717C 1113
	1436					1923	<u>WCBS</u>	101.1	NY	New York	CBS-FM1144
1250	<u>CJBR1</u>	89.5	PQ	Riviere-du-Loup	1383	1925	<u>WJBR</u>	99.5	DE	Wilmington	calls 075
1256	<u>CBJ</u>	93.7	PQ	Chicoutimi	Pgm.Premiere	1926	<u>WMGQ</u>	98.3	NJ	New Brunswick	Magic98.3
	1321						1120				
1259	<u>CJAB</u>	94.5	PQ	Chicoutimi	1321	1927	<u>WQWK</u>	97.1	PA	Univ Park	FM#700 938
1300	<u>CKAJ</u>	92.5	PQ	Jonquiere	FF, calls1312	1927	<u>WRAT</u>	95.9	NJ	Pt Pleasant	RatRadio1148

June 14 Es

1736	<u>WBZO</u>	103.1	NY	Bay Shore	B-103 1184	1942	<u>WZKL</u>	92.5	OH	Alliance	Z 92.5 774
1740	<u>WBAZ</u>	102.5	NY	Bridgeton	calls 1225	1956	<u>WOGF</u>	104.3	OH	E Liverpool	Froggy 801
1743	<u>WALK</u>	97.5	NY	Patchogue	Walk 97.5	1959	<u>WJTL</u>	90.3	PA	Lancaster	calls 1023
	1192					2001	<u>WITF</u>	89.5	PA	Harrisburg	998
1745	<u>WRBT</u>	94.9	PA	Harrisburg	Bob 94.9 994	2003	<u>WYEP</u>	91.3	PA	Pittsburgh	calls 838
1746	<u>WSBG</u>	93.5	PA	Stroudsburg	area ad	2005	<u>WIXM</u>	97.3	NJ	Millville	Mix 97.3 1121
	1081					2009	<u>WPLY</u>	100.3	PA	Media	Y100, PI: 7D7A
1748	<u>WWZY</u>	107.1	NJ	Long Branch	SS 1149		1078				
1749	<u>WBLI</u>	106.1	NY	Patchogue	calls	2010	<u>WVLY</u>	100.9	PA	Milton	100.9 The Valley
	1192					999					
1749	<u>WIOV</u>	105.1	PA	Ephrata	The New I-105	2021	<u>CKRA</u>	96.3	AB	Edmonton	Mix 96 1188
	1037					2024	<u>CKNG</u>	92.5	AB	Edmonton	Power 92
1753	<u>WBEA</u>	101.7	NY	Southold	Sag Harbor ad		1188				
	1228					2027	<u>WSTW</u>	93.7	DE	Wilmington	calls 1075
1759	<u>WHYY</u>	90.9	PA	Philadelphia	PI: 69AC	2028	<u>CKUA</u>	94.9	AB	Edmonton	calls 188
	1087					2033	<u>WPRB</u>	103.3	NJ	Princeton	1112
1759	<u>WCBE</u>	90.5	OH	Columbus	ID 683	2035	<u>WROG</u>	102.9	MD	Cumberland	Hit Country
1800	unID	89.3				902					
	"...RUV-FM";					2040	WHFS	99.1	MD	Annapolis	RDS:"99-1
	this is 90.1 in VT?					HFS"1028					
1803	<u>WAWZ</u>	99.1	NJ	Zarephath	gospel 1115	2045	<u>WWSO</u>	92.9	VA	Suffolk	Oldies 92-91087
1808	<u>WWMD</u>	101.5	PA	Waynesboro	Magic 101.5	2048	<u>WASH</u>	97.1	DC	Washington	Wash FM1007
	969					2050	<u>WARW</u>	94.7	MD	Bethesda	area ad 1006
1813	<u>WCEI</u>	96.7	MD	Easton	calls 1062	2055	<u>WOMP</u>	100.5	OH	Bellaire	799
1814	<u>WPAT</u>	93.1	NJ	Paterson	93 puntoAMor	2057	<u>WSLC</u>	94.9	VA	Roanoke	Star Country
	1143					886					
1816	<u>WMWX</u>	95.7	PA	Philadelphia	PI: 76AB1087	2058	<u>CKUA6</u>	101.3	AB	Red Deer	// 94.9
1816	<u>WKYE</u>	95.5	PA	Johnstown	Key 95 888		1144				
1818	<u>WKZL</u>	107.5	NC	Winston-Salem	107.5 KZL	2058	<u>WGTS</u>	91.9	MD	Takoma Park	PI: 6680
	923						1011				
1822	<u>WCAT</u>	106.7	PA	Hershey	RDS:"WRKZ CAT"	2059	<u>CKUA13</u>	91.3	AB	Drumheller	"CKUA"1073
	1014					2100	<u>WAMU</u>	88.5	DC	Washington	calls
1825	<u>WQBJ</u>	103.5	NY	Cobleskill	area ad 1106		1007				
1830	<u>WICQ</u>	97.5	MD	Salisbury	area ad 1094	2200	<u>KFAE</u>	89.1	WA	Richland	ID, state #43
1835	unID	96.9			"Valley Mall" ad (in Hagerstown?)		1211				
1838	<u>WWSW</u>	94.5	PA	Pittsburgh	834	2200	WRVQ	94.5	VA	Richmond	Q94
1842	<u>WEGW</u>	107.5	WV	Wheeling	Eagle 107.5	1027					
	799										
1848	<u>WKSW</u>	101.7	OH	Urbana	Buckeye Ford ad						
	642										
1853	<u>WBEB</u>	101.1	PA	Philadelphia	area ad						
	1087										
1856	<u>WORD</u>	101.5	PA	Pittsburgh	Word FM, g						
	834										
1857	<u>WBYN</u>	107.5	PA	Boyertown	107.5 Alive						
	1061										
1859	<u>WTLR</u>	89.9	PA	State College	941						
1900	<u>WQED</u>	89.3	PA	Pittsburgh	calls						
	836										
1900	<u>WOFN</u>	88.7	OH	Beach City	Oasis						
	751										
1901	<u>WDSY</u>	107.9	PA	Pittsburgh	Y108						
	834										

June 22 Es

2059	<u>WAGP</u>	88.7	SC	Beaufort	local ad1032
------	-------------	------	----	----------	--------------

June 26 Tr

1628	<u>KNWS</u>	101.9	IA	Waterloo	calls
222					

An odd 2002 for FM DX. I logged exactly 100 new stations in the three early to mid June openings, 72 of those on June 14 alone. The skip on June 1 was nice; after all those years of DXing in the southeast, it's fun to hear stuff I never got out there. The California loggings were a nice surprise; I was hoping to get all the way out to San Francisco but no such luck, although I had KTVU-2 Oakland on TV about half an hour after hearing Sacramento. I enjoyed June 13, some strong signals from good distances. I had one eye on TV, hoping for WLBZ-2 Bangor, but no luck. Still I wouldn't have thought I'd get my first Maine FM from that far into the state! June 14 has to be in my top 5 of all-time openings on FM. The only 'complaint' was that the cloud hardly moved for hours. Every time I'd go back through the frequencies the same stations would still be in, like WALK-97.5...AMazing!

All in all I'd rank this as a better season if the 100 new loggings had been spread out among more openings. As it is, the season was great while it lasted. FM log total is now 731. 73s Matt.

HARRY HAYES - Wilkes-Barre, PA

Equipment: Superadio II w/110khz filter, Jerrold 10 el. in attic aimed west.

Underlined are new

June 13 Es

1130	KKMA	99.5	IA	Le Mars		1900	KLIQ	94.5	NE	Hastings	"KLIQ-94.5, The Breeze"
				"Cool Oldies" and mention Sioux City, no call ID.		1905	KEFM		96.1	NE	Omaha
											"Mix 96.1"
						1920	KKLS		104.7	SD	Sioux Falls
											"Hot 104.7"
1157	KYSM	103.5	MN	Mankato		1930	KZDY		<u>96.3</u>	KS	Cawker
				w/C&W mx. Over semi local WKAB for quite some time.							City
						1931	KBGU		<u>96.3</u>	KS	Ingalls
											Remote from Dodge City, mostly u/KZDY.
1237	KOWZ	<u>100.9</u>	MN	Blooming Prairie		1957	KAAN		<u>95.5</u>	MO	Bethany
				Numerous IDs, inc. "Kows", AOR							"Can Country" w/Royals BB.
						2056	KJCK		94.5	KS	Junction City
				type rr, ment. Owatonna.							"The Big Cat 94.5" no call heard. New rock
1240	KBHP	<u>101.1</u>	MN	Bimidji	C&W	2105	KSKG		99.9	KS	Salina
				mx w/metion of Bimidji, thru 101.3 sideband.							"Eagle Country 99.9"
						2112	KZZT		105.5	MO	Moberly
											ID, oldies off the bird
						2128	KKJO		<u>105.5</u>	MO	St. Joseph
											"K-JOE" ID, ex 105.1
						2153	KHOK		100.7	KS	Hosington
											"Eagle 101", ABC NX.
						2156	KMKF		<u>101.5</u>	KS	Manhattan
											"K-Rock", mention Manhattan

June 14 Es

Except for this, it's been all quiet since.

ADAM RIVERS Chicopee, MA Email: patriotsrule417@yahoo.com

http://adamskewlsite.freesevers.com

Sherwood S-7250 tuner w/ 110kHz filters, RS wire antenna and Conrad RDS manager
New are underlined, Total: 281 stations

June 20 Tr

						1:01AM	89.3	WRTC	Hartford	CT
										<Note 2>
7:52PM	96.9	WFPG	Atlantic City			1:37AM	95.1	WAYV	Atlantic City	NJ
						1:41AM	94.1	WYSP	Philadelphia	PA
8:05PM	99.7	WYFI	Norfolk	VA						
8:45PM	107.9	WVPS	Burlington	VT						
8:49PM	89.5	WVPR	Windsor	VT						
11:57PM	107.5	WKHI	Fruitland	MD						
										<Note 1>

June 22 Es

10:54AM	92.3	WLWI	Birmingham	AL
				<Note 3>

June 21 Tr

June 29 Tr

10:59PM 97.3 WJFD New Bedford MA
 local quality; full stereo
 10:59PM 96.3 WRZE Nantucket MA
 local quality; full stereo
 11:05PM 107.1 WFHN Fairhaven MA
 "Fun 107", rare
 11:10PM 106.1 WCOD Hyannis MA
 11:12PM 98.1 WCTK New Bedford MA
 local quality; full stereo
 11:12PM 99.9 WQRC Hyannis MA
 11:13PM 101.1 WTWV Mashpee MA
 <Note 4>
 11:13PM 102.7 WAKX Naragansett RI
 rare; local quality
 11:27PM 97.7 WBOT Brockton MA

June 30 Tr

9:19AM 103.1 WBZO Bay Shore NY
 rare
 9:20AM 98.7 WRKS New York NY
 9:21AM 97.1 WQHT New York NY
 over local translator
 9:22AM 92.7 WLIR Garden City NY
 <Note 5>
 9:23AM 92.3 WXRK New York NY
 rare because of WPRO/WFLY
 10:38PM 95.1 WAYV Atlantic City NJ
 local quality
 10:39PM 94.3 WMJC Smithtown NY
 rare due to semilocal WYBC

July 4 Es

12:30PM 95.5 KKZY Bemidji MN
 <note 6>

July 4 Tr

10:27PM 92.1 WSEN Baldwinsville NY
 11:16PM 105.7 WMRV Endicott NY
 11:35PM 104.5 WABT Mechanicville NY
 11:37PM 105.7 WCHR Manahawkin NJ

July 7 GW

5:41PM 97.3 WJDF Orange MA
 <note 7>

July 7 Tr

9:07PM 89.5 WPKN Bridgeport CT
 over local

July 8 Tr

4:33AM 105.5 WJYY Concord NH
 4:45AM 104.7 WQEZ Kennebunkport ME
 8:27AM 103.9 WQBK Renssler NY

July 9 Tr

12:47AM 98.9 WCLZ Brunswick ME
 12:59AM 88.9 WFRS Smithtown NY
 1:00AM 89.1 WEVO Concord NH
 1:04AM 95.9 WCRI Block Island RI

The tropo season has been bad for everyone else, but good by my standards because this is the first season I am really DXing.

Note 1- "Lite Rock 103-5 and 107-5". 316 miles. Never thought I would get it. Note 2- Not really tropo, but over a local and only 100 watts. Note 3- Was doing a bandscan before trip to visit relatives in RI and was surprised. Note 4- Never thought I would get this one. Note 5- Tried FOREVER to get this one and I finally got it! Note 6- very brief Es, but a relog on KKZY. Note 7- Was offair for a very long time, came back with a fringe signal. More distant WZBG much stronger.

KEITH MCGINNIS Winthrop MA Equipment: Yamaha T-85 with an APS 9 antenna at 15 ft AGL. Underlined are new.

June 21 Tr

0902 WPFW 89.3 Washington DC

1045 WZEW 92.1 Fairhope AL
 92 ZEW
 1052 Unid 96.7
 Political ad for election of Sheriff to Longs
 Cnty

June 22 Es

1025 WRWA 88.7 Dothan AL
 1029 Unid 90.1
 Religious
 1030 WKGC 90.7 Panama City FL
 RDS 6FAE
 1036 WTBF 94.7 Troy AL
 RDS
 1040 WMXA 96.7 Auburn AL
 The Mix Crew.....mentions of Opelika
 1042 WBHY 88.5 Mobile AL
 Radio with a Vision.....Power 88

June 23 Tr

0648 WSKG 89.3 Binghamton NY
 Call letter mentioned

June 29

2310 WPNH 100.1 Plymouth NH
 The Planet
 2320 WLMW 90.7 Manchester NH
 seldom heard....listed at 15 watts

June 30 Tr

0852	WNHW	97.1	Hatteras	NC
	Classic Country			
0935	WAYV	95.1	Atlantic City	NJ
	local ads and mentions....		local like signal	

Mike Bugaj – 69 Sherman Road, Enfield, CT 06082. APS-13/Probe-9, Carver TX-11 and Sony ST-5130 tuners, Conrad RDS Manager, etc.

June 13 Es

Everything heard on a 2000 Toyota Corolla car radio. All times EDT.

1049 KGRC- 92.9 MO Hannibal
1050 KKMI- 93.5 IA Burlington, today's light favorites
1053 WAAG- 94.9 IL Galesburg, 343-4MSI Mechanical Svc Inc advert
1057 U 95.5 MO Missouri Network news
1059 U 100.1 MO Missouri Network news
1059 KDVV-100.3 KS Topeka, Gearhead Tuesday, Topeka's rock leader
1100 KMKF-101.5 KS Manhattan, pure rock 101.5, K-rock
1102 KQLA-103.5 KS Ogden
1102 KNZA-103.9 KS Hiawatha
1102 KRKN-104.3 IA Eldon, news
1103 KXBZ-104.7 KS Manhattan, Hot Country B104.7
1106 U 107.9 "In Touch" with Charles Stanley, blowing away WEBE
1111 KBBX- 97.7 NE Nebraska City La Maquina, SS, I really enjoyed this.
1116 KEGL- 92.9 NE Beatrice, the eagle
1118 KRXL- 94.5 MO Kirksville, 94.5 the X, Classic rock lives
1120 KFGE- 98.1 NE Milford, Froggy 98, k
1122 KQKQ- 98.5 IA Council Bluffs, My Closet in Omaha, Montclair Sh. Ctr
1124 KUTT- 99.5 NE Fairbury, Brian's Auto Body in Beatrice
1126 KKSI-101.5 IA Eddyville, Kiss-FM weather
1127 WNWC-102.5 WI Madison, religious
1128 KFRX-102.7 NE Lincoln, Lincoln's best music
1130 KLKK-103.7 IA Clear Lake, Lyons Fast Lube and Tire in Mason City
1134 KTWA- 92.7 IA Ottumwa, country mx
1135 KCSI- 95.3 IA Red Oak, Junction 2000 Days @Montgomery Cty F'gnds
1204 KKCK- 99.7 MN Marshall
1209 KCTM-101.1 ?? Hot Country
1211 KZSR-102.3 IA Onawa, Star 102.3
1212 U -102.3 K-Country 102.3
1213 KUOO-103.9 IA Spirit Lake 104-KUOO

1217 KSYZ-107.7 NE Grand Island Skagway, Nebraska Diamond ad.
1220 KSUX-105.7 NE Winnebago K-sux105.7 Super Pig, the "SwineLine"
1223 KKSD-104.3 SD Millbank, oldies 104.3
1225 KAZR-103.3 IA Pella, Lazer 103.3
1225 WJOD-103.3 IA Ashbury, new country 103, WJOD
1223 U 103.1 Stan's bake shop in downtown Madison
1228 KYTC-102.7 IA Northwood, KY-102.7
1234 KCGN-101.5 IA Ortonville, religious
1236 KZPK- 98.9 MN Paynesville, Bitson's Jewelers St. Cloud
1237 KSMA- 98.7 IA Osage, Mason City's new kiss-FM
1238 KTCZ- 97.1 MN Minneapolis, KSDC45.com
1242 KSTP- 94.5 MN St. Paul, KS-95
1243 KFGX- 95.1 MN Detroit Lakes, Gateway Chevrolet in Fargo
1244 KDJS- 95.3 MN Willmar, Ken's Casuals
1245 KTTB- 96.3 MN Glencoe, B-95 the hip-hop crew
1246 KDLO- 96.9 SD Watertown
1247 KSJN- 99.5 MN Minneapolis, classical music
1248 KOLV-100.1 MN Olivia, Central Contractors Supply in Willmar
1253 KQIC-102.5 MN Willmar Q102
1257 KYSM-103.5 MN Mankato, Country 103.5 Clear channel Comm
1314 KBBX-101.9 ND Fargo, 101.9 the Box, Red River Valley Fair tickets
1316 KZCR-103.3 MN Fergus Falls, lakes radio
1427 CKMW- 93.5 MB Winkler, Eagle 93.5 FM temps in celsius helped
1428 U - 93.5 French, Radio Canada
1432 CITI- 92.1 MB Winnipeg, 92.1 City FM Winnipeg with the Cars

Without a doubt the best Es opening I ever had in the car.

June 14 Es

1803 KMXW- 92.3 KS Newton, Wichita's Mix 93
1803 KANS- 92.9 KS Osage City, RDS KANSas 1164
1806 KSKU* 97.1 KS Hutchinson 97.1, KSKU Jingle
1813 KVGB 104.3 KS Gt. Bend, RDS KVGB 4811
1815 KCLY 100.9 KS Clay Center, news
1818 KFH* 98.7 KS Clearwater, Hot Talk KFH
1818 KSAJ 98.5 KS Minneapolis Oldies Radio 98.5
1826 WCOY* 99.5 IL Quincy, RDS COYOTE 5B74
1827 KMZU 100.7 MO Carrolton, KMZU country
1843 KXKU*106.1 KS Hutchinson, Kansas Best Country
1846 U 101.7 Hot Country Z-107
1849 KAAN 95.5 MO Bethany, RDS KAAN A10D
1849 KOKX 95.3 IA Keokuk, RDS KOKX 3613
1856 KKJO*105.5 MO St. Joe, N. Mitubishi KC North
1857 KBEQ 104.3 MO Kansas City, Q-104
1859 KXBZ*104.7 KS Manhattan, Hot Country B104.7
1908 KYYS 99.7 MO Kansas City, RDS 997KY F001
1913 KMAG 107.7 KS Topeka, the Magic-line

1918 KNIM 97.1 MO Maryville, id
1927 KSKG 99.9 KS Salina, RDS Eagle99.9 A492
1936 KILS 92.7 KS Minneapolis, Minneapolis mentioned
1938 KHAZ 99.5 KS Hayes, RDS KHAZ 2295
1952 KBLS 102.5 KS N Fort Riley, Sunny 102.5
1957 KCKS 94.9 KS Concordia, 94.9 Kiss-F20
2002 KZRD* 93.9 KS Dodge City, 939 the Buzzard
2208 KNZA 103.9 KS Hiawatha, Kanzaland
2010 KZLS*107.9 KS Great Bend, Star 107.9
2015 KHOK*100.7 KS Hoisington, Eagle Country 101
2020 KKQY*101.9 KS Hull City, the Country bull Y-102
2025 KNDY*103.1 KS Maryville, calls, country
2028 KFBZ*195.3 KS Hayesville, 105.3 the Buzz
2035 KCFN 91.1 KS Wichita, RDS KCFN 15D7
2041 KUSV*105.5 KS Beloit, easy listening mx
2046 KXKU 106.1 KS Hutchinson, Kix-106

(Continued on page 42)



RADELCO AERIALS

RADELCO "BAR-X" CONICAL ANTENNA

with the ORIGINAL High Channel Director Bar

King of the Conicals!

Director Bar definitely improves performance on high channels where reception is most difficult.

Heavy duty construction thruout. Rugged 1" cross boom. Aluminum elements specially engineered to reduce vibration and noise. All boom fittings are pre-assembled.

SINGLE STACK consists of single Bar-X array. U-bolt mounting. Fits mast up to 1½".

Model	List	Pkg.	Ship. Wt.
RS-751	\$7.65	4	20 lbs.

DOUBLE STACK consists of 2 bays, complete with jumper bars.

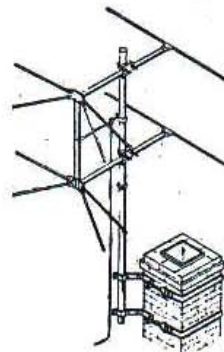
Model	List	Pkg.	Ship. Wt.
RS-752	\$16.15	4	38½ lbs.

QUAD STACK consists of 4 bays complete with all linking bars and terminal block.

Model	List	Pkg.	Ship. Wt.
RS-754	\$35.85	1	20 lbs.

RADELCO DOUBLE STAR ANTENNA KITS

SAVE TIME!
SAVE MONEY!



Made of finest materials and designed for trouble-free performance. Elements are tight butt seam aluminum tubing, reinforced with wood dowels. U-bolt mounting takes up to 1½" mast. Heavy gauge steel fittings with thick zinc plating. Mounting plates, U-bolts and saddle assembly are attached to boom before shipping.

REAL LOW PRICES!

SINGLE STACK

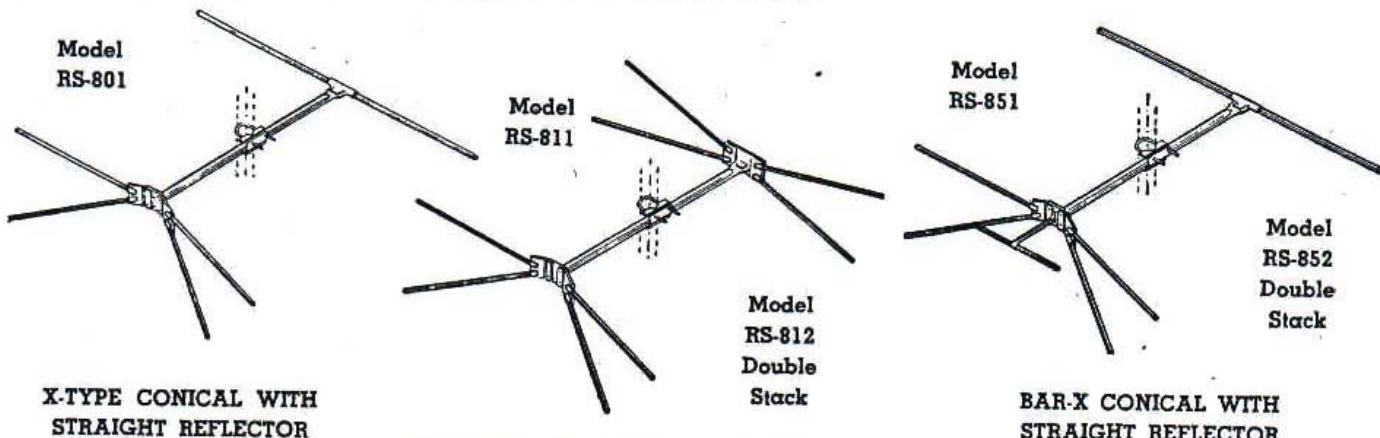
Model	List	Pkg.	Ship. Wt.
RK-901	\$10.95	4	39½ lbs.

DOUBLE STACK

Model	List	Pkg.	Ship. Wt.
RK-902	\$19.30	2	31½ lbs.

RADELCO RS-800 SERIES OF CONICAL ANTENNAS

Pre-assembled with wing nuts to assure quick, easy installation. Made of finest materials and designed for trouble-free performance. Elements are tight butt seam aluminum tubing, reinforced with wood dowels to eliminate vibration and breakage. Ends are crimp closed to prevent whistling. Rugged cross boom pre-assembled. U-bolt mounting will take up to 1½" mast. All fittings are of heavy gauge steel with thick zinc plating.



X-TYPE CONICAL WITH STRAIGHT REFLECTOR
One of the greatest values offered today in Conical antennas. Packed in bulk, 4 to a carton.

Model	List	Pkg.	Ship. Wt.
RS-801	\$ 4.85	4	12½ lbs.

X-TYPE CONICAL WITH X-REFLECTOR
Packed in bulk, 4 to a carton.

Model	List	Pkg.	Ship. Wt.
RS-811	\$ 5.90	4	15½ lbs.

Double stacked array with jumper bars. In bulk, 2 double arrays per carton.

Model	List	Pkg.	Ship. Wt.
RS-812	\$12.80	2	16 lbs.

BAR-X CONICAL WITH STRAIGHT REFLECTOR
Equipped with hi-channel director bar. Packed in bulk, 4 to a carton.

Model	List	Pkg.	Ship. Wt.
RS-851	\$ 5.60	4	14 lbs.

Double stacked array with jumper bars. In bulk, 2 double arrays per carton.

Model	List	Pkg.	Ship. Wt.
RS-852	\$12.05	2	14½ lbs.

Thanks to Gary Hickerson for this "Oldie but Goodie"



SATELLITE NEWS

George W. Jensen
4604 Antanna Ave., Baltimore, MD 21206-4220
SCISATMAN@AOL.COM

Continuing our march from west to east in the arc, we will look at the current menu of a couple of satellites.

G-Star 4 - 105 West - 1990 - 10 years - KuBand only with 16 27 watt Horizontal polarity transponders. It is in an inclined orbit and used primarily for various news and special feeds. It is doing very well for being out of functional time.

AMC1 - 105 West - 1996 - C and KuBand - C Band transponders are 17 watts and the KuBand transponders are 60 watts - October 1996 - 12 year life. Format - Odds-Horizontal Even transponders are vertical both C and KuBand
C Band Services:-
1 - Feeds 3 - digital 4 - digital 5 - Telemundo 2 digital feeds/Hero Teleport Miami 7 - MPEG2 - 3840H/26670 - with the following --- Pax TV East, Mountain and West, Worship Television, Praise Television, and Faith Television and misc Pax Feeds 13 - feeds 15 - MPEG2 - 4010H/13818 - WCLF Ch 22 - Clearwater /Tampa, Florida - aka - CTN - Christian Television Network also several feeds for Total Living Network 18 - digital 20 - M2 22 - Deutches Welle 23 - TV Games Network VC2 4DTV digital channels:- 400 - Fox Sports New York, 401 - Fox Sports Bay Area, 402 - Madison Square Garden, 403 - Fox Sports Ohio, 404 - Fox Sports Chicago, 405 - Fox Sports North East, 406 - Fox Sports Florida, 407 - Fox Sports 1, 408 - Fox Sports 2, 409 - Fox Sports North, 600 - PBS X Channel - National Feed, 750 - Telemundo 2 East, 751 - Telemundo2 West, 752 - Color Bars, 753 - German Television, 755 - Hero Teleport Miami, 820 - Radio Feeds, 821 - Paz Net, Radio Paz - WACC - 830 - Miami, Florida, 822 - Deutches Welle Radio, 823 open, 824 - La Grande Cadena. KuBand Services :-
18 - digital, 22 - NBC Feeds, 24 Feeds, 780 - America's Collectables Network Most other transponders are in some form of MPEG format and consist of NBC network primary feeds to East, Central, Mountain and Pacific areas. Others are ENG feeds mostly on transponders 19 through 24.
Audio Subcarriers:- C Band - 22 - various Deutches Welle feeds at 7.38/7.54 - German, 7.71 - English, 7.86 - Foreign Languages
ALSO NOTE THAT 9 - FOX SPORTS NET VC2 IS DELETED AS WELL AS SUB-CARRIER KHCB AND 12 - WISDOM TELEVISION IS DELETED ALONG WITH SUB-CARRIER WISDOM RADIO.

DIRECT TV 1, 2, AND 4 - 101 WEST - APRIL, 1994 - EACH WITH 16 KUBAND 120 WATT TRANSPONDERS AND ARE A COMPRESSED VIDEO DBS SATELLITE SYSTEM.

AMC4 - 101 WEST - C AND KuBAND JANUARY 1, 2000 - 12 YEARS - 18 WATT C BAND AND 60 WATT KuBAND TRANSPONDERS FORMAT - ODDS - VERTICAL, EVENS - HORIZONTAL POLARITY. Video Services:-
1 - MPEG 2 - 3709V/4578 - Cornerstone WPCB Pittsburgh, Pennsylvania MPEG2 - 3734V/1903 - TVU 5 - Feeds, 9 - Golden Eagle Broadcasting, 13 - MPEG2 - 3873V/4362 - University of California TV, 14 digital, 16 digital, 18 - WNBC Ch 4 - New York, New York, NBC VC2, 21 - MPEG2 - 4116V/2300 - Familyland Network, MPEG2 - 4125V/4340 - God's Learning Channel, MPEG2 - 4134V/2170 - Safe TV, 22 - WKRN Ch 2 - Nashville, Tennessee - ABC VC2, 23 - MPEG2 - 4175V/4340 - La Familia TV Network 24 - WSEE Ch 35 - Erie, Pennsylvania - CBS VC2. 4DTV digital channels - 400 - Fox Sports Mid West, 401 - Fox Sports North West, 402 - Fox Sports Arizona, 403 - Fox Sports South, 404 - Sunshine Sports, 405 - Fox Sports West, 406 - Fox Sports South West, 407 - Fox Sports South West 2, 408 - Fox Sports Detroit, 409 - Fox Sports Pittsburgh, 410 - Fox Sports Rocky Mountains, 411 - MidWest Sports Channel - FSNN1, 412 - MidWest Sports Channel 2 - FSNN2, 413 - Comcast Sports Network. Audio Sub-Carriers:- 9 - 5.8 - KMUS Muskogee, Oklahoma KuBand Services:-
6 - MPEG2 - 11807H/4000 - 3 Angels Broadcasting Network 3 channels plus 3ABN Radio, 7 - Feeds, 21 - MPEG2 - 12120V/30000 - Lawyers TV color bars and 2 radio - German - Schlagerradio and Heimatradio both seem to be traditional German Music, 23 - Color Bars ID Channel. That's all for this month - see you in 30 - 73's and great DX. George.

PHOTO-NEWS

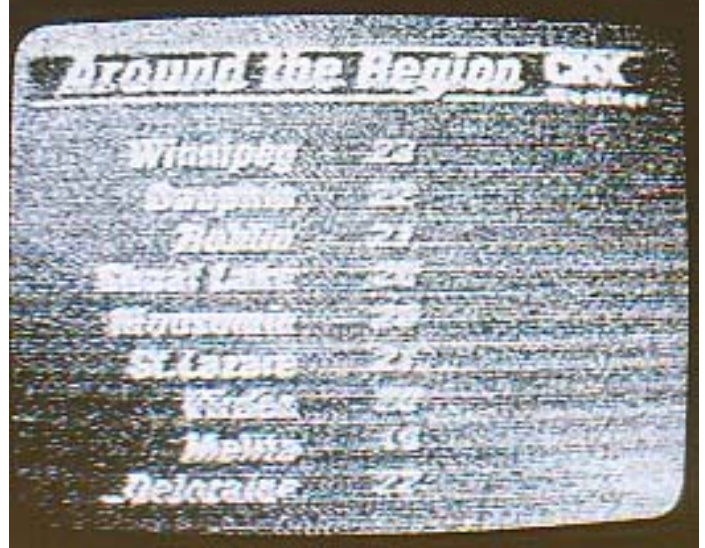
Jeff Kruszka, Editor
5024 S. Braxton Ave.
Baton Rouge, LA 70817
jkruszka@bellsouth.net

August 2002

We continue with more great photos from Danny Oglethorpe, Shreveport, LA:



WBTW-3 Charlotte, NC
768 mi Es seen 8/6/01
@1000 CT
"over local KTBS"



CKX-5 Brandon, MB
1247 mi Es seen 7/16/01
@1215 CT



WECT-6 Wilmington, NC
924 mi Es seen 7/8/01
@1155 CT
"over local KTAL"



WMBB-13 Panama City, FL
502 mi Tr seen 3/27/02
@0800 CT

WMAZ-13 Macon, GA
590 mi Tr seen 4/1/02
@0655 CT





WSRE-23 Pensacola, FL
400 mi Tr seen 4/23/02
@0030 CT



KBSI-23 Cape Girardeau, MO
416 mi Tr seen 3/14/02
@0930 CT



WATL-36 Atlanta, GA
551 mi Tr seen 4/1/02

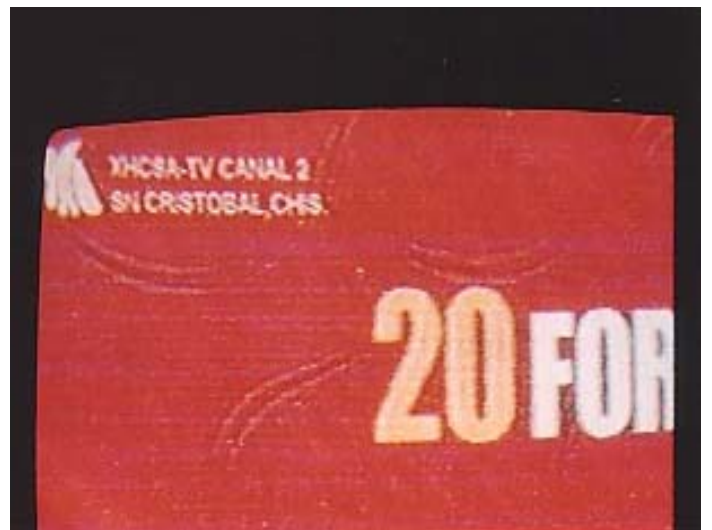


WFXL-31 Albany, GA
565 mi Tr seen 3/27/02
@0832 CT

And now, more of what Danny's famous for...Mexican DX! Those tiny Mexican ID's can be tough for the visually-challenged, though. Here's one with a full-screen and a closeup shot:



XHCSA-2 San Cristóbal, CHIS
1082 mi Es seen 8/25/00
@0935 CT



XHCSA-2 San Cristóbal, CHIS
"closeup"



XHCSA-2 San Cristóbal, CHIS
1082 mi Es seen 7/28/01
@1020 CT



XHHSS-4 Hermosillo, SON
1047 mi Es seen 6/23/01
@1623 CT



XHGV-4 Las Lajas, VER
930 mi Es seen June 2000
"TV Mas"



XHQRO-2 Cancún, QROO
891 mi Es seen 7/25/01
@1055 CT



XHHHN-2 Huajuapán de León, OAX
1038 mi Es seen 6/8/01
@1758 CT



XHMEN-4 Mérida, YUC
830 mi Es seen 7/3/01
@2100 CT

Small TV Stations Reel Under Order To Go Digital

By David Lieberman, USA TODAY 7/16/2002

Duhamel Broadcasting Enterprises has provided a nice income to the Duhamel family since World War II.

First a radio company, it entered the television age with KOTA in Rapid City, S.D. The station beams ABC shows and local news to the No. 175 TV market: 88,000 viewers spread over an area the size of a triangle from Washington, D.C., to Boston to Buffalo, N.Y.

So company President Bill Duhamel was stunned when the federal government ordered all TV stations — even in tiny markets such as his — to buy the towers, transmitters and other gear needed to join the long-awaited and fitful national march from analog to digital television (DTV).

"I would guess it's going to take three to four years of operating profits just to pay for the first stage" of retransmitting ABC's digital signals, he says. The full transition can cost up to \$3 million per station.

"The deal I have with the family is, they better make their living someplace else. It's not a great situation."

A lot of station owners in small markets feel the same way about DTV. For them, it's not just a troublesome mandate. Many of them see it as a threat to their survival.

They find it next to impossible to amass the needed dollars in the midst of the worst ad recession in decades. And they grumble that the conversion mandate hits small stations harder than big ones.

"The cost really doesn't vary a whole hell of a lot whether you're in New York or Yakima," says Elizabeth Murphy Burns, president of Duluth, Minn.-based Morgan Murphy Stations. "In some cases, the cost of converting to digital is more than the station is worth. Right now, we're sort of stymied."

Federal officials ordered the national conversion from analog to digital TV in 1997. It seemed like a good idea. They wanted to spur development of high-definition TV (HDTV). They wanted to save valuable spectrum — six or more non-HDTV digital channels fit in airwaves used by one analog channel. And they wanted to raise billions by selling the spectrum saved to wireless companies.

But the transition has been rocky. Cable companies balked at carrying stations in both analog and digital form during the change. Digital TV sets remain costly. Consumers have shown little interest.

And nobody seemed to consider the plight of smaller stations.

Some 68% of the USA's 1,240 commercial television stations failed to meet the government's May 1 deadline to begin transmitting some digital programming. The majority of the laggards are in small markets. Just 13% of the 443 stations that now offer DTV are in the 110 smallest markets — those smaller than No. 100, metro Brownsville, Texas.

They'll have to move fast, though, unless they can persuade the Federal Communications Commission or Congress to give them more time. "The law says you have to do it, and if you don't, they have the right to take your license back," says CEO Don Cornwell of station owner Granite Broadcasting.

The industry's National Association of Broadcasters warns that consumers may lose in the rush. Stations scrounging for cash "have to cut back on news or services to a community to fulfill a government mandate," says Edward Fritts, NAB chief executive. "That's just wrong."

In fact, several news operations at Emmis Television's 15 stations — in midsize markets such as Orlando, Wichita, Omaha and Topeka — have felt the pinch. "Everything from cameras, news production systems and satellite trucks have had to fall to a lower priority, and some have been eliminated" to accommodate DTV, says Randall Bongarten, Emmis president.

The threat is real

Industry analysts say small-station owners aren't just crying wolf.

"These guys have really got a problem," says Sanford C. Bernstein's Tom Wolzien. "It can cost \$3 million to convert to digital. But a smaller TV station is lucky if it makes \$300,000 a year in free cash flow."

The government's General Accounting Office reached a similar conclusion in April. In a survey of station owners, it found that:

Digital expenses represent an average of 11% of yearly revenue for the mostly big-market stations that have already made the transition. By contrast, the costs for stations in the 100 smallest markets, when they do go digital, will be about 242% of annual revenue.

Lack of money was "one of the most prevalent problems" for stations that haven't made the transition.

Some 6% say they can only pay for DTV by putting themselves up for sale.

About 56% of station owners say that consumers in their markets have "low" interest in DTV. An additional 7% said their viewers have no interest in it.

The last point, a consumer yawn on DTV, helps explain lenders' reluctance to help stations. "When you go to bankers for a (DTV) loan and they look at return on investment, there isn't any," says Liberty President James Keelor.

There's no mystery why. Digital conversion raises stations' costs. Advertisers supply virtually all of a station's revenue. But advertisers won't pay extra for their ads to appear on DTV when only a handful of consumers have bought TV sets capable of receiving digital signals.

The FCC gave stations some relief in November.

"For the first time, the commission created the possibility of an extension of time based on financial hardship," says Rick Chessen, who chairs the FCC's DTV task force. "You can't just come in and say, 'I don't have the cash.' You have to show why your financial condition precludes the build-out."

The FCC has gotten 193 hardship requests but says it doesn't track them by market size, so it could not say whether small stations dominate the list.

In another easing of the burden, the FCC cut the requirement that a station transmit digital signals to everyone in its current broadcast territory. That lets small stations with big areas install low-power transmitters that reach homes just in their immediate home city.

"That downscales a number of items needed for the investment," says Dale Mowry, vice president of transmission systems for Harris, which supplies about two-thirds of the market for DTV transmission equipment. "A station can get on the air with a digital signal for as little as \$160,000."

There is disagreement in the industry, however, over whether that's a smart investment in the long run. Mowry says it is. He thinks most of the equipment can still be used later when the FCC sets a date for stations to raise power to reach everybody.

But others say that low power would leave a lot of viewers feeling left out now and that the equipment may not last that long. "I wouldn't call it a waste of money, but when you want to go high power, you'd have to throw it out," Cornwell says.

Low-power technology also is just part of the story.

Whatever the power level, many stations still have to pay much more to build or modify their towers to accommodate DTV. They would pay higher electric costs. And production costs would soar to produce local programs.

Several station owners in rural markets add that low power doesn't solve one of their biggest problems: To cover vast territories, they often have several repeater stations that basically just relay programming from the largest outlet in the group.

The FCC wants each of these repeaters upgraded to carry DTV.

(continued on page 16)

DTV Interference Issues Loom

As stations move to full power, problems among stations are expected to increase

By Ken Kerschbaumer
Broadcasting & Cable
6/24/2002

Industry experts warn that, when broadcasters get on-air with full-power DTV signals, interference issues like that being experienced by WBOC-TV Salisbury, Md., may be the norm rather than the exception.

"I think it's inevitable that there are going to be a lot of these problems, and a lot of it was predicted," says William Meintel, president of Chantilly, Va.-based TechWare, which was hired by the FCC to create the software used to make the DTV propagation tables. "We just haven't seen it because there aren't a lot of stations on the air and an even smaller number on-air at their full power. And I think that, once these stations start firing up with their full-power signals, we'll see a lot of interference to NTSC, and it may be worse than what was originally predicted."

Two weeks ago, WBOC-TV filed an emergency request asking the FCC for relief from interference that its signal is getting from the 950-kW DTV signal of WHRO-DT Hampton Roads, Va., located nearly 120 miles away. In April, when WHRO-DT made the move to full power, WBOC-TV began receiving consumer complaints (even from cable subscribers) not only from the area of its viewing audience closest to Hampton Roads but also from Dover, Del., which is about 150 miles away from Hampton Roads.

The cause of the interference in the case of WBOC-TV is "duct skipping," a phenomenon in which the signal skips across a body of water, causing interference where it usually wouldn't occur. It is not just a DTV phenomenon. Analog stations, typically in Florida or Louisiana, have been subject to duct-skipping interference for years.

WBOC-TV General Manager Rick Jordan says the situation is unique because ducting was not taken into account in the FCC's DTV interference modeling. WHRO-DT's tests showed interference of only 0.9%, well within acceptable limits, but they do not take into account the ducting interference.

"I wish that 0.9% was all that we were receiving, but I have cable systems as far north as Dover, Del., receiving an unbelievable amount of interference," he says, adding, "It's also unbelievable that propagation can have that much impact" from so far away.

The concern is obvious, Jordan says: The analog signal is the station's livelihood, and there are only a handful of DTV viewers.

"I'm hoping that this will be resolved with a gentlemen's agreement," he adds. "And I hope everyone sits down at the table and says this is a real-world issue and not that the computer model says this doesn't exist so we're done."

WHRO-DT plans to file a reply to the FCC concerning WBOC-TV's complaint, according to spokeswoman Donna Hudgins. "Everything that we've built and constructed has complied with the FCC's regulations," she adds. "And our engineers don't see that the facts presented really demonstrate a reception problem that needs extraordinary action by the FCC."

The situation is similar to one experienced in 2000 on Lake Michigan. WMVS-DT Milwaukee's signal was interfering with that of WOOD-TV Grand Rapids, Mich. The solution then was for WMVS-DT to voluntarily cut its transmission power by 75%.

That was a temporary solution, because the FCC told WOOD-TV that the interference from WMVS-DT was acceptable within the Grade B contours.

Today, WMVS-DT is back on at full power, and WOOD-TV has spent about \$200,000 putting in an LPTV translator transmitting its signal on ch. 46 to serve cable headends and viewers within that Grade B contour.

"The rules provide up to 10% interference within a Grade B signal," explains Mike Laemers, director of engineering for WOOD-TV, WOTV(TV) Battle Creek, Mich., and WXSJ(TV) Grand Rapids. "That doesn't sound like a lot of people, but, if you have a cable headend that is considered one of those 10% being affected, that equals a lot of people. That headend is serving 40,000 households."

The potential number of complaints about DTV interference seems destined to rise to flood levels when it comes to stations on or near large bodies of water.

"Anytime there's a large body of water with an unobstructed path," says Laemers, "interference is going to happen a lot, not only when temperature inversions occur."

Complaints may spread to land-locked stations as more stations increase DTV power levels, although just how large of a problem it will become remains to be seen.

"The root problem is that some people think that the DTV spectrum was spectrum that wasn't being used," says one industry source. "For all practical purposes, there was no available spectrum on the East and West Coasts."

MSTV Vice President, Technology, Tom Gurley points out that the spectrum of a digital station is noise-like: Any interference raises the noise level and creates snow and sparkles in the signal. Analog-station signal spectrum is very concentrated around the visual and aural carrier, causing interference that is much more distracting to viewers.

Meintel concurs. "Digital is different than analog, and the interference characteristics are different. The FCC knew there was going to be interference, but it was the only way to assign the digital channels."

So what is the solution? Meintel says lower power levels may be the only way to solve interference troubles because changing channel assignments is not easy and may just move the problem elsewhere. "You can play with the statistics all you want, but it's not going to solve the problem."

The problem with lowering the power is that digital broadcasters then lose service in some areas.

Meintel says that the extent of interference problems from DTV signals remains to be seen. But everyone seems to agree that it could become a fairly large number. The question is, what can the FCC do?

"If the interference is a temporary thing, then the commission is not likely to do anything," says Meintel. "If the station causing the interference is complying with all of the commission's regulations, I don't know if there is anything the commission can do about it."

Gurley says that, if the digital station is operating at a power it was licensed for and the allotment table says it can operate at, what the FCC can actually do remains to be seen. "If the FCC does something for a station that is getting interference from that signal, then they almost have to start looking at the whole table again."

NORTHERN FM DX CONTINUES FROM PAGE 34.

(Mike Bugaj's report)

June 14 Es Continued

2053 KCIY 196.5 MO Liberty, Smooth jazz 106.5
2056 KFME*105.1 MO Garden City, E105FM
2100 KFXJ*104.5 KS Augusta, the Fox

2100 KRES 104.7 MO Moberly, RDS KRES 5D5D
2101 KJRL 105.7 KS Herington, Herington-Ft.Riley
2109 KLRQ 96.1 MO Clinton, RDS KLRG 2ED6
2134 KJCK 94.5 KS Junction City, the big cat 94.5
2136 KQLA*103.5 KS Ogden, sundown salute in Jct C.

June 22 Es

1930 KITN 93.5 MN Worthington, Kitten country
1930 WJJO 94.1 WI Madison Madison's new rock
leader

1934 WKTI 94.5 WI Milwaukee
1936 KGLI 95.5 IA Sioux City
1941 KOEL 92.3 KS Olweine

Sign Up/Renewal form

Name_____

Address_____ Apt #_____

City_____ State/Prov_____ Zip_____

Country_____ Interests: TV () FM () 30-50() Weather()

email address_____

Sign me up/renew me for: 1 year () 2 years () More ()

Yearly dues \$24 to US addresses, \$26 to Canada and Mexico
\$38 to the rest of the world (payable in U.S. Funds)

Mail your dues to: WTFDA, P.O. Box 501, Somersville, CT USA 06072

Make your checks/money orders payable to: DAVE JANOWIAK

And *thanks* for your support of the WTFDA!

Return this form with your dues or make a copy of it and return that.

Editors and Submissions

Send your reports and station info to these folks.

THE MAILBOX and all general club correspondence:

Mike Bugaj at WTFDA, PO Box 501, Somersville, CT 06072

mbugaj@snet.net

SATELLITE NEWS

George Jensen, 4604 Antana Ave., Baltimore, MD 20206-4220

scisatman@aol.com

TV NEWS

Doug Smith, 1385 Old Clarksville Pike, Pleasant View, TN 37146-8098

w9wi@w9wi.com

FM NEWS

Greg Coniglio, 90 Slate Creek Dr., Apt#3, Cheektowaga, NY 14227

coniglio@adelphia.net

PHOTO NEWS

Jeff Kruszka, 5024 S. Braxton Ave., Baton Rouge, LA 70817

jkruzka@bellsouth.net

TV TIME TUNNEL

Tom Bryant, 849 Todd Preis Dr., Nashville, TN 37221-2607

tjbdx@comcast.net

EASTERN TV DX

Matt Sittel, 15013 Eureux Circle, Bellevue, NE 68123

mcsittel@cox.net

WESTERN TV DX

Victor Frank, 12450 Skyline Blvd., Woodside, CA 94062-4554

frank@horizon.sri.com

SOUTHERN FM

John Zondlo, 4889 Driftwood Cir., Yukon, OK 73099

sfm@fmdxweb.com

NORTHERN FM

Keith McGinnis, 387 Shirley Street, Winthrop, MA 02152

longwave@attbi.com

WTFDA://ONLINE

Saul Chernos, 57 Berkeley St., Toronto, ON M5A 2W5

schernos@sympatico.ca

VERIFICATIONS AND QSL SIGNERS

Tom Yingling, 221 Pinewood Road, Baltimore, MD 21222-2345

ka3tcc@erols.com

TV and FM STATISTICS

Fred Nordquist, 7945 Boxford Road, Clay, NY 13041

nordquis@twcnny.rr.com

***Please Remember To Make Your Renewal Checks Payable to Dave Janowiak
Checks made payable to WTFDA may be returned and your renewal may be delayed.***