

# The Worldwide TV-FM DX Association

*Serving the VHF-UHF Enthusiast*



## VHF-UHF DIGEST

E-ZINE VERSION

**SEPTEMBER 2002**

The VHF-UHF Digest is the official publication of the Worldwide TV-FM DX Association dedicated to the observation and study of the propagation of long distance television and FM broadcasting signals at VHF and UHF. The WTFDA is governed by a board of directors: TOM BRYANT, GREG CONIGLIO, BRUCE HALL, DAVE JANOWIAK AND MIKE BUGAJ.

### **MEMBERSHIP ENDING IN SEPT 2002**

Check this list. This is your last issue unless you re-up.

Wayne Benkinney	Mike Bugaj
Joe Fela	Joe Gragg
Kurt Nelson	Jim Renfrew
James Snow	Eric Voytko
FJ Issard	Bill Smith
John T. Ridge	Cliff Rames

WTFDA membership stands at 277 as of 8/24/02.

If you have a computer, hang out at the place where many of your fellow Dxers reside. That place is the WTFDA list at Topica.com. Want to



know when tropo is up? You'll find out. The Topica list takes out the guesswork. Subscribe now by sending an email to WTFDA-subscribe@

topica.com. Your logbook will love you for it! Have a great tropo season!

**IRC CHAT...ICQnet room #dx every Tue/Fri  
At 10:00pm ET**

### **CONTENTS**

Page Two	2
Mailbox	3
TV News...Doug Smith	5
Convention Wrap-up...John Zondlo	12
FM News ... Steven Wiseblood	15
Eastern TV DX...Matt Sittel	20
Western TV DX...Victor Frank	22
Photo News...Jeff Kruszka	28
Southern FM DX...John Zondlo	30
Northern FM DX...Keith McGinnis	35
Satellite News...George Jensen	42
Time Tunnel...Tom Bryant	43
QSL Corner...Tom Yingling	45
Editors and Addresses	47

This time we have a very full issue for you. FM News is back again, this time edited by Steven Wiseblood. It looks good. And with the 2002 WTFDA convention passing into history, John Zondlo presents a three page recap of the event and we do hope you enjoy it.

Tom Bryant returns again with his Time Tunnel and this time he has quite a few rare photos for your enjoyment.

There's lots of good reading in this issue of the VHF-UHF Digest. I hope you'll agree.

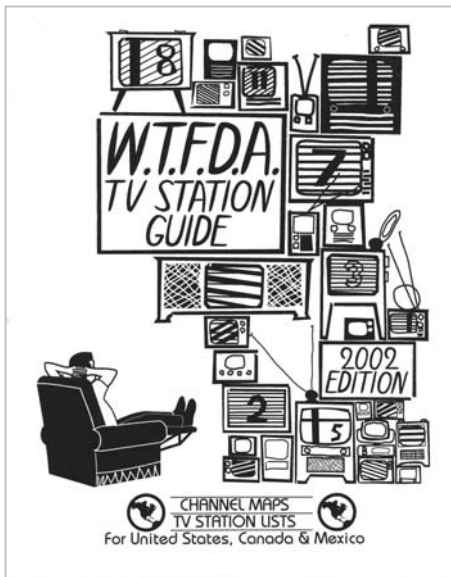
## **The 2002 WTFDA TV Station Guide MAKES A GREAT CHRISTMAS GIFT!**

You just can't get any better than this! Over 400 pages of listings by channels and by plots on channel maps...full power, LPTVs, translators and DTV stations. The WTFDA Station Guide has it all! Make your check or money order for \$23.00 (US funds for those outside the USA) payable to **Dave Janowiak** and mail it to:

John Ebeling  
9209 Vincent Avenue South  
Bloomington, MN 55431-2157

**Order now! Supplies are limited! Don't be left out!**

For even more info see us online at: <http://fmdx.usclargo.com/tvg.html>





# The Mailbox

P.O. Box 501, Somersville, CT USA 06072  
MIKE BUGAJ MBUGAJ@SNET.NET

---

## SEPTEMBER 2002

Hello, and welcome to the Mailbox for September. I know you all are burned out from all the E skip we got this summer ( just a little sarcasm here). Now it's time to move on and immerse ourselves in tropo and maybe a little meteor scatter for the fall.

One more thing...it's September, and this marks my first anniversary as VUD publisher. Personally I find this hard to believe. Two years ago I never thought I'd be doing this job. I'm looking forward to year two.

## MEMBERS AND MORE

Welcome this month to Ryan St. Arnold from Hermantown, MN. Ryan is a friend of Jacob Norlund and I've talked to Ryan a few times on IRC chat. Ryan is a ham and has the calls KC0JEX and likes TV, FM and public service DX. He uses a 13" Sanyo TV (probably much like mine), a 35 element UHF corner-yagi, a Sangean ATS-818 receiver, an 8 element VHF log periodic and a Uniden BC-895 XLT (mine's a BC 865). Ryan gets in under the student discount. It's nice to have you here, Ryan, and show up on chat sometime and we'll talk.

I have renewals in from the following folks: **John Tudenham**(MO), **Fred McCormack**(MN), **Bill Burrows**(PA), **John Zondlo**(OK), **Chip Kelley**(TX), **Bill Eckberg**(IL), **Robert Williams**(ID), **Les Rayburn**(AL), **Walter Patton**(ON), **Al Tobia** (CA), **Glen Boche**(MN), **Randy Miltier**(OR), **Mike DeRoo**(KS), **David Flottman**(MO), **Jim Ayers**(GA), **Ronald Purdue**(MN) and **Calvin Glover**(MD), Thank you all for your support!

The renewal from Jim Ayers came as a shock. Jim had emailed me earlier that he wasn't renewing due to the utter congestion of the band in the Atlanta area, but he had a change of heart (like the TV show of the same name). I can understand that. This club is addictive.

Note to Al Tobia and Randy Miltier: how about logging in to chat some night. It's been a long time.

## 100000WATTS.COM

According to the August 12, 2002 edition of the NRC's *DX NEWS*, WTFDA member Scott Fybush has taken over the management and updating of the 100000 watts site previously run by Chip Kelley. More than a few of us wondered what would be the fate of this important website and we're grateful to see it's in the hands of a professional like Scott. Thank you Mr. Fybush!

## dMARC NETWORKS

More hope for RDS enthusiasts: dMarc Networks is excited to announce the production launch of our patent-pending dRDSTM system, providing packet-based, centralized Radio Data Service (RDS) management and data broadcasting. This revolutionary system enables FM broadcasters and marketers to dynamically schedule, target, deliver, and report on RDS data broadcasts across one or multiple stations, all through our user-friendly desktop software, dMarc WebManager 1.0. dRDSTM allows broadcasters and marketers to target and deliver subcarrier content to RDS-enabled car receivers, now standard in over 75% of new automobile models. dRDSTM is included in our dMarc For Broadcasters suite, and is also available to be managed and sold through our Subcarrier Representation services. If your broadcast station already offers RDS, no problem..as our dRDSTM solution can be integrated with most RDS hardware systems to expand your data broadcasting capabilities and revenue opportunities.

Launched initially in Southern California, and spanning more than 27 FM stations from San

Luis Obispo to San Diego, dMarc Networks enables content and data service providers to plan, target, and deliver data and content files seamlessly across a coverage area reaching more than 15,000,000 people. dMarc Subcarrier Representation offers direct access to this population, through our multi-station network, providing wide reach, signal redundancy and pinpoint targeting through our patent-pending dMarc technology.

dMarc has a scheduled national expansion beginning during the third quarter of 2002.

### **BEYOND LINE OF SIGHT**

This is from Bob Cooper: "I suggest anyone who REALLY wishes to understand how various forms of VHF and UHF propagation function should locate a copy of "Beyond Line of Sight - A History of VHF Propagation from the pages of QST" by Emil Pocock. The ARRL web site should have an ordering system for this one. It traces the world above 50MHz from the 1930s, touches on and details how everything from tropo scatter to field aligned Es works and includes some interesting references to TV and FM DX as well. This should be in every DXer's library as a reference work."

### **A NEW PARABOLIC ?**

Recent news from Rich Wertman: "As most of you know there are no more Channel Master/Antennacraft-Finco parabolic antennas being built. There are commercial types available from Wade and Taco, however most people don't want to spend in the thousand-dollar range for one. I'm currently doing some experimenting with a 6' and 7' mesh satellite dish being used for UHF TV. The reflectors are fantastic and blow most dishes away in terms of f/b ratio and directivity. The problem lies in their weight and windload. I'm reducing the amount of ribs in each of the 4 sections this helps with weight. I'm also not using the typical mount. I've configured a mount with u-bolts on the top and bottom of the outer rims. The feed style has been the Finco feed and a CM 2bay bowtie. I'll publish results soon!! I think you'll be surprised. I'm also working with a Canadian antenna company to help in the design and building of a high gain parabolic antenna for this purpose. I'd like to be marketing a dish again soon. With HDTV coming on I think many areas will require a high gain antenna, not rabbit ears!

### **HE HEARD YOUR STATION**



When I first saw this, I thought it was a QSL card, but upon looking closer I find it an "I received your station" card instead. This was sent by Jim Gill, who does his TV Dxing from beautiful Bradenton, Florida.

If you have a QSL card or something of this nature, send it along with your renewal and I'll save them and use them to fill up any unused space.

### **A GREAT GATHERING!**

The 9th Annual Madison Get-together for DXers and Radio Enthusiasts is over, but not forgotten. This year's event, held on Saturday August 17, 2002, was hosted by Bill and Nina Dvorak at their home, 501 Algoma Street Madison WI 53704-4812. The day was sun-drenched with low humidity and a refreshing slight breeze, and the temperature peaked at a perfect 80 degrees.

A record 26 DXers showed up for this year's event. Included in this number were 11 WTFDA Members: Mike Condon, Bill Eckberg, Paul Froehlich, George Greene, Jeff Kadet, Neil Kazaross, John Lentz, Frank Merrill, Ken Onyschuk, Marv Shults, and host Bill Dvorak. Over the years, the support that has been given the Madison GTG by WTFDA members has been outstanding, and the Madison group thanks them very much.

Next year will be our milestone 10th GTG. If you are interested in joining us and meeting fellow WTFDA members, please contact us. Next year's host will be Tim Noonan, e-mail < dxing2@aol.com >, or contact Bill Dvorak, e-mail < dxerak@aol.com >.

**LAST BUT NOT LEAST** That's all I have for this time. Take care and see you all next month. -Mike

Douglas E. Smith W9WI  
 1385 Old Clarksville Pike  
 Pleasant View, TN 37146-8098  
 W9WI@w9wi.com http://www.w9wi.com

## Abbreviations:

AF	Applied for (a new station)	QC	Channel change on the air
aux	Auxiliary (backup) transmitter	QG	Channel change granted
CC	Call change	QR	Channel change requested
CL	City-of-license change	RA	Returned to the air
DE	Station deleted	ROA	Request of applicant
FC	Programming (format) change	SI	Off the air ("silent")
LC	License to cover (for changes or new station)	STA	Special Temporary Authority
NO	Not on the air	XC	Transmitter site change on the air
NS	New station granted permit	XG	Transmitter site change granted
NW	New station on the air	XR	Transmitter site change requested
PC	Power (or tower height) change on the air		
PG	Power (or tower height) change granted		
PR	Power (or tower height) change requested		

DTV stations *in italics*; full-license stations in **boldface**.

## News:

### Alabama:

<b>Bessemer</b>	<b>17 WDBB</b>	<b>PR&gt;2240kw/675m, 33-28-51/87-24-03</b>
<i>Bessemer</i>	<i>18 WDBB-DT</i>	<i>PR&lt;350kw</i>
Birmingham	47 W62CK	QR from ch. 62, 150kw, 33-27-37/86-51-07, CL from Acton, TN
Carrollton	14 W14CV	NS 10kw, 33-18-07/88-09-22
Dothan	5 WJIN-LP	PR>1.18kw, 31-14-54/85-23-20
<i>Huntsville</i>	<i>49 WAFF-DT</i>	<i>PR&lt;41kw/552m</i>
Jasper	23 W23AK	PR>31kw, 33-50-42/87-18-26
Jasper	55 W55BJ	XR 33-50-42/87-18-26
Montgomery	42 W45BL	QR from ch. 45, 110kw, 32-22-56/86-17-33, CL from Colquitt, GA
<b>Selma</b>	<b>8 WAKA</b>	<b>drops DA</b>

### Alaska:

Fairbanks	13 K13XD	PC>3kw
Fairbanks	32 KDMD-LP	QC from ch. 33, 28.4kw, 64-52-44/148-03-10

### Arizona:

Bullhead City	61 K61HA	QC from ch. 20, 56.8kw <u>dismissed</u>
Douglas	26 new-LP	PC<1.8kw
Fortuna	41 K41EM	QC from ch. 66, 1.13kw
Kingman	41 K66AK	NS 3kw, 34-31-27/114-17-05
Lake Havasu C.	10 K10OS	QC from ch. 62, 2.21kw
Lake Havasu C.	43 K62BN	QC from ch. 54, 2.34kw
Lake Havasu C.	46 K54AN	QG from K24EI, 4kw
Phoenix	42 K42FD	PR<108kw
Tucson	32 KOLD-DT	

### Arkansas:

Conway	29 K61FP	QR from ch. 61, 145kw, 35-06-34/92-30-27, CL from Batesville
Harrison	8 K08NG	PR<2kw

### California:

Chico	27 K27HD	NS 11.6kw, 39-39-04/121-27-43
Fresno	4 KVHF-LP	PC>3kw
<i>Fresno</i>	<i>34 KGPE-DT</i>	<i>PG&lt;257kw/526m</i>
Fresno	41 KTFF-LP	QC from ch. 68, 150kw, 37-04-22/119-25-51; CC from KQJA-LP
Indio	8 KVPS-LP	PR>990kw, 33-51-58/116-26-04; CC from K08MX (power must be typo, probably 990w)
Los Angeles	33 KSMV-LP	QC from ch. 44, 22.8kw, 34-13-36/118-03-57
Oroville	15 K15CX	PC>21.9kw, 39-27-46/121-34-49, CL from Chico
Red Bluff	27 K27HC	PG>50kw
Red Bluff	27 K27HC	PR>24kw <u>dismissed</u>
Redding	40 K54ED	QR from ch. 54, 31.6kw
<b>Riverside</b>	<b>62 KRCA</b>	<b>PC 2630kw/895m, 34-12-50/118-03-40</b>
<i>Salinas</i>	<i>10 KSBW-DT</i>	<i>PG&gt;21.4kw/736m</i>
San Francisco	28 KBIT-CA	PG>30.3kw
San Francisco	52 new	AF 300w, 37-49-40/122-18-53 booster of KICU-DT? (Jeremy Lansman)
<b>Sanger</b>	<b>59 KFRE-TV</b>	<b>PR 4600kw/641m</b>
Santa Barbara	51 KBAB-LP	QC from ch. 38, 3.57kw, 34-27-58/119-40-37
Ukiah	31 K31GK	QG from ch. 67, 2.54kw

Ventura	49 KJLA-DT	PR 1000kw/949m, 34-13-35/118-03-58	Palm Beach	43 WWHB-CA	PG>150kw, 27-01-32/80-10-43; CC from WINQ-LP
			Panama City	54 W54CU	QC from ch. 68, 10.6kw, 30-11-41/85-37-51
<b>Colorado:</b>					
Colorado Springs	30 K30AA	PR>126.5kw			
Denver	7 KMGH-TV	PR>358m, 39-43-51/105-13-54	Panama C. Beh.	47 WPCT-DT	PR<12.9kw/59m
Denver	16 KUSA-DT	PR 1000kw/318m, 39-43-51/105-13-54	Pensacola	45 WJTC-DT	PG<457m, 30-35-16/87-33-13
Denver	17 KMGH-DT	PR>1000kw/295m, 39-43-51/105-13-54	St. Augustine	22 WQXT-CA	CC from W22AN
Denver	19 KTVD-DT	PR 1000kw/295m, 39-43-51/105-13-54	St. Petersburg	36 W60BK	QC from ch. 60, 3.8kw, 28-03-06/82-44-11
Dove Creek	23 K23GF	NS 300w, 37-45-37/108-54-39	Tallahassee	45 WVUP-CA	FC to religion
Grand Junction	11 KKCO	PR>446m, 39-04-00/108-44-45	Vero Beach	10 WWCI-CA	PC>3kw
Grand Junction	12 KKCO-DT	PR<5.3kw/452m, 39-04-00/108-44-45	Williston	63 W63DB	NS 150kw, 29-24-11/82-27-03
Pleasant Valley	26 K26GX	NS 214w, 40-30-35/102-06-51	<b>Georgia:</b>		
Yuma	30 K30HA	NS 2.685kw, 40-08-35/102-48-51	Atlanta	25 WATL-DT	NW 500kw/332m, 33-48-26/84-20-22
			Atlanta	36 WATL	PG<313m, 33-48-26/84-20-22
			Columbus	47 WTVM-DT	PR<528kw/115m
			Columbus	29 W36BT	QR from ch. 36, 150kw, 32-25-59/84-57-02, CL from Grenada, MS
<b>District of Columbia:</b>					
Washington	50 WBDC-TV	PR>4178kw/253m, drop DA	Tifton	12 W12DA	NW 100w, 31-34-00/82-58-15
Washington	51 WBDC-DT	PR 125kw/253m			
<b>Delaware:</b>					
Sussex County	24 WEWE-LP	PG>7kw			
<b>Florida:</b>					
Big Pine	52 W52BB	PR<250w, 24-41-51/81-20-55; already granted & on the air	Boise	39 KKJB	CC for new station
Clermont	17 WKCF-DT	NW 1000kw/472m, 28-35-12/81-04-58	Burley	39 K63BX	QR from ch. 63, 3.9kw
Cocoa	53 WTGL-DT	NS 13kw/514m, 28-35-12/81-04-58	McCall	41 K41HS	NS 338w, 44-45-54/116-11-54 (KAID-4)
Fort Lauderdale	51 WSCV	PC>304m, 25-59-09/80-11-37	Preston	17 K17GB	QG from K22DV, 770w
Fort Lauderdale	52 WSCV-DT	NW, 500kw/304m, 25-59-09/80-11-37			
Homestead	56 W56AZ	PG>147kw, 25-32-24/80-28-06, CL from Rock Harbor	Blue Island	48 W54AP	QR from ch. 54, 20kw
Jacksonville	45 W45BZ	QC from ch. 67, 50kw, 30-16-51/81-34-12	Carbondale	25 K65GP	QR from ch. 65, 150kw, 37-49-42/89-02-25, CL from Cape Girardeau, MO
Lake City	11 WBFL-LP	QG from ch. 15, 3kw, 30-12-50/82-39-00	Chicago	13 WOCC-CA	PG>3kw
Lake City	15 WBFL-LP	CC from WJXE-LP	Chicago	20 WYCC	Previous report of PR<2kw apparently in error, amended back to existing 2340kw...
Miami	53 WLMF-LP	QC from ch. 13, 15.8kw, 25-58-15/80-12-32	Rockford	51 WCFC-CA	PC>49.4kw, 42-19-20/89-00-41
Miami	57 W57DJ	QG from W55BV, 147kw			
Naples	23 WXDT-LP	QC from ch. 15, 20kw	Bloomington	30 WTIU	PG>1622kw/221m, 39-08-31/86-29-43
Naples	39 WZDT-LP	QC from ch. 52, 20kw	Fort Wayne	43 W66BD	QR from ch. 66, 4.4kw
Naples	46 WTVK	PC>5000kw/456m, 26-47-08/81-47-40	Hammond	36 WJYS-DT	NW 50kw/455m, DA, 41-52-44/87-38-10, Sears Tower in Chicago
Ocala	31 WOGX-DT	PC<500kw	Indianapolis	50 WALV-CA	QC from ch. 27, 14.9kw
Orlando	14 WRDQ-DT	NW, 171.3kw/458m, 28-34-07/81-03-16	Terre Haute	31 K58FD	QR from ch. 58, 150kw, 39-27-57/87-24-12, CL from Cape
Orlando	21 W21AU	FC to Azteca USA			
Orlando	36 WZXZ-LP	QG from ch. 11, 23kw, 28-34-52/81-04-31			



Girardeau, MO

970w

**Iowa:**

Ottumwa 49 K49DX PG<10w,  
40-57-50/92-23-51

Ottumwa 51 K51FJ QC from ch. 36,  
10w, 40-57-50/92-23-51

Sioux City 28 KSIN-DT PR 475kw/352m,  
42-30-53/96-18-05

**Kansas:**

Hays 48 KHKT-LP CC from K48GH

Independence 20 K20HJ NS 68.2kw,  
37-13-16/95-43-47  
(KWBT-19)

Independence 59 K59HS NS 68.4kw,  
37-13-16/95-43-47  
(KWBT-19)

Iola 20 K20HK NS 20kw,  
37-55-38/95-24-33

Lawrence 36 KMCI-DT PG<291m,  
38-58-42/94-32-02

Liberal 41 KLKT-LP CC from K41HG

Pittsburg 9 KPKT-LP CC from K09XG

Pittsburg 49 K49GR NS 1kw,  
37-26-06/94-42-04

Pittsburg 59 K59HT NS 9kw,  
37-24-47/94-38-14

Salina 41 K41HT NS 70kw,  
39-14-57/97-30-47

**Topeka 11 KTWU PR<302m**

Topeka 55 K55IL QG from K21AP,  
46.2kw,  
39-01-34/95-55-01

**Kentucky:**

Danville 4 WDKY-DT PR<17.5kw/347m,  
37-58-09/84-22-09

**Lexington 62 new AF dismissed  
(3 applications)**

**Louisiana:**

Shreveport 3 KTBS-TV PR<541m

Slidell 24 WUPL-DT PG<1000kw/272m,  
29-55-11/90-01-29

**Maine:**

Calais 10 WMED-DT PR<3.5kw/133m,  
drop DA

**Michigan:**

Bad Axe 15 WDCP-DT PG>309m,  
43-32-33/83-39-27

**Grand Rapids 13 WZZM-TV PC 257kw/324m**

Grand Rapids 25 WOGC-CA PC>30kw

**Ishpeming 10 WBUP PR<316m,  
46-21-09/87-51-17**

Kalamazoo 2 WWMT-DT NW, 6.9kw/305m

Marquette 35 WLUC-DT PR<63kw/257m, DA

Pinconning 57 W57CS PC<250w

**Minnesota:**

Alexandria 36 KSAX-DT PG>1000kw/340m

Grand Marais 63 K63BI PG<500w,  
47-46-04/90-20-47

Grand Marais 67 K67CT PC>2.6kw,  
47-46-04/90-20-47

**Minneapolis 11 KARE PC>455m**

**Minneapolis 45 KSTC-TV PC>430m**

St. James 14 K14KE QC from ch. 38,  
980w

Walker 67 K67BZ PC>670w,  
47-05-36/94-34-47

Walker 69 K69CP PC>670w,  
47-05-36/94-34-47

Willmar 14 K36FL QR from ch. 36,

**Mississippi:**

Greenville 48 W41BV QR from ch. 41,  
72kw, 33-27-56/90-51-07,  
CL from Grenada, MS

**Magee 34 new amendment from  
357m to 305m**

**Natchez 48 WNTZ PG>5000kw/549m,  
31-52-33/90-54-35,  
becomes Fox affiliate for  
Jackson**

Senatobia 47 W41BT QR from ch. 41,  
150kw,  
34-37-39/90-01-27, CL  
from Acton, TN

Senatobia 47 W46CE QR from ch. 46,  
150kw,  
34-37-39/90-01-27, CL  
from Acton, TN

**Missouri:**

Kirksville 33 KTVO-DT PR<87kw/290m, DA

**Springfield 3 KYTV PC<611m,  
37-10-26/92-56-27**

West Plains 38 K38HE PG>30.1kw,  
36-45-02/91-51-51

**Montana:**

Bozeman 13 KBZK-DT QG from ch. 16,  
21kw

Bozeman 34 K34FI PC<260w,  
45-41-46/111-01-43

**Butte 24 KBTZ PR<330kw**

Butte 43 K43DU PG>27.1kw

Missoula 42 K42EO PG<6.7kw,  
46-48-30/113-58-38

White Sulphur Springs 57 K57CX PR>1kw,  
46-32-40/110-54-01  
Already granted.

**Nevada:**

Alamo 16 K16FK QG from K07QH,  
<5w

Dayton 45 K45GZ QC from ch. 13,  
500w

Goldfield 6 K06NN NS 22w,  
37-43-37/117-13-28

**Las Vegas 3 KVBC PG<386m**

Las Vegas 12 KTNV-DT AF 9.55kw/568m,  
DA (aux)

**Las Vegas 13 KTNV AF 67.6kw/568m,  
DA (aux)**

Las Vegas 19 KHDF-CA CC from KKJK-LP;  
FC to Azteca USA

Las Vegas 35 KYRK-LP FC to Azteca USA

Lund 47 K47HV QG from K53AN,  
3.55kw,  
39-13-40/114-58-30

Orovada 8 K08NM NS 72.5w,  
41-38-59/117-43-14

Wells 39 K39GL NS 730w,  
41-11-40/114-56-36

**New Hampshire:**

Manchester 36 W54CG QR from ch. 54,  
12.5kw,  
42-58-59/71-35-19, CL  
from Bangor, ME

**New Mexico:**

Alamogordo 31 K32FC QC from ch. 32  
 Albuquerque 43 K45DL QR from ch. 45  
 Carlsbad 12 K12PK NS 1kw,  
 32-26-08/104-11-14  
 Deming 29 K29FN NS rescinded  
 Deming 46 K46GU NS 802w,  
 32-11-40/107-36-29  
 Deming 49 K49GV NS 802w,  
 32-11-40/107-36-29  
 Farmington 41 K41HU NS 10kw,  
 36-41-45/108-13-23, but  
rescinded.  
 Fort Sumner 15 K15GG NS 269w,  
 34-35-21/104-21-26  
 Santa Rosa 30 K30FP QG from ch. 74,  
 900w, already on the  
 air  
 Silver City 8 K08NN NS 490w,  
 32-50-40/108-14-19

**New York:**

**Albany** 23 WXXA-TV **PC>3675kw/363m**  
 Albany 52 W52DF QG from ch. 64,  
 1kw  
**Buffalo** 2 WGRZ-TV **PC 93.3kw/311m**  
**Ithaca** 52 950320KH **PR<396m,**  
**42-52-50/76-11-46**  
**(amendment to**  
**modification of existing**  
**construction permit)**  
 New York 53 WKOB-LP PC<6.52kw  
 Oneida 13 W13BR PG<230w,  
 43-03-57/75-40-04  
 Rochester 42 W42CO QC from W59BV,  
 11.9kw  
**Syracuse** 3 WSTM-TV **PR 41.9kw/396m,**  
**42-56-42/76-07-07**  
 Syracuse 38 W38CY QC from W46CU  
 Syracuse 54 WSTM-DT PR 376kw/405m  
 Utica 51 W51CV QG from ch. 41,  
 8.3kw

**North Carolina:**

**Greensboro** 2 WFMY-TV **PC<551m**  
 Linville 54 WUNE-DT *NW 137.8kw/531m,*  
*36-03-50/81-50-33*  
 Tryon 19 W24BA QR from ch. 24,  
 1.23kw, but  
 dismissed.  
 Wilmington 10 WILM-LP PC<70w,  
 34-13-21/77-54-10  
 Winston-Salem 32 WUNL-DT *NW 197.5kw/479m,*  
*36-22-33/80-22-18*

**North Dakota:**

Dickinson 38 K38HA NW, 8.76kw,  
 46-55-08/102-43-47  
 (KNDX)  
 Fargo 33 KVNJ-LP QG from ch. 2,  
 150kw,  
 46-51-39/96-51-17  
**Williston** 11 KXMD-TV **PC<100kw/291m,**  
**48-08-45/103-53-20**

**Ohio:**

Delaware 42 WXCB-LP QR from ch. 56,  
 19.28kw  
 Marion 39 WOGB-LP PR>18.9kw,  
 40-36-54/83-07-54  
 Steubenville 57 WTOV-DT PR<261m  
**Toledo** 13 WTVG **drops DA**  
 Toledo 19 WTVG-DT PR<221.5m  
 Toledo 22 W22CO PR>50kw  
Dismissed, Canadian  
 objection  
 Toledo 38 W38DH QG from W64BM

**Oklahoma:**

Grove 48 KELF-LP QR from ch. 43,  
 29.6kw  
 Nowata 25 KGCT-LP QC from ch. 60,  
 11.6kw  
 Oklahoma City 24 KOKH-DT PR>476m  
**Oklahoma City** 25 KOKH-TV **PR>3470kw/476m**  
 Oklahoma City 27 KFOR-DT PR>790kw  
**Oklahoma City** 34 KOCB **PR>1200kw/458m,**  
**35-32-58/97-29-18**  
 Ponca City 54 K54FZ QC from ch. 68,  
 23.8kw  
**Shawnee** 30 KQOK **PG<253m,**  
**35-16-58/97-20-18**  
 Tulsa 51 KOPE-LP PR>7.15kw,  
 36-05-41/95-52-00,  
 already granted.

**Oregon:**

Astoria 4 K04PH NS 2.25kw,  
 46-17-10/123-53-50  
 Eugene 23 KEVU-LP PC<19.4kw,  
 44-00-04/123-06-45  
 Eugene 41 KORY-CA PC>112kw  
 Milton 23 K23FH QC from ch. 63  
 Milton 35 K35FO QC from ch. 65  
 Newberg 51 KOXO-CA QC from ch. 66,  
 150kw  
 Pendleton 16 KORX-CA PC>36kw  
 Portland 35 KORK-CA QC from ch. 62,  
 105kw,  
 45-29-24/122-41-53  
 Portland 38 KKEI-CA QC from ch. 56,  
 111kw  
 Prineville 16 K16EM PG<660w  
 Roseburg 49 K14HA QC from ch. 14,  
 1.5kw  
 Salem 36 KORS-LP QC from ch. 55,  
 150kw

**Pennsylvania:**

**Philadelphia** 10 WCAU **NS, 151kw/164m,**  
**40-02-31/75-14-12 (aux)**  
 Scranton 26 W26CD QC from ch. 67  
 Scranton 49 WNEP-DT *NW, 100kw/506m,*  
*41-11-00/75-52-10*

**South Carolina:**

Charleston 21 W21BX QC from ch. 44,  
 30kw  
 Columbia 48 WACH-DT PR<520kw  
**Sumter** 63 WQHB **PC>1312kw/374m,**  
**34-06-58/80-45-51**

**South Dakota:**

Aberdeen 28 KABY-DT PR<54kw/396m, DA  
 Pierre 19 KPRY-DT PR<61kw/347m, DA

**Tennessee:**

Chattanooga 20 W66CG QR from ch. 66,  
 135kw,  
 34-55-57/84-58-32, CL  
 from Acton, TN  
 Nashville 42 W42CR QG from W52CT,  
 25kw

**Texas:**

Beaumont 22 KEBQ-LP QC from ch. 21, 138.2kw  
 Big Springs 10 K10HH PC>70w  
 Corpus Christi 22 K50DW QR from ch. 50, 150kw, 27-39-20/97-33-55, CL from Alexandria, LA  
 Corpus Christi 21 KCBO-LP CC from K21GM  
 Galveston 47 KTMD-DT PG 230kw/597m, 29-34-15/95-30-37  
**Garland 23 KUVN PR<517m, 32-35-21/96-58-12**  
 Garland 24 KUVN-DT PR<518m, 32-35-21/96-58-12  
 Houston 9 KUHT-DT NW 8.4kw/564m  
 Jasper 66 KVHP-LP CC from K66GA  
 Laredo 21 K21GX NS rescinded  
**Nacogdoches 19 KLSB-TV PG>4270kw/457m, 31-54-20/95-05-05; should cover Tyler, expect FC from NBC to ??**  
 New Boston 20 K20HL NS 150kw, 33-33-25/94-27-29  
 Pampa 55 K55JM NS 7kw, 35-32-46/101-00-02 (TBN)  
 Paris 25 K20HI? NS 13.93kw, 33-38-54/95-36-13  
 San Angelo 34 K34GX NS rescinded, Mexican objection  
 Sherman 44 K59FJ QR from ch. 59, 105kw, 33-39-01/96-36-33, CL from El Dorado, AR  
 Texarkana 42 K63FX QR from ch. 63, 150kw, 33-25-48/94-05-08, CL from El Dorado, AR  
**Waco 34 KWBU-TV PG>1950kw/319m, 31-19-17/97-20-40**  
**Weslaco 5 KRGV-TV PC>442m, 26-06-02/97-50-21**  
**Utah:**  
 Aneth 58 K58HO NS 999w, 37-14-46/109-13-00  
 Bluff 2 K02PU NS 4.5w, 37-16-11/109-33-25  
 Bluff 13 K13XS NS 4.5w, 37-16-11/109-33-25  
 Cedar City 45 K45HD NS 147w, 37-38-18/113-01-52  
 Enoch 50 K50HI NS 745w, 37-50-32/112-58-10  
 Henrieville 22 K22GP NS 8w, 37-33-13/111-59-40  
 Logan 8 K08NL NS 3kw, 41-53-50/111-57-39  
 Mexican Hat 2 K02PT NS 4.5w, 37-09-00/109-51-34  
 Mexican Hat 4 K04PG NS 4.5w, 37-09-00/109-51-34  
 Mexican Hat 6 K06NK NS 4.5w, 37-09-00/109-51-34  
 Oljeto 6 K06NM NS 4.5w, 37-02-27/110-19-47  
 Oljeto 7 K07XO NS 4.5w, 37-02-27/110-19-47  
 Park City 57 K57JB NS 732w, 40-51-15/111-28-51  
 Provo 44 KBYU-DT NW, 346kw/1257m, 40-39-33/112-12-07  
 St. George 18 KUEW-DT PG<1.62kw  
**Virginia:**  
 Blackwater 14 WAPG-CA QG from ch. 51,

Bristol 28 WCYB-DT 5kw PR<182.5kw  
 Petersburg 22 WRIC-DT PG<328m, drop DA  
 Petersburg 22 WRIC-DT PR 328m, drop DA  
 Portsmouth 50 WGNT-DT NW 800kw/264m  
 Richmond 17 WXOB-LP QC from ch. 14, 22.8kw  
 Richmond 39 W39CO QC from ch. 40, 31kw  
 Roanoke 25 W54BT QR from ch. 54, 150kw  
**Washington:**  
 Moses Lake 43 K58BL QR from ch. 58  
 Seattle 47 K57HB QR from ch. 57, 124kw, 47-37-55/122-20-59, CL from Eureka, CA  
 Spokane 52 KHBA-LP PR>18kw, 47-34-45/117-17-48 dismissed, ROA  
**West Virginia:**  
 Huntington 45 W45CG QG from W69DD, 45kw, 38-29-41/82-12-03  
 Moorefield 22 W22CV NS 35w, 38-58-57/78-54-31  
**Wisconsin:**  
 Hayward 31 K31GH NW, 16.4kw, 45-59-52/91-24-14 (KQDS-21)  
 Kenosha 40 WPXE-DT PR 830kw/358m on the WMVS/WMVT tower in Milwaukee (note also WVCY, WCGV, and WVTW will have -DT's here)  
 Madison 50 WISC-DT FC from CBS/WB to CBS/UPN "UPN 14"  
**Wyoming:**  
 Casper 47 K47HQ QC from K13UC, 10.1kw  
 Laramie 24 KPAH-CA PR>4.2kw  
 Sheridan 7 KBNM NW, 9kw/349m, 44-37-20/107-06-57. To be NBC but temporarily relaying KTVQ-2, CBS. QC from K07HC  
 Sheridan 9 K09XK  
**U.S. POSSESSIONS:**  
**Puerto Rico:**  
 Caguas 56 WLII-DT PR<71kw, DA  
 Fajardo 16 WMTJ-DT PR<150kw, already granted  
 Mayaguez 35 WIPM-DT NS, 690kw/710m  
 Ponce 43 WSUR-DT PR<68kw/834m, DA  
**CANADA:**  
**Manitoba:**  
 Winnipeg 35 new NS, 20kw, religious, co-owned with CHNU-66 in British Columbia.  
**Ontario:**



Thanks to Charles Gauthier and Fred McCormack for information in this month's column.

The programming change at WISC-DT Madison affects only their DTV station. They had been running a WB affiliate on their second virtual channel. (The "TVW" outlet that had been cable-only before the DTV signed on the air) Madison's UPN affiliate WHPN-57 is switching to WB this fall. So the WB cable-only station is switching to UPN, and with it the second virtual channel. Similar situations exist in Springfield, Missouri (where a UPN LPTV is carried on the second virtual channel of a full-power DTV station) and central Illinois. (Where a CBS DTV on one end of the market is carrying their co-owned UPN affiliate from the other end of the market on their second virtual channel, and vice-versa.)

Note major power increases at several stations this month. WDBB-17 (Alabama), WQHB-63 (South Carolina), KLSB-19 (Texas), and KWBU-34 (also Texas) should all become much easier DX targets. At the same time, at least ten DTV stations have been granted major decreases in power. DTV still isn't making financial sense for stations, and many are operating at the lowest power practical to save electrical bills. There are also a number of long-distance LPTV moves this month.

The FCC has taken action it hopes will reverse this situation. After a deadline, many new TV sets will be required to receive DTV signals. The requirements will be phased in over a five-year period, depending on screen size:

- **TVs 36" or larger:** 50% must receive DTV by 1 July 2004, all by 1 July 2005.
- **TVs 25-35":** 50% must receive DTV by 1 July 2005, all by 1 July 2006.
- **TVs 13-24":** all must receive DTV by 1 July 2007.
- **Other devices which receive TV signals:** (VCRs, DVD recorders, etc.) all must receive DTV by 1 July 2007.

Smaller TVs will not be required to receive DTV. This is similar to Commission policy on closed-caption decoders, which are required in receivers larger than 13" but not in smaller sets. The Commission believes action is permissible under the 1962 All Channel Receiver Act. This law was originally enacted to save UHF TV, by requiring all TVs to receive UHF signals.

Setmakers are of course not particularly happy with these rules. (will they be challenged in court? I don't know yet.) I doubt they'll add more than maybe \$10 to the price of a new TV. A few chips will have to be added. The impact will be a bit more than closed-captioning requirements but not a whole lot more.

Some websites are also reporting that some in Congress are considering legislation that would require cable to carry DTV stations in addition to analog signals. Current FCC rules require carriage of either analog or digital, but not both. I have not seen any such legislation actually introduced yet.

The new channel 52 application in San Francisco is a strange one. This is for a "booster" station - a station that relays another station on its own channel. (Like a translator, except the input and output channels are the same. Boosters are usually fed by microwave rather than off-air.) All boosters I'm aware of relay full-power stations. But there is only one full-power analog channel 52 station in California. It's in Corona, near Los Angeles - way too far from San Francisco to have a booster there. Boosters must operate within the predicted coverage area of the stations they relay.

I suspect the intended primary of this San Francisco booster is a DTV station, KICU-DT in San Jose. KICU-DT is indeed on channel 52. And their transmitter is far enough south of town that it could probably use a booster, yet close enough that San Francisco is in the predicted coverage area. Still strange.. is that the applicant is Jeremy Lansman. That name is probably familiar to many members. Lansman was involved in several community-radio projects like KDNA in St. Louis; he's also involved with KYES-5 in Anchorage and "FM radio on TV" outlet KZND-LP ch. 6 also in Anchorage. To my knowledge he has nothing to do with the ownership of KICU. However, sometimes it's tough to know more obscure ownership links...

CICE-TV-4's application to move to channel 29 had not been found "technically acceptable" by the Department of Industry in time for the CRTC to act on it. It doesn't appear that they found it to be unacceptable, only that they hadn't ruled on it. My guess is the application can be re-submitted provided TVOntario can obtain a guarantee of acceptability in time for CRTC action. I can't think offhand of any reason why the use of channel 29 for a low-power relay would be a problem at that location.

Fred can confirm that K65DT Walker, Minnesota now translates KFTC-26 instead of WFTC-29. The only difference between the two primaries is a two-line ID "KFTC-TV/Bemidji MN" in the lower-left corner around the top of the hour.

In Walker, the upcoming WFTC/KMSP network swap should have little effect; both stations are on translators there. KMSP translator K49CU is more powerful than WFTC's K65DT. (Nearly 9kw vs. about 800 watts) K49CU is also, however, roughly 10 miles out of town to the southeast.

Charles notes that WVNY-22's four translators disappeared from my database for awhile. For some reason, their programming records had vanished. Strange. For the record, these stations are:

- ☐ W60AF Malone, NY
- ☐ W66AJ Lyon Mountain, NY (Charles sees this one in Montreal)
- ☐ W55AILake Placid, NY
- ☐ W63AD Rutland, VT

Oh, the funny-looking "950320KH" callsign on the new Ithaca, NY station is not a typo. This is a construction permit for a new station which has not yet requested call letters. 950320KH is the "reference number" associated with their original application - which was filed on March 20, 1995. (The "KH" is to distinguish their application from other applications filed on the same date) This procedure of using reference numbers for new stations was regular FCC policy for many years, but recently they've been assigning call letters (in alphabetical order) to new stations shortly after the construction permit is issued. Why the Ithaca station hasn't received such a call I can't say.

Still no skip to speak of. Tropo seems to be picking up though. Good DX!

### WESTERN TV DX CONTINUES FROM PAGE 27

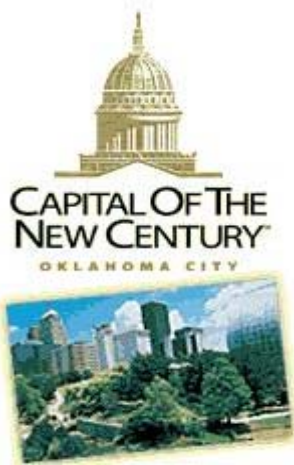
Bill Eckberg's report continues:

0930	WPBT	2 FL	1229		2125 CFQC-1	3 SK	1120
	1430 XHHUPN	2 TM	1201		2155 CKAL-1	2 AB	1217
	1500 KBEJ	2 TX	972	19 Es	1900 WPBT	2 FL	1229
	1600 XEPM	2 CI	1162		1910 WESH	2 FL	983
17 Es	0905 WPBT	2 FL	1229		2150 KTWO	2 WY	849
18 tr	0730 KSAX	42 MN	404				
	Es 2000 CKSA	2 AB	1206	20 tr	0645 WOAC	67 OH	417
	2030 CKBI-3	4 SK	1178	23 Es	1045 XHHUPN	2 TM	1201
	2100 CITL	4 AB	1206	30 Es	1155 KASA	2 NM	972
	2120 CKCK	2 SK	918	31 Es	1400 KASA	2 NM	972

I caught the end of an Es opening to Mexico on July 14. Logged new XHDRG-2 with rotating ID and local ads. Five photos of the ID are yet to be developed. The distance of 1498 miles is a no-man's land. Are loggings of 1450-1600 miles single hop, double hop, intercloud, or other type of Es? {*Editor, Yes!*} Logging was at the end of an opening and no close Es stations were present, so I suspect a long single hop. The only other station ever logged in this range was Sydney NS-5. I determined the distance with a computer.

### METEOR SHOWER GUIDE FOR SEPTEMBER 2002

There are no major showers this month but seven minor showers do have their peaks this month. The showers are: 1. Alpha Aurigids (9/1 and 9/2), 2. Gamma Aquarids (9/7 and 9/8), 3. Alpha Triangulids(9/11 and 9/12), 4. Southern Piscids (9/11-20<sup>th</sup>), 5. Eta Draconids (9/12 and 9/13), 6. Gamma Piscids (9/23 and 9/24) and 7. Sextantids (9/30 through 10/4). Happy hunting!



# WTFDA 2002

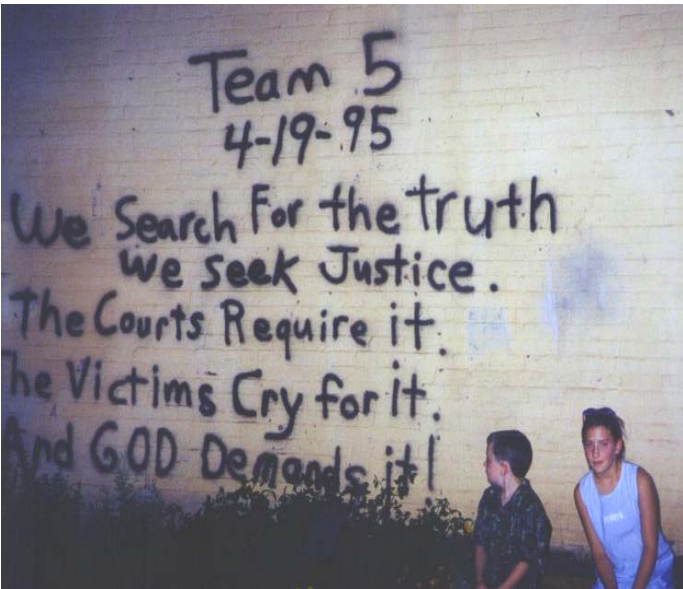
Oklahoma City

A look back...

by John Zondlo



Oklahoma's capital welcomed 19 members of WTFDA to this year's annual convention July 25-28. Kicking off the festivities was the early bird get-together Thursday evening. Members met at our host motel, the Hampton Inn in Yukon, before venturing to the Bricktown entertainment district of OKC for dinner at Zio's Italian Restaurant. To the left, waiting for dinner are (starting at front & going clockwise) David Sinclair, Scott Fybush, Tom Bryant, Bill Eckberg, Paul Swearingen, John Callarman, Marv Shults, George Greene and Greg Coniglio.



After dinner everyone headed over to the Oklahoma City National Bombing Memorial, which commemorates the April 19, 1995, bombing of the Murrah Federal Building. At left, my kids, Joel and Christy, pose in front of a poignant reminder of the bombing left by rescue workers who searched for victims amidst the rubble. Below, George Greene, Greg Coniglio and Tom Bryant gather by the reflecting pool at the Memorial.



Our first full day of activities, Friday, July 26, began with the opening of the meeting room at the Hampton Inn. Conventions are a great time to renew old friendships and begin new ones. In the picture on the bottom left, Washington member Stan Weisbeck chats with David Sinclair from British Columbia. In the background, other members check out the equipment which was set up to try and snag some DX during the convention. Later in the day, several members ventured to the National Severe Storms Laboratory in Norman. On the bottom right, in the foreground, Tom Bryant, John Ebeling and George Greene view the Storm Prediction Center. One of their expert meteorologists fielded a myriad of questions from members about the workings of the Lab. No doubt about it, TV-FM Dxers have a fascination with weather!





Friday evening at the Hampton Inn featured pizza, conversation and a bit of DXing. To the right we see Jim Thomas, Marv Shults, John Callarman and John Ebeling standing around George Greene discussing DX (or the lack of it). In the foreground is Tallahassee member Jeff Lockwood. Jim graciously provided much of the equipment used during the convention, including the APS-9 antenna in the picture. He also designed T-shirts and a banner for the event. By the way, there are still a few T-shirts available, contact me at the address listed in Southern FM DX.



To the left, Tom Bryant and David Sinclair check out the local TV scene. Unfortunately, being on the ground floor of the Hampton Inn didn't help DXing a whole lot, nor did the electrical noise in the motel. Folks were able to see a couple of the Lawton, OK, stations, while those listening to FM were able to hear a few Dallas area stations. Despite the hopes of those attending, neither Es nor tropo materialized during the convention.



Saturday got off to a great start with Tim McVey's tuner clinic. Tim brought in loads of test equipment to check out tuners and bring them up to spec. After a detailed explanation of the workings of a tuner, those attending gathered around the test bench for some hands on instruction as Tim worked on my Akai AT-VO4 (thanks, Tim!). To the left, Tim gives his analysis of the AT-VO4 to Dave Sinclair, John Ebeling and Bill Eckberg. Below that, Marv Shults gets a close-up look at what Tim is doing. Along with my tuner, Tim also worked on Scott Fybush's and Jim Thomas' tuners. His expertise and experience truly made this clinic one of the highlights of the convention

Saturday afternoon, many of those attending headed into town for tours. First on the agenda was a tour of the Clear Channel networks based in OKC. CC operates many networks in Oklahoma City, including the Oklahoma News Network, The Oklahoma Agrinet, the Agrinet of the High Plains and the Yancy Farm Network. In addition, Clear Channel Sports uses the facilities for the production of the Iowa State University and Texas A&M sports networks.

Following the CC tour, Joel Reagan of KYIS took us on a tour of the Citadel Broadcasting stations in OKC, which include KATT, KYIS, WWLS, KKWD, KLGH and KQBL. The tours were a great lead in to the events planned for Saturday evening.

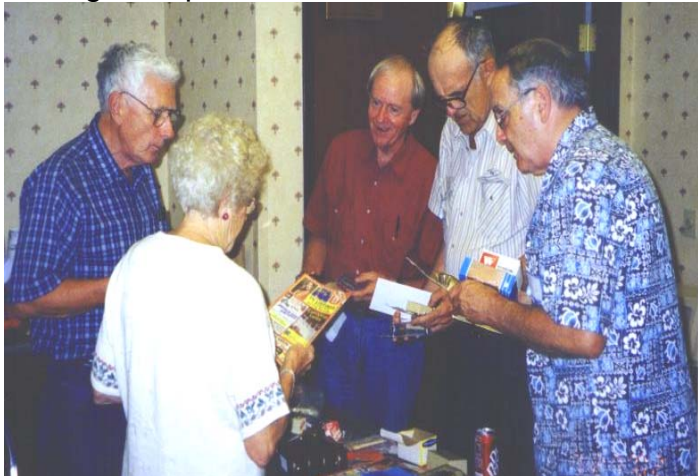




Saturday night the scene shifted to the Interurban Restaurant for the banquet. To the left, in the foreground we see FM Atlas publisher Bruce Elving & his wife, Carol, sitting across from John Ebeling.

After dinner it was time for door prizes, which included T-shirts from local stations such as KKNB and KJYO, and coffee cups from KQCV and KTOK.

Following a videotaped presentation on Mexican TV by Danny Oglethorpe and an auction conducted by Paul Swearingen, Tom Bryant represented the club's board of directors in hosting the annual business meeting. Unlike last year's meeting, when WTFDA was in a transition period following the resignation of long time publisher Bill Thompson, this year's meeting was rather uneventful. Tom brought members up to date on the status of the club newsgroup, the electronic VUD (e-VUD), and the TV Station Guide. He then opened up the proceedings for questions from the members.



After departing the Interurban, most members headed back to the Hampton Inn to check out the DX and chat some more. Several, including Scott Fybush, Rick Lucas and John Callarman, headed up to Tom Bryant's room to check out some classic TV QSL's and pictures. Others hung out in the meeting room, checking out the collection of freebies and door prizes available. To the right are John and Ira Ebeling, Marv Shults, Bill Eckberg and Dave Sinclair. A few DXers checked out the bands, but after the poor conditions of the first few days of the convention they gave up hope of any great openings during their time in Oklahoma City.



The final day of the convention, Sunday, July 28th, saw many members departing early for their next destination. Here, Tom Bryant, George Greene, Stan Weisbeck, Marv Shults and Bill Eckberg gather for breakfast at the Hampton Inn. The meeting room stayed open til 2 for the final few who hung around.

Here are the fine folks who attended this year's convention, by state & province-

BC: Dave Sinclair; CO: Jim & Cheryl Thomas; FL: Jeff Lockwood; IL: Bill Eckberg, Marv Shults; KS: Paul Swearingen; MN: John & Ira Ebeling, Bruce & Carol Elving; NY: Greg Coniglio, Scott Fybush, Rick Lucas; OH: George Green; OK: Danny Buntin, John Zondlo; TN: Tom Bryant; TX: John Callarman, Joe Gragg; VA: Tim McVey; WA: Stan Weisbeck.

As host, I'd like to thank the following for making this year's convention an event to remember: My family, all of those who attended, Traci Yarbrough & staff (Hampton Inn), Daphne Zaras (National Severe Storms Laboratory), Jim Thomas, Bill LaFortune (Interurban Restaurant), Kevin Christopher (KKNB), Paul Sublette KQCV), Chris Fleming (Clear Channel), Derrick Nance (Oklahoma News Network), Joel Reagan (KYIS), Rich Wertman, Tim McVey, Danny Oglethorpe, Doug Smith.

For more pictures and comments about the convention, please check out the WTFDA 2002 page of Fmdxweb.com.

# FM NEWS

Steven C. Wiseblood  
28 LBJ Blvd.  
Brownsville, TX 78521  
stevenwisebl@hotmail.com

SEPTEMBER 2002



## ABBREVIATIONS:

AFA: American Family Association  
CC: **call letter** change&: satellite programming  
CL: **city of license** change  
CX: a **construction permit** has been **canceled**  
C1,C2,etc: a change in status to that  
FM license **class**  
DA: **directional antenna**  
DE: station has been **deleted**  
FC: **format change**  
GA: **granted amendment** to the table of  
FM allocations  
GE: **granted extension** of construction permit  
GX: **granted replacement** of expired permit  
LC: **license to cover** filed  
(means station is ready to come on air)  
MC: **multiple-city** legal ID  
NC: **no change** yet on a reported change/permit

ND: **non-directional** antenna

NO: **not on the air**

NS: **new station** granted

NW: **new station** signs on

OSA: **one-step application** granted for change  
PA: **proposed amendment** to change FM  
table of allocation

PC: **power change** on the air (“>” for increase,  
“<” for decrease, when known)

PG: **power change** granted (“>” for increase,  
“<” for decrease, when known)

QC: **frequency change** occurred

QG: **frequency change** granted

RA: silent station **returns to air**

RE: station **requests extension** on permit

RX: station **requests replacement** of expired  
permit

SG: **slogan change** or update

SI: **station is silent**

XA: **dismissed amendment** to FM allocations

XC: **transmitter site change** occurred

XG: **transmitter site change** granted



## UNITED STATES

### ALABAMA:

Citronelle: WQUA 102.1 FC to Disney,  
children’s (Mobile) (&  
Dothan: WDYF 90.3 NW, religion “**Faith Radio**”

### ALASKA:

Anchorage: KDBZ 102.1 CC (ex KKRO) “**The Buzz**”  
Houston: KADX 94.7 PG> 51 kW, C1

### ARIZONA:

Bagdad: KRCI 103.1 PC 21 kW, 358’,  
XC: 34-28-52 / 113-20-12  
Payson: KNRJ 101.1 FC to hot AC, SC  
“**Energy 92.7/101.1**” (Phoenix)

### ARKANSAS:

Ashdown: KPGG 103.9 FC to rock “**The Pig**”  
Atkins: KVLD 99.3 CC (ex KRRD) “**River Rock 99.3**”.  
FC to JRN oldies (&  
Bentonville: KSEC 95.7 XC 36-17-54 / 94-10-21  
Gurdon: KYXK 106.9 FC to JRN country (&  
Paris: KERX 95.3 PC 50 kW, 459 ft,  
XC: 35-17-13 / 94-2-51  
Van Buren: KLFS 90.3 NW, “**K-Love**” cont. Christian (&  
Waldo: KWDO 99.1 NW, country // KVMA “**K-Country**”

### CALIFORNIA:

Alameda: KPTI 92.7 FC to dance “**The Party**”  
CC (ex KXJO)  
Kings Beach: KSRN 107.7 PG 900w, 2687 ft,  
C2, XG: 39-18-48 / 119-52-59  
Livingston: KLVN 88.3 PC 6.1 kW, B1,  
112’, XC: 37-36-31 / 120-39-02  
Long Beach: KKJZ 88.1 CC (ex KLON)  
Lucerne Valley: KIXA 106.5 FC to Classic Rock  
SC “**Fox Rocks**”  
Mecca: KRCK 97.7 PC> 1270w

Merced: KZMR 107.7 CC (ex KAJZ)

North Fork: KZOL 107.9 CC (ex KZMR) “**Estereo Sol**”

Oakdale: KHOP 95.1 FC to hot AC (Modesto)

Pasadena: KPCC 89.3 inc. to 2923 ft.

Riverside: KELT 92.7 reported SI

San Diego: KBZT 94.9 adds Bob & Sheri

San Diego: KSDS 88.3 PC> 19 kW, 246’, DA, B1

San Francisco: KZQZ 95.7 FC to soft classic hits

SC “**The Drive**” (like WDRV in Chicago)

San Jacinto: KWRP 96.1 PC 1550w, 653’

, XC: 34-2-14 / 116-58-7

Santa Clara: KEMR 105.7 CC (ex KARA) “**Estero Sol**”

anta Cruz: KZMR 99.1 CC (ex KZOL) “**Amor 98.9 & 99.1**”

Soledad: KFRS 89.9 LC

Tipton: KCRZ 104.9 FC to hot AC “**Z-104.9**”

Yermo: KJAT 105.3 CC (ex KYHT), FC to country

// KATI “**Kat Country**”

### COLORADO:

Denver: KQMT 99.5 CC (ex KKHK), FC to alternative Rock  
SC “**The Mountain**”

Durango: KIQX 101.3 PC 30 kW, C, 2014’,

XC: 37-21-46 / 107-47-37

Estes Park: KXUU 102.1 FC to dance “**102.1 X**”

Evergreen: KXPK 96.5 FC to regional Mexican,  
SC “**Tri-Color**” (Denver)

Ridgway: KBNG 103.7 PC 4.1 kW, 1575’, DA,

XC: 38-23-15 / 107-40-31, CL from Silverton, CO

### CONNECTICUT:

Middletown: WIHS 104.9 PG> 5.8 kW, 328 ft.

### DELAWARE:

Ocean View: WZEB 101.7 adds Steve & DC

### FLORIDA:

Baldwin: WHJX 105.7 CC (ex WXQL) “**Hot 105.7**”

Blountstown: WPHK 102.7 QC from 102.3, Class C3,  
PC> 13 kW, 318 ft.

Five Points: WCJX 106.5 PG 3.8 kW, 341’,

XG: 30-15-14 / 82-40-56

Gainesville: WXJZ 100.9 CC (ex WYGC),

FC to **Smooth Jazz**

High Springs: WDRS 104.9 CC (ex WXJZ),

FC to Modern Country, XC: 29-49-16 / 82-34-25

(Gainesville)



Immokalee: WAFZ 92.1 ( ex WGCQ),  
FC to Regional Mexican, SC "Radio Fiesta" (Naples)  
Jacksonville: WROO 107.3 PG 98 kW, 991',  
XG: 30-16-51 / 81-34-12  
Lafayette: WEGT 99.9 CC (ex WYZR),  
FC to classic hits "The Eagle" (Tallahassee)  
Marianna: WJNF 91.1 PG> 25 kW (v),  
295', QG to 88.3, XG: 30-46-57 / 85-6-30  
Safety Harbor: WYUU 92.5 FC to country  
Sebring: WWLL 105.7 FC to a/c  
Tampa: WRBQ 104.7 FC to oldies  
Tavernier: WKEZ 96.9 inc. to 223'

#### GEORGIA:

Cairo: WSLE 102.3 FC to R&B oldies // WWLD "Groovin"  
Hinesville: WSGA 104.7 CC (ex WHVL),  
FC to Fox sports (&) (Savannah)  
Jesup: WTLN 90.5 SI  
Macon: WBKG 88.9 NW, AFA cont. Christian  
Peachtree City: WBZY 96.7 FC to alternative  
SC "The Buzz" (Atlanta) CC (ex WXVV)  
Savannah: WAEV 97.3 PG 100 kW,  
class C0, XG: 32-2-45 / 81-20-27  
WQBT 94.1 dec. to 1299',  
XG: 32-2-45 / 81-20-27  
Washington: WXKT 100.1 PC> 5 kW  
West Point: WCJM 100.9 PC 5.8 kW, 328',  
XC: 32-51-07 / 85-08-14

#### HAWAII:

Honolulu: KHUI 99.5 FC to Hawaiian  
SC "The Breeze", (CC ex KORL)  
KAHA 105.9 FC to Classic Rock,  
SC to "The Big Kahuna"  
Lanai City: KONI 104.7 FC to classic hits

#### IDAHO:

Caldwell: KTHI 107.1 CC (ex KCID),  
FC to oldies "K-Hits" (Boise)  
Gooding: KHJR 100.7 CC (ex KIJZ),  
"The Next Generation of Oldies"  
Pocatello: KISU 91.1 PG> 4.5 kW, 1470 ft,  
XG: 42-51-51 / 112-21-39

#### ILLINOIS:

Charleston: WWGO 92.1 XC: 39-31-40 / 88-21-23  
Chicago: WDRV 97.1 PG 7.9 kW, 1214 ft, DA,  
XG: 41-53-6 / 87-37-13  
Danville: WIAI 99.1 adds Steve & DC  
Decatur: WYDS 93.1 XC: 39-47-11 / 88-59-29  
Elmwood Park: WCKG 105.9  
adds rock overnights and weekends (Chicago)  
Fairbury: WYST 107.7 CC (ex WBZM),  
FC to classic hits // WDQX "TheEagle"  
Golconda: WLIE 94.3 CC (ex WPFX, WDXR)  
Lena: WQLF 102.1 NW Classic Rock "Hit Radio Q102.1"

Ramsey: WTRH 93.3 adds oldies & standards  
Shelbyville: WEJT 105.1 inc. to 466',  
XC: 39-35-38 / 88-50-45

#### INDIANA:

Churubusco: WNHT 96.3 CC (ex WHTD) (Fort Wayne)  
Hardinsburg: WKLO 96.9 PG 3.5 kW, 433',  
XG: 38-28-21 / 86-24-39  
Indianapolis: WBDG 90.9 FC to hot AC "Giant 90.9"  
Monticello: WMRS 107.7 SC "Sunny 107-7"  
Plymouth: WJUK 105.7LC  
Wadesville: WXTZ 90.1 NW

#### IOWA:

Des Moines: KIOA 93.3 PG 100 kW, C0, 1122'  
Des Moines: KSTZ 102.5 PG 100 kW, C0, 1122'  
Hiawatha: KWOE 89.1 NW, cont. Christian,  
Iowa City: KRNA 94.1 FC to classic rock  
Vinton: KROJ 107.1 NW  
Waverly: KWAY 99.3 PC> 4.6 kW

#### KANSAS:

Burlington: KSNP 97.7 FC to country  
SC "Thunder Country" QC from 95.3  
Emporia: KANH 89.7 LC  
Thayer: KTHA 100.5 LC

#### KENTUCKY:

Clinton: WYKL 102.1 CC (ex WCBF) "Kool 102"  
Georgetown: WXZZ 103.3 FC to active rock  
SC "Z-Rock 103" (Lexington)  
Louisville: WULV 102.3 FC to hot AC "The Max"  
Nicholasville: WLTO 102.5 FC to classic country  
SC "US 102" (Lexington)  
Owensboro: WKWC 90.3 inc. to 82',  
XC: 37-44-32 / 87-7-27  
Philpot: WBIO 94.7 XC: 37-41-50 / 86-59-28  
Stamping Ground: WLXO 96.1 FC coming soon

#### LOUISIANA:

Houma: KFXN 104.1 FC to hot AC,  
SC to "104.1 Kiss-FM" (New Orleans)  
Jennings: KHLA 92.9 PC 30 kW, 640', DA,  
XC: 30-10-48 / 93-1-52  
Jonesville: KTYX 105.1 FC to WAY cont. Christian  
SC "The Dove" (&)  
Opelousas: KVOL 105.9 FC to Modern Rock  
SC "Extreme Rock 105.9" (Lafayette)  
Natchitoches: KZBL 100.7 inc. to 276'  
KDBH 97.3 dec. to 220',  
XC: 31-48-17 / 93-1-27  
New Iberia: KOOJ 93.7 adds Rick & Bubba  
New Orleans: KKND 99.5 CC (ex WRNO),  
FC to modern rock  
Port Sulphur: WRNO 106.7 CC (ex KKND),  
FC to classic rock (New Orleans)  
Richwood: KHLL 100.9 PG 6.5 kW, C3  
Ruston: KNBB 99.3 inc. to 331',  
XG: 32-28-53 / 92-40-34  
Shreveport: KRMD 101.1 PG> 100 kW, 1755', DA  
Winnfield: KVCL 92.1 FC to country

#### MAINE:

Islesboro: WBYA 105.5PG< 20 kW, DA  
Kittery: WSHK 105.3 adds Bob & Tom

#### MARYLAND:

Cambridge: WFBR 94.3 FC to alternative  
// WRNR "Radio Annapolis"  
Ocean City: WRXS 106.9 PG 4.5 kW, 384', DA  
Sherwood: WRYP 97.5 LC

#### MASSACHUSETTS:

S. Yarmouth: WOCN 103.9 PG 5.5 kW, 341', DA,  
XG: 41-41-26 / 70-11-21

#### MICHIGAN:

Detroit: WDTW 106.7 CC (ex WLLC "Alice"),  
FC to Classic Rock, SC to "106.7 The Drive"  
Frankfort: WBNZ 99.3 PG 27 kW, 571',  
XG: 44-30-54 / 86-6-52  
Harrietta: WKAD 93.7 PG 4.3 kW, 390',  
XG: 44-16-41 / 85-35-28  
Harrison: WKKM 92.1 SI  
Holton: WSHN 100.1 FC to hot AC "Kiss 100 FM"  
Houghton: WOLV 97.7 dec to 367',  
XG: 47-08-06 / 88-33-53  
Iron Mtn: WVCM 91.5 LC  
Temperance: WMLZ 107.9 LC  
Whitehall: WEEG 97.5 FC to country

#### MINNESOTA:

Duluth: KQDS 94.9 inc. to 846',  
XC: 46-47-37 / 92-07-03  
WNCB 89.5 QG .5 (ex 89.3)  
Moose Lake: WMOZ 106.9 CC (ex KFBH)  
Proctor: KBMX 107.7 FC to hot AC "Mix 108",  
CC (Ex KUSZ), adds Bob & Sheri (Dulu th)  
Waseca: KRUE 92.1 PG 9.8 kW, 531 ft,

XG: 44-2-46 / 93-23-3

### MISSISSIPPI:

Belzoni: WBYP 107.1 PG 9.4 kW, 531 ft.  
Byhalia: WKVF 94.9 PG 4.1 kW, 348 '  
Centreville: WZFL 104.9 RA with gospel  
// WAKK "Heaven II"  
Greenville: WDMS 100.7 adds Young & Elder AM  
Pearl: WRXW 93.9 CC (ex WVIV), FC to Modern Rock  
SC "New Rock 93-9" (Jackson)  
Pi chkins: WYJS 105.9 FC to 80's hits "The Max"  
Port Gibson: WRTM 100.5 inc. to 285'  
Prentiss: WCJU 104.9 XC: 31-31-56 / 89-56-17  
Utica: WJXN 100.9 PC 39 kW, C2, 551 ft,  
XC: 32-3-13 / 90-20-23

### MISSOURI:

Brookline: KQRA 102.1 NW, modern rock  
SC "Q 102.1" (Springfield)  
Chaffee: KYRX 104.7 PG > 7.7 kW, C3, 585',  
XG: 37-9-46 / 89-28-59  
Country Club: KJCV 89.7 PG < 3.2 kW, ND, C2  
Deerfield: KBZI 100.7 FC to hot AC  
Gainesville: KMAC 99.7 FC to rock "99-7 K-Mac"  
Gordonville: KCGQ 99.3 PC > 5 kW, X  
C: 37-21-34 / 89-37-16  
LaMonte: KPOW 97.1 QG to 97.7, C1, 100 kW, 981',  
XG: 39-3-10 / 93-16-01  
Moberly: KCSX 97.3 PG > 55 kW, C1, 1172',  
XG: 39-5-26 / 94-28-18  
Ozark: KOMG 92.9 FC to hot AC "Mix 92.9"  
Shell Knob: KQMO 97.7 FC to Traditional Country  
South West City: KURM 100.3 CC (ex KWMQ)  
"Continuous Soft Hits", then FC to WW1 country  
(&) and talk

### MONTANA:

Anaconda: KGLM 97.7 FC to hot AC  
Butte: KMSM 106.9, QG to 107.1

### NEBRASKA:

Columbus: KKOT 93.5 FC to classic rock "The Hawk"  
Hastings: KLIQ 94.5 PC 98.7 kW, 948'  
Lexington: KRVN 93.1 FC to country "The River"  
Nebraska City: KBBX 97.7 FC to Spanish,  
CC (ex KQCH), "La Zeta" (Omaha)  
Omaha: KQCH 94.1 CC (ex KMXM) FC to dance,  
SC "Channel 94.1"

### NEVADA:

Jackpot: KBSJ 91.3 LC  
Moapa Valley: KBHQ 104.7 FC to country

### NEW JERSEY:

Long Branch: WWZY 107.1 FC to Spanish hits  
// WYNY "Rumba 107.1"  
Manahawkin: WCHR 105.7 FC to classic rock  
SC "The Hawk" (Monmouth-Ocean)  
Millville: WIXM 97.3 CC (ex WBSS) "Mix 97"  
Pemberton: WBZC 88.9 PG 18.5 kW, 200 ft,  
XG: 39-49-33 / 74-36-12  
Sussex: WNJP 88.5 PG > 1 kW  
Vineland: WVLT 92.1 FC to JRN oldies "Cruisin' 92.1"  
Wildwood Crest: WBNJ 93.1 PG 4.2 kW, 217 ft.  
Woodbine: WJPH 89.9 PG > 920w, 128'

### NEW MEXICO:

Albuquerque: KTZO 103.3 PC 20 kW, 4242',  
XC: 35-12-50 / 106-27-01  
Cloudcroft: KHII 88.9 LC  
Las Vegas: KOOT 101.5 dec. to -92', DA,  
CL to Pecos, NM, XG: 35-34-57 / 105-46-34  
KLSK 98.1 CC (ex KBAC), FC to classic rock  
SC "Eagle" (Albuquerque/Santa Fe)  
Mesquite: KELP 89.3 PG > 3 kW, 184', DA,  
XG: 32-5-5 / 106-44-01  
Red River: KRDR 90.1 PC > 3.2 kW,  
XC: 36-41-25 / 105-33-43

Rio Rancho: KOSZ 101.7 CC (ex KQEO),  
FC to soft AC "KOZY" (Albuquerque)  
Roswell: KEND 106.5 FC coming soon  
Santa Fe: KBAC 104.1 CC (ex KLSK),  
FC to alternative (Albuquerque)

### NEW YORK:

Briarcliff Manor: WWYY 107.1 FC to Spanish hits  
// WYNY "Rumba 107.1"  
Conklin: WCDW 100.5 FC to oldies "Cool 100"  
Corinth: WWFG 107.1 CL from Hudson Falls, NY  
Ellenville: WFKP 99.3 adds T-Man mornings  
Hampton Bays: WWXY 107.1 FC to Spanish hits  
// WYNY "Rumba 107.1"  
Poughkeepsie: WPKF 96.1 adds T-Man mornings  
Saugerties: WRKW 92.9 FC to Modern Rock,  
SC "92.9 Rock, The Valley's Rock Station" (Poughkeepsie)  
Scotia: WHTR 93.5 FC to talk (Albany)  
Westhampton: WDRE 98.5 PG 3 kW, 328 ft, DA,  
XG: 40-51-18 / 72-46-12, FC to classic rock "The Bone"

### NORTH CAROLINA:

Goldsboro: WYMY 96.9 adds Bob & Sheri  
Greensboro: WOZN 98.7 CC (ex WKSI) "The Zone"  
Wilkesboro: WSIF 94.9 QG to 90.9, 1 kW, -171 ft.

### NORTH DAKOTA:

Arthur: KVMI 96.7 FC to oldies "Kool 96.7" (Fargo);  
Kindred: KULW 92.7 FC to country "B93"

### OHIO:

Beavercreek: WXEG 103.9 SC "103-9 The X"  
Bucyrus: WQEL 92.7 FC to Classic Hits  
SC "Classic Hits 92-7 Gold"  
Cambridge: WOUC 96.7 SC to "Mix 96 FM"  
Chillicothe: WFCB 93.3 PC 33 kW, 597 ft.,  
SC "Mix 93.3" CC (ex WKKJ)  
WKKJ 94.3 CC (ex WFCB) "94.3 Country"  
Crestline: WYXZ 98.7 SC to "The Rock-Z98"  
Fremont: WFRO 99.1 FC to AC, SC "Eagle 99"  
Huron: WKFM 96.1 adds Young & Elder overnights  
(Sandusky)  
Lima: WIMT 102.1 SC " Buckeye Country T-102"  
Marion: WDIF 94.3 SC "Mix 94.3"  
N. Kingsville: WFXJ 107.5 NW, classic rock  
SC "The Fox" (Ashtabula),  
Piqua: WDPT 95.7 FC //95.3 WDTP, 80's rock  
SC "95-7, 95-3 The Point"  
S. Webster: WZIO 94.9 FC to cont. Christian  
Steubenville: WOGH 103.5 SC to "Froggy 103"  
Toledo: WRVF 101.5 PC 41 kW, 486',  
XC: 41-40-23 / 83-25-31  
Upper Sandusky: WYNT 95.9 FC to oldies "Magic 95.9"  
Youngstown: WYTN 91.7 PG > 1.8 kW, 614', DA,  
XG: 41-03-24 / 80-38-44  
Zanesville: WHIC 91.7 FC to gospel/Christian  
WHIZ 102.5 FC to Hot AC "Z102"

### OKLAHOMA:

Altus: KOCU 90.1 PC 5 kW, 85 ft.  
Bethany: WWLS 104.9 FC to country "K-Bull"  
Collinsville: KTBK 101.5 CC (ex KMRX),  
FC to urban contemporary "101.5 The Beat" (Tulsa)  
Kingfisher: KLGH 105.3 FC to sports/talk // KLGH  
Oklahoma City: KJYO 102.7 adds Kid Kraddick  
KHBZ 94.7 CC (ex KQSR),  
FC to Modern Rock, SC "94.7 The Buzz"  
Pocola: KKRI 88.1 PG < 17 kW,  
XG: 35-13-30 / 94-18-4  
Poteau: KARG 91.7 PG > 2.7 kW  
Tishomingo: KAZC 88.3 PC 5.5 W, 922', C2  
Tulsa: KVOO 98.5 adds classic country

### OREGON:

Bend: KWLZ 96.5 (ex-KRCO), FC to modern rock,  
SC "Laser 96.5"  
KXIX 94.1 FC to hot AC, SC "Power 94"

Cottage Grove: KCGR 100.5 adds Spanish 6pm-6am (music, talk, and teaching) (Eugene)  
Klamath Falls: KKRK 106.9 FC to soft AC "**Sunny 107**"  
Myrtle Point: KOOZ 94.1 CC (ex KTBR)  
Florence: KDUK 104.7 PC < 62 kW  
Portland: KUPL 98.9 adds Lia nights  
KBPS 89.9 PG 4.2 kW, 1358', C1  
KRVO 105.9 CC (ex KSTE), FC Classic Rock, SC "**The River**"

#### PENNSYLVANIA:

Allentown: WLEV 100.7 SC to "**My 100.7**"  
Barnesboro: WHPA 93.5 FC to modern rock "**Point 93.5**" (Altoona)  
Berwick: WKAB 103.5 FC to Classic Rock SC "**The Mountain**"  
Carlisle: WRKZ 102.3 CC (ex WHYI), FC to 80's hits SC "**Z-102.3**" (Harrisburg)  
Cooperstown: WUUZ 107.7 CC (ex WHUG) SC "**WUZ 94.3 & 107.7**"  
Hawley: WBYH 89.1 NW, gospel/Christian //88.9 "**The Word**"  
Hazleton: WBSX 97.9 FC to modern rock // WBSX "93.7 X" (Wilkes-Barre) CC (ex WAOZ)  
Milton: WVLV 100.9 PC 1.3 kW, 715', XC: 40-57-12 / 76-45-05  
Olyphant: WEOZ 95.7 FC to talk "**Z-Talk**"  
Philadelphia: WPHI 103.9 FC to dance "**The Beat**"  
WSNI 104.5 FC to AC (ex WYXR) SC "**Sunny 104.5**"  
Pittsburgh: WORD 101.5 adds contemp. Christian on weekends  
Tafton: WPGP 88.3 NW, cont. Christian, reported SI (Wilkes-Barre)  
Warren: WRRN 92.3 FC to oldies "**92 Gold**"  
Williamsport: WVYA 89.7 NW, news & talk // WVIA

#### RHODE ISLAND:

Wakefield: WSKO 99.7 CC ex WZRA, FC to sports // WSKO "**The Score**" (Providence)

#### SOUTH CAROLINA:

Bluffton: WWVV 106.9 adds Bob & Sheri  
Folly Beach: WYBB 98.1 adds Howard Stern  
Hartsville: WBZF 98.5 XG: 34-27-54 / 80-5-45  
Loris: WVCO 94.9 PG 11.2 kW, 489', C3  
Mauldin: WBZT 96.7 PC 700w, DA, CL change, DA, 965', XC: 34-55-16 / 82-24-5, CC (ex WPEK)  
Murrell's Inlet: WYEZ 94.5 PG 25 kW, C3, 328', XG: 33-33-13 / 79-13-14

#### SOUTH DAKOTA:

Custer: KAWK 105.1 reported SI  
Flandreau: KKHG 107.9 adds Young & Elder AM

#### TENNESSEE:

Belle Meade: WNPL 106.7 FC to urban SC "**Blazin' 106.7**" (Nashville), adds Russ Parr  
Gallatin: WGFX 104.5 PG 58 kW, 1207', XG: 36-16-05 / 86-47-45  
Kingston Springs: WYYB 93.7 FC to Contemporary Christian  
Lawrenceburg: WLLX 97.5 PC 5560w, 358', XC: 35-15-18 / 87-19-30  
McKenzie: WWYN 106.9 dec. to 886', XG 35-54-5 / 88-46-51  
Memphis: WGKX 105.9 adds Lia nights  
Oliver Springs: WYIL 98.7 CC (ex WSMJ) "**Wild 98.7**"  
Ripley: WAUV 89.7 PC > 5.3 kW  
WKVZ 94.9 PG > 6 kW, DA  
Smyrna: WRLG 94.1 FC to Contemporary Christian

#### TEXAS:

Amarillo: KBZD 99.7 FC to Tejano (ex blues)  
Alamo: KJAV 104.9 PC > 6 kW, 328', DA  
Beaumont: KQQK 107.9 FC to Spanish CHR  
Brenham: KULF 94.1 FC to soft AC // KLTR  
Cedar Park: KXMG 93.3 dec. to 1926 ft.

Clifton: KWOW 104.1 FC to regional Mexican SC "**La Mia**" (Waco)  
Coleman: KXCT 102.3 FC to rock "The Cat"  
Corpus Christi: KFFG 88.7 RA, FC Christian, SC "**World Wide Worship**"  
Crystal Beach: KSTB 101.5 PG < 6 kW, class A, 184 ft, XG: 29-30-7 / 94-31-15  
Dilley: KLMO 98.9 PG > 100 kW, 981', DA, C1  
El Paso: KXCR 89.5 FC to contemp. Christian "**K-Love**"  
Graham: KWKQ 94.7 FC to ABC hot AC (&)  
Hemphill: KTHP 103.9 PC 4.5 kW, 377', XC: 31-25-24 / 93-50-30  
Huntsville: KUST 99.7 PG < 3.5 kW, class A, 433', XG: 30-26-55 / 95-31-48, CL: Willis, TX  
Kilgore: KKTG 96.1 PC 50 kW, 492', XC: 32-22-14 / 94-56-20  
Linden: KIXK 99.3 CL to White Oak, TX, PG < 40 kW, RA with country "**The Bull**" (Tyler)  
Marble Falls: KBMD 88.5 LC  
Mercedes: KTJN 106.3 FC to tejano / regional Mexican  
Mt. Enterprise: KTEZ 99.9 CC (ex KGRI)  
Muenster: KXGM 106.5 QG to 106.7, PG > 75 kW, 2034', XG: 33-26-13 / 97-29-05  
Navasota: KMBV 92.5 FC to WW1 country // KULF (Bryan)  
Pilot Point: KTCY 104.9 FC to Spanish AC "**Super Estrella**" (Dallas)  
San Antonio: KTFM 102.7 FC to CHR  
Seadrift: KMAT 105.1 PG > 40 kW, 407', C2  
Shamrock: KBKH 92.7 CC (ex KRMN)  
Silsbee: KAYD 101.7 CC (ex KLOI) "**CD 101.7**"  
Temple: KLTD 101.7 FC to classic rock SC "**Eagle 101**" (Killeen)

#### VERMONT:

St. Johnsbury: WKXH 105.5 PG 1230w, 712 ft.

#### VIRGINIA:

Berryville: WWRE 105.5 CC (ex WAPP), FC to classic rock (Winchester)  
Cape Charles: WROX 96.1 XC: 37-15-45 / 76-0-45  
Chase City: WFXQ 99.9 FC to black gospel  
Coeburn: WVSG 99.7 CC (ex WZQK) SC "**Voice of Southern Gospel**"  
Newport News: WGH 97.3 adds Lia nights  
Norfolk: WNSB 91.1 FC to urban "**Hot 91.1**"  
Pennington Gap: WSWV 105.5 FC to soft AC (&)  
Strasburg: WWRT 104.9 CC (ex WBPP), FC to classic rock // WWRE (Winchester)  
Vinton: WJJS 106.1 PC 6 kW, 95 ft, XC: 37-17-03 / 79-59-14  
Woodstock: WAZR 93.7 FC to CHR "Kiss", PC 8.5 kW, 420', XC: 38-37-04 / 78-42-39

#### WASHINGTON:

E. Wenatchee: KYSN 97.7 PC 9.3 kW, -98 ft, C3  
Seattle: KNHC 89.5 PC 8.5 kW, class C1, 1220', DA, XC: 47-32-35 / 122-6-25  
Vancouver: KSTE 105.9 PG > 21 kW, C1

### WEST VIRGINIA:

Clarksburg: WWLW 106.5 (QC WFBY moves to 102.3),  
FC to Soft AC  
WFBY 102.3 (QC from 106.5),  
Romney: WWSB 104.1 FC to country //WELD-FM

### WISCONSIN:

Appleton: WAPL 105.7 adds Bob & Brian  
Forestville: WRKU 102.1 FC to a/c  
Menomonie: WMEQ 92.1 adds Bob & Tom,  
PG 590w, 427', DA, XG: 44-54-56 / 92-4-34  
Merrill: WM ZK 104.1 adds Bob & Brian  
New Richmond: KFMP 107.1 FC to talk on June 3  
(Minneapolis), CC (ex WIXK)  
Platteville: WPVL 101.7 QC from 107.1,  
PC> 4.2 kW, 394 ft.  
Spooner WPLT 106.3 NW Soft AC  
Sturgeon Bay: WLYD 99.7 CC (ex WLTM),  
FC to dance "Wild 99.7" (Green Bay)

### WYOMING:

Cheyenne: KRRR 104.9 CC (ex KZCY)  
SC "Real Rock and Roll"  
Gillette: KLWD 91.9 PG> 100 kW, 981', C1,  
XG: 43-43-27 / 105-52-54

### PUERTO RICO:

Aguadilla : W TPM 92.9 XC: 18-18-47 / 67-11-6  
Hormigueros: WRRH 106.1 PC 800w, 1932',

XC: 18-8-33 / 66-58-56

WZET 92.1 FC to tropical  
SC "Cadena Zeta" (Mayaguez)

### VIRGIN ISLANDS:

Charlotte Amalie: WVPI 104.3 PC< 19.5 kW, 1545',  
XC: 18-21-31 / 64-58-20



**CANADA**

### NOVA SCOTIA:

Truro: CKTO 100.9 FC to rock "Big Dog FM"

### ONTARIO:

Chatham: CKSY 94.3 CC (ex CKUE), a/c  
Kaministiquia: CFQK 104.5 FC to country "Max 104.5"  
Thunder Bay: CJLB 105.3 FC to CHR "Hot 105"



**MEXICO**

### Baja California (Norte)

Tijuana: XHCR 99.3 FC to modern country, SC "Bob 99-3"

Until the Next, 73's de Steve/ AB5GP

---

## CHANGES AT THE BIG KAT – WHAT'S THE FREQUENCY?

The Daily Union, Junction City, Kansas August 11,2002

By Gail Parsons

Change is in the airwaves at Platinum Broadcasting. In a move that is anticipated for September, listeners to Big Kat 94.5 will have to adjust their radio dial to find disc jockeys Chad Allen, Rodney, Wende Horton, Bradley J. and JT. The crew isn't moving far, but because of a new station in Kansas City, Big Kat's (KJCK) new home will be at 97.5

General manager Mark Ediger said trying to put that new station in has been a "technical nightmare" and at least a dozen radio stations are moving frequencies because of it.

However for the Big Kat, the move should be positive and the listeners will benefit by having a stronger signal. "The move requires a new antenna – a huge 12 bay antenna," Ediger said. The one Big Kat uses now is more than 20 years old and has a diminished capacity because of its age.

While a stronger signal is nice, the switch provides a perfect excuse to give away stuff in a special moving promotion. Listeners will be rewarded with contests and giveaways, which Ediger refrained from going into detail about, besides saying that some of the prizes involve cash. "There will be plenty of incentives to switch – all I will say is stay tuned, we will be enticing you to switch to 97.5," he said.

Once the move is made, Ediger said listeners should not be disrupted. On the day of the change a stand-by transmitter will be used to keep the station on the air while the switch is finalized.

Longtime listeners to KJCK might also recognize the return of a familiar voice- Jerry Brecheisen. "Jerry was a very familiar voice to anyone who has listened to KJCK in the past 20 years," Ediger said.

In addition to the new frequency for 94.5, September is also expected to bring new ownership for the radio station. Although the final details of the sale are still pending with the F.C.C., Ediger said he doesn't anticipate any complications that will prevent the sale from becoming final in mid-September.

The sale was necessitated after the death of former owner Bob Weary.

(Thanks to Roosevelt Crawford for this article)



Saul Chernos, Burnt River, ON

(705) 454-9636 / (416) 364-0725

schernos@sympatico.ca

				1957	WJXT-4	FL	Jacksonville
<u>7/4 Es</u>				1959	WEDU-3	FL	Tampa
1313	KGAN-2	IA	Cedar Rapids	2013	WDIQ-2	AL	Dozier
1330	KLNE-3	NE	Lexington	<u>7/29 Es</u>			
1400	KUSD-2	SD	Vermillion	1900	WYFF-4	SC	Greenville
				1955	KJRH-2	OK	Tulsa
<u>7/13 Es</u>				2131	WEDU-3	FL	Tampa
2256	WDIQ-2	AL	Dozier	2230	KDTN-2	TX	Denton, PBS
2305	WSB-2	GA	Atlanta		KERA 13	SID,	maybe ment. 2
<u>7/14 Es</u>				2235	KTVI-2	MO	St. Louis
1130	WDIQ-2	AL	Dozier	<u>8/3 tr</u>			
1220	WBRZ-2	LA	Baton Rouge	1815	WEWS-5	OH	Cleveland
<u>7/21 tr</u>				1818	WNWO-24	OH	Toledo
0600	WVPX-23	OH	Akron	<u>8/4 tr</u>			
0640	WQHS-61	OH	Cleveland	0611	CBLFT10-48	ON	Chatham
0645	WOAC-67	OH	Canton	<u>8/5 Es</u>			
<u>7/22 Es</u>				1130	WJXT-4	FL	Jacksonville
1854	WBRZ-2	LA	Baton Rouge	"One 4 Only" logo			
1855	WDIQ-2	AL	Dozier	<u>8/6 Es</u>			
2115	WTVY-4	AL	Dothan	2210	KUSD-2	SD	Vermillion
<u>7/26 Es</u>				2215	KGFE-2	ND	Grand Forks

KDTN-2 is sometimes IDing as KERA-13, which is co-owned. WJXT-4 uses a "One 4 Only" logo on the lower right of the screen. July 2002 ranks the worst July ever for Es since I started seriously in the late 1970s. But tropo has made up for it with some very strong signals, though I stuck mainly to FM. I have now added a 4-bay antenna to my rig. 73s, Saul.

Keith K. Smith, 910 N. Larch St. #7, Lansing, MI 48906  
 (517) 485-7346 (Su-Fr only), FAX: (240) 757-4298

vgmc@webtv.net, seventysixfifty@hotmail.com  
<http://community.webtv.net/vgmc/KKSTV>

Equipment: GPX 12" B&W TV, whip and Philips Magnavox dipole (override) for VHF, round for UHF.

				0856	WCMU-14	MI	Mount Pleasant	59	
<u>6/9 tr</u>					WFQX-33	MI	Cadillac	105	
0750	<u>WADL-38</u>	MI	Mount Clemens	85	WTVS-56	MI	Detroit	65	
	<u>WGVU-35</u>	MI	Grand Rapids	70	WWJ-62	MI	Detroit	73	
	<u>WWJ-62</u>	MI	Detroit	73	<u>7/18 tr</u>				
	<u>CICO32-32</u>	ON	Windsor	91	0857	<u>CBET-9</u>	ON	Windsor	82
	<u>WGTE-30</u>	OH	Toledo	94	0909	<u>WTLW-44</u>	OH	Lima	138
	<u>WDWB-20</u>	MI	Detroit	65		<u>WHME-46</u>	IN	South Bend	115
	<u>WANE-15</u>	IN	Fort Wayne	119		<u>WINM-63</u>	IN	Angola	90
	<u>WSBT-22</u>	IN	South Bend	116	<u>7/23 tr</u>				
	<u>WNWO-24</u>	OH	Toledo	96	1010	<u>WGTU-29</u>	MI	Traverse City	141
	<u>WBGU-27</u>	OH	Bowling Green	116	<u>7/24 tr</u>				
	<u>WTLJ-54</u>	MI	Muskegon	70	0833	<u>WRGT-45</u>	OH	Dayton, Fox 45	209
	<u>WQHS-61</u>	OH	Cleveland	174		<u>WKEF-22</u>	OH	Dayton, NBC 22	210
	<u>WTVG-13</u>	OH	Toledo, u/WZZM96			<u>WPTD-16</u>	OH	Dayton	210

All tropo this month. Nothing else to say. The Daytons are my biggest trop catches yet at this location. More next month?

Yours truly had some minor DX while on vacation. While staying in Syracuse, NY, on August 1, 2002 there were some decent tropo noted about 2330 EDT. I had my Sansui 9" TV/VCR combo w/rabbit ears in the motel room (4<sup>th</sup> floor, facing east) and noted nice signals from Utica and Rochester, with weak signals from Buffalo. On my ICOM R-10 handheld scanner I heard audio from the Toronto UHF stations, such as 19 with "two" spoken promos.

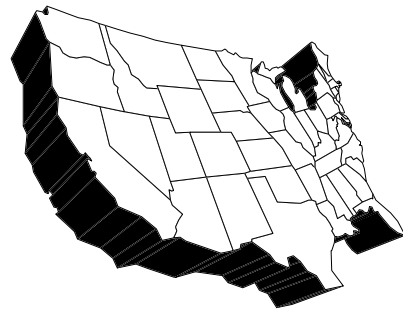
I checked for DX at a number of other locations on our drive through the Canadian Maritimes, but nothing was noted. In fact conditions might have been downright terrible; in St. John, New Brunswick the local TV stations were barely watchable on the west side of town. Drizzle and 60F/16C couldn't have been all that conducive to decent DX!

That's all for this month; if you have any TV DX, please take a moment to e-mail (or snail mail) your loggings. Your support of this column is always appreciated! Until next time.....73s Matt.



# WESTERN TV DX

**VICTOR FRANK**  
**12450 SKYLINE BLVD.**  
**WOODSIDE, CA 94062-4554**  
**frank@horizon.sri.com**



**\*\*\*Welcome to a new reporter\*\*\***

**Steven C. Wiseblood**, 28 LBJ Blvd, Brownsville, TX 78521  
[stevenwisebl@hotmail.com](mailto:stevenwisebl@hotmail.com)  
<mailto:stevenwisebl@hotmail.com>  
 1.5 miles from the Rio Grande River (Mexican Border)

**Equipment:** 13" Orion Color TV, Radio Shack VHF/UHF @ 15ft. Indoor 25dB Signal Amplifier.

July 18, 2002 tr

1720 K111 3 TX Corpus Christi, local news, weather 125  
 1722 KRIS 6 TX Corpus Christi, local news 125  
 1734 KZTV 10 TX Corpus Christi, news 125  
 1736 KEDT 16 TX Corpus Christi, **PBS** 125  
 1736 KORO 28 TX Corpus Christi, **Univision** 125  
 1821 KXCC-LP 45 TX Corpus Christi, "**Americas Store**", 125  
 home shopping  
 1822 K47DF 47 TX Corpus Christi, **FOX** "Seinfeld" 125  
 1827 K57FC 57 TX Corpus Christi, **TBN** 125  
 1828 K68DJ 68 TX Corpus Christi, **Telemundo** 125  
 1831 K21?? 21 TX Corpus Christi, 125

"**Americana Music Television**"

country music videos, cowboy stories

1832 KCRP-CA 41 TX Corpus Christi, **TeleFutura** 125  
 1835 K49DV 49 TX Beeville-Refugio, **Telemundo** 170  
 1951 K38EB 38 TX Kingsville, **Telemundo** 100

July 19 tr

0428 KVUE 24 TX Austin, ABC news 300  
 0430 KLRU 18 TX Austin, **PBS**, promo "Frontier House" 300  
 0430 KTRK 13 TX Houston, ABC news, local ads 285  
 0435 KAVU 25 TX Victoria, ABC nx, //13, 24 195  
 0438 KXAN 36 TX Austin, "Early Today on NBC" 300  
 0439 KEYE 42 TX Austin, "CBS Early Morning News" 300  
 0441 KNCT 46 TX Belton, **PBS** replay of live concert 350  
 "Bolero", //60  
 0444 K72BN 49 TX Uvalde, "**Worship**", Christian music 275  
 0447 unID 62 TX Univision, promo "Despierta America"  
 0448 KZJL 61 TX Houston, "**Shop at Home**" 285  
 0451 unID 54 TX "**Shop at Home**", 0kHz CCI to Matamoros.  
 0458 KXTX 39 TX Dallas, **Telemundo**, 475  
 promo Rodeo en Plaza Mexico  
 0458 KTBU 55 TX Conroe, ads, Old Movies 318  
 0459 KDAF 33 TX Dallas, "**WB33**", 0500 "I Love Lucy" 475  
 0502 KBVO-LP 49 TX Austin, **Telefutura** "El Chavo del 8" 300  
 0505 KBVO-CA 51 TX Austin, **Telefutura**, //49 300  
 0508 KDTX 58 TX Dallas. **TBN** //57, 44 475  
 0510 KGBS-LP 65 TX Austin, "**Tu Musica**", Tejano Videos 300  
 0515 KDFI 27 TX Dallas, "**FOX-KIDS**" 475  
 Little House on the Prairie  
 0522 KLTJ 22 TX Galveston, "**WORSHIP**", Christian Music 270  
 "**DAYSTAR**"  
 0602 WFAA 8 TX Dallas, end "Early Today", start 475  
 "**PRO-8 News**"  
 0607 KERA 13 TX Dallas, **PBS** "Mister Rogers" 475  
 1133 30 TX La Feria, religion, Christian Crusade promo 42  
 at the Mercedes Livestock Fairgrounds

1135 KTIZ-LP 52 TX Harlingen, religion 37  
 "Diamonds for Daily Living"  
 1500 K57FC 57 TX Corpus Christi, **TBN**, Xlnt ducting 125  
 1510 KXCC-LP 45 TX Corpus Christi, "**Americas Store**", 125  
 home ideas  
 1513 K47DF 47 TX Corpus Christi, **FOX** 125  
 "Sabrina the Teenage Witch"  
 1823 KXPX 14 TX Corpus Christi, **PAX**, announcement: 125  
 "**Pardon Our Dust**", We are currently working to build a  
 better KXPX-14 PAX."  
 1832 K68DJ 68 TX Corpus Christi, **Telemundo**, telenovelas 125  
 1834 KCRP-CA 41 TX Corpus Christi **Telefutura** 125  
 1839 KHCC-CA 35 TX Corpus Christi **MTV2**, rating Videos 125  
 1849 K21?? 21 TX Corpus Christi, "**Americana Music TV**" 125  
 1850 KRIV 26 TX Houston, **FOX** "Simpsons" 300  
 1859 K49DV 49 TX Beeville-Refugio, **Telemundo**, 170  
 "Pedro..El Escamoso"  
 1909 KCCX-LP 25 TX Corpus Christi, old movies 125  
 2159 KPXL 26 TX Uvalde-San Antonio, **PAX**, Vy Strong 275

July 22 tr

0523 KXTX 39 TX Dallas, Telemundo "**T39**" noticias 475  
 0528 KXAN 36 TX Austin, "First WARNING wx", local nx 300  
 0530 KDAF 33 TX Dallas, "I Love Lucy" "**WB33**" 475

July 23 Es

0733 unID 3 0 kHz CCI to K111 Corpus Christi  
 0734 unID 2 CCI

July 23 tr

0844 KETK 56 TX Jacksonville, "**NBC56**", local ads 460  
 0846 KFXK 51 TX Longview, "**FOX51**", Simpson promo 475  
 0945 KXTX 39 TX Dallas, "**T39**" Telemundo 475  
 1851 KTRK 13 TX Houston, "Eyewitness Sports" 285  
 1853 KZJL 61 TX Houston, Spanish "Family Court" program 285  
 1934 KAZH 57 TX Houston, "**Azteca America**" 285  
 1947 KTBU 55 TX Conroe, ads, promos, old movies 330  
 1959 KUHT 8 TX Houston, **PBS** 285  
 2015 KTWS 51 TX Houston, ads 285  
 2113 K43DV 43 TX Victoria, **TBN** 200

July 24 tr

0501 K47ED 47 TX College Station, **TBN** 325  
 0502 KNCT 46 TX Belton, **PBS**, Mister Rogers 345  
 0502 KXLN 45 TX Rosenberg, **Univision** 285  
 0502 KHWB 39 TX Houston "**WB39**" Mama's Family 285  
 0503 KRHD 34 TX Bryan-College Station, ABC nx 335  
 0504 KYLE 28 TX Bryan Religious sermon 335  
 0508 KLRU 18 TX Austin, **PBS**, superimposed ID 300  
 0508 KHOU 11 TX Houston, "**11KHOU** news", 76 degrees 285  
 0513 KPRC 2 TX Houston, ID, "2NEWS" 285  
 0518 KLTJ 22 TX Galveston, religious "**Daystar**" 275  
 0543 KETK 56 TX Jacksonville, "**NBC56**", "Today" promo 460  
 0547 KVVV-LP 53 TX Houston, "**Azteca America**", //57 285  
 0558 KPXB 49 TX Houston, **PAX**, "Houston Chronical Jobs" 285  
 0601 KZJL 61 TX Houston, Spanish, religious pgm 285  
 0618 KBMT 12 TX Port Arthur, "KBMT News", local ads 345  
 0707 KITU 34 TX Beaumont, **TBN** 355  
 0858 KNWS 51 TX Houston, Bloomberg on Business 285

1328 KVHP 29 LA Lake Charles-Beaumont, "FOX KIDS" 355  
 1911 K43DV 43 TX Victoria, TBN 200  
 2003 KVCT 19 TX Victoria, FOX 200

July 31 tr

0626 KLTS 24 LA Shreveport, PBS-KIDS cartoons 505  
 "LPB=Louisiana Pubic Broadcasting"  
 0633 KETK 56 TX Jacksonville, "NBC56" logo, local nx, 460  
 "TODAY" at 0700  
 0720 K59GO 59 LA Shreveport, TBN 505  
 0731 KASN 38 AR Pine Bluff, "UPN38" Tarzan 660  
 0800 KLRT 16 AR Little Rock, "FOX16" 680  
 0806 KTAQ 47 TX Greenville, "ShopNBC" 500

Aug 1 tr

1048 WFAA 8 TX Dallas, ABC logo 475  
 1050 KERA 13 TX Dallas, PBS-kids cartoons 475  
 1052 KXTX 39 TX Dallas, Telemundo //40 475

Aug 7 tr

1717 XHTPZ 24 MEX Tampico, Tamaulipas 280  
 "GALAVISION-XEQ" superimposed ID, promo for  
 program on Canal 5\*, net ID as "Canal 9"  
 1722 XHWT 12 MEX Tampico, Tamaulipas, "AZTECA-13", 280  
 // 11-Matamoros  
 1923 XHIC 13 MEX Perote, Veracruz "AZTECA-13", //11,12 425  
 1931 XHCLV 22 MEX Las Lajas, Veracruz, "Galavision-XEQ", 475  
 "La Oreja" //24-Tampico. 1944 local ad with mention of Cordoba,  
 Jalapa and Veracruz (Ciudad).

Aug 8 tr

0707 K46DL 46 TX Kingsville, TBN 100  
 0710 K49DV 49 TX Beeville-Refugio, Telemundo 165  
 0713 K38EB 38 TX Kingsville, Telemundo, //49, 40 100  
 Rio Grande City  
 0716 K43DV 43 TX Victoria. TBN, in SOLID! //44, 46( et al) 200

73's de Steve/AB5GP

**Dennis Park Smith**, 3605 San Remo Drive, Santa Barbara, CA 93105-2523 (805)687-7803

This report is for July 2002. This time, tropo DX along the southern California coast to San Diego/Tijuana on TV-FM (250mi/320km) existed for the entire month. The air boundary varied from high to low elevation (the lower elevation the boundary is, the better the tropo for my low elevation). Temperatures continued hot inland, which also means the air layer above the boundry along the cool moist coast was hot and dry helping the tropo.

Jul 1-2: Fair  
 Jul 3-7: Variably poor/very poor  
 Jul 8-10: Fair  
 Jul 11: Good +  
 Jul 12-13: Fair  
 Jul 14-16: Poor  
 Jul 17: Fair, Some stns very good; see below  
 Jul 18-22 am: Poor  
 Jul 22 eve-27: Fair  
 Jul 28-31: Variably poor

Jul 17 eve tropo between 1700-1800 PDT, peaked aprox 1730. (There were other only-fair signals from SD/Tijuana (XETV-6, XEWT-12, KPBS-15, XHTIT-21, XHJK-27, XHAS-33, XHBJ-45, XHU\*AA-57), but the stations below were most notable. All were received on indoor rabbit-ear and bow-tie antennas.

KFMB 8 San Diego CBS very good 175/280  
 KGTV 10 San Diego ABC very good 175/280  
 KSDX-LP 29 San Diego CAN shopping fair  
 (not seen very often)  
 KNSD 39 San Diego NBC very good 185/295  
 XHUPN 49 Tecate BN UPN 200/320  
 (ID on horizontal frame bar superimposed on local K49EK)  
 KUSI 51 San Diego 185/295  
 (Heavy 0-offset under local KBAB-LP)  
 KSWB 69 San Diego WB very good 185/295

However, there was no signal this time from K35DG-CA La Jolla.

Best of DX to all, Dennis

**John Ebeling**, 6843 Hwy. 47, Alborn, MN 55702  
 The year to date Es report from the cabin in Prosit, MN in northern MN. It has been a lousy season up to August. Times are CDT.

May 31--First sign of Es.

2:45 KBEJ-2 TX  
June 11 11:15 WSB-2 GA  
June 14 11:30 KBEJ-2 TX  
 16:00 KPRC-2 TX  
 16:08 KBEJ-2 TX  
 16:14 KXAS-5 TX  
 16:30 KMOL-4 TX  
 17:00 KTVQ-2 MT  
 WUNC-4 NC  
 17:01 KDFW-4 TX (fox 4)  
June 15 11:20 Unid-2 (Jack Hanna in Spanish)  
 11:25 KDFW-4 TX  
 11:30 Unid-5 TX (5 with a star in it)  
 12:30 KACV-2 TX  
June 17 12:27 KASA-2 NM  
 (weak Es on 2 all afternoon)  
June 22 18:58 WDIQ-2 AL  
 19:00 Unid-2 (NBC)  
June 26 14:26 KPRC-2 TX  
June 27 11:15 Unid-2 QU (weak Es)  
 12:20 WWL-4 LA  
June 28 21:00 WBRZ-2 LA  
June 29 12:00 to 13:00 Es-2 (Fox bb; NBC tennis)  
July 18 18:10 WUND-2 NC (& Unid CBS-2)  
 18:45 WCBF-2 NC  
Aug 4 17:30 Unid-2 (ABC) Prob. LA

That's all!!!. Not a heck of a lot. All from Prosit, MN

**Mike Cherry, VE7SKA** <mcherry@saltspring.com>

Hi Victor - with Es season soon winding down - 2002 is the worst I've experienced in this region since I started DXing TV & FM in 1968!! Nonetheless, there have been a few "crumbs" to chase after

July 2002 UTC  
 16 Es 2259 KREG 3 CO 125 deg  
 24 Es 0328 KTUU 2 AK 325 deg  
 0357 KTVQ 2 MT 115 deg  
 27 Es 1512 KNOP 2 NE 130 deg  
 29 Es 1759 KTUU 2 AK 315 deg

August 2002 UTC  
 6 Es 1530 KTVU 2 CA  
 7 Es 0259 KUTV 2 UT

73 Mike VE7SKA

Jeff Kruszka, 5024 S. Braxton Ave., Baton Rouge, LA 70817

The worst year of E-skip ever continues. I have now gone three months without a major opening. At least I got a few new LPTVs.

July 2002 CT

3	Es	1122	unid 4			XEW
5	tr	0700	KWKT	44	TX	365
		0702	KTXA	21	TX	395
		0730	KXAN	36	TX	395
		0737	KEYE	42	TX	395
		0739	<u>K47ED</u>	47	TX	TBN310NEW
		0743	KAKW	62	TX	390
		0821	KUVN	23	TX	365
			KYLE	28	TX	310
		0833	WFAA	8	TX	365
8	tr	0100	<u>K36DS</u>	36	LA	UATV95NEW
11	tr	2232	<u>WTNO-LP</u>	22	LA	HSN75NEW
12	Es	1147	XEPMt	2	CH	
		1203	KENW	3	NM	760
14	Es	1115	WCCO	4	MN	995
		1129	KSTP	5	MN	1005
		1131	KAALt	6	MN	
		1159	WFRV	5	WI	985
		1829	KDBC	4	NM	910
		1850	unid 4 Azteca-13			
		1859	unid 5 Galavision			
15	tr	2119	W26BB	26	MS	3ABN; rare
		2142	WXVT	15	MS	rare200
16	Es	0756	WTVH	5	NY	1180
		0957	WRC	4	DC	985
		1039	WPSX	3	PA	975
		1057	WSAZt	3	WV	
		1058	WTAE	4	PA	930
		1109	WIVB	4	NY	1095
		1111	CKVR	3	ON	1130
		1128	WCMH	4	OH	800
		1139	WKYC	3	OH	890
		1402	HRTG	5	HND	1160
	tr	2303	KLRT	16	AR	305
		2311	KWBF	42	AR	305
17	tr	0000	KTHV	11	AR	305
	Es	1417	unid SS 3, 4			
18	tr	0900	<u>WBXS-CA</u>	50	LA	MTV NEW
19	Es	1753	WSKY	4	NC	970
		1757	WUNC	4	NC	790
		1806	WTKRt	3	VA	
		1815	WDIVt	4	MI	
		1852	WTAE	4	PA	930
20	tr	0047	KNVA	54	TX	395
		0050	KXAN	36	TX	395
		0119	KWEX	41	TX	445
		0120	KEYE	42	TX	395
	Es	1349	unids 3, 4 brief			
21	tr	2231	WJSU	40	AL	385
		2248	WTJP	60	AL	390
22	tr	2356	KLRT	16	AR	305
			KWBF	42	AR	305
23	tr	0013	KTHV	11	AR	305
		0835	KXAN	36	TX	395
		0844	WHNT	19	AL	400
		0905	WFIQ	36	AL	360
		0910	W43BF	43	MS	265
26	tr	0322	KLRT	16	AR	305
			KEYE	42	TX	395
			KXAN	36	TX	395
	Es	1819	CBLTt	5	ON	
		1840	WKYC	3	OH	890
		1850	WIVB	4	NY	1095
		1919	WTAE	4	PA	930
29	Es	2036	unid 3 CBS weak, brief			
31	tr	0055	KXAN	36	TX	395

Danny Oglethorpe, P.O. Box 17452, Shreveport, LA 71138-0452

Email: doglethorpe@yahoo.com  
Tropo: No relogs under 400 miles (200 miles for LPTVs).

MAY 2002 UTC

1	tr	0505	Tampa FL area 13, 28, 38, 44, 50, 62, 66	700+
		0515	Ft Myers/Naples FL area 36, 46800+	
		0535	Orlando FL area 43, 65	784
			Montgomery 20, 32	436
			<u>WGCU 30FL</u>	<u>818</u>
		0610	WPXPt	67 FL Worship
		0545	WFSG	56 FL 502
		0910	<u>WBBH 20 FL</u>	<u>818</u>
2	tr		Many from previous day.	
		0245	WCJBt	20 FL ABC
		0250	<u>WRDQ 27 FL</u>	<u>784</u> 0250
			Jacksonville FL area 25, 30	728+
		0310	WACX	55 FL TBN 749
		0335	WKCFt	18 FL WB
		0445	Columbus	GA 28, 38512
		0520	Atlanta area 14, 30, 34, 36, 46, 63, 69	500+
		0615	WACS	25 GA GPTV 533
		0625	WJSU	40 AL 468
			Birmingham 13, 42 (over local),	68410
		0633	WTJP	60 AL TBN 461
		0640	Macon area 13, 44	590
			WCES	20 GA GPTV 663
			WJCL	22 GA 742
		0715	<u>WATC 57 GA</u>	<u>551</u>
		0745	<u>WAGT 26 GA</u>	<u>"NBC26" 689</u>
		0800	WBIHt	29 AL "Praise" Mixed with Jackson
		0820	WHNT	19 AL 444
			WPGX	28 FL "Fox28" 502
4	tr	2325	<u>KQOK 30 OK</u>	<u>272</u>
5	tr	0315	K36AB	36 OK OETA 309
		0335		
		WJSP	28	GA GPTV 512
		0343	WTJP	60 AL TBN 461
		0400	Montgomery 13, 20, 26, 32	436
		0310	<u>K28AC 28 OK</u>	<u>OETA 230</u>
		0436	WCIQ	7 AL APT 469
		0510	K26DL	26 TX 293
		0520	Atlanta area 36, 46, 63	500+
		0540	W46BUt	46 AL Note # 1
		0630	WTTO	21 AL (mixed with local) 410
6	tr	0830	Valley 7 (CBs), 9 (CBs with "/" marks), 23	500+
		12 Es	1015 WJBK	2 MI 904
			1502 XHCSA	2 Chiapas Supered ID upper left 1082
		20 Es	1340 XEFB	2 NL Note # 2 611
			1345 KNAZ	2 AZ 1045
			1400 XHCSA	2 Chiapas 1082
			1528 XHGV	4 VER "TV Mas" 930
			XHTAU	2 TAM Regional Nx 747
		21 Es	2315 WGRZ	2 NY 1091
		22 Es	0032 KDKA	2 PA 945
			0035 WMAR	2 MD 1072
			0100 WUND	2 NC 1031
			WSKY	4 NC 1063
			1445 Hermosillo	SON 2, 4 1047

1542 Cd Juarez CHIH/EI Paso TX 2, 4 746  
 1610 KNAZ 2 AZ 1045  
 1740 KTFL 4 AZ 1045  
 23 Es 0310 WJBK 2 MI 904  
 1435 Guadalajara JAL 2, 4 1003  
 24 Es 0059 XEFB 2 NL 611  
 KGFE 2 ND 1086  
 WBAY 2 WI 892  
 1445 WPBT 2 FL 939  
 1450 WESH 2 FL 789  
 2005 XHAGU 2 AGS Local Nx 896  
 2140 XHCSA 2 Chiapas 1082  
 25 Es 1415 KNAZ 2 AZ 1045  
 1430 XHHSS 4 SON  
 Supered ID upper right 1047  
 27 Es 1955 XEWO 2 JAL  
 Supered ID upper left 1003  
 30 Es 1533 XEZ 2 GTO Note # 3 903  
 1710 XEFB 2 NL 611  
 2028 Great Lakes area up to channel 5

NOTE # 1 TBN with 256 area code. Thanks to Jeff Kruszka and Doug Smith for help with this one!  
 NOTE # 2 Thanks to Fernando for providing information and photographs of XEFB's new circular shaped logo!

NOTE # 3 Local ID supered upper right with "San Miguel de Allende GTO" listed as location.

Es: Highlights only.  
 Time listed for most Mexico TV is time of ID.

JUNE 2002 UTC

3 Es 0004 KTVQ 2 MT 1215  
 "Q2" bug on telethon  
 0401 KXLF 4 MT Note # 1 1376  
 10 Es 2120 KTVI 2 MO 475  
 11 Es 0128 KTVN 2 NV 1537  
 1605 WSB 2 GA 551  
 12 Es 1625 XHQ 2 SIN XHQ-3 988  
 1705 YSR 2 El Salvador 1324  
 1720 XHEFT 5 CAMPSupered ID upper  
 left 1913 XHCV 2 VER Local ad 985  
 2000 XHTV 4 DF "4tv" 958  
 13 Es 2150 XHCSA 2 Chiapas 1082  
 Supered ID upper left  
 2225 XHFM 2 VER Local ad 920  
 14 Es 0120 XHGV 4 VER "RTV" 930  
 0150 XHTV 4 DF 958  
 0212 XHURT 5 MICH Note # 2 1000  
 16 Es 1345 WSB 2 GA 551  
 19 Es 2000 XHPDT 2 SON 1159  
 Supered ID upper center  
 2322 XHCH 2 CHIH 778  
 Supered ID upper left  
 2334 Cd Juarez CHIH/EI Paso TX  
 2, 4, 5 746  
 20 Es 1345 KVVU 5 NV 1238  
 23 Es 0035 WCBS 2 NY 1238  
 1500 Hermosillo SON 2, 4 1047  
 1529 XHIT 4 CHIH 778  
 Supered ID upper left  
 1535 XHCCH 5 CHIH 826  
 Supered ID upper right  
 24 Es 2030 Guadalajara JAL 2, 4 1003  
 2207 WTWO 2 IN 604  
 29 Es 0116 WTVH 5 NY 1212  
 2301 XHQRO 2 QROO 891  
 Supered ID upper right

JULY 2002 UTC

3 Es 1515 XHGV 4 VER 930

XHTAU 2 TAM 747  
 1629 XHURT 5 MICH 1000  
 12 Es 1732 XEWO 2 JAL 1003  
 Supered ID upper left

NOTE # 1 Thanks to John Johnson for informing me that KXLF-4 relays the late-night weekend newscasts of KTVQ-2.

NOTE # 2 Supered ID upper right, which has location listed as "Cerro Burro MICH."

Comments: In spite of this poor Es season, some rare Mexicans have been IDed this summer. Guanajuato and Campeche, for example, made their second appearance ever, but with different stations than the first time around.

**Marvin Shults, RR#1 Toulon, IL 61483**

April 2002

13 tr 0830 KWCV 33 KS  
 0830 KSPR 33 MO  
 0830 KYNE 26 NE  
 0835 29,41,62 MO, K.C.  
 0843 K\_\_\_ 38 KS

May 2002

17 Es 2047 KBCI 2 ID  
 2048 unID 3  
 2132 KTVQ 2 MT  
 19 Es 2112 XEFB 2 NL  
 21 Es 1859 WEDU 3 FL  
 1900 WESH 2 FL  
 1900 WDIQ 2 AL  
 1900 W\_\_\_ 4+  
 1915 WPTV 5 FL  
 1958 WPBT 2 FL  
 22 Es 1953 WMAR 2 MD  
 2105 WPBT 2 FL  
 23 Es 1848 K\_\_\_ 2 unID  
 1848 KIDK 3 ID  
 1852 CKSA 2 AB  
 1852 CKCK 2 SK  
 1925 KFRN 3 AB  
 1947 CICT 2 AB  
 30 Es 1150 X\_\_\_ 2  
 31 Es 1445 XEFB 2 NL  
 1502 unID 2

June 2002

1 Es 2054 KASA 2 NM  
 2055 XEPM 2 CH  
 2105 KNAZ 2 AZ  
 2112 KMID 2 TX  
 3 Es 1743 C\_\_\_ 2  
 1847 KGWN 5 WY  
 1849 KTVQ 2 MT  
 1850 KHMT 4+ MT FOX  
 1857 KYUS 3 MT  
 1925 K\_\_\_ 3 PBS  
 1927 CFQC 3 SK  
 1930 CKAL 2 AB  
 1939 CKCK 2 SK  
 1954 CKOS 5  
 2127 CKSA 2 AB  
 8 tr 0530 3,11,32,41,68 KY Louisville  
 0530 W\_\_\_ 34 KY  
 0600 9,48,64 OH Cincy  
 0600 t 19 OH Cincy  
 0750 WYTV 33 OH  
 Es 1257 WESH 2 FL  
 9 Es 2000 unID 2 NBC  
 2005 KYUS 3 MT  
 2006 CKSA 2 AB

	2008	C__	3	CBC
	2014	CKCK	2	SK
	2100	KTVQ	2	MT
	2100	KRTV	3	MT
10 Es	2057	XEPM	2	CH
	2100	K__	2	"2 News"
	2116	XEFB	2	NL
11 Es	1436	C__	2	CBC Soccer
	2000	C__	2	QU Fr.
	2003	C__	3	QU Fr.
	2008	C__	2	Fr. Talk Show
	2010	CFAP	2	QU TBS
	2013	WLBZ	2	ME
	2014	CBHT	3	NS
12 Es	1717	ICR	2	Cuba NND
	1724	WESH	2	FL
	1805	WPBT	2	FL
	1843	X__	2	
	1859	WEDU	3	FL
13 Es	1028	unID	5	ABC SE
		unID	5	CBS
14 Es	2240	X__	2	S
				Portugal/Korea Soccer
15 Es	0938	XEFE	2	
	0958	XEFB	2	NL
	1045	XEFE	2	
	1045	K__	3	NBC
	1051	X__	3	
	1054	unID	2	UPN
	1200	KTVQ	2	MT
	1200	KHMT	4	MT
	1208	X__	4+	TV Azteca
	1215	X__	2-	
	1234	KYUS	3	MT "KULR color 8"
	1258	XEJ	5	
16 Es	1227	WEDU	3	FL
	1227	WESH	2	FL
	1229	WFTV	5	FL
	1245	WKMG	6	FL
	1254	WPBT	2	FL
	1321	ICR	2	Cuba
	1335	X__	2	
	1358	XHTAU	2	TM Tampica Azteca 7
	2011	X__	2	
	2107	KNAZ	2	AZ
	2134	KASA	2	NM
	2134	KTVK	3	AZ
17 Es	1305	KUTV	2	UT
	1305	KSL	5	UT
	1305	KTVX	4	UT
	1400	KASA	2	NM
	1431	KMID	2	TX
	1500	X__	2	& KMID 2
19 Es	2000	CFAP	2	QU
	2018	C__	2	Fr.
	2023	C__	2 & 3	Fr. CBC
20 Es	1000	KBEJ	2	TX
21 Es	0749	WPBT	2	FL
	0750	WESH	2	FL
	1123	KWGN	2	CO
	1123	KREG	3	CO
	1123	K__	5	
	1300	KUTV	2	UT
22 tr	0907	WCTE	22	TN
Es	0920	C__	2	CBC
	0958	WUND	2	NC
	1312	WCBS	2	NY
	1314	WCXB	5	MA
	1325	C__	2	Fr.
	1825	C__	3	CBC Fr.

	1830	WGBH	2	MA
	1856	WBZ	4	MA
	1859	WCSHt	6	ME
	1859	WFSB	3	CT
23 Es	0730	WGBH	2	MA
25 Es	1359	KTVQ	2	MT
	1359	KYUS	3	MT
	1400	KHMT	4	MT
	1419	CKCK	2	SK
26 Es	1415	K__	2	PBS
28 Es	1856	WPBT	2	FL
	2022	WESH	2	FL
<u>July 2002</u>				
6 tr	0530	WUXP	30	TN
7 tr	0602	K41DD	41	IA Des Moines
	0603	KPTH	44	IA
	0603	KMEG	14	IA
	0700	KSTC	45	MN
	0700	WFTC	29	MN
9 Es	1900	ICR	2	Cuba
13 Es	2100	WLBZ	2	ME
	2116	WCVB	5	ME
	2123	WFSB	3	CT
	2123	WCSH	6	ME
	2128	WGBH	2	MA
	2130	WCBS	2	NY
	2130	WBZ	4	MA
14 Es	1050	X__	2	
	1100	WBRZ	2	LA
	1100	KBTV	4	TX
	1113	KALB	5	LA
	1126	KPRC	2	TX
15 Es	1028	WBRZ	2	LA
	1028	KATC	3	LA
	1230	KBTX	3	TX
	1230	KIII	3	TX
	1258	XEFB	2	NL
	1301	KBEQ	2	TX
17 Es	1430	XHY	2	QR
18 Es	2027	CKSA	2	AB
	2039	CBXT	3	AB
	2050	K__	3	
	2057	CKCK	2	SK
	2100	CBWFTt	3	MB
	2113	CKSA	2	AB
	2151	CQFC	3	SK

**William Eckberg, 1032 Sterling Rd., Dixon, IL 61021**

<u>May 2002</u>				
		CDT		
21 Es	1830	WPBT	2	FL 1229
		WEDY	3	FL 1031
	1845	WDIQ	2	AL 727
		WBRZ	2	LA 784
	1850	WESH	2	FL 983
	1935	WFOR	4	FL 1229
<u>June 2002</u>				
1 tr	1930	W49CR	46	MI Saginaw 299
				Xltr WOOD-8
3 Es	1000	WLBZ	2	ME 1030
	1005	CKLT-1	3	NB 1105
	1015	CJCH	5	NS 1272
	1025	CKCW	2	NB 1221
	1030	WGBH	2	MA 918
4 Es	1930	KENW	3	NM 912
	1950	KWSE	4	ND 802
	1955	CKAL-1	2	AB 1217
	2055	CICT	2	AB 1293
7 tr	2155	WLMT	30	TN 451
	2210	WUXP	30	TN 408
8 tr	0045	WPTY	24	TN 451



	0310	WOAC	67	OH	417
	0330	KTEJ	19	AR	409
	0400	WUXP	30	TN	408
	0450	WJKT	16	TN	419
	0525	WPXK	54	TN	451
	0535	WNPX	28	TN	434
	0600	WHTN	39	TN	434
	0830	WKOH	31	KY Owensboro	298
	0900	WNKY	40	KY Bowling Green	359
Es	1255	WESH	2	FL	983
		WEDU	3	FL	1031
9 Es	2050	CKAL-1	2	AB	1217
	2100	KTVQ	2	MT	968
13 Es	0930	WGBH	2	MA	918
		WLNE	6	MA	934
	0955	WABI	5	ME	1030
	1000	WBZ	4	MA	918
	1115	WCAX	3	VT	821
	1130	WNYW	5	NY	792
	1205	CHAU-7	4	QC Riv-au-Renard	1272
	1220	CJPM	6	QC Chicoutimi	978
	1240	CFRS	4	QC	974
		CFCU-2	2	ON Kerns	678
14 Es	1000	WPBT	2	FL	1229
		XHRIO	2	TM	1201
	1010	WEDU	3	FL	1031
	1100	WESH	2	FL	983
	1105	WPTV	5	FL	1168
		WFOR	4	FL	1229
	1200	KPHO	5	AZ	1348
		KTVK	3	AZ	1348
	1210	KASA	2	NM	972
	1245	KNAZ	2	AZ	1258
	1820	WPSX	3	PA Clearfield	559
	1830	CBLT	5	ON Toronto	514
	1840	WUND	2	NC	797
	1845	WCBS	2	NY	792
	1850	CFCN	4	AB	1293
	1855	CICT	2	AB	1293
	1900	CKAL	5	AB	1293
	1905	CKAL-1	2	AB	1217
	1930	CKRD	6	AB	1313
	1935	CBCP-3	3	SK	1002
		CJFB	5	SK	1029
	1945	KBME	3	ND	644
	2035	KRTV	3	MT	1112
	2055	KFBB	5	MT	1112
	2100	CITL	4	AB	1206
15 Es	1030	KEBJ	2	TX	972
18 Es	0925	KBEJ	2	TX	972
	1030	CFAP	2	QC	938
20 Es	1010	KBEJ	2	TX	972
	1130	KMID	2	TX	967
21 Es	0955	KWGN	2	CO	811
	1025	KREG	3	CO	933
22 Es	1310	KTVQ	2	MT	968
	2020	KBEJ	2	TX	972
	2025	KACB	3	TX	933
	2100	KPRC	2	TX	893
23 tr	1900	KWCV	33	KS	498
24 tr	0005	KWCV	33	KS	498
25 Es	0855	WESH	2	FL	983
	0955	WPBT	2	FL	1229
	1125	KASA	2	NM	972
	1130	KACV	2	TX	803
		KOB	4	NM	1026
	1155	KSWK	3	KS	669
	1205	KNME	5	NM	1026

KOAA	5	CO	828	
	1300	KGWN	5	WY 785
		KWGN	2	CO 811
	1305	KDUH	4	NE Scottsbluff 718
	1315	KTWO	2	WY 849
	1325	KIDK	3	ID 1123
	1400	KHMT	4	MT 925
		KTVQ	2	MT 968
	1430	KWSE	4	ND 802
	1435	KBMF	3	ND 644
		KXMA	2	ND 732
26 Es	1330	KTVQ	2	MT 968
		KIDK	3	ID 1123
27 tr	0745	KSAX	42	MN 404
Es	1055	KTVQ	2	MT 968
		KBEJ	2	TX 972
	1215	KPRC	2	TX 893
		KRGV	5	TX 1189
28 Es	1755	WPBT	2	FL 1229
29 Es	2055	WPBT	2	FL 1229
	1250	KTWO	2	WY 849

The AM of June 8 saw 450 mile tropo from AR to TN. Close in stations that have eluded me for decades were seen. Rarely seen Bowling Green 13 was strong at 357 miles. Nashville 30 was snowfree for hours. A stationary front extended from upper MI to central NE. A warm front ran from Atlanta to Dallas. A pool of warm stagnant air was trapped between the fronts in the Midwest.

June Es included areas not seen often with six new loggings. Some years I have only gotten one new station. June 14 saw short Es to Clearfield-3 for a half-hour and Toronto-5 briefly at 559 and 514 miles respectively. June 25 saw Scottsbluff-4 for half an hour and only five degrees north of my local 4 at 61 miles. The directivity of this discontinued antenna is legendary. All three stations I assumed were impossible to log here. Normally Es is concentrated into Mexico and FL early. This year Es was common to the east, west, and into Canada.

I purchased a 13 inch Panasonic color TV/VCR Model CVS 1322 for \$169. The TV had defeatable blue screen, no sound cutout, and unparalleled vertical lock on weak signals. Pix detail, sensitivity, and selectivity were excellent. I returned the set as the tuner would lock in on an adjacent stronger signal instead of the weak signal tuned to. I'm told this capture effect is one undesirable feature of phase locked loops. The set had a notable feature. It displayed the call letters of the station tuned to briefly. A knowledgeable dxer in the club stated in a letter—XDS is what call that text ID. It's being transmitted as part of the closed captioning data, etc. Twelve stations in the area transmit the signals. I think all the educational stations in WI, IL, and IA transmit it.

<u>July 2002</u> CDT				
2 Es	1325	KTVQ	2	MT 968
5 Es	1415	KWGN	2	CO 811
6 tr	0030	WOAC	67	OH 417
	0500	WUNF	33	NC 558
	0700	WLFG	68	VA 487
9 Es	1805	WEDU	3	FL 1031
	1830	WPBT	2	FL 1229
13 Es	2135	WCBS	2	NY 792
14 Es	1405	XEPM	2	CI 1162
	1410	XHDI?	5	DU Durango 1498
	1415	XHDRG	2	DU Durango 1498
15 Es	1015	KUTV	2	UT 1139
16 tr	0510	KSAX	42	MN 404
Es	0925	WEDU	3	FL 10

(Continued on page 11)

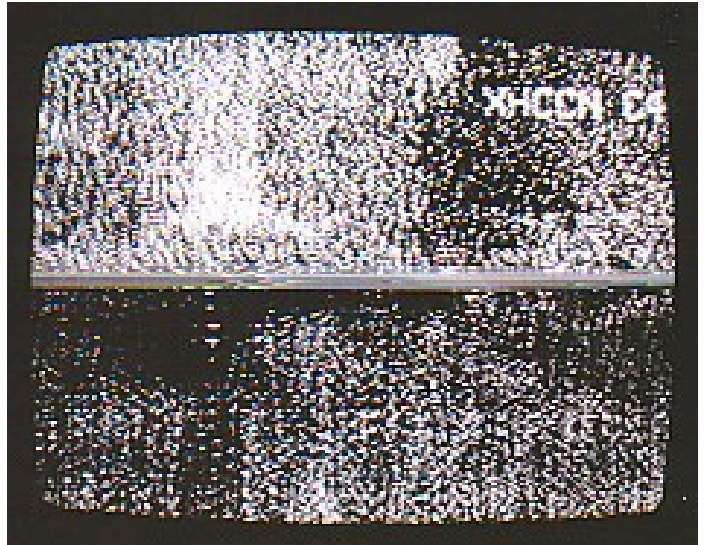


September 2002

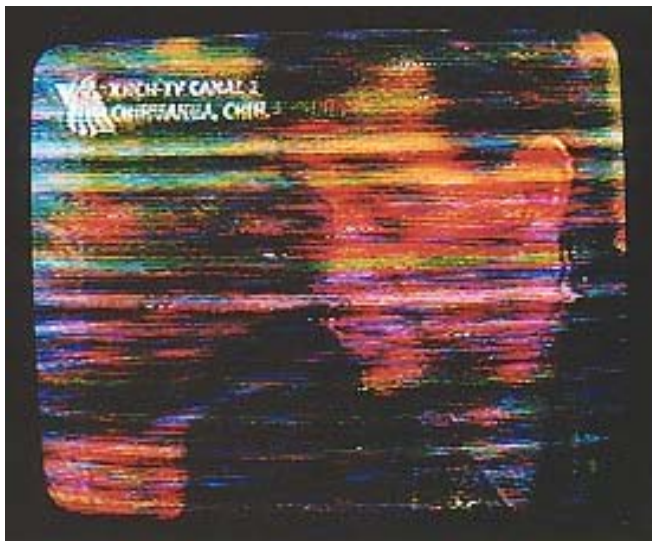
Here's more Mexican E-skip from Danny Oglethorpe, Shreveport, LA. Because of the small ID's, some will show up better in the e-VUD:



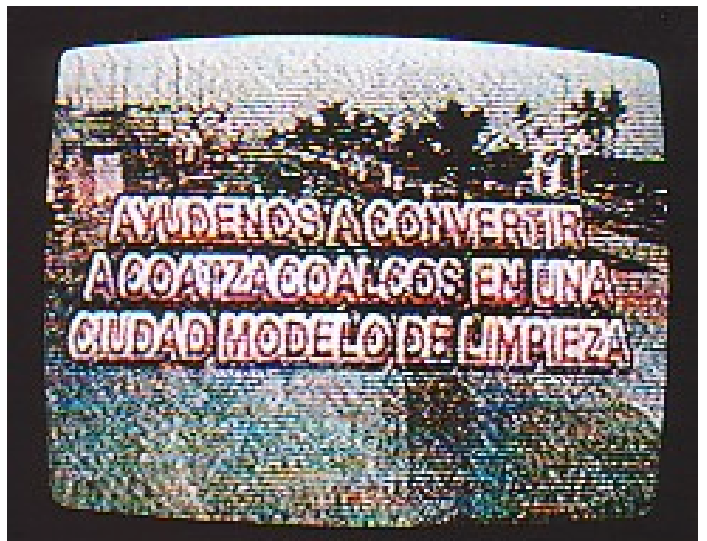
XHAGU-2 Aguascalientes, AGS  
896 mi Es seen 7/31/01  
@1438 CT



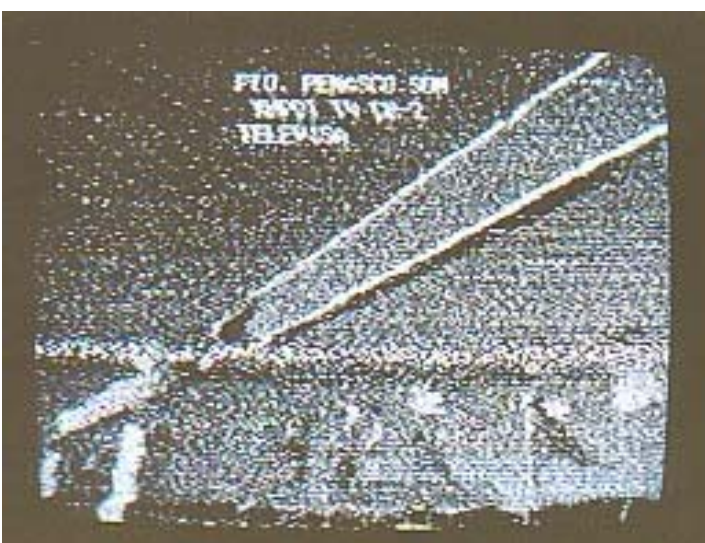
XHCCN-4 Cancún, QROO  
891 mi Es seen 7/25/01  
@1100 CT



XHCH-2 Chihuahua, CHI  
778 mi Es seen 2/01



XHCV-2 Coahuila, VER  
988 mi Es seen 6/13/01  
@0935 CT  
*"local ad"*



XHPDT-2 Puerto Peñasco, SON  
1159 mi Es seen 4/16/02  
@2040 CT



XHCCH-5 Cuauhtemoc, CHI  
826 mi Es seen 7/31/01  
@1555 CT



XHTFL-5 Tepic, NAY  
1019 mi Es seen 6/2/01  
@1058 CT



XHAJ-5 Las Lajas, VER  
930 mi Es seen 6/5/01  
@1700 CT

And no, these are not E-skip photos, believe it or not, but some great tropo from Danny:



WBBH-20 Ft. Myers, FL  
818 mi Tr seen 5/1/02  
@0410 CT  
*"cable channel 2"*

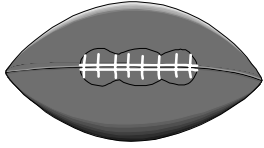


WFTX-36 Cape Coral, FL  
818 mi Tr seen 5/1/02  
@0100 CT  
*"cable channel 4"*

The rest of Danny's outstanding May tropo catches next month.  
73's, Jeff



# SOUTHERN FM DX



JOHN ZONDLO  
4009 DRIFTWOOD CIRCLE  
YUKON, OK 73099  
SFM@FMDXWEB.COM  
DEADLINE: 10TH

For DXers in AL, AZ, AR, CA, CO, DE, DC, FL, GA, HI, KS, KY, LA, MD, MS, MO, NV,  
NM, NC, OK, SC, TN, TX, UT, VA, WV, Cuba & Mexico

September 2002

**Fred Laun – K3ZO – 5801 Huntland  
Road - Temple Hills, MD 20748 – EDT**  
[aalaun@attglobal.net](mailto:aalaun@attglobal.net)

Denon TU-800 tuner, Winegard antenna @ 35'

7/28 Es

2105 KANS 92.9 KS Osage City, Emporia ads  
1032  
2109 KFDI 101.3 KS Wichita, ID 1117  
2110 KBLS 102.5 KS North Fort Riley, Marion  
County wx 1066  
2116 KKJQ 97.3 KS Garden City, Garden City  
ads 1274  
2117 KICT 95.1 KS Wichita, "T-95," ads for  
Derby Bowl 1117



Just caught the tail end of the opening as I  
was blissfully watching Nero Wolfe without  
realizing what was going on on the bands.

**Adam Rivers – Chicopee, MA –**  
[patriotsrule417@yahoo.com](mailto:patriotsrule417@yahoo.com) -  
<http://adamskewlsite.freesevers.com>  
EDT

Sherwood S-7250 tuner with 110 kHz filters, RS  
antenna wire and Conrad RDS Manager

From Staunton, VA:

7/13 Tr

1733 WNCI 97.9 OH Columbus, (1)

From Banner Elk, NC, elevation 4,560'

7/14 Tr

1847 WOLT 103.3 SC Greer

7/15 Tr

2040 WKSP 96.3 SC Aiken, (Augusta, GA  
market)

7/17 Tr

0440 WMUU 94.5 SC Greenville, o/local rel  
0445 WWDM 101.3 SC Sumter  
0449 WTCB 106.7 SC Orangeburg  
0450 unID 98.3 ?? ??, "Oldies 93"  
0453 WFMV 95.3 SC South Congaree  
0508 WZSN 103.5 SC Greenwood

0509 WJMX 103.3 SC Cheraw  
0513 WOMG 103.1 SC Columbia  
0514 WGVC 106.3 SC Newberry  
0526 WOLI 103.9 SC Easley  
0533 WXCC 96.5 WV Williamson  
1024 WZNY 105.7 GA Augusta, (2)  
1054 WYMZ 103.5 TN Knoxville  
1721 WCOS 97.5 SC Columbia  
2211 unID 100.1 ?? ??, sounded like WAQQ,  
classic r possible  
2214 WMCD 100.1 GA Statesboro, Braves bb



7/18 Tr

0912 WNOK 104.7 SC Columbia  
0954 WIBK 107.7 TN Knoxville  
2321 WCCD 104.9 SC Clemson

7/19 Tr

1219 WSLC 94.9 VA Roanoke, (3)

7/21 Tr

0020 WDCG 105.1 NC Durham  
0031 WQDR 94.7 NC Raleigh  
0043 WIFM 100.9 NC Elkin  
0124 WPJO 99.3 NC Elizabethton, o/local WBT,  
(4)  
0844 WKHT 93.7 SC Bishopville, o/local WFBC,  
(5)

From Canaan Valley, WV, elevation 3,250'

2230 WITH 99.5 DC Washington  
2257 WMZQ 98.7 DC Washington  
2302 WRVZ 102.1 OH Marietta

Notes:

(1) Sitting around after a day of driving, tuned up  
to the frequency and heard the station.  
(2) Didn't know tropo was still around until I pulled  
up to the frequency and heard "Complicated."  
(3) Not too far distance (115 miles) but since I  
was facing south, I couldn't get much from the  
north. I want into the week expecting to listen to  
WAEZ from Johnson City TN for regular listening,  
and not being able to get my favorite CHR ever,  
WNKS Charlotte, because of terrain. But actually  
WNKS and the rest of Charlotte was strong. I was  
facing south with a mountain behind me, so I think  
that contributed.

(4) Amazed that a station NW of me could beat WBT, but it did.

(5) Never believed something like that would come in in full stereo.

---

**William McGuire – 2412 59<sup>th</sup> Pl. –  
Cheverly, MD 20785-2918 – EDT**

DX-398

7/8 Tr

0010 WRVQ 94.5 VA Richmond, "Q-94," Top 40  
0025 WMXB 103.7 VA Richmond, Hardee's ad,  
"B-103"  
0028 WRXL 102.1 VA Richmond, "XL-102,"  
"Studio B"  
0030 WTVR 98.1 VA Richmond, "Richmond's  
soft rock favorites, Lite  
98"  
2118 WZBH 93.5 DE Georgetown, "The Beach"  
2132 WIXM 97.3 NJ Millville, "Mix 97.3"  
2135 WICO 97.5 MD Salisbury, k, "Cat Country"  
2140 WWFG 99.9 MD Ocean City, k, "Froggy 99.9"  
2145 WZXL 100.7 NJ Wildwood, r, "ZXL"  
2148 WFAL 104.5 VA Falmouth, "Thunder 104.5"  
2155 WQHQQ 104.7 MD Ocean City, "Q-105," ID,  
Delilah

2223 WSTW 93.7 DE Wilmington, ID  
2228 WDSO 92.9 DE Smyrna, "Delaware's  
continuous country," ID

2245 WKHS 90.5 MD Worton, r  
2258 WSCL 89.5 MD Salisbury, c

7/9 Tr

0025 WFPG 96.9 NJ Atlantic City, ID  
0049 WIOQ 102.1 PA Philadelphia, Top 40,  
"Q-102"

7/18 Tr

2042 WSTW 93.7 DE Wilmington  
2050 WLTE 97.5 WV Martinsburg, Delilah  
2118 WFAL 104.5 VA Falmouth, "Thunder 104.5"

7/21 Tr

2210 WTVR 98.1 VA Richmond, Delilah  
2221 WNVZ 104.5 VA Norfolk, RDS, "Z-104"  
2232 WAFX 106.9 VA Suffolk, "The Fox"  
2237 WOCQ 103.9 MD Berlin, "OC-104"  
2300 WYSP 94.1 PA Philadelphia, "94-WYSP"  
2313 WESR 103.3 VA Onley, "103 The Shore"  
2336 WDSO 92.9 DE Smyrna, PSA, ad, k  
2340 WFPG 96.9 NJ Atlantic City, promo, ID  
2345 WPST 97.5 NJ Trenton, "97-5 PST"

7/22 Tr

0000 WUSL 98.9 PA Philadelphia, "Power 99"  
0025 WJKS 101.7 NJ Canton, hip hop, "Kiss  
101.7 FM"  
0030 WIOQ 102.1 PA Philadelphia, Casey Kasem  
0033 WMGK 102.9 PA Philadelphia, "Classic rock  
102.9"

0038 WLCE 104.5 PA Philadelphia, "Alice 104.5"

7/22 Tr

0050 WDAS 105.3 PA Philadelphia, ID  
0100 WNNT 100.9 VA Warsaw, ID, "River Country  
100.9"

0115 WYCR 98.5 PA York, "98.5 YCR"  
0119 WOGL 98.1 PA Philadelphia, ID  
0140 WBBB 96.1 NC Raleigh, "96 Rock"  
0150 WBOS 92.9 MA Brookline, ad mentioning  
Boston, ID

2155 WQHQQ 104.7 MD Ocean City, "Delilah," ID  
2200 WFRE 99.9 MD Frederick, ID  
2212 WZBH 93.5 DE Georgetown, "The Beach"  
2222 WICO 97.5 MD Salisbury  
2234 WLVW 105.5 MD Salisbury, "The Wave," o  
2247 WAFX 106.9 VA Suffolk, "106.9 The Fox"

7/23 Tr

2025 WXCY 103.7 MD Havre de Grace, k, ID  
2030 WARX 106.9 MD Hagerstown, promo  
2055 WLTF 97.5 WV Martinsburg, local ads  
2117 WSTW 93.7 DE Wilmington  
2244 WLVW 105.5 MD Salisbury, "The Wave"

7/25 Tr

2008 WOCQ 103.9 MD Berlin, "OC-104"  
2025 WZBH 93.5 DE Georgetown  
2125 WRAR 105.5 VA Tappahannock, ID  
2128 WAYZ 104.7 MD Hagerstown, "Today's  
hottest country," ID  
2140 WWFG 99.9 MD Ocean City, k, "Froggy  
99.9"  
2220 WLVW 105.5 MD Salisbury, "The Wave"  
2238 WNVZ 104.5 VA Norfolk, "Z-104"  
2244 WTDK 107.1 MD Federalsburg, "The Duck"  
2249 WMGM 103.7 NJ Atlantic City, "Classic  
Rock 103.7"

2300 WAFY 103.1 MD Middletown, "Key 103.1"  
2325 WMGK 102.9 PA Philadelphia, classic r  
2330 WESR 103.3 VA Onley, "103 The Shore"  
2336 WICO 97.5 MD Salisbury  
2340 WDSO 92.9 DE Smyrna, ID  
2349 WIXM 97.3 NJ Millville, "Mix 97.3"  
2351 WOGL 98.1 PA Philadelphia, "Oldies 98.1"  
2356 WIOQ 102.1 PA Philadelphia

7/26 Tr

0002 WKCE 104.5 PA Philadelphia, ID  
0025 WAFX 106.9 VA Suffolk  
2042 WQHQQ 104.7 MD Salisbury  
2050 WFAL 104.5 VA Falmouth, station promo

7/27 Tr

2040 WNVZ 104.5 VA Norfolk  
2221 WKJS 104.7 VA Crewe

7/28 Tr

2135 WRAR 105.5 VA Tappahannock, ID

7/29 Tr

2045 WLVW 105.5 MD Salisbury  
2335 WTVR 98.1 VA Richmond, Delilah

7/30 Tr

0035 WRXL 102.1 VA Richmond  
0040 WNNT 100.9 VA Warsaw, "River Country  
100.9"

0058 WIXM 97.3 NJ Millville

8/4 Tr

0158 WINX 94.3 MD St. Michael's, "The new  
shore country," ID

2226 WICO 97.5 MD Salisbury  
2300 WZBH 93.5 DE Georgetown, ID  
2313 WAFB 97.7 DE Milford, "Eagle 97.7"  
2320 WZXL 100.7 NJ Wildwood, ID  
2335 WOCQ 103.9 MD Berlin

2340 WZBZ 105.5 NJ Cape May Court House,  
"South Jersey's Hip Hop  
station"



**Gus Mancuso** – 5706 Greenleaf Rd. – Hyattsville, MD 20785 – EDT  
All new

Radio Shack DX-440 multi-band portable with McVey filters, rabbit ears

From Grantsville, MD

5/31-6/3 Tr

WKJL	88.1	WV	Clarksburg, had erroneously thought this was an image of local WAIJ 90.3 in past
WYFV	88.5	PA	Masontown
WZWA	90.1	WV	Clarksburg
WFWM	91.9	MD	Frostburg, x-91.7
WQYX	93.1	PA	Clearfield, x-93.5
WBTQ	93.5	WV	Buckhannon
WKOV	96.3	PA	Oil City, picked up from NE side of Holiday Inn
WCMJ	96.7	OH	Cambridge
WQWK	97.1	PA	University Park
WKDD	98.1	OH	Canton
WKBN	98.9	OH	Youngstown, frequency opened up since local WKHJ gone
WRVB	102.1	OH	Marietta
WGYE	102.7	WV	Mannington
WBEU	103.3	PA	Brookville
WPXZ	104.1	PA	Punxsutawney
WJGF	104.1	WV	Romney
WMKK	105.5	PA	Brookville
WDSN	106.5	PA	Reynoldsville

From Summersville, WV

6/28 Tr

WKJL	88.1	WV	Clarksburg
WMLJ	90.5	WV	Summersville
WRVZ	98.7	WV	Pocatalico
WAFD	100.3	WV	Webster Springs

6/29 Tr

WZAQ	92.3	KY	Louisa
WZKM	93.3	WV	Montgomery
WBRF	98.1	VA	Galax
WOKE	98.3	KY	Garrison
WBYG	99.5	WV	Point Pleasant
WCDA	106.3	KY	Versailles

Didn't wake up until 0800, so I wasn't able to scan entire dial before morning enhancement dissipated. Rain on the 28<sup>th</sup> must have evaporated since there was no noticeable enhancement the next 2 mornings.

Picked up a strange unID this trip. It came in strongest on 89.75 (set tunes in halves of tenths), but still sounded slightly off tuned. I'd as "Genesis Radio Network," carries various conservative and populist programs – some religious, some strictly political. They were hawking shortwave antennas for better reception.

Heard a 2<sup>nd</sup> station behind WVPG 90.3 NPR echoing about .2 second behind. No other WV NPR on that frequency, so still haven't found a way to distinguish WV NPRs on same frequency (88.9, 89.9, 91.7).

I'm in need of tubes for a 1975 GE television. Give me a call at (301) 583-0531. Also, I have a

copy of the issue of "The Week" magazine that contains an article on Philo Farnsworth. I'll send a copy of it on request.

**Joe Kureth** – 2900 Uniontown Rd. – Uniontown, MD 21158-3553 – EDT

All on 2000 Saturn car radio except 6/14 (Radio Shack DX-398), all new unless noted

4/27 Tr

1750 WGBZ	105.5	NJ	Cape May Court House, "The Buzz"/WZBZ 99.3 126
-----------	-------	----	--

5/8 Tr

1530 WKZQ	101.7	SC	Myrtle Beach, 1 <sup>st</sup> SC, farthest tropo log 404
-----------	-------	----	--

5/26 Tr

0500 WKWI	101.7	VA	Kilmarnock 135
-----------	-------	----	----------------

5/30 Tr

0001 WRTY	91.1	PA	Jackson Township, //WRTI 90.1 Philadelphia 135
-----------	------	----	--

6/14 Es

1956 KRKQ	98.3	IA	Boone, "The River" 891
2000 KESD	88.3	SD	Brookings 1080
2002 KMNE	90.3	NE	Bassett, RDS 1179
2028 unID	94.3	??	??, KRDX?
2038 KGRD	105.3	NE	Orchard, several IDs, CCM 1124

2040 KTCH	104.9	NE	Wayne 1055
-----------	-------	----	------------

2050 KKCV	98.5	IA	Cedar Falls, "The Hog" 824
-----------	------	----	----------------------------

2102 KBBN	98.3	NE	Broken Bow, RDS, Nebraska vs Clemson College World Series game 1185
-----------	------	----	---

2103 KQKQ	98.5	IA	Council Bluffs, "Sweet 98" 999
-----------	------	----	--------------------------------

2111 KBRX	102.9	NE	O'Neill, RDS 1132
-----------	-------	----	-------------------

2150 KBEA	99.7	IA	Muscataine 744
-----------	------	----	----------------

6/14 Tr

2145 WKJS	104.7	VA	Crewe, Hagerstown MD nulled 174
-----------	-------	----	---------------------------------

6/23 Ms?

0930 unID	89.9	??	??, KXTI? Calls & SS talk
-----------	------	----	---------------------------

7/1 Tr

0345 WKHI	107.5	MD	Fruitland, "Lite Rock"/103.5 152
-----------	-------	----	----------------------------------

7/22 Tr

0005 WVES	99.3	VA	Accomac 149
-----------	------	----	-------------

0100 WFME	94.7	NJ	Newark, "Family Radio," relog 171
-----------	------	----	-----------------------------------

0120 WBHX	99.7	NJ	Tuckerton, Dr. Demento pgm 144
-----------	------	----	--------------------------------

0135 WXPZ	101.3	DE	Milford, "The Light FM" 101
-----------	-------	----	-----------------------------

0200 WKTU	103.5	NY	Lake Success, no sign of WGMS DC, relog 180
-----------	-------	----	---

0207 WRCH	100.5	CT	New Britain, only 2 <sup>nd</sup> logged on 100.5! 267
-----------	-------	----	--

0215 WBLS	107.5	NY	New York 182
-----------	-------	----	--------------

0300 WSUF	89.9	NY	Noyack, NPR "World Radio Net" 270
-----------	------	----	-----------------------------------

WNYC	93.9	NY	New York, relog 180
------	------	----	---------------------

0305 WBGO	88.3	NJ	Newark 172
-----------	------	----	------------

7/31 Tr

1700 WBBC	93.5	VA	Blackstone, calls and Blackstone-Richmond ID
-----------	------	----	--



(that's a stretch!) 182

Good news....6/14 was the first ever RDS logged via Es on the DX-398 purchased last December. Bad news...on 6/14 I was in Arbutus, MD, just SW of Baltimore and in the Baltimore-DC corridor where FM "birdies," harmonics, spurs or whatever are everywhere. I feel fortunate to have heard any DX. The 6/14 Es "cloud" looks like it was centered somewhere around the Indiana-Ohio border per my loggings and those of Jim Renfrew, Jerry Bond and others. The "cloud" didn't seem to move at all as most of my meager 10 loggings were in strong for at least two hours.

**Eric Bueneman** – NOUIH –

631 Coachway Lane –  
Hazelwood, MO 63042-1347 –

[NOUIHEric@aol.com](mailto:NOUIHEric@aol.com) -

(314) 839-9751 (prepaid only) –

<http://www.qsl.net/nOuih> - CDT -

all distances miles/kilometers

Realistic STA-90 AM/FM/FM Stereo receiver,  
Radio Shack VU-210XR with RS Archerotor at 35'  
(10.6 meters) AGL

7/23 Tr

0209 KMMO 102.9 MO Marshall, local ads, calls, k,  
\$ 155/249

2358 WPBG 93.3 IL Peoria, o, through KNSX,  
Peoria TV stations also in  
140/225

7/24 Tr

0521 KBEA 99.7 IA Muscatine, "B-100," "B-  
Music," local ad, wx, CHR  
185/298

0522 WMOI 97.7 IL Monmouth, wx, calls,  
modern AC, KHCR nulled  
145/233

7/29 Tr

1526 KUMR 88.5 MO Rolla, "Writer's Almanac,"  
local underwriting, no ACI  
from WSIE 88.7 80/128

1547 KSRC 102.1 MO Kansas City, "Star 102,"  
local ad, mixing with KJFM  
225/362

1550 KJEL 103.7 MO Lebanon, "K-Jel," local ad,  
legal ID in Cardinals bb  
promo 155/249

1553 KATI 94.3 MO California, "Kat Country," k  
120/193

1556 WQUB 90.3 IL Quincy, NPR's "Fresh Air,"  
local underwriting, station  
promo 110/177

1602 WLRW 94.5 IL Champaign, "Mix 94.5," hot  
AC, ACI from KSHE 94.7  
150/240

7/30 Tr

Springfield IL 89.7, 90.5, 91.9, 98.7\$, 101.9,  
103.7, 104.5 (mixing w/KSLQ) 80/128

7/31 Tr

0358 WGEL 101.7 IL Greenville, local ad, legal  
ID, k, mixing w/semi-local  
KLPW

0400 Cape Girardeau MO 100.7, 102.9 115/184

0435 WRUL 97.3 IL Carmi, "Best Country 97.3,"  
k // WROY(AM), ACI from  
KFTK 97.1

8/1 Tr

0500 Hannibal MO 91.7, 92.9\$ 90/145

0504 WGEM 105.1 IL Quincy, ABC nx, net/local  
ads, local news, no ACI  
from KMJM 104.9 110/177

0509 KLOZ 92.7 MO Eldon, "Mix 92-7," promo,  
Jones hot AC/WAOX 105.3  
130/209

8/3 Tr

0456 WQRL 106.3 IL Benton, "Good Time  
Oldies," o, ACI from WSSM  
106.5

0502 KPLA 101.5 MO Columbia, legal ID, soft AC,  
\$ 105/169

0559 KJLU 88.9 MO Jefferson City, "Smooth  
Jazz 88.9," s/on, smooth  
Jazz, between locals WSIE  
88.7 and KCLC 89.1  
100/161

8/7 Tr

0225 WPBG 93.3 IL Peoria, "Big Oldies 93.3,"  
local ads, wx, o, KNSX  
nulled 140/225

0227 KIOA 93.3 IA Des Moines, "Oldies 93-3,"  
o, through WPBG in KNSX  
null 255/410

0321 KSJN 99.5 MN Minneapolis, MPR mention,  
calls, wx, c, through WCOY  
450/724

0323 WLTE 102.9 MN Minneapolis, "102.9 Light  
FM," local ad, Twin Cities  
wx, soft AC 450/724

0329 KEEY 102.1 MN Minneapolis, "102.1 K-102,"  
k, o/KJFM/KSRC 450/724

0335 KGGO 94.9 IA Des Moines, local ad, calls,  
AOR 255/410

0445 KSRC 102.1 MO Kansas City, "Star 102,"  
local ads, AC, o/KJFM  
225/362

8/8 Tr

0533 WDNL 102.1 IL Danville, "D-102," AC  
175/282

0540 WBNQ 101.5 IL Bloomington, calls, CHR  
140/225

8/9 Tr

0135 KTIS 98.5 MN Minneapolis, Bible verse,  
Skylight CCM, KTJJ  
nulled 450/724

0136 KSJN 99.5 MN Minneapolis, c, mixing w/  
WCOY 450/724

0250 KMGO 98.7 IA Centerville, "99 Country,"  
wx, k, through WNNS  
225/362

0501 WVSI 88.9 IL Mount Vernon, NPR  
"Morning Edition,"  
underwriting//WSIU 91.9 &  
WUSI 90.3 85/137

On July 22, 2002, I had the antenna height increased from 28' (8 meters) to 35' (10.6 meters). Also, the RG-59U cable that I had used for the last ten years was replaced with RG-6 cable. This has resulted in somewhat better FM reception (the best results of the new cable/antenna height can be seen on UHF TV). So, I tested it out on the FM side, and found that I



could null out semi-locals (such as KHCR 97.7) to hear DX. This was the case with the WMOI reception on July 24. One of my closest unheards was finally bagged on July 31 in the form of WGEL 101.7 (only 50 miles away in Greenville, IL). On that frequency, I also have a semi-local parked there (KLPW Union, MO). Now, the closest unheard is 100.1 in DeSoto (hard to do with locals on 99.9 and 100.3).

The Twin Cities made it in for only the second time at this QTH; a new one was added from the area in the form of WLTE 102.9. Two days later, the same metro area was in again, but this time, only on 98.5 and 99.5. Hearing Bruce Hanson on KTIS 98.5 was a pleasant surprise; the station I worked for in the late 1980's and early 1990's, WFTD 1080 Marietta, GA, carried his afternoon show from Skylight, "Panorama." Another new one was added that morning in the form of WWSI 88.9, simulcasting WSIU 91.9 in Carbondale, IL. I often wonder why WSIU would need a relay in Mount Vernon, when they're a semi-local in the Mount Vernon area. Anyway, the FM total stands at 680 as of August 10. 73, Eric (N0UIH)

**John Zondlo** – 4009 Driftwood Circle Yukon, OK 73099 – [sfm@fmdxweb.com](mailto:sfm@fmdxweb.com) - CDT – all new

Akai AT-VO4 w/110 filters, Stereo Probe 9

6/1 Es

2115 KKTO 90.5 CA Tahoe City, Capital Public Radio 1256  
 2130 KLLP 98.5 ID Chubbock, 80's r 940  
 2228 KQXR 100.3 ID Payette, local spot, "The X" 1179  
 2253 KATW 101.5 ID Lewiston, "Cat FM" 1257

6/13 Es

1131 CIMW 91.5 MB Brandon 997  
 1204 CJMK 98.3 MB Saskatoon, "Magic 98.3" 1231

6/14 Es

2008 CKDX 88.5 ON Newmarket, "Fox 88.5" 1136  
 2046 CHMS 97.7 ON Bancroft, "Moose FM" 1239  
 2052 WFRY 97.5 NY Watertown, Lia 1300  
 2058 CBCB 98.7 ON Owen Sound, CBC-1 1088  
 2158 WLZW 98.7 NY Utica, "Lite 98.7" 1313  
 2159 WSEN 92.1 NY Baldwinsville, "Oldies 92.1" 1261

6/19 Es

1922 KONY 99.9 UT Cedar City, local spot 863  
 2019 KZGH 98.7 OR Nyssa, k 1176  
 2019 KVEG 97.5 NV Mesquite, promo 915

6/25 Es

1143 WOCO 107.1 WI Oconto, ID, EZL 824  
 1153 WMXG 106.3 MI Stephenson, local KGOU nulled, "Mix 106," ad for S&S Café in Escanaba 868

1155 WACD 106.1 WI Antigo, ID 806  
 1157 WLJY 106.5 WI Marshfield, EZL 750  
 1201 WRCO 100.9 WI Richland Center 669  
 1202 WIZD 99.9 WI Rudolph, o//94.7 861

1203 WKEB 99.3 WI Medford, local spots 773  
 1204 WRHN 100.1 WI Rhinelander, "Hits 100.1" 826  
 1205 WOBE 100.7 MI Crystal Falls, spot for busn in Iron Mountain 885  
 1221 KAGE 95.3 MN Winona, winonaradio.com 674  
 1223 WOLV 97.7 MI Houghton, local spots 933  
 1224 WDRK 99.9 WI Cornell, "99 The Carp"  
 1228 KMFX 102.5 MN Lake City 682  
 1230 KUWS 91.3 WI Superior, ID 830  
 1234 WBIZ 100.7 WI Eau Claire, "Z-100, Real Hits" 723  
 1251 WJJH 96.7 WI Ashland, local spots 845  
 1300 WTIP 90.7 MN Grand Marais, ID 929

8/2 Es

1920 KNOG 91.1 AZ Nogales, RDS only 813  
 1935 KOHT 98.3 AZ Marana, "The Hot 98.3," hip hop 800  
 1900 XHPPO 106.1 SO Puerto Penasco, local spots  
 2001 KBJX 106.3 ID Shelley, "Hot 106," ID  
 2027 KWFM 97.1 AZ Green Valley, o 814  
 2051 KXCI 91.3 AZ Tucson, alt r 792  
 2057 KGBM 89.7 CA Randsburg, Air 1 1120  
 2101 KUAZ 89.1 AZ Tucson, NPR, promos 792  
 KUAT 90.5 AZ Tucson, ID, c 792  
 2133 KGBA 100.1 CA Holtville, SS 1025  
 2138 KVVA 107.1 AZ Apache Junction, SS, Radio Romantica 796



*From the Editor*

Wow, what a showing by members in the Old Line State! Thanks to them, and Adam and Eric, for a great column this month. Glad to see someone got some DX this year. Es here has been extremely meager. I was hoping the convention would spark something, but that didn't happen. Now if I had scheduled it just a week later, those attending would've had a great Friday night of western DXing. Oh, well.....

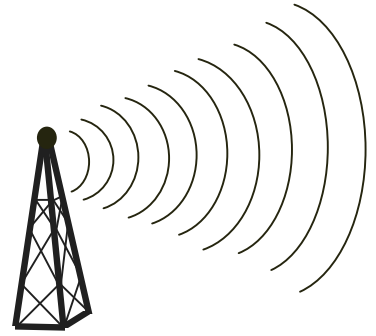
Speaking of the convention, be sure to check out the wrap up of WTFDA 2002 elsewhere in this issue. I had a great time hosting it. Hopefully I'll have a chance to get to another convention in the future and meet some of our eastern members.

See y'all next month!



[www.fmdxweb.com](http://www.fmdxweb.com)

# Northern FM DX



**Keith McGinnis**  
**387 Shirley Street, Winthrop, MA 02152**  
**longwave@attbi.com 617-846-5760**

For Dxers in the following states **CT, IA, ID, IL, IN, MA, ME, MI, MN, MT, ND, NE, NH, NJ, NY, OH, OR, PA, RI, SD, VT, WA, WI, WY** Please submit by the 10<sup>th</sup> of each month. If possible please submit in the formats shown below.

**JOHN VERVOORT - 217 79 Street Brooklyn NY 11209-3607**  
**Equipment : Optimus Extended Range with Radio Shack amplifier and Yacht Boy 400 PE**

Underlined are new

June 14 Es

					2248	<u>WIOQ</u>	102.1	Philadelphia	PA
								"Q 102"	
1945	<u>KTGL</u>	92.9	Beatrice	NE	2252	<u>WPHI</u>	103.9	Jenkintown	PA
								"The Beat"	
2025	<u>KEFM</u>	96.1	Omaha	NE	2254	<u>WCHK</u>	105.7	Manahawkin	NJ
2028	<u>KGBI</u>	100.7	Omaha	NE				"The Hawk...Where Classic Rock	
2044	<u>WOW</u>	94.1	Omaha	NE				Lives"	
2049	<u>KRNY</u>	102.3	Kearney	NE	2259	<u>WKDN</u>	106.9	Camden	NJ
								"Y102"	
					2302	<u>WPUR</u>	107.3	Atlantic City	NJ

June 20 Tropo

2231	<u>WXTU</u>	92.5	Philadelphia	PA
2239	<u>WCEI</u>	96.7	Easton	MD
2241	<u>WFPG</u>	96.9	Atlantic City	NJ
2244	<u>WWFG</u>	99.9	Ocean City	MD
				"Froggy 99.9"

July 22 Tropo

0910	<u>WFPG</u>	96.9	Atlantic City	NJ
				"Lite Rock"
0914	<u>WAFL</u>	97.7	Milford	DE
				"The Eagle"

**Morris Sorensen - Winnipeg MB SMosor@aol.com Equipment: Realistic DX-392 with whip. Underlined are new. Mileage is after location**

May 13 Tropo

1858	<u>KAXE</u>	91.7	Grand Rapids	MN
				248
2121	<u>KKDQ</u>	99.3	Thief River Falls	
				MN 131

June 21 Es

0938	<u>KBMQ</u>	88.7	Monroe	LA
				"The Cross" 1228 New State

June 5 Tropo

0959	<u>KUND</u>	89.3	Grand Forks	ND
				137

June 21 Tropo

2204	<u>CBQQ</u>	90.5	Fort Frances	ON
2215	<u>KZZY</u>	103.5	Devil's Lake	ND
				"ZZ Country" 147
2219	<u>KKZY</u>	95.5	Bemidji	MN
				196
2229	<u>CBQH</u>	100.9	Dryden	ON

June 12 Tropo

2155	<u>CIWM</u>	91.5	Brandon	MB
				126 NCI network (native) fairly new on air
2245	<u>KXGT</u>	95.5	Jamestown	ND
				219

June 22 Tropo

2210	<u>CKSB-9</u>	89.1	Fort Frances	ON
------	---------------	------	--------------	----

2220	KYYX	97.1	Minot	ND	1335	<u>WUSJ</u>	96.3	Jackson	MS
	"Kicks Country"	221				"US 96.3"	New State		
2234	KDVL	102.5	Devil's Lake	ND	1359	<u>KBMJ</u>	89.7	Heber Springs	AR
	"K-Devil"	147				1027			
2244	CBQX	98.7	Kenora	ON	1423	<u>KELE</u>	92.5	Mountain Grove	MO
		124				914 New State			
2247	KSNR	100.3	Thief River Falls		1433	<u>KMSI</u>	88.1	Moore	OK
	MN "Kool Country"	131				1006 N			
2257	KMPR	88.9	Minot	ND					
		221				<u>June 27 Tropo</u>			
2259	KEYA	88.5	Belcourt	ND					
		139			2159	KCDD	90.3	Moorhead	MN
						210			
<u>June 25 Es</u>					<u>June 28 Tropo</u>				
1152	<u>KOOJ</u>	93.7	New Iberia	LA	0945	KQMN	91.5	Thief Rver Falls	
	"Kool 93.7"	1400				MN	131		
1159	<u>KUAR</u>	89.1	Little Rock	AR	1001	KNTL	102.7	Thief River Falls	
		1075 New State				MN	131		
1203	<u>WRNO</u>	99.5	New Orleans	LA	1005	KJKJ	107.5	Grand Forks	
		1419				ND "The Big Dog-KJ-108"	137		
1208	<u>KRKA</u>	107.9	Erath	LA					
		1401				<u>June 29 Tropo</u>			
1226	<u>KRRQ</u>	95.5	Lafayette	LA	1342	KFGO	101.9	Fargo	
		1384				ND "The Box"	209		
103.7	<u>KABZ</u>	103.7	Little Rock	AR	1349	KPFX	107.9	Fargo	
	"The Buzz"	1075 N				ND "The Fox"	209		
1236	<u>KZBL</u>	100.7	Natchitoches	LA					
		1269							
1301	<u>KNTU</u>	88.1	Denton	TX					
		1152							

**Harry Hayes - Wilkes-Barre, PA 18702**

**HJHdesign@aol.com**

**Equipment: Superadio II w/110khz filter, Jerrold 10 element in attic**

All Times are EDT

July 14 Tropo

0400 WSQX 91.5 Binghamton NY  
Jazz music, NPR News o/weak  
WVMW Scranton

July 28 Es

2100 KSYE 91.5 Frederick  
OK ID as "KSYE-Frederick, Lawton,  
Wichita Falls o/WVMW. KCBI IDs hrd  
during programming, New.

**John Ebeling - Bloomington, MN. ljebeling@aol.com**

**Equipment: Pioneer TX-9500 IF modified tuner in use along with a Stereo Probe 9, 25' AGL. Times are CST.**

July 17 Tropo

1130 K201HD 88.1 Clara City MN

July 31 Tropo

0653 KLNE 88.7 Lexington NE  
(RDS ID)

July 30 Tropo

0900 KHCT 90.9 Great Bend KS  
K205DJ 88.9 Worthington MN

0700 KBOJ 88.1 Worthington MN  
new sta.

0800 KHNE 89.1 Hastings NE  
0805 KCHE 92.1 Cherokee IA  
0832 KROR 101.5 Hastings NE

0841	KEXL	106.7	Norfolk	NE	1240	KBAJ	105.5	Deer River	MN
0851	KIOD	105.3	McCook	NE	"KQ 95" (a Duluth repeater)				
0854	KFNF	101.1	Oberlin	KS	1830	KJIA	88.9	Spirit Lake	IA
<u>August 6 Tropo</u>									
					2300	KNCM	88.5	Appleton	MN
								(thru local KBEM)	

**SAUL CHERNOS - Burnt River and Toronto ON**  
**416-364-0725 / 705-454-9636 / schernos@sympatico.ca**

July 4 Tr (BR)

0632	WBMI	105.5	West Branch	MI
			WBMI 105-5 p	
0816	WIDL	92.1	Caro	MI
			Best hits best variety / The Coyote	

July 4 Es (BR)

1430	KLND	89.5	Little Eagle	SD
			Native stn	

July 6 Au (BR)

0500	WPNE	89.3	Green Bay	WI
			c, prev Tr	

July 6 GW (TO - Downtown)

1740	....	105.1	Toronto	ON
			Molson Indy live	

July 7 Tr (TO - Snowball)

0450	WLAV	96.9	Grand Rapids	MI
0501	CJQM	104.3	Soo St. Marie	ON
			Q-104, k	
0550	CBSM	89.5	Soo St. Marie	ON
			CBC Radio Overnight	
0602	WLDR	101.9	Traverse City	MI
			John Tesh Radio Show	
0620	CBON21	104.9	Gogama	ON
			FF CBC	

July 7 GW (Port Bolster - Hwy 48 & Durham Rd 23)

1215	LP	104.9	Port Bolster	ON
			Cinedrive drive-in (Mr. Deeds)	

July 10 GW (BR)

1848	CKSG	93.3	Cobourg	ON
			Testing	

July 11 Tr (BR)

0753	CBON25	97.1	Timmins	ON
			FF CBC	
0756	CKGB	99.3	Timmins	ON
			Easy Rock	
0757	CJQQ	92.1	Timmins	ON
			Q92	

0806	CBON24	90.7	Kapuskasing	ON
			FF CBC	
0810	CBCJ	96.1	Timmins	ON
			CBC Radio One (#1)	
0815	CBON21	104.9	Gogama	ON
			FF CBC	

July 12 GW-Tr (TO - Downtown)

1330	CKSG	93.3	Cobourg	ON
			Testing	

July 13 MS (BR)

1952	KZBK	96.9	Brookfield	MO
			(#2)	

July 16 Es (BR)

0900	....	90.7		TX
			(#3)	
0920	KTUX	98.9	Carthage	TX
			99X	
0921	KIOX	96.9	El Campo	TX
			X97	
0928	KULM	98.3	Columbus	TX
0940	KHHL	98.9	Leander	TX
			SS	

July 16 Tr (BR)

0930	CBON25	97.1	Timmins	ON
			FF	
1722	CHLM1	91.5	Amos	PQ
			CBC FF with CBCO off	

July 17 Es (BR)

1906	KUVO	89.3	Denver	CO
			Jazz 89	

July 18 Tr (BR)

0545	WFXJ	107.5	N. Kingsville	OH
			The Fox, r	
0559	WCTL	106.3	Union City	PA
			g, SRN news	
0654	WKZA	106.9	Lakewood	NY
			106.9 Kiss FM	

July 19 Tr (BR)

1944 WNCO 101.3 Ashland OH  
AM 1340, Unforgettable favorites

1947 WAKS 96.5 Akron OH  
96-5 Kiss-FM

2300 W... 95.3 ...  
Non-stop 60s & 70s rock, no IDs

July 20 Au (BR)

0008 KOWZ 100.9 Bloomg Prair MN  
Clear ID, r

0014 KROC 106.9 Rochester MN  
106-9 KROC pr (Prev Tr)

0117 CJFP 103.7 Riv de Loup PQ  
FF, clear IDs

0024 CITE1 102.7 Sherbrooke PQ  
Rock Detente //94.7 (Prev Tr)

0024 CHEY 94.7 Trois Riv'res PQ  
Rock Detente //102.7 (Prev Tr)

0029 WOKO 98.9 Burlington VT  
98-9 WOKO, k (Tr)

0030 CKOI 96.9 Verdun PQ  
C'est Quoi, FF (Prev Tr)

July 20 Tr (BR)

0640 WYSZ 89.3 Maumee OH  
Yes FM, g-mx

0800 WKRW 89.3 Wooster OH  
NPR

0821 WMRN 106.9 Marion OH  
Country 107 WMRN

0823 WLRD 96.9 Willard OH g

0923 W... 100.9 ...  
The Classic Rock Station, Kim Ketchel  
DJ

0937 WBNI 89.1 Fort Wayne IN  
NPR

0940 WGLE 90.7 Lima OH  
FM-91, NPR

1015 CIZN 92.9 Cambridge ON  
The Zone 92-9

2347 WRPL 93.9 Fairview PA  
The New Planet Radio 93-9, p

July 21 Tr (BR)

0900 WRUW 91.1 Cleveland OH  
very strong

0928 WCOT 90.9 Jamestown NY  
g-mx //WCOU 88.3

July 22 Es (BR)

1950 WCMQ 92.3 Hialeah FL  
SS

1959 WRTO 98.3 Goulds FL  
SS

July 22 Tr (BR) (CFJB off with t-storm)

2210 CHGO1 95.7 Rouyn PQ  
FF r

2212 WPIG 95.7 Olean NY k  
2215 WCMB 95.7 Oscoda MI c  
//91.7 WCMU

2218 WFHM 95.5 Cleveland OH  
Fish, g

July 26 Es (BR)

2000 WUFT 89.1 Gainesville FL  
Classic 89...Majorcoast 90

July 27 GW (TO - Downsview) (#4)

2220 LP 104.9 Toronto ON  
World Youth Day (Catholic)

2221 LP 102.7 Toronto ON  
WYD

2222 LP 101.7 Toronto ON  
WYD

2223 LP 90.7 Toronto ON  
WYD

2224 LP 98.7 Toronto ON  
WYD

2225 LP 91.9 Toronto ON  
WYD

2226 LP 103.9 Toronto ON  
WYD

2227 LP 99.5 Toronto ON  
WYD

July 28 Es (BR)

2048 WGOR 93.9 Martinez GA  
Oldies 93-9

2049 .... 88.9  
Sounds of Joy g-t

2050 KSBJ 89.3 Humble TX  
gt

2051 KQXY 94.1 Beaumont TX  
Q-94

2052 KTFA 92.5 Groves TX

2056 KRWP 97.5 Beaumont TX  
RDS: POWER975, Power 97, pop-  
dance

2057 KRVV 100.1 Bastrop LA  
RDS: THE BEAT

2049 .... 89.5  
Sounds of Joy g-t

2100 KYFL 89.5 Monroe LA  
Bible Broadcasting Network

2107 KKGB 101.3 Sulphur LA  
The Rock

2109 KAOK 97.9 De Ridder LA

2110 KFAD 93.9 Alexandria LA  
Real country 93-9 KFAD

2111 WYMX 99.1 Greenwood MS  
Max 99

2116 KZMZ 96.9 Alexandria LA

2117 KKST 98.7 Oakdale LA  
Night Flight show

2123 WBBN 95.9 Taylorsville MS  
B-95, k

2130 WTYX 94.7 Jackson MS  
Arrow 94-7

2137	WHJT	93.5	Clinton	MS	2355	WJST	92.1	Ellwood City	PA
	Star 93.5	Christian Hits Radio				Star 92.1			
2154	WBRH	90.3	Baton Rouge	LA	<u>Aug 3 Tr (BR) (#6)</u>				
	Smooth Jazz 90.3	WBRH			0000	WORD	101.5	Pittsburgh	PA
2155	WCKW	92.3	La Place	LA	0002	WMXY	98.9	Youngstown	OH
	92.3	The Point				Mix 98-9			
<u>July 29 Es (BR)</u>					0014	WDSY	107.9	Pittsburgh	PA
1653	WMKS	92.3	Macon	GA		Y-108, k			
	Rock 92-3				0020	WMKX	105.5	Brookville	PA
1954	WTTS	92.3	Bloomington	IN		Megarock			
1757	KOBC	90.7	Joplin	MO	0028	WICT	95.1	Grove City	PA
1758	KTTK	90.7	Lebanon	MO		The Cat, k			
1759	KKOW	96.9	Pittsburg	KS	0031	WOWQ	102.1	Du Bois	PA
	96.9	The Cow				Q-102, k			
1800	KNYD	90.5	Broken Arrow	OK	0034	WHOT	101.1	Youngstown	OH
	Oasis Network				0039	WHUZ	94.3	Saegertown	PA
2144	KFRQ	94.5	Harlingen	TX		The New 94.3, 107			
	The Rock				0129	WAMO	106.7	Beaver Falls	PA
2146	KUT	90.5	Austin	TX	0200	WRQK	106.9	Canton	OH
<u>July 30 MS (BR)</u>					1954	WNWV	107.3	Elyria	OH
1215	KZBK	96.9	Brookfield	MO		RDS: WNWV-FM, j			
	"stop by Kirksfield or Columbia"				1957	WMRN	106.9	Marion	OH
<u>Aug 1 Tr (TO - Snowball / Bluffs)</u>						Buckeye Country 107			
0332	CJBC5	106.3	Peterborough	ON	1958	WWWM	105.5	Sylvania	OH
	(#5)					Star 105, pr			
0336	WIDL	92.1	Caro	MI	2004	WLTQ	97.3	Milwaukee	WI
	92FM The Coyote	CKPC off)				Light 97.3			
0554	WRPL	93.9	Fairview	PA	2008	WMYX	99.1	Milwaukee	WI
	Planet 93-9, pr				2034	WLKR	95.3	Norwalk	OH
<u>Aug 2 MS (BR)</u>						Cleveland Rockers	WNBA		
1303	KKBJ	103.7	Bemidji	MN	2039	WSWR	100.1	Shelby	OH
	Local ad					Cruisin' 100			
<u>Aug 2 Au (BR)</u>					2230	WNCD	93.3	Youngstown	OH
1712	KOWZ	100.9	Bloomg Prair	MN		CD 93-3	The Wolf, pr		
<u>Aug 2 Tr (BR)</u>					2345	WJZE	97.3	Oak Harbor	OH
2047	WKSV	89.1	Thompson	OH		The new Fox 97.3, rm			
	RDS: WKSV, folk mx				<u>Aug 4 Tr (BR)</u>				
2220	WOXX	99.3	Franklin	PA	0420	WTWR	98.3	Monroe	MI
	Kiss, r					Tower 98			
2300	WSHH	99.7	Pittsburgh	PA	0425	WOBE	100.7	Crystal River	MI
	Wish 99.7					B-100			
2305	WJJJ	104.7	Pittsburgh	PA	0500	WHDI	91.9	Sister Bay	WI
	The Beat					BBC World Service			
2310	WDVE	102.5	Pittsburgh	PA	0530	WJNR	101.5	Iron Mountain	MI
	DVE, pr				0455	WRGX	88.5	Sturgeon Bay	WI
2225	WKST	96.1	Pittsburgh	PA		pr			
	Kiss FM, hiphop				2215	WIHC	97.9	Newberry	MI
2342	WBTJ	101.9	Hubbard	OH		Bear, r			
	102 Jams				<u>Aug 5 Tr (BR)</u>				
2347	WRRK	96.9	Braddock	PA	0157	CKUN	101.3	Beausoleil	ON
	Channel 97, r					Nish 101	Beausoleil (#7)		
2350	WLTJ	92.9	Pittsburgh	PA	0313	WYZN	94.5	Mackinaw City	MI
						The Zone, modern rock			
					0812	WEEG	97.3	Essexville	MI
						Saginaw's Classic Rock			
					0818	WGDN	103.1	Gladwin	MI
						103 Country	WGDN		
					0824	WKCC	98.1	Saginaw	MI
						98-KCQ, k			



0825	WILZ	104.5	Saginaw	MI	1123	WECC	89.3	Folkston	GA
	Wheels	104-5 & 101,	Bob & Tom			89.3	The Lighthouse,	g	
0826	WYLZ	100.9	Pinconning	MI	1137	WYFE	88.9	Tarpon Sprgs	FL
	Wheels	104-5 & 101,	Bob & Tom			BBN	g		
0828	WHST	106.1	Tawas City	MI					
			g-t						
0836	WQBX	104.9	Alma	MI					
			Q-105, Bob & Sherry	Chat Room					
0924	WJOJ	89.7	Harrisville	MI					
			Joy 89,	g-mx					
<u>Aug 5 Es (BR)</u>									
1100	WWIO	88.9	Brunswick	GA					
			WSVH-WWIO,	wsvh.org					

Aug 6 MS (BR)

0745	KKOW	96.9	Pittsburg	KS
		620-485-2388	twice, prev Es	
0810	WGKS	96.9	Paris	KY
			Kiss FM	
1748	WLEZ	102.7	Terre Haute	IN
			Ad with full address	

Underlined is new, BR is Burnt River, TO is Toronto, SN is Snowball (near Newmarket).  
 #1: 96.1 CBC in Timmins ON is exactly // North Bay but there were clearly two of them mixing.  
 #2: Long MS burst for KZBK: "If you're listening to the Best Hits and Best Variety, there's a good chance you're listening to KZBK."  
 #3: Upon waking, turned the radio on, caught a clear ID with list of stns incl. xltr on 90.7, which I happened to be on. But I was groggy & couldn't remember anything more specific than a mention of a stn in Austin. Opening was solid TX. Sigh...  
 #4: World Youth Day stations on for papal visit. Probably used mobile transmitters at three sites around Toronto.  
 #5: CJBC5 106.3 relaying TK-99 / TK-105 (99.5) NY oldies, probably picked up via 99.5 CJBC station in Kingston.  
 #6: Signals for the next three days strongest ever noted to Pittsburgh and Cleveland areas.  
 #7: CKUN is a recent CRTC grant for a Native community on Beausoleil Island, also known as Christian Island.  
 REMARKS: July 2002 ranks the worst July ever for Es since I started seriously in the late 1970s. But Tropo has made up for it with some very strong signals. I very rarely get the Pittsburgh direction at Burnt River. Nice auroral opening, too. The borderline variety where the hash is not intense and signals are relatively clear. The trade-off seems to be that the more intense aurora yield more unusual areas but are hard to ID. 73s, Saul

**ADAM RIVERS - Chicopee MA Email: [patriotsrule417@yahoo.com](mailto:patriotsrule417@yahoo.com)**

**<http://adamskewlsite.freesevers.com>**

**Sherwood S-7250 tuner w/ 110kHz filters RS antenna wire and Conrad RDS manager New are underlined**

July 26 Tropo

10:41 PM	WBLS	107.5	New York	NY
10:43 PM	WAXQ	104.3	New York	NY semi-local quality
10:45 PM	WATD	95.9	Marshfield	MA rare

July 28 Tropo

7:48 PM	WSEN	92.1	Baldwinsville	NY
7:54 PM	WAYV	95.1	Atlantic City	NJ

July 28 Es

8:45 PM	WKXI	107.5	Magee	MS legal ID "Kixie 107"
8:45 PM	WAJV	98.9	Brooksville	MS
8:46 PM	WJMI	99.7	Jackson	MS relog
8:52 PM	WJKX	102.5	Ellisville	MS
8:58 PM	UNID	92.1	<Note 1>	
9:15 PM	WBAM	98.9	Montgomery	AL

July 29 Es

4:41 PM	<u>KCHA</u>	95.9	Charleston	IA
4:42 PM	<u>KWOA</u>	95.1	Worthington	MN
4:48 PM	<u>WKLQ</u>	94.5	Holland	MN
4:49 PM	<u>KOEL</u>	92.3	Oelwein	IA
4:50 PM	<u>WKIF</u>	92.7	Kanakee	IL <Note 2>
4:53 PM	KIAQ	96.9	Clarion	IA
4:55 PM	<u>KSMA</u>	98.7	Osage	IA "Kiss-fm"
4:59 PM	<u>WQPC</u>	94.3	Prarie du Chien	WI- QSLed 8/1/02
5:01 PM	<u>KKCV</u>	98.5	Cedar Falls	IA
5:09 PM	* <u>KICD</u>	107.7	Spencer	IA
5:25 PM	<u>KISD</u>	98.7	Pipestone	MN

August 2 Tropo

4:04 PM	<u>WHRB</u>	95.3	Cambridge	MA
			<Note 3>	

4:07 PM WNHU 88.7 West Haven CT  
 <Note 4>  
 4:43 PM WFTN 94.1 Franklin NH rare  
 4:49 PM WFNX 101.7 Lynn MA rare  
 6:14 PM WUUB 95.3 York Center ME  
 <Note 5>  
 7:07 PM WFHN 107.1  
 Fairhaven MA  
 8:48 PM WQCB 106.5 Brewer ME  
 <Note 6>  
 9:02 PM WWBX 97.1 Bangor ME  
 <Note 7>  
 9:59 PM WSPK 104.7 Poughkeepsie NY

August 3 Tropo <Note 8>

9:49 AM WBAI 99.5 New York NY  
 ST; local quality  
 9:52 AM WXRK 92.3 New York NY  
 ST; local quality; rare  
 10:03 AM WHTZ 100.3 New York NY  
 ST; local quality  
 10:06 AM WRKS 98.7 New York NY  
 ST; local quality  
 10:08 AM WOKO 98.9 Burlington VT  
 10:12 AM WQCD 101.9 New York NY  
 ST; local quality  
 10:13 AM WKTU 103.5 New York NY  
 ST; local quality  
 10:13 AM WAXQ 104.3 New York NY  
 ST; local quality  
 10:14 AM WWPR 105.1 New York NY  
 ST; local quality; rare  
 10:16 AM WLTW 106.7 New York NY  
 ST; local quality; rare  
 10:16 AM WBLS 107.5 New York NY  
 ST; local quality  
 10:25 AM WQHT 97.1 New York NY  
 ST; local quality; rare  
 10:30 AM WCBS 101.1 New York NY  
 ST; local quality  
 10:51 AM WPLJ 95.5 New York NY  
 ST; local quality

11:01 AM WRBY 102.5 Utica NY  
 very strong  
 11:04 AM WOUR 96.9 Utica NY  
 very strong

August 4 Tropo

12:00 AM WZRT 97.1 Rutland VT  
 over local translator  
 10:28 AM WLOB 96.3 Rumford ME  
 rare  
 7:17 PM WYFI 99.7 Norfolk VA  
 7:18 PM WQEZ 104.7 Kennebunkport ME  
 7:36 PM WBYY 98.7 Somersworth NH  
 7:49 PM WPOR 101.9 Portland ME  
 10:12 PM WAKX 102.7 Narragansett Pier RI  
 10:18 PM WZRI 100.3 Middletown RI  
 10:19 PM WPLM 99.1 Plymouth MA  
 over local WPLR in stereo  
 10:25 PM WDVT 93.5 Harwichport MA  
 10:31 PM WATD 95.9 Marshfield MA  
 10:41 PM WPRO 92.3 Providence RI new  
 RDS "PRO-FM"  
 11:20 PM UNID 90.1 <Note 9>  
 11:29 PM WBLI 106.1 Patchogue NY  
 <Note 10>  
 11:40 PM UNID 105.5 <Note 11>

August 5 MS

1:37 AM UNID 92.3 "Power 92" <Note 12>

August 5 Tropo

5:20 PM WQBK 103.9 Rensselaer NY  
 rare; stereo.

August 6 Tropo

6:50 PM WAYV 95.1 Atlantic City NJ  
 6:52 PM WFPG 96.9 Atlantic City NJ

<Note 1>- My UNID mystery for that night. Kept showing up with program "USA Music Magazine", which appeared to be an R&B countdown show, but no ID. <Note 2>- Could have been WKIE 92.7 Arlington Heights, IL or WKIF 92.7 Kanakee, IL. Putting WKIF in log because it was closer to the other stations that I was receiving at that time. <Note 3>- Local WPVQ off. <Note 4>- Adjacent local WFCR off. Heard many meteor pings on 88.5 frequency, but none IDable. <Note 5>- Came up strong for 20 minutes, then left while WPVQ off. <Note 6>- Very surprised at this catch- 253 miles. <Note 7>- Over local translator at 261 miles. <Note 8>- My strongest tropo opening to New York City. Usually I don't log stations for New York City, but these were extremely strong. <Note 9>- This was that night's UNID mystery. Talking extensively about the Mets and Giants, college sport program (although I did not catch the name of the college). <Note 10>- Last summer I could hear this station every night, if I hear it once a week I'm lucky this year. <Note 11>- ESPN Radio. Top of the hour ID was for 99.7 WSKO in Providence. My theory is that it was a translator picking it up with the strong tropo but you never know. Came up over WQGN for over 25 minutes. <Note 12>- My first real meteor scatter burst, and there are more than one and I didn't get any local identifiers. Oh well.



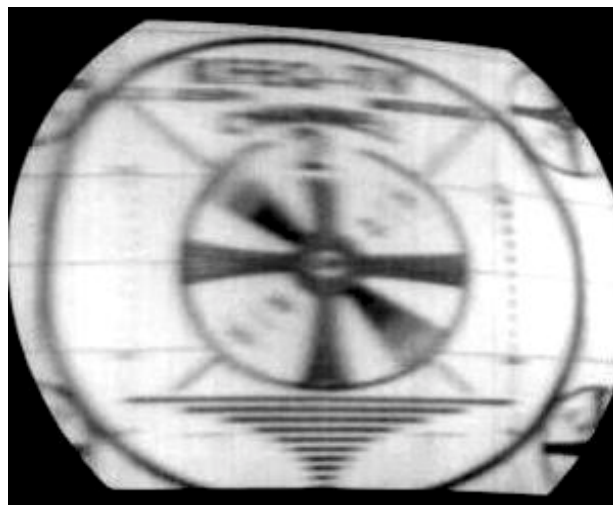
# **SATELLITE NEWS**

**George W. Jensen**  
**4604 Antanna Ave., Baltimore, MD 21206-4220**  
**SCISATMAN@AOL.COM**

Not too many changes this month - of note - SatcomC3 - 5 - delete Hallmark channel - now in an MPEG format and encrypted. On Galaxy 1 - 603 - the new Discovery HDTV service. Now on to the satellite rundown -

**First - Galaxy 4.** C and KuBand - 2000 - 12 year life 20 watt C Band transponders and 60 watt KuBand transponders. Format - Odds/Horizontal, Evens/Vertical. Here are the generally in clear services: 2 - digicipher encrypted 7 - Feeds 9 - MPEG2 encrypted 11 - MPEG2 encrypted 12 - Feeds 14 - MPEG2 - 3980V/1160 - Feeds, Bloomberg, Sports Feeds, Color Bars 15 - World Harvest Television, WHMB Ch 40 - Indianapolis, Indiana 16 - National Christian Television - The Shepherd's Chapel 17 - Buena Vista Television Feeds 21 through 24 - occasional feeds. Audio Sub-Carriers:- 15 - Pulse FM WHPZ FM Breme, Indiana and various World Harvest Radio International Feeds 16 - KNEA 970 - Jonesboro, Arkansas On the KuBand side many transponders are used for HITS - Head End In The Sky - a downlink service for cable television systems. open for reception are the following:- 401 - Outdoor Life Network, 583 - Bloomberg News, 604 - America's Health Channel, 620 - Toon Disney, 820 - 857 - DMX Music 820 - Listening Room, 821 - Jazz Vocal Blends, 822 - Hottest Hits, 823 - Modern Country, 824 - Alternative Rock, 825 - Adult Contemporary, 826 - Light Classics, 827 - 60's Oldies, 828 - Classic Rock, 829 - Urban Beat, 830 - Urban Adult Contemporary, 831 - Eap. 832 - Classic Jazz, 833 - Rock 'N Blues, 834 - Gospel, 835 - Childrens, 836 - Coffee House Rock, 837 - Dance, 838 - Christian, 839 - Album Rock. 840 - Hard Rock, 841 - 80's Hits, 842 - 70's Oldies, 843 - Classic R and B, 844 - Traditional Country, 845 - Soft Hits, 846 - Retro Dance, 847 - Acid Jazz, 848 - Swing, 849 - Lite Jazz, 850 - New Age, 851 - Holidays and Happenings, 852 - Great Standards, 853 - The 50's Golden Oldies, 854 - Reggae, 855 - Trends, 856 - Symphonic.

**Next to Telstar 5** - 97 West - Spring, 1997 - 12 years - C and KuBand - Format - odds/vertical, evens/horizontal power - C Band 12 to 23 watts, KuBand 60 - 120 watts. C band services - 4 - digicipher feeds - Nebraska Public Television 8 - ABC News Channel feeds, 10 - Fox Network occasionally, 11 - MPEG2 - 3907V/4651 Latter Day Saints. MPEG2 3934V/2638 - Brigham Young University Television. 15 - MPEG2 feeds - 3991V/13300 - UPN Network and others 17 - MPEG1 - Scola, 18 - Armed Forces Radio and Television in encrypted MPEG2, 21 - ABC West, 22 - ABC east, 23 and 24 - misc feeds, 600 - Nebraska Public Television, 601 - N2, 602 through 607 - Nebraska Public Television Instructional Television Distance Learning Service. KuBand Services:- Everything mentioned here is in MPEG2 unless mentioned otherwise-- 1 - 11749V/7232 - Homesat - Home School Service - religious based - all but one of 4 channels now encrypted. 5 - 11836V/20765 - IRIB Jaam-E-Jam Iranian, Sahar University Network, Rang-A-Rang, Iranian - US Based?, GCGI - Chinese, Super Value Channel - Chinese, Asia After Dark Proro Channel - TVI - Tamil , Haitian Satellite Television 8 - MPEG2 Encrypted, 9 - 11898V/20000 - Nile TV International, Palestinian Satellite Channel, Emirates Dubai 1, EDTV2 - Sports Channel, Saudi Channel 1, Dish Middle Eastern Channels Promos, Dubai Business Channel, KBS International Color Bars (Kelly International), Radio - Holy Koran Radio and main Saudi Audio Channel 10 digicipher feed 11 - 11929V/22000 - Euronews - Languages, Euronews English, Al-Manar TV, Syrian Satellite Channel, Fashion TV (seems to have gone dark here and elsewhere), MTV Lebanon (not the US music television), TV Polonia and RTV2 - Romana (new) radio services - Deutsches Welle 1 and Polskie Radio 1 and 3 21 - 12084V/23145 - Color Bars, Super Value Channel, The Asia Network, UCN Television, Radio services - CCBC Pop, CCBC News, CCBC Taiwan Radio Iran Los Angeles 22 - 12090H/20000 - TzuChi Television (Buddhist), Appadana Color Bars, National Iranian Television (US), 23 - 12115V/22425 - Buddhism Light Television, MAC Television- Chinese and TzuChi Television, 24 - 12122H/22000 - HRT Sat Zagreb, Croatia, DFH1 Turkish, KISB2, KISB3 - radio services - Radio Hrvarska Zagreb, Radio Korea, 26 - 12152H/20000 - Abu Dhabi Television, Pars TV, Thai TV, Bangkok, Tapes Television, Ajara TV (appears to be Russian), Melli TV, Iran TV Network, Color Bars, Jaam-E-Jam Iran, radio services - Radio Sedaue Iran, Radio Seoul. 12177/23000 - Kurd Sat, Samanyolu TV World Turkey, Maharishi Open University, Kurdistan Television, VTV4 - Hanoi, Vietnam, TRT International - Turkey, Color Bars, Kuwait Space Channel, radio services - World Radio Network - English, Languages and French (3 channels) Kuwait Radio , Radio Sedaye Melli Iran, and AFN. That's all for this month - see you in 30. 73's and good DX - George.



KFEQ-TV 2 in St. Joseph, MO began life in 1953. Based on the shape of the screen this picture was probably taken off an early RCA color set.

## Midwest Memories

(Here's more from Bill Eckberg's huge DX photo collection. Most of the photos included here were taken between 1955 and 1965 near Dixon, IL)



WEEQ-TV in LaSalle, IL was almost in Bill's backyard. While operation as a low power satellite of WEEK-TV (25) in Peoria ended years ago, it's back as a full power TBN o&o (and major "pest" for Bill).



Almost 50 years ago, CCI wasn't much of a problem. That's evident in this interference-free shot of channel 9 Minneapolis (which began operation in 1955 as KEYD-TV). That's likely the lens turret of a RCA TK-11A image orthicon camera on the left. Loew and National Telefilms owned the station at this time



Here's a rare one! WFAM-TV (59) Lafayette, Indiana.



Anybody remember when WEHT, Evansville was on Channel 50?



WEAU-TV has evolved to WEAQ-TV, but it still serves Eau Claire and Chippawa Falls, Wisconsin.

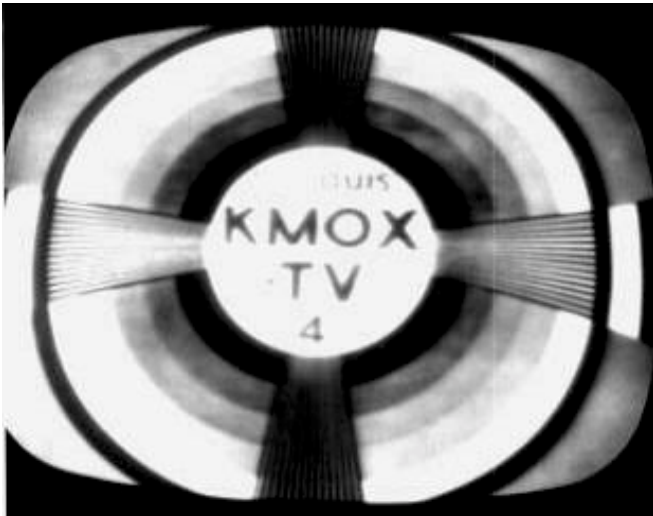




It's KSFY-TV now; and if that logo looks familiar, it was created by owner WDAY-TV in Fargo, ND.



Now KCCI-TV, here's a great pic from Des Moines.



Now KMOV, KMOX-tv St. Louis was a regular for Bill.



Fantastic low-V Tr from WFBM-TV 6, Indianapolis.



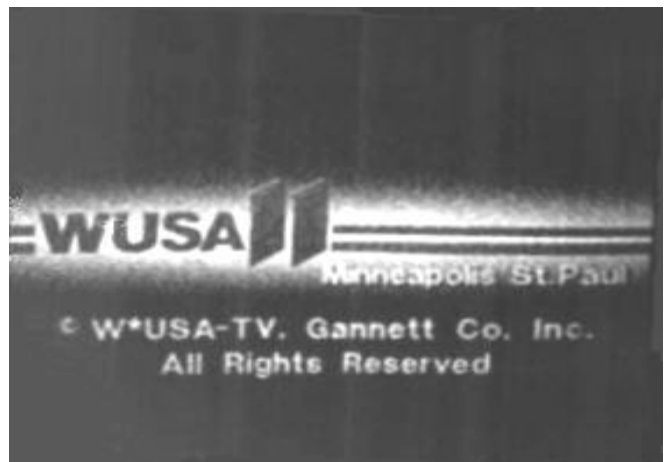
Another low-V Tr catch, WJIM-TV 6, Lansing, MI.



These call letters launched both channels 4 (now WCCO-tv) and 11 in Minneapolis, St. Paul.



Dxers today know this as KTTC-TV, Rochester, MN.



On the way to becoming today's KARE-TV, here's yet another call used on channel 11 in the Twin Cities.

## **The QSL Corner**

Thomas J. Yingling, Jr.  
221 Pinewood Road  
Baltimore, MD 21222-2345  
E-Mail: KA3TCC@EROLS.COM



This column returns again, but now I'm all out of QSL items again. First we have: Bruce Elving, FM Atlas Publishing, 241 Anderson Road, Esko MN 55733-9413. QSLs this year have been few in number but the quality is just excellent!

**WPMA 102.7 2278 Wortham Lane., Grovetown GA 30813-5103.** Clarence Barinowski, owner, wrote a note on the bottom of my letter, saying: "Don't think we have heard a report of greater distance. We should increase power this year to 25 kW from present 6 kW. Yes, you did hear WPMA Sparta GA." The new construction permits calls for it to move to Buckhead GA. Also enclosed bumper sticker and program guide.

**WPUB 102.7 PO Box 753, Camden SC 29020.** "Kool 102.7" David McIntosh, news director, writes saying they were "quite surprised and pleased to receive your letter telling of your reception of WPUB-FM in Minnesota. To our knowledge this is the farthest that anyone has received the station." Mentions its oldies format. "I'm glad to see that there are still folks out there who are DXing (I DXed in the '60s and '70s--mainly on shortwave and medium wave)." He invited me to try DXing their MOR/easy listening AM on 1590. Power is 1000 watts day, only 30 watts at night. He thinks the best time to DX it is just before sunset. Enclosed bumper sticker.

**KDHF 88.1 3504 Magnolia, St. Louis MO 63118.** Letter from Larry Weir, operations manager, mentioning its heritage as KDNA 102.5 in the early '70s, and how it came back on 88.1 in 1987. His in specific verification mentions hearing from people "around the country occasionally who are radio hobbyists, and it's always fun to find out where some people are listening to us." Enclosed a bumper sticker and program grid.

**KYZZ 100.1 424 N. Van Buren, San Angelo TX 76901.** Audrey C. Luna, general manager she sent bumper sticker, a San Angelo city map, a KYZZ media kit, and a long, friendly letter that says in part: "You definitely have the long distance award at plus or minus 1300 miles! Congratulations!" [And she enclosed a "KYZZ Extended Distance Listener Certificate," with my name printed thereon. It must have been done on there Computer.] The letter continues: "Our DJs are bilingual, and as you note, broadcast in both English and Spanish," and she mentions her brother who died March '99 was a ham who built KYZZ. "I wish you and he could've had the opportunity to communicate. At ages 64 and 73, my husband and I are now the owner/managers of KYZZ. We have learned that radio stations are far more complex than just turning a button to 'on'. "Your treasured letter is currently being displayed on the office notice board, with a copy posted on the jock bulletin board. It is certainly a day-brightener and has been thoroughly enjoyed by all of the 'Z-Crew' Hope you hear from us again soon!"



**W265AI 100.9 For a translator of WXPR 91.7 Ironwood MI**, received here in Esko, west of Duluth MN. Verification from president and manager Mick Fiocchi at WXPR, 303 W. Prospect St., Rhinelander WI 54501. He was not surprised at my reception. "We have been getting lots of complaints from people who ARE in our listening area and they can't hear us, that they are receiving other stations instead of WXPR . . . The 'ether' must really be in a turmoil recently."

Now from my DXing. I send letters with screen shots from Win-TV-D computer card.

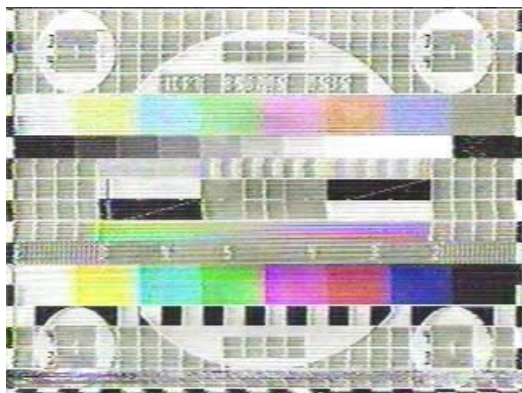
**WBOC-DT-TV 21** Box 2057, 1729 North Salisbury Boulevard, Salisbury, MD 21801.

Letter & baseball cap from Rick Jordan, VP in 1 week. Also qsl'ed analog ch 16. Also send booklet on HDTV-101 all about the station, tower located in Laurel, Delaware.

**WGNT-DT-TV 50** 1318 Spratley Street, Portsmouth, Virginia 23704. An e-mail QSL (bad, I want letterhead paper) from George M Randell, [gmandell@wgnttv.com](mailto:gmandell@wgnttv.com). I e-mailed him back; no reply yet. I wonder if !

**WPVI-DT 64 4100** City Line Avenue Philadelphia PA 19131. First an e-mail QSL from [James.D.Gilbert@abc.com](mailto:James.D.Gilbert@abc.com), then I got a package in mail with a letterhead paper letter and large coffee cup from James D. Gilbert, WA2CZD Director of Engineering. I was shocked. After first getting a e-mail QSL from WGNT-DT-TV , I though oh no! But, I was lucky. It looks real nice too.

Now as a filler for page 2, some TV dx and odd test patterns id's.



## Sign Up/Renewal form

Name\_\_\_\_\_

Address\_\_\_\_\_ Apt #\_\_\_\_\_

City\_\_\_\_\_ State/Prov\_\_\_\_\_ Zip\_\_\_\_\_

Country\_\_\_\_\_ Interests: TV ( ) FM ( ) 30-50( ) Weather( )

email address\_\_\_\_\_

Sign me up/renew me for: 1 year ( ) 2 years ( ) More ( )

Yearly dues \$24 to US addresses, \$26 to Canada and Mexico  
\$38 to the rest of the world (payable in U.S. Funds)

**Mail your dues to: WTFDA, P.O. Box 501, Somersville, CT USA 06072**

**Make your checks/money orders payable to: DAVE JANOWIAK**

**And *thanks* for your support of the WTFDA!**

Return this form with your dues or make a copy of it and return that.

## Editors and Submissions

*Send your reports and station info to these folks.*

### **THE MAILBOX and all general club correspondence:**

Mike Bugaj at WTFDA, PO Box 501, Somersville, CT 06072

[mbugaj@snet.net](mailto:mbugaj@snet.net)

### **SATELLITE NEWS**

George Jensen, 4604 Antana Ave., Baltimore, MD 20206-4220

[scisatman@aol.com](mailto:scisatman@aol.com)

### **TV NEWS**

Doug Smith, 1385 Old Clarksville Pike, Pleasant View, TN 37146-8098

[w9wi@w9wi.com](mailto:w9wi@w9wi.com)

### **FM NEWS**

Steven Wiseblood, 28 LBJ Blvd., Brownsville, TX 78521

[stevenwisebl@hotmail.com](mailto:stevenwisebl@hotmail.com)

### **PHOTO NEWS**

Jeff Kruszka, 5024 S. Braxton Ave., Baton Rouge, LA 70817

[jkruszka@bellsouth.net](mailto:jkruszka@bellsouth.net)

### **TV TIME TUNNEL**

Tom Bryant, 849 Todd Preis Dr., Nashville, TN 37221-2607

[tjbdx@comcast.net](mailto:tjbdx@comcast.net)

### **EASTERN TV DX**

Matt Sittel, 15013 Eureux Circle, Bellevue, NE 68123

[mcsittel@cox.net](mailto:mcsittel@cox.net)

### **WESTERN TV DX**

Victor Frank, 12450 Skyline Blvd., Woodside, CA 94062-4554

[frank@horizon.sri.com](mailto:frank@horizon.sri.com)

### **SOUTHERN FM**

John Zondlo, 4889 Driftwood Cir., Yukon, OK 73099

[sfm@fmdxweb.com](mailto:sfm@fmdxweb.com)

### **NORTHERN FM**

Keith McGinnis, 387 Shirley Street, Winthrop, MA 02152

[longwave@attbi.com](mailto:longwave@attbi.com)

### **WTFDA://ONLINE**

Saul Chernos, 57 Berkeley St., Toronto, ON M5A 2W5

[schernos@sympatico.ca](mailto:schernos@sympatico.ca)

### **VERIFICATIONS AND QSL SIGNERS**

Tom Yingling, 221 Pinewood Road, Baltimore, MD 21222-2345

[ka3tcc@erols.com](mailto:ka3tcc@erols.com)

### **TV and FM STATISTICS**

Fred Nordquist, 7945 Boxford Road, Clay, NY 13041

[nordquis@twcnny.rr.com](mailto:nordquis@twcnny.rr.com)

---

**Please Remember To Make Your Renewal Checks Payable to Dave Janowiak**  
**Checks made payable to WTFDA may be returned and your renewal may be delayed.**