

Vhf-Uhf DIGEST

The Official Publication of the Worldwide TV-FM DX Association

FEBRUARY 2003

The Magazine For TV and FM DXers

FRIGID FEBRUARY

**INSIDE: ROY BARSTOW'S ANTENNA FARM
DOUG SMITH'S LISTING OF REDUCED POWER DTV STATIONS!**

NEED A ROTOR? LOOK INSIDE!



TV AND fm DXing was *never* so much fun!

THE WORLDWIDE TV-FM DX ASSOCIATION

Serving the UHF-VHF Enthusiast

THE VHF-UHF DIGEST IS THE OFFICIAL PUBLICATION OF THE WORLDWIDE TV-FM DX ASSOCIATION DEDICATED TO THE OBSERVATION AND STUDY OF THE PROPAGATION OF LONG DISTANCE TELEVISION AND FM BROADCASTING SIGNALS AT VHF AND UHF. WTFDA IS GOVERNED BY A BOARD OF DIRECTORS: TOM BRYANT, GREG CONIGLIO, BRUCE HALL, DAVE JANOWIAK AND MIKE BUGAJ.



Editor and publisher: **Mike Bugaj**

Circulation: **Mike Bugaj** Treasurer: **Dave Janowiak** Webmaster: **Tim McVey**
Editorial Staff: **Tom Bryant, Steven Wiseblood, Victor Frank, George W. Jensen, Jeff Kruszka, Keith McGinnis, Fred Nordquist, Matt Sittel, Doug Smith, Thomas J. Yingling, Jr. and John Zondlo,**

Our website: www.anarc.org/wtfda

ANARC Rep: **Jim Thomas**, Back Issues: **Dave Nieman**

FEBRUARY 2003 EVUD



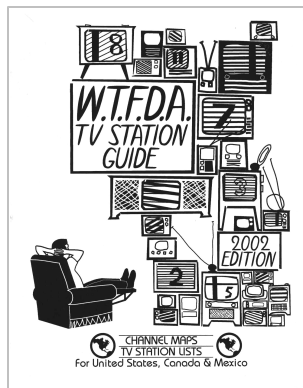
Finally! For those of you online with an email address, we now offer a quick, convenient and secure way to join or renew your membership in the WTFDA from our page at:

<http://fmdx.usclargo.com/join.html>

Dues are \$25 if paid from your account and \$26 if paid by credit card because of fees charged. And of course you can always renew by check or money order for the usual price.

CONTENTS

Page Two	2
Mailbox	3
TV News...Doug Smith	4
Western TV DX...Victor Frank	13
FM News...Steven Wiseblood	15
Northern FM DX...Keith McGinnis	17
Photo News...Jeff Kruszka	20
Meteor Shower guide	22
Time Tunnel...Tom Bryant	23
Satellite News...George Jensen	24
More DXing in a Digital World	25
Editors and submissions	27



The 2002 WTFDA TV STATION GUIDE

Start your new year with the most comprehensive listing off North American Television stations in print! Just \$23 US will get you one. Mail your check or money order

today. Make it payable to Dave Janowiak and mail it to John Ebeling, 9209 Vincent Avenue S., Bloomington, MN 55431-2157. Remember, there won't be a station guide for 2003 so get your copy now for the 2003 DX season before they're out of print.

Well, what can we say. This has been one heck of a winter from Buffalo to Daytona Beach, from Atlanta to Minneapolis. It has been *cold*. Not just cold...*frigid!* It snowed in Daytona Beach and Nashville went down to zero one morning. This is winter? Yes, I guess it is!

I've been walking around the house singing "I Love New York". I have a feeling that this will be another great convention.

And those antennas in this month's cover? Those belong to me and the rotor is frozen and will have to be replaced this spring.

So, sit back, keep warm and enjoy this VUD. We have some great reading for you



WTFDA CONVENTION 2003!



WTFDA Convention 2003 will take place in Western, NY, brought to you by WTFDAers in Rochester (Scott Fybush, Rick Lucas, Jerry Bond), Buffalo (Greg Coniglio and others) and all points in between (Jim Renfrew). Look for a motel announcement (tentatively in Batavia, halfway between Rochester and Buffalo with a great shot into Canada on FM and TV) and more details in the March VUD.



The Mailbox

P.O. Box 501, Somersville, CT USA 06072
MIKE BUGAJ MBUGAJ@SNET.NET

FEBRUARY 2003

Welcome to the Mailbox for February. We've had a rather uneventful January in most of North America. A couple of minor Es events were noted on the 5th and 6th, but nothing of a significant nature.

But then again, this is winter in North America. We can't expect much in the way of dx this time of year.

If there is any news in January, the news is that we have dates scheduled for the WTFDA convention this summer. The dates are July 11-13 and the location is Batavia, New York. Batavia is an easy place to reach from the east and from the west. All you do is take your favorite ramp to I-90 and take it to Batavia and get off at exit 48 (route 98). I did this drive back in September and it's an easy 6 hour drive from New England. Some details have yet to be confirmed. We'll let you know more when we find out.

MEMBERS AND MORE

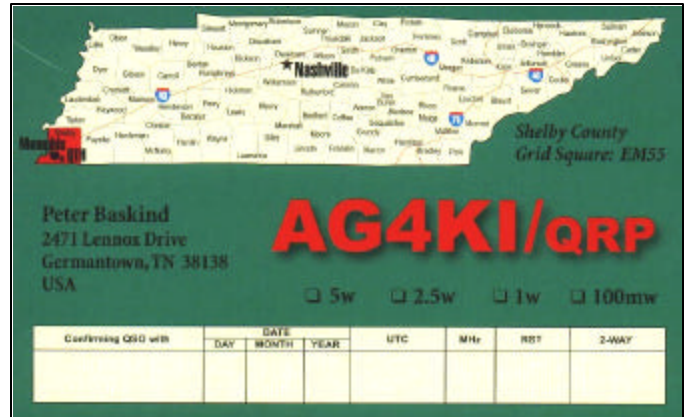
Well, it's nice to see another Canadian member in our ranks. Hello to **Eric Conchie** who lives in Tweed, Ontario. Eric signed up on the internet with Paypal. Greetings, Eric!

We have a long list of renewals. Glad to have all of you aboard for another year:

- Melvyn Larson (MN)
- Wally Dickson (MA)
- Steven Wiseblood (TX)
- J Conway Dabney (MS)
- Bogdan Chiochiu (QC)
- Humberto Molina (EI SALVDR)
- Adam Rivers (MA)
- Robert Fischer (AK)
- Glen Hale (KY)
- Lenny Goldberg (OR)
- Dave Pomeroy (KS)
- Todd Emslie (AUSTRALIA)
- Gill Morgan (MO)
- Tom Bryant (TN)
- Roger Sabella (IL)
- Russ Edmunds (PA)
- Peter Baskind (TN)
- Charles Gauthier (QC)
- Albert Gordon (CA)
- Jim Thomas (CO)

Long time member John Vervoort has

left Brooklyn NY and reports in from Murray, KY, his new QTH. John sent a quick note that he doesn't miss Brooklyn in the least.



Peter Baskind sent in a couple of his QSL cards with his renewals. These are *really* sharp cards. I picked the one above mainly because I think it will copy better. If you have one, send it along with your dues. And by the way, thank you ALL for renewing.

Jesus Perez checks in again from Havana: "Well Mike, let me tell you that I am making some friends of mine in other cities in this country to record some programming including the local TV channel identifications, since I want to make a collection of every of those logos to send you. It is going to take me a little of time since there are around 14 local stations and I have friends having VCR's in four cities, but I am sure I will get to do it all. Some of the stations produce good documentaries about their local geography too.

So far, one friend is going to record something from TELEYUMURI-Matanzas City, another friend is going to record something from TELEPINAR-Pinar del Rio, then, another friends will do the same from TELETURQUINO-Santiago de Cuba and TV CAMAGUEY-Camaguey City, and also a friend will do all his best (he doesn't have VCR) to record something from PERLAVISION in Cienfuegos City. So hope to take pictures of every of those logos recorded with the use of a digital camera and send them to you or to Jeff in Baton Rouge in Louisiana for the joy of the rest of the members of our club, OK? Have a nice day, Your friend, Jesús" It sounds like a great idea to me and I know that almost everyone, TV Dxr or not, will love to see them!

Well, it's an abbreviated Mailbox for February. We'll see you next month! -Mike

TV News

February 2003

Douglas E. Smith W9WI
 1385 Old Clarksville Pike
 Pleasant View, TN 37146-8098
W9WI@w9wi.com

<http://www.w9wi.com>

Abbreviations:

AF	Applied for (a new station)	QC	Channel change on the air
aux	Auxiliary (backup) transmitter	QG	Channel change granted
CC	Call change	QR	Channel change requested
CL	City-of-license change	RA	Returned to the air
DE	Station deleted	ROA	Request of applicant
FC	Programming (Aformat@) change	SI	Off the air (Asilent@)
GA	Granted Amendment (to channel allocation table)	STA	Special Temporary Authority
LC	License to cover (for changes or new station)	XC	Transmitter site change on the air
NO	Not on the air	XG	Transmitter site change granted
NS	New station granted permit	XR	Transmitter site change requested
NW	New station on the air		
PA	Proposed Amendment		
PC	Power (or tower height) change on the air		
PG	Power (or tower height) change granted		
PR	Power (or tower height) change requested		

DTV stations *in italics*; full-license stations in **boldface**.

News:

Alabama:

Montgomery	14 WSFA-DT	QR from ch. 57, 600kw/530m	36-17-14/118-50-17; CC from K08LV
Tuscaloosa	11 W11CU	XR 33-13-48/87-50-50	

Arizona:

Holbrook	6 KNJO-LP	CC from K06NL	
Kingman	6 KMOH-TV	PC>592m, DA	
Tucson	6 KUAT-TV	PC<33.9kw/1101m	
Tucson	27 KUAS-TV	PG>178m, already on	
Tucson	34 KTAZ-CA	QC from ch. 25, 9.9kw	

Arkansas:

Little Rock	20 KKYK-LP	QC from ch. 22, 150kw	
Mountain Home	37 new-LPTV	AF dismissed (see Philadelphia NY)	

California:

Anaheim	56 KDOC-TV	PG>2390kw/922m, 34-13-36/118-03-58; already on	
Fallbrook	12 K12PO	QG from K47FL, 1kw, 33-35-36/117-08-53	
Lancaster	50 KTRO-LP	PR>26kw, 34-32-50/118-12-43	
Los Angeles	33 KSMV-LP	AF 300kw (experimental)	
Modesto	27 KEXT-CA	PG>90kw	
Morongo Valley	21 K21GI	QC from K60AY	
Morongo Valley	30 K30GU	QC from K64AU	
Porterville	61 KPXF	PC<2400kw/814m	
Redding	5 KRDN-LP	CC from K05LB	
San Diego	9 K09XM	QR from ch. 61, CL from National City, 21.9kw (?), 32-50-24/117-14-52 (KMCG-FM tower, Mt. Soledad); already granted	
Santa Barbara		55 K55AP	SI
Santa Maria	14 KQMM-LP	PG<36.7kw, 34-53-54/120-35-28	
Visalia	8 KFAZ-CA	PR>3kw,	

Colorado:

Colorado Sprs.	23 K38DM	QC from ch. 38, 50kw, 38-44-41/104-51-48, CL from Estes Park	
Denver	45 K45HH	QR from K55AU, 59.5kw, 39-54-48/105-17-33; CL from Windcliff. Already granted.	
Denver	50 KCEC	PC<231m, 39-43-58/105-14-08	
Denver	55 K69AT	QC from ch. 69, 13kw, 39-54-48/105-17-33; CL from Windcliff.	
Fort Collins	56 K56GH	PR>12.5kw, 40-35-09/105-04-05, CL from Estes Park	
Grand Junction	5 KREX-TV	PC>100kw/428m, 39-03-58/108-44-46	
Holyoke	21 K21FF	QG from ch. 61, 740w	

Florida:

Fort Myers	14 WTPH-LP	CC from W14CI	
Gainesville	45 WYPN-CA	QC from ch. 43, 30kw, 29-32-09/82-19-18	
Hallandale	58 W58BU	PR>90.8kw, already granted	
Jacksonville	7 WJCT	PR<270kw/302m	
Lakeland	31 WLWA-LP	QR from ch. 14, 8.42kw, 28-05-05/81-49-14	
Newport	29 W29CW	PR 150kw, 24-57-31/80-34-29; CL from Marathon	
Miami	31 WTVJ-DT	NS 1000kw/311m, 25-58-07/80-13-20	
Miami	57 W55BV	QR from ch. 55, 45.9kw	
Palm Beach	43 WWHB-CA	QC from ch. 19, 150kw, 27-01-32/80-10-43	

Stuart	48 WTCN-CA	QC from ch. 16, 60kw, 27-01-32/80-10-43	Marquette	19 WMQF	NW 500kw/248m, 46-36-14/87-37-15. Fox/WB/UPN.
Tampa	49 WRMD-LP	QG from ch. 57, 124kw, 27-56-50/82-27-35	Mount Pleasant	32 W32BT	PG>18kw, 43-37-38/84-50-18
Venice	62 WVEA-TV	PC>5000kw/476m, 27-49-10/82-15-39	<u>Minnesota:</u>		
<i>W Palm Beach</i>	<i>13 WPEC-DT</i>	<i>NW 29.5kw/291m</i>	Wadena	17 K20AC	QC from ch. 20, 25kw
<u>Georgia:</u>			<u>Mississippi:</u>		
Atlanta	32 WANN-LP	RA with Urban America TV	Pontotoc	15 W23CL	QR from ch. 23, 49.6kw, 34-15-10/88-57-36
<i>Atlanta</i>	<i>43 WUPA-DT</i>	<i>NW 1000kw/335m, 33-44-41/84-21-36</i>	<u>Missouri:</u>		
Atlanta	59 WSKC-LP	RA with music videos & Korean programming	Springfield	27 KDEB-TV	PC<4575kw/517m, 37-13-08/92-56-56
Baxley	34 WGSA	PR>5000kw/364m, 32-00-05/81-51-15	<i>St. Louis</i>	<i>31 KDNL-DT</i>	<i>NS 1000kw/321m</i>
<u>Hawaii:</u>			<u>Montana:</u>		
<i>Honolulu</i>	<i>40 KITV-DT</i>	<i>PG>1000kw/-1.6m</i>	Big Arm	5 K05EE	XR 47-40-39/114-08-30
Lihue	7 KLHE-LP	CC from K07XE	Bozeman	42 K42BZ	PC <18.7kw, 45-40-24/110-52-02
<i>Wailuku</i>	<i>45 KWHM-DT</i>	<i>PR>87kw/1298m, 20-40-58/156-19-07</i>	Finley Point	6 K06MQ	XR 47-40-39/114-08-30
<u>Idaho:</u>			Kalispell	34 KMMF-LP	CC from KESI-LP
Boise	47 K47BE	PC>59.6kw, from no offset to plus	Missoula	17 KMMF	PC<589kw/628m, 46-48-08/113-58-19
Lewiston	55 K55HZ	QC from ch. 64, 360w	<u>Nebraska:</u>		
<u>Illinois:</u>			Omaha	67 KVSS-LP	RA with Catholic religion
Carthage	44 WCRD-LP	CC from W44CA	<u>Nevada:</u>		
Chicago	2 WBBM-TV	PC 26.4kw/455m	<i>Reno</i>	<i>9 KOLO-DT</i>	<i>QG from ch. 23, 15.6kw/893m</i>
Chicago	23 WFBT-CA	FC to independent for seniors "Me-TV"	<u>New Hampshire:</u>		
Holcomb	7 WRDH-LP	CC from W07DH	<i>Concord</i>	<i>33 WPXG-DT</i>	<i>PG>100kw/344m</i>
<u>Indiana:</u>			Merrimack	60 WNEU	PC>5000kw
Clarksville	45 WJYL-CA	PR>150kw	<u>New Jersey:</u>		
Coalmont	18 WHFE-LP	CC from W18CX	<i>Atlantic City</i>	<i>49 WWSI-DT</i>	<i>NW 130kw/296m</i>
Shelburn	29 WSVC-LP	CC from W29CS	Edison	39 W39CQ	QG from W36AS, 35kw, 40-31-45/74-23-34; CL from New Brunswick
Vigo	54 WVGO-LP	CC from W54DF	Vineland	65 WUVP	PC>4070kw/396m, 40-02-30/75-14-11
<u>Iowa:</u>			<u>New Mexico:</u>		
Des Moines	17 KDSM-TV	PC>3030kw/612m, 41-48-47/93-36-56	Albuquerque	30 KYNM-LP	QG from ch. 61, 8.41kw
Iowa City	64 K64DG	SI, lost lease on tower site	Albuquerque	48 KTFA-LP	PR<147kw
<u>Kentucky:</u>			Farmington	27 K27GJ	QC from K55DW
<i>Louisville</i>	<i>8 WBNA-DT</i>	<i>NW 27kw/200m</i>	Hatch	28 K65BS	QC from ch. 65
<u>Louisiana:</u>			Silver City	28 K12LL	QC from ch. 12, 9.38kw
New Orleans	38 WNOL-TV	PG<2880kw/309m, 29-58-57/89-56-58	<u>New York:</u>		
Shreveport	3 KTBS-TV	PC<541m	<i>Binghamton</i>	<i>4 WIVT-DT</i>	<i>PR 1.5kw/263m</i>
<u>Maine:</u>			Buffalo	23 WNLO	FC to UPN
Waterville	23 WPFO	CC from WMPX-TV	New York	11 WPIX	NW 24kw/244m, 40-57-39/73-55-23 (aux backup)
<u>Maryland:</u>			New York	23 WNYX-LP	QG from ch. 35, 10kw
<i>Baltimore</i>	<i>40 WNUV-DT</i>	<i>PR<845kw/373m</i>	Nyack	46 WRNN-LP	QG from ch. 57, 2.5kw
<u>Massachusetts:</u>			Philadelphia	37 new-LPTV	AF dismissed (0.283, 73.3566, 74.603(c)) (site *is* in NY, not PA)
<i>Boston</i>	<i>19 WGBH-DT</i>	<i>NW 700kw/374m</i>			
<i>Boston</i>	<i>43 WGBX-DT</i>	<i>NW 500kw/391m</i>			
<u>Michigan:</u>					
Kalamazoo	50 WOKZ-CA	QC from ch. 38, 14.3kw			

Rochester Springville	47 WROH-LP 67 WNGS	PG<11kw PR<364m; FC to independent, drops UPN	29-17-39/98-15-30; QR ch. 11, 1kw, 29-26-29/98-30-22 XR 28-47-09/97-00-04 PR<3.34kw
Utica <i>Utica</i>	20 WUTR 30 WUTR-DT	PR>1150kw PR<227m, DA	Victoria 17 K17FS Wichita Falls 44 K44FI
North Carolina:			Utah:
Jacksonville	19 WUNM-TV	PC<2400kw, 35-06-15/77-20-12	Beaver 18 K18FU
Shallotte	47 W47CK	QC from ch. 45, 13kw, 34-02-36/78-19-55; PR 6.8kw.	Delta 31 K31FG
North Dakota:			Summit Co. 41 K41GS
Williston	11 KXMD-TV	PC<100kw/291m, 48-08-45/103-53-20	Summit Co. 47 K65AD Summit Co. 49 K49FY
Ohio:			Summit Co. 51 K51FY
<i>Lorain</i>	28 WUAB-DT	PC>200kw/337m	Virginia: Bristol 5 WCYB-TV PC 71.7kw/741m, 36-26-58/82-06-29 <i>Bristol</i> 28 WCYB-DT PC<182.5kw <i>Front Royal</i> 21 WVPY-DT NW 50kw/400m <i>Ruckersville</i> 58 W58DK QG from W49AV <i>Staunton</i> 11 WVPT-DT NW 3.2kw/680m <i>Virginia Beach</i> 25 W60BR QC from ch. 60; CL from Chesapeake
<i>Toledo</i>	19 WTVG-DT	PR>795kw	
Zanesville	16 W16BT	PC>22.7kw	
Oklahoma:			Washington:
Elk City	29 K29EI	PG>9.98kw	Kennewick 15 KVVK-CA PC>81.9kw
Elk City	44 K44AP	PG>9.7kw	<i>Richland</i> 38 KTNW-DT PR>387m dismissed
Elk City	46 K46AN	PG>9.7kw	Spokane 52 KHBA-LP PR<13.64kw, 47-34-46/117-17-51
Elk City	48 K48AP	PG>9.7kw	West Virginia:
Elk City	50 K50AL	PG>9.7kw	Huntington 13 WOWK-TV PC 115kw/414m, 38-30-21/82-12-33
Stillwater	31 KWEM-LP	XG 36-03-37/97-08-31	Huntington 45 WBWV-LP FC to WB // WHCP-30
Oregon:			Wisconsin:
Grants Pass	47 K47GI	LC dismissed for QC from ch. 65/2.3kw (to stay at 10.1kw?)	<i>Appleton</i> 59 WACY-DT NW 4.14kw/279m
La Pine	5 K05JV	PG>350w; previous PR dismissed ROA	<i>Green Bay</i> 42 WPNE-DT PR 200kw/375m
Newport	18 K18FR	QC from K66AS, 12kw	Madison 38 W38CT QC from W33AX, 14.1kw, 43-03-09/89-28-42
Pennsylvania:			Wyoming:
Clearfield	3 WPSX-TV	PC 42.4kw/395m	Evanston 15 K44FA QC from ch. 44
<i>Harrisburg</i>	10 WHTM-DT	PR<16.2kw	U.S. Possessions:
Meadville	44 W44CC	QR from W52BO, 3.6kw dismissed, Canadian objection (CJMT-TV?)	Northern Mariana Islands:
Philadelphia	7 WWJT-LP	PG>3kw	Saipan 32 KGPN-LP CC from W32CJ
<i>Pittsburgh</i>	26 WQEX-DT	PG 50kw/213m	Puerto Rico:
<i>Pittsburgh</i>	43 WPGH-DT	NS 1000kw/312m, PR 303m	<i>Aguadilla</i> 34 WELU-DT NS 250kw/574m, 18-08-33/66-58-56; PR 665m, 18-08-59/66-59-16
Scranton	49 WNEP-DT	NW 100kw/506m, 41-11-00/75-52-10	U.S. Virgin Islands:
York	47 WPMT-DT	PR<933kw/385m	Christiansted 15 WCAV CC from WPXO
South Dakota:			Canada:
<i>Lead</i>	10 KHSD-DT	NW 40w/480m	British Columbia:
<i>Rapid City</i>	2 KOTA-DT	NW 7.1kw/185m	Vavenby 12 CKVB-TV NW 10w, 51-34-37/119-47-28; CBC
Texas:			Ontario:
Austin	51 KBVO-CA	QC from ch. 49, 13.4kw	Normandale 42 CBLN-TV-6 QR from ch. 44
Bryan	23 KMAY-LP	QG from ch. 63, 5kw, 30-41-18/96-25-35; CC from K23GL	Ottawa 67 "CDTV-2" NW 40w,
Bryan	40 KRHD-LP	QR from ch. 34, 89.1kw	
Cass	37 new-LPTV	AF dismissed (see XC)	
Fredericksburg	44 KHPF-CA	30-15-35/98-53-13	
<i>Lubbock</i>	9 KCBD-DT	NW 15kw/232m	
Mount Pleasant	54 K54CB	PR dismissed ROA	
San Antonio	59 KMHZ-LP	QG from ch. 65,	

45-25-25/75-41-01
 Prince Township 29 CICE-TV-4 QC from ch. 49,
 20w/15m,
 46-31-35/84-32-07
Toronto 25 CBLFT PC<616kw/491m
Toronto 44 CJMT-TV CC
for new station.
500kw/304m,
43-38-56/79-22-55
but temporarily
13kw/102m,
43-47-45/79-25-34
Toronto 53 CITY-DT NS 980w/515m

Quebec:
 Montreal 64 "CDTV-MTL" NW 3kw/110m,
 45-31-05/73-33-04

Thanks to John Zeis, Dennis Smith, Bill Draeb and Brock Whaley for information in this month's column.

The ACDTV@ stations in Canada are experimental operations. I saw one in Hull, Quebec in passing (also on channel 67) but can no longer find it. It looks like they've been experimenting with a single-frequency network in the Ottawa area. CITY-DT [53] in Toronto, however, is not experimental. This becomes the first DTV station in Canada to receive a permit for regular, commercial broadcasting. A condition of the permit is that they apply to increase power to 2.2kw by this time next year...

Yes, that's an entire 40 watts at KHSD-DT in South Dakota... An article in the *Rapid City Journal* indicates KSGW-DT in Wyoming will be on the air this spring. KELO-DT Sioux Falls will be on the air by the time you read this (channel 32, 869kw/589m), with KELO's satellites elsewhere in the state signing on later this year.

Also noted in the *Journal*, plans to rebuild KDUH-4's lost 2,000-foot tower in western Nebraska. KDUH claims to have replicated coverage to 70-80% of their viewers with a temporary transmitter and some translators. They do expect to have the new tower in place by mid-September though. KDUH-DT also began broadcasts around Christmas. The paper says A... from their Scottsbluff transmitter...@ However, they have special temporary authorization to use a tower at 42-54-44N/103-39-38W, which is on the Nebraska/South Dakota border between Chadron and Hot Springs, and nowhere near Scottsbluff. This is a DTV transmitter I think you really reasonably can assume nobody is watching; 40 watts at 42 meters in one of the most sparsely-populated parts of the country!

John forwarded an update from the Philadelphia area. On or before 23 December, WUVP-65 moved from New Jersey to the new Philadelphia community tower. The new facilities are listed above. WYBE-DT on channel 34 began testing from the same tower early in December, but as of January 2nd John was only seeing a dead carrier. Up in Allentown, WFMZ-DT on channel 46 is still off. Finally, he says the coordinates listed for WPPX-DT 31 in last month's VUD are wrong. A tower planned for that location couldn't get zoning

approval and will not be built. I note this station is now listed at the same community tower as WUVP-65 and WYBE-DT 34.

Santa Barbara TV update from Dennis Smith:

- # K15BD (KCET-28 translator in San Luis Obispo): Possibly switched from off-air feed from K55AP to satellite feed direct from Los Angeles? See K26FT. This translator is to be bumped from channel 15 by KSBY-DT. It will nearly quadruple its power when it moves to channel 16, and will have more than 10dB more power than KSBY-DT, whose tower it shares...
- # K15DB (KTBN-40 translator): Poor picture quality, dark picture since early November.
- # K21FP (TBN, Bakersfield): I made a mistake in December and tagged this station as a KCET-28 translator. It isn't; it's a TBN, formerly K55CN. The KCET-28 translator in Bakersfield is K67FS. (Which is moving to channel 46...)
- # K26FT (KCET-28 translator): Used to lose its KCET-28 feed when K55AP went off the air. However, K26FT remained on the air during K55AP's recent extended dark period. Presumably K26FT has switched to satellite feed directly from Los Angeles.
- # KCET-28 (PBS, Los Angeles): Dennis confirms that KCET itself is not on the air 24 hours. Most days, KCET operates from 6am to midnight. *TV Guide* indicates college courses may bring KCET on the air early, at 4:30am, on Thursday mornings.
- # KSBT-LP 32 (Americas Store): Blank screen only, with good audio, from December 2nd. Disappeared completely around Christmas and still off in early January.
- # KPMR-38 (Univision): Off the air for two days in mid-December.
- # KTSB-LP 43 (Telefutura): Off the air on December 2nd, Returned the next day but with very low audio power. Then, on December 27th, developed same dark-picture fault observed on K15DB.
- # K46GC (CTN): Began broadcasts at reduced power but has been gradually increasing to full power. However, as of January 1st, has been broadcasting a blank screen only. (Like KSBT-LP, with good audio...)
- # K55AP (KCET-28 translator): Disappeared on October 31st, but suddenly returned on December 6th. In the past, this translator has occasionally Aphantomed@ XHJK-27 and KSDX-LP 29 onto channels 54 and 56. However, it appears a satellite feed is now available (see K26FT) so this may no longer happen. Time will tell.

With regard to the Aphantoming@ on K55AP, Dennis notes that when that did happen, K26FT (which translated K55AP) did not show the phantom signals on channels 25 and 27. Of course, it's a relatively rare situation where a translator relays another translator, so the chances of this Adouble

phantoming@are extremely rare. In cases like this where it is possible, it is also possible the second translator has better filters. While K55AP may not have been able to reject the adjacent channel 27 and 29 signals, it is very possible K26FT could reject the phantoms on channels 54 and 56 at its input.

Bill saw WACY-DT 59 on the air for the first time on November 22nd. The facilities listed are for special temporary authority (STA) which I presume they're using. Other operating DTVs in Green Bay are WBAY-23, WGBA-41, and WFRV-56. The first two are operating at full power; WFRV has a STA for 115kw. It looks like they want to move to channel 39. No sign of WLUK-51, WPNE-42, or WIWB-21 yet. Nor of new analog station WMQF-19 in Michigan's Upper Peninsula. (However, other sources say WMQF is on, so I'm going to list it. It's a Fox affiliate with some UPN and WB programs.)

I know many DXers are lamenting the high cost of DXing DTV. (They really shouldn't. Hauppauge DTV tuner cards are now available on eBay for under \$250, and DTV Aset-top boxes@ can now be had at Circuit City and similar stores for similar prices. The set-top boxes can be connected to regular analog TVs. (possibly through an inexpensive Radio Shack ARF modulator@ if there isn't already a video input jack) Many models will also allow you to connect a VGA computer monitor. Anyway, Bill has found a way of getting into DTV DX that's even cheaper. Indeed, free. Provided

you're lucky. (So far, Bill isn't.) The DTV stations in Green Bay have been running contests to give away digital TVs. Bill has been making a serious effort at winning a DTV from one of his locals. This has happened in other markets; give it a try!

Emmanuel Granado wrote from Edmonton questioning some of the area channels in my database. He also passed along two web addresses that may be of interest to those DXing Canadian stations. Check out Nelson Media on <http://members.shaw.ca/nelsonmedia/> and CDN:TV on <http://www.cdntv.cjb.net>. The latter site offers video clips and network IDs.

Three applications for new LPTVs on channel 37 have been dismissed. Surprised? I am a bit unclear on what was going on here though. 47CFR0.283 has to do with which matters may be handled by the Chief of the Media Bureau without going to the whole Commission. 73.3566 states that applications patently inconsistent with FCC regulations will not be accepted for filing. And 74.603(c) states that radio studio-transmitter links may continue to operate in the 942-947MHz band until a separate rulemaking is concluded. (Which has what to do with low-power TV?!)

It's been a slow month. The holidays ensured that not much would happen at the FCC or CRTC. I expect the flood of DTV activity to reopen next month though. In the meantime, here's hoping for plenty of winter tropo!

DTV STAs

The following stations have special temporary authority to operate their DTV stations at reduced power:

<u>City</u>	<u>Call</u>	<u>Ch.</u>	<u>HAAT</u>	<u>ERP</u>					
					YUMA	KSWT	16	399	54.4
					YUMA	KYMA	41	349.6	5.33
<u>Alabama:</u>					<u>Arkansas:</u>				
BIRMINGHAM	WABM	36	409	17.1	FORT SMITH	KFSM	18	286	275
BIRMINGHAM	WVTM	52	373	360	FORT SMITH	KHBS	21	602	280
DOTHAN	WDHN	21	149	3.5	FORT SMITH	KPOM	27	300	6
GADSDEN	WTJP	26	267.7	8.2	LITTLE ROCK	KATV	22	460.8	30
GADSDEN	WPXH	45	309	225	LITTLE ROCK	KARK	32	339	4
HOMEWOOD	WTTO	28	409	15.4	SPRINGDALE	KSBN	39	114	35
HUNTSVILLE	WZDX	41	371.2	15	<u>California:</u>				
HUNTSVILLE	WHNT	59	514	450	EUREKA	KBVU	28	503	6
MOBILE	WMPV	20	67	0.6	FORT BRAGG	KFWU	15	733	1.95
MOBILE	WKRG	27	254.1	55	LOS ANGELE	KWHY	42	873	86
MONTGOMER	WCOV	16	156	1.1	NOVATO	KTLN	47	402	230
MONTGOMER	WMCF	46	34.4	1.4	PARADISE	KCVU	20	449	4.03
OPELIKA	WSWS	31	147	3.65	REDDING	KRCR	34	1101	26
OPELIKA	WSWS	31	147	3.94	RIVERSIDE	KRCA	68	907	574
<u>Alaska:</u>					SACRAMENT	KMAX	21	301.4	7.2
KETCHIKAN	KUBD	13	-77	0.17	SACRAMENT	KCRA	35	462	687
<u>Arizona:</u>					SALINAS	KSBW	10	717	0.28
FLAGSTAFF	KNAZ	22	494.98	39.73	SAN DIEGO	KUSI	18	564	22.9
FLAGSTAFF	KFPH	27	459	20	SAN DIEGO	KGTV	25	205	316
FLAGSTAFF	KCFG	32	597	1	SAN FRANCIS	KTSF	27	400	220
PHOENIX	KPHO	17	507	300	SAN FRANCIS	KCNS	39	428	468
PHOENIX	KPAZ	20	469	3	SAN JOSE	KSTS	49	688	200
PHOENIX	KTVK	24	501	487	SAN LUIS OBI	KSBY	15	506	2.8
PHOENIX	KUTP	26	517	67	SANGER	KFRE	36	600.4	1.8
PHOENIX	KASW	49	497	66	STOCKTON	KQCA	46	424	0.77
PRESCOTT	KAZT	25	786	2.27	TWENTYNINE	KVMD	23	766	100
TUCSON	KHRR	42	597.6	10.59	<u>Colorado:</u>				
YUMA	KSWT	16	399	50.9					

DENVER	KUSA	16	178	10.9
DENVER	KWGN	34	248	450
DENVER	KCNC	35	177	11
FORT COLLIN	KFCT	21	232.8	0.88
LONGMONT	KDEN	29	315.1	0.49
STEAMBOAT	KMAS	10	175.2	0.48

Connecticut:

HARTFORD	WFSB	33	256.4	20
HARTFORD	WUVN	46	283.15	4
NEW HAVEN	WCTX	39	301	140
NEW HAVEN	WCTX	39	301	100
WATERBURY	WTXX	12	196	9.6

District of Columbia:

WASHINGTON	WETA	27	177	50.4
WASHINGTON	WDCA	35	146.1	1.17
WASHINGTON	WJLA	39	254	324

Florida:

CLEARWATER	WCLF	21	414	565
CLERMONT	WKCF	17	472	905.7
CLERMONT	WKCF	17	472	595.7
FORT MYERS	WBBH	15	453	500
FORT WALTO	WPAN	40	25	0.8
HIGH SPRING	WGFL	28	154	5.47
HOLLYWOOD	WAMI	47	297	650
JACKSONVILL	WTLV	13	310	13.7
JACKSONVILL	WJWB	34	270.5	43.7
JACKSONVILL	WJXT	42	294	488
KEY WEST	WEYS	3	30.9	0.22
KEY WEST	WVIB	12	25	0.03
LAKELAND	WMOR	19	458	307
LEESBURG	WACX	40	58	0.1
MELBOURNE	WOTF	20	102	300
MIAMI	WBZL	19	252	500
MIAMI	WHFT	46	162.5	3.7
NAPLES	WZVN	41	453	500
ORLANDO	WOFL	22	392	200
ORLANDO	WRBW	41	515	382
PANAMA CITY	WMBB	19	392	38
PENSACOLA	WEAR	17	102.8	8.3
PENSACOLA	WSRE	31	549	287
PENSACOLA	WHBR	34	415	108
SARASOTA	WWSB	52	216	0.93
ST. PETERSB	WTTA	57	443	9
STUART	WHDT	59	57	0.4
STUART	WHDT	59	25.3	0.13
TEQUESTA	WPBF	16	454	670
TICE	WRXY	33	429	132

Georgia:

ALBANY	WALB	17	92	29
AUGUSTA	WRDW	31	443.4	346
AUGUSTA	WJBF	42	341	14.04
AUGUSTA	WFXG	51	220	15.6
COLUMBUS	WRBL	15	95.9	42
COLUMBUS	WLTZ	35	153.7	2.93
COLUMBUS	WXTX	49	176	16
MACON	WMAZ	4	180.8	7
MACON	WMGT	40	143	3.3
SAVANNAH	WSAV	39	126.49	18

Hawaii:

HILO	KHBC	22	-170	4.72
HONOLULU	KAH	27	573.1	4.4
HONOLULU	KWHE	31	31	5
KAILUA KONA	KLEI	25	874	3.3

Idaho:

BOISE	KTVB	26	786.5	73.9
BOISE	KTVB	26	786.5	85.5
CALDWELL	KNIN	10	818	3.34
CALDWELL	KNIN	10	768	0.15

IDAHO FALLS	KIDK	36	-8	2.2
LEWISTON	KLEW	32	361	5
MOSCOW	KUID	12	339.7	128.5
NAMPA	KIVI	24	858.1	100

Illinois:

BLOOMINGT	WYZZ	28	90	3
CHAMPAIGN	WICD	41	88	2
CHAMPAIGN	WCIA	48	265	1.28
CHICAGO	WBBM	3	384	2.5
CHICAGO	WBBM	3	384	1
CHICAGO	WCIU	27	510	15.1
CHICAGO	WTTW	47	465	200
DECATUR	WBUI	22	405	125
FREEPOR	WIFR	41	176	49.6
HARRISBURG	WSIL	34	265.2	1000
JOLIET	WGBO	53	346	42
LASALLE	WWTO	10	208.6	0.05
MARION	WTCT	17	213	20.7
MOLINE	WQAD	38	334	500
PEORIA	WAOE	39	162	4.26
PEORIA	WTVP	46	216	133
QUINCY	WTJR	32	89.42	5
QUINCY	WGEM	54	216	12
QUINCY	WGEM	54	205	2.5
ROCK ISLAND	WHBF	58	90	2.2
ROCKFORD	WREX	54	196	55.2
SPRINGFIELD	WICS	42	95.8	2
SPRINGFIELD	WCFN	53	179	1.81
URBANA	WCCU	26	138	507

Indiana:

BLOOMINGT	WTTV	53	299	4
BLOOMINGT	WCLJ	56	175.4	7.1
ELKHART	WSJV	58	315	10.5
EVANSVILLE	WFIE	46	310	128
GARY	WPWR	51	523	350
INDIANAPOLI	WHMB	16	140	18.6
INDIANAPOLI	WTHR	46	267	1000
INDIANAPOLI	WTHR	46	267	700
LAFAYETTE	WLFJ	11	214	28
RICHMOND	WKOI	39	170	18.1
SALEM	WFTE	51	185.9	13.5
SOUTH BEND	WSBT	30	239	280
SOUTH BEND	WHME	48	204.5	4.5
TERRE HAUT	WTHI	24	130	4.3

Iowa:

CEDAR RAPI	KFXA	27	208.8	0.61
CEDAR RAPI	KGAN	51	585	6.6
DAVENPORT	KLJB	49	343.7	300
DAVENPORT	KWQC	56	329	500
DES MOINES	KDSM	16	612	9
DES MOINES	WHO	19	609	300
DES MOINES	KCCI	31	566	377
DUBUQUE	KFXB	43	125.4	1.07
IOWA CITY	KWKB	25	111.8	2.7
MASON CITY	KIMT	42	62.2	117
SIOUX CITY	KCAU	30	31	2.7
SIOUX CITY	KTIV	41	232	10.6
SIOUX CITY	KPTH	49	77	2
SIOUX CITY	KPTH	49	77	2.6

Kansas:

GARDEN CIT	KSNG	16	148.2	3.63
GREAT BEND	KSNC	22	161.6	3.39
HUTCHINSON	KWCH	19	409.6	119
PITTSBURG	KOAM	13	229	0.14
TOPEKA	KSNT	28	130	4
TOPEKA	WIBW	44	392	93.4
WICHITA	KAKE	21	279.6	87.03
WICHITA	KSNW	45	152.4	3

Kentucky:

ASHLAND	WTSF	44	175.3	14.45	GREENVILLE	WXVT	17	59	0.25
BOWLING GR	WBKO	33	207	65.6	GULFPORT	WXXV	48	43.5	13
DANVILLE	WDKY	4	124	7.5	HOLLY SPRIN	WBUY	41	117.6	4.5
LEXINGTON	WTVQ	40	135.9	61	JACKSON	WMPN	20	482	50
LOUISVILLE	WDRB	49	185.9	3.36	JACKSON	WAPT	21	251	526
LOUISVILLE	WDRB	49	185.9	6.26	JACKSON	WBD	41	598	50
LOUISVILLE	WHAS	55	359	46.1	JACKSON	WJTV	52	279	33
MADISONVILL	WAZE	20	202	1.11	MERIDIAN	WGBC	31	181	4.9
PADUCAH	WPSD	32	74	4.47	MERIDIAN	WTOK	49	150	85
PADUCAH	WDKA	50	167	18.9					

Louisiana:

ALEXANDRIA	KALB	35	58.5	37
BATON ROUG	WBRZ	13	498	30
COLUMBIA	KAQY	57	120	2
LAFAYETTE	KADN	16	67	1
LAKE CHARL	KVHP	30	25.35	0.2
MONROE	KNOE	7	518	1
NEW ORLEAN	WWL	36	311	319
NEW ORLEAN	WDSU	43	230	445
SLIDELL	WUPL	24	150.2	3
WEST MONR	KMCT	38	85	8.1

Maine:

BANGOR	WVII	14	223	1.84
BANGOR	WABI	19	390.9	234.85
BANGOR	WLBZ	25	198.8	500
POLAND SPRI	WMTW	46	586	501
PORTLAND	WGME	38	491	100
PORTLAND	WCSH	44	587.9	500

Maryland:

BALTIMORE	WUTB	41	314	0.53
BALTIMORE	WBFF	46	341	35
SALISBURY	WBOC	21	282.5	200

Massachusetts:

ADAMS	WCDC	36	631	16.2
CAMBRIDGE	WLVI	41	345	30
MARLBOROU	WUTF	23	333.8	47.9
SPRINGFIELD	WWLP	11	260	0.75
SPRINGFIELD	WGGB	55	301	13.1
WORCESTER	WUNI	29	211.55	11

Michigan:

BAY CITY	WNEM	22	275.3	500
CADILLAC	WWTV	40	326	175
CADILLAC	WFQX	47	57.8	0.03
DETROIT	WDIV	45	281	486.5
ESCANABA	WJMN	48	54.9	9.8
GRAND RAPI	WXMI	19	306	70
GRAND RAPI	WZZM	39	305.4	500
LANSING	WSYM	38	281	646
SAULT STE.	WWUP	49	179	82.4

Minnesota:

ALEXANDRIA	KCCO	24	102.3	30.4
ALEXANDRIA	KSAX	36	48	84
AUSTIN	KAAL	33	165	4.9
DULUTH	WDIO	43	274	54
HIBBING	WIRT	36	167	143
MANKATO	KEYC	38	290.7	117
MINNEAPOLIS	KMWB	22	410	20
MINNEAPOLIS	KARE	35	435.4	500
MINNEAPOLIS	KSTC	44	430	205
MINNEAPOLIS	KSTC	44	430	12
REDWOOD F	KRWF	27	151	58
ROCHESTER	KTTC	36	328	324
ROCHESTER	KXLT	46	343	55.3
ST. PAUL	KSTP	50	433	426
ST. PAUL	KSTP	50	433	280
WALKER	KCCW	20	67.6	20.3

Mississippi:

Missouri:

CAPE GIRAR	KBSI	22	166.4	3.1
JEFFERSON	KNLJ	20	248	12
KANSAS CITY	KCTV	24	227.9	225
KANSAS CITY	KCWE	31	332	525
KANSAS CITY	WDAF	34	69	1.1
KANSAS CITY	KSMO	47	356	9
ST. JOSEPH	KTAJ	21	107	0.4
ST. LOUIS	KNLC	14	285	63.2
ST. LOUIS	KDNL	31	320.5	10
ST. LOUIS	KTVI	43	337	556

Montana:

BUTTE	KTVM	33	546	6.19
KALISPELL	KCFW	38	814	5.24

Nebraska:

GRAND ISLA	KTVG	19	139	10.6
GRAND ISLA	KTVG	19	139	5.3
HASTINGS	KHAS	21	82.7	1.35
HAYES CENT	KWNB	18	121	0.53
KEARNEY	KHGI	36	179	8.4
KEARNEY	KHGI	36	179	4.2
LINCOLN	KLKN	31	52	3.2
NORTH PLAT	KNOP	22	102.05	1.31
OMAHA	KETV	20	179	10
OMAHA	KETV	20	179	18.9
OMAHA	WOWT	22	392	38.7
OMAHA	KXVO	38	116	16.8
OMAHA	KXVO	38	116	16.3
OMAHA	KPTM	43	116	16.5
OMAHA	KPTM	43	116	17.3
SCOTTSBLUF	KDUH	7	42	0.04
SUPERIOR	KSNB	34	78	0.53

Nevada:

LAS VEGAS	KVBC	2	386	10
LAS VEGAS	KVWB	22	331	4.4
LAS VEGAS	KFBT	29	331	4.4
PARADISE	KBLR	40	357	32.4
RENO	KRNV	7	876	6.18
RENO	KREN	26	874	4

New Hampshire:

DERRY	WNDS	35	191	7.3
-------	------	----	-----	-----

New Jersey:

ATLANTIC CIT	WWAC	44	212	200
BURLINGTON	WGTW	27	250	3.3
MONTCLAIR	WNJN	51	261	0.8
NEWARK	WFUT	53	265.4	3.45
NEWARK	WNET	61	94.2	2.66
NEWTON	WMBC	18	154	0.23
TRENTON	WNJT	43	173	41
WEST MILFOR	WFME	29	167	2

New Mexico:

ALBUQUERQ	KOAT	21	1264	140
ALBUQUERQ	KNAT	24	1247.9	0.6
ALBUQUERQ	KOB	26	1258	80
ALBUQUERQ	KOB	26	1248	10.7
ALBUQUERQ	KNME	35	1231.2	0.38
CARLSBAD	KOCT	19	209	3
CLOVIS	KVIH	20	89	0.26

FARMINGTON	KOFT	8	62.2	2.4
FARMINGTON	KOBF	17	82	10
FARMINGTON	KOBF	17	103	125
LAS CRUCES	KTYO	47	116.7	22.8
ROSWELL	KOBR	38	75	59
ROSWELL	KBIM	41	28.2	6.8
SANTA FE	KASA	27	1278	255
SANTA FE	KASA	27	1278	210
SILVER CITY	KOVT	12	466	1

New York:

BINGHAMTON	WBNG	7	342	1.22
BUFFALO	WGRZ	33	295.1	240
CARTHAGE	WWNY	35	203	135
CARTHAGE	WWNY	35	203	500
KINGSTON	WRNN	48	378	750
NEW YORK	WPIX	12	306	0.13
NEW YORK	WNYE	24	176.4	21.5
NEW YORK	WNYW	44	368	73.8
RIVERHEAD	WLNY	57	179	30.9
ROCHESTER	WROC	45	136	1.74
ROCHESTER	WHEC	58	135	38
ROCHESTER	WOKR	59	133	8.7
SYRACUSE	WSYT	19	234.8	3.1
SYRACUSE	WCNY	25	393	25
SYRACUSE	WSTM	54	405	42

North Carolina:

ASHEVILLE	WASV	45	523	48
ASHEVILLE	WLOS	56	841	14.9
ASHEVILLE	WHNS	57	744	500
BELMONT	WJZY	47	553.5	400
DURHAM	WRDC	27	610	9.1
GREENSBOR	WLXI	43	520.6	9.4
GREENSBOR	WFMY	51	568.8	500
GREENVILLE	WUNK	23	118	44.7
HICKORY	WHKY	40	183	6.39
HIGH POINT	WGHP	35	281	4.2
LEXINGTON	WTWB	19	157	8.1
LEXINGTON	WTWB	19	157	9
RALEIGH	WRAZ	49	614.1	200
RALEIGH	WLFL	57	610	9.2
WILMINGTON	WUNJ	29	116	116
WILMINGTON	WSFX	30	38	5
WILSON	WRAY	42	539	95
WINSTON-SA	WXLV	29	576	750
WINSTON-SA	WXII	31	572	408

Ohio:

CINCINNATI	WSTR	33	319	17.1
CINCINNATI	WCET	34	326	7
CINCINNATI	WLWT	35	310.5	512
CINCINNATI	WLWT	35	277.6	125
CINCINNATI	WLWT	35	288.3	125
COLUMBUS	WSYX	13	76.6	30
COLUMBUS	WCMH	14	264	288
COLUMBUS	WBNS	21	278.6	700
COLUMBUS	WTTE	36	26.6	2.4
DAYTON	WHIO	41	290	275
DAYTON	WDTN	50	323	125
DAYTON	WKEF	51	351	95.5
LIMA	WLIO	8	60.2	0.43
NEWARK	WSFJ	24	172	0.92
SANDUSKY	WGGN	42	112.2	0.64
STEUBENVILL	WTOV	57	79	114
TOLEDO	WTOL	17	263	700
TOLEDO	WTVG	19	221.5	397
YOUNGSTOW	WYTV	36	148	50

Oklahoma:

ADA	KTEN	26	265	2.6
BARTLESVIL	KDOR	15	85.4	4.8
OKLAHOMA C	KOCO	7	35	10
OKLAHOMA C	KTBO	15	159.4	7.9
OKLAHOMA C	KOKH	24	84.4	2.2

OKLAHOMA C	KOCB	33	90	3
OKLAHOMA C	KSBI	51	457.9	360.9
SHAWNEE	KQOK	29	253	0.8
TULSA	KOKI	22	74	4
TULSA	KGEB	49	182	17
TULSA	KOTV	55	490.4	300

Oregon:

COOS BAY	KCBY	21	188	5.1
EUGENE	KVAL	25	395	27
EUGENE	KLSR	31	372	6
EUGENE	KEZI	44	457.8	13.5
KLAMATH FAL	KOTI	13	659	1.9
MEDFORD	KOBI	15	835	0.6
MEDFORD	KTVL	35	1008	10.2
MEDFORD	KSYS	42	412	4
PORTLAND	KPTV	30	528	370.5
PORTLAND	KATU	43	524	500
PORTLAND	KNMT	45	296	0.56
ROSEBURG	KPIC	19	274	5.1

Pennsylvania:

ALLENTOWN	WFMZ	46	170	39
ALTOONA	WATM	24	300	2
ALTOONA	WTAJ	32	295	3.33
ALTOONA	WKBS	46	299	6.1
ERIE	WQLN	50	270.7	39.1
ERIE	WICU	52	261	0.95
HARRISBURG	WHP	4	349	0.57
JOHNSTOWN	WWCP	29	345	2
JOHNSTOWN	WJAC	34	383	250
PITTSBURGH	WQED	38	213	54.74
PITTSBURGH	WCWB	42	314.9	20
PITTSBURGH	WPGH	43	312	20
RED LION	WGCB	30	169	50
SCRANTON	WYOU	13	409	1.45
SCRANTON	WNEP	49	506	68.1
WILKES-BAR	WBRE	11	409	1.45
YORK	WPMT	47	293	10

Puerto Rico:

AGUADILLA	WOLE	69	364	120
ARECIBO	WCCV	53	481	3.2
FAJARDO	WPRV	33	844	6
GUAYAMA	WIDP	45	593	3.2
HUMACAO	WVSN	49	593	2.6
MAYAGUEZ	WORA	29	590.3	90
SAN JUAN	WJPX	21	564	45
SAN JUAN	WAPA	27	794	100

South Carolina:

ANDERSON	WBSC	14	93.3	3.1
CHARLESTON	WMMP	35	47	3.6
CHARLESTON	WTAT	40	47.1	3.6
CHARLESTON	WCSC	47	521	1000
COLUMBIA	WLTX	17	500.3	500
FLORENCE	WBTW	56	378.8	19.54
GREENVILLE	WGGS	35	338	15.5
GREENVILLE	WGGS	35	338	3.1
GREENVILLE	WYFF	59	577	392
MYRTLE BEA	WFXB	18	45.19	5
ROCK HILL	WWWB	39	515.7	200
SUMTER	WQHB	39	141.4	0.7

South Dakota:

LEAD	KHSD	10	480	0.04
LEAD	KIVV	29	538	2.59
RAPID CITY	KEVN	18	181	2.54

Tennessee:

CHATTANOO	WRCB	13	281	16.6
CHATTANOO	WTCI	29	336	20
CHATTANOO	WDEF	47	276	74
GREENEVILL	WEMT	38	773	3.9
HENDERSON	WPGD	51	179.4	0.4

JOHNSON CI	WJHL	58	690.3	41	HAMPTON	WVEC	41	344	363
KNOXVILLE	WATE	26	529.2	300	HAMPTON-NO	WHRO	16	360.6	475
KNOXVILLE	WBIR	31	529.6	420	LYNCHBURG	WJPR	20	500.3	186.3
MEMPHIS	WPTY	25	340	437.6	NORFOLK	WTVZ	38	360.5	8
MEMPHIS	WPTY	25	340	87.32	NORFOLK	WTKR	40	377	724
MEMPHIS	WREG	28	313	393	NORFOLK	WTKR	40	377	400
MEMPHIS	WLMT	31	340	87.32	RICHMOND	WRLH	26	319.3	12.4
MEMPHIS	WHBQ	53	23	2.2	ROANOKE	WSLS	30	584.5	55.46
MEMPHIS	WHBQ	53	65	1.2					
MURFREESB	WHTN	38	250	48					
NASHVILLE	WUXP	21	413	7.6					
NASHVILLE	WNAB	23	367	18.4					
SNEEDVILLE	WSJK	41	490	4.86					

Texas:

ABILENE	KTAB	24	242.8	2.07
ALVIN	KFTH	36	579	135
AMARILLO	KVII	23	85	0.28
AUSTIN	KEYE	43	106	35.4
AUSTIN	KNVA	49	396	190
AUSTIN	KTBC	56	80	0.8
BAYTOWN	KAZH	57	553	125
BEAUMONT	KFDM	21	254	50
BEAUMONT	KBMT	50	33	10.5
DALLAS	KDFI	36	384	11.2
DALLAS	KDTX	45	215.6	18.1
EL PASO	KFOX	15	604	350
GALVESTON	KTMD	48	597.1	1000
GARLAND	KUVN	24	518	190
KATY	KNWS	52	308	12.5
KILLEEN	KAKW	13	484	45
LAKE DALLAS	KLDT	54	121.4	3.25
MIDLAND	KMID	26	262.8	1.36
NACOGDOCH	KLSB	18	18	0.33
ODESSA	KOSA	31	106	13.3
PORT ARTHUR	KBTV	40	244.8	1.28
SAN ANGELO	KLST	11	83.8	0.76
SAN ANTONI	KVDA	38	414.7	375
SAN ANTONI	KWEX	39	414	375
SAN ANTONI	KENS	55	445	29.4
SWEETWATE	KTXS	20	351	26.44
TEMPLE	KCEN	9	527	12.5
TEXARKANA	KTAL	15	445	1.34
VICTORIA	KAVU	15	46	0.34
WACO	KWBU	20	318.9	93
WACO	KXXV	26	132.8	2.27
WACO	KWTX	53	515.3	501
WESLACO	KRGV	13	445	5.7

Utah:

SALT LAKE C	KSTU	28	1115.5	2.5
SALT LAKE C	KTVX	40	1256.1	433.89

Vermont:

WINDSOR	WVTA	24	692	30
---------	------	----	-----	----

Virginia:

ARLINGTON	WFDC	15	173	82
ASHLAND	WUPV	47	89	9.2
CHARLOTTES	WVIR	32	306.3	6.5
DANVILLE	WDRL	41	98	6.94

Washington:

BELLEVUE	KWOG	50	719	21.2
BELLINGHAM	KVOS	35	-42	12
EVERETT	KONG	31	218	35
PASCO	KEPR	18	354.1	5.3
RICHLAND	KNDU	26	376.3	33
SEATTLE	KTWB	25	290	155
SEATTLE	KOMO	38	223	405
SEATTLE	KHCV	44	714	31.3
SPOKANE	KHQ	15	536.1	423
TACOMA	KTBW	14	420.8	2.75
TACOMA	KSTW	36	253	68
YAKIMA	KNDO	16	274.6	35
YAKIMA	KIMA	33	278	12.5

West Virginia:

BLUEFIELD	WVVA	46	363	20
CHARLESTON	WVAH	19	151	3
CHARLESTON	WCHS	41	171	2.9
CLARKSBUR	WBOY	52	247.2	3.14
HUNTINGTON	WSAZ	23	363.7	425.5
OAK HILL	WOAY	50	190.5	0.46
WHEELING	WTRF	32	140	4.5

Wisconsin:

APPLETON	WACY	59	279	4.14
EAGLE RIVER	WYOW	28	144	17.3
EAU CLAIRE	WQOW	15	280	25.3
EAU CLAIRE	WEAU	39	585.1	500
FOND DU LA	WMMF	44	-23	1.8
FOND DU LA	WMMF	44	-23	2
GREEN BAY	WGBA	41	279	4.14
GREEN BAY	WLUK	51	365	360
GREEN BAY	WFRV	56	365	115
LA CROSSE	WXOW	14	336	12.3
MADISON	WMSN	11	471	5
MADISON	WMTV	19	334	21.4
MADISON	WISC	50	466	380.2
MAYVILLE	WWRS	43	167	0.41
MILWAUKEE	WVCY	22	212	2.54
MILWAUKEE	WITI	33	38	16.7
MILWAUKEE	WITI	33	38	6.7
MILWAUKEE	WISN	34	267.7	570
MILWAUKEE	WDJT	46	322	11.7
RHINELANDE	WJFW	16	495	0.01
SUPERIOR	KBJR	19	314.9	433
WAUSAU	WAOW	29	383	29.9

Wyoming:

CHEYENNE	KKTU	11	153.3	0.04
----------	------	----	-------	------



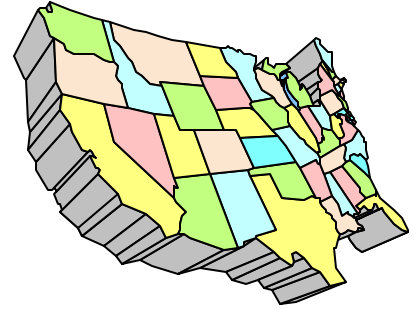
Western TV DX

VICTOR FRANK

12450 SKYLINE BLVD.

WOODSIDE, CA 94062-4554

frank@horizon.sri.com



Dennis Park Smith, 3605 San Remo Drive, Santa Barbara, CA 93105-2523 (805)687-7803

This report is for December 2002. Again surprisingly, there was some southern California tropo activity (to San Diego/Tijuana, 200mi/320km). Despite conditions that were still mostly cool and unstable as in November, there were a few occasional stable days which helped the tropo ducting (no particular warming this time), until mid-month, when instability and storms commenced in earnest, with no further coastal tropo except for a tiny bit between storms on Dec. 27.

Dec 1-2 am: None (Continuing from Nov 25)
Dec 2 eve: Poor
Dec 3 am: None
Dec 3 eve-4: Very poor
Dec 5-6 am: Fair
Dec 6 eve-7: None (Dec 6 eve slight rain)
Dec 8-9: Poor
Dec 10-11 am: None
Dec 11 eve: Fair (rather suddenly)
Dec 12 am: Poor
Dec 12 eve: Good
Dec 13 am-14aft: Poor (Dec 14 night some rain)
Dec 14-27 am: None (Dec 16 aft heavy rain)
(Dec 19 nigh moderate rain)
(Dec 21 rain)
Dec 27 eve: Barely fair for apx 3 hrs.
Dec 28-31: None (Dec 28 eve rain)

Best of DX to All. Dennis

William Eckberg, 1032 Sterling Rd., Dixon, IL 61021

December 2002	CST				
12 tr 0930	WCFT	33	AL	593	
2100	WJSU	40	AL	585	
2105	WTCI	45	TN	512	
2110	WDSI	61	TN	512	
2145	WNPX	28	TN	434	
2150	WPXK	54	TN	451	
2200	WAAY	31	AL	503	
28 Es 0443	CKAL-1	2	AB	1217	

December 12 saw weak but briefly viewable tropo to AL and across TN to 600 mi. The weather map showed sleet and rain across TN, AL, GA, and southward. Sleet is sometimes a necessary ingredient for tropo. No local enhancement was seen.

For the first time on December 28, I triangulated an Es cloud and got a rough measurement on rate of movement. Perhaps from the data an estimate of the size could be calculated. To get the data only one station was received at each QTH on channel 2 and reception was brief—a rare happening.

Letheridge-2 was received eight mi SSW of Dixon, IL for 10 minutes centered on 0443. Calgary-2 was received three mi NE of Toulon, IL for ten minutes centered on 0503. The midpoint of the Es cloud at 0443 was six mi west of Linton, ND and at 0503 was 16 mi SW of Bismark, ND. The cloud moved 42 miles NW in 15 minutes and traveled 168 mph. Does this correlate with other observations? I am no expert on Es propagation. The info might be interesting to someone researching Es propagation. The picture was excellent, but no audio was heard at my QTH.

Matthew C. Sittel, 15013 Eureux Circle, Bellevue, NE 68123 mcsittel@cox.net
<http://members.cox.net/mcsittel/beltvdx.htm>

Equipment: Winegard PR-9032 UHF antenna at 35', Winegard AP-4700 UHFpre-amp., Winegard PR-5030 VHF antenna at 32', MFC traps for channels 3, 6,7 and 26, Hauppauge WinTV-D PCI card for HDTV.

10/6 Es
2130 unID-2
10/8 Es
2156 XEFB-2 NL Monterrey, nx 1096
10/26 GW
1120 *KETV-DT-20* NE Omaha 16
10/26 Es
1259 unID-2 Spanish (2 stations)
11/9 tr
0218 24/33 KS Wichita 244
0219 *KWCV-DT-31* KS Wichita 243
0305 KWCH-12 KS Hutchinson 231
0525 KAKE-10 KS Wichita, TP 244
0525 KIIN-12 IA Iowa City 242
0922 27/47 WI Madison 355
0922 *WISC-DT-50* WI Madison 355
0933 KTTC-10 MN Rochester 248
12/7 tr
0858 *KDIN-DT-50* IA Des Moines 130
12/9 Es
1733 WDIQ-2 AL Dozier, "APT" 846
1734 unIDs-2 NBC, 4
12/15 tr
0930 21/27/33 MO Springfield 312
0930 KWBM-31 AR Harrison 353
0930 *KSMO-DT-47* MO Kansas City 158
0934 *KCTV-DT-24* MO Kansas City 157
0936 *KYTV-DT-44* MO Springfield 315
0950 *KDSM-DT-16* IA Des Moines 130
1007 KSNF-16 MO Joplin 287
12/18 Es
2051 WBRZ-2 LA Baton Rouge 792
12/24 Es
1700 unID-2 SS
12/25 Es
1859 WSJK-2 TN Sneedville 760

A very quiet fall season for DX. The search for DTV signals livened things up, but more often than not there was too weak a signal to decode. I was teased more than once with Topeka, Kansas City and Cedar Rapids signals.

The payoffs were on November 9 and December 15, and both days featured the added bonus of 300 mile plus DTV catches. Interestingly, WISC and KYTV's analog counterparts have never been logged here (thanks to KMTV).

Locally, only WOWT-DT-22 stays on more or less 24/7 (but is off occasionally), while KETV-DT-20 airs about 4 hours of programming nightly.

The 'slop' of DTVs 20 and 22 onto 19 and 21 has been significant, but strong DX will make it through, so I feel confident that I'm not losing too many analog channels. Once the Iowa and Nebraska PBS DTVs sign on, I may feel differently, but I'm hoping they will have downtime like their analog counterparts' nightly sign-offs. DTV log total is now 13, and overall is 590 for TV. 73s Matt

Jeff Kadet, K1MOD, Box 20, Macomb, IL 61455
DTV pix at <http://www.oldtvguides.com/DXPhotos/>

December 13 2002 CST
2208 MS going bonkers on ch. 2
WESH, WBRZ, WCBS, et al

December 14
1920 WICS-DT-42 Springfield, IL 75 miles
(WICS Digital TV)

December 25
Es 542 XHAGU-2 Aguascalientes, Ags.
(XEQ-TV Galavision ID)

December 29
0425 WBUI-DT-22 Decatur, IL 104 mi
Program 1 (WBUI-HDTV)
0435 WYZZ-DT-28 Bloomington, IL 64 miles
Program 1 (WYZZ Digital TV)

December 31
Es 1130 KMID-2
XHPN-3
KACB-3

January 3 2003
2331 Some Es on ch. 2
2335 KGAN-DT-51
Text ID was:
Program 1 (CBS Digital Television)

January 6 2003
Es 1214 Cuba ch. 2 TP
2300 WAOW-DT-29 Wausau, WI 313 mi
no text ID
2311 WISN-DT-34 Milwaukee 232 mi
Program 1 (WISN Digital Television)
As usual, no sign of WITF-DT-33.

January 7
0030 WXOW-DT-14 La Crosse, WI 235 mi
Text ID:
Program 1 (WXOW LaCrosse, WI –
HIGH DEFINITION (ABC))
0040 KSBI-DT-51 Okla City 508 mi
Text ID:
Program 1 (KSBI Digital Television)
Program 2 (KSBI SD)
0105 WSJV-DT-58 Elkhart, IN 247 mi
no text id

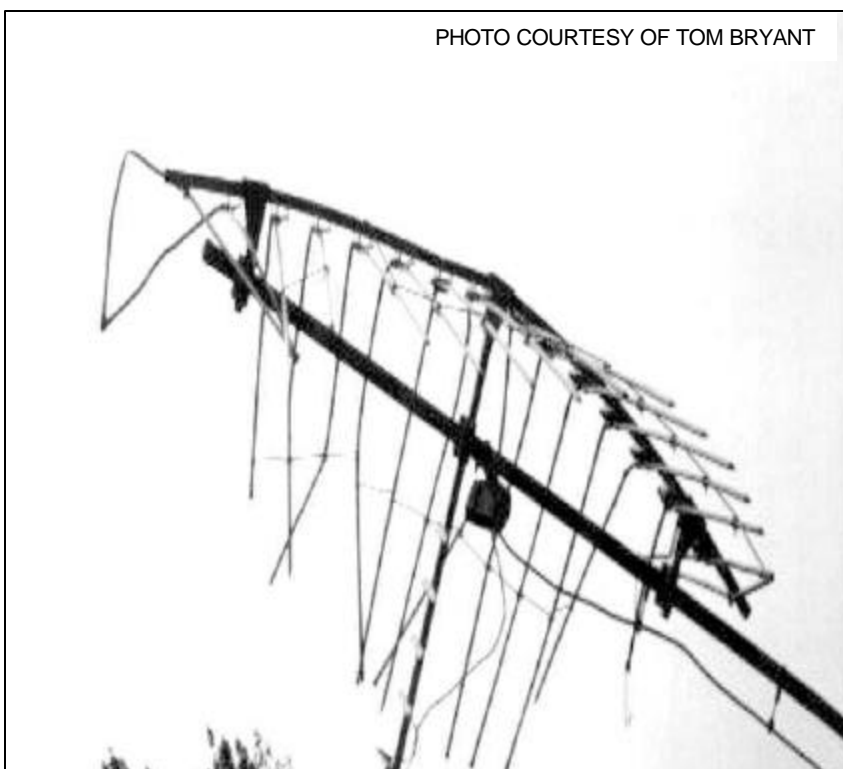
Es 0920 WPBT-2

January 08
2032 WTND-LP 106.3 Macomb on the air!
WTND-LP 106.3 Macomb Webfeed
<http://live365.com/play/10653>

There are a slew of new DTV stations listed as being on the air around here, but I am having little luck in getting them. My guess is that most of them are at very low power. DTV total @ 98.

73, Jeff

PHOTO COURTESY OF TOM BRYANT



It's Winter !

Rotors freeze and high winds bring down antennas in the best of installations.

But wait! There's hope!

In about 7 more weeks winter turns into spring. Dxers come out of hibernation to check on their DX installations and make needed repairs.

SPRING ARRIVES MARCH 21
(Southern DXers can ignore this public service announcement)

FM NEWS

Steven C. Wiseblood
28 LBJ Blvd.
Brownsville, TX 78521
stevenwisebl@hotmail.com



ABBREVIATIONS:

AFA: American Family Association
CC: **call letter** change&: satellite programming
CL: **city of license** change
CX: a **construction permit** has been **canceled**
C1,C2,etc: a change in status to that
FM license **class**
DA: **directional antenna**
DE: station has been **deleted**
FC: **format change**
GA: **granted amendment** to the table of
FM allocations
GE: **granted extension** of construction permit
GX: **granted replacement** of expired permit
LC: **license to cover** filed
(means station is ready to come on air)
MC: **multiple-city** legal ID
NC: **no change** yet on a reported change/permit

ND: **non-directional** antenna
NO: **not on the air**
NS: **new station** granted
NW: **new station** signs on
OSA: **one-step application** granted for change
PA: **proposed amendment** to change FM
table of allocation
PC: **power change** on the air (">" for increase,
"<" for decrease, when known)
PG: **power change** granted (">" for increase,
"<" for decrease, when known)
QC: **frequency change** occurred
QG: **frequency change** granted
RA: silent station **returns to air**
RE: station **requests extension** on permit
RX: station **requests replacement** of expired permit
SG: **slogan change** or update
SI: **station is silent**
XA: **dismissed amendment** to FM allocations
XC: **transmitter site change** occurred
XG: **transmitter site change** granted



ALABAMA:

Jasper: WDXB 102.5, FC to country,
SC to "102.5 the Bull" (Birmingham)
Northport: WANZ 100.7, CC (ex-WLXY),
FC to modern rock, SC as "Z-100" (Tuscaloosa)

ARIZONA:

Oro Valley: KOAZ 97.5, FC to hot AC,
SC to "Star 97.5" (Tucson)

ARKANSAS:

Harrisburg: KBZR 95.9, CC (ex KKEY)
Nashville: KSSW 96.9, NW hot AC
Sheridan: KVLO 102.9, FC to country (Little Rock)

CALIFORNIA:

Bakersfield: KPSL 92.1, CC (ex KIWI)
Garden Grove: KMXN 94.3, FC to regional Mexican,
SC to "Que Buena", //KBUE 105.5 Long Beach
McFarland: KIWI 102.9, CC (ex KPSL) (Bakersfield)
Ojai: KLFH. 89.5, NW
San Francisco: KSOL 98.9, CC (ex KEMR),
FC to regional Mexican, SC to "Estereo Sol"
Santa Clara: KEMR 105.7, CC (ex KSOL),
FC to Spanish AC, SC to "Amor"
Santa Cruz: KSQL 99.1, CC (ex KZMR),
//98.9 KSOL "Estereo Sol" '

FLORIDA:

Fort Lauderdale: WMIB 103.5, CC (ex WMGE),
FC to urban AC, SC to "the Beat" (Miami)
Gifford: WSYR 94.7 (ex WAVW), FC to hot AC,
SC to "Star"
Stuart: WAVW 92.7, CC (ex- WZZR),
FC to country, slogan to "the Wave"

GEORGIA:

Ringgold: WSGC 101.9,
FC to classic rock, (Chattanooga TN)
Ringgold: WMPZ 93.7, FC to gospel,
SC to "Rejoice 93." (Chattanooga TN)

ILLINOIS:

Arlington Heights: WKIE 92.7, FC to Spanish top 40,
SC to "La Nueva Onda"
Morris: WYXX 103.1, FC to urban rhythmic,
SC to "Party 103.1"
Pontiac: WPJC 88.3, NW CSN religious programming
Zion: WWDV 96.9, CC (ex WTNX), SC to "The Drive",
//WDRV 97.1

INDIANA:

Chesterton: WBEW 89.5, CC (ex WAJW),
Lowell: WTMK 88.5, NW
Morgantown: WCJL 90.9. NW

IOWA:

Creston: KLOX 90.9, NW

KENTUCKY:

Somerset: WKVY 88.1, NW

MASSACHUSETTS:

Taunton: WSNE 93.3, FC to hot AC. SC to "Star 93.3";
(Providence RI)

MICHIGAN:

Goodland Township: WWKM 88.1, NW
Spring Arbor: WJKN 89.3, NW

MINNESOTA:

Sunburg: KLFN 106.5, FC to classic rock,
SC as "the Train."

MISSISSIPPI:

Olive Branch: WOTO 95.7, FC to black gospel,
SC to "Hallelujah 95.7" (Memphis)
Pickens: WYJS 105.9, FC to blues,

as "Maximum Blues." (Jackson)

NEBRASKA:

Blair: KBLR 97.3 FC to Urban,
SC to "HOT 107.7/97.3 FM"

NEVADA:

Las Vegas: KWID 101.9, CC (ex KFMS),
FC to urban contemporary, SC to "Wild 102"

NEW HAMPSHIRE:

Rochester: WQSO 96.7, FC to hot AC,
SC to "the Wave 96.7"

NEW MEXICO:

Albuquerque: KKOB 93.3, FC to hot AC;
Corrales: KSYU 95.1, FC to urban AC,
SC to "Hot 95.1" (Albuquerque)

NEW YORK:

DeRuyter: WXBB 105.1, FC to active rock,
SC as "the Dog" (Syracuse)
Homer: WXHC 101.5, FC to oldies (Cortland)
Remsen: WUCL. (93.5, CC (ex WRFM),
FC to oldies, SC to "Cool" (Utica)
South Bristol: WLCL 107.3, FC to classic hits,
SC to "The Fox" (Rochester)

NORH CAROLINA:

Farmville: WGPM 94.3, FC to country
SC to "Eagle 94" (Greenville)
Oriental: WNBR 94.1, FC to country, //WGPM 94.3,
//WZBR 97.1
Kinston: WZBR 97.1 , FC to country, //WNBR 94.1,
//WGPM 94.3
Spring Lake: WZRI 89.3, NW

OHIO:

Defiance: WZOM 105.7, FC to country,
SC as "Bull country"

OKLAHOMA:

Bethany: KQBL 104.9, FC to all-sports.
Enid: KMMZ 96.9, FC to country, SC to "the Bull"
Kingfisher: WWLS 105.3, FC to modern rock,
SC as "K-Spy"
Stigler: KTKL 88.5, NW contemporary Christian
Taft: KCXR 100.3, CC (ex KHJM), FC to Christian rock,
SC to "The Cross."

PENNSYLVANIA:

Freeland: WDMT 103.1, CC (ex WBZH),
FC to classic rock, SC as "the Mountain" ,
//WAMT 102.3
Pittston: WAMT 102.3, CC (ex WBZJ).
//WDMT 103.1

SOUTH CAROLINA:

Manning: WCSQ 92.5 CC (ex-WHLZ)
Marion: WFSF 100.5 FC to country,
SC to "Wheelz" (Florence)

TEXAS:

Benbrook: KDXT 107.1 FC to Spanish AC,
SC to "Amor" (Fort Worth)
Houston: KTHT 97.1 FC to classic country,
SC to "Country Legends 97.1"
Lewisville: KDXX 107.9 FC to regional Mexican,
SC to "La Raza 107.9"
Pittsburg: KDVE 103.1 FC to classic rock
Stephenville: KEQX 89.7, NW

UTAH:

Salt Lake City: KISN 97.1, FC to hot AC,
SC to "97-1 Kiss FM, Today's Best Music."

VIRGINIA:

Emporia: WYTT 99.5, NW rhythmic oldies,
// WLGQ 97.9 Gaston, NC
Salem: WJLM 93.5, FC to hot AC,
SC to "Sunny 93.5" (Roanoke)

VERMONT:

Randolph: WCVR-FM 102.1, //WCPV 101.3 Essex
NY/Burlington VT
with classic rock as "Champ

WASHINGTON:

Newport: KMJY 104.5, QC (ex 104.9)

WISCONSIN:

Eau Claire: WISM 98.1, FC to AC "Mix".
Fond du Lac: WLWR 91.7, NW

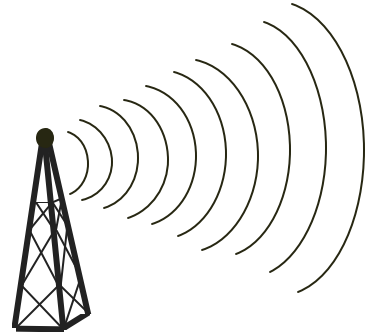
Has Your Dead Rotor Got You Down?

WE ALL KNOW IT'S A BRUTAL WINTER IN MUCH OF NORTH AMERICA.

If your rotor has died in the low temperatures and high winds and you have no idea where to look for your next rotor, here's help. I have recently purchased a ton of new and used rotors from a friend in the rotor business who was getting out, if anyone needs some standard duty Channel Master or HD rotors. I also have a ton of CDR and Yeasu rotors and a few Alliance HD-73 rotors. Some I have to rebuild and go thru. But I've got a bunch of new in-the-box units for great prices. So if you're frozen up. let me know!! STAY WARM. -Rich Wertman

R.W. SERVICE, INC., LOCKPORT, NY 716-434-9216 rwsvcinc@aol.com

Northern FM DX



Keith McGinnis
387 Shirley Street, Winthrop, MA 02152
longwave@attbi.com 617-846-5760

For Diners in the following states CT, IA, ID, IL, IN, MA, ME, MI, MN, MT, ND NE, NH, NJ, NY, OH, OR, PA, RI, SD, VT, WA, WI, WY Please submit by the 10th of each month. If possible please submit in the formats shown below.

John Ebeling - Bloomington, MN. ljebeling@aol.com

Equipment: Pioneer TX-9500 IF modified tuner in use along with a Stereo Probe 9, 25' AGL.
Times are CST.

Dec 13 Tr

1025 WZFJ 100.1 Pequot Lakes MN
Z-100(new station)

2043	KROM	92.9	San Antonio	TX
"		1100		
2058	KAMX	94.7	Luling	TX
"mix 94.7"		1074		
2100	KSTX	89.1	San Antonio	TX
		1100		
2100	KPAC	88.3	San Antonio	TX
		1100		

Dec 18 Es

1845 KNMI 88.9 Farmington NM
"vertical radio" 959 miles
2053 KLUX 89.5 Robstown TX
1203
2040 KLEY 94.1 Floresville TX
Spanish 1117

Dec 28 Tr

2300	K206DI	89.1	Nicollet	MN
	(WNCB Duluth Xltr)			65

Neil Wolfish - Toronto ON Honda Accord Car Stereo

Nov 30 Es

1751 WMIE 91.5 Cocoa FL
WMIE 91.5, Christian hit radio

to the Space Coast
1720 WLFZ 93.3 Tampa FL
Local Spots ...Tampa Bay's # 1 Hit
Music Channel 93.3 FLZ

Harry Hayes - Wilkes-Barre, PA

Equipment-Superadio II w/110khz filter, FM Quad loop in attic facing WNW.

September 1 Tr

0534 WKXZ 93.9 Norich NY
"1 Thing The Family Can Agree

On", strong.

0600 WSFT 107.9 Williamsport PA
"Star", good sig.

0930 WIII 99.9 Cortland NY
Ext. strong during rain.

September 3 Tr

0735 WVPS 107.9 Burlington VT
NPR, fair, IDs.

November 12 MS

2328 KDAT 104.5 Cedar Rapids IA
"...Cedar Rapids..."

November 30 Es

1645 UNID 95.3
Mentioned Gulfport, "The New Z-95.3".
Lumberton?

1702 WVRK 102.9 Columbus GA
Call ID and "Rock-103" ad for
Columbus.com.

1705	UNID	103.1			1724	WJZD	94.5	Long Beach	MS
			Very strong o/semi-local Weatherly PA						
103.1,	Gospel	MX.			1741	WAVW	94.7	Gifford	FL
1712	WYOK	104.1	Mobile	AL	1752	WLDI	95.5	Ft. Pierce	FL
			"Mobile's Hot 104" No call so not sure					"West Palm Beaches Wild-95.5" Song	
			if WYOK is still the call sign.					by Eminem.	

Adam Rivers- Chicopee, MA Email: patriotsrule417@yahoo.com
<http://adamskewlsite.freesevers.com>

DXing with a Sherwood S-7250 tuner modified with 110kHz filters, FM dipole antenna, Conrad RDS manager

<u>10/15 Tr <Note 1></u>					0100	<u>WFSU</u>	88.9	Tallahassee	FL
1828	WYSP	94.1	Philadelphia	PA	0300	<u>WNSC</u>	88.9	Rock Hill	SC
1831	WWOD	104.3	Hartford	VT	0520	<u>WSTR</u>	94.1	Smyrna	GA
1834	WPLJ	95.5	New York	NY	<u>11/30 Es <Note 5></u>				
1854	<u>WDST</u>	100.1	Woodstock	NY	1608	WZBQ	94.1	Carrollton	AL
1902	<u>WRKW</u>	92.9	Saugerties	NY	1610	WNNX	99.7	Atlanta	GA
1905	<u>WRRV</u>	92.7	Middletown	NY	1614	<u>WDYN</u>	89.7	Chattanooga	TN
1908	<u>WRNQ</u>	92.1	Poughkeepsie	NY	1616	WLWI	92.3	Montgomery	AL
1929	<u>WHUD</u>	100.7	Peekskill	NY	1617	<u>WBTR</u>	92.1	Carrollton	GA
<u>10/28 Tr</u>					1622	<u>WNFB</u>	94.3	Lake City	FL,
1622	WRZE	96.3	Nantucket	MA	QSLed 12/4				
1648	WFCC	107.5	Chatham	NY	1623	<u>WINL</u>	98.5	Linden	AL
2047	WMRV	105.7	Endicott	NY	1627	<u>WTVY</u>	95.5	Dothan	AL
<u>10/29 Tr</u>					1630	<u>WAFX</u>	95.1	Prattville	AL
1802	NYC	very strong			1633	<u>WQBT</u>	94.1	Savannah	GA
1820	WLNG	92.1	Sag Harbor	NY	1637	<u>WDOG</u>	93.5	Allendale	SC
		rare			1642	<u>WYNK</u>	101.5	Baton Rouge	LA
<u>10/30 Tr</u>					1646	<u>WRNO</u>	99.5	New Orleans	LA
1628	WBLS	107.5	New York	NY	1648	<u>KQXL</u>	106.5	New Roads	LA
1629	WAXQ	104.3	New York	NY	RDS "Q106-FM"				
1630	WPRB	103.3	Princeton	NJ	1649	<u>WTID</u>	101.7	Reform	AL
1647	WXRK	92.3	New York	NY	1650	<u>WFME</u>	102.5	Baton Rouge	LA
1652	WGNY	103.1	Newburgh	NY	1651	<u>WNSL</u>	100.3	Laurel	MS
<u>11/5 Tr</u>					1655	<u>WJXM</u>	105.7	DeKalb	MS
1942	WVPS	107.9	Burlington	VT	1659	<u>WUAL</u>	91.5	Tuscaloosa	AL
1955	WEZF	92.9	Burlington	VT	1703	<u>WCKW</u>	92.3	La Place	LA
2023	WBFB	104.7	Belfast	ME	1706	<u>WBBN</u>	95.9	Taylorville	MS
2025	WQEZ	104.7	Kennebunkport	ME	1708	<u>WQSB</u>	105.1	Albertville	AL
<u>11/6 Tr</u>					1710	<u>WEMX</u>	94.1	Kentwood	LA
1803	<u>WBBS</u>	104.7	Fulton	NY	1719	<u>WKQL</u>	96.9	Jacksonville	FL
		<Note 2>			1721	<u>WXXL</u>	106.7	Tavares	FL
<u>11/17 GW</u>					1724	<u>WZZK</u>	104.7	Birmingham	AL
1418	<u>WZID</u>	95.7	Manchester	NH	1729	<u>WKZB</u>	93.5	Butler	AL
		<Note 3>			1729	<u>WAPR</u>	88.3	Selma	AL
<u>11/19 MS (Leonids) <Note 4></u>					1733	<u>WKMX</u>	106.7	Enterprise	AL
					1735	<u>WQYK</u>	99.5	St. Petersburg	FL
					1738	<u>WKTK</u>	98.5	Crystal River	FL
					1739	WAPE	95.1	Jacksonville	FL
					1743	<u>WSJT</u>	94.1	Lakeland	FL
					1747	<u>WFLZ</u>	93.3	Tampa	FL
					1749	<u>WWRM</u>	94.9	Tampa	FL
					1754	<u>WLLD</u>	98.7	Holmes Bech	FL
					1758	<u>WJXR</u>	92.1	MacClenny	FL
					1809	<u>WRAXt</u>	107.7	Birmingham	AL
					<Note 6>				
					1810	<u>WRBQ</u>	104.7	Tampa	FL
					1853	<u>WWKA</u>	92.3	Orlando	FL

11/30 GW

1906 WQTQ 89.9 Hartford CT
WSCB off

12/4 GW

1500 WACC 107.7 Enfield CT
<Note 7>

12/15 GW/Tr

1929 WCVR 102.1 Randolph VT
WAQY off

1933 WIOQ 102.1 Philadelphia PA
WAQY off

1939 WSAK 102.1 Hampton NH
WAQY off

2035 WFPG 96.9 Atlantic City NJ

2133 WFCC 107.5 Chatham MA

12/19 Tr

1813 CBCK 107.5 Kingston ON

1821 WCOD 106.1 Hyannis MA
rare

1901 WECS 90.1 Willimantic CT

1903 WRPI 91.5 Troy NY

1947 WZSH 107.1 Bellows Falls VT

1954 WHRL 103.1 Albany NY

12/30 Tr

1654 WNYQ 105.7 Queensbury NY

1655 WVPS 107.9 Burlington VT

1656 WABT 104.5 Mechanicville NY

1708 WRZE 96.3 Nantucket MA

1802 WKTU 103.5 Lake Success NY
<Note 8>

12/31 Tr

1613 WBLI 106.1 Patchogue NY

1615 WFHN 107.1 Fairhaven MA

1637 WEFX 95.9 Norwalk CT

<Note 9>

1646 WNYC 93.9 New York NY
over WRSI

1709 New RDS: "KISS 108" on WXKS

1720 WBCN 104.1 Boston MA
over WMRQ

1830 WQHT 97.1 New York NY
very rare

1835 All of NYC strong

1839 WMJC 94.3 Smithtown NY

2340 Tropo still around to LI/NYC

I have begun to record some of my DX on my computer; as I now can record it. Star 92.9 and WVPS were exceptionally strong on New Year's Day, and I recorded both stations' Ids. I hope to have a website devoted to this type of thing coming later on this year. November 30th Es opening was a welcome surprise, but there hasn't been any Es recorded here since, except an UNID ABC station on Channel 2 at the end of December. 73s, Adam

<Note 1>- Nice Hudson Valley tropo opening, short but bagged 5 new ones.

<Note 2>- Faded up in mess of WQEZ, WSPK, WMOS for about 3 minutes with legal ID.

<Note 3>- WKSS running 3000 watts according to PD

<Note 4>- Very disappointed with Leonids, but happy that I got the three.

<Note 5>- Nice, unexpected skip opening

<Note 6>- Very fadey, but I'm 99.99% sure I heard it. I had 2 songs in a row and part of the slogan. I recently checked with Mediabase's Hour-by-Hour reports and they match up.

<Note 7>- LP on air. It hasn't been on, however, since December 10th or so.

<Note 8>- WKTU used to be my most frequent station from over 100 miles, now I have trouble getting it at all.

<Note 9>- Long a target, finally bagged on the last day of the year in this nice tropo opening.



20 YEARS AGO THIS MONTH!

The VUD featured the BBC Crystal Palace transmitter on the cover.

Technical Topics featured photos and specs on the Finco series of FM antennas, the FM4-G and the FM-5. It also compared them to the CM Stereo Probe 9.

Central FM DX's header was "Another Dead Winter."
Some things just never change.

February 2003

Here's the last of the photos from Girard Westerberg, Lexington, KY:



KXJB-4 Valley City, ND
1305 mi Es seen 6/14/02



WLS-DT-52 Chicago, IL 317
mi Tr seen 6/8/02

And now for some photos from Roy Barstow, Teaticket, MA. Roy recently rebuilt his DX shack and as you can see, has it stocked with loads of antennas and receivers. Roy has 3 TV's, 4 VCR's, 5 rotors, 8 amps, and 12 coax lines coming into the shack from outside antennas!



Below, on the North tower he has on top a FUBA UHF, followed by a Blonder-Tongue high band, and a B-T low band. On the roof tripod he has his high-band meteor scatter magnets: on top a 10 el. cut for ch. 11-13, and below is a 10-el. cut for ch. 7-8.



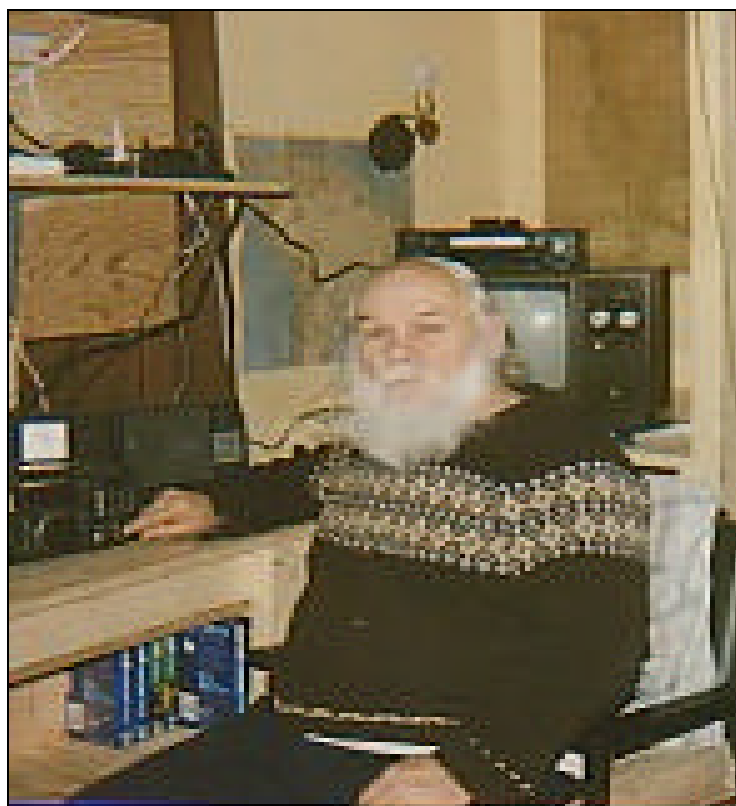
On the South side of the house, he has a 10-el. cut for ch. 2-3 and fixed in position for Trinidad reception (!), then an 8-el. low-band B-T fixed toward Cuba, a 10-el. cut for ch. 2-3 and fixed toward Central America, a B-T low band (rotor but no amp) for Es to the South, and in the background, a 7' UHF dish:



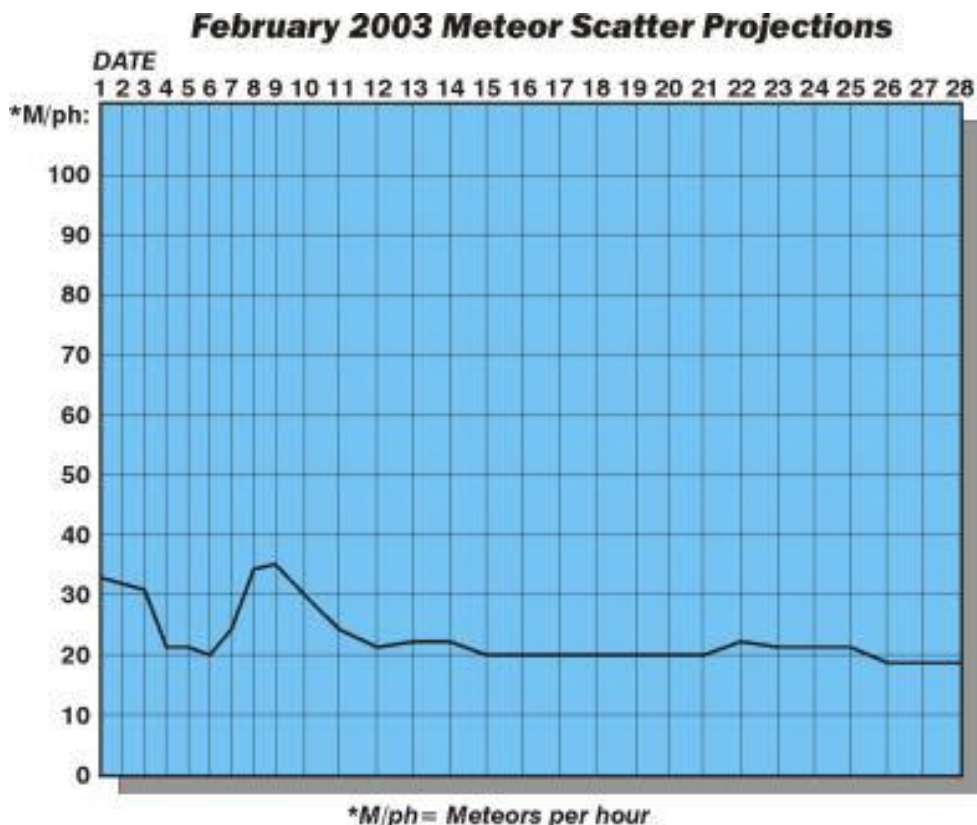
Finally, at ground level we have a 6-el. cut for ch. 5-6, with trap for ch. 6, fixed and no amp, for ch. 5 Ms work. Behind that, on the shed top is a 10-el. cut for ch. 4 with rotator (no amp), again for Ms work.



And here he is, the DX guru himself, Roy Barstow at the helm:



73's, Jeff



Meteor Shower Guide

February is an "off" month for meteors. We have five minor showers peaking in February, and these are the Aurigids (Feb 5-10), Alpha Centaurids (Feb 8/9), Beta Centaurids (Feb 8/9), Chi Capricornids (Feb 13/14), Delta Leonids (Feb 22/23) and the Sigma Leonids (Feb 25/26). As the chart above indicates, none of them are biggies. The random meteor count is best on the 8th and 9th, and this coincides with the Centaurids showers. Good luck!

(graph courtesy of Jim Thomas. Also on the internet at <http://members.cox.net/fmdxweb/thomas.html>)

Technology: Viacom wants FCC to require HDTV anti-piracy technologies

By JON HEALEY, Los Angeles Times

(December 23, 2002 8:58 p.m. EST) - Viacom Inc., parent of the CBS television network and Paramount Pictures, has threatened to stop all high-definition TV broadcasts on CBS unless federal regulators mandate certain anti-piracy technologies by this summer.

CBS is the leading source of free, over-the-air HDTV, transmitting most of its prime-time programs and many sports broadcasts in the format for the last four seasons.

In comments filed Dec. 6, Viacom told the Federal Communications Commission that it would transmit no HDTV in the 2003-04 season unless the commission mandated "broadcast flag" technology to deter digital TV broadcasts from being retransmitted over the Internet.

Viacom warned the FCC that without

protections for free over-the-air broadcasts, HDTV programs would shift to more secure cable and satellite services. Some Viacom programs already are heading in that direction: On Dec. 11, HDNet of Dallas announced a deal to rebroadcast several defunct TV series from Paramount in HDTV on cable and satellite.

A variety of programmers, TV manufacturers and high-tech companies have backed the concept of a broadcast flag, which would require future TVs, computers and other digital devices to block digital TV shows from moving onto the Internet. But the proposal has drawn sharp criticism from some technology companies and consumer advocates, who warn that it would hamstring innovation to guard against a nonexistent threat.



BACK TO THE BORDER

In order to set the stage for a 'hot' new story, a trip back to "TV TIME TUNNEL" in the July 1989 VUD will be helpful. Away we go!

INTERNATIONAL INTRIGUE

This unusual chain of events began in 1961 when KCND-TV began telecasting on channel 12 in Pembina, ND, with a primary objective of drawing advertising dollars out of the half-million plus Winnipeg market (which had more people than the entire state to which KCND-TV was licensed). The tower was situated just south of the US/Canada border 55 miles due south of Winnipeg and one of the tower guy lines was anchored just a few feet away from Canadian soil. Thanks to tabletop flat terrain, the station put a good signal into the Metro Winnipeg area.

KCND-TV was an independent, but did manage one major coup d'etat! They carried the "Tonight Show With Johnny Carson"... never before seen in Winnipeg.

After ten years on the air, a lot of red ink, and some bad breaks regarding Canadian advertising, the channel went dark and re-remained off the air for better than 10 years.

Shortly after KCND-TV bit the dust, CKND-TV (note the similarity in call letters) went on the air in Winnipeg. Meanwhile, the ex-KCND-TV tower re-remained in place at the border; tower lights blinking but no signal being transmitted...for another 10 years!

Eventually the tower (which was part of the KCND/CKND deal) was dismantled and shortly afterward re-assembled at Minnedosa, MB, where it serves as the 'stick' for CKND-2, a re-broadcaster of CKND 9 in Winnipeg.

The final chapter in this bizarre affair is that after being dark for so many years, channel 12 in Pembina has been reactivated and is now KNRR-TV, a satellite of KVRN-TV in Fargo.

There's a new tower at almost the exact location of the former KCND structure. There is also a new

Winnipeg reception problem in the form of adjacent channel interference from CHMI-TV (13) with transmitter near Elie, MB; about 25 miles west of downtown Winnipeg.

###

NOW...THE "HOT" UPDATE!

When KCND cranked up in 1961 the skimpy studio/office building was at the edge of the village of Pembina, and just a couple of blocks east of Interstate 29. The transmitter was about 10 miles west. The station went on the air in the fall, and experienced a relatively trouble-free startup.

In mid-summer of the first full year of operation a problem cropped up. On very hot days, something happened to the KCND-TV video. "Sparkles" and occasional dropouts would begin at about 1 or 2 PM, worsen, and then begin to disappear about 8 or 9 PM. Remember, it can get mighty hot up there. 100+ isn't uncommon..and along the 49th parallel, the sun doesn't set until after 10 PM.

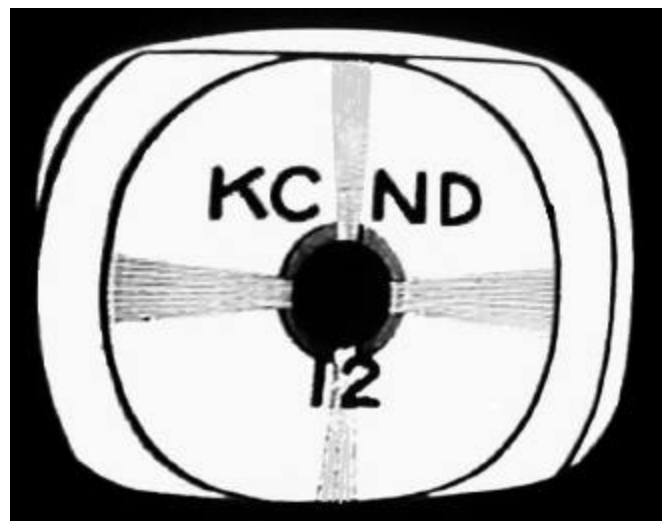
After a good bit of head-scratching, some sharp engineer locked onto the problem.

Heat rising from the concrete surface of four-lane Interstate Highway 29 was creating inversions that were deflecting the STL signal and causing the dropouts. The microwave path was only 15 feet above the road surface.

The problem was solved by building a lightweight 50 foot tower beside the studio building, and moving the STL transmit dish up to the top of it from the roof of the one story studio building.

Amazing stuff; surely too good to be forgotten!

###



This off-the-air photo of the KCND-TV test pattern reveals what may have been one of the crudest lettering jobs in circular test pattern history. It looks like the call letters and number were sketched onto the pattern template with a 'magic marker'.



SATELLITE NEWS

George W. Jensen
4604 Antanna Ave., Baltimore, MD 21206-4220
SCISATMAN@AOL.COM

There are a number of changes to list this month. Here goes - TELSTAR 7 - delete 681 - Vision ID Card and 724 - Unused. AMC1 - transponder 20 now ID's as MTV2 and on the KuBand side - delete Americas Collectibles Network on transponder 18 - it is now elsewhere.. Also on AMC1 Ku is an unused or unld'd 780. Now to AMC4 - add the following - Transponder 10 - HBO2 East VC2, 12 - HBO2 West VC2, 17 - MoreMax East VC@ and 19 - HBO Signiture - East VC2. On TELSTAR 5 - C-Band - 602 is now N3 and the Nebraska Public Television HDTV feed is on 603. GALAXY 3 - delete the following - 16, HBO Plus East, 17 - MoreMax East, 19 - HBO Signiture East and 20 - HBO Plus West as well as the NFL 4DTV Digicipher feeds on 400, 401, 402, 403 and 404. ADD - AMERICA 1 ON Transponder 21 - one of it's new homes. On the Ku side - delete the CCTV 4 channel on xpdr 24. I want to relist the digicipher/4DTV channels on GALAXY 11 - they are as follows:

400 - NBA Television. 500 - Unknown, 600 - Ovation, 601 - Bloomberg, 602 - VTV - Varsity Television, 603 - KTVD - Ch 20 - Denver, Colorado, 604 - KVMD Ch 31 - Los Angeles/29 Palms, California, 605 - KJLA Ch 57 - Los Angeles, California, 606 - KXLA Ch 44 - Los Angeles/Rancho Palos Verdes, California, 607 - JCTV - religious pop videos (it seems) 680 - The Church Channel, 750 - International Channel, 751 - TV 5 Paris, France, 752 - CCTV4 - Peking, China 780 - Access Television Network 1, 781 - Access Television Network 2, 800 The SET of which there may eventually be a 1, 2 and 3. 801 and 802 are barker channels for Crawford Communications. AMC2 - KuBand - delete 400, 401 and 402 - American Sports Cable Network and finally - Intelsat K at 21 West is no longer beaming any material in this direction. That's all for this month - see you in 30. - George

New System Uses Indoor Antennas to Improve Digital TV Reception

Los Angeles Times

Hoping to boost the appeal of digital television, News Corp.'s Fox Group unit and Philips Research announced a new technology Wednesday that they say will deliver perfect digital TV signals to more homes through indoor antennas.

The technology resulted from three years of research into digital TV reception in four major metropolitan areas. The companies' study found no fundamental problems with the way stations broadcast digital TV; instead, the shortcomings were in the digital TV receivers inside people's homes.

The work by Fox and Philips is just the latest in a series of efforts across the television industry to improve indoor reception, one of a handful of issues slowing the transition to digital TV. Such

improvement is critical for viewers who use antennas but can't have or don't want one on their roof, particularly those in densely developed cities or hilly neighborhoods.

Even homes with cable or satellite TV frequently rely on antennas for one or more of their sets, such as a small TV in the kitchen. Researchers have found that up to 40 percent of all viewers receive some television through an antenna.

The study by Fox, the Australian National University and Philips Research, an arm of Royal Philips Electronics, found that the biggest difficulty for digital receivers is distinguishing between the original broadcast and the echoes bouncing off of buildings and hills. On a conventional analog TV, such echoes cause ghosts, or multiple images. But on a digital TV, those reflections can wipe out the entire picture.

Andrew G. Setos, president of engineering for Fox, said the team studied the reflections in hundreds of locations around the four cities, using newly developed tools to capture and analyze the echoing signals.

"It turns out everyone had made bad assumptions" about the reflections' impact, Setos said. Using computer models of the most severe conditions, the researchers developed software that microchips in digital receivers could use to filter out the reflections more effectively, he said.

The Federal Communications Commission ordered broadcasters five years ago to switch from analog to digital transmissions, which promised flawless reception, richer pictures and cinema-quality sound.

But the public has been slow to make the leap.

MORE DXING IN A DIGITAL WORLD

Well, a couple of issues ago I speculated on the DTV and the future of TV dxing. A few members responded to that article, and here we share their thoughts with you:

I think that's an excellent analysis of DT/analog DXing. It truly is a new frontier, and something that those of us who enjoy DXing must embrace if we are to continue in the hobby.

There are several things I've learned in a few months with a WinTV-D card and now a set-top box. Analog and digital signals can and do co-exist on a given channel. With strong tropo, I've been able to pull out 140 mile analog dx on channels with digital signals just 10 miles away. For program viewing, digital is spectacular. I get a somewhat snowy signal from an analog WKRC about 65 miles to my north, but the digital WKRC is flawless. From a program viewing perspective, I'm actually wishing for all of the semi-local digital stations to go full-power so I can quit watching the analog signals altogether.

It's a trade-off for DXing, but I still have some open channels to do that on. --Glen Hale--Georgetown, KY

I don't seriously DX TV - only FM & AM. I have yet to see an analog computer TV card that can receive the same # of stations I can get on a regular TV and rabbit ears - and we've tried a few including Hauppauge.

But Mike hit on something I've thought about at some length. I figure that as long as there are any significant number of FM analog signals out there, and if the conditions are strong enough, I'll still be able to hear those. I don't yet know what digital signals I'll be able to hear on an analog tuner, but if I can hear them, and conditions bring me some, I'll hear them. Pretty much the same story on AM.

But as of right now, I cannot possibly justify the expense involved in converting to digital equipment of equal quality to the analog equipment I have. It's quite possible that by the time prices get to be reasonable enough to consider by today's standards, I may be in a more limited-income situation. Since I don't use either AM or FM for much beyond DX'ing other than occasional sports events and the local news station, I have no driving need to go digital to replace entertainment value. The good news here is that there's probably a significant portion of the non-DX'ing population in that same situation.

My hope continues to be that the market won't support the cost/benefit equation of digital radio as presented today. And if that hope is lost, then I may also have to choose to find other ways to use my hobby time.

And, even though I know I'll get an argument from some on this because I have before, I'm one of those who believes that no amount of letter-writing, complaining, etc. by a small minority special-interest group of DX'ers will make any difference to the FCC, the industry or Congress.

But if enough consumers across the board refuse to convert, then that's a voice which might be heard.... --Russ Edmunds - PA

What is needed here is software or windows module or whatever it's called to record the screen when there is a station on and stop recording when the screen is black. This would allow us to log stations without having to stare at a black screen and still have a good picture of what came in. Sort of like leaving the Conrad RDS thing going all night to catch MS.

My ATI All-in-Wonder card has the ability to record but you have to start and stop it yourself. It would also take "screen shots." It is for analog signals or cable, not for DTV, and I've never hooked it up to the rooftop system, just cable, DVD, VCR and back out to the TV. But it is neat to put up all the channels in thumbnails and have them updated every few seconds. Then you just click on a thumbnail that you want to watch in the ATI window and it pops up. Pretty cool!

I think that we'll be able to transition OK from analog to digital. As for how much skip and how far - well that remains to be seen.

Never surrender, never give up!!
--Guy T. Falsetti, Lockport, NY

The Jan.2003 Sound & Vision magazine (Pg. 92) has the following: Add-on tuners, mainly available from Samsung, Sony, Mitsubishi, and Zenith, generally cost between \$500 and \$800". Maybe your figure of \$400 is a bit low. --John Ebeling, MN

Mike's e-mail got me thinking about some things: A downside:

If we ever reach a point where all the analog signals are gone, and have been replaced by their digital counterparts, I can foresee having trouble determining CCI and subsequently attempting to null one digital signal for another (i.e., how will you know there are two signals there).

An upside: Guy brought up an interesting possibility: the 'security camera wall of screens' where you, potentially, could have many DTV signals on your computer screen simultaneously and could DX many channels at once! And the potential to record them

could mean you really could DX every channel all at once! We know we've missed signals before when tuning the band... maybe we won't do that in the future.

A question: When this transition occurs, will all the little TBN translators convert to digital too, or will the cost prove too high and they'll all go away? Or is there any special rule that would allow them to continue operation as analog (I'm assuming not). Is there any chance some of our dials will be cleaned up with the 'survival of the (financially) fittest'?

A wish list:

I note that KVBC-DT-2 is now on the air in Las Vegas. If there's one I'm looking for on skip to log here, that is probably it. Other interesting targets for skip that NAB claims to be on air include:

- WBBM-DT-3 in Chicago
- WKYC-DT-2 in Cleveland
- WWMT-DT-2 in Grand Rapids
- WHP-DT-4 in Harrisburg PA
- WMAZ-DT-4 in Macon, GA
- KTVM-DT-2 in Butte, MT

That's seven skip targets out there for any DTV DXer to be looking out for when skip fires up. Some of them strike me as very promising targets, free from nearby alternate signals (e.g., Macon, Butte and Harrisburg)... I think we'll learn a lot in 2003 about what is possible when it comes to skip.

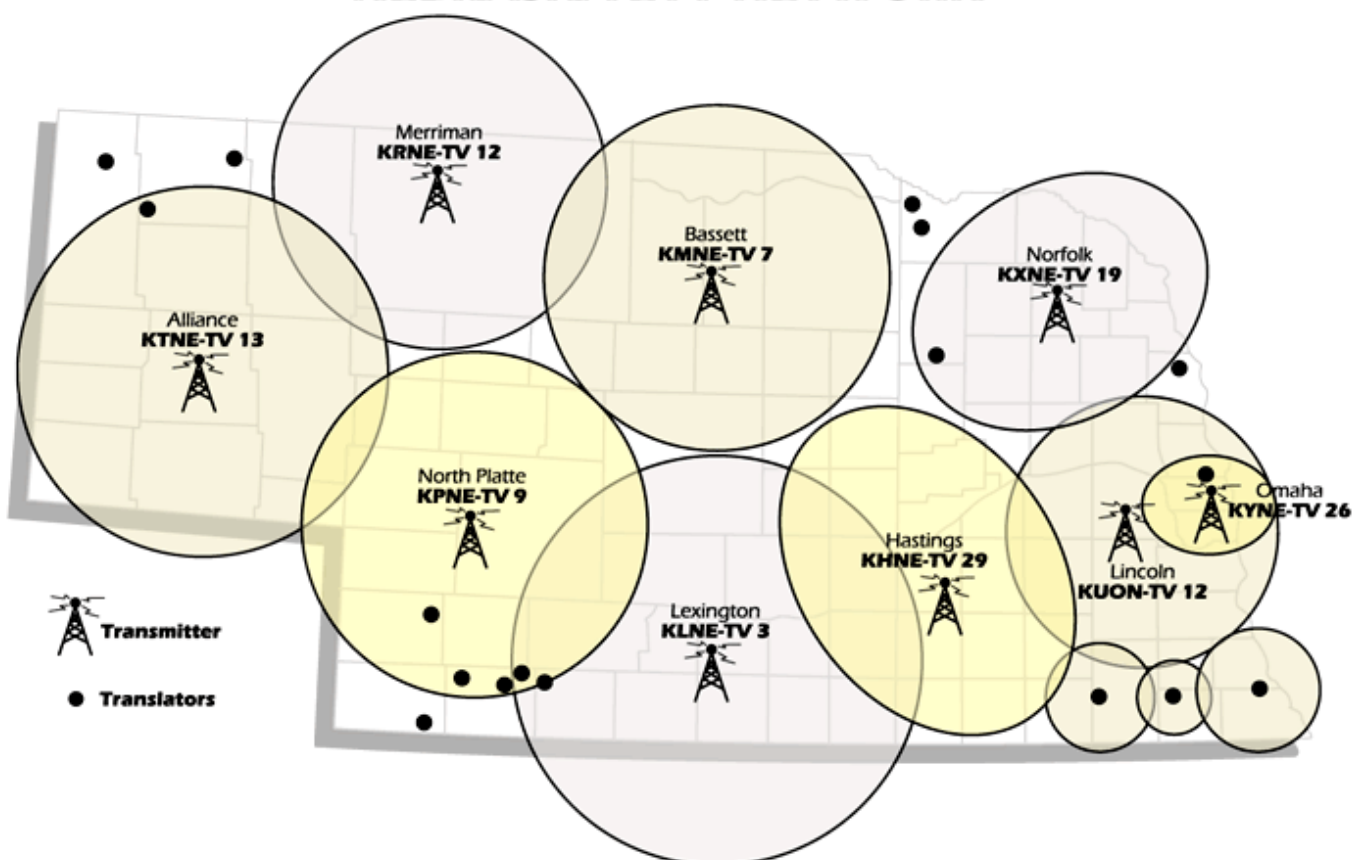
I fully expect at least one of us to log DTV skip in the next year. How hard will it be to get it to stay in long enough to lock? We'll see. Heck, a number of us, myself included, have seen the DTV snow of WKYC -DT via skip...but I didn't have the DTV card installed yet.

A closing thought: I look forward to the possibility of logging them... and there are more potentially that will be on air with those. In a way it's comparable to the pioneering efforts of earlier DXers on various other bands. We'll be the ones who will find out what is possible. Imagine if there was a massive skip opening and multiple DTV signals came in at once... could we get instantaneous IDs on our skip, similar to RDS/XDS?

The future may have some neat stuff for DXers! And while I certainly enjoy DX the way we've known it for years, I see that DTV is certainly a DX-able signal, and one I'll continue DXing! --Matt Sittel --NE

As long as the FCC doesn't change the characteristics of the atmosphere..there will always be ionospheric & tropospheric abnormalities around to produce DX. This at least is certain and will prolong our hobby no matter what form the signals themselves take! --Bill Hepburne --ON

NEBRASKA ETV NETWORK



SIGN UP/Renewal form

Name _____

Address _____ Apt # _____

City _____ State/Prov _____ Zip _____

Country _____ Interests: TV () FM () 30-50() Weather()

email address _____

Sign me up/renew me for: 1 year () 2 years () More ()

Yearly dues \$24 to US addresses, \$26 to Canada and Mexico
\$38 to the rest of the world (payable in U.S. Funds)

Mail your dues to: WTFDA, P.O. Box 501, Somersville, CT USA 06072

Make your checks/money orders payable to: DAVE JANOWIAK

And *thanks* for your support of the WTFDA!

Return this form with your dues or make a copy of it and return that.

Editors and Submissions

Send your reports and station info to these folks.

THE MAILBOX and all general club correspondence:

Mike Bugaj at WTFDA, PO Box 501, Somersville, CT 06072 mbugaj@snet.net

SATELLITE NEWS

George Jensen, 4604 Antana Ave., Baltimore, MD 20206-4220 scisatman@aol.com

TV NEWS

Doug Smith, 1385 Old Clarksville Pike, Pleasant View, TN 37146-8098 w9wi@w9wi.com

FM NEWS

Steven Wiseblood, 28 LBJ Blvd., Brownville, TX 78521 stevenwisebl@hotmail.com

PHOTO NEWS

Jeff Kruszka, 5024 S. Braxton Ave., Baton Rouge, LA 70817 jkruszka@bellsouth.net

TV TIME TUNNEL

Tom Bryant, 849 Todd Preis Dr., Nashville, TN 37221-2607 tjbdx@comcast.net

EASTERN TV DX

Matt Sittel, 15013 Eureux Circle, Bellevue, NE 68123 mcsittel@cox.net

WESTERN TV DX

Victor Frank, 12450 Skyline Blvd., Woodside, CA 94062-4554 frank@horizon.sri.com

SOUTHERN FM

John Zondlo, 4889 Driftwood Cir., Yukon, OK 73099 sfm@fmdxweb.com

NORTHERN FM

Keith McGinnis, 387 Shirley Street, Winthrop, MA 02152 longwave@attbi.net

VERIFICATIONS AND QSL SIGNERS

Tom Yingling, 221 Pinewood Road, Baltimore, MD 21222-2345 ka3tcc@erols.com

TV and FM STATISTICS

Fred Nordquist, 7945 Boxford Road, Clay, NY 13041 nordquis@twcny.rr.com

BACK ISSUES Dave Nieman, PO Box 17, Clarence, NY 14031-0017 nieman@localnet.com

We have a large selection available for \$1.00 each. Email or write Dave for availability.

You'll find DX info and many technical articles from classic VUDs scanned and converted to pdf files on the WTFDA pages at the ANARC website. Check out the WTFDA website at

<http://www.anarc.org.WTFDA>

**Please Remember to Make Your Renewal Checks Payable to Dave Janowiak
Checks made payable to WTFDA may be returned and your renewal may be delayed.**