

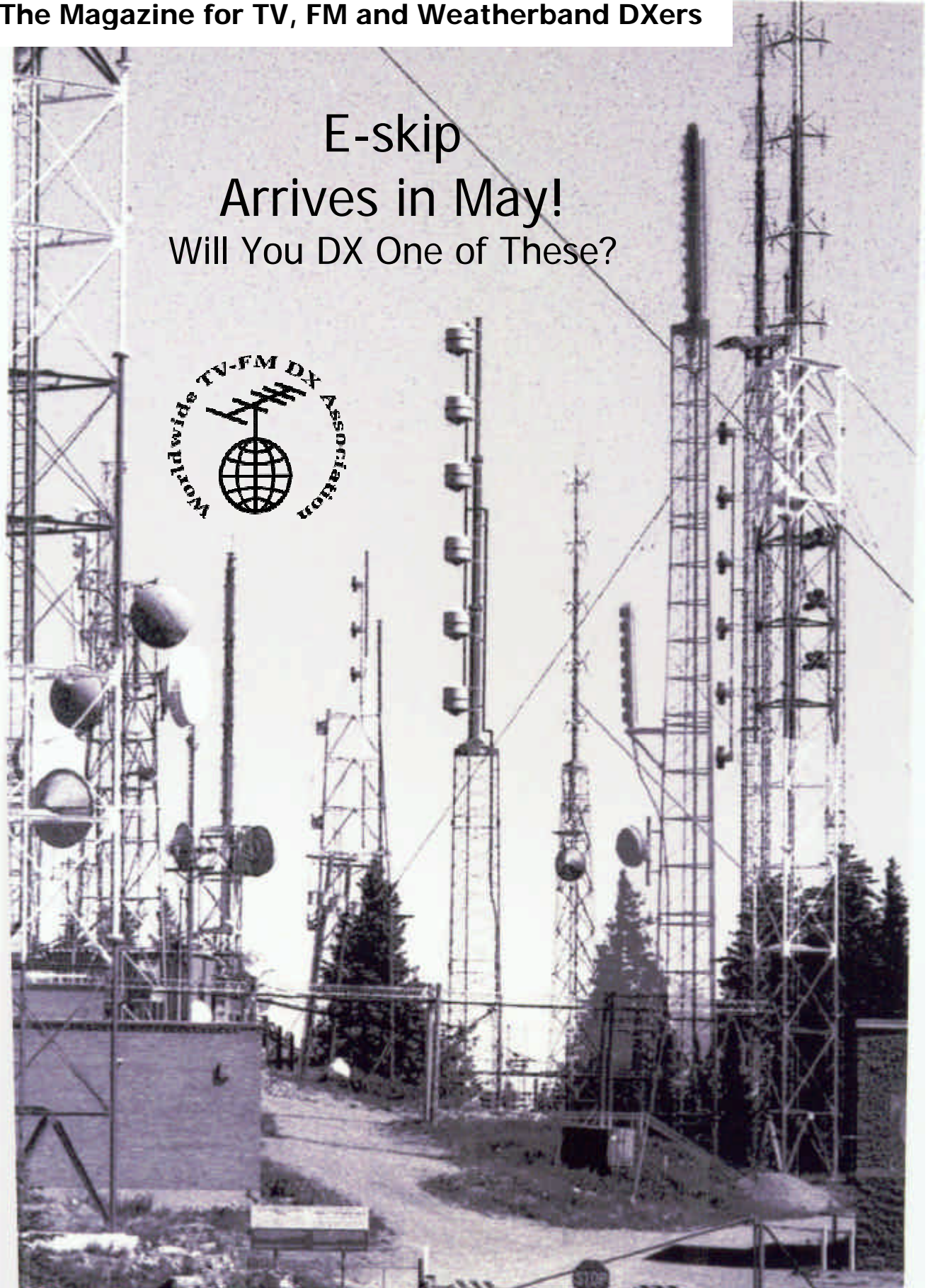
Vhf-Uhf DIGEST

The Official Publication of the Worldwide TV-FM DX Association

JUNE 2004

The Magazine for TV, FM and Weatherband DXers

E-skip
Arrives in May!
Will You DX One of These?



TV and FM DXing was never so much fun!

THE WORLDWIDE TV-FM DX ASSOCIATION

Serving the UHF-VHF Enthusiast

THE VHF-UHF DIGEST IS THE OFFICIAL PUBLICATION OF THE WORLDWIDE TV-FM DX ASSOCIATION DEDICATED TO THE OBSERVATION AND STUDY OF THE PROPAGATION OF LONG DISTANCE TELEVISION AND FM BROADCASTING SIGNALS AT VHF AND UHF. WTFDA IS GOVERNED BY A BOARD OF DIRECTORS: DOUG SMITH, GREG CONIGLIO, BRUCE HALL, DAVE JANOWIAK AND MIKE BUGAJ.



Editor and publisher: **Mike Bugaj**

Treasurer: **Dave Janowiak** *Webmaster:* **Tim McVey**

Editorial Staff:, **Victor Frank, George W. Jensen, Jeff Kruszka**

Keith McGinnis, Fred Nordquist, Matt Sittel, Doug Smith,

Adam Rivers, Jason Koralja and John Zondlo,

Our website: www.anarc.org/wtfda

ANARC Rep: **Jim Thomas**, *Back Issues:* **Dave Nieman**,

JUNE 2004



Finally! For those of you online with an email address, we now offer a quick, convenient and secure way to join or renew your membership in the WTFDA from our page at:

<http://fmdx.usclargo.com/join.html>

Dues are \$25 if paid to our Paypal account. But of course you can always renew by check or money order for the usual price of just \$24. Either way, it's still a bargain!

VUDS ON A CD!

Every VUD from Jan 1980 to December 1989 is on this disk. You'll need Adobe Reader to read them. Why have a box of old VUDs taking up space when you can have this. **It's yours for just \$8.00 per disk.** Send your check or money order for \$8.00 to WTFDA, P.O. 501, Somersville, CT 06072. Make it payable to Dave Janowiak.



CONTENTS

Page Two	2
Mailbox	3
TV News...Doug Smith	4
FM News...Adam Rivers	12
ATSC 101 Pt IX...Doug Smith	17
Photo News...Jeff Kruszka	19
Eastern TV DX...Matt Sittel	21
Western TV DX...Victor Frank	23
Satellite News...George Jensen	25
Northern FM DX...Keith McGinnis	26
Weak Signal Techniques...Bob Cooper	29
WTFDA Convention Info	32
IRCA Convention Info	33
Translator News...Bruce Elving	34
Convention Info and Registration	36

Well, the skip is finally flying. There haven't been any major bang-up FM openings just yet, but they'll come. This month Bruce Elving supplies a few pages of recent translator info, we've got info on upcoming DX club conventions and Doug Smith wraps up his course on digital television.

Hope you all enjoy this issue!

LET EVERYONE KNOW THAT YOU'RE A PROUD WTFDA MEMBER!

This removable plastic cling sticks to glass but can be easily removed. It features the WTFDA emblem and our WTFDA website address. Get one for just \$2 each!

Send cash, check or money order payable to Dave Janowiak. Send your order to WTFDA, P.O. Box 501, Somersville, CT 06072. Specify *red* or *yellow*.

Great for your car!

PERMANENT DECALS ALSO AVAILABLE UPON REQUEST.



Just \$2.00 Each



The Mailbox

P.O. Box 501, Somersville, CT USA 06072
MIKE BUGAJ MBUGAJ@SNET.NET

JUNE 2004

It's back! I'm talking about E skip. Early May brought 50mhz openings in Europe and North America with a few of them reaching up to the FM band briefly. A good period in particular was May 10-12. A few newsworthy items are receptions by **Matt Sittel** of WKYC-DT 2 with a partial picture decode with the NBC peacock in the lower right of the screen plus a great screencatch of the PSIP ID on the Win TV D card, **Juan Gualda's** catches of RCN and Caracol (Venezuela and Colombia) plus Puerto Rico from his home in Ft. Pierce, and **Steven Wiseblood's** Es from Nicaragua.

Matt's reception of WKYT-DT is just the second DTV E-skip reception ever recorded (**Girard Westerberg** was the first one to do it last year). Matt was late for work that day but he didn't even care. You can't blame him.

MEMBERS AND MORE

An official welcome goes out this month to **Peter Baskind** (TN) who joins the WTFDA after being on the WTFDA reflector for longer than I can remember. We all look forward to his 50mhz skip alerts and we're glad you decided to put c'mon in.

We have renewal checks received this month from **Milton C. Bay** (KY), **Fred Nordquist** (NY), **William Grant** (MA), **Jerry Bond** (NY), **George Mileon** (MA), **Eric Fader** (NY), **Steve Naetzker** (CA), **Peter Giacomelli** (NY), **Harry Helms** (CA), **Jacob Norlund** (MN), and **Ken Onyschuk** (IL). And thank all of you for your support of the WTFDA!

Bill Grant writes "No winter Es noted. Waiting for the next round to start. F2 on vacation for a few years." (Well, this round of Es is beginning. I hope those of us in the north have a good season. -Mike)

Matt Sittel talks about the upcoming convention: "Early arrivals are invited to a cookout Thursday night at the Sittel's house. Then on Friday we have a tour lined up at frequent skip catch KMTV-3, followed by a group dinner and business meeting Friday evening. Saturday will feature a WTFDA quiz, awarding of door prizes, and a barbecue buffet for our Saturday night banquet. We're still working on a few more things such as short lectures and presentations on all

aspects of DX. Of course in between there will be plenty of time to sit and visit with other attendees. We'll also be setting up antennas on site and will have HDTV and RDS receivers set up to demonstrate the latest technology. While I can't promise there will be DX, late summer can bring about all-day tropo as well as skip, which out here can come from both coasts! What I can promise is a great host location, the Park Plaza Regency Lodge, and a good time with your fellow WTFDA members.

We've already got half a dozen folks registered for the event, and you've got until June 30 to register. If you've never attended a WTFDA convention, you owe it to yourself to come on out and meet with fellow hobbyists. Why not make this the year you attend? If you have any questions, please get in touch with Mike or me.

PART 15 DEVICES ON TV CHANNELS

Peter Baskind reports: "The FCC is now proposing using vacant TV channels for Broadband WiFi distribution. Unlike the dubious Broadband Over Power Lines (BPL), where "primary user" hams like me can complain and require the provider to fix potential problems, TV viewers will have no such standing, as non licensed users of the spectrum." (This is just wonderful news -M)

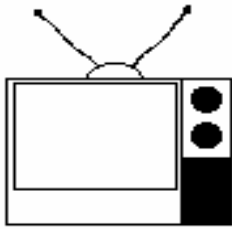
E SKIP MAPS

With Es at our doors it would benefit every one of us who has a computer and is online to bookmark the following site: <http://www.egrabow.com/gallery/>. This is the location where you'll find maps of the US and Canada and some Mexico showing all skip stations from ch2 to ch6 with powers and network affiliation. These maps are a great aid and our hats are off to **Ryan Grabow** for publishing a truly informative website!

WANT A DTV CARD?

Go to www.tigerdirect.com or call 1-800-800-8300. They have the Hauppauge Win TV D card for \$99. Do a search on the website for "Hauppauge" for the details. I doubt you'll ever see a better price.

Take care and see you next month. -Mike



TV News

Douglas E. Smith
 1389 Old Clarksville Pike
 Pleasant View, TN
 37146-8098
w9wi@w9wi.com
<http://www.w9wi.com>

June 2004

Abbreviations:

AF	Applied For (a new station)	PG	Power change granted
Aux	Auxiliary (backup) transmitter	PR	Power change requested
CC	Callsign change	QC	Channel (?frequency??) change on the air
CL	City-of-license change	QG	Channel change granted
DE	License/permit deleted	QR	Channel change requested
FC	Programming (?format??) change	RE	Reinstated (previously-dismissed app.)
FTP	Failure to Prosecute	ROA	Request of Applicant
GA	Granted amendment (to table of channel allotments)	SI	Off the air (?silent??)
LC	License to Cover	STA	Special Temporary Authority
NS	Permit granted for new station	XC	Transmitter site changed
NW	New station on the air	XG	Transmitter site change granted
PA	Proposed Amendment	XR	Transmitter site change requested
PC	Power (and/or tower height) change on the air		

News:

(full-power analog stations in **bold face**; LPTV and translators in regular type; full-power digital stations in **bold italics**)

Alabama:

Decatur 51 WYAM-LP QG fm ch. 16
Louisville 44 WGIQ-DT NW 925kw/262m
Opelika 31 WSWS-DT PR<150kw/539m, 32-19-16/84-47-28

Tuscaloosa 5 WCFT-DT NW 9.5kw/625

Alaska:

Anchorage 23 NEW-LP AF dismissed

Arizona:

Cottonwood 51 K51HV QG from K58AV
 Kingman 20 K20ID QG from K55GG, 790w
 Littlefield 48 NEW-LP AF dismissed
 Peach Spring 21, NEW-LP AF dismissed
 45
 Phoenix 43 K43GV PG<9kw, 33-20-01/112-03-44
 Prescott 20 NEW-LP RE AF 5kw, 34-42-52/112-31-33
 Tacna 23 NEW-LP AF dismissed

Arkansas:

Bentonville 26 K14IT QR dismissed ROA
 Bentonville 26 K26HB PG>150kw; CC from K14IT
 El Dorado 61 K61HQ XR 33-48-10/92-26-10; QG fm K46DT, 150kw
Fort Smith 21 KHBS-DT NW 325kw/602
 Springdale 4 KJBW-CA QR from ch. 15, 3kw dismissed

California:

Arcata 26 K26HM NS 25kw,

41-05-58/
 124-07-35
 Arroyo Grande 20 KSSY-LP QG from ch. 56, 20kw, 35-06-25/120-30-58
 Bakersfield 6 NEW-LP AF dismissed
 Bakersfield 34 KJOI-LP PG>150kw, 35-25-47/118-44-56
 Bakersfield 47 K47IA PG>150kw, 35-26-17/118-44-22
 Banning 55 K55JW PG>8.5kw; PR>10kw, 34-11-16/117-41-54
 Caliente 43 K43IR NS 22kw, 35-15-21/118-37-39
 Chico 28 KKPM-CA PG<129kw, from zero offset to plus
 Chico 32 K32GM NS 1kw, 39-45-18/121-44-13
 Daggett 46 K46HT QC from K44DV
 Eureka 35 KEAZ-LP PR>50kw, 40-43-36/123-58-18; already granted
 Glen Arbor 26 KBKF-LP PG>20kw, 37-06-40/121-50-29; PR>22kw, 36-45-23/121-30-05; CC from K26HN
 Holtville 30 K56GC QR from ch. 56, 3.4kw; CL from El Centro-Holtville
 Joshua Tree 17 K17GJ CC from K57EV
 Maricopa 38 KNXT-LP QG from ch. 57, 150kw

Morongo Vly. 40 K40HX QG from K62AO
Oxnard 63 KBEH-TV CC from KADY
Palm Desert 43 K43IW NS 7.26kw,
33-38-55/
116-33-34
Palm Springs 7 NEW-LP AF dismissed
Palm Springs 29 K29GA NW 60w, 33-49-
00/116-43-10;
PR>6.6kw,
33-45-20/
116-43-18
Redding 2 K02QA QG from K56ID,
410w, 40-39-19/
122-31-22; NW
Redding 42 K42GE PR>150kw
Redding 46 K46HI NW 3kw,
40-39-16/
122-31-13
Redding 58 K58IF NS 29.3kw,
40-39-16/
122-31-13
Ridgecrest 45 K45GQ QC from K69AS,
2.38kw
Sacramento 3 KCRA-TV PC>600m
Salinas 3 KMMD-CA PG>540w
San Diego 24 K61GH QR from ch. 61,
125kw, 32-50-
24/ 117-14-52;
CL from National
C.
San Francisco 28 KFTL-CA PG>90kw
San Mateo 60 KCSM-TV CX
Santa Ana 23 KTVN-DT NS 50kw/900m
Santa Barbara 28 K28GY QC from K55AP,
74.3kw
Sonoma 43 NEW-LP AF dismissed
Stockton 22 KDTS-CA PR>50kw
dismissed; PR>5
Twentynine 29 K29GK QG from K65AR,
Palms 4kw
Ukiah 19 KDSL-CA CC from K19FN
Colorado:
Aspen 50 K50IF AF dismissed
(so why calls
issued?)
Aspen 50 K50IN QG from
K03DW, 1.4kw
Basalt 36 K36GX PG<80w
Estes Park 49 K49IB PR>150kw
Estes Park 61 K61AA PG>150kw,
40-15-56/
105-33-37; XR
39-54-48/
105-17-33; PG
Genoa 44 NEW-LP AF dismissed
Grand 17 KRMJ-DT PG<65kw/409m
**Junction 39-03-58/
108-44-43**
Hartsel 20, K20IC, QG from K68AR
23 K23GZ & K70FL, 3.4kw
Loveland 45 K45GR QG from K63AB,
46.9kw,
40-38-31/
104-49-05; CL
from Estes Park
Pagosa Springs 31 K31FS QC from K62AP,
1.3kw
Pagosa Springs 40 K40GE QC from K54DH

Redstone 9, K09XN, XG 39-14-20/
11 K11VC 107-13-02
Vail 45 K45IE XR 39-36-18/
106-21-23
Windsor 36 K36HG PG>150kw, CL
from Estes Park
Woody Creek 39, K39HE, PG<60w,
44 K44GQ 39-18-37/
106-56-53

Connecticut

Darien 69 WNYZ-LP QR from ch. 33
dismissed; QR
to ch. 35
dismissed
New Britain 35 WVIT-DT NW
205kw/434m
New Haven 39 WCTX-DT NW 170kw/301
Norwich 9 WEDN-DT PA from ch. 45
Delaware:
Rehoboth Beach 59 W59DZ NS 1kw,
38-44-53/
75-11-00 (TBN)

Seaford 44 WDPB-DT PG>98kw

District of Columbia:

Washington 34 WUSA-DT PC>1000kw, DA

Florida:

Clearwater 26 WXAX-LP PR<50kw,
27-50-52/
82-15-48
Fort Myers 14 WTPH-LP PG>127kw,
26-43-36/
81-47-14
Gainesville 8 WNFT-LP PG>3kw,
29-38-08/
82-19-35
Gainesville 36 WUFT-DT NW 1000kw/263
Inglis/ 47 WYKE-LP XR 28-53-02/
Yankeetown 82-31-20; XG
Jacksonville 13 WTLV-DT NW 25kw/310m
Jacksonville 15 WJXE-LP XR 30-16-51/
81-34-12; CL
from Lake City;
PG>150kw,
30-16-32/
82-04-46
Key West 8 WVIB PR<2.65kw/56m
**24-33-18/
81-48-05**
Key West 12 WVIB-DT PR>210w/56m,
**24-33-18/
81-48-05**
Lake City 33 W33CI PG>150kw,
30-15-28/
82-10-48;
XR 30-16-51/
81-34-12; CL to
Maxville; XG
Mayo 32 NEW-LP AF dismissed
Miami 49 W49CL QG from
W54BB, 75kw,
25-58-15/ 80-12-
32; CL from
Rock Harbor
Miami 56 WEYS-LP FC; Almavision
Orlando 14 WRDQ-DT PG>182kw/477
Panama City 8 W08DZ NS 3kw,
30-12-13/
85-36-57
Panama City 17, W17CG, FC to religion

26, W26BV,
36, W36BU,
41, W41CP,
69 W69DH
Panama City 34 W34DH QG from
W54CU, 22.1kw
Port Richey 18 W18DB PR<2kw; PG
Rock Harbor 50 W54BB QR from ch. 54
dismissed
Sarasota 5 W05CO QG from
W34AW, 3kw
Tampa 26 WXAX-LP PG<50kw,
27-50-52/
82-15-48; CL
from Clearwater
Tampa 30 WTAM-LP PG<68.9kw
Tampa-St. 20 WARP-CA PR>150kw
Petersburg
Trenton 58 NEW-LP AF dismissed
Georgia:
Atlanta 10 **WXIA-DT** **NW 80kw/303m**
Atlanta 26 WANX-LP PG>51.8kw
Augusta 6 **WJBF** **PC>495m,**
33-24-20/
81-50-01
Savannah 43 W43CK QG from
W57CT, 36.5kw
Hawaii:
Honolulu 46 KHLU-LP QC from ch. 60,
11.93kw
Kahului 38 K38IE NS 50kw,
20-46-43/
156-14-51
Kailua 50 **KKAI** **NW 83.2kw/632,**
21-19-49/
157-45-24
Lihue 52 K52JG NS 15kw,
21-59-59/
159-24-55
Lihue 52, NEW-LP RE AF 15kw,
54 21-59-59/
159-24-55
Waimanalo 56 **KMGT** **PR<19kw/340m2**
1-19-23/
157-40-53
Idaho:
Georgetown 15 K15GO QG from K57IA,
330w, 42-30-07/
111-20-31
Grangeville 46 K46HX QG from K59BA
Idaho Falls 54 K54JF NS 41kw,
43-45-44/
111-57-30
Lava H.S. 14 K14MC QG from K59BV
Lewiston 51 K51HY QG from K55HZ,
360w
Malad 31 K31HS NW 1.2kw,
42-04-50/
112-12-29
Pocatello 41 NEW-LP AF dismissed
ROA
Preston 21, K22DV, QC from chs. 22,
23 K36AD 36
Preston 42 K42GN NW 1.8kw,
41-53-00/
112-04-42
Priest Lake 42 K42GT QG from
K57CW
Rexburg 43 K43JD NS 79w,
43-45-19/

Salmon 49 K49IC QG from K57CI
Soda Springs 49 K49HU NS 1.135kw,
42-37-48/
111-41-00

Illinois:

Galesburg 51 W51DT QG from
W50BY, 17.8kw
Joliet 53 **WGBO-DT** **NW 180kw/401**
Peoria 50 W41BO QC from ch. 41,
37.7kw,
40-33-29/
89-34-05
Rochelle 33 W33CH XR 42-01-12/
88-22-53
Rochelle 48 W48DH PG>150kw,
42-04-28/
88-49-24;
XR 42-01-12/
88-22-53
Rochelle 61 W61DT PG<22kw, 41-
48-27/88-16-06;
PR>38kw, 41-
53-56/87-37-23
(John Hancock
Center,
Chicago); PG;
PR>50kw

Indiana:

Bloomington 48 **WTTV-DT** **GA from ch. 53**
n
Gary 17 **WYIN-DT** **NW 300kw/290**
Indianapolis 47 WBXI-CA PR>117.4kw,
39-53-25/
86-12-20
Jeffersonville 9 WVHF-LP QR from ch. 5,
3kw

Iowa:

Davenport 44 K44HL QG from
K61HD, 20kw
Knoxville 21 K21EM XG 41-13-35/
92-44-48; CL
from Ottumwa
Sioux City 51 K38DU QC from ch. 38,
50.1kw

Kansas:

Dodge City 41 K41II NS 50kw,
37-45-58/
100-02-03
Topeka 32 NEW-LP AF dismissed
Wichita 51 KSMI-LP PG<14.1kw,
37-41-53/
97-19-10; PC

Kentucky:

Jamestown 2 W02CO NS 350w,
37-09-29/
85-09-50

Paducah 32 **WPSD-DT** **NW 906kw/492**

Louisiana:

Monroe 22 KMNO-LP PG>150kw
Monroe 33 NEW-LP AF dismissed
New Orleans 30 K30ID QG from
W52DE, 43.9kw,
29-58-41/
89-56-26; CL
from Meridian,
Miss.
Tullos 44 K44HN FC; sold to
KEJB

Maine:

Bangor	47 W47CU	NS 1kw, 44-33-52/ 69-36-37	Natachez(sic) 53 NEW-LP Natchez 44 W44CE	AF dismissed FC; sold to KEJB
Bangor	22 WFVX-LP	PR>150kw	Starkville 32 W32DB	NS 500w, 33-27-06/ 88-50-46
Biddeford	26 WMEA-TV	PC<133kw/231	Vicksburg 35 WUFX	NW 5000kw/253
Portland	15 WLLB-LP	FC; Daystar		32-19-35/ 90-37-03 (Fox)
<u>Maryland:</u>			<u>Missouri:</u>	
Lake Shore	69 W69EH	PG>150kw, 38-37-28/ 75-53-20; XR 38-58-02/ 76-15-30; CL from Salisbury	Anderson 53 K09VM	QR from ch. 9, 50kw
Salisbury	24 W24CW	PG>150kw, 38-40-00/ 75-35-00	Chillicothe 46 K46HP	NS 1kw, 39-49- 09 /93-32-53
Salisbury	51 W51DR	PG>150kw, 38-17-05/ 75-39-55	Columbia 32 K32GR	QG from K11SN, 143.2kw, 38-47-28/ 92-17-43
<u>Massachusetts:</u>			Jefferson City 38 K38II	QG from K11TB, 143.2kw, 38-47-28/ 92-17-43
Boston	24 WFXZ-CA	PR>90kw	Kansas City 45 K26CR	QR from ch. 26, 150kw
New Bedford	49 WLNE-DT	PR>284m, DA	Kirksville 4 K04PX	NS 100w, 40-15-42/ 92-34-49
Vineyard Haven	58 WDPX	PC>1665kw/ 153m	St. Louis 40 KUMO-LP	CC from K40FF
<u>Michigan:</u>			<u>Montana:</u>	
Cadillac	47 WFQX-DT	PR>393m, 44-44-53/ 85-04-08	Big Sky 46 K46IA	NS 50kw, 45-22-21/ 111-43-38
Cheboygan	35 WTOM-DT	NW 78kw/168m	Billings 16 NEW-DT	PA by KUSM-9
Detroit	14 WKBD-DT	PR>200kw	Butte 5 KXLF-DT	PR>10.7kw/576
Flint	66 WSMH	PR>1750kw/362 43-13-31/ 84-04-33	Glasgow 30 NEW-LP	AF dismissed
Gladstone	51 W51DP	NS 1kw, 45-51- 49 /87-02-17	Great Falls 21 NEW-DT	PA by KUSM-9
Lansing	51 WLAJ-DT	NW 900kw/300	Polson 14 K14LT	QC from K05EE, 250w, 47-40-39 /114-08-30; CL from Big Arm
St. Ignace	34 NEW-LP	AF dismissed	Polson, 16, K16GJ, Rollins 41 K41IW	QG from K07HG & K60AL, 250w, 47-40-39 /114- 08-30
<u>Minnesota:</u>			Wolf Point 29 K29FS	NW 840w, 48-02-06/ 105-31-12
Alexandria	14 K14LZ	QG from K36AA, 1.56kw	<u>Nevada:</u>	
Brainerd	30 K57BJ	QR from ch. 57	Las Vegas 41 K41IO	QG from K57FA
Little Falls	18 K18GF	PR<15.21kw, 45-59-03/ 94-19-57 dismissed; PG<1.5kw, 45-56-58/ 94-17-45	Las Vegas 43 K43FO	XC 36-00-36/ 115-00-20
Minneapolis	25 K25IA	QG from K58BS, 100kw	Pahrump 30 K30HX	NS 50kw, 36-11-24/ 116-06-59
Minneapolis	31 W62BD	QR from ch. 62, 150kw	Reno 27 KREN-TV	PR>2600kw/894
Rochester	43 NEW-LP	AF dismissed	Verdi 30 K15CT	QC from ch. 15, 800w
Wabasha	40 K57CN	QR from ch. 57, 10.4kw, 44-22- 12 /92-04-47	Verdi & 30 K30HY Mogel	QC from K15CT, 800w
<u>Mississippi:</u>			<u>New Jersey:</u>	
Bradley	55 W55DL	NS 999w, 33-13-08/ 88-58-48	Cherry Hill 41 WNAI-LP	QG from ch. 68, 140kw, 40-02-30 /75-14-11
Greenwood	6 WABG-TV	drops DA	<u>New Mexico:</u>	
Jackson	9 WLBT-DT	GA from ch. 51; PR<15kw/535m dismissed; PR<7kw/393m instead	Arrey & Derry 34 K34FU	CC from K67BG
Magee	34 KRBU	NS 3000kw, 32-07-18/ 89-32-39; CC	Carlsbad 25 KTEL-TV	PR>113kw
			Carrizozo 48 K48GY	CC from K57CF
			Clovis 4 NEW-LP	AF dismissed
			Clovis 16 K16EX	QC from K55AM, 16.4kw

Farmington Grants	43 K43AI 58 K58HX	PG<9.33kw XR 35-35-07/ 108-11-49; CL fm Sheep Springs	36-32-54/ 76-11-16
Hobbs	47 NEW-DT	Window opens for NS 4/23/2004- 5/24/2004	Manteo 45 W45CL NS 10.8kw, 35-51-52/ 75-39-01
Hobbs	52 KHLC-LP	XR 32-42-34/ 103-09-07; XG	Raleigh 36 W36DC QG from W64CN, 10kw
Las Vegas	20 K20GQ	QC from K58AZ, 1.18kw, 35-36- 16 /105-15-35; CL fm Nolan/Wooton CC from K55CV	Rocky Mount 33 WHIG-LP PR>9.8kw Rocky Mount 45 W45CN QG from W66DK, 8.3kw
Montoya & Newkirk	17 K17FK		Statesville 21 W21CI QG from W66BT, 9kw, 35-48-15/ 80-53- 30
Portales Quemado	14 K14KO 15 K15FS	CC from K58FW QG from K02GB, 160w, 34-19-47/ 108- 34-41; QC	Wanchese 23 W23CR NS 1kw, 35-50- 48 /75-37-19
Red River	15 K15FV	QG from K03CZ, 40w; already on	Wilmington 44 WECT-DT NW 575kw/280, 34-19-16/ 78-13-43
Roswell	50 K50IA	QG from K30HI, 5.4kw	North Dakota:
Santa Rosa Sheep Springs	38 K38HR 58 K58HX	CC from K62CU PG>150kw	Bismarck 48 NEW-LP AF dismissed
Truth or Consequences	25 K25HV	CC from K54CC	Devils Lake 25 NEW-DT Window opens for NS 4/23/2004- 5/28/2004
New York:			Fargo 44 KVLV-DT QR from ch. 58, 414kw/543m
Albany	7 WXXA-DT	QR from ch.4, 10kw/434m, 42-37-31/ 74-00-38	Jamestown 18 KJRR-DT PA from ch. 14
Auburn	15 WNNY-LP	PG<8.1kw; CL from Moravia	Ohio:
Bath	14 870331LW	NS 1000kw/318, 42-18-28/ 77-13-17	Athens 27 WOUB-DT NW 250kw/242
Brooklyn	3 W03BM	QC from W38CL, 750w, 40-44-46/ 73-58- 52	Bowling Green 20 WBGU-DT PA from ch. 56 withdrawn
Cobleskill New York	41 W41CV 6 WXNY-LP	PG>9.2kw QR from ch. 32, 3kw	Columbus 8 WGCT-CA CC from WINJ- LP
New York	11 WPIX	NS 25.2kw/300 (aux)	Lima 38 WLMO-LP FC to CBS
Ogdensburg	3 NEW-LP	AF dismissed	Shaker Hts. 19 WOIO PR<3700kw
Plattsburgh	38 WCFE-DT	PR>737m; NW 100kw/721m	Toledo 19 WTVG-DT NW 795kw/222
Plattsburgh	57 WCFE-TV	PR<462kw/737	Oklahoma:
Utica	30 WUTR-DT	NW 50kw/227m	Lawton 3 NEW-LP AF dismissed (interference to KFDX-3)
North Carolina:			Oklahoma C. 19 KUOT-CA PR>23.7kw
Asheville	50 W50CZ	QG from ch. 69, 21kw	Sayre 26 K26EU PG>9.9kw
Charlotte	16 W16CF	QG from W52CW, 44.8kw	Tulsa 45 KLOT-LP QG from ch. 25, 25kw
Fayetteville	45 W45CO	QG from W66DF, 41.5kw	Oregon:
Goldsboro	35 W35BZ	QG from W63CW, 18.3kw	Astoria 39 K39HO NS 24.5kw, 46-17-10/ 123-53-50 (KWBP-32)
Greenville	9 WNCT-TV	PC>575m	Bend 49 K49HX NS 1kw, 43-58- 55 /121-20-02
Lumberton	35 W35CC	QG from W67DU, 27kw	Glide 24 K24FH CC from K68BG
Manteo	4 WSKY-DT	AF 10kw/274m,	Klamath Falls 25 K25IB QG from K56EW, 13kw, 42-05-56/ 121- 38-02
			Klamath Falls 48 K48HV PG<7.24kw (corrects typo of 7244kw!)
			Lincoln City 50 K50IK CC from K59HY
			Madras/ 30, K30IC, QG from K56BV/
			Culver 32, K32GU, K58BK/ K63CC/ K69BI, , 2kw (1.7kw on ch. 45)
			Medford 32 K32DY PR<11kw, 42-17-54/ 122-44-57; PG
			Sunriver 23 K23FS CC from K62AJ

The Dalles	18 K61BX	QR from ch. 61, 1.2kw	Big Wells	25, NEW-LP	AF dismissed 29
Tolo	3 K03EI	XG 42-22-41/ 122-50-43	Corsicana	22 KNAV-LP	QR from ch. 30, 150kw
<u>Pennsylvania:</u>			Crockett	45 K45HZ	NS 10kw, 31-14-39/ 95-19-53
<u>a:</u>			De Leon	38 K38IO	NS 3kw, 32-10- 55 /98-31-52
Freedom	31 WWBP-LP	QG from ch. 25, 29kw	Denison	7 K07XZ	NS 500w, 33-52-20/ 96-28-12
Sayre	24 W52CE	QR from ch. 52, 17.5kw	El Paso	65 KTFN	PC<2637kw
<u>South Carolina:</u>			Floydada	24 K24GL	NS 22.5kw, 33-59-02/ 101-17-30
Charleston	2 WCBD-TV	PR>599m	Greenville	46 KTAQ-DT	NW 600kw/496, 32-32-36/ 96-57-32
Charleston	35 WMMP-DT	PR<46kw/583m	Harper	17 K17GZ	NS 7.5kw, 30-20-29/ 99-13-23
Charleston	36 WMMP	PR 1000kw/583, 32-56-24/ 79-41-45	Kerrville	32 KRRT-DT	NS 1000kw/531
Charleston	49 WITV-DT	NW 400kw/521	Kress & Tulia	41 K41CA	PC<930w, 34-32-12/ 101-44-25
Charleston	50 WCBD-DT	PR>581m; PG	Louise	50 K50HN	PG>150kw, 29-12-07/ 96-14-57
Columbia	47 NEW	NS 750kw, 34-02-38/ 80-59-51	Lufkin	53 KLSB-LP	CC from K53IQ
Johnston	46 W46DO	QG from W56EE	Mason	34 K34HW	NS 2.5kw, 30-47-08/ 99-18-40
Myrtle Beach	32 960920WV	sold to WIS-10	McCamey-Rankin	50 K50ED	XG 31-12-42/ 102-16-14; XC
Sumter	27 WRJA-TV	PG<647kw	Odessa	9 KWES-TV	PG>391m, 31-59-17/ 102-52-41
<u>South Dakota:</u>			Odessa	20 KTLE-LP	QC from K60EE
Aberdeen	17 KDSD-DT	PR<36kw, DA	Pampa	34 K34HU	NS 10kw, 35-32-46/ 101-00-02 (TBN)
Brookings	18 KESD-DT	PR<38kw, DA	Paris	13 K13YP	NS 1kw, 33-38- 46 /95-31-35
Eagle Butte	25 KPSD-DT	PR<31kw, DA	Plainview	17 NEW-LP	AF dismissed
Lowry	15 KQSD-DT	PR<24kw, DA	Port Arthur	40 KBTB-DT	PG>1000kw/ 360m
Martin	23 KZSD-DT	PR<39kw, DA	San Antonio	58 WOAI-DT	PR>776kw/457
Pierre	21 KTSD-DT	PR<34kw	Seminole	21 K21FV	QC from K55IF, 6.8kw
Sioux Falls	23 KCSD-TV	PC>84.7m, 43-34-28/ 96-39-19	Sherman	34 K34HQ	NS 10kw, 33-40-48/ 96-35-05
<u>Tennessee:</u>			Smith Hill	13 K13YN	NS 150w, 33-30-24/ 94-12-26
Acton	69 W69DB	PG>150kw	Texarkana	5 K05LQ	NS 500w, 33-35-06/ 94-02-28
Chattanooga	36 WCNT-LP	QG from ch. 65, 64.4kw, 35-22- 49 /84-42-45	Texarkana	66 K66GF	NS 150kw, 33-35-06/ 94-02-28
Chattanooga	58 W58DO	QG from W26BE, 11.3kw	Tulia	25 K25CP	PC<960w, 34-32-12/ 101-44-25
Holladay	62 W62CJ	XG 35-49-15/ 88-10-08; CL from Jackson	Uvalde	42 K42GJ	QG from K59EY, 9.99kw, 29-22- 08 /99-20-58; QR 8.15kw, 29- 37-11 /99-02-55
Knoxville	30 WVLT-DT	NW 398kw/551, 35-59-44/ 83-57-23			
Lawrenceburg	13 WLLP-CA	PG>3.5kw, 35-08-06/ 87-22-31			
Memphis	10 WKNO	PC<324m			
Moscow	64 W64BZ	PR<80kw, 35-05-43/ 89-23-07; CL from Jackson; PG			
<u>Texas:</u>					
Amarillo	41 KEYU-LP	PG<123kw, 35-20-33/ 101-49-20; CC from K41GY			
Amarillo	50 KAMT-LP	QR from ch. 31, 150kw, 35-20-33 /101-49-20			
Amherst	48 K48JC	NS 10kw, 33-58-18/ 102-19-59			
Austin	11 KQUX-CA	PC>1kw			
Austin	33 KVUE-DT	NS 1000kw/376			

Victoria 42 K42GO NS 9.89kw,
28-49-01/
97-03-58

**Wichita Falls 28 KFDX-DT PG>1000kw/
305m**

Utah:
Brian Head 47, K47JF, NS 75w, 37-41-
51 K51HQ 25 /112-49-45
Delta & Oak 51 K51GG QC from
City K54DW, 2kw,
39-21-12/ 112-
21-06
Duchesne 34 K34FV CC from K06MT
Enterprise 34 K34FW CC from K55CH
Fruitland 29 K29EZ CC from K59EL
Garrison 46 K46GG QC from K55GN
Henefer & 38 K38HW NW 260w,
Echo 40-58-40/
111-26-08
Mount 22 K22FW QC from K57HK,
Pleasant 1.8kw, 39-32-22
/111-23-17
Myton 19 K19EY, CC from K63CB,
K21FT, K69DE, K67CK,
K25HH, K65CL, and
K27GN, K61CF
K41GT
Park City 56 K56IQ NS 710w,
40-51-18/
111-28-44
Price 17 K17GT NS 380w,
39-31-47/
111-03-04
(KUWB-16)
Roosevelt 38 K38GO, QC from K19CZ,
K47HA, K23DR, K53BB,
K48GZ, K55DG, 1.12kw
K50GO
Samak 3 K03HQ NS 72w, 40-37-
56 /111-15-30
Santa Clara 36 K36FT CC from K57BG
St. George 33 K33GE CC from K59AG
Tropic & 27 K27ID NS 600w,
Cannonville 37-42-40/
112-04-39
Vernal 6 NEW-LP AF dismissed

Vermont:
Hartford 31 WNEE PC<1820kw/684
St. Albans 49 W52CD QR dism. ROA

Virginia:
Central 19 W19CW QG from
Rockingham W21AC, 2.2kw
Co.
Charlottesville 13 W13DD NS 1.5kw,
e 38-16-30/
78-27-37
Charlottesville 19 WCAV CC for NS
e
Charlottesville 32 WVIR-DT PR>369m
e
Charlottesville 64 WVAW-LP CC from W64AO
e
Honaker 51, WAPV-LP CC from
55 W51AD, W55AK

Richmond 57 WCVW PR<50kw
Richmond 26 WRLH-DT PR>328m
Yorktown 19 WYSJ-CA PG>150kw

Washington:
Grays River, 38 K38GS QC from K67BJ
Lebam

Longview 28, K28IH, NS 2.2kw,
31 K31HK 46-10-55/
122-57-00
Spokane 43 K14IF PR<2.2kw,
47-34-45/
117-17-51
Spokane 32 K32GS QG from K55EB,
10.2kw

West Virginia:
**Charleston 11 WVAH-TV PG 52.4kw/524,
38-24-28/
81-54-13**
**Charleston 19 WVAH-DT PR>514m,
38-34-28/
81-54-13**
Huntington 34 WPBY-DT NW 60.1kw/378
Martinsburg 50 W44AA QC from ch. 44,
11.5kw
Parkersburg 15 WTAP-TV PC 220kw/192m
Parkersburg 49 WTAP-DT NW 47.4kw/193

Wisconsin:
Fence 45 W45CD PG>2.1kw, QG
from no offset to
plus
Green Bay 42 WPNE-DT NW 200kw/375
**Kenosha 40 WPXE-DT NW 830kw/358,
43-05-44/
87-54-17**
La Crosse 30 WHLA-DT NW 308kw/351
Menomonie 27 WHWC-DT NW 200kw/350
Milwaukee 38 W38DT QG from
W53CC, 34.5kw,
43-05-15 /87-54-
13; CL from
Ludington, Mich.
Milwaukee 6 WITI PR>240m (aux)
Park Falls 47 WLEF-DT NW 200kw/244
Sister Bay 18 W18CU PR>5.16kw; PG;
QC
Wausau 3 W03BN NS 250w,
44-57-52/
89-39-45

Wyoming:
**Cheyenne 11 KKTU-DT NW 16kw/650m,
40-32-47/
105-11-50**
Cheyenne 14 K14LV NS 3kw,
41-08-17/
104-47-30 (TBN)
Hulett 58 K58IE NS 999w,
44-41-49/
104-37-07
Laramie 14 K14LK XR 41-17-17/
105-26-42;
PG<11kw,
41-14-16/
105-27-48
Rawlins 26 NEW-LP AF dismissed



Canada:
British Columbia:
**Vancouver 33 CIVT-DT NS 900w/740
49-21-29/ 122-
57-09**

Guam:
**Agana 5 KGTF-DT PG>8.26kw/
75m, DA**

Ontario:

Hamilton 15 CKXT-DT- NS 8.6kw/193
1 43-12-27/
79-46-28

Hamilton 45 CKXT-TV- NW 19kw/193
1 43-12-27/
79-46-28

Leamington 34 CFTV-TV NS 400w/61m
42-02-30/
82-36-24

London 14 CITS-TV-2 NS 883w/268
42-57-20/
81-21-20

Ottawa 32 CITS-TV-1 NS 7.2kw/142
45-13-01/
75-33-51



Puerto Rico:

Mayaguez 26 NEW-LP RE AF 19.94kw,
18-19-06/
67-10-49

Ponce 14 WTIN **FC; sold to
WAPA-4**

Ponce 19 WKPV-DT **PG<700kw/
269m, DA**

Yauco 41 WIRS-DT **PR>185kw/
832m**



U.S. Virgin Islands:

Christianstd. 15 WVIF **CC fm WCAV;
to be Fox**

Thanks to Jeff Kruszka, Bill Draeb, Charles Gauthier, Mike Bugaj, and Dennis Smith for information appearing elsewhere in this month's column.

TBN has sold a number of their duplicate new construction permits to Prism Broadcasting:

Charlotte Amalie, V.I.	W50CQ
Vidalia, GA	W59DS
Glasgow, KY	W57DO
Albert Lea, MN	K67HL
Cleveland, MS	W34CT
Starkville, MS	W61DQ
Cambridge, OH	W60DD
Durant, OK	K50GT
McAlester, OK	K61HM
Hereford, TX	K33GH
Chippewa Falls, WI	W61DM
Rhineland, WI	W44BZ

A few items of special interest this month. KCSM-60 has lost the lease on their analog transmitter site. They've requested permission to turn in their analog license and go digital-only. KCSM's analog transmitter was on the Mt. San Bruno tower farm south of the city; their digital is on Mt. Sutro.

Well, it was bad enough for NYC DXers when they managed to shoehorn in a channel 3 station in Brooklyn. Now, they've done it again. WXNY-LP has applied to move from channel 32 to channel 6, with 3kw. If approved, there would be no open low-band channels in New York City...

DTV RECEPTION #2



Matt Sillel (NE) comes through this month with only the second DTV E skip reception ever noted.

This screenshot from his computer shows program 1 and program 2 info. Also notice in the partially decoded picture, part of the NBC bug in the lower right side of the picture.

The station is WKYC-DT, channel 2 in Cleveland running 296kw, seen on May 12, 2004 at 8:01am local time. A Win TV D card was used for this reception.



FM NEWS

editor: adam rivers

37 carlton ave. chicopee, mass. 01020

email: redsoxdxer417@hotmail.com



SUMMER



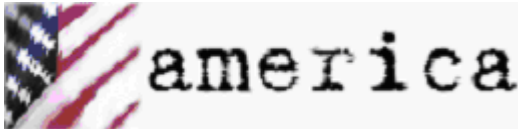
June 2004

CONGRATULATIONS TO THE CLASS OF '04

ABBREVIATIONS:

AFA: American Family Association
 CC: call letter change
 CL: city of license change
 CX: a construction permit has been cancelled
 C1, C2, etc.: a change in status to that FM license class
 DA: directional antenna
 DE: station has been deleted
 FC: format change
 GA: granted amendment to the table of FM allocations
 GE: granted extension of construction permit
 GX: granted replacement of expired permit
 LC: license to cover filed (ready to come on the air)
 MC: multiple-city ID
 NC: no change yet on a reported change or permit
 ND: non directional antenna
 NO: not on the air

NS: new station granted
 NW: new station signs on
 OSA: one step application granted for change
 PA: proposed amendment change to FM allocation table
 PC: power change on the air (> = increase, < = decrease)
 PG: power change granted (> = increase, < = decrease)
 QC: frequency changed occurred
 QG: frequency change granted
 RA: silent stations returns to the air
 RE: station requests an extension on permit
 RX: station requests replacement of expired permit
 SC: slogan change or update
 SI: station is silent
 SOA: signed on air
 XA: dismissed amendment to FM allocations
 XC: transmitter site change occurred
 XG: transmitter site change granted



ALABAMA:

Ashland: WTRB-FM 98.3, GA from Sylacauga
 Atmore: WYDH 105.9, FC to classic country, CC to WDXZ
 Brookwood: WRTR 105.9, PG>25kw/82m, 33-14-17/87-29-06; CL from Tuscaloosa
 Bryant: WWFC-LP 99.9, NW ?w/137m, 34-52-33/85-35-18
 Coaling: WFFN 95.3, GA from Cordova
 Cordova: WQOP-FM 92.5, GA from Dora
 Dothan: WDYF 90.3, PG>171m, 31-19-29/85-36-06
 Hackleburg: WFMH-FM 95.5, GA from Holly Pond
 Hobson City: WASZ 95.5, GA from Ashland
 Holly Pond: WRSA 96.9, GA from Decatur
 Homewood: WBPT 106.9, CL granted from Birmingham
 Killen: WKSR-FM 98.3, GA class A->C3, from Pulaski, TN
 Lannett: WRNK-LP 96.3, NW 100w/2m, 32-52-05/85-11-28
 Linden: WNPT-FM 102.9, PR 29kw/197m, 32-40-50/87-24-22
 Midfield: WBHJ 95.7, GA from Tuscaloosa, from Class C1 to C2
 Orrville: WJAM-FM 97.3, PG<125m
 Scottsboro: WKEA-FM 98.3, GA from class A to C3, PR>12kw/146m, 34-31-57/85-55-07
 Thomaston: WAYI 97.7, RA simulcasting WALX 100.9, Hot AC "Lazer 101"

ALASKA:

Nome: KICY-FM 100.3, PR>1kw/-104m, 64-30-11/165-24-36

ARIZONA:

Camp Verde: KAJM 104.3, PR>86kw/600m; CL from Payson
 Fountain Hills: KLVK 89.1, PC>2.5kw-V/285m
 Gilbert: KEDJ 103.9, PR>99.6kw
 Kingman: KFLG-FM 94.7, PR 43kw/790m

Lake Havasu City: KLHA 89.3, calls for new station

ARKANSAS:

Earle: KCJF 103.9, PC 12.5kw/143m, 35-27-01/90-42-11
 Gentry: KOZR-LP 102.9, PG 31m, 36-15-16/94-29-38
 Vilonia: KASR 92.7, PR>25kw/100m, 35-03-26/92-04-16; CL from Conway
 West Helena: KIHV-LP 107.7, NW ?w/59m, 34-31-48/90-36-46



CALIFORNIA:

Arcata: KCHP-LP 97.1, NW 100w/-41m, 40-52-32/124-05-21
 Bakersfield: KFRB 91.3, PR>2.8kw-V
 Chico: KPLS-LP 105.9, calls for new station
 Corning: KTHU 100.7, PA class B, from C1
 Crescent City: KCRE-FM 94.3, PR>25kw/-47m, 41-45-35/124-11-28
 Essex: KHWW 98.9, PG>9kw/348m
 Fresno: KJWL 99.3, PC>14.5kw/105m
 Fortuna: KWPT 100.3, FC to classic hits "The Point"
 Grass Valley: KCEE 103.3, signs on with Salem's talk programming "K-Talk", PC>530w/336m
 Hemet: KXRS 105.5, PR 6kw/85m, 34-01-41/116-58-40



Hollister: KHRI 90.7, PG>170w
 Johannesburg: KEDD 103.9, RA with Spanish hits "Radio Exitos"
 Lompoc: KSMY 106.7, FC to regional Mexican
 Los Molinos: KCEZ 102.1, NW 25kw/81m, 39-53-16/122-37-38
 Modesto: KEJC 93.9, corrects tower coordinates to 37-39-00/121-01-24 and power to 3.95kw
 Mt. Shasta: KMJC-FM 107.9, PR>20kw/249m, 41-13-37/122-14-23
 Oxnard: KCRU 89.1, PC>850w
 Pacific Grove: KAZU 90.3, PC 3.4kw/168m
 Quincy: KHGQ 100.9, PA from 100.3

Redondo Beach: KZAB 93.5, PC 3.4kw/132m, 33-51-35/118-20-56
Ridgecrest: KWTD 91.9, PR 6.6kw/404m



San Jacinto: KWRP 96.1, CC to KWIE, PC 1.4kw/209m, 34-02-13/116-58-07
Santa Barbara: KFAC 88.7, CC to KQSC

Thousand Oaks: KCPB 91.1, CC to KDSC
Willows: KCHC 106.3, PR<400w/34m, 39-31-25/122-10-07
Yuba City: KXCL 103.9, PG 25kw/100m, 39-02-43/121-28-41
Yuba City: KRYC-LP 105.9, NW 100w/7m, 39-07-34/121-39-09

COLORADO:

Aspen: KSPN-FM 103.1, PR>10.5kw/319m, 39-09-09/106-49-09
Dolores: KTCF 89.5, PG>66m, 37-27-38/108-30-29
Eaton: KLCQ 88.9, NW 640w/-1m, 41-08-17/104-47-30
Grand Junction: KBKL 107.9, PR>470m
Grand Junction: KMXV 104.3, PR>470m
Kremmling: KRKM 106.3, CC to KKHI
Salida: KHEN-LP 106.9, XR 38-32-30/105-59-11
Westcliffe: KWMV-LP 95.9, PR>-46m, 38-08-04/105-27-41
Yuma: KNEC 100.9, PG<23kw

CONNECTICUT:

Ledyard: WCSE-LP 100.1, PG 68m, 41-25-00/72-02-41

DELAWARE:

Dover: WIHW-LP 96.1, calls for new station

DISTRICT OF COLUMBIA:

Washington: WROX 107.3, PC 19.5kw/246m



Washington: WGMS-FM 103.5, AF 10kw/131m, 39-02-32/77-02-49 (aux)

FLORIDA:

Apalachicola: WFCT 105.5, PG 45kw/159m
Brooksville: WRRR-LP 102.7, CC to WKJO-LP
Collier Co. Rest Area: WFLP-LP 98.7, NW 100w/29m, 26-10-02/81-04-40
Fort Meade: WWRZ 98.3, PR>11.5kw/311m, 27-50-15/81-56-53
Glen St. Mary: WFBB-LP 100.3, NW 100w/27m, 30-16-17/82-09-46
Graceville: WTOT-FM 101.7, PR>25kw, 30-59-55/85-42-16
Holt: WTKE 98.1, PR<147m, 30-24-38/86-37-22
Inglis: WIFL 104.3, PR>25kw/95m, 29-02-10/82-42-40
Marathon: WAVK 97.7, PC>50kw-H/49kw-V/65m, 24-46-02/80-56-42
Mcintosh: WIMR-LP 96.5, NW 100w/30m, 29-26-57/82-13-36



Melbourne: WBVD 95.1, PC 4.3kw/118m, 28-08-15/80-42-11
Miles City: WFLU-LP 107.9, NW ?w/31m, 26-09-40/81-20-58
Miramar Beach: WSBZ 106.3, PC>6kw
Naples: WSRX 89.5, PC>100kw
Palm Bay: WEJF 90.3, PC>100w-H/10kw-V/123m

Panama City Beach: WVVE 100.1, PC>12kw/123m
San Carlos Park: WNRW 98.5, FC to country "US 98.5", CC to WUSV
Seaside: WTHA-LP 107.1, NW 100w/24m, 30-19-23/86-08-31
St. Catherine: WKFA 89.3, PR>90m, 28-32-22/82-04-48

GEORGIA:



Ambrose: WKAA 97.9, GA from 97.7 Ocilla
Atlanta: WSB-FM 98.5, GA from class C to class C0

Blackshear: WKUB 105.1, PC>50kw
Bowdoin: WMAX-FM 105.3, NW 70kw/307m (aux)
Canton: WPCG-LP 107.9, NW ?w/33m, 34-18-25/84-30-59
Dublin: WQZY 95.9, PG>100kw
Glennville: WOAHA 106.3, PC 4kw/121m, 31-51-18/81-44-28
Milledgeville: WKZR 102.3, PR>6kw/100m
Quitman: WSTI-FM 105.3, FC to top 40 "Mix 105.3", PC>25kw/97m, 30-38-23/83-26-52
Savannah: WZAT 102.1, PC>456m, 32-03-37/81-20-40
Statesboro: WMCD 100.1, CC to WMZD
Waycross: WASW 91.9, PR>18kw/88m, 31-16-13/82-39-19
Yates: WWBM 89.7, NW 1kw/98m, 33-27-47/84-53-35

HAWAII:

Haliimaile: KPMW 105.5, PC>14kw/134m, 20-44-32/156-18-48
Keaau: KBGX 105.3, PR 22.5kw-H/5.7kw-V/28m, 19-43-18/155-27-23

ILLINOIS:

Cairo: WBEL 88.5, PR>64kw-V/170m, 36-59-32/88-59-19
Carthage: WCEZ 93.9, PC>100m
Clinton: WHOW-FM 95.9, PR>6kw
Johnson City: WDDD-FM 107.3, request CL from Marion



Milford: WJCY 91.3, PR<25kw/27m, 40-35-07/87-57-47
Okawville: WIBV 102.1, GA from Mt. Vernon
Peoria: WWKJ-LP 102.9, NW 100w/11m, 40-54-

44/89-30-11

Shelbyville: WHBW-LP 93.7, CX, DE

Virden: WCVS-FM 96.7, PC>6kw, 39-38-02/89-48-50

INDIANA:

Cicero: WJCY 91.5, PR<250w-V/51m
Columbia: WSHI 106.3, PC>5.6kw/104m, 41-12-49/85-12-04
Corydon: WGZB-FM 96.5, PG>6kw/100m
Evansville: WCFY-LP 102.7, calls for new station
Fishers: WGRL 93.9, PC 2.95kw/145m, 39-49-39/85-58-51

Kokomo: WJJD-LP 101.3, calls for new station



Ligonier: WNRL-LP 105.9, NW ?w/39m, 41-25-55/85-34-59
Mitchell: WVEG 102.5, CC to WNUF
Montpeiler: WJCO 91.3, PR<350w-V/60m
Oolitic: WXVW 88.9, PR 5.2kw-V/78m, 38-59-14/86-27-31
Seymour: WQKC 93.7, PC<24.5kw-V (remains

25kw-H)

Spencer: WSKT 97.7, PR>6kw/100m, 39-10-32/86-42-29

Sullivan: WNDI-FM 95.3, PC>6kw/100m

IOWA:

Alair: KDDI-LP 102.9, NW ?w/47m, 41-29-47/94-38-29
Bettendorf: KORB 93.5, CC to KQCS
Charles City: KQOP-LP 94.7, NW 100w/-3m, 43-03-54/92-40-20
Clear Lake: KLKK 103.7, PR 6.2kw/199m, 43-10-04/93-06-04
Davenport: KTJT-LP 102.7, calls for new station
De Soto: KSDE-LP 104.7, NW 100w/16m, 41-32-07/94-00-18
Des Moines: KJMC 89.3, PC 7.1kw/61m, 41-39-21/93-35-51
Pocahontas: KWFF-LP 95.3, NW 100w/10m, 42-43-59/94-40-05

KANSAS:

Bronson: KBJQ 88.3, PR>36kw/116m
Dodge City: KVPC-LP 100.5, NW ?w/50m, 37-45-19/100-00-59
Emporia: KANS 99.5, QR to 96.1



Shawnee: KMAJ-FM 107.7, PR<275kw, 39-00-45/95-01-46; CL from Topeka (move into KC market)

Wichita: KZZD 90.7, CC to KYWA, FC to Way FM contemporary Christian

KENTUCKY:

Georgetown: WRVG-LP 93.7, calls for new station
Hopkinsville: WHOP-FM 98.7, PG>189m, 36-55-41/87-32-50
Jenkins: WIFX-FM 94.3, PG>6.3kw/410m, 37-09-59/82-37-13
Owensboro: WIMM-LP 107.7, NW 100w/28m, 37-43-39/87-03-15
Williamsburg: WCCR-LP 94.7, NW 100w/15m, 36-44-07/84-09-46
Williamsburg: WNLW-LP 95.1, NW 100w/30m, 36-44-40/84-10-25

LOUISIANA:

Baker: WJNH 107.3, CC to WTGE
Belle Chasse: KMEZ 102.9, PR 18.5kw/91m
Chalmette: WRQZ-LP 103.7, calls for new station
Jackson: WNXX 104.5, PR 3kw/144m, 30-44-44/91-07-32
Jonesville: KTGTV 105.1, PG 900w/249m, 31-40-08/91-41-30
Lake Charles: KBXG 99.5, PR<311m, 30-17-26/93-34-35



LaPlace: WCKW-FM 92.3, XG 29-57-09/90-43-26
Sulphur: KKGB 101.3, PR 12kw/146m, 30-14-41/93-20-37

MAINE:

Auburn: WMEK-FM 99.9, CC to WTHT

MARYLAND:

Crisfield: WBEY 96.9, PG 1.4kw/113m, 38-01-45/75-45-05
Frederick: WJTM 88.1, PR 1kw/340m, 39-29-31/77-30-00

MASSACHUSETTS:

East Harwich: WXLJ-LP 97.7, NW 100w/27m, 41-42-56/70-00-32
Hyannis: WCOD-FM 106.1, PG>50kw
South Yarmouth: WOCN-FM 103.9, PC>5.5kw/104m
Springfield: WAQY 102.1, NS 30kw/24m, 42-04-25/72-31-28 (aux)
Worcester: WAAF 107.3, CL to Westborough now on air

MICHIGAN:

Bear Lake: WCUZ 100.1, PR 1.1kw/166m, 44-30-54/86-06-53
Benton Harbor: WVBH-LP 105.3, NW 100w/16m, 42-07-06/86-26-59
Coopersville: WCXT 105.3, PR 50kw/146m, 43-15-41/86-02-01; CL from Hart
Crystal Falls: WOBE 100.7, XC 45-49-16/88-02-34
Detroit: WGPR 107.5, PC>124m
Grand Rapids: WVGR 104.1, PG>219m, 42-39-18/85-31-38
Kalamazoo: WCAC-LP 92.7, calls for new station
Mount Pleasant: WQOS-LP 98.9, NW 100w/22m, 43-35-28/84-45-50
Onsted: WAAQ 88.3, XG 42-03-33/84-12-54
Pentwater: WWKR 94.1, requests CL from Hart



Pinconning: WSAG 104.1, PC 4.6kw/99m, 43-43-30/83-56-50
Standish: WWCM 96.9, PA to 106.9 dismissed, class A
West Branch: WAWB-LP 107.3, NW 100w/21m, 44-16-39/84-12-23
White Star: WEJC 88.3, PG>50w-H/80kw-V

MINNESOTA:

Ada: KRJB 106.3, PR>50kw/85m
Breezy Point: KLKS 104.3, AF 70w/126m (aux)
Duluth: KDAL-FM 95.7, PC<221m, 46-47-15/92-07-21
Park Rapids: KDKK 97.5, PG>194m, 46-55-51/95-00-27
Sebeka: KOPJ 89.3, calls for new station

MISSISSIPPI:

Coldwater: WVIM-FM 95.3, PC>3.6kw/129m
Greenville: WIXP-LP 107.9, calls for new station
Gulfport: WGCM-FM 102.3, PG>50kw/120m

Hickory: WGTC 91.3, calls for new station
Okolona: WACR-FM 103.9, PG<120m, 34-12-18/88-41-49; CL from Columbus
Port Gibson: WATU 89.3, PR<8kw-V, 32-07-56/90-45-29
Port Gibson: WRTM-FM 100.5, PR>50kw/150m, 32-00-00/90-59-20
Yazoo City: WYAZ 89.5, PR>25kw-V/158m, 32-48-04/89-56-32

MISSOURI:

Birch Tree: KBMV-FM 107.1, PC>25kw, 36-56-03/91-43-07
Bowling Green: KPVR 94.1, PC 7.5kw/180m, 39-15-45/91-04-09
Cuba: KESY 107.3, XG 38-02-43/91-30-08
Farmington: KSEF 89.9, PG 9.5kw/195m, 37-47-57/90-33-43
Hannibal: KJIR 91.7, PC>12kw/174m, 39-41-54/91-29-48
Lexington: KMJK 107.3, PR>361m
Marshfield: KNLM 91.9, PC 1.75kw/76m, 37-19-01/92-57-51
Osceola: KCVJ 100.3, PC>6kw/86m, 38-03-43/93-33-24
Otterville: KCVK 107.7, PR 2.5kw/152m, 38-39-21/92-54-27
St. Louis: KEZK 102.5, GA from class C-> class CO
Stockton: KRLK 107.7, PR<850w/35m, 37-41-50/93-45-59



MONTANA:

Arlee: KJFT 90.3, calls for new station
Bozeman: KOFK-LP 98.3, calls for new station
Hardin: KRWS-LP 100.7, calls for new station
Kalispell: KANB-LP 102.3, calls for new station
Montana City: KBSG-LP 106.3, calls for new station
Polson: KMDM-LP 105.9, QR from 107.9
Shelby: KFAS-LP 95.3, PG 34m, 48-29-37/111-53-21
Whitehall: KESW-LP 106.5, calls for new station

NEBRASKA:

Bennington: KRQC 93.3, CC to KHUS
Grand Island: KKLK 88.3, PG 1.7kw/45m, 40-54-50/98-23-52
Mitchell: KOSJ 89.5, calls for new station
Omaha: KIOS-FM 91.5, AF 55kw/183m (aux)
Omaha: KGOR 99.9, PG<370m, 41-18-29/96-01-36

NEVADA:

Sparks: KLRH 88.3, NW 1.8kw/880m, 39-45-38/119-27-59

NEW HAMPSHIRE:

Bartlett: WJSK-LP 101.1, NW 100w/-15m, 44-07-17/71-12-16
Dublin: WFCB-LP 100.3, PG ?w/132m, 42-53-58/72-07-16
West Keene: W240AM 95.9, CX, deleted (interference on WZID/95.7 Manchester)



NEW JERSEY:

Burlington: WPST 97.5, GA from Trenton
Canton: WJKS 101.7, PG 800w/195m, 39-25-51/75-20-13
Eatontown: WHTG-FM 106.3, PC 1.1kw/161m, 40-16-41/74-04-51

NEW MEXICO:

Alamogordo: KKBO 107.9, calls for new station
Albuquerque: KFLO 91.5, PC<20kw/1232m
Belen: KVLK 91.1, QC to 90.7, PR<1.6kw/198m, 34-47-55/106-48-59
Los Alamos: KZNM 106.7, PR>45.3kw/577m, 35-46-49/106-31-34



Portales: KSEL-FM 95.3, QR to 105.9; PR>100kw/165m, 34-11-34/103-16-44
Rio Rancho: KVVV 101.7, FC to smooth jazz "The Horizon", CC to KAJZ
Santa Fe: KAJZ 105.1, CC to KKRK and goes silent

Socorro: New 89.5, NS 100kw/99m, 34-16-37/106-54-08 (K-Love)

NEW YORK:

Binghamton: WHWK 98.1, PC 6.7kw/395m, 42-03-40/75-56-45
Binghamton: WSKG 89.3, PC>11.5kw/317m, 42-03-40/75-56-46
Buffalo: WBFO 88.7, PR>117m
Frankfort: WKLL 94.9, FC back to modern rock "K-Rock"
Kingston: WKXP 94.3, PC>2.25kw
Kingston: WKHV-LP 103.9, NW 100w/6m, 41-55-07/73-59-15
Lake Luzerne: WBAR-FM 94.7, PG>940m/253m
Oneida: WMCR-FM 106.3, PG>1.25kw
Saranac Lake: WSL 90.5, PC>600w/107m
Southold: WBEA 101.7, PR>5.5kw
Wellsville: WJQZ 103.5, PG>1.75kw



Wethersfield Twp: WNSA 107.7, simulcasting WGR-550

NORTH CAROLINA:

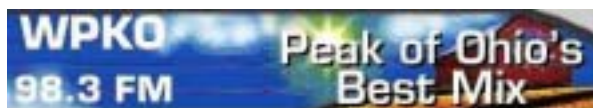
Aurora: WFPF 104.5, CC to WSTK
Chapel Hill: WCOM-LP 103.5, XR 35-53-22/79-03-59
Charlotte: WYLI-LP 93.7, NW ?w/-3m, 35-06-04/81-03-26
Elizabethtown: WDJL-LP 93.7, PG 43m, 34-38-40/78-38-21
Greensboro: WOZN 98.7, PC>375m, 35-56-42/79-51-45
Lenoir: WSER-LP 100.1, NW 1w/314m, 35-54-25/81-29-22
Lincolnton: WWGT-LP 100.9, NW ?w/1m, 35-27-50/81-16-29
Stanley: WVEM-LP 100.5, calls for new station
Washington: WBOB-FM 93.3, CC back to WERO
Windsor: WIAM-FM 98.9, CC to WNBR
Winston-Salem: WFEC-LP 103.1, calls for new station

NORTH DAKOTA:

Devil's Lake: KZZY 103.5, PC<138m, 47-58-49/99-03-11
Dickinson: KPAR-LP 103.3, NW 100w/-3m, 46-53-12/102-47-02
Minot: KSAF-LP 104.1, calls for new station

OHIO:

Bellefontaine: WPKO-FM 98.3, PC 1.75kw/131m, 40-22-05/83-44-02



Bellevue: WOHF 92.1, PC>6kw/100m, 41-14-19/82-50-16
Kettering: WLQT 99.9, NS 8.2kw/112m, 39-43-36/84-12-23 (aux)
Mount Sterling: WSWO 102.3, PA from Wilmington, class A
Newark: WJFY-LP 104.3, NW 100w/30m, 39-58-18/82-24-45
Oxford: WOXY 97.7, FC to modern rock "X97-7"



West Carrollton: WDPR 88.1, PR 600w/238m, 39-43-16/84-15-00

OKLAHOMA:

Grandfield: KWKL 89.9, NW 11kw-V/152m, 34-16-19/98-25-30
Healdton: KICM 97.7,

PC 10kw/156m, 34-20-57/97-27-24

Okarche: KTUZ-FM 106.7, AF 13kw/285m, 35-36-49/97-52-19 (aux)

OREGON:

Astoria: KJAC 88.7, CC to KLOY
La Grande: KTVR-FM 90.3, NW 400w/774m, 45-18-35/117-43-57
Lakeview: KOIK-FM 93.5, PG 1kw/303m, 42-12-19/120-19-37
Monmouth: KSND 95.1, PC 1kw/477m, 44-53-19/123-36-26
Newport: KWPB-LP 98.7, PG<18m, 44-38-57/124-03-08

PENNSYLVANIA:

Avoca: WAMT 103.7, CC to WFEZ, PC<6kw/22m, 41-18-20/75-45-38
Dallas: WCWQ 93.7, CC to WSJR
Ellwood City: WJST 92.1, PR 2.5kw/156m, 40-46-09/80-16-56
Erie: WMCE 88.5, PC>750w/152m, 42-05-25/79-56-37
Erie: WXKC 99.9, AF 9.7kw/117m, 42-03-21/80-02-24 (aux)
Gap: WOMB-LP 92.9, CC to WGCP-LP
Greensburg: WSSZ 107.1, CC to WJJJ
Hazleton: WBSX 97.9, PC 6.3kw/407m, 41-10-56/75-52-22
Pittsburgh: WBZZ 93.7, SC to "B93-7"
Pittsburgh: WORD-FM 101.5, NS 28kw/158m (aux)

SOUTH CAROLINA:

Bamberg: WWBD 95.7, PR>7.6kw/164m, 33-24-49/81-00-59
Clemson: WCCP-FM 104.9, PR>4.6kw/113m, 34-38-13/82-42-30
Greenville: WPLS-LP 95.9, NW ?w/33m, 34-55-13/82-26-17
Hilton Head Island: WIAR-LP 100.5, NW ?w/32m, 32-09-14/80-45-36
Murrells Inlet: WYEZ 94.5, PG 12kw/145m, 33-33-13/79-13-14



Newberry: WWPZ-LP 95.9, NW ?w/43m, 34-16-27/81-46-05
Seneca: WHZT 98.1, PR>459m, 34-34-00/82-58-50
Sumter: WICI-FM 94.7, PC>8.1kw/174m, 34-02-56/80-12-51

Williston: WAAW 94.7, PC 2.55kw/155m, 33-30-31/81-37-27

SOUTH DAKOTA:

Flandreau: KKHG 107.9, CC to KWSF
Huron: KZKK 105.1, PG>50kw/150m, 44-11-39/98-19-05

TENNESSEE:

Colonial Heights: WRZK 95.9, PC 7.4kw/382m
Knoxville: WUOT 91.9, PR 63.9kw/534m, 36-59-44/83-57-23
Lenoir City: WKZX 93.5, FC to country (Knoxville)
Pulaski: WKSX-FM 98.3, PR>25kw/100m, 35-00-35/87-21-30
Spencer: WSPE-LP 93.1, XR 35-43-38/85-28-04
St. Joseph: WJOR 101.5, PR>4kw/123m, 34-56-01/87-32-59
Walden: WTRZ-FM 103.9, QR from 103.7, 25kw/92m, 35-07-33/85-17-25; CL from McMinnville (enters Chattanooga market)

TEXAS:

Abilene: KGNZ 88.1, PR<5kw/73m, 32-28-37/99-44-56
Beaumont: KQK 107.9, PR>90kw/596m, 30-01-01/94-32-47
Belton: KOOC 106.3, CC to KQXB
Borger: KDSH-LP 105.1, calls for new station
Burnet: KBey-FM 92.5, PG 1.8kw/184m, 30-44-29/98-19-05
Cameron: KHTZ 94.3, CC to KNVR
Dallas: KEGL 97.1, FC to AC "Sunny 97.1"
Denton: KHCK 99.1, CC to KFZO
Elgin: KKL 92.5, PG>3.5kw/134m, 30-13-07/97-24-03
Fort Worth: KTCU-FM 88.7, PC>10kw/90m
Graham: KWKQ 94.7, FC to classic hits
Hondo: KRIO-FM 98.5, CC to KMFR
Iowa Park: KIXC 100.9, PA from Quanah, class C3
Jasper: KWYX 102.7, PG>50kw/150m
La Porte: KVST 103.7, PR>100kw/590m, 29-56-09/94-30-38; CL from Willis



Lumberton: KOBT 100.7, PA from Winnie, class C
Navasota: KMBV 92.5, CC to KHTZ
Pasadena: KFTG 88.1, PR>58m
Pearsall: KRIO 104.1, FC to Spanish Hits "Digital 104.1" (San Antonio)

Pittsburg: KKXI 91.1, PR>1.57kw-V/61m, 32-57-48/94-53-54

Plainview: KJTV-FM 97.3, CC to KSTQ-FM



Port Arthur: KTJM 98.5, PR>100kw/596m, 30-01-01/94-32-47

San Angelo: KELI 98.7, FC to soft AC "K-Lite"

Stanton: KFRI 88.1, PR>139m, 32-05-44/101-48-47

Sterling City: KCSE 96.5, FC to Spanish hits "Que Buena 96.5"

Stephenville: KEQX 89.7, PR>6kw-V/150m, 32-07-24/97-58-48

Victoria: KXBJ 89.3, PR 9.5kw/115m, 28-46-20/96-57-17

Weatherford: KYQX 89.5, PG>4.5kw/158m, 32-51-05/98-06-31

Wichita Falls: KBZS 106.3, PC>50kw

Winfield: KLNA-LP 94.3, PC>27m, 33-09-37/95-05-13

Winnie: KLTO 105.3, PA from Crystal Beach, from class A to C2

Wolfforth: KAIQ 95.5, PR 100kw/206m, 33-31-03/101-51-24

UTAH:

Delta: KMGR 95.9, PG>293m, 39-43-58/111-56-34

Logan: KBLQ-FM 92.9, PC>100kw/63m

Monticello: KAAJ-LP 103.5, PR<-52m, 37-52-43/109-20-25

North Ogden: KNKL 88.7, NW 7.3kw-V/300m, 41-35-30/112-14-57

Ogden: KKAT 101.9, simulcasting sports KFNZ-1320

Salt Lake City: KSOP-FM 104.3, PG>1140m

St. George: KZBS 90.7, calls for new station

VERMONT:

Norwich: WNCH 88.1, PR 100w-H/1.6kw-V/689m

Warren: WMRW-LP 95.1, XR 44-06-31/72-49-11

VIRGINIA:

Cheriton: WWIP 89.1, calls for new station

Emporia: WJYA 89.3, PG>135m, 36-46-04/77-43-39

Heathsville: WCNV 89.1, calls for new station

Mount Jackson: WSIG 96.9, PC>4.3kw/170m, 38-36-31/78-54-07

Susan: WSUV-LP 102.3, NW ?w/60m, 37-23-09/76-19-02

WASHINGTON:

Centralia: KMNT 102.9, PG>87kw/635m, 46-58-31/123-08-16

Olympia: KOWA-LP 106.5, XR 47-01-15/122-57-50

Pacific Beach: KXPB-LP 89.1, PG ?w/71m, 47-13-07/124-12-13

Pullman: KFFR 97.7, calls for new station

Tacoma: KXOT 91.7, PR>39kw

WEST VIRGINIA:

Beckley: WVPP-LP 97.9, NW ?w/40m, 37-47-35/81-12-17

Clay: WYAP-LP 101.7, PG<-60m, 38-28-32/81-05-03

Edmond: WQAZ-LP 98.5, NW ?w/123m, 38-03-23/80-59-49

Gary: WHQX 107.7, PC 8.6kw/172m

Martinsburg: WLTF 97.5, PG 11.5kw/316m

Martinsburg: WVEP 88.9, PR<3.5kw/484m

Petersburg: WAUA 89.5, PG<322m

Webster Springs: WAFD 100.3, PC>35kw

WISCONSIN:

Marinette: WLCJ-LP 92.5, XR 45-05-33/87-37-18

Milwaukee: WMYX-FM 99.1, NW 440w/54m, 43-02-18/87-55-16 (aux)

Omro: WPKR 99.5, PC 25kw/151m, 43-49-44/88-40-06

Richland Center: WRCO-FM 100.9, PR>23kw/105m

Siren: WXCX 105.7, FC to classic hits

Superior: WSAD-LP 93.7, calls for new station

Wausau: WCLQ 89.5, PC>90kw/185m

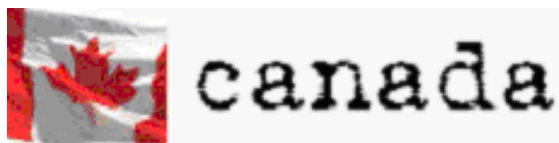
WYOMING:

Chugwater: KLWV 90.9, PG>361m

Kemmerer: KAOX 107.3, PC>100kw/289m

Orchard Valley: KWYC 90.3, PR<20kw/130m

Rock Springs: KUWZ 90.5, PR 50kw/512m, 41-25-39/109-07-17



ONTARIO:

Ottawa: CKBY-FM 105.3, CC to CISS-FM



Smiths Falls: CIOX-FM 101.1, CC to CKBY-FM

Toronto: CISS-FM 92.5, CC to CJAQ-FM

QUEBEC:

Pohenegamook: CFVD-FM-2, QG from 104.9; PG>294w

Squatec: CFVD-FM-3, PG>301w

YUKON TERRITORY:

Whitehorse: CKRW-1-FM, NS 380w // CKRW-AM

Some news and notes:

- WBZZ/Pittsburgh finally realized the stupidity of their slogan change last year from the heritage "B94" to "93-7 BZZ", changing the slogan back, but in a different form as "B93.7". They are currently being beat by CC's WKST 96.1.



- WKLL 94.9 out in New York State changed back to its K-Rock modern rock format after the sale of the stations to the owners who were going to implement the new format fell through.
- Late news: KEGL/97.1 The Eagle in Dallas was blown up by Clear Channel, to a hybrid of Philadelphia's WSNI as "Sunny 97.1", with a similar logo.



Another relatively quiet month in FM radio around the country. It's also been a tough early start to the Dxing season.. hopefully that gets better. Some skip has shown up here so far, but only on TV. Have a great beginning to the summer!

-Adam

ATSC PRIMER IX

Doug Smith

Reception limitations:

If you haven't been under a rock, you're probably aware that the music industry (and to a lesser degree, the film industry) has been fighting a piracy epidemic. File-sharing networks on the Internet are blamed¹ for a sharp reduction in sales of recorded music. Program producers fear DTV will allow the unauthorized distribution of perfect digital copies of their shows, with commercials removed. This would limit their ability to sell off-network programs in syndication or directly to the public.

Broadcast Flag:

A proposal has been made for the establishment of a "broadcast flag". This is a burst of data that would be transmitted along with the DTV signal². It would tell the receiver what it's allowed to do with the received program. Digital VCRs would be required to "listen to" this flag. A given program might:

- Ⓞ Allow viewing only, VCRs would refuse to record the program.
- Ⓞ Allow viewing and recording, but VCRs would refuse to make a copy of a recording.
- Ⓞ Allow viewing and recording, with no limits on making copies of recordings.

There's an obvious shortcoming in this scheme. There's no way to pass the "broadcast flag" to an analog output – no way to prevent a DTV setowner from recording restricted programs on his analog VCR. Nor on a digital recorder³ with an analog input.

The content industry has suggested plugging this "analog hole". Their proposal would require that DTV receivers refuse to output any program that has the "broadcast flag" set from any analog output. It could only be passed to digital outputs, to devices that would be required to honor this flag.

There are two problems with this scheme. The obvious one is that, after transition, viewers who have bought a DTV receiver to use with their existing analog display will no longer be able to view the flagged programs. They'll be forced to buy an expensive digital-input display. Knowledge of this issue will (has) slow the transition to digital, by making viewers less likely to buy a DTV tuner unless they can afford a digital display as well⁴.

Less obvious is the devaluation of thousands of high-definition analog displays already purchased by early adopters of DTV.

A television display is inherently analog. The brightness of a spot on the screen depends on the amount of current applied by the electron gun at that point. You don't send the number 35,178 to the picture tube and expect it to display a dot of 53.6%⁵ brilliance. Rather, you send a current of, say, 536uA.

Most existing high-definition displays put most of the "smarts" in the tuner. The display simply accepts analog currents representing the amount of red, green, and blue at any given point, and displays them as dots of a given brilliance. These displays do not contain a digital input – they have no way of obeying the "broadcast flag".

Requiring DTV receivers to honor this flag, and to refuse to transmit flagged programs through any analog output, would make it impossible to watch flagged programs on existing high-definition displays. Furthermore, existing anti-piracy laws would probably make it illegal to offer an external digital-to-analog converter.

1In this author's opinion, file-sharing is only part of the reason; a slow economy, high prices, the demise of the single, and "overconsulted" music & radio that don't offer anything of interest to many would-be buyers have contributed to the decline.

2As part of the "conditional access" scheme?

3Such as TiVO.

4The price of a digital display is (very!) roughly 10 times that of a DTV tuner.

535,178/65,535 ; 65,535 is the greatest number that can be represented by a 16-bit digital system.

As you might imagine, existing HDTV set owners emphatically oppose the broadcast flag. (even those – the vast majority – who have no intention of engaging in unauthorized copying) Equipment makers also oppose the flag. Presumably they fear people will continue to operate their analog equipment as long as possible – will delay purchase of digital receivers and displays – if they know they'll be restricted in what they can record.

Program producers are equally adamant about supporting this flag. CBS/Viacom has threatened⁶ to stop carrying high-definition programming this fall if a flag was not in place. Other producers haven't taken such drastic steps, but still fully support the proposal.

A big unresolved question is that of what kind of material will be subject to the flag. Will only feature films and popular sporting events be flagged? Or will regular series like comedies and dramas be flagged as well? How much recording will be permitted?^{7 8} It looks like this will be up to the program providers.

Geographic restrictions:

About the same time DTV got started, the digital “mini-dish” satellite operators began to offer network-affiliated TV to their subscribers. At first, only one or two sets of network affiliates were carried; most satellite viewers could not receive their local stations through the satellite. Because of copyright restrictions⁹ satellite operators are only allowed to offer a network affiliate if either it's the viewer's local affiliate, or the viewer is unable to receive an affiliate of that network. This led to the need for “waivers” and submission of your ZIP code before receiving network affiliates through the dish.

It's my belief this is what started a rumor that DTV would include geographic restrictions. Some equipment salesmen have told DXers that DTV receivers would demand your ZIP code and refuse to receive any stations besides your locals. Obviously this would make DXing difficult!

There are no laws, regulations, or technical standards requiring DTV receivers to receive only your locals. In fact, the vast majority of receivers will happily display any station they see during a channel scan.

As it turns out, however, a few DTV receivers have been sold that do request the user's ZIP code and display only those stations that cover that code. My best guess is the manufacturers believe it's a good way to ensure the receiver gets all the stations their customers want to see¹⁰, even if those stations are not on the air during a channel scan. DXers, of course, need to avoid such receivers.

Conclusion:

OK, that's it. Hopefully we've adequately explained how DTV works and how the United States is transitioning from analog to digital. Please feel free to drop me a line with any further questions you might have. I don't promise an answer, but I'll sure try!

Doug Smith
1385 Old Clarksville Pike
Pleasant View, TN 37146-8098
w9wi@w9wi.com

⁶But since withdrew the threat.

⁷Will I be allowed to record “Law and Order”, but not to make a copy of the recording? Actually, in that case if I still had only an analog VCR I wouldn't be able to record it at all because of the “analog hole”.

⁸This is a serious concern for this author. I work evening shift – I'm only able to watch TV between roughly 8am and noon. Obviously, the programs scheduled during this period are not of much interest to men above the age of 12!

If I'm unable to record the interesting programs airing between 6 and 11pm while I'm at work, I have little or no reason to buy digital equipment.

⁹Broadcast TV programs are copyrighted and cannot be retransmitted without the station's permission.

¹⁰After all, unfortunately the vast majority of viewers are not DXers...

PHOTO-NEWS

Jeff Kruszka, Editor
5024 S. Braxton Ave.
Baton Rouge, LA 70817
jkruszka@bellsouth.net

June 2004

This month we have photos from me!:

Equipment: 1992 Zenith "Sentry 2" 13" color TV, Channel Master 4228A screened 8-bay w/CM Spartan 3 #0071 preamp and RG-11 coax for UHF, Channel Master 1114 Crossfire w/CM #0040 preamp, MFC trap for 88.5 MHz, and RG-6 for VHF, both in attic @20 ft. AGL. WinTV-D card.



KVOA-4 Tuscon, AZ
1175 mi Es seen 6/20/03
@1851 CT



KBMT-DT-50 Beaumont, TX
180 mi Tr seen 10/22/03
@ 2136 CT



KSLA-DT-17 Shreveport, LA
205 mi Tr seen 11/15/03
@0106 CT



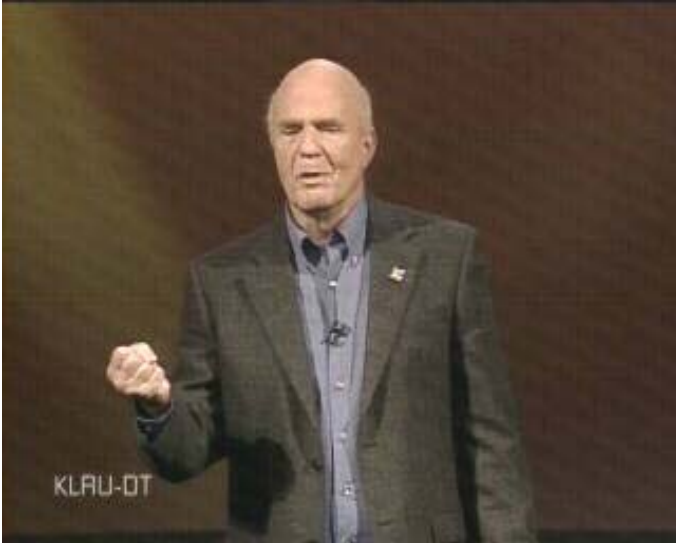
KTBS-DT-28 Shreveport, LA
205 mi Tr seen 11/14/03
@ 2341 CT
"Program 1"



KWTX-DT-53 Waco, TX
365 mi Tr seen 4/16/04
@2215 CT



WUPA-DT-43 Atlanta, GA
455 mi Tr seen 12/16/03
@ 0024 CT
"UPN Atlanta"



KLRU-DT-22 Austin, TX
395 mi Tr seen 3/20/04
@0910 CT
"Program 1"



KFDM-6 Beaumont, TX
180 mi Tr seen 3/21/04
@0253 CT



WFTX-DT-35 Cape Coral, FL
620 mi Tr seen 4/10/04
@2358 CT



WTVK-46 Naples, FL
645 mi Tr seen 4/11/04
@0100 CT



WJTV-DT-52 Jackson, MS
135 mi Tr seen 5/7/04
@0700 CT

Eastern TV-DX

Matthew C. Sittel
15013 Eureux St.
Bellevue, NE 68123
mcsittel@cox.net

June, 2004

Jul. 2004 column deadline: Jun. 12

Eastern TV-DX is for reporters from the following states: AL, CT, DE, FL, GA, IN, KY, MA, MD, ME, MI, NC, NH, NJ, NY, OH, PA, RI, SC, TN, VA, VT and WV, plus Washington, DC. Also for reporters from the following Canadian provinces: NB, NF, NS, ON, PEI and PQ. Overseas reports welcome!

Five reporters this month-that's more like it! Long-time WTFDAers will be interested to see two familiar names back in print: Les Prus and Roger Gravelle! Thanks to both of you for taking time to report. It's never too late to share your DX; it only takes a few minutes to let everyone in the club know what you've been up to and what you've been seeing. With skip season upon us now is the time to

Doug Smith, W9WI, Pleasant View, TN

w9wi@earthlink.net
http://www.w9wi.com

<u>4/17 tr</u> 0600 WCFT 33 AL Tuscaloosa 223 Northport ad WKDH 45 MS Houston 212 North MS radar		0630 <u>W42CR</u> 42 TN Nashville <1> 23 WDBD 40 MS Jackson, WB 40 338 0729 KARD 14 LA W. Monroe <2> 415 0900 KFWD 52 TX Fort Worth 630 ID w/"DT 51"
--	--	--

Notes:

1. Telefutera, previously logged as W59AW and W52CT.
 2. Local fishing derby ad, sponsors include "K-104" (KJLO) and KTVE-10.
-

Rick Shaftan, Sparta, NJ

shaftan@earthlink.net

<u>2/10 Es</u> 1029 KPRC 2 TX Houston 1411		ID or promo for WFSI 1405 WBRC 6 AL Birmingham 846 Fox 6
<u>2/12 Es</u> 1301 KETS 2 AR Little Rock 1058		

William McGuire, Cheverly, MD

Equipment: Admiral 13" color TV.

<u>2/3 Es</u> 2025 WEDU 3 FL Tampa, PBS 2030 unID 3 ABC		1827 WTVR 6 VA Richmond, CBS 6 <u>5/6 tr</u> 2030 WBOC 16 MD Salisbury, ID 2312 WAVY 10 VA Portsmouth, logo <u>5/7 tr</u> 0000 WTXF 29 PA Philadelphia, Fox 29 0927 WVIR 29 VA Charlottesville1647 WHYY 12 DE Wilmington, PBS
<u>2/3 tr</u> 2100 WGAL 8 PA Lancaster, NBC		<u>5/10 tr</u> 0636 KYW 3 PA Philadelphia, logo
<u>3/2 tr</u> 2100 WWBT 12 VA Richmond, NBC 12 2112 WVIR 29 VA Charlottesville, NBC 2140 WTVR 6 VA Richmond, CBS 2200 WAVY 10 VA Portsmouth, logo 2040 WBOC 16 MD Salisbury, CBS 2220 WHYY 12 DE Wilmington, PBS		<u>5/10 Es</u> 1411 unID 3 ABC 1800 Cubavision 3 CUBA, cartoon, ID
<u>3/29 tr</u> 1810 WWBT 12 VA Richmond, logo		

Les Prus, Alexandria, VA

Equipment (temp setup as of 3/3/04): Toshiba CN36X81 36" HDTV & DST-3000 DTV converter w/RS UHF 100" corner reflector yagi outside on 10' mast (digital); Toshiba 14AF42 14" TV with CM 4228 8-bay bowtie in the bedroom (analog loggings).

3/2-3 tr

2345-0015 WVBT-DT-29 and WAVY-DT 31

0015-0130 WAVY-10. WCVE-23, WTVZ-33, WVBT-43 Norfolk, VA, unID-42 (the visual ID looked like "WKRP"), WLFL-22, WRDC-28 in Raleigh, NC.

Here's my first TV DX in a number of years; none to report for remainder of March and April, but I have been improving my DX systems in the interim.

On March 2/3, 2330-1330 EST, tropo noted to the south (Richmond and Norfolk VA, and Raleigh NC at 225 miles).

Roger Gravelle, 60 South Valerie St., St. Thomas, ON N5R A18 Canada

Equipment: 37" Electrohome 89CG01, 5' parabolic (Delhi) at 80' for UHF and Delhi 1047 for VHF at 70', separate amps on tower.

I'm back from winter in Fort Myers Beach, FL! I purchased a Samsung digital converter SIR-T351 from Circuit City. (Editor's note: Signal refers to that on the Samsung receiver's meter. I have abbreviated "Signal 8", for example, to "s8"-mcs)

4/27 GW

0800 CTS 14 ON London 20
new station, low power

5/1 tr

1900 WFXT-DT 22 PA Erie, s8 75
big improvement over ch. 66 for reception

1901 WICU-DT 52 PA Erie, s5 75
Running 1000 watts per John Wilcosie, CE; was surprised I was receiving station

1930 WJET-DT 58 PA Erie, s5 75
low power

1935 WQLN-DT 50 PA Erie, s9 75

2300 WEWS-DT 15 OH Cleveland, s9 110

2305 WJW-DT 31 OH Cleveland, s9 110
through local "City" Woodstock ch. 31

2307 WUAB-DT 28 OH Cleveland 110

2308 WQHS-DT 34 OH Cleveland, s8 110

2310 WEAO-DT 50 OH Akron, s5 140

5/6 tr

2200 WDIV-DT 45 MI Detroit, s9 120
Had NBC on 4-1, weather radar 4-2, camera from Windsor on Detroit skyline on 4-3 (ID as "CH 4")

2205 WXYZ-DT 41 MI Detroit 120
7-1 ABC, 7-2 Detroit weather radar
7-3 ID WXYZ 7 & 41

2209 WJBK-DT 58 MI Detroit 120

2215 WKBD-DT 14 MI Detroit 120
thru London local

2220 WWJ-DT 44 MI Detroit 120

2230 WADL-DT 39 MI Mt. Clemens 100
39-2 WOKD-TV

5/7 tr

0700 WTVG-DT 19 OH Toledo 150

0800 WGTE-DT 29 OH Toledo 150

Suspect only, could not get local and ID on WTOL-DT 17, signal 3, need 4 or 5 to get ID.

2200 WDLI-DT 39 OH Canton 150

39-1 TBN, ID on screen

39-2 "Church Channel" ID on screen

39-3 Music ID JDTV on screen

TBN WWJD Santa Ana

39-4 "Enlace" USA Spanish language

2300 WFMJ-DT 20 OH Youngstown 140

Comment: I hope digital tuners in televisions have better "time" performance than my converter. Lock time is way too long once a digital signal is found if near threshold of 5 signal strength.

Overall, digital TV has tremendous potential for program diversity, e.g., small community could have 5 networks on one channel and tower and be cost frugal! Lock ID is great! 73's Rog.

WTFDA Convention 2004 Omaha, NE, Jul. 30-Aug. 1

It's not too late to make your reservations and join me and co-host Mike Hawk here in Omaha for WTFDA Convention 2004. Our host hotel is the Park Plaza Regency Lodge near 108th and Pacific in Omaha. We'll have antennas setup at the Park Plaza, and also plan on having RDS-equipped tuners and a DTV set-top box to demonstrate DXing with the latest technology. Also planned is a tour of the studios of frequent skip catch, KMTV-3. Morning meteorologist Charles (C.T.) Thongklin, WXOD, will be our tour guide. Contact Park Plaza directly at (402) 397-8000 to make your reservations. Convention registration is \$28 which includes the Saturday dinner banquet. You may send payment directly to me at the address at the start of this column. Feel free to contact me if you have any questions. I hope to see you here in Omaha next month!

WESTERN TV DX

VICTOR FRANK
12450 SKYLINE BLVD.
WOODSIDE, CA 94062-4554
Victor.frank@sri.com



Dennis Park Smith, 3605 San Remo Drive, Santa Barbara, CA 93105-2523 (805)687-7803

This report is for April 2004. Yes—as it seemed last month, it has gotten into the hot summer about a month earlier than usual (with area water and fire concerns), with some tropo (to San Diego/Tijuana up to 200mi/ 320km), though not settled into a real pattern.

Apr 1-9 am: None (upper level winds; somewhat cooler.)
 Apr 9 eve-13: Poor (Quieter, somewhat stable, slightly warmer)
 Apr 14-23: None (Unstable; weather fronts, occas. Windy)
 Apr 24: Poor (Stable; warming)
 Apr 25: Fair
 Apr 26: Poor (Perhaps higher inversion?)
 Apr 27: None (“ “)
 Apr 28: Fair + (Temp. HOT!)
 Apr 29-30 am: None
 Apr 30 eve & early May: Variably poor to fair.

One new station was seen in Santa Barbara, starting April 9, when KCET-28 Los Angeles translator K55AP west S.B./Goleta/Santa Ynez changed from ch. 55 to ch. 28 (new call in April VUD TV News—I don't have VUD right here as I'm typing this...)

Best of DX to All. Dennis

Jeff Kruszka, 5024 S. Braxton Ave., Baton Rouge, LA 70817

<u>April 2004</u>				CT
6	GW	0657	<u>WPXL-DT</u> 50 LA	75
	tr	2214	<u>WEIQ-DT</u> 41 AL	180
		2217	WVEA 62 FL	575
8	GW	2259	<u>WVUE-DT</u> 29 LA	75
10	tr	0052	Austin 22, 36, 42, 54	395
		2159	WFTX 36 FL	620
		2224	WVEA 62 FL	575
			WXPX 66 FL Pax	560
		2226	WFTT 50 FL	550
		2230	W48CN 48 FL TBN	565
		2235	WRBW 65 FL	600
		2237	<u>W56EB</u> 56 FL Note 1	555
		2242	WFLA-DTt 7 FL	
		2342	WFTS 28 FL	550
		2350	<u>WFTX-DT</u> 35 FL	620
11	tr	0039	WTVK 46 FL	645
		0047	<u>WVEA-LP</u> 46 FL Note 2	555
15	tr	2200	unid 18 SS to W.	
		2229	XHAB 7 TA	505
		2343	XHFOX 17 TA	535
16	tr	2007	KEDT 16 TX	425

		KXAN	36 TX	395
		2010	KTBC 7 TX	395
		2229	KEYE 42 TX	395
		2231	KVDA 60 TX	445
		2315	<u>KUPB</u> 18 TX Univision	655
		2316	<u>KPEJ</u> 24 TX ID	670
		2336	<u>KOSA</u> 7 TX CBS 7	670
17	tr	0715	WJSP 28 GA	390
18	tr	0013	KLRT 16 AR	305
		0114	KVTH 26 AR "VTN"	295
		0646	WZTV 17 TN "Fox 17"	465
		0651	unid 59 DTV sync lock to NE	
23	tr	2209	unid 14 DTV sync lock to NE	
		2248	WRJM 67 AL	320

Note 1 – Station # 700!

Note 2 – Formerly received on ch. 61; running color bars with ID, floating over WTVK

Tropo picked up this month with some nice openings to FL and TX. WFTX-DT Cape Coral was in for an hour with zero errors (see Photo News). I've seen Midland/Odessa via tropo only once before (which I thought was probably once in a lifetime), so that was unexpected. I thought the 18 SS was a new Mexican at first, but there's nothing listed in Doug's database.

Matthew C. Sittel, 15013 Eureux Circle, Bellevue, NE 68123
mcsittel@cox.net

<http://members.cox.net/mcsittel/beltdx.htm>

Equipment: Winegard PR-9032 UHF antenna at 35', Winegard AP-4700 UHF pre-amp., Winegard PR-5030 VHF antenna at 32', Channel Master remote controlled rotor, MFC traps for channels 3, 6, 7 and 26, Hauppauge WinTV-D PCI card for HDTV.

1/12 Es

0648 WGRZ 2 NY Buffalo, logo 899

3/19 tr

0711 WFTC 29 MN Minneapolis 309

0718 KSTP-DT 50 MN St. Paul 309

0730 KLJB 18 IA Davenport 289

4/16 tr

0712 14/25/34/43 OK Oklahoma City 390

0720 KSBI 52 OK Oklahoma City 404

0720 KSTR 49 TX Irving, TLM, SS 594

0722 KPTS 8 KS Hutchinson 232

0723 KFWD 52 TX Fort Worth 591

0726 KAKE 10 KS Wichita, wx 244

0728 KWTV 9 OK Oklahoma City 393

0730 KPXD 68 TX Arlington, ID 591

0731 KAKW 62 TX Killeen, UNI, SS 726

0736 KWCV 33 KS Wichita, WB 244

0759	<u>KDTX</u>	58 TX	Dallas, TBN, ID	591
0807	<u>KWCV-DT</u>	31KS	Wichita	244
	Text ID: (KWCV Digital Television)			
0813	<u>KOPX-DT</u>	50 OK	Oklahoma City	389
	Text ID: (KOPX Digital Television)			
0820	<u>KOZK</u>	21 MO	Springfield,OPT	312
0823	<u>KTXA-DT</u>	18 TX	Fort Worth	591
	Text IDs: (UPN 21), (Radar)			
0827	<u>KTVT-DT</u>	19 TX	Fort Worth	592
	Text ID: (KTVT-DT)			
0828	<u>KXTX-DT</u>	40 TX	Dallas	591
	Text ID: (KXTX-DT). Local KUON-DT signed on 10 minutes later!			
0834	<u>KXAS-DT</u>	41 TX	Fort Worth	591
	Text IDs: (KXAS-SD), (KXAS-DT)			
0836	<u>KDFW-DT</u>	35 TX	Dallas	591
	Text ID: (KDFW-DT)			
0851	<u>KOOD-DT</u>	16 KS	Hays	219
0851	<u>KOOD</u>	9 KS	Hays	217
0903	<u>KTXA</u>	21 TX	Fort Worth	591
<u>4/17 tr</u>				
1957	<u>KPXE-DT</u>	51 MO	Kansas City	161
2212	<u>KCRG-DT</u>	52 IA	Cedar Rapids	226
<u>4/26 tr</u>				
0713	<u>K29EA</u>	29 IA	Des Moines	128
0718	<u>KCRG-DT</u>	52 IA	Cedar Rapids	226
0720	<u>KPXR-DT</u>	47 IA	Cedar Rapids	225
0728	<u>KGAN-DT</u>	51 IA	Cedar Rapids	224
0733	<u>KWWL-DT</u>	55 IA	Waterloo	229
<u>5/5 tr</u>				
0648	21/33	MO	Springfield	312
0709	8/17	MO	Columbia	240
0709	13/25	MO	Jefferson City	262

0725	18/31/34/51	MO	Kansas C. DTV	156
<u>5/6 tr</u>				
0650	10/33	KS	Wichita	244
0655	KPTS-8	KS	Hutchinson	232
0701	KSNC-2	KS	Great Bend	238
0745	9/34/43/52	OK	Oklahoma City	390

April 16 was a nice opening; I was very pleased to get the DFW DTVs. KAKW-62 was a nice surprise also! Log total now stands at 740, which includes 108 DTVs. 73s Matt.

Michael Hawk, Omaha NE

Equipment: WINTV-D card, Channel Master 4248 @ 25' AGL, Winegard AP-4700

April 2004 CT

16 tr	0705	<u>KFOR-DT</u>	27 Oklahoma City	OK
	0708	KOCB	34 Oklahoma City	OK
	0714	<u>KAUT</u>	43 Oklahoma City	OK
	0715	<u>KWTV-DT</u>	39 Oklahoma City	OK
	0716	<u>KOPX-DT</u>	50 Oklahoma City	OK
	0720	<u>KDFW-DT</u>	35 Dallas	TX
	0720	<u>KSBI</u>	52 Oklahoma City	OK
	0722	<u>KPXE-DT</u>	51 Kansas City	MO
	fairly new to air			
	0940	<u>KWWL-DT</u>	55 Waterloo	IA

Quite an opening on 4/16. There were several unID's that were likely Dallas, but I had to leave from 0730 to 0930, and missed the peak of the opening.

The WTFDA Mexican FM Directory

Just in time for the 2004 E skip season, it's the 2004 Mexican FM Directory with stations sorted by frequency. If you're in range of Mexican FM skip, this 60 page directory is something you can use. **The price of the directory is just \$7.00.**

To order a copy of the Mexican FM Directory, send a check or money order for \$7.00 payable to Dave Janowiak and send it to **Jim Thomas, 280 Katsura Avenue, Milliken, CO 80543.** For more information, email Jim at mrradiohead@netzero.com



This Month's Cover...

Is supplied by WTFDA member Paul Mitschler living in Albuquerque, NM. It's a photo of the transmitter farm on top of Sandia Crest. It looks in a way like Mount Wilson, but it's not. Perhaps one of us will hear one of these transmitters this summer. Thanks to Paul for this photo and for one we haven't published yet.



SATELLITE NEWS

GEORGE W. JENSEN
4604 ANTANNA AVE, Baltimore, MD 21206-4220
SCISATMAN@AOL.COM

Not much this month - just 1 change and a bunch of new programming possibilities. The one change is CNBC from Galaxy 5 -13 to W3 - 22
Now to the new planned services - MPEG2, Digicipher (4DTV), VC2, HDTV, ??? all to be determined at a later date. The planned services are:
SCREAM CHANNEL - speaks for itself, better than Sci-Fi, I hope
ANIME NETWORK - Japanese animation programs
CSTV - College Sports
FOX SPORTS DIGITAL NETWORKS ??????
FUEL - FOX SPORTS ACTION SPORTS NETWORK?????
G4 - Video Gaming Network
GOLTV - Soccer games - has been testing at times
HORSERACING TV - speaks for itself
NBATV - has been testing at times on G11
NFL NETWORK - football
REALITY TV - documentary and similar programs???
SI TV - Latino themed English language
SORPRESA - Spanish kids channel
THE SPORTSMAN CHANNEL - Hunting and fishing
THE TENNIS CHANNEL - is already testing
TV ONE - African-American network

AMERICA CHANNEL - ???
CASINO AND GAMING TELEVISION - Speaks for itself
CAREER ENTERTAINMENT TELEVISION - Work and the workplace???
EDGE TV - Gaming channel
GOSPEL MUSIC CHANNEL
HERE TV - Gay and Lesbian Themed
HYPE TV - Hip Hop music
THE ICE CHANNEL - skating etc.
IMAGINASIAN TV - Asian American
THE MARTIAL ARTS CHANNEL
MAVTV - Sex, sports, technology and finance
THE Q TELEVISION NETWORK - Gay and Lesbian Themed
REALITY CENTRAL - reruns and originals
SOUTHERN ENTERTAINMENT TELEVISION - Thought this was around once before
STAND UP COMEDY TELEVISION
THE FOOTBALL NETWORK - not the NFL
VARSITY TELEVISION - currently testing on G11
WHEELS TV - Automotive programs
This looks like a real 8566'/*&5## line-up a great programming.
That's all for this month - see you in 30. "73"s

Change



NATIONAL RADIO CLUB 2004 CONVENTION

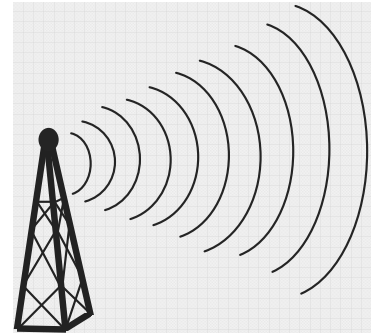
Batavia, New York

Labor Day weekend Sept. 2-5, 2004

The National Radio Club is holding their 2004 convention this year at the Days Inn of Batavia (Exit 48 off I-90). Make your reservations now by calling the hotel at 585-343-1440. Rooms are \$72 per night for up to four people per room.

This is the same hotel that hosted the WTFDA convention last year. There is plenty of free parking and many good, inexpensive restaurants in the area and the ramps to I-90 are just a few hundred feet away. Email Scott Fybush for more info at scott@fybush.com.

Northern FM DX



Keith McGinnis
387 Shirley Street, Winthrop, MA 02152
longwave@attbi.com 617-846-5760

For Dxers in the following states: **CT IA ID IL IN MA ME MI MN MT ND NE NH NJ NY OH OR PA RI SD VT WA WI WY** and all of **Canada**. Please submit by the 10th of each month. If possible please submit in the formats shown Below.

EDITORS NOTE: PLEASE NOTE THAT ANY TYPEWRITTEN OR HANDWRITTEN REPORTS MIGHT BE DELAYED TILL A LATER ISSUE AS TIME PERMITS. ALSO PLEASE KEEP REPORTS AS RECENT AS POSSIBLE (THE LAST 3 MONTHS SHOULD WORK FINE). THANK YOU.

Michael Hawk, Omaha NE
Equipment: Technics ST-9030, FM-10 at 25' AGL, Conrad RDS

April 6 2004 Tr

0729	KUQL	98.3	Wessington Spg	SD	oldies; Cool 98
0740	KPLO	94.5	Reliance	SD	C&W, lcl weather
0747	KWYR	93.7	Winner	SD	local sports
0836	K202CY	88.3	Norfolk	NE	K-Love
2003	KNLV	103.9	Ord	NE	local news

April 16 2004 Tr

0555	Wichita area 97.9, 98.7, 106.5 noted very strong				
0600	KHBZ	94.7	Oklahoma City	OK	The Buzz; 405 miles
0602	KDGS	93.9	Andover	KS	Power 93.9; KS #110
0605	KCVW	94.3	Kingman	KS	rel
0630	K252DA	98.3	Enid	OK	KLVV ID's
0644	KATT	100.5	Oklahoma City	OK	
0651	KHKS	106.1	Denton	TX	Kiss FM; Kidd Kraddock
0915	KFWR	95.9	Mineral Wells	TX	C&W; lcl ads; hrd in car
0929	KLVV	88.7	Ponca City	OK	ID
0950	KJYO	102.7	Oklahoma City	OK	KJ-103; ID o/KFRX

April 18 2004 Tr

0218	WSSM	106.5	Granite City	IL	St Louis' Smooth Jazz
0220	KFUO	99.1	Clayton	MO	opera
0625	KSPQ	93.9	West Plains	MO	Q-94 Triple Play
0631	KGMV	100.5	Aurora	MO	local ads
0634	KOMT	107.5	Mountain Home	AR	MoYL
0647	KKLH	104.7	Marshfield	MO	"KLH"
0700	KOKS	89.5	Poplar Bluff	MO	rel; ID a ToH
0705	KBIY	91.3	Van Buren	MO	"Heres Help Radio Network"
0710	KASU	91.9	Jonesboro	AR	classical mx; end of "Joy" music program; ID
0715	KBIA	91.3	Columbia	MO	
0731	WSIE	88.7	Edwardsville	IL	ID
0740	WNIN	88.3	Evansville	IN	ID, mention of show on WNIN-TV, 509 miles
0810	KZLE	93.1	Batesville	AR	?? 93-1 FM; lcl ads, 448 miles
0826	KPNT	105.7	Ste Genevieve	MO	

April 28 2004 Tr

0557	KEEZ	99.1	Mankato	MN	good tropo indicator station
0601	KIKN	100.5	Salem	SD	Kickin Country

0603	KVHT	106.3	Vermillion	SD	Mix 106.3	
0613	KZPK	98.9	Paynesville	MN	Wild Country 99	
0617	KKSR	96.7	Sartell	MN	Kiss 96.7	
0631	KBHZ	91.9	Willmar	MN	Praise FM; #1800 logged from Omaha	
0645	KCGN	101.5	Ortonville	MN	Praise FM; RDS	
0651	KOLV	100.1	Olivia	MN	C&W; ID	
0700	KRSW	89.3	Worthington	MN	news; missing from log	
0715	KKSD	104.3	Millbank	SD	Oldies 104.3	
0722	KAUR	89.1	Sioux Falls	SD	Augustana College Radio; 890 watts	
0730	KARL	105.1	Tracy	MN	C&W; Karl Country	
0750	KDJS	95.3	Willmar	MN	K-95.3	
0755	KBWS	102.9	Sisseton	SD	Pheasant Country	
0800	KVCF	90.5	Freeman	SD	VCY religion	

Matthew Sittel, 15013 Eureux Circle, Bellevue, NE 68123

mcsittel@cox.net <http://members.cox.net/mcsittel/dx.htm>

Equipment: Yamaha TX-900 tuner w/modified filters, Winegard PR-5030 VHF/FM antenna w/rotor at 32 feet, Conrad RDS unit, Radio Shack signal attenuator for overload problems.

April 3 2004 Tr

0954	KZPL	97.3	Lees Summit	MO	the Planet	158
------	------	------	-------------	----	------------	-----

April 16 2004 Tr

0756	KLVV	88.7	Ponca City	OK	calls	312
0808	KZSN	102.1	Hutchinson	KS		244
0811	KATT	100.5	Oklahoma City	OK	Katt	404
0823	KNID	99.7	Alva	OK	calls	336
0828	KTLI	99.1	El Dorado	KS	Lite 99	225
0844	KRZZ	96.3	Derby	KS		245
0845	KFWR	95.9	Mineral Wells	TX	the Ranch	585
0857	KREP	92.1	Belleville	KS	KR 92	129
0922	KVGB	104.3	Great Bend	KS	local ad 238	

May 6 2004 Tr

0739	KHMY	93.1	Pratt	KS	My 93-1	253
0743	KFH	98.7	Clearwater	KS	calls	270
0744	KATT	100.5	Oklahoma City	OK	Katt	404
0748	KVGB	104.3	Great Bend	KS	local ad 238	
0751	KCFN	91.1	Wichita	KS	RDS: "KCFN"	226
0752	KXKU	106.1	Lyons	KS	Kix, k	222
0800	KCVT	92.5	Silver Lake	KS	Life 92 FM	135
0801	KHUT	102.9	Hutchinson	KS	Country102-9	238
0814	KBBE	96.7	McPherson	KS	local ads	212
0816	KNID	99.7	Alva	OK	calls	336
0817	KFDI	101.3	Wichita	KS	calls	244
0820	KHBZ	94.7	Oklahoma City	OK	the Buzz	402

Nice to have some tropes again after a long winter. Hopefully skip season will be a good one. Log total is now 901. 73s Matt.

Jim Renfrew, Byron NY

Sansui TU-9900, UHF & FM Antennae with rotor, VHF antenna hand-steered

*** = new, # = new with these calls**

May 7 2004 Tr

2100	*WCMU	89.5	Mt. Pleasant	MI	"CMU"	340
------	-------	------	--------------	----	-------	-----

May 8 2004 Tr

0200 UNID 100.3 Pirate or low power CKRZ, all oldies, Motown, disco, no voice announcements of any kind

May 10 2004 Tr

1221	WJIS	88.1	Bradenton	FL	1104
1230	WSEB	91.3	Englewood	FL	1137
1232	WDDV	92.1	Venice	FL	(PI5CF7) 1129
1235	*WBTP	95.7	Clearwater	FL	r (PI 8615) "The Beat" (RDS reads old calls x WSSR) 1074
1245	#WAMO	106.7	Beaver Falls	PA	"WJJJ 107.1" and "WAMO 860"
1305	WYFO	91.9	Lakeland	FL	Moody 1059
1310	*WXOF	96.3	Yankeetown	FL	"The Fox" 1003
1311	WSKY	97.3	Micanopy	FL	tentative with Limbaugh 965
1320	WNFB	94.3	Lake City	FL	"mix" 924
1321	UNID	93.1			"Today's New Hit Country", WKRO?
1740	WMXD	92.3	Detroit	MI	

May 11 2004 Tr

0024 WQMX 94.9 Medina OH

May 17 2004 Tr

1220	WOMC	104.3	Detroit	MI	PI 7ADA
1312	*CBBL	100.5	London	ON	CBC2, through WVOR!
1400	CKPC	91.1	Brantford	ON	new with RDS PI 2BF0

**Mike Bugaj – 69 Sherman Road – Enfield, CT 06082
Heard on an Onkyo T450 RDS tuner and APS13 @ 25 feet agl.**

April 22 2004 Tr

1550	WGMS	103.5	Washington	DC	classical, 300mi
1555	WMGQ	98.7	Washington	DC	country Q-country

May 17 2004 Tr

0714	WTSR	102.5	Buffalo	NY	star 102.5 310mi
0716	WNED	94.5	Buffalo	NY	classical music
0830	CBL	94.1	Toronto	ON	classical 350 miles
0830	CHUM	104.5	Toronto	ON	calls and Ricky Lee Jones music

TRANSLATOR NEWS CONTINUED FROM PAGE 35

VT Middlebury W237BF *95.3 (WRVT 88.7 Rutland), h,v
 VT Rupert W226AL *93.1 (WVPR), h,v
 W266AK *101.1 (WVPR), h,v.
 VT South Bennington (just SW Bennington) W228BL *93.5
 (WBTN-FM 94.3 Bennington), h,v
 VT Woodstock W295AL *106.9 (WVPR), 100 w h,v
 VA Front Royal W268AV 100.5 (WSIG 96.9 Mount Jackson), 250
 h,v
 VA Heathsville WCNV *89.1 5000 v, 93 m, d-a, with 48% power
 240-250", Commonwealth Public Broadcasting Corporation.
 VA Leesburg W282AM 104.3 (WTOP-FM 107.7 Warrenton), h,v.
 See also "Deletions," below.

VA Roanoke W226AM *93.1 (KAWZ, as received via W204BH
 88.7 Boones Mill), h,v
 VA Winchester W239AO 95.7 (WSIG), h,v
 WA Wishram K298AN *107.5 (KZAS-LP 95.1 Hood River OR
 translator), h,v
 WI Hudson W239AM 95.7 (KNXR 97.5 Rochester MN), 250 h,v
 WI Plymouth W300AT 107.9 (WXER 104.5 Plymouth), 250 h,v
 WI Ripon W269BG *101.7 (WEMI 91.9 Appleton), h,v
 WI Waupun W282AN 104.3 (WBKY 95.9 Portage), 250 h,v
 VI Charlotte Amalie W224BD *92.7 (WIVH 90.1 Christiansted), h,v

Weak Signal Techniques

BOB COOPER

WHEN YOU HAVE FOUND SIGNALS

And they are several hundred metres (or even several miles) from the home or homes you wish to serve. What next?

Transporting one or more signals over distances to 750 metres suits simple transmission lines quite well; and the cost need not be excessive.

Beyond 750 metres (and this is hardly a fixed number) when you will serve only one or a few homes, the dollar-sensible transportation technique is through the air (as it would also be if the terrain to be covered is difficult or impossible to access). Now we are on quasi-legal ground: the use of airwaves to transport signals without RFS/Department of Commerce approval. Let's be up front about this.

The regulations prohibit the turn-on of non-licensed, non-approved transmitters. If everyone in the country fabricated and turned-on their own private transmitters, the airwaves would collapse in chaos. The major danger is that any such transmitting device will radiate signal not only on its intended frequency (a TV channel) but also, quite unintentionally and quite to the surprise of the builder, on another frequency; such as 121.500 MHz. or square in the middle of an aircraft communications band; dangerous!

UHF television channels 39-41 and 42 are set aside for low power television broadcasting. Additionally, unlicensed TV transmission (with restrictions) is permissible under certain circumstances in the region inclusive of channels 39-42, and a few channels either side of these. An example of this is the (approved) Videosender unit (sold by K Smith Electronics generating a TV signal in this region (typically pre-tuned to channel 36 when removed from the box; but channel adjustable) and sold as a wireless extender of a user's VCRTV (antenna). The measured output of this unit is in the region of 60 dBmV (100 dBuV) and it comes with an attached extendable (420 cm) whip antenna.

Other options include Radio2 (form) licensed on-channel boosters' (at radiated power levels so low [10 microwatts] as to make them marginally useful; under Part XIII of the Regulations) or going through a more complicated licensing procedure with higher power boosters'; both discussed at some length in Tech Bulletin 9303.

For many installations, conventional low-loss transmission lines are more practical as such lines can carry several channels of TV simultaneously and there is little likelihood of interfering with other services operating a relatively simple cable connected remote antenna site. Fence lines (with posts in place) offer a handy way to route open-wire (ladder) line with appropriate line-mounting spacers/insulators along the way. Coaxial cable can usually be simply left on the ground provided there is minimal human and stock traffic in the area. See Tech Bulletin 9305 for a discussion of establishing transmission line distribution (ie., mini-cable systems) or TB9303 for calculating through-air losses in a cable-less service.

Generally speaking, all transmission lines exhibit line loss (attenuation) and the system designer looks first at the amount of signal (before and after amplification) available at the antenna site, calculates the line loss in various types of lines available over the distance required, and then determines whether there is sufficient signal available to reach the TV set(s) at the bottom without additional amplification.

Line-powered amplifiers can be placed on any type of TV transmission line and subject to certain limits of amplifier cascading you can string kilometres of cable with properly spaced repeater amplifiers without degrading the signal quality past the point of consumer acceptance (Tech Bulletins 9303 and 9305).

TYPICAL CABLE LOSSES

Cable loss increases per unit of cable length (such as over 100 metres of cable) as the frequency increases. Channel 1 TV will transport nearly twice as far in cable before amplification

is required as channel 11 TV At UHF, the difference is more dramatic as the table on page 23 illustrates.

Assume a 20 dB gain amplifier to send signal through as much cable as you can string-out. You start with 0 dBmV at the input to the amplifier (producing +2() dBmV at the start of the cable/wire run) and you run cable for as far as you can go until you have returned to the 0 dBmV original level. How much cable will be possible?

A 20 dB gain masthead amplifier is easily placed at the antenna and line-powered even through appropriate 300-450-600/75 ohm matching transformers (with power passing built-in); thus for bands I and III the limiting factor in this hypothetical installation is the loss at band III (258 metres in 7 foam; 321 metres in 11 foam).

One (or more) line amps can also be line powered in the system to extend the total cable length permissible. But there are caveats. All line amps have cascading limits (ie., the number of amps that can be placed in series along a line), and input levels to each amplifier following the first must be carefully adhered to within manufacturer stated parameters (to avoid undesirable modulation products developing); Tech Bulletins 9303 and 9305.

As impressive as 1 or 6 inch (line to line spacing) open wire fine appears to be in the tables on page 23 (certainly going nearly 6.3 kilometres with only 20 dB of gain going in at channel 11 is impressive!), fabricating the line (6" spaced line is not an off-the-shelf item) and properly suspending it on wooden posts without metal (such as fencing wire) near to it (to avoid coupling effects to from the nearby wires) can be a challenge. Note that 12" spaced (300 ohm) and 1" spaced (450 ohm) open wire line is off-the-shelf available .Also note the loss difference between ½" open wire (300 ohm) and 1" open wire line (450 ohm) is barely measurable if each is properly designed. One danger with some of the readily available 300 or 45() ohm open wire line is that the insulating (typically plastic) spacers which are sometimes used to retain the line-to-line spacing dimension are poorly quality-controlled and improperly affixed to the twin (parallel) wires. The surest way to have problems with any open wire line is to have non-uniform line-to-line spacing along the run.

Do-it-yourself note: Quality, low loss, open wire line is unbeatable for low-loss, long transmission runs. Conversely we have seen installations where common #12 galvanized fencing wire has been stapled (!) to wooden fence posts at about inch spacing and run hundreds of metres as a quick and dirty transmission line. You match the impedances in and out of such a line by marking off the last full-wave-length (measured as the wavelength in space 'times' the velocity of propagation [factor] of the open wire line: typically .95) on each and gradually taper match the two lines to a 1/2" (300 ohm) spacing over the full wavelength (at the lowest frequency in use on the system). There must be a matching section on both ends for the impedance transformation. or you will lose many (tens of) dB on the line. Note this is not a substitute for properly designed open wire line but it may work for you if you make an effort to maintain uniform (6" suggested) wire to wire spacing with the wires under tension to reduce whipping in winds. Metal posts would be a mistake since each metal post would act as a short to the lines!

HOW MUCH ANTENNA GAIN?

If your installation will not create a minimum of 250 microvolts (-12 dBmV/48 dBuV) at the antenna output terminals before masthead amplification on the weakest channel to be transported, you could be using the wrong antenna system. Either you stack additional antennas of the same design to increase the gain, or you upgrade to a higher gain antenna. Here's the logic.

- 1) The TV receiver requires approximately 1,000 microvolts for a TASO Grade 1 picture.
- 2) There will be transmission line loss from the antenna to the TV.
- 3) Sooner or later the customer will want a second TV set outlet, which adds splitter loss to the equation.
- 4) You have the option of installing a 20 dB gain masthead amplifier.

TASO?

The basis for this grading is the signal + noise to noise ratio; abbreviated SNR. The television receiver has a noise-threshold or floor; determined by the noise figure of the TV receiver as it processes a 7 (8)MHz wide video (t audio) signal. The TASO assumption is that the typical TV set has a noise floor/threshold of -40 dBmV or 10 microvolts (abbreviated uV

here). If the noise floor is at -40 dBmV(20 dBuV), logic says an excellent quality signal which requires a 40 dB SNR will be 40 dB stronger than the noise floor; ie., 0 dBmV (1,000 uV). Which leads us to one more table.

Well now, if all it takes to have a Grade 1 picture is 0 dBmV. why can't you stick a 30 dB gain masthead amplifier on a -30dbmV antenna signal and produce an extremely high quality picture? Fair question. Signal voltage alone is not what determines picture quality. It's that ratio between noise and the signal voltage. If you start out with a noise level of -40 dBmV and a signal level of -30 dBmV, the best signal noise to noise ratio you can expect is 10 dB. Amplifying a -30 dBmV signal by 30 dB produces 0 dBmV of signal airtight. But, the same amplifier also increases the -40 dBmV noise to -10 dBmV. You began. before amplification, with a SNR of 10 dB. After amplification you still have a 10 dB SNR: only now both the signal and the noise voltages are 30 dB stronger! Is that the end of the story? Not quite.

Recall the TV set has its own noise figure and this translates to a noise floor or threshold. With a properly engineered masthead amplifier and its careful use, you can reduce the TV receiving system (the system is the entire antenna . masthead . TV set configuration) noise_figure. The -40 dBmV TV set noise floor assumed for TASO wading can be reduced by improving the TV set with a proper masthead amplifier. Recall from pages 56 in this Tech Bulletin that your customer's TV receiving system faces two noise sources; the noise generated within the system (a natural side-effect of electrons moving under voltage stimulation) and the noise coming into the system from manmade sources (electrical systems, ignition systems et al). We can reduce (but not eliminate the noise originating inside of our receiving system. The outside noise sources can be located and repaired (not always practical), phased (reduced in signal level) with appropriate antenna stacking techniques, or accepted.

Noise originating within the system can be dealt with using well accepted mathematical formulae. The results are predictable, repeatable. Noise from outside is subject to a wide variation in amplitude (level), type (ie., short pulses. a constant buzz, etc.) and resonant frequency.

REDUCING THE INTERNAL 'NOISE FLOOR'

Disconnect the aerial from the TV set and tune to a channel not in use in your area. The picture tube is alight with dancing black and white dots and the audio if cracked open 'hisses' at you: noise.

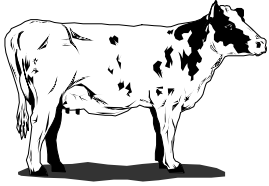
Now connect a masthead amplifier to the TV, but do not connect an aerial. Compare the apparent noise present with and without the masthead amp. It looks stronger; it sounds stronger, with the amp; right?

When electrons flow in a circuit, because of voltage applied, there is electron—noise. This noise is random with frequency (ie.. very broadband). The TV receiver alone has a measurable amount of internally generated noise. We'll call it the noise threshold or floor. For you to have a quality TV picture through this receiver, the ratio of signal voltage to noise voltage must approximate the SNR depicted on the TASO grading scheme. By reducing the noise threshold/floor of the TV set, you can obtain the high TASO demanded ratios of SNR with a lower amplitude TV signal voltage. That in a nutshell is the primary reason you employ a low noise (as opposed to a not-so-low-noise) masthead amplifier.

There are applications in this world for masthead amplifiers which produce voltage gain without pretext of being low noise. For example, if you are in a medium to high signal area, a not-so-low-noise masthead amplifier will increase signal voltages to allow long transmission line runs, or (if carefully used) multiple-set splitting. The amplification devices (ie., bi-polar transistors, field-effect transistors) in such not-so-low-noise mastheads differ from their low noise masthead cousins because they are for a different application. You cannot have ultra low masthead noise and, also, medium to high. masthead amplification of strong signals in the same masthead unit: the two are not compatible engineering requirements.

In selecting a masthead amplifier, then. you must be certain the unit you are choosing is intended for the job requirement. A low-noise masthead unit is not advisable in a medium to high signal area; a high gain, higher noise figure unit equally wrong in a weak signal area.

(To be Continued)



WORLDWIDE TV-FM DX ASSOCIATION

2004 Annual Convention

Omaha, NE, July 30-August 1, 2004

Make plans now to attend the annual WTFDA convention, hosted this year by Matthew Sittel and Michael Hawk.

Our host location for the event is the Park Plaza Regency Lodge, located at 909 South 107th Avenue in Omaha, conveniently located one block east of the I-680 exit at Pacific Street. The hotel room rate for the convention is \$79/night for two doubles or one queen bed. This rate includes a complimentary hot breakfast with waffles made to order. All rooms feature a microwave, refrigerator, coffee maker, iron, in-room safe and radio with CD player. There is also a small business center with internet access. To make your reservations and receive the special rate, the hotel has asked that you call them directly at (402) 397-8000. *Be sure to mention WTFDA to get the \$79 rate; we have a block of rooms set aside for us at this rate!*

We have received permission from Park Plaza to set up antennas. Feel free to bring along your favorite DX equipment and try it out-hopefully we'll have some DX! Bring along video or audio tapes and photos of your DX to share; we'll have equipment set up to share your catches.

The registration fee for the convention is \$28, which includes the Saturday night banquet on-site at the Park Plaza. You can purchase additional banquet tickets for spouses or other guests at the rate of \$24 per additional meal.

If you plan on attending, please take a moment to fill out the form below and mail it along with check or money order for fees to **Matthew Sittel, 15013 Eureux Cir., Bellevue, NE 68123**. Registration deadline is June 30, 2004. If you have questions e-mail Matt at mcsittel@cox.net or Mike at thisisatest22@yahoo.com.

We hope to see YOU at WTFDA 2004 Omaha!



CONVENTION 2004 REGISTRATION FORM

Name : _____

Address: _____

E-mail: _____

	Fee	Number	Total
Registration :	\$28	x _____	= _____

Additional banquet tickets:	\$24	x _____	= _____
-----------------------------	------	---------	---------

Total amount enclosed (check/money order, payable to Matthew Sittel): _____

CONVENTION 2004

July 23-25

Bruce Bacon and Frank Aden will be hosting the 2004 IRCA Convention at the Rodeway INN, 1115 North Curtis Rd, Boise ID 83706 from July 23-25 2004. Room rates are \$59.95 plus 12% tax which comes to \$67.14. This rate is the same for a single, two people one bed or two people two beds. Extra person charge is \$5.00, with tax, \$5.60 and with a roll a way bed is additional \$8.00, \$8.96 with tax. This includes a continental breakfast.


Reservations can be made at 1-800-272-5003. Deadline is July 12, 2004.

Convention fee is \$25.00. Instead of having a set menu for a banquet we will have a dinner Saturday night, July 24, in the hotel restaurant where attendees can select off the regular menu.

Tentative schedule will include station studio/transmitter tours, auction, 40th Anniversary Quiz and a visit to Bonneville Point on the Oregon Trail where there have been several Beverage DXpeditions. More details are to follow.

Any items to be donated for the auction can be sent to Frank Aden, 4096 Marcia Pl., Boise ID 83704. E-mail inquires can be sent to: IRCA2004@aol.com.

I-184 Connector & Curtis Road Exit



RODEWAY INN
1115 North Curtis Road
Boise, Idaho 83706
(208) 376-2700



1964-2004

FM TRANSLATOR NEWS

Courtesy of Bruce Elving

New Translators Granted

Translators have less than 100 watts unless shown otherwise; technical parameters for most LPFM stations are not announced, but can be up to 100 watts at 30 meters above average terrain (horizontal, vertical or both h & v)

- AL Alexander City W231AP *94.1 (WJSP-FM 88.1 Warm Springs GA translator), h,v
AL Bay Minette W266AL *101.1 (WPAS 89.1 Pascagoula MS), h,v
AL Brewton W262AR 100.3 (WKXK 96.7 Pine Hill AL translator), h,v
AL Brundidge W204BG *95.9 (WAXU 91.1 Troy), h,v
AL Clio W243AX 96.5 (WVFJ 93.3 Manchester GA), h,v
AL Daphne W278AP 103.5 (WJZD 94.5 Long Beach MS), h,v
AL Demopolis W278AQ *103.5 (WALN 89.3 Carrollton AL), h,v
AL Gadsden W230AV *93.9 (WYFD 91.7 Decatur), h,v
AL Gorgas (transmits from the N.W. arm of Birmingham) W270AQ *101.7 (WGIB 91.9 Birmingham), h,v
AL Mobile W239AP 95.7 (WJZD), h,v
AL Mount Jefferson (between Opelika and Valley) W221BH 92.1 (WVFJ), 250 h,v
AL Ridge Grove (NW side of Auburn) W294AR *106.7 (WAYW 89.9 New Johnsonville TN), h,v
AL Robertsdale W279AT 103.7 (WJZD), h,v
AL Union Springs W300AU *107.9 (WJSP-FM), h,v
AK Whale Pass (SSW Petersburg) K241AS *96.1 (KFSK 100.9 Petersburg), 150 watts h(orizontal).
AZ Buckeye K240DC *95.9 (KLVA 105.5 Casa Grande), h,v
AZ Cottonwood K273AN *102.5 (KNAQ 89.3 Prescott), h,v
K277AR 103.3 (KAFF-FM 92.9 Flagstaff), h,v
AZ Fort Defiance K231AS 94.1 (KYVA-FM 103.7 Grants NM), h,v
AZ Lake Havasu City *89.3 440 watts v, -156 m, Educational Media Foundation; to be \$, gr
AZ Prescott K291AL *106.1 (KNAU 88.7 Flagstaff), h,v
AZ Seligman K265DU 100.9 (KRRK 101.1 Lake Havasu City AZ), h,v
AR El Dorado K286AQ *105.1 (KYFL 89.5 Monroe LA), 250 h,v
AR Magnolia K296FC *107.1 (KBPW 88.1 Hampton), 250 h,v
CA Barstow K230AO *93.9 (KGBM 89.7 Randsburg), h,v
K270AR *101.9 (KWTB 91.9 Ridgecrest), h,v
CA Baywood Park-Los Osos K229AK *93.7 (KLVH 88.5 San Luis Obispo CA), h,v
CA Boron K300AW 107.9 (KWXY-FM 98.5 Cathedral City), h,v
CA Borrego Springs *99.3 Borrego Springs Christian Center, LPFM
CA El Paso de Robles (Paso Robles) K233AV *94.5 (KLVH 88.5 San Luis Obispo), h,v
CA Merced K244DV *96.7 (KXSR 91.7 Groveland), h,v
K258AU *99.5 (KUOP 91.3 Stockton), h,v
CA Oceanside K253AD *98.5 (KLVJ 100.1 Julian), h,v
CA Oroville K222AQ *92.3 (KCHO 91.7 Chico) 250 h,v
CA San Pasqual K245AI 96.9 (KRTM 88.9 Temecula), v
CA Willits K273AO 102.5 (KSAY 98.5 Fort Bragg), h,v
CO Julesburg K232DD 94.3 (KADL 102.9 Imperial NE), 250 h,v
DE Smyrna W254AT *98.7 (WJPH 89.9 Woodbine NJ), h,v
FL Crystal River W265BJ *100.9 (WYFE 88.9 Tarpon Springs), h,v
FL Dunnellon W259AI *99.7 (WWKQ 88.7 Clermont), h,v
FL Inverness W280DK *103.9 (WJIX-LP 103.1 Homossa), 170 h,v
FL Jacksonville W223AL *92.5 (WJLH 90.3 Flagler Beach), 250 h,v
FL Layton W240BF *95.9 (WAVQ 88.3 Key West), h,v
FL Ramrod Key W285DRI *104.9 (WAVQ 88.3 Key West), h,v
GA Athens *93.3 Athenstown Media Enthusiasts Association, LPFM
GA Eastman W221BK 92.1 (WVFJ), h,v
GA Louisville ("Lewis-ville") W287AO *105.3 (WJTG 91.3 Fort Valley), h,v
GA McRae W221BJ 92.1 (WVFJ), h,v
GA Milledgeville W245AN *96.9 (WAFJ 88.3 Belvedere SC), h,v
GA Pembroke W229AJ *93.7 (WDCO-FM 89.7 Cochran), h,v
GA Soperton W221BI 92.1 (WVFJ), h,v
GA Sparta W253AM *88.5 (WAFJ), h,v
GA Sylvania W224BE *92.7 (WAFJ), h,v
GA Washington W252BH *98.3 (WAFJ), h,v
HI Honolulu K288FB *105.5 (KHRI 90.7 Hollister CA, received via K214CY 90.7 Mali), h,v. See also "Facilities," below.
ID Eagle K247AS *97.3 (KARJ 88.3 Kuna), h,v
ID Pocatello K275AN *102.9 (KYFO-FM 95.5 Ogden UT), h,v
IL Canton W282AO *104.3 (WVCL-LP 95.7 Galesburg), h,v
IL Dahinda W264AZ *100.7 (WVCL-LP), h,v
IL Effingham W229AI 93.7 (WDZQ 95.1 Decatur), h,v
IL El Paso W234AO *94.7 (WSOG 88.1 Spring Valley), 250 h,v
IL Vienna W241AH *96.1 (WAAJ 89.7 Benton KY), h,v
IL Watseka W238AP 95.5 (WDZQ), h,v
IL White Hall W227AR *93.3 (WTSG 90.1 Carlinville), h,v
IN Bloomington W276BF *103.1 (WJLR 91.5 Seymour), h,v
IN Clinton W294AQ 106.7 (WDZQ), h,v
IN Roselawn W276BG *103.1 (WAWF 88.3 Kankakee), h,v
IA Algona K242BA *96.3 (KNWC-FM 96.5 Sioux Falls SD), h,v
IA Centerville K239AK *95.7 (KAYP 89.9 Burlington), 250 h,v
IA Fort Dodge K237DF *95.3 (KBDC 88.5 Mason City), h,v
IA Harlan K272DY *102.3 (KNWC-FM), 250 h,v
IA Iowa Falls K268AX *101.5 (KBDC), h,v
IA Le Mars K245AM *96.9 (KILV 107.5 Castana), h,v
IA Marshalltown K279AN *103.7 (KNWS-FM 10.9 Waterloo), h,v
IA Mason City K252DW *98.3 (KTIS-FM 98.5 Minneapolis MN), h,v
IA Mount Pleasant K271AJ *102.1 (KAYP 89.9 Burlington), h,v
IA Muscatine K277AU *103.3 (KNWS-FM), h,v
IA New Hampton K234AP *94.7 (KNWS-FM), h,v
K245AL *96.9 (KNWS-FM), h,v
IA Northwood K271AI *102.1 (KBDC), 210 h,v
IA Winterset K269ET *101.7 (KMLV 88.1 Ralston NE), h,v
KS Chanute K247AT *97.3 (KWRI 89.1 Bartlesville OK), h,v
KS Colby K291AO 106.1 (KRKU 98.5 McCook NE), 250 h,v
KS Dodge City K267AM *101.3 (89.9 Dodge City application), 250 h,v
KS El Dorado K238AO *95.5 (KCFN 91.1 Wichita), h,v
KS Newton K228DY *93.5 (KYFW 88.3 Wichita), 250 h,v
KS Oberlin K225AM 92.9 (KICX 96.1 McCook), 250 h,v;
K291AN 106.1 (KRKU), 250 h,v
KY Benton W248AI 97.5 (WMXX 103.1 Jackson TN), h,v
KY Berea W298AO 107.5 (WWAG 107.9 McKee), h,v
KY Clinton W238AN *95.5 (WAAJ), h,v
KY Hickman W273AK *102.5 (WAAJ), h,v
KY Hopkinsville W268AL *101.5 (WAAJ), h,v
KY Mount Sterling W296BC 107.1 (WIOK 107.5 Falmouth KY), h,v
KY Murray W243AZ 96.3 (WMXX 103.1), h,v
KY Paducah W258AN *99.5 (WTRT 88.1 Benton), h,v
LA Alexandria K267AN *101.3 (KYFL 89.5 Monroe), 250 h,v.
This despite K288ER *105.5 there, another KYFL translator, which increases to 250 watts (h,v).
LA Boothville-Venice K276EQ 103.1 (WJZD), h,v
LA Buras-Triumph K225AL *92.9 (WAOY 91.7 Gulfport MS), h,v;
K243AS 96.5 (WJZD), h,v
LA Jonesville K232DC *94.3 (KOUZ 89.9 Alexandria), h,v
MD Ocean City W235AL 94.9 (WOLC 102.5 Princess Anne), 170 h,v
MD Pocomoke City W234AR *94.7 (WXHL-FM 89.1 Christiana DE), h,v
MA Gloucester W268AM 101.5 (KBIC 105.7 Raymondville TX), h,v. Said to receive KBIC off air, which might be only during rare skip openings. I have asked the FCC about this. Jim Bradshaw of the FCC agrees there is a problem, since KBIC is commercial. "We will contact the translator to rebroadcast another nearby station." The problem also applies to K262AT 100.3 Naples FL.

MA Great Barrington W254AU *98.7 (WFCR 88.5 Amherst), 250 h,v
MA Lee W252BG *98.3 (WFCR), h,v
MA Pittsfield W230AU *93.9 (WFCR), h,v
MA Williamstown W242AT *96.3 (WFCR), 250 h,v
MI Boyne City W238AO 95.5 (WFDX 92.5 Atlanta MI), 250 h
MI Bronson W223AM 92.5 (WCEN 94.5 Hemlock), h,v
MI Coldwater W246AU *97.1 (WSAE 106.9 Spring Arbor), 120 h,v
MI Rochester Hills W288BK *105.5 (WAKL 88.9 Flint), h,v
MN Bemidji K276EP *103.1 (KFNW-FM 97.9 Fargo ND), h,v
MN Big Lake K277AS *103.3 (KHRI 90.7 Hollister CA, received via K208DV 89.5 St. Cloud), h,v. See also "Facilities," below.
MN Blue Earth K270AQ *101.9 (KNGA 91.5 St. Peter), 250 h,v
MN Litchfield K277AT *103.3 (WNCB 89.5 Duluth), 250 h,v
MN Lynd K227AN *93.3 (KNWC-FM), 140 h,v
MN Redwood Falls K245AK *96.9 (KKLW 90.9 Willmar), 170 h,v
MN Sleepy Eye K272DZ *102.3 (WNCB), 250 h,v
MN Virginia W265BK *100.9 (WNCB), h,v
MN Windom K245AJ *96.9 (KBOJ 88.1 Worthington), 250 h,v
MS Batesville W297AJ *107.3 (WKVF 94.9 Byhalia), h,v
MS Lucedale W227AP 93.3 (WJZD), h,v
MS Marion W233AS *94.5 (KLOV 89.3 Winchester OR, received via W213AV 90.5 Meridian MS), h,v
MO Jefferson City K285FC *104.9 (KGNV 89.9 Washington MO), 250 h,v
MO Morrisville K227AO *93.3 (KWND 88.3 Springfield), 210 h,v
MO Stover K286AR *105.1 (KCRL 90.3 Sunshine Beach), 250 h,v
MT Bozeman *107.7 Gallatin Christian Education Station, LPFM
MT Great Falls K281AP 104.1 (KMBR 95.5 Butte), h,v
NE Benkelman K223AQ 92.5 (KICX), 250 h,v
K291AM 106.1 (KRKU), 250 h,v
NE Imperial K282AH 104.3 (KKAS 96.5 Julesburg CO), 210 h,v
NE McCook K221EG 92.1 (KFNF 101.1 Oberlin KS), 250 h,v
K291AP 106.1 (KADL 102.9 Imperial), 210 h,v
NE North Platte K268AY 101.5 (KICX), 250 h,v
NV Tonopah K283AL *104.5 (KQMC 90.1 Hawthorne), h,v
NH Claremont W294AP *106.7 (WKVJ 89.7 Dannemora NY), h,v
NM Albuquerque K275AO 102.9 (KTAO 101.9 Taos), h,v
NM Artesia K289AR *105.7 (KLYT 88.3 Albuquerque), h,v. This despite K218AK 91.5 there, another KLYT relay.
NM Corrales K255AU 98.9 (KKIT 99.9 Angel Fire), h,v
NM Cuba K224CW 92.7 (KPCL 95.7 Farmington), h,v
K260AP *99.9 (KTGW 91.7 Fruitland NM), h,v
NM Hobbs K284AQ *104.7 (KLYT), h,v. This despite K211CW 90.1, another KLYT relay there.
NM Questa K229AL *93.7 (KLYT), 250 h,v
NM Ruidoso Downs K234AQ *94.7 (KMTH 98.7 Maljamar), h,v
NM Socorro *89.5 100000 h,v; 99 m, Educational Media Foundation, to be \$, gr.
NM Thoreau K250AI *97.9 (KTGW), h,v
K270AP 101.9 (KPCL), h,v
NM Tucumcari K237DE *95.3 (KRGV 102.9 Amarillo TX), h,v
NM Williamsburg K270AS 101.9 (KNUW 95.1 Santa Clara NM), h,v
NY Batavia W295AM *106.9 (WZ XV 99.7 Palmyra), h,v
NY Bath W261AG 100.3 (WVIN 98.3 Bath), h,v
NY Beacon W280DJ 105.9 (WAWZ 99.1 Zarephath NJ), h,v
NY Carthage W262AT 100.3 (WOTT 100.7 Henderson), h,v
NY East Hampton W262AS *100.3 (WGRS 91.5 Guilford CT), 250 h,v
NY Smithtown W228BI *93.5 (WNYC-FM 93.9 New York NY), h,v
NC Asheville W251AN *98.1 (WNCW 88.7 Spindale NC), h,v
NC Black Mountain W239AQ *95.7 (WLFJ-FM 89.3 Greenville SC), h,v
NC Burlington W224BC *92.7 (KAWZ 89.9 Twin Falls ID, via W243AL 96.5 Browns Summit), v
NC Liberty *97.7 Health & Liberty, Inc., LPFM
NC South Goldsboro W222AO 92.3 (WCLN-FM 107.3 Clinton NC), h,v
NC Stanley WVEM-LP *100.5, Voice of Evangelism Cathedral, Inc., LPFM. Seeks 100.7.
NC Weaverville W231AR *94.1 (WLFJ-FM), h,v
ND Casselton K293AQ *106.5 (translator of ungranted 89.3 Jamestown ND), 210 h,v
ND Devils Lake K283AM 104.5 (KHRT-FM 106.9 Minot), 250 h,v
[250 h,v
ND Tower City K240DB *95.9 (89.3 Jamestown),/
ND Urbana (just W. Jamestown) K231AQ *94.1 (89.3 Jamestown), 250 h,v
OK Little Ponderosa K222AS *92.3 (KJRT 88.3 Amarillo TX), 250 h,v
OK Sand Springs K293AP *106.5 (KWRI 89.1 Bartlesville), 210 h,v
OK Shady Grove (west of Tulsa) K246AJ *97.1 (KBQC 88.5 Independence KS), h,v
PA Bloomsburg W282AP 104.3 (WKAB 103.5 Berwick), 250 h,v
PA Butler W253AL *98.5 (WRWJ 88.1 Murrysville), h,v
PA Chambersburg W264AY *100.7 (WJTL 90.3 Lancaster), h,v
PA Gettysburg W291AY *106.1 (WJTL), h,v
PA Johnstown W263AW *100.5 (WDUQ 90.5 Pittsburgh), h,v
PA Kittanning W254AV *98.7 (WPCL 97.3 Spangler), h,v
PA Ligonier W281AI *104.1 (WDUQ), h,v
PA Muncy W234AQ *94.7 (WGRC 91.3 Lewisburg), h,v
PA New Baltimore W222AP *92.3 (WDUQ), h,v
PA Somerset W281AH *104.1 (WDUQ), h,v
PA Waynesburg W281AG (WKJL 88.1 Clarksburg WV), h,v
W286AL *105.1 (WRIJ 106.9 Masontown), h,v
SC Charleston W234AP *94.7 (WLPE 91.7 Augusta GA), h,v
SC Marion W228BJ *93.5 (WKVC 88.9 North Myrtle Beach), h,v
SD Brookings K235AS *94.9 (KNWC-FM), 170 h,v
SD Mitchell K231AR *94.1 (KNWC-FM 96.5 Sioux Falls), 250 h,v
K280ER *103.9 (KNWC-FM), 170 h,v
SD North Sioux City (although FCC calls it in the nonexistent "North Sioux City IA"; Dale Bickel of the FCC sent map showing its transmitter is in IA, but the city is SD!) K228DZ *93.5 (KNWC-FM), 210 h,v. Then he said he's checking with colleagues what to call its location.
SD Rapid City K300AX 107.9 (KLMP 97.9 there), 250 h,v
SD Watertown K223AP *92.5 (WNCB), h,v. Seeks 91.9.
TN Dyersburg W288BL *105.5 (WAAJ), h,v
TN Huntingdon W271AN *102.1 (WTRT), h,v
TN Jefferson City W222AN *92.3 (WHCB 91.5 Bristol), h,v
TN Martin W243AY *96.5 (WVHM 90.5 Benton KY), h,v
W273AL *102.5 (WAAJ), h,v
TN Paris W242AS *96.3 (WAAJ), h,v
W270AR *101.9 (WTRT), h,v
TX Austin K274AX 102.7 (KHLB 106.9 Burnet ["burn-it"]) TX h,v
TX Eagle Pass *98.3 Maverick County TX, LPFM
TX Floresville K237DC 95.3 (KMFR 105.9 Hondo, as received from K279AB San Antonio), 250 v
TX Floydada K249DU 97.7 (KNNK 100.5 Dimmitt), h,v
TX Fredericksburg K267AO *101.3 (KTSW 89.9 San Marcos), 250 h,v
TX Killeen *104.5 Metroplex Adventist Hospital, Inc., LPFM
TX Linn (not "Lynn") *107.1 Hidalgo County Texas, LPFM. Linn is NNE Edinburg, W. Raymondville.
TX Meadow K264AN *100.7 (KQRI 90.9 Lubbock), h,v
TX Memphis K229AJ *93.7 (KPDR 90.5 Wheeler), 100 h,v
TX Odessa K292FL *106.3 (KFLB-FM 90.5 Odessa), h,v
TX Perryton K222AP *92.3 (KPDR), 100 h,v
TX Plainview K222AR *92.3 (KJRT 88.3 Amarillo), 100 watts h,v
TX Pleasanton K292FK *106.3 (KAYK 88.5 Victoria), 250 h,v
TX San Antonio K279AB 103.7 (KMFR), v. This translator is reinstated.
TX Seminole K290AN *105.9 (KLVW 88.7 West Odessa), h,v
TX Thorndale K290AM *105.9 (KNCT-FM 91.3 Killeen), h
TX Tulia K235AR *94.9 (KJRT), 100 h,v
TX Uvalde *95.5 Community Council of SW Texas, Inc., LPFM
UT Moab K268AV 101.5 (KWSA 100.9 Price), 250 h,v. K281AJ 104.1 still exists there—another KWSA translator.
VT Brattleboro W233AR *94.5 (WVPR 89.5 Windsor), h,v
VT Burlington W227AQ 93.3 (WNCS 104.7 Montpelier), h,v

(continued on page 28)

SIGN UP/Renewal form

Name _____

Address _____ Apt # _____

City _____ State/Prov _____ Zip _____

Country _____ Interests: TV () FM () 30-50() Weather()

email address _____

Sign me up/renew me for: 1 year () 2 years () More ()

Yearly dues \$24 (US), \$26 to (CANADA), \$10 (Electronic VUD)
(Students get a discounted rate of \$15 yearly for the paper VUD.)

Mail your dues to: WTFDA, P.O. Box 501, Somersville, CT USA 06072

Make your checks/money orders payable to: DAVE JANOWIAK

And *thanks* for your support of the WTFDA!

Return this form with your dues or make a copy of it and return that.

WTFDA BOARD OF DIRECTORS

Mike Bugaj, use the WTFDA Mailing address listed below

Doug Smith, 1385 Old Clarksville Pike, Pleasant View, TN 37146-8098

Greg Coniglio, 11825 Genesee St., Alden, NY 14004

Bruce Hall, 5 Stirton Ave., Brantford, ON N3T 1E2

Dave Janowiak, 5023 S. 65th St., Greenfield, WI 53220

mbugaj@snet.net

w9wi@w9wi.com

wgrc@rochester.rr.com

dbuceaa@hotmail.com

tvdxer@hotmail.com

THE MAILBOX and all general club correspondence:

Mike Bugaj at WTFDA, PO Box 501, Somersville, CT 06072

mbugaj@snet.net

SATELLITE NEWS

George Jensen, 4604 Antana Ave., Baltimore, MD 20206-4220

scisatman@aol.com

TV NEWS

Doug Smith, 1385 Old Clarksville Pike, Pleasant View, TN 37146-8098

w9wi@w9wi.com

FM NEWS

Adam Rivers, 37 Carlton Ave., Chicopee, MA 01020

redsoxdxer417@hotmail.com

PHOTO NEWS

Jeff Kruszka, 5024 S. Braxton Ave., Baton Rouge, LA 70817

jkruszka@bellsouth.net

EASTERN TV DX

Matt Sittel, 15013 Eureux Circle, Bellevue, NE 68123

mcsittel@cox.net

WESTERN TV DX

Victor Frank, 12450 Skyline Blvd., Woodside, CA 94062-4554

victor.frank@sri.com

SOUTHERN FM

John Zondlo, 4009 Driftwood Cir., Yukon, OK 73099

sfm@fmdxweb.com

NORTHERN FM

Keith McGinnis, 387 Shirley Street, Winthrop, MA 02152

longwave@comcast.net

TV and FM STATISTICS

Fred Nordquist, 7945 Boxford Road, Clay, NY 13041

nordquis@twcny.rr.com

WEATHER DX

Jason Koralja, Surf City, NJ

jklbi01@hotmail.com

BACK ISSUES Dave Nieman, PO Box 17, Clarence, NY 14031-0017

nieman@localnet.com

We have a large selection available for \$1.00 each. Email or write Dave for availability.

WEBSITE Tim McVey Webmaster <http://www.anarc.org/wtfda/>

tkmcvey@erols.com

Please Remember to make your renewal checks payable to Dave Janowiak

Checks made payable to WTFDA may be returned and your renewal may be delayed.