

Vhf-UhfDIGEST

The Official Publication of the Worldwide TV-FM DX Association

JULY 2004

The Magazine for TV and FM DXers



CONVENTION 2004

ALL ROADS LEAD TO OMAHA

The Big Question
WHERE IS THE E SKIP?????????
Can this season be saved?

It's all here...TV, FM, Weatheradio, Translators

THE CONCLUSION OF BOB COOPER'S WEAK SIGNAL TECHNIQUES

TV AND FM DXing was never so much fun!



THE WORLDWIDE TV-FM DX ASSOCIATION

Serving the UHF-VHF Enthusiast

THE VHF-UHF DIGEST IS THE OFFICIAL PUBLICATION OF THE WORLDWIDE TV-FM DX ASSOCIATION DEDICATED TO THE OBSERVATION AND STUDY OF THE PROPAGATION OF LONG DISTANCE TELEVISION AND FM BROADCASTING SIGNALS AT VHF AND UHF. WTFDA IS GOVERNED BY A BOARD OF DIRECTORS: DOUG SMITH, GREG CONIGLIO, BRUCE HALL, DAVE JANOWIAK AND MIKE BUGAJ.



Editor and publisher: **Mike Bugaj**

Treasurer: **Dave Janowiak** *Webmaster:* **Tim McVey**

Editorial Staff:, **Victor Frank, George W. Jensen, Jeff Kruszka**

Keith McGinnis, Fred Nordquist, Matt Sittel, Doug Smith,

Adam Rivers, Jason Koralja and John Zondlo,

Our website: www.anarc.org/wtfda

ANARC Rep: **Jim Thomas**, *Back Issues:* **Dave Nieman,**

JULY 2004



Finally! For those of you online with an email address, we now offer a quick, convenient and secure way to join or renew your membership in the WTFDA from our page at:

<http://fmdx.usclargo.com/join.html>

Dues are \$25 if paid to our Paypal account. But of course you can always renew by check or money order for the usual price of just \$24. Either way, it's still a bargain!

VUDS ON A CD!

Every VUD from Jan 1980 to December 1989 is on this disk. You'll need Adobe Reader to read them. Why have a box of old VUDs taking up space when you can have this. **It's yours for just \$8.00 per disk.** Send your check or money order for \$8.00 to WTFDA, P.O. 501, Somersville, CT 06072. Make it payable to Dave Janowiak.



CONTENTS

Page Two	2
Mailbox	3
TV News...Doug Smith	5
Western TV DX...Victor Frank	12
Eastern TV DX...Matt Sittel	16
Northern FM DX...Keith McGinnis	18
Weak Signal Techniques...Bob Cooper	28
Photo News...Jeff Kruszka	32
Southern FM DX...John Zondlo	35
FM News...Adam Rivers	40
Weather DX...Jason Koralja	45
Translator News...Bruce Elving	46
WTFDA Convention Info	50
Editors/Submissions	51

Well, the skip is finally flying. That's what I said last month. Well, it flew alright, but to parts unknown. But even so, you folks pitched in and we actually have 52 pages of goodies for you this time and it's all hard DX. Thank you all for supporting the club and I hope you all have a great summer.

Hope you all enjoy this issue!

LET EVERYONE KNOW THAT YOU'RE A PROUD WTFDA MEMBER!

This removable plastic cling sticks to glass but can be easily removed. It features the WTFDA emblem and our WTFDA website address. Get one for just \$2 each!

Send cash, check or money order payable to Dave Janowiak. Send your order to WTFDA, P.O. Box 501, Somersville, CT 06072. Specify *red* or *yellow*.

Great for your car!

PERMANENT DECALS ALSO AVAILABLE UPON REQUEST.



Just \$2.00 Each



The Mailbox

P.O. Box 501, Somersville, CT USA 06072
MIKE BUGAJ MBUGAJ@SNET.NET

WHERE ARE YOU SKIP?

Well, I don't know, but I think Lenny Goldberg had this season pegged when he posted this on the WTFDA reflector: "This year, if you're not TV DXing, you're not DXing." In other words, if you're an FM DXer, this Es season you're out of luck. As a matter of fact, even if you're DXing TV, you're pretty much stuck DXing channel 2 and channel 3.

What the heck happened? Were we all spoiled last summer with all the transatlantic Es and all the great openings? Did we expect too much this summer? Well, I don't think so. After all, all of us DXers wait all year in hope of a decent summer DX season. This is our one fairly reliable time of the year to bag some new catches; at least most years it is.

Something went wrong. Who knows what that was, but those of us who watch the 6m Es maps on the internet saw plenty of openings on 50mhz that just barely crept up to channel 2, if they even got that far. Skip on channel 3 was a bonus.

The first part of the skip season is a bust. If you just returned from another planet be advised that you missed nothing. You probably had better Es there.

How do we describe this skip season? Let me count the ways. It's poor, bad, lousy, rotten, disappointing, disgusting, stinky, a bust, a tragedy, awful, miserable, unkind, unwarranted. It appears to me to be a clone of 1984, a year that featured almost no Es and the smallest amount of loggings I've ever had in one year. This year might beat that, unless something happens very soon.

Unfortunately, I misplaced my crystal ball so I have no way to know how the rest of the season will turn out. This season could change on a dime. However, at this writing (June 20), much of the Es season is at a standstill. We will see.

Let me add another quick update. Much of June 19 was full of Es except in the northeast, as you might have guessed. Kevin Redding and Jim Thomas did well in the FM Es department; the rest was TV Es. June 20 had Es all day but as usual it stayed down in the ch2-4 range and mostly avoided the northeast again.

MEMBERS AND MORE

This month let's welcome **Ms. Sheryl Paszkiewicz** to the club. Sheryl lives in Manitowoc, WI. No longer is Emily Keene our sole YL member. Welcome Sheryl, from me, Emily and everybody!

Let's check renewals. This month we have them from **Stan Weisbeck** (WA), **Benjamin Greenlaw** (ME), **William McGuire** (MD), **Garret Wollman** (MA), **Al Tobia** (CA), **Roger Gravelle** (ON), **Dave Bright** (FL), **Al Laun** (MD), **John Griffiths** (ON), **Keith Smith** (MI), **Edward Cotton** (VA), **Dan Oglethorpe** (LA), **Michael Temme-Soir** (NJ), **Stan Morss** (MA), **Rod O'Connor** (ME) and **Rod Jorgenson** (WI). Paypal gave us renewals from **Robert Ross** (ON), **Dave Williams** (OR), **Mike Hawk** (NE), **Steven Ponder** (TX) and **Octavio Cuoso** (Cuba). Thank you all for your support of the WTFDA!

I'd like to thank **Stan Morss** for the coupon for the free ice cream cone (buy one and get one free) at Smolak Farms in North Andover, MA. Now all I need to do is get up there to claim it before June 30th.

Rod O'Connor (ME) says "This will be my 29th renewal! Member since 1975 (I think). Somewhere in the deep, dark recesses of my memory I think I remember Rod being stationed at some dank, dreary place in Alaska for some years (Kodiak??) Am I close, Rod?"

Also while I'm thinking about it, member **Gary Hickerson** (OK) looked at one of the webpages I put together regarding AM reception while I was in the navy, and told me that he was stationed at NAS Keflavik, Iceland only a year or two apart from me, only he was in the Air Force instead of the Navy. They always had better food.

Ken Onyschuk (IL) writes: "Last week local 99.9 WRZA Kankakee, IL sale went through and now Newsweb owns it. Thankfully the Spanish was dropped and now veteran jock Ken Cocker is playing and programming a different format each day as he spins a dial at 8am daily. Today it's jazz. Good music until a permanent format is decided on. But the big deal is a change in the city of license from Kankakee to up north in Park Forest, though it's not physically there. I made a few calls yesterday and WRZA is broadcasting from 6012 So. Pulaski

Road in Chicago, IL. The transmitter is still north of Kankakee on the east side of I-57. Can't miss it as you drive by. Also when the lady answered the phone, she said WNDZ (licensed to Portage, IN). Weird. Despite the different cities of license, several broadcast from the southwest side of Chicago address. Only the transmitter is at the city of license. So, Newsweb owns several AM and FM stations here. See what happens to 99.9 in June. It had been WBYG/WBSW/EBUS, etc.

If you are just yearning to relive those precious moments at the 2001 WTFDA convention in Boise, or you just want to see for yourself what happened there, **Frank Aden** has an offer for you. Frank is offering a DVD of the Boise convention to anyone for **\$20.00** postpaid. Email Frank at n7sok@aol.com or write me at PO Box 501 for his address.

David Williams(OR) writes "While Es has been disappointing this early spring, I'm looking for it to fire up and have some portable equipment I'm going to take out to the desert if the timing is right or the opening is long enough. Just a little over an hour from here, I can be in a position that shields me from the Bend/Redmond/Prineville locals and puts me 150+ miles from the Eugene/Portland cluster.

I am, however, blown away that tropo is possible here in the intermountain west. Summertime brings regular reception of stations in the 250-350 mile range, including Spokane, Vancouver (BC), the Puget Sound, the Washington and Oregon coasts and the Boise metro. Still looking for a real tropo duct opening but this spring has been rather blustery. I need some serious T-storm action followed by a nice calm day/evening. (Just a note that at this point Dave has seen much, much more E skip there than we have here in the northeast -mike).

Hold on to your hats because I never thought I'd see the day when **Bob Smolarek** goes digital, but he has. Bob Writes "Well I made the plunge and bought a Samsung SIR-T151 DTV set top box the other day. So far I'm impressed with the clarity of the signals I've gotten, crystal clear pictures. " Welcome to the future, Bob.

Speaking of digital television, last month I showed a screenshot of **Matt Sittel's** Es reception of KOTA 2 in Rapid City. A short time later this reception was followed by *completely decoded pictures* of KOTA-DT on May 26th by **Girard Westerberg, Greg Barker** and **Glen Hale**. This is the first time in television DX history that DTV signals have completely decoded and three of our guys were the first to see it. Doug Smith estimates that about a dozen stations on channels 2-6 are broadcasting in digital, although at least one TV DXer has seen digital snow indicating the presence of a DTV station that is

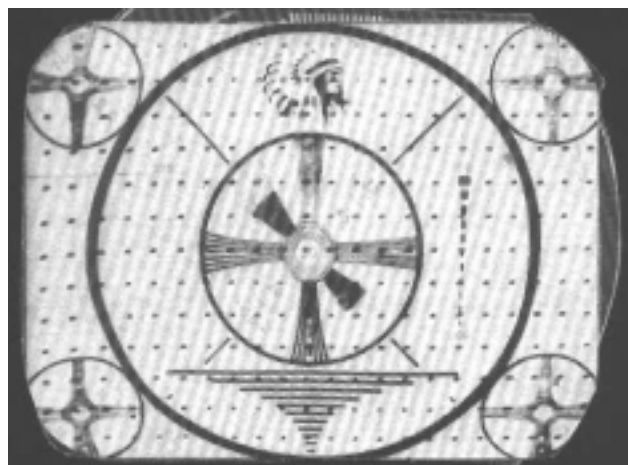
unknown. By the way, check Photo News for pictures of these receptions.



The Hancock and Prudential Transmitter Towers in Boston taken in May. Photo by Mike B.

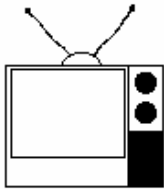
THE WTFDA FTP SERVER

A server is a computer. An FTP server is a computer that's used to store files. The files can be about almost anything: audio files, video files, document files and/or pictures. Bill Nollman has a spare computer he set up as a FTP (file transfer protocol) server. Any of you with a computer can access the files stored on this computer. Anyone can upload files if you have a computer and an FTP program. If your computer has Windows XP you can send files from that operating system. To view the files on that server, just make sure you are using Internet Explorer and type in the following address: <ftp://wtfda.serveftp.net>. From there, click on the incoming folder then click on any folder with a name on it. Mine is MikeB, for example. Juan Gualda has some neat Es photos from Venezuela and Colombia there. Jeff Lehmann has some neat stuff. I have some old VUDs there. There are some unid DX photos and/or audio. If you have a computer, try it out. It's another cool place to go to and browse.



WHEN IS THE LAST TIME YOU SAW ONE OF THESE?

That's it for this time. We were down in Atlantic City for a few days of R&R and met up with **Michael Temme-Soifer** for lunch in Smithville. Michael, you picked a great place with great food and I hope we meet again. We had an enjoyable time! -Mike



TV News

Douglas E. Smith
 1389 Old Clarksville Pike
 Pleasant View, TN
 37146-8098
w9wi@w9wi.com
<http://www.w9wi.com>

July 2004

Abbreviations:

AF	Applied For (a new station)	PG	Power change granted
Aux	Auxiliary (backup) transmitter	PR	Power change requested
CC	Callsign change	QC	Channel (?frequency??) change on the air
CL	City-of-license change	QG	Channel change granted
DE	License/permit deleted	QR	Channel change requested
FC	Programming (?format??) change	RE	Reinstated (previously-dismissed app.)
FTP	Failure to Prosecute	ROA	Request of Applicant
GA	Granted amendment (to table of channel allotments)	SI	Off the air (?silent??)
LC	License to Cover	STA	Special Temporary Authority
NS	Permit granted for new station	XC	Transmitter site changed
NW	New station on the air	XG	Transmitter site change granted
PA	Proposed Amendment	XR	Transmitter site change requested
PC	Power (and/or tower height) change on the air		

News:

(full-power analog stations in **bold face**; LPTV and translators in regular type; full-power digital stations in **bold italics**)

Canada:

Alberta:

Jean-Cote 31 CBXAT-13 CX, DE
 Jean-Cote 40 CBXFT-10 CX, DE

Ontario:

Ottawa 32 CITS-TV-1 NW 7.2kw/142
 45-13-01/
 75-33-51
 Toronto 65 CIII-DT-41 NS, 3kw, CN
 Tower

Puerto Rico:

Bayamon-San Juan 44 W44CK QG from W21AR
 Ponce 33 WWKQ-CA CC from WQQZ-LP
Ponce 7 WSTE AF 100kw/88m (aux)
San Sebastian 39 WJWN-DT PG>700kw/627m 18-09-00/66-59-00

U.S. Virgin Islands:

Charlotte 43 WZVI-DT NW 1.4kw/28m, 18-20-43/64-55-45; CC

U.S.A.

Alabama:

Anniston 9 WJSU-DT QR from ch. 58, 15.6kw/359m
 Berry 48 WSSF-LP QG from ch. 58
 Dothan 59 W59DY NS 20kw, 31-13-39/
 85-21-10
 Florence 50 W50DH QG from W57BV, 11.8kw
Huntsville 25 WHIQ PR<338m
Montgomery 14 WSFA-DT PR<507m; PG
Opelika 31 WSWS-DT PR<150kw/539m

Opelika 66 WSWS-TV PR>2050kw/556 32-19-16/84-47-28

Alaska:

Anchorage 8 KAKM-DT PA from ch. 24
Anchorage 9 960916KE NS 316kw/212m, 61-04-02/149-44-36; competing app dismissed
Anchorage 10 KTUU-DT PA from ch. 18
Anchorage 12 KIMO-DT PA from ch. 30
Anchorage 33 KDMD PC>66kw/300m, 61-20-11/149-30-48
Fairbanks 18 KATN-DT PG>1000kw/156 64-54-42/147-46-38
Fairbanks 24 KUAC-DT NW 69kw/163m
North Pole 20 KJNP-DT AF 80w/5m, 64-45-32/147-19-26

Arizona:

Bullhead City 16, K16EV, QC from K58DU, 25 K25HD K65FI
 Dolan Springs 43 K43GU QC from K62CH
 Lake Havasu 29 K29FD QC from K52AX, 2.37kw
 Lake Havasu 31 K31GZ QC from K47FQ, 2.21kw
 Lake Havasu 39, K39FV, QC from K56BU, 40 K40FG 2.34kw
 Meadview 36 K36FZ QC from K58EP, 1kw
 Meadview 38 K38GR QC from K52CT, 1.05kw
 Meadview 47 K47HE QC from K56DX, 1.96kw
 Prescott 18 K28FF QR from ch. 28, 87kw, 33-34-06/112-33-31
 Prescott 47 K24EP QR from ch. 24, 150kw, 34-14-03/112-22-03

Topock	21 K21FU	QC from K64AG, 1.03kw			122-26-10; XG PG>150kw
Tucson	25 KMSB-DT	PG<480kw/1123		Redding	42 K42GE
Arkansas:				Redding	44 K44GY
Arkadelphia	13 KETG-DT	NW 7.3kw/320m			
El Dorado	30 KETZ-DT	AF 1000kw/538		Sacramento	44 KRJR-LP
El Dorado	40 K40EF	PG>150kw			QR from ch. 47, 87kw, 39-12-20/ 121-49-10
El Dorado	47 K47JG	NS 30kw, 32-59-35/ 92-20-38		Sacramento	45 K45HC
					QC from K69FB, 150kw, 38-15-54/ 121-29-24
El Dorado	55 K55JY	NS 11.4kw, 33-16-18/ 92-42-12		San Diego	43 KBOP-CA
					PR<4.1kw, 32-41-48/ 116-56-10
Fort Smith	43 KXUN-LP	CC from K43EZ		San Francisco	52 KMMC-LP
Jonesboro	20 KTEJ-DT	NW 50kw/310m		San Luis	16 K16FC
California:				Obispo	
Arroyo Grande	8 KAGP-LP	PR>3kw, 34-54-37/ 120-11-08		Santa Ana	33 KTBN-DT
				Van Nuys	38 K38CY
Avalon	47 KAZA-DT	AF 350kw/937m, 34-13-37/ 118-03-57			PA from ch. 23 PR>3.8kw, 34-17-03/ 118-28-17; PG
Bakersfield	23 KERO-TV	NS 324kw/1101m (aux)		Colorado:	
				Ashcroft	16, K16FS, 19 K19FH
Bakersfield	41 NEW-LP	RE AF 30kw, 35-18-23/ 118-47-58			PR<60w, 39-13-33/ 106-50-00
Banning	45 K45IC	PR>10kw, 33-58-09/ 117-17-08		Ashcroft	21 K21HF
				Basalt	36 K36GX
Big Bear Lake	40 K40HY	NS 250w, 34-03-46/ 116-53-34 (Daystar)		Cripple Creek	14 K57BY
					QR from ch. 57; PR>1kw, 38-46-21/ 104-59-32
Bishop	20 960919KZ	NS 195.4kw/928, 37-24-43/ 118-11-06; competing app dismissed		Cripple Creek	55 K55CJ
					PR>100kw, 38-59-13/ 104-55-12; PG; QR ch. 30, 110kw PR>100kw, 38-59-13/ 104-55-12
Fort Bragg	8 KUNO-TV	PG<744m		Crystal/Frying Pan	56 K56AD
Huntington Beach	50 KOCE-TV	PC>2354kw/949 34-13-35/ 118-03-58			XR 39-25-24/ 107-22-32; from no offset to zero
Jones Valley Park	4 K04PQ	NW 10w, 40-43-31/ 122-14-08		Denver	2 KWGN-TV
					NW 50kw/232m, 39-43-58/ 105-14-07 (aux)
Los Angeles	11 KTTV	PC>156kw/921m (aux)		Denver	32 KDVR-DT
Los Angeles	13 KCOP-TV	PC>161kw/906m 34-13-29/ 118-03-48; NW aux at same site		Denver	40 KRMT-DT
				Denver	41 KRMT
Los Angeles	42 KWHY-DT	PG>486kw/892m 34-12-48/ 118-03-41		Denver	47 KSBS-LP
					QC from ch. 13, 59.1kw, 39-23-06/ 105-02-51; PG<23.2kw but rescinded
Los Angeles	66 KCOP-DT	PG>890m, 34-13-29/ 118-03-48; PC; PR>1000kw		Estes Park	26, K26HQ, 42 K42GS
					NS 400w, 40-25-13/ 105-26-39
Lucerne Valley	47 K47HC	QC from K68CW, 400w, 33-52-03/ 116-26-01		Estes Park	49 K49IB
					QR from K61AA, 7.5kw; PR<5.6kw, 39-53-37/ 105-25-07; PG>150kw
Needles	31 K31HY	QG from K19BR, 1.06kw		Glen Haven	65 K13ON
					QR from ch. 13, 150kw, 40-15-56/ 105-33-37
Oxnard	24 KBEH-DT	PR>184kw		Haxtun	39, K39HM, 41 K41IT
Palm Desert	43 KDUO-LP	CC from K43IW			QG from K53AJ/K55CD
Palm Springs	29 KSPP-LP	PG>6.6kw, 33-45-20/ 116-43-18; CC from K29GA		Julesburg	47 K47JH
					QG from K31AB, 670w
Redding	2 K02QA	QC from K56ID, 410w, 40-39-19/ 122-31-22; XR 40-34-10/		Julesburg	57 K57JE
					NW 670w, 40-54-19/ 102-22-32
				Longmont	25 KDEN
					PR 2200kw/495,

Longmont 29 **KDEN-DT** **PR>760kw/516m**
40-05-57/
104-53-48
, 40-05-57/
104-53-48

Lower Fryingpan River 11 K11LM PR>40w,
39-21-12/
106-41-00; PG
Montrose 19 K19CE PG>1.3kw,
38-20-21/
107-38-22; PC
Redstone 2 K02IO PR<40w,
39-14-20/
107-13-02; PG &
PC
Redstone 4 K04HP PR<40w,
39-14-20/
107-13-02; PG
Redstone 9, K09XN, 11 K11VC XC 39-14-20/
107-13-02
Vail 45 K45IE XG 39-36-18/
106-21-23
Woody Creek 44 K44GQ PC<60w,
39-18-37/
106-56-53
Yuma 42 K42GI NW 2.69kw,
40-08-35/
102-48-51

Connecticut:
Hartford 31 **WTIC-DT** **PR<380kw/506m**
Waterbury 12 **WTXX-DT** **PR>515m**

Delaware:
Seaford 64 **WDPB** **PR<48.7kw/153**

District of Columbia:
Washington 47 WMDO-CA PG>24kw

Florida:
Fort Myers 4 WEVU-CA PG>3kw
Key West 12 **WVIB-DT** **PG<210w/56m,**
24-33-18/
81-48-05

Melbourne 29 WMVJ-LP PR>150kw,
28-02-49/
80-40-34
Melbourne 43 **WOTF-TV** **PR>5000kw/492**
28-35-12/
81-04-58

Orlando 36 WZXZ-CA QC from ch. 11,
23kw, 28-34-52/
81-04-31
Panama City 6 W08DZ QR from ch. 8,
30-19-42/
85-41-22

St. Petersburg 35 WSPF-CA PG>28kw
Tallahassee 24 **WTLF-DT** **PR>1000kw ;PG**
Tampa-St. Petersburg 20 WARP-CA PG>150kw
Williston 56 NEW-LP NS 8kw,
29-24-11/
82-27-03
Yankeetown 17 W43CI QR from ch. 43,
150kw,
28-54-46/
82-35-40

Georgia:
Atlanta 40 WIRE-CA PR>150kw; PG
Augusta 49 W49CM QG from W58CZ,
11.9kw
Columbus 13 WGMH-LP CC from W13CY
Columbus 61 W61DU NS 20kw,
32-35-58/
84-57-02
Marietta 49 W49CO QG from W55BM,
48.3kw
Monroe 44 **WHSB-DT** **NW**
700kw/303m, 33-

Weston 34 W34DJ NS 100kw,
32-01-15/
84-38-03

Hawaii:
Honolulu 8 **KHON-DT** **PR<7.2kw/-12m,**
21-17-46/
157-50-36

Honolulu 10 **KALO-DT** **PA from ch. 39**
Honolulu 22 **KGMB-DT** **PR>1000kw/9m,**
21-17-39/
157-50-18

Kailua 50 **KKAI** **PR<19kw/340m,**
21-19-23/
157-40-53

Kailua Kona 6 **KLEI** **PC<8.3kw/864m,**
19-43-16/
155-55-15

Kailua Kona 25 **KLEI-DT** **PR<700kw/871m**
19-43-16/
155-55-15

Waimanalo 56 **KMGT** **NW 83.2kw/632,**
21-19-49/
157-45-24

Idaho:
Boise 18 KCLP-CA QG from ch. 38,
60kw
Boise 21 **KAID-DT** **PR>725kw**
Boise 35 KUNS-LP PR>150kw,
43-45-17/
116-05-53
Boise 41 K41IV QG from K60FH,
18.7kw
Boise 49 K49GX PG>150kw,
43-44-23/
116-08-15
Bonners Ferry 46 K27HA QR from ch. 27,
3kw
Idaho Falls 28 K28II NS 31kw,
43-45-44/
111-57-30

Nampa 13 **KTRV-DT** **QR from ch. 44,**
17kw/829m

Pocatello 38 **KFXP-DT** **PA dismissed**
Pocatello 41 K15DG QG from ch. 15,
16kw
Preston 21, K21HH, 23 K23GR QC from K22DV,
K36AD
Sandpoint 16 K16EN PG<3.3kw
Twin Falls 38 KTFT-LP PG>150kw
Twin Falls 52 K52JI NS 500w,
42-12-53/
114-42-42

Illinois:
Champaign 34 W34DL QG from W58DA,
90kw
Chicago 2 **WBBM-TV** **PC 26.4kw/455m**
Chicago 3 **WBBM-DT** **NW 3.7kw/448m**
Chicago 19 **WGN-DT** **PC>645kw**
Decatur 22 **WBUI-DT** **NW 253kw/401,**
39-56-56/
88-50-12

Peoria 50 W50DD QC from W41BO,
37.7kw,
40-33-29/
89-34-05
Quincy 35, W35CB, 46, W46DP, 50 W50DG NS 1kw,
39-58-19/
91-19-39
Rochelle 36 W36DE NS 300w,
41-55-11/
89-07-04
Rochelle 61 W61DT PG>50kw

Indiana:

Bloomington	48 WTTV-DT	QR from ch. 53, 870kw/337m	Pinconning	58 WKJF-LP	CC from W58CW
Indianapolis	47 WBXI-CA	PG>117.4kw, 39-53-25/ 86-12-20	Saginaw	32 W32DE	QG from W22CC, Pinconning; 62.2kw, 43-28-24/ 83-50-40
Indianapolis	69 WDTI	FC to Daystar; CC from WTBU	Minnesota:		
Lafayette	11 WLFJ-DT	NW 30kw/214m	Cloquet	48 K48IX	NS 10kw, 46-46-52/ 92-26-44
Iowa:					
Dubuque	40 KFXB	FC to CTN relig.	Frost	27 K27FI	PG>2kw
Knoxville	21 K21EM	PR>150kw, 41-36-37/ 93-21-52; CL from Ottumwa	Hibbing	15 K15GT	QG from K31HE, 16.1kw
Storm Lake	18 K18HG	QG from K40CO, 15kw	Jackson	16 K59FN	QR from ch. 59, 3kw
Kansas:			La Crescent	23 KQEG-CA	QC from ch. 50, 18.5kw, 43-44-53/ 91-17-51
Dodge City	43 K43HN	NW 23.3kw, 37-46-51/ 100-04-11 TBN	St. James	41 K54AC	QR from ch. 54, 1.32kw
Topeka	49 KTKA-TV	PR<2690kw/453; PG	Worthington	22 K22HJ	QG from K15EB, 12.3kw
Topeka	55 K55IL	QC from K21AP, 46.2kw, 39-01-34/ 95-55-01	Mississippi:		
Wichita	51 KSMI-LP	PC>14.1kw, 37-41-53/ 97-19-10	Greenville	42 W33BH	QR from ch. 33, 17.8kw, 33-21-57/ 90-57-20
Kentucky:			Tupelo	49 960920LX	QR from ch.35
Danville	56 WDKY-TV	PG>5000kw	Missouri:		
Morehead	21 WUPX-DT	PR<428m	C. Girardeau	65 K65GP	PR>150kw; PG
Morehead	67 WUPX-TV	PR>446m	Jefferson City	38 K38II	QC from K11TB, 143.2kw, 38-47-28/ 92-17-43
Louisiana:			Jefferson City	63 K63HG	NS 1kw, 38-35-38/ 92-14-57
Minden	21 KPXJ-DT	AF 1000kw/502, 32-41-08/ 93-56-00; NS	Joplin	55 K55HU	PR>150kw, 37-04-49/ 94-33-25; PG
Monroe	45 K45IM	QG from K59GI, 28.8kw	Kansas City	35 K35CT	PG>20kw, 39-01-20/ 94-30-49
New Iberia	50 KACB-TV	PG>303m, 30-20-32/91-58-32; CC	St. Charles	22 K22HG	QG from K59GP, 20kw
New Orleans	12 WYES-TV	PG<307m	Montana:		
New Orleans	18 WBXN-CA	QC from ch. 10, 5kw	Billings	7 NEW-LP	RE AF 3kw, 45-46-00/ 108-27-27
Maine:			Bozeman	54 K54JL	NS 10kw, 45-39-33/ 111-03-22 TBN
Portland	43 WPXT-DT	QR from ch. 4, 750kw; QG	Glendive	10 KXGN-DT	PA from ch. 15
Maryland:			Lewistown	4 NEW-LP	RE AF 750w, 47-10-46/ 109-32-05
Annapolis	63 WWTD-LP	CC from W63BP	Polson	30 K30II	QG from K06MQ, 250w, 47-40-39/ 114-08-30; CL from Finley Point
Baltimore	41 WUTB-DT	PR>200kw	Nebraska:		
Frederick	22 W22DA	QG from W52AS, 37.3kw	Omaha	7 KETV	PR>419m
Lake Shore	69 W69EH	XR 38-58-02/ 76-15-30, CL from Salisbury dismissed	Omaha	20 KETV-DT	PG<396m
Ocean City	58 W58DH	FC; sold by TBN	Omaha	43 KPTM-DT	PR>600kw
Salisbury	7, W07DJ, 11 W11CX	NS 100w, 38-20-42/ 75-17-00	Omaha	57 KAZO-LP	PC>100kw; FC to Azteca America
Salisbury	67 W67EA	FC; sold by TBN	Nevada:		
Massachusetts:			Carson City	32 K32GW	QG from K57CV, 15kw
Boston	30 WBZ-DT	PR>825kw	Duckwater	15 K15GS	QG from K55CR
Springfield	11 WWLP-DT	PG>10kw/268m	Ely	16 K16GK	NS 150kw, 39-15-53/ 114-53-35
Michigan:			Las Vegas	43 K43FO	PC>10.2kw,
Bay City	46 960710KZ	PR 1600kw/306, 43-28-27/ 83-50-45			
Detroit	14 WKBD-DT	PR>200kw			
Detroit	21 WDWB-DT	NW 500kw/324, 42-26-52/ 83-10-23			
Gd. Rapids	7 WOOD-DT	PG>288m			
Gd. Rapids	11 WGVU-DT	PG<238m			

Laughlin 32 KMCC-DT 36-00-36/
115-00-20
PR>1000kw/607,
35-39-07/
114-18-42;
PG>41.6kw/-63
35-10-08/
114-38-09

Laughlin 34 KMCC NW 416kw/-63m,
35-10-08/
114-38-09

Laughlin 67 KJTZ-LP CC from K67HO
Pequop 33 K33HD CL from Starr Vly
Reno 5 KNPB PC<4.61kw/145
Reno 15 KNPB-DT NW 32.3kw/149
Wells 39 K39GL CL from Starr Vly

New Hampshire:
Colebrook 26 W26CQ PG>19.7kw,
44-56-50/
71-20-28

Littleton 49 WLED-TV XG 44-21-10/
71-44-15

New Jersey:
Linden 47 WNJU NS 1500kw/348,
40-44-54/
73-59-10 (aux)

New Mexico:
Albuquerque 38 K38IM QG from K17DD,
45.4kw,
35-12-50/
106-27-01

Caballo 31 K31DR PR>10kw
Deming 35 K57AW QC from ch. 57
Española 44 K44HO NS 907w,
35-53-55/
105-53-53
(KNME-5)

Farmington 14 K14KN XR 36-40-16/
108-13-54; XG

Gallup/
Tohatchi 20 NEW-LP RE AF 1.65kw,
35-36-18/
108-41-11

Hobbs 47 NEW-DT AF 125kw,
32-45-40/
103-11-21
(KENW-3)

Hobbs 52 KHLC-LP QC from ch. 18,
32-42-34/
103-09-07

Roswell 27 KRPV PR<472kw/122m
33-23-50/
104-22-34

Roswell 31 NEW GA, DTV, non-
commercial

Roswell 50 K50IA QC from K30HI,
5.4kw

Ruidoso 16 K16BZ PR>6.23kw; PG
Santa Rosa 30 K30FP FC; KNME-5
PBS, not KOAT

New York:
Albany 12 WNYT-DT NW 9.1kw/436m,
42-37-31/
74-00-38

Cobleskill 41, WUCB-LP, CC from W41CV,
57 WYBN-LP W57DS

New York 4 WNBC XR 40-44-54/
73-59-10,
30kw/439m; AF
48kw/367m (aux)

New York 7 WABC-TV AF 204kw/296m,
40-45-22/
73-59-12 (aux)

Rochester 28 WUHF-DT PR<320kw
Rome 12 W12BZ PC>3kw
Saranac Lake 40 950809KF PR<155kw

Utica 29 WKTV-DT PG>708kw

North Carolina:
Charlotte 34 WSOC-DT PC>1000kw
Raleigh 44 WHOA-LP PR>150kw,
35-47-17/
78-43-13

Reidsville 39 WGSR-LP QG from ch. 14,
7kw, 36-21-36/
79-39-51; CC
from WXIV-LP
PG>9.8kw

Rocky Mount 33 WHIG-LP

North Dakota:
Devils Lake 25 NEW-DT AF 134kw,
48-03-47/
99-20-08 (Prairie
Public)

Dickinson 20 KDSE-DT PG<54.1kw
Ellendale 20 KJRE-DT PG>72.3kw
Fargo 44 KVLV-DT QG from ch. 58,
414kw/543m

Williston 44 K44HR NS 18.1kw,
48-09-18/
103-30-01

Ohio:
Columbus 28 WTTE PC<1440kw/267,
39-56-14/
83-01-16

Columbus 8 WGCT-CA CC from WINJLP
Dayton 41 WHIO-DT NW 1000kw/290
Lima 38 WLMO-LP QG from ch. 16
Mansfield 12 WMFD-DT PR>13kw/180m
Portsmouth 43 WPBO-DT NW 50kw
Springfield 18 WBDT-DT NW 35kw/291m,
39-43-28/
84-15-18

Youngstown 41 WKBN-DT NS 700kw/418m,
41-03-24/
80-38-44

Oklahoma:
McAlester 16 K16GH NS 7kw,
34-58-07/
95-46-22 (TBN)
PG>23.7kw

Oklahoma C. 19 KUOT-CA

Oregon:
Medford 41 K41IX QG from K57EK,
12.1kw
PR<1.63kw; PG

Merlin 33 K33GJ PR<95kw,
45-31-21/
122-44-45

Newberg 51 KOXO-CA PR>150kw,
45-31-21/
122-44-45

Portland 35 KORK-CA PR>15kw,
44-58-46/
123-20-57; PG

Salt Creek 14 K14KW QR from ch. 66,
1.03kw,
45-42-43/
121-06-58

The Dalles 31 K66AH NS 2.5kw,
45-12-51/
123-45-11
(KWBP-32)

Tillamook 16 K16GI

Pennsylvania:
Pittsburgh 42 WCWB-DT PG>1000kw/315
Pittsburgh 47 W65CG QR from ch. 65,
7.5kw

Reading 25 WTVE-DT PR>900kw/395m
40-19-52/
75-41-41

Rhode Island:
Providence 13 WPRI-DT NW 18kw/305m

South Carolina:
Charleston 24 WTAT-TV PR<3500kw/583

Charleston 40 WTAT-DT PR<400kw/583m
PG
Columbia 47 WRBJ CC for NS
Greenville 21 WHNS PG<761m
Myrtle Beach 32 NEW AF 3740kw/298,
33-35-27/
79-02-55

South Dakota:

Brookings 18 KESD-DT PG<38kw
Eagle Butte 25 KPSD-DT PG<31kw
Lowry 15 KQSD-DT PG<24kw
Vermillion 34 KUSD-DT PR<27kw
Watertown 42 K42FI NW 10kw,
44-52-16/
97-06-34 (KDLT-
46)

Tennessee:

Chattanooga 3 WRCB-TV PR>377m
Hurricane 62 W62CJ XR 35-52-41/
Mills 87-43-12; CL
from Jackson
Knoxville 8 WVLT-TV PC>510m,
35-59-44/
83-57-23
Knoxville 26 WATE-DT NW 930kw/529m
Lakeland 38 W38BY PR<100kw,
35-12-41/
89-48-54; CL
from Jackson
Nashville 48 W36AK PR>40kw,
36-16-03/
86-47-44

Texas:

Abilene 60 NEW-LP RE AF 25kw,
32-18-56/
99-59-14
Amarillo 8 KACV-DT NW 5kw/519m,
35-22-30/
101-52-56
Amarillo 38 NEW-LP NS 1.5kw,
35-15-39/
101-52-53
Amarillo 59 K59HG PR>25.8kw, 35-
20-33/
101-49-20
Atlanta 20 K20HL XR 33-11-54/
94-12-57; CL
from New Boston;
XG
Beaumont 69 K69IY NS 7kw,
30-00-05/
94-05-36
Borger 31 KEYU-DT XG 35-20-33/
101-49-20, CL
from Elk City,
OK
Brownsville 28 K57FE QR from ch. 57,
150kw,
26-07-12/
97-43-52; CL
from McAllen
Conroe 55 KTBU PR>554m, DA;
PG but DA
dismissed
Corpus Christi 13 KRIS-DT NS 160kw/291m
Greenville 53 KNOK-LP PR>49kw,
32-56-12/
96-24-43
Houston 53 KVVV-LP PR>150kw,
29-24-40/
94-57-04; PG
Keene 31 KGSW-LP QR from ch. 46,
14.1kw
Longview 38 KCEB QR from ch. 54,

Midland 18 KUPB-DT 268m
NS 1000kw/281,
31-50-19/
102-31-59
Odessa 9 KWES-TV PC>391m,
31-59-17/
102-52-41
Odessa 31 KOSA-DT NS 912kw/205m
Paris 27 K27GR NW 2kw,
33-37-15/
95-32-51;
PR>30.6kw
Port Neches 58 NEW-LP AF dismissed
San Angelo 23 NEW-LP AF dismissed
San Antonio 16 KHCE-DT NS 500kw/307m,
29-17-24/
98-15-20
Sweetwater 35 KIDB-CA PR>8.8kw; PG
Tyler 27 K27IC QG from K20DL,
18.5kw
Uvalde 42 K42GJ QG from K59EY,
8.15kw,
29-37-11/
99-02-55
Uvalde 47 K47IJ PG>9.99kw,
29-21-46/
99-37-14; XG 29-
22-08/
99-20-58
Victoria 15 KAVU-DT NS 900kw/312m,
28-50-42/
97-07-33

Utah:

Bullfrog 15 K15GN NW 600w,
37-27-15/
110-43-20
Fremont 12 K12PX NS 9w,
38-25-58/
111-37-57; NW
Logan 68 NEW-LP AF RE 50kw,
41-12-00/
111-52-55
Manti & 27 K27HR NW 460w,
Ephraim 39-19-23/
111-46-23
Mount 50 K50HL NW 1.8kw,
Pleasant 39-32-22/
111-23-17
Tropic & 33 K33HX NS 600w,
Cannonville 37-42-40/
112-04-39
Washington 47 K47AK PG>1.28kw,
37-09-19/
113-52-57; PC

Vermont:

Burlington 39 WGMU-CA CC from WBVT-
LP
St. Albans 41 W52CD QR from ch. 49
White River 27 W27CP PG>24.4kw,
Junction 43-39-33/
72-11-10

Virginia:

Charlottesville 14 W14CY NS 15kw, 38-24-
10/78-29-40
Charlottesvle 19 WCAV PR>5000kw/499
37-34-20/
78-12-10
dismissed;
PG<1000kw/326;
CC
Charlottesvle 32 WVIR-DT PR 993kw/368m;
PG
Hampton 53 WTTD-LP QC from ch. 59
Luray 23 W23CP PR<50kw,
38-44-30/

		77-50-08	
Staunton- Waynesboro Suffolk	25 WAZM-CA 52 WBTD-LP	PG>44kw QC from ch. 66	
Washington:			
Camas	20 KOXI-CA	XR 45-31-21/ 122-44-45; QC from ch. 19, 150kw	
Kennewick	23, K62EM, 29 K57HF	QC from ch. 62, 57	
Moses Lake Pullman	58 K58BL 24 KQUP	FC; sold to KXLY NW 29.2kw/329, 46-51-44/ 117-10-22	
Richland	36 KBWU-LP	QG from ch. 52, 50kw	
Spokane	7 KSPS-TV	NS 67.9kw/500m (aux)	
Walla Walla	9 KAZW-DT	AF 45kw/432m, 46-05-59/ 119-07-36	
Yakima	39 K60EB	QC from ch. 60, 46-31-57/ 120-29-45	
Yakima	43 K43GY	QC from K17CJ, 18.6kw	
Yakima	45 KDHW-LP	XR 46-32-00/ 120-29-31	
Yakima	49 K56EG	QC from ch. 56, 2.48kw	
West Virginia:			
Charleston	41 WCHS-DT	PG 475kw/514m, 38-24-28/ 81-54-13	
Clarksburg	56 W56EI	NS 1kw, 39-18-02/ 80-20-37 (TBN)	
Lewisburg Martinsburg	8 WVNS-DT 50 W50DE	app to drop DA QC from W44AA, 11.5kw	
Wisconsin:			
Fond du Lac	68 WMMF-TV	PG<4986kw/195 43-26-20/ 88-31-29	
Milwaukee Milwaukee River Falls	35 WMVT-DT 36 WMVT 47 W47CO	PR>500kw/355m PR>340m QC from W55AP, 1kw	
Suring	21 WIWB-DT	NW 450kw/332, 44-20-01/ 87-58-56	
Wausau Wyoming:	7 WSAW-TV	PC>373m	
Cokeville	51 NEW-LP	AF RE 49kw, 42-04-04/ 111-00-37	
Gillette	40 NEW-LP	AF RE 150kw, 44-12-33/ 105-28-05	
Kemmerer	24, NEW-LP 30	AF RE 150kw, 41-46-45/ 110-32-12	
Laramie	14 K14LK	XG 41-17-17/ 105-26-42	
Laramie	19 K08IQ	QR from ch. 8, 2.31kw	
Laramie	25 NEW-LP	RE AF 25kw, 41-04-53/ 105-29-03	
Rawlings	26 NEW-LP	RE AF 37w, 41-46-16/ 107-14-15	
Rock Springs	45 K45IA	NW 1kw, 41-26-05/	

		109-07-00
Teton Village	25 K25ID	QG from K04NR, 300w

Thanks to Charles Gauthier, Matt Sittel, and Glenn Hauser for information appearing elsewhere in this month's column.

WNBC's application is to "permanentize" their temporary facility on the Empire State Building. They've also applied for an auxiliary backup transmitter lower on the same site.

Prairie Public TV of North Dakota already operates one digital-only station, KCGE-16 in nearby Crookston, Minnesota. This month they've applied for a second DTV transmitter in Devils Lake.

The two deleted Alberta stations apparently only served to relay CBXT and CBXFT to other relay sites in northern Alberta. With the installation of satellite equipment at the other sites, the Jean-Cote transmitters became unnecessary.

Note an unusual amount of activity with full-power stations this month. New stations have been authorized on channel 9 in Anchorage, Alaska and channel 20 in Bishop, California; and an application has been filed for one on channel 32 in Myrtle Beach, South Carolina. New station KMGT-56 is on the air in Waimanalo, Hawaii.

Applications have been filed for new DTV stations on channel 25 in Devils Lake, North Dakota and channel 47 in Hobbs, New Mexico; and channel 31 has been assigned for DTV use in Roswell, New Mexico. A new DTV-only station is on the air on channel 43 in the Virgin Islands.

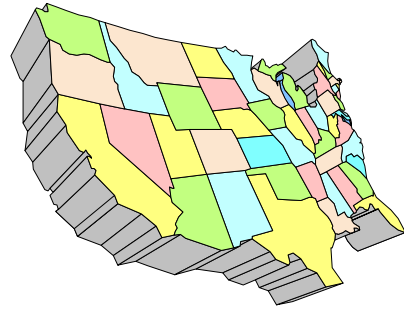
The permittee for a new station on channel 35 in Tupelo, Mississippi has lost their channel - and filed for channel 49 instead. KCEB-54 in Texas proposes a move to channel 38. And newly-permitted Arkansas ETV station KETZ-30 has filed to switch from analog operation to digital.

Going in the other direction... KFXP-31 in Idaho has dropped their attempt to get channel 38 assigned for digital operation. Presumably they plan to build their DTV

(TV NEWS Continues on page 27)

WESTERN TV DX

VICTOR FRANK
12450 SKYLINE BLVD.
WOODSIDE, CA 94062-4554
Victor.frank@sri.com



Dennis Park Smith, 3605 San Remo Drive, Santa Barbara, CA 93105-2523 (805)687-7803

This report is for May 2004, and was no better for coastal tropo to San Diego/Tijuana (up to 200mi/ 320km) than was April. The first few days of June are a tad better so far.

May 1-4 am: Variably poor to fair
 May 4 eve: Good
 May 5: Fair
 May 6: Very poor
 May 7-29: Variably very poor to poor
 May 30: Fair
 May 31: Poor

As reported last month, K28GY West Santa Barbara/Goleta/Santa Ynez (KCET-28 Los Angeles translator) started April 9, replacing K55AP. The new call is in VUD TV News in May and June, not April as I noted in error last month.

Best of DX to All. Dennis

William Draeb, 1304 Ellis St., Kewaunee, WI 54216-1802

May 2004

9 Es 1915 WEDU 3
 1950 NBC 3
 2000 ABC 3
 2024 WDIQt 2
 10 Es 1600 WGBHt 2
 Canadians 2,3,4
 WKRGt 5
 WDIQt 2
 12 Es 0625 WEDU 3
 WESHt 2
 1635 WDIQt 2
 WJXTt 4
 2000 KACBt 3 SW, NBC
 unID 2
 2019 KENWt 3
 2028 unID 4
 16tr 2000 WOUC 44
 Cleveland Us OH
 Columbus 53 OH
 Detroit Us MI
 Springfield 44 OH
 Ft. Wayne IN & others
 18tr 1800 South Bend 16,22,28,34,46,57,69
 " " 25 IN UPN25, Loc ads
 W18CU 18
 Washington15 (WPNE-38)
 2000 CLBN4 45
 2030 CFMT1 69
 S.E. MI U's

20Es	1657	WEDUt	3	
24tr	2000	WBIJ	4	WI Crandon 99 Family Network
26Es	1200	KRTVt	3	
		KXLft	2	
		KTVQt	2	
	1815	KBTX	3	
	1825	KIII	3	
	1830	KPRC	2	
		KBEJ	2	
	1845	KMOL	4	
	1849	KENSt	5	
	1915	KENW	3	
	1922	KSWKt	3	
	1925	KFDX	3	Note 1
27Es	1845	KTBS	3	
		KPRC	2	
	1852	KIII	3	
	1900	KBTX	3	
tr	2020	WBIJ	4	
	2030	WBUP	10	"5-10" I.D.
28Es	1710	KJAC	4	
		KIII	3	
		KPRC	2	
	1758	KBEJt	2	
		WOAI	4	
		KDFW	4	
	1804	KTBS	3	
	1829	XHPNt	3	
	1853	Spanish	4	Note 2
	1955	KENW	3	
	1959	KFDXt	3	
	2001	KOB	4	
	2004	KWAB	4	Note 3
31Es	1500	Weak	2 & 3	
	1508	KATC	3	
	1555		2-5	West
<u>June 2004</u>				
1 Es	1131		2-4	SSE
	1146	WESH	2	
		WJXT	4	

Notes:

1. Severe thunderstorm warning for Hardeman TX and Jackson OK counties (near El Dorado OK).
2. In for about 5 min, returned at 1929 for a few seconds, XELN or XHIT (tentative)
3. Local ad mentioning Midland-Odessa.

Es seemed to be active in the beginning and end of May, but not much in the middle. Some local news, W55AO is off and so is W22BW. I'm no longer using the antennas on my 90' tower. Everything now is on a 40' tower. I will probably take the big tower down. It's too much work maintaining stuff up there.

Eric Bueneman (N0UIH), 631 Coachway Lane, Hazelwood, MO 63042-1347

E-mail: N0UIHEric@aol.com Web site: <http://www.qsl.net/n0uih/>

Equipment: Samsung 19-inch color TV, Alaron 12-inch black and white TV, Daewoo 13-inch color TV, Radio Shack VU-210 XR with Channel Master remote-controlled rotor at 30 feet (9.1 meters) above ground level (with Archerotor at 35 feet above ground level prior to March 2004). *All times CST/CDT; all distances in miles/ kilometers.*

May 25, 2003 (E-skip)

1706 CITO 3 ON Timmins (//CKOH-13 Ottawa) 805/1296

January 27, 2004 (E-skip)

1716 KIII 3 TX Corpus Christi 860/1384

April 18, 2004 (trop)

0457 KSAS 24 KS Wichita (floating under KNLC) 400/644

0505 KAFT 13 AR Fayetteville (Arkansas ETV) 280/451

0509 KEMV 6 AR Mountain View (Arkansas ETV) 220/354

0530 WIBW 13 KS Topeka 285/459

May 12, 2004 (E-skip)

1330 KTVK 3 AZ Phoenix "News Channel 3" 1255/2020

May 18, 2004 (trop)

2358 K11TB 38 MO Jefferson City "Fox 38 KQFX" (moved from channel 11) 100/161

May 22, 2004 (E-skip)

1009 KIII 3 TX Corpus Christi 860/1384

1232 XET 6 NL Monterrey 1075/1730

1324 KTVK 3 AZ Phoenix 1255/2020

May 26, 2004 (E-skip)

1855 XEFB 2 NL Monterrey (floating under KTVI) 1075/1730

1858 KENW 3 NM Portales 780/1255

1929 KTVK 3 AZ Phoenix 1255/2020

1936 KNAZ 2 AZ Flagstaff (floating under KTVI) 1190/1915

2005 XEPM 2 CH Ciudad Juarez (floating under KTVI) 1030/1658

May 29, 2004 (trop)

0000 WHMB 40 IN Indianapolis (KUMO-LP nulled) 240/386

0002 WXIN 59 IN Indianapolis (over K59GP) 240/386

0047 WNDY 23 IN Marion "UPN Indiana" 285/459

0049 WLFI 18 IN Lafayette 225/362

0117 WFYI 20 IN Indianapolis (WICS nulled) 240/386

0118 WTTK 29 IN Kokomo 255/410

0119 WRTV 6 IN Indianapolis 240/386

0128 WDRB 41 KY Louisville 250/402

0129 WLKY 32 KY Louisville 250/402

0131 WIPX 63 IN Bloomington 210/338

0141 WFIE 14 IN Evansville 165/266

0142 WEVV 44 IN Evansville 165/266

0203 KYTV 3 MO Springfield 190/306

0205 KOLR 10 MO Springfield 190/306

0229 WSJV 28 IN Elkhart 305/491

0230 WNDU 16 IN South Bend 300/483

0231 WSBT 22 IN South Bend 300/483

0233 WHME 46 IN South Bend (floating under WRBU) 300/483

The unidentified station from the May 25, 2003 opening with the news from CKOH 13 Ottawa was finally identified as CITO 3 Timmins, ON. Thanks to the 2004 World Radio-TV Handbook for the ID! I had some off-season E-skip, with KIII 3 noted on January 27 with local news. The first E-skip opening of the season was on May 10; however, it only reached 37.3 MHz into Connecticut. The first opening to reach TV since late January occurred on May 12, noting KTVK 3 with local news. Before that, the first trop opening on April 18 extended from Nebraska into Louisiana; however, only Kansas and Arkansas was represented. Further E-skip openings were all to the west, with KTVK being the most frequently seen station. K11TB Jefferson City, MO has officially moved from VHF Channel 11 to UHF Channel 38; they're still using the K11TB calls, identifying as "Fox 38 KQFX", which may signify that they have applied for new calls. In another call letter change, K40FF 40 St. Louis has become KUMO-LP, although they don't mention the calls on the ID for main station WPXS 13. The station hasn't yet moved to UHF Channel 51. The trop opening on May 29 stretched from Kansas City to South Bend; this opening marked the first time that WLFI 18 came through with an interference-free signal, since the local TBN station is now on UHF Channel 33. As of May 30, 2004, 452 stations have been logged at this QTH.

73 and good DX, Eric (N0UIH).

Michael Hawk, Omaha NE

Equipment: For VHF: Old Toshiba 13" color set and FM-10 @ 25' AGL; For UHF: WINTV-D card, Channel Master 4248 @ 25' AGL, Winegard AP-4700

May 2004 CT

5	Tr	0624	<u>KTKA-DT</u>	48	Topeka	KS
		0630	<u>KTWU-DT</u>	23	Topeka	KS
12	Es	1815	<u>KPRC</u>	2	Houston	TX
			logo; local news			
26	Es	1809	<u>WSB</u>	2	Atlanta	<u>GA</u>
		1827	<u>WDIQ</u>	2	Dozier	AL
		1829	<u>WMAR</u>	2	Baltimore	<u>MD</u>
			ABC 2 logo			
27	Es	1820	<u>WUND</u>	2	Columbia	<u>NC</u>
			UNC TV			
28	Es	1730	<u>WPBT</u>	2	Miami	FL
31	Es	1624	<u>KTVQ</u>	2	Billings	<u>MT</u>
			Q2 logo; Dr Phil			

Not much in the way of tropo this month. There were a lot of VHF-only openings that seemed to have no effect on UHF. I mainly monitor for Es as an early-warning for FM, but have spent more time this year trying to ID what I see. That, and very few openings have actually made it to FM!

Mike Cherry, VE7SKA Salt Spring Is., BC CANADA

May 2004 UTC times & dates
 17 Es 0057 KREG 3 CO 125°
 0101 KUTV 2 UT 130°
 27 Es 1342 KNOP 2 NE 135°

June 2004

3 Es	0257	KCRA	3	CA	190°	
	0300	KTVU	2	CA	190°	
10 Es	0258	KASA	2	NM		
12 Es	0146	KTWO	2	WY	125°	
	0158	KCNC	4	CO	125°	
	0159	KREG	3	CO	125°	
	0200	KWGN	2	CO	125°	
	0212	KGAN	2	IA	120°	
	0227	WDAF	4	KS	120°	
	0229	KSWK	3	KS	120°	
	0230	WOI	5	KS	120°	
	0239	KIMT	3	IA	120°	
	0256	KNOP	2	NE	120°	
	0300	KLNE	3	NE	120°	
		KDUH	4	NE	120°	
	1559	KRTV	3	MT	95°	
	1600	KTVQ	2	MT	95°	
	1622	KGFE	2	ND	95°	
	1630	CBWFT	3	MB	90°	
	1658	CKCK	2	SK	90°	
	1700	CBKMT	4	SK	90°	
	1729	CKND2	2	MB	90°	
13 Es	0013	KTVK	3	AZ	155°	
20 Es	0217	KWGN	2	CO	135°	

73 Mike VE7SKA (CN88)

Jeff Kruszka, 5024 S. Braxton Ave.,
Baton Rouge, LA 70817

May 2004

5 tr	2221	XHAB	7	TA		505
	2226	KVDA	60	TX		445
6 tr	0653	KAKW	62	TX		390
	0658	KEYE	42	TX		395
		KXAN	36	TX		395
7 tr	0651	WXVT	15	MS	rare	210
		WABG	6	MS		215
	0658	WJTV-DT	52	MS		135
	0704	WTVA	9	MS	floating	295
8 tr	0758	unid 10 DTV sync lock to N.				
	0852	WTJP	60	AL		390
	0859	WSWS	66	AL	UPN	370
	0903	WJSP	28	GA	GPB	390
10 Es	1800	unid SS 4-6				
12 Es	2020	unids 3-5 weak				
22 Es	1115	KAMR	4	TX	ID	700
	1129	KSWK	3	KS	bug	760
	1139	KLBY	4	KS	ID	845
	1144	KOAA	5	CO		940
	1149	KRMA	6	CO		1010
	1211	KWNB	6	NE		830
	1227	KLNE	3	NE		860
	1229	KGWN	5	WY		1045
	1813	KSNC	2	KS	KSN	695
26 Es	1645	KTIV	4	IA		880
	1700	KDUH	4	NE		1050
		KLNE	3	NE		860
	1800	WJMN	3	MI	"WFRV"	1075
	1806	KENW	3	NM	CNN	760
	1831	KWAB	4	TX	"KWES"	620
	1910	KCWC	4	WY	logo	1275
27 tr	0654	WVEA	62	FL		575
Es	1843	unid 3 brief				
28 Es	1653	WUNC	4	NC	UNCTV	790
	1700	WBTW	3	NC	logo	680
	1713	KBJR	6	WI	logo	1125

1716	WCCO	4	MN	logo	995
1722	KDLH	3	MN	local ad	1080
1729	unid 4 DTV sync lock!			0 kHz	
1800	WTAE	4	PA		930
1819	KLBY	4	KS		845
1900	KOAA	5	CO		940
tr	2237	KVDA	60	TX	445
	2325	KAKW	62	TX	390
	2329	KEDT	16	TX	425
	2339	KYLE	28	TX	310
	2341	KLSB-LP	53	TX	NBC 220
29 tr	0101	KNCT	46	TX	bug 375
31 tr	2014	KLRT	16	AR	300
	2136	KWBF	42	AR	300
	2154	KVTH	26	AR	295

A couple of decent Es openings this month.
However, June is not panning out as well.

Morris Sorensen,

Equipment

RCA 1983 b&w portable

Channel Master indoor antenna from 1950's era

May 2004 CDT

31 Es 1800 KBCI 2 Boise ID ID logo News.

Relog. 1000 mi

June 2004

12 Es 1224 unID 2 PBS

1300 WGRZ 2 Buffalo NY presumed based
on skip direction with NBC Sports and US Olympic
diving trials.

Relog. 995 mi.

1314 CKCO-2 2 Warton ON local ad. 822mi

Marvin Shults, RR #1, Toulon, IL 61483

May 2004

3 Es	2000	CKCK	2	SK	
12 Es	0646	WESH	2	FL	
	0648	WPBT	2	FL	
	0657	WCBD	2	SC	
	1856	KMID	2	TX	
	1903	XEPM	2	CI	
	1925	KASA	2	NM	
	1937	KACV	2	TX	
	1943	KACB	3	TX	(KRBC 9)
	2019	KWAB	4	TX	
	2039	KOB	4	NM	
13 Es	1859	KNAZ	2	AZ	
	1955	KASA	2	NM	
	2104	WPBT	2	FL	
	2104	WESH	2	FL	
21 Es	1805	KGBT	4	TX	
	1805	KRGV	5	TX	
22 Es	1136	X__	2		
	1139	KRGV	5	TX	
	1140	KIII	3	TX	
	1140	K__	4		
	1148	X__	5		
	1149	unID	2		¾ CBTP
24 Es	2015	KASA	2	NM	
26 Es	2140	X__	2		
	2225	KNAZ	2	AZ	
28 Es	1821	KENS	2	TX	
	1825	KETS	2	AR	

1829	X___	2		2200	KIVV	5	SD	
	1839	KPRC	2	11Es	0742	KRGV	5	TX
	1904	KMID	2		0749	KIII	3	TX
	2000	KASA	2		0750	X___	2	
<u>June 2004</u>					2027		4	FOX
3 Es	1310	KRTV	3		2051	KWGN	2	CO
	1313	KFBB	5		2102	C___	2	CBC
	1340	WEDU	3	12Es	1714	XHQROt	2	QU
	1405	WPBT	2		1800	KIII	3	TX
	1540	KUTV	2		1802	KDFW	4	TX FOX
	1600	KCWC	4		1806	KBEQ	2	TX
	1600	KIDK	3		1807	KPRC	2	TX
10Es	2129	KTWO	2		1809	XEFB	2	NL
	2154	KHMT	4		1810	unID	6+	
					1816	WEAR	3	FL

WEAK SIGNAL TECHNIQUES CONTINUED FROM PAGE 31

metres in length! You won't find one of these on your distributor shelves. In this real world situation the practical limits to band I antennas are typically 5 elements; still a boom length of 4+metres if properly designed (for channel 1). When the number of elements is reduced (or the boom shortened), the gain of course goes down: 7.5 dB for five elements is a real-world number when compared to a dipole antenna (ie..7.5 dBd). Four metre booms (slightly less at channels 2 and 3) are physically manageable but still a challenge. With the natural shortening of wavelengths

on band III, ten element yags (or yagi which is a combination log for bandwidth) and vagi (for gain) will be 3.2 to 3.7 metres in boom length when designed for optimum gain. This suggests stacked arrays at band I will pay a 3 dB penalty in realizing maximum forward gain because you are typically limited to forward gain in the 7 to 7.5 dB region with the first antenna. After that the 2.5 dB stacking gain rule applies.

Fittings. Use only weather-tight F connectors and outdoor devices (combiners, filters, mastheads) that either hard-wire direct with coaxial cables or use F series fittings. Belling Lee (PAL) connectors are never advisable in outdoor situations.

Weatherproofing all connections, sealing element to boom screws and nuts is especially important in coastal regions where salt-spray quickens the pace of antenna deterioration. It's not complicated; use a caulking gun and good grade of silicone caulking sealant specified for use with aluminum and plastic parts liberally coating all fittings, plus antenna screws, nuts and bolts (both ends) with compound. The silicone will harden and act as a barrier to moisture and air-borne contaminants for as long as the antenna stays together.

IN SUMMARY

While not every component part described in this Tech Bulletin is presently New Zealand made, all are available through Signal Master. As the realization sinks-in that the VHF signals we now have or announced may well be the extent of TVs 1, 2 and 3 coverage for the foreseeable future, consumers will either resign themselves to partial reception coverage or aerialists will offer alternatives as described here. In Tech Bulletin 9305 we describe simple, basic master/community antenna techniques; systems you can duplicate to allow 2, 20 or 200 families to share a single well-placed aerial system installed to bring in distant TV 1, 2, 3 transmitters and/or UHF signals which otherwise are never likely to be available in a smaller community.

TECH BULLETIN is copyright 1993 by Robert B. Cooper, P.O. Box 330, Mangonui. Far North (FAX 09-406-1083). All rights reserved. This issue of Tech Bulletin is distributed under agreement by Signal Master Limited (Auckland) and neither Signal Master nor Robert B. Cooper make any representations concerning the utility of the data contained herein. Reprinted with permission of Bob Cooper.

Eastern TV-DX

Matthew C. Sittel
15013 Eureux St.
Bellevue, NE 68123
mcsittel@cox.net

July, 2004

Aug. 2004 column deadline: Jul. 12

Eastern TV-DX is for reporters from the following states: AL, CT, DE, FL, GA, IN, KY, MA, MD, ME, MI, NC, NH, NJ, NY, OH, PA, RI, SC, TN, VA, VT and WV, plus Washington, DC. Also for reporters from the following Canadian provinces: NB, NF, NS, ON, PEI and PQ. Overseas reports welcome!

Where's the skip? It's something most of us are asking these days, as 2004 has gotten off to a poor start. Maybe by the time this is in print we'll be having nicer things to say about the season, but so far it has been very quiet.

Saul Chernos, 57 Berkeley St., Toronto, ON M5A 2W5 Canada
(416) 364-0725 (BR) = Burnt River, (TO) = Toronto

schernos@sympatico.ca

3/19 tr (TO-downtown)

2025 CJMT 69 ON Toronto, Omni 2
SID w/Omni news, // 44 (replacing it)

5/26 Es (BR)

1910 KSNC 2 KS Great Bend
KSN news, NBC in logo
1930 KJRH 2 OK Tulsa, logo, calls

1950 KARK 4 AR Little Rock, nx promo
2000 KETS 2 AR Little Rock, AETN ID
2043 KFOR 4 OK Oklahoma City
Live tornado report: Watchhorn

5/29 tr (BR)

0645 CJMT 69 ON Toronto, Omni 2 ID

William McGuire, Cheverly, MD

Equipment: Admiral 13" color TV.

5/14 Es

1925 unID 3 CBC

5/17 tr

2340 WGAL 8 PA Lancaster, NBC

5/18 tr

0015 WVIR 29 VA Charlottesville, NBC

2330 WHYI 12 DE Wilmington, PBS

5/19 tr

0000 WTXF 29 PA Philadelphia, Fox 29

5/21 Es

1558 unID 3 w/"Inside Edition"

1703 unID 3 w/"Winnie the Pooh"

5/28 tr

2010 unID 3 NBC w/"Dateline"

6/8 tr

1948 WAVY 10 VA Portsmouth, logo

6/9 tr

0019 WWBT 12 VA Richmond, NBC

Harry Hayes, Wilkes-Barre, PA

harryhayes@epix.net

Equipment: Zenith Sentry 1991 color TV, ch. 2-5 quad loop

1/19 Es

1900 WREG 3 TN Memphis

1910 KARK 4 AR Little Rock

1915 KTBS 3 LA Shreveport

5/9 Es

2000 KJRH 2 OK Tulsa

5/21 Es

1100 WPBT 2 FL Miami

Jim Renfrew, Byron, NY

renfrew14422@juno.com

Equipment: Zenith, UHF antenna with rotor, hand-steered VHF antenna.

5/10 Es (MUF 96.3)

1230 WEDU 3 FL Tampa

2359 KBTX 3 TX Bryan

tentative with CBS/star logo

5/17 tr

0246 WQHS 61 OH Cleveland, Univision

0248 WBNX 55 OH Akron, WB, log #224

0255 WFUM 28 MI Flint, M logo with
calls

0305 WVIZt 25 OH Cleveland, PBS

0316 WPGH 53 PA Pittsburgh, local ads

0320 WJPA 19 PA Jeanette, UPN

0324 WOIO 19 OH Shaker Heights, ad

0325 WOACt 67 OH Canton

Shop at Home, no ID's sadly

0330	WUAB	43	OH	Lorain, same ad on 19	2221	unID	4	ABC KLBY KDUH or KPRY?
0335	WUTR	20	NY	Utica, ABC strong off the back	2222	unID	3	CBS (weather notice LL)
0340	unID	33		Shop at Home WFXV Utica?	2234	<u>KDLV</u>	5	SD Mitchell, NBC weather map LL, "KDLT" logo LR
0340	WYTVt	33	OH	Youngstown, ABC	2236	unID	4	NBC, KTIV?
0548	WCWB	22	PA	Pittsburgh Shop at Home-in briefly then gone	2238	unID	4	"Skywatch" in large letters written sideways on left side of screen
0604	WNEOt	45	OH	Alliance, BBC news <u>5/19 tr</u>	2246	KWNBt	6	NE Hayes Center storm warning mini-map in Nebraska map LR
0123	WFUM	28	MI	Flint	2250	unID	5	ABC, WOI?
0139	WDWB	50	MI	Detroit	2259	KTIV	4	IA Sioux City "News Channel 4 KTIV"
0144	WTVS	56	MI	Detroit	2304	KSNC	2	KS Great Bend, "KSN"
0230	WWJ	62	MI	Detroit	2306	KMTV	3	NE Omaha, "KM3" logo
0330	WGTE	30	OH	Toledo	2312	unID	4	ABC
	<u>6/10 Es</u>				2315	KLNE	3	NE Lexington "n" logo UR, full network list at 2330
2220	unID	3		ABC, KTVO or KOTA?				
2220	unID	3		CBS, KDLO or KMTV?				

ABC unIDs were video and/or audio-easy to spot because of the NBA game, but not easy to ID! Exactly one month since the last E-skip here, which was May 10 to Florida.

Roy Barstow, P.O. Box 2488, East Falmouth, MA 02536

5/4 tr, 2300: 15, 27, 33 eastern Virginia, W24, W41, W44, W60 Virginia, 16/28/47 Salisbury, MD, 62, 23 NJ.

5/6 tr 2200: 15, 27, 33, 43, 49 Virginia, 22 MD, 23, 62 MJ, W17, W18, W24, W35, W36, W39, W44, W45, W60 Virginia, also 35 Richmond, VA.

This past winter DX was down, also did not check as often. In December eastern Virginia was in on the 16th, 28th and 29th. Best day and night was Dec. 28th with eastern Virginia and NC coming in. 39 PBS NC at 660 miles the longest signal. January and February no DX. April 1 time to eastern Virginia. Conditions this spring also down, and why no reports sent in.

Recently I took 3 antennas down from the roof and put 1 new one up. And that antenna being a Cushcraft sel. 6 M yagi. The elements set for the low end of the ham band and the last element I extended out about 3 more inches. The lead-in will go to the R-75 receiver which goes to 60 mc. Or will go to the D-100 for TV. Who knows if HDTV gets me down, maybe I will try for my ham ticket. I have yet to see new DTV Worcester, MA 76 miles away.

Jason Koralja, Surf City, NY ** NEW REPORTER **

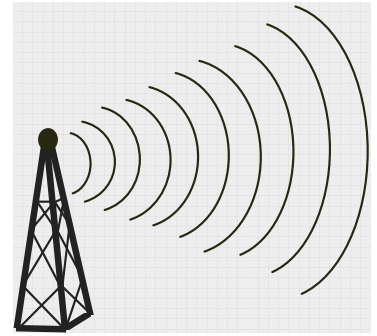
jklbi01@hotmail.com

Equipment: generic rabbit ears with 20dB Radio Shack amplifier. WinTV-D card, Zenith ZHDTV1 antenna.

<u>5/17 tr</u>					2020	WCTX	59	CT	New Haven	
2330	WBOC	16	MD	Salisbury	2020	WTIC	61	CT	Hartford	
2345	WCPB	28	MD	Salisbury	2025	WNAC	64	RI	Providence	
<u>5/20 tr</u>					<u>6/3 tr</u>					
1940	WTNH	8	CT	New Haven		WVIT	30	CT	New Britain	157
1940	WBOC	16	MD	Salisbury		WFMZ	69	PA	Allentown	95
1955	WLIW	21	NY	Garden City		WCTX	59	CT	New Haven	131
2000	WHPX	26	CT	New London		WCPB	28	MD	Salisbury	117
2000	WCPB	28	MD	Salisbury	<u>6/4 tr</u>					
2010	WVIT	30	CT	New Britain		WLIW	21	NY	Garden City	86
2010	WXNY-LP	32	NY	New York		WLIW-DT	22	NY	Garden City	86
2010	WNYN-LP	39	NY	Deer Park		WRNN-DT	48	NY	Kingston	127
2015	WLNY	55	NY	Riverhead						

That's all for this month. If you see any TV DX, please take a moment to share it with all of us! Hope to see many of you in Omaha late July for WTFDA Convention 2004.....73s Matt.

Northern FM DX



Keith McGinnis
 387 Shirley Street, Winthrop, MA 02152
 longwave@attbi.com 617-846-5760

For Dxers in the following states: CT IA ID IL IN MA ME MI MN MT ND NE NH NJ NY OH OR PA RI SD VT WA WI WY and all of Canada. Please submit by the 10th of each month. If possible please submit in the formats shown Below.

EDITORS NOTE: PLEASE NOTE THAT ANY TYPEWRITTEN OR HANDWRITTEN REPORTS MIGHT BE DELAYED TILL A LATER ISSUE AS TIME PERMITS. ALSO PLEASE KEEP REPORTS AS RECENT AS POSSIBLE (THE LAST 3 MONTHS SHOULD WORK FINE). THANK YOU.

Harry Hayes, Wilkes-Barre, PA
Equipment: Superadio II w/110khz filter, FM-6 in attic

April 19 2004 Tr

0735	WDAS	105.3	Philadelphia	PA	Soul format, loud, 100mi.
0803	WMMR	93.3	Philadelphia	PA	V/strong

May 13 2004 Tr

2340	WKYE	95.5	Johnstown	PA	"Key-95" FM, good 180 mi.
------	------	------	-----------	----	---------------------------

May 20 2004 GW

0830	W280CV	103.9	Scranton	PA	Relaying WITF-89.5 Hershey PA (Note 1)
------	--------	-------	----------	----	--

It's June 4 and no E skip noted into the FM band so far. Note 1-This translator normally broadcasts KEAR from CA. This picks up the signal normally from another translator about 20 miles SW of Scranton in Nanticoke PA on 89.5. This morning featured strong tropes to the Harrisburg area, thus it was picking up WITF-89.5 and rebroadcasting it instead.

John Ebeling 9209 Vincent Ave. So. Bloomington MN 55431
Equipment: Pioneer TX 9500 tuner w/ modified IF strip; Penny's MCS receiver also w/modified IF; Stereo Probe 9 @ 25 feet AGL; Vertical dipole underneath the Probe; Conrad RDS unit; rotor; several tape recorders & a SCA adaptor. A B/W older Zenith TV also is used to tip me off on Es openings.

Times are CST, not CDT!

June 23 Es

1855	WAYF	88.1	W Palm Beach	FL	1456
1902	WZBQ	94.1	Carroliton	A	RDS ID of 94 I the buzz 847
1905	WTBF	94.7	Brundidge	AL	RDS ID 993
1915	unid	95.7	-----		the 'rock'
1922	WKGC	90.7	Panama City	FL	RDS ID 1096
1930	WQUE	93.3	New Orleans	LA	Q 93 1042
1932	WKSJ	94.9	Mobile	AL	95 KSJ 1017
1935	WKOR	94.9	Columbus	MS	826
2038	KHLA	92.9	Lake Charles	LA	1010
2040	KQXY	94.1	Beaumont	TX	1020
2042	KYKR	95.1	Beaumont	TX	kicker 1020

June 24 Es

1012	KPKY	94.9	Pocatello	ID	KPKY on RDS 963
1014	KEZJ	95.7	Twin Falls	ID	1075

1016	KLCE	97.7	Idaho Falls	ID	932	
1019	KMGI	102.5	Pocatello	ID	963	
1023	KLIX	96.5	Twin Falls	ID	1075	
1028	KMTN	96.9	Jackson	WY	863	
1031	KID	96.1	Idaho Falls	ID	932	
1033	KUWJ	90.3	Jackson	WY	WY Public Radio	863
1038	KLGT	92.9	Buffalo	WY	659	
1045	KLCE	97.3	Blackfoot	ID	RDS ID	952
1047	KBYI	100.5	Rexburg	ID	(NPR Classical)	915
1050	K285CO	104.9	Pocatello	ID	(KBYI xltr)	963
1105	KYYA	93.3	Billings	MT	738	
1107	KEMC	91.7	Billings	MT	RDS ID	738
1111	KPKX	97.5	Bozeman	MT	864	
1114	KMXE	99.3	Red Lodge	MT	the mountain	779
1119	KBOZ	99.9	Bozeman	MT	(ex KZLO) 'the fox'	864
1128	KUFM	89.1	Missoula	MT	(+ talk on 67 SCA)	1006
1131	KGFC	88.9	Great Falls	MT	gospel	879

Jim Renfrew, Byron NY

Sansui TU 9900, FM antenna on 20' tower, rotor, RDS Manager, RDS Decoder 3.0

May 18 Tr

1700 *WSLU 89.5 Canton NY (PI: 8562)

May 19 Tr

0100 WCMU 89.5 Mt Pleasant MI
0119 WNIC 100.3 Dearborn MI (PI: 77CE)
0146 WQBX 104.9 Alma MI
0148 WMGC 105.1 Detroit MI
0202 WDMK 102.7 Mt. Clemens MI
0210 *WFMK 99.1 East Lansing MI
0236 WCVJ 90.9 Jefferson OH
0302 WKRK 97.1 Detroit MI
0307 WDVD 96.3 Detroit MI
0309 WKQI 95.5 Detroit MI
0318 WMXD 92.3 Detroit MI
0340 WGPR 107.5 Detroit MI
0347 WMUS 106.9 Muskegon MI country music
0406 WIOT 104.7 Toledo MI
0407 WDET 101.9 Detroit MI
0418 WNWV 107.3 Elyria OH
0426 WDTJ 105.9 Detroit MI
0427 WМУZ 103.5 Detroit MI
0440 WCSX 94.3 Birmingham MI
0447 CBE 89.9 Windsor ON
0452 *WDTW 106.7 Detroit MI
0500 WKAR 90.5 East Lansing MI (PI: 6F21)
1053 WQMX 94.9 Medina OH
1102 WKSU 89.7 Kent OH
1135 *WMJI 105.7 Cleveland OH
1211 *WBCL 90.3 Ft. Wayne IN NEW STATE #29
1215 WCPN 90.3 Cleveland OH

May 21 Tr

2015 *CHMS 97.7 Bancroft ON "The Moose"
2025 *WKLL 94.9 Frankfort NY (PI: 4341)
2112 WAAL 98.1 Binghamton NY "The Whale"
2125 *WCDO 100.9 Sidney NY (with Mets baseball)

May 22 Tr

0005 WZPT 100.7 New Kensington PA "Star 100.7"
2246 WXTA 97.9 Edinboro PA (T-storm, WPXY off)
2247 WJLB 97.9 Detroit MI hiphop (last Detroit wanted!)
2256 *WNCI 97.9 Columbus OH (WPXY off)
2345 *WRUW 91.1 Cleveland OH

May 23 Tr

0012 WMMS 100.7 Cleveland OH
0050 WYFM 102.9 Sharon PA "Y 103"
2200 WFXJ 107.5 N. Kingsville OH "The Fox"

2212	WENZ	107.9	Cleveland	OH	
<u>May 24 Tr</u>					
0211	#CKBY UNID	101.1 101.1	Smith's Falls	ON	"Y 101" Classical music – antenna aimed north
<u>May 25 Tr</u>					
2330	CIQB	101.1	Barrie	ON	(PI: 6B69) RDS B101
<u>May 26 Tr</u>					
1205	*WAUA	89.5	Petersburg	WV	promo for WV PR program, WV #3
1530	*WEBE	107.9	Westport	CT	Westport Toyota ad – NEW STATE #30!
<u>May 27 Tr</u>					
1940	*CBLA2	89.1	Paris	ON	(WBSU off)
1959	WCID	89.1	Friendship	NY	(WBSU off)
1959	*WKSV	89.1	Thompson	OH	(WBSU off)
<u>June 2 Tr</u>					
2224	*WXHC	101.5	Homer	NY	"Oldies 101.5"
2240	*WOJZ	104.9	Egg Harbor City	NJ	NEW STATE #31
<u>June 3 Tr</u>					
0125	WNBQ	92.3	Mansfield	PA	(PI 7726)
0212	WAAL	99.1	Binghamton	NY	"The Whale"
2252	WOJZ	104.9	Egg Harbor	NJ	now a pest!
<u>June 4 Tr</u>					
0010	WSQX	91.5	Binghamton	NY	(WXXI off)
0010	UNID	91.5		ON	Orillia or Ontario, CBC R. 1
0330	WPGB	104.7	Pittsburgh	PA	local quality!
<u>June 5 Tr</u>					
0100	WITF	89.5	Harrisburg	PA	
0112	WICB	91.7	Ithaca	NY	
0730	WRTS	103.7	Erie	PA	(PI 838A = WRQS!)
<u>June 6 Tr</u>					
1340	*CKRZ	100.3	Ohsweken,	ON	Six Nations program
1800	WSLU	89.5	Canton	NY	
1809	CIMF	94.9	Hull	PQ	
1811	*WSNN	99.3	Potsdam	NY	"99 Hits FM"
1819	WYZY	106.3	Saranac Lake	NY	"Y 106.3"
1847	*WPAC	92.7	Ogdensburg	NY	"The Border", calls noted at 2100
2000	WJNY	90.9	Watertown	NY	"WCNY"

Jason Koralja Surf City, NJ Sony IC F SW7600GR

May 20, 2004

WBGO	88.3	Newark	NJ	74mi (over local WVBH)
WRSU	88.7	New Brunswick	NJ	58mi
WMCX	88.9	Long Branch	NJ	44mi
WFRS	88.9	Smithtown	NY	95mi
WFDU	89.1	Teaneck	NJ	91mi
WSOU	89.5	South Orange	NJ	75mi
WSCL	89.5	Salisbury	MD	104mi
WPRO	92.3	Providence	RI	205mi
WEHM	92.9	Southampton	NY	132mi
WRTN	93.5	New Rochelle	NY	92mi
WZBH	93.5	Georgetown	DE	99mi
WZMX	93.7	Hartford	CT	149mi
WHFM	95.3	Southampton	NY	129mi
WRZE	96.3	Nantucket	MA	238mi
WALK	97.5	Patchogue	NY	101mi
WCTK	98.1	New Bedford	MA	218mi
WHUD	100.7	Peekskill	NY	117mi

WBAB	102.3	Babylon	NY	90mi
UNID	91.9	CSN Radio id'd as K201CW Mohab presumed to be W220BT Cape May, NJ		

June 24, 2004

WJPG	88.1	Cape May Cthse	NJ	(51mi)
WBGO	88.3	Newark	NJ	(74mi) [over local WVBH]
WRHU	88.7	Hempstead	NY	(79mi) [over semilocal WXXY]
WLBW	92.1	Fenwick Island	DE	(100mi)
WPRO	92.3	Providence	RI	(205mi)
WGMD	92.7	Rehoboth Beach	DE	(86mi) [over local WOBFM]
WFOG	92.9	Suffolk	VA	(227mi)
WZBH	93.5	Millsboro	DE	(99mi)
WKCK	93.7	Chesapeake	VA	(228mi)
WPTE	94.9	Virginia Beach	VA	(228mi)
WBRU	95.5	Providence	RI	(210mi)
WVKL	95.7	Norfolk	VA	(233mi)
WOSC	95.9	Bethany Beach	DE	(92mi)
WRZE	96.3	Nantucket	MA	(238mi)
WCTG	96.5	Chincoteague	VA	(137mi)
WALK	97.5	Patchogue	NY	(101mi)
WCTK	98.1	New Bedford	MA	(218mi)
WOCM	98.1	Selbyville	DE	(100mi)
WWFG	99.9	Ocean City	ND	(100mi) [between locals WJRZ & WBHX]
WXMM	100.5	Norfolk	VA	(225mi)
WKCI	101.3	Hamden	CT	(138mi)
WNCL	101.3	Milford	DE	(80mi)

Michael Hawk, Omaha NE

Equipment: Technics ST-9030, FM-10 at 25' AGL, Conrad RDS

May 5 2004 Tr

0700	K219CE	91.7	Falls City	NE	NPRN
1950	KJAB	88.3	Mexico	MO	rel; // internet

May 6, 2004 Tr

0554	KPRD	88.9	Hays	KS	o/lcl KVSS
0558	KZQD	105.1	Liberal	KS	SS; 385 miles
0650	KNID	99.7	Alva	OK	C&W; ID
0705	KSCB	107.5	Liberal	KS	lcl news
0710	KTUZ	106.7	Okarche	OK	SS; La Zeta; OK #30
0750	KRPS	89.9	Pittsburg	KS	ID; NPR
0822	KTTL	105.7	Alva	OK	strong; lcl wx
0830	KBDD	91.9	Winfield	KS	Sonlife Radio; full network ID

May 8, 2004 Tr

0725	KFXX	106.7	Hugoton	KS	SS/EE mix; lcl ads; 390 miles
0752	KMCX	106.5	Ogallala	NE	lcl ads
0847	KSWN	93.9	McCook	NE	lcl ads; NE #95

May 16, 2004 Tr

0620			Wichita/Pratt area in on 93.1, 99.1, 106.5		
0645			St Louis metro in on 88.7, 99.1		
0725	KWFC	89.1	Springfield	MO	ID

May 18, 2004 Tr

2207	KWDM	88.7	West Des Moines	IA	alt rock; ID; 100 watts
2217	KNEI	103.5	Waukon	IA	Real Country; ID

May 19, 2004 Tr

0540	KEEZ	99.1	Mankato	MN	Z-99
0550	KOWZ	100.9	Blooming Prairie	MN	Cows 100.9; AC/mix
0600	KAUR	89.1	Sioux Falls	SD	680 watts
1800	KXNP	103.5	North Platte	NE	KX-104
1845	KSQB	95.7	Dell Rapids	SD	lcl ads; oldies

May 22, 2004 Tr (weak/fadey opening)

0830	KZQD	105.1	Liberal	KS	SS; 385 miles
0855	KPRF	98.7	Amarillo	TX	Top 40; Power 98.7; 515 miles
0922	KXGL	100.9	Amarillo	TX	classic rock "100.9 The Eagle"
0926	KQIZ(t)	93.1	Amarillo	TX	rap-ish song; thought I heard "The Beat"
0930	KQFX	104.3	Borger	TX	SS

May 22, 2004 Es (MUF 105.1 MHz)

1120	XHAAA	93.1	Reynosa	TM	SS; "Super Estelar"
1303	unID	88.7	??	??	Metropolitan Opera
1900	XHYI	93.1	Cancun	QR	SS; EE pop/rock music; "Mix 93.1 and 580"; 1485 miles
1912	XHNUC	105.1	Cancun	QR	SS mx; choppy, having audio problems

May 25, 2004 Tr

2200	WSSM	106.5	Granite City	IL
2202	KFUO	99.1	Clayton	MO

May 26, 2004 Es (MUF 94.3 MHz)

1830	WRWA	88.7	Dothan	AL	ID
1833	WPOZ	88.3	Union Park	FL	Z-88.3
1837	WRLX	92.1	West Palm Beach	FL	ID during promo
1855	WZZR	94.3	Riviera Beach	FL	RDS ID
2000	WSMR	89.1	Sarasota	FL	Life FM 89.1
2003	WNCW	88.7	Spindale	NC	ID, mention of a Grateful Dead show

May 27, 2004 Tr

0630	K242AM	96.3	Newell	IA	
0642	KVGO	104.3	Spring Valley	MN	Cool 104

several other north-central IA and southern MN; none new

May 28, 2004 Es (MUF 103.5 MHz)

1721	WAYJ	88.7	Ft Myers	FL	Way FM
1810	WABB	97.5	Mobile	AL	ID
1811	WHNB	94.5	Jackson	AL	B-94 FM
1814	WKZB	93.5	Butler	AL	The Buzz
1815	WTBF	94.7	Brundridge	AL	RDS; PS=WTBF-FM, PI=EEEE
1816	WBZE	98.9	Tallahassee	FL	Star 98; mntn of Tallahassee
1819	WANZ	100.5	Northport	AL	Z-100.5, "3 decades of alternative rock"
1820	WMCZ	97.1	Millbrook	AL	local ads
1821	WMJJ	96.5	Birmingham	AL	ID/ "Birmingham's Biggest Variety, Magic 96"
1822	WTGZ	95.9	Tuskegee	AL	on-location promo from Auburn
1828	WOGK	88.7	Ocala	FL	lcl ads

May 29, 2004 Tr

0659	KPNT	105.7	Ste Genevieve	MO	The Point
0720	KUQL	98.3	Wessington Spgs	SD	Cool 98.3
0740	KRRY	100.9	Canton	MO	ads for Quincy, IL

The usual St Louis area stations on 88.7, 99.1, and 106.5 also heard.

Not a very good month Es-wise. Not even a sign of Es on TV the first few days of June. But early season tropo continues to do well, with the second appearance of TX and OK occurring, and already the third 500+ mile opening.

Rick Shaftan Sparta NJ

Equipment: Realistic STA-2280, Conrad RDS Manager, Two APS 14s stagger stacked with two FM 13s.

@ is new. First number at end is bearing, second is mileage.

March 29 TrS

1017	@WCIZ	93.3	Watertown	NY	"Route 11 just n of Watertown" 343	211
------	-------	------	-----------	----	------------------------------------	-----

April 10 Ms

0922	#WSTS	100.9	Fairmont	NC	RDS PI 8630. Prev on Au, Tr and Es
------	-------	-------	----------	----	------------------------------------

April 19 Tr

0810 @WGRX 104.5 Falmouth VA Thunder 104.5 w/nx 220 245

May 18 Ms

0636 KRES 104.7 Moberly MO RDS PI 3D5E 270 956

June 4 Ms

1631 #KOLL 94.9 Maumelle AR RDS PI 3621 "MIX" 243 1059

June 6 Ms

0535 #WTNT 94.9 Talahassee FL RDS PI EEEE "94.9 TNT" 219 899

June 17 Ms

0039 WSYE 93.3 Houston MS RDS PI 86A4 "SUNNY" 242 927

June 18 Ms

2256 #KIGL 93.3 Seligman MO RDS PI 25C7 "The Eagle" 260 1095

June 20 Ms

0701 WQST 92.5 Forest MS RDS PI A8CF 238 1011

June 20 Es

1313 KZPS 92.5 Dallas TX RDS PI 539C 252 1360

June 24 Es

1020 WAFR 88.3 Tupelo MS RDS PI 553B 244 891
 1048 ??? 88.5 Black Gospel
 1050 90.1 Mexican Mx.
 1100 WRKF 89.3 Baton Rouge LA WRKF 89.3 Baton Rouge 237 1181
 1110 WQUE 93.3 New Orleans LA Q93FM, RDS PI 80F4 234 1153
 1115 WEMX 94.1 Kentwood LA Max 94.1 RDS PI A687 238 1146
 1117 WQST 92.5 Forest MS WQST RDS PI A8CF 238 1011
 1119 KCOL 92.5 Beaumont TX Hank Jr. and ZZ Top at the Ford Center
 1130 WBRH 90.3 Baton Rouge LA Local ads, Airline Hwy mention 237 1176
 1154 WWOZ 90.7 New Orleans LA ID 234 1153
 1207 KLNE 88.7 Lexington NE RDS PI 2E62 277 1295

June 25 Ms

0850 WVAS 90.7 Montgomery AL RDS PI EEEE WVAS 231 878

June 25 Es

1211 KXRA 92.3 Alexandria MN Minnewaska Meats in Downtown
 Glenwood 296 1092
 1214 @WGRX 88.5 Sturgeon Bay WI Fundraising Drive for WGRX 297 696
 1215 @KKJM 92.9 St. Joseph MN Christian Rock 295 1038
 1217 KSKK 94.7 Staples MN Pseudo-Religious Talk Show 298 1064
 1218 KJKK 96.5 Fergus Falls MN Country 296 1121
 1220 @WAQE 97.7 Barron WI Community First Bank in Rice Lake
 1222 @KZPK 98.9 Paynesville MN Redneck Woman, Wild Country 99
 1225 @KLIZ 107.5 Brainerd MN Bachman Turner Overdrive at
 the Northern Lights Casino 297 1038
 1228 WCMP 100.9 Pine City MN Rust City Aquatic Center, WCMP ID
 1230 @KDJZ 100.7 Harwood ND Christian Rock 299 1182
 1233 KVOX 99.9 Moorehead MN Country, Froggy 99.9 298 1166
 1236 @KPRW 99.5 Perham MN New York Mills Rodeo at Battleview
 Landing on County Road 5 in Otter Tail
 1237 @KQWB 98.7 Moorehead MN Very Heavy Metal 298 1158
 1237 KYNU 98.3 Carrington ND Chicks Dig It, RDS PI A5C6 KYNU
 1239 KDKK 97.5 Park Rapids MN Sappy Love Songs 300 1087
 1245 KUWS 91.3 Superior WI "We had some frost this morning in some
 parts of Wisconsin" 301 953
 1336 WERN 88.7 Madison WI RDS PI A6FF, NPR NEWS CLASSIC

Total up to 2562 with 119 Minnesotas.

**Saul Chernos, 57 Berkeley St, Toronto ON M5A 2W5
416-364-0725 / schernos@sympatico.ca**

Jan 2 MS (Burnt River ON) (Quadrantids)

2359 unID 93.9 RDS: FROM - bizarre!

Jan 3 MS (BR) (Quadrantids)

0013 WCYI 93.9 Lewiston ME ID (also FF ballad 96.9, maybe CFIX-PQ?)
0050 KYNU 98.3 Carrington ND More of today's hot new country, Big Dog

Jan 11 MS (BR)

1046 KSOU 93.9 Sioux Center IA RDS: KSOU; talk mentions Turkey (g?)

Jan 14 Tr (BR) (C... on reduced power)

1356 WRCD 101.5 Canton NY CI Rock 101-5 The Fox, Ottawa/Seaway Vllly

Feb 7 MS (BR)

0738 KKOW 96.9 Pittsburgh KS RDS: KKOW upon checking

Feb 8 MS (BR)

0944 WLLK 93.9 Burnside KY RDS: WLLK upon checking

Mar 4 Tr (Toronto – QEW at Hurontario)

1024 *LP 104.9 Mississauga ON Ready Honda Radio auto dealership

Mar 26 Tr (TO – Snowball)

2300 *CIKZ 99.5 Kitchener ON The New Kix 99.5 FM / Tri-Cities hot new
country

Mar 29 MS (BR)

0843 KKCT 97.5 Bismarck ND The New Hot 97-5, prev Es

Apr 7 Tr (TO – Downtown)

1945 LP 89.9 Toronto ON Air Canada Centre, Toronto Raptors NBA
//590 (& 640 Maple Leafs NHL)

Apr 10 MS (BR)

1224 KZKX 96.9 Seward NE Two ads for Lincoln

Apr 11 MS (BR)

1207 KMFY 96.9 Grand Rapids MN \$60 million ethanol plant (in news)

May 16 Tr (TO – Snowball)

0322 *CHCD 98.9 Simcoe ON 106.7 testing, 519-426-7700, oldies & pop

May 17 Tr (TO – Scarborough Bluffs)

0545 WMTT 94.7 Tioga PA 95 The Met, classic rock format
0559 WSKG 89.3 Binghamton NY Listener Supported Pub Radio WSKG, wx
0636 WXTM 92.3 Cleveland Hts OH Local ad o/WRRN
0637 WKBI 93.9 St. Mary's PA Today's Hit Music B-94, Brookville ad
0640 WFHM 95.5 Cleveland OH 95.5 The Fish, wx, Cleve-Akron-Canton QTH
0645 WDDH 97.5 St. Mary's PA WDDH The Hound, k, Warren ad
0650 WJQZ 103.5 Wellsville NY Oldies R WJQZ, Maple Farms dbl-smkd
bacon

May 18 Tr (BR)

2220 *CKBT 91.5 Kitchener ON 91-5 The Beat, urban, K/W
2227 WOVE 98.9 Vassar MI 98-9 WOVE, r&b
2228 WVMV 98.7 Detroit MI RDS: WVMV; V-98, smth jz; Detroit strong
2231 *CHRW 94.9 London ON ID, new age jazz
2259 WFRO 99.1 Fremont OH Eagle 99

May 19 Tr (BR)

0050	CJLF2	89.3	Peterborough	ON	Relaying WNIC 100.3 (Detroit powerful)
0200	*CIKZ	99.5	Kitchener	ON	99-5 Kicks-FM, k

May 21 Tr (BR)

0748	WDOR	93.9	Sturgeon Bay	WI	ID, Algoma ad
0750	*WKZC	94.9	Scottville	MI	Z-95, k, wx
0807	WLJN	89.9	Traverse City	MI	g, nw MI wx,
0823	WBLV	90.3	Twin Lake	MI	GR/Muskegon wx, c
0827	*WMTE	101.5	Manistee	MI	GT&GO, Oldies 101.5, Muskegon/Ludington
0850	*WPCK	104.9	Denmark	WI	Kicks 104.9 Country, Green Bay Packers in news
0900	WPNE	89.3	Green Bay	WI	RDS: WPNE; ID, WI Public Radio, NPR
0904	WLYD	99.7	Sturgeon Bay	WI	Bangin' more beat back to back - Wild
0908	WLDR	101.9	Traverse City	MI	Sunny 101.9 WLDR, r
0910	*WRKU	102.1	Forestville	WI	Dore County QTH, area ads, Packers ment'd
0926	WNIC	100.3	Detroit	MI	Poking through CJLF Barrie, Detroit strong
1002	WRVM	102.7	Suring	WI	Dual ID ments 90.7 WMVM Iron Mtn, g
1020	WOBE	100.7	Crystal Falls	MI	B-100, oldies
1021	WTGV	97.7	Sandusky	MI	ID, QTH
1113	WITL	100.7	Lansing	MI	ID, k

May 25 MS (BR)

0620	WDJR	96.9	Enterprise	AL	RDS: CNTRY969 upon waking
------	------	------	------------	----	---------------------------

May 25 Tr (BR)

2146	WIHC	97.9	Newberry	MI	This is the Bear, this is Lynnyrd Skynnyrd
------	------	------	----------	----	--

May 26 Tr (BR)

0718	*CHCD	98.9	Simcoe	ON	106.7 testing, 519-426-7700, oldies & pop
------	-------	------	--------	----	---

May 27 MS (BR)

0825	WLLK	93.9	Burnside	KY	RDS: WLLK upon waking
------	------	------	----------	----	-----------------------

May 28 MS (BR)

1718	KDLO	96.9	Watertown	SS	RDS: KDLO on two sets upon checking
------	------	------	-----------	----	-------------------------------------

May 29 MS (BR)

1007	KIAI	93.9	Mason City	IA	Ad: Lyons Toyota Dodge
------	------	------	------------	----	------------------------

May 29 Tr (BR)

1040	*CHGK	107.7	Stratford	ON	107-7 Mix FM, rm
1818	WNCD	93.3	Youngstown	OH	Ad: Preston Chrysler Jeep; QTH of Rte 422
1822	CFRU	93.3	Guelph	ON	Spanish (checks with program schedule)

May 30 MS (BR)

0236	KDLO	96.9	Watertown	SD	RDS: KDLO upon waking
------	------	------	-----------	----	-----------------------

May 31 MS (BR)

0512	WLLK	93.9	Burnside	KY	RDS: WLLK upon waking
0830	WLLW	99.3	Seneca Falls	NY	Relaying full WFBQ 94.7 Indianapolis Bob & Tom feed, incl. Q95 slogan and local ads

Adam Rivers - Chicopee, MA

March 30 Tr

2243	CFRQ	104.3	Dartmouth	NS	Q104, The Home of Rock & Roll, Halifax ads
------	------	-------	-----------	----	--

May 20 Tr

2226	WPUR	107.3	Atlantic City	NJ	Cat Country 107.3
------	------	-------	---------------	----	-------------------

June 25 Tr

0000	WESR	103.3	Onley-Onancock	VA	"103 The Shore", legal ID, ABC news
0023	WKHW	106.5	Pocomoke City	MD	Cat Country 96.9 and 106.5
0031	WRSF	105.7	Columbia	NC	Dixie 105.7, in for hours
0031	WZBH	93.5	Georgetown	DE	93-5 The Beach

0038	WBBO	98.5	Ocean Acres	NJ	B98.5 - suprise
0042	WRAT	95.9	Point Pleasant	NJ	95.9 The Rat
0043	WJSE	102.7	Petersburg Confessional	NJ	Digital 102.7, new music from Dashboard
0048	WCZT	98.7	Villas	NJ	98.7 The Coast
0050	WLVW	105.5	Salisbury	MD	Oldies are on The Wave
0053	WFAF	106.3	Mt. Kisco	NY	calls

June 25 Es

1340	WGLO	95.5	Pekin	IL	95.5 GLO
1343	WZPW	92.3	Peoria	IL	Power 92, rap
1344	WQKQ	92.1	Carthage	IL	The classic hits staion, KQ92
1345	KRNQ	96.3	Keokuk	IA	96 dot 3, KRNQ
1348	WPMJ	94.3	Chillcothe	IL	Magic 94.3 Smooth Jazz
1348	WZOC	94.3	Plymouth	IN	oldies, calls mentions
1351	WSSR	96.7	Joliet	IL	Star 96.7
1352	WXLP	96.9	Moline	IL	97 rock, local ads

A tough start to the season for Es so far.. but hopefully it improves. Have a great summer.

Jeff Lehmann Hanson, MA

Tuner: Yamaha T-80, Antenna: Stereo Probe 9 at 35 Feet.

@= New Log

June 24 Tr

1330	WTOS	105.1	Skowhegan	ME	RDS: "WTOS" 206
@1405	WMEM	106.1	Presque Isle	ME	ME Public Radio 344
2030	WJNE	103.5	Bethany Beach	DE	Lite Rock 107.5 & 103.5 328
2035	WXJN	105.9	Lewes	DE	Cat Country 328
@2040	WWZK	94.3	Avalon	NJ	94 Slammin Gold 288
2041	WDTH	93.1	Wildwood Crest	NJ	The Touch 297
2043	WOJZ	104.9	Egg Harbor City	NJ	Smooth Jazz 104.9 262
2045	WIXM	97.3	Millville	NJ	Mix 97.3 278
2045	WAYV	95.1	Atlantic City	NJ	263
2046	WZBZ	99.3	Pleasantville	NJ	99.3 The Buzz 263
2047	WPUR	107.3	Atlantic City	NJ	Cat Country 263
2110	WQJZ	97.1	Ocean Pines	MD	Smooth Jazz 97.1 341
@2115	WSBY	98.9	Salisbury	MD	Magic 98.9 361
2120	WPTE	94.9	Virginia Beach	VA	RDS: "THEPOINT" 463
2121	WVKL	95.7	Norfolk	VA	95.7 R&B469
2122	WXMM	100.5	Norfolk	VA	RDS: (song title), 100.5 Max-FM 460
2125	WWDE	101.3	Hampton	VA	2WD 461
2126	WWHV	102.1	Virginia Beach	VA	Hot 102.1 462
2126	WOWI	102.9	Norfolk	VA	103 Jamz 470
2130	WKUS	105.3	Norfolk	VA	105.3 Kiss FM 469
2132	WAFX	106.9	Suffolk	VA	The Fox 480
2135	WNVZ	104.5	Norfolk	VA	Z104 451
@2145	W277AB	103.3	Noyack	NY	WSHU 107
2155	WSDL	90.7	Ocean City	MD	334
2156	WWFG	99.9	Ocean City	MD	Froggy 337
2158	WQHQ	104.7	Ocean City-Salisbury	MD	Q105 344
2200	WQMR	101.1	Snow Hill	MD	Hot Talk 101.1 359
@2210	WESR	103.3	Onley-Onancock	VA	103.3 The Shore 394
@2300	WCTG	96.5	Chincoteague	VA	
2330	WOBM	92.7	Toms River	NJ	228
@2346	WSHR	91.9	Lake Ronkonkoma	NY	143

Keith McGinnis Hingham MA

Equipment: Yahama T-85 (Modified) & Conrad RDS Manager with an APS 9 antenna 12 ft AGL

Only including new logs on this report

March 1 2004 Tr

0800	WPLJ	95.5	New York	NY	with WBRU off the air
------	------	------	----------	----	-----------------------

April 16 2004 Tr

2100	W282AB	104.3	Dover	NH	xltr for WEVO 89.1
------	--------	-------	-------	----	--------------------

April 17 2004 Tr

0813 W250AB 97.9 Manchester NH xltr for WOKQ 97.5

May 9 2004 Tr

0915 WNHU 88.7 New Haven CT first time I positively knew I had them as they were always pretty much lost in the slop of WERS when I lived in Winthrop MA

May 20 2004 Tr

2330 WZBG 97.3 Litchfield CT local ads and partial ID
2336 WSPK 104.7 Pougkeepsie NY local mentions and ads
2339 WPUR 107.3 Atlantic City NJ
2343 WMGM 103.7 Wildwood NJ local mentions

June 19 2004 Ms

2344 WEPC 88.5 Belton SC RDS A6C0

TV NEWS CONTINUES FROM PAGE 11

facility on channel 31.

Twenty-nine stations have been granted extensions to their DTV permits. Eleven are awaiting FCC action on modifications to their permits. Thirteen convinced the Commission they faced financial constraints that forced delays. (two have since been sold to more financially-solid owners; four more belong to a Christian network in Texas which claims their recent fund drive was unexpectedly successful and will speed construction.)

KOLN and KXLA cite delays in tower or antenna work; WJHG told the Commission they hired structural engineers to arrange tower work, but the engineering firm went out of business before the work was completed! WAWD mentioned delays in electrical work at a shared transmitter site.

Two stations - WBHQ and WCOV - were admonished for failing to provide good reason for delays in construction. These stations will be subject to extra reporting requirements.

KTBN for some reason (mutual interference with XETV-DT in Tijuana?) claims they must operate at lower power on DTV channel 23 and would have to return to channel 40 after transition. If allowed to use DTV channel 33 instead, they could operate at full power during transition and remain on channel 33.

It also contains the confusing sentence:

"Trinity claims that the Longley-Rice interference free service on channel 33 would be include 5,035,227 viewers as compared to only 13,429,034 viewers on channel 23c."

This is the FCC's interpretation of Trinity's submission; it's possible it's the Commission, not Trinity, that believes it would be a public service to deny 8,400,000 people access to KTBN-DT<grin>...

As the summer with no DX continues... here's hoping you caught all the openings that did happen, if any...

The WTFDA Mexican FM Directory

Just in time for the 2004 E skip season, it's the 2004 Mexican FM Directory with stations sorted by frequency. If you're in range of Mexican FM skip, this 60 page directory is something you can use. **The price of the directory is just \$7.00.**

To order a copy of the Mexican FM Directory, send a check or money order for \$7.00 payable to Dave Janowiak and send it to Jim Thomas, 280 Katsura Avenue, Milliken, CO 80543. For more information, email Jim at mrradiohead@netzero.com



WEAK SIGNAL TECHNIQUES

Bob Cooper
CONCLUSION

Summarizing Signal + Noise To Noise

The effective Noise threshold for a TV channel can be reduced in a given receiving system by carefully selecting and installing a low-noise masthead amplifier as physically close to the antenna output terminals as possible. In a band I or III system outfitted with such a masthead amplifier, the system SNR should improve by not less than 3 dB. And 3 dB is slightly more 'gain' than you should expect by doubling (as in stacking) the number of antenna elements in use. In UHF (bands IV and V) receiving systems, when the TV or VCR tuner have a noise figure of 10 dB or more, the improvement possible with the careful addition of a 0.5 dB noise figure GaAs-FET masthead unit should exceed 6 dB (*). And that's the equivalent to making the original antenna system four times as large (i.e., going from 1 stack of an antenna to four stacks).

Avoid low-grade matching transformers when connecting a 300 ohm antenna to a 75 ohm masthead amplifier as the matching transformer can easily cost you two dB in signal before amplification. Also avoid any combiners or other signal splitters between the antenna output and the input to the masthead amplifier when low noise is important: unless following stacking techniques.

Masthead SNR requirements should be calculated by taking the available gain (say 20 dB at the masthead) and subtracting:

- 1) Known/ suspected TV set noise figure (in dB)
- 2) The line loss between the masthead unit and the TV set (in dB)
- 3) Any other loss (such as a splitter) between masthead and TV set and, you should have

not less than 3 dB of signal voltage left over after subtracting these numbers. If not, graduate to a higher gain masthead unit, select a lower loss transmission cable, or with an exceptionally long transmission line run follow the masthead unit with a line amplifier (also probably line powered) having its own noise figure no greater than the noise figure of the TV set VCR (tuner); placing the line amplifier down the line where the signal voltage has dropped to a level equal to the noise figure of the line amp 3 dB (see Tech Bulletins 9303 and 9305).

Finally, not all masthead amplifiers are created equal. Any unit with a noise figure higher than 2.5 dB at bands I and III is hardly state-of-the-art and you can do better. UHF units with noise figures under 3 dB are worthwhile but for the really difficult installation, 0.5 dB is state-of-the-art.

INCREASING ANTENNA GAIN

Not all antennas are created equal; either. The weaker your off-air signals, the greater the antenna gain required. Remember, you cannot improve the overall signal to noise ratio without increasing the signal part of the equation; once you have taken steps to reduce the noise to its practical minimum.

Let's assume for discussion you are on a hilltop with a field strength meter and some type of all-channel antenna. There you find a desired channel 2 is -23 dBmV 37 dBuV while a desired channel 7 is -21 dBmV 39 dBuV. A chart on page 29 suggests you have a situation where the SNR will be in the region of 17 to 19 dB; or marginal inferior.

What next?

Before we start down the hill with the signal, what could be done to improve these marginal to inferior pictures?

1) Masthead Amplifier. We'll need one just to reach the bottom of the hill. By selecting a low-noise unit, we can gain 3 dB of additional SNR in this step. Now we'll be at the 20 to 22 dB SNR region. Better; but still basically marginal pictures.

2) We don't really know the gain of the hilltop 'test' antenna at channel 2, but logic suggests it is no more than 5 dB; tops. We also don't know the gain of this all-channel antenna at channel 7 but logic again suggests it will not exceed 6 dB.

A) If we installed a quality 10-element channel 2 yagi (yes, they do exist!) with 10 dB of known gain, we'd add 5 dB to the channel 2 SNR over the test antenna; creating a new SNR of 25 dB.

B) If we installed a pair of similar yagis for channel 7, with a total gain of 12.5 dB (10

dB for one + 2.5 dB stacking gain), our SNR goes up 6.5 dB over the test antenna; making it now 28.5 dB.

If the installation design stopped here, the customer has gone from a marginally-inferior picture to a passable picture on channel 7 and one between marginal and passable at channel 2. The channel 2 picture could upgrade to passable by going back and adding a second stack of ten element channel 2 yagi.

Since this is on paper only at this stage, consider making both antenna arrays even larger. The results summarize here (top of next and a 2 dB noise figure masthead is built-in to each signal + noise to noise ratio calculation.

SO ... there you sit atop a hill in the middle of a customer's paddock with -23 dBmV on channel 2 and -21 dBmV on channel 7. And you are only 64 ten element yagis away from perfect pictures!

Of course you are unlikely to encounter a customer with either the dollars or inclination to fund such a massive array (25 dB of forward gain) but its interesting to see how this works none the less. in this situation, both you and the customer would probably settle for passable level signals; which means a two or four stack array on both channels 2 and 7. How do you phase them together and then mix their individual outputs to produce the same passable quality down-the-hill at the TV set(s)!

Carefully. Very carefully.

Recall that any combiner or other passive device, any coaxial or matching transformer loss after the antenna but before the low-noise masthead runs the risk of permanent impairment of the system noise figure. No system designer/installer wants to risk losing several dB of SNR after going to an extra sensitive antenna array with stacked yagi antennas.

Fortunately in our example the two channels in question are on different TV bands; i.e., band I (channel 2) and band EU (channel 7). [his allows us to consider two technically correct options for combining the separate channels from two separate antenna arrays onto a single down-hill line.

Number One: Two separate masthead amplifiers can be installed. Ideally, one would be a band I masthead amp (or even single channel; i.e., 2) while the second would be band III/ channel 7. The bad news is that such narrow band mastheads are seldom carried in stock in New Zealand and while obtainable, the wait could be a couple of months. A viable option for this is to utilize a pair of VHF (ie., band I and band III in one unit) mastheads, placing each as close to the individual stacked antenna array outputs as possible. This gives us two mastheads, each connected to an antenna, and the output from each ready to connect to the single down/transmission line. Use a signal combiner? You could, but there is a better way. A device called a high/low separator (high being band III; low being band I), or, diplexer (Kingray DPOHL) provides 30-- dB of rejection of the opposite band. Two inputs (one high, one low) and one combined output. Now go into your downline and you'll have sufficient rejection of 2 through 7, and, 7 through 2 there should never be ghosting when signals get really strong (under favorable weather conditions that enhance signals).

Number Two: If you can locate a pair of single channel mastheads. one each for channels 2 and 7. that will be the best way of all.

Suppose, however, the two signals are in the same band; ie., channels 1 and 3 or channels 6 and 11 Life can be complex.

Number One: Some (European and North American) manufacturers offer single-channel filters. If you place separate mastheads on each antenna, then follow these with single-channel bandpass filters, you might then be able to combine signals in the same band. The bad news is these bandpass (ie., single channel) filters will not pass power and you need the AC/DC power to run the mastheads in front of the filters. Hirschmann (a German firm) offers a suppression trap that will pass power. They have input and output connectors, are in shielded boxes (with weatherproofmg available), and are tuned by a pair of field adjustable slugs which will suppress the video carrier (one slug) and the aural carrier (the second slug) by iS dB each; or, you can tune both slugs to a single frequency (all of this with a field strength meter as an indicating device) and get 40 (50 on band III) dB total suppression on a single carrier. With one of these suppression traps in each line, you tune-out the wrong channel (ie.. channel I on channel 3 antenna and vice-versa) and having done this then use a two-way signal combiner to join the two channels onto a single down line. The individual mastheads go right at the respective antennas, of course, followed by the suppression filters and then the combiner.

Number Two: There is no acceptable number two in this situation.

ANTENNA COMBINING

If you are experiencing co-channel interference problems at the chosen site, read Tech Bulletin 934)1 before designing your antenna array. What follows assumes you have no co-channel problems worth being concerned about; you want maximum stacked-array gain in a single direction.

The basics.

1) Only stack identical antennas; i.e., same manufacturer. same model/design. Don't try stacking different configuration antennas; it will not work properly.

2) You can stack broadbanded antennas (such as band I and 3 on one boom) but one must ask why would you do this? When you are considering stacking, it is assumed you need maximized signal gain. Any dual-band (i.e., I and III) antenna is a compromise in gain, probably also in antenna pattern, and certainly in antenna impedance matching. Would you try to stuff two Volkswagen Beetle engines into an engine compartment, or one Chevy VS when you wanted maximum vehicle performance?

Agreed, life seems much easier if when facing a customer with weak signals you simply put up two of your best all band antennas in place of the (admittedly) more complicated single-band/single channel antennas. There are good reasons for not stacking broad band antennas.

1) Spacing distance. The two antennas must be a proper distance apart for effective gain improvement (over one antenna). You have at least two VHF signals; perhaps three. The stacking distance for proper gain addition (i.e., more gain with two antennas than with one antenna) is set by the wavelength of each channel. See Table 32-1 here.

The proper physical distance between two antennas for channel 3 is not the proper distance for channel 1; nor 7. So while the antennas may be two-band the stacking distance is single channel. Net effect you'll possibly get enhanced performance on one channel; the one where the spacing is proper. But on the other channel(s) you could actually end up losing signal with incorrect antenna-to-antenna physical spacing.

2) Best versus worst. The best dual-band antenna is no match for a single channel yagi; not on any band in any configuration It is possible to find broad-banded LOG type antennas for band I. or, band III, which have gain approaching that of a single-channel yagi. But never better-than a single-channel yagi. So the best of dual-band is worse than the worst of single channel (unless of course the firm making the single-channel really fouls up the job).

If you are still unconvinced and will settle for second best, at the very least use Table 32-i to select the antenna-to-antenna spacing distance for the lowest channel in use for the system: i.e., for a channel 2, 4 and 7 all-channel antenna array, the stacking distance should be for channel 2. It is better to err in the direction of too-wide spacing than to err by placing the antennas too close together (and the higher the channel number, the shorter the wavelength; ergo the closer the antenna to antenna spacing becomes).

Now, if you are planning a masthead amplifier with the stacked array, you already know the amplifier should be at the output of the antenna array; as close as possible to the signal combiner which matches and joins (as in adding signal voltages) the two antennas together. With some areas using vertical polarization, and others using horizontal, you may suspect there is some magic method of configuring two (or four or eight) antennas to achieve maximized stacking gain. There is; it is not polarization conscious. Common sense does apply.

Horizontal polarization. This is the easy one because you stick up an antenna mast and place the first antenna at the top. Then you measure down the mast to the stacking distance called for with Table 32-1 and mount the second antenna. With four antennas you can keep going down the mast or you can mount two antennas on one mast, two on another, and then separate the two sets of two by distance SV in Table 32-I. Is there a preference between stacking four antennas on the same mast, or, stacking two on one mast and two on an adjacent mast?

A marginal electrical performance difference (in favor of four on one mast); a difference if you have to build and erect the support structure for four antennas! Do the one that is common-sense easiest for you.

Electrical connections. Distance S -(cleverly the stacking distance between antennas; a physical distance) is determined by the operating frequency of the antenna or by the boom length of the antenna if it measures longer than one wavelength from end-to-end. Using RG-6/U or RG-1 1/U foam (please not RG-59 in any form!) cut as many phasing lines as you have antennas and combiners to join. All lines will be the same length; that's within mm at VHF 2 mm at UHF. The actual length of any line is up to you to determine (as long as you make them all identical). By

placing the two (four) way signal combiner at the physical centre of the array, you can then determine how much cable is required to reach from the feed-point on each antenna to the combiner. With a two-stack array and the combiner in the middle, the distance from one antenna to the combiner will be the same as the distance from the second antenna to the combiner. With a four-stack array, the top and bottom antennas are further (physically) from the combiner than antennas two and three. **DO NOT CUT THE LINES TO FIT THE DISTANCE.** Measure the longest line length (top or bottom antenna to the combiner) and then make all four the same length. The extra cable for the two close antennas? Make a nice, neat coil close to the combiner and tape the coil to the mast tower so it will not swing and sway in the wind exerting pressure on the fittings of the combiner.

That's right; **NEVER - NEVER** cut the lines for the closer antennas to fit the distance. You are trying to add signals from each antenna in phase through the combiner. For each antenna to be in phase with the other antennas, the individual antenna signal voltages must be in phase with each other. They must travel the same distance from each antenna to the combiner to remain in phase and by making the phasing-lines identical in length, you ensure this will happen.

Vertical polarization. Stacking antennas polarized vertically is more of a mechanical challenge: all other considerations remain the same. Since one wavelength (in free space) at TV channel 1 is 6.624 metres. the minimum distance between two identical antennas is $.75 \times 6.624$ or 4.968 metres (see Table 32-1); it could be more in the case of a truly long-boom yagi. This extreme distance creates a challenge for physically mounting of two (or more) antennas.

1) If two antennas are horizontally spaced while remaining vertically polarized, they must be in the same plane (ie., parallel to the ground below). This suggests a support of the correct length, in turn fastened to a tower or mast which provides height above ground. Keeping such an array in the air under varying wind and climatic conditions is the challenge.

2) There is nothing taboo about spacing the two vertically polarized antennas vertically apart on a vertical mast. But the antennas at $.75$ wavelength spacing will now have only $.25$ wave free space between the longest element tips of the adjacent antennas. This close spacing is not the best compromise (but it is an acceptable situation because the boom to boom spacing remains at $.75$ wavelength). In Table 32-i here, a separate 'SV' distance appears. Where possible when stacking vertically polarized arrays one above the other use the wider spacing of SV to ensure optimum stacked array performance. This situation is an anomaly of band I only, caused by the extravagantly long waves in this frequency band. The installer should not be challenged by band I (or UHF) distance S spacings (only 1.002 metres at channel 11: $.432$ metres at channel 27). Note the special rule when the antennas to be stacked exceed 1 wavelength in length (ie., length of boom) at the operating frequency; you select either distance S or SV from Table 32-1 (for shorter boom antennas), or when the boom length exceeds one wavelength you opt for a distance that is equal to the length of the boom itself This will usually be the case for any yagi antennas with more than 5 elements (VFIF or UHF). The

logic behind this is that when an antenna boom exceeds one wavelength in physical length, at the operating frequency, the antenna's 'capture area' is so enlarged that effective stacking-gain only comes when the physical separation between antennas is equal to or slightly greater than the boom length.

Stacking bars? Some antennas sold have aluminum rod or wire parallel phasing. lines offered; two antennas are spaced apart by the length of the phasing bars. The concept here is that if you place two 300 ohm antennas 12 wavelength apart, in parallel electrically, the impedance of the two-stack-antenna in the middle of the phasing bars magically repeats as 300 ohms; a match for the transmission line. There is nothing improper with this concept provided the antennas are relatively small; ie., up to say 5 elements each. But when the antennas become larger (such as 10 elements on a boom) the optimum stacking distance becomes further between antennas; too far for proper use of standard $1/2$ wave stacking bars. So a pair of larger antennas (ie., more than 4 to 5 elements per antenna) employing this phasing arrangement sacrifices optimum array gain for optimum impedance matching when the stacking distance is predetermined by the physical $1/2$ wave length of the phasing bars/ line. One solution is to appropriately lengthen the phasing bars and add some phasing bar tuning stubs; at this point it makes far more sense to place the antennas the proper boom length distance apart and using a carefully selected 300/75 ohm matching transformer on each antenna, join the antennas with equal lengths of coaxial phasing lines. For band I it is worth noting that a pair of 5 element yagi stacked with phasing bars is unlikely to provide better performance than a single ten element yagi for the same channel.

REAL WORLD CONSIDERATIONS

There are several. Band 1 long yagis are one special problem. A ten element yagi for channel I (and to a lesser extent channels 2 and 3) if designed for optimum performance approaches 15

(Weak Signal Techniques concludes on page 15)

July 2004

This month we feature more DTV photos from Girard Westerberg of Lexington, KY:

Equipment: VHF: Delhi (Jerrod) VIP-307SR antenna. UHF: Channel Master 4228 antenna. CM 7777 UHF/VHF preamp. Traps on chs. 18, 27, and 36. Sony KV-9PT50 TV. Hauppauge WinTV-D card.



KLJB-DT-49 Davenport, IA
 389 mi Tr seen 6/24/03



WTOL-DT-17 Toledo, OH
 261 mi Tr seen 12/27/03



WUSI-DT-19 Olney, IL
 207 mi Tr seen 9/19/03



KDKA-DT-25 Pittsburgh, PA
 294 mi Tr seen 9/4/03



WATE-DT-26 Knoxville, TN
 140 mi Tr seen 8/24/03



KPLR-DT-26 St. Louis, MO
320 mi Tr seen 8/24/03



WKRN-DT-27 Nashville, TN
187 mi Tr seen 8/24/03



WSLS-DT-30 Roanoke, VA
242 mi Tr seen 8/27/03



KDNL-DT-31 St. Louis, MO
320 mi Tr seen 7/20/03



WLMT-DT-31 Memphis, TN
348 mi Tr seen 9/24/03



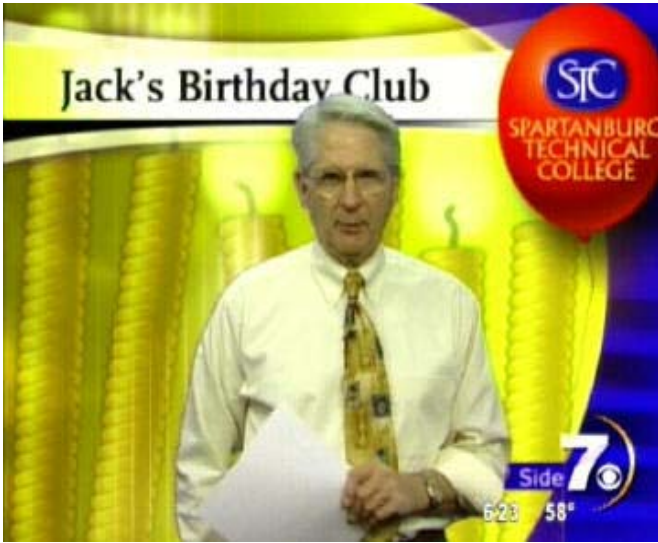
KETC-DT-39 St. Louis, MO
323 mi Tr seen 6/25/03



WAFF-DT-49 Huntsville, AL
252 mi Tr seen 6/25/03



WVUT-DT-52 Vincennes, IN
169 mi Tr seen 9/21/03



WSPA-DT-53 Spartanburg, SC
229 mi Tr seen 9/24/03



WPTD-DT-58 Dayton, OH
121 mi Tr seen 9/21/03



WHNT-DT-59 Huntsville, AL
252 mi Tr seen 6/25/03



WZTV-DT-15 Nashville, TN
175 mi Tr seen 9/4/03



John Zondlo
 4009 Driftwood Circle
 Yukon, OK 73099
 sfm@fmdxweb.com
 Deadline: 15th

For DXers in AL, AZ, AR, CA, CO, DE, DC, FL, GA, HI, KS, KY, LA, MD, MS, MO, NV,
 NM, NC, OK, SC, TN, TX, UT, VA, WV, Cuba & Mexico

July 2004

Eric Bueneman - NOUIH - 631 Coachway Lane - Hazelwood, MO 63042-1347 -
NOUIHEric@aol.com - <http://www.qsl.net/n0uih/>

Kenwood AR-304 AM/FM/FM stereo receiver (modified with three 110 kHz filters by Bruce Elving) with a Radio Shack VU-210XR with Channel Master rotor at 30' (9.1 meters) above ground level. Logs made before March 8, 2004 used the same antenna at 35' AGL with a Radio Shack rotor. All times CST/CDT; all distances in miles/kilometers

1/27 Es

1719 KOIR 88.5 TX Edinburg, Christian talk in SS, o/KUMR 970/1561
 1720 XHAAA 93.1 TM Reynosa, DJ talk and local ads in SS 985/1585

2/14 Tr

1540 WSWT 106.9 IL Peoria, local ad, legal ID, soft AC 140/225
 1548 WILL 90.9 IL Urbana, opera, ACI from KWMU 90.7 155/249
 1549 Springfield IL 90.5, 98.7, 101.9, 103.7 80/128
 1550 WDNL 102.1 IL Danville, "D-102," hot AC, mixing w/WIBV 175/282
 1553 Decatur IL 95.1, 102.9, 110/177
 1554 WGEL 101.7 IL Greenville, Vandalia ad, legal ID, k, through KLPW 50/80

3/8 Gw

1500 KDJR 100.1 MO DeSoto, legal ID, Christian teaching, ACI from KATZ 100.3 45/72

3/10 Gw

0029 KBGM 91.1 MO Park Hills, "New Life Radio," CCM//WIBI 65/105
 0036 KGNA 89.9 MO Arnold, Christian talk, light CCM//KGNV, through WLCA 25/40

3/25 Gw

1840 WRLJ 88.3 IL White Hall, "Adventures in Odyssey," promo, legal ID//WLUJ 89.7 45/72

4/6 Tr

0025 KLRQ 96.1 MO Clinton, "K-Love," CCM, ACI from KIHT 96.3 185/298
 0026 KZBK 96.9 MO Brookfield, "96-9 The Z," hot AC, ACI from KFTK 97.1 155/249
 0027 KQRC 98.9 KS Leavenworth, "98-9 The Rock," hard r, light ACI from KFUE 99.1 255/410
 0030 KKFI 90.1 MO Kansas City, soul mx, WTSG nulled 225/362
 0035 Columbia MO 89.5, 91.3, 96.7, 101.5 105/169
 0036 KZZT 105.5 MO Moberly, local ads, calls, o, light ACI from KPNT 105.7 115/184
 0038 Jefferson City MO 88.9, 106.9 100/161
 0045 KICK 97.9 MO Palmyra, "97-9 Kick FM," k, slight ACI from KYKY 98.1 90/145
 0048 KATI 94.3 MO California, "Cat Country 94.3," promo, k 120/193



0051 Rolla MO 88.5, 105.3 80/128
 0055 Decatur IL 93.1, 95.1, 102.9 110/177
 0058 WSWT 106.9 IL Peoria, "Light Rock 107," legal ID, soft AC 140/225

4/18 Tr

0111 KKOW 96.9 KS Pittsburg, "After Midnite," k, ads, confirmed through website 260/418
 0153 KQRC 98.9 KS Leavenworth, "98-9 The Rock," hard r 255/410
 0155 KFME 105.1 MO Garden City, "E-105," hot AC 210/338

0158 KKFI 90.1 MO Kansas City, promos, legal ID, call-in show 225/362
0337 KRMS 93.5 MO Osage Beach, "93-dot-5," classic r 140/225
0339 WIBW 94.5 KS Topeka, "94 Country," k, x-97.3 285/459
0348 KTBB 96.5 MO Kansas City, "96-5 The Buzz," modern r, \$ 225/362
0351 KZPL 97.3 MO Lee's Summit, "97-3 The Planet," promo, hot AC 215/346
0353 KFBD 97.9 MO Waynesville, "B-97.9," PSA, light r 120/193
0358 KNWI 107.1 IA Osceola, "Family & Family Minute," legal ID, AP News//KNWM 96.1 235/378
0405 KTBB 90.9 MO Warrensburg, "The Bridge," modern AC 180/290
0408 KJCK 97.5 KS Junction City, "Big Cat 97-5," CHR 350/563
0410 KPOW 97.7 MO LaMonte, "Power 97," Sedalia ads, wx, classic r 165/266
0422 KBBM 100.1 MO Jefferson City, "100.1 The Buzz," modern r, ACI from KFAV 99.9 100/161
0426 KYYZ 99.7 MO Kansas City, "99-7 KY," local ads, AOR 225/362
0428 WLMG 101.9 LA New Orleans, "Magic 101.9," soft AC, local ads, prev by Es 600/966
0436 KEYN 103.7 KS Wichita, jingle ID, o 400/644
0437 KSAJ 98.5 KS Abilene, "Oldies Radio 98.5," o 365/587
0451 KNIA 102.9 IA Iowa City, local ad, through KEZS 225/362

4/21 Tr

2039 KYLS 95.9 MO Ironton, "Froggy 96," k, WOLG nulled 80/128
2057 KKID 92.9 MO Salem, "92-9 K-Kid," classic r 90/145

5/11 Tr

0231 KUPH 96.9 MO Mountain View, "The Fox 96-9," local ads, hot AC 145/233
0255 KAMS 95.1 AR Mammoth Spring, "K-Country," promo, k 175/282
0302 KBMV 107.1 MO Birch Tree, "107-1 The Point," hot AC 125/201
0317 KBIY 91.3 MO Van Buren, CCM, PSAs//KNLH 89.5 125/201
0353 KFLW 98.9 MO St. Robert, "98-9 The Fort," hot AC 90/145
0359 KDAA 97.5 MO Rolla, legal ID, AC, WBBA/WDLJ nulled 80/128
0401 KWTO 98.7 MO Springfield, Fox Sports Radio, local ads 190/306
0404 KIYS 101.9 AR Jonesboro, "101-9 Kiss FM," CHR 200/322

5/14 Tr

2150 KTKS 95.1 MO Versailles, "KS-95," Royals postgame show, Kansas City ads 130/209
2210 KGRS 107.3 IA Burlington, "Mix 107-dot-3," hot AC 140/225
2219 WNLF 95.9 IL Macomb, "Modern Rock 95-9," local ads, modern r, WOLG off 115/185
2239 KMMO 102.9 MO Marshall, "Real Radio KMMO," k 155/249
2245 KPOW 97.7 MO LaMonte, "Power 97," Sedalia ads, classic r 165/266



2254 KBBM 100.1 MO Jefferson City, "100.1 The Buzz," local ads 100/161
2255 KRES 104.7 MO Moberly, local ads, k 115/185
2258 KWWC 90.5 MO Columbia, "Sweet 90.5," legal ID, AC 105/169
2330 WQKQ 92.1 IL Carthage, "KQ-92," classic hits 125/201
2334 KCLR 99.3 MO Boonville, "Clear 99," k 125/201
2354 KRRY 100.9 MO Canton, "Y-101," PSAs, wx, CHR 110/177

5/15 Tr

0011 WEJT 105.1 IL Shelbyville, "Light Rock 105-1," AC 115/185
0023 WYDS 93.1 IL Decatur, "93-1 The Party," CHR 110/177
0025 KLRQ 96.1 MO Clinton, "K-Love," CCM 185/298
0038 WDKR 107.3 IL Maroa, "Good Times, Great Oldies, WDKR," o 115/185
0045 WHOW 95.9 IL Clinton, "Today's hits, yesterday's favorites," loegal ID, AC/oldies 120/193
0053 WBNH 88.5 IL Pekin, light CCM, SRN nx, legal ID 140/225
0108 WDQZ 99.5 IL Lexington, "99-5 and 102-3 The Eagle," classic hits 155/249
0123 WDQX 102.3 IL Morton, "The Eagle," classic hits, last heard as WFXF 135/217
0216 W205BC 88.9 IL Taylorville, BBN mention, Christian mx and teaching 70/113
1142 KWRT 93.1 MO Boonville, "Casino 93.1," adult standards 125/201
1144 KQRC 98.9 KS Leavenworth, "98-9 The Rock," AOR 255/410
1147 WTAO 105.1 IL Murphysboro, "TAO," AOR 110/177
2058 WUSI 90.3 IL Olney, PSA, legal ID//WSIU 91.9 and WWSI 88.9 130/209
2101 WILL 90.9 IL Urbana, legal ID, "The Jazz Corner," mention of relays on 101.1 and 106.5 155/249
2140 WBNQ 101.5 IL Bloomington, local ads, wx, calls, CHR 140/225
2154 WDNL 102.1 IL Danville, local ads, '90s hits 175/282

5/16 Tr

0048 WLRW 94.5 IL Champaign, "The New Sound of Mix 94.5," PSA, CHR 150/240
0051 WHQQ 98.9 IL Neoga, Charleston ads 110/177
0054 WACF 98.5 IL Paris, local ads, calls, k, KTJJ nulled 145/233
0112 W203AN 88.5 IL Flora, "American Family Radio," PSAs, CCM 100/161
0126 WKRV 107.1 IL Vandalia, "107-1 The Curve," CHR 70/113
0231 WQRL 106.3 IL Benton, "Q-106," o 95/153

0238 WOKZ 105.9 IL Fairfield, calls, k 145/233
 0256 KJEZ 95.5 MO Poplar Bluff, "Classic 95.5," legal ID, classic r, WFUN off 140/225
 1159 KOKX 95.3 IA Keokuk, Christian mx, AM/FM ID, "Cool 95," o 125/201
 1222 KMJK 107.3 MO Lexington, "Magic 107.3," R&B o 185/298
 1322 KWTO 98.7 MO Springfield, SW Missouri State University baseball 190/306



1354 WQQN 95.9 IL DuQuoin, "Revelation Insights," light Christian mx, legal ID 100/161
 1422 KJEL 103.7 MO Lebanon, St. Louis Cardinals baseball 155/249

5/22 Es

1214 XHLDO 89.9 TM Nuevo Laredo, PSAs and ads in SS 940/1513
 1217 XHXL 91.7 NL Monterrey, local ads in SS, Beatles mx in EE 1075/1730
 1220 XHMLS 91.3 TM Matamoros, talk mentioning Mexico in SS 985/1585
 1221 KBNL 89.9 TX Laredo, talk in SS through KGNV 935/1504
 1222 KROM 92.9 TX San Antonio, Tejano mx, local ads in SS 790/1271
 1228 KJBZ 92.7 TX Laredo, "Z-93," talk in EE/SS, Tejano mx 935/1504
 1230 KUT 90.5 TX Austin, choral mx, local underwriting 715/1151
 1233 XHSAB 89.5 NL Sabinas Hidalgo, talk in SS, Nortena mx thru KCFV/KEPX 1020/1642

5/26 Es

1840 WIKX 92.9 FL Charlotte Harbor, "Kix Country," traffic report, local ad 945/1521

5/26 Tr

2132 KSCV 90.1 MO Springfield, "Truths that Transform" // KSIV 91.5 190/306

5/29 Tr

0200 Kansas City 90.1, 99.7, 102.1 225/386
 2119 Columbia MO 90.5, 91.3, 96.7, 101.5 105/169

What a difference a new receiver, modified for DXing, can make! I purchased a used Kenwood AR-304 receiver in January; I sent it to Bruce Elving for modification. The selectivity of this particular receiver now approaches that of the receiver it replaces, a 1970s-vintage Realistic STA-90 which wasn't modified. I was able to hear stations that I couldn't otherwise hear with the old rig. I'm now able to null out WLCA on 89.9 to hear KGNV and KGNA, pull in KBGM with sister station WIBI nulled, and get KDJR 100.1 between locals on 99.9 and 100.3. The first E-skip heard with this receiver came in the same month; I was surprised to pull in KOIR 88.5 with Christian programming in Spanish. XHAAA 93.1, a skip regular during the summer months, was also heard; the same opening also brought in some TV DX.

On March 1, the Radio Shack rotor gave up the ghost due to high winds. The top part of the rotor, supporting the 10-foot mast, broke off from the rotor. While I was able to salvage the VU-210XR, I had to replace the rotor. This time, a Channel Master rotor replaced the RS rotor, with a five-foot mast. The 10-foot mast was also salvaged; it's now supporting a Radio Shack discone antenna for NOAA Weather Radio DX and VHF/UHF utility band monitoring. The new rotor was installed on March 8.

It didn't take long for the first tropes to come in...the opening of April 6 brought in some DX from outstate Missouri and the Kansas City area. KLRQ's format change from Classic Hits to Contemporary Christian was noted; the station is now non-commercial. I also heard a few stations from Illinois making it in. The opening of April 18 was also a surprise; this is the earliest I've had tropes of over 400 miles on FM at this QTH. KKOW 96.9 was a pleasant surprise, ditto with KFME 105.1. This was previously a St. Joseph assignment, as I also heard KKJO on this frequency before they shifted to 105.5. Also noted WIBW on its new 94.5 frequency; this assignment came as a result of the combination of two 97.3 assignments into one, which I also noted with KZPL coming in, with clean separation from local KFTK 97.1. The other station in this complicated switch, KJCK 97.5, also came in. KJCK had been on 94.5 before this mega-switch. Also noted a call letter change with KNWI 107.1 (last heard as KJJC, "The Jock"); this one is carrying the Skylight network from KTIS 98.5 Minneapolis. KNIA 102.9 also made it in; albeit with a weak signal. The signal was too weak to see if the IBOC sidebands would wreak havoc with KEZK and KLOU. The major surprise of this opening was WLMG 101.9, noted off the back side of the antenna. The mentions of New Orleans, Kenner and AirTran Airways clinched it for me. It was the only FM in from south of Springfield, MO. The opening of May 11 included some new Missouri stations; I last heard KBMV 107.1 back in the 1980s from the old Lamplight Lane QTH. The reception of KBIY was the highlight of the opening; I pulled this one in through KBIA with ACI from KSIV 91.5.

The opening of May 14-16 netted two new stations on 95.9; WNLF (greetings, Jeff and Frank!) and WHOW. Semi-local WOLG was noted off the air at the time. I now have only one Columbia, MO station left to hear, after logging KWWC 90.5 with a Soft AC format (a tad softer than KPLA 101.5). I also noted WDQZ 99.5 with Classic Hits; WDQX 102.3 (which I last heard as WFXF in August 1999)

also made it in, but with some ACI from local KEZK 102.5. Only my second translator was logged at this location, with W205BC 88.9 relaying WYFG 91.1 Gaffney, SC with BBN programming. The third one followed nearly twenty-three hours later, with W203AN 88.5, relaying WAFR 88.3 Tupelo, MS. Also noted KJEZ 95.5 with WFUN having popped off for a few minutes, while KOKX 95.3 was noted just before noon local time coming out of Christian programming, simulcast with their AM (1310 kHz). The FM broke away from the AM to its regular Oldies format at the top of the hour.

The E-skip opening of May 22 was the first one of the season to reach into the FM band. The opening of May 10 only peaked at 37.3 MHz into Connecticut, while the opening on May 12 only reached VHF-TV Channel 4 into Arizona. The first surprise on the 5/22 opening was Spanish on 88.9, between locals on 88.7 and 89.1. A check of the Mexican government's radio Web site showed XHLDO Nuevo Laredo. Also noted XHMLS 91.3 with talk mentioning Mexico; sounded like a statewide or nationwide talk program. KBNL 89.9 poked through KGNV with talk in Spanish; sounded Christian in nature. A station I thought was a Mexican rolled in with ads mentioning Tampico and Linares, but another one mentioning San Antonio was in that cluster; it was determined that it was definitely KROM. KJBZ 92.7 was noted in "Spanglish" (a dialect combining English and Spanish words and phrases, widely spoken in the Rio Grande Valley); the "Z-93" identifier was spoken in English. Finally noted some E-skip on 90.5 with KUT; the phrase "support for KUT comes from..." clinched it for me. Good going with a local on 90.7! Finally, XHSAB was noted with Spanish talk and Nortena music; tough copy with local KCFV nulled and through KEPX (with Christian programming in Spanish).

The E-skip event of May 26 was mainly a TV opening to the southwest; however, WIKX 92.9 was noted with a traffic report mentioning Interstate 75 before KGRC took over. KSCV 90.1 was noted for a call letter change; the last three letters of the call sign stand for "Springfield's Christian Voice". It is now part of the Bott Radio Network, a non-commercial satellite feed aired only on stations owned by Bott Broadcasting Company, including my locals KSIV 91.5 (and their sister station on 1320 kHz). I last caught this station as an affiliate of American Family Radio as KAKU.

731 stations have been logged at this QTH as of May 30, 2004. 73 and good DX, Eric (N0UIH)

William McGuire – 2412 59th Pl. –
Cheverly, MD 20785-2918

DX-398

4/6 Tr

1953 WXCY 103.7 MD Havre de Grace, ID by female

2140 WINX 94.3 MD St. Michael's, k, local ad

4/19 Tr

0624 WLEV 100.7 PA Allentown, "Soft Rock 100"

4/22 Tr

2237 WTDK 107.1 MD Federalsburg, "The Duck"

4/26 Tr

2328 WOLC 102.5 MD Princess Anne, rel mx, "Joy 102.5"

5/6 Tr

2306 WICO 97.5 MD Salisbury, "Cat Country"

2329 WZBH 93.5 DE Georgetown, "The Beach"

5/7 Tr

0016 WOGL 98.1 PA Philadelphia, o, ID

PHILADELPHIA



0025 WGBG 98.5 DE Seaford, "Delmarva's classic rock station,"

0054 WAAI 100.9 MD Hurlock, k, ID

0123 WAFL 97.7 DE Milford, "Eagle 97.7"

0130 WOCQ 103.9 MD Berlin, hiphop, "OC 104"

2025 WGRX 104.5 VA Falmouth, k, "Thunder 104.5"

2028 WTVR 98.1 VA Richmond, station promo, "Lite 98.1"

5/10 Tr

2300 WMGK 102.9 PA Philadelphia, "MGK"
2315 WSNI 104.5 PA Philadelphia, "Sunny 104.5"
5/11 Tr

0055 WPST 97.5 NJ Trenton, local ads, "PST"

0102 WWIN 95.9 MD Glen Burnie, "Unity through music, Magic 95.9," ID

0108 WSTW 93.7 DE Wilmington, ID

5/14 Tr

0052 WZXL 100.7 NJ Wildwood, ID, "South Jersey's Rock Station"

0100 WWFG 99.9 MD Ocean City, "Froggy 99.9," local ad

5/23 Tr

0247 WNVZ 104.5 VA Norfolk, "Z-104"

2349 WWWV 97.5 VA Charlottesville, local ads, PSA, "3WV"

6/8 Tr

2150 WKJS 104.7 VA Crewe, promo, "Kiss 104.7"

6/9 Tr

2325 WGRX 104.5 VA Falmouth, k, "Thunder 104.5"

2355 WTVR 98.1 VA Richmond, ID, "Lite 98"

John Zondlo – 4009 Driftwood Circle
– Yukon, OK 73099 – CST – All new

Akai AT-VO4 tuner (modified w/2 110 filters),
APS-9B antenna w/Channel Master 9521A rotor
at 16', Conrad RDS Manager

5/5 Tr

2137 KOBT 100.7 TX Winnie, SS, "Orbita"

5/6 Tr

0835 KSMB 94.5 LA Lafayette, calls

0915 KGFM 91.5 LA Grambling, interview with Grambling U president

1001 KLBQ 98.7 AR El Dorado, calls, r

1026 KIXB	103.3	AR	El Dorado, k, local spots
1029 KMLK	101.5	AR	El Dorado, urban
<u>5/8 Tr</u>			
0937 KAYD	101.7	TX	Silsbee, "Kay-D 101," k
0953 KKPS	99.5	TX	Brownsville, "K-Pasa," SS
<u>5/18 Tr</u>			
0948 KTOT	89.5	TX	Spearman, High Plains Public Radio, j
1007 KPZA	103.7	NM	Jal, spot for busn in Kermit TX
1015 KFLP	106.1	TX	Floydada, calls
1018 KAMZ	103.5	TX	Tahoka, "La Ley," nortena
1040 KYMI	98.5	TX	Los Ybanez, ment of Brownfield, SS
1047 KTUM	107.1	NM	Tatum, local talk and "New Mexico in the Morning" from KRUI
<u>5/19 Tr</u>			
0713 KATR	98.3	CO	Otis, "Cat Country"
0736 KSPZ	92.9	CO	Colorado Springs, traffic
0740 KILO	94.3	CO	Colorado Springs, "Key-lo," nx
0744 KWGB	97.9	KS	Colby, "K-97.9," k
0807 KQSK	97.5	NE	Chadron, k, local spots, "Double-Q country"



0832 KKFM	98.1	CO	Colorado Springs, sports
0900 KEPC	89.7	CO	Colorado Springs, ID
0914 KFZX	102.1	TX	Gardendale, calls
<u>6/19 Es</u>			
1511 KBAZ	96.3	MT	Hamilton, "The Blaze," r
1520 KLTC	107.5	MT	Superior, r, "Missoula's Wild 107.5"
1523 KZOQ	100.1	MT	Missoula, local spots
1525 KMSO	102.5	MT	Missoula, r, "Mountain FM"
1535 KMCQ	104.5	OR	The Dalles, "Q-104," spot for festival in Stevenson WA
1550 KYWL	103.9	WA	Spokane, spots for Foothills Mazda and Silverwood Water Park
1558 KGDN	101.3	WA	Pasco, roundtable for Republican US House Candidates
1636 CKLJ	97.7	AB	Olds, k, calls, "All hit country"
1650 KISC	98.1	WA	Spokane, r, "Kiss 98.1," literockkiss.com
2157 CFGW	94.1	SK	Yorkton, "Fox FM," local spot
2201 CKCK	94.5	SK	Regina, classic r, "Rock 94"
<u>6/20 Es</u>			
1550 WVYB	103.3	FL	Holly Hill, local spots



From the Editor

Looks like DX has been pretty meager in Southern FM DX land. Only one good day of Es here as of this writing. Still hoping for a few good openings to the northeast this year....lots of stations I haven't heard up there.

Hope to see many of you in Omaha at the end of this month for the WTFDA Convention. This one will be a treat for me, as it's been 25 years since I've attended a club convention that I haven't hosted. Omaha is a great central location, easily accessible to many club members. I know Mike and Matt have some great stuff planned. Hopefully we'll have lots of DX to talk about.

See y'all next month!



WHAT IS IT?

It looks like another picture on the cover of another VUD but this time it's a look from the bottom to the top of the WIBW television tower west of Topeka, KS. (photo supplied by Paul Mitschler)



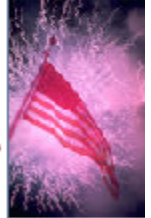
FM NEWS

editor **Adam Rivers**

37 carlton ave. Chicopee, ma 01020

email-redsoxdxer417@hotmail.com

Summer '04

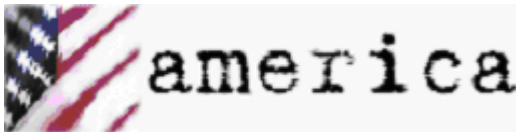


JULY 2004

ABBREVIATIONS:

AFA: American Family Association
 CC: call letter change
 CL: city of license change
 CX: a construction permit has been cancelled
 C1, C2, etc.: a change in status to that FM license class
 DA: directional antenna
 DE: station has been deleted
 FC: format change
 GA: granted amendment to the table of FM allocations
 GE: granted extension of construction permit
 GX: granted replacement of expired permit
 LC: license to cover filed (ready to come on the air)
 MC: multiple-city ID
 NC: no change yet on a reported change or permit
 ND: non directional antenna
 NO: not on the air

NS: new station granted
 NW: new station signs on
 OSA: one step application granted for change
 PA: proposed amendment change to FM allocation table
 PC: power change on the air (> = increase, < = decrease)
 PG: power change granted (> = increase, < = decrease)
 QC: frequency change occurred
 QG: frequency change granted
 RA: silent stations returns to the air
 RE: station requests an extension on permit
 RX: station requests replacement of expired permit
 SC: slogan change or update
 SI: station is silent
 SOA: signed on air
 XA: dismissed amendment to FM allocations
 XC: transmitter site change occurred
 XG: transmitter site change granted



Lake Havasu City: KLHA 89.3, calls for new station
 Leupp: KJKI 98.9, CX, DE
 Patagonia: KPUP-LP 100.5, calls for new station
 Phoenix: KKLTV 98.7, SC to "98-7 The Peak", adding oldies

ALABAMA:

Ashland: WTRB-FM 98.3, PR 1.7kw/188m, 33-18-30/85-50-58; CL from Sylacauga
 Birmingham: WYSF 94.5, PA from class C to class C0
 Cordova: WFFN 95.3, PR>17kw/122m, 33-02-25/87-27-12
 Dora: WQOP-FM 92.5, CC to WXJC-FM
 Hobson City: WASZ 95.5, PR 1.1kw/230m, 33-40-51/85-48-56; CL from Ashland
 Hoover: WENN 105.5, PR>29.5kw/190m, 33-29-04/86-48-25; CL from Trussville
 Madison: WVMB-LP 107.9, NW ?w/46m, 34-49-30/86-54-24
 Marion: WNPT-LP 102.9, PR 29kw/197m, 32-40-50/87-24-22; CL from Linden
 Midfield: WBHJ 95.7, PR 12.2kw/306m, 33-27-37/86-51-07; CL from Tuscaloosa
 Northport: WANZ 100.5, PR 93kw/309m, 33-05-42/87-15-16
 Piedmont: WJCK 88.3, PR<295m, 33-50-12/85-43-59
 Selma: WDXX 100.1, PR>150m, 32-25-06/86-58-49
 Thomaston: WAYI 97.7, CC to WSMO
 Uniontown: WVFG 107.5, is silent after a fire

ALASKA:

Kasilof: KWMD 90.7, PR>4kw-V/103m, 60-31-58/151-04-52
 Kasilof: KWVK 89.7, PR>4kw-V/103m, 60-31-58/151-04-52
 Sterling: KRAW 90.1, PR 250w-V/117m, 60-31-48/150-34-52
 Wrangell: KWRG-LP 99.9, calls for new station

ARIZONA:

Chino Valley: KFPB 94.3, PR 4.1kw/247m, 34-49-32/112-34-09
 Holbrook: KJNN-LP 94.7, calls for new station



ARKANSAS:

Arkadelphia: KSWH-LP 99.9, PG>30m, 34-07-44/93-03-37
 Bentonville: KFAY-FM 98.3, CC to KQSM-FM, SC to "Sam 98"
 Clarksville: KUOZ-LP 100.5, PR<-4m dismissed
 El Dorado: KAGL 93.3, PC>18kw/108m
 Lonoke: KLEC-FM 106.3, CC to KOLL, FC to oldies
 Piggott: KBOA-FM 105.5, XC 36-19-49/90-07-23
 Russellville: KWKK 100.9, NS 280w/-10m, 35-16-52/93-07-32 (aux)

CALIFORNIA:

Alameda: KPTI 92.7, CC to KBTB
 Alpine: KRWI-LP 107.9, calls for new station
 Corona: KGIC-LP 105.5, calls for new station
 Desert Center: KZAL 105.5, CX, DE
 Garberville: KLVG 103.7, PG>11kw
 Hollister: KHRI 90.7, PC>170w
 Johannesburg: KEDD 103.9, PR>402m
 Lenwood: KHDR 96.9, PC>244m
 Modesto: KEJC 93.9, corrects coordinates to 37-39-00/121-01-24
 Moro Bay: KKAL 99.7, CC to KXTY
 Paso Robles: KWSR 92.5, CC to KKAL.
 Patterson: KOSO 93.1, PR<2.75kw



Point Arena: KYOE 102.3, signs on with country
Prunedale: KLVM 89.7, PR>520w
Shafter: KQZQ 89.5, CC to KGLV
Windsor: KMHX 104.1, AF 580w/97m, 38-32-28/122-54-06 (aux)

COLORADO:

Canon City: KSTY 104.5, PG>25kw
Castle Rock: KJMN 92.1, PR 42kw/163m, 39-23-07/105-02-52
Colorado Springs: KEPC 89.7, PR<-77m, 38-45-41/104-47-04
Colorado Springs: KTLF 90.5, PC>673m
Delta: KKNN 95.1, PR>451m
Dolores: KKDC 93.3, signs on as AAA "The Crow"
Glenwood Springs: KMTS 99.1, PR>-69m
Greeley: KUNC-FM 91.5, PC 81kw/211m, 40-38-31/104-49-03
Lamar: KSNZ 93.3, CC to KLMR-FM
Rocky Ford: KJOY 95.5, PG>100kw/224m, 37-54-08/104-16-00
Westcliffe: KWMV-LP 95.9, NW 100w/-46m, 38-08-04/105-27-41

CONNECTICUT:

Pawcatuck: WHJM 107.7, CC to WWRX

FLORIDA:

Anthony: WPZL-LP 96.3, NW 100w/28m, 29-16-57/82-02-49
Avon Park: WAPQ-LP 95.9, calls for new station
Century: WPFL 105.1, PC 8.6kw/170m, 31-07-09/87-16-05
Clermont: WWKQ 88.7, CC to WQQZ



Coral Cove: WSRZ-FM 107.9, PC>47kw/155m, 27-09-03/82-27-51
Estero: WRQC 92.5, PR>25kw
Graceville: WTOT-FM 101.7, PG>25kw, 30-59-55/85-42-16
Inglis: WIFL 104.3, PR>25kw/95m, 29-02-10/82-42-40
Jacksonville: WNCM-FM 88.1, CC to WCRJ
Key Colony Beach: WKYZ 105.5, QR to 101.7, 100kw/84m, 27-41-30/81-06-31
Key Largo: WGES 90.9, NW 33kw/77m, 25-22-53/80-26-24, signs on with Spanish religious
Lafayette: WEGT 99.9, PC<5.5kw/90m, 30-29-42/84-13-51
Naples: WSRX 89.5, PC>100kw
Naples: WSOR 90.9, PR<275m
Rock Harbor: WKLG 102.1, PG>100kw
Sarasota: WUWU-LP 96.5, calls for new station
Sebring: WGSE-LP 95.7, calls for new station
St. Catherine: WKFA 89.3, PR>90m, 28-32-22/82-04-48
Vero Beach: WGNX 99.7, PR 50kw/134m, 27-44-07/80-27-27

GEORGIA:

Ambrose: WKAA 97.9, PR<3.5kw/96m, 31-31-51/82-54-34; CL from Ocilla
Americus: WFRP 88.7, PR>4.2kw/70m
Athens: WGDY-LP 93.3, calls for new station
Atlanta: WABE 90.1, PG<250m, 33-45-32/84-20-07
Brunswick: WRJY 104.1, FC to country "Coastal Country 104, The Wave"
Cochran: WVMG-FM 96.7, FC to modern rock//WYNF 96.5
College Park: WWWQ 100.5, PG 27kw/143m, 33-41-20/84-30-38



Glennville: WOA 106.3, PG 6kw/100m, 31-58-23/81-57-28
Nashville: WJYF 95.3, PG>29kw/159m, 31-10-18/83-21-57
Rossville: WRXR-FM 105.5, PR 1.8kw/184m, 34-57-23/85-17-32
Springfield: WEAS-FM 93.1, requests CL from Savannah
Statesboro: WMCD 100.1, CC to WMZD
Thomasville: WAYT 88.1, NW 35kw/392m, 30-40-06/83-58-10 (Way FM)
Warner Robbins: WELV-FM 102.5, CC to WEBL, FC to country "Bull 102"
Willacoochee: WDMG-FM 99.5, PR 43kw/230m, 31-10-18/83-21-57

HAWAII:

Hilo: KIHLP 103.3, calls for new station
Kalaheo: KTOH 99.9, PR<51kw
Kapaa: KITH 98.9, PR<51kw
Keaau: KBGX 105.3, PR<25.5kw/28m, 19-43-18/155-27-23

IDAHO:

Rexburg: KADQ 94.3, FC to AAA "Z94"
Rupert: KKMV 106.1, PR>25kw/761m, 42-20-06/113-36-15
Sandpoint: KPND 95.3, PR>56kw/764m, 48-04-43/116-57-09

ILLINOIS:

Chicago: WDRV 97.1, PG 8.3kw (from 8.4-H/7.5-V), 41-53-06/87-37-18
Chillicothe: WPMJ 94.3, shifts to smooth jazz, still as "Magic 94.3"
Dundee: WZCH 103.9, CC to WWYW, FC to "Y103.9"
Godfrey: WLCA 89.9, PG>1.5kw/120m, 38-56-57/90-11-47
Loves Park: WKMQ-FM 96.7, CC to WKGL-FM
Milford: WJCZ 91.3, PR 25kw/27m, 40-35-07/87-57-47
Morrisson: WZZT 102.7, FC to classic hits "ZZ103"
Park Forest: WRZA 99.9, relaunched as Hot AC "Nine FM"
Petersburg: WYVR 97.7, XC 39-54-35/89-43-01
Springfield: WLJX-LP 107.9, calls for new station
Sugar Grove: WSRI 88.7, PR<250w/39m, 41-47-01/88-26-14



INDIANA:

Brazil: WSDM-FM 97.7, QR to 92.7
Fort Wayne: WBCL 90.3, PC 26kw/211m
Jasper: WKJR 91.7, PG 2.6kw/84m, 38-25-23/86-49-47
Kokomo: WJJD-LP 101.3, XR 40-29-49/86-06-14
Terre Haute: WAPC 91.9, PC<960w, CC to WHOJ

IOWA:

Boone: KBGG-FM 98.3, NS 28kw/114m (aux)
Des Moines: KIOA 93.3, PR>100kw
Hiawatha: KWOF-FM 89.1, NW 5.8kw-V/122m, 42-03-13/91-44-35
Waverly: KWAR 89.1, PR>26m



KANSAS:

Derby: KRZZ-FM 96.3, CC to KZCH, FC to CHR "Channel 96-3"
El Dorado: KTLI 99.1, FC to K-Love contemporary Christian
Hutchinson: KSNZ 102.1, PR 100kw/313m, 37-46-40/97-30-37
Iola: KIKS-FM 101.5, QC from 99.3, 11.5kw/88m
Topeka: KWIC 99.3, PC>6.8kw/164m, 39-03-50/95-45-49

Wichita: KRBB 97.9, PR>313m, 37-46-40/97-30-37
Wichita: KKRD 107.3, FC to Classic Rock "107.3 The Road", Bob and Tom

KENTUCKY:

Bowling Green: WGGC 95.1, GA from Glasgow
Hopkinsville: WPJI-LP 94.5, NW 100w/21m, 36-50-48/87-32-11
Oak Grove: WEGI 94.3, PC>6kw/78m, 36-38-28/87-26-01; CL from Springfield, TN; FC to classic hits "Eagle"
Paducah: WGCF 89.3, PR>15kw/145m, 37-11-14/88-59-18
Russell Springs: WHVE 92.7, XR 37-04-41/85-10-26

LOUISIANA:

Jonesboro: KTOC-FM 104.9, PR>25kw/72m
Kenner: WKZN 105.3, PR>96kw/305 m



Shreveport: KMJJ-FM 99.7, PR<21.5kw/163m, 32-29-36/93-45-55

MARYLAND:

Frederick: WJTM 88.1, PG 1kw/340m, 39-29-31/77-30-00

MASSACHUSETTS:

Northampton: WXOJ-LP 103.3, calls for new station
Pittsfield: WRRS-LP 104.3, XR 42-26-01/73-15-00

MICHIGAN:

Battle Creek: WUBC-LP 97.1, calls for new station
Detroit: WOMC 104.3, PR<58kw
Detroit: WDET-FM 101.9, AF 16kw/128m (aux)
Essexville: WEEG 97.3, FC to hot AC/classic hits "Joe FM"
Grand Rapids: WBCT 93.7, NS 70kw/180m (aux)
Ishpeming: WMQT-FM 107.7, PC>98kw/195m, 46-30-07/87-38-52
Ishpeming: WJPD 92.3, PC>155m
Marquette: WUPK 94.1, PC 4.4kw/116m, 46-30-51/87-28-58
Mount Pleasant: WRWP-LP 106.7, calls for new station
Muskegon: WMCQ 91.7, PR>8kw/109m, 43-18-37/85-54-44
Muskegon: WPOZ 88.1, PR 1kw/28m, 43-16-38/86-18-39
Saginaw: WGER 106.3, PG>4.4kw, 43-28-36/83-57-06
Southfield: WSHJ 88.3, PR>120w/21m



MINNESOTA:

Glenwood: KMGK 107.1, PR>25kw/100m, 45-44-39/95-08-05
Hermantown: WWAX 92.1, AF 990w/113m, 46-47-41/92-07-05 (aux)
Spring Grove: KQYB 98.3, PR 14.1kw/284m, 43-39-30/91-31-56
Willmar: KKLW 90.9, NW 400w/129m, 45-11-52/94-56-58

MISSISSIPPI:

Brookhaven: WBKN 92.1, PR 3.4kw/92m, 31-33-48/90-26-27
Coldwater: WVIM-FM 95.3, PR>3.4kw/134m, 34-48-22/89-59-47
Horn Lake: WHAL-FM 95.7, PC<88m, 35-08-09/89-58-17; CL from Olive Branch



Lumberton: WZNF 95.3, PG>70kw/360m, 30-44-48/89-03-30

West Point: WKBB 100.9, PC>10kw/157m, 33-40-43/88-48-18

MISSOURI:

Country Club: KJCV 89.7, PR>3.9kw/167m, 39-42-35/95-02-33
De Soto: KDJR 100.1, PC<2kw/100m
Kansas City: KBEO 104.3/KMXV 93.3/KSRC 102.1, AF 36kw/144m, 39-06-50/94-40-45 (aux)
Mansfield: KTRI-FM 95.9, PR>8.9kw/165m, 37-17-10/92-36-55, FC to top 40 "The Buzz"

MONTANA:

Bozeman: KZLO-FM 99.9, CC to KBOZ-FM
Browning: KBWG-LP107.5, calls for new station
Helena: KHFG-LP 101.9, calls for new station
Kalispell: KANB-LP 102.3, NW 100w/-40m, 48-08-39/114-17-02
Plains: KWHP-LP 104.3, NW 100w/-195m, 47-27-25/114-53-1
Ronan: KQRK 92.3, FC to Top 40 "Power 92"



Sidney: KGCX 93.1, NW 100kw/110m, 47-51-51/103-57-26, signs on with Classic rock "Eagle 93"

NEBRASKA:

Broken Bow: KBBN-FM 95.3, PA from 98.3
Callaway: KAWA-LP 102.7, XR 41-17-30/99-55-32
Grand Island: KGIA-LP 92.9, calls for new station
Grand Island: KKLK 88.3, CC to KLNK
Imperial: KADL 102.9, PC>300w/68m, 40-30-45/101-38-39
Maxwell: KRKU 98.5, PA from McCook
Shelton: KPVA-LP 92.9, calls for new station

NEVADA:

Ely: KCLS 101.7, PR>3.5kw/266m
Mesquite: KAIZ 88.5, calls for new station
Sun Valley: K200AA 87.9, QC from 88.1

NEW HAMPSHRE:

Lebanon: WVFA 90.5, NW 10w/212m, 43-37-17/72-10-30

NEW JERSEY:

Cape May CH: WJPG 88.1, NW 550w-V/65m, 39-07-36/74-49-39
Lakewood: WMDI-LP 107.9, NW 100w/7m, 40-05-46/74-13-21
Long Branch: WWZY 107.1, PR 5kw/110m
Port Republic: WXXY-FM 88.7, PR>760w-V/40m

NEW MEXICO:

Alamogordo: KKBO 107.9, calls for new station
Chama: KFLH 95.9, CC to KZRM, FC to rock "Rocky Mountain Rock"



Fruitland: KTGW 91.7, PR 10kw/133m
Grants: KDSK 92.7, FC to oldies, simulcasting KMIN 980
Lovington: KCMG-LP 100.1, NW 100w/30m, 32-56-35/103-21-15
Roswell: KRSR 89.1, calls for new station

Socorro: KQRI 89.5, calls for new station

NEW YORK:

Arcade: WCOF 89.5, PR>1kw
Binghamton: WAAL 99.1, PC 8.7kw/291m, 42-03-31/75-57-06
Brighton: WZNE 94.1, NS 1kw/120m, 43-09-17/77-36-10 (aux)
Brockport: WMJQ 105.5, QR to 104.9, 6kw/100m, 43-09-51/77-47-02
Honeoye Falls: WNVE 95.1, CC to WFXF, FC to classic rock "The Fox"
Kingston: WBPM 94.3, CC to WKXP
New York: WSKQ-FM 97.9, AF 12.4kw/281m, 40-45-22/73-59-12 (aux)



Patchogue: WBLI 106.1, NW 11.6kw/100m (aux)
Ripley: WNYF-LP 98.7, calls for new station
Rochester: WRMM 101.3/WPXY 97.9, NS 1kw/120m, 43-09-17/77-36-10 (aux)
Saugerties: WRKW 92.9, CC to WBPW, FC to oldies "Cool 92.9"
South Bristol: WFXF 107.3, CC to WNVE, FC to modern rock "The Nerve"
Sylvan Beach: WBGJ 100.3, XC 43-14-46/75-46-25
Weathersfield Twp.: WNSA 107.7, FC to classic rock "107.7 The Lake", CC to WLKK

NORTH CAROLINA:

Chapel Hill: WCOM-LP 103.5, XR 35-52-38/79-04-09
Charlotte: WFAE 90.7, PR>331m, 35-17-14/80-41-45
Creedmor: WFXQ 99.9, GA from Chase City, VA
Elizabeth City: WKJX 96.7, relauches as AC "Mix 96", upgrades to class C2
Gatesville: WODK 99.3, GA from Ahoskie
Hatteras: WYND-FM 97.1, PC>59kw
Henderson: WYFL 92.5, PC>100kw-V
Kill Devil Hills: WCXL 104.1, PC 100kw/296m, 36-08-08/75-49-28
Kinston: WWNF 97.7, PR>2.65kw/153m, 35-17-30/77-49-25
Nashville: WZAX 99.7, GA to 99.3
Roanoke Rapids: WZNC-LP 95.9, NW 100w/16m, 36-28-08/77-39-02
Windsor: WIAM-FM 98.9, FC to WNBR

NORTH DAKOTA:

Arthur: KVMI 103.9, GA from class C3-> class C1
Dickinson: KPAR-LP 103.3, XR 46-53-10/102-46-58
Jamestown: KXGT 95.5, PR>202m, 46-56-21/98-18-30
Valley City: KQDJ-FM 101.1, PR>100kw/202m, 46-56-21/98-18-30

OHIO:

Ashville: WLZT 93.3, PG 32kw/184m, 39-52-34/82-58-49; CL from Chillicothe
Gahanna: WCVO 104.9, PR 2.5kw/154m, 40-06-30/82-48-49
Georgetown: WAXZ 97.7, PR 3kw/100m, 38-46-50/83-51-55



Johnstown: WSMZ 103.1, CC to WVKO-FM
Mount Gilead: WVXG 95.1, RA with contemporary Christian, "95.1 The River"
Norwalk: WNRK 90.7, NW 4kw/124m, 41-10-50/82-23-21
Oxford: WOXY 97.7, PR>100m, 39-30-44/84-38-09
South Webster: WRAU 94.9, CC to WSNA
Thompson: WKSJ 89.1, PR<144m, 41-41-34/81-02-51

OKLAHOMA:

Bartlesville: KWRI 89.1, PR>100kw-V/191m, 36-42-13/95-30-57
Cache: KARU 88.9, PG<440w-V/79m
Enid: KAMG-LP 100.9, calls for new station
Glenpool: KTSO 94.1, PR<211m, 36-07-52/96-04-13

Oklahoma City: KYLV 88.9, PR>39kw/205m, 35-34-24/97-29-08

OREGON:

Coos Bay: KJCH 90.9, PR<1.4kw/446m
Coos Bay: KDCQ 92.9, GA from 93.5
Gladstone: KAST-FM 93.1, GA from 92.9 class C1, Astoria to class C3
Long Beach: KAQX 92.7, GA from 94.3
Portland: KPDO-FM 93.9, GA from 93.7 class C to class C2



Springfield: KGNU 93.3, GA from 93.1
The Dalles: KACI-FM 97.7, PR>5.1kw
Tillamook: KTIK-FM 94.3, GA from 94.1
Tillamook: KILN 89.5, calls for new station

PENNSYLVANIA:

Cambridge Springs: WXCS-LP 92.9, NW ?w/31m, 41-47-20/80-03-39
Chambersburg: WZXQ 88.3, PG 110w/352m, 39-57-40/77-28-32
Gap: WGCP-LP 92.7, CC to WOMB-LP
Girardville: WQDD-LP 107.9, XR 40-47-09/76-14-43
Grove City: WICT 95.1, CC to WWGY, SC to "Froggy 95.1"
Havertown: WHHS 107.9, QR to 99.9
Laplume: WKCV-LP 103.5, calls for new station
Middletown: WZXM 88.7, PR>4.3kw-V/251m, 40-01-37/76-36-02



SOUTH CAROLINA:

Anderson: WJMZ-FM 107.3, PR<301m, 34-38-51/82-16-13
Gaffney: WAGI-FM 105.3, PC>374m, 35-24-52/81-46-31
Irmo: WJES-FM 92.1, PR>15kw/130m, 34-04-55/81-07-36; CL from Saluda
New Ellenton: WAJY 102.7, PC>4.3kw/118m
Richburg: WRBK 90.3, PR>7.5kw-H/7.3kw-V/164m, 34-41-46/81-01-23
Seneca: WHZT 98.1, PR 93kw/308m, 34-42-07/82-36-19

TENNESSEE:

East Ridge: WOGT 107.9, PR>25kw, 35-07-33/85-17-2
Jefferson City: WEZG 99.9, CC to WNRX
Lebanon: WRVW 107.5, PC 46kw/409m



Memphis: WYPL 89.3, PC>100kw/382m, 35-28-03/90-11-27
Savannah: WKWX 93.5, PC>25kw
Sewannee: WMTN-LP 94.1, calls for new station
Smyrna: WFFH 94.1, PR>3.2kw/93m, 36-01-14/86-38-18
St. Joseph: WJOR-FM 101.5, PG 4kw/123m, 34-56-01/87-32-59

TEXAS:

Alice: KOPY-FM 92.1, PC>6kw/94m
Belton: KOXB 106.3, CC to KOOC
Corpus Christi: KKLM 88.7, PG>8.3kw/264m
Devine: KSJL-FM 92.5, CC to KHTY
Edinburg: KVLV 107.9, PR>100kw/257m, 26-05-18/98-03-44
Falfurrias: KPSS-FM 106.3, PR>6kw/56m
Farmersville: KXEZ 92.1, PG 1.95kw/178m

Fredericksburg: KNAF-FM 105.7, PG<9.1kw/164m, 30-21-51/98-54-49; CL from Mason
 Jacksboro: KJKB 95.5, NW 6kw/100m, 33-19-43/98-16-46
 Jacksonville: KBJJ 90.3, PC>16.5kw/392m, 32-03-40/95-18-50
 Kerens: KRVF 106.9, FC to country "The Ranch"
 Levelland: KLVT-FM 105.3, PR>50kw/150m, 33-28-30/102-18-10
 Lubbock: KQRI 90.9, CC to KKLK, FC to K-Love
 Mason: KBLK 102.5, PG 26kw/192m
 Navasota: KMBV 92.5, CC to KHTZ, FC to country "Lone Star 92.5"
 Post: KOFR 107.3, CC to KPOS, FC to Christian rock (Air 1)
 Premont: KYFF-LP 102.5, calls for new station
 Rio Grande City: KOBO 107.5, QC from 103.1, 12kw/303m, 26-31-01/98-39-07
 San Angelo: KYZZ 100.1, PG>50kw/117m, 31-31-49/100-29-05
 Seguin: KSMG 105.3, PR>100kw/453m
 Seymour: KSEY-FM 93.9, PR<144m, 33-34-15/99-18-30
 Sinton: KOUL 103.7, PC>290m
 South Padre Island: KESO 92.7, FC to Spanish Top 40, simulcasting XHAVO 101.5, "Digital 101-5"
 South Padre Island: KZSP 95.3, FC to news-talk //KURV 710 Edinburg TX
 Stamford: KLGJ 106.9, FC to tejano, CC to KJTZ
 Stanton: KFRI 88.1, PG>139m, 32-05-44/101-48-47
 Stephenville: KEQX 89.7, PG 6kw/150m, 32-07-24/97-58-48
 Wolfforth: KAIQ 95.5, PR 100kw/206m, 33-31-03/101-51-24



UTAH:

Salt Lake City: KKAT 101.9, FC to Top 40 "Pop FM"
 St. George: KAER 89.5, PR>7kw/555m, 36-50-49/113-29-28

VERMONT:

Norwich: WNCH 88.1, NW 110w-H/1.7kw-V/674m, 43-26-15/72-27-08
 Royalton: WRJT 103.1, PR 6kw/85m, 43-42-29/72-23-22
 Waterbury: WLKC 103.3, PR>1.05kw/806m, 44-31-32/72-48-54

VIRGINIA:

Cheriton: WWIP 89.1, calls for new station
 Grundy: WMJD 97.7, FC to classic country
 Louisa: WLSA 105.5, CC to WOJL, FC to oldies
 Luray: WMXH-FM 105.7, PC<150w/601m, 38-35-59/78-38-01
 Midlothian: WCUL 98.9, PG>7.3kw/183m, 37-36-52/77-30-56; CL from Orange
 Richmond: WCVE-FM 88.9, PC>17.5kw
 Shell Knob: KQMO 97.7, FC to smooth jazz
 South Hill: WKSK-FM 101.9, PC<6kw-H/5.7kw-V/96m
 Virginia Beach: WWHV 102.1, PC 6kw/100m, 36-45-07/76-08-57



WASHINGTON:

Basin City: KHTO 97.5, PR>50kw/189m, 46-17-23/119-25-28; CL from Othello
 Centralia: KMNT 102.9, PR 70kw/668m
 Covington: KMCO 104.5, GA from The Dalles, OR
 Deming: KLOO-LP 102.5, calls for new station
 Ellensburg: KXLE-FM 95.3, PR>51kw/125m, 47-09-48/120-47-36

Ocean Shores: KOSW-LP 91.3, NW 100w/12m, 46-58-30/124-09-48
 Ocean Shores: KYAO-LP 100.1, NW 100w/25m, 46-59-00/124-09-07

WEST VIRGINIA:

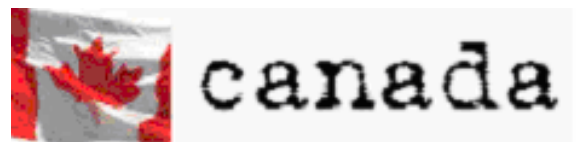
Berekeley Springs: WDHC 92.9, PR 3.2kw/139m
 Charleston: WVPN 88.5, PR>44kw/134m
 New Martinsville: WXCR 92.3, PR>3.2kw
 Parkersburg: WHBR-FM 103.1, PC 2.1kw/171m
 Summersville: WMLJ 90.5, PG>315m

WISCONSIN:

Eau Claire: WRFP-LP 101.9, calls for new station
 Eau Claire: WLFK-LP 107.9, NW 100w/27m, 44-48-55/91-29-36
 Three Lakes: WLSL 93.7, PR>100kw/124m, FC to classic hits

WYOMING:

Douglas: KDUW 91.7, PC>95m, 42-43-24/105-18-21
 Evanston: KOTB 106.1, PC>89kw/647m, 40-52-16/110-59-43
 Laramie: KIMX 96.7, PR 4.8kw/313m, 41-17-15/105-26-38



ALBERTA:

Calgary: CKIK 107.3, CC to CFGQ

ONTARIO:

Belleville: CKJJ-FM 102.3, PG<15kw/136m
 Belleville: CJLX-FM 91.3, QR from 92.3, 3400w/164m, move 16.5km NW
 Brantford: CFWC-FM 93.9, QG from 99.5, 250w

QUEBEC:

Pabos Mills: CFMV-FM 95.5, QR to 92.1
 Sherbrooke: CJRF-FM 89.5, QR to 93.1
 Sherbrooke: CFGE-FM 93.7, PG>1.78kw

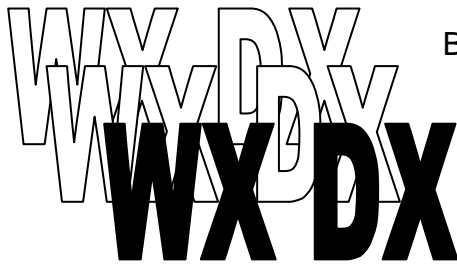
Some news and notes:

- WBNI 89.1 (Fort Wayne) and WBOI 91.3 (translated on 88.7 in Ft. Wayne) swap calls and formats. WBOI is NPR, WBOI is classical.
- Another heritage CHR is killed in Kansas, as KKRD-107.3 gets trashed by Clear Channel, moving the CHR format to 96.3 as "Channel", and making KKRD 107.3 The Road, a classic rock station.



I am going to Arizona for the latter part of July, so FM news might be shortchanged, or we might have to skip enough depending on the circumstances. I will have my laptop with me.

-Adam



Beyond FM
 Beyond TV
 USA – CANADA
 Weather Radio Monitoring

Submit weather band loggings and weather radio news to
 Jason Koralja at: jk1bi01@hotmail.com (Subject: WXDX)

Published bi-monthly

July 2004

Weather Radio Frequencies

WX1	162.550 MHz	WX6	162.500 MHz
WX2	162.400 MHz	WX7	162.525 MHz
WX3	162.475 MHz	WX8*	161.650 MHz
WX4	162.425 MHz	WX9*	161.775 MHz
WX5	162.450 MHz	* =	Canada Only

NEWS: May 1 to June 20

Per Bill Heppurn,
 NEW - VEF 956 162.400 Algonquin Park, ON
 NEW - CIE 211 162.550 Hay River, NT
 NEW - XKI 403 161.650 Inner Whaleback Rocks, NT (// Yellowknife)
 NEW - XJS 786 162.475 Pine Point, NT (// Hay River)

DX LOGGINGS (May 1 to June 20)

Eric Bueneman (N0UIH), Hazelwood, MO

Equipment: Radio Shack PRO-79 handheld scanner, Radio Shack VU-210XR, Radio Shack discone antenna (both at 30 feet/9.1 meters above ground level)

All times CDT; all distances in miles/kilometers. Cities in parentheses are the National Weather Service offices where programming originates.

April 18, 2004 (trop)

0244 KWN55 162.425 Jamestown, MO-legal ID, Central MO forecast (St. Louis, MO) 115/185
 0245 WXM49 162.425 Marion, IL-conditions for southern IL (Paducah, KY) 100/161
 0246 WXL45 162.400 Columbia, MO-CDT TC, legal ID, MO cx (St. Louis, MO) 105/169
 0320 WXJ71 162.475 Peoria, IL-Midwest cx, legal ID, local signal (Lincoln, IL) 140/225

May 11, 2004 (trop)

0208 WNG639 162.475 Cherokee Village, AR-legal ID, AR and TN cx (Little Rock, AR) 180/290
 0213 KXI35 162.500 Alton, MO-legal ID, CDT TC, severe wx outlook (Springfield, MO) 155/249
 0356 KXI66 162.425 Piedmont, MO-legal ID, severe wx outlook (Paducah, KY) 100/161

May 15, 2004 (trop)

0002 WNG648 162.500 Dixon, MO-legal ID, forecast for central MO (Springfield, MO) 110/177
 2132 KXI48 162.450 Newton, IL-wx forecast for SE IL, cx for Lawrenceville (Lincoln, IL) 135/217

May 16, 2004 (trop)

0110 WVK72 162.400 Putnamville, IN-wx forecast for Terre Haute (Indianapolis, IN) 190/306
 0117 KXI52 162.400 McLeansboro, IL-wx forecast for southeastern IL (Paducah, KY) 100/161
 0207 KXI42 162.450 Chester, IL-wx forecast for southwest IL, KXI70 off (St. Louis, MO) 65/105
 0304 WXJ71 162.475 Peoria, IL-legal ID, wx forecast for Peoria (Lincoln, IL) 140/225
 1155 WXJ92 162.500 Macomb, IL-legal ID, cx for Burlington, IA (Quad Cities, IL/IA) 115/185
 1326 KIH46 162.475 Mayfield, KY-legal ID, wx forecast for western KY (Paducah, KY) 170/274
 1349 WXM49 162.425 Marion, IL-wx forecast for southern IL, KXI79 off (Paducah, KY) 100/161
 1406 KXI35 162.500 Alton, MO-wx forecast for MO Ozarks, thru KXI46 (Springfield, MO) 155/249

May 18, 2004 (trop)

(Continues on page 49)

TRANSLATOR NEWS

BRUCE ELVING

FM Stations, Translators, Low Power FM Stations Granted

Translators have less than 100 watts unless shown otherwise; technical parameters for most LPFM stations are not announced, but can be up to 100 watts at 30 meters above average terrain (horizontal, vertical or both h & v)

AL Alexander City W245AQ 96.9 (WVFJ 93.3 Manchester GA translator), h,v
AL Auburn W254AY 98.7 (WELR-FM 102.3 Roanoke), h,v. Granted despite
W224AK 92.7 there, another WELR-FM translator.
AL Greensboro W237BH *95.3 (WALN 89.3 Carrollton), h,v
AL Livingston W259AL *99.7 (WQST-FM 92.5 Forest MS), h,v
AL Northport W286AQ *105.1 (WALN), h,v
AL Onenta W231AW 94.1 (WVFJ), h,v
AZ Parker K222AV *92.3 (KYRM 91.9 Yuma), h,v
AZ Winslow K300BB *107.9 (KGCB 90.9 Prescott), h,v
AR Blytheville K277AV *103.3 (WKVZ 94.9 Ripley TN), 250 h,v
AR Magnolia K286AT 105.1 (KMGC 104.5 Camden), 250 h,v
AR Marshall K235AV *94.9 (KCMH 91.5 Mountain Home), h,v
AR Mountain View K254AW *98.7 (KCMH), h,v
AR Osceola K237DL *95.3 (KAOG 90.5 Jonesboro), 250 h,v
AR Pine Bluff K255AX *98.9 (KBPW 88.1 Hampton), h,v
CA Baker K241AV 96.1 (KGMN 100.1 Kingman AZ), h,v
CA Bakersfield K278AT *103.5 (KGZO 90.9 Shafter), h,v. Its location is
N.E. of town; KRHM-LP *103.3 is south of Bakersfield.
CA Clark Mountain (SW Boulder City NV) K284AU *104.7 (KWITH 91.3 Barstow), h,v
CA Clearlake K273AT 102.5 (KMKX 93.5 Willits), 100 h,v
CA Crescent City K28EC *93.5 (KLVG 103.7 Garberville), h,v
CA Halloran Springs K264AP *100.7 (KWITH), h,v
CA Los Banos K233AX *94.5 (KYCC 90.1 Stockton), h,v
K299AP *107.7 (KLVY 91.1 Fairmead), 120 h,v
CA Marysville K255AY *98.9 (KARA 99.1 Williams CA), h,v
CA Mountain View K264AQ *100.7 (KSRI 90.7 Santa Cruz), h,v
CA Napa K289AS *105.9 (KLSI 89.3 Moss Beach), h,v
CA North Edwards K253AJ *98.5 (KWTD 91.9 Ridgecrest), h,v
CA Susanville K224DA 92.7 (KRNG 101.3 Fallon NV), h,v
CA Yreka K293AU *106.5 (KDOV-FM 91.7 Medford OR), h,v
CO Fort Morgan K237DK *95.3 (KLDV 91.1 Morrison), 210 h,v
CO Fowler K282AK *104.3 (KVOD 90.1 Denver), 250 v
CO Holyoke K257DX *99.3 (KWYC 90.3 Orchard Valley WY), 210 h,v
CO Lake City K271AK *102.1 (KTPS 89.7 Pagosa Springs), h,v
CO Redvale K252DZ 98.3 (KMOZ-FM 100.7 Grand Junction), h
CO Steamboat Springs K219DA *91.7 (WWFM 89.1 Trenton NJ), h. Seeks 91.1, 200 watts h.
CO Trinidad K257EA *99.3 (KTPL 89.1 Pueblo), h,v
K284AV 104.7 (KZKS 105.3 Rifle CO), 250 h
CT Danbury W233AU *94.5 (WEDW-FM 88.5 Stamford), h,v
W297AN *107.3 (WMNR 88.1 Monroe), h,v
CT Torrington W231AX *94.1 (WPKT 90.5 Meriden), h,v
W286AP *105.1 (WAPJ 89.9 Torrington), 150 h,v
DE Georgetown W286AS 105.1 (WSCL 89.5 Salisbury MD), h,v
FL Bayonet Point (N. New Port Richey) W256AQ 99.1 (WXCV 95.3 Homosassa Springs), h,v
W260AV *99.9 (WKFA 89.3 St. Catherine FL), h,v
FL Citrus Springs K266AP (WYKS 105.3 Gainesville FL), 170 h,v
FL Flamingo (on the mainland, west of Key Largo) W229AL *93.7 (WAVQ 88.3 Key West), h,v
W297AM *107.3 (WKWR 90.1 Key West), h,v
FL Gulfport W233AV *94.5 (WSMR 89.1 Sarasota), h,v
FL Melbourne *94.1 Windover Farms of Melbourne Homeowners' Association, LPFM
FL Palm Bay *107.9 Public Radio Information Services of Central Florida, Inc., LPFM
GA Alma W260AX *99.9 (WASW 91.9 Waycross), h,v
GA Bainbridge W290AS *105.9 (WKVH 91.9 Monticello FL), h,v
GA Camilla W250AO *97.9 (WKVH), h,v
GA Cordele W232BF *94.3 (WWXC 90.7 Albany), 250 h,v
GA Jefferson W265BL *100.9 (WLPE 91.7 Augusta), h,v
GA Moultrie *102.7 Sunrise Broadcasting Corp., LPFM
GA Ocilla W260AW *99.9 (WUNV 91.7 Albany), h,v
GA Quitman W249BI *97.7 (WKVH), h,v
GA St. Marys W223AR *92.5 (WCRJ 88.1 Jacksonville FL), h,v
GA Swainsboro W259AK *99.7 (WXVS 90.1 Waycross), h,v
GA Tifton W260AT *99.9 (WUNV), h,v
GA Valdosta W269BJ *101.7 (WKVH), h,v
GA Wadley W253AP *98.5 (WDCO-FM 89.7 Cochran), h,v
W273AN *102.5 (WACG 90.7 Augusta), h,v
W277AY *103.3 (WSVH 91.1 Savannah), h,v
GA Warner Robins W258AP *99.5 (WBJY 89.3 Americus), h,v
GA Wrightsville W277AX *103.3 (WJTG 91.3 Fort Valley), h,v
HI Honolulu K256AS *99.1 (KHPR 88.1 Honolulu), 210 h,v. Seeks h,v, but less than 100 watts.
ID Post Falls K253AK *98.5 (KKRS 97.3 Davenport WA), h,v
ID Priest River (transmitter SSE Newport WA) K231AU *94.1 (KKRS), h,v
ID St. Anthony K279AP *103.7 (KLRI 89.5 Rigby), 250 h,v
ID Salmon K273AU *102.5 (KLRI), h,v
ID Soda Springs K231AZ *94.1 (KLRI), h,v
IL Brighton W227AZ 93.3 (WDZQ 95.1 Decatur), h,v
IL Cairo W247AX *97.3 (WAWJ 90.1 Marion), h,v
IL Englewood (neighborhood of Chicago, near S. 62nd St.) W264BF *100.7 (WHLP 89.9 Hanna IN), 120 h,v
IL Galva W261AL (WAXR 88.1 Geneseo), h,v
IL Park Forest W276BM *103.1 (WHLP), h,v
IL Polo W227AY *93.3 (WNWC-FM 102.5 Madison WI), h,v
IL Sterling W226AQ *93.1 (KXJX-LP 92.5 Clinton IA), 120 h,v

IL Streator W275AM *102.9 (WWGN 88.9 Ottawa), h,v
 IN Bedford W247AY *97.3 (WJLR 91.5 Seymour), h,v
 IN Bourbon W294AS *106.7 (WHLP 89.9), h,v
 IN Buffalo W266AO *101.1 (WHLP), h,v
 IN Crown Point W240BJ *95.9 (WHLP), h,v
 IN Elkhart W286AT *105.1 (WRXH 89.3 Plymouth), h,v
 IN Goshen W251AR *98.1 (WQKO 91.9 Howe), h,v
 W255AX *98.9 (WSBL-LP 98.1 South Bend), 170 h,v.
 How it will get the signal with W251AR on the air is a mystery.
 IN Kirksville W256AR *99.1 (WJLR), h,v
 IN Rochester W234AU *94.7 (WHLP), h,v
 W293AL *106.5 (WHLP), h,v
 IN South Bend W223AU *92.5 (WHLP), h,v
 IA Anamosa K273AV *102.5 (KNWS-FM 101.9 Waterloo), h,v
 IA Carroll *103.1 St. Barnabas Educational Association, LPFM
 IA Marshalltown K284AW *104.7 (KNWS-FM), 250 h,v.
 IA Ottumwa K246AL *97.1 (KNWS-FM), h,v
 IA Pella K237DH *95.3 (KAYP 89.9 Burlington), h,v
 KS Abilene K231AW *94.1 (KAKA 88.5 Salina), h,v
 KS Arkansas City K244DW 96.7 (KCVW 94.3 Kingman), 250 h,v
 KS Augusta K234AR *94.7 (KPOR 90.7 Emporia), 250 h,v
 KS Cedar Vale K282AL 104.3 (KCVW), 250 h,v
 KS Coffeyville K259AZ 99.7 (KCVW), 250 h,v
 KS Dighton K297AL *107.3 (KJIL 99.1 Copeland), 170 h,v
 KS Dodge City K276ES 103.1 (KCVW), 250 h,v
 KS Elkhart K228EE *93.5 (KJIL), 170 h,v
 KS Emporia K231AY *94.1 (KCFN 91.1 Wichita), 170 h,v
 KS Garden City K300BC 107.9 (KCVW), 250 h,v
 KS Hays K227AS 93.3 (KCVW), 210 h,v
 KS La Crosse K237DI 95.3 (KCVW), 250 h,v
 KS Marysville K223AT *92.5 (KBUZ 90.3 Topeka), h,v
 K231AX *94.1 (KFLV 89.9 Wilber NE), h,v
 KS Ness City K265DY *100.9 (KJIL), 170 h,v
 KS Nickerson K255AZ *98.9 (KJRL 105.7 Herington), 200 h,v
 KS Pratt K237DN *95.3 (KJIL), 170 h,v
 KS Salina K296FD 107.1 (KCVW), 250 h,v
 KS Ulysses K232DH *94.3 (KHYM 103.9 Copeland), 170 h,v
 KY Lawrenceburg W266AN *101.1 (WWLT 103.1 Manchester), 120 h,v. Note on the FMaps p. 44 the town names are mixed up for Versailles and Lawrenceburg.
 KY London W285DT *104.9 (WKVY 88.1 Somerset), h,v
 KY Morehead W223AS 92.5 (WIOK 107.5 Falmouth), h,v
 KY Prestonsburg W283AP 104.5 (WDHR 93.1 Pikeville), h,v
 KY West Liberty W257BM *99.3 (WBMK 88.5 Morehead), h,v
 LA Baker K249DV *97.7 (KLXA 89.9 Alexandria), 250 h,v
 LA Chalmette K248BB *97.5 (WPAS 89.1 Pascagoula MS), 120 h,v
 LA Many K232DF *94.3 (KLXA), h,v
 LA Shreveport K298AO *107.5 (KHCL 92.5 Arcadia), h,v
 LA Slidell K248BA *97.5 (WAOY 91.7 Gulfport MS), h,v
 ME Benedicta W264BG *100.7 (WWWA 95.3 Winslow), h,v
 MI Allegan W286AU *105.1 (WPQZ 88.1 Muskegon), h,v
 MI Battle Creek W274AQ *102.7 (WQKO), h,v
 MI Ironwood W231Y 94.1 (WCUP 105.7 L'Anse), h,v
 W236AT 95.1 (WGLI 98.5 Hancock), h,v
 MI Marquette W235AN 94.9 (WGLI), h,v
 MI Powers W253AQ *98.5 (WRVM 102.7 Suring WI), h,v
 MI St. Johns W262AW *100.3 (WEMU 89.1 Ypsilanti), h,v
 MI Sandusky W255AV *98.9 (WAKL 88.9 Flint), h,v
 MI Three Rivers W286AR *105.1 (WRXH), h,v
 MN Eveleth K258AZ *99.5 (KDNW 97.3 Duluth MN), h,v
 MN Fairmont K258AY *99.5 (KBDC 88.5 Mason City), h,v
 MN Glencoe K286AU *105.1 (KKLW 90.9 Willmar), 250 h,v
 MN Montevideo K257DY *99.3 (KKLW), 170 h,v
 MN Moose Lake K279AQ *103.7 (KTIS-FM 98.5 Minneapolis), h,v
 MN Mora W221BL *92.1 (KMKL 90.3 North Branch), h,v. Seeks 210 watts h,v.
 MN New Ulm K252DX *98.3 (KNWC-FM 96.5 Sioux Falls SD), 250 h,v
 MN Park Rapids K225AQ *92.9 (KFNW-FM 97.9 Fargo ND), h,v
 MN Roseau K264AR *100.7 (KNTN 102.7 Thief River Falls), 250 h,v
 MN Willmar K224DB *92.7 (KTIS-FM), 250 h,v
 MS Batesville W244BN *96.7 (WKVF 94.9 Byhalia), h,v. That despite W297AJ 107.3 there.
 MS Newton W225AK *92.9 (WATP 90.7 Laurel), h,v
 MO Bethany K279AP *103.7 (KLOX 90.9 Creston IA), h,v
 MO Brookfield K273AP *102.5 (KAYP 89.3 Burlington IA), 120 h,v
 MO Butler K257DZ *99.3 (KBJQ 88.3 Bronson KS), h,v
 MO Chillicothe K226AR 93.1 (KDKD-FM 95.3 Clinton), h,v
 MO Kahoka K227AR *93.3 (KAYP [as an alternate, KNWS-FM]), 120 h,v
 MO Kirksville K231AV 94.1 (KRLI 103.9 Malta Bend), h,v
 MO Macon K223AS 92.5 (KRLI), 120 h,v
 MO Maryville K273AQ *102.5 (KMLV 88.1 Ralston NE), h,v
 MO Scott City K262AX *100.3 (WBEL 88.5 Cairo IL), 250 h,v
 MO Sikeston K255AW *98.9 (WBEL), h,v
 MO Warrensburg K229AO *93.7 (KBJQ 88.3 Bronson KS), 170 h,v
 MT Hardin K221EL *92.1 (KLMT 89.3 Billings), 120 h,v
 K233BD *94.5 (KBLW 90.1 Billings [or KCGL 104.1 Powell WY]), 120 h,v
 MT Helena K242BB *96.3 (KHLV 90.1 Helena), 250 h,v. Alternate station it might carry: KAAR 92.5 Butte MT.
 MT Lewistown K268BB *101.5 (KVCM 103.1 Helena), 210 h,v
 MT Miles City K233BC *94.5 (KEMC 91.7 Billings [or KZWY 94.9 Sheridan WY]), h,v
 MT Shelby K273AR *102.5 (KGFC 88.9 Great Falls), 170 h,v
 NE Beatrice K256AQ *99.1 (KFLV 89.9 Wilber), 120 h,v
 NV Tonopah K290AO *105.9 (KWTW 88.5 Bishop CA), h,v
 NH Barnstead W277AV *103.3 (WVNH 91.1 Concord), h
 NH Laconia W241AJ *96.1 (WVNH), h,v
 NJ Atlantic Highlands W288BM 105.5 (WHTG-FM 106.3 Eatontown), h,v
 NJ Hackettstown W290AR *105.9 (WNJP 88.5 Sussex), h,v
 NJ Lakewood W272BF *102.3 (WNJT-FM 88.1 Trenton), h
 NJ Mount Holly W246BH *100.7 (WBZC 88.9 Pemberton), h,v
 NJ Netcong W244BO *96.7 (WNJP), h,v
 NJ Whiting W273AO *102.5 (WYRS 90.7 Manahawkin), h,v
 NM Artesia K256AM *99.1 (KLYT 88.3 Albuquerque, via K218AK 91.5

Artesia), h,v. This is one of three KLYT translators there!

NM Clovis K258AV *99.5 (KLYT K228DO 93.5 Portales), h,v

NM Ruidoso K257AR 99.1 (KMMW 105.1 Maljamar), h,v

NY Boonville W291BB *106.1 (WRVJ 91.9 Watertown), h,v

NY Cortlandville (NE Corland, SE Homer) W238AT *95.5 (WRVO 89.9 Oswego), h,v

NY Dryden W237BJ *95.3 (WRVO 89.9 Oswego), h,v

NY Horseheads W269BK 101.7 (WMTT 94.7 Tioga PA), h,v

NY Narrowsburg W228BM 93.5 (WVOS-FM 95.9 Liberty), h,v

NY Oneonta W257BL 99.3 (WDHI 100.3 Delhi), h,v *104.7 State U. of NY at O., LPFM

NY Plattsburgh W251AT *98.1 (WKVJ 89.7 Dannemora NY [or KLOV 89.3 Winchester OR, as received via W213AZ 90.5), h,v

NY Port Jervis W299BA 107.7 (WDNB 102.1 Jeffersonville), h,v

NY Warwick W252BK 98.3 (WQXR 96.3 New York), h,v

W296BD 107.1 (WQCD 101.9 New York), h,v

NC Black Mountain W251AO 98.1 (WOXL-FM 96.5 Biltmore Forest), h,v

NC East Bend W267AP *101.3 (WBFJ-FM 89.3 Winston-Salem), h,v

NC High Point W275AL 102.9 (WMIT 106.9 Black Mountain), h,v

NC Whiteville W229AM *93.7 (WBPL-LP 92.7 Wilmington), h,v

NC Wilmington W263BA *100.5 (WKVC *88.9 North Myrtle Beach SC), h,v

ND Devils Lake K248AZ *97.5 (KFNW-FM), 250 h,v

ND Jamestown K246AM *97.1 (KFNW-FM), 170 h,v

OH Sidney W231AZ *94.1 (WOKL 96.9 Troy), h,v

OH Urbana W279BB *103.7 (WOKL), h,v

OH Wilmington W268AR *101.5 (WOKL), h,v

OK El Reno K261DA *100.1 (KYL 88.9 Oklahoma City), h,v

OK Hobart K273AS *102.5 (KAYM 90.5 Weatherford OK), 120 h,v

OK Hugo K262AW *100.3 (KXRT 90.9 Idabel), h,v

OK Lexington K290AQ *105.9 (KYL 140 h,v

OK Pawhuska K233BB *94.5 (KCFN 91.1 Wichita), h,v

OK Purcell K245AN *96.9 (KFXT 90.7 Sulphur), 250 h,v

OK Seminole K276ET *103.1 (KGOU 106.3 Norman), 250 h,v

OK Union City K290AR *105.9 (KYCU 89.1 Clinton OK), 250 h,v

OR Enterprise K265DX *100.9 (KFAE 89.1 Richland WA), h,v

OR Springfield K224DC *92.7 (KGRI 88.1 Lebanon OR), h,v

PA Bear Creek W227BA *93.3 (WBYX 88.7 Stroudsburg), v

PA Bloomsburg W291BD *106.1 (WBYX), h,v

PA Carlisle W226AS *93.1 (WZXQ 88.3 Chambersburg), h,v

W250AP *97.9 (WZXQ), h,v

PA Coatesville W269BL *101.7 (WBMMP 88.1 Warwick PA), h,v

PA Grantville *93.1 Harrisburg Area Information Corporation, LPFM

PA Lees Cross Roads W275AN *102.9 (WZXQ), v

PA Middle Spring W230AX *93.9 (WZXQ), h,v

PA Milford W295AQ 106.9 (WDNH-FM 95.3 Honesdale [or WDNB 102..1 Jeffersonville NY]), h,v

PA Radnor W235AP *94.9 (WBYO 88.9 Sellersville), v

PA Wilkes-Barre W237BI *95.3 (WPGP 88.3 Taffon), h,v

PA Zullinger W291BC *106.1 (WZXQ), h,v

RI Providence W229AN *93.7 (WSMA 90.5 Scituate MA), v (seeks h,v).

RI Warwick W284BA *104.7 (WSMA), h,v

SC Coachmans Corner (WSW Ladson, toward Cottageville SC) W255AZ *98.9 (WSHG-LP 105.9 St. George), h,v

SC Lexington W255AW *98.9 (KAWZ 89.9 Twin Falls ID, as received from W207BQ 89.3 Columbia SC), v

SC Mullins W252BL *98.3 (WKVC), h,v

SC Santee W249BL *97.7 (WSHG-LP), h,v

SC Spartanburg W231BA *94.1 (WTBI-FM 91.7 Greenville), h,v

SD Brookings K261DC *100.1 (KBPG 89.5 Montevideo MN), 170 h,v.

SD Hot Springs K233BA *94.5 (KCSP-FM 90.3 Casper WY), h,v

SD Milbank K253AL *98.5 (KFNW-FM), h,v

SD Redfield K237DJ *95.3 (KFNW-FM), 210 h,v

SD Sisseton K233AZ *94.5 (KFNW-FM), h,v

SD Watertown K233AY *94.5 (KFNW-FM [or, as an alternate, KNWC-FM 96.5 Sioux Falls]), h,v

TN Brownsville *88.3 500 watts h,v; 38 m, d-a, with 20% power 200-230°, Broadcasting for the Challenged.

TN Camden W256AP *99.1 (WBEL [or WMXX 103.1 Jackson TN]), h,v

TN Cleveland W235AO *94.9 (WNGU 89.5 Dhlonega GA), h,v

TN Clifton W253AO *98.5 (WIGH 88.7 Lexington), h,v

TN Halls W257BN *99.3 (WKVZ 94.9 Ripley), h,v

TN Hickory With W292CT *106.3 (WKVF), h,v

TN Jackson W245AR *96.9 (WKVZ), h,v

TN Martin W255AU *98.9 (WKVZ), h,v

TN McKenzie W292CS *106.3 (WKVZ), h,v

TX Amarillo K280EU 103.9 (KNNK 100.5 Dimmitt [or KXLV 89.1 there]), h,v

TX Bowie K222AW *92.3 (KWKL 89.9 Grandfield OK), 250 h,v

TX College Station K278AU *103.5 (KHCB-FM 105.7 Houston), 250 h,v

TX Commerce K290AP *95.9 (KHCP 89.3 Paris), 140 h,v

K290AP *99.9 (KHCP 89.3 Paris), 140 h,v

TX Dumas K223AU 92.5 (KXLV 89.1 Amarillo), 140 h,v.

TX Flour Bluff (a road on the S. side of Corpus Christi, near the sea)

K241AT 96.1 (KFLZ 106.9 Bishop), 250 h,v

TX Hereford K241AU *96.1 (KXLV), 150 h,v

TX Littlefield K249DW 97.7 (KNNK [KKLU 90.9 Lubbock as an alternative]), 170 h,v

TX Pampa K228EB *93.5 (KXLV), h,v; despite K296EW 107.1 there.

TX Smithville K274BB *102.7 (KNCT-FM 91.3 Killeen), 250 h,v

TX Spearman K296FF *107.1 (KJIL), 170 h,v

TX Tulia K252DY *98.3 (KRGH 102.9 Amarillo), h,v

TX Tyler K250AJ *97.9 (KETN-LP 100.1 Palestine), 250 h,v

TX Wake Village K231BA *94.1 (KSBC 90.1 Hot Springs AR), 250 h,v. It seeks to carry KLOV 89.3 Winchester OR, as received via K205DN 88.9 Texarkana.

VT Montgomery (NW Montgomery Center) W255AY *98.9 (WVPS 107.9 Burlington VT), 170 h,v

VT Sharon W298AR *107.5 (WVPS), h,v

VA Hampden-Sydney W298AQ *107.5 (WCPE 89.7 Raleigh NC), h,v

VA Narrows WZFM 101.3 210 h,v; 264 m, \$, o, Old Dominion Communications, reinstated.

VA Tazewell W269BI 101.7 (WSTG 95.9 Princeton WV), h,v

VA Virginia Beach W249BK *97.7 (WJLZ 88.5 Virginia Beach), h,v

WA Forks K222AU *92.3 (KNWP 90.1 Port Angeles), 1709 h,v
 WA Mattawa K291AS 106.1 (KZML 95.9 Quincy), v
 WA Medina K249DX *97.7 (KSVR 91.7 Mount Vernon WA), h,v
 WA Royal City K269EU 101.7 (KZML), 100 v
 WA Sprague K221EM *92.1 (KRKL 93.3 Walla Walla), 210 h,v
 WA Walla Walla K262AY 100.3 (KRKL [or KEYG-FM 98.5 Grand Coulee]), h,v
 WA Wenatchee K225AR 98.9 (KZML), v
 WV Cross Lanes (transmitter at the NW edge of Charleston) W283AQ 104.5 (WRVZ 98.7 Pocalico), 210 h,v
 WV Princeton W277AW 103.3 (WSTG there), h,v
 WV Sheperdstown W293AM *106.5 (WZXQ), h,v
 WV Sutton W295AR 106.9 (WRLB 95.3 Rainelle WV), h,v, but seeking 250 h,v.
 WI Beaver Dam W276BL 103.1 (WBKY 95.9 Portage), 170 h,v
 WI Berlin W247AZ 97.3 (WMMA 93.9 Nekoosa), 250 h,v
 WI Clintonville W296BE *107.1 (WNWC-FM), h,v
 WI Crivitz W246BA *97.1 (WLCJ-LP 92.5 Marinette), 250 h,v
 WI Kewaunee W226AR 93.1 (WSRG 97.7 Sturgeon Bay), 250 h,v
 WI Madison W270AU *101.9 (WJWD 90.3 Marshall WI), h,v
 WI Peshtigo W221BM *92.1 (WLCJ-LP), 250 h,v
 WI Platteville W285DS *104.9 (WNWC-FM), h,v
 WI Rhinelander W254AX *98.7 (WYNW 92.9 Birnamwood), 250 h,v
 WI Shawano W246AZ *97.1 (WYNW), 250 h,v
 WI Tomah W223AT 92.5 (WMMA 93.9 Nekoosa), 250 h,v
 WI Wausaukee W221BN *92.1 (WLCJ-LP), 120 h,v
 WY Casper K289AT *105.7 (KUWC 91.3 Casper), h,v
 WY Glenrock K269EV *101.7 (KCSP-FM 90.3 Casper), h,v
 WY Laramie K252EA *98.3 (KWYC 90.3 Orchard Valley), h,v
 K266AP *101.1 (KWYC, as received via K252EA 98.3 Laramie), 250 h,v
 WY Rock Springs k285FC *104.9 (KUWZ 90.5 Rock Springs), h,v
 WY Thermopolis K228ED *93.5 (KCSP-FM), h,v
 WY Wheatland K234AS *94.7 (KLWV 90.9 Chugwater), h,v

WEATHER DX CONTINUES FROM PAGE 45

0040 KZZ39 162.500 Clinton, MO-wx conditions for MO cities (Pleasant Hill, MO) 185/298
 0047 WXJ71 162.475 Peoria, IL-wx forecast for Peoria, legal ID (Lincoln, IL) 140/225
 0049 WXJ75 162.400 Springfield, IL-legal ID, wx forecast for central IL (Lincoln, IL) 80/128
 0057 KWN55 162.425 Jamestown, MO-wx forecast for Jefferson City (St. Louis, MO) 115/185

May 19, 2004 (trop)

0125 KXI42 162.450 Chester, IL-forecast for southwest IL, legal ID, KXI70 nulled (St. Louis, MO) 65/105
 0202 KXI52 162.400 McLeansboro, IL-forecast for southeast IL (Paducah, KY) 100/161

May 20, 2004 (trop)

2234 KZZ39 162.500 Clinton, MO-legal ID, weather forecast (Pleasant Hill, MO) 185/298
 2239 KIH46 162.475 Mayfield, KY-CDT time check, western KY forecast (Paducah, KY) 170/274
 2248 WWF76 162.475 Summersville, MO-cx for West Plains, CDT TC (Springfield, MO) 130/209

COLUMN NEWS

I want to feature YOUR TOWN as the listening site of the month! Please send me YOUR **non-dx** loggings before April 15 using the format below.

LOCATION OF THE MONTH

A monthly feature highlighting weather radio reception around the country during normal reception conditions.

Joliet, IL:

Frequency	Station	City	Quality
162.400	KXI58	Plano, IL	Very Good
162.425	K2281	Lockport	Very Good
162.450	WXK24	Odell	Good
162.525	K2258	Kankakee	Good
162.550	KWO39	Chicago	Very Good

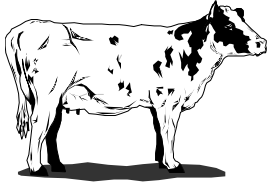
(Submitted By: Ken Onyschuk)

WEATHER RADIO LINKS

www.weatherradio.info

www.nws.noaa.gov/nwr/

<http://www.iprimus.ca/~hepburnw/dx/wx.htm>



WORLDWIDE TV-FM DX ASSOCIATION

2004 Annual Convention

Omaha, NE, July 30-August 1, 2004

Make plans now to attend the annual WTFDA convention, hosted this year by Matthew Sittel and Michael Hawk.

Our host location for the event is the Park Plaza Regency Lodge, located at 909 South 107th Avenue in Omaha, conveniently located one block east of the I-680 exit at Pacific Street. The hotel room rate for the convention is \$79/night for two doubles or one queen bed. This rate includes a complimentary hot breakfast with waffles made to order. All rooms feature a microwave, refrigerator, coffee maker, iron, in-room safe and radio with CD player. There is also a small business center with internet access. To make your reservations and receive the special rate, the hotel has asked that you call them directly at (402) 397-8000. *Be sure to mention WTFDA to get the \$79 rate; we have a block of rooms set aside for us at this rate!*

We have received permission from Park Plaza to set up antennas. Feel free to bring along your favorite DX equipment and try it out-hopefully we'll have some DX! Bring along video or audio tapes and photos of your DX to share; we'll have equipment set up to share your catches.

The registration fee for the convention is \$28, which includes the Saturday night banquet on-site at the Park Plaza. You can purchase additional banquet tickets for spouses or other guests at the rate of \$24 per additional meal.

If you plan on attending, please take a moment to fill out the form below and mail it along with check or money order for fees to **Matthew Sittel, 15013 Eureux Cir., Bellevue, NE 68123**. Registration deadline is June 30, 2004. If you have questions e-mail Matt at mcsittel@cox.net or Mike at thisisatest22@yahoo.com.

We hope to see YOU at WTFDA 2004 Omaha!

CONVENTION 2004 REGISTRATION FORM



Name : _____

Address: _____

E-mail: _____

	Fee	Number	Total
Registration :	\$28	x _____	= _____
Additional banquet tickets:	\$24	x _____	= _____

Total amount enclosed (check/money order, payable to Matthew Sittel): _____

SIGN UP/Renewal form

Name _____

Address _____ Apt # _____

City _____ State/Prov _____ Zip _____

Country _____ Interests: TV () FM () 30-50() Weather()

email address _____

Sign me up/renew me for: 1 year () 2 years () More ()

Yearly dues \$24 (US), \$26 to (CANADA), \$10 (Electronic VUD)
(Students get a discounted rate of \$15 yearly for the paper VUD.)

Mail your dues to: WTFDA, P.O. Box 501, Somersville, CT USA 06072

Make your checks/money orders payable to: DAVE JANOWIAK

And *thanks* for your support of the WTFDA!

Return this form with your dues or make a copy of it and return that.

WTFDA BOARD OF DIRECTORS

Mike Bugaj, use the WTFDA Mailing address listed below	mbugaj@snet.net
Doug Smith, 1385 Old Clarksville Pike, Pleasant View, TN 37146-8098	w9wi@w9wi.com
Greg Coniglio, 11825 Genesee St., Alden, NY 14004	wgrc@rochester.rr.com
Bruce Hall, 5 Stirton Ave., Brantford, ON N3T 1E2	dbruceaa@hotmail.com
Dave Janowiak, 5023 S. 65 th St., Greenfield, WI 53220	tvdxer@hotmail.com

THE MAILBOX and all general club correspondence:

Mike Bugaj at WTFDA, PO Box 501, Somersville, CT 06072	mbugaj@snet.net
--	-----------------

SATELLITE NEWS

George Jensen, 4604 Antana Ave., Baltimore, MD 20206-4220	scisatman@aol.com
---	-------------------

TV NEWS

Doug Smith, 1385 Old Clarksville Pike, Pleasant View, TN 37146-8098	w9wi@w9wi.com
---	---------------

FM NEWS

Adam Rivers, 37 Carlton Ave., Chicopee, MA 01020	redsoxdxer417@hotmail.com
--	---------------------------

PHOTO NEWS

Jeff Kruszka, 5024 S. Braxton Ave., Baton Rouge, LA 70817	jkruszka@bellsouth.net
---	------------------------

EASTERN TV DX

Matt Sittel, 15013 Eureux Circle, Bellevue, NE 68123	mcsittel@cox.net
--	------------------

WESTERN TV DX

Victor Frank, 12450 Skyline Blvd., Woodside, CA 94062-4554	victor.frank@sri.com
--	----------------------

SOUTHERN FM

John Zondlo, 4009 Driftwood Cir., Yukon, OK 73099	sfm@fmdxweb.com
---	-----------------

NORTHERN FM

Keith McGinnis, 387 Shirley Street, Winthrop, MA 02152	longwave@comcast.net
--	----------------------

TV and FM STATISTICS

Fred Nordquist, 7945 Boxford Road, Clay, NY 13041	nordquis@twcny.rr.com
---	-----------------------

WEATHER DX

Jason Koralja, Surf City, NJ	jklbi01@hotmail.com
------------------------------	---------------------

<u>BACK ISSUES</u> Dave Nieman, PO Box 17, Clarence, NY 14031-0017	nieman@localnet.com
---	---------------------

We have a large selection available for \$1.00 each. Email or write Dave for availability.

<u>WEBSITE</u> Tim McVey Webmaster http://www.anarc.org/wtfda/	tkmcvey@erols.com
---	-------------------

Please Remember to make your renewal checks payable to Dave Janowiak
Checks made payable to WTFDA may be returned and your renewal may be delayed.