

Vhf-Uhf DIGEST

The Official Publication of the Worldwide TV-FM DX Association

DECEMBER 2004

The Magazine for TV and FM DXers



TV and FM DXing
was never so much
Fun!

IN THIS ISSUE

MAPPING THE JULY 6TH Es CLOUD
BOB COOPER'S ARTICLE ON COLOR TV CONTINUES

THE WORLDWIDE TV-FM DX ASSOCIATION

Serving the UHF-VHF Enthusiast

THE VHF-UHF DIGEST IS THE OFFICIAL PUBLICATION OF THE WORLDWIDE TV-FM DX ASSOCIATION DEDICATED TO THE OBSERVATION AND STUDY OF THE PROPAGATION OF LONG DISTANCE TELEVISION AND FM BROADCASTING SIGNALS AT VHF AND UHF. WTFDA IS GOVERNED BY A BOARD OF DIRECTORS: DOUG SMITH, GREG CONIGLIO, BRUCE HALL, DAVE JANOWIAK AND MIKE BUGAJ.



Editor and publisher: Mike Bugaj

Treasurer: Dave Janowiak Webmaster: Tim McVey

Editorial Staff: Victor Frank, George W. Jensen, Jeff Kruszka

Keith McGinnis, Fred Nordquist, Matt Sittel, Doug Smith,

Adam Rivers and John Zondlo,

Our website: www.anarc.org/wtfda

ANARC Rep: Jim Thomas, Back Issues: Dave Nieman,

DECEMBER 2004



Finally! For those of you online with an email address, we now offer a quick, convenient and secure way to join or renew your membership in the WTFDA from our page at:

<http://fmdx.usclargo.com/join.html>

Dues are \$25 if paid to our Paypal account. But of course you can always renew by check or money order for the usual price of just \$24. Either way, it's still a bargain!

VUDS ON A CD!

Every VUD from Jan 1980 to December 1989 is on this disk. You'll need Adobe Reader to read them. Why have a box of old VUDs taking up space when you can have this. **It's yours for just \$8.00 per disk.** Send your check or money order for \$8.00 to WTFDA, P.O. 501, Somersville, CT 06072. Make it payable to Dave Janowiak.



CONTENTS

| | |
|--------------------------------------|----|
| Page Two | 2 |
| Mailbox | 3 |
| Satellite News... George Jensen | 5 |
| TV News... Doug Smith | 6 |
| FM News... Adam Rivers | 14 |
| Photo News... Jeff Kruszka | 20 |
| Eastern TV DX... Matt Sittel | 23 |
| Western TV DX... Victor Frank | 25 |
| Northern FM DX... Keith McGinnis | 27 |
| Translator News... Bruce Elving | 34 |
| Color TV History... Bob Cooper | 37 |
| Mapping the 7/6 Es Cloud... Les Prus | 41 |
| A Tour of the US | 42 |
| Editors/Submissions | 43 |

Happy holidays everyone! This month we have a very overdue report on the highband Es on July 6th prepared by Les Prus. We also have an article sent me by Frank Aden from a long time ago on call letters and the fun you can have with them, that had to be reformatted for the VUD and took a while. Frank, I hope to be using more of your files in the future.

This is your very last chance for a good deal on the TV Station Guide before we get started on the new edition.

And awaaay we go!

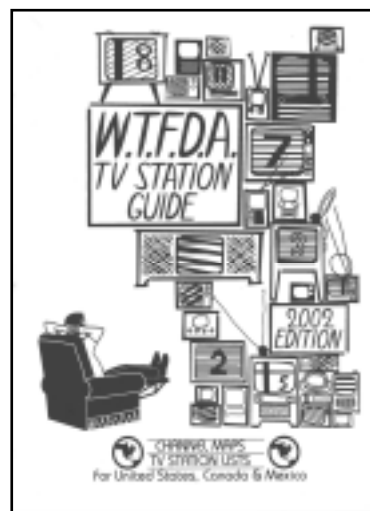
Last Chance Offer!

The WTFDA TV STATION GUIDE Clearance SALE!

It's the most comprehensive listing of North American Television stations in print Just \$5 US will get you one of the four remaining guides. Mail your check or money order today. Make it payable to Dave Janowiak and mail it to John Ebeling, 9209 Vincent Avenue S., Bloomington, MN 55431-2157. Get your WTFDA TV Station Guide **now!**

****ONLY THREE LEFT!***

Email John at ijebeling@aol.com to reserve yours!





The Mailbox

P.O. Box 501, Somersville, CT USA 06072
MIKE BUGAJ MBUGAJ@SNET.NET

DECEMBER 2004

Greetings! Don't know about you but I swear it was just July, but it's not. I think something is messed up in the time-space continuum because time seems to be speeding by faster than it ought to be. I think we need to get that fixed. Maybe we can find a repairman in the yellow pages.

At any rate, it's December and the holiday season is rapidly approaching. We wish you all the best for this season and for the year 2005.

I've been checking out the local stores to see if any of them are pushing DTV set top boxes for the season, but so far it doesn't seem like they are. Supposedly the new boxes with the new and improved 5th generation chips should be showing up but you wouldn't know it by shopping in the major chains, at least from my own observations. I'd buy one, if the price was right.

MEMBERS AND MORE

What's new for December? Let's find out. We say welcome to our newest member **Marcus Barboni** of Norristown, PA. Marcus signed on using Paypal, the easiest way to join or renew your membership. Welcome in, Marcus, and I hope you enjoy your membership.

And renewing their membership for another year are **Randall Trapp** (MN), **Brian May**(CT), **Matt Sittel**(NE), **Melvin Larson**(MN), **Wayne Benkinney**(MI), **George Hamer**(NY), **John Adams**(OR), **Marvin Shults**(IL), **Paul Lafreniere**(MN), **Jeff Kitsko**(PA), and **Eric Bueneman** (MO). Thank you all for spending another year with us.

George Hamer sent in his renewals and along with it George sent in a couple of questions. George was wondering if there is any print publications listing FM stations using RDS or any television stations with SAPs. I may be wrong here but I told George I didn't think there were any in print. The most you could do at this time is find a computer and go to either John Zondlo's website (www.fmdxweb.com) or Chris Cervantez's website (www.rdslist.com) and print out what you find there.

George also said that he's interested in TV Guides from various cities and wonders where he can buy TV Guides from other cities. He's called TV Guide in Radnor, PA and he's been told they don't offer this service. I confess that TV Guide is not a great interest of mine although I know some of you are great TV Guide fans. If any of you offer this service or know of a place where TVGs from various cities are sold, please email me and we'll put the information here.

WEATHERING THE STORM

Juan Gualda(FL) writes: "after two hurricanes we have finally returned. We were without power for a total of 19 days, then power was restored and power spike/surge damaged my computer. Anyway, it's good to be back.

During the second storm, as our group of stations was broadcasting the hurricane info, I went in to work to cover a six hour shift before Jeanne arrived, and to my surprise, at the station was Herb Oscar Anderson of WABC fame. He had to evacuate his condo in Fort Pierce with his wife and had asked our GM, Jim Davis, if he could ride out the hurricane at the station. Needless to say it was quite an honor to do an airshift with Herb. We talked about the storm, talked about radio and listeners called in to ask Herb to sing his theme song. To be honest, it seemed surreal.

He will not admit it but I am sure Herb regretted staying at the station as Jeanne took off the rest of the roof as he and Jim Davis were doing their live coverage. At that point, about 2am, the rain came in to most of the station like it being poured in. Most of what was left of the station was ruined although we managed to stay on the air with the generators. About 40 feet of Rohn tower fell off the roof too. We are lucky, though.

Thanks for the kind words and emails that I am catching up with as we speak."

LAST MONTH'S COVER

I had two folks ask me about last month's VUD cover. The reason nothing was mentioned about that cover was that I didn't know much about the picture. What I *did* know about that picture I had already

forgotten. It's senility, friends. But the scoop about that picture is that it was taken from **Greg Barker's** (IN) website (Greg says it is not there now). Greg writes that "those antennas are the Televes DAT-75 Wideband UHF models which came from www.cpc.co.uk. The quad stack has gobs of forward gain but I didn't like the pattern as well as a horizontal stack using two antennas."

Greg says that the entire antenna setup and tower now belong to **Neil Kazaross**. Greg says that Kaz is planning to arrange them in a diamond stack to try to improve the pattern. Maybe they'll show up on another cover someday.

Greg also mention that he has a new webpage for some new super-duper Band III (UHF) antennas he's ordering from Holland. When he gets them, he's putting up a horizontal stack above the Antennacraft High-banders he has on the tower now to compare along with screenshots and more pictures. The address is <http://community-2.webtv.net/GregBarker/UltraHighGain/>.



So, now you know the "rest of the story" regarding last month's cover.

SOMETHING EXTRA WITH YOUR VUD?

Two WTFDA members received a little bonus with their VUDs last month. At random I picked two VUDs and sent them on their way with a WTFDA cling included. Chances are excellent I'll do it again this month and probably for a few more months also. The clings are a nice perk, but so few people have been ordering them that I still have a large bag of them and I'd rather have them in your hands instead of sitting here. So, you can send in a buck and get one or you can take your chances that I'll put one in with your VUD. It's your choice.

THE SAGA OF DAVID WILLIAMS

David's post to the WTFDA list on November 8th: So, I know most of you live in trop-friendly areas. I don't – but I've just spent the past hour listening to CBRL, Lethbridge, AB (542 miles) battle it out with KZOQ Missoula, MT (391 miles). Both with near perfect signals as each are on top. KZOQ has

been in and out for over 4 hours – and CBRL almost that long. I'm guessing that this is Au related but the signals have been very clear and listenable for the past hour."

Jim Thomas responded: "I'm going on a hunch here but I'll bet you've experienced your first really good tropo (duct) opening. Check out Hepburn's Western US map for Sunday. The map shows a pretty good tropo hook going into MT from the southwest, off of the Pacific coast. Just my educated guess (not being there) and based on experience, I think you got some really good tropo catches for the intermountain region."

The next day, David wrote me "I just realized what I accomplished last night – trans-rockies tropo! Lethbridge AB (CBRL 100.1 100kw) is on the high plains about 50 miles east of the Rockies. So I have managed to do what I was sure was impossible.

Bill Hepburn's maps match up. Even looking at the visible satellite as well as water vapor imagery this AM, I can see how the duct may have formed. Everyone has convinced me that I didn't have Au – the signal was not degraded or muffled at all, just weak, and it outlasted the visible aurora."

Also on the 9th, David wrote "CBRL's in for a third day in a row. This time at noon, so it's not just an evening thing anymore! The more I listen, the more I believe it's tropo."

THE FUTURE?

Another great DX mag and accompanying e-zine bite the dust as the British FM-TV Circle's *Skywaves* magazine and e-zine ceased operation. The BFMTVC now becomes basically a group held together by an email list on Yahoogroups.

I'm sad to see *Skywaves* go. It was a classy DX publication. The folks over there helped me to get the eVUD off the ground with their suggestions.

Some of the reasons for *Skywave's* demise are those reasons you'd probably expect. They had trouble finding editors for certain columns and they had trouble finding contributors for columns. The existing staff had too little extra time to spare for the magazine.

Is this fate ahead for us? Maybe and maybe not. We do need volunteers to take columns as the need arises. We need people to post their loggings not only on the WTFDA email list, but here in the VUD.

We have a thriving email list on Topica but we should realize that the list is not the WTFDA but a part of the WTFDA and should be treated as such.

We have quite a few members (half the club) who are not signed up to the WTFDA list and some veteran DXers who choose not to subscribe and for that matter, don't even own computers. We can't afford to leave these

WTFDAers out in the cold, so to speak.

Luckily for the WTFDA, we have DX gods like Bob Cooper who love to write and supply us with original articles for the VUD which do NOT appear on the WTFDA list.

We also have folks like Frank Aden, Tim McVey, Gary Hickerson and John Ebeling (just to name a few) who send us technical data, antenna articles, memorabilia, etc.

We have guys like Jeff Lehmann who own a digital camera and don't mind going out and snapping a couple of photos and emailing them to me for cover consideration.

And a big "thank you" to everybody I missed. You know who you are.

The WTFDA owes a debt of gratitude to any one of our club members who sends in a report to a DX column, a question in search of an answer, a letter, a picture, an update, an article. To Victor and Adam and the rest of the editors: You people know doing a monthly column can be a pain at times. There are times when you have so much on your plate that you don't know if you'll have time for your columns. But they get done. Thank You!

I posted a short note on the Skywaves list regarding the end of *Skywaves*. In it I wondered aloud what the WTFDA will look like in five years. I really don't know. I've been doing the mail since March 1997, publishing the VUD since September 2001 and the eVUD beginning a couple of months later. I plan to continue with it. However my wife and I are faced with elderly parents, one of which may not be with us much longer, and the other who may need our attention three time zones away for extended periods. How all this plays out for us when the time comes, is uncertain.

It could be that the WTFDA, in the end, becomes just a Topica mailing list. I hope not, but it depends. If an editor or publisher opening arises, it'll depend on whether someone comes forward and says, "Yeah, I'll do that!" It depends on whether Mr. DXer decides to post a report to the WTFDA list and then thinks "I'll rework that for the VUD and email it in to my editor."

Yes, it depends. It depends on you.
And now, let's go take on 2005!!



SATELLITE NEWS

GEORGE W. JENSEN
4604 ANTANNA AVE, Baltimore, MD 21206-4220
SCISATMAN@AOL.COM

Another small column this month with some odd and crazy happenings..

Satcom C4 - the Latino Music services have returned to channels 860 - 867.

Galaxy 5 - xpdr 18 - Color Bars in VC2

Galaxy 10 - xpdr 19 - Spike East in VC2 - was to go all digital but instead moved here?? Showtime digital has been playing games with their feeds on C3 and G10 - channels - 120 - High Definition, 125 - Next West, 126 - Family West, and 127 - Women's West.

At this writing they ARE on Galaxy 10 as indicated, but at any time will move - unannounced - to C3 only. They will then

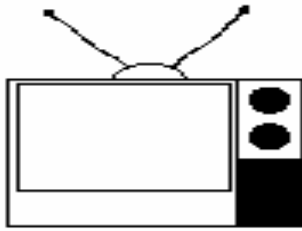
move - unannounced - back to G 10. At this moment - they are NOT in any form on C3, but that could change tomorrow or this afternoon or next week???????

That's all for this month - see you next year in 2005. Have great DX, a Merry Christmas, Happy New Year, Happy Chanukkah and Happy Kwanzaa.

"73's

THIS MONTH'S COVER...

Comes to us from Randy Miltier in Phoenix, Oregon. It's a photo of KOTI, Channel Two in Klamath Falls, Oregon, a place most of us visit at least once a month. KOTI is owned by CA-OR Broadcasting and is the only locally owned TV in S.Oregon.



TV News

Douglas E. Smith
1389 Old Clarksville Pike
Pleasant View, TN
37146-8098
w9wi@w9wi.com
<http://www.w9wi.com>

December 2004

Abbreviations:

| | | | |
|-----|--|-----|---|
| AF | Applied For (a new station) | PC | Power (and/or tower height) change on the air |
| Aux | Auxiliary (backup) transmitter | PG | Power change granted |
| CC | Callsign change | PR | Power change requested |
| CL | City-of-license change | QC | Channel (?frequency?) change on the air |
| DE | License/permit deleted | QG | Channel change granted |
| FC | Programming (?format?) change | QR | Channel change requested |
| FTP | Failure to Prosecute | RE | Reinstated (previously-dismissed app.) |
| GA | Granted amendment (to table of channel allotments) | ROA | Request of Applicant |
| LC | License to Cover | SI | Off the air (?silent?) |
| MX | Mutually Exclusive | STA | Special Temporary Authority |
| NS | Permit granted for new station | XC | Transmitter site changed |
| NW | New station on the air | XG | Transmitter site change granted |
| PA | Proposed Amendment | XR | Transmitter site change requested |

News:

(full-power analog stations in **bold face**; LPTV and translators in regular type; full-power digital stations in **bold italics**)

18-23-00/
66-04-01



Canada:

Alberta:

| | | | |
|------------|----|--------|---------------|
| Coronation | 13 | CBXT-n | AF 210kw/213 |
| Red Deer | 22 | CBXT-n | AF 759.3/216m |

British Columbia:

| | | | |
|------------|----|---------|------------------------------|
| Canoe | 11 | CBUT-n | AF 5w/33m |
| Celista | 5 | CBUT-n | AF 10w/115m |
| Enderby | 26 | CBUT-n | AF 2.388/-190m |
| Kelowna | 45 | CBUT-n | AF 14.8kw/507 |
| Kelowna | 2 | CHBC-TV | FC; to disaffiliate from CBC |
| Myra | 15 | CBUT-n | AF 18w/15m |
| Oliver | 6 | CBUT-n | AF 230w/-72m |
| Penticton | 17 | CBUT-n | AF 3.98kw/240 |
| Salmon Arm | 3 | CBUT-n | AF 95w/764m |
| Vancouver | 58 | CBUT-DT | NS 15.6kw |
| Vernon | 18 | CBUT-n | AF 4.235kw/53 |
| Victoria | 21 | CHNU-n | AF 1.8kw/274m |

Ontario:

| | | | |
|---------|----|-----------|----------|
| London | 14 | CITS-TV-2 | PG<2.6kw |
| Toronto | 53 | CITY-DT | PG<1.2kw |

Quebec:

| | | | |
|----------|----|---------|----------|
| Montreal | 19 | CBMT-DT | NS 250kw |
| Montreal | 20 | CBFT-DT | NS 107kw |



Puerto Rico:

| | | | |
|--------------|----|---------|---|
| Ponce | 8 | WSTE-DT | QG from ch. 66, 50kw/88m, 18-02-52/66-39-16 |
| Ponce | 15 | WTIN-DT | NS 380.2kw/839 |
| Quebradillas | 26 | WREI-LP | QC from ch. 27, 17.82kw |
| San Juan | 25 | W25DN | NS 15.89kw, |



U.S. Virgin Islands:

| | | | |
|----------------|----|---------|------------------------------|
| Charlotte | 22 | WMNS-LP | NW 10kw, 18-21-27/64-56-51 |
| Amalie | | | QC from ch. 27, 26.67kw/134m |
| Christian-sted | 39 | WCVI-TV | |

Alabama:

| | | | |
|------------|----|---------|--------------------------------|
| Birmingham | 34 | W34BI | PR>30kw |
| Birmingham | 36 | WABM-DT | PR>885kw/406; PG |
| Dothan | 25 | WDOL-LP | NW 150kw, 31-13-40/85-21-06 |
| Hamilton | 24 | W24DC | NS 19.7kw, 34-02-22/87-57-03 |
| Homewood | 21 | WTTO | PR 920kw/425 |
| Homewood | 28 | WTTO-DT | PR<765kw/427 |
| Huntsville | 54 | WZDX | PC>2400/518m 34-44-12/86-31-59 |
| Huntsville | 31 | WAAY-TV | PC<1120kw |
| Huntsville | 59 | WHNT-DT | PR<514m; PG |
| Mobile | 9 | WALA-DT | PR<29kw/381m PG |
| Mobile | 18 | NEW-DT | GA from ch. 61 |
| Mobile | 30 | W52BF | PR>50kw |
| Montgomery | 20 | WCOV-TV | PR<2742/519m |
| Opelika | 66 | WSWS-TV | PG>2050/556 32-19-16/84-47-28 |
| Ozark | 34 | WDFX-TV | PG>151m |
| Ozark | 33 | WDFX-DT | PR<15kw/151m PG |

Alaska:

| | | | |
|-----------|---|---------|--------------------------------------|
| Anchorage | 8 | KAKM-DT | QG from ch. 24, 50kw/240m, 61-25-22/ |
|-----------|---|---------|--------------------------------------|

| | | | | | |
|---------------------|------------------------|---|------------------|------------|--|
| Anchorage | 10 KTUU-DT | 149-52-20 QR from ch. 18, 21kw/240m, same site as KAKM; QG | | | |
| Anchorage | 12 KIMO-DT | QR from ch. 30, 41kw/240m; QG | Los Angeles | 4 KNBC | AF 48kw/987m (aux); PR>75kw/977 (main) |
| Anchorage | 28 KTVA-DT | AF 52kw/61m | Los Angeles | 5 KTLA-TV | PR>80kw/977 |
| Juneau | 3 KTOO-TV | PC<500w/-323 | Los Angeles | 7 KABC-TV | AF 161kw/904, 34- 13-27/ 118-03-45 (aux); PR 161kw/906, 34- 13-29/ 118-03-48 (main) PR 161kw/906 |
| Arizona: | | | | | |
| Camp Verde | 23 K23FZ | QC from ch. 65, 1.22kw | | | |
| Globe | 16 K16FB | PR<9.95kw, 33-17-21/ 110-49-45; PG | | | |
| Safford | 15, K15GC, 21 K21GC | PG<9.95kw, 32-39-00/ 109-50-55; NW | Los Angeles | 11 KTTV | |
| | | | Los Angeles | 22 KWHY-TV | PR>895m, 34-12-50/ 118-03-40 |
| Arkansas: | | | | | |
| Batesville | 15 K15FW | PG<9.2kw, 35-53-27/ 91-44-01 | Los Angeles | 28 KCET | PR 2291kw/956 |
| | | | Los Angeles | 36 KNBC-DT | AF 1000kw/987 (aux); PR>1000kw (main) |
| Eureka Springs | 34 KWFT | CC from KWBS-TV | | | |
| Fort Smith | 18 KFMS-DT | PR<550kw; PG | Los Angeles | 53 KABC-DT | AF 1000kw/888, 34-13-27/ 118-03-45 (aux); PR>1000/890, 34- 13-29/ 118-03-48 (main) |
| Little Rock | 12 KTHV-DT | NW 55kw/519m | | | |
| Rogers | 51 KNWA-TV | PG>151kw/267 36- 24-48/ 93-57-17 | | | |
| California: | | | | | |
| Banning | 55 K55JW | PR>10kw dismissed; PR<1.57kw, 33-58-09/ 117-17-08 | Los Angeles | 60 KCBS-DT | AF 1000/1100m (aux); PR>1000kw (main) |
| Cloverdale | 40 K40IB | NS 1kw, 38-50-37/ 122-56-45 | Morongo Valley | 18 K05CU | PR>7.5kw, 33-51-56/ 116-25-58 |
| Cotati | 23 KRCS-DT | PG<110kw/628 | Palm Desert | 9 K09XW | QG from K55FI, 1.5kw |
| El Centro | 9 KECY-TV | PR<484m | Paradise | 20 KCVU-DT | PR<115.6kw but returned |
| El Centro | 48 KECY-DT | PR<414m; PG | Redding | 29 K29FZ | PR<10w, 40-33-51/ 122-26-00 |
| Eureka | 2 K17EH | QR to ch. 38 dismissed ROA; QR to ch. 2, 3kw, 40-43-36/ 123-58-27 | Redding | 42 KOSX-LP | PR 17kw, 40-53-12/ 122-31-19 |
| Eureka | 13 KEET | PR>550m | Sacramento | 21 KMAX-DT | NW 850kw/581 |
| Eureka | 19 K67GU | QR from ch. 67 dismissed | San Diego | 8 KFMB-TV | PR>615m, 32-41-48/ 116-56-06 |
| Eureka | 28 KBVU-DT | PR 60.3kw/513, 40- 43-39/ 123-58-17 but returned | San Diego | 10 KGTV | PR>618m, 32-41-49/ 116-56-05 |
| Eureka | 31 K31EW | PR>44.6kw, 40-43-36/ 123-58-27; PG; | San Diego | 25 KGTV-DT | PR>576m, 32-41-50/ 116-56-04 |
| Eureka | 33 K33FN | PR<21.9kw PG>24.2kw, 40-43-36/ 123-58-27; PR<21.9kw | San Diego | 40 KNSD-DT | PR<563m; PG |
| | | | San Diego | 55 KFMB-DT | PR>566m, 32-41-48/ 116-56-06 |
| Fort Dick | 36 K36HM | QG from K28CU | Colorado: | | |
| Fresno | 16 KHSC-LP | QR from ch. 38, 145kw, 37-04-26/ 119-25-52 | Akron | 8 K08ND | NW 258w, 40-16-52/ 103-05-55 |
| Huntington Beach | 48 KOCE-DT | NW 1000/949m 34- 13-35/ 118-03-58 | Basalt | 33 K33HY | NW 2.1kw, 39-21-10/ 107-06-06 |
| Los Angeles | 2 KCBS-TV | AF 45kw/1100 | Carbondale | 29 K29CK | XC 39-25-24/ 107-22-32; QC from no offset to |

| | | | | | |
|---------------------------------|-----------------------|--|--|--|--|
| Cortez | 6 K06JF | zero PR>1.16kw, 37-19-32/ 108-14-55; PG | Fort Myers Fort Myers | 9 WINK-DT 22 W22CL | NS 20kw/451m PR>75kw, 26-47-08/ 81-47-47 |
| Cortez | 16 K16CT | PG>920w, 37-21-01/ 108-08-01 | Fort Myers | 51 WLZE-LP | QR from ch. 65; 150kw; 26-39-34/ 81-50-53 |
| Cortez | 27 K27IG | NS 920w, 37-21-00/ 108-08-00 | Fort Pierce | 8 WFPI-LP | XR 27-26-08/ 80-21-40 |
| Cortez | 31 K31CT | PG>920w, 37-21-01/ 108-08-01; CL from Mancos | Key West | 12 WGEN-DT | NW 210w/56m, 24- 33-18/ 81-48-05 |
| Cortez | 47 K53DR | QR from ch. 53 dismissed | Key West Key West | 16 NEW-LP 49 WKIZ-LP | AF dismissed XC 24-34-04/ 81-44-55 |
| Cortez-Red Mesa | 46 K46IE | QG from K64FF, 1.64kw, 37-21-54/ 108-08-51; CL from Towaoc | Lealman | 43 W61AI | QC from ch. 61, 45kw, 28-02-21/ 82-39-20; CL from Rock Hbr. |
| Crystal/ Frying Pan | 35 K60AH | QC from ch. 60, 1.7kw, 39-25-24/ 107-22-32 | Matecumbe | 43 W32AB | QC from ch. 32, 120.5kw, 25-32-24/ 80-28-09 |
| Crystal/ Frying Pan | 56 K56AD | XC 39-25-24/ 107-22-32 | Miami Miami | 19 WBZL-DT 50 WSBS-CA | PG<239m PR>126.9kw, 25- 59-09/ 80-11-37; PG |
| Dove Creek | 30 K30DC | PG>1.17kw, 37-45-37/ 108-54-39; CL from Monticello, UT | Naples Naples | 2 WUVF-CA 43 WWDT-CA | CC from WTIG PC>144kw, 26-30-18/ 81-51-14 |
| Glen Haven | 62 K13ON | QR from ch. 62 dismissed | Orange Park | 10 WJXX-DT | PG 11.1kw/307; NW |
| Greeley Haxtun | 45 NEW-DT 35 K51AI | GA QC from ch. 51, 890w | Palm Beach Panama City | 43 WTCN-CA 8 WJHG-DT | FC? sold to CBS NW 52kw/244m |
| Haxtun | 41 K55CD | QC from ch. 55, 890w | Panama City | 9 WPGX-DT | PR<2.3kw/142, 30- 23-42/ 85-32-02; PG |
| Julesburg | 47 K31AB | QC from ch. 31, 670w | Stuart | 15 WWHB-CA | FC?, sold to CBS |
| Julesburg | 55 K41AB | QC from ch. 41, 670w | Tallahassee Tampa | 22 WTXL-DT 29 WFTS-DT | PG<487m PR>987kw; PG |
| Longmont | 29 KDEN-DT | PG>650kw/358 40- 05-57/ 104-53-48 | Tampa Vero Beach | 49 WRMD-LP 69 WMMF-LP | PC>128kw CC from WWAZ |
| Pueblo | 42 KOAA-DT | NS 880kw/660, 38- 44-42/ 104-51-39 | West Palm Beach | 41 WBPB-LP | PR<75kw, 26-35-18/ 80-12-30 |
| Sargents | 6 K06NG | NW 5w, 38-23-26/ 106-24-39 | <u>Georgia:</u> Albany Augusta Baxley | 17 WALB-DT 51 WFXG-DT 35 WGSA-DT | PR<800kw; PG PR<37kw; PG PG>650kw/454, 32-03-35/ 81-20-43 |
| Sterling | 23 KUPN-DT | PR>1000/565m, 39-55-22/ 103-58-18 | Columbus Columbus Thomasville | 47 WTVM-DT 49 WXTX-DT 46 WCTV-DT | PG 302kw/323m PR<500kw/312; PG PR>566m, 30-40-13/ 83-56-26; PG |
| Thomasville | 4 K04PO | NW 40w, 39-21-12/ 106-41-00 | Vidalia | 53 W53CG | FC; sold by TBN |
| Woody Creek | 39 K39HE | NW 60w, 39-18-37/ 106-56-53 | <u>Hawaii:</u> Honolulu | 18 KHET-DT | PR 9.5kw/637m, 21-24-03/ 158-06-10; PG |
| <u>Connecticut:</u> Hartford | 33 WFSB-DT | PC>1000/289m | Honolulu | 20 KIKU | FC; adds UPN to ethnic |
| <u>Florida:</u> Boca Raton | 63 WPPB-TV | PR>5000/305m 25- 59-10/ 80-11-36 | Honolulu Honolulu | 40 KITV-DT 43 KWBN-DT | PR<85kw/1m PR<6.46kw |
| Cape Coral | 35 WFTX-DT | PR<930kw; PG | <u>Idaho:</u> | | |
| Daytona Beach | 26 WVEN-TV | PC>5000kw | | | |

| | | | |
|------------------|------------|---|--|
| Ashton | 13 K13YF | QC from K09VD | 89-12-11 |
| Boise | 39 KKJB | PG<1295/534m 43-44-23/ 116-08-15 | Rockford 42 WQRF-DT NS 1000kw/149 |
| Boise | 41 K41IV | QG from K60FH, 150kw, 43-44-23/ 116-08-14 | <u>Indiana:</u> Fort Wayne 21 WPTA PR<224m Fort Wayne 40 WFWA-DT NW 90kw/221m Kokomo 50 WKGK-LP PR 10.8kw, 40-25-55/ 86-06-37; PG |
| Bonnars Ferry | 46 K46HZ | QC from K56AB, 1.1kw, 48-36-37/ 116-15-24 | Kokomo 54 WTTK-DT PG>1000/285m 39-53-20/ 86-12-07 |
| Caldwell | 9 KNIN-TV | PC>162kw | South Bend 42 WNDU-DT PG>695kw/299 |
| Coeur d'Alene | 38 K38IS | QG from K20EM, 11.2kw; QC | Terre Haute 36 WTWO-DT PG>1000/290m |
| Lewiston | 58 K58GL | FC; sold by TBN | West Lafayette 65 W65EH NS 150kw, 40-44-06/ 87-00-42 |
| Moscow | 12 KUID-DT | QR from ch. 35, 129kw/340m, 46-40-54/ 116-58-13 | <u>Iowa:</u> Keokuk 46 NEW-LP AF dismissed Waterloo 40 K40GO PR>40kw, 42-29-56/ 92-15-51; CL from Quincy, IL |
| Moscow | 35 KUID-TV | PR 75kw/296m | <u>Kansas:</u> |
| Preston | 46 K46HW | NW 1.8kw, 41-53-00/ 112-04-42 | Derby 46 NEW AF 5000kw, 37-55-01/ 97-37-21 |
| Preston | 50 K50IE | NW 1.8kw, 41-53-00/ 112-04-42 | Hays 7 KBSH-TV PR<112kw |
| Twin Falls | 7 K07YB | NS 3kw, 42-43-42/ 114-24-43 | Topeka 10 NEW-LP AF dismissed Topeka 33 K33IC QG from K55IL Wichita 21 KAKE-DT PR<850kw/310; PG Wichita 45 KSNW-DT NW 891kw/312 |
| <u>Illinois:</u> | | | <u>Kentucky:</u> |
| Carbondale | 8 WSIU-TV | PC>271m, 38-06-11/ 89-14-40 | Bowling Green 16 WNKY-DT PR 1000kw/176, 37-02-04/ 86-10-41 |
| Carthage | 44 WCRD-LP | PG<35.5kw, 41-59-46/ 89-12-11 | Bowling Green 40 WNKY PR<193m, 37-02-04/ 86-10-41 |
| Charleston | 50 WEIU-DT | PR 255kw/146, 39-34-15/ 88-18-26; PG | <u>Louisiana:</u> |
| Charleston | 51 WEIU-TV | PR>72.5kw/146 39-34-15/ 88-18-26 | Alexandria 36 KWCE-LP CC from K36DS |
| Chicago | 18 W34CD | PG 37.5kw, 41-53-55/ 87-37-23; CL from Quincy | Baton Rouge 25 WLPB-DT PC>200kw Baton Rouge 41 KBTR-CA PR<18.9kw, 30-26-59/ 91-07-55 |
| Chicago | 30 W34CD | PG 100kw, 41-52-44/ 87-38-08; CL from Quincy | Lake Charles 8 KPLC-DT PR<17kw; PG Lake Charles 14 KFAM-LP PR>150kw, 30-13-24/ 93-18-36 |
| Holcomb | 7 WRDH-LP | XG 41-59-46/ 89-12-11 | Monroe 7 KNOE-DT PG>17kw Monroe 19 KLTM-DT NW 6.7kw/154, 32-31-39/ 92-06-08 |
| Milford | 64 W34CD | PG 150kw, 40-35-07/ 87-57-47; CL from Quincy | New Orleans 47 K66FW QR from ch. 41, 150kw Shreveport 47 K67FD PR>22kw |
| Mount Vernon | 21 WPXS-DT | NS 1000kw/316, 38-32-54/ 89-29-17; PR<242m | <u>Maryland:</u> Hagerstown 16 WJAL-DT NS 50kw/380m, 39-53-25/ 77-58-04 |
| Peoria | 46 WTVP-DT | NW 190kw/216 | Salisbury 49 W49CE XR 38-12-57/ 75-19-21; XG |
| Quincy | 30 NEW-LP | AF dismissed | <u>Massachusetts:</u> |
| Quincy | 43 NEW-LP | AF dismissed | Adams 36 WCDC-DT PR<48kw; PG |
| Quincy | 48 W48CU | QG frm W34CD, 5w, 40-13-05/ 88-06-55 | Dennis 33 WMPX-LP QC from ch. 67 |
| Rochelle | 25 WMKB-LP | XG 41-59-46/ | Lawrence 18 WMFP-DT PG<357m Marlborough 23 WUTF-DT PG 100kw/332m |
| | | | <u>Michigan:</u> Cadillac 47 WFOX-DT PR>393m, |

| | | | | | |
|---------------------|------------|---|--------------------|------------|--|
| Detroit | 44 WWJ-DT | 44-44-53/ 85-04-08 PR>345kw returned | Great Falls | 50 K50IQ | 47-16-04/ 105-23-26 NS 50kw, 47-32-08/ 111-17-02 |
| Marquette | 31 W31CJ | FC; sold by TBN | Helena | 29 KMTF-DT | PR<43.4kw; PG |
| Marquette | 35 WLUC-DT | PG>83kw/262m | Helena | 41 K41CX | PR<9.8kw, 46-46-07/ 112-01-21; PG |
| Sault Ste. Marie | 10 WWUP-TV | XR 46-03-36/ 84-05-57 | | | QG from K56DJ |
| Minnesota: | | | Lakeside | 15 K15GP | |
| Alexandria | 44 K44GH | NW 1.2kw, 45-55-59/ 95-26-50 | Nebraska: | | |
| Bemidji | 42 K42FH | PG<8.8kw | Columbus | 36 KCAZ-LP | PG>43.6kw; CC from KHJP-LP |
| Duluth | 48 K48JF | NS 2kw, 46-41-40/ 91-59-25 (Daystar) | McCook | 8 KSNK | PG>218m |
| Duluth | 63 K63HH | NS 10kw, 46-49-59/ 92-12-35 | Omaha | 22 WOWT-DT | PR 1000kw/398; PG |
| Jackson | 43 K43JG | NS 35kw, 43-36-12/ 94-59-33 (KWCM- 12) | O'Neill | 27 KAZK-LP | NW 10.3kw, 42-26-57/ 98-36-53 |
| Karlstada | 17 NEW-LP | AF dismissed | O'Neill | 48 KOAZ-LP | NW 9.9kw, 42-26-57/ 98-36-53 |
| Little Falls | 18 K18GF | NW 2.29kw, 45-56-39/ 94-24-01 (3Abn) | Scottsbluff | 7 KDUH-DT | NS 32kw/475m |
| Minneapolis | 43 K67HG | PR>150kw | Valentine | 29 KHJP-LP | NW 10.1kw, 42-53-22/ 100-33-15; CC from KCAZ |
| Park Rapids | 16 NEW-LP | AF dismissed | Nevada: | | |
| Rochester | 52 K52HH | QC from ch. 65, 5w, 43-58-16/ 92-24-54; CL from Whiting,WI | Las Vegas | 7 KLAS-DT | PR<16.5kw/598 |
| St. James | 56 K56IT | NS 2kw, 44-06-28/ 94-35-55 (KWCM- 12) | Las Vegas | 28 KVPX-LP | PG>54kw; PC |
| Windom | 18 NEW-LP | AF dismissed | Reno | 20 KAME-DT | PR>897kw/174 returned |
| Mississippi: | | | Reno | 27 KREN-TV | PG>2600/894 |
| Cleveland | 8 WHCQ-LP | PR>3kw; PG | New Jersey: | | |
| Cleveland | 56 W56DY | PR>2.4kw; PG | Springville | 41 WNAI-LP | QC from ch. 68, 140kw, 40-02-30/ 75-14-11; CL from Cherry Hill |
| Gulfport | 36 W36CU | QC from ch. 56, 106.9kw, 30-42-30/ 89-05-06; PR<5w, 30-23-58/ 89-00-02 dismissed | New Mexico: | | |
| Laurel | 53 W53CE | QG from ch. 48, 4w, 31-46-05/ 89-10-12; CL from Meridian; QC | Farmington | 8 KOFT-DT | PR<40kw/166m 36- 40-17/ 108-13-53; PG |
| Laurel | 68 W68DX | NS 5kw, 31-41-44/ 89-05-40 | Farmington | 19 K19CM | XR 36-40-17/ 108-13-53; XG |
| Meridian | 49 WTOK-DT | PR>852kw/160; PG | Farmington | 40 K40FI | QC from ch. 60, 200w, 36-24-56/ 107-50-40 |
| Tupelo | 49 W49BK | PR>49.9kw, 34-12-16/ 88-41-43; CL from Acton, TN; PG | Hobbs | 40 K40IG | QG from K16EB, 10kw |
| Missouri: | | | Las Cruces | 23 KRWG-DT | PR<200kw |
| Kansas City | 18 KCPT-DT | PR<48kw | Lordsburg | 16 K16GS | NS 999w, 32-34-57/ 108-25-29 (KRWG- 22) |
| Kansas City | 50 KPXE | PR<326m | New York: | | |
| St. Joseph | 21 KTAJ-DT | XR 39-01-20/ 94-30-49 | Albany | 26 WTEN-DT | PR 700kw/426, 42- 37-31/ 74-00-38 |
| St. Louis | 38 K38HD | PR>150kw | Hudson | 21 W21BU | XG 42-08-09/ 73-53-11 |
| Montana: | | | New York | 6 WNYZ-LP | QG from ch. 49, 3kw |
| Billings | 16 NEW-DT | GA | New York | 7 WABC-TV | NS 204kw/296, 40- 45-22/ |
| Circle | 16 K16GP | NW 840w, | | | |

| | | | | | |
|-------------------------------|------------|---|-------------------------------|------------|---|
| New York | 31 WPXN-TV | 73-59-12 (aux) NS 1800kw/360 (aux) | Medford | 25 K25IH | QG from K52EE, 49kw |
| New York | 44 WNYW-DT | PR>990kw | Merlin | 29 K56FN | QR to ch. 20 dismissed; QR from ch. 56, 8.26kw, 42-42-59/ 123-11-53; PG>13kw on 56 |
| Philadelphia | 54 W54DN | NS 5.2kw, 44-12-44/ 75-49-30 | | | |
| Rochester | 16 WXXI-DT | PR>130m; PG; NW | | | |
| Rochester | 20 WAWW-LP | QR from ch. 38, 27kw | Salem | 4 KPXG-DT | NW 16kw/490m, 45-31-21/ 122-44-45 |
| Syracuse | 44 WNYS-DT | NS 680kw/445, 42- 52-50/ 76-12-00 | | | |
| Syracuse | 54 WSTM-DT | PG<376kw/405 | | | |
| <u>North Carolina:</u> | | | <u>Pennsylvania:</u> | | |
| Charlotte | 16 W52CW | QC from ch. 52, 44.8kw | Allentown | 46 WFMZ-DT | PR 400kw/331m |
| Hickory | 14 WHKY-TV | PC>2000kw/ 182m | Clarks Summit | 24 W24DB | QG from ch. 9, 17.5kw |
| Raleigh | 36 W64CN | QC from ch. 64, 10kw | Erie | 50 WQLN-DT | requests DA |
| Wilmington | 30 WSFX-DT | PR<547kw/419; PG | Harrisburg | 10 WHTM-DT | NW 16.2kw/311 |
| Wilmington | 46 WWAY-DT | PR>1000kw; PG | Philadelphia | 10 WCAU | PC 137kw/392, 40- 02-30/ 75-14-11; PC>191kw/35440- 02-36/ 75-14-12 (aux) |
| Wilson | 30 WRAY-TV | PC<1800kw | Philadelphia | 38 WPHA-CA | XC 40-02-19/ 75-14-14 |
| Wilson | 42 WRAY-DT | PG 873kw/539m | | | |
| <u>North Dakota:</u> | | | Pittsburgh | 51 WTAE-DT | PC>1000/273m |
| Bismarck | 16 KBMY-DT | PR<275m; PG | <u>Rhode Island:</u> | | |
| Bismarck | 64 K64GN | NS 100kw, 46-35-23/ 100-47-38 | Providence | 54 WNAC-DT | NW 1000/295m |
| Devils Lake | 25 NEW-DT | NS 134kw, 48-03-47/ 99-20-08 (Prairie Public) | <u>South Carolina:</u> | | |
| Dickinson | 20 KDSE-DT | NW 54.1kw/208 | Allendale | 14 WEBA-TV | PG>2307/241 |
| Ellendale | 20 KJRE-DT | NW 72.3kw/163 | Allendale | 33 WEBA-DT | PG>427kw/241 |
| Jamestown | 18 KJRR-DT | QR from ch. 14, 1000kw/107m; QG | Beaufort | 16 WJWJ-TV | PG>2553/385 32- 42-42/ 80-40-54 |
| Williston | 51 KWSE-DT | NW 53.9kw/248 | Beaufort | 44 WJWJ-DT | PG>468kw |
| <u>Ohio:</u> | | | Charleston | 24 WTAT-TV | PG 3500kw/583 |
| Cambridge | 35 WOUC-DT | NW 350kw/390; PR<310kw/385; PG | Charleston | 36 WMMP | PR 1000/583m, 32- 56-24/ 79-41-45 |
| Cambridge | 44 WOUC-TV | PC>871kw/390 | Rock Hill | 15 WNSC-DT | PG>403kw/212 |
| Cincinnati | 10 WCPO-DT | PR 16.3kw/272; PG | Sumter | 28 WRJA-DT | PG>98.4kw/364 |
| Cincinnati | 35 WLWT-DT | PR>1000/311m PG | <u>South Dakota:</u> | | |
| Mansfield | 12 WMFD-DT | PR>13kw/180m | Brookings | 18 KESD-DT | PR>76kw; PC>801.6kw |
| Shaker Hts. | 19 WOIO | PC<3700kw | Eagle Butte | 25 KPSD-DT | PR>61kw |
| <u>Oklahoma:</u> | | | Lowry | 15 KOQD-DT | PR>50kw |
| Lawton | 10 K10PA | NS 750w, 34-38-19/ 98-22-58 | Martin | 23 KZSD-DT | PR>77kw |
| Shawnee | 30 KTUZ | CC from KQOK?; FC to Telemundo | Rapid City | 16 KCLO-DT | PR<150kw; PG |
| Tulsa | 57 K57IP | PR<10w, 36-06-38/ 96-02-04; CL from Batesville, AR; PG | Rapid City | 40 K31DK | NW 21.6kw, 44-19-42/ 103-50-05 (3Abn) |
| <u>Oregon:</u> | | | <u>Tennessee:</u> | | |
| Bend | 41 K41HA | NW 6.5kw, 44-04-39/ 121-19-57 (KF XO- LP 39) | Acton | 28 W28BO | PR<10kw, 34-58-18/ 88-30-59 |
| Coos Bay | 44 K44FH | PC>5.52kw | Chattanooga | 13 WRCB-DT | NW 34.8kw/335 |
| Corvallis | 39 KOAC-DT | NW 1000/341m | Clarksville | 26 W26CJ | PG<5w, 36-33-30/ 87-19-34 |
| Eugene | 31 KLSR-DT | PR<88kw/372m PG | Dyersburg | 33 WDYR-CA | XR 36-03-27/ 89-26-27; PR<11.1kw dismissed |
| Klamath Falls | 13 KOTI-DT | PR<9kw; PG | Jackson | 39 WJKT-DT | PR<392kw |
| La Grande | 5 KTVR-DT | NW 6kw/775m | Kingsport | 27 WKPT-DT | PR<695m |
| La Grande | 13 KTVR | PC>65kw/775 | Knoxville | 7 WMAK-DT | NW 55kw/382m, 36-00-36/ 83-55-57 (ind.) |

| | | | | | |
|-------------------------|-------------|--|-----------------------|------------|--|
| Knoxville | 43 WTNZ | PC>1960/531m 36-00-13/ 83-56-35 | | | 109-27-42 |
| Memphis | 14 960405KF | NS 4497/379m, 35-28-03/ 90-11-27; competing app dismissed | Cedar City | 47 K47IS | PG>1.2kw, 37-38-18/ 113-01-52; CL fm Kanarraville |
| Memphis | 56 961213KH | NS 3027/332m, 35-09-16/ 89-49-20 (WKNO); 5 competing apps dismissed | Circleville | 17 K18BK | QR from ch. 18, 80w |
| Nashville | 14 WIW-LP | PR>106kw, 36-08-27/ 86-51-56 | Levan | 18 K18GX | NW 30w, 39-29-31/ 111-49-40 |
| Nashville | 56 WTVF-DT | PR>1000kw; PG | Rural Beaver | 33 K33FW | PR>24.2kw, 40-43-36/ 123-58-27; dismissed |
| Sneedville | 41 WETP-DT | PR 445kw/557; PG | Salina | & 18 K62BP | QR from ch. 62, 160w |
| Texas: | | | Redmond | | |
| Abilene | 42 KIDZ-LP | QC from ch. 54 | Summit Co. | 47 K47HB | QC from ch. 65, 770w |
| Alvin | 36 KFTH-DT | PG<579m | Vermont: | | |
| Beeville | 45 NEW-LP | AF dismissed | Monkton | 19 W19BR | PG>63.9kw |
| Corpus Christi | 8 KIII-DT | NS 160kw/269m | Rutland | 9 WVER-DT | QG from ch. 56, 15kw/385m |
| Corpus Christi | 38 960111LP | NS rescinded | Virginia: | | |
| Corsicana | 22 KNAV-LP | QG from ch. 28, 150kw; QC | Arlington | 15 WFDC-DT | NS 900kw/173m |
| Del Rio | 28 KTRG-DT | AF 1000kw/100 | Marion | 52 WMSY-TV | PR>452m |
| El Paso | 40 K40FW | XR 31-48-19/ 106-28-59 | Martinsville | 40 WYAT-LP | PR<10kw, 36-36-48/ 79-55-05; CL from Danville |
| Gainesville | 2 NEW-LP | AF dismissed | Portsmouth | 14 W56CS | QR from ch. 56, 83.3kw |
| Houston | 21 KVQT-LP | PR<50kw, 29-34-15/ 95-30-37 | Richmond | 42 WCVE-DT | PG>346m |
| Houston | 27 KRIV-DT | PG>1000kw | Richmond | 44 WCWV-DT | PR<100kw/328PG |
| Houston | 43 KHLM-LP | PR>84.9kw; PG | Richmond | 54 WWBT-DT | PR>1000kw; PG |
| Houston | 44 KZJL-DT | PR<461m; PG | Roanoke | 44 W34CU | QR from ch. 34, 100kw |
| Llano | 27 KXAM-DT | NS 660kw/249m | Washington: | | |
| Longview | 38 KCEB | QG from ch. 54, 268m, 32-15-36/ 94-57-02 | Kennewick | 44 KVEW-DT | PR<160kw; PG |
| Lubbock | 14 NEW-LP | AF dismissed | Longview | 36 K36DG | PG>20kw, 46-09-52/ 122-51-13 |
| Lubbock | 35 KJTV-DT | PR 1000kw/305, 33-30-08/ 101-52-20 | Spokane | 36 KSKN-DT | PG>1000kw |
| Lufkin | 11 KTRE-DT | QG from ch. 43, 10kw | Tacoma | 11 KSTW | PR>276m |
| Lufkin | 42 KLNLM-LP | PR<200w, 31-20-20/ 94-43-49; PG | Tacoma | 36 KSTW-DT | PR>276m |
| Mount Pleasant | 36 K54CB | QR from ch. 54, 50kw | Yakima | 14 KAPP-DT | PR<160kw; PG |
| Quanah | 43 K43HD | NW 750w, 34-12-41/ 99-44-05 | West Virginia: | | |
| Tyler | 10 KLTV-DT | QG from ch. 38, 15kw | Clarksburg | 44 W44CF | PR>10.8kw, 39-16-32/ 80-17-43; PG |
| Victoria | 45 K45IN | NS 10kw, 28-46-16/ 96-13-11 | Huntington | 14 W14CU | PR>50kw |
| Waco | 44 KWKT | PG>558m | Wisconsin: | | |
| Refugio | 42 NEW-LP | AF dismissed | Fond du Lac | 68 WWAZ-TV | PC>4986/195m, 43-26-20/ 88-31-29; CC from WMMF-TV; FC to Azteca? |
| Utah: | | | Mayville | 43 WWRS-DT | PG 300kw/186m |
| Blanding/ Monticello | 36 K36AK | PC<300w, 37-50-22/ 109-27-42 | Milwaukee | 35 WMVT-DT | NS 500kw/355m |
| Blanding | 42 K42AD | PC<300w, 37-50-22/ | Wyoming: | | |
| | | | Buffalo | 11 K11UT | XG 44-19-44/ 106-41-30; NW (70w) |
| | | | Casper | 7 NEW-LP | AF dismissed |
| | | | Casper | 23 K23HQ | NS 10kw, 42-50-32/ 106-13-04 |

Thanks to Bill Draeb, John Zeis, Mike Ward, and Mike Dorner for information in this month's column.

Bill Draeb reports the addition of channel 11 to the WBKP-5/WBUP-10 ID slide. Presumably this means WBKP-DT is on the air.

Note that the WBKP-DT tower is very close to the WBUP analog site. (within a few hundred meters or less) Note also that WBUP has never filed for a DTV permit.

One might speculate the station's owners (WBKP and WBUP are co-owned) plan to allow the WBUP license to expire at the end of transition, and operate WBKP-DT as their only station in the western U.P..

(it does seem a bit strange to do it that way, rather than the other way around. WBKP's city of license is Calumet, in the Keweenaw Peninsula – it's not that far from the population center in Marquette as the crow flies, but if you look at the map you'll see it's a long trip by road! WBKP is required to maintain a meaningful presence and a public file in Calumet.

It would seem to me to make more sense to run WBUP-DT on channel 11, allow WBKP to expire, and keep the studio presence in Ishpeming, in the more populous Marquette area.)

Bill also noted WMMF-68 Fond du Lac on their newly (greatly!) increased facilities. The station's 64dBu service contours now encompass almost all of Milwaukee and a chunk of Madison's far northeast side.

Actually, WMMF no longer exists. A day or two after filing for a license-to-cover for the power increase, they changed call letters to WWAZ. The station's owners operate TV Azteca (Spanish-language) LPTV stations in Omaha and Lincoln, Nebraska; presumably the Milwaukee-area station will also be Azteca?

The tower location of the new channel 14 station in Memphis is given as "Mississippi, Arkansas". Of course, the station is licensed to Tennessee! Judging from the coordinates I believe the tower site is in Mississippi.

The new station applications in British Columbia are required by CHBC-2's disaffiliation from the CBC. CHBC has existing relays in all these cities except Myra. (it has one in Apex Mountain which the CBC has not applied to replace – I suspect Myra and Apex Mountain are the same place)

Similarly, the two applications in Alberta are required by CKRD-6's disaffiliation. CBC had hoped to negotiate an agreement for the use of the channel 6 transmitter and CKRD's channel 10 relay in Coronation, but was unable to do so. Presumably this means CKRD will remain on channels 6 and 10, and will not change channels?

John reports WPHA-LP 38 and WNAI-LP 41 both

operating on their new channels and sites in the Philadelphia antenna farm.

WPHA moves from channel 63, and to the WRDW-FM (96.5) tower. They're still carrying America's Store.

WNAI moves from channel 68, and to the new WCAU-10 tower. (also home to WPHL-17, WYBE-35, and WPSG-DT) The city-of-license has also changed, from Cherry Hill, New Jersey to Springville. WNAI-LP is carrying HSN – John couldn't see them when they were on channel 68, so he doesn't know if this is a change.

Finally, John reports WGTW-48 switched to TBN on October 1st. Existing TBN LPTV affiliate W40AZ Wilmington continues to carry the Trinity programming though.

Mike Ward challenges a recent format change listing at W64AK Conneaut, Ohio. He says it belongs to the owners of PBS affiliate WVIZ-25 Cleveland, and can't imagine it carrying WIVM-LP. Rechecking the FCC database confirms Mike's comments. I can't remember where I got this change from, but it sure looks like W64AK is still PBS.

Mike Dorner comments on a number of changes at stations owned by Equity Broadcasting Corporation. Mike speculates many of Equity's low-power – and even full-power – stations may be switching to Hispanic formats.

This has already happened at their KOOK-30 Shawnee, Oklahoma (Oklahoma City) which is reported to have gone Telemundo. 100000Watts.com reports the calls have also changed to KTUZ but that change hasn't cleared the FCC yet. (sometimes the Commission is awfully slow to get call changes on notice...)

Mike expects flips to Univision at Equity LPTVs in St. Louis (KUMO-51); Kansas City (KCUN-48); Detroit; Minneapolis; Tulsa (KLOT-45); Boise (KUNS-35); Pocatello (KUNP-24); Jackson, TN (W58DG); and Sherman, TX (KOKT-34). Additional Equity LPTVs suspected to be considering Univision are in Twin Falls, Idaho; Lawton, Oklahoma; Wichita Falls, Texas; Idaho Falls; and Cedar City, Utah.

Two switches seem a bit strange: stations in Charleston, South Carolina (WJEA-12) and Nashville (W42CR) carrying Telefutera. Neither city has a Univision affiliate. Mike asks, why these stations carry the second Univision network and not the primary one. He speculates Univision itself – or in partnership with Equity or Entravision – is attempting to launch full-power Univision affiliates.

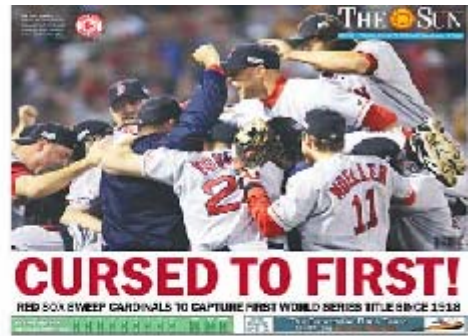
In Nashville, I would not be surprised to see home-shopping WJFB-66 flipped to a Hispanic format. I'm not aware of any available stations for a change in Charleston though.



FM News

Adam Rivers
37 Carlton Ave.
Chicopee, MA 01020

redsoxdxer417@hotmail.com



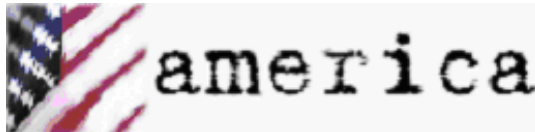
"...for the first time in 86 years..the Red Sox have won baseball's world championship.."

Joe Castiglione, WEEI-AM call of Game 4 vs St. Louis

ABBREVIATIONS:

- AF: applied for (a new station)
- AFA: American Family Association
- CC: call letter change
- CL: city of license change
- CX: a construction permit has been cancelled
- C1, C2, etc.: a change in status to that FM license class
- DA: directional antenna
- DE: station has been deleted
- FC: format change
- GA: granted amendment to the table of FM allocations
- GE: granted extension of construction permit
- GX: granted replacement of expired permit
- LC: license to cover filed (ready to come on the air)
- MC: multiple-city ID
- NC: no change yet on a reported change or permit
- ND: non directional antenna
- NO: not on the air
- NS: new station granted
- NW: new station signs on
- OSA: one step application granted for change

- PA: proposed amendment change to FM allocation table
- PC: power change on the air (> = increase, < = decrease)
- PG: power change granted (> = increase, < = decrease)
- PR: power change requested
- QC: frequency changed occurred
- QG: frequency change granted
- QR: channel change requested
- RA: silent stations returns to the air
- RE: station requests an extension on permit
- RX: station requests replacement of expired permit
- SC: slogan change or update
- SI: station is silent
- SOA: signed on air
- XA: dismissed amendment to FM allocations
- XC: transmitter site change occurred
- XG: transmitter site change granted



ALABAMA:

- Ashland: WTRB 98.3, PR 1.7kw/188m, 33-18-30/85-50-58; CL from Sylacauga
- Birmingham: WYSF 94.5, GA from class C to C0
- Boligee: NEW 107.3, GA, class A
- Eufaula: WRVX 97.9, PC>6kw
- Gardendale: WODL 97.3, CC to WNCB
- Gurley: WXQW 94.1, PR 510w/337m, 34-40-49/86-30-55
- Helena: WANZ 100.5, PR>93kw/309m, 33-05-42/87-15-16
- Hobson Cty: WASZ 95.5, PR 530w/332m, 33-37-38/85-53-25; CL from Ashland
- Holly Pond: WRSA 96.9, CL granted from Decatur
- Homewood: WNCB 97.3, CC from WODL
- Lanett: WRNK-LP 96.3, PG>27m
- Littleville: WMXV 103.5, PR 3.2kw/138m
- Marion: WNPT 102.9, PG 29kw/197m, 32-40-50/87-24-22
- Meridianville: WLAY 100.3, PR<8.5kw/299m, 34-47-36/86-37-51
- Midfield: WBHJ 95.7, PR<12.2kw/306m, 33-27-37/86-51-07; CL from Tuscaloosa
- Montgomery: WLWI 92.3, PR>585m, 32-12-27/86-37-03
- Muscle Shoals: WQPR 88.7, PG 20kw/131m, 34-34-41/87-47-02
- Opp: WAMI 102.3, PG 6kw/60m, 31-16-14/86-20-04
- Selma: WDXX 100.1, PR>150m, 32-25-06/86-58-49
- Tuscaloosa: WTCC-LP 103.5, calls for new station
- Union Springs: WQSI 93.9, PR>12.5kw/143m, 32-19-04/85-40-16
- Winfield: WKXM 97.7, QC from 105.9, 3.9kw/123m



ALASKA:

- Fairbanks: KYSC 96.9, PR>5.8kw
- Galena: KXES-LP 92.9, NW 100w/?m, 64-44-29/156-52-25

ARIZONA:

- Apache Junction: KVVA 107.1, FC to Spanish top 40 "Super Estrella"
- Arizona City: KKMR 106.5, PR>8.6kw/168m, 32-59-46/111-45-28
- Buckeye: KDVA 106.9, FC to Spanish top 40 "Super Estrella" //KVVA 107.1
- Flagstaff: KVNA 97.5, PG 42kw/849m, 34-14-05/112-22-02
- Florence: KCDX 103.1, PR>95kw/614m, 32-46-44/110-57-46
- Safford: KXKQ 94.3, QR from 94.1; 1.7kw/671m, 32-53-23/109-19-26
- Tombstone: KCDQ 95.3, QR from 94.1; 1.7kw/671m, 32-53-23/109-19-26
- Tucson: KSZR 97.5, FC to hot AC/classic hits "Bob"



ARKANSAS:

- Barling: KOLX 94.5, PR<18.5kw/82m, 35-15-54/94-21-52
- Hot Springs: KLAZ 105.9, PR 100kw/299m, 34-21-31/92-42-43
- Mena: KRMN-LP 101.1, NW 100w/7m, 34-36-42/94-13-44
- Texarkana: KWLL 89.3, PR>5.7kw-V/154m, 33-23-26/93-51-34
- Vilonia: KASR 92.7, PG>25kw/100m, 35-03-26/92-04-16; CL from Conway

CALIFORNIA:

- Alameda: KNGY 92.7, PG 510w/339m, 37-45-19/122-27-06
- Big Pine: KRHV 93.3, PG>890w/885m, 37-24-48/118-11-08
- Calexico: KOVO 97.7, now simulcasting KPBS 89.5, San Diego
- California City: KCEL 106.9, FC to regional Mexican "Radio Lazer"
- Carpinteria: KSBL 101.7, PR<6kw/6m, 34-20-07/119-23-03
- Coachella: KBXO 90.3, NW 340w/175m, 33-48-08/116-13-30

Edwards: KEDD 103.9, PR 6kw/100m, 34-58-45/118-10-02
 Garden Grove: KEBN 94.3, PG>6kw/73m
 Hemet: KXRS 105.5, PR 6kw/85m, 34-01-41/116-58-40
 Jackson: KOSL 94.3, FC to cont. Christian "The Fish", simulcasting KKFS 105.5
 Los Angeles: KXOL 96.3, PC 27.5kw/204m, 34-09-50/118-11-46



Mendocino: KAKX 89.3, PR>250w-V/71m, 39-18-46/123-46-57
 Merced: KHPO 106.3, PC>4kw/123m, 37-25-35/120-26-25
 Ontario: KDAI 93.5, CC from KZBA
 Prunedale: KLVM 89.7, PR>520w
 Quincy: KHGQ 100.9, PA from 100.3
 Rohnert Park: KRPC-LP 105.7, calls for new station
 Sacramento: KDEE-LP 97.7, NW ?w/43m, 38-40-51/121-12-07
 San Fernando: KBUA 94.3, PG>6kw/26m
 San Francisco: KRZZ 93.3, relaunched as regional Mexican "La Raza"
 San Jose: KSJO 92.3, FC to Spanish Oldies "La Preciosa"
 San Rafael: KSFB 100.7, CC to KVVZ, FC to Spanish Top 40 "Viva" /KVVV 105.7
 Stockton: KUOP 91.3, PG 2.4kw/573m, 37-30-31/121-22-27
 Taft: KBDS 103.9, FC to R&B "Play 103.9"
 Temecula: KTMQ 103.3, CC from KGBB, FC to classic rock "Q103"
 Temecula: KMYI 94.5, FC to smooth jazz
 Thousand Oaks: KMLT 92.7, PC 3.1kw/141m, 34-12-21/118-49-04
 Ventura: KCVE 92.3, NW 100w/-39m, 34-16-45/119-17-44
 Weimar: KWMI-LP 104.1, PG 228m

COLORADO:

Breckenridge: KSMT 102.3, PR>6kw
 Carbondale: KVOV 90.5, CC from KDNK
 Castle Rock: KJMN 92.1, PG 42kw/163m, 39-23-07/105-02-52
 Delta: KKNN 95.1, PR>451m
 Dolores: KTCF 89.5, NW 500w/53m, 37-28-07/108-32-48; religious // KTLF
 Glenwood Sprngs: KDNK 88.1, CC from KVOV; NW 1.2kw-H/1.07kw-V/775m, 39-25-08/107-22-10 (Colo. Public Radio)
 Glenwood Springs: KKCH 92.7, FC to classic hits/Hot AC "Jack FM"
 Grand Junction: KMXV 104.3, PR>470m



Limon: KIIQ 93.7, NW 1kw/-32m, 39-16-00/103-41-15
 Loveland: KTRR 102.5,

PR>17kw/234m, 40-38-31/104-49-03
 Loveland: KXWA 89.7, PG 45w-H/36kw-V/372m, 40-37-03/105-19-40
 Strasburg: KAGM 102.3, PR>16.5kw/124m, 39-36-33/104-34-02
 Trimble: KTDU 88.5, PR>4kw-V/113m, 37-15-43/107-54-24

DELAWARE:

Laurel: WKDB 95.3, PR<54m, 38-24-28/75-36-16

FLORIDA:

Belle Glade: WBGF 93.5, PR>19.5kw/115m, 26-41-10/80-43-33
 Bonifay: WYYX 97.7, PR 82kw/329m, 30-30-42/85-29-17
 Bonita Springs: WRXK 96.1, PR>100kw/597m, 26-17-37/81-11-30
 Brooksville: WKJO LP 102.7, NW 100w/26m, 28-32-08/82-28-30
 Clermont: WQQZ 88.7, PR<108m
 Cross City: NEW 97.7, GA, class C3
 Cypress Quarters: WREH 90.5, NW 100kw-H/91.7kw-V/76m, 27-20-1/80-57-04
 DeFuniak Sprngs: WWEO-LP 103.9, NW ?w/57m, 30-44-18/86-06-22
 Fort Meade: WWRZ 98.3, PR>11.5kw/311m, 27-50-15/81-56-53
 Inglis: WIFL 104.3, PR>25kw/95m, 29-02-10/82-42-40
 Key Colony Beach: WKYZ 101.7, PR>100kw
 Key Largo: NEW 95.3, PA class C3

Key West: WAVO 88.3, PG>37kw-H/100kw-V/83m, 24-39-34/81-32-19
 LeCanto: WLMS 88.3, PR 4.1kw/73m, 28-53-01/82-31-21
 Live Oak: WMLO-LP 97.1, NW 100w/23m, 30-16-00/82-59-14
 Marathon: WAVK 97.7, PR>100kw/65m, 24-46-02/80-56-42
 Melbourne: WFHA-LP 94.1, NW 100w/15m, 28-10-23/80-41-17
 MiCanopy: WSKY-FM 97.3, PR 50kw/150m
 Monticello: WFRF 105.7, PC 16kw/125m
 Pennesco: WIRP 88.3, PC>6kw (adds H, was V only)
 St. Augustine: WSOS 94.1, PG>25kw/92m, 29-57-57/81-28-36
 Winter Hvn: WPCV 97.5, PR>452m, 28-00-28/81-29-10

GEORGIA:

Ambrose: WDMG 97.9, PC<3.5kw/96m, 31-31-51/82-54-34; QC from 97.7; CL from Ocilla
 Arcade: WPUP 103.7, XR 34-14-13/83-31-48; CL from Royston
 Athens: WPPP-LP 100.7, NW 100w/26m, 33-56-21/83-22-47
 Athens: WDRW-LP 107.9, NW 100w/9m, 33-57-13/83-22-45
 Atlanta: WABE 90.1, PC<250m, 33-45-32/84-20-07
 Atlanta: WNNX 99.7, PC 96.6kw/340m, 33-48-26/84-20-22



Blackshear: WKUB 105.1, PR>106m, 31-10-54/82-22-51
 Bollingbroke: WWWD 102.1, PR>6kw
 Coosa: WSRM 95.3, PR>5kw/109m, 34-11-46/85-21-03
 Dexter: NEW 103.1, PA class A
 LaGrange: WPMA-LP 98.9, NW ?w/55m, 33-02-42/84-58-36
 Milledgeville: WKZR 102.3, PR>6kw/100m
 Ringgold: WTUN 101.9, PR>710w/290m, 34-49-12/85-00-30
 Rockmart: WTSH 107.1, PR 50kw/150m, 34-09-08/84-53-16
 Rossville: WRXR 105.5, PR 1.8kw/184m
 Springfield: WEAS 93.1, req. CL from Savannah
 Statenville: WHLJ 97.5, PR 4.2kw/120m, 30-48-22/83-00-21
 Sycamore: WBLY-LP 101.5, NW ?w/44m, 31-39-28/83-34-01
 Thomasville: WJGG-LP 98.1, NW 100w/28m, 30-51-45/83-56-40
 Watkinsville: WXKT 100.1, PR>4.3kw/88m, 33-56-28/83-23-55
 Willacoochee: WKAA 99.5, PC 43kw/230m, 31-10-18/83-21-57

HAWAII:

Kaneohe: KXME 104.3, CC to KPHW

IDAHO:

American Falls: KORR 104.1, PR 52kw/350m
 Kamiah: KMEI-LP 97.3, NW 100w/-79m, 46-12-46/115-59-19
 McCall: NEW stations on 93.5, 95.5, 102.9, 106.5 up for bid, all class C3
 Moscow: KRFP-LP 92.5, NW 100w/-5m, 46-43-57/117-00-02
 Pocatello: KZBQ 93.7, PR>100kw/333m, 42-51-46/112-31-03
 Sun Valley: KECH 95.3, PR>47kw/582m, 43-38-36/114-23-49
 Twin Falls: KSNQ 98.3, NW 100kw/189m, 42-43-42/114-24-48

ILLINOIS:

Arlington Hgts: WKIE 92.7, now simulcasting WRZA 99.9 "Nine FM" Park Forest IL
 Carmi: WJHP-LP 103.3, calls for new station
 Chicago: WNND 100.3, FC to AC/Rhy Oldies "100-3 Love FM", CC to WILV



Clinton: WHOW 95.9, PR>94m
 DeKalb: WDEK 92.5, now simulcasting WRZA 99.9 "Nine FM" Park Forest IL
 Des Plaines: WZFS 106.7, CC

to WPPN, FC to Spanish top 40 "Pasion 106.7"
 Macomb: WKAI 100.1, PR>11.5kw/148m, 40-26-59/90-42-27
 Neoga: WMCI 101.3, PR 11kw/150m
 Peoria: WXMP 105.7, PR<169m, 40-43-25/89-29-04

INDIANA:

Brownsburg: WKLK 101.9, PR>4.9kw/110m, 39-47-13/86-17-57
 Crothersville: WOJC 89.7, QR from 89.9, 3.25kw/74m, 38-50-39/85-49-26
 Elkhart: WLFO-LP 98.7, NW 100w/30m, 41-40-43/86-03-40
 Ft. Wayne: WFWI 92.3, PR>2.2kw/166m, 41-06-39/85-11-44
 Huntington: WXKE 102.9, PR>4.7kw
 South Bend: WUBU 106.3, PR>92m, 41-40-35/86-15-08
 Speedway: WYJZ 100.9, PR 6kw/100m
 Tell City: WTCJ 105.7, PR 2.7kw/153m, 37-47-44/86-50-58

IOWA:

Asbury: WJOD 103.3, PR 9kw/106m, 42-30-10/90-42-24
Chariton: KELR 105.3, PR>150m, 40-53-10/93-01-21
Des Moines: KMXD 100.3, PG>547m, 41-49-48/93-36-54



Des Moines: KHKI 97.3, PR 105kw/143m
Forest City: KIOW 107.3, PR>50kw/150m, 43-03-17/93-32-54
Indianola: KOLH-LP 94.1, calls for new station
Perry: KDLS 105.5, PR>25kw/100m, 41-43-23/94-00-27
Vinton: KROJ 107.1, PR 4.7kw/113m, 42-08-56/91-52-50
Waterloo: KNWS 101.9, PG 100kw/479m, 42-24-02/91-50-36

KANSAS:

Arkansas Cty: KAXR 91.3, PR>13.25kw
Girard: KSEK 99.1, NW 6kw/99m, 37-29-02/94-51-08
Great Bend: KBDA 89.7, PR>4.5kw
Hays: KCCC-LP 98.5, calls for new station
Hugoton: KFFX 106.7, PR>50kw/75m
Hutchinson: KZSN 102.1, PR>100kw/313m, 37-46-40/97-30-37



Hutchinson: KSKU 97.1, PR>50kw/150m, 37-47-47/97-31-59
Independence: KBQC 88.5, PG>20kw
Shawnee: KMAJ 107.7, PR<90kw/299m, 39-00-45/95-01-46
Sterling: KGGG 94.7, PR>50kw/150m, 38-13-45/98-18-56
Topeka: KWIC 99.3, FC to classic hits "The Eagle"
Wichita: KRBB 97.9, PR>313m
Winfield: KSOK 95.9, PC 15.2kw/128m, 37-04-32/96-56-13

KENTUCKY:

Glasgow: WOVO 105.3, PR 15kw/133m, 36-58-50/86-06-10
Salt Lake: WAXZ 97.7, GA from Georgetown, OH
Whitesburg: WKXQ 103.9, PR>280w

LOUISIANA:

Breaux Brd: KVTZ-LP 92.9, PG 35m, 30-19-08/91-50-16
Dubach: KPCH 97.7, PR>141m, 32-40-09/92-37-58
Franklin: KDDK 105.5, returns to air with standards
Lake Charles: KYKZ 96.1, PR>302m, 30-16-44/93-20-59
LaPlace: WCKW 92.3, CC to WDVW, FC to rhythmic AC "Diva 92.3"
New Orleans: WEZB 97.1, PR>451m, 29-55-28/90-02-02
New Orleans: WYLD 98.5, PR>300m, 29-55-11/90-01-29
Ruston: KYKZ 107.5, PC>100kw
Shreveport: KRMD 101.1, PR>100kw/475m
Sulphur: KKGB 101.3, PR 12kw/146m, 30-14-41/93-20-37



MARYLAND:

Annapolis: WHFS 99.1, PR>45kw/157m, 39-01-48/76-44-25
Easton: WCEI 96.7, PR>45kw/157m, 39-01-48/76-44-25
Ocean Pines: WQJZ 97.1, PR>3.1kw/142m, 38-22-24/75-15-31

MASSACHUSETTS:

Andover: WPAA 91.7, CX, DE; off air more than 12 months
Gt. Barrington: WBCR-LP 97.7, NW 100w/-180m, 42-11-31/73-22-21
Southbridge: WWFX 100.1, FC to classic hits "The Pike"

MICHIGAN:

Bay City: WTRK 89.1, PR>25kw/113m, 43-33-42/83-58-52
Benton Hbr: WVBH 105.3, PR>28m, 42-07-45/86-27-55
Berrien Sprngs: WSFT-LP 96.3, NW ?w/40m, 41-55-25/86-16-56
Clare: WCFX 95.3, PR<99m, 43-44-33/84-48-18
Detroit: WGPR 107.5, PC>124m
Fenwick: WDLF-LP 92.9, NW 100w/30m, 43-09-34/85-07-43
Flint: WKUF-LP 94.3, NW 100w/29m, 43-00-52/83-42-50
Flint: WAKL 88.9, PC>380w-V/80m, 42-58-49/83-34-40
Harbor Bch: WCZE 103.7, PR 43kw/161m, 43-41-10/82-59-40
Hart: WWKR 94.1, req. CL from Pentwater
Hartford: WSPZ 103.7, CC from WZBL
Ishpeming: WMQT-FM 107.7, PC>195m, 46-30-08/87-38-52

Marlette: WMSQ 89.3, PR>250w/28m, 43-19-38/83-04-05
Onsted: WAAQ 88.3, XC 42-03-33/84-12-54
Southfield: WSHJ 88.3, PC 100w/21m

MINNESOTA:

Ada: KRJB 106.5, PR>100kw/138m, 47-18-41/96-31-13; QR from 106.3
Blue Earth: KBEW 98.3, PR>50kw/150m, 43-44-54/94-25-45; QR from 98.1
Glenwood: KMGK 107.1, PR>25kw/100m, 45-44-39/95-08-05
Hibbing: WTBX 93.9, PR<162m
New Prague: KRDS 95.5, PC>6kw
N. Mankato: KDOG 96.7, PR>11.5kw/150m, 44-08-34/94-06-36
Sebekka: KOPJ 89.3, PG<143m, 46-33-08/94-39-03
Spring Grve: KQYB 98.3, PR 14.1kw/284m, 43-39-30/91-31-56
St. Paul: KNOF 95.3, PR>6kw
Virginia: KUSZ 99.9, PR<162m

MISSISSIPPI:

Baldwin: WESE 92.5, PR>25kw/89m, 34-21-55/88-36-27
Columbus: WCSO 90.5, calls for new station
Piney Woods: WPWS-LP 104.3, calls for new station
Richton: WXHB 96.5, PC>5.7kw/175m, 31-28-09/88-45-53, returns to air with black gospel "Solid Gospel 96.5"
Taylorsville: WBBN 95.9, PG>100kw/223m, 31-38-03/89-28-35
Vaiden: NEW 102.1, GA class A

MISSOURI:

Gainesville: KMAC 99.7, FC to AAA "World Class Rock"
Garden City: KFME 105.1, CC to KCJK



Naylor: KZMA 99.9, PR 2.6kw/150m, 36-39-43/90-29-16
Otterville: KCVK 107.7, PR 2.5kw/152m
Rolla: KDAK 97.5, PR 1.3kw/174m, 37-52-39/91-44-45
Stockton: KRLK 107.7, PR<450w/68m, 37-41-45/93-46-15
Union: KLPW 101.7, PR>5.2kw
Windsor: KWKJ 98.5, PR>7kw/163m, 38-35-37/93-31-26

MONTANA:

Big Sky: KBZM 104.7, PC>5kw/1017m
Bigfork: KIBG 100.7, PC>85kw/646m, 47-46-25/114-16-04
Billings: KIBL 90.9, PR>7.5kw-V/181m, 45-45-54/108-27-19
Helena: KHLV 90.1, PR 3.5kw-V/202m, 46-46-07/112-01-21
Helena: KVCM 103.1, PR>235m, 46-46-07/112-01-21
Kalispell: KLKM 88.7, CC from KHBQ
Miles City: KKRY 92.3, QR from 92.5
Park City: KLZY 92.5, PR<100kw/200m, 45-45-54/108-27-19

NEBRASKA:

Crete: KIBZ 104.1, PR 50kw/99m, 40-40-12/96-43-39



Ord: KNLV 103.9, PC 30kw/194m, 41-34-17/98-55-21

NEVADA:

Amargosa Vly: KPCK 101.1, PR>100kw-H/572m, 36-37-15/115-57-31
Ely: KCLS 101.7, PR>3.5kw/266m
Las Vegas: KWID 101.9, FC to Spanish Oldies "La Preciosa"
Moapa Valley: KBHQ 104.7, PC>100kw/184m, 36-41-00/114-30-48
Reno: KURK 92.9, PC<48kw/153m, 39-35-03/119-48-06
Sparks: KJZS 92.1, PC>8.9kw/153m, 39-35-03/119-48-06

NEW HAMPSHIRE:

Londonderry: WLLO-LP 102.9, NW 100w/12m, 42-55-08/71-23-51

NEW JERSEY:

Bringatine: WWFP 90.5, PR<77w-V/94m, 39-22-46/74-25-45
Egg Hbr City: WSJO 104.9, FC to hot AC "SoJo 104.9"
Hazlet: WCNJ 89.3, PG>95m, 40-23-07/74-12-41
Medford Lakes: WVBV 90.5, PR>1.23kw-V/246m, 39-43-41/74-50-39
Millville: WIXM 97.3, simulcasting WKXW 101.5
Ocean City: WKOE 106.3, FC to soft AC "Breeze"

Pennesauken: WSNJ 107.9, PG<550w/252m, 39-57-09/75-10-05, CC to WPPZ

NEW MEXICO:

Alamogordo: KZZX 105.3, PR>1.37kw/412m, 32-49-40/105-53-40
Alamogordo: KYEE 94.3, PR>38.5kw/426m, 32-49-40/105-53-40
Alamogordo: KALH-LP 95.1, XR 32-56-44/105-56-47
Bosque Farms: KQLV 105.5, PR>100kw/227m, 34-47-55/106-48-59; CL from Grants
Farmington: KRWN 92.9, PR>98.5kw
Grants: KDSK 92.7, PC>26kw/52m
Los Alamos: KZNM 106.7, PR>51.4kw/551m, 35-46-49/106-31-37
Portales: KSEL 105.9, PR>100kw/165m, 34-11-34/103-16-44; QR from 95.3
Tucumcari: KOAY 92.7, PR>126m, 35-08-23/103-44-35

NEW YORK:

Brockport: WMJQ 104.9, PR>6kw/100m, 43-09-51/77-47-02
Buffalo: WBUF 92.9, PR<76kw/195m, 42-57-13/78-52-36
Dundee: WFLR 95.5, PR>880w/261m, 42-23-10/77-00-16
Gouverner: WGIX 95.3, PR>6kw
Hampton Bays: WLIR 107.1, PR>4.1kw/121m, 40-53-07/72-41-32
Malone: WVNV 96.5, PR 16kw-H/15.5kw-V/122m
New York: WCBS-FM 101.1, PG 6.7kw/408m



New York: WQCD 101.9, FC to "chill" (European format with a wide variety of music) as "CD 101.9"

Norwich: WBKT 95.3, PR 470w/256m, 42-26-08/75-30-47
Ogdensburg: WPAC 98.7, PR>6kw/100m, 44-34-43/75-30-51
Oswego: WTKV 105.5, PR 3.9kw/125m, 43-16-23/76-24-05
Schuyler Falls: WAVX 90.9, signs on with contemporary Christian "The Wave"
Southold: WBEA 101.7, FC to rhythmic CHR "Blaze 101.7"
Tupper Lake: WRGR 102.3, PR>1.2kw

NORTH CAROLINA:

Aurora: WSTK 104.5, PR 4.2kw/120m, 35-18-09/76-34-00
Burlington: WBYJ-LP 97.9, calls for new station
Calabash: WYNA 104.9, PR<15kw
Charlotte: WFAE 90.7, PG>331m, 35-17-14/80-41-45
Creedmoore: WFXQ 99.9, PR 22kw/89m, 36-04-52/78-28-27
Durham: WDCG 105.1, PR<78kw/321m, 35-42-50/78-49-04
Fletcher: WQNO 104.3, PR 470w/349m, 35-31-39/82-29-49
Gatesville: WQDK 99.3, PR 3.7kw/128m, 36-16-29/76-43-17; CL from Ahoksie
Hickory: WLRZ-LP 99.3, calls for new station
Indian Trl: WABZ 100.9, PC>6kw/100m, 35-07-29/80-43-30; CL from Albemarle, relaunched as black gospel "Praise 100.9"
Kinston: WWNF 97.7, PR>2.65kw/153m, 35-17-30/77-49-25
Lincolnton: WWGT-LP 100.9, NW 100w/1m, 35-27-50/81-16-29
Roanoke Rapids: WRTP 90.1, PG>11kw/154m, 36-14-39/77-34-40
Rocky Mount: WTRG 100.7, FC to classic hits "The River", CC to WRVA-FM

NORTH DAKOTA:

Lison: KQLX-FM 106.1, PR>100kw/218m, 46-44-39/97-25-38

OHIO:

Ashtabula: WYBL 98.3, PR>5.2kw/106m, 41-51-39/80-40-47
Athens: WEAK-LP 106.7, NW 100w/24m, 39-18-59/82-10-02
Belpre: WMBP 91.9, FC to K-Love contemporary Christian
Bluffton: WBWH-LP 99.3, NW ?w/37m, 40-53-49/83-54-10
Caledonia: WYNT 95.9, PR>3.7kw/129m, 40-40-55/83-00-27; CL from Upper Sandusky
Cincinnati: WVMX 94.1, PR 16kw/264m, 39-06-59/84-30-07
Delaware: WINF-LP 101.9, NW ?w/39m, 40-17-57/83-02-45
Elyria: WNWV 107.3, PC 20kw/238m



Georgetown: WRAC 103.1, GA from West Union
Mansfield: WNCG-LP 95.7, NW ?w/51m, 40-48-24/82-35-31
Mason: WOXY 97.7, GA from Oxford
Norwalk: WNRK 90.7, NW 4kw/124m, 41-10-50/82-23-21
Portsmouth: WPAY 104.1, PR>454m, 38-43-21/83-00-05
Rushville: WLRV 88.5, PC>900w-V/91m

W. Carrollton: WDPR 88.1, PR 600w/238m, 39-43-16/84-15-00

W. Union: WUHS-LP 96.9, NW ?w/34m, 38-48-49/83-34-54
Westerville: WEGE 103.9, PR 6kw/100m, 40-05-24/82-56-52, CC to WTDA

OKLAHOMA:

Anadarko: KVSP 103.5, PC>100kw/600m, 35-15-04/98-36-53
Apache: KACO 98.5, PR 18.5kw/93m, 34-56-30/98-22-33; CL from Ardmore
Bartlesville: KWRI 89.1, NW 100kw-V/191m, 36-42-13/95-30-57 (K-Love)
Cache: KJMZ 97.9, PR<5.7kw/103m, 34-35-31/98-32-55; CL from Lawton
Elk City: KTIJ 106.9, PR<299m
Enid: KQOB 96.9, PR>451m
Glenpool: KTSO 94.1, PG<211m, 36-07-52/96-04-13
Idabel: KXRT 90.9, PR>92kw-V/180m, 33-48-03/94-45-02
Ketchum: KGND 107.5, CC to KOSN
Lahoma: KXLS 95.7, PR 29.4kw/131m, 36-32-13/98-00-39
Okla. City: KJYO 102.7, PR>479m, 35-35-52/97-29-22



Okla. City: KHBZ 94.7, PR>479m
Okla. City: KXXY 96.1, PR>100kw/479m
Okla. City: KTST 101.9, PR>100kw/479m
Ponca City: KJTH 89.7, NW 100kw/307m, 36-35-42/97-34-38
Woodward: KWOX 101.1, PR>600m

OREGON:

Ashland: KIFS 107.5, PR 5.8kw/419m
Baker: KANL 90.7, NW 250w/199m, 44-45-58/117-52-54 (AFA)
Bend: KTWS 98.3, PG 5.2kw/223m
Bend: KOAB-FM 91.3, PG>207m
Bend: KMTK 99.7, PC>26kw/208m, 44-04-39/121-19-57
Burns: KBWR-LP 98.1, NW 100w/-21m, 43-35-18/119-03-21
Cottage Grove: KSOW-LP 106.7, NW 100w/-38m, 43-45-06/123-04-29
Days Creek: KUMP-LP 107.9, NW 100w/-131m, 42-55-53/123-02-02
Fossil: KFSL-LP 99.5, NW 100w/-85m, 45-00-30/120-12-35
Glide: KLBG-LP 92.3, NW 100w/-64m, 43-18-05/123-09-34
Jordan Vly: KIDH 90.9, PR<200w-V/667m
Milton-Freewater: KOLW 97.9, CC to KHTO
Newport: KSHY-LP 94.3, NW ?w/76m, 44-38-44/124-01-33
Ontario: KSRV 96.1, PR>47kw/815m, 43-45-18/116-05-51
Pendleton: KCUW-LP 101.1, NW 100w/-65m, 45-39-36/118-34-04
Redmond: KLRR 101.7, PG 23kw/223m
Roseburg: KLLF-LP 106.7, NW ?w/67m, 43-12-24/123-21-47

PENNSYLVANIA:

Everett: WSKE 104.3, PR 820w/270m, 40-00-11/78-23-58
Gap: WOMB-LP 92.9, CC to WLDW-LP
Greensburg: WJJJ 107.1, FC to R&B "Magic 107"
Greenville: WEXC 107.1, PC>100m, 41-22-50/80-24-48
Murrysville: WRWJ 88.1, PG>1kw-V/92m, 40-31-12/79-39-29
New Wilm: WWNW 88.9, PC>200w/23m (adds V), 41-06-42/80-20-02
Philadelphia: WXTU 92.5, PR>277m



Scranton: WVMW 91.7, PG 2kw/-87m, 41-25-57/75-38-06
Shawnee-On-Delaware: WCSO-LP 104.9, NW 100w/26m, 41-01-03/75-06-51

SOUTH CAROLINA:

Anderson: WJMZ 107.3, PR<301m, 34-38-51/82-16-13
Bamberg: WWBD 95.7, PR>7.6kw/164m, 33-24-49/81-00-59
Branchville: WGFG 105.1, PR 2.75kw/150m, 33-26-15/80-49-17
Charleston: WALC 100.5, PR 18.5kw/80m, 32-49-40/79-57-50
Forest Acres: WEHA 94.3, CC to WWNQ
Hanahan: WAVF 96.1, PR>542m, 32-55-28/79-41-58
Irmo: WJES 92.1, PG>15kw/130m, 34-04-55/81-07-36
Lamar: WSIM 93.7, FC to oldies, "Z95.5"//WIBZ 95.5

Orangeburg: WQKI 102.9, PR 3.1kw/139m, 33-26-35/80-48-16
St. Matthews: WIGL 93.9, PC 1.75kw/185m, 33-45-46/80-49-23

SOUTH DAKOTA:

Pierre: KGFX 92.7, PR>50kw/149m, 44-18-30/100-20-49

TENNESSEE:

E. Ridge: WOGT 107.9, PR 25kw/100m, 35-07-33/85-17-24
Erwin: WXIS 103.9, PR>5.4kw/106m
Manchester: WWTN 99.7, PR>451m
S. Fulton: WCMT 101.3, QC from 101.7; PC>22kw/94m, 36-29-00/88-57-10; CL from Martin
Trenton: WTNE 97.7, PR>50kw/150m, 35-44-40/88-53-50
Walden: WTRZ 103.7, PR>25kw/93m, 35-07-33/85-17-25; QR from 103.9

TEXAS:

Amarillo: KGNC 97.9, PR>100kw/398m
Anson: KFOX 98.1, CC to KTLT
Baird: KNCE 95.1, CC to KORQ
Beaumont: KOXY 94.1, PR<110m, 30-20-15/94-08-49
Beeville: KVFM 91.3, Returns to air with Spanish religious
Bloomington: KLUB 106.9, PR>25kw/100m, 28-42-24/96-50-06
Bridgeport: KBOC 98.3, PR>40kw/620m, 33-26-13/97-29-05
Bushland: KTXP 91.5, NW 1kw/80m, 35-08-51/102-05-56
Crystal Bch: KLTO 105.3, CC to KPTI
Cuero: KTLZ 89.9, NW 5kw/74m, 29-02-23/97-19-24
Dalhart: KXIT 96.3, PC>100kw/144m, 35-53-46/102-23-03
Dallas: KJKK 100.3, PC>574m, 32-35-05/96-57-46
Decatur: KDKR 91.3, PR>12kw-H/57kw-V/544m, 33-23-12/97-33-57
Dublin: KSTV 93.1, PR<7kw/178m, 32-10-59/98-17-12
El Indio: NEW 95.1, GA class A
Falfurrias: KPSO 106.3, PC>6kw/56m
Fort Worth: KOAI 107.5, PC 16.5kw/574m



Freeport: KJOJ 103.3, PR>595m, 28-48-58/95-36-11
Freer: KPBN 90.7, calls for new station
Gainesville: KSOC 94.5, PC>100kw
Hebbronville: KAZF 91.9, RA with Spanish religious
Houston: KLOL 101.1, FC to Spanish CHR "Mega 101, Latino and Proud"
Kerrville: KKER 88.7, PR>55kw/174m, 30-03-30/99-03-50
Kerrville: KWSP-LP 104.9, NW ?w/70m, 30-03-51/99-08-16
Leander: KHHL 98.9, PC<25kw/164m, 30-23-26/97-50-13
Llano: KITY 102.9, PR>2kw/151m, 30-40-37/98-33-59
Lufkin: KLFK-LP 104.1, NW 100w/25m, 31-19-47/94-41-10
Mason: KOTY 95.7, NW 50kw/133m, 30-33-53/99-27-13
Mercedes: KHKZ 106.3, PR 2.85kw/146m, 26-06-24/97-39-20
Orange Grove: KEKO 101.7, PR>50kw/150m, 27-59-45/98-15-18; CL from Hebbronville
Palestine: KYYK 98.9, PR<5kw/222m, 31-55-33/95-38-48
Pittsburg: KXXI 91.1, PR>1.2kw-V/61m, 32-57-48/94-53-54
Plainview: KOLF-LP 100.7, NW 100w/29m, 34-11-41/101-42-02
Portland: KMJR 105.5, PR>2.8kw/104m
Ranger: KCUB 98.3, PR>6kw/92m, 32-24-54/98-42-44



San Angelo: KYZZ 100.1, PC>50kw/117m, 31-31-49/100-29-05
Sanger: KTDK 104.1, PR 6.1kw/193m, 33-28-48/97-03-16
Seguin: KSMG 105.3, PR>100kw/453m
Seymour: KSEY 93.9, PR>40kw/130m, 33-34-15/99-18-30
Stephenville: KQXS 89.1, NW 1.2kw-V/129m, 32-16-09/98-18-51
Three Rivers: KEMA 94.5, PR>50kw, 28-44-20/98-10-37
Waco: KXZY-LP 100.7, NW ?w/355m, 31-33-00/97-08-44
W. Orange: KBXG 99.5, PA from Lake Charles, LA withdrawn
Winnie: KOBT 100.7, CC to KKHT-FM, FC to Salem religious programming//KKHT 1070
Winters: KORQ 96.1, CC to KNCE
Wolforth: KAIQ 95.5, relaunched as Spanish Top 40 "Super Estrella"

UTAH:

Bountiful: KURR 99.5, relaunched as AC as "My 99.5", CC to KJMY
Cedar City: KXFF 92.1, PR>100kw, 37-38-43/113-22-22
Centerville: KCPX 105.7, FC to classic hits "The River", CC to KXRV
Kanab: KPLD 101.1, PR<79kw
Monticello: KAAJ-LP 103.5, PC<-52m, 37-52-43/109-20-25
Naples: KCUA 92.5, NW 840w/506m, 40-32-16/109-41-57
Smithfield: KKEX 96.7, PR>100kw/63m

VERMONT:

Addison: WXAL 93.7, PR 21kw/108m, 44-13-15/73-24-37
Barre: WJPL-LP 92.1, XR 44-10-18/72-29-02
Derby: WDER-LP 98.3, PG>181m
Enosburg Falls: WEVT-LP 98.1, NW 100w/13m, 44-54-39/72-48-12
Randolph: WRAN-LP 100.1, NW ?w/120m, 43-57-20/72-36-18
Rupert: WMNV 104.1, PC>4.3kw/61m
Waterbury: WLKC 103.3, PR>1.05kw/806m, 44-31-32/72-48-54

VIRGINIA:

Bridgewater: WJDV 105.1, XC 38-27-08/78-54-32
Cape Charles: WAZP 90.7, PC>13kw
Grundy: WMJD 100.7, PR 2.3kw/163m
Midlothian: WCUL 98.9, PG>4.8kw/227m, 37-36-52/77-30-56
Nassawadox: WJCN 90.1, PG<4.5kw-V/61m, 37-33-27/75-49-44
Richlands: WRIC 97.7, PR 1.35kw/214m
Richmond: WJMO-FM 105.7, CC to WKJM, FC to R&B "Kiss FM"
South Hill: WKSK 101.9, QC from 98.9, 6kw-H/5.7kw-V/96m
Suffolk: WAFX 106.9, XR 36-48-09/76-45-19
Williamsburg: WCWM 90.9, QC from 90.7; 13.5kw/82m, 37-21-16/76-59-58

WASHINGTON:

Basin City: KOLW 97.5, PR>50w/189m, 46-17-23/119-25-28
Camas: KNRK 94.7, PC 6.3kw/403m, 45-29-20/122-41-40
Centralia: KMNT 102.9, PG>70kw/668m, 46-58-31/123-08-16
Ellensburg: KGRU-LP 96.1, NW 100w/-73m, 47-01-18/120-34-24
Othello: KHTO 97.5, CC to KOLW
Raymond: KJET 105.7, PR>58kw/158m, 46-56-30/123-47-07
Spokane: KAGU 88.7, PC>5kw/466m, 47-34-52/117-17-47

WEST VIRGINIA:

Berkeley Springs: WDHC 92.9, PG>3.2kw/139m
Moundsville: WRKP 96.5, PG>1.9kw
Ripley: WVRP 90.7, FC to K-Love contemporary Christian
Romney: WDNZ 100.1, PR>900w

WISCONSIN:

Kewaunee: WAUN 92.7, FC to classic rock "U-Rock"
Milwaukee: WLTV 97.3, CC to WQBW

WYOMING:

Casper: KCPP 89.1, PR 1.5kw-V/564m, 42-44-03/106-20-00
Jackson: KMTN 96.9, PR>100kw/324m
Laramie: KARS 102.9, returns to air as "Oldies 102.9"

Some news and notes:

-Radio One's Richmond cluster had a huge shakeup as WKJS 104.7 picks up the "Praise" gospel format that was on WPZZ 99.3, WKJS's adult R&B format moves to WJMO 105.7 as "Kiss FM 105.7", and Kiss is also on 99.3.

-Ken Onyschuk checks in from Joliet, Illinois, reporting of format changes on a bunch of Chicago-area format changes, which are stated above. Sent a nice article from The Daily Southtown. Thanks Ken!

- You may notice many class C stations upgraded their power or antenna height this month because the FCC was downgrading class C stations that met the low requirements to class C0 automatically. Therefore, many of these stations upgraded so as not to lose their class C status.

Have a very Happy Holidays this year, and thanks for making 2004 a great one!

-Adam



Here are stations with the all Christmas format:

KEZK 102.5 St. Louis, MO
 WYYY 94.5 Syracuse, NY
 WUCL 93.5 Remsen, NY
 WLYF 101.5 Miami, FL
 WSNE 93.3 Taunton, MA
 WSRS 96.1 Worcester, MA
 WEZN 99.9 Bridgeport, CT
 WWDE 101.3 Norfolk, VA
 WSNV 93.5 Salem, VA
 WPLJ 95.5 New York
 KSNE 106.5 Las Vegas
 WAWZ 99.1 Zarepath NJ
 KCMS 105.3 Edmonds WA
 WFSH 104.7 Athens GA
 WSLT 98.3 Clearwater SC
 WLRX 95.7 Nappae IN
 KRVE 96.1 Brusly LA
 KMGA 99.5 Albuquerque NM
 KSYR 92.1 Benton LA
 KMXZ 94.9 Tucson AZ
 KKMJ 95.5 Austin TX
 KKMJ 104.5 Orange TX
 WSPA 98.9 Spartanburg SC
 WRSA 96.9 Decatur AL
 WTRY 98.3 Rotterdam NY
 KBBB 103.7 Billings MT
 WSNY 94.7 Columbus OH
 WVXG 95.1 Mt. Gilead OH
 WCVZ 92.7 South Zanesville OH
 WOEZ 88.3 Maynardville TN
 WBBG 106.1 Niles OH
 WMEZ 94.1 Pensacola FL
 WMXC 99.9 Mobile AL
 WTLT 93.7 Naples FL
 KQXT 101.9 St. Antonio TX
 WTSS 102.5 Buffalo NY
 KIYX 106.5 Sageville IA
 KXLT 107.9 Eagle ID
 KISC 98.1 Spokane WA
 WSYR 94.7 Gifford FL
 WRVR 104.5 Memphis TN
 WDEF 92.3 Chattanooga TN
 KBEZ 92.9 Tulsa OK
 KYMG 98.9 Anchorage AK
 WFOG 92.9 Suffolk VA
 WXGM 99.1 Gloucester VA
 WTVR 98.1 Richmond VA
 WYND 97.1 Hatteras NC
 WDLZ 98.3 Murfeesboro NC
 WWLI 105.1 Providence RI
 KQLF 97.9 Cheyenne WY
 WJXA 92.9 Nashville TN
 WZZU 97.9 Lynchburg VA
 WZZI 101.5 Vinton VA
 KUUL 101.3 Quad Cities IL
 KRVI 95.1 Detroit Lakes MN
 WARM 103.3 York PA
 WALK 97.5 Patchogue NY
 WMXW 103.3 Vestal NY
 WLTF 97.5 Martinsburg WV
 WLTW 106.7 New York NY
 WLIT 93.9 Chicago IL
 KODA 99.1 Houston TX
 WLIF 101.9 Baltimore MD
 KOIT 96.5 San Francisco CA
 WMGF 107.7 Mount Dora FL
 WRMM 101.3 Rochester NY
 WISY 102.3 Canandaigua NY
 KQXT 101.9 S an Antonio TX
 WVEZ 106.9 Louisville KY
 WROZ 101.3 Lancaster PA
 WCVO 104.9 Gahanna OH

WFLC 97.3 Miami FL
 KGFM 101.5 Bakersfield CA
 WMAG 99.5 High Point NC
 WMOX 93.1 Winston Salem NC
 WLNH 98.3 Laconia NH
 WMEE 97.3 Fort Wayne IN
 WXKE 102.9 Huntington IN
 WSYE 93.3 Houston MS
 WJYE 96.1 Buffalo NY
 WMJJ 96.5 Birmingham AL
 KKST 98.7 Oakdale LA
 WRDA 104.1 Jerseyville IL
 WBYS 107.9 Canton IL
 WMOI 97.7 Monmouth IL
 WKAI 100.1 Macomb IL
 KSCR 93.5 Benson MN
 WEZF 92.9 Burlington VT
 WDVT 93.5 Harwichport MA
 WTWV 101.1 Mashpee MA
 WVAF 99.9 Charleston WV
 WLYT 102.9 Hickory NC
 WVMX 94.1 Cincinnati
 WLTU 96.7 Columbia SC
 WRSN 93.9 Burlington NC
 KSFI 100.3 Salt Lake City
 KRWM 106.9 Bremerton WA
 WRVF 101.5 Toledo OH
 WLZT 93.3 Ashville OH
 WLQT 99.9 Kettering OH
 WOOD 105.7 Grand Rapids MI
 WTRV 100.5 Walker MI
 KMSX 94.9 Maumelle AR
 WRIT 95.7 Milwaukee WI
 KQQL 107.9 Anoka MN
 WLTE 102.9 Minneapolis
 WNTM 104.3 Luverne AL
 WFFH 94.1 Symryna TN
 WFFI 93.7 Kingston Springs TN
 KKCW 103.3 Beaverton OR
 WPEZ 93.7 Macon GA
 KOST 103.5 Los Angeles
 KOSI 101.1 Denver
 WGKS 96.9 Paris KY
 CJEZ 97.3 Toronto
 WXLM 102.3 Stonington CT
 WLEV 100.7 Allentown PA
 KMXD 100.3 Des Moines IA
 KLTU 104.1 Ames IA
 KYIS 98.9 Oklahoma City OK
 KESZ 99.9 Pheonix AZ
 KLTH 106.7 Lake Oswego OR
 WKQL 96.9 Jacksonville FL
 WTPI 107.9 Indianapolis
 KJMK 93.9 Webb City MO
 WSUJ 96.9 Charleston SC
 KGBY 92.5 Sacramento CA
 WMGQ 98.3 New Brunswick NJ
 WSNY 94.7 Columbus OH
 WGXL 92.3 Hanover NH
 WODS 103.3 Boston
 WWSW 94.5 Pittsburgh
 WECB 104.3 Seymour WI
 WASH 97.1 Washington DC
 WMYX 99.1 Milwaukee
 WBMW 106.5 Ledyard CT
 WALC 100.5 Charleston SC
 WGLD 104.5 Indianapolis
 WNIC 100.3 Dearborn MI
 KEFM 96.1 Omaha NE
 KLTO 101.9 Lincoln NE
 KLMY 106.3 Lncoln NE
 KOSY 106.5 Spanish Fork UT
 KNEV 95.5 Reno NV

Have a great holiday!

December 2004

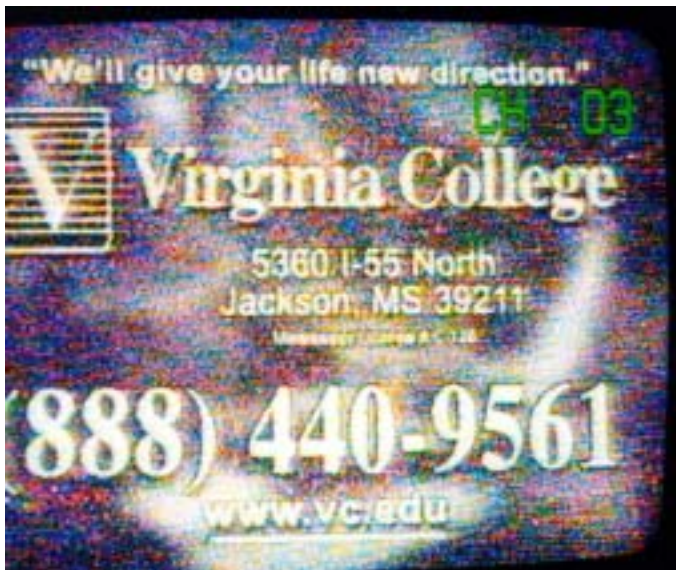
Marv Shults checks in with some fantastic E-skip received from Toulon, IL:



KTVO-3 Kirksville, MO
144 mi Tr seen 5/30/04
@0700 CT



KGBT-4 Harlingen, TX
1126 mi Es seen 6/4/04
@1805 CT



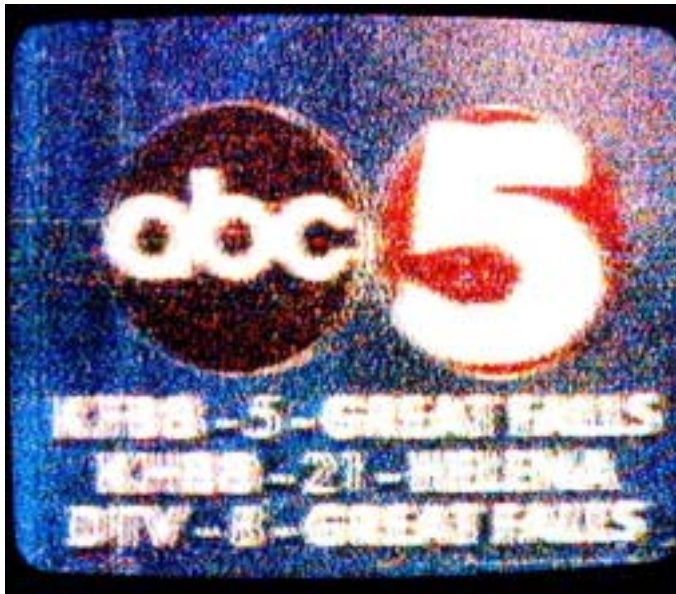
WLBT-3 Jackson, MS
613 mi Es seen 07/8/04
@1510 CT



KRGV-5 Weslaco, TX
1130 mi Es seen 6/11/04
@ 0742 CT



KWGN-2 Denver, CO
815 mi Es seen 6/11/04
@ 2051 CT



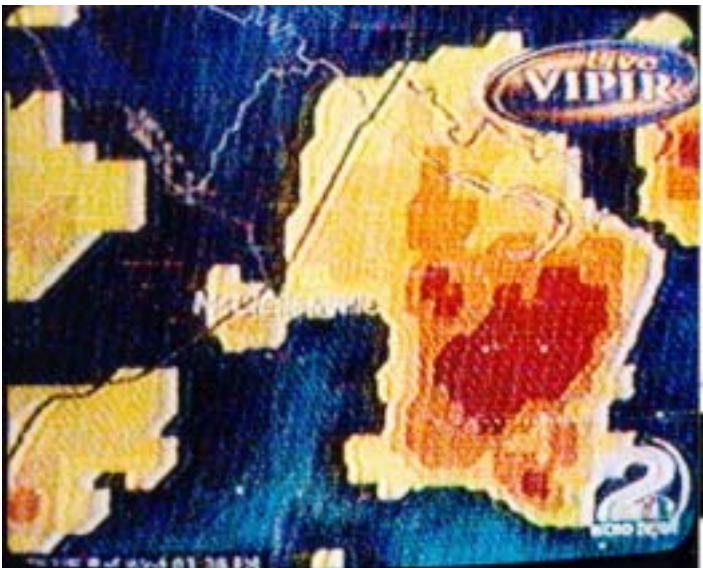
KFBB-5 Great Falls, MT
 1146 mi Es seen 6/24/04
 @1200 CT



KIDK-3 Idaho Falls, ID
 1176 mi Es seen 5/24/04
 @ 0954 CT



KVBC-3 Las Vegas, NV
 1407 mi Es seen 6/26/04
 @2007 CT



WCBD-2 Charleston, SC
 794 mi Es seen 6/30/04
 @1435 CT



KIII-3 Corpus Christi, TX
 1025 mi Es seen 6/23/04
 @2035 CT



WWL-4 New Orleans, LA
 771 mi Es seen 7/8/04
 @1511 CT



WSAV-3 Savannah, GA
783 mi Es seen 7/11/04
@1246 CT

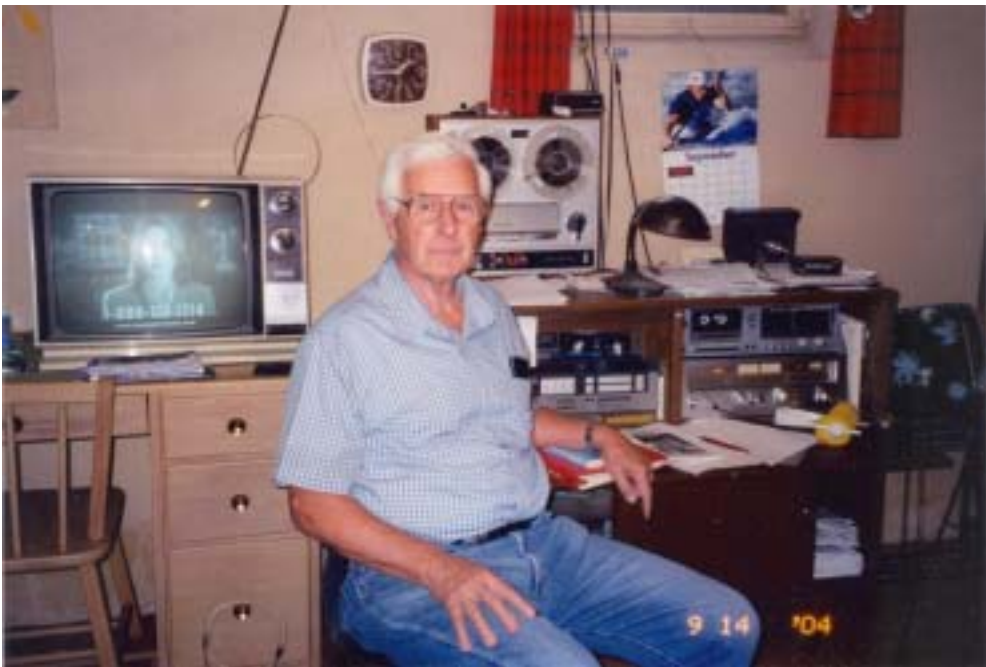


KDBC-4 El Paso, TX
1123 mi Es seen 7/21/04
@1917 CT



WJXT Jacksonville, FL
879 mi Es seen 6/21/04
@1245 CT

73's,
JEFF



This month we have enough space to show you the shack of John Ebeling in Bloomington, MN. That's a nice reel-to-reel deck there, John.

For those who don't know, John did the mailing for the first two TV Station Guides and it appears that he'll be sending you your next Guide when it's ready!

You can catch John on IRC almost any Tuesday or Friday night.

Eastern TV-DX

Matthew C. Sittel
15013 Eureux St.
Bellevue, NE 68123
mcsittel@cox.net

December, 2004

Jan. 2005 column deadline: Dec. 12

Eastern TV-DX is for reporters from the following states: AL, CT, DE, FL, GA, IN, KY, MA, MD, ME, MI, NC, NH, NJ, NY, OH, PA, RI, SC, TN, VA, VT and WV, plus Washington, DC. Also for reporters from the following Canadian provinces: NB, NF, NS, ON, PEI and PQ. Overseas reports welcome!

Roy Barstow, PO Box 2488, Teaticket, MA 02536

roybarstow@hotmail.com

Equipment: UHF modified Fuba yagi at 52', VHF highband B/T antenna at 48', VHF lowband B/T antenna at 43', all with Titan II amps. Three TVs. Receivers: ICOM R-100 for UHF to 7' dish on house roof, ICOM R-7000 for VHF, Zenith HDV 420, and D-100 for enhancement. All cables with quick disconnects to go to various equipment.

8/10 tr

| | | | | | |
|------|-------------------------|----|----|---------------|-----|
| 0820 | WRAY | 30 | NC | Wilson | 570 |
| | WEBA | 14 | SC | Allendale | 827 |
| | WRAZ | 50 | NC | Raleigh | 600 |
| | WUNM | 19 | NC | Jacksonville | 577 |
| 0930 | WUNJ | 39 | NC | Wilmington | 660 |
| 1730 | eastern Virginia strong | | | | |
| | <u>WTVZ-DT</u> | 38 | VA | Norfolk | 457 |
| | <u>WWAC-DT</u> | 44 | NJ | Atlantic City | 280 |
| 2300 | WYDO | 14 | NC | Greenville | 562 |
| | WEPX | 38 | NC | Greenville | 562 |

8/11 tr

| | | | | | |
|------|---------|----|----|--------------|-----|
| 0030 | WTAT | 24 | SC | Charleston | 779 |
| | WSFX | 26 | NC | Wilmington | 660 |
| | WMMP | 36 | SC | Charleston | 779 |
| 0100 | WCSC-DT | 47 | SC | Charleston | 779 |
| | WPXV | 35 | NC | Jacksonville | 577 |
| | W65CP | 65 | VA | Chesapeake | 455 |
| 0125 | CBHFT8 | 34 | NS | Weymouth | 315 |
| | CBHFT5 | 46 | NS | Middleton | 377 |
| | CBHT10 | 24 | NS | Weymouth | 315 |
| | CBHT7 | 52 | NS | Digby | 324 |
| 0730 | CBHT6 | 8 | NS | Middleton | 377 |
| | CBHT2 | 7 | NS | Shelburne | 308 |
| 0930 | CBHT3 | 11 | NS | Yarmouth | 279 |

8/23 tr

| | | | | | |
|------|------|----|----|------------|-----|
| 2015 | WPDE | 15 | SC | Florence | 688 |
| | WRAZ | 50 | NC | Raleigh | 600 |
| 2140 | WUNJ | 39 | NC | Wilmington | 660 |

8/26 tr

| | | | | | |
|------|-------------------------|----|----|------------|-----|
| 0020 | WGAL | 8 | PA | Lancaster | 332 |
| | WUSA | 9 | DC | Washington | 387 |
| | <u>WBFF-DT</u> | 46 | MD | Baltimore | 354 |
| 0100 | <u>WJLA-DT</u> | 39 | DC | Washington | 387 |
| 0745 | WNYA-LP | 15 | NY | Easton | 195 |
| | eastern Pennsylvania in | | | | |
| 1115 | <u>WVTA-DT</u> | 24 | VT | Windsor | 158 |
| 1715 | CBLFT13 | 15 | ON | Belleville | 383 |
| | WPBS | 16 | NY | Watertown | 303 |
| 1900 | WMED | 13 | ME | Calais | 288 |
| | WMUR-LP | 29 | NH | Littleton | 200 |
| 2100 | CBHT6 | 8 | NS | Middleton | 377 |
| | CBHFT5 | 46 | NS | Middleton | 377 |
| | CBHT7 | 52 | NS | Digby | 324 |
| 2200 | W15BK | 15 | NH | Hanover | 160 |

| | | | | | |
|------|----------------|----|----|------------|-----|
| 2300 | WSKG | 46 | NY | Binghamton | 277 |
| 2310 | <u>WVIA-DT</u> | 41 | PA | Scranton | 275 |
| | WBRA | 15 | VA | Roanoke | 592 |

8/27 tr

| | | | | | |
|------|-------------|----|----|-----------------|-----|
| 0030 | WYDO | 14 | NC | Greenville | 562 |
| | WUNP | 36 | NC | Roanoke Rapids | 533 |
| 0110 | CIVS | 24 | PQ | Sherbrooke | 269 |
| 0130 | CBHFT1 | 3 | NS | Yarmouth | 279 |
| 1930 | WVIR | 29 | VA | Charlottesville | 486 |
| 2000 | <u>WCAV</u> | 19 | VA | Charlottesville | 486 |
| | WRLH | 35 | VA | Richmond | 471 |

8/29 tr

| | | | | | |
|------|-------|----|----|--------------|-----|
| 0050 | WRAY | 30 | NC | Wilson | 570 |
| 0115 | WUVC | 40 | NC | Fayetteville | 616 |
| | WRPX | 47 | NC | Rocky Mount | 560 |
| | WLFL | 22 | NC | Raleigh | 600 |
| | WRAZ | 50 | NC | Raleigh | 600 |
| 0300 | WGPX | 16 | NC | Burlington | 614 |
| | W34AX | 34 | NC | Henderson | 560 |
| | WNCN | 17 | NC | Goldsboro | 592 |
| 0412 | WCVV | 57 | VA | Richmond | 471 |
| 1010 | WRIC | 8 | VA | Petersburg | 467 |

9/5 tr

| | | | | | |
|------|----------------|----|----|----------------|-----|
| 2100 | CIVC | 45 | PQ | Trois Rivieres | 353 |
| | <u>WTMU-LP</u> | 67 | MA | Boston, F32 | 59 |
| | W15BK | 15 | NH | Hanover | 160 |
| | CFKM | 16 | PQ | Trois Rivieres | 353 |
| | CIVS | 24 | PQ | Sherbrooke | 269 |
| | CIVQ | 15 | PQ | Quebec | 361 |
| 2300 | WBGR-LP | 33 | ME | Bangor | 237 |

9/6 tr

| | | | | | |
|--------------|---------------------------------------|----|-----|---------------|-----|
| 1930 | CBHFT5 | 46 | NS | Middleton | 377 |
| | CBAFT5 | 31 | PEI | Charlottetown | 481 |
| | CIHF | 27 | NB | Moncton | 412 |
| | CBHT | 3 | NS | Halifax | 408 |
| | CBAT | 4 | NB | Saint John | 345 |
| | CBAT2 | 7 | NB | Moncton | 412 |
| | CBHT6 | 8 | NS | Middleton | 377 |
| | CKLT | 9 | NB | Saint John | 345 |
| | CBHT7 | 52 | NS | Digby | 324 |
| 2000 | WMUR-LP | 29 | NH | Littleton | 200 |
| | in strong | | | | |
| 2015 to 2115 | power outage | | | | |
| 2130 | 6,13,14,15,23,26,32,33,35,36,51 Maine | | | | |
| 2150 | CBHT8 | 55 | NS | Truro | 452 |

| | | | | | | | | | | | |
|------|--|----|-----|----------------|-----|------|---|----|---------------------|-----------------|-----|
| | CFL on CBC | | | | | 0050 | W60CV | 60 | NC | Greenville | 562 |
| 2200 | CIHF4 | 18 | NS | Truro | 452 | | WSFX | 26 | NC | Wilmington | 660 |
| | CIHF2 | 21 | NB | St. Stephen | 300 | 0100 | WUNU | 31 | NC | Lumberton | 640 |
| 2230 | CIHF | 42 | PEI | Charlottetown | 481 | | WWAY-DT | 46 | NC | Wilmington | 660 |
| | <u>9/11 tr</u> | | | | | | <u>WFPX-DT</u> | 36 | NC | Fayetteville | 616 |
| 1900 | CFKM | 16 | PQ | Trois Rivieres | 353 | 0200 | <u>WUND-DT</u> | 20 | NC | Columbia <1> | 500 |
| | <u>9/12 tr</u> | | | | | | WITN-DT | 32 | NC | Washington | 565 |
| 0915 | <u>WMPT-DT</u> | 42 | MD | Annapolis | 363 | 0220 | WUND | 2 | NC | Columbia, rare | 500 |
| | <u>9/14 tr</u> | | | | | | WUNK | 25 | NC | Greenville | 562 |
| 0730 | CBLFT13 | 15 | ON | Belleville | 383 | | WUVC | 40 | NC | Fayetteville | 616 |
| | in all day | | | | | 0458 | WTVI | 42 | NC | Charlotte | 705 |
| PM | many from coastal Maine with 24 PQ | | | | | 0558 | WJZY | 46 | NC | Belmont | 713 |
| | <u>9/15 tr</u> | | | | | 1135 | WBRA | 15 | VA | Roanoke | 592 |
| 0000 | Baltimore area but better northeast | | | | | | WRLH | 35 | VA | Richmond | 471 |
| 0030 | CJCH7 | 40 | NS | Yarmouth | 279 | | WVIR | 29 | VA | Charlottesville | 486 |
| | CIHF10 | 45 | NS | Yarmouth | 279 | 1200 | <u>WTVR-DT</u> | 25 | VA | Richmond | 471 |
| | CBAT | 4 | NB | Saint John | 345 | 1210 | CBAT | 4 | NB | Saint John | 345 |
| | CBHT6 | 8 | NS | Middleton | 377 | | hockey | | | | |
| | CBHFT1 | 3 | NS | Yarmouth | 279 | | CBHT | 3 | NS | Halifax | 408 |
| | CKLT | 9 | NB | Saint John | 345 | 1220 | CKLT | 9 | NB | Saint John | 345 |
| | CIHF | 27 | NB | Moncton | 412 | 1250 | WUNP | 36 | NC | Roanoke Rapids | 533 |
| | CBHT10 | 24 | NS | Weymouth | 315 | 1350 | unID | 35 | religion more south | | |
| 0230 | CBHT7 | 52 | NS | Digby | 324 | | than Richmond, VA... who? | | | | |
| 0810 | CBHFT5 | 46 | NS | Middleton | 377 | 1400 | W36?? | 36 | VA? | w/WVBT-43 Fox | |
| | CJCH6 | 6 | NS | West Caledonia | 336 | 1500 | <u>WCWV-DT</u> | 44 | VA | Richmond | 471 |
| 0830 | <u>WPMT-DT</u> | 47 | PA | York | 332 | | <u>10/4 tr</u> | | | | |
| | <u>WGAL-DT</u> | 58 | PA | Lancaster | 332 | 0040 | <u>WQPX-DT</u> | 32 | PA | Scranton | 275 |
| | WGAL | 8 | PA | Lancaster | 332 | | <u>10/8 tr</u> | | | | |
| 1000 | CBHFT2 | 7 | NS | Mulgrave | 535 | 0815 | WYDO | 14 | NC | Greenville | 562 |
| 2140 | CJCH | 5 | NS | Halifax | 408 | | WEPX | 38 | NC | Greenville | 562 |
| | <u>9/24 tr</u> | | | | | | WUNJ | 39 | NC | Wilmington | 660 |
| 1900 | W51DO | 51 | VA | Hampton | 455 | | WPXV | 35 | NC | Jacksonville | 577 |
| | WTTD-LP | 53 | VA | Hampton | 455 | | WRAY | 30 | NC | Wilson | 570 |
| 2000 | 15, 27, 33, 43, 49 eastern Virginia | | | | | 1040 | WUNU | 31 | NC | Lumberton | 640 |
| | WYDO | 14 | NC | Greenville | 562 | | others from eastern Virginia | | | | |
| | WPXV | 35 | NC | Jacksonville | 577 | | <u>10/9 tr</u> | | | | |
| | WEPX | 38 | NC | Greenville | 562 | 0150 | WLFL | 22 | NC | Raleigh | 600 |
| 2100 | <u>WTEN-DT</u> | 26 | NY | Albany | 188 | 0200 | WUVC | 40 | NC | Fayetteville | 616 |
| | <u>WMHT-DT</u> | 34 | NY | Schenectady | 188 | 0222 | WRPX | 47 | NC | Rocky Mount | 560 |
| | WRAZ | 50 | NC | Raleigh | 600 | 0845 | WBPH | 60 | PA | Bethlehem | 280 |
| | WNYA-LP | 15 | NY | Easton | 195 | | <u>10/24 tr</u> | | | | |
| | WRAY | 30 | NC | Wilson | 570 | 2010 | <u>CIMT</u> | 9 | PQ | Riviere-du-Loup | 418 |
| | WNCN | 17 | NC | Goldsboro | 592 | 2025 | CIVK | 15 | PQ | Chaleton | 502 |
| 2328 | WUNJ | 39 | NC | Wilmington | 660 | 2100 | <u>CIVK1</u> | 32 | PQ | Gascons | 535 |
| 2330 | 46 NS weak plus 17 from Maine | | | | | 2105 | CKLT | 9 | NB | Saint John | 345 |
| | <u>9/25 tr</u> | | | | | 2110 | CIVB | 22 | PQ | Rimouski | 488 |
| | eastern Virginia W17, W24, W35, W36, W39, W41, W45, W56, W60 | | | | | | <u>10/25 tr</u> | | | | |
| 0025 | WCTI | 12 | NC | New Bern | 577 | 0700 | 15 and 22 PQ still in w/music and schedule pre-7am and then sign on with cartoons | | | | |
| | WVEC | 13 | VA | Hampton | 455 | 1630 | CIVS | 24 | PQ | Sherbrooke | 269 |
| | WTVI | 11 | NC | Durham | 591 | 1730 | CIVC | 45 | PQ | Trois Rivieres | 353 |
| | WNCT | 9 | NC | Greenville | 562 | | <u>10/31 tr</u> | | | | |
| | WUNM | 19 | NC | Jacksonville | 577 | AM | eastern Virginia in and 14, 35, 38 NC | | | | |
| | WLFL | 22 | NC | Raleigh | 600 | | | | | | |

Notes:

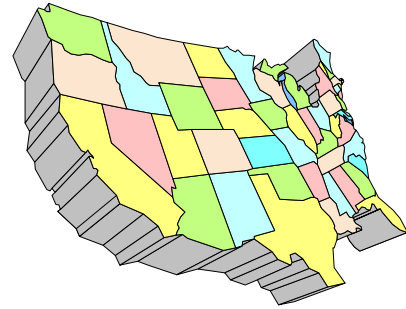
1. WTKR-3 VA, WWAY-3 NC and WUND-2 NC have now been received by all 4 modes: tr, MS, Es and DTV.

It was a good DX season here with good openings down the coast. Also a rare opening to my north past Maine made an enjoyable session. Totals 917 stations, of this 101 DTV.

Happy holidays! May 2005 bring you even more DX than in 2004..... 73s Matt

WESTERN TV DX

VICTOR FRANK
12450 SKYLINE BLVD.
WOODSIDE, CA 94062-4554
Victor.frank@sri.com



Dennis Park Smith, 3605 San Remo Drive,
 Santa Barbara, CA 93105-2523 (805)687-7803

This report is for October 2004. Tropo DX between Santa Barbara and San Diego/Tijuana (up to 200 mi/320 km) was overall less than was in September, but that is to be expected for this time of year, when temperatures are cooler and there is not as much chance for inversion layering due to colder air and stormy instability.

- Oct 1: Very poor (continuing from Sep 29-30)
- Oct 2: None
- Oct 3: Very poor
- Oct 4-5 am: Fair
- Oct 5 eve: Good
- Oct 6-8: Fair
- (Oct 9-15: Out of town, in Wasco and Bay Area—no attempt this time to check signals there).
- Oct 15-31: None (Periods of rain Oct 16-27)

Best of DX to All. Dennis

William Draeb, 1304 Ellis St., Kewaunee, WI
 54216-1802

Equipment: 1994 Sylvania 25" TV; Rohn 25G 40' tower; ch 2026, Y713, KU420(screened) antennas. CMA-Ub, CMA-HB; preamps; TR44 rotor; etc.

October 2004

- 10tr 1948 Cleveland 43,61 (Univision on 61)
 2004 Religion 48
- 12tr 1945 Alpena MI 11 under local WLUK
 WJKW 8 w/baseball playoffs
 FOX net.
 Cleveland 61 43
 Toledo 24, 30, 36
 Shop at home network -67, WOAC
 solid, almost snow free
 TCT NET 63
 WMFD 68
- 2023 WBNX 55
 WEAO 49
 WOIO 19
 WVIZt 25
- 2032 WPGHt 53 Fox, baseball playoff
 WNEO 45
 WRGT 45 Fox, baseball playoff
- 2039 CBLFT10 48
 WGGN 52
 Detroit 50, 62
- 2046 unID 44 700 Club
 WBGU 27 Rock solid, nearly sf
- 2105 WHIZt 18

- 13tr 0400 Some of the same DX as previous evening, but not as widespread.
- 21tr 1930 WMMF 68 WI Fon Dulac 66
 Family network, signal had a little snow, but rock solid most of the time.
 Identification was supered for a few seconds in lower right corner of screen above the Family Net Logo at 2000.
- 22tr 0630 WBKPt 5
 2000 Cleveland 43, 61
 Buffalo 49t, 29t
 Erie(tent) 54
- 25tr 0857 3ABN 48 Central Lower Mich?

Steven Wiseblood, Boca Chica Beach, Texas

Equipment: SANYO 20" Colour TV, stacked UHF antennas at 25'

- 11/3 tropo Times are CST
- 1156 32 WLAE LA New Orleans, PBS 540
 "LPBS" lower right corner
- 1203 26 WGNO LA New Orleans, ABC 540
 ABC network programming, Kerry concedes election,
 1410 Bush acceptance speech.
- 1203 20 WHNO LA New Orleans, religion, 540
 Woman preaching the WORD of GOD.
- 1401 16 WAPT MS Jackson, ABC Bush speech,
 //26 New Orleans. 620
- 1511 27 WLPB LA Baton Rouge, PBS 500
 PBS cartoons for kids
- 1514 33 WVLA LA Baton Rouge, "Dr.Phil" 500
- 11/5 tropo
- 0704 33 WVLA LA Baton Rouge, NBC "Today"
 local weather, ad for "Popeyes, a taste of New Orleans", ID 500
- 0829 "WVLA, NBC-33"
- 0831 15 KADN LA Lafayette, "FOX-15" 445
- 0832 27 WLPB LA Baton Rouge, PBS 500
- 1654 25 WXXV MS Gulfport, "FOX-25" 600
- 1656 "WXXV-25" super-imposed upper right-corner, ads with mention of Gulfport, ID 1700
 "WXXV, FOX-25", begin "The Parkers"
- 1757 40 WDBD MS Jackson, "WB-40" 620
- 1800 16 WAPT MS Jackson, local news 620
- 1805 29 WMPN MS Jackson, PBS world nx 620
- 1957 end "Wall Street Week", promo for "Mississippi
 Outdoors" Saturdays @ 5:30am,
 1951 21 WMPV AL Mobile, TBN 660
 still in at 2100 with "Crouch Family"
- 1959 55 WBPG AL Gulf Shores, "WB-55" 670

2000 promo "Girlfriends", "GULF COAST WB-55" 445
2019 32 WLAE LA New Orleans, PBS 540
local political talk show
2154 25 KLPA LA Alexandria, "LPB" 480
discussing the elections, what went wrong?
11-6 tropo
0615 33 WVLA LA Baton Rouge, ID 500
Hunting program featuring a couple of guys with
shotguns going for the big game. Seems most of
their time was spent in the hunting Lodge though,
hi! In again at 2133 "NBC" network programs
0617 32 WLAE LA New Orleans,
540
woman teaching multiplication & math skills, 0720
sermon and praying by a Catholic archbishop
0619 26 WGNO LA New Orleans, ID 540
"Order your Magic Bullet now for just \$99.99"
0622 21 WMPV AL Mobile, promo 660
0625 34 KITU TX Beaumont, TBN 360
0628 38 WNOL LA New Orleans, paid ads 540
0628 42 WIAT AL Birmingham, "CBS-42" 830
ad "Chip Ellis" in South Birmingham; full ID 0629
0637 54 WUPL LA Slidell, black gospel religio
gave telephone # "Prayer Line" 1-225-869-4158
black preacher "New Zion Baptist Church" in
Gramercy, LA 560
0644 16 WAPT MS Jackson, ads, ID 620
in again 2120 superimposed ID lower right corner
ABC-16 WAPT"
0705 27 WLPB LA Baton Rouge, "LPB" 500
painting on canvas

0706 18 KLTL LA Lake Charles, "LPB" PBS
painting on canvas, //27 395
0720 25 KLPA LA Alexandria, "LPB" PBS 480
//18, 27 artist painting
0730 31 WAAY AL Huntsville, ABC Morning
show 890
0734 19 WHNT AL Huntsville, local news 890
"News Channel-19", weather for the Tennessee
Valley
0757 25 WXXV MS Gulfport, "FOX-25"
"FOX-BOX" cartoons 600
11-7 tropo
0546 28 WPGX FL Panama City "FOX 28" 780
0553 29 KVHP LA Lake Charles, color bars 400
0553 30 "Shop At Home"
1709 18 KLTL LA Lake Charles, "LPB" PBS
documentary on the flu epidemic of 1918 (WW-I).
395
2000 LPB promo, begin "Masterpiece Theatre"
1737 15 KADN LA Lafayette, FOX NFL
Football

1740 33 WVLA LA Baton Rouge, NBC-33 500
"NEXTEL CUP" auto racing
1952 26 WGNO LA New Orleans, ABC-26
540
1953 20 WHNO LA New Orleans, religion 540
'D. James Kennedy' asking for contributions
2000 27 WLPB LA Baton Rouge, PBS 500
begin "Masterpiece Theatre"
2002 32 WLAE LA New Orleans, ID on screen
540
2116 16 WAPT MS Jackson, "ABC-16 WAPT",
ID superimposed in lower right corner 620
11-8 tropo
1522 24 KLPB LA Lafayette, "LPB", PBS 445
still in at 1900 "Supporting Louisiana Public
Broadcasting", into "Antiques Road Show"
1524 15 KADN LA Lafayette, "FOX-15" 445
still in at 1800 "Friends", 1900 "Trading Spouses"
1526 18 KLTL LA Lake Charles, "LPB" PBS
//24 with PBS cartoons 400
1850 19 KYTX TX Tyler, "CBS-19" 460
"CBS-19 Eyewitness news"
11-9 tropo
0505 18 KLTL LA Lake Charles, "LPB" PBS
400
0510 29 KVHP LA Lake Charles, color bars
400
0516 25 KLPA LA Alexandria, "LPB" PBS
480
1018 33 WVLA LA Baton Rouge, "NBC-33"
500
Tony Danza show

73's and gud dx. Steve AB5GP

Morris Sorensen, Winnipeg MB

Equipment: 1983 RCA b&w portable with
Channel Master indoor antenna

Nov 14 2004 Es (associated with intense auroral
activity)

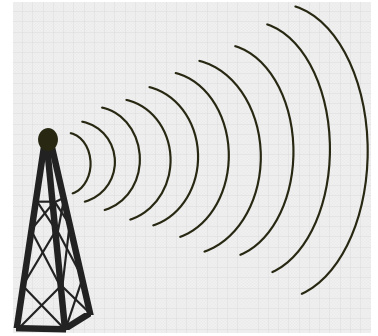
2143 CST CH.2 CKAL-1 AB Lethbridge "A
Channel" logo New! 700 miles

2209 CST Ch.2 KBCI ID Boise KBCI News promo
Relog 1000 miles
Also Un IDs on Ch.4 and 5. Nothing on FM.

SCOTT FYBUSH'S TOWER SITE CALENDAR FOR 2005

The TOWER SITE CALENDAR 2005 is now shipping from Scott Fybush's NorthEast Radio Watch/Tower Site of the Week. This year's calendar again covers the continent, showcasing everything from the former CFNB 550 Fredericton NB to KTYD 99.9/KTMS 990 in Santa Barbara CA, with stops along the way ranging from Binghamton to Roanoke to Las Vegas to the roof of Chicago's John Hancock Center. And as always, the calendar features more than a dozen full-color 8.5x11" photos - plus hundreds of historic broadcasting dates and events. It's available for \$16 (\$17.32 to New York State addresses) postpaid from Scott Fybush, 92 Bonnie Brae Avenue, Rochester NY 14618, or order on-line at www.fybush.com. (And if you still need the 2004 edition, those are available, too - \$8 each postpaid, or \$20 for both the 2004 and 2005 editions, plus 8.25% sales tax in New York.)

Northern FM DX



Keith McGinnis
6 Ritter Road, Hingham, MA 02043
longwave@comcast.net 781-875-1944

For Dxers in the following states: CT IA ID IL IN MA ME MI MN MT ND NE NH NJ NY OH OR PA RI SD VT WA WI WY and all of Canada. Please submit by the 10th of each month. If possible please submit in the formats shown Below.

EDITORS NOTE: PLEASE NOTE THAT ANY TYPEWRITTEN OR HANDWRITTEN REPORTS MIGHT BE DELAYED TILL A LATER ISSUE AS TIME PERMITS. ALSO PLEASE KEEP REPORTS AS RECENT AS POSSIBLE (THE LAST 3 MONTHS SHOULD WORK FINE). THANK YOU.

**Fred Nordquist - 7945 Boxford Road Clay, NY 13041 (Lat 43.154N Long 76.141 W)
Equipment: Receivers: Ailing Carver TX-11a or Ancient Heath AJ15(backup) both w/110khz filter mods. Weathered Antennas: SP9 at ~35' & SP9 vertical/10 deg slant at ~12'. RDS Mgr & RDSDX Version 2.15 SW with US/Canada/Mexico DB. (Version 2.16 doesn't recognize Comm Ports!)**

Times: EDT *=New to log. #=New Prop Mode

Clay NY DX:

July 4 2004 Es 1252-2105 FL/GA/LA/TX MUF:106.7

1259 *W244AT 92.7 Tallahassee FL NPR w/WFSQ ID 250 watts (980)
1437 *WOSN 97.1 Indian River FL "Music of the Ocean" (1092)
Many relogs. RDS hits: WSOR/WEJZ/WEZB/WWKA/WZZR/WLDI/WEMX/pest WXVS.

July 5 2004 Es 1202-1934 FL/AL/LA/NB/NS/NF MUF:108

1220 *WQSI 94.1 Union Springs AL "South 94.1" (927)
1753 *CBAF 88.5 Moncton NB FFC "Radio Canada" (589)
1800 *CBNC 88.7 Stephenville NF EE Canadian NX (918)
1804 *CJLS 95.5 Yarmouth NS wx SID (511=my shortest FM Es)
1824 *CBAF14 95.9 Sydney NS FFC Radio Canada (810)
1827 *CBAF10 88.7 New Glasgow NS FFC Radio Canada (686)
Many relogs. RDS hits: WEZB/WXVS/WZBQ/CBHA-90.5 PI=F001 PS=CBC R1 w/many AFs.

July 6 2004 Es 0926-2220 FL/TX/GA/AL/SC/MS/AR MUF:108+++

1100 *WHBX 96.1 Tallahassee FL Jazz ID (996)
1140 *WMAX 105.3 Bowdon GA PM Talk (820)
1145 *WBGB 106.5 Ponte Vedra Bch FL Oyster Country 106.5 (938)
1215 *WUGA 91.7 Athens GA (743)
1230 *WDCCO 89.7 Cochran GA (833)
1651 *WHIJ 88.1 Ocala FL lcl promo (1016)
1740 *WOYS 100.5 Apalachicola FL (1045)
1759 *WFRE 105.7 Monticello FL Faith Radio(978)
1805 *WBXY 100.5 Gainesville FL The Buzz (985)

1846-1900 digressed to High Band Ch 7/8 Es IDs no luck-1st time ever seen.

NBC News on Ch 7 with zero offset at 1854 most likely WDAM in Laural MS!

2123 *KMSX 94.9 Maumelle AR ps=KOLL Mix94.9 (1051)

Many relogs (RDS decodes minimized by Es QRM - sounded like AM graveyard QRM).

RDS hits:

WSOR/WZTA/WLDI/WCKT/WKGC/WXVS/WEJZ/WDJR/WAMR/WMAX/WEPR/WVAS(PI=EEEE)/

July 9 2004 Es 0847-1319 LA/MS/AL/TX/AR/GA/FL MUF:107.5 & 2005-2037 NE/MO MUF:97.1

| | | | | | |
|------|-------|-------|-------------|----|------------------------------|
| 0932 | *WXFX | 95.1 | Prattville | AL | 95.1 The Fox (925) |
| 1044 | *KUEZ | 100.1 | Luftkin | TX | Oldies (1300) |
| 1147 | WXOF | 96.3 | Homosassa | FL | ID (1041) |
| 1200 | *WJFM | 88.5 | Baton Rouge | LA | relig multiple sta ID (1205) |
| 2025 | *KMNE | 90.3 | Bassett | NE | RDS PI=3106 (1181) |

Many relogs (RDS Hits: WMAW(PI=75EB)/WVAS/WEMX/KARN/KRVV/WLMG/KLNE/KUMR)

July 11 2004 Es 1330-1656 LA/MS/MO/TN/AL//AR MUF:101.9

| | | | | | |
|------|-------|------|----------|----|--------------------|
| 1451 | *KOZO | 89.7 | Branson | MO | ID (1012) |
| 1509 | *WAQY | 91.7 | Gulfport | MS | RDS PI=562C (1115) |

Many relogs (RDS Hits: WEMX/WQST/WMBZ/WVAS/WSYE)

July 15-Aug 6 in Charleston SC area scoping out good retirement places to live near daughter's home but far enough north away from Charleston (eg Moncks Corner) to weaken QRM from TV/FM/AM locals. Looking for house on large exterior lot for the "antenna farm" without HOA constraints!

DX back in Clay NY:

August 8 2004 Tr

| | | | | | |
|------|-------|-------|---------|----|------------------------------|
| 2027 | *CJTN | 107.1 | Trenton | ON | new to air w/AM 1270 ID (95) |
|------|-------|-------|---------|----|------------------------------|

August 9 2004 MS-Perseids

| | | | | | |
|-------|-------|------|---------|----|-------------------|
| ~1200 | *WERN | 88.7 | Madison | WI | RDS PI=A6FF (675) |
|-------|-------|------|---------|----|-------------------|

August 10 2004 MS-Perseids

| | | | | | |
|-------|-------|------|------------|----|---------------------------|
| ~0600 | #WZBQ | 94.1 | Carrollton | AL | RDS PI=96D6 prev Es (942) |
| ~1400 | #WHAD | 90.7 | Delafield | WI | RDS PI=6727 prev Es (617) |

August 11 2004 MS-Perseids

| | | | | | |
|------|-------|------|-----------------|----|--|
| 1106 | #WQPR | 88.7 | Muscle Shoals | AL | RDS PI=A87F multiple bursts, prev Es (860) |
| 1203 | WVAS | 90.7 | Montgomery | AL | RDS PI=EEEE (927) |
| 1207 | WHAD | 90.7 | Delafield | WI | again (617) |
| 1207 | #WAUS | 90.7 | Berrien Springs | MI | RDS PI=56C2 prev Es/Tr (525) |
| 1239 | *WGFA | 94.1 | Watseka | IL | RDS PI=6502 strong bursts (617) |
| 1259 | *KRNA | 94.1 | Iowa City | IA | w/ID RDS PI=3E36 8 sec burst (804) |
| 1307 | #WMBZ | 94.1 | Germantown | TN | RDS PI=748B prev Es (925) |
| 1335 | #WUSF | 96.3 | Jackson | MS | RDS PI=8B55 prev Es (1084) |
| 2042 | *KFTK | 97.1 | Florissant | MO | RDS PI=1F2C 6 sec burst (817) |

August 12 2004 MS-Perseids

| | | | | | |
|------|------|------|-------------|----|--------------------|
| 1544 | WXVS | 90.1 | Waycross | GA | RDS PI=9398 (896) |
| 1620 | WKGC | 90.7 | Panama City | FL | RDS PI=6FAE (1041) |

Total Loggings now at 1906 (Probably won't make 2000 before planned move to SC - estimate next spring after Hurricane season.

Retired 6/30/04 from Lockheed Martin after 35.5 years = more time to DX!

RDS catches = 128. Noted CJOJ-95.5 ON Belleville with RDS PI=C100

Jim Renfrew Byron NY

Equipment: Sansui TU-9900, Conrad RDS Manager, RDS Decoder 3.0, 20' tower, FM antenna

*** = new, # = new calls underline = since verified, % = new mode**

SEP 7 2004

0250 WVAS 104.9 Montgomery AL PI EEEE, last month's final logging was this,
after carefully analyzing the RDS Decoder
"Group Viewer" fragments

SEP 13 2004

2345 *CHRI 99.1 Ottawa ON 201

SEP 14 2004

0112 CJPT 103.7 Brockville ON "Bob" PI 1234
0120 CIMF 94.9 Hull PQ "Détente" PI C2A5 201

SEP 15 2004

1300 "WFNT" 104.9 "Richmond"
1518 *WVPS 107.9 Burlington VT NEW FM STATE #33 261

SEP 18 2004

0723 WQBX 104.9 Alma MI 333
0723 *WTUE 104.7 Dayton OH PI 88E0 391
0933 *WHKO 99.1 Dayton OH 391
0940 *WGLU 99.1 Ebsburg PA 182
2125 *WQHQ 104.7 Ocean City MD "Q-105" 361
2126 *WAYZ 104.7 Hagerstown MD 238

SEP 20 2004

1150 WVNO 106.1 Mansfield OH 280
1310 WIOT 104.7 Toledo OH 299

SEP 21 2004

0010 CBBX 90.9 Sudbury ON 276
0154 WDET 101.9 Detroit MI PI E02D 261
0333 WVMV 98.7 Detroit MI 261
2115 WPDJ 104.9 Clarksburg WV 288
2116 *WUBZ 105.9 Phillipsburg PA "Buzz" 201
2117 #WAMO 1 06.7 Beaver Falls PA 198
2124 *WDSY 107.9 Pittsburgh PA 207
2201 *WORD 101.5 Pittsburgh PA 207
2210 *WPKL 99.3 Uniontown PA "Pickle" 236

SEP 22 2004

0150 *WOGF 104.3 E. Liverpool OH "Froggy" 213
0201 WENZ 107.9 Cleveland OH 216
0215 WNWV 107.3 Elyria OH 238
0223 WQXK 105.1 Salem OH 208
0247 *WGGE 99.1 Parkersburg WV 320
0317 *CHCD 98.9 Simcoe ON (ex 106.7)
0324 UNID 89.5 BBN (2 outlets in OH)
0352 WQHG 106.3 Huntingdon PA "Q-106" 178

SEP 28 2004

0312 WVAS 90.7 Montgomery AL PI EEEE many RDS hits 0330-0530
1355 *WOGH 103.5 Burgettstown PA "Froggy" 222

SEP 29 2004

1829 *CHRW 94.9 London ON 161

I have finally completed my review of cassette tapes from JUL 4-6, and it looks like I got 171 new FM stations. Since I like to write for QSL's, I've been doing a lot of typing!

Morris Sorensen Winnipeg MBONKYO T-403 tuner with filter mods Archer indoor FM antenna

I recently purchased an Onkyo T-403 tuner with filter mods from Mike Bugaj and to say that I have been pleased with it would be an understatement. Here are some of my better catches. Times are CDT. All catches are via tropo.

Sept. 10 2004

2058 KACL 98.7 Bismarck ND oldies "Cool 98.7" relog 272 mi.

Sept. 18 2004

2022 KKWS 105.9 Wadena MN "Your super station-KKWS" relog 256 mi.
2043 KQKK 101.9 Walker MN oldies "KQ-102 & Oldies-1570" NEW! 227 mi.
2157 KBHW 99.5 International Falls MN news, religious message, ID in CKSB-8
Brandon null NEW! 191 miles.

Sept.19 2004

0757 KPHR 106.3 Ortonville MN "Power 106.3" rock mx. relog 319 mi.
0803 KJOE 106.1 Slayton-Princeton MN "K-joe weather" NEW! 413 miles
0812 KDSU 91.9 Fargo ND "Dakota Notebook" on "North Dakota Public
Radio". NEW! 209 miles. Completes Fargo for
me on FM. Never wexpected to hear this one
with local classic rocker CITI pumping out
210 kw. on adjacent 92.1!
0854 KMFG 102.9 Nashwauk MN with local ads and partial ID despite my local
on 103.1. NEW! 251 miles.

Sept. 26 2004

2319 KKBJ 103.7 Bemidji MN good with rock music Hits 103.7 slogan and
Bemidji ads. Relog.196 mile tropo.

October 12 2004

0959 KQMN 91.5 Thief River Falls MN good with weather and ID for MN public
radio. Brandon MB is more usual here.
Relog. 131 mile tropo.
1004 KFBN 88.7 Fargo ND fair.Presumed with usual religion, Relog. 209
mile tropo.

November 10 2004

1142 VF2384 88.5 St. Norbert MB fair . New station just on the air with highway
advisories for Pembina Highway motorists
heading south out of Winnipeg. Must be very
low powered (5 watts or less) as quite weak
here in north end of city. NEW!

Hopefully will squeeze in one more good tropo opening before the cold weather sets in!

Harry Hayes - Wilkes-Barre, PA Equipment: Superadio II w/110khz filter, Bose Wave Radio, FM-6 in attic, Superadio II amplified, Bose Wave not

September 6 2004 Tr

0837 WJHT 107.9 Port Matilda PA "Hot-107.9", Rap Music 120 miles

September 8 2004 Tr

| | | | | | |
|------|------|-------|----------------|----|---------------------------------|
| 0605 | WABT | 104.5 | Mechanicsville | NY | "The Buzz", fair signal 150 mi. |
|------|------|-------|----------------|----|---------------------------------|

September 18 2004 MS

| | | | | | |
|------|-------|------|---------------------|----|-------------------|
| 0800 | *KBHW | 99.5 | International Falls | MN | "...home KBHW..." |
|------|-------|------|---------------------|----|-------------------|

September 21 2004 Tr

| | | | | | |
|------|-------|-------|----------------|----|--|
| 0348 | WQKT | 104.5 | Wooster | OH | Country MX, ID 325 mi. |
| 0400 | WNNK | 104.1 | Harrisburg | PA | Solid signal 100 mi. |
| 0403 | WFRE | 99.9 | Frederick | MD | ID under WQBR PA 140 mi. |
| 0406 | *WXMJ | 99.5 | Union Junction | PA | ID as "WPRR, Power 100" 175 mi. |
| 0430 | WKCY | 104.3 | Harrisonburg | VA | Numerous ads, "Country KCY" 225 mi. |
| 0731 | WOGF | 104.3 | E. Liverpool | OH | v/strong, country music 260 mi. |
| 0940 | *WAYZ | 104.7 | Hagerstown | MD | Many ID's, weak 160 mi. |
| 1005 | WFRB | 105.3 | Frostburg | MD | ID |
| 1205 | WPGB | 104.7 | Pittsburgh | PA | "Pittsburgh's News Talk 104.7" Glen Beck program 220 mi. |
| 2228 | WKPO | 105.3 | Hornell | NY | "Q-105, The Quest", strong o/WYCY |
| 2238 | WOGF | 104.3 | E. Liverpool | OH | v/strong, making a reappearance |

September 22 2004 Tr

| | | | | | |
|------|-------|-------|----------|----|------------------------------|
| 0728 | *WSKE | 104.3 | Everett | PA | "Cool Country", fair 150 mi. |
| 2250 | WEGW | 107.5 | Wheeling | WV | good signal 245 mi. |

September 24 2004 Tr

| | | | | | |
|------|------|-------|------|----|----------------|
| 2222 | WQXA | 105.7 | York | PA | "105.7, The X" |
|------|------|-------|------|----|----------------|

October 1 2004 Tr

| | | | | | |
|------|------|------|---------|----|--|
| 2315 | WFGY | 98.1 | Altoona | PA | "Froggy 98", good thru WKRZ's slop 185 mi. |
|------|------|------|---------|----|--|

Russ Edmunds Blue Bell, PA (360' ASL)**[15 mi NNW of Philadelphia]****40:08:45N; 75:16:04W, Grid FN20ID****<wb2bjh@yahoo.com>****Yamaha T-80 & APS9B @15'****Sept 20 Tropo**

| | | | | | |
|------|------|-------|--------------|----|----------------------------|
| 2049 | WAYC | 100.9 | Bedford | PA | SID. rock |
| 2050 | WSRA | 101.7 | Central City | PA | Multiple "Cool 101" promos |
| 2137 | WUZY | 97.7 | Somerset | PA | Classic Rock, ID |
| 2311 | WWLW | 106.5 | Clarksburg | WV | "John Tesh on Magic 106.5" |

Sept 21 Tropo

| | | | | | |
|------|------|-------|----------------|----|----------------------------------|
| 0630 | WSTS | 100.9 | Fairmont | NC | NCNN News; ID |
| 0631 | WKZQ | 101.7 | Myrtle Beach | SC | "Mad Max Morning Show", local ad |
| 0633 | WFMZ | 104.9 | Hertford | NC | CRK |
| 0637 | WKCY | 104.3 | Harrisonburg | VA | C&W, "Country KCY" |
| 1205 | WBQB | 101.5 | Fredericksburg | VA | "B-101.5", Traffic |

Sept 25 Tropo

| | | | | | |
|------|------|------|----------------|----|---------------|
| 0745 | WGPS | 88.3 | Elizabeth City | NC | Religion |
| 0748 | WBHH | 92.1 | Moyock | NC | local weather |
| 0800 | WFOS | 88.7 | Chesapeake | VA | ID |
| 0823 | WDLZ | 98.3 | Murfreesboro | NC | ID |

| | | | | | |
|------|------|-------|-----------|----|------------------|
| 0830 | WGPM | 94.3 | Farmville | NC | local ads, C&W |
| 1915 | WWDE | 101.3 | Hampton | VA | ID, promo |
| 1950 | WFMZ | 104.9 | Hertford | NC | Classic Rock, ID |

October 8 Tropo

| | | | | | |
|------|------|-------|------------------|----|--|
| 2041 | WRSF | 105.7 | Columbia | NC | Country Countdown pgm, promo |
| 2045 | WCXL | 104.1 | Kill Devil Hills | NC | Ad for Alliance Nissan No. of Elizabeth City |
| 2048 | WYND | 97.1 | Hatteras | NC | HS FB "Nighthawks", local mentions |
| 2108 | WROX | 96.1 | Exmore | VA | "The New Rock Alternative. 96-X". New. |
| 2134 | WVOD | 99.1 | Manteo | NC | Promo - "The Sound", local ad |
| 2140 | WFMI | 100.9 | Southern Shores | NC | Preaching, RDS PI 631C |
| 2143 | WVFJ | 100.1 | Ashland | VA | Religion, area mentions |
| 2158 | WRNS | 95.1 | Kinston | NC | Country, promo; New. |
| 2225 | WMGV | 103.3 | Newport | NC | MOR, ID - 1st time with this call |
| 2255 | WJCD | 107.7 | Windsor | VA | Soft AC, "Lite FM", RDS PI: 6CA3 |
| 2300 | WFMZ | 104.9 | Hertford | NC | Classic Rock, ID |
| 2307 | WBXB | 100.1 | Edenton | NC | Gospel music, "Gospel 100.1 & 97.7" |

October 9 Tropo

| | | | | | |
|------|--------|-------|--------------|----|-----------------------|
| 0925 | WAVA | 105.1 | Arlington | VA | Religion, promo |
| 0944 | W261AE | 100.1 | Camden | DE | W/ WRBS 95.1 ID. New. |
| 1829 | WRAR | 105.5 | Tappahannock | VA | Weather, ID |
| 2030 | WJZW | 105.9 | Woodbridge | VA | "Smooth Jazz 105.9" |

John Ebeling Bloomington MN

Equipment: Pioneer TX 9500 IF Modified Tuner with a Stereo Probe 9 at 25 ft AGL.

As promised, here are a few more reports from my cabin @ 6843 Hwy. 47 in Alborn, MN. The * indicates new to Alborn log.

Sept. 1, 2004 Tr

| | | | | | |
|------|-------|------|--------------|----|-----------|
| 1300 | *KCMF | 89.7 | Fergus Falls | MN | 171 miles |
| 1630 | *KPRJ | 91.5 | Jamestown | ND | 287 " |

Sept. 2, 2004 Tr

| | | | | | |
|------|-------|------|------------|----|-------------------|
| 0826 | KWIT | 90.3 | Sioux City | IA | 362 |
| 0953 | *WYTE | 96.7 | Whiting | WI | 228 |
| 1005 | *WLBL | 91.9 | Wausau | WI | 199 (a 54 watter) |

Jason Koralja From Mays Landing, NJ Pioneer DEH-P4600MP

October 22, 2004

| | | | | |
|------|------|--------------|----|--------------------------------|
| WERQ | 92.3 | Baltimore | MD | 104mi. [from Mays Landing, NJ] |
| WMGS | 92.9 | Wilkes-Barre | PA | 134mi [from Mays Landing, NJ] |
| WZBH | 93.5 | Georgetown | DE | 72mi [from Mays Landing, NJ] |
| WRBT | 94.9 | Harrisburg | PA | 132mi [from Mays Landing, NJ] |
| WKDB | 95.3 | Laurel | DE | 83mi [from Mays Landing, NJ] |
| WHUR | 96.3 | Washington | DC | 131mi [from Mays Landing, NJ] |
| WCEL | 96.7 | Elkton | MD | 87mi [from Mays Landing, NJ] |
| WAFL | 97.7 | Milford | DE | 55mi [from Mays Landing, NJ] |

Jerry Bond Rochester, NY DXing in 1992 Chevy Van

October 12 Tr

| | | | | | |
|------|------|-------|------------|----|--|
| 0012 | UNID | 107.9 | | | Delilah show |
| 0018 | CKNX | 101.7 | Wingham | ON | FM 102 Precision wx |
| 0117 | WREO | 97.1 | Ashtabula | OH | Star 97.1, jingle |
| 0132 | UNID | 99.5 | | | Delilah |
| 0147 | WKJC | 104.7 | Tawas City | MI | Today's hot new country |
| 0200 | WHSB | 107.7 | Alpena | MI | Playing the best variety of the 80's and 90's, WHSB Alpena and WCLS- Oscoda, slogan was 107.7 The Bay, first noted back at 0007 |
| 0227 | WHNN | 96.1 | Bay City | MI | oldies, ID |
| 0244 | WKYE | 95.5 | Johnstown | PA | Key 95, very tough with Belleville, ON on 95.5 |

Mike Bugaj, 69 Sherman Road, Enfield, CT 06082. All heard using an Onkyo T450 RDS tuner with an APS-13 on the roof about 30'agl.

| | | | | | |
|----------------|-----------|----------|----|---|---|
| 8/17 Tr | | | | | 2105 WYNK 106.1 NY Corning, wink106 |
| 2300 | WWOC | 94.5 | NC | Hatteras, water country | |
| 8/22 Tr | | | | | 9/21 Tr |
| 2200 | WWOC | again, | | WYFI 99.7 and WYND 97.1 the wind, good sig | 2120 WTSS 102.5 NY Buffalo, again |
| | | | | | 2122 WBGJ 100.3 NY Sylvan Beach, R.Disney |
| 8/23 Tr | 1930 | Mostly | DE | but WWOC 94.5 and some coastal MD | 9/24 Tr |
| | | | | | 0820 WSFL 106.5 NC New Bern, country |
| 8/24 Tr | Baltimore | on 105.7 | | and very rare CITE 102.7 on top of WEQX. Last heard years ago. | 2140 WUSQ 102.5 VA Shanandoah, Shenandoah country Q-102 |
| | | | | | 2150 WQZK 94.1 WV Keyser channel 94 w/hsfb |
| 9/5 Tr | | | | | 2230 WKCY 104.3 VA Harrisonburg |
| 1250 | CHLX | 97.1 | QC | Gatineau, French | 2040 WSFL 106.5 BC New Bern |
| 1250 | CKOI | 96.9 | QC | Montreal | 2349 WRAL 101.5 NC Raleigh, mix 101.5 |
| 1301 | WIZN | 106.7 | VT | Vergennes, The Wizard | 2352 WKJS 104.7 VA Crewe, kiss-FM |
| 1305 | CISS | 105.3 | ON | Ottawa over my local WPVQ translator | 9/25 Tr |
| 1345 | CHOM | 97.7 | QC | Montreal, shom 97.7 | 0002 WBBB 96.1 NC Raleigh, 96Rock |
| 1410 | WXXX | 95.5 | VT | S. Burlington, Triple X | 0012 WBBC 93.5 VA Blackstone, country |
| 1412 | CJFM | 95.9 | QC | Montreal, the new Mix | 0100 WLIC 97.1 MD Frostburg calls & He's Alive Net |
| 1420 | CBFX | 100.7 | QC | Montreal, classical o/WVAY | 0111 WRSN 93.9 NC Burlington, Sunny 93.9 |
| 1458 | WNCS | 104.7 | VT | Montpelier // 103.1 | 0850 WSLC 94.9 VA Roanoke, Star Country |
| 1500 | | | | Conditions switched a little and Bangor, Skowhegan, and downeast ME heard. | 10/8 Tr |
| 9/6 Tr | | | | | 2115 WWOC 94.5 NC Hatteras w/audio problems |
| 1725 | CBAF | 102.3 | NB | Fredricton, French | 2118 WOBR 95.3 NC Wanchese, 95.3theRock |
| 1735 | CBZ | 101.5 | NB | Fredricton, classical mx | 2121 WNBR 98.9 NC Windsor, the Bear, classic country 97.9 |
| 1850 | CBAL | 88.1 | NB | Fredricton over semi lcl WESU! | 2129 WERX 102.5 NC Columbia, the Shark |
| 1910 | CHSJ | 94.1 | NB | St. Johns, super stronfg | 2140 WSFL 106.5 BC New Bern, classic rock |
| 1925 | CJMO | 103.1 | NB | St. Johns, C103 | 2145 WNVZ 104.5 VA Norfolk Z104 |
| 2058 | CKWM | 94.9 | NS | Kentville, magic 94.9 | 2150 WWEA 94.1 NC Oriental, todays country, the New Eagle 94 |
| 2106 | CBH | 102.7 | NS | Halifax, CBC Radio2 ID | 2300 WGPS 88.3 NC Elizabeth City w/calls |
| 2120 | CBAX | 91.5 | NS | Halifax, slow cl music | 2310 WERO 93.3 NC Washington, most req songs |
| 2130 | CFRQ | 104.3 | NS | Halifax, Q104 | 2317 WQZL 101.1 NC Bellhaven over WCBS-FM |
| 9/14 Tr | | | | | 2323 WLQM 101.7 VA Franklin, The Real Country |
| | | | | | 2326 WMGV 103.3 NC Newport, V-103 |
| | | | | | 2335 WRQM 90.9 NC Rocky Mount, calls and lots of WUNC calls mentioned |
| 9/15 Tr | | | | | 10/9 Tr |
| 1720 | CITF | 107.5 | QC | Quebec, French at ME fadedown | 0035 WRVA 94.5 VA Richmond, Q94.5 |
| 9/20 Tr | | | | | 0043 WURB 97.7 NC //WBXB 100.1 |
| 2100 | WTSS | 102.5 | NY | Buffalo, Star 102.5 | 0100 WBXB 100.1 NC Edenton w/WURB ID also |
| 2100 | WHGL | 100.3 | PA | Canton, wiggle 100 | 0100 WRDU 106.1 NC Wilson, classic rock block |
| 2105 | WQFN | 100.1 | PA | Forest City, Oldies 92&100 | 0125 WRAL 101.5 NC Raleigh, mix |
| | | | | | 0135 WPWZ 95.5 NC Pinetops, 1 st Media Radio Contest, hip-hop |
| | | | | | 0140 WYMY 96.9 NC Goldsboro, Spanish, LaLey |

TRANSLATOR NEWS

Dr. Bruce Elving

New Translators, Low Power FM Stations Granted, as compiled by Bruce F. Elving from his *FMedia!* newsletter

*The rate of translator growth has slowed at the FCC--finally! Translators have less than 100 watts unless shown otherwise; technical parameters for most LPFM stations are not announced, but can be up to 100 watts at 30 meters above average terrain (horizontal, vertical or both h & v). Note that these stations can have a great effect on DXing, as I pointed out in a September 8 article in **Radio World** newspaper (pp. 20-21). These stations might provide interesting targets to DXers, or they might impede DX. For example, the new Oklahoma City station on 92.1, K221EZ, might stop club member John Zondlo from getting skip or tropo on that frequency.*

- AL Alabaster W286BK *105.1 (WJSP-FM 88.1 Warm Springs GA translator), h,v
AL Auburn W264BS 100.7 (WQNR 99.9 Tallassee AL), h,v (less than 100 watts h & v)
AL Bay Minette W246BN *97.1 (WPAS 89.1 Pascagoula MS), h,v
AL Clanton W300BO *107.9 (WGIB 91.9 Birmingham AL translator), h,v
AL Cullman W247BI *97.3 (WAKD 89.9 Sheffield), h,v
W293BD *106.5 (WAFR 88.3 Tupelo MS), h,v
AL Gulf Shores W262BL *100.3 (WPAS 89.1 Pascagoula MS), h,v
AL Jasper W291BT *106.1 (WGIB), h,v. Granted despite W268AO *101.5 there, another WGIB relay.
AL Montgomery W248AY *97.5 (WJWV 90.9 Fort Gaines GA), h,v
AL Trussville W250AY 97.9 (WODL 97.3 Gardendale), h,v
AL Tuscaloosa *103.3 City of Tuscaloosa, Crucifest Ministries, Tuscaloosa Chinese Ministry Assn., LPFMs, with the three to share time.
AK Ambler K232DV 94.3 (KYKD 100.1 Bethel), 250 v
AK Anaktuvuk Pass K232DU 94.3 (KYKD), 250 v
AK Coldfoot K232DR 94.3 (KYKD), 250 v
AK Eagle K231BJ 94.1 (KYKD), 250 v
AK Hooper Bay K232DS 94.3 (KYKD), 250 v, received via satellite.
AK Hope K287AO *105.3 (KEUL 88.9 Girdwood), h
AK North Wrangell Island K296FN *107.1 (KSTK 101.7 Wrangell), h. At N. tip of island.
AK Quinhagak K232DW (KYKD), 250 v
AK Sand Point K232DT 94.3 (KYKD), 250 v
AK Sterling K223BE *92.5 (KWJG 91.5 Kasilof), 250 h
K235BE *94.9 (KWVK 89.5 Kasilof), 250 h,v
K239AV *95.7 (KWMD 90.5 Kasilof), 250 h,v
AZ Cortaro K266AX *101.1 (KFLR 90.3 Phoenix), h,v
AZ Mojave Valley (S. Bullhead City with transmitter in California) K248BJ *97.5 (KNLB 91.1 Lake Havasu City), 140 h,v
AZ Williams K284BJ *104.7 (KNLB 91.1 Lake Havasu City), h,v
AR Earle K236AV *95.1 (KAOG 90.5 Jonesboro), 250 h,v
AR Fayetteville K265EF *100.9 (KLRC 101.1 Siloam Springs AR), h,v
K278BB *103.5 (KLFS 90.3 Van Buren), h,v
AR Harmon (the Harmon just SW Springdale, not the Harmon near Harrison) Kk274BJ *102.5 (KSSQ-LP 102.3 Siloam Springs), 250 h
AR Little Rock K237EM *95.3 (KANX 91.1 Sheridan), 210 h,v. .
Another KANX relay there is K288EZ *105.5.
AR Sulphur Springs *97.3 Stateline Christian Radio Group, Inc., LPFM
CA Carmel Valley K267AW *101.3 (KSRI 90.7 Santa Cruz), h,v
CA Chalfant Valley (NNE of Bishop, across the county line) K289BD *105.7 (KWTW 88.5 Bishop), h,v
CA Conway Summit K243BC 96.5 (KDAY 92.5 Independence CA), v
CA Dublin K241BH *96.1 (KLVR 91.9 Santa Rosa), h,v
CA Glen Ellen KRPO-2 104.9 950 v, d-a, with 100% power 0°. Booster of Rohnert Park station.
CA Haiwee (near Olancho Dam) K247BB ;97.3 (KDAY), 250 v
CA Lancaster K236AW *95.1 (KXRD 89.5 Victorville), h,v
CA Lone Pine K246AZ *97.1 (KWTW), h,v
CA Mammoth Mountain K223BF 92.5 (KDAY), v
CA Olancho K236AX *95.1 (KWTW), h,v
CA Truckee K273BI *102.5 (KLVS 99.3 Grass Valley), h,v
CA Ukiah K270BC 101.9 (KSAY 98.5 Fort Bragg CA), h,v
CA Ventura K259BI 99.7 (KTYD 99.9 Santa Barbara), h
CA Yuba City K238AV *95.5 (KARA 99.1 Williams CA), h,v
CA Yucca Valley K237EN *95.3 (KNLB), h,v
CO Craig K239AW 95.7 (KMOZ-FM 100.7 Grand Junction), v
K255BL 98.9 (KMGJ 93.1 Grand Junction), v
CO Eagle K290AZ 105.9 (KZKS 105.3 Rifle), v
CO Glenwood Springs K242BL 96.3 (KMGJ 93.1 Grand Junction),
CO Kremmling K262BL *100.3 (translator of new 91.7 Sidney CO station), 250 h,v
CO Pinecliffe K269FE *101.7 (KVOD 90.1 Denver), 100 h
CO Sedalia KKCS-2 101.9 2750 v, d-a, with 100% power 0°. Booster of Colorado Springs station.
CO Windsor K221EW *92.1 (KTLF 90.5 Colorado Springs), h,v
CO Wray K274BM *102.7 (KTLF 90.5 Colorado Springs), 210 h,v
CT Greenwich W276BV *103.1 (WMNR 88.1 Monroe), h,v
FL Brandon W280DW *103.9 (WSMR 89.1 Sarasota), h,v
FL Daytona Beach *99.1 Bethune-Cookman College, Inc.; Embrey-Riddle Aeronautical University, LPFM, to share time.
FL Deltona W274AY *102.7 (WJLU 89.7 New Smyrna Beach), 250 h,v
FL Flamingo W257CA *99.3 (WSOR 90.9 Naples), h,v
FL Fort Lauderdale W228BV *93.5 (WREH 90.5 Cypress Quarters), 100 h,v
FL Jacksonville Beach W295AZ *106.9 (WXVS 90.1 Waycross GA), h,v [Key West], h,v
FL Key Largo W296BP *107.1 (WAVQ 88.3/
FL Lauderdale Lakes (NW Fort Lauderdale, NE Sunrise) W245BC *96.9 (WREH), h,v
FL Malabar W227BO *103.3 (WCEE-LP 93.1 Melbourne), 170 watts h,v
FL Miami W237CP *95.3 (WMCU 89.7 Miami), h,v
FL Milton W293BA 106.5 (WYCT 98.7 Pensacola), 250 h
FL Plant City W222AX *92.3 (WLAZ 89.1 Kissimmee), h,v
FL Port St. Lucie W227BT *93.3 (WAYF 88.1 West Palm Beach), h,v
FL St. Augustine W258BF *99.5 (WKTO 88.7 Edgewater FL), h,v
FL Tampa W237CQ *95.3 (WSMR 89.1 Sarasota), h,v
FL Wakulla (transmitter WSW St. Marks) W222AY *92.3 (WJTF 89.9 Panama City), 250 h,v
GA Americus W238BK *95.5 (WJSP-FM 88.1 Warm Springs), h,v
GA Crystal Valley (NE Columbus, but transmitter on the south side of Columbus) W295AY *106.9 (WAYT 88.1 Thomasville), h,v
GA Glennville W263BK *100.5 (WLFS 91.9 Port Wentworth GA), h,v
GA Nashville W275AY 102.9 (WULS 103.7 Broxton), 170 h,v
GA Winder W243CE *96.5 (WJSP-FM), h,v
HI Honolulu K246AY *97.1 (KIPO 89.3 Honolulu), h,v. Its transmitter is west of Waipahu, while K245AS *96.9 Honolulu will have its transmitter in Kaneohe HI.
ID Grangeville K264AW *100.7 (KMEI-LP 97.3 Kamiah), 120 h,v
ID Mullan K286BH *105.1 (KPLG 91.5 Plains MT), v
IL Clinton W291BR *106.1 (WOLG 95.9 Carlinville), 120 h,v

IL Elgin W221BY *92.1 (WHLP 89.9 Hanna IN, received via a new station), v

IL Flora W203AN *88.5 (WAFR 88.3 Tupelo MS), h,v. See also "Deletions."

IL Lake Bluff W292DJ *106.3 (WHLP 89.9 Hanna IN, received via a new application), h,v

IL Martinsville W226AZ *93.1 (WOLG), 120 h,v

IL Pekin W291BS *106.1 (KLRX 88.9 Wapello IA), h,v

IL Peru W225AW *92.9 (WAXR 88.1 Geneseo), h,v

IL Saint Elmo W243CC *96.5 (WOLG), h,v

IL Salem W246BL *97.1 (WOLG), h,v

IL Waukegan W260BL *99.9 (WHLP, via a new application), h,v

IL Winchester W292DG *106.3 (WOLG), h,v

IN Anderson W287BC *105.3 (WJCF 88.1 Morristown IN), h,v

IN Arcadia W297AU *107.3 (WIRE 91.1 Lebanon IN), h,v

IN Auburn W257CC *99.3 (WQKO 91.9 Howe), h,v

IN Floyds Knobs W236AN *95.1 (WJLR 91.5 Seymour IN), h,v. Transmitter just NNW New Albany.

IN Greensburg W278BB *103.5 (WJCF), h,v
W282AZ *104.3 (WIRE 91.1 Lebanon IN), h,v

IN Indianapolis W221BZ 92.1 (WTTS 92.3 Bloomington), h,v. Transmitter downtown Indy.

KS Abilene K240DL *95.9 (KCVW 94.3 Kingman), 250 h,v

KS Larned K239AX *95.7 (KJIL 99.1 Copeland), 170 h,v

KS Liberal K226AP *93.1 (translator of a new 89.9 Doge City application), 140 h,v

KS Salina K243BD *96.5 (KJRL 105.7 Herington), 200 h,v

KY Murray W221AA *92.1 (WKNJ 89.3 Hopkinsville), h,v

KY Paducah W229AZ *93.7 (WBEL 88.5 Cairo IL), h,v

LA Covington K235BG *94.9 (WBSN 89.1 New Orleans), 100 watts h,v

ME Portland W300BN *107.9 (WMSJ 89.3 Freeport), h,v

MA Gloucester W243CD *96.5 (WMSJ 89.3 Freeport ME), h,v
W279BQ *103.7 (WYFP 91.9 Harpswell ME), h,v

MI Flint W261BH *100.1 (WAKL 88.9 Flint), h,v

MI Gaylord W221CA *92.1 (WTLI 89.3 Bear Creek Township), h,v

MI Monroe W236BI *95.1 (KAWZ 89.9 Twin Falls ID, received via W264AK 100.7 Toledo OH), v.
W292DI *106.3 (KLOV 89.3 Winchester OR via a new application), h,v

MN Dilworth K257EP *99.3 (KDJZ 100.7 Harwood), 250 h,v

MN Fridley K273BH *102.5 (KHRI 90.7 Hollister CA, to be received via a new station). Transmitter downtown Minneapolis.

MO Cassville K283AV *104.5 (new 90.7 Fort Smith AR station), 210 v

MO Hermitage K251AT *98.1 (KYRV 88.1 Concordia MO), 250 v

MO Louisiana K235BD *94.9 (WOLG), 170 h,v

MO Marshall K234BG *94.7 (WOLG), 250 h,v

MO St. Joseph K294BE *106.7 (WOLG 95.9 Carlinville IL, which supposedly will be received direct, off air!), h,v.

MO West Plains K285FR *104.9 (KJLV 105.3 Hoxie AR), 120 h,v

MO Windsor K268BI *101.5 (KYRV 88.1 Concordia MO), 120 v

MT Bozeman K288FR 105.5 (KBZM 104.7 Big Sky), h,v

MO Whiteside K291BG *106.1 (WOLG), 170 h,v

MT Conrad K254BD *98.7 (KFAS-LP 95.3 Shelby MT), h,v

MT Missoula K296FM *107.1 (KVCM 103.1 Helena), h,v

MT Townsend *98.3 Townsend K-12 School District #1, LPFM

NE Kearney K285FQ 104.9 (KCVN 104.5 Cozad), 250 h,v

NE Lexington K237EO 95.3 (KCVN), 250 h,v

NV Carson City K297AS 107.3 (KNCI 105.1 Sacramento CA), h,v

NV Pahrump K288FS *105.5 (KAIZ 88.5 Mesquite), 140 h,v

NV Spring Creek K222BF 92.3 (KRJC 95.3 Elko), 250 h

NH Berlin W294AZ *106.7 (WMSJ 89.3 Freeport ME), h,v

NH Littleton W237CR *95.3 (WMSJ), h,v

NH Sugar Hill W253AY *98.5 (WVPS 107.9 Burlington VT), h,v

NJ Brick Township (of which "Brick Town" is part) *104.7 International Music Society, Inc., LPFM

NJ Bridgeton W249BY *97.7 (WVVBV 90.5 Medford Lakes), h,v

NJ Edison W264BT *100.7 (WCNJ 89.3 Hazlet), h,v

NJ Manahawkin W276BW *103.1 (WCNJ 89.3 Hazlet), h,v

NJ Wildwood W238BL *95.5 (WXXY 88.7 Port Republic), 150 watts h,v

NM Albuquerque K251AU 98.1 (KZRM 95.9 Chama), h,v

NM Shiprock K294BF *106.7 (KFLO 91.5 Albuquerque), h,v

NM Socorro K234BH *94.7 (KCJH 89.1 Livingston CA, via a new application), h,v

NY Albany W248AX *97.5 (WNGN 91.9 Argyle), h,v

NY Byron (seeks move to North Syracuse 94.1) W230BE *93.9 (WZXV 99.7 Palmyra), h,v

NY Elmira W226BA 93.1 (WPHD 96.1 South Waverly PA), h

NY Holland W221AB *92.1 (WNAR-LP 100.3 Arcade NY), h,v

NY Manorville W245BA *96.9 (WRDR 89.7 Freehold Township NJ), h,v

NY Penn Yan W251BB 98.1 (WNYR 98.5 Waterloo NY), h,v

NY Vestal W254BH *98.7 (WCII 88.5 Spencer), h,v

NC Durham W289AY *105.7 (WKVE 106.7 Semora), h,v

NC Greensboro W284BN *104.7 (WFDD 88.5 Winston-Salem), h,v

NC Kinston W229AY *93.7 (WCPE 89.7 Raleigh), h,v

NC Rocky Mount W278BA *103.5 (WKVE), h,v

NC Wake Forest W288BQ *105.5 (WKVE), h,v

NC Wilson W250AZ *97.9 (WZRU 88.5 Roanoke Rapids), h,v
W261BS *100.1 (WKVE), h,v; despite W288BP 105.5, another WKVE relay there.

NC Winston-Salem W260BK (99.9 (WKVE), h,v

OH Bellefontaine W227BU *93.3 (WCDR 90.3 Cedarville), h,v

OH Fremont W272BX 102.3 (WCPZ 102.7 Sandusky), h,v

OH Greenville W279BR *103.7 (WCDR), h,v

OH Logan W257EQ *99.3 (WCDR), h,v

OH Lorain W233BJ 94.5 (WCPZ), 150 h,v
W262BN *100.3 (WAPS 91.3 Akron), h,v

OH Marysville W293BB 106.5 (WMRN-FM 106.9 Marion), 250 h,v

OH Mount Orab W262BJ 100.3 (WVMX 94.1 Cincinnati), 180 h,v

OH Port Clinton W295BA *106.9 (WNRK 90.7 Norwalk), h,v

OH Sandusky W225AX *92.9 (WNRK), h,v

OH Sidney W251BC *98.1 (WCDR), h,v

OH West Chester W266BB 101.1 (WVMX), h,v

OH West Union W224BO *92.7 (WOHP 88.3 Portsmouth), h,v

OK Oklahoma City K221EZ *92.1 (KJCC 89.5 Carnegie OK), v

OR Arlington K291BF *106.1 (KGTS 91.3 College Place WA), h,v

OR Bandon K261DL *100.1 (KVIP-FM 98.1 Redding CA, via K205DR 88.9 McKinley OR), h,v

OR Bend K221EY *92.1 (KYPL 91.1 Yakima WA), h,v

OR Bethel (just S. Eugene) K235BF 94.9 (KXPC 103.7 Lebanon OR), h,v

OR Portland K288FT *105.5 (KAWZ 89.9 Twin Falls ID via K231AM 94.1 Woodland WA), v

OR Rockford (just S.W. Hood River) K252EN 98.3 (KACI-FM 97.7 The Dalles), 250 h,v

OR Yachats K253AU *98.5 (KSHY-LP 94.3 Newport OR), 250 h,v

PA Bradford W237CS *95.3 (WAWN 89.5 Franklin PA), h,v

PA Carbondale *91.3 300 h,v; 168 m, d-a with 58% power 290-350°, Family Life Ministries.

PA Hazleton W297AV 107.3 (WPZX 105.9 Pocono Pines PA), h,v

PA Highspire W263BL *100.5 (WFNM 89.1 Lancaster PA), h,v

PA Hillsville (NE East Stroudsburg) W269BX *101.7 (WCSD-LP 104.9 Shawnee-On-Delaware PA), h,v

PA Uniontown W292DH *106.3 (WDKL 95.9 Grafton WV, received via a new station), h,v

PA West Hazleton W287BD 105.3 (WKAB 103.5 Berwick), h

TN Elk Valley W293BC *106.5 (WYLV 89.1 Alcoa TN), h,v

TN Gladeville W271BE *102.1 (WMTS 88.3 Murfreesboro), h,v

TN Hawthorne (SW Shelbyville, NW Lynchburg) W240BU *95.9 (WMOT 89.5 Murfreesboro), h,v.

TN Hopewell (just NE Cleveland TN, not either of the other two Hopewells in Tennessee) W266BD *101.1 (WAYW 89.9 New Johnsonville, received via W268AA 101.5 Falling Water TN; see also "Facilities," below), h,v

TN Memphis W244BY *96.7 (WKVF 94.9 Byhalia MS), h,v.
There's also a WKVF relay there on 98.9, W255AH.

TN Walnut Hill (west of Bristol TN) W270BN *101.9 (WAYW New 89.9 New Johnsonville TN, via W210BR 89.9 Kingsport), h,v

TN Whitwell W286BL *105.1 (WJCR-LP 94.9 Jasper TN), h,v

TX Albany K249EB *97.7 (KYRE-LP 92.7 Breckenridge TX), 250 h,v. There's another KYRE-LP relay in Albany, K268BG 101.5.

TX Anthony K274BL *102.7 (KXCR 89.5 El Paso), h,v

TX Borger K222BE *92.3 (KXLV 89.1 Amarillo), 140 h,v. There's K292FD *106.3 there, another KXLV relay.

TX Comanche Trail (west side Austin) K292FQ *106.3 (KDRP-LP 99.9 Dripping Springs), h,v

TX Huntsville K283AW *104.5 (KANJ 91.5 Giddings), h,v

TX Killeen K271AS *102.1 (KVLZ 98.3 Gatesville), h,v

TX Kingsville K271AT 102.1 (KTNR 92.1 Kenedy), h,v

TX Lackland City (west of San Antonio, near the Air Force base) K221EX *92.1 (KKER 88.7 Kerrville), h,v

TX Liberty K241BI *96.1 (KLBT 88.1 Beaumont), 120 h,v

TX Livingston K290BA *105.9 (KSBJ 89.3 Humble), 170 h,v

TX Lockhart K203CC *88.5 (WAFR 88.3 Tupelo MS), h,v

TX Luling K269FD *101.7 (WAFR, via Lockhart (see above listing), 250 h,v

TX McQueeney K229BF 93.7 (KLMO-FM 98.9 Dilley), h,v

TX Pearsall KRIO-1 104.1 15000 h,v; d-a, with 100% power 180°, booster of Pearsall station.

TX The Woodlands K299AX *107.7 (KAXF 88.3 Conroe), 120 h,v

TX Waxahachie K229BD *93.7 (KVLW 88.1 Waco), h,v

UT Bountiful KPEB-5 103.1 2500 h,v; d-a, with 100% power 0°. Booster of Coalville station.

UT Cedar City K262BM *100.3 (KBYU 89.1 Provo via a new station), h,v

VA Warrenton WYQZ-LP *96.7, Clark Communications, LPFM W271BD *102.1 (WTRM 91.3 Winchester), h,v

VA Waynesboro W262BK *100.3 (WRVL 88.3 Lynchburg), h,v

WA Brewster K267AX 101.3 (KWWW 96.7 Quincy WA), h,v

K285FP 104.9 (KAAP 99.5 Rock Island WA), h,v

K299AY 107.7 (KEYG-FM 98.5 Grand Coulee), h,v

WA Chehalis K271AU 102.1 (KAYO-FM 99.3 Elma), v. Granted despite K259BG 99.7, another KAYO-FM relay there.

WA Port Angeles K266AY *101.1 (KNHC 89.5 Seattle), h,v

WA White Center (transmitter just S. Edmonds) K233BU *94.5 (KSVR 91.7 Mount Vernon WA, despite K225AX 92.9 there), h,v.

WI Beloit W258BG *99.5 (WNWC-FM 102.5 Madison), h,v. This in addition to W263BJ 100.5, another WNWC-FM relay there.

WI Hayward W261BI *100.1 (KTIS-FM 98.5 Minneapolis), h,v

WI La Crosse W250AX *97.9 (KNWS-FM 101.9 Waterloo IA), h,v

WI Richland Center W237CO *95.3 (WNWC-FM 102.5 Madison), h,v

UT Ogden KPEB-1 103.1 500 h,v; d-a, with 100% power 160°. Booster of Coalville station.

UT Park City KEGA-7 101.5 3000 h,v; d-a, with 100% power 180°, booster of Oakley station.

KPEB-3 103.1 3000 h,v; d-a, with 100% power 180°. This is expected to cause the deletion of K276CE 103.1 there, although the KEGA-7 site is considerably north of Park City.

UT Provo KPEB-4 103.1 600 h,v; d-a, with 100% power 320°. KRMF-3 106.1 600 h,v; d-a, 100% power 320°, booster of Evanston WY station.

UT Salt Lake City KPEB-2 103.1 560 h,v; d-a with 100% power 130°.

VA Portsmouth W227BR *93.3 (WAZP 90.7 Cape Charles), h,v

WV Granville W246BM *97.1 (WDKL 95.9 Grafton), h,v

WV Wheeling WVNP-1 *89.9 41 watts h,v, no d-a. Booster of Wheeling station.

WY Jackson K287AP *105.3 (KLRI 89.5 Rigby ID), h,v

WY Sheridan K257EO *99.3 (KCSP-FM 90.3 Casper), 200 h,v. Had operated at various times as K230AE 93.9 or K255AI 98.9.

AB Buffalo Head [Prairie] CIAM-2 95.5 25 watts h,v; 164 m, to be \$[tereo], relay of CIAM 92.7 Fort Vermillion.

AB Foggy Mountain CIAM-4 104.3 50 watts h,v; 115 m, \$, relay of CIAM 92.7 Fort Vermillion.

BC Canyon Creek (51-14.9; 116-56.78, or SE Revelstoke) VF2471 *104.7 10 watts h only, -104 m, Columbia Electoral Area "A" Television-Radio Society ("CBCE").

BC Chase CFCH 103.5 5 watts h only, height not announced, Chase and District Lions Community Club (community station)

BC Chilliwack CBU-FM7 *99.9 790 h,v; 218 m, \$, relay of CBU-FM 105.7 Vancouver

BC Crawford Bay CJLY-1 96.5 19 watts v only, height missing, relay of 93.5 Nelson

BC New Hazelton VF2470 105.9 32 watts v only, height missing, Skeena TV Association.

BC Tofino CHMZ 90.1 170 h, 60 m, \$, rk format, "pop-rock and country," McBride Communications & Media, Inc. and Umeek Human Resources Development, Inc., partners in West Island Radio Enterprises General Partnership.

BC Tumbler Ridge CFGP-2 104.3 10 watts h, d-a, height missing, to be \$[tereo], relay of 97.7 Grande Prairie AB.

BC Williams Lake CISK *94.3 35 watts h only, zero m, d-a, programming to be aimed to the Sikhs and Hindus, no ads allowed, Western Singh Sabha Association.

MB Flin Flon CIFF 101.1 300 h,v; 55 m, \$, to relay CINC 96.3 Thompson, Native Communications, Inc.

NB Baie-Ste-Anne CJSE-2 107.5 2400 v, 38 m, \$, relay of Shediac 89.5.

ON Oshawa CKDO-1 107.7 250 h,v; 70 m, relay of CKDO AM Oshawa, but like mentioned in Sept. (p. 5, col. 2), this station will have to find a new frequency. It's because CKMB Barrie is moving to 107.7 from 107.5.

ON Peterborough CKKK 99.5 50 watts v, 13 m, \$, Christian music, King's Kids Promotions Outreach Ministries, Inc., "a non-profit organization," but the CRTC doesn't mention if ads will be allowed.

ON Renfrew CJHR 98.7 14000 h,v; 106 m, d-a, \$[tereo], with "heritage" country and easy listening music, community station licensed to V. R. Garbutt.

ON Toronto CKRG *89.9 1 watt h,v, to supplement the carrier-current station at Glendon College.

ON Wingham 94.5 21200 h, 226 m, d-a, with "hybrid adult rock . . . blending classic rock and new rock," \$[tereo], Blackburn Radio, Inc.

PQ Brisay 92.1 260 v, 131 m, d-a, to relay CKAC AM Montreal 94.9 270 v, 125 m, a CITE 107.3 Montreal relay, both these licensed to the Northeast Social Club.

PQ Forestville CFRP 100.5 3370 v, 61 m, d-a, \$, moving from AM. To relay CHLC 97.1 Baie-Comeau, licensee 9022-6242 Quebec, Inc.

PQ Guyer (or "Camp Guyer"; 53-29-35; 75-01-39) 92.1 32 h, 124 m, d-a, to relay CKAC AM 98.5 32 h, 118 m, d-a, to relay CITE

PQ Keyano (Camp LG-4) 93.1 79 watts v, 159 m, d-a, CKAC AM relay 100.1 77 watts v, 162 m, d-a, CITE relay. These and Guyer owned by Northeast Social Club.

PQ Laforge-2 100.7 980 v, 100 m, d-a, CITE relay, Northeast Social Club

PQ La Grande-3 {Camp LG-3} 99.5 79 watts v, 144 m, d-a, CITE relay, NE Social Club

PQ Nikamo/Laforge-1 (LA-1) 92.5 990 v, 75 m, d-a 94.7 990 v, 75 m, d-a, both NE Social Club

PQ Pabos Mills CFMV-3 92.1 (was on 95.5) 10 watts h, 9 m, d-a, relay of CJMS 100.3 Ste-Anne-des-Monts. It disappeared from the Industry Canada database, but it's back now.

PQ Saint-Anselme (46-37-47; 70-57-58) CFIN-3 105.5 32 watts v, 29 m, d-a, \$, relay of 100.5 Lac Etchemin

PQ Saint-Jean-d'Orleans (46-54-26; 70-55-26, or SW Montmagny) CFIN-4 105.5 35 watts v, 13 m, d-a, monophonic

PQ Saint-Melachie (46-31-52; 70-45-54) CFIN-2 105.5 34 watts v, 41 m, \$[tereo]

SK Meadow Lake 104.5 45000 h,v; 158 m, \$, relay of CJCQ 97.9 North Battleford, Northwestern Radio Partnership

TELEVISION: THE TECHNOLOGY THAT CHANGED OUR LIVES

BOB COOPER
PART THREE

The following material is from an in process book by Robert B Cooper who retains the copyright to this material. None of this may be reproduced in any form without the permission of the author; special permission for VUD to publish this 'draft version' is on record."

CBS and fellow travelers such as Zenith were still hoping to stop black and white TV before it ran away at the consumer level. In 1946, according to the RMA, 11,651 TV sets had been manufactured and most forecasts suggested ten to twenty times that number in 1947. For CBS, stopping the black and white TV explosion was a major concern. The hearings allowed CBS, Zenith and a small handful of disgruntled manufacturers to urge the Commission to reserve the UHF spectrum for color-only transmissions, using the wider channel bandwidths Goldmark's TV system demanded. CBS continued to tell the press, "We will not enter television until it can be color and this will only happen at UHF." The FCC seemed to be leaning in this direction throughout the hearings by pre announcing, "500 - 900 megacycles will be reserved for color television broadcasting."

Actually, although Goldmark does not explain the subject, by the "UHF/Color Hearings" CBS had finally had time to work out the gulf between limited resolution color using a 6 Mc/s bandwidth and the on-paper projected wideband UHF color transmission system. What had been a 343 line 120 fields per second system crammed into 6 megacycles in 1940-1941 matured to a CBS demonstrated 525 line, 144 fields per second system in 1946 using slightly over 12 megacycles bandwidth. Goldmark ignores what his developmental processes were leading to this technology improvement in "Maverick Inventor" and RCA's Brown apparently could but observe from afar what CBS was doing. Brown writes:

"CBS radiated a color signal from a rather low-powered transmitter located near the top of the Chrysler building. During the course of the hearing, CBS gave a number of demonstrations at carefully selected locations and produced very pretty pictures of rather low brightness to avoid the flicker problem inherent in the field-sequential method. However, no specific data were produced to show how to lick the apparent engineering problems." The insinuation is that CBS was now using a UHF (500 - 900 Mc/s) region transmission to conduct these tests.

What is of particular interest is that for these demonstrations CBS had reduced the original 16 Mc/s channel-width requirement of 1940-1942 to "just over 12 Mc/s" which meant that between 450 and 900 MHz, the FCC - if it adopted the CBS plan - could now create something approaching 37 TV channels in lieu of the original 26 maximum. Reduced TV channel widths meant an easier job for FCC planners and of course this would have appealed to the bureaucrats.

RCA escaped from the first CBS attack in 1940-1941, and having learned a lesson from the encounter, was now hard at work on its own version of color. Brown, again:

"RCA however was very concerned about CBS's blind acceptance that UHF channels would work."

Almost nothing was known about 'UHF wave propagation' - how signals in the 500 - 900 Mc/s region would fly through the air, curve behind buildings and other obstructions, bend over hills and mountains. Brown wrote:

"I had already developed a feeling from some preliminary (RCA conducted) wave propagation tests that the (UHF) transmitter scheme could only take us down the road to disaster."

RCA early in 1946 applied to the FCC for a special experimental license (KC2XAX) to utilise a frequency of 288 Mc/s for "propagation tests" with a transmitting antenna mounted slightly higher than the NBC channel antenna on the Empire State Building. Testing done in the mid 1930s by RCA engineers had developed a sizeable record of data concerning how VHF waves travelled in the region 30 to 100 Mc/s and various technical papers published in the Proceedings of the IRE (Institute of Radio Engineers; now IEEE) were the foundation for any serious student of the subject. What those tests suggested, quite properly, was that as the frequency of transmission was increased, an entire new layer of data emerged. Signals at 40 Mc/s which easily flowed through and past buildings and other

physical objects in the way simply were not working at 100 Mc/s. Logic suggested, absent tests, that as the frequency of transmission grew to 200, 300, 500, or 900 Mc/s, this "blockage of reception" artefact would become greater, not lesser.

While RCA was conducting tests at 288 Mc/s (not quite UHF but 3 octaves in frequency higher than any existing New York City TV transmitter), CBS had created a 500 Mc/s transmitter on the Chrysler Building (W2XCS) through which they were testing and modifying their proposed field sequential color system. Brown wrote of the two systems being tested during 1946:

"RCA carried out these 288 Mc/s surveys throughout the summer and fall of 1946 so that by the time CBS demonstrated their UHF color transmissions, we were sufficiently sophisticated to realize that CBS had very carefully selected locations to show the highest possible performance and we were able to point out to an industry team many spots where UHF reception was hopeless.

"(Later) in 1947, we thoroughly explored the performance of the UHF spectrum by placing two more experimental transmitters on the Empire State Building, one operating near 500 Mc/s and a second near the top at 850 Mc/s. Our experiments clearly indicated that successful transmission in the UHF channels would require transmitter powers far greater than that used by VHF stations and far in excess of the power which could be generated by 1947 technology."

Goldmark: "A shift of (TV) standards one way or another could benefit one corporation over another and decide the pattern of the TV industry for years to come. It is no wonder that there was confusion between the private and public interest, and there was constant investigation or threats of it (by the FCC)."

How did CBS and Goldmark gravitate from the 343 line / 120 limited resolution system of 1941 to the higher definition images immediately following the war? Goldmark's war years were largely spent involved in working out techniques for dealing with the German's radar systems. He created or helped create both radar jamming systems and the technology that used precisely formed pieces of aluminum foil dropped from bombers to confuse the German radar sentry (the German response was to create metalised helium balloons, released by their thousands, to confuse Allied radars; neither

the Goldmark foil strips nor the German balloons had much of an impact on the war effort.). He was "on loan" to the United States government although CBS kept his position open and continued to pay 20% of his pre-war salary to help make up the difference to military advisor pay. It was during this effort that Goldmark was introduced to the most recent developments in the ultra high frequency region. He returned to New York after VE day filled with new concepts and an enthusiasm for UHF which bordered on passion. He claims credit for proposing restarting the pre-war CBS proposal for color TV, using UHF channels, and says CBS management saw this as an opportunity to further retard the growth proposed by a RCA fuelled NBC promoted lunge into VHF black and white TV.

He wrote of his first weeks back at CBS, "I improved the mechanism of the whirling disc and watched the color come through true and fine. I felt that with a little work we could coach color into UHF bands and be the first to bring commercial color to viewers. Management had bought it once (1940) - why not again?"

Here, in *Maverick Inventor*, Goldmark is suggesting it was his initiative upon returning to civilian duty at CBS which pushed Paley to once again challenge the industry (read RCA/NBC) and the FCC to revisit higher definition field sequential color. Perhaps.

Writing in *Radio-Craft* for July 1944, a pseudonym author called A. Pascale devoted two pages to the title, "Better Television Coming." The sub-head read, "Wide Band System Will Produce Greater Definition." An article appearing in July's RC would have been written no later than April 1944 and Peter Goldmark was at that time deeply involved in assisting in the creation of a "Fake Navy" which it was hoped would "fool Hitler's coastal radar system along the French coast" as to the size, deployment and likely landing spot for the invasion by Allies of mainland Europe. In other words, Goldmark could not have been a source for nor a participant in this controversial, very much anti-RCA, article.

Pascale: "During the past month numerous discussions initiated by the Columbia Broadcasting System's proposal for a high-definition post-war television system have taken place. If CBS's plans are put into effect, there is no doubt that the image on the future television set will have more 'eye-appeal' than at present. The present system of transmitting

television pictures on a band width of 6 megacycles, (mostly) below the 200 megacycle section of the spectrum, results in the production of a coarse-screen image. The production of television pictures within a 6 megacycle band is comparable to playing a tune on a three octave piano. Any tune can be played on a three octave piano, but with a limited range. The same holds true of television in a 6 megacycle bandwidth - any picture can be reproduced but with a limited range of definition.

"The present 10-inch picture tube image has 250,000 elements (pixels in today's language). The only way more detail can be added to a television picture is to increase the number of lines in the image. If a band width of 16 megacycles were used for television transmission, there would be 585,000 picture elements, thus giving a clearer image and bringing out more detail. The finer the detail, the more can be brought into fine detail focus by the television camera, whereas the coarser the screen the more detail is lost."

Pascale goes on to point out that when a 10 inch image is enlarged to a 18 inch image, no more detail is added - "the space between picture elements simply becomes larger. The use of the same wide band also makes possible a good television image in full color. Although full color images were possible in pre-war television, the same coarseness in screen existed as in black and white television. The proposed post-war color image will contain more than three times as many picture elements; nine hundred thousand tiny units are blended into each 'color frame'."

Apparently Pascale was a stalking horse for CBS ambitions to create television as a wide band UHF service with color. He quotes but does not name the sources for his information at CBS.

"CBS claims, 'it is at the very fingertips but not yet in the palm of the hand. If the FCC should allocate the (proposed 16 megacycle band width) UHF channels, it may also be imperative that television occupy both ultra-high-frequencies and its present frequencies for a short period, as it would be impractical to build sets which are capable of receiving both the high and low frequencies. The old sets cannot be scrapped suddenly.'"

"If, after the war, time is wasted in discussion on the subject of improving television, the public will continue to purchase television receivers of the old type. The investment -

both in receivers and transmitters - will continue to grow by leaps and bounds. Every additional television set of the old type sold will be one more obstacle in the path of improved television. The sooner the television image is improved, the sooner will the public desire to buy television receivers and the sooner will the broadcaster's problem be reduced. Broadcasting will be profitable only when there is a large audience."

Goldmark in Maverick Inventor ignores the possibility that someone other than himself, left behind at CBS, was carrying the torch for UHF and/or color in his absence. He recounts how he (alone) reignited Paley's fever for the subject, in a personal meeting.

"He listened with an air of mixed impatience and interest and quickly told us he loved the idea. I would discover later that love and hate with Paley were emotions that quickly followed one another. Paley needed a blockbuster device. Competition was then intense for (network radio) audiences and here might be the answer to (RCA's David) Sarnoff's belligerent push to promote black and white TV as well as (NBC) radio," to the detriment of CBS.

The "incentive" for the CBS initiative was many-fold but the opportunity to make their point is easily located. Starting in September 1944, the FCC under Chairman Fly took detailed testimony concerning the question of basic frequency allocations between 25 and 30,000 megacycles. Going into World War Two the FCC had all but ignored the frequencies above 100 megacycles and had flip-flopped several times on allocations between 25 and 100. Television and FM broadcasting became two heated contestants in the 25 - 100 region, each after sufficient spectrum space to launch their respective industries. A reassessment of the pre-war allocations status would have been mandatory even without the very rapid advancements in transmission and reception technology above 100 megacycles during the war. With this new knowledge, it had become crystal clear that frequencies from 100 to at least 1,000 megacycles suddenly had new value and a long list of potential users. The Society of Motion Picture Engineers trade association, for example, was asking for fifteen 20 megacycle width channels between 600 and 1,000 mc (300 of the 400 megacycles there).

CBS saw in this period of intense FCC interest an opportunity to reattract support to its original 1940 scheme to derail the start of

TV at VHF by gathering backers for moving it to UHF. Color, Goldmark's special area, was a sidecar that sweetened the pot. In 1940, Goldmark and CBS said "color" first and "UHF" second when describing the benefits. In 1944, writer Pascale in reporting on the "new" CBS position was saying "UHF" first, "higher quality image definition" second and as a weak third - "color."

On June 27, 1945, after Goldmark returned from World War Two and after CBS and dozens of other interested parties testified before the FCC (September 1944 through June 1945), a decision. FM radio broadcasting, painfully occupying 42 - 50 mc with 40 broadcasting channels was to be reassigned to 88-106 megacycles with room for 90 channels. Television, originally assigned 44-50 megacycles but having lost that in a 1941 decision to FM, got back 44-50 and 54 to 88 (amateur radio miraculously held onto 50-54) as well as 174 to 216 megacycles. UHF? The Commission elected to formally assign 480 to 920 mc to "future television expansion" but dangled a carrot before CBS and its backers; no 6 (or 12 or other) band width channels were assigned, merely a "block of frequencies" for "experimental television."

Goldmark: "Back home at CBS I faced an organization that had grown in numbers and expertise."

Now Goldmark returned to the FCC where when last visited they had been urging him to complete the development of his color system which he took as an indication that they were anxious to approve it as an alternative to the RCA backed black and white service system.

"All you need to do is prove that you can transmit and receive UHF, one of the Commissioners told me, and if you can do that, then we'll consider a CBS proposal for a hearing."

All of this was by way of leading up to the December 1946 "UHF/Color Hearings" which would once again pit Goldmark against the boys from RCA.

Brown of RCA was spot on when he dissected the CBS technique of "hand picking UHF demonstration sites" for the FCC side-show. Unlike RCA which Brown and others have written was "primarily interested in the worst case, not the best one," CBS under Goldmark was more interested in getting the FCC approval than total honesty in

presentation. Goldmark wrote about the FCC demonstration as follows:

"The place chosen for the major portion of the demonstration was the Tappan Zee Inn at Nyack, a luxury hotel on a hill overlooking the Tappan Zee, the widest part of the Hudson River. The hotel was about forty miles from the CBS transmitter on the Chrysler Building in New York City, a reasonable distance to prove the point that color was not only feasible but practical. I knew our company was lagging behind others in the rush to market television, and was prepared to invest a great deal of money in the future of color.

Televiser Magazine coverage quoted CBS President Frank Stanton as follows:

"If the Commission acts favorably on the CBS petition, we intend to convert our present extensive black-and-white operations (WCBS-TV) into ultra high frequency color television as rapidly as possible. We are prepared to inaugurate a partial color television program schedule within a few weeks of a favorable Commission decision."

And his other side:

"Should the Commission rule adversely upon our petition we are not prepared to expend further substantial corporate energies in this direction."

For the record, WCBS-TV was operating on a very limited schedule (1 to 3 hours daily, 4 days per week), had only 3 commercially sponsored programs in January 1947 (WNBT/RCA had 17 commercially sponsored programs, averaged 4 hours daily, 6 days per week).

The "special FCC field tests" by CBS at Tappan Zee Inn, as remembered by Goldmark:

"Charles Denny, the new FCC Chairman, sat mesmerised as our instant starlet in the special CBS color studio, Patty Painter from Beckley, West Virginia, filled the tube. She was 19, auburn hair, and every detail of her face and figure was memorable and as clear as anyone could possibly ask."

Denny and his staff, hardly closed mouthed, let it be known they were extremely impressed. CBS would get the hearing it wanted. And RCA turned from adversarial to vicious. RCA introduced their four-transmitter scheme (one each for red, blue, green and sound) and during the hearings in Washington (and later New York) claimed their system for UHF was superior. Unfortunately for those who saw it, including FCC personnel, it was not even close to the CBS quality.

(Continued next time)

MAPPING THE JULY 6TH ES CLOUD

Les Prus



Here's a slightly more refined update of the Es midpoints triangulation map. It is based on 4 TV DXer's high-band loggings 6 July from 1854 - 1935 EDT (info out of the Aug VUD, and Draeb's from personal correspondence).

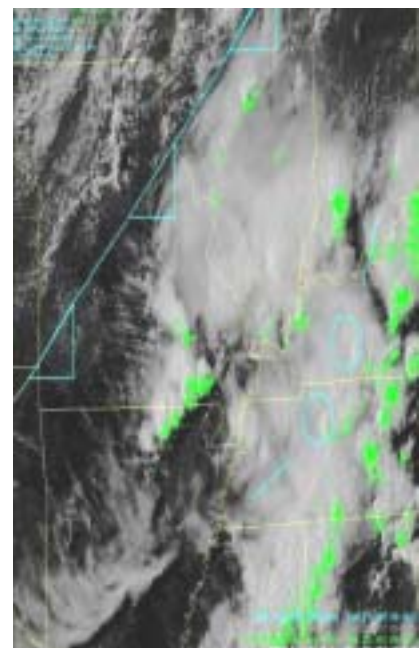
- 1) Katlic in Inlet, NY (vice Rochester): 7,8,9,10,11,12,13 in LA and MS.
- 2) Bugaj in Enfield, NY: 7 and 9 in AR
- 3) Timmerman in Ft Wayne, IN: 8 and 10 in LA
- 4) Draeb in Kewaunee, WI: WJCT-7 FL w/ ID; WXGA-8 Waycross or WGTV-8 Athens GPB/PBS); WFTV-9 FL w/ID; unID-10.

The Bugaj, Katlic, and Draeb midpoints (smileys) cluster near Girard's KY location, but Timmerman's seems to be over Nashville, TN. That's the problem with midpoints, when the Es cloud is probably somewhere within an ellipse along the great circle routes (which should appear as curves) between the transmitter and receiver, assuming a horizontal reflection. Les

P.S. My irony is that I'm a TV DXer, and when I got home at 1855 EDT and found low band unwatchable due to Es intensity, I didn't think to check high-band (8, 10, 12 are wide open for me, with Baltimore semi-locals on 11, 13). I went straight to FM DXing (and was getting central IL and MO stations at the time). My FM midpoint coincides with the Bugaj, Katlic, and Draeb smiley cluster. Les

...Severe Storms on July 6, 2004...

Below is a visible satellite photo of Missouri, western KY, and nearby states taken at 5:25 P.M. CDT on July 6. Overlaid on the satellite image are lightning strikes during the previous 15 minutes, shown in green. Finally, the location of the cold front over Missouri and Illinois is overlaid in blue. The blue feature over western KY and TN is a cold-front like feature called an outflow boundary, which is produced by thunderstorms. At this time, thunderstorms were intensifying over southeast Missouri near Poplar Bluff. A Severe Thunderstorm Warning was issued for the Poplar Bluff area.



A TOUR OF THE U.S.

WITH KGUN AND KMRA

BY DAVID LACHENBRUCH



At crossings, you WTOP and WOOK in Washington, D.C., WISN in Milwaukee.

WHO is in Des Moines?

WHEN is Syracuse?

WHYY is Wilmington, Del.?

In Madison, Wis. -

WHA?

The answer to these questions is yes. They're TV-station call letters, and after considerable research

I can state conclusively that they have more rhyme than reason; i.e.: WHIO is Dayton, Ohio? —but, unfortunately, they usually have little of either.

For example, it's KOOL in Phoenix, and it's KOLD in Tucson, according to the TV forecasts. To get WARM you have to turn on your radio way up north in Scranton, Pa.

What is WAVE doing in Louisville and WEAT in West Palm Beach?

True, it's also WAVY in Portsmouth, Va. — but that doesn't WROC the boat in Rochester, N.Y.

KOLO isn't in Colo., but in Nev. And don't look for WIS in Wis.- it's in S.C. KLOE won't answer your call in the swampland, because she's in Goodland (Kan.).

WSIX in Nashville is on Channel 8. WATE in Knoxville is on Channel 6.

In Seattle, the King Family is on KOMO, while Perry Como is on KING.

KNOE and WYES are both in Louisiana.

You used to go "KCHU" in San Bernardino, Cal. That station went off the air, but you can still catch KHOL in Kearney, Neb.

It's all right to be a KARD in Wichita, a WHIZ in Zanesville, O., WISE in Asheville—or even a KOOK in Billings, Mont. You can get KURT in Houston and KCOY in Santa Maria, Cal. But they'll KUSU in Logan, Utah (you'll also get KUSD in Vermillion, S.D.).

You may be able to KOAP with anything in Oregon, but stay out of California, where the stations are definitely unfriendly. They'll tell you to fly a KEYT in Santa Barbara. They may even KICU in Visalia. Keep under KOVR in Stockton, because someone will call a KCOP if you go to Los Angeles.

If you get hungry on your television tour, the pickings are slim. Of course, you'll find KORN in Mitchell, S.D., but the KOB's in Albuquerque. There's KAIL in Fresno, and, if you go for seaweed, the KELP is kept in El Paso (WWUP, Sault Ste. Marie, Mich.!). There's KAKE in Wichita.

There's plenty to drink, however. You can milk a KHOU in Houston or a WKOW in

Madison, Wis., get KOCO in Oklahoma City, KOAC in Corvallis, Ore., KREM in Spokane, or WATR in Waterbury, Conn. (natch). If you crave something stronger, there's KGIN in Grand Island, Neb., or you can pull a KORK in Las Vegas. But if you get KROC in Rochester, Minn., don't KWAB about it when you wake up in Big Spring, Tex., with a big head.

You can buy a KOAT in Albuquerque (where they rarely sell them), WEAR it in Pensacola, Fla. (where they rarely need them). If you have a date with a KOED from Tulsa, she'll let you WATE in Knoxville, get WEEK in Peoria and WAST away in Albany, N.Y. If you don't WAKR in Akron, maybe she WOOD by the time you get to Grand Rapids. She definitely WILL in

Champaign, Ill.—but

you'll never KEPR in Pasco, Wash.,

because she'll run off with KRIS from Corpus Christi, who has KOIN stashed away in Portland, Ore.

The only thing left for you is to move to Indianapolis and



WISH.

Go fly a KEYT in Santa Barbara, Ca!

There could be a happier ending, as in this television drama: WBOY from Clarksburg, W. Va., meets WGAL from Lancaster, Pa., WAAY down South in Huntsville, Ala. They say "WEDU" in St. Petersburg, and they are WEDH

in Hartford. After a honeymoon at the KAVE in Carlsbad, N.M., they settle down and have a KID in Idaho Falls.

On a cross-country TV journey such as this one, be sure to remember: When you come to a railroad



She definitely WILL in Champaign, Ill.

crossing, you must WTOP and WOOK in Washington, D.C., but you WISN in Milwaukee. (The fact that you left your KAAR in San Diego makes this even more difficult.)

We end our call-letter tour by paying fond tribute to a couple of stations which no longer are on the scene. WACH went off the air in Newport News, Va., back in 1955, because people didn't. The same year, WCAN left the Milwaukee scene because it couldn't.

I guess it's nothing to KREY about, but even the Television KODE doesn't answer the question: WHAS in a KALB letter?

'Montrose, Colo. 'Louisville, Ky.
'Joplin, Mo. 'Alexandria, La.

SIGN UP/Renewal form

Name _____

Address _____ Apt # _____

City _____ State/Prov _____ Zip _____

Country _____ Interests: TV () FM () 30-50() Weather()

email address _____

Sign me up/renew me for: 1 year () 2 years () More ()

Yearly dues \$24 (US), \$26 to (CANADA), \$10 (Electronic VUD)
(Students get a discounted rate of \$15 yearly for the paper VUD.)

Mail your dues to: WTFDA, P.O. Box 501, Somersville, CT USA 06072

Make your checks/money orders payable to: DAVE JANOWIAK

And *thanks* for your support of the WTFDA!

Return this form with your dues or make a copy of it and return that.

WTFDA BOARD OF DIRECTORS

| | |
|---|-----------------------|
| Mike Bugaj, use the WTFDA Mailing address listed below | mbugaj@snet.net |
| Doug Smith, 1385 Old Clarksville Pike, Pleasant View, TN 37146-8098 | w9wi@w9wi.com |
| Greg Coniglio, 11825 Genesee St., Alden, NY 14004 | wgrc@rochester.rr.com |
| Bruce Hall, 5 Stirton Ave., Brantford, ON N3T 1E2 | dbruceaa@hotmail.com |
| Dave Janowiak, 5023 S. 65 th St., Greenfield, WI 53220 | tvdxer@hotmail.com |

THE MAILBOX and all general club correspondence:

Mike Bugaj at WTFDA, PO Box 501, Somersville, CT 06072 mbugaj@snet.net

SATELLITE NEWS

George Jensen, 4604 Antana Ave., Baltimore, MD 20206-4220 scisatman@aol.com

TV NEWS

Doug Smith, 1389 Old Clarksville Pike, Pleasant View, TN 37146-8098 w9wi@w9wi.com

FM NEWS

Adam Rivers, 37 Carlton Ave., Chicopee, MA 01020 redsoxdxer417@hotmail.com

PHOTO NEWS

Jeff Kruszka, 5024 S. Braxton Ave., Baton Rouge, LA 70817 jkruszka@bellsouth.net

EASTERN TV DX

Matt Sittel, 15013 Eureux Circle, Bellevue, NE 68123 mcsittel@cox.net

WESTERN TV DX

Victor Frank, 12450 Skyline Blvd., Woodside, CA 94062-4554 victor.frank@sri.com

SOUTHERN FM

John Zondlo, 4009 Driftwood Cir., Yukon, OK 73099 sfm@fmdxweb.com

NORTHERN FM

Keith McGinnis, 6 Ritter Rd., Hingham, MA 02043 longwave@comcast.net

TV and FM STATISTICS

Fred Nordquist, 7945 Boxford Road, Clay, NY 13041 nordquis@twcny.rr.com

BACK ISSUES Dave Nieman, PO Box 17, Clarence, NY 14031-0017 nieman@localnet.com

We have a large selection available for \$1.00 each. Email or write Dave for availability.

WEBSITE Tim McVey Webmaster <http://www.anarc.org/wtfda/> tkmcvey@erols.com

Please Remember to make your renewal checks payable to Dave Janowiak
Checks made payable to WTFDA may be returned and your renewal may be delayed.

PLEASE SEND ANY UHF/VHF POLICE, FIRE, UTILITY, 50MHZ DX
TO MBUGAJ@SNET.NET OR P.O. BOX 501 SOMERSVILLE, CT 06072
I Need at least half a page of material to run the column.