

# Vhf-Uhf DIGEST

The Official Publication of the Worldwide TV-FM DX Association

OCTOBER 2005

The Magazine for TV and FM DXers

## The Accurian HTS-6000 DTV Set Top Box From Radio Shack



Make Your Plans for the  
2006 WTFDA Convention  
At Rick Shaftan's Mountaintop  
Den in Sparta, NJ!  
(More details inside)



*TV and FM DXing was never so much fun!*

# THE WORLDWIDE TV-FM DX ASSOCIATION

*Serving the UHF-VHF Enthusiast*

THE VHF-UHF DIGEST IS THE OFFICIAL PUBLICATION OF THE WORLDWIDE TV-FM DX ASSOCIATION DEDICATED TO THE OBSERVATION AND STUDY OF THE PROPAGATION OF LONG DISTANCE TELEVISION AND FM BROADCASTING SIGNALS AT VHF AND UHF. WTFDA IS GOVERNED BY A BOARD OF DIRECTORS: DOUG SMITH, GREG CONIGLIO, BRUCE HALL, KEITH MCGINNIS AND MIKE BUGAJ.



*Editor and publisher:* **Mike Bugaj**  
*Treasurer:* **Keith McGinnis** *Webmaster:* **Tim McVey**  
*Editorial Staff:* **Dave Williams, George W. Jensen, Jeff Kruszka**  
**Keith McGinnis, Fred Nordquist, Matt Sittel, Doug Smith,**  
**Peter Baskind and John Zondlo,**  
Our website: [www.anarc.org/wtfda](http://www.anarc.org/wtfda) Our forums: [www.wtfda.info](http://www.wtfda.info)

OCTOBER 2005



Finally! For those of you online with an email address, we now offer a quick, convenient and secure way to join or renew your membership in the WTFDA from our page at:

<http://fmdx.usclargo.com/join.html>

Dues are \$25 if paid to our Paypal account. But of course you can always renew by check or money order for the usual price of just \$24. Either way, it's still a bargain!

## VUDS ON A CD!

Every VUD from Jan 1980 to December 1989 is on this disk. You'll need Adobe Reader to read them. Why have a box of old VUDs taking up space when you can have this. **It's yours for just \$8.00 per disk.** Send your check or money order for \$8.00 to WTFDA, P.O. 501, Somersville, CT 06072. Make it payable to **WTFDA.**



## CONTENTS

Page Two	2
Mailbox	3
TV News...Doug Smith	4
FM News	10
Photo News...Jeff Kruszka	16
Western TVDX...Dave Williams	20
Southern FMDX...John Zondlo	22
Northern FMDX...Keith McGinnis	24
Madiera and Portugal DX...Jim Renfrew	31
The Radio Shack/Accurian S.T.B.	36
2005 Madison G.T.G...Bill Dvorak	39
6 meters...Peter Baskind	41
Editors/Submissions	43

This issue features an article by Jim Renfrew detailing his honeymoon trip to Madiera and Portugal in August. He did some dxing, of course. And we have a report by Bill Dvorak detailing the 2005 Madison GTG. They did some dxing, of course. And finally some posts taken from the WTFDA list about a hot new DTV tuner from Radio Shack, and the fact that it costs less than \$100 doesn't hurt, either.



## THE WTFDA FORUMS AT

<http://www.wtfda.info>

This is the newest addition to WTFDA on the internet. The forums consist of a series of public forums for all TV and FM Dxers *plus* two forums just for WTFDA members; the eVUD forum and the Members-Only Forum. Register yourself and go take a look. It costs you **nothing more!**

## THE WTFDA EMAIL LIST AT WTFDA.INFO

Due to popular demand, we've moved the list from Topica to the forums. The emails fly faster and you get subscribed faster! Just send an email to [tvfmdx-subscribe@wtfda.info](mailto:tvfmdx-subscribe@wtfda.info) to be added to the list quickly. If you've had problems with Topica before, try us now and come onboard. Read on the web or by emails. Your choice!



# The Mailbox

P.O. Box 501, Somersville, CT USA 06072  
MIKE BUGAJ MBUGAJ@SNET.NET

---

Welcome to the Mailbox. It's been a quick summer and the skip has been uneventful. One thing I noticed this summer was the lack of reports from people in the NYC Metro area, but that's what IBOC will do to you. Some of you out there not plagued with IBOC seem to be doing quite well.

TV Dicers have a new toy to play with. It's the Radio Shack/Accurian DTV set-top box. After being alerted to the fact that Radio Shack had dropped the price on this box to about \$85 from well over \$200, a big group of people went to Radio Shack and bought one. Right now there are more Radio Shack boxes out there in TV Dicers' hands than anything else.

What we've done is devoted this month's cover to the Accurian STB plus we've added three pages of posts on the tvfmdx list devoted to discussion of this new toy. We could have gone to six or more pages...the discussion was that interesting. Did I say the tvfmdx list? Yes, I did, and we'll explain more about that shortly.

## MEMBERS AND MORE!

We welcome two new Dicers into the WTFDA fold this month. The first is **Tom Colyard** from Port St. Lucie, FL. Tom is a ham and a TV DXer and I remember seeing his TV DX pictures on the web a while back.

And then we have **Chris Kadlec** from Fremont, MI. Chris is in his last year of college, he's into FM Dicing and loves to travel. Plus he has one heck of a website.

Welcome to both of you!

## Renewals

This time we cover the period of August 19<sup>th</sup> through September 17<sup>th</sup>. We have renewals from **Bob Smolarek** (NJ), **John Lentz** (WI), **Roosevelt Crawford** (KS), **Melvin Dishong** (GA), **Jim Alexander** (NJ), **Marcus (Ed) Barboni** (PA), **Mike DeRoo** (KS), **William Hein** (VT), **Wolfgang Schneider** (CA), **Joe Fela** (NJ), **Marv Shults** (IL), **William Mitchell** (OH) and **George Greene** (OH). Thank you all for deciding to hang around for one more year!

Ken Onyschuk mailed in a couple of articles

from the local Chicago newspapers. One of them concerning a new LPFM in suburban Chicagoland is pretty interesting and we'll try to make room for it in this issue.

**John Ebeling** mentioned the other day that we've sold just over 60 *TV Station Guides*. This amount is about half of what we had printed this time around. If you want one or need one, they are available and will be for quite some time to come. So order one! Nothing can replace paper.

John also mentioned that *Monitoring Times* did a very positive write-up on the guide. I imagine that if M/T didn't like it, they wouldn't pull any punches.

## OH YES, THE WTFDA LIST

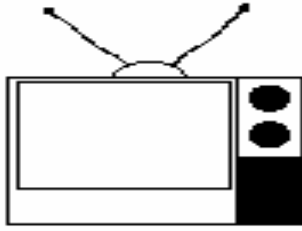
Well, we moved it from Topica. All of you who wanted to subscribe but couldn't, all of you who complained about Topica's service and bounced messages and blocked ISPs, well, we heard you. The WTFDA email list is now called tvfmdx and resides on the wtfda.info server. We are using software from Mailman to send the posts to your house. It's fast and so far, absolutely no blocking domains. Those who want to read on the web can also do it. To join the list, you can email Keith or myself to add you to the list (which we could not do before) or you can send an email addressed to tvfmdx-subscribe@wtfda.info.

## We're LOOKING

Yes, we're looking for a new FM News editor. If you have internet access and are familiar with MS Word, and if you want to help out the club, email me or any of us on the board and we'll give you more information and work with you. Keith and I have put together FM News for October. It looks a little bit different this month, but the information is still there. If we can do it, you can too!

## WTFDA Convention 2006

Where will it be? Next year it's back at **Rick Shafan's** place on the mountaintop in Sparta, New Jersey. We don't have the exact dates yet (we should have next month), but make plans now for late July. CUin30 -Mike



# TV News

Douglas E. Smith  
 1389 Old Clarksville Pike  
 Pleasant View, TN  
 37146-8098  
[w9wi@w9wi.com](mailto:w9wi@w9wi.com)  
<http://www.w9wi.com>

**October 2005**

## Abbreviations:

AF	Applied For (a new station)	PC	Power (and/or tower height) change on the air
Aux	Auxiliary (backup) transmitter	PG	Power change granted
CC	Callsign change	PR	Power change requested
CL	City-of-license change	QC	Channel (?frequency?) change on the air
DE	License/permit deleted	QG	Channel change granted
FC	Programming (?format?) change	QR	Channel change requested
FTP	Failure to Prosecute	RE	Reinstated (previously-dismissed app.)
GA	Granted amendment (to table of channel allotments)	ROA	Request of Applicant
LC	License to Cover	SI	Off the air (?silent?)
MX	Mutually Exclusive	STA	Special Temporary Authority
NDA	Non-directional antenna	XC	Transmitter site changed
NS	Permit granted for new station	XG	Transmitter site change granted
NW	New station on the air	XR	Transmitter site change requested
PA	Proposed Amendment		

## News:

(full-power analog stations in **bold face**; LPTV and translators in regular type; full-power digital stations in **bold italics**)



### Canada:

#### Alberta:

**Coronation**      **10 CBXT-n**      **QG from ch. 13, 210kw/213m, 52-09-22/111-08-05.**

#### British Columbia:

Victoria      21 CHNU-1      NW, // CHNU-66



### USA:

#### Alabama:

Dothan      2 W02CP      NS 100w, 31-09-21/85-23-58

**Mobile**      **27 WKRG-DT**      **NW 1000kw/499**

Russellville      44 W59CF      QR from ch. 59 dismissed

**Selma**      **55 WAKA-DT**      **NW 1000kw/481**

#### Alaska:

Anchorage      22 K22HN      NS 150kw, 61-28-05/150-44-16 (KYES-5)

Dutch Harbor      8 KIAL-LP      CC from K08IW

#### Arizona:

Bullhead City      45 NEW-LP      AF dismissed

Holbrook      48 K48JQ      NS 5kw, 35-55-05/110-08-25

Holbrook (sic)      33 K33IH      NS 1kw, 35-55-05/110-08-25

Lake Havasu City      10 KBBA-LP      NW 3kw, 34-36-09/114-22-16

Madera Peak      22 K22HL      QG from K55BW, 1.2kw, 33-20-24/110-52-12

Phoenix      43 KQBN-LP      FC; sold to KMOH-6 (S:independent)

Safford      15 KZOL-LP      CC from K15GC

**Tucson**      **25 KMSB-DT**      **NW 480kw/1123, 32-24-56/110-42-50**

Winslow      48 K48JR      NS 5kw, 35-08-42/110-29-03

#### Arkansas:

**Little Rock**      **7 KATV**      **PG<579m**

Little Rock      9 KZJG-LP      QG from ch. 13, 1.5kw, 34-44-38/92-16-32

#### California:

Bakersfield      19 KAZB-CA      NW 14.5kw, 35-27-11/118-35-25

Barstow      28 K28IE      PG 6.72kw, 34-36-38/117-17-17

Chico      17 KXVU-LP      CC from K17HF

Chico      51 K51ID      NS 5.5kw, 39-42-57/121-50-09 (3Abn)

Encinitas      36 KDIG-LP      QR from ch. 67 dismissed

Fort Bragg      42 K42HE      NS 100w, 39-27-55/123-45-28

Fresno      16 KHSC-LP      QG from ch. 38

Hemet      27 KZSW-LP      XR 33-36-01/117-11-41; XG

Indio      8 KVPS-LP      PR>2.95kw dismissed

Litchfield      50 K50HJ      NW 255w, 40-07-01/120-19-06

Lucerne Valley      47 KIJR-LP      QC from ch. 68, 400w, 33-52-03/116-26-01

Morongo Valley      18 KJHP-LP      FC?, sold to KVCR-24

Palm Springs      7 K07YH      NS 950w, 33-55-20/116-37-00

Palm Springs	40 K40ID	QG from K66BM, 50kw	Washington	31 WZDC-LP	QR from ch. 64 dismissed
Red Bluff	51 K51IS	NS 1kw, 40-14-25/ 122-15-30	<b>Florida:</b> Big Pine Key	6 W06CH	QG fm. W57AM, 2.23kw
Redding	47 KRDT-CA	PC>47kw, 40-20-41/ 121-56-48; CC from K47GR	<b>Destin</b>	<b>48 WFBD-DT</b>	<b>NW 1000kw/318, 30- 59-52/ 86-43-13 (DTV only); UATV (Urban America TV)</b>
Sacramento	49 KSAO-LP	PC>4.5kw	<b>Gainesville</b>	<b>29 960920WR</b>	<b>NS 3600kw/278, 29- 37-47/ 82-34-25</b>
<b>San Diego</b>	<b>25 KGTV-DT</b>	<b>PC&gt;1000kw/205</b>	Gainesville	29 W29CV	NW 15kw, 29-25-05/ 82-32-57
San Diego	34 KSDX-LP	QR from ch. 29, 10kw dismissed (granted - and on air with - 7.4kw instead)	<b>Gainesville</b>	<b>61 960920LI</b>	<b>AF dismissed</b>
San Diego	41 KZDF-LP	FC; sold to KGTV-10	<b>Key West</b>	<b>3 WDLP-DT</b>	<b>PG&lt;54m</b>
Stockton	<b>25 KOVR-DT</b>	<b>PC&lt;760kw</b>	Marathon	29 W29CW	XR 25-32-25/ 80-28-06, CL from Marathon dismissed; NW 4w, 24-46-02/80- 56-42 ; req. CL to Duck Key
Sycamore	2 KOTR-LP	CC from K02DC			QG from W69DH, 115kw, 30-24-13/ 86-59-34; CL from Panama City
Ventura	20 KIMG-LP	QR from ch. 23, 2.83kw; QG			PG>150kw, 26-31-20/ 80-10-09
Victorville	29 KMXU-LP	CC from K29GW			
Victorville	34 K34IH	QG from K55CW, 3.53kw, 34-36-36/ 117-17-13			
Yreka	41 K41JB	NW 10.3kw, 41-36-31/ 122-37-32	Pensacola	46 W46DX	
Yreka	48 K48JO	NS 500w, 41-36-28/ 122-35-08			
<b>Colorado:</b>					
Aspen	14 K14ML	NS 10kw, 39-13-34/ 106-50-00	<b>Georgia:</b> Blairsville	23 NEW-LP	NS 150kw, 34-51-59/ 83-57-20 (Daystar)
Colorado Springs	32 K32EO	PR>109.4kw; PG			
Denver	28 KLPD-LP	CC from K28HJ	Blairsville	38 W38DW	NS 150kw, 34-51-59/ 83-57-22
Denver	30 KLPT-LP	QC from K55IO, 9kw, 39-54-48/ 105-17-33; CC; was briefly K30IR	<b>Macon</b>	<b>45 WGNM-DT</b>	<b>NW 1000kw/223</b>
Dove Creek	48 K48BK	PR<1.05kw, 37-21-58/ 108-08-42	<b>Savannah</b>	<b>39 WSAV-DT</b>	<b>NW 1000kw/442</b>
Durango	43 K43JS	NS 14.76kw, 37-21-53/ 107-46-58	<b>Hawaii:</b> Hilo	34 K34HC	NW 12.5kw, 19-50-19/ 155-06-43 (TBN)
East Eagle	34 K34IE	NS 100w, 39-46-29/ 106-50-43	<b>Honolulu</b>	<b>8 KHON-DT</b>	<b>NW 7.2kw/-12m, 21- 17-46/ 157-50-36</b>
Glenwood Springs	14 K14MK	NS 10kw, 39-32-36/ 107-17-47	Kailua-Kona	38 K38HU	NW 11.4kw, 19-43-04/ 155-55-00 (TBN)
Grand Junction	29 K29GU	NS 1kw, 39-00-58/ 108-29-21	Kula	48 K48JJ	NS 8kw, 20-39-36/ 156-21-50 (Daystar)
Grand Junction	30 K30IU	NS 4.09kw, 39-00-58/ 108-29-21	<b>Idaho:</b> Boise	16 KKIC-LP	QG from K30GS, 150kw, 43-44-23/ 116-08-15; was briefly K16GT
Grand Junction	46 K46IK	NS 500w, 39-00-58/ 108-29-21	Boise	18 KCLP-LP	QC from ch. 38, 60kw
Hesperus	2 K02OI	NS 5w, 37-17-01/ 108-01-01	Boise	35 KUNS-LP	QC from ch. 66, 150kw, 43-45-17/ 116-05-53
Idalia	14 K14LB	NW 742w, 39-43-50/ 102-28-56	Boise	49 KZAK-LP	FC: "24/7 Newschannel" // KTVB-DT
Westcliffe	7, 9 K07BW, K09DY	PG>140w	Hagerman	29, K29GV, 31, K31IF, K41JF, 41, K47JW, K49IT K65AQ, K69BD 47, 49	QG from K63AM, K61EA, K67AT, K65AQ, K69BD
Connecticut: Hartford	38 WHCT-LP	PC>150kw	Lewiston	51 K51HY	QC from K55HZ, 362w, 46-27-03/ 72-10-03
<b>Norwich</b>	<b>53 WEDN</b>	<b>PR&lt;630kw/204m41- 31-14/ 72-10-03</b>			
<b>District of Columbia:</b>					

Malad City	46 K46IM	117-02-46 (DTV st. ? Primary changed to KUID-DT) NS 1.2kw, 42-04-50/ 112-12-29	<b>Louisiana:</b> Leesville	43 K43JP	NS 1kw, 31-07-27/ 93-16-28
Twin Falls	53 K53IL	NS 500w, 42-12-53/ 114-42-42	<b>New Orleans</b>	<b>26 WGNO</b>	<b>FC; temporarily relaying WBRZ-2 (ABC)</b>
Illinois: Champaign	34 W58DA	QC from ch. 58, 90kw, 40-09-12/ 88-06-56	<b>Maine:</b> Bangor	28 W28CY	NS 10kw, 44-47-08/ 68-48-11
<b>Chicago</b>	<b>38 WCPX</b>	<b>PC&gt;479m, 41-52-44/ 87-38-08 dismissed; PC&gt;3630kw/510 from same site instead</b>	<b>Bangor</b>	<b>19 WABI-DT</b>	<b>NW 363kw/391m, 44-42-11/ 69-04-47</b>
Peoria	27 W67DR	QG from ch. 67, 150kw, 40-33-28/ 89-34-04; CL from Quincy	<b>Portland</b>	<b>44 WCSH-DT</b>	<b>NW 1000kw/588, 43- 51-30/ 70-42-41</b>
Rockford	49 W52CP	QR from ch. 52, 80kw, 42-15-18/ 89-07-23, CL from Traverse City, MI dismissed	<b>Maryland:</b> Ocean City	51 W51EA	NS 1kw, 38-23-09/ 75-04-03
<b>Rock Island</b>	<b>58 WHBF-DT</b>	<b>NW 1000kw/378</b>	Towson	16 WMJF-LP	PC>3.5kw
<b>Indiana:</b> Evansville	<b>45 WEVV-DT</b>	<b>NW 500kw/288m</b>	<b>Michigan:</b> Ann Arbor	<b>33 WPXD-DT</b>	<b>NS 48kw/327m</b>
Indianapolis	31 WKOG-LP	PC<55kw	Big Rapids	23 W48CC	QR from ch. 48, 100kw, 43-41-10/ 85-34-59, CL from Traverse City, MI dismissed
Marion	27 WSOT-LP	QG from ch. 25, 18.9kw, 40-39-18/ 85-37-23	Petoskey	36, W36CD, 39, W39CB, 53, W53BN, 55, W55CL, 62, W62CR, 64, W64CK, 66 W66CY	PG<10w (all seven channels)
Sullivan	54 WVGO-LP	PC<39w	<b>Saginaw</b>	<b>49 WAQP</b>	<b>PR 1000kw/287, 43- 13-18/ 84-03-14</b>
<b>Iowa:</b> Ames	<b>59 WOI-DT</b>	<b>NW 1000kw/613, 41- 49-47/ 93-36-56</b>	<b>Sault Ste. Marie</b>	<b>10 WWUP-TV</b>	<b>XC 46-03-36/ 84-05-57</b>
<b>Cedar Rapids</b>	<b>27 KFXA-DT</b>	<b>NW 1000kw/449, 42- 05-25/ 92-05-13</b>	<b>Minnesota:</b> Duluth	25 K25IN	NS 3kw, 46-44-07/ 92-07-15
<b>Cedar Rapids</b>	<b>28 KFXA</b>	<b>PC&gt;4470kw/449, 42- 05-25/ 92-05-13</b>	Frost	45 K45IX	NS 7kw, 43-35-09/ 93-55-46
<b>Des Moines</b>	<b>8 KCCI</b>	<b>PC&gt;597m</b>	Frost Jackson	60 K60FY 18 K18HP	PG>1.75kw NS 3kw, 43-36-12/ 94-59-33
<b>Dubuque</b>	<b>40 KFXB</b>	<b>PR 700kw/248m, 42- 31-09/ 90-37-11</b>	Rochester	51 W62DA	QG from ch. 62, 28kw, 43-58-16/ 92-24-54; CL from Whiting, WI
Fort Madison	28 K28JD	QG from K38AB, 76.6kw	<b>Mississippi:</b> Gulfport	<b>25 WXXV</b>	<b>FC; temporarily relaying WLOX-13 (ABC)</b>
<b>Kansas:</b> Colby	<b>19 NEW</b>	<b>AF dismissed, see text</b>	<b>Missouri:</b> Cape Girardeau	47 K47FB	PR>120kw, 37-22-16/ 89-31-52 dismissed
Dodge City	38 NEW-LP	AF RE 5kw, 37-45-58/ 100-02-03	Columbia	2 K02NQ	PC<4w, 38-57-53/ 92-19-52
Manhattan	40 K40IJ	NS 4.45kw, 39-08-40/ 96-31-02	Joplin	22 KGCS-LP	QG from ch. 57, 131kw, 37-04-49/ 94-33-24
Topeka	10 K10PD	NS 3kw, 39-04-19/ 96-10-46			
<b>Wichita</b> Wichita	<b>10 KAKE-TV</b> 28 K28JB	<b>PC&lt;310m</b> QC from K59DA, 8.8kw			
<b>Kentucky:</b> Glasgow	64 WKUT-LP	PC<6.9kw, 36-57-34/ 86-00-08			
<b>Louisville</b>	<b>49 WDRB-DT</b>	<b>PG 1000kw/374m</b>			

<b>Montana:</b>			Buxton	41	W41CM	NW 100kw, 35-15-49/ 75-31-41
<b>Bozeman</b>	<b>13 KBZK-DT</b>	<b>NW 18.9kw/271m</b>	<b>Greenville</b>	<b>25</b>	<b>WUNK-TV</b>	<b>XC 35-33-10/ 77-36-06</b>
Bozeman	40, KJCX-LP, 54 KHJT-LP	FC; sold by TBN; latter is CC from K54JL	Raleigh	44	WZGS-CA	CC from WHOA-LP
Helena	34 KJJC-LP	NW 10kw, 46-46-11/ 112-01-25	Williamston	45	WFTB-LP	QG from ch. 55, 12.4kw, 35-58-00/ 76-56-54
<b>Nebraska:</b>			<b>North Dakota:</b>			
Norfolk	35 K35FM	PG>10kw, 42-01-46/ 97-21-24	Benedict	56, K56IV, K58IK 58		NS 1kw, 47-55-19/ 101-04-48 (both channels)
<b>Nevada:</b>			Bismarck	36	K36HY	NS 25kw, 46-49-26/ 100-46-12
Elko	21 K21HR	QG from K55IK	Bismarck	42	K42HD	NS 20kw, 46-49-38/ 100-46-29
<b>Las Vegas</b>	<b>2 KVBC-DT</b>	<b>XC 386m, 36-00-32/ 115-00-19</b>	Bismarck	43	K43JQ	NS 7.28kw, 46-49-38/ 100-46-29
Las Vegas	31 KNBX-CA	PC>2.1kw	Columbus	52	K52JP	NS 1kw, 48-46-32/ 102-45-33
Laughlin	63 K63HJ	NS 150kw, 35-10-29/ 114-38-00	Fargo	35	K35HQ	QG from K56ET, 24.4kw
<b>New Hampshire:</b>			Keene	58	K58IJ	NS 1kw, 47-58-56/ 102-56-16
<b>Derry</b>	<b>50 WZMY-TV</b>	<b>CC from WNDS</b>	<b>Ohio:</b>			
<b>New Mexico:</b>			<b>Columbus</b>	<b>14</b>	<b>WCMH-DT</b>	<b>NW 902kw/264m</b>
Alamogordo	56 K56IU	NW 9.9kw, 32-56-42/ 105-56-47	<b>Newark</b>	<b>51</b>	<b>WSFJ-TV</b>	<b>PC&lt;132m, 40-04-45/ 82-41-41</b>
Gallup	50 K50JE	NS 8kw, 35-29-39/ 108-44-32 (TBN)	Portsmouth	50	W50DL	QG from W66CZ, 12.4kw
Roswell	46 K46IJ	NS 5kw, 33-23-36/ 104-37-27	<b>Oklahoma:</b>			
Ruidoso	20 K20GU	QC from K58AH, 712w, 33-24-14/ 105- 46-55	Duncan	31	KSWX-LP	CC from K31IG
Taos	33 K33BN	PC>620w	Durant	64	K64GW	FC; sold by TBN
<b>New York:</b>			McAlester	16	KXVY-LP	CC from K16GH
<b>Amsterdam</b>	<b>55 WYPX</b>	<b>PC&lt;220m, 42-59-04/ 74-10-56</b>	<b>Oklahoma City</b>	<b>25</b>	<b>KOKH-TV</b>	<b>PC&gt;3470kw/476</b>
<b>Buffalo</b>	<b>14 WUTV-DT</b>	<b>NS 1000kw/300m</b>	Oklahoma City	38	KOHC-LP	QC, 50kw, 35-21-46/ 97-26-58
Buffalo	28 WDTB-LP	QG from ch. 39, 25kw, 42-52-47/ 78-52-35; CL from Hamburg (had very low power STA on ch. 40)	<b>Oklahoma City</b>	<b>40</b>	<b>KAUT-DT</b>	<b>AF 1000kw/437, 35- 35-52/ 97-29-22</b>
<b>Buffalo</b>	<b>33 WGRZ-DT</b>	<b>NW 480kw/295m</b>	Oklahoma City	48	KWDW-LP	QG from ch. 69, 18.1kw
Greenwich	41 WVBG-LP	QG from ch. 25, 104kw, 42-43-42/ 73-58-49	Tulsa	13	K33EK	QC from ch. 33, 1kw
Liberty	30 W30AZ	PR>2.9kw, 41-41-02/ 74-21-23; PG	Tulsa	27	K35EA	QG from ch. 35, 50kw, 36-02-35/ 95-57-11; CL from Batesville, AR
New York	42 WKOB-LP	QG from ch. 53, 20kw, 40-42-19/ 74-00-46	<b>Oregon:</b>			
Plattsburgh	27 WWBI-LP	FC; sold to Daystar	Ashland	48	KFBI-LP	QG from ch. 63, 25.8kw
Rochester	20 WAWW-LP	QG from ch. 38	Bend	41	KBND-LP	CC from K41HA
<b>Schenectady</b>	<b>39 WRGB-DT</b>	<b>NW 120kw/355m, 42-37-31/ 74-00-38 (aux)</b>	Enterprise	28	K28JC	QG from K61BF, 550w, 45-23-58/ 117-23-16
<b>Syracuse</b>	<b>19 WSYT-DT</b>	<b>NW 621kw/445m</b>	Medford	25	K25IM	NW (x-K52EE) 18kw, 42-03-53/ 122-28-41
Syracuse	35 WOBX-LP	PR>4.92kw	Portland	42	KPXG-LP	QR from ch. 54, 150kw, DA
<b>Utica</b>	<b>20 WUTR</b>	<b>PC&gt;1150kw</b>	Riley	19	K19GC	QG from K05HO, 5.5kw
Utica	40 WVVC-LP	PR 10.6kw, 43-02-15/ 75-11-45	Wallowa	30, K30IV, K34IF, 34, K36HV, K40IK		QG from K63AT, K65AY, K67BF, K69AD, 550w, 45-23-
<b>Watertown</b>	<b>41 WPBS-DT</b>	<b>NW, 39.4kw/370</b>		36,		
<b>North Carolina:</b>						

	40	58/ 117-23-16	Lubbock	44 K44HH	NW 20kw, 33-34-48/ 101-50-46 (TBN)
<b>Pennsylvania:</b>					
Butler	60 WJMB-LP	CC from W60BL	Mullin	61 K61CV	PG>150kw, 31-39-48/ 98-21-28; PG
Chambersburg	56 W56EK	NS 650w, 40-03-00/ 77-44-54	Odessa	48 K48JK	NS 40kw, 31-38-17/ 102-19-47
<b>Erie</b>	<b>16 WSEE-DT</b>	<b>PG 75kw/271m, 42-03-52/ 80-00-19</b>	Odessa	66 K66GG	NS 20kw, 31-47-40/ 102-35-15
Greensburg	56 WEMW-LP	CC from W56CG	Plainview	18 KXVZ-LP	CC from K18HC
<b>Hazleton</b>	<b>45 WOLF-DT</b>	<b>NW 420kw/488m</b>	San Antonio	21 KXTM-LP	PR 150kw, 29-15-58/ 98-18-32
New Castle	56 WPCP-LP	CC from W56CL			
<b>South Carolina:</b>					
<b>Beaufort</b>	<b>44 WJWJ-DT</b>	<b>PR&lt;440kw/365m</b>	<b>Waco</b>	<b>25 KXXV</b>	<b>PC&gt;561m</b>
<b>Charleston</b>	<b>2 WCB-DT</b>	<b>PC&gt;599m</b>	Welch	19 KWGD-LP	PG>59kw
<b>Columbia</b>	<b>17 WLTX-DT</b>	<b>NW 1000kw/500</b>	Wichita Falls	25 K25IL	NS 17.5kw, 34-00-11/ 98-51-49
<b>Columbia</b>	<b>47 WZRB</b>	<b>NW 750kw/192, 34-02-38/ 80-59-51 (UPN)</b>	Wichita Falls	44 K24AD	QC from ch. 24, 3.34kw
<b>Conway</b>	<b>9 WHMC-DT</b>	<b>NW 20kw/230m, 33-56-58/ 79-06-31</b>	<b>Utah:</b>		
Myrtle Beach	11 WGSI-CA	PC>3kw, 33-35-27/ 79-02-55	Bluff & Area	2, K02PU, 13 K13XS	NW 5w, 37-16-12/ 109-33-26
Spartanburg	51 WSQY-LP	XG 34-56-29/ 82-24-41	Brian Head / Parowan	49, K49HC, 51 K51HQ	PR<1.2kw, 37-50-32/ 112-58-27; PG
<b>South Dakota:</b>					
<b>Lead</b>	<b>10 KHSD-DT</b>	<b>NW 34.8kw/576m</b>	Cedar City	43 K43JT	NS 147w, 37-38-18/ 113-01-52
Rapid City	47 K47JU	NS 5kw, 44-04-49/ 103-13-46	Heber / Midway	39 K39HS	NS 1.43kw, 40-33-45/ 111-28-30; NW
<b>Sioux Falls</b>	<b>47 KDLT-DT</b>	<b>NW 1000kw/608</b>	Logan	8 KUTA-LP	PR>2.41kw; PG; CC from K08NL
<b>Vermillion</b>	<b>34 KUSD-DT</b>	<b>PG&gt;236kw</b>	Mexican Hat	2, 4, K02PT, 6 K04PG, K06NK	NW 5w, 37-09-00/ 109-51-34
<b>Tennessee:</b>					
Chattanooga	36 WCNT-LP	QC from ch. 65, 64.4kw, 35-22-49/ 84-42-45	Oljeto	6, 7 K06NM, K07XO	NW 5w, 37-02-28/ 110-19-48
<b>Cleveland</b>	<b>53 WFLI-TV</b>	<b>PR&lt;1150kw</b>	Tooele	65 K64FZ	QR from ch. 64, 1.13kw, 40-39-33/ 112-12-08; also seeks STA
Cookeville	49 W49CQ	QG from W57CZ, 42.5kw	Vernal	41 NEW-LP	AF dismissed
Nashville	34 WJNK-LP	QC from ch. 61, 35.8kw, 36-16-05/ 86-47-45	Virgin	29 K64BE	PR>4.23kw
<b>Texas:</b>			Woodland & Kamas	23 K23HS	NS 450w, 40-33-59/ 111-14-31
<b>Austin</b>	<b>21 KXAN-DT</b>	<b>NW 700kw/396m</b>	<b>Vermont:</b>		
Austin	31 KAKW-CA	CC from KDAS-	Burlington	32 WETK-DT	NS 90kw/830m
<b>Blanco</b>	<b>17 KNIC-TV</b>	<b>CC for NS</b>	Burlington	39 WGMU-CA	PC<60kw, 44-18-46/ 73-11-10
<b>Brownsville</b>	<b>24 KVEO-DT</b>	<b>NW 1000kw/445, 26-06-02/ 97-50-20</b>	Monkton	19 W19BR	PC>63.9kw, 44-18-46/ 73-11-10
Corpus Christi	61 KCCZ-LP	PR<10kw, 27-47-48/ 97-24-15			
<b>Dallas</b>	<b>32 KDAF-DT</b>	<b>AF 235kw/496m (aux)</b>	<b>Virginia:</b>		
<b>Dallas</b>	<b>33 KDAF</b>	<b>AF 1000kw/496 (aux)</b>	<b>Charlottesville</b>	<b>46 WHTJ-DT</b>	<b>NW 165kw/332m</b>
<b>Decatur</b>	<b>29 KMPX</b>	<b>PC&gt;5000kw/544, 32-35-19/ 96-58-05; AF</b>	Grundy	23 WJDG-LP	QG from ch. 7, 150kw, 37-18-03/ 82-07-04; XR 37-02-58/ 81-37-01
<b>Decatur</b>	<b>30 KMPX-DT</b>	<b>AF 900kw/447m (aux)</b>	Harrisonburg	13 W13DH	NS 500w, 38-31-07/ 79-06-12
Denison	30 K30IS	NS 5kw, 33-52-20/ 96-28-12	<b>Lynchburg</b>	<b>34 WSET-DT</b>	<b>NW 200kw/568m</b>
<b>Greenville</b>	<b>47 KTAQ</b>	<b>FC to religion</b>	<b>Washington:</b>		
Hereford	44 KXVM-LP	CC from K44GW			
Keene	31 KGSW-LP	QC from ch. 46, 14.1kw			



Colville	9 K09UP	PC>1.25kw, 48-34-30/ 117-55-00
Pateros	21 K21HL	NS 12.5kw, 48-00-53/ 119-59-02 (3Abn)
Seattle	40 K68DL	QR from ch. 53, 16.6kw
<b>Spokane</b> Stemilt	<b>30 KAYU-DT</b> 38 K38IT	<b>NW 335kw/564m</b> QG from K69BF, 14.3kw
<b>Vancouver</b>	<b>48 KPDX-DT</b>	<b>NW 1000kw/530</b>
<b>West Virginia:</b> <b>Huntington</b> Weirton	<b>47 WOWK-DT</b> 57 WJPW-CA	<b>PR&lt;562kw/396m</b> CC from W57BH
<b>Wisconsin:</b> Ashland	25 WAST-LP	PC>52kw, 46-41-17/ 90-54-23
Green Bay	47 W47CZ	QG from W49CB, 29.8kw
Janesville	30 W66CX	QR from ch. 66, 100kw, 42-39-35/ 89-02-32, CL from Traverse City, MI dismissed
Kenosha	39 W56DF	QR from ch. 56, 50kw, 42-30-35/ 87-53-11, CL from Traverse City, MI dismissed
<b>Mayville</b> <b>Milwaukee</b>	<b>43 WWRS-DT</b> <b>36 WMVT</b>	<b>NW 300kw/186m</b> <b>PC&gt;4790kw/330, 43- 05-44/ 87-54-17 dismissed; PC&gt;4790kw/340, 43- 05-46/ 87-54-15 instead</b>
Oshkosh	48 W23BL	QR from ch. 23, 49kw, 44-03-51/ 88-31-43, CL from Traverse City, MI dismissed
Sheboygan	14 W58CN	QR from ch. 58, 100kw, 43-42-12/ 87-45-09, CL from Traverse City, MI dismissed
<b>Wyoming:</b> Cheyenne Glendo	14 KXVS-LP 21 K21HQ	CC from K14LV QG from K58GQ, 42- 20-44/ 105-01-54
Greybull	50 K50JC	QG from K56GY, 44- 24-47/ 107-59-49
Jackson	26, K26IA, K48JT 48	NS 1kw (ch. 26)/ 5kw (ch. 48), 43-27-40/ 110-45-09
Rawlins	56, K56AV, 58 K58AM	FC; sold to KCWC-4
Saratoga	7, 9 K07NT, K09OC	FC; sold to KCWC-4
Sheridan	29 KJCW-LP	NW 8kw, 44-37-20/ 107-06-57

Thanks to Rick Lucas, Curtis Sadowski, Danny Oglethorpe, and David Sinclair for information appearing elsewhere in this month's column...

The new Colby, Kansas station was to operate on

an educational-reserved channel. The FCC ruled that the applicant had not established that the station would be used to advance an educational program. They also found that the applicant's board of directors failed to meet requirements for local representation. (these requirements apply to non-commercial stations but not to commercial outlets. Both of the applicant's directors live in Abilene, Texas.)

The Commission has since determined that the permit should go to Smoky Hills Public TV (KSWK-3). It has not yet been formally issued.

It seems a bit trite to talk about TV transmitters in the wake of Hurricane Katrina. But most other aspects of this disaster have been hashed over in many more appropriate places, so I guess it is appropriate to go into the storm's effects on transmission in the pages of the *VUD*.

To the best of my knowledge, despite all the other horrible damage Hurricane Katrina did, she didn't bring down any broadcast towers! She did, however, flood at least one station's transmitter. (WVUE-8) WLOX-13 in Biloxi, Mississippi also suffered severe studio damage, losing part of their roof.

Other New Orleans stations' transmitters survived but their studios didn't. Or, the lack of electricity, drinking water, and security forced the evacuation of usable studios. WDSU-6 was reported operating out of the studios of a co-owned station in Florida. WWL-4 used Louisiana Public TV and Louisiana State University in Baton Rouge. WGNO-26 has been simulcasting Baton Rouge station WBRZ-2. WUPL-54 has been rebroadcasting WDSU.

Speaking of WWL-4, they were also reported signing off the air between 11pm and 5am for several days following the storm, to conserve scarce diesel fuel. (WWL Radio was reported operating on half power for the same reason) Commercial power to the WWL transmitter was restored a few days later. The WWL-TV signal was also being uplinked to satellite, and rebroadcast on the second digital channels of several stations.

There are reliable rumors to the effect that some New Orleans stations may be suspending operations around the time you read this. Hundreds of thousands of Crescent City residents have spread throughout the country; some don't intend to return. Baton Rouge became Louisiana's largest city in a matter of hours.

It seems unlikely to me that any station would stop broadcasting outright. I would not, however, be surprised to see one or more stations become semi-satellites of Baton Rouge outlets, as appears to have already happened with WGNO. Could one or more New Orleans stations move to Baton Rouge? (not an easy task, but who knows?)

Good DX!

# FM NEWS

## TECHNICAL DATA



# FM NEWS

- AK Sitka 104.7 KCAW AF 300w/-166m (aux)  
AK Anchorage 103.1 KMXS PC>100kw/32m, 61-11-33/149-54-01  
AK Sterling 94.1 NEW GA from class C2 to C1  
AK Sitka 104.7 KCAW NW 40w/-165m (aux)  
AL Citronelle 102.1 WQUA FC; sold to Sonlife (religious)  
AL Butler 93.5 WMLV CC from WKZB  
AL Decatur 102.1 WDRM NW 30kw/269m (aux)  
AL Union Springs 93.9 WQSI GA from 94.1, class A to C3  
AL Florence 91.3 WFIX PC>100kw/265m  
AL Brewton 106.3 WKNU PC>3.8kw/127m, 31-06-42/87-01-17  
AR Greenbrier 107.1 KCNY PC 12.5kw/142m, 35-17-47/92-19-11;CL from Bald Knob  
AR Bald Knob 107.1 KCNY CC from KKSJ  
AR Texarkana 89.3 KKLK CC from KWLL  
AR Melbourne 90.3 KAEN FC; sold to AFR  
AZ Bullhead City 89.9 981023MO AF 40kw/913m, 35-06-28/113-5240(CSN)  
AZ Lake Havasu City 89.3 KVKL CC from KLHA  
AZ Sun City West 95.1 KVIB CC from KFMR  
AZ Parker 98.3 KRIT PA from 93.9, class C3 to B1 dismissed,going to 92.7 instead  
AZ Mayer 98.3 KKLD GA from class C2 to C, from Prescott Valley  
AZ Miami 101.9 KQSS GA from 98.3  
AZ Ajo 106.9 NEW GA from 98.3 (vacant allotment)  
AZ Parker 92.7 KRIT GA from 93.9, class C3 to B1  
AZ Payson 99.3 KSXX GA from class A to C3  
AZ Bagdad 103.1 KFTT CC from KRCL  
AZ Tucson 88.5 KFLT-FM NW 1.5kw-V/125m, 32-00-11/110-47-49, FLR religious  
CA Foothill Ranch 101.5 NEW-LP AF RE  
CA Barstow 89.1 KVID FC; sold by K-Love to Hispanic religNewious organization  
CA Los Angeles 96.3 KXOL-FM PC 7kw/388m, 34-11-46/118-15-32  
CA Barstow 89.1 KVID CC for NS 20000118AAN  
CA Chester 98.9 KWLU CC from KBNF  
CA Corcoran 102.3 KBLO CC from KXQX  
CA Felton 93.7 KXZM CC from KTEE  
CA Hollister 93.5 KXSM CC from KOTR  
CA Los Molinos 102.1 KCEZ PR<67m  
CA Salinas 97.9 KEXA CC from KEBV  
CA San Bernardino 94.3 KJVA-LP CC for NS  
CA Oxnard 101.5 KOCC-LP NW 100w/1m, 34-11-55/119-09-16  
CA Lost Hills 96.9 KLRM GA from 97.1, San Luis Obispo  
CA Maricopa 96.9 NEW PA, class A dismissed (no expression of interest)  
CA Los Angeles 107.5 KLVE NS 295w/885m, 34-13-43/118-04-01(aux)  
CA Los Angeles 91.5 KUSC NS 13.4kw/276m, 34-06-35/118-23-25(aux)  
CA Camino 88.3 KYCJ CC for NS  
CA El Centro 95.3 KYFC-LP CC for NS  
CA Inyokern 88.7 KZLU FC; sold to K-Love  
CO Kremmling 106.3 KKHI PG>50kw/150m, 40-07-12/106-14-13  
CO Brush 89.1 KBWA QR from 89.5, 44m, 40-13-02/103-41-46  
CO Pagosa Springs 88.1 KPGS CC for NS 20000413ABA  
CO Gunnison 100.9 NEW GA, class C2  
CO Holyoke 92.3 KSTH GA from class C1 to A  
CO Rye 104.9 KRYE GA from class A to C3  
CO Greeley 104.7 KELS-LP XR 40-23-06/104-44-11  
CO Denver 105.9 KALC PC 100kw/524m, 39-43-58/105-14-08  
CO Cortez 91.5 KSJD PG>1.2kw/102m, 37-28-57/108-30-34  
CO Sterling 90.7 KDRE FC; sold to K-Love  
CO Hayden 90.1 KHCO NW 1.9kw-V/518m, 40-27-  
CO Security 105.5 KSKX PR>1.65kw/676m  
CT Hartford 106.9 WCCC-FM NW 22kw/221m (aux)  
DC Washington 96.3 WHUR-FM NS 361w/189m (aux)  
FL Indiantown 103.1 WPBZ PR>35kw (aux)  
FL Tampa 90.5 WBVM PG<77kw/294m, 27-50-53/82-15-48  
FL Key West 90.1 WKWR PR<250w/29m, 24-34-05/81-44-53  
FL Sugarloaf Key 105.7 NEW GA, class A  
FL Islamorada 105.5 WWWK GA from Marathon  
FL Lecanto 88.3 WLMS PC 4.1kw/73m, 28-53-01/82-31-21  
FL Dunnellon 105.7 WRLE-LP OG from 94.9, 68w/36m, 29-08-57/82-31-29  
FL Holt 98.1 WTKE PC 100kw/147m, 30-24-38/86-37-22  
FL Callaway 103.5 WAKT-FM NS 11.5kw/65m, 30-12-12/85-36-57 (aux)  
FL Panama City 107.9 WPFM-FM NS 1.3kw/35m, 30-09-58/85-45-21 (aux)  
FL Marathon 91.5 WHWY CC from WZKC  
FL Daytona Beach 99.1 WIKD-LP NW ?w/31m, 29-11-33/81-02-50  
FL Rock Harbor 102.1 WKLG PC>100kw  
GA Athens 107.9 WDRW-LP PC>33m, 33-57-11/83-24-31  
GA Athens 104.7 WFSH-FM PC 24kw/505m, 33-52-02/83-49-44  
GA Elberton 105.1 WLWX CC from WEHR  
GA Macon 105.5 WIFN CC from WAYS  
GA Macon 92.3 WLZN CC from WMKS  
GA Tignall 96.7 NEW GA, class A  
GA Marietta 101.5 WKHX-FM GA from class C to C0  
GA Pinehurst 98.3 WQXZ PC 3.1kw/140m, 32-10-03/83-37-51  
GA Americus 88.7 WFRP NW 4.2kw/70m, 32-05-34/84-16-56 (Family Radio religious)  
GA Canton 105.7 WWVA-FM NW 20kw/227m (aux)  
HI Paia 89.5 KOPO-LP CC from KEKI-LP  
HI Honokaa 102.9 NEW GA from class C2 to C  
HI Kailua Kona 93.9 KLUA GA from class C to C0  
HI Keaau 105.3 KBGX PG 20w/925m, 19-43-15/155-55-50 (aux)  
IA Glenwood 103.7 KXKT PR>331m, 41-18-32/96-01-33  
IA Des Moines 94.1 KGVC-LP CC from KLFA-LP  
IA Des Moines 94.1 KDRA-LP CC for NS 20010611ACU  
IA Des Moines 94.1 KGVC-LP CC for NS 20010613ADR  
IA Newton 88.3 KKLK CC from KNNU  
IA Urbana Garage Tower 99.9 KUBH-LP CC for NS  
IA Waverly 88.9 KWVI CC for NS  
IA Des Moines 100.3 KMXD AF 25kw/413m, 41-49-48/93-36-54 (aux)  
IA Manson 99.7 NEW GA from class A to C3  
IA Newton 88.3 KNNU FC; sold to K-Love  
IA Independence 95.3 KQMG-FM PR 1.75kw/186m, 42-23-55/91-45-32  
ID Idaho Falls 90.7 KAIO CC for NS  
ID Boise 89.1 KAWS CC from KZJB  
ID Homedale 106.3 KQTA CC from KBNH  
ID Kootenai 106.7 KTPO CC for NS 20041229ABA  
ID Pocatello 90.3 KZJB CC from KAWS  
ID McCall 98.3 KDZY PC<500w-H/586m, 45-00-18/116-08-01  
ID Ririe 91.7 981215MK PR<250w/162m, 43-32-37/111-53-07  
ID Ashton 96.5 NEW GA from class A to C2  
ID Orofino 98.5 KZID GA from class A to C2  
ID Soda Springs 100.1 KITT GA from class A to C2  
ID Troy 100.3 NEW GA to 100.5, class A to C2  
ID Buhl 88.1 KTFY PG 20050308ABX  
IL Champaign 94.5 WLRW PR>138m

IL	Heyworth 97.9 WVVN CC for NS 20041227ABZ	IL	Normal 100.7 WDNO CC for NS 20041227ABL
IL	Normal 100.7 WDNO CC for NS 20041227ABL	IL	Champaign 91.7 WBGL PC>140m, 40-09-12/88-06-56
IL	Champaign 91.7 WBGL PC>140m, 40-09-12/88-06-56	IL	Ottawa 88.9 WWGN PG 1.4kw-H/4.1kw-V/148m, 41-18-05/88-51 Jul 1
IL	Ottawa 88.9 WWGN PG 1.4kw-H/4.1kw-V/148m, 41-18-05/88-51 Jul 1	IL	Round Lake Heights 98.3 WRLR-LP NW 95w/30m, 42-23-05/88-05-51
IL	Round Lake Heights 98.3 WRLR-LP NW 95w/30m, 42-23-05/88-05-51	IL	Dorsey 89.5 WDRS FC; sold to K-Love
IL	Dorsey 89.5 WDRS FC; sold to K-Love	IL	Normal 100.7 WVMG NW 4.2kw/105m, 40-27-08/88-57-48
IL	Normal 100.7 WVMG NW 4.2kw/105m, 40-27-08/88-57-48	IN	Bluffton 100.1 WNUY PR 6kw/91m, 40-52-10/85-10-20
IN	Bluffton 100.1 WNUY PR 6kw/91m, 40-52-10/85-10-20	IN	Cannelton 105.7 WTCJ-FM PR 2kw/178m, 37-47-44/86-50-58;CL from Tell City
IN	Cannelton 105.7 WTCJ-FM PR 2kw/178m, 37-47-44/86-50-58;CL from Tell City	IN	Tell City 102.9 WLME req. CL from Cannelton
IN	Tell City 102.9 WLME req. CL from Cannelton	IN	West Lafayette 97.3 WWCC-LP NW ?w/79m, 40-23-26/86-51-52
IN	West Lafayette 97.3 WWCC-LP NW ?w/79m, 40-23-26/86-51-52	IN	Huntington 105.5 WQHU-LP CC from WQHC-LP
IN	Huntington 105.5 WQHU-LP CC from WQHC-LP	IN	Muncie 88.3 WWMU CC for NS
IN	Muncie 88.3 WWMU CC for NS	IN	Oolitic 88.9 WMYJ CC from WXVW
IN	Oolitic 88.9 WMYJ CC from WXVW	IN	Oolitic 88.9 WMYJ NW 5.2kw/78m, 38-59-14/86-27-31
IN	Oolitic 88.9 WMYJ NW 5.2kw/78m, 38-59-14/86-27-31	IN	West Lafayette 97.3 WWCC-LP NW ?w/74m, 40-23-26/86-51-52
IN	West Lafayette 97.3 WWCC-LP NW ?w/74m, 40-23-26/86-51-52	KS	Lawrence 91.5 KANU NW 17kw/185m (aux)
KS	Lawrence 91.5 KANU NW 17kw/185m (aux)	KS	Kingman 100.3 KTCM PR<7.8kw
KS	Kingman 100.3 KTCM PR<7.8kw	KS	Dodge City 89.9 KAIG CC for NS
KS	Dodge City 89.9 KAIG CC for NS	KS	Arkansas City 106.5 KYQQ PA from class C to C0
KS	Arkansas City 106.5 KYQQ PA from class C to C0	KS	Kiowa 94.5 NEW PA, class A
KS	Kiowa 94.5 NEW PA, class A	KS	Cimarron 92.3 NEW GA to 92.9, class A to C1
KS	Cimarron 92.3 NEW GA to 92.9, class A to C1	KY	Auburn 88.1 WAYD NW 1kw/113m, 36-57-37/86-32-49 (Way FM, for Bowling Green)
KY	Auburn 88.1 WAYD NW 1kw/113m, 36-57-37/86-32-49 (Way FM, for Bowling Green)	KY	Danville 107.1 WHIR-FM PC>4.9kw/48m
KY	Danville 107.1 WHIR-FM PC>4.9kw/48m	KY	Atwood 97.7 WZFR-LP PC 61w/38m, 38-52-42/84-35-08
KY	Atwood 97.7 WZFR-LP PC 61w/38m, 38-52-42/84-35-08	KY	EdMTon 99.1 WHSX CC from WKNK
KY	EdMTon 99.1 WHSX CC from WKNK	KY	Corbin 95.3 WRHR-LP NW 100w/5m, 36-55-54/84-05-40
KY	Corbin 95.3 WRHR-LP NW 100w/5m, 36-55-54/84-05-40	KY	WILamstown 106.7 WNKR QR from 106.5, 1.8kw/185m, 38-41-19/84-35-07
KY	WILamstown 106.7 WNKR QR from 106.5, 1.8kw/185m, 38-41-19/84-35-07	LA	Jonesboro 104.9 KTOC-FM PC>25kw/72m
LA	Jonesboro 104.9 KTOC-FM PC>25kw/72m	LA	Baton Rouge 89.3 WRKF AF 2.4kw/269m (aux)
LA	Baton Rouge 89.3 WRKF AF 2.4kw/269m (aux)	LA	Alexandria 93.9 KMXH CC from KFAD
LA	Alexandria 93.9 KMXH CC from KFAD	LA	Blanchard 89.1 KOUZ CC for NS 19961112MC
LA	Blanchard 89.1 KOUZ CC for NS 19961112MC	LA	Mansfield 91.7 KMSL CC for NS
LA	Mansfield 91.7 KMSL CC for NS	LA	New Orleans 98.5 WYLD-FM GA from class C1 to C0
LA	New Orleans 98.5 WYLD-FM GA from class C1 to C0	LA	Baton Rouge 89.3 WRKF NS 2.4kw/269m (aux)
LA	Baton Rouge 89.3 WRKF NS 2.4kw/269m (aux)	LA	Larose 100.3 KLRZ PC>89kw/179m, 29-33-01/90-21-04
LA	Larose 100.3 KLRZ PC>89kw/179m, 29-33-01/90-21-04	LA	Alexandria 96.9 KZMZ PR<98kw
LA	Alexandria 96.9 KZMZ PR<98kw	LA	Oakdale 98.7 KKST PR>50kw
LA	Oakdale 98.7 KKST PR>50kw	LA	Houma 107.5 KCIL PC<28kw
LA	Houma 107.5 KCIL PC<28kw	MA	Falmouth 91.9 WFPB-FM PR>76m
MA	Falmouth 91.9 WFPB-FM PR>76m	MA	Feeding Hills 99.7 WLCQ-LP CC for NS 20010613AGT
MA	Feeding Hills 99.7 WLCQ-LP CC for NS 20010613AGT	MA	Brockton 97.7 WBOT PC 2kw/173m, 42-12-42/71-06-51
MA	Brockton 97.7 WBOT PC 2kw/173m, 42-12-42/71-06-51	MA	Winchendon 91.1 WKMY PR>60w/137m
MA	Winchendon 91.1 WKMY PR>60w/137m	MA	Boston 90.9 WBUR-FM PC 12kw/305m, 42-18-27/71-13-27
MA	Boston 90.9 WBUR-FM PC 12kw/305m, 42-18-27/71-13-27	MD	Ocean City 99.9 WWFG AF 9.1kw/96m, 38-20-07/75-09-04 (aux)(uses former main antenna but at lower power)
MD	Ocean City 99.9 WWFG AF 9.1kw/96m, 38-20-07/75-09-04 (aux)(uses former main antenna but at lower power)	ME	Milbridge 93.7 WRMO GA from class B to A
ME	Milbridge 93.7 WRMO GA from class B to A	ME	Winslow 95.3 WWWW GA from class C3 to C2
ME	Winslow 95.3 WWWW GA from class C3 to C2	MI	Freeland 90.9 WWZP PR>430w/99m, 43-33-42/83-58-52
MI	Freeland 90.9 WWZP PR>430w/99m, 43-33-42/83-58-52	MI	Big Rapids 100.9 WWBR CC from WBRN-FM
MI	Big Rapids 100.9 WWBR CC from WBRN-FM	MI	Bear Creek Township 89.3 WTLI PC>17kw-V
MI	Bear Creek Township 89.3 WTLI PC>17kw-V	MI	Big Rapids 100.9 WWBR CC from WBRN-FM
MI	Big Rapids 100.9 WWBR CC from WBRN-FM	MI	Detroit 105.9 WDMK CC from WDTJ
MI	Detroit 105.9 WDMK CC from WDTJ	MI	Freeland 90.9 WLKB CC from WWZP
MI	Freeland 90.9 WLKB CC from WWZP	MI	Mount Clemens 102.7 WHTD CC from WDMK
MI	Mount Clemens 102.7 WHTD CC from WDMK	MI	Iron Mountain 106.7 WHTO PR>7.1kw
MI	Iron Mountain 106.7 WHTO PR>7.1kw	MI	Lake Odessa 89.7 NEW NS
MI	Lake Odessa 89.7 NEW NS	MI	Newaygo 92.5 WODJ XG 43-18-35/85-54-45
MI	Newaygo 92.5 WODJ XG 43-18-35/85-54-45	MI	Gwinn 100.3 NEW GA from class C3 to C1
MI	Gwinn 100.3 NEW GA from class C3 to C1		

22/108-41-26 (K-Love;satellite of KLVR)

NM Mentmore 88.5 990325MD NS 1.3kw/150m, 35-33-36/109-06-30)CSN)	NM Mentmore 88.5 990325MD NS 1.3kw/150m, 35-33-36/109-06-30)CSN)
NM Socorro 88.1 KNMA CC for NS	NM Socorro 88.1 KNMA CC for NS
NM Albuquerque 100.3 KPEK NW 1.5kw/1223m (aux)	NM Albuquerque 100.3 KPEK NW 1.5kw/1223m (aux)
NM Ruidoso 104.5 NEW-LP NS 100w/-142m, 33-19-21/105-38-25	NM Ruidoso 104.5 NEW-LP NS 100w/-142m, 33-19-21/105-38-25
NM Albuquerque 101.3 KJFA NS 3.7kw/99m, 35-04-04/106-46-47 (aux)	NM Albuquerque 101.3 KJFA NS 3.7kw/99m, 35-04-04/106-46-47 (aux)
NM Los Lunas 102.5 KIOT NS 950w/26m, 35-04-41/106-35-06 (aux)	NM Los Lunas 102.5 KIOT NS 950w/26m, 35-04-41/106-35-06 (aux)
NM Roswell 89.1 KRSR FC; sold to K-Love	NM Roswell 89.1 KRSR FC; sold to K-Love
NM Clovis 90.3 KKCC FC; sold to K-Love	NM Clovis 90.3 KKCC FC; sold to K-Love
NV Indian Springs 99.3 KQMR AF 600w/333m, 36-00-29/115-00-20 (aux)(same facilities as booster KQMR-1 but 10db lower power)	NV Indian Springs 99.3 KQMR AF 600w/333m, 36-00-29/115-00-20 (aux)(same facilities as booster KQMR-1 but 10db lower power)
NV Henderson 100.5 KKJJ CC from KMZQ-FM	NV Henderson 100.5 KKJJ CC from KMZQ-FM
NV Henderson 100.5 KKJJ CC from KMZQ-FM	NV Henderson 100.5 KKJJ CC from KMZQ-FM
NV Fernley 94.1 NEW GA, class C3	NV Fernley 94.1 NEW GA, class C3
NV Elko 94.5 NEW GA from class C3 to C	NV Elko 94.5 NEW GA from class C3 to C
NV Reno 92.9 KURK GA from class C to C2	NV Reno 92.9 KURK GA from class C to C2
NV Mesquite 96.7 NEW AF 57.6kw/726m, 36-50-52/114-28-37	NV Mesquite 96.7 NEW AF 57.6kw/726m, 36-50-52/114-28-37
NV Indian Springs 99.3 KQMR NS 600w/333m, 36-00-29/115-00-20(aux)	NV Indian Springs 99.3 KQMR NS 600w/333m, 36-00-29/115-00-20(aux)
NV INan Springs 99.3 KRGT CC from KQMR	NV INan Springs 99.3 KRGT CC from KQMR
NY Corning 107.5 WLRG-LP CC for NS	NY Corning 107.5 WLRG-LP CC for NS
NY Corning 98.7 WGMM CC from WGMM-FM	NY Corning 98.7 WGMM CC from WGMM-FM
NY Sanitaria Springs 95.7 WLDM-LP CC for NS 20010116AFG	NY Sanitaria Springs 95.7 WLDM-LP CC for NS 20010116AFG
NY Brockport 105.5 WMJQ GA to 104.9	NY Brockport 105.5 WMJQ GA to 104.9
NY Johnson City 101.7 WLTB PR 580w/312m, 42-03-22/75-56-39; CL from Owego	NY Johnson City 101.7 WLTB PR 580w/312m, 42-03-22/75-56-39; CL from Owego
NY Auburn 106.9 WPHR-FM CC from WPHR	NY Auburn 106.9 WPHR-FM CC from WPHR
NY Brockport 104.9 WMJQ QC from 105.5, 6kw/100m, 43-09-51/77-47-02	NY Brockport 104.9 WMJQ QC from 105.5, 6kw/100m, 43-09-51/77-47-02
NY Buffalo 96.1 WJYE NW 11.5kw/135m (aux)	NY Buffalo 96.1 WJYE NW 11.5kw/135m (aux)
OH Ashtabula 98.3 WYBL NW 5.3kw/105m, 41-50-23/80-44-36	OH Ashtabula 98.3 WYBL NW 5.3kw/105m, 41-50-23/80-44-36
OH Georgetown 97.7 WAXZ PC 5.1kw/107m, 38-46-50/83-51-55	OH Georgetown 97.7 WAXZ PC 5.1kw/107m, 38-46-50/83-51-55
OH Oxford 97.7 WOXY PC 1.2kw/206m, 39-30-44/84-38-09	OH Oxford 97.7 WOXY PC 1.2kw/206m, 39-30-44/84-38-09
OH Athens 106.7 WEAK-LP PG>30m	OH Athens 106.7 WEAK-LP PG>30m
OH Bucyrus 92.7 WQEL PR<93m	OH Bucyrus 92.7 WQEL PR<93m
OH Findlay 89.7 WTKC CC for NS 19990216MB	OH Findlay 89.7 WTKC CC for NS 19990216MB
OH SCh Webster 94.9 WSNA FC; sold to K-Love	OH SCh Webster 94.9 WSNA FC; sold to K-Love
OH Cleveland 104.1 WQAL PC 12kw/293m, 41-20-28/81-44-24	OH Cleveland 104.1 WQAL PC 12kw/293m, 41-20-28/81-44-24
OH Loudonville 107.7 WXXF CC from WBZW	OH Loudonville 107.7 WXXF CC from WBZW
OH Fredericktown 98.3 WXXR CC from WWBK	OH Fredericktown 98.3 WXXR CC from WWBK
OK Cache 97.9 KJMZ PG<6kw/89m, 34-35-31/98-32-55; CL from Lawton	OK Cache 97.9 KJMZ PG<6kw/89m, 34-35-31/98-32-55; CL from Lawton
OK Grove 88.9 KWXC CC for NS	OK Grove 88.9 KWXC CC for NS
OK Woodward 88.1 NEW NS 100kw/306m, 36-16-06/99-26-56 (U.of OK)	OK Woodward 88.1 NEW NS 100kw/306m, 36-16-06/99-26-56 (U.of OK)
OK Enid 104.7 KEIF -LP CC from KUAL-LP	OK Enid 104.7 KEIF -LP CC from KUAL-LP
OK Grove 88.9 KWXC CC for NS 19980225ME	OK Grove 88.9 KWXC CC for NS 19980225ME
OK Marlow 106.3 KZPY-LP CC for NS	OK Marlow 106.3 KZPY-LP CC for NS
OK Waukomis 106.3 NEW PA, class A	OK Waukomis 106.3 NEW PA, class A
OK Pittsburg 94.3 NEW GA, class A	OK Pittsburg 94.3 NEW GA, class A
OK Red Oak 93.3 NEW GA, class A	OK Red Oak 93.3 NEW GA, class A
OK Tipton 94.5 NEW GA, class C3	OK Tipton 94.5 NEW GA, class C3
OK Sulphur 90.7 KFXT NW 7kw/91m, 34-32-57/96-58-34	OK Sulphur 90.7 KFXT NW 7kw/91m, 34-32-57/96-58-34
OR Florence 91.5 KWVZ PR<167m, 43-57-26/124-04-26; drop DA	OR Florence 91.5 KWVZ PR<167m, 43-57-26/124-04-26; drop DA
OR La Pine 90.1 KKLP NW 2.5kw-V/40m, 43-34-50/121-34-13 (K-Love)	OR La Pine 90.1 KKLP NW 2.5kw-V/40m, 43-34-50/121-34-13 (K-Love)
OR Monmouth 95.1 KSND PC 1kw/477m, 44-53-19/123-36-26	OR Monmouth 95.1 KSND PC 1kw/477m, 44-53-19/123-36-26
OR Florence 88.1 KLFO PG 250w/167m	OR Florence 88.1 KLFO PG 250w/167m
OR Cave Junction 92.7 NEW-LP AF dismissed	OR Cave Junction 92.7 NEW-LP AF dismissed
OR Condon 93.5 KHAL CC for NS 20041214AFN	OR Condon 93.5 KHAL CC for NS 20041214AFN
OR Junction City 88.5 KPIJ CC for NS	OR Junction City 88.5 KPIJ CC for NS
OR Lakeview 98.1 KTOD-LP CC for NS 20010615BAP	OR Lakeview 98.1 KTOD-LP CC for NS 20010615BAP
OR Newport 88.9 KYOR CC for NS	OR Newport 88.9 KYOR CC for NS
OR Woodburn 96.3 KPCN-LP CC for NS	OR Woodburn 96.3 KPCN-LP CC for NS
OR Cottage Grove 100.5 KCGR GA from class A to C3	OR Cottage Grove 100.5 KCGR GA from class A to C3
OR Ontario 96.1 KSRV-FM GA from class C1 to C	OR Cottage Grove 100.5 KCGR GA from class A to C3

TX Houston 102.1 KMJQ NS 85kw/510m, 29-33-44/95-30-35 (aux)					
TX Houston 97.9 KBXX NS 100kw/510m, 29-33-44/95-30-35 (aux)					
TX Mart 88.9 KSUR CC from KP5A					
TX BeauMT 88.1 KLBT PR<7kw-V/145m, 29-54-52/94-17-06					
TX El Campo 96.9 KIOX-FM XC 28-53-22/96-21-41					
TX Midland 94.1 KACD-LP NW 100w/28m, 31-59-26/102-05-55					
TX Greenville 101.5 KYLP-LP NW 100w/27m, 33-08-15/96-06-44					
TX Pittsburg 100.5 KLNA-LP PC>44m					
TX Jullard 106.5 KXZX-LP NW ?w/33m, 35-20-14/101-49-42					
TX Seymour 98.7 NEW NS					
UT Hurricane 102.9 NEW GA from class C3 to C2					
UT Salt Lake City 90.1 KUER-FM NS 6.3kw/891m, 40-36-29/112-9-36(AUX)					
UT MTicello 103.9 KAAJ-LP QG from 103.5, -55m					
VA Alberta 103.1 WWDW CC from WSMY-FM					
VA Woodstock 95.7 WSCE-LP CC for NS 20000901ADU					
VA Bedford 106.9 WLEQ CC from WBWR					
VA Warrenton 107.7 WTOP-FM NW 20kw/164m (aux)					
VT Waterbury 103.3 WWMP CC from WLKC					
WA Chehalis 104.3 KMNT CC for NS					
WA Elma 99.3 KDDS-FM CC from KAYO-FM					
WA Fall City 104.5 KCFL-LP NW ?w/101m, 47-34-32/121-51-15					
WI La Crosse 101.5 WLXS-LP CC for NS 20010116AFA					
WI Appleton 91.1 WLFM FC; sold to Relevant Radio					
WI Marinette 107.7 WLWR-LP PG<30m					
WI Birnamwood 92.9 WYNW PC>6kw/100m, 44-59-50/89-22-07					
WV Kenova 97.9 WVMG CC for NS 20041227ACF					
WV Richwood 105.5 WKQV CC for NS 20050103ACL					
WV Richwood 105.5 WKQV GA from class A to B1					
WY Laramie 102.9 KARS-FM PC<83kw/248m, 40-52-37/105-41-44					
WY Evanston 88.1 990825MC PG<90w/411m, 41-21-10/110-54-29					
WY Guernsey 104.1 KANT GA from class A to C2					
WY Kemmerer 107.3 KAOX GA from class C1 to C2					
WY Mills 105.5 KHAD GA from class A to C2					
WY Rock Springs 99.7 KSIT QC from 104.5, 99kw/493m					

## **STATION FORMAT DATA**

WXFR	88.3	State College PA.			
WZXQ	88.3	Chambersburg PA signs on with "The Word" contemporary Christian.			
WMYJ	88.9	Oolitic IN signs on with southern gospel as "My Joy 88.9."			
WDDM	89.3	Hazlet NJ drops its Indian programming & flips to EWTN Catholic programming as WFJS.			
KEGR	89.5	Fort Dodge IA signs on with Family Radio religion.			
KLRI	89.5	Rigby ID signs on with EMF "Air 1" Christian rock.			
WVRI	90.5	Pavo GA signs on with EMF "K-Love" contemporary Christian.			
WWZP	90.9	Freeland MI changes calls to WLKP.			
WSRV	92.3	Deltaville VA flips from oldies to AAA as "The Tide."			
WXAL	93.7	Addison VT flips from adult hits "MP103" (simulcasting WWMP 103.3 Waterbury VT) to classic country "US 93.7." Classic country WVA			
WWEA	94.1	Oriental NC and WWGL 94.3 Farmville NC change calls to WWAH and WWNK respectively.			
WDMO	95.9	Durand WI/WQOQ 1430 Durand WI flip from classic rock to classic country "Thunder 95.9"			
WYZK	96.7	Valdosta GA changes calls to WGOV-FM.			
KFMS	97.5	Coalville/Salt Lake City UT signed on Tuesday with news/talk, including CBS hourly news. It's Salt Lake City's first FM news/talker - but it already has company. Tuesday also			
					saw the flip of KQMB 102.7 Midvale/Salt Lake City UT to a simulcast of news/talk KSL 1160, with new calls KSL-FM requested.
WBBE	97.9	Heyworth IL signs on as adult hits "Bob FM 97.9."			
WVWN	97.9	Heyworth IL changes calls to WBBE.			
KQLF	97.9	Cheyenne WY/Fort Collins CO flips from AC "Sunny" to hot AC "My 97.9."			
KYSR	98.7	Los Angeles CA was stunting over Labor Day weekend;			
WCUL	98.9	Midlothian/Richmond VA signs on with adult hits as "Liberty 98.9" new calls WWLB have been requested.			
KBNF	98.9	Chester CA changes calls to KWLU.			
WXTT	99.1	Danville IL edges from classic rock to 80s rock.			
WKNK	99.1	Edmondton KY changes calls to WHSX.			
KQMR	99.3	Indian Springs/Las Vegas NV changes calls to KRGT.			
KBXG	99.5	Lake Charles LA changes calls to KNGT; it's now "Gator 99.5." New calls for new stations: KCKR 91.9 Kaplan LA,			
KFRC	99.7	San Francisco CA edges from 60s-70s oldies to classic hits, keeping its current personalities but moving the music mix to 70s-80s era.			
WXQL	100.5	Carrollton/Saginaw MI flips from rhythmic oldies "Kool" to rhythmic top 40 "100.5 the Beat."			
WHZZ	101.7	Lansing MI flips from top 40 "Z-101.7" to adult hits "101.7 Mike FM."			
WRWW	101.9	South Hill VA changes calls to WKSK.			
KLSZ	102.7	Van Buren/Fort Smith AR flips from rock to rhythmic top 40 "102.7 the Beat." The rock format moves to KBQQ-FM 100.7 Fort Smith AR, which drops oldies. The stations have requested a swap of callsigns, as well.			
KRCI	103.1	Bagdad AZ changes calls to KFTT.			
KCEE	103.3	Grass Valley CA changes calls to KBAA.			
KNDZ	105.1	Billings MT changes calls to KOBL.			
KKUL	105.3	Lincoln NE drops "Cool" oldies for classic hits as "Linc FM 105.3," with new calls KLNC.			
KDLS	105.5	Perry IA picks up the Spanish AC "La Ley" programming that had been on KBGG 1700 Des Moines IA. KBGG flips to regional Mexican as "La Indomable."			
WUSX	105.7	Campton NH changes calls to WLKC; WUSX calls replace WXAL on 93.7 Addison VT			
WENN	105.9	Trussville AL moves to its new frequency and city of license, 105.5 Hoover AL, providing an improved signal over Birmingham for what's now "105.5 Hallelujah FM," still with a black gospel format. On the other end of the swap, WRTR 105.5 Tuscaloosa AL moves to Brookville and 105.9, upgrading from A to C3 for an improved Tuscaloosa signal.			
WDDB	106.3	Columbia City/Fort Wayne IN is stunting.			
KZLK	106.3	Rapid City SD flips from AC "Star" to adult hits "Max."			
KKHI	106.3	Kremmling CO changes calls to KZMV.			
WBWR	106.9	Bedford VA changes calls to WLEQ.			
WKQB	106.9	Southern Pines NC drops country and is stunting.			
WBWR	106.9	Bedford VA breaks from its temporary simulcast of "Bob" oldies (with WZZI 101.5 Vinton VA/WZZU 97.9 Lynchburg VA) and returns to a much earlier format, flipping to standards as "The Lake." It requests new calls WLEQ, close to the WLOE calls it had in its first "Lake" incarnation.			
WBZW	107.7	Loudonville OH and WWBK 98.3 Fredericktown OH drop their "Kiss" top 40 simulcast and flip to a simulcast of "Fox" classic rock from WFXN-FM 102.3 Galion/Mansfield OH. New calls are WXXF for 107.7 and WXXR for 98.3.			
XHOCL	99.3	Tijuana/San Diego drops oldies "Kool" for Spanish oldies "La Preciosa."			

New calls for new stations: KTRT 97.5 Winthrop WA, KYCJ 88.3 Camino CA, WDPW 91.9 Greenville MI, WHWY 91.5 Marathon FL, WWWW 88.5 Halifax PA, WZHN 91.3 East Tawas MI, KOYT 94.5 Elko NV, KSUR 88.9 Mart TX, WJKA 90.1 Jacksonville NC, KLBR 88.1 Bend OR, KSCY 96.3 Big Sky MT, KKJA 89.9 Redmond OR, KVFL 89.1 Pierre SD, WWED 89.5 Spotsylvania VA, KRKV 107.3 Las Animas CO, KVAR 93.7 Pine Ridge SD.

September 6 2005

Tower down in Hattiesburg: Reports that no towers were destroyed by Hurricane Katrina turned out to be premature. As information slowly emerges from the wide area devastated by the storm, we now know that WNSL 100.3 Hattiesburg MS and WUSW 103.7 Hattiesburg MS lost their 974-foot tower in the storm, as well as the studio-transmitter link tower at the Clear Channel studios.

## Hurricane Katrina Information

September 1 2005

As radio stations along the Gulf Coast continue to face the same perils that the rest of the region does - high water and no power - they're combining operations to keep at least some signals on the air to provide emergency information for the region. In New Orleans, Entercom's WWL 870 New Orleans is originating coverage that's being heard on sister stations WTKL 95.7, WEZB 97.1 and WLMG 101.9 as well as on several Clear Channel stations. Entercom has closed down WSMB 1350 New Orleans and WKBU 105.3 Kenner LA for the duration, while it focuses on keeping WWL and the other three FMs (which share a transmitter site) on the air. Clear Channel is providing studio support at its Baton Rouge studios, while Entercom also uses emergency studio facilities at the Jefferson Parish emergency operations center. In Biloxi, at least one station is on the air: WCPR 97.9 Wiggins MS is providing emergency coverage.

September 7 2005

Stations now listed as silent with the FCC include: KKND 106.7 Port Sulphur LA, WBSN 89.1 New Orleans LA, WEZB 97.1 New Orleans LA, WJSH104.7 Folsom LA, WKSX 106.1 Picayune MS, WNOE 101.1 New Orleans LA, WRBH 88.3 New Orleans LA, WTIK-FM 94.3 Galliano/New Orleans LA, WTKL 95.7 New Orleans LA, WTUL 91.5 New Orleans LA, WWNO 89.9 New Orleans LA, WWOZ 90.7 New Orleans LA, WXRK 105.9 Pascagoula MS, and WXYK 107.1 Gulfport MS.

September 8 2005

The FCC lists more stations that are dark for the duration due to Hurricane Katrina - WAIL 89.3 Hattiesburg MS, WAQL 90.5 McComb MS, WATP 90.7 Laurel MS, WFMM 97.3 Sumrall MS, WPRG 89.5 Columbia MS, WZKM 89.7 Waynesboro MS. (All but WFMM are AFA religious or southern gospel outlets.)

September 13 2005

Back on the air are WZLD 106.3 Petal MS, WHER 99.3 Heidelberg/Hattiesburg MS and WNSL 100.3 Laurel/Hattiesburg MS.

### CALL CHANGE DATA

PEI Charlottetown	92.5	NEW	AF 70kw/213m, classic rock withdrawn before hearing	ID Franklin	97.5	KFMS	CC from KTPM
AZ Bagdad	103.1	KFTT	CC from KRCI	ID Troy	100.5	KQZB	CC for NS
AZ Flagstaff	97.5	KRZS	CC from KZLB	ID Victor	92.3	KMPT	CC from KMQS
AZ Lake Havasu City	89.3	KAIH	CC from KVKL	IL Heyworth	97.9	WBBE	CC from WVVN
AZ Payson	99.3	KMZQ	CC from KSXX	IL Normal	100.7	WVMG	CC from WDNQ
AR Cave City	89.9	KZIG	CC from KVMN	IL Peoria	101.9	WCUA-LP	CC for NS
AR Cotton Plant	99.3	KAPW	CC for NS	IL Streator	106.1	WYYS	PG 2.45kw/159m, 41-16-30/88-57-56
CA Camino	88.3	KYCJ	CC for NS	IN Attica	95.7	WSHP	CC from WLFF
CA Dunnigan	105.5	KVMG	CC from KKFS	IN Brookston	95.3	WLFF	CC from WSHP
CA El Centro	93.7	KYFC-LP	CC for NS	IN Clarksville	93.1	WTFX-FM	CC from WJZL
CA Freedom	107.5	KPIG-FM	CC from KPIG	IN Veedersburg	88.5	WXVW	CC for NS
CA Grass Valley	103.3	KBAA	CC from KCEE	KS Osage City	92.9	KMXN	CC from KKYD
CA Jackson	94.3	KLMG	CC from KSFS	KY Burnside	93.9	WSEK	CC from WLLK-FM
CA Lincoln	103.9	KKFS	CC from KVMG	KY EdMTon	99.1	WHSX	CC from WKNK
CA Mendocino	107.3	KFOJ-LP	CC for NS	KY KYLAAsville	100.5	WLUE	CC from WTFX-FM
CA North Fork	107.9	KLLE	CC from KZOL	KY Somerset	97.1	WKEQ	CC from WKEQ-FM
CA Placerville	92.1	KXCL	CC from KBDB-FM	KY Somerset	102.3	WLLK-FM	CC from WHMJ-FM
CA Susanville	96.3	KLZN	CC for NS	KYLA Houma	104.1	KHEV	CC from KSTE-FM
CA Walnut Creek	92.1	KKDV	CC from KABL-FM	KYLA Kaplan	91.9	KCKR	CC for NS
CO Carbondale	96.7	KUUR	CC for NS	KYLA Lake Charles	99.5	KNGT	CC from KBXG
CO Cuchara	106.9	KCOX-LP	CC for NS	KYLA Norco	91.1	WPDD	CC from WWLA
CO El Jebel	100.5	KCUF	CC for NS	MA Dudley	97.5	WNRC-LP	CC for NS
CO Kremmling	106.3	KZMV	CC from KKHI	MA Falmouth	91.9	WFPB-FM	PC>76m
CO Las Animas	107.3	KRKV	CC for NS	MI Clyde Township	90.1	WXPZ	CC for NS
FL Marathon	91.5	WHWY	CC for NS	MI East Tawas	91.3	WZHN	CC for NS
FL Panama City	91.7	WFFL	CC for NS	MI Elkton	88.9	WJCE	CC for NS
FL Umatilla	102.7	WUFR-LP	CC for NS	MI Greenville	91.9	WDPW	CC for NS
GA Boynton	103.7	WBFC-LP	XR 34-55-08/85-07-49	MI Newaygo	92.5	WKOO	CC from WODJ-FM
				MO Republic	99.5	KADI-FM	CC from KADI
				MT Alberton	105.5	KROS	CC for NS
				MT Big Sky	96.3	KSCY	CC for NS
				MT BILngs	105.1	KOBL	CC from KNDZ

NE Beatrice	88.9	KNBE	CC for NS	SD Pierre	89.1	KVFL	CC for NS
NE Lincoln	105.3	KLNC	CC from KKUL	SD Pine Ridge	93.7	KVAR	CC for NS
NV Elko	94.5	KOYT	CC for NS	SD Sioux Falls	90.1	KSFS	CC for NS
NV INan Springs	99.3	KRGT	CC from KQMR	TN Knoxville	101.1	WIAM-LP	CC for NS
NV Las Vegas	91.1	KVKL	CC from KAIH	TX Corpus Christi	107.9	KXVR-LP	CC for NS
NH Campton	105.7	WLKC	CC from WUSX	TX Knox City	107.3	NEW	NS
NJ Burlington	97.5	WTHK	PR 43kw/160m, 40-04-57/75-10-53. Requests move to Philadelphia as predicted, WJJZ-106.1 tower	TX Lubbock	93.7	KXTQ-FM	PG>299m, 33-30-08/101-52-20
NJ Manahawkin	100.1	WJRZ-FM	PG>1.7kw	TX Mart	88.9	KSUR	CC for NS
NM Taos	95.9	KKTC	CC for NS	TX Seymour	92.3	NEW	NS
NY Hoosick Falls	97.5	WHAZ-FM	CC from WZEC	TX White Oak	99.3	KVEE	CC from KLBL
NC Farmville	94.3	WWNK	CC from WWGL	TX Wichita Falls	90.5	KZKL	CC from KTEO
NC Jacksonville	90.1	WJKA	CC for NS	UT Midvale	102.7	KSL-FM	CC from KOMB
NC Mt. Airy	101.3	WFOG-LP	CC from WPVR-LP	UT Richfield	97.5	KCYO	CC from KLGL
NC Oriental	94.1	WWHA	CC from WWEA	UT Richfield	93.7	KLGL	CC from KCYO
NC Wilson	106.9	WUBN-LP	CC for NS	UT TreMton	104.9	KYLZ	CC from KBNZ
ND Jamestown	88.9	KLJA	CC for NS	VT Addison	93.7	WUSX	CC from WXAL-FM
OH Fredericktown	98.3	WXXR	CC from WWBK	VA Bedford	106.9	WLEQ	CC from WBWR
OH Loudonville	107.7	WXXF	CC from WBZW	VA Fredericksburg	100.7	WLMP-LP	CC for NS
OK Chickasha	90.5	KSSX	CC for NS	VA Roanoke	92.3	WXLK	PC>93kw (V. Was already 93kw-H.)
OK Norman	89.3	KSSO	CC for NS	VA South Hill	101.9	WKSK-FM	CC from WRWW
OK Tulsa	107.9	KJZT-LP	CC for NS	VA Spotsylvania	89.5	WWED	CC for NS
OR Bend	88.1	KLBR	CC for NS	WA East Wenatchee	88.1	KTRW-FM	CC from KTRJ
OR Elgin	105.9	KRJT	CC for NS	WA Forks	103.9	KBDB-FM	CC from KLLM
OR Grants Pass	106.7	KCGP-LP	CC for NS	WA Winthrop	97.5	KTRT	CC for NS
OR Redmond	89.9	KKJA	CC for NS	WV Kenova	97.9	WDNQ	CC from WVMG
PA Bedford	91.1	WUFR	CC for NS	WV South Charleston	89.3	WWLA	CC from WPDD
PA Halifax	88.5	WWWH	CC for NS	WI Appleton	91.1	WOVM	CC from WLFM
PA Hershey	106.7	WMHX	CC from WCPP	WI Madison	102.5	WNWC-FM	PC>150m
PA Honesdale	90.9	WZZH	CC for NS	WI Manitowoc	104.1	WTSW-LP	CC for NS
PA Pittsburgh	92.1	WPTS-FM	PG 16w/141m, 40-26-39/79-57-12	WI Milwaukee	102.9	WHQG	CC from WLZR
PA State College	88.3	WXFR	CC for NS	WY Cheyenne	93.7	KSHF	CC for NS
PA Waynesburg	103.1	WANB	CC from WANB-FM	WY Laramie	98.7	KUSZ	CC from KHIH
SC Greenville	95.5	WMXP-LP	CC for NS	WY Marbleton	95.7	KFMR	CC for NS
SD Belle Fourche	102.1	KBEN-FM	CC from KFMH				

*Many Thanks to Scott Fybush and 10000watts.com for the information used in this column.*

## LOW POWERED BUT HIGH HOPES

Round lake Radio, ready for Friday's launch, will concentrate on local flavor

By M. Daniel Gibbard, Tribune Staff Writer

Chicago Tribune Sept 2, 2005

Fed up with generic commercial broadcasting, a group of Lake County residents is about to ride the local radio wave.

Round Lake Radio, WRLR-FM 98.3 will flip the switch at 7 p.m. Friday, becoming the first non religious station broadcasting in the Chicago area under the federal government's low power FM service.

"One of the biggest complaints now is that all the stations sound alike," said WRLR President Bish Krywko. "There's no localism in radio. What the low-power movement said is [that] the community loses because of that."

At WRLR, "we can talk about the dogcatcher or the Wal-Mart coming to town and knocking out the small businesses, or small-town corruption, if it's happening," he said. "Local radio embodies programming at the street and back-yard fence level."

Weather information will come from Campbell Airport in Grayslake.

"We're not going to give the temperature at O'Hare because nobody cares," Krywko said.

The broadcast radius for a low power station is projected at about 3 ½ miles, but during half-power testing, the signal went farther, Krywko said. With full power, the signal might reach from Antioch to Mundelein, he said.

The Federal Communications Commission created low-power FM, or LPFM, in January 2000, and there are 690 LPFM stations on the air, according to LPFMDatabase.com. Programming is restricted to non-commercial educational broadcasting, and transmitter power to 100 watts maximum and antenna height to 100 feet.

Krywko, 52, who briefly studied radio after high school in the 1970s, heard a news blurb about the program in 200 and thought "Wow, this would be cool if we could get a community radio station in Round Lake."

As it turned out, it would not be easy.

Government rules and red tape created plenty of frustration in the five years Krywko and his all-volunteer staff spent getting the station on the air. It didn't help that being halfway between the big media markets of Chicago and Milwaukee, there was precious little bandwidth available.

"There were a couple of times we were ready to pull the plug before we even got it turned on," he said. "[I thought], 'It's just not going to happen.' And either something came through or someone encouraged me to hang in there."

Low power radio proponents speak with near-revolutionary fervor of the need to offset what they see as increasing domination of the airwaves by a few large media corporations.

October 2005

More from Danny Oglethorpe, Shreveport, LA:



KVBC-DT-2 Las Vegas, NV  
 1236 mi Es seen 5/29/05  
 @1330 CT  
*"first DT by Es decoded"*



XHLGT-2 Leon, GTO  
 940 mile Es seen 6/5/05  
 @1938 CT  
*"el canal de casa"*



XHMTS-2 Matehuala, SLP  
 737 mile Es seen 5/18/05  
 @1220 CT



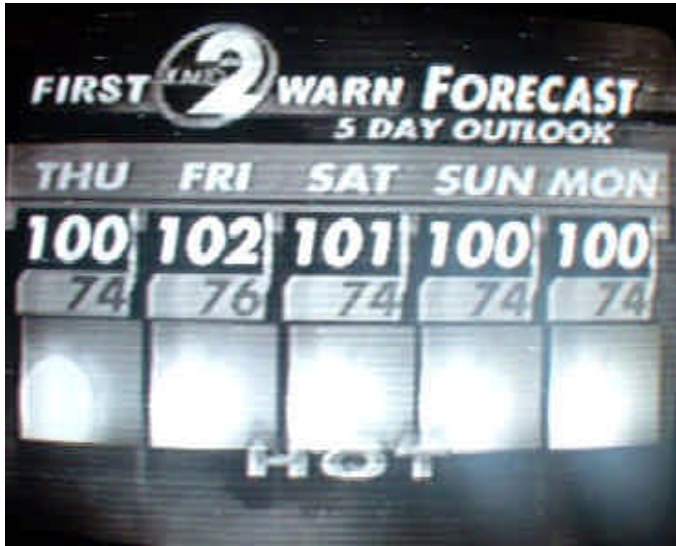
XHQRQ-2 Cancun, QROO  
 889 mile Es seen 6/24/05  
 @1528 CT  
*"rare for Mexico - BIG ID"*



KBEJ-2 Fredericksburg, TX  
 327 mile Es seen 6/15/05  
 @1207 CT

This was a test signal generated when the STL was lost. Extremely short and rare Es!

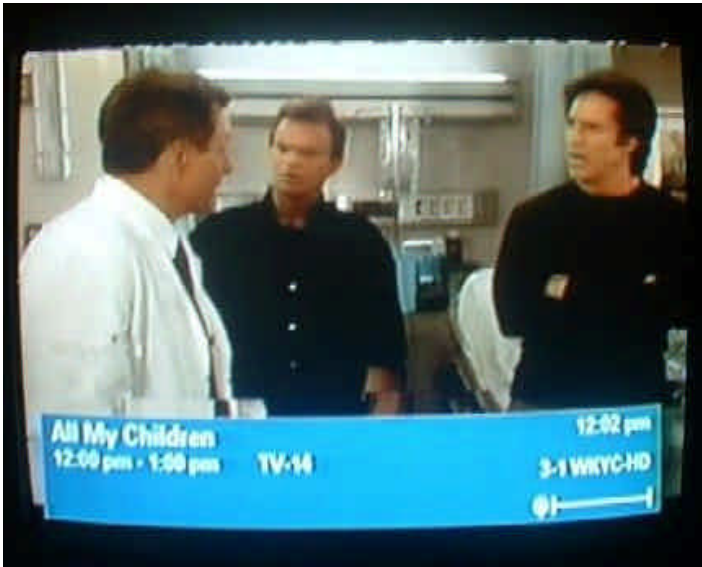




KMGD-2 Midland, TX  
497 mile Es seen 6/15/05  
@1810 CT  
"similar to WDTN's logo"



KABB-DT-30 San Antonio, TX  
344 mile tropo seen 5/24/05  
@2135 CT



WKYC-DT-2 Cleveland, OH  
908 mile Es seen 8/9/05  
@1209 CT

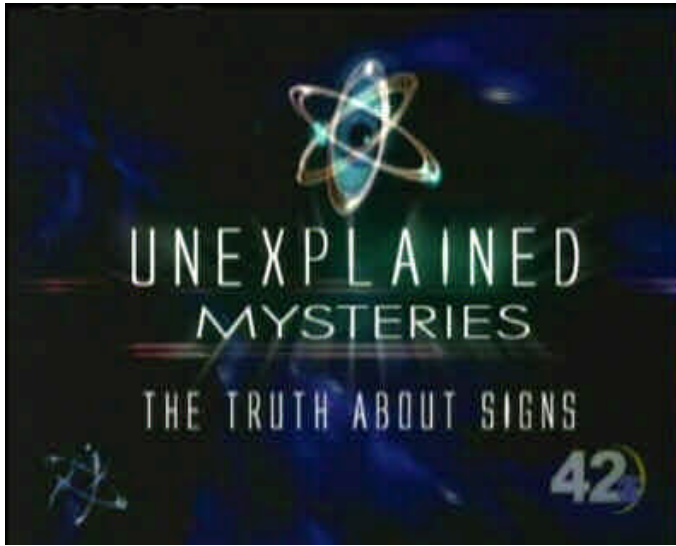


KXAN-DT-21 Austin, TX  
279 mi Tr seen 8/11/05  
@0645 CT

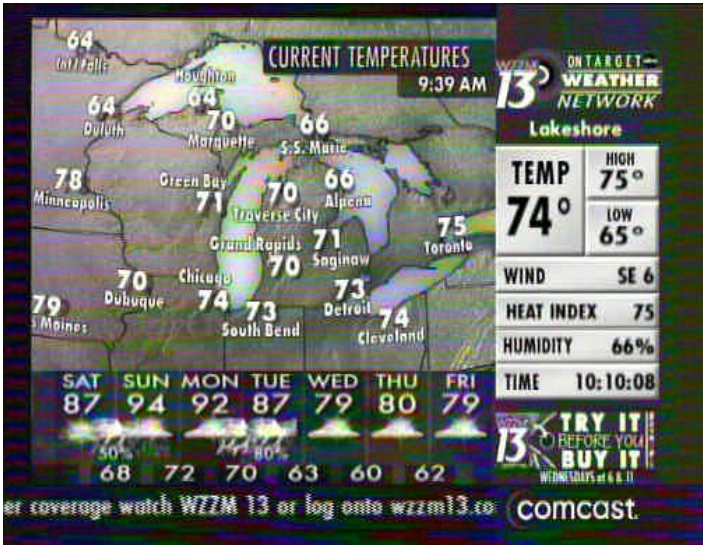
Here's some recent photos from one of the legends of DXing, Jeff Kadet of Macomb, IL:



WPTA-DT-24 Ft. Wayne, IN  
292 mi Tr seen 6/22/05  
@0217 CT



WIAT-DT-30 Birmingham, AL  
526 mi Tr seen 7/23/05  
@ 2018 CT



WZZM-DT-39 Grand Rapids, MI  
315 mi Tr seen 7/23/05  
@0908 CT



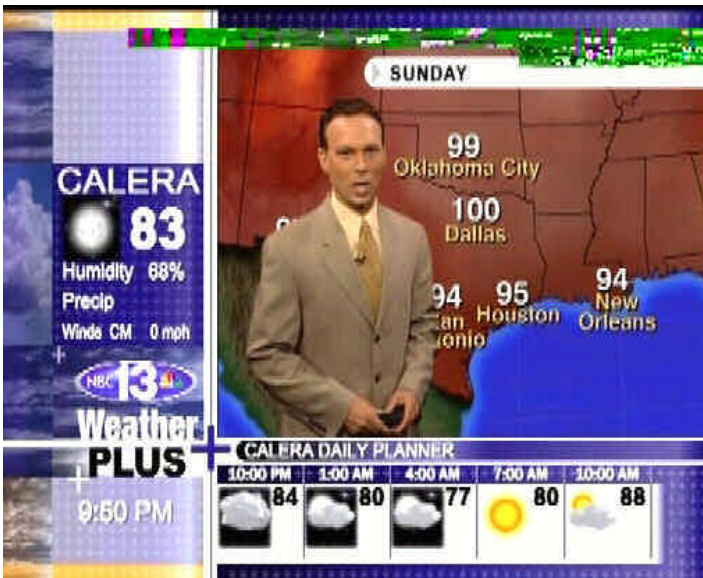
WHIQ-DT-24 Huntsville, AL  
455 mi Tr seen 7/23/05  
@0410 CT



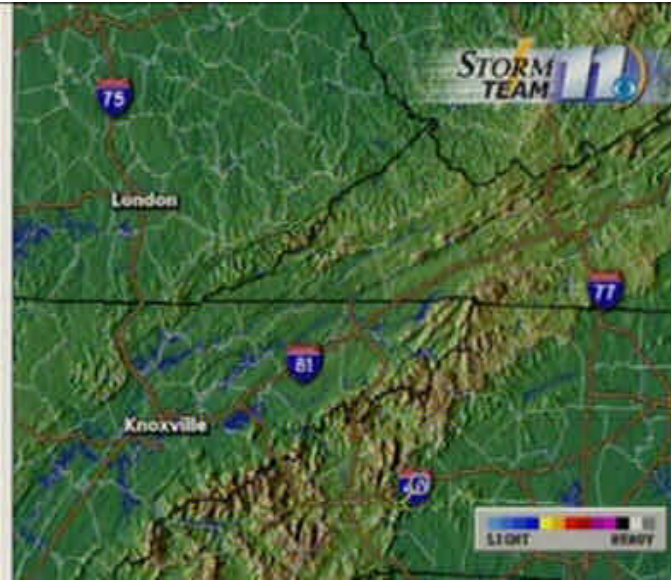
WZDX-DT-41 Huntsville, AL  
455 mi Tr seen 7/23/05  
@2058 CT



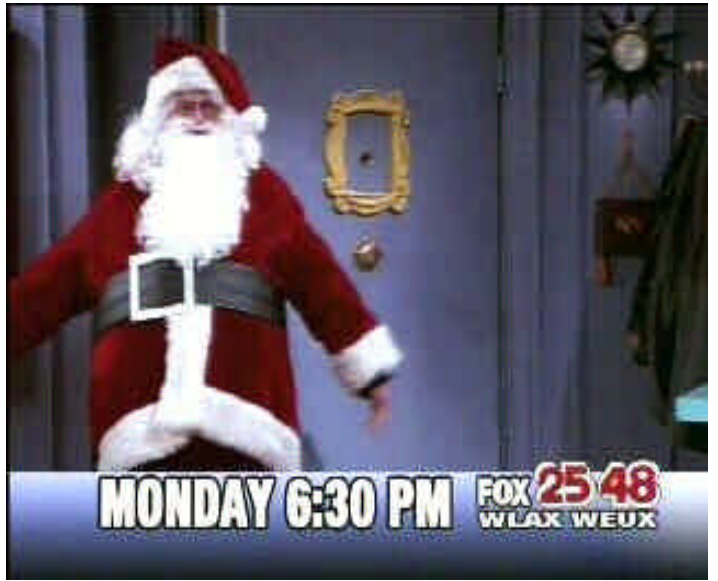
WUPA-DT-43 Atlanta, GA  
578 mi Tr seen 7/23/05  
@2049 CT



WVTM-DT-52 Birmingham, AL  
526 mi Tr seen 7/23/05  
@2012 CT



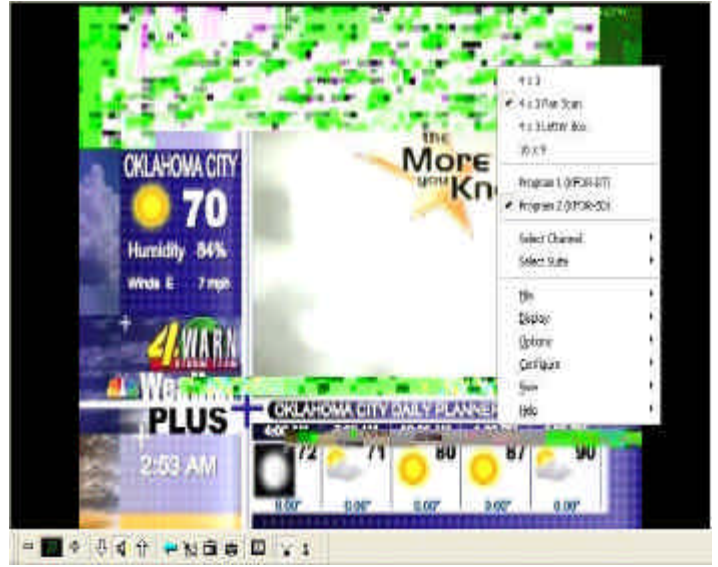
WJHL-DT-58 Johnson City, TN  
528 mi Tr seen 7/23/05  
@2049 CT



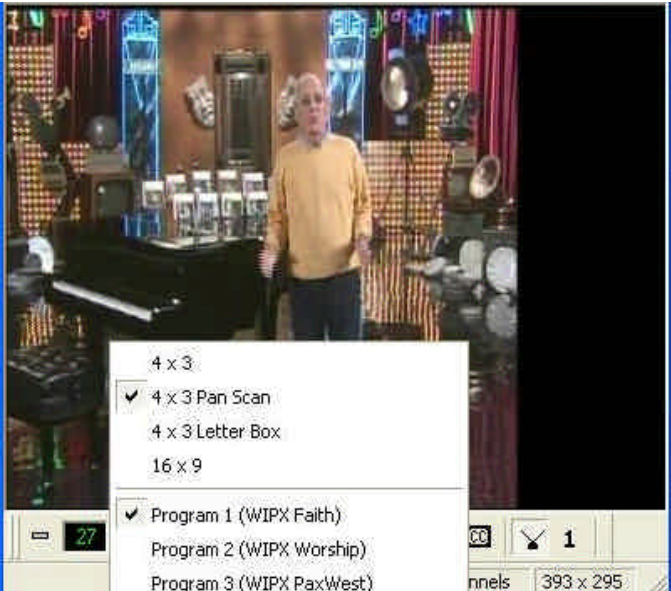
WLAX-DT-17 La Crosse, WI  
234 mi Tr seen 7/31/05  
@2300 CT



WBUW-DT-32 Janesville, WI  
173 mi Tr seen 6/22/05  
@0255 CT



KFOR-DT-27 Oklahoma City, OK  
502 mi Tr seen 6/20/05  
@0253 CT



WIPX-DT-27 Bloomington, IN  
237 mi Tr seen 7/24/05  
@0400 CT



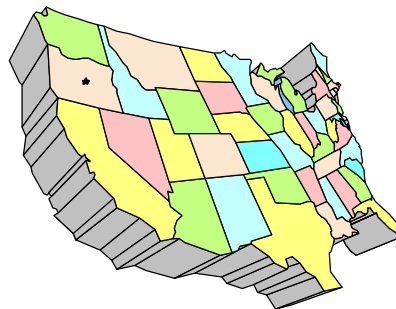
KSNW-DT-45 Wichita, KS  
410 mi Es seen 6/20/05  
@0130 CT

# WESTERN TV DX

**DAVE WILLIAMS**

3525 SW Timber Ave  
 REDMOND, OR 97756

beansdad@bendcable.com (541) 420-4704



Please note that handwritten or typed reports *may* be delayed to a future release. If I have time, I'll get them in right away. Thanks!

**Dennis Park Smith**

3605 San Remo Drive  
 Santa Barbara, CA 93105-2523  
 Telephone (805) 687-7803

This report is for August, 2005. Inversion-layering was stable throughout the month, but tropo-signal strengths were mediocre for whatever reason, along the Southern California coast between Santa Barbara and San Diego/Tijuana, up to 200 mi/320 km.

Aug 1st – 5th AM:	Variably very poor/poor (some easing of inland heat)
Aug 5 <sup>th</sup> Eve – 10th AM:	Variably fair/poor (inland heat again)
Aug 10 <sup>th</sup> Eve – 31 <sup>st</sup>	Variably very poor/poor (hot inland, but...?)

There was some *Es* on Aug 12: chs. 2-3, approx 1240-1350 PT.

- Ch 2 Soap (probably ABC), ads in Odessa and Midland (KMID-2 Midland TX, appx 1000 miles), 1300 Judge Judy. Finally caught one this time; IDs here in Santa Barbara on indoor whip have been rare.
- After 1300, unID ch-2 Spanish station (offset CCI to KMID) with cartoons Pink Panther and Garfield (maybe XEPM-2 Ciudad Juarez?)
- Ch 3; offset CCI under local KEYT-3 (same below).

Also *Es* on Aug. 28: Chs 2-3, approx 1740-1750 PT, weak, no IDs or program info.

Best of DX to all Dennis

**Jeff Kruszka**

5024 S. Braxton Ave. Baton Rouge, LA 70817

August 2005

				CT
2 Es	1714 KSWK	3 KS		760
	1719 KGWN	5 WY		1045
	1722 KCNC	4 CO		1010
	1801 KAMR	4 TX		700
	1824 KGAN	2 IA		795
	1827 WCCO	4 MN		995
	1834 KDLH	3 MN		1080
	1850 WIVB	4 NY		1095
3 Es	1058 KDBC	4 TX	on tape	910

9 Es	1230 WFRV	5 WI	on tape	985
10Es	1058 WUNC	4 NC	on tape	790
12 tr	2318 <u>KBCA</u>	41 LA	thru local	95
13 Es	1145 KOAA	5 CO		940
	1155 KREG	3 CO		1105
14 Es	1336 unid 3 weak			
22 Es	1800 WTMJ	4 WI		885
	1805 KLBY	4 KS		845
	1835 KENW	3 NM		760
	1850 KREG	3 CO		1105
	1930 KGWNt	5 WY		
	1940 KSWK	4 KS		760
	2005 KOAA	5 CO		940
	2057 KOB	4 NM		955
26 Es	1638 WTOM	4 MI		1110
	1640 WNEM	5 MI		990
	1644 WDIV	4 MI		935
	1704 WAVE	3 KY		620
	1710 WKYC	3 OH		925
	1723 WTKR	3 VA		960
	1755 WSKY	4 NC		970
	1827 WCIVt	4 SC		
27 Es	1859 HRTG	5 HND		1160
	1912 unid 6 "canal cinco"			
	1949 TGV	3 GU		1100

Wow! Now this is a first: more E-skip in August than in July!

**William Draeb**

1314 Ellis St. Kewaunee, WI 54216-1802

8/1/2005 Es

1500 3	KBTX	1069 miles
1520 2	KBEJ	1161
1600 4	KDFW	950
	5 KXAS	967, wx report at 1620, 98 deg
1701 3	KFDX	937
1716 3	KENW	1104
1848 3	KOTA	779, news, ads
2000 3	KIDK	Rodeo ads

8/2/2005 Es

1715 3	UNID	Educ., South
	2 WESH	(t)
1720 5	UNID	South, (+) offset
	4 UNID	South, zero offset
1948 3	KATC	ID, Acadiana Calendar
	2 WBRZ	(t)
2000 3	KFDX	(t)

8/6/2005 Es and Tr

1315 2	UNID	Es, (+) offset
--------	------	----------------

2024 13 W13BE 177, Soccer game, Spanish commentary, snow free, Monaroas vs. Monterrey  
12 W12BK 208, snow free, 3ABN

8/7/2005 Es

1705 2 UNID (+) offset

8/10/2005 Es and Tr

1600 2, 4 UNID Es  
2130 48 UNID Tr, ESE, Cooking show, 3ABN, Cadillac/Traverse City?

8/11/2005 Es

1202 3 KBTX 1069  
2 KPRC (t)  
4 UNID (-) offset  
1220 4 KDUH (t)

8/17/2005 Tr

2100 27 W27AU 108  
48 W48DB 100  
55 Wausau, 112, seldom seen

8/22/2005 Es

1957 2, 3 UNID Es West  
3 was ABC, CBS

8/26/2005 Tr

0630 24, 30 Toledo U's, 278

8/27/2005 Es

1403 2-4 UNID Es West  
1424 4 KDUH KOTA ID  
3 KOTA (t)  
1700 4 WBZ 838  
2 WGBH 838  
5 WCVB 838  
2048 3 WEDU 1174  
2 WCBD (t)  
2051 6 WCTV (t)  
2127 3 WEAR News crawl across bottom about Katrina.  
6 WCPX (t)  
2132 2 WBRZ (t)

8/29/2005 Tr

2100 15 WANE 262

---

**Dave Pomeroy**

2321 SE Libra Ct.  
Topeka, Kansas 66605-3505  
weberbosco@earthlink.net

July 5, 2005 Tr

0730 WICS-20 WSEC-14 Springfield, IL  
0800 WTJR-16 Quincy, IL  
KDNL-30 St. Louis, MO  
0830 WTJR-DT\* 32 Quincy, IL  
WSEC-DT\*15 Springfield, IL  
0900 WTVP-47 Peoria, IL

1000 KMEG-14 Sioux City, IA

July 7, 2005 Tr

0745 KWWL-DT 55 Waterloo, IA  
0805 KPTS-DT 29 Hutchinson, KS  
0815 KOTV-DT 55 KJRH-DT 56 Tulsa, OK

July 8, 2005 Tr

0715 KOHA-65 Omaha, NE (LPTV)  
KMEG-14 Sioux City, IA  
KBIN-DT\*33 Council Bluffs, IA  
(over local TBN-33 LPTV)  
KYNE-DT 40 KETV-DT 20  
WOWT-DT 22 KMTV-DT 45 Omaha, NE  
0730 KVAZ-LP 56 Lincoln, NE  
0750 KWWL-DT 55 Waterloo, IA  
0755 KCRG-DT 52 Cedar Rapids, IA  
0800 KYOU-DT 14 Ottumwa, IA  
0845 KOOD-DT 16 Bunker Hill, KS  
0855 KGIN-DT 32 Grand Island, NE

July 9, 2005 Tr

0000 KWWL-DT 55 KRIN-DT 35 Waterloo, IA  
KCRG-DT 52 Cedar Rapids, IA  
(with NBC Weather Plus on Program 2)

July 11, 2005 Es

1650 WMAR-2 Baltimore, MD  
1715 KYW-3 Philadelphia, PA

July 12, 2005 Tr

PM K46AH-46 Medford, OK

July 14, 2005 Tr

2200 KUKC-LP\* 48 Kansas City, MO  
(Spanish language. First time seen.  
Local KTKA-DT 48 off-the-air. Local ads and ID)

August ??? Es

2100 KREG-3\* Glenwood Springs, CO  
(I didn't get the date written down.  
Short skip--first from Colorado)

August 18, 2005 Tr

1130 KSNK-8 Oberlin, KS (McCook, NE)  
KMNE-DT 15 Bassett, NE

August 19, 2005 Tr

1800 KFTO-41 Tulsa, OK  
DTs 32, 42, 55, 56 Tulsa, OK  
1845 KTBO-DT 15 KWTU-DT 39 KSBI-DT 51  
Oklahoma City, OK

August 20, 2005 Tr

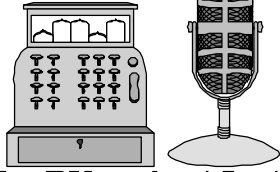
0615 KHIN-35 Red Oak, IA

August 27, 2005 Tr

2255 WTIU-DT\* 14 Bloomington, IN  
2345 KWTU-DT 39 KTBO-DT 15

(Dave's report continues on page 40)

# SOUTHERN FM DX



**John Zondlo**  
**4009 Driftwood Circle**  
**Yukon, OK 73099**  
**sfm@fmdxweb.com**  
**Deadline: 15th**

For DXers in AL, AZ, AR, CA, CO, DE, DC, FL, GA, HI, KS, KY, LA, MD, MS, MO, NV,  
 NM, NC, OK, SC, TN, TX, UT, VA, WV, Cuba & Mexico

**October 2005**

**Fred Laun** – K3ZO – 5801 Huntland Road –  
 Temple Hills, MD 20748 – [k3zo@verizon.net](mailto:k3zo@verizon.net)

Denon TU-800 tuner, Winegard antenna @ 35'

8/26 Es

1700 WKEY 93.5 FL Key West, ID 1023  
 1707 WMKL 91.7 FL Key Largo, ID 959

9/7 Tr

0018 WNCT 107.9 NC Greenville, "Oldies 107.9,"  
 o/WFSI 20 miles away 239  
 0037 WRVA 100.7 NC Raleigh, "100.7 The River"  
 216

0046 WFLB 96.5 NC Laurinburg, ID 300  
 0048 WBBB 96.1 NC Raleigh, Raleigh ads 237  
 0051 WKML 95.7 NC Lumberton, ID, adjacent to  
 WPGC 95.5 4 miles  
 away 308

0055 WQDR 94.7 NC Raleigh, "94.7 QDR,"  
 o/WARW 14 miles away  
 234

0100 WEGX 92.9 SC Dillon, "Eagle 92.9" 335  
 0123 WQRC 99.9 MA Barnstable, ID 400  
 0125 WIKS 101.9 NC New Bern, "101.9 Kiss FM,"  
 o/WLIF 47 miles away 250  
 0133 WSNZ 102.7 VA Appomattox, "Sunny FM,"  
 o/WXYV 41 miles away 146

0147 WHAJ 104.5 WV Bluefield, "T-104.5," ID 255  
 0155 WKJS 105.7 VA Richmond, "105.7 Kiss FM,"  
 o/WQSR 40 miles away 95

0157 WRDU 106.1 NC Wilson, "106-1 RDU, the  
 Triangle's original rock  
 Station" 222

0159 WMNA 106.3 VA Gretna, ID 184  
 0200 WSFL 106.5 NC New Bern, ID, o/WWMX 40  
 miles away 261

0204 WMIT 106.9 NC Black Mountain, "106.9 The  
 Light," ID 363

0209 WCJZ 107.5 VA Charlottesville, "Distinctively  
 different smooth jazz 107.5"  
 101

0220 WJJX 107.1 VA Lynchburg, "The New 107.1,  
 Joy FM" 153

0633 WKCY 104.3 VA Harrisonburg, ID, o/WSMJ  
 48 miles away 122

0650 WKBC 97.3 NC North Wilkesboro, Hickory  
 ads 298

0829 WQCD 101.9 NY New York, "Smooth Jazz  
 CD-101.9," o/WLIF 47 miles  
 Away 206

0832 WNEW 102.7 NY New York, Long Island City  
 ads 206

0837 WFRB 105.3 MD Frostburg, ID 124  
 0856 WLTJ 92.9 PA Pittsburgh, ID 201

0900 WXLK 92.3 VA Roanoke, Roanoke ads,  
 o/WERQ 39 miles away 20  
 207

0915 WQZS 93.3 PA Meyersdale, Somerset  
 County announcements  
 138

0919 WFBC 93.7 SC Greenville, "B-93.7" 404

0922 WWSW 94.5 PA Pittsburgh, "3WS" 199

0927 WBHB 96.1 VA Bridgewater, Harrisonburg  
 ads 107

0939 WLKH 97.7 PA Somerset, "K-Love" 143

0951 WSLQ 99.1 VA Roanoke, "Q99," o/WLZL 20  
 miles away 208

9/9 Tr

0520 WSRV 92.3 VA Deltaville, "92.3 & 107.9 The  
 Tide," o/WERQ 39 miles  
 away 95

0534 WJCD 107.7 VA Windsor, "Hampton Roads'  
 new Lite FM," o/WTOP 50  
 miles away 50

0552 WRSF 105.7 NC Columbia, "Dixie 105.7"  
 o/WXYV 41 miles away 206

0742 WBEY 97.9 MD Crisfield, "Bay Country  
 97.9," o/WIYY 39 miles  
 away 83

0803 WVES 99.3 VA Accomac, ID 101

0820 WNCL 101.3 DE Dover, Delmarva ads 78

0842 WKHW 106.5 MD Pocomoke City, "Sam  
 106.5," o/WWMX 40 miles  
 away 91

9/10 Tr

0713 WFMZ 104.9 NC Hertford, "Classic Hits  
 104.9" 189

0725 WERX 102.5 NC Columbia, "102.5 The  
 Shark" 202

0739 WXGM 99.1 VA Gloucester, ID, o/WLZL 20  
 miles away) 99

9/13 Tr

0117 WHITE 101.9 VA Ruckersville, "Hot 101.9,"  
 o/WLIF 47 miles away 93

0130 WTHZ 94.1 NC Lexington, "Hits 94," ID 302

0144 WUVA 92.7 VA Charlottesville, "92.7 Kiss  
 FM," o/WBZS 21 miles away  
 101

0156 WMQX 93.1 NC Winston-Salem, "Oldies 93,"  
 o/WPOC 35 miles away 240

0216 WKJS 105.7 VA Richmond, "Kiss FM 99.3 &  
 105.7" 126

0242 WXJN 105.9 DE Lewes, "105.9 Cat Country,"  
 o/WJZW 16 miles away 93

0300 WFXQ 99.9 VA Chase City, ID 161

0318 WRDX 94.7 DE Dover, "The River,"  
 o/WARW 14 miles away 78

0741 WTYD 107.9 VA West Point, "The Tide 92.3

and 107.9," o/WFSI 20 miles away 94  
 0753 WTQR 104.1 NC Winston-Salem, "104.1 WTQR," o/WWZZ 14 miles away 253  
 0803 WVBZ 100.3 NC High Point, "100.3 The Buzzard," o/WBIG 12 miles away 241  
 0918 WZKL 107.5 NC Winston-Salem, "107.5 KZL" 255

**Dan Oetting** – Elkton, MD

Harman-Kardon Citation-23 tuner w/FM amp, 2 FM yagis in attic, Andy Bolin phase box, on hill sloping NW

7/20 Tr

2205 WHOM 94.9 NH Mt. Washington, liner  
 2210 WLOB 96.3 ME Rumford, promos w/WLOB 1310 AM, in good, WOW!  
 2243 CBOF 90.7 ON Ottawa, FF  
 2359 WOSR 91.7 NY Middletown, WAMC multiple IDs

7/31 Tr

0925 WNBT 104.5 PA Wellsboro, calls, ads  
 1928 WXLV 90.3 PA Schneckville, calls

8/2 Es

1943 KTFW 92.1 TX Glen Rose, jingle  
 2000 WUWF 88.1 FL Pensacola, ID

8/16 Tr

2037 WKYE 96.5 PA Johnstown, rm, calls  
 2145 WUBZ 105.9 PA Phillipsburg, rp, "The Buzz"  
 2200 WDXD 105.9 PA Pittsburgh, rp, ID  
 2345 WTSS 102.5 NY Buffalo, r, PSA

8/17 Tr

0725 WTYL 91.7 PA Wyomissing, gr, "Word FM"  
 0758 WHFM 95.3 NY Southampton, rp, "BAB"  
 0830 WTRM 91.3 VA Winchester, calls, "Southern Gospel Radio"

8/26 Es

1627 WWRM 94.9 FL Tampa, rm, "Magic 94.9," ads  
 1628 unID 94.9 ?? ??, Spanish  
 1842 WAYJ 88.7 FL Ft. Myers, gr, "Way FM," FL references

8/28 Tr

0127 WZXQ 88.3 PA Chambersburg, gr, "Word FM"

9/5 Tr

2108 WORD 101.5 PA Pittsburgh, calls, g

9/7 Tr

0001 WSHR 91.9 NY Lake Ronkonkoma, ID, j  
 0025 CIMX 88.7 ON Windsor, rp, "89-X," ads  
 0046 WSLQ 99.1 VA Roanoke, rp, "Q-99," ads, John Tesh  
 0052 WZXQ 88.3 PA Chambersburg, gr, "Word FM"/WBYO  
 0100 WYPF 88.1 MD Frederick, ID, simulcasting a split second behind WYPR 88.1 Baltimore  
 0103 WKJY 98.3 NY Hempstead, rm, "K-Joy," Long Island mentions  
 0709 WRSN 93.9 NC Burlington, ads, "Sunny 93.9," rm  
 0735 WROV 96.3 VA Martinsville, op, "ROV Rock of Virginia," wx  
 0753 WSSL 100.5 SC Gray Court, k, ads, "Whistle 100"

0756 WJMH 102.1 NC Reidsville, ID, hiphop, wx  
 0805 WCHX 105.5 PA Lewistown, local nx  
 0810 NYC and CT in nice  
9/11 Tr  
 0100 WTLR 88.9 PA State College, WOEL off  
 1009 WZXQ 88.3 PA Chambersburg, "Word FM"  
 1012 CIMX 88.7 ON Windsor, "89-X," retro-alternative show  
 1014 WRRN 92.3 PA Warren, b  
 1015 WOWQ 102.1 PA DuBois, k  
 1031 WORD 101.5 PA Pittsburgh, g  
 1032 WBHV 103.1 PA State College, "Beaver 103"  
 1048 WMKX 105.5 PA Brookville, ID//100.5 "Mega Rock"  
 1049 unID 105.9 ?? ??, 2 rockers, assume western PA but one might be Mt. Pocono  
 1055 WEGW 107.5 WV Wheeling, ads, ID  
9/12 Tr  
 0045 WOJL 105.5 VA Louisa, r, "The new 105.5, Sam FM"  
 0050 WMKX 105.5 PA Brookville

My DX this year has been tougher due to nearby wireless Internet interference. I just finished burning 7 CDs worth of my FM DX catches from Elkton, MD, 1999 to 2004 and got jealous when I heard what I was getting last year...lol.

**William McGuire** – Cheverly, MD

DX-398

8/4 Tr

2058 WSCL 89.5 MD Salisbury, classical mx, ID  
 2302 WOSC 95.9 DE Bethany Beach, ID, "96 Rock"

8/5 Tr

1022 WMXB 103.7 VA Richmond, "B-103.7"

8/8 Tr

0608 WDAS 105.3 PA Philadelphia, ID

8/9 Tr

1223 WYPR 88.1 MD Baltimore, NPR promo, ID

8/13 Tr

2215 WZEB 101.7 DE Ocean View, "80's music on the B"  
 2226 WKHI 107.5 MD Fruitland, "70's show on 107.5 and 103.5"

8/14 Tr

2320 WGRQ 95.9 VA Colonial Beach, wx, ID, "Q-96"



**From the Editor**

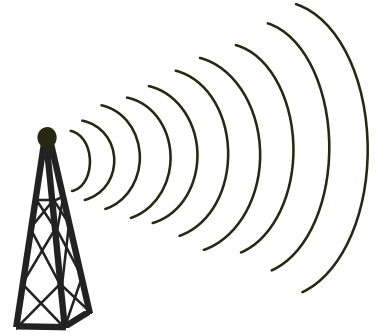
Thanks to all who reported this month. Keep your ears open for some fall tropo and meteor scatter and report what you hear to SFM!

Check out

**FMDXWeb.com**

for a special announcement!

# Northern FM DX



**Keith McGinnis**  
**6 Ritter Road, Hingham, MA 02043**  
**longwave@comcast.net 781-875-1944**

For Dxers in the following states: CT IA ID IL IN MA ME MI MN MT ND NE NH NJ NY OH OR PA RI SD VT WA WI WY and all of Canada. Please submit by the 10<sup>th</sup> of each month. If possible please submit in the formats shown Below.

**EDITORS NOTE: PLEASE NOTE THAT ANY TYPEWRITTEN OR HANDWRITTEN REPORTS MIGHT BE DELAYED TILL A LATER ISSUE AS TIME PERMITS. ALSO PLEASE KEEP REPORTS AS RECENT AS POSSIBLE (THE LAST 3 MONTHS SHOULD WORK FINE). THANK YOU.**

**Russ Edmunds Blue Bell, PA ( 360' ASL ) [15 mi NNW of Philadelphia]**  
**4008:45N; 75:16:04W, Grid FN20ID <wb2bjh@yahoo.com>**  
**FM: Yamaha T-80 & APS9B @15'**

August 11 MS

2007	WZGC	92.8	Atlanta	GA	RDS PI 974A screen capture. New, 669 mi.
------	------	------	---------	----	------------------------------------------

August 13 MS

1358	WQPR	88.7	Muscle Shoals	AL	RDS PI A87F screen capture; MS regular
1614	WUAW	88.3	Erwin	NC	ID - New, 380 mi.
1615	WLPT	88.3	Jesup	GA	RDS PI 734D; MS regular

August 13 apparent Es - maps supported it vs MS

2045	KWND	88.3	Springfield	MO	ID
------	------	------	-------------	----	----

August 24 Tr

1205	WRRN	92.3	Warren	PA	( presumed ) Warren County news items, oldies; tropo maps support; antenna aimed that way, nothing else within 300+ miles fits
------	------	------	--------	----	--------------------------------------------------------------------------------------------------------------------------------

August 26 Es

1623	WCMQ	92.3	Hialeah	FL	Spanish, Miami ads
1625	WPOZ	88.3	Union Park	FL	Contemp Christian "Positive Hits Z 88.3"
	UNID	88.3			TFC Network, can't access station listings on website. Parent station is WRAF-90.9; can't find anything listed elsewhere either.
1627	WAYJ	88.7	Fort Myers	FL	Local events, "Way FM"
1629	WAVW	92.7	Stuart	FL	Program promo, "Wave 92.7"
1632	WWKA	92.1	Orlando	FL	Country, Orlando weather, K-92
1634	WLTQ	92.1	Venice	FL	"Lite FM"; RDS PI: 73B2
1637	WHIJ	88.1	Ocala	FL	ID "88.1 and 91.5, The Joy FM" New,
1639	WSMR	89.1	Sarasota	FL	Sarasota event promo, "Life 89.1"
1642	WIKX	92.9	Port Charlotte	FL	Local ad, promo, "KIX"
1644	WKRO	93.1	Edgewater	FL	Country; "KRO COUNTRY"; New,
1649	WTLQ	97.7	Punta Rassa	FL	Spanish
1651	WPYO	95.3	Maitland	FL	Local traffic report; Maitland promo
1652	WMGE	94.9	Miami Beach	FL	Spanish, ID, promo
1657	WKEY	93.5	Key West	FL	Hurricane news, ID
1702	WAVK	97.7	Marathon	FL	Weather warnings; "Wave FM"
1704	WSCF	91.9	Vero Beach	FL	"The Station That Loves You – Your x Christian FM"; Contemp. Christian
1705	UNID	92.7			RDS PI: 3170, Decodes as non-existent
			KMRG.		
1706	WEOW	92.7	Key West	FL	Id; RDS PI: A6BA; New,
1713	WRMB	89.3	Boynton Beach	FL	Moody Bible Institute News; ID New,
1716	WJFP	91.1	Fort Pierce	FL	Hip Hop, "91 Jamz" ; New,
1716	WPSM	91.1	Fort Walton Beach	FL	Promo for groundbreaking of Billy Graham Library in Charlotte, NC; "Psalm 91.1"; New,



1720	MORE94	94.9	Nassau	BAH	(Presumed) Caribbean hip hop; accented English annncers; "Five O'Clock Road Block"
------	--------	------	--------	-----	------------------------------------------------------------------------------------

August 29 Tr

1903	WKHL	96.7	Stamford	CT	Oldies, "Kool 96.7", state-related PSA. Moderate tropo that way was good enough to
------	------	------	----------	----	------------------------------------------------------------------------------------

land this one for the first time.

2003	WRCH	100.5	New Britain	CT	MOR-type music, ID
------	------	-------	-------------	----	--------------------

August 30 Tr

1845	WIUV	91.3	Castleton	VT	RDS: PI 6BE5; new 262 mi; new grid also.
------	------	------	-----------	----	------------------------------------------

September 5 Es

1544	WFFN	95.3	Coaling	AL	Ad for Tuscaloosa Toyota
1546	WERH	92.1	Hamilton	AL	CIRock, Deep-South accents – probably this.

**Ralph Strobel - 106 E. Davidson St. - Muncie, IN 47303**

**Equipment: McIntosh MR-78 FM Tuner with two CM Stereo Probe 9 antennas and rotors at 38 and 32 feet above ground separated by 23 feet with the use of Bolin Phase Box and RDS. @= new. Numbers at end indicate mileage.**

May 26 Es

1800	WMED	89.7	Calais	ME	ME ID's 982
1809	@WFNK	107.5	Lewiston	ME	op, "Frank FM" 823
1825	WHCF	88.5	Bangor	ME	PSA 904

May 31 Es

1500	XHCCQ	91.5	Cancun QR	SS, ID	1319
------	-------	------	-----------	--------	------

June 15 Es

2340	K201EV	88.1	Guymon	OK	KHYM 103.9 ID 904
------	--------	------	--------	----	-------------------

June 18 Ms

0118	CHMSt	97.7	Bancroft	ON	"...the point show on the moose..." 510
------	-------	------	----------	----	-----------------------------------------

June 18 Es

1050	KMOR	92.9	Scottsburg	NE	op 960
1054	KQSW	96.5	Rock Springs	WY	ads 1249
1100	KCWC	88.1	Riverton	WY	calls 1204
1100	KCSP	90.3	Casper	WY	g, "Pilgrim" 1099
1108	KMLD	94.5	Casper,	WY	r, "Melody 94.5" 1099
1115	@KTRS	104.7	Casper	WY	r, "Kiss-FM" 1099
1120	KQLT	103.7	Casper	WY	wx, ads, "Country-103" 1099
1129	KTAK	93.9	Riverton	WY	r, 1204
1158	@K203BI	88.5	Worland/Cody	WY	KEMC MT/WY ID's 1187 (See Note #1)
1208	KKLX	96.1	Worland	WY	r 1187
1213	KYTI	93.7	Sheridan	WY	k 1145
1220	KLGT	92.9	Buffalo	WY	k 1127

June 21 Es

1942	KBAT	93.3	Midland	TX	ads 1090
1944	KMCM	96.9	Odessa	TX	ads. o, "97-Gold" 1110
1048	@KOLI	94.9	Electra	TX	k classics 858
1956	KGEE	99.9	Monahans	TX	g, "Joy 99.9" 1146
2000	@KAGT	90.5	Abilene	TX	g 961
2000	KFLB	90.5	Odessa	TX	g 1110
2012	KFZX	102.1	Gardebdake,	TX	r 1100
2035	KGZ	88.1	Abilene		
TX	g	961			
2038	KCSE	96.5	Sterling City	TX	r 1036
2050	KMQX	88.	Weatherford	TX	o, mono 859
2113	@KFXT	90.7	Sulphur	OK	"Gospel-91," mono 747

July 03 Tr

1600 @WJCZ 91.3 Milford IL g, o/WWHI phased 125

July 23 Tr

1822 @WQOX 88.5 Memphis TN rj 432  
1900 @WKNQ 90.7 Dyersburg TN t mono 359

July 24 Tr

0223 WZZK 104.7 Birmingham AL k 467  
0405 @WMXN 101.7 Stevenson, AL op 368  
2000 @KYRX 97.3 Marble Hill MO o. o/WMEE phased 315  
2022 @KLUE 103.5 Poplar Bluff MO o, "Clue-103.5" 360

July 25 Tr

0600 @WZUS 100.9 Macon-Decatur IL k, "US-101" 190  
(See Note #2)

July 31 Es

1159 KTXT 88.1 Lubbock TX p 1018  
1222 KLEY 94.1 Floresville TX o 1054  
1224 KAJA 97.3 San Antonio TX ads, 1050  
1235 KQXT 101.9 San Antonio TX r 1050  
1300 KAYK 88.5 Victoria TX g 1028  
1950 KTXT 88.1 Lubbock TX p 1018  
2000 @KBAH 90.5 Plainview-Lubbock TX g 990  
2015 KWTS 91.1 Canyon TX r 974  
2022 KGNZ 88.1 Abilene TX g 961  
2030 @KDKR 91.3 Decatur TX g, o/WWHI phased 829 (This is station #801 from the Educational Band)  
2100 KPBB 88.5 Brownfield TX g, SS 1053  
2109 KECO 96.5 Elk City OK k 834  
2130 KAMU 90.9 College Station TX PSA 905

August 1 Es

1600 KMML 96.9 Amarillo TX k 962

August 2 Es

1950 KUT 90.5 Austin TX PSA 978

August 5 Ms

2300 KOSN 107.5 Ketchum OK c 586 "...This is the Oklahoma Public Radio Network 107.5 KOSN Ketchum-Tulsa and 91.7 KOSU Stillwater, Oklahoma..."

August 22 Es

1800 KFRQ 94.5 Harlingen TX r 1201

Note #1 - I can only suspect this xltr was from Worland or Cody WY. There are many KEMC xltrs on 88.5 in MT WY and elsewhere. At the time, 96.1 Worland was blasting in, so I will count this station once and that is all.

Note #2 - I wrote WZUS to ask if their tower had been moved from Pana, IL to another location. I received a reply from Mike Topoll, General Manager who said, "When we purchased the station the antenna was moved from Pana to Elwin, IL. Therefore, you can count it as a new station."

This summer was "pathetic" for Es, tr, etc. I haven't seen such a non Es year in the 33 years I've been DXing from Muncie, IN!

**Ed Barboni - Norristown, PA  
Equipment - Car: Pioneer DEH-9500, Home: Sansui RZ9500**

July 12 Car

1833 WWFM 89.1 Trenton NJ Caught ID  
1840 WSJI 89.5 Cherry Hill NJ Poor w/ID

### July 19 Car

1940 Either WNJS Berlin, NJ or WNJT (UNID) 88.1 Trenton, NJ "New Jersey Network News"

### July 27 Home

0937	WGLS	89.7	Glassboro	NJ	Rowan University
0952	WSCL	89.5	Salisbury	MD	NPR
1001	WVLT	92.1	Vineland	NJ	Oldies

### Aug 13 Home

1956	WWMX	106.5	Baltimore	MD	ID as 'Mix Music'
2265	WHFS	105.7	Baltimore	MD	90's rock 'legendary rock'
2321	WQHQ	104.7	Salisbury	MD	Q105, classic rock
2336	WSJO	104.9	Egg Harbor City	NJ	'So Jo 104.9'
2358	WXCX	103.7	Havre de Grace	MD	w/Country Mx

### Sep 1 Car

1855	WKXW	101.5	Trenton,	NJ	RDS showed '97.3 WIXM' - Sister station of WKXW
1905	WMGS	92.9	Wilkes Barre,	PA	Classic Rock
1911	WDSO	92.9	Smyrna/Dover,	DE	Country Mx, hrd under WMGS

I can't say I really have any real DX, just a few new 'non-locals'. I figured that I'd report them anyway since they are new to me, with the exception of WDSO. I'm working on a improving the setup here, since I've gone from a home where I had decent elevation along with two stacked FM yagis, to a home which is below the average terrain, with only a small whip antenna on the roof.

---

## **Morris Sorensen DXing from Riding Mountain National Park MB, Grundig YB-400 with whip Times are CDT**

Just back fom a long weekend at Riding Mountain National Park in western MB. Main purpose was nature and landscape photography but managed some FM DXing as well. Brandon stations were strong. Most of the higher powered Winnipeg stations were heard but could be nulled.

DX is different up on the Manitoba escarpment with tropo fading in and out all day, bringing in different stations, instead of just morning and late evening as I usually get in Winnipeg.

Here are some of my more interesting logings by tropo or tropo enhancement.

### September 3

1140	CILG	100.7	Moose Jaw	SK	good "Country 100.7"
1925	CKSB-1	92.9	Ste. Rose du Lac	MB	good SRC French
1930	CBKF-4	91.3	Bellegarde	SK	good SRC French
1941	CFGW	94.1	Yorkton	SK	good "The Fox" country
2130	KCAD	99.1	Dickinson	ND	fair with western ND wx. update
2140	KGWB	106.9	Wahpeton	ND	fair with oldies

### September 4

0900	KYTZ	106.7	Walhalla	ND	good legal ID
1133	KYNU	98.3	Carrington	ND	good "Big Dog Country"
1339	KMPR	88.9	Minot	ND	good with NPR
1840	CHSN	102.3	Estevan	SK	good with "Happy Centennial SK from Sun 102.3 CHSN"
2000	KBTO	101.9	Bottineau	ND	good with "Sunny101.9 KBTO Bottineau"
2002	CJVR-1	100.3	Dafoe	SK	good with "Broadcast News" then local news with mentions of Melfort, Carrot River and Northern SK and ID as FM Country CJVR
2240	CFUF	104.9	Regina	SK	good with clustered Regina ads
2312	CBK	96.9	Regina	SK	good with clustered Regina ads

### September 5

0915	CKSB-1	88.9	Regina	SK	good with La Chaine Culturelle
------	--------	------	--------	----	--------------------------------

## Keith McGinnis Hingham MA

Equipment: Modified Yamaha T-85 with APS 9B antenna at 35 ft AGL , Bolin Phase Box and another APS 9B as a phase antenna at 12 ft AGL. Conrad RDS Manger and RDS Decoder 3.0 Software. Total Recorder PE. All times are EDT.

New listings only in this report

### June 27

0756	WGTY	107.7	Gettysburg	PA	Country // to what Jeff Lehmann was hearing
1019	WBSX	97.9	Hazleton	PA	mod rock 97.9X also mentions of Scranton x and new antenna

### June 27 Es

1920	WKSG	89.5	Cedar Creek	FL	cont xtan mentions of Ocala
1454	WKEA	98.3	Scottsboro	AL	country local ads and Scottsboro mentions

### June 30 Es

1459	WTRB	98.3	Ashland	AL	AC	ID
------	------	------	---------	----	----	----

### July 4 Gw & Tr

0030	WFHL	88.1	New Bedford	MA	Portugese // to web stream with WMBR off
0047	WCHC	88.1	Worcester	MA	adult alt Nice ID with WMBR off
0050	WNCH	88.1	Norwich	VT	classical // to web stream with WMBR off
0100	WMNR	88.1	Monroe	CT	classical // to web stream with WMBR off

### July 5 Tr

0900	WVHV	102.1	Virginia Beach	VA	Urban	local ads in to full legal ID
------	------	-------	----------------	----	-------	-------------------------------

### July 18 Es

0500	WSFM	98.3	Oak Island	NC	mod rock RDS
1512	WHBX	96.1	Tallahassee	FL	urban 96.1 Jamz
1617	WCNO	89.1	Palm City	FL	relig WCNO ID mention of prgr called x "southern Style"
1621	WQCS	88.9	Ft Pierce	FL	NPR Vero Beach mentions NPR
1704	WGNX	99.7	Vero Beach	FL	80's Hits 2 80's songs....incorrect PI Code
1827	WFSW	89.1	Panama City	FL	NPR Panama City ment & Amer Pub Media
1830	WPIO	89.3	Titusville	FL	relig Worldvisionradio.org
1833	WKZJ	92.7	Eufaula	AL	urban K92.7 mentions of Tony Woods
1845	WABB	97.5	Mobile	AL	Faulkner State CC ad & local Mitsubishi ad
1847	WRIX	103.1	Honea Path	SC	talk Sports talk about SC college teams
1913	WJGO(t)	102.9	Tice	FL	rhythm old
1917	WACR	105.3	Aberdeen	MS	r&b blues music
1925	WQPW	95.7	Valdosta	GA	AC The Mix 95.7
1931	Love 97	97.5	Nassau	Bahamas	AC Bahama Journal mentions along with other Bahama mentions
2004	WZSP(t)	105.3	Nocatee	FL	SS
2006	WMBX	102.3	Jensen Beach	FL	ac/mix RDS ID
2104	KVNE	89.5	Tyler	TX	Cont Xtan // to webstream
2105	KEWL	95.1	New Boston	TX	oldies Kool 95.1

### July 20 Tr

1739	CKKL	93.9	Ottawa	ON	AC	Ottawa Ads
1825	CIMF	94.9	Hull	PQ	FF soft AC	FF

### July 26 Tr

0935	WTOS	105.1	Skowhegan	ME	Rock	ID completely over Providence
------	------	-------	-----------	----	------	-------------------------------

### July 29 Es

1720	WBHC	92.1	Hampton	SC	AC	Cruise 92
1732	WKPB	89.5	Henderson	KY	NPR	KY govt and other KY mentions
1754	WKZS	103.1	Covington	IN	c/w	Covington and Warren Cnty mentions
1812	WGFB	103.1	Rockton	IL		Today's Lite Rock B103 // to audio clip on website
1818	WNMU	90.1	Marquette	MI	NPR	Marquette mentions

1824	KBEA	99.7	Muscantine	IA	CHR	District of Rock Island mentioned
1844	WTCM	103.5	Traverse City	MI		ads for Greath Lakes Laser & Merritt Speedway
1936	WBJI	98.3	Blackduck	MN	c/w	Bemidji mentions
2012	KFBN	88.7	Fargo	ND	relig	// to web stream

August 1 Tr

2232	WBXB	100.1	Edenton	NC	gospel	Gospel
2253	WPKM	88.7	Montauk	NY	variety	// WPKN

August 2 Es

1739	WMLV	93.5	Butler	AL	classic hits	Sam 93.5
1743	WYYW	95.1	Marion	MS	Country	Classic Country
1744	WPRF	94.9	Reserve	LA	relig	Praise FM
1745	WKBU	105.3	Kenner	LA	cl rock	Incorrect RDS 71A7....Bayou 105.3
1802	WJDQ	101.3	Meridian	MS	CHR	Q101
1805	WMXC	99.9	Mobile	AL	soft ac	Lite Mix with RDS 76B0
1809	WXHB	96.5	Richton	MS	gospel	
1810	KBZZ	96.7	Morgan City	LA	soft ac	Soft rock for the Triparish area
1907	WFKZ	103.1	Plantation Key	FL	classic hits	Sun 103.1

August 3 Es

1059	WGPU	90.1	Fort Myers	FL	NPR	WGPU mentions
1114	WJSJ	105.3	Fernandina Beach	FL	jazz	local ads and Jacksonville mentions
2230	WJBX	99.3	Ft Myers Beach	FL	rock	Ft Myers mentions New Rock 99X

August 5 Tr

1753	WNHW	93.3	Belmont	NH	cw	with WSNE off the air
1754	WPDM	101.5	Potsdam	NY	AC	with WPDM ID (//) w/ WWBB off the air

August 7 Tr

2254	WEBE	107.9	Westport	CT	AC	"WEBE 108" with WXKS Phased
2304	WLTW	106.7	New York	NY	Lite AC	"lite Fm 106.7" with WMJX phased
2326	WVLT	92.1	Vineland	NJ	oldies	with WLNG and WOMR phased
2328	WOBM	92.7	Tom's River	NJ	"OBM" ID into Drift Away with IBOC / WMVY phased	
2345	WCHR	105.7	Mannahawkin	NJ	cl rock	"The Hawk" ID with WROR phased

August 8 Tr

229	WBAZ	102.5	Bridgehampton	NY		ID into Crazy Little Thing Called Love with WCRB phased
325	WSHR	91.9	Lake Ronkonhoma	NY		WSHR ID with Jazz with WUMB phased

August 26 Es

1735	More 94	94.9	Nassau	Bahamas		Island accented EE
1755	Island	102.9	Nassau	Bahamas		Island accented EE "Island 102.9"
1800	WAVV	101.1	Marco	FL		easy list Fort Myer & Cape Coral mentions
1807	Power	104.5	Nassau	Bahamas		News and Talk about Bahamas

August 27 Es

1815	KWNO	99.3	Rushford	MN	country	Winona mentions
1818	KLCX	107.7	St Charles	MN	Cl Hits	Classics Hits 107.7
1820	KBGY	107.5	Fairbault	MN	SS	mentions of MN
1822	WCKC	107.1	Cadillac	MI	cl rock	The Bear
1822	WFMP	107.1	Coon Rapids	MN	talk	Becker Furniture and other local ads
1834	WKQH	104.9	Marathon	WI	mod rock	mod rock and WI mentions
1843	KBEK	95.5	Mora	MN	Adult Stan	"Fisherman Radio"
1844	WIFC	95.5	Wausau	WI	CHR	RDS

September 6 Tr

2243	WMCM	103.3	Rockland	ME		Real Country 103.3 with WODS phased
2246	WQSS	102.5	Camden	ME		"102.5 the Peak" into CCR w/ WCRB phased
2305	WKSQ	94.5	Ellsworth	ME	ac	Kiss 94.5 with WJMN phased
2319	WEZQ	92.9	Bangor	ME	lite ac	Delilah with WBOS partially phased
2342	WJCX (t)	99.5	Pittsfield	MA	relig	possible relig with WKLB phased

September 7 Tr

2239 CKBW-2 93.1 Shelburne NS mix interesting mix of music  
 2306 CBAF-7 104.7 Digby NS FF with WKPE phased

Acquired the Bolin Phase Box in early August. All I can say is "wow". I'm now able to phase IBOC hash out & hear stations with just weak enhancement. Also able to hear tropo scatter and Meteor Scatter on those stations again. Best of all was how surprised I was to be able to phase locals (15-20 miles) during strong openings.

**Mike Bugaj – 69 Sherman Road – Enfield, CT 06082**  
**Sony ST-5130 IF modified, APS-13 @ 30'. RDS Manager w/software**

New are underlined.

September 6, Tr  
 2100 CBAF NB Fredricton, French (480)  
 2107 CBZ 101.5 NB Fredricton, classical  
 2152 WSLC 94.9 VA Roanoke, Star Country (500)  
 2321 WDVE 102.5 PA Pittsburgh, ID f/b Rush (480)

September 10 Tr  
 1945 WKPQ 105.3 NY Hornell Q-105 (255)  
 1952 WEBK 105.3 VT Killington  
 (my local xltr off the air)

September 11 Es  
 1915 WEMX 94.1 LA Kentwood  
 1920 KTSU 90.9 TX Houston, ID

2130 Unid-96.9 Spanish

September 17 Tr  
 1749 WBEE 92.5 NY Rochester, calls (260)  
 1755 CKTF 104.1 QC Gastineau, rock/dance mx(270)  
 1758 CFQR 92.5 QC Montreal (240)  
 1820 WXTU 92.5 PA calls, country (200)

Both WWYZ 92.5 and WPHH 104.1 were knocked off the air because of lightning. After WPHH came back on the air, WWYZ remained off but its digital xmtrs on 92.3 and 92.7 came back on. Really weird being able to DX on 92.5 while the sidebands spewed IBOC on the adjacents. Really weird.

**98.7: General Manager Ray Nordstrand dies, 73**

Special to the Daily Southtown

In his many years as general manager at the classical music station WFMT-FM (98.7), Ray was never shy when it came to making a deal.

Take, for instance, the bargain he struck with the British Broadcasting Corp., which was hesitant to give such a small station full access to its programs. But Mr. Nordstrand got his way when he offered to pay whatever New Zealand was paying since that country had the same subscription size as WFMT

Mr Nordstrand had a mind for business and a passion for music that he put to good use at a classical music station. It was an odd combination that worked beyond anyone's wildest dreams. His formidable talents carried over into the folk-based program "Midnight Special" and Chicago magazine, which Mr Nordstrand built into a highly successful source of income for the radio station.

Mr. Nordstrand, 73, died Saturday morning at Northwestern Memorial Hospital.

He had suffered several strokes in recent years. After triple bypass surgery in the mid '90s, he was confined to a wheelchair and his health slowly deteriorated.

Mr. Nordstrand began as an announcer and worked his way to general manager and president at WFMT-FM, where he teamed with program director Norm Pellegrini to take the station into the upper echelon of

broadcasting. Even after his retirement, he remained an icon at the station; successive station managers continued to seek his advice.

"Ray is a seminal figure not only at WFMT but within the entire radio industry" said Steve Robinson, senior vice president of radio for WFMT's parent company, Window to the World Communications. "He had a single-minded dedication to the station which has been an inspiration to me and many others."

Under Mr Nordstrand's guidance, WFMT became the pinnacle of classical music broadcasting in the country. The station was more than a jukebox for classical music. Technically, he maintained state-of-the-art standards and was a pioneer in stereo and FM broadcasting and the birth of the WFMT Radio Network; created to syndicate recordings of orchestras from around the world.

But according to author and oral historian Studs Terkel, Mr Nordstrand also brought a working-class attitude and ethic to his ambitious plans for the radio station.

"Ray had a hunger for something and a missionary zeal to succeed," said Terkel, who also worked for decades at WFMT. "He felt that WFMT wasn't Just for the elite, it was for everyone"

(Thanks to Ken Onyschuk for this item from the 8/26 *Daily Southern*, Chicago)

**WTFDA EMAIL REFLECTORS**

**Enhance your DXing experience! Entertaining and informational.**

*For WTFDA members and invited guests*

<b>The WTFDA TV/FM list</b> ...send an email to <a href="mailto:tvfmdx-subscribe@wtfda.info">tvfmdx-subscribe@wtfda.info</a>	175 subs
<b>The WTFDA DXalert list</b> ...send an email to <a href="mailto:WTFDA2-subscribe@topica.com">WTFDA2-subscribe@topica.com</a>	34subs
<b>The WTFDA AM DX list</b> ...send to <a href="mailto:WTFDA-AM-subscribe@topica.com">WTFDA-AM-subscribe@topica.com</a>	70 subs

DX Alerts contain real time, concise alerts of E skip and widespread tropo with no discussion.

# MADEIRA & PORTUGAL, AUG 17-28, 2005

By Jim Renfrew, Byron NY

Married in March, Robin and I finally got our honeymoon vacation in August, which included a week on Maderia, a Portuguese island that lies about 300 kilometers west of Morocco, and three days in Portugal, about 30 kilometers from Lisbon. Robin has been to Portugal on a number of other occasions, but this was her first time to Madeira. She has developed some fair Portuguese language skills over the years, while I did better with English and Spanish. However, I don't recall meeting a single person who could not communicate in English.



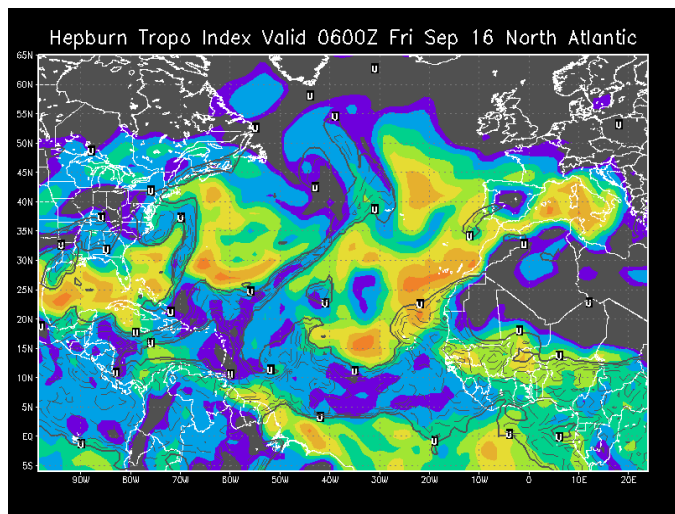
MapQuest.com, Inc.; © 2005 AND Products B.V.

Madeira has been a part of Portugal since the 1420's. Christopher Columbus is known to have spent time on the island. It has been best known for the excellent wine produced there. With the construction of a new airport the island is more accessible than ever before. Maderia also includes Porto Santo, a smaller island to the north, and two groups of uninhabited islands. One resident explained to me that about 80% of the population is Madeiran by birth, and most of the rest are children of Madeirans who have decided to return. The island is 57 kilometers long and 22 kilometers wide. Funchal, the capital, has a population of about 100,000 people, and the total population is over 250,000. The weather is very pleasant. The currency in use is the Euro, and a gallon of diesel fuel cost 1 euro/liter, equivalent to about \$5.00/gallon in US currency.



Driving, by the way, is an acquired skill on Maderia, with many one-lane wide roads for two-way traffic! Switch-backs are constant. Along one road on the north coast Robin happened to be driving on the narrow road hugging the steep cliff when a large tour bus came around a blind curve (requiring her to back up), and then a short distance later it took three tries (with more back-ups) to get through a narrow tunnel. Remarkably, I saw little evidence of side scrapes on any of the local cars.

This DX report is still incomplete, in that there are still quite a few gaps in what follows. The distance to Portugal from Madeira is about 600 miles / 1000 kilometers, and the Canary Islands are about 340 miles/450 kilometers.



William Hepburn's "VHF/UHF Tropospheric Ducting" map (see sample above) at <http://home.cogeco.ca/~dxinfo/tropo.html> routinely shows bright red off the coast of West Africa, so these distances may not be all that remarkable. It also helps that once the listener gets past the local stations on Madeira there's nothing else until the Iberian Peninsula or the Canary Islands are reached. Morocco, though closer, was not easy to hear. A lot of the stations noted were from the highest elevations on the island, and some were from sea level. There is a high ridge of mountains running east/west, and reception is favored north or south accordingly. One big mistake I made was not to bring any kind of FM frequency guide. I had actually planned to focus on Medium Wave, but there just wasn't much to hear that I hadn't already heard from previous DXpeditions to Newfoundland. Also, we spent a lot of time in the car, so an FM radio with RDS made it easy to DX throughout each day while taking in the sights. I noted quite a few Canary Islands stations without bothering to ID them, only to discover that there are a HUGE number of stations from those islands, so sitting here back at home it is impossible to determine which ones some of them were were!



**Receiver Notes:** The Sony 2010, while nice to use with tuning steps of 0.05 MHz in a 0.10 environment, in the presence of strong adjacent channel will sometimes give the impression that a given signal is as much as .15 MHz off channel. The rental vehicle in Portugal was almost always 0.10 MHz off true channel.

**Logging notes:** The most complete list of European FM stations I have found is located at this web site: [http://www.ukwtv.de/fmlist/index\\_neu.html](http://www.ukwtv.de/fmlist/index_neu.html). There are additional lists from official, media, tourist and DX sources, but there is much that is missing, and a lot that is contradictory. I invite your corrections and additions!

**Medium Wave Notes:** Although I did not give serious attention to Medium Wave on Madeira (assisted by my suitcase with the loop antenna inside being lost for two days after our arrival), here are some of the things I noted: The car radios were terrible. For example, in Lisbon receptions were limited day and night

to 594, 666, 963, 1035. In Madeira, using the Sony and loop, the band was awash with Iberian stations, some of which were probably Canary Islands or Azores. The only African signals noted at night were Morocco on 711 and 1044, Algeria 891 (terrible quality) and Guinea on 1385.9 (very strong). Madeira stations were noted on 531, 603, and 1530. The 1530 station is PEF, which also broadcasts on 92.0 FM.



**Madeira, AUG 18-25 (primarily Santo da Serra).**

**Receiver: Puegot 307 rental car radio with RDS and Sony 2010 with whip antenna.**

Ch.	ID	CTRY	CITY/TOWN	kW	RDS Text/notes	Date/Time
87.7	RNE 2	CNR	Temejereque TVN	7000	"RNE CLAS"	AUG 19 1659
88.0	Sintonia	CNR	La Oliva TVN	2000	"SINTONIA"	AUG 19 1659
88.3	R. Isla	CNR	Santa Cruz TNF	6000	"R. ISLA 88.1 88.3 99.2"	AUG 21 1508
88.5	Frontera	E	Jerez		"FRONTERA"	AUG 20 1351
88.6	R. Cinco	CNR	La Isleta GC	20000		AUG 19 1954
88.8	R.Jornal	MDR	Funchal	1000	"RJM 88.8"	AUG 21 1508
89.0		CNR			"radio"	AUG 21 1659
89.0	R.Vina Mar	CNR	Icod de Los Vinos TNF	2000		AUG 21 1945
89.3	Antena 3	MDR	Canico	500	"ANTENNA 3"	AUG 19 1100
89.4	Cuarenta	E	San Fernando AND	4200		AUG 20 1351
89.6	R.Palmeira	MDR				AUG 20 2207
89.6	RFM				San Miguel?	AUG 20 1358
89.7	SER	CNR	Arrecife Lanzarote GCL	400	"SER"	AUG 19 1711
89.8	Antena 3	MDR	Funchal-Monte	1000	"ANTENNA 3"	AUG 22 1042
90.0	RNE 3	CNR	Izana TFH	5000	"RNE 3"	AUG 21 1659
90.0	RTM(t)	MRC	Casablanca	10000		AUG 21 1528
90.3	R. El Dia	CNR	Santa Cruz TF		"EL DIA"	AUG 22 1049
90.3	Onda Cero	E	Jerez AND	6000		AUG 20 1358
90.3	Punto Radio	CNR	La Palma			AUG 19 1856
90.3	Antena 3					AUG 19 1230
90.4	R.Paris Lisboa	POR	Lisboa	5000		AUG 19 0710
90.6	MM	CNR	Montana de Guaza TNF		"MM RADIO"	AUG 22 1316
90.8	SER					AUG 20 1358
90.8	Antena 3	MDR	Pico do Facho	100	"ANTENNA 3"	AUG 19 1100
90.8	COPE					AUG 22 0020
90.8	Punto Radio	CNR	Santa Cruz			AUG 22 2323
91.1	RTV	CNR				AUG 21 0948
91.3	Antena 3	MDR	Santa Cruz-Gaula	1000	"ANTENNA 3"	AUG 19 0710
91.4	Onda Cero	E	Rota AND	2000		AUG 20 1358
91.4	Canarias Radio	CNR				AUG 24 0002
91.5	Power FM (t)	CNR	Norte La Isla LZR			AUG 24 0201
91.6	R.Praia	MDR	Porto Santo	500		AUG 20 1109
91.6	Cadena Dial	CNR	Los Realejos TF	2000	"CAD DIAL"	AUG 22 1316
91.7					German	AUG 20 2245
91.8	Cadena Cien	CNR	Las Palmas GC	1000	"CAD CIEN"	AUG 22 1049
92.0	Nova Antena	POR	Loures	2000	"RNA"	AUG 20 1417
92.0	PEF	MDR	Funchal	2000	"PEF FM"	AUG 19 1100
92.4	Cadena Cien	E	Cadiz		"CAD-100"	AUG 20 1417
92.5	RNE	CNR	La Frontera ELH	2000		AUG 22 2305
92.8	La Radio en Color	CNR	La Orotava TF		"LA RADIO EN COLOR"	AUG 20 1417
93.0	RKM	CNR	Las Palmas GC		"RKM"	AUG 22 2232
93.1					"RAL"	AUG 22 2232
93.1	Antena 1	MDR	Pico do Facho	100	"ANTENNA 1"	AUG 24 0758
93.2	Punto Radio	CTA	Punto Radio			AUG 23 2335
93.7	R. Marca	CNR	Las Palmas GC	4000		AUG 22 0935
93.7	Antena 3					AUG 19 0710
94.1	Antena 3	MDR	Pico do Areeiro	10000	"ANTENNA 3"	AUG 19 0710
94.5	Antena 2	POR	Lisboa			AUG 19 0710
94.7	RNE 5 (t)	E	Lorca MUR			AUG 21 2345
94.8	Antena 3	MDR	Cabo Girao	3000	"ANTENNA 3"	AUG 19 1100
94.9	RNE 2	CNR	Arrecife-Mt Mina LZR	4000		AUG 19 1930
95.1	RTMI(t)	MRC	Meknes-Zerhoun	10000		AUG 22 0944
95.4	R.Gente	CNR	La Matanza de A. TNF		"ICOD RADIO GENTE 103.4 LAGUNA"	AUG 20 1417
95.5	Antena 1	MDR	Pico doAreeiro	10000	"ANTENNA 1"	AUG 19 1100



95.7	Antena 1	POR	Lisboa	100000		AUG 20 1645
96.1	R.Palmeira	MDR	Santa Cruz	500		AUG 20 2100
96.2	RNE 2	CNR	Izana TNF	5000	"RNE CLAS"	AUG 20 1640
96.5	Antena 3	MDR	Porto Santo	10000	"ANTENNA 3"	AUG 19 1100
96.5	R.Taoro	CNR	La Orotara		"R.TAORO"	AUG 22 1316
96.7	Antena 1	MDR	Cabo Girao	3000	"ANTENNA 1"	AUG 21 1528
96.8	R.Insular	CNR	Arrecife Lanzarote GCL	5000		AUG 20 2224
97.0	RNE 2	CNR	Valverde ELH	2000	"RNE CLAS"	AUG 20 1640
97.1	COPE Tenerife	CNR	La Laguna TNF	2000	"COPE FM TENERIFE"	AUG 20 1645
97.4	R.Comercial	POR	Monsanto	100000	"R.COMERCIAL"	AUG 20 1119
97.5	Medi-Un	MRC	Rabat	20000	"MEDI 1"	AUG 21 1532
97.8	R.Marca	CNR	Play de Las Americas TNF		"R. MARCA"	AUG 19 1100
97.9	R.Milenium	CNR	Orotava TNF		"MILENIUM"	AUG 19 1100
98.0	Q FM	CNR	Antigua FVN	2000	English	AUG 20 2231
98.2	R. Cinco	CNR	La Frontera ELH	2000	"RNE 5"	AUG 19 1100
98.2	Holiday FM	CNR	Lanzarote		English	AUG 21 1538
98.4	RTM	MRC	Meknese Zerhoun	10000		AUG 20 2245
98.4	R.Zarco R.Sal					AUG 23 2309
98.5	Antena 1	MDR	Santa Cruz-Gaula	1000	"ANTENNA 1"	AUG 20 2239
98.8	R.Calheta	MDR	Pico do Arco	500	"R.CALHIETA"	AUG 21 1542
98.8					German	AUG 22 2304
99.0	Antena 2	MDR	Canico	500		AUG 19 0710
99.1	Cuarenta	CNR	Puerto La Cruz TNF	2000		AUG 19 1100
99.4	Antena 2	MDR	Cabo Ginao	3000	"ANTENNA 2"	AUG 19 1100
99.6	Medi-Un	MRC	Casablanca	8300		AUG 21 1543
99.8	SER	CNR	Orotava TNF	2000	"SER"	AUG 20 1645
99.9	UK Way FM	CNR	Femes LZR		English	AUG 19 1959
100.0	TSF	MDR	Funchal -Monte	2000	"NOTICIAS"	AUG 19 1100
100.1	La Pasion de Radio					AUG 23 2321
100.3	SER	CNR	Telde GC	2000		AUG 21 1600
100.5	Antena 1	MDR	Porto Santo	10000	"ANTENNA 1"	AUG 19 1100
100.7	R.Taoro	CNR	Orotava	2000	"R.TAORO"	AUG 21 1557
100.9	R.Maria					AUG 22 0038
101.0	R.Popular	MDR	Camara de Lobos	2000		AUG 19 1100
101.2	R.ECCA	CNR	Puerto del Rosario FVN			AUG 19 1100
101.4	Cadena Dial	CNR	Pozo de las Nieves GC	2000	"CAD-DIAL"	AUG 19 1100
101.6	Antena 1	MDR	Canico	500	"ANTENNA 1"	AUG 19 1100
101.9	Antena 1	MDR	Paul da Serra	1000	"ANTENNA 1"	AUG 21 1552
101.9	Antena 3	POR	Monchique?			AUG 22 0002
102.0	Punto Radio				"PUNTO" Badajoz?	AUG 19 1659
102.1	RNE 2	CNR	La Montameta TNF	10000	"RNE-CLASE"	AUG 19 1100
102.2	Punto R. Lanz.	CNR				AUG 19 1957
102.4	Antena 2	MDR	Funchal-Monte	400	"ANTENNA 2"	AUG 19 1100
102.5	R.Europa	CNR	Montana Blanca LZR	7500	German	AUG 22 0004
102.7	Onda Canaria	CNR	Galdur GC	2000		AUG 21 1607
102.8	RNE 3	CNR	Arrecife-Mt. Mina LZR	1000		AUG 19 1954
102.8	R.Cinco					AUG 24 0800
102.9	R.Portugues					AUG 19 1659
103.0	R.Maria	CNR	Santa Ursula TNF	400	"R.MARIA"	AUG 22 0007
103.3	Antena 2	MDR	Porto Santo	10000	"ANTENNA 2"	AUG 19 1100
103.4	Onda Cero	CNR	Arrecife Lanzarote GCL		"24 hrs de R.Lancelot"	AUG 21 1607
103.7	Megawelle	CNR	Orotava TNF	100	(or San Sebastian LGO)	AUG 19 1100
103.7	R.Maria					AUG 22 0007
104.0	Cuarenta					AUG 19 1119
104.2	R.Faycan	CNR	Telde GC	500		AUG 19 1119
104.3	Antena 1	MDR	Achadas da Cruz	1000	"ANTENNA 1"	AUG 20 1159
104.3	La Mega	CNR	Puerto La Cruz TNF	2000		AUG 19 1119
104.5	R.Tinajo	CNR	Tinajo LZR	2000	"R TINAJO 104.5 FM"	AUG 19 1646
104.6	Antena 1	MDR	Funchal-Monte	1000	"ANTENNA 1"	AUG 19 1119
104.6	R.Valleseco	CNR	Valleseco			AUG 21 1834
104.6	Medi 1(t)	MRC	Agadir	20000		AUG 24 0804
104.7	R.Ecca	CNR	Los Realejos TNF	4000		AUG 21 1008
104.8	R.Cinco	CNR	Temejereque FVN	1000	"RNE 5"	AUG 19 1119
104.9	RNE 3	CNR	Valverdedel Hiero ELH	2000		AUG 21 1619
105.0	Antena 3	MDR	Achadas da Cruz	1000	"ANTENNA 3"	AUG 19 1646
105.0	RNE	CNR				AUG 21 1000
105.1	R.Gigante	CNR	Los Silos TNF	500		AUG 21 1008
105.2	R.Arcipelago	CNR	Puerto del Rosario FVN			AUG 21 1842
105.3	Medi 1 (t)MRC		Marrakesh	12000	French	AUG 19 1119
105.5	Medi 1 (t)MRC		Meknes-Zerhoun	10000		AUG 24 0804
105.7	RNE 3	CNR	La Monaneta TNF	10000	Or Santa Cruz TF	AUG 19 1133
105.9	Canal 4	CNR	Santa Cruz			AUG 21 1632
106.3	Antena 2	MDR	Santa Cruz-Gaula	700	"ANTENNA 2"	AUG 19 1133
106.4	Onda Cero	CNR	Puntallano LPM		"ONDA CERO"	AUG 19 1133
106.6	Kiss	E	Huelva or Fuente al Saz		"KISS FM"	AUG 21 1659
106.8	RFM	POR	Montejunto	10000	"RFM"	AUG 20 1159
106.8	R.Clube	MDR	Funchal	400	"R.CLUBE"	AUG 19 1133
106.8	Onda Cero	CNR	Las Palmas GC	8000		AUG 19 2930

107.1	R.Mun.Tequise	CNR	Tequise LZR	150	"RMD"	AUG 19 2016
107.1	R.Cl Portugues	POR	Foia	10000		AUG 19 0710
107.4	Canal 4	CNR				AUG 21 1641
107.6	Onda Cero					AUG 19 1133
107.8	R.Aventura	CNR	Telde GC			AUG 21 1655
107.9	Antena 2					AUG 19 1655
107.9	RNE 2					AUG 19 1655
107.9	R. Realejos	CNR	Los Realejos	100	"R.REALEJOS NORTE"	AUG 22 1316

**Sinta, Portugal, AUG 25-28 (Astra Opel rental car routinely 0.1 MHz inaccurate, and Sony 2010)**

88.0	Occidente		Sintra	1000	"OCCIDENTE"	
88.4	Antena 1				"ANTENA 1"	
88.9	Antena 2		Lisboa/Banática		"ANTENA 2"	
89.3	Antena 2		Lousa	100000	"ANTENA 2"	
89.5	TSF		Lisboa	5000		
89.9	RFM		Arrabida	12000		
90.2	Renasenca		Montejunto	10000	or Guarda	
90.4	R. Paris		Lisboa	5000		
90.8	R.Comercial		Lousa	44000		
91.2	R. Sintra		Sintra	1000	"RC SINTRA"	
91.7	RFM		Lousa	56000		
92.0	Nova Antena		Loures	2000	"RNA"	
92.4	Mega FM		Lisboa	5000		
92.8	Horizonte FM		Loures	2000		
92.9	Antena 2		Portoalegre	10000		
93.2	RFM		Lisboa	50000		
93.5	R.Voz		Alenquer	500	"ALENQUER"	
93.7	R.Mais		Amadora	1500	"R. MAIS"	
93.8	Nova Europa		Torres Vedra	1000		
94.2	Talk FM					
94.4	Antena 2		Lisboa	100000		
95.0	R.Miramar		Oeiras	1500		
95.3	Tropical FM		Moita	1500	"TROPICAL FM"	
95.6	R. Sestais					
95.7	Antena 1		Lisboa/Monsanto		"ANTENA 1"	
96.0	Antena 2		Sintra/Janas	200	"ANTENA 2"	
96.4	R.Clube Portugues		Montejunto	10000	"RDP"	
96.6	Best FM		Lisboa	5000	"BEST FM"	
96.9	Antena 1		Sintra/Janas	200	"ANTENA 1"	
97.1	Vida FM		Arruda dos Vinhas	500		
97.4	R.Comercial		Monsanto/Lisboa	44000		
97.8	Radar		Lisboa	2000	"RADAR"	
98.1	R.Marginal		Cascais	3000	"MARGINAL"	
98.3	Antena 1		Lisboa/Montejunto	40000	"ANTENA 1"	
98.7	R.Baia		Seixal	1500		
98.7	R.Pontevedra		Pontevedra, SPAIN			
99.0	Energie FM					
99.3	Cidade FM					
99.5	Maior FM		Rio Maior	1000		
99.8	R.Comercial		Montejunto	10000		
100.3	Antena 3		Lisboa/Monsanto	100000	"ANTENA 3"	
100.5	R.Porto Algre		Porta Legra	2000		
100.8	Capital		Almada	2000	"CAPITAL"	
101.5	RDPAfrica		Lisbon area	5000	"AFRICA"	
101.9	Orbital		Loures	2000	"ORBITAL"	
102.2	Antena 3		Lousa	100000	"ANTENA 3"	
102.6	Oxigeneo		Oeiras	1500	"OXIGENEO"	
103.2	TSF		Bornes?	10000		
103.4	RR		Lisboa	50000	"RR"	
103.8	Antena 3		Sintra/Janas	200	"ANTENA 3"	
104.3	R.Clube Portugues		Lisboa	50000		
104.8	Eco FM		Alcochete			
105.2	Antena 3		Lisboa/Montejunto	40000	"ANTENA 3"	
105.6	RC Mafra	Mafra		1000	"RC MAFRA"	
105.8	RR		Arrabida	12000	"RR"	
106.0	R.Renasenca		Lousa	50000		
106.4	Oasis FM		Sobral de Monte Agraco	1000	"OASIS"	
106.8	TSF				106.7 Or 106.8?	
107.2	Cidade		Amadora	1500	"CIDADE"	
107.7	Nossa FM		Sintra	1000	"NOSSA FM"	



Jim Renfrew and Robin Dunnington at Pico do Areeiro, third highest peak on Madeira ... and a great DX spot! Jim Renfrew is a member of the World FM TV DX Association (WTFDA), National Radio Club (NRC), North American Short Wave Association (NASWA), Medium Wave Circle (MWC) and the Longwave Club of America (LWCA)

---

## “TOWER SITE 2006 CALENDAR” GOES ON SALE Fifth Year For One Of America’s Most Unusual Calendars

**CONTACT:** Scott Fybush, 585-442-5411 ([scott@fybush.com](mailto:scott@fybush.com))

ROCHESTER, N.Y. – One of North America’s most unusual wall calendars is back for a fifth year, with the publication of the “Tower Site 2006 Calendar.”

The calendar, which features a monthly photo of a well-known broadcast transmitter site, is photographed and written by Scott Fybush, the creator of “Tower Site of the Week” ([www.fybush.com/featuredsite.html](http://www.fybush.com/featuredsite.html)) and “NorthEast Radio Watch” ([www.fybush.com/nerw.html](http://www.fybush.com/nerw.html)).

The full-color monthly calendar has become a tradition for many radio engineers and a curiosity for those who think all radio towers look alike.

“It’s turned into a very popular gift for radio engineers,” says Fybush. “I’m delighted by the response the calendar keeps getting each year.”

Like its predecessors, each month of the 2005 calendar features an 8”x11” color photograph of a broadcast transmitter site taken by Fybush during his travels around the U.S., Canada and beyond. Some sites pictured on the 2005 calendar:

- WMCA, New York, featured in a dramatic nighttime view on the cover
- The rooftop tower at the Prudential Tower in Boston’s Back Bay
- KTAR, Phoenix, whose towers sit in a shopping center parking lot
- WSB, Atlanta, another tower that’s surrounded by a shopping center
- WKY, Oklahoma City, with a beautiful Art Deco building and one of the tallest AM towers in the U.S.
- Mount Wilson, above Los Angeles, home to most of that city’s FM and TV stations
- KQRT, Las Vegas, in a dramatic desert view
- KCMO, Kansas City, with an historic transmitter building
- CBV, Quebec City, a now-defunct AM station
- KLIF, Dallas, in a scenic lakeside setting
- WKJV, Asheville, N.C., with its venerable hilltop site
- WGOW, Chattanooga, nestled in the river valley near the city
- WEJL, Scranton, with a rare rooftop AM tower

In addition to tower photos, the calendar’s monthly pages include significant dates in radio and television history, as well as civil and religious holidays.

Like the 2005 edition, the 2006 calendars cost \$16 each, postpaid (\$17.28 including sales tax for New York State residents), and can be purchased by check (payable to “Scott Fybush”) or money order to 92 Bonnie Brae Avenue, Rochester NY 14618. Orders can also be placed with major credit cards at [www.fybush.com](http://www.fybush.com).

“It’s been exciting to travel around the country and see the calendar hanging in radio stations from coast to coast,” says Fybush, who also edits the radio directory site 100000watts.com and is a regular contributor to the trade publication *Radio World*.

# The Accurian HTS-6000 DTV Set Top Box

From Radio Shack

Slashed from \$175 to \$85, this Set Top Box Is Making Waves  
This material taken from posts on the WTFDA List

If you are looking for a cheap DTV STB, then run, do not walk, to your nearest Radio Shack location. RS has this unit marked down to \$89.98 for clearance. Thanks to a heads-up from Glen Hale, yesterday I bought the last two at my nearest RS, one for Greg Barker and one for myself.....Yes, I know, I now own five DTV receivers!! But at this price, I figured I could find a new home for it if I didn't like it.

So far I like it, especially for the price. It has a GREAT signal strength meter screen PLUS a SNR reading like on the WinTV-D. This is the first STB I've seen with this added feature. Plus, from my early testing, the strength/SNR screen does not time out, so it continues to stay on screen while DXing.

As for its sensitivity/decoding abilities, so far it unfortunately doesn't seem to be quite on the level with the new Humax, which overall has the best ability to hold a very weak signal out of all my receivers, but it does seem to be very close with my LG LST-3100A. I need some DECENT TROPO to conduct more testing.

This RS unit will allow you to manually enter the actual RF channel number or when it auto scans it will display the remapped analog channel number.

Overall, especially for the price, I don't think you can go wrong with this receiver. **Steve Rich IN**

---

A heads-up for those of you who try to use the "store locator" feature on the RS website - it only looks for stores within about 10 miles of your location, if even that. I had a moment of panic when it told me there were no units available, but then had the presence of mind to punch in some other zip codes in the area. I'll be going out this afternoon and picking one up, I think...if Renfrew doesn't beat me to it ;- ) So I went out to my "neighborhood" Shack - actually, 30 miles away, as it was the closest one that really had a box - and picked mine up at lunchtime. And guess what? It didn't ring up at \$89. It rang up as \$39. **Scott Fybush NY**

---

Wow, Scott, what a deal! You must have charmed them. The one I got was actually the demo/display unit, because that was the last one they had, unless I wanted to drive close to 30 miles to another Indy area location. I tried to get them to take a little off but I was told by the store manager that because it was already

marked down so low, they couldn't take any additional amount off, but they did give me a free 2-year warranty on the unit. I'm happy.

**Steve Rich IN**

---

I bought one, too. Paid the full \$89, though. It's scanning right now. **Peter Baskind TN**

---

OK I sprung for the Radio Shack HTS 6000. I bought the only one at the Batavia RS. A floor model gives me twice the warranty - 180 days instead of 90. Just what I need more appliances! My sister in a recent visit was quite amused to count as many as 13 TVs around the house.

At the moment I have to run it through the VCR, don't have a cord and plug that connects direct from antenna-STB-TV, so the configuration is antenna-STB-VCR-TV, so some signal loss is likely. First run-through:

WGRZ-2, WIVB-4, WKBW-7, WNLO-23, WUHF-31. Looks like WIVB and WNLO carry each other on the sub-channels. No 8, 10, 13, or 21, even when I aim the antenna right at Rochester.

The remote seems to have a learning curve.

OK, now I guess I should read the directions.

And all of the helpful posts about using these things which I've ignored I will have to pay some attention to now. I also have to figure out where these channels are located on the dial. Looks like WUTV 29 is on 14? A nice way to boost my TV totals above 300, with five new ones! **Jim Renfrew NY**

---

So this is my first experience with receiving DTV off-air.

Boy, you really have to cram a brick through the front end of these things, don't you? WKNO, on a tower I could see if the trees were not in the way, freezes.

The others seem to work OK. But, I can't find WHBQ. **Peter Baskind TN**

---

It's basically like connecting a VCR or DVD player to a TV monitor with audio/video inputs (RCA type). You don't even have to have a DTV/HDTV monitor to use it. Use the analog outputs and you are ready to go with any analog set. If you want to use an older TV monitor that doesn't have audio/video input

jacks on it, I've used a VCR in between. Plug the audio and video outputs into a VCR and then feed that into your TV monitor via the RF output of the VCR into the TV. As for your antenna cable, this unit doesn't have a pass-through output like my RCA and LG units have, so you might need a splitter to feed it.

If you've never worked DTV reception before, there will be a little adjustment time. I bought my first STB, the RCA DTC100, over 4 years ago, so I've had some time to adjust. Once you get the hang of it, I think you'll really enjoy it. I know I have. I prefer DXing DTV stations these days. Because I live so close to the Indianapolis antenna farm, finding open channels has been somewhat of a challenge. But with this in mind, I've also found that DXing DTV stations is sometimes easier than DXing analog stations in my location. As Danny, Girard and I, along with a few others recently discussed, it sometimes is easier to decode a digital signal through a local or semi-local analog signal on the same channel than it is to find an analog signal through a local digital signal. I've been able to find and decode some DTV stations that I never thought I could in my location. I'll never be able to catch up with the likes of Girard, Greg and Jeff in this part of the country, but I've been able to log 103 DTV stations to date. It can be fun.

Sorry for rolling on so long but it sounds like you need a little coaxing. Four years ago I was VERY GREEN around the edges regarding DTV. I've learned a lot from this site and with some great assistance from Greg and Girard. Thanks.

BTW, one last thought regarding your "mobile" comment. I've recently been doing some DTV spot signal checks for an engineer at one of the Indy stations. I bought a cheap, \$20 power inverter for my car. With it I power a DTV STB, a 9" color TV/VCR unit and the Motorola signal booster connected to a Zenith Silver Sensor antenna or a CM 4221. I've actually been pleasantly surprised at the reception I can get around the area with this simple setup. **Steve Rich IN**

---

Welcome to DTV reception and DXing!! Your situation with WKNO-DT could (might) actually indicate TOO much signal with your proximity, or it might also be caused by multipath, also due to your close proximity to the tower. On several occasions with a couple of my STBs, if I over amplify the signal into the receiver, the signal meter will actually indicate "0", no signal. When this has happened, I've either added a RS attenuator to knock down the signal a little or sometimes by simply adding a splitter or a few extra feet of coaxial cable to the line will be enough to get the receiver to

work. But in my location, I have definitely learned that too much signal can actually be worse than not enough. Just a thought for you.

While I'm in this chatty mode, I might as well pass along something I stumbled on by accident with the RS STB. I couldn't find this in the manual, but after playing around with it last evening I did discover a manual way of converting the actual RF channel number into the PSIP remapped information. There are two ways to allow the unit to automatically scan for stations, either with "Rescan" which scans all channels and deletes any previously listed channels or with "Update" which simply adds new channels found WITHOUT deleting previously found/listed channels. If you manually add a channel by simply punching in the true RF channel number, like ch. 48, then when the receiver finds the station and decodes it, the on screen display will indicate "48-1" but will not give any additional information, like call letters of the station. But I found on mine that if you then punch the "CH-ADD" button, the receiver will then convert that RF channel number into the remapped channel number (analog) and become, for example "4-1" and then will display the station's call letters and store them in memory just like the stations it finds when performing an auto scan. **Steve Rich**

---

Well, I picked one up too. It was the last one they had. Another guy was checking out with one when I walked in the store. I've done a side-by-side comparison with the Sylvania SRZ3000. The performance is pretty similar, although the Accurian seems to be slightly better with multipath. I haven't had a chance to check it more thoroughly yet.

As Steve had mentioned, the signal meter is very helpful, including the signal-to-noise measurement. It's also nice to have the "meter" button right on the remote instead of digging through menus. It is also very fast at locking on signals.

For \$89 (or \$39!!), you can't really go wrong. I think I still like the LG4200a better, but it also cost quite a bit more. **Glen Hale**

---

I like this!!! I'm watching WTBX-27 in Poughkeepsie and the Sylvania had a rough time with this one. If a signal hits 60 on the meter the signal decodes. And the signal does NOT disappear when the signal level drops below 60...you still have a still picture...not a black screen.

Right now ch48 in Kingston is showing anything between a zero and 40. That's not enough to decode, but lets me know a signal

is there. I might just stay there watching the meter to see if it spikes to 60 later.

Steve, you made my day. This one is a definite keeper. I've only played with it an hour but I'm hooked. **Mike B. CT**

---

Well I got one also. Works GREAT! I do believe it blows the doors off the Win TV-D card in my computer. It cost the full shot \$89.00 plus tax. Very nice unit. The channel add or "Update" is a nice feature.

**Guy Falsetti NY**

---

8 DTVs logged so far:

34-WCIV SC (25)

47-WCSC SC (25) (Live 5 Weather Radar on 5.2-nice for tracking hurricanes off the Charleston coast)

54-WECT NC (120)

49-WITV SC (25) (using remapped 7.1 7.2 7.3)

16-WPDE SC (87)

20-WWMD SC (87)

28-WRJA SC (49) (using remapped 27.1 27.2 27.3)

29-WUNJ NC (120) (using remapped 39.1 39.4 39.5)

Eq: 4 bay bow tie UHF Ant at only ~15' AGL with RS rotor, pre-amp AC-4990, connected to the Line 3 video inputs to our family room analog JVC TV.

Question: Can I connect the STB to my laptop via cables connecting the HDMI connector on the STB to the DVI connector on my laptop, along with connecting cables for the audio?

**Fred Nordquist SC**

---

Yes, this time I agree it "blows the doors" of the Win card. There is really no decent tropo tonight but the RS box shows WHDH-DT ch43 running a signal level between 34-43 on the meter. The Win card shows zilch.

Back to WTBV DT ch27. Right now the signal is at 72-73, a nice strong signal and a perfect picture on the RS box. However, the Win Card has all 3 green boxes glowing but the signal won't decode. Once in a while it pixellates with plenty of errors. I've been watching it on the RS box for over half an hour without one single error.

I noticed one or two odd features. Ch 27 is in memory and remaps to 54. If I look for 54 in R.I., the set remaps to 27 and WTBV. Maybe I need to clear memory first. Sometimes if you are viewing the meter and want to turn it off, the meter takes some seconds to clear. It appears that you can't see the stations call letters in the channel number box unless you put the channel into memory. Pressing 27 brings up 54 in the box but no

calls. **Mike B. CT**

I broke down and got one too. It's much better than the Samsung, which I can resell on eBay for what I paid. The RS box is very resistant to multipath, so it doesn't break up when planes fly over, etc.

It can even get the 45kW PBS affiliate, without a preamp! The Samsung rarely ever got that channel, if ever. I can't wait for a good opening.

The default aspect ratio isn't all squashed like the Samsung, and finding RF channels is much easier. Like you said, they can just be entered in, added and deleted with one button. The SNR display really helps; I'm getting the local FOX at 32 dB now!

When the signal drops, there isn't the irritating breakup either, just fade to black. The Samsung also had a problem with Dolby Digital audio, it would break up on some programs.

BTW, I'm watching women's tennis right now; it's a bit more interesting in HD. :)

**Chris Carter TN**

---

The RCA is lonely so I went to Radio Shack and bought it a friend. I'll check out the new RS HDTV box as soon as I can. Thanks to all of you for posting the price tip and good reviews! **Matt Sittel NE**

---

Me too, me too !!! Test driving right now.....

Best part is I used the \$10 RS Entertainment Coupon I had sitting around since last November ! Nice set of RCA cables it comes with - worth at least \$15 by themselves !!!

**Bill Nollman CT**

---

I'm pretty happy with mine, so far – no problem on any of my locals, 4300 feet away, and I'm getting decent signals on SOME, but not all, of the Buffalo and Syracuse signals I was expecting to see. (WIVB-DT 39 Buffalo and WSYT-DT 19 Syracuse are rock solid, and I can see WGRZ-DT 33 Buffalo and WTVH-DT 47 Syracuse most of the time.) I suspect all those locals so close, all running full power on DTV, are overloading my preamp pretty badly. I'm going to end up spending six times as much at MFC on filters as I did on the tuner by the time I get done...

**Scott Fybush NY**

---

I'm now in the club as well. I'm glad I won't have to deal with the WinTV-D freezing my computer anymore! **Jeff Lehmann MA**

# 12th ANNUAL MADISON-MILWAUKEE DX GTG

Bill Dvorak

Madison, Wisconsin is unique among cities in that it is built on an isthmus, or a strip of land between two bodies of water. To the south and east of Madison lies Lake Monona, while to the north and west lies Lake Mendota. Life on the land in between (less than 0.6 miles wide at its narrowest point) is defined by this unique arrangement. Land use, property values, traffic patterns, recreational and even cultural opportunities, and most of all the pure physical beauty of the place, are all deeply influenced by this arrangement of nature.

The northern lake, Lake Mendota, is the ninth largest lake in the State. Boating and fishing are very popular activities on this lake. The University of Wisconsin-Madison is located on its shore, and so is much of downtown Madison. Many very nice, scenic, long-established parks dot its shoreline also. Among these is Burrows Park, site of the 12th Annual Madison-Milwaukee Get-together for DXers and Radio Enthusiasts.

For those of you not familiar with the Madison-Milwaukee, it is a one-day, regional, all-band event for DXers that has been held every third Saturday in August since 1994. The first ten GTGs were held in Madison. Beginning with last year, we have begun the practice of alternating sites between Madison, with Bill and Nina Dvorak as hosts, and Milwaukee, where Tim Noonan hosts.



Relaxing in the Burrows Park Shelter

In the early Madison years, the Get-together could be comfortably held in the host's house or apartment; only eight DXers attended the first get-together. As years went by, however, and the number of participants increased, this arrangement got harder to keep up. Tim decided to hold the event in a park last year, as attendance approached 30. Bill decided to do the same this year, and it soon became apparent that he did the right thing. A record 41 DXers from ten states attended, well beyond

anybody's wildest dreams!

The danger of an outdoor event is that the weatherman will not cooperate. Not to worry: the weather couldn't have been much better for a get-together than it was on Saturday, August 20, 2005. The skies were sunny and the temperature topped off at a near-perfect 84 degrees (a gusty wind was problematic but did not really spoil anything). Burrows Park proved to be the perfect venue for the GTG. The scenic backdrop, picturesque shelter and spaciousness yet coziness of the park were universally acclaimed.

Demonstrations during the day included a Winradio WR-G313i receiver brought by Craig Menning, a prototype AM radio built and displayed by Pete Gianakopoulos, and an IBOC HD radio brought by Kent Winrich. For the latter demonstration, Madison's first HD radio station, WORT 89.9, provided the FM signal. All three demonstrations attracted a great deal of interest.



Dining at the Esquire Club

Following the afternoon session, the attendees went on to dinner at the Esquire Club, one of Madison's oldest family owned restaurants. This was the fifth time that our Get-together dinner was held there, and the food, service and atmosphere continued to more than meet our needs. After dinner, an "award" of a key was given to ten attendees who came from great distance to be at the event. WTFDA members who received this recognition were Scott Fybush (NY), George Greene (OH), Chris Kadlec (MI), Dave Legler (MN), and Garrett Wollman (MA),

It was at the restaurant that we held a drawing for door prizes. We are grateful to Universal Radio, Clear Channel Madison, Clear Channel Milwaukee and Scott Fybush for providing them.

The evening session was held at Bill and Nina's house, where activities and DX talk continued until midnight. It was there that we cut and served the annual Get-together cake, lovingly baked and decorated by Nina. This year's cake was decorated like an open egg carton. On each of the 12 "eggs" was the number and date of a past (or present) get-together. Below this was the inscription, "It Just 'Dozen' Get Better than This!" And, it dozen!!



**WTFDA Members pose for a photo**

Fischer, Pete Gianakopoulos (IL), Mike Henke, Fred Kelcz, Lester Kleidon (IL), Peggy Leifert (IL), Kevin McGill, Olaf Meding, Craig Menning (MN), Jim Menning, Don Moore (IA), Tim Noonan, John Nordbo, Joe Olig, Mike Piering, Dave Rude, John Sampson (MN), Glen Schroeder, Mark Taylor, Mike Ward (OH), Ernie Wesolowski (NE), Dave Willow, Kent Winrich, Dave Zantow.

Once again this year, participation in this event by WTFDA members was outstanding! Ten members, including **Chris Kadlec** from Fremont MI, who had joined just days earlier, attended. They are pictured in the accompanying photo. Kneeling, left-to-right: **Niel Kazaross** (IL), **George Greene** (OH), **Frank Merrill** (IL), **Dave Legler** (MN), **Chris Kadlec** (MI). Standing, left-to-right: former long-time member **Mike Condon** (WI), **Garrett Wollman** (MA), **Scott Fybush** (NY), **Bill Eckberg** (IL), **John Rieger** (WI), **Bill Dvorak** (WI). Other attendees (all from WI except where noted): Jim Albrecht, Erik Berntsen, Bob Brossell, Rich D'Angelo (PA), Dave DeRosier, Gerry Dexter, Ken

We did our part to promote the WTFDA at the Get-together. Mike Bugaj sent us copies of the August 2005 VUD, and we distributed 15 of them. Here's hoping that we got some new members out of this endeavor.

Mostly, however, we promoted what we always try to promote at this event-- good-will among DXers. The Madison-Milwaukee is at its heart a social event. The DX talk and camaraderie, the exchange of ideas, the old friendships renewed and the new friendships made, in other words, those elements that make an event such as this an enjoyable experience, were there for all to enjoy.

Thanks go out to all who attended. A special thank you goes out to Dave Legler, who took the photos that accompany this article.

The 13th Annual Madison-Milwaukee Get-together for DXers and Radio Enthusiasts will be held on Saturday August 19, 2006. The event returns to the Milwaukee area, with Tim Noonan as host. For more information, please contact Tim at [dxing2@aol.com](mailto:dxing2@aol.com), <mailto:dxing2@aol.com>. We hope to see you next year!

---

## ***Western TV DX (continues from page 21 )***

Oklahoma City, OK  
KOTV-DT 55 KJRH-DT 56 Tulsa, OK  
K30AE-30 Alva, OK

### August 28, 2005 Tr

0010 KTFO-DT 42 Tulsa, OK  
KSHB-DT 42 Kansas City, MO  
(both available by turning antenna)  
0050 KOZJ-DT 25 Joplin, MO

### September 3, 2005 Tr

0945 KDSM-DT 16 WHO-DT 19 KCCI-DT 31  
KDIN-DT 50 Des Moines, IA  
WOI-DT 59 Ames, IA

Digital TV has certainly cut down distant tropo with so many channels filled with regional stations. WTIU-DT did sneak through on August 27 for a new one. The PSIP only indicated 30-1 and 30-2. However, when a pledge break began I recognized a friend who retired from WTIU several years ago. We saw each other at PBS meetings for at least 25 years. It was nice to see him. He looks older now, but I guess I probably do too. I've seen several PBS colleagues on pledge drives over the years including Iowa, Wisconsin and North Carolina. If they are on live I give them a call. They are surprised that I am watching from a distance. A benefit of TV DXing.



## 6 Meter/2 Meter Amateur DX



50 Mhz  
The *Magic* Band



**Peter Baskind, N4LI**  
**3225 Forest Hill-Irene Rd**  
**Germantown, TN 38138**  
**N4LI@ARRL.net**

As I write in September, I am reminded once again to keep this hobby in perspective. Seeing the devastation in New Orleans, the city where I attended Tulane and occasionally had a little too much fun, and the Mississippi Coast, my home of many years, and location of my mother's now devastated home, DXing and hobbies do seem a bit trivial.

Here in Memphis, it is hard to drive anywhere without seeing Louisiana car tags, or cars with plates from Mississippi with county names like Harrison, Hancock, Jackson, or Forrest. While Memphis is the new home to many of these transplants (I avoid the term "refugee"), we all admire cities like Baton Rouge, Houston, Lafayette, and Mobile that have nearly burst at the seams with the influx. Hopefully, we can all pull together to help these folks transition into the next phases of their lives. Between openings in the coming weeks, please volunteer, give, or roll up your sleeve and donate blood. If everybody did just a little, we could really improve lives.

Our thoughts also are with the people of Texas who opened their hearts and homes to the Katrina survivors, and now need help themselves. Hopefully, Rita knows "you don't mess with Texas."

\* \* \*

I hope all got a taste of the August DX that graced the country's midsection. As mentioned in last month's column, the month kicked off in Memphis with a very nice opening UTC. August also brought a handful of openings to not-so-unusual places like Florida, the Rocky Mountains and the East Coast. The most interesting days by far were the 26<sup>th</sup> and 27<sup>th</sup> with nice openings into the Caribbean, and a half-hour long opening to Argentina late on the 27<sup>th</sup>, UTC. While "LU" is not terribly uncommon here, the signal levels were very surprising. LU6DRV was peaking well over S9, and other stations from the same grid were also pretty strong. I suspect this was TE-to-E linking, as evidenced by my hearing both sides of a LU-to-Costa Rica QSO.

### Loggings

**Bill Smith, WA1NYV, 56 Locust Street, Douglas, MA 01516 FN42**

2 Aug '05

Opening to the SW around 0000 UTC – the usual suspects. While double-hop was seen South of me, there was none here. At 1548 UTC, logged CY0AA (FN93, off the Coast of the Maritimes) on Sable Island for DXCC #86. Band opened later to the south and SW – nothing new, just lots of people calling Sable.

3 Aug '05

Opening S & SW

1343	N0PD	EM48	1451	K4CVS	EM66
1416	KI4GVD	EM64	1526	KI4JWY	FM04
1417	NG4C	FM16	1550	W4GNE	<b><u>FM17</u></b>
1423	N8FF	FM15	1752	N4ERO	EM96
1441	N2RUB	EL98	1755	W5JRX	EM53
1449	N4HID	EM66	1816	KG4BHJ	EM65
1450	N4WO/m	EL88	1829	KG4UQZ	EM65

9 Aug '05

Brief opening to Europe. Worked CT1EEB/IN50 at 1128 and heard bits and pieces of ZB3B and EH1GAR. Around 2200 band opened to Caribbean. Heard VP2E, Trinidad, Martinique, Bermuda, Dominican Republic, and Colombia, all worked previously. Worked FG1GW/FK96 in Guadeloupe.

11 Aug '05

Brief opening to NE. Worked VO1NO/GN18 @ 2259.

12 Aug '05

Brief opening to Midwest. Worked K8LEE/EM79 @1140 and N8OC/**EN83** @ 1359.

13 Aug '05

1440	KD5IKG	EM53	1446	KD5TDP	EM53
1443	W4SHG	EM84	1454	KI4CBZ	EM95
1444	WB4OGG	EM75	1455	KD4TDI	EM96
1445	NV4T	EM66			

14 Aug '05

0008	NW0X	EN40	0051	WB8GZX	EM79
0043	W0KKK	EM19	0052	K4KO	EM66
0049	W9NTO	EM79			

16 Aug '05

Brief opening to Europe – very late in Europe – probably could have been a good opening. Worked CT1QP/**IM58** @ 2321; CT1APE/IM59 @ 2333.

24 Aug '05 (Aurora)

1153	KIGUP	FN54	1210	VE2QRA	FN46
1207	VE2YKT	FN37	1248	W1TAM	FN34

31 Aug '05 (more Aurora)

1907	VE3GIB	FN25	1918	KC2GOA	FN34
1908	VE1YX	FN74			

No E-skip for about 2 weeks now. Maybe the Season is over.



## SIGN UP/Renewal form

Name \_\_\_\_\_

Address \_\_\_\_\_ Apt # \_\_\_\_\_

City \_\_\_\_\_ State/Prov \_\_\_\_\_ Zip \_\_\_\_\_

Country \_\_\_\_\_ Interests: TV ( ) FM ( ) 30-50( ) Weather( )

email address \_\_\_\_\_

Sign me up/renew me for: 1 year ( ) 2 years ( ) More ( )

Yearly dues \$24 (US), \$26 to (CANADA), \$10 (Electronic VUD)  
(Students get a discounted rate of \$15 yearly for the paper VUD.)

**Mail your dues to: WTFDA, P.O. Box 501, Somersville, CT USA 06072**

**Make your checks/money orders payable to: WTFDA**

**And *thanks* for your support of the WTFDA!**

Return this form with your dues or make a copy of it and return that.

### WTFDA BOARD OF DIRECTORS

Mike Bugaj, use the WTFDA Mailing address listed below	mbugaj@snet.net
Doug Smith, 1385 Old Clarksville Pike, Pleasant View, TN 37146-8098	w9wi@w9wi.com
Greg Coniglio, 11825 Genesee St., Alden, NY 14004	wgrc@rochester.rr.com
Bruce Hall, 5 Stirton Ave., Brantford, ON N3T 1E2	dbruceaa@hotmail.com
Keith McGinnis, 6 Ritter Road, Hingham, MA 02043	longwave@comcast.net

\*\*\*\*\*

#### **THE MAILBOX and all general club correspondence:**

Mike Bugaj at WTFDA, PO Box 501, Somersville, CT 06072 mbugaj@snet.net

#### **SATELLITE NEWS**

George Jensen, 4604 Antana Ave., Baltimore, MD 20206-4220 scisatman@aol.com

#### **TV NEWS**

Doug Smith, 1389 Old Clarksville Pike, Pleasant View, TN 37146-8098 w9wi@w9wi.com

#### **PHOTO NEWS**

Jeff Kruszka, 5024 S. Braxton Ave., Baton Rouge, LA 70817 jkruszka@bellsouth.net

#### **EASTERN TV DX**

Matt Sittel, 15013 Eureux Circle, Bellevue, NE 68123 mcsittel@cox.net

#### **WESTERN TV DX**

Dave Williams, 3525 SW Timber Ave., Redmond, OR 97756 beansdad@bendcable.com

#### **SOUTHERN FM**

John Zondlo, 4009 Driftwood Cir., Yukon, OK 73099 sfm@fmdxweb.com

#### **NORTHERN FM**

Keith McGinnis, 6 Ritter Rd., Hingham, MA 02043 longwave@comcast.net

#### **TV and FM STATISTICS**

Fred Nordquist, 147 Travis Hill Road, Moncks Corner, SC nordquis@homexpressway.net

#### **6 METER/2 METER**

Peter Baskind, 3225 Forest Hill-Irene Rd, Germantown, TN 38138 n4li@arrl.net

**BACK ISSUES** Dave Nieman, PO Box 17, Clarence, NY 14031-0017 nieman@localnet.com

*We have a large selection available for \$1.00 each. Email or write Dave for availability.*

**WEBSITE** Tim McVey Webmaster <http://www.anarc.org/wtfda/> tkmcvey@erols.com

**PLEASE MAKE ALL CHECKS AND MONEY ORDERS PAYABLE TO WTFDA.**

**Our thoughts and prayers go out to all of our members affected  
by hurricanes Katrina and Rita.**