

Vhf-UhfDIGEST

The Official Publication of the Worldwide TV-FM DX Association

MARCH 2006

The Magazine for TV and FM DXers

**WAITING FOR SPRING AND
THE DX
IT WILL BRING!**



TV DXING IN MINNESOTA

DXing Takes a Hiatus as Winter
Temperatures Return to Much of North
America in late February.

15 Continuous Days of E-Skip?!!



TV and FM DXing was never so much fun!

THE WORLDWIDE TV-FM DX ASSOCIATION

Serving the UHF-VHF Enthusiast

THE VHF-UHF DIGEST IS THE OFFICIAL PUBLICATION OF THE WORLDWIDE TV-FM DX ASSOCIATION DEDICATED TO THE OBSERVATION AND STUDY OF THE PROPAGATION OF LONG DISTANCE TELEVISION AND FM BROADCASTING SIGNALS AT VHF AND UHF. WTFDA IS GOVERNED BY A BOARD OF DIRECTORS: DOUG SMITH, GREG CONIGLIO, BRUCE HALL, KEITH MCGINNIS AND MIKE BUGAJ.



Editor and publisher: **Mike Bugaj**

Treasurer: **Keith McGinnis** *Webmaster:* **Tim McVey**

wtfda.info *Site Administrator:* **Chris Cervantez**

Editorial Staff: **Dave Williams, George W. Jensen, Jeff Kruszka**

Keith McGinnis, Fred Nordquist, Matt Sittel, Doug Smith,

Chris Kadlec, Peter Baskind and John Zondlo,

Our website: www.anarc.org/wtfda Our forums: www.wtfda.info

MARCH 2006



Finally! For those of you online with an email address, we now offer a quick, convenient and secure way to join or renew your membership in the WTFDA from our page at:

<http://fmdx.usclargo.com/join.html>

Dues are \$25 if paid to our Paypal account. But of course you can always renew by check or money order for the usual price of just \$24. Either way, it's still a bargain!

VUDS ON A CD!

Every VUD from Jan 1980 to December 1989 is on this disk. You'll need Adobe Reader to read them. Why have a box of old VUDs taking up space when you can have this. **It's yours for just \$8.00 per disk.** Send your check or money order for \$8.00 to WTFDA, P.O. 501, Somersville, CT 06072. Make it payable to **WTFDA.**



CONTENTS

Page Two	2
Mailbox	3
TV News...Doug Smith	5
FM News...Chris Kadlec	13
Western TVDX...Dave Williams	20
Photo News...Jeff Kruszka	22
Satellite News...George Jensen	24
6 meters...Peter Baskind	25
Southern FMDX...John Zondlo	28
Long Distance Listening	29
Editors/Submissions	31

And now... **eVUDS ON CD!**

All eVUDs from 09/01 through 12/05 are on this disc (except 8/02 which was not published). Follow the changes from day one to the present form. **You can have it for just \$6.00** (\$5.00 plus a dollar shipping). Use the same address as for VUDs on CD shown on the opposite column. Have a great February!



THE WTFDA FORUMS AT

<http://www.wtfda.info>

This is the newest addition to WTFDA on the internet. The forums consist of a series of public forums for all TV and FM Dxers *plus* four forums just for WTFDA members in the Members-Only Forum. Register yourself and go take a look. It costs you **nothing** ! And while you're there, look at the latest eVUD!

THE WTFDA EMAIL LIST AT WTFDA.INFO

Due to popular demand, we've moved the list from Topica to the forums. The emails fly faster and you get subscribed faster! Just send an email to tvfmdx-subscribe@wtfda.info to be added to the list quickly. If you've had problems with Topica before, try us now and come onboard. Read on the web or by emails. Your choice!



The Mailbox

P.O. Box 501, Somersville, CT USA 06072
MIKE BUGAJ MBUGAJ@SNET.NET

Well it's March and we are back for another month. The days are growing longer and the temperatures are heading upward (we hope) so the chances of tropo are a bit better than last month. The most amazing item I read on the tvfmdx list last month was a statement by Randy Zerr that, as of the 15th of February, he had observed 15 continuous days of E skip. Now I know *for sure* that I'm living in the wrong state. Plus only a couple of local FM stations in his area are running IBOC. It may be time for me to retire and move down there.

MEMBERS AND MORE

This month we welcome **David Challis** in Auckland, New Zealand. David is an FM DXer using an APS-13 which must have cost a fortune to ship down there. David is subscribed to the eVUD. Another huge welcome goes to **Jeff Rostron** in Chicopee, MA. Jeff does TV DXing, both analog and digital and signed up for the eVUD. With the amount of new WTFDAers popping up here lately, a local get-together seems like a definite possibility. Also we say hi to **Ronald Ehike** (MN) who I believe was a WTFDA member in a past life. And finally we have **John T. Ridge** (NY) rejoining the club after experiencing the agony of living month to month without a VUD delivered in his mailbox. Welcome back, John!

Time to take a deep breath and read the names of all the members who've renewed for another year, and they are: **Paul Hansen** (MA), **Charles Gauthier** (QC), **Scott Hood** (MA), **Peter Oprisko** (IN), **Steve Solomon** (MA), **James Nahirniak** (MI), **Robert Fischer** (AK), **Paul Mitschler** (NM), **Charles Burnham** (NY), **Jeff Wolf** (MD), **Joseph Kureth** (MD), **Tom Yingling** (MD), **Robert Steadman** (WI), **Bill Higgs** (CA), **Richard Porter** (IL), **Peter Taylor** (WA), **Harry Hayes** (PA), **Barry Shinall** (VA), **Morris Sorensen** (MB) and **David Legler** (MN).

For those who don't know, we have a program called the *Buddy System* which we use to pay the dues for WTFDA members who just can't afford the annual dues. Usually what happens is that we'll post to the tvfmdx list asking for volunteers to help pay a member's dues for the year and we always get plenty of offers to help. But I've talked to Keith and what we're going to do is take any

monies received from either 80s VUD CDs or eVUDs on CDs and put the money into a Buddy System fund so we won't have to beg so often. If you have some spare change laying around and want to put it into the fund, just send a check for whatever amount and make it payable to WTFDA and mail it to the club address and we'll set it aside for those who really need the help.

POST-IT NOTES IN ACTION

The first Post-It note is a pink one that comes from **Pete Taylor** who says "I will learn how to write checks someday." Pete, I don't *think* that one will bounce. The next note is a yellow Post-It from **John Ridge** who says "I rejoin. Never should have let my membership expire." John also ordered both the 80s CD and the eVUD CD as penance and his CD drive is happy now. And since we're mentioning CDs, **Morris Sorensen** also ordered an eVUD CD. Thanks, guys!

EMAIL LIST PROBLEMS

Sometime during the first few days of February, someone was caught trying to hack into the server hosting the WTFDA's tvfmdx and amdx lists (among others on that server). The person was stopped but he did some damage. The server was down for some time, taking all of wtfda.info with it. The site eventually came back to life with just a few bugs that had to be corrected. The lists also returned but since the problem began at the very beginning of February, the Mailman program did not create the February archives, which a few WTFDA members rely on to read the posts from both lists. The archives finally arrived around the middle of February and the downloadable archive file has ALL of the February posts on it. Our thanks go out to site administrator **Chris Cervantez** and all those who worked behind the scenes to put it all back together.

HD RADIO

Here's a little from **Eric Bueneman** regarding HD Radio: "The St. Louis area, which was devoid of FM stations broadcasting in "HD Radio" just two years ago, now has eight FM stations broadcasting in this

unproven format. I wonder how many WTFDA members are reporting degraded audio quality, especially with the station in Stereo mode, with stations experimenting with so-called "HD Radio". I have noticed a significant reduction in Stereo separation on stations broadcasting in this format. I'm noticing Stereo separation of 10 dB or less on stations broadcasting in "HD Radio"; even the 400 remaining AM Stereo stations have better Stereo separation than the FM stations broadcasting in the digital format. I'm hearing up to 70 dB separation with FM Stereo stations broadcasting in analog only.

KWMU 90.7, WIL-FM 92.3, KSD 93.7, KATZ-FM 100.3 and WARH 106.5 have, at most, 10 dB Stereo separation, given their power and distance from the shack to the transmitter site. WVRV 101.1, KMJM 104.9 and KPNT 105.7 have even worse separation; I could hear, at most, one to seven dB of Stereo separation, given their power and distance from transmitter site to shack (KPNT's transmitter site is some 40 miles south of my location; KMJM only operates with 7,800 watts ERP).

Along with IBOC's spectral inefficiency, reduced signal coverage and expense of receivers, it's more reason why "HD Radio" will be a failure. I'm sure there will be a lot of people bailing out of "HD Radio" soon; it's really low-definition radio.

There was also some mention of an expansion of the FM broadcast band in the February VUD; this will definitely be opposed by commercial and private aviation interests, especially the Federal Aviation Administration (FAA). The frequencies mentioned in Bob Cooper's report are allocated worldwide for commercial and private aviation communications. Besides, the sample represents only a small minority of consumers. The vast majority will resist "HD Radio"; the only effective way digital signals can be delivered is via satellite radio. My advice: if you want digital radio, subscribe to XM or Sirius Satellite Radio."

Well, after receiving this email I decided to listen to my local stations broadcasting HD. Now my ears are shot from years of listening to lousy tropo and skip signals, but listening to WHCN 105.9 (The River) told me their separation was great. WDRC's is fine, and that goes for WRCH 100.5, WWYZ 92.5 and WCCC 106.9. WKCI 101.3, WPHH 104.1, WKSS 95.7 and WTIC 96.5 did not have good separation, but they also had crummy fidelity and that (in my opinion) is due to the over-processed low fidelity garbage music they play, rather than their IBOC sidebands. But I could be wrong.

Also the idea being floated of "expanded band" dial positions for HD creates "virtual" dial positions, not real signals on those dial positions. The re-mapping of DTV channels is

the same idea. A station using 108.1 or 108.3 for their HD-1 and HD-2 channels would just use the marker of 108.1 or 108.3 (or whatever they want to use, really.) In reality, nothing would be transmitted on these channels. Anyway, the whole concept is debatable and who knows if anything will ever become of the idea. And, of course, who knows if anything will ever become of HD radio in the first place.

Eric raises another point. The point is this...how many FM Dxers care about separation and fidelity and all the things audiophile cherish anyway? No audiophile would listen to the garbage signals we listen to (or put up with) in our DXing pursuits. I hardly ever sit down and listen to music on my tuners with phones on for any length of time. The only time I notice anything resembling stereo separation in my car is when it's parked. When I'm driving all I want is a station loud enough to overcome the road noise. I guess I flunk as an audiophile.

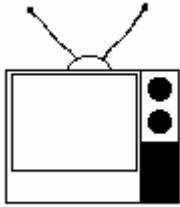
THIS MONTH'S COVER

It comes from **Glen Boche** in S. St Paul, MN and here's part of Glen's email: "The E season and tropo system were not much to speak off in this neck of the woods. In fact I had thought there might be problems with the gear on this end but from the other postings I wasn't the only one to say the same words. The tropo season was nothing more than enhanced ground wave reception in this area. The same thing occurred last night when others were getting E's. Of course it doesn't help to have a local on channels 2, 4, and 5. I did manage to get the big CM yagi back up this past spring along with the CM dish. The dish is only about 15 feet above the ground at this QTH. I plan to hoist it up another 10 feet this spring. The dish has a clear shot to the east, northeast and southeast but nothing in any other direction due to the house. If I can get it up another 10 feet this spring I will then have a better shot to the north, northwest, and the south. The cm yagi on the roof is up and clear in all directions. I think my dx tv set will be replaced soon also. I have a line on an older Zenith color with the click stop tuner. I still haven't dx'ed any digital tv stations but am looking for the Sylvania SRZ 3000 box that I heard was pretty good. That was about a year ago and there might be something better out there now. I

Didn't get one of the RS boxes so I'm still behind the times here in that aspect."

AND THAT JUST ABOUT

Wraps it up for this month. Let's hope mother nature co-operates and hands us some tropo and E-skip in the near future. See you all next month!



TV News

Douglas E. Smith
 1389 Old Clarksville Pike
 Pleasant View, TN
 37146-8098
w9wi@w9wi.com
<http://www.w9wi.com>

March 2006

Abbreviations:

AF	Applied For (a new station)	NW	New station on the air
Aux	Auxiliary (backup) transmitter	PA	Proposed Amendment
CC	Callsign change	PC	Power (and/or tower height) change on the air
CL	City-of-license change	PG	Power change granted
DC	Converted to DTV	PR	Power change requested
DG	Granted flash-cut to DTV	QC	Channel (frequency) change on the air
DE	License/permit deleted	QG	Channel change granted
DR	Requests flash-cut to DTV	QR	Channel change requested
FC	Programming (format) change	RE	Reinstated (previously-dismissed app.)
FTP	Failure to Prosecute	ROA	Request of Applicant
GA	Granted amendment (to table of channel allotments)	SI	Off the air (silent)
LC	License to Cover	STA	Special Temporary Authority
MX	Mutually Exclusive	XC	Transmitter site changed
NDA	Non-directional antenna	XG	Transmitter site change granted
NS	Permit granted for new station	XR	Transmitter site change requested

News:

(full-power analog stations in **bold face**; LPTV and translators in regular type; full-power digital stations in **bold italics**; low-power digital stations in *regular italics*)



Mexico:

Baja California Norte:

Tecate **49 XHUPN-TV FC; to lose UPN**

Nuevo Laredo:

Monterrey **50 XHAW-DT NW**



Canada:

British Columbia:

Fraser Valley **66 CHNU-TV PG>17kw**

Manitoba:

Winnipeg **35 CIIT-TV NW, 20kw/250m, 49-44-50/97-08-37 "OMNI.11"**



Puerto Rico:

Fajardo **13 WORO-TV CC from WPRV-TV**

Mayaguez **16 WOST NW 9.55kw/338m, 18-18-51/67-11-24**



U.S. Virgin Islands:

Charlotte **44 WTJX-DT NW 50kw/458m**

Amalie



USA:

Alabama:

Birmingham **47 W49AY STA 12.9kw from ch. 49**

Demopolis **25 WJMY-CA STA 30kw**

Enterprise **47 NEW-LP AF dismissed**

Homewood 21 WTTO PC 920kw/425m

Jasper **25 W66CN QR from ch. 66, 8.4kw**

Mobile 18 NEW-DT NS 300kw, 30-36-45/87-38-43

Mobile 61 NEW AF dismissed (2 apps) (same allotment as DTV ch. 18)

Moulton **46 W46CF PR>150kw, 34-35-29/87-24-18; CL from Tuscomb**

Russellville **45 W59CF STA 45kw from ch. 59**

Scottsboro **27 W64BJ QC from ch. 64, 11.1kw**

Alaska:

Anchorage 2 KATN STA 26.7kw/218, 64-55-20/147-42-49

Anchorage 20 KTTY-DT PR>234kw/55m, 61-13-11/149-53-24

Anchorage **38 NEW-LP NS**

Fairbanks **6 NEW-LP NS**

Arizona:

Buckeye **38 NEW-LP NS**

Cane Beds **6 K06OB NW 90w,**

		36-54-11/ 113-51-08	Denver	50	KCEC	PC<231m, 39-43-58/ 105-14-08	
Flagstaff	20	NEW-LP	NS	Eagle	40	KCXP-LP	STA 5w, 39-13-07/ 106-51-37; CC from K40DA
Flagstaff	35	K35FH	FC; sold by TBN				
Flagstaff	53	NEW-LP	NS	Glenwood Springs	23	KREG-DT	PR<16.1kw
Globe	50	KDOS-LP	QR from ch. 53, 9.95kw, 33-17-21/ 110-49-45	Longmont	29	KDEN-DT	PR 540kw/379m, 40- 05-59/ 104-54-02
Phoenix	17	KPHO-DT	NW 1000kw/507m	Lower Fryingpan River	11	K11LM	STA to remain silent up to 60 days from Dec. 16, 2005
Phoenix	31	KSAZ-DT	PC>1000kw/484m	Parlin - Doyleville	36	K36GQ	NW 52w, 38-30-22/ 106-40-47
Phoenix	45	KUTP	FC; to lose UPN	Pitkin	17	K17GC	NW 150w, 38-36-16/ 106-31-40
Phoenix	61	KASW	FC; to be CW	Romeo	47	NEW-LP	NS
Prescott	50	NEW-LP	NS	Steamboat Springs	14	NEW-LP	NS
Williams	29	K29DK	PC>1.16kw, 35-12-01/ 112-12-15 (KAZT-7)	Connecticut: Bridgeport	42	WSAH-DT	PR<780kw/169m
Williams-Ashfork	41	NEW-LP	NS (KTVK-3)	Hartford	28	WXCW-CA	CC from W28CT
Arkansas: Newport	45	NEW-LP	NS	Hartford	50	WRDM-LP	QC from ch. 13, 50kw, 41-47-48/ 72- 47-52
California: Bishop	30	NEW-LP	NS	New Haven	59	WCTX	FC; to lose UPN
Chico	48	NEW-LP	NS	New London	34	WHPX-DT	PG>368m
Coalinga	27	KJKZ-LP	PG>150kw	Waterbury	20	WTXX	FC; to be CW
Eureka	9	K17EH	QR from ch. 17, 3kw	Delaware: Rehoboth	51	NEW-LP	NS
Eureka	28	KBVU-DT	PR<50kw	Rehoboth Beach	59	WRDE-LP	PR>20.5kw, 38-44-51/75-11-21
Fresno	31	KBID-LP	PR>100kw, 36-44-05/ 119-47-26; CC from KGMC-LP	District of Columbia: Washington	20	WDCA	FC; to lose UPN
Hemet	51	KDUG-LP	CC from K51IW	Washington	25	WZDC-LP	QR from ch. 64, 32kw
Los Angeles	5	KTLA	FC; to be CW	Washington	50	WBDC	FC; to be CW
Los Angeles	13	KCOP-TV	FC; to lose UPN	Florida: Fort Pierce	34	WTVX	FC; to be CW
Los Angeles	27	KNLA-LP	QR from ch. 68, 150kw dismissed	Fort Pierce	38	WTCE-DT	PR>765kw/297m
Morongo Valley	18	KJHP-LP	STA 500w	Hollywood	47	WAMI-DT	PR>1000kw
Morongo Valley	40	K40HX	QC from K62AO, 1.08kw	Key West	5	W05CJ	PR<590w, 24-33-18/81-48-05, reduce tower height 27m
Palm Springs	8	KSPP-LP	STA 490w, 33-50-02/ 116-49-20 from ch. 29	Key West	10	W10CQ	PR<660w, 24-33-18/81-48-05, reduce tower height 24m
Paradise	20	KCVU-DT	PR<100kw/449m	Key West	22	WDLP-TV	request to drop DA dismissed
Redding	56	NEW-LP	NS	Key West	25	W05CL	QR from ch. 5, 5.63kw, 24-35-44/ 81-39-37
Sacramento	31	KMAX	FC; to be CW	Key West	36	WCAY-LP	STA 5.44kw, 24-34-07/81-44-02 from ch. 33
San Diego	17	KBNT-CA	STA 11.95kw, 32-43-48/ 117-05-03	Key West	69	WGAY-LP	CC from W69EI
San Diego	69	KSWB	FC; to be CW	Leesburg	40	WACX-DT	NW 1000kw/494, 28- 35-12/81-04-58
San Francisco	20	KBWB	FC; to lose WB	Marathon	48	WDFL-LP	CC from W48DA
San Francisco	44	KBHK	FC; to be CW				
San Jose	12	KNTV-DT	NW 103.1kw/377				
Stockton	58	KQCA	FC; to lose WB				
Stockton	62	KTFK-DT	NW 195kw/935m, 37-52-54/ 121-55-05				
Twentynine Palms	29	K29GK	QC from K65AR, 4kw				
Van Nuys	45	KSKJ-CA	STA from ch. 38, 8kw				
Winnfield	22	NEW-LP	NS				
Colorado: Broadmoor	41	K59BZ	QR from ch. 59				
Broomfield	12	KBDI-TV	PC 226kw/742m				
Denver	2	KWGN	FC; to be CW				
Denver	20	KTVD	FC; to lose UPN				

Melbourne	47 W46DB	STA 25kw from ch. 46			
Miami	6 WTVJ	STA for unreported reduced power, due to Wilma		Illinois:	
Miami	33 WBFS	FC; to lose UPN		Carbondale	40 WSIU-DT NW 1000kw/271m
Miami	39 WBZL	FC; to be CW		Chicago	9 WGN-TV FC; to be CW
Miami	49 W54BB	PC>150kw, 25-59-09/80-11-37; CL from Rock Harbor		Chicago	41 WOCH-CA STA for circular polarization
Miami	56 WEYS-LP	PG>150kw		East St. Louis	46 WRBU FC; to lose UPN
Miami	56 WEYS-LP	PR>150kw		Elgin	30 W57DN DR from ch. 57, 15kw
Palm Beach	43 WTCN-CA	FC; to lose WB		Rochelle	55, WLFM-LP, NW 50kw, 61 WCHU-LP 41-53-56/87-37-23 (John Hancock Cen., Chicago); CC from W55DF & W61DT
Panama City	5 WODL-LP	FC; sold to religious organization			
Panama City	10 W36BU	QC from ch. 36, 3kw, 30-19-41/85-41-22		Indiana:	
Pensacola	12 WBQP-CA	PR>3kw, 30-28-32/87-15-16		Bloomington	4 WTTV FC; to be CW
St Petersburg	38 WTTA	FC; to lose WB		Columbia	27 W27CT PR>150kw dismissed
St Petersburg	44 WTOG	FC; to be CW		Evansville	14 WFIE PC 2500kw/310m
Tampa	31 W56EB	DR from ch. 56, 12kw		Farmersburg	7 WIIB-LP PR<1.5kw, 39-07-12/87-24-36; NW
Georgia:				Gary	50 WPWR-TV FC; to lose UPN
Athens	48 WUVG-DT	NW 1000kw/310, 33-48-26/84-20-22		Kokomo	29 WTTK FC; to be CW
Atlanta	17 WTBS	AF 250kw/332m, 33-48-26/84-20-22 (aux)		Marion	23 WNDY-TV FC; to lose UPN
Atlanta	19 WGCL-DT	PC>1000kw		South Bend	16 WNDU-TV PR>4170kw
Atlanta	36 WATL	FC; to lose WB			
Atlanta	69 WUPA	FC; to be CW		Iowa:	
Augusta	49 W58CZ	QG from ch. 58, 11.9kw rescinded		Ottumwa	23, K23CI, PG<740w, 25, K25DE, 40-55-45/92-23-03 (all 3 channels) 27 K27CV
Columbus	11 NEW-LP	NS		Red Oak	35 KHIN-DT NW 600kw/475m
Columbus	28 WJSP-TV	STA 1500kw		Sioux City	28 KSIN-DT NW 400kw/348m
Columbus	33 NEW-LP	NS			
Douglas	41 WWPB-LP	PR<100kw, 31-30-41/82-51-32; CL from Willacoochee		Kansas:	
Hinesville	41 W41CR	STA 26.9kw (to use old W39BV antenna on ch. 41)		Colby	19 NEW-DT NS 500kw, 39-14-31/101-21-38 (KOOD-9)
Pearson	3 WPNG-LP	PR<385w		Hoisington	14 KOCW CC from KBDK
Vidalia	17 W53CG	QR from ch. 53, 143kw		lola	30 K30AL DR 7.1kw, 37-54-33/95-07-23
Hawaii:				Topeka	44 WIBW-DT NW 193kw/379m, 39-00-22/96-02-57
Hilo	5 KHNB-LP	CC from K05LD		Kentucky:	
Wailuku	49 NEW-LP	NS		Danville	56 WDKY-TV PG>5000kw/352m 37-52-51/84-19-16
Idaho:				Louisiana:	
Boise	33 KBSE-LP	PC>120kw		Bastrop	4 NEW-LP NS
Boise	43 KIWB-LP	PC>150kw		Baton Rouge	39 WBXH-CA STA 12.2kw, 30-26-36/91-10-54 from ch. 46 due to Katrina
Bonnars Ferry	46 K67DI	STA from ch. 67, until ch. 32 approved		Lake Charles	29 KVHP STA 1757kw due to Rita
Idaho Falls	8 KIFI-TV	XR 464m, 43-30-04/112-39-43		New Orleans	6 WDSU STA 40.9kw/233, 29-56-59/89-57-28 due to Katrina
Idaho Falls	9 KIFI-DT	PR<17.9kw/464m, 43-30-04/112-39-43; PG;NW		New Orleans	8 WVUE STA 8.8kw/267m, 29-55-12/90-01-29 due to Katrina
Idaho Falls	38 NEW-LP	NS		New Orleans	32 WLAE-TV PR<617kw/310m
Lewiston	27 KIDQ-LP	QR from ch. 61; PC>2.8kw on ch. 61		New Orleans	38 WNOL FC; to be CW
St. Maries	23 K23HT	QG from K54FR		Slidell	54 WUPL FC; to lose UPN
Twin Falls	53 KYTL-LP	CC from K53IL		Tullos	46 K44HN QR from minus offset to plus

Maine:			Montana:		
Bangor	49 NEW-LP	NS	Billings	27 NEW-LP	NS (Nexstar)
Maryland:			Bozeman	54 KHJT-LP	CC from K54JL
Annapolis	61 WRZB-LP	CC from W61BY	Butte	21 NEW-LP	NS
Baltimore	41 WUTB-DT	PR 220kw/308m	Colstrip	58 K58IH	XC 45-50-20/ 106-54-17, 31.9kw
Bowie	25 WQAW-LP	QR from ch. 69, 45kw, 39-00-36/ 76- 36-33; CL from Lake Shore	Hardin	58 K58HS	PG<600w, 45-44-43/ 107-32-03
Salisbury	23 NEW-LP	NS	Poplar	50 K50GU	NW 988w, 48-17-28/ 105-15-09
Massachusetts:			Nebraska:		
Boston	38 WSBK	FC; to lose UPN	North Platte	50 NEW-LP	NS
Cambridge	56 WLVI-TV	FC; to be CW	Omaha	42 KPTM	PC 4800kw/452m, 41-04-14/96-13-33
New Bedford	28 WLWC	FC; to be CW	Sioux City	5 KSXC-LP	CC from K05LH
Pittsfield	51 WNYA	PG 141kw/293m, 42- 30-09/ 73-18-58; NW; FC, to lose UPN	Verdigre	10 K10JW	XR 42-35-55/ 98-02-30 (already has STA for this move)
Michigan:			Nevada:		
Alpena	26 W26DF	NS 5kw, 45-02-57/ 83-26-43	Elko	19 NEW-LP	NS
Detroit	20 WDWB	FC; to lose WB	Las Vegas	28 KVPX-LP	PR>150kw, 36-00-31/ 115-00-28
Detroit	47 W66BV	DR from ch. 66, 10kw	Laughlin	26 K67HO	QR from ch. 67, 150kw
Detroit	50 WKBD	FC; to be CW	Pahrump	41 KPVM-LP	CC from K41CQ
<i>Hesperia</i>	42 W42CB	DR 15kw	Reno	27 KREN-TV	STA 546kw
<i>Muskegon</i>	31 W52DB-D	DR from ch. 52, 15kw	New Hampshire:		
Traverse City	15 W15BM	PR>150kw, 44-45-37/85-40-58 dismissed	Newport- Charlestown	47 WVWQ-LP	PR<145w, 43-24-12/72-25-42; CL from Windsor, VT
Minnesota:			New Jersey:		
Duluth	10 WDIO-TV	XC 46-47-15/ 92-07-21 (correction only)	Burlington	27 WGTW-DT	NW 160kw/354m, 40-02-30/75-14-11
Grand Rapids	41 NEW-LP	NS (3Abn)	Secaucus	9 WWOR	STA for aux in Montclair, NJ; FC, to lose UPN
Hibbing	45 NEW-LP	NS (3Abn)	New Mexico:		
<i>Minneapolis</i>	25 K25IA	DR 15kw	Alamogordo	63 K63GU	NW 4.1kw, 32-49-45/ 105-52-14
Starbuck & Pope City	68 K68BP	XR 45-34-57/ 95-25-41, from no offset to zero; XG	Albuquerque	24 KNAT-DT	NW 200kw/1243m
Warroad	31 K31IL	NS 2.7kw, 48-53-49/95-18-58 (3Abn)	Clovis	41 K41JI	FC; sold to Faith Christian Church
Mississippi:			Clovis	29 NEW-LP	NS
Hattiesburg	35 NEW-LP	NS	Dora	69 K40GC	STA to return to ch. 69; see text
Magee	34 WRBJ	NW 1400kw/375, 32- 07-18/ 89-32-52; UPN	Farmington	43 K43AI	PR<8.42kw, 36-40-17/ 108-13-53
Meridan	42 NEW-LP	NS	Fort Sumner	34 K34GU	NW 1.29kw, 34-28-35/ 104-21-24 (KENW-3)
Meridian	49 WTOK-DT	PR<400kw/136m	Grants	44 NEW-LP	NS
<i>Pascagoula</i>	7 WKFK-LP	DR 300w	Roswell	27 KRPV	PC 490kw/122m, 33- 23-50/ 104-22-34
Starkville	47 NEW-LP	NS	Santa Fe		
Tupelo	40 NEW-LP	NS	Tucumcari	30 K30HD	NW 30kw/608m
Missouri:			Texas:		
Kansas City	31 KCWE-DT	NW 1000kw/332m	Abilene	34 K34GU	NS
Kansas City	45 K26CR	QC from ch. 26, 111kw	Abilene	34 K34GU	NS
Kansas City	62 KSMO-TV	PC<1795kw/341m39 -05-26/94-28-18	Abilene	34 K34GU	NS
St. Louis	7 KPTN-LP	RA; QC from ch. 58, 2.91kw	Abilene	34 K34GU	NS
St. Louis	11 KPLR	FC; to be CW	Abilene	34 K34GU	NS

		103-41-56 (KENW-3)	Tulsa	48 KWHB-DT	NW 29kw/460m
New York:			Woodward	35 KUOK	STA 32kw
Binghamton	8 WICZ-DT	PG 7.9kw	Oregon:		
Buffalo	38 WKBW-DT	NW 358kw/433m	Chiloquin	6 K06NS	PC>500w, 42-38-20/ 121-56-03
Corning	39 W39CP	NW 1.5kw, 42-08-31/77-04-40	Coos Bay	23 KUCW	CC from KMTZ
Easton	15 WNYA-CA	PG>150kw	Florence	32 K54DG	QR from ch. 54, 15kw
Hudson	21 WSSN-LP	CC from KHVB-LP	Klamath Falls	33 KFTS-DT	PG>9.6kw/649m;
Jamestown	27 WNYB-DT	NW 213kw/448m			NW
New York	5 WNYW	STA for aux in	Newport	29 K29AZ	PR>19kw
		Montclair, NJ	Portland	6 KOIN	PC<491m
<i>New York</i>	<i>6 WNYZ-LP</i>	<i>DR 300w</i>	Portland	40 KOIN-DT	NW 1000kw/523m
New York	7 WABC-TV	AF 23kw/243m, 40-57-39/73-55-23 (the Armstrong tower in Alpine, NJ) (aux)	Port Orford	8 K08AK	PC>300w, 42-44-25/ 124-30-17
New York	11 WPIX	FC; to be CW	Riley	19 K19GC	PR>125kw, 43-47-29/ 120-56-48
New York	45 WABC-DT	AF 399kw/309m, 40-45-22/73-59-12 (aux)			(supercedes application to move to Hampton)
Philadelphia	54 WTKJ-LP	CC from W54DN	Roseburg	27 K53CU	QR from ch. 53, 43-12-22/ 123-21-50
Port Jervis	64 WASA-LP	NW 110kw, 41-00-35/74-35-39; CC from W64CW	Roseburg	46 KTCW	CC from KMTX-TV
Schenectady	45 WEWB	FC; to be CW	Salem	47 KPOU-LP	PR>93.6kw, 45-31-14/ 122-44-37
Schenectady	17 WMHT	STA 1315kw			FC; to be CW
North Carolina:			Salem	32 KWBP	
Wilmington	46 WWAY-DT	NW 1000kw/590m	Pennsylvania:		
North Dakota:			Altoona	32 WTAJ-DT	NW 883kw/305m
Bismarck	39 NEW-LP	NS	Erie	7 W07DM	NS 400w, 42-04-47/ 79-57-02
Devils Lake	25 KMDE-DT	NW 134kw/245m, 48-03-48/99-20-09 (Prairie Public TV)	Erie	18 NEW-LP	NS (3Abn)
Minot	30 K30IY	NS 1.9kw, 48-15-02/ 101-17-52	Jeannette	19 WNPA	FC; to be CW
Ohio:			Johnstown	29 WWCP-DT	NW 1000kw/352m
Bowling Green	56 WBGU-DT	NW 200kw/306m	Johnstown	34 WJAC-DT	NW 1000kw/386m
Cleveland	44 WXOX-LP	QR from ch. 65, 120.4kw dismissed; going for 100kw instead	Philadelphia	17 WPHL	FC; to lose WB
Columbus	32 WCSN-LP	PG>25kw; CL from Bucyrus	Philadelphia	57 WPSG	FC; to be CW
Findlay	22 WFND-LP	PG>55kw, 40-56-26/83-52-43	Pittsburgh	22 WCWB	FC; to lose WB
Oklahoma:			Scranton,	13, WYOU-	NW 30kw/471m, 41-
Allen	18 KDNT-LP	NW 150kw, 34-15-47/96-22-43 (Daystar); CC from K18GO	Wilkes-Barre	11 WBRE-DT	10-58/75-52-26 (both stations)
Okla. City	19 KUOT-CA	PR>150kw, DA	South Carolina:		
Okla. City	34 KOCB	FC; to lose WB	Conway	9 WHMC-DT	NW 20kw/230m, 33-56-58/79-06-31
Okla. City	36 KCHM-LP	STA 30kw, 35-22-10/97-27-41	Conway	23 WHMC-TV	PG<917kw/245m, 33-56-58/79-06-31
Okla. City	41 KXOC-LP	QC from ch. 54, 48.8kw, 35-35-52/ 97-29-22; STA 900w on this channel	Greenwood	18 WNEH-DT	NW 49kw/230m
Okla. City	43 KAUT	FC; to be CW	Greenwood	38 WNEH	PC<1225kw, 34-22-19/82-10-05
Tulsa	29 KTZT-LP	FC; sold to Daystar	South Dakota:		
			Aberdeen	43 NEW-LP	NS
			Eagle Butte	13 KPSD-TV	STA 79kw
			Eagle Butte	25 KPSD-DT	STA 25.25kw
			Lowry	15 KQSD-DT	NW 85kw/274m, 45-16-38/99-59-10
			Pierre	21 KTSD-DT	PC>113kw, drop DA
			Rapid City	16 KCLO-DT	NW 150kw/154m
			Sioux Falls	44 KCWS-LP	CC from KBNW-
			Tennessee:		

Cookeville	49 W57CZ	QC from ch. 57	Plainview	31 NEW-LP	NS
Cookeville	52 WCTE-DT	NW 27.73kw/412	Port Arthur	45 NEW-LP	NS
Gatlinburg	36 WDWC-LP	NW 15kw, 35-42-29/83-31-15	San Angelo	43 K43IQ	PR<900w, 31-28-10/ 100-27-06
Memphis	14 960405KF	FC; sold to Christian Worldview Broadcasting Corp.	San Antonio	15 K15GX	NS 13.1kw, 29-25-51/98-29-23 (Tower Life Bldg.)
Texas:			San Antonio	50 K20BW	QR from ch. 20, 9.9kw
Abilene	38 NEW-LP	NS	Tyler	7 KLTV	XC 32-32-23/ 95-13-12
Amarillo	17 NEW-LP	NS (3Abn)	Tyler	10 KLTV-DT	NW 15kw/302m
Amarillo	48 K69IH	QR from ch. 69, 13.6kw, 35-15-41/ 101-52-52 dismissed ROA	Victoria	30 KCPV-LP	QR from ch. 55, 25kw, 28-48-58/ 97- 03-58
Amarillo	52 NEW-LP	NS	Victoria	51 KBGS-LP	PC>48.8kw; STA 27.29kw
Austin	20 KADF-LP	PR>150kw	Wichita Falls	68 KUWF-LP	NW 13.7kw, 33-52-48/98-35-18; CC from K68GK
Austin	33 KVUE-DT	NW 1000kw/376m			
Beaumont	10 NEW-LP	NS	Utah:		
Beaumont-Orange	22 KEBQ-LP	XR 30-03-40/ 93-58-50	Coalville	35 K35HH	NW 140w, 40-55-26/ 111-23-51
Beaumont	50 KBMT-DT	PG 35.5kw/276m	Heber & Midway	18 K18GV	NW 1.43kw, 40-33-45/ 111-28-30
Brownsville	39 KBDF-LP	QR from ch. 64, 75kw, 26-02-58/ 97- 31-10	Henefer & Echo	29, K29FY, 31 K31HR	NW 260w, 40-58-40/ 111-26-08
Canyon	46 NEW-LP	NS	Peoa	36 K36GK	NW 490w, 40-43-21/ 111-21-46
Corpus Christi	59 NEW-LP	NS	Provo	44 KBYU-DT	PR>402.8kw
Dallas	32 KDAF-DT	NW 235kw/496m, 32-32-36/96-57-32 (aux)	Samak	31, K31HH, 33 K33HP	NW 140w, 40-37-56/ 111-15-30
Dallas	33 KDAF	NW 1000kw/496, 32- 32-36/96-57-32 (aux); FC, to be CW (main too, of course!)	St. George	38 K69CT	QR from ch. 69, 470w, 37-03-48/ 113- 34-23
Denison	59 NEW-LP	NS	Wanship	31, K31HG, 33 K33HQ	NW 260w, 40-48-31/ 111-23-41
El Paso	14 KFOX-TV	PC>420kw	Wendover	15 K57BE	QR from ch. 57, 130w
El Paso	17 KVIA-DT	PG 263kw/577m; PC	Vermont:		
Forbes	59 NEW-LP	NS	Bennington	69 W69AD	PR>50kw, 43-01-13/73-31-29
Fort Worth	21 KTXA	FC; to lose UPN	Rutland	9 WVER-DT	NW 15kw/385m
Gainesville	61 K61HP	PR 100kw, 33-28-38/97-09-28 dismissed ROA	Virginia:		
Hallettsville	14 NEW-LP	NS	Norfolk	33 WTVZ-	FC; to lose WB
Houston	20 KTXH	FC; to lose UPN	Portsmouth	27 WGNT	FC; to be CW
Houston	24 KETH-DT	NW 900kw/578m, 29-34-15/95-30-37	Roanoke	17 WFXR-DT	PG 400kw/594m, 37- 11-46/80-09-16
Houston	39 KHWB	FC; to be CW	Roanoke	44 W34CU	QC from ch. 56, 108.5kw (yes, from ch. 56...)
Houston	61 KZJL	PC<1700kw/579m29 -33-44/95-30-35	Washington:		
Kerrville	35 KRRT	PC<515m	Bellevue	32 KWPX-DT	XG 716m, 47-30-17/ 121-58-03
Laredo	19 KLDO-DT	PR<5kw/109m, 27- 39-53/99-36-25	Bellingham	43 K43KB	NS 25kw, 48-42-14/ 122-23-42 (Daystar)
Livingston	7 KETX-LP	QC from ch. 5, 3kw	Bellingham	65 NEW-LP	NS
Louise	50 K50HN	NW 150kw, 29-12-07/96-14-57 (Daystar)	Moses Lake	58 K58BL	STA 890w
Lubbock	69 K69IM	NW 15kw, 33-30-56/ 101-50-54; TV Azteca	Seattle	22 KTWB	FC; to lose WB
McAllen	39 KNDF-LP	QR from ch. 57, 40kw, 26-16-32/ 98- 25-32; PR<10kw dismissed	Spokane	20 KREM-DT	NW 893kw/641m
Midland	41 K41HY	NW 9.5kw, 31-59-44/ 102-15-28	Spokane	11 KUUP-LP	CC from K11VT

Tacoma 11 KSTW FC; to be CW
 Vancouver 49 KPDJ FC; to lose UPN

West Virginia:

Clarksburg 22 W22CY NW 13kw,
 39-16-32/80-17-43
 (WDTV-5)
 Clarksburg 44 W44CF NW 11.2kw,
 39-16-32/80-17-43
 (TBN)

Wisconsin:

Appleton 32 WACY-DT PG<50kw
 Bloomington 22 W22CI DR 128w
 Coloma 48 W48DB DR 2.36kw
 Fence 45 W45CD DR 420w
 Grantsburg 24 W24CL DR 680w
Milwaukee 22 WVCY-DT PG 196kw/286m
 River Falls 47 W47CO DR 200w
 Sister Bay 18 W18CU DR 1.03kw

Wyoming:

WYOM Laramie 8 KWYP-TV NW 37kw/318m, 41-
 17-17/
 105-26-42 (KCWC-4,
 PBS)

Thanks to Mike Bugaj, John Zeis, Guillermo Franco, Brock Whaley, and Eric Bueneman for information appearing elsewhere in this month's column.

The big news this month is the pending merger of the UPN and WB networks. In September, both networks will cease to exist and will be replaced with a single entity called "CW". The network is a joint venture of Tribune Co. (part-owners of the WB network) and CBS. (who owns UPN)

Obviously, many stations will be left unaffiliated as a result of this change. There's already considerable speculation that Fox will pick up the slack, launching a second network that will serve a number of Fox-owned UPN affiliates as well as many third-party ex-UPN and ex-WB stations.

Some of the stations that will be affiliated with the new CW network are listed above; also listed are some stations that will be losing their UPN or WB affiliations. These lists are not complete.

Note that three stations have changed calls to calls with "CW" in them. It is not believed these stations will be affiliating with the CW network – the stations are owned by large groups which may be "warehousing" the calls in anticipation of using them on other stations that will be CW affiliates.

The other big news is from Washington, where the FCC is opening a window for LPTV stations to request a second channel for digital operation. For the first twelve days of May, LPTV, translator, and Class A stations may file an application for a second digital channel.

Unlike full-license stations, LPTV operations are not guaranteed a second channel – many of these applications will be denied. The second "companion" channel is not protected from interference from full-license stations – even if the underlying analog operation is a Class A station that would be otherwise protected.

As with full-license stations, either the LPTV's existing analog channel or the companion digital channel it requests in May must be surrendered after transition. Applicants may only request one companion channel for each analog channel they currently occupy.

To simplify the process for these applications, the FCC is also freezing LPTV technical changes from April 3 through May 12.

The new "Rochelle", Illinois LPTVs are reported on with test patterns. Both stations actually transmit from the John Hancock Center in Chicago.

KLTV-7 Tyler, Texas was off briefly in early February after their tower collapsed for unknown reasons. They returned to the air from an old tower a few days later, possibly at reduced power. At last report their DTV on channel 10 was still off.

I've noted a few Special Temporary Authorities recently issued by the FCC. They've begun putting some STAs in their CDBS database. This list is definitely not complete. Most STAs are still filed on paper, and such filings are not in the CDBS. Only those filed electronically appear.

The situation at K40GC in New Mexico is a bit more complicated than can be quickly explained. It would appear K40GC serves to deliver KBIM's signal to K49BY in Clovis.

Then... new station K41JI came on the air from a tower less than a mile from K49BY. Due to the strong channel 41 signal, the channel 49 translator can no longer receive the channel 40 signal from Dora. So... they filed to move K40GC back to channel 69 until they can arrange some other way to get the KBIM signal to Clovis...

WNPA-19's request for the assignment of DTV channel 49 has been approved. This station moved from Johnstown, Penna. to Jeannette, a Pittsburgh suburb, in the early 1990s. The FCC forgot about the move, and assigned them digital channel 30 at Johnstown.

DTV channel 30 at Johnstown would have been suitable, as it could be co-located with WWCP-DT on channel 29. But DTV channel 30 would not be suitable for use at WNPA's current analog tower site. It would cause severe adjacent-channel interference to WWCP-DT in western parts of the Johnstown-Altoona market. Channel 49 is suitable for use at WNPA's current site.

Class A station WLLS-CA Indiana, Penna. objected to the assignment. WLLS operates on channel 49 and will be bumped from that channel by WNPA-DT. They claim that, as a Class A station, they are protected from being bumped by city-of-license changes subsequent to the original DTV allotments. The Commission's point is that WNPA-DT shouldn't have been assigned channel 30 in the first place, and the assignment of channel 49 is the correction of a clerical error on the FCC's part.

The Commission also notes that WNPA's licensee has identified at least two channels suitable for WLLS-CA to move to. (I suspect channel 30 will be one such possibility!)

TV Marti has had its permission to operate at variance to previously-authorized parameters extended for one year. This permission came from the International Bureau, not the Media Bureau which usually handles broadcast matters. (however, generally the FCC is not involved at all in authorizing stations like TV Marti that are operated by the federal government)

XHAW-12 Monterrey appears to be the key station for a new network, "Multimedios TV". (<http://www.multimedios.tv>) The network claims transmitters through much of northern Mexico. They also have a number of affiliates in the U.S.

Listed on the XHAW website:

XHVTU	7	Cd. Victoria
XHLGG	6	Leon
XHVTV	54	Matamoros
XHAW	12	Monterrey
XHNAT	45	Nuevo Laredo
XHTAO	6	Tampico
XHOAH	9	Torreon

as well as 14 translators/boosters of XHAW on channels 11, 12, and 13 elsewhere in Nuevo Leon, and a booster of XHVTV, also on channel 54, in Reynosa.

Guillermo Franco forwarded a list of their U.S. affiliates:

K64GK	64	Amarillo, Texas
K18HD	18	Bakersfield, CA
?	59	Corpus Christi, TX
KVPX-LP	28	Las Vegas, Nevada
K24GP	24	Lubbock, Texas
KATA-CA	50	Mesquite (Dallas), Texas
K69IT	69	Midland, Texas
K45HW	45	San Angelo, TX
K52EA	50	San Antonio, Texas

I don't list any channel 59 station in or near Corpus Christi – I have no idea who this station is.

The Multimedios website also mentions XHAW's DTV operation on channel 50, remapping to 12-1. This would appear to be the second operational DTV station in Mexico, after Tijuana's XETV-DT 23. I would not be surprised if there are other DTV stations south of the border, either operational or planned in the very near future.

Good DX!



CIIT CH35 Winnipeg MB

TELEVISION'S PIRATES: HIDING BEHIND YOUR PICTURE TUBE

BY BOB COOPER

What is a Television Pirate?

By Oxford definition, a pirate is "a person who infringes another's copyright or other business rights" and/or "someone who broadcasts without official authorization." Television programming carries copyright, television stations travel a years-long pathway seeking "official authorization" before broadcasting. Alas, not every television station has waited for, nor even sought, authorization, and it goes without saying, contacting those who's copyright might be violated by their transmissions. Many figures in recent history (Winston Churchill) met our definition.

Tens of thousand have been driven by their intense desire to have, for their own, access to television. Cable TV began as piracy. Satellite TV was driven by rampant piracy. And now the Internet is spooked by those who would "broadcast" with authorization. This is their story.

ORDER YOUR 928 PAGE COPY FROM BOB RIGHT NOW!

Send your check or money order for \$20 (payable to WTFDA) to WTFDA, P.O. Box 501, Somersville, CT 06072.

Paypal order are also accepted. Send \$21.50 (to cover Paypal fees, etc.) To mbugaj@snet.net.



YO HO!
I tell it *all*
in 928
pages!

FM NEWS

from the WTFDA

3860 Shorewood Drive
Fremont Michigan 49412-9604
Phone: 231 924 0730



Chris Kadlec

E-Mail: beaglebass@beaglebass.com
http://www.beaglebass.com/dx_index.htm

MAR 2006

Instead of me cursing out the people who sold one of my favourite CHR-format stations to K-Love last month... I've decided my time could better be used by offering the latest changes to FM radio for the month of March!

INDEX OF ABBREVIATIONS

AF applied for (a new station)
AFA American Family Association
CC call letter change
CL city of license change
CX a construction permit has been cancelled
C1-C5 change in status to that FM license class
DA directional antenna
DE station has been deleted
FC format change
GA granted amendment to table of FM allocations
GE granted extension of construction permit
GX granted replacement of expired permit
LC license to cover filed (ready to come on air)
MC multiple-city ID
NC no change yet on a reported change or permit
ND non-directional antenna
NO not on the air

NS new station granted
NW new station signs on
OSA one step application granted for change
PA proposed amendment change to FM allocation table
PC power change on the air (> = increase, < = decrease)
PG power change granted (> = increase, < = decrease)
PR power change requested
QC frequency change occurred
QG frequency change granted
QR frequency change requested
RA silent station returns to the air
RE station requests an extension on permit
RX station requests replacement of expired permit
SC slogan change or update
SI station is silent
SOA signed on the air
XA dismissed amendment to FM allocations
XC transmitter site change occurred
XG transmitter site change granted

UNITED STATES and CANADA

Alabama / AL

Athens 97.9 WQXD-LP / CC from WGHE-LP
Athens 97.9 WQXD-LP / PR 47w/43m, 34-47-26/87-00-57 dismissed
Athens 97.9 WQXD-LP / PG 70m, 34-49-07/87-03-01, but CX ROA
Cordova 92.5 WPHC / CC from WXJC-FM
Eva 99.9 WRJL-FM / PG>25kw/97m
Goodwater 97.5 WZLM / PC 5.1kw/108m, 33-01-42/85-59-23
Heflin 89.1 WKNG-FM / PR>1kw/254m, 33-40-52/85-48-55
Homewood 106.9 WBPT / CL changed from Birmingham
Jasper 102.5 WDXB / NW 32kw/221m, 33-26-38/86-52-47 (aux)
Jemison 97.7 WHPH / CC from WEZZ-FM
Orrville 100.9 WALX / req. CL from Selma
Repton 101.1 WTID / CC from WFNU
Thomaston 97.7 WEZZ-FM / CC from WSMO

Alaska / AK

Juneau 92.7 KVIM-LP / NW 100w/-257m, 58-22-39/134-37-21
Palmer 88.9 KJLP / NW 250w/-64m, 61-37-18/149-01-16
Seward 105.9 KSWD-FM / CC from KPFN
Sterling 90.1 KRAW / NW 1.2kw/6m, 60-29-16/150-47-38

Alberta / AB

Fairview 88.5 NEW / AF 850w/66m // CKYL 610
High Prairie 88.5 NEW / AF 1.4kw/117m // CKYL 610
Peace River 88.7 NEW / AF 2.9kw/115m // CKYL 610
Saddle Hills 88.9 NEW / AF 2500w/228m // CKYL 610
Valleyview 88.7 NEW / AF 1400w/89m // CKYL 610

Arizona / AZ

Bisbee 90.9 KWRB / PC>990w-V/638m, 31-28-58/109-57-29 (drops H)
Flagstaff 100.1 KVNA-FM / PC<5.2kw/437m
Globe 100.3 KQMR / AF 900w/583m (aux)
Globe 100.3 KQMR / NS 900w/583m (aux)
Holbrook 94.7 KJNN-LP / NW 100w/-52m, 34-52-59/110-11-39
Miami 101.9 KQSS / QR from 98.3, -24m (was -85m)
Payson 96.3 KRIM-LP / PR 8w/103m, 34-16-00/111-18-54 dismissed
Tuba City 97.9 NEW / AF 100kw/315m, 35-33-39/111-36-07

Arkansas / AR

Blytheville 91.5 KOUX / NW 1kw/58m, 35-54-45/89-53-28 (AFR)
Fort Smith 90.7 971202MA / NS 26kw-V/636m, 35-09-56/93-40-36 (Family Radio)
Huntsville 99.5 KAKS / PR>13.8kw
Maumelle 94.9 KHLR / CC from KMSX
Nashville 90.5 97011OMB / NS 24kw-V/169m, 33-45-16/93-52-29 (AFR)
Nashville 90.5 KNLL / CC for NS
Waldron 103.1 KHGG-FM / CC from KRWA-FM

British Columbia / BC

No Reported Changes

California / CA

Adelanto 101.5 KPTG-LP / CC for NS
Calipatria 100.9 KSSB / PG>5.2kw/40m
Camarillo 90.3 KMRO / PR 10.7kw/281m, 34-24-40/119-10-28
Cathedral City 98.5 KWXY-FM / NW 2kw/-216m, 33-48-07/116-27-44 (aux)
Chico 92.7 KLRS / AF 700w/169m (aux)
Chico 92.7 KLRS / NS 700w/169m (aux)
Coalinga 90.7 KFRP / NW 2.5kw-V/382m, 35-55-39/120-22-46 (Family Radio)
Coalinga 100.9 NEW / PA, class A, dismissed; nobody expressed interest in using the channel
Corning 100.7 KTHU / NS 900w/52m (aux)

Corona 105.5 KGIC-LP / PR 100w/5m, 33-50-08/117-29-38
Delano 105.3 KBFP-FM / CC from KKDJ
El Cerrito 88.1 KECG / PC<-29m, 37-54-20/122-17-34
Fowler 96.7 KALZ / CC from KEZL
Fowler 96.7 KALZ / XC 36-41-42/119-43-56
Fresno 90.3 KFNO / PC>2.2kw/594m
Fresno 102.7 KHGE / CC from KCTZ
Goleta 96.3 KVRV-LP / NW 100w/16m, 34-26-50/119-53-28
Goleta 96.3 KVRV-LP / PG 100w/16m, 34-26-50/119-53-28 (CSN)
Hanford 107.5 KRDA / CC from KVBE
King City 93.9 KEXA / CC from KHDV
Laytonville 90.3 KLAI / PC 75w/722m, 39-41-38/123-34-43
Los Angeles 95.5 KLOS / AF 49.5kw/893m, 34-12-46/118-03-42 (aux)
Los Angeles 95.5 KLOS / NS 50kw/893m, 34-12-46/118-03-42 (aux)
Los Angeles 96.3 KXOL-FM / PR 6.6kw/398m, 34-11-48/118-15-30
Los Angeles 104.3 KBIG-FM / PC 65kw/928m
Los Angeles 107.5 KLVE / NW 290w/885m, 34-13-43/118-04-01 (aux)
McKinleyville 89.3 971211MH / AF 4.2kw/-84m, 40-54-08/124-04-56
Modesto 106.9 KEQP-LP / NW ?w/64m, 37-38-31/120-59-48
Mojave 96.1 NEW / NS 5.4kw/-3m, 35-07-23/118-12-06
Moss Beach 89.3 KLSI / NW 10w-V/498m, 37-33-44/122-28-46
Mt. Shasta 107.9 KMJC-FM / PC>20kw-H/249m, 41-13-37/122-14-23
Needles 103.1 KCAN-LP / PR<-28m
Needles 103.1 KCAN-LP / PG 100w/-28m, 34-49-43/114-36-38
Pescadero 89.3 KPDO / PG>-43m, 37-15-23/122-24-33
Quincy 88.1 KQNC / PC 500w/-346m, 39-56-14/120-56-51
Redding 91.5 KKRO / PG>400w/379m, 40-54-29/122-26-34
Ridgecrest 91.9 KWTB / PC 7kw/390m, 35-28-38/117-41-58
Salinas 97.9 KYZZ / CC from KEXA
San Clemente 107.9 KWVE / PG 49kw/152m, 33-25-52/117-35-47
San Diego 106.5 KLNK / AF 480w/562m, 32-41-48/116-56-10 (aux)
San Diego 106.5 KLNK / NS 480w/562m, 32-41-48/116-56-10 (aux)
San Luis Obispo 91.3 KCPR / PR>310w/432m, 35-21-38/120-39-21
Santa Cruz 88.1 KZSC / PG>20kw/133m
Shingletown 96.1 KKXS / PC>1.9kw
Sonora 92.7 KZSQ-FM / PC 390w/373m (aux)
Twain Harte 93.5 KKBN / PC 400w/373m (aux)

Colorado / CO

Bayfield 107.1 KLJH / XC>574m, 37-21-46/107-47-40
Broomfield 92.5 KWLI / CC from KLWL
Broomfield 92.5 KWLI / AF 2.4kw/297m (aux)
Cortez 91.5 KSJD / PR<95m
Craig 88.3 KPVR / NW 250w/271m, 40-33-50/107-36-40 (Colo. Public Radio)
Denver 105.1 KXKL-FM / AF 4.5kw/342m, 39-36-00/105-23-34 (aux)
Eaton 88.9 KLCQ / FC; sold by K-Love (!)
Grand Junction 89.5 KPRN / NW 4.5kw/386m, 39-03-58/108-44-43 (aux)
Greeley 91.5 KUNC / CC from KUNC-FM
Greeley 104.7 KELS-LP / PR>28m
Greeley 104.7 KELS-LP / PG>28m
Gypsum 91.3 KLRY / NW 110w/859m, 39-46-30/106-50-45 (K-Love)
Kremmling 106.3 KZMV / PC>50kw/150m, 40-07-12/106-14-13
Lamar 93.5 KLMR-FM / QR from 93.3, 100kw/146m, 38-02-10/102-35-58
Loveland 102.5 KTRR / AF 10kw/162m (aux)
Pueblo 99.9 KVUU / NW 2.2kw/535m, 38-44-44/104-51-42 (aux)
Steamboat Sps. 88.5 KRNC / CC from KTAH
Sterling 90.7 KDRE / NW 1.6kw/154m, 40-36-56/103-02-02 (K-Love)

Vail 104.7 KSKE-FM / PC 95kw
Windsor 99.1 KUAD-FM / AF 17kw/181m (aux)
Windsor 99.1 KUAD-FM / NS 17kw/181m (aux)

Connecticut / CT

No Reported Changes

Delaware / DE

No Reported Changes

District of Columbia / DC

Washington 100.3 WBIG-FM / PG>20kw/149m (aux)
Washington 103.5 WTOP-FM / CC from WGMS-FM

Florida / FL

Callaway 103.5 WAKT-FM / NW 11.5kw/65m, 30-12-12/85-36-57 (aux)
Cedar Creek 89.5 WKSG / PR<26kw-V, add 100w-H
Cross City 88.5 WWLC / NW 420w/59m, 29-39-09/83-10-08
Cross City 88.5 WWLC / PG 100kw/103m, 29-31-35/83-14-17
DeFuniak Sps. 91.3 WAKJ / PC>1.2kw/69m, 30-41-05/86-08-28
Florida City 88.5 WMFL / PC>7.7kw/52m, 25-19-31/80-24-16 (adds H, was V only)
Islamorada 105.5 WWWW / PG>50kw/75m, 24-57-34/80-34-30; CL from Marathon
Jacksonville 107.3 WPLA / NW 42kw/143m, 30-06-14/81-28-11 (aux)
Key West 88.3 WAZQ / CC from WAVQ
Key West 88.3 WAZQ / PR<2.5kw-H/90kw-V/77m, 24-40-28/81-21-40 dismissed ROA, went for 180w/34m instead
Marianna 88.3 WJNF / QC from 91.1, 25kw-V/80m, 30-46-57/85-06-30
Naples 89.5 WSRX / PG>149m, 26-07-12/81-40-59
New Port Richey 105.5 WDUV / NW 6.7kw/320m, 28-10-56/82-46-06 (aux)
Ocala 93.7 WOGK / GA from class C to C0 (proposal for full Class C facilities dismissed due to FAA objections)
Palm City 100.1 NEW-LP / NS 100w/13m, 27-11-57/80-13-30
Port St. Lucie 100.1 NEW-LP / NS 91w/31m, 27-16-29/80-17-11
Sanibel 93.7 WTLT / GA from Naples, class C3 to C2
Sebastian 95.9 WSJZ-FM / PG 21.5kw/109m, 27-53-21/80-33-27
St. Catherine 89.3 WKFA / PR>4kw
Tampa 88.5 WMNF / PG 7kw/469m, 27-49-10/82-15-39
Tice 102.9 WJGO / PR>96kw
Vero Beach 99.7 WGNX / PC>134m, 27-44-07/80-27-27
Weirsdale 104.5 WHZL-LP / NW 100w/25m, 28-58-42/81-55-40
Weirsdale 104.5 WHZL-LP / CC for NS
Yulee 105.3 WJSJ / GA from Fernandina Beach

Georgia / GA

Alma 104.3 WAJQ-FM / NW 3.1kw/49m, 31-32-44/82-28-43 (aux)
Augusta 100.3 WRMK-LP / PR 46w/44m, 33-30-11/82-03-36
Augusta 100.3 WRMK-LP / PG<27m, 33-30-11/82-03-36
Brunswick 106.7 WBHS-LP / NW 100w/19m, 31-11-08/81-29-31 (Brunswick H.S.)
Brunswick 106.7 WBHS-LP / PC<19m, 31-11-08/81-29-31
Butler 96.9 NEW / PA, class A, denied. Promise to apply for the channel filed two days late due to postal delays. Mutually exclusive with Reynolds allotment.
Hampton 107.9 WHAT / AF 33kw/154m (aux)

Reynolds 96.9 NEW / GA, class A, non-commercial
 Rincon 100.1 WMZD / PR>150m, 32-16-49/81-11-40, CL from Statesboro
 Rockmart 107.1 WTSH-FM / PG 50kw/150m, 34-09-08/84-53-16
 St. Simons Is. 93.7 NEW / GA, class C3
 Thomaston 101.1 WTGA-FM / PR 1.27kw/218m, 32-59-13/84-21-55
 Unadilla 99.9 WQSA / FC, sold to "Hajaaaa Communications, LLC". Yes, this is correct.
 Valdosta 88.5 WVDA / NW 18.5kw-V/66m, 30-47-50/83-01-01
 Zebulon 92.5 WEKS / PG 12kw/145m, 33-08-20/84-31-31

Guam / GU

No Reported Changes

Hawaii / HI

Captain Cook 102.5 KCOF-LP / NW 100w/0m, 19-25-00/155-52-30
 Hilo 91.1 KANO / PR 30kw/0m (HAAT may be a typo)
 Hilo 103.3 KIHL-LP / NW 100w/0m, 19-43-34/155-05-16
 Honokaa 102.9 KLZY / CC for NS
 Honolulu 101.1 NEW-LP / NS
 Kahului 88.5 KAKU-LP / NW 100w/-169m, 20-53-15/156-27-30
 Kailua 101.1 NEW-LP / NS
 Kealahou 101.5 KAOY / PC 6.5kw/909m, 19-43-15/155-55-16
 Pahala 90.5 KPHL / NW 250w/-12m, 19-06-02/155-34-09
 Pahala 90.5 KPHL / PR<250w/-12m, 19-06-02/155-34-09
 Pahala 90.5 KPHL / PG 250w/-12m, 19-06-02/155-34-09
 Volcano 107.7 KKOAA / PG 25.26kw/28m, 19-43-18/155-27-23
 Waianae 101.1 KLHI-FM / PR 100kw/592m, 21-23-45/158-05-58; CL from Lahaina; moves from Maui to Oahu
 Wailuku 90.7 KKUA / PR 56kw/779m, 20-39-36/156-21-50
 Wailuku 95.1 KAOI-FM / PR RE<55kw, 20-38-13/156-23-21

Idaho / ID

Boise 104.3 KTMV / CC from KLTB
 Boise 105.1 KJOT / NW 6.3kw/810m (aux)
 Driggs 101.9 KCHQ / QR from 102.1, 100kw/596m, 43-42-27/111-20-40
 Gooding 100.7 KAYN / CC from KISY
 Sun Valley 107.5 KYZK / PR 47kw/582m, 43-38-36/114-23-49 dismissed
 Victor 103.7 KWHO / CC from KKTN

Illinois / IL

Crete 88.1 WBMF / FC: sold to WJFM
 Cuba 106.3 NEW / GA, class A, counterproposal to Knoxville request
 Gilman 103.7 NEW / AF 6kw/100m, 40-43-04/87-51-36
 Gilman 103.7 NEW / NS 6kw/100m, 40-43-04/87-51-36
 Kankakee 88.3 WAWF / FC; sold to WJFM
 Knoxville 106.1 NEW / PA, class A, possibly non-commercial, mutually exclusive with Cuba request
 Neoga 101.3 WMCI / PG 11kw/150m
 Oglesby 102.1 WALS / PC>2.25kw/166m, 41-16-30/88-57-56
 Ottawa 88.9 WWGN / FC; sold to WJFM
 Ottawa 88.9 WWGN / PC 1.4kw-H/4.1kw-V/148m, 41-18-05/88-57-11
 Peoria 89.9 WCBU / PC 26.5kw/197m
 Rock Island 98.9 WHTS / FC; sold to K-Love
 Rock Island 98.9 WLKU / CC from WHTS
 West Salem 101.1 NEW / GA, class A, counterproposal to New Harmony, IN

Indiana / IN

Angola 88.3 WEAX / PG 850w/67m, 41-41-12/84-59-53
 Bloomington 103.7 WFIU / NW 1kw/124m (aux)
 Bluffton 100.1 WNUY / PC 6kw/91m, 40-52-10/85-10-20
 Brazil 92.7 WSDM-FM / QC from 97.7
 Columbus 90.3 970501MB / NS 1.5kw-V/42m, 39-12-27/86-01-27
 Indianapolis 94.7 WFBO / NW 12.9kw/227m, 39-46-11/86-09-26 (aux)
 Lebanon 91.5 990420MB / QR from 91.9, 900w-V/75m, 40-16-51/86-31-39
 Marion 106.9 WMRI-FM / CC from WMRI
 New Harmony 101.1 NEW / PA, class A, denied - allotted to West Salem instead.
 Richmond 101.3 WFMG / PR<20.5kw/83m
 Spencer 97.7 WCLS / QC from 92.7, 6kw/100m, 39-13-22/86-38-40
 Terre Haute 88.5 WCRT-FM / CC from WCRT

Iowa / IA

Ames 94.1 KJAS-LP / XR 42-02-05/93-34-25
 Ames 94.1 KJAS-LP / XG 42-02-05/93-34-25
 Britt 99.5 KHAM / NW 200w/16m, 43-05-47/93-48-05
 Cedar Rapids 96.5 WMT-FM / XC 42-01-40/91-38-25
 Emmetsburg 100.1 KUYV / CC from KDWD
 Newton 88.3 KKLK / NW 400w/67m, 41-41-33/93-00-37 (K-Love)
 Postville 89.1 KPVL / PR>3kw
 Stuart 107.9 KKRF / XR 41-27-40/94-29-22
 Vinton 107.1 KRQN / CC from KROJ
 Vinton 107.1 KRQN / PG>4.7kw
 Waverly 88.9 KWVI / PG 20kw/84m, 42-47-21/92-14-22
 Waverly 89.1 KWAR / PC>26m, 42-43-37/92-29-01

Kansas / KS

Augusta 100.5 KPLN / CC for NS
 Hutchinson 90.1 KHCC-FM / PR>395m, 38-03-22/97-44-43
 Lawrence 91.5 KANU / NW 1kw/185m, 38-57-14/95-16-11 (aux)
 Medicine Lodge 91.5 KSNS / PR>96kw-V (to drop H)

Kentucky / KY

Columbia 93.5 WAIN-FM / PG>61m, 37-06-26/85-16-42
 Erlanger 101.1 WIZF / QR from 100.9
 Fredonia 92.1 WKEN / CC for NS
 London 92.3 WYGE / PC>23.5kw/223m
 Owensboro 90.3 WKWC / PC 5kw/25m, 37-44-32/87-07-27
 Prospect 98.9 WZKF / GA from Salem, Ind.
 Russell Springs 92.7 WHVE / PC 6kw/77m, 37-04-41/85-10-26
 Salyersville 106.5 WRLV-FM / PC<5.9kw/101m
 Springfield 102.7 WYSB / CC from WAKY-FM
 Stanford 96.3 WXKY-FM / PC 4.9kw/223m
 Whitesburg 103.9 WXKQ-FM / PC>280w

Louisiana / LA

Bastrop 94.3 KTRY-FM / CX, DE
 Baton Rouge 96.9 WHYR-LP / PR<25m, 30-26-59/91-10-14
 Homer 106.7 KYLA / FC; sold to K-Love
 Jonesville 105.1 KTGTV / PC 900w/249m, 31-40-08/91-41-30
 Lacombe 94.7 WYLK / CC from WOPR
 Lacombe 94.7 WYLK / PG 2.9kw/146m, 30-23-07/89-55-33
 Lafayette Reserve 99.9 KTDY / NW 100kw/159m (aux)
 Reserve 94.9 WPRF / PG>50kw/147m, 29-43-48/90-43-37

Maine / ME

No Reported Changes

Manitoba / MB

No Reported Changes

Maryland / MD

Braddock Hts. 103.9 WGYS / CC from WWVZ
 Frederick 88.1 WYPF / PC 1kw/340m, 39-29-31/77-30-00
 St. Leonard 100.7 WWZZ-LP / CC for NS
 Waldorf 104.1 WGMS / CC from WWZZ

Massachusetts / MA

N. Dartmouth 91.1 WSMU-FM / FC; sold to K-Love
 Scituate 90.5 WSMA / PR<7.7kw-V/150m (H power remains 10w)

Michigan / MI

Benton Harbor 105.3 WVBH-LP / NW 100w/19m, 42-06-33/86-26-30
 Benton Harbor 105.3 WVBH-LP / PC<19m, 42-06-33/86-26-30
 Carrollton 100.5 WSGW-FM / CC from WTBT
 Charlevoix 90.9 WTCK / PR 1kw/185m, 45-11-04/85-05-33
 Holton 100.1 WVIB / PC 2.9kw/144m, 43-18-50/86-09-17
 Lapeer 103.1 WQUS / PC 2.6kw/104m, 43-04-43/83-11-24
 Marlette 89.3 WMSQ / PG 250w/24m, 41-23-35/83-02-04
 Muskegon 104.5 WSNX-FM / NW 22kw/139m, 43-12-16/86-01-45 (aux)
 Rogers City 96.7 WVXA / PR>42kw
 Rogers City 96.7 WVXA / PC 42kw/162m, 45-21-02/83-46-59
 Rogers City 96.7 WRGZ / CC from WVXA
 Springfield 90.9 WCFG / CC for NS

Minnesota / MN

Cold Spring 94.9 KMXX / NW 1kw/133m, 45-33-36/94-08-20 (aux)
 Grand Portage 92.7 NEW / GA, class C
 Minneapolis 100.3 KTLK-FM / CC from KJZI
 New Prague 95.5 KRDS-FM / PC>6kw
 North Branch 90.3 KMKL / NW 500w/112m, 45-32-36/92-58-24 (K-Love)
 Northfield 89.3 KCMP / XG 44-41-21/93-04-21
 Park Rapids 92.5 KXKK / PR>10kw
 Park Rapids 97.5 KDKK / PC>194m, 46-55-51/95-00-27
 Pipestone 98.7 KISD / PR>95.3kw/466m
 Rochester 88.7 KMSE / PG>168m, 44-02-28/92-20-25
 Waite Park 103.7 KLZZ / NW 1kw/133m, 45-33-36/94-08-20 (aux)
 Warroad 92.5 KKWQ / XR 48-59-26/95-30-55
 Windom 88.1 981015MB / NS 250w/52m, 43-51-15/95-07-30
 Windom 88.1 KQRW / CC for NS

Mississippi / MS

Brandon 104.1 WSKM-LP / CC for NS
 Columbus 88.5 WMUW / CC for NS
 Columbus 90.5 WCSO / PR>13kw-V/112m, 33-20-44/88-14-06
 Glen 97.1 WTRR-LP / NW 50w/42m, 34-54-27/88-29-06
 Gulfport 96.7 WUJM / PG 4.27kw/119m, 30-27-31/89-04-46
 Hattiesburg 93.1 WGDQ / NW 6kw/100m, 31-22-58/89-23-43
 Hattiesburg 103.7 WUSW / GA class C0 from C
 Jackson 95.5 WHLH / PC>451m
 Laurel 90.9 WATP / PR 75kw/206m, 31-50-09/88-52-21 (V only, drops H)
 Leland 94.3 WBAD / PC 50kw/88m, 33-24-55/90-59-18
 Pearl 93.9 WRXW / NW 12kw/135m (aux)
 Picayune 106.1 WMTI / CC from WKSJ
 Tunica 96.1 WYYL / PC 9.5kw/161m

Missouri / MO

Arcadia 103.9 KTNX / NW 450w/284m, 37-34-23/90-41-35
 Dixon 92.1 KCVZ / NW 6kw/100m, 37-37-59/92-10-03
 Eldon 101.9 NEW / AF

Kansas City 102.1 KCKC / CC from KSRC
 Marshall 102.9 KMMO-FM / PG>76kw/299m, 39-07-12/93-18-09
 Sedalia 92.3 KSDL / QC from 92.1, 6kw/89m, 38-44-03/93-13-31
 Sedalia 92.3 KSDL / PC>6kw, QC from 92.1
 St. Genevieve 105.7 KPNT / NW 43kw/369m (aux)

Montana / MT

Columbia Falls 95.9 KHNK / CC from KKMT
 Great Falls 90.7 KGFA / PG>91m, 47-31-57/111-16-38
 Great Falls 91.5 KAFH / PG 1kw/91m, 47-31-57/111-16-38
 Havre 92.5 KPQX / NW 16.5kw/526m, 48-10-55/109-41-01 (aux)
 Helena 90.1 KHLV / NW 3.5kw-V/202m, 46-46-07/112-01-21 (may have very low H power, less than 5 watts) (K-Love)
 Helena 99.5 KBLL-FM / PC>12.25kw/589m, 46-44-52/112-19-48
 Lockwood 88.9 KYWH / NW 1.9kw-V/138m, 45-51-12/108-45-50
 Missoula 102.5 KMSO / PR>40kw dismissed ROA
 Park City 89.7 KBIL / NW 1.5kw-V/66m, 45-34-31/109-14-34 (K-Love)
 Whitehall 89.7 KAIB / PG<3.5kw-V/549m, 46-00-23/112-26-28
 Whitehall 89.7 KQLR / CC from KAIB

Nebraska / NE

Nebraska City 97.7 KBBX-FM / XR 40-53-27/96-09-11
 Norfolk 94.7 KNEN / PR>164m, 41-55-28/97-36-22
 Omaha 91.5 KIOS-FM / NW 550w/143m, 41-17-10/95-59-37 (aux)
 Omaha 100.7 KGBI-FM / PC>368m, 41-03-01/96-11-33
 Ravenna 103.1 KKJK / PG>195m

Nevada / NV

Gardnerville 94.7 KYHW-LP / NW 100w/-108m, 38-54-39/119-43-47
 Gardnerville 99.1 KKFT / CC from KCMY in Gardnerville-Minden
 Gardnerville 99.1 KKFT / NW 405w/612m, 39-15-34/119-42-21 in Gardnerville-Minden
 Gardnerville 99.1 KCMY / PG>612m, 39-15-34/119-42-21 in Gardnerville-Minden
 Mesquite 90.9 KAIZ / PR>25kw/252m, 36-53-51/114-17-10
 Spring Creek 101.7 KCLS / PA from class C3 to C1, CL from Ely, dismissed ROA
 Tonopah 91.7 KTPH / PR>1kw/430m

New Brunswick / NB

No Reported Changes

New Hampshire / NH

Campton 105.7 WLKC / PC>130w/622m
 Claremont 106.1 WHDQ / PC 1.58kw/685m, 43-26-15/72-27-08
 Exeter 107.1 WERZ / PG 6kw/100m, 42-59-23/70-56-14
 North Conway 103.7 WPKQ / PC>21.5kw-V (was already 21.5kw-H but 16.5kw-V)

Newfoundland and Labrador / NL

Baie Verte 97.1 CBTB-FM / PR>24.2kw/254m
 Fermeuse 104.3 CBN-x-FM / AF 3.2kw/61m, 46-57-48/52-57-02, // CBN-AM 640 (CBC R. 1)
 Glovertown 101.5 CBNG-FM / QR from 1090 AM, 1.276kw/149m, 48-40-39/54-04-19, // CBG-AM 1400 (CBC R. 1)
 Marystown 91.7 CBN-FM-x / AF 100kw/195m, 47-08-39/55-08-52, // CBN-FM 106.9 (CBC R. 2)

New Jersey / NJ

Atlantic City	96.9 WFPG-FM / AF 440w/131m, 39-21-40/74-25-05 (aux)
Atlantic City	107.3 WPUR / AF 340w/131m, 39-21-40/74-25-05 (aux)
Atlantic City	107.3 WPUR / NW 340w/131m (aux)
Belvidere	107.1 WWYY / PG 1.05kw/230m, 40-56-56/75-09-29
Brigantine	90.5 WWFP / NW 77w/94m, 39-22-46/74-25-45 (CSN)
Egg Harbor City	104.9 WSJO / AF 440w/131m, 39-21-40/74-25-05 (aux)
Millville	97.3 WIXM / AF NW 440w/131m, 39-21-40/74-25-05 (aux)
Zarephath	99.1 WAWZ / AF 17.8kw/182m (aux)
Zarephath	99.1 WAWZ / NS 17.8kw/182m (aux)

New Mexico / NM

Albuquerque	94.1 KZRR / NW 2.7kw/1238m, 35-12-42/106-26-59 (aux)
Albuquerque	107.9 KBQI / NW 1kw/1240m, 35-12-43/106-26-57 (aux)
Corrales	95.1 KSYU / NW 9kw/96m, 35-04-04/106-46-46 (aux)
Gallup	91.7 KGLP / PC>880w/350m
Los Alamos	106.7 KZNM / PR 44kw/592m, 35-46-50/106-31-35
Pecos	100.7 KLVF / PR>3.7kw/209m, 35-39-06/105-33-15, CL from Las Vegas
Raton	96.5 KBKZ / PC>5.4kw/295m
Roswell	89.1 KRSR / PG<2kw-V/63m, 33-23-36/104-37-27

New York / NY

Brooklyn	90.3 WKRK / QR from 90.9
Lakewood	106.9 WKZA / NW 3.8kw/210m, 41-57-31/79-16-11 (aux)
New York	92.3 WFNY-FM / CC from WXRK
New York	99.5 WBAI / PR 20060201BGL
Noyack	103.3 NEW / PA, class A, non-commercial, dismissed?
Noyack	103.3 WSUF / PA from 89.9, class B1 to A, dismissed?
Ossining	90.3 WDFH / PG>120w/126m
Patchogue	106.1 WBLI / NW 11.6kw/100m (aux)
Ravena	94.5 WBOE / CC from WRCZ
Scotia	93.7 WOBB / CC from WEGQ
Southampton	92.9 WEHM / PR<79m
Water Mill	94.5 NEW / GA, class A, counterproposal to 103.3
Water Mill	103.3 NEW / PA, class A, dismissed, allotted 94.5 instead
Watertown	90.1 WKVV / CC from WWJS

North Carolina / NC

Aurora	91.1 WZGO / CC for NS
Bethel	98.9 WNBR-FM / PC>11kw/149m, 35-47-29/77-22-54
Cary	93.9 WRSN / PG>453m, 35-42-50/78-49-04; CL from Burlington
Creedmoor	99.9 WCMC-FM / PC 22kw/89m, 36-04-52/78-28-27
Enfield	107.3 WBOB-FM / CC for NS
Fair Bluff	105.3 WODR / NW 11kw/150m, 34-17-01/78-48-09
Forest City	93.3 WTPT / PR 100kw/580m, 35-10-11/82-17-28
Hickory	102.9 WLYT / AF 58kw/372m (aux)
Hickory	102.9 WLYT / NS 58kw/372m (aux)
Lockwoods F.T.	88.1 WGHW / PG 1.5kw/95m, 34-03-48/78-05-32 in Lockwoods Folly Town
Robbins	103.1 WLHC / NW 6kw/100m, 35-26-33/79-26-37
Simpson	105.1 WDLV-LP / NW 100w/17m, 35-34-18/77-18-08
Simpson	105.1 WDLV-LP / PR<17m, 35-34-18/77-18-08
Simpson	105.1 WDLV-LP / PG<17m, 35-34-18/77-18-08
Wadesboro	98.3 WEHB-LP / PG 21w/65m
Wilson	106.9 WUBN-LP / PG>46m, 35-44-08/77-53-02
Windsor	97.7 WGTI / CC from WURB

North Dakota / ND

Burlington	102.9 KWGO / NW 98kw/156m, 48-03-04/101-20-23
Jamestown	95.5 KYNU / PC>197m, 46-56-21/98-18-30
Valley City	101.1 KQDJ-FM / PC>100kw/197m, 46-56-21/98-18-30
Wimbledon	103.1 KRXX / NW 99kw/144m, 46-56-21/98-18-30

Nova Scotia / NS

No Reported Changes

Ohio / OH

Belpre	91.9 WLKP / PR>5.2kw
Belpre	91.9 WLKP / PG>5.2kw
Bowling Green	93.5 WRQN / PG>7kw
Cincinnati	101.9 WKRO / NW 16kw/190m (aux)
Cleveland Hts.	92.3 WXRK / CC from WXTM
Fremont	99.1 WFRO-FM / PR 11.5kw/111m, 41-21-58/83-05-20
Fremont	99.1 WFRO-FM / PG 11.5kw/111m, 41-21-58/83-05-20
Hamilton	103.5 WGRR / NW 6.1kw/232m (aux)
Kettering	99.9 WLQT / NW 8.2kw/112m, 39-43-36/84-12-23 (aux)
Pickerington	103.5 WJZA / GA from Lancaster
Rushville	88.9 WLRY / QG from 88.5, 1.1kw-V
South Vienna	88.3 WVSO / PG 1kw/85m, 39-55-54/83-36-36
Thompson	89.1 WKSX / XG 41-41-34/81-02-51
Upper Sandusky	90.1 WXML / PR 15kw/158m, 40-54-53/83-07-32

Oklahoma / OK

Antlers	102.3 NEW / NS 3.3kw/84m, 34-13-35/95-37-20
Antlers	104.7 NEW / PA, class A, mutually exclusive with KZMP-FM (TX) upgrade request, dismissed ROA
Edmond	90.9 KOKF / FC; sold to K-Love
Haskell	91.5 990910MA / AF dismissed, settlement w/KVAZ
Henryetta	91.5 KVAZ / PG>25kw-V/93m, 35-30-57/95-57-07 (settlement w/Haskell new-station application)
Marlow	92.1 KFXI / PG>166m, 34-40-50/98-01-02
Millerton	100.9 NEW / GA "because the allotment of Channel 265A at Center, Texas could provide the community with its first local aural transmission service" (sic)
Nowata	104.9 KRIG-FM / PC 7.6kw/172m, 36-43-37/95-46-18
Weatherford	97.3 KOJK / CC from KWEY-FM
Woodward	90.7 KJOV / PC>25kw/121m
Woodward	100.1 KWFX / QC from 93.5, 100kw/265m, 36-22-31/99-28-32
Woodward	102.3 KWDQ / PC>100kw/265m, 36-22-31/99-28-32

Ontario / ON

No Reported Changes

Oregon / OR

Ashland	101.9 KCMX-FM / XC 42-17-55/122-44-53
Bend	106.7 KPOV-LP / NW 2w/200m, 44-04-36/121-19-48
Canyonville	97.7 KYON-LP / CC for NS
Coos Bay	92.9 KDCQ / QC from 93.5, 4.5kw/160m
Cottage Grove	100.5 KDPM / CC from KCGR
Cottage Grove	106.7 KSOW-LP / NW 100w/-38m, 43-45-06/123-04-29
Dallas	94.3 KPJE-LP / QC from 93.9
Elgin	105.9 KRJT / NW 115w/584m, 45-26-26/117-53-31
Gladstone	93.1 KTRO-FM / QC from 92.9, 1.6kw/387m, 45-29-20/122-41-40; CL from Astoria
Gladstone	93.1 KTRO-FM / CC from KAST-FM

Gold Beach 101.1 KTJN-LP / NW 100w/-72m, 42-24-46/124-25-06
 John Day 98.1 KSPL-LP / NW 100w/-38m, 44-26-02/118-57-26
 Klamath Falls 99.5 KAGO-FM / PC>112m, 42-12-56/121-47-51
 La Grande 94.3 KFYL-LP / NW 100w/-132m, 45-18-01/118-04-01
 La Pine 90.1 KKLP / PR>54m
 La Pine 90.1 KKLP / PC 2.5kw-V/40m, 43-34-50/121-34-13
 Lakeview 98.1 KTOD-LP / NW 100w/-101m, 42-11-17/120-21-01
 Lebanon 103.7 KXPC-FM / NW 600w/529m, 45-00-35/122-20-17 (aux)
 Madras 99.3 KMAB-LP / NW 100w/-13m, 44-37-51/121-07-51
 Madras 99.3 KMAB-LP / PG 100w/-13m, 44-37-51/121-07-51
 Medford 93.7 KTMT-FM / XC 42-04-52/122-43-09 (correction only)
 Oakridge 88.5 KMKR / NW 400w/-392m, 43-44-27/122-26-50
 Portland 88.3 KBVM / PG>3.5kw/437m
 Portland 93.9 KPDQ-FM / QC from 93.7, 52kw
 Redmond 88.5 KWRX / PC>720w
 Rockaway Bch. 90.3 KLON / NW 1.8kw-V/104m, 45-36-18/123-55-30 (K-Love)
 Sisters 106.5 KZSO-LP / NW 100w/-58m, 44-17-34/121-34-14
 Springfield 93.3 KKNU / QC from 93.1 in Springfield-Eugene
 Tillamook 91.1 KTMK / NW 140w/356m, 45-27-59/123-55-11
 Tillamook 99.1 KGLS-LP / NW 100w/-77m, 45-27-26/123-50-09
 Welches 90.3 KZRI / NW 235w/531m, 45-20-01/121-42-45 (K-Love)

Pennsylvania / PA

Allentown 104.1 WAEB-FM / AF 2.5kw/126m (aux)
 Allentown 104.1 WAEB-FM / NS 2.5kw/126m (aux)
 Altoona 100.1 WWOT / PG<810w/269m, 40-34-01/78-26-32
 Centre Hall 99.5 WXOT / PG>850w/417m, 40-45-09/77-45-16; CL from Mount Union
 Erie 103.7 WRTS / NW 27kw/145m, 42-05-25/79-56-37 (aux)
 Gallitzin 93.5 WHPA / PG 1.25kw/222m, 40-29-36/78-32-31, CL from Barnesboro
 Gettysburg 91.1 WZBT / PR 346w/36m
 Greensburg 107.1 WGSM / CC from WJJ
 Harrisburg 104.1 WNNK-FM / NW 550w/220m (aux)
 McConnellsburg 88.7 WWCF / PC 9w/364m, 39-54-58/77-57-25
 Media 100.3 WPHI-FM / PC 17kw/263m, 40-02-36/75-14-33; NW 33kw/183m, 39-58-29/75-25-22 (aux); swaps aux & main transmitters, slight changes in power at both
 Nanty Glo 90.7 WLGY / NW 2.1kw/147m, 40-30-20/78-48-12 (AFR)
 Port Matilda 107.9 WKVB / FC; sold to K-Love
 Portage 105.7 WLKJ / FC; sold to K-Love
 Sunbury 94.1 WQKX / XC 40-47-10/76-41-49
 Tunkhannock 107.7 WGMF / CC from WBZR
 Waynesburg 103.1 WANB-FM / CC from WANB
 Williamsport 102.7 WKSJ / AF 8kw/227m (aux)
 Williamsport 102.7 WKSJ / NS 8kw/227m (aux)

Prince Edward Island / PE

No Reported Changes

Puerto Rico / PR

Levittown 88.5 WPLI / PR>100w-V/21m (drop H)
 Quebradillas 98.3 WOYE / CC from WIDI
 San Juan 98.5 WPRM-FM / NW 10kw/558m, 18-06-47/66-03-06 (aux)

Québec / QC

Trois-Rivières 89.1 CFOU-FM / PG>3kw/43m

Rhode Island / RI

East Greenwich 91.5 WRJI / CC for NS

Saskatchewan / SK

No Reported Changes

South Carolina / SC

Bamberg 95.7 WWBD / PC>11kw/145m, 33-19-38/80-57-09
 Cayce 96.7 WLTY / NS 3.3kw/135m, 34-00-04/81-02-05 (aux)
 Charleston 100.5 WALC / PR 19kw/114m, 32-49-15/79-57-27
 Columbia 99.3 WXYR-LP / NW 19w/68m, 34-00-12/81-02-04 (USC Alumni)
 Columbia 99.3 WXYR-LP / PC ?w/68m
 Newberry 95.5 WNIR-LP / NW ?w/40m, 34-17-03/81-37-16

South Dakota / SD

Newell 103.7 NEW / NS 50kw/139m, 44-47-06/103-28-06
 Rapid City 90.3 KASD / NW 1kw/124m, 44-04-13/103-15-01 (AFR)

Tennessee / TN

Alamo 93.1 WWGM / XG 35-43-28/89-03-35
 Alcoa 89.1 WYLV / NW 1.7kw-H/411m, 36-00-13/83-56-34 (aux)
 Arlington 102.7 WEGR / GA from Memphis
 Cleveland 95.3 WHJK / CC from WALV
 Erwin 103.9 WXIS / PC 5.4kw/106m, 36-08-17/82-23-01
 Halls Crossroads 96.7 WXJB / QR from 96.5; 1.9kw/149m, 36-04-21/84-01-18; CL from Harrogate
 Lawrenceburg 97.5 WLLX / PC>42kw/161m, 35-16-56/87-06-18
 Manchester 99.7 WWTN / PR>451m, 35-48-32/86-34-54 dismissed, reclassified from class C to C0
 Maynardville 88.3 WOEZ / NW 2.8kw-H/411m, 36-00-13/83-56-34 (aux)
 Olive Hill 89.1 WDNX / PC 52kw/180m, 35-12-23/88-03-32
 Pasquo 98.9 WRFN-LP / XR 36-01-48/87-00-14
 Pegram 102.5 WVNS-FM / NW 50kw/251m, 36-17-36/87-18-20 (aux)

Texas / TX

Abilene 90.5 KAGT-FM / AF 250w/624m, 32-26-38/99-44-05 (aux) (HAAT is a typo. Probably should be about 100m +/-.)
 Abilene 90.5 KAGT-FM / NS 250w/624m, 32-26-38/99-44-04 (aux) (HAAT is a typo)
 Abilene 90.5 KAGT-FM / NW 250w/624m, 32-26-38/99-44-04 (aux) (HAAT is typo)
 Amarillo 89.1 KXLV / PC>27.5kw
 Austin 90.5 KUT / NW 6.3kw/183m (aux)
 Benavides 107.7 KXTM / XR 27-35-18/98-26-49 dismissed; XG 27-35-13/98-28-40; NW 5kw/34m
 Benavides 107.7 KXTM / PC<5kw/34m; fined \$10,000 for constructing at this power rather than the 50kw/150m specified in their permit
 Big Lake 104.1 KWTR / PG>100kw/299m, 31-37-05/101-37-35
 Byrne 88.5 KLRW / NW 500w-V/159m, 31-25-16/100-32-36 (K-Love)
 Chillicothe 97.5 NEW / PA, class A, dismissed ROA
 College Station 89.9 KLGJ / CC for NS
 Conroe 106.9 KHPT / PR<91.6kw
 Corpus Christi 95.5 KZFM / XR 27-37-34/97-34-13
 Cuney 99.7 NEW / GA, class A
 Dallas 100.3 KJJK / PC>82kw (aux)

Decatur 91.3 KDKR / PG>57kw/544m
Denison 91.5 970219MA / NS 4kw/63m, 33-42-38/96-34-20 (Bible Broadcasting)
Denton 106.1 KHKS / NW 1kw/475m, 32-35-20/96-58-05 (aux)
Dripping Sps. 91.9 KLLR / CC from KLOW
Dripping Sps. 91.9 KLLR / PR 1.1kw/145m, 30-11-54/98-00-46
Dripping Sps. 99.9 KDRP-LP / NW 30w-H/20w-V/50m, 30-11-39/98-03-21
El Campo 96.9 KIOX-FM / XC 28-53-22/96-21-41
El Paso 89.5 KPLY / CC from KXCR
El Paso 96.3 KHEY-FM / NW 1kw/367m (aux)
Fannett 90.5 KZFT / PC>40kw-V
Ft. Worth-Dallas 102.1 KDGE / NW 1kw/439m, 32-34-54/96-58-32 (aux)
Gainesville 94.5 KSOC / NW 96kw/537m (aux)
Galveston 106.5 KOVE-FM / NW 800w/140m, 29-47-26/95-20-43 (aux)
Georgetown 107.7 KINV / NW 12kw/137m (aux)
Gonzales 88.1 KZAR / CC from KITS
Gonzales 106.3 KMLR / CC from KQQT
Greenville 90.5 KTXG / NW 38kw/220m, 33-19-00/96-24-27 (AFR)
Hamlin 103.7 KCDD / PG>453m
Harlingen 96.1 KBTQ / NW 17.5kw/162m (aux)
Harlingen 96.1 KBTQ / XC 26-08-56/97-49-18
Helotes 101.1 KONO-FM / PG<265m (aux)
Henrietta 97.5 NEW / PA, class A, dismissed ROA
Houston 95.7 KHJZ-FM / NW 76kw/534m, 29-34-15/95-30-37 (aux)
Houston 96.5 KHMV / NW 65kw/438m, 29-34-15/95-30-37 (aux)
Houston 100.3 KILT-FM / NW 7.5kw/345m, 29-34-34/95-30-36 (aux)
Houston 102.9 KLTN / NW 55kw/140m, 29-47-26/95-20-43 (aux)
Houston 104.1 KRBE / NW 86kw/534m, 29-34-15/95-30-37 (aux)
Houston 104.1 KRBE / PC<92.18kw
Hutto 92.1 KYLR / CC from KQJZ
Killeen 104.7 KHTL-LP / CC for NS
Lamesa 91.1 KBKN / PG>23kw/157m, 32-47-05/102-19-35
McAllen 98.5 KGBT-FM / NW 17.5kw/162m, 26-08-55/97-49-18 (aux)
McQueeney 97.7 KLTO-FM / PR>100kw/299m, 29-22-11/97-39-44
Midland 90.9 KAQQ / CC for NS
Missouri City 104.9 KPTY / NS 3.2kw/225m, 29-45-26/95-20-19 (aux)
Mont Belvieu 97.5 KRWP / GA from Beaumont
Mount Pleasant 95.7 KXDX-LP / NW 67w/37m, 33-07-24/94-57-44 (to amateur radio club)
Mount Pleasant 95.7 KXDX-LP / PC>37m
Nacogdoches 107.7 KTBQ / PC<13kw/122m, 31-34-50/94-40-15
Palestine 98.3 KYYK / PC<5kw/222m, 31-55-33/95-38-48
Pasadena 92.9 KKBQ-FM / NW 55kw/513m, 29-34-06/95-29-57 (aux)
Pilot Point 104.9 KZMP-FM / PA form class C1 to C0, dismissed ROA
Port Isabel 105.5 NEW / GA, class A
Prairie View 91.3 KPVU / NW 9.8kw/128m (aux)
Roma 103.5 NEW / GA, class A
San Angelo 89.3 KNAR / CC from KJIN
San Antonio 100.3 KCYY / PG<265m (aux)
San Antonio 102.7 KJXK / CC from KSRX
San Antonio 107.5 XXTN-FM / PR>98kw/453m
San Isidro 103.5 NEW / PA, class A, counterproposal to Roma, dismissed - filed two days too late.
Sherman 91.5 970709MF / AF dismissed (AFR)
Tom Bean 97.5 KLAK / PC 32kw/188m, 33-28-30/96-26-45; CL from Durant, OK
Woodson 97.5 NEW / PA, class A, dismissed ROA
Woodson 107.5 NEW / PA, class A, dismissed ROA
Yorktown 96.3 NEW / NS 6kw/100m, 29-02-43/97-24-23

Utah / UT

Cedar City 92.1 KXFF / PR 93.1kw/532m, 37-38-43/113-22-22 dismissed

North Ogden 88.7 KNKL / PG>73kw/297m
Payson 92.1 KTCE / QC from 92.3, 130w/657m, 40-05-21/111-49-15
Salt Lake City 90.9 KRCL / PC 25kw/1140m, 40-39-34/112-12-05
South Jordan 92.5 KUUU / QC from 92.1, 500w/1198m
St. George 90.3 KSGU / NW 2kw/555m, 36-50-49/113-29-28 (KNPR)
St. George 106.1 KSNN / PR>45kw/571m
St. George 106.1 KSNN / PG>45kw
Vernal 105.5 KLCY-FM / QC from 105.9, 3.3kw/518m, 40-32-16/109-41-57

Vermont / VT

Vergennes 106.7 WIZN / NW 1kw/112m (aux)

Virginia / VA

Richmond 106.5 WBTJ / NW 4kw/368m, 37-30-14/77-41-52 (aux)
Roanoke 89.1 WVTF / AF 1kw/600m (aux)
Roanoke 89.1 WVTF / NS 1kw/600m (aux)
Salem 93.5 WSNV / AF 5kw/18m, 37-17-03/79-59-14 (aux)
Strasburg 104.9 WWRT / PC<66m, 39-01-06/78-25-35
Suffolk 106.9 WAFX / NS 100kw/239m (aux)
Suffolk 106.9 WAFX / XG 36-48-09/76-45-19; XC; NW 100kw/239m (aux) at same site
Warrenton 96.7 WYQZ-LP / XR 38-34-17/77-45-46
Warrenton 96.7 WYQZ-LP / PR<-11m, 38-40-05/77-47-20
Warrenton 96.7 WYQZ-LP / PR<100w/7m, 38-34-17/77-45-46 dismissed
Warrenton 107.7 WTWP-FM / CC from WTOP-FM
White Stone 104.9 WNDJ / PG>100m, 37-43-26/76-23-27

Washington / WA

Aberdeen 94.3 KAYO-LP / CC from KYAH-LP
Bellingham 102.3 KMRE-LP / NW 100w/-47m, 48-45-05/122-28-44
Clarkston 89.3 NEW / NS 5w/256m, 46-26-24/117-15-54 (CSN)
Clarkston 89.3 KJCF / CC for NS
Coupeville 101.1 NEW / GA, class A
Ellensburg 95.3 KXLE-FM / PC 51kw/125m, 47-09-48/120-47-36
Fall City 104.5 KCFL-LP / NW 32w/52m, 47-34-54/121-51-14
Ilwaco 103.9 KVAS / PC 11kw/151m, 46-10-56/123-48-09
Long Beach 94.3 KAST-FM / CC from KAOX
Long Beach 99.7 KAST-FM / QC from 94.3, 6kw
Manson 94.7 KZAL / PG 7kw/316m, 47-51-02/119-52-26
Newport 104.5 KOQB-FM / CC from KMJY-FM
Ocean Park 88.1 KLOP / NW 550w/318m, 46-41-46-123-46-17
Ocean Shores 89.5 KYAO-LP / CC from KAYO-LP
Pullman 98.5 KZLF-LP / NW 100w/-5m, 46-42-41/117-11-38
Republic 100.5 KETL-LP / NW 100w/-81m, 48-40-11/118-39-19
Seattle 90.3 KEXP-FM / PC>4.7kw
Seattle 94.9 KUOW-FM / CC from KUOW
Sequim 95.3 NEW / GA, class A
Sequim 101.1 NEW / PA, class A, denied. Allotted 95.3 instead.
Tacoma 103.7 KMTT / PG>71kw/707m

West Virginia / WV

Fisher 103.7 WQWV / PR>2.62kw/312m, 39-06-34/79-20-40

Wisconsin / WI

De Pere 95.9 WKSZ / NW 8.7kw/107m, 44-21-32/87-59-07 (aux)
Fond du Lac 91.7 WDKV / CC from WLWR
Madison 97.1 WIXL-LP / CC for NS
Madison 97.1 WIXL-LP / XR 43-05-09/89-16-33
Madison 102.5 WNBC-FM / PC>150m

(TV News Continues on page 27)

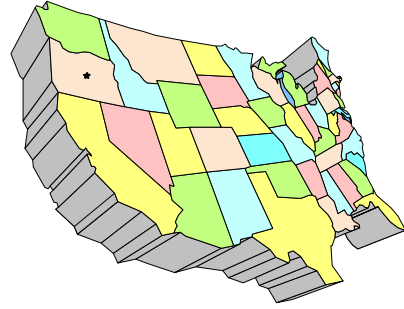
WESTERN TV DX

DAVE WILLIAMS

3525 SW Timber Ave

REDMOND, OR 97756

beansdad@bendcable.com (541) 420-4704



Greetings!

A bit of out-of-season Es has made me even more anxious for the "real" season to begin.

From Feb 5-11, nearly every day brought at least some weak Es to Central Oregon, getting into FM on both the 5th and 11th themselves. Actual TV IDs were sparse as the Es was weak, but I did log the following:

2/5/2006 Es

- 1730 2 KCBS Local News, mixed with many others including 2 Mexicans and 1 CT station
- 4 KNBC (t) with news

2/11/2006 Es

- 1715 2 KSNC NBC Olympics coverage on central feed, likely KSNC
- 1830 2 UNID Azteca 13, probably Nogales SN

Only a few more months 'til the start of Springtime Es!

73, Dave Williams, Redmond OR

Dennis Park Smith

3605 San Remo Drive

Santa Barbara, CA 93105-2523

Telephone (805) 687-7803

This report is for January 2006. Coastal tropo to San Diego/Tijuana up to 200mi/320km wasn't much this month, typical at this time of year.

All dates in January, 2006

- 1 – 7 am: None (Continuing from Dec 28; rain from Dec 31 to Jan 2)
- 7 aft – 9 am: Very Poor
- 9 eve – 10 am: None (possible wx front)
- 10 eve – 13 am: Variably poor-fair
- 13 eve – 16: None (rain Jan 14)
- 17 – 18 am: Poor
- 17 eve – 20 am: None (wx front)
- 20 eve – 21: Variably fair-poor
- 22 – 28 am: None (various wx fronts, unsettled, colder)
- 29 – 31 am: None
- 31 eve (briefly): Fair (approx. 1600 PT, no more than 1 hour)
- 31 night: None

Best of DX to all, Dennis

Jeff Kruszka

5024 S. Braxton Ave.,

Baton Rouge, LA 70817

January 2006, All Times CT

1 tr	2039	XHAB	7	TA	505
2 tr	2118	XHOR	14	TA	505
	2119	XHTAM	17	TA	535
		KVEO	23	TX	500
	2121	XHAB	7	TA	505
		XHMTA	11	TA	505
	2127	XHVTV	54	TA	505
3 tr	2145	Valley 7,14,17,23			505
4 tr	0643	Austin U's		TX	395
		KVDA	60	TX	445
	0654	WOAI-DT	58	TX	445
8 tr	0138	Austin U's		TX	395
	2134	Valley 7, 17, 23			505
11 tr	2309	WTJP	60	AL	390
	2316	WRJM	67	AL	320
12 tr	0651	WFBD-DT	48	FL	280
	0659	WDSI	61	TN	465
	0700	WAFF	48	AL	400
	0713	WHNT	19	AL	400
	0714	WJSP	28	GA	390
		WJSU	40	AL	385
	0730	WLGA	66	AL	370
	????	WAKA-DT	55	AL	280
		remapped to 8			
15 tr	1634	XHAB	7	TA	505
24 tr	0646	WTBS	17	GA	455
		"tbs" bug			

For the most part, same old same old. I looked back at my logs to see how the distribution of openings here has changed over the years, and my suspicions were correct. While (Rio Grande) Valley and Arkansas openings have increased in the last few years vs. the 90's, openings to Dallas, OK, and FL have decreased dramatically.

As an example, I remember receiving Dallas frequently when I first moved here in 1993; in fact I had 8 openings to there that first year. The average through 2000 was 5 openings/year. Since 2001, I have had only two openings total to Dallas, and they were both 3 years ago! Something has changed. I don't know what it is, global warming, or whatever, but something has changed.

William Draeb (920) 388-2350
1314 Ellis St. Kewaunee, WI 54216-1802

1994 Sylvania Y1 Chassic, 40' Rohn 25G Tower,
CH2026, Y713, and KV420 Antennas, CMA-HB
and CMA-Ub Preamps.

1/13/2006 Es

1830 UNID-2 S, Also Channel 3
Not much during January, I hope Feb. is better.

Eric Bueneman (NØUIH)

631 Coachway Lane, Hazelwood, MO 63042-1347

Equipment: Samsung 19-inch color television (1984
vintage), Daewoo 13-inch color television, Digital
Stream HD3150 digital television receiver, Radio
Shack VU-210XR with Channel Master rotor at 30
feet above ground level.

All times CDT, all distances in miles/kilometers.
New stations have calls underlined.

January 3, 2006 Tr

2044 Springfield, MO 3, 10, 21 190/306
2045 KYTV-DT 44 MO Springfield 190/306
2110 KBSI-DT 22 MO Cape Girardeau 115/184
2112 Cape Girardeau 12, 23 115/184

January 21, 2006 Tr

1830 KIIN 12 IA Iowa City 225/362
2050 Kansas City 9 (under KETC), 19, 29, 41, 50
(through W50CH), 62 225/362
2325 KRCG-DT 12 MO Jefferson City 100/161

January 23, 2006 Tr

1750 WAND-DT 18 IL Decatur (w/local radar)
110/177
1806 KRCG-DT 12 MO Jefferson City 100/161
1807 KOMU-DT 36 MO Columbia 105/169
1830 KMOS-DT 15 MO Sedalia 155/249
1857 WEVV-DT 45 IN Evansville 165/266
1901 WHAS-DT 55 KY Louisville 250/402
1906 WTTK 29 IN Kokomo 240/386
1919 WANE 15 IN Fort Wayne 320/515
1921 WPTA 21 IN Fort Wayne 320/515
1922 WLKY 32 KY Louisville 250/402
1924 WUSI-DT 19 IL Olney 130/209
1933 WXIN-DT 45 IN Indianapolis 240/386
1939 WDRB-DT 49 KY Louisville (DTV #20)
250/402
1948 WSJV-DT 58 IN Elkhart 305/491

1953 WRGT 45 OH Dayton 340/547
2025 WLAJ 53 MI Lansing 390/636
2114 WINM 63 IN Angola 345/555
2115 WIPX 63 IN Bloomington 210/338
2119 WKMJ 68 KY Louisville 250/402
2140 WIPB 49 IN Muncie 255/410
2145 WTLW 44 OH Lima 360/579
2151 WQHS 61 OH Cleveland 500/802
2238 WSBT 22 IN South Bend 300/483
2240 WUPW 36 OH Toledo 415/668
2243 WNWO 24 OH Toledo (through KNLC)
415/668
2248 WISE 33 IN Fort Wayne (through K33GU)
320/515
2250 WISH 8 IN Indianapolis 240/386
2251 WWJ 62 MI Detroit 460/740
2252 WGGN 52 OH Sandusky 445/716
2300 WDNI-LP 65 IN Indianapolis (station #500)
240/386
2302 WOAC 67 OH Canton 500/802
2315 WNDY 23 IN Marion 285/459
2332 WHIO 7 OH Dayton 340/547

St. Louis has been through the third warmest
January on record; and the TV DX of the past
month seems to prove it. I pulled in another DTV
through a nearby signal (this time a semi-local
TBN) when I pulled in KBSI-DT 22. For the life of
me, I haven't yet pulled in KFVS-DT 57, but I'm
sure I'll pull it in during the upcoming DX season.
The January VHF Sweepstakes of January 21-22
was a precursor to the trop conditions that I
experienced the following night. The first new log of
the night was one of my closest unseen DTVs,
WAND-DT 18 with local weather radar and audio
from KXI46 162.500 MHz in nearby Shelbyville. Not
typical of an NBC affiliate; the first virtual channel is
usually the HD version of the analog channel.
Before 7:00 p.m. local time, I pulled in WEVV-DT
45 Evansville, IN; they were running local ads and
"Everybody Loves Raymond". Before 8:00 p.m., I
logged my second DTV on 45 with WXIN-DT
Indianapolis; I also pulled in WDRB-DT 49 with
local analog LPTV K49FC nulled; this was DTV #20
from this location. The big surprises on the opening
were WGGN 52 with TBN and videos on 65, which
turned out to be WDNI-LP for TV station #500.
January 2006 will go down as a month where I
reached three milestones; besides the 500th TV
and 20th DTV station, I pulled in AM station #1,000
earlier in the month.

73, Eric (NØUIH)

WTFDA EMAIL REFLECTORS

Enhance your DXing experience! Entertaining and informational.

For WTFDA members and guests on the wtfda.info server

The WTFDA list...send an email to tvfmdx-subscribe@wtfda.info

180 subs

The WTFDA AM DX list...send to amdix-subscribe@wtfda.info

80 subs



PHOTO-NEWS

Jeff Kruszka, Editor
 5024 S. Braxton Ave.
 Baton Rouge, LA 70817
 jkruszka@bellsouth.net

March 2006

Aaron Mitterling checks in again with the best of his 2005 DX from Warsaw, IN:



KASA-2 Albuquerque, NM
 1200 mi Es seen May 2005



WPBT-2 Miami, FL
 1130 mi Es seen May 2005



KLBY-4 Colby, KS
 700 mi Es seen May 2005
 "KAKE-10 ID"



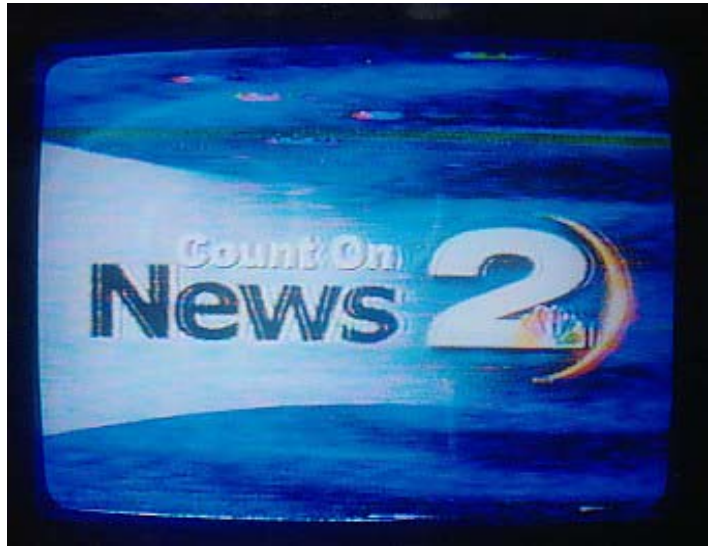
KOAA-5 Pueblo, CO
 1000 mi Es seen May 2005



KWGN-2 Denver, CO
 1000 mi Es and
 KSNC-2 Great Bend, KS
 715 mi Es (floating)
 seen 1/11/05
 "Two ID's in one!"



KOB-4 Albuquerque, NM
1200 mi Es seen May 2005



WCBD-2 Charleston, SC
660 mi Es seen 6/05



KIVV-5 Lead, SD
900 mi Es seen 6/05
"KEVN-7 ID"



KOTA-3 Rapid City, SD
900 mi Es seen 6/05
"KOTA Territory"



KTWO-2 Casper, WY
1050 mi Es seen 6/05
"K2"



KDTN-2 Denton, TX
840 mi Es seen 6/05
"Daystar network"

More from Aaron next month!

73's, Jeff



SATELLITE NEWS

GEORGE W. JENSEN
4604 ANTANNA AVE, Baltimore, MD 21206-4220
SCISATMAN@AOL.COM

There are changes again. Here goes:

AMC 10/Satcom C4 - 581 - Northwest Cable News here from C3

Galaxy 1 - may have missed these in the past - deletions - XPDR 20 - HGTV and 21 - USA West.

Satcom C3 - 581 - Color Bars with Court TV - takes place of moved NW Cable News to C4.

At 617 - HDTV Discovery

Galaxy 14 (was 5) - delete the following:-

XPDR 16 - Cinemax West, 23 - A & E East and 102 - Movie Plex West.

Galaxy 10 - change - XPDR 16 from TV Land to MTV East

Intelsat Americas 13 121 West - 804 Azteca America West is now NDTV Pakistan (or India)

Intelsat Americas 5 (Telstar 5)

add 618 to the Nebraska Instructional Television Service

Galaxy 11 at 91 West

delete Arts and Entertainment at 401 to channel 600 same satellite.

It has been replaced by a sports channel - unable to name at this time.

Add the following:-

402 - Sports Net Southeast

403 - Varsity TV returns here?

600 - Arts and Entertainment East

782 through 785 appear to be nothing but Infomercial Channels

AMC 3 at 87 West:-

The Prime Time 24 Channels will switch to digital (4DTV) shortly these are - 5 - WNBC, 19 - WABC and 23 - WSEE.

-The following have been deleted:-

XPDR 9 - WPIX New York 11 and XPDR 15 - KTLA Los Angeles 5

PanAmSat 9 - 58 West -

My favorite ID problem bird with its constantly changing DMX music channels:

They run from channel 800 through 849 - here's my best vague guess:

809 - Latin, 810 Latin, 811, Dance, 812 -

Mariachi, 813 - Jazz, 814 - US Standards,

815 - Tangos, 816 - WorldMusic, 817 -

Classical, 818 - Latin, 823 - USA 60's Pop,

824 - French Latin, 825 - Portuguese (Brazil

Latin Pop, 826 - Brazilian Portuguese Pop,

827 - Blues, 828 - Classical, 829 - Latin, 830 -

Latin, 831 - US Dance, 832 - Mexican, 833 -

US Standarsa, 834 - Jazz, 835 - Tangos, 836

- US 70's Pop, 837 - SOCA and other

Jamaican West Indian music, 838 - Latin Pop,

840 - US Pop, 841 - Classican, 842 - Rap/Hip

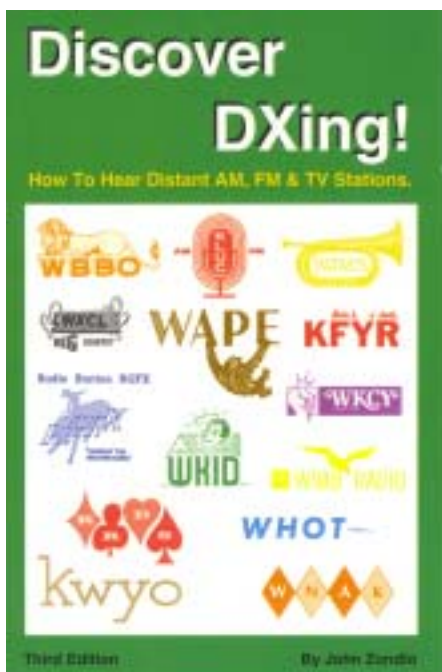
Hop, 843 - Urban Contemporary, 844 - Pop,

845 - Latin, 846 - Dance, 847 - Latin, 848 -

Latin, and 849 - New Age Music.

That's it for this month. Have some great DX and '73's.

George



DISCOVER DXING...THE THIRD EDITION BY JOHN ZONDLO

How to hear distant AM, FM and TV Stations

Topics include propagation, seasonal conditions, equipment, antennas and reference materials. There's a "best bet" section for hearing all 50 states on AM. This expanded 3rd edition includes a list of AM clear channel stations and a list of VHF-TV stations. Novices and old-timers can pick up this book and learn something new.

Author and WTFDAer John Zondlo writes in a conversational style that makes this book as easy to read as it is informative.

Order your copy of this 96 page Discover DXing from Universal Radio, 6830 Americana Pkwy, Reynoldsburg, Ohio 43068-4113 for just \$6.95. Order #0009. Call 1-800-431-3939 for orders and pricing.

6 Meter/2 Meter Amateur DX



50 Mhz
The *Magic* Band



Peter Baskind, N4LI
3225 Forest Hill-Irene Rd
Germantown, TN 38138
N4LI@ARRL.net

2006 seems to be off to a pretty good start. Waking up New Year's Day here in Memphis, I was greeted with some nice conditions – hopefully, a good omen for the year to come. Tropo conditions on 2 meters were heading SSW, deep into Texas. First heard was KC5OLC in EM10, near Austin, and other stations nearby followed. I did manage one new grid, **EM21**, with a QSO with KI5P. Jacksonville, TX is not a super-distance, but it was new to me, as it has a low ham population.

I understand the opening continued as the morning wore on, but I had to leave for work at Sirius, so I missed the reported elongation toward Mexico. Maybe next time...

The month was not without sporadic-E. Notable openings popped up the evening of the 14th and 15th (UTC), and on the 17th. The opening were unimpressive and to oft-seen areas.

I have been playing with a new toy, which is proving useful for finding DX openings. I picked up a Kenwood D-700, a 2m/70cm FM transceiver built with the Automatic Position Reporting System (“APRS”) operator in mind. The radio is a stand-alone box that allows one to transmit APRS packets and receive and decode right on-screen, or it may be interfaced to a PC. When weak openings have started in the past couple of weeks, I have seen distant APRS stations displayed.

APRS is, of course, the system that drives the “mountainlake” tropo map we have all come to love. Sadly, that web page has been a bit unreliable, perhaps due to increasing demand. Further, using APRS directly has illustrated that much of what is bounced around is missed by the map, since some contacts never make it to the local Internet gateway (“iGate”) stations. With the D-700, I should be able to get much of the same information pertinent to me without needing the web. That will be quite useful. Further, when the band is up, I can send APRS packets, hopefully beaconing others. I have the radio connected to a small yagi in my attic, which I can point into the openings, and even beacon my longest direct APRS reception of the session automatically. When mountainlake is up, I can even see information from some stations downrange hearing me, or any other station, assuming that information makes it to an iGate. For my station, follow this link:

<http://www.mountainlake.k12.mn.us/ham/aprs/path.cgi?call=N4LI>

You can check any other station on-air by simply changing the call sign at the end of the string. You'll note in APRS, some stations have a dash and number at the end (e.g., my local digipeater, N4GMT-3); full call is needed here.

The good news for non-hams is that an elaborate radio like the D-700 is not necessary to receive and decode APRS data. There are a few software programs available for little money that allow monitoring of APRS with a computer and soundcard. There is even a client that will tell you when the band is opening, based upon what it monitors from your station. Installation of the software is easy; patch in FM audio of 144.390 MHz, and you're in business. A surplus scanner should work fine, especially if you are near a digipeater. A few software packages, though, are only available to licensed hams. But, others are open to the public. Give it a try!

Loggings

Eric Bueneman, N0UIH, 631 Coachway Lane, Hazelwood, MO 63042 EM48

Equipment: MFJ-9402 2-meter SSB transceiver, Diamond five-element beam at 26 feet above ground level, Mirage B-34-G linear amplifier, Channel Master TV antenna rotator

The contacts from January 21 through 23 were worked during the January VHF Sweepstakes; contacts on January 24 during a trop opening. I worked seven new grid squares during that three-day period; four of those in the contest.

The following week, at the Winterfest in Collinsville, IL, I was able to meet KA9UVY and NØAFT in person. KOØZ was part of the ARRL VE team which administered the Element 2 exam for my Technician Class license in 1992! Bob was telling me about an ATV transmitter in the St. Louis area operating on the same frequency as cable channel 57. He's the second WTFDA member I've contacted on 2 meter SSB (after November-Four-Long-Island, of course!)

I will be adding 6 meter SSB in the very near future!

All contacts on 2 meters (144 MHz).

21 Jan. '06

1906	NØAFT	EM48/MO	1908	KØDOK	EM48/MO
1907	AF4JF	EM48/MO			
1908	NØUQC	EM48/IL	2149	WBØQLG	EM48/MO
1915	W9RVG	EM57/IL	2155	K2DRH	EN41/IL
1924	KCØTPP	EM48/MO	2201	WAØEFB	EM48/MO
2024	WØNC	EM48/MO	2210	NVØH	EM48/MO
2037	W9GKA	EM58/IL	2211	KCØEOC	EM48/MO
2055	N2BJ	EN61/IL	2331	KOØZ	EM48/MO
2058	K9CT	EN50/IL	2333	WØFK	EM48/MO
2148	KA9UVY	EM58/IL			

22 Jan '06

0142	KØWYN	EM48/MO	0505	NØURW	EN41/IA
0353	KI9A	EM58/IL	0534	N9RXM	EN41/IL
0426	KE5GBC/Ø	EM48 MO	1946	K9SD	EM48/IL

23 Jan '06

0016	WØDQY	EM48/MO	0109	K9IMX	EM38/MO
0050	WR9L	EN61/IL	0355	W8ULC	EM79/OH

24 Jan '06

0219	N9XG	EN60/IN	0244	KC8ZJL	EN71/OH
0244	WA9OEX	EM59/IL	0255	N9PUZ	EM59/IL

Bill Smith, W1OW, 56 Locust Street, Douglas, MA 01516 FN42

[all W1OW contacts are 6 meter/50 Mhz]

13 Jan '06

Weak, water opening from Newfoundland to Midwest, but no new stations.

14 Jan '06

WP4NQR/FK68 heard at 0133. Another Puerto Rican also heard, but he was too weak to copy.

15 Jan '06

Good opening south and slightly southeast. Several old friends worked, along with new station listed below.

1416	N4JRY	FM04	1452	KA1VRF	EL97
1429	K4LTD	EM93	1556	KG4WHJEM80	
1431	KI4HEE	FM03	1825	K4YI	EL88
1433	KI4DPU	EL98	2305	W4LWW	EM65
1442	WA4GZK	EM73	2310	KA4D	EM75
1443	W4STW	FM04	2318	KI4MHA	EM67

16 Jan '06

Another decent opening south and southeast.

2215	WA4UBZ	FM25	2239	W4CM	FM16
[Good for you. Tough grid! -ed.]					
2217	WB4SLM	EM82	2327	KZ4RR	EM90
2230	W4RVZ	FM16	2359	N5KWB	EM32

19 Jan '06

Brief opening – more to SW. Only new station was N5HXQ/**EM33** at 0148.

23 Jan '06

The VHF contest was a bust except for W2FV/FN13, extended groundwave. No skip whatsoever.

TV News Continues from Page 19

Milwaukee	107.7 WVCY-FM / NW 22kw/163m, 42-57-51/88-04- 23 (aux)
Mount Horeb	106.7 WSLK / NW 2.9kw/146m, 43-00-19/89-52-25
Oshkosh	101.9 WOCT-LP / NW 100w/27m, 44-01-13/88-32-28

Wyoming / WY

Casper	93.5 NEW / AF 15kw/522m, 42- 44-30/106-18-29
Casper	93.5 NEW / NS 15kw/522m, 42- 44-30/106-18-29
Cheyenne	88.1 KWHY / NW 1kw/64m, 41- 09-37/104-42-13 (AFR)
Cheyenne	106.3 KLEN / PC>6kw/99m, 41- 03-09/104-49-55
Clearmont	104.7 NEW / AF 2.1kw/342m, 44-37-20/107-06-57
Clearmont	104.7 NEW / NS 2.1kw/0m, 44- 39-39/106-36-28
Douglas	92.5 KDAD / CC from KBOG
Ethete	89.5 KWRR / NW 9kw/137m, 43-05-15/108-46-19 (aux)

Laramie	98.7 KUSZ / CC from KHIH
Powell	92.5 KWMY / CC from KLZY
Rock Springs	90.5 KUWZ / PC 35kw/512m, 41-25-39/109-07-17

Sources

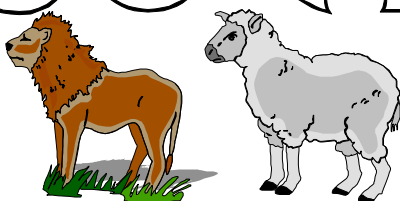
Government: Canadian Radio-Television and
Telecommunications
Commission (CRTC), Federal
Communications Commission
(FCC)

This report includes 598 changes to the FM dial.



-Chris Kadlec
FM News Editor

SOUTHERN FM DX



John Zondlo
4009 Driftwood Circle
Yukon, OK 73099
jzondlo@cox.net
Deadline: 15th

For DXers in AL, AZ, AR, CA, CO, DE, DC, FL, GA, HI, KS, KY, LA, MD, MS, MO, NV, NM, NC, OK, SC, TN, TX, UT, VA, WV, Cuba & Mexico

March 2006

Fred Nordquist - 147 Travis Hill Road - Moncks Corner, SC 29461 - nordquis@homexpressway.net -
Statistics Web Page: <http://web.infoave.net/~fmjnordquist/statistics.html>

Equipment: Denon TU-1500RD with 4 110khz IF Filter Mod & RDS Mgr, Ant: APS-13 at 25' AGL, CDR Rotor, CAC-11 coax lead-ins.

12/9 Ms

1800 WKAR 90.5 MI East Lansing, Ms #3, RDS PI 6F21 698

12/13 Tr

1110 WGOV 96.7 GA Valdosta, "all new WGOV-FM" 267

12/13 Gw

1150 W243AG 96.5 SC Orangeburg, //BBN WYFA webcast 54

12/14 Tr

1015 WTLD 90.5 GA Jesup, ID, 6kw 161

12/22 Tr

0836 WKXS 94.1 NC Leland, "Kiss 94.1" 126

12/30 Tr

0900 WTHZ 94.1 NC Lexington, Lexington-High Point 187

1230 WBGA 92.7 GA St. Simons, "B-92.7," wx for Camden county 167

1/3 Gw

1400 WGOR 102.7 SC New Ellenton, o, 3 city ID 99

2222 WDAR 105.5 SC Darlington, "Sunny 105.5," local ads 76

1/3 Tr

2244 WCCP 104.9 SC Clemson, RDS PI 5A33 185

1/23 Tr

2137 WBYZ 94.5 GA Baxley, "Hit Kicking Country Z94" 176



2138 WXXL 106.7 FL Tavares, "XL 106.7" 336

2150 WCFB 94.5 FL Daytona Beach, "Star 94.5," //webcast 306

2305 WUIN 106.7 NC Carolina Beach, "The Penguin" 129

2354 WHJX 105.7 FL Baldwin, urban //webcast 231

1/25 Tr

1402 WPUP 103.7 GA Royston, "The Bulldog" 291

1/25 Ms

1414 KABZ 103.7 AR Little Rock, Ms #4, "1037 The Buzz" 725

1/28 Tr

1629 WAEG 92.3 GA Evans, ID 133

1/29 Tr

0200 WMOQ 92.3 GA Bostwick, "Real Country Q-92.3" 210

2/1 Tr

1010 WAAC 92.9 GA Valdosta, "92.9 Country" 231

1014 WNFQ 92.9 FL Ocala, "Big 92.9" 312

Totals now at 325

LONG-DISTANCE LISTENING ON FM, YOU MAY FIND STEREO OR QUADRAPHONIC SIGNALS

BY RICHARD E. WOOD
Popular Electronics May 1972

MORE than 2500 stations are licensed on the 100 channels that make up the FM broadcast band which extends from 88.1 to 107.9 MHz. For many radio listeners, this is a favorite band for chasing that elusive commodity: DX—rare, low-powered, distant stations. The reasons for this infatuation with FM DX are many. The distances may not be as great as routinely encountered on shortwave or at night on the AM broadcast band; but when it occurs, a good FM DX opening can provide pristine local-quality reception of a kind that simply can't be found on the SW and AM bands. And where else can one DX in stereo and quadrasonic sound?

The FM broadcast band is divided into two parts with the midpoint falling at 92 MHz. On the educational channels, which are in the range from 88.1 to 91.9 Mhz, stations are operated by National Public Radio, colleges and universities, religious broadcasters, and some city and county administrations. At present, there are more than 250 such stations in operation.

In the commercial band, from 92.1 to 107.9 MHz, more than 2300 stations are saddled up geographically according to the master plan implemented in 1961 which calls for an eventual total of 3075 stations. Not all of the existing stations in this band are commercial. Some are educational, but they must conform to the same power and antenna regulations applicable to the commercial stations.

One difference between the educational and commercial bands is that the commercial stations are non-directional. This makes it easier to predict chances of hearing a particular station once the power and antenna height are known. This contrasts sharply with the situation on the AM band where many clear-channel and almost all regional channel outlets are highly directional.

When there is a directional opening on FM—a duct to a particular city, state, or region—you can consult a list of FM stations and, after judging power and antenna height and possible interference on the frequency, look for other stations in the same location. Chances are that they will be right there. (Perhaps the best aid in tracking down directional openings is the "FM Atlas and Station Guide" published by Bruce F. Elving. Box 24-PE, Adolph, MN 55701, \$2.50 per copy.)

The only exception to the non-directional rule is the educational band where some stations can be directed by choice. For example, WSIE, Edwardsville, Ill., a university station on 88.7 MHz located near the southwest corner of the

state directs its signal to the northeast to cover Illinois and away from St. Louis which lies nearby but across the state line.

Many FM listeners specialize in the educational band. They like the challenge of the extra complications in directionality, low power (some college and high school stations put out a meager 10 watts), and the lack of identifications on the hour and half—hour. On the other hand, DX listening in the educational band is made easier by the comparatively low frequencies involved. E-layer skip, tropospheric ducting, and other forms of propagation cause the m.u.f. (maximum usable frequency) to rise gradually from TV channel 2 to channel 6 and then up into the FM radio frequencies. But the m.u.f. may hover in the high 80's or low 90's and not rise as far as the commercial FM band.

Bearing this in mind, most FM DX'ers begin their search for stations by checking conditions in the lower half of the educational range. Some also combine their DX'ing with similar work in TV, monitoring TV channel 6 for early warning of DX propagation on FM.

One might well ask where is the best possible location for an FM DX'er in North America? Actually, each part of the continent has its pros and cons. The greatest choice of stations is in the Northeast and Great Lakes region, followed by the South and California. There are fewer stations in the Plains States and Mountain West, but this means that there is less chance of band saturation.

A New Jersey DX'er can quickly run up a goodly station and state count by tuning the many groundwave (GW) and extended groundwave (ECW) signals which he can hear daily. But if his FM dial is filled with GW signals and splatter from local outlets, he may miss such DX-producing phenomena as E-layer skip (Es), tropospheric ducting (Tr), and meteor scatter (Ms). A California DX'er may achieve a total of 175 home-state stations, but his total of states logged is likely to be less than that of the New Jersey listener.

All things considered, the best location for an FM DX'er is generally agreed to be in the South where FM broadcasting is really lively. There are many interesting targets to aim for. And there is also a natural advantage, especially for listeners in the Gulf South. Here there is more Tr than in any other part of the country, especially in winter which tends to be an off-season for FM DX in the North. "Gulf tropo"—tropo propagation across and around the Gulf of Mexico—is a byword among southern FM DX hounds. Skip from the E layer is also more frequently encountered in

southern latitudes.

FM listeners tend to have a strong interest in propagation. They learn to distinguish the different modes as they hear them. Tr, for example, shows great directionality, allowing an experienced DX'er to zero in on a duct that is so directional that only those stations operating from a single transmitter site or narrowly circumscribed section of a city are audible.

Tropospheric reception is often strong and steady. It may last for hours or days and provide excellent stereo signals at average distances of 300 to 600 miles. At a distance of 1094 miles, Tr of WBEN-FM Buffalo, N.Y., 102.5 MHz, was heard in Baton Rouge, La.—maybe a record for this mode of propagation at FM broadcast frequencies.

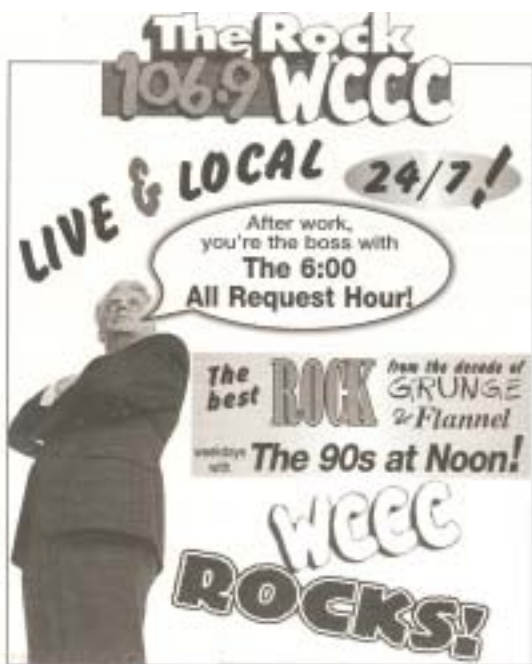
Perhaps the most exciting mode of FM propagation is Ms. Meteors and meteorites constantly rain down from space; as they fall, they interpose themselves between transmitter and receiver and reflect the FM signal. Ms is very brief, lasting only seconds, and at the most, minutes. The majority of stations heard will remain unidentified since only music or other non-distinctive program material will be heard. But there is always the possibility that the scatter may occur just when an identification or a local commercial is being aired. If enough is heard, a report can be sent off. For example, from Baton Rouge, WIF1 Philadelphia, 92.5 MHz, was positively identified and subsequently verified. The distance of 1112 miles is typical for Ms.

A more regular source of reception in the 750-2000 mile range is Es, chiefly in summer

around midday but irregularly observed throughout the year. Like Tr, it is directional but generally less steady, with the focus darting around, and lasting only minutes. As with Tr and Ms, signals propagated by Es are generally quite loud, but at times they may fade deeply. Es is quite unpredictable, more so than Ms which cannot be predicted in detail for specific stations.

International activity in FM DX (as well as in utility vhf and TV) is organized by Worldwide TV-FM DX Association, 1203 Kenton Rd., Deerfield, IL 60015. Annual membership which includes the monthly "VHF-UHF Digest" is \$8.50; a sample copy of the Digest is 50 cents. The Digest regularly carries the latest FCC, Canadian, and foreign station license news; news on Mexican, Central American, and Caribbean stations; regional FM reports which give latest member loggings; and a QSL section. For international FM DX'ers, there is a regular "European Scene."

FM stations tend to be friendlier and better verifiers of QSL's than are stations on the AM broadcast band. The reasons for this are the relatively few FM reports received, the newness of many FM stations (which makes them genuinely interested in reports), and the high quality of FM reception reports sent in. This last is due to the almost total lack of casual FM DX'ers. Too, it is recognized that the FM DX'er must have better equipment than his counterpart working DX on SW and AM BCB, and that he must take more care in tuning and have a nodding acquaintance with propagation.



On the left, a current newspaper advertisement for WCCC-FM 106.9, live, local...and they have IBOC! On the right is a photo of the old WDKY 56 tower in Lexington, KY looking straight down. Thanks to Jim Renfrew for this picture.



SIGN UP/Renewal form

Name _____

Address _____ Apt # _____

City _____ State/Prov _____ Zip _____

Country _____ Interests: TV () FM () 30-50() Weather()

email address _____

Sign me up/renew me for: 1 year () 2 years () More ()

Yearly dues \$24 (US), \$26 to (CANADA), \$10 (Electronic VUD)
(Students get a discounted rate of \$15 yearly for the paper VUD.)

Mail your dues to: WTFDA, P.O. Box 501, Somersville, CT USA 06072

Make your checks/money orders payable to: WTFDA

And *thanks* for your support of the WTFDA!

Return this form with your dues or make a copy of it and return that.

WTFDA BOARD OF DIRECTORS

Mike Bugaj, use the WTFDA Mailing address listed below	mbugaj@snet.net
Doug Smith, 1385 Old Clarksville Pike, Pleasant View, TN 37146-8098	w9wi@w9wi.com
Greg Coniglio, 11825 Genesee St., Alden, NY 14004	wgrc@rochester.rr.com
Bruce Hall, 5 Stirton Ave., Brantford, ON N3T 1E2	dbruceaa@hotmail.com
Keith McGinnis, 6 Ritter Road, Hingham, MA 02043	longwave@comcast.net

THE MAILBOX and all general club correspondence:

Mike Bugaj at WTFDA, PO Box 501, Somersville, CT 06072	mbugaj@snet.net
--------------------------------------------------------	-----------------

SATELLITE NEWS

George Jensen, 4604 Antana Ave., Baltimore, MD 20206-4220	scisatman@aol.com
-----------------------------------------------------------	-------------------

TV NEWS

Doug Smith, 1389 Old Clarksville Pike, Pleasant View, TN 37146-8098	w9wi@w9wi.com
---------------------------------------------------------------------	---------------

FM NEWS

Chris Kadlec, 3860 Shorewood Dr., Fremont, MI 49412	ckadlec@beaglebass.com
-----------------------------------------------------	------------------------

PHOTO NEWS

Jeff Kruszka, 5024 S. Braxton Ave., Baton Rouge, LA 70817	jkruszka@bellsouth.net
-----------------------------------------------------------	------------------------

EASTERN TV DX

Matt Sittel, 15013 Eureux Circle, Bellevue, NE 68123	mcsittel@cox.net
------------------------------------------------------	------------------

WESTERN TV DX

Dave Williams, 3525 SW Timber Ave., Redmond, OR 97756	beansdad@bendcable.com
-------------------------------------------------------	------------------------

SOUTHERN FM

John Zondlo, 4009 Driftwood Cir., Yukon, OK 73099	sfm@fmdxweb.com
---------------------------------------------------	-----------------

NORTHERN FM

Keith McGinnis, 6 Ritter Rd., Hingham, MA 02043	longwave@comcast.net
-------------------------------------------------	----------------------

TV and FM STATISTICS

Fred Nordquist, 147 Travis Hill Road, Moncks Corner, SC	nordquis@homexpressway.net
---------------------------------------------------------	----------------------------

6 METER/2 METER

Peter Baskind, 3225 Forest Hill-Irene Rd, Germantown, TN 38138	n4li@arrl.net
----------------------------------------------------------------	---------------

<u>BACK ISSUES</u> Dave Nieman, PO Box 17, Clarence, NY 14031-0017	nieman@localnet.com
---------------------------------------------------------------------------	---------------------

We have a large selection available for \$1.00 each. Email or write Dave for availability.

<u>WEBSITE</u> Tim McVey Webmaster http://www.anarc.org/wtfda/	tkmcvey@erols.com
-----------------------------------------------------------------------------------------------------------------	-------------------