

# Vhi-UhiDIGEST

The Official Publication of the Worldwide TV-FM DX Association

APRIL 2006

The Magazine for TV and FM DXers



CONVENTION 2006 IS RIGHT HERE  
AUGUST 11,12,13 in SPARTA, N.J.

Come visit the mountaintop!

See Inside For More Details!

We Give Up!! Where's all the DX???

## IN THIS ISSUE

René Tetro Reviews the Bose HD Receptor Radio

Doug Smith Reviews the Bose HD Receptor Radio



*TV and FM DXing was never so much fun!*

# THE WORLDWIDE TV-FM DX ASSOCIATION

*Serving the UHF-VHF Enthusiast*

THE VHF-UHF DIGEST IS THE OFFICIAL PUBLICATION OF THE WORLDWIDE TV-FM DX ASSOCIATION DEDICATED TO THE OBSERVATION AND STUDY OF THE PROPAGATION OF LONG DISTANCE TELEVISION AND FM BROADCASTING SIGNALS AT VHF AND UHF. WTFDA IS GOVERNED BY A BOARD OF DIRECTORS: DOUG SMITH, GREG CONIGLIO, BRUCE HALL, KEITH MCGINNIS AND MIKE BUGAJ.



*Editor and publisher:* **Mike Bugaj**

*Treasurer:* **Keith McGinnis** *Webmaster:* **Tim McVey**

*wtfda.info Site Administrator:* **Chris Cervantez**

*Editorial Staff:* **Dave Williams, George W. Jensen, Jeff Kruszka**

**Keith McGinnis, Fred Nordquist, Matt Sittel, Doug Smith,**

**Chris Kadlec, Peter Baskind and John Zondlo,**

Our website: [www.anarc.org/wtfda](http://www.anarc.org/wtfda) Our forums: [www.wtfda.info](http://www.wtfda.info)

APRIL 2006



Finally! For those of you online with an email address, we now offer a quick, convenient and secure way to join or renew your membership in the WTFDA from our page at:

<http://fmdx.usclargo.com/join.html>

Dues are \$25 if paid to our Paypal account. But of course you can always renew by check or money order for the usual price of just \$24. Either way, it's still a bargain!

## VUDS ON A CD!

Every VUD from Jan 1980 to December 1989 is on this disk. You'll need Adobe Reader to read them. Why have a box of old VUDs taking up space when you can have this. **It's yours for just \$8.00 per disk.** Send your check or money order for \$8.00 to WTFDA, P.O. 501, Somersville, CT 06072. Make it payable to **WTFDA.**



## CONTENTS

Page Two	2
Mailbox	3
TV News...Doug Smith	5
FM News...Chris Kadlec	12
Photo News...Jeff Kruszka	18
Boston Accoustics Review	21
Eastern TVDX...Matt Sittel	22
Northern FMDX...Keith McGinnis	23
Sun Cycle Minimum	24
Western TVDX...Dave Williams	25
Satellite News...George Jensen	27

## And now... eVUDS ON CD!

All eVUDs from 09/01 through 12/05 are on this disc (except 8/02 which was not published). Follow the changes from day one to the present form. **You can have it for just \$6.00** (\$5.00 plus a dollar shipping). Use the same address as for VUDs on CD shown on the opposite column. Have a great month!



## CONVENTION 2006

**AUGUST 11-12-13 Sparta, NJ**

Join your host Rick Shaftan for three days of fun. Rick's tentative schedule calls for a BBQ at the Mountaintop for early arrivals on the 10<sup>th</sup>, check-in on Friday the 11<sup>th</sup> with a tentative trip to the Meadowlands AM transmitter sites, an attempt to string up a Rhombic aimed at Europe and possible tours of local stations. Saturday a field trip to High Point is planned as well as a business meeting and food in the evening.

Registration fee, hotel information and more will be included in the next VUD.



# The Mailbox

P.O. Box 501, Somersville, CT USA 06072  
MIKE BUGAJ MBUGAJ@SNET.NET

---

## LATE WINTER BLAHS

Well, I'm glad it's April because March was a pretty slow month. I went back to the tvfmdx list archives to see if it was as slow as I thought it was, and yes, it was. Not much DX was reported at all.

A couple of popular topics in March were the purchase of a Boston Acoustics HD radio by Doug Smith and the flip of WBYO 107.5 Boyertown PA from Christian programming (which it has had for as long as I can remember) to Frank FM (WFKB). Now when you hear Frank via Es, you'll scratch your heads wondering if what you heard was Boyertown or Lewiston, ME. Flip a coin.

## MEMBERS AND MORE

March wasn't a particularly big month for renewals either. But we did have a surprise or two. We say "welcome back" to **Robert Grant** (MI). Robert has been away from the WTFDA for many moons now. Bob is living in Temperance, MI and owns the calls W8NU. Bob's main interest is TV DXing with FM DXing as a second choice. He claims he has no website at the moment, but if one really looks hard, one will find a website which hasn't been updated in eons, but it still there. I have had a link to his old site for years now at my own website ([pages.cthome.net/fmdx](http://pages.cthome.net/fmdx)).

My next surprise was a new membership for **David Fleming** (NS8S). David lives in Muskegon County, Michigan and has an APS-13 on a 100+ foot tower. He's also the proud owner of an Onkyo T-9090 tuner. David emailed me a couple of questions and mentioned how he was interested in FM DXing, so I emailed him the March eVUD and the rest is history. If you're in that area, email David at [david.fleming@verizon.net](mailto:david.fleming@verizon.net) and say hi.

Renewals were received during the period of 2/20 through 3/15 from **Dan Dankert** (CA), **Craig Healy** (RI) (another surprise!), **Gerard Hart** (NY), **Frank Merrill** (IL), **Nat Ely** (WI), **George Rogers** (GA), and **Ryan Grabow** (FL).

So far we've had 5 orders for the eVUDs on CD. Thank you all for that. The money goes into the Buddy System fund.

We've also received a couple of orders for Bob Cooper's book *Television's Pirates:*

*Hiding Behind Your Picture Tube.* Bob wants all of you to know that the book retails elsewhere for \$29.95 and Bob offered it to WTFDA members for a discount which was re-negotiated downward by the WTFDA BoD to the current price of \$20 (\$21.50 via Paypal). So take advantage of the WTFDA member price!

Bob also tells us the following: "It turns out I will be in the States two times over April and May - in Atlanta at Satellite Expo 06 (April 20-22) at DMS International Booth, and then in Dayton at the annual Hamfest May 19-21 at the M-Squared (Antennas) booth. Anyone attending would be welcome at either to meet and greet." If you live in those areas, go see Bob. Perhaps he'll autograph a copy for you.

Here's a little bit more from **David Fleming**: "I live in West Michigan, in the lower penn, in Muskegon County. I have an APS-13 at 110 feet, but no pre-amp.

I caught the FM bug one day, when listening in on some tropo coming out of Florida on my scanner antenna, hooked to a Harmon Kardon HK-715 tuner.

I started searching the web immediately looking for others in the same hobby, and wow, there's a real hobby!

At any rate, I bought a used, mint Onkyo T-9090II tuner, because it was mentioned in many FM DX articles. It's been interesting to operate, but a pain because it has no RDS system.

I was also thinking about modifying my Harmon Kardon with a wide, narrow switch, and changing the filters in it. It's a very, very quiet tuner, and extra sensitive.

Antenna is working out fine, but I found that a pair of Radio Shack yagis in horizontal stack offers more side lobe rejection than the APS-13, and the two Radio Shack yagis are only mounted on a pole at around 30 feet!

Forward gain is way more impressive with the APS-13, however."

I printed this from David because I think a few people might be startled to read his observations about the horizontally stacked Radio Shack yagis. I was. I thought the APS-13 was "hot" for side lobe rejection. Or perhaps it is hot, but not as hot as two stacked yagis.

## **ANOTHER DTV CARD?**

Jeff Kadet posted this question on the tvfmdx list regarding the *Dvico Fusion HDTV5 USB Gold HDTV Analog-PC Adapter*. "Has anyone reviewed this yet? I got one for a Dell Inspiron 6000 laptop.

It is genuine HDTV and appears (i won't swear to it) to be compatible with every Worldwide standard, both analog and digital.

When setting it up, at least, it lists just about every country in the world with DTV or expecting it. The adapter box itself is so small and lightweight that it almost defies imagination. It also includes a video recorder for dtv and analog, plus all sorts of other gizmos.

I haven't compared it to the Hauppauge WinTV-D card yet, but it seems to be sensitive enough. You can program in RF channels or scan for them.

It's important that your computer have specific video cards. The Dell has a ATI video card which was compatible.

The product's Website is here

<http://www.fusionhdtv.co.kr/eng/Products/HDTV5usb.aspx>.

Installation instructions can be found here

<http://www.wfu.edu/~yipcw/atg/hdtv/index.html>.

I got one the other day from

<http://store.snapstream.com/fusionhdtv-gold-usb.html>.

They're having a Special which includes the Box, a very well made UHF antenna (even though it has ---ick---the "Terk" name on it), and 6' of RG6 for \$149.99 + reasonable shipping". -Jeff Kadet

Glen Hale replied: "Yes...I have it. The software is a bit quirky, but it seems to work well enough. You do need a pretty fast computer or it has a tendency to crash. It runs pretty well on my Dell 9300 laptop, but crashes pretty frequently on my eMachines desktop that isn't quite as loaded for speed. They are constantly updating the software to try to work out various kinks -- most of them with recording.

It has the LG 5th generation DTV chip. The DT tuner appears to be pretty solid. I rate it slightly better than my Accurian box.

The analog tuner is horrible, probably the worst I've used anywhere, but for DT and portability, there's nothing else like it.

I got it from Snapstream as well. The antenna I got was not a Terk, but was a Silver Sensor-type model. I think they're now using the Terk that looks like a Silver Sensor, but also includes rabbit ears."

## **HD RECEPTOR RADIO REVIEW #1**

WTFDAer René Tetro of WFIL reviews the Boston Accoustics HD radio: I've had my HD Receptor now for about a week and wanted

to give it some time before I sat down and wrote a review.

Let me begin by saying that this is a good radio, for what it is. The emphasis is on sound and not on "dx-ability;" meaning that it is not extremely sensitive (either on FM or AM), although the selectivity is acceptable for most situations. The sound quality, however, is very good - even with the small albeit somewhat bassy internal speakers. When connected to a stereo, however, it's true audio performance comes out.

Let's look first at the FM side. This is where I first noticed that sensitivity is lacking. Even with an outside antenna it is difficult to pull in anything but local stations. For instance, there are several rim shot FM's near Philadelphia that put respectable signals over my location in Lafayette Hill at the WFIL/WNTP transmitter site. I tried two outside antennas: a standard crossed FM dipole, and a Diamond DX-130 discone antenna. It worked slightly better on the discone, but even at that, it was difficult to pull in rim shots like WPST, WBYN, and WJBR.

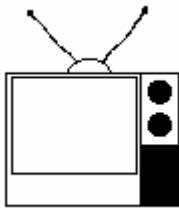
The Receptor also had difficulty pulling in the second HD multicast channel on local WRTI, which runs less power than most of the major FM's in town, but whose transmitter is located with most others at the Roxborough antenna farm, about four miles away. Likewise, when using the radio at my home QTH in Lansdale, about 15 miles from Roxborough, reception of IBOC even on high power FM's was iffy with an outside antenna. At home I used a Winegard crossed-dipole and a Dressler ARA-2000 to test the Receptor.

On the whole, however, I have to say that the FM IBOC is indeed superior sounding to analog FM. When switching between the main FM analog channel and its IBOC counterpart, there is a marked difference in audio quality. The high end is largely much brighter and cleaner. There is also none of the "swishy" artifacts associated with analog's 75 microsecond preemphasis.

The audio on AM IBOC, as on the FM side, tends to be cleaner than analog, but I am not sure if that is a function of the IBOC itself, or merely the difference in audio processing between analog and IBOC components. As in FM, the high end is also much cleaner in digital. These gains, however, seem to be negated by the noise and static that still exists.

Overall, I would rate the radio as being adequate for local FM IBOC reception with an outside antenna, and ok for AM IBOC as well. My gut feeling about AM IBOC, now having experienced it, is that AM stereo was much better.

We'll try to get Doug's review on this radio in this issue if we have space. CU in 30.



# TV News

Douglas E. Smith  
 1389 Old Clarksville Pike  
 Pleasant View, TN  
 37146-8098  
[w9wi@w9wi.com](mailto:w9wi@w9wi.com)  
<http://www.w9wi.com>

April 2006

## Abbreviations:

AF	Applied For (a new station)	NW	New station on the air
Aux	Auxiliary (backup) transmitter	PA	Proposed Amendment
CC	Callsign change	PC	Power (and/or tower height) change on the air
CL	City-of-license change	PG	Power change granted
DC	Converted to DTV	PR	Power change requested
DG	Granted flash-cut to DTV	QC	Channel (?frequency?) change on the air
DE	License/permit deleted	QG	Channel change granted
DR	Requests flash-cut to DTV	QR	Channel change requested
FC	Programming (?format?) change	RE	Reinstated (previously-dismissed app.)
FTP	Failure to Prosecute	ROA	Request of Applicant
GA	Granted amendment (to table of channel allotments)	SI	Off the air (?silent?)
LC	License to Cover	STA	Special Temporary Authority
MX	Mutually Exclusive	XC	Transmitter site changed
NDA	Non-directional antenna	XG	Transmitter site change granted
NS	Permit granted for new station	XR	Transmitter site change requested

## News:

(full-power analog stations in **bold face**; LPTV and translators in regular type; full-power digital stations in **bold italics**; low-power digital stations in regular italics)



### Canada:

#### British Columbia:

Vancouver **20 CHNM-DT** NS, 772w

#### Quebec:

Montreal **59 CFTM-DT** NS 6.14kw, ant. at studio site



### Mexico:

#### Baja California Norte:

Tijuana **33 XHAS-TV** PC>2447kw

#### Campeche:

Campeche **4 XHCCA-** PC<10kw

#### Chiapas:

Tuxtla Gutierrez **8 XHTX-TV** PC>46.55kw

#### Chihuahua:

Balleza **6 XHBAL-TV** QC from ch. 3, 50w

#### Coahuila:

Sabinas **5 XHSDD-** PC<1.926kw

#### Colima:

Colima **7 XHBZ-TV** PC>86.24kw

#### Districto Federal:

Mexico City **28 XHRAE-** PC>5000kw

#### Guanajuato:

Leon **2 XHLGT-** PC>100kw

#### Jalisco:

**Guadalajara** **21 XHGUE-TV** PC 2371.5kw (correction from 2371.05)

#### Michoacan:

Lazaro Cardenas **13 XHLBT-TV** PC<14.53kw (correction from 14.63)  
 Zamora **48 XHRAM-** PC<1995.82kw

#### Nuevo Leon:

Monterrey **28 XHMNL-** PC<2525kw

#### Oaxaca:

San Miguel Tlacotepec **11 XHSMT-TV** PC<870w

#### Quintana Roo:

Cancun **13 XHCCU-** PC>203.1kw

#### San Luis Potosi:

Cd. Valles **8 XHVSL-** PC<13.5kw  
 Tama-zunchale **2 XHTZL-** PC>10kw

#### Sonora:

Benjamin Hill **3 XHBHS-** PC<10w  
 Empalme **7 XHEMS-** PC<50w  
 Fronteras **6 XHFAS-** PC>23w  
**Guaymas** **13 XHGSO-** PC<50w  
**Soyopa** **7 XHSYO-** NW, 23w, educational?



#### American Samoa:

Pago Pago **30 WVUV-LP** PR>6kw, 14-19-21/170-45-47





Pensacola	7	WRBD-LP	<b>Network TV</b> PR>1kw, 30-28-31/ 87-15-16	Salem	58	WFTE	52-44/87-38-08 (aux) <b>FC to MyNet</b>
St. Petersburg	36	W36CO	DR 15kw, 29-03-06/82-44-12 (possible typo, analog was *28*-03-06N)	South Bend	25	WMWB-LP	<b>FC to CW</b>
St. Petersburg	38	WTTA	FC to MyNet	South Bend	48	WHME-DT	<b>NW 300kw/295m</b>
Tallahassee	22	WTXL-DT	<b>PR&lt;8.7kw/487m; PG</b>	Terre Haute	43	W43BV	DR 15kw
Georgia:				Terre Haute	47	W47CT	PR>150kw, 39-30- 14/87-26-37 dismissed; CX?
Atlanta	20	WTBS-DT	PC>1000kw	Iowa:			
Atlanta	42	WTHC-LP	DG 7kw (maybe should be WTHC-LD?)	Ames	23	KPWB-	<b>FC to CW</b>
Augusta	30	WAGT-DT	to add CW on subchannel	Cedar Rapids	17	K17ET	DR 15kw
Augusta	31	WRDW-DT	<b>NW 751kw/469m</b>	Davenport	10	WBQD-LP	FC to MyNet
Cleveland	28	WDWW-LP	XR 34-30-32/ 83-48-27; CL from Blairsville	Lansing	49	K41AD	QR from ch. 41, 62.5kw
Dalton	16	WELF-DT	NW 300kw/425m	Sioux City	56	NEW-LP	<b>AF 150kw, 42-28-40/96-20-25</b>
Macon	50	W50DA-D	DR 15kw, 32-45-04/ 83-33-27; DG	Waterloo	7	KWWL	XR 42-24-02/ 91-50-36; drop DA
Pearson	3	WPNG-LP	PG<390w	Kansas:			
Pearson	26	WPDW-LP	PR>150kw	lola	30	K30AL-D	DG 7.1kw, 37-54-33/95-07-23
Rome	14	WPXA	PC<3800kw/607m	Wichita	33	KWCV	<b>FC to CW</b>
Savannah	3	WSAV-TV	<b>PC&lt;442m, 32-03-31/81-17-55</b>	Kentucky:			
Valdosta	25	W25CP-D	DR 15kw; DG	Bowling Green	33	WBKO-DT	<b>NW 490kw/203m, 37- 03-49/86-26-07</b>
Hawaii:				Campbells-ville	34	WBKI	<b>FC to CW</b>
Honolulu	5	KFVE	<b>FC to MyNet</b>	Hazard	12	WYMT-DT	to add CW on subchannel
Idaho:				Lexington	13	WKYT-DT	to add CW on subchannel
Boise	20	KITL-LP	PC>150kw	Madisonville	19	WAZE	<b>FC to CW</b>
Boise	47	K47BE-D	DR 15kw; DG	Paducah	49	WDKA	FC to MyNet
Idaho Falls	8	KIFI-TV	<b>XG 464m, 43-30-04/ 112-39-43 (correction only)</b>	Louisiana:			
Idaho Falls	33	NEW-LP	AF 10kw, 43-29-36/ 112-02-14	Alexandria	45	K64FT	DR 15kw from ch. 64
Twin Falls	34	KXTF-DT	NW 21.7kw/152m	Baton Rouge	21	WBRL-CA	<b>FC to CW</b>
Twin Falls	51	KSAW-LP	OG from ch. 52, 21.6kw, 42-43-46/ 114-24-53	Baton Rouge	46	WBXH-CA	<b>FC to MyNet</b>
Twin Falls	53	KYTL-LP	XR 42-43-46/ 114-25-08	Baton Rouge	58	K58GB	RA
Illinois:				Baton Rouge	7	K07WE	PR>3kw, 30-26-59/91-07-55
Bloomington	51	W51CT	DR 15kw	Lafayette	62	KLAF-LP	<b>FC to MyNet</b>
Champaign	34	W34DL-D	DR 15kw; DG	Minden	21	KPXJ	<b>FC to CW</b>
Chicago	31	WFLD-DT	AF 475kw/480m, 41- 52-44/87-38-08 (aux)	Monroe	45	K45IM	DR 15kw
Decatur	23	WBUI	To be CW	New Iberia	50	KLWB	NW 5000kw/303m 30-20-32/91-58-32 WB (for now!; to be CW.)
East St. Louis	46	WRBU	FC to MyNet	New Orleans	21	WHNO-DT	<b>NW 300kw/254m</b>
Peoria	59	WAOE	<b>FC to MyNet</b>	New Orleans	28	K28IL-D	DR 15kw; DG
Rochelle	28	W28CO	PR>150kw, 41-52-33/88-45-16 dismissed; CX?	Opelousas	22	KDCG-LP	DR 3kw
Springfield	49	WCFN	<b>To be MyNet</b>	Shreveport	31	K31HO-D	DR 15kw, 32-39-57/93-55-58; DG
Indiana:				Shreveport	45	KSHV	<b>FC to MyNet</b>
Bloomington	48	WTTV-DT	PR<318m	Maine:			
Columbia	27	W27CT	PR>150kw, 39-37-55/85-06-10	Bangor	36	W36CK	DR 15kw
Elkhart	18	W18CF-D	DR 8kw; DG	Farmington	21	W21BI	FC; sold by TBN
Evansville	38	W38BK-D	DR 15kw; DG	Portland	51	WPXT	<b>FC to CW</b>
Evansville	41	WTSN-LP	<b>FC to MyNet</b>	Maryland:			
Gary	50	WPWR	<b>FC; to be My Network TV</b>	Baltimore	24	WUTB	<b>FC; to be My Network TV</b>
Gary	51	WPWR-DT	AF 508kw/480m, 41-	Lake Shore	8	WQAW-LP	QR from ch. 69, 3kw, 38-58-02/ 76-15-31
				Salisbury	61	W61DS	XR 38-26-02/ 76-27-00 dismissed; CX?
				Massachusetts:			
				Pittsfield	51	WNYA	<b>NW 141kw/293m, 42-</b>

			<b>30-09/73-18-58 (not exactly new but finally filed for LC); FC to MyNet</b>			40-42-39/ 116-49-48 FC to MyNet PG>150kw DR 350w PC<363m, 36-00-36/ 115-00-20
Michigan:				<b>Las Vegas</b>	<b>21 KVWB</b>	
Hesperia	42 W42CB-D	DG 15kw		Las Vegas	28 KVPX-LP	
Jackson	18 WHTV	FC to MyNet		Laughlin	28 K28EU	
Marquette	45 NEW-LP	AF 5kw, 46-30-51/ 87-28-58		Paradise	39 KBLR	
Pickford	43 NEW-LP	AF 12kw, 46-05-05/84-24-23				
St. Ignace	26 W26DG	NS 999w, 45-51-25/ 84-46-43		<b>Reno</b>	<b>27 KREN</b>	<b>FC to CW</b>
				Reno	39 K39FF-D	DR 15kw; DG
				Winnemucca	21 K21FO	DR 200w
				Winnemucca	23 K23FR-D	DR 200w; DG
				Winnemucca	49 K49BK	DR 200w
				<b>New Hampshire:</b>		
Minnesota:				Charlestown	47 WVBO-LP	PG<140w, 43-24-12/72-25-42
Bemidji	48 NEW-LP	AF 9kw, 47-28-59/ 94-53-25 (3Abn)		Manchester	28 W28CM	XR 42-45-45/ 71-27-29 dismissed
Minneapolis	25 K25IA-D	DG 15kw				
Minneapolis	29 WFTC	FC; to be My Network TV		New Jersey:		
St. Cloud	19 K19BG	DR 15kw		<b>Secaucus</b>	<b>9 WWOR-TV</b>	<b>FC; to be My Network TV</b>
<b>Mississippi:</b>				<b>New Mexico:</b>		
Magee	34 WRBJ	NW 1400kw/375m 32-07-18/89-32-52 (UPN, for now!)		<b>Albuquerque</b>	<b>50 KASY-TV</b>	<b>FC to MyNet</b>
Meridian	49 WTOK-DT	PG 400kw/136m		Aztec	38 K38DA-D	DG 395w, 36-48-53/ 107-53-31
Meridian	65 W65DE	PG>750w, 32-11-42/89-10-31		Carrizozo	51 K51CN	PG>100kw, 33-49-34/ 106-14-52
Pascagoula	7 WKFK-LP	DG 300w		Cuba	34 K34HF-D	DR 647w; DG
Vicksburg	35 WUFX	Adds MyNet to Fox		<b>Farmington</b>	<b>30 NEW-LP</b>	<b>AF 10.5kw, 36-40-17/ 108-13-53</b>
				Farmington	40 K40FI-D	DR 403w; DG
<b>Missouri:</b>				Lovington	39 K46HM	DR 1.1kw, 32-57-34/ 103-21-13 from ch. 46
Ashbury	24 KJOM-LP	PG<58kw, 37-26-55/94-38-11; already on		Lovington	46 K46HM	PC 1.1kw, 32-55-44/ 103-20-45; NW
Joplin	26 KOZJ	PG to drop DA & correct coordinates to 37-04-37/ 94-32-15		Roswell	25 K25IK	DR 2.2kw, 33-24-15/ 104-22-48
<b>Kansas City</b>	<b>29 KCWE</b>	<b>FC to CW</b>		Ruidoso	18 K18GQ	NW 1.29kw, 33-24-14/ 105-46-55 (KENW-3); DR, 10kw
Kansas City	62 KSMO	FC to MyNet		Ruidoso	35 K35GU-D	PC 8.7kw, 33-24-14/ 105-46-55; DR, 8.3kw
Rolla	16 K16FE	DR 15kw		<b>Santa Fe</b>	<b>19 KWVQ</b>	<b>FC to CW</b>
Springfield	41 K41FQ-D	DR 15kw, 37-13-09/92-56-57; DG		Silver City	42 K42HC	PR>9.9kw, 32-51-45/ 108-14-27
Springfield	49 K49DG-D	DR 15kw; DG		Socorro	46 K46HY-D	DR 419w; DG
<b>St. Louis</b>	<b>24 KNLC</b>	<b>PG 1148kw/396m</b>		Tucumcari	30 K30HD-D	DR 12kw, 35-08-03/ 103-41-54; DG
St. Louis	33 K33GU	DR 15kw				
<b>Montana:</b>						
<b>Billings</b>	<b>8 NEW-LP</b>	<b>AF 1kw, 45-46-54/ 108-30-19</b>		New York:		
Bozeman	34 K34FI-D	DG 7.8kw		Albany	26 WTEN-DT	NW 700kw/426m, 42-37-31/74-00-38
Kalispell	26 K26DD	DR 15kw		Binghamton	42 WSKG-DT	NW 50kw/408m, 42-03-40/75-56-46
Pinesdale	45 K67EC	QR from ch. 67		<b>Buffalo</b>	<b>49 WNYO</b>	FC to MyNet
Poplar	48 K48IA	NW 820w, 48-17-28/ 105-15-09		Elmira	6 W06CD	NW 250w, 42-03-49/76-51-10
				Glens Falls	47 W47CM	DR 15kw (app typos COL to "Glen Falls")
Nebraska:				New York	6 WNYZ-LP	DG 300w
Lincoln	51 KOWH	PG<51.4kw/125m, 40-51-10/96-40-36				
<b>Omaha</b>	<b>15 KXVO</b>	<b>FC to CW</b>				
<b>Omaha</b>	<b>38 KXVO-DT</b>	<b>PR 700kw/475m</b>				
<b>O'Neill</b>	<b>48 KOAZ-LP</b>	<b>Relays KTVG (17, Fox)</b>				
Scottsbluff	7 KDUH-DT	NW 32kw/475m				
Verdigre	10 K10JW	XG 42-35-55/ 98-02-30; XC				
Nevada:						
Battle Mountain	3 KNNC-LP	PR>3kw,				



New York	32	WXNY-LP	DG 7.5kw				Salem
New York	35	WNYX-LP	DG 10kw	Port Orford	47	K61BU	QR from ch. 61, 600w
New York	39	WNYN-LP	DG 3kw	Terrebonne	45	K60BQ	QR from ch. 60, 13.8kw, 44-11-52/ 120-58-39
Southampton	50	WVH-LP	XR 40-57-20/ 72-15-16				QR from ch. 59
<b>Syracuse</b>	<b>43</b>	<b>WNYS</b>	FC to MyNet	The Dalles	25	K59EK	
<b>Syracuse</b>	<b>47</b>	<b>WTVH-DT</b>	<b>PG&lt;500kw/290m, 42-57-19/76-06-34</b>				
Syracuse	54	WSTM-DT	NW 185kw/405m	Pennsylvania:			
Utica	11	WPNY-LP	XR 43-08-43/ 75-10-35	<i>Chambersbg.</i>	51	W51CY	DR 15kw
Utica	51	W51CV	DR 5kw	<b>Pittsburgh</b>	22	WCWB	FC to MyNet
Utica	53	W53AM	PR>9.84kw, 43-08-43/75-10-35	Pittsburgh	30	WBPA-LP	PR>25kw
				<b>Scranton</b>	38	WSWB	FC to CW
				<b>South Carolina:</b>			
North Carolina:				<b>Allendale</b>	14	WEBA-TV	PC>2307kw/241m33-11-15/ 81-23-50
<b>Belmont</b>	<b>46</b>	<b>WJZY</b>	<b>FC to CW</b>	<b>Anderson</b>	40	WBSC	FC to MyNet
<i>Canton/</i>	<i>47</i>	<i>W57BG</i>	<i>DR 5kw from ch. 57</i>	<i>Anderson</i>	50	W50CL-D	DR 8kw; DG
<i>Waynesville</i>				Beaufort	44	WJWJ-DT	NW 440kw/365m
<b>Durham</b>	<b>28</b>	<b>WRDC</b>	FC to MyNet	Charleston	5	WCSC-	PC<596m
<i>Franklin</i>	<i>15</i>	<i>W64BO</i>	<i>DR 5kw from ch. 64</i>	Charleston	20	W21BX	QC from ch. 21, 18.7kw
<b>Greensboro</b>	<b>48</b>	<b>WUPN</b>	FC to MyNet	<b>Charleston</b>	36	WMMP	FC to MyNet
Highlands	27	W27BD	PC 910w, 35-02-21/83-13-04; WUNF-33 via W24AU, Cashiers	Conway	23	WHMC	PC<917kw/245m, 33-56-58/79-06-31
<b>Lexington</b>	<b>20</b>	<b>WTWB-</b>	<b>FC to CW</b>	Myrtle Beach	21	WWMB	FC to CW
<i>Lumberton</i>	<i>35</i>	<i>W35CC</i>	<i>DR 15kw</i>	<b>Rock Hill</b>	15	WNSC-DT	NW 403kw/212m
<i>Sylva</i>	<i>44</i>	<i>W66BU</i>	<i>DR 5kw from ch. 66</i>	<b>Rock Hill</b>	30	WNSC-TV	PC>2674kw/212m, 34-50-23/81-01-07
<i>West Asheville</i>	<i>14</i>	<i>W14AS</i>	<i>DR 5.3kw</i>	<b>Rock Hill</b>	55	WWWB	FC to MyNet
<b>North Dakota:</b>				<b>Sumter</b>	27	WRJA-	PC 647kw/354m
Grand Forks	43	NEW-LP	AF 50kw, 47-52-33/ 97-02-55	<b>South Dakota:</b>			
				Martin	23	KZSD-DT	PC>129kw, drop DA
Ohio:				<b>Rapid City</b>	40	NEW-LP	AF 14kw, 44-03-08/ 103-14-32
Akron	55	WBNX	FC to CW	<b>Sioux Falls</b>	36	KWSD	FC to CW
Bridgeport	28	WVTX-CA	FC to UPN	<b>Tennessee:</b>			
Canton	47	WOAC-DT	NW 1000kw/134m	Chattanooga	53	WFLI	FC to CW
<b>Cincinnati</b>	<b>64</b>	<b>WSTR</b>	FC to MyNet	Crossville	20	WBXX	FC to CW
Columbus	8	WGCT-CA	PR>3kw, 40-00-31/83-02-49	Gatlinburg	36	WDWC-LP	PR<5.4kw, 35-48-43/83-40-03
Kirtland	51	W51BI	DR 8kw	Nashville	30	WUXP	FC to MyNet
Lorain	43	WUAB	FC to MyNet	<i>Nashville</i>	48	W48DG-D	DR 5kw; DG
<b>Newcomerstn.</b>	<b>22</b>	<b>NEW-LP</b>	AF 60kw, 40-15-27/81-34-31	South East	33	W08DH	DR 15kw from ch. 8
<b>Portsmouth</b>	<b>30</b>	<b>WHCP</b>	FC to CW	Memphis			
Springfield	26	WBDT	FC to CW	Texas:			
Oklahoma:				<i>Abilene</i>	51	K51CK	DR 15kw
Beaver	34	K56AY	PR>8.34kw	<b>Amarillo</b>	13	NEW-LP	AF 3kw, 35-17-33/ 101-50-48
Boise City	20	K55BV	PR>10.7kw	Amarillo	39	NEW-LP	AF 5kw, 35-15-39/ 101-52-52
Buffalo	48	K58AX	PR>7.9kw	<b>Austin</b>	56	KTBC-DT	NW 1000kw/354m
Duncan	47	K54BB	PR>9.8kw	Beaumont	17	NEW-LP	AF 20kw, 30-00-05/94-05-35
Frederick	34	K56BQ	PR>8.34kw	Clear Lake City	29	KJIB-LP	DR 11.75kw
Grove	48	KELF-LP	PC>98.4kw, 36-52-50/94-59-26	Corpus Christi	13	KRIS-DT	PR<46.1kw/240m, 27-44-29/97-36-09
Idabel	23	K63BA	PR>5.1kw	Dallas	13	KERA-TV	PR>521m
Oklahoma City	34	KOCB	PC>1200kw/458m, 35-32-58/97-29-18	Dallas	27	KDFI	FC; to be My Network TV
Tahlequah	30	K52GX	QC from ch. 52, 10kw	El Paso	17	KVIA-DT	FC to CW on subchannel
<b>Tulsa</b>	<b>48</b>	<b>KVHB-DT</b>	<b>NW 29kw/460m, 36-01-15/95-40-32</b>	<b>Fort Worth</b>	11	KTVT	NS 123kw/482m (aux)
<b>Oregon:</b>				Freeport	30	K30DN	XR 29-07-29/ 95-21-24
Gold Beach	50	K55CM	QR from ch. 55, 680w	Gainesville	61	K61HP	PR<18kw, 33-38-58/97-03-15
Klamath Falls	29	KDKF-DT	PR<4.87kw	Gainesville	65	K65HJ	PR<35kw, 33-49-35/97-16-38
Medford	41	K57EK	QC from ch. 57, 12.1kw	Houston	15	KVVV-LP	DR from ch. 53, 15kw,
Pendleton	22	K59BO	QR from ch. 59, 490w, 45-35-21/ 118-34-44				
Portland	47	KPOU-LP	PG>93.6kw, 45-31-14/ 122-44-37; CL from				

Houston	20 KTXH	29-24-40/ 94-57-04 <b>FC; to be My Network TV</b>	Kanarraville	2, 6, K02KN, 8, K06KO, 10, K08CE, 12 K10CK, K12CD	PR>230w (2), 300w (6, 10, 12), 150w (8), 37-29-16/ 113-12-18
Houston	27 KRIV-DT	NS 150kw/536m, 29-33-44/95-30-35 (aux)			
Jasper	15 NEW-LP	<b>AF 5kw, 30-58-31/ 93-59-24</b>	Navajo Mtn. School	2, 6 K02PX, K06NR	NW 4.6w, 37-01-16/ 110-45-58; KUTV-2
Katy	52 KNWS-DT	XR 29-33-44/ 95-30-35	Oljeto	2, 5 K02PV, K05LF	NW 4.5w, 37-02-28/ 110-19-48; KUTV-2 via K46AF, Blanding & KSL-5 via unID-42
<b>Kerrville</b>	<b>35 KRRT</b>	<b>PC&lt;515m, 29-36-38/98-53-33; FC to MyNet</b>			
Killeen	62 KWKT	<b>FC to MyNet</b>			
Laredo	4 NEW-LP	AF 990w, 27-31-14/99-31-19	Price	25 NEW-LP	AF 150kw, 39-32-42/ 110-48-56
Laredo	5 NEW-LP	AF 300w, 27-31-27/99-31-20			
<b>Laredo</b>	<b>17 NEW-LP</b>	<b>AF 3.4kw, 27-24-00/99-26-41</b>	Vermont:		
<b>Laredo</b>	<b>19 KLDO-DT</b>	<b>PG&gt;5kw/109m, 27-39-53/99-36-25</b>	Bennington	21 W69AD	QR from ch. 69
<b>Laredo</b>	<b>31 KVTV-DT</b>	<b>PG&lt;35kw/181m</b>	<b>Burlington</b>	<b>13 WVNY-DT</b>	<b>PG&lt;831m</b>
Laredo	51 NEW-LP	AF 9.4kw, 27-24-00/99-26-41	Burlington	16 W16AL	DR 12.8kw
		<b>FC to CW</b>	<b>Burlington</b>	<b>43 WFFF-DT</b>	<b>NS 47kw/839m, 44-31-33/72-48-57</b>
<b>Longview</b>	<b>38 KCEB</b>	<b>FC to MyNet</b>	<b>Windsor</b>	<b>24 WVTA-DT</b>	<b>PR&lt;55.7kw/692m</b>
<b>Longview</b>	<b>58 KLPN-LP</b>	<b>AF 2kw, 33-36-37/ 110-52-36</b>			
Lubbock	7 NEW-LP	DR 1kw; DG	<b>Virginia:</b>		
Lubbock	44 K44HH-D	<b>AF 25kw, 31-22-50/94-42-25</b>	Ashland	47 WUPV-DT	NW 1000kw/249m
<b>Lufkin</b>	39 NEW-LP	PR>120kw	Grundy	23 WJDG-LP	QG from ch. 7, 150kw, 37-02-58/ 81-37-01
Midland	41 K41HY	NW 9.5kw, 31-59-44/ 102-15-28 (Multimedios)	Marion	52 WMSY-TV	PC>452m, 36-54-07/81-32-32
Midland	69 K69IT	XR 31-40-07/ 98-02-30; NW 150kw, 31-39-48/98-21-28 (KTAB-32, CBS) (calls are correct...)	Newport News	39 WJHJ-LP	PC>150kw, 36-51-39/76-21-13
Mullin	61 K61VC	PG 120kw, 35-23-00/ 101-18-41	<b>Norfolk</b>	<b>33 WTVZ</b>	FC to MyNet
		AF 49kw, 32-33-59/98-38-33	<b>Roanoke</b>	<b>17 WFXR-DT</b>	<b>NW 400kw/594m, 37-11-47/80-09-16</b>
		AF 3kw, 27-59-36/ 97-09-19	Roanoke	49 W49AP	DR 15kw
		<b>AF 3kw, 31-27-42/ 100-31-04</b>			
San Angelo	13 NEW-LP	NW 980w, 31-28-10/ 100-27-06	<b>Washington:</b>		
San Angelo	45 K45HW	QR from ch. 52, 9.5kw, 29-26-29/ 98-30-22	Aberdeen	25 K25CG	DR 15kw, 46-55-41/ 123-44-11
San Antonio	51 K52EA	PR<8kw, 29-53-26/97-56-54	Bellingham	38 K38JH	PR>150kw
San Marcos	40 KHPM-CA	QC from K07TZ, 9.31kw, 32-45-34/ 100-54-47; xltr of KWBZ-22	Centralia	25, K25CH, 42 K42CM	DR 15kw/12kw
Snyder	47 K47IP	AF dismissed	Chelan	28 K64ES	DR 15kw, from ch. 64
Victoria	10 NEW-LP	PR>200kw/326m returned; PC>142kw	Ellensburg	39 K39DM	PG>10kw
Wolfforth	22 KWBZ-TV		Ellensburg-Kittitas	7 K54DX	DR 300w from ch. 54
			Everett	29 K29ED	DR 15kw
<b>Utah:</b>			Vancouver	49 KPDX	FC to MyNet
Bluff & Area	4 K04PI	NW 4.5w, 37-16-12/ 109-33-26; KBYU-11 via ch. 38, probably K38AJ, Blanding	West Virginia:		
		PR<1.47kw dismissed	Clarksburg	44 W44CF	DR 15kw
		PR>1.47kw	<b>Weirton</b>	<b>18 WJPW-CA</b>	<b>FC to UPN // WVTX-CA</b>
Cedar City	35 K35HG	AF dismissed ROA	<b>Wisconsin:</b>		
Cedar City	45 K45HD		Bloomington	22 W22CI-D	DG 130w
Cedar City	45 NEW-LP		Coloma	48 W48DB-D	DG 2.36kw
			<b>Eau Claire</b>	<b>39 WEAU-DT</b>	<b>NW 500kw/585m (already operating with these facilities under STA)</b>
			Eau Claire	51 NEW-LP	AF 11kw, 44-49-47/91-26-48
			Grantsburg	24 W24CL-D	DG 680w
			Janesville	57 WBUW	<b>FC to CW</b>
			Madison	38 W38CT-D	DR 15kw; DG
			<b>Madison</b>	<b>50 WISC-DT</b>	"UPN 14" on 3-2 to be MyNet
			<b>Milwaukee</b>	<b>24 WCGV</b>	FC to MyNet
			Oshkosh	17 W17CF-D	DR 15kw; DG
			River Falls	47 W47CO-D	DG 200w
			Sister Bay	18 W18CU-D	DG 1.03kw

Suring	14 WIWB	FC to CW
Wyoming: Casper	13 KCWY	NW 10.9kw/488m, 42-44-45/ 106-21-14
Kemmerer Lander	24 K24GT 8 KCWC-DT	FC; sold to KCWC-4 PR<432m, add DA

Thanks to Phil Howard, Jeff Kruszka, Brock Whaley, and Joel Nelson for information appearing elsewhere in this month's column.

Pappas Telecasting owns nine LPTV stations in Nebraska with "AZ" in their calls, and a number of Azteca America outlets in various states. KAZO-LP Omaha is known to be an Azteca outlet, and their ID slide indicates KWAZ-LP Lincoln and KCAZ-LP Columbus relay the Omaha station. One might think this means all the Pappas "AZ" stations in Nebraska are Azteca affiliates – but that's not true. Joel Nelson has additional information on some of these.

Firstly, the applications on file with the FCC for KAZJ-LP Norfolk and KAZS-LP South Sioux City indicate both stations also relay KAZO-LP. Joel believes there may be other KAZO translators.

Next, KOAZ-LP in O'Neill, which is known to relay Pappas' KTVG-17, a Fox affiliate in Grand Island. And in Omaha itself, a second "AZ" LPTV is KKAZ-LP, a translator of Pappas' Fox affiliate KPTM-42. (the KPTM transmitter is well to the south and west of Omaha, a considerable distance from the city's other stations)

This leaves two "AZ" stations with unknown sources. KAZK-LP is also in O'Neill, and KAZD-LP in Valentine. Pappas' other primary stations in or near Nebraska include KSNB-4 Superior (Fox, relays KTVG); KPTH-44 Sioux City, Iowa (Fox); KHGI-13 Kearney (ABC); and KWNB-6 Hayes Center. (ABC) Joel speculates KAZD-LP is a KHGI translator.

Pappas has five more LPTVs in Nebraska. Two McCook stations (KUVR-LP 29 and KPCI-LP 38) and a

second Valentine station (KHJP-LP 29) have unknown program sources, though Joel believes KHJP may be another KAZO translator. A second Norfolk station (KPTP-LP 57) carries KPTH-44.

And a station in North Platte carries KWNB-6. Somehow, this Nebraska station managed to swing the calls WSWS-CA... warehoused from Pappas' UPN station in the Columbus, Ga. market when it changed from WSWS to WLGA.

Otherwise this month... most of the news consists of new CW and MyNet affiliations. Some other sources have suggested the two Kentucky stations (WYMT and WKYT) were themselves to be CW affiliates – in fact, this applies to subchannels of their DTV signals, not their main programs. I think you can reasonably assume that when you hear of a major-network affiliate switching to CW or MyNet, they're actually talking about a DTV subchannel.

And the other news this month... is a large number of digital flash-cut conversion applications among low-power stations. Most of these are TBNs, and it looks like TBN may have done a "group buy" of DTV equipment as the vast majority of TBN flash-cut applications are specifying the same power, 15 kilowatts. Some other notable conversions include all seven of Wisconsin Public Television's translators, and four translators of WHNS-21 in western North Carolina.

It should be noted that LPTV construction permits run for three years; that period will expire almost exactly the same time as analog full-power stations (and quite possibly LPs as well) will be required to shut down. I will not be surprised if many of these stations are not in a hurry to build the authorized digital facilities.

The new Mexican information reported this month is not really new. It results from a periodic rescan of the SCT's station lists. Much of this information may have been out there for as long as a year. Note that two of these listings are minor corrections to existing data.

Good DX!

---

## THE WTFDA FORUMS AT <http://www.wtfda.info>

This is the newest addition to WTFDA on the internet. The forums consist of a series of public forums for all TV and FM Dxers *plus* four forums just for WTFDA members in the Members-Only Forum. Register yourself and go take a look. It costs you **nothing** ! And while you're there, look at the latest eVUD or even some back issues!

## THE WTFDA EMAIL LIST AT WTFDA.INFO

Due to popular demand, we've moved the list from Topica to the forums. The emails fly faster and you get subscribed faster! Just send an email to [tvfmdx-subscribe@wtfda.info](mailto:tvfmdx-subscribe@wtfda.info) to be added to the list quickly. If you've had problems with Topica before, try us now and come onboard. Read on the web or by emails. Your choice!

# FM NEWS

from the WTFDA

3860 Shorewood Drive  
Fremont Michigan 49412-9604  
Phone: 231 924 0730



Chris Kadlec

E-Mail: [beaglebass@beaglebass.com](mailto:beaglebass@beaglebass.com)  
[http://www.beaglebass.com/dx\\_index.htm](http://www.beaglebass.com/dx_index.htm)

APR 2006

**Do you want your voice heard?** If you do not like the changes that have been made to FM News in recent months, please feel free to let me know. Even if you have a great new idea of how to organize this column or some special monthly features to add, I would appreciate the input. The occasional postcards I receive in the mail, such as one from Ken Onyschuk of Joliet, Illinois, not only totally make my day but also help me change what you want to see changed! In some cases, your complaints may receive explanations. Some of you likely are happy as long as you get your FM News each month. Of course, I'm happy just to give it to you.

A special thanks and recognition goes out to **Doug Smith**. Did any of you know that all that technical information I post in this column each month doesn't actually come from me? This information is courtesy of Doug (aside from the FCC and CRTC naturally), who does a fantastic job of gathering it for me so I can send it on to you. Without Doug, FM News would probably not exist.

To save space, the following are omitted for the lack of reported changes this month: Connecticut, District of Columbia, Guam, Manitoba, New Brunswick, Newfoundland and Labrador, Nova Scotia, Ontario, Prince Edward Island, Puerto Rico, Rhode Island, and Saskatchewan.

## INDEX OF ABBREVIATIONS

AF	applied for (a new station)	NS	new station granted
AFA	American Family Association	NW	new station signs on
CC	call letter change	OSA	one step application granted for change
CL	city of license change	PA	proposed amendment change to FM allocation table
CX	a construction permit has been cancelled	PC	power change on the air (> = increase, < = decrease)
C1-C5	change in status to that FM license class	PG	power change granted (> = increase, < = decrease)
DA	directional antenna	PR	power change requested
DE	station has been deleted	QC	frequency change occurred
FC	format change	QG	frequency change granted
GA	granted amendment to table of FM allocations	QR	frequency change requested
GE	granted extension of construction permit	RA	silent station returns to the air
GX	granted replacement of expired permit	RE	station requests an extension on permit
LC	license to cover filed (ready to come on air)	RX	station requests replacement of expired permit
MC	multiple-city ID	SC	slogan change or update
NC	no change yet on a reported change or permit	SI	station is silent
ND	non-directional antenna	SOA	signed on the air
NO	not on the air	XA	dismissed amendment to FM allocations
		XC	transmitter site change occurred
		XG	transmitter site change granted

## UNITED STATES and CANADA

### Alabama / AL

Ashland	100.7 NEW / AF 4.6kw/114m, 33-16-55/85-47-38
Birmingham	88.5 WLJR / PC 370w-V/183m, 33-23-51/86-39-41
Columbiana	101.5 WOEM / PC<1.8kw, 33-13-45/86-42-56
Fayette	98.1 WTXT / NW 600w/71m, 33-10-30/87-33-18 (aux)
Gardendale	97.3 WNCB / PC>6.2kw/404m, 33-29-04/86-48-25
Millbrook	97.1 WWMG / PR>5.4kw, DA
Orrville	100.9 WALX / req. CL from Selma
Sheffield	89.9 WAKD / PC>7.4kw-V
Union Springs	93.9 WQSI / QC from 94.1, 12.5kw/143m, 32-19-04/85-40-16

### Alaska / AK

Delta Junction	93.5 KDJF / PR>100kw/260m, 64-18-13/146-32-44
Ketchikan	105.3 KRBD / PC 3.4kw/21m, 55-20-23/131-37-29; NW 3.4kw/14m (aux)
Sitka	104.7 KCAW / NW 40w/-165m (aux)
Sitka	104.7 KCAW / PC<3.6kw
Yakutat	103.9 NEW / AF 6kw/43m, 59-32-37/139-43-32

### Alberta / AB

Bonnyville	101.3 CJEG-FM / NS, 27kw/115m, 54-17-26/110-28-53, CHR
------------	--

Fort Vermilion	98.3 NEW / NS 2w, English & native community station
High Prairie	92.1 NEW / application amended to specify this frequency
Peace River	94.9 NEW / application amended to specify this frequency
Saddle Hills	88.9 NEW / application amended for 228m HAAT

### Arizona / AZ

Arizona City	106.5 KKMR / PR>8.6kw/168m, 32-59-46/111-45-28
Flagstaff	103.7 NEW / AF 560w/597m, 35-14-25/111-35-53
Fountain Hills	89.1 KLVK / PR>29.97kw/703m, 33-35-33/112-34-49
Gilbert	103.9 KEDJ / PC>43kw (aux)
Kingman	91.5 970822MA / req. to go V-only
Marana	98.3 KOHT / NW 3.7kw/34m, 32-27-10/111-05-11 (aux)
Parker	90.3 KWFH / QG from 90.1; 20kw/266m, 34-07-29/114-12-34
Phoenix	89.5 KBAQ / PR 30kw/474m, 33-19-58/112-03-53
Salome	101.9 NEW / AF 6kw/100m, 33-46-54/113-36-42
Sedona	102.9 KQST / PC>451m
Tuba City	97.9 NEW / AF 90kw/315m, 35-33-39/111-36-07
Tuba City	97.9 NEW / PR<90kw

**Tucson** 98.7 KWXL-LP / NW 100w/-12m, 32-10-59/110-58-39 (Tucson Unified School District)  
**Vail** 98.5 KRDX / QC from 98.3, 3.9kw/125m, 31-55-39/110-37-57; CL from Nogales  
**Yarnell** 99.5 NEW / AF 14.04kw/285m, 34-02-38/112-48-34

**Arkansas / AR**

**Kensett** 105.7 KKSJ / PR 15kw/130m, 35-17-20/91-46-17  
**Viola** 94.3 NEW / AF 8.5kw/170m, 36-19-31/91-58-42

**British Columbia / BC**

**Osoyoos** 106.5 NEW / NS, 16.5w, TIS  
**Vancouver** 93.1 CKYE-FM / NW 4.2kw/600m, 49-21-17/122-57-25, "Red FM", ethnic, mostly South Asian. Website also says "CFMW" but the CKYE calls appear to be official.

**California / CA**

**Adelanto** 101.5 KPTG-LP / NW 100w/10m, 34-31-55/117-24-50  
**Barstow** 91.3 KWTH / NW 1.55kw/700m, 34-38-39/116-37-38  
**Blue Lake** 106.3 NEW / AF 3.3kw/516m, 40-43-39/123-58-17  
**Cartago** 102.9 KWTY / PR>6kw/38m, 36-27-55/118-04-08  
**Cartago** 102.9 KWTY / PG>6kw/38m, 36-27-55/118-04-08  
**Coalinga** 97.3 NEW / AF 6kw/100m, 36-16-32/120-19-45  
**Colusa** 107.5 KOPT / NW 370w/172m (aux)  
**Encinitas** 102.1 KPRI / PG 32kw/188m, 32-50-24/117-14-52  
**Essex** 98.9 KHBY / PC 9kw/348m  
**Fowler** 96.7 KALZ / PC 25kw (drops DA)  
**Indian Wells** 95.5 NEW / AF 1.69kw/191m, 33-51-58/116-25-58  
**Los Angeles** 99.5 KKLA-FM / PR 10kw/902m  
**Los Angeles** 104.3 KBIG-FM / PC 65kw/928m, 34-13-36/118-03-59  
**Maricopa** 94.9 KXTT / PG 6kw/11m, 35-05-10/119-26-06  
**Mecca** 102.7 NEW / GA, class A  
**Modesto** 106.9 KEQP-LP / PR 100m, 37-39-00/121-01-24  
**Moss Beach** 89.3 KLSI / NW 1w-H/8w-V/498m, 37-33-44/122-28-46  
**Newport Beach** 101.5 KOCI-LP / QR from 107.1, 37w/48m  
**Pescadero** 89.3 KPDO / NW 100w/-43m, 37-15-23/122-24-33  
**San Diego** 94.1 KMYI / AF 1kw/180m, 32-50-21/117-14-57 (aux)  
**San Joaquin** 107.7 NEW / GA, class A  
**San Luis Obispo** 91.3 KCPR / PG>310w/432m, 35-21-38/120-39-21  
**Stockton** 90.1 KYCC / PR>40kw/91m, 37-57-30/121-16-54  
**Taft** 106.5 KEAL / PG 6kw/11m, 35-05-10/119-26-06  
**Walnut Creek** 92.1 KKDV / PC<24m, 37-54-02/122-05-07  
**Windsor** 104.1 KJOR / PR<580w/93m, 38-32-28/122-54-05

**Colorado / CO**

**Calhan** 104.7 NEW / AF 1.95kw/178m, 38-59-57/104-18-47  
**Durango** 100.5 KRSJ / PR>30kw/608m, 37-21-46/107-47-37  
**Fort Collins** 88.3 KLHV / NW 150w-V/364m, 40-37-03/105-19-40 (K-Love)  
**Placerville** 90.7 KTEI / PR<449m  
**Rangely** 106.9 NEW / AF 15kw/606m, 40-21-53/109-07-38  
**Sidney** 91.7 KTSG / NW 2.5kw-H/186m, 40-27-43/106-50-58 (KTLF)  
**Silverton** 95.5 NEW / AF 25kw-H/-562m, 37-49-11/107-39-23

**Delaware / DE**

**Dover** 96.1 WIHW-LP / NW 100w/10m, 39-08-08/75-32-24

**Florida / FL**

**Fort Myers** 101.9 WWGR / PR>341m, 26-25-22/81-37-49  
**Lynn Haven** 104.3 NEW / AF 6kw/76m, 30-10-47/85-38-11  
**Neptune Bch** 97.9 WFKS / NW 5.7kw/116m, 30-06-14/81-28-11 (aux)  
**Otter Creek** 95.9 NEW / GA from commercial to non-commercial  
**Palm Beach** 97.9 WRMF / PC>263m, 26-35-20/80-12-44 (aux)  
**Panama City** 90.7 WKGC-FM / PR>109m, 30-17-45/85-39-42  
**Sarasota** 102.5 WHPT / NS 87kw/367m (aux)  
**Satellite Beach** 98.5 NEW / AF 6kw/100m, 28-08-11/80-42-12  
**Shalimar** 93.3 WPGG / GA from Evergreen, AL; from C1 to C2; petition for reconsideration denied

**Georgia / GA**

**Boynton** 103.7 WBFC-LP / PG 129m, 34-53-27/85-10-07  
**Clayton** 104.1 WRBN / PG 4.2kw/120m, 34-49-46/83-21-53  
**College Park** 100.5 WWWQ / NW 5kw/315m, 33-46-57/84-23-19 (aux)  
**Doraville** 95.5 WBTS / NW 10kw/295m, 33-55-51/83-47-00 (aux)  
**Ellaville** 94.3 NEW / AF 6kw/100m, 32-15-37/84-10-57  
**Hampton** 107.9 WHAT / NS 33kw/154m (aux)  
**Nashville** 95.3 WJYF / PC>29kw  
**Omega** 107.5 WTIF-FM / PC>4kw  
**Smyrna** 94.1 WSTR / PR <310m, 33-45-33/84-20-05  
**Springfield** 93.1 WEAS-FM / PC<96.64kw, 32-02-45/81-20-27  
**Tybee Island** 103.9 WTYB / NS 15kw/105m (aux)  
**Tybee Island** 103.9 WTYB / PC>50kw/105m, 32-03-33/81-00-57  
**Valdosta** 96.7 WGOV-FM / PG>100m, 30-48-13/83-21-20

**Hawai'i / HI**

**Honolulu** 101.1 KXRG-LP / XR 21-19-10/157-52-25  
**Kahului** 92.5 NEW / AF 1.7kw/674m, 20-39-36/156-21-50  
**Kalaheo** 99.9 KTOH / XC 21-56-10/159-26-43  
**Kapaa** 98.9 KITH / XG 21-56-10/159-26-43 (correction only)  
**Nanakuli** 106.7 NEW / AF 2.6kw/559m, 21-23-45/158-05-57  
**Pahala** 90.5 KPHL / NW 250w/18m, 19-06-02/155-34-09

**Idaho / ID**

**Hailey** 106.7 NEW / AF 97kw/481m, 43-16-45/114-09-14

**Illinois / IL**

**Champaign** 94.5 WLRW / NW 17.5kw/124m (aux)  
**Chicago** 97.9 WLUP-FM / PG 6kw/357m, 41-53-56/87-37-23 (aux)  
**Dorsey** 89.5 WDRS / NW 30w/85m, 38-59-04/89-59-20 (K-Love)  
**Evanston** 105.1 WOJO / NS 8.4kw/358m (aux)  
**Mount Vernon** 90.5 WAPO / NW 1.1kw/62m, 38-18-39/88-56-11 (AFR)  
**Pekin** 104.9 WXCL / XC 40-38-34/89-32-38 (correction only)  
**Streator** 106.1 WYYS / PC 2.45kw/159m, 41-16-30/88-57-56  
**Vandalia** 107.1 WKRV / PR>6kw/100m, 38-59-48/88-55-44

**Indiana / IN**

<b>Brownsburg</b>	101.9 WKLU / PC>4kw/110m, 39-47-13/86-17-57
<b>Columbus</b>	91.1 WYGS / NW 380w-V/100m, 39-13-35/85-44-47
<b>Danville</b>	88.1 990311MF / NS 10kw-V/125m, 39-47-44/86-48-04 (CSN)
<b>Danville</b>	88.1 990311MF / FC; sold by CSN to local religious group
<b>Delphi</b>	102.9 WXXB / NW 3.7kw/127m (aux)
<b>Evansville</b>	88.3 WNIN-FM / NW 21.5kw/225m (aux)
<b>Fishers</b>	93.9 WISG / NW 500w/133m, 39-48-01/86-04-39 (aux)
<b>Jasper</b>	91.7 WKJR / NW 2.6kw/84m, 38-25-23/86-49-47
<b>Morgantown</b>	90.9 WCJL / NW 13.5kw/65m, 39-19-17/86-31-08 (CSN)
<b>New Washington</b>	88.3 WSOH / PC 950w/91m, 38-35-40/85-28-06
<b>Newburgh</b>	106.1 WDKS / XG 37-52-57/87-32-27
<b>South Bend</b>	106.3 WUBU / PR>92m, 41-40-35/86-15-08

#### Iowa / IA

<b>Centerville</b>	98.7 KMG0 / PR>94kw/458m, 41-02-22/93-00-32
<b>Des Moines</b>	97.3 KHKI / XR 41-39-46/93-45-23 (correction only)
<b>Des Moines</b>	97.3 KHKI / PG 105kw/143m, 41-39-46/93-45-23
<b>Stuart</b>	107.9 KKRF / XG 41-27-40/94-29-22

#### Kansas / KS

<b>Arkansas City</b>	106.5 KYQQ / GA from class C to C0
<b>Chanute</b>	93.1 KFEX-LP / QG from 97.7
<b>Olpe</b>	103.1 NEW / AF 2.45kw/96m, 38-17-37/96-13-03
<b>Osage City</b>	92.9 KMXN / XR 38-44-22/95-33-07
<b>Pleasanton</b>	93.7 NEW / AF 25kw/100m, 38-14-23/94-56-47
<b>Topeka</b>	88.1 KJTY / PC>100kw
<b>Topeka</b>	99.3 KWIC / PC>6.8kw/164m, 39-03-50/95-45-59

#### Kentucky / KY

<b>Lebanon</b>	100.9 WLSK / PG<6.6kw/126m
<b>London</b>	92.3 WYGE / PC>23.5kw/223m, 37-09-01/83-59-32
<b>Westwood</b>	99.7 NEW / AF 3kw/100m, 38-26-20/82-47-52

#### Louisiana / LA

<b>Bunkie</b>	104.3 KEZP / PC 19.2kw/114m, 31-05-14/92-21-34
<b>De Ridder</b>	91.5 KBAN / QC from 91.1, 20.5kw/110m
<b>Harrisonburg</b>	94.3 NEW / GA, class A
<b>Larose</b>	100.3 KLRZ / NS 50kw/97m, 29-34-40/90-23-56 (aux)
<b>Mansfield</b>	91.7 KMSL / NW 12kw-V/103m, 32-10-39/93-55-02 (AFR)
<b>Natchitoches</b>	97.5 KDBH-FM / PC<6kw
<b>Rosepine</b>	104.1 NEW / GA, class A

#### Maine / ME

<b>Fort Kent</b>	106.5 WMEF / PG<7.4kw/92m, 47-15-30/68-33-30
<b>Howland</b>	103.9 WVOM / NW 450w/315m, 44-39-31/68-36-17 (aux)
<b>Machias</b>	101.1 NEW / AF 50kw/118m, 44-38-13/67-37-36

#### Maryland / MD

<b>Lexington Park</b>	97.7 WMDM-FM / PC>6kw/100m, 38-16-58/76-33-39
-----------------------	---

#### Massachusetts / MA

<b>Boston</b>	89.7 WGBH / NW 22.5kw/184m (aux)
<b>N. Dartmouth</b>	89.3 WUMD / PR 70w-H/7.3kw-V/107m

<b>Oak Bluffs</b>	93.7 WVVY-LP / PG 31m, 41-26-53/70-36-39
<b>Scituate</b>	90.5 WSMA / PG 7.7kw/150m, 41-56-02/70-35-10
<b>Tisbury</b>	93.7 WVVY-LP / XR 41-26-53/70-36-39; CL from Oak Bluffs
<b>Winchendon</b>	91.1 WKMY / PC 60w/137m

#### Michigan / MI

<b>Cheboygan</b>	97.7 NEW / AF 16.3kw/100m, 45-36-32/84-15-49
<b>Fenwick</b>	93.1 WDLP-LP / QC from 92.9
<b>Grand Rapids</b>	105.7 WOOD-FM / NW 99kw/177m, 42-44-14/85-37-16 (aux)
<b>Holland</b>	96.1 WMAX-FM / NW 20kw/128m, 42-49-11/85-52-10 (aux)
<b>McMillan</b>	96.7 NEW / PG 20051123AGF
<b>Monroe</b>	88.1 WDTR / PC 1.2kw/41m, 41-55-08/83-22-34
<b>Monroe</b>	88.1 WDTR / PG>90w-H/2.8kw-V/137m, 41-57-26/83-15-30
<b>Newberry</b>	93.9 WNBV-FM / QR from 93.7, 50kw/135m, 46-26-58/85-06-04
<b>Pickford</b>	105.5 WMKD / PC>100kw/77m, 46-23-48/84-23-52
<b>Sault Ste. Marie</b>	99.5 WYSS / PC>100kw/77m

#### Minnesota / MN

<b>Alexandria</b>	92.3 KXRA-FM / XG 45-55-55/95-26-43 (correction only)
<b>Anoka</b>	107.9 KQQL / NW 36kw/240m (aux)
<b>Belview</b>	105.9 NEW / AF 6kw/100m, 44-42-20/95-13-01
<b>Blackduct</b>	104.5 NEW / AF 8.5kw/148m, 47-33-26/94-48-04
<b>Grand Portage</b>	102.7 NEW / GA, class C
<b>Kelliher</b>	102.5 NEW / AF 50kw/150m, 47-43-52/94-39-48
<b>Northfield</b>	89.3 KCMP / XC 44-41-21/93-04-21
<b>Northfield</b>	89.3 KCMP / PC<97.6kw, 44-41-21/93-04-21
<b>Roseau</b>	103.5 NEW / AF 50kw/128m, 48-51-10/95-46-13
<b>Sleepy Eye</b>	107.3 KNUJ-FM / PC 4kw/124m, 44-19-38/94-43-41
<b>St. Cloud</b>	98.1 WWJO / NW 1kw/133m, 45-33-36/94-08-20 (aux)
<b>St. James</b>	101.5 KRRW / XC 43-52-27/94-36-00

#### Mississippi / MS

<b>Aberdeen</b>	105.3 WACR-FM / PC 50kw/108m, 33-40-09/88-40-08
<b>Greenville</b>	91.5 WFBI / NW 50kw/98m, 33-32-25/91-22-39
<b>Mound Bayou</b>	101.9 WZYQ / NW 6kw/100m, 33-52-49/90-42-24
<b>Natchez</b>	91.1 WASM / PR<59m, 31-33-24/91-23-00 (dismissed but re-filed)
<b>Natchez</b>	91.1 WASM / PG 1kw/59m, 31-33-24/91-23-00
<b>New Augusta</b>	101.7 NEW / AF 6kw/100m, 31-12-59/89-10-56
<b>Saltillo</b>	102.9 NEW / AF 11.5kw/147m, 34-24-51/88-32-26
<b>Tunica</b>	96.1 WIVG / PC 9.5kw/161m, 34-43-36/90-09-43; CC from WYYL

#### Missouri / MO

<b>Branson</b>	106.3 KRZK / PC>27kw/201m
<b>Cuba</b>	102.1 NEW / AF 2.35kw/158m, 38-08-06/91-23-59
<b>Eldon</b>	101.9 NEW / PR 42.7kw/161m, 38-16-46/92-35-06
<b>Joplin</b>	92.5 KSYN / PC>300m, 37-05-49/94-34-25
<b>Joplin</b>	102.5 KIXQ / PC 100kw/278m, 37-05-49/94-34-25
<b>Malta Bend</b>	103.9 KRLL / PC>12kw/268m
<b>Maryville</b>	90.5 KXCV / AF 1kw/167m (aux)
<b>Maryville</b>	106.7 KZLX-LP / PG 31w/53m, 40-21-12/94-53-01
<b>Osage Beach</b>	93.5 KRMS-FM / NW 5.5kw/137m (aux)
<b>Ravenwood</b>	106.1 NEW / AF 25kw/100m, 40-16-36/94-28-57

Union 101.7 KLPW-FM / PC>5.2kw

Point Pleasant 95.9 WRAT / NW 6kw/52m (aux)

**Montana / MT**

**New Mexico / NM**

Billings 90.1 KBLW / PC>450w/137m, 45-45-37/108-27-09 (adds H, was V only)  
 Bozeman 91.9 KGLT / NW 1.5kw/-101m, 45-39-59/111-02-47 (aux)  
 Bozeman 93.7 KOB-FM / PG>243m, 45-40-24/110-52-04  
 Bozeman 99.9 KBOZ-FM / PG>243m, 45-40-24/110-52-04  
 Browning 94.7 NEW / AF 50kw/150m, 48-34-14/112-52-43  
 Columbia Falls 103.1 NEW / AF 8kw/720m, 48-30-43/114-22-13  
 Darby 107.9 NEW / AF 30kw/-293m, 46-05-03/114-11-14  
 Kalispell 88.7 KLKM / PR<8.5kw-V/93m, 48-04-07/114-02-17  
 Kalispell 88.7 KLKM / PG<8.5kw-V/95m, 47-04-07/114-02-20  
 Lockwood 106.7 KPLN / NW 100kw/156m, 45-45-54/108-27-19  
 Manhattan 105.7 KKQX / PC>20kw/208m, 45-38-16/111-16-05  
 Park City 89.7 KBIL / PG>2.7kw/160m, 45-51-12/108-45-50  
 Shelby 95.7 KFAS-LP / XR 48-30-47/111-53-00  
 Victor 97.9 NEW / AF 7.5kw/103m, 46-30-36/113-58-45  
 Wolf Point 92.7 KVCK-FM / PG>2.55kw

Albuquerque 101.3 KJFA / XG 35-04-04/106-46-47  
 Farmington 96.9 KDAG / PC<303m  
 Gallup 91.7 KGLP / PC>880w/350m  
 Gallup 101.5 NEW / AF 47.36kw/404m, 35-36-22/108-41-26  
 Kirtland 102.9 KAZX / PC<303m, 36-48-52/107-53-32  
 Las Vegas 91.1 KEDP / PR>1.32kw-H/-61m, 35-35-39/105-13-15  
 Las Vegas 91.1 KEDP / PC 72w/-61m, 35-35-39/105-13-15  
 Las Vegas 92.7 NEW / AF 18kw/116m, 35-36-16/105-15-35  
 Taos 95.9 KKIT / NW 4kw/-192m, 36-23-22/105-35-09  
 Taos 105.5 NEW / GA, class A

**Nebraska / NE**

**New York / NY**

Humboldt 96.7 NEW / PG 6kw/100m, 40-03-22/95-57-26  
 Lincoln 105.3 KLNC / PR 3.2kw/138m  
 Lincoln 105.3 KLNC / PG 3kw/144m, 40-43-38/96-36-51  
 McCook 102.1 NEW / AF 100kw/180m, 40-11-27/100-48-29  
 McCook 103.9 NEW / AF 50kw/113m, 40-10-19/100-41-05  
 Omaha 90.7 KVNO / NW 8.4kw/191m, 41-18-32/96-01-33 (aux)  
 Omaha 90.7 KVNO / PC<191m (aux)  
 Omaha 100.7 KGBI-FM / NS 50kw/163m, 41-03-01/96-11-33 (aux)

Arcade 89.5 WCOF / PR 900w/198m  
 Beekman 88.3 981110MA / AF dismissed  
 Bridgehampton 102.5 WBAZ / PR 6kw/97m, 40-52-10/72-34-37  
 Canandaigua 88.9 WCIV / PG>680w/324m, 42-44-44/77-25-34  
 Canandaigua 88.9 WCIV / PC>680w/324m, 42-44-44/77-25-34  
 Endicott 105.7 WMRV-FM / XG 42-08-17/75-59-59  
 Lake Success 103.5 WKTU / PC 13kw/281m (aux)  
 Liberty 88.1 WGWR / PR 80w/163m  
 Livingston Mnr. 107.1 NEW / AF 6kw-H/100m, 41-58-28/74-55-05 Livingston Manor  
 Malta 105.7 WNYQ / PG 7.1kw/187m, 42-47-09/73-37-43; CL from Queensbury  
 Montgomery 88.1 980825MA / AF dismissed  
 Monticello 98.3 WSUL / NW 1.5kw/112m (aux)  
 New York 90.7 WFUV / NS 23kw/142m (aux)  
 New York 101.1 WCBS-FM / PC 6.7kw/408m  
 New York 106.7 WLTW / PC 13kw/281m (aux)  
 Old Forge 94.1 NEW / AF 500w/136m, 43-41-37/74-57-42  
 Rochester 96.5 WCMF-FM / AF 6.3kw/142m, 43-08-05/77-35-07 (aux)  
 Rochester 96.5 WCMF-FM / PR>50kw/142m, 43-08-05/77-35-07  
 Rochester 97.9 WPXY-FM / NS 6.3kw/142m, 43-08-05/77-35-07 (aux)  
 Saranac Lake 93.3 NEW / AF 8.5kw/108m, 44-20-27/74-07-44  
 Wellsville 93.5 NEW / AF 6kw/100m, 42-03-45/77-53-40

**Nevada / NV**

**North Carolina / NC**

Elko 94.5 KOYT / NW 36kw/461m, 40-55-18/115-50-58  
 Ely 92.7 KDSS / PR>31.9kw/293m  
 Fallon 104.1 NEW / AF 100kw-H/500m, 40-01/24/118-43-54  
 Mesquite 91.1 KAIZ / NW 400w/252m, 36-53-51/114-17-10 (K-Love)  
 Wells 103.9 NEW / AF 100kw/32m, 41-13-11/115-08-07

Bayboro 97.9 WNBB / PG>50kw  
 Clemmons 105.7 WFMX / PR<34kw/443m, 36-22-28/80-22-31; CL from Statesville  
 Elizabethtown 105.7 WGQR / PC<116m, 34-37-32/78-37-28  
 Kinston 97.7 WWNF / PC>2.65kw/153m, 35-17-28/77-49-25  
 Mount Zion 106.1 WEJM-LP / NW 100w/21m, 36-05-10/79-42-35  
 Statesville 105.7 WFMX / NS 33kw/443m, 36-22-28/80-22-31 (aux)  
 Swansboro 104.1 WWTB / QR from 103.9; 3.9kw/124m, 34-43-03/77-16-57; CL from Topsail Beach  
 Topsail Beach 93.7 WBNE / PR>11kw/152m, 34-25-04/77-43-21; CL from Wrightsville Beach  
 Weaverville 105.9 WCTU / PR>9.6kw/337m, 35-36-04/82-39-07; CL from Tazewell, TN  
 Wilson 106.9 WUBN-LP / NW 42w/46m, 35-44-08/77-53-02  
 Wrightsville Bch 103.7 WBNU / PR>35kw/156m, 34-03-02/77-57-20; CL from Shallotte

**New Hampshire / NH**

**North Dakota / ND**

Campton 105.7 WLKC / PG 4.1kw/119m, 43-45-45/71-39-00  
 Stratford 98.7 NEW / AF 140w/597m, 44-43-54/71-32-10

Beulah 97.9 NEW / AF 6kw/96m, 47-18-23/101-43-35

**New Jersey / NJ**

Atlantic City 96.9 WFPG-FM / AF 440w/131m, 39-21-40/74-25-05 (aux)  
 Atlantic City 107.3 WPUR / PR>440w; NW (aux)  
 Bass River Twp. 106.5 WKOE / QG from 106.3, 1.45kw/208m, 39-37-53/74-21-12; CL from Ocean City  
 Burlington 97.5 WTHK / PR>43kw/160m, 40-04-57/75-10-53  
 Dover 105.5 WDHA-FM / PC>1kw  
 East Orange 91.1 WFMU / NW 1.25kw/145m (aux)  
 Egg Harbor City 104.9 WSJO / AF 440w/131m, 39-21-40/74-25-05 (aux)  
 Manahawkin 90.7 WYRS / PR>15kw-V  
 Manahawkin 100.1 WJRZ-FM / PC>1.7kw  
 Millville 97.3 WIXM / AF 440w/131m, 39-21-40/74-25-05 (aux)  
 Newark 100.3 WHTZ / PC 13kw/281m (aux)

Bismarck	88.3 KBMK / NW 5.5kw-V/116m, 46-49-38/100-46-28 (K-Love)
Cannon Ball	107.5 NEW / AF 100kw/272m, 46-35-23/100-47-39
Enderline	94.5 NEW / AF 100kw/299m, 46-24-59/97-13-23
Flasher	105.9 NEW / AF 100kw/278m, 46-35-23/100-47-39
Gackle	99.1 NEW / AF 100kw/153m, 46-53-00/99-14-22
Lincoln	89.1 KVLQ / NW 950w/211m, 46-35-24/100-47-47 (K-Love)
Medina	92.3 NEW / AF 100kw/213m, 47-05-38/99-02-11
Rugby	95.3 NEW / AF 100kw/113m, 48-10-44/100-03-45
Wishek	100.3 NEW / AF 100kw/338m, 46-23-18/100-06-46

#### Ohio / OH

Bucyrus	92.7 WOEL / PC>93m, 40-45-49/82-56-00
Huber Heights	97.7 WOXR-LP / NW 100w/29m, 39-53-19/84-08-17
Lancaster	90.9 WFCO / PC 1.2kw-V/78m, 39-40-49/82-35-51
Mason	97.7 WOXY / PR 5.6kw/103m, 39-27-48/84-22-38
Mount Vernon	93.7 WQIO / NW 20kw/112m, 40-24-14/82-26-18 (aux)
Norwood	100.3 WIFE / PG<3.6kw/130m, 39-07-19/84-32-52; CL from Connersville, IN
Pickerington	103.5 WJZA / PR 4.2kw/119m, 39-57-00/82-43-29; CL from Lancaster
Portsmouth	104.1 WPAY-FM / PG>453m, 38-41-00/83-00-46
Ripley	99.5 WAOL / PR 6.6kw/194m, 38-53-42/84-01-02
Thompson	89.1 WKSX / PC<144m, 41-41-34/81-02-51

#### Oklahoma / OK

Antlers	92.3 NEW / AF 50kw/150m, 34-04-14/95-41-53
Frederick	95.9 KYBE / PR>55m
Granite	104.3 NEW / AF 1.25kw/314m, 34-52-15/99-17-36
Haileysville	98.3 NEW / PA from 105.9 dismissed ROA
Mooreland	104.5 NEW / AF 100kw/299m, 36-30-18/99-12-55
Nowata	104.9 KRIG-FM / PR>8.3kw
Okeene	101.5 NEW / GA, class C3
Oklahoma City	104.1 KMGL / PR<472m
Stringtown	105.9 NEW / PA dismissed ROA
Waukomis	106.3 NEW / PA, class A
Woodward	101.1 KWOX / PR>100kw/600m dismissed ROA
Woodward	102.3 KWDQ / PC>100kw/265m, 36-22-31/99-28-31

#### Oregon / OR

Baker	88.1 KDJC / NW 100w/361m, 44-44-20/117-44-45 (CSN)
Brookings	90.7 KMWR / NW 100w/376m, 42-07-23/124-17-56
Butte Falls	92.9 NEW / AF 800w/519m, 42-32-28/122-41-01
Milton-Freewater	97.9 KMMG / PC 100kw/274m, 45-47-41/118-10-06
Pilot Rock	92.1 NEW / AF 6.9kw/193m, 45-35-21/118-59-54
Portland	88.3 KBVM / PC>3.5kw/437m
Portland	101.9 KINK / PR 97kw/441m, 45-30-58/122-43-59
Portland	101.9 KINK / PG 97kw/441m, 45-30-58/122-43-59
Sunriver	92.7 NEW / AF 18.5kw/248m, 44-02-49/121-31-50
Tillamook	88.5 KAIK / NW 60w-V/389m, 45-27-59/123-55-11 (K-Love)
Vale	105.5 NEW / AF 100kw/600m, 44-00-06/117-21-32
Warrenton	90.9 KCPB-FM / PR 7w/341m

#### Pennsylvania / PA

Bethlehem	95.1 WZZO / NW 4.5kw/157m (aux)
Centre Hall	99.5 WLTS / PC>850w/417m, 40-45-09/77-45-16; CL from Mount Union
Erie	88.5 WMCE / NW 500w/0m, 42-05-37/80-03-23 (aux)
Farmington Twp	106.1 NEW / AF 4.12kw/118m, 41-29-48/79-25-52
Havertown	99.9 WHHS / QC from 107.9, 9w/49m, 39-58-59/75-18-10
Mount Union	106.3 WWLY / PC 120w/439m, 40-24-53/77-54-13; CL from Huntingdon
Philadelphia	98.1 WOGL / NW 10kw/261m (aux)
Philadelphia	98.1 WOGL / PC 9.6kw/338m, 40-02-30/75-14-11
Red Lion	96.1 WSOX / NW 4.5kw/247m (aux)
State College	89.1 WRXV / PR>343m

#### Québec / QC

Montréal	100.1 NEW / NS, 250w/1m, 45-25-51/73-35-39, French community w/some English programming
Québec	89.7 NEW / NS, 16w, English TIS
Québec	90.3 NEW / NS, 16w, French TIS

#### South Carolina / SC

Beaufort	89.9 WJWJ-FM / PC 48kw/334m, 32-42-42/80-40-54
Gaffney	105.3 WAGI-FM / PR<308m, 35-13-57/81-16-35
Murrells Inlet	94.5 WYEZ / PC 12kw/145m

#### South Dakota / SD

Pierre	89.1 KVFL / NW 400w-V/113m, 44-25-33/100-21-28 (WVCY religious)
Pierre	92.7 KGFX-FM / PC>50kw/149m, 44-18-30/100-20-49

#### Tennessee / TN

Chattanooga	89.7 WDYN / NW 40w/251m (aux)
Knoxville	101.1 WIAM-LP / NW 2w/61m, 36-00-24/83-54-21 (CSN)
Olive Hill	89.1 WDNX / PC 52kw/180m, 35-12-23/88-03-32
Union City	105.7 WQAK / PR<94m, 36-31-07/89-05-41

#### Texas / TX

Abilene	92.5 KULL / NW 5.3kw/33m, 32-27-03/99-46-16 (aux)
Abilene	92.5 KULL / PG 27.5kw/202m, 32-16-35/99-35-38
Abilene	107.9 KEYJ-FM / NW 6.5kw/114m (aux)
Amarillo	100.9 KXGL / PC>398m, 35-18-53/101-50-47
Amarillo	102.9 KRGH / QR from 103.1, 100kw/120m, 35-15-41/101-52-52
Breckenridge	100.1 NEW / AF 6kw/76m, 32-47-32/98-56-24
Brownwood	96.9 KXYL-FM / PG 100kw/101m, 31-42-16/99-00-05 (QG?)
Bryan	99.5 KNFX-FM / PC>6kw
Charlotte	102.3 NEW / AF 6kw/100m, 28-45-29/98-38-01
Corpus Christi	95.5 KZFM / PG<302m, 27-39-33/97-34-12
Dallas	90.1 KERA / NW 32kw/474m, 32-32-35/96-57-32 (aux)
Eastland	91.1 KQXE / PR<14kw/102m, 32-20-48/98-42-50
El Paso	88.5 KTEP / AF 920w/216m (aux) (correction; original app read 920kw!)
El Paso	88.5 KTEP / NS 920w/216m (aux)
Fannett	90.5 KZFT / PC>40kw
Friona	94.7 KGRW / PC>150m
Gainesville	94.5 KSOC / PC>100kw
Georgetown	107.7 KINV / NW 12kw/137m (aux)
Greenville	90.5 KTXG / NW 38kw/220m, 33-19-00/96-24-27 (AFR)
Houston	88.7 KUHF / NS 100kw/439m (aux)
Hunt	99.9 NEW / AF 8.5kw/103m, 30-05-07/99-16-23



Iowa Park 96.3 NEW / AF 6kw/78m, 33-58-20/98-45-35  
 Jefferson 91.9 KHCJ / PG<154m; NW 3.2kw/154m, 32-50-07/94-28-53 (KHCB)  
 Kermit 105.7 KERB-FM / PC>23.5kw/84m, 31-50-05/103-08-10  
 La Porte 103.7 KIOL / XC 29-56-09/94-30-39 (correction only)  
 Leakey 93.1 NEW / AF 50kw/121m, 29-46-41/99-45-06  
 Lovelady 104.3 NEW / NS 10.5kw/155m, 31-11-30/95-29-32  
 Madisonville 101.3 NEW / AF 3.1kw/141m, 31-00-00/95-59-58  
 Mason 99.7 NEW / AF 5kw/85m, 30-44-48/99-14-58  
 Matagorda 98.3 NEW / GA, class A  
 Meridian 95.3 NEW / AF 25kw/100m, 32-02-06/97-50-02  
 Mertzon 101.1 NEW / AF 25kw/97m, 31-24-16/100-41-16  
 Mexia 104.9 KWGW / PR 2.85kw/147m, 31-38-39/96-36-51  
 Missouri City 104.9 KPTY / NW 3.2kw/225m, 29-45-26/95-20-19 (aux)  
 New Boston 105.1 NEW / AF 4.3kw/118m, 33-28-00/94-27-48  
 Oakwood 107.9 NEW / PA, class A  
 Odessa 90.5 KFLB-FM / PR<76m  
 Orange 104.5 KKMV / XG 30-08-07/93-50-41  
 Pasadena 92.9 KKBB-FM / PR<93.7kw  
 Pearsall 103.3 NEW / AF 6kw/100m, 29-01-04/99-09-25  
 Reno 98.9 NEW / AF 5.9kw/101m, 33-38-54/95-36-12  
 Rocksprings 106.9 NEW / AF 50kw/150m, 29-58-30/100-25-15  
 Sulphur Bluff 99.7 NEW / AF 6kw/97m, 33-27-29/95-19-35  
 Terrell Hills 106.7 KELZ-FM / NW 6.2kw/276m (aux)  
 Thorndale 99.3 KLGO / NW 6kw/100m, 30-29-23/97-17-56

**Utah / UT**

Coalville 97.5 KFMS / PC>89kw-H/647m, 40-52-16/110-59-43  
 Monroe 100.5 NEW / PG<993m  
 Roy 107.9 KUDD / PC 220w/295m, 40-48-27/111-53-26 (aux)  
 St. George 89.5 KAER / NW 7kw/555m, 36-50-49/113-29-28 (K-Love)  
 St. George 101.9 KTIM-LP / QR from 106.1, 100w/-11m, 37-07-45/113-35-46  
 St. George 101.9 KTIM-LP / PG<-11m  
 Torrey 98.5 NEW / AF 51kw/114m, 38-16-56/111-30-36  
 Woodruff 100.7 KEGH / PR 88kw-H/647m, 40-52-16/110-59-43; CL from Brigham City (drops V)

**Vermont / VT**

Brighton 106.9 NEW / AF 1.42kw/207m, 44-47-02/71-53-14 (VPR)  
 Bristol 97.5 NEW / AF 25kw/100m, 44-19-10/73-07-10

**Virginia / VA**

Deltaville 92.3 WTYD / PG 4.8kw/112m  
 Highland Sps 91.1 WHCE / PR 800w-V/112m, 37-35-04/77-29-08  
 Lexington 91.5 WLUR / PC>170w/-51m, 37-47-42/79-26-49 (adds V, was H only)  
 Louisa 105.5 WOJL / PG 6kw/99m, 38-01-37/78-01-05  
 Salem 93.5 WSNV / NS 5kw/18m, 37-17-03/79-59-14 (aux)  
 Strasburg 104.9 WWRT / XC 39-01-06/78-25-35 (correction)  
 Virginia Beach 94.9 WPTE / XG 36-48-37/76-16-59  
 Warrenton 96.7 WYQZ-LP / PG 100w/-11m, 38-40-05/77-47-20

**Washington / WA**

Newport 104.5 KOQB-FM / NW 4kw-V/79m, 47-41-52/117-31-07 (aux) (to license existing Spokane booster as aux)  
 Royal City 93.5 NEW / AF 210w/508m, 46-48-25/119-33-20  
 Seattle 100.7 KKWF / PG>71kw/707m rescinded  
 South Bend 107.9 NEW / AF 790w/276m, 46-41-44/123-46-17  
 Tacoma 103.7 KMTT / PG>71kw/707m rescinded

**West Virginia / WV**

Arnoldsburg 100.7 NEW / AF 6kw/100m, 38-51-52/81-07-16  
 Kenova 97.9 WMGA / NW 3.5kw/133m, 38-25-26/82-32-08  
 Williamson 96.5 WXCC / PG>56kw/374m, 37-30-06/82-13-39, apparently moves into Kentucky

**Wisconsin / WI**

DePere 95.9 WKSZ / FC back to former "Kiss FM" CHR  
 Manitowoc 96.3 WTSW-LP / QR from 104.1, 44-05-06/87-39-39  
 Plymouth 104.5 WXER / PC 5.1kw/108m, 43-43-32/88-03-07  
 Sister Bay 105.1 NEW / AF 6kw/100m, 45-14-19/87-05-27  
 Sturgeon Bay 99.7 WLYD / FC & CC from WLYD "Wild 99.7" Rhythmic CHR to WZBY "99.7 The Bay" variety format among other similar Fox Valley changes  
 Westby 103.9 NEW / AF 6kw/100m, 43-37-36/90-41-57

**Wyoming / WY**

Clearmont 104.7 NEW / AF 2.1kw/342m, 44-37-20/107-06-57  
 Dubois 104.7 NEW / AF 5.5kw-H/429m, 43-40-26/110-01-49  
 Hudson 102.9 NEW / AF 100kw/586m, 43-26-18/107-59-46  
 Laramie 88.9 KAIW / NW 400w/197m, 41-17-46/105-53-30 (K-Love)  
 Orchard Valley 90.3 KWYC / NW 20kw/130m, 41-13-01/104-26-53 (CSN)  
 Pine Haven 99.1 NEW / AF 100kw/94m, 44-19-04/104-46-31  
 Rock Springs 90.5 KUWZ / PC 35kw/512m, 41-25-39/109-07-17  
 Shoshoni 97.1 NEW / AF 10kw/586m, 43-26-18/107-59-46  
 Upton 104.5 NEW / AF 20kw/474m, 44-28-35/104-26-54  
 Warren AFB 92.9 KMOR / PR 33kw/185m, 41-04-35/105-12-10  
 Wright 92.7 NEW / AF 6kw/100m, 43-44-32/105-28-14

**Sources**

Government: Canadian Radio-Television and Telecommunications Commission (CRTC), Federal Communications Commission (FCC)

This report includes 433 changes to the FM dial.



-Chris Kadlec  
 FM News Editor



# PHOTO-NEWS

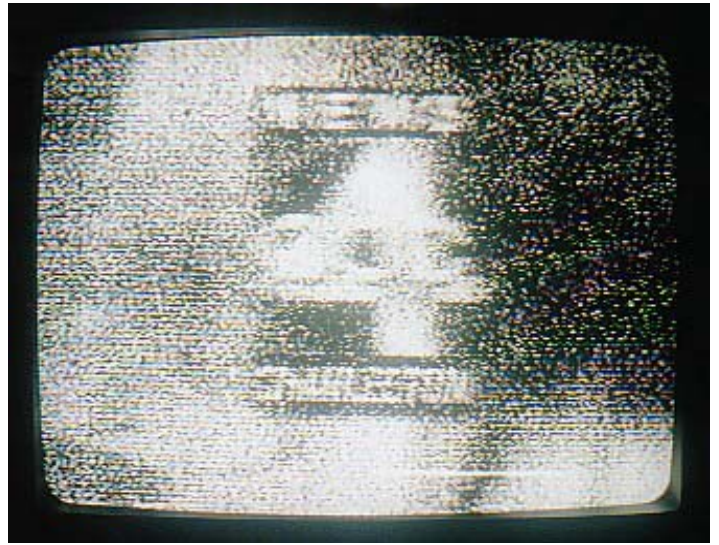
Jeff Kruszka, Editor  
 5024 S. Braxton Ave.  
 Baton Rouge, LA 70817  
 jkruszka@bellsouth.net

April 2006

The rest of Aaron Mitterling's photos from Warsaw, IN:



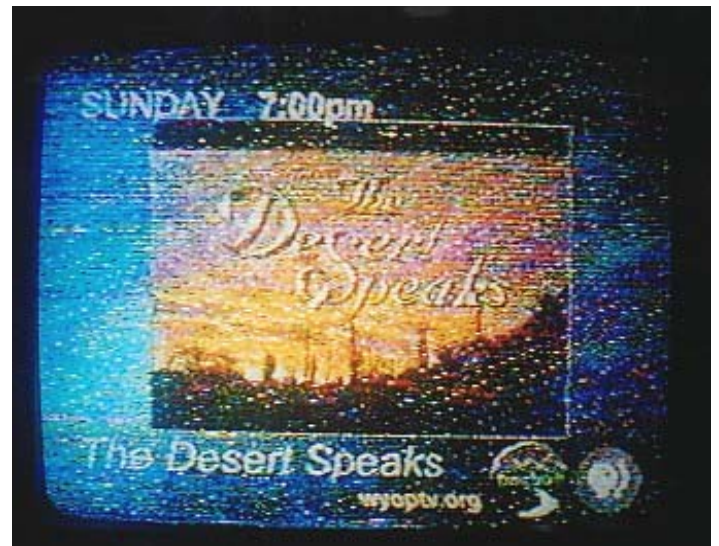
KFOR-4 Oklahoma City, OK  
 740 mi Es seen 6/05



WCIV-4 Charleston, SC  
 660 mi Es seen 6/05



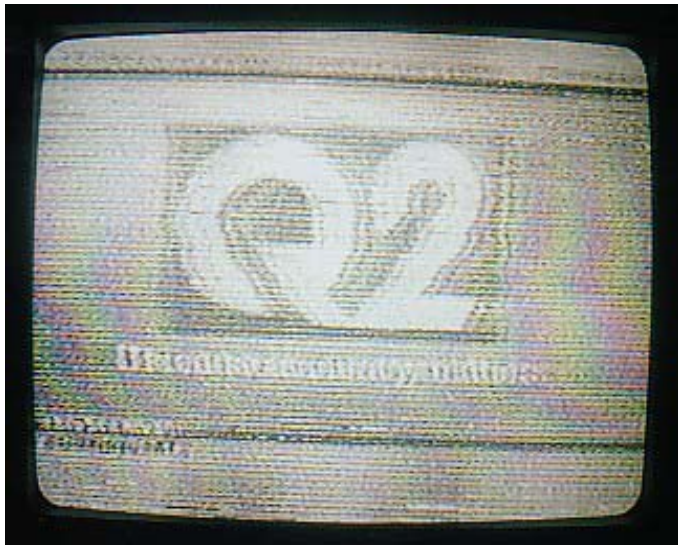
KGWN-5 Cheyenne, WY  
 970 mi Es seen 6/18/05



KCWC-4 Lander, WY  
 1150 mi Es seen 6/18/05



KLJB-18 Davenport, IA  
 240 mi Tr seen 7/3/05



KTVQ-2 Billings, MT  
1130 mi Es seen 7/19/05



WKEF-22 Dayton, OH  
130 mi Tr seen 7/19/05



WRGT-45 Dayton, OH  
130 mi Tr seen 7/19/05



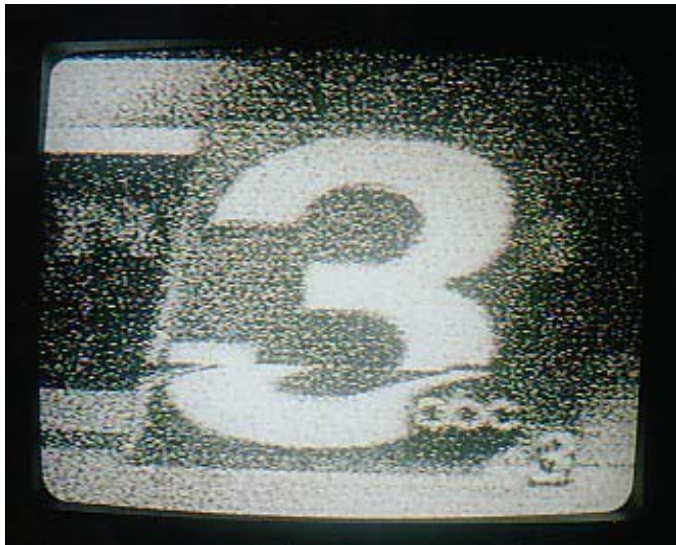
WBDT-26 Springfield, OH  
130 mi Tr seen 7/19/05



KHMT-4 Hardin, MT  
1130 mi Es seen 7/19/05



WUFT-5 Gainesville, FL  
860 mi Es seen 7/28/05



WWAY-3 Wilmington, NC  
640 mi Es seen 7/28/05



KPRC-2 Houston, TX  
950 mi Es seen 8/1/05



WTMJ-4 Milwaukee, WI  
160 mi Tr seen 8/9/05



WFOR-4 Miami, FL  
1130 mi Es seen 8/26/05  
*"Katrina after FL, but before LA! - jtk"*

And here's some of Aaron's equipment:



The Radio Shack VU-190XR  
VHF/UHF Antenna



1984 Commodore color monitor  
(model 1702) used for taking  
photos ("richer color and sharper  
images, especially for weak ID's")

73's,  
Jeff

# Adventures with the Boston Acoustics Receptor HD Radio

Doug Smith

Originally posted on the tvfmdx list

As I type, I'm listening to WNRQ-HD2... Yep, I bought a Boston Acoustics HD radio. A few early thoughts...

- I can't tell the difference between HD and regular FM. They both sound good but I can't tell one from the other.

- There are four HD stations in Nashville:

-

WLAC-AM 1510: well, UPS took until 6:15 to get here with the radio. "FCC sunset" for March is 6:00. Won't be able to check out AM HD until tomorrow.

WPLN-FM 90.3: HD2 carries a schedule of classical music and talk programs, similar to the analog but different programs. They're running classical music right now, while the analog is running Marketplace and WPLN-AM is carrying All Things Considered.

WVNS-FM 102.5: No HD2. Ironically their analog sounds \*better\* than the HD -- I think they have a processing problem, the HD is "hissing its F's" which the analog isn't. No other station is doing this. WVNS' translator on 102.1 is \*not\* relaying the HD.

WNRQ 105.9: HD2 is playing oldies. (analog is classic rock) Ran a pile of Beatles, now they're into a variety of soul classics. No announcements yet. You'd think they'd pick a format that wasn't already on a local analog station.

- The Receptor HD comes with a built-in AM antenna and a short wire (about 18") FM antenna. Neither one can receive any HD stations here. (indeed, WSM-650 is just barely copyable in analog on the built-in. WPLN-FM does blink the HD light but is never quite strong enough to decode HD) The radio also comes with an external AM loop, it looks absolutely identical to the one that came with my Technics ST-G50 tuner. (over 15 years old<grin>!)

- With the external loop, the Receptor HD is a usable AM radio. Not exceptional (it's easy to null WSM right into the noise - and remember, I'm only 45 miles from the tower) but usable.

- Strange (and probably not related to the radio) but I can't get WLAC right now! - while WCKY 1530 is coming in quite well. We did have severe storms to the south a few hours back, it's possible WLAC is on a low-powered backup transmitter.

- The radio will occasionally falsely blink the HD light on AM. (for example, on WSM 650 which is known not to have HD) Nothing happens to the audio.

- An external FM antenna can be attached to a standard F connector. I've hooked up my VHF TV antenna. It gets all three HD FM stations listed above. (and no others, but I haven't exhaustively checked for HD stations in southern Kentucky or West Tennessee) The HD on WNRQ is going out occasionally, about every 30 - 60 seconds for about 5 seconds. I haven't tried touching up the antenna orientation to see if that'll clear it up. (this doesn't appear to happen on WPLN or WVNS. WVNS' transmitter is a lot closer, but WPLN is on the same tower as WNRQ - and runs 20% \*less\* analog power. Not sure what they're doing digitally.) There's a 3-bar signal strength indicator in the upper right.

- The Receptor HD is a pretty decent \*analog\* FM radio. All the Kentucky analog stations I'd expect to hear are coming in well. Selectivity is at least as good as the ST-G50 (which is modified with 110KHz filters) and quite possibly better! - the 107.3 station in Florence, AL is coming in without even a hint of adjacent channel QRM from local WRVW 107.5; 96.9 Paducah doing fairly well against local 97.1 even though the antenna is pointed closer to 97.1 than to Paducah. I've heard rumors that the AM selectivity is exceptional too, but with the poor sensitivity it's hard to tell. (may be easier during the day when I have some strong local signals to work with - but if WSM isn't any louder than this...)

- The radio has weak-signal muting on AM, and it can't be turned off. Strangely, it \*doesn't\* mute weak signals on FM!

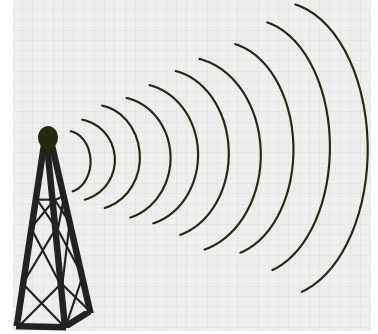
- No hint of overload, (even on the big antenna) but the closest station is at least 18 miles away.

- It has RDS. PS and RT only. If a station has both RDS and HD (WVNS, for example) it only displays the HD info. (so if I want to see the RDS data on WVNS, I tune in the translator instead<grin>...) The radio has a "display mode" button but that only switches between the frequency display and the time on HD stations and analog stations without RDS. On analog stations with RDS it switches between the clock and a large and small version of the RDS. RDS sensitivity seems about the same to slightly better than the Conrad.

(Continues on page 24)



# Northern FM DX



Keith McGinnis  
6 Ritter Road, Hingham, MA 02043  
longwave@comcast.net 781-875-1944

For Dxers in the following states: CT IA ID IL IN MA ME MI MN MT ND NE NH NJ NY OH OR PA RI SD VT WA WI WY and all of Canada. Please submit by the 10<sup>th</sup> of each month. If possible please submit in the formats shown Below.

**EDITORS NOTE: PLEASE NOTE THAT ANY TYPEWRITTEN OR HANDWRITTEN REPORTS MIGHT BE DELAYED TILL A LATER ISSUE AS TIME PERMITS. ALSO PLEASE KEEP REPORTS AS RECENT AS POSSIBLE (THE LAST 3 MONTHS SHOULD WORK FINE). THANK YOU.**

**Dave Williams, 3525 SW Timber Av, Redmond, OR  
Denon TU1500RD, FM6, Total Recorder, Power Audio Editor 2005**

Updated totals: Es 437, Tr 253, Ms 182,  
Au 10, Total (minus duplicates) 806

Listed loggings are either new, or new via prop mode.

#### 12/20/2005 Ms

97.3 KKJQ Garden City KS 1159

#### 12/26/2005 Es

92.1 KFMA Green Valley AZ 1007 RDS  
92.9 KWMT Tucson AZ 983 RDS

#### 1/1/2006 Ms and Tr (local KLRR Off)

100.7 KMNA Prosser WA 180  
100.7 KQAZ Springerville AZ 919

#### 1/4/2006 Ms

91.7 KTGW Fruitland NM 849

#### 1/10/2006 Ms

105.1 CJVR Melfort SK 968 RDS  
105.1 KAOC Cavalier ND 1140 RDS

#### 1/29/2006 Tr: Big OR/WA Dial Shakeup

92.9 KDCQ Coos Bay OR 165  
93.1 KTRO Gladstone OR 120  
93.3 KKNV Eugene OR 100  
93.7 CJJR Vancouver BC 356  
93.7 KXAA Cle Elum WA 208  
93.9 KPDQ Portland OR 120  
94.3 KTIL Tillamook OR 165

KDCQ from 93.5, KKNV from 93.1, KPDQ from 93.7, all relogs on new freqs. KTRO from 92.9 (formerly KAST) with power from 99KW>1.5KW, but moved 60 miles closer. KTIL from 94.1, not previously heard here. KXAA and CJJR on newly-vacated (by KPDQ) 93.7.

#### 1/29/2006 Ms

93.1 CJXX Peace River AB 842

#### 1/30/2006 Ms

93.7 KCLB Coachella CA 761

#### 2/5/2006 Es

92.1 KFMA Green Valley AZ 1007 RDS  
92.9 KWMT Tucson AZ 983 RDS  
93.7 KRQQ Tucson AZ 983

#### 2/11/2006 Ms

93.1 KRAI CraigCO 731 RDS  
93.7 KYTI Sheridan WY 691  
93.7 KWYR Winner SD 1015

#### 2/12/2006 Ms

93.7 KKRL Carroll IA 1325



# Scientists Say Sun's Next Cycle Stronger

Los Angeles, Mar 07: A new computer model suggests the next solar cycle will be more active than the previous one, potentially spawning magnetic storms that will be more disruptive to communication systems on Earth.

The next sunspot cycle will be between 30 percent to 50 percent more intense than the last one, scientists said Monday.

The cycle will also begin a year later than expected, in late 2007 or early 2008, and peak around 2012, said Mausumi Dikpati of the National Center for Atmospheric Research in Boulder, Colo.

The new prediction is at odds with previous forecasts, which suggested that the intensity of the next solar cycle would be measurably smaller.

Accurately predicting the intensity of the sunspot cycle, which occurs about every 11 years, allows scientists to anticipate solar storms. They are caused by solar flares, or giant eruptions that burst from the surface of the sun.

Solar storms, which eject billions of tons of plasma and charged particles into space, can produce dazzling northern lights, but also

disrupt power lines, radio transmissions and satellite communication.

The last time the solar cycle peaked was in 2001. During the last cycle, solar storms caused extreme radio blackouts in the Pacific.

For decades, scientists have tracked the solar cycle and appearance of sunspots, but they have been unable to accurately predict the intensity or timing of solar storms, which increase as the number of sunspots increases.

Dikpati, of the National Center for Atmospheric Research, said her team tested the new computer model using previous solar cycle data and had 98 percent accuracy.

David Hathaway, a solar astronomer with NASA's Marshall Space Flight Center in Huntsville, Ala., does not doubt that the next sunspot cycle will be stronger than the previous one.

But Hathaway said his own research suggests that the next cycle will occur late this year ? earlier than what Dikpati predicted.

The current research, funded by National Science Foundation, is published in the latest *Geophysical Research Letters*.

---

## **BOSTON ACCUSTICS CONTINUED FROM PAGE 21**

- At least in theory, the HD exciter is supposed to contain a delay line that delays the analog audio to match the delay through the digital coding process. It appears that no station around here has got it completely right. (but they're all pretty close) It is possible this is due to varying delays in \*receivers\* though; see below...

- The Receptor HD delays \*ANALOG\* audio! I tune in an analog-only station on both the Receptor HD and the ST-G50, and there's a slight but perceptible delay in the Receptor's audio. Maybe it has digital signal processing in the analog audio? Checked only on FM.

- Audio quality is quite good (both analog and digital) but rather bassy. There's a "DIM" mode that should allow one to drop the bass up to 6dB.

- Once you find a HD station with multiple subchannels, a display shows that fact and allows you to tune the subchannels. The knob works backwards... if you turn it towards the arrow, the radio tunes to the next

channel. If you turn it \*away\* from the arrow it selects the other HD subchannel. I'll get used to it someday.

- It takes roughly 5 seconds for the radio to lock in to a HD signal. If you've tuned to a HD simulcast of an analog signal, you'll hear the analog audio during the lockin period. (the only ways you can tell it's switched to HD are by the HD light on the display going steady (it blinks while it's trying to lock) -- or by the brief stutter if the analog and digital audio are not in sync.)

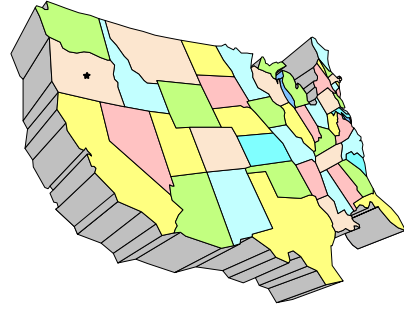
- Strange. There's a little plastic box in the output side of the wall-wart that powers this thing. What's in it? Good question. The voltage/current marked on the wall-wart itself is the same as that called for on the back of the radio. My guess is RF from the (switching) power supply was interfering with AM reception & they put additional filtering in the box.

- This radio has an "Aux" input (the manual shows it connected to an iPod) and a  
(Continues on page 25)



# WESTERN TV DX

**DAVE WILLIAMS**  
3525 SW Timber Ave  
REDMOND, OR 97756  
beansdad@bendcable.com (541) 420-4704



Greetings! A VERY short report this month.

The truly *sporadic* off-season Es has died down here in Central Oregon. Been focused on getting ready for the real season by adding a Hauppauge WinTV-D, as well as a second WinTV, to my arsenal – will hopefully be able to capture some nice screen shots for Photo News as well as maybe snag a -DT or two via Es this year.

A reminder to contributors as we approach the heavy reporting season: e-mailed reports are appreciated and a second option is to mail me your reports on disk. Especially for long reports, this will ensure that your report gets posted immediately. Thanks to all of my consistent and sporadic contributors, regardless of how you report!

73 - Dave

---

## Dennis Park Smith

3605 San Remo Drive  
Santa Barbara, CA 93105-2523  
Telephone (805) 687-7803

This report is for February 2006. There was a little tropo activity along the Southern California coast (to San Diego/Tijuana, up to 200mi/320km), perhaps a bit more than expected for this season. wasn't much this month, typical at this time of year.

2/1 – 2/3	None (Continuing from Jan 31 night).
2/3 Eve – 2/7	Variably poor to almost good.
2/8 – 2/9	None (windy in region)
2/10 – 2/11	<u>Good</u> – (warm temps, almost HOT)

2/12 – 2/13 AM	Poor
2/13 Eve – 2/14	Fair
2/15 – 2/21 AM	None (windy, cooler, rain 2/17 – 2/19)
2/21 AM – 2/24 Eve	Out of Town at Wasco
2/24 Eve – 2/26	Fair
2/27 – 2/28	None (rain 2/27)

I was in Wasco (near Bakersfield) as noted above, setting up the RS digital TV box once again, on Feb 22, with another new local/regular: KNXT-DT 50 Visalia, 80 miles with mountain transmitter, noncommercial religious, educational, cultural (analog KNXT 49). My receiving antenna is only 16 feet above ground. This makes by Wasco DT total a whopping 10 (*Dennis, my total is 1, so don't feel too bad! – Ed.*) Beyond that, conditions were disgustingly normal.

Best of DX to all, Dennis

---

**William Draeb** (920) 388-2350  
1314 Ellis St. Kewaunee, WI 54216-1802

1994 Sylvania Y1 Chassic, 40' Rohn 25G Tower, CH2026, Y713, and KV420 Antennas, CMA-HB and CMA-Ub Preamps.

## 2/5/2006 Es

1945 UNID 2-4 to the West, including Lawrence Welk on Channel 3 (Educ.)

Not much in February, I hope March is better.

73. Bill

---

## BOSTON ACCOUSTICS CONTINUES FROM PAGE 24

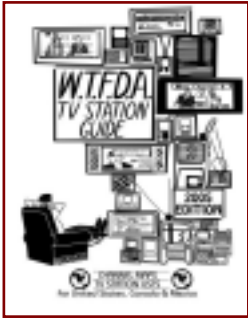
"Phones" output. (there's also a "service only" 6-pin DIN jack) It also comes with a tiny remote. Remote. For what's sold as a high-end clock radio?????

- The set is tiny. 4" tall, 7.5" wide, 6" deep. Plus a 4x4.375x6" second speaker. Oh, and the wall-wart, and the external filter box. It doesn't say whether the second speaker is right-channel or left. I guessed right.

My gut feeling is that HD Es will be quite possible. Time will tell. Sooner or later we're going to have a tropo opening and WJCR 90.1 is going to give WPLN a bit of grief. We'll see how WPLN-HD deals with it.

Anyway, that's probably more than you wanted to know...  
-Doug Smith

# A GREAT COMBINATION FOR 2006!



## WTFDA TV STATION GUIDE

To order your copy of the 2005 WTFDA TV Station Guide, send a check or a money order for **\$20.00** payable to WTFDA and send it to John Ebeling, 9209 Vincent Avenue S., Bloomington, MN 55431-2157 **STILL IN STOCK! GET YOURS NOW!**

(Yes, you can use Paypal. From the Paypal website, click on *send money* and send \$20 to [mbugaj@snet.net](mailto:mbugaj@snet.net). Use the comment box on that page.)



## WTFDA MEXICAN FM RADIO DIRECTORY

To order your copy of the 2005 WTFDA Mexican FM Directory, send a check or money order for **\$7.00** payable to WTFDA and send it to Jim Thomas, 280 Katsura Avenue, Milliken, CO 80543. For more information email Jim at [mrradiohead@wdemail.com](mailto:mrradiohead@wdemail.com)

(Yes, you can use Paypal. From the Paypal website, click on *send money* and send \$7 to [mbugaj@snet.net](mailto:mbugaj@snet.net). Use the comment box on that page.)

FOR YOUR TV AND FM DXING PLEASURE!

## WTFDA EMAIL REFLECTORS

Enhance your DXing experience! Entertaining and informational.

*For WTFDA members and guests on the wtfda.info server*

The WTFDA list...send an email to [tvfmdx-subscribe@wtfda.info](mailto:tvfmdx-subscribe@wtfda.info)

180 subs

The WTFDA AM DX list...send to [amdix-subscribe@wtfda.info](mailto:amdix-subscribe@wtfda.info)

80 subs

# TELEVISION'S PIRATES: HIDING BEHIND YOUR PICTURE TUBE

BY BOB COOPER

## What is a Television Pirate?



By Oxford definition, a pirate is "a person who infringes another's copyright or other business rights" and/or "someone who broadcasts without official authorization." Television programming carries copyright, television stations travel a years-long pathway seeking "official authorization" before broadcasting. Alas, not every television station has waited for, nor even sought, authorization, and it goes without saying, contacting those who's copyright might be violated by their transmissions. Many figures in recent history (Winston Churchill) met our definition.

Tens of thousand have been driven by their intense desire to have, for their own, access to television. Cable TV began as piracy. Satellite TV was driven by rampant piracy. And now the Internet is spooked by those who would "broadcast" with authorization. This is their story.

**ORDER YOUR 928 PAGE COPY FROM BOB RIGHT NOW!**

Send your check or money order for \$20 (payable to WTFDA) to WTFDA, P.O. Box 501, Somersville, CT 06072.

Paypal order are also accepted. Send \$21.50 (to cover Paypal fees, etc.) To [mbugaj@snet.net](mailto:mbugaj@snet.net).

**Orders received by April 10th will be shipped from California on or about May 1st**

??



YO HO!  
I tell it *all*  
in 928  
pages!



# SATELLITE NEWS

**GEORGE W. JENSEN**  
4604 ANTANNA AVE, Baltimore, MD 21206-4220  
SCISATMAN@AOL.COM

A number of items this month are returns - but to digital format - of channels lost on the analogue side, as well as some new items.  
C4 (AMC 10) note the following items  
channel 710 - Bravo West  
900 - DMX Adult Contemporary  
901 - DMX Light Classical  
902 - DMX 60's Pop  
903 - DMX Acid Jazz  
904 - DMX Urban Beat  
Galaxy 1 - delete XPDR 10 - MSNBC - now digital - see later for new location.  
Galaxy 13 - 500 - CNBC  
501 - MSNBC  
510 - WPIX - New York  
620 - TVLand  
720 - Arts and Entertainment East  
702 - HallMark Channel  
703 - Lifetime

800 - VH1  
801 - CMTV - Country Music Television  
Intelsat Americas 13 -  
804 - Azteca America West delete and add in place - NDTV - India  
AMC 1 - new channel - unknown as yet on channel 401  
AMC 3 - Delete XPDR 5 - WNBC, XPDR 19 - WABC, and XPDR 23 WSEE.  
These remain on the same satellite, but indigital at -  
500 - WABC - New York  
501 - WSEE - Erie  
502 - WNBC - New York -  
NO sign of KTLA which is no longer on analogue.  
That's all for this time around - see you in 30 and good DX to all.

## SIGN UP/Renewal form

Name \_\_\_\_\_

Address \_\_\_\_\_ Apt # \_\_\_\_\_

City \_\_\_\_\_ State/Prov \_\_\_\_\_ Zip \_\_\_\_\_

Country \_\_\_\_\_ Interests: TV ( ) FM ( ) 30-50( ) Weather( )

email address \_\_\_\_\_

Sign me up/renew me for: 1 year ( ) 2 years ( ) More ( )

Yearly dues \$24 (US), \$26 to (CANADA), \$10 (Electronic VUD)  
(Students get a discounted rate of \$15 yearly for the paper VUD.)

**Mail your dues to: WTFDA, P.O. Box 501, Somersville, CT USA 06072**

**Make your checks/money orders payable to: WTFDA**

**And *thanks* for your support of the WTFDA!**

Return this form with your dues or make a copy of it and return that.

### WTFDA BOARD OF DIRECTORS

Mike Bugaj, use the WTFDA Mailing address  
Doug Smith, 1385 Old Clarksville Pike, Pleasant View, TN 37146-8098  
Greg Coniglio, 11825 Genesee St., Alden, NY 14004  
Bruce Hall, 5 Stirton Ave., Brantford, ON N3T 1E2  
Keith McGinnis, 6 Ritter Road, Hingham, MA 02043

mbugaj@snet.net  
w9wi@w9wi.com  
wgrc@rochester.rr.com  
dbruceaa@hotmail.com  
longwave@comcast.net