

Vhf-Uhf DIGEST

The Official Publication of the Worldwide TV-FM DX Association

NOVEMBER 2006

The Magazine for TV and FM DXers



E SKIP IS GONE AND TROPO FIZZLES
WHERE'S THE DX?

IN THIS ISSUE!

Mike Cherry finds days of intense tropo
From British Columbia to Oregon,
Washington and Northern California



TV and FM DXing was never so much fun!

THE WORLDWIDE TV-FM DX ASSOCIATION

Serving the UHF-VHF Enthusiast

THE VHF-UHF DIGEST IS THE OFFICIAL PUBLICATION OF THE WORLDWIDE TV-FM DX ASSOCIATION DEDICATED TO THE OBSERVATION AND STUDY OF THE PROPAGATION OF LONG DISTANCE TELEVISION AND FM BROADCASTING SIGNALS AT VHF AND UHF. WTFDA IS GOVERNED BY A BOARD OF DIRECTORS: DOUG SMITH, GREG CONIGLIO, BRUCE HALL, KEITH MCGINNIS AND MIKE BUGAJ.



Editor and publisher: **Mike Bugaj**

Treasurer: **Keith McGinnis** Webmaster: **Tim McVey**

wtfda.info Site Administrator: **Chris Cervantez**

Editorial Staff: **Dave Williams, George W. Jensen, Jeff Kruszka**

Keith McGinnis, Fred Nordquist, Nick Langan, Doug Smith,

Chris Kadlec, Peter Baskind and John Zondlo,

Our website: www.anarc.org/wtfda Our forums: www.wtfda.info

NOVEMBER 2006



Finally! For those of you online with an email address, we now offer a quick, convenient and secure way to join or renew your membership in the WTFDA from our page at:

<http://fmdx.usclargo.com/join.html>

Dues are \$25 if paid to our Paypal account. But of course you can always renew by check or money order for the usual price of just \$24. Either way, it's still a bargain!

VUDS ON A CD!

Every VUD from Jan 1980 to December 1989 is on this disk. You'll need Adobe Reader to read them. Why have a box of old VUDs taking up space when you can have this. **It's yours for just \$8.00 per disk.** Send your check or money order for \$8.00 to WTFDA, P.O. 501, Somersville, CT 06072. Make it payable to **WTFDA.**

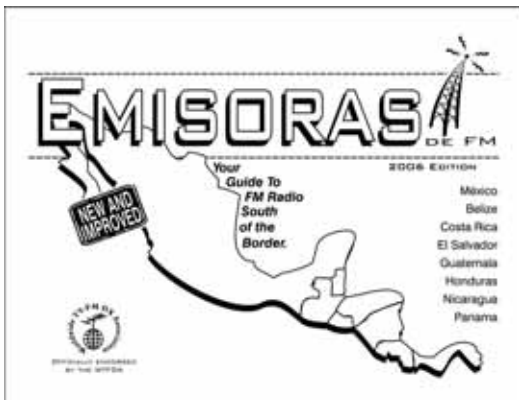
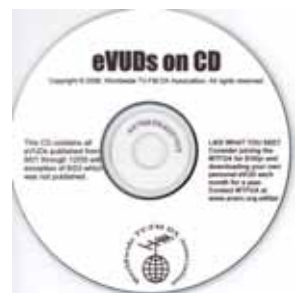


CONTENTS

Page Two	2
Mailbox	3
TV News...Doug Smith	4
FM News...Chris Kadlec	15
Photo News...Jeff Kruszka	22
Eastern TVDX...Nick Langan	26
Western TVDX...Dave Williams	27
Southern FM DX...John Zondlo	28
Northern FM DX...Keith McGinnis	29
Satellite News...George Jensen	41
Scott Fybush's Tower Calendar	42
Editor and Submission Info	43

And now... eVUDS ON CD!

All eVUDs from 09/01 through 12/05 are on this disc (except 8/02 which was not published). Follow the changes from day one to the present form. **You can have it for just \$6.00** (\$5.00 plus a dollar shipping). Use the same address as for VUDs on CD shown on the opposite column. Have a great month!



NEW!!! Emisoras de FM

BY JIM THOMAS

Everything you needed to know about FM radio South of the Border!

To order your copy of the 2006 WTFDA Mexican/ Central American FM Directory, send a check or money order for **\$16.50** payable to WTFDA and send it to Keith McGinnis, 6 Ritter Rd., Hingham, MA 02043. (For Paypal orders, send \$17.50 to mbugaj@snet.net. Use the comment box for any instructions.)

See much more at

<http://fmdx.usclargo.com/emisorasdefm/>



The Mailbox

P.O. Box 501, Somersville, CT USA 06072
MIKE BUGAJ MBUGAJ@SNET.NET

BACK TO THE USUAL

Where's the DX? Obviously, it's not in most places lately. Rob Ross in ON had some decent FM tropo around the 8th of October and I read reports of good tropo down south around the 17th of October but that was the exception. Randy Zerr and Fred Nordquist were two of the lucky ones who worked it.

Our members in the Buffalo NY area already have worked a couple of feet of snow. There's no tropo there. And a lot of us look out our windows and watch as autumn flies by without good tropospheric ducting. Oh well. We can always rake leaves, cut wood or go to the beach (well, Fred and Randy can, at least).

Or we can just dust off the AM radios and do some medium wave DXing because in the winter DX is where you can find it, and you can find it there. Or we can spend our time looking at DTVs at Walmart. Hmm...that's an idea!

MEMBERS AND MORE

There's not much mail this month. We have one new member, and he's **Jefferson Lewis** in Kansas City, MO. He's signed up for the eVUD and he uses one of those new-fangled ETON receivers and has received some decent tropo with it already. Welcome, Jefferson!

On our short list of renewals this month we have **William Hein** (VT), **Joe Gragg** (TX), **Marv Shults** (IL), **Joe Fela** (NJ), **Jeff Kitsko** (PA) and **Karl Zuk** (NY). These were all received from 9/26 to 10/17. Thanks folks!

Joe sent a short note with his renewal to say that he's without any FM antenna since his new roof was installed and he says that *if* he puts up any antenna at all it will be at ground level. With all the IBOC down there, an antenna 10 feet off the ground may be the best option.

Karl Zuk wrote the following: *Dropped on my head during a solar maximum as a child, I remain an avid UHF/VHF Dxr. So is **that** what happened Karl?*

After receiving Jefferson Lewis' dues, I spent a couple of hours one evening getting him access to the eVUD Forum. Jefferson emailed: *Thank you so much for your extremely prompt response and service, in fact, the quickest response to any application and/or inquiry in my 60 years !!* Thanks for the kind words. I have two computers here...one

upstairs and one downstairs and I'm always walking by one or the other so I catch most email right away. I'm glad you're happy because when you are, I am!

IT'S ALMOST 2007

And that means you're probably going to want one of Scott Fybush's 2007 Tower Calendars. Scott sent along all the ordering information you'll ever need and you'll find it elsewhere in this VUD.

A FEW STATS

Currently we have 34 members signed up for the eVUD and only the eVUD. That number is going up slowly in spite of Jeff's message at the top of Photo News. We ended up September with 247 members, which is what we had in July and one less than August.

By the way, we still have more than enough WTFDA TV Station Guides to move out of John Ebeling's house, so if you are a WTFDA member and you really want one, pretend you're at Priceline.com, email John and name your price. Our current price is \$20, but you could get a great deal (no deals on airfare or hotel accommodations.)

NEW HD STEREO TUNER

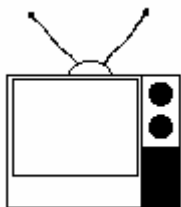
Doug Smith reports: I note Sangean is introducing two new HD radios for home use. The HDR-1 is a table radio more or less similar to the Boston Acoustics Receptor HD; the HDT-1 is a stereo tuner.

The HDT-1 includes a RDS decoder with PS, PTY, RT, and CT. Radio Magazine says MSRP on the HDT-1 will be \$299.



Given the rarity of decent new tuners for decent prices the HDT-1 may be worth keeping an eye on.

And that's it for November. Keep a TV set for channel 2 and check for off-season Es! We may get lucky! See you next month. -Mike



TV News

Douglas E. Smith
1389 Old Clarksville Pike
Pleasant View, TN
37146-8098
w9wi@w9wi.com
<http://www.w9wi.com>

November 2006

Abbreviations:

- | | | | |
|-----|--|-----|---|
| AF | Applied For (a new station) | NW | New station on the air |
| Aux | Auxiliary (backup) transmitter | PA | Proposed Amendment |
| CC | Callsign change | PC | Power (and/or tower height) change on the air |
| CL | City-of-license change | PG | Power change granted |
| DC | Converted to DTV | PR | Power change requested |
| DCC | Digital Companion Channel | QC | Channel (?frequency??) change on the air |
| DG | Granted flash-cut to DTV | QG | Channel change granted |
| DE | License/permit deleted | QR | Channel change requested |
| DR | Requests flash-cut to DTV | RE | Reinstated (previously-dismissed app.) |
| FC | Programming (?format??) change | ROA | Request of Applicant |
| FTP | Failure to Prosecute | SI | Off the air (?silent??) |
| GA | Granted amendment (to table of channel allotments) | STA | Special Temporary Authority |
| LC | License to Cover | XC | Transmitter site changed |
| MX | Mutually Exclusive | XG | Transmitter site change granted |
| NDA | Non-directional antenna | XR | Transmitter site change requested |
| NS | Permit granted for new station | | |

News:

(full-power analog stations in **bold face**; LPTV and translators in regular type; full-power digital stations in **bold italics**; low-power digital stations in regular italics)

64-56-53



Canada:

British Columbia:

Valemount 32 CHVC-TV QR from ch. 14

Ontario:

Ottawa 22 CBOFT- **NW 66kw/ 333m DT**

Ottawa 25 CBOT-DT **NW 165kw/ 333m**



Puerto Rico:

Arecibo 60 WMEI **NW 1000kw/ 833m, 18-09-17/ 66-33-16**

Mayaguez 31 W51DJ *AF DCC 100w*

Ponce 30 W36DB *AF DCC 100w, 17-58-52/ 66-36-48*

San Juan 17 W25DN *AF DCC 500w, 18-25-55/ 66-08-07*

San Juan 55 WIPR-DT **PG 39kw/ 776m**



U.S. Virgin Islands:

Charlotte 44 WTJX-DT **PG 30kw/ 505m, 18-21-28/**



USA:

Alabama:

Berry 38 WSFG-LD **AF DCC 15kw, 33-41-16/ 87-33-55**

Dothan 49 WJJN-LD **AF DCC 15kw, 31-14-54/ 85-23-20**

Huntsville 24 WHIQ-DT **PG 396kw/ 338m; NW**

Mount Cheaha 56 WCIQ-DT **PG 61kw/ 562m**

Alaska:

Homer-Seldovia 11 K11VP **NW 3kw, 59-27-17/ 151-40-18**

Arizona:

Concho 10 KWKM-LP **NW 800w, 34-14-58/ 109-35-11**

Flagstaff 22 KNAZ-DT **PG 283kw/ 465m**

Flagstaff 27 KFPH-DT **NW 240kw/ 459m**

Kingman 19 KMOH-DT **NW 25.2kw/ 578m**

Le Chee 33 K07PH *AF DCC 10w, 36-51-20/ 111-26-26*

Phoenix 6 KTVP-LD *AF DCC 100w, 33-19-58/ 112-03-59*

Phoenix 9 KDTP-LD *AF DCC 300w, 33-20-01/ 112-03-45*

Phoenix 13 KCOS-LD *AF DCC 300w, 33-*

Prescott	12 KPDT-LD	29-39/ 111-38-28 AF DCC 300w, 34-42-04/ 112-07-04		Coalinga	25 KJKZ-LD	move to ch. 57 AF DCC 3.5kw, 37-04-26/ 119-25-52
Prescott	39 K04AI	AF DCC 1.3kw, 34-29-20/ 112-32-15		Cotati	22 KRCB	PG 60kw/ 630m, 38-20-55/ 122-34-38
Prescott	47 KDFQ-LP	QG from ch. 24, 9.97kw, 34-41-11/ 112-06-59		Crescent City	51 K44GX	AF DCC 500w, 41-49-51/ 123-52-32
Sierra Vista	36 K33CG	AF DCC 100w, 31-28-58/ 109-57-29		Eureka	9 KUVU-LP	QC from ch. 17, 3kw, 40-43-36/ 123-58-27
Yuma	41 KYMA-DT	NW 22.2kw/ 368m		Eureka	28 KBVU-DT	PG 50kw/ 513m, 40-43-39/ 123-58-17
Arkansas:				Eureka	43 K69IE	QR from ch. 69, 4kw, 40-29-52/ 124-17-36
Bentonville	14 KHMf-CA	FC to My // KPBI-CA 46		Fort Bragg	42 K42HE	FC; sold to Hispanic Christian Community Network
Eureka Springs	34 KPBI	CC from KBBL-TV; FC to My		Fresno	11 K15ET	QR from ch. 15, 3kw
Fayetteville	36, KFFS-CA, 48 KEGW-LP	FC to My // KPBI-CA 46		Fresno	19 KMSG-LD	AF DCC 4kw, 36-44-45/ 119-16-57
Fort Smith	32, K32GH, 33, K33HE, 34, KWFT-LP, 48, K48FL, 54, KUFS-LP, 66 K66FM	FC to My // KPBI-CA 46		Fresno	44, KSDI-LD, 52 KHSC-LD	AF DCC 15kw, 36-44-46/ 119-16-57
Fort Smith	44 KFDF-CD	AF DCC 15kw, 35-26-50/ 94-21-54		Hemet	24 KDUG-LD	AF DCC 50w, 33-36-01/ 117-11-41
Harrison	26 KTKO-LD	AF DCC 5kw, 36-10-40/ 93-12-40		Litchfield	46 K46HL	NW 270w, 40-07-01/ 120-19-06 (KOLO-8)
Hindsville	35 KRBF-CD	AF DCC 15kw, 36-24-41/ 93-57-14; FC to My // KPBI-CA 46		Los Angeles	25 KNET-LP	PC>2.8kw, 34-12-46/ 118-03-42
Newport	45 K45IZ	PG 150kw, 35-36-20/ 91-17-00		Mammoth Lakes	22 K22HB	FC; sold to Hispanic Christian Community Network
Paris	10 KRAH-CD	AF DCC 140w, 35-09-52/ 93-40-52; FC to My // KPBI-CA 46		Merced- Mariposa	49 KMPH-CD	AF DCC 2kw, 37-33-33/ 120-04-29
Rogers	50 KNWA-DT	NW 1000kw/ 267m, 36-24-48/ 93-57-17		National City	38 K61GH	QR from ch. 61 dismissed
Siloam Springs	33 KKAf-CA	FC to My // KPBI-CA 46		Palm Springs	2 KCWQ-LP	NW 1kw, 33-51-58/ 116-26-02 (CW)
Springdale	30 KJBW-CD	AF DCC 15kw, 36-08-50/ 94-11-13; FC to My // KPBI-CA 46		Paradise	20 KCVU-DT	PG 100kw/ 449m, 39-57-49/ 121-42-38; NW
Winslow	31 KWNL-CD	AF DCC 15kw, 36-08-50/ 94-11-13		Red Bluff	3 KACX-LP	PC>1.9kw, 40-26-50/ 122-17-50
California:				Redding	34 KRCR-DT	NW 105.9kw/ 1101m
Bakersfield	30 KBFK-LP	AF DCC 2.5kw, 35-26-16/ 118-44-28		Riverside	68 KRCA-DT	NW 500kw/ 907m, 34-12-48/ 118-03-41
Barstow	30 K20IM	AF DCC 200w, 34-53-07/ 116-53-45		Riverside/ Perris	30 KBLM-LD	AF DCC 30w, 33-57-44/ 117-16-48
Barstow	40 K28IE	AF DCC 650w, 34-21-08/ 117-40-27		San Diego	25 KZSD-LD	AF DCC 15kw, 32-50-20/ 117-14-56
Chico	35 K35HY	PR<42.2kw, 39-57-50/ 121-42-48; would supersede grant to		San Francisco	38 KCNS	FC; sold to Multicultural Television Broadcasting

LLC

Santa Clara - San Jose 42 KAXT-CD AF DCC 4w, 37-41-15/122-26-01

Stockton 58 KQCA PG<537m, 38-15-54/121-29-24

Ukiah 24 KDSL-CD AF DCC 15kw, 39-07-49/123-04-31

Victorville 23 KVKV-LD AF DCC 4.5kw, 34-36-44/117-17-29

Visalia 50 KNXT-DT NW 185kw/834m

Vista 50 K26FA AF DCC 100w, 33-00-33/116-58-10

Colorado:

Aurora 20 KDEO-LD DR from ch. 23, 10w

Boulder 12 K11QJ AF DCC 75w, 39-59-58/105-15-06

Boulder 14 KTFD-TV NW 2400kw/351m, 39-40-17/105-13-06

Boulder 15 KTFD-DT NW 200kw/351m, 39-40-17/105-13-06

Brecken-ridge 26 K26GY PC<100w, 39-36-50/106-04-02

Colorado Springs 18 K32EO AF DCC 2kw, 38-44-40/104-51-42

Colorado Springs 25 KZCS-LD AF DCC 15kw, 38-44-41/104-51-48

Cripple Creek 5 K30IK AF DCC 300w, 39-44-37/104-59-20

Denver 31 KLPT-LD AF DCC 100w, 39-54-48/105-17-33

Durango 16 K38JD AF DCC 200w, 37-13-19/107-51-04

Estes Park 8 K61AA AF DCC 300w, 39-54-48/105-17-33

Grand Junction 20 KKHD-LP NW 16kw, 39-04-00/108-44-45

Grand Junction 38 K30IU AF DCC 1kw, 39-00-58/108-29-20

Grand Junction 38 K30IU AF DCC 1kw, 39-00-58/108-29-20

Montrose 36 K36HJ PG>46.8kw, 38-18-57/108-11-47; PC

Pueblo 26 KTSC-DT NW 39kw/657m

Connecticut:

Bridgeport 42 WSAH-DT PG 780kw/169m

Bridgeport 43 WSAH FC; sold to Multicultural Television Broadcasting

LLC

Delaware:

Georgetown 48 W69EP AF DCC 500w, 38-42-29/75-24-21

Georgetown 50 W51DQ AF DCC 500w, 38-42-29/75-24-21

District of Columbia:

Washington 35 WDCA-DT PG 500kw/227m, 38-57-22/77-04-59

Florida:

Daytona Beach 28 WDYB-LP QR from ch. 53, 50kw, 29-13-57/81-02-14

Fort Myers 11 WINK-TV PG<412m

Fort Pierce 31 W44AY AF DCC 15kw, 27-32-46/80-22-08

Gainesville 16 WCJB-DT PR<345kw/254m; PG

Key West 40 WGAY-LD AF DCC 2kw, 24-34-20/81-44-25

Key West 51 WGZT-LP QR from ch. 27, 10kw

Lealman 17 W43CE AF DCC 450w, 28-02-21/82-39-21

Marathon 11 WDFL-LD AF DCC 300w, 24-57-34/80-34-30

Marathon 35 W35CH QG from W63AL, 150kw, 24-46-02/80-56-42

Miami 30 WGEN-LP QC from ch. 55, 138.2kw, 25-46-29/80-11-19

Miami 39 WSFL-CC from WBZL

Panama City 24 W23CT AF DCC 500w, 30-17-45/85-39-42

Panama City 30 W30CF NW 40kw, 30-11-42/85-37-51

Panama City 49 W15CK AF DCC 500w, 30-17-45/85-39-42

Port St. Lucie 37 WSLF-LD AF DCC 15kw, 26-51-18/80-17-30, but dismissed (no kidding!)

Tampa 47 WFTT-DT NW 500kw/317m

Georgia:

Atlanta 16 WYGA-CDAF DCC 1kw, 33-44-41/84-21-36

Columbus 11 WWCG-LP CC from W11DC

Macon 4 WMAZ-DT PG 7kw/181m

Pearson 26 WPDW-LP NW 42kw, 31-19-36/82-51-54

Hawaii:						43-22/ 99-59-36
Hanamaulu	12 K06NC	AF DCC 300w, 21-56-10/ 159-26-43		Manhattan	36, K32HB 33	AF DCC 400w, 39-08-40/ 96-31-01 (x2?)
Honolulu	46 KHLU-LD	DR 190w		Phillipsburg	23 K66CD	AF DCC 15kw, 39-55-10/ 99-19-43
Kailua-Kona	32 K32GJ	PR<160w		Pittsburg	41 K69IU	AF DCC 2kw, 37-24-49/ 94-38-14
Kailua-Kona	47 KHIK-LP	NW 150kw, 19-42-56/ 155-55-00		Pittsburg	51 K36HB	AF DCC 4kw, 37-24-49/ 94-38-14
Idaho:				Salina	15 K15CN-D	DG 15kw
Hollister/ Twin Falls	23 K30HK	AF DCC 15kw, 42-43-47/ 114-24-52		Salina	47 K06LZ	AF DCC 15kw, 38-50-29/ 97-40-03
Idaho Falls	45 K51IM	AF DCC 200w, 43-32-36/ 111-53-08		Kentucky:		
Paul	4 K04NO	XR 42-36-22/ 113-47-47		Lexington	42 WKLE-DT PC 45.8kw/ 258m	
Pocatello	23 KPVI-DT	NW 505kw/ 398m, 42-55-13/ 112-20-45		Louisiana:		
Rexburg	13 K13UF	PR>3kw, 43-47-20/ 111-58-08		Alexandria	27 KWCE-LP	FC to RTN; QC from ch. 36
Twin Falls	17 KYTL-LD	AF DCC 15kw, 42-43-46/ 114-25-15		Lafayette	21 KLFT-LP	PC<15kw, 30-20-32/ 91-58-32
Illinois:				Lafayette	28 KATC-DT PG 1000kw/ 537m, 30-19-25/ 92-17-24	
Quincy	14 W26DA	AF DCC 100w, 39-58-19/ 91-19-40		Lafayette	32 KLFT-LD	AF DCC 8.1kw, 30-20-32/ 91-58-32
Rockford	33 WFBN-LP	CC from WCWW-LP		Lake Charles	43 K69IX	AF DCC 1kw, 30-18-42/ 93-20-15
Indiana:				Lake Charles	48 K45HY	AF DCC 2kw, 30-16-06/ 93-14-45
Chesterton	54 WHCH-LP	CC from W54BK		Maine:		
Gary	18 WHNW-LP	CC from W18AT		Bangor	16, W31CX, 29 W47CU	AF DCC 1kw, 44-48-13/ 68-48-17
Lafayette	51 W57DC	QC from ch. 57, 35.4kw		Massachusetts:		
Salem	40 WHAN-LP	AF DCC 15kw, 38-35-59/ 86-05-17		Lawrence	62 WMFP	FC; sold to Multicultural Television Broadcasting LLC
South Bend	25 WCWW-LP	CC from WMWB-LP		Pittsfield	28 W07AI	QC from ch. 7, 9.3kw
Iowa:				Michigan:		
Ames	23 KCWI-TV	CC from KPWB-TV		Bay City	46 WBSF	NW 1600kw/ 306m, 43-28-27/ 83-50-45 (CW)
Des Moines	19 WHO-DT	PG 550kw/ 609m, 41-49-47/ 93-36-56; NW granted DA (presumably will share KTIN-DT antenna)		Cadillac	40 WWTV-DT	PG 191kw/ 427m
Fort Dodge	21 KTIN			Detroit	8 WUDT-CDA	AF DCC 300w, 42-26-52/ 83-10-23
Fort Dodge	25 KTIN-DT	PG 600kw/ 355m		Detroit	47 W66BV	DR from ch. 66 dismissed
Sioux City	41 KTIV-DT	NW 873kw/ 609m		Flint	26 WHNE-LD	AF DCC 1.6kw, 42-47-02/ 83-32-05
Kansas:				Flint	66 WSMH	PG 1090kw/ 365m, 43-13-31/
Concordia	20 K64BS	AF DCC 15kw, 39-32-20/ 97-41-42				
Derby	46 NEW-DT	NS 570kw/ 276m, 37-48-01/ 97-31-29 (Univision)				
Dodge City	51 K48IU	AF DCC 1kw, 37-				

Marquette	13 WNMU	84-04-33 XC 46-21-10/ 87-51-15		<i>Colstrip</i>	8, K07WJ, 10, K09OY, 11, K13PV	AF DCC 20w, 45- 53-42/ 106-37-39
Muskegon	29 WOMS- CA	PC>10.4kw, 43-15-45/ 86-04-34		<i>Colstrip</i>	38 K61BL	AF DCC 300w, 45- 50-24/ 106-54-39
Minnesota:				<i>Forsyth</i>	41, K04FF, 43 K12LR	AF DCC 150w, 46- 19-38/ 106-41-49
<i>Brainerd</i>	31 K54AT	DR from ch. 54, 7.36kw		<i>Forsyth</i>	47, K07LO, 49, K09BW, 51 K11CB	AF DCC 20/20/20w, 46-15-40/ 106-40-21
<i>Duluth</i>	44 W51DN	AF DCC 1kw, 46- 47-20/ 92-07-27		<i>Gallatin River</i>	11, K07LE, 13 K09LP	AF DCC 31w
<i>Little Falls</i>	49 K63DY	AF DCC 15kw, 45- 52-58/ 94-27-01		<i>Howard</i>	48, K10AJ, 50 K44DM	AF DCC 250w, 46- 19-15/ 106-59-46
<i>Minneapolis</i>	30 WTMS- CDAF	DCC 15kw, 44- 58-34/ 93-16-20		Missoula	36 KTMF-DT	NW 5.1kw/ 618m
Rochester	46 KXLT-DT	NW 220kw/ 343m		<i>Pablo/ Ronan</i>	46 KSKC-CD	AF DCC 5kw, 47- 46-25/ 114-16-04
<i>Wadena</i>	33 K63DX	AF DCC 10kw, 46- 23-23/ 95-04-03		<i>Rosebud</i>	8, K07QK, 10 K09OK	AF DCC 180w
<i>Walker</i>	21, K65DT, 34, K67BZ, 35 K69CP	AF DCC 300w, 47- 05-36/ 94-34-47		<i>St. Ignatius</i>	42 K28CF	AF DCC 2kw, 47- 27-06/ 114-15-28
Mississippi:				Nebraska:		
Greenville	17 WXVT-DT	PG<5kw/253m		<i>Benkelman</i>	33 K33FO-D	PR<15kw
<i>Greenville</i>	46 K63HD	AF DCC 1kw, 33- 25-24/ 91-01-41		<i>Chadron</i>	6 K06JC-D	PR<70w
<i>Greenwood</i>	49 K43IU	AF DCC 1kw, 33- 30-51/ 90-08-27		<i>Crawford</i>	6 K06KR-D	PR<30w
Jackson	51 WWJX	CC for NS		<i>Falls City</i>	46 K46FG-D	PR<8.3kw
<i>Meridan(sic)</i>	21 W42DD	AF DCC 1kw, 32- 14-37/ 88-41-17		<i>Harrison</i>	8 K08LN-D	PR<70w
Missouri:				Lincoln	31 KLKN-DT	NW 500kw/ 376m
<i>Branson</i>	36 KBNS-CD	AF DCC 15kw, 36- 43-53/ 93-10-02		<i>Neligh</i>	50 K65AT	QC from ch. 65, 1.1kw
<i>Kansas City</i>	39 KUKC-LD	AF DCC 15kw		<i>North Platte</i>	34 K47IX	AF DCC 1kw, 41- 03-38/100-45-51
Kansas City	62 KSMO-TV	PG<1510kw		<i>North Platte</i>	49 K50JI	AF DCC 1kw, 41- 06-40/100-49-49
Osage Beach	49 KRBK	CC for NS		<i>Omaha</i>	47 KOHA-LD	AF DCC 15kw, 41- 18-40/96-01-37
<i>Rolla</i>	48 KROL-LP	CC from K48IG		Scotts-bluff	16 KTUW-DT	PG 5.2kw/ 237m, 41-50-23/ 103-49-35; switches from analog to digital; NW
<i>Springfield</i>	56 KBBL-CA	FC to My // KPBI- CA 46		<i>South Sioux City</i>	5 KSXC-LP	XG 42-29-26/96- 18-21
<i>St. Louis</i>	27 KPTN-LD	AF DCC 4.8kw, 38-25-01/ 90-26-00		<i>South Sioux City</i>	60 KAZW-LP	CC from KCWK- LP
Montana:				Nevada:		
<i>Billings</i>	5 K42GF	AF DCC 100w, 45- 48-27/ 108-20-25		<i>Beowawe</i>	14, K18GW, 43 K30HF	AF DCC 300w, 40- 37-15/ 116-41-17
<i>Billings</i>	45, K68GO, 51 K69IV	AF DCC 4kw, 45- 43-44/ 108-23-42		<i>Duckwater</i>	19, K15GS, 26 K29GM	AF DCC 300w, 39- 26-58/ 115-59-54
<i>Bozeman</i>	41 K47IW	AF DCC 500w, 45- 41-34/ 110-58-57		<i>Eureka</i>	38, K40CI, 49 K44CP	AF DCC 300w, 39- 28-30/ 115-59-33
<i>Bozeman</i>	46 K36HC	AF DCC 1kw, 46- 00-24/ 112-26-30		<i>Glendale</i>	34 K62DZ	AF DCC 400w, 36- 41-07/ 114-31-09
<i>Butte</i>	39 K34II	AF DCC 2kw, 46- 00-27/ 112-26-30		<i>Las Vegas</i>	6 KVPX-LD	AF DCC 100w, 35- 56-44/ 115-02-33
<i>Butte</i>	41 K50II	AF DCC 4kw, 46- 00-24/ 112-26-30		<i>Las Vegas</i>	24 KEGS-LD	AF DCC 15kw, 35- 56-43/ 115-02-32

Overton	30, K54CJ, 36 K66CB	AF DCC 400w, 36-41-07/ 114-31-09	Wilmington	40 WILM-LD	AF DCC 15kw, 34-13-22/ 77-54-09
Pahrump	15 KINC-1	AF 1.4kw, 35-58-04/ 115-30-06	Wilson	30 WRAY-TV FC;	sold to Multicultural Television Broadcasting LLC
Reno	44 KRXI-DT	NW 1000kw/ 836m			
Verdi	47 K54DA	AF DCC 350w, 39-34-38/ 119-56-19	North Dakota:		
Winne-mucca	53, K51BW, 55, K47CH, 57 K45BJ	AF DCC 100w, 41-00-38/ 117-45-40 (200w on ch. 55)	Bismarck	28 K64GN-D	AF DCC 5kw, 46-49-24/ 100-51-44
			Bismarck	34 K43JQ-D	AF DCC 1kw, 46-49-24/ 100-51-44
New Jersey:			Minot	42 K47KA-D	AF DCC 500w, 48-12-56/ 101-19-05
Atlantic City	44 WMCN-DTNW	200kw/ 212m, 39-43-41/ 74-50-39			
Belvidere	43 W43CH	DR 600w	Ohio:		
Hacketts-town	50 W49BE	AF DCC 600w, 40-51-07/ 74-52-36	Canton	67 WOAC	FC; sold to Multicultural Television Broadcasting LLC
Sussex	35 W36AZ	AF DCC 600w, 41-08-37/ 74-32-18			
			Cincinnati	47 WOTH-LD	AF DCC 15kw, 39-07-30/ 84-29-56
New Mexico:			Columbus	33 WCSN-LD	AF DCC 15kw, 40-01-02/ 83-01-11
Alamogordo	36 KPWB-LP	CC from KCWI-LP	Mansfield	47 W47AB-D	DR 10kw
Aztec	22 K22HT	QG from K08FR, 1.1kw	Toledo	48 WMNT-CACC	from WNGT-LP
Aztec	38 K38DA-D	DC 400w, 36-48-53/ 107-53-31	Youngstown	35 WYFX-LD	AF DCC 300w, 40-03-24/ 80-38-44
Espanola	49 K44HO-D	DR from ch. 44, 690w, 35-53-09/ 106-23-13			
Farmington	29 K21AX-D	AF DCC 4.4kw, 36-40-17/ 108-13-53	Oklahoma:		
Farmington	45 K47DR-D	AF DCC 8kw	Bartles-ville	15 KDOR-DT PG	40kw/ 103m
Hobbs	28 K50IP-D	AF DCC 1kw, 32-28-28/ 104-11-54	Claremore	36 KRSC-DT NW	144kw/ 255m
Hobbs	30 K45JA-D	AF DCC 2kw, 32-40-25/ 103-06-42	Lawton	43 K68GN-D	AF DCC 2kw, 34-26-51/ 98-24-28
Las Cruces	31 KLCP-LP	PR dismissed	Poteau	50 KSJF-CA	FC to My // KPBI-CA 46
Las Cruces	42 KAEP-LP	CC from K42DJ	Shawnee	30 KTUZ-TV	PG>455m, 35-33-36/ 97-29-07
Roswell	47 K45HX-D	AF DCC 1kw, 33-20-42/ 104-31-39			
			Oregon:		
New York:			Baker City	20 K48DC-D	AF DCC 500w, 44-35-57/ 117-46-58; PR>5kw on analog ch. 48
Buffalo	32 WNLO-DT PR<303m		Bend	7 K11SE	QC from ch. 11
Gloversville	21 W07AV	QC from ch. 7, 8.3kw	Bend	51 KOHD-DT NW	84.1kw/ 206m, 44-04-41/ 121-19-57
Troy	38 WNGN-LP	QR from ch. 26, 8.5kw	Coos Bay	14 K14MQ	QG from K63DO, 40kw
			Coos Bay	21 KCBY-DT PG	5.1kw/ 188m
North Carolina:			Coos Bay	23 KMCB	CC from KUCW
Black	30 W30CL-D	DG from W35AV, 5kw	Eugene	44 KEZI-DT	PG 13.5kw/ 458m
Mountain			Grants Pass	50 K50FW	PG>2.81kw, 42-24-43/ 123-16-54
Fayette-ville	38 WUVC-DT NW	500kw/ 509m	Medford	48 KFBI-LD	DG 250w
High Point	35 WGHP-DT NW	1000kw/ 365m, 35-48-46/ 79-50-29	Merlin	29 K56FN	QC from ch. 56, 5kw, 42-42-59/ 123-11-57
Jefferson	21 W25AY-D	AF DCC 170w, 36-27-40/ 81-29-19	Midland	36 K36IB	QG from K62BE, 70kw, 42-05-48/

Salem	121-37-57 32 KRCW-TV CC from KWBP	52-44/ 97-43-27; CL from Killeen
Pennsylvania:		
Clarks Summit	47 W48AQ-D AF DCC 900w, 41-28-01/ 75-41-12	Kerrville 16 KVHC-LD AF DCC 15kw, 30-03-21/ 99-08-16
Philadelphia	13 WWJT-LD AF DCC 300w, 39-57-13/ 75-10-11; XR 39-57-10/ 75-10-03 for analog on ch. 7	Killeen 13 KAKW-DT NW 45kw/ 484m, 30-43-34/ 97-59-23
Reading	24 W24CS-D DG 10w	Lake Dallas 54 KLDT-DT NW 75kw/ 494m, 32-32-36/ 96-57-32
South Dakota:		Lubbock 23 K24GP-D AF DCC 1kw, 33-30-58/ 110-50-54
Aberdeen	35 K42GG-D AF DCC 250w, 45-28-29/ 98-31-37	Lubbock 25 KPTB-DT NW 8.28kw/ 83m
Eagle Butte 13 KPSD-TV PR<516m, 45-03-14/ 102-15-47		Midland 21, K21GU, PR<4w, 34 K34HH 31-03-15/ 102-04-50
Pierre	51 K43IP-D AF DCC 100w, 44-18-42/ 100-21-09	Midland 39 K69IT-D AF DCC 900w, 31-59-44/ 102-15-28
Tennessee:		Odessa 46 K46HN PR<4w Plainview 18 K18HC PG 1kw, 34-14-05/ 101-47-25
Cookeville 52 WCTE-DT PG>82kw		San Angelo 15 K43IQ AF DCC 90w, 31-28-10/ 100-27-06
Gatlinburg	36 WDWC-LP NW 15kw, 35-42-29/ 83-31-15	San Antonio 6, K52EA-D, AF DCC 22, KISA-LD, 402w/1kw/99w, 52 KSAA-LD 29-26-29/ 98-30-22
Memphis	17 W67CV-D AF DCC 15kw, 35-12-34/ 89-49-01	San Antonio 51 K52EA QC from ch. 52, 9.5kw, 29-26-29/ 98-30-22
Memphis	46 W57CG-D AF DCC 15kw, 35-12-34/ 89-49-01	Victoria 40 KVIT-LP AF DCC 4kw, 29-33-44/ 95-30-35 (CL from DeWalt)
Nashville	31 WJDE-LD AF DCC 15kw, 36-09-49/ 86-45-45	Victoria 48 K42GO AF DCC 2kw, 28-49-00/ 97-03-57
Texas:		Wichita Falls 24 K30DJ AF DCC 15kw, 33-53-50/ 98-32-33
Abilene	47 K49HW-D AF DCC 3kw, 32-22-21/ 99-47-42	Wichita Falls 46 K20DN AF DCC 15kw, 33-54-31/ 98-29-45
Amarillo	49 K46HQ-D AF DCC 1.5kw, 35-15-41/ 101-52-52	Utah:
Amarillo	51 K64GK-D AF DCC 500w, 35-15-41/ 101-52-52	Alton 21, K11OC, AF DCC 4w, 22, K38IN, 37-22-26/ 29 K34FO 112-32-08
Beaumont	53 KPPY-LP PR<2kw, 30-04-31/ 94-07-48	Antimony 36, K02FA, AF DCC 10w, 38-10-57/ 38, K05DO, 112-02-25 39, K44GA, 40, K42FB, 46 K04FG
Blanco 17 KNIC-TV NW 5000kw/ 204m, 29-41-48/ 98-30-45, Telefutera.		Apple Valley 21 K30DE AF DCC 10w, 37-07-00/ 113-07-50
Corpus Christi	31 K54JS-D AF DCC 400w, 27-47-26/97-27-02	Aurora 51 K51BK-D DC 250w
Corpus Christi	43 K68DJ QR from ch. 68, 21.5kw	Battle Mountain 21 KNNC-LP AF DCC 15kw, 40-42-39/ 116-49-48
Dallas & Mesquite	7 KJJM-LD AF DCC 200w, 32-35-20/ 96-58-05	Beaver 47, K09CS, AF DCC 25w, 38-27-24/ 48, K11CX, 112-39-27 49, K13CV, 50, K07GY, 55, K36FM, 56, K38GF, 57, K42EX, 58 K44HT
De Soto	3 KHPK-LD AF DCC 200w, 32-35-22/ 96-58-12	
De Soto	12 KNAV-LD AF DCC 299w, 32-45-52/ 96-52-06	
El Paso 30 KCOS-DT NW 393kw/ 226m		
Georgetown	16 KADT-CA PR>106.2kw, 30-	

Beaver	51 K40FT	AF DCC 10w, 38-27-24/ 112-39-27	Fremont	59 K40GD 19, K10OW, 20, K15GI, 21, K12PX, 22 K17FQ	AF DCC 30w, 38-25-58/ 111-37-57
Bicknell	45, K34GN, 52, K38CJ, 54 K42AE	AF DCC 20w, 38-17-00/ 111-30-36	Fruitland	31, K08JD, 32, K10KN, 34, K12KZ, 35, K41DM, 36, K29EZ, 40 K50EC	AF DCC 10w, 40-12-18/ 110-53-44
Boulder	31, K08II, 32, K10JG, 33, K12JR, 34 K18CG	AF DCC 4w, 37-53-53/ 111-25-08	Garfield	44, K41EB, 46, K47AB, 48, K45BY, 53, K39FT, 54, K51AH, 56 K49AG	AF DCC 10w, 37-45-21/ 111-52-27
Caineville	45, K09LV, 47, K11LZ, 49 K13MQ	AF DCC 30w, 38-21-38/ 110-53-37	Garfield Co.	15, K24FD, 17, K26GD, 19, K28GM, 21, K30GA, 23, K16EQ, 27, K18FT, 29 K20GE	AF DCC 10w, 38-32-30/ 112-04-20
Cannonville	23 K07OB	AF DCC 10w, 37-42-41/ 112-04-39	Garfield Co.	50, K43DY, 55 K36FW	AF DCC 4w, 37-45-21/ 111-52-27
Capitol Reef National Park	16, K08HZ, 18, K10IV, 20 K12JH	AF DCC 30w, 38-17-46/ 111-17-30	Garrison	35, K07OH, 47, K48FH, 45, K46GG, 49, K50FC, 41, K42FU, 51 K44GP	AF DCC 6w
Cedar City	8, K41GE, 10, K02NU, 12, K39FQ, 55 K05HB	AF DCC 10w, 37-38-21/ 113-01-53	Garrison	36, K09NB, 38, K11NP, 40 K13OJ	AF DCC 10w, 38-56-53/ 114-09-05
Circleville	19, K11FZ, 21, K09FX, 31, K13EK, 32, K17HD, 33 K07JV	AF DCC 10w, 38-12-41/ 112-14-02	Green River	15, K02BU, 16, K04BR, 17, K05BK, 41, K09CX, 42, K11DD, 43, K13DB, 44, K07QV, 45, K38GP, 47 K36FX	AF DCC 20w, 39-10-58/ 110-36-25
Coalville Delta	27 K07LT 36, K51GG, 38, K39FR, 40, K35GC, 42, K43GN, 46, K45GE, 48, K41GH, 50, K29FQ, 53, K49HA, 54 K47HM	AF DCC 8w AF DCC 10w, 39-21-12/ 112-21-06	Hanksville	17, K11LJ, 19, K09LC, 21, K13LS, 27, K46FU, 29, K48GR, 31 K50FZ	AF DCC 10w, 38-22-24/ 110-41-59
Duchesne	31, K03CN, 32, K08CT, 35, K10DE, 36, K12DL, 39, K45AG, 40, K34FV, 41 K47AN	AF DCC 10w, 40-09-18/ 110-23-29	Hanna	31, K09MQ, 32, K07NV, 34, K11ND, 35, K03HM, 36 K06NX	AF DCC 10w, 40-23-08/ 110-45-28
Duchesne Co.	16 K17DM	AF DCC 20w, 40-21-41/ 110-47-21	Hatch	15, K09MO, 17, K11NA, 19, K13NT, 21, K38GQ, 23 K36FV	AF DCC 30w, 37-40-36/ 112-22-20
Dutch John & Manila	30, K02HP, 31, K04HN, 32, K05FJ, 34, K09LZ, 35 K19DV	AF DCC 10w, 40-57-34/ 109-24-58	Heber	26, K18GV, 40, K31FP, 42, K33FX, 44, K27GC, 46, K39HS, 50 K25HF	AF DCC 10w, 40-33-45/ 111-28-30
Emery	17, K35DW, 19, K39DV, 21, K41GV, 23, K43EV, 25, K45GP, 27, K47HD, 29 K49GB	AF DCC 10w, 38-55-52/ 111-11-25	Henefer	24, K38HW, 26, K29FY, 27, K31HR, 33 K08AS	AF DCC 10w, 40-58-40/ 111-26-07
Escalante	17, K02FQ, 19, K04FR, 21, K05DV, 23, K07JZ, 25, K15EM, 27, K13VH, 29, K11SJ, 31 K09WJ	AF DCC 10w, 37-47-14/ 111-35-43	Henrieville	39, K11UM, 40, K09XF, 41, K07OB, 42, K18CV,	AF DCC 10w, 37-32-59/ 111-59-22
Fillmore	21, K44EA, 23, K34GO, 25, K46EI, 52, K50DE, 55, K38GT, 56, K36FY, 57, K32GE,	AF DCC 10w, 39-02-10/ 112-19-31			

	44, K16FN, 45, K20BT, 46 K22GP				32 K12GI	
Hildale/ Cane Beds AZ	17 K06OB	AF DCC 10w, 36- 54-11/ 113-51-08		Mount Pleasant	15, K08CC, 19, K10CH, 21, K12CC, 35, K46HO, 38, K48IL, 40 K50HL	AF DCC 10w, 39- 32-22/ 111-23-17
Hurricane, Leeds, Toquerville Kanab	15 K21GW	AF DCC 10w, 37- 17-22/ 113-16-33		Myton	18, K07NV, 20, K21FT, 24, K25HH, 26 K27GN	AF DCC 20w, 40- 21-41/ 110-47-21
Kanab	16, K18DN, 26, K32DC, 40, K10ME, 42 K28IT	AF DCC 10w, 37- 03-35/ 112-31-12		New Harmony	53, K51GI, 59 K49GA	AF DCC 10w, 37- 29-16/ 113-12-17
Kanab	17 K23DP	AF DCC 4w, 37-03-35/ 112-31-12		Ogden	30 KUCW	CC from KUWB
Kanarraville	46, K06KO, 48, K12CD, 50, K08CE, 52 K10CK	AF DCC 10w, 37- 29-16/ 113-12-17		Orangeville	36, K16EW, 45, K22FX, 46, K15GQ, 47, K20GP, 48, K26EM, 49, K28GZ, 50 K18FZ	AF DCC 10w, 39- 12-36/ 111-08-30
Koosharem	38, K10CU, 39, K08CL, 40, K45FV, 43, K03FF, 44, K41FZ, 49, K06IG, 47 K12CT,	AF DCC 10w, 38- 28-43/ 111-49-22		Orderville	20, K05DU, 31, K02EN, 33, K04EK, 35, K07OY, 39 K18ET	AF DCC 4w, 37-16-25/ 112-37-33
Laketown	42, K08JR, 57 K46GD	AF DCC 10w, 41- 52-57/ 111-16-09		Orderville	40 K16BT	AF DCC 10w, 37- 16-25/ 112-37-33
Leamington	23, K42FR, 25, K10NW, 27, K50DJ, 52, K12OO, 55, K46DK, 56, K48FY, 57, K38HK, 58, K44FB, 59 K08MC	AF DCC 10w, 39- 31-56/ 112-18-47		Panguitch	38, K02BN, 39, K04AU, 40, K05BB, 41, K07JW, 43, K34FN, 44, K12OI, 46 K10LV	AF DCC 10w, 37- 49-16/ 112-27-28
Loa	23, K07CT, 25, K06BS, 27 K03AU	AF DCC 30w, 38- 24-25/ 111-41-52		Park City	30, K33FY, 32, K39HP, 34, K15FL, 38, K27GD, 40 K31FQ	AF DCC 4w, 40-40-58/ 111-31-21
Long Valley Junction	33, K48EK, 32, K06FM, 41, K44FU, 51 K03CX	AF DCC 20w, 37- 30-25/ 112-30-36		Parowan	53, K40CH, 56 K46DF	AF DCC 10w, 37- 50-30/ 112-58-27
Long Valley Junction	35, K50GD, 43 K46EO	AF DCC 10w, 37- 30-25/ 112-30-36		Peoa & Oakley	18, K10JB, 21, K15FP, 33, K08IE, 35 K28GW	AF DCC 11w, 40- 43-21/ 111-21-49
Manti	24, K11FP, 26, K13FF, 28, K09FM, 30, K33FT, 32, K27HR, 39, K29EM, 41, K31FN, 46 K25GS	AF DCC 10w, 39- 19-24/ 111-46-26		Randolph & Woodruff	22, K38GN, 30, K40FY, 53 K36FS	AF DCC 10w, 41- 37-31/ 111-07-23
Marysvale	45, K02BQ, 47, K05BH, 49, K46FX, 50, K04BO, 51, K48GS, 52 K34AL	AF DCC 10w, 38- 30-26/ 112-11-49		Richfield	31, K03AS, 32, K07CQ, 33, K06BQ, 34, K38AQ, 39, K40AB, 58, K44DU, 59 K35GQ	AF DCC 20w, 38- 38-06/ 112-03-34
Minersville	17 K05AT	AF DCC 10w, 38- 31-14/ 113-17-12		Roosevelt	14, K48GZ, 30, K08CS, 41, K10DD, 44, K12FG, 46 K50GO	AF DCC 4w, 40-19-27/ 110-09-19
Modena	33, K19DO, 50, K17FF, 52, K27GB, 54, K25GY, 53 K23DV	AF DCC 10w, 37- 42-19/ 113-44-37		Rural Beaver Co.	18 K18FU-D	DG 140w, 38-31-14/ 113-17-12
Morgan	26, K27GA, 28, K29EP, 30, K08GA, 31, K10FW,	AF DCC 10w, 41- 04-07/ 111-39-31		Rural Beaver Co.	19 K33FW	AF DCC 10w, 38- 31-14/ 113-17-12
				Rural Juab Co.	45 K56BB	AF DCC 150w, 39- 29-31/ 111-49-37
				Rural Sevier	47, K35DX,	AF DCC 10w, 38-

Co.	48, K45FT, 49, K39GN, 50, K33DU, 57 K41GA	30-44/ 111-47-01	Kamas	36, K26GI, 38, K42FA, 52 K23HS	34-01/ 111-14-32
Rural Uintah Co.	33 K16DA	AF DCC 10w, 40- 57-34/ 109-24-58	Vermont:		
Salina & Redmond	22, K15FF, 39, K18HO, 41, K17FC, 50, K21FL, 52 K23FK	AF DCC 4w, 38-52-37/ 111-52-32	Burlington	32 WETK-DT NW 90kw/ 830m	
Salt Lake City	28 KSTU-DT NW 350kw/ 1210m		Burlington	49 WGMU- CA	AF DCC 15kw, 44- 18-46/ 73-11-10
Salt Lake City	39 K45GX	AF DCC 15kw, 40- 39-09/ 112-12-05	Burlington	53 WCAX-DT PG 628kw/ 845m, 44-31-32/ 72-48-58	
Salt Lake City	47 KUBX-LP	AF DCC 15kw, 40- 39-09/ 112-12-05	Virginia:		
Samak	23, K31HH, 26, K11SX, 27, K13VT, 28 K03HQ	AF DCC 4w, 40-37-56/ 111-15-34	Charlottes- ville	40 WAHU-CA AF DCC 9.5kw, 37-59-03/ 78-28-52	
Scipio & Holden	19, K31GT, 21, K41IG, 23, K06DH, 25, K12DH, 29, K10EB, 34, K39EH, 35, K43JN, 36 K45EL	AF DCC 10w, 39- 12-09/ 112-08-35	Washington:		
Sigurd & Salina	16, K08CM, 20, K10CT, 43 K12CJ	AF DCC 4w, 38-52-37/ 111-52-32	Baker Flats Area	43, K57BA, QR from ch. 57 49 K59BF	
St. George	57 K32FQ	AF DCC 10w, 37- 03-50/ 113-34-19	Bellevue	50 KWOG-DTNW 240kw/ 719m	
Tabiona & Myton	28 K29EX	AF DCC 20w, 40- 21-41/ 110-47-21	Bremerton	26 K26IC-D DG 900w	
Teasdale	39, K02BO, 41, K04BN, 43, K05BG, 53, K36DL, 55 K40AH	AF DCC 20w, 38- 17-00/ 111-30-36	Cashmere	40 K40AE PR<100w, 47-31-53/ 120-29-10	
Tropic	17, K02IF, 19, K04IN, 21, K05FY, 24, K33HX, 25, K31EL, 35, K29GJ, 38 K27ID	AF DCC 10w, 37- 42-41/ 112-04-39	Dryden	43, K57AY, QR from chs. 57 , 49 K52ER 52	
Vernal	31, K07CY, 32, K09CY, 34, K11DF, 35, K13HF, 36, K49AT, 40, K51AO, 56 K33DO	AF DCC 10w, 40- 21-03/ 109-09-45	East Wenatchee	16, K55FO, QR from chs. 55, 42 K53DN 53	
Wanship	23, K08JE, 28, K12LC, 29 K27GE	AF DCC 5w, 40-48-33/ 111-23-41	Ellensburg	17, K69BE, QR from chs. 69, 19 K63BZ 63, 1.1kw, 46-53- 15/ 120-26-29	
Washington	50 K51GH	AF DCC 10w, 37- 09-19/ 113-52-56	Everett	43 K58BW-D DR from ch. 58	
Wayne Co.	58 K43IJ	AF DCC 10w, 38- 30-44/ 111-47-01	Monitor	16, K55BN, QR from chs. 55, 42 K53AH 53	
Wendover	31, K08EI, 32, K10ES, 33, K12EB, 57 K15GZ	AF DCC 10w, 40- 44-28/ 114-02-11	Point Pulley	47 K67GJ-D DR from ch. 67, 1.1kw	
Woodland &	34, K48AE,	AF DCC 11w, 40-	Pullman	17 KWSU-DT NW 10kw/ 255m	
			Seattle	46 KUSE-LD AF DCC 15kw, 47- 30-17/ 121-58-03	
			Stemilt Yakima	40 K65AU QR from ch. 65 20 KDHW-LD AF DCC 15kw, 46- 31-59/ 120-29-31	
			Yakima Yakima	27 KCWK-LP CC from KAZW- 33 KIMA-DT NS 20kw/ 278m	
			West Virginia:		
			Bluefield	46 WVVA-DT PG 1000kw/ 372m; NW	
			Wisconsin:		
			Appleton	27 WACY-DT PG 50kw/ 321m	
			La Crosse	14 WXOW- DT PG 174kw/ 348m	
			Madison	26 WKOW- DT NS 201kw/ 363m (aux)	
			Milwaukee	38 WBWT-LPFC; to be Azteca when built. CC from W53CC.	
			Wyoming:		
			Cheyenne	30 KGWN-DTPG 459kw/ 162m	
			Cheyenne	35, K50HX, AF DCC 2kw, 41- 38 K44HF 08-55/ 104-57-22	
			Gillette	38 K45IB AF DCC 250w, 44- 14-53/ 105-29-40	
			Kemmerer	24 K24GT-D DC 370w, 41-50-17/	

110-30-11

Lander **8 KCWC-DTPG 60kw/
432m**
Rawlins 51 K51IZ-D DR 230w; DG
Rock Springs 31, K41IJ-D, AF DCC 1kw, 41-
33 K24GZ-D 34-43/
109-19-12

Thanks to Bill Hepburn, Jeff Kruszka, and "techpup" for information appearing elsewhere in this month's column.

Presumably, KNIC-17 in Blanco, Texas supercedes KNIC-LP on the same channel in nearby San Antonio.

Of course, this month's big news are the huge collection of digital companion channels requested by LPTV/translator stations. Utah broadcasters have prepared a digital conversion plan, both for full-power and low-power stations; I think that accounts for the pages (and pages and pages) full of Utah applications.

Dave Williams noted the WSLF-LD application for a digital companion operation on channel 37 in Florida, as well as applications filed in Lewiston, Idaho and Scofield, Utah. (the latter two have not yet been reported on Public Notice)

I have no idea why anyone thought the FCC would approve an application for channel 37. (a reminder: channel 37 is reserved for radio astronomy) I can only guess these applications were filed electronically and somebody's keyboard finger slipped...

Dave also noted that all three applications were "accepted for filing". However, as you see above the Florida application has already been dismissed. It does bring up the question: just how closely does the FCC check an application before returning it as "unacceptable for filing"?

As I understand it, a blatantly-defective application will be returned. (for example, you use the Form 610 intended for ham radio licenses to apply for a broadcast TV station) One that's not immediately

obviously defective might be accepted but dismissed in processing. (for example, it turns out the proposed site will deliver a 69dBu signal to the city of license when 70dBu is required)

I can't answer this question – one would think "37" in the channel box would be an immediate sign of unacceptability! I wonder if, by the time this companion-channel process is over, we'll have applications above channel 69? (who'll be first to apply for channel 84?<grin>!)

Bankrupt Shop-At-Home has sold their five stations to Multicultural Television Broadcasting LLC. This company is new to television but operates 46 radio stations across the country. Broadcasts are in a variety of languages, including Spanish, Korean, and Hindi. (it may be telling that the company's website operates in two languages: English and Chinese) Their plans for the TV stations are not yet known.

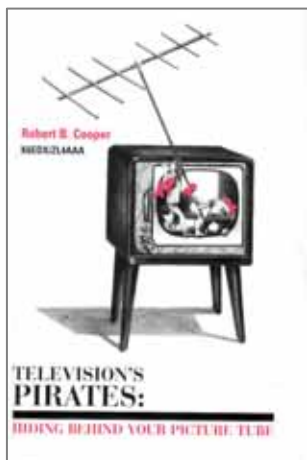
Besides KNIC-17, we have another new full-license station on the air in Scottsbluff, Nebraska. KTUW-16, however, has signed on as a DTV station and at a LPTV power level of only 5 kilowatts.

The station is co-owned with KTWO-2 in Casper, Wyoming, and it was believed channel 16 would be a KTWO satellite. However, since the KTUW calls were picked, KTWO switched networks from NBC to ABC. There's already an ABC affiliate in Scottsbluff (KDUH-4) so presumably KTUW is doing something else. It may be awhile before we find out what!

Also in the new-station department, note that a permit has been granted for a new full-power DTV station on channel 46 in Derby, Kansas. This is a Wichita suburb. The station is owned by Entravision and could be expected to be a Univision affiliate.

Finally, note that call letters have been assigned to new stations in Jackson, Mississippi (WWJX-51) and Osage Beach, Missouri. (KRBK-49) This may, or may not, mean these stations' signon is imminent.

**Bob Cooper's
TELEVISION'S PIRATES: HIDING BEHIND YOUR
PICTURE TUBE**



ORDER YOUR 928 PAGE COPY FROM BOB RIGHT NOW!

Send your check or money order for \$20 (payable to WTFDA) to WTFDA, P.O. Box 501, Somersville, CT 06072. Paypal order are also accepted. Send \$21.50 (to cover Paypal fees, etc.) To mbugaj@snet.net. US ORDERS ONLY. FOR ORDERS OUTSIDE USA PLEASE EMAIL US FOR SHIPPING RATES BEFORE ORDERING.

WTFDA FM NEWS

Bringing you the most recent FM changes in the U.S. and Canada!

CHRIS KADLEC, EDITOR
3860 SHOREWOOD DR.
FREMONT, MI 49412-9604
beaglebass@beaglebass.com
www.beaglebass.com/dx_index.htm



NOV 2006

The November 2006 column marks one year of me as your editor. Already? Even this month a few minor changes have been made in the column format to make it easier to read... even if nobody notices!

States and provinces omitted this month include the following: Alberta, British Columbia, Connecticut, Delaware, District of Columbia, Manitoba, Newfoundland and Labrador, New Hampshire, Northwest Territories, Nova Scotia, Prince Edward Island, Puerto Rico, Rhode Island, Saskatchewan, and Vermont.

Included in the listings this month: Guam (both main and auxiliary) and the Virgin Islands.

INDEX OF ABBREVIATIONS

AF	applied for (a new station)	NS	new station granted
AFA	American Family Association	NW	new station signs on
Aux	Auxiliary antenna (backup)	OSA	one step application granted for change
CC	call letter change	PA	proposed amendment change to FM allocation table
CL	city of license change	PC	power change on the air (> = increase, < = decrease)
CX	a construction permit has been cancelled	PG	power change granted (> = increase, < = decrease)
C1-C5	change in status to that FM license class	PR	power change requested
DA	directional antenna	QC	frequency change occurred
DE	station has been deleted	QG	frequency change granted
FC	format change	QR	frequency change requested
GA	granted amendment to table of FM allocations	RA	silent station returns to the air
GE	granted extension of construction permit	RE	station requests an extension on permit
GX	granted replacement of expired permit	ROA	request of applicant
LC	license to cover filed (ready to come on air)	RX	station requests replacement of expired permit
MC	multiple-city ID	SC	slogan change or update
NC	no change yet on a reported change or permit	SI	station is silent
ND	non-directional antenna	SOA	signed on the air
NO	not on the air	XA	dismissed amendment to FM allocations
		XC	transmitter site change occurred
		XG	transmitter site change granted

UNITED STATES and CANADA

CANADA

New Brunswick / NB

Moncton 107.3 CKOE-FM / PR>725w/112m, relocate XR denied for non-technical reasons

Rothesay 95.1 NEW / AF 50w, to relay CJEF-FM

Saint John 103.5 CJEF-FM / proposes FC to rock; CC from CFHA-FM

Nunavut / NU

Iqaluit 105.5 NEW / AF 250w, to relay CJLF-FM Barrie, denied.

Ontario / ON

Arnprior 107.7 CHMY-FM-1 / QR from 104.7, PR>1kw/46m

Fort Erie 101.1 CKEY-FM / PR>50kw/142m, 43-05-37/79-12-53 to co-locate with CFLZ-FM 105.1

Foymount 106.5 NEW / AF 26.915kw to relay CKJJ-FM, denied. CRTC feels a relay transmitter is not the best use of a Class C1 frequency.

Oshawa 107.7 CKDO-FM-1 / PR>2kw/86m to reduce interference from WLKK-FM

St. Catharines 101.1 CKEY-FM-1 / proposes deletion, if power increase for Fort Erie transmitter is granted then this relay will no longer be necessary.

Strathroy 91.1 NEW / NS 1.75kw, adcon/mor

Windsor 100.7 CKUE-FM-1 / QG from 95.1, 3.84kw, 42-20-30/82-56-07

Québec / QC

Rivière-du-Loup 102.5 NEW / AF denied for CFVD-FM-relayer

Yukon / YK

Dawson City 106.9 NEW / NS 5w, 18hr. local community programs, 108hr. // CKRW-FM

UNITED STATES

Alabama / AL

Mobile 94.9 WKSJ-FM / PC>98kw/521m, 30-36-45/87-38-43

Alaska / AK

Juneau 100.7 KXLL / CC from KFMG
 Juneau 102.7 KRNN / CC from KSRJ

Arizona / AZ

Bagdad 103.1 KFTT / PG<381m
 Colorado City 107.3 KXFF / CC from KMXM
 Corona de T. 101.3 KKYZ / req. CL from Sierra Vista in Coronado de Tucson
 Glendale 92.3 KTAR-FM / CC from KKFR
 Patagonia 98.1 NEW / PA to non-commercial, denied. Local commercial licensee suggested three existing non-commercial services (KUAZ, KUAT-FM, KNOG-FM) already serve 94% of the area population, and a new non-commercial station could be authorized on the reserved channels 91.5 or 91.7. Petitioner claims KUAZ doesn't count because it's an AM station and 91.5 and 91.7 aren't available because of potential interference to KUAT-TV channel 6.
 Prescott Valley 98.3 KKFR / CC from KZGL
 Tuba City 91.3 KGHR / PC>100kw-H/322m, 36-21-27/111-12-12

Arkansas / AR

Hot Springs 105.9 KLAZ / PG 100kw/299m, 34-19-55/92-39-55
 Hot Springs 107.3 KHSA-LP / CC for NS
 Hot Springs 107.3 KHSA-LP / NW 100w/13m, 34-30-28/92-59-56

California / CA

East Porterville 100.5 KMQA / PR 50kw/43m, 35-48-19/118-38-46
 Fairmead 91.1 KLVY / PC 50kw/148m, 37-07-40/119-40-38 (K-Love)
 Ferndale 99.1 KJNY / CC from KAJK-FM
 Firebaugh 94.7 KYAF / CC from KAJP
 Garberville 89.1 KXBC / PR 1.3kw-V/765m
 Glen Ellen 103.3 NEW-LP / NS 100w/-78m, 38-22-04/122-31-21, Fire Protection District – possibly the 1st broadcast station licensed to a fire department
 Huron 98.3 KZLA / CC from KHRN
 Los Angeles 96.3 KXOL-FM / PC<6.6kw/398m, 34-11-48/118-15-30
 Los Molinos 102.1 KCEZ / PC<67m, drop DA
 Palo Cedro 101.1 KWCA / PG>4.9kw/450m, 40-39-15/122-31-12; CL from Weaverville
 Placerville 92.1 KXCL / PC>6kw/100m, 38-38-11/120-38-14
 Redding 91.5 KKRO / PR>370w/401m, 40-54-53/122-26-37
 Rio Vista 91.5 KRVH / QC from 90.9, 500w
 Sacramento 88.9 KXPR / CC from KXJZ
 Sacramento 90.9 KXJZ / CC from KXPR
 San Diego 94.1 KMYI / PR 77kw/210m, 32-50-20/117-14-56
 San Diego 94.1 KMYI / PG 20060927AMI
 San Diego 105.3 KIOZ / PR 26kw/210m, 32-50-20/117-14-56
 San Diego 105.3 KIOZ / PG 20060927AMF
 San Diego 107.5 KHHS-LP / XR 32-52-26/117-12-53
 Santa Maria 90.5 KGDP-FM / CC from KRVC

Santa Maria 90.5 KGDP-FM / PC>252m; PG>17.5kw, 34-44-30/120-26-45
 Valley Springs 103.7 KWLK-LP / XR 38-10-03/120-51-50

Colorado / CO

Cripple Creek 95.1 KATC-FM1 / CX, DE
 Estes Park 102.1 KRKY-FM / PG<6kw-H/25m, 40-21-38/105-31-12
 Estes Park 102.1 KRKY-FM / CC from KXDC
 Greenwood VII. 102.3 KCUV / CC from KCUV-FM
 Greenwood VII. 102.3 KCUV / PR>100m, 39-40-02/104-59-07 dismissed ROA; going for 1kw/238m, 39-43-59/105-14-10 instead
 Hayden 90.1 KHCO / PR 1.8kw-V/522m
 Hayden 90.1 KHCO / PG 1.8kw/522m
 Pueblo 89.9 KFRY / NW 870w/647m, 38-02-29/105-11-05 (Family Radio)
 Rye 104.9 KRYE / PR>55m
 Salida 92.3 KVRH-FM / PG>220w/895m, 38-27-11/106-01-02
 Steamboat Sps. 89.3 KLBV / PR>528m
 Steamboat Sps. 89.3 KLBV / PG>528m
 Wheat Ridge 102.3 KKWC-LP / KCUV petitions to rescind; stations are only 24km apart. It was apparently successful as KKWC-LP is now listed as "DKKWC-LP", indication of deletion.

Florida / FL

Auburndale 96.1 WSEU-LP / CC for NS
 Cedar Creek 89.5 WKSG / PG<100w-H/26kw-V (was V only)
 Columbia City 96.5 WJTK / NW 5kw/109m, 30-09-20/82-38-14
 Edgewater 88.9 WKTO / PG 29kw-V/72m, 29-01-32/81-05-15
 Fernandina Bch. 91.7 WJBC-FM / CC from WNLE
 Flagler Beach 90.3 WJLH / PR>15kw-V/56m
 Fruit Cove 94.1 WSOS-FM / CL granted from St. Augustine
 Gibsonton 96.5 WQRD-LP / NW 100w/29m, 27-49-57/82-22-49
 Inglis 99.3 WFWW / CC for NS
 Islamorada 105.5 WWWW / PR>131m, 25-05-29/80-26-37; CL from Marathon
 Key Largo 104.3 WORZ-LP / XR 25-19-05/80-16-55
 Merritt Island 93.5 WRDJ-LP / NW 100w/16m, 28-25-22/80-42-20
 Merritt Island 93.5 WRDJ-LP / NW 100w/16m, 28-25-22/80-42-20
 Ponte Vedra Bch. 106.5 WOKV-FM / CC from WGBB
 Port St. Joe 88.5 WDBW-LP / CC from WGBW-LP
 St. Catherine 89.3 WKFA / PG>4kw-V

Georgia / GA

Albany 101.7 WQVE / PR>6kw
 Camilla 105.5 WZBN / CC from WQVE
 Gibson 94.3 WTHP / NW 2.05kw/174m, 33-17-05/82-35-45
 Rockmart 107.1 WTSH-FM / PR 49kw/153m
 Valdosta 88.5 WVDA / PR>100kw-V/85m
 Vienna 92.1 WHHR / CC for NS
 Wrens 96.9 WAKB / PR 6.2kw/121m

Guam / GU

Tumon 106.9 KGCA-LP / NW 100w/20m, 13-30-13/144-48-11

Hawai'i / HI

Kahului 92.5 KORL-FM / CC for NS
Kaunakakai 102.3 KMCK-FM / PR<1.9kw/360m, 21-07-55/157-11-31

Idaho / ID

Caldwell 103.5 KSAS-FM / PA from 103.3
Idaho Falls 90.5 KAIO / NW 500w-V/161m, 43-32-37/111-53-07 (Air 1)
Rexburg 91.5 KBYR-FM / PC>1kw/14m, 43-49-02/111-46-42 (adds V, was H only)
Ririe 91.7 KSQS / NW 250w/162m, 43-32-37/111-53-07
Twin Falls 102.1 KISY / CC from KISI

Illinois / IL

Bartonville 99.9 WWCT / CC from WRXP
Bloomington 90.3 990602MS / NS 10kw/100m, 40-41-23/88-50-39
Casey 91.5 WLHW / NW 6kw/60m, 39-18-14/87-58-15
Clinton 95.9 WHOW-FM / PC>6kw/94m
East St. Louis 101.1 WMVN / FC from Modern AC to Rhyth. AC "Movin" & dropped HD
East St. Louis 101.1 WMVN / CC from WVRV
Eureka 98.5 WPIA / XR 40-42-57/89-27-50
Farmington 96.5 WRJA / CC from WWCT
Glasford 101.1 WXMP / CC from WVLE-FM
Pekin 88.5 WBNH / PC>48kw/154m, 40-38-53/89-33-26
Peoria 105.7 WIXO / CC from WXMP
Quincy 107.9 WQJC-LP / XR 39-56-20/91-24-03
Rantoul 95.3 WMYE / CC from WEVX
Springfield 95.9 WWGD-LP, WEAH-LP, NEW-LP / XR 39-49-44/89-35-44 (all three stations, which share time)
Springfield 95.9 WWGD-LP, WEAH-LP, NEW-LP / XR 39-49-44/89-35-44 dismissed (shared time on same transmitter)
Watseka 95.9 WMLF / CC for NS
West Frankfort 105.5 WPKC-LP / PG<24m, 37-54-57/88-45-46

Indiana / IN

Austin 92.7 WJCP-FM / PR>3.6kw/129m, 38-49-20/85-47-38
Columbus 90.3 WKJD / PR>8kw-V/118m, 39-10-41/86-11-52
Edinburg 100.3 WYGB / GA from 102.9
Fort Wayne 95.7 WQSW-LP / CC for NS
Greencastle 90.5 WIKL / FC; sold to K-Love
Hope 102.9 WXCH / GA from 103.1, Versailles
Lebanon 91.5 990420MB / AF 900w-V/75m, 40-16-51/86-31-39
Muncie 88.3 WWMU / PR>400w-V/83m, 40-07-09/85-28-31
Newburgh 106.1 WDKS / XC 37-52-57/87-32-28
Seymour 91.5 WJLR / PR>34kw
Wadesville 90.1 WRFM / PG>6kw

Iowa / IA

Clarinda 99.1 KKBZ / PR>100kw/223m, 40-44-48/95-04-31
Dubuque 88.5 KIAD / NW 750w-V/158m, 42-24-16/90-34-12 (AFR)
Fairfield 100.1 KRUI-LP / NW 100w/25m, 41-00-36/91-57-54
New London 97.3 KHDK / CC from KKNL

Kansas / KS

Ashland 99.7 NEW / PA, class C3, counterproposal to 105.5, denied
Ashland 105.5 NEW / PA, denied. Applicant did not express continuing interest.
Burlington 97.7 KSNP / PG>27.5kw/161m, 38-07-03/95-33-07
Kinsley 105.5 NEW / GA, counterproposal to Ashland
Sterling 94.7 KGGG / PC>50kw/148m, 38-13-50/98-18-53

Kentucky / KY

Brodhead 101.9 WPNS / CC for NS
Greensburg 105.7 WGRK-FM / GA from 103.1
Hazard 106.1 WYZQ-LP / XR 37-16-57/83-13-06
Hodgenville 107.3 WKMO / GA from 106.3
Horse Cave 106.5 WHHT / GA from 106.7
Lebanon Jct. 99.3 WTHX / GA from 107.3
Lewisport 102.7 WLME / GA from 102.9, class C3 to A, from Tell City, Ind.
Louisville 92.7 WXBH-LP / PR 41m, 38-14-47/85-32-21 dismissed
Lyndon 103.1 WRKA / GA from class A, St. Matthews
Morehead 96.3 WIVY / PG 2.15kw/158m, 38-10-33/83-24-28
Mount Vernon 102.9 WANK / CC for NS
St. Matthews 106.9 WVEZ / GA from Louisville

Louisiana / LA

Addis 105.5 KDDK / PG 6kw/100m, 30-19-25/91-16-51; CL from Franklin
Lake Charles 99.5 KNKT / PR>450m, 29-59-47/93-36-41
Lake Charles 99.5 KNKT / PG>311m, 30-17-26/93-34-35 cancelled ROA, going for 450m at 29-59-47/93-36-41 instead
Plaquemine 88.1 KPAQ / PG 2.9kw/94m, 30-15-41/91-18-40
Winnsboro 95.9 KMAR-FM / PC>6kw/54m, 32-11-02/91-44-51

Maine / ME

Skowhegan 107.9 WHQO / PR>15kw
Van Buren 98.1 WCXV / CC for NS

Maryland / MD

Cambridge 94.3 WINX-FM / PA from St. Michaels, from class A to B1, denied. Cambridge already has a station - if this proposal were granted, St. Michaels would lose its only station.

Fruitland	107.7 WKHI / GA from WKHI, class B1 to A
Newark	94.3 NEW / PA, class A, counter-proposal to WINX-FM at Cambridge, dismissed, assigned 94.9 instead.
Stockton	94.3 NEW / PA, class A, counter-proposal to WINX-FM at Cambridge.

Massachusetts / MA

Greenfield	107.9 WMCB-LP / PR>129m, 42-36-28/72-35-56
Greenfield	107.9 WMCB-LP / PG 100w/-58m, 42-36-28/72-35-56

Michigan / MI

Allegan	100.9 WOXC-FM / CL changed from Otsego
Crystal Falls	94.9 WUPG / CC for NS
Dowagiac	92.1 WHPD / CC from WDW-FM
Gaylord	88.1 WBLW / PG>5kw-V/260m, 45-10-12/84-45-04
Gaylord	88.1 WBLW / PG>5kw-V/260m, 45-10-12/84-45-04
Grand Rapids	104.1 WVGR / PG 96kw/221m, 42-39-18/85-31-38
Gwinn	100.3 WUPF / CC for NS
Harbor Beach	103.7 WCZE / PR 47kw/155m
Marshall	104.9 WRCC / CC from WWKN
McMillan	96.7 WMJT / NW 50kw/126m, 46-32-02/85-35-24
Mundy Twp.	104.7 WMRP-LP / PG<26m, 42-54-45/83-43-59
Republic	96.7 WUPZ / CC for NS

Minnesota / MN

Barnesville	95.1 KRVI / PR<100kw/251m, 46-40-28/96-13-05
Morris	89.7 KUMM / PG>3kw/38m, 45-35-11/95-53-57
Sebeka	89.3 KOPI / NW 99.23kw/143m, 46-33-08/94-39-03
Windom	89.9 QORB / NW 250w/52m, 43-51-15/95-07-30 (AFR)

Mississippi / MS

Brandon	97.7 WRJH / PC>100m, 32-10-31/89-56-10
Greenwood	104.3 WGNL / PR>44kw/154m, 33-40-45/90-04-07
Meridian	102.1 WUCL / CC from WMMZ
Moss Point	104.9 WBUV / PC 16kw/268m, 30-29-09/88-42-53
Pascagoula	105.9 WHGO / CC from WXRG
Port Gibson	100.5 WRTM-FM / PR>44kw/150m, 31-59-38/90-58-15
Saltillo	102.9 WWMR / CC for NS
Sumrall	93.1 WGDQ / PG>25kw/92m, CL from Hattiesburg

Missouri / MO

Auxvasse	94.9 NEW / PA, class A, dismissed. Applicant failed to express continuing interest. However, KSHE-94.7, already downgraded from class C to C0 to
-----------------	--

accommodate this allotment, will remain C0.

Boonville	93.1 KWJK-FM / GA from class A to C3
Eldon	101.9 KZWW / NW 42.7kw/161m, 38-16-46/92-35-06
St. Robert	98.9 KFLW / PC>6.7kw/191m, 37-52-42/92-01-04
Wheatland	102.3 NEW / GA from 93.1

Montana / MT

Belgrade	96.7 KISN / PC>18.5kw/248m
Big Sky	106.9 KSCY / QR from 96.3, 690w
Big Sky	106.9 KSCY / PG 690w/1014m, 45-16-41/111-26-57
Billings	104.5 KOBL / QG from 105.1, 100kw/124m
Columbia Falls	103.1 KRVO / NW 8kw/720m, 48-30-43/114-22-13
Joliet	105.9 KPBR / NW 100kw/134m, 45-39-31/108-34-14

Nebraska / NE

Grand Island	92.9 KGIA-LP / NW 100w/30m, 40-55-06/98-18-08
Grand Island	92.9 KGIA-LP / NW 100w/30m, 40-55-06/98-18-08
McCook	102.1 KZMC / CC for NS
North Platte	91.7 KPNE-FM / PC 16kw-H/78kw-V/288m
Omaha	100.7 KGBI-FM / PR<100kw/309m, 41-18-40/96-01-37
Scottsbluff	88.3 KLJV / PR>238m, 41-50-21/103-49-53
Shelton	92.7 KPVA-LP / NW 100w/26m, 40-47-42/98-42-31
Shelton	92.7 KPVA-LP / NW 100w/26m, 40-47-42/98-42-31

Nevada / NV

Las Vegas	88.9 KNPR / PR>1214m, 35-57-55/115-29-59; also see aux. section
------------------	---

New Jersey / NJ

Bridgeton	98.5 WZFI-LP / PR 52m
Cherry Hill	89.5 WSJI / FC; sold to K-Love
Long Branch	107.1 WWZY / PC 5kw/110m
Ocean Acres	98.5 WKMK / PR 3.4kw/136m, 39-42-56/74-17-31
Port Norris	107.7 NEW / PA, class A, denied
Wildwood Crest	93.1 WEZW / CC from WDTN

New Mexico / NM

Alamogordo	89.9 KYCM / NW 800w/497m, 32-49-47/105-53-13 (Your Christian Companion)
Bayard	102.9 KNFT-FM / PC 29kw/481m, 32-51-49/108-14-27
Cannon AFB	90.7 KKCJ / NW 25kw/59m, 34-26-58/103-37-03 (CSN)
Clovis	90.3 KELU / NW 14kw/121m, 34-26-21/103-12-22 (K-Love)
Lovington	91.3 KYCV / CC for NS
Questa	103.7 KLNN / NW 51kw/-64m, 36-39-23/105-37-57
Ruidoso	91.3 KYCT / CC for NS

New York / NY

Cape Vincent	102.7 WBDR / CC from WXKK
Copenhagen	106.7 WBDI / CC from WBDR
Glens Falls	90.7 WLJH / QG from 90.9, 40w-V/404m, 43-25-12/73-45-37
Malone	96.5 WNVV / PC 16kw-H/15.5kw-V/122m
New Rochelle	93.5 WRTN / CC from WVIP-FM
Oneonta	104.7 WUOW-LP / CX, DE (likely renewal problems)
Queensbury	105.7 WBZZ / CC from WNYQ
Remsen	93.5 WORK / PR 1.15kw/228m, 43-20-44/75-15-00
Rouses Point	88.7 WKYJ / PR 420w-V/4m
Saranac Lake	93.3 WSLP / PR<12kw/-63m, 44-15-36/74-01-22
S. Bristol Twp.	107.3 WSNP / CC from WNVE

North Carolina / NC

Aberdeen	104.1 WAOG-LP / CC for NS
Clemmons	105.7 WMKS / CC from WFMX
Creedmoor	99.9 WCMC-FM / PR 8kw/175m, 36-03-56/78-29-26
Dallas	91.7 WSGE / PC>7.5kw
Lenoir	103.3 WKVS / PC 910w/257m, 35-58-30/81-33-07
Louisburg	102.5 WKXU / PR 1.45kw/207m, 36-06-11/78-57-56
Raleigh	107.9 WVDJ-LP / NW 100w/26m, 35-52-54/78-42-57
Sanford	107.9 WDSG-LP / PR 126m, 35-29-33/79-11-28
Topsail Beach	93.7 WBNE / PR<6kw/100m, 34-18-04/77-48-07; CL from Wrightsville Beach
Wade	90.7 970109MN / FC; sold to K-Love
Weaverville	105.9 WCTU / PR>10kw/332m, 35-42-18/82-50-01; CL from Tazewell, Tennessee.
Wilmington	89.7 WDVV / PC>13.5kw/106m
Wilson	106.1 WRDU / PG<80kw/330m, 35-56-25/78-28-45

North Dakota / ND

Lincoln	89.1 KVLQ / PG>50kw
---------	---------------------

Ohio / OH

Baltimore	102.5 WHIZ-FM / PR 11kw/152m, 39-47-00/82-45-21
Bowling Green	93.5 WRQN / PC>7kw
Columbus	102.1 NEW-LP / AF dismissed
Fairfield	94.9 WPRV / CC from WMOJ
Logan	98.3 WLGN-FM / PR>6kw/67m, 39-31-43/82-23-06
Norwood	100.3 WMOJ-FM / CC from WIFE-FM
Norwood	100.3 WMOJ-FM / PC<3.6kw/130m, 39-07-19/84-32-52; CL from Connersville, Ind.
Portsmouth	104.1 WPAY-FM / PC>453m, 38-41-00/83-00-46
Westerville	103.9 WTDA / PR>5.3kw
Zanesville	102.5 WHIZ-FM / PG<11kw/152m, 39-47-00/82-45-21

Oklahoma / OK

Ada	89.5 KTGS / PC>8kw/154m, 34-41-01/96-45-44
Eldorado	96.9 KXOW / PR>25kw
Frederick	95.7 KYBE / PA from 95.9, class A, to class C3 on this frequency, counterproposal to both Crowell 97.9 proposals, dismissed
Medford	99.9 NEW / PA, class C3, counterproposal to Ashland, Kansas 105.5, denied
Mustang	99.7 KNID / PA from Alva, class C1 to C2, counterproposal to Ashland, Kansas 105.5, denied.
Okemah	103.7 KESC / PR>299m, 35-15-27/96-18-03; CL from Wilburton
Oklahoma City	92.5 KOMA / PR>100kw/472m, 35-33-36/97-29-07
Wilburton	101.3 KMCO / requested CL from McAlester

Oregon / OR

Baker	88.1 KDJC / PC>500w-V/552m, 45-07-26/117-46-48 (drops H)
Bend	90.5 KVLB / PC>1.4kw-V/193m
McMinnville	90.3 KSLC / PR<-17m
North Powder	89.5 KEFS / NW 120w/545m, 45-07-26/117-46-48 (CSN)
Powers	106.5 NEW / GA, class C2
Sisters	89.3 KVRA / NW 1.4kw-V/193m, 44-04-40/121-19-48 (K-Love)
Woodburn	96.3 KPVN-LP / CC for NS
Woodburn	96.3 KPVN-LP / PG 53m

Pennsylvania / PA

Altoona	100.1 WWOT / PC>3kw/291m, 40-34-11/78-26-25
Jenkintown	103.9 WPPZ-FM / PR 270w/338m, 40-02-30/75-14-11; see aux. list for additional station changes
Middletown	88.7 WZXM / PG>70w-H/7kw-V/216m, 40-02-07/76-37-19
New Wilmington	88.9 WWNW / PC>4kw-V/39m, 41-06-41/80-20-21
Philadelphia	88.1 WPEB / PC>21m, 39-56-57/75-13-09
Tafton	88.3 WPGP / FC; sold to K-Love

South Carolina / SC

Chesterfield	107.3 WVSZ / PR>4.5kw
Lancaster	107.1 WRHM / PR 2.4kw/160m, 34-51-34/80-47-59
Parris Island	103.1 WGZO / PC 9.5kw/127m, 32-13-36/80-50-53
Scranton	102.9 WZTF / CC from WWRK-FM

South Dakota / SD

Sioux Falls	90.9 KCSD / PR>6kw/65m, 43-34-28/96-39-19
-------------	---

Tennessee / TN

Belle Meade	97.1 WRQQ / GA from Goodlettsville
Crossville	99.3 WPBX / PR 1.4kw/210m, 35-59-11/84-59-09

Crossville 102.5 WOWF / PR 6.1kw/203m, 35-59-11/84-59-09

Goodlettsville 92.1 WQQK / GA from Hendersonv.

Hendersonville 99.7 WWTN / GA from Manchester, class C to CO

Loretto 98.3 WKSJ-FM / PG>18kw/115m, 35-09-00/87-17-45; CL from Pulaski

Memphis 102.7 WEGR / PG>100kw/287m

Millersville 106.7 WNFN / GA from Belle Meade, class A to C3

Munford 98.9 WKIM / CC from WMPW

Tiptonville 97.3 WTNV / CC from WOGY

Texas / TX

Albany 98.9 KNOS / PG>8kw/150m, 32-42-39/99-25-17

Archer City 107.7 NEW / PA from 97.5, counter-proposal to both Crowell 97.9 proposals and the Megargel 97.7 proposal, dismissed

Brownwood 96.9 KXYL-FM / PC 100kw/101m, 31-42-16/99-00-05

Caldwell 91.9 KALD / CC for NS

Comfort 95.1 KCOR-FM / PR<201m, 29-38-03/98-47-58

Crowell 97.5 NEW / PA from 106.5, counter-proposal to both Crowell 97.9 proposals and the Megargel 97.7 proposal, dismissed

Crowell 97.9 NEW / PA, class A, dismissed

Crowell 97.9 NEW / PA from 106.5, part of Rochester counterproposal, dismissed

Dallas 100.3 KJKK / XG 32-35-02/96-57-48

Dilley 98.9 KLMO-FM / PG 60kw/269m

Ingram 96.5 KAKI / CC for NS

Jefferson 104.5 KJTX / PR 4.42kw/117m

Kerrville 92.3 KRNH / PR 23kw/181m, 30-03-42/99-03-43

Know City 106.5 NEW / PA from 106.1, part of Rochester counterproposal, dismissed

Megargel 97.7 NEW / PA, class A, counter-proposal to both Crowell 97.9 proposals, dismissed

Mineral Wells 95.9 KFWR / PA from class C1 to C, counterproposal to both Crowell 97.9 proposals, dismissed

Rochester 105.5 NEW / PA, class A, counter-proposal to Crowell 97.9, dismissed

Zapata 106.3 NEW / GA, class A

Utah / UT

Brigham City 100.7 KYMV / CC from KEGH

Brigham City 106.9 KEGH / CC from KRAR

Cedar City 92.5 KXBN / CC from KXFF

Cedar City 92.1 KXBN / QC from 92.5, 95kw/532m, 37-38-43/113-22-22

Logan 89.5 KUSR / PC>-174m; see aux. for additional station changes

Salt Lake City 94.1 KODJ / PC 21.5kw/1219m, 40-39-35/112-12-05

St. George 101.9 KTIM-LP / NW 100w/-11m, 37-07-45/113-35-46

St. George 106.1 KSNM / PR<2kw/577m

St. George 106.1 KSNM / PC<2kw

Virginia / VA

Chincoteague 94.3 NEW / PA, class A, counter-proposal to WINX-FM at Cambridge, Md., dismissed, assigned 94.5 instead.

Chincoteague 96.5 WCTG / PR>20kw dismissed

Clifton Forge 103.9 WXCJ-FM / PR 530w/310m, 37-47-36/79-55-57

Colonial Hts. 95.3 WKHK / XR 37-26-22/77-26-02

Fredericksburg 99.9 WLMP-LP / XC 38-18-46/77-26-20

Fredericksburg 99.9 WLMP-LP / PC 79m, 38-18-46/77-26-20

Goochland 100.5 WZEZ / PR 2.6kw/155m, 37-47-37/77-55-57

Keswick 106.1 WCNR / QC from 106.3, 600w/312m, 37-59-06/78-28-48; CL from Churchville

Lakeside 100.9 WDYL / GA from 101.1, class A to B1, CL from Chester

Warsaw 107.5 WNNT-FM / GA from 100.9

Virgin Islands / VI

Charlotte Amalie 107.3 WVGN / PC<439m, 18-21-24/64-57-59 (unknown, but possibly a commercial NPR affiliate)

Washington / WA

Bellevue 89.9 KASB / QG from 89.3, 60w

Grandview 100.9 KARY-FM / PC 7.8kw/369m, 46-29-12/120-00-05

Manson 94.7 KZAL / PR 10.3kw/158m, 47-51-16/120-09-59

Mercer Island 88.9 KMIH / QG from 104.5, 47-34-21/122-13-05

Pullman 90.7 KZUU / PR<30m, 46-43-51/117-09-42

Seattle 96.5 KJAQ / PC 49kw/696m, 47-30-17/121-58-03

Twisp 106.3 KCSY / CC from KVLK

West Virginia / WV

Mount Hope 105.9 WTNJ / PG 4.4kw/467m, 37-56-51/81-18-29

Parkersburg 97.9 WSPW-LP / NW ?w/97m, 39-14-55/81-27-31

Ripley 98.3 WCEF / PR>6kw/94m

Wisconsin / WI

Brookfield 106.9 WFMR / PR 4.4kw/116m, 43-02-49/87-58-52

Madison 99.1 WIDE-LP / CC for NS

Mukwonago 101.3 WFAQ-LP / QR from 92.9, 42-52-22/88-22-39 (possibly due to powerful Milwaukee pirate on 92.9)

Platteville 89.1 WHSW / CC for NS (Wisconsin Public Radio)

Shawano 94.5 WRGW-LP / CC for NS

Sister Bay 105.1 WSBW / PR 3.1kw/142m, 45-14-04/87-05-27

Wyoming / WY

Casper 93.5 KWYX / CC for NS

Casper 95.5 KWYY / PC>591m

Casper 104.7 KTRS-FM / PC>554m

Cheyenne 93.7 KZDR / NW 25kw/35m, 41-08-04/104-41-32

Chugwater 99.5 KCUG / CC from KWHO
 Cody 96.7 KWHO / CC for NS
 Hanna 103.3 KHNA / CC for NS
 Newcastle 99.5 KRKI / PR>100kw-H/224m, 43-51-24/103-45-50
 Thermopolis 91.3 KUWT / PC>2kw/598m, 43-26-16/107-59-48
 Wheatland 107.5 KPAD / CC for NS

Taylorsville 95.9 WBBN / AF 25.5kw/190m, 31-37-59/89-28-40 (aux)

Nevada / NV

Las Vegas 88.9 KNPR / AF 2kw/1188m, 35-57-55/115-29-59 (aux)

New Mexico / NM

Questa 103.7 KLNN / AF 380w/-125m, 36-25-05/105-37-03 (aux)
 Questa 103.7 KLNN / NS 380w/-125m, 36-25-05/105-37-03 (aux)

Ohio / OH

Youngstown 101.1 WHOT-FM / AF 500w/175m (aux)
 Youngstown 101.1 WHOT-FM / NS 500w/175m (aux)

Pennsylvania / PA

Jenkintown 103.9 WPPZ-FM / NW 370w/283m, 40-02-30/75-14-11 (aux); see also the main list for changes
 Philadelphia 92.5 WXTU / NS 15kw/279m, 40-02-19/75-14-14 (aux)
 Sharon 102.9 WYFM / AF 500w/175m (aux)
 Sharon 102.9 WYFM / NS 500w/175m (aux)

Texas / TX

Spearman 89.5 KTOT / NW 1kw/292m (aux)
 Winnie 100.7 KKHT-FM / AF 4.5kw/178m, 29-46-06/95-01-04 (aux)
 Winnie 100.7 KKHT-FM / NS 4.5kw/178m, 29-46-06/95-01-04 (aux)

Utah / UT

Logan 89.5 KUSR / NW 820w/-180m, 41-44-43/111-48-16 (aux)
 Salt Lake City 94.1 KODJ / AF 470w/1168m (aux)
 Salt Lake City 94.1 KODJ / NS 470w/1168m (aux)

Wyoming / WY

Casper 96.7 KMGW / NW 2.1kw/554m (aux)

AUXILIARY CHANGES

Alabama / AL

Dothan 102.5 WESP / NS 890w/29m, 31-15-10/85-25-51 (aux)
 Headland 105.3 WDBT / NS 890w/29m, 31-15-10/85-25-05 (aux)

Alaska / AK

Anchorage 98.9 KYMG / NW 1.5kw-H/-66m, 61-08-34/149-51-53 (aux)

California / CA

Redding 97.3 KNCQ / NW 250w/459m, 40-39-06/122-31-32 (aux)
 Weaverville 103.1 KHRD / NW 700w/452m, 40-39-06/121-31-32 (aux)

Connecticut / CT

New London 100.9 WKNL / AF 3kw/84m (aux)
 New London 100.9 WKNL / NS 3kw/84m (aux)
 New London 100.9 WKNL / NW 3kw/84m (aux)

Florida / FL

Melbourne 95.1 WBVD / AF 1.2kw/64m, 28-04-42/80-35-56 (aux)

Guam / GU

Agana 90.9 KOLG / NW 4kw/286m, 13-25-53/144-42-36 (aux)

Maryland / MD

Baltimore 97.9 WIYY / AF 6.86kw/231m (aux)
 Baltimore 97.9 WIYY / NS 6.86kw/230m (aux)

Minnesota / MN

Lake City 102.5 KMFX-FM / NS 170w/14m, 44-00-12/92-29-07 (aux)

Mississippi / MS

Hattiesburg 104.5 WXRR / AF 64kw/131m (aux)
 Hattiesburg 104.5 WXRR / NS 64kw/131m (aux); Also see Sandersville
 Sandersville 94.3 WKZW / AF 13kw/131m, 31-25-50/89-08-51 (aux) (same site as WXRR Hattiesburg new aux)

SOURCES

Government: Canadian Radio-Television and Telecommunications Commission (CRTC), Federal Communications Commission (FCC)

This report includes a total of 381 changes to the FM dial. Of these, 33 are auxiliary changes.

-Chris Kadlec
 FM News Editor

PHOTO-NEWS



Jeff Kruszka, Editor
 5024 S. Braxton Ave.
 Baton Rouge, LA 70817
 jkruszka@bellsouth.net

November 2006

EVEN BETTER IN COLOR! CHECK OUT THE eVUD

More photos from Steve Rich of Indianapolis, IN:

Equipment: UHF: 2-Triax Unix 100's horizontally stacked @ 30 ft. w/CM 7775 preamp; VHF: Winegard low-band @ 13 ft. and Antennacraft high-band @ 27 ft. with Motorola signal booster; TV: Dell W1700; DTV: LG LST-3100A, RCA ATSC11, RS Accurian, Humax HFA100, and Hauppauge WinTV-D card.



KOTA-DT-2 Rapid City, SD
 922 mi Es seen 6/10/06



KPLR-DT-26 St. Louis, MO
 244 mi Tr seen 7/24/05



WCMH-DT-14 Columbus, OH
 164 mi Tr seen 6/17/06



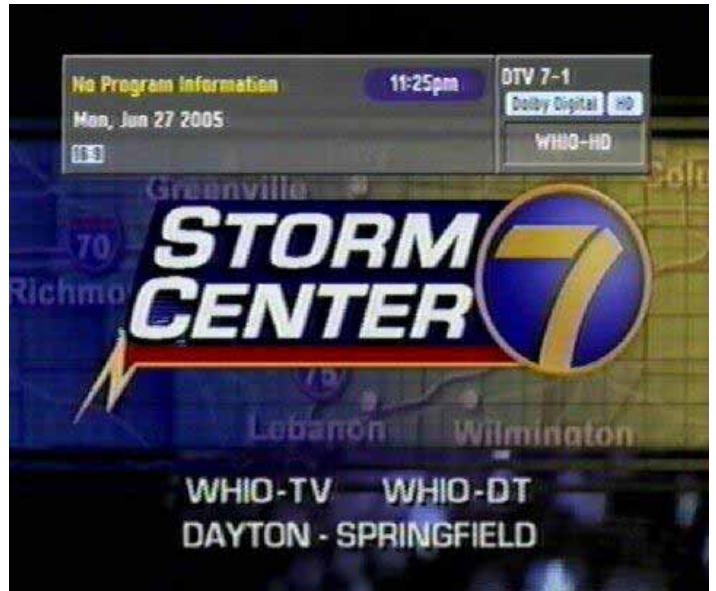
WDTN-DT-50 Dayton, OH
 100 mi Tr seen 6/27/05



WFLD-DT-31 Chicago, IL
 155 mi Tr seen 8/28/05



WGN-DT-19 Chicago, IL
155 mi Tr seen 7/21/05



WHIO-DT-41 Dayton, OH
101 mi Tr seen 6/27/05



WJBK-DT-58 Detroit, MI
231 mi Tr seen 6/17/06



WKMR-DT-15 Morehead, KY
190 mi Tr seen 5/31/05



WKRC-DT-31 Cincinnati, OH
104 mi Tr seen 8/5/06



WKYU-DT-18 Bowling Green, KY
200 mi Tr seen 7/20/06



WMFD-DT-12 Mansfield, OH
193 mi Tr seen 8/21/05



WNIT-DT-35 South Bend, IN
116 mi Tr seen 6/12/05



WOSU-DT-38 Columbus, OH
170 mi Tr seen 8/2/06



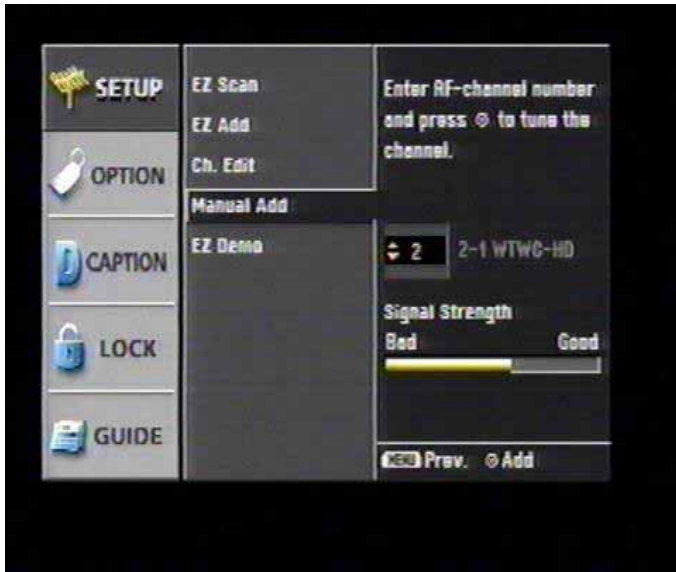
WSIL-DT-34 Harrisburg, IL
218 mi Tr seen 7/25/05



WSYM-DT-38 Lansing, MI
191 mi Tr seen 8/24/05



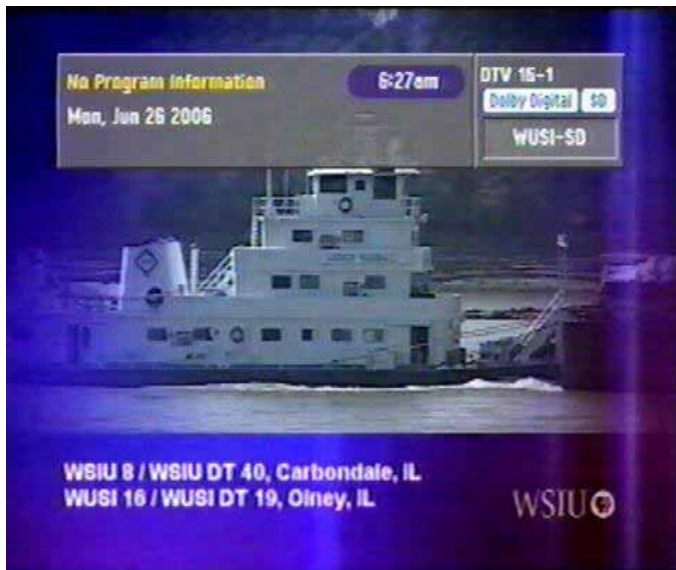
WTVG-DT-19 Toledo, OH
186 mi Tr seen 8/24/05



WTWC-DT-2 Tallahassee, FL
655 mi Es seen 5/28/06
"PSIP only"



WUAB-DT-28 Lorain, OH
251 mi Tr seen 8/28/05



WUSI-DT-19 Olney, IL
131 mi Tr seen 6/26/06



WVAH-DT-19 Charleston, WV
248 mi Tr seen 7/20/05

And here's a photo of Steve's antenna setup, with the Triax horizontal stack and the Antennacraft hi-band on the same mast:



73's,
Jeff



Eastern U.S. TV DX

Featuring reports from AL, CT, DC, DE, FL, GA, IN, KY, MA, MD, ME, MI, NC, NH, NJ, NY, OH, PA, RI, SC, TN, VA, VT, and WV, along with the Canadian Provinces of NB, NF, NS, ON, PEI, and PQ.

Send reports by the 15th of each month to:

Nick Langan
 1040 Riverview Drive
 Florence, NJ 08518
 E-mail: nick.langan@gmail.com

The Editor's Note

Well, the tropo season has not been as active as many of us would have liked so far, but as I write this conditions seem to be firing up along the Gulf Coast. Hopefully the book isn't closed on the TV DX season just yet.

As the year does come to an end, one idea that came to mind to close out the year would be for readers to send in year-end tallies of their DX loggings. In other words, simply just the number of new stations (including DTVs) logged, and then their overall log totals. If anyone is interested in doing this, feel free to send me your report.

Robert Grant (N8NU) 231 E Temperance Rd. Temperance, MI 48182

E-mail: Rg3d@yahoo.com (expect delays, no home Internet access)

Temperance is in SE corner of MI, lat 41.7794, lon -83.5437 (EN81fs)

Receivers: Sylvania (Funai) 6427GFF 27" color analog/digital SDTV;

Sanyo 21T63 analog-only 12" B&W; Yaesu VX-5 handheld and FT-857

Base/mobile amateur transceivers.

Antenna: Channel Master Advantage 3020 on chimney. All times EDT.

9/19 Tr

0050	<u>WOUB</u>	20	OH Athens	185
	WCPO	9	OH Cincinnati	190
	WBNS-DT	21	OH Columbus	128
			(first time w/video & audio)	
	WDKYt	56	KY Danville	T
	WDKY-DTt	4	KY Danville	T
	WPBO	42	OH Portsmouth	210
0100	CIII	6	ON Paris	188
0130	<u>WPBO-DT</u>	43	OH Portsmouth	210
0130	unID-DT	7		
	WUPXt	67	KY Morehead	T
			(S@H // WOAC)	
0137	<u>WOUB-DT</u>	27	OH Athens	185
0153	<u>WCHS</u>	8	WV Charleston	248
0157	<u>WOUC</u>	44	OH Cambridge	166

9/25 Tr

0619	<u>WAQP-DT</u>	48	MI Saginaw	103
------	----------------	----	------------	-----

10/8 Tr

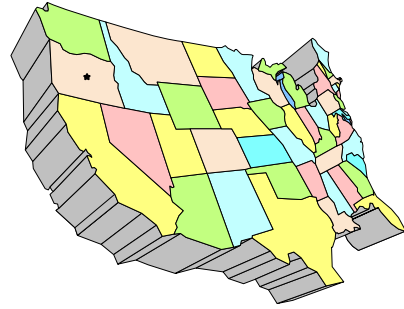
0100	WCIU	26	IL Chicago	211
	WNYB	26	NY Jamestown	226
0305	CHCH	11	ON Hamilton	216
	<u>CICO12</u>	12	ON Owen Sound	223
	CIII7	7	ON Midland	290
0325	<u>WNED</u>	17	NY Buffalo	252
0349	<u>CIII27</u>	27	ON Peterborough	316
0401	unID	11	"Soul Train"	
0500	<u>CBLFT8</u>	61	ON Kitchener	189
0546	<u>WINM-DT</u>	12	IN Angola	69

Says Robert: "DX slowed down in September, as can be expected. The tropo openings were a welcome surprise, since the weather did not appear to be good for tropo (drizzling and dreary on 9/19, and unseasonably cold on 10/8). WOUB-DT was interesting, not just because I was able to get them while WBGU was still on, but because of its multicast lineup. They used their actual RF channel 27 instead of virtual channel 20, they had four digital channels, 27.2, .3, .4 and .5, but no 27.1. Like WGTE, none of their digital programs matched the program on analog channel 20.

WDKY-DT was by far the most likely explanation for a DTV signal on 4. I also have tentatively seen WDKY-DT by E-skip during the famed opening of 7-6-2004 (which brought highband Es to many, but only tons of very close lowband Es here). Then, I had no receiver to ID a DTV signal, now the signal was not strong enough to overcome WCMH and WDIV, so, officially, the long sought "same station by skip and trop" still eludes me.

Is it just me, or does CICA12 really get out well when trop is in?"

WESTERN TV DX



DAVE WILLIAMS
3525 SW Timber Ave
REDMOND, OR 97756
beansdad@bendcable.com (541) 420-4704

Nothing much to report from the land of no tropo, with the exception of the sign-ons of Bend stations KOHD-DT 51 (ABC) and KTVZ-DT2 (18.2) with the CW. KTVZ-DT had been on with NBC for a little over a year. I'm hoping they will start carrying the Fox HD programming as well on a third DT channel as they now also own KFXO 39.

Been looking for Es from time to time but not paying too much attention. Boise and Seattle VHF's have been in from time-to-time but that's it.

73 – Dave Williams

John Ebeling

DXing from his cabin in Alborn, MN

August, 2006 – All loggings via Es

3	0900	2	WFMY	NC
		3	UNID	
		4	WUNC	NC Very strong w/ good pix
	1100	2	WUND	NC
	1143	2	WMAR	MD
	1420	4	UNID	CBC bug
12	1812	4	WTVY	AL (Es 2-4)
	2193	2	WMAB	MS
14	2000	2	UNID	French (NB in on FM)
	2000	4	UNID	French (symbol like a bull or deer head)

William Draeb

(920) 388-2350
 1314 Ellis St.
 Kewaunee, WI 54216-1802

1994 Sylvania Y1 Chassic, 40' Rohn 25G Tower, CH2026, Y713, and KV420 Antennas, CMA-HB and CMA-Ub Preamps.

A slow month for DX. Temps have been below normal and precip above normal.

September, 2006 – All loggings via Tr

6	2020	WOKZ-CA	50 (t), hvy CCI on WPWR-50
15	1912	WOCH-CA	41 Chicago, Korean program.
16	2000	Indy U's	
		CBLN	45 CFL Football, Montreal Vs. Vancouver
21	2035	UNID	46 "Mid-Michigan's CW-46" No call mentioned or seen.
26	0620	WBWT-LP	38 Milwaukee, ID slide with lg call letters floating across the screen under local WPNE.

Dennis Park Smith

3605 San Remo Drive
 Santa Barbara, CA 93105-2523
 Telephone (805) 687-7803

This report is for August 2006. The cool temperatures along the ocean vicinity and hot inland continued steadily for much of the time, and so did Southern California tropo on TV-FM to San Diego/Tijuana up to 200mi/320km on my indoor whip and bow-tie Variations at times may not have been due to unsettled weather but rather variations in the elevation of the air-layer boundary. For example, the apparent Aug-9 peak may have been a lower-than-average boundary, closer to my elevation of approximately 250 feet.

Jul apx 27 – Aug 2:	None
Aug 3-7:	Poor
Aug 8 am:	Fair
Aug 8 eve:	Good
Aug 9:	Very good (VHF almost excellent)
Aug 10-11:	Good
Aug 12-15:	Fair
Aug 16:	Poor
Aug 17-20:	Variably poor to fair
Aug 21-31:	Good (and into September)

Best of DX to all, Dennis

OLDIES BUT GOODIES...WRCV ch3 Philadelphia and KDAL ch3 in Duluth





Southern FM DX

John Zondlo
4009 Driftwood Circle
Yukon, OK 73099
jzondlo@cox.net
Deadline: 15th

For DXers in AL, AZ, AR, CA, CO, DE, DC, FL, GA, HI, KS, KY, LA, MD, MS, MO, NV, NM, NC, OK, SC, TN, TX, UT, VA, WV, Cuba & Mexico

November 2006

Fred Nordquist – 147 Travis Hill Road –
Moncks Corner, SC 29462 –
nordquis@homexpressway.net –
Statistics webpage:
<http://web.infoave.net/~fmjnordquist/statistics.html> – EDT

Denon TU1500RD (RDS chip mod connected to PC via serial port & using RDSDec SW), APS13 (23'AGL) w/CDR rotor - roof tripod mounted, Sony VCR SLV595HF & Total Recorder SW, CAC 11 coax leadins to quick-disconnect panel at window

- 9/1 Tr
2302 WKRX 96.7 NC Roxboro, 224
- 9/2 Tr
1353 WYYD 107.9 VA Amherst, RDS PI 967B 224
- 9/5 Tr
1130 WGAC 93.1 GA Warrenton, "News talk 580 WGAC" 155
- 9/20 Ms
1418 CFPL 95.9 ON London, RDS PI 1ECS (prev via Es) 676
- 9/22 Ms
2135 CJKX 95.9 ON Ajax, RDS PI 1ECS, prev via Es 676
- 9/22 Tr
2135 WBGB 106.5 FL Ponte Vedra Beach, "News Talk 690 WOKV" 224
- 9/30 Ms
0316 CJFM 95.9 PQ Montreal, RDS PI D852, prev via Es 913
- 9/30 Tr (local WAZF briefly off air this AM)
0907 WBZE 98.9 FL Tallahassee, "Star 98" 316
- 0910 WNBR 98.9 NC Windsor, "The Bear," k 256

Total logged now at 806. Some Ms catches were noted on my clearest frequency, 95.9. Some tropo noted 10/3 to NC and 10/5 to FL (Jacksonville), nothing new, tho.

Doug Smith – W9WI – Pleasant View, TN
w9wi.com

9/18 Tr

- 2330 WMAO 90.9 MS Greenwood, RDS "MPB" 286
- 2330 WBVX 92.1 KY Carlisle, "b92fm.com" 193
- 9/19 Tr
0014 KLSC 92.9 MO Malden, "92-9 The River," first DX ever heard through local WJXA 149
- 0016 WOFX 92.5 OH Cincinnati, "92.5 FM Classic Rock, the Fox" 234
- 0033 KBXB 97.9 MO Sikeston, "Southeast Missouri's new country, B97-9," over local WSIX 147
- 0038 WYMX 99.1 MS Greenwood, "Bob lives at 99.1" 269
- 0105 KEZS 102.9 MO Cape Girardeau, "102.9 K-103," over semi-local 153
- 0137 unID 92.7 ?? ??, "Rejoice, musical soul food"
- 0152 KHLS 96.3 AR Blytheville, "Thunder Country 96-3," over local WCJK 158



- 0623 W237BV 95.3 KY Hopkinsville, WVHM ID 45
- 0650 WBPT 106.9 AL Birmingham, "106-9 The Eagle" 201

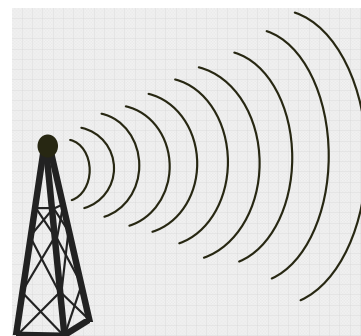
Didn't have much of the long haul stuff being heard/seen on the ham bands, but the signals out to about 250 miles were VERY intense. KLSC is the first station ever heard on 92.9 besides local WJXA, and DX was also heard over locals 92.1, 96.3, 97.9 and 102.9.



From the Editor

Thanks to Fred and Doug for their fine reports this month. Be looking for Ms this month with the Leonids shower, and here's hoping we'll get a few off-season Es openings, too.

Northern FM DX



Keith McGinnis
6 Ritter Road, Hingham, MA 02043
longwave@comcast.net 781-875-1944

For Dxers in the following states: CT IA ID IL IN MA ME MI MN MT ND NE NH NJ NY OH OR PA RI SD VT WA WI WY and all of Canada. Please submit by the 10th of each month. If possible please submit in the formats shown Below.

EDITORS NOTE: PLEASE NOTE THAT ANY TYPEWRITTEN OR HANDWRITTEN REPORTS MIGHT BE DELAYED TILL A LATER ISSUE AS TIME PERMITS. ALSO PLEASE KEEP REPORTS AS RECENT AS POSSIBLE (THE LAST 3 MONTHS SHOULD WORK FINE). THANK YOU.

EDITORS NOTE PLEASE SUBMIT ALL REPORTS IN THE FORMAT SHOWN BELOW. All Submissions must be in to me by the 10th of each month.

Jim Pizzi 100 Country Road Palmyra NY 14522 315-597-5898
Antennacraft FM @ 20 ft AGL
All New except where noted and unids

May 25 2006 Tr

1455	WXLK	92.3	Roanoke	VA	Lynchburg ads via TS
1550	WVBR	93.5	Ithaca	NY	Ads

May 26 2006 Es

1456	Unid	92.3			Beaver 92.3 (editors note....no Beaver 92.3 that I could find however there is a Diva 92.3 WDVW playing hot AC in LaPlace LA)
1501	Unid	95.7			Bayou 95.7 (ed note this is WKBU)
1504	WDGL	98.1	Baton Rouge	LA	Eagle 98.1
1510	KRVE	96.1	Brusly	LA	The River
1516	WBBN	95.9	Taylorville	MS	B-95, k
1538	KAFX	95.5	Diboll	TX	Fox 95.5

May 27 2006 Tr

2000	W215AB	90.9	WatkinsGlen	NY	WSKG ID
------	--------	------	-------------	----	---------

June 6 2006 Tr

2140	WXUR	92.7	Herkimer	NY	Calls
------	------	------	----------	----	-------

June 7 2006 Tr

0115	WYZY	106.3	Saranac Lake	NY	Y106.3, rock
0117	CJBC5	106.3	Peterborough	ON	FF
1028	WRED	97.1	Ashtabula	OH	Star 97.1, weather

June 8 2006 Tr

0155	WRRN	92.3	Warren	PA	92 Gold
0200	CJBX	92.7	London	ON	BX 93, k

June 9 2006 Tr

1657	CKBY	101.1	Smith Falls	ON	Y101
------	------	-------	-------------	----	------

June 10 2006 Tr

0009	WBRR	100.1	Bradford	PA	Cool 100, k
0013	WCKR	92.1	Hornell	NY	CK Country, k
0023	W282AC	104.3	Dansville	NY	// to WCOU 88.3
0028	WKNB	104.3	Clarendon	PA	Calls, k

0032	WCOU	88.3	Warsaw	NY	// to 104.3
0038	WZKZ	101.9	Alfred	NY	KZ 102, k
0100	WMHI	94.7	Cape Vincent	NY	ID (incl WMHR)
0122	WQHT	97.1	New York	NY	Ads
0131	WOKN	99.5	Southport	NY	calls, k
0141	WMJI	105.7	Cleveland	OH	Magic 105.7, oldies
0830	WFGI	95.5	Johnstown	PA	Froggyland, ads, promos

June 10 2006 Es

0823	WLDI	95.5	Fort Pierce	FL	So FL Ford Dealers Ad
1016	WDMQ	92.3	Hialeah	FL	Classica Noventi Dos
1018	WFLC	97.3	Miami	FL	Tentative Southern Chevy Olds
1107	KLKL	95.7	Minden	LA	Oldies 95.7, N. LA Car Club
1109	WELB	97.1	New Orleans	LA	Hip Hop
1112	KAMD	97.1	Camden	AR	K 97 Rock
1114	KRUF	94.5	Shreveport	LA	K 94.5 and ads
1120	KNOR	93.7	Krum	TX	area cities ment, The Breeze
1121	WTLT	93.7	Naples	FL	SW FL Promo
1122	Unid	93.7			The Garden Show. AR Radio Net
1123	KXKS	93.7	Shreveport	LA	Kiss Country 93.7, ads
1128	Unid	93.7			Family Life Net, Gospel Greats
1136	KTYL	93.1	Tyler	TX	Mix 93.1, ads, Longview ment
1141	KTAL	98.1	Texarkana	TX	98 Rocks
1142	Unid	92.1			SS Tex Mex music
1148	KCUL	92.3	Marshall	TX	SS, ment Tyler TX
1157	KIPR	92.3	Pine Bluff	AR	Promos, ads
1200	Unid	97.7			SS
1212	Unid	94.9			The River
1213	WTNT	94.9	Tallahassee	FL	94.9 TNT, calls
1226	Unid	92.7			Cix mx
1404	WTCD	96.9	Indianola	MS	Super Talk in stereo
1407	Unid	96.9			Bob FM
1409	KWCL	96.7	Oak Grove	LA	Oldies 96.7
1456	WLWI	92.3	Montgomery	AL	calls
1459	KYKC	100.1	Byng	OK	calls, k

June 10 2006 GW

1128	WYYY	94.5	Syracuse	NY	Y94, Ads
1218	WNTQ	93.1	Syracuse	NY	92Q, Ads

June 11 2006 Tr

0917	W249BC	97.7	Mattydale	NY	K Rock 100.9 106.5
2240	WFGY	98.1	Altoona	PA	Froggy 98 calls @ 2251
2255	CHFI	98.1	Toronto	ON	calls

June 12 2006 Tr

0110	CISS	105.3	Ottawa	ON	105.3 Kiss FM
0117	CHEZ	106.1	Ottawa	ON	Chez106.com
0120	Unid	107.9			NNE direction classical
0121	CJMJ	100.3	Ottawa	ON	Magic 100
0127	CHLX	97.1	Ottawa	ON	weak
0132	CJET	97.3	Smith Falls	ON	97.3 Jack FM
1049	WDDH	97.5	St. Mary's	PA	calls....The Hound
1055	Unid	97.5			SW direction Religion

June 13 2006 Tr

0834	Unid	97.5			direction SE
0838	WNKI	106.1	Corning	NY	WINK 106 ads
1030	W248AT	97.5	Corfu	NY	WZXV ID

June 14 2006 Tr

0037	WBGJ	100.3	Sylvan Beach	NY	Radio Disney
0040	WOTT	100.7	Henderson	NY	Real Rock 100.7
0050	WKRL	100.9	North Syracuse	NY	K Rock
0050	WKRH	106.5	Minetto	NY	100.9 & 106.5
0057	WFLK	101.7	Geneva	NY	K101-7
0058	WBBS	104.7	Fulton	NY	B104.7, k
0100	W251AJ	98.1	Melrose Park	NY	WNYR ID
0112	WMTT	94.7	Tioga	PA	The Met
0830	CING	95.3	Hamilton	ON	Country 95.3
0833	CJOJ	95.5	Belleville	ON	News, Classic Hits 95.3

June 15 2006 Tr

0142	WAQX	95.7	Manlius	NY	95X
1053	WDNY	93.9	Dansville	NY	Y93-9
1059	Unid	93.9			direction toward Ottawa CBC Radio 1
1101	WNED	94.5	Buffalo	NY	ID
1107	WFGO	94.7	Erie	PA	Froggy 94.7 weak but steady
1135	WTKV	105.5	Oswego	NY	TK 99 & TK 105

June 16 2006 Tr

0100	WZUN	102.1	Phoenix	NY	Sunny 102 and legal ID
0108	WTKW	99.5	Bridgeport	NY	TK 99 & TK 105

June 17 2006 Tr

0026	WIII	99.9	Cortland	NY	I-100 oldies
0030	CHCQ	100.1	Belleville	ON	Cool 100

June 18 2006 Es

1210	WCKT	100.1	Port Charlotte	FL	The New Cat Country 100
1217	WRUM	100.3	Orlando	FL	SS Ads
1219	WLLD	98.7	Holmes Beach	FL	Wild 99.7 Ads
1225	WQYK	99.5	St. Petersburg	FL	calls, k
1227	WIRK	107.9	W. Palm Beach	FL	wx & calls
1228	WMGF	107.7	Mount Dora	FL	Magic 107-7
1230	WAOA	107.1	Melbourne	FL	WA1A
1242	Unid	95.9			Coast Rock
1245	WHPT	102.5	Sarasota	FL	Car ads
1247	WFYV	104.5	Atlantic Beach	FL	Car ads
1249	WRBQ	104.7	Tampa	FL	Car ads
1250	WJSJ	105.3	Fernandia Beach	FL	Smooth Jazz 105
1401	WBTP	95.7	Clearwater	FL	ID Hip Hop
1402	WWRM	94.9	Tampa	FL	Magic 94.9 Soft Rock
1411	WAFZ	92.1	Immokalee	FL	Tentative SS
1448	WNFB	94.3	Lake City	FL	Mix 94.3
1450	Unid	92.7			Classical
1452	Unid	92.1			People calling in to tell stuff ed note: this is more than likely WJXR
1454	Unid	92.1			ad for a company called "On Call Energy"
1502	Unid	89.5			SRN News Net

June 18 2006 Tr

1400	WFLR	95.9	Dundee	NY	ID
1458	WJSL	90.3	Houghton	NY	ID WJSL & WXXI
1500	WRVO	89.9	Oswego	NY	ID of all WRVO stations

June 23 2006 Tr

0845	WQXR	96.3	New York	NY	Classical
0846	CFMK	96.3	Kingston	ON	ads
0852	WJSA	96.3	Jersey Shore	NJ	g

June 26 2006 Tr

0838	WENI	97.7	Big Flats	NY	92.7 & 97.7 Magic FM
0848	CHTZ	97.7	St Catherines	ON	ads
1035	CHFI	98.1	Toronto	ON	calls

June 27 2006 Tr

0822	CFLY	98.3	Kingston	ON	98-3 Fly FM
0825	WVIN	98.3	Bath	NY	ads – promos
0835	WTRY	98.3	Rotterdam	NY	98-3 TRY, oldies
1010	WUMX	102.5	Rome	NY	Mix 102-5
1025	WYTR	103.3	Brookeville	PA	ads, 102 Cool All Oldies
1033	WMXW	103.3	Vestal	NY	Mix 1033.com
1035	CBOQ	103.3	Ottawa	ON	Peggy Lee Song

June 28 2006 Tr

0043	WJYE	96.1	Buffalo	NY	calls
0107	WTSS	102.5	Buffalo	NY	Star 102-5
0145	WORD	101.5	Pittsburgh	PA	Chorus Singing Calls Full ID at @0200

0153	WMXO	101.5	Olean	NY	Mix 101.5
0220	WKST	96.1	Pittsburgh	PA	96-1 Kiss Pittsburgh
1026	WHWK	98.1	Binghamton	NY	98.1 The Hawk
1100	WFME	94.7	Newark	NJ	Full ID w/ NYC too
1538	WKPQ	105.3	Hornell	NY	Freedom 105

June 29 2006 Tr

1011	WJCA	102.1	Albion	NY	g
1015	WCIK	103.1	Bath	NY	Family Life Radio, g
1021	WRTS	103.7	Erie	PA	
1022	WQNY	103.7	Ithaca	NY	Airport promo
1032	WAEB	104.1	Allentown	PA	104.1 B104
1037	Unid	104.1			Cookston College in PA (WAEB again?)

June 29 2006 Es

1104	WOSN	97.1	Indian Rvr Shores	FL	Vero Beach ads. Ocean FM
1143	Unid	96.9			Country 96.9
1150	WKAK	104.5	Albany	GA	Sunbelt Ford
1157	WEBZ	93.5	Port St. Joe	FL	Panama City #1 93.5 The Beat
1158	WLWI	92.3	Montgomery	AL	relog....Montgomery's Leader
1211	Unid	93.3			Hip Hop
1223	WHJT	93.5	Clinton	MS	
1226	Unid				SS music
1128	WBBN	95.9	Taylorsville	MS	relog Laurel Ford ad local wx
1416	KAA243	42.06	Springfield	MO	Police?

July 1 2006 Tr

1101	CIGL	97.1	Belleville	ON	Promos
------	------	------	------------	----	--------

July 3 2006 Tr

1123	WSEN	92.1	Baldwinsville	NY	ID
1222	WFRY	92.3	Watertown	NY	Froggy 97
1226	WKGS	106.7	Irondequoit	NY	Ads Kiss FM
1228	WNVE	107.3	South Bristol	NY	107-3 The Nerve
1338	WGIX	95.3	Gouverneur	NY	Full legal ID @ 1400 w/ Cool 95.3

July 4 2006 Tr

1130	WPIG	95.7	Olean	NY	Ads, P-I-G
------	------	------	-------	----	------------

July 7 2006 Tr

1109	CKWF	101.5	Peterborough	ON	The Wolf
1112	WHXC	101.5	Homer	NY	Oldies Radio
1130	WWDG	105.1	DeRuyter	NY	Rock 105 The Dog

July 8 2006 Tr

1058	WOUR	96.9	Utica	NY	calls, ad
------	------	------	-------	----	-----------

July 10 2006 Tr

1037	WPGI	100.9	Horseheads	NY	ads
------	------	-------	------------	----	-----

July 11 2006 Tr

1027	WMJQ	104.9	Brockport	NY	K Love, g
1100	WYXL	97.3	Ithaca	NY	Lite 97.3

July 12 2006 Tr

1100	WCOV	93.7	Clyde	NY	ID w/ WCIY
1128	WBUF	92.9	Buffalo	NY	Jack FM
1132	WCCR	92.7	Clarion	PA	C-93

July 13 2006 Tr

1046	WMCR	106.3	Oneida	NY	ads, ID
1058	WKLL	94.9	Frankfort	NY	K Rock, ads

July 14 2006 Tr

1025	WJIV	101.9	Cherry Valley	NY	Victory 102 WJIV
1042	CBOQ	103.3	Ottawa	ON	relog CBC Radio 2

1710	CFXJ	93.5	Toronto	ON	Toronto News and Traffic
1717	CJKX	95.9	Ajax	ON	KX 96, traffic

July 15 2006 Tr

0111	WLKK	107.7	Wethersfield	NY	107-7 The Lake
0132	CKGE	94.9	Oshawa	ON	94-9 The Rock
0138	Unid				pointed to toward Coburg "Ontario's Newest Radio Station Soon To Start Broadacasting"
0142	CJTN	107.1	Trenton	ON	Quintes Lite Rock
0147	CKQM	105.1	Peteborough	ON	Country 105 ads
1506	WBFO	88.7	Buffalo	NY	NPR, calls

July 17 2006 Tr

1727	WHUG	101.9	Jamestown	NY	ads, Chatauqua 4H promo
------	------	-------	-----------	----	-------------------------

July 18 2006 Es

0115	WYRK	106.5	Buffalo	NY	calls, k
0217	WYJB	95.5	Albany	NY	B95.5 soft rock
0232	W237??	95.3			Love Radio WVOA
1119	KRRQ	95.5	Lafayette	LA	Q95-5 plus calls
1122	Unid	95.5			95-5...SJ
1130	WYAB	93.1	Benton	MS	Madison County Bank
1137	WDGL	98.1	Baton Rouge	LA	relog ads
1138	KMDL	97.3	Kaplan	LA	97.3 The Dog....local weather
1143	KRKA	107.9	Erath	LA	Hot 107-9 Hip Hop
1145	WTNM	105.5	Water Valley	MS	Oxfordhomes.com
1147	KPEL	105.1	Abbeville	LA	Golf 411 Local mens talk
1154	KKST	98.7	Oakdale	LA	Channel 5 Radar Promo
1158	KTDY	99.9	Lafayette	LA	calls
1200	KNBB	99.3	Rustin	LA	Espn Sports, calls
1200	KXKC	99.1	New Iberia	LA	Acadiana's New Country & calls
1205	KOYE	96.7	Frankston	TX	Muisica Mexicana
1211	WUSJ	96.3	Jackson	MS	U.S. 96.3 Jackson's Country Station
1215	KQID	93.1	Alexandria	LA	Q93
1217	KYKZ	96.1	Lake Charles	LA	Kicks 96
1217	KRVE	96.1	Brusly	LA	relog Promos Louisiana Gambling
1219	KKTX	96.1	Kilgore	TX	Ad.. Mutual Mart in Longview
1221	KPCH	97.7	Dubach	LA	The Peach....oldies
1223	KZRZ	98.3	West Monroe	LA	Insurance ad in W. Monroe Sunny 98
1225	KUEZ	100.1	Lufkin	TX	Texas State Optical in Lufkin
1227	Unid	101.9			SS soft Latin mx
1235	Unid	96.7			Another Latin w KOYE

July 20 2006 Tr

1027	CIWV	94.7	Hamilton	ON	Smooth Jazz 94-7 The Wave
1049	W234AZ	94.7	Brighton	NY	Family Net WCIY

July 22 2006 Tr

1138	WOLF	96.7	Oswego	NY	Radio Disney
1148	WWYL	104.1	Chenango Brdg	NY	ads
1156	WHTT	104.1	Buffalo	NY	calls
1223	WMRV	105.7	Endicott	NY	Star 105.7

July 23 2006 Tr

1038	WLVY	94.3	Elmira	NY	94 Rock
1040	WLTS	94.5	State College	PA	Lite 94.5
1105	CBLU	94.3	Huntsville	ON	wx—ID'd as CBC 1 98.7 Owen Sound tent
1115	CJBC	94.3	Belleville	ON	ff

Ralph Strobel - 106 E. Davidson St. - Muncie, IN 47303

Equipment: McIntosh MR-78 FM Tuner with two CM Stereo Probe 9 Antennas and rotors at 38 and 32 feet above ground separated by 23 feet with the use of Bolin phase box and RDS. @=new. Numbers at end include mileage.

January 10 2006 tr

0300	@WRXH	89.3	Plymouth	IN	g, 400w h,v 94
------	-------	------	----------	----	----------------

January 14 2006 ms

0010 KSMX 107.5 Clovis NM "Mix-107.5," SID 1059

February 3 2006 tr

2012 @WTMK 88.5 Lowell IN g, phased o/WMUB 131

February 5 2006 ms

0020 KKDM 107.5 Des Moines IA previous tr 441 ",,,people do their favorite television shows...in Des Moines..."

May 24 2006 tr

0200 @WWLO 89.1 Lowell IN g, AFR 131

May 26, 2006 Es

1420 WFLZ 93.3 Tampa FL k 862
1430 WGWD 93.7 Gretna FL k 655
1436 WGYL 93.7 Vero Beach FL ads 913
1450 WSCF 91.9 Vero Beach FL g 913

May 28 2006 Es

1215 WIKX 92.9 Charlotte Harbor FL k 933
1228 WMKL 91.7 Key Largo FL g, 1083
1236 UNID 99.9 Cuba? Sure sounded like a Cuban to me!
1240 WWGR 101.9 Fort Myers FL ads 959
1247 @WGCX 95.7 Navarre FL calls, 680
1256 WGYL 93.7 Vero Beach FL ads 913
1300 WBRH 90.3 Baton Rouge FL sm. j 752
1302 @WJZD 94.5 Long Beach MS sr, RDS: JZ-94.5 710
1317 KBON 101.1 Mamou LA k, RDS: KBON 770
1320 KFTE 96.5 Breaux Bridge LA ads, 778
1328 KHLA 92.9 Jennings LA r, "LA-92.9" 802
1332 KYKR 95.1 Beaumont TX k 854
1339 KLTG 96.5 Corpus Christi TX r 1098
1355 KMDL 97.3 Kaplan TX ads, "The Dog" 804
1400 KSTX 89.1 San Antonio TX c 1050
1400 @KZFT 90.5 Fannett-Beaumont TX g 867
1403 KAJN 102.9 Crowley LA wx 794
1408 KITE 93.3 Port Lavaca TX o 1025
1425 KQUR 94.9 Laredo TX r 1093
1426 KVET 98.1 Austin TX ads 978
1446 KROM 92.9 San Antonio TX ads 1050
1450 KKBA 92.7 Kingsville TX ad 1131
1453 KLBJ 93.7 Austin TX ads 978
1500 KAYK 88.5 Victoria TX g 1028
1500 KUT 90.5 Austin TX c, 978
1502 KLEY 95.7 Jourdanton TX SAT, L, SS 1080

May 31 2006 Es

1644 @KTZU 94.9 Velva-Minot ND op, "The Zoo" 943 (ND NPR's on 88.9, 90.5 x and 91.5)

June 4 2006 Es

1040 WMGE 94.9 Miami Beach FL sr, "Mega 94-9" 1040
1043 KMXR 93.9 Corpus Christi TX o 1098
1100 KAMU 90.9 College Station TX ID 905
1111 KQUR 94.9 Laredo TX r 1193
1116 @KSMG 105.3 Seguin TX r, "Magic-105.3" 1023
1123 KBPA 103.5 San Marcos TX r, "Bob-FM" 1006
1127 KPEZ 102.3 Austin TX r, "The River" 978

June 8 2006 tr

0507 @WXNU 106.5 St. Anne IL k, "X-106-5," 137 phased o/WDSJ

June 8 2006 Es

1400 @KWYH 88.1 Cheyenne WY g, AFR 1021
1425 KSQY 95.1 Deadwood SD ads 982
1440 KAML 96.9 Gillette WY r, "The Edge" 1068
1545 CBK 96.9 Regina SK c, "CBC Radio 2" 1173

June 9 2006 Es

1922	WJIS	88.1	Bradenton	FL	g 892
1929	WIKX	92.9	Charlotte Harbor	FL	ads, k 933

June 10 2006 Es

1100	WRQC	92.5	Estero-Fort Myers	FL	"92-5 The Hog" 970
1102	WLMS	88.3	Lecanto	FL	g, "Spirit 90.5" 800

June 12 2006 tr

1700	@W249BG	97.7	Richmond	IN	/WJYW 88.9, g 35
------	---------	------	----------	----	------------------

June 16 2006 Es

1007	KUWR	91.9	Laramie	WY	nx 1060
------	------	------	---------	----	---------

June 21 2006 Es

2035	KTEP	88.5	El Paso	TX	wx 1316
------	------	------	---------	----	---------

June 27 2006 Es

1132	WSJT	94.1	Lakeland	FL	sm. j 861
1140	WOGK	93.7	Ocala	FL	k 782

June 28 2006 tr

0200	@WQSG	90.7	Lafayette	IN	g, AFR, v only 81
------	-------	------	-----------	----	-------------------

June 29 2006 Es

0101	KQUR	94.9	Laredo	TX	s, 1193
0110	KTFM	94.1	Floresville	TX	s 1054

June 30 2006 Es

1222	XHCAO	89.1	Reynosa	TM	SS ads 1226
------	-------	------	---------	----	-------------

July 3 2006 Es

1900	@KPMB	88.5	Plainview	TX	g 990
1900	KBAH	90.5	Plainview	TX	g 990
1901	KFMX	94.5	Lubbock	TX	r 1018

July 4 2006 Es

1558	WJFM	88.5	Baton Rouge	LA	g 752
1603	KQKI	95.3	Bayou Vista	LA	wx, k 797
1620	KFTE	96.5	Breau Bridge	LA	rp, 778
1658	XHZMI	91.1	Monclova	CL	SS 1302

July 5 2006 Es

1119	KNEL	95.3	Brady	TX	k 1002
1133	KGZ	88.1	Abilene	TX	g 961
1422	KTFM	94.1	Floresville	TX	s 1054
1428	KPAC	88.3	San Antonio	TX	c 1050

July 6 2006 Es

1000	KFRQ	94.5	Harlingen	TX	r 1210
1008	KVMV	96.9	McAllen	TX	g mono 1219
1043	XHSRO	92.5	Monterrey	NL	SS 1325
1100	XET	94.1	Monterrey	NL	SS 1325

July 7 2006 Es

1833	KEDT	90.3	Corpus Christi	TX	nx 1098
1834	KVRT	90.7	Victoria	TX	wx 1028
1835	KAMU	90.9	College Station	TX	905
1837	KIVY	92.7	Crockett	TX	PSA 834
1840	KQUR	94.9	Laredo	TX	ads 1193
1842	KTFM	94.1	Floresville	TX	ads 1054
1848	KTXK	91.5	Texarkana	TX	nx 669

1852	@KVLT	88.5	Temple	TX	g, "K-Love" 919
1900	KSTX	89.1	San Antonio	TX	nx mono 1050
1900	KUT	90.5	Austin	TX	978
1910	KONO	101.1	Helotes	TX	o 1054
1918	KLBJ	93.7	Austin	TX	r 978
1923	KRPT	92.5	Devine	TX	k 1083
1950	KPSM	99.3	Brownwood	TX	gr 960
1954	@KGLF	88.1	Doss	TX	gr, "K-Love" 1025 (# 74 on 88.1, my best frequency)
2000	@XHPSP	106.3	Piedras Negras	CL	SS 1172
2009	KOEM	88.5	Mesquite	TX	r 807
2020	KNON	90.9	Dallas	TX	g 815
2033	KCBI	89.3	Dallas	TX	g 815

July 8 2006 Es

1145	WAYF	88.1	W Palm Beach	FL	gr 980
1200	KUT	90.5	Austin	TX	978
1200	KYFX	90.9	San Antonio	TX	g 1050

July 10 2006 tr

0200	@WYBV	89.9	Wakarusa-Goshen	IN	g 102
------	-------	------	-----------------	----	-------

July 12, 2006 Es

1900	KEOM	88.5	Mesquite	TX	r 807
1907	KGZ	88.1	Abilene	TX	g 961
1922	KNIN	92.9	Wichita Falls	TX	r 844
1928	KDKR	91.3	Decatur	TX	g, phased o/WCRD 829
1929	KSYE	91.5	Frederick	OK	g 850
1932	KKNG	93.3	New Castle	OK	r 745
1933	KOLI	94.9	Electra	TX	k, "The Outlaw" 858
1940	@KZCD	94.1	Lawton	OK	r 812
1944	KYCS	95.1	Rock Springs	WY	r 1249
1947	KIGN	101.9	Burns	WY	r 996
1955	@KRMR	107.3	Hayden	CO	ads, mono (Terrible buzz in signal)
1957	KLEN	106.3	Cheyenne	WY	ads 1021
2000	@CBKS	105.5	Saskatoon	SK	nx 1309
2021	KQSW	96.5	Rock Springs	WY	ads 1249
2040	@CFGW	94.1	Yorkton	SK	r, ads, wx, "Fox-FM" 1132
2050	@CIWM	91.5	Brandon	MB	k, ads, "NCI" 975
2057	CFCQ	92.9	Saskatoon	SK	k 1309
2120	CJDJ	102.1	Saskatoon	SK	ads, "Rock-102" 1309

July 14 2006 Es

1629	@CION-2	106.7	Saguenay	QC	FF 909
1632	@CBRX-1	107.5	Matane	QC	c, FF 1064
1638	@CHRM	105.3	Matane	QC	FF 1064
1643	@CBJE	102.7	Saguenay	QC	EE 909 (Traffic detours ment QC cities)
1648	CJAB	94.5	Saguenay	QC	FF, RDS: Energie 909
1700	@CBGA-7	101.1	Ste-Anne-des-Monts	QC	FF 1123

July 15,2006 Es

1325	KZOR	94.1	Hobbs	NM	r 1114
1328	KPER	95.7	Hobbs	NM	k, 1114
1333	@KLZK	104.3	Brownfield	TX	r, "Star-104.3" 1053
1342	KKCL	98.1	Lorenzo	TX	r, "Cool-98" 999
1400	KJAK	92.7	Slaton	TX	g 1014
1402	KFMX	94.5	Lubbock	TX	r 1018
1404	@KMMX	100.3	Tahoka	TX	r, "Mix-100" 1031
1407	KONE	101.1	Lubbock	TX	ads, "Rock-101.1" 1018
1425	@KRMQ	101.5	Clovis	NM	o, ads, "Q-101.5" 1059
1745	KUSO	92.7	Albion	NE	k 667
1753	KLXS	95.3	Pierre	SD	ads, PSA 818
1800	@KKRY	92.3	Miles City	MT	k, phased o/WTTS 1116 (ex-KMCM 92.5 MT Miles City)
1805	KDLO	96.9	Watertown	SD	ad 680
1808	KMMR	100.1	Malta	MT	ds, k 1247
1816	KDSR	101.1	Williston	ND	k, "Coyote Country" 1058
1827	@CHAT	94.5	Medicine Hat	AB	k, "Chat-FM 94.5" 1409 (New Province #8 – x Took 35 years to hear Alberta!)
1830	KTHC	95.1	Sidney	MT	k, "Power-95" 1069
1848	@CHSN	102.3	Estevan	SK	r, "Sun-102.3" 1046
1900	KGVA	88.1	Fort Belknap	MT	Agency, pow-wow 1288
1901	KVCK	92.7	Wolf Point	MT	baseball game, ads 1144

1906	@CKFI	97.1	Swift Current	SK	op, "Magic-97" 1296
1911	@CILG	100.7	Moose Jaw	SK	k 1207
1918	KRZN	96.3	Billings	MT	p, "The Zone" 1228
1920	CFMC	95.1	Saskatoon	SK	k, "C-95" 1309
1922	@CKCK	94.5	Regina	SK	rp, "Jack" 1173
1925	KYYA	93.3	Billings	MT	r, "Y-93.3" 1228
1927	CFQC	92.9	Saskatoon	SK	ads, "Hot-93" 1309
1933	@CJMK	98.3	Saskatoon	SK	r, "Magic-98.3," 1309 phased o/WZZY
1940	@KTPT	88.3	Rapid City	SD	g, "The Point" 953
1943	KVCK	92.7	Wolf Point	MT	r 1144
1952	@CJVR	105.1	Melfort	SK	k, Pike Festival Report 1255
2002	@CJVR-2	106.3	Waskesiu Lake	SK	k, //105.1 1255

July 15 2006 tr

2350	@KTTB	96.3	Glencoe	MN	s, "B-96," Mpls. ads 547
------	-------	------	---------	----	--------------------------

July 17 2006 tr

0007	WIZM	93.3	La Crosse	WI	r 392
0018	KEEZ	99.1	Mankato	MN	r, phased o/WJPB-LP 521
0030	KNXR	97.5	Rochester	MN	m 451
0040	KIAQ	96.9	Clarion	IA	k 467
0114	UNID	101.5			"True-Country"

July 20 2006 tr

0300	@WVMG	100.7	Normal	IL	r, "Magic-100.7" 191
------	-------	-------	--------	----	----------------------

July 21 2006 tr

0001	@WIZF	101.1	Cincinnati	OH	s, "The Wiz," 90 (ex-100.9) new frequency
------	-------	-------	------------	----	---

July 24 2006 Es

1105	CJXL	96.9	Moncton	NB	ads, k, "XL-96.9" 1116
------	------	------	---------	----	------------------------

September 5 2006 tr

2000	@WHNI	88.5	Rochester	IN	g, AFR, 250w 75
------	-------	------	-----------	----	-----------------

September 18 2006 tr

1800	@WMWX	88.9	Cincinnati	OH	op, "Class X," 76 phased o/WJYW
------	-------	------	------------	----	---------------------------------

September 21 2006 tr

1802	@WMOJ	100.3	Norwood	OH	so, "Mojo-100.3" 88 (ex-WIFE 100.3 IN Connersville), 39 (Tower move to OH)
------	-------	-------	---------	----	--

September 28, 2006 tr

0018	@WGRY	100.3	Grayling	MI	k, phased o/WLKI 312
------	-------	-------	----------	----	----------------------

Comments: Others certainly had a better E-skip summer than I did here in East Central Indiana. I was on vacation most of August, so no stations logged in that month. Many thank yous to Charles Gauthier for listening to my tape of French Canadian stations heard on July 14 and positively identifying them for me. Still nothing logged from BC or NF. I telephoned CHAT Medicine Hat and played my tape for the nice lady there. She said it was indeed "Chat-FM." 73 - Ralph

Mike Cherry VE7SKA, Salt Spring Island BC, Canada

mikecherry@telus.net

DX from Tofino, BC & Pacific Rim Nat'l Park (aka – "Long Beach") logging times: PDT

Distances are calculated from Tofino, BC

* = denotes loggings from Radar Hill, 400' ASL using 1990 Toyota FM stereo radio

= denotes loggings at sea level using 2001 GE Superadio III with NO external antenna, built-in 'whip' antenna only

\$ = stereo

Oct 9 tropo #

1822	KCRX	102.3	Seaside	OR	229	miles local ads, classic rock
1834	KTIL	94.3	Tillamook	OR	262	adult standards, frequent ID
1836	CKXM1	97.1	Sooke	BC	89	"The Zone" translator, rock, 40 watts
1839	KJET	105.7	South Bend	WA	184	"The Jet", classic rock
1843	KVIX	89.3	Port Angeles	WA	107	//KPLU, Seattle traffic
1847	KAQX	99.7	Long Beach	WA	194	Ocean Shores wx & tides, ads
1850	KDEP	105.5	Garibaldi	OR	216	"Coast 105 weather"
1856	KVAS	103.9	Illwaco	WA	216	regional wx & tides
1857	KMHD	89.1	Gresham	OR	282	jazz & legal ID
1858	CBCV	99.5	Sooke	BC	89	"CBC Radio 1" 40 watt translator
1859	KMUN	91.9	Astoria	OR	209	ID, listener support promo
1900	CBU2	105.1	Sooke	BC	89	//CBU "Radio 2" 40 watt translator
1901	KXXK	95.3	Hoquiam	WA	171	ID, Christian PSA
1903	KIXT	95.9	Bay City	OR	216	"Kix 96" hot country music
1906	KCYS	98.1	Seaside	OR	229	weak, ID & country music
1910	KPPT	100.7	Depoe Bay	OR	307	"100.7 Boss FM" jingle, oldies
1917	KYTE	102.7	Newport	OR	307	Newport wx, "Kite FM"
1922	KINK	101.9	Portland	OR	279	concert promo
1927	KXJM	95.5	Portland	OR	282	"Jammin" urban oldies
1930	K222AU	92.3	Forks	WA	91	//Northwest Public Radio, ID
1933	KFIS	104.1	Scappoose	OR	265	"The Fish" Christian cont. music
1937	KBDB	103.9	Forks	WA	94	local ads, wx, weak under KVAS
1947	KIJZ	105.9	Vancouver	WA	279	"Portland's Smooth Jazz 105.9"

Oct 10 tropo #

0810	KCRX	102.3	Seaside	OR	229	classic rock, ads,
0816	KMUN	91.9	Astoria	OR	209	program promo
0823	KVAS	103.9	Illwaco	WA	216	local ads, beach report
0829	KOPB	91.5	Portland	OR	279	Oreg. Public Radio ID
0838	KVMX	107.5	Portland	OR	279	"Movin" urban oldies
0844	KNRK	94.7	Camas	WA	282	Portland ads, "94-7 FM"
0850	KMCQ	104.5	The Dalles	OR	311	Portland ads, wx
0853	KUKN	105.5	Longview	WA	237	Longview Hi-school sports promo
0855	KUPL	98.7	Portland	OR	279	local ads, country music
0857	KACS	90.5	Chehalis	WA	199	Christian talk & underwriting, ID
0859	KFMY	97.7	Raymond	WA	180	ID with Olympia, Tacoma,
0900	KITI	95.1	Winlock	WA	211	legal ID, "Live 95", 90's pop
0901	KLTH	106.7	Portland	OR	279	ID, faded fast
0904	KBPS	89.9	Portland	OR	279	ID & classical music
0912	KXPC	103.7	Lebanon	OR	319	country music & Corvallis ad
0918	KJET	105.7	South Bend	WA	184	coast wx, "The Jet" jingle, 80's pop
0923	KLOO	106.3	Corvallis	OR	325	Corvallis wx & local PSA
0927	KRKT	99.9	Albany	OR	325	mixing with KISW Seattle
0934	KWJZ	98.9	Seattle	WA	197	"Smooth Jazz KWJZ" & promo
0938	KPLZ	101.5	Seattle	WA	190	local ads
0948	KCMS	105.3	Seattle	WA	172	Christian AC w/ID
0955	KSER	90.7	Everett	WA	173	ID & listener-support PSA
0959	CBU1	92.1	Victoria	BC	96	"CBC Radio 2" ID, news
1000	Unid	100.9		WA??		KPLU Tacoma translator
1008	KAFE	104.3	Bellingham	WA	126	"Soft Rock Café"
1013	CHQM	103.5	Vancouver	BC	118	Vancouver ads,
1026	KBCS	91.3	Bellevue	WA	183	pledge-drive
1042	KLYN	106.5	Lynden	WA	126	"Praise 106.5"
1046	KPLU	88.5	Tacoma	WA	197	"NPR news & all that jazz"
1059	KZAZ	91.7	Bellingham	WA	141	NW Public Radio ID
1102	KEXP	90.3	Seattle	WA	190	"listener powered KEXP"

Oct 10 tropo *

1847	KCRF	96.7	Lincoln City	OR	307	calls & classic rock music, \$
1851	KSHL	97.5	Gleneden Beach	OR	307	"K-Shell" country music, \$
1854	KLOO	106.3	Corvallis	OR	325	ads, "106.3 KLOO Timeless Rock"
1858	KWAX	91.1	Eugene	OR	369	legal ID, underwriting ann. \$
1859	KODZ	99.1	Eugene	OR	364	legal ID, weak "Cool 99.1 FM"
1904	KZEL	96.1	Eugene	OR	369	concert promo, ad \$
1907	KSND	95.1	Monmouth	OR	304	"Salem's FM radio station"
1910	KFLY	101.5	Corvallis	OR	327	"101.5 KFLY Oregon's Real Rock" \$
1912	KPPT	100.7	Depoe Bay	OR	307	"100.7 Boss FM" oldies, \$
1916	KYTE	102.7	Newport	OR	307	"102.7 Kite FM" hot AC music \$
1925	KNCU	92.7	Newport	OR	307	"U-92 Newport's New Country"

1931	KLCO	90.5	Newport	OR	307	//KLCC – both station IDs
1939	KNRQ	97.9	Eugene	OR	396	local references, weak
1941	Unid	101.7		??		country music
1944	KCYS	98.1	Seaside	OR	229	country music, wx & tides
1954	KIJZ	105.9	Vancouver	WA	279	“Portland’s Smooth Jazz 105.9” \$
1958	KBVM	88.3	Portland	OR	279	Portland’s Catholic comm. refs.
2000	KOPB	91.5	Portland	OR	279	“Oregon Public Radio” \$
2009	KMHD	89.1	Gresham	OR	282	NPR jazz show promo
2022	KFIS	104.1	Scappoose	OR	265	“The Fish” , Christian PSA
2029	KACS	90.5	Chehalis	WA	199	ID, underwriting anncement, PSA
2034	KUKN	105.5	Longview	WA	237	wx, ads “Cookin’ Country 105-5” \$

Oct 11 tropo #

0822	CKLG	96.9	Vancouver	BC	118	“96-9 Jack FM”
0829	CBU	105.7	Vancouver	BC	118	“CBC Radio 2”
0829	CBU1	92.1	Victoria	BC	96	//CBU-FM Radio 2
0830	CBCV	90.5	Victoria	BC	96	“CBC Radio 1” ID
0838	KISM	92.9	Bellingham	WA	126	“92.9 KISM” op
0849	KLYN	106.5	Lynden	WA	126	“106.5 Praise FM”
0859	CKAY	91.7	Sechelt	BC	99	“CK-FM” (75 mi. of rugged mtns !)
0901	KAFE	104.3	Bellingham	WA	126	“Soft Rock KAFE” & legal ID
0908	KJR	95.7	Seattle	WA	190	“Classic hits KJR”
0912	CKQC	107.1	Abbotsford	BC	172	“Country 107” & ads
0920	CKSR	98.3	Chilliwack	BC	172	Fraser Valley wx, soft rock
0926	KPLU	88.5	Tacoma	WA	197	pledge-drive
1954	KCRF	96.7	Lincoln City	OR	307	calls & classic rock,
1956	KLCO	90.5	Newport	OR	307	//KLCC, ID & underwriting,
1959	KSLC	90.3	McMinnville	OR	290	ID, only 290 watts!
2001	KCRX	102.3	Seaside	OR	229	ID & Alice Cooper syndicated show!
2009	KPPT	100.7	Depoe Bay	OR	307	“100.7 Boss FM”, ads
2022	KYTE	102.7	Newport	OR	307	“Today’s best mix 102.7 Kite FM”
2028	KLCC	89.7	Eugene	OR	364	ID with KLCO 90.5,
2031	KZEL	96.1	Eugene	OR	369	KZEL concert calendar
2037	KMGE	94.5	Eugene	OR	369	“Magic 94.5 FM” soft rock
2039	KFLY	101.5	Corvallis	OR	327	local ads, weak
2042	KLOO	106.3	Corvallis	OR	325	concert giveaway contest promo
2052	KXPC	103.7	Lebanon	OR	319	wx & local mention
2059	KWAX	91.1	Eugene	OR	364	legal ID & NPR news,
2110	KSHL	97.5	Gleneden Beach	OR	307	“97-5 K-Shell” hot country music,

Oct 12 tropo *

0950	KYTE	102.7	Newport	OR	307	“102.7 Kite FM”, PSA, \$
0952	KTRO	93.1	Portland	OR	282	local Portland mention
0955	KNCU	92.7	Newport	OR	307	“U-92” \$
0957	KLCO	90.5	Newport	OR	307	//KLCC ID and promo, \$
0959	KPDQ	93.9	Portland	OR	286	legal ID, weak
1000	KTIL	94.3	Tillamook	OR	261	ID & ABC News
1003	KCRF	96.7	Lincoln City	OR	307	calls & op, \$
1007	KCST	106.9	Florence	OR	361	wx and local ad “Coast Radio 106.9”
1010	KKCW	100.3	Portland	OR	286	ads, “K-103”
1016	KDCQ	92.9	Coos Bay	OR	401	“K-Dock”\$
1019	KJMX	99.5	Reedsport	OR	379	local references
1026	KYSJ	105.9	Coos Bay	OR	394	“Smooth Jazz 105.9” local PSA, \$
1025	KMHD	89.1	Gresham	OR	282	PSA, ID and jazz
1030	Unid	88.1		OR??		“K-Love” station, \$
1036	KSHR	97.3	Coquille	OR	409	“Country 97.3 K-Shore” \$
1044	KBDN	96.5	Bandon	OR	427	local ads, “96.5 The Rock” \$
1048	KOOS	94.9	North Bend	OR	410	ID with 95.7 KOOZ, op \$
1057	KIXT	95.9	Bay City	OR	216	ID, weak, “Kix 96”
1059	KYTT	98.7	Coos Bay	OR	394	“SW Oregon’s Christian talk KYTT”
1101	KRKT	99.9	Albany	OR	325	legal ID, country music
1103	KDEP	105.5	Garibaldi	OR	216	“Coast 105” 80’s pop, \$
1109	KGBR	92.7	Gold Beach	OR	465	wx, tides and ID
1114	KACW	107.3	North Bend	OR	408	Coos Bay ads, “Power 107” \$
1119	KDUK	104.7	Florence	OR	344	“104.7 KDUK - today’s best music”
1126	Unid	99.1		OR??		Rap, \$ never got an ID
1131	KMWR	90.7	Brookings	OR	484	ID, \$ only 100 watts!!
1139	KEKA	101.5	Eureka	CA	603	“Thunder Country KEKA” \$
1147	KSJD	92.1	Reedsport	OR	380	comm. Calendar, 300 watts! weak

1152	KXGO	93.1	Arcata	CA	582	wx & local ads, classic rock, \$
1158	KCRE	94.3	Crescent City	CA	510	legal ID, weak
1159	Unid	89.1		OR??		KSOR ID, Coos Bay??
1200	KSBA	88.5	Coos Bay	OR	396	legal ID, \$
1216	KFMI	96.3	Eureka	CA	582	wx "Power 96.3 FM" \$
1224	KSLG	94.1	Hydesville	CA	596	"K-Slug" ska music!!
1239	KRED	92.3	Eureka	CA	582	"Big Red Country" \$
1247	Unid	100.1		??		religion
1251	KLOO	106.3	Corvallis	OR	325	"106.3 KLOO FM – Timeless Rock"
1255	KZEL	96.1	Eugene	OR	369	calls, alt. adult rock \$
1258	KWAX	91.1	Eugene	OR	364	legal ID \$
1300	KLCC	89.7	Eugene	OR	364	//KLCO 90.5 Newport (also in) \$

Oct 12 tropo #

1857	KOOZ	94.1	Myrtle Point	OR	427	local ads
1859	KLCO	90.5	Newport	OR	307	ID with KLCC Eugene
1918	KPPT	100.7	Depoe Bay	OR	307	"100.7 Boss FM" oldies,
1928	KMUN	91.9	Astoria	OR	209	ID and listener support pitch
1933	KFMY	97.7	Raymond	WA	180	"97-7 The Eagle"
1939	KGON	92.3	Portland	OR	279	classic rock & calls,
1942	KLTH	106.7	Portland	OR	279	"K-Hits 106.7" oldies
1950	KBDN	96.5	Bandon	OR	427	"96.5 The Rock" classic rock
1956	KOOS	94.9	North Bend	OR	410	"Classic Hits 94.9 & 95.7 Koos"
1958	KBPS	89.9	Portland	OR	279	legal ID, underwriting ann.
1959	KYTT	98.7	Coos Bay	OR	394	legal ID, "SW Oregon's Xtan Talk"
2007	KYSJ	105.9	Coos Bay	OR	394	"Smooth Jazz 105.9" local refs.
2024	KSHR	97.3	Coquille	OR	409	"Country K-Shore"
2033	KSLG	94.1	Hydesville	CA	596	"K-Slug" weak
2038	KEKA	101.5	Eureka	CA	603	"Thunder Country KEKA 101.5"
2049	KDCQ	92.9	Coos Bay	OR	401	"K-Dock", local mention
2057	KACW	107.3	North Bend	OR	408	legal ID with Coos Bay, "Power 107"

Oct 13 tropo #

Relogs of above stations, many of which faded in & out all day – only loggings beyond 450 miles listed:

0912	KFMI	96.3	Eureka	CA	582	local wx and ads, "Power 96.3 FM"
0923	KEKA	101.5	Eureka	CA	603	"Thunder Country KEKA 101.5"
0929	KMWR	90.7	Brookings	OR	484	ID & local underwriting
0934	KPOD	97.9	Crescent City	CA	510	local PSA, "hot 97.9 KPOD Country"
0945	KGBR	92.7	Gold Beach	OR	465	ads, calls, weak
2118	KEKA	101.5	Eureka	CA	603	concert promo, slogan
2128	KSLG	94.1	Hydesville	CA	596	"K-Slug"

In 28 years of chasing tropo from the west coast of Vancouver Island, this trip had some of the best tropo DX ever encountered. Many of these stations have been heard over the years, but NEVER with such bone-crunching signals – at SEA LEVEL!! Warm, sunny wx from a strong hi-pressure system gave way to a strong temp. inversion which brought in heavy fog. The duct dissipated the morning of Oct 14 as low pressure entered the region. The duct is an over-the-water path similar to east coast or trans-Gulf (of Mexico) tropo condx. Some of these loggings are definitely inland however. The distances on the Sechelt/Vancouver/Victoria/Bellingham reception might not seem like a big deal, but there



are approx 75 miles of high mountains on this path! I now have over 400 stations logged via tropo, MS and Es from this location. Coos Bay/North Bend OR (approx 400 miles) stations were in solid, for close to 3 days straight without ever fading out. Even my wife was driving around the Long Beach peninsula for a few days listening to classic rock in perfect stereo from 94.9 & 96.5 Coos Bay; 100.7 Depoe Bay & 102.3 Seaside, OR using the Toyota's pre-sets. 'Fixtures' during the entire 5 day visit were KPPT 100.7 Depoe Bay; KCRX 102.3 Seaside; and KYTE 102.7 Newport, OR!! Only a few un-IDs are listed – these are signals that persisted & I wasn't able to ID them. I heard plenty of un-IDs...much of these were translators which I didn't bother to chase on this trip. Upon returning home, I checked Bill Hepburn's tropo maps which to no surprise showed excellent condx down the Pacific coast on these days. My ultimate target is still to be the first VE7 to work Hawaii via tropo on 144 mHz but I'll settle for a first tropo logging on FM from Hawaii! (already logged that state via Es2 from Tofino). Last summer, VE7DXG heard the KH6HME 144 mhz beacon from Hawaii for about 10 min. while on Radar Hill in Pacific Rim Park, so the path exists!



SATELLITE NEWS

GEORGE W. JENSEN

4604 ANTANNA AVE, Baltimore, MD 21206-4220

SCISATMAN@AOL.COM

Greetings - some changes and additions since the last report - so here goes:

Satcom C4/AMC10 - channel 120 - Encore Love West, 152 HBO La East, 661 west was Casa Club is now Venemovies. 801 was Eye Net and is now just color bars

Galaxy 1 - xpdr 1 - AMC gone - now digital - see later entry

Galaxy 13 127 West - channel 410 - just a carrier - wonder if ABC Family will be located here. Channel 701 is new location of AMC from Galaxy 1

Galaxy 14 (was Galaxy 5) delete XPDR 11 - ABC Family soon to be digital????, channel 600 seems to be warming up for something

Galaxy 10R delete XPDR16 MTV East.

Galaxy 4 KuBand:

New Channels - 252 - Independent Film Channel, 256 - Women's Entertainment, 421 - was Outdoor Life Network - now Versus 422 - was Outdooe Life National - now Versus Alternate and new 681 - I Life
Am restoring my MPEG receiver and will list recent catches on Vertical channels from **Telstar/Intelsat Americas** 5 Ku Band
Xpdr 3 - 11789V/25000 - the following free to air - Al Karna TV, JIP TV test card, Al Maghribia Rabat Morocca, ETN Korea, YTN Korea, MBNKorea, STV bengali US - Radio Subcarriers - Al Maghribia Radio and Bengala Radio.

11836/20765 - the following - Jame-Jam - IRIB Iran, Al Alam News Channel, Daystar TV, N T D - Chinese from New York, Tunis Tunisia Channel 7, IRINN - News

Channel Iran, Next TV color bars, Appadana International - Iran, GNF Music Channel as

well as a number of radio subcarriers

11991/22000 - Kuwait TV 5, BTV World (Bengali) and 1 radio subcarrier

12146/22000 - Syria Satellite Channel, Yemen Sat TV, Sudan TV, Saudia Arabia TV 1, Al-Iraqiya, Abu Dhabi Sports, Sharja TV, Oman TV, Qatar TV, Jamahiryia

Satellite TV and numerour radio subcarriers
12177/23000 - Movie Channel, Kurdistan TV, TBN Russia, TBN Enlace, Emmanuel TV, God's Learning Channel, Smile of a Child, The Church Channel - Lao TV US, Fashion TV, JCTV and several radio subcarriers

A few with Horizontal Polarity -

12122/22000 - TV Orient, Belgala TV, SBS Korea

11966/22000 - Russia Today, KurdSat, RBN Russian TV, Thai Global Television , TRT International (Yurkey), VTV3 - VietNam Hanoi, MRTV3 - Myanamar, Global Christian Television, CNL (Russian), The Word Network, The Miracle Channel, and several radio subcarriers

11998/20000 - MBC (Korea), ETN (Korea), SBS (Korea), CBS (Korea), MBN (Korea), YTN (Korea) Korea Business, Al Jazeera Testing, TV Cancao Nova International

(Brazilian Pentecostal Catholic Channel and few radio subcarriers.

That's all for this month and have a Happy Thanksgiving. AND don't forget to vote November 7th.

WTFDA EMAIL REFLECTORS

Enhance your DXing experience! Entertaining and informational.

For WTFDA members and guests on the wtfda.info server

The WTFDA list...send an email to tvfmdx-subscribe@wtfda.info

193 subs

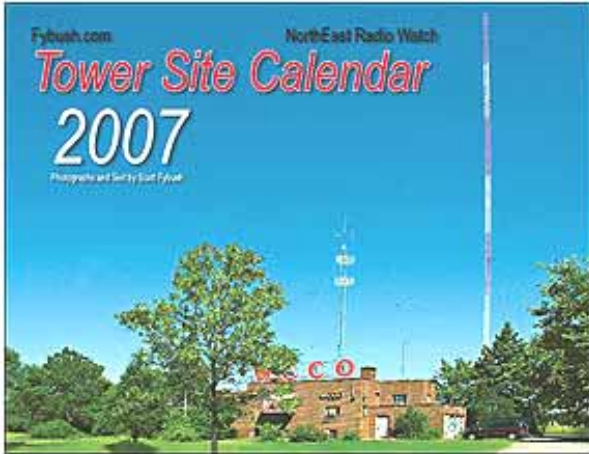
The WTFDA AM DX list...send to amdxx-subscribe@wtfda.info

86 subs

"TOWER SITE 2007 CALENDAR" GOES ON SALE
Sixth Big Year For One Of America's Most Unusual Calendars

CONTACT: Scott Fybush, 585-442-5411 (scott@fybush.com)

ROCHESTER, N.Y. – One of North America's most unusual wall calendars is back for a sixth year, with the publication of the "Tower Site 2007 Calendar."



The calendar, which features a monthly photo of a well-known broadcast transmitter site, is photographed and written by Scott Fybush, the creator of "Tower Site of the Week" (www.fybush.com/featuredsite.html) and "NorthEast Radio Watch" (www.fybush.com/nerw.html).

The full-color monthly calendar has become a tradition for many radio engineers and a curiosity for those who think all radio towers look alike.

"The response to the 2006 calendar was the best yet," says Fybush. "Radio engineers have been begging me to add their towers to the calendar, and I'm hoping to make some of them very happy with the 2007 edition."

As in its predecessors, each month of the 2007 calendar features an 8"x11" color photograph of a broadcast transmitter site, taken by Fybush during his travels around the U.S., Canada and beyond. The sites pictured on the 2007 calendar:

- WCCO, Minneapolis, the 50-kilowatt voice of the upper Midwest
- Philadelphia's Roxborough FM/TV tower farm, in a dramatic nighttime shot
- Atlanta's newest 50-kilowatt AM signal, WCFO 1160
- New York City's ESPN outlet, WEPN 1050
- The two towers of Boston's legendary WBZ
- The three towers of KGO, San Francisco, in the waters of the East Bay
- A stunning sunset view of the hilltop tower farm overlooking Duluth, Minnesota
- Chicago's WGRB 1390 and WVON 1690
- The remote Mount Potosi FM antennas, high above Las Vegas, Nevada
- Wintertime shots of two small "hometown" stations – WJOT Wabash, Indiana and WCJW Warsaw, N.Y.
- The historic site of WTIC, Hartford, Connecticut, in use since the 1920s
- From Andy Griffith's hometown, the picturesque site of WPAQ, Mount Airy, N.C.
- The seven towers of KOIL, Plattsmouth, Nebraska, near Omaha

In addition to tower photos, the calendar's monthly pages include significant dates in radio and television history, as well as civil and religious holidays.

The 2007 calendars cost \$17 each, postpaid (\$18.36 including sales tax for New York State residents), and can be purchased by check (payable to "Scott Fybush") or money order to 92 Bonnie Brae Avenue, Rochester NY 14618. Orders can also be placed with major credit cards at www.fybush.com.

"I'm enjoying traveling around the country, meeting engineers and visiting their stations," says Fybush, who also edits the radio directory site 100000watts.com, anchors newscasts for NPR member station WXXI in Rochester, N.Y. and is a columnist for *Radio World*.

SIGN UP/Renewal form

Name _____

Address _____ Apt # _____

City _____ State/Prov _____ Zip _____

Country _____ Interests: TV () FM () 30-50() Weather()

email address _____

Sign me up/renew me for: 1 year () 2 years () More ()

Yearly dues \$24 (US), \$26 to (CANADA), \$10 (Electronic VUD)
(Students get a discounted rate of \$15 yearly for the paper VUD.)

Mail your dues to: WTFDA, P.O. Box 501, Somersville, CT USA 06072

Make your checks/money orders payable to: WTFDA

And *thanks* for your support of the WTFDA!

Return this form with your dues or make a copy of it and return that.

WTFDA BOARD OF DIRECTORS

Mike Bugaj, use the WTFDA Mailing address listed below	mbugaj@snet.net
Doug Smith, 1385 Old Clarksville Pike, Pleasant View, TN 37146-8098	w9wi@w9wi.com
Greg Coniglio, 11825 Genesee St., Alden, NY 14004	wgrc@rochester.rr.com
Bruce Hall, 5 Stirton Ave., Brantford, ON N3T 1E2	dbruceaa@hotmail.com
Keith McGinnis, 6 Ritter Road, Hingham, MA 02043	longwave@comcast.net

THE MAILBOX and all general club correspondence:

Mike Bugaj at WTFDA, PO Box 501, Somersville, CT 06072	mbugaj@snet.net
--	-----------------

SATELLITE NEWS

George Jensen, 4604 Antana Ave., Baltimore, MD 20206-4220	scisatman@aol.com
---	-------------------

TV NEWS

Doug Smith, 1389 Old Clarksville Pike, Pleasant View, TN 37146-8098	w9wi@w9wi.com
---	---------------

FM NEWS

Chris Kadlec, 3860 Shorewood Dr., Fremont, MI 49412	ckadlec@beaglebass.com
---	------------------------

PHOTO NEWS

Jeff Kruszka, 5024 S. Braxton Ave., Baton Rouge, LA 70817	jkruszka@bellsouth.net
---	------------------------

EASTERN TV DX

Nick Langan, 1040 Riverview Dr., Florence, NJ 08516	nick.langan@gmail.com
---	-----------------------

WESTERN TV DX

Dave Williams, 3525 SW Timber Ave., Redmond, OR 97756	beansdad@bendcable.com
---	------------------------

SOUTHERN FM

John Zondlo, 4009 Driftwood Cir., Yukon, OK 73099	sfm@fmdxweb.com
---	-----------------

NORTHERN FM

Keith McGinnis, 6 Ritter Rd., Hingham, MA 02043	longwave@comcast.net
---	----------------------

TV and FM STATISTICS

Fred Nordquist, 147 Travis Hill Road, Moncks Corner, SC	nordquis@homexpressway.net
---	----------------------------

6 METER/2 METER

Peter Baskind, 3225 Forest Hill-Irene Rd, Germantown, TN 38138	n4li@arrl.net
--	---------------

<u>WEBSITE</u> Tim McVey Webmaster http://www.anarc.org/wtfda/	tkmcvey@erols.com
--	-------------------

PRINT TOO SMALL??? See MORE...PAY LESS!!

Try the eVUD!