

Vhf-Uhf DIGEST

The Official Publication of the Worldwide TV-FM DX Association

JANUARY 2007

The Magazine for TV and FM DXers

26
MONTHS
REMAINING UNTIL
ANALOG TV SHUTOFF



JIM RENFREW ON MT. MANSFIELD, VERMONT



Want to Host a Convention This Year?
Get in Touch with Any of the WTFDA Board Members
Before the end of January

TV and FM DXing was never so much fun!

THE WORLDWIDE TV-FM DX ASSOCIATION

Serving the UHF-VHF Enthusiast

THE VHF-UHF DIGEST IS THE OFFICIAL PUBLICATION OF THE WORLDWIDE TV-FM DX ASSOCIATION DEDICATED TO THE OBSERVATION AND STUDY OF THE PROPAGATION OF LONG DISTANCE TELEVISION AND FM BROADCASTING SIGNALS AT VHF AND UHF. WTFDA IS GOVERNED BY A BOARD OF DIRECTORS: DOUG SMITH, GREG CONIGLIO, BRUCE HALL, KEITH MCGINNIS AND MIKE BUGAJ.



Editor and publisher: **Mike Bugaj**

Treasurer: **Keith McGinnis** Webmaster: **Tim McVey**

wtfda.info Site Administrator: **Chris Cervantez**

Editorial Staff: **Dave Williams, George W. Jensen, Jeff Kruszka**

Keith McGinnis, Fred Nordquist, Nick Langan, Doug Smith, Chris Kadlec, Peter Baskind and John Zondlo,

Our website: www.anarc.org/wtfda Our forums: www.wtfda.info

JANUARY 2007



Finally! For those of you online with an email address, we now offer a quick, convenient and secure way to join or renew your membership in the WTFDA from our page at:

<http://fmdx.usclargo.com/join.html>

Dues are \$25 if paid to our Paypal account. But of course you can always renew by check or money order for the usual price of just \$24. Either way, it's still a bargain!

VUDS ON A CD!

Every VUD from Jan 1980 to December 1989 is on this disk. You'll need Adobe Reader to read them. Why have a box of old VUDs taking up space when you can have this. **It's yours for just \$8.00 per disk.** Send your check or money order for \$8.00 to WTFDA, P.O. 501, Somersville, CT 06072. Make it payable to **WTFDA.**



CONTENTS

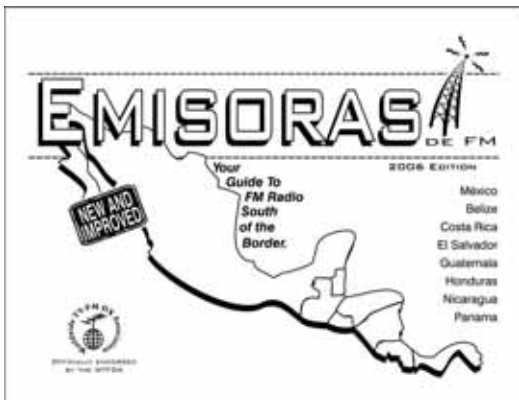
| | |
|--|----|
| Page Two | 2 |
| Mailbox | 3 |
| TV News...Doug Smith | 4 |
| FM News...Chris Kadlec | 8 |
| Photo News...Jeff Kruszka | 16 |
| Eastern TVDX...Nick Langan | 20 |
| FM DX North...Keith McGinnis | 24 |
| 6 Meters...Peter Baskind | 33 |
| Set Top Box Talk/Sangean Photos | 35 |
| 1948 FM List | 38 |
| Editor and Submission Info | 43 |
| <i>(Some columns are not available this month)</i> | |

And now... eVUDS ON CD!

All eVUDs from 09/01 through 12/05 are on this disc (except 8/02 which was not published).

Follow the changes from day one to the present form. **You can have it for just \$6.00** (\$5.00 plus a dollar shipping).

Use the same address as for VUDs on CD shown on the opposite column. Have a great month!



NEW!!! Emisoras de FM

BY JIM THOMAS

Everything you needed to know about FM radio South of the Border!

To order your copy of the 2006 WTFDA Mexican/ Central American FM Directory, send a check or money order for **\$16.50** payable to WTFDA and send it to Keith McGinnis, 6 Ritter Rd., Hingham, MA 02043. (For Paypal orders, send \$17.50 to mbugaj@snet.net. Use the comment box for any instructions.)

See much more at

<http://fmdx.usclargo.com/emisorasdefm/>



The Mailbox

P.O. Box 501, Somersville, CT USA 06072
MIKE BUGAJ MBUGAJ@SNET.NET

HAPPY NEW YEAR!

Time marches on and 2007 is here. We have 26 more months of analog television left. On the FM side we have hundreds of stations broadcasting FM IBOC (HD Radio) and there are now a couple of tabletop HD FM radios on the market plus the new Sangean HD tuner.

By March of this year, all televisions sold in the United States will be required to have built-in digital tuners, in anticipation of the February 2007 shutoff. There is no such requirement for HD radio because there is no shutoff date, so the FM band will continue to be a congested mess of analog stations and stations using IBOC technology for the foreseeable future.

Radio DX clubs have been having a tough time over the past few years attracting new members. I expect the WTFDA to take a larger hit in membership than the AM clubs since we deal with TV and FM DXing. The UHF band is badly congested with a mixture of analog and digital TV signals and the FM band is trashed with IBOC in many parts of North America, especially the Northeast corridor of the United States. Those who can DX will and those who no longer can won't.

I'll go out on a limb and predict that in 2007 DXing will go on but the WTFDA will be somewhat leaner. Most of us long-time members will continue to support the WTFDA, even if we no longer DX much. In the spring and summer we'll no doubt hit the dials for E skip season, taking whatever new logs we can scavenge. Some people will just move on. My hope is that we will still be able to stay above the 200 member mark. WTFDA members in Canada, more rural areas of the midwest and members along the Gulf coast will probably bring us the bulk of all TV and FM loggings in 2007. Perhaps somebody will finally invent a DTV set top box that is really a DX machine and an HD radio that will let DXers hunt DX on adjacent channels once more. We can hope.

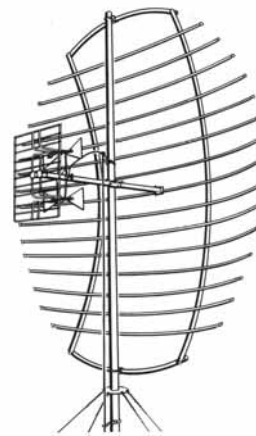
MEMBERS AND MORE

Renewals received during the period of 11/20 to 12/7 from: **Melvyn Larson** (MN), **George Hamer** (NY), **Roger Sabella** (IL), **Rick Shaftan** (NJ), **Bob Seybold** (NY), **Adam Rivers** (MA), **Eldon Geiman** (PA) and **David Wurl** (WI). Thank you all for being here another year!

RICH WERTMAN NEEDS YOU!

Or to be more specific, he needs your six foot parabolic antenna. Read on:

I'm putting out an urgent request again to all members. I need a Channel Master #4250 6 ft parascope antenna. We have finally found a company that can do custom bending of the aluminum and seeing how we want to make this thing UPSable we are having to design the 6 ft model. Easton tubing in Utah is going to cut, design and curve all parts. The uprights will be either 5/8 "or 3/4" t-6 tubing and the reflectors will be 1/2 " tubing. The item will be screwed together by the installer with easy to use directions. The feed is going to be built by Antennacraft utilizing they're old design from the p-7 model with a folded dipole. Average gain will be 16 dbi with very narrow beamwidths.



I have a 7 foot model but I need to get a 6 ft model to Easton to spec all the parts out. I know there are some out there and if anyone is willing to offer one up I will gladly pay what its worth and supply them with a brand new version of the prototype afterwards.

Without the 6ft I will be going nowhere. Sincerely

Rich Wertman

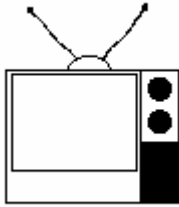
I read this to mean that Rich will take your old antenna and give you a brand new parabolic in return. Sounds like a deal!

MORE STUFF

Bob Seybold sent a letter along with his renewal dues a short time ago. He mentioned doing extremely well during the massive tropo event around Thanksgiving and what caught our eye is the fact that he's now got a SDTV analog/digital set, and doing well with DTV Dxing. I guess if Bob can adjust to digital TV DXing, the rest of us can also.

Also our cover this month is a photo of Jim Renfrew standing next to the WCAX (3) transmitter on Mt. Mansfield in VT back in July.

Happy New Year everyone and we'll see you next month!



TV News

Douglas E. Smith
1389 Old Clarksville Pike
Pleasant View, TN
37146-8098
w9wi@w9wi.com

<http://www.w9wi.com>

January 2007

Abbreviations:

| | | | |
|-----|--|-----|---|
| AF | Applied For (a new station) | NW | New station on the air |
| Aux | Auxiliary (backup) transmitter | PA | Proposed Amendment |
| CC | Callsign change | PC | Power (and/or tower height) change on the air |
| CL | City-of-license change | PG | Power change granted |
| DC | Converted to DTV | PR | Power change requested |
| DCC | Digital Companion Channel | QC | Channel (?frequency??) change on the air |
| DG | Granted flash-cut to DTV | QG | Channel change granted |
| DE | License/permit deleted | QR | Channel change requested |
| DR | Requests flash-cut to DTV | RE | Reinstated (previously-dismissed app.) |
| FC | Programming (?format??) change | ROA | Request of Applicant |
| FTP | Failure to Prosecute | SI | Off the air (?silent??) |
| GA | Granted amendment (to table of channel allotments) | STA | Special Temporary Authority |
| LC | License to Cover | XC | Transmitter site changed |
| MX | Mutually Exclusive | XG | Transmitter site change granted |
| NDA | Non-directional antenna | XR | Transmitter site change requested |
| NS | Permit granted for new station | | |

News:

(full-power analog stations in **bold face**; LPTV and translators in regular type; full-power digital stations in **bold italics**; low-power digital stations in regular italics)



Puerto Rico

| | | | |
|-----------------|-----------|----------------|--|
| Arecibo | 60 | WMEI | NW 1000kw/ 833m, 18-09-17/ 66-33-16 |
| San Juan | 26 | W25DN | QR from ch. 25 |
| San Juan | 55 | WIPR-DT | PR>500kw |



USA:

Alaska:

| | | | |
|----------------|----|-------|--------------------------------------|
| Homer-Seldovia | 11 | K11VP | PC 3kw, 59-27-17/ 151-40-18 |
| Kodiak | 17 | K17GQ | NW 12.3kw, 57-47-03/ 152-23-57 |

Arizona:

| | | | |
|----------------|----|---------|--------------------------------------|
| East Flagstaff | 39 | K39FC | NW 700w, 35-14-26/ 111-35-48 |
| Prescott | 47 | KDFQ-LP | NW 9.99kw, 34-41-11/ 112-06-59 |
| Prescott | 53 | K53IJ | NW 50kw, 34-29-25/ 112-32-00 |
| Show Low | 10 | KWKM-LP | NW 795w, 34-14-58/ 109-35-11 |

Arkansas:

Eureka Springs **34** **KPBI** **CC from KBBL-TV**

California:

| | | | |
|-----------------|-----------|----------------|--|
| Bakersfield | 42 | KZKC-LP | CC from KPMC- |
| Bishop | 20 | NEW | PR<4.2kw/924 |
| Chico | 15 | K51ID | QR from ch. 51, 50kw |
| Chico | 28 | KKPM-CA | FC; sold to KFTL |
| Chico | 35 | K35HY | PG<42.2kw, 39-57-50/ 121-42-48; NW |
| Cloverdale | 36 | KTVJ-LP | PC<21.3kw |
| Eureka | 9 | KUVU-LP | NW 3kw, 40-43-36/ 123-58-27 |
| Los Angeles | 25 | KNET-LP | PC 73.7kw, 34-12-46/ 118-03-42 |
| Maricopa | 38 | KNXT-LP | NW 150kw, 35-07-04/ 119-27-36 |
| Maricopa | 38 | KNXT-LP | QC from ch. 57, 150kw |
| Palm Springs | 2 | KCWQ-LP | NW 1kw, 33-51-58/ 116-26-02 |
| Paradise | 20 | KCVU-DT | NW 100kw/ 449m, 39-57-49/ 121-42-38 |
| Redding | 6 | KFMD-LP | NW 1.5kw, 40-39-15/ 122-31-13 |
| Sacramento | 22 | K22FR | QC from ch. 21, 34.9kw, 38-40-21/ 121-19-55 |
| San Francisco | 22 | KDTS-LP | QR from ch. 52, |

20kw, 37-53-34/
121-53-59; CL
from Stockton
Santa Rosa 36 KTVJ-LP PC 50kw,
38-30-31/
122-39-41
Yreka 49 K49IG PG>5.87kw,
41-44-55/
122-42-01

Colorado:

Breckenridge 26 K26GY NW 100w,
39-36-50/
106-04-02
Colorado Springs 51 KWHS-LP PR>150kw,
38-44-43/
104-51-39
**Denver 18 KRMA-DT PR>115kw/
331m,
39-40-17/
105-13-06**
Grand Junction 20 KKHD-LP NW 40.5kw,
39-04-00/
108-44-41
Montrose 36 KXHD-LP NW 60.9kw,
38-18-57/
108-11-47; CC
from K36HJ
San Luis Valley 35 K55CL DR from ch. 55
dismissed
**Steamboat Springs 24 KMAS-TV FC; sold to
KRMA-6 (PBS)**

Connecticut:

Hartford 48 WRNT-LP QC from ch. 6,
60kw, 41-47-48/
72-47-52

District of Columbia:

Washington 5 WTTG PR 94kw/243m

Florida:

Daytona Beach 53 WDYB-LP FC; sold to ZGS
Gainesville 22 W22DB FC; sold to ZGS
Live Oak 26 WSSH-LP NW 150kw,
30-00-40/
83-01-51
Matecumbe 43 W43CB FC; sold to
Hispanic Christian
organization
Melbourne 29 WMVJ-LP FC; sold to ZGS
Miami 25 WIMP-CA PG 150kw,
25-59-09/
80-11-37; PC
Miami 39 WSFL-TV CC from WBZL
New Port Richey 48 WZRA-CA PC>150kw,
28-15-32/
82-43-45; CL from
Oldsmar
Orlando 31 WPXG-LP FC; sold to ZGS
Pensacola 26 W26BV PG>150kw,
30-24-13/
86-59-34; CL from
Panama City
Perry 69 WSFD-LP CC from ??
(W69AX?)
Sebring 51 W51DY QC from W60CE,
39.6kw
Tallahassee 47 WWWF-
LP FC; sold to ZGS
**Tampa 34 WUSF-DT NW 475kw/
453m**
**Tampa 47 WFTT-DT NW 500kw/
317m**

Georgia:

Atlanta 22 WSKC-CA DR 800w
Bainbridge 49 WTLH PR<2650kw, DA
Blairsville 28 WDWW-
LP PG 87kw,
34-30-32/
83-48-27
Columbus 11 WWCG-
LP PG 3kw,
32-30-45/
85-00-41

Hawaii:

**Honolulu 10 KALO-DT PR 21kw/
577m,
21-23-45/
158-05-58**
Kailua-Kona 32 K32GJ PG 160w,
19-43-04/
155-55-00
Kailua-Kona 47 KHIK-LP NW 150kw,
19-42-56/
155-55-00
Waimanalo 56 KUPU CC from KMG

Idaho:

Boise 35 KUNB-LP CC from KUNS-LP
Mink Creek 10 K10FF PR<4w
Paul 4 K04NO XG 42-36-22/
113-47-47

Illinois:

Rockford 33 WFBN-LP CC from WCWW-
LP
Sterling/
Dixon 19 W19CX QG from W52BI,
9.5kw

Indiana:

Jeffersonville 9 WVHF-CA QC from ch. 5,
3kw, 38-22-08/
85-49-48
South Bend 25 WCWW-
LP CC from WMWB-
LP

Iowa:

**Ames 23 KCWI-TV CC from KPWB-
TV**
**Davenport 34 KQIN-DT PR>166m,
41-31-44/
90-38-26**

Louisiana:

**Alexandria 32 KLAX-DT PR>48.3kw/
333m**

Michigan:

Muskegon 29 WOMS-
CA PC 10.4kw
**Saginaw 48 WAQP-DT NW 851kw/
287m**
**Saginaw 49 WAQP PC 1000kw/
287m**

Mississippi:

Jackson 51 WWJX CC for NS
Natchez 27 W27CX QC from W59DK,
16.3kw

Missouri:

Columbia 47 K47JM QG from K56AU,
6.9kw

Osage Beach 49 KRBK CC for NS

Montana:

Belgrade 20 K20DY DR 150w
Billings 20 K20HB DR 14.5kw

Butte 43 K43DU DR 4.55kw
 Helena 49 K49EH DR 3.1kw
 Missoula 27 KUFM-DT NW 11.9kw/
 630m

Nebraska:

Blair 24 K24GO QG from K68AV,
 60w
 Niobrara 14 K14MI QC from K69BM,
 3w, 42-44-42/
 98-02-00
 North Platte 25 K57CZ DR from ch. 57,
 2.28kw
 Omaha 19 K61GA DR from ch. 61,
 5kw, 41-18-40/
 96-01-37
 South Sioux City 60 KAZW-LP CC from KCWK-
 LP

Nevada:

Mina-Luning 16 K16FU NW 220w,
 38-23-40/
 118-03-00

New Jersey:

Belvidere 43 W43CH-D DG 600w
 Montclair 50 WNJN PC<1225kw/
 233m
 Montclair 51 WNJN-DT NW 200kw/
 233m
 Secaucus 9 WWOR-TV NW 104.4kw/
 223m,
 40-51-53/
 74-12-03 (aux)

New Mexico:

Alamogordo 36 KKNJ-LP CC from KCWI-LP
 (was briefly
 KPWB-LP)
 Aztec 38 K38DA-D DC 395w,
 36-48-53/
 107-53-31
 Taos 15 K15HD-D DC 289w

New York:

Buffalo 14 WUTV-DT NW 1000kw/
 300m
 New York 5 WNYW NW 49.8kw/
 218m,
 40-51-53/
 74-12-03 (aux)

North Carolina:

Buxton 14 WPDZ-LP CC for NS
 Buxton 41 WRZY-LP CC for NS
 Fayetteville 38 WUVC-DT NW 500kw/
 509m
 Greenville 44 W44CN QC from W60CV,
 35.2kw

North Dakota:

Fargo 35 K35HO QG from K56ET,
 19.8kw

Ohio:

Toledo 48 WMNT-CACC from WNGT-
 LP

Oklahoma:

Durant 46 K46AI DR 13.4kw
 reinstated

Oregon:

Bend 39 KFXO-LP DR 100w
 reinstated; DG

Coos Bay 23 KMCB CC from KUCW
 Grays River 35 K35HU QC from K31FB,
 1.9kw
 Merlin 29 K29GX QC from K56FN,
 5kw
 Myrtle Point 55 K55FM PG<50w,
 43-03-50/
 124-07-54
 Salem 32 KRCW- CC from KWBP

Pennsylvania:

Reading 25 WTVE-DT-NS 760w/
 DTS1 225m,
 40-21-16/
 75-53-57
 (Reading)
 Reading 25 WTVE-DT-NS 2.8kw/
 DTS2 155m,
 40-37-13/
 75-17-37
 (Bethlehem)
 Reading 25 WTVE-DT-NS 110w/87m,
 DTS3 39-33-42/
 75-55-48
 (North East, Md)
 Reading 25 WTVE-DT-NS 1kw/337m,
 DTS4 39-53-44/
 76-14-23
 (Lancaster)
 Reading 25 WTVE-DT-NS 1.15kw/
 DTS5 235m,
 40-23-53/
 76-19-25
 (Lebanon)
 Reading 25 WTVE-DT-NS 600w/
 DTS6 168m,
 40-23-06/
 74-52-58
 (Lambertville,
 New Jersey)
 Reading 25 WTVE-DT-NS 126kw/
 DTS7 444m,
 40-02-30/
 75-14-13 (WCAU-
 10 twr.,
 Philadelphia)
 Reading 25 WTVE-DT-NS 4.25kw/
 DTS8 138m,
 40-45-50/
 76-02-03
 (nr. Pottsville)

South Dakota:

Aberdeen 16 KDSD-TV XR 45-29-54/
 97-40-28, 359m
 Lowry 11 KQSD-TV PR<295m,
 45-16-38/
 99-59-10
 Martin 8 KZSD-TV XR 43-25-59/
 101-33-16, 266m

Tennessee:

Jackson 43 WBBJ-DT NS 4.22kw/
 177m,
 35-38-32/
 88-48-28 (aux)
 (use old STA
 facility as aux)

Texas:

Beaumont 9 KEBQ-LP CC from KUMY-
 LP
 Beaumont-Orange 22 KUMY-LP CC from KEBQ-LP
 Beaumont 53 KPPY-LP NW 2kw,

| | | | |
|-----------------------|-----------|---------------------|---|
| | | | 30-04-31/ 94-07-48 |
| Corpus Christi | 33 | KCCG-LP | PR<2.6kw, 27-47-46/ 97-23-47 |
| El Paso | 38 | KSCE | PR>400kw/ 557m, 31-48-19/ 106-28-59 |
| El Paso | 51 | KTFN-DT | NW 70kw/ 525m |
| Laredo | 15 | KGNS-DT | NW 2.4kw/ 285m |
| San Antonio | 51 | K51JF | QC from K52EA, 9.5kw, 29-26-29/ 98-30-22 |
| Uvalde | 42 | K59EY | QC from ch. 59, 8.15kw, 29-37-11/ 99-02-55 |
| Victoria | 21, 28 | KUNU-LP, KXTS-LP | PG>25kw |
| Utah: | | | |
| Logan | 10 | K10OX | PR<960w, 41-45-21/ 112-01-22 |
| Ogden | 30 | KUCW | CC from KUWB |
| Provo | 43 | K43JV | QC from K34DW, 4kw |
| Rural Beaver Co. | 18 | K18FU | DC 140w, 38-31-14/ 113-17-12 |
| Rural Juab Co. | 47 | K47BD-D | DC 1.2kw, 39-29-31/ 111-49-37 |
| Santa Clara | 49 | K49AS | DR 150w, 37-09-19/ 113-52-57 |
| Vermont: | | | |
| VERM | 21 | W21CQ | QC from W69AD |
| Bennington | | | |
| VERM | 21 | W69AD | QC from ch. 69 |
| Bennington | | | |
| VERM | 32 | WETK-DT | NW 90kw/830m |
| Burlington | | | |
| Virginia: | | | |
| Charlottesville | 14 | W14CY | PG 30kw, 38-12-57/ 78-22-01 |
| Fairfax | 6 | W06CJ | QG from W42BE, 3kw, 38-53-45/ 77-08-08 |
| Keysville | 45 | WKYV-LP | FC; sold to ZGS |
| Washington: | | | |
| Bellevue | 51 | KUNS-TV | CC from KWOE |
| Longview | 34 | K34HK | QC from K68DZ, 10.45kw, 46-10-55/ 122-57-04 |
| Tacoma | 28 | KBTC-TV | PC<604kw/ 219m, 47-16-44/ 122-30-42 |
| Yakima | 27 | KCWK-LP | CC from KAZW- |
| West Virginia: | | | |
| Bluefield | 14 | WLFB-DT | NW 12kw/ 428m |
| Weirton | 18 | WJPW-CA | QC from ch. 57, 150kw; CL from Steubenville, Ohio |

A slow month.

The eight new DTV stations in Pennsylvania require some explanation. These stations comprise a "Distributed Transmission System" (DTS) associated with analog station WTVE-51. All eight transmitters will operate simultaneously:

- #1: on the existing analog tower northeast of Reading 760 watts
- #2: on the WZZO-95.1 tower east of Bethlehem 2,800 watts
- #3: South of North East, Maryland 110 watts
- #4: WDAC-94.5 tower south of Lancaster on Highway 272 1,000 watts
- #5: Between Lebanon & Myerstown 1,150 watts
- #6: Between Lambertville & Trenton, New Jersey 600 watts
- #7: WCAU-10 tower, Philadelphia 126,000 watts
- #8: Between Pottsville & Tamaqua on Highway 209 4,250 watts

The FCC has not yet finalized rules for DTS, so this facility is authorized under Special Temporary Authority. (STA) If the final DTS rules conflict with WTVE's STA, WTVE will be required to amend their operation.

WTVE's market is probably unusually suited for a DTS operation. The important cities are spread around the market, with relatively lightly populated areas between them. Other markets where I could see DTS working might include Green Bay and Richland, Wash.. You won't see DTS in places like Los Angeles and Chicago where there are no sparsely-populated gaps.

On December 13th, the analog transmitters in the Netherlands were shut down. Reportedly only 70,000 people in the country relied on analog OTA TV; well over 90% of Dutch viewers have cable and most of the rest digital over-the-air sets.

Good DX!



WTFDA FM NEWS

Bringing you the most recent FM changes in the U.S. and Canada!

CHRIS KADLEC, EDITOR
3860 SHOREWOOD DR.
FREMONT, MI 49412-9604
beaglebass@beaglebass.com
www.beaglebass.com/dx_index.htm



DEC 2006
JAN 2007

Due to the lack of a December FM News and an early publishing deadline for the January news, this month contains the changes as listed from October 21 to November 29. Sorry for the delay of information, but apparently the FM dial never stops changing even for a moment!

INDEX OF ABBREVIATIONS

| | | | |
|-------|---|-----|--|
| AF | applied for (a new station) | NS | new station granted |
| AFA | American Family Association | NW | new station signs on |
| Aux | Auxiliary antenna (backup) | OSA | one step application granted for change |
| CC | call letter change | PA | proposed amendment change to FM allocation table |
| CL | city of license change | PC | power change on the air (> = increase, < = decrease) |
| CX | a construction permit has been cancelled | PG | power change granted (> = increase, < = decrease) |
| C1-C5 | change in status to that FM license class | PR | power change requested |
| DA | directional antenna | QC | frequency change occurred |
| DE | station has been deleted | QG | frequency change granted |
| FC | format change | QR | frequency change requested |
| GA | granted amendment to table of FM allocations | RA | silent station returns to the air |
| GE | granted extension of construction permit | RE | station requests an extension on permit |
| GX | granted replacement of expired permit | ROA | request of applicant |
| LC | license to cover filed (ready to come on air) | RX | station requests replacement of expired permit |
| MC | multiple-city ID | SC | slogan change or update |
| NC | no change yet on a reported change or permit | SI | station is silent |
| ND | non-directional antenna | SOA | signed on the air |
| NO | not on the air | XA | dismissed amendment to FM allocations |
| | | XC | transmitter site change occurred |
| | | XG | transmitter site change granted |

UNITED STATES and CANADA

CANADA

Alberta / AB

| | |
|-----------------------|--|
| Bonnyville | 99.7 NEW / NS 50kw, replaces CKLM-FM-1. Licensee wishes to originate programming at Bonnyville, rather than relaying CKLM-FM Lloydminster. No technical changes. |
| Calgary | 101.5 NEW / AF 100kw/160m for CHUM Ltd. hot adcon station approved in August |
| Fort McMurray | 91.1 NEW / NS 35w, religious hot adcon/chr, co-owned w/CKKK-FM Peterborough |
| Fort McMurray | 93.3 CJOK-FM / PG>40kw/129m |
| Fort McMurray | 97.9 CKYX-FM / PG>40kw/129m |
| Fort McMurray | 100.5 NEW / NS 20kw/54m, 56-44-00/111-23-00, classic hits |
| Fort McMurray | 103.7 CFVR-FM / NS 20kw/54m, 56-48-29/111-26-51, adcon |
| Fort McMurray | 102.9, 94.3, 89.5 NEW / Six applications denied |
| Grande Prairie | 96.3 NEW / NS 100kw, religious contemporary |
| Grande Prairie | 103.3 CIKT-FM / NS 100kw/257m, 55-29-20/118-44-50, classic rock/classic hits |
| Grande Prairie | 104.7 CHDV-FM / NS 100kw/266m, 55-28-44/118-45-04, classic rock |
| Grande Prairie | 99.1, 101.9, 98.9, 104.7 NEW / Seven applications denied |
| Red Deer | 107.7 CKUA-FM-6 / QR from 101.3, to allow use of 101.5 in Calgary |

British Columbia / BC

| | |
|----------------------|--|
| Kamloops | 92.5 CFBX-FM / PG>420w/-191m, 50-40-24/120-21-53 |
| Pemberton | 98.9 CFPV-FM / NS rock/pop, 420w-H/-584m, 50-19-42/122-49-45 |
| Prince George | 88.7 NEW / AF 510w/108m, campus/community |
| Prince George | 93.1 NEW / NS 5w, community sta. |
| Whistler | 97.9 NEW / NS 5w, community sta. |

Nova Scotia / NS

| | |
|------------------|---|
| Dartmouth | 88.9 CFDR / QR from 780 AM, 50kw/189m, alternative rock |
| Windsor | 92.9 CFAB / QG from 1450 AM but proposed 47kw/159m facilities not acceptable; must re-file. FM coverage would exceed the AM by too much - from 7,841 people reached to 107,610. Overlap with co-owned CKWM-FM and CKEN-FM would be excessive. |

Nunavut / NU

| | |
|----------------|--|
| Iqaluit | 88.3 NEW / AF 800w/-37m, to relay CBM-FM CBC Radio 2 |
|----------------|--|

Ontario / ON

| | |
|----------------------|---|
| Arnprior | 104.7 CHMY-FM-1 / could suffer interference from new Gatineau, Que. station; said station suggests CHMY-FM-1 move to 97.5 |
| Chapleau | 95.9 NEW / AF 40w/15m, privately-owned relay of CHYC-FM Sudbury |
| Goderich | 104.9 NEW / AF 12.55kw/110m, classic adcon |
| Kingston | 98.9 CKLC / QR from 1380 AM, 15kw/132m |
| Napanee | 88.7 NEW / NS 5kw/185m, 44-08-30/77-04-34, adcon, 2hr./week in Mohawk, 90% // CHMY-FM Renfrew |
| Peterborough | 99.3 CKPT / QR from 1420 AM, 17kw/92m, soft oldies |
| Sioux Lookout | 89.9 CKWT-FM / NS 224w-V/19m, 50-05-55/91-55-07, English & Cree |
| Strathroy | 105.7 NEW / QG from 91.1 |
| Timmins | 106.7 NEW / NS, English & Cree, 50w |
| Whitchurch | 102.7 NEW / NS 50w, community station in Whitchurch-Stouffville |

Québec / QC

| | |
|----------------------|--|
| Drummondville | 88.9 NEW / NS 710w-V/7m, 45-53-00/72-29-21, French community |
| Gatineau | 104.7 CJRC / QG from 1150 AM, 2.9kw/95m, 45-25-09/75-42-19, French talk. |

| | |
|----------------|--|
| La Baie | 99.7 CKAJ-FM-1 / NS, 60w-H/11m, 48-18-29/70-55-22, to relay CKAJ-FM |
| Saguenay | 98.3 CKRS / QG from 590 AM, 51kw/148m, 48-22-15/71-10-20, French talk |
| Sherbrooke | 102.1 CHLT / QG from 630 AM, 5.8kw/91m, 45-26-28/72-00-35, French talk |
| Trois-Rivières | 105.9 NEW / NS 5w, 4hr./week from a local grade school |
| Trois-Rivières | 106.9 CHLN / QG from 550 AM, 60kw/87m, 46-14-21/72-35-26, French talk |

Saskatchewan / SK

| | |
|---------|---|
| Yorkton | 92.9 NEW / NS 1.26kw, to relay CJLR-FM La Ronge |
|---------|---|

UNITED STATES

Alabama / AL

| | |
|-------------|--|
| Ashland | 100.7 NEW / NS 6kw/22m, 33-16-55/85-47-38 |
| Dadeville | 100.3 WKGA / PR 2.15kw/170m, 32-45-38/85-40-24 |
| Dadeville | 100.3 WKGA / PG 2.15kw/170m, 32-45-38/85-40-24 |
| Enterprise | 96.9 WDJR / PC<316m, 30-55-19/85-44-41 |
| Monroeville | 89.3 980529MC / NS 3kw/133m, 31-53-28/87-42-45 (CSN) |
| Monroeville | 89.3 WJIK / CC for NS |
| Montgomery | 92.3 WLWI-FM / PG>494m, 32-10-39/86-38-33 |
| Repton | 101.1 WTID / PR 6kw/62m, 31-21-34/87-10-02 |
| Scottsboro | 98.3 WKEA-FM / PR >11kw/150m, 34-32-00/85-55-20 |
| Tallassee | 99.9 WQNR / PR<3kw/144m dismissed |

Alaska / AK

| | |
|---------|--|
| Houston | 96.3 KXLW / CC from KRPM |
| Kenai | 100.1 KWHQ-FM / PR>25kw/58m |
| Kodiak | 100.1 KMXT / PG>275w/289m, 57-47-23/152-25-54 |
| Nome | 100.3 KICY-FM / PC>1kw/-110m, 64-30-09/165-24-37 |

Arizona / AZ

| | |
|-----------------|---|
| Bagdad | 103.1 KFTT / PC<900w/381m, 34-33-25/113-16-00 |
| Colorado City | 107.3 KXFF / CC from KMXM |
| Coolidge | 89.9 KZAI / PR>16kw |
| Cottonwood | 95.9 KKLD / PC>21kw/799m, 34-41-11/112-07-02 |
| Dewey | 97.5 KMVA / CC from KRZS in Dewey-Humboldt |
| Flagstaff | 103.7 KFZA / CC for NS |
| Glendale | 92.3 KTAR-FM / CC from KKFR; FC to talk |
| Kingham | 97.1 KGPS-LP / XR 35-13-45/113-56-45 |
| Kingman | 91.9 980611ME / PR<882m, 35-06-35/113-52-51 |
| Lk Havasu City | 91.1 KNLB / PR>15kw/793m, 34-33-06/114-11-37 |
| Lk Havasu City | 96.7 KRCY-FM / req. drop DA |
| Payson | 96.3 KRIM-LP / NW 8w/103m, 34-16-00/111-18-54 |
| Payson | 99.3 KMZQ / PR>50kw/137m |
| Phoenix | 90.3 KFLR-FM / PR>100kw |
| Phoenix | 90.3 KFLR-FM / PG<483m |
| Prescott | 99.1 KTMG / PR>25kw |
| Prescott | 99.1 KTMG / PG>2.55kw/312m, 34-28-36/112-24-03 cancelled; going for 25kw at existing site |
| Prescott Valley | 98.3 KKFR / CC from KZGL |
| Salome | 101.9 NEW / NS 6kw/100m, 33-46-54/113-36-42 |
| Tucson | 88.9 KAIC / NW 1.8kw/8m, 32-36-56/110-38-39 (Air1) |

Arkansas / AR

| | |
|-------------|--------------------------|
| Bentonville | 88.1 KAPG / PG<750w/70m |
| Bryant | 93.3 KKSP / CC from KKZR |

| | |
|-------------|---|
| Gravette | 100.3 KURM-FM / request CL from Southwest City, Mo. |
| Hot Springs | 107.3 KHSA-LP / CC for NS |
| Judsonia | 95.3 KVHU / NW 14kw/134m, 35-13-41/91-29-19 |
| Nashville | 105.5 KNAS / PC 6kw/62m, 34-00-41/93-52-03 |
| Texarkana | 89.3 KKLK / PC>23kw |
| Viola | 94.3 KSMZ / CC for NS |

California / CA

| | |
|------------------|--|
| Big Bear Lake | 103.5 KWBB-LP / XR 34-14-24/116-49-24 |
| Blue Lake | 106.3 KEJY / CC for NS |
| Chico | 92.7 KBQB / CC from KLRS |
| East Porterville | 100.5 KMQA / PG 50kw/43m, 35-48-19/118-38-46 |
| El Campo | 96.1 KSIQ / PR<25kw-H/92m, 32-40-44/116-31-05; CL from Brawley |
| El Centro | 95.3 KYFC-LP / PR 100w, 32-48-10/115-29-54 dismissed |
| El Centro | 107.5 KXO-FM / PR>60kw/87m, 32-48-24/115-32-44 |
| El Centro | 107.5 KXO-FM / PG>50kw/87m, 32-48-24/115-32-44 |
| Eureka | 97.7 KKDS-LP / NW 100w/-28m, 40-48-29/124-08-45 |
| Ferndale | 99.1 KJNY / CC from KAJK-FM |
| Firebaugh | 94.7 KYAF / CC from KAJP |
| Glen Ellen | 103.3 KGEK-LP / CC for NS |
| Huron | 98.3 KZLA / CC from KHRN |
| Inyokern | 88.5 KZLU / PR>1kw/396m |
| Jenner | 106.3 KGRP / PG>1.37kw/210m, 38-29-20/123-01-55 |
| Kerman | 94.3 KOKO-FM / PG<2.3kw, 36-46-38/120-02-10 |
| Kettleman City | 89.9 KWDS / NW 50kw/77m, 35-59-42/119-58-06 |
| Los Molinos | 102.1 KCEZ / NW 25kw/67m, 39-53-17/122-37-38 |
| Los Osos | 101.3 KSTT-FM / PC 3.6kw/502m in Los Osos - Baywood Park |
| Morro Bay | 94.1 KLMM / PR>360w/401m, 34-54-14/120-35-26 |
| Oxnard | 104.7 KCAQ / PR 50kw/150m, 34-24-44/119-02-15 |
| Rancho Mirage | 99.5 KMRJ / PR>6kw |
| Red Bluff | 90.7 950714MF / NS 2.5kw/100m, 40-12-31/122-07-27 |
| Red Bluff | 90.7 KTHM / CC for NS |
| Sacramento | 88.9 KXPR / CC from KXJZ |
| Sacramento | 90.9 KXJZ / CC from KXPR |
| San Diego | 88.3 KSDS / PG>22kw-V/75m 22kw over objections of XETV-6 |
| San Luis Obispo | 96.1 KSLY-FM / PC 3.6kw/502m |
| Santa Maria | 90.5 KGDP-FM / CC from KRVC |
| Shafter | 89.5 KAIB / NW 50kw/109m, 35-36-53/119-28-16 (Air 1) |
| Shafter | 89.5 KGLV / PG 50kw/109m, 35-36-53/119-28-16 |
| Shafter | 89.5 KAIB / CC from KGLV |
| Susanville | 88.1 KFLL / FC; permit sold to K-Love |
| Susanville | 88.1 KJAR / CC from KFLL |
| Tehachapi | 88.7 KYLU / PR>390w |
| Valley Springs | 103.7 KWLK-LP / XG 38-10-03/120-51-50 |

Colorado / CO

| | |
|----------------|--|
| Brighton | 101.9 KAMV-LP / PG<-26m, 39-57-19/104-51-01 |
| Brighton | 101.9 KAMV-LP / XR 39-59-22/104-49-27 |
| Brighton | 101.9 KAMV-LP / PG>-10m, 39-59-22/104-49-27 |
| Colorado Sps | 92.9 KKPX / CC from KSPZ |
| Denver | 95.7 KPTT / CC from KMGG |
| Denver | 95.7 KPTT / PR<346m |
| Denver | 103.5 KRFX / PR>346m, 39-43-59/105-14-10 |
| Denver | 106.7 KBPI / PR>96kw/382m, 39-43-58/105-14-08 |
| Estes Park | 102.1 KRKY-FM / CC from KXDC |
| Grand Junction | 100.7 KMOZ-FM / PC 30kw/475m, 39-03-59/108-44-41 |
| Greeley | 91.5 KUNC / PG 36kw/384m, 40-37-03/105-19-39 |
| Greenwood VII. | 102.3 KCUV / CC from KCUV-FM |
| Hayden | 95.9 KIDN-FM / PG>28.8kw |
| Hayden | 107.3 KTRJ / CC from KRMR |
| Julesburg | 96.5 KJBL / PC<-32m, 40-59-18/102-15-44 |

| | |
|-------------|---|
| La Veta | 103.3 NEW / NS 100kw/116m, 37-37-39/104-49-17 |
| La Veta | 103.3 KJQY / CC for NS |
| Leadville | 90.9 KTOL / NW 450w-H/-192m, 39-14-05/106-17-59 (religious // KTLF) |
| Leadville | 90.9 KTOL / PR<-207m |
| Longmont | 90.7 NEW / AF dismissed |
| Walden | 94.1 KEZZ / CC for NS |
| Wheat Ridge | 93.3 KTCL / PR<71kw/346m, 39-43-59/105-14-10; CL from Fort Collins |

Connecticut / CT

| | |
|------------|---------------------------------|
| New London | 100.9 WKNL / PG<99m (from 100m) |
|------------|---------------------------------|

Delaware / DE

| | |
|--------------|--|
| Dover | 96.1 WIHW-LP / PC>26m |
| Rehoboth Bch | 92.7 WGMD / PR 2.6kw/132m, 38-42-14/75-12-01 |

Florida / FL

| | |
|-----------------|--|
| Auburndale | 96.1 WSEU-LP / CC for NS |
| Christmas | 95.7 WLPM-LP / NW 100w/28m, 28-32-17/81-07-53 |
| Clearwater | 95.7 WBTP / XR>189m, 27-51-23/82-37-26 |
| Columbia City | 96.5 WJTK / NW 5kw/109m, 30-09-20/82-38-14 |
| Edgewater | 88.9 WKTO / PR>25kw-V/120m, 29-01-31/81-08-52 |
| Fernandina Bch | 91.7 WJBC-FM / CC from WNLE |
| Flagler Beach | 93.3 WFBO-LP / XR 29-32-29/81-09-28 |
| Flagler Beach | 93.3 WFBO-LP / XR 29-32-29/81-09-28 dismissed |
| Frostproof | 89.3 990420ME / NS 10kw-V/113m, 27-33-37/81-29-36 |
| Gainesville | 94.7 WVFP-LP / CC for NS (2 stations sharing time on same frequency) |
| Homosassa | 99.9 WEKJ-LP / QR from 103.1 |
| Inglis | 99.3 WFBI / CC for NS (was briefly WFWW) |
| Islamorada | 105.5 WWWK / PG>50kw/131m, 25-05-29/80-26-37; CL from Marathon |
| Key Largo | 90.9 WGES-FM / CC from WGES |
| Lafayette | 99.9 WEGT / XC 91m, 30-29-38/84-13-57 |
| Lakemont | 89.3 930119MA / AF dismissed, settlement |
| Naples | 89.5 WSRX / PG>94m, 26-07-12/81-40-58 |
| Ponte Vedra Bch | 106.5 WOKV-FM / CC from WBGB |
| Port St. Joe | 88.5 WDBW-LP / CC from WGBW-LP |
| Sarasota | 96.5 WSLR-LP / XR 27-19-27/82-29-44 |
| Sarasota | 96.5 WSLR-LP / PG>61m, 27-19-27/82-29-44 |

Georgia / GA

| | |
|-------------|---|
| Albany | 101.7 WQVE / CC from WNUQ |
| Brunswick | 100.7 WMUV / CC from WKQL |
| Calhoun | 91.3 WCGN / CC from WPAW |
| Camilla | 105.5 WZBN / CC from WQVE |
| Columbus | 91.7 WTJB / granted 3.33kw-V (was H-only) |
| Ellaville | 94.3 NEW / NS 4.8kw/100m, 32-15-10/84-13-50 |
| Ellaville | 94.3 WLEL / CC for NS |
| Folkston | 91.3 WATY / PR>12kw/96m |
| Folkston | 91.3 WATY / PG>12kw/96m |
| Gibson | 94.3 WTHP / NW 2.05kw/174m, 33-17-05/82-35-45 |
| Gordon | 107.1 WFXM / PC 3kw/143m, 32-50-59/83-28-38 |
| Gordon | 107.1 WFXM / XR 32-50-55/83-28-29 |
| Gray | 96.5 WPCH / CC from WYNF |
| Helen | 105.1 WZGA / CC from WHEL |
| Rockmart | 107.1 WTSH-FM / PG 49kw/153m, 34-09-08/84-53-16 |
| Rossville | 105.5 WRXR-FM / PG1.8kw/184m, 34-57-23/85-17-32 |
| Statenville | 97.5 WHLJ / PC 4.2kw/120m, 30-48-22/83-00-21 |
| Sylvester | 102.1 WNUQ / CC from WZBN (was briefly WQVE) |
| Valdosta | 88.5 WVDA / PG>100kw/85m |
| Vienna | 92.1 WHHR / CC for NS |

Guam / GU

| | |
|-------|---|
| Agana | 101.9 KTKB-FM / PR>100kw |
| Agana | 101.9 KTKB-FM / PC 46kw/156m |
| Tumon | 106.9 KGCA-LP / NW 70w/20m, 13-30-13/144-48-11E |
| Tumon | 106.9 KGCA-LP / CC for NS |

Hawai'i / HI

| | |
|------------|---|
| Kahului | 92.5 KORL-FM / CC for NS |
| Kaunakakai | 102.3 KMKK-FM / PG<1.9kw/360m, 21-07-55/157-11-31 |

Idaho / ID

| | |
|-------------|---|
| Hailey | 105.5 KLCW-LP / XR 43-31-42/114-19-25 |
| Hailey | 105.5 KLCW-LP / XR<-284m, 43-31-42/114-19-15 dismissed; going for unspecified other facilities at same site |
| Hailey | 105.5 KLCW-LP / XG 43-31-42/114-19-25 |
| Hailey | 106.7 KYUN / NW 100kw/481m, 43-16-45/114-09-14 |
| Idaho Falls | 102.1 KISY / CC from KISI |
| Ketchum | 104.7 KIKX / PR<97kw |
| Lewiston | 88.9 KLHS-FM / PC 230w/-256m, 46-24-45/117-01-31 |
| McCall | 101.1 KMCL-FM / PR>18kw/864m, 44-26-34/116-08-11 |
| Orofino | 95.1 KLER-FM / QC from 95.3 |
| Victor | 92.3 KRVQ / CC from KYPT |
| Victor | 92.3 KRVQ / PR 1.139kw; CC |
| Victor | 92.3 KRVQ / PG>1.14kw, adds V (was H only) |
| Victor | 103.7 KVRG / CC from KXMP |
| Victor | 103.7 KVRG / PR 1.139kw |
| Victor | 103.7 KVRG / PG>1.14kw, adds V (was H only) |

Illinois / IL

| | |
|-------------|---|
| Bartonville | 99.9 WWCT / CC from WIXO (was briefly WRXP) |
| E St. Louis | 101.1 WMVN / CC from WVRV |
| Eureka | 98.5 WPIA / XG 40-42-57/89-27-50 |
| Freeburg | 96.5 WRIA / CC from WWCT |
| Freeburg | 99.9 WZJM-LP / NW 100w/26m, 38-22-28/89-54-56 |
| Glasford | 101.1 WXMP / CC from WVLE-FM |
| Golconda | 94.3 WKYX-FM / CC from WLIE-FM |
| Joliet | 96.7 WSSR / PG>3.6kw/131m, 41-36-01/87-58-44 |
| Monee | 88.9 WJCG / FC; sold to KTLW |
| Peoria | 101.9 WCUA-LP / XR 40-46-22/89-44-50 |
| Peoria | 105.7 WIXO / CC from WXMP |
| Quincy | 107.9 WQJC-LP / PR>100w |
| Quincy | 107.9 WQJC-LP / XR 54m, 39-56-20/91-24-03 dismissed ROA but another application for the same facilities granted |
| Rantoul | 95.3 WMYE / CC from WEVX |
| Sugar Grove | 88.7 WSRI / PR>600w/103m, 41-42-16/88-26-02 |
| Watseka | 95.9 WMLF / CC for NS |
| White Hall | 88.3 WRLJ / PC>2kw |

Indiana / IN

| | |
|--------------|--|
| Austin | 92.7 WXKU-FM / CC from WJCP-FM |
| Connersville | 100.3 WMOJ-FM / CC from WIFE-FM |
| Fort Wayne | 100.5 WQSW-LP / CC for NS |
| Fort Wayne | 103.9 WXKE / CC from WYLT |
| Lebanon | 91.5 990420MB / NS 900w-V/75m, 40-16-51/86-31-39 |
| Morristown | 88.1 WJCF / PC>3.6kw/48m |
| Rochester | 88.5 WHNI / NW 250w/52m, 41-03-14/86-16-12 (AFR) |
| Seymour | 91.5 WJLR / PR 34kw/116m, 38-49-20/85-47-38 |
| Shelbyville | 98.5 WSHI-LP / NW 100w/27m, 39-27-47/85-48-28 |
| South Bend | 103.9 WRBR-FM / XG 41-41-53/86-09-25 |
| Wadesville | 90.1 WRFM / NW 6kw/87m, 37-56-03/87-55-35 |
| Terre Haute | 91.9 WHOJ / PR<960w/15m |

Iowa / IA

| | |
|----------|--|
| Brooklyn | 99.1 KSKB / PR>43.5kw, 41-41-23/92-21-31 |
|----------|--|

Centerville 98.7 KMGO / PR>94kw/458m, 41-02-22/93-00-32
 Centerville 98.7 KMGO / PG>94kw/458m, 41-02-22/93-00-32
 Estherville 95.9 KILR-FM / PR>50kw/150m, 43-15-58/94-53-35
 Fairfield 100.1 KRUU-LP / NW 100w/25m, 41-00-36/91-57-54
 Keokuk 90.9 KMDY / PC>7.7kw/60m, 40-30-41/91-19-50
 Mason City 88.5 KBDC / PC>68kw-V/141m, 43-22-12/93-16-27
 New London 97.3 KHDK / CC from KKNL

Kansas / KS

Burlington 97.7 KSNP / PR 17.2kw/178m, 38-09-57/95-32-19
 Enterprise 90.5 KBMP / PG 13kw/212m, 39-06-16/97-23-15
 Lawrence 90.7 KJHK / PC 2.3kw/85m
 Manhattan 88.7 KYFA / FC; sold to K-Love
 Manhattan 88.7 KGLV / CC from KYFA
 Manhattan 88.9 KYFA / QR from 88.7, 11kw/319m, 39-00-22/96-02-57
 Olpe 103.1 KEKS / NW 2.45kw/96m, 38-17-37/96-13-03
 Olpe 103.1 KEKS / CC for NS
 Osage City 92.9 KMXN / PC>42kw/163m, 38-44-22/95-33-07

Kentucky / KY

Brodhead 101.9 WPNS / CC for NS
 Jackson 97.3 WJSN-FM / QC from 106.5, 19kw/248m, 37-40-19/83-24-21
 Lexington 91.3 WUKY / PC<100kw/237m, 37-52-45/84-19-33
 Lexington 94.5 WMXL / PC<85kw
 Morganfield 95.3 WEZG / CC from WMSK-FM
 Mount Vernon 102.9 WANK / CC for NS
 Owingsville 107.7 WKCA / PC 6kw/100m, 38-06-08/83-50-12
 Stanford 96.3 WXYK-FM / FC; sold to K-Love
 Sturgis 101.3 WMSK-FM / CC from WEZG
 Sturgis 101.3 WMSK-FM / NW 5.4kw/82m, 37-40-00/87-55-40

Louisiana / LA

Baton Rouge 105.7 WBRJ-LP / XR 30-24-59/91-05-03
 Bunkie 89.5 KAHJ / FC; permit sold to K-Love
 Bunkie 89.5 KPCL / CC from KAHJ
 De Quincy 92.1 KTSR / XR 30-15-32/93-16-08
 Houma 104.1 KYRK / CC from KHEV
 Monroe 104.1 KJLO-FM / PR>100kw/455m
 Norco 91.1 WPDD / FC; permit sold to K-Love
 Norco 91.1 WPDD / PR>2kw-V/101m, 29-49-33/90-25-44
 Norco 91.1 WNKV / CC from WPDD
 Norco 91.1 WNKV / PG>2kw-V/101m, 29-49-33/90-25-44
 Richwood 100.9 KHLL / PC>6.5kw
 Shreveport 106.3 KBLK-LP / QR from 97.3
 Shreveport 106.3 KBLK-LP / PR 100w/?m, 32-27-05/93-50-54
 Shreveport 106.3 KBLK-LP / PG 46w/44m, 32-27-05/93-50-54
 South Fort Polk 95.7 KROK / PC>25kw/90m
 Sulphur 89.1 KHBO / FC; permit sold to K-Love
 Sulphur 89.1 KHBO / PR>15kw-V/107m, 30-21-06/93-23-49
 Sulphur 89.1 KRLR / CC from KHBO
 Sulphur 89.1 KRLR / PG>19kw/107m, 30-21-06/93-23-49
 Tallulah 104.5 KLSM / QR from 104.9, 7kw/60m, 32-26-53/91-12-30
 Tallulah 104.9 KLSM / PR 20060623AAO dismissed ROA

Maine / ME

Augusta 101.3 WKCG / PR 41kw/113m, 44-18-36/69-49-51
 Bangor 89.3 WHSN / PC>3kw/26m, 44-49-46/68-47-39
 Boothbay Hrb 96.7 WCME / PR>16kw

Maryland / MD

Cumberland 102.9 WROG / PR >5.4kw/435m, 39-34-59/78-53-50

Massachusetts / MA

Andover 92.5 WXRV / CL granted from Haverhill
 East Harwich 97.7 WXLJ-LP / XR 41-41-15/70-01-17
 Feeding Hills 99.7 WLCQ-LP / NW 100w/29m, 42-04-59/72-38-47
 Gardner 91.7 WJWT / NW 850w/84m, 42-33-29/72-03-06 (CSN religious)
 Winchendon 97.7 WSNI / CC from WOQL

Michigan / MI

Carson City 91.5 990914MC / AF dismissed (Great Lakes Community Broadcasting)
 Crystal Falls 94.9 WUPG / CC for NS
 Dowagiac 92.1 WHPD / CC from WDOV-FM
 Freeland 90.9 WLKB / PC>430w/99m, 43-33-42/83-58-52 (adds H, was V-only)
 Grand Ledge 92.9 WJZL / PR 5.4kw/105m
 Grand Rapids 104.1 WVGR / PC 96kw/221m, 42-39-18/85-31-38
 Gwinn 100.3 WUPF / CC for NS
 Manistee 97.7 WMLQ / CC from WVXM
 Marshall 104.9 WRCC / CC from WVKN
 Mount Pleasant 91.5 WMHW-FM / PG>13kw/140m
 Newberry 93.9 WNBY-FM / QC from 93.7, 50kw/135m, 46-26-58/85-06-04
 Newberry 93.9 WNBY-FM / PG>100kw/143m, 46-37-36/85-07-17
 Powers 107.3 WXPT / CC for NS
 Powers 107.3 WXPT / PC>24kw/133m
 Republic 96.7 WUPZ / CC for NS
 Rodney 91.5 990720MC / AF dismissed (Great Lakes Community Broadcasting)
 Sanford 91.3 990728MB / AF dismissed (Great Lakes Community Broadcasting)
 Walhalla 98.9 NEW / NS 6kw/100m, 43-52-51/86-13-04

Minnesota / MN

Barnesville 95.1 KRVI / PG<100kw/251m, 46-40-28/96-13-05
 Breckenridge 105.1 KLTA / XG 201m, 46-32-46/96-37-39 (correction)
 Breckenridge 105.1 KLTA / PC>201m, 46-32-46/96-37-39
 E Grand Forks 104.3 KZLT-FM / PG>140m, 47-48-49/96-55-48
 La Crescent 102.7 KOEG / PR<4.4kw/214m, 43-43-17/91-17-24
 Rochester 88.7 KMSE / PC>171m-H/168m-V, 44-02-28/92-20-25
 Rochester 98.9 KNLW-LP / XR 44-03-53/92-28-51

Mississippi / MS

Greenville 91.5 WLRK / CC from WFBI
 Greenwood 104.3 WGNL / PR>91m, 33-40-45/90-04-07
 Greenwood 104.3 WGNL / PG>91m, 33-40-45/90-04-07
 Hazlehurst 92.9 WDXO / PG 2.7kw/151m
 Meridian 102.1 WUCL / CC from WMMZ
 New Augusta 101.7 NEW / NS 5kw/95m, 31-13-01/89-10-57
 Pascagoula 105.9 WHGO / CC from WXRG
 Saitillo 102.9 WWMR / CC for NS

Missouri / MO

Centralia 94.9 KSDC-LP / NW 100w/16m, 39-14-45/92-12-38
 Centralia 94.9 KSDC-LP / PR<16m
 Centralia 94.9 KSDC-LP / PC 100w/16m
 Country Club 89.7 KJCV / PG>25kw/166m
 Eldon 101.9 KZWW / NW 43kw/161m, 38-16-46/92-35-06
 Fulton 107.9 KRFL-LP / QG from 97.5
 Osage Beach 93.5 KMYK / CC from KRMS-FM
 Potosi 97.7 KHZR / PC>26.5kw
 Webb City 97.9 KXDG / PC>15.5kw/127m, 37-14-34/94-30-21

Montana / MT

| | |
|-------------------|--|
| Belgrade | 96.7 KISN / PC 18.5kw/248m, 45-40-24/110-52-02 |
| Billings | 107.5 KRPM / CC from KZRV |
| Boulder | 106.3 KEME-LP / XR 46-12-55/112-06-43 |
| Charlo | 101.5 KCTQ-LP / QC from 103.3, 100w/6m, 47-25-34/114-11-36 |
| Dixon | 97.9 KCTD-LP / QG from 104.7, -316m, 47-18-33/114-17-52 |
| Kalispell | 88.7 KLKM / PG>3kw/852m, 48-00-48/114-21-55 |
| Miles City | 90.7 KYPR / CC from KECC |
| Missoula | 94.9 KYSS-FM / PC 63kw/729m |
| Pablo | 102.1 KCTP-LP / QR from 106.7 |
| Shelby | 95.7 KFAS-LP / XR 48-30-13/111-51-06 |
| Whitehall | 89.7 KQLR / PG 1.45kw/547m, 46-00-22/112-26-33 |

Nebraska / NE

| | |
|-------------------|---|
| Lexington | 88.7 KLNE-FM / PR<60kw/297m |
| McCook | 102.1 KZMC / CC for NS |
| West Point | 107.9 KWPN-FM / PR>33kw/182m, 41-52-53/97-00-58 |
| Wilber | 89.9 KFLV / PR>5.8kw/157m |

Nevada / NV

| | |
|------------------|--|
| Las Vegas | 88.9 KNPR / PR>1214m, 35-57-55/115-29-58 dismissed |
| Las Vegas | 88.9 KNPR / PR 22kw/1190m |
| Las Vegas | 93.1 KPLV / CC from KQOL-FM |
| Las Vegas | 105.1 KQRT / PR>49m |

New Hampshire / NH

| | |
|-------------------|--------------------------|
| Hanover | 99.3 WFRD / PC>6kw/100m |
| Whitefield | 99.1 WXRG / PR 460w/346m |
| Whitefield | 99.1 WXRG / CC for NS |

New Jersey / NJ

| | |
|-----------------------|--|
| Burlington | 97.5 WJZ-FM / CC from WTHK |
| Cape May | 101.5 WCFA-LP / NW ?w/33m, 38-58-27/74-50-22 |
| Ocean Acres | 98.5 WKMK / PG 3.4kw/136m |
| Wildwood Crest | 93.1 WEZW / CC from WDTN |

New Mexico / NM

| | |
|-------------------|---|
| Alamogordo | 89.9 KYCM / NW 800w/497m, 32-49-47/105-53-13 (Your Christian Companion) |
| Grants | 90.3 KLGQ / PG>18.5kw |
| Las Vegas | 95.7 KLYN-LP / NW ?w/170m, 35-36-16/105-15-35 |
| Questa | 103.7 KLNN / NW 51kw/-64m, 36-39-23/105-37-57 |

New York / NY

| | |
|---------------------|---|
| Binghamton | 94.3 WLRP-LP / NW ?w/224m, 42-03-49/75-57-02 |
| Binghamton | 94.3 WLRP-LP / CC for NS |
| Buffalo | 92.9 WBUF / PC 76kw/195m, 42-57-13/78-52-36 |
| Canaseraga | 97.1 NEW / NS 3.5kw/133m, 42-17-54/77-43-47 |
| Cape Vincent | 102.7 WBDR / CC from WXXX |
| Copenhagen | 106.7 WBDI / CC from WBDR |
| Cortland | 90.5 WSUC-FM / PC>210w/-18m, 42-35-48/76-11-23 |
| Glens Falls | 90.7 WLJH / QC from 90.9, 40w-V/404m, 43-25-12/73-45-37 |
| Hudson Falls | 101.7 WNYQ / CC from WENU-FM (was briefly WQYQ) |
| Malta | 105.7 WBZZ / PC 7.1kw/187m, 42-47-09/73-37-43; CL from Queensbury |
| Mexico | 103.9 WVOA-FM / PR>19kw/114m, 43-36-19/75-56-17 |
| Mount Kisco | 106.3 WFAF / PG<980w/135m, 41-11-09/73-40-41 |
| Mount Kisco | 106.3 WFAF / PC<980w/135m, 41-11-09/73-40-41 |
| New Paltz | 93.3 WBWZ / PC 330w/295m, 41-41-58/74-00-11 |
| New Rochelle | 93.5 WVIP / CC from WVIP-FM (was briefly WRTN) |
| Queensbury | 105.7 WBZZ / CC from WNYQ |
| Rochester | 88.5 WRUR-FM / XR 43-08-07/77-35-03 |

| | |
|----------------------|---|
| Saranac Lake | 93.3 WSLP / PG 12kw/-63m, 44-15-36/74-01-22 |
| S Bristol Twp | 107.3 WSNP / CC from WNVE |
| Sylvan Beach | 100.3 WWLF-FM / CC from WBGJ |
| Waterloo | 98.5 WNYR-FM / PC 3.2kw/136m, 42-48-22/76-50-47 |
| Wellsville | 93.5 NEW / NS 1.1kw/234m, 42-11-25/77-49-17 |
| Windsor | 106.7 WRRQ / NW 680w/196m, 42-03-10/75-42-07 |

North Carolina / NC

| | |
|----------------------|---|
| Aberdeen | 104.1 WAOG-LP / CC for NS |
| Aurora | 91.1 WZGO / NW 40kw/107m, 35-18-09/76-34-00 |
| Burgaw | 99.9 WKXB / PC>236m, 34-14-37/78-07-24; drops V, goes H-only |
| Chapel Hill | 89.3 WXYC / PG >1.2kw/139m, 35-51-59/79-10-00 |
| Clemmons | 105.7 WMKS / CC from WFMX |
| Creedmoor | 99.9 WCMC-FM / PG 8kw/175m, 36-03-56/78-29-26 |
| Creedmoor | 99.9 WCMC-FM / PC 8kw/175m, 36-03-56/78-29-26 |
| Hamlet | 104.3 WJSG / PC>6kw, 34-48-39/79-43-38 |
| Hillsborough | 102.5 WKXU / req. CL from Louisburg |
| Scotts Hill | 88.5 WZDG / PR>8.9kw-V/166m, 34-30-07/78-04-58 |
| Scotts Hill | 88.5 WZDG / QG from 88.3, 8.9kw-V/166m, 34-30-07/78-04-58 |
| Swainsboro | 104.1 WWTB / QR from 103.9, 6kw/92m, 34-42-59/77-18-35; CL from Topsail Beach dismissed ROA |
| Topsail Beach | 104.1 WWTB / PR<6kw/92m, 34-42-59/77-18-35 |
| Wade | 90.7 WZRL / CC for NS |
| Winston-Salem | 93.1 WPAW / CC from WMOX-FM |

North Dakota / ND

| | |
|--------------------|---|
| Beulah | 97.9 KHRU / CC for NS |
| Bismarck | 88.3 KBMK / PG>8.5kw |
| Bismarck | 96.5 KBYZ / PG>305m |
| Bismarck | 97.5 KKCT / PG>305m |
| Bismarck | 98.7 KACL / PG>305m |
| Fargo | 93.7 WDAY-FM / PR<307m, 47-00-36/97-11-41 |
| Fargo | 107.9 KPFX / PC>201m, 46-32-46/96-37-39 |
| Fargo | 107.9 KPFX / XG 201m, 46-32-46/96-37-39 (correction) |
| Grand Forks | 90.7 KFJM / PC 4kw/34m, 47-54-17/97-06-53 |
| Hazleton | 103.3 KUSB / PR>305m |
| Kindred | 92.7 KFAB-FM / FC; sold to Northwestern College (KFNW-97.9) |
| Medina | 92.3 KCVG / CC for NS |
| Minot | 93.7 KIZZ / PC<169m, 48-03-11/101-26-04 |
| Minot | 105.3 KZPR / PC<169m, 48-03-11/101-26-04 |
| Wahpeton | 106.9 KEGK / PG 41kw/164m, 46-32-46/96-37-39 |
| Wahpeton | 106.9 KEGK / PC 41kw/164m, 46-32-46/96-37-39 |

Ohio / OH

| | |
|--------------------|---|
| Anna | 88.7 WHJM / NW 1kw-V/97m, 40-28-02/84-11-24 (Radio Maria, Catholic religious) |
| Ashville | 93.3 WLZT / PC 32kw/184m, 39-52-34/82-58-49; CL from Chillicothe |
| Caledonia | 95.9 WYNT / PC>4.6kw/114m, 40-40-55/83-00-27 |
| Chillicothe | 94.3 WKKJ / PC 19kw/108m |
| Columbus | 102.1 WCRX-LP / XR 40-03-48/82-53-45 |
| Fairfield | 94.9 WYGY / CC from WMOJ (was briefly WPRV) |
| Fremont | 99.1 WFRO-FM / PC 11.5kw/111m, 41-21-58/83-05-20 |
| Lancaster | 103.5 WJZA / PC 4.2kw/119m, 39-57-00/82-43-29 |
| Lebanon | 96.5 WFTK / CC from WYGY (was briefly WPRV) |
| Lexington | 89.5 WFOT / PR<93m, 40-43-36/82-36-59 |
| Lexington | 89.5 WFOT / PR>360w-V/480m, 40-47-36/82-38-58 dismissed |

| | |
|--------------|--|
| Logan | 106.7 WWTL-LP / PC>27m, 39-30-24/82-22-09 |
| Milford | 107.1 WKFS / NW 4kw/152m, 39-06-18/84-33-25 |
| Norwood | 100.3 WMOJ-FM / PR 3.1kw/141m |
| Oak Harbor | 97.3 WJZE / PR 4.3kw/118m |
| Piqua | 95.7 WHIO-FM / CC from WDPT |
| Portsmouth | 104.1 WPAY-FM / PC 100kw/453m, 38-41-00/83-00-46 |
| South Vienna | 88.3 WVSO / NW 1kw/85m, 39-55-54/83-36-36 (AFR) |
| Westerville | 103.9 WTDA / PG>5.3kw |

Oklahoma / OK

| | |
|---------------|---|
| Ada | 89.5 KTGS / PR 5.8kw/177m |
| Ada | 89.5 KTGS / PG 5.8kw/177m |
| Antlers | 102.3 KDOE / NW 3.3kw/84m, 34-13-35/95-37-20 |
| Bennington | 98.1 KFYZ-FM / NW 2.5kw/88m, 34-02-48/95-56-30 |
| Bethany | 104.9 KKWD / CC from WWLS-FM |
| Edmond | 97.9 WWLS-FM / CC from KKWD |
| Eldorado | 96.9 KXOW / PG>25kw |
| Enid | 92.1 KAMG-LP / QR from 100.9, 36-27-40/97-55-20 |
| Grandfield | 89.9 KWKL / PC>45kw |
| Guymon | 99.5 KRBG / CC for NS |
| Muskogee | 97.1 KYAL-FM / PG>600m, 35-24-48/95-21-55 |
| Norman | 89.3 KSSO / PR<2.3kw/50m, 35-13-22/97-26-21 |
| Oklahoma City | 92.5 KOMA / PG>100kw/472m, 35-33-36/97-29-07 |
| Tahlequah | 102.1 KEOK / QC from 101.7, 87m |
| Warner | 101.7 KTFX-FM / QC from 102.1, 25kw |

Oregon / OR

| | |
|---------------|--|
| Astoria | 90.5 KORM / NW 50w-V/143m, 46-10-56/123-48-09; World Radio bilingual religious |
| Cottage Grove | 100.5 KDPM / PC>10.5kw/154m, 43-45-40/123-02-07 |
| Hood River | 105.5 KCGB-FM / PR 1kw/240m |
| Hood River | 105.5 KCGB-FM / PG>1kw/240m, 45-39-45/121-28-14 |
| Hood River | 105.5 KCGB-FM / PC>1kw/240m, 45-39-45/121-28-14 |
| Oakridge | 88.5 KMKR / CC briefly to KAVE but changed back |
| Rainier | 98.3 KPPK / NW 1.6kw/195m, 46-10-59/122-57-29 |
| Redmond | 88.5 KWRX / PR>950w |
| Selma | 88.7 KJKL / PC>30kw (K-Love) |
| Sunriver | 92.7 NEW / NW 18.5kw/248m, 44-02-49/121-31-50 (no known call letters yet) |
| Sunriver | 92.7 KKCU / NW 18.5kw/248m, 44-02-49/121-31-50 |
| Sunriver | 92.7 KRXF / CC for NS (was briefly KKCU) |
| Warrenton | 90.9 KCPB-FM / NW 10w/341m, 46-15-46/123-53-09 |
| Woodburn | 96.3 KPVN-LP / NW ?w/53m, 45-08-29/122-51-21 |
| Woodburn | 96.3 KPVN-LP / CC for NS |

Pennsylvania / PA

| | |
|--------------|---|
| Altoona | 100.1 WWOT / PC 3kw/291m, 40-34-11/78-26-25 |
| Bedford | 91.1 WUFR / PG>2.5kw/372m |
| Brookville | 103.3 WKQL / CC from WYTR (was briefly WMUV) |
| Clearfield | 93.1 WQYX / PC 1.7kw/287m, 41-04-05/78-31-07 |
| Gallitzin | 93.5 WHPA / PC>1.25kw/222m, 40-29-36/78-32-31 |
| Girardville | 107.9 WQDD-LP / NW 100w/-19m, 40-47-46/76-16-34 |
| Greenville | 107.1 WEXC / PR 2.1kw/119m |
| Halifax | 88.5 WMBZ / CC from WWWH |
| Nanticoke | 94.5 WVHO-LP / PR<-141m |
| Nanticoke | 94.5 WVHO-LP / PG<-141m |
| Palmyra | 92.1 WWKL / PC>1.5kw/183m, 40-23-28/76-43-31 |
| Philadelphia | 94.1 WYSP / PR 9.6kw/338m, 40-02-30/75-14-12 |
| Pittsburgh | 99.7 WSHH / PC 15.5kw/274m, 40-27-48/80-00-16 |

Puerto Rico / PR

| | |
|----------|--|
| Pastillo | 90.1 WJZD / PR>1kw/-68m, 17-59-36/66-28-34 |
| San Juan | 98.5 WPRM-FM / PC<581m, 18-06-47/66-03-06 |

South Carolina / SC

| | |
|-----------|---|
| Due West | 95.3 NEW / NS 6kw/100m, 34-18-34/82-25-30 |
| Ridgeland | 104.9 WWJN / CC from WWVW |
| Scranton | 102.9 WZTF / CC from WWRK (was briefly WWRK-FM) |

South Dakota / SD

| | |
|---------------|---|
| Belle Fourche | 101.9 KFMH / QC from 102.1, 100kw-H /454m, 44-19-40/103-50-06 |
| Belle Fourche | 101.9 KVBB / CC from KFMH |
| Rapid City | 97.1 KFND-LP / XR 44-02-35/103-14-54 |
| Rapid City | 97.1 KFND-LP / XR 44-02-35/103-14-54 dismissed |
| Rapid City | 97.1 KFND-LP / PG>80m, 44-02-35/103-14-54 |
| Reliance | 94.5 KPLO-FM / PG<94.6kw/301m, 43-57-57/99-36-11 |
| Salem | 100.5 KIKN-FM / XR 43-29-22/97-26-33 |
| Sioux Falls | 90.1 KSFS / NW 1kw/18m, 43-32-41/96-45-45 (AFR) |
| Sioux Falls | 90.9 KCSD / PG>6kw/65m, 43-34-28/96-39-19 |
| Spearfish | 90.9 KSPF / PG>800w |

Tennessee / TN

| | |
|----------------|--|
| Arlington | 102.7 WEGR / CL changed from Memphis (no technical changes) |
| Brownsville | 88.3 WQNN / FC; permit sold to K-Love |
| Brownsville | 88.3 WRR1 / CC from WQNN |
| Germantown | 94.1 WSNA / CC from WMBZ |
| Halls Crossrds | 96.7 WMYL / QC from 96.5, 1.9kw/149m, 36-04-21/84-01-18; CL from Harrogate |
| Harriman | 92.7 WBZH / PC 690w/294m, 35-59-05/84-44-07 |
| Jackson | 98.7 WJKR-LP / FC possible; sold to Lane College |
| Jackson | 104.1 WOGY / CC from WJGY |
| Munford | 98.9 WKIM / CC from WMPW |
| Nashville | 98.7 WZLU-LP / XR 36-06-15/86-48-02 |
| Ooltewah | 99.7 WYTY-LP / XR 35-03-47/85-02-15 |
| Paris | 90.9 990402MC / NS 14.5kw/88m, 36-08-55/88-08-06 |
| Paris | 90.9 990402MC / PR>14.5kw/88m, 36-08-55/88-08-06 |
| Paris | 90.9 WPRH / CC for NS |
| Paris | 90.9 WPRH / FC; sold to AFR |
| Selmer | 90.5 WSMM / FC; permit sold to K-Love |
| Selmer | 90.5 WSMM / PR>20kw/126m, 35-10-44/88-33-45 |
| Selmer | 90.5 WXKV / CC from WSMM |
| Tiptonville | 97.3 WTNV / CC from WOGY |
| Tiptonville | 97.3 WTNV / PR 1.9kw/180m, 36-16-11/89-19-25 |
| Trenton | 97.7 WTNE-FM / PR>50kw/123m, 35-44-35/88-59-19 |
| Wartburg | 101.3 WECO-FM / PR>5.1kw/226m, 35-55-41/84-34-49 |

Texas / TX

| | |
|------------|---|
| Abilene | 90.5 KAGT-FM / FC; sold to K-Love |
| Ace | 104.7 KDLP-LP / PC 79w/34m, 30-31-23/94-48-40 |
| Benavides | 107.7 KXTM / PC>25kw/77m, 27-35-18/98-26-49 |
| Bishop | 106.9 KMZZ / PR>25kw/99m-H/75m-V, 27-38-39/97-45-13 |
| Bridgeport | 98.3 KBOC / PC 93kw/620m, 33-26-13/97-29-05 |
| Brownfield | 90.7 KCWV / FC; permit sold to K-Love |
| Brownfield | 90.7 KMLU / CC from KCWV |
| Bryan | 98.3 KORA-FM / PC 900w/161m, 30-39-01/96-20-57 |
| Comfort | 95.1 KCOR-FM / PG<201m, 29-38-03/98-47-58 |

| | |
|----------------------|---|
| Daingerfield | 92.7 KWSK-LP / NW 45w/44m, 33-02-44/94-44-53 |
| Dallas | 101.1 WRR / PC>508m, 32-35-19/96-58-05 |
| Fort Worth | 107.5 KMVK / CC from KOAI |
| Hereford | 88.7 KWDH / CC from KHFD |
| Hutto | 92.1 KYLR / PC>2.5kw |
| Ingram | 96.5 KAKI / CC for NS |
| Iowa Park | 96.3 KXXN / CC for NS |
| Kenedy | 92.1 KTNR / PC>6kw/80m |
| Kerrville | 92.3 KRNH / PG<23kw/181m, 30-03-42/99-03-43 |
| Kerrville | 107.1 KZOE-LP / NW 27w/56m, 30-02-37/99-07-16 |
| Leesville | 88.7 960401MC / AF dismissed |
| Meridian | 95.3 KSCG / CC for NS |
| Monahans | 99.9 KBAT / PG>100kw/175m |
| Pearsall | 103.3 KSAG / CC for NS |
| Reno | 98.9 KLOW / CC for NS |
| Rocksprings | 92.5 NEW / NS 25kw/100m, 29-58-34/100-25-00 |
| Terrell Hills | 106.7 KPWT / CC from KELZ-FM |
| Winfield | 94.3 KXVI-LP / XR 33-09-40/95-06-29 |

Utah / UT

| | |
|---------------------|---|
| Brigham City | 106.9 KEGH / CC from KRAR |
| Cedar City | 92.1 KXBN / CC from KXFF |
| Cedar City | 94.9 KCIN / CC from KXBN |
| Coalville | 97.5 KOAY / CC from KFMS |
| Logan | 90.5 KZCL / PR 1kw/112m, 41-36-41/111-57-05 |
| Price | 100.1 KWSA / QC from 100.9, 3kw/41m |
| Woodruff | 100.7 KYMV / CC from KEGH |
| Woodruff | 100.7 KYMV / PC 88kw-H/647m, 40-52-16/110-59-43 |

Vermont / VT

| | |
|-------------------|---|
| Burlington | 107.9 WVPS / PC>828m, 44-31-32/72-48-58 |
| Wilmington | 100.7 WTHK / CC from WWAY |

Virginia / VA

| | |
|---------------------|---|
| Buffalo Gap | 95.5 WBOP / CC from WZXI |
| Chincoteague | 96.5 WCTG / PR 6kw/100m, 38-02-51/75-25-45 |
| Churchville | 106.1 WCNR / CC from WBOP |
| Deltaville | 92.3 WTYD / NW 2.4kw/160m, 37-29-37/76-26-30 |
| Goochland | 100.5 WZEZ / PG 2.6kw/155m, 37-47-37/77-55-57 |
| Kilmarnock | 101.7 WKWI / PR 2.2kw/122m |
| Louisa | 105.5 WOJL / NW 6kw/99m, 38-01-37/78-01-05 |
| Poquoson | 106.1 WNRJ / CC from WZNR |
| White Stone | 104.9 WIGO / PR 4.1kw/122m |
| Woodstock | 95.7 WSCE-LP / FC; sold by local public schools to religious org. |

Virgin Islands / VI

| | |
|----------------------|--|
| Christiansted | 88.5 930114MB / AF dismissed ROA (VI Public Television System) |
| Frederiksted | 101.7 WEVI / PR>252m, 17-43-17/64-51-24 |

Washington / WA

| | |
|-----------------------|---|
| Aberdeen | 94.3 KAYO-LP / PG>-14m, 46-56-59/123-49-13 |
| Athena | 100.7 KHSS / PG>4.9kw, CL from Walla Walla |
| Bellingham | 89.3 KUGS / PG>700w/147m |
| Longview | 90.3 KWYQ / PR 400w/272m |
| Manson | 94.7 KZAL / PG 10.34kw/158m, 47-51-16/120-09-59 |
| Olympia | 90.1 KPLI / PC>-10m, 47-02-24/122-54-03 |
| Onalaska | 92.1 KTYG-LP / CC for NS |
| Royal City | 93.5 KWDR / CC for NS |
| Walla Walla | 100.7 KHSS / PR>4.9kw/418m |
| West Clarkston | 89.7 990823MA / AF returned |

West Virginia / WV

| | |
|-----------------|---|
| Logan | 101.9 WVOW-FM / XC 37-51-24/81-58-18 |
| Richwood | 105.5 WKQV / PR 3.5kw/269m |
| Ridgeley | 100.5 WDYK / NW 4.6kw/114m, 39-43-03/78-42-43 |

| | |
|---------------------|-------------------------------------|
| Salem | 99.9 WVBL-LP / XR 39-15-43/80-34-48 |
| S Charleston | 89.3 WWLA / FC; sold to K-Love |

Wisconsin / WI

| | |
|-----------------------|---|
| Chippewa Falls | 97.3 WHRC-LP / CC for NS |
| Chippewa Falls | 97.3 WHRC-LP / XR 44-53-09/91-23-57 |
| La Crosse | 104.9 WLXR-FM / PR 800w/201m, 43-43-17/91-17-24 |
| Madison | 98.1 WMGN / PG 36kw/176m |
| Madison | 98.1 WMGN / PC<36kw/176m |
| Madison | 99.1 WIDE-LP / CC for NS |
| Menomonie | 105.3 WPHF-LP / NW 100w/5m, 44-53-00/91-54-13 (religious) |
| Mukwonago | 101.3 WFAQ-LP / QR from 92.9, 42-52-22/88-22-39 dismissed |
| Platteville | 89.1 WSSW / CC from WHSW-FM |
| Shawano | 94.5 WRGW-LP / CC for NS |
| Two Rivers | 97.1 WTRW / CC for NS |
| Westby | 103.9 NEW / NS 2.75kw/145m, 43-37-36/90-41-57 |
| Whitewater | 106.5 WKCH / XC 42-54-20/88-45-05 |

Wyoming / WY

| | |
|-------------------|--|
| Basin | 103.3 KBEN-FM / CC for NS |
| Casper | 93.5 KWYX / CC for NS |
| Chugwater | 99.5 KCUG / CC from KWHO |
| Cody | 96.7 KWHO / CC for NS |
| Gillette | 88.9 KDMN / CC from KYPR |
| Gillette | 89.7 KAXG / PR>400w/137m, 44-12-34/105-28-04 |
| Glenrock | 98.5 KGRK / QR from 98.3; 100kw/558m, 42-44-03/106-20-00 |
| Hanna | 102.1 KXMP / CC for NS |
| Hanna | 103.3 KHNA / CC for NS |
| Hudson | 105.1 KTUG / CC for NS |
| Laramie | 93.9 KRQU / QR from 104.5, 6.6kw-H/192m, 40-52-44/105-41-46 |
| Laramie | 93.9 KRQU / QR from 104.5, 15kw-H/130m, 40-53-00/105-42-01 |
| Laramie | 104.5 KRQU / PR 6.6kw-H/192m, 40-52-44/105-41-46 dismissed |
| Lyman | 104.7 KYLZ / QC from 104.9, 89kw-H/647m, 40-52-16/110-59-43; CL from Tremonton, Utah |
| Pine Haven | 99.1 KWAP / CC for NS |
| Upton | 104.5 KRUG / CC for NS |
| Wamsutter | 94.7 KRAN / CC for NS |
| Wamsutter | 104.3 KYPT / CC for NS |
| Wheatland | 107.5 KPAD / CC for NS |
| Wright | 92.7 KHRW / CC for NS |

AUXILIARY CHANGES

Alaska / AK

| | |
|------------------|-----------------------------------|
| Fairbanks | 102.5 KIAK-FM / AF 1kw/118m (aux) |
| Fairbanks | 102.5 KIAK-FM / NW 1kw/118m (aux) |

Arizona / AZ

| | |
|----------------|-----------------------------------|
| Globe | 100.3 KQMR / NW 900w/583m (aux) |
| Phoenix | 90.3 KFLR-FM / AF 430w/476m (aux) |
| Phoenix | 90.3 KFLR-FM / PG 430w/476m (aux) |

California / CA

| | |
|--------------------|--------------------------------|
| Fresno | 105.9 KFJK / NW 1kw/590m (aux) |
| Los Molinos | 102.1 KCEZ / AF 6kw/67m (aux) |

Colorado / CO

| | |
|---------------|--|
| Denver | 103.5 KRFK / NW 100kw/238m, 39-43-59/105-14-10 (aux) |
| Denver | 106.7 KBPI / NW 100kw/487m, 39-43-59/105-14-10 (aux) |
| Pueblo | 98.9 KKMKG / AF 3.1kw/641m (aux) |

Connecticut / CT

| | |
|---------------|---|
| Monroe | 88.1 WMNR / NS 170w/117m, 41-20-30/73-16-30 (aux) |
|---------------|---|

Florida / FL

Callahan 93.3 WROO / NW 25kw/119m (aux)
 Clearwater 97.9 WXTB / NW 13kw/350m (aux)
 Cocoa Beach 101.1 WJRR / AF 9kw/391m (aux)
 Cocoa Beach 101.1 WJRR / NS 9kw/391m (aux)
 Cocoa Beach 104.1 WTKS-FM / NS 9kw/391m (aux)
 Fort Lauderdale 106.7 WRMA / NW 1.4kw-V/88m, 25-43-56/80-14-04 (aux)
 Hialeah 92.3 WCMQ-FM / NW 1.4kw-V/88m, 25-43-56/80-14-04 (aux)
 N Miami Beach 95.7 WXDJ / NW 1.4kw-V/88m, 25-43-56/80-14-04 (aux)
 Orlando 100.3 WRUM / NS 9kw/391m (aux)

Georgia / GA

Athens 104.7 WFSH-FM / NW 23.3kw/412m (aux)
 Athens 104.7 WFSH-FM / PR>23.3kw (aux)
 Athens 104.7 WFSH-FM / PG>23.3kw (aux)
 Hampton 107.9 WHAT / NW 33kw/154m (aux)
 Tybee Island 103.9 WTYB / PC<15kw (aux)

Kansas / KS

Hill City 90.5 KZNA / NW 1kw/159m (aux)
 Leavenworth 98.9 KQRC-FM / NW 65kw/254m (aux)

Massachusetts / MA

Brockton 97.7 WKAF / NS 2.7kw/148m, 42-07-28/71-00-05 (aux)

Michigan / MI

Birmingham 94.7 WCSX / NS 14kw/239m, 42-28-16/83-12-01 (aux)
 Detroit 99.5 WYCD / NW 15.3kw/106m (aux)

Minnesota / MN

Barnesville 95.1 KRVI / AF 15kw/190m (aux)
 Barnesville 95.1 KRVI / NS 15kw/190m (aux)
 Staples 94.7 KSKK / NS 4.4kw/95m, 46-23-43/94-57-54 (use old main as aux)

Mississippi / MS

Sandersville 94.3 WKZW / NS 13kw/131m (aux)

Missouri / MO

Canton 100.9 KRRY / NW 5.2kw/146m (aux)
 St. Louis 93.7 KSD / AF 29kw/164m, 38-36-47/90-20-09 (aux)
 St. Louis 93.7 KSD / NS 29kw/164m, 38-36-47/90-20-09 (aux)
 St. Louis 96.3 KIHT / NW 30kw/164m, 38-36-47/90-20-09 (aux)

Montana / MT

Bozeman 93.7 KOB-FM / PR 51kw/-39m, 45-36-58/111-05-16 (presume aux)
 Bozeman 99.9 KBOZ-FM / PR 19kw/-56m, 45-36-58/111-05-16 (presume aux)
 Shelby 96.7 KZIN-FM / NW 370w/137m, 48-19-44/112-02-05 (aux)

Nevada / NV

Las Vegas 88.9 KNPR / NS 2kw/1188m (aux)

New Hampshire / NH

Mt Washington 94.9 WHOM / NS 20.5kw/1149m (aux)
 Mt Washington 94.9 WHOM / PR<1149m (aux)

New Jersey / NJ

Eatontown 106.3 WHTG-FM / NW 850w/80m, 40-13-06/74-02-35 (aux)
 Long Branch 107.1 WWZY / NW 1.35kw/80m, 40-13-06/74-02-35 (aux)
 Pennsauken 107.9 WRNB / AF 500w/252m (aux)

New York / NY

Babylon 102.3 WBAB / PR>6kw (aux)
 Honeoye Falls 95.1 WFXF / NW 2kw/135m (aux)
 Plattsburgh 99.9 WBTZ / PR 9.9kw/300m dismissed ROA (presumably aux); AF 9.9kw/255m (aux)

North Carolina / NC

Greensboro 98.7 WSMW / PC>266m (aux)

Ohio / OH

Chillicothe 93.3 WLZT / AF 13kw/161m, 39-52-34/82-58-49 (aux)
 Cincinnati 102.7 WEBN / NW 17kw/175m, 39-06-18/84-33-25 (aux)
 Lancaster 95.5 WHOK-FM / AF 45kw/150m (aux)
 Miamisburg 93.7 WFCJ / NW 477w/125m (aux)

Oklahoma / OK

Oklahoma City 102.7 KJYO / PC<160m, 35-32-51/97-29-30 (aux)

Oregon / OR

Portland 101.9 KINK / PG>50kw/470m (aux)

Pennsylvania / PA

Harrisburg 89.5 WITF-FM / NW 13.6kw/258m (aux)
 Lancaster 94.5 WDAC / NS 13.5kw/151m (aux)

South Carolina / SC

Spartanburg 98.9 WSPA-FM / NS 50kw/563m (aux)

Tennessee / TN

Walden 103.7 WTRZ-FM / AF 15kw/92m (aux)
 Walden 103.7 WTRZ-FM / NS 15kw/92m, 35-07-33/85-17-25 (aux)

Texas / TX

Amarillo 105.7 KJJP / NW 1kw/83m (aux)
 Denton 99.1 KFZO / PR 1.2kw/243m (aux)
 Denton 99.1 KFZO / PG 1.2kw/243m (aux)
 Highland Vil. 100.7 KWRD-FM / PC<493m (aux)
 Houston 90.1 KPFT / NS 1kw/182m (aux)
 Krum 93.7 KNOR / NW 5.3kw/600m, 33-29-05/97-24-44 (aux)
 Port Arthur 93.3 KQBU-FM / AF 100kw/330m (aux)
 Port Arthur 93.3 KQBU-FM / NS 100kw/330m (aux)
 San Marcos 103.5 KBPA / NW 100kw/329m (aux)

Utah / UT

Salt Lake City 94.1 KODJ / NW 470w/1168m, 40-39-35/112-12-05 (aux)
 Spanish Fork 106.5 KOSY-FM / AF 410w/1020m, 40-39-35/112-12-05 (aux)
 Spanish Fork 106.5 KOSY-FM / NS 410w/1020m (aux)

Washington / WA

Richland 94.9 KIOK / NW 4.6kw/-36m, 46-13-18/119-11-10 (aux)

Wisconsin / WI

Rhineland 91.7 WXPR / NS 10kw/128m, 45-46-30/89-14-55 (aux)

Wyoming / WY

Sheridan 93.7 KYTI / NW 4.5kw/348m (aux)
 Sheridan 94.9 KZWY / NW 4.5kw/348m (aux)

SOURCES

Government: Canadian Radio-Television and Telecommunications Commission (CRTC), Federal Communications Commission (FCC)

This report includes a total of 690 changes to the FM dial. Of these, 78 are auxiliary changes.



-Chris Kadlec
 FM News Editor

PHOTO-NEWS



Jeff Kruszka, Editor
 5024 S. Braxton Ave.
 Baton Rouge, LA 70817
 jkruszka@bellsouth.net

January 2007

EVEN BETTER IN **COLOR!** CHECK OUT THE eVUD

We feature DX from the Land of Lincoln this month. First off is Jeff Kadet of Macomb, IL:



CITO-3 Timmins, ON
 720 mi Es seen 7/18/06
 @1646 CDT

WBRA-DT-3 Roanoke, VA
 611 mi Es seen 6/10/06
 @1345 CDT



WBTV-3 Charlotte, NC
 625 mi Es seen 7/18/06
 @1116 CDT

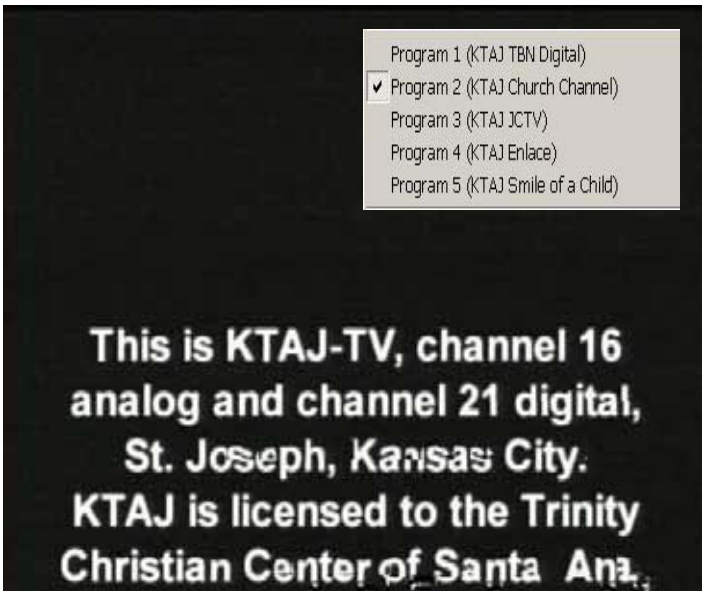
WYFF-4 Greenville, SC
 598 mi Es seen 7/18/06
 @1025 CDT



XHPNG-6 Piedras Negras, COAH
 984 mi Es seen 7/15/06
 @1224 CDT



KETV-DT-20 Omaha, NE
285 mi Tr seen 7/18/06
@0238 CDT



KTAJ-DT-21 Kansas City, MO
229 mi Tr seen 7/19/06
@0057 CDT



WOWT-DT-22 Omaha, NE
285 mi Tr seen 7/16/06
@0200 CDT



WTLJ-DT-24 Muskegon, MI
301 mi Tr seen 5/25/06
@0228 CDT



WCGV-DT-25 Milwaukee, WI
228 mi Tr seen 7/22/06
@0018 CDT
"carrying WVTV-DT"



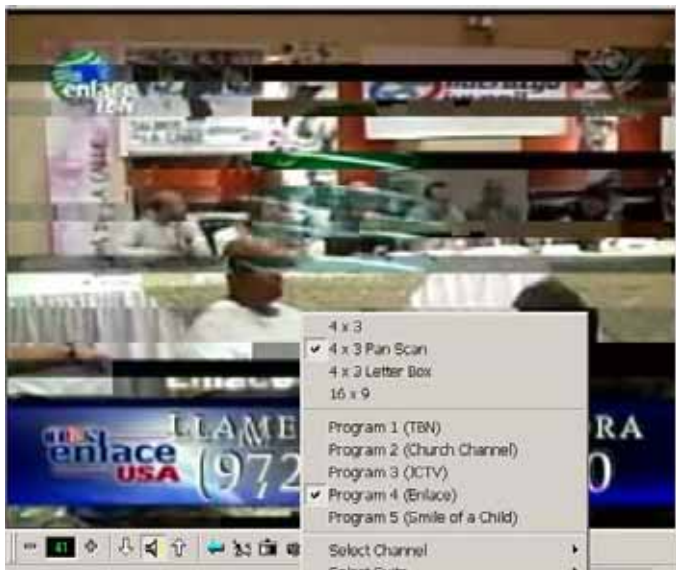
WZZM-DT-39 Grand Rapids, MI
315 mi Tr seen 7/9/06
@1204 CDT
"over Peoria 39"



KPXM-DT-40 St. Cloud, MN
 374 mi Tr seen 7/15/06
 @2132 CDT



WFRV-DT-39 Green Bay, WI
 306 mi Tr seen 7/15/06
 @2336 CDT



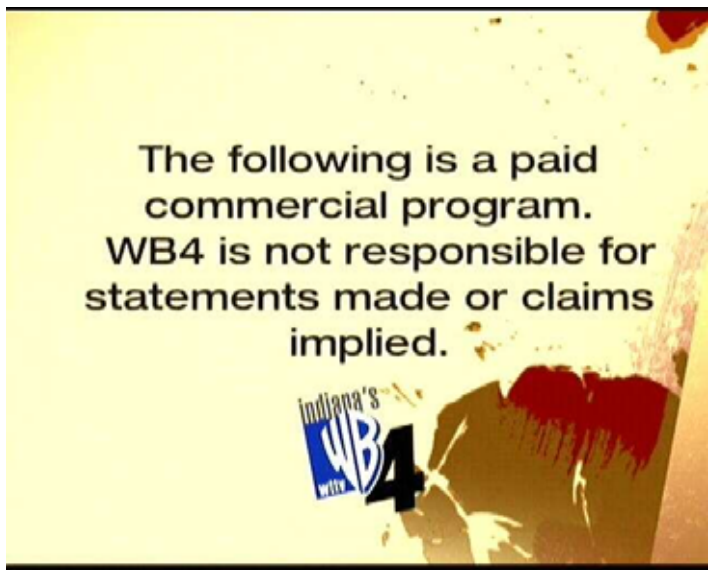
WBUY-DT-41 Holly Springs, MS
 404 mi Tr seen 7/19/06
 @1133 CDT



KPTM-DT-43 Omaha, NE
 285 mi Tr seen 7/18/06
 @0238 CDT



WEVV-DT-45 Evansville, IN
 245 mi Tr seen 7/31/06
 @0725 CDT



WTTV-DT-48 Bloomington, IN
 251 mi Tr seen 7/31/06
 @0725 CDT



WIPB-DT-52 Muncie, IN
280 mi Tr seen 7/30/06
@0754 CDT



WHBQ-DT-53 Memphis, TN
369 mi Tr seen 7/19/06
@1051 CDT

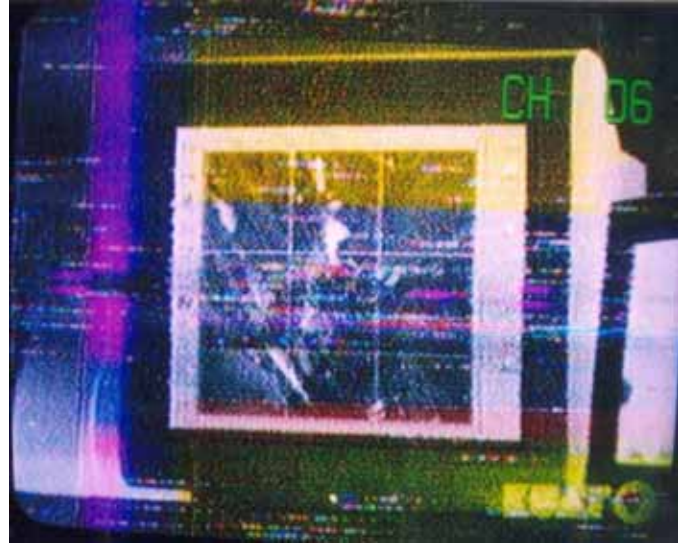
And now more DX from Marv Shults, of Toulon, IL:



KDUH-4 Scottsbluff, NE
687 mi Es seen 7/5/06
@1834 CDT



KTWO-2 Casper, WY
855 mi Es seen 5/30/06
@1145 CDT



KUAT-6 Tucson, AZ
1298 mi Es seen 7/4/06
@2000 CDT



ICR-2 Havana, CU
1312 mi Es seen 6/4/06
@1128 CDT



Eastern U.S. TV DX

Featuring reports from AL, CT, DC, DE, FL, GA, IN, KY, MA, MD, ME, MI, NC, NH, NJ, NY, OH, PA, RI, SC, TN, VA, VT, and WV, along with the Canadian Provinces of NB, NF, NS, ON, PEI, and PQ.

Send reports by the 15th of each month to:

Nick Langan
 1040 Riverview Drive
 Florence, NJ 08518
 E-mail: nick.langan@gmail.com

The Editor's Note

Here's hoping everyone had a terrific holiday season, and that Santa brought some interesting DXing toys!

The beginning of the doldrums of Winter has not been without some interesting DX. Some tropo has been scattered across the east while there has been a handful of E-Skip to keep the antennas dust-free. Here's to a DX-filled 2007!

Fred Nordquist Fred Nordquist - 147 Travis Hill Rd - Moncks Corner SC 29461

5/4 Tr
 2229 WMFE 23 FL Orlando 326 DTV-
 Educ

5/22 Tr
 0120 WSCV 51 FL Ft. Lauderdale 500
 SS

5/24 Es
 1800 KTBS 3 LA Shreveport 810
 CBS

5/28 Es
 1342 KOTV 6 OK Tulsa 913 CBS

8/1 Tr
 2315 WBCC-DT 30 FL Cocoa 325
 PBS

10/12 Tr
 0910 WSRE 23 FL Pensacola 468
 PBS

0925 WDHN 18 AL Dothan 341 ABC

10/17 Tr
 2211 WLTV 23 FL Miami 501 SS-
 Univision

2350 WBZL 39 FL Miami 501 CW

10/18 Tr
 0001 WHFT 45 FL Miami 499 TBN
 0005 WAMI 69 FL Hollywood 501
 SS-Telefutura

0010 WTVJ-DT 31 FL Miami 501 NBC
 (Farthest DTV logging)

WBFS-DT 32 FL Miami 501 Ind.

0013 WLRN 17 FL Miami 502 PBS

(Farthest Tr logging)

1428 WNEG 32 GA Toccoa 218 CBS

10/20 Tr
 2115 WDTA-LP 53 GA Fayetteville 258
 Daystar-Relig.

2215 WUOA 23 AL Tuscaloosa 439

2301 WATL 36 GA Atlanta 255
 2302 WJBF-DT 42 GA Augusta 109
 ABC

10/22 Tr
 2043 WNCN 32 AL Montgomery 401
 ABC

10/31 Tr
 2158 W60CV 44 NC Greenville 218
 TBN

2225 WUND-DT 20 NC Columbia 277
 UNC

11/2 Tr
 0032 WBTD-LP 52 VA Suffolk 316 NBC
 0112 WXLV-DT 29 NC Winston Salem
 183 ABC

Says Fred: "Listed only new loggings. Totals now at 251 including 75 DTVs. Equipment: Ant: UHF: CM 7' screened dish at 30' VHF: APS-13 at 25' w/rotor on roof & homebrew Es Dipole w/rotor in attic RX: 2 Panasonic 13" 83 Ch Color TVs & RS Accurian STB Wineguard AC-4990 UHF Preamp. RS Rotor, CAC-11 coax lead-ins.

Email: nordquis@homexpressway.net.

Statistics Web Page:

<http://web.infoave.net/~fmjnordquist/statistics.html>

Your statistics updates are always welcome!"



Brian S. May Fairfield, Connecticut — Antenna approx. 330 feet above msl.

TV: Philips 9" color portable. Antenna: Channel Master Crossfire - model 3679a. Preamp: Winegard AP-8700.

Propagation: Local, Exloc= Extended Local, Trop=Tropospheric Ducting, Es= Ionospheric Skip

5/31 Band Scan from 21:00 to 23:30 TV

Stations Received: 55

WCBS 2 NY New York City CBS Local
WFSB 3 CT Hartford CBS Local
WNBC 4 NY New York City NBC Local
WNYW 5 NY New York City Fox Local
WLNE 6 RI Providence ABC Trop
WABC 7 NY New York City ABC Local
WTNH 8 CT New Haven ABC Local
WWOR 9 NJ Secaucus UPN Local
WJAR 10 RI Providence NBC Trop
WPIX 11 NY New York City WB Local
WPRI 12 RI Providence CBS Trop
WNET 13 NY New York City PBS Local
WHRO 15 VA Hampton PBS Trop
WBOC 16 MD Salisbury CBS Trop
WUVN 18 CT Hartford Uni Local
WTTX 20 CT Waterbury WB Local
WLIW 21 NY Garden City PBS Local
WNJS 23 NJ Camden PBS Trop
WEDH 24 CT Hartford PBS Local
WNYE 25 NY New York City PBS Local
WFXT 25 MA Boston Fox Trop
WHPX 26 CT New London i TV Local
WGNT 27 VA Portsmouth UPN Trop
WCPB 28 MD Salisbury PBS Trop
WLWC 28 MA New Bedford WB Trop
WTFX 29 PA Philadelphia Fox Trop
WVIT 30 CT New Britain NBC Local
WPXN 31 NY New York City i TV Local
WSBE 36 RI Providence PBS Trop

WSBK 38 MA Boston UPN Trop
WGGB 40 MA Springfield ABC Trop
WXTV 41 NJ Paterson Uni Local
WSAH 43 CT Bridgeport Inde. Local
WGBX 44 MA Boston PBS Trop
WWDP 46 MA Norwell Inde. Trop
WNJU 47 NJ Linden Tel Local
WGTW 48 PA Philadelphia TBN Trop
WEDW 49 CT Bridgeport PBS Local
WNJN 50 NJ Montclair PBS Local
WEDN 53 CT Norwich PBS Trop
WTBY 54 NY Poughkeepsie TBN Local
WLVI 56 MA Boston WB Trop
WGBY 57 MA Springfield PBS Trop
WNJB 58 NJ New Brunswick PBS Exloc
WDPX 58 MA Hyannis i TV Trop
WCTX 59 CT New Haven UPN Local
WTIC 61 CT Hartford Fox Local
WV\JSI 62 NJ Atlantic City Tel Trop
WMBC 63 NJ Newton Inde. Trop
WNAC 64 RI Providence Fox Trop
WUTF 66 MA Marlborough TFu Trop
WFTY 67 NY Smithtown TFu Local
WFUT 68 NJ Newark TFu Local
WBPX 68 MA Boston i TV Trop
WPXQ 69 RI Westerly i TV Trop

LPTV Stations Received: 4

WXNY 32 NY New York City Inde. Local
WRDM 50 CT Hartford Tel Trop
w60ai 60 NY New York City Inde. Local
w65dz 65 CT Bridgeport Inde. Exloc

Says Brian: "This was my peak dxing night of the year and the most TV stations I received during a band scan in eleven years. As you can see, the vast majority of tropo came in from the north and east. Most of these stations came in all night. As for the smattering of TV stations I tuned in via tropo from the southwest, they came in at dusk and quickly disappeared, having bowed to the strong trend in the opposite direction. Considering the local HDTV interference I have to deal with, and the loss of local analog station WLNY-55 from Riverhead, New York in January, I still think I can do better in the two seasons (maybe more?) of NTSC tropo dxing I have left. Until next year, 73."

Doug Smith W9WI

Pleasant View (Nashville, TN) EM66

<http://www.w9wi.com>

11/10 Tr

0700 unID 49 TBN; Cookeville?
Jackson MS in on FM

11/12 Tr

1706 WRSP 55 IL Springfield 267
WICS 20 IL Springfield 267

| | | | | |
|------|------|----|------------------|-----|
| | unID | 64 | prob. Cincinnati | |
| 1900 | WUPA | 69 | GA Atlanta | 237 |
| | WXFT | 60 | IL Aurora | 379 |
| | WSNS | 44 | IL Chicago | 380 |
| 1902 | WPXK | 54 | TN Jellico | 159 |
| 1947 | WMSN | 47 | WI Madison | 477 |
| 2336 | WCLJ | 42 | IN Bloomington | 213 |

Rick Shaftan

Sparta, NJ

(First # at end is bearing, second is mileage)

9/18/06 GW

2311 14z @W14CO Clarks Summit PA //WNEP 301 63

9/19/06 GW0000 48 @WRNN-DT Kingston NY Sync Lock, no pic 47 49
0050 42+ ???? Daystar, towards NYC, believe this to be NY off channel.10/8/06 Tr2143 19+ @WYSJ-CA Yorktown VA Shopping 200 289
2152 66 @WUVP-DT Vineland NJ Sync Lock, no pic 206 74
2217 56 @WCPB-DT Salisbury MD Sync Lock, no pic11/25/06 Tr1947 24+20 @W24DB-CA Sayre/Clarks Summit PA //WOLF-TV
298 64
2019 27 @WRDC-DT Durham NC My RDC 210 425
2151 50- SitCom Beam 230 degrees
2304 24Z @WTAT Charleston SC Solid and in color 208 62411/26/06 Tr0026 43+ @WFXB Myrtle Beach SC Audio only through CCI.
Where New Rock Lives 101.7 KZQ Myrtle Beach 208 533
0117 32 @WITN-DT Washington NC Sync Lock, no pic 202 41812/5/06 GW

2352 40 @WXTV-DT New York NY Full Pic 118 38

Robert Grant (N8NU) 231 E Temperance Rd. Temperance, MI 48182E-mail: Rg3d@yahoo.com (expect delays, no home Internet access)

Temperance is in SE corner of MI, lat 41.7794, lon -83.5437 (EN81fs)

Receivers: Sylvania (Funai) 6427GFF 27" color analog/digital SDTV;
Sanyo 21T63 analog-only 12" B&W; Yaesu VX-5 handheld and FT-857
Base/mobile amateur transceivers.

Antenna: Channel Master Advantage 3020 on chimney. All times EDT.

11/9 Tr0248 WOTV-DT 20 MI Battle Creek
113

unID 20 plus offset

11/21 Tr2330 WTOL-DT 17 OH Toledo
NOTED SILENT 20+h
2359 WXMI 17 MI Grand Rapids
12011/22 Tr0020 WCIU 26 IL Chicago
211
1045 WNDU-DT 42 IN South Bend
139
1900 WOIO-DT 10 OH Cleveland (rare)
100

(all Youngstown very strong)

11/23 Tr0100 nWRTV 6 IN Indianapolis
190
2250 nWNLO-DT 32 NY Buffalo
252
2300 WSTR 64 OH Cincinnati
185
2309 nWSTR-DT 33 OH Cincinnati
185
2321 nWKRC 12 OH Cincinnati
191
2344 nWTAJ-DT 32 PA Altoona
27911/25 Es(?)1226 WPBT 2 FL Miami
1107

(very brief, could be MS or even Tr)

12/8 Es1827 KSWK 3 KS Lakin
962
unID 2 plus offset**Says Robert:** "Highlight of a usually no-DX time of year was the tropo opening around Thanksgiving. This was reminiscent of the opening around Thanksgiving twenty years ago, 1986, though that one extended all the way into Missouri.

WTOL-DT was silent for a whole day, which provided good reception of WXMI as the opening was beginning. If they had chosen the next day to be silent instead, I probably would have made some new additions to the logbook.

WTAJ-DT was a surprise, which added a new DTV state (PA) and a new personal longest DTV tropo (albeit only a few miles longer than WGRZ-DT). WTAJ-DT oddly lacked a 10.1, with their only channel being labeled 10.2.

Have also been playing with an HDTV STB (RCA ATSC11). It seems to work well with the 15-623 two bay and RDX amp. Didn't log any new DX on it (got Cleveland stations). This will allow me to DX DTVs from the vacation site. I've hooked it up to an old 17" computer monitor to get true HDTV on the cheap (though one has to look right up to the CRT to appreciate it ☺)."

About the year-end totals:

As of from 1-1 to 12-11, 2006,

Temperance log:

138 new stations, 53 of them DTV, and 85 analog. All but 8 of the DTVs are within 199 miles.

Keep in mind that I only got a DTV set on 12-26-05, In fact, my first trop opening for DTV happened to be on the evening of New Year's Day.

Manistique log: 57 new stations, 12 by Es (in the previous 5 years, only one Es logging!)

Jim Pizzi 100 County Road 28
Palmyra, NY 14522 (315)597-5898

6/23 Tr

2330 WBNG 12 NY Binghamton Local news

6/24 Tr

0000 WICU 12 PA Erie NBC
0003 WETM 18 NY Elmira WETM Storm Team
0026 WSKG 46 NY Binghamton WSKG Bug
0027 WIVT 34 NY Binghamton ABC
0034 WICZ 40 NY Binghamton FOX
0438 CITY-3 65 ON Ottawa CITY Bug
0439 CFMT-2 60 ON Ottawa
0443 CIVO 30 QC Hull Weak
0445 CICO-24 24 ON Ottawa TVO
0447 CJMT-2 14 ON Ottawa
0828 CKNY 11 ON Huntsville
1015 WBNX 55 OH Akron WB/WNYS-43
1425 WSEE 35 PA Erie Exercise equip. promo
1433 WFXP 66 PA Erie Weak TS
1434 WQLN 54 PA Erie

6/25 Tr

0006 Unid 4 //CKWS-11, CHEX-12
0015 CKWS-1 66 ON Brighton
0142 CICO-9 55 ON Cloyne TVO
1031 WYOU 22 PA Scranton ID@1100
1107 WOLF 56 PA Hazelton CCI 10 kz. To WSPX
2009 WCBS 2 NY New York City CCI 10 kz. To WSPX

6/27 Tr

1915 CIII-7 7 ON Midland Global NX
1930 CBLT 5 ON Toronto Near snow free
1934 WVPX 23 OH Akron 20 kz. WNLO-23

6/28 Tr

0024 CBLT-5 4 ON North Bay
0032 CKVR 3 ON Barrie
0220 CBOT 4 ON Ottawa CBC Promos
0227 CJOH 13 ON Ottawa //CJOH-6
1527 WTFX 29 PA Philadelphia Court show w/deep rapid fading
2239 W15BR 15 ON Oneida Cornerstone @2300
2245 W53AM 53 NY Utica "WPNY Utica TV"
2246 WSTQ-LP 14 NY Syracuse UPN Promo
2301 W51CV 51 NY Utica
2313 CJOH-8 8 ON Cornwall CTV
2320 WPBS 16 NY Watertown
2322 WTVU-LP 22 NY Syracuse Cornerstone

6/29 Tr

0021 WNNY-LP 15 NY Moravia Cornerstone
0100 W25AQ 25 PA Towanda

0107 WENY 36 NY Elmira Calls
0118 WYDC 48 NY Corning Promos, Big FOX @0130
0139 WVIA 44 PA Scranton
0142 WQPX 64 PA Scranton

6/29 Es

1055 WEDU 3 FL Tampa WEDU Bug
1059 WESH 2 FL Daytona Beach Orlando bar AD
1100 WFOR 4 FL Miami Promos
1200 WCTV 6 GA Thomasville Calls then news w/bug

7/1 Es

0927 WPBT 2 FL Miami "Arthur"
0928 WFDR 4 FL Miami News & Wx
1057 WEDU 3 FL Tampa Calls

7/2 Es

1129 WEDU 3 FL Tampa Calls
1130 WESH 2 FL Daytona Beach ID

7/3 Tr

0828 CBOT 4 ON Ottawa CBC "Clifford"
0900 CIII-2 2 ON Bancroft Global
0931 CBOF 9 ON Ottawa FF
0934 CJOH 13 ON Ottawa Wheel of Fortune
1915 WBRE 28 PA Wilkes-Barre WBRE buddy check @ 1929
1930 WCPB 28 MD Salisbury 10 seconds of heavy CCI

7/4 Tr

0515 Unid 28 East heading w/"Shepards Chapel" //WNYS-43, WNYS-49

7/7 Tr

0929 WNPI 18 NY Norwood WPBS Bug LR
0941 CFCF 12 QC Montreal CTV

7/8 Tr

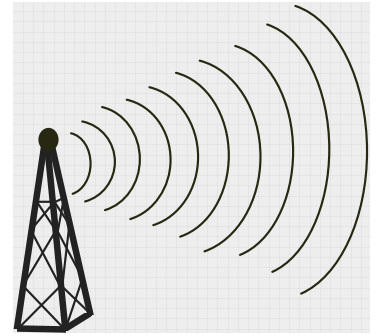
0210 WGCE-CA 6 NY Greece Continuous ID LL
0648 CKXT 52 ON Toronto Infomercial portable hand-mixer
0759 WOBX-LP 35 NY Syracuse Univision WPNY @ 0930
0800 W53AM 53 NY Utica

7/11 Es

1218 WPBT 2 FL Miami
1218 WFOR 4 FL Miami

Says Jim: "Some E-Skip and good tropes here, hope it keeps up."

Northern FM DX



Keith McGinnis
 6 Ritter Road, Hingham, MA 02043
 longwave@comcast.net 781-875-1944

For Dxers in the following states: CT IA ID IL IN MA ME MI MN MT ND NE NH NJ NY OH OR PA RI SD VT WA WI WY and all of Canada. Please submit by the 10th of each month. If possible please submit in the formats shown Below.

EDITORS NOTE PLEASE SUBMIT ALL REPORTS IN THE FORMAT SHOWN BELOW. All Submissions must be in to me by the 10th of each month.

Matthew Sittel, 15013 Eureux Circle, Bellevue, NE 68123
 mcsittel@cox.net <http://www.mcsittel.com>

Equipment: Denon TU-1500RD tuner w/4 150kHz filters, APS-9B FM antenna at 18' AGL, Channel Master remote controlled rotor, Radio Shack signal attenuator for overload problems. Cool Edit 2000 audio recording software; tuner attached to Dell desktop PC.

Jun 14 tr

| | | | | | | |
|-----|------|-------|---------------|----|--------------------|-----|
| 659 | KZNA | 90.5 | Hill City | KS | ID | 242 |
| 703 | KGTR | 96.7 | Larned | KS | ID, Bob 96.7 | 264 |
| 721 | KVGB | 104.3 | Great Bend | KS | local ad | 238 |
| 736 | KATT | 100.5 | Oklahoma City | OK | Rick and Brad show | 404 |
| 751 | KKJK | 103.1 | Ravenna | NE | Thunder 103-1 | 150 |

Jun 15 tr

| | | | | | | |
|-----|------|-------|-------------|----|-------------------|-----|
| 644 | KOMG | 92.9 | Ozark | MO | 92.9 Bass Country | 314 |
| 654 | KXUS | 97.3 | Springfield | MO | local ad | 311 |
| 704 | KBXR | 102.3 | Columbia | MO | ID | 240 |

Jun 17 Es

| | | | | | | |
|------|------|------|----------|----|---------------------|------|
| 1943 | WAGP | 88.7 | Beaufort | SC | Low Country mention | 1032 |
|------|------|------|----------|----|---------------------|------|

Jun 22 Es

| | | | | | | |
|------|------|------|-------------|----|------------------------|------|
| 1853 | WZMX | 93.7 | Hartford | CT | Hot 93.7 | 1194 |
| 1853 | WSJR | 93.7 | Dallas | PA | JR 93-7 | 1035 |
| 1856 | WLNG | 92.1 | Sag Harbor | NY | calls | 1224 |
| 1859 | WLIU | 88.3 | Southampton | NY | ID | 1220 |
| 1906 | WCID | 89.1 | Friendship | NY | RDS w/calls | 917 |
| 1909 | WWYZ | 92.5 | Waterbury | CT | calls in RDS, CNTRY925 | 1193 |

Jun 24 Es

| | | | | | | |
|------|------|------|---------|----|--------------|-----|
| 1343 | KSII | 93.1 | El Paso | TX | 93.1 Kiss FM | 870 |
|------|------|------|---------|----|--------------|-----|

Jun 24 tr

| | | | | | | |
|------|------|------|-----------------|----|-------------------------------|-----|
| 1421 | KJRV | 93.3 | Wessington Spgd | SD | Huron Mall ad, local KHUS off | 246 |
|------|------|------|-----------------|----|-------------------------------|-----|

Jun 26 Es

| | | | | | | |
|------|------|------|-----------|----|----------------|------|
| 2129 | WJXR | 92.1 | Macclenny | FL | Orange Park ad | 1078 |
|------|------|------|-----------|----|----------------|------|

| | | | | | | |
|------|------|------|------------|----|--------------------|------|
| 2131 | WGYL | 93.7 | Vero Beach | FL | 93.7 the Breeze | 1281 |
| 2132 | WOGK | 93.7 | Ocala | FL | Gainesville ad | 1129 |
| 2137 | WARO | 94.5 | Naples | FL | Wink News ad | 1304 |
| 2141 | WWRM | 94.9 | Tampa | FL | the New Magic 94-9 | 1201 |

Jun 28 Es

| | | | | | | |
|------|-------|-------|------------------|----|---------------------------|------|
| 1859 | KUHF | 88.7 | Houston | TX | ID | 796 |
| 2017 | XHUA | 90.1 | Chihuahua | CH | Estereo Vida | 1036 |
| 2019 | XHAHC | 90.9 | Chihuahua | CH | La Caliente | 1036 |
| 2021 | XHCHH | 94.9 | Chihuahua | CH | D 95 | 1036 |
| 2058 | KXPR | 90.9 | Sacramento | CA | ID | 1361 |
| 2100 | KGBY | 92.5 | Sacramento | CA | calls | 1361 |
| 2104 | KQJK | 93.7 | Roseville | CA | Jack | 1344 |
| 2107 | KSFM | 102.5 | Woodland | CA | RDS: KSFM | 1374 |
| 2113 | KWYL | 102.9 | South Lake Tahoe | CA | Wild 102.9 | 1268 |
| 2115 | KRVB | 94.9 | Nampa | ID | 94.9 the World Class Rock | 1042 |
| 2122 | KMVX | 102.9 | Jerome | ID | local ad | 955 |
| 2127 | KTPZ | 99.1 | Mountain Home | ID | Twin Falls ad | 1009 |
| 2131 | KSSJ | 94.7 | Fair Oaks | CA | calls | 1352 |
| 2132 | KNEV | 95.5 | Reno | NV | RDS: Magic | 1257 |

Jun 29 Es

| | | | | | | |
|------|-------|------|---------|----|----------------------------|------|
| 1718 | XHTPO | 94.5 | Tampico | TA | SS, RDS: 94.5 FM con Julio | 1311 |
| 1722 | XHMU | 90.1 | Tampico | TA | local ad | 1306 |

Jun 30 tr

| | | | | | | |
|------|------|-------|--------------|----|----------------|-----|
| 2059 | WSIE | 88.7 | Edwardsville | IL | ID | 352 |
| 2242 | KRRY | 100.9 | Canton | MO | Y 101 | 242 |
| 2244 | KBKB | 101.7 | Fort Madison | IA | 101-7 the Bull | 247 |

Jul 4 Es

| | | | | | | |
|------|------|-------|--------------|----|---------------------|------|
| 1119 | WBSN | 89.1 | New Orleans | LA | Mandeville mention | 840 |
| 1126 | WKBU | 95.7 | New Orleans | LA | local ad | 839 |
| 1127 | WYNK | 101.5 | Baton Rouge | LA | calls | 787 |
| 1129 | WFMF | 102.5 | Baton Rouge | LA | calls | 787 |
| 1130 | KMEZ | 102.9 | Belle Chasse | LA | New Orleans mention | 839 |
| 1133 | WNOE | 101.1 | New Orleans | LA | calls | 837 |
| 1141 | WEZB | 97.1 | New Orleans | LA | RDS: **B97** | 839 |
| 1145 | WYLK | 94.7 | Lacombe | LA | The Lake 94.7 | 824 |
| 1440 | WAGP | 88.7 | Beaufort | SC | Low Country mention | 1032 |
| 1444 | WSMR | 89.1 | Sarasota | FL | Life 89.1 | 1237 |
| 1448 | WARO | 94.5 | Naples | FL | Wink mention | 1304 |
| 1458 | WGCU | 90.1 | Fort Myers | FL | calls | 1265 |
| 1500 | WMOC | 88.7 | Lumber City | GA | calls | 969 |
| 1500 | WAFZ | 92.1 | Immokalee | FL | Radio Fiesta | 1314 |
| 1501 | WMYB | 92.1 | Myrtle Beach | SC | | 1059 |
| 1515 | WWNU | 92.1 | Irmo | SC | New 92 | 941 |
| 1528 | WDDQ | 92.1 | Adel | GA | Wild Adventures ads | 978 |

Jul 7 tr

| | | | | | | |
|------|------|------|--------------|----|--------------|-----|
| 1734 | WSIE | 88.7 | Edwardsville | IL | traffic info | 352 |
|------|------|------|--------------|----|--------------|-----|

Jul 7 Es

| | | | | | | |
|------|------|-------|-------------------|----|--------------------|------|
| 1724 | WAYJ | 88.7 | Fort Myers | FL | 88.7 Way FM | 1303 |
| 1740 | WFFY | 92.1 | Destin | FL | Fly 92-1 | 902 |
| 1743 | WJNF | 88.3 | Marianna | FL | religion | 930 |
| 1749 | WKSM | 99.5 | Fort Walton Beach | FL | 99 Rock | 901 |
| 1754 | WPAS | 89.1 | Pascagoula | MS | AFR, ID | 839 |
| 1757 | WLAZ | 89.1 | Kissimmee | FL | Genesis, SS | 1216 |
| 1846 | WQPR | 88.7 | Muscle Shoals | AL | RDS: APR. FM #1300 | 631 |
| 1849 | WMAH | 90.3 | Biloxi | MS | RDS: MPB | 813 |
| 1851 | WMJY | 93.7 | Biloxi | MS | Magic 93.7 | 837 |
| 1854 | WQST | 92.5 | Forest | MS | RDS: .WQST | 701 |
| 1858 | WAGR | 102.5 | Lexington | MS | ID | 634 |

| | | | | | | |
|------|------|-------|-----------------|----|----------------------------|------|
| 1859 | WRWA | 88.7 | Dothan | AL | partial ID | 892 |
| 1903 | WKNN | 99.1 | Pascagoula | MS | ID | 837 |
| 1905 | WGCM | 102.3 | Gulfport | MS | Severe T-storm warning | 832 |
| 1906 | WHPT | 102.5 | Sarasota | FL | 102.5 the Bone | 1224 |
| 1912 | WSNZ | 102.7 | Appomattox | VA | Sunny FM | 936 |
| 1916 | WJAW | 100.9 | McConnellsville | OH | ESPN Radio | 747 |
| 1916 | WXMM | 100.5 | Norfolk | VA | 100.5 Max FM | 1098 |
| 1924 | WXJZ | 100.9 | Gainesville | FL | Smooth Jazz | 1099 |
| 1930 | WPTE | 94.9 | Virginia Beach | VA | 94.9 the Point | 1095 |
| 1937 | WWOC | 94.5 | Hatteras | NC | 94.5 Water Country | 1146 |
| 1939 | WKOC | 93.7 | Elizabeth City | NC | Bob FM, Tidewater mention | 1106 |
| 1950 | WKJX | 96.7 | Elizabeth City | NC | Mix 96 | 1109 |
| 1955 | WRVS | 89.9 | Elizabeth City | NC | 89.9 ECSU | 1112 |
| 1959 | WGPS | 88.3 | Elizabeth City | NC | ID | 1107 |
| 2100 | WUAW | 88.3 | Erwin | NC | Triton High School 88.3 FM | 1015 |

Jul 8 Es

1004 unIDs 88.3, 88.7

Jul 12 Es

| | | | | | | |
|------|------|-------|------------------|----|-----------------------------|------|
| 1734 | WJCR | 90.1 | Upton | KY | calls | 586 |
| 1759 | WVTF | 89.1 | Roanoke | VA | calls, RDS: WVTF | 886 |
| 1805 | WMNC | 92.1 | Morganton | NC | local ad | 851 |
| 1809 | WVFG | 107.5 | Uniontown | AL | 107-5 | 761 |
| 1819 | WYNA | 104.9 | Calabash | NC | RDS: COOL1049, N. Myrtle ad | 1063 |
| 1820 | WYAV | 104.1 | Conway | SC | Myrtle Beach Chevrolet ad | 1059 |
| 1823 | WWDM | 101.3 | Sumter | SC | RDS: DM 101.3 | 963 |
| 1825 | WXLY | 102.5 | North Charleston | SC | Y 102.5 | 1056 |
| 1828 | WNKT | 107.5 | St. George | SC | Country 107.5 | 1019 |
| 1834 | WSSL | 100.5 | Gray Court | SC | South Carolina Lottery ad | 878 |
| 1836 | WNML | 99.1 | Loudon | TN | sports | 727 |
| 1838 | WOBX | 98.1 | Manteo | NC | 98 X | 1151 |
| 1839 | WKXC | 99.5 | Aiken | SC | Kicks 99 | 922 |
| 1844 | WJZZ | 107.5 | Roswell | GA | calls | 803 |
| 1847 | WBUZ | 102.9 | La Vergne | TN | 102-9 the Buzz | 621 |
| 1848 | WPMX | 102.9 | Statesboro | GA | local ad | 974 |
| 1853 | WFXM | 107.1 | Gordon | GA | Foxy 107 | 894 |
| 1854 | WQBZ | 106.3 | Fort Valley | GA | Q106 | 883 |
| 1855 | WBZY | 105.3 | Bowdon | GA | RDS: The BUZZ | 807 |
| 1858 | WDXB | 102.5 | Jasper | AL | 102-5 the Bull | 724 |
| 1859 | WLPT | 88.3 | Jesup | GA | ID | 1015 |
| 1859 | WJCT | 89.9 | Jacksonville | FL | calls | 1095 |
| 1902 | WMGB | 95.1 | Montezuma | GA | B 95.1 | 895 |
| 1912 | WAPE | 95.1 | Jacksonville | FL | calls | 1090 |
| 1913 | WQPW | 95.7 | Valdosta | GA | Scrolling RDS: 95.7 THE MIX | 1014 |
| 1914 | WTNT | 94.9 | Tallahassee | FL | 94-9 TNT, empty RDS readout | 976 |
| 1959 | CBQT | 88.3 | Thunder Bay | ON | CBC Radio 1 | 610 |

Jul 12 tr

2002 KESD 88.3 Brookings SD ID 234

Jul 14 Es

| | | | | | | |
|------|------|------|------------|----|---------------------------------|------|
| 2004 | WNCW | 88.7 | Spindale | NC | Local Color show | 824 |
| 2017 | WXJY | 93.7 | Georgetown | SC | Baseball, Myrtle Beach ad | 1060 |
| 2029 | WUAW | 88.3 | Erwin | NC | The Voice of Triton High School | 1015 |

Jul 15 tr

| | | | | | | |
|-----|------|-------|--------------|----|---------------|-----|
| 439 | KKSD | 104.3 | Milbank | SD | Cool 104 | 288 |
| 443 | KDEC | 100.5 | Decorah | IA | FM 100.5 | 262 |
| 459 | WRFW | 88.7 | River Falls | WI | ID | 310 |
| 819 | KTCZ | 97.1 | Minneapolis | MN | RDS: Cities97 | 309 |
| 828 | WLTE | 102.9 | Minneapolis | MN | 102.9 Lite FM | 309 |
| 833 | KARZ | 107.5 | Tracy | MN | 107.5 Karz FM | 224 |
| 840 | KQYB | 98.3 | Spring Grove | MN | KQ 98 | 278 |
| 843 | KEEY | 102.1 | St. Paul | MN | K 102 | 309 |

| | | | | | | | |
|------|------|-------|-----------|----|-------|--|-----|
| 1123 | KDWB | 101.3 | Richfield | MN | calls | | 309 |
|------|------|-------|-----------|----|-------|--|-----|

Jul 15 Es

| | | | | | | | |
|------|------|-------|----------------|----|-----------------------|------|------|
| 1029 | WGPS | 88.3 | Elizabeth City | NC | ID | | 1107 |
| 1036 | WYFL | 102.5 | Henderson | NC | BBN | | 1011 |
| 1053 | WAGO | 88.7 | Snow Hill | NC | Storm Team 9 weather | 1064 | |
| 1100 | WSGP | 88.3 | Glasgow | KY | Network ID | | 623 |
| 1101 | WESC | 92.5 | Greenville | SC | calls in RDS | | 831 |
| 1105 | WIHB | 92.5 | Moncks Corner | SC | the Hot New B 92 | | 1087 |
| 1106 | WKZZ | 92.5 | Tifton | GA | 92.5 the Mix | | 961 |
| 1113 | WDDQ | 92.1 | Adel | GA | area ad | | 978 |
| 1115 | WTNT | 94.9 | Tallahassee | FL | Publix ad, blank RDS | | 976 |
| 1118 | WPCV | 97.5 | Winter Haven | FL | 97 Country | | 1211 |
| 1118 | WOYS | 100.5 | Apalachicola | FL | local mention | | 999 |
| 1124 | WQUT | 101.5 | Johnson City | TN | Johnson City Press ad | 803 | |
| 1133 | WDGM | 99.1 | Greensboro | AL | calls | | 728 |
| 1138 | WQPW | 95.7 | Valdosta | GA | 95.7 the Mix | | 1014 |
| 1140 | WOGK | 93.7 | Ocala | FL | 93.7 K Country | 1129 | |
| 1143 | WNFB | 94.3 | Lake City | FL | Mix 94.3 | 1051 | |
| 1144 | WKZW | 94.3 | Sandersville | MS | KZ 94-3 | | 766 |
| 1147 | WABB | 97.5 | Mobile | AL | calls | | 850 |
| 1149 | WKNN | 99.1 | Pascagoula | MS | Isle of Capri promo | | 837 |
| 1159 | WTSU | 89.9 | Montgomery | AL | Troy State | | 830 |
| 1159 | WMBV | 91.9 | Dixons Mills | AL | Moody Radio | | 768 |
| 1202 | WRXW | 93.9 | Pearl | MS | Rock 93-9 | | 696 |
| 1219 | WAOY | 91.7 | Gulfport | MS | calls | | 812 |
| 1258 | KRVS | 88.7 | Lafayette | LA | RDS: 887 KRVS | | 778 |
| 1301 | WQYZ | 92.5 | Ocean Springs | MS | Hallelujah FM | | 834 |

Jul 15 tr

| | | | | | | | |
|------|------|-------|---------------|----|----------|--|-----|
| 1557 | WERN | 88.7 | Madison | WI | ID | | 355 |
| 1613 | KQRS | 92.5 | Golden Valley | MN | calls | | 309 |
| 1626 | KVGO | 104.3 | Spring Valley | MN | local ad | | 243 |

Jul 15 Es

| | | | | | | | |
|------|-------|------|---------------|-----|--------------------------------|--|------|
| 1636 | WQCM | 94.3 | Greencastle | PA | Hagerstown Kia ad | | 961 |
| 1641 | WBVQ | 93.1 | Barrackville | WV | Simply About Music | | 846 |
| 1642 | WINC | 92.5 | Winchester | VA | 92.5 Wink FM | | 958 |
| 1646 | WFGI | 95.5 | Johnstown | PA | Froggy 95 | | 888 |
| 1648 | WFHM | 95.5 | Cleveland | OH | Fish Morning Show promo | | 749 |
| 1653 | WBYX | 88.7 | Stroudsburg | PA | Lehigh Valley | | 1067 |
| 1655 | WOFN | 88.7 | Beach City | OH | Oasis | | 751 |
| 1656 | KFMA | 92.1 | Green Valley | AZ | RDS: KFMA | | 1036 |
| 1659 | WRSU | 88.7 | New Brunswick | NJ | calls | | 1121 |
| 1803 | KNAI | 88.3 | Phoenix | AZ | La Campesina | | 1027 |
| 1836 | WOLF | 96.7 | Oswego | NY | Radio Disney | | 1011 |
| 1840 | WOKQ | 97.5 | Dover | NH | calls | | 1283 |
| 1847 | XHSOL | 89.9 | Mexicali | BCN | Ke Buena, 43 C, PDT time check | | 1227 |

Jul 15 tr

| | | | | | | | |
|------|------|-------|----------------|----|-------------------------------|-----|-----|
| 1859 | KSJN | 99.5 | Minneapolis | MN | ID | | 309 |
| 1900 | KFUO | 99.1 | Clayton | MO | Classic 99 | | 345 |
| 1959 | WDLM | 89.3 | East Moline | IL | ID | | 285 |
| 2014 | KMCH | 94.7 | Manchester | IA | Dyersville and Monticello ads | 254 | |
| 2037 | WCFL | 104.7 | Morris | IL | WBGL calls | | 386 |
| 2045 | KCII | 106.1 | Washington | IA | calls | | 219 |
| 2049 | KFMW | 107.9 | Waterloo | IA | Rock 108 | | 229 |
| 2207 | KRVY | 97.3 | Starbuck | MN | The River, Lite Rock | | 307 |
| 2221 | KTLK | 100.3 | Minneapolis | MN | calls | | 309 |
| 2230 | KZJK | 104.1 | St. Louis Park | MN | RDS: JACK-FM | 309 | |

Jul 16 tr

| | | | | | | | |
|-----|------|------|-----------|----|-----------|--|-----|
| 159 | WCLQ | 89.5 | Wausau | WI | ID | | 411 |
| 201 | WHRM | 90.9 | Wausau | WI | RDS: WHRM | | 411 |
| 212 | WYTE | 96.7 | Whiting | WI | RDS: WYTE | | 393 |
| 221 | WHDG | 97.5 | Rhineland | WI | calls | | 450 |

| | | | | | | | |
|------|------|-------|------------------|----|-----------------------|-----|-----|
| 226 | WSPT | 97.9 | Stevens Point | WI | Jack FM | 399 | |
| 237 | KOWZ | 100.9 | Blooming Prairie | MN | calls | | 242 |
| 238 | WJNR | 101.5 | Iron Mountain | MI | Frog Country 101.5 | | 512 |
| 251 | WLJY | 106.5 | Marshfield | WI | RDS: WLJY | | 394 |
| 259 | WHDI | 91.9 | Sister Bay | WI | ID | | 529 |
| 333 | WPF | 90.5 | Sturgeon Bay | WI | RDS: WPF | | 505 |
| 359 | WIAA | 88.7 | Interlochen | MI | ID | | 562 |
| 1052 | KBBN | 95.3 | Broken Bow | NE | local ad | | 193 |
| 1154 | KULO | 94.3 | Alexandria | MN | Cool 94.3 | | 336 |
| 1159 | KCLD | 104.7 | St. Cloud | MN | RDS: KCLD | | 317 |
| 1202 | KMXK | 94.9 | Cold Spring | MN | Mix 94-9, ID | | 307 |
| 1204 | KDDG | 105.5 | Albany | MN | Bob 106, country | | 320 |
| 1206 | KNSG | 94.7 | Springfield | MN | The Dog | 228 | |
| 1207 | KZPK | 98.9 | Paynesville | MN | Wild Country 99 | 317 | |
| 1300 | KBHZ | 91.9 | Willmar | MN | ID | | 276 |
| 2001 | KCMP | 89.3 | Northfield | MN | ID | | 287 |
| 2009 | WIFC | 95.5 | Wausau | WI | calls | | 411 |
| 2012 | KDOG | 96.7 | North Mankato | MN | the Dog | | 235 |
| 2020 | KLCI | 106.1 | Princeton | MN | Total Country Bob 106 | 308 | |
| 2022 | KQQL | 107.9 | Anoka | MN | RDS: KOOL 108 | | 320 |
| 2100 | WIAA | 88.7 | Interlochen | MI | State mentions | 562 | |

Jul 17 tr

| | | | | | | | |
|-----|------|-------|-------------|----|----------------------|-----|-----|
| 705 | KCZE | 95.1 | New Hampton | IA | 95-1 the Bull | | 229 |
| 709 | WCOW | 97.1 | Sparta | WI | Cow 97 | | 326 |
| 720 | KVIK | 104.7 | Decorah | IA | calls | | 256 |
| 723 | WLJY | 106.5 | Marshfield | WI | Lite Rock 106-5 WLJY | 394 | |

Jul 18 Es

| | | | | | | | |
|------|------|------|--------------|----|------------|--|------|
| 1159 | WAGO | 88.7 | Snow Hill | NC | Kinston ad | | 1064 |
| 1204 | WZFX | 99.1 | Whiteville | NC | Foxy 99 | | 1031 |
| 1213 | WQOK | 97.5 | South Boston | VA | K 97.5 | | 985 |
| 1214 | WQDR | 94.7 | Raleigh | NC | calls | | 1012 |

Jul 19 tr

| | | | | | | | |
|-----|------|------|--------------|----|--------------------------|--|-----|
| 700 | WSIE | 88.7 | Edwardsville | IL | ID | | 352 |
| 722 | KATI | 94.3 | California | MO | Jefferson City Hy-Vee ad | | 258 |

Jul 28 tr

| | | | | | | | |
|------|------|------|---------|----|----|-----|--|
| 2159 | WERN | 88.7 | Madison | WI | ID | 355 | |
|------|------|------|---------|----|----|-----|--|

Jul 30 tr

| | | | | | | | |
|-----|------|-------|------------|----|-----------|-----|-----|
| 847 | KCQQ | 106.5 | Davenport | IA | Q 106.5 | 289 | |
| 857 | KGRS | 107.3 | Burlington | IA | Mix 107.3 | | 250 |

Aug 7 tr

| | | | | | | | |
|------|------|------|---------|----|----|-----|--|
| 1959 | WERN | 88.7 | Madison | WI | ID | 355 | |
|------|------|------|---------|----|----|-----|--|

Aug 9 tr

| | | | | | | | |
|-----|------|------|--------------|----|------------|-----|-----|
| 652 | WSIE | 88.7 | Edwardsville | IL | calls | 352 | |
| 703 | KJAB | 88.3 | Mexico | MO | state news | | 250 |
| 708 | KMFC | 92.1 | Centralia | MO | calls | 239 | |

Oct 2 tr

| | | | | | | | |
|-----|------|-------|----------|----|---------------------|-----|-----|
| 623 | KJIL | 99.1 | Copeland | KS | calls | 354 | |
| 630 | KSCB | 107.5 | Liberal | KS | calls, B 107.5 | | 394 |
| 642 | KHAZ | 99.5 | Hays | KS | calls | 235 | |
| 647 | KSLS | 101.5 | Liberal | KS | Lite Rock 101-5, ID | | 382 |

Log total now stands at 1359. 73s Matt.

Rick Shaftan
Neighborhood Research / Mountaintop Media Sparta NJ
Realistic STA 2280 with 3 150khz filters. Boston Acoustics Receptor Radio HD
2 APS 14s stagger stacked phased with 2 APS 13s

First # at end is bearing, second is mileage @ = new

7/29/06 Es

1954 WUWF 88.1 Pensacola FL HD 1 & 2 227 1007

7/30/06 Es

1012 WUWF 88.1 Pensacola FL HD 1 & 2 227 1007

8/3/06 Es

1048 WBFM 93.7 Sheboygan WI B-93.7 290 692
 1055 KNXR 97.5 Rochester MN Jazz 289 922
 1057 KISD 98.7 Pipestone MN Pipestone mention 288 1100
 1115 KSOU 93.9 Sioux Center IA RDS PI 4108 285 1116

8/7/06 Tr

0046 @WFOS 88.7 Chesapeake VA Here on WFOS 197 310

9/16/06 GW

2322 @W243BZ 96.5 Ellenville NY Country 95.9. Supposedly 5 watts but strong here. 17 49

9/18/06 Tr

0924 @CFJR 104.9 Brockville ON 104.9 JRFM 349 254
 1048 CHCQ 100.1 Belleville ON Cool 100, Today's Best Country 328 269
 2320 CIOK 100.5 St. John NB K-100 51 522
 2333 @CHSJ 94.1 St. John NB All your favorite country music plays here, 94.1 CHSJ 51 522

9/19/06 Tr

0124 Unid 97.7 Classical to ENE

9/20/06 Ms

0150 @WQXC 100.9 Otsego MI Cool 101, Great Oldies 284 582

11/19/06 Tr

2315 @WUSX 93.7 Addison VT // Internet 20 220

11/26/06 Tr

0129 @WFLB 96.5 Laurinburg NC 96.5 The Drive. Sweet Home Ala. 210 493

Count up to 2911.

Jim Pizzi 100 Country Road Palmyra NY 14522 315-597-5898
Akai AT-V04 Antennacraft FM @ 20 ft AGL
All New except where noted and unids

July 24 Tr

1101 WCOF 89.5 Arcade NY ID

| | | | | | |
|------|--------|------|--------|----|--------------------------------------|
| 1232 | CBCL | 93.5 | London | ON | CBC Radio 1 in London |
| 1355 | W215?? | 90.9 | | | Only station that matters, 90.5 WBER |
| 1400 | WSQG | 90.9 | Ithaca | NY | ID with WSKG stations |
| 1408 | CBOF | 90.7 | Ottawa | ON | FF |

August 6 Tr

| | | | | | |
|------|-------|---------|-----------|----|--------------------|
| 0838 | Unid | 161.65 | | | Environment Canada |
| 0840 | WXN68 | 162.475 | Watertown | NY | |
| 0843 | Unid | 162.775 | | | Environment Canada |

August 12 Tr

| | | | | | |
|------|--------|-------|--------------|----|-------------------------------------|
| 0437 | CHUM | 104.5 | Toronto | ON | 104.5 CHUM-FM |
| 0500 | W283AG | 104.5 | Johnson City | NY | WCDW Susquahanna, Binghamton 100.5 |
| 1053 | WNBT | 104.5 | Wellsboro | PA | 104.5 & 92.3 The Buzz calls at 1100 |

August 12 Ms

| | | | | | |
|------|------|-------|--|--|--|
| 1100 | Unid | 104.5 | | | KJ-104 (ed note ..more than likely KJTX) |
|------|------|-------|--|--|--|

August 14 Tr

| | | | | | |
|------|------|------|--------|----|--------------------|
| 1050 | CHAY | 93.1 | Barrie | ON | Ads & The New CHAY |
|------|------|------|--------|----|--------------------|

August 15 Tr

| | | | | | |
|------|------|------|-----------|----|---------------|
| 1118 | CKPC | 92.1 | Brantford | ON | Ads & FM 92.1 |
|------|------|------|-----------|----|---------------|

August 16 Tr

| | | | | | |
|------|-------|-------|----------------|----|--------------------------------------|
| 0040 | WWHT | 107.9 | Syracuse | NY | Hot 107.9 |
| 0041 | CHUC | 107.9 | Coburg | ON | 107-9 The Breeze & ads |
| 0058 | CJXY | 107.9 | Burlington | ON | Y 108 & ads |
| 0105 | CBCK | 107.5 | Kingston | ON | CBC |
| 0117 | CILQ | 107.1 | Toronto | ON | Classic Rock 107 & Q107 |
| 0130 | CIMJ | 106.1 | Guelph | ON | Magic 106.1 |
| 0146 | CIKR | 105.7 | Kingston | ON | Promo & Krock 15.7 |
| 0151 | CHRE | 105.7 | St. Catherines | ON | Ad for Mr. Furnace & 105.7 Easy Rock |
| 0225 | CFBK | 105.5 | Huntsville | ON | More FM, Ads & Wx |
| 0233 | CFCA | 105.3 | Kitchener | ON | Cool 105.3 |
| 0241 | CFLZ | 105.1 | Niagra Falls | ON | 105.1 The River |
| 0300 | W283? | 104.5 | WSW of here | | WCIY & WCOV ID Family Life |
| 1114 | CJPT | 103.7 | Brockville | ON | 103-7 Bob FM |

August 17 Tr

| | | | | | |
|------|-------|-------|----------|----|--------------------|
| 0121 | CKLH | 102.9 | Hamilton | ON | 102.9 K-Lite FM |
| 0135 | W225? | 92.9 | Webster | NY | // To WCIY 88.9 |
| 0156 | CFRC | 101.9 | Kingston | ON | CFRC...101.9 |
| 0210 | WSCP | 101.7 | Pulaski | NY | 101.7 & 101.3 WSCP |
| 0217 | WLOF | 101.7 | Attica | NY | Catholic Radio |

August 19 Tr

| | | | | | |
|------|------|------|---------|----|----------------------------------|
| 1137 | CKFM | 99.9 | Toronto | ON | 99.9 Mix FM...Triple 9 MixFM.com |
|------|------|------|---------|----|----------------------------------|

August 21 Tr

| | | | | | |
|------|------|------|------------|----|-------------------|
| 0912 | WDCX | 99.5 | Buffalo | NY | g |
| 0918 | WAAL | 99.1 | Binghamton | NY | The Whale |
| 1035 | WLZW | 98.7 | Utica | NY | Calls & lite 98.7 |

August 22 Tr

| | | | | | |
|------|-------|------|-----------|----|---|
| 0105 | CHMS | 97.7 | Bancroft | ON | The Moose 97.7 in Cottage Country |
| 0120 | W248? | 97.5 | | | // WXZV 99.7 |
| 0138 | CJEZ | 97.3 | Toronto | ON | 97.3 Toronto's Easy Rock |
| 0145 | CIQM | 97.5 | London | ON | Q97.5 London's Easy Rock |
| 0200 | WREQ | 96.9 | Ridgebury | PA | You are listening to WREQ Ridgebury and WIFF Burlington |

| | | | | | |
|------|--------|------|---------------|----|------------------------|
| 0215 | CFMX-1 | 96.3 | Toronto | ON | Classical |
| 0223 | WDDZ | 96.1 | Rome | NY | 96.1 WDDZ Oldies Radio |
| 0232 | WPHD | 96.1 | South Waverly | PA | Cool 96 Oldies |
| 0236 | WKST | 96.1 | Pittsburgh | PA | relog |
| 0836 | CFJB | 95.7 | Barrie | ON | Wx...Rock 95 |

August 28 Tr

| | | | | | |
|------|------|------|--------------|----|------------------------------|
| 1125 | CBCP | 98.7 | Peterborough | ON | Northern Lights on CBC Radio |
|------|------|------|--------------|----|------------------------------|

August 31 Tr

| | | | | | |
|------|------|------|--------|----|-------------------------------------|
| 1005 | WICB | 91.7 | Ithaca | NY | Reggae Music and Ithaca mentions |
| 1021 | Unid | 91.7 | | | either WANU or WFNU? 1-800-433-8850 |

September 5 Tr

| | | | | | |
|------|-------|------|---------|----|---|
| 1200 | CJRT | 91.1 | Toronto | ON | On low power Canada's Premier FM Jazz Station |
| 1849 | W216? | 91.1 | | | xltr for WSKG or is it WSQE |

September 6 Tr

| | | | | | |
|------|--------|------|--------|----|--------------------------|
| 1044 | W212? | 90.3 | | | xltr for WXXI ? |
| 1059 | W212BA | 90.3 | Geneva | NY | WEOS Geneva-Ithaca |
| 1102 | Unid | 90.3 | | | Id'd as WXXI 91.5 & 90.3 |

September 8 Tr

| | | | | | |
|------|------|-------|----------|----|----------------------|
| 1600 | CKTF | 104.1 | Gatineau | PQ | FF ads ment Gatineau |
|------|------|-------|----------|----|----------------------|

September 13 Tr

| | | | | | |
|------|------|------|-----------|----|-----------|
| 0108 | WBSU | 89.1 | Brockport | NY | The Point |
|------|------|------|-----------|----|-----------|

September 21 Tr

| | | | | | |
|------|------|------|---------|----|-------------------|
| 1055 | WFGY | 98.1 | Altoona | PA | WFGY..Were Froggy |
|------|------|------|---------|----|-------------------|

October 8 Tr

| | | | | | |
|------|------|-------|--------|----|--------------|
| 0951 | CKKL | 93.9 | Ottawa | ON | Bob FM |
| 1000 | CHRI | 99.1 | Ottawa | ON | Full ID |
| 1212 | CBOX | 102.5 | Ottawa | ON | FF Classical |

It's been quiet here for awhile. I'll be looking for some Ms and Trops this winter and maybe some Dec/Jan Es. I have a JVC FM tuner (VT 900) that works great but I would like to have a Filter Mod done to it. I would pay a qualified member to do the job-and all expenses (parts, shipping both ways), Whoever feels up to it give me a call or drop a snail mail to me...sorry no computer

Mike Bugaj 69 Sherman Road, Enfield, CT 06082 Carver TX11 and APS13.
 New loggings are underlined and in bold print.

7/18 Es

| | | | | | |
|------|------|-------|---------------|----|-------------------------------------|
| 1014 | KCMQ | 96.7 | Columbia | MO | RDS 1690 KCMQ The Rocker |
| 1030 | KTFK | 97.1 | Florissant | MO | RDS 1F2C 97-1 TALK |
| 1047 | KYYS | 99.7 | Kansas City | MO | 99.7 KY super Tuesday, classic rock |
| 1050 | KCFX | 101.1 | Harrisonville | MO | RDS 5660 KCFX Pink Floyd |
| 1051 | KPRS | 103.3 | Kansas City | MO | RDS 1ECB 103 JAMS |
| 1054 | KXKX | 105.7 | Knob Noster | MO | calls, address |
| 1055 | WDAF | 106.5 | Liberty | MO | RDS WDAF-FM 1630 |
| 1058 | KMJK | 107.3 | Lexington | MO | Magic 107.3 R&B/Classic soul |
| 1059 | KRES | 104.7 | Moberly | MO | RDS 3D5E KRES |
| 1102 | KBEQ | 104.3 | Kansas City | MO | Q104 |
| 1108 | KTBG | 90.9 | Warrensburg | MO | The Bridge |
| 1111 | KMZU | 100.7 | Carrolton | MO | The Farm, country,mono |

| | | | | | |
|------|------|-------|--------|----|--------------------------------|
| 1120 | KDVV | 100.3 | Topeka | KS | Topeka Area Tech. School |
| 1124 | KAFX | 95.5 | Diboll | TX | Lufkin ment, Ross Motor Sports |

8/3 Es

| | | | | | |
|------|-------------|-------|--------------|----|-----------------------------|
| 1053 | KCRR | 97.7 | Grundy Cntr | IA | calls, classic rock |
| 1057 | KUSO | 92.7 | Albion | NE | ID, Cumming Cty Fair ad |
| 1101 | KKEZ | 94.5 | Ft. Dodge | IA | ID, a Clear Channel Station |
| 1101 | KIAQ | 96.9 | Clarion | IA | RDS KIAQ-FM 2530 |
| 1104 | KZEB | 100.3 | Central City | NE | KZ100, weather, country |
| 1128 | KNIM | 97.1 | Maryville | MO | 97-1 the Ville |

8/21 Es

| | | | | | |
|------|------|-------|---------------|----|---|
| 1945 | WXGL | 107.3 | St.Petersburg | FL | RDS 920B EAGLE, One of these Days by the Eagles |
| 1949 | Unid | 92.9 | | | Mix 92.9, no RDS |

9/18 Tr

| | | | | | |
|------|-------------|-------|---------|----|-------------------------------------|
| 2025 | CKHZ | 103.5 | Halifax | NS | Z 103 dot Five, the beat of Halifax |
| 2025 | CFRQ | 104.3 | Halifax | NS | Q104 |
| 2034 | CBH | 102.7 | Halifax | NS | talk |

| | | | | | |
|--------|---------------|------|-----------|----|--|
| 19-Sep | W252AS | 98.3 | New Haven | CT | WDAQ phased, opera // 88.1//91.9 WMNR xltr |
|--------|---------------|------|-----------|----|--|

10/26
GW

| | | | | | |
|------|-------------|-------|-------------|----|----------------------|
| 2100 | WVEI | 105.5 | Easthampton | MA | //103.7 and WEEI 850 |
|------|-------------|-------|-------------|----|----------------------|

10/29
GW

| | | | | | |
|------|----------------|------|--------|----|-------------------------|
| 2000 | WLCQ-LP | 99.7 | Agawam | MA | Christian contemp music |
|------|----------------|------|--------|----|-------------------------|

11/06
Tr

| | | | | | |
|------|---------------|-------|--------|----|--------------------------|
| 2104 | W238BA | 104.5 | Selden | NY | RadioX, alternative rock |
|------|---------------|-------|--------|----|--------------------------|

12/25
Tr

| | | | | | |
|------|------|------|----------|----|---------------------------------|
| 1931 | WCMS | 94.5 | Hatteras | NC | country |
| 1935 | WWHA | 94.1 | Oriental | NC | 94 Hank FM...Everything Country |
| 1952 | WYND | 97.1 | Hatteras | NC | country |



6 Meter/2 Meter Amateur DX



50 Mhz
The *Magic* Band



Peter Baskind, N4LI
3225 Forest Hill-Irene Rd
Germantown, TN 38138
N4LI@ARRL.net

Boy, it sure has been quiet hasn't it? Since the "Season" ended in August, 6 meters has been a vast wasteland. Sure, there have been a few stray openings, as evidenced by Bill Smith's loggings below, but they have been few and far between.

Fortunately, things *should* be looking up soon. The Winter sporadic-E season is already showing some life in early December. While I have yet to hear any 6 meter E_s, I have noticed a few openings on 10 meters (28 MHz). Last year, the Winter mini-season was short, and frankly, disappointing. All I heard were the usual suspects – the Eastern Seaboard, Florida, Texas, and the like. Perhaps this year ole Santa will be a bit more generous.

Much ink has been spilled lately about the sunspot cycle. Are we at bottom of Cycle 23? Has Cycle 24 begun? Who knows?! But, interestingly, as I write, I am reading of an X8 or X9 solar flare that just happened. We haven't seen such a solar event in over 2 years. This flare won't impact the Earth much or likely cause any unusual 6 meter conditions, since the resulting coronal mass ejection will miss us. Further, the event probably is not meaningful about our place in the Cycle, but it is nice to see some solar burping here at Solar Minima.

Tropo has not been totally absent recently. Over the long Thanksgiving weekend, central states DXers had some conditions with which to work. Here in Memphis, I am told signals from Central and South Texas were strong, indeed. One ham buddy of mine was working Dallas with an ugly homemade 4-element beam (copper wire on a scrap piece of wood) in his attic, and an unamplified stock radio. That's nice stuff!

Sadly, I have missed much of the tropo. My tower project is moving forward, but, these things can run slowly. The tower itself in most of the way up. The bottom five feet of Rohn 45 are encased by a yard of concrete, and twenty-five feet is above ground level.



The lame-looking three-element in the background is the antenna I have been using since 2001 for 50Mhz. Pretty sad, ain't it?

The final section will be set in the next few days, and the twenty-three foot mast pole will be placed inside by a small crane. What's left is to assemble the antennas, take delivery on the feedline, and just get the thing in the air.

This project has not come without its lessons. Some of the important things I have learned so far are:

1. Don't attempt as ambitious a project as this without someone who has done it before. The number of details involved is staggering, and some will simply slide past you.
2. Figure a budget.
3. Take the figure from #2 and double it. Maybe now you're in the ballpark.
4. Figure the project to take twice as long as expected.

Hopefully, I can get this wrapped-up pretty soon. I need to, anyway, before the wife finds out how much this is costing!

Loggings

Bill Smith, W1OW, 56 Locust Street, Douglas, MA 01516 FN42

Not much to report this Fall. I have been consistently monitoring 50.110 with hopes that a South American breaking through – but, absolutely nothing.

I received a QSL from TI2KI/EJ89 from a 2001 *contact*. Never give up hope!

The September contest was a bust; farthest worked was FM09 on extended groundwave.

22 Oct. '06

VP5KE/**FL41** was loud for about an hour, but no other Caribbean on.

27 Oct. '06

| | | | | | |
|------|--------|------|------|-------|------|
| 2240 | KC5PIA | EM51 | 2301 | N4ZEN | EM82 |
| 2243 | K4RAD | EM82 | 2309 | K4JVW | EM90 |
| 2251 | KI4AOQ | FM03 | 2319 | AC5TM | EM40 |

20 Nov. '06

Opening to W/SW; then, South. Worked NI0E/EM28 @ 2313, and heard stations from EM48, 50, 61 and 63.

WTFDA EMAIL REFLECTORS

Enhance your DXing experience! Entertaining and informational.

For WTFDA members and guests on the wtfda.info server

The WTFDA list...send an email to tvfmdx-subscribe@wtfda.info

190 subs

The WTFDA AM DX list...send to amdx-subscribe@wtfda.info

86 subs

The Saga of an RCA ATSC11 Set Top Box

And More Discussion on How to Make Sense Out of DTV STBs

I bought one and it was delivered today.

I wish I could rave about it, but I can't. The remote/stb locked up a couple of times on me just like the Accurian does. I get a great signal on ch31 (WTIC61-DT) but no audio or video to go with it and the "no-signal" box on a black screen. I have absolutely no signal on ch39 (WCTX59-DT) but somehow the box got the PSIP info. Figure that one. Both are fine on the RS box.

The rest of the channels loaded fine and the more distant ones like WDCD-DT 36 and WUNI-DT 29 in Worcester scanned in fine.

This box has a couple of nice features, the best being the fact that as soon as you tune in a channel you get the PSIP info. But if I can't get the above problems solved then this one goes back on eBay. I'll probably take the money and go to Walmart and get a SDTV there or maybe not. -Mike Bugaj CT

The box is not defective. It's the station's encoders not being set up properly. Call the stations and tell them to get their act together. I have two locals with the same problem, both previously decoded fine until their decoders went haywire. -Greg Barker IN

And ya wonder why us engineers get grumpy? It's calls like that, that snap to us to "get our act together", that doesn't help anything. First off, we do have our act together, in fact the majority of commercial TV station's engineering staff is very knowledgeable about how their DTV encoding and muxing is working. Have you been inside ANY TV station in the last few years and talked with their engineers? Right out, most are backlogged with projects and work. With the constant high demand of several sources, there is only so much we can do.

So instead of the default attitude of "It's not MY problem, it's YOURS", Try this instead, call us and working WITH us to resolve your issues? Of course we are concerned when there are compatibility issues. We know that people are watching our DTV signals, and we know there can be troublesome problems that show up in older encoders. And personally I'd much rather work with someone who knows what their talking about than someone who just calls to say that their TV isn't producing sound and that we should take the annoying green "mute" bug off our screen. -Mike Fitzpatrick MA

I suspect the specific problem Greg cited may have come from a misprogramming of the station's PSIP generator. ISTR the major channel number (the "4" in "4-2") has to be set in more than one place, though examining the tables on WSMV-DT Monday night I can only find it in one place & can't remember where else it belongs...

Anyway, ATSC is a very flexible - and complex - technology. There's a lot to set up, a lot to learn. Different receivers behave differently; a mistake in the PSIP that might render the station unreceivable on one set will be completely ignored by a different set. Since the station can't possibly own every available model of

receiver, some problems *will* be detected by the viewers and will require the viewers' help to fix.

All the while, the engineers still have to keep a balky old analog transmitter working. (while management is reluctant to spend money on maintaining a rig they know will be shut down in two years) They still have to clean up after the guy who just *had* to install iTunes on the main editing computer & overwrote a critical DLL for the editing application. Etc., etc., etc...

We're excited about ATSC, we *want* it to work, but we simply can't allocate enough time to fix every possible receiver. -Doug Smith TN

Relating to Mike B's issue with the RCA ATSC11, that same issue has popped up a couple times over the past few months with the local Fox station, WXIN-DT. The ATSC11 would indicate plenty of signal but would not decode audio or video. Greg, Glen and I all experienced the same issue with our ATSC11's, plus a few other makes/models of DTV receivers refused to decode, too. According to one of the station's engineers, the fix was the "big hardware reboot" on the FOX splicer.

Last year, right after purchasing the Humax HFA100, I found that it would not decode the audio and video signal from the new Harris transmitter installed for WTTK-DT. An engineer at the station reported that some other viewers using other various makes/models of receivers were reporting the same issue. Long story short, Harris sent a new software update for the transmitter and that took care of this issue.

Sometimes the DTV frustration level can rise for both viewers and engineers, as it's new to all of us. But working together, a lot of these issues can be resolved. I'm really enjoying the world of DTV/HDTV. -Steve Rich

You guys are probably sick of reading about this box, but here goes one more time.

The problem is that I can see WCTX-DT 39 on my Accurian box and I can't on the RCA.

WCTX-DT is on 39, right next to local WHYD analog on 40. No problem with the Accurian. I get a picture that locks most of the time and pixelates once in a while. It's 50 miles or so south of me in New Haven.

I have a 5 foot dish and a Winegard AP4700 UHF amp. The amp is in the basement, which is good tonight because I found out something.

I found out that if I bypass the amp and go right into the RCA box, I can get WCTX 39. The signal is weak and the picture pixelates like crazy (the bar on the RCA meter goes as far as "A" in weak, you ATSC11 guys will know what I mean). I get identical results with it fed into the Accurian...the identical amount of pixelation.

So what seems to be happening is that the preamp is overloading. Could it be amplifying WGGB 40 so much that WCTX-DT 39 is being buried? Or does it mean that the RCA box is less selective than the Accurian box, or maybe more prone to overload? -Mike B. CT

I have definitely seen cases where the ATSC11 seems more affected by a strong adjacent channel than the WinTV-D. I'd say the WinTV-D works better in most instances but since I don't always keep the PC up and running the ATSC11 is more convenient when I just want to watch some HDTV.

Also, I can't imagine how anyone can DX with it with the way the auto-remapping works. With the WinTV-D there is no remapping so you know where you are at all times. Once remapped how the heck do you know what freq the box is really tuned to ? Or if I want to punch in channel 8 - since I already have a local on 12 which remapped to 8 now I have to clear channels to get to HD-8 ??? Thank goodness FM analog tuners were never this way ! -Bill Nollman CT

I too want to hear more about STBs..

My dilemma..Hauppauge Card - DX-Friendly but died on me - don't want to pay to fix since others report same problems - probably not as sensitive as newer generation stuff anyways

Humax HFA100 - Automatically DXs when off, semi DX-Friendly since I can scan 1 channel instead of the whole band - but NOT as sensitive as my new Sony TV (KDS-A2000) which blows away the Hauppauge + Humax + is better than my Sony DVR - but is DX unfriendly.

I'm looking for a STB as sensitive as my Sony TV but a little more DX-friendly. I can't stand how insensitive the Humax is vs. the 60" TV upstairs. I can still use the Humax for auto-DXing strong stations but would love to also have a sensitive & somewhat DX -friendly STB. I don't want to buy something to only find out that it too is less sensitive than the Sony TV. -Bill Hepburn ON

The only issues I've noted with the RCA are some odd decoding problems, generally caused by an issue at the station. The RCA is not as forgiving as some receivers when it comes to this.

My current favorite HD receiver is the FusionHDTV5 USB for computers. It has the hottest receive I've used. Early versions of the software were very quirky, but the latest version is very stable. It beats all other receivers in my situation hands down. There is also a free software program called WatchHDTV that will work with the Fusion, and it doesn't remap channels.

Here's a link to the Fusion...

<http://fusionhdtv.co.kr/eng/Products/HDTV5usb.aspx>

Here's WatchHDTV

<http://watchhdtv.net/default.aspx>

There is also an ultra-cheap HD receiver out for computers called the Artec T14A, which can be had for \$40, including shipping. It requires a pretty hefty computer, and the software it has is not very good. The receiver is decent, but not the best. Here's the link for that...

<http://www.zipzoomfly.com/jsp/ProductDetail.jsp?ProductCode=324900>

The price is brought down to \$40 by applying code art12 at checkout. -Glen Hale IN

As posted July 23, 2006, why couldn't I receive all of these stations on ALL receivers? As a DTV DXer for five years now, I'm still scratching my head over these results. How can these receivers be so different in decoding abilities with the same signal at the same time??? I guess some receivers are better at decoding than other receivers.

Some recent side-by-side comparisons with out-of-market stations:

| | WinTV-D | Humax | LG |
|----------|----------------|--------|----------|
| WAND-DT | nothing | locked | locked |
| WBUI-DT | nothing | locked | locked |
| WICD-DT | nothing | locked | locked |
| WKPC-DT | nothing | locked | locked |
| WDRB-DT | PSIP only | locked | nothing |
| | | | |
| | Accurian | | RCA |
| WAVE-DT | locked 2nd | | locked |
| 1st | | | |
| WKOI-DT | nothing | | locked |
| WLWT-DT | locked 1st | | locked |
| 2nd | | | |
| WLKY-DT | in & out | | locked |
| WMYO-DT | locked | | nothing |
| WHIO-DT | nothing | | locked |
| WRGT-DT | locked | | PSIP |
| only | | | |
| WTVG-DT | in & out | | locked |
| WXYZ-DT | locked | | locked |
| WTVS-DT | in & out | | locked |
| WJBK-DT | in & out | | locked |
| WSTR-DT | in & out | | locked |
| WICD-DT | nothing | | locked |
| WDRB-DT | video, no PSIP | | PSIP, no |
| video | | | |
| WHAS-DT | nothing | | locked |
| (strong) | | | |

Note: I swapped coaxial cables to these receivers, but didn't notice any difference.

I live 5.3 miles from WHMB-40's tower (2090kW @ 990') and when tropo is up I'm able to receive WKOI-DT 39, Richmond,IN @ 85 miles. Last week I received WADL-DT39, Mt. Clemens, MI @ 247 miles with WHMB's 2 million watt signal banging the heck out of the backside of the antenna. In fact, on an analog TV, channel 39 will show LOTS of overload interference from WHMB, but the RCA ATSC11 is still capable of decoding these and other DTVs on ch. 39.

I live 5.4 miles from WXIN-59's tower (4470kW @ 997') and when tropo is up I'm able to receive WJBK-DT 58, Detroit @ 231 miles, with WXIN's super powerful signal directly behind, banging the backside of the antenna.

For UHF, I'm using 2-Triax Unix 100 wide-band antennas, horizontally stacked at 30 feet, along with the Channel Master 7775 preamp (gain: 26 dB; noise:2.0 dB).

For highband VHF, I'm using the 10-element Antennacraft with the Motorola Signal Booster (15 dB gain) which Jim Gould reviewed a few years ago. As Jim noted, it works very well in strong RF areas. And

in spite of WTHR-13's tower just 3 miles away (with lots of overload interference present on analog ch.12), I'm still able to log out-of-market DTVs on ch.12.

Your issue could be caused by one or a combination of your suspicions. There have definitely been some improvements in DTV receivers since 2003, when the RCA

ATSC11 was introduced. But many of those improvements contained in newer STBs and built-in DTV tuners, in my opinion, have not really helped DXers. As we've discussed before, many of the newer units require an auto scan before you can even view a station. With this in mind, the display of the stations found during the auto scan are indicated by their virtual channel numbers, and not their true RF numbers. Many newer units don't even offer a signal meter or LED indicator light (like the ATSC11). And there are some other

various differences that, IMO, are not helpful to DXers.

YMMV (your mileage may vary), and the reception abilities of your ATSC11 (along with all other brands/models) may vary, too, depending on location, location, location. But to date, Greg Barker has logged 289 DTV stations, most of those with the RCA ATSC11. So apparently the ATSC11 is doing something right in Greensburg, IN, which is surrounded by a lot of TV signals (Indy, Cincinnati, Dayton, Louisville).

I'm still waiting on that fabulous review from a WTFDA member of the PERFECT DTV receiver for DTV DXers and priced at \$110 or less. I'll keep checking my email.....

-Steve Rich IN

Sangean HD Tuner HDT-1 Photos

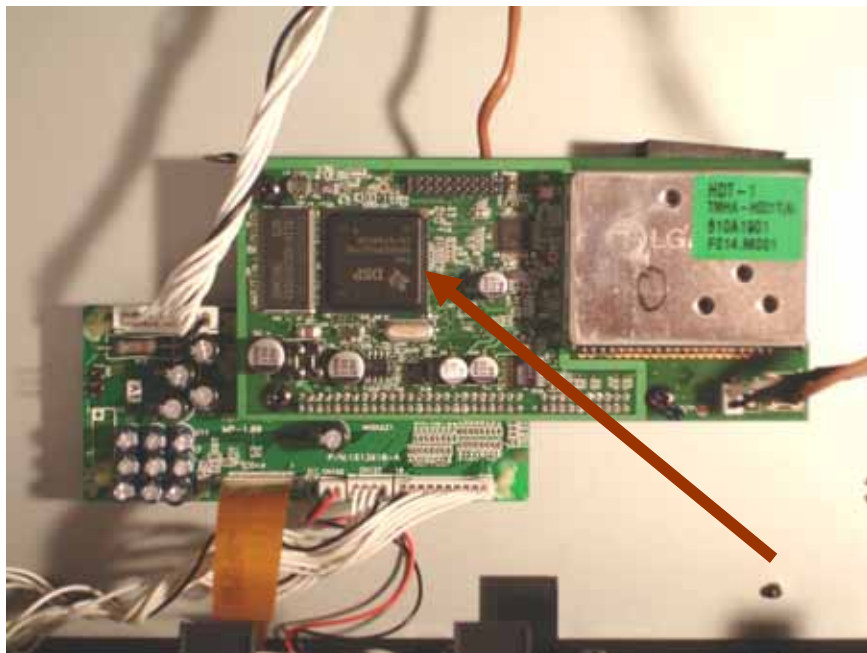
Initial observations by Keith McGinnis and Bill Nollman seem to indicate this one is HOT. A look inside shows there's not much there.



Front view of the HDT-1



Yes, this tuner also displays the RDS data from non-HD stations transmitting RDS. It will also display inaccurate decoding of bogus PI codes until the HD signal decodes. It will then display correct calls.



And finally, to the guts in this tuner. There's not much, is there? There are NO filters! However, there is a large square black component marked DSP. Can you find it? We'll have more info about this tuner in upcoming VUDs.

FM STATION LIST

RADIO-CRAFT presents this month its first list of FM radio stations of the United States. It has not been practical to print such a list in earlier issues, as the number of FM stations was increasing so rapidly that any such list would have been almost useless by the time it could be printed. This list is complete as of February 25, 1948.

In addition to those below, there are also 38 non-commercial FM stations between 88 and 92 mc, on which information is not immediately available. We hope to include all these in the June list.

New stations are still coming on the air daily, but the

initial rush is over, and we believe it will be possible from now on to keep a reasonably up-to-date list. To this end, we will print revised lists as often as necessary—every other month for a time. Shortwave station data will appear in alternate issues.

Stations are listed by frequencies for easy identification. A listener may not always hear the call letters perfectly, but can always note the frequency of an unknown station on the dial of his own receiver. As many stations announce their channel numbers, a conversion table of frequencies and channel numbers is printed on this page.

COMPLETE LISTING OF U.S. FM STATIONS IN 1948

| | | | | | |
|------|---------|-------------------------|------|---------|-------------------------|
| 44.1 | W2XMN | Alpine, N. J. | 94.5 | WIS-FM | Columbia, S. C. |
| 90.5 | KWGS-FM | Tulsa Okla. | 94.5 | KGKL-FM | San Angelo, Texas |
| 92.1 | KLZ-FM | Denver, Colo. | 94.5 | WMLL | Evansville, MD |
| 92.1 | W2XEA | Alpine, N.J. | 94.5 | WMOT-FM | Pittsburgh Pa. |
| 92.3 | KUMB | Des Moines, Iowa | 94.5 | WNDB-FM | Daytona Beach, Fla. |
| 92.3 | KVNJ-FM | Fargo, N.D. | 94.5 | WSYR-FM | Syracuse N. V. |
| 92.3 | WCOH-FM | Newnan, Ga. | 94.7 | KOCY-FM | Oklahoma City, Okla. |
| 92.3 | WCOL-FM | Columbus, Ohio | 94.7 | KROC-FM | Rochester, Minn |
| 92.3 | WDUL | Duluth, Minn | 94.7 | WAPO-FM | Chattanooga, Tenn. |
| 92.3 | WEBC-FM | Superior, Wisc. | 94.7 | WENR-FM | Chicago, Ill. |
| 92.5 | KCMC-FM | Texarkana, Texas | 94.7 | WMAS-FM | Springfield, Mass. |
| 92.5 | KYW-FM | Philadelphia, Pa. | 94.7 | WMCP | Baltimore, Md. |
| 92.5 | WFRS | Grand Rapids, Mich. | 94.9 | KAKC-FM | Tulsa; Oklahoma |
| 92.5 | WGOV-FM | Valdosta, Ga. | 94.9 | WMRC-FM | Greenville, S.C. |
| 92.5 | WINC-FM | Winchester, Va. | 94.9 | WQAM-FM | Miami, Fla. |
| 92.5 | WMBD-FM | Peoria, Ill. | 94.9 | WWCF | Greenfield, Wisc. |
| 92.9 | KDKA-FM | Pittsburgh Pa, | 94.9 | KSCJ-FM | Sioux City, Iowa |
| 92.9 | KGDM-FM | Stockton, Calif. | 95.1 | KFXM-FM | San Bernardino, Calif. |
| 92.9 | KOAD-FM | Omaha, Neb. | 95.1 | WEW-FM | St. Louis, Mo. |
| 92.9 | KONO-FM | San Antonio, Tex. | 95.1 | WGBA-FM | Columbus, Ga. |
| 92.9 | WBNY-FM | Buffalo, N. Y. | 95.1 | WGPA-FM | Bethlehem, Pa. |
| 92.9 | WBUR-FM | Burlington, Iowa | 95.1 | WHBS-FM | Huntsville, Ala. |
| 92.9 | WBZ-FM | Boston, Mass. | 95.1 | WRXW | Louisville, Ky. |
| 92.9 | WEEU-FM | Reading, Pa. | 95.1 | WTRF-FM | Bellaire, Ohio, |
| 93.1 | KWBW-FM | Hutchinson, Kan. | 95.1 | WTMA-FM | Charleston, S.C. |
| 93.1 | WAIR-FM | Winston-Salem, N.C. | 95.3 | KGBS-FM | Harlingen, Texas |
| 93.1 | WFBL-FM | Syracuse, N.Y. | 95.3 | KSJO-FM | San Jose, Calif. |
| 93.1 | WHYN-FM | Holyoke, Mass. | 95.3 | WSRS-FM | Cleveland Heights, Ohio |
| 93.1 | WJBK-FM | Detroit, Mich. | 95.5 | KECA-FM | Los Angeles, Calif. |
| 93.1 | WKAT-FM | Miami Beach, Fla. | 95.5 | KRBA-FM | Lufkin, Texas |
| 93.1 | WKBH-FM | La Crosse, Wisc. | 95.5 | KPRA | Portland, Oregon |
| 93.3 | WGBR-FM | Goldsboro, N.C, | 95.3 | WBGE-FM | Atlanta, Ga. |
| 93.3 | WIP-FM | Philadelphia, Pa. | 95.5 | WDLM | Chicago, Ill. |
| 93.3 | WJTN-FM | Jamestown, N.Y. | 95.5 | WHPE-FM | High Point, N.C. |
| 93.3 | WKPB | Knoxville, Tenn. | 95.5 | WPAM-FM | Pottsville, Pa. |
| 93.3 | WKYC | Paducah, Ky. | 95.6 | WKNB-FM | New Britain, Conn. |
| 93.3 | WRBL-FM | Columbus, OH | 95.7 | WMMW-FM | Meriden, Conn. |
| 93.3 | WTMJ-FM | Milwaukee, Wisc. | 95.7 | WMUR-FM | Manchester, N.H. |
| 93.5 | KOCS-FM | Ontario, Calif. | 95.7 | WTPS-FM | New Orleans, La. |
| 93.7 | KRFM | Fresno, Calif. | 95.9 | WEMZ | Allentown, Pa. |
| 93.7 | KXOK-FM | St. Louis, Mo. | 96.1 | WBCM-FM | Bay City, Mich. |
| 93.7 | WCSI | Columbus, Ind. | 96.1 | KCRA-FM | Sacramento, Calif. |
| 93.7 | WLAW-FM | Lawrence, Mass. | 96.1 | KFMX | Council Bluffs, Iowa |
| 93.7 | WSGN-FM | Birmingham, Ala. | 96.1 | KLCN-FM | Blytheville, Ark. |
| 93.9 | KSPI-FM | Stillwater, Okla. | 96.1 | WMBH-FM | Joplin, Mo. |
| 93.9 | WCOU-FM | Lewiston, Maine | 96.1 | WOHS-FM | Shelby, N.C. |
| 93.9 | WNYC-FM | New York, N.Y. | 96.1 | WOWO-FM | Fort Wayne, Ind. |
| 93.9 | WRC-FM | Washington, D.C. | 96.1 | WTAG-FM | Worcester, Mass. |
| 94.1 | KERN-FM | Bakersfield, Calif. | 96.3 | KRKD-FM | Los Angeles, Calif. |
| 94.1 | WGST-FM | Atlanta, Ga. | 96.3 | WBIK | Chicago, Ill. |
| 94.1 | WHBC-FM | Canton, Ohio. | 96.3 | WINX-FM | Washington, D.C. |
| 94.1 | WIBG-FM | Philadelphia, Pa. | 96.3 | WJCM-FM | Rice Lake, Wisc |
| 94.1 | WKOK-FM | Sunbury, Pa. | 96.3 | WQXR-FM | New York, N.Y. |
| 94.1 | WMIX-FM | Mt. Vernon III. | 96.5 | KRON | San Francisco, Calif. |
| 94.1 | WEAU-FM | Eau Claire, Wisc. | 96.5 | KSEI-FM | Pocatello, Idaho |
| 94.3 | WDRC-FM | Hartford, Conn. | 96.5 | KXYZ-FM | Houston, Texas |
| 94.3 | WGUY-FM | Bangor, Maine | 96.5 | WGH-FM | Norfolk, Va. |
| 94.3 | WJLK-FM | Asbury Park N.J. | 96.5 | WHEF-FM | Rochester, N.Y. |
| 94.5 | KAMT-FM | College Station, Texas. | 96.5 | WTIC-FM | Hartford, Conn. |

| | | | | | |
|------|---------|-----------------------|-------|---------|-------------------------|
| 96.7 | WBUZ | Cradbury Heights, Md. | 98.7 | WGNB | Chicago, Ill. |
| 96.7 | WEAW | Evanston, Ill. | 98.7 | WHOP-FM | Hopkinsville, Ky. |
| 96.7 | WSTC-FM | Stamford, Conn. | 98.7 | WJNO-FM | West Palm Beach, Fla. |
| 96.7 | WVAW-FM | Cheviot, Ohio. | 98.7 | WPAG-FM | Ann Arbor, Mich. |
| 96.9 | KCRK | Cedar Rapids, Iowa | 98.7 | WSOY-FM | Decatur, Ill. |
| 96.9 | KFBK-FM | Sacramento, Calif. | 98.7 | WWVA-FM | Wheeling, W. Va. |
| 96.9 | KRBC-FM | Abilene, Texas | 98.9 | KJBS-FM | San Francisco, Calif. |
| 96.9 | WEBR-FM | Buffalo, N.Y. | 98.9 | WCOA-FM | Pensacola, Fla. |
| 96.9 | WIBX-FM | Utica, N.Y. | 98.9 | WHBF-FM | Rock Island, Ill. |
| 96.9 | WJHP-FM | Jacksonville, Fla. | 98.9 | WHFM | Rochester, N. Y. |
| 96.9 | WLAN-FM | Lancaster, Pa. | 98.9 | WKBN-FM | Youngstown, Ohio |
| 96.9 | WLAV-FM | Grand Rapids, Mich. | 98.9 | WKY-FM | Oklahoma City, Okla. |
| 96.9 | WOPI-FM | Bristol, Tenn, | 98.9 | WSNJ-FM | Bridgeton, N. J. |
| 96.9 | WPAD-FM | Paducah, Ky. | 98.9 | WSPA-FM | Spartanburg, S.C. |
| 96.9 | WXHR-FM | Cambridge, Mass. | 99.1 | KUGN-FM | Eugene, Ore. |
| 97.1 | KKLA | Los Angeles, Calif. | 99.1 | KWK-FM | St. Louis, Mo. |
| 97.1 | KPFM-FM | Portland, Oregon | 99.1 | WOOS-FM | Oneonta, N.V. |
| 97.1 | KTUL-FM | Tulsa, Okla | 99.1 | WGTR | Boston, Mass. |
| 97.1 | WASH | Washington, D.C. | 99.1 | WHIO-FM | Dayton, Ohio |
| 97.1 | WBZA-FM | Springfield, Mass, | 99.1 | WMAZ-FM | Macon, Ga. |
| 97.1 | WELD-FM | Columbus, Ohio. | 99.1 | WNAV-FM | Annapolis, Md. |
| 97.1 | WRCM | New Orleans, La. | 99.1 | WSLS-FM | Roanoke, Va. |
| 97.1 | WTCN-FM | Minneapolis, Minn | 99.1 | WITH-FM | Port Huron, Mich. |
| 97.1 | WWJ-FM | Detroit, Mich | 99.3 | KGAR-FM | Garden City, Kan. |
| 97.3 | KTRN | Wichita Falls, Texas | 99.3 | WBBM | Chicago, Ill. |
| 97.3 | KWBR-FM | Oakland, Calif. | 99.3 | WFRO-FM | Fremont, Ohio |
| 97.3 | KWBR-FM | San Francisco, Calif. | 99.5 | KISS | San Antonio, Texas |
| 97.3 | WHCU-FM | Ithaca, N.Y. | 99.5 | KRIC-FM | Beaumont, Texas |
| 97.3 | WHP-FM | Harrisburg, Pa. | 99.5 | KTSJ | Topeka, Kan |
| 97.3 | WIL-FM | St. Louis, Mo. | 99.5 | WABF | New York, N.Y. |
| 97.3 | WKWK-FM | Wheeling, W.Va. | 99.5 | WAFM-FM | Birmingham, Ala. |
| 97.3 | WNBC-FM | New York, N.Y. | 99.5 | WEFM | Chicago, III. |
| 97.3 | WROL-FM | Knoxville, Tenn. | 99.5 | WJLS-FM | Beckley, W. Va. |
| 97.3 | WTAR-FM | Norfolk, Va. | 99.5 | WGFM | Schenectady, N.V. |
| 97.3 | WTOC-FM | Savannah, Ga. | 99.5 | WMFR-FM | High Point, N.V. |
| 97.5 | KPOR | Riverside, Calif. | 99.5 | WMIN-FM | St. Paul, Minn. |
| 97.5 | WAKR-FM | Akron, Ohio | 99.5 | WNLC-FM | New London, Conn. |
| 97.5 | WIOD-FM | Miami Fla. | 99.5 | WSON-FM | Henderson, Ky. |
| 97.5 | WLVA-FM | Lynchburg, Va. | 99.7 | KPDR-FM | Alexandria, La. |
| 97.9 | KFAB-FM | Lincoln, Nebr. | 99.7 | KTFI-FM | Twin Falls, Idaho |
| 97.9 | WBTM-FM | Danville, Va. | 99.7 | WCJT | Louisville, Ky. |
| 97.9 | WEHS | Chicago, Ill. | 99.7 | WJAS-FM | Pittsburgh, Pa. |
| 97.9 | WFAA-FM | Dallas, Texas. | 99.7 | WMC-FM | Memphis, Tenn. |
| 97.9 | WGYN-FM | New York, N.Y. | 99.7 | WSAP-FM | Portsmouth, Va, |
| 97.9 | WJLB-FM | Detroit, Mich. | 99.9 | KBMT | San Bernardino, Calif. |
| 97.9 | WLPM-FM | Suffolk, Va. | 99.9 | KMYC-FM | Marysville, Calif. |
| 97.9 | WLTN | Lewistown, Pa. | 99.9 | KVEC-FM | San Luis Obispo, Calif. |
| 97.9 | WMAR-FM | Baltimore, Md. | 99.9 | WBT-FM | Charlotte, N.C. |
| 97.9 | WMRF-FM | Lewistown, Pa. | 99.9 | WCLO-FM | Janenville, Wisc. |
| 97.9 | WRNY-FM | Rochester, N.Y. | 99.9 | WERC-FM | Erie, Pa. |
| 97.9 | WWPG-FM | Palm Beach, Fla. | 99.9 | WFNS-FM | Burlington, N.C. |
| 98.1 | KQV-FM | Pittsburgh, Pa. | 99.9 | WHFB-FM | Benton Harbor, Mich. |
| 98.1 | KOZY | Kansas City, Mo. | 99.9 | WKRG-FM | Mobile, Ala. |
| 98.1 | KRSC-FM | Seattle, Wash. | 99.9 | WKRT-FM | Cortland, N.Y. |
| 98.1 | WBRL | Baton Rouge, La. | 99.9 | WSAN-FM | Allentown, Pa. |
| 98.1 | WCAU-FM | Philadelphia, Pa. | 99.9 | WTRT-FM | Toledo, Ohio. |
| 98.1 | WCOD-FM | Richmond, Va. | 100.1 | WKBR-FM | Manchester, N.H. |
| 98.1 | WFMR | New Bedford. Mass. | 100.1 | WLBR-FM | Lebanon, Pa. |
| 98.1 | WFNC-FM | Fayetteville, N. C. | 100.1 | WMUS-FM | Muskegon, Mich. |
| 98.1 | WSAL | Saginaw, Mich. | 100.3 | KGW-FM | Portland, Maine |
| 98.3 | KAGH | Pasadena, Calif. | 100.3 | KMPC-FM | Hollywood, Calif. |
| 98.3 | WEEX | Easton, Pa. | 100.3 | KSL-FM | Salt Lake City, Utah |
| 98.3 | WHNY-FM | Hempstead, N.Y. | 100.3 | WACE-FM | Chicopee, Mass. |
| 98.3 | WLAD-FM | Danbury, Conn. | 100.3 | WCLT | Newark, Ohio |
| 98.3 | WPIK | Alexandria, Va | 100.3 | WGBG-FM | Greensboro, N.C. |
| 98.3 | WTFM-FM | Tiffin, Ohio | 100.3 | WHO-FM | Des Moines, Iowa |
| 98.5 | KBIX-FM | Muskogee, Okla. | 100.3 | WMGM-FM | New York, N.Y. |
| 98.5 | KLOK-FM | San Jose, Calif. | 100.3 | WSAV-FM | Savannah, Ga. |
| 98.5 | KOPY | Houston, Texas | 100.3 | WWLH | New Orleans, La. |
| 98.5 | WAGE-FM | Syracuse, N.Y. | 100.5 | KSBR | San Bruno, Calif. |
| 98.5 | WBRE-FM | Wilkes-Barre, Pa. | 100.5 | KMBC-FM | Kansas City, Mo. |
| 98.5 | WCBT-FM | Roanoke Rapids, N.C. | 100.5 | WHMA-FM | Anniston, Ala. |
| 98.5 | WHLA-FM | Niagara Falls, N.V. | 100.5 | WHTN-FM | Huntington, W. Va. |
| 98.5 | WJPF-FM | Herrin, Ill. | 100.5 | WMNE | Boston, Mass. |
| 98.5 | WNAM-FM | Neenah, Wisc | 100.5 | WLDS-FM | Jacksonville, Ill. |
| 98.7 | KDYL-FM | Salt Lake City, Utah | 100.5 | WNBF-FM | Binghamton, N.Y. |
| 98.7 | KYWC-FM | Vernon, Texas | 100.5 | WNNV-FM | Watertown, N.Y. |
| 98.7 | WBAM | New York, N.Y. | 100.7 | WBAB-FM | Atlantic City, N.J. |
| 98.7 | WCTP | Greensboro, N.C. | 100.7 | WBIB | New Haven, Cons. |

| | | | | | |
|-------|---------|----------------------|-------|---------|------------------------|
| 100.7 | WBML-FM | Macon, Ga. | 103.3 | WDBQ | Dubuque, Iowa |
| 100.7 | WBOX-FM | Louisville, Ky. | 103.3 | WIZZ | Wilkes-Barre, Pa. |
| 100.7 | WCEC-FM | Rocky Mount, N.C. | 103.3 | WLOG-FM | Logan, W. Va. |
| 100.7 | WCIL-FM | Carbondale, Ill. | 103.3 | WSBA-FM | Montgomery, Ala. |
| 100.7 | WHKX | Cleveland, Ohio | 103.3 | WSFA-FM | York, Pa. |
| 100.7 | WKIL | Kankakee, Ill. | 103.3 | WSM-FM | Nashville, Tenn. |
| 100.7 | WSVA-FM | Harrisonburg, Va. | 103.5 | KYSM-FM | Mankato, Minn. |
| 100.7 | WTJS-FM | Jackson, Tenn. | 103.5 | WSTV-FM | Steubenville, Ohio. |
| 100.9 | WABX-FM | Harrisburg, Pa. | 103.7 | KQW-FM | San Francisco, Calif. |
| 100.9 | WCFR | Fall River, Mass. | 103.7 | WROV-FM | Roanoke, Va. |
| 101.1 | KGLO-FM | Mason City, Iowa | 103.7 | WSAR-FM | Fall River Mass. |
| 101.1 | KHJ-FM | Hollywood, Calif. | 103.7 | WTBY-FM | Gadsden, Ala. |
| 101.1 | KTRH-FM | Houston, Texas | 103.9 | KENO-FM | Las Vegas, Nev. |
| 101.1 | KVCI-FM | Chico, Calif. | 103.9 | KOPP-FM | Ogden Utah. |
| 101.1 | KXLW-FM | Clayton, Mo. | 103.9 | WDLB-FM | Marshfield, Wisc. |
| 101.1 | WBBB-FM | Burlington, N.C. | 103.9 | WFAS-FM | White Plains, N.Y. |
| 101.1 | WBCA-FM | Schenectady, N.Y. | 103.9 | WJEM | Springfield, Ohio |
| 101.1 | WBOW-FM | Terre Haute, Ind. | 103.9 | WTAL-FM | Tallahassee, Fla. |
| 101.1 | WCAC-FM | Anderson, S. C. | 103.9 | WXNJ | Green Brook Twp., N.J. |
| 101.1 | WCBSFM | New York, N. V. | 103.9 | WXNJ-FM | Plainfield, N.J. |
| 101.1 | WJPG-FM | Green Bay, Wisc. | 104.1 | KFUO-FM | St. Louis, Mo. |
| 101.1 | WLWA-FM | Cincinnati, Ohio | 104.1 | KMFM | Monroe. La. |
| 101.1 | WXYZ-FM | Detroit, Mich. | 104.1 | WJW-FM | Cleveland, Ohio |
| 101.1 | WWDC-FM | Washington, D.C. | 104.1 | WMUN | Muncie, Ind. |
| 101.3 | WATG-FM | Ashland, Ohio | 104.1 | WSJS-FM | Winston-Salem, N.C. |
| 101.3 | WCFC-FM | Beckley, W. Va. | 104.3 | KGNC-FM | Amarillo, Texas |
| 101.3 | WGAL-FM | Lancaster, Pa. | 104.3 | KTOK-FM | Oklahoma City, Okla. |
| 101.3 | WSBF | South Bend, Ind. | 104.3 | KWLK-FM | Longview, Wash. |
| 101.3 | WSRK | Shelbyville, Ind. | 104.3 | WITH-FM | Baltimore, Md. |
| 101.5 | KFMB-FM | San Diego, Calif. | 104.3 | WLOS-FM | Asheville, N.C. |
| 101.5 | KMUS | Muskogee, Okla. | 104.5 | KIXL-FM | Dallas, Texas |
| 101.5 | KGKB-FM | Tyler, Texas | 104.5 | KRCC | Richmond, Calif. |
| 101.5 | KYFM-FM | San Antonio, Texas | 104.5 | WHIS-FM | Bluefield, W. Va. |
| 101.5 | WFMD-FM | Frederick, Md. | 104.5 | WWST-FM | Wooster, Ohio |
| 101.5 | WIBA-FM | Madison, Wisc. | 104.7 | WHVA | Poughkeepsie, N.Y. |
| 101.5 | WJBC-FM | Bloomington Ill. | 104.7 | WIST | Charlotte, N. C. |
| 101.5 | WRAL-FM | Raleigh, N.Y. | 104.7 | WJEJ-FM | Hagerstown, Md. |
| 101.5 | WSPD-FM | Toledo, Ohio | 104.7 | WOPT-FM | Oswego, N. Y. |
| 101.7 | KPNI | Palo Alto, Calif. | 104.9 | KURV-FM | Edinburg, Texas |
| 101.7 | KWIL-FM | Albany, Ore. | 104.9 | KONG | Alameda, Calif. |
| 101.7 | WFAH-FM | Alliance, Ohio | 104.9 | WMCK-FM | McKeesport, Pa. |
| 101.7 | WLIN-FM | Merrill, Wisc. | 105.1 | KCLI | Los Angeles. Calif. |
| 101.9 | KARM-FM | Fresno, Calif. | 105.1 | WDNC-FM | Durham, N. C. |
| 101.9 | KFXD-FM | Nampa, Idaho | 105.1 | WQDI | Quincy. Ill. |
| 101.9 | WCTS | Cincinnati, Ohio | 105.1 | WFMJ-FM | Youngstown, Ohio |
| 101.9 | WGAN-FM | Portland, Maine | 105.3 | WWHG | Hornell, N.Y. |
| 101.9 | WGHF-FM | New York, N.Y. | 105.5 | WFOB | Fostoria Ohio |
| 101.9 | WGNC-FM | Gastonia, N.C. | 105.7 | KIMY | Hutchinson, Ken. |
| 102.1 | KSTP-FM | St. Paul, Minn. | 105.7 | KUOA-FM | Siloam Springs, Ark. |
| 102.1 | WELL-FM | Battle Creek, Mich. | 105.7 | KXEL-FM | Waterloo, Iowa |
| 102.1 | WEWS-FM | Cleveland, Ohio | 105.7 | WDAE-FM | Tampa, Fla. |
| 102.1 | WFIL-FM | Philadelphia, Pa. | 105.7 | WMBS-FM | Uniontown, Pa. |
| 102.3 | WGAY-FM | Silver Spring, Md. | 105.7 | WRUN-FM | Rome, N.Y. |
| 102.5 | WFJS | Freeport, Ill. | 105.7 | WSIC-FM | Statesville, N.C. |
| 102.5 | WIBW-FM | Topeka, Kan. | 105.9 | KFI-FM | Los Angeles, Calif. |
| 102.5 | WISE-FM | Asheville, N.C. | 105.9 | KOMA-FM | Oklahoma City, Okia. |
| 102.5 | WOAI-FM | San Antonio Texas | 105.9 | KSBS | Kansas City, Ken. |
| 102.5 | WNDR-FM | Syracuse, N. Y. | 106.1 | KGO-FM | San Francisco, Calif. |
| 102.5 | WPLH-FM | Huntington, W. Va. | 106.1 | KIDO-FM | Boise, Idaho |
| 102.7 | KFMY | Fort Dodge, Iowa | 106.1 | WKJG-FM | Fort Wayne, Ind. |
| 102.7 | KOKX-FM | Keokuk, Iowa | 106.1 | WKNP-FM | Coming. N.Y. |
| 102.7 | WAAT-FM | Newark, N.J. | 106.1 | WLOB-FM | Claremont, N.H. |
| 102.7 | WCAO-FM | Baltimore, Md. | 106.3 | WMLN | Mt. Clemens, Mich, |
| 102.7 | WSMB-FM | New Orleans, La. | 106.5 | WBEN-FM | Buffalo, N.Y. |
| 102.7 | WTRI-FM | Troy, N.Y. | 106.5 | WFML | Washington, Ind. |
| 102.9 | KFOR-FM | Lincoln, t4ebr. | 106.5 | WRGA-FM | Rome, Ga. |
| 102.9 | KPRC-FM | Houston, Texas | 106.5 | WSTP-FM | Salisbury, S.C. |
| 102.9 | WCVS-FM | Springfield, Ill. | 106.7 | WGTM-FM | Wilson, N.C. |
| 102.9 | WFMU | Crawfordsville, Ind. | 106.9 | WMIT | Winston-Salem, N.C. |
| 102.9 | WLET | Toccoa, Ga. | 107.1 | WAJL | Flint, Mich. |
| 102.9 | WPEN-FM | Philadelphia, Pa. | 107.1 | WCAP-FM | Asbury Park N.J. |
| 102.9 | WPIC-FM | Sharon, Pa. | 107.1 | WWDX-FM | Paterson, N.J. |
| 102.9 | WRLD-FM | Lanett, Ala. | 107.3 | KSEO-FM | Durant, Okla. |
| 103.1 | KRJM | Santa Maria, Calif. | 107.3 | WBNB | Beloit, Wisc. |
| 103.1 | WCTW | New Castle, Ind. | 107.7 | KFSA-FM | Fort Smith, Ark. |
| 103.1 | WFMO-FM | Jersey City, N.J. | 107.7 | WAYS-FM | Charlotte, N.C. |
| 103.1 | WJWJ | Wyandotte, Mich. | 107.9 | KXOA-FM | Sacramento. Calif |
| 103.1 | WRGK | Brookfield, Ill. | | | |
| 103.1 | WRGK | La Grange Ill. | | | |

FROM RADIOCRAFT—1948 LISTING

TELEVISION'S PIRATES: HIDING BEHIND YOUR PICTURE TUBE

BY BOB COOPER

What is a Television Pirate?

By Oxford definition, a pirate is "a person who infringes another's copyright or other business rights" and/or "someone who broadcasts without official authorization." Television programming carries copyright, television stations travel a years-long pathway seeking "official authorization" before broadcasting. Alas, not every television station has waited for, nor even sought, authorization, and it goes without saying, contacting those who's copyright might be violated by their transmissions. Many figures in recent history (Winston Churchill) met our definition.

Tens of thousand have been driven by their intense desire to have, for their own, access to television. Cable TV began as piracy. Satellite TV was driven by rampant piracy. And now the Internet is spooked by those who would "broadcast" with authorization. This is their story.

ORDER YOUR 928 PAGE COPY FROM BOB RIGHT NOW!

Send your check or money order for \$20 (payable to WTFDA) to WTFDA, P.O. Box 501, Somersville, CT 06072. US ORDERS ONLY. ORDERS OUTSIDE USA PLEASE EMAIL US FOR POSTAL RATES BEFORE ORDERING.

Paypal order are also accepted. Send \$21.50 (to cover Paypal fees, etc.) To mbugaj@snet.net. ORDERS OUTSIDE THE USA PLEASE EMAIL US FOR SHIPPING!



??

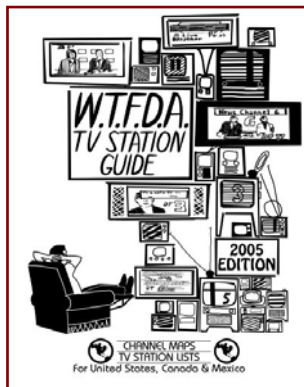


You haven't ordered yet?

WALK THE PLANK MATEY!

LAST CALL FOR WTFDA MEMBERS FINAL PRICE REDUCTION.

And if \$10 is too much, make an offer!
WE NEED TO GET THESE OUT OF JOHN'S HOUSE!



WTFDA TV STATION GUIDE

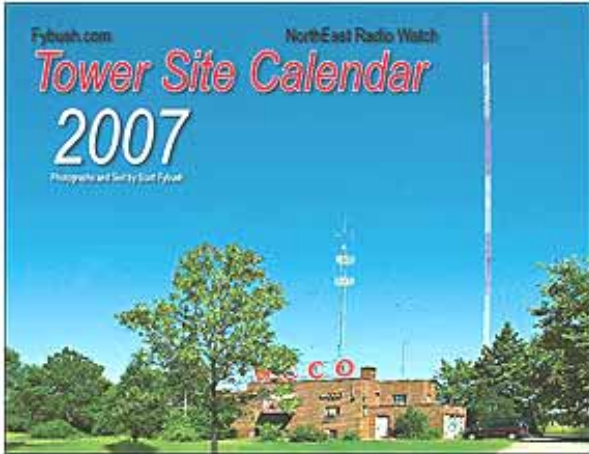
To order your copy of the WTFDA TV Station Guide, send a check or a money order for **\$10** payable to WTFDA and send it to John Ebeling, 9209 Vincent Avenue S., Bloomington, MN 55431-2157

STILL IN STOCK! GET YOURS NOW!

"TOWER SITE 2007 CALENDAR" GOES ON SALE
Sixth Big Year For One Of America's Most Unusual Calendars

CONTACT: Scott Fybush, 585-442-5411 (scott@fybush.com)

ROCHESTER, N.Y. – One of North America's most unusual wall calendars is back for a sixth year, with the publication of the "Tower Site 2007 Calendar."



The calendar, which features a monthly photo of a well-known broadcast transmitter site, is photographed and written by Scott Fybush, the creator of "Tower Site of the Week" (www.fybush.com/featuredsite.html) and "NorthEast Radio Watch" (www.fybush.com/nerw.html).

The full-color monthly calendar has become a tradition for many radio engineers and a curiosity for those who think all radio towers look alike.

"The response to the 2006 calendar was the best yet," says Fybush. "Radio engineers have been begging me to add their towers to the calendar, and I'm hoping to make some of them very happy with the 2007 edition."

As in its predecessors, each month of the 2007 calendar features an 8"x11" color photograph of a broadcast transmitter site, taken by Fybush during his travels around the U.S., Canada and beyond. The sites pictured on the 2007 calendar:

- WCCO, Minneapolis, the 50-kilowatt voice of the upper Midwest
- Philadelphia's Roxborough FM/TV tower farm, in a dramatic nighttime shot
- Atlanta's newest 50-kilowatt AM signal, WCFO 1160
- New York City's ESPN outlet, WEPN 1050
- The two towers of Boston's legendary WBZ
- The three towers of KGO, San Francisco, in the waters of the East Bay
- A stunning sunset view of the hilltop tower farm overlooking Duluth, Minnesota
- Chicago's WGRB 1390 and WVON 1690
- The remote Mount Potosi FM antennas, high above Las Vegas, Nevada
- Wintertime shots of two small "hometown" stations – WJOT Wabash, Indiana and WCJW Warsaw, N.Y.
- The historic site of WTIC, Hartford, Connecticut, in use since the 1920s
- From Andy Griffith's hometown, the picturesque site of WPAQ, Mount Airy, N.C.
- The seven towers of KOIL, Plattsmouth, Nebraska, near Omaha

In addition to tower photos, the calendar's monthly pages include significant dates in radio and television history, as well as civil and religious holidays.

The 2007 calendars cost \$17 each, postpaid (\$18.36 including sales tax for New York State residents), and can be purchased by check (payable to "Scott Fybush") or money order to 92 Bonnie Brae Avenue, Rochester NY 14618. Orders can also be placed with major credit cards at www.fybush.com.

"I'm enjoying traveling around the country, meeting engineers and visiting their stations," says Fybush, who also edits the radio directory site 100000watts.com, anchors newscasts for NPR member station WXXI in Rochester, N.Y. and is a columnist for *Radio World*.

SIGN UP/Renewal form

Name _____

Address _____ Apt # _____

City _____ State/Prov _____ Zip _____

Country _____ Interests: TV () FM () 30-50() Weather()

email address _____

Sign me up/renew me for: 1 year () 2 years () More ()

Yearly dues \$24 (US), \$26 to (CANADA), \$10 (Electronic VUD)
(Students get a discounted rate of \$15 yearly for the paper VUD.)

Mail your dues to: WTFDA, P.O. Box 501, Somersville, CT USA 06072

Make your checks/money orders payable to: WTFDA

And *thanks* for your support of the WTFDA!

Return this form with your dues or make a copy of it and return that.

WTFDA BOARD OF DIRECTORS

| | |
|---|-----------------------|
| Mike Bugaj, use the WTFDA Mailing address listed below | mbugaj@snet.net |
| Doug Smith, 1385 Old Clarksville Pike, Pleasant View, TN 37146-8098 | w9wi@w9wi.com |
| Greg Coniglio, 11825 Genesee St., Alden, NY 14004 | wgrc@rochester.rr.com |
| Bruce Hall, 5 Stirton Ave., Brantford, ON N3T 1E2 | dbruceaa@hotmail.com |
| Keith McGinnis, 6 Ritter Road, Hingham, MA 02043 | longwave@comcast.net |

THE MAILBOX and all general club correspondence:

| | |
|--|-----------------|
| Mike Bugaj at WTFDA, PO Box 501, Somersville, CT 06072 | mbugaj@snet.net |
|--|-----------------|

SATELLITE NEWS

| | |
|---|-------------------|
| George Jensen, 4604 Antana Ave., Baltimore, MD 20206-4220 | scisatman@aol.com |
|---|-------------------|

TV NEWS

| | |
|---|---------------|
| Doug Smith, 1389 Old Clarksville Pike, Pleasant View, TN 37146-8098 | w9wi@w9wi.com |
|---|---------------|

FM NEWS

| | |
|---|------------------------|
| Chris Kadlec, 3860 Shorewood Dr., Fremont, MI 49412 | ckadlec@beaglebass.com |
|---|------------------------|

PHOTO NEWS

| | |
|---|-----------------------|
| Jeff Kruszka, 5024 S. Braxton Ave., Baton Rouge, LA 70817 | jkruzka@bellsouth.net |
|---|-----------------------|

EASTERN TV DX

| | |
|---|-----------------------|
| Nick Langan, 1040 Riverview Dr., Florence, NJ 08516 | nick.langan@gmail.com |
|---|-----------------------|

WESTERN TV DX

| | |
|---|------------------------|
| Dave Williams, 3525 SW Timber Ave., Redmond, OR 97756 | beansdad@bendcable.com |
|---|------------------------|

SOUTHERN FM

| | |
|---|-----------------|
| John Zondlo, 4009 Driftwood Cir., Yukon, OK 73099 | sfm@fmdxweb.com |
|---|-----------------|

NORTHERN FM

| | |
|---|----------------------|
| Keith McGinnis, 6 Ritter Rd., Hingham, MA 02043 | longwave@comcast.net |
|---|----------------------|

TV and FM STATISTICS

| | |
|---|----------------------------|
| Fred Nordquist, 147 Travis Hill Road, Moncks Corner, SC | nordquis@homexpressway.net |
|---|----------------------------|

6 METER/2 METER

| | |
|--|---------------|
| Peter Baskind, 3225 Forest Hill-Irene Rd, Germantown, TN 38138 | n4li@arrl.net |
|--|---------------|

| | |
|--|-------------------|
| <u>WEBSITE</u> Tim McVey Webmaster http://www.anarc.org/wtfda/ | tkmcvey@erols.com |
|--|-------------------|

PRINT TOO SMALL??? See MORE...PAY LESS!!

Try the eVUD!

**THE WORLDWIDE TV-FM DX ASSOCIATION
THE VHF- UHF DIGEST
P.O. Box 501, SOMERSVILLE, CT 06072**

Opinions expressed in this publication are those of the individual contributor and do not necessarily reflect the views of the publisher or board of directors. We reserve the right to edit material to meet publishing standards. Unless previously agreed upon in writing, all material submitted for publication in the VHF-UHF Digest becomes the property of the WTFDA. Reproduction of material from the VHF-UHF Digest without permission of the WTFDA is prohibited. Individuals and other organizations are granted such permission providing proper credits is given to the source.



FIRST CLASS MAIL

NOW! JOIN AND RENEW USING PAYPAL!

Now you can pay for your dues by check, money order and ONLINE. Pay by credit card at Paypal! If you have a Paypal account you'll be done in a matter of seconds! Pay at our Paypal webpage at <http://fmdx.usclargo.com/join.html>.