

Vhf-Uhf DIGEST

The Official Publication of the Worldwide TV-FM DX Association

JULY 2007

The Magazine for TV and FM DXers

19
MONTHS

REMAINING UNTIL
ANALOG TV SHUTOFF



THE SKIP SEASON ARRIVES!

AND FLORIDA FMERS HEARD IN MASSACHUSETTS BY LONG DISTANCE TROPO!

Enjoy those scratchy
pictures and wavy lines
from far away places
while you can!



TV and FM DXing was never so much fun!

THE WORLDWIDE TV-FM DX ASSOCIATION

Serving the UHF-VHF Enthusiast

THE VHF-UHF DIGEST IS THE OFFICIAL PUBLICATION OF THE WORLDWIDE TV-FM DX ASSOCIATION DEDICATED TO THE OBSERVATION AND STUDY OF THE PROPAGATION OF LONG DISTANCE TELEVISION AND FM BROADCASTING SIGNALS AT VHF AND UHF. WTFDA IS GOVERNED BY A BOARD OF DIRECTORS: DOUG SMITH, GREG CONIGLIO, BRUCE HALL, KEITH MCGINNIS AND MIKE BUGAJ.



Editor and publisher: **Mike Bugaj**

Treasurer: **Keith McGinnis** wtfda.org Webmaster: **Tim McVey**
wtfda.info Site Administrator: **Chris Cervantez**

Editorial Staff: **Dave Williams, Jeff Kruszka, Keith McGinnis, Fred Nordquist, Nick Langan, Doug Smith, Chris Kadlec, Peter Baskind and John Zondlo,**

Our website: www.wtfda.org; Our forums: www.wtfda.info

JULY 2007



Finally! For those of you online with an email address, we now offer a quick, convenient and secure way to join or renew your membership in the WTFDA from our page at:

<http://fmdx.usclargo.com/join.html>

Dues are \$25 if paid to our Paypal account. But of course you can always renew by check or money order for the usual price of just \$24. Either way, it's still a bargain!

VUDS ON A CD!

Every VUD from Jan 1980 to December 1989 is on this disk. You'll need Adobe Reader to read them. Why have a box of old VUDs taking up space when you can have this. **It's yours for just \$8.00 per disk.** Send your check or money order for \$8.00 to WTFDA, P.O. 501, Somersville, CT 06072. Make it payable to **WTFDA.**



CONTENTS

Page Two	2
Mailbox	3
TV News...Doug Smith	5
FM News...Chris Kadlec	11
Florida to Massachusetts FM tropo	17
Western TV DX...Dave Williams	18
Eastern TV DX...Nick Langan	21
Southern FM DX...John Zondlo	22
Northern FM DX...Keith McGinnis	24
Photo News...Jeff Kruszka	27
Es Report Card	29
Editors and Submissions	31

Everyone is here this month except our 50mhz column. August is Chris' last column and Dave needs a replacement ASAP, so help us if you can.

And now... eVUDS ON CD!

All eVUDs from 09/01 through 12/05 are on this disc (except 8/02 which was not published). Follow the changes from day one to the present form. **You can have it for just \$6.00** (\$5.00 plus a dollar shipping).

Use the same address as for VUDs on CD shown on the opposite column.



Frank Aden Hosts the 1st NRC/WTFDA Convention!

Friday, August 31, 2007 through Sunday, September 2, 2007
At the Rodeway Inn, 1115 North Curtis Road, Boise, ID 83706
(208) 376-2700

The First ever Combined National Radio Club/WTFDA Convention!
Registration for all is \$15, spouses are \$10 and kids under 14 are free. The cutoff date for registering with the club(s) is August 15, 2007; with the hotel, August 20, 2007.
PLEASE SEND YOUR REGISTRATION TO EITHER CLUB



The Mailbox

P.O. Box 501, Somersville, CT USA 06072
MIKE BUGAJ MBUGAJ@SNET.NET

Welcome to the Mailbox. We're glad to have you back for another month. I think most DXers would agree that May was a rather decent month for E skip this year and that DXers believed (or hoped) that June would continue May's winning streak. As this is being written, in the latter part of June, we found that the word that describes the first half of the month is "anemic". DXers found plenty of openings where the MUF stayed at channel 2 or 3 and never went higher. We really haven't seen any reports from the Southwest or Northwest USA. DXers down south seem to have fared pretty well with lots of Caribbean and Central American TV and FM DX, but New Englanders have been frustrated by the lack of openings jumping into the FM band. As usual there were winners and there were losers. Let's hope that in July the number of winners increases dramatically!

MEMBERS AND MORE

We have two new WTFDA members to welcome this month and they are Frank E. Perry from Land 'o Lakes, FL and Kevin Short from Bluefield, WV. Welcome to the both of you!

Renewals were received from the period 5/26 to 6/16 from **Owen Wood** (NY), **Matt Haston** (KY), **John Griffiths** (ON), **Rod O' Connor** (ME), **Dan Oglethorpe** (LA), **Tim McVey** (VA), **Joseph Esser** (NJ), **James Montgomery** (IN), **Rick Lucas** (NY), **Garret Wollman** (MA), **Stan Weisbeck** (WA) and **Stephen Ponder** (TX). Thanks for your vote of confidence in the WTFDA. We ended May with about 250 WTFDA members and that's not bad at all.

ONCE AGAIN, IT'S TIME FOR IT!

The 14th annual Madison-Milwaukee Get-together for DXers and Radio Enthusiasts returns to Madison this year, after the highly successful gathering in Grafton WI last year. This year's event will be held on Saturday, August 18, beginning at 1 PM CDT. The WTFDA's Bill and Nina Dvorak are this year's hosts, and the location will be their home, 3358 Ridgeway Avenue, Madison WI 53704-4327. This all-band event has for the past several years been a popular destination for Upper Midwest WTFDA members. In fact, if you would like to get a little flavor of the event (and

see who from the WTFDA attended), there have been write-ups of the last three events in the VUD, October 2004, 2005 and 2006. For more information on this year's event, please e-mail Bill at dxerak@aol.com (please include "Madison DX GTG" in the subject line), write him at the above address or phone him at 608-244-5497. We hope to see you in Madison on August 18!

BOB REVIEWS BOOKS

Bob Cooper reviews two books that DXers might find interesting (one if you are old enough to remember Top 40 on AM radio). Bob writes: "There are two recently released books of interest to our group. During April-May while in states I visited numerous book distributors and found the following.

"Something in the air" by Marc Fisher chronicles the transitional period from network generated radio to Cousin Brucie and the introduction of Rock and Roll to the radio dial. Fisher has done an incredible amount of research tracing the not so gradual shift from network to music formats including the late 40s experiments (such as WDIA Memphis) with "race music/R and B" that led to the "top 40" formats pioneered by Todd Storz and his contemporaries. This book (ISBN 987-0-375-50907-0) is filled with so much memorable trivia you are likely, as I did, to finish it and then instantly start it anew (for example: Wolfman Jack's real name was Bob Smith). Storz, McLendon radio pretty much structured when those of us as teens in the 50s and 60s grew up, listening on our 8 transistor sets hidden under our pillows at night. "Something in the air" is nostalgic with the added plus of offering easy to digest history of our radio medium.

"Same Time, same station" is the television equivalent of Fisher's book. The author, James L. Baughman, is a University of Wisconsin staffer with a mission to explain how television's late 40s-50s programming developed and affected all that followed. Like Fisher, he has unburied a plethora of trivia gems (for example: Desi Arnez asked CBS to invest in Lucy - 25% - before the first show was completed and they had so little faith in it they refused the opportunity!). This book reads "harder" than Fisher because it is more scholarly; the author never quite escapes the flowing robes of academia and I found his end-of-book sources as useful and fascinating as

the text itself. If you have ever wondered how Fox ended up being a serious competitor to the established three, "Same Time ..." (ISBN 978-0-8018-7933-3) will make it painfully obvious that television's top people are at the end of the day unbuckling their shoes and disrobing just like you and I."

MORE CONVENTION INFO

We've got more news about the activities at WTFDA/NRC Convention 2007.

The program will begin on Friday morning around 11 o'clock -- a tour of a Boise television station, and Frank has arranged it so the group can sit in and watch how their noon newscast is put together and broadcast. Friday night, Frank is going to speak on the history of Idaho's earliest radio and TV stations.

Saturday will be filled with a tour of the local radio transmitting sites around Boise for those who want to see where the signals are coming from. For others, the hotel meeting room will be open for musing and swapping stories or demonstrating what you have brought with you to the convention. In the evening after dinner, we will hear about our two clubs and how we're doing. Frank Aden will present some video about the old DuMont Television Network, and that will be followed by the annual auction.

Sunday will include the annual "Candy Quiz" for the early risers, followed by the annual National Radio Club Examination for

those who wish to compete for a free full-year's membership in the NRC. There should be time for a visit to 7100-foot Deer Point where the Boise FM and TV transmitters are located in the hills just outside of town.

Sounds like fun, so check page two and register! You can send registration checks to us at PO Box 501 and we'll make sure Frank and the NRC folks know you are coming.

COMCAST CABLE

If you happen to be a Comcast Cable customer and you subscribe to the WTFDA's tvfmdx list and you are *not* receiving emails from the list, there's a reason. Since June 16th Comcast has been blocking email from our list (or more precisely, blocking the IP address of the server that sends the email from our list). We know about it, but you may not. Keith McGinnis is a Comcast user and he's been in contact with them to try to rectify the situation. We hope this is just a temporary situation.

WANT TO WRITE?

We're still looking for an editor for FM News and Western TV DX. Chris Kadlec and Dave Williams need to be relieved of their editor duties and we need people to take their places. Email me if you are interested. Remember: no editors, no columns. Period.

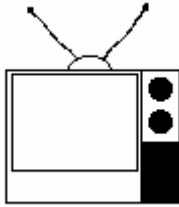
That's it for this month. See you in August!

Frequency Modulation **FM** *First in Michigan*

Michigan's pioneer F.M. station is now on the air. Independent programming 18 hours daily. Owned and operated by The Detroit News, associate station WWJ.

Rate Card on Request

W 4 5 D
4500 Penobscot Bldg.
DETROIT, MICHIGAN



TV News

Douglas E. Smith
 1389 Old Clarksville Pike
 Pleasant View, TN
 37146-8098
w9wi@w9wi.com

<http://www.w9wi.com>

July 2007

Abbreviations:

AF	Applied For (a new station)	NW	New station on the air
Aux	Auxiliary (backup) transmitter	PA	Proposed Amendment
CC	Callsign change	PC	Power (and/or tower height) change on the air
CL	City-of-license change	PG	Power change granted
DC	Converted to DTV	PR	Power change requested
DCC	Digital Companion Channel	QC	Channel (frequency) change on the air
NS DCC	Granted flash-cut to DTV	QG	Channel change granted
DE	License/permit deleted	QR	Channel change requested
DR	Requests flash-cut to DTV	RE	Reinstated (previously-dismissed app.)
FC	Programming (format) change	ROA	Request of Applicant
FTP	Failure to Prosecute	SI	Off the air (silent)
GA	Granted amendment (to table of channel allotments)	STA	Special Temporary Authority
LC	License to Cover	XC	Transmitter site changed
MX	Mutually Exclusive	XG	Transmitter site change granted
NDA	Non-directional antenna	XR	Transmitter site change requested
NS	Permit granted for new station		

News:

(full-power analog stations in **bold face**; LPTV and translators in regular type; full-power digital stations in ***bold italics***; low-power digital stations in *regular italics*)

42/
 87-15-56; CL from
 Tusculumbia dismissed



CANADA:

Alberta:

See text below for six new stations in Calgary and Edmonton and new DTV-only applications elsewhere in Canada.



PUERTO RICO:

Ponce	7	WSTE	NW 100kw/ 88m, 18-02-52/ 66-39-16 (aux)
Ponce	51	W34DT	QR from ch. 34, 350w, 18-00-34/ 66-36-49
San Juan	10	W52DY	QR from ch. 52, 2.8kw, 18-25-24/ 66-08-49
San Juan	55	WIPR-DT	NW 500kw/ 776m
Ycamuy	45	W45DD	NS 250w, 18-27-53/ 66-52-26; city should probably be "Camuy".



USA:

Alabama:

Moulton	46	W46CF	PR<12.18kw, 34-27-
---------	----	-------	--------------------

Alaska:

Juneau	11	KJUD-DT	NW 140w/ -290m
--------	----	---------	---------------------------

Arizona:

Flagstaff	22	KNAZ-DT	NW 283kw/ 465m
Kingman	23	K23JJ	NS 1kw, 35-05-39/ 113-54-18 FC; sold to Hispanic Christian Community Network
Littlefield, Parker, 30, Quartzsite, 49, Tacna 55		K30IP, K49IM, K55KC, K27IJ	
Prescott	47	K27CA	AF DCC 15kw, 33-20- 00/ 112-03-45
Williams	41	K41JE	NW 1kw, 35-12-01/ 112-12-15 (KASW-61)

Arkansas:

El Dorado	32	K32HT	PC>150kw
El Dorado	47	K47JG	PC>30kw
Little Rock	27	K55GE	DR from ch. 55, 1kw
Searcy	17	KTWN-LP	DC from ch. 43, 15kw, 35-02-13/ 92-01-02 (database says channel 18...)

California:

Bakersfield	16	KTFB-CD	QR from ch. 4, 15kw
Bakersfield	23	KERO-TV	NW 324kw/ 1101m (aux)
Bakersfield	38	KNXT-LP	PC<65kw, 35-26-16/ 118-44-28; CL from Maricopa
Big Bear Lake	40	KPCD-LP	CL changed from

Bishop 20 **KBBC-TV** Palm Springs
NW 4.2kw/
924m,
37-24-43/
118-11-06

Caliente 43 K43IR PR>150kw,
35-26-16/
118-44-28

Chico 15 *K15HV* DR 15kw

Daggett 26 K26FO FC; sold by TBN

El Centro 22 **KVYE-DT** NW 1000kw/
477m,
33-03-02/
114-49-38

Glen Arbor 42 *KBKF-LP* AF DCC 15kw, 37-07-
19/
122-09-19

Palm Springs 52 **KESQ-DT** PG<50kw/
219m,
33-51-58/
116-26-02

Paso Robles 30 *KPAO-CA* AF DCC 7.5kw, 35-38-
45/
120-44-16

Redding 4 K04PY NW 10w,
40-39-14/
122-31-12

Redding 58 KKDJ-LP NW 29.3kw,
40-39-16/
122-31-13

Ridgecrest 43 K43AG PG>10kw,
35-21-46/
117-38-24; from no
offset to zero

Riverside 25 KBLM-LP PG>9.55kw

Sacramento 59 *KEFM-LP* AF DCC 15kw, 39-12-
20/
121-49-10

Sacramento 44 KRJR-LP QR from ch. 47,
150kw,
39-12-20/
121-49-10

San Diego 9 *K61GH* AF DCC 290w, 32-50-
24/
117-14-52

Temecula 12 *K12PO* DR 300w

Colorado:

Anton 51 *K51HS-D* DC 130w

Cortez 32 K32IJ NW 1.5kw,
37-13-10/
108-48-26

Cortez 50 K53DR QC from ch. 53, 1.8kw

Denver 6 KLPT-LP QR from ch. 30, 70w

Estes Park 26, K26HQ,
39, K39JT,
42 K42GS
105-31-12

Estes Park 39 *K49IB* DR from ch. 49
dismissed

Holyoke 27 *K27IH-D* DC 200w

Peetz 14 *K14JZ-D* DC 170w

Pueblo 32 **NEW** AF dismissed (Ch. 32
Hispanic
Broadcasters Ltd.)

Sterling 31 *K54GJ-D* DC from ch. 54, 400w

Wray 31 K54HL QC from ch. 54

Yuma 28 *K28JH-D* DC from ch. 59, 170w

Connecticut:

Hartford 24 **WEDH** PC>1200kw/
517m,
41-42-13/
72-49-57

Florida:

Daytona Beach 49 **WVEN-DT** NW 120kw/
428m,
28-55-16/
81-19-09

Miami 41 WJAN-CA PR>500kw,
25-46-23/
80-25-17 dismissed

Panama City 6 W06CQ QC from W08DZ

Pensacola 33 **WHBR** XC 30-36-45/
87-38-43 (correction
only)

Perry 18 WSFD-LP QC from ch. 69,
150kw,
30-08-00/
83-35-45

Summer-land 28 W28CP PR>150kw,
24-34-06/
81-44-54 dismissed

Georgia:

Atlanta 40 WIRE-CA PC>55kw,
33-44-41/
84-21-36

Augusta 49 W49DF QG from W58CZ,
11.9kw

Columbus 61 W61DU PG 1kw,
32-31-52/
84-57-31; NW

Douglas 13 W12DA QR from ch. 13, 360w,
31-30-41/
82-51-32; CL from
Tifton

Hawaii:

Hilo 5 KHHB-LP PC>3kw,
19-50-19/
155-06-43

Honolulu 46 *KHLU-LP* DR, 30w

Kaneohe 66 **KPXO** requests permission
to go dark and
become DTV-only on
ch. 41

Idaho:

Coolin 5, 9, K05GL, DR 13w
10, K09XY, DR 17w
11, K10KR, DR 16w
12, K11UN, DR 16w
31, K12LF, DR 16w
41, K31DS, DR 95w
51 K40DJ, DR 97w
K51EF, DR 95w

Idaho Falls 39 K39HJ NW 7kw,
43-31-00/
112-00-40

Lewiston 27 KIDQ-LP PR>11.4kw

Pocatello 51 K51HU NW 1kw,
43-11-30/
112-20-41

Rexburg 43 *K43JD-D* PC<20w

Twin Falls 7 K07YB FC; sold to Hispanic
Christian Community
Network

Illinois:

Arlington Heights 42 W64CQ QR from ch. 64
dismissed

Chicago 13 WOCC-CA PR<2.4kw

Rochelle 8 *WMKB-LD* NS DCC, 300w

Indiana:

Fort Wayne 36 **WFFT-DT** PG<219m

Indianapolis 44 **WDTI-DT** PR<28kw/293 39-53-
40/
86-12-21

114-20-53 remining on ch. 34

Iowa:
Iowa City 45 **KIIN-DT** **NW 922kw/423m**
Newton 39 **KFPX-DT** **PG 116kw (implies station has flash-cut to DTV)**

Kansas:
Arcadia 55 **K55HU** req. CL from Joplin, Mo. dismissed
Colby 19 **KWKS-DT** **NW 464kw/ 383m, 39-14-31/ 101-21-38 (KOOD-9)**

Kentucky:
Bowling Green 40 **WNKY** **PC 1640kw/ 193m**
Louisville 41 **WDRB** **PC<3990kw**
Paducah 50 **WDKA-DT** **NW 195kw/ 327m**

Louisiana:
Hammond 42 **WHMM-DT** **NW 1000kw/ 294m, 29-58-41/ 89-56-26 (Telemundo)**

Maryland:
Salisbury 7, 11 **W07DJ, W11CX** **PG 100w, 38-20-42/ 75-17-00; NW**

Massachusetts:
Springfield 43 **WHTX-LP** **QR from ch. 10, CL from Hartford, Ct. dismissed**

Michigan:
Kalamazoo 45 **WLLA-DT** **NW 440kw/ 331m**

Minnesota:
Bemidji 48 **K48KI** **DR 5.8kw**
Frost 51 **K51KB** **QC from K65FW**
St. James 7, 8 **K49HE, K50AB** **AF DCC 50w (ch. 7)/300w (ch. 8) 44-06-25/ 94-35-44**
St. James 18 **K19CA** **AF DCC 80w, 44-06-28/ 94-35-55**

Mississippi:
Meridian 40 **WMRQ-LP** **PR<160w, 32-20-39/ 88-42-40**

Montana:
Billings 30 **K30IB** **NW 3kw, 45-39-52/ 108-46-10**
Billings 11 **KULR-DT** **PC>16kw**
Bozeman 54 **KHJT-LP** **NW 170w, 45-39-33/ 111-03-22 (TBN)**
Butte 22 **K22HD** **NW 113kw, 46-20-17/ 112-17-30**
Castle Rock 45 **K64EM** **AF DCC 15kw, 45-50-24/ 106-54-39**
Kalispell 22 **KMMF-LP** **QR from ch. 34 dismissed; PR<9.8kw, 48-10-34/**

Nebraska:
McCook 29 **KUVR-LD** **DG 4.7kw**
Neligh 50 **K50IO-D** **DG 350w**

Nevada:
Carrara 30 **K30IG** **FC; sold to Hispanic Christian Community Network**
Carson City 32 **K57CV** **QC from ch. 57, 6.94kw**
Ely 36 **K36JJ** **FC; sold to Hispanic Christian Community Network**
Las Vegas 30 **KEGS-LP** **QC from ch. 63, 2.1kw**
Pahrump 31 **K31HV** **NW 45kw, 36-11-24/ 116-06-59**
Tonopah 11, 13, 45 **K11WE, K13YU, K45KK** **FC; sold to Hispanic Christian Community Network**
Verdi 42 **K54DA** **QR from ch. 54, 400w**

New Jersey:
Camden 22 **WNJS-DT** **NW 197kw/ 264m**
Camden 23 **WNJS** **PG<1530kw/ 264m; PC**
Linden 47 **WNJU** **NW 1500kw/ 348m (aux)**
Morristown 17 **W54CZ** **DR from ch. 54, 1kw**
Newark 68 **WFUT-TV** **NW 3000kw/ 336m, 40-45-22/ 73-59-12 (aux)**
Paterson 41 **WXTV** **NW 1400kw/ 321m, 40-45-22/ 73-59-12 (aux)**

New Mexico:
Capulin 48 **K48JH** **QC from K62AR, 940w, 36-42-19/ 103-52-38**
Farmington 40 **K40FI-D** **NW 400w, 36-24-56/ 107-50-40 (KNME-5)**
Lordsburg 29 **K29DP** **XR 32-19-40/ 108-43-35**
Los Alamos 49 **K49KF-D** **DC from ch. 44, 340w, 35-53-09/ 106-23-13; CL from Espanola**
Socorro 46 **K46HY-D** **NW 420w, 34-04-18/ 106-57-45 (KNME-5)**

New York:
Amster-dam 55 **WYPX** **requests permission to go dark and become DTV-only on ch. 50**
Ellenville 30 **W30AZ** **DR 150w, 41-41-06/ 74-21-24; CL from Liberty**
Mineola 26 **WLIG-LP** **DR from ch. 54, 1kw**
Monticello 27 **W27AL** **DR 5kw**
New York 26 **WNYX-LP** **XR 40-44-59/ 73-56-38 (correction only)**
Pough-keepsie 54 **WTBY** **requests permission to go dark and**

White Lake	51	W51BN	become DTV-only on ch. 27 DR 15kw	Harlingen Houston	34 53	KLUJ-DT KVVV-LP	NW 45kw/ 283m PC>150kw, 29-24-40/ 94-57-04
North Carolina:				Houston	61	KZJL	FC to Spanish independent
Raleigh	34	WACN-LP	PR>85kw, 35-41-21/ 78-51-26	Lubbock Midland	33 17	KJTV-LD K52JQ-D	PR>15kw DR from ch. 52, 15kw, 32-05-08/ 102-17-11
Ohio:				Mullin	61	KAXW-LP	XC 31-40-07/ 98-02-30
Kirtland	38	W51BI	QR from ch. 51 dismissed	Plainview San Angelo	44 3	K44GL KSAN	DR 5kw FC to standalone NBC (no longer satellite of KRBC-9)
Oklahoma:				San Antonio	34	KNIC-CA	QR from ch. 17, 9.99kw (displaced by own full-license station)
Norman	46	KOCM	PR<380kw/ 416m	Sherman	34	KADY-LP	NW 10kw, 33-42-09/ 96-34-05 (LAT TV); CC from K34HQ
Oregon:				Tuscola	36	K36HF	NW 50kw, 32-22-21/ 99-47-42
Bend	18	KTVZ-DT	PR<28kw/197m; NS	Utah:			
Brookings	21	K57GP	DR 1.2kw	Cedar City	10, 12	K10PN-D, K12QF-D	PG 60w, 37-38-21/ 113-01-53
La Pine	9	K09YE	QC from K11GQ, 200w, 43-39-00/ 121-25-44	Huntsville	51	K50EB	QC from ch. 50, 400w, 41-20-20/ 111-48-56
Medford	25	K25IM	PR<2.97kw	Huntsville	22	K58FT	AF DCC 670w, 41-12- 00/ 111-52-53
Rainier	28.3	K28IH, 1 K31HK	NW 2.2kw, 46-09-46/ 122-51-05 (KOPB-10; KRCW-32)	Logan	50	K50IB	NW 15kw, 41-52-19/ 111-48-35
Tolo	3	K03EI	NW 1kw, 42-22-41/ 122-50-43 (KOB1-5)	Park City	28	K35OP	AF DCC 2w, 40-40-58/ 111-31-21
Pennsylvania:				Virginia:			
Berwick	19	W19CI	DR 120w	Charlottes-ville	14	W14CY	NW 15kw, 38-28-44/ 78-24-58
Phila-delphia	3	KYW-TV	NW 68kw/ 302m, 40-02-33/ 75-14-33 (aux) DR 10w	Grundy	68	WLFG	granted permission to go dark and become DTV-only on ch. 49
Wilkes-Barre	7	W07BV	DR 10w	Onancock	25	W25AA	PC<19.7kw, 37-50-32/ 75-34-17
Tennessee:				Onancock	30	W41AC	QC from ch. 41, 19.4kw, 37-50-32/ 75-34-17
Chatta-nooga	28	WRNG-LP	PR 1.5kw, 34-57-12/ 85-22-55; CL from Ringgold, Ga.	Onancock	39	W44AD	QC from ch. 44, 19kw, 37-50-32/ 75-34-17
Collegedale	21	W21BZ	PG 46.6kw, 35-01-32/ 85-04-26	Onancock	34	W60AL	QC from ch. 60, 19.2kw, 37-50-32/ 75-34-17
Knoxville	45	W56CM	AF DCC 15kw, 35-59- 44/ 83-57-23	Washington:			
Texas:				Pullman	46	K46HV	FC; sold by TBN
Amarillo	39	K39HF	NW 2kw, 35-16-27/ 101-34-39	Seattle	8	K68DL	DR from ch. 68, 170w
Baytown	57	KAZH	FC to independent	Wisconsin:			
Beaumont	39	K39HG	NW 100kw, 29-59-39/ 94-13-08	Rhine-lander	16	WJFW-DT	NW 269kw/ 362m
Beaumont	69	K69IY	NW 12kw, 30-06-40/ 94-03-10				
Bryan	18	KSCM-LP	QC from ch. 12, 54kw, 30-45-35/ 96-28-00				
Corpus Christi	33	KCCG-LP	PR<2.6kw, 27-47-46/ 97-23-47				
Dallas	6	KZFW-LP	QR from ch. 53, 3kw, 32-44-28/ 96-53-42; CL from Royse City				
DeWalt	34	KUVM-CA	PR<36.9kw; FC to Azteca				

Sheboygan 16 W16BS FC; sold by TBN

Wyoming:
 Casper; Jackson;7, K07YF, FC; sold to Hispanic
 Kemmerer; 39, K39JU, Christian Community
 Laramie 46, K46JY, Network
 25 K25IE
 Casper 24 NEW-LP NS 10kw,
 42-50-32/
 106-13-04
 Gillette 19 NEW-LP NS 10kw,
 44-18-10/
 105-27-00
 Hoback Junction 34 K13LY AF DCC 20w, 43-18-
 01/
 110-43-00
 La Barge 29 K29HV-D NW 250w,
 42-09-27/
 110-19-39 (KUTV-2)

Thanks to Joe Isham and Jon Kemppainen for information elsewhere in this month's column.

Lots of news north of the border this month:

1. Canada has set a "drop-dead date" for analog TV: August 31, 2011. Exceptions may be made in remote communities (for example, in Nunavut) distant enough from southern Canada that continuing analog operations won't cause interference.

Analog licenses will not be renewed past that date. The six new Alberta stations noted below have all been granted short-term permits, expiring in August 2011; they will be expected to file applications to convert to digital if they wish to renew their licenses to continue after that date.

The CRTC considered an option of phasing out over-the-air (OTA) television broadcasting entirely! Several existing broadcasters supported that model. However, the CRTC felt phasing out OTA would deny access to TV for low-income households and those "...with low levels of television viewing." and would cause some viewers to be lost to U.S. border stations. Also, Canada's two satellite services stated they didn't have enough bandwidth to deliver signals for all of the country's current OTA broadcasters, and they suggested that cable operators would have the same problem.

The CRTC will not require existing OTA stations to convert to digital. However, those that do not convert will be required to cease OTA operation in August 2011. Stations that do not provide an OTA signal will not receive must-carry protection on cable/satellite, and will not be entitled to require cable/satellite systems to block U.S. stations when they carry the same program. They do seem to suggest many OTA broadcasters will not bother to convert all of their relay transmitters to digital.

What happens next? Good question. I would tend to expect DTV applications from Canada's large-market stations. I suspect relatively few rural relay stations will convert.

2. Three new stations have been approved in each of Alberta's two largest cities:

Calgary:
 - ch. 32, 75kw/206m,
 51-03-37/114-10-13
 (co-owned with CITS-36 Hamilton, Ont.; to be a

religious station)

- ch. 38, 510kw/325m,
 51-03-54/114-12-47
 (ethnic, mostly Asian)

- ch. ??
 (relay of CHCA-6 Red Deer. Requested channel 38, must seek new channel. Channels 19 and 23 are still open in Calgary.

Edmonton:
 - ch. 17, 92kw/232m,
 53-27-49/113-20-07
 (relay of CHCA-6 Red Deer)

- ch. 45, 50kw/121m,
 53-30-53/113-17-07
 (co-owned with CITS-36 Hamilton, Ont.; to be a religious station)
 Not 100% sure of facilities, might be 71kw/176m at 53-27-49/113-20-07. Calls CHXE-TV already assigned.

- ch. 56, 340kw
 Ethnic, mostly Asian.

A competing application for an ethnic station, and for a relay of CJIL-17 Lethbridge, were denied in each city.

3. Also in Canada, applications have been filed for new DTV-only stations. The same applicant has filed in the country's eight largest cities. The channels requested have not yet been released, but available unused DTV channels are listed below:

Vancouver, B.C.:	14, 18, 30, 56
Calgary, Alta.:	27, 29, 44, 50
Edmonton, Alta.:	2, 17, 23, 30, 50, 56
Winnipeg, Man.:	5, 25, 40, 43, 54
Toronto, Ont.:	(none)
Ottawa, Ont.:	(none)
Montreal, Que.:	20, 26, 61
Halifax, N.S.:	21, 43

The CRTC notes that no channels are available for the Toronto or Ottawa applications; grant would require taking a channel currently reserved for another station's conversion from analog.

As is normal practice when applications are filed for full-service stations, the CRTC has issued a call for additional applications for DTV-only stations. The call does not appear to be limited to the eight specified cities.

The call also indicates (as is usual practice) that the CRTC does not guarantee they will grant any new DTV-only stations at this time. The grants of new stations in Calgary and Edmonton leave me wondering whether yet another station will be authorized in each of these cities.

Moving back to the United States:

A temporary experimental Distributed Transmission System has been authorized for

operation in New York City. The Metropolitan Television Alliance consists of the seven NYC VHF stations and UHF outlets WPXN-31, WNJU-41, and WXTV-47.

There are five sites:

1. 40-44-54N/73-59-10W
2. 40-41-37N/73-59-29W
3. 40-41-59N/73-55-58W
4. 40-39-12N/73-55-54W
5. 40-39-20N/73-58-56W

The first site is the Empire State Building and will operate only on channel 12. The other four are in Brooklyn and will operate on channels 12, 33, and 65. All sites and channels will be 1kw ERP. Antenna heights above average terrain are not given, but except for the first site they will be between 33 and 127m – roughly 100-450'.

The experimental stations are to provide fillin DTV coverage pending completion of the Freedom Tower. It's unclear which of the ten stations will be carried in what pattern. Channel 33 is WPIX-DT's channel – one would presume they'll be the only station carried on the channel 33 transmitters – or maybe not?

Qualcomm, the company deploying the MediaFLO video-to-cell-phones technology, has reached interference agreements with nine TV stations on channels 54, 55, and 56. These nine stations have agreed to accept interference in part of their Grade B coverage areas:

City	Stn.	% int	Interfering markets
Springfield, Ill.	WRSP-55	5.91	Indianapolis Chicago St. Louis
Fort Wayne, Ind.	WFFT-55	2.53	Indianapolis Chicago
Kenosha, Wis.	WPXE-55	29.42	Chicago
Gary, Ind.	WYIN-56	4.1	Chicago
Rockford, Ill.	WREX-DT 54	1.24	Chicago
Hagers-town, Md.	WHAG-DT 55	3.92	Norfolk Richmond Philadelphia New York
Anaheim, Cal.	KDOC-56	0.60	Los Angeles Santa Barbara
Melbourne, Fla.	WOPX-56	5.94	Orlando?
Tampa, Fla.	WEDU-DT 56	2.13	Tampa?

We have a frequency mystery in South Dakota. Pat Dyer and Randolph Zerr have both noted KDLO-3's audio on 65.79MHz –

not on 65.74, where it should be. KDLO's video is on the correct frequency (61.24), and the 65.79 signal is not a spur – KDLO audio is only on 65.79, not on both 65.79 and 65.74.

FCC regulation 73.1545(c)(2) requires that a TV station's audio carrier be within 1KHz of precisely 4,500KHz above the video carrier. KDLO's frequency error would seem to exceed the regulation by a factor of 50. Maybe more important, I would think this frequency error would cause severe audio distortion in TV sets tuned to KDLO. The error is twice the normal peak deviation of a TV sound signal. It's the equivalent of an FM station being 150KHz off-frequency – of, for example, WQXR-96.3 operating instead on 96.15.

Pat and Randolph have noticed this error across several Es openings. I'm amazed KDLO has remained this far off-frequency for this long!

Finally, as we continue south, we end up in Mexico:



Rick Lucas found this picture on the Internet:

It's a mountain located near Juarez, Mexico, across the border from El Paso. Note the tower on the right side of the mountain. There are at least sixteen more towers (that probably won't be visible in this small image) on the mountain.

Rick speculates that some of Juarez' TV stations are on this mountain at 31-40-14N/106-31-10W, and not at the coordinates they're listed with on my website.

I strongly suspect Rick is right. Mexico releases only a .pdf file of channels, cities, and powers for their TV stations. Tower coordinates and heights are not listed. Where you find a tower height on my website, it's what the Mexican government has notified to the FCC. These notifications are often way out of date.

Good DX!

WTFDA FM NEWS

Bringing you the most recent FM changes in the U.S. and Canada!

CHRIS KADLEC, EDITOR
3860 SHOREWOOD DR.
FREMONT, MI 49412-9604
beaglebass@beaglebass.com
www.beaglebass.com/dx/



JUL 2007

All denied applications in the prairie provinces were denied on economic grounds - the markets could only provide enough advertising business to support two stations. And don't forget: if you're interested in doing FM News, even for just a few months, please step forward! August is my last month with FM News.

INDEX OF ABBREVIATIONS

AF	applied for (a new station)	NS	new station granted
AFA	American Family Association	NW	new station signs on
aux	Auxiliary antenna (backup)	OSA	one step application granted for change
CC	call letter change	PA	proposed amendment change to FM allocation table
CL	city of license change	PC	power change on the air (> = increase, < = decrease)
CX	a construction permit has been cancelled	PG	power change granted (> = increase, < = decrease)
C1-C5	change in status to that FM license class	PR	power change requested
DA	directional antenna	QC	frequency change occurred
DE	station has been deleted	QG	frequency change granted
FC	format change	QR	frequency change requested
GA	granted amendment to table of FM allocations	RA	silent station returns to the air
GE	granted extension of construction permit	RE	station requests an extension on permit
GX	granted replacement of expired permit	ROA	request of applicant
LC	license to cover filed (ready to come on air)	RX	station requests replacement of expired permit
MC	multiple-city ID	SC	slogan change or update
NC	no change yet on a reported change or permit	SI	station is silent
ND	non-directional antenna	SOA	signed on the air
NO	not on the air	XA	dismissed amendment to FM allocations
		XC	transmitter site change occurred
		XG	transmitter site change granted

UNITED STATES and CANADA

CANADA

Alberta / AB

Medicine Hat	92.9 NEW / AF 100kw, rock (Harvard), denied
Medicine Hat	93.7 CJLT-FM / QG from 99.5, 2.3kw
Medicine Hat	101.5 NEW / AF 100kw, rock (Golden West), denied
Medicine Hat	102.1 NEW / AF 100kw, classic rock (CJVR Ltd.), denied
Medicine Hat	102.1 NEW / AF 100kw, rock (Pat Lough), denied
Medicine Hat	102.1 NEW / NS 100kw, adult standards (Clear Sky Radio)
Medicine Hat	105.3 NEW / AF 100kw, rock (Newcap), denied
Medicine Hat	105.3 NEW / AF 100kw, classic hits (VistaRadio), denied
Medicine Hat	105.3 NEW / NS 77.9kw, rock (Rogers)
Olds	104.5 NEW / NS 12kw/93m, 51-45-30/114-05-35, chr, co-owned with CKLJ-FM
Olds	104.5 CKJX-FM / CC for NS
Prince Albert	92.5 NEW / AF 46w/10m, 5hr./week of Lutheran religious programming

British Columbia / BC

Richmond	1465.024 CISL / AF new digital station, two transmitters, 3.381kw on Mt. Seymour & 2.774kw in downtown Vancouver.
Salt Spring Is.	102.1 NEW / AF 9w/595m, mostly folk music
Salt Spring Is.	107.9 NEW / AF 1kw/216m, classical
Vancouver	1465.024 CKZZ-FM / AF new digital station, two transmitters, 3.381kw on Mt. Seymour & 2.774kw in downtown Vancouver.

Manitoba / MB

Winnipeg	106.3 CJOB-FM / AF 100kw/223m, to relay (not replace) AM 680
----------	--

Ontario / ON

Bolton	105.5 NEW / AF 50w/20m, eclectic adcon
Caledon	101.5 NEW / AF 32w/16m, TIS
Newmarket	102.7 CHOP-FM / CC for NS
Ottawa	N/A NEW / AF
Perth	88.1 CHLK-FM / CC for NS
Peterborough	N/A NEW / AF
Tillsonburg	101.3 CKOT-FM / PG 26kw/206m
Windsor	N/A NEW / AF; call for additional applications issued. Not specified whether AM or FM.

Prince Edward Island / PE

Elmira	92.3 NEW / AF 3.15kw/115m, to relay CBCT-FM (CBC Radio 1)
--------	---

Québec / QC

Lennoxville	92.1 CJMQ-FM / PG>1.67kw
St.-Jerôme	101.9 NEW / AF 3.168kw/80m, French campus station

Saskatchewan / SK

Regina	90.3 NEW / AF 100kw, oldies/classic hits (Newcap), denied
Regina	90.3 NEW / AF 43kw, to relay CJLR-FM La Ronge, denied
Regina	92.7 NEW / NS 100kw, country (Standard Radio)
Regina	96.1 NEW / AF 86kw, Christian (Touch Canada), denied
Regina	96.1 NEW / NS 100kw, Native (Aboriginal Voices Radio)
Regina	103.1 NEW / AF 100kw, classic rock (CJVR Ltd.), denied
Regina	106.3 NEW / AF 100kw, oldies (CJVR Ltd.), denied
Saskatoon	89.7 NEW / AF 100kw, classic rock (CJVR Ltd.), denied
Saskatoon	91.5 NEW / AF 100kw, oldies/classic hits (Newcap), denied
Saskatoon	92.3 NEW / NS 100kw, chr (Harvard)

Saskatoon 96.3 NEW / AF 100kw, soft adcon (Standard), denied
 Saskatoon 100.9 NEW / AF 100kw, Christian (Touch Canada), denied
 Saskatoon 102.9 NEW / NS 100kw, Native (Aboriginal Voices Radio)
 Saskatoon 106.1 NEW / AF 100kw, oldies (CJVR Ltd.), denied
 Saskatoon 106.7 NEW / AF 100kw, CHR (co-venture of Rawlco and Hildebrand, who own all the existing commercial stations in Saskatoon), denied
 Saskatoon 106.7 NEW / AF 100kw, soft adcon/oldies (Pattison Broadcast Group), denied

San Diego 88.3 KSDS / PC>22kw-V
 Shasta Lake 92.7 NEW / GA, class A
 Shasta Lake 99.3 KNNN / GA from Shasta Lake City (editorial correction; FCC had name of town wrong)
 Shasta Lake 107.1 KESR / GA from Shasta Lake City (editorial correction; FCC had name of town wrong)
 Temecula 88.9 KRTRM / PG>270w-V/932m, 33-22-09/116-56-04
 Trinidad 95.5 KZCC / PR 5kw/222m, 40-58-43/124-00-36; CL from McCloud
 Weaverville 101.1 KWCA / PC>4.9kw/450m, 40-39-15/122-31-12
 Yucca Valley 88.1 981013MB / NS 8.4kw/114m, 34-06-59/116-29-29

UNITED STATES

Alabama / AL

Ashland 100.7 WCKF / PR 2.2kw/168m, 33-19-14/85-51-39
 Dothan 90.3 WDYF / PC>171m
 Fairhope 92.1 WZEW / PC 20.5kw/111m, 30-31-23/88-06-32
 Monroeville 88.9 NEW / AF dismissed (AFR)
 Monroeville 88.9 980108MG / NS 50kw/100m, 31-28-56/87-15-01 (Okaloose Public Radio)
 Opp 102.3 WAMI-FM / PG 6kw/60m, 31-16-14/86-20-04 cancelled; has filed for 100kw/218m from different site
 Pine Level 97.5 NEW / NS 6kw/100m, 31-58-32/85-58-27

Alaska / AK

Anchorage 97.3 KEAG / PC<55kw/19m, 61-07-12/149-53-43
 Delta Junction 93.5 KDJF / PR>472m, 64-52-52/148-03-05
 Seward 105.3 KSWD-FM / QR from 105.9, 4kw/-436m

Arizona / AZ

Bisbee 92.3 KWCD / PR>90w/649m
 Bisbee 96.1 KBRP-LP / PC 137m, 31-26-31/109-54-50
 Kingman 97.1 KGPS-LP / NW 100w/-37m, 35-13-45/113-56-45
 Pinetop 101.7 KQAZ / req. CL from Springerville
 Vail 104.5 KRDX / QR from 98.5, 6kw/13m, 31-59-43/110-39-32

Arkansas / AR

Bono 99.3 NEW / AF 8.6kw/161m, 36-01-16/90-37-03; CL changed from Paragould
 Hot Springs 91.5 KALR / FC; sold to K-Love
 Marvell 90.7 KVRN / FC; sold to K-Love
 Percy 104.5 KWXE / PR>124m, 34-26-56/93-15-59; CL from Glenwood (yes, Percy, not Searcy)
 Rison 98.9 NEW / NS 6kw/100m, 33-55-26/92-09-31
 Siloam Sps. 97.3 KSSQ-LP / QR from 102.3, 29m
 Siloam Sps. 97.3 KSSQ-LP / QR from 102.3, 29m dismissed

California / CA

Banning 103.5 KSOJ-LP / NW ?w/46m, 33-56-38/116-53-35
 Cottonwood 92.1 NEW / GA, class C3 (conflicts with Class A allotment and 92.7 Shasta Lake)
 Cottonwood 92.1 NEW / GA, class A
 Hemet 102.5 NEW / GA to non-commercial
 Jenner 106.3 KGRP / NW 1.35kw/210m, 38-29-20/123-01-55
 Lone Pine 103.5 KLPC-LP / QR from 94.3
 Lone Pine 103.5 KLPC-LP / QG from 94.3
 McCloud 91.9 950210MA / NS 35w/724m, 41-20-46/122-11-42 (Jefferson Public Radio)
 Redding 92.1 NEW / PA, class A, denied

Colorado / CO

Akron 103.7 NEW / GA, class C1; KRFX's objection denied
 Arriba 105.3 NEW / AF 200w/63m, 39-18-52/103-18-22
 Denver 103.5 KRFX / GA from class C to CO
 La Junta 94.7 KFVR-FM / QG from 106.5
 Parker 103.1 KAVD / PG>448m, 39-31-57/104-08-48; CL from Limon
 Vail 88.5 NEW / AF dismissed (Public Broadcasting of Colo.)
 Vail 88.5 980123MO / NS 1.9kw/60m, 39-38-05/106-26-47 (Denver Educational Broadcasting)

Florida / FL

Cape Canaveral 88.7 NEW / AF dismissed (CSN; Florida Public Radio)
 Chassahowitzka 96.7 WEKJ-LP / QR from 99.9, 100w/28m, 28-42-39/82-34-05; CL from Homosassa
 Chassahowitzka 96.7 WEKJ-LP / QR from 99.9, 24m, CL from Homosassa dismissed
 Coral Gables 90.5 WVUM / PR>5.9kw
 Daytona Beach 101.9 WJHM / XR 28-55-10/81-19-08 (suspect correction only)
 Deland 105.9 WOCL / XR 28-55-10/81-19-08 (suspect correction only)
 Destin 101.1 WCQQ-LP / PG<31cm, 30-24-00/86-35-41 (antenna height 31 hundredths of a meter, about a foot)
 Dunnellon 94.9 WRLE-LP / PC>35m
 Flagler Beach 100.7 WFBO-LP / QG from 93.3, 26m, 29-32-29/81-09-28
 Gainesville 95.7 WERF-LP / NW 63w/38m, 29-39-49/82-28-25
 Gulfport 103.5 WFUS / CL changed from Bradenton
 Inverness 104.9 WCFO-LP / QC from 100.1
 Pensacola 94.1 WMEZ / PG 77kw/488m, 30-36-40/87-36-27
 Pensacola 107.3 WYCL / PR 50kw/488m, 30-36-40/87-36-27
 Port Saint Joe 88.5 WDBW-LP / XR 29-48-35/85-17-44
 Port Saint Joe 88.5 WDBW-LP / XG 29-48-35/85-17-44
 Quincy 90.1 970326MB / NS 20kw-V/100m, 30-42-28/84-37-25 (Okaloose Public Radio)
 Union Park 88.3 WPOZ / PG>14.5kw/382m
 West Palm Bch. 104.3 WEAT-FM / PR>459m

Georgia / GA

Aragon 107.1 WTSH-FM / GA from class C2, Rockmart
 Augusta 100.3 WRMK-LP / PC<27m, 33-30-11/82-03-36
 Cairo 90.1 NEW / AF dismissed (AFR)
 Doraville 95.5 WBTS / PG 40kw/432m
 Ellijay 101.1 WLJA-FM / GA from 93.5
 La Grange 91.9 NEW / AF dismissed (Family Stations)
 La Grange 91.9 980604MA / NS 3kw/100m, 32-52-33/84-57-20 (Community Public Radio)
 Lexington 97.7 WMGZ / PR>50kw/150m, 33-50-22/82-46-18; CL from Eatonton
 Peachtree City 91.7 NEW / AF dismissed (Community Public Radio; Augusta Radio Fellowship)

Peachtree City 91.7 970416MF / NS 10kw/100m, 33-16-03/84-33-20 (Life Radio Ministries)
Reidsville 104.1 WRBX / FC?, sold to Nassau Baptist Ministries Inc.
Union Station 105.1 WLVX / PA from Elberton, class A to C2, withdrawn
Woodbury 94.5 NEW / NS 2.75kw/150m, 32-50-40/84-37-25

Hawai'i / HI

Hanamaulu 102.3 KCSK-LP / NW 100w/-36m, 21-59-50/159-21-27
Lihue 98.1 KAWV / PR>16kw/280m, 21-56-10/159-26-43
Wahiawa 103.5 KHAI / PR>53kw

Illinois / IL

Colchester 96.7 NEW / NS 1.8kw/100m, 40-23-54/90-43-55
East St. Louis 101.1 WMVN / PR>99kw/300m, 38-28-56/90-23-53 (to move across the river into Missouri)
Glendale Hts. Peoria 94.3 WJKL / CL changed from Elgin
Peoria 90.7 NEW / AF dismissed (Pinebrook Foundation; AFR)
Peoria 90.7 980319MJ / NS 1.3kw/70m, 40-46-22/89-44-50 (Sirius Syncope)
Trenton 101.7 WGEL / PR>100m; req. CL from Greenville
Woodstock 91.7 NEW / AF dismissed (Family Stations)
Woodstock 91.7 990917MM / NS 5kw-V/100m, 42-17-37/88-35-13 (Cornerstone Community Radio)

Indiana / IN

Bloomington 99.1 WIUX-LP / QC from 100.3
Jamestown 91.9 NEW / AF dismissed (Mary V. Harris Foundation)
Oakland City 94.1 WWPO-LP / XR 38-20-12/87-22-01
Zionsville 91.9 980918MG / NS 1kw/107m, 40-00-13/86-28-14 (Kids First Inc.)

Iowa / IA

Center Point 89.9 NEW / AF dismissed (Florida Public Radio)
Fairfield 89.1 950515ML / AF dismissed (AFR)
Marshalltown 88.7 980417MH / NS 8.3kw/29m, 42-04-17/92-55-19 (Marshalltown Education)
Marshalltown 88.7 971009MA / AF dismissed (AFR)
Oskaloose 90.5 NEW / AF dismissed (Salt & Light; Family Stations)
Oskaloose 90.5 981215MA / NS 1.5kw/89m, 41-19-15/92-38-44 (WOI-FM)
Ottumwa 89.1 950213MB / NS 13.5kw/137m, 40-57-40/92-22-11 (WOI-FM)
Ottumwa 89.7 941209MB / AF dismissed (Grassroots Broadcasting)
Perry 91.7 NEW / AF dismissed (AFR)
Perry 91.7 951215ME / NS 23.5kw/111m, 41-52-06/94-04-54 (WOI-FM)

Kansas / KS

Caney 101.1 KE0J / PR>25kw, 36-56-59/95-51-03
Clay Center 100.9 KCLY / PC>35.5kw/177m, 39-28-03/97-03-45
Clay Center 100.9 KCLY / PC>35.5kw/177m, 39-28-03/97-03-45
Garden City 91.1 KANZ / PC>292m, 37-46-43/100-53-43
Independence 91.5 KARF / PC>28kw-V/100m, 37-03-54/95-45-03
Shawnee 94.9 KCMO-FM / req. CL from Kansas City, Mo.

Kentucky / KY

Ashland 91.1 NEW / AF dismissed (AFR)

Ashland 91.1 960328MC / NS 7kw/108m, 38-25-11/82-24-06 (Positive Alternative)
Drakesboro 101.5 WNTC / QR from 103.9, 6kw/100m, 36-55-36/87-28-35
Fort Thomas 97.3 WYGY / PR>25kw/100m, 39-01-28/84-30-44
Grand Rivers 99.1 WCBL-FM / PR>20kw/85m, 37-02-00/88-22-10; CL from Benton
St. Matthews 106.9 WVEZ / CL granted from Louisville

Louisiana / LA

Amite 96.5 WTGG / XG 30-37-24/90-24-19
New Orleans 89.9 WWNO / PR<35kw/300m (adds H, was V-only)
Shreveport 99.7 KMJJ-FM / PR 23.5kw/163m, 32-29-36/93-45-55

Maine / ME

Freeport 89.3 WMSJ / PR>30kw/193m, 43-44-38/70-20-00
Standish 97.1 WJZF-LP / PC 61m, 43-44-37/70-32-23

Maryland / MD

Frederick 99.9 WFRE / PC<7.6kw
Myersville 106.9 WWEG / CL changed from Hagerstown

Michigan / MI

Benton Harbor 89.9 NEW / AF dismissed (AFR)
Benton Harbor 89.9 980909MQ / NS 250w/102m, 42-04-19/86-22-14 (WCSG)
Fowler 104.7 WQBX / QR from 104.9, 3.4kw/126m, 42-54-05/84-36-58; CL from Alma
Gladwin 103.1 WGDN-FM / PR>148m
Grand Rapids 105.7 WOOD-FM / PG<177m, 42-39-17/85-31-38
Ironwood 88.3 WICE / FC; sold to K-Love
Linwood 104.1 WSAG / CL changed from Pinconning
Palmer 98.3 WRUP / PR 2.6kw/310m, 46-36-14/87-37-15; CL from Munising

Minnesota / MN

Esko 88.7 970331MA / NS 450w-V/29m, 46-42-22/92-21-44 (Lincoln H.S.)
Glyndon 89.5 NEW / AF dismissed (Mary V. Harris Foundation)
New Ulm 88.3 NEW / AF dismissed (AFR)
New Ulm 88.3 980602MC / NS 400w/54m, 44-16-11/94-26-22 (Minn.-Iowa Christian Broadcasting)
Windom 90.9 NEW / AF dismissed (AFR)
Windom 90.9 981215MB / NS 25kw/100m, 44-00-22/95-12-09 (Minn.-Iowa Christian Broadcasting)

Mississippi / MS

Bentonia 92.1 WJNS-FM / PR<5.7kw/100m, 32-33-25/90-20-14; CL from Yazoo City
Biloxi 88.1 NEW / AF dismissed (Greater Miss. Broadcasting; AFR; Bible Broadcasting)
D'Iberville 88.1 990510MJ / NS 1kw-V/66m, 30-26-37/88-50-54 (Radio Maria)
Greenville 97.9 WBAQ / PC 48kw/153m, 33-23-51/91-00-35
Guntown 99.3 WBVV / PC>15.5kw/128m, 34-21-46/88-35-28; CL from Booneville
Leland 102.3 WIQQ / PC 1.65kw/136m
Port Gibson 100.5 WRTM-FM / PC>44kw/150m, 31-59-38/90-58-15
Tupelo 90.9 WAQB / PG>35kw

Missouri / MO

Boonville 93.1 KWJK / PC>7.2kw
Elsberry 101.7 KLPW-FM / XR 39-06-11/90-49-45; CL from Union
Kirksville 88.7 KTRM / PR>3.5kw

Kirksville 88.7 KTRM / PG>3.5kw
 Kirksville 89.7 KKTR / PR>3.5kw
 Kirksville 89.7 KKTR / PG>3.5kw
 Kirksville 91.5 NEW / AF dismissed (AFR)
 Kirksville 91.9 970806MA / NS 1kw/94m, 40-13-46/92-32-38 (Great Commission Broadcasting)
 Lk. Lotawana 91.9 NEW / AF dismissed (Community Broadcasting)
 Liberty 91.9 KWJC / PG>4kw/52m
 Madison 97.3 NEW / NS 25kw/100m, 39-28-52/92-10-13
 Mansfield 95.9 KTRI-FM / PC>8.9kw/165m, 37-17-10/92-36-55
 St. Joseph 91.1 NEW / AF dismissed (Baptist Temple School; AFR; Community Broadcasting)
 St. Joseph 91.1 960514MA / NS 50kw/150m, 39-40-51/94-46-47 (Good News Ministries)
 Sullivan 102.1 KTUI-FM / QR from 100.9; 6kw

Montana / MT

Missoula 88.1 NEW / AF dismissed (AFR)
 Missoula 88.3 970716MA / NS 1kw-V/636m, 46-48-09/113-58-21 (Moody Bible)
 Whitehall 89.7 KQLR / NW 1.45kw-V/547m, 46-00-22/112-26-33

Nebraska / NE

Hubbard 88.1 NEW / AF dismissed (AFR)
 Hyannis 97.9 NEW / NS 100kw/186m, 42-01-28/102-00-22
 Lexington 88.7 KLNE-FM / PC 60kw/297m (was 44kw-H/92kw-V)
 Omaha 100.7 KGBI-FM / PC<309m, 41-48-40/96-01-37
 Omaha 100.7 KGBI-FM / PC<100kw/309m, 41-18-40/96-01-37
 Ponca 88.1 980318MD / NS 14kw-V/73m, 42-27-48/96-37-29 (St. Gabriel Comms.)
 Scottsbluff 89.1 KKSJ / FC; sold to K-Love

Nevada / NV

Gardnerville 99.1 KKFT / PR>1.8kw

New Hampshire / NH

Newport 101.9 WVRR / QG from 101.7, 1.05kw/236m, 43-02-00/72-22-04

New Jersey / NJ

Barnegat 91.9 NEW / AF dismissed (Hope Christian Church; JC Radio)
 Barnegat 91.9 123342 / NS 4.5kw-V/69m, 39-45-54/74-19-12 (WWN Educational Radio Corp.)
 Burlington 97.5 WJJZ / PC 26kw/208m, 40-04-57/75-10-53
 Hopatcong 88.1 121770 / NS 500w-V/118m, 40-56-25/74-36-48 (Youngshine Media)
 Lk. Hopatcong 88.1 NEW / AF dismissed (CSN; K-Love)
 Manahawkin 90.7 WYRS / PC>15kw-V/80m, 39-38-24/74-17-32
 Wildwood Crest 93.1 WEZW / PR 4.1kw/68m, 38-59-34/74-48-48

New Mexico / NM

Gallup 88.1 KKNM / FC; sold to K-Love
 Hobbs 90.9 KLIT / FC; sold to K-Love
 Hobbs 91.7 KOBH / FC to AFR
 Roswell 91.7 980824ME / FC; sold to K-Love
 Santa Rosa 103.1 NEW-LP / NS ?w/57m, 34-57-14/104-40-34

New York / NY

Bronxville 103.9 WFAS-FM / CL changed from White Plains
 Ithaca 90.1 NEW / AF dismissed (WSKG)

Ithaca 90.1 970411MC / NS 4.2kw/-96m, 42-25-47/76-29-49 (Colleges of the Seneca)
 Saranac Lake 93.3 WSLP / NW 11kw/-63m, 44-15-36/74-01-22
 Schoharie 97.3 WMYY / PG 800w/273m
 Schoharie 97.3 WMYY / PC 800w/273m
 Schoharie 97.3 WMYY / PC 800w/273m
 Schuyler Falls 90.9 WAVX / FC; sold to Vt. Public Radio

North Carolina / NC

Elizabethtown 105.7 WGQR / PC>7.7kw/178m, 34-44-05/78-47-25
 Fayetteville 91.1 NEW / AF dismissed (AFR)
 Fayetteville 91.1 970109MG / NS 500w-V/69m, 35-05-20/78-54-37 (Bible Broadcasting)
 Hickory 89.1 NEW / AF dismissed (Radio Training Network)
 Hickory 89.1 980316MB / NS 500w/137m, 35-43-59/81-19-51 (AFR)
 High Point 90.3 WHPU / CX, DE. Station surrendered license for cancellation, has been off for over two years.
 Oriental 94.1 WWHA / PR>35kw/150m, 34-45-07/76-52-57
 Weaverville 105.9 WTMT / PC>9.7kw/336m, 35-42-18/82-50-01

North Dakota / ND

Fargo 89.5 NEW / AF dismissed (Pioneer Public)
 Horace 89.5 981201MA / NS 8.7kw-V/59m, 46-48-05/96-52-59 (Selah Corp.)
 Jamestown 89.9 KJTW / FC to AFR

Ohio / OH

Berea 88.3 WBWC / PR>5kw dismissed
 Columbus 102.1 WCRS-LP / NW ?w/41m, 40-03-48/82-53-45
 Findlay 89.7 WTKC / NW 130w/9m, 41-02-43/83-39-02
 Geneva-on-the... 106.1 WBBG / PR>6kw/97m, 41-49-44/80-49-28; CL from Niles (a move of roughly 30 miles due north) in Geneva-on-the-Lake
 Geneva-on-the... 106.1 WBBG / PR>6kw/97m, 41-49-44/80-49-28; CL from Niles dismissed ROA in Geneva-on-the-Lake
 McDonald 97.1 WREO-FM / PR<4.7kw/80m, 41-04-50/80-38-54; CL from Ashtabula (a move of roughly 45 miles west-southwest)
 McDonald 97.1 WREO-FM / PR<4.7kw/80m, 41-04-50/80-38-54; CL from Ashtabula dismissed ROA
 Painesville 88.3 970311MA / NS 700w/44m, 41-42-17/81-14-34 (La Cadena Mundial)

Oklahoma / OK

Chelsea 100.5 KTFR / PR>25kw, 36-36-57/95-29-34
 El Reno 88.5 NEW / AF dismissed (AFR)
 Oklahoma City 88.9 KYLV / PC>39kw/205m
 Piedmont 88.5 NEW / AF dismissed (Community Broadcasting)
 Piedmont 88.5 961028MB / NS 45kw/156m, 35-34-31/98-13-34 (The Love Station)
 Sapulpa 100.9 KXOJ-FM / PR>16.26kw/124m, 36-02-51/96-06-59
 Spencer 105.7 KROU / PR>6kw dismissed
 Yukon 88.5 NEW / AF dismissed (K-Love)

Oregon / OR

Florence 91.5 KWVZ / PC<167m, 43-57-26/124-04-26
 Gold Hill 100.3 KRWQ / PG>306m, 42-27-11/123-03-22
 Gold Hill 100.3 KRWQ / PC>306m, 42-27-11/123-03-22
 Redmond 88.5 KWRX / PC>950w

Pennsylvania / PA

Brookville	95.9 WWJL-LP / CX, DE
Coatesville	89.3 980512MF / NS 600w-V/72m, 40-01-23/75-48-56
Coatesville	89.3 980204MA / AF dismissed (AFR)
Coatesville	89.3 980512MB / AF dismissed (Family Radio)
Halifax	88.5 WMBZ / FC; sold to K-Love
Philadelphia	94.1 WYSP / PC 9.6kw/338m, 40-02-30/75-14-12
Philadelphia	94.1 WYSP / PC 9.6w/338m, 40-02-30/75-14-12
Pittsburgh	105.9 WXDX-FM / PR<15.5kw/272m, 40-29-38/80-01-09
W. Middlesex	103.9 WWIZ / CL grant from Mercer rescinded

Rhode Island / RI

Narragansett P.	102.7 WRNI-FM / CC; converts to non-commercial operation
-----------------	--

South Carolina / SC

Anderson	101.1 WROQ / GA from class C0 to C1
Beaufort	88.7 WAGP / PR>100kw/103m, 32-21-27/80-55-11

South Dakota / SD

Rapid City	97.1 KFND-LP / PR 135m dismissed
------------	----------------------------------

Tennessee / TN

Brownsville	88.3 WRR1 / NW 200w-V/38m, 35-34-47/89-14-36 (Air1)
Decatur	93.9 WAYA / GA from Spring City
Harriman	92.7 WBZH / PG 6kw/100m, 35-52-04/84-25-56
Harrison	93.5 WMPZ / GA from Ringgold, Ga. 93.7
Henderson	95.7 WFKX / PG 4.4kw/117m
Linden	100.7 NEW / AF 5kw-H/100m, 35-16-05/87-46-05
Lynchburg	93.9 NEW / GA from 107.1
St. Joseph	101.5 WMXV / PR 2.85kw/148m, 34-55-47/87-31-44
St. Joseph	101.5 WMXV / PG 2.85kw/148m, 34-55-47/87-31-44
Tazewell	105.9 WTMT / PC>9.7kw/336m, 35-42-18/82-50-01
Wartrace	93.9 NEW / PA, class A, denied; conflicts with Lynchburg & Decatur

Texas / TX

Aransas Pass	88.1 KKWV / FC; sold to K-Love
Beaumont	88.5 980911MB / NS 12kw-V/112m, 30-16-23/93-57-23 (CCS Radio)
Camp Wood	89.7 NEW / AF dismissed (Christian Education Association)
Camp Wood	89.7 981119MB / NS 500w/110m, 29-42-53/100-00-56 (KHCB)
Converse	97.7 KVCQ / PA from McQueeney, denied; conflicts with Goldthwaite allotment
Encinal	102.5 NEW / NS 6kw/100m, 28-06-32/99-26-52
Flatonja	94.3 NEW / PA, class A, denied; conflicts with Goldthwaite allotment
Fredericksburg	99.1 NEW / PA, class C3, denied; conflicts with Goldthwaite allotment
Goldthwaite Groves	107.3 NEW / GA, class A
Groves	92.5 KCOL-FM / PC<31kw/131m, 30-03-43/93-58-50
Harper	99.1 NEW / AF 25kw/100m, 30-16-20/99-07-25
Ingram	99.1 KAKI / PA from 96.5, denied; conflicts with Goldthwaite allotment
Kenedy	92.1 KTNR / FC; sold to Hispanic Christian Community Network
Lago Vista	96.5 KHFI / PA from 96.7 Georgetown, class C2 from C1, denied; conflicts with Goldthwaite allotment

Lakeway	97.3 KWTX-FM / PA from 97.5 Waco, C1 from C, denied; conflicts with Goldthwaite allotment
Livingston Llano	96.1 KDOL-LP / QC from 96.3, 124m 107.3 NEW / PA, class A, denied; conflicts with Goldthwaite allotment
Llano	107.3 KQBT / PA from 96.3, denied; conflicts with Goldthwaite allotment
Madisonville Markham	91.5 KHML / PC 95kw/104m
Markham	94.9 NEW / AF 6kw/100m, 28-51-18/96-02-06
Mason	101.7 NEW / NS 8.2kw/172m, 30-42-03/99-13-59
Munday	101.9 NEW / AF 100kw/245m, 33-50-52/99-38-43
Nacogdoches New Deal	107.7 KTBO / XR 31-34-58/94-39-59
New Deal	97.3 KSTQ-FM / PR<32kw/187m, 33-30-08/101-52-20; CL from Plainview
Nolanville	97.7 KLFX / PA from 107.3, denied; conflicts with Goldthwaite allotment
Nolanville	107.3 KLFX / PR<1.35kw/167m, 31-05-38/97-34-51
Port O'Connor	91.9 KHPO / NW 4kw/94m, 28-25-44/96-26-54 (KHCB)
San Angelo	90.9 KPFB / FC; sold to K-Love
San Antonio	96.9 KAJA / PA from 97.3, class C1 from C, denied; conflicts with Goldthwaite allotment
Santa Fe	90.5 KJIC / PR>36kw
Seadrift	105.1 KMAT / PC>38.5kw/139m, 28-26-17/96-26-55
Sealy	90.7 NEW / AF dismissed (Christian Education Association)
Sealy	90.7 990319MC / NS 1.7kw/136m, 29-50-05/96-16-10 (KHCB)
South Padre Is.	92.7 KESO / PC>38kw/142m, 26-03-14/97-12-47
Trent	92.1 NEW / AF 15.5kw/128m, 32-37-32/100-07-10
Vidor	88.5 NEW / AF dismissed (Radio Maria)

Utah / UT

Price	98.3 KARB / PC>7kw/-32m, 39-36-33/110-48-50
-------	---

Vermont / VT

Springfield	93.5 WTSM / PG>2.3kw/159m, 42-54-53/72-19-52
-------------	--

Virginia / VA

Lynchburg	91.7 950628MA / AF dismissed (Positive Alternative)
Rustburg	91.7 960328MD / NS 1.15kw/228m, 37-17-07/79-05-26 (K-Love)

Virgin Islands / VI

Christiansted	95.1 WJKC / PR<30kw/248m
---------------	--------------------------

Washington / WA

Asotin	88.1 NEW / AF dismissed (Living Faith)
Clarkston	88.1 970910MC / NS 450w/62m, 46-18-59/117-02-24 (Upper Columbia Media Assn.)

West Virginia / WV

Beckley	88.1 960502MH / AF dismissed (Positive Alternative Radio)
Beckley	88.1 950905MD / NS 1kw-V/323m, 37-35-27/81-06-52
Glenville	107.7 NEW / NS 1.55kw/199m, 38-54-23/80-49-48

Wisconsin / WI

Adams	89.1 980826MH / NS 28.5kw/176m, 44-01-13/89-33-29 (Wisconsin Public Radio)
Janesville	91.5 990719MI / NS 2.2kw/118m, 42-43-47/89-10-10 (Family Stations)
Janesville	91.9 NEW / AF dismissed (WVCY)
Peshtigo	91.3 990120MD / NS 5.4kw/170m, 44-54-23/87-22-15 (Radio Maria)

Sarona 106.3 WPLT / PR 3.4kw/134m, 45-40-28/91-58-52; CL from Spooner
 Spooner 95.3 WGMO / PR<152m, CL from Shell Lake (antenna height not actually changing, apparently HAAT recalculated?)
 Sturgeon Bay Superior 91.3 NEW / AF dismissed (WVCY)
 Superior 88.5 971211MC / AF dismissed (Wis. Public Radio)
 Waukesha 106.1 WMIL-FM / PC 12kw/304m, 43-05-46/87-54-15
 Waukesha 106.1 WMIL-FM / PC>12kw/304m, 43-05-46/87-54-15
 Wentworth 88.1 971009MB / AF dismissed (AFR)

Wyoming / WY

Buffalo 99.5 KSLW-LP / PR<-135m, 44-21-19/106-44-57
 Glenrock 98.3 KGRK / NW 200w/-76m, 42-51-49/105-52-15
 Glenrock 98.3 KGRK / NW 200w/-76m, 42-51-49/105-52-15
 Jackson Jackson 88.3 KMLT / FC; sold to K-Love
 Jackson 91.1 NEW / AF dismissed (Abundant Life)
 Jackson 91.1 122126 / NS 350w/312m, 43-27-40/110-45-09 (Moody Bible)
 Laramie 88.5 NEW / AF dismissed (Educ. Comms. of Colo. Springs; WCN Inc.)
 Laramie 88.5 980826MA / NS 130w/307m, 41-18-36/105-27-17 (U. of Wyo.)
 Laramie 90.1 980826MK / NS 90w/314m, 41-18-36/105-27-17 (KUWR)
 Laramie 90.1 980407MD / AF dismissed (AFR)
 Laramie 90.1 980825MD / AF dismissed (Educ. Comms. of Colo. Springs)
 Laramie 90.1 980825ME / AF dismissed (Colo. Christian Univ.)
 Orchard Valley Reliance 90.3 KWYC / PG>34kw
 Reliance 98.7 NEW / NS 8kw/168m, 41-39-24/109-09-32
 Saratoga 99.3 KTGA / PR>18kw/324m, 41-40-46/107-14-08

AUXILIARY CHANGES

Alaska / AK

Anchorage 97.3 KEAG / NW 5.3kw-V/-16m, 61-07-14/149-53-42 (aux)

Arkansas / AR

England 96.5 KHTE-FM / PG>172m (aux)
 Lonoke 106.3 KOLL / PG>170m (aux)

California / CA

Dinuba 98.9 KSOB / NW 1kw/230m (aux)
 Los Angeles 95.5 KLOS / PR>68kw/890m, 34-13-36/118-03-59 (aux)
 San Bernardino 95.1 KFRG / NS 1.66kw/146m (aux)

Colorado / CO

Pueblo 107.9 KDZA-FM / AF 3.3kw/57m, 38-21-32/104-38-17 (aux)
 Pueblo 107.9 KDZA-FM / NS 3.3kw/57m, 38-21-32/104-38-17 (aux)

District of Columbia / DC

Washington 100.3 WBIG-FM / AF 1.65kw/138m (aux)
 Washington 100.3 WBIG-FM / NS 1.65kw/138m, 38-53-13/77-12-03 (aux)
 Washington 103.5 WTOP-FM / NW 44kw/138m, 39-02-32/77-02-49 (aux)

Florida / FL

Fort Pierce 95.5 WLDI / AF 15kw/264m, 27-01-31/80-10-43 (aux)
 Fort Pierce 95.5 WLDI / NS 15kw/264m, 27-01-31/80-10-43 (aux)
 Fort Pierce 98.7 WKGR / PR 50kw/263m (aux)

Illinois / IL

Springfield 103.7 WDBR / PR<13kw/74m (aux)
 Springfield 103.7 WDBR / NW 13kw/74m (aux)

Indiana / IN

Jeffersonville 95.7 WQMF / NW 5kw/190m (aux)
 Morristown 88.1 WJCF / NS 500w/40m, 39-47-09/85-45-48 (aux)

Kansas / KS

Garden City 91.1 KANZ / NW 1kw/259m (aux)

Maine / ME

Portland 101.9 WPOR / AF 35kw/74m, 43-39-48/70-16-17 (aux)
 Portland 101.9 WPOR / NS 35kw/74m, 43-39-48/70-16-17 (aux)
 Westbrook 100.9 WYNZ / AF 11.5kw/74m, 43-39-48/70-16-17 (aux)
 Westbrook 100.9 WYNZ / NS 11.5kw/74m, 43-39-48/70-16-17 (aux)

New Hampshire / NH

Mt. Washington 94.9 WHOM / NW 20.5kw/1149m (aux)

New Jersey / NJ

Burlington 97.5 WJZ / NS 850w/350m, 40-02-21/75-14-13 (aux)
 Burlington 97.5 WJZ / NS 850w/350m, 40-02-21/75-14-13 (aux)
 Manahawkin 100.1 WJRZ-FM / NS 2.6kw/108m (aux)
 Manahawkin 100.1 WJRZ / NS 2.6kw/108m (aux)

North Carolina / NC

Creedmoor 99.9 WCMC-FM / NS 10kw/150m (aux)

Ohio / OH

Cleveland 98.5 WNCX / AF 31kw/212m (aux)
 Cleveland 98.5 WNCX / NS 31kw/212m (aux)
 Cleveland 100.7 WMMS / NS 17.33kw/176m (aux)
 Cleveland 104.1 WQAL / AF 23kw/212m (aux)
 Cleveland 104.1 WQAL / NS 23kw/212m, 41-20-28/81-44-24 (aux)
 Ironton 107.1 WBKS / NW 3kw/44m, 38-32-21/82-40-30 (aux)

Oklahoma / OK

Bartlesville 100.1 KYFM / AF 250w/212m (aux)
 Bartlesville 100.1 KYFM / NS 250w (aux)
 Bartlesville 100.1 KYFM / NW 250w/212m (aux)
 Broken Arrow 92.1 KTBT / NS 15.6kw/101m (aux)

South Carolina / SC

Columbia 97.5 WCOS-FM / NW 84kw/278m (aux)
 Orangeburg 103.9 WHXT / NS 9.2kw/147m (aux)
 Orangeburg 103.9 WHXT / NS 9.2kw/147m (aux)

Texas / TX

Bryan 99.5 KNFX-FM / AF 450w/76m (aux)
 Willis 99.7 KVST / NS 2.95kw/143m (aux)

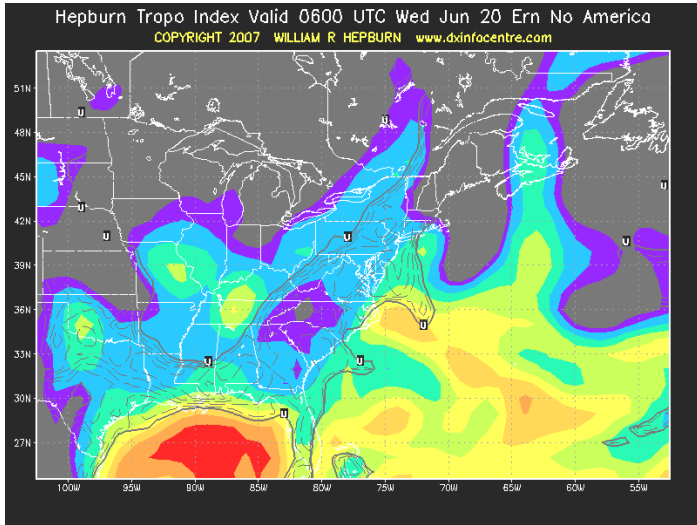
Wisconsin / WI

Kenosha 91.1 WGTD / AF 250w/62m (aux)
 Kenosha 91.1 WGTD / NS 250w (aux)

This report includes a total of 408 changes to the FM dial. Of these, 46 are auxiliary changes.

-Chris Kadlec
 FM News Editor

FLORIDA FM TROPS TO MA 6/19-20 2007



June 19 started off like any other day for our WTFDA Dxers in Eastern Massachusetts. E-skip kicked in during the evening hours and brought in some FM Dx from the Bahamas and South Florida. By 9pm or so, it was over.

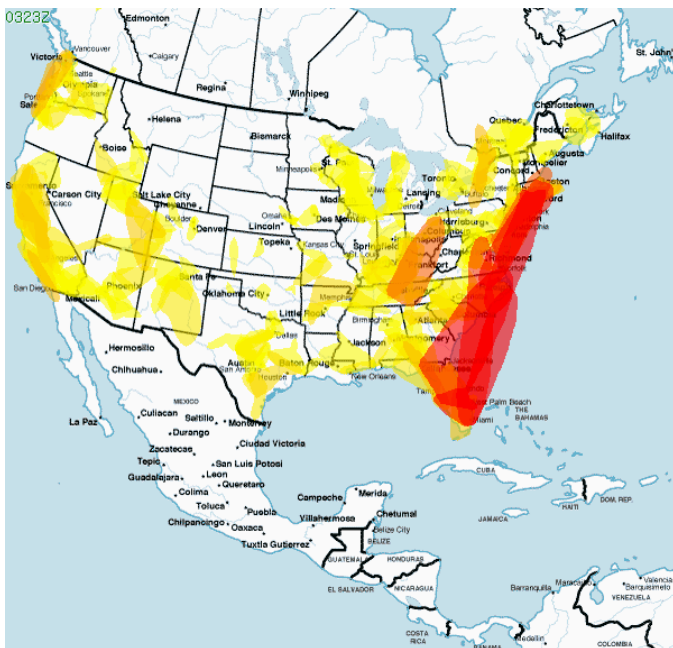
WTFDA chat began at 10pm Tuesday evening and a few DXers assembled to talk over the day's events.

At some point during chat Jeff Lehmann wondered if there was still any FM E-skip kicking around. There wasn't. Then Jeff said that he was hearing WRMF on 97.9 from Florida. Since the alert was out that the APRS maps were hot down the coast from New England to Florida and that a ham in CT had

been in contact with hams in Florida at the same time, it was plainly obvious that what Jeff was hearing on his T-85 was tropo from Florida!

Between 11pm and 2am of the 20th, Jeff Lehmann and Keith McGinnis logged WRMF 97.9 and WEAT 104.3. Roy Barstow logged WHDR 93.1, WMGE 94.9, WEAT 104.3 and WRMF 97.9.

Distances to Roy's House are 1172 miles for WEAT/WRMF and 1209 miles for WHDR/WMGE. Congratulations to all three of you!



A look at the map on the left shows a huge stretch of red along the east coast of the USA from MA down to FL (and at one point, even reaching eastern Cuba!). Numerous contacts were made by amateurs in Southern New England down into Florida at that time.



For those reading the paper VUD, the red area is the darker band running along the east coast. You can find audio of Jeff's WRMF reception on the WTFDA Forums at <http://www.wtfda.info>. Keith McGinnis now holds the all time tropo record for reception on 97.9!



WEAT'S RDS displayed on Jeff's HDT-1



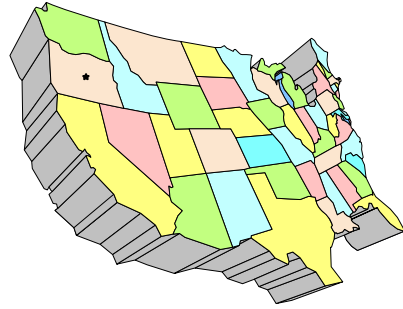
WESTERN TV DX

DAVE WILLIAMS

3525 SW Timber Ave

REDMOND, OR 97756

beansdad@bendcable.com (541) 420-4704



Dave Williams

Where's the skip? Es got off to a great start in May with multiple FM openings and some nice TV to Canada, Mexico, and everywhere in between. Since June 1 I've had only four days of TV skip here.

As noted, we're looking for someone to replace me as editor of this column. It's been a good ride, but family and work, in that order, are calling me away. Please contact Mike if you're interested in the job.

73 – Dave Williams

Dave Pomeroy

2321 SE Libra Ct.

Topeka, Kansas 66605-3505

davepomeroy@sbcglobal.net

May 9, 2007 Es

0905 3 WEDU Tampa, FL
1015 2 WESH Daytona Beach, FL
1100 3 WEAR Pensacola, FL

May 11, 2007 Tr and Es

0700 30 K30AL Iola, KS
0915 14 KMEG Sioux City, IA
39 KMEG-DT Sioux City, IA
20 22, 38, 45 Omaha, NE Digitals
17 KBIN-DT Council Bluffs, IA
1300 2 UNID CBC French (Es)

May 12, 2007 Tr

0915 56 KDMI-DT Des Moines, IA
(DTV only station)
Program #1 KDMI-DT ID as 56.1
Program #2 KCWI channel 23 PSIP channel 23
Program #3 KEFB-TV channel 34 PSIP channel 34
(TBN)
(confusing with KDMI-DT coming in on three
different channels)
59 WOI-DT Ames, IA
16 KD SM-DT Des Moines, IA
19 WHO-DT Des Moines, IA
50 KDIN-DT Des Moines, IA
1000 31 KCCI-DT Des Moines, IA (rarely seen)

May 16, 2007 Tr and Es

0630 14 KMEG Sioux City, IA
14 KFJX Pittsburg, KS
0640 39 KMEG-DT Sioux City, IA
41 KTIV-DT Sioux City, IA
1000 3 KTVK Phoenix, AZ (Es)

May 22, 2007 Es

1100 2 WUND Columbia, NC
3 WTKR Norfolk, VA
1200 2 WMAR Baltimore, MD
1615 3 KYW Philadelphia, PA
2 WMAR Baltimore, MD back in
2100 2 WUND Columbia, NC back in

William Draeb (920) 388-2350

1314 Ellis St. Kewaunee, WI 54216-1802

1994 Sylvania Y1 Chassis, 40' Rohn 25G Tower, CH2026, Y713, and KV420 Antennas, CMA-HB and CMA-Ub Preamps.

March 20, 2007 Tr

1915 12 WLLZ-LP (t) Not ABC, NBC, or CBS,
+ or – offset. Have been looking for them
in the past, still no ID.

May 4, 2007 Es

1216 2-4 UNID New England (t)
1246 Mostly Gone

May 5, 2007 Es

1815 2 WCBD + offset, Panthers training
camp talk

May 6, 2007 Es

1724 2-3 UNID South
1730 2 WCBD (t)
1737 3 WEDU Dance competition
3 WSAV (t)
4 UNID
1813 5-6 UNID
1826 6 WCTV (t)
1842 2 WESH
6 WKMG (t)
1856 3 WEAR (t)

May 9, 2007 Es

1108	2-3	UNID	South
	3	KIII	
1221	3	KBTX	
1558	3	WEDU	
1608	2	WESH	
1613	5	WPTV	
	4	WFOR	
1700	2	WTHS	

May 10, 2007 Es

1655	2	KPRC	
1714	3	KATC	
1724	2	WBRZ	
1730	4	WWL	(t)
1742	4	KBTX	(t)

May 11, 2007 Es

1155	2-4	UNID	South
1225	5-6	UNID	South
1300	3	WTKR	
1330		NYC, Philly	
1335	6	French Audio, suspect FM station	
1428	3	WFSB	
	6	WLNE	
	2	WGBH	
1451	5	WCVB	(t)

May 21, 2007 Es

1155	2	UNID	+ offset
------	---	------	----------

May 22, 2007 Tr and Es

0630	5	WBKP	(t), Tr, all others Es
1030	3	WEDU	
	2	WESH	
	6	WCTV	(t)
	5	WPTV	
	6	WKMG	
	4	WFOR	
1600	2	WCBD	
1605	3	WBTV	
	4	WCIV	
	5	WCSC	(t)
1718	3	WSAV	
1725	2	WFMY	(t)

May 24, 2007 Es

1210	2	UNID	+ offset, SW
------	---	------	--------------

May 25, 2007 Es

1727	2	UNID	+ offset NBC ad for Jean Reid Toyota
1915	3	WEDU	
1923	2	WESH	
1957	2	CBKFT	
1959	3	CFRN	(t)
	3	KRTV	(t)
2011	4	CITL	

May 29, 2007 Tr

0600	12	CIII-TV-1	210 Mi, seldom seen
------	----	-----------	---------------------

A rather average month for Es. A big empty space from the 11th to the 21st didn't help.

Eric Bueneman (NØUIH)

631 Coachway Lane
Hazelwood, MO 63042-1347

Equipment: Daewoo 13-inch color TV, Samsung 19-inch color TV, Digital Stream HD3150 DTV tuner, Radio Shack VU-210XR with Channel Master CM-9521 rotor at 30 feet above ground level

All times CDT/CST; all distances in miles/kilometers. New stations and states in boldface.

September 15, 2006 (trop)

2230	KDSM	17 IA Des Moines	255/410
2235	KPWB	23 IA Ames	275/443
2300		Springfield, MO	3, 10 190/306
2330	KSNF	16 MO Joplin	250/402

September 16, 2006 (trop)

0945	WIPX	63 IN Bloomington	210/338
0950	WTHI	10 IN Terre Haute (Grade B)	170/274
1001	WDRB	41 KY Louisville	250/402

October 17, 2006 (E-skip/trop)

2033	KYUS	3 MT Miles City	945/1521
2047	KTVO	3 MO Kirksville	155/249

November 12, 2006 (trop)

1835	WPXK	54 TN Jellico (Grade B)	375/604
1837	WDSI	61 TN Chattanooga	385/620
1838	WUPA	69 GA Atlanta	480/772
1845	WATL	36 GA Atlanta	480/772
1852	WTBS	17 GA Atlanta "TBS"	480/772
1901	WCTE	22 TN Cookeville	325/523
1905	WJKT	16 TN Jackson	235/378
1908	WSTR	64 OH Cincinnati "My 64"	320/515
1910	WFYI	20 IN Indianapolis	240/386
1910	WHMB	40 IN Indianapolis	240/386
1910	WXIN	59 IN Indianapolis	240/386
1912	WCET	48 OH Cincinnati	320/515
1913	WKMJ	68 KY Louisville	250/402
1914	WDRB-DT	49 KY Louisville	250/402
1915	WHAS-DT	55 KY Louisville	250/402
1920	WPSD-DT	32-1 KY Paducah	155/249
1930	WNPX	28 TN Cookeville	325/523
1940	WLGA	66 AL Opelika	505/813
2002	WIAT	42 AL Birmingham	415/668
2016	WPSD-DT	32-3 KY Paducah (local weather channel)	155/249
2017	WSIL-DT	34-2 IL Harrisburg (simulcast of analog 3)	130/209
2044	WTCI	45 TN Chattanooga	385/620
2051	WZTV-DT	15 TN Nashville (new DTV state!)	270/435
2122	WAFF	48 AL Huntsville	345/555
2122	WCLP	18 GA Chatsworth	415/668
2123	WZDX	54 AL Huntsville	345/555
2127	WHNT	19 AL Huntsville	345/555
2135	WKRN-DT	27-1 TN Nashville (ABC HD)	270/435

2144 WKRN-DT 27-2 TN Nashville (Nashville Weather Channel) 270/435
2158 **WTJP** 60 AL Gadsden 405/652
2217 **WJHL-DT** 58-1 TN Johnson City 470/756
2225 WJHL-DT 58-2 TN Johnson City (local weather channel) 470/756
2313 **WPWR-DT** 51 IN Gary "My 50" 250/402
2327 **WLS-DT** 52 IL Chicago "ABC 7" 255/410
2354 **WGN-DT** 19 IL Chicago 255/410
2356 WFLD 32 IL Chicago 255/410
2356 WCPX 38 IL Chicago 255/410
2356 WSNS 44 IL Chicago 255/410

November 21, 2006 (trop)

2036 WSJV 28 IN Elkhart 305/491
2039 WLAJ 53 MI Lansing 390/627
2040 WFLD 32 IL Chicago 255/410
2040 WCPX 38 IL Chicago 255/410
2040 WSNS 44 IL Chicago 255/410
2043 WRSP-DT 44 IL Springfield 80/128
2046 WAND-DT 18-2 IL Decatur (local weather) 110/177
2049 WXFT 60 IL Aurora 235/378
2057 WAND-DT 18-1 IL Decatur (NBC HD) 110/177
2059 WBUI 23 IL Decatur 110/177
2113 WHMB 40 IN Indianapolis 240/386
2114 WOTV 41 MI Battle Creek 365/587
2117 WXIN 59 IN Indianapolis 240/386
2129 WBND-LP 57 IN South Bend 300/483
2140 KFVS-DT 57 MO Cape Girardeau 115/184
2140 WPSD-DT 32 KY Paducah 155/249
2142 WSIL-DT 34 IL Harrisburg 130/209
2219 WICS-DT 42 IL Springfield 80/128

November 22, 2006 (trop)

1650 WPWR 50 IN Gary (through W50CH) 250/402
1653 WTHR 13 IN Indianapolis 240/386
1656 WTHI 10 IN Terre Haute 170/274
1828 WNDU 16 IN South Bend 300/483
1833 WSJV 28 IN Elkhart 305/491
1900 WCCU 27 IL Urbana 155/249
1909 WFLD 32 IL Chicago 255/410
1919 WNDU-DT 42 IN South Bend 300/483
1929 WJYS 62 IN Hammond 245/394
2002 WSBT 22 IN South Bend 300/483
2005 WOTV 41 MI Battle Creek 365/587
2006 WLAJ 53 MI Lansing 390/627
2023 WPTA 21 IN Fort Wayne 320/515
2036 WCPX 38 IL Chicago 255/410
2039 WXFT 60 IL Aurora 235/378
2045 WVTM 18 WI Milwaukee 320/515
2046 WMVT 36 WI Milwaukee 320/515
2137 WXIN 59 IN Indianapolis 240/386
2229 WPSD-DT 32 KY Paducah 155/249

January 2, 2007 (trop)

2157 WUSI-DT 19 IL Olney 130/209
2200 WSIL-DT 34 IL Harrisburg 130/209
2205 WLEX 18 KY Lexington 330/531
2217 WHAS-DT 55 KY Louisville 250/402
2218 WTVQ 36 KY Lexington 330/531
2226 WPSD-DT 32 KY Paducah 155/249
2229 WKYT 27 KY Lexington 330/531
2234 **WOWK** 13 WV Huntington (through WPXS) 430/692
2237 WCET 48 OH Cincinnati 320/515
2238 WDRB 41 KY Louisville 250/402

2242 WKMR 38 KY Morehead 380/612
2243 WKON 52 KY Owenton 305/491
2247 WBKI 34 KY Campbellsville (through KSDK-DT 35) 290/467
2254 WZTV 17 TN Nashville 270/435
2304 WSTR 64 OH Cincinnati "CW 64" 320/515
2306 WWHO 53 OH Chillicothe "CW 53" 400/644
2307 WRGT 45 OH Dayton 340/547
2314 WXIN 59 IN Indianapolis 240/386
2315 WHMB 40 IN Indianapolis 240/386
2316 WICD-DT 41 IL Champaign 150/240
2319 WXIX 19 KY Newport 325/523
2320 WHIO 7 OH Dayton (through KPTN-LP) 340/547

January 3, 2007 (trop)

0016 WKEF 22 OH Dayton "ABC 22" 340/547
1746 KOLR 10 MO Springfield 190/306
1747 KYTV 3 MO Springfield 190/306

January 4, 2007 (trop)

0942 WPXK 54 TN Jellico 375/604
0955 WBXX 20 TN Crossville 395/636
1015 WJKT 16 TN Jackson 235/378
1021 WCFT 33 AL Tuscaloosa (through K33GU) 415/668
1022 WTCT-DT 17 IL Marion 100/161
1025 WSIL-DT 34 IL Harrisburg 130/209
1030 **WKNO** 10 TN Memphis 250/402
1031 WHBQ 13 TN Memphis "Fox 13" 250/402
1043 WBBJ 7 TN Jackson (through KPTN-LP) 235/378
1045 K45CA 45 MO Cape Girardeau (WTCT-27) 115/184
1051 WDRB 41 KY Louisville 250/402
1053 WAFF 48 AL Huntsville 345/555
1055 WKPD 29 KY Paducah (KET-1) 155/249
1056 WKGB 53 KY Bowling Green (KET-1) 220/354
1127 WLEX 18 KY Lexington 330/531
1130 WDSI 61 TN Chattanooga 385/620
1145 WDKA 49 KY Paducah "My 49" 155/249

January 8, 2007 (E-skip)

1716 KIII 3 TX Corpus Christi 860/1384
1825 WEDU 3 FL Tampa 880/1416

May 4, 2007 (E-skip)

1550 XHPN 3 CL Piedras Negras 910/1465
1605 XHBQ 3 ZA Zacatecas 1320/2124
1630 KIII 3 TX Corpus Christi 860/1384

May 11, 2007 (trop)

2050 WICS-DT 42 IL Springfield 80/128
2053 WRSP-DT 44 IL Springfield 80/128

A lot of DX to get caught up on! The opening of September 15 was mainly into Des Moines and southwest Missouri; I checked DTV channel 16, but the signal on KDSM-DT wasn't strong enough to decode. The surprise of October 17 was brief E-skip into eastern Montana; otherwise KTVO was dominant on channel 3. I got a tip to the opening on November 12 from hams in the St. Louis area who were working into the Deep South on 144 MHz, so I turned on the TV to find WPXK 54 at semi-local

(Continues on page 23)



Eastern U.S. TV DX

Featuring reports from AL, CT, DC, DE, FL, GA, IN, KY, MA, MD, ME, MI, NC, NH, NJ, NY, OH, PA, RI, SC, TN, VA, VT, and WV, along with the Canadian Provinces of NB, NF, NS, ON, PEI, and PQ.

Send reports by the 15th of each month to:

Nick Langan
 1040 Riverview Drive
 Florence, NJ 08518
 E-mail: nick.langan@gmail.com

The Editor's Note

The DX through the month of June has been, well, down and up. After a promising dosage of E-Skip in May, the first half of June's sporadic E activity was nil in many areas, other than a few flirtations that popped out of six meters. The latter half of the month has featured a bit of a turnaround, with several solid E-Skip openings, and the wild, record-breaking tropo along the Atlantic that interestingly enough seemed to not infiltrate TV. As July approaches, the opportunities for DX should continue to be around!

Robert Grant (N8NU) 231 E Temperance Rd. Temperance, MI 48182
 E-mail: Rg3d@yahoo.com (expect delays, no home Internet access)

Temperance is in SE corner of MI. (EN81fs)
 Receiver: Sylvania (Funai) 6427GFF 27" color analog/digital SDTV.

Antenna: Channel Master Advantage 3020 on chimney at about 33'

Alternate receiver: Sanyo 21T63 12" B&W analog, antenna Winegard

PR-7084 at about 15' on rear (South) deck.

All times EDT

5/15 Es

2310 KCWX 2 TX Fredericksburg 1162
 KPRC 2 TX Houston 1075

5/22 Es

1825 WPBT 2 FL Miami 1107
 WFOR 4 FL Miami 1106
 WSAV 3 GA Savannah 682

1830 WEDU 3 FL Tampa 965

1858 WESH 2 FL Daytona Beach

894

2155 KCWX 2 TX Fredericksburg 1162

2200 KENW 3 NM Portales 1235

2300 KMID 2 TX Midland 1230

2327 KFDX 3 TX Wichita Falls 983

KDTN 2 TX Denton 973

5/23 Tr

2300 W48AV 48 MI Detroit 58

5/25 Es

2043 KUPN 3 CO Sterling 1017

KTWOt 2 WY Casper T

(w/another unID making 16 kHz beat)

2055 unID 2 (CW2 bug, not the same font as KCWX uses, and not + offset)

2110 KCWX 2 TX Fredericksburg 1162
5/26 Es

2000 WPBT 2 FL Miami 1107
 WEDU 3 FL Tampa 965

Says Robert: "Not as much to comment about this month. I've had worse Es seasons, but this is still a disappointment for the "penultimate analog Es season". Not only are the openings usually short, and of low MUF, but they are almost limited to Texas. ENOUGH of KCWX!"

William McGuire

Cheverly, MD
 Sylvania 15" TV

5/22 Es

1655 WREG 3 TN Memphis Ad for lawyer; mentions of west Tennessee/mid-south

5/25 Es

1915 KTBS 3 LA Shreveport ABC
 News report, ID; logo

5/27 Tr

2005 WFPT 62 MD Frederick PBS

6/4 Tr

2010 WGAL 8 PA Lancaster NBC

2155 WCPB 28 MD Salisbury PBS

6/6 Es

2010 Unid 3 NBC; NHL game

6/8 Es

0900 Unid 3 Entertainment Tonight



SOUTHERN FM DX

John Zondlo
4009 Driftwood Circle
Yukon, OK 73099
jzondlo@cox.net
Deadline: 15th
July 2007



Eric Bueneman – NØUIH - 631 Coachway Lane - Hazelwood, MO 63042-1347

Kenwood AR-304 AM/FM/FM Stereo receiver with filter modification by Bruce Elving, Antenna Performance Specialties APS-9B at 26 feet AGL, all times CDT/CST, all distances in miles/km

9/15/06 Tr

2324 KSUI	91.7	IA	Iowa City, classical mx, local underwriting, through KJIR	225/362
2330 KMGO	98.7	IA	Centerville, "Live, Local Radio," local ads, k	225/362
2333 KQRC	98.9	KS	Leavenworth, "98-9 The Rock, Kansas City's Rock Station," promo, rp	255/410
2340 KYYS	99.7	MO	Kansas City, "99-7 KY," local ads, op	225/362

9/16/06 Tr

0958 WFIU	103.7	IN	Bloomington, "Car Talk," underwriting, legal ID, local wx	210/338
1003 WZNX	106.7	IL	Sullivan, "106.7 The Fox," Decatur ads, op	115/184
1007 WNIN	88.3	IN	Evansville, "What D'Ya Know" from NPR, through WJLY	165/266
1010 WBGL	91.7	IL	Champaign, "Family Friendly WBGL," CCM	
1017 WDNL	102.1	IL	Danville, University of Illinois pregame show, local ads // WDAN (AM)	175/282
1019 WBOW	102.7	IN	Terre Haute, "The New B-102.7," modern AC	170/274
1025 WSWT	106.9	IL	Peoria, "Light Rock 107," local ads, soft AC, \$	140/225
1027 WCIC	91.5	IL	Pekin, "Family Friendly 91.5," promo, CCM, \$, KSIV nulled	140/225
1030 WLRW	94.5	IL	Champaign, "Today's Best Music, Mix 94.5," hot AC	150/240
1032 WAAG	94.9	IL	Galesburg, "FM95 – The Country Station," k	155/249

11/9/06 Tr

2238 <u>KZWV</u>	101.9	MO	Eldon, "101-9 The Wave," Columbia ads, promo, website mention, smooth jazz	130/201
------------------	-------	----	--	---------

11/12/06 Tr

1952 WMBW	88.9	TN	Chattanooga, "Hour of Decision," SRN news, promos, legal ID	385/620
-----------	------	----	---	---------

12/8/06 Tr

2025 WGKC	105.9	IL	Mahomet, calls, classic r, through KPNT digital sideband	270/435
2033 WEBX	93.5	IL	Tuscola, "9305 The Rock," modern r, through KSD digital sideband	170/274
2034 WPBG	93.3	IL	Peoria, "93-3 The Drive," classic hits, local ads	140/225
2041 WEIU	88.9	IL	Charleston, high school basketball, between WSIE and KCLC	130/209
2043 <u>WBFW</u>	88.5	IL	Flora, "Open Line" from Moody Radio Network, promo, PSA	100/161

1/2 Tr

2250 WNRQ	105.9	TN	Nashville, "105-9 The Rock," rp, through KPNT digital sideband	270/435
2253 WGRN	89.5	IL	Greenville, "Air One," Christian rock	50/80
2257 WJXA	92.9	TN	Nashville, soft AC with Delilah	270/435

1/4 Tr

0936 KIYS	101.9	AR	Jonesboro, "101.9 Kiss FM," syndicated morning show, local ads, CHR	200/322
0945 <u>WDCL</u>	89.7	KY	Somerset, classical mx, promo, underwriting, CST/EST TC's, legal ID, NPR nx	335/539

2/19 Gw

2051 <u>WDRS</u>	89.5	IL	Dorsey, "Air One," promos, legal ID, Christian rock	25/40
------------------	------	----	---	-------

4/28 Gw

2151 <u>K268DE</u>	101.5	MO	Bellefontaine, "Air One," Christian rock, promos, PSA, legal ID // WDRS	89.5 10/24
--------------------	-------	----	---	---------------

The openings of September 15 and 16 were fairly routine; KZWV 101.9 is now on the air; the Class C2 station replaces a previous Class A assignment. WBFW 88.5 was the highlight of the December 8 opening; I have also logged a WAFR 88.3 translator on the frequency from Flora. The January 2 opening was mostly a TV opening; I was listening to WPLN 90.3 on the way home from work at WSIE 88.7 that morning. WDCL 89.7 was the highlight of the opening; the time checks for two time zones were the tip off for me. K268DE had been on the air relaying the programming of WWCR, a shortwave radio station in Nashville, TN, into the Alton/Wood River area. The station K268DE was originally intended to relay, KDJR 100.1 De Soto, MO, is blocked by the digital sidebands of KATZ

100.3 Alton, IL. The translator has now added a western lobe, and changed the primary to WDRS 89.5 Dorsey, IL. Bellefontaine, the city of license for K268DE, is in an area where KCFV can be nulled to receive WDRS. As of May 14, 2007, 953 stations have made it to this location. Could #1,000 be logged this summer? 73 and good DX from Eric (NØUIH).

[Joe Kureth](#) – Uniontown, MD 21158

Saturn car radio

5/11 Es

1439 KAXE 91.7 MN Grand Rapids
 1445 WTIP 90.7 MN Grand Marais
 1446 WLSN 88.7 MN Grand Marais

1721 KOBC 90.7 MO Joplin, "Route 66
 Speedway"
 1729 KTTK 90.7 MO Lebanon
 1732 KSD 93.7 MO St. Louis, "The Bull

5/22 Es

Western TV DX Continues from Page 20

strength. I finally got much-wanted ex-local WTBS 17 in the book; now, if I could figure out a way around the locals on 30 and 46 to pull in WPBA and WGCL before the cutover to digital.

Speaking of digital, I added Tennessee to the DTV book with the log of WZTV-DT 15. I also pulled in WKRN-DT 27; I was able to use the "channel add" feature on my remote control to check out what else was on their digital signal; the second channel featured the Nashville Weather Channel, a 24-hour weather channel. My mouth fell open when I saw the 2300 ELT news from WJHL-DT 58! I also checked out their signal (remapped to their analog channel, 11), and found a 24-hour weather channel on their second channel. This shattered the previous record (also on 58, WSJV-DT Elkhart, IN) by 165 miles. Another regular from my Georgia days also made it in, WTJP 60. When John Broomall owned W55BM 55 Marietta, GA, he was looking at relaying WTJP back in 1989. Chicago also made it in on DTV for the first time; I was able to pull in WPWR-DT 51; the analog signal mixed in with semi-local W50CH. I also pulled in much-wanted WGN-DT 19; it's nice to see the non-cable version of this station! I also pulled in WLS-DT 52; they have three sub-channels, the third one being a simulcast of analog 7. 2007 came in with a new VHF state, as WOWK 13 poked through WPXS. This is only my second West Virginian from this location; I also have WPBY 33 logged from Huntington. The trop opening of January 4 brought in another new station in WKNO 10. With a local parked on 5 and WSIL dominating on 3 in that direction, it would make the other two VHF's in Memphis a challenge. With WMC planning digital operation on channel 5, that would make the station an easier target once KSDK becomes digital-only on 35. Maybe Elvis had something to do with the E-skip on January 8, with the southeastern regulars

and KIII making their presence known. May 4 kicked off the E-skip season with the logs of the two most frequently seen Mexicans on 3, as well as KIII. May 11 brought my two trop indicator DTVs to the north from Springfield, IL. As of May 14, 2007, the total number of TV stations stands at 534, including 41 DTV stations. 73 and good DX from Eric (NØUIH).

Dennis Park Smith

3605 San Remo Drive
 Santa Barbara, CA 93105-2523
 Telephone (805) 687-7803

This report is for April and May, 2007. Southern California coastal tropo was so-so with nothing really good (to San Diego/Tijuana, 200mi/320km). Also, there was a little Es on May 22, at 2025-2030+ PDT on chs. 2-3, but not enough for program info or IDs.

3/29-3/30	Variably poor
3/31-4/1	Poor (VHF fair)
4/2	Very poor
4/3-23	None (windy at times, 4/20 only)
4/24-26	Poor
4/27 AM	Fair
4/27 Eve	Good
4/28	Fair
4/29-5/3	None
5/4-5/8 AM	Poor
5/8 Eve-5/10	Fair
5/11-16	Variably poor
5/17-23	None (stable but with high boundary layer elevation)
5/24-31	Variably poor (May 24-26 UHF only)

Best of DX to All, Dennis

WTFDA EMAIL REFLECTORS

Enhance your DXing experience! Entertaining and informational.

For WTFDA members and guests on the wtfda.info server

The WTFDA list...send an email to tvfmdx-subscribe@wtfda.info

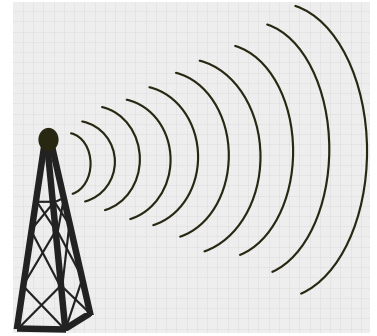
190 users

The WTFDA AM DX list...send to amdxdx-subscribe@wtfda.info

85 users

Northern FM DX

Northern FM DX



Keith McGinnis
6 Ritter Road, Hingham, MA 02043
longwave@comcast.net 781-875-1944

For Dxers in the following states: CT IA ID IL IN MA ME MI MN MT ND NE NH NJ NY OH OR PA RI SD VT WA WI WY and all of Canada. Please submit by the 10th of each month. If possible please submit in the formats shown Below.

EDITORS NOTE: PLEASE NOTE THAT ANY TYPEWRITTEN OR HANDWRITTEN REPORTS MIGHT BE DELAYED TILL A LATER ISSUE AS TIME PERMITS. ALSO PLEASE KEEP REPORTS AS RECENT AS POSSIBLE (THE LAST 3 MONTHS SHOULD WORK FINE). THANK YOU.

Mike Bugaj – 69 Sherman Road – Enfield, CT 06082 –
Carver TX-11 and/or Sangean HDT-1, APS-13 with Bolin box and phase antenna. New are underlined.

5/6 Es
1918 KERX 95.3 AR Paris, the X 95.3 rock

5/9 Es
1645 WDJR 96.9 AL Enterprise, RDS CNTRY969
1646 WOOF 99.7 AL Dothan, RDS WOOF-FM
1647 WESP 102.5 AL Dothan, RDS ROCK1025
1649 Unid 90.9 Augusta, Operahouse in Hawkinsville, GA weather
1651 WFSW 89.1 FL Panama City, RDS WFSW-FM (WFSU.org)
1655 WTYS 94.1 FL Marianna, real gospel, calls
1659 WYYX 97.7 FL Bonifly, RDS 97X
1700 WDGL 98.1 LA Baton Rouge, Eagle 98.1
1701 WVVE 100.1 FL Panama City Beach, RDS WVVE
1709 KNOV 94.1 LA Baton Rouge RDS MAX94.1 + calls
1715 WJNF 88.3 FL Marianna, g, the Rock
1717 WDVW 92.3 LA LaPlace, New Orleans traffic
1719 KQKI 95.3 LA Bayou Vista Southland Dodge, cajun.net
1721 WFMF 102.5 LA Baton Rouge RDS WFMF
1724 KCIL 107.5 LA Houma, C107.5 country
1730 WEZB 97.1 LA New Orleans, B97
1734 WWNO-HD 89.9 LA New Orleans, both HD1 and HD2 channels (music heard on HD2). **HD #1.**
1738 WQUE 93.3 LA New Orleans, RDS (Mis-ID as KABE)
1744 WPRF 94.9 LA Reserve, New Orleans ads
1812 Unid 89.1 AFR.net
1819 WJZD 94.5 MS Long Beach, RDS JZ

5/11 Es

1426 KRNA 94.1 IA Iowa City RDS KRNA-FM
1430 Unid 107.5 Spanish Mexican talk
1437 WSJY 107.3 WI Ft. Atkinson, RDS LITE1037 Leutenants Restaurant
1438 Unid 107.5 Oldies 107.5 f.b. Tom Jones oldie
1441 KIYX 106.1 IA Sageville, in historic downtown Galena...
1441 WSLD 104.5 WI Whitewater, WSLD Country, 3kw
1444 WNWC 102.5 WI Madison, RDS WNWC scrolling title & artist, rel.
1446 WMYX 99.1 WI Milwaukee, RDS 99.1 WMYX, adult hits
1447 WCOW 97.1 WI Sparta, RDS COW-97, scrolling title & artist

1447 KIAQ 96.9 IA Clarion, RDS
 1449 WHAD 90.7 WI Delafield, RDS WHAD thru local WTCC
 1450 WERN 88.7 WI Madison, RDS WERN-FM
 1451 KBBG 88.1 IA Waterloo, RDS KBBG
 1452 KIAI 93.9 IA Mason City, RDS KIA-FM, 93.9 the cow
 1454 WUWM 89.7 WI Milwaukee, RDS WUWM-FM
 1455 WOLX 94.9 WI Bariboo-Madison, RDS WOLX
 1456 KSMA 98.7 IA Osage, RDS KISS-FM and calls
 1458 KLKK 103.7 IA Clear Lake, RDS 103.7THEFOX
 1459 KNEI 103.5 IA Waukon, real country 103.5, knei.com
 1501 KBGY 107.5 MN Faribault, Spanish
 1505 KQYB 98.3 MN Spring Grove, RDS KQ98, country
 1508 KDOM 94.3 MN Windom, calls 73 degrees
 1510 WLSU-HD 88.9 WI LaCrosse, WJMJ Htfd a local here, "WLSU" in display with classical music HD#2
 1528 KRUE 92.1 MN Waseca, Turtle Creek Nursery and Landscaping in Owatana.
 1528 ????? 94.9 wkla.com ??
 1531 WIZD 99.9 MN Rudolph, RDS WIZD, the Valley 99.9
 1532 KOLV 100.1 MN Olivia, RDS KOLV
 1533 WNCY 100.3 Y-100, the valley
 1533 KTLK 100.3 MN Minneapolis, talk RDS KTLK
 1535 KYSM 103.5 MN Mankato, River Hills Mall
 1538 KARZ 107.5 MN Marshall, ...107-5 KARZ...
 1543 Unid 98.5 Star 98
 1543 KTIS 98.5 MN Minneapolis, rel
 1545 Unid HD station showing up on 98.5 as HD_U three times.
 1546 KZPK 98.9 MN Paynesville, Wild Country 99, Sauk Rapids mentioned
 1547 KTCZ-HD 97.1 MN Minneapolis, Cities97, locked in with KTCZ-1 and KTCZ-2 HD#3
 1549 KMXK 94.9 MN Cold Spring RDS MIX949
 1550 WHRM 90.9 WI Wausau RDS WHRM
 1552 KNSR-HD 88.9 MN Collegeville, covered local WJMJ with HD, HD#4
 1609 WWIB 103.7 MN Hallie, RDS WWIB
 1609 KCLD 104.7 MN St. Cloud, RDS 1047KCLD
 1609 KQDS 94.9 MN Duluth

6/3 Es

0912 WZEW 92.1 AL Fairhope-Mobile, calls
 1907 KUEL 92.1 IA Ft. Dodge, cool 92, calls.
 1912 KCZE 95.1 IA New Hampton, RDS the Bull, 17D6
 1919 KKOT 93.5 NE Columbus, the Hawk
 1922 KBBN 95.3 NE Broken Bow, RDS 12CB

6/5 Tr

2020 CBF 95.1 QC Montreal, French

6/7 Tr

2204 W289AD NY Selden
 2206 W283BA NY Selsen, WLIX Radio Network, rel.
 2210 WWFG 99.9 MD Ocean City, country
 2230 WRLI 91.3 NY Southampton WNPR calls w/WWUH phased
 2300 WQHQ 104.7 MD Ocean City, calls and Delilah
 2320 WZXL 100.7 NJ Atlantic City
 2330 WXKW 97.3 NJ Millville, NJ 101.5 w/WZBG phased

6/8 Tr

2030 W235BB 90.9 NY Riverhead, WMHR calls, rel

6/16 Es

1105 Cool-96.1 Bahamas, girl dj, local ads
 1120 More-94 94.9 Bahamas, music, ads more94fm.com
 Evening Es (forgot to write down the times)
 ---- KSMB 94.5 LA Lafayette RDS A4C1

---- KYKR 95.1 TX Beaumont, Kicker 95.1, country
---- WUSJ 96.3 MS Jackson, 8B55 RDS
---- KZMZ 96.9 LA Alexandria, KZMZ 96 Rock, classic rock
---- WMYB 92.1 SC Myrtle Beach, the new Star 92.1

6/18 Es

1841 KGGO 94.9 IA Des Moines, calls, classic rock that rocks
1842 WFUM 91.1 MI Flint, RDS WFUM
1843 WTNR 94.5 MI Holland, Thunder 94.5
1844 KCZE 95.1 IA New Hartford, RDS KCZE
1845 KIAQ 96.9 IA Clarion, RDS
1846 WMYX 99.1 WI Milwaukee, RDS, HD "where the mix means variety"
1849 WJVL 99.9 WI Janesville, RDS WJVL
1850 KCTN 100.1 IA Garnaville k, calls, starspangled.com
1851 KXIA 101.1 IA Marshalltown, kix 101.1 IA's best country
1850 WIBA 101.5 WI Madison, 101.5 IBA-FM
1853 WDDW 104.7 WI Stutevart, Spanish RDS
1856 WHMI 93.5 MI Howell, RDS Whmi93.5
1857 WJJO 94.1 WI Watertown, Madison's solid rock
1903 KIAI 93.9 IA Mason City, RDS KIA-FM, country
1904 KSMA 98.7 IA Osage, RDS KISS-FM
1912 WWDV 96.9 IL Zion, RDS WWDV
1912 KCMO 94.9 MO Kansas City, oldies
1922 KZBK 96.9 MO Brookfield, RDS
1927 WSTO 96.1 KY Owensboro, RDS w/ RT that read: This is dynamic radiotext." Sure is.
1940 KLSC 92.9 MO Malden, RDS, the River
1944 KHPQ 92.1 AR Clinton, calls
1945 WQKQ 92.1 IL Carthage, KQ92, RDS
1947 KCLR 94.5 MO Poplar Bluff, Clear 94
1949 KERX 95.3 AR Paris, calls

6/19 Es

1733 WQCS 88.9 FL Ft. Pierce, calls o/phased WJMJ
1850 WAVW 92.7 FL Stuart, RDS Wave 92.7
1853 Radio Abaco 93.5 Bahamas ID, ph Nr 367-3925
1855 More-FM 94.9 Bahamas, Bahamas super station
1902 Bahamas on 104.5, Caribbean music

6/21 Es

1113 WLVE 93.9 FL Miami
1116 WCMQ 92.3 FL Hialeah, Spanish

So far about 22 new loggings, two of the by tropo. Considering all the IBOC on the dial here, in my mind that's pretty good. It also seems to me that RDS is being used more than ever. The Sangean is proving to be a fine DX tuner but the Carver with the Bolin box and phase antennas is just as valuable to me. FM totals stand at 2,559.



Studios of WZEC Bennington, VT taken in May 2005

PHOTO-NEWS



Jeff Kruszka, Editor
12516 Short Springs Dr.
Pearland, TX 77584
jkruszka@sbcglobal.net

July 2007

EVEN BETTER IN **COLOR!** CHECK OUT THE eVUD

This month we feature some great photos from new contributor Christopher Dunne, who frequently DXes at mile marker 35 on US 1 in the Florida Keys, a prime DX area for Cuban TV as well as foreign E-skip. Thanks Chris!

Equipment: Funai 9" AC/DC TV/VCR combo (hence the video grabs), using car battery. Radio Shack VU-90XR antenna at 20 feet max for Tr, generally 15 feet for Es.



Canal Educativo ch. 18?
Matanzas, Cuba
115 mi Tr seen 2005?
*"can be seen via Es as ch. 4
Havana or ch. 3 Cubavision Santa
Clara when parallel"*



Cubavision 9
Matanzas, Cuba
115 mi Tr seen 2006
*"can be seen on Es as ch.
6 Havana"*



Canal Educativo 2 ch. 15
Havana, Cuba
120 mi Tr seen 2004?
"promo seen on Cubavision"



Tele Rebelde 13
Matanzas, Cuba
115 mi Tr seen 2006
*"can be seen via Es on ch. 2
Havana"*



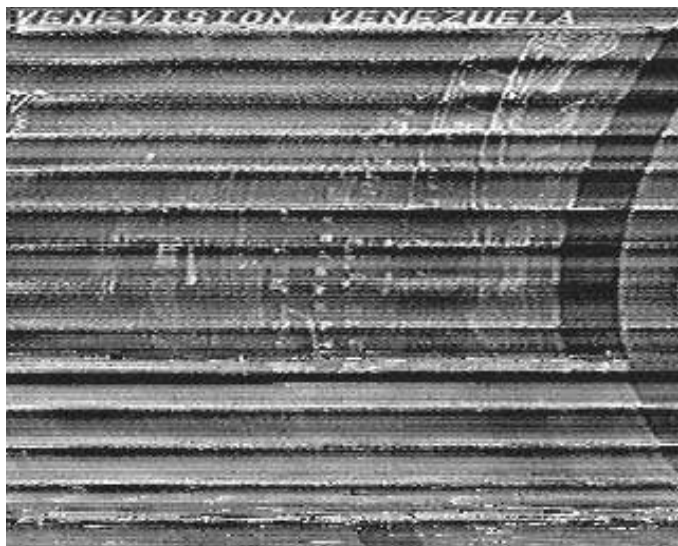
Canal Habana 27
Havana, Cuba
120 mi Tr seen 2006



XHP-3 Puebla, PUE?
1160 mi Es seen 5/13/07
"Assumed w/new logo-jk"



Venezolana-5 Caracas, VEN
1350 mi Es seen 5/13/07
"V symbol upper left"



Venevision-4 Maracaibo? VEN
1150 mi Es seen 5/13/07
"ID in sync bar"



XHRIO-2 Matamoros, TM
1025 mi Es seen 5/13/07



KRGV-5 Weslaco, TX
1055 mi Es seen 5/13/07

73's,
Jeff

REPORT CARD ON FIRST HALF OF ES SEASON 2007

This is a tough question... The season started off great in May, then it died for several weeks. It did however pick right back up with a vengeance in the last week or so...

So I have to consider the following things... this season has been pretty good. I've had E-Skip to every region that I can expect from here. There has been a few openings to the islands, the Dominican Republic on FM (new country), Cuba, probable Haiti's, the Bahamas, and as of yesterday Jamaica have all been heard (another new country ~1500 mi!). The only islands really missing is Puerto Rico, (which did make a showing last year) Bermuda, St. Pierre & Miquelon, the Caymans or maybe the Turks & Caicos islands. Anything else can't really be expected except via 2x . Going across the southeast it has been exceptional as well... I've had a few FL openings that have gone from the Keys to GA (WSOR seems like it's my new local), HDs and translators have both been logged. Going west, New Orleans, E-TX, Houston, OK, KS, MO have all been heard. Farther north the only ones missing are the Dakotas and Manitoba... but for it only being late June that's pretty good. Moving east some near west stuff has already been heard including Michigan and even some Ontarios up by Lake Huron. Finally, E-Skip has even been active to the East... Newfoundland, the Maritimes, and Quebec have already been heard which is again some pretty short hop stuff and does not happen every year.

Duration wise that has even been good... several openings have lasted a few hours, then there was the exceptional 6hr to 108 opening yesterday which was incredible. It could of course be better, but compared to how it could be, that's almost being greedy. Regardless it's tough to grade... It isn't A+, as that's some high expectations, but at the same time I don't see it even being a B+... new countries, long hops, short hops, possible 2x, all those have already happened. I'd have to say A-.... Now if I don't hear anything else this year then that would drop significantly, but I doubt that happening...

How can it get a few more points, besides more of the same?

-More short hop, we're talking 400-500 mile stuff into Ohio and IN or maybe Maine and NC/SC/TN /KY/VA.

-2x or more, either west or east. I understand the Azores have been heard in NJ in the past, I would like to log them. Maybe even mainland Europe, I have been checking when the 6m maps show the paths. (Though in the case of yesterday, I had 108 to the islands while the 6m map wasn't even showing paths.)

-A few more 6 or more hour openings.

-*Michael Temme-Soifer, NJ*

A for May. Logged several new stations, two new countries, and my third DTV via Es.

D for June. Most openings have been weak and short-lived.

Danny Oglethorpe, LA

The quality of logs has been very good here. In the past week I have logged two new countries in D.R. and Mexico (Yucatan), both over 1400 miles (Yucatan being 1579). I thought I had a 3rd in Jamaica but it's looking like it was probably More 94 from the Bahamas running a talk program instead. I also added a new state in IN on 5/11.

As others also have seemed to note, the signal strength of openings was very good in May. May 11th's opening is still by far the highlight opening of the season here. May 22 was very good as well. But the ones in June, conversely, have generally had weak/fadey signals, which doesn't play well with IBOC. The June 16 opening to D.R./Cuba/FL and June 18 to the Maritimes were solid openings, the select others in June have been spotty.

Overall 160 new FM logs via Es (surprisingly 131 of those in May), a bit off the pace of last year's 250 (in which I missed a few openings). I'd tentatively grade this season here a B+, but I would definitely like to see a few more long-lasting, good signal strength openings in the next few weeks. -*Nick Langan, NJ*

B-. Mainly because I did catch some nice openings south of the border. We're almost to the peak - which I think is around 6/25. *Fred Nordquist-Moncks Corner SC*

Nothing really spectacular so far here. Nice to see others snag a few 2X receptions, new countries and other exotic DX. Early May had more Es on FM than usual including the big event to NY,PA etc. on May 9 when 2 FM translators were logged. One only 20 watts. 97.1 W246AL WELLSBORO, PA. I've been getting many new logs on Es which is a plus, a few short skip ID's a couple long ones including 106.9 Bavaro, Dominican Republic at 1397 miles and 93.9 Flagstaff, AZ relog at 1474 miles. Got cheated out of Utah for my last state in 1X range. One new Mexican State of Hidalgo and log #3 in Arizona with 95.7 KWKM at 1361 miles when my local was off the air. Working 40+ hours makes it tough to DX. Have not caught any multi hour top of the band events yet this year. Just lots of spotty

openings up to 2 or 3 hour events. I'm rating a B- or C so far. 6/21/07.

Randy KW4RZ Fort Walton Beach, FL

I'll give it a C- so far. Most of the openings there've been have been on weekdays, resulting in my missing most of it. I have fewer than 20 new Es logs so far. Most of the openings have been messy with skip from multiple directions or rapidly moving, making it harder to ID things. –*Russ Edmunds, PA*

So far it has been weak. Gave it a C+ Due to my loggings of 2 HD Fm 94.5 WLRW HD1 Champaign Ill @ 831Mi and 95.5 WNUA HD1 Chicago Ill @ 775Mi. With VHF Santa Clara Cuba CH 5 "N" and Newfoundland off back of antenna with Channels 4 and 6 "NTV". Did get one DTV Hit of WTWC DT 2 "WTWC40" Tallahassee Fl @ 1019Mi. Shortest Fm was 94.1 WVIC Jackson Mi @ 621Mi RDS WVIC. Furthest FM 94.1 KQXY Beaumont TX @ 1452 Mi Q94. But most E's openings seem to make it to Channel 2 and WESH or WPBT are always the target. –*Jeff Rostron, MA*

It's a D now... I would have given it a C two weeks ago. I've spent a lot of time digging for signals with little reward. Yes, I missed the first half of May, but the drought as of late the score just gets worse. June 2 was the only bright spot in the season... otherwise it's been an exercise in tracking how often I can see various channel 2s in one season. –*Matt Sittel, NE*

I missed May 14 to June 6, as was outside the country without a radio or TV. Es started off early, netting me two good openings before I left. That was cool! Since my return, here has been only minor FM activity. I missed the June 18 pening as I chose that date to go to Toronto to shop for furniture. Apparently I didn't miss anything totally huge while was away in Europe. I give my fortune-telling abilities a D, largely for missing a chance to get NL on TV for the first time ever. And, give the Es season thus far a C- for quantity and a C- for quality. I've had nothing from the plains states or from western Canada. Most of my FM has been FL - the far bulk of it, in fact. The grade is saved by the very opening I missed June 18 - it sounds like it was a winner. I did catch the tail end in Toronto -- to FL and AL!
–*Saul Chernos, ON*

This is only my second season at serious FM DXing, so I can only compare to last June when I started. I would have to give this June a C.

I've had some good openings this year, about 10 of them starting on May 9th. But they haven't been nearly as long an opening as many of last June's.

And last June it seemed like there was E-skip every single day/afternoon and evening here, and the 6 meter map was nothing but red lines last June, and this year, not like that.
–*Craig Rathbone, Denver*

A big fat C overall. TV (C-) has been hit and miss. I've not caught any Cubans or Canadians, and Mexicans have been rare. Mainly NE, East Coast, Midwestern, and a couple of Florida TV's. No DTV skip.

FM (I) I don't DX FM that much (6m and TV get priority for time being) now, although after 2008 that will change. Nice loggings though from the Midwest.

VHF Amateur Radio (B-). No 2m E's, and this is my first summer 6m skip since 2002 so its somewhat new to me (again).
–*Fritze Prentice, AR*

Two days ago, I would have given it a D-. It's amazing what 6 hours of TV and FM Es will do.

My highlight this year has been logging more low-powered Canadian stations including the as-yet-unknown power, unrecognized by the CRTC, NCN Native station on 98.1 in Nelson House, MB. Also 50-watter 91.7 CITT Saskatoon (a TIS-type station) and a "cleanup" type opening to northern BC where I pretty much logged everything possible for me in the "Gateway to the Alaska Highway" towns of Ft St John and Dawson Creek including re-log CFKU "Moose FM", a 50-watter on 100.1.

Looking forward to a better late June and early July. –*Dave Williams, OR*

Tropo scatter moderate down to Cleveland, managed one new catch - 105.7 in Strathroy ON, My FM. That's probably too close to DXer Robert Ross in London ON. I'm downgrading this Es season to a D-. It's about as bad as it can get. – *Saul Chernos*

TWO GREAT DOMAINS FOR ONE GREAT CLUB!

Our Forums at <http://www.wtfda.info>

Our Website at <http://www.wtfda.org>

SIGN UP/Renewal form

Name _____

Address _____ Apt # _____

City _____ State/Prov _____ Zip _____

Country _____ Interests: TV () FM () 30-50() Weather()

email address _____

Sign me up/renew me for: 1 year () 2 years () More ()

Yearly dues \$24 (US), \$26 to (CANADA), \$10 (Electronic VUD)
(Students get a discounted rate of \$15 yearly for the paper VUD.)

Mail your dues to: WTFDA, P.O. Box 501, Somersville, CT USA 06072

Make your checks/money orders payable to: WTFDA

And *thanks* for your support of the WTFDA!

Return this form with your dues or make a copy of it and return that.

WTFDA BOARD OF DIRECTORS

Mike Bugaj, use the WTFDA Mailing address listed below	mbugaj@snet.net
Doug Smith, 1385 Old Clarksville Pike, Pleasant View, TN 37146-8098	w9wi@w9wi.com
Greg Coniglio, 11825 Genesee St., Alden, NY 14004	wgrc@rochester.rr.com
Bruce Hall, 5 Stirton Ave., Brantford, ON N3T 1E2	dbruceaa@hotmail.com
Keith McGinnis, 6 Ritter Road, Hingham, MA 02043	longwave@comcast.net

THE MAILBOX and all general club correspondence:

Mike Bugaj at WTFDA, PO Box 501, Somersville, CT 06072	mbugaj@snet.net
--	-----------------

TV NEWS

Doug Smith, 1389 Old Clarksville Pike, Pleasant View, TN 37146-8098	w9wi@w9wi.com
---	---------------

FM NEWS

Chris Kadlec, 3860 Shorewood Dr., Fremont, MI 49412	ckadlec@beaglebass.com
---	------------------------

PHOTO NEWS

Jeff Kruszka, 12516 Short Springs Dr., Pearland, TX 77584	jkruszka@sbcglobal.net
---	------------------------

EASTERN TV DX

Nick Langan, 1040 Riverview Dr., Florence, NJ 08516	nick.langan@gmail.com
---	-----------------------

WESTERN TV DX

Dave Williams, 3525 SW Timber Ave., Redmond, OR 97756	beansdad@bendcable.com
---	------------------------

SOUTHERN FM

John Zondlo, 4009 Driftwood Cir., Yukon, OK 73099	sfm@fmdxweb.com
---	-----------------

NORTHERN FM

Keith McGinnis, 6 Ritter Rd., Hingham, MA 02043	longwave@comcast.net
---	----------------------

TV and FM STATISTICS

Fred Nordquist, 147 Travis Hill Road, Moncks Corner, SC	nordquis@homexpressway.net
---	----------------------------

6 METER/2 METER

Peter Baskind, 3225 Forest Hill-Irene Rd, Germantown, TN 38138	n4li@arrl.net
--	---------------

<u>WEBSITE</u> Tim McVey Webmaster http://www.anarc.org/wtfda/	tkmcvey@erols.com
--	-------------------

SEE IT IN **C O L O R**
the eVUD!

**THE WORLDWIDE TV-FM DX ASSOCIATION
THE VHF- UHF DIGEST
P.O. Box 501, SOMERSVILLE, CT 06072**

Opinions expressed in this publication are those of the individual contributor and do not necessarily reflect the views of the publisher or board of directors. We reserve the right to edit material to meet publishing standards. Unless previously agreed upon in writing, all material submitted for publication in the VHF-UHF Digest becomes the property of the WTFDA. Reproduction of material from the VHF-UHF Digest without permission of the WTFDA is prohibited. Individuals and other organizations are granted such permission providing proper credits is given to the source.



Established 1967



FIRST CLASS MAIL

NOW! JOIN AND RENEW USING PAYPAL!

Now you can pay for your dues by check, money order and ONLINE with Paypal! If you have a Paypal account you'll be done in a matter of seconds! Pay at our Paypal webpage at <http://fmdx.usclargo.com/join.html> or send your dues to mbugaj@snet.net

**BOISE IN 2007!!!
WTFDA/NRC CONVENTION
8/31 THROUGH 9/2**