

Vhf-Uhf DIGEST

The Official Publication of the Worldwide TV-FM DX Association

AUGUST 2007

The Magazine for TV and FM DXers

18
MONTHS

REMAINING UNTIL
ANALOG TV SHUTOFF



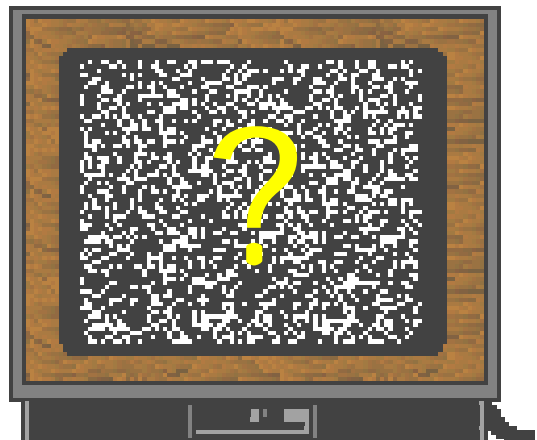
4 TIMES SQUARE, NEW YORK FM BROADCAST ANTENNAS
PHOTO BY MIKE BUGAJ

THE DEATH OF ANALOG TV E-SKIP DXING?

This and Much More Inside!



LAST CALL
FOR
WTFDA/NRC
CONVENTION 2007



THE WORLDWIDE TV-FM DX ASSOCIATION

Serving the UHF-VHF Enthusiast

THE VHF-UHF DIGEST IS THE OFFICIAL PUBLICATION OF THE WORLDWIDE TV-FM DX ASSOCIATION DEDICATED TO THE OBSERVATION AND STUDY OF THE PROPAGATION OF LONG DISTANCE TELEVISION AND FM BROADCASTING SIGNALS AT VHF AND UHF. WTFDA IS GOVERNED BY A BOARD OF DIRECTORS: DOUG SMITH, GREG CONIGLIO, BRUCE HALL, KEITH MCGINNIS AND MIKE BUGAJ.



Editor and publisher: **Mike Bugaj**

Treasurer: **Keith McGinnis** wtfda.org Webmaster: **Tim McVey**

wtfda.info Site Administrator: **Chris Cervantez**

Editorial Staff: **Dave Williams, Jeff Kruszka, Keith McGinnis, Fred Nordquist, Nick Langan, Doug Smith,**

Chris Kadlec, Peter Baskind and John Zondlo,

Our website: www.wtfda.org; Our forums: www.wtfda.info

AUGUST 2007



Finally! For those of you online with an email address, we now offer a quick, convenient and secure way to join or renew your membership in the WTFDA from our page at:

<http://fmdx.usclargo.com/join.html>

Dues are \$25 if paid to our Paypal account. But of course you can always renew by check or money order for the usual price of just \$24. Either way, it's still a bargain!

VUDS ON A CD!

Every VUD from Jan 1980 to December 1989 is on this disk. You'll need Adobe Reader to read them. Why have a box of old VUDs taking up space when you can have this. **It's yours for just \$8.00 per disk.** Send your check or money order for \$8.00 to WTFDA, P.O. 501, Somersville, CT 06072. Make it payable to **WTFDA.**



CONTENTS

Page Two	2
Mailbox	3
TV News...Doug Smith	5
FM News...Chris Kadlec	11
Photo News...Jeff Kruszka	18
Eastern TV DX...Nick Langan	20
Western TV DX...Dave Williams	24
Southern FM DX...John Zondlo	27
Northern FM DX...Keith McGinnis	32
6 meters...Peter Baskind	48
The Death of Es TV DXing	50
Editors and Submissions	31

We've a full crew this month plus we've included a very recent thread from the tvfmdx list. Maybe you've been thinking about this. I know I have.

And now... **eVUDS ON CD!**

All eVUDs from 09/01 through 12/05 are on this disc (except 8/02 which was not published). Follow the changes from day one to the present form. **You can have it for just \$6.00** (\$5.00 plus a dollar shipping).

Use the same address as for VUDs on CD shown on the opposite column.



THIS IS YOUR LAST WARNING! Frank Aden Hosts the 1st NRC/WTFDA Convention!

Friday, August 31, 2007 through Sunday, September 2, 2007
At the Rodeway Inn, 1115 North Curtis Road, Boise, ID 83706
(208) 376-2700

The First ever Combined National Radio Club/WTFDA Convention!
Registration for all is \$15, spouses are \$10 and kids under 14 are free. **The cutoff date for registering with the club(s) is August 15, 2007; with the hotel, August 20, 2007.**

PLEASE SEND YOUR REGISTRATION TO EITHER CLUB





The Mailbox

P.O. Box 501, Somersville, CT USA 06072
MIKE BUGAJ MBUGAJ@SNET.NET

AUGUST 2007

It's hard to believe but skip season is just about over for another year. A few members might say it's been over for quite a while now. All in all, a safe statement might be that almost everyone has either heard or seen *something* this season with the possible exception of our members in the southwestern US.

There have been a couple of instances of FM double hop this year. The ones that come to mind are 1. San Antonio TX to Springfield, MA and 2. ST. John NF to Grand Marais, MN. I know there are more than that and I hope the people who heard them will post about it in the VUD.

CONVENTION 2007

This is the last chance we'll have to remind you of the joint WTFDA/NRC convention. You have a cut-off date for registering, so be aware of that. Send your registration fee to the NRC or send it to us and we'll get it to them. Frank has some station tours set up. For those not participating on the tours, John Bowker will be available at the hotel to offer any help as needed and to "hold down the fort" while the tours are in progress until Frank returns.

MEMBERS AND MORE

These renewals were received during the period from 6/20 to 7/14: **Eric Sundius** (AZ), **Greg Coniglio** (NY), **Frank Aden** (ID), **Alfred Laun** (MD), **Al Tobia** (CA), **Steve Rich** (IN), **Mike DeRoo** (KS), **Mike Lapinski** (NY), **Randy Miltier** (OR), **Ronald Purdue** (MN), **Pete Giacobelli** (NY), **Benjamin Greenlaw** (ME), **Nick Lombardi** (GA), **Alan Michalek** (MA), **William Lindsay** (WA), **Rod Jorgenson** (WI), **Doug Smith** (TN), **Paul Swearingen** (KS), **Mike Lazaro** (NY) and **Dave Austin** (SC). Thank you everyone for supporting the WTFDA!

Randy Miltier (OR) emailed to say he's still alive and kicking and trying to DX. I think he's a little bit envious of all the DX Dave Williams hauls in from Redmond, OR. Randy lives in Ashland and never seems to pick up anything when Dave's FM DX is blazing along.

The same thing happens with myself and **Jeff Rostron**. Jeff has a pipeline to WTSS 102.5 in Buffalo. He must have perfect line of sight to WTSS because he hears them all the

time. He'll tell me about it, I'll go to the radio and...nothing. I don't know how he does it.

NØUIH
Eric S. Bueneman
631 Coachway Lane
Hazelwood, MO 63042-1347

Pse QSL Tnx St. Louis County

CONFIRMING STATION	DATE			UTC	MHz	R S T	MODE 2-WAY
	DAY	MONTH	YEAR				

This month, our QSL card belongs to **Eric Bueneman** (MO) who sent it in with his renewal. Thanks Eric and hope all is well with you.

THE FUTURE WITH DTV

For those of you wondering what your TV dial is going to look like after the analogs bite the dust, I'd recommend a look at Doug Smith's website, www.w9wi.com. Doug has posted a table of final DTV channel assignments by state, a glimpse into the digital television future. In it you'll find the final resting place of your local television stations.

An interesting sideline to this table is a table of lowband digital stations which was put together by Bill Hepburn from Doug's list. What we find is that low band VHF will be almost completely open. As of today there are only about forty (4-0) digital stations who will be using channels two through six and only four stations will be using channel 4! Of course there could be one or two corrections to the list as we approach zero-hour, but for the most part, the list is very accurate. We have it, and if we have space for it we'll put it in this VUD. It won't take up too much space.

SANGEAN HDT-1X

There's an updated version of the HDT-1 available from Sangean. It costs a little bit more, about \$50.00 more. It allows the user to force HD stations into analog mode and to dim the annoying blue display when the radio is turned off. They've also put in a stereo indicator and added a feature that outputs

analog on one channel and stereo on the other, for comparison. Chris Cervantez says it overloads less. I've also read a review of this tuner online. It was written by a Brian Beezley and Brian found a few of the technical specifications on this tuner were actually worse than on the HDT-1. But many of us would never hear a difference.

DTV DXERS HALL OF FAME

Dan Oglethorpe has put together a "Hall of Fame" page for DTV DXers. Dan writes: "I know the DTV Hall of Fame page is probably a silly idea to some WTFDAers. Nevertheless, DTV DXing is difficult. I like Greg Barker and Steve Rich, but most hardcore TV DXers, unfortunately, will never share their enthusiasm for DTV DXing. Therefore, I want to put every DXer's name on that page who has managed to do well with DTV DX.

I keep thinking that thirteen DXers have received DTVs via Es, but I can only locate eleven. I know that others fit into the distance and total loggings categories, as well.

Would you mention this page in VUD? Maybe a few more DXers will step forward with DTV logging information."

<http://www.tvdxexpo.com/dtvhall.html>

LOWBAND DTV CHANNEL ASSIGNMENTS

Here we go:

CHANNEL 2

KTNL	AK	Sitka
KNAZ	AZ	Flagstaff
KREX	CO	Grand Junction
WLBZ	ME	Bangor
KNOP	NE	North Platte
KVBC	NV	Las Vegas
KOTA	SD	Rapid City
KJWY	WY	Jackson
CIIT	MB	Winnipeg

CHANNEL 3

KYUK	AK	Bethel
KIEM	CA	Eureka
WSBS	FL	Key West
KYUS	MT	Miles City
KVNV	NV	Ely
KDLO	SD	Florence
WBRA	VA	Roanoke
CBLFT9	ON	London
CKWS2	ON	Prescott

CHANNEL 4

KJNP	AK	North Pole
WHBF	IL	Rock Island
WDKY	KY	Danville
WOAY	WV	Oak Hill

CHANNEL 5

KYES	AK	Anchorage
WOI	IA	Ames
WBKP	MI	Calumet
WGVK	MI	Kalamazoo
KXLF	MT	Butte
KHAS	NE	Hastings
WLMB	OH	Toledo
KOBI	OR	Medford
WMC	TN	Memphis
WTVF	TN	Nashville
KCWX	TX	Fredericksburg
WCYB	VA	Bristol
WDTV	WV	Weston
CICA13	ON	Huntsville

CHANNEL 6

WEDY	CT	New Haven
WABW	GA	Pelham
WCES	GA	Wrens
KBSD	KS	Ensign
KTVM	MT	Butte
WRGB	NY	Schenectady
WPVI	PA	Philadelphia
KPTW	WY	Casper
CBCE	ON	Little Current
CIII22	ON	Stevenson

Interesting list, wouldn't you say?

CAN'T RECEIVE TVFMDX LIST MESSAGES?

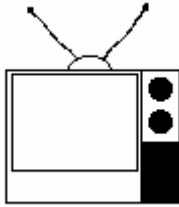
If you subscribe to our tvfmdx list but suddenly stop receiving messages, there is something you can do about it. Get on the net and go to <http://www.wtfda.info>. In the WTFDA Help Central area you'll find updates about issues with our email lists. Currently we still have problems with Comcast and recently Bellsouth is not accepting email from wtfda.info. Please check there for details.

HAPPY SECOND ANNIVERSARY

Speaking of the WTFDA Forums, July 17 marks our second anniversary there. The Forums have proved popular with some non-members, and who knows, they might just join the club at some point. And for those of you who don't want to join an email list, this is just what the doctor ordered. Anyone can read the posts there but you need to be registered in order to post anything.

Also remember that we delete anyone who has registered but not visited for six months. If you are one of those people you'll have to re-register if you want to post. And remember also that the eVUDs are there and you MUST be registered to read or download them.

That's all for August. See you next month.



TV News

Douglas E. Smith
 1389 Old Clarksville Pike
 Pleasant View, TN
 37146-8098
w9wi@w9wi.com
<http://www.w9wi.com>

August 2007

Abbreviations:

AF	Applied For (a new station)	NW	New station on the air
Aux	Auxiliary (backup) transmitter	PA	Proposed Amendment
CC	Callsign change	PC	Power (and/or tower height) change on the air
CL	City-of-license change	PG	Power change granted
DC	Converted to DTV	PR	Power change requested
DCC	Digital Companion Channel	RA	Returns to the air
NS DCC	Granted flash-cut to DTV	QC	Channel (frequency) change on the air
DE	License/permit deleted	QG	Channel change granted
DR	Requests flash-cut to DTV	QR	Channel change requested
FC	Programming (format) change	RE	Reinstated (previously-dismissed app.)
FTP	Failure to Prosecute	ROA	Request of Applicant
GA	Granted amendment (to table of channel allotments)	SI	Off the air (silent)
LC	License to Cover	STA	Special Temporary Authority
MX	Mutually Exclusive	XC	Transmitter site changed
NDA	Non-directional antenna	XG	Transmitter site change granted
NS	Permit granted for new station	XR	Transmitter site change requested

News:

(full-power analog stations in **bold face**; LPTV and translators in regular type; full-power digital stations in **bold italics**; low-power digital stations in regular italics)



Puerto Rico:

Ponce	8	WSTE-DT	NW 50kw/ 88m, 18-02-52/ 66-39-16
Ycamuy	36	W45DD	QR from ch. 45, 70kw, 18-19-06/ 67-10-48. CL probably should be "Camuy".



USA:

Alabama:

Anniston	9	WJSU-DT	NW 15.6kw/ 359m
Dothan	15	WDTH-LP	QG from ch. 59, 1kw
Dothan	23	W23DJ	QC from ch. 53, 150kw
Mont-gomery	51	WNCF-DT	PR<5.9kw
Priceville	51	WYAM-LP	PG<19.6kw

Alaska:

Anchorage	5	KYES-TV	PR>277m dismissed; CC from KYES
Juneau	24	KXLJ-LP	CC from K24HB
Kenai	8	K08LW	PR>400w
North Pole	20	KJNP-DT	NW 15kw/8m, 64-45- 32/ 147-19-26

Arizona:

<i>Bullhead City</i>	<i>51</i>	<i>K51IO</i>	<i>DG 15kw</i>
<i>Littlefield; Parker;</i>	<i>30;</i>	<i>K30IP;</i>	<i>FC; sold to Hispanic</i>
<i>Quartzsite;</i>	<i>49;</i>	<i>K49IM;</i>	<i>Christian Community</i>
<i>Tacna</i>	<i>55;</i>	<i>K55KC;</i>	<i>Network</i>
	<i>27</i>	<i>K27IJ</i>	
<i>Prescott</i>	<i>53</i>	<i>K53IJ</i>	<i>XR 34-13-58/ 112-22-13, from zero offset to minus</i>
			<i>AF dismissed</i>
<i>Yuma</i>	<i>39</i>	<i>NEW-LP</i>	

Arkansas:

<i>El Dorado</i>	<i>32</i>	<i>K32HT</i>	<i>QG from ch. 55, 1kw</i>
<i>El Dorado</i>	<i>47</i>	<i>K47JG</i>	<i>NW 1kw, 32-59-35/ 92-20-38</i>
			<i>QC from ch. 18, 10kw</i>
<i>Eureka</i>	<i>22</i>	<i>K18EG</i>	<i>NS 550kw/ 286m, 35-49-49/ 94-09-24</i>
Fort Smith	18	KFSM-DT	
			<i>FC; sold to Hispanic</i>
<i>Fulton</i>	<i>64</i>	<i>K64GT</i>	<i>Christian Community</i>
			<i>Network</i>

California:

<i>Moreno Valley</i>	<i>69</i>	<i>KMRZ-LP</i>	<i>CC from K69JA</i>
<i>Bakersfield</i>	<i>13</i>	<i>KBVJ-LP</i>	<i>CC from K13YV</i>
Bakers-field	25	KGET-DT	adds CW on 17-2 subchannel
Bakers-field	33	KBAK-DT	adds KBFX-LP 58 (Fox) and 4KIDSTV on 33-2 and 33-3 subchannels. 33-2 may be off.
Barstow	44	KHIZ-DT	NW 1000kw/ 596m, 34-36-34/

Caliente	41	K41JN	117-17-11 PR>120kw				26.6kw, 26-12-12/ 81-48-54 (TBN)
Clovis	43	KGMC	FC to America 1	St. Augustine	28	WQXT-CA	QR from ch. 22, 150kw, 29-54-14/ 81-22-55
Concord	42	KTNC-TV	FC to Spanish independent				
Eureka	35	KBVO-LP	CC from KEAZ-LP	Williston	56	W56EJ	NW 1kw, 29-24-11/ 82-27-03 (S:LatTV)
Fresno	38	KSEE-DT	adds Weather Plus on 24-2 subchannel				
Fresno	40	KVPT-DT	adds PBS-HD and Vme (Spanish children's channel) on 18-2 and 18-2 subchannels	Georgia: Atlanta	27	WAGA-DT	NW 1000kw/ 332m
Hanford	20	KFTV-DT	adds KTFF-61 (Telefuturo) on 21-2 subch.	Hawaii: Honolulu	35	KHNL-DT	NW 5.9kw/ 453m, 21-22-55/ 158-06-19
Los Angeles	3	KVTU-LP	PR<100w, 34-14-17/ 117-04-31; PG; CC from KSPP-LP	Kailua	50	KKAI	NW 19kw/ 340m, 21-19-23/ 157-40-53
Los Angeles	36	KNBC-DT	PG>665kw, DA				
Los Angeles	41	KLCS-DT	NW (aux)	Kula	19	K19FV	NW 40w, 20-50-33/ 156-19-18
Lucerne Valley	22	K33DK	QR from ch. 33, 2kw, 34-23-09/ 117-03-24	Waimanalo	56	KUPU	NW 19kw/ 340m, 21-19-23/ 157-40-53
Monterey	27	K27IE	FC; sold by TBN				
National City	61	K61GH	PR>75kw, 32-41-47/ 116-56-09	Idaho: Boise	21	KAID-DT	PC>725kw
Palm Desert	9	K09XW	XG 33-52-15/ 116-13-37	Twin Falls	7	K07YB	FC; sold to Hispanic Christian Community Network
Palmdale	8	KFLA-LD	CC from K08NZ				
Palmdale	22	KPAL-LP	AF DCC 2.5kw	Illinois: Arlington Heights	42	W64CQ	QR from ch. 64, 150kw
Porterville	48	KTFF-DT	adds Worship on 61- 2 subchannel? (maybe off)	Indiana: Chesterton	4	WAAA-LP	CC from W04CQ
Porterville	54	KVVG-LP	FC to Televida	Marion	51	WIWU-LP	XR 40-36-56/ 85-38-47
Redding	4/8	KVFR-LP/ LD	CC from K04PY/ K08OI-D	West Lafayette	65	W65EH	FC; sold to Hispanic Christian Community Network
Redding	40	KBVS-LP	CC from K40KA	Westville	49	WAAA-LP	QC from ch. 4, 87kw, 41-31-17/ 87-01-26; CL from Chesterton
Redding	48	NEW-LP	AF dismissed				
San Francisco	38	KCNS	FC to Chinese ethnic	Iowa: Estherville	48	KBVI-LP	CC from K48JZ
Santa Barbara	8	KZDF-LP	RA with Azteca America	Mason City	42	KIMT-DT	PR<200kw/ 463m, 43-28-32/ 92-42-29, to share tower with KYIN-DT
Susanville	36	K65CC	QC from ch. 65, 1.17kw	Spencer	52	KBVK-LP	CC from WTWB-
Susanville	42	K67BY	QC from ch. 67, 1.12kw				
Colorado: Longmont	26	K63AB	QR from ch. 63, 115kw, 39-54-48/ 105-17-33 from Estes Park	Kansas: Chanute	39	K39HI	NW 6kw, 37-41-15/ 95-24-49
Pueblo	48	KVSN	CC for NS	Parsons	33	K33HW	NW 25kw, 37-17-34/ 95-24-43
Steamboat Springs	33	KHSB-LP	CC from K33IE	Topeka	10	K10PD	FC; sold to Hispanic Christian Community Network
Delaware: Rehoboth Beach	59	WRDE-LP	PG>20.5kw				
District of Columbia: Washington	8	WMDO-LD	PR>200w, 38-56-24/ 77-04-54				
Washington	47	WMDO-CA	PR<16.5kw, 38-56-24/ 77-04-54				
Florida: Naples	16	W16CJ	QC from W56DW,				

Smithfield	34	WARZ-LP	75-39-01 PC>70kw	Abilene	22	KKAB-LP	NW 10kw, 32-25-04/ 99-58-16
North Dakota:				Abilene;	31;	K31ID;	FC; sold to Hispanic
Bismarck	16	KBMY-DT	NW 1.6kw/7m, 46-48-23/ 100-44-36		46;	K46IG;	Christian Community
Fargo	21	WDAY-DT	NW 1000kw/ 322m, 47-00-28/ 97-12-02	Beaumont;	60;	K60GP;	Network
Fargo	44	KVLY-DT	NW 356kw/ 576m, 47-20-32/ 97-17-20	Denison;	7; 2;	K07XZ;	
				Gainesville;	35;	K02QH;	
				George West;	13;	K35HX;	
				Paris; San	13;	K13YP;	
				Angelo; Smith	13;	K13YX;	
				Hill; Texarkana;	66;	K13YN;	
				Victoria	45	K66GF; K45IN	
				Amarillo	40	KDAX-LP	QR from ch. 13, 35kw, 35-15-41/ 101-52-52
Ohio:				Austin	32	KGBS-CA	PR RE>86kw
Akron	23	WVPX-DT	QR from ch. 59, 317kw (to flash-cut from analog?)	Beaumont	50	KBMT-DT	NW 35.5kw/ 276m, 30-11-26/ 93-53-08
Cleveland	8	WJW	NW 61.5kw/ 257m (aux)	Britton	26	KODF-LP	PG>86kw
Dayton	50	WDTN-DT	NW 1000kw/ 323m	Corpus Christi	19	KDCP-LP	PG<10kw, 27-45-32/ 97-36-26
Steuben-ville	57	WTOV-DT	NW 485kw/ 261m	Corpus Christi	24	KCCX-LP	PG>9kw, 27-47-26/ 97-27-02
Oklahoma:				De Soto	28	KHPK-LP	PG>30.5kw
Altus	19	K19AA-D	DG 430w	De Soto	31	K31GL	PG<20kw
Woodward	35	KUOK-DT	NS 8kw/197m (for flash-cut from analog)	DeWalt	34	KUVM-CA KUVMLD	CC from KVIT-LP CC from KVIT-LD
				El Paso	18	KDBC-DT	PG 160kw/ 577m, 31-48-19/ 106-28-59
Oregon:				McAllen	49	KNVO-DT	NS 1000kw/ 286m
Eugene	25	KVAL-DT	NW 27kw/ 395m	Pampa	34	KZFB-LP	NW 120kw, 35-23-00/ 101-18-41 (TBN)
Glide	26	K02AU	QC from ch. 2, 10.8kw, 43-22-19/ 123-03-48	Paris	48	KNOK-LP	CC from K48IZ
Roseburg	19	KPIC-DT	NW 50kw/ 274m	Paris	49	KPTD-LP	NW 10kw, 33-37-15/ 95-32-50; CL from Cooper (Daystar); CC from K49II
Salem	52	KXPD-LP	CC from KWVT-LP; was briefly KGUG-LP	Paris	64	KHFD-LP	CC from K64GQ
The Dalles	18	K61BX	QC from ch. 61	San Angelo	40	KAEM-LP	CC from KUVMLP
Tillamook	4	KWVT-LP	CC from K04PE	San Antonio	6	KFLZ-CA	QR from ch. 7, 500w, 29-26-29/ 98-30-22
Tillamook	26	K26HS	NW 3.25kw, 45-26-48/ 123-47-59 (TBN)	Sherman	34	KADY-LP	CC from K34HQ
				Victoria	30	KCPV-LP	QC from ch. 55, 2kw, 28-47-23/ 96-56-20
South Carolina:				Wichita Falls	36	KUWF-LP	CC from K36GZ; was briefly KTWW-LP
Greenville	35	WGGS-DT	NW 150kw/ 337m				
South Dakota:				Utah:			
Aberdeen	16	KDSD-TV	PR<357m dismissed	Enterprise	32	KMBU-LD	DG 10kw
Eagle Butte	25	KPSD-DT	NW 101kw/ 489m, 45-03-14/ 102-15-47	Provo	22	K55IT	QR from ch. 55, 11.35kw
				Provo	44	KBYU-D	PG>403kw
Tennessee:				Vermont:			
Chatta-nooga	28	WRNG-LP	QC from ch. 63, 3.5kw, 34-57-12/ 85-22-55; CL from Ringgold, Ga.	Burlington	43	WFFF-DT	NW 47kw/ 839m
Ducktown	22	WCTD-LP	NW 150kw, 35-02-18/ 84-27-13; CL from Blue Ridge, Ga. (Daystar); CC from W22CZ	Virginia:			
				Charlottes-ville	13	W13DD	FC; sold to Hispanic Christian Community Network
Texas:				Harrison-burg	49	WHSV-DT	NW 65kw/

Keyesville	45	WKYV-LP	639m PR>72.6kw, 37-30-45/ 77-36-05
Washington:			
Belling-ham	35	KVOS-DT	NW 580kw/ 799m, 48-40-50/ 122-50-22
Seattle	53	NEW	PA from analog ch. 62 denied, Canadian objection
Tacoma	27	KBTC-DT	PG>45kw/235, 47-16- 44/ 122-30-42
Yakima	2	KKFQ-CA	PR<1kw, 46-31-58/ 120-30-33
Yakima	32	KKFQ-LD	PR>9.5kw, 46-31-58/ 120-30-33
West Virginia:			
Beckley	2	WCIR-LP	NW 3kw, 37-47-53/ 81-06-50
Elkins	31	W31CQ	NW 2.7kw, 38-51-41/ 79-56-01 (WDTV-5)
Oak Hill	50	WOAY-DT	NW 600kw/ 200m
Romney	69	W69AC	PG<1kw
Wisconsin:			
Eau Claire	6	K06OA	NW 900w, 44-55-43/ 91-32-32
Milwaukee	22	WVCY-DT	NW 196kw/ 286m, 43-05-46/ 87-54-15
Milwaukee	35	WMVT-DT	NW 500kw/ 355m
Wausau	4	KBVW-LP	CC from W04DI
Wyoming:			
Casper; Jackson;	7;	K07YF;;	FC; sold to Hispanic
Kemmerer;	39;	K39JU;	Christian Community
Laramie	46;	K46JY;	Network
	25	K25IE	
Casper	31	K31HT	NW 10w, 42-44-26/ 106-21-34
Cheyenne	14	K14LV	NW 11.2kw, 41-10-01/ 104-45-21 (TBN)
Cheyenne	47	KGSC-LP	PG>20kw, 41-09-34/ 104-43-19; CC from K47IU
Chugwater	12	K12QG	NW 3kw, 41-46-02/ 104-48-57
Cody	34	K34HZ	NW 50w, 44-29-48/ 109-09-07

Thanks to Joel Nelson, Curtis Sadowski, and Dennis Smith for information elsewhere in this month's column.

WLJC-65 Beattyville, Kentucky has received permission to go dark and become a DTV-only station on channel 7. Besides the typical economic and protection of new two-way services arguments, WLJC notes their analog transmitter was destroyed by lightning in October 2006, and has been off the air ever since. The Commission agreed it was not in the public interest to require a non-profit station to replace a transmitter that would be removed from the air in 18 months.

At the same time, the Public Notice noted that cable/satellite penetration in the station's market (Louisville) is only 64%; 36% of viewers are still using antennas!

CHNU-66 Fraser Valley (Vancouver) BC has got in a bit of trouble with the CRTC. CHNU is licensed as a religious station. At least half of primetime programming and 75% of overall programming must be religious in nature; all remaining programming must be "...programs that reflect broadly accepted religious, spiritual, ethical or moral values; ..."

CHNM-42 filed a complaint against their competitor, claiming channel 66's program schedule showed the station wasn't complying with its religious license.

The CRTC agreed with CHNU's classification of *Touched by an Angel* and *7th Heaven* as religious programs. They also accepted the *World Vision* infomercials as religious programming.

CHNU claimed a number of other prime-time programs qualified as "programs that reflect broadly accepted religious, spiritual, ethical or moral values". The CRTC did not seem quite so ready to classify a number of U.S. sitcoms in this way!

They were even less convinced by CHNU's claim that *Friends* belongs in this category! (one might argue that the lack of religion – and maybe more so, the extramarital sexual activity -- reflected in *Friends* is in fact a broadly accepted value, just not accepted by religious leaders...)

CHNU was given until September 1st to amend several locally-produced news and public-affairs programs to reflect the religious nature of the station's license. Because of contracts and acquisition delays, they were given another three months – until the 1st of 2008 – to replace the cited U.S. programs – or file an application to remove the religious restriction from their license.

Interesting translator developments in Minnesota: *Upper Midwest Broadcasting* reports K18HP Jackson is carrying KSTP-DT's 2nd subchannel, a mix of newscast reruns and live radar. And in St. James, digital translator K32GX-D is carrying KTCA-DT's bitstream in its entirety – both subchannels – and the PSIP data, so the translator comes up as channels 2-1 and 2-2.

On a similar vein, the Indian Wells Valley TV Booster has begun translating DTV signals into Ridgecrest, California. As of June 14th, they're translating:

L.A. station	Translator
KNBC-DT 36	K55AB-D 35
KTLA-DT 31	K57AK-D 39
KCAL-DT 43	K45GQ-D 45
KCET-DT 59	K51DD-D 51

They've also switched several of their analog translators to translating DTV signals – i.e., converting them to analog:

L.A. station	Translator
KCBS-DT 60	K02HY
KNBC-DT 36	K04HX
KTLA-DT 31	K05FO
KCAL-DT 43	K09MG
KTTV-DT 65	K11ML
KCOP-DT 66	K13NF
KCET-DT 59	K14AT

For some reason they're still carrying KABC's analog signal. On K14AT, they're carrying the 28-2 subchannel – not -1 – I'm guessing 28-2 is a standard-definition simulcast of high-definition on 28-1; carrying 28-2 on an analog translator would avoid aspect ratio problems. (and since the entire KCET-DT datastream is being rebroadcast on K51DD, they have both subchannels available for analog retransmission)

The IWVTV Booster has two sites; the UHF translators are at one site, while the VHF (and K14AT) are at another. Their plan is to convert the UHF site to digital, and to use the VHF site to downconvert those digital signals to analog. They indicate they plan to continue downconverting to analog “...for as long as the FCC will allow us to.”

Good DX!





Bringing you the most recent FM changes in the U.S. and Canada!

WTFDA FM NEWS

AUGUST 2007
FINAL EDITION

CHRIS KADLEC, EDITOR
3860 SHOREWOOD DR.
FREMONT, MI 49412-9604
www.beaglebass.com/dx/

INDEX OF ABBREVIATIONS

AF	applied for (a new station)	NS	new station granted
AFA	American Family Association	NW	new station signs on
aux	Auxiliary antenna (backup)	OSA	one step application granted for change
CC	call letter change	PA	proposed amendment change to FM allocation table
CL	city of license change	PC	power change on the air (> = increase, < = decrease)
CX	a construction permit has been cancelled	PG	power change granted (> = increase, < = decrease)
C1-C5	change in status to that FM license class	PR	power change requested
DA	directional antenna	QC	frequency change occurred
DE	station has been deleted	QG	frequency change granted
FC	format change	QR	frequency change requested
GA	granted amendment to table of FM allocations	RA	silent station returns to the air
GE	granted extension of construction permit	RE	station requests an extension on permit
GX	granted replacement of expired permit	ROA	request of applicant
LC	license to cover filed (ready to come on air)	RX	station requests replacement of expired permit
MC	multiple-city ID	SC	slogan change or update
NC	no change yet on a reported change or permit	SI	station is silent
ND	non-directional antenna	SOA	signed on the air
NO	not on the air	XA	dismissed amendment to FM allocations
		XC	transmitter site change occurred
		XG	transmitter site change granted

UNITED STATES and CANADA

CANADA

British Columbia / BC

Abbotsford	101.7 NEW / AF 316w/150m, to relay CBU-AM 690 Vancouver
Enderby	104.3 NEW / AF 210w/-84, to fill areas not reached when CKXR moved from AM to FM
Hornby Island	96.5 NEW / NS 5w, community; replaces previous permit for 91.5 which expired unbuild.
Metlakatla	98.1 VF2119 / proposes deletion, to be replaced by new 98.1 station in Prince Rupert
Powell River	105.3 NEW / AF 3kw/408m, to relay CKAY-FM Sechelt
Prince Rupert	98.1 NEW / AF 22w/422m, to relay CFNR-FM Terrace
Sicamous	102.1 NEW / AF 200w/-169, to fill areas not reached when CKXR moved from AM to FM

Newfoundland and Labrador / NL

Carbonear	103.9 CHVO / QG from AM 560, 14kw/124m, 47-43-13/53-12-54, country
------------------	--

Nova Scotia / NS

Big Harbour	Unknown frequency CBI / CBC suggests they'll apply for a relay of 97.1 Sydney here.
Englishtown	106.1 CBI / CBC suggests they'll apply for a relay of 97.1 Sydney here.
Glace Bay	89.7 CKOA-FM / NS, English community, 4.7kw/49m, 46-11-59/59-58-46 (replaces temporary 50w-V/20m station)
Ingonish	Unknown frequency CBI / CBC suggests they'll apply for a relay of 97.1 Sydney here.
Kentville Pomquet	89.3 NEW / NS 9.9kw, classic hits 92.5 NEW / AF 475w/31m, to relay CKJM-FM Cheticamp
Sydney	93.1 NEW / AF 50kw/86m, 46-05-40/60-08-55, adcon/classic hits, denied

Sydney	97.1 CBI / QG from 1140 AM, 61.4kw-H/123m, 46-05-40/60-08-55 (95.9/105.1 CBC tower)
Sydney	100.9 NEW / AF 10.5kw/168m, 46-05-55/60-18-44, youth contemporary, denied
Sydney	101.9 NEW / NS 57kw-H/123m, 46-05-40/60-08-55, rock
Sydney	103.5 NEW / NS 26.5kw-H/170m, 46-05-55/60-18-44, rock

Ontario / ON

Collingwood	95.1 CKCB-FM / PR>4kw denied, for economic reasons
Elliot Lake	98.7 NEW / AF 50w/-5m, to relay CKNR-FM 94.1 to the north part of the city
Espanola	99.3 NEW / NS 794w-V/33m, 46-14-16/81-46-35; classic hits
Hawkesbury	107.7 CKHK-FM / NS 875w/137m, 45-30-30/74-39-49
Leamington	92.7 CJSP-FM / NS 960w-H/955w-V/145m, 42-00-35/82-33-45 (CHYR-96.7 tower), country
Meaford	102.9 NEW / AF 17.5kw/110m, to relay CIWV-94.7 Hamilton
Peterborough	90.5 CKKK-FM / QG from 99.5, 230w/26m. Some objection as station was allowed to switch from secondary to protected status without solicitation of competing applications.
Sudbury	88.5 NEW / AF dismissed
Sudbury	91.7 NEW / NS 50kw/121m, 46-30-14/80-58-04, country (Larche)
Sudbury	94.5 NEW / AF dismissed (2 apps)
Sudbury	101.1 NEW / AF dismissed (2 apps)
Timmins	105.7 NEW / NS 37.8kw, to relay CBBX-FM Sudbury (Espace Musique)

Québec / QC

Montréal	106.3 NEW / NS 190w/194m, 45-30-10/73-35-48, ethnic
Montréal	106.3 NEW / AF 327w, world music, denied
Montréal	106.3 NEW / AF 324w, ethnic, denied
Montréal	106.3 NEW / AF 320w, bilingual (English/French) religious, denied

Vaudreuil-D. 106.3 NEW / NS 1.1kw, classic hits but must seek different frequency, mutually exclusive with new Montréal station on this frequency; in Vaudreuil-Dorion.

Saskatchewan / SK

Melville 98.5 NEW / AF 43w/61m, to relay CJC-FM Yorkton
 Tisdale 95.7 NEW / AF 45w, to relay CJNE-FM, denied. For economic reasons; also, CJNE admitted violation of Canadian music content rules.

UNITED STATES

Alabama / AL

Andalusia 91.5 WSTF / PG>20.5kw; mutually-exclusive frequency change 91.1 to 91.3 and power increase for WAXU Troy dismissed
 Cordova 92.5 WXJC-FM / CC from WPHC
 Thomaston 97.7 WGZZ / CC from WEZZ-FM

Alaska / AK

Kasilof 106.9 KFSE / CC from KZNZ
 Kotzebue 103.9 KHZK / NW 200w/14m, 66-54-11/162-34-16

American Samoa / AS

Pago Pago 93.1 KKHJ-FM / CC from KKHJ

Arizona / AZ

Bisbee 96.1 KBRP-LP / PC 137m, 31-26-31/109-54-50
 Camp Verde 104.3 KAJM / PC 22kw/807m, 34-13-47/112-21-03; CL from Payson
 Chino Valley 92.5 NEW / NS 1.5kw/174m, 34-42-53/112-31-33
 Flagstaff 103.7 KZGL / CC from KFZA
 Kingman 97.1 KGPS-LP / NW 100w/-37m, 35-13-45/113-56-45
 Parker 97.3 NEW / NS 25kw/37m, 34-00-11/114-13-40
 Snowflake 99.7 NEW / NS 50kw/143m, 34-38-26/110-19-16
 Tucson 91.3 KXCI / PR>580w/1075m

Arkansas / AR

Arkadelphia 91.9 990318MB / NS (Henderson State Univ.); AF dismissed (Bright Light Broadcasting)
 Gould 102.5 KAFN / PC<54m, 33-58-11/91-32-58

California / CA

Banning 103.5 KSOJ-LP / NW ?w/46m, 33-56-38/116-53-35
 Big River 94.7 KFLG-FM / PG<19.5kw/834m, 34-33-06/114-11-37, CL from Kingman, Ariz.
 Burney 92.9 NEW / NS 6kw/-145m, 40-53-03/121-37-49
 Carlsbad 95.7 KUSS / PC>27.8kw/202m, 32-50-21/117-14-57
 Ceres 89.5 KBES / PG>150w-V (was H-only)
 Chester 98.9 KWLU / PG<1kw/754m
 Citrus Heights 99.5 KLVS / QG from 99.3, 5.1kw/109m, 38-38-32/121-05-25
 Coachella 93.7 KCLB-FM / PG 50kw/116m, 33-52-15/116-13-37
 Covelo 96.9 KQZT / CC for NS
 E. Porterville 100.5 KMQA / PG>2kw/612m, 35-45-36/118-45-30
 El Centro 95.3 KYFC-LP / NW ?w/32m, 32-47-33/115-32-14
 Holtville 100.1 KGBA-FM / CC from KGBA
 Inyokern 88.5 KZLU / PR>1kw/396m dismissed
 Johannesburg 100.9 KRAJ / PR<1.48kw/399m, 35-28-38/117-41-59

Lompoc 105.1 KRTO / PR>3.4kw/275m, 34-44-31/120-26-46
 McKinleyville 95.1 NEW / NS 2.45kw/317m, 40-49-32/124-00-05
 Mojave 96.1 KMVE / PG>630w/251m, 35-05-38/118-16-00
 Ridgecrest 104.9 KLOA-FM / PR 1.52kw/393m, 35-28-38/117-41-59
 San Francisco 99.7 KMVQ-FM / CC from KFRC-FM
 San Francisco 106.9 KFRC-FM / CC from KIFR
 Susanville 88.1 KJAR / PR<335m
 Tehachapi 88.7 KYLU / PR>390w dismissed
 Visalia 94.1 KFSC-LP / NW 100w/28m, 36-20-28/119-17-44
 Williams 99.1 KARA / PG>480w/644m, 39-12-20/121-49-10

Colorado / CO

Durango 91.9 KDUR / PG 6kw-V/-161m, 37-16-41/107-52-21 (drops 200w-H)
 Fort Collins 101.5 KKNZ-LP / CC for NS
 Gypsum 102.5 KQZR / PG<240w/851m, 39-46-30/106-50-45
 Silverton 95.5 KRKQ / CC for NS
 Silverton 104.1 NEW / PA, class A
 Starkville 91.7 981208ME / NS 370w/303m, 36-59-33/104-28-24 (Colo. College)
 Sterling 97.5 KSRX / CC for NS
 Trinidad 91.7 990208MA / AF dismissed (AFR)
 Wellington 94.3 KMAX-FM / CC from KKQZ
 Wheat Ridge 93.3 KTCL / PC<71kw/346m, 39-43-59/105-14-10; CL from Fort Collins
 Wheat Ridge 93.3 KTCL / PC<71kw/346m, 39-43-59/105-14-10

Delaware / DE

Millsboro 93.5 WZBH / PR>50kw/150m; CL from Georgetown

Florida / FL

Chassahowitzka 96.7 WEKJ-LP / QG from 99.9, 24m, 28-42-39/82-34-05; CL from Homosassa
 Clewiston 91.5 WPSF / CC for NS
 Destin 101.1 WCQQ-LP / PC<31cm (nearly one foot), 30-24-00/86-35-41
 Estero 92.5 WUSV / PC>25kw
 Hammocks 91.9 WMKL / PR>116m, 25-45-42/80-49-11; CL from Key Largo
 Homosassa 99.9 NEW / NS 6kw/100m, 28-40-50/82-33-50
 Immokalee 92.1 WAFZ-FM / PC 5.6kw/100m, 26-26-54/81-16-17
 Live Oak 98.1 WQHL-FM / PG>135m
 Live Oak 100.1 NEW / PA from 99.7, proposes reservation as non-commercial, to allow WKAA 99.5 to increase power to class C1
 Mexico Beach 99.3 WEBZ / CC from WPBH
 Naples 88.1 WBGY / PR>1.88kw-V/77m, 25-54-36/81-21-49 dismissed; waiver of 73.515 denied. (proposal wouldn't maintain 60dBu signal across at least 50% - either land area or population - of Naples)
 Naples Park 101.1 WAVV / CL changed from Marco
 Port Charlotte 91.7 WVIJ / PC>1.9kw
 Port St. Joe 93.5 WPBH / CC from WEBZ
 Sebring 88.3 WMKM / CC for NS
 Sebring 88.3 WMKM / PG>3.45kw-V/102m, 27-25-54/81-14-22
 Silver Springs 95.5 WNDD / PR>9.8kw/102m
 Tampa 90.5 WBVM / PC<74.7kw-V (H unchanged); XC 27-50-50/82-15-50

Georgia / GA

Ashburn 105.7 WFFM / FC; sold by K-Love
 Augusta 90.7 WACG-FM / PR>5.6kw-V/429m, 33-15-33/82-17-09
 Augusta 100.3 WRMK-LP / PC<27m, 33-30-11/82-03-36
 Brunswick 88.9 WWIO-FM / PR>11.7kw
 Cochran 89.7 WMUM-FM / PR<43kw/304m

Coosa 93.5 WSRM / QR from 95.3, 1.2kw/226m, 34-14-02/85-13-50
Cusseta 103.7 WBOJ / CC for NS
Cuthbert 91.9 990224MA / NS 6kw/62m, 31-45-18/84-47-26 (AFR); competing application in Eufaula, Ala. (Faith Broadcasting) dismissed
Cuthbert Lumpkin 91.9 WEBH / CC for NS
88.5 WTMQ / PR>24.5kw/164m, 31-59-20/84-55-59 dismissed but reinstated
Peachtree City Savannah 91.7 WMVW / CC for NS
91.1 WSVH / PG>96kw-V/431m, 32-08-48/81-37-05 (drops H)
Sylvester Thomson 106.1 WHKV / CC from WRXZ
89.5 WTHM / QR from 89.9, 34kw-V/180m, 33-44-32/82-31-17
Wadley 93.3 NEW / NS 6kw/91m, 32-50-55/82-24-10
Warm Springs Young Harris 88.1 WJSP-FM / PR 42kw/417m
95.1 NEW / NS 200w/483m, 34-56-26/83-55-08
Young Harris 95.1 WACF / CC for NS

Guam / GU

Agana 89.3 KPRG / PG>9.2kw/162m

Hawai'i / HI

Holualoa Kahului 92.1 KHWA / CC for NS
92.5 KLHI-FM / NW 1.7kw/674m, 20-39-36/156-21-50
Kahului Waianae Waianae 92.5 KLHI-FM / CC from KORL-FM
101.1 KORL-FM / CC from KLHI-FM
101.1 KORL-FM / PC 100kw-H/81kw-V/592m, 21-23-45/158-05-58; CL from Lahaina; moves from Maui to Oahu

Idaho / ID

Boise Latah 104.3 KAWO / CC from KTMV
89.7 NEW / AF dismissed (Moody Bible)
Middleton 88.7 931206MB / NS 3kw/811m, 43-45-18/116-05-52 (Southern Idaho Corp.)
Mountain Home Pocatello 99.1 KTMB / CC from KTPD
92.1 KPCC / NW 12kw/301m, 42-52-26/112-30-47
Rathdrum 90.3 NEW / AF dismissed (AFR, Mary V. Harris Fdn.)
Victor 92.3 KRVQ / PG>2.2kw

Illinois / IL

Atlanta Carpentersville 96.3 WLCN / PR>6kw
88.1 990319MH / NS 2kw-V/33m, 42-06-21/88-22-38 (Lifetalk; two competing 88.5 applications at Pingree Grove dismissed)
Colchester Danville 96.7 WGNX / CC for NS
88.5 WXVW / PR 1.2kw/52m, 40-06-00/87-23-28; CL from Veedersburg, Ind.
Farmer City 98.3 WWHP / PR>5.2kw/107m, 40-24-17/88-35-34
Farmington Joliet 96.5 WZPN / CC from WRIA
96.7 WSSR / PR 3.1kw/142m, 41-36-01/87-58-44
Kewanee 91.1 NEW / AF dismissed (AFR) (mutually exclusive with Bettendorf, Iowa)
Lemont Lincoln 93.5 WVIX / GA from Joliet
89.5 WLNK / PR>2.8kw/58m, 40-11-35/89-23-16 (adds V, was H-only)
Macomb 100.1 WKAI / PR 5.9kw/102m, 40-26-58/90-42-25 cancelled but reinstated & granted; PG>11.5kw/148m, 40-26-59/90-42-27 cancelled
Macomb Peoria Polo Rockford Trenton 100.1 WKAI / PC 5.9kw/102m
90.7 WAZU / CC for NS
107.7 WLLT / PG>3kw
97.5 WZOK / PG>138m
101.7 WGEL / PR>100m, 38-43-02/89-39-38; CL from Greenville

Indiana / IN

Clinton Crown Point 93.7 WPFR-FM / GA from 93.9
90.5 891019MA / NS 10kw/69m, 41-27-56/87-24-29 (Hyles-Anderson College); competing Moody Bible application dismissed
Danville Edinburg 88.1 WDWL / CC for NS
100.3 WYGB / QC from 102.9; PC>6kw
Evansville 102.5 WCFY-LP / QR from 102.7, 23m, 38-03-03/87-29-57 dismissed
Fishers Greencastle 95.5 WFMS / GA from Indianapolis
90.5 WIKL / PR<8kw-V/129m, 39-35-34/86-33-07
Lafayette Twp. Lawrence 91.1 WCYT / PG>720w
93.9 WWFT / GA from class A to B1, CL from Fishers
Lawrence 93.9 WWFT / PA from from Fishers (counterproposal to B1 proposal, wouldn't require WPFR to change frequency, denied)
Marion New Haven 94.3 WIWU-LP / CC from WCWC-LP
91.3 970501MF / AF dismissed (AFR)
Oakland City 94.1 WWPO-LP / PR ?w/63m, 38-20-12/87-22-01 dismissed
Oolitic Roanoke Thornton 94.1 NEW / PA, class A
94.1 WBNI-FM / PR<3.4kw
97.5 W230AR / PA from class D, denied
Zionsville 91.9 WITT / CC for NS

Iowa / IA

Bettendorf 91.1 960927MA / NS 20kw/188m, 41-18-44/90-22-46 (KUNI)
Bettendorf Center Point 91.1 KWNJ / CC for NS
89.9 NEW / AF dismissed (Florida Public Radio); mutually exclusive with Marion applications
Fairfield 88.1 970321MB / NS 250w/99m, 41-05-21/91-58-05 (KUNI); competing AFR application dismissed
Fairfield Johnston 88.1 KUNJ / CC for NS
95.7 KGCW-LP / XR 41-35-46/93-45-51
Marion 89.9 971110MC / NS (KUNI); AF dismissed (AFR)
Marion Oskaloosa 89.9 KZNJ / CC for NS
89.5 990113MA / NS 420w/94m, 41-19-15/92-38-44 (KUNI); AF dismissed (Solid Rock Broadcasting)
Oskaloosa Oskaloosa 89.5 KCNJ / CC for NS
90.5 981215MA / NS (WOI); AF dismissed (Salt & Light Comms. Inc.; Family Stations)
Ottumwa 88.3 970321MA / NS 500w/107m, 40-57-41/92-22-13 (KUNI); competing AFR application dismissed
Ottumwa Perry 88.3 KUNE / CC for NS
91.7 951215ME / NS (WOI); AF dismissed (AFR)
Treynor 95.3 KCSI / PR 22.5kw/105m, 41-14-43/95-41-32; CL from Red Oak
Waverly 89.9 KWER / CC for NS

Kansas / KS

Columbus 107.1 KMOQ / PG>11.2kw/150m, 37-13-15/94-42-22
Norton 106.7 KQNK-FM / PR>5.45kw/105m

Kentucky / KY

Annville 96.7 WANV / NW 1.85kw/152m, 37-13-24/84-02-01
Ashland Burgin 91.1 WKAO / CC for NS
105.9 NEW / NS 1.1kw/144m, 37-47-18/84-42-50 (K-Love)
Burgin Frankfort 105.9 WKYB / CC for NS
88.3 NEW / AF dismissed (AFR) (mutually exclusive with WRFL-88.1 upgrade)
Lexington Louisville 88.1 WRFL / PG>7.9kw
92.7 WXBH-LP / NW ?w/54m, 38-09-22/85-35-34
Morgantown 99.1 NEW / NS 6kw/56m, 37-17-38/86-44-30
Radcliff Richmond 103.5 WAKY / CC from WASE
88.9 WEKU / PR>100kw/215m

Richmond Science Hill 101.5 WVLC-FM / CC from WLRO
106.1 NEW / NS 3.1kw/141m, 37-07-24/84-33-06
Shepherdsville 105.1 WLRS / PG>1.8kw/181m, 38-04-36/85-46-11
St. Matthews 106.9 WVEZ / CL changed from Louisville

Louisiana / LA

Addis 105.5 KDDK / PC>6kw/100m, 30-19-25/91-16-52; CL from Franklin
Bunkie 89.5 KITA / CC from KPCL
Buras 91.1 980226MB / NS (Empire Broadcasting); AFR application dismissed
Jackson 104.5 WNXX / PC 3kw/144m, 30-44-44/91-07-32
Mansfield 92.7 KJVC / PR>6kw/87m, 32-05-41/93-49-01
Natchitoches 89.7 KBIO / PR>10kw/100m, 31-53-22/92-48-50
Opelousas 105.9 KFZX-FM / CC from KTSJ

Maine / ME

Van Buren 98.1 WCXV / PR<1m
Winslow 95.3 WWSA / PG>27.5kw

Maryland / MD

Braddock Hts. 103.9 WTLF / CC from WGYS
Frederick 99.9 WFRE / PC<7.6kw
Fruitland 107.7 WKHI / QR from 107.5, 6kw/72m, 38-23-00/75-24-53
Ocean City 88.3 960516ME / NS 50kw/150m, 38-23-12/75-17-27 (WAMU-88.5); competing 88.3 application at Princess Anne dismissed

Massachusetts / MA

Marshfield 91.7 NEW / NS 550w/60m, 42-05-27/70-43-10 (U. Mass.); AF dismissed (Talking Information Center)
Truro 102.3 WGTX / CC from WCDJ

Michigan / MI

Cheboygan 105.1 WGFM / PR 43kw/295m, 45-10-12/84-45-04
Gladwin 103.1 WGDN-FM / PG>148m
Honor 105.5 WSRJ / QG from 100.7
Iron Mountain 106.7 WHTO / PC>6.1kw/206m, 45-49-16/88-02-34

Minnesota / MN

Belview 105.9 KHRS / CC for NS
Blackduck 92.1 NEW / NS 36kw/176m, 47-33-26/94-48-04
Blackduck 104.5 NEW / NS 8.5kw/148m, 47-33-26/94-48-04
Hibbing 90.1 KADU / PC>1.5kw/103m, 47-24-10/92-57-50
Princeton 89.7 KPCC / CC for NS
St. Louis Park 104.1 KZJK / PG>100kw

Mississippi / MS

Bay St. Louis 107.9 WZKX / PG>100kw/465m, 30-45-05/89-03-24
Forest 91.7 WSQH / PR>17.9kw
Greenwood 103.3 NEW / NS 6kw/100m, 33-32-21/90-02-08
Laurel 90.9 WATP / QC from 90.7, 69kw/221m, 31-52-39/88-52-44
Lumberton 95.3 WZNF / PG>100kw/435m, 30-45-05/89-03-24
McComb 90.5 WAQL / PG>36kw

Missouri / MO

Doolittle 104.5 NEW / NS 3.9kw/124m, 37-56-21/91-56-45
Jackson 89.9 970508MD / NS 9.9kw-V/100m, 37-21-35/89-52-37 (IGWT Community Radio); competing app in Benton dismissed

Liberty 91.9 KWJC / PR>7kw/190m, 39-07-23/94-23-24
Maryville 90.5 KXCV / PC>193m, 40-24-09/94-53-16
Poplar Bluff 88.7 980204ME / NS 50kw-V/126m, 36-50-50/90-19-52 (SE Mo. State Univ.); competing applications in Poplar Bluff (Bible Broadcasting) & Kennett (AFR) dismissed
Rolla 88.5 KMST / CC from KUMR
Warrensburg 90.9 KTBG / PR>100kw/356m, 39-02-14/93-55-48

Montana / MT

Billings 88.1 990602MJ / NS 2.25kw/109m, 45-39-31/108-34-14 (Billings Community Cable Corp.); AF dismissed (Solid Rock Broadcasting)
Hamilton 96.3 KBAZ / PG<50kw/637m
Lolo 97.9 KDXT / PG>10kw/127m, 46-30-37/113-58-48; CL from Victor
Missoula 88.3 KJCG / CC for NS
Park City 89.7 KBIL / PC>2.7kw/160m, 45-51-12/108-45-50
Three Forks 107.7 KMTZ / PG>100kw/251m, 45-38-16/111-16-05

Nebraska / NE

Firth 93.7 NEW / NS 6kw/69m, 40-34-57/96-37-15
Hyannis 97.9 KNPE / CC for NS
Overton 99.3 KHZY / NW 100kw/229m, 40-41-49/99-47-16
Pierce 97.5 NEW / NS 30kw/103m, 42-17-38/97-25-52
Ralston 88.1 KMLV / PG>45.5kw/369m
Valley 94.9 KRKR / PR<6kw/100m, 41-16-06/96-11-39; CL from Lincoln
West Point 107.9 KTIC-FM / CC from KWPN-FM
West Point 107.9 KTIC-FM / PG>33kw/182m, 41-52-53/97-00-58

Nevada / NV

Elko 102.7 NEW / AF 1.05kw/467m, 40-55-43/115-50-36 (both apps same applicant)
Elko 104.7 NEW / AF 1.05kw/467m, 40-55-43/115-50-36 (both apps same applicant)
Las Vegas 91.1 KVKL / PG>44.8kw
Mesquite 90.9 KAIZ / PG<400w/247m, 36-53-48/114-17-23

New Hampshire / NH

Dover 101.5 WXGR-LP / PG ?w/81m, 43-10-27/70-46-47
Groveton 101.5 NEW / NS 6kw/97m, 44-37-50/71-17-34
North Conway 103.7 WPKQ / PR<1159m

New Jersey / NJ

Atlantic City 107.3 WPUR / PG<14.7kw/100m, 39-22-35/74-33-44
Manahawkin 90.7 WYRS / PC>15kw/80m, 39-38-24/74-17-32

New Mexico / NM

Farmington 88.9 KNMI / PR>27kw-V/202m
Hobbs 91.7 KOBH / CC for NS
Las Vegas 93.7 NEW / NS 26kw/4m, 35-30-41/105-15-18
Las Vegas 98.1 KBAC / FC; sold to K-Love
Las Vegas 98.1 KBAC / FC; sold by K-Love
Pecos 101.5 KVSF-FM / CC from KWRP
Reserve 104.5 KZSQ / CC from KLBZ
Ruidoso 93.5 KWES-FM / CC from KWES
Santa Fe 94.7 KKIM-FM / CC from KBOM
Silver City 92.7 KSCQ / QG from 92.9, 12kw/314m
White Rock 101.1 KSFQ / FC; sold to K-Love

New York / NY

Amsterdam 97.7 WEXT / CC from WBKK

Canton	89.5 WSLU / PG>40kw-V (was already 40kw-H)
New York	92.3 WXRK / CC from WFNY-FM
Phoenix	102.1 WZUN / PR>95m
Pulaski	101.7 WSCP-FM / PC>5kw/109m, 43-36-28/75-58-23
Pulaski	101.7 WGKV / CC from WSCP-FM
Ravena	94.5 WYKV / CC from WBOE
Scotia	93.7 WOQB / PC 1.25kw/215m
Scotia	93.7 WYAI / CC from WOQB
S. Bristol Twp.	107.3 WCRR / CC from WSNP
Watertown	90.1 WKVV / PG 400w/207m

North Carolina / NC

West Point	107.9 KTIC-FM / CC from KWPN-FM 90.1 WZPE / PR>4.5kw
Buies Creek	90.1 WCCE / FC; sold to WRTP
Buxton	99.9 WHDX / PG<110w
Buxton	101.5 WHDZ / PG<110w
Fayetteville	91.1 WYBH / CC for NS
Garysburg	103.1 NEW / NS 6kw/97m, 36-30-13/77-44-20
Hickory	89.1 WRYN / CC for NS
Ocracoke	92.7 NEW / AF
Oriental	94.1 WWHA / PG>35kw/150m, 34-45-07/76-52-57

North Dakota / ND

Bismarck	89.7 KNRI / PG>1.4kw
Bismarck	92.9 KYYY / PR<352m, 46-36-20/100-48-24
Jamestown	89.9 KJTW / CC for NS
South Heart	105.7 NEW / NS 100kw/67m, 46-46-12/103-12-37

Ohio / OH

Cleveland Hts.	92.3 WKRI / CC from WXRK
Columbus	102.1 WCRS-LP / NW ?w/41m, 40-03-48/82-53-45
Findlay	89.7 WTKC / NW 130w/9m, 41-02-43/83-39-02
Jackson	97.7 WCJO / PR 1.9kw/126m
Marion	91.9 990426MB / NS 10w-H/500w-V/96m, 40-36-46/83-07-48 (Kayser Broadcast Ministries); competing WCDR application dismissed
Upper Sandusky	90.1 WXML / PC>15kw-V/158m, 40-54-53/83-07-32
Westerville	97.5 WOBN / QR from 101.5, 20m

Oklahoma / OK

Henryetta	91.5 KVAZ / PG>7.8kw-V/172m, 35-32-53/95-58-14
Mangum	97.7 KHIM / PR>2.2kw/329m, 34-58-39/99-24-35
Oklahoma City	100.5 KATT-FM / PR>100kw/468m, 35-33-37/97-29-08 dismissed ROA
Sayre	101.7 NEW / NS 50kw/100m, 35-13-35/99-30-27
Stillwater	101.1 KVRO / QR from 98.1
Wilburton	103.7 KOCD / CC from KESC
Woodward	95.9 KOPA / CC from KAZY
Woodward	101.1 KWOX / PR<84kw

Oregon / OR

Coos Bay	91.3 980810MC / NS 6kw/-12m, 43-21-45/124-11-33 (School Dist. 9); competing Family Stations application dismissed
Dallas	95.1 NEW / PA from 98.3
Florence	91.5 KWVZ / PC<167m, 43-57-26/124-04-26
Gold Hill	100.3 KRWQ / PC>306m, 42-27-11/123-03-22
Merrill	105.5 951102MA / QR from 105.7, 18kw/209m, 42-13-24/121-49-02
Monmouth	98.3 KSND / PA from 95.1
Shady Cove	99.1 KSHD-LP / CC for NS
Waldport	98.5 NEW / PA, class A
Warm Springs	91.9 KWSO / PG>4.3kw/334m

Pennsylvania / PA

Avoca	103.1 WILK-FM / CC from WFEZ
Coatesville	89.3 WRTJ / CC for NS

Confluence	98.5 NEW / NS 1.1kw/233m, 39-55-40/79-25-06 (K-Love)
Cresson	94.7 WBRX / CC from WBXQ
Grantville	93.1 WHBI-LP / NW ?w/148m, 40-24-18/76-40-55
Harrisburg	88.1 WXPB / FC; sold to religious broadcasting organization
Kane	103.9 WLMI / PG 840w/223m, 41-37-03/78-48-13
Middletown	88.7 WZXM / PC>70w-H/7kw-V/216m, 40-02-07/76-37-19
Middletown	88.7 WZXM / FC; sold to WXPB (apparent trade for WXPB 88.1 Harrisburg)
Patton	94.3 WBXQ / CC from WBRX
Philadelphia	96.5 WRDW-FM / PC 9.6kw/338m, 40-02-30/75-14-11
Philadelphia	104.5 WRFF / CC from WUBA
Saegertown	94.3 WUZZ / CC from WHUZ
Sykesville	95.9 NEW / AF 1.52kw/196m, 41-02-43/78-42-11

Rhode Island / RI

Narragansett P.	102.7 WRNI-FM / CC from WAKX
------------------------	------------------------------

South Carolina / SC

Beaufort	88.7 WAGP / PG>100kw/103m, 32-21-27/80-55-11
Columbia	99.3 WXPB-LP / PR ?w/71m
Coward	105.1 WPDT / XG 33-58-02/79-43-03
Eastover	107.5 WNKT / PG<40kw/167m, 33-45-46/80-49-23
Forestbrook	96.1 WAVF / PR<26kw/150m, 33-35-27/79-02-55; CL from Hanahan
Gaffney	105.3 WNOW-FM / CC from WAGI-FM
Hanahan	101.7 WKZQ-FM / PR>100kw/542m, 32-55-28/79-41-58; CL from Myrtle Beach
Isle of Palms	95.9 WWBD / PR>50kw/115m, 32-48-06/80-01-26; CL from Bambert
Ravenel	107.3 WMGL / PR>32kw/190m, 32-47-44/79-50-27
Ravenel	107.3 WMGL / PG>16.5kw/125m, 32-54-18/79-55-19
Spartanburg	98.9 WSPA-FM / PR>598m
Sumter	105.9 W290AY / FC to WDXY-1240 (talk)

South Dakota / SD

Ipswich	107.7 KABD / PR<51kw/108m, 45-27-13/98-48-10
Wall	107.5 NEW / AF 100kw-H/146m, 44-05-50/102-35-48
Watertown	89.1 KJBB / PG>25kw/262m, 45-06-17/96-59-17 (adds H, was V only)

Tennessee / TN

Charleston	97.9 NEW / PA, class A, denied. Mutually exclusive with Englewood counterproposal; Englewood is a larger city
Englewood	97.9 NEW / GA, class A, counterproposal to Charleston
Harrison	93.5 WMPZ / QR from 93.7, 910w/260m, 35-15-20/85-13-34; CL from Ringgold, Ga.
Henderson	95.7 WFKX / PC 4.4kw/117m
Loretto	98.3 WKSJ-FM / PC>18kw/115m, 35-09-00/87-17-45
McMinnville	103.9 WKZP / CC from WTRZ-FM
Newport	92.9 WNPC-FM / PG>25kw/95m, 36-01-19/83-01-58
Ooltewah	95.3 WHJK / PR 11kw/152m, 34-57-23/85-17-32 from Cleveland; enters Chattanooga market
Pigeon Forge	106.3 NEW / NS 500w/340m, 35-42-13/83-33-57
Rockwood	105.7 WIHG / CC from WLSQ
Signal Mtn.	98.1 WLND / CC from WKXJ
S. Pittsburg	97.3 WUUS-FM / CC from WNGA
Spencer	107.3 WTRZ / CC from WKZP
Tellico Plains	97.9 NEW / PA, class A, counterproposal to Charleston & Englewood, denied. Would require reclassifying WJXA-92.9 Nashville as

	class CO, not permissible in a counterproposal.
Tiptonville	97.3 WTNV / NW 1.9kw/180m, 36-16-11/89-19-25
Trenton	97.7 WTNE-FM / PC>50kw/123m, 35-44-35/88-59-19
Union City	88.9 WTAI / CC from WUKV
Vonore	95.1 WTRL-LP / QC from 106.9

Texas / TX

Alice	88.3 KEAM / CC for NS
Alice	88.3 KIFR / CC from KEAM
Beaumont	88.5 KGHY / CC for NS
Bruni	106.5 NEW / NS 6kw/100m, 27-32-41/98-52-28
Camp Wood	89.7 KHPS / CC for NS
Eldorado	104.9 NEW / NS 6kw/92m, 30-51-55/100-35-36
Eldorado	104.9 KLDE / CC for NS
Eldorado	106.5 NEW / NS 6kw/84m, 30-49-56/100-37-27
Floresville	89.7 KJMA / CC from KWCB
Hewitt	106.7 NEW / NS 21.5kw/108m, 31-24-45/97-12-40
Holliday	100.9 KWFB / PG<25kw/99m, 33-53-55/98-49-16
Huntington	101.9 KSML-FM / PR 18.5kw/252m, 31-20-05/94-40-10
Ingram	96.5 KAKI / PR 8.4kw/131m
Ingram	96.5 KAKI / PG 8.4kw/131m
Kerrville	106.1 KEVE / CC for NS
Leakey	107.7 NEW / NS 1.9kw/181m, 29-41-34/99-48-56
Leander	98.9 KHHL / PR 6.74kw/394m, 30-19-23/97-47-59 dismissed ROA; PR 29kw/157m at existing site instead
Lubbock	93.7 KXTQ-FM / XG 33-30-08/101-52-20 (also involves tower height increase of 45cm - about 18" - and power decrease of ten watts)
Lufkin	100.1 KYBI / PR 20.5kw/240m, 31-20-05/94-40-10
Pasadena	88.1 KFTG / PC>700w-H/660w-V/57m, 29-41-18/95-12-07
Perryton	93.7 KEYE-FM / QR from 96.1
Port O'Connor	91.9 KHPO / CC from KCPC
San Augustine	92.5 QQSI / PR>2.55kw/157m, 31-32-49/95-05-47
Savoy	107.3 NEW / NS 2.3kw/163m, 33-37-30/96-20-04
Sealy	90.7 KCPC / CC for NS
Victoria	100.9 KBAR-FM / CC from KEPG

Utah / UT

Hurricane	103.1 KURR / CC for NS
Park City	91.9 KPCW / PR>6kw/0m

Vermont / VT

Brighton	106.9 WVTI / CC for NS
-----------------	------------------------

Virginia / VA

Bristol	100.5 WKJV-LP / XR 36-36-25/82-12-15
Bristol	100.5 WKJV-LP / XR 36-36-25/82-12-15 dismissed
Chester	100.9 WDYL / QG from 101.1, 17.5kw/122m, 37-37-15/77-22-13
Hampton	103.7 WRPC-LP / PC>?w/96m, 37-05-07/76-25-37
Nassawadox	90.1 WJCN / PR>50kw/90m (adds H, was V-only), 37-47-05/75-36-16
Poquoson	106.1 WNRJ / PG>11kw/150m
Rustburg	91.7 WWEM / CC for NS
Shawsville	102.5 971022MC, 971023ME / PR 800w/276m, 37-14-47/80-19-33; 1kw/244m (both apps at same site)

Washington / WA

Bellingham	104.1 KAFE / PR<701m
Chehalis	88.9 960325MD / NS 50w-H/1kw-V/306m, 46-33-16/123-03-26 (KWSU)
Forks	96.7 KBDB-FM / QR from 103.9, 6kw
Kennewick	88.1 KTCV / PR>20w-H/3.5kw-V dismissed
Littell	88.9 960619ME / AF dismissed (Shepherd Comms. Inc.)
Onalaska	92.7 KTYG-LP / QR from 92.1
Spokane	90.3 980224MA / NS 500w/336m, 47-48-48/117-30-41 (KPBX)
W. Clarkston	89.7 990129MD / NS 500w/-185m, 46-26-20/117-00-31 (Upper Columbia Media Corp.)

West Virginia / WV

Beckley	88.1 WJJJ / CC for NS
Glennville	107.7 WVRW / CC for NS
Mount Hope	105.9 WTNJ / PC 4.4kw-H/467m, 37-56-51/81-18-29
S. Charleston	89.3 WWLA / PR 2.3kw/63m, 38-23-47/81-35-28

Wisconsin / WI

Adams	89.1 WHAA / CC for NS (Wis. Public Radio)
Brookfield	106.9 WJZX / CC from WFMR
Ephraim	106.9 NEW / NS 6kw/75m, 45-08-54/87-08-22
Janesville	91.5 WWJA / CC for NS
Madison	97.1 WIXL-LP / XR 43-03-52/89-18-24
Richland Ctr.	100.9 WRCO-FM / PG 8.4kw/170m, 43-18-56/90-25-35
Rosholt	100.5 NEW / NS 25kw/93m, 44-45-09/89-22-40
Wentworth	88.1 971009MB / AF 31kw-V/90m, 46-25-07/91-55-12 reinstated (AFR)
Westby	103.9 WDSW / CC for NS

Wyoming / WY

Buffalo	99.5 KSLW-LP / PG<-135m, 44-21-19/106-44-57
Cheyenne	97.9 KOMY / CC from KQLF
Clearview Acres	104.3 KYPT / PR<43kw/159m, 41-39-24/108-09-32; CL from Wamsutter
Douglas	99.3 KKTY-FM / PR>9.1kw
Gillette	88.9 KLOF / PR<440w/121m
Gillette	97.3 KAML-FM / QG from 96.9, 335m, 43-59-57/105-15-15
Hanna	103.3 KHNA / PR>50kw/150m, 41-35-16/105-45-23
Hudson	105.1 KTUG / PR>25kw/89m, 42-52-17/108-25-55
Laramie	88.5 KUWY / CC for NS
Laramie	89.3 990601MG / NS 150w/273m, 41-17-06/105-26-41 (KEPC); competing KSLT application dismissed
Laramie	90.1 KUWL / CC for NS
Laramie	98.7 KUSZ / PR>25.5kw/208m, 41-11-46/105-53-30
Rock River	103.3 KHNA / PR>50kw/150m, 41-35-16/105-45-23; CL from Hanna
Sinclair	101.3 NEW / NS 51kw/250m, 41-48-46/107-19-00
Upton	93.5 KWDU / CC for NS
Wamsutter	94.7 KRAN / PR>25kw/84m, 41-28-49/108-04-37

AUXILIARY CHANGES

Arkansas / AR

Bryant 93.3 KKSP / NW 280w/168m, 34-44-38/92-16-32 (aux)
England 96.5 KHTE-FM / NW 18w/172m, 34-44-38/92-16-32 (aux)
Lonoke 106.3 KOLL / NW 40w/170m, 34-44-38/92-16-32 (aux)

California / CA

Los Altos 97.7 KFFG / AF 3.1kw/136m (aux); NS
Pasadena 106.7 KROQ-FM / NW 6.5kw/204m, 34-09-50/118-11-46 (aux)
Roseville 93.7 KQJK / NW 19kw/72m (aux)

Colorado / CO

Timnath 105.5 KJAC / NW 36kw/361m (aux)

District of Columbia / DC

Washington 98.7 WMZQ-FM / PR 4.2kw/180m, 39-00-00/77-03-26 (aux)
Washington 100.3 WBIG-FM / PR>4.1kw/180m, 39-00-00/77-03-26 (aux)

Florida / FL

Pensacola 98.7 WYCT / NW 1kw/299m (aux)

Hawai'i / HI

Honolulu 93.9 KIKI-FM / NW 6kw/-63m (aux)

Illinois / IL

Springfield 103.7 WDBR / PC 13kw/74m (aux)

Louisiana / LA

Laplace 92.3 WDVW / AF 600w/200m, 29-57-07/90-04-13 (aux)
Laplace 92.3 WDVW / NS 600w/200m, 29-57-07/90-04-13 (aux)

Minnesota / MN

Glencoe 96.3 KTTB / NS 550w/59m, 44-51-43/93-21-08 (aux)

Nebraska / NE

Omaha 88.9 KVSS / PR>147m, 41-18-47/96-00-36 (aux)

New Hampshire / NH

Mt. Washington 94.9 WHOM / PC<1149m (aux)
North Conway 103.7 WPKQ / AF 4.8kw/1140m (aux)
North Conway 103.7 WPKQ / NS 4.8kw/1140m (aux)

New York / NY

Auburn 106.9 WPHR-FM / NW 500w/284m, 42-48-05/76-26-14 (aux)
Corning 106.1 WNKI / AF 800w/57m, 42-12-00/76-51-30 (aux)
Corning 106.1 WNKI / NS 800w/57m, 42-12-00/76-51-30 (aux)
Horseheads 100.9 WPGI / AF 800w/57m, 42-12-00/76-51-30 (aux)
Horseheads 100.9 WPGI / NS 800w/57m (aux)
Montour Falls 104.9 WNGZ / NS 380w/57m, 42-12-00/76-51-30 (aux)
Montour Falls 104.9 WNGZ / AF 380w/57m, 42-12-00/76-51-30 (aux)

North Carolina / NC

Creedmoor 99.9 WCMC-FM / NW 10kw/150m (aux)

Oklahoma / OK

Broken Arrow 90.5 KNYD / AF 44kw-V/173m, 35-47-51/95-54-02 (aux)
Moore 88.1 KMSI / AF 12kw-V/159m (aux)
Moore 88.1 KMSI / NS 12kw-V/159m (aux)

Pennsylvania / PA

Muncy 93.3 WBZD-FM / AF 420w/373m (aux)
Muncy 93.3 WBZD-FM / NS 420w/373m (aux)
Philadelphia 96.5 WRDW-FM / PR>15.2kw/264m (aux)
S. Williamsport 99.3 WZXR / AF 415w/373m (aux)
S. Williamsport 99.3 WZXR / NS 410w/373m, 41-12-42/76-57-16 (aux)
Williamsport 105.1 WILQ / AF 420w/373m, 41-12-42/76-57-16 (aux)
Williamsport 105.1 WILQ / NS 420w/373m, 41-12-42/76-57-16 (aux)
Williamsport 107.9 WRVH / AF 375w/373m, 41-12-42/76-57-16 (aux)
Williamsport 107.9 WRVH / NS 380w/373m, 41-12-42/76-57-16 (aux)

South Carolina / SC

Columbia 97.5 WCOS-FM / NW 84kw/278m (aux)

Texas / TX

Dallas 102.9 KDMX / NW 1kw/442m (aux)
La Porte 103.7 KIOL / NW 12.5kw/141m, 29-46-06/95-01-04 (aux)
Texarkana 91.5 KTXK / NW 5.4kw/74m (aux)

Washington / WA

Seattle 96.5 KJAQ / AF 53kw/373m, 47-32-39/122-06-32 (aux)

SOURCES

Government: Canadian Radio-Television and Telecommunications Commission (CRTC), Federal Communications Commission (FCC)
Individuals: Doug Smith

This report includes a total of 490 changes to the FM dial. Of these, 44 are auxiliary changes.

Chris !!

-Chris Kadlec
 FM News Editor





PHOTO-NEWS

Jeff Kruszka, Editor
 12516 Short Springs Dr.
 Pearland, TX 77584
 jkruszka@sbcglobal.net

August 2007

EVEN BETTER IN **COLOR!** CHECK OUT THE eVUD

This month we feature my final DX photos from Baton Rouge, LA.



KNIC-17 Blanco, TX
 435 mi Tr seen 11/9/06
 @2000 CT



WRBL-DT-15 Columbus, GA
 390 mi Tr seen 12/17/06
 @2159 CT



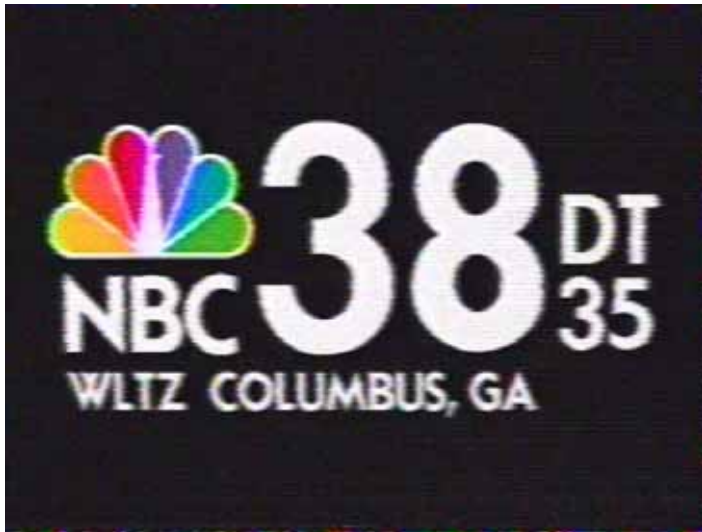
WXIA-DT-10 Atlanta, GA
 455 mi Tr seen 12/18/06
 @0008 CT



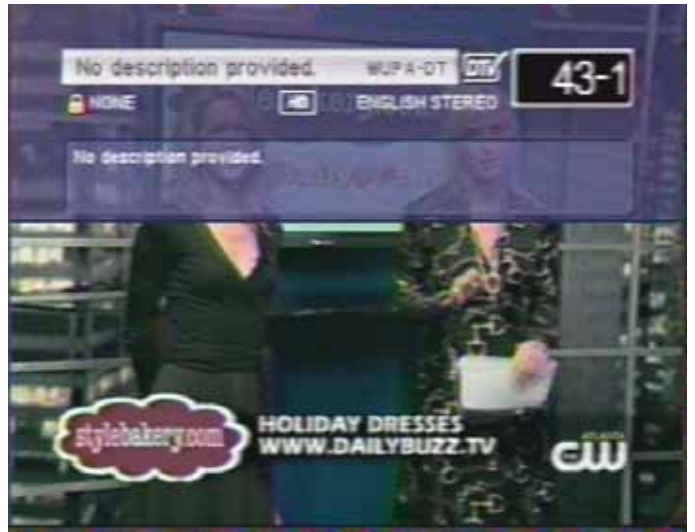
WGCL-DT-19 Atlanta, GA
 455 mi Tr seen 11/18/06
 @0032 CT



WAAY-DT-32 Huntsville, AL
 400 mi Tr seen 12/18/06
 @0036 CT



WLTZ-38 Columbus, GA
390 mi Tr seen 12/18/06
@0230 CT



WUPA-DT-43 Atlanta, GA
455 mi Tr seen 12/18/06
@0648 CT



WTBS-DT-20 Atlanta, GA
455 mi Tr seen 12/18/06
@0644 CT



KSAT-DT-48 San Antonio, TX
445 mi Tr seen 11/9/06
@1853 CT

And here's one from my first trip outside the Western Hemisphere, to Osaka, Japan. This was caught on the local cable TV on the morning of Feb. 28, 2007:



73's,
Jeff



Eastern U.S. TV DX

Featuring reports from AL, CT, DC, DE, FL, GA, IN, KY, MA, MD, ME, MI, NC, NH, NJ, NY, OH, PA, RI, SC, TN, VA, VT, and WV, along with the Canadian Provinces of NB, NF, NS, ON, PEI, and PQ.

Send reports by the 15th of each month to:

Nick Langan
 1040 Riverview Drive
 Florence, NJ 08518
 E-mail: nick.langan@gmail.com

The Editor's Note

A solid amount of E-Skip was around the eastern half of the United States a good part of the first half of July, hopefully you were able to catch some! Long-haul tropo around the U.S. has been relatively quiet in the past month, but things might get busier in August, at the same time as we bid adieu to another E-Skip season. A nice amount of reports this month, let's get to them.

Robert Grant (N8NU) 231 E Temperance Rd. Temperance, MI 48182
 E-mail: Rg3d@yahoo.com (expect delays, no home Internet access)
 Temperance is in SE corner of MI. (EN81fs)
 Receiver: Sylvania (Funai) 6427GFF 27" color analog/digital SDTV.
 Antenna: Channel Master Advantage 3020 on chimney at about 33'
 Alternate receiver: Sanyo 21T63 12" B&W analog, antenna Winegard PR-7084 at about 15' on rear (South) deck.
 All times EDT

5/6 Es
 2035 XHRIO-2 2 TA Matamoros 1355
 (change from uniD, see comments)

6/2 Es
 1100 KDFW 4 TX Dallas 973
 1220 KCWX 2 TX Fredericksburg 1162
 1230 KASA 2 NM Santa Fe 1317
 2235 KBTX 3 TX Bryan 1040
 2240 KCWX 2 TX Fredericksburg 1162
 2302 KIII 3 TX Corpus Christi 1313
 2310 KDFW 4 TX Dallas 973

6/3 Es
 uniDs: 2+ PBS, 2z NBC, 4z NBC
 2140 KSNW 3 KS Wichita 792
 2215 KMIDt 2 TX Midland T
 2311 WLBT 3 MS Jackson 760
 2315 KATC 3 LA Lafayette 948

6/5 Es
 1120 unID 2 PBS, plus offset
 1130 KJRH 2 OK Tulsa 764
 KOETt 3 OK Eufaula T
 1230 KDFW 4 TX Dallas 973
 KPRC 2 TX Houston 1075
 1300 WOAI 4 TX San Antonio 1193

6/10 Es
 2200 KCWX 2 TX Fredericksburg 1162

6/11 Es
 1905 KSWK 3 KS Lakin 972
 1950 KLBY 4 KS Colby 952
 2000 KWGNt 2 CO Denver T
 ("CW2" bug – zero offset)

6/14 Tr
 0055 WVIZ-DT 26 OH Cleveland (rare)100e
 0600 unID-DT 48 East WPXI-DT?
 1940 WEAO-DT 50 OH Akron 110
 1950 WOIO-DT 10 OH Shaker Heights 100
 WKYC-DT 2 OH Cleveland 100
 (above three not very far, but quite rare)
 2015 WNYB 26 NY Jamestown 226
 (up suddenly, in for 15mins, then gone)

6/14 Es
 2030 KJRHt 2 OK Tulsa T
 KACVt 2 TX Amarillo T
 KFDXt 3 TX Wichita Falls T
 KDTN 2 TX Denton 973

6/15 Es
 1920 KCWX 2 TX Fredericksburg 1162
 XHPNt 3 CI Piedras Negras T
 2130 KGWN 2 CO Denver 1144

6/16 Es
 1215 WEDU 3 FL Tampa 965
6/16 Tr
 1426 WQLN-DT 50 PA Erie 180

6/16 Es
 1715 WFOR 4 FL Miami 1106
 WEDU 3 FL Tampa 965
 WPBT 2 FL Miami 1107
 Cubavision 3 VC Santa Clara
 UnID 3 Cuba, zero offset,
 Not same program as above
 Cubavision t6 LH Habana T
 1800 Educativo 4 LH Habana 1300e
 (under WFOR)
 1826 WTVJ 6 FL Miami 1133
 1833 unID-2 ss

1900 KATC 3 LA Lafayette 948
1915 WWL 4 LA New Orleans 895
1929 KCWX 2 TX Fredericksburg 1162
6/17 Tr
0210 WNED 17 NY Buffalo 252
0225 CIII55 55 ON Fort Erie 241
6/18 Es
2120 CBHT 3 NS Halifax 1021
6/19 Es
1730 WFSB 3 CT Hartford 554
2130 WEDU 3 FL Tampa 965
6/23 Tr
1800 WCPXt 38 IL Chicago T
6/25 Es (Detroit work site EN82lj, Yaesu VX-5)
1230 KTBS 3 LA Shreveport 898
KOET 3 OK Eufaula 830
UnID 6 SS, zero offset
6/25 Es (Temperance)
1955 WFOR 4 FL Miami 1106
2008 WEDU 3 FL Tampa 965
2013 KDUH 4 NE Scottsbluff 1006
2020 unID 2 NBC KNOP?
2032 KUSD 2 SD Vermillion 682
2040 KOTA 3 SD Rapid City 1010
KOTA-DTt 2 SD Rapid City T
6/26 Es (Detroit worksite)
1230 Many unIDs noted, strong
1300 KSWKt 3 KS Lakin PBS z T
(Mobile near Monroe)
2000 KOAA 5 CO Pueblo
(Mobile in Toledo, OH)
2030 KREG 3 CO Glenwood Spgs
(Temperance)
2045 KREG 3 CO Glenwood Spgs
1259
2054 KIII 3 TX Corpus Christi 1313
2119 KCWX 2 TX Fredericksburg 1162
2124 KASA 2 NM Santa Fe 1317
2300 KDFW 4 TX Dallas 973
2308 KFDX 3 TX Wichita Falls 983
2331 KMID 2 TX Midland 1230
6/27 Es
2020 CBAFT3t 3 NB Allardville T
(SRC, zero offset)
CKLT1t 3 NB Woodstock T
(CTV, NB tourism ad, nonzero offset)
2138 KCWX 2 TX Fredericksburg 1162
2145 XHPNt 3 CI Piedras Negras T
6/29 Es
2030 KIII 3 TX Corpus Christi 1313
2100 tentatives KPRC-2, XHRIO-2,
KGBT-4
2138 KCWX 2 TX Fredericksburg 1162
2147 KTBS 3 LA Shreveport 848
6/30 Es
1146 XHRIO 2 TA Matamoros 1355
1300 WPBT 2 FL Miami 1107
1315 WESH 2 FL Daytona Beach
894
1400 KATC 3 LA Lafayette 948
1405 KCWX 2 TX Fredericksburg 1162
1455 KACV 2 TX Amarillo 1082
1830 KENW 3 NM Portales 1235
1842 KOTA 3 SD Rapid City 1010
1850 KDTN 2 TX Denton 973

KDFW 4 TX Dallas 973
KIII 3 TX Corpus Christi 1313
1908 KOET 3 OK Eufala 784
1916 KPRC 2 TX Houston 1075
1928 CKND2 2 MB Minnedosa 986
CBWFTt 3 MB Winnipeg T
CKCKt 2 SK Regina T
2158 KTBS 3 LA Shreveport 848
7/3 Tr
1830 WKBW 7 NY Buffalo 260
(at this time, strong, but the ONLY
station with any sign of enhancement)
2130 CICO28 28 ON Kitchener 188
WNYB 26 NY Jamestown 226
Erie and London UHF's very strong
7/7 Tr
1100 WNYB 26 NY Jamestown 226

Says Robert: "The XHRIO logging on 5/6 had originally been a unID, as a 2+, Fox, with a unique bug that did not match that of KASA. It was IDed when I saw the Photo-News in the July 2007 VUD, with the bug in the photo! (FWIW, the 6/30 logging of XHRIO was a full-screen ID card, with the short call "XRIO" clearly visible, which ran for more than a minute).

Distances with an "e" are estimated. I suspect WVIZ-DT has moved their low-power transmitter to their new studio on the East side of Cleveland. I was in front of the building on Brookpark where the WVIZ studio had been (the site for the WVIZ-DT STA in the database) on 6/5, and found no trace of any signal on 542.34. I note that WVIZ-DT often appears when other Cleveland stations are weak, and often is absent when other Cleveland stations (including WVIZ-25 NTSC) are very strong. This could be because a duct favors a different altitude, not just a different site.

The 2007 Es season continued in its basic pattern, lots of Es, none of it great. The MUF finally made it into the FM band on 6-26, while at work.

Having KDUH-4 come in suddenly while Florida was in was welcome. What is interesting is how KDUH eluded the Temperance log for so long – being a full service station, at an ideal Es distance, in a direction where WDIV is not a big problem.

Hearing KREG-3 while mobile with its positioner "News Channel 5" (referring to parent KREX) had me thinking, at first, that I was getting WJMN by skip!"

Jim Pizzi 100 County Road 28 Palmyra, NY
14522
(315)597-5898
Equipment: 1994 27" RCA Delhi VIP 307; VHF
Winegard PR-9032 & PA-4975 AM UHF @ 20'
Approx.

5/9 Es

1543 WKMG 6 FL Local 6 Bug LR
1546 WPTV 5 FL 5 Bug LR
1547 WFOR 4 FL CBS 4 Bug LR
WPBT 2 FL 2 PBS Bug LR
1549 WEDU 3 FL Lrg WEDU Bug LR
1550 WESH 2 FL WESH 2 Bug LR
1750 WTVJ 6 FL Tent., NBC 6
1758 WUFT 5 FL Tent. PBS?

5/10 Es

2321 WESH 2 FL Wx
2323 WEDU 3 FL Bug LR

5/11 Es

1135 unID 5 Highway to Shelby Co.
1136 unID 6 CBN
1139 unID 3 One ABC the other CBS

5/19 Tr

AM Most semi-local V's and U's Snow-Free

5/22 Es

1106 WBRZ 2 LA Bug LR
1109 WDSU 6 LA WDSU Bug LR
1131 unID 5 DTV Snow
1235 KATC 3 LA News, Large Bug LR
1702 WEAR 3 FL Local Nx
1704 WWL 4 LA Nx w/Calls
1705 unID 4 Inside Edition
unID 4 ABC Bug LR
1753 KARK 4 AR Ad "Central AR
Honda"
1758 KETS 2 AR Arthur-APB Promo
1840 unID 6 NBC Network News
1854 WBRC 6 AL FOX6 Local News
1859 WKRG 5 AL CBS News, ID
@1900

5/23 Tr

0620 WTXF 29 PA Philly Wx

5/30 Tr

0800 WWTI-DT 21 NY DTV Snow
covering WXXI

6/2 Es

2115 unID 2-6
2205 KFDM 6 TX Bug w/Calls LR
2206 WABG 6 MS Bug LR Calls

6/18 Es

0928 WPBT 2 FL
0950 WESH 2 FL Auto ad
0958 WEDU 3 FL ID @ 1000

6/21 Es

0958 WEDU 3 FL WEDU Bug @ 1035
WPBT 2 FL PBS
WFOR 4 FL Ads

6/25 Es

2325 unID 2-6 SW, Just returned home
gone all day

6/26 Es

0110 WOWT 6 NE Tent., NBC Conan,
Flash flood watch w/map of counties in LL

0119 KQTV 2 MO KQ2 News promo,
ABC/Kimmel
0133 KFOR 4 OK Local auto ad
mentions OK
0136 KOET 3 OK OETA Bug LR
1127 KOCO 5 OK Doppler w/calls
1129 KFOR 4 OK "Rachel" w/wx bug
UR
1131 unID 4 "700 Club"
1132 KIMT 3 IA Large calls "KIMT
News"
1134 unID 6 CBS KPLO or KOTV?
1140 unID 2 "Barney" KUSD?
1158 KWNB 6 NE "NTV" ABC6
1200 unID 6 CBS
"jimnortontoyota.com" (Editor's note: Jim,
website goes to dealership in Tulsa, making
this most likely KOTV)
1230 KHAS 5 NE ID
1231 KOWT 6 NE Calls, Wx
1232 KLNE 3 NE Tent., PBS "Barney"
1233 KQTV 2 MO Car ad w/816 AC
1236 KJRH 2 OK "Here in Tulsa" heard
1300 KBSD 6 KS "KWCH 12" ID then
KBSD LR-Wx
1302 KCTV 5 MO Local Nx
1312 KSNW 6 KS Wichita Doppler
1355 KOTV 6 OK "News on 6 KOTV"
1905 KGAN 2 IA Local Nx
1912 KAAL 6 MN Local Nx
1914 KPLO 6 SD "Keloland" weather
1916 KDLV 5 SD NBC-Jerry's auto
sales, local wx-KDLV Bug LR plus KDLT calls
@1925
1922 KIMT 3 IA
KMTV 3 NE Tent., "Menards" Ad
6/28 Es
1345 unID 2-6 SW
1359 KXAS 5 TX ID, Promos, Ads
1400 KCEN 6 TX Full ID w/DT, Ads
1432 KAUZ 6 TX Lawyer ad w/940 AC,
CBS
1435 KOET 3 TX OETA Bug LR
1535 KSNW 3 KS KSN, Flash Flood for
Cowley Co.
1700 KUSD 2 SD "SDPB"
1702 KDLV 5 SD KDLT Bug LR
1714 KPLO 6 SD KELO Calls, Oprah
1733 KOTA-DT 2 SD Tent., DTV Snow,
Is KDLO-DT on?
6/29 Tr
0558 WPSU 3 PA ID, Calls, Accuwx
6/30 Es
2005 unID 2-4
2020 KTVI 2 MO Tent., FOX "Cops"
2026 unID 6 ?? ABC, movie w/Eddie
Murphy
7/6 Es
2037 unID 2 SW CCI to WGRZ-2
7/8 Es
1907 unID 2 SW CCI to WGRZ
1938 unID 2 PBS Antiques Rd.
Show
1943 unID 3 SW ABC KATC, KTBS,
WEAR Tent.

1944 KBTW 4 TX Tent., NBC CCI to WIVB
 1946 WBRZ 2 LA Calls, Life After 50 Promo
 1951 KALB 5 LA Tent., NBC
7/9 Es
 1825 unID 2-4
 1828 unID 2 SW
 2103 KDLO 3 SD PBS, Severe T. Storm Warning
 2156 WEDU 3 FL Bug LR
 WESH 2 FL NBC
7/10 Es
 1714 WESH 2 FL Local news
 1715 unID 3-6
 1728 unID 6 Judge Judy
 1729 WBRZ 2 LA Local news, Bug LR
 1740 KXAS 5 TX Local news, Wx @ 1744
 1746 unID 4 Judge Judy
 1747 WTWC-DT 2 FL DTV Snow on Roof ant., not on indoor rabbit ears
 1750 WRBL 3 GA "WRBL News"
 1756 WCTV 6 FL "WCTV Eyewitness news"
 1851 WEDU 3 FL Bug LR
 1859 WJXT 4 FL Promos, Calls, car ads
 1903 WUFT 5 FL Bug LR

Doug Smith W9WI

Pleasant View (Nashville, TN) EM66

<http://www.w9wi.com>

7/9 Es

0820 unID 2 ABC under WKRN

7/13 Es

0930 KSWK 3 KS Lakin
 unID 2 PBS
 0940 KOCT 6 NM Carlsbad Circle-7 logo
 1000 KENW 3 NM Portales ID
 w/translators
 1815 WFSB 3 CT Hartford

7/14 Es

0945 WEDU 3 FL Tampa
 unID 3 Presumed Cuba
 w/cartoon in Spanish

Fred Nordquist

147 Travis Hill Rd - Moncks Corner SC 29461
 Equipment: Ant: UHF: CM 7' screened dish at 30'

RX: 2 Panasonic 13" 83 Ch Color TVs & RS Accurian STB

Email: nordquis@homexpressway.net.

Statistics Web Page:

<http://web.infoave.net/~fmjnordquist/statistics.html>

5/9 Es

1147 KCEN 6 TX Temple NBC
 KCWX 2 TX Fredericksburg CW2
 WLBT 3 MS Jackson NBC
 1200 KDTN 2 TX Denton Daystar
 1525 WPSU 3 PA Clearfield PBS

1800 WISU 3 WI Madison CBS
 1801 WSIL 3 IL Harrisburg ABC
 2117 KOET 3 OK Eufala OETA-PBS
5/15 Es
 1921 KATC 3 LA Lafayette ABC
5/22 Es
 1200 KAAL 6 MN Austin ABC
5/22 Tr
 0818 WLGA 66 AL Opelika CW
 0845 WRBL-DT 15 GA Columbus CBS
 WGXA-DT 16 GA Macon MYTV
 0920 WGNM-DT 45 GA Macon CTN
5/24 Es
 1110 CBOT-6 3 ON Pembroke CBC
5/26 GW
 0010 WZRB 47 SC Columbia CW
5/26 Tr
 2300 WHRO 15 VA Hampton PBS
 2306 WAVY-DT 31 VA Portsmouth NBC
 2325 WVEC-DT 41 VA Hampton ABC
5/29 Tr
 0916 WSPA-DT 53 SC Spartanburg
 CBS
 WYCW-DT 45 NC Asheville CW

5/30 Tr

0052 WJSP 28 GA Columbus GPB
 0100 WFXG-DT 51 GA Augusta FOX
 0107 W65DS 65 SC Honea Path TBN
 0145 WAGA-DT 27 GA Atlanta FOX
 0815 WGCL-DT 19 GA Atlanta CBS
 WUVG-DT 48 GA Athens

Univision

0837 WJTP 60 AL Gadsden TBN
 0842 WATC 57 GA Atlanta Religious

5/30 Es

1740 KTAL 6 TX Texarkana NBC
6/1 Es
 1145 KIII 3 TX Corpus Christi ABC
6/3 Tr
 2239 WRET 49 SC Spartanburg ETV
 2301 W34CQ 34 SC Myrtle Beach TBN

6/16 Es

1007 CMCD 3 CU Holquin SS

6/18 Es

1700 CITO 3 ON Timmins City CTV
6/23 Tr

0121 WRAL 5 NC Raleigh CBS
 0158 WSPA 5 SC Spartanburg CBS
 0207 WUFT 7 FL Gainesville PBS
 2217 WPBF 16 FL Tequesta ABC

7/5 Es

1943 KYTV 3 MO Springfield NBC

7/6 Tr

2300 W22CJ 22 NC Jacksonville TBN

7/10 Es

1703 WOWT 6 NE Omaha NBC

Says Fred: "All above are new loggings. TV Totals = 327"

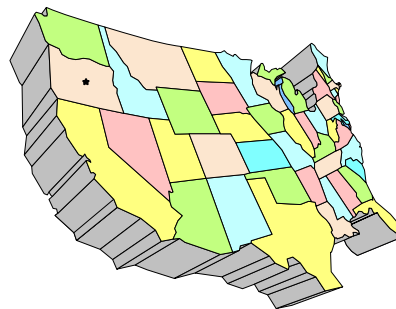
WESTERN TV DX

DAVE WILLIAMS

3525 SW Timber Ave

REDMOND, OR 97756

beansdad@bendcable.com (541) 420-4704



Dave Williams

Just after last month's column, the DX Gods rained some really nice Es down on Central Oregon. The period from 6/24-7/14 brought 5 days of top-of-the-dial FM Es plus several nice TV openings to NM, CO, AZ, and CA.

One new logging was KREX-5 from Grand Junction, CO with local news and their distinctive orange logo. Also, my best view ever of CKPG-2 Prince George BC with a "PGTV News and Noon" news intro – wish I had had a camera handy.

Still looking for a replacement for this column, but I'll keep it going as long as possible.

73 – Dave Williams

Dave Pomeroy

2321 SE Libra Ct.

Topeka, Kansas 66605-3505

davepomeroy@sbcglobal.net

June 18, 2007 Es

1730 WUND 2 Columbia, NC

June 19, 2007 Tr

0830 WTJR 16 Quincy, IL
KDNL 30 St. Louis, MO
KNLC-DT 14 St. Louis, MO
0900 KNLJ 25 Jefferson City, MO
UNID-DT 12 Lit up Win TV-D, but no PSIP

June 25, 2007 Tr

0600 DT 20, 22, 38, 45 Omaha, NE
KODD-DT 16 Bunker Hill, KS
0900 KMEG 14 Sioux City, IA

Es

1215 WLBT 3 Jackson, MS
1330 UNID 2 mention of "Texas drivers"
1400 KYW 3 Philadelphia, PA
1530 KTVK 3 Phoenix, AZ
1600 XEJ 5 Ciudad Juarez, CI

June 26, 2007 Es

1215 UNID 5 CBC
1400 WSTM 3 Syracuse, NY
1600 KIDK 3 Idaho Falls, ID
1640 CBWFT 3 Winnipeg, MB
1650 UNID 3 CBC English

1700 KWSE* 4 Williston, ND
UNID 2 mention of University of
Winnipeg
2000 WUND 2 Columbia, NC

June 27, 2007 Es

1200 XHY 2 Merida, YU
1230 XHFM* 2 Veracruz, VC
1600 KIII 3 Corpus Christi, TX
1615 KGBT 4 Harlingen, TX
KRGV* 5 Weslaco, TX
1700 XEFB 2 Monterrey, NM
XHWX* 5 Monterrey, NL
2105 KVBC 3 Las Vegas, NV
KVBC-DT 2 Las Vegas, NV

June 28, 2007 Es

1140 WUND 2 Columbia, NC
1400 WPSU 3 College Station, PA
1500 WSTM 3 Syracuse, NY
1430 WGRZ 2 Buffalo, NY
1515 UNID 3 CBC French

June 29, 2007

1145 UNID 2 Spanish
(7) with time and temp 31C
1925 WESH 2 Daytona Beach, FL
1930 WPBT 2 Miami, FL
UNID 2 Spanish with Cuba mention
(first known Cuban here, but no ID)
1955 WEDU 3 Tampa, FL
2000 WDIQ 2 Dozier, AL

June 30, 2007 Es

1030 WEDU 3 Tampa, FL
WESH 2 Daytona Beach, FL
1400 WHSV 3 Harrisonburg, VA (2nd time)
WMAR 2 Baltimore, MD
1900 WFSB 3 Hartford, CT
1905 WUND 2 Columbia, NC
1915 KVBC 3 Las Vegas, NV
1935 KTVK 3 Phoenix, AZ
1940 KVBC-DT 2 Las Vegas, NV

July 5, 2007 Tr

0630 KJRH-DT 56 Tulsa, OK
KOED-DT 38 Tulsa, OK
KAAS-DT 17 Salina, KS
KSBH 14 Hoisington, KS
KETV-DT 20 Omaha, NE
KMBC-DT 45 Omaha, NE
0955 WSEC 14 Jacksonville, IL
KNLJ-DT 20 Jefferson City, MO

July 6, 2007 Tr

0540 KMJT-CA 15 Manhattan, KS
(not seen often since KMOS-DT in
Sedalia, MO went on)
0545 KSNF 16 Joplin, MO
0915 KAAS 18 Salina, KS
KBDK 14 Hoisington, KS
K25DS 25 Junction City, KS (TBN)
0930 K15CN 15 Salina, KS
KAAS-DT 17 Salina, KS
KOOD 9 Bunker Hill, KS
KOOD-DT 16 Bunker Hill, KS

July 8, 2007 Tr

0400 KLKN 8 Lincoln, NE
KXVO 15 Omaha, NE
KXVO-DT 38 Omaha, NE
0700 KMEG 14 Sioux City, IA

July 10, 2007 Es

1810 WESH 2 Daytona Beach, FL

July 13, 2007 Es

1830 WSAV 3 Savannah, GA
2100 WUND 2 Columbia, NC
2125 XHMEN 4 Merida, YU

July 14, 2007 Tr

0700 KDSM 17 Des Moines, IA
0710 KDMI-DT 56 Des Moines, IA

July 16, 2007 Tr

0740 KFJX 14 Pittsburg, KS very strong
0745 KOZJ-DT 25 Joplin, MO
KSNF 16 Joplin, MO
KNWA-DT* 50 Rogers, AR
(PSIP51.1KNWA HD 51.2KFTA SD)
(KNWA is NBC for Fayetteville and
KFTA is NBC in Ft. Smith)
UNID PSIP "TV 38-1" and "TV 38-2"
KOKH 25 Oklahoma City, OK
KDOR 17 Bartlesville, OK

William Draeb (920) 388-2350
1314 Ellis St. Kewaunee, WI 54216-1802

1994 Sylvania Y1 Chassic, 40' Rohn 25G Tower,
CH2026, Y713, and KV420 Antennas, CMA-HB
and CMA-Ub Preamps.

June 2, 2007 Es

1145 2-4 UNID SW
1155 3 XHPN (tentative)

June 3, 2007 Es

0855 2-4 UNID ENE-Canada
0933 4 CFCM
2 CFAP (t)
1015 4 KCNC
3 KREG ad for KEKB-FM

1045 3 KRTV ad for Triangle Telephone
Support of Havre
1118 4 KCWC Bug in lower right, auction
items to bid on show
South
2008 2-3 UNID
2027 3 KTBS
2 KPRC (t)
2052 2 KCWX (t)

June 5, 2006 Es

1148 2 KCWX
4 WOAI
3 XHPN
1300 3 KBTX
3 KIII

June 8, 2007 Es

1900 4 KCWC
3 KIDK
1950 4 UNID ABC

June 15, 2007 Es

1130 2+ UNID
2015 3 KSWK
4 KAMR (t)
2 KACV (t)
4 KLBY (t)

June 18, 2007 Es

1145 2-4 UNID SW
1300 2-6 UNID ENE, Canada, NS
1656 3 CHAU-TV-1
1828 3 XHPN

June 19, 2007 Es

1858 2 WCBF
1957 3 WEDU
2 WESH
4 WJXT

June 24, 2007 Tr

2045 46 KDLT
14 KMEG (t)
15 KVRR
17, 29, 45, Twin Cities
2 (t), 4(t), 11(t) Twin Cities
43 KRWF KSAX ID
2218 12 KCCW Snow Free
7 KCCO
2228 8, 10 Duluth
2230 8 WDAZ

June 25, 2007 Es

1210 2-6 UNID S

June 26, 2007 Es

0925 3 WEDU
3 KSWK
5 KXAS
2 KPRC
1225 6 KOTV
1255 4 KDFW
1600 3 KENW

2000 3 KREG
2005 3 KLNE

June 28, 2007 Es

1150 3 WEDU
1215 2-6 UNID West
1235 3 WLBT
1257 3 UNID South, Spanish
1301 4 WTVY

June 30, 2007 Es

1024 3 KIDK (t)
1038 4 KCWC
1300 3 KRTV
1730 3 KENW
1745 3 UNID Spanish
1801 3 KIII
2046 3 WEDU

Dennis Park Smith
3605 San Remo Drive
Santa Barbara, CA 93105-2523
Telephone (805) 687-7803

This report is for June, 2007. Southern California coastal tropo was mostly steady this time, though was consistently good only on VHF and was

steadily only poor to fair on UHF for whatever reason. The UHF xmtrs are at a higher elevation, so perhaps the air inversion-layer boundary was lower this time but I don't know for sure.

6/1-6/3 None
6/4 Fair
6/5-6/7 morn None (Windy)
6/7 eve Fair
6/8-6/14 None (some wind)
6/15-6/16 morn Fair (VHF very good)
6/17-6/30 VHF good to very good
UHF poor to fair

This condition continued into July as of this writing. There was some Es on June 17 on channels 2-3 noted, and best approx. 1700-1800 and continued weaker for about 3 more hours, for the same two channel 2 Spanish stations, perhaps Mexico south of New Mexico or Texas but that is a guess.

I overlooked this, but I was in Wasco on May 18-20. I had reported previously from Wasco of a new "local", KEBK-LP 47 Bakersfield (color bars and ID). This time it wasn't on, but there was a new one on channel 38 from the same direction, color bars but no ID. No new digital stations.

Best of DX to All, Dennis

THE DEATH OF TV ES DX CONTINUES FROM PAGE 50

something is happening. But I can leave one or two radios going and wait. Saul Chernos

I don't know if TV DXing will survive, but one thing has become apparent about receiving DTV signals via Es in the analog age. Most DTV logs via Es posted this summer by WTFDAers have been receptions of PSIP data without video. ATV cci is probably part of the reason video is not decoding. Surely that situation will improve when the ATVs are gone. Dan Oglethorpe

If you think about it, double hop is rare and with the number of US VHF stations, very difficult to catch due to CCI from the 1st hop. I'd bet the number of double hop eskip catches in 2009 skyrockets ! Bill Nollman

Canada has an official deadline of Aug 31th, 2011 for all analogues to shutdown (except in remote areas) and switch to DTV or go dark. So we'll have 3 skip seasons..2009, 2010 &

2011..with wide-open Canadian analogue ES..then starting in 2012 it's a brave new world. Don't forget folks... the new solar cycle will be upon us by then. F2 skip on ch 2 will really stand out on a empty channel !

Might be a blessing to FM DXers and broadcasters, especially for stations near the 88 end of the dial. I did the FM station application for Esko MN *88.7 about ten years ago. Recently, the FCC granted this application (construction permit).

We specified 450 watts vertical only, anticipating an outcry from folks trying to get analog KBJR, channel 6, Superior WI, with transmitter in Duluth MN. Now, I believe we could be circular (including horizontal) with up to 89 kw in Esko, or 8000 watts if we specified a site in the Duluth MN antenna farm.

Other places across the country could similarly benefit. This will be of great interest as the educational FM station filing window of Oct. 12-19 approaches. Bruce Elving

SOUTHERN FM DX



John Zondlo
4009 Driftwood Circle
Yukon, OK 73099
jzondlo@cox.net
Deadline: 15th

For DXers in AL, AZ, AR, CA, CO, DE, DC, FL, GA, HI, KS, KY, LA, MD, MS, MO, NV,
 NM, NC, OK, SC, TN, TX, UT, VA, WV, Cuba & Mexico

August 2007

Fred Laun – K3ZO – 5801 Huntland Road –
 Temple Hills, MD 20748 – k3zo@verizon.net

Denon TU-800 tuner, Winegard antenna @ 35'

6/26 Es

1225 KBRK 93.7 SD Brookings, "B-93.7" 1092
 1255 KWYR 93.7 SD Winner, ads for Gregory
 County 1231
 1310 KFGE 98.1 NE Milford, "Froggy 98" 1075

William McGuire – 2412 59th Pl. - Cheverly, MD
 20785

Grundig S350

5/22 Tr

2055 WQHQ 104.7 MD Ocean City, "Q-105"

5/24 Tr

2200 WDKZ 105.5 MD Salisbury, "Kiss 105.5," ID
 2225 WNCL 101.3 DE Milford, "Kool 101.3," o
 2235 WICO 97.5 MD Salisbury, "Cat Country" //
 105.9

6/2 Tr

2240 WZBH 93.5 DE Georgetown, promo for car
 show, "The Rock Station,"
 "The Beach"

6/19 Tr

1033 WNVZ 104.5 VA Norfolk, hiphop, ""Z-104"
 2130 WOCQ 103.9 MD Berlin, hiphop, "OC-104"
 2140 WWFG 99.9 MD Ocean City, "Froggy 99.9"

John Zondlo – 4009 Driftwood Circle – Yukon,
 OK 73099 – jzondlo@cox.net - CDT – all new

Akai AT-VO4 tuner (w/2 110 filters), Radiosphy
 HD-100 receiver, Katruud RDS monitor, APS-9B
 antenna @ 16'

6/16 Es

2144 KVYB 103.3 CA Santa Barbara, spot for
 show at Oceanview Pavilion
 2153 KAXL 88.3 CA Greenacres, calls, CCM

6/17 Es

1245 XEDA 90.5 DF Mexico City, RDS "Imagen"
 2000 KJTA 89.9 AZ Flagstaff, ID, "Family Life
 Radio"

2002 KRIT 93.9 AZ Parker, EE ID, "Radio
 Campesina"

2006 KMVA 97.5 AZ Dewey, gave comment line
 phone # 602-260-9750

2011 KFPB 94.3 AZ Chino Valley, calls, k

6/26 Es

1155 WTLI 89.3 MI Bear Creek Township,
 "Smile FM"

1202 CIRV 88.9 ON Toronto, talk about
 Toronto in Portuguese, local
 KYLV off again
 1205 CBCE 97.5 ON Little Current, CBC
 Radio One for NE ON
 1220 WNBY 93.9 MI Newberry, "Oldies 93"
 1223 CBON17 95.1 ON North Bay, FF
 1255 WFCX 94.3 MI Leland, spot for Kent
 Feeds dealer
 1313 WPJP 100.1 WI Port Washington,
 "Relevant Radio for
 Milwaukee"
 1320 WKHQ 105.9 MI Charlevoix, r
 1327 WCRZ 107.9 MI Flint, r, "Cars"
 1331 WYKX 104.7 MI Escanaba, "KX Country,"
 k
 1339 WECB 104.3 WI Seymour, "The Breeze"
 1345 WSUE 101.3 MI Sault Ste. Marie, "The
 Soo's Rock Station"
 1400 WIAA 88.7 MI Interlochen, ID, c
 1402 WPHN 90.5 MI Gaylord, "Northern
 Christian Radio," CCM
 1409 WCMB 92.9 MI Oscoda, WCMU repeater
 1434 WYSS 99.5 MI Sault Ste. Marie, trivia
 contest, calls
 1438 WTHN 102.3 MI Sault Ste. Marie, Northern
 Christian Radio, station
 #2,500
 1507 CHVN 95.1 MB Winnipeg, CCM
 1548 KYUS 92.3 MT Miles City, local spots
 1553 KLGT 92.9 WY Buffalo, spot for busn in
 Sheridan, "Kix 92.9"
 1555 KYTI 93.7 WY Sheridan, wx
 1600 KZZS 98.3 WY Story, ID
 1620 WMFG 106.3 MN Hibbing, calls, over local
 KGOU
 1623 KKEQ 107.1 MN Fosston, talk about
 Hennepin County
 1624 KLIZ 107.5 MN Brainerd, r, "Power Loon"
 1632 KLKS 104.3 MN Breezy Point, multiple
 spots for restaurants near
 area lakes
 1636 KVMI 103.9 ND Arthur, k, "103.9 The Truck"
 1637 KRCQ 102.3 MN Detroit Lakes, spot for MN
 National Guard
 1650 CKQV2 104.5 ON Kenora, spots for
 several Kenora businesses
 1657 KVOX 99.9 MN Moorhead, "Froggy FM"
 1658 CFWM 99.9 MB Winnipeg, r, "Bob FM"
 1704 CKDR 92.7 ON Dryden, celebrating Chris
 Pronger Day in Dryden
 1739 KYNU 95.5 ND Jamestown, "Big Dog
 Country"
 2030 QQMN 91.5 MN Thief River Falls, MNPR c
 2040 KJKJ 107.5 ND Grand Forks, "KJ-108"

6/28 Es

1205 CJRL 89.5 ON Kenora, personal messages to area residents

1220 CKSB7 93.5 ON Kenora, FF

1220 CBQX 98.7 ON Kenora, cooking show

1223 CJZZ 99.1 MB Winnipeg, "Smooth Jazz – Cool 99.1"

1233 CBW1 89.3 MB Winnipeg, wx for Manitoba

7/12 Es

1632 XHCRS 88.5 SN San Luis Rio Colorado, "Radio Sonora"

1634 XHCRL 89.5 SN San Luis Rio Colorado, calls, local spots

Fred Nordquist – 147 Travis Hill Road - Moncks Corner, SC - 33.21756N 79.95798W - FM03AF -
 Statistics web page at:
<http://web.infoave.net/~fmjnordquist/statistics.html>
 EDT

Denon TU1500RD w/RDS chip tapped for direct connect to PC serial port, RDSDec v3 SW, APS13 @ 23'AGL w/CDR rotor, roof tripod (guyed), SP9 w/RS Rotor at 20' (pole mast, phase antenna)

All new except those noted with *

5/15 Es

2202 KRTU 91.7 TX San Antonio, j, ID 1121

5/21 Tr

0915 WBTS* 95.5 GA Doraville, RDS PI 594C PS BEATB97 233

0945 WMGZ* 97.7 GA Eatontown, "Z97" 189

2317 WXOF* 96.3 FL Yankeetown, "96.3 The Fox" 332

5/21 Es

1132 KMCN 94.7 IA Clinton, ID 821

1135 KCPI 94.9 MN Albert Lea, RDS PI 1696 PS THEHAWK 1019

1137 KQWC 95.7 IA Webster City, SID 986

1142 WLCN 96.3 IL Atlanta, "Lincoln Country" 707

1145 WFYR 97.3 IL Elmwood, RDS PI 645D DPS 750

1147 KSMA 98.7 IA Osage, RDS PI 40CC PS KISS-FM 995

1150 WDQZ 99.5 IL Lexington, RDS PI 5E4D PS THEEAGLE 705

1156 WYST 107.7 IL Fairbury, RDS PI 95EF PS Star107 706

1201 KCQQ 106.5 IA Davenport, RDS PI 16F8 817

1203 KCLD 104.7 MN St. Cloud, RDS PI 1669 PS KCLD 1150

1209 KXJK 104.1 MN St. Louis Park, RDS PI 52F8 PS JACK FM 1078

1210 KFIL 103.1 MN Preston, local ads 976

1212 WCSJ 103.1 IL Morris, RDS PI 5BCD 722

1212 WLTE 102.9 MN Minneapolis, RDS PI 73A6 DPS 1077

1213 WKIF 92.7 IL Kankakee, RDS PI 6FE5 698

1218 KHME 101.1 MN Winona, local promo 975

1220 KOWZ 100.9 MN Blooming Prairie, local ad 1031

1223 KSJN 99.5 MN Minneapolis, RDS PI A47F PS KSJN, calls 1078

1233 KNXR 97.5 MN Rochester, local wx 1000

1236 KWWK 96.5 MN Rochester, local ad 1009

1241 KXXR 93.7 MN Minneapolis, RDS PI 4F23 PS 93XROCKS 1078

1259 WCOW 97.1 WI Sparta, RDS PS COW 97.1, k 945

1301 WAQE 97.7 WI Barron, ID 1056

1305 WUSZ 99.9 MN Virginia, RDS PI 8B65 RADIOUSA 1191

1310 WTBX 93.9 MN Hibbing, ID 1191

1707 CBQI 90.1 ON Atikokan, EE, CBC Radio 1231

1707 WORQ 90.1 WI Green Bay, "Q90FM" 881

1713 WYVN 92.9 MI Saugatuck, RDS PI 9637 736

1718 WCMU 89.5 MI Mt. Pleasant, Central Michigan University, NPR 761

2317 WSOF 96.3 FL Yankeetown, "The Fox," ID 332

5/22 Tr

0915 WBTS 95.5 GA Doraville, RDS PI 594C 233

0945 WMBZ 97.7 GA Eatontown, "Z97" 189

1038 WLWI* 92.3 AL Montgomery, ID 366

5/23 Tr

1015 WRHD 103.7 NC Williamston, "96.7/103.7, Thunder," k 251

5/30 Tr

0816 WJSP 88.1 GA Warm Springs, RDS PI 6E48 276

5/31 Es (TX/OK on 2006 Chrysler 500C car radio)

1216 KWEY 95.5 OK Clinton, Weatherford ads 1094

1217 KARX 95.7 TX Claude, "95.7 The Car" 1244

5/31 Es to Jamaica ~ 1069 miles...back at home

1817 92.3 JM , "Hitz 92 FM," EE all w/Jamaican accent

1903 92.7* JM , "Hitz 92 FM," EE // 92.3

1912 94.9 JM , "RJR 94 FM" EE //94.7

1913 93.9* JM , "NewsTalk 93FM," EE, // 93.5

1917 93.5 JM , "NewsTalk 93 FM," EE

1920 94.7* JM Coleyville, "RJR 94 FM" EE

1920 97.7 JM , "Kool FM," RDS PI 0000, EE

1942 97.9 JM , "Kool FM," RDS PI 0000, EE // 97.7

Es died down around 1945 EDT

6/1 Es

1153 KZBJ 89.5 TX Bay City, SID 986

1220 KOJO 91.1 LA Lake Charles, RDS PI 11CC, "Radio Maria," rel 790

1225 KQVT 92.3 TX Victoria, "Q92," r&b 1051

1236 KROM 92.9 TX San Antonio, SS, RDS PI 3E5C 1113

1243 KLEY 95.7 TX Jourdanon, SS, RDS PI 2D8C, "La Ley" 1140

1257 KRXT 98.5 TX Rockdale, ID, local ads 1176

1330 KGKL 97.5 TX San Angelo, ID, k 1197

1335 KBGO 95.7 TX Waco, RDS PI 134E PS KBGO, o 1011

6/2 Es

2143 KXRA 92.3 MN Alexandria, RDS PI 4E76 PS KX92 OLDIES 1200

2152 KMXK 94.9 MN Cold Spring, RDS PI 3210 PS MIX 94.9 1139

2203 WYTE 96.7 WI Whiting, PI 72B6
PS LITE 96.7 950

6/3 Tr
1000 WPWB 90.5 GA Byron, GNN rel 201
1419 WYFL 92.5 NC Henderson, BBN rel 230
1428 WFGO 92.5 GA Folkston, SS 207

6/6 Es
1044 XHCAQ 92.3 QR Cancun, SS, Radio
Formula 932

6/7 Tr
2332 WBT 99.3 NC Chester, "NewsTalk
1110 WBT" 132

6/14 Es
2001 KLNB 88.3 NE Grand Island, Fox nx, ID
1143

6/16 Es
Many SS/FF unIDs up/down the dial, will place IDable
clips in WTFDA Forums
0954 RAICES 102.9 DR Santo Domingo, SS, RDS
PI 2615 PS RAICES 1193

1005 107.3 JM Montego Bay, IRIE FM, EE
talk

1012 107.9 JM, IRIE FM // 107.3



1017 106.9 JM Kingston, "Power 106,"
EE, talk

1020 106.7 JM, "Power 106" // 106.9

1021 106.5 JM Montego Bay, "Power 106"
// 106.9

1040 99.5 JM, "Music 99," EE

1040 99.1 JM, "Music 99" // 99.5

1054 R. Mona 93.1 JM Mandeville, "NewsTalk 93,"
// 93.5/93.1 also heard –
relogs

1116 unID 107.1 ?? ??, EE ID "You are
listening to WRCH, the
Haitian Community Network
Radio," FF audio cut in/out,
definitely via Es

1147 WIOA 99.9 PR San Juan, SS SID 1351

1158 WDGT 97.3 PR Rio Grande, SS, RDS PI
FFFF PS MAGIC 1351

1220 unID 92.7 DR? ??, RDS PI 0000

1942 KRNH 92.3 TX Kerrville, SID 1149

1952 KNCT 91.3 TX Killeen, ID 1044

2117 XHRYS 90.1 TA Reynosa, SS, RDS PI B110
1208

6/16 Tr
1626 WZPR 92.3 NC Nags Head, "Party
92.3/101.1" 306

6/18 Tr
0707 WSJT* 94.1 FL Lakeland, RDS PI 852D,
smooth j 404

0752 WJBT* 92.7 FL Green Cove Springs, RDS
PI 1F1A, r&b 239

6/18 Es
Canada 1640-1944
FF Radio Canada etc on 88.3, 88.9, 89.1, 89.5, 90.3,
93.1, 94.9
EE on CBC Radio etc on 88.3, 89.5, 91.1

1818 CHNI* 88.9 NS St. John, RDS PI CA5E
1194

6/18 Gw

2000 W208BA 89.5 SC Myrtle Beach, CSN 70
6/18 Tr
0100 Central FL TV/FM stns in again strong

2202 WJFR 88.7 FL Jacksonville, Family Radio
ID 224

6/25 Es
Es spotty all day –
Jamaica/OK/KS/AR/TX/WI/IA/NE/MO – MUF 94.7

1023 KLAS* 89.1 JM, EE mx, RDS PI 3001
1026

1100 KLVV 88.7 OK Ponca City, "Praise 88.7,"
ID 1007

1110 KANS 91.1 KS Garden City, local wx 1214

1122 KKTZ 93.5 AR Forrest City, local ads, wx
637

1142 KTOT 89.5 TX Spearman, HPR 1211

1247 WLSU 88.9 WI LaCrosse, ID 954

1658 KCCK 88.3 IA Cedar Rapids, RDS PI
1586 826

1900 KEZO* 92.3 NE Omana, "Z92" 1036

1900 KTTN 92.3 MO Trenton, local ad, ID 889

1909 KCSI 95.3 IA Red Oak, local telephone
#, announcements 995

1910 KNEN 94.7 NE Norfolk, RDS PI 32C9,
"Mix 94.7" 1134

Above FM Es was a series of short spikes, not very
high MUF

6/25 Super Tr – all of Florida

Miami/Orlando/Tampa/Lakeland/Melbourne/
Jacksonville, etc, UHF/VHF/FM

6/26 Tr
0013 WMTX 100.7 FL Tampa, Mix 100.7

0015 WUSF 89.7 FL Tampa, RDS PI 8B51 395

6/26 Es
1146 KNOX 94.7 ND Grand Forks, "94.7 The
Rooster," k 1353

1150 KMFL 94.1 MN Little Falls, "FM 94" 1164

1202 KSRQ 90.1 MN Thief River Falls 1330

1207 WHLA 90.3 WI LaCrosse, "Ideas 90.3,
Wisconsin Public Radio"
954

1210 KKXL 92.9 ND Grand Forks, "XL93," rel
1349

1217 KYYX 97.1 ND Minot, RDS PI 51E7,
furthest Es this season
1508

1220 KRVY 97.3 MN Starbuck, "The River 97.3"
1185

1220 KQWB 98.7 MN Moorhead, RDS PI 3C7D
1279

1231 CFWM 99.9 MB Winnipeg, RDS PI CDE5
PS BOB FM, new province
1446

1231 KAUS 99.9 MN Austin 1011

1247 KKEQ 107.1 MN Fosston, "Q-107," rel 1282

1252 KAOC 105.1 ND Cavalier, RDS PI 116E
PS MAVERICK, k 1413

1307 KRCQ 102.3 MN Detroit Lakes, k 1252

1315 KVOX 99.9 MN Moorhead, RDS PI 48F7,
k 1288



1319 KLMP 97.9 SD Rapid City, "Light 97.9,"
rel 1489

1340 KCNE 91.9 NE Chadron 1412

1355 KKOK	95.7	MN	Morris, k 1201	1712 WCEZ	93.9	IL	Carthage, "EZ 93.9" 797
1400 KJKK	96.5	MN	Fergus falls, "KJ Country" 1233	1713 KKXA	93.1	SD	Yankton, "KK93," k 1151
1410 CBQQ	90.5	ON	Fort Frances, EE, CBC Radio One talk 1280	1722 KRXL	94.5	MO	Kirksville, local ads 842
1451 KSCR	93.5	MN	Benson, r 1177	1735 KTTN*	92.3	MO	Trenton, local ad 889
<u>6/27 Es</u>				1737 CBAF5	92.3	NS	Halifax, FF CBC 1175
1305 KJAB	88.3	MO	Mexico, family calendar, rel 781	1744 CFRK	92.3	NB	Fredericton, "Fred FM," EE 1130
<u>6/28 Es</u>				1800 KBAH	90.5	TX	Plainview, AFA nx 1249
1351 KKYY	101.3	TX	Whiting, local ad 1082	1803 KQRN	107.3	SD	Mitchell, local anmct, "Q107" 1210
<u>6/29 Es</u>				1812 KMXC	97.3	SD	Sioux Falls, "Mix 97.3," lcl telephone # 1172
1940 KYSU	90.9	TX	Houston, website 938	1818 unID	101.9	??	??, RDS PI 1315, k
2000 KSYM	90.1	TX	San Antonio, ID 1122	1853 WMEP	90.5	ME	Camden, NPR multi-station ID 955
2015 KTXK	102.7	TX	San Antonio, RDS PI 2A24 1122	1853 CJPN	90.5	NB	Fredericton, FF ID 1125
2018 KUSJ	105.5	TX	Harker heights, "US105," k 1044	1905 WMGX	93.1	ME	Portland, RDS PI 750B 892
2020 KUSN	105.9	TX	Centerville, local ad, wx, k 939	1922 CKUT	90.3	QC	Montreal, EE, ID 913
2025 KESS	107.9	TX	Lewisville, "La Que Buena," SS 979	2001 WWNO	89.9	LA	New Orleans, RDS PI F001 PS WWNO 634
2035 KWGW	104.9	TX	Mexia, "George FM" 970	2014 unID	96.7	??	??, RDS PI 1F07, Top 40
2043 KLJT	102.3	TX	Jacksonville, RDS PI 2E09, soft r 880	The 7/10 Es was very productive, with stations heard from US/Canada/Mexico (15 political units), 25 new loggings. An unID FM SS 89.5 was posted in the WTFDA Forums for ID help			
2044 KACQ	101.9	TX	Lometa, "Texas Country Q102" 1080	<u>7/13 Es</u>			
2105 KIXY	94.7	TX	San Angelo, RDS PI 278E, k 1199	KBNL	88.3	TX	Brownsville, SS, "Radio Manantial" 1167
2117 KNEX	99.1	TX	Fairfield, local ad 941	1751 WKUZ	95.9	IN	Wabash, local ments 607
2132 KSMG	105.3	TX	Sequin, "Magic 105.3" 1113	1807 KXCV	90.5	MO	Maryville, local promo, NPR 959
2139 KMLR	106.3	TX	Gonzales, "K-Love," rel 1070	1817 WBLV	90.3	MI	Twin Lake, public radio, local sports 785
2145 KISX	107.9	TX	Whitehouse, RDS PI 270B, soft r&b 887	1825 WAUN	92.7	WI	Kewaunee, "Smooth jazz 92.7 and 97.3" 879
<u>7/5 Es</u>				1835 WKMJ	93.5	MI	Hancock, "Mix 93" 1059
Es was shortlived and only up to MUF 95.9 on a couple of Es spikes into FM this evening.				1843 WDOR	93.9	WI	Sturgeon Bay, local wx, talk 926
1630 KAFR*	88.3	TX	Conroe	1908 WBCM	93.5	MI	Boyne City, ID //WTCM 876
1636 KUT	90.5	TX	Austin	1920 KXOJ	100.9	OK	Sapulpa, RDS PI FFFF, rel 937
1640 unID	90.3	??	??, "K-Love," many possibilities	1935 KEOJ	101.1	KS	Caney, RDS PI FFFF, rel, RDS // KXOJ 936
1856 KLVV*	88.7	OK	Ponca City, "Praise 88.7," ID 1002	1943 KSGF	104.1	MO	Ash Grove, RDS PI F000, PS TALK RT:ID 822
1907 KOSU*	91.7	OK	Stillwater, RDS PI 36EO	1947 KJLS	103.3	KS	Hays, local promo 1137
1911 KKBD	95.9	OK	Sallisaw, RDS PI 2A85 PS BIG DOG 853	1955 KSEK	99.1	KS	Girard, baseball, ID 888
<u>7/8 Es</u>				1959 KSAJ	98.5	KS	Abilene, baseball, multi-city ID 1036
1720 KJBZ	92.7	TX	Laredo, SS, EE/SS ads 1115	<u>7/14 Es</u>			
<u>7/9 Es</u>				1038 KRUF	94.5	LA	Shreveport, local ads 810
1928 WHCF	88.5	ME	Bangor, rel anncmnts 1028	1110 KGNE	88.1	TX	Abilene, ID 1143
1947 WMME	92.3	ME	Augusta, RDS PI 6168 PS 92 MOOSE 994	1115 unID	88.5	??	??, PTA TX KEOM which is oldies, RDS PI 1BED=KENL?, PTY: Oldies
<u>7/10 Es</u>				1225 KQCH	94.1	NE	Omaha, RDS PI 3A78 PS CHANNEL 94.1 1042
1607 KNEN*	94.7	NE	Norfolk, SID 1134	1228 KAAN	95.5	MO	Bethany, "KAAN Country" 922
1620 KCLY	100.9	KS	Clay Center, SID, k 1046	1247 unID	105.9	??	??, PTA NE/MO, RDS PI 2194=KGRC?, PTY: classic rock, RT" 105.9 FM
1630 KFTK	97.1	MO	Florissant, RDS PI 1F2C 713	1252 KELR	105.3	IA	Chariton, local wx 909
1632 KXCM	97.3	MO	Lee's Summit, ESPN Radio 904	1253 KNAX	104.1	SD	Yankton, local ad 1132
1636 KPLA	101.5	MO	Columbia, local ad 794	1319 KPNO	90.9	NE	Norfolk, rel, "Praise 90.9," ID 1127
1637 KTLQ	101.9	NE	Lincoln, local ad 1042	1455 KWRI	89.1	OK	Bartlesville, "Air 1," rel, ID 911
1640 KWPN	107.9	NE	West Point, k, local ad 1087	FM totals now at 1153			
1644 KKCD	105.9	NE	Omaha, RDS PI 2A9F 1035				
1653 KBOE	104.9	IA	Oskaloosa, ID, k 892				
1656 KFJK	103.1	NE	Ravenna, RDS PI 2B5C 1159				
1658 KBRX	102.9	NE	O'Neill, RDS PI 1475, k 1194				

Randy Zerr, KW4RZ, Ft. Walton Beach, FL.

6/17/07 was one of the best openings to Mexico caught while I was able to DX in the shack. Es began at about 8:50 am with Guatemala, El Salvador and Nicaragua and moved north cutting off at just after the noon hour.

10 new FM's ID'ed including the first from the state of Hidalgo.

Samples:

2 more recordings of Humberto's "72.9 Radio Selectos" supermarket chain radio station from San Salvador, El Salvador. This one includes the frequency announced which is unusual. I don't think shoppers have radios that tune 72 MHz and would need to know. It's fadey but you can hear "setenta dos punto nueve efey emey"

89.3 XHLLV Tula, Hidalgo 1kw 991 miles with city and state mentioned

107.9 XHIMR Mexico City 30kw 1090 miles, "107.9 FM Horizonte" clobbered 100kw WPFM Panama City 73 miles east

95.5 XHTP Xalapa 3kw 990 miles had me fooled first with "Oldies 95-5" thought it was a new station until I caught this full ID.

2+ minutes of 90.9 with at least 3 Mexicans mixing over the top of 100kw WELJ Brewton, AL 64 miles north (religious singing)

Luck was with me to be able to pull out 3 ID's in this mess:

XHQRT Querétaro 30kw 1092 miles "Radio Querétaro", XHTEZ Puebla 2kw 992 miles "SICOM Radio", and XHUIA Mexico City 3kw 1090 miles "Ibero 90.9". There may be others.

91.3 XHFAJ Mexico City 100kw 1090 miles "Alfa 91.3" clobbered 100kw WHIL Mobile, AL 73 miles west

From here, June 27 was the best day overall for the first half of this E season.

Much of the opening was missed due to work 7am-4:30pm but running two tuners all day and recording, and coming home at lunch caught some of the daytime DX.

The first Es appeared just before noon into Michigan with a couple new loggings on recordings including 102.9 WWWW-FM in Michigan.

Mexico and west Texas seemed to be in rather nicely from 1:30-4:30pm then shortly after arriving home the Es picked up to include several New Mexico and Arizona stations. 97.1 was monitored in search of KCYN Moab, UT again for a new state but no joy. I don't think it could get any closer though with 97.9 KISZ Cortez, CO in good, just 82 miles short. 2 new Flagstaff area FM's at 1474 miles were a nice treat. Multiple E clouds resulted in skip in several directions at the same time.

The MUF reached 144 MHz for some with New Mexico - Tennessee, Louisiana, Mississippi reported.

No 144 MHz SSB signals were heard here. The last FM Es signals were in after 10pm with spotty Mexico 88-94MHz over 10 hours of FM Es.

7/14 Es

Es was intense on this end. Over 5 hrs worth and finally on a weekend!

Quite a variety of FM DX was in including some short skip under 700 miles and new loggings over the top of 100kw semi local stations rarely ever clobbered by Es. Here's a few audio samples from stations in the northeast.

88.7 WBYX Stroudsburg, PA 4kw 964 miles big signal
90.3 WJTL Lancaster, PA 12kw 876 miles live from Harborfest

91.9 WNIN Charlottesville, VA only 320 watts 698 miles with RDS

92.3 WPRO Providence, RI 39kw 1150 miles

93.5 WZBH Georgetown, DE 11kw 852 miles

93.9 WKYS Washington, DC 24.5kw 798 miles what's with the RDS "MAIN"?

93.9 WNYC New York City, NY 5.4kw 1000 miles unmistakable NPR

94.3 WJII Norlina, NC 6kw 641 miles, did not realize skip was so short until audio reviews hrs later

95.1 WAYV Atlantic City, NJ 50kw 924 miles with

WBPC semi local on since 7/05 and 94.9 WKSJ stronger and with IBOC now, never thought I'd hear WAYV again. 95.1 used to be one of the best freqs here.

95.3 WHFM Southampton, NY 5kw 1076 miles with WBAB 102.3 ID and RDS

95.3 WKDB Laurel, DE 6kw 835 miles strong, with RDS

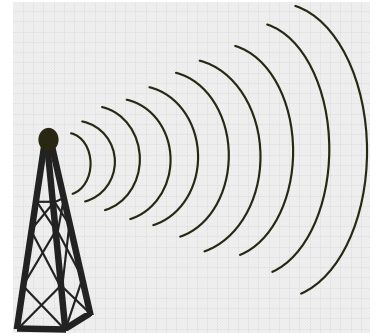
95.3 WDNH Honesdale, PA 1.6kw 998 miles nice signal

95.5 WPGC Morningside, MD 50kw 801 miles

97.1 WASH-FM Washington, DC 17.5kw 799 miles



Northern FM DX



Keith McGinnis
18 Newbridge St., Hingham, MA 02043
longwave@comcast.net 781-875-1944

For Dxers in the following states: CT IA ID IL IN MA ME MI MN MT ND NE NH NJ NY OH OR PA RI SD VT WA WI WY and all of Canada. Please submit by the 10th of each month. If possible please submit in the formats shown Below.

EDITORS NOTE: PLEASE NOTE THAT ANY TYPEWRITTEN OR HANDWRITTEN REPORTS MIGHT BE DELAYED TILL A LATER ISSUE AS TIME PERMITS. ALSO PLEASE KEEP REPORTS AS RECENT AS POSSIBLE (THE LAST 3 MONTHS SHOULD WORK FINE). THANK YOU.

Jim Renfrew, Holley NY
Sansui T-9900 Tuner, Conrad RDS Decoder, 40' FM antenna on roof, Alliance rotor, Prius auto radio

MAY 11 Es NY – AR/MO/KS/NE

1200	UNID	91.1	"tonight's programming is made possible in part by Mary Evelyn Faisal in honor of Edward Faisal, a new graduate of Christian University. This hour is made possible by contributions to ... welcome to Texas (A&M) ...". Kingsville Texas?	
1202	UNID	92.1	Brief Spanish talk – perhaps Seabrook TX, similar bearing to previous item.	
1315	WMA?	90.3	"MPB" RDS (two stations possible)	
1316	WMAE	89.5	Booneville	MS "MPB" RDS
1317	WMAO	90.9	Greenwood	MS "MPB" RDS
1317	UNID	92.7	Kiss-FM or Mix-FM	
1319	*KJMT	97.1	Calico Rock	AR "Mountain Talk"
1321	*KOMC	100.1	Kimberling City	MO "KOMC" RDS
1322	UNID?	99.7	"KOAN" RDS	
1323	KAWW	100.7	Heber Springs	AR North Little Rock car ads
1325	KHOZ	102.9	Harrison	AR Most Country KHOZ" RDS
1326	*KSGF	104.1	Ash Grove	MO "KSGF" RDS
1328	UNID	106.1	Detailed farming report	
1329	*KRZK	106.3	Branson	MO "12:30 report", call letters
1332	UNID	106.5	"Mix 106 ...", skip or Cleveland?	
1333	*KPFM	105.5	Mountain Home	AR "Country 1-5", Foxworthy Sat 1 pm promo
1334	#KABZ	103.7	Little Rock	AR Arkansas sports scholarships, new calls
1335	UNID	103.7	"Foley Automotive"	
1343	KXUS	97.3	Springfield	MO Worlds of Fun and the Royals vacation package
1346	*KJEZ	95.5	MO Poplar Bluff	"KJEZ Z95" RDS, ID as "Z95 the Bone".
1347	*KKLR	94.5	MO Poplar Bluff	"Clear 94" ID
1350	UNID	94.3	Limbaugh. The Limbaugh site seems out of date. This could be WKYX Golcanda IL (Paducah) or KSMZ Viola AR. The latter is "Mountain Talk", along with 97.1 (also reported above), but I can't find any program schedule for "Mountain Talk". The Limbaugh site lists KEZG the previous calls for KJMT, but no mention of Viola AR.	
1352	*KOE	97.5	Doniphan	MO Ripley County ads
1353	*KDAA	97.5	Rolla	MO Surdyke Yamaha in Osage Beach
1355	UNID	100.9	"FarmFest" mention	
1357	KBEQ	104.3	Kansas City	MO "Q 104"
1359	*KJCK	97.5	Junction City	KS "Power Hits 97-5", heard on 94.5 in 1999.
1403	KJTY	88.1	Topeka	KS short "Probe.org" program, not mentioned in station sked, but would fit 1:00-1:06 PM
1404	KBUZ	90.3	Topeka	KS AFR
1405	KRVN	93.1	Lexington	NE "The River"
1409	WQUB	90.3	Quincy	IL "WQUB" RDS
1411	KKOT	93.5	Columbus	NE "The Hawk"
1415	KNDY	95.5	Maryville	KS "Tad Svendsen" DJ correlates with web page
1420	KATI	94.3	California	MO Jefferson City ads
1422	KLOZ	92.7	Eldon	MO

MAY 22 Es NY-LA/MS/TX

1130	WWNO	89.9	New Orleans	LA	RDS "WWNO"
1140	WKZW	94.3	Sandersville	MS	"KZ 94.3"
1141	WPRF	94.9	Reserve	LA	"Praise 94.9"
1144	WGCMt	102.3	Gulfport	MS	"Coast"
1148	*WCDV	103.3	Hammond	LA	
1150	WLMG	101.9	New Orleans	LA	"Magic"
1152	K---	104.1	Houma	LA	ad for TL Starks Sports Pub in Kenner
1158	KLRZ	100.3	Larose	LA	call in about levees
1200	WBBNt	95.9	Taylorville	MS	Jones County Community College ad
1200	WTKL	95.7	New Orleans	LA	Rhino Construction ad
1204	*KQKI	95.3	Bayou Vista	LA	
1209	KPELt	105.1	Abbeville	LA	Limbaugh
1210	*WAKH	105.7	McComb	MS	"SW MS'S Best Country. K106" RDS
1218	WJXN	100.9	Jackson	MS	"K-Love"
1221	KRDJ	93.7	New Iberia	LA	"Acadiana's Classic Rock"
1226	UNID	91.1	"Different styles of rock means true variety on 91.1"		
1228	UNID	91.1	PI 11CC = KARS		
1229	WMPN	91.3	Jackson	MS	PI 658A
1230	WDVW	92.3	LaPlace	LA	"Diva"
1231	WHJT	93.5	Clinton	MS	"Star"
1232	*WEMX	94.1	Kentwood	LA	PI 33DS "Max 94.1"
1232	*KSMB	94.5	Lafayette	LA	PI A4C1
1237	KRRQ	95.5	Lafayette	LA	RDS Q-95 PI 3EAE
1237	WUSJ	96.3	Jackson	MS	"US 96.3" PI 8B55
1240	UNID	96.7	MS DOT PSA, mixing with WFFF		
1251	KRRV	100.3	Alexandria	LA	
1304	WMAO	90.9	Greenwood	MS	RDS MPB
1314	KSWP	90.9	Lufkin	TX	
1709	WFFF	96.7	Columbia	MS	PI 6263 (unattended RDS hit)

MAY 30 Tr NY-ON

0730	CIKR	105.7	Kingston	ON	PI 6B8C
0730	CHEZ	106.1	Ottawa	ON	PI C24E
0730	CIXK	106.5	Owen Sound	ON	PI A7D5

MAY 31 Es NY-FL

0948	WSOR	90.9	Naples	FL	
0958	WGEst	90.9	Key Largo	FL	Spanish

Harry Hayes - 9 Henry Street - Wilkes-Barre, PA 18702
Equipment: Bose Wave Radio, FM-6 antenna, no amplification

March 17 Ground

1400	WHMN	107.3	Plymouth	PA	relay of Radio 74 Int. Full ID, fair signal
------	------	-------	----------	----	---

May 6 Es

1900	KLCU	90.3	Ardmore	OK	KCCU ID, NPR
------	------	------	---------	----	--------------

May 9 Es

1545	UNID	91.1	Religious and parallel to 90.3		
------	------	------	--------------------------------	--	--

May 11 Es

1400	WNIU	90.5	Rockford	IL	Classical, ID as "Rockford, DeKalb"
1443	WHMH	101.7	Sauk Rapids	MN	Mention of St. Cloud area
1500	KNOW	91.1	Minneapolis	MN	Weather report, ID, NPR
1505	KQRS	92.5	Minneapolis	MN	ID as "KQ-92", classic rock
1519	WJJQ	92.5	Tomahawk	WI	ID, country format, slogan; "The North Woods"

May 22 Es

1138	KZLG	95.9	Mansura	LA	ID, over semi-local WGGI Benton, PA
------	------	------	---------	----	-------------------------------------

1150	KZBL	100.7	Nachitoches	LA	ID's
1200	KAVK	89.3	Many	LA	Full ID, town pronounced "Manny"
1213	(KNBB) 99.3		Ruston	LA	Num. "The Peach" ID's and mentions of Ruston. I'm assuming this call no longer valid as an internet search applies this call to another station.
1245	KKUS	104.1	Tyler	TX	"104.1 The Ranch"
1300	KTXG	90.5	Greenville	TX	ID
1735	KTTG	96.3	Mena	AR	"Sports Wrap" local sports, ads fro Ft. Smith and Van Buren
1900	KCOL	92.5	Groves	TX	ID, oldies
6/2 Es					
2120	KOMA	92.5	Oklahoma City	OK	assumed with oldies, as OK all over TV tonight.

An incredible work load this year means that just about all this DX was made while working in the home studio, where the Bose is. This means not sitting in front of the radio and tuning up and down the dial, but rather tuning in one frequency and letting the stations drift in and out. 92.5 and 101.7 are two of my favorite frequencies for this. Not as many loggings this way, but very interesting. The area has many new HD radio stations including WGGY-101.3, WDMT-102.3 and WILK-FM-103.1. I note that strong skip signals don't seem to challenge the side bands on these, either high or low. Yes, WILK AM now is heard on 103.1, 24 hours a day with it's mostly local talk format. This is ex WFEZ and soft rock.

June 3 MS

1650	WBKR	92.5	Owensboro	KY	"...on the Country Station, WBKR..."
------	------	------	-----------	----	--------------------------------------

June 16 Es

1740	WQST	92.5	Forest	MS	"Family Radio", mention Meriden
1800	WBRH	90.3	Baton Rouge	LA	jazz

June 18 Es

1635	KUAR	89.1	Little Rock	AR	promo for Ark. Arts Council, local 89.1 off
1638	CBHC	89.1	Truro	NS	CBC News, mention Halifax, tentative

June 25 Es

1831	WBRH	90.3	Baton Rouge	LA	"Mainstream Jazz"
2129	KJJY	92.5	Des Moines	IA	promo for Hatfield & McCoys morning show

June 26 Es

1055	KELO	92.5	Sioux Falls	SD	ID, "KELO Land"
1100	KCCD	90.3	Moorehead	MN	weather for Fargo
1125	KQMA	92.5	Phillipsburg	KS	ID
1143	KJJY	92.5	Des Moines	IA	
1205	KSKU	94.7	Sterling	KS	Numerous jingle ID's, New Music
1223	KNEN	94.7	Norfolk	NE	"Music Mix for North Ease Nebraska"
1405	KJCK	97.5	Junction City	KS	"Power Hits 97.5"

June 28 Es

1415	KOMA	92.5	Oklahoma City	OK	ID
1418	KHBZ	94.7	Oklahoma City	OK	"94.7, The Buzz"

July 7 Es

1925	WEKS	92.5	Zebulon	GA	"92.5, The Bear" NASCAR, tent.
------	------	------	---------	----	--------------------------------

Lots of skip in July, most of it staying below Channel 6 TV.

Paul LaFreniere Grand Marais, MN
All times CDT

May 25, 2007 Es

1021	KTHQ	92.5	Eager	AZ	Q-Country 92.5.
1054	KUYI	88.1	Hotevilla	AZ	Pow-Wow
1105	KGLX	99.1	Gallup	NM	Local ads
1120	KQST	102.9	Sedona	AZ	Q-102.9 Ads & wx

1122	KAZX	102.9	Kirtland	NM	Star 102.9
1129	KRWN	92.9	Farmington	NM	Local ads
1132	KAFF	92.9	Flagstaff	AZ	Kaff Country

June 2, 2007 Es

0916	KROM	92.9	San Antonio	TX	RDS=LATINO ESTEREO
0918	KKRW	93.7	Houston	TX	RDS=Rock93.7
0923	KAMX	94.7	Luling	TX	RDS=KAMX-FM
0928	KTTX	106.1	Brenham	TX	RDS=KTEX 106
0931	KBPA	103.5	San Marcos	TX	RDS=BOB FM
0932	WACO	99.9	Waco	TX	RDS=WACO 100
0933	KGSR	107.1	Bastrop	TX	RDS=KGSR
0934	KXTN	107.5	San Antonio	TX	SS Ads & I.D.
0937	KINV	107.7	Georgetown	TX	RDS=RECUERDO
0940	KRBE	104.1	Houston	TX	RDS=KRBE
0943	KHHL	98.9	Leander	TX	RDS=LA LEY
0945	KIOX	96.9	El Campo	TX	RDS=XO 96.9
0946	KOOC	106.3	Belton	TX	I.D. B-106 Hip Hop
0950	KHTC	107.5	Lake Jackson	TX	RDS=K-HITS
0952	KLTN	102.9	Houston	TX	RDS=ESTEREO LATINO
0957	KILT	100.3	Houston	TX	Local ads
0958	KTYL	93.1	Tyler	TX	RDS=MIX 93.1
0959	KLRK	92.9	Marlin	TX	RDS=STAR92.9
1000	KYBI	100.1	Lufkin	TX	TOH I.D.
1002	KMKT	93.1	Bells	TX	RDS=KMKT FM
1003	KSAB	99.9	Robstown	TX	TOH I.D.
1006	KLGO	99.3	Thorndale	TX	"The Word 99-3.com
1012	KODA	99.1	Houston	TX	RDS=SUNNY 99
1019	KMBV	92.5	Navasota	TX	RDS=LONESTAR
1028	KKDA	104.5	Dallas	TX	RDS=K 104-FM
1032	KBHT	93.5	Crockett	TX	Country Legends
1033	KEGL	97.1	Fort Worth	TX	RDS=PRECIOSA
1035	KDBN	93.3	Haltom City	TX	RDS=BONE
1035	KLBJ	93.7	Austin	TX	"The Rock of Austin"
1036	KSII	93.1	El Paso	TX	"KSII.com
1041	KXXM	96.1	San Antonio	TX	RDS=MIX 96.1
1047	KIVA	95.9	Santa Rosa	NM	"95.9 The Lion"
1052	KENW	89.5	Portales	NM	RDS=KENW FM
2030	WOGK	93.7	Ocala	FL	K-Country slogans
2034	WRUM	100.3	Orlando	FL	RDS=RUMBA
2037	WTKS	104.1	Cocoa Beach	FL	RDS=WTKS
2041	WYYX	97.7	Bonifay	FL	RDS=97X NEWROCK
2043	KQIS	102.1	Basile	LA	RDS=1021KQIS
2046	WJGL	96.9	Jacksonville	FL	RDS=969EAGLE
2051	WSOS	94.1	St. Augustine	FL	RDS=WSOS-FM
2052	WXXL	106.7	Tavares	FL	RDS=XL 106.7
2055	WCFB	94.5	Daytona Beach	FL	Star 94.5 slogans
2101	WPCV	97.5	Winter Haven	FL	RDS=WPCV

June 5, 2007 Es

1040	KTYL	93.1	Tyler	TX	RDS=MIX 93.1
1044	WQST	92.5	Forest	MS	RDS=WQST
1049	WEZB	97.1	New Orleans	LA	RDS=**B-97**
1053	KIOX	96.9	El Campo	TX	RDS=XO 96.9
1120	KRPT	92.5	Devine	TX	RDS=OUTLAW

June 7, 2007 Es

1830	KALQ	93.5	Alamosa	CO	RDS=KALQ93.5
1840	KIIQ	93.7	Limon	CO	Local ads
1854	KCCY	96.9	Pueblo	CO	RDS=Y 96.9
1855	KKFM	98.1	Colo. Springs	CO	RDS=98.1KKFM
1901	KGDK	101.9	Colo. Springs	CO	SS I.D. ads
1941	KWLI	92.5	Broomfield	CO	RDS=THE WOLF
2003	KUVO	89.3	Denver	CO	I.D. NPR-JAZZ
2008	KJYE	92.3	Grand Jct.	CO	Colorado 92.3
2023	KEKB	99.9	Fruita	CO	I.D. KEBB Country

2035	KSNO	103.9	Snowmass Vil.	CO	Ads. K-Snow slogans
2046	KYGO	98.5	Denver	CO	RDS=KYGO
2103	KKTX	96.1	Kilgore	TX	RDS=96X
2105	KMKT	93.1	Bells	TX	RDS=KMKT
2117	KTHT	97.1	Cleveland	TX	Ctry Legends 97.1
2121	KQUS	97.5	Hot Springs	AR	RDS=US97
2127	KLAK	97.5	Tom Bean	TX	RDS=97.5KLAK
2135	KMBV	92.5	Navasota	TX	RDS=LONESTAR

June 15, 2007

2010	KMRK	96.1	Odessa	TX	RDS=KMRK
2017	KIXN	102.9	Hobbs	NM	RDS=KIX 103
2020	KXTQ	93.7	Lubbock	TX	RDS=MAGIC
2021	KBNA	97.5	El Paso	TX	RDS=QUEBUENA
2022	KFMX	94.5	Lubbock	TX	RDS=KFMX
2023	XHPX	98.3	Ciudad Juarez	CH	RDS=EXA 98.3
2025	KGNC	97.9	Amarillo	TX	RDS=KGNC-FM
2026	KOFX	92.3	El Paso	TX	RDS=FOX 92.3
2027	KTSM	99.9	El Paso	TX	RDS=KTSM-FM
2030	KMMX	100.3	Tahoka	TX	RDS=MIX100.3
2031	KLLL	96.3	Lubbock	TX	RDS=96.3KLLL
2031	KEJL	100.9	Eunice	NM	RDS=KEJL
2032	KFZX	102.1	Monahans	TX	RDS=FZX
2033	KPZA	103.7	Jal	NM	RDS=KPZA
2036	KSII	93.1	El Paso	TX	RDS=KISS-FM
2046	KAMZ	103.5	Tahoka	TX	SS Local ads
2050	KEND	106.5	Roswell	NM	RDS=BOB FM
2051	KEJS	106.5	Lubbock	TX	SS Power 106

Jerry Bond Rochester, NY 2004 Chevy Trailblazer w/RDS

EDT

May 22 Es

1124	WZEW	92.1	Fairhope	AL	92-Zoo
1142	WJZD	94.5	Long Beach	MS	RDS-JZ, local talk show
1151	WTUG	92.9	Northport	AL	Today's R and B - 92.9-WTUG
1152	KRDJ	93.7	New Iberia	LA	Rock 93.7
1153	WMJY	93.7	Biloxi	MS	Magic 93.7
1153	WKZW	94.3	Sandersville	MS	jingle - KZ 94.3
1155	WBBN	95.9	Taylorville	MS	RDS-B95, mention of B95country.com website
1201	WWOZ	90.7	New Orleans	LA	mention of WWOZ.org website
1306	WMAO	90.9	Greenwood	MS	RDS-MPB
1705	KBSA	90.9	El Dorado	AR	Red River Radio, NPR
1710	KQUS	97.5	Hot Springs	AR	..10 in a row on Arkansas' US-97
1728	KRDJ	93.7	New Iberia	LA	RDS - Acadiana-Classic Rock 93.7
1734	WQPR	88.7	Muscle Shoals	AL	publicly supported APR-Alabama Public Radio
1850	WAYJ	88.7	Ft. Myers	FL	88.7-Way FM

May 24 Tr

1924	CJAQ	92.5	Toronto	ON	Jack-FM, new-with local WBEE-92.5 completely off
1934	CJBX	92.7	London	ON	BX-93, local spots
1938	CBCD	92.5	Pembroke	ON	CBC
1947	CJET	92.3	Smith Falls	ON	Jack-FM, local WBEE OC back on

May 25 Tr

2207	CHIP	101.7	Ft. Coulonge	PQ	oldies, local announcements, ID
2215	CKTF	104.1	Gatineau	PQ	FF

May 26 Tr

0050	CITE	107.3	Montreal	PQ	FF, mention of Montreal
0107	WOTT	100.7	Henderson	NY	extremely strong, rock
0107	CKBY	101.1	Smith Falls	ON	
0118	CHOM	97.7	Montreal	PQ	"Shom-97.7 just rocks"

June 5 Es

1143	KGNZ	88.1	Abilene	TX	"Thanks Abilene for supporting Abilene Christian radio" with local WFRW-88.1 off
1151	KNTU	88.1	McKinney	TX	"The real jazz station in Dallas - Ft. Worth"

Russ Edmunds, WB2BJH Blue Bell, PA 40:08:45N; 75:16:04W, Grid FN20id <amfmdxer@yahoo.com>
FM: Yamaha T-80 w/ APS9B @ 15'; Conrad RDS Decoder; Onkyo T-450RDS

5/11/07 - Es

1413	unid	94.9	Pop/rock, "94.9" choral jingle		
1417	KLQP	92.1	Madison	MN	Event promo at the "Prairie Arts Center promo in Madison" (new)
1419	KKJM	92.9	St. Joseph	MN	"Spirit 92.9"
1420	KMKX	94.9	St. Cloud	MN	Pop, "Mix 94.9"
1421	KSDR	92.9	Watertown	SD	Local ad
1422	WYRQ	92.1	Little Falls	MN	Local ads for St. Cloud & Little Falls
1423	WGMO	95.3	Shell Lake	WI	"95-GMO" liner
1445	WSCD	92.9	Duluth	MN	Classical
1446	KQDS	94.9	Duluth	MN	Ad for "Kia of Duluth"
1448	unid	89.3	Religious, promo for "Institute for Creation Research" 800-775-4672		
1522	WXXZ	95.3	Grand Marais	MN	"95.3 KQDS" ID

5/13/07 Es

1713	WMGE	94.9	Miami Beach	FL	ad, ID
1714	unid		Rap - pirate ?		
1715	WLRN	91.3	Miami	FL	ID; PI: 737B
1720	WGMX	94.3	Marathon	FL	local ad, ID
1722	WMKL	91.9	Key Largo FL	ID	promoting recent frequency change from 91.7 (new)
1726	unid	99.7	Spanish		

5/22/07 Es

1130	KSBH	94.9	Coushatta	LA	Promos- "94.9 the River"
1136	KCXY	95.3	East Camden	AR	Country, "Y-95"
1138	KMJJ	99.7	Shreveport	LA	Station promo, ID
1158	KPCH	99.3	Ruston	LA	Oldies, "The Peach" (new call)
1159	unid	99.3	PI: 999E (WMC-99.7)		
1202	KZHE	100.5	Stamps	AR	ID, Ad for "Tom Lofton Construction - El Dorado"
1209	WMC	99.7	Memphis	TN	Rock, "FM-100", wx
1210	WXFM	99.3	Mount Zion	IL	Rock, "99-X" (new)
1212	KAJK	99.3	White Oak	TX	Rock, "Jack-FM", ad for "E-Tex Wireless" (new call)
1223	KTCY	101.7	Azle	TX	Spanish, music, "More Musica", Dallas mention (new)
1225	KGAP	98.5	Clarksville	TX	"Kool 98.5", mention of Clarksville (new)
1226	WLRQ	99.3	Cocoa	FL	Promos for being a "Lite Rock VIP"; and "call 632-LITE on the LITE-line"
1227	KURB	98.5	Little Rock	AR	Ads for "Lakewood Dental Care" and "Izzy's Restaurant"
1228	WJBX	99.3	Fort Myers Beach	FL	Modern rock, "The X"
1229	KVLD	99.3	Atkins	AR	Spanish talk/music; "La Gran D" (new)
1238	KKBZ	99.3	Clarinda	IA	"Your 99.3 FM"
1250	KADA	99.3	Ada	OK	Ad for "Legacy Ford-Lincoln-Mercury, Paul's Valley"; ID (new)
1317	WKCN	99.3	Lumpkin	GA	PI: 6F51; Country "Kissin Country"
1655	KINZ	95.3	Humboldt	KS	ID, wx
1703	KLOR	99.3	Ponca City	OK	News, ID (new)

1704	KNID	99.7	Alva	OK	News, OK PSA, PI: 3327
1705	KTFX	101.7	Warner	OK	Muliple ID's, "Okie Country 101.7" (new)
1707	WXL	103.5	Christopher	IL	Station promo:www.jackfm1035.com (new)
1727	unid	99.7	Heard an apparent ID of "KOAN"		
1732	KGVE	99.3	Grove	OK	Muliple ID's, Agric. News
1735	KVOO	98.5	Tulsa	OK	"Fox 23 Weather", PI: 48EE
1741	KXUS	97.3	Springfield	MO	Classic Rock, "US 97"; event promo (new)

6/16, Es

1205	CM..	95.3	Camaguey	CUBA	R. Enciclopedia - soft pop/jazz instrumentals, female anncr per Randy Zerr and Chris Dunne who listened to the recordings. New log, new country.
1712	WMAW	88.1	Meridian	MS	RDS PI 75EB; PS: MPB
1713	WMAU	88.9	Bude	MS	RDS PI 75EB; PS: MPB
1715	KLDN	88.9	Lufkin	TX	"Red River Broadcasting" promo (new)
1718	WUWF	88.1	Pensacola	FL	ID
1720	WMPN	91.3	Jackson	MS	RDS PI 75EB; PS: MPB (new)
1722	unID	90.5	"Lifesongs" on AFR could have been either WQVI Forest or WCSO Columbus or WAQL McComb		
1723	unID	89.3	"Lifesongs" on AFR could have been WAIL Hattiesburg, WATU Port Gibson or KAVK		
1724	KSBH	94.9	Coushatta	LA	"94.9 The River"
1728	KAYT	88.1	Jena	LA	ID
1731	KYFL	89.5	Monroe	LA	"Words of Praise" w/ Dr. Donald R. Hubbard
1732	KKUL	92.3	Marshall	TX	Ad for Pietro's Floating Docks in Shreveport
1734	KJVC	92.7	Mansfield	LA	Ad for Ryan Auto Group in Minden LA (new)
1737	KHLA	92.9	Jennings	LA	Classic Rock

6/18 Es

1645	WEZQ	92.9	Bangor	ME	Ad for car dealer in Ellsworth
1702	CKLE	92.9	Bathurst	NB	Local (Caraquet) La-Z-Boy ad in French
1703	CHOE	95.3	Matane	QC	Calls in French
1704	CHOZ	92.3	St. John's	NF	ID, promo
1705	CFIM	92.7	Cap-aux-Meules	QC	News, ID in very French-accented English
1705	CBVM	95.3	Magdalen Isld	QC	Presumed w/ News in English
1707	CBAL-FM5	94.3	Edmundston	NB	Presumed w/ CBC French news
1708	CBGA-FM8	93.5	Magdalen Isld	QC	French news. Given the skip area, the only reasonable possibility is this
1712	CKWM	94.9	Kentville	NS	Rock, " The 80's 90's and Today, Magic 94.9"
1714	CKPE	94.9	Sydney	NS	Rock, " The 80's & 90's Hits, 94.9 The Cape"
1716	KCLR	99.3	Boonville	MO	"Clear 99"
1718	WGEL	101.7	Greenville	IL	Ad for "Chubby Chassis" in Greenville and obits for Vandalia
1722	unid	94.9		QC	Either unn. CIEU-Carleton or CHME, Les Ecoumins
1722	WNXX	99.7	Atlanta	GA	news item relayed from "Newsradio 750, WSB"
1723	KXMO	95.3	Owensville	MO	Ad for First Community National Bank and ID
1727	KINZ	95.3	Humboldt	KS	Classic Hits, ad Edwin Jones Co in Chanute
1829	unid	92.9	Items from "the Mailbag on the Dina Martin Show"		
1831	unid	92.9	choral music		
1833	KVRE	92.9	Hot Spgs Village	AR	ID, weather
1835	unid	95.3	"New York, New York" by Sinatra		
1837	KLTY	94.9	Electra	TX	"Ciro"(?) Energy ad, ID
1839	KCXY	95.3	E. Camden	AR	Traffic report, weather, local ad
1841	unid	92.1	Country		
1843	KOYN	93.9	Paris	TX	Country, "KOYN Best Country"
????	KJMK	93.9	Webb City	MO	RDS PI: 2906 unattended
1913	WSCD	92.9	Duluth	MN	Presumed with Classical music
1945	unid	95.3	Modern-type classical or possibly New Age instrumental music		

6/25 Es

1717	KHLA	92.9	Jennings	LA	ID
1810	KLTY	94.9	Arlington	TX	Traffic report
1830	KSBH	94.9	Coushatta	LA	Ad for "Security Sporting Goods" in Alexandria
1834	KUT	90.5	Austin	TX	ID - new
1836	unid	91.5	Contemporary Christian		
1843	KZBJ	89.5	Bay City	TX	relay of KSBJ w/ ID - new

1843	WYAZ	89.3	Yazoo City	MS	Promo for Dayspring Community Church in Clinton;
AFR promo - new					
1845	KSBJ	89.3	Humble	TX	ID - new
1847	KTHT	97.1	Cleveland	TX	Country , "Country Legends" - new
1849	KAYD	101.7	Silsbee	TX	Country, "Continuous Country Favorites, KD-101" - new
1854	KSBH	94.9	Coushatta	LA	Country, "Your Country Authority, 94.9, The River"
1851	KKBQ	92.9	Pasadena	TX	Country, "Q-93"
1854	KNIN	92.9	Wichita Falls	TX	Traffic report on "92.9-NIN"
1857	KLRK	92.9	Marlin	TX	Contemporary Rock, "Star 92.9"
1901	KHLA	92.9	Jennings	LA	"Classic Hits for Lake Charles"
1920	KVRE	92.9	Hot Spgs Village	AR	Local ad, weather
1928	KPAE	91.5	Erwinville	LA	ID - "Sound Radio, WPAE" - (// WPAE-89.7-MS)
new					
1939	KTSR	92.1	DeQuincey	LA	"More hits on Your Star 92.1"; Hip-hop
1950	unid	90.5	Classical sometimes	over WVBN-NJ	
2000	WMAE	89.5	Booneville	MS	RDS PI 75EB; PS: MPB
2030	KYFB	91.5	Denison	TX	BBN net, Rel talk - new
2040	WWIS	99.7	Black River Falls	WI	Brewers' baseball
2045	KDJS	95.3	Willmar	MN	RDS PI: 18E8
2145	KKCK	99.7	Marshall	MN	Weather for Brookings & Sioux Falls; CHR
2242	KBEA	99.7	Muscataine	IA	Ad for "Jewell-Osco", ID / RDS PI: 51E2
2355	KYYS	99.7	Kansas City	MO	ID - new

6/26 Es

0005	KMAC	99.7	Gainesville	MO	Alternative - ID "K-MAC 99-7"
0008	KTTR	99.7	St. James	MO	Bohannon show, MO PSA
0024	KBTN	99.7	Neosho	MO	ID
1220	KCKS	94.9	Concordia	KS	Ad for Concordia Apts ID
1224	KOGA	99.7	Ogallala	NE	99.7/106.5 promo, weather - in fairly solid for about 90 minutes !
1845	WECL	92.9	Elk Mound	WI	Classic Rock, "The Big Cheese" - new
1858	KSCR	93.5	Benson	MN	Classic Rock, ID
1900	KLRJ	94.9	Aberdeen	SD	Contemporary Christian Rock, ID
1903	KYYY	92.9	Bismarck	ND	ID, "Y-93", local ad - new
1903	WYRQ	92.1	Little Falls	MN	Ad for Minnesota Valley REC & ID
1907	KLQP	92.1	Madison	MN	Promo's for the Dawson Riverfest, ID, "Q92"
1909	KDJS	95.3	Willmar	MN	RDS PS: "KDJS-FM"
1910	unid	94.9	Promo for Rivers of the World, "www.row.org"		
1912	KVOX	99.9	Moorhead	MN	Country, ID - new
1914	WCOW	97.1	Sparta	WI	Country, local ad
1915	KKCK	99.7	Marshall	MN	ID
1918	WKBH	100.1	West Salem	WI	Classic Rock, ID - new
1923	WWIS	99.7	Black River Falls	WI	Country, local ad
1926	WOWN	99.3	Shawano	WI	Country, "B-99.3" - new
1935	KSDR	92.9	Watertown	SD	Ad for Lincoln-Mercury dealer in Millbank, ID
1938	unid	92.1	"Power 92" promo		

6/27 Es

1246	KYBI	100.1	Lufkin	TX	Promo for East Texas, Lufkin Panthers, ID -
------	------	-------	--------	----	---

6/28 Es

1711	unid	92.9	Current rock, "Big Time 92.9" ?		
1731	WBLX	92.9	Mobile	AL	"93-BLX"
1735	WMGE	94.9	Miami Beach	FL	Spanish talk, music, ads
1739	WRXW	93.9	Pearl	MS	Rock, "Rock 93.9" - new
1943	WCMQ	92.3	Hialeah	FL	Spanish talk, ads

7/7/ Es

1720	KXLS	95.3	Pierre	SD	Mixed bag of Rock, local ads, "Bob 95.3 FM"
1908	WSRM	95.3	Coosa	GA	WRGA Talk Radio (AM) ID's, Braves BB - new, 690 miles
1926	WFFN	95.3	Coaling	AL	MRN; RDS software hit, PI: 626B; PS: Bear 95.3; mixing w/ WSRM w/ MRN pre-race
1935	WMAW	88.1	Meridian	MS	RDS PI 75EB; PS: MPB

Jeff Lehmann Hanson, MA

APS-13 antenna, Sangean HDT-1 and Yamaha T-85 tuners

@=New Time Freq Calls City St. Comments Distance

6/16 ES

1700	WPRF	94.9	Reserve	LA	Praise 94.9	1367
1704	WMNF	88.5	Tampa	FL	1173	
1706	WMYZ@	88.7	Clermont	FL	Z88.3, RDS	1108
1709	WJSU	88.5	Jackson	MS	RDS 1254	
1710	KRVS@	88.7	Lafayette	LA	1440	
1715	WKSJ	94.9	Mobile	AL	95 KSJ, RDS	1218
1716	WWRM	94.9	Tampa	FL	Magic 94.9	1174
1718	WRLD	95.3	Valley	AL	Boomer 95.3	1010

6/18 ES

1649	KHLR	94.9	Maumelle	AR	Hallelujah 94.9	1266
1652	WQMF@	95.7	Jeffersonville	IN	RDS 838	
1654	WKIB@	96.5	Anna	IL	Mix 96.5	1039
1656	KBXB	97.9	Sikeston	MO	B97.9	1056
1704	KYNF	94.9	Prairie Grove	AR	Y 94.9	1327
1710	WSTO@	96.1	Owensboro	KY	Hot 96	919
1712	KCGQ@	99.3	Gordonville	MO	Real Rock 99.3	1044
1715	WEBQ@	102.3	Eldorado	IL	RDS 973	
1717	WGBF@	103.1	Henderson	KY	103 GBF	932
1719	KLUE@	103.5	Poplar Bluff	MO	Klue 103	1094
1720	KAHR@	96.7	Poplar Bluff	MO	Sam 96.7	1104
1720	KKIX@	103.9	Fayetteville	AR	Kix 104	1314
1721	KZBB@	97.9	Poteau	OK	B98	1366
1735	KAMS	95.1	Mammoth Spring	AR	K Kountry 95	1158
1751	KTG@	96.3	Mena	AR	ESPN Radio, RDS	1342
1753	WBNH@	88.5	Pekin	IL	970	
1755	WYSA@	88.5	Wauseon	OH	Yes FM 684	
1800	KTCS	99.9	Fort Smith	AR	RDS 1366	
1802	KBCN	104.3	Marshall	AR	Hot New Country	1240
1809	KWTO	98.7	Springfield	MO	Jock 98-7	1238
1834	KSUI@	91.7	Iowa City	IA	HD 1048	
1834	KLOZ	92.7	Eldon	MO	Mix 92.7 FM	1169
1841	WRIT@	95.7	Milwaukee	WI	My 95.7	866
1845	KCRR@	97.7	Grundy Center	IA	1103	
1847	WIIL	95.1	Kenosha	WI	95 WIIL Rock	867
1849	WGRD@	97.9	Grand Rapids	MI	97-9 GRD	752
1850	KOWI@	97.9	Lamoni	IA	Iowa Public Radio	1187
1850	KWQW@	98.3	Boone	IA	98.3 Wow FM	1169
1852	WVIV	103.1	Highland Park	IL	Viva 93.5 & 103.1	874
1856	KIAI	93.9	Mason City	IA	RDS 1127	
1857	WMMQ	94.9	East Lansing	MI	Classic Rock 94-9	697
1857	KXIA@	101.1	Marshalltown	IA	Kix 101.1	1127
1858	KZIA@	102.9	Cedar Rapids	IA	Z102.9, HD	1063
1901	KBBG@	88.1	Waterloo	IA	HD 1092	
1904	KFTK	97.1	Florissant	MO	97.1 FM Talk	1064
1905	WDKB@	94.9	De Kalb	IL	B95 922	
1907	KGGO	94.9	Des Moines	IA	1157	
1910	WZZN	94.7	Chicago	IL	94.7 The True Oldies Channel	858
1914	KCCK@	88.3	Cedar Rapids	IA	HD	
1918	KCMO	94.9	Kansas City	MO	RDS 1255	
1925	KCKC	102.1	Kansas City	MO	Star 102	1249
1929	WSEY	95.7	Oregon	IL	Kool FM 947	
1934	KSWI	95.7	Atlantic	IA	KS-95.7	1230
1935	KKFI@	90.1	Kansas City	MO	Kansas City Community Radio	1250
1940	KOEA	97.5	Doniphan	MO	Cardinals Baseball	1126
2000	KWFC	89.1	Springfield	MO	1216	
2015	KRBZ	96.5	Kansas City	MO	96-5 The Buzz, RDS, HD	1253

6/19 ES

1845	WJSP	88.1	Warm Springs	GA	Georgia Public Radio 987	
1847	WAYF	88.1	West Palm Beach	FL	Way FM 1176	
1848	WJIS	88.1	Bradenton	FL	The Joy FM	1219

6/19-20 Yes, it's really Trop!

2322	WRMF	97.9	Palm Beach	FL	97.9 WRMF	1194
0000	WEAT	104.3	West Palm Beach	FL	Sunny 104.3, RDS	1194

6/25 ES

1709	KHLR	94.9	Maumelle	AR	Hallelujah 94.9, HD	1266
1711	WHRK	97.1	Memphis	TN	K97	1132
1900	KDHX	88.1	Saint Louis	MO	St. Louis Community Radio	1058
1902	KSD	93.7	Saint Louis	MO	93.7 The Bull	1049
1903	KSHE	94.7	Crestwood	MO	K She 95, RDS, HD	1048
1916	KLOZ	92.7	Eldon	MO	Mix 92.7 FM, RDS	1169
1937	KQIS@	102.1	Basile	LA	RDS	1450
1946	KYKZ@	96.1	Lake Charles	LA	Kix 96	1487

6/26 ES

1851	KDCR	88.5	Sioux Center	IA	RDS	1281
1853	KNEN@	94.7	Norfolk	NE	Mix 94.7	1365
1906	KUQL@	98.3	Wessington Spg	SD	Kool 98	1390
1912	KCPI	94.9	Albert Lea	MN	94.9 The Breeze, RDS	1139
1919	KSMA	98.7	Osage	IA	98.7 Kiss FM, RDS	1124

6/28 ES

1655	WMGE	94.9	Miami Beach	FL	Mega 94-9, HD	1232
1657	WXDJ	95.7	N Miami Beach	FL	EI Sol 95	1243
1702	WAFC	99.5	Clewiston	FL	1201	
1703	WAVW	92.7	Stuart	FL	Wave 92.7	1151
1706	WRMF	97.9	Palm Beach	FL	1194	
1712	WZJZ@	100.1	Port Charlotte	FL	Smooth Jazz 100.1	1222
1719	WKLG@	102.1	Rock Harbor	FL	Star 102	1293
1740	WWRM	94.9	Tampa	FL	Magic 94.9, RDS, HD	1174
1742	WKZM	104.3	Sarasota	FL	Moody Bible	1213
1747	WCOS@	97.5	Columbia	SC	RDS	777

John Ebeling Report from cabin in Alborn, MN Times are CST.

Antenna used is Stereo Probe 9, hand rotated, Pioneer TX-9500 tuner, RDS unit and a cassette recorder.

May 6, Es

1738	WAYF	88.1	West Palm Beach	FL	1564 miles
------	------	------	-----------------	----	------------

May 23, Es

0830	KNTU	88.1	McKinney	TX	977
0835	KTRX	92.7	Dickson	OK	913
1035	KNAU	88.7	Flagstaff	AZ	1283
1045	KRFC	88.9	Fort Collins	CO	764

June 2, Es

0815	KEQX	89.7	Stephenville	TX	1064
0818	KLUX	89.5	Robstown	TX	1356
0821	KRNX	92.3	Kerrville	TX	1223
0822	KLBJ	93.7	Austin	TX	1189
0836	KKMJ	95.5	Austin	TX	(RDS: KKM) 1189
0830	KFWR	95.9	Mineral Wells	TX	"the ranch" 1020
0834	KNES	99.1	Fairfield	TX	1072
0839	KIOC	106.1	Orange	TX	(RDS: Big Dog) 1175
0848	KULM	98.3	Columbus	TX	1214
0849	KYYK	98.3	Palestine	TX	1065
0900	KUHF	88.7	Houston	TX	1200
0903	KFNC	97.5	Beaumont	TX	(RDS ID) 1172
0905	KIOX	96.9	El Campo	TX	(RDS: XO96.9) 1246

0909	KYKR	95.1	Beaumont	TX	(RDS: KICKER 95)	1172
0913	KQBU	93.3	Port Arthur	TX		1182
0927	KEJS	106.5	Lubbock	TX		1047
0933	KESS	107.9	Lewisville	TX		990
1000	KACV	89.9	Amarillo	TX		945
1000	KANW	89.1	Albuquerque	NM		1102
1010	KXAZ	93.3	Page	AZ	(RDS: Z93.3 Page)	1191
1015	KNAU	88.7	Flagstaff	AZ		1283
1213	KANW	89.1	Albuquerque	NM		1102
1215	KTAR	92.3	Glendale	AZ	(RDS ID)	1389
1227	KPKX	98.7	Phoenix	AZ	"The peak"	1390
1250	KOOL	94.5	Phoenix	AZ		1390
1255	KYOT	95.5	Phoenix	AZ		1390
1300	KJZZ	91.5	Phoenix	AZ		1390

June 3, Es

1709	WHRO	90.3	Norfolk	VA	(RDS ID)	1105
1714	WPYA	93.7	Chesapeake	VA	"Bob FM"	1102
1718	WRVQ	94.5	Richmond	VA	(RDS: Q 94)	1015

From Bloomington, MN

May 16, Es

0950	KROM	92.9	San Antonio	TX	RDS: "Estereo"	1100 miles
------	------	------	-------------	----	----------------	------------

May 22, Es

1021	WNSC	88.9	Rock Hill	SC	"Carolinas Jazz"	945
1027	WAVF	96.1	Hanahan	SC	"96 WAVE"	1091
1031	WSSX	95.1	Charleston	SC	RDS: 95.1	1100
1033	WSCC	94.3	Goose Creek	SC	94.3 WSC	1084
1038	WLGI	90.9	Hemmingway	SC	Jazz	1066
1100	WHMC	90.1	Conway	SC		1077
1102	WEGX	92.9	Dillon	SC	RDS: Eagle	1034
1112	WKVC	88.9	N. Myrtle Beach	SC	K-love	1092
1505	WJIJ	94.3	Norlina	NC		980
1513	WRNS	95.1	Kinston	NC	RDS: WRNS	1063
1519	WFSS	91.9	Fayetteville	NC		1020

June 5 Es

0930	WAYF	88.1	W. Palm Beach	FL	way-fm	1456
0939	WJTF	89.9	Panama City	FL		1096
0942	WKGC	90.7	Panama City	FL	RDS ID	1096
0950	WJNF	88.3	Marianna	FL		1066
1000	KRWG	90.7	Las Cruces	NM		1116
1004	KRUC	88.9	Las Cruces	NM		1116
1025	KITE	93.3	Port Lavaca	TX		1135
1026	KBHT	93.5	Crockett	TX		941
1037	KLEY	95.7	Jourdenton	TX	RDS: LaLey	
1042	KLRK	92.9	Marlin	TX		955
1049	KTXN	98.7	Victoria	TX		1126
1033	KHHL	98.9	Leander	TX	RDS: Austin	1033
1054	KMKS	102.5	Bay City	TX		1105
1100	KUHF	88.7	Houston	TX		1047
1103	KGZ	88.1	Abilene	TX		923
1110	KEPX	89.5	Eagle Pass	TX	RDS ID	1182

June 7, Es

1828	WMAE	89.5	Booneville	MS	RDS: MPB 89.5	7
------	------	------	------------	----	---------------	---

Rick Shaftan
Neighborhood Research / Mountaintop Media Sparta NJ
Realistic STA 2280 with 3 150khz filters. 2 APS 14s stagger stacked phased with
2 APS 13s

5/25/2007 Es

1901 KAYT 88.1 Jena LA 242 1187

5/31/07 Es

1046 WJIS 88.1 Bradenton FL Joy FM 207 1054
 1049 WSMR 89.1 Sarasota FL Life 89.1207 1056
 1050 WSOR 90.9 Naples FL RDS PI 85AD 204 1090
 1056 ???? 88.3 SS
 1057 ???? 88.7 "The FM"
 1057 WSRX 89.5 Naples FL Praise FM Fort Myers 204 1090

6/3/2007 Es

1918 ???? 88.7 Bluegrass
 1920 ???? 92.1 Muzak
 1922 KGFX 92.7 Pierre SD DakotaRadioGroup.com 289 1323
 1925 ???? 93.1 Country
 1923 KCPI 94.9 Albert Lea MN RDS PI 16D6 The Hawk 287 971
 1925 KWOA 95.1 Worthington MN Spanish 287 1086
 1928 KBEW 98.1 Blue Earth MN Country 287 1009
 1929 ???? 97.7 Jungle Love

6/16/2007 Es

1120 CMIC 91.5 Ciego de Avila CU "Havana mention, sounded Cuban" 191 1348
 1138 ZNM 94.9 Nassau BAH #1 Rated, More 94, the Bahamas Superstation"
 188 1080
 1138 WMGE 94.9 Miami Beach FL SS mx through Bahamas 199 1086
 1144 ???? 92.9 Classical
 1631 WMAW 88.1 Meridian MS MPB RDS PI 75EB 237 1006
 1632 WAPR 88.3 Selma AL APR.ORG 231 907
 1641 KAYT 88.1 Jena LA A proud underwriting sponsor of KAYT 88.1 FM
 242 1187
 1652 ???? 88.3 Blues
 1653 ???? 88.5 Religion
 1653 WMAU 88.9 Bude MS NPR MPB RDS PI 75EB 239 1114
 1654 WPAS 89.1 Pascagoula MS "AFR, Today's Radio for Life" 231 1060
 1655 ???? 91.5 SRN
 1700 ???? 89.9 Religious singing
 1703 ???? 89.3 NPR
 1703 ???? 88.7 NPR // 89.3
 1705 KTSR 92.1 DeQuincy LA New Music Now Star 92.1 240 1281
 1706 KQID 93.1 Alexandria LA Q-93 242 1168
 1708 ???? 89.1 RDS PI 63C6
 1709 WPAE 89.7 Centreville MS RDS PI 7C48 PS 1108 238 1141
 1710 KLSA 90.7 Alexandria LA RDS PI 2EE0 242 1187
 1714 KVLU 91.3 Beaumont TX RDS PI 48A6 241 1320
 1715 ???? 91.7 AFR
 1718 WQST 92.5 Forest MS RDS PI A8CF 238 1011
 1720 KRDJ 93.7 New Iberia LA RDS PI 3D3B 237 1196
 1721 KMXH 93.9 Alexandria LA R & B 241 1199
 1722 WJSU 88.5 Jackson MS RDS PI 6E54 239 1049
 1724 KRVS 88.7 Lafayette LA NPR 238 1228
 1725 WMAB 89.9 Oxford MS MPB HD241 956
 1728 WMPR 90.1 Jackson MS RDS PI 75EF 238 1049
 1728 KYLC 90.3 Lake Charles LA Religious mx Parallel to 90.5 241 1251
 1729 WAQL 90.5 McComb MS Religious mx parallel to 90.3 237 1106
 1730 KSLU 90.9 Hammond LA Red River Radio // 90.7236 1146
 1732 KOJO 91.1 Lake Charles LA Radio Maria RDS PI 11CC 240 1279
 1733 WMPN 91.3 Jackson MS MPB RDS PI 75GB 240 1061
 1735 ???? 91.7 "Rap, almost certain this is the needed Prison station, but can't get anything even
 close to a trace for an iD."

1737	????	92.3	Country					
<u>6/18/2007 Es</u>								
1533	CBGA-10	89.3	Gaspe	QC	FF	40	740	
1707	CBAF-3	91.5	Campbellton	NB	FF	36	628	
1708	????	91.9	NPRish news breaking through WNTI					
1709	CBSI-7	92.5	Havre St. Pierre	QC	FF	36	828	
1713	KSPQ	93.9	West Plains	MO	We don't play what we don't want.	Rock	259	
1719	KAMO	94.3	Rodgers	AR	US-94	259	1086	
1723	????	94.3	FF					
1724	CIEU	94.9	Carleton	QC	FF	37	646	
1724	KYNF	94.9	Prairie Grove	AR	Off Back Y-94	Northwest Arkansas Mall	258	
1747	????	88.7	FF					
1748	CBAF-18	90.3	Lameque	NB	FF	43	679	
1748	????	90.7	FF Mx					
1755	CBNC	88.7	Stephenville	NL	CBC English	51	938	
1758	????	89.1	Parallel 88.7					
1801	CBGC	92.5	Carmanville	NL	CBC English	53	1145	
1803	????	93.7	FF					
1808	WSIE	88.7	Edwardsville	IL	WSIE ID265	826		
1838	????	92.5	Christian Mx					
1842	CJRG	94.5	Gaspe	QC	"Echo Auto, Quebec and Gaspe mentions"			
1943	KAYH	89.3	Fayetteville	AR	White Gospel	259	1110	
1945	????	92.3	Check n Go ad					
1946	????	93.9	Freebird					
1948	WOKQ	97.5	Dover	NH	Big 97.5 WOKQ.	Trop in the middle of Eskip		

6/21/2007 Es

1003	WMAB	89.9	Mississippi State	MS	Mississippi News	241	956	
1021	WAIL	89.3	Hattiesburg	MS	Laurel MS sponsorships	235	1058	
1038	WLRN	91.3	Miami	FL	Local ad 199	1086		

6/25/2007 Es

1659	KPAQ	88.1	Plaquemine	LA	Mention of Plaquemine-Baton Rouge	237		
1700	WJFM	88.5	Baton Rouge	LA	List of Swaggert stations	237	1175	
1702	WRKF	89.3	Baton Rouge	LA	NPR	237	1175	
1703	????	89.7	Religion					
1704	????	91.1	Parallel to 91.7					
1704	????	91.7	Parallel to 91.1					
1705	KMXH	93.9	Alexandria	LA	Black	241	1199	
1705	KARH	88.1	Forrest City	AR	RDS PI 11C1	251	952	
1706	WMAW	88.1	Meridian	MS	MPB RDS PI 75EB	237	1007	
1710	????	90.3	Jazz					
1720	WQST	92.5	Forest	MS	RDS PI A8CL	238	1011	
1845	????	92.1	Gospel					
1850	KQBU	93.3	Port Arthur	TX	Spanish	242	1344	
1904	KAFR	88.3	Conroe	TX	First Assembly of God in Conroe TX	245		
1905	????	88.7	KJFI?					
1924	WPAE	89.3	Centreville	MS	RDS PI 7C48 PS 1108	238	1141	
1925	WMPR	90.1	Jackson	MS	RDS PI 75EF	238	1049	
1927	KRDJ	93.7	New Iberia	LA	RDS PI 3D3B	237	1196	
1928	WEMX	94.1	Kentwood	LA	Black	238	1146	
1929	WBBN	95.9	Taylorville	MS	HD-B95.9	237	1046	
1930	????	94.7	"Rock, no HD"					
1934	KSBH	94.9	Coushatta	LA	Local ad 244	1216		
1935	????	95.5	RDS PI 50A1					
1936	WUSJ	96.3	Jackson	MS	US 96.3 RDS PI 8B55	240	1063	
1937	WOKK	97.1	Meridian	MS	RDS PI 7AAE	237	981	
1938	KNBB	97.7	Dubach	LA	ESPN Radio	246	1166	
1939	WJKK	98.7	Vicksburg	MS	RDS PI 6D7A	240	1063	
2027	????	95.3	Wabash Cannonball					
2033	KNOR	93.7	Krum	TX	Mexican	255	1360	
2050	????	88.3	SS Rel					
2052	????	90.7	Big Band					

6/26/2007 Es

0014	KOBC	90.7	Joplin	MO	Christ Centered Radio	262	1091		
0015	KSYN	92.5	Joplin	MO	Eminem	262	1091		
0016	????	94.1	Jazz						
0016	????	94.5	"Good Directions"						
0018	KWEN	95.5	Tulsa	OK	Cherokee Casino	866-443-8849		262	1201
0029	????	93.7	Rap						
0033	KTBT	92.1	Broken Arrow	OK	The Beat	262	1200		
0036	KOMA	92.5	Oklahoma City	OK	ID	261	1290		
0038	KMXV	93.3	Kansas City	KS	At 816-	270	1057		
0951	KUND	89.3	Grand Forks	ND	Prairie Public Radio	302	1198		
0955	KDNI	90.5	Duluth	MN	Insight for Living	301	953		
0957	KCCD	90.3	Moorhead	MN	HD Minnesota Public Radio			298	1158
0958	KGAC	90.5	St. Peter	MN	Minnesota Public Radio			289	1011
0959	????	91.3	Classical						
1001	KXRA	92.3	Alexandria	MN	Colorful Seasons Nursery and Floral			296	1092
1004	????	88.5	NPR not NJN						
1006	KLQP	92.1	Madison	MN	"Q-92 320-760 AC, Dawson"			292	1118
1008	KSJZ	93.3	Jamestown	ND	RDS PI A48B	297	1256		
1011	KKRC	93.9	Granite Falls	MN	"Deep Purple, Oldies 93.9"			291	1090
1012	????	94.7	Summertime Blues						
1014	KDJS	95.3	Willmar	MN	HD RDS PI 18E8			292	1074
1015	KTTB	96.3	Glencoe	MN	The B. Urban Hip Hop			292	1029
1016	????	96.9	Dr. Susan Beets -- very strong						
1018	????	97.7	Elvis Costello -- very strong						
1020	WWJO	98.1	St. Joseph	MN	HD	295	1025		
1022	KOLV	100.1	Olivia	MN	Real Country K-100	292	1072		
1023	KTLK	100.3	Minneapolis	MN	35 West in Bloomington	RDS PI 1F24		292	978
1024	KMLO	100.7	Lowry	SD	Main Street in Mobridge in Lowry			291	1303
1025	????	100.9	Pop a Top -- Alan Jackson						
1025	KSJN	99.5	Minneapolis	MN	HD	292	978		
1027	WHMH	101.7	Sauk Rapids	MN	Metal RDS PI 6863	295	1027		
1028	KEEY	102.1	Minneapolis	MN	K-102 Country	292	978		
1029	KQIC	102.5	Willmar	MN	Q-102 RDS PI 3B12	293	1067		
1030	KTIG	102.7	Pequot Lakes	MN	Focus on the Family	298	1056		
1031	KBWS	102.9	Sisseton	SD	Country	293	1182		
1032	KRVX	103.1	Wimbleton	ND	Mercy Hospital in Valley City			297	1244
1035	KZZY	103.5	Devils Lake	ND	"Swap and Shop. Phones 662-5946, 662-6528"				
		300	1288						
1035	KUAL	103.5	Brainerd	MN	Oldies in the mix	297	1038		
1036	KBHL	103.9	Osakis	MN	"Religion, Christian Corner"	296	1075		
1040	KMXW	104.7	Hope	ND	RDS PI 321C	297	1204		
1100	KUOO	103.9	Spirit Lake	IA	"Fox News, Estherville Rental"	286	1055		
1102	KJIA	88.9	Spirit Lake	IA	Mentions of Spirit Lake and Estherville	286	1055		
1103	KULO	94.3	Alexandria	MN	Alexandria MN wx	295	1095		
1104	????	95.5	Ad for Minnesota Driving Tests						
1111	????	88.5	Song by Natalie Grant						
1243	KQMA	92.5	Phillipsburg	KS	Mention of Smith Center. Boss Motor Sports in Hays				
		273	1297						
1244	KDRB	92.7	Ainsworth	NE	Dr. Owen in Valentine and Ainsworth	283	1296		
1247	KKEZ	94.5	Fort Dodge	IA	Mix 94	282	1011		
1249	KGLI	95.5	Sioux City	IA	KG-95	283	1117		
1255	KICX	96.1	McCook	NE	Peterson Jewelers in McCook	276	1361		
1258	????	95.5	Rap/Dance						
1259	KNDY	95.5	Marysville	KS	"Country, KNDY, Marshall County Farm Bureau"				
		274	1160						
1300	KBBN	95.3	Broken Bow	NE	Central Nebrasks News RDS PI 12CB	279	1293		
1313	KSWN	93.9	McCook	NE	"Who, US 93.9"	276	1368		
1317	KHUS	93.3	Bennington	NE	"HD US 93.3 RDS PI 2496, Village People"			278	
		1109							
1321	KMXC	93.3	Kansas City	MO	RDS PI 321B	269	1057		
1327	????	94.1	Shania Twain						
1328	KCVW	94.3	Kingman	KS	Bott	268	1239		
1329	????	89.7	CST Religion						
1330	KBMP	90.5	Enterprise	KS	Love Worth Finding. North Central Kansas Wx.				
		270	1194						
1332	KPOR	90.7	Emporia	KS	Family Radio	268	1152		
1334	KPRD	88.9	Hays	KS	...Baptist Church of Russell	271	1282		
1335	????	92.3	Early Hank Jr.						
1338	KTUF	93.7	Ottumwa	MO	Paul Harvey	272	938		
1340	KKAN	95.3	Phillipsburg	KS	"Pink Floyd. Bands, Booze and Barbeque in Barnwell NE"				

1345	????	96.3	Elvis						
1350	KZBK	96.9	Brookfield	MO	96.9 KZBK	272	970		
1401	????	90.5	USA News						
1406	KREP	92.1	Belleville	KS	KR92	273	1208		
1406	????	92.3	816-449						
1410	KHMY	93.1	Pratt	KS	RDS PI 835B	268	1275		
1415	WIBW	94.5	Topeka	KS	94.5 Country	270	1138		
1417	KZPL	97.3	Lees Summit	MO	816-587	269	1055		
1417	????	97.5	Disco						
1420	KUDL	98.1	Kansas City	MO	Kansas City's Soft Rock		270	1055	
1422	KCMO	94.9	Kansas City	MO	Kansas City ad	270	1060		
1426	????	88.1	Insight for Living						
1429	KJCV	89.7	Country Club	MO	Bott	272	1078		
1434	KTBG	90.9	Warrensburg	MO	The Bridge	268	1023		
1437	KTTN	92.3	Trenton	MO	See them both on KTTN-FM		273	973	
1439	KAYX	92.5	Richmond	MO	hopefortheheart.org	269	1019		
1439	????	92.7							
1446	KYEZ	93.3	Salina	KS	Y-93.7. The Best and Most of Today's Country		271		
	1220								
1448	KFKF	94.1	Kansas City	KS	Verizon Wireless Ampitheater	270	1057		
1901	KMNE	90.3	Bassett	NE	RDS PI 3106	282	1280		
1920	KLPQ	92.1	Madison	MN	"ID, in car"	292	1118		
1924	KKOK	95.7	Duluth	MN	Request Line 589-3131294		1110		

6/27/2007 Es

1104	????	88.1	88.1 The Joy FM						
1105	WMAW	88.1	Meridian	MS	MPB	237	1007		
1114	WDJC	93.7	Birmingham	AL	HD - RDS PI 5D80	236	851		
1117	WPYM	93.1	Miami	FL	South Florida Goodyear Dealers		199	1088	
1120	????	92.5	Q-92.5						
1125	WUAL	91.5	Tuscaloosa	AL	Alabama Public Radio	236	890		
1130	????	91.3	60s: Snoopy and Red Baron/Back off Boogaloo						
1140	????	93.1	Old version of Blue Velvet						
1145	????	93.1	Cream						
1150	????	93.1	Country						
1154	????	88.1	AFR						
1156	????	89.3	AFN News						
1158	KLSA	90.7	Alexandria	LA	RDS PI 2EE0	242	1187		
1159	????	91.7	AFN News						
1200	????	88.9	NPR						
1207	KQID	93.1	Alexandria	LA	Q-93	242	1169		
1216	KAYT	88.1	Jena	LA	"Parishes including Avoyelles, LaSalle"				
1226	KUHF	88.7	Houston	TX	Classical RDS PI 458B	242	1418		
1227	KVDP	89.1	Dry Prong	LA	318-448-4500 in Alexandria	242	1185		
1244	KAJR	88.3	Conroe	TX	RDS PI A193	245	1365		
1247	KSWP	90.9	Lufkin	TX	KSWP Jingle	246	1294		

6/28/2007 Es

0744	WPBZ	103.1	Indiantown	FL	Ms Burst RDS PI 7C77 Prev on Es				
1428	KJOV	90.7	Woodward	OK	KJIL ID 265	1368			
1511	????	88.9	WHBP?						
1512	KZNA	90.5	Hill City	KS	High Plains Public Radio		273	1330	
1647	KJRV	93.3	Wessington Spg	SD	The River Valley's Big Jim	93.3	288	1223	
1749	WRMB	89.3	Boynton Beach	FL	RDS PI 82C5	200	1050		
1938	WMCU	89.7	Miami	FL	RDS PI 74A0	199	1120		
1940	WJSU	88.5	Jackson	MS	HD - RDS PI 6E51	239	1049		
1945	WMAB	89.9	Mississippi State	MS	RDS PI 75EB MPB	241	956		
1946	WMPR	90.1	Jackson	MS	HD - RDS PI 75EF	239	1049		

6/30/2007 Es

1844	KVSC	88.1	St. Cloud	MN	Ad for concert in Winsted MN	294	1029		
1846	KBMK	88.3	Bismarck	ND	Religion parallel to 88.5 and 88.9		296	1358	
1846	KLVQ	88.5	Lincoln	ND	//88.3	296	1357		
1846	KLRX	88.9	Jamestown	ND	"//88.3, 88.5"	297	1265		
1847	KSTP	94.5	St. Paul	MN	KS-95	294	972		
1848	KTTB	96.3	Glencoe	MN	HD B-96292		1029		
1852	KDJS	95.3	Willmar	MN	"S. First St., Willmar RDS PI 18E8"				
1858	????	94.7	Rock						

1904	KLQP	92.1	Madison	MN	Q-92	292	1118		
1933	????	93.3	Country						
1934	KHBZ	94.7	Oklahoma City	OK	"HD, Oklahoma School of Bartending"				
1935	KTTS	94.7	Springfield	MO	"Tornado watch for Mansfield, Grove Spring, Stone County"	262	1019		
1936	KYNF	94.9	Prairie Grove	AR	Y-94.9	258	1122		
1937	KSEC	95.7	Bentonville	AR	Mexican	259	1101		
1938	KYAL	97.1	Muskogee	OK	Royals BB	257	1192		
1938	KJMT	97.1	Calico Rock	AR	Discussion on cars	256	1011		
1945	KMOD	97.5	Tulsa	OK	RDS PI 1F21	262	1201		
1947	KOMA	92.5	Oklahoma City	OK	HD RDS PI 3630	261	1290		
1948	KKOZ	92.1	Ava	MO	Royals BB	260	1005		
1951	KKNG	93.3	Newcastle	OK	"West Point Chrysler, Maxie's ad."	260	1309		
2008	????	94.9	"Christian, RDS PI 0000"						
2015	????	88.7	His Radio						

7/7/2007 Es

1800	KUQL	98.3	Wessington Spgs	SD	Cool 98	288	1223		
1802	WBJI	98.3	Blackduck	MN	Ad for Cattails Bar and Grill	302	1089		
1828	KRSW	89.3	Worthington	MN	Prairie Home Companion, ad for				
			greatriverenergy.com			288	1089		
1918	????	90.7	RDS PI 0000						

7/9/2007 Es

1810	WPAE	89.7	Centreville	MS	RDS PI 7C48	238	1141		
1927	????	88.1	Religious						
2054	????	92.3	Country						
2056	????	92.5	News						
2057	WMAO	90.9	Greenwood	MS	HD-MPB	244	1019		
2058	WAFR	88.3	Tupelo	MS	AFR for Northeast Mississippi	244	891		

7/10/07 Es

1648	KAYT	88.1	Jena	LA	ID	242	1188		
1651	KUHF	88.7	Houston	TX	HD RDS PI 458B	242	1410		
1654	KQID	93.1	Alexandria	LA	Q-93	242	1169		
1655	KRDJ	93.7	New Iberia	LA	Rock 93.7 RDS PI 3D3B	237	1196		
1656	KAFX	95.5	Diboll	TX	HD KFOX RDS PI 50AI	246	1298		
1657	WTCD	96.9	Indianola	MS	Talk	244	1003		
1658	WMAW	88.1	Meridian	MS	MPB RDS PI 75EB	237	1007		
1658	????	88.3	Religious News						
1658	WRKF	89.3	Baton Rouge	LA	National Public Radio. I-10 ment	237	1181		
1659	WPAE	89.7	Centreville	MS	WPAE and KPAE ID	238	1141		
1659	WAQL	90.5	McComb	MS	AFR.NET	238	1110		
1700	WMAU	88.9	Bude	MS	MPB RDS PI 75EB	238	1115		
1701	90.9 @KIKL		Lafayette	LA	KITL Lafayette, K-Love	238	1223		
1718	@KRLR	89.1	Sulphur	LA	K-Love	240	1283		
1719	WMAB	89.9	Mississippi State	MS	MPB	241	956		
1720	KPFT	90.1	Houston	TX	Drug War News at 4:20	243	1398		
1721	KLSA	90.7	Alexandria	LA	NPR RDS PI 2EE0	242	1187		
1725	KVLU	91.3	Beaumont	TX	RDS PI 48A6	241	1320		
1728	KVTT	91.7	Dallas	TX	Truth Talk Live at KVTT.ORG				
1730	KAFR	88.3	Conroe	TX	RDS PI A193, Spirit 88. In til 2014				
1830	KOYE	96.7	Frankston	TX	Spanish	248	1304		
1858	WRWA	88.7	Dothan	AL	WTSU Troy	226	912		
1901	WUWF	88.1	Pensacola	FL	HD	227	1007		
1918	WDVW	92.3	LaPlace	LA	Diva 92.3	235	1180		
1919	WZEW	92.1	Fairhope	AL	92 Zoo in mix	231	1033		
1922	WMTM	93.9	Moultrie	GA	Supergold with Mike Harvey.				
	Tentative for relog.	220	848						
1922	WAKU	94.1	Crawfordville	FL	SRN News	218	929		
1923	????	94.9	Urban						
1923	WZNS	96.5	Fort Walton Beach	FL	850-863-4187 Geico ad	226	993		
1924	WJIZ	96.3	Albany	GA	Urban with calls	223	835		
1927	WDLT	98.3	Chickasaw	AL	Southern Soul Instant Request	231	1047		
1930	????	88.1	Native American victimization program						

6 Meter/2 Meter Amateur DX



50 Mhz
The *Magic* Band



Peter Baskind, N4LI
3225 Forest Hill-Irene Rd
Germantown, TN 38138
N4LI@ARRL.net

Well, first of all, a bit of an apology. I have been AWOL for the past couple of months with this column. It's Summer, and with young kids, I have been nearly constantly on the move. Hopefully, I am now back on-track.

We have made it though the major part of the Summer Sporadic-E Season, and I must say, it has been a bit of a disappointment. This is surprising considering early signs in May that this might be a good season. Larger openings have been few and far between, non-E_s days have been plentiful, and high-MUF events have been rare. What 144 MHz E_s there has been has been fleeting across the country, and far from wide-spread when it did happen.

Despite the less-than-stellar conditions this Summer, I haven't gone through the entire Season without some useful QSOs. As I write, I have worked four new countries this Summer. While neither of those countries is particularly exciting, and, frankly, they should have been in the log long ago, I'll certainly take them. Panama was worked on May 12, with HP3XUG at 0012 UTC; Honduras was well over S9 on the thirteenth as HR9/WQ7R was logged at 2250; rare Haiti was worked on June 20th with HH4/W3CMP at 0019 (a very tough QSO, btw); and Anguilla got in the log on June 28th with VP2EDH at 1923. Anguilla may well have been my easiest country ever. I heard the operator off the side of the antenna on my QRP (low-power) radio. I turned southeast and worked him first call at just 5 Watts. Ah, if they were all that easy! Sadly, I missed out on the DXpedition to St. Vincent (J8). Conditions just didn't pop while the station was on – maybe next time! Not much has made it into Memphis trans-Atlantic; the East Coast guys have been gobbling that up. But, I did manage a new Canadian Province/Territory, as a small group trekked north to a group of islands in Nanavut. I will be looking forward to a card from VF0X, the special call the group was using.

During the Season, I have worked a handful a nice, new grids – some of which are rare. But, I'll spare you the extended listing; they are all domestic, and just not that exciting.

Tropo has also been rare this Season. By now, I would have expected at least one or two opening to the south. We occasionally get fringes of larger Gulf tropo openings -- but, not this year, so far, anyway. We did get lucky during the June VHF contest. It was an odd opening – one that didn't seem to show on the APRS mappers, implying it was a pretty narrow duct. But, it was fun! The "Grid Pirates," a well-known VHF contest club camped on a mountain in eastern West Virginia, and were very busy, indeed. Their station, K8GP, was often S9 here in Memphis for hours, bringing in a new state at 0359 on the tenth. Other notable contacts during the opening included K3YTL in FN11, a new grid, at 0434. That's well over 800 miles.

Loggings

Bill Smith, W1OW, 56 Locust St, Douglas, MA 01516 FN42

5 May '07

Band finally opened, south. Then shifted SW. New stations:

1948	N4NUM	EM84	2009	KD4HLM	EM82
1949	KF4ZYO	EM82	2033	NC4MP	FM15
1951	KI4ATT	EM95	2034	N4JJ	FM04
1953	KE4OHB	EM95	2119	K4BEE	EM81
2007	AA4SC	EM94	2148	N4WO	EL88

2338 KC5FZA EM34

6 May '07

Opening to Midwest; then a shift to SW

2338	KC5FZA	EM34	2212	N9RBE/m	EM58
2129	W9VHF	EM89	2249	WB5NDJ	EM13
2130	N4QWZ	EM66	2253	WN2E	EM50
2132	W8KIE	EM37	2254	W5TF	EM51
2143	K9AAO	EM40	2311	KC5GTT	EL09
2208	AB5CC	<u>EM14</u>	2338	NU5D	<u>EM11</u>

(Oddly, a rare grid. -ed.)

8 May '07

Good opening to the Caribbean. Worked PJ4/PA3CNX/FK52 @ 2135; YV4DYJ/FK60 @ 2148.

9 May '07

Band opened to the South (FL, GA, AL). No new stations worked.

11 May '07

Band opened to the Midwest.

1900	KC0QNA	1941	EH8BPX	IL18
1929	KB9WMJ/m	EN53	(1 st Trans-Atlantic of Season)	

12 May '07

Good opening to the SW. Worked TI4CF/EJ79 at 2323.

15 May '07

Good opening to the SW. Heard XE2WWW/EL06; W5UWB/EL17; 6I2YWB/DL82. No new stations worked.

22 May '07

EH8BPX in again; new stations worked:

2324	KC5BYE	EL49	0155	WB0000	EM48
2327	K4KNO	EM60	0205	KD5YQW	EM15
0047	W9BF/5	EM10			

23 May '07

Slight Aurora. VE3EN/FN24 heard at 2238.

25 May '07

Opening to the Midwest; then SW.

2100	KZ9A	EM59	2129	KB0RGS	EN35
2101	N0UIH	EM48	2132	WB0YDI	EN35
2104	N8XA/m	EM79	2207	KA0JGH	EN10
2105	N2NKP	EM84	2214	K0HHB	EM48
2117	NU8D	EM79	2314	N0OB	EN11
2128	K0RDW	EN34			

May 28-29 '07

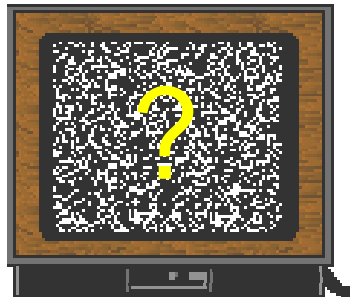
Opening into the South, then SW. Worked KD4BQK/EM66 @ 0003

Elsewhere, little out of Europe or the West Coast though May.

THE DEATH OF TV E-SKIP?

Is E skip TV DXing Finished in 18 Months?
Interesting discussion from WTFDA members on the TVFMDX list in July.

Most stations that have had a choice have left low-band DTV channels in favor of high-band if possible, UHF if necessary. WTWC's old analog channel (40) is much better suited to digital service than channel 2. Doug Smith



Sounds like the Death of TV E-skip is coming soon. So figure the summer of 2008 to be the last summer for TV E-skip forever! Time to find a new hobby! John Lentz

Don't nail the coffin lid down yet- the real fun will be the season in 2009 and for at least a dozen years thereafter. Band I will be nearly vacant in the United States allowing multiple-hop Es to be received from Canada, Mexico, Cuba, Latin America, even further afield from South America, Europe and Africa at times. The glory days of the craft are ahead of us to enjoy. Curtis Sadowski

I agree with Curtis. We are in for interesting times. It appears there will be analog low powered stations for who knows how long. 2009 will be historic for TV DXing, almost like the original days of TV. Mike Glass

I agree with Curtis I have no plans to take down my E skip antenna as I have had Cuba/Mexico and Canada here via ES. With most low band VHF gone in the US there are many possibilities for DX especially for those who live in markets where the low band VHF is now crowded. I live about 60 miles to the coast both east and south so Central America and Europe will be my new targets. DTV skip will be around and will be much easier to get. I have logged WTWC DT 2 a total of 5 times in the past year with all the analogs still on air. Jeff Rostron

The Death of the TV DX hobby has been greatly exaggerated. This is why I'm looking forward to 2009--- Logging stations on channels other than Ch 3 (and 6) mainly. Seeing real DX instead of the constant relogging of WEDU, KTVK, etc. When something is in English, you will pretty well suspect it will be North of the US Border. Fritze Prentice

If all you DX is TV then maybe, depending on where you live.

All I have available by single-hop Es will be parts of Canada, Cuba, DR and Puerto Rico. Anything else will have to be 2Es at least. There is not that much out there in single hop range. It might be hard to keep

an interest going when 80% of your Es openings yield nothing but snow. But, we shall see... the other 20% might be interesting. Mike Bugaj

For me..my log of YVVA-2 Caracas a few years back by F2 is worth 295 relogs of WPBT-2 Miami. Bring on the changes! Bill Hepburn

Well to me at first it sounds great- like I will try to pick up more Meteor scatter and tropo from Canada and what I can of 2Es and Canada Es. But then WHAT? Just like anyone who has dxed Ms, many and many are repeats. So after the first year or maybe two, you [or we] will have our quota and then the BOREDOM sets in and that will be the Death of TV DX as I see it. I am not complaining due to the fact that I have dxed many, many years and my cup runneth over and retirement for me is around the corner anyway. And AM DX is great on the coast and I have many other hobbies to pursue-- it's the young new DXers that I feel sorry for. ROY BARSTOW

I've seen enough of WESH WBRZ and WDIQ, and KSN, and such, over 30 years, that I really wouldn't miss any of it. There are a tiny handful of 3, 5 and 6 analogs within 600-1500 mile range in the U.S. that I haven't seen. I'll be watching for those next summer and maybe a last chance at double hop from the U.S. west on 2.

From 2009 onwards, as long as it lasts, I'm looking forward to a much more open band. I've never had Newfoundland/Labrador from here on TV, though I have had many other Canadians, so I guess during those east-west openings I'll be looking to fill out the logbook, and there's a very small chance maybe it'll make 2Es a bit easier in those directions. The most exciting opportunity for me will be Cuba, Mexico, other points south.

The only interest stations like WESH and WWL have for me nowadays is that they indicate the potential for skip on FM. They tell me

(Continues on page 26)

SIGN UP/Renewal form

Name _____

Address _____ Apt # _____

City _____ State/Prov _____ Zip _____

Country _____ Interests: TV () FM () 30-50() Weather()

email address _____

Sign me up/renew me for: 1 year () 2 years () More ()

Yearly dues \$24 (US), \$26 to (CANADA), \$10 (Electronic VUD)
(Students get a discounted rate of \$15 yearly for the paper VUD.)

Mail your dues to: WTFDA, P.O. Box 501, Somersville, CT USA 06072

Make your checks/money orders payable to: WTFDA

And *thanks* for your support of the WTFDA!

Return this form with your dues or make a copy of it and return that.

WTFDA BOARD OF DIRECTORS

Mike Bugaj, use the WTFDA Mailing address listed below	mbugaj@snet.net
Doug Smith, 1385 Old Clarksville Pike, Pleasant View, TN 37146-8098	w9wi@w9wi.com
Greg Coniglio, 11825 Genesee St., Alden, NY 14004	wgrc@rochester.rr.com
Bruce Hall, 5 Stirton Ave., Brantford, ON N3T 1E2	dbruceaa@hotmail.com
Keith McGinnis, 6 Ritter Road, Hingham, MA 02043	longwave@comcast.net

THE MAILBOX and all general club correspondence:

Mike Bugaj at WTFDA, PO Box 501, Somersville, CT 06072	mbugaj@snet.net
--	-----------------

TV NEWS

Doug Smith, 1389 Old Clarksville Pike, Pleasant View, TN 37146-8098	w9wi@w9wi.com
---	---------------

FM NEWS

Chris Kadlec, 3860 Shorewood Dr., Fremont, MI 49412	ckadlec@beaglebass.com
---	------------------------

PHOTO NEWS

Jeff Kruszka, 12516 Short Springs Dr., Pearland, TX 77584	jkruszka@sbcglobal.net
---	------------------------

EASTERN TV DX

Nick Langan, 1040 Riverview Dr., Florence, NJ 08516	nick.langan@gmail.com
---	-----------------------

WESTERN TV DX

Dave Williams, 3525 SW Timber Ave., Redmond, OR 97756	beansdad@bendcable.com
---	------------------------

SOUTHERN FM

John Zondlo, 4009 Driftwood Cir., Yukon, OK 73099	sfm@fmdxweb.com
---	-----------------

NORTHERN FM

Keith McGinnis, 6 Ritter Rd., Hingham, MA 02043	longwave@comcast.net
---	----------------------

TV and FM STATISTICS

Fred Nordquist, 147 Travis Hill Road, Moncks Corner, SC	nordquis@homexpressway.net
---	----------------------------

6 METER/2 METER

Peter Baskind, 3225 Forest Hill-Irene Rd, Germantown, TN 38138	n4li@arrl.net
--	---------------

<u>WEBSITE</u> Tim McVey Webmaster http://www.wtfda.org	tim@4mcveys.com
---	-----------------

WTFDA EMAIL REFLECTORS

Enhance your DXing experience! Entertaining and informational.

For WTFDA members and guests on the wtfda.info server

The WTFDA list...send an email to tvfmdx-subscribe@wtfda.info	194 users
--	-----------

The WTFDA AM DX list...send to amdx-subscribe@wtfda.info	88 users
---	----------

**THE WORLDWIDE TV-FM DX ASSOCIATION
THE VHF- UHF DIGEST
P.O. Box 501, SOMERSVILLE, CT 06072**

Opinions expressed in this publication are those of the individual contributor and do not necessarily reflect the views of the publisher or board of directors. We reserve the right to edit material to meet publishing standards. Unless previously agreed upon in writing, all material submitted for publication in the VHF-UHF Digest becomes the property of the WTFDA. Reproduction of material from the VHF-UHF Digest without permission of the WTFDA is prohibited. Individuals and other organizations are granted such permission providing proper credits is given to the source.



Established 1967



FIRST CLASS MAIL

NOW! JOIN AND RENEW USING PAYPAL!

Now you can pay for your dues by check, money order and ONLINE with Paypal! If you have a Paypal account you'll be done in a matter of seconds! Pay at our Paypal webpage at <http://fmdx.usclargo.com/join.html> or send your dues to mbugaj@snet.net

**BOISE IN 2007!!!
WTFDA/NRC CONVENTION
8/31 THROUGH 9/2**