

# Vhi-UhiDIGEST

The Official Publication of the Worldwide TV-FM DX Association

OCTOBER 2007

The Magazine for TV and FM DXers



**SEARCHING FOR DISTANT  
DIGITAL TELEVISION SIGNALS**

**THE ANTENNAS OF MIKE GLASS,  
INDIANAPOLIS**

**16  
MONTHS**  
REMAINING UNTIL  
ANALOG TV SHUTOFF

**ANOTHER FIRST AND  
ANOTHER NEW RECORD!**  
September 19 Tropo Brings CIOZ  
96.3 Marystown, Newfoundland to  
Jeff Lehmann via 847 mi Tropo!  
Dxers in Eastern USA and Canada  
Get In on the Fun!



*TV and FM DXing was never so much fun!*

# THE WORLDWIDE TV-FM DX ASSOCIATION

*Serving the UHF-VHF Enthusiast*

THE VHF-UHF DIGEST IS THE OFFICIAL PUBLICATION OF THE WORLDWIDE TV-FM DX ASSOCIATION DEDICATED TO THE OBSERVATION AND STUDY OF THE PROPAGATION OF LONG DISTANCE TELEVISION AND FM BROADCASTING SIGNALS AT VHF AND UHF. WTFDA IS GOVERNED BY A BOARD OF DIRECTORS: DOUG SMITH, GREG CONIGLIO, BRUCE HALL, KEITH MCGINNIS AND MIKE BUGAJ.



*Editor and publisher:* **Mike Bugaj**

*Treasurer:* **Keith McGinnis** wtfda.org Webmaster: **Tim McVey**

wtfda.info Site Administrator: **Chris Cervantez**

*Editorial Staff:* **Dave Williams, Jeff Kruszka, Keith McGinnis, Fred Nordquist, Nick Langan, Doug Smith, Peter Baskind and John Zondlo,**

Our website: [www.wtfda.org](http://www.wtfda.org); Our forums: [www.wtfda.info](http://www.wtfda.info)

OCTOBER 2007



Finally! For those of you online with an email address, we now offer a quick, convenient and secure way to join or renew your membership in the WTFDA from our page at:

<http://fmdx.usclargo.com/join.html>

Dues are \$25 if paid to our Paypal account. But of course you can always renew by check or money order for the usual price of just \$24. Either way, it's still a bargain!

*eVUD members please send \$10 for membership or renewal to [mbugaj@snet.net](mailto:mbugaj@snet.net).*

## CONTENTS

Page Two	2
Mailbox	3
TV News...Doug Smith	5
FM News...	10
Photo News...Jeff Kruszka	15
Eastern TV DX...Nick Langan	16
Southern FM DX...John Zondlo	18
Northern FM DX...Keith McGinnis	19
Renewal Form	31

Western TV DX should return next month.

## FIND US FAST!

### WTFDA BOARD OF DIRECTORS

Mike Bugaj, use the WTFDA Mailing address listed below  
Doug Smith, 1385 Old Clarksville Pike, Pleasant View, TN 37146-8098  
Greg Coniglio, 11825 Genesee St., Alden, NY 14004  
Bruce Hall, 5 Stirton Ave., Brantford, ON N3T 1E2  
Keith McGinnis, 6 Ritter Road, Hingham, MA 02043

[mikeb@wtfda.org](mailto:mikeb@wtfda.org)  
[dougs@wtfda.org](mailto:dougs@wtfda.org)  
[gregc@wtfda.org](mailto:gregc@wtfda.org)  
[dbruce@wtfda.org](mailto:dbruce@wtfda.org)  
[nfmdx@wtfda.org](mailto:nfmdx@wtfda.org)

### THE MAILBOX and all general club correspondence:

Mike Bugaj at WTFDA, PO Box 501, Somersville, CT 06072

[mailbox@wtfda.org](mailto:mailbox@wtfda.org)

### TV NEWS

Doug Smith, 1389 Old Clarksville Pike, Pleasant View, TN 37146-8098

[dougs@wtfda.org](mailto:dougs@wtfda.org)

### FM NEWS

Use the Mailbox address

### PHOTO NEWS

Jeff Kruszka, 12516 Short Springs Dr., Pearland, TX 77584

[jeffk@wtfda.org](mailto:jeffk@wtfda.org)

### EASTERN TV DX

Nick Langan, 1040 Riverview Dr., Florence, NJ 08516

[nickl@wtfda.org](mailto:nickl@wtfda.org)

### WESTERN TV DX

Dave Williams, 3225 SW Timber Ave., Redmond, OR 97756

[wtdvx@wtfda.org](mailto:wtdvx@wtfda.org)

### SOUTHERN FM

John Zondlo, 4009 Driftwood Cir., Yukon, OK 73099

[southernfmdx@wtfda.info](mailto:southernfmdx@wtfda.info)

### NORTHERN FM

Keith McGinnis, 6 Ritter Rd., Hingham, MA 02043

[nfmdx@wtfda.org](mailto:nfmdx@wtfda.org)

### TV and FM STATISTICS

Fred Nordquist, 147 Travis Hill Road, Moncks Corner, SC

[nordquis@homexpressway.net](mailto:nordquis@homexpressway.net)

### 6 METER/2 METER

Peter Baskind, 3225 Forest Hill-Irene Rd, Germantown, TN 38138

[n4li@arrl.net](mailto:n4li@arrl.net)

WEBSITE Tim McVey Webmaster <http://www.wtfda.org>

[tim@4mcveys.com](mailto:tim@4mcveys.com)



# The Mailbox

P.O. Box 501, Somersville, CT USA 06072  
MIKE BUGAJ MBUGAJ@SNET.NET

## DX WINDS DOWN

Welcome to October! The Es season is long gone and much of the tropo season is almost over for most of us.

Early September found tropo in the Northeast USA from the 2<sup>nd</sup> to the 3<sup>rd</sup> (ON to NJ and parts of New England) and then again from the 5<sup>th</sup> to the 6<sup>th</sup> (paths from coastal New England to NC) and then from the 8<sup>th</sup> to the 9<sup>th</sup> from MA down to Virginia. The 11<sup>th</sup> found tropo in the Ozarks. E skip was noted on the 3<sup>rd</sup> and the 8<sup>th</sup> of September on ch2 and 3 from the midwest to the East Coast. And Saul Chernos caught some MS bursts during the period also.

## CONVENTION 2007 IS OVER

And a great time was had by all. The WTFDA board agreed that we should do this again sometime but probably at a more easterly location where more WTFDA members could attend. A big thank you goes out to the Frank Aden and the NRC Board of Directors.



Here is a photo taken at KBOI. This is probably as close to a group picture that we'll find. You can go to our website at <http://www.wtfda.org> for a link to a much larger picture and other photos.

## MEMBERS AND MORE

This month we welcome one new member and that's **Tommy Adair**. Tom lives in Columbia, TN and is discovering the wonderful (and sometimes frustrating) world of digital television DXing. He's been the cause of some good DTV discussion at the

Forum site (<http://www.wtfda.info>).

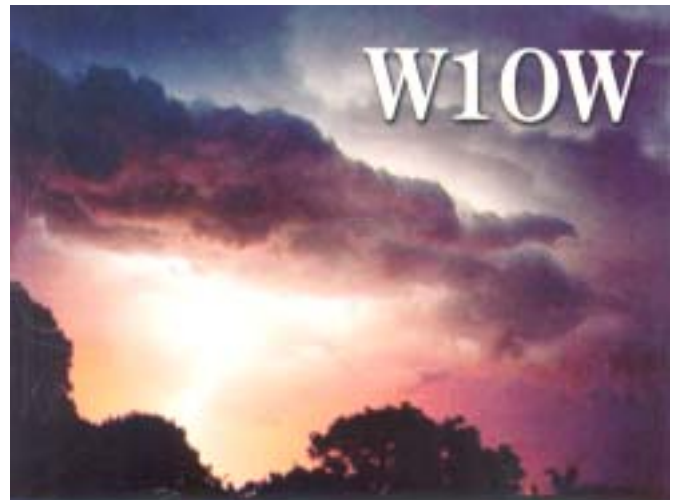
Also we welcome back **John Lochey** into the group. We're glad you're back!

With WTFDA member **William Hein's** move to Long Island we no longer have a member in the state of Vermont. Well at least William won't have any problem watching any OTA television there.

We've got renewals and these cover the period from 8/20 to 9/17: **Michael Temme-Soifer** (NJ), **Wolfgang Schneider** (CA), **Jeff Lehmann** (MA), **Al Putman** (ON), **John Lentz** (WI), **FJ Issard** (ON), **Glen Hauser** (OK), **Roosevelt Crawford** (KS), **William Hein** (NY), **Chris Kadlec** (NY), **Bill Smith** (MA), **Melvin Dishong** (GA), **George Greene** (OH), **Joe Fela** (NJ), and **Mike Bugaj** (CT).

Thank you all for staying with us as we continue in this wondrous journey to digital television.

Bill Smith sends in one of his QSL cards this month. Thanks, Bill!



## FM TRANSLATOR INTERFERENCE

Bob Seaman sends in this interesting report:

At the end of June I had experienced a local translator W248AK come on the air and obliterated a 40dB signal on 97.5. I knew that this shouldn't have been happening, but I wasn't quite sure how to alleviate the interference. I had the name of the Chief Engineer at the station that was being covered by the translator and an e-mail address. I also contacted Scott Fybus to see if he knew of an e-mail address at the FCC where I could send a message about my displeasure with the new translator.

## ODDS 'N ENDS

Scott suggested I contact the FCC by phone and the Chief Engineer of the affected station. Scott said that the translator regulations state that TRANSLATORS CAN NOT INTERFERE WITH THE "REGULAR" RECEPTION OF ANY STATION OPERATING AT THE FULL FCC AUTHORIZED POWER, EVEN OUTSIDE THE PROTECTED CONTOURS OF THAT STATION. I sent an e-mail to the station and called the FCC. The FCC told me that they did not get involved directly with the public and that I should contact the station which was being affected by the translator.

If anyone has a local translator which interferes with another station, the translator can be made to eliminate the interference. The local translator on 97.5 was shut down on August 15th restoring reception of WJJZ Burlington, NJ/Philadelphia which had moved to the new transmitter site just north of Philadelphia, the signal strength is now 45dB at my location.

A check of the engineering information on file for the translator shows that they do an Interference Study Overlap Requirements of co-channel and 1st and 2nd adjacents. The study is done with the translator as a Class A station, but the interference is only done at the 54dB signal of Class B stations and the 60dB signal of Class A stations. This information totally ignores the fact that THE TRANSLATOR WILL STILL INTERFERE WITH THE OTHER STATIONS.

The same translator is now looking for another frequency and they have chosen 96.9 and there is a local Class A on 97.1 WBHT which is going to be affected by the new frequency. The new Interference Study has the 60dB signals of the translator and WBHT butting up to each other, but not overlapping. Apparently the FCC only looks for overlapping, but there still will be interference.

So the final word is if you have a translator interfering with a full power station, contact the full power station. They usually are willing to eliminate the interference to their signal. They need 6 or 7 letters of complaint from listeners in the affected area to initiate the proceedings. In my area, I have found that most translators are interfering with another stations due to the crowded band conditions which already exist. One other local translator has applied to move to 91.1 from 91.5 and there is an existing station on 91.1 WRTY which is putting in a signal of 52-54 dB into the area being served by the translator. This translator will never be able to exist on 91.1.

If anyone needs any additional information on this contact me directly.

[seaman\\_robert@myrealbox.com](mailto:seaman_robert@myrealbox.com)

If you look at page two you'll see something different this month. What you'll see is that our webmaster Tim McVey has set up most of us with our very own wtfda.org email addresses. The Mailbox has it's own address as does Northern FM DX and Eastern TV DX and Western TV DX (which does not appear this month due to lack of material to fill a page).

We have more than enough email addresses remaining to assign to every WTFDA member if we wanted to. But we won't do that. What we will do is ask you to email us if you want one. Tell us what address you would want ([superdx@wtfda.org](mailto:superdx@wtfda.org), for example) and tell us what email address you want email for superdx redirected into. Right now we don't have webmail set up at wtfda.org to send email from there, but an incoming wtfda.org email address will work just fine, plus it will confound and impress your friends, family and co-workers.

I now have access to a portion of the wtfda.org website and I've made some changes and added some material. If you would like to add some material to wtfda.org, send it in an email (or Word document along with a graphic or two...or even Wordperfect if you use it) and I will get it posted there. We could use original equipment reviews, for example, but your imagination is the limit. If you like to write about your hobby, this is a great place to get your original material published!



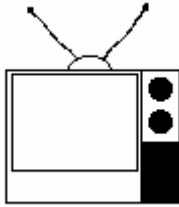
## FINAL 2007 ESKIP POLL RESULTS

We asked you to give a final grade to the 2007 E skip season and you did.

This graph appears at the polling area of wtfda.info. Eighteen votes were placed. Two people gave the season an A, eleven gave a B, four gave a C and one gave a D. All in all, it wasn't too bad this year. Go there and read the complete thread. Or post *your* grade!

## LAST BUT NOT LEASED

We are holding our own with a membership hovering in the upper 240s by the end of the month. Our Forums are popular with many people and it seems some prefer them to the email mailing lists we offer. The WTFDA is a vibrant club of enthusiastic DXers and it's YOU who keep it that way. See you next month!



# TV News

Douglas E. Smith  
1389 Old Clarksville Pike  
Pleasant View, TN  
37146-8098  
[w9wi@w9wi.com](mailto:w9wi@w9wi.com)

<http://www.w9wi.com>

## October 2007

### Abbreviations:

AF	Applied For (a new station)	NW	New station on the air
Aux	Auxiliary (backup) transmitter	PA	Proposed Amendment
CC	Callsign change	PC	Power (and/or tower height) change on the air
CL	City-of-license change	PG	Power change granted
DC	Converted to DTV	PR	Power change requested
DCC	Digital Companion Channel	RA	Returns to the air
NS DCC	Granted flash-cut to DTV	QC	Channel (frequency) change on the air
DE	License/permit deleted	QG	Channel change granted
DR	Requests flash-cut to DTV	QR	Channel change requested
FC	Programming (format) change	RE	Reinstated (previously-dismissed app.)
FTP	Failure to Prosecute	ROA	Request of Applicant
GA	Granted amendment (to table of channel allotments)	SI	Off the air (silent)
LC	License to Cover	STA	Special Temporary Authority
MX	Mutually Exclusive	XC	Transmitter site changed
NDA	Non-directional antenna	XG	Transmitter site change granted
NS	Permit granted for new station	XR	Transmitter site change requested

### News:

(full-power analog stations in **bold face**; LPTV and translators in regular type; full-power digital stations in **bold italics**; low-power digital stations in *regular italics*)



#### CANADA:

##### Alberta:

Calgary	32	<b>CKCS-TV</b>	CC for NS
Calgary	44	<b>CHCA-TV-1</b>	testing w/10kw/51m, 51-03-15/ 114-00-08
Edmonton	45	<b>CKES-TV</b>	CC for NS



#### PUERTO RICO:

Fajardo	16	<b>WMTJ-DT</b>	<b>PG 140kw/ 852m</b>
Mayaguez	46	W34CI	QR from ch. 34, 17.1kw
Ponce	8	<b>WSTE-DT</b>	<b>NW 50kw/ 88m, 18-02-52/ 66-39-16</b>



#### USA:

##### Alabama:

Andalusia	25	WKNL-LP	DR 15kw
Enterprise	26, 41	NEW-LP	AF dismissed
Mont-gomery	51	<b>WNCF-DT</b>	<b>PG&lt;5.9kw</b>
Priceville	51	WYAM-LP	PC<19.6kw; DR 15kw

##### Alaska:

Anchorage	6	KOAN-LP	CC from KZND-
Seward	14	NEW-LP	AF dismissed

##### Arizona:

Flagstaff	21	KBFG-LP	CC from KWTF-LP
Flagstaff	45	K45KL	QR from ch. 20, 1kw, 35-14-30/ 111-36-34; calls already changed from K20IQ
Flagstaff	51	KBFG-LP	CC from KWTF-
Globe	30	K30ES	PR>9.84kw, 33-31-14/ 111-11-28; PG; PC NW 1.3kw, 34-29-20/ 112-32-15 (KSAZ-10)
Prescott	39	<i>K39IT-D</i>	AF dismissed
Yuma	20	NEW-LP	

##### Arkansas:

Bentonville	11	K67EO	QR from ch. 67, 800w
El Dorado	5	KCIB-LP	CC from K05KG
<b>El Dorado</b>	<b>27</b>	<b>KTVE-DT</b>	<b>NW 823kw/ 582m</b>
Eureka Springs	22	K22HS	QC from K18EG 10kw, 36-21-38/ 93-44-54
Fayetteville	44	K62DQ	QR from ch. 62, 23kw
<b>Springdale</b>	<b>39</b>	<b>KWOG-DT</b>	<b>NW 35kw/ 114m</b>

##### California:

Bakersfield	18	K18HD	DR 13kw, 35-26-18/ 118-44-18
Bakersfield	32	KSTV-LP	QC from ch. 60, 150kw
Bakersfield	38	KNXT-LP	PC<65kw, 35-26-16/

Big Bear Lake 35 KPCD-LP 118-44-28  
QR from ch. 40, 300w,  
33-55-28/  
116-36-54

**Bishop** 20 **KBBC-TV** **NW 4.2kw/ 924m,**  
**37-24-43/**  
**118-11-06**

Brawley 20 NEW-LP AF dismissed

**Cotati** 22 **KRCB** **PC 60kw/**  
**630m,**  
**38-20-55/**  
**122-34-38**

Johannes-burg 6 NEW-LP AF dismissed

Lancaster 50 KEDD-LP CC from KTRO-LP

**Los Angeles** 36 **KNBC-DT** **PC>665kw**

Monterey 27 KYMB-LP CC from K27IE

Morongo Valley 3 K03HS NW 500w,  
33-54-30/  
116-59-45

Paso Robles 23 K23ED PC>150kw,  
36-22-07/  
120-38-33

Redding 4 KVFR-LP PG>50w,  
40-36-40/  
122-22-51; NW; CC  
from K04PY

*Redding* 10 ? *AF DCC 20w, 40-33-*  
*46/*  
*122-27-07 (suspect for*  
*KMCA-LP 2)*

Redding 41 KKDJ-LP QR from ch. 58, 130kw

**San Bernardino** 26 **KVCR-DT** **NW 475kw/**  
**510m**

**Watson-ville** 25 **KOET** **CC from KCAH**

**Colorado:**

Aspen 25 NEW AF dismissed

*Bayfield* 50 *K50FS* *DR 240w*

*Cortez* 33, *K33JL-D,* *NW 10w,*  
52, *K52KF-D,* *37-21-01/*  
53, *K53JP-D,* *108-08-01*  
55, *K55KN-,*  
56, *K56JI-D,*  
57, *K57KA-D,*  
58, *K58IV-D,*  
25 *K25JN-D*

Durango 50 NEW-LP AF dismissed

Fort Collins 44 KDNF-LP PG<33.7kw,  
40-53-42/  
105-11-38

Fruita 53 NEW AF dismissed

Glenwood 25 NEW AF dismissed

Springs

**Greeley** 45 **KPJR-DT** **CC for NS**

Powderhorn 34 K69AO QR from ch. 69, 15kw

Salida 36 K36HS XR 38-27-11/  
106-01-02; XG

**Steamboat** 24 **KRMZ** **CC from KMAS-TV**

**Springs**

Steamboat 33 KHSB-LP CC from K33IE

Springs

Wolcott 25 NEW-LP AF dismissed

Wray 31 K31IH QC from K54HL,  
715w, 40-03-15/  
102-13-32

**Delaware:**

*Rehoboth Beach* 31 *WRDE-LD* *AF DCC 15kw, 38-44-*  
*51/*  
*75-11-21*

**Florida:**

**Cocoa** 52 **WHLV-TV** **CC from WTGL-TV**

Fort Myers 51 WLZE-LP QC from ch. 65,  
150kw,  
26-47-07/  
81-47-47

Key West 19 WEYW-LP XR 34-33-37/  
81-47-51

Key West 42 NEW AF dismissed

**Leesburg** 45 **WTGL** **CC from WLCB-TV**

Summer-land 28 W28CP PG>150kw,  
24-34-06/  
81-44-54

Vero Beach 19 WMMF-LP PR<14.8kw; PG; PC

West Palm 57 WBWP-LP XC 26-47-59/  
80-04-33

**Georgia:**

**Athens** 12 **WGTV-DT** **PR 15kw/**  
**317m**

Athens 50 WAGC-LP PR 11kw,  
33-57-47/  
83-27-22

Atlanta 26 WANX-LP PG>103.5kw, 33-46-  
15/  
84-23-10

**Atlanta** 27 **WAGA-DT** **NW 1000kw/**  
**332m (aux)**

**Atlanta** 41 **WATC-DT** **NW 165kw/**  
**319m**

**Columbus** 23 **WJSP-DT** **PR<177kw/**  
**444m**

Columbus 33 W33CN PR>40kw

Columbus 41 NEW AF dismissed

Columbus 61 W61DU NW 1kw,  
32-31-52/  
84-57-31

Ringgold 28 WRNG-LP PR>139kw; PG

**Savannah** 9 **WVAN-TV** **PR<170kw/**  
**388m**

**Savannah** 13 **WVAN-DT** **PR<1.6kw/**  
**388m**

Vidalia 5 NEW-LP AF dismissed

**Waycross** 8 **WXGA-TV** **AF 34.2kw/**  
**155m (aux)**

**Waycross** 9 **WXGA-DT** **PR 16kw/**  
**308m**

**Wrens** 2 **WCES-DT** **PR 34kw/**  
**408m**

**Hawaii:**

Hilo 44 NEW-LP AF dismissed

*Wailuku* 34 *KHIW-LD* *CC from KUNT-*

**Idaho:**

**Boise** 21 **KAID-DT** **NW 725kw/**  
**858m,**  
**43-45-21/**  
**116-05-54**

Bonnors Ferry 11, K11HM,  
32, K32HA,  
35, K35IC,  
46, K46HZ,  
50, K50GL

*Bonnors Ferry* 56 *K32HA* *AF DCC dismissed*

Burley 51 NEW-LP AF dismissed

Hailey 51 NEW-LP AF dismissed

Idaho Falls 33 K33IP NS 10kw,  
43-29-36/  
112-02-14

Idaho Falls 39 K39HJ NW 2.5kw,  
43-31-00/  
112-00-40

Pocatello 51 K51HU NW 5kw,  
43-11-30/

Sandpoint	18	K18HQ	112-20-41 NW 890kw, 48-19-53/ 116-41-32 (3Abn) (power is a typo but appears in the online application)				<b>551m</b>
Shoshone	30	NEW-LP	AF dismissed (2 apps)				
Sun Valley	25	NEW	AF dismissed				
<b>Illinois:</b>							
<b>Chicago</b>	<b>45</b>	<b>WSNS-DT</b>	<b>NW (aux)</b>				
<b>Chicago</b>	<b>52</b>	<b>WLS-DT</b>	<b>AF 220kw/ 474m (aux)</b>				
Effingham	45	WEIL-LP	QC from ch. 41, 150kw, 39-36-39/ 88-41-32				
<b>Harrisburg</b>	<b>3</b>	<b>WSIL-TV</b>	<b>PC&gt;629m (??)</b>				
Quincy	48, 59, 57, 23	NEW	AF dismissed				
<b>Indiana:</b>							
<b>Chesterton</b>	<b>40</b>	<b>WHCH-LD</b>	<b>DC from ch. 54, 15kw</b>				
Marion	51	WIWU-CA	PG<3.6kw, 40-36-56/ 85-38-47				
<b>South Bend</b>	<b>49</b>	<b>WBND-LD</b>	<b>NW 15kw</b>				
<b>Iowa:</b>							
Cedar Rapids	33, 35	KCDR-LP, KRUB-LP	QR from ch. 55/65, 4kw/3kw, 41-57-10/ 91-41-00				
<b>Fort Dodge</b>	<b>25</b>	<b>KTIN-DT</b>	<b>NW 600kw/ 355m</b>				
<b>Sioux City</b>	<b>30</b>	<b>KCAU-DT</b>	<b>NW 500kw/ 558m</b>				
Sioux City	52	NEW	AF dismissed				
<b>Kansas:</b>							
<b>Colby</b>	<b>19</b>	<b>KWKS-DT</b>	<b>NW 464kw/ 383m, 39-14-31/ 101-21-38 (KSWK-3) (DTV-only st.)</b>				
<b>Great Bend</b>	<b>22</b>	<b>KSNC-DT</b>	<b>PG 500kw/ 284m</b>				
<b>Kentucky:</b>							
<b>Elizabeth-town</b>	<b>30</b>	<b>W39CJ</b>	<b>DR from ch. 39, 5kw</b>				
<b>Louisiana:</b>							
<b>Baton Rouge</b>	<b>34</b>	<b>WVLA-DT</b>	<b>NW 1000kw/ 522m</b>				
<b>Baton Rouge</b>	<b>45</b>	<b>WGMB-DT</b>	<b>NW 1000kw/ 424m</b>				
<b>Columbia</b>	<b>11</b>	<b>KAQY-DT</b>	<b>QR from ch57 14kw/ 544m (presume permanent post- Transition facilities?)</b>				
<b>Hammond</b>	<b>42</b>	<b>KGLA-DT</b>	<b>NW 1000kw/ 294m, 29-58-41/ 89-56-26; CC from WHMM-; Telemundo. DTV-only station.</b>				
Montgomery	51	NEW-LP	AF dismissed (2 apps)				
<b>Shreve-port</b>	<b>34</b>	<b>KMSS-DT</b>	<b>NW 1000kw/</b>				
<b>Maryland:</b>							
Annapolis	31	WRZB-LP	QC from ch. 61, 67.6kw				
<b>Baltimore</b>	<b>24</b>	<b>WUTB</b>	<b>AF 540kw/ 283m (aux)</b>				
<b>Baltimore</b>	<b>38</b>	<b>WJZ-DT</b>	<b>NW 306kw/ 283m (aux)</b>				
<b>Ocean City</b>	<b>30</b>	<b>WRAV-LD</b>	<b>AF DCC 7.4kw, 38-22- 52/ 75-10-32</b>				
Salisbury	7, 11	WNGA- W11CX	NW 100w, 38-20-42/ 75-17-00; CC from W07DJ on ch. 7				
<b>Michigan:</b>							
Marquette	25	NEW	AF dismissed				
<b>Traverse City</b>	<b>31</b>	<b>WGTU-DT</b>	<b>NW 64.8kw/ 393m</b>				
<b>Minnesota:</b>							
Hokah	41	NEW	AF dismissed				
Lake Crystal	43	K43JE-D	PR<10.82kw, 44-03- 06/ 94-17-59				
Mankato	28	KHVM-LP	NW 10w, 44-10-11/ 94-02-58; CC from K28IO; DR 100w				
Minneapolis	43	K43HB	QC from K67HG, 54.8kw				
Royalton	30	KTCJ-LP	NW 100w, 45-49-45/ 94-17-45; CC from K30IN				
<b>Mississippi:</b>							
Hattiesburg	53	NEW	AF dismissed				
Meridian	6	W06CO	PR>3kw				
Meridian	40	WMRQ-LP	NW 157w, 32-20-39/ 88-42-40				
Meridian	65, 46, 35, 20, 59, 27, 54, 69, 52, 36, 26	W65DE, W46CL, W34CH, W20BS, W59DE, W43BM, W32CN, W69DJ, W52CS, W36BY, W26BR	PC>1.1kw, 32-11-47/ 89-10-32				
<b>Montana:</b>							
Billings	38	NEW	AF dismissed				
<b>Nebraska:</b>							
<b>Lexington</b>	<b>26</b>	<b>KLNE-DT</b>	<b>PC&gt;331m</b>				
Lincoln	35	KWAZ-LP	QC from ch. 22, 7.5kw				
S Sioux City	63	NEW-LP	AF dismissed				
<b>Nevada:</b>							
Deeth	26	K41DL	PR>950w				
Elko	41	K05JU	QR from ch. 5 (via ch. 19), 950w, 40-42-00/ 115-54-09				
<b>Fallon</b>	<b>25</b>	<b>NEW</b>	<b>AF 500kw/ 965m, 39-13-32/</b>				

Laughlin	57	K57JO	<b>118-09-07 (KNPT-5)</b> NW 820w, 35-10-08/ 114-38-09	Hood River	50	K50CE	XR 45-44-31/ 121-34-43; XG
Yerington	16	NEW	<b>AF 10kw/ 193m, 38-59-44/ 119-01-01 (KNPT-5)</b>	Newberg	51	KOXO-CA	PC<95kw, 45-31-21/ 122-44-45
<b>New Hampshire:</b>				Portland	35	KORK-CA	PC>150kw, 45-31-21/ 122-44-45
Hanover	50	W50DP-D	NW 50w (DCC for ch. 15)	Portland	38	KKEI-CA	PC>150kw, 45-31-21/ 122-44-45
<b>New Jersey:</b>				Salem	52	KXPD-LP	CC from KGUG-
Morristown	17	W17DC-D	DG from W54CZ, 1kw	Tillamook	26	K26HS	NW 3.25kw, 45-26-48/ 123-47-58 ; FC to KBLN-30
<b>New Mexico:</b>				<b>Pennsylvania:</b>			
Alamogordo	19	KVBA-LP	PC<9.9kw	<b>Pittsburgh</b>	48	<b>WPXI-DT</b>	<b>adds Weather Plus on 11-2 and RTN on 11-3</b>
<b>Albu-querque</b>	42	<b>KLUZ-DT</b>	<b>NW 321kw/ 1262m</b>	<b>South Carolina:</b>			
Artesia	46	K46FE	DR 2kw	<b>Greenville</b>	35	<b>WGGS-DT</b>	<b>NW 150kw, 34-56-26/ 82-24-41</b>
Aztec	44	K44GC	DR 240w	<b>South Dakota:</b>			
Carlsbad	47	K47FX	DR 2.3kw	Pierre	40	KJCI-LP	CC from K40JZ
Farmington	50	NEW-LP	AF dismissed	<b>Tennessee:</b>			
Lordsburg	50	NEW	AF dismissed	Chatta-nooga	6	WOOT-LP	PC>1.4kw, 35-12-26/ 85-16-52
Lovington	39	K46HM	QR from ch. 46, 1.1kw, 32-57-34/ 103-21-13	<b>Chatta-nooga</b>	13	<b>WRCB-DT</b>	<b>NW 18.2kw/ 283m (aux)</b>
Roswell	34	NEW-LP	AF dismissed	<b>Memphis</b>	14	<b>WTWV-</b>	<b>CC for NS</b>
Truth or Consequences	50	NEW-LP	AF dismissed	<b>Memphis</b>	53	<b>WHBQ-DT</b>	<b>NW 1kw/ 201m, 35-10-29/ 89-50-42 (aux)</b>
<b>New York:</b>				<b>Texas:</b>			
<b>Amster-dam</b>	55	WYPX	<b>granted permission to go SI and become DTV-only on ch. 50</b>	Amarillo	29	K29GD	NW 1kw, 35-12-25/ 101-50-18
New York	26	WNXY-LP	PC 20kw, 40-44-59/ 73-56-38	Amarillo	45	NEW-LP	AF dismissed
<b>South-ampton</b>	50	<b>WVH-LD</b>	<b>DG 100w</b>	Big Spring	58	NEW	AF dismissed
Troy	38	WNGN-LP	QC from ch. 26, 8.5kw	Britton	26	KODF-LP	PC>86kw
<b>North Carolina:</b>				Brownwood	28	NEW-LP	AF dismissed
<b>Charlotte</b>	3	<b>WBTV</b>	<b>NW 22.3kw/ 204m, 35-17-50/ 81-06-56 (aux)</b>	Corpus Christi	24	KCCX-LP	PC>9kw, 27-47-26/ 97-27-02
Franklin	31	W60DA	DR from ch. 60, 500w	Corpus Christi	34	KYDF-LP	QG from ch. 64, 14kw, 27-47-59/ 97-23-30
Raleigh	44	WZGS-CA	PR<138kw, 35-47-13/ 78-43-38	Corpus Christi	51	KLAO-LP	QR from ch. 43, 10kw, 27-47-59/ 97-23-30
Spruce Pine	31	W28AO	QR from ch. 28, 500w	Corpus Christi	59	NEW-LP	AF dismissed
<b>North Dakota:</b>				De Soto	28, 31	KHPK-LP, K31GL	PC>30.5kw (ch. 28)/ 20kw (ch. 31), 32-35- 21/ 96-58-12
Bismarck	33	KIJC-LP	CC from K33IG	Harlingen	52	KTIZ-LP	FC to CW
Fargo	35	K56ET	QC from ch. 50	Jasper	62	NEW-LP	AF dismissed
<b>Minot</b>	27	<b>NEW</b>	<b>AF dismissed</b>	Laredo	29	NEW	AF dismissed
<b>Oklahoma:</b>				<b>Longview</b>	31	<b>KFXK-DT</b>	<b>NW 1000kw/ 361m</b>
Ponca City	20	KTEW-CA	CC from KGBN-	Longview	36	KLGV-LP	QC from ch. 10, 10kw, 32-26-56/ 94-43-35
<b>Oregon:</b>				Lubbock	65,	NEW	AF dismissed
Bend	53	K11LY	PR>30kw, 44-04-41/ 121-19-57; CL from Black Butte Ranch; QC from ch. 11				
Hood River	28	K28CQ	PR>1.2kw, 45-44-31/ 121-34-43; PG				
Hood River	38	K53EI	QR from ch. 53, 1.2kw, 45-44-31/ 121-34-43				



	58,		
	42		
McAllen	67	KSFE-LP	FC to CW
<b>Odessa</b>	<b>23</b>	<b>KPEJ-DT</b>	<b>NW 600kw/ 333m</b>
Paris	49	KPTD-LP	XR 33-36-59/ 95-33-16
Paris	64	KHFD-LP	CC from K64GQ
Pecos	34	NEW	AF dismissed
<b>Vermont:</b>			
<b>Burlington</b>	<b>43</b>	<b>WFFF-DT</b>	<b>NW 47kw/ 839m</b>
<b>Virginia:</b>			
<i>Charlottes-ville</i>	40	WAHU-CD	NW 9.5kw, 37-59-03/ 78-28-52
<b>Washington:</b>			
Bellingham	28	NEW	AF dismissed
Camas	20	KOXI-CA	XC 45-31-21/ 122-44-45
Lynden	45	NEW	AF dismissed
Pullman	46	KPMT-LP	CC from K46HV
<b>West Virginia:</b>			
Clarksburg	64	W64CZ	PR<2kw, 39-17-53/ 80-17-59
Elkins	31	W31CQ	NW 2.7kw, 38-51-41/ 79-56-01 (WDTV-5)
Romney	69	W69AC	PC<1kw
<b>Wisconsin:</b>			
Chippewa Falls	65	WIJC-LP	CC from K65HZ
Waukesha	47	WTAS-LP	PR<39.7kw
<b>Wyoming:</b>			
Casper	31	K31HT	NW 15w, 42-44-26/ 106-21-43
Casper	39, 45	NEW-LP	AF dismissed
Cody	34	K34HZ	NW 50w, 44-29-48/ 109-09-07
Gillette	24	K22AD	QR from ch. 22 dismissed
Guernsey	31, 50	NEW-LP	AF dismissed
Rawlins	51	K56AV	QC from ch. 56, 230w

Thanks to Jeff Kitsko, John Lentz, Steve Rich, and Robert Grant for information elsewhere in this month's column.

Robert Grant brought my attention to a NTIA (National Telecommunications and Information Administration) program for upgrading LPTV and translator stations to handle the DTV transition.

The Deficit Reduction Act of 2005 has three relevant provisions:

- Analog LPTV and translators are permitted past the February 17, 2009 deadline for the shutdown of full-power analog stations.

- \$10,000,000 has been appropriated for digital-to-analog converters at the input of TV translators, beginning October 1st.

This money is for translators to switch from relaying analog full-power stations to relaying their associated full-power DTV signals. Up to \$1,000 is available for each translator. Both commercial and non-commercial stations are eligible, but the station must be on the air as of the date the grant request is filed.

The output signals of these translators will continue to be analog.

- \$65,000,000 has been appropriated for upgrading the output signals of LPTV and translator stations to digital. Only stations in towns of less than 20,000 population are eligible for this money.

Priority for grants in both programs goes to stations that serve rural areas with fewer than 10,000 viewers.

John Lentz reports WVCY-30 Milwaukee off for over a week due to a dead Klystron tube in their transmitter. Tim Cuprisin of the Milwaukee Journal-Sentinel reported the replacement tube had to be shipped from England.

John also wrote that as a result, WVCY-DT is also off the air. When I first read John's email I figured it had to be a misunderstanding. There was no way that a tube failure in the analog transmitter could force the digital station off the air. But after reading the rest of the email, I realized why the digital was off:

"Reason is because the DTV transmitter relies on getting a signal from the analog transmitter and it will rebroadcast programs off the analog transmitter."

I've never heard of a DTV station doing that before! Essentially, WVCY-DT is a giant 200-kilowatt digital translator of the channel 30 analog signal.

I do note that the WVCY analog and DTV transmitters are at different sites; presumably they didn't want to spend the money on a second microwave studio-transmitter link. (STL) I suppose they figure when the analog is shut down in 2009, they simply remove the STL receiver from the analog transmitter site and move it to the digital site.

Good DX!

## INDEX OF ABBREVIATIONS

AF	applied for (a new station)
AFA	American Family Association
aux	Auxiliary antenna (backup)
CC	call letter change
CL	city of license change
CX	a construction permit has been cancelled
C1-C5	change in status to that FM license class
DA	directional antenna
DE	station has been deleted
FC	format change
GA	granted amendment to table of FM allocations
GE	granted extension of construction permit
GX	granted replacement of expired permit
LC	license to cover filed (ready to come on air)
MC	multiple-city ID
NC	no change yet on a reported change or permit
ND	non-directional antenna
NO	not on the air

NS	new station granted
NW	new station signs on
OSA	one step application granted for change
PA	proposed amendment change to FM allocation table
PC	power change on the air (> = increase, < = decrease)
PG	power change granted (> = increase, < = decrease)
PR	power change requested
QC	frequency change occurred
QG	frequency change granted
QR	frequency change requested
RA	silent station returns to the air
RE	station requests an extension on permit
ROA	request of applicant
RX	station requests replacement of expired permit
SC	slogan change or update
SI	station is silent
SOA	signed on the air
XA	dismissed amendment to FM allocations
XC	transmitter site change occurred
XG	transmitter site change granted

AK Akiachak	92.7	NEW	NS 50w-V/28m, 60-54-36/161-25-57 (Class D st.)	CA Johannesburg	100.9	KRAJ	PG 1.48kw/399m, 35-28-38/117-41-59
AK Akiachak	92.7	KHKY	CC for NS	CA Johannesburg	103.9	KGBB	CC from KEDD
AK Akiachak	92.7	KHKY	CC for NS	CA Lodi	97.7	KWIN	PG>100m, 38-04-17/121-15-25
AK Anchorage	89.9	KAUG	CC for NS	CA Lodi	89.7	KLRS	PR>2.5kw/487m, 38-16-18/121-30-18 (adds H, was V-only)
AK Anchorage	89.9	KAUG	NW 10w-H/30m, 61-24-33/149-25-15 (Anchorage School District)	CA Long Beach	88.1	KKJZ	PR>40.84kw/164m, 34-04-44/118-11-06
AL Dadeville	100.3	WGZZ	CC from WKGA	CA Los Angeles	101.1	KRTH	PG 16kw/955m, 34-13-38/118-04-00 (aux)
AL Fort Mitchell	98.3	WBFA	CC from WAGH	CA Madera	107.1	KXOB	CC from KMMM
AL Smiths	101.3	WAGH	CC from WBFA	CA McKinleyville	95.1	KMDR	CC for NS
AL Thomaston	97.7	WKGA	CC from WGZZ	CA McKinleyville	89.3	KNDZ	PR>1.15kw-V/306m, 40-49-32/124-00-05
AR Arkadelphia	91.9	KHED	CC for NS	CA Mecca	97.7	KRCK-FM	PR 2kw/174m, 33-48-04/116-13-28
AR Cherokee Village	98.3	KFCM	PR>30kw	CA North Highlands	89.3	KQEI-FM	PR>3.1kw-H (was V-only)
AR Harrison	96.1	KCWD	PR 50kw/150m, 36-14-49/93-05-07	CA Ontario	93.5	KWIE	CC from KADI
AR Marvell	90.7	KLMK	CC from KVRN	CA Pasadena	89.3	KPCC	PR>860w
AR Marvell	90.7	KLMK	CC from KVRN	CA San Diego	96.5	KYXY	XC 32-50-20/117-14-56, 210m
AR Turrell	94.7	KKLV	PR<69m, 35-28-03/90-19-22	CA San Jacinto	96.1	KROB	CC from KWIE
AZ Chino Valley	94.3	KFPB	CC for NS	CA Sonoma	91.3	KSVY	PR>8kw/-25m, 38-15-49/122-30-06 (was V-only)
AZ Congress	91.9	KCAI	req. CL from Kingman	CA Susanville	88.1	KJAR	PG<335m
withdrawn by applicant & dismissed				CA Tehachapi	88.7	KYLU	PR RE>390w
AZ Globe	91.9	KVJC	PR>3.2kw-V/1028m dismissed	CA Windsor	91.1	KRCB-FM	PR>3.4kw; CL from Santa Rosa
AZ Nogales	91.7	KNOG	QR from 91.1, 100w-H/50kw-V	CA Quincey	88.5	KJCQ	PR>750w/688m (adds V, was H-only); CL from Quincy
AZ Parker	97.3	KPKR	CC for NS	CO Aspen	93.5	NEW	NS 21kw/109m, 39-18-56/106-57-32
AZ Payson	99.3	KMZQ	NW 17kw-H/123m, 34-11-04/111-20-16	CO Bayfield	92.5	KAYF	CC for NS
AZ Phoenix	90.3	KFLR-FM	PC>100kw	CO Broomfield	92.5	KWLI	AF 1.2kw/197m, 39-44-37/104-59-18 (aux)
AZ Teec Nos Pos	95.3	KEEC	CC for NS	CO Canon City	104.5	KSTY	CC from KKCS-FM
AZ Tucson	91.3	KXCI	PG 580w/1075m CX ROA	CO Canon City	104.5	KSTY	CC from KKCS-FM
AZ Yuma	88.9	KAWC-FM	PR>1.5kw/363m, 32-40-24/114-20-11	CO Centennial	101.9	KGDK	PG<9.5kw/163m, 39-23-07/105-02-52; CL from COrodo Springs
BC Abbotsford	101.7	NEW	NS 67w, to relay CBU-AM 690	CO Colorado Springs	94.3	KILO	NW 16.5kw/643m (aux)
BC Campbell River	106.1	CFWB	QG from 1490 AM but not to this frequency. Must seek lower power & different frequency, proposed facilities would expand coverage too far.	CO Del Norte	96.5	KYDN	CC for NS
BC Kelowna	102.3	NEW	AF 20kw/-89m, variety	CO Denver	100.3	KIMN	AF 3kw/197m, 39-44-37/104-59-18 (aux)
BC Kelowna	96.1	NEW	AF 50kw/506m, country	CO Denver	105.1	KXKL-FM	AF 3kw/197m, 39-44-37/104-59-18 (aux)
BC Kelowna	103.9	NEW	AF 6.8kw/508m, religious	CO Denver	92.5	KWLI	QR from 100.3, CL from Broomfield (aux) (FCC fixes one error & creates another. KWLI-92.5 Broomfield filed for an aux backup transmitter - the application listed the transmitter as being licensed to Broomfield but on 100.3MHz. This application corrects the frequency to 92.5 but changes the city-of-license to Denver. Expect another correction.)
BC Kelowna	96.3	NEW	AF 20kw/-89m (eight separate applications, all mutually exclusive with 96.1)	CO Dove Creek	102.5	KDVC	CC for NS
BC Metlakatla	98.1	VF2119	CX, DE, replaced by new Prince Rupert station	CO Fountain	96.1	KIBT	AF 460w/656m (aux)
BC Prince Rupert	98.1	VF2119	NS 22w-V/422m, 54-17-04/130-18-48, relay of CFNR-FM Terrace; replaces station with same calls in Metlakatla	CO Fountain	96.1	KIBT	NS 460w/656m, 38-44-43/104-51-39 (aux)
CA Baker	94.9	KHRO	PG>1.45kw/404m	CO Frisco	90.3	KTDX	NW 400w/-89m, 39-27-47/106-01-43 (KTLF)
CA Blythe	88.5	KERU-FM	PR>7kw-V/87m, 33-45-00/114-31-17				
CA Claremont	88.7	KSPC	PR>630w/7m, 34-08-33/117-43-17				
CA Coarsegold	94.5	KCGC	CC for NS				
CA Fort Bragg	89.9	KJCU	PR<106m; CL from Laytonville				
CA Geyserville	98.7	KSXY	PC 2.65kw/153m, 38-44-08/122-50-55				
CA Indian Wells	95.9	KAJR	NW 1.75kw/189m, 33-48-04/116-13-28				
CA Inyokern	88.5	KZLU	PR RE>1kw/396m				

CO Frisco	90.7	KTDX	QR from 90.3, 5.2kw/361m,	HI Kihei	107.5	KHEI-FM	CC for NS
39-27-50/105-58-56				HI Kihei	107.5	KHEI-FM	CC for NS
CO Palisade	98.5	KAAI	NW 220w/911m, 39-03-	IA Albia	96.7	KIIC	CC from KLBA-FM
14/108-15-13				IA Albia	96.7	KIIC	CC from KLBA-FM
CO Salida	91.3	KTPF	NW 390w/900m, 38-26-	IA Albia	96.7	KIIC	CC from KLBA-FM
48/106-00-36 (KTLF)				IA Ames	104.1	KLTI-FM	PR>451m
CO Vail	88.5	KVJZ	CC for NS	IA Ames	89.1	KJRE	QR from 88.5, 1.7kw
CT Middletown	88.1	WESU	PR>6kw	IA Anamosa	95.7	KKSY	XR 42-05-56/91-21-28
CT Norfolk	89.3	WSSG	PR<2.1kw-V/-90m, 42-00-	IA Bettendorf	91.1	KWNJ	CC for NS
24/73-15-24				IA Decorah	88.7	KLNI	PR>1.5kw/55m, 43-18-56/91-
DE Dover	94.7	WDSO	CC from WRDX	47-18			
DE Smyrna	92.9	WRDX	CC from WDSO	IA Estherville	95.9	KILR-FM	PR>50kw/150m, 43-15-58/94-
FL Clermont	88.7	WMYZ	AF 1.15kw/100m (aux);	53-35			
PR>7.2kw/114m for main				IA Estherville	95.9	KILR-FM	PG>50kw/150m, 43-15-58/94-
FL Cocoa	91.5	WMIE-FM	PR 8.5kw/79m, 28-21-12/80-	53-35			
46-45				IA Fairfield	88.1	KUNJ	CC for NS
FL Cutler Bay	90.9	WGES-FM	req. to drop H and go V-only;	IA Fort Dodge	91.1	KTPR	PG>326m
already granted				IA Fort Dodge	91.1	KTPR	PC>326m
FL Cutler Bay	90.9	WGES-FM	PR<7.5kw-V/62m, 25-27-	IA Marion	89.9	KZNJ	CC for NS
07/80-31-02				IA Marshalltown	88.7	KRFH	CC for NS
FL Daytona Beach	99.1	WRWS-LP	PG 100w/29m, 29-12-20/81-	IA Oskaloosa	90.5	KOSK	CC for NS
01-52				IA Oskaloosa	89.5	KCNJ	CC for NS
FL Destin	101.1	WCQQ-LP	PR<-1m, 30-26-32/86-36-08	IA Ottumwa	88.3	KUNE	CC for NS
(below average terrain in Florida??)				ID Ashton	96.5	KRID	CC for NS
FL Destin	101.1	WCQQ-LP	PG<-1m, 30-26-32/86-36-08	ID Ashton	96.5	KRID	CC for NS
FL Fernandina Beach	91.7	WJBC-FM	PR>50kw/131m, 30-33-22/81-	ID Fruitland	99.5	KWEI-FM	PG>22kw
33-13				ID Lapwai	97.7	KZBG	CC from KFFR
FL Flagler Beach	100.7	WFBO-LP	QG from 93.3, 100w/22m, 29-	ID Moscow	91.7	KRFA-FM	PR>28kw
34-16/81-11-28				ID Sandpoint	95.3	KPND	PR>56kw/763m, 48-04-
FL Flagler Beach	90.3	WJLH	PR>15kw-V/54m	44/116-57-11; PG			
FL Fort Pierce	91.1	WJFP	PR>35kw	ID St. Maries	92.1	KXJO	CC for NS
FL Hammocks	91.9	WMKL	QR from 91.7, 116m, 25-45-	IL Bloomington	94.9	WXRJ-LP	XR 40-30-02/88-55-43
42/80-49-11, CL from Key Largo dismissed,			73.215(e) - short-spacing	IL Carpentersville	88.1	WWTG	CC for NS
FL Key WV	96.7	NEW	NS 42.6kw/150m, 24-40-	IL Chicago	91.5	WBEZ	PR 5.7kw/425m
35/81-30-41				IL Colchester	96.7	WGNX	CC for NS
FL Marianna	88.3	WJNF	PR>20w-H/14.5kw-V/199m,	IL Colchester	96.7	WGNX	NW 1.8kw/100m, 40-23-54/90-
30-30-42/85-29-17				43-55			
FL North Miami Beach	95.7	WXDJ	PR 19kw/246m, 25-45-31/80-	IL Cuba	98.3	NEW	PA from 106.3
11-31				IL Dorsey	89.5	WARW	CC from WDRS
FL Orlando	105.1	WOMX-FM	AF 4.4kw/391m (aux)	IL Dorsey	89.5	WARW	CC from WDRS
FL Orlando	105.1	WOMX-FM	NS 4.4kw/391m (aux)	IL Greenville	101.7	WGEL	PR dismissed ROA
FL Palm City	100.1	WJPP-LP	PC>30m, 27-13-15/80-15-50	IL Lake Forest	88.9	WMXM	PR<290w/32m (adds V, was
FL Quincy	90.1	970326MB	PR>32kw, 30-42-22/84-37-39	H-only)			
FL Sebring	88.3	WMKM	CX, DE	IL Monee	88.9	WOTW	PR>54m, 41-24-48/87-46-03
FL Tallahassee	89.7	WVFS	PR>12.5kw/75m	IL Pontiac	88.3	WPJC	PR>3.13kw/172m, 40-44-
FL Tallahassee	90.5	WANM	PR>2.5kw-V	13/88-30-47			
FL Union Park	88.3	WPOZ	PG>20kw/406m	IL Rantoul	95.3	WLFH	CC from WMYE
FL White City	104.7	WFLM	PR>50kw/121m dismissed	IN Cicero	91.5	WJCY	PR>4.5kw/62m
73.3573 note 4, unable to force another station to be reclassified from class C to C0.				IN Fishers	93.9	WWFT	PR>6.9kw/146m
FL W Palm Bch	104.3	WEAT-FM	PG>459m	IN Lowell	88.5	WTMK	PR>15kw/75m, 41-19-16/86-
FL Parker	94.5	WFLF-FM	CC from WFBX	52-58			
FL Parker	94.5	WFLF-FM	CC from WFBX	IN Marion	94.3	WIWU-LP	CC from WCWC-LP
FL Quincy	90.1	WFRU	CC for NS	IN Marion	94.3	WIWU-LP	XR 40-31-15/85-39-59
GA Atlanta	90.1	WABE	PR>100kw/334m	IN Marion	94.3	WIWU-LP	PR<25m, 40-31-15/85-39-59
GA Augusta	102.3	WIBL	CC from WEKL	IN Morristown	88.1	WJCF	PR 5kw-V/33m, 39-50-20/85-
GA Augusta	105.7	WEKL	CC from WIBL	34-01			
GA Brunswick	104.9	WBHS-LP	QR from 106.7	IN Montpelier	91.3	WJCO	PR>10kw/58m
GA Brunswick	88.9	WWIO-FM	PG>11.7kw	IN New Whiteland	88.3	WWDN	PR 10w-H/8kw-V/219m, 39-
GA Brunswick	104.9	WBHS-LP	QG from 106.7	24-14/86-08-41			
GA Clayton	104.1	WRBN	PR<6kw/-42m, 35-21-58/83-	IN Roanoke	94.1	WBNI-FM	PG<3.4kw
13-17				IN Rushville	94.3	WIFE-FM	CC from WKWH-FM
GA Cochran	89.7	WMUM-FM	PG<43kw-H, 304m (was	IN Veedersburg	88.5	WXVW	CX, DE ROS
100kw-H; remains 100kw-V)				IN Worthington	94.1	NEW	AF 6kw/100m, 39-00-31/86-
GA Lumpkin	88.5	WTMQ	PG>23kw/164m, 31-59-19/84-	55-05			
55-59				KS Burdett	93.5	KKDT	CC for NS
GA Manchester	93.3	WVFJ-FM	PR>88kw/468m, 33-01-56/84-	KS Caney	101.1	KEOJ	PG>25kw, 36-56-59/95-51-03
47-27				KS Caney	101.1	KEOJ	PR>25kw, 36-56-59/95-51-03
GA Valdosta	95.7	WQPW	PC 32kw/185m; NW	KS Enterprise	90.5	KBMP	PR>100kw
1.9kw/70m, 30-50-05/83-17-57 (aux)				KS Fort Scott	103.9	KOMB	XC 37-54-28/94-46-02
GA Warm Springs	88.1	WJSP-FM	PG 42kw/417m	KS Haven	97.1	KGGG	PR>18.5kw/251m, 37-48-
GA Waycross	90.1	WXVS	PR>79kw-V (from 71kw; was	01/97-31-29; CL from Hutchinson			
already 79kw-H)/278m				KS Independence	91.5	KARF	QR from 91.9, 100kw-V/100m,
GA Willacoochee	99.5	WKAA	NW 1.9kw/66m, 30-50-05/83-	37-03-54/95-45-03			
17-57 (aux)				KS Ness City	104.7	KXNC	CC for NS
GA Woodbury	94.5	WFDR-FM	CC for NS	KS Norton	106.7	KONK-FM	PR>21.1kw/109m
GA Young Harris	95.1	WACF	NW 200w/483m, 34-56-26/83-	KS Norton	106.7	KONK-FM	PR>21.1kw/109m
55-08				KS Topeka	88.1	KJTY	PC<35kw/178m, 38-53-23/95-
HI Honolulu	97.5	KHCM-FM	CC from KHNR-FM	17-17			
HI Honolulu	97.5	KHCM-FM	CC from KHNR-FM	KY Benton	90.5	WVHM	PR>14.75kw (adds H, was V-
HI Honolulu	90.1	KTUH	QR from 90.3, 529m, 21-20-	only)			
12/157-49-03				KY Benton	88.1	WTRT	PR>6kw (adds H, was V-only)
HI Kailua-Kona	96.7	NEW	AF 5.8kw-H/207m, 20-41-	KY Burgin	105.9	WKYB	FC; sold by K-Love
16/156-22-13				KY Madisonville	90.9	960328MH	PR>25kw/123m, 37-21-47/87-
HI Kihei	107.5	KHEI-FM	CC for NS	30-56			

KY Morehead 33/83-24-28	96.3	WIVY	PC 2.15kw/158m, 38-10-	MO Elsberry	101.7	KLPW-FM	PR 3.1kw/142m, 39-06-09/90-
KY Morgantown	99.1	WWKN	CC for NS	MO Gideon	103.9	KGLU	PG 2.5kw/122m, 36-25-31/89-
KY Richmond	88.9	WEKU	PG>100kw/215m	MO High Point	89.9	KMCV	PR>50kw
KY Science Hill	106.1	WYKY	CC for NS	MO Madison	97.3	KCDG	CC for NS
KY Shepherdsville 47-06	105.1	WLRS	PR>1.9kw/180m, 38-04-55/85-	MO Rolla	88.5	KMST	CC from KUMR
KY Sturgis (probably correction only)	101.3	WMSK-FM	XR 37-40-04/87-55-46	MO Springfield	90.1	KSCV	PR>23.3kw-V (drops H)
LA Addis	105.5	KDDK	PC>6kw/100m, 30-19-25/91-	MO Sunrise Beach	90.3	KCRL	PR>10kw/87m, 38-18-07/92-
LA Broussard	91.3	WHFG	PR<17.5kw	MO Warrensburg	90.9	KTBG	PR>100kw/356m, 39-02-
LA Buras	91.9	KMRL	PR>14.5kw/200m, 29-33-	73.509	(prohibited overlap)		
LA 45/89-49-46				MO Westminster	100.7	WZBA	PR 25kw/210m, 39-26-50/76-
LA Hodge	94.1	KRLQ	NW 35kw/155m, 32-24-35/92-	46-48			
LA Jackson	104.5	WNXX	PC 3kw/144m, 30-44-44/91-	MS Bentonla	92.1	WJNS-FM	CL granted from Yazoo City
LA Monroe	90.3	KEDM	PR>100kw/261m	MS Brandon	104.1	WSKM-LP	PR>36m, 32-17-20/90-02-39
LA Morgan City	96.7	KMYO-FM	CC from KBZZ-FM	dismissed; going for 104.3 instead			
LA New Orleans	89.1	WBSN-FM	PR 11kw/134m, 29-55-11/90-	MS Brandon	104.3	WSKM-LP	QR from 104.1
01-29 (goes V-only)				MS Byhalia	94.9	WKVF	PR 6kw/84m, 35-10-30/89-44-
LA New Roads	106.5	KOXL-FM	NS 4kw/106m (aux)	MS Collins	107.1	WLVZ	CC from WKNZ
LA Norco	91.1	WNKV	NW 4.7kw-V/70m, 29-48-	MS Forest	91.7	WSQH	PG>17.9kw
34/90-25-17 (K-Love)				MS Hazlehurst	92.9	WDXO	PC 2.7kw/151m
LA Richwood	100.9	KHLL	PG>25kw	MS Jackson	99.7	WJMI	XG 32-12-28/90-24-50
LA Shreveport	99.7	KMJJ-FM	PG 23.5kw/163m, 32-29-	MS Senatobia	88.9	WMSB	PR>145m, 34-39-30/89-37-32
36/93-45-55				(drops 20kw-H, goes V-only)			
LA Simmesport	105.3	KCJN	CC for NS	MT Alberton	105.5	KHLN	CC from KRQS
MA Greenfield	107.9	WMCB-LP	PR>-38m, 42-35-14/72-36-01	MT Alberton	105.5	KHLN	CC from KRQS
dismissed (2 similar apps)				MT Bozeman	89.3	KLBZ	CC from KRFR
MA Truro	102.3	WGTX	PR>59m, 42-01-20/70-04-28	MT Drummond	101.5	KXGZ	CC for NS
MA Woods Hole	90.1	WCAI	PR>12.5kw/74m	MT Drummond	101.5	KXGZ	CC for NS
MB Winnipeg	106.3	NEW	AF *denied* for 100kw relayer	MT Hamilton	90.7	KMZO	QR from 90.3, 5kw
of CJOB-AM 680				MT Kalispell	90.1	KUKL	QR from 89.9, 2.5kw/786m,
MD Lexington Park	97.7	WRKZ	CC from WYRX	48-30-22/114-20-49			
MD Ocean City	88.3	WRAU	CC for NS	MT Montana City	98.5	NEW	NS 6kw/-33m, 46-33-25/111-
MD Ocean City-Salisbury	104.7	WOHQ	AF 20kw/81m, 38-23-	55-01			
12/75-17-27 (aux)				MT Whitefish	89.5	NEW	AF dismissed (KUFM)
MI Adrian	107.9	WVAC-FM	PG>90w/25m; adds V (was H-	NC Bath	90.1	WZPE	PG>4.5kw
only)				NC Durham	105.1	WDCG	PR 73kw/339m
MI Benton Harbor	89.9	WAYO	CC for NS	NC Lockwoods Fly Tn	88.1	WGHW	PR<10kw
MI Berrien Springs	105.5	WSFT-LP	QR from 96.3	NC Mars Hill	90.5	WYQS	PR>250w/389m, 35-53-12/82-
MI Berrien Springs	105.5	WSFT-LP	QG from 96.3	33-23			
MI Carrollton	100.5	WTKQ-FM	CC from WSGW-FM	NC New Bern	88.1	WZNB	QR from 88.5, 100kw/114m,
MI Carrollton	100.5	WTKQ-FM	CC from WSGW-FM	35-17-50/76-52-09			
MI Flint	95.1	WFBE	PR 34kw/97m	NC Sanford	105.5	WFJA	PR 3.2kw/138m, 35-26-34/79-
MI Flint	95.1	WFBE	PR 34kw/97m, 42-58-26/83-	12-41 20060621AAT dismissed ROA. Going for 2.55kw/143m at different			
39-01				site.			
MI Gladwin	103.1	WGDN-FM	PC>148m	NC Winston-Salem	88.5	WFDD	AF 440w/60m, 36-08-07/80-
MI Goodland Township	88.1	WHYT	PR>12.5kw-V	16-28 (aux)			
MI Harrison	98.5	WUPS	XR 44-17-21/84-44-32; CL	NC Zebulon	90.5	WAJC	PR 1.2kw/64m, 35-49-19/78-
from Houghton Lake				18-36; CL from Wilson			
MI Houghton Lake	92.1	WTWS	PR 920w/228m, 44-17-21/84-	NE Allen	100.9	KHSK	CC for NS
44-32, CL from Harrison				NE Firth	93.7	KOLB	CC for NS
MI Indian River	102.9	WMKC	req. CL from St. Ignace	NE Grand Island	90.7	KNFA	PR>2.3kw/100m, 40-47-18/98-
MI Ironwood	88.3	WLVM	CC from WICE	20-03			
MI Ironwood	88.3	WLVM	CC from WICE	NE Grand Island	91.5	KBTK	CC for NS
MI Ironwood	88.3	WLVM	CC from WICE	NE Grand Island	91.5	KBTK	CC for NS
MI Lansing	89.7	WLNZ	PR>1.2kw/29m (adds H, was	NE Hastings	90.9	KNHA	CX, DE ROA
V-only)				NE Paxton	93.5	KZTL	CC for NS
MI Mount Pleasant	91.5	WMHW-FM	PR 9.1kw/164m (add H, was	NE Paxton	93.5	KZTL	CC for NS
V-only)				NE Ponca	88.1	KFHC	CC for NS
MI Riverside	88.7	980512MC	PR 6kw/117m, 42-15-14/86-	NE Scottsbluff	89.1	KDAI	CC from KKSBB
20-09				NE Scottsbluff	89.1	KDAI	CC from KKSBB
MI Speaker Township	89.7	990510MA	PR>400w/168m, 43-10-27/82-	NE Scottsbluff	89.1	KDAI	CC from KKSBB
36-01				NE Sutherland	100.7	KRNP	CC for NS
MI White Star	88.3	WEJC	PC>55kw-V/114m, 43-41-	NE Sutherland	100.7	KRNP	CC for NS
40/84-05-03 (drops 50w-H)				NH Groveton	101.5	WRNH	CC for NS
MN Appleton	91.3	KRSU	PR>82kw/345m	NH Portsmouth	100.3	WHEB	AF 50kw/107m (aux)
MN Blackduck	92.1	WMIS-FM	CC for NS	NJ Berlin	88.1	WNJS-FM	PR<80w/287m
MN Blue Earth	104.5	KJLY	XR 43-54-38/94-03-09	NJ Dover	105.5	WDHA-FM	PG>2kw
MN Chatfield	103.1	KFIL-FM	req. CL from Preston	NJ Manahawkin	100.1	WJRZ-FM	NW 2.6kw/108m (aux)
MN Duluth	89.5	WJRF	PR>100kw-V/154m	NJ Wildwood Crest	93.1	WEZW	PG 4.1kw/68m, 38-59-34/74-
MN Glencoe	96.3	KTTB	NW 380w/59m, 44-51-43/93-	48-48			
21-08 (aux)				NM Farmington	89.7	KUUT	PG>1.35kw-V/202m
MN Rochester	88.7	KMSE	PR>850w	NM Farmington	95.7	KPCL	PR>92kw/310m, 36-48-
MN Vernon Center	94.1	KXRP	CC for NS	53/107-53-31			
MO Columbia	98.1	KLJE-LP	QR from 107.9 dismissed	NM Fruitland	91.7	KTGW	PR 12.5kw/120m
MO Concordia	88.7	KYRV	QR from 88.1, 20kw/131m, 38-	NM Gallup	88.1	KGGA	CC from KKNM
44-47/93-16-30				NM Gallup	88.1	KGGA	CC from KKNM
MO Cuba	107.3	KESY	NW 6.7kw/191m, 37-55-17/91-	NM Gallup	88.1	KGGA	CC from KKNM
26-36				NM Roswell	91.7	KELT	CC for NS
MO Doolittle	104.5	KUMR	CC for NS	NM Roswell	91.7	KELT	CC for NS
				NM Roswell	91.7	KELT	CC for NS
				NM Ruidoso	93.5	KWES-FM	CC from KWES

NS Halifax 100kw/160m	101.3	CJCH	QR from 920 AM,	PA Hawley	89.1	WBYH	PR>4.7kw/176m, 41-16-01/75-23-19
NS Pomquet 103.3	92.5	NEW	NS 475w, to relay CKJM-	PA Hustontown	91.7	990901MA	req. CL from McCTellsburg
NS Windsor	92.9	NEW	AF 65kw/159m (previously approved but not at requested 100kw power)	PA New Wilmington (only)	88.9	WWNW	req. to add 250w-H (was V-
NV Cal-Nev-Ari	104.9	KVYL	CC for NS	PA Philadelphia 14-12	90.1	WRTI	PR 7.7kw/371m, 40-02-30/75-14-12
NV Hawthorne dismissed ROA; going for 250w on 89.5 instead	90.1	KQMC	PR>480w-H (was V-only)	PA Philadelphia 14-12	90.1	WRTI	PR 7.7kw/371m, 40-02-30/75-14-12
NV Hawthorne	89.5	KQMC	PR 250w/957m	PA Pittsburgh	105.9	WXDX-FM	AF 6.5kw/272m, 40-29-38/80-01-09 (aux)
NV Mesquite	96.7	KHIJ	CC for NS	PA Pittsburgh	105.9	WXDX-FM	PG 15.5kw/272m, 40-29-38/80-01-09
NV Mesquite	96.7	KHIJ	CC for NS	PA State College	88.3	WXFR	PR>209m, 40-53-35/77-51-48
NV Smith	92.3	KSVL	PR<629m, 38-41-09/119-11-15	PA Tunkhannock	107.7	WGMF	PG 1.25kw/221m, 41-27-07/76-00-33
NV Spring Creek	103.9	KEBG	CC for NS	PA Warwick	88.1	WZZD	PR>430w
NV Spring Creek	103.9	KEBG	CC for NS	QC Amos	105.3	NEW	AF 9.5kw/24m, French
NY Brockport	104.9	WKDL-FM	CC from WKDL	QC Gaspe	92.7	NEW	AF 1.577kw/71m, French chr
NY Brockport	104.9	WKDL-FM	CC from WKDL	QC Riviere-au-Renard	92.7	NEW	AF 50w/-16m, to relay requested Gaspe station on same frequency
NY Corning 51-30 (aux)	106.1	WNKI	NW 800w/57m, 42-12-00/76-51-30 (aux)	QC Rouyn-Noranda	88.7	CHIC-FM	PR>300w/35m
NY Glens Falls	90.7	WLJH	PR>650w	RI Ashaway	96.7	WBLO-LP	QC from 96.9, 1m, 41-24-43/71-44-59
NY Horseheads 51-30 (aux)	100.9	WPGI	NW 800w/57m, 42-12-00/76-51-30 (aux)	RI Providence	88.1	WELH	PR>700w/80m (adds H, was V-only), 41-48-28/71-28-22
NY Liberty	88.1	WGWR	PR>1kw	RI Smithfield	88.7	WJMF	PR>8.5kw-V/56m, 41-55-12/71-32-15
NY Monroe	89.3	WLJP	PR>1.4kw/321m, 41-22-42/74-08-16	SC Charleston 00/79-50-10	100.5	WALC	PR 17.5kw/117m, 32-49-00/79-50-10
NY MTour Falls 51-30 (aux)	104.9	WNGZ	NW 380w/57m, 42-12-00/76-51-30 (aux)	SC Charleston 00/79-50-10	100.5	WALC	PR 13.5kw/137m, 32-49-00/79-50-10
NY New Rochelle 46-29 (aux)	93.5	WVIP	AF 640w/54m, 40-55-40/73-46-29 (aux)	SC Chesterfield	89.3	WRFE	PR>33kw/85m, 34-45-59/80-15-55
NY Portville	96.7	WFRM-FM	PG<460w/155m, 42-03-04/78-25-11; CL from Coudersport, PAa.	SC Lancaster	107.1	WRHM	PC 2.4kw/160m, 34-51-34/80-47-59
NY Remsen	90.3	WRUN-FM	CC for NS	SC Sullivan's Isl 10-06; CL from Claxton, Ga.	107.3	WMCD	PR>50kw/125m, 32-45-26/80-10-06; CL from Claxton, Ga.
NY Syracuse	91.3	WCNY-FM	PR 9.7kw/333m	SD Lennox	99.1	KHJK	CC for NS
NY Westhampton	98.5	WBON	CC from WBZB	SD Lennox	99.1	KHJK	CC for NS
OH Grove City	88.1	WWGV	PG 5.4kw/83m, 39-43-16/83-08-36	SD Lennox	99.1	KIOL	CC from KHJK
OH KY	89.7	WKSU-FM	PR<12kw	SD Spearfish	90.7	KOAR	QR from 90.9, 500w/503m,
OH Marion	91.9	WXMF	CC for NS	TN Belle Meade	97.1	WRQQ	PR>45kw; CL from
OH Marion	91.9	WXMF	CC for NS	Goodlettsville			
OH Niles 35 (aux)	106.1	WBBG	NW 3kw/69m, 41-15-52/80-45-35 (aux)	TN Brownsville	88.3	WRRR	PG>200w-V/38m, 35-34-47/89-14-36 CX ROA
OH Springfield	100.7	WEEC	AF 500w/122m (aux)	TN Goodlettsville	92.1	WQOK	PR>3.1kw; CL from
OK Arnett	104.9	NEW	NS 50kw/150m, 36-01-46/99-58-30	Hendersonville			
OK Bennington 54-53/96-05-58	96.1	KFYZ-FM	QR from 98.1, 6kw/100m, 33-54-53/96-05-58	TN Hendersonville	99.7	WWTN	req. CL from Manchester
OK Chickasha	90.5	KFXU	CC from KSSX	TN Jackson	88.7	WIGH	req. CL from Lexington
OK Chickasha	90.5	KFXU	CC from KSSX	TN Lebanon	98.9	WANT	PR>5.34kw/106m, 36-09-20/86-22-33
OK Lawton	91.1	KJRF	PR>14kw	TN Millersville	106.7	WNFN	PR>2.95kw/294m, 36-15-50/86-47-39; CL from Belle Meade
OK Mangum	97.7	KHIM	PR>540w/329m, 34-58-39/99-24-35	TN Ripley	94.9	WKVZ	PR<67m, 36-19-06/89-42-01
OK Norman	106.3	KGOU	PR>6kw/92m	TN Spring Hill	88.7	WAYM	CL changed from Columbia
OK Oklahoma City	98.9	KYIS	PC>470m	TX Amarillo	88.3	KJRT	PR>35kw/156m, 35-08-37/100-58-40
OK Oklahoma City	92.5	KOMA	PC>94kw/472m, 35-33-36/97-29-07	TX Austin	91.7	KVRX	PR>50kw (KVRX shares time with KOOP Hornsby on the same transmitter)
OK Oklahoma City	107.7	KRXO	PC>92kw/470m, 35-33-37/97-29-06	TX Beeville	91.3	KVFM	PR>4.7kw/112m, 28-15-17/97-55-09 (adds H, was V-only)
OK Oklahoma City	104.1	KMGL	PC>92kw/472m, 35-33-36/97-29-07	TX Benbrook	107.1	KDXX	AF 100kw/237m (aux)
ON Cochrane	104.7	NEW	AF 5w/27m, community	TX Big Sandy	90.7	KTAA	PR>13.6kw (adds H, was V-only)
ON Elliot Lake 10/82-38-54	98.7	CKNR-FM-1	NS 50w/6m, 46-23-10/82-38-54	TX Brenham	94.1	KLTR	PR>50kw/150m, 30-23-31/96-20-15; supercedes previous permit for same facilities which has been cancelled.
ON Kingston	93.5	NEW	NS 3.23kw, country	TX Childress	104.1	KCHT	CC for NS
ON Kingston	98.9	CKLC	QG from 1380 AM, 5.7kw	TX Childress	104.1	NEW	NS 50kw/77m, 34-13-41/100-18-17
ON Kingston	104.3	CFFX	QG from 960 AM, 4kw	TX Corpus Christi	91.7	KBNJ	PR>35kw-H/50kw-V/97m, 27-38-12/97-26-44
ON Parry Sound	94.7	NEW	AF 10kw/113m, rock	TX Dallas	91.7	KVTT	PR 75kw/369m
ON Stella	93.7	NEW	AF 250w/26m, community	TX Denton	99.1	KFZO	NW 1.2kw/243m, 33-19-42/97-03-56 (aux)
ON Stella	92.1	NEW	AF 250w/26m, community, alternative to 93.7	TX Dilley	93.7	KKDL	CC for NS
ON Timmins	100.7	NEW	AF 50w/40m, religious	TX Dilley	93.7	KKDL	CC for NS
OR Eugene 06-34	88.1	KWVA	PR>1kw/54m, 44-04-54/123-06-34	TX Floresville	89.7	KJMA	PC>100kw/172m, 28-57-40/98-15-31
OR Merrill 42-13-24/121-49-02	105.5	KKKJ	QG from 105.7, 18kw/209m,	TX Floresville	89.7	KJMA	PG>100kw/172m, 28-57-40/98-15-31
OR Millersburg from Salem	90.1	KAJC	PR>1kw-H/15.44kw-V; CL				
PA Beaver Falls	88.3	WGEV	CX, DE				
PA Gap	92.9	WLRI-LP	CC from WLAL-LP				
PA Gap	92.9	WLRI-LP	CC from WLAL-LP				
PA Halifax	88.5	WLVU	CC from WMBZ				
PA Halifax	88.5	WLVU	CC from WMBZ				
PA Harrisburg 52-09 (aux)	94.9	WRBT	NS 2.4kw/246m, 40-20-43/76-				

TX Floresville 40/98-15-31	89.7	KJMA	PC>100kw/172m, 28-57-	VA Spotsylvania	89.5	WWED	PR>10kw/151m
TX Greenville	90.5	KTXG	PR>100kw	VA White Stone	104.9	WIGO-FM	PC>4.1kw/122m, 37-43-25/76-23-29
TX Hornsby with KVRX Austin on the same transmitter)	91.7	KOOP	PR>50kw (KOOP shares time	VT Barre	92.1	WJPL-LP	PC<8m
TX Huntington 05/94-40-10	101.9	KSML-FM	PR 18.5kw/252m, 31-20-	VT St. Johnsbury	90.5	WCKJ	PR 260w/587m, 44-34-16/71-53-39
TX Jasper	102.7	KTXJ-FM	PG>50kw/150m	VT St. Johnsbury	88.5	WVPA	PR>90w-H/850w-V (was V-only)
TX Kerrville 10-19	106.1	KKVR	NW 6kw/100m, 30-02-37/99-	VT Windsor	89.5	WVPR	PC>1.7kw/694m
TX La Porte	103.7	KHJK	CC from KIQI	WA Clarkston	90.5	KNWV	PR>420w/322m
TX Leander	98.9	KHHL	PG 29kw/157m	WA Coupeville	96.9	KWPA-LP	QR from 103.1, 48-14-43/122-39-42
TX Marfa	93.5	KRTS	CC for NS	WA Kennewick	88.1	KTCV	PG>250w-H/5kw-V/22m
TX Marfa	93.5	KRTS	CC for NS	WA Nile	88.1	KSBC	QR from 88.3
TX Marfa Corp.	93.5	KRTS	sold to Marfa Public Radio	WA Ocean Shores	93.7	KANY	PR 14kw/122m, 46-56-00/123-43-57
TX Mexia	104.9	KROX-FM	CC from KWGW	WA Vancouver	105.9	KOOL	CC from KIJJ
TX Mexia	104.9	KROX-FM	CC from KWGW	WA Vancouver	105.9	KOOL	CC from KIJJ
TX Midland	90.9	KAQQ	FC; sold by K-Love to	WI Brookfield	106.9	WJZX	PC 4.4kw/116m, 43-02-49/87-58-52 (leaves tower at old house in Menomonee Falls – no longer a radio station within 1/2mi. of where I grew up... tower has many 2-way/cellular anTNas though.)
Hispanic religious organization				WI Ephraim	106.9	WLGE	CC for NS
TX Morton station, not yet on)	91.9	961206ME	FC; sold to K-Love (new	WI Ephraim	106.9	WLGE	CC for NS
TX Nacogdoches	107.7	KTBO	XG 31-34-58/94-39-59	WI Madison	99.1	WIDE-LP	PR<9m, 43-03-10/89-26-26
TX San Angelo	90.9	KLPT	CC from KPEB	WI Madison	99.1	WIDE-LP	PG<9m, 43-03-10/89-26-26
TX San Angelo	90.9	KLPT	CC from KPEB	WV Moundsville	96.5	WLVW	CC from WRKP
TX San Angelo	90.9	KLTP	PR 5kw-V/72m, 31-24-43/100-25-25	WV Moundsville	96.5	WLVW	CC from WRKP
TX San Antonio 100kw-H)	101.9	KOXT-FM	PC>100kw-V (was already	WV South Charleston	89.3	WWLA	PG 2.3kw/63m, 38-23-47/81-35-28
TX San Antonio already 100kw-H)	104.5	KZEP-FM	PC>100kw-V (was 64kw; was	WY Cheyenne	103.9	KYEN	CC for NS
TX Turkey 46-15	107.5	NEW	NS 40kw/166m, 34-28-11/100-	WY Chugwater	99.5	KCUG	PG<9.6kw/73m, 41-46-04/104-49-00
TX Victoria	89.3	KXBJ	PR>50kw/117m	WY Cody	101.1	KWHO	QR from 96.7, 5.4kw/427m,
TX Wheeler	90.3	KPDR	QR from 90.5, 20kw/181m, 35-	WY Evansville	100.5	KTED	QG from 100.9, 10kw/437m
31-06/100-32-43				WY Guernsey	104.1	KANT	PR 36kw/172m, 42-20-47/105-02-04
UT Castle Dale	102.1	KEMR	CC for NS	WY Jackson	88.3	KMLT	PG<150w/331m
UT Cedar City 22-22	94.9	KCIN	PR>5kw/514m, 37-38-43/113-	WY Laramie	96.9	KIMX	QR from 96.7, 6kw/100m, 40-
UT Huntington	107.1	KHUN	CC for NS	WY Mills	105.5	KHAD	PG 2.75kw/543m, 42-44-03/106-20-00
UT Santa Clara 49/113-29-38; CL from Pioche	98.9	KBZB	PR 14.5kw/620m, 36-50-	WY Moorcroft	93.5	KPKL	CC for NS
VA Blacksburg 12/80-28-54	90.7	WUVT-FM	PR>10kw-V/131m, 37-11-	WY Moorcroft	93.5	KPKL	CC for NS
VA Emory	90.7	WEHC	PC>500w	WY Newcastle	99.5	KRKI	PC>100kw-H/224m, 43-51-24/103-45-50
VA Emory	90.7	WEHC	PR>10kw/58m, 36-46-01/81-	WY Superior	106.5	KKWY	CC for NS
50-18				WY Vista WV	107.9	KRVK	PG<15.5kw/591m, CL from
VA Emporia 39/77-37-14	89.3	WJYA	PR>23kw-V/161m, 36-56-	Bar Nunn			
VA Harrisonburg 56-56	91.7	WEMC	PR>9.5kw/199m, 38-33-40/78-	YT Whitehorse	91.1	NEW	AF 50w/0m, community
VA Kilmarnock 23-29	101.7	WKWI	PC 2kw/122m, 37-43-25/76-				

## Northeast All-Band DX Get Together November 10, 2007

AM Dixer Chris Black will be hosting the 3<sup>rd</sup> annual "Ray Arruda Replacement" GTG at his home on Cape Cod on 11/10/2007.

WTFDA members are welcome!

For information email Chris at [n1cp@comcast.net](mailto:n1cp@comcast.net).

Chris Black  
12 Cypress Point Way  
S. Yarmouth, MA 02664  
(508) 394 0528

# PHOTO-NEWS



Jeff Kruszka, Editor  
12516 Short Springs Dr.  
Pearland, TX 77584  
jkruszka@sbcglobal.net

October 2007

EVEN BETTER IN COLOR! CHECK OUT THE eVUD

More from Jeff Rostron of Springfield, MA.



WHRO-15 Hampton, VA  
427 mi Tr seen 7/26/07  
*"my UHF distance record"*



WWBT-12 Richmond, VA  
417 mi Tr seen 7/26/07  
*"my VHF distance record"*



WNEDE-17 Buffalo, NY  
332 mi Tr seen 8/29/07



WPVI-6 Philadelphia, PA  
204 mi Tr seen 7/26/07



WTFX-29 Philadelphia, PA  
204 mi Tr seen 7/26/07



# Eastern U.S. TV DX

Featuring reports from AL, CT, DC, DE, FL, GA, IN, KY, MA, MD, ME, MI, NC, NH, NJ, NY, OH, PA, RI, SC, TN, VA, VT, and WV, along with the Canadian Provinces of NB, NF, NS, ON, PEI, and PQ.

Send reports by the 15<sup>th</sup> of each month to:

Nick Langan  
 1040 Riverview Drive  
 Florence, NJ 08518  
 E-mail: [nickl@wtfd.org](mailto:nickl@wtfd.org)

## The Editor's Note

September was a fun month for tropo for DXers in the northern half of the east, while not much was to be found toward the south. Expect conditions to reverse themselves as the cold air of Autumn starts to filter its way down from Canada. Still, October figures to offer tropo opportunities for most, so stay near the dials!

**Robert Grant (N8NU)** 231 E Temperance Rd. Temperance, MI 48182  
 E-mail: [Rg3d@yahoo.com](mailto:Rg3d@yahoo.com) (expect delays, no home Internet access)  
 Temperance is in SE corner of MI. (EN81fs)  
 Receiver: Sylvania (Funai) 6427GFF 27" color analog/digital SDTV.  
 Antenna: Channel Master Advantage 3020 on chimney at about 33'  
 Alternate receiver: Sanyo 21T63 12" B&W analog, antenna Winegard PR-7084 at about 15' on rear (South) deck.  
 All times EDT

### 8/5 Tr

0230 WBKB 11 MI Alpena 202  
 (WTOL in silent period)

0240 WFQXDT 47 MI Cadillac 219  
 unID 7 minus offset, not //CBET

0300 unID 16 same offset as CHWI  
 London, Erie stations very strong

### 8/12 Tr

0210 WNED 17 NY Buffalo 252  
 Dayton UHF's very strong

0255 WSTR-DT 33 OH Cincinnati 185  
 WSTR 64 OH Cincinnati 185

0305 WTTW 11 IL Chicago 211

0326 WBDT-DT 18 OH Springfield 147

0328 WKEF-DT 51 OH Dayton 147

WDTN-DT 50 OH Dayton 147

0346 WROC 8 NY Rochester 319

(snowfree)

WHEC 10 NY Rochester 319

(did not ID on hour, IDed later by local ad)

0401 WIVB 4 NY Buffalo 260

WKBW 7 NY Buffalo 260

0405 WSWP 9 WV Grandview 300

0452 W63AH 63 OH Maplewood 99

WPTD-16 xltr

1000 WCSN-LPt 32 OH Columbus T

sports lifestyle pgm,  
 Columbus area (614 ad)

### 8/12 Es

1030 CBHTt 3 NS Halifax T

unID 4 CBC, non-zero offset

1115 unID 4 CTV, zero offset

1145 unID 3 CTV, non-zero offset

1155 unID 2 French, not // CBEFT

1156 unID 2 SRC

channels 2, 3 and 4 very widespread

Es, unable to ID anything

1350 unID 2 ENE, video carrier FM'd

1400 WEAR 3 AL Pensacola, FL 803

WDIQ 2 AL Dozier 722

1425 WWL 4 LA New Orleans 895

WBRZ 2 LA Baton Rouge 899

1530 KATC 3 LA Lafayette 948

1600 KPRC 2 TX Houston 1075

### 8/14 Tr

0555 WSWP 9 WV Grandview 300

### 8/16 Tr

2000 WFLD 32 IL Chicago 211

WCIU 26 IL Chicago 211

unID 9 CW not //WGN, not 0-CBET

2355 unID 9 PBS, 0-CBET, but not

same beat WSWP produced, and SSW

### 8/17 Tr

0050 unID 15 not 0-WANE "Maxed Out"

0130 WXIN 59 IN Indianapolis 191

WDFM-LP 26 OH Defiance 62

### 8/28 (Tr?)

0015 WBAY 2 WI Green Bay 289

(calls u/WJBK, in briefly, no sign

of anything on highband or UHF)

### 9/2 Tr

0200 WTTW 11 IL Chicago 211

0325 WYIN 56 IN Gary 202

### 9/3 Es

1155 WLBZt 2 ME Bangor T

(minus offset, start newcast with NBC

peacock theme graphics, from ENE)

### 9/4 Tr

0545 unID 2 nxcast with very light

2 logo, non-plus ofst



**Says Robert:** "Es made a pretty good finale on 8/12. The channel 2 at 1350 EDT is unique. It seems to show up every time Es works to Maritime Canada. It had been noticed several times last summer, and at least once earlier this summer, but has never been strong enough to break through WJBK.

The video carrier of this one seems to be a plus offset – but varies SEVERLY. I would not be surprised if this transmitter is modulating the video carrier frequency with the audio content, then using a dead carrier in place of the audio transmitter. On virtually any TV set, this would still result in audio being heard!

Just after the Canadian stations faded out, the opening was reborn in the Southwest. WWL was very strong, free of multipath and quite steady for nearly a whole hour. I wish that they had been transmitting as a DTV on channel 4, I'm sure I would have had a lot of good HD video and audio from this opening if that were the case.

The August Tr season, like this summer's Es season, offered a decent amount of DX time, but none of it great."

**Jim Pizzi** 100 County Road 28 Palmyra, NY 14522

(315)597-5898

Equipment: 1994 27" RCA Delhi VIP 307; VHF Winegard PR-9032 & PA-4975 AM UHF @ 20' Approx.

8/13 Es

1000 unIDs 2-4 West  
 1012 KGAN 2 IA "Judge Joe"  
 "Adventureland Park" AD @ 1019 + Iowa Lottery Promo  
 1020 KMTV 3 NE Regis & Kelley ads + Nebraska Medical Bug w/Temp LR @ 1030 for a few seconds  
 1057 KTIV 4 IA "Business Spotlight"  
 712 AC, Zero Beat to WIVB  
 1100 KIMT 3 IA Large Calls  
 1101 KUSD 2 SD PBS "Calliou"

**Says Jim:** "Well, the 13<sup>th</sup> was the last day of the ES till hopefully late November-early December, maybe January too! I'll be keeping an extra watchful eye open. Tropes has been so-so here...no enhancements beyond 150 mi. in quite a while. I hope others are doing better as I enjoy reading reports in the VUD. Good DX to all. Jim."

**Rick Shaftan**

Sparta, NJ  
 First number at end is bearing, second is mileage. @ = new & = new prop mode # = DTV signal but no picture.

7/15 Es

0936 2- WKRN Nashville TN  
 wkrn.com 246 742  
 0940 3- WREG Memphis TN Logo  
 248 917  
 0945 4+ @WSMV Nashville TN  
 Logo in nx 246 742

8/24 Short Trop

2030 43+ @W43CH Belvedere NJ  
 NJN 234 28  
 2100 64- @WASA-LP Port Jervis NY ID after infomercial, snowy at 20 watts. 2.3 miles over the hill. I can't imagine who is watching this, since it is not on cable. From the Channel 63 tower.

80 2.3!  
 2307 40 @WNUV-DT Baltimore MD Full Pic 222 158  
 2356 44 #WWPB-DT Hagerstown MD 8.2 db 242 199  
 2359 12 @WWPX-DT Martinsburg WV Full Pic 241 211

8/25 Tr

0009 24 #WATM-DT Altoona PA 2.0 db 261 201  
 0013 46 #WKBS-DT Altoona PA 2.0 db 261 201  
 0827 31 @WSWB-DT Scranton PA Full Pic 296 63  
 1104 20 -5 khz ???? Aiming 160 degrees with infomercial  
 1154 10 #WHTM-DT Harrisburg PA 14.5 db 248 126

8/28 Tr

2324 8- CKNX Wingham ON City News (Canadian) 304 395  
 2331 12+ CHEX-TV Peterborough ON chextv.com 322 294

8/29 Tr

0044 42+ ???? Religious, Woman Preacher not TBN. Aiming 305 degrees  
 0052 3+ @CKVR Barrie ON Conan 314 344

9/6 Tr

0241 26 #WRLH-DT Richmond VA 9.4 db

**William McGuire**

Cheverly, MD  
 Sylvania 15" TV

7/27 Es

1530 unID 3 Frasier

8/1 Es

1425 unID 3 Spanish Cartoon

8/29 Tr

1002 WHTJ 41 VA Charlottesville Sesame Street, PBS

# SOUTHERN FM DX



John Zondlo  
4009 Driftwood Circle  
Yukon, OK 73099  
jzondlo@cox.net  
Deadline: 15th

For DXers in AL, AZ, AR, CA, CO, DE, DC, FL, GA, HI, KS, KY, LA, MD, MS, MO, NV,  
NM, NC, OK, SC, TN, TX, UT, VA, WV, Cuba & Mexico

October 2007

**William McGuire** – 2412 59<sup>th</sup> Place – Cheverly, MD 20785-2918  
Grundig S350

7/9 Tr

2155 WAFL 97.7 DE Milford, station promo, "Eagle 97.7"

7/10 Tr

2142 WTVR 98.1 VA Richmond, local ads, "Lite 98"  
2150 WZXL 100.7 NJ Wildwood, local mentions, ID  
2155 WRAR 105.5 VA Tappahannock, ID

7/27 Tr

0715 WPTE 94.9 VA Virginia Beach, "The Point"  
0733 WPYA 93.7 VA Chesapeake, "93.7 Bob FM"

8/29 Tr

1013 WWWV 97.5 VA Charlottesville, "3 W V"  
1025 WSTW 93.7 DE Wilmington, ID

9/8 Tr

2150 WOWI 102.9 VA Norfolk, "103 Jamz"  
2205 WDSB 92.9 DE Smyrna, University of Delaware post game show  
2232 WSBY 98.9 MD Salisbury, "Magic 98.9"  
2238 WXMM 100.5 VA Norfolk, "Max FM"  
2244 WKWI 101.7 VA Kilmarnock, promo, "Bay 101.7 FM"  
2248 WESR 103.3 VA Onley, Virginia Tech vs LSU college football  
2255 WAFX 106.9 VA Suffolk, "The Fox"  
2310 WOGL 98.1 PA Philadelphia, ID

---

**John Zondlo** – 4009 Driftwood Circle – Yukon, OK 73099 – [jzondlo@cox.net](mailto:jzondlo@cox.net) - CDT – all new  
Akai AT-VO4 tuner (w/2 110 filters), Radiosphy  
HD-100 receiver, Katruud RDS monitor, APS-9B antenna @ 16'

7/25 Es

1733 KCRCY 88.1 CA Mojave, digital signal in with local analog KMSI, RDS PS KCRCY  
1800 KQED 88.5 CA San Francisco, in digital with RDS PS KQED, traffic rpt  
1804 KUSP 88.9 CA Santa Cruz, digital signal in with local analog KYLV, RDS, NPR program  
1809 KDAR 98.3 CA Oxnard, calls

7/29 Es

1213 WELT 98.1 GA East Dublin, car dealer spot, "E-98.1"  
1214 WMGP 98.1 GA Hogansville, "Magic 98-1," spot for car dealer in AL  
1220 WGSY 100.1 AL Phenix City, r, PI 666C

8/8 Tr

2221 WQLQ 103.1 LA Columbia, "103.1 The Party"  
2225 KTXK 103.1 TX Karnes City, "La Luz for San Antonio"  
2227 KMKS 102.5 TX Bay City, "Hot Country 102.5," through KJYO 102.7 digital sideband  
2246 KYDL 96.7 AR Hot Springs, "Star 96"  
2256 KAVH 101.5 AR Eudora, black Gospel, mention of parish in Louisiana  
2327 KKST 98.7 LA Oakdale, s, "Kiss FM"

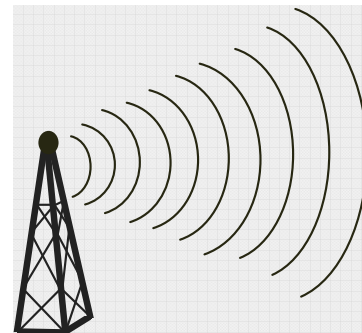
8/9 Tr

2301 KLKL 95.7 LA Minden, local spots

8/27 Es

1729 WKPX 88.5 FL Sunrise, high school station with 50's-70's mx  
1730 WIRP 88.3 FL Pennsuco, SS, traffic report for Miami  
1731 WMKL 91.9 FL Key Largo, "The Call," rock CCM, through KOSU 91.7 digital sideband, previously  
heard on 91.7 through KOSU

# Northern FM DX



Keith McGinnis  
 18 Newbridge St., Hingham, MA 02043  
 longwave@comcast.net 781-875-1944

For Dxers in the following states: CT IA ID IL IN MA ME MI MN MT ND NE NH NJ NY OH OR PA RI SD VT WA WI WY and all of Canada. Please submit by the 10<sup>th</sup> of each month. If possible please submit in the formats shown Below.

**EDITORS NOTE: PLEASE NOTE THAT ANY TYPEWRITTEN OR HANDWRITTEN REPORTS MIGHT BE DELAYED TILL A LATER ISSUE AS TIME PERMITS. ALSO PLEASE KEEP REPORTS AS RECENT AS POSSIBLE (THE LAST 3 MONTHS SHOULD WORK FINE). THANK YOU.**

Jeff Lehmann Hanson, MA  
 Antenna APS-13 Tuners Sangean HDT-1X, Yamaha T-85

### August 11 ES

1814	WUBL	94.9	Atlanta	GA	94-9 The Bull, RDS	926
1815	WAEZ	94.9	Greenville	TN	Electric 94.9, RDS	775
1820	WMAW	88.1	Meridian	MS	MPB, RDS	1210
1827	WAYT	88.1	Thomasville	GA	Way FM 1069	
1828	WTNT	94.9	Tallahassee	FL	94.9 TNT 1085	
1839	WDEC	94.7	Americus	GA	1018	
1842	WWRM	94.9	Tampa	FL	Magic 94.9, RDS	1174
1845	WBZE	98.9	Tallahassee	FL	Star 98, RDS	1090
1850	WLOQ	103.1	Winter Park	FL	RDS	1106
1857	WHDR	93.1	Miami	FL	93 Rock	1232
1857	MORE	94.9	Nassau	NP	More 94 FM, RDS	1232
1905	WMGE	94.9	Miami Beach	FL	Mega 94-9	1232
1912	WXDJ	95.7	North Miami Beach	FL	EI Sol 95	1243
1915	WJIS	88.1	Bradenton	FL	The Joy FM	1219
1955	WLLD	98.7	Holmes Beach	FL	Wild 98.7	1189
2000	WXTB	97.9	Clearwater	FL	98 Rock	1168
2000	WEAT	104.3	West Palm Beach	FL	Sunny 104.3	1194
2004	WZSP	105.3	Nocatee	FL	1203	
2005	WMIB	103.5	Fort Lauderdale	FL	103-5 The Beat	1232
2015	WRMF	97.9	Palm Beach	FL	1194	
2016	WRTO	98.3	Goulds	FL	La Kalle	1265
2022	WPBZ	103.1	Indiantown	FL	The Buzz, HD	1164

### August 12 ES

935	WZOR@	94.7	Mishicot	WI	Razor 94.7, RDS	863
940	KDCR	88.5	Sioux Center	IA	RDS	1281
943	KCMP	89.3	Northfield	MN	89.3 The Current, RDS	1124
946	WORQ@	90.1	Green Bay	WI	Q90 FM	872
947	KSOU	93.9	Sioux City	IA	RDS	1289
1008	WERN	88.7	Madison	WI	Wisconsin Public Radio, RDS	948
1013	KNSG	94.7	Springfield	MN	The Dog	1234
1021	KWOA	95.1	Worthington	MN	KO95	1254
1030	WAAG	94.9	Galesburg	IL	FM 95	1006
1040	WRBO	103.5	Como	MS	Soul Classics 103.5, RDS	1137
1050	KCZE@	95.1	New Hampton	IA	95.1 The Bull	1088
1057	KGLI@	95.5	Sioux City	IA	KG95	1293
1103	KSEZ	97.9	Sioux City	IA	Z98	1291

Russ Edmunds, WB2BJH

Blue Bell, PA

400845N; 751604W, Grid FN20id

<amfmdxer@yahoo.com>

FM Yamaha T-80 w/ APS9B @ 15'; Conrad RDS Decoder; Onkyo T-450RDS

AM Hammarlund HQ-150 w/ 4' amplified Air core loop

July 10 Es

1537	KKEN	97.1	Duncan	OK	Ad for Chickasha Honda
1543	KYAL	97.1	Muskogee	OK	ESPN Sportstalk
1615	WEZB	97.1	New Orleans	LA	Rock, traffic, "B-97"
1640	KEGL	97.1	Fort Worth	TX	Spanish talk, including La Preciosa slogan
1640	KTHT	97.1	Cleveland	TX	ID
1643	WFFN	95.3	Coaling	AL	RDS PI
1648	KVRE	92.9	Hot Springs Village	AR	MYL, ID
1650	KROI	92.1	Seabrooke	TX	Houston's Inspiration Station, Praise 92.1
1655	KAMX	94.7	Luling	TX	Austin's Mix 94.7
1658	KZFT	90.5	Fannett	TX	Religious talk, ID, monster signal
1700	KNCT	91.3	Killeen	TX	Soft instr mx, ID, monster signal
1701	KTSR	92.1	DeQuincey	LA	ID: The New Star 92.1, KTSR
1702	KVST	99.7	Willis	TX	Country, ID
1702	KAJK	99.3	White Oak	TX	Rock "This is Jack FM, playing what we like"
1703	KLTD	101.7	Temple	TX	Rock, "Eagle 101.7"
1706	KAYD	101.7	Silsbee	TX	Country, "KD-101"
1712	unid	100.1			Country, KYKC-OK likely
1714	KLAA	103.5	Tioga	LA	Country, "Louisiana Country, LA-103.5"
1717	KKBQ	92.9	Pasadena	TX	"93-Q"
1720	unid	94.7			Country
1721	unid	99.7			Urban - likely KMJJ-LA
1723	KVST	99.7	Willis	TX	Traffic, ad for Able Glass in Huntsville, Gallery Furniture in Houston
1724	unid	99.7			Spanish, mention of "Galloway campus of Dallas Regional Medical Center"
1728	KMGZ	95.3	Lawton	OK	"Magic 95.3"
1750	KCXY	95.3	East Camden	AR	RDS PI
1755	KFRO	95.3	Gilmer	TX	Probable, with ad for Austin Bank, which has a branch there - and not in/around Austin, so much better fit with skip area
1755	KAMD	97.1	Camden	AR	ID
1801	KBYB	101.7	Hope	AR	local ad, ID
1802	unid	94.7			Current rock, WYLK-LA ?
1803	KWFX	100.1	Woodward	OK	News item about ".. the Katy (?) River flowing back into OK.." then Ad for Radio Shack @ 2125 Oklahoma Ave.

July 13 Es

1745	WUWF	88.1	Pensacola	FL	All Things Considered
1747	unid	88.7			All Things Considered NPR not MPB
1748	WEZB	97.1	New Orleans	LA	Soul music, "B-97"
1750	WAPR	88.3	Selma	AL	All Things Considered; then RDS hit and Alabama Public Radio spot
1755	WPRF	94.9	Reserve	LA	Praise FM
1756	KQKI	95.3	Bayou Vista	LA	local news
1758	WJSP	88.1	Warm Springs	GA	ID
1800	WMAB	88.9	State College	MS	MPB announcement, RDS MPB
1805	unid	89.3			NPR "All Things Considered" WRKF-LA or WLRH-AL ?
1808	WBLX	92.9	Mobile	AL	Hip Hop, rap, promo
1811	KAYT	88.1	Jena	LA	local announcements, ID
1812	KHLA	92.9	Jennings	LA	3 Dog Night - "Mama Told Me.."; "92.9, The Lake"
1814	KPCH	99.3	Ruston	LA	ID
1816	unid	100.1			Country - likely WQXB-MS
1818	KTEZ	99.9	Zwolle	LA	ID
1820	KRVV	100.1	Bastrop	LA	Hip Hop, Rap, "The Beat"
1822	KSBH	94.9	Coushatta	LA	promo for Cherokee Club, ID
1824	WRTM	100.5	Port Gibson	MS	Hip Hop, RDS PI: 8386
1830	unid	100.5			Country - "Widest Variety of Country", on-air DJ, "Tad Swenson"
1830	KGPQ	99.9	Monticello	AR	Weather, "Q-100"
1835		100.1			preacher emoting - was fady so probably

1836	KMJJ	99.7	Shreveport	LA	not a new local translator, I hope
1840	unid	99.9			Hip Hop, local event promos
					country ( "She Don't Know She's Beautiful" - there are 2 in AR and I can't forget about WFRE-MD either
1843	KAMD	97.1	Camden	AR	K-97
1844	KTKC	92.9	Springhill	LA	ID by small child: This is the Light, 92.9
1847	unid	88.1			Piano music
1849	KHLR	94.9	Maumelle	AR	"KHLR, Hallelujah FM, Maumelle - Little Rock"
1908	CM..	95.3	Camaguay	CU	1940's jazz R Enciclopedia presumed

July 14 Es

0926	WOLZ	95.3	Fort Myers	FL	Oldies " on OLZ"
0928	WJBX	99.3	Fort Myers Beach	FL	New rock, ID, Lennar Homes ad
0931	WOSN	97.1	Indian Rvr Shores	FL	MYL - "The Ocean" New
0933	WWRM	94.9	Tampa	FL	Light rock
0934	unid	97.1			"97.1, Lite?-FM" into a Carpenters song
0937	WLRQ	99.3	Cocoa	FL	"Light Rock 99.3, WLRQ"
0942	WSRX	89.5	Naples	FL	Local religious anncts, Praise FM
0945	WCMQ	92.3	Hialeah	FL	Spanish, Miami-area ads
0950	WKIS	99.9	Boca Raton	FL	Kiss-FM
0950	unid	99.7			Spanish
0951	WZJZ	100.1	Port Charlotte	FL	Soft Jazz, ID
0955	unid	92.1			Spanish
0956	WJKD	99.7	Vero Beach	FL	PI: 0000 ID
1000	WPYO	95.3	Maitland	FL	ID, Hip Hop
1112	WPRF	94.9	New Orleans	LA	Gospel, "Praise FM"
1119	WEBZ	99.3	Mexico Beach	FL	PI: 7C65 = WPBH-93.5; Dual ID
1121	WVVE	100.1	Panama City Bch	FL	PI 8E42, Wave100
1125	unid	101.7			Open carrier
1126	WFSY	98.5	Panama City	FL	Rock, "Sunny 98.5", local car dealer ad - new
1130	WOOF	99.7	Dothan	AL	Remote / promo, ID
1200	KVLU	91.3	Beaumont	TX	PI: 48A6; Rel talk
1205	unid	91.5			AFR
1210		88.1			Religious talk, Texas accent
1215	KUHF	88.7	Houston	TX	Show promoing www.saysyou.org - only reasonable possibility on website
1221	KKBQ	92.9	Pasadena	TX	93-Q
1238	KCXY	95.3	East Camden	AR	Country, station promos
1245	KFTG	88.1	Pasadena	TX	Spanish, local ads #NAME?
1246	unid	88.1			AFR
1247	KLRK	92.9	Marlin	TX	Waco ads, "Star 92.9"
1247	KGNZ	88.1	Abeliene	TX	ID new
1248	KLTY	94.9	Arlington	TX	ID
1258	KEGL	97.1	Fort Worth	TX	PI: 1B37, Spanish
1310	unid	92.1			Country - KVCL-LA ?
1313	KHYI	95.3	Howe	TX	Country - "The Range"
1318	KVRP	97.1	Haskell	TX	Country, ID - "Big Country 97" new
1320	KLUR	99.9	Wichita Falls	TX	ID, "Texoma Country", Country New
1321	KTCY	101.7	Azle	TX	Spanish, presumed
1325	KERX	95.3	Paris	AR	Current rock, "The X"
1333	KNIN	92.9	Wichita Falls	TX	PSA, ID

July 15 Es

1006	KNUQ	99.3	Houston	MO	Country - "Big Country 99" New
1009	KHZYt	99.3	Overton	NE	Christian music
1038	unid	99.3			Blues music

7/23 Es

1601	WHRD	93.1	Miami	FL	"South FL Home of Pure Rock, 93-Rock"
1610	WMGE	94.9	Miami Beach	FL	Spanish music, talk, Miami-area ads
1615	WWRM	94.9	Tampa	FL	Oldies, ID
1625	KSBH	94.9	Coushatta	LA	Rock, "94.9 The River"
1629	unid	99.7			Spanish again
1631	WEBZ	99.3	Mexico Beach	FL	RDS PI:7C65; "99.3, The Beat", Hip Hop
1632	KPCH	99.3	Ruston	LA	Local ads
1639	WXCX	95.3	Homosassa Spgs	FL	Rock, "Citrus 95.3"
1639	KCXY	95.3	E. Camden	AR	Promo for event at Coleman Stadium; ID
1642	KRVV	100.1	Bastrop	LA	Rock, "100.1 The Beat"
1644	WKJK	98.5	Crystal River	FL	Traffic, ID

1646	WSMS	99.9	Artesia	MS	Ad for "Lakeside Place Apts, Starkville" & another ad for Columbus
1654	WTNT	94.9	Tallahassee	FL	ID
1654	unid	93.1			Rap/Hip-Hop - WBBK-GA likely
1657	WJXR	92.1	Macclenny	FL	Call-in, answering "WXR"
1700	WJMG	92.1	Hattiesburg	MS	ID
1703	KQKI	95.3	Bayou Vista	LA	ID
1704	KAXV	91.9	Bastrop	LA	AFR
1713	KHLR	94.9	Maumelle	AR	ID
1714	WMC	99.7	Memphis	TN	Memphis Traffic, "FM-100"
1716	KHYI	95.3	Howe	TX	ID
1721	KVRE	92.9	Hot Spgs Village	AR	Oreck ad, ID
1721	KINZ	95.3	Humboldt	KS	Ad for Quality Toyota in Independence
1722	KXMO	95.3	Owensville	MO	ID
1725	unid	95.3			Weather, Texas, W/NW of Dallas
1731		98.5			Country - Likely KVOO
1733	KZLE	93.1	Batesville	AR	Local ad, traffic, Classic Rock KZLE
1733	KMYK	93.5	Osage Beach	MO	The New Mike FM
1735	KURB	98.5	Little Rock	AR	Soul, "Best Mix B-98.5"
1740	WYLD	98.5	New Orleans	LA	Louisiana PSA, local ad
1742	KGAP	98.5	Clarksville	TX	ending Paul Harvey on Your Good Times, Great Oldies Station
1750	unid	93.5			Hip-Hop
1752	KERX	95.3	Paris	AR	New rock, "The X"
1756	KBKG	93.5	Corning	AR	Local ads, ID. new
1758	KHMY	93.1	Pratt	KS	My 93.1, wx, T-storm watch for Reno County
1759		93.1			Classic Rock - Z Z Top
1800	KYAL	97.1	Muskogee	OK	Sports Talk, "1550 AM and 97.1 FM, The Sports Animal"
1809	KQID	93.1	Alexandria	LA	Current Rock, "Q-93"

#### July 26 Es

1534	KSTV	93.1	Dublin	TX	Country, ID new
1601	WKRO	93.1	Edgewater	FL	Local ads, ID, Country
1605	WZRO-LP	93.1	Suwannee	FL	ID, Banjo music - new- 1st Es LPFM.
1610	WWRM	94.9	Tampa	FL	ID
1614	KZLE	93.1	Batesville	AR	" on the all new Classic Rock 93"
1616	KQID	93.1	Alexandria	LA	Current rock, Q-93
1620	WBBK	93.1	Blakely	GA	RDS PI 5770 new
1622	unid	93.5			Classic Country - KBHT-TX ?
1627	WSUN	97.1	Holiday	FL	Rock, "97X" new
1628	WOKK	98.5	Meridian	MS	Country, RDS PI 7AAE new
1629	unid	97.1			Ad for Dunn Chevrolet-Buick-Pontiac in Eufaula, AL- no 97.1 stations within 70 miles of Eufaula
1630	KYAL	97.1	Muskogee	OK	Sportstalk, WWLS ID
1631	WKTK	98.5	Crystal River	FL	ID
1633	KKEN	97.1	Duncan	OK	"Real Country", Brad Paisely promo // 97.1
1633	KACO	98.5	Apache	OK	"Real Country", B Paisely promo // 98.5 new
1634	KTFX	101.7	Warner	OK	Country , ID
1636	KVSP	103.5	Anadarko	OK	RDS PI 4957
1640	WMCB	107.3	Claxton	GA	"Oldies 107.3, The Greatest Hits of all Time"
1641	WMCG	104.9	Milan	GA	Classic Country – presumed new
1645	WMIB	103.5	Ft. Lauderdale	FL	Ad for the Eye Center in Pembroke Pines
1647	unid	103.5			Jazz
1648	KACO	98.5	Apache	OK	ID
1651	KFXI	92.1	Marlow	OK	ID new
1653	unid	100.1			Country
1656	KQID	93.1	Alexandria	LA	Q-93, current rock
1704	KNIN	92.9	Wichita Falls	TX	ID
1705	KJAE	93.5	Leesville	LA	K-Jae
1708	WJNS	92.1	Yazoo City	MS	Religion – Country Gospel music new
1710	KTSR	92.1	DeQuincy	LA	Hip Hop "Star 92.1"
1725	WHJT	93.5	Clinton	MS	local Chevrolet ad, "Star 93.5"
1727	KKTZ	93.5	Lakeview	AR	Hits 93.5 - KKTZ new
1728	KQKI	95.3	Bayou Vista	LA	Ad for "Boardwalk Office(?)" with locations in Crowley & Marksville
1730	unid	93.1			Hip Hop & Modern Rock mixing
1734	KTDY	99.9	Lafayette	LA	Local sports
1737	unid	94.9			Country with slogan
1739	KLTY	94.9	Arlington	TX	ID
1740	WKSJ	94.9	Mobile	AL	Ad for Chris Myers Nissan in Daphne
1740	KOLI	94.9	Electra	TX	Ad for Wagner's Restaurant Supply in Wichita Falls
1743	KAYD	101.7	Silsbee	TX	Promos for Bowl Star in Beaumont, BeaumontRadioAdvertising.com

1745		99.3			Spanish - KVLD-AR likely
1745		99.9			Country garbled ID sounded like Magic 99.9
1747	KLUR	99.9	Wichita Falls	TX	Country, local ad
1747	KTCS	99.9	Ft. Smith	AR	Country ID, Ad for Kiowa Casino new
1749	KADA	99.3	Ada	OK	Oldies - Kool 99.3
1800	KMKT	93.1	Bells	TX	ID, "Texoma's Best Country" New
1803	KSTV	93.1	Dublin	TX	Country, Ad for S. R. Williams Financial Advisor in Stephenville
1810	KLXK	93.5	Breckenridge	TX	K-Lakes 93.5, Lakes Country News new

July 26 non-Es

1905	W269BT	101.7	Pottstown	PA	Preaching //WV BV-90.5 new
------	--------	-------	-----------	----	----------------------------

July 28 Es

1030	WFFN	95.3	Coaling	AL	RDS PI 626B
1030	WTUG	92.9	Tuscaloosa	AL	ID
1033	unid	92.1			Dance/ Hip Hop
1035	WJMI	99.7	Jackson	MS	RDS PI F000 , Urban
1036	KTSR	92.1	DeQuincy	LA	ID
1038	WWJK	94.7	Jackson	MS	Traffic report:at Pearson Rd exit of I-20 new
1042	KHLA	95.3	Jennings	LA	Classic Rock, "The Lake"
1043	unid	93.9			Dance/ Hip Hop
1044	unid	93.5			Country
1049	KSBH	94.9	Coushatta	LA	Weather
1100	unid	95.3			Classic Country promo
1102	unid	95.3			Ad for Access Medical Supplies - Diabetic supplies ; "Oldies Radio 95.3"
1104	KHYI	95.3	Howe	TX	Ad for Bill McRae Ford in Jacksonville, ID
1108	KCXY	95.3	East Camden	AR	RDS PI17B6
1121	KLTY	94.9	Arlington	TX	ID
1123	KVRE	92.9	Hot Spgs Village	AR	ID
1125	KEGL	97.1	Houston	TX	Spanish, local ad
1135	KEFH	99.3	Clarendon	TX	Country "Kool 99.3" new

July 29 Es

1344	RJR	94.9	JAMAICA		ID, political spot new/new country
1347	CMKX	95.3	Bayamo CUBA		Call ID, "R Bayamo"

July 29, non-Es

1400	WHHS	99.9	Havertown	PA	ID - this is the 3 <sup>rd</sup> frequency I've logged them on over 15 years as they've had to relocate due to interference or move-ins. Only about 20 miles away.
------	------	------	-----------	----	--

August 6 - Tr

0715	WTRM	91.3	Winchester	VA	Presumed with Southern-type Gospel
2314	WHLM	103.5	Berwick	PA	ID
2323	CIDC	103.5	Orangeville	ON	Ad for <a href="http://www.apotex.ca">www.apotex.ca</a> & ID and station site Z1035.com New

August 7 Tr

608	CIDC	103.5	Orangeville	ON	Weather, traffic, ID still in - cont until 10 am
-----	------	-------	-------------	----	--

August 8

1226	W235AT	94.9	Coatesville	PA	Standard promos for Hope Christian Church of Marlton. Another new local translator
------	--------	------	-------------	----	--

August 9 Tr

556	WOWY	97.1	University Park	PA	ID new
-----	------	------	-----------------	----	--------

August 11 Tr

1320 WZRV 95.3 Front Royal VA Oldies, ID

August 11 Es

1654 KCXY 95.3 East Camden AR Ms hit on RDS: 17B6  
1714 HIGP 88.1 Santo Domingo DR RDS Software Screen shot, PI: F002; PS: x  
Primera; SS talk and ID. New, new country.  
1736 Power 95 94.9 Hamilton BER Talk, ID  
1813 WTPM 92.9 Aguadilla PR Talk, ID New, new country

August 12 Es

1016 WXXM 95.3 Grand Marais MN Promo for the KQ Morning show, ID, then  
Canned Heat's greatest ( only ) hit  
1058 unid 92.9 religious service - likely the following  
1106 KKJM 92.9 St. Joseph MN Community calendar of religious-oriented  
events in area.  
1113 KCXY 95.3 East Camden AR RDS PS: KCXY-FM  
1115 KDJS 95.3 Willmar MN RDS PS: KDJS-FM  
1121 WMFS 92.9 Bartlett TN Station promo, modern rock  
1154 KVHU 95.3 Judsonia AR ID - new

August 12 Ms

2220 unid 94.9 Bluegrass, Trad. Country Ms bursts mixing  
with WRBT-PA

August 13 Ms

1131 CKWM 94.9 Kentville NS Promo for "Annapolis Valley Crimestoppers"  
1823 WGLQ 97.1 Escanaba MI Ad for Getz Dept. Store New

Doug Smith W9WI

Meteor scatter heard on the way to the Boise Convention:

August 29 Ms

1011 KTLK 100.3 Minneapolis MN "Twin Cities" (heard in Moose Jaw, Sask.)  
1530 KTZU 94.9 Velva ND Minot ad (heard in Bow Island, Alberta)

August 31 Ms

1000 CFRY 93.1 Portage la Prairie MB Canadian news of crime at Sears store,  
matches station website (heard in southern  
Idaho)

The Canadian Prairies are a great place to DX - still few locals.

---

**Roger Gravelle 42 Little Creek Place Port Stanley Ontario N5L 1K1**

**Equipment: Sony ST-S555 with Rabbit Ears**

June 24, 2007

1300 Unid 104.7 Woodstock ON Heart Radio—No Calls yet for me  
1330 CJDL 107.3 Tillsonburg ON Test Transmission 4500 watts C&W Format  
1345 Unid 89.5 Onieda ON Native Station no calls assigned so not  
under CRTC control – classic c/w, blues,  
rock & ethnic prgm 400 watts at 150 ft, stereo  
to go to 1000 watts later this fall

July 15, 2007

1400 CFPS 97.9 Port Elgin ON Replaced 1490 AM  
1410 CHCD 98.9 Simcoe ON

July 26, 2007

1300 WUCF 89.9 Orlando FL Classical



1315	WUSF	89.7	Tampa	FL	
1330	WDVW	92.3	New Orleans	LA	
1335	WWL	105.3	New Orleans	LA	The Big One

**Jim Pizzi**  
**100 Country Rd 28**  
**Palmyra, NY 14322-9440**  
**Equipment: Akai AT-V04 w/mod; Antennacraft FM-10 @ 20ft AGL**

All new except where noted

May 3 2007 Tr

0837	WUNY	89.5	Utica	NY	CLX
0837	WCOF	89.5	Arcade	NY	relog Transmitting off freq 89.45
0900	WRVJ	91.7	Watertown	NY	ID w/ other WRV stations

May 4 2007 Tr

0920	WORK	93.5	Remsen	NY	93.5 The River 94.1 in Downtown Utica
1126	CJCB2	99.5	Kingston	ON	FF

May 7 2007 Tr

0906	WBDI	106.7	Copenhagen	NY	The Border 106-7 93-7
0924	W291??	106.1	East Heading		TK 105 and TK 99 Very Strong

May 9 2007 Es

1536	WINK	96.9	Fort Myers	FL	Ads and "Wink 96.9" ID
1733	W204??	88.7	??	FL	Star 88.3
1743	WSEB	91.3	Englewood	FL	Calls
1744	WVOB	91.3	Dothan	AL	ID "WVOB-Dothan-Bonifay" o/ WSEB
1749	WIZB	94.3	Abbeville	AL	Wiz Radio g, rock
1800	WDJR	96.9	Enterprise	AL	Tent k

May 10 2007 Tr

0045	CKLY	91.9	Lindsay	ON	Ads and "70s, 80s, 90s 91.9 Bob FM"
0100	WRVN	91.9	Utica	NY	ID w/ other WRV stations

May 22 2007 Tr & Es

0912	CBL4`		Owen Sound	ON	clx
1119	WBBN	95.9	Taylorville	MS	relog B95, promos
1123	WDLT	98.3	Chickasaw	AL	Calls
1124	WYLD	98.5	New Orleans	LA	Calls
1128	WTKL	95.7	New Orleans	LA	promos
1131	Unid	92.1			rock, oldies "G92"
1142	KMDL	97.3	Kaplan	LA	relog 97-3 the Dog ads
1148	WDVW	92.3	Laplace	LA	Ads, Peretti Jaguar
1151	WQCK	92.7	Clinton	LA	Christian rock
1153	Unid	93.5			The New B (or V) 93.5"
1154	Unid	94.5			ad "Champion Chrysler Dodge"
1155	Unid	94.3			KZ 94.3
1159	Unid	102.5			WBRC or WVRC
1200	KAJN	102.9	Crowley	LA	g
1205	WMIU	104.3	Bude	MS	Ad for Bank of Brookhaven "Gospel Giant"
1208	KPEL	105.1	Abbeville	LA	relog, Rush Limbaugh
1209	WCDV	103.3	Hammond	LA	Sunny 103.3, Baton Rouge Ads
1212	WAKH	105.7	McComb	MS	ads, promos
1223	KRKA	107.9	Erath	LA	relog Acadian hip hop
1225	KEZP	104.3	Bunkie	LA	The New Tiger 104.3 local mentions
1230	KIOL	103.7	LaPorte	TX	713 area code / ment I45 "Rock 103.7"
1254	WWMS	97.5	Oxford	MS	Miss 98 ment Hwy 72 in Corinth
1257	Unid	98.3			Sunny 98.3 Lite Rock

June 26 2007 Es

1044	KXLP	93.1	New Ulm	MN	Ads
1147	KICK	96.1	McCook	NE	24 Hrs a day—Kicx”
1154	KQOB	96.9	Enid	OK	96-9 Bob FM
1154	Unid	96.9			“High Country”
1156	Unid	97.1			“Stateline in Andover”
1201	Unid	97.3			“97.3 Easy Rock”
1204	KATR	98.3	Otis	CO	Cat Country 98.3, k
1249	Unid	95.5		KS	“Magic 95” 620 area code Manhattan ment
1256	KKQY	101.9	Hill City	KS	Brush County-Hays ads
1332	KIZS	92.1	Broken Arrow	KS	“Tulsa’s Party Station”
1333	KREP	92.1	Belleville	KS	ment Narka city pool in Hanover
1336	KFXI	92.1	Marlow	OK	“Southeast Oklahoma’s....” k
1342	Unid	92.3			ph # 773+9851 ment of Central County and
					“Classic Country 92.3”
1350	KBEZ	92.9	Tulsa	OK	ad for “Big Splash 747-7389”
1359	KOLS	95.5	Dodge City	KS	local ads
1400	KSKL	94.5	Scott City	KS	ID
1402	KHMY	93.1	Pratt	KS	“My 93.1” + calls & city
1407	KILS	92.7	Minneapolis	KS	“92-7 the Zoo Salina’s Rock Station”
1430	KCVW	94.3	Kingman	KS	Bott Radio Network for Central & SW KS
1433	KFXJ	104.5	Augusta	KS	local auto ad Fidelity Bank ad

June 28 2007 Es

1424	KRKZ	93.5	Altus	OK	Ad for Altus and SW OK
1426	Unid	107.9			SS KQQK, KQLM, KESS KHCK???
1437	KXXY	96.1	Oklahoma City	OK	local ads “96.1 KXY”
1438	KITO	96.1	Vinita	OK	calls
1442	KKAJ	95.7	Armore	OK	k, ads
1443	KHBZ	94.7	Oklahoma City	OK	local ads & promos
1449	KXXM	96.1	San Antonio	TX	Local ads including “Ferguson Trucks”

July 13 2007 Tr

1125	WQXK	105.1	Salem	OH	
------	------	-------	-------	----	--

July 16 2007 Tr

1009	WHOT	101.1	Youngstown	OH	This is Hot 101
1034	W266BE	101.1	Auburn	NY	// WZXV

July 23 2007 Tr & Es

1152	C???	88.7	Kingston	ON	“My FM” Kingston mentions
1200	CBBK	92.9	Kingston	ON	clx
1656	WRTO	98.3	Goulds	FL	Radio Shack ad in SS then eng ID

July 26 2007 Es

1501	WRXK	96.1	Bonita Sprigns	FL	Full ID & KRock 96.1
1508	WVOJ	99.1	Avon	FL	Tentative
1512	WRUM	100.3	Orlando	FL	relog SS
1513	WAVV	101.1	Marco Island	FL	“Wave 101.1”
1514	Unid	101.1		FL	“Country Toyota” ad
1516	WJRR	101.1	Cocoa Beach	FL	101 Real Rock WJRR
1520	WNUE	98.1	Titusville	FL	SS ads ment Orlando
1522	WLTQ	92.1	Venice	FL	ads ment Sarasota
1523	WAFZ	92.1	Immokalee	FL	SS ads
1526	WLRQ	99.3	Cocoa	FL	local ads “lite rock 99.3”
1529	WKIS	99.9	Boca Raton	FL	“Kiss Country”
1530	WCKT	100.1	Port Charlotte	FL	r, ads
1535	Unid	105.5			SS female dj “Radio Izmo”? “Radio Exceto”?
1539	WCTQ	106.5	Sarasota	FL	“105-5 CTQ”
1540	Unid	106.7		FL	Translator? // to 106.3 WZMQ
1542	Unid	106.5			SS
1547	WZMQ	106.3	Key Largo	FL	Upbeat Latin SS
1551	WJPT	106.3	Ft Myers	FL	Calls often
1554	KTLT		????		“Broadcasting from the Shores of the x
			Mississippi KTLT”		
1559	Unid	106.7			Another SS plus WZMQ

1601	Unid	106.7			Kiss FM
1602	Unid	106.3			SS "Baywood Ford Izuzu"
1604	Unid	105.5			SS then "Sandy's Dollar and Up" ad in EE
1605	Unid	105.5			Hip Hop
1607-1616		Unid			Ads for night spots & other nite life..kept repeating ment of Ft Lauderdale & 954 AC
1618	WPBZ	103.1	Indiantown	FL	"From the Buzz"
1622	WMXJ	102.7	Pompano Beach	FL	local ads
1626	WMFM	107.9	Key West	FL	SS "Armstrong Toyota" ad
1628	WIRK	107.9	W Palm Beach	FL	Calls
1629	WAMR	107.5	Miami	FL	SS ads
1632	WZSP	105.3	Nocatee	FL	SS Insurance ads
1635		106.5			Suny 106.5
1640	WAIL	99.5	Key West	FL	ads
1705	KSWP	90.9	Lufkin	TX	"Chirstian Radio 90.9 KWSP"
1709	WLWI	92.3	Montgomery	AL	relog calls, k
1715	WBLX	92.9	Mobile	AL	"Mobile Highway to Pensacola" hip hop
1720	KBHT	93.5	Crockett	TX	wx & calls
1725	KCUL	92.3	Marshall	TX	relog SS
1727	KAFX	95.5	Diboll	TX	relog ads
1728	KTHT	97.1	Cleveland	TX	"Houston area Mercedes Benz Dealers"
1730	KSOA?	97.3			Shreveport- Bossier Weather
1736	WINN	98.3			Hip Hop.brief talk w/ woman about an assault
1737	KZRZ	98.3	West Monroe	LA	relog I-20 ment NBC 10 promo
1742	KNBB	99.3	Ruston	LA	relog ads
1744	KWAK	105.5	Stuttgart	AR	Local ads, contest many ment of Stuttgart
1746	KTTX	106.1	Brenham	TX	"K-TEX 106"
1748	KKYS	104.7	Bryan	TX	Brazos Valley Ad
1759	Unid	101.9			SS
1804	KAVX	91.9	Lufkin	TX	91.9 KAVX

July 28 2007 Es

1129	KZMZ	96.9	Alexandria	LA	Ads, Ment of Leesville
1134	WTCD	96.9	Indianola	MS	relog Talk
1145	KXUL	91.1	Monroe	LA	"playing tomorrow's artists today 91-X"
1156	KOUZ	89.1	Blanchard	LA	promo for a Baptist church in Sherveport

August 4 2007 Tr

0814	WOMC	104.3	Detroit	MI	relog, wx "oldies 104.3" promos
0835	WCSX	94.7	Birmingham	MI	Calls
0841	CFPL	95.9	London	ON	NBA Tour Coming to London "FM96"
0843	WKRK	97.1	Detroit	MI	"Live 97.1" promos

August 5 2007 Tr

1715	WOMC	104.3	Detroit	MI	relog ads
------	------	-------	---------	----	-----------

August 7 2007 Tr

1047	WBUG	101.1	Fort Plain	NY	"Real Country"
1054	WBEB	101.1	Philadelphia	PA	<a href="http://www.B101.com">www.B101.com</a> ads and PA Promos
1330	CKMB	107.5	Barrie	ON	"Cool FM" & local promos
1345	CIDC	103.5	Orangeville	ON	Sort of like hip hop but not...over WNNR

August 9 2007 Tr

0213	CHKS	106.3	Sarnia	ON	"K106.3" "Sarnia-Port Huron's best rock"
0221	WLKJ	105.7	Portage	PA	"K Love" ID
0304	WDSN	106.5	Reynoldsville	PA	"Sunny 106 Radar weather"
0314	WFGI	95.5	Johnstown	PA	relog Froggy 95

August 10 2007 Tr

0757	WOGF	104.3	East Liverpool	OH	weather and "Frogg 104", k
0801	WMJI	105.7	Cleveland	OH	relog Calls, news
0807	WORD	101.5	Pittsburg	PA	relog Full ID
0810	WONE	97.5	Akron	OH	"97.5 WONE" promos
0834	WZAK	93.1	Cleveland	OH	Calls, ads

Mike Bugaj 69 Sherman Road – Enfield, CT 06082. Equip: Sangean HDT-1, Carver and Sony Tuners w/RDS, APS-13 and phase antenna. Bolin phase box. New are underlined.

6/25 Es

2125 KTGL 92.9 NE Beatrice, Eagle, RDS PS=KTGL-FM  
2130 KKPR 98.9 NE Kearny, ad in Grand Island  
2133 KUTT 99.5 NE Fairbury, RDS PS=KUTT-FM, R/T = KUTT is Today's Best Country  
2135 KLNC 105.3 NE Lincoln, RDS PS=KLNS, adult hits, Neil Diamond heard  
2142 KSRZ 104.5 NE Omaha, HD...switched into HD for about 15 seconds. Another new HD logging, HD #6  
2345 KQOB 96.9 OK Enid, RDS 3BAD, 969 Bob FM  
2349 KKPT 94.1 AR Little Rock PI=1234 false PI KAVS  
2351 KHLR 94.9 AR Maumelle, Hallelujah FM  
2352 KICT KS Wichita, T-95, rock

6/26 Es

0003 KSAR 92.3 MO Thayer, sung K-S-A-R jingle  
0005 KYAL 97.1 OK Muskogee, the Sports Animal  
0010 KSCV 90.1 MO Springfield, Bott Radio Network  
0011 KTSO 94.1 OK Glenpool, alt rock RDS bogus PI of KWI  
0025 KXBL 99.5 OK Henryetta, Big Country 99.5  
0027 KWTO 98.7 MO Springfield, Jock 98.7  
1003 KPLO 94.5 SD Reliance, RDS PS=KPLO94  
1007 KTSD 91.1 SD Reliance-Pierre, RDS PS=SDPB KTSD  
1013 KXQL 107.9 SD Flandreau, Make a Wish Found S.D.  
1013 KQRN 107.3 SD Mitchell, Q107, rock  
1019 KARZ 107.5 MN Marshall, calls  
1020 KKLS 104.7 SD Sioux Falls, Midamerica Motoplex ad  
1021 KLZZ 103.7 MN Waite Park, RDS PS= KLZZ  
1023 KOLV 100.1 MN Olivia, RDS PS=KOLV  
1024 KZPK 98.9 MN Paynesville, wild country 99  
1024 KNXR 97.4 MN Rochester, calls  
1025 KMXC 97.3 SD Sioux Falls, [www.mix97-3.com](http://www.mix97-3.com)  
1029 KQQL 107.9 MN Anoka, Kool 107 HD#7  
1030 KCLD 104.7 MN St. Cloud RDS PS=KCLD  
1031 KKSD 104.3 SD Millbank 104.3 the Fox  
1036 KDJS 95.3 MN Willmar, RDS PS=KDJS  
1037 WQRB 95.1 WI Bloomer, RDS PS=WQRB, country  
1048 KGIM 103.7 SD Redfield, Pheasant Country 103  
1057 KVOX 99.9 MN Moorhead, Froggy 99.9  
1059 KNBj 91.3 MN Bemidji, RDS/HD locked in w/1 sec delay HD#8  
1850 KSOU 93.9 IA Sioux Center, RDS PS=KSOU PI=4108  
1857 KTSD 91.1 SD Reliance, PS=PUBLIC, PI=4403  
1900 KLNE 88.7 NE Lexington, NE weather  
1910 Unid 98.3, Kool 98 jingle  
1903 KBBN 95.3 NE Broken Bow, RDS PS=KBBN-FM PI=12CB  
1905 KINI 96.1 NE Crookston, Native American Music  
1917 KBRB 92.7 NE Ainsworth, calls

6/28 Es

1736 WRMB 89.3 FL Boynton Beach, RDS 82C5, PS=MOODY  
1738 WSOR 90.9 FL Naples, RDS PS=WSPR PI=85AD  
1948 KSMB 94.5 LA Lafayette, RDS A4C1 PS=KSMB 945

6/30 Es

1923 KTSO 94.1 OK Glenpool, Tulsa's Indep. Alt  
1927 KFPW 94.5 MO Barling, RDS, FoxNews  
1934 KSUI 91.7 IA Iowa City, HD locked in HD#9  
1936 KEFM 96.1 NE Omaha  
1937 KOCM 97.5 RDS, classic rock, unid  
1939 KYKC 100.1 OK Byng, KYKC continuous hit country  
1940 Unid 101.7 Spanish love songs ?  
1950 Unid 97.1 RDS PI=WXB PS kinda like 97.1URM White Sox/Royals BB, Midwest Ford Dealers ad  
1955 KRLS 92.1 IA Pella knia/krls.com, Pella mentioned  
1959 KCWD 96.1 AR Harrison, calls  
2010 WQKQ 92.1 IL Carthage, RDS PS=KQ92 classic r  
2020 KRSS 93.5 MO Tarkio, RDS PS=WYNK101.5  
2020 KTGL 92.9 NE Beatrice, RDS PS=KTGL rock  
2130 Atlantic City 107.3/96.9 strong

7/5 Es

1949 WSJT 94.1 FA Sarasota, Smooth Jazz & RDS  
1957 WJIS 88.1 FL Bradenton, Joy-FM  
2002 WIKX 92.9 FL Charlotta Harbor, country, calls  
2003 WLTV 92.1 FL Venice, RDS and John Tesh

2006 WSOR 90.9 FL Naples, RDS  
2012 WARO 94.5 FL Naples, classicrock945.com

7/7 Es

1915 WQUE 93.3 LA New Orleans  
1917 WEZB 97.1 LA New Orleans  
1919 WNOE 101.9 LA New Orleans, jingle, country  
1922 KCIL 107.5 LA Houma  
1927 WDVW 92.3 LA LaPlace, diva 92.3

7/8 Es

1942 KLNO 94.1 TX Ft.Worth, Recuardo  
1943 KKPT 94.1 AR Little Rock  
1947 KEGL 97.1 TX Ft. Worth, La Preciosa, SS

7/9 Es

1946 WGO 98.3 FL Midway, RDS, Oldies 98.3  
1948 WJSP 88.1 GA Warm Springs, RDS GA.Public  
2010 WTNT 94.9 FL Tallahassee, RDS bogus PI "WLA"

7/13 Es

1800 WFSQ 91.5 FL Tallahassee, RDS WFSU.org  
1803 WMCU 89.7 FL Miami "SPIRIT FM"  
1808 WOKK 97.1 MS Meridian, RDS "97OKK"  
1811 WEMX 94.1 LA Kentwood, RDS MAX94.1  
1812 WTNT 94.9 FL Tallahassee, RDS bogus "WLA"  
1820 WYOY 101.7 MS Gluckstadt, RDS Y101  
1838 KLAA 103.5 AL Tioga, LA103.5  
1844 WMAE 89.5 MS Boonville, RDS MPB89.5 WMPN  
1846 WMAO 90.9 MS Greenwood, MPB  
1854 KXKZ 107.5 LA Ruston, Z107.5  
1856 WTCD 96.9 MS Indianola, WTCD Super Talk  
1858 WDNX 89.1 TN Olive Hill, calls  
1902 WSNA 94.1 TN Germantown RDS new snap 94.1  
1919 More FM 94.9 Bahamas, ID  
1920 WSJT 94.1 FL Lakeland RDS, smooth jazz  
1921 WLTQ 92.1 FL Venice, Lite 92.1 RDS

7/14 Es

Missed most of this  
0942 WKES 91.1 FL Lakeland. Calls  
Plus WLTQ 92.1, WMCU 89.7 and WSOR 90.9

7/15 Es

1138 KIXQ 102.5 MO Joplin, Kicks 102.5

7/16 Es

1112 WFSW 89.1 FL Panama City, RDS 63C6  
1119 WMGE 94.9 FL Miami Beach, SS  
1130 Unid 89.1 rap, uncensored mixing with an open carrier plus a weaker SS station.

7/21 Es

1952 WMAO 90.9 MS Greenwood, RDS WMPN  
2011 KOUZ 89.1 AR Blanchard, Miracle 89.1

7/23 Es

1604 WSJT 94.1 FL Lakeland, RDS  
1604 WWRM 94.9 FL Tampa, RDS MAGIC94.9  
1605 WCFB 94.5 FL Dayton Beach, talk  
1606 WQYK 99.5 FL St. Petersburg, RDS k,  
1608 WHPT 102.5 FL Sarasota, RDS CI rock  
1609 WTBT 103.5 FL country, ???  
1610 WCTQ 106.5 FL Sarasota, ctq.com  
1614 WSOS 94.1 FL St. Augustine, RDS WSOSFM  
1618 WJGL 96.9 FL Jacksonville "northeast FL" mentioned  
1749 KOMG 92.9 MO Ozard RDS, basscountry.com  
1757 KKPT 94.1 MO Poplar Bluff, RDS

7/24 Tr

2045 WYND 97.1 NC Hatteras "Orville" on 97.1, "Wilbur" on 92.1  
2049 WCMS 94.5 NC Hatteras, Water Country  
2100 WFGY 99.9 MD Salisbury, Froggy  
2148 WNOR 98.7 VA Norfolk, fm99.com  
2150 WXEZ 94.1 VA Yorktown, gospel in \$  
2150 WYFI 99.7 VA Norfolk, preaching in stereo,

2157 WNVZ 104.5 VA Norfolk, ID "WNVZ Norfolk" at 9:57, z-104 after  
2159 WQHQ 104.7 MD Ocean City, RDS  
2200 WKUS 105.3 VA Norfolk, Kiss-FM R&B, alone on 105.3

7/25 Es

1716 WYNU 92.3 TN Milan RDS 956E  
1718 WJXA 92.9 TN Nashville, mix92.9.com  
1802 Tropo beginning from Norfolk and the coast including some rare catches as WGH 97.3.  
2312 WERX 102.5 NC Columbia, the Shark

7/26 Tr

0802 WBQK 107.9 VA West Point, W-Bach w/RDS PS=WBach, 58F6  
0830 WRVQ 94.5 VA Richmond, super strong Q  
0847 WRCK 107.3 DC Washington, mix 107.3  
0853 WRAR 105.5 VA Tappahannock, calls, Chandler Chevrolet, over local WVEI!  
0859 WXGG 104.1 MD Waldorf, local WPHH nulled out  
0900 WKIK 102.9 MD California, Calif. country with local WDRC phased down! 0902 Spanish with local WHCN phased down. Newark  
0910 WYRX 97.7 MD Lexington Park, 97-7 the Rocket, rock, New!  
0912 religious running // to WYFI.  
0913 WNNT 100.9 VA Warsaw, Swap Shop, ad for place on the road between Warsaw and Lyles Corner  
0919 WKJS 105.7 VA Richmond, Richmond Ford, Crossroads  
Chrysler-Jeep-Dodge in Petersburg  
0923 WAFX 106.9 VA Hampton Roads, 106.9 the Fox with super local WCCC phased down. Think this one is new.  
0926 WTDK 107.1 MD Federalsburg, Lloyd Hawk Chry-Jeep-Dodge, "the Duck"  
0934 WNCL 101.3 DE Milford, Cool 101.3 with WKCI phased down

7/26 Es

1603 WXGL 107.3 FL St. Petersburg, RDS HD 1 and HD2 HD#10  
1606 WQYK 99.5 FL St. Petersburg RDS  
1607 WXVS 90.1GA Waycross, RDS Waycross/Valdosta  
1608 WFSQ 91.5FL Tallahassee, RDS, classical  
1608 WSOS 94.1 FL ST. Augustine, RDS  
1608 WFBX 94.5 FL Parker, RDS  
1610 WQHL 98.1 FL Live Oak, RDS, country  
1610 WLLD 98.7 FL Holmes Beach RDS  
1611 WBZE 98.9 FL Tallahassee, RDS  
1614 WYNR 102.5 GA Waycross  
1615 WWSN 103.3 GA Waycross Sunny 103  
1629 WSUN 97.1 FL Holiday, 97x Tampa's new alt rock

Es

2030 KSAR 92.3 MO Thayer, ID and baseball

8/25 Tr

1203 WRQX 107.3 DC Washington mix107.3  
1207 WWMX 106.5 MD Baltimore, mix 106.5  
1211 WQXA 105.7 PA York, the X, rare here and more so with WHCN IBOC  
1226 WXPY 103.7 MD Havre de Grace, country  
1229 WTOP 103.5 DC Washington, nx/traffic/weather, calls  
1240 WWLF 101.9 MD Baltimore, 101.9 lite FM  
1245 WLEV 100.7 PA Allentown, 100.7WLEV, rare, WHUD fade, WRCH IBOC nulled  
1312 WASH 97.1 DC Washington Wash FM  
1317 WAYZ 104.7 MD Hagerstown, country, calls  
1728 WWZY 107.1 NJ Long Branch, the Breeze, through WCCC IBOC (phased)  
1857 WCZT 98.7 NJ Villas, 98.7 the Coast  
1900 WKMJ 98.5 NJ Ocean Acres, country, calls

8/28 Tr

2027 WTSS 102.5 NY Buffalo, Star 102.5  
2034 CKDK 103.9 ON London, 103.9 the Hawk  
2129 CBCL 93.5 ON London // 98.7  
2129 CBCB 98.7 ON Owens Sound // 93.5  
2142 CIMJ 106.1 ON Guelph, Magic 106.1  
2146 CFCA 105.3 ON Kitchener, Cool FM  
2245 WXNR 99.5 NC Grifton, the X  
2117 WUSQ 102.5 VA Winchester, Q102 wusq.com

### WTFDA EMAIL REFLECTORS

Enhance your DXing experience! Entertaining and informational.

*For WTFDA members and guests on the wtfda.info server*

The WTFDA list...send an email to [tvfmdx-subscribe@wtfda.info](mailto:tvfmdx-subscribe@wtfda.info)

190 users

The WTFDA AM DX list...send to [amdx-subscribe@wtfda.info](mailto:amdx-subscribe@wtfda.info)

89 users

## SIGN UP/Renewal form

Name \_\_\_\_\_

Address \_\_\_\_\_ Apt # \_\_\_\_\_

City \_\_\_\_\_ State/Prov \_\_\_\_\_ Zip \_\_\_\_\_

Country \_\_\_\_\_ Interests: TV ( ) FM ( ) 30-50( ) Weather( )

email address \_\_\_\_\_

Sign me up/renew me for: 1 year ( ) 2 years ( ) More ( )

Yearly dues \$24 (US), \$26 to (CANADA), \$10 (Electronic VUD)  
(Students get a discounted rate of \$15 yearly for the paper VUD.)

**Mail your dues to: WTFDA, P.O. Box 501, Somersville, CT USA 06072**

**Make your checks/money orders payable to: WTFDA**

**And *thanks* for your support of the WTFDA!**

Return this form with your dues or make a copy of it and return that.

### Bill Grant – Worcester MA

I noticed at 11pm on Tuesday (18th) that CJMO 103.1 Moncton was coming in. I was dead tired from looking at late night football and baseball all week, so I went to bed with the idea of getting up early. However, it was nearly 8am when I turned the radio on again. There on 103.1 was CBH-2 in Mulgrave (parallel to 102.7). I spent the rest of the day and evening listening to stations in NB, NS and downeast Maine. CBH-2 and 105.9 in Dennysville were still in there after midnight Thursday morning (20th) but were gone by 7am when I checked again.

Here is a rundown of what I heard (\* new stations).

Halifax, NS

CBAX 91.5, \*CKUL 96.5 (RDS: KOOL-FM), CBH 102.7, CKHZ 103.5, \*CFRQ 104.3  
(RDS: Q104-FM)

Mulgrave, NS

\*CBH-2 103.1

Truro, NS

\*CKTO 100.9

Moncton, NB

\*CJXL 96.9, CJMO 103.1 (RDS: C103FM)

Fredericton/St. John, NB

CHWV 97.3, CIOK 100.5, CBZ 101.5, CBAF-1 102.3, \*CFXY  
105.3

Maine, USA

\*WMME 92.3 Augusta, \*WEZQ 92.9 Bangor, \*WALZ 95.3

Machias, \*WABI 95.7

Ellsworth, \*WNSX 97.7 Winter Harbor, \*WFZX 101.7 Searsport,  
WQSS 102.5

Camden, WCRQ 102.9 Dennysville, WVOM 103.9 Howland, WBQI 107.7 Bar Harbor



CKTO Truro, NS

Antenna was in the attic (heading 40 degrees). Strong area stations and their IBOC hash made other frequencies (i.e. Sydney) impossible. I'll be looking for a few good fall openings.

**THE WORLDWIDE TV-FM DX ASSOCIATION  
THE VHF- UHF DIGEST  
P.O. Box 501, SOMERSVILLE, CT 06072**

Opinions expressed in this publication are those of the individual contributor and do not necessarily reflect the views of the publisher or board of directors. We reserve the right to edit material to meet publishing standards. Unless previously agreed upon in writing, all material submitted for publication in the VHF-UHF Digest becomes the property of the WTFDA. Reproduction of material from the VHF-UHF Digest without permission of the WTFDA is prohibited. Individuals and other organizations are granted such permission providing proper credits is given to the source.



***Established 1967***



## **FIRST CLASS MAIL**

**NOW! JOIN AND RENEW USING PAYPAL!**

Now you can pay for your dues by check, money order and ONLINE with Paypal! If you have a Paypal account you'll be done in a matter of seconds! Pay at our Paypal webpage at <http://fmdx.usclargo.com/join.html> or send your dues to [mbugaj@snet.net](mailto:mbugaj@snet.net)