

# Vhf-Uhf DIGEST

The Official Publication of the Worldwide TV-FM DX Association

DECEMBER 2007

The Magazine for TV and FM DXers

## DENVER DTV TOWER CONSTRUCTION SITE



Photo Supplied by Jim Thomas

**14**  
**MONTHS**

REMAINING UNTIL  
ANALOG TV SHUTOFF



### *Holiday Greetings*

Midwest DXers Find Tropo  
November 13-14 to 400 miles



*TV and FM DXing was never so much fun!*

# THE WORLDWIDE TV-FM DX ASSOCIATION

*Serving the UHF-VHF Enthusiast*

THE VHF-UHF DIGEST IS THE OFFICIAL PUBLICATION OF THE WORLDWIDE TV-FM DX ASSOCIATION DEDICATED TO THE OBSERVATION AND STUDY OF THE PROPAGATION OF LONG DISTANCE TELEVISION AND FM BROADCASTING SIGNALS AT VHF AND UHF. WTFDA IS GOVERNED BY A BOARD OF DIRECTORS: DOUG SMITH, GREG CONIGLIO, BRUCE HALL, KEITH MCGINNIS AND MIKE BUGAJ.



*Editor and publisher:* **Mike Bugaj**

*Treasurer:* **Keith McGinnis** wtfda.org Webmaster: **Tim McVey**

wtfda.info Site Administrator: **Chris Cervantez**

*Editorial Staff:* **Dave Williams, Jeff Kruszka, Keith McGinnis, Fred Nordquist, Nick Langan, Doug Smith, Peter Baskind, Bill Hale and John Zondlo,**

Our website: [www.wtfda.org](http://www.wtfda.org); Our forums: [www.wtfda.info](http://www.wtfda.info)

DECEMBER 2007



Finally! For those of you online with an email address, we now offer a quick, convenient and secure way to join or renew your membership in the WTFDA from our page at:

<http://fmdx.usclargo.com/join.html>

Dues are \$25 if paid to our Paypal account. But of course you can always renew by check or money order for the usual price of just \$24. Either way, it's still a bargain!

*eVUD members please send \$10 for membership or renewal to [mbugaj@snet.net](mailto:mbugaj@snet.net).*

## CONTENTS

Page Two	2
Mailbox	3
TV News...Doug Smith	5
FM News...	9
Photo News...Jeff Kruszka	18
Eastern TV DX...Nick Langan	20
Western TV DX...Dave Williams	24
Southern FM DX...John Zondlo	26
Northern FM DX...Keith McGinnis	27
The Kitz Amp	28
2008 Tower Calendar	29
RCA L15D20 15" DTV	30
Sign up/Renewal Form	31

## FIND US FAST!

### WTFDA BOARD OF DIRECTORS

Mike Bugaj, use the WTFDA Mailing address listed below

Doug Smith, 1385 Old Clarksville Pike, Pleasant View, TN 37146-8098

Greg Coniglio, 11825 Genesee St., Alden, NY 14004

Bruce Hall, 5 Stirton Ave., Brantford, ON N3T 1E2

Keith McGinnis, 6 Ritter Road, Hingham, MA 02043

[mikeb@wtfda.org](mailto:mikeb@wtfda.org)

[dougs@wtfda.org](mailto:dougs@wtfda.org)

[gregc@wtfda.org](mailto:gregc@wtfda.org)

[dbruce@wtfda.org](mailto:dbruce@wtfda.org)

[nfmdx@wtfda.org](mailto:nfmdx@wtfda.org)

\*\*\*\*\*

**THE MAILBOX** and all general club correspondence:

Mike Bugaj at WTFDA, PO Box 501, Somersville, CT 06072

[mailbox@wtfda.org](mailto:mailbox@wtfda.org)

**TV NEWS**

Doug Smith, 1389 Old Clarksville Pike, Pleasant View, TN 37146-8098

[dougs@wtfda.org](mailto:dougs@wtfda.org)

**FM NEWS**

Bill Hale, 6124 Roaring Springs Drive, N. Richland Hills, TX 76180

[w\\_r\\_hale@sbcglobal.net](mailto:w_r_hale@sbcglobal.net)

**PHOTO NEWS**

Jeff Kruszka, 1909 Lost Lake Pl., Pearland, TX 77581

[jeffk@wtfda.org](mailto:jeffk@wtfda.org)

**EASTERN TV DX**

Nick Langan, 1040 Riverview Dr., Florence, NJ 08516

[nickl@wtfda.org](mailto:nickl@wtfda.org)

**WESTERN TV DX**

Dave Williams, 3525 SW Timber Ave., Redmond, OR 97756

[wtdvx@wtfda.org](mailto:wtdvx@wtfda.org)

**SOUTHERN FM**

John Zondlo, 4009 Driftwood Cir., Yukon, OK 73099

[southernfmdx@wtfda.org](mailto:southernfmdx@wtfda.org)

**NORTHERN FM**

Keith McGinnis, 6 Ritter Rd., Hingham, MA 02043

[nfmdx@wtfda.org](mailto:nfmdx@wtfda.org)

**TV and FM STATISTICS**

Fred Nordquist, 147 Travis Hill Road, Moncks Corner, SC

[nordquis@homexpressway.net](mailto:nordquis@homexpressway.net)

**6 METER/2 METER**

Peter Baskind, 3225 Forest Hill-Irene Rd, Germantown, TN 38138

[n4li@arrl.net](mailto:n4li@arrl.net)

**WEBSITE** Tim McVey Webmaster <http://www.wtfda.org>

[tim@4mcveys.com](mailto:tim@4mcveys.com)



# The Mailbox

P.O. Box 501, Somersville, CT USA 06072  
MIKE BUGAJ MBUGAJ@SNET.NET

---

## THE OFF-SEASON BLUES

Well it's December now and it's the season to be jolly and all that, but it's not easy to be jolly when there's no DX around. This is not the best time of the year for tropo but there's always the possibility of a little bit of winter E skip if you happen to be lucky enough to find it.

On November 13<sup>th</sup> and 14<sup>th</sup> the midwest experienced some fine, late fall tropo and DXers caught stations up to 400 miles away. The rest of us, though, haven't missed much.

The Geminids is an annual meteor shower taking place from the 6<sup>th</sup> through the 19<sup>th</sup> of December. This is a major shower and if you live in an area with some open frequencies on FM you might try parking on one of them to see what you hear. You might hear something.

In just one month we will be entering our last full year of analog television (with the exception of LPTVs and translators). We'll try to keep you informed of all the latest happenings since there will be a lot going on like the distribution of vouchers for new DTV converter boxes.

Will the shut down of analog TV yield the same results for DXing as the proliferation of IBOC on FM by the major broadcasters? It won't be long before we find out.

## MEMBERS AND MORE

There wasn't too much mail this month. Carlin Hattan (FL) rejoined after moving from Miami to Melbourne. Welcome back Carlin!

During the period of 10/17 through 11/18 we had renewals back from Keith Short (OH), Wayne Benkinney (MI), Jefferson Lewis (MO), Brian May (CT), Chester Jaffee (CA), Paul LeFrenaire (MN), John Adams (OR) and Bill Heusmann (IA). Thank you all for staying with us another year!

## TRANSMISSION QUESTIONS

**Chris Kadlec** posted this recently on the tvfmdx list: I have what seems like a somewhat stupid question for someone who has been DXing for 18 years now... but it's been bugging me for a long time and has been the single biggest problem in my lake

tropo research (and my understanding of generally everything radio):

I've been told before that signals generally extend into space due to the curvature of the Earth. But in all my research, I've recorded that signals are instead going toward the ground. Now I know that there are ducts and various other things to reflect off of (birds, planes, buildings, clouds, rain, high pressures, low pressures, whatever), but I've always found one hole in this idea. At a transmitter site, does a signal broadcast from the tower in a 360 degree pattern? I'm assuming it must, or else you wouldn't be able to hear it at the transmitter site and for a way beyond that. Anyone who lives near a transmitter knows the station is loud as heck though!! So that would mean that a signal ALSO is sent straight up into the air, to the left, to the right, AND toward the ground whether at 180 degrees or 100 degrees or 90 or whichever. Yes?

I've always found (as everyone else has) that when a signal is distant, it comes in and goes out, etc. To me, I would visualize it as individual lines of signal. Let's say a transmitter beams out 10,000 lines of a signal... and maybe a cluster of 100 of them make it 150 miles... and you hear them and then you don't... etc. Because by then it's not one big... signal, but leftover bits. (Some of you are probably looking crookedly at your screen thinking I'm crazy!!) I guess that's my way of trying to SEE what really is invisible in order to understand it.

But I'd like to finally understand how this works... how a signal comes off the transmitter. I haven't had much luck finding info on that in the past, but I know some of you surely know what I want to know. After all, I'm in the business of listening for the signal, not broadcasting it to people.-Chris Kadlec

-----  
*Short answer is, the pattern from broadcast antennas looks like a toroid. The more bays on the antenna, or generally the higher in frequency, the flatter this toroid or donut is.*

*A longer answer.. An antenna that radiates equally well in all directions is called an isotropic radiator. In practice, these don't exist. Even a dipole antenna turned vertical will send essentially no signal off the ends. Sliced through the center, the pattern has a*

*big fat donut shape. If you add dipoles (bays) to the antenna, it squashes the donut shape and puts more signal out to the horizon. For FM and TV, this will increase the effective radiated power and coverage. Even AM antennas have an effect like this. A quarter wave antenna is a fat donut shape. Increase the height to a half wave, and the donut flattens, increasing coverage. This increase happens up to a 5/8 wavelength, but a secondary lobe begins to form as you go over half wave. This lobe is aimed around 30 degrees upwards and can cause interference from skywave to the groundwave signal about 70 miles away, ±.*

*On FM and TV, these secondary lobes also happen when you add bays. For example, on a 12 bay FM antenna, the lobes do cause trouble if not carefully designed, and the antenna situated properly. A many-bay antenna also can have a pattern that is so flat that relatively near-in listeners can have signal issues. UHF antennas have a **\*very\*** flat donut shape. And maybe 20db gain. Gain is the goal of multi-bay antennas. Smaller transmitters required.*

*While VHF antennas don't put a lot of signal high up or close in, it's not a perfect null by a long shot. Odd number bay antennas (3-5-7, etc.) do have a small lobe straight up/down. This does cause RF exposure issues on rare occasions.*

*Signals do go up at high angles, but are considered wasted energy. –Craig Healy*

### **ABOUT THE VUD COVER**

This month's cover comes to us from **Jim Thomas**, who posted the picture on the WTFDA Forum site. Jim wrote "The tower has not started yet. In the picture is construction of the building that will house the transmitters and technical offices for KCNC-DT 4, KMGH-DT 7, KUSA-DT 9, and KTVD-DT 20. This photo was taken this past weekend (11-03-07) by a colleague in Golden. One can also see the guy wires for other towers currently on Lookout Mountain, which is just west (slightly north) of Golden, Colorado.

An added note: Most of the engineers in Denver are saying now that it might be possible that by this time next year, Denver will have FULL POWER DTVs from Lookout Mountain."

### **DIGITAL RADIO ON CH 5 AND 6?**

**Allan Dunn** posted a link on the tvfmdx list to a Radio World article where a proposal to expand the FM band down to 82 or 76mhz was discussed.

The post prompted this reply from **Doug Smith**: "This kind of thing seems to come up

from time to time. I used to write it off as impossible due to continuing use of channels 2-6 for DTV.

I still think DTV will continue to use these channels to some degree for quite awhile to come. However, I no longer think DTV would preclude the use of 54-88MHz for radio.

I do wonder whether analog FM is the right thing to do here. IMHO this is the right place to put "IBOC" digital. (or better yet, Eureka-147 digital)

There is only one market (Butte, Montana) in which both channels 5 and 6 will be used for permanent DTV operation. There are few other markets (if any!) in which more than one low-band channel will be used. We could allot 54-88MHz for digital radio provided protection is given to DTV assignments. I would suggest 18MHz (3 TV channels) would be available **everywhere**. That's almost enough to give every FM station an "IBOC" channel on which they could operate without interfering with anyone. (and on which they could immediately begin operation in full digital mode, probably fixing the IBOC coverage issues)

Again, better yet, run Eureka up here. That would provide enough subchannels to give AM stations a full-coverage, full-fidelity digital channel as well.

In all three cases (analog, IBOC, Eureka) receiver designs already exist - and in all three cases modification of the RF frequency-determining circuits would have to happen - so I don't think there would be much difference in time to deployment."

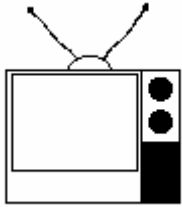
### **THOUGHTS ON 2007**

Throughout 2007 WTFDA membership held in the mid 240s and on one recent month it peaked at just over 250. In reality we're on a plateau. Most people who have had their hobby trashed by IBOC or DTV are still here although they aren't active DXers anymore. But it's possible we could have a membership spike in 2009 when VHF opens up and Es becomes more interesting again.

We have a group of DXers who enjoy DXing DTV stations and we have FM Dxers who are DXing through their IBOC and doing well and still enjoying the hobby.

We've had a few large VUDs this year but many months have been rather thin. I don't know how we can reverse this as it depends on DX and DXers and other conditions out of our control.

So folks, please support your column editors in 2008 even if you have only a few items to report. It all adds up. No reports are trivial. If you've only reported to the email lists, consider CCing your email to the column editor in your area and help us stay monthly. See you next month!



# TV News

Douglas E. Smith  
 1389 Old Clarksville Pike  
 Pleasant View, TN  
 37146-8098  
[w9wi@w9wi.com](mailto:w9wi@w9wi.com)

<http://www.w9wi.com>

## December 2007

### Abbreviations:

AF	Applied For (a new station)	NW	New station on the air
Aux	Auxiliary (backup) transmitter	PA	Proposed Amendment
CC	Callsign change	PC	Power (and/or tower height) change on the air
CL	City-of-license change	PG	Power change granted
DC	Converted to DTV	PR	Power change requested
DCC	Digital Companion Channel	RA	Returns to the air
NS DCC	Granted flash-cut to DTV	QC	Channel (frequency) change on the air
DE	License/permit deleted	QG	Channel change granted
DR	Requests flash-cut to DTV	QR	Channel change requested
FC	Programming (format) change	RE	Reinstated (previously-dismissed app.)
FTP	Failure to Prosecute	ROA	Request of Applicant
GA	Granted amendment (to table of channel allotments)	SI	Off the air (silent)
LC	License to Cover	STA	Special Temporary Authority
MX	Mutually Exclusive	XC	Transmitter site changed
NDA	Non-directional antenna	XG	Transmitter site change granted
NS	Permit granted for new station	XR	Transmitter site change requested

### News:

(full-power analog stations in **bold face**; LPTV and translators in regular type; full-power digital stations in **bold italics**; low-power digital stations in regular italics)



#### Puerto Rico

<b>Guayama</b>	<b>45</b>	<b>WIDP-DT</b>	<b>NW 50.1kw/ 631m, 18-16-44/ 65-51-10</b>
San Juan	38	NEW-LP	AF dismissed



#### USA

##### Alabama

Andalusia	25	WKNJ-LD	DG 15kw
Andalusia	40	W40BE	PR>50kw
Priceville	51	WYAM-LD	DG 19.6kw

##### Alaska

Juneau	17	K17HC	PR<100w, 58-19-47/ 134-28-17 dismissed
Kenai	8	K08LW	PR>400w

##### Arizona

Big Sandy Valley	27	K27DA	RA w/KNXV-15
Camp Verde	55	K55IY	RA w/KPHO-5
Colorado C.	27	K27EJ	FC to KSAZ-10
Duncan	65	K65CM	FC to KGUN-9
Duncan	67	K67CP	FC to TNT
Duncan	69	K69DG	FC to KOVT-10
Flagstaff	45	KAFL-LP	CC from K45KL
Fredonia	15	K15DX	FC to KSAZ-10
Golden Valley	21	K21EG	off

Lake Havasu City	10	KBBA-LP	off
Moccasin	35	K35EE	RA w/KSAZ-10
<b>Phoenix</b>	<b>29</b>	<b>KAET-DT</b>	<b>8-3: FC to PBS World 8-4: KBAQ-FM simulcast moved from 8-3</b>
Phoenix	55	K55EH	off, bumped by MediaFLO
Prescott	39	K39IT-D	NW 1.3kw, 34-29-20/ 112-32-15; relays KSAZ-DT
Williams	41	K41JE	NW 1kw, 35-12-01/ 112-12-15; relays KASW-61
York	7	K07IR	off
Yuma	20	NEW-LP	AF dismissed

##### Arkansas

El Dorado	5	KCIB-LP	CC from K05KG
-----------	---	---------	---------------

##### California

Arroyo Grande	8	KKDJ-LP	CC from KAGP-LP
Bakersfield	18	K18HD-D	DG 13kw, 35-26-18/ 118-44-18
Banning	35	KRMV-LP	DR 10w from ch. 45 Moreno Valley dismissed
Brawley	20	NEW-LP	AF dismissed
<b>Ceres</b>	<b>15</b>	<b>KBSV-DT</b>	<b>NW 18.6kw/ 151m, 37-29-32/ 121-13-28</b>
Chico	15	K15HV-D	PR<1.04kw, 39-57-29/ 121-42-49; PG
Chico	35	KKTF-LP	CC from K35HY
Chico	51	KBIT-LD	NW 15kw
Cloverdale	40	KORM-LP	PC<4kw,

Crescent City 44 K44JF-D 38-48-34/  
123-02-56  
DG 12kw,  
41-58-11/  
124-11-17

Daggett 6 KCIO-LP QG from ch. 26, 1kw;  
CC from K26FO

Eureka 11 KEET-DT NW 40kw/  
550m

Greenfield 20 KSCZ-LD NS DCC for ch. 42,  
15kw,  
36-45-23/  
121-30-05

Hanford 14, KHMM-CA, - XR 37-04-19/  
23 LD 119-25-49; PR<500w  
on ch. 14 analog

Lancaster 50 KEDD-LP CC from KTRO-  
Los Angeles 3 KVTU-LP PC 100w,  
34-14-17/  
117-04-31

Los Angeles 12 KVTU-LD DR 230w,  
34-20-28/  
117-48-22

Morongo Valley 3, KHIR-LP/LD CC from K03HS  
51

Morongo Valley 22 KHIR-LP QG from ch. 3,  
9.99kw,  
34-15-24/  
117-14-23

Paso Robles 36 KJCN-LP PG>150kw,  
35-57-07/  
121-00-00

Redding 58 KRHT-LP CC from KKDJ-LP  
Salinas 18 K18IJ-D NS DCC 100w for  
K56AA

Salinas 38 K56AA QC from ch. 56, 150kw  
Templeton 19 K19HU-D NS DCC 15kw, 36-32-  
18/  
121-37-31 for K23ED

**Colorado**

Bayfield 50 K50FS-D DG 240w  
Cortez 7, 9 K07UY, PC>1kw,  
K09DM 37-21-01/  
108-08-01

Cortez 24 K20DI QC from ch. 20  
Cortez 28 K28EB PC<920w,  
37-21-01/  
108-08-01

Cortez 39 K39EY-D DR 1kw  
Dolores 12 K12QH NW 10w,  
37-28-00/  
108-31-26

Glenwood 39 KHGS-LP CC from K39IC  
Springs

Steamboat 24 KRMZ CC from KMAS-TV;  
Springs FC to PBS // KRMA-6  
Wray 31 K31IH-D DG 190w

**Delaware**

Rehoboth Beach 31 WRDE-LD NS DCC for ch. 59,  
15kw

**Florida**

Jacksonville 50 W50CO XR 30-19-33/  
81-39-33

Leesburg 45 WTGL CC from WLCB  
Live Oak 26 WSSH-LD DG 15kw,  
29-44-22/  
82-23-09

Live Oak 48 WFXU-DT NW 22kw/  
134m,  
30-33-00/

Orlando 22 WOFL-DT 83-00-48  
AF 227kw/423  
28-34-51/  
81-04-32(aux)

Orlando 35 WOFL AF 483kw/423 28-34-  
51/  
81-04-32 (aux)

Orlando 41 WRBW-DT AF 255kw/423 28-34-  
51/  
81-04-32(aux)

Orlando 65 WRBW AF 460kw/423 28-34-  
51/  
81-04-32 (aux)

Palm Beach 11 WBPB-LD QR from ch. 30, 300w,  
26-22-12/  
80-10-23

St. Augustine 14 WOXT-LD NS DCC for ch. 22,  
15kw,  
29-54-14/  
81-22-55

**Georgia**

Athens 8 WGTV PG 314kw/  
330m; PC

Athens 8 WGTV NS 46.3kw/  
302m (aux)

Atlanta 17 WPCH-TV CC from WTBS  
Atlanta 26, WTBS-LP/LDCC from WANX-LP/LD  
30

Columbus 19/2 WANX- CC from W19DA/  
1 LP/LD W21CV-D

Columbus 36 W60DJ QR from ch. 60,  
17.5kw

Toccoa 8 W68AF QR from ch. 68, 180w  
(to synchronize w/co-  
owned WGTV-8?)

**Hawaii**

Honolulu 40 KITV-DT NW 85kw/1m  
Honolulu 46 KHLU-CD DG 30w

**Idaho**

Idaho Falls 12 K12NZ PR<110w,  
43-30-40/  
112-00-35

**Illinois**

Chicago 4 WOCK-LD QR from ch. 12, 300w  
Chicago 39 WWME-LD PR>1.8kw

Mount Vernon 21 WPXS-DT PR<240kw dismissed  
Rochelle 8 WMKB-LD XR 42-01-05/  
88-29-28 (from DeKalb  
to western Kane Co.  
Analog station is near  
Rochelle.)

**Indiana**

West Lafayette 65 WUVI-LP PG<5kw,  
40-45-51/  
87-09-03; CC from  
W65EH

**Iowa**

Cedar Rapids 33, KCDR-LP, QR from ch. 55, 4kw,  
35 KRUB-LP 41-57-10/  
91-41-00 dismissed

Mason City 42 KIMT-DT NW 200kw/  
463m,  
43-28-32/  
92-42-29 (KYIN-24  
twr)

**Kansas**

Concordia	20	K20JP-D	NS DCC 15kw for K64BS	<b>Butte</b>	19	<b>KWYB-DT</b>	<b>PR&lt;111kw</b>
				Kalispell	34	KMMF-LP	PG<2kw, 48-10-34/ 114-20-53
<b>Kentucky</b>				Kalispell	42	KTMF-LP	QR from ch. 59 dismissed
Augusta	20	W20CT-D	NS DCC 800w, 38-46-04/ 84-00-35 for W56AT	Polson	41	K41IW-D	DG 60w, 47-40-42/ 114-08-36
<b>Bowling Green</b>	16	<b>WNKY-DT</b>	<b>PR&lt;120kw</b>	Red Lodge	35	K35JF-D	NS DCC 15kw for K39HD
Campbells-ville	4/	WLCU-	CC from W04BP/	Thompson Falls	7, 9,	K07FL-D,	DG 30w,
	45	CA/LD	W45DC-D		11,	K09FQ-,	47-32-27/
Lebanon	6	W06AY-D	DG 300w		36	K11FQ-,	115-19-06 (180w on ch 36)
						K36BW-D	
<b>Louisiana</b>				Weeksville	29	K29ID	QG from K68AR, 840w
<b>Lafayette</b>	28	<b>KATC-DT</b>	<b>NW 1000kw/ 537m, 30-19-25/ 92-17-24</b>	Woods Bay	48	K48EO-D	DG 170w
Lafayette	58	KOPP-LP	CC from K58GA	<b>Nevada</b>			
New Orleans	41	KNOV-LD	NW 6.3kw (DCC for ch. 57)	Laughlin	57	K57JO	off
<b>West Monroe</b>	38	<b>KMCT-DT</b>	<b>NW 14kw/ 144m</b>	<b>New Mexico</b>			
				Albu-querque	39	KTEL-LP	QC from ch. 53, 71.6kw
<b>Maine</b>				Albu-querque	47	K56FB	QC from ch. 56, 62.8kw
Bangor	16	W16CN-D	NS DCC 1kw, 44-48-13/ 68-48-17 for W31CX	Aztec	44	K44GC-D	DG 240w
				Farmington	27	K27GJ-D	DG 2kw, 36-40-17/ 108-13-53
Calais	42	W42DN-D	NS DCC 300w for W61AO	<b>Hobbs</b>	16	<b>KUPT-DT</b>	<b>PR&lt;380w/ 154m</b>
Farmington	21	WGBI-LD	DG 14kw; CC from W21BI	Las Cruces	20	KCWF-CA	PR<990w, 32-24-16/ 106-45-38
<b>Poland Spring</b>	8	<b>WMTW</b>	<b>CC from WMTW-TV</b>	Los Alamos	49	K49KF-D	PR>694w
				Santa Rosa	34	K34GL-D	DG 120w
<b>Maryland</b>				<b>New York</b>			
Ocean City	30	WRAV-LD	NS DCC for ch. 8, 7.4kw	<b>Albany</b>	26	<b>WTEN-DT</b>	<b>adds RTN on 10-2</b>
				<b>Amster-dam</b>	55	<b>WYPX</b>	<b>Dark, now DTV-only on ch. 50</b>
<b>Michigan</b>				Ellenburg	49	W49BI	PG>11kw
Detroit	8	WUDT-LD	NS DCC for ch. 23, 300w	Monticello	27	W27AL-D	DG 5kw
Flint	26	WHNE-LD	NS DCC for ch. 32, 1.6kw, 42-47-02/ 83-32-05	Plattsburgh	27	WWBI-LP	FC to i (lon)
Grand Rapids	41	WOLP-LD	NS DCC for ch. 27, 42-41-13/ 85-30-34 (must wait for WOTV)	Port Jervis	9	W09CU-D	NS DCC 40w, 41-12-30/ 74-21-23 for W55DK
Kalamazoo	26	W26BX-D	DG 15kw, 42-07-44/ 85-20-22	<b>Saranac Lake</b>	40	<b>WCWF</b>	<b>FC to i, relays WWBI-LP 27</b>
Pickford	43	W43CM	NW 12kw, 46-05-05/ 84-24-23	<b>North Carolina</b>			
St. Ignace	24	NEW-LP	AF dismissed	Buxton	50	WHOB-LP	CC from W50DM
<b>Minnesota</b>				<b>North Dakota</b>			
Hibbing	15	K15GT-D	DG 8.04kw	<b>Bismarck</b>	31	<b>KFYR-DT</b>	<b>NW 500kw/ 389m</b>
Mankato	28	KHVM-LD	DG 100w	Bismarck	33	KIJC-LP	CC from K33IG
Royalton	30	KTCJ-LD	DG 5kw, 45-37-57/ 94-10-26	Minot	42	K42IM-D	NS DCC 500w for K47KA
<b>Mississippi</b>				<b>Ohio</b>			
Hattiesburg	10	WGVI-LP	CC from W10CV	Columbus	33	WCSN-LD	NS DCC for ch. 32, 15kw
Jackson	39	WJKO-LD	NS DCC for ch. 64, 15kw, 32-16-53/ 90-17-41	Marietta	22, 1	WVEX-	CC from
					3	LP/LD	W22CU/W13DL-
Laurel	68	W68DX	PR<1kw	Marietta	64,	WWWVX-	CC from
					4	LP/LD	W64CS/W04DH-
<b>Montana</b>				Toledo	28	W28DH-D	NS DCC 1kw, 41-39-13/ 83-41-34 for W38DH
Big Arm	7	K07VU-D	DG 40w	Toledo	34	WBTL-LP	PR>90kw dismissed
				<b>Zanesville</b>	40	<b>WHIZ-DT</b>	<b>req. DA, but</b>

**dismissed**

**Oregon**  
**Bend** 18 **KTVZ-DT** **NW 28kw/ 197m**  
Black Butte Ranch 53 K53JV PC>30kw, 44-04-41/ 121-19-57  
Eugene 49 KAMK-LP QG from ch. 53, 10kw  
Grants Pass 19 K19HS-D XG 42-29-20/ 123-18-21  
Hood River 20 K20EH PR<258w  
The Dalles 51 K51EH-D PR>2.23kw; PG  
Warrenton 51 KHPN-LP CC from K511X

**Pennsylvania**  
Erie 9, 43 WLEP-LP/LDCC from WWTF-LP/LD  
State College 27 WHVL-LD NS DCC for ch. 29, 15kw  
State College 42 W42DG-D NW 15kw, 40-43-04/ 77-53-28

**South Carolina**  
**Sumter** 39 **WKTC-DT** **NW 500kw/ 391m**

**South Dakota**  
Pierre 40 KJCI-LP CC from K40JZ

**Tennessee**  
**Memphis** 14 **WTWV-DT** **CC for NS; then -DT dropped (to sign on as analog?)**

**Texas**  
Abilene 5 KTXF-LP PC<670w, 32-30-38/ 99-44-29  
Austin 20 KADF-LP PC>150kw  
Corpus Christi 33 KCCG-LP PC<2.6kw, 27-47-46/ 97-23-47  
Corpus Christi 53 NEW-LP AF dismissed  
Raymond-ville 46 KRYM-LP QC from ch. 55, 100w, 26-29-51/ 97-46-04  
Rio Grande City 30 KRGT-LP QR from ch. 6 dismissed  
Victoria 45 K45IN PR<2kw, 28-42-08/ 96-12-54

**Utah**  
**Bicknell** 54 **K54JV-D** **NW 20w, 38-17-00/ 111-30-36**  
**Garfield Co.** 16, 18, 20, 22, 24, 26, 28, 30 **K16EQ-, K18FT-D, K20GE-, K22FT-D, K24FD-D, K26GD-, K28GM-, K30GA-D** **DG 110w, 38-32-30/ 112-04-20; DC**  
**Garfield Co.** 39, 41, 45, 47, 495 **K39FT-D, K41EB-, K45BY-, K47AB-, K49AG-1 K51AH-** **DG 180w**  
Huntsville 22 K22IU-D NS DCC 340w for K58FT  
Juab 22 K22EC-D DC 680w

Long Valley Junction 46 K46EO DG 20w  
Long Valley Junction 48 K48EK-D DR 20w  
Manti 43 K43JF DR 40w; DG  
Marysville 45, 47, 49, 50, 51, 52 K45JM-D, K47KO, K49JN-D, K50JV-D, K51JO-D, K52JU-D NW 10w, 38-30-26/ 112-11-49  
Richfield 57 K57KB-D NW 10w, 38-38-06/ 112-03-34  
Springlen 51 K51IC-D DC 130w  
St. George 25 K25JS-D NW 130w, 37-03-48/ 113-34-23; relays KTVX-DT 40 (both subchannels)  
Teasdale 53 K53JG-D NW 20w, 38-17-00/ 111-30-36

**Vermont**  
**Burlington** 43 **WFFF-DT** **adds CW on 44-2**  
**Burlington** 44 **WFFF-TV** **PR<750kw/ 577m, 44-34-26/ 73-40-29**  
Burlington 49 WGMU-LD NS DCC for ch. 39, 15kw  
Rutland 20 W20CS-D DG 610w; CC from W69AR  
St. Johnsbury 18 **WVTB-DT** **PR<67kw**

**Virginia**  
Charlottesville 13 WIVC-LP CC from W13DD  
Grundy 49 **WLFG-DT** **NW 1000kw/ 662m**  
Lovingston 70 W70AP granted transfer of control  
Richmond 45 WKYV-LP PC>72.6kw, 37-30-45/ 77-36-05; CL from Keysville  
South Boston 73 W73AJ granted transfer of control

**Washington**  
Prosser 10 K10NQ PC>1.1kw  
Pullman 46 KPMT-LP CC from K46HV  
Walla Walla 21 K21EK PR>3.58kw; PG; PC

**West Virginia**  
Clarksburg 56 WVUX-LP CC from W56EI

**Wisconsin**  
Chippewa Falls 65 WIJC-LP CC from K65HZ  
Milwaukee 20 WMKE-LD NS DCC for ch. 7, 2kw

**Wyoming**  
Casper 23 K23HQ NW 10kw, 42-50-32/ 106-13-05  
Cheyenne 36 K36JO-D DR 6kw, 41-09-34/ 104-43-19; DG  
Jackson 30 KHJH-LP CC from K30JU

(FM News continues on page 17)





# FM NEWS

From WTFDA.info and w9wi.com



**BILL HALE, 6124 ROARING SPRINGS DR, N. RICHLAND HILLS TX 76180**  
**w\_r\_hale@sbcglobal.net**

**USE CHANNEL 6 FOR FM, says Engineer**  
from Radio World

It's time to drop radio's protections for TV Channel 6 and re-purpose that spectrum to the FM band. So says engineering consultant John Mullaney. In a filing to the FCC for MB Docket 87-268, "Advanced Television Systems and Their Impact Upon the Existing Television Broadcast Service," Mullaney says adding 82 to 88 MHz to the bottom of the FM band would ease overcrowding; the time is also right for the agency to decide if TV Channel 5 should be reallocated to radio as well, he said.

"The assumptions that Channels 2-6 are technically equal to the remaining Channels 7-51 has proved not to be totally accurate," says Mullaney in the filing.

"We believe the problems associated with impulse noise and greater difficulty in compensating for signal cancellations are some of the major reasons why there are only 38 potential [TV] digital allotments under consideration while there are currently 302 analog full-service analog allotments."

Because only eight digital allotments are proposed for TV Channel 6, Mullaney believes, based upon this "extreme underutilization of TV 6, the commission could also consider a shared use of the channel but limit the sharing to just those full-service digital TV allotments currently under consideration."

Many of the recently filed NCE applications for radio allocations either ignored Channel 6 protection or curtailed their proposed power levels to protect those analog channels, he said.

The thousands of applications filed in the recent window, as well as more than 14,000 applications filed in the 2003 FM translator window, demonstrates pent-up-demand for FM spectrum, he argues.

One allocation for a TV channel could be used for up to 30 FM radio stations; such additions could go a long way towards easing short-spacing conditions on the FM band, he states.

As you will notice, as I'm not a great fan of abbreviations, I have replaced many of them (see below) with common, everyday language. Such as changing "PR" and "QR" to 'Applies for'. Many abbreviations are useful, such as "DA" and "CP" and have been retained. I recognize the need to fit a lot of data in a small space and still make it readable, but let's try to make this column as readable as possible. Feel free to sound off on the subject. My e-mail address appears above.

## INDEX OF ABBREVIATIONS

**APP** application  
**AUX** auxiliary facilities (backup)  
**CL** city of license change  
**CP** construction permit  
**C1-C5** FM license class  
**DA** directional antenna

**FC** frequency change  
**ROA** request of applicant

**Note: antenna heights are HAAT except where noted**

## --- CANADA ---

### CALL CHANGES

	Old	New
AB Fort McMurray	100.5 new	CHFT
AB High River-Okotoks	99.7 new	CFXO: Country: "Sun Country"
BC Powell River	95.7 new	CHQB: 1.2 kw; FM conversion from 1280 previously approved but applied-for frequency of 94.1 was not acceptable
BC Salt Spring Island	107.9 new	CFSI
BC Whistler	90.7 VF2341	CFMI-1
BC Whistler	92.3 CFXX	CFOX-1
MB Winnipeg	99.1 CJZZ-FM	CKGV-FM
ON Bolton	105.5 new	CJFB
ON Caledon	102.7 new	CFGM
ON Chatham	89.3 new	CKGW (Christian)
QC Donnacona	100.9	CHXX
QC Mont Joli	93.3 new	CFYX: Classic Rock/Talk (FF)
QC Saguenay	98.3 new	CKRS: // 590 for 3 months
QC Sherbrooke	102.1 new	CHLT // 630 for 3 months
SK Prince Albert	92.5 new	CJLC
SK Saskatoon	92.3 CHZN-cp	CFWD
SK Saskatoon	92.9 CFQC	CKBL "92.9 The Bull"

BC Powell River	95.7 new	New station granted with 1.183 kw-H/416 m at 49-41-55/124-26-00. Previously approved but the requested 94.1 MHz with 8.6 kw/421 m was denied.
NB Blackville	107.7 CJFY	CP granted for move from 107.5
NS Eastern Passage	94.7 CFEP	CP granted for 1.4 kw
NS Halifax	93.9 CJLU-FM	Applies for 91 m; XR
NS Halifax	97.9 CIRH	Move to 107.7 and increase power from 10 w to 560 w
ON Cobourg	103.1 CFMZ	Applies to provide local programming to Cobourg 24 hours per week (currently // CFMZ-1-96.3 Toronto 100%)
ON Cochrane	102.3 new	Applies for 37 w/28 m; to relay CHIM-FM Timmins
ON Iroquois Falls	101.1 CFIF	Relocate transmitter
ON Marathon	102.3 new	Granted 765 watts at 273.2 metres (CBC La Première Chaîne) (French)
ON Ottawa	99.7 CIIO	CP granted for 427 watts
ON Sarnia	103.9 CHOK-1	Granted 200 watts: Previously approved but applied frequency of 100.9 was not acceptable

### FORMAT CHANGES

MB Winnipeg	99.1 CJGV	> "Groove FM" (format remains Smooth Jazz and adds AC.)
ON Kingston	93.5 CKXC	> Country
ON Kingston	104.3 CFFX	> AC as "Lite 104 point 3" // 960 for 3 months
QC Donnacona	100.9 CHXX	> Modern Rock: Radio X2 (FF)
SK Saskatoon	95.1 CFMC	> CHR ("C95")

### TECHNICAL CHANGES

AB Buffalo Head	95.5 CIAM-2	Relocate transmitter
BC Kelowna	88.9 CBTK	CP granted for 5.2 kw
BC Kelowna	89.7 CBU-3	CP granted for 5 kw
BC Kelowna	90.5 CBUF-2	CP granted for 2.7 kw

### PROPOSED NEW STATIONS

MB Winkler	103.7	Applies for 27 kw (Country) (nested repeater for CKMW-1570 Winkler)
NB Edmundston	97.3	Applies for 6.6kw (Classic Rock/Talk) (French) (will simulcast CFYX-93.3 Mont Joli, QC)
NS Yarmouth	98.5	Applies for 19 kw/48.2 kw ERP (CBC Radio Two)
ON Apsley	92.9	Applies for 50 watts (Christian) (Apsley Community Chapel)
ON Brockville	106.5	Applies for 3 kw (CBC Radio One)
ON Kawartha Lakes	96.7	Applies for 11.694 kw/50 kw ERP

ON	Kawartha Lakes	96.7	(Blues) Applies for 5.37kw/12.59 kw ERP	ON	Ottawa	99.7	(CHR-Alternative) Applies for 2.4 kw/8 kw ERP
ON	Kawartha Lakes	96.7	(Christian)	ON	Ottawa	99.7	(Religion; Talk)
ON	Muncey	88.5	Applies for 3 kw (Easy Listening)				Applies for 4.8 kw/10 kw ERP
ON	Ottawa	99.7	Applies for 50 watts (Aboriginal)				(Triple A)
ON	Ottawa	101.7	Applies for 3.7 kw/8 kw ERP				Joli)
ON	Ottawa	101.9	Applies for 5.46 kw (Community) (French)	QC	Carleton	99.1	Applies for 790 watts (AC) (French) (will simulcast proposed CHNC-107.1 New Carlisle)
ON	Ottawa	101.9	Applies for 3.6 kw/10 kw ERP (Blues)	QC	Chandler	98.3	Applies for 870 watts (AC) (French) (will simulcast proposed CHNC-107.1 New Carlisle)
ON	Ottawa	101.9	Applies for 450 watts (Christian) (French)	QC	Gaspe	92.7	Applies for 337 watts/1.577 kw ERP (CHR; Talk) (French)
ON	Ottawa	101.9	Applies for 3.3 kwatts/10 kw (News-Talk)	QC	Gatineau	101.9	Applies for 250 watts (College) (French)
ON	Ottawa	101.9	3.6 kw/10 kw ERP (Soft AC)	QC	Perce	107.3	Applies for 1.2 kw (AC) (French) (will simulcast proposed CHNC-107.1 New Carlisle)
ON	Ottawa	101.9	Applies for 200 watts (Tourist) (French)	QC	Riviere au Renard	92.7	Applies for 50 watts (CHR; Talk) (French) (will simulcast proposed 92.7 Gaspe)
ON	Owen Sound	92.3	Applies for 20 kw (Active Rock)				
ON	Owen Sound	92.3	Applies for 32 kw (Active Rock-Classic Rock)				
ON	Owen Sound	92.3	Applies for 14.635 kw/20 kw ERP (Classic Hits)				
ON	Owen Sound	92.3	Applies for 40 kw (Easy Listening)				
ON	Owen Sound	96.1	Applies for 5.54 kw (AC) (nested repeater for CFOS-560 Owen Sound)	BC	Powell River	105.3	<b>DENIALS</b> Applied for 3 kw (AC-Oldies) (would have simulcasted CKAY-91.7 Gibsons-Sechelt)
ON	Peterborough	96.7	Applies for 13 kw/50 kw ERP (AC)	BC	Salt Spring Island	102.1	Applied for 8.9 watts (Variety/Folk)
ON	Peterborough	96.7	Applies for 12.4 kw/41 kw ERP (AC)	ON	Meaford	102.9	Applied for 9.9 kw (Smooth Jazz) (would have simulcasted CIWV-94.7 Hamilton)
ON	Peterborough	96.7	Applies for 13 kw/50 kw ERP (AC) (Pineridge Broadcasting)				
ON	Peterborough	96.7	Applies for 17 kw/50 kw ERP (AC-Oldies)				
ON	Peterborough	96.7	Applies for 17 kw/50 kw ERP (Classic Hits)				
ON	Peterborough	96.7	Applies for 17 kw/50 kw ERP (Soft Rock-Pop)	ON	Peterborough	980	<b>PROPOSED AM TO FM CONVERSIONS</b> Move to 96.7 with 6 kw/20 kw ERP
ON	Windsor	95.9	Applies for 3.3 kw/14 kw ERP (Country)	QC	Gaspe	1150	CHGM Move to 99.3 with 257 watts/468 watts ERP (will simulcast proposed CHNC-107.1 New Carlisle)
ON	Windsor	95.9	Applies for 2.9 kw/11.8 kw ERP (Multilingual)	QC	New Carlisle	610	CHNC Move to 107.1 with 3.8 kw/6 kw ERP
ON	Windsor	102.3	Applies for 690 watts/3.3 kw ERP (CBC Radio One) (nested repeater for CBE-1550 Windsor)				
ON	Windsor	105.5	Applies for 620 watts/2.94 kw ERP (CBC Premiere Chaîne) (nested repeater for CBEF-540 Windsor)	MB	Winnipeg	107.9	<b>OTHER STUFF</b> CJWV-FM Remains silent
QC	Amqui	92.7	Applies for 280 watts/900 watts ERP (Classic Rock/Talk) (French) (will simulcast CFYX-93.3 Mont)	MB	Winnipeg	?	new AF (details not given; further applications solicited; application might be AM)
				ON	Peterborough	92.7	CFFF Change status from Campus-Based to Community-Based

**- - - UNITED STATES AND TERRITORIES - - -**

<b>CALL LETTER CHANGES</b>									
		<u>Old</u>	<u>new</u>						
AL	Fort Mitchell	98.3	WAGH	WBFA	FL	Clermont	97.1	W245BE	W246BT
AL	Smiths	101.3	WBFA	WAGH	FL	Marathon	91.5	WHWY-FM	WKWM-FM
AK	Akiachak	92.7	new	KHKY	FL	Miami	89.7	WMCU	WKCP
AZ	Chino Valley	94.3	KFPB	KDDL	FL	Parker	94.5	WFBX	WFLF-FM
AZ	Prescott	94.3	new	KZXS-LP (or KYXS-LP; as both are listed)	FL	Quincy	90.1	new	WFRU
AZ	Teec Nos Pos	95.3	new	KEEC	GA	Plainville	104.9	new	WRBF
AR	Marvell	90.7	KVRN	KLMK	HI	Kihei	107.5	new	KHEI-FM
AR	Bearden	92.7	new	KIXC	ID	Ashton	96.5	new	KRID
CA	Coarsegold	94.5	new	KCGC	ID	Middleton	88.7	new	KTYT
CA	Guadalupe	105.5	KIDI-FM	KRTO	ID	St. Maries	92.1	new	KXJO
CA	Johannesburg	103.9	KEDD	KGBB	IL	Bloomington	90.3	new	WJWR
CA	Kingsburg	106.3	KSXE	KVPW	IL	Charleston	89.1	new	WZGL
CA	Laguna Niguel	93.5	new	KNIG-LP	IL	Dorsey	89.5	WDRS	WARW
CA	Lompoc	105.1	KRTO	KIDI-FM	IL	Elmwood Park	105.9	WCKG	WCFS-FM
CA	Madera	107.1	KMVM	KXOB	IL	Glasford	101.1	WXMP	WHPI
CA	Santa Rosa	107.5	K292FU	K295BK (CP from 106.9 at Calistoga)	IL	Rantoul	95.3	WMYE	WLFH
CO	Bayfield	92.5	new	KAYF	IN	Franklin	95.9	WIAU	WFDM
CO	Boulder	97.3	KBCO-FM	KBCO	IN	Indianapolis	93.1	WNOU	WEXM
CO	Canon City	104.5	KKCS-FM	KSTY	IN	Richmond	89.3	WVXR	WZRP
CO	Center	105.3	new	KPAU-FM	IN	Speedway	100.9	WYJZ	WNOU
CO	Dove Creek	102.5	new	KDVC	IN	Wadesville	90.1	WRFM-FM	WENS-FM // WJCF-88.1
CO	Durango	89.3	new	KDNG	IA	Albia	96.7	KLBA-FM	KIIC
CO	Rye	89.7	KRYI	KJWA	IA	Cascade	88.9	new	KDSO
CO	Rye	90.9	KXWY	KRWA	KS	Burdett	93.5	new	KKDT
DE	Dover	94.7	WRDX	WDSD	KS	Ingalls	96.3	KSSH	KERP
DE	Smyrna	92.9	WDSD	WRDX	KS	Kingman	100.3	KTCM-FM	KNZS-FM
					KS	Ness City	104.7	new	KXNC
					KY	Mount Vernon	102.9	WANK	WPBK
					KY	Owingsville	107.7	WKCA	WKYN
					KY	Science Hill	106.1	new	WYKY

MD	Lexington Park	97.7	WYRX	WRKZ	MN	Blackduck	104.5	new	KSCK
MI	Battle Creek	95.3	WBXX	WBCK-FM	MN	Sartell	96.7	KKSR	KZRV
MI	Carrollton	100.5	WSGW-FM	WTKQ-FM	MS	Collins	107.1	WKNZ	WLWZ
MI	Marshall	104.9	WRCC	WBXX	MO	Ravenswood	106.1	new	KEXS-FM
MI	Ironwood	88.3	WICE	WLVM	MT	Alberton	105.5	KHLN	KERT-FM
MT	Frenchtown	101.5	new	KXGZ	WY	Jackson	91.1	new	KMWW
MT	Montana City	98.5	new	KERT (then, days later . . .)	WY	Moorcroft	93.5	new	KPKL
MT	Montana City	98.5	KERT	KHLN	WY	Superior	106.5	new	KKWY
NE	Allen	100.9	new	KHSK					
NE	Grand Island	91.5	new	KBTK					
NE	Hershey	107.3	new	KNPQ-FM					
NE	Lincoln	102.7	KFRX	KBZR	AR	El Dorado	88.9	KKDU	> sold to K-Love
NE	Lincoln	106.3	KLMY	KFRX	CA	Westlake Village	107.9	KNJR-LP	> Religious teaching
NE	Paxton	93.5	new	KZTL	CT	Waterbury	104.1	WPHH	> Modern Rock
NE	Scottsbluff	89.1	KKSB	KDAI	FL	Key Largo	106.3	WZMQ	> Regional Mexican // WMFM 107.9
NE	Sutherland	100.7	new	KRNP	FL	Melbourne	89.5	WFIT	> Adult Alternative; Florida Institute of Technology
NV	Boulder City	102.7	KSTJ	KFRH	FL	Miami	89.7	WKCP	> classical
NM	Arroyo Seco	91.3	new	KRRT	IL	Chicago	101.1	WKQX	> "Q 1-0-1 point 1"
NM	Las Vegas	92.7	new	KBQL-FM	IL	Elmwood Park	105.9	WCFS-FM	> AC (female-oriented hits) as "Fresh 1-0-5 point 9"
NV	Mesquite	96.7	new	KHIJ	IL	Gilman	103.7	WFAV	> Oldies // WVLI-95.1
NV	Reno	89.5	new	KJIV	IL	Wilmington	105.5	WYKT	> Rock as "Live 105"
NV	Spring Creek	103.9	new	KEBG	IN	Bicknell	105.7	WUZQ	> Country
NJ	Barnegat	91.9	new	WBNJ	IN	Franklin	95.9	WIAU	> Talk
NM	Clovis	107.5	KSMX	KSMX-FM	IA	Fairfield	95.9	KIHK-FM	> Classic Rock
NM	Espanola	91.9	new	KRAR-FM	IA	Sheldon	105.3	KIWA-FM	> Classic Rock
NM	Gallup	88.1	KKNM	KGGA	ME	Lewiston	93.9	WCYI	> Blues
NM	Las Vegas	91.9	new	KRRE	MN	Blackduck	92.1	WMIS-FM	> Talk
NM	Roswell	91.7	new	KELT	MN	Northwood	102.7	KYTC	> Active Rock as "The Blaze"
NM	Socorro	88.7	new	KBOM	MN	Osakis	103.9	KBHL	> Religious Teaching // KBHZ-91.9
NY	Brockport	104.9	WKDL	WKDL-FM	MN	Willmar	91.9	KBHZ	> Religious teaching // KBHL-103.9
NY	Ogdensburg	92.7	WBDB-FM	WQTK	MS	Holly Springs	92.7	WKRA-FM	> Urban Contemporary
NY	Paul Smiths	98.3	new	WPSA	MS	Indianola	105.5	WNLA-FM	> Urban AC
NY	Remsen	90.3	new	WRUN-FM	MS	Greenville	91.5	WLRK	> sold to K-Love
NY	Schuyler Falls	90.9	WAVX	WOXR	MS	Greenville	97.9	WBAQ	> Soft AC
NY	Westhampton	98.5	WBZB	WBON	NE	Bennington	93.3	KHUS	> 'New' Country; "The Twister"
NC	Garysburg	103.1	new	WNCM	NE	Lincoln	95.1	KRKR	> Talk
NC	Newton Grove	90.7	WZRL	WPRZ-FM	NM	Los Alamos	106.7	KZNM	> Regional Mexican // KLVO-97.7
NC	Pine Knoll Shores	92.7	new	WBNK	NY	Remsen	93.5	WOKR	> Contemporary Christian
NC	Roanoke Rapids	95.9	WZNC-LP	WEZU-LP	NY	Utica	107.3	WRCK	> Contemporary Christian
OH	Chillicothe	89.3	WVXC	WZCP	OH	Eaton	92.9	WGTZ	> Adult Hits as "Fly 92.9"
OH	Cincinnati	94.1	WVMX	WNNF	PA	Cresson	94.7	WBRX	> Adult Contemporary
OH	Georgetown	97.7	WAXZ	WKCA	SD	Brandon	100.1	KDEZ	> AC as "Easy and Fun 100.1"
OH	Marion	91.9	new	WXMF	TN	Huntington	100.9	WVHR	> Country
OH	West Union	89.5	WVXW	WZWP	TX	Bay City	101.7	KXGJ	> Spanish CHR // KOQK-107.9
OK	Chickasha	90.5	KSSX	KFXU	TX	El Campo	96.9	KIOX-FM	> Regional Mexican
OR	Klamath Falls	107.7	KEUI-LP	KZZF-LP	TX	Midland	90.9	KAQQ	> Religious teaching
PA	Cambridge Springs	104.5	WXXO	WXMJ // WOXX-99.3	UT	Centerville	105.7	KXRV	> Country
PA	Centre Hall	99.5	WLTS	WMAJ-FM	VT	Vergennes	106.7	WIZN	> Classic Rock
PA	Clarendon	102.7	new	WNAE-FM	VA	Crozet	102.3	WSUH	> Classic Hits
PA	Franklin	99.3	WOXX	WHMJ	WA	South Bend	107.9	KLSY	> Classic Hits // KFMV-97.7
PA	Gap	92.9	WLAL-LP	WLRI-LP	WI	Hartford	104.9	WTKM-FM	> Classic Country // WTKM-1540
PA	Halifax	88.5	WMBZ	WLVU	WY	Cheyenne	97.9	KQMY	> Country
PA	Harrisburg	88.1	WXPB-FM	WZXM-FM					
PA	Middletown	88.7	WZXM-FM	WXPB-FM // WXPB 88.5					
PA	Wilkes-Barre	96.1	W244CE	W241BB					
PR	Ceiba	93.7	WZNT-1	WZNT-FM1 (CP)					
PR	Ceiba	99.9	WIOA-1	WIOA-FM1 (CP)					
SC	Charleston	96.9	WSUY	WIWF					
SC	Pageland	102.3	WRML	WGSP-FM					
SD	Lennox	99.1	KHJK	KIOL					
TN	Pigeon Forge	106.3	new	WPFT					
TX	Childress	104.1	new	KCHT	AL	New Hope	103.5	WHWT	CP modified to 290w/449 m, 34-38-11/ 86-30-42; urban
TX	Dilley	93.7	new	KKDL	AL	Slocomb	100.5	WLDA	Applies for 16.5 kw/124 m at 31-11-00/85-24-23; CL from Fort Rucker
TX	Houston	95.7	KHJZ-FM	KHJZ	AL	Springville	92.3	W222AZ	CP for 10 w/30 m AGL is on
TX	La Porte	103.7	KIOL	KHJK	AL	West Tuscaloosa	105.5	W235AX	CP granted for 5 w; FC & CL change from 94.9 at Tuscaloosa
TX	Marfa	93.5	new	KRTS	AK	Ester	93.5	KDJF	CP granted for 25 kw/481 m, class C1; 64-52-45/148-03-14
TX	Mexia	104.9	KROX-FM	KWGW	AK	Houston	94.7	KZND-FM	CP for 15 kw/265 m is on the air at 61-20-12/ 149-30-45
TX	Morton	91.9	new	KPGA	AK	Kenai	100.1	KWHQ-FM	CP for 25 kw/58 m is on the air
TX	Port Isabel	101.1	KZPL	KNVO-FM	AK	Ketchikan	99.9	KFMJ	CP granted for 940 w/681 m; class C2
TX	San Angelo	90.9	KPEB	KLTP	AK	Seward	105.3	KSWD-FM	Applies to move from 105.9, 7 kw/16 m, 60-29-16/150-47-38
TX	Turkey	107.5	new	KTTO	AK	Sterling	90.1	KRAW	In May 2007 KRAW applied to move to Ridgeway with 465 watts at 102 meters on 89.7; now they propose to remain in Sterling with 1.6 kw-H/102 m on 89.7; both applications specify a
TX	Winters	96.1	KNCE	KGXL					
UT	Castle Dale	102.1	new	KEMR					
UT	Huntington	107.1	new	KHUN					
VT	Lunenburg	93.7	WXBN	WOTX					
VA	Charlottesville	107.5	WCJZ	WWTJ					
VA	Manassas	107.7	WTWP-FM	WWWV-FM					
WV	Moundsville	96.5	WRKP	WLWV					
WA	Vancouver	105.9	KIJZ	KOOL					
WV	Beckley	88.1	new	WJJJ					
WI	Ephraim	106.9	new	WLGE					
WY	Cheyenne	103.9	new	KYEN					

				new tower location at 60-31-58/ 151-04-52	AZ	Bacavi	101.5	KBWV-LP	Applies for 1 w/9 m AGL at 35-52-53/110-36-27; CL to Kykotsmovi (honest!)
AS	Eastern District	102.5	K273BK	CP granted for 23 w/14 m AGL, 14-15-29/170-33-50					
AZ	Cameron	101.5	new	Applies for 51 kw-H/-18 m, 35-51-59/ 111-24-57					32-34/104-22-31; applies for 7.5 kw-V/60 m, 37-59-15/103-34-02; CL to Swink; then an amendment for same facilities with CL to La Junta.
AR	Benton	106.7	KHKN	CP granted for 3.7kw/71m, 34-42-51/ 92-23-50 (aux)					
AR	Conway	105.1	KMJX	CP granted for 3.76 kw/71 m, 34-42-51/ 92-23-50 (aux)	CO	Lakewood	88.1	KFDN	CP for 1.2 kw is on the air
AR	Green Forest	88.7	KGSF	CP for 3.55 kw/182 m, 36-21-38/ 93-44-54, moving from 88.5 is on the air	CO	Sidney	91.7	KTSG	Applies for 2.5 kw/186 m // KTLF 90.5; CL to Steamboat Springs; Religious Teaching; Educational Communications of Colorado Springs, Inc.
AR	Hot Springs	91.5	KALR	CP for 4.5 kw is on the air					
AR	Jacksonville	100.3	KDJE	CP granted for 3.8 kw/71 m, 34-42-51/ 92-23-50 (aux)	CO	Trimble	88.5	KTDU	Applies for 4 kw/113 m // KTLF- 90.5; CL to Durango
AR	Little Rock	95.7	KSSN	CP granted for 3.72 kw/71 m, 34-42-51/ 92-23-50 (aux)	CO	Westcliffe	89.3	KTAW	Applies for 2 kw/112 m; Class C3
AR	Maumelle	94.9	KHLR	CP granted for 3.68kw/71m, 34-42-51/ 92-23-50 (aux)	CO	Westcliffe	89.3	KTAW	Applies for 2 kw, 37-38-27/ 104-46-15; CL to Walsenburg
AR	Pearcy	104.5	KWXE	CP granted for 3 kw/124m; CL from Glenwood at 34-26-56/ 93-15-59	CO	Widefield	106.3	KKLI	Applies for 970 w/661 m (aux)
AR	Sulphur Springs	97.3	KJAT-LP	CP for 100w/12 m AGL is on the air at 36-28-35/ 94-27-17	CT	Middletown	88.1	WESU	Applies for 6 kw
					CT	Port Chester	96.7	WCTZ	CP for 3 kw/100 m is on, CL from Stamford
CA	Arcadia	90.5	KHSU-FM	Application accepted for 8.5 kw/ 459 m; Humboldt State Univ	DE	Fenwick Island	92.1	WLBW	CP granted for aux facilities of 2 kw/107 m at 38-25-19/60-75-08- 23.3
CA	Beaumont	100.9	KAEH	Applies for 5.3 kw/38 m, 33-56-51/ 116-59-03	FL	Buena Ventura Lakes			
CA	Blue Lake	106.3	KEJY	CP for 3.3kw/516m, 40-43-39/ 123-58-17 is on the air	FL	Milton	95.7	WBVL-LP	XR 28-19-42/81-20-33
CO	Fort Collins	107.9	KPAW	Applies for 220 m, 40-53-42/ 105-11-38	FL	Ocala	104.7	WITG-LP	Applies for 488m, 30-36-40/ 87-36-27
CA	Gilroy	94.5	KBAY	Applies for 45 kw/158 m	FL	Pensacola	94.1	WMEZ	XR 29-11-16/82-08-14
CA	Hollister	90.7	KHRI	Applies to move to 90.3, 36 kw-V/177 m, 37-57-11/ 89-52-37; CL to Red Bud, IL	FL	Pensacola	101.5	WTKX-FM	Applies for 77 kw/488 m, 30-36-40/87-36-27
CA	King City	91.3	KDRH	Applies for 4.9 kw/84 m on 91.7, 37-37-36/78-08-27; CL to Powhatan, VA	FL	Quincy	90.1	WFRU	Applies for 488 m, 30-36-40/ 87-36-27
CA	Los Angeles	101.1	KRTH	CP for 16 kw/955 m, 34-13-38/ 118-04-00 is licensed (aux)	FL	Sebring	91.5	WJFH	PR >32 kw-V, 30-42-22/ 84-37-39
CA	Orcutt	95.7	KPAT	CP for 3.3 kw/274 m, class B1, is on the air; station is diplexed with KBOX-104.1	FL	Wesley Chapel South	92.1	W221CE	CP for 16 kw-H/15.7 kw-V/138 m, 27-22-52/81-29-28 is on
CA	Redondo Beach	93.5	KDAY	Applies for 4.2 kw/117 m, 34-00-19/ 118-21-44	GA	Bainbridge	101.9	WBGE	CP for 80 w/46 m AGL is on Applies for 6 kw/100 m, 31-00-33/ 84-25-16
CA	Sacramento	88.9	KXPR	Applies for 138 m, 38-27-12/ 121-20-55	GA	Fort Gaines	90.9	WJWV	Applies for 30 kw-H/85 kw-V/77.5 m (was already 85 kw-V)
CA	San Luis Obispo	91.3	KCPR	CP for 310 w/432 m, 35-21-38/ 120-39-21 is on the air	GA	Hampton	107.9	WHTA	Applies for change to 35 kw/ 177 m; class C2
CA	San Fernando	107.1	KSSE-FM1	CL from Burbank	GA	Bostwick	92.3	WMOQ	CP for move to 33-44-49/ 83-33-23 is on the air
CA	Santa Rosa	106.9	K295BK	CP granted for 10 w/5 m AGL and CL change from Calistoga	GA	Hampton	107.9	WHTA	Applies for 35 kw/177 m
CA	Susanville	88.1	KJAR	Applies for 160 w-V/66 m on 89.3, 40-09-59/74-03-15; CL to Manasquan, NJ	GA	Lula	100.9	new	Applies for 6 kw/99 m, 34-28-25/ 83-46-00
CA	Ukiah	103.3	KUKI-FM	CP for 2.9 kw/542 m is on the air at 39-19-35/123-16-11	GA	Pineview	93.1	new	Amends application to 6 kw/91 m at 31-58-21/83-36-36
CA	Walnut	90.1	KSAK	CP granted for 3 w/191 m, 34-02-18/ 117-53-21	GA	Roswell	107.5	WJZZ-FM	Applies for 50 kw/107 m, 33-55-52/ 84-14-40; class C2
CO	Broomfield	92.5	KWLI	1.2kw/197m, 39-44-37/ 104-59-18 (aux)	GA	Thomaston	101.1	WTGA-FM	Applies for 1.27 kw/21 8m, 32-59-13/ 84-21-55
CO	Canon City	104.5	KSTY	CP for 8.6 kw/14 m is on the air	GA	Thomaston	101.1	WTGA-FM	Applies for change to 1.27 kw/ 66 m; class A
CO	Colona	89.9	KTMH	Applies for 4 kw/498 m; // KTLF- 90.5; req. CL to Montrose; Religious Teaching; Educational Communications of Colorado Springs, Inc.	HI	Captain Cook	93.1	KMWB	CP granted for 10 kw/986 m at 19-43-15/155-55-16
CO	Craig	102.5	KQZR	Applies for 480 w/660 m, 39-44-18/ 106-47-58; CL to Gypsum	HI	Hilo	90.3	KCIF	CP for 5 kw/-40.2 m is on
CO	Denver	100.3	KIMN	NW 3 kw/197 m, 39-44-37/ 104-59-18 (aux)	HI	Holualoa	92.1	KHWA	Applies for mod of CP to 4.5 kw/949 m
CO	Denver	105.1	KXKL-FM	NW 3 kw/197 m, 39-44-37/ 104-59-18 (aux)	HI	Honolulu	90.1	KTUH	CP granted for 3 kw/529 m at 21-20-12/ 157-49-03, moving from 90.3
CO	Denver	106.7	KBPI	CP granted for 100 kw/382 m, 39-43-58/105-14-08, class C0. Now applies for 100 kw/408 m	HI	Paia	102.9	KLZY	CP granted for 1.5 kw/696 m, 20-39-36/156-21-50
CO	Trinidad	90.7	KTDL	CP for 450 w/296 m, 36-59-33/ 104-28-24 is on the air with religion // KTLF Colo. Springs)	IN	Clarksville	93.1	WTFX-FM	Applies for 4.1 kw/114 m
CO	Walsenburg	91.3	KTWX	Has CP for 8 kw/198 m, C3, 37-	ID	Boise	106.7	K294AE	CP for 28 w/59 m is on the air
					ID	Hailey	105.5	KLCW-LP	XR 43-31-21/114-19-03
					IL	East St. Louis	101.1	WMVN	CP granted for 99kw/300 m, 38- 28-56/90-23-53 (moves to WIL- 92.3 tower in Missouri, qualifying to go from Class B to Class C1)
					IL	Gilman	103.7	WFAV	CP for 6 kw/100 m is on at 40- 43-04/ 87-51-36; format > Oldies

IL	Highland Park	103.1	WVIV-FM	// WVLI-95.1 PR 5.4 kw/82 m, 42-03-28/ 87-45-36	IL	Pontiac	88.3	WPJC	CP granted for 3.13 kw/172 m, 40-44-13/ 88-30-47
IN	Clinton	93.9	WPFR-FM	Applies for 2.35 kw/161 m, moving from 93.7	IN	Clarksville	93.1	WTFX-FM	Applies for 4.1 kw/114 m
IN	Versailles	103.1	WXCH	Applies for 500 w-H/14 m, 39- 18-41/85-47-07; CL to Hope	MO	Elsberry	101.7	KLPW-FM	CP granted for 3.1 kw/142 m, 39-06-09/90-49-23
IN	Rochester	88.7	WQKV	CP granted for 25 kw/90 m, 41- 04-26/85-53-46, moving from 88.5	MO	St. Louis	103.3	KLOU	CP for 54 kw/191 m, 38-34-05/ 90-19-55 is licensed (aux)
IA	Anamosa	95.7	KKSY	CP mod granted for 6 kw/100 m at 42-05-56/ 91-21-28	MO	St. Louis	107.7	KSLZ	CP for 54 kw/191 m, 38-34-05/ 90-19-55 is licensed (aux)
IA	Patterson	105.9	KZLN	CP changed to 900 w/12 m, 41-18-50/ 93-50-15	MO	Steelville	93.3	KNSX	Applies for CL to Hermann, MO
IA	Pleasantville	96.3	160103	Application changed to 500 w/ 255 ft; class A	MO	Springfield	97.3	KXUS	CP for 1 kw/47 m, 37-10-47/ 93-15-39 is licensed (aux)
KS	Iola	96.3	W242BM	Applies for 80 w/35 m AGL	MO	Sullivan	102.1	KTUI-FM	CP granted for 6 kw/84 m, moving from 100.9
KS	Oberlin	89.7	KRLE	Has CP for 250 w/36 m; applies for 70 kw/88 m, 33-56-37/ 87-39-02 (drops H); CL to Carbon Hill, AL	MO	Warrensburg	90.9	KTBG	Applies for 90 kw/350 m, 39-02-14/ 93-55-48
KS	Shawnee	94.9	KCMO-FM	CP granted for CL change from Kansas City, MO	MT	Frenchtown	101.5	KXGZ	CP for 3.6 kw/637 m is on the air
KY	Crab Orchard	102.9	WPBK	CP modified to 6 kw/98 m; CL from Mount Vernon; now applies for 2.75 kw/110m; 37-25-39/ 84-39-21	MT	Drummond	101.5	KXGZ	NW 3.4 kw/637 m, 46-48-08/ 113-58-21
KY	Irvington	100.1	new	Applies for 2.3 kw/162 m; 37-57-06/ 86-24-38	MT	Missoula	91.1	KMZL	CP granted for 2.2 kw
KY	Madisonville	93.9	WKTG	Applies for aux facilities of 10.15 kw/178 m at 37-31-26/ 87-24-11	NE	Crete	104.1	KIBZ	Applies for 40 kw/116 m, 40-40-18/ 96-43-48
LA	Breaux Bridge	92.9	KVTZ-LP	CP for 74 w/34.9 m, 30-19-08/ 91-50-16 is on the air	NE	Paxton	93.5	KZTL	CP for 100 kw/230 m, 41-03-50/ 101-20-16 is on the air
LA	Hodge	94.1	KRLQ	New station signs on with classic country [state correction from last month]	NE	Scottsbluff	89.1	KDAI	Applies for 2.2kw/167m, 39-16-33/ 120-53-49. Class A; CL to Foresthill, CA
LA	Houma	104.1	KYRK	Applies for 20 kw/274 m, 29-57-10/ 90-43-26 (aux)	NE	Sutherland	100.7	KRNP	CP for 100 kw/229.5 m; class C1 is on the air
LA	Monroe	90.3	KEDM	CP granted for 100 kw/261 m	NV	Elko	97.5	KPHD	App for CP Mod to 85 kw-H (only) from 100 kw-H & V
ME	Sanford	88.5	WSEW	Applies for 100 w/190 m on 88.7, 43-25-14/ 70-48-04	NV	Hawthorne	89.5	KQMC	CP granted for 1.25 kw/957 m, moving from 90.1; adds H (was V-only)
ME	Skowhegan	107.9	WFMX	Applies for 25 kw/103 m, 44-37-01/ 69-37-29	NV	Mesquite	90.9	KAIZ	Applies to move to 88.9, 50 kw-V/89 m, 40-41-19/ 87-03-36; CL to Fowler, IN
MA	Gloucester	96.5	W243CD	CP granted for 10 w-V/4 m AGL	NV	Spring Creek	103.9	KEBG	CP granted for 12.6 kw/487 m
MO	Springfield	97.3	KXUS	CP for 1 kw/47 m is licensed (aux)	NH	Dover	101.5	WXGR-LP	CP for 13 watts/81.1 m is on New station signs on with 250 w-V & H/15 m AGL
MA	Waltham	102.5	WKLB-FM	Applies for 12 kw/276 m (aux)	NH	Hanover	103.9	W280CS	CP granted for 80 w-V/287 m
MI	Burton	89.7	WTAC	Applies for 5 kw, 43-05-28/ 83-40-18	NJ	Bridgeton	97.7	W249BY	CP for 1 w/4 m AGL is on
MI	Alma	104.7	WQBX	Applies for 3.7 kw/118 m on 104.9, 42-54-12/ 84-36-49; CL to Fowler	NJ	Dover Township	91.1	WWNJ	CP for 50 kw/46 m DA Class B; is on the air // WWFM-89.1
MI	Honor	100.7	WSRJ	Applies for 15 kw-V/264 m, 46-36-14/87-37-15, moving from 88.1	NJ	Margate City	96.1	WTTH	Applies for 2.9 kw/99 m
MI	Michigamme	88.3	WKPK	CP granted for 15 kw-V/264 m, 46-36-14/87-37-15, moving from 88.1	NJ	Wildwood	95.5	W238BL	CP granted for 1 w/76 m AGL
MI	Lansing	89.7	WLNZ	CP granted for 1.2 kw/29 m; adds H (was V-only)	NJ	Wildwood Crest	93.1	WEZW	CP for 4.1 kw/68 m is on the air at 38-59-34/74-48-48; // WTTH- 96.1
MN	Appleton	91.3	KRSU	CP granted for 82 kw/345 m	NM	Alamogordo	95.1	KALH-LP	Applies to move the tower site to 32-57-35/105-56-32, remaining 100 w, but lowering the height to 23 m AGL
MN	Blackduck	92.1	WMIS-FM	CP for 36 kw/176 m, 47-33-26/ 94-48-04 is on the air	NM	Magdalena	95.9	KANM	Applies for 99 kw from 100 kw
MN	Eveleth	97.9	WEVE-FM	Applies for 100 kw/158 m	NM	Reserve	104.5	KZSQ	Applies for 20 kw/697 m; class C0; station is silent
MN	Minneapolis	90.3	KFAI	CP granted for 900 w/241 m; 44-58-34/ 93-16-21	NM	Roswell	89.1	KQAI	Applies for 1 w/136 m on 88.3, 39-44-00/75-57-56; CL Rising Sun, MD
MN	Moose Lake	99.7	WMLA-LP	Applies to move antenna to 46-27-17/92-46-17	NM	Roswell	92.5	K223BH	CP granted for 62 w/95 m AGL, 33-24-58/104-33-59
MN	Rochester	88.7	KMSE	CP granted for 850 w/170.9 m	NM	Tucumcari	91.7	KVLP	Applies for 4.8 kw/54 m on 90.1, 40-39-35/81-21-26; CL to Brewstor, OH
MN	Rochester	98.9	KNLW-LP	Applies to move to 44-05-30/ 92-31-03 with 100 w/37 m	NY	Buffalo	92.9	WBUF	CP for 76 kw/177 m DA is on the air
MN	Windom	88.1	KRLP	Applies for 5.2 kw-V/98 m, 42- 45-38/87-57-55 on 88.5, CL to Union Grave, WI	NY	Corning	106.1	WNKI	CP for 800 w/57 m is licensed (aux)
MS	Brandon	104.3	WSKM-LP	CP granted for 41m, 32-17-19/ 90-02-39, moving from 104.1	NY	Keene	89.7	W211BU	Applies to move to 90.1; remaining 10w
MS	Clarksdale	92.1	WKXY	Has CP for 4 kw/100 m; Applies for 6 kw/100 m; CL to Merigold	NY	Lake Luzerne	94.7	WBAR-FM	Applies for 1.25 kw/220 m, 43-18-17/ 73-45-07
MS	Marion	95.1	WJDQ	CP granted for 26 kw/174 m	NY	Lancaster	90.7	960920MA	CP granted for 430 w/25 m, 42- 52-55/78-37-54
MS	Senatobia	88.9	WMSB	Applies for 52 kw/145 m; PR 34-39-30/ 89-37-32 (drops H)	NY	Old Forge	94.1	WZNY	Applies for 21.3 kw/108 m, 43-58-00/ 75-48-11
MO	Cuba	107.3	KESY	Applies for CL to Steelville, MO	NY	Paul Smiths	98.3	WPSA	CP for 10 w-H/-2 m
MO	Warrensburg	90.9	KTBG	Applies for 100 kw/356 m; DA class C1	NY	Rochester	104.7	WIRO	Applies for 19 w/35 m on 90.9
					NC	Calabash	104.9	WYNA	CP granted for 23.5 kw/103 m
					NC	Marble	95.1	WPTP-LP	Applies for 100 w/31 m AGL on 104.3
					NC	Morganton	92.1	WMNC-FM	Applies for 25 kw/100 m; Class

NC	Rocky Mount	88.1	W201DF	C3 CP for 3 w/100 m AGL // WKVE-106.7 is on the air via W206BR; ex: W255BS	TN	Dyersburg	89.1	W205BN	CP moving from 88.9 with 10 w/164 m is on
NC	Rocky Mount	100.7	WRVA-FM	Applies for 13 kw (aux)	TN	Harriman	92.7	WIJV	Applies for 2.65 kw/153 m at 35-52-04/ 84-25-56
NC	Sanford	105.5	WFJA	Applies for 2.3 kw/148 m, 35-26-34/ 79-18-41	TN	Hopewell	101.1	W266BD	CP for 10 w/60 m AGL; class D is on the air
NC	Whiteville	99.1	WZFX	CP for 12.5 kw/ 269 m is licensed (aux)	TN	Newport	90.7	961203ME	Applies for 1 kw/700 m
NC	Wilson	106.1	WRDU	Applies for 27.5 kw/488 m, CL to Knightsdale; 35-40-35/ 78-32-08	TN	Pigeon Forge	106.3	WPFT	CP for 500 w/340.4 m is on at 35-42-13/ 83-33-57
ND	Bismarck	92.9	KYYY	CP granted for 100 kw/352 m; class C0; 46-36-20/ 100-48-24	TN	Reubensville	95.9	W294BE	CP for 15 w/58 m AGL is on, moving from 106.7
ND	Jamestown	88.9	KLRX	Applies to move to 88.7, 10 kw/ 36 m, 64-52-16/147-05-49, C3; CL to North Pole, Alaska	TN	Whitwell	105.1	W286BL	CP for 55 w/60 m AGL; class D is on the air
OH	Cedarville	90.3	WCDR-FM	Applies for 47 kw 109 m	TX	Brownfield	90.7	KMLU	Has CP for 130 w/84 m; applies to move to 89.3, 50 kw-V/165 m, 37-04-30/83-49-14; CL to McKee, KY
OH	Centerville	101.5	WCWT-FM	Applies for 23 w on 107.3	TX	Lake Jackson	91.1	KYBJ	Applies for (1) 15.8 kw/115 m, CL to Galveston, 29-01-49/ 95-30-34, and (2) 700 w/76 m, (STA) at Lake Jackson
OH	Cleveland	98.5	WNCX	CP for 31 kw/ 212 m is licensed (aux)	TX	Hereford	90.9	KRLH	Has CP for 250 w/44.8 m; applies to move to 89.5 with 17 kw-V/ 93m, 30-43-27/90-04-09; CL to Abita Springs, Louisiana
OH	Cleveland	104.1	WQAL	CP for 23 kw/ 212 m is licensed (aux)	TX	Houston	102.9	KLTN	NW 27 kw/225 m, 29-45-26/ 95-20-19 (aux)
OH	Lorain	100.3	W262BN	CP modified to 10 w/4 m AGL	TX	Killeen	92.3	KIIZ-FM	CP granted for 6 kw/79 m; class A
OH	North Canton	101.7	WHOF	Applies for aux facilities: 6 kw/ 41 m	TX	Lamesa	91.3	KBKN	Has CP for 23 kw/157 m on 91.1; now requests 29 kw/157 m back on 91.3
OK	Bennington	98.1	KFYZ-FM	Applies for 1.6 kw/100 m on 96.1; 33-53-51/96-08-18	TX	Pecos	97.3	KGEE	Applies for 300 w/21 m, 31-25-07/ 103-30-58
OK	Clinton	95.5	KWEY-FM	Applies for 18.3 kw/252 m, 35-26-43/98-59-19	TX	Plainview	97.3	KSTQ-FM	Applies for 32 kw/187 m DA; class C2 at New Deal, Texas; 33-30-00/101-52-20
OK	Cordell	99.3	KCDL	Applies for 4.4 kw/240 m, 35-26-43/98-59-19	TX	Port Arthur	98.5	KTJM	CP for 100 kw/596 m, 30-01-01/ 94-32-47 is on
OK	Norman	106.3	KGOU	CP granted for 6 kw/92 m	TX	Savoy	107.3	KQDR	Applies to modify their CP to 3.9 kw/125 m, 33-42-48/ 96-24-01
OK	Oklahoma City	100.5	KATT-FM	CP granted for 31 kw/470 m, 35-33-37/ 97-29-07	TX	Victoria	95.1	KVIC	CP granted to modify CP to 6.5 kw non-DA from 13 kw DA
OK	Woodward	101.1	KWOX	CP for 84 kw/366 m, Class C0 is on the air	TX	Wheeler	90.5	KPDR	Applies to move to 90.3; 20 kw/181 m, 35-31-06/100-32-43
OR	Jacksonville	99.3	K257BO	CP for 50 w/9 m AGL DA is on	UT	Huntington	107.1	KHUN	CP for 400 w from 1 kw is on
OR	Madras	102.5	KHJA-LP	CP granted to move from 102.1 with 100 w/-31.3 m, 44-39-00/ 121-07-01	VT	Johnson	90.7	WJSC-FM	Applies for 1 kw/-144 m on 89.1
OR	Warm Springs	91.9	KWSO	CP for 4.3 kw/334 m is on	VT	Stowe	101.7	WCVT	Applies for 400 w
PA	Altoona, Etc.	102.7	W274BE	CP for 9 w/76 m AGL; class D; 40-29-19/78-21-20 is on the air	VA	Appomattox	102.7	WSNZ	Aux facilities granted: 350 w/40 m at 37-33-39/79-11-30
PA	Hawley	89.1	WBYH	Applies for 4.7 kw/176 m, 41-16-01/75-23-19	VA	Clifton Forge	103.9	WXCF-FM	CP for 530 w/310 m, 37-47-36/ 79-55-57 is on the air
PA	Hollidaysburg	88.1	91685	New station granted with 850 w/ 412.1 m; class B1	VA	Emporia	89.3	WJYA	Applies for 23 kw-V/161 m at 36-56-39/77-37-14
PA	Wilkes-Barre	96.1	W241BB	CP for 6 w-V/38 m AGL DA is on, moving from 96.7	VA	Richmond	88.1	WRIH	Applies for 6 kw/145.9 m, 37-42-54/ 77-21-55; class B1
PA	Wyomissing	91.7	WYTL	Applies for 5.3 kw-V/64 m, moving to 91.9; 40-14-15/ 76-02-53 (drops 10 w-V)	WA	Spokane	93.7	KDRK-FM	CP for 300 w-V/413 m at 47-34-38/ 117-17-54 is licensed (aux)
PR	Levittown	88.5	WPLI	Applies for 2 kw-V/20.9 m on 91.7	WA	Westport	101.3	KABW	Applies to amend CP to 1.2 kw from 6 kw
PR	Luquillo	92.1	WZOL	CP granted for 6.9 kw/288 m	WV	Parkersburg	106.1	WRZZ	CP for 3.3 kw/138 m is on
PR	Pastillo	90.1	WJDZ	CP for 900 w/-55m DA at 17-59-57/ 66-27-29 is on	WI	Altoona	98.1	WISM-FM	Applies for 25 kw/84 m
SC	Anderson	101.1	WROQ	Applies for 296 m	WI	Beloit	99.5	W258BG	CP for 10 w/4 m AGL; class D is on the air
SC	Charleston	100.5	WALC	CP granted for 13.5 kw/137 m, 32-49-00/ 79-50-10	WI	Ephraim	106.9	WLGE	Has CP for 6 kw/75 m; Applies for 56 m/56 m, 45-03-14/ 87-08-37; CL to Baileys Harbor
SC	Columbia	97.5	WCOS-FM	CP for 84 kw/278 m is licensed (aux)	WI	Sturgeon Bay	103.3	W277BP	CP for 80 w/33 m AGL is on
SC	Murrells Inlet	88.3	WMBJ	Applies for 20 kw/90 m, 33-36-28/ 78-59-25 (adds H, was V-only)	WY	Cheyenne	100.7	KOLZ	Applies for 100 kw/202 m; class C1; 41-02-55/104-53-28
SC	Six Mile	97.7	W249CB	CP changed to 38 w from 10 w	WY	Cheyenne	103.9	KYEN	Applies for 16.5 kw/372 m, 40-37-03/ 105-19-40
SC	South Congaree	95.3	WFMV	CP for 3.3 kw/91 m (aux) is licensed	WY	Clearmont	104.9	KLQQ	CP granted for 100 kw/368 m; class C0, moving from 104.7
SC	Gaffney	105.3	WNOW-FM	Applies for 49 kw/401 m, 35-21-51/81-11-13; CL to Bessemer City, NC	WY	Clearmont	104.9	KLQQ	Applies for 300 w/22 m, 44-47-54/ 106-55-51 (aux)
SC	Orangeburg	102.9	WQKI-FM	CP for 3.1 kw/139 m, 33-26-35/ 80-48-16 is on the air	WY	Douglas	92.5	KDAD	Applies for 1 kw/-52 m, 42-44-34/ 105-24-18 (aux)
SD	Brandon	100.1	KDEZ	CP for 2.15 kw/170 m, 43-31-07/ 96-32-05 is on	WY	Evanston	98.3	KADQ-FM	Applies for CP Mod to 1.2 kw from 37 kw
SD	Ipswich	107.7	KABD	CP Mod granted to 55 kw/108 m at 45-27-13/98-48-10					
SD	Salem	100.5	KIKN-FM	CP moving to 43-29-22/ 97-26-33 is on the air					
SD	Spearfish	90.9	KOAR	CP granted for 800 w-V/128 m					
TN	Decatur	93.9	WAYA	Applies for 16.5 kw/123 m, 35-21-55/ 84-45-22; CL from Spring City					

WY Hoback Junction	102.7	K274BQ	CP for 10 w class D is on the air	AR Springerville	89.3	new	AF dismissed
WY Jackson	88.3	KMLT	Applies for 12 kw-V/110 m on 90.9; 36-11-23/ 94-47-14; CL to Jay, OK	CA Boulder Creek	90.1	new	AF dismissed (73.511)
WY Laramie	89.3	990601MG	Applies for 450 w/347 m; DA; class A @ 41-18-39/ 105-27-12	CA Calipatria	88.1	new	AF dismissed
WY Laramie	104.5	KROU	Has CP for 50 kw/150 m; now applies for 800 w/-26 m on 93.9, 41-20-20/105-35-31	CA Greenville	90.3	new	AF dismissed
WY Midwest	95.5	KWYY	CL granted from Casper	CA Groveland	91.7	KXSR	Application for 1 kw/440 m, 38-07-07 /120-43-27 dismissed
WY Sheridan	89.9	KVLZ	Has CP for 500 w/-5 m; applies for 1.2 kw/53 m on 90.3, 42-40-43/83-07-28; CL to Rochester Hills, MI	CA Juneau	88.9	new	AF dismissed (73.515)
WY Sheridan	93.7	KYTI	Applies for 300w/20m, 44-47-54/ 106-55-51(aux)	CA Kane Spring	89.5	new	AF dismissed
WY Superior	106.5	KKWY	APP for PR from 23.5 kw to 7 kw and QR to 106.7	CA Laguna Niguel	91.7	new	AF dismissed (73.509)
WY Vista West	107.9	KRVK	CP granted for 15.5 kw/591 m; class C1; CL from Midwest	CA Mettler	89.7	new	AF dismissed (73.509) (I guess 89.7 will continue to be "the empty space"! - DS)

### DISMISSALS

The FCC received over 3500 applications during a recent 'window' for new non-commercial stations and major changes. 100s were immediately dismissed (see list). A 'major change' encompasses a change in city-of-license, frequency changes and other technical matters.

**DOUG SMITH** relates that, concerning "FM dismissals per DA 07-3521 - I think because they were filed on paper, as 07-3521 said only electronic applications would be accepted". Those applications that fall into this category are listed below, except where noted. The exceptions designated as being rejected due to the categories listed here. Other dismissals are the run-of-the-mill FCC rejections, and explained if possible.

FCC 07-179 : 10-application limit

- 73.207: minimum distance separation between stations
- 73.215(a): inadequate separation between stations (based on signal strength, not distance)
- 73.215(e): inadequate separation between stations (based on distance)
- 73.509: prohibited signal overlap
- 73.510: prohibited directional antenna
- 73.510(b): directional antenna "too directional" (maximum to minimum ratio more than 15dB)
- 73.511: either power too low for Class A minimum or greater than Class B facilities in Class B territory (probably the latter)
- 73.512(c): No Class D stations outside Alaska
- 73.515: won't provide 60dBu signal across at least half the city of license

AL Cullman	88.3	new	AF dismissed	FL Islamorada	88.7	new	AF dismissed (07-179)
AL Camp Hill	91.5	new	AF dismissed (07-179)	FL Islamorada	89.3	new	AF dismissed
AL Gadsden	91.1	new	AF dismissed (07-179)	FL Key Largo	91.7	new	AF dismissed (73.509)
AL Jemison	89.3	new	AF dismissed (07-179)	FL Palm Coast	89.3	new	AF dismissed
AL Opelika	90.3	new	AF dismissed	FL St. Augustine	88.9	new	AF dismissed (73.515)
AL Piedmont	89.5	new	AF dismissed (07-179)	FL Sopchoppy	89.3	new	AF dismissed
AL Roanoke	91.5	new	AF dismissed	FL Starke	91.5	new	AF dismissed
AL Talladega	89.7	new	AF dismissed (07-179)	GA Atlanta	88.1	new	AF dismissed
AL Talladega	90.9	new	AF dismissed	GA Brunswick	91.5	new	AF dismissed
AL Union Springs	91.3	new	AF dismissed (07-179)	GA Cedartown	90.9	new	AF dismissed
AK College	90.7	new	AF dismissed	GA Crawfordville	90.3	new	AF dismissed (07-179)
AK Hope	91.7	new	AF dismissed (07-179)	GA Damascus	89.7	new	AF dismissed
AK Juneau	88.1	new	AF dismissed (73.515)	GA Dublin	90.9	new	AF dismissed (07-179)
AK Juneau	89.7	new	AF dismissed (73.515)	GA Grayson	91.7	new	AF dismissed (73.509)
AK Juneau	90.5	new	AF dismissed (73.515)	GA Mauk	90.3	new	AF dismissed
AL Petersville	90.7	new	AF dismissed (73.515)	GA Rome	90.9	new	AF dismissed
AL Talkeenta (sic)	91.7	new	AF dismissed	GA Smithboro	89.1	new	AF dismissed (07-179)
AS Pago Pago	90.9	new	AF dismissed (73.515)	GA Tallulah Falls	91.7	new	AF dismissed
AZ Ajo	88.5	new	AF dismissed	GA Thomson	91.5	new	AF dismissed (07-179)
AZ Ajo	89.3	new	AF dismissed	GA Vidalia	90.3	new	AF dismissed (07-179)
AZ Bullhead City	91.9	new	AF dismissed	GA Vienna	88.5	new	AF dismissed (07-179)
AZ Kingman	91.9	KCAI	Application for 9.2 kw/462 m, 35-39-07/ 114-18-41 dismissed	HI Puna	91.9	new	AF dismissed
AZ Nogales	91.1	KNOG	Application to move to 91.7, 100 w-H/50 kw-V dismissed (73.510, prohibited use of directional antenna. Probably "too" directional.)	ID Blackfoot	88.5	new	AF dismissed
AZ San Pedro	91.7	new	AF dismissed (73.509)	ID Idaho Falls	88.7	new	AF dismissed
AZ Sierra Vista	91.9	new	AF dismissed (73.215(e))	IL Carmi	90.5	new	AF dismissed
AR Earle	91.5	new	AF dismissed (07-179)	IL Minooka	89.3	new	AF dismissed
AR Hot Springs	88.7	new	AF dismissed (73.515)	IL Sesser	90.5	new	AF dismissed
AR Sheridan	91.1	KANX	Application for 40 kw/ 159 m DA class C2 & CL to Little Rock dismissed	IL Sheffield	88.7	new	AF dismissed (73.509 & 73.510)
				IL Wonder Lake	91.3	new	AF dismissed (73.515)
				IN Center Township	88.1	new	AF dismissed
				IN Cherry Grove	88.1	new	AF dismissed
				IN Danville	91.5	new	AF dismissed
				IN Deer Creek Township	88.9	new	AF dismissed
				IN Dupont	88.7	new	AF dismissed
				IN Klondike	88.5	new	AF dismissed
				IN Marion	88.5	new	AF dismissed
				IN newbury Township	88.5	new	AF dismissed
				IN Nottingham	88.7	new	AF dismissed
				IN Petersburg	90.1	new	AF dismissed (73.509)
				IN Riely	91.3	new	AF dismissed
				IN Swayzee	90.5	new	AF dismissed
				IN Versailles	89.5	new	AF dismissed (73.509)
				IN Wilkinson	89.1	new	AF dismissed
				IA Coggon	88.7	new	AF dismissed (73.515)
				IA Mason City	89.7	new	AF dismissed
				IA Elliott	91.9	new	AF dismissed ROA
				IA Shenandoah	89.1	new	AF dismissed
				IA Waterloo	91.3	new	AF dismissed
				IA Webster	88.7	new	AF dismissed
				KS Junction City	88.3	new	AF dismissed
				KS Ottawa	89.7	new	AF dismissed (07-179)
				KY Morganfield	90.3	new	AF dismissed
				LA Alexandria	90.5	new	AF dismissed (73.509)

LA	Dry Prong	91.9	new	AF dismissed (73.215(e))				letters deleted ROA	
LA	Greenwood	91.1	new	AF dismissed	NM	Taos	90.5	new	AF dismissed
LA	Kinder	88.3	new	AF dismissed	NV	Spring Creek	103.9	KEBG	CP Mod for 32 kw dismissed
LA	Monroe	90.5	new	AF dismissed (73.509)	NY	Cape Vincent	88.1	new	AF dismissed
ME	Bucksport	89.1	new	AF dismissed	NY	Gordon Heights	88.5	new	AF dismissed (73.509)
ME	Caribou	90.7	new	AF dismissed	NY	Macedon	89.5	new	AF dismissed
ME	Harpwell	88.5	new	AF dismissed (73.509)	NY	Mt. Kisco	88.9	new	AF dismissed (73.509)
ME	Scarborough	91.7	new	AF dismissed (73.515)	NY	New York	91.9	new	AF dismissed (73.512(c))
MA	Bernardston	91.1	new	AF dismissed (73.509)	NY	North Salem	90.1	new	AF dismissed (73.510(b))
MA	Dorchester	91.9	new	AF dismissed (73.512(c))	NY	Rapids	90.5	new	AF dismissed
MA	Gloucester	91.5	new	AF dismissed (73.515)	NY	Williamsville	90.7	new	AF dismissed
MA	Haverhill	90.5	new	AF dismissed	NY	Yonkers	91.9	new	AF dismissed (73.512(c))
MA	Provincetown	88.1	new	AF dismissed (07-179t)	NC	Cherokee	90.7	new	AF dismissed
MI	Attica Township	90.3	new	AF dismissed	NC	Fairmont	89.9	new	AF dismissed (73.515)
MI	Baldwin Township	90.3	new	AF dismissed	NC	Jacksonville	88.3	new	AF dismissed
MI	Beaver Island	89.7	new	AF dismissed (07-179)	NC	Robbins	88.1	new	AF dismissed (FCC 07-179 )
MI	Big Rapids	90.7	new	AF dismissed	NC	Yadkin	90.3	new	AF dismissed (73.515)
MI	Bucks	88.9	new	AF dismissed	ND	Buford	90.7	new	AF dismissed
MI	Carleton	89.5	new	AF dismissed	OK	Carnegie	89.5	KJCC	Application for CL to Hinton dismissed
MI	Eckford Township	91.1	new	AF dismissed	OH	Allen Township	91.7	new	AF dismissed
MI	Emmett Township	88.7	new	AF dismissed	OH	Ashtabula	90.1	new	AF dismissed
MI	Ensign Township	88.9	new	AF dismissed	OH	Carrollton	90.9	new	AF dismissed
MI	Fawn River	90.9	new	AF dismissed	OH	Cedarville	90.3	WCDR-FM	Application dismissed for 47 kw/109 m DA; class B
MI	Fremont	89.1	new	AF dismissed	OH	Center Township	88.9	new	AF dismissed
MI	Fremont Township	91.3	new	AF dismissed	OH	Sandusky	88.5	new	AF dismissed (2 apps: WKSU, WGTE)
MI	Hamlin Township	89.7	new	AF dismissed	OH	Urbana	89.3	new	AF dismissed
MI	Hillsdale	88.9	new	AF dismissed	OH	Washington Court House	91.1	new	AF dismissed
MI	Hope Township	89.1	new	AF dismissed	OH	Versailles (sic)	88.3	new	AF dismissed
MI	Huron Township	89.3	new	AF dismissed	OH	Waynesville	89.3	new	AF dismissed
MI	Huron Township	89.5	new	AF dismissed	OR	Lees Camp	88.7	new	AF dismissed
MI	Mackinac Island	89.7	new	AF dismissed	OR	Lowell	88.3	new	AF dismissed (07-179)
MI	Manistique	88.1	new	AF dismissed	OR	Madras	102.5	KHJA-LP	Application to move from 102.1, 44-36-29/121-08-04 dismissed
MI	Manistique	91.5	new	AF dismissed	OR	Riley	89.1	new	AF dismissed
MI	Marlette	91.5	new	AF dismissed (73.215(a) waiver denied)	PA	Blakely	89.7	new	AF dismissed (73.515)
MI	Mount Clemens	88.5	new	AF dismissed	PA	Cooperstown	91.7	new	AF dismissed (07-179)
MI	Mount Pleasant	90.7	new	AF dismissed	PA	Crown	89.1	new	AF dismissed
MI	Muskegon	88.9	new	AF dismissed	PA	Hanover	90.7	new	AF dismissed (73.509)
MI	Pellston	90.1	new	AF dismissed	PA	Indiana	88.5	new	AF dismissed
MI	Port Austin	91.1	new	AF dismissed (07-179)	PA	Pleasureville	91.3	new	AF dismissed
MI	Rogers City	88.3	new	AF dismissed	PA	Reading	90.5	new	AF dismissed
MI	Taymouth Township	88.7	new	AF dismissed	PR	Manati	91.9	new	AF dismissed
MN	Bemidji	90.5	new	AF dismissed	RI	Newport	88.1	new	AF dismissed
MN	Blue Earth	89.1	new	AF dismissed	RI	Wakefield	91.3	new	AF dismissed
MN	Demopolis	90.1	new	AF dismissed	SC	Bluffton	89.3	new	AF dismissed (73.509, 73.207)
MN	Eveleth	97.9	WEVE-FM	CP granted for 100 kw/158 m	SC	Enoree	88.1	new	AF dismissed
MN	International Falls	89.7	new	AF dismissed	SD	Groton	88.9	new	AF dismissed
MO	Ash Grove	91.5	new	AF dismissed (73.509)	SD	Spearfish	90.9	KOAR	Application to move to 90.7, 500 w/503 m, 44-19-35/ 103-50-06 dismissed ROA
MO	Sarcoie	89.5	new	AF dismissed	TN	Hollywood	89.7	new	AF dismissed
MS	Demopolis	90.1	new	AF dismissed	TX	Alvin	91.3	new	AF dismissed
MS	Magee	91.9	new	AF dismissed (73.215)	TX	Baytown	90.7	new	AF dismissed (73.511)
MO	Oran	90.5	new	AF dismissed (73.509)	TX	Beaumont	90.1	new	AF dismissed
MO	Poplar Bluff	91.7	new	AF dismissed (73.509)	TX	Brady	90.7	new	AF dismissed (07-179)
MS	Poplarville	88.7	new	AF dismissed	TX	Camp Wood	90.5	new	AF dismissed
MT	Bozeman	95.9	new	AF dismissed	TX	Coleman	91.9	new	AF dismissed (73.509)
MT	Circle	90.3	new	AF dismissed (73.512(c))	TX	Detroit	91.9	new	AF dismissed (07-179)
MT	East Helena	88.7	new	AF dismissed	TX	Giddings	89.1	new	AF dismissed (07-179)
MT	Forsyth	91.5	new	AF dismissed	TX	Gonzales	91.9	new	AF dismissed (07-179)
MT	Glendive	88.1	new	AF dismissed	TX	Groesbeck	90.5	new	AF dismissed (07-179)
MT	Libby	89.7	new	AF dismissed	TX	Herne	90.3	new	AF dismissed (07-179)
MT	Libby	90.5	new	AF dismissed	TX	Herne	91.3	new	AF dismissed (07-179)
MT	Miles City	89.5	new	AF dismissed	TX	Ingleside On-The-Bay	88.5	new	AF dismissed (73.509)
NE	Blair	91.1	KDCV-FM	Application for 1.5 kw/60 m, 41-44-58/ 96-16-50, CL to Tekamah dismissed	TX	Kerens	89.7	new	AF dismissed(07-179)
NE	Gretna	90.1	new	AF dismissed ROA	TX	Kerrville	89.3	new	AF dismissed (73.509)
NE	North Platte	90.1	new	AF dismissed	TX	Lamesa	88.9	new	AF dismissed
NE	Schuyler	90.1	new	AF dismissed (07-3521)	TX	Lampasas	88.3	new	AF dismissed
NH	Lebanon	90.5	WVFA	Application for 80w/212 m dismissed; remains 7 w/212 m	TX	Leon Valley	90.5	new	AF dismissed (73.207, 73.509)
NH	Holderness	90.7	new	AF dismissed (73.509)	TX	Menard	90.3	new	AF dismissed
NJ	Harmony Township	90.7	new	AF dismissed	TX	Monahans	89.9	new	AF dismissed (07-179)
NJ	Hazlet	89.3	WDDM	Application for 5 w/139m, 40-23-45/74-10-31 dismissed; station still has a CP for 9 w/95 m and a pending application for 8 w/99 m	TX	Pittsburg	91.7	new	AF dismissed (73.509)
NM	Eagle Nest	90.9	new	AF dismissed	TX	Richards	89.7	new	AF dismissed
NM	Gallup	89.9	new	AF dismissed (73.509)	TX	Robstown	90.9	new	AF dismissed (73.509)
NE	Hagerman	89.7	new	AF dismissed (73.515)	TX	Rockport	89.9	new	AF dismissed (07-179)
NM	Ruidoso	97.7	K249DD	License cancelled and call	TX	Snyder	91.1	new	AF dismissed (73.509)
TX	Tokio	89.7	new	AF dismissed	TX	Texas City	88.1	new	AF dismissed (73.509)
					TX	Valley View	89.1	new	AF dismissed (73.515)





# PHOTO NEWS



Jeff Kruszka, Editor  
 1909 Lost Lake Pl.  
 Pearland, TX 77581  
 jkruszka@sbcglobal.net

December 2007

EVEN BETTER IN **COLOR!** CHECK OUT THE eVUD

More fantastic international DX from Christopher Dunne, DXing in Everglades City, FL:



TVN-3 Colon, Panama  
 1138 mi Es seen 5/30/07  
 @1630 ET



WORA-5 Mayaguez, PR  
 1053 mi Es seen 5/31/07  
 "U5" logo lower left



HIJB-2 Santo Domingo, DR  
 907 mi Es seen 5/31/07  
 Tele Antillas "TA" logo



WIPM-3 Mayaguez, PR  
 1053 mi Es seen 5/31/07  
 "tutv" logo on mic



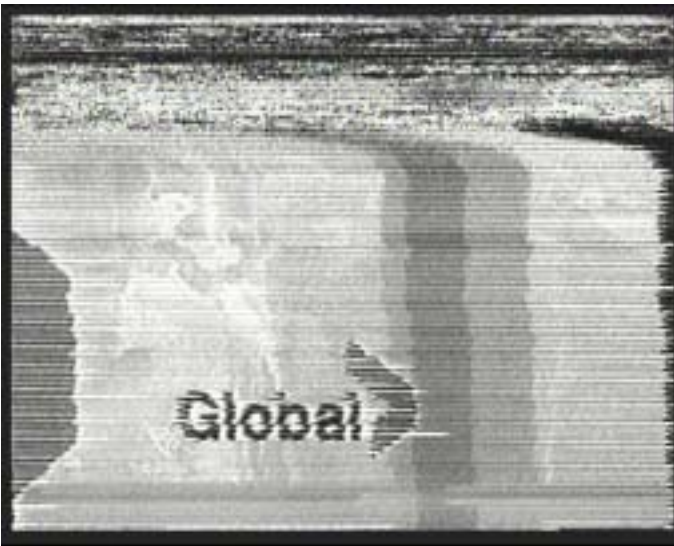
WRTV-6 Indianapolis, IN  
 998 mi Es seen 6/16/07  
 "rtv 6"



CKVR-3 Barrie, ON  
1284 mi Es seen 6/16/07  
"A" channel



CBLT-5 Toronto, ON  
1236 mi Es seen 6/16/07  
"CBC"



CIII-6 Paris, ON  
1200 mi Es seen 6/16/07



WLNS-6 Lansing, MI  
1180 mi Es seen 6/16/07



WCBD-2 Charleston, SC  
493 mi Es seen 6/24/07



WUND-2 Edenton, NC  
762 mi Es seen 6/30/07

The rest from Chris next month. 73's, **JEFF**



# Eastern U.S. TV DX

Featuring reports from AL, CT, DC, DE, FL, GA, IN, KY, MA, MD, ME, MI, NC, NH, NJ, NY, OH, PA, RI, SC, TN, VA, VT, and WV, along with the Canadian Provinces of NB, NF, NS, ON, PEI, and PQ.

Send reports by the 15<sup>th</sup> of each month to:

Nick Langan  
 1040 Riverview Drive  
 Florence, NJ 08518  
 E-mail: nickl@wtfd.org

## The Editor's Note

Wishing you and yours a happy holiday season! Hopefully Santa will deliver all of the DX gadgets on your list. Understandably with the calendar turning, DX around the country has been quiet, but keep an eye out for Winter E-Skip, especially right after Christmas.

### Brian S. May

Fairfield, CT – Antenna approx. 330 ft. asl

TV: Philips 9" color portable. Antenna: Channel Master Crossfire - model 3679a. Preamp: Winegard AP-8700.

### 7/17 Band Scan from 20:30 to 23:30

TV Stations Received: 51

WCBS	2	NY	New York City	CBS	Local
WFSB	3	CT	Hartford	CBS	Local
KYW	3	PA	Philadelphia	CBS	Trop
WNBC	4	NY	New York City	NBC	Local
WNYW	5	NY	New York City	Fox	Local
WPVI	6	PA	Philadelphia	ABC	Trop
WABC	7	NY	New York City	ABC	Local
WTNH	8	CT	New Haven	ABC	Local
WWOR	9	NJ	Secaucus	MNT	Local
WCAU	10	PA	Philadelphia	NBC	Trop
WPIX	11	NY	New York City	CW	Local
WPRI	12	RI	Providence	CBS	Trop
WHYY	12	PA	Philadelphia	PBS	Trop
WNET	13	NY	New York City	PBS	Local
WBOC	16	MD	Salisbury	CBS	Trop
WPHL	17	PA	Philadelphia	MNT	Trop
WUVN	18	CT	Hartford	Uni	Local
WTXX	20	CT	Waterbury	CW	Local
WLIW	21	NY	Garden City	PBS	Local
WNJS	23	NJ	Camden	PBS	Trop
WEDH	24	CT	Hartford	PBS	Local
WNYE	25	NY	New York City	PBS	Local
WHPX	26	CT	New London	ION	Local
WLWC	28	MA	New Bedford	CW	Trop
WCPB	28	MD	Salisbury	PBS	Trop
WTFX	29	PA	Philadelphia	Fox	Trop

WVIT	30	CT	New Britain	NBC	Local
WPXN	31	NY	New York City	ION	Local
WYBE	35	PA	Philadelphia	PBS	Trop
WSBE	36	RI	Providence	PBS	Trop
WMGM40		NJ	Wildwood	NBC	Trop
WXTV	41	NJ	Paterson	Uni	Local
WSAH	43	CT	Bridgeport	Inde.	Local
WWDP46		MA	Norwell	Inde.	Trop
WNJU	47	NJ	Linden	Tel	Local
WGTW48		PA	Philadelphia	TBN	Trop
WEDW49		CT	Bridgeport	PBS	Local
WNJN	50	NJ	Montclair	PBS	Local
WNJT	52	NJ	Trenton	PBS	Exloc
WEDN	53	CT	Norwich	PBS	Trop
WTBY	54	NY	Poughkeepsie	TBN	Local
WDPX	58	MA	Hyannis	ION	Trop
WNJB	58	NJ	New Brunswick	PBS	Exloc
WCTX	59	CT	New Haven	MNT	Local
WTIC	61	CT	Hartford	Fox	Local
WWSI	62	NJ	Atlantic City	Tel	Trop
WMBC	63	NJ	Newton	Inde.	Trop
WNAC	64	RI	Providence	Fox	Trop
WFTY	67	NY	Smithtown	TFu	Local
WFUT	68	NJ	Newark	TFu	Local
WPXQ	69	RI	Westerly	ION	Trop

LPTV Stations Received: 2

w60ai	60	NY	New York City	Inde.	Local
w65dz	65	CT	Bridgeport	Inde.	Exloc

Propagation: Local, Exloc=Extended Local, Trop=Tropospheric Ducting, Es=Ionospheric Skip

**Says Brian:** "This was my peak dxing night of the year, although I didn't receive as many TV stations as my decade's best band scan from last year. The night started with mild tropo coming in from the northeast around sundown. After more than a half-hour with no change, I figured Bill Hepburn might be wrong tonight and started doing something else. Fortunately, I decided to try again

shortly after 9:30 PM and was greatly rewarded. There was now a strong opening to the southwest that continued for most of the night. Even WNJT-52 from Trenton was strong enough to override the digital signal from WEDW-DT-52 whose transmitter is only eight miles from my house. Conversely, WPSG-57 from Philadelphia didn't quite have enough signal to override WLNY-DT-57 booming in from Long Island. Of course, local HDTV interference will become a moot issue soon enough. Anyway, it was a great night. Until next year, 73."

**Saul Chernos** 57 Berkeley Street, Toronto  
ON M5A2W5  
416-364-0725  
schernos@sympatico.ca

May 9 Es (BR)

1648 WPTV 5 FL West Palm Beach  
5 logo with circle, later calls  
1650 WPBT 2 FL Miami Beach  
2 logo, PBS  
1651 WESH 2 FL Daytona Beach  
ID with news  
1655 WTVJ 6 FL Miami 6 NBC bug  
1705 WCTV 6 GA Thomasville WCTV News  
SID

1819 WEDU 3 FL Tampa  
WEDU / PBS bug  
1829 WFOR 4 FL Miami  
CBS4.com in 4 bug, Miami-Dade-Broward  
1919 WBRZ 2 LA Baton Rouge  
calls with news, later Price LeBlanc ad

Jun 10 ES (BR)

1255 KSNC 2 KS Great Bend  
KSN SID, NBC Sports  
1339 KJRH 2 OK Tulsa  
kjr.com, NBC Sports, local ads

Jun 14 Es (BR)

1950 KETS 2 AR Little Rock  
AETN bug  
1951 unID 2 .. ... Spanish audio very briefly  
1951 KDTN 2 TX Denton  
Daystar bug, English g, many SIDs  
2000 KARK 4 AR Little Rock  
Earlier ad, SID  
2016 KDFW 4 TX Fort Worth  
Fox, game show  
2023 KFSM 5 AR Fort Smith  
CBS, outdoors reality show, SID

Jun 16 Es (BR)

0956 WESH 2 FL Daytona Beach  
Area news, Cypress Gardens ad  
0957 WPBT 2 FL Miami Beach  
Fundraising (area code 305)  
1604 WPBT 2 FL Miami Beach  
Fundraising (305-949-2922, 800-222-9728)  
1620 WDIQ 2 AL Dozier  
APT bug, later Alabama PTV voice ID  
1634 WTVY 4 AL Dothan WTVY 4 SID

Jun 19 Es (BR)

1000 KJRH 2 OK Tulsa Local ad (918 AC)  
1027 WSB 2 GA Atlanta  
WSB-TV-DT SID  
1046 WDIQ 2 AL Dozier APT bug  
1151 KETS 2 AR Little Rock  
AETN bug  
1200 \*KCWX 2 TX Fredericksburg

Large KENS 5 logo in show promo  
1755 WPBT 2 FL Miami Beach  
BBC World News, 2 logo, WPBT SID  
1830 WFOR 4 FL Miami  
CBS4.com, local news ends  
1906 WBRZ 2 LA Baton Rouge  
WBRZ 2 NEWS bug during local news  
1910 WWL 4 LA New Orleans  
4 WWL bug during local news  
1932 WDIQ 2 AL Dozier  
APT bug, later APT voice ID  
2027 WMAB 2 MS Ackerman M bug  
0829 WLBT 3 MS Jackson  
Cowboy Mahoney's ad (Jackson MS)

Jun 20 Es (BR)

1150 WESH 2 FL Daytona Beach  
central FL, WEH NBC 2 bug, SID, noon news  
1210 WDIQ 2 AL Dozier APT bug  
1216 WEDU 3 FL Tampa  
WEDU PBS bug  
1217 WJXT 4 FL Jacksonville  
4 WJXT bug, news, weather  
1513 WDIQ 2 AL Dozier APT bug  
1523 WMAB 2 MS Ackerman M bug  
1531 WBRZ 2 LA Baton Rouge  
News 2 promo, local ads, ABC

Jun 21 Es (BR)

0950 WPBT 2 FL Miami Beach  
Sesame Street, later 2 SID  
0955 WBRZ 2 LA Baton Rouge  
Ad: Price LeBlanc Toyota  
0956 WESH 2 FL Daytona Beach  
WESH 2 NBC bug, wesh.com, Weather Plus

Jun 24 Es (BR)

1657 WDIQ 2 AL Dozier APT bug

Jun 25 Tr (BR)

0751 \*CKXT 52 ON Toronto  
Sports talk, show promos, large round SID

Jun 25 Es (BR)

1145 KFOR 4 OK Oklahoma City  
Rachel Ray show, OKC ad  
1148 KETS 2 AR Little Rock  
AETN bug, Barney  
1150 KJRH 2 OK Tulsa  
Tulsa ads, lots of 2 KJRH SIDs and bugs  
1154 KDFW 4 TX Fort Worth  
Fox 4 SID in square box, myfoxdfw.com  
1200 KOET 3 OK Eufaula  
PBS Kids program ends, OETA SID  
1201 \*KAUZ 6 TX Wichita Falls  
Brian Loncar ad, Nx Ch. 6, Lawton/WF QTH  
1215 KDTN 2 TX Denton g-mx  
1220 KFDX 3 TX Wichita Falls  
Brian Loncar lawyer ad  
1245 KXAS 5 TX Fort Worth  
972 AC ad, Clay Cooley ad (cars)

1301 WBRZ 2 LA Baton Rouge  
Home Furniture in South Louisiana  
1654 WBRZ 2 LA Baton Rouge  
Local ads, Dr. Phil  
1705 WSB 2 GA Atlanta  
2 bug, wsbtv.com, wx (storms)  
1717 WDIQ 2 AL Dozier APT bug  
1818 WLBT 3 MS Jackson  
Flattop 3 logo, NBC, Coaling Green Med Ctr  
1820 KATC 3 LA Lafayette  
KATC 3 bug through strong CKVR  
1850 WUNC 4 NC Chapel Hill  
UNC (PBS) TV bug  
1900 WEAR 3 FL Pensacola  
WEAR SID pokes thru (later Ft Walt Bch wx)  
1909 WWL 4 LA New Orleans  
4WWL bug  
2018 KOET 3 OK Eufaula  
OETA bug, PBS  
2304 KJRH 2 OK Tulsa  
Tulsa QTH, bug  
Jun 26 Es (BR)  
0908 KQTV 2 MO St. Joseph  
KQ2 SID, weather  
0924 WWL 4 LA New Orleans 4WWL bug  
0925 \*KTVO 3 MO Kirksville  
3 with revolving KTVO SID  
0928 KSNC 2 KS Great Bend  
KSN logo on weather map  
1159 KXAS 5 TX Fort Worth  
5 logo with star inside  
1211 KAUZ 6 TX Wichita Falls  
Archer County flash flood warning  
1301 KOTV 6 OK Tulsa  
The News on 6 weather, KOTV.com ID  
Jun 27 Es (BR)  
1129 WDIQ 2 AL Dozier  
Alabama Public Television voice ID, bug  
1130 WTVY 4 AL Dothan 4 WTVY SID  
1200 WKRG 5 AL Mobile  
CBS, 251 AC in ad  
Jun 28 Es (BR)  
1510 WDIQ 2 AL Dozier APT bug  
1512 KOTV 6 OK Tulsa  
CBS, Oklahoma storm warnings  
1630 KSNB 4 NE Superior 4/17 logo  
Jun 30 Es (BR)  
1805 KJRH 2 OK Tulsa  
2 kjrh.com bug  
1817 KYTV 3 MO Springfield  
KY3 logo with MO tornado/flood alert, QTHs  
1920 KALB 5 LA Alexandria  
442-1110 weatherline, Mac's Food Market bug  
2123 WDIQ 2 AL Dozier APT bug  
Jul 7 Es (BR)  
1800 KOET 3 OK Eufaula OETA SID  
1901 KSNW 3 KS Wichita  
KSN/NBC SID, KSN Weather Lab  
1903 WWL 4 LA New Orleans 4WWL bug  
2048 unID 3 ..  
Promo: Christian Worship Hour Sundays 9am  
Jul 8 Es (BR)  
1100 KQTH 2 MO St. Joseph  
KQ2 SID in Regis promo  
1200 KLNE 2 NE Lexington

PBS, Saving NE Treasures sponsor slide  
1324 KUSD 2 SD Vermillion  
SDPT wheat bug  
1818 KJRH 2 OK Tulsa  
Local news with logo, Tulsa ad  
1825 KFDX 3 TX Wichita Falls  
KFDX3 logo with golf  
1830 CKND2 2 MB Minnedosa  
Global National News, not //7  
2042 WDIQ 2 AL Dozier APT bug  
Jul 10 Es (BR)  
1542 WDIQ 2 AL Dozier APT bug  
Jul 11 Es (BR)  
1951 WCBD 2 SC Charleston Local ad  
2000 WPBT 2 FL Miami Beach SID  
2111 WESH 2 FL Daytona Beach  
WESH 2 NBC logo, news/program promos  
2206 KDTN 2 TX Denton  
Daystar bug, gt  
2207 KOET 3 OK Eufaula  
OETA bug  
2210 KDFW 4 TX Fort Worth Fox 4 logo  
Jul 12 Es (BR)  
1633 WDIQ 2 AL Dozier APT bug  
1800 WBRZ 2 LA Baton Rouge  
News 2 Louisiana, WBRZ News 2 bug  
1826 KETS 2 AR Little Rock  
AETN bug  
1830 KARK 4 AR Little Rock  
KARK 4 News at 5  
2108 WMAB 2 MS Ackerman  
M bug, music program  
Jul 13 Es (BR)  
0851 KSNC 2 KS Great Bend  
KSN Live WeatherLab, storm ticker  
0927 KJRH 2 OK Tulsa bug  
0928 WBRZ 2 LA Baton Rouge  
WBRZ News 2 bug  
1220 WDIQ 2 AL Dozier  
APT bug, Teletubbies  
1221 WSB 2 GA Atlanta  
2 bug with news  
1930 WBRZ 2 LA Baton Rouge  
Team Toyota ad, ABC News mentioned  
1932 WLBT 3 MS Jackson WLBT3 SID  
Jul 14 Es (BR)  
0820 WPBT 2 FL Miami Beach  
Kid2Vision bug, Dragon tales, SID  
1000 WCBD 2 SC Charleston  
Ad: SC Technical College System  
1931 CBWFT7 2 ON Kenora CBC French  
1934 CKND2 2 MB Minnedosa  
Global, not //7  
1935 CBWFT 3 MB Winnipeg  
CBC French, Le Match des Etoiles  
Jul 15 Es (BR)  
0942 WSB 2 GA Atlanta 2 bug  
0948 WDIQ 2 AL Dozier APT bug  
1030 WBRZ 2 LA Baton Rouge  
You're watching WBRZ News 2 Louisiana  
1206 KETS 2 AR Little Rock  
AETN bug  
Jul 16 Es (BR)  
1157 WDIQ 2 AL Dozier APT bug

1158 WESH 2 FL Daytona Beach  
WESH 2 NBC SID, local news  
1200 WEAR 3 FL Pensacola  
Ad checks to southern AL  
1146 WPBT 2 FL Miami Beach  
KID Vision 2 bug  
1205 KPRC 2 TX Houston  
2 bug with inside star  
Jul 23 Es (BR)  
1600 WPBT 2 FL Miami Beach 2 SID  
2105 KETS 2 AR Little Rock  
AETN bug  
Jul 25 Es (BR)  
1556 WESH 2 FL Daytona Beach  
WESH 2 NBC bug, into 4 pm news  
1734 WJXT 4 FL Jacksonville  
4 WJXT bug with news  
1742 WEDU 3 FL Tampa  
WEDU PBS bug  
2117 KUSD 2 SD Vermillion SDPT bug  
Jul 26 Es (BR)  
1315 WPBT 2 FL Miami Beach  
KID Vision 2 bug, Curious George  
1400 WFOR 4 FL Miami  
Miami Seaquarium ad  
1430 WPTV 5 FL West Palm Beach  
NBC with very strong Miami 2 and 4  
1636 WKMG 6 FL Orlando  
Cannon Cadillac ad (Lakeland)  
1655 WABG 6 MS Greenwood  
6 bug with ABC  
1924 WUND 2 NC Edenton  
Nightly Business Report, UNC bug  
2043 KETS 2 AR Little Rock  
AETN bug  
2230 KJRH 2 OK Tulsa  
NBC, kjrh.com in news promo  
2244 WBRZ 2 LA Baton Rouge  
WBRZ News, Henderson Chrysler Jeep  
2310 KPRC 2 TX Houston  
2 bug with star  
Jul 27 Es  
1335 WBRZ 2 LA Baton Rouge  
News 2 WBRZ bug  
1740 \*WCBS 2 NY New York City  
CBS 2 HDTV bug, nx mikes, EDT, tristate wx  
1800 WBRZ 2 LA Baton Rouge  
Royal Nissan ad (Baton Rouge)  
Jul 28 Es (Clarendon NY @ Jim Renfrew's)  
1830 KOTA 3 SD Rapid City KOTA SID  
1906 WREG 3 TN Memphis WREG SID,  
local news  
1919 KOET 3 OK Eufaula OETA bug,  
later SID  
1911 KYTV 3 MO Springfield KY3 SID  
1914 KMOV 4 MO St. Louis 4 KMOV SID,  
4WARN in weather  
1916 KJRH 2 OK Tulsa 2 logo  
1920 KTVI 2 MO St. Louis Fox 2 logo  
1929 WSIL 3 IL Harrisburg Ward Chrysler  
ad, WSIL SID, into Seinfeld  
Aug 2 Es (BR)  
1633 WESH 2 FL Daytona Beach  
NBC 2 WESH logo with news  
Aug 3 Es (BR)  
1732 WESH 2 FL Daytona Beach  
NBC 2 WESH logo with news  
Aug 5 Es (BR)

0931 WBRZ 2 LA Baton Rouge LA PSA  
1002 KJRH 2 OK Tulsa  
SID with news & weather promo  
1015 KDTN 2 TX Denton  
Daystar bug, gospel singer  
1030 KDFW 4 TX Fort Worth  
Fox News interview w/ Condy; Dallas ad  
1946 KATC 3 LA Lafayette  
LA PSA, SID, ABC  
Aug 8 Es (BR)  
2116 WKRN 2 TN Nashville  
SID: wkrn.com / News 2 (promo), abc  
2117 WMAB 2 MS Ackerman  
MS Pub Bdg fundraising 800-390-4388  
Aug 10 Es (BR)  
1310 WDIQ 2 AL Dozier APT bug  
Aug 12 Es (BR)  
1051 KMOS 6 MO Sedalia KMOS bug  
1114 KSDK 5 MO St. Louis KSDK bug  
1117 KCTV 5 MO Kansas City  
KCTV 5 news promo with SID and bug  
1227 unID 3 ..  
Bishop Isaiah Williams Jr. (Trinity)  
1237 WEAR 3 FL Pensacola  
Gulf Coast ad, 850 and 350 AC  
1321 KUSD 2 SD Vermillion SDPT bug  
1930 KACV 2 TX Amarillo  
2 KACV bug, later SID  
  
Aug 13 Es  
0948 WKRN 2 TN Nashville Lavergne QTH  
in ad  
0957 WSB 2 GA Atlanta  
Lawyer ad  
0959 KJRH 2 OK Tulsa  
Bug, Tulsa ad  
1142 WCBD 2 SC Charleston  
Charleston ads  
1315 KOET 3 OK Eufaula  
OETA bug, solid o/CKVR  
1322 KDTN 2 TX Denton  
Daystar bug, preacher, later revolving SID  
1323 KDFW 4 TX Fort Worth  
Dallas Gold & Silver, Van Chevrolet, Fox 4  
1332 WBRZ 2 LA Baton Rouge  
Price LeBlanc, WBRZ ABC 2 News Louisiana  
1356 KDUH 4 NE Scottsbluff  
KOTA Territory ABC SID brief, All My Chldn  
1357 KUSD 2 SD Vermillion SDPT bug  
1426 KLNE 3 NE Lexington Teletubbies  
1430 KPRC 2 TX Houston  
Houston ads, 713 AC  
1622 KQTV 2 MO St. Joseph  
KQ2 SID (MS?)  
Aug 13 MS (BR)  
1539 KUSD 2 SD Vermillion  
SDPT bug twice for a few seconds  
1819 KUSD 2 SD Vermillion SDPT bug  
1935 KTVI 2 MO St. Louis  
Fox 2 bug, Seinfeld

**Says Saul:** "Highlights include my shortest TV skip ever (WCBS 2 NYC), and one of the longest heard here with KCWX Fredericksburg. Not sure if this was single or double hop. Lots of TV skip, but very little from my own country."

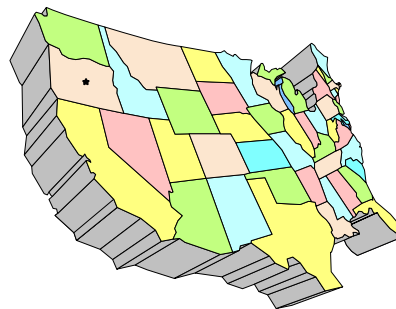
# WESTERN TV DX

**DAVE WILLIAMS**

**3525 SW Timber Ave**

**REDMOND, OR 97756**

**beansdad@bendcable.com (541) 420-4704**



## Dave Williams

Hello,

I have to apologize for misplacing at least one Western TV DX submission, from Jeff Kadet. I'll attempt to grab his postings to the TV/FM Skip Log for next month's column. Also, it appears that the USPS may have lost a submission from Dennis Park Smith for last month, as I had no material and he says he sent a report (his report returns this month) Sorry for these omissions.

73 – Dave Williams

---

**William Draeb** (920) 388-2350

1314 Ellis St. Kewaunee, WI 54216-1802

1994 Sylvania Y1 Chassic, 40' Rohn 25G Tower, CH2026, Y713, and KV420 Antennas, CMA-HB and CMA-Ub Preamps.

### August 12, 2007 Es

0528 2	UNID	East
0738 2, 4		Boston
3		Halifax

### August 13, 2007 Tr

2015 34 WOSU

### August 14, 2007 Tr

1620 7	Waterloo IA
9	Cedar Rapids, IA
11, 13	Des Moines, IA
12	Iowa City, IA
1653 15	Ottumwa, IA
17	Des Moines, IA
1719 48	Cedar Rapids, IA

### August 28, 2007 Tr

0530 Ohio, Indiana, Lower Ont U's

---

## Dennis Park Smith

3605 San Remo Drive

Santa Barbara, CA 93105-2523

Telephone (805) 687-7803

This report is for late September and October, 2007, starting with Southern California coastal tropo (to San Diego-Tijuana, up to 200 mi/320 km) with indoor whip and bowtie.

Sep 24-30	Out of town: Las Cumbres and Oakland
Sep 30 eve –	Poor
Oct 1 morn	
Oct 1 eve	Good
Oct 2-3	VHF Good, UHF Poor
Oct 4 morn	VHF Poor, UHF Good
Oct 4-7 morn	Out of town, Wasco
Oct 7 aft	None
Oct 7 eve	VHF very good, UHF very poor
Oct 8	None
Oct 9	Fair
Oct 10-18 morn	None (unsettled weather)
Oct 18 eve – 19	Poor
Oct 20-24	None (unsettled again, windy)
Oct 25-28	Variably poor to fair
Oct 29-30	None (passing wx front)
Oct 31	Poor

During this time, in traveling to three other California locations, I took along some analog (NTSC) and digital (DTV) toys to try out. Briefly, here are the results (generally locals/regulators).

### Las Cumbres, CA

Sep 24-25, Santa Cruz Mountains, elev 2580 feet (NTSC and DTV, indoor antennas) and 2800 feet (NTSC only, battery portables, whip antennas):

- 52 NTSC stations (San Jose-San Francisco and Sacramento to Fresno, 10-150 miles)
- 5 DTV stations (Salinas-Monterey, 45-55 miles).

### Oakland, CA

Sep 27-28, near San Francisco, elev 200 ft or less (indoor antennas):

- 31 NTSC stations (San Francisco to Sacramento, 12-50 miles)
- 18 DTV stations (San Francisco, San Jose, Novato, 12-35 miles).

### Wasco, CA

Oct 4-7, near Bakersfield, elev 325 ft with outdoor antennas, 4 bay UHF conical 15ft & 1-bay VHF conical 10ft above ground:

- 50 NTSC stations (Bakersfield to Sacramento, 35-215 miles with a hint of tropo Oct 6-7)
- 10 DTV stations (Bakersfield to Fresno, 35-100 miles).

Best of DX to All, Dennis



**Dave Pomeroy**  
 2321 SE Libra Ct.  
 Topeka, Kansas 66605-3505  
[davepomeroy@sbcglobal.net](mailto:davepomeroy@sbcglobal.net)

**July 2007 Es**

21 1600 WUND-2 Columbia, NC  
 23 1720 KYW-3 Philadelphia, PA  
 1730 WMAR-2 Baltimore, MD  
 1805 WUND-2 Columbia, NC  
 1807 WBTV-3 Charlotte, NC

Remainder of report is Tr

**July 2007**

24 0745 KMEG-14 Sioux City, IA  
 0800 KXVO-DT 38 KPTM-42 Omaha, NE  
 KDLT-46 Sioux Falls, SD

August 2007

14 2300 K15CN-15 Salina, KS (TBN)  
 KBDK-14 Hoisington, KS  
 K25DS-25 Junction City, KS  
 KOOD-DT 16 Bunker Hill, KS  
 KAAS-18 KAAS-DT 17 Salina, KS  
 2325 KSAS-24 KSCW-33  
 KWCH-DT 19 Wichita, KS  
 KAKE-DT 21 KSCW-DT 31  
 KPTS-DT 29 Wichita, KS  
 (19, 21, 24, 29, 31 are semi-local  
 KC channels, 33 is LPTV in Topeka)  
 2330 KDMI-DT 56 Des Moines, IA  
 (DTV only)  
 KSCC-36 Hutchinson, KS  
 KFVT-LP 40 Wichita, KS  
 KMEG-14 Sioux City, KS  
 KAZO-LP 57 Omaha, NE  
 KXVO-DT 38 KPTM-42  
 KXVO-15 Omaha, NE  
 KMEG-DT 39  
 KTIV-DT 41 Sioux City, IA  
 KYIN-24 Mason City, IA  
 2358 KSMQ-15 Austin, MN  
 15 0530 KDIN-DT 50 KDSM-DT 16  
 KDMI-DT 56 Des Moines, IA  
 WOI-DT 59 Ames, IA  
 KMTV-3 Omaha, NE  
 16 2100 KBDK-14 Hoisington, KS  
 KTVG-17 Grand Island, NE  
 KOLN-10 KOLN-DT 25 Lincoln, NE  
 27 0400 KDOR-17 Bartlesville, OK  
 0415 KOED-DT 38 Tulsa, OK  
 0600 KOZJ-DT 25 KSNF-16 Joplin, MO  
 0630 KHOG-DT 15 Ft. Smith, AR  
 KNWA-DT 50 Fayetteville, AR  
 (51.1 KNWA-SD 51.2KFTA-SD)  
 0640 KETV-DT 20 KMTV-DT 45  
 WOWT-DT 22 Omaha, NE  
 KHIN-DT 35 Red Oak, IA  
 0645 KUON-DT 40 Lincoln, NE  
 1630 KDLT-46 Sioux Falls, SD  
 28 0630 **KOLR-DT** 52 Springfield, MO  
 0700 KGEB-53 Tulsa, OK  
 KDOR-17 Bartlesville, OK

31 0600 WAND-17 Decatur, IL  
 (very rare since KMIZ-17 in  
 Columbia, MO went on)  
 0610 KMEG-14 Sioux City, IA  
 0615 KMEG-DT 41 Sioux City, IA  
 KETV-DT 20 KXVO-DT 38  
 KMTV-DT 45 Omaha, NE  
 KHIN-DT 35 Red Oak, IA  
 0800 KMYT-41 KMYT-DT 42  
 KJRH-DT 56 KOED-DT 38  
 KOKI-DT 22 Tulsa, OK  
 KHOG-29 Fayetteville, AR  
 KHBS-40 Ft. Smith, AR

**September 2007**

2 0800 KCAU-DT 30 KMEG-14 Sioux City, IA  
 KMEG-DT 41 Sioux City, IA  
 KAZO-LP 57 Omaha, NE  
 KUON-DT 40 Lincoln, NE  
 KBIN-32 Council Bluffs, IA  
 12 0630 UNID-35 translator for KTVG-17  
 Grand Island, NE  
 KOWH-51 Lincoln, NE  
 (only second time)  
 KXVO-DT 38 Omaha, NE  
**K53GC-53** Neligh, NE  
 KAZO-LP 57 Omaha, NE  
 K18CD-18 Lincoln, NE (xltr KTVG-17)  
 KXNE-DT 16 KXNE-19 Norfolk, NE  
 KMEG-14 Sioux City, IA  
 K46FG-46 Falls City, NE  
 0830 KMEG-DT 39 Sioux City, IA  
 13 0630 KBSH-14 Hoisington, KS  
 KOOD-DT 16 Bunker Hill, KS  
 0830 K30DG-30 Great Bend, KS  
 (xltr KAKE-10)  
 KSCW-33 Wichita, KS  
 (over Topeka TBN 33)  
 K15DD-15 Wichita, KS  
 0845 KTIV-DT 41 KMEG-DT 39  
 KCAU-DT Sioux City, IA

**October 2007**

2 0320 KDSM-DT 16 Des Moines, IA  
 KFPX-39 Newton, IA  
 4 0230 KDSM-17 KDSM-DT 16  
 KCCI-DT 31 Des Moines, IA  
 0500 WHO-DT 19 Des Moines, IA  
 KMEG-14 Sioux City, IA  
 0530 KDMI-DT 56 Des Moines, IA  
 9 0500 KNLC-DT 20 St Louis, MO  
 0530 K30DG-30 Great Bend, KS  
 (xltr KAKE-10)  
 K30AL-30 Iola, KS  
 (xltr KTWU-11)  
 K15CN-15 Salina, KS TBN  
 0545 KSCW-DT 31 Wichita, KS  
 K25DS-25 Junction City, KS

KTKA-DT 48 in Topeka now air "49 Doppler Radar"  
 on 48.2 24 hours a day.



KNLC DT 20  
 St. Louis

# SOUTHERN Merry Christmas FM DX

John Zondlo  
4009 Driftwood Circle  
Yukon, OK 73099  
southernfmdx@wtfda.org  
Deadline: 15th

For DXers in AL, AZ, AR, CA, CO, DE, DC, FL, GA, HI, KS, KY, LA, MD, MS, MO, NV,  
NM, NC, OK, SC, TN, TX, UT, VA, WV, Cuba & Mexico

December 2007

**Thomas Yingling** – KA3TCC – 221 Pinewood Road – Baltimore, MD 21222 – EDT

Sony STA-D2ES receiver with a Channel Master PRC-BR9 antenna

9/26 Tr

2200 WBQB 101.5 VA Fredericksburg, "B 101.5"  
WRAL 101.5 NC Raleigh  
WTKU 98.3 NJ Ocean City, "Cool 98.3"  
WJKS 101.7 NJ Canton, "Kiss 101.7"  
WAIV 102.3 NJ Cape May  
2233 WESR 103.3 VA Onley, "103.3 The Shore"

9/27 Tr

0015 WSJO 104.9 NJ Egg Harbor  
WVLT 92.1 NJ Vineland  
0100 WOBM 92.7 NJ Toms River, "93.5 The Beach"  
WYSP 94.1 PA Philadelphia  
WDSB 94.7 DE Dover  
WXKW 97.3 NJ Millville  
1930 WLAN 96.9 PA Lancaster  
WRDW 96.5 PA Philadelphia, "Wired 96.5"  
WBEN 95.7 PA Philadelphia  
WSOX 96.1 PA Red Lion  
WJJZ 97.5 NJ Burlington, cool jazz  
WGTY 101.7 PA Gettysburg  
WFKB 107.5 PA Boyerstown  
WODE 99.9 PA Easton

**John Cereghin** – 38 S. Carter Road – Smyrna, DE 19977 – [jcereghin@gmail.com](mailto:jcereghin@gmail.com) - EDT

Kaito 1103 with a variety of antennas and stock Ford Taurus car radio

10/16 Tr

2245 WPZZ 104.7 VA Crewe, urban Gospel, "Richmond's Praise and Inspiration Station" 186

10/22 Tr

0715 WKLR 96.5 VA Fort Lee, "Richmond's Classic Rock" 159  
0720 WALK 97.5 NY Patchogue, ID 167  
0730 WMGQ 98.3 NJ New Brunswick, "Magic 98.3, Jersey's soft rock" 83  
0850 WNYZ 87.9 NY Long Island City, clear IDs, NYC traffic report, talk about "MTC Europe music awards" in Russian, pop music

From Wiki- "WNYZ is a low-power television station in the New York City market area on TV channel 6. However, they have not been

broadcasting video and are now only carrying audio programming on the audio sub-carrier of 87.75MHz. This can be received on many FM broadcast receivers, and as a result WNYZ markets itself as an FM radio broadcast station. However, they are not licensed by the FCC as an FM broadcast station. The format is Russian Top 40 (Radio Vsyo - Russian for "Radio Everything"). The station also plays local club programming on Friday nights. Its transmitter is on top of the Citicorp Building in Long Island City, Queens." Very good signal this morning.

10/23 Tr

2200 WJFD 97.3 MA New Bedford, Portuguese talk, presumed the one here 273  
2215 WROG 102.9 PA Chambersburg, "Real Country," Joyce Jefferson program 164  
2230 WINC 92.5 VA Winchester, "Wink-FM" 126



**From the Editor**

Many thanks to all of you who contributed to SFM this past year. Here's hoping you have plenty of great DX in 2008!

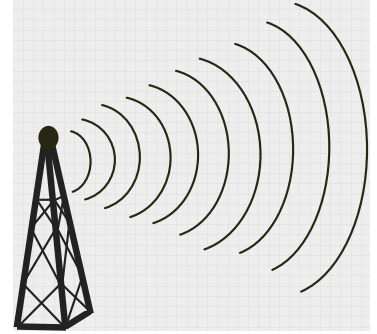


John 3:16 "For God so loved the world that he gave his one and only Son, that whoever believes in him shall not perish but have eternal life."

*Merry Christmas from the Zondlo family  
John, Carol, Christy & Joel*

# Northern FM DX

## Northern FM DX



**Keith McGinnis**  
18 Newbridge St., Hingham, MA 02043  
longwave@comcast.net 781-875-1944

---

For Dxers in the following states: CT IA ID IL IN MA ME MI MN MT ND NE NH NJ NY OH OR PA RI SD VT WA WI WY and all of Canada. Please submit by the 10<sup>th</sup> of each month. If possible please submit in the formats shown Below.

---

**EDITORS NOTE: PLEASE NOTE THAT ANY TYPEWRITTEN OR HANDWRITTEN REPORTS MIGHT BE DELAYED TILL A LATER ISSUE AS TIME PERMITS. ALSO PLEASE KEEP REPORTS AS RECENT AS POSSIBLE (THE LAST 3 MONTHS SHOULD WORK FINE). THANK YOU.**

---

**Harry Hayes – 9 Henry Street – Wilkes-Barre, PA 18702**  
Equipment: Superadio II w/110khz filter, Grundig S-350, Bose Wave radio, FM-6 in attic no amp.

### August 8 Tr

2350 CIQM 97.5 London ON  
“London’s Easy Rock”, mostly weak (300 mi)

### August 9 Tr

0405 WDDH 97.5 St. Marys PA  
“The Hound”, strong (150 mi)  
0751 WFGY 98.1 Altoona PA ID’s,  
strong (180)

### August 25 Tr

0000 WAMC 90.3 Albany NY ID’s (150)  
0913 WKJZ 97.5 Trenton NJ “Smooth  
Jazz”, good (90)

### September 19 Tr

0345 WBBS 104.7 Fulton NY “B-104” Ad  
for fall fair in Jordan (200)  
0357 WZPT 100.7 New Kensington PA  
“Star 100.7”, “Pittsburgh’s Best Variety”,  
weakfish (280)  
0340 W283AG 104.5 Chenango Bridge NY  
“Q-107” ID’s, repeats WRRQ-106.7 Windsor  
NY, good sig. (80)

### September 21 Tr

0400 WTMM 104.5 Mechanicsville NY ID,  
“ESPN Radio” (150)

### September 30 Tr

2016 WMTT 94.7 Tioga PA strong, “95 The  
Met”(100)  
2017 WIYN 94.7 Deposit NY “Oldies  
100”(80)  
2100 WFRG 104.3 Utica NY strong,  
o/Scranton translator (150)  
2140 WYXL 97.3 Ithaca NY “Lite Rock  
97.3”, John Tesh, v/strong (100)  
2155 WLTF 97.5 Martinsburg WV “Lite  
Rock”, ID, weak (175)

### October 1 Tr

0900 WJUN 92.5 Mexico PA ID, fair,  
country music

Unusually hot weather this fall is resulting in almost daily tropo, but mostly below 150 miles. Mileage listed above is approximate.

---

### **Keith McGinnis Hingham MA**

**Equipment: Yamaha T-85 (modified), Sangean HDT-1, 2 APS 9b Antennas (one as a phase antenna), Bolin Phase Box, Conrad RDS Manager & Esslinger RDS Software, Total Recorder**

### October 1 Tr

2217 WDOT 95.7 Danville VT with  
WZID phase ID heard

### October 2 Tr

0014 CFGE-1 98.1 Magog PQ nice  
recording of a fair to good signal // to web  
stream

# LAST CHANCE!

This offer is for WTFDA members ONLY *and is good until December 31, 2007.*

Jeffrey Kitz, creator of the Kitztech KT-100VG preamp is offering the amp to WTFDA members for a special reduced price.

This amp can be purchased by Paypal or by mail for only **\$40.00 plus \$6.60** shipping. (Regular price is \$50.00 plus \$8.00 shipping).

The Kitz amp has adjustable gain from zero to +20db.  
The noise figure is 1db or less throughout its range.

Jeff accepts Paypal at [kitztech@vbe.com](mailto:kitztech@vbe.com). You can order by mail by sending \$46.60 to:

Kitz Technologies  
531 N. Main St.  
Oshkosh, WI 54901

This is the same amp Jeff offers on eBay at the higher price. The people I've emailed give it a good review. I find the amp shows me DTV signals that my CM AP-4700 will not. I can see these scattery signals so I know the amp is working and that I'll see these stations with a bit of tropo enhancement.

Note: Do not order through his website. To get the reduced price send money direct to [kitztech@vbe.com](mailto:kitztech@vbe.com) and mention WTFDA when you do. *Mention WTFDA when ordering by mail also..*

-----  
*After a few days of normal conditions on UHF with the new Kitz amp that Bill Nollman installed here on my combo VHF-UHF antenna @ 25 feet, I'm happy to report that this morning with thick fog, many UHF signals came up nicely with reasonable trop. Local Fox 25 looks like cable quality and low power 46 Norwell is local quality. Others include 50-Derry,NH, 27-Worcester, and I have a weak 24 I'm not sure what that is.*

*Bottom line: this amp is sweet! VHF is great, and UHF is very good. The fact that it is not mounted up on antenna is very convenient as I don't climb on roofs!*

Steve Solomon  
Yarmouthport, MA

-----  
Bandwidth 40 Mhz - 1000Mhz  
Noise Figure: 1 db or less across the band  
Gain: Adjustable from 0 - 20 db  
Output IP3: >+32dbm  
Input/Output Impedance: 75 ohms  
Diecast Aluminum Case  
DC power supply included  
Warranty: 1 Year



# SCOTT FYBUSH'S TOWERSITE CALENDAR 2008

**CONTACT:** Scott Fybush, 585-442-5411 ([scott@fybush.com](mailto:scott@fybush.com))

ROCHESTER, N.Y. – One of North America's most esoteric wall calendars comes out for its seventh year in a row.

The "Tower Site Calendar 2008" went on sale at the end of August.

The calendar, which features a photo each month of a well-known broadcast transmitter site, is photographed and written by Scott Fybush, the creator of "Tower Site of the Week" ([www.fybush.com/featuredsite.html](http://www.fybush.com/featuredsite.html)) and "NorthEast Radio Watch" ([www.fybush.com/nerw.html](http://www.fybush.com/nerw.html)).

The full-color monthly calendar has become a tradition for many radio engineers. It's also a novelty for those who think all radio towers look alike.

"The response to the 2007 calendar was overwhelming," says Fybush. "A lot of radio engineers invite me to their sites in the hope that their towers will feature in the calendar, and I'm hoping to make some of them very happy with this edition."

As in its predecessors, each month of the 2008 calendar features an 8"x11" color photograph of a broadcast transmitter site, taken by Fybush during his travels around the U.S., Canada and beyond. The sites pictured on the 2008 calendar:

- KAST's waterfront site in Astoria, Oregon
- The demolition of WOR New York's three-tower array in Lyndhurst, New Jersey
- KFBK Sacramento's decades-old Franklin antennas
- Rib Mountain's candelabra tower near Wausau, Wisconsin
- Black Mountain's tower farm, overlooking the Las Vegas Strip
- WESX's tower and studio in Salem, Massachusetts
- The pair of Blaw-Knox towers for KFKA Greeley, Colorado
- The historic WIBG AM array in Whitemarsh Township, Pennsylvania
- WGAN Portland, Maine, draped in afternoon summer shadows
- KXLY's towers atop Mount Spokane in Washington
- Binghamton, New York's Ingraham Hill tower farm
- KROQ's Verdugo Hills site east of Burbank, California
- A close-up night shot of the first-ever FM tower, built by Major Edwin Howard Armstrong in Alpine, New Jersey
- WBNS's Blaw-Knox "diamond" tower in Columbus, Ohio

In addition to tower photos, the calendar's monthly pages include significant dates in radio and television history, as well as civil and religious holidays.

The 2008 calendars cost \$18 each, postpaid (\$19.44 including sales tax for New York State residents), and can be purchased by check (payable to "Scott Fybush") or money order to 92 Bonnie Brae Avenue, Rochester NY 14618. Orders can also be placed with major credit cards at [www.fybush.com](http://www.fybush.com).

"Visiting studio and transmitter sites is a great way to see the country," says Fybush, who also edits the radio directory site [100000watts.com](http://100000watts.com) and trade newsletter *Radio Journal* and anchors newscasts for NPR member station WXXI in Rochester, N.Y.

# RCA L15D20 15" DIGITAL TELEVISION

Robert Ross & Bill Hepburn

The other night my Buddy Al, in St. Thomas, Ontario alerted me to a pretty good deal on a 15 inch digital TV. I have been looking for a smaller sized TV with digital tuner to use in my Radio Room/Ham Shack. Trying to find a small Set in Canada with a digital tuner is not easy. There are lots of bigger sets with digital tuners but I wanted something small. I wanted it just for DX'ing. I already have a 50 Inch HD for my Viewing Pleasure.

The set in question is the RCA L15D20 which has all 3 tuners built in: Analog/Digital/ QAM. It is an LCD Set with a square picture. It is not true HD but will display stations that are in HD with bars on the top and bottom of the screen. The picture quality is excellent.

The Analog and Digital Tuners appear to be quite sensitive.

The set scans for stations, first analog stations then digital stations. Or you can just enter any channel you want to watch with the remote. This includes digital stations. If, for example, you want to watch Cleveland WEWS 15 Digital you just punch in 15.1 and you get the digital channel. If you want another sub channel you just punch in the appropriate sub channel...eg 15.2 or 15.3. The set Displays PSIP Information as well. If you want an analog station you don't punch in the sub channel decimal. Channel 15 analog would just be 15 (not 15.1).

Scanning thru the analog stations 2-69 is VERY Fast. Scanning thru digital channels 2-69 is

somewhat slower, about the same time my HUMAX Tuner takes but not nearly as fast as my US Digital Tuner.

It also has a Built in signal Meter for digital TV. This is very helpful when trying to zero in your beam for a specific station!!

Once the scan looks through all the analog and digital stations it puts all stations received (both analog and digital) on your viewing list. You can manually hide any stations you don't want on the List.

The other feature I really like is every time you do a re-scan it starts from scratch and only lists stations it receives on that specific scan!! You don't have to clear out the old stuff.

Another nice feature is that it will recognize digital signals that are present but are not strong enough to decode It will add them to your list of stations present even though they didn't decode. It may just take a tweak of the antenna to make them strong enough to decode. This makes sure you don't miss stations that were weak on the first pass by!!

The TV was purchased from The Real Canadian Superstore which is a division of the LOBLAWS grocery Chain. Price on the set was \$299 Canadian Dollars but it was on sale for \$269 so not a bad price for Canada especially when it fit all the criteria I was looking At: size, 3 Tuners built in etc. It is also stereo sound.

---

## Digital DXing is Fun Alright (he says sarcastically) Bill Hepburn

The tuner is reasonably sensitive. It can get DTV stations my Humax can't, but in a couple of cases the Humax held a signal better. Most of the time though the RCA won out. Analog video *seems* slightly more sensitive on moderate DX signals than my Samsung (i.e.- slightly less snow)...but who knows whether video noise reduction circuit tricks are making it appear better.

Here's where the story isn't as rosy: Selectivity seems average on UHF..meaning not as good as my Samsung analog. I can't get my usual 243 mile tropo scatter beacon CIVO-30 without the AFC causing the channel to go to the "black adjacent channel" look (caused by local 29). Ch 30 is more open on my Samsung. Selectivity is better on VHF than my Samsung analog. All this won't matter once analog is gone, but for now I'm still keeping my 13" analog TV around until I've gone through some DX sessions.

Analog audio sensitivity is *much* better than my Samsung. Mutes on weak signals but threshold is decent (i.e.-OK). Audio does make an audible click sound as it goes in and out; might be annoying to some. I'm already used to it. "CC On When Mute" option very handy for DXing with the sound off. You can force mono if you want. The audio on my TV has some digital noise on it. Normally quiet, but a few times has been audible at 6 feet away from the

TV. Not sure if it's an issue with my particular unit or if all TVs have it.

As with all "digital" analog TV tuners I've come across, they have a harder time with analog CCI than "analog" analog tuners; not as bad as some tuners, but still, pictures are not as stable and harder to see details with. Not as good for skip. Again. keep an analog around for skip. I Can't truly judge 'til next ES season. It may not be as bad as I suspect.

Yes, you can tune in digital channels using their physical channel (like 5.1) unless that channel is already used by a virtual channel. In my example, virtual "5.1" is my local CBC on physical 20.1. So punching in 5.1 gets me CBLT-DT 20.1, not the real 5.1. During a DX opening, this might cause all sorts of headaches. An automatic scan sorts things out, as Rob mentioned, existing assignments are then wiped out. You may need to do a scan with no antenna attached though to, in my case, make 5.1 available for DXing. When you do get a DX station on 5.1, the call letters do not show up - but instead can be found by entering in the virtual channel - which is automatically stored the instant a new station comes in (but the TV tuner does not automatically show the virtual channel - you have to hunt for it - all virtual channel assignments can be found in the Manual Channel Setup menu). The tuner does not decode analog call letters like some tuners can. It does decode analog program names (found by pressing the Info button).

(Continued on page 31)

## SIGN UP/Renewal form

Name \_\_\_\_\_

Address \_\_\_\_\_ Apt # \_\_\_\_\_

City \_\_\_\_\_ State/Prov \_\_\_\_\_ Zip \_\_\_\_\_

Country \_\_\_\_\_ Interests: TV ( ) FM ( ) 30-50( ) Weather( )

email address \_\_\_\_\_

Sign me up/renew me for: 1 year ( ) 2 years ( ) More ( )

Yearly dues \$24 (US), \$26 to (CANADA), \$10 (Electronic VUD)  
(Students get a discounted rate of \$15 yearly for the paper VUD.)

**Mail your dues to: WTFDA, P.O. Box 501, Somersville, CT USA 06072**

**Make your checks/money orders payable to: WTFDA**

**And *thanks* for your support of the WTFDA!**

Return this form with your dues or make a copy of it and return that.

## WTFDA MEMBER SELLING DX EQUIPMENT ON eBay

Long time veteran WTFDA member and TV DXer Jeff Kadet (IL) is currently selling a large batch of electronic equipment, much of it DX related. If you are interested in bidding on any of Jeff's DX equipment and possibly picking up a bargain at the same time, visit eBay online and do an advanced search for Jeff's username, which is **ibuytvguides**. We recently checked Jeff's auctions and saw a USDTV DTV box with a \$7.00 bid and a CM 7008 Hi-Q low band trap going for \$5.00 with no bids. Head for <http://www.ebay.com> and check out Jeff's auctions.

<http://search.ebay.com/W0QQfrppZ25QQfrtsZ0QQsassZibuytvguides>

## WTFDA EMAIL REFLECTORS

**Enhance your DXing experience! Entertaining and informational.**

*For WTFDA members and guests on the wtfda.info server*

The WTFDA list...send an email to <a href="mailto:tvfmdx-subscribe@wtfda.info">tvfmdx-subscribe@wtfda.info</a>	190 users
The WTFDA AM DX list...send to <a href="mailto:amdx-subscribe@wtfda.info">amdx-subscribe@wtfda.info</a>	92 users
The WTFDA Es Alert List...send to <a href="mailto:alerts-subscribe@wtfda.info">alerts-subscribe@wtfda.info</a>	24 users

## RCA L15D20 15" DIGITAL TELEVISION CONTINUED FROM PAGE 30

Analog channels can be turned on or off but this gets ruined by subsequent auto scans. So I won't be bothering to set it up to manually browse 2 to 69, instead will use my Samsung VCR for that.

DTV signal strength meter has a good range to it, meaning 80 on my Sony TV is about 60 on the RCA. It's a useful meter. It can only be accessed through a menu but disappears when you change channels.

The TV has no video out capability but does have a digital audio out. It has several inputs. There is no "blue screen of death" but the composite input does

have a "black screen of death" which shows even with weak but barely watchable video from my VCR.

Is it a keeper? Yes, since I can finally leave it on a physical digital channel and get DX. Is it a dream DX machine? Not by any stretch of the imagination. But if you're like me and would like digital DXing integrated into your main DX TV, then this TV does just fine. Don't throw out the analog just yet.

(Bill and Rob have since upgraded to the same TV with a much larger screen)

RCA Link..

<http://tv.rca.com/en-US/ModelDetail.html?MN=L15D20&nav=ByRoom&PC=Bedroom>

**THE WORLDWIDE TV-FM DX ASSOCIATION  
THE VHF- UHF DIGEST  
P.O. Box 501, SOMERSVILLE, CT 06072**

Opinions expressed in this publication are those of the individual contributor and do not necessarily reflect the views of the publisher or board of directors. We reserve the right to edit material to meet publishing standards. Unless previously agreed upon in writing, all material submitted for publication in the VHF-UHF Digest becomes the property of the WTFDA. Reproduction of material from the VHF-UHF Digest without permission of the WTFDA is prohibited. Individuals and other organizations are granted such permission providing proper credits is given to the source.



***Established 1967***



## **FIRST CLASS MAIL**

**NOW! JOIN AND RENEW USING PAYPAL!**

Now you can pay for your dues by check, money order and ONLINE with Paypal! If you have a Paypal account you'll be done in a matter of seconds! Pay at our Paypal webpage at <http://fmdx.usclargo.com/join.html> or send your dues to [mbugaj@snet.net](mailto:mbugaj@snet.net)