

Vhf-Uhf DIGEST

The Official Publication of the Worldwide TV-FM DX Association

JUNE 2008

The Magazine for TV and FM DXers

**EIGHT
MONTHS**

REMAINING UNTIL
ANALOG TV SHUTOFF



The Sony XDR-F1HD AM/FM TUNER

Would you believe a tuner with 82db adjacent channel selectivity, super sensitivity, RDS and HD included, 20 presets, signal meter, clock, remote control, and extreme overload resistance for only

\$100.00 ?

BELIEVE IT!

(MORE IN THIS ISSUE)



Also In This Issue

PORTABLE DTVs.

Is that a DTV they're watching in the back of that limo?

TV and FM DXing was never so much fun!

THE WORLDWIDE TV-FM DX ASSOCIATION

Serving the UHF-VHF Enthusiast

THE VHF-UHF DIGEST IS THE OFFICIAL PUBLICATION OF THE WORLDWIDE TV-FM DX ASSOCIATION DEDICATED TO THE OBSERVATION AND STUDY OF THE PROPAGATION OF LONG DISTANCE TELEVISION AND FM BROADCASTING SIGNALS AT VHF AND UHF. WTFDA IS GOVERNED BY A BOARD OF DIRECTORS: DOUG SMITH, GREG CONIGLIO, BRUCE HALL, KEITH MCGINNIS AND MIKE BUGAJ.



Editor and publisher: **Mike Bugaj**

Treasurer: **Keith McGinnis** wtfda.org Webmaster: **Tim McVey**

wtfda.info Site Administrator: **Chris Cervantez**

Editorial Staff: **Dave Williams, Jeff Kruszka, Keith McGinnis, Fred Nordquist, Nick Langan, Doug Smith, Peter Baskind, Bill Hale and John Zondlo,**

Our website: www.wtfda.org; Our forums: www.wtfda.info

JUNE 2008



Finally! For those of you online with an email address, we now offer a quick, convenient and secure way to join or renew your membership in the WTFDA from our page at:

<http://fmdx.usclargo.com/join.html>

Dues are \$25 if paid to our Paypal account. But of course you can always renew by check or money order for the usual price of just \$24. Either way, it's still a bargain!

eVUD members please send \$10 for membership or renewal to mbugaj@snet.net.

CONTENTS

Page Two	2
Mailbox	3
TV News...Doug Smith	4
FM News...Bill Hale	9
WTFDA Contest Update	17
Sony XDR-F1HD Reviews	18
Mobile DTV Standards	19
Photo News...Jeff Kruszka	20
Eastern TV DX...Nick Langan	22
Western TV DX...Dave Williams	24
Southern FM DX...John Zondlo	28
Northern FM DX...Keith McGinnis	29

FIND US FAST!

WTFDA BOARD OF DIRECTORS

Mike Bugaj, use the WTFDA Mailing address listed below

Doug Smith, 1385 Old Clarksville Pike, Pleasant View, TN 37146-8098

Greg Coniglio, 11825 Genesee St., Alden, NY 14004

Bruce Hall, 5 Stirton Ave., Brantford, ON N3T 1E2

Keith McGinnis, 18 Newbridge St., Hingham, MA 02043

mikeb@wtfda.org

dougs@wtfda.org

gregc@wtfda.org

dbruce@wtfda.org

nfmdx@wtfda.org

THE MAILBOX and all general club correspondence:

Mike Bugaj at WTFDA, PO Box 501, Somersville, CT 06072

mailbox@wtfda.org

TV NEWS

Doug Smith, 1389 Old Clarksville Pike, Pleasant View, TN 37146-8098

dougs@wtfda.org

FM NEWS

Bill Hale, 6124 Roaring Springs Drive, N. Richland Hills, TX 76180

fmnews@wtfda.org

PHOTO NEWS

Jeff Kruszka, 1909 Lost Lake Pl., Pearland, TX 77581

jeffk@wtfda.org

EASTERN TV DX

Nick Langan, 1040 Riverview Dr., Florence, NJ 08516

nickl@wtfda.org

WESTERN TV DX

Dave Williams, 3225 SW Timber Ave., Redmond, OR 97756

wtvdx@wtfda.org

SOUTHERN FM

John Zondlo, 4009 Driftwood Cir., Yukon, OK 73099

southernfmdx@wtfda.org

NORTHERN FM

Keith McGinnis, 18 Newbridge St., Hingham, MA 02043

nfmdx@wtfda.org

TV and FM STATISTICS

Fred Nordquist, 147 Travis Hill Road, Moncks Corner, SC

stats@wtfda.org

6 METER/2 METER

Peter Baskind, 3225 Forest Hill-Irene Rd, Germantown, TN 38138

ag4ki@yahoo.net

WEBSITE Tim McVey Webmaster <http://www.wtfda.org>

webmaster@wtfda.org



The Mailbox

P.O. Box 501, Somersville, CT USA 06072
MIKE BUGAJ MBUGAJ@SNET.NET

WELCOME TO JUNE!

Let's hope that June turns out to be a better month than May was. As of the third week of the month there was one fairly widespread Es opening that covered the eastern portion of North America on May 19th but barely hit FM. But back on May 15th Dave Williams had Es on FM from Southern California to 108mhz. Other minor TV openings occurred on May 15 and May 19. Tropo was active down in the Gulf area on the 20th when Jeff Kruszka heard 900 mile trans-Gulf tropo from Florida at his home in Texas. Roy Barstow saw coastal tropo from VA to his home on Cape Cod a few times.

All in all, the Es season has been very quiet so far and with precious time ticking away, DXers wonder when the skip season will shift into high gear.

NEW DXER?

Congratulations go out to **Scott Fybush** and his wife Lisa on the birth of their son Eli Benjamin Fybush on May 13th, 2008 at 5:32am. Eli weighed in at 5lb 8oz and 18.5" and made his entrance a month early as he was informed that May would be a great month for E skip DXing. Little did he know, and when he found out, it was too late to go back.

MEMBERS AND MORE

This month I'd like to welcome **John Vervoort** back to the WTFDA. John had been a WTFDA member in the past and it's good to have him back.

This month we also welcome new members **Tim Alderman**, **Larry Kenney** and **Larry Back** to the WTFDA. Tim was referred to us by Bob Cooper and had written several articles for Bob's *Satfacts* magazine. Larry Kenney lives in the San Francisco area (as does Tim) and has his own website relating to Bay Area television which has a link to my own personal website. I've always wanted to thank him for linking to mine and now I can. And last but not least welcome to Larry Back. Larry lives in Ohio. Thank you all for joining the WTFDA!

During the period of 4/12 to 5/14 we received renewals from **Nick Langan** (NJ), **John Hanna** (IL), **Saul Chernos** (ON), **Gray Fulk** (NC), **Fred Newlin** (NY), **Eric Fader** (NY), **Fred Nordquist** (SC), **Bill Grant** (MA), **Bill Hepburn** (ON), **Mike Glass** (IN), **Tim**

Katlic (NY), **Peter Baskind** (MS), **Neil Griffin** (FL), **Ken Onyschuk** (IL), **Bob Garchak** (PA), **Roger Gravelle** (ON) and **Jerry Bond** (NY).

If I remember correctly, Tim Katlic should be graduating college (if he hasn't already), so congratulations to you, Tim! And thanks to you all for helping to make WTFDA a great club to belong to.

WTFDA.ORG

For the past few weeks I've been scanning the set of 1990s VUDs I received from Bill Nollman and as of the 22nd I have them all scanned except for 1998 and 1999. All of the scanned VUDs are available for any WTFDA member to view at the club website at <http://www.wtfda.org>. I'm still looking for the year 2000 and the months of 2001 prior to September when the first eVUD was published.

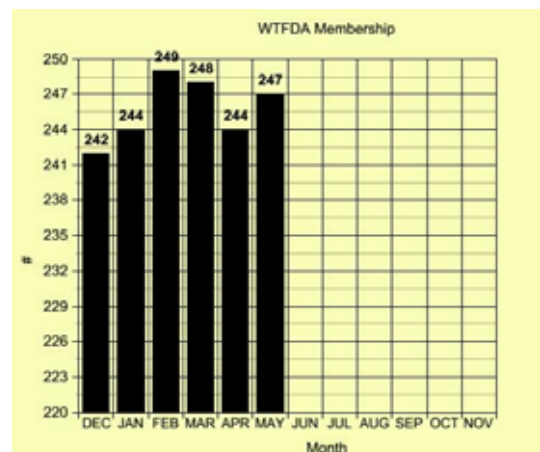
When those are done I'll start working on the box of AIPA bulletins that Matt Sittel sent.

If you want access to the VUDs, just use the Contact Us link on the page and either give us a username/password or ask us for one.

ANOTHER HOT TUNER!

This one is the Sony XDR-F1HD and it sells for \$100 or less. I now have two of these. This tuner is the most selective tuner I've ever owned (or modified). We have three reviews of this tuner available at the WTFDA website plus we have Nick Langan's review included in this VUD. Read the review, go to the website and read for yourself. This tuner is HOT and the price is such that it shouldn't break the bank. A low cost tuner of this quality wasn't available five years ago. It is now.

MEMBERSHIP AS OF 5-1-08



255 as of 5/22. Happy skip hunting! CU in July.



TV News

Douglas E. Smith
1389 Old Clarksville Pike
Pleasant View, TN
37146-8098
w9wi@w9wi.com
<http://www.w9wi.com>

June 2008

Abbreviations:

AF	Applied For (a new station)	NW	New station on the air
Aux	Auxiliary (backup) transmitter	PA	Proposed Amendment
CC	Callsign change	PC	Power (and/or tower height) change on the air
CL	City-of-license change	PG	Power change granted
DC	Converted to DTV	PR	Power change requested
DCC	Digital Companion Channel	RA	Returns to the air
NS DCC	Granted flash-cut to DTV	QC	Channel (frequency) change on the air
DE	License/permit deleted	QG	Channel change granted
DR	Requests flash-cut to DTV	QR	Channel change requested
FC	Programming (format) change	RE	Reinstated (previously-dismissed app.)
FTP	Failure to Prosecute	ROA	Request of Applicant
GA	Granted amendment (to table of channel allotments)	SI	Off the air (silent)
LC	License to Cover	STA	Special Temporary Authority
MX	Mutually Exclusive	XC	Transmitter site changed
NDA	Non-directional antenna	XG	Transmitter site change granted
NS	Permit granted for new station	XR	Transmitter site change requested

News:

(full-power analog stations in **bold face**; LPTV and translators in regular type; full-power digital stations in **bold italics**; low-power digital stations in regular italics)



Canada:

Ontario:

Ottawa 20 **CKXT-DT-?** **QR from ch 62**
9.3kw/333m, 45-30-11/75-51-01



Guam:

Tamuning 14 **KTGM-DT*** **NS 12.5kw/ 168m, 13-29-17/144-49-30**



Puerto Rico:

Aguadilla 34 **WELU-DT** **NW 250kw/ 605m, 18-09-06/66-59-23**

Arecibo 20 **WIMN-CD** **DR 40w (FC)**

Isabel Segunda 50 **WVQS-LD** **DG 15kw, 18-18-45/65-47-35 (FC)**

Ponce 9 **WSUR-DT*** **QR from ch 43 15.6kw/857m; QG**

San Juan 10 **W10CZ** **QG from W52DY, 2.8kw, 18-25-31/66-08-50**



U.S. Virgin Islands:

Christiansted 34 **WJWM-LP** **CC from W34DO**



USA:

Alabama:

Montgomery 12 **WSFA-DT*** **QG from ch 14 1.16kw/598m**

Opelika 18 **W18CD** **FC; sold by TBN**

Tuscaloosa 33 **WCFT-DT*** **QR from ch. 5, 230kw/657m; QG**

Alaska:

Fairbanks 9 **KUAC-DT*** **QR from ch 24 2.8kw/169m**

Ketchikan 13 **KUBD-DT*** **PR<1.5kw/ -69m**

Arizona:

Globe 30 **K30ES** **PC<5kw, 33-29-33/111-38-26; from minus offset to zero**

Green Valley 46 **KUVE-DT*** **QG from ch 47 70.8kw**

Phoenix 26 **KUTP-DT** **NS 1000kw/ 517m**

Phoenix 26 **KUTP-DT*** **AF 324kw/ 501m, 33-20-03/112-03-43 (aux)**

Arkansas:

Harrison 31 **KWBM-DT*** **NS 191kw/ 339m (FC)**

Hot Springs 26 **KVTH-DT*** **NS 66.4kw**

California:
Altadena 6 **KTAV-LP** QR from ch 69 500w
Alturas 20 **K20DE-D** PR<900w,
41-09-18/
120-33-46
(amendment to permit
to flash-cut to DTV)

Cathedral City 13 **KRET-CA** CC from KDPX
Etna 3 **K02HC** DR from ch. 2, 2w
Fall River Mills 28 **K28DB** DR 66w
Fresno 30 **KFSN-DT*** **QR from ch 9**
260kw/625m

Glen Arbor 6 **KBKF-LD** DR from ch. 42, 300w,
37-04-35/
122-08-03

Indio 19 **KLPS-LP** CC from K19DH
Johannesburg 6 **NEW-LP** AF RE 500w,
35-21-46/
117-38-24 (Jeff
Chang)

La Jolla 38 **K67AM-D** DR from ch. 67, 580w,
32-50-53/ 117-16-32
reinstated

Lakehead 14 **K14HX** DR 58w; DG (FC)
Lakeport 4 **K56AW-D** QR from ch. 56, 60w
Lakeport 5 **K64AZ-D** QR from ch. 64, 60w
Lancaster 26 **K26GN** PR<500w (permit for
15kw DTV still valid)

Lewiston 28 **K28CY** DR 14w; DG (FC)
Los Angeles 3 **KVTU-LP** PG>499w; PC
Los Angeles 43 **KCBS-DT*** **QG from ch 60**
540kw/951m, 34-13-
38/
118-04-00 (will take
over the facilities of
co-owned KCAL-DT
but at about 10%
higher power)

Redding 5 **KRDN-LD** DR 300w,
40-15-31/
122-05-24; DG

Redding 29 **KMSX-LD** DC 15kw,
39-55-02/
122-40-10; PR<10kw,
39-39-04/
121-27-43

San Diego 7 **KFMB-DT** **QC from ch 55 (STA,**
not in database)

San Diego 9 **KZSD-LP** QR from ch 66 2.3kw,
32-50-20/
117-14-56

San Luis Obispo 31 **K57BC** QR from ch 57 140w
San Luis Obispo 49 **KPXA-LP** DR 1kw,
34-54-36/
120-11-10 (FC)

Santa Barbara 17 **KSBB-LD** DR 10w
Santa Maria 29 **KQMM-LD** DC 15kw
Santa Rosa 20 **KTVJ-LP** QR from ch. 36, 38-
19-56/
122-35-42

Trinity Center 39 **K39DG** DR 59w; DG (FC)

Colorado:
Anton 51 **K51HS-D** PR<420w
Denver 7 **KMGH-DT*** **QG from ch 17**
2.8kw/359m

Denver 19 **KTVD-DT** **PR<96kw/329; PG**
Denver 35 **KCNC-DT** **NW 978kw/**
373m

Denver 52 **KSBS-LP** QR from ch. 28, 2kw
Greeley 38 **KPJR-DT** **QG from ch 45**
1.2kw/362m
40-05-59/

104-54-02

Connecticut:
Waterbury 20 **WTXX-DT*** **QG from ch 12**
52kw/516m

District of Columbia:
Washington 7 **WJLA-DT*** **QG from ch 39**
13.6kw/235m

Washington 9 **WUSA-DT*** **PR>12.6kw; PG**
(amendment to
permit to move from
ch. 34)

Washington 36 **WTTG-DT*** **PG>227m; NW**
Washington 47 **WMDO-CA** PC<16.5kw,
38-56-24/
77-04-54

Florida:
Jacksonville 7 **WJCT-DT*** **QG from ch 38**
18kw/302m

Jupiter 53 **WWJV-LP** PC>40kw
26-35-20/
80-12-43

Key West 31 **WTVK-LP** CC from W31AB
Miami 6 **WEYS-LP** QR from ch 56 200w,
25-52-24/
80-28-59

Orlando 28 **WDTO-LD** DR 15kw
28-34-51/
81-04-32

St. Petersburg 44 **WTOG-DT*** **QG from ch 59**
370kw/454m, 27-49-
46/
82-15-59

Union Park 10 **WSWF-LP** QR from ch. 13, 300w,
28-34-07/
81-13-55

Yankeetown 45 **WGCT-LD** XR 28-30-17/ 82-20-
34

Georgia:
Albany 10 **WALB-DT*** **QR from ch 17**
2.75kw/297m; QG

Atlanta 29 **WANN-LD** PR>15kw
Chatsworth 33 **WNGH-DT** **NW 426kw/**
537m; CC from
WCLP

Cochran 7 **WMUM-DT** **NW 31kw/**
332m

Columbus 9 **WTVM-DT*** **QG from ch 47**
1kw/507m

Columbus 36 **W36DQ** FC; sold by TBN
Dalton 16 **WELF-DT** **PR 250kw/ 445m; PG**
Dawson 25 **WACS-TV** PG<90kw/
303m; PC

Savannah 9 **WVAN-TV** PG<170kw/
388m; PC; NW
47kw/169m (aux)

Waycross 9 **WXGA-DT** **NW (facilities**
unknown...)

Wrens 6 **WCES-DT*** **QG from ch. 2,**
45kw/429m

Hawaii:
Waimea 57 **K57BI** PR>440w,
21-55-10/
159-31-37

Idaho:
Boise 39 **KKJB-DT*** **PR<35kw**
(amendment to
existing flash-cut
application)

Soda Springs 30 **K30JW** DR 250w,
42-30-57/

111-55-23; DG (FC)

Illinois:

Aurora 50 **WXFT-DT*** QG from ch 59 172kw
Champaign-Urbana 25 **W25DW** QG from W52BR, 95kw, 41-53-06/ 87-37-18 (site is in downtown Chicago)
Chicago 12 **WBBM-DT*** QG from ch. 3, 8kw/497m, 41-52-44/ 87-38-08 (moves from John Hancock Center to Sears Tower)
Peoria 25 **WEEK-DT*** QG from ch. 57, 246kw
Rochelle 49 **WCHU-LD** QR from ch. 61 dismissed

Indiana:

Evansville 9 **WNIN-DT*** QR from ch 12 3kw/304m; QG
Indianapolis 13 **WTHR-DT*** QR from ch 46 15.1kw/299m; QG
Kokomo 29 **WTTK-DT*** QG from ch 54 410kw/300m
Marion 51 **WIWU-CA** PC<3.6kw, 40-36-56/ 85-38-47

Iowa:

Ottumwa 15 **KYOU-DT*** QR from ch 14 9.2kw/363m

Kansas:

Topeka 11 **KTWU-DT*** QG from ch 23 15.4kw/302m
Topeka 13 **WIBW-DT*** QG from ch 44 18.1kw/413m

Kentucky:

Ashland 44 **WTSE-DT** NW 50kw/ 174m

Louisiana:

Alexandria 41 **KBCA-DT*** NS 210kw (FC)
Baton Rouge 9 **WAFB-DT*** QR from ch 46 110w/511m, 30-21-58/ 91-12-47; QG
Monroe 13 **KLTM-DT*** QR from ch 19 17.2kw/544m, 32-11-50/ 92-04-14; QG
New Iberia 50 **KLWB-DT*** NS 195kw (FC)
Opelousas 39 **K39JV-D** DG 15kw, 45-38-15/ 111-16-01

Maine:

Lewiston 35 **WPME-DT*** QG from ch 28 14.35kw/278m
Presque Isle 8 **WAGM-DT*** QR from ch 16 4.3kw/350m 46-33-04/ 67-48-34 (amends previous application for 5kw)

Maryland:

Baltimore 38 **WMAR-DT*** PG>1000kw/ 312m
Ocean City 22 **WBLP-LP** PR>750kw (? , obviously a typo. 750 watts?)
Pocomoke City 11 **W11DB** PR>500w

Massachusetts:

Springfield 22 **WGBY-DT*** QR from ch 58 306m; QG

Michigan:

Calumet 5 **WBKP-DT*** QG from ch 11 6.4kw/301m, 47-02-11/ 88-41-43
Flint 16 **WSMH-DT** NS 895kw/ 287m
Mount Pleasant 26 **WCMU-DT*** QG from ch 56 226kw
Onondaga 10 **WILX-DT*** QG from ch 57 14.8kw/299m

Minnesota:

Duluth 10 **WDIO-DT*** QG from ch 43 34.6kw/297m
Frost 19 **K19GW-D** NW 280w, 43-35-09/ 93-55-46 (KARE-11)
Frost 34 **K34JZ-D** NW 170w, 43-35-09/ 93-55-46 (WFTC-29)
Hibbing 13 **WIRT-DT*** QG from ch 36 9.8kw/204m
Jackson 36 **K36IV-**, NW 1.5kw,
40 **K40JN-**, 43-36-12/
49 **K49JU-D** 94-59-33 (KMSP-9; KEYC-12; ?)

Minneapolis 9 **KMSP-DT*** QG from ch 26 21kw/433m

Royalton 30 **KTCJ-LP** PR<2kw 45-39-13/ 94-10-15

St. James 29 **K29IE-D** XR 44-06-28/ 94-35-55

St. James 31 **K31JY-D** PR>1.5kw 44-06-28/ 94-35-55

St. James 32 **K32GX-D** NW 1kw (KTCA-DT 34)

St. James 33 **K33JX-D** PR>1kw, 44-06-28/ 94-35-55

St. James 34 **K34JX-D** NW 1.5kw, 44-06-25/ 94-35-44 (TNN)

Thief River Falls 10 **KBRR-DT*** QR from ch 32 590w/192m, 47-58-38/ 96-36-18; QG

Mississippi:

Jackson 12 **WJTV-DT*** QG from ch 52 20.3kw/491m

Jackson 51 **WWJX-DT*** NS 177kw (FC)

Magee 34 **WRBJ-DT*** NS 98kw (FC)

Meridian 11 **WTOK-DT*** QR from ch 49 11.8kw/160m; QG

Meridian 38 **W65DE** QR from ch. 65, 200w
Meridian 46 **W46CL** PR<200w

Missouri:

Cape Girardeau 12 **KFVS-DT*** QG from ch 57 6.8kw/609m

Kansas City 4 **WDAF-TV** AF 35.6kw/ 254m (aux)

Montana:

Billings 45, **K68GO**, QR from chs. 68/69,
51 **K69IV** 50w, 45-47-55/ 108-32-30

Bozeman 32 **KBTZ-LP** PR>53kw, 45-39-28/ 110-48-23

Butte 19 **KWYB-DT** NW 110.7kw/ 585m

Missoula 13 **KECI-DT*** QG from ch 40
 26.7kw/610m
Missoula 17 **KMMF-DT*** AF 50kw/ 628m (FC)

Nebraska:
Lincoln 10 **KOLN-DT*** QG from ch 25
 18.4kw/454m
Merriman 12 **KRNE-DT*** QG from ch 17
 30kw/322m (reflects
 amendment to
 application,
 increasing power
 from 14kw)

Nevada:
Reno 8 **KOLO-DT*** QR from ch. 9,
 15.6kw; QG
Verdi 24 **K06GB** QC from ch 6, 535w

New Hampshire:
Durham 11 **WENH-DT*** QG from ch 57
 15.8kw/302m
Manchester 9 **WMUR-DT*** QG from ch 59
 6.5kw/314m

New Jersey:
Linden 36 **WNJU-DT** NW 650kw/
 223m,
 40-48-08/
 74-14-48

New Mexico:
Farmington 8 **KOFT-DT** Cancelled effective
 Nov. 13, 2007.
Farmington 12 **KOBF-DT*** QG from ch 17
 13.5kw/125m
Las Cruces 22 **K54GR-D** DR from ch. 54, 15kw,
 32-17-33/
 106-41-51
Roswell 13 **K13RK** DR 300w (FC)
Taos 12 **K12OG-D** DG 28w (FC)

New York:
Bath 14 **WFBT** CC for NS
Jamestown 26 **WNYB-DT*** QG from ch 27
 234kw/463m
New York 11 **WPIX-DT*** QG from ch 33
 7.5kw/405m
Riverhead 47 **WLNY-DT*** QG from ch 57
 1000kw/193m
Rochester 10 **WHEC-DT*** QR from ch 58
 30kw/153m
Rome 6 **W12BZ** QR from ch. 12
 dismissed

North Carolina:
Chapel Hill 25 **WUNC-DT*** QG from ch 59
 404kw/464m
Goldsboro 17 **WNCN-DT*** QG from ch 55
 27kw/611m
Jacksonville 19 **WUNM-DT*** QR from ch 18 90kw;
 QG
Linville 17 **WUNE-DT*** QG from ch 54
 55kw/546m
Lumberton 31 **WUNU-DT*** QR from ch 25
 18kw/319m; QG
Williamston 55 **WFTB-LP** PR<13.05kw, 35-58-
 00/
 76-56-54; PG (still
 holds permit to move
 to ch. 45)
Winston-Salem 32 **WUNL-DT** XR 36-22-31/
 80-22-18 dismissed
 (but correction
 only?)

North Dakota:
Devils Lake 8 **WDAZ-DT*** QR from ch 59
 19kw/451m; QG
Jamestown 7 **KJRR-DT*** QG from ch 18
 10.6kw/135m
Minot 10 **KMOT-DT*** QG from ch. ?,
 7.69kw/207m
Minot 14 **KMCY-DT*** QG from ch 15
 40kw/217m

Ohio:
Cleveland 17 **WKYC-DT*** QG from ch. 2,
 868kw/307m
Toledo 13 **WTVG-DT*** QG from ch 19
 3.55kw/305m

Oklahoma:
Oklahoma City 7 **KOCO-DT*** PG 47kw/ 370m
Muskogee 20 **KQCW-DT** PR<550kw
Woodward 15 **KOMI-LD** QR from ch. 24, 15kw,
 but dismissed. Going
 for ch. 34 instead.

Oregon:
Eola 17 **KWVT-LP** PC>35kw
 44-58-38/
 123-08-29
Medford 44 **K44IA** PR>13.8kw

Pennsylvania:
Hawley 11 **WWPS-LP** QR from ch. 8, 1.25kw
Johnstown 8 **WWCP-DT*** QG from ch 29
 8.4kw/368m
Philadelphia 42 **WTFX-DT*** AF 150kw/
 163m,
 40-03-29/
 75-14-21 (aux)
State College 13 **WSCP-CA** CC from W13BY

South Carolina:
Columbia 47 **WZRB-DT*** NS 50kw (FC)

South Dakota:
Huron 12 **KTTM-DT*** QG from ch 22
 12.6kw/257m
Pierre 19 **KPRY-DT*** PG>110kw

Tennessee:
Clarksville 49 **WCKV-LP** PR<15.4kw
 36-31-39/
 87-21-30
Memphis 5 **WMC-DT*** QG from ch 52
 7.3kw/309m, 35-10-
 09/
 89-53-10

Texas:
Andrews 20 **KADX-LP** CC from K20JR
Austin 7 **KTBC-DT*** AF 27.3kw/
 209m (aux)
Clear Lake City 29 **KJIB-LD** DR from ch. 5, 10kw,
 29-34-16/
 95-30-38
Corpus Christi 20 **K54JS** QR from ch 54, 9kw
Corpus Christi 42 **KVVC-LP** QR from ch 69, 9.99kw
Corpus Christi 49 **KCBO-LD** DR 800w (FC)
Dallas 8 **WFAA-DT*** AF 37.9kw/
 426m,
 32-35-17/
 96-58-34 (aux)
Houston 13 **KTRK-DT*** QR from ch 32
 32.4kw/588m; QG
Houston 26 **KRIV-DT*** AF 435kw/
 530m (aux)
Lubbock 41 **K64GV** DR from ch. 64, 750w
Midland 29 **K69IT-D** DR from ch. 69, 800w

Odessa	30	KWWT	PC<270kw/ 147m, 32-02-52/ 102-17-46
Sherman	12	KXII-DT*	QG from ch 20 14.4kw/546m
Snyder	17	KPCB-DT*	QG from ch 10 5kw/135m
Tyler	7	KLTV-DT*	QG from ch 10 10.2kw/300m
Victoria	47	KXVT-LP	CC from K47JS
Wolfforth	43	KLCW-DT	NS 36.9kw/ 280m
Utah:			
Cedar City	45	K45HD-D	DG 400w, 37-38-21/ 113-01-53
Circleville	33	K33JD-D	NW 6w, 38-12-41/ 112-14-02 (KUED-7)
Enoch	50	K50HI-D	DG 250w, 37-50-30/ 112-58-27
Logan	12	KUTF-DT*	NS 22.3kw (FC)
Panguitch	38,	K38KF-D,	NW 6w,
	39,	K39JG-D,	37-49-16/
	40,	K40JL-D,	112-27-28 (all seven
	41,	K41KA-D,	channels)
	44,	K43KL-D,	
	46	K44IU-D,	
		K46JI-D	
Parowan	49,	K49HC-	DG 250w
	51	K51HQ-	
Vernal	16	KBCJ-DT	PR 1000kw/ 676m (amendment to previous application to flash-cut on ch. 6, I think)
Vermont:			
Burlington	22	WCAX-DT*	QG from ch 53 443kw
Virginia:			
Charlottesville	19	WCAV-DT*	NS 50kw (FC)
Manassas	34	WPXW-DT*	QG from ch 43 110kw/221m, 38-57- 01/ 77-04-47 (to move to the WJLA-7/WUSA-9 tower along with their DTVs, WETA- 26's DTV, and WHUT- 32's DTV
Washington:			
Spokane	28	KAYU-DT*	QG from ch 30 91.4kw/601m
Tacoma	11	KSTW-DT*	QG from ch. 36, 12.5kw
Yakima	32	KUNW-CA	CC from KKFQ
West Virginia:			
Huntington	23	WSAZ-DT*	PG 825kw/ 387m
Wisconsin:			
Eau Claire	13	WEAU-DT*	QG from ch 39 22.9kw/611m
Racine	49	WBME-TV	CC from WJJA; FC to "MeTV" nostalgia
Sheboygan	29	W29DJ-D	DG 8.7kw, 43-05-46/ 87-54-15 (moves to Milwaukee)
Wausau	7	WSAW-DT*	QR from ch 40 16.9kw/373m; QG

Wausau 27 W27AU-D DG 1.1kw

Wyoming:

Cheyenne 40 KKTU-LP PG>150kw
Cody 34 K34HZ-D DG 5kw
Laramie 8 KWYP-DT* NS 1.4kw/ 308m,
41-18-35/
105-27-19 (FC)
Rock Springs 13 KGWR-DT* QR from ch 21
14.2kw

(FC): Flash-cut from analog to DTV on same channel.

Broadcasting and Cable is reporting that Wilmington, North Carolina is going to be the test market for a dry run of the analog shutdown. Wilmington's mayor told the magazine the city's four commercial network affiliates have agreed to turn off their analog signals on September 8th.

The article doesn't say whether PBS affiliate WUNJ-39 is participating. Wilmington's CBS affiliate is a LPTV, WILM-LP channel 10, but it does have a permit for a digital companion operation on channel 40.

KOFT-3 Farmington, New Mexico filed its DTV Status Report with the FCC in May. In that report, the stations' owner stated that they had asked the Commission to cancel the KOFT permit effective last November 13th. KOFT had apparently operated as a DTV station on channel 8, presumably with their low-power STA at 2.4kw. However, the Report indicated the analog signal on channel 3 had never operated.

KOFT was a satellite of KOAT-7 Albuquerque. KOAT programming should continue to be available in Farmington over existing translator K19CM.

Four TQS stations in Quebec have been sold to the CBC. CKSH-9, CKTM-13, CKTV-12, and its relay CKTV1-27 are the stations in question. All four are already carrying CBC's Radio-Canada French-language network, but you should expect the transfer of ownership to result in the stations carrying the entire R-C schedule.

Good DX!



Got yours yet?



FM NEWS

From WTFDA.info and w9wi.com



BILL HALE, 6124 ROARING SPRINGS DR, N. RICHLAND HILLS TX 76180

FMnews@wtfda.org

INDEX OF ABBREVIATIONS

APP	application	PTA	Program Test Authority (station has been given authority to begin testing)
APP Mod	Change to an already submitted application	STA	Special Temporary Authority
AUX	auxiliary facilities (backup)	ROA	(at the) request of applicant
CC	call change	XL	Transmitter Location
CL	city of license (change to or from)		
Class	FM license class	AS	American Samoa
CP	construction permit (authority to broadcast with facilities noted)	GU	Guam
CP Mod	change to an already granted CP	VI	Virgin Islands
DA	directional antenna		
FC	frequency change (change to or from)		
LC	License to Cover (station has ended testing and has been given authority to begin operation)		
NDA	non-directional antenna		

Note: antenna heights are HAAT except where noted

--- CANADA ---

--CALL LETTER CHANGES--

Old Call New Call

Can you believe it . . . none!!

- FORMAT and SLOGAN CHANGES -

Can you believe it . . . none!!

- TECHNICAL CHANGES -

- NOW ON THE AIR -

New facilities:

Now, this getting ridiculous!

--TECHNICAL CHANGES --

- CRTC ACTIONS -

ON	Orillia	105.9	CICX-FM	CP granted for 10.6 kw/214 m, 44-32-03/79-39-48, to co-locate with co-owned CICZ-FM 104.1
----	---------	-------	---------	---

--TECHNICAL CHANGES --

- GRANTS FOR NEW STATIONS -

CP granted for:

MB	Pukatawagan	102.5	CBDS	200 w/25 m, 55-44-24/101-19-42; FC from 690 AM; no simulcast period, AM will be silent by the time you read this
NS	Wolfville	88.3	NEW	175 w, to relay CJLU-FM Halifax
ON	Owen Sound	92.3	NEW	20 kw; rock
ON	Peterborough	96.7	NEW	13 kw/150 m, 44-26-44/78-31-59; adcon
ON	Pickle Lake	96.5	NEW	50 w; Native Evangelical Fellowship of Canada
ON	Thunder Bay	98.1	NEW	50 w; Native Evangelical Fellowship of Canada
ON	Windsor	95.9	NEW	3.55 kw; country
ON	Windsor	102.3	NEW	690 w; to relay, NOT replace, CBE-1550 (nested station)
ON	Windsor	105.5	NEW	2.4 kw; to relay, NOT replace, CBEF-540 (nested station)
ON	Windsor	xx.x	NEW	Applied for 95.9 and must seek different frequency; ethnic

--TECHNICAL CHANGES --

- APPLICATIONS FROM EXISTING/PROPOSED FACILITIES -

Applies for:

NS	Amherst	107.9	NEW	6.5 kw/123 m; community
NS	Parrsboro	99.1	NEW	50 w/10 m; community
ON	Bancroft	103.5	NEW	250 w/7 m, 45-03-39/77-51-51, to relay CKJJ-FM Belleville

QC	Acton Vale	103.7	CFID-FM	6 kw /23 m
----	------------	-------	---------	------------

--TECHNICAL CHANGES --

- APPLICATIONS FOR NEW STATIONS -

Applies for:

ON	Huntsville	105.5	CFBK-FM	43.4 kw/147m
PI	Charlottetown	91.3	CIOG-FM	NS 50 w-V/32 m, 46-17-14/63-06-08; religious contemporary; co-owned w/CITA-FM Moncton & CJLU-FM Halifax
PI	Summerside	91.1	CIOG-FM-1	50 w-V/26 m, 46-24-39/63-47-23; to relay new CIOG-FM Charlottetown
QC	Alma	97.7	CFGT-FM	50 kw/78 m; to move from 1270 AM; previously filed, then withdrawn; now resubmitted.

- DISMISSALS -

NB	Edmundston	97.3	NEW	Applied for 1.4 w; would have relayed CFYX-FM Rimouski
ON	Kawartha Lakes	96.7	NEW	Two applications for new stations
ON	Owen Sound	92.3	NEW	Three APPs for new station
ON	Peterborough	96.7	NEW	Six applications for a new station here
ON	Sudbury	107.1	CFRM-FM-1	Applied for 50 w-V/53 m; would have relayed CFRM Little Current
ON	Timmins	100.7	CKOG-FM	AP for new station, inadequate plans for balance in religious programming. (apparently in Canada, you can get call letters assigned before you get your CP!)
QC	Alma	96.3	CKYK-FM-1	Applied for 43 w/65 m; would have relayed CKYK-FM
QC	Amqui	92.7	NEW	Applied for 280 w; would have relayed CFYX-FM Rimouski

- OTHER NEWS -

BC	Williams Lake	96.1	NEW	Correction to previous notice: power of CFNR-FM relay here will be 43 watts, not 34
ON	Peterborough	xx.x	CKRU	CP granted to move from 980 AM, but must find different frequency in lieu of requested 96.7

- - - UNITED STATES AND TERRITORIES - - -

--CALL LETTER CHANGES--

	<u>Old Call</u>	<u>New Call</u>					
AL	Good Hope	95.3 W239BH	W237DH	MN	Warroad	91.7 NEW	KOLJ
AK	Seward	105.3 KSWD-FM	KKNI	MO	Moberly	88.7 NEW	KSDQ
AK	Unalaska	89.7 NEW	KUCB	MT	Bozeman	95.9 K294AC	K240DU
AZ	Green Valley	100.7 NEW	K264BB	MT	Missoula	97.9 KDXT-1	KDXT-FM1
AR	Eureka Springs	100.9 KTCN	KESA	NE	Hastings	99.9 K261DE	K260BK
AS	Pago Pago	104.1 NEW	K281AY	NV	Beatty	89.5 NEW	KWLH
CA	Auberry	105.1 KLBN	KKBZ	NV	Moapa	94.5 KMOA	KVBE
CA	Bella Vista	88.5 NEW	KKRN	NV	Sunrise Manor	94.5 KMOA-1	KVBE-1
CA	El Paso de Robles	97.1 K244DX	K246BO	NV	Winnemucca	89.7 NEW	KWNM
CA	Fresno	101.9 KOQO-FM	KLBN	NH	Keene	103.1 W272CJ	W275BI
CA	Los Angeles	100.3 KRBV	KSWD	NH	Keene	104.1 W225BE	W278BG
CA	Ridgecrest	89.3 NEW	KRSF	NH	North Conway	95.3 W238BP	W237BX
CO	Berthoud	102.7 K275AH	K274BW	NH	Peterborough	103.1 W272CJ	W275BI
FL	Bunnell	106.3 W293BJ	W292DE	NH	Whitefield	99.1 WNYN	WXRG
FL	Naples	90.5 W210BU	W213BQ	NM	Tucumcari	90.9 NEW	KVIJ
FL	Pierson	106.3 W293BJ	W292DE	NY	Geneva	105.7 KSAC-LP	KHWS-LP
FL	Ramrod Key	95.5 W241AY	W238BU	NY	Italy	97.1 W249CE	W246BV
GA	Bainbridge	99.5 W260BS	W258BL	NY	Roxbury	91.3 NEW	WIOX
GA	Chatsworth	98.9 WQMT	WNGH	OK	Marlow	88.7 NEW	KFXH
GA	Elberton	105.1 WLXV-FM	WSGC-FM	OK	Oklahoma City	96.5 NEW	K243BJ
GA	McRae	105.9 W287BF	W290BR	OK	Oklahoma City	101.5 NEW	K268BR
GA	Nashville	95.3 WJYF	WVKV	OR	Bend	104.5 K285DH	K283BH
GA	Patterson	88.1 NEW	WIVL	OR	Hood River	88.1 NEW	KHRV
GA	Toccoa	102.3 W272CH	W269BN	OR	Klamath Falls	107.7 NEW	KZZF-LP
HI	Naalehu	105.3 KBGX-5	KBGX-FM5	OR	Madras, etc	104.5 K285CV	K283BI
HI	Naalehu	107.3 KKOA-5	KKOA-FM5	PA	Center Moreland	99.3 W260AY	W257CK
HI	Ocean View	95.9 KPVS-1	KPVS-FM1	PA	Mansfield	96.3 W239AW	W242BO
HI	Ocean View	97.9 KKBG-!	KKBG-FM1	PA	Nescopeck Pass	107.9 W297AZ	W300BT
HI	Wailea-Makena	97.3 NEW	KRKH	PR	Mayaguez	102.9 NEW	WDIN-2
ID	St. Anthony	96.7 K246BJ	K244BJ	PR	Mayaguez	107.3 NEW	WCMN-5
IL	Arcola	107.9 WXET	WUJL	TN	Cowan	105.3 W287BK	W286BP
IN	Elkhart	105.3 W286AT	W287BL	TN	Gatlinburg	93.7 W230AB	W229BE
IN	Madison	91.1 NEW	WHMO	TN	Martin	96.1 W291BI	W238BT
IN	Muncie	101.5 W269BC	W268BJ	TN	Palmer	105.7 W286BL	W289BH
KS	Belleville	97.9 K248AW	K250AT	TX	Naches	99.3 KQSN	KWMY
KS	Paola	89.7 KCPU	KCPK	UT	Heber City	91.5 K216BR	K218EM
KY	Winchester	91.7 W273BT	W219DM	UT	Moab	89.3 K205CH	K207EM
ME	York Center	95.3 WUBB	WSKX	WA	Glenoma	90.1 NEW	KCFL
MD	St. Mary's City	88.1 NEW	WGWS	WA	Port Angeles	102.1 K247BV	K271AZ
MA	Athol	99.9 WNYN	WXRG	WV	Mullens	92.7 WPMW	WVJO
MI	Big Rapids	96.5 NEW	W243BA	WY	Buffalo	104.9 KLOQ-1	KLOQ-FM1
MN	Blackduck	89.5 NEW	WYNJ	WY	South Greely	88.7 KEZF	KDNR [CP from Eaton, Colorado on 88.9]
MN	Kelliher	102.5 NEW	KKWB				

- FORMAT and SLOGAN CHANGES -

AK	Seward	105.3	KKNI	> Adult Contemporary	MO	Campbell	107.5	KFEB	> CHR
AR	Barling	94.5	KFPW-FM	> Classic Rock	MO	Doniphan	97.5	KOEA	> Classic Country
CA	Lakeport	88.1	KPFZ-FM	> Variety	NE	Chadron	94.7	KCNB	> Adult Contemporary
CA	Riverside	97.5	KLYY	> Spanish Adult Hits	NV	Moapa	94.5	KMOA	> Dance
CA	Auberry	105.1	KLBN	> Classic Rock	NM	Arroyo Seco	90.9	KRRT	> News // KUNM-89.9
CO	Westcliffe	104.7	KXCL	> Regional Mexican	NM	Espanola	91.9	KRAR	> News // KUNM-89.9
CO	Rye	104.9	KRYE	> Regional Mexican // KXCL	NM	Las Vegas	91.9	KRRE	> News // KUNM-89.9
CT	Sharon	91.9	WHHD-FM	> News/Talk	NM	Socorro	89.9	KBOM	> News // KUNM-89.9
GA	Folkston	91.3	WATY	> News // WJSP-FM 88	NY	Geneva	105.7	WHWS-LP	> Spanish
ID	Orofino	98.5	KZID	> Classic Hits	NY	Liberty	95.9	WVOS-FM	> Classic Hits
IL	Bartonville	99.9	WWCT	> Modern AC: 99-9 The Stage	NY	Sanataria Springs	95.7	WLDM-LP	> Religious
IN	Bluffton	100.1	WNUY	> Talk: FM 100 point 1 Talks	OR	Portland	95.5	KXJM	> Sports
IA	Northwood	102.7	KYTC	> The Blaze	TN	Dyersburg	100.1	WASL	> Classic Rock
KS	Cimarron	92.9	KMML	> Regional Mexican	TX	Mineral Wells	95.9	KFWR	> Americana
LA	Hammond	103.3	WCDV	> Sunny 103 point 3	TX	Ranger	98.5	KCUB-FM	> Americana
LA	Lake Charles	103.3	KBIU	> Adult Hits	VT	Lunenburg	93.7	WOTX	> Classic Rock
LA	Port Sulphur	106.7	KKND	> R&B Oldies // KMEZ-102.9	VA	Norton	106.3	WNVA-FM	> Adult Contemporary
MA	Athol	99.9	WXRG	> Alternative // WXRV-92.5	WI	Sturgeon Bay	97.7	WSGR	> Country as The Big Dawg
MN	Blackduck	104.5	WQXJ	> Oldies: ABC's True Oldies	WI	Wisconsin Rapids	91.9	WRAO	> Religious
MN	St. Charles	107.7	KDZZ	> Z-Rock One-Oh-Seven- Seven, the Rock of Rochester					

- TECHNICAL CHANGES -

- NOW ON THE AIR -

		<u>New facilities:</u>				
AL	Montgomery-Troy	89.9 WTSU	100 kw/230 m, DA, 32-03-40/ 86-01-19	AL	Valley	95.3 WRLD-FM 86-52-47; CL from Jasper
AL	Northport	88.1 WSJL	10 w-H/20 kw-V/150m, DA, 33-28-51/87-24-03	AZ	Merino	94.5 KRGQ 25 kw/77 m, 32-44-07/85-08-55 6.5 kw/69 m, 40-28-33/ 103-13-28; CL from Yuma
AL	Pelham	102.5 WDXB	90 kw/313 m, 33-26-38/	AR	Melbourne	90.7 KLRM 7 kw-V/188 m, 36-05-31/ 92-15-46

CA Cedarville	88.1	KDUP	130 w/-206 m, 41-31-41/ 120-10-14	NV Las Vegas	105.1	KQRT	50 kw/19 m, 36-20-00/ 115-21-41
CA Citrus Heights	99.5	KLVS	5.1 kw/109 m, 38-38-32/ 121-05-25	NJ Pompton Lakes	103.1	W276BX	10 w/143 m, 41-00-41/74-18-04
CA El Paso de Robles	97.1	K246BO	10 w-V/4 m AGL, 35-36-54/ 120- 38-51	NM Farmington	89.7	KUUT	1.35 kw-V/202 m, 36-40-16/ 108-13-54
CA Inyokern	88.5	KZLU	1 kw/396 m, 35-28-39/117-41-58	NM Los Lunas	102.5	KIOT	20.8 kw/1242 m, 35-12-47/ 106-26-59
CO Idalia	94.1	KWDI	50kw/87m, 39-40-22/102-15-18	NM Roswell	91.7	KELT	3.5 kw-V/120 m, 33-21-47/ 104-38-11
CT Hartford	93.7	WZMX	17 kw/259 m, 41-33-44/ 72-50-42	NM Roswell	99.3	KWFL	9.5 kw/133 m, 33-21-47/ 104-38-11; FC from 99.5
CT Sharon	91.9	WHDD-FM	650 w/-15 m, DA, 41-53-32/ 73-27-16	NM Tularosa	88.1	KNMA	7 kw-V/579 m, 32-49-49/ 105-53-25
FL Gainesville	94.7	WVFP-LP	25 w-H/59 m, 29-41-12/82-26-48	NY Buffalo	88.7	WBFO	50 kw/117 m, DA, 43-00-12/ 78-45-56
FL Islamodora	107.3	W297AS	250 w-V/5 m AGL, 24-58-08/ 80-33-38	NY Delhi	97.5	WTBD-FM	6 kw/100 m, 42-14-09/74-57-12
FL Naples	90.5	W213BQ	27 w/87 m AGL, 26-10-11/ 81-30-16; FC from 89.9	NY Herkimer	92.7	WXUR	6 kw/91 m, 43-03-50/75-01-44
FL Ocala	104.7	WITG-LP	74 w-H/35 m, 29-11-16/82-08-14	NY Ithaca	90.1	WITH	3 kw/-22 m, 42-25-08/ 76-29-29
FL Pierson	106.3	W292DE	35 w/8 m AGL, 29-25-24/ 81-25-30; FC from 106.5	NY Sanitaria Springs	95.7	WLDM-LP	100 w/-34 m, 42-09-30/75-48-53
GA Bainbridge	99.5	W258BL	250w-V/12 m AGL, 31-03-15/ 84-20-39; drops H; having just moved here, they have already filed to return to 99.9 but at these increased facilities; CL from Camilla	NY Saranac	106.3	WYZY	1.47 kw/706 m, 44-41-43/ 73-53-00; CL from Saranac Lake
GA Cusseta	103.7	WBOJ	4.8 kw/227 m, 32-27-29/ 84-53-08	NC Beech Mountain	102.3	WECR-FM	150 w/597 m, DA, 36-11-03/ 81-52-48
GA Demorest	88.3	WPPR	7.3 kw/194 m, DA, 34-31-24/ 83-40-46	NC Asheville	98.1	W251AO	250 w/24 m AGL, DA, 35-36-04/ 82-39-07; CL from Black Mountain
GA Eastman	97.5	WUFF-FM	4.62 kw/113 m, 32-13-18/ 83-13-04	OR Ashland	107.9	K300BE	250 w/82 m AGL, 42-13-42/ 122-44-43 (XL move)
GA Elberton	93.5	W226AU	250 w/90 m, 33-59-22/82-46-23; FC from 93.1	OR Sandy	88.7	KLVP	245 w-H/3.7 kw-V, 532 m, 45-20-01/121-42-45; CL from Cherryville
GA McRae	105.9	W290BR	120 w/14 m AGL, 32-04-48/ 82-55-27	PA Center Moreland	99.3	W257CK	3 w-H/8 m AGL, 41-30-45/ 76-04-16; FC from 99.9
GA Warm Springs	88.1	WJSP-FM	42 kw/417 m, 32-51-08/ 84-42-04	PA Gap	92.9	WLRI-LP	10 w/94 m, 39-58-39/76-03-17
ID Burley	97.1	K246BH	115 w-V/, 32 m AGL, 42-33-36/ 114-05-50	SD Watertown	103.5	K278BK	10 w-V/4 m AGL, 44-54-57/ 97-05-10
IN Kokomo	96.3	W242BM	80 w/45 m AGL, 40-27-30/ 86-04-30	TN Goodlettsville	92.1	WQOK	3.1 kw/141 m, 36-17-50/ 86-45-11; CL from Hendersonville
IN Muncie	101.5	W268BJ	250 w/15 m AGL, 40-09-21/ 85-22-22; FC from 101.7	TN Hendersonville	99.7	WWTN	100 kw/395 m, 35-49-03/ 86-31-24; CL from Manchester
IA Pleasantville	96.3	KZWU	500 w/78 m, 41-21-04/93-13-58	TN Millersville	106.7	WNFN	2.95 kw/294 m, 36-15-50/ 86-47-39; CL from Belle Meade
IA Rockford	92.9	KYME	375 w/10 m, 43-03-12/92-57-15	TN Morrison	105.3	WRKK-FM	6 kw/78m, 35-37-27/85-53-37; FC from 105.5; CL from Sparta
KS Topeka	89.5	K205CS	140 w-V/91 m AGL, DA, 39-15-41/95-39-20 (XL move); FC from 88.9	TX Bloomington	106.9	KLUB	18.5 kw/116 m, 28-42-24/ 96-50-06
KS Belleville	97.9	K248AW	180 w/41 m, 39-49-41/97-37-45; FC from 97.5	TX Comfort	95.1	KGSX	100 m/201 m, 29-38-03/ 98-47-58
ME Bangor	89.3	WHSN	3 kw/26 m, 44-49-46/68-47-39	TX Gonzales	88.1	KZAR	1.3 kw/117 m, 29-29-09/ 97-29-17
MI Beulah	92.3	WOUF	50 kw/136 m, DA, 44-36-38/ 86-09-38; FC from 92.1	TX Holliday	100.9	KWFB	18.5 kw/91 m, 33-49-42/ 98-40-13; CL from Quanah
MI Crystal Falls	94.9	WUPG	6.2 kw/48 m, 46-09-49/88-22-50	UT Ballard	95.5	KFMR	890 w/506 m, 40-32-16/ 109-41-57
MI Republic	96.7	WUPZ	25 kw/52 m, 46-32-24/88-03-18	VT Burlington	105.9	WOMM-LP	100 w/23 m, 44-28-37/73-12-41
MN Duluth	89.5	WJRF	2.85 kw-V/156 m, 46-47-21/ 92-07-09	VA Waverly	92.3	W223BI	19 w78 m AGL, 37-03-00/ 77-12-05; FC from 92.5; adds H to V-only
MN Eden Prairie	105.7	WGVZ	950w/254m, 44-58-34/93-16-20	WA Hoquiam	98.5	KGHO-LP	100 w/3.2 m, 46-58-22/ 123-51-10
MS Lexington	102.5	WAGR-FM	25 kw/100 m, 33-09-06/ 90-07-45	WA Oakville	97.7	KFMY	63 kw/728 m, 47-18-46/ 123-22-15; CL from Raymond
MS Madison	90.5	WQVI	60 kw-V/131 m, DA, 32-42-51/ 89-49-19	WA Port Angeles	102.1	K271AZ	70 w/9 m AGL, 48-05-14/ 123-24-58
MO Tarkio	93.5	KRSS	11 kw/149 m, 40-31-11/ 95-11-03	WI Baileys Harbor	106.9	WLGE	6 kw/56 m, 45-03-14/87-08-37
MS Taylorsville	95.9	WBBN	100 kw/223 m, DA, 31-38-03/ 89-28-35; NDA to DA	WY South Greeley	88.7	KEZF	500 w/129 m, 41-06-02/ 105-01-29; FC from 88.9
MT Bozeman	95.9	K240DU	250 w/7 m AGL, DA, 45-38-44/ 111-01-14; QC from 106.7				

--TECHNICAL CHANGES --

- FCC ACTIONS -

AL Good Hope	95.3	W237DH	CP granted for 10w/67 m AGL, 34-04-31/86-48-48; FC from 95.7, CL from Cullman	AK Kasilof	88.9	KABN-FM	CP granted for 3.2 kw-V/102 m, 60-31-58/151-04-52; FC from 89.5
AL Greenville	101.1	W266BL	CP granted for 170 w/15 m AGL, 32-03-16/ 86-18-09	AK Kodiak	98.7	NEW	CP Mod granted for 250 w/ 16 m AGL, 57-47-03/ 152-23-57; FC from 99.1
AL Heflin	91.7	WPIL	CP granted for 1 kw/23 m, DA, 33-36-55/85-32-41	AK Seward	91.7	NEW	CP granted for 1 kw/-475 m, 60-09-39/149-23-24
AL Mobile	99.5	W258AY	CP granted for 10 w/152 m AGL, 30-44-06/88-07-16; adds H to V-only	AK Sterling	89.7	KRAW	CP granted for 4kw-V/69m, 60-29-21/150-44-32; FC from 90.1
AL Waverly	100.3	WGZZ	CP granted for 3.4 kw/135 m, 32-43-13/85-42-17				

AZ	Kingman	94.7	KFLG-FM1	CP granted for 1.2 kw/9 m AGL, 35-14-49/114-02-14	IL	Cambridge	93.9	WYEC	CP Mod granted for 4.2 kw/120 m, 41-22-56/90-10-47; CL from Kewanee
AZ	Kingman	98.7	KGPS-LP	CP granted for 100 w/50 m, 35-15-23/113-59-38; FC from 97.1	IL	Macomb	100.1	WKAI	CP Mod granted for 25 kw/86 m, 40-32-01/90-51-45
AZ	Lake Havasu City	91.1	KNLB	CP granted for 15 kw/793 m, 34-33-06/114-11-37; DA from NDA	IN	Cole	88.5	NEW	CP Mod granted for 1 kw-V/57 m, 40-35-00/85-46-42; FC from 88.1
AZ	Lake Havasu City	96.9	KRCY-FM	1.05 kw/825 m, DA, 34-33-06/114-11-37; FC from 96.7	IN	Elkhart	88.1	WVPE	CP Mod granted for 11 kw/315 m, 41-36-49/86-11-20
AZ	Mohave Valley	97.5	K248BJ	CP granted for 220 w, 34-59-19/114-35-46; drops H for V-only	IA	Davenport	107.7	KTJT-LP	CP granted for 100 w-H/22 m, 41-24-16/90-37-56; FC from 102.7; drops V for H-only
AZ	Sedona	107.5	KSED	CP granted for 100 kw/451 m, 34-58-07/111-30-24	IA	Patterson	105.9	KZLN	CP granted for 900 w/12 m, 41-18-50/93-50-15
AR	Melbourne	90.7	KLRM	CP Mod granted for 7 kw-V/188 m, DA, 36-05-31/92-15-46	KS	Arlington	100.3	KNZS	CP granted for 14.5 kw/135 m, 37-55-41/98-17-58; CL from Kingman
CA	Coalinga	97.3	KQNO	CP Mod granted for 25 kw/100 m, 36-07-46/120-26-52; Class A to B1	KS	Emporia	89.3	WJYA	CP granted for 23 kw-V/161 m, DA, 36-56-39/77-37-14
CA	Gilroy	94.5	KBAY	CP granted for 45 kw/158 m, DA, 37-12-32/121-46-27	KS	Parsons	89.5	K208EK	CP granted for 190 w-V/87 m AGL, DA, 37-23-07/95-14-06; CL from Thayer
CA	Mountain Pass	99.7	KHYZ	CP granted for 50 kw/150 m, 35-28-05/115-28-32	KY	Morganfield	88.7	NEW	CP Mod granted for 2.2 kw-V/82 m, 37-44-09/87-59-45
CA	Muscoy	103.1	K276EF	CP granted for 10 w/26 m AGL, DA, 34-12-49/117-29-57	KY	Williamstown	106.7	WNKR	CP granted for 1.8 kw/185 m, 38-41-19/84-35-07
CA	Oxnard	104.7	KCAQ	Aux license issued for 200 w/450 m, 34-20-55/119-20-13	KY	Winchester	91.7	W219DM	CP granted for 27 w/64 m AGL, 38-01-23/84-15-17; FC from 102.5
CA	San Jose	106.5	KEZR	CP granted for 42 kw/163 m, DA, 37-12-32/121-46-27	LA	Broussard	91.3	WHFG	CP Mod granted for 6 kw/112 m, 29-58-04/91-55-31
CO	Berthoud	102.7	K274BW	CP granted for 50 w-V/30 m AGL, 40-05-29/105-07-17; FC from 102.9	LA	Hodge	94.1	KRLQ	CP granted for 47 kw/155 m, 32-24-35/92-53-49
CO	Fountain	96.1	KIBT	Aux license issued for 460 w/661 m, 38-44-44/104-51-42	LA	Leesville	92.7	KBDV	CP Mod granted for 6 kw/100 m, 31-07-07/93-11-12
CO	Idalia	94.1	KWDI	CP granted for 50 kw/87 m, 39-40-22/102-15-18	MD	Ocean Pines	105.1	W286BB	CP granted for 27 w/88 m AGL, 38-25-20/75-08-23
CO	Montrose	92.5	K220CD	CP granted for 23 w/196 m; 38-31-49/107-43-13; FC from 91.9	MI	Battle Creek	92.3	W222BB	CP granted for 80 w/34 m AGL, 42-18-44/85-12-02
CO	Shingletown	96.1	KKXS	CP granted for 25 kw/100 m, DA, 40-30-51/122-01-48	MI	Big Rapids	96.5	W243BA	CP Mod granted for 19 w/101 m AGL, 43-39-49/85-28-54
CT	Monroe	88.1	WMNR	Aux license issued for 175 w/117 m, 41-20-29/73-16-30	MI	Grand Rapids	105.7	WOOD-FM	Aux license issued for 99 kw/177 m, 42-39-17/85-31-38
FL	Fort Myers	91.9	WMYE	CP granted for 1.2 kw/100 m, DA, 26-47-08/81-47-47	MN	Blackduck	104.5	WQXJ	CP granted for 8.5 kw/148 m, 47-33-26/94-48-04
FL	Naples	102.3	W272BM	CP granted for 27 w/86 m, 26-13-32/81-46-46	MN	Kelliher	102.5	KKWB	CP granted for 50 kw/144 m, DA, 47-44-21/94-41-10
FL	Osprey	106.9	W298AU	CP granted for 250 w-V/12 m AGL, 27-13-09/82-26-00; drops H; FC from 107.5; CL from Woodmere	MO	Warrensburg	90.9	KTBG	CP granted for 90 kw/355 m, 39-02-14/93-55-48
FL	Ramrod Key	95.5	W238BU	CP granted for 250 w/6 m, 24-42-38/81-05-51; FC from 96.1; replaces permit for 24-40-56/81-13-46	MT	Billings	101.1	KFHW-LP	CP Mod granted for 100 w-H/-32 m, 45-46-59/108-31-13; FC from 92.5; drops V for H-only
FL	Ramrod Key	105.3	W287BJ	CP granted for 250 w-V/6 m AGL, 24-40-56/81-13-46	MT	Missoula	97.9	KDXT-FM1	CP granted for 29 w/46 m AGL, DA, 46-48-30/113-58-38
FL	Sarasota	96.5	WSLR-LP	CP granted for 23 w/61 m, 27-19-27/82-29-44	NE	Beatrice	88.9	KNBE	7.5 kw-V/140 m, 40-33-03/96-38-45
GA	Albany	97.7	W246BE	CP granted for 10 w, 229 m AGL, 31-32-57/84-00-19	NE	Broken Bow	91.3	NEW	APP Mod granted for 40 kw-V/150 m, DA, 41-20-08/100-14-13
GA	Carrollton	101.9	W270AS	CP granted for 10 w/72 m AGL, 33-33-54/85-01-03	NE	Hastings	99.9	K260BK	CP granted for 250 w/58 m AGL, 40-35-47/98-20-39; FC from 100.1
GA	Chatsworth	98.9	WNGH-FM	CP Mod granted for 420 w/527 m, 34-45-06/84-42-54	NE	Minatare	106.9	KHYY	CP Mod granted for 25 kw/28 m, 41-51-50/103-42-20
GA	Cochran	89.7	WMUM-FM	CP granted for 43 kw-H/100 kw-V/304 m, 32-28-11/83-15-17; reduces H power	NE	Mitchell	99.3	KETT	CP Mod granted for 950 w/249 m, 41-50-23/103-49-35
GA	Kings Bay	88.5	NEW	CP granted for 100 w-H/1 kw-V/115 m, DA, 30-50-02./81-33-57	NV	Mesquite	89.3	KAER	CP granted for 89 kw-H/586 m, 36-36-04/114-35-06; FC from 89.5; CL from St. George; drops V for H-only
GA	Morrow	100.1	W261BG	CP granted for 5 w/117 m AGL, 33-33-45/84-20-28	NV	Mesquite	96.7	KHIJ	CP granted for 93 kw-H/637 m, 36-38-07/114-07-18; drops V for H-only
GA	Toccoa	102.3	W269BN	CP granted for 250 w/38 m AGL, 34-30-15/83-10-15; FC from 101.7; CL from Hartwell	NJ	Atlantic City	107.3	WPUR	CP mod granted for 25 kw/94 m, 39-22-42/74-26-53
ID	Burley	93.5	KZDX	CP granted for 63 kw/747 m, DA, 42-20-06/113-36-15; FC from 99.9	NH	Claremont	106.5	W293BH	CP granted for 10 w/88 m AGL, 43-16-54/72-29-21; CL from Claremont
ID	St. Anthony	96.7	K244BJ	CP granted for 250 w/30 m AGL, 43-53-05/111-44-17; FC from 97.1	NM	Albuquerque	101.3	KKRG	CP granted for 4.76 kw/113 m, 35-03-57/106-46-58
					NM	Gallup	88.1	KGGA	CP Mod granted for 2.3 kw-V/.2 m HAAT (15 m AGL), 35-32-27/108-44-36; drops H

NM	Gallup	88.9	KLLU	for V-only CP Mod granted for 2.85 kw-V/ .2 m HAAT (15 m AGL), 35-32-27/108-44-36	SD	Lake Andes	89.5	NEW	CP Mod granted for 6 kw/132 m, 43-04-59/98-28-23
NM	Las Cruces	95.9	K240DV	CP granted for 50 w/97 m AGL, DA, 32-16-32/106-52-17; // KNUW-95.1	SD	Sioux Falls	105.5	K288GA	CP granted for 230 w/46 m, 43- 33-28/96-47-46; adds V
NM	Mesilla	95.1	K236BD	CP granted for 50 w/97 m AGL, DA, 32-16-32/106-52-17; // KZZX-105.3	TN	Belle Meade	97.1	WRQQ	CP granted for 45 kw/158 m, 36-17-50/86-45-11; CL from Goodlettsville
NM	Mimbres	100.5	K263AX	CP granted for 50 w-H/20 m AGL, DA, 32-48-23/107-57-04	TN	Douglas	99.3	W257BX	CP granted for 150 w-V/12 m AGL, 35-45-23/86-57-54; drops H for V-only
NM	Santa Fe	105.1	KJFA	CP granted for 100 kw/578 m, 35-46-49/106-31-34	TN	Gatlinburg	93.7	W230AB	CP granted for 10 w/9 m AGL, 35-42-14/83-33-09; FC from 93.9
NY	Italy	97.1	W246BV	CP Mod granted for 3 w-V/6 m AGL, DA, 42-36-47/77-20-15; CL from Branchport; FC from 97.7	TN	Martin	96.1	W238BT	CP Mod granted for 250 w/ 53 m AGL, 36-21-45/88-50-57; FC from 106.1 via 95.5
NC	Banner Elk	100.7	WZJS	CP granted for 150 w/593 m, 36-11-03/81-52-48; DA to NDA	TN	Newport	90.7	WGSN	CP Mod for 900 w-V/714 m, DA, 35-54-21/83-17-47
NC	Durham	105.1	WDCG	Aux license issued for 1.8 kw/ 317 m, 35-52-20/79-09-29; will use the old main xmtr at reduced power	TN	Palmer	105.7	W289BH	CP granted for 10 w-V/11 m AGL, 35-20-57/85-33-36; FC 105.1; CL from Whitwell
NC	Fayetteville	91.1	WYBH	CP Mod granted for 255 w/ 195 m, 35-03-35/78-59-24; adds H to V-only	TX	Friona	94.7	KGRW	CP granted for 47.88 kw/ 153 m, 34-41-17/102-56-53
NC	Indian Trail	100.9	WPZS	CP granted for 5.2 kw/107 m, 35-07-29/80-43-30; CL from Albemarle; adds V to H-only	TX	Garland	95.9	K240DS	CP Mod granted for 115 w/ 121 m, 32-50-36/96-33-48
NC	New Bern	88.1	WZNB	CP Mod granted for 100 kw/ 116 m, DA, 35-06-32/77-06-10; FC from 88.5	TX	Hereford	88.7	KWDH	CP Mod granted for 9.5 kw/ 116 m, 34-53-50/102-14-03
ND	Barnesville	95.1	KBVB	CP Mod granted for 50 kw/117 m, 46-49-09/96-45-56; XL move to the KVXR-1280 site	TX	Ozona	94.3	KYXX	CP granted for 3 kw/120 m, 30-42-43/101-07-29
ND	Dickinson	103.3	KPAR-LP	CP granted for 7 w-H/106 m, 46-55-17/102-43-58	TX	Pecos	97.3	KGEE	CP granted for 100 kw/ 126.2 m (an increase of 20 cm), 31-30-54/103-11-25
OH	Enon	101.5	WKSW	CP granted for 6kw/71m, DA, 39-52-49/84-03-56; FC from 101.7; CL from Urbana	TX	Texarkana	98.1	KTAL-FM	CP granted for 100 kw/484 m, 32-54-11/94-00-20
OH	Urbana	102.9	WDHT	CP granted for 50 kw/150 m, 39-57-11/ 83 -52-07; CL from Springfield	UT	Centerville	91.5	K224BY	CP granted for 135 w-V/321 m, 40-57-27/111-54-08; drops H to be V-only
OK	Muskogee	97.1	KYAL-FM	CP Mod granted for 100 kw/ 600 m, 35-24-48/95-21-55	VA	Emporia	89.3	WJYA	CP granted for 23 kw/161 m, 36-56-39/77-37-14
OK	Oklahoma City	96.5	K243BJ	CP granted for 75 w/145 m AGL, 35-24-02/97-29-34	VT	Burlington	94.5	W233BD	CP granted for 27 w/12 m AGL, 44-21-29/73-14-50
OK	Oklahoma City	101.5	K268BR	CP granted for 75 w/134 m AGL, 35-24-02/97-29-34	VT	Springfield	106.5	W293BH	CP granted for 10 w/88 m AGL, 43-16-54/72-29-19; CL from Claremont, New Hampshire
OR	Condon	93.5	KHAL	CP granted for 35 kw/277 m, 45-14-09/120-18-09	VA	Aquia Harbour	89.7	W210BY	CP granted for 5 w/46 m AGL, 38-34-18/77-19-21; FC from 89.9
OR	Glide	92.5	KLBG-LP	CP granted for 93 w-H/31 m, 43-19-07/123-10-42; FC from 92.3	UT	Heber City	91.5	K218EM	CP granted for 36 w/381 m, 40-33-45/111-28-30; FC from 91.1 via 90.5; CL from Heber
OR	Junction City	88.5	KPIJ	CP granted for 550 w/705 m, 44-16-44/123-35-38	UT	Moab	89.3	K207EM	CP granted for 250 w-V/12 m AGL, 38-34-13/109-31-38; FC from 88.9
OR	Shady Cove	101.1	KSHD-LP	CP granted for 100 w-H/ -156 m, 42-37-25/122-48-29; FC from 99.1	UT	Price	95.3	KARB	CP granted for 7 kw/42 m, 39-36-33/110-48-50; FC from 98.3
PA	Harrisburg	94.9	WRBT	Aux license issued for 2.4 kw/ 240 m, 40-20-43/76-52-09	UT	Wellington	92.7	KRPX	CP granted for 6 kw/42 m, 39-36-33/110-48-50; FC from 95.3
PA	Johnstown	93.9	W230BK	CP granted for 85 w/85 m AGL, 40-19-45/78-53-54; FC from 93.5	VT	Starksboro	95.1	W235BE	CP granted for 1 w/7 m AGL, 44-14-02/73-01-22; FC from 94.9; CL from Bristol
PA	Mansfield	96.7	W242BO	CP granted for 950 w-V/8 m AGL, 41-48-54/77-05-28; FC from 96.3	VA	Glade Spring	100.5	WFYE	CP Mod granted for 6 kw/-4.3 m, 36-48-45/81-33-20; FC from 102.7
PA	Nescopeck Pass	107.9	W300BT	CP granted for 10 w-V/45 m AGL; 40-58-09/75-57-28; FC from 107.3; DA to MDA; from H-only to V-only	WA	Lopez Island	102.9	KLOI-LP	CP granted for 17 w-H/71 m, 48-28-33/122-53-52
PA	Philadelphia	92.5	WXTU	Aux license issued for 2.89 kw/ 338 m, 40-02-30/75-14-11	WA	Moclips	92.5	K225BJ	CP granted for 250 w-V/30 m AGL, 47-13-07/124-12-08; FC from 92.9
PA	Sand Spring	94.9	W238BR	CP Mod granted for 30 w-H/ 8 m AGL, DA, 41-03-50/ 75-57-52; FC from 95.5; CL from Nescopeck Pass	WA	Oakville	97.7	KFMY	Aux license issued for 3.4 kw/ 83 m, 47-00-57/122-54-59
SC	Darlington	98.9	W255BD	CP granted for 250 w/122 m AGL, 34-13-48/79-44-49	WA	Olympia	96.1	KXXO	Aux license issued for 4 kw/ 349 m, 46-50-34/122-45-46
SC	Greenville	94.5	WMUU-FM	CP granted for 100 kw/454 m, 34-56-29/82-24-41	WA	Raymond	105.7	KJET	CP Mod granted for 13.5 kw/ 290 m, DA, 46-41-44/ 123-46-17; CL from South Bend
SC	Rock Hill	94.3	W232AX	CP granted for 54 w/37 m AGL, 34-55-25/81-01-13	WA	Walla Walla	91.9	K272EC	CP granted for 115 w/42 m AGL, 46-00-33/118-16-59; FC from 102.3
					WY	Superior	106.7	KKWY	CP granted for 7 kw/482 m, 41-25-28/109-07-54; FC from 106.5

--TECHNICAL CHANGES --

- GRANTS FOR NEW STATIONS -

AL	Cullman	88.3	NEW	<u>CP granted for:</u> 100 w-V/93 m, 34-12-19/ 86-44-58	MA	St. Mary's City	88.1	WGWS	CP granted for 1.9 kw-V/54 m, DA, 38-09-06/76-22-41
AL	Jemison	89.3	NEW	500 w/57 m, 33-00-25/86-44-03	MI	Bedford	89.7	NEW	750 w-V/71 m, 42-27-13/ 85-20-39
AK	Petersville	90.7	NEW	100 kw-V/26 m, 62-19-07/ 150-17-55	MI	Wixom	88.3	NEW	100 w-V/37 m, 42-30-14/ 83-34-07
AK	Seldovia	88.1	NEW	100 w-H/213 m, 59-27-17/ 151-40-18	MN	Blackduck	89.5	WYNJ	800 w/100 m, 47-44-21/ 94-41-10
AZ	Corona de Tucson	96.7	K244EI	250 w/6 m AGL, DA, 31-55-39/ 110-37-57	MS	Hollywood	89.7	NEW	1 kw/34 m, 34-45-41/90-23-36
AZ	Kaibito	90.1	NEW	100 kw/68 m, 36-34-33/ 111-05-50	MS	Itta Bena	89.7	NEW	6 kw/90 m, 33-31-05/90-20-37
AR	Lake Village	89.9	NEW	2.5 kw-H/100 kw-V/78 m, 33-08-16/91-20-15	MS	Jackson	89.7	NEW	1.6 kw/130 m, 32-28-47/ 90-42-45
CA	Bella Vista	88.5	KKRN	590 w/620 m, DA, 40-54-21/ 121-49-38	MO	Freeman	88.9	NEW	1kw-H/13.522 kw-V/142 m, 38-25-45/94-34-19
CA	Carmel Valley	105.9	NEW	800 w/276 m, 36-21-07/ 121-36-20	MO	Moberly	88.7	KSDQ	18 kw-V/61 m, 39-15-11/ 92-12-42
CA	Crescent City	91.1	NEW	4 kw-V/54 m, 41-48-11/ 124-04-09	MO	Sarcoxie	89.5	NEW	31 kw/100 m, 37-04-34/ 93-55-27
CO	Alamosa	89.1	NEW	40 kw/68 m, DA, 37-26-07/ 105-30-50	MT	Browning	88.1	NEW	6 kw/27 m, 48-31-34/113-01-33
CO	Clifton	106.9	NEW	100 kw/440 m, 39-34-52/108-57-36	MT	Havre	89.3	NEW	125 w/-66 m, 48-33-14/ 109-40-36
CO	Wray	88.1	NEW	100 w-V/38 m, 40-04-24/ 102-14-03	MT	Scobey	91.3	NEW	100 w/88 m, 48-48-05/ 105-20-54
GA	Fargo	91.1	NEW	5 kw/48 m, 30-40-31/82-40-40	NE	Franklin	90.1	NEW	40 kw/100 m, DA, 39-49-39/ 98-48-22
GA	Tallulah Falls	91.7	NEW	130 w/314 m, 34-43-46/ 83-29-42	NE	Tecumseh	91.7	NEW	6 kw/94 m, 40-16-31/95-58-05
HI	Hilo	91.1	KANO	30 kw/41 m AGL, 19-35-31/ 155-07-36	NM	Tucumcari	90.9	KVIJ	500 w-V/259 m, 34-57-50/ 103-41-33
ID	Caldwell	89.9	NEW	158 w-H/7.9 kw-V/285 m, 43-37-15/117-12-35	ND	Devils Lake	91.7	NEW	24 kw/214 m, 48-03-48/ 99-20-09
IL	Morris	89.3	NEW	2.95 kw-V/61 m, DA, 41-24-30/ 88-21-45	NY	Boonville	91.7	NEW	70 w/107 m, DA, 43-26-53/ 75-20-48
IN	Fairland	90.9	NEW	110 w-V/30 m, 39-35-37/ 85-55-44	NY	Canton	88.7	NEW	2.6 kw/71 m, 44-32-01/75-05-50
IN	Madison	91.1	NEW	300 w/75 m, 38-40-50/85-19-45	NY	Medina	89.7	NEW	2.2 kw/66 m, 43-13-23/78-17-21
IA	Storm Lake	88.1	NEW	CP granted for 1.4 kw/142 m, 42-40-50/95-11-22	OH	Van Wert	89.7	NEW	2.2 kw/58 m, 40-53-33/84-31-41
KS	Beloit	88.1	NEW	1 kw/40 cm (a bit more than a foot), 39-26-57/98-06-05	OK	Hammon	89.9	NEW	100kw/176m, 35-47-46/ 99-18-12
KS	Hays	88.3	NEW	100 kw-V/150 m, 39-01-15/ 99-28-12	OK	Sayre	88.7	NEW	7 kw/78 m, 35-17-36/99-41-52
KS	Le Roy	89.5	NEW	50 kw/85 m, 38-05-48/95-10-31	OR	Brightwood	91.1	NEW	380 w/507 m, 45-19-58/ 121-42-48
KS	Overbrook	89.9	NEW	3.4 kw/44 m, 38-49-34/95-28-33	OR	Lonerock	88.3	NEW	100 kw/81 m, DA, 45-21-01/ 119-33-55
LA	Amite	91.5	NEW	1.4 kw/86 m, 30-48-02/90-28-21	OR	Riley	89.1	NEW	2.5 kw/540 m, 43-33-25/ 120-04-23
LA	Grand Chenier	90.7	NEW	6 kw-V/64 m, 29-45-54/92-57-24	PA	Dushore	88.7	NEW	720 w/3.8 m, DA, 41-31-59/ 76-24-10
ME	Pittston Farm	88.1	NEW	250 w/-73 m, 45-53-38/69-57-54	TX	Uvalde	88.9	NEW	10 kw/100 m, 29-25-09/ 100-02-05
					UT	Paragonah	91.3	NEW	1.5 kw/-226 m, 37-54-56/ 112-46-07

--TECHNICAL CHANGES --

- APPLICATIONS FROM EXISTING/PROPOSED FACILITIES -

AL	Mountain Brook	104.1	W281AB	<u>Applies for:</u> 250 w/61 m AGL, DA, 33-29-04/86-48-25					from previous application that specified a HAAT of 1,334 m from the same site! Did they plan a 4,000-foot tower???-ds)
AK	Seward	105.3	KKNI	APP Mod 7 kw/97 m, 60-29-21/150-44-32; CL to Sterling	CA	North Highlands	89.3	KQEI-FM	CP granted for 3.1 kw/108 m, DA, 38-42-38/121-28-54; adds H to V-only
AZ	Bullhead City	95.9	K240CL	145 w/12 m AGL, DA, 35-02-06/114-22-09	CA	Sacramento	88.9	KXPR	APP Mod for 50 kw/101 m, 38-30-42/121-10-14
AZ	Mohave Valley	93.7	KVYL	CP Mod for 625 w/576 m, 35-01-58/114-21-57	CA	Santa Clara	103.3	KSCU	30 w/-2 m, 37-20-50/ 121-56-25; would add V; XL correction
AZ	Salome	101.9	KVGG	APP Mod for 6 kw/44 m, 33-47- 48/113-33-28	FL	Edgewater	88.9	WKTO	CP Mod for 25 kw/120 m, 29-01-30/81-08-52
CA	Brownsville	91.3	K217EA	6 w/40 m AGL, 39-23-18/ 21-10-36; would drop H to go V-only; supercedes permit to move to 91.5 with 10 watts horizontal	FL	Fruit Cove	94.1	WSOS-FM	CP Mod for 12.5 kw/100 m, 30-04-08/81-38-50; CL from St. Augustine
CA	Carpinteria	101.7	KSBL	320 w/430 m, 34-22-20/ 119-25-13	FL	Pierson	106.3	W292DE	250 w/91 m AGL, 29-29-41/ 81-16-23; CL to Bunnell
CA	Greenview	89.3	NEW	1 kw/852 m, 41-36-26/ 122-50-16	GA	Bainbridge	99.5	W258BL	27 w-V/78 m AGL, 31-03-15/ 84-20-39; FC to 99.3; this, after just moving here from 99.9
CA	Los Angeles	94.7	KTWW	CP Mod for 3.5 kw/882 m, 34-13-29/118-03-46 (aux)	GA	Jacksonville	102.3	NEW	5.5 kw/102 m, 31-46-42/ 83-05-07
CA	Lost Hills	105.7	KQMX	CP Mod for 25 kw/100 m, 35-28-21/119-54-03	GA	Kings Bay	88.5	NEW	100 w-H/1 kw-V/115 m, 30-50-02/81-33-57
CA	Mount Hebron	89.3	NEW	APP Mod for 4.2 kw/-78 m, 41-47-10/122-00-26 (amended	ID	Chubbuck	98.5	KLLP	100 kw/198 m, 42-43-42/

ID	Lewiston	100.9	K265AP	114-24-48; FC to 98.3; CL to Filer 108 w/12 m AGL, 46-27-25/ 117-02-51; XL move	MO	Osage Beach	96.9	K245BB	48-54-10/95-22-38 170 w/67 m AGL, 38-12-04/ 92-48-03; FC to 97.5; CL from Hermitage; would add H to V-only
ID	Orofino	90.5	K213BN	50 w/232 m, 46-30-33/ 116-12-59; FC to 100.9	NE	Kimball	100.1	KYOY	2.4 kw/-7 m, 41-15-42/ 103-40-06; FC to 92.3
ID	St. Anthony	96.7	K246BJ	CP Mod for 100 w-V/30 m AGL, 43-53-05/111-44-17; FC from 97.1	NE	Scottsbluff	89.1	KDAI	CP Mod for 1.4 kw/238 m, 41-50-21/103-49-53
ID	Twin Falls	95.7	KEZJ-FM	100 kw/198 m, 42-43-42/ 114-24-48	NM	Portales	105.9	KSEL-FM	CP Mod for 100 kw/141 m, 34-15-08/103-14-21
ID	Twin Falls	98.3	KSNQ	100 kw/177 m, 42-43-42/ 114-24-48; FC to 100.1	NM	Ruidoso	93.5	KWES-FM	20 kw/552 m, 33-18-15/ 105-47-10
IL	Glendale Heights	94.3	WJKL	3.5 kw/134 m, 41-51-30/ 87-57-16	NY	Lockport	95.7	W239BA	CP Mod for 55 w/58 m, (would drop H to go V-only), 43-01-48/78-55-15; CL to Grand Island via a CP to Pendleton
IL	Morton	92.7	W224BT	10 w-V/4 m AGL, 40-35-58/ 89-28-32; would drop H for V-only	ND	Jamestown	93.3	KSJZ	100 kw/137 m, 46-49-06/ 98-42-39
IL	Shelbyville	105.1	WEJT	13 kw/142 m, 39-35-38/ 88-50-45; CL to Dalton City	OH	Akron	91.3	WAPS	2 kw/106 m, 41-03-53/81-34-59
IN	Columbus	90.3	WKJD	CP Mod for 1.36 kw-V/46 m, 39-11-10/85-57-29	OR	Prineville	104.9	KNLX	430 w/675 m, 44-26-13/ 120-57-11 (apparently a last-minute change from 98.9 MHz? - ds)
IA	Johnson	95.7	KGCW-LP	32 w/18.9 m AGL, 41-35-42/ 93-44-24; XL move	OH	South Webster	94.9	WEKV	CP Mod for 2.1 kw/146 m, 38-42-30/82-40-15
IA	Sioux City	88.3	KMSC	APP Mod for 12 w/56 m, 42-28-28/96-21-34; FC to 92.9	SD	Chamberlain	91.9	NEW	10 kw/226 m, 43-30-27/ 99-27-25; FC from 91.5; adds H and goes NDA
IA	Sioux Rapids	102.9	KTFG	50 kw/151 m, 42-54-35/ 95-09-33	TX	Albany	98.9	KNOS	CP Mod for 8.6 kw/165 m, 32-42-51/99-25-36
KS	Concordia	94.9	KCKS	APP Mod for 53.9 kw/244 m, 39-26-32/97-42-17	TX	Comanche Trail	106.5	K292FQ	CP Mod for 75 w/100 m AGL, 30-19-24/97-48-06 from 106.3, 75 w, (supercedes permit to go to 100 w/109 m AGL, DA, V-only on 106.5 from existing site)
KS	Paola	89.7	KCPK	CP Mod for 3 kw/89 m, DA, 38-28-32/ 94-56-23	UT	Parowan	107.9	NEW	APP Mod for 19.3 kw/241 m, 37-50-31/112-58-27
KY	Danville	107.1	WLAI	3.6 kw/128 m, 37-57-37/ 84-32-42; CL to Wilmore	VA	Emory	90.7	WEHC	APP Mod for 10 kw/114 m, DA, 36-46-01/81-50-18
KY	Glasgow	105.3	WOVO	150 w/126 m, 36-58-50/ 86-06-10 (aux)	WV	Burnsville	95.7	WSWW-FM	CP Mod for 25 kw/99 m, 38-24-56/80-31-49
MA	Wellfleet	90.1	WRYP	22 kw-V/24 m, DA, 42-01-53/ 70-05-26	WY	Hanna	102.1	KXMP	CP Mod for 630 w/1050 m, 41-38-01/106-31-32
MI	Adrian	107.9	WVAC-FM	APP Mod for 87 w/26 m, 41-53-49/84-03-40					
MI	Coldwater	90.1	WCWB	APP Mod for 1 w-H/25 kw-V/ 85 m, 42-10-47/85-09-10					
MI	Powers	107.3	WXPT	25 kw/97 m, 45-42-39/87-20-48					
MI	Springfield	90.9	WCFG	1 kw/54 m, 42-22-35/85-12-42					
MN	Roseau	103.5	KRXW	CP Mod for 48 kw/150 m,					

--TECHNICAL CHANGES --

- APPLICATIONS FOR NEW STATIONS -

AL	Steele	91.1	NEW	<u>Applies for:</u> 117 w-H/470 w-V/230 m, 33-57-30/ 86-13-01	NE	Utica	91.7	NEW	97-58-09 3 kw/100 m, 40-59-52/97-16-02
AZ	San Carlos	91.1	NEW	75 kw/-50 m, 33-14-50/110-11-36	OH	Republic	88.5	NEW	1 kw/103 m, 41-11-55/82-56-11
AZ	Thatcher	90.9	NEW	600 w-V/680 m, 32-53-22/ 109-19-23	OR	Ashland	89.5	NEW	190 w/602 m, 42-11-53/122-29-30
CA	Avalon	89.7	NEW	14.1 kw/213 m, 32-58-48/ 118-32-46	OR	Bend	88.9	NEW	13 kw/161 m, DA, 43-49-44/ 121-21-03
CA	Two Harbors	89.1	NEW	65 w/578 m, 33-23-12/118-24-00	OR	Brightwood	91.1	NEW	380 w/507 m, DA, 45-19-58/ 121-42-48
IA	Montezuma	89.7	NEW	2.35 kw/113 m, 41-43-55/92-34-01	SD	Sisseton	89.9	NEW	10 kw/211 m, DA, 45-31-10/ 97-06-42
MI	Newberry	90.3	NEW	70 kw/62 m, 46-18-48/85-30-38	SD	Arlington	89.9	NEW	14 kw/142 m, DA, 44-20-23/ 97-09-17
MN	Cook	88.3	NEW	1 kw/70 m, 47-53-09/92-39-47	TX	Falfurrias	91.1	NEW	900 w/30 m, 27-09-45/98-08-54
MO	Cameron	91.7	NEW	20 kw/98 m, 39-52-42/94-05-33	TX	Mountain Home	102.1	NEW	6 kw/83 m, 30-10-34/99-23-02
MO	Kirkville	91.5	NEW	6.5 kw-V/106 m, 40-07-20/ 92-49-38	WI	Ashland	90.9	NEW	23 kw/74 m, DA, 46-36-28/ 90-50-14
MO	Osage Beach	89.3	NEW	500 w-V/47 m, 38-07-29/92-40-39	WI	Owen	90.1	NEW	50 kw/40 m, 44-56-59/90-37-54
NE	Aurora	91.9	NEW	25 kw/49 m, DA, 40-50-34/					

- REINSTATEMENTS -

AS	Pago Pago	104.1	K281AY	APP for 10 w-H, 14-16-12/ 170-41-10
MI	Big Rapids	96.5	W243BA	APP for 19 w reinstated
TX	Del Rio	89.1	NEW	APP for 25 kw/93 m, 29-13-49/100-44-13

- DISMISSALS -

AL	Gadsden	91.1	NEW	APP for new station ROA	AZ	Mohave Valley	93.7	KVYL	APP for 625 w/576 m ROA
AL	Langdale	91.5	WEBT	Renewal application	CA	Carpinteria	101.7	KSBL	CP for 320 w/425 m ROA; see 'applications'
AK	Anchorage	91.1	KSKA	CP for 100 kw	CA	Hidden Meadows	89.9	NEW	APP for new station
AZ	Duncan	90.9	NEW	APP for new station (settlement)	CA	Los Angeles	91.5	KUSC	Aux CP ROA
AZ	Kearny	105.3	KZLZ	APP for 575 w/581 m; FC from 105.1	CA	Lucerne	104.5	KPFZ-LP	License canx ROA
AR	Elaine	95.5	KERE	License canx	CO	Crook	88.1	NEW	APP for new station

FL Islamorada	107.3	W297AS	APP for transmitter relocation	PA Palmyra	91.5	NEW	APP for new station (73.515*)
FL Naples	102.3	W272BM	APP for 1 w; FC to 91.5 ROA	TN Bristol	91.5	WHCB	CP for 4 kw
GA Blairsville	101.1	W266AC	FC to 101.3 dismissed ROA	TN Carthage	88.1	NEW	APP for new station
GA Lumpkin	90.1	NEW	APP for new station ROA	TN Lebanon	88.1	NEW	APP for new station (settlement)
ID Soda Springs	88.9	NEW	APP for new station (73.525*)	TX Camden	98.1	KKUL-FM	APP for 15 kw/129 m; CL from Groveton (73.3573 note 4***)
IN Plymouth	94.3	WZOC	APP for 25 kw/100 m ROA	TX Dalhart	96.1	KIXK	CP Mod for STA
IA Malcom	89.7	NEW	APP for new station	TX New Caney	94.9	NEW	APP for new translator ROA
IA Pocahontas	95.3	KWFF-LP	Renewal application	UT Nephi	103.9	KUDE	CP for 83 kw
MO Brookfield	91.7	NEW	APP for new station (settlement)	NJ Fort Lee	103.1	W276AQ	CP for 10 w ROA (will continue at 35 watts)
MO Dixon	90.5	NEW	APP for new station	WA Kennewick	95.3	K237DP	APP for transfer of license
MO Warsaw	88.1	NEW	APP for new station	WI Thorp	90.1	NEW	APP for new station (settlement)
NE Utica	91.7	NEW	APP for new station				
OR Sunriver	88.9	NEW	APP for new station (settlement)				
PA New Brighton	107.5	W298AE	License canx ROA				

***73.515 - NCE FM transmitter location.**

The transmitter location shall be chosen so that, on the basis of effective radiated power and antenna height above average terrain employed, a minimum field strength of 1 mV/m (60 dBu) will be provided over at least 50 percent of its community of license or reach 50 percent of the population within the community.

****73.525 - TV Channel 6 protection.**

The provisions of this section apply to all applications for construction permits for new or modified facilities for a NCE-FM station on Channels 200-220 unless the application is accompanied by a written agreement between the NCE-FM applicant and each affected TV Channel 6 broadcast station concurring with the proposed NCE-FM facilities.

*****73.3573 note 4 - Processing FM broadcast station applications.**

A Class C station operating with antenna height above average terrain of less than 451 meters is subject to reclassification as a Class C0 station upon the filing of a triggering application for construction permit that is short-spaced to such a Class C station under Sec. 73.207 but would be fully spaced to such a station considered as a Class C0 assignment.

- OTHER NEWS -

AZ Seligman	90.3	K212FP	Sold to KNLB	OH South Zanesville	92.7	WCVZ	for renewal in a timely manner
AZ Prescott	100.7	K264AZ	Sold to KNLB				Non-commercial station fined \$9000 for repeated broadcasts of advertisements
CA Lewiston	98.7	K254AJ	License canx ROA	OK Ada	89.5	KTGS	Sold to the Chickasaw Nation
GA Folkston	91.3	WATY	Sold to Georgia Public Broadcasting	OR Baker	89.9	KANC	Sold to AFR
ID Idaho Falls	91.3	K217EJ	Transferred to KISU	UT Greenville	105.9	K290AV	Sold to Morningstar Media
IL Watseka	95.9	WMLF	Is silent	UT Ephraim	89.5	KAGJ	Fined \$7,000 for failure to file their renewal application in a timely manner and subsequent unauthorized operation. Then granted their renewal application.
IA Waverly	89.1	KWER	License surrendered by licensee	TX San Angelo	90.9	KLTP	Sold by K-Love
IA Rockford	92.9	KYME	Is silent	WI Appleton	91.1	WOVM	Sold to "Music that Matters"
KS Hays	105.7	KRMR	Is silent	WI Two Rivers	97.1	WTRW	Is silent
KS Lindsborg	101.7	KDJM	Is silent				
MA Boston	106.1	Pirate	Fined \$17,000 for unlicensed operation				
MI Crystal Falls	94.9	WUPG	Is silent				
NY Brooklyn	102.3	Pirate	Fined \$10,000 for unlicensed operation				
NC Sanford	90.5	WDCC	Fined \$1500 for failure to file				

++++
 Thanks to Shawn Axelrod, Ron Purdue, Doug Smith, FM Atlas, Upper Midwest Broadcasting.com and Wisconsin Broadcasting.com for updates.
 If you hear any changes occur on your FM dial, please pass them along for all to see!
 +++++

Mexico Authorizes Transition to HD Radio Broadcasting for Stations Within 320 Kilometers of Country's Northern Border with the U.S.

COLUMBIA, Md., May 21 /PRNewswire/ -- Mexico's Federal Telecommunications Commission (CoFeTel) announced last week that it is authorizing radio stations within 320 kilometers (200 miles) from its border with the United States to begin transmitting with digital HD Radio technology.

In an official statement, the CoFeTel said: "Considering the extent of the development and implementation of the IBOC system in the United States of America, Mexico is required to take decisive action so that [the country's AM and FM radio stations] in the zone located within 320 kilometers of the northern border of Mexico can transmit at the same technological level so that they can provide the benefits of quality service to the radio listening public." It went on to state that stations that want to transmit with the IBOC (HD Radio) system must request authorization from CoFeTel and must commit to assisting the commission in studying the technology.

"We're deeply grateful to the Mexican broadcasting industry for its decision to join the HD Radio phenomenon," said Bob Struble, President and CEO of iBiquity Digital, the developer of HD Radio technology. "As the outstanding success we're seeing in the United States is mirrored elsewhere in the world, more and more countries will reap the benefits of this technology's efficient use of spectrum to bring very high-quality audio and data to consumers."

WTFDA DX Contest

Douglas E. Smith
1389 Old Clarksville Pike
Pleasant View, TN
37146-8098
w9wi@w9wi.com
<http://www.w9wi.com>

May 2008 standings

Analog FM:

<u>DXer</u>	<u>Stations logged</u>	<u>Logging points</u>	<u>Grids</u>	<u>Total Score</u>
<i>Randolph Zerr Fort Walton Beach, Florida</i>	<i>513</i>	<i>1,655</i>	<i>97</i>	<i>160,535</i>
<i>Jeff Lehmann Hanson, Massachusetts</i>	<i>298</i>	<i>1,275</i>	<i>28</i>	<i>35,700</i>
<i>Nick Langan Florence, New Jersey</i>	<i>210</i>	<i>985</i>	<i>25</i>	<i>24,625</i>
<i>Douglas Smith Pleasant View, Tennessee</i>	<i>115</i>	<i>442</i>	<i>24</i>	<i>10,608</i>
<i>John Cereghin Smyrna, Delaware</i>	<i>166</i>	<i>736</i>	<i>12</i>	<i>8,832</i>

Digital ("HD") FM:

<u>DXer</u>	<u>Stations logged</u>	<u>Logging points</u>	<u>Grids</u>	<u>Total Score</u>
<i>Jeff Lehmann Hanson, Massachusetts</i>	<i>46</i>	<i>154</i>	<i>5</i>	<i>770</i>
<i>Nick Langan Florence, New Jersey</i>	<i>43</i>	<i>146</i>	<i>4</i>	<i>584</i>
<i>Randolph Zerr Fort Walton Beach, Florida</i>	<i>5</i>	<i>10</i>	<i>1</i>	<i>10</i>
<i>Douglas Smith Pleasant View, Tennessee</i>	<i>4</i>	<i>8</i>	<i>1</i>	<i>8</i>

Analog TV:

<u>DXer</u>	<u>Stations logged</u>	<u>Logging points</u>	<u>Grids</u>	<u>Total Score</u>
<i>Danny Oglethorpe Shreveport, Louisiana</i>	<i>158</i>	<i>364</i>	<i>60</i>	<i>21,840</i>
<i>Roy Barstow Teaticket, Massachusetts</i>	<i>108</i>	<i>440</i>	<i>36</i>	<i>15,840</i>
<i>Robert Grant Temperance, Michigan</i>	<i>112</i>	<i>400</i>	<i>32</i>	<i>12,800</i>
<i>Douglas Smith Pleasant View, Tennessee</i>	<i>27</i>	<i>94</i>	<i>11</i>	<i>1,034</i>

Digital TV:

Get your loggings in for next month – both to me and to your DX column editors.
Thanks!

DX CONTEST NEWS CONTINUES ON PAGE 27



SONY XDR-F1HD RADIO

Nick Langan

I recently purchased the Sony XDR-F1HD tuner and have had a chance to use it the past few days connected to the APS-13 in the marginal trop conditions. I was intrigued based on Brian Beezley's very good and in-depth review at <http://www.ham-radio.com/k6sti/xdr-f1hd.htm> in which he described it as being excellent on analog FM in many aspects. My thoughts:

Positives: Extremely selective. Definitely the most selective tuner I've used, significant difference versus the Sangean HDT-1, and is slightly better than my modified Yamaha TX-900. Aimed right into my 6 mi. 50 kw. local WPST, WFME is audible without too much bleed. FME's signal is pretty hashy when aimed into PST, but it's still a marked improvement over the Sangean and Yamaha where FME is completely wiped out. Hand in hand with the selectivity is that the tuner's handling of intermod is excellent and also the best tuner I've seen in that category. I haven't been able to find any intermod on the entire dial aiming around, while on the Sangean and Yamaha I can find intermod on a few frequencies aiming at PST or WKXW, and even aimed at Roxborough/the Philly stations. I do notice, very much similar to the Boston Acoustics HD Receptor radio, that some weaker signals will be "muted" when aimed right at a local signal like PST, but that is about the only defect I could find. The tuner also seems very sensitive, I was able to find two new translators on 94.9 and 95.3 last night with weak signals in the localized enhancement last night while the Yamaha had intermod and the Sangean had adjacent bleed on those same frequencies.

Negatives: Brian's review described the tuner being a good performer at handling IBOC noise on adjacents versus other tuners. At my location here with all the IBOC around I was unable to detect any difference in reception of stations through IBOC noise versus the Sangean and Yamaha, so I was a bit disappointed. Best method still for me to receive through IBOC is to tune around sidebands on the Yamaha (like the Sangean, the Sony only tunes in 100-kHz steps on FM). The RDS display on the Sony is a big drawback versus the Sangean's. The Sony does not display the PI (call letters) like the Sangean does, and the Sony does not seem to be at quick decoding RDS as the Sangean is. It definitely wouldn't be a bad idea to have a second tuner on hand to handle RDS duties while using the Sony. I don't notice any differences whatsoever between the Sony and Sangean with regard to reception and decoding of HD signals.

Overall I would definitely recommend giving this tuner a try, especially if you're in a high-overload area. I think the positives definitely outweigh the negatives. It's also less pricey versus the Sangean HDT-1 at \$99.99, I had a hard time finding it in stock but it seems to be available at various places on the internet.

Much has been posted on the club's tvfmdx list lately about this tuner and some FM DXers have bought it and most are very pleased with it. Those FM DXers who use modified Yamaha T-85 tuners report this tuner as being equal or slightly better than the Yamaha. Although FM DXers care very little about AM radio HD, this tuner is more sensitive to AM HD stations than the Sangean HDT-1. The radio features variable IF, which almost totally eliminates splatter from local stations on adjacent channels without sacrificing audio quality. The effective noise filtering eliminates hiss. The remote is smooth and very responsive. The radio has two sets of up/down buttons: one for regular tuning and one for preset tuning (20 presets). This tuner is the size of a car radio (7" x 6" and 2 1/4" tall). Controls are located on the remote and on the top front of the tuner. The display has three degrees of brightness: full, dimmer and dim. Antenna input is by an F connector. Connection to an amp is by two RCA connectors. There is NO headphone jack on the front. Signal meter resembles the indicator on a cell phone and consists of three bars. An on/off switch is located in the front on the left side. There is NO direct entry of frequencies. Tuning is done through presets or normal up/down buttons.

Please also read WTFDA member David Pierce's in depth review of this tuner on the web at: <http://home.comcast.net/~dlp85x/review.htm>

LG and Samsung Join Forces to Develop and Promote North American Mobile Digital TV Standard

By Shane Sturgeon on May 14, 2008

www.hdtvmagazine.com

- Agreement signed on May 14, 2008

- Companies are jointly developing and proposing technology for a mobile/handheld DTV standard to the Advanced Television Systems Committee (ATSC)

- LG President and CTO Woo Paik: "LG and Samsung are already world-class in digital TV and mobile communications. Through this collaboration, we also have an opportunity to lead the North American mobile DTV market."

- Samsung President, Digital Media Business JongWoo Park: "Our collaboration on North American mobile DTV standardization will help accelerate the ATSC standardization of mobile TV technology, which will benefit both consumers and broadcasters."

=====

Seoul, Korea, May 14, 2008 - LG Electronics (LG) and Samsung Electronics (Samsung), which together lead the global digital TV market, announced today that they will propose their jointly developed technology as the North American technology standard for mobile DTV.

Samsung and LG held a signing ceremony at Seoul Plaza Hotel in Seoul, Korea, on May 14, 2008. Executives from the two companies attended the event, including Woo Paik, LG's President and CTO, and JongWoo Park, President of Samsung Digital Media Business.

At the ceremony, the two companies agreed to cooperate in order to assure rapid adoption by the Advanced Television Systems Committee (ATSC) of a single common in-band mobile DTV standard.

Technology for the jointly proposed system will reflect the findings of the IDOV (Independent Demonstration of Viability) conducted by the Association of Maximum Service Television (MSTV) on behalf of the Open Mobile Video Coalition (OMVC). A report on IDOV will be submitted by the OMVC to the ATSC.

The jointly promoted mobile DTV solution uses the existing terrestrial digital TV broadcast bandwidth, with no impact on existing digital TV and with minimum broadcasting equipment investment.

"LG and Samsung are already world-class in digital TV and mobile communications, said LG President and Chief Technology Officer Woo Paik. "Through this collaboration, we also have an opportunity to lead the North American mobile DTV market."

Added JongWoo Park, President of Samsung Digital Media Business: "Our collaboration on North American mobile DTV standardization will help accelerate the ATSC standardization of mobile TV technology, which will benefit both consumers and broadcasters."

ATSC is expected to adopt the mobile/handheld DTV standard for the North American market in early 2009 following trials of the technology by the Open Mobile Video Coalition (OMVC), a group of leading U.S. broadcasters who are vigorously promoting the development and early deployment of mobile DTV.

According to a study commissioned by the National Association of Broadcasters (NAB), with the adoption of a single ATSC mobile/handheld DTV standard, the U.S. market for mobile DTV phones will reach 130 million units by the end of 2012, with the market for portable media device mobile DTV receivers growing to include an additional 25 million units. (Source: "Study of the Impact of Multiple Systems for Mobile/Handheld Digital Television," BIA Financial Network, January 14, 2008.)

PHOTO NEWS

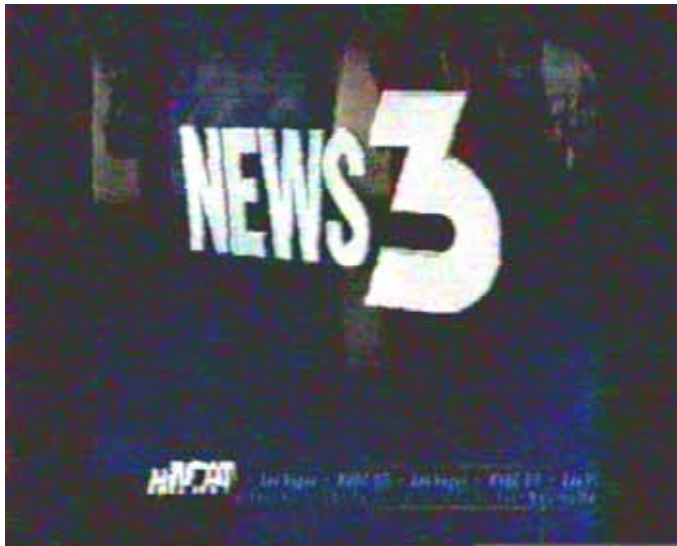


Jeff Kruszka, Editor
 1909 Lost Lake Pl.
 Pearland, TX 77581
 jkruszka@sbcglobal.net

June 2008

EVEN BETTER IN COLOR! CHECK OUT THE eVUD

It's been a couple of years, but once again we hear from Danny Oglethorpe of Shreveport, LA. First off are some spectacular DTV Es photos from KVBC-2, complete with on-screen IDs!



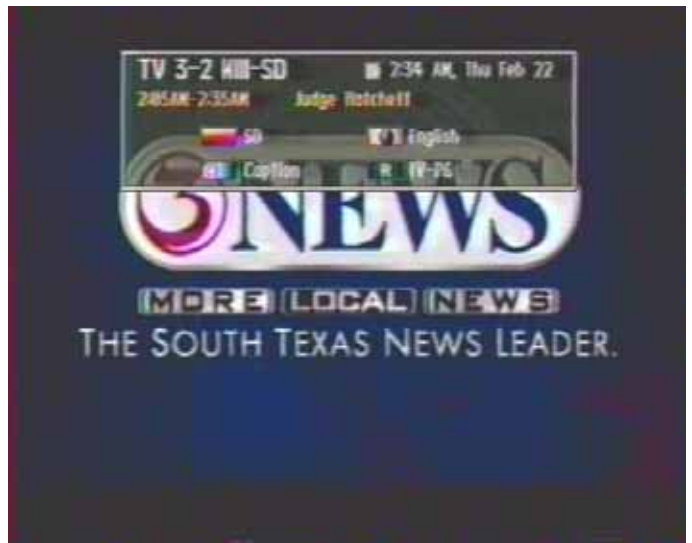
KVBC-DT-2-1 Las Vegas, NV
 1238 mi Es seen 7/06



KVBC-DT-2-2 Las Vegas, NV
 1238 mi Es seen 7/06



KARK-DT-32 Little Rock, AR
 179 mi Tr seen 2006



KIII-DT-8 Corpus Christi, TX
 401 mi Tr seen 2/22/07

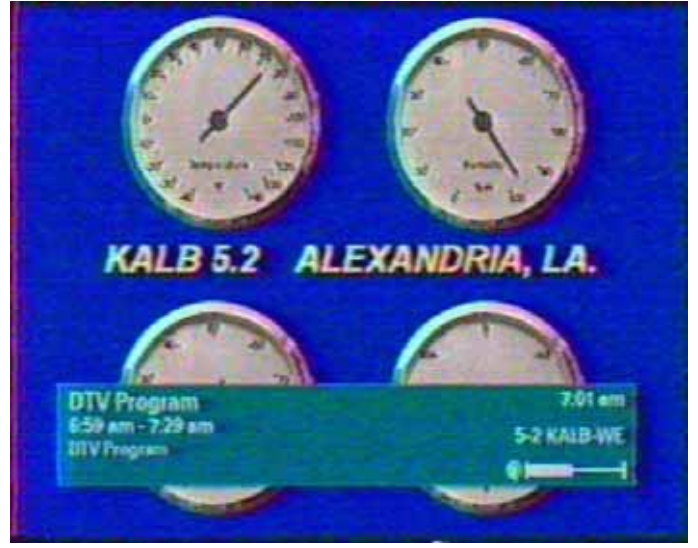


WABG-DT-32 Greenwood, MS
 199 mi Tr seen 2/3/06

Now for some Louisiana photos:



WAFB-DT-46-2 Baton Rouge, LA
205 mi Tr seen 4/2/06
hmmm...this one looks familiar



KALB-DT-35-2 Alexandria, LA
122 mi Tr seen 2006
note the "analog" wx readings!



KADN-DT-16 Lafayette, LA
169 mi Tr seen 10/06



KPLC-DT-8 Lake Charles, LA
147 mi Tr seen 12/06



KZUP-CA-19 Baton Rouge, LA
210 mi Tr seen 4/06



KNOE-DT-7 Monroe, LA
100 mi Tr seen 2006

Okay, folks, I'm basically out of photos, so to keep this column alive, I need your help! Please send your photos via whatever mode you want (mail, email, carrier pigeon, whatever). – 73's, Jeff



(Photo courtesy of Michael Temme-Soifer)

Eastern U.S. TV DX

Featuring reports from AL, CT, DC, DE, FL, GA, IN, KY, MA, MD, ME, MI, NC, NH, NJ, NY, OH, PA, RI, SC, TN, VA, VT, and WV, along with the Canadian Provinces of NB, NF, NS, ON, PEI, and PQ.

Send reports by the 15th of each month to:

Nick Langan
 1040 Riverview Drive
 Florence, NJ 08518
 E-mail: nickl@wtfd.org

The Editor's Note

Good things come to those who wait, or at least that's how the saying goes, so hopefully that's the case with this year's E-Skip season because thus far it has been pretty much a no-show with the exception of a few minor low MUF openings. June and July are ahead of us so there's plenty of time for the season to make a rebound. With the unseasonably chilly weather through much of the east lingering through May, tropo openings have also been few and far between with the exception of the Gulf Coast where it has been one day after another of long-haul activity.

Doug Smith W9WI

Pleasant View (Nashville, TN) EM66

<http://www.w9wi.com>

5/3 Tr

0930 *WBBJ-DT* 43 TN Jackson, weather radar
 0945 WFIQ-DT 22 AL Florence, "WFIQ-HD"
 0958 *WGBC-DT* 31 MS Meridian, "WGBC-DT"
 0958 *WTOK-DT* 49 MS Meridian, "WTOK-HD"
 1030 *WHLT* 22 MS Hattiesburg, logo matching website

Robert Grant (N8NU) 231 E Temperance Rd. Temperance, MI 48182

Rg3d@yahoo.com (expect delays, no home Internet access)

Temperance is in SE corner of MI. (EN81fs) Channel Master Advantage 3020 on chimney at about 33'

Receivers: Sylvania (Funai) 6427GFF analog/digital (2005)

4/16 Tr

0055 CFTV 34 ON Leaming 52 EN82 (rare)

4/23 Tr

2230 WRGT 45 OH Dayton 147 EM79 (rare – through WDIV-DT)
 2245 W47AB 47 OH Mansfi 92 EN80 (FSK Morse ID at 2 WPM!)

2320 WSTR 64 OH Cincin 185 EM79

4/24 Tr

0020 unID 69 TBN
 0040 W63AH 63 OH Maplew 99 EN70
 WCPOt 9 OH Cincinnati T
 (also noted in opening: WSYX-6; WHIO-7; WLIO-DT-8; WBNS-10;

WMFD-DT-12; WCMH-DT-14; WPTD-16; WBDT-DT-18; WOSU-DT-38; WDTN-DT-50; WKEF-DT-51 and WWHO-53)

1915 WNYB 26 NY Jamest 226 FN02
 W51BI 51 OH Kirtlan 119 EN91

4/26 Tr

0910 WAVE 3 KY Louisv 250 EM78 (strong – but only station affected)

5/3 Tr

1000 WAVE 3 KY Louisv 250 EM78 (strong - also WDTN-2 noted)

5/5 Tr

0030 WFXP 66 PA Erie 180 EN92 (also noted W48AV, CICO59 and CBLFT17-68)

5/8 Tr

2250 CKNX 8 ON Wingha 199 EN94

5/10 Tr

1830 WNYB 26 NY Jamest 226 FN02
 WKBW-DT 38 NY Buffal 260 FN02
 WIVB-DT 39 NY Buffal 260 FN02

5/11 Tr

0150 WOIO-DT 10 OH Shkr H 100 EN91 (rare)

Says Robert: "Still no sign of Es yet (5-11), antenna still not fixed. Multipath-tolerant CECBs are ready for Es."

Roy Barstow

Teaticket, MA

4/8 Tr

2300 WMBC 63 N.J. Newton
 WFTY 67 N.Y. Smithtown
 WYBE 35 Pa. Philadelphia

4/9 Tr

0130 WPHL 17 Pa. Philadelphia
WNJT 52 N.J. Trenton
WPSG 57 Pa. Philadelphia
WUVP 65 N.J. Vineland

4/17 Tr

0005 WVBT 43 Va. Virginia Beach
0025 WWSI 62 N.J. Atlantic City
0705 WHRO 15 Va. Norfolk
0735 WTVZ 33 Va. Norfolk
W39CS 39 Va. Onancock
0745 WMDT 47 Md. Salisbury

4/18 Tr

1845 W14DC 14 Va. Portsmouth
1850 WHRE 21 Va. Virginia Beach
1855 W30CI 30 Va. Onancock
1915 WXPO-LP 34 N.J. East Orange
1925 W45CP 45 N.J. Atlantic City
1927 WPXV 49 Va. Norfolk
1930 WPMC-CA 36 Va. Mappsville

4/19 Tr

0015 WPXU 35 N.C. Jacksonville
0030 W34DN 34 Va. Onancock
0035 WTTD-LP 53 Va. Hampton
0210 WYDO 14 N.C. Greenville
0215 WCPB 28 Md. Salisbury
0240 WYSJ-CA 19 Va. Yorktown
0245 WITD-LP 23 Va. Chesapeake
0250 WSFX 26 N.C. Wilmington 660
0300 WNYN-LP 39 N.Y. New York
0330 WMBQ-CA 46 N.Y. Manhattan *NEW*
0340 WNYX-LP 35 N.Y. New York
0350 WNJM 50 N.J. Montclair
0400 WUPV 65 Va. Ashland
0405 WUNM 19 N.C. Jacksonville
WUNJ 39 N.C. Wilmington 660
0420 WPSG 57 Pa. Philadelphia
0445 WHRO-DT 16 Va. Norfolk
WVBT-DT 29 Va. Virginia Beach
0500 WNJU-DT 36 N.J. Linden
WTVZ-DT 38 Va. Norfolk *NEW*
WVEC-DT 41 Va. Hampton
0505 WPXV-DT 46 Va. Norfolk
WGNT-DT 50 Va. Portsmouth
0510 WABC-DT 45 N.Y. New York
0515 WFUT-DT 53 N.J. Newark
0530 WWOR-DT 38 N.J. Secaucus

0540 W24OI 24 Va. Virginia Beach
0600 W14CL 14 Me. Harpswell
WLLB-LP 15 Me. Portland
0605 WMEA 26 Me. Biddeford
1130 WFUT 68 N.J. Newark

4/20 Tr

1600 WRIW-LP 50 R.I. Providence
1630 WHCT-LP 38 Ct. Hartford
1700 WUTH-CA 47 Ct. Hartford
WRNT-LP 48 Ct. Hartford

4/21 Tr

2000 WNYA-LP 15 N.Y. Easton
2030 WXXA 23 N.Y. Albany
2150 WLYH 15 Pa. Lancaster
2200 WGTW 48 N.J. Burlington
WNYN-LP 39 N.Y. New York
WTBY 54 N.Y. Poughkeepsie
2300 WFTY-DT 23 N.Y. Smithtown
WNYE-DT 24 N.Y. New York
KYW-DT 26 Pa. Philadelphia
2310 WPSG-DT 32 Pa. Philadelphia
WNJU-DT 36 N.J. Linden
WWOR-DT 38 N.J. Secaucus
2315 WNYW-DT 44 N.Y. New York
WABC-DT 45 N.Y. New York
WNJN-DT 51 N.J. Trenton
WFUT-DT 53 N.J. Newark
2330 WCBS-DT 56 N.Y. New York
WPVI-DT 64 Pa. Philadelphia
WUVP-DT 65 N.J. Vineland
2335 WYBE-DT 34 Pa. Philadelphia
2340 WTXF-DT 42 Pa. Philadelphia

4/22 Tr

0700 W26CE 26 N.Y. New York
1725 CBHFT 46 N.S. Middletown
1730 CBHT-3 11 N.S. Yarmouth
WMED 13 Me. Calais
2145 WPXT 51 Me. Portland
2200 CIHF-6 9 N.S. Bridgewater
CBHT-6 8 N.S. Middletown

4/23 Tr

0115 WCWN 45 N.Y. Albany
1900 WFDC 14 Va. Arlington

Says Roy: "Some nice and varied DX for APRIL."

<http://www.wtfda.org>

**WTFDA's Official Home on the Internet
And home to the VUD Archives**

<http://www.wtfda.info>

**Home to one of the net's most popular DTV forums!
A great place to meet DXers from all over the world.**

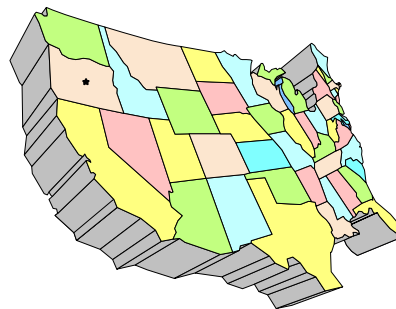
WESTERN TV DX

DAVE WILLIAMS

3525 SW Timber Ave

REDMOND, OR 97756

beansdad@bendcable.com (541) 420-4704



Es activity began here in earnest on May 14. I hope it's a long season!

May 14, 2008 Es

1645 2 KSNC Great Bend, KS Wheel of Fortune
1700 3 KLNE Lexington, NE Web ID thru KOAB
1707 5 KHAS Hastings, NE Wheel of Fortune
1740 4 KLBY Colby, KS 4/10/13 ID
1744 2 KWGN Denver, CO CW2 Bug
1758 4 KCNC Denver, CO News
1810 5 UNID NBC, prob either KOAA or KHAS

May 15, 2008 Es

1615 2 KWGN Denver, CO CW2 Bug
1630 2 KSNC Great Bend, KS Jeopardy

May 19, 2008 Es

1320 2 KCBS Los Angeles, CA CBS2 Bug
1330 4 KNBC Los Angeles, CA (t) w/NBC soap

73- Dave

Dave Pomeroy

2321 SE Libra Ct.

Topeka, Kansas 66605-3505

davepomeroy@sbcglobal.net

February 25, 2008 Es

2030 XHBC-3 Mexicali, BC

March 14, 2008 Tr

0600 KWTV-9 Oklahoma City, OK
KPTS-8 Hutchinson, KS
KOAM-7 Pittsburg, KS over
KMBC-DT 7 in KC
KSNW-DT 45 Wichita/Hutchinson, KS
KWCH-DT 19 Wichita/Hutchinson, KS
0745 KAFT-DT 9* Fayetteville, AR
0758 KFSM-DT 18 Ft. Smith, AR
0800 KTUL-8 Tulsa, OK
KOED-DT 38 Tulsa, OK
CCI on local WIBW-13
0820 KPTS-DT 29 Hutchinson, KS
KAKE-10 Wichita, KS
KAKE-DT 21 Wichita, KS
1000 KFJX-14 Pittsburg, KS/Joplin, MO
KSNF-16 Pittsburg, KS/Joplin, MO
1010 KNWA--50 Fayetteville, AR
(51.1 KNWA-DT, 51.2 "Fox 24")
KOZJ-DT 25 Joplin, MO
1030 KHOG-DT 15 Fayetteville, AR
KHOG-29 Fayetteville, AR

1035 KOLR-DT 52 Springfield, MO
1100 KOZK-21 Springfield, MO
(rare since KTAJ-DT 21 moved to
Kansas City)
KSPR-33 Springfield, MO
(over local TBN-33)
CCI on local KSNT-27
(probably Springfield)
1105 KQCW-19 Muskogee, OK
KDOR-17 Bartlesville, OK
KRSU-35 Claremore, OK
1115 KWHB-47 Tulsa, OK
KGEB-53 Tulsa, OK
KOET-DT 31 Eufala, OK
1120 KHBS-40 Ft. Smith, AR
1200 K32GH-32* Ft. Smith, AR
(Very weak. Thanks to several who helped identify
this one. Matt had a shot of the MyTV stations on
the multiple station ID which matched what I saw
but could not read)

April 19, 2008 Tr

0830 KDOR-17 Claremore, OK
KJRH-DT 56 Tulsa, OK

April 20, 2008 Tr

0730 Five analogs and a DTV on channel 17.
(Des Moines, Columbia, Bartlesville, Grand
Island and LPTV Emporia, KS)
DTV snow from KAAS-DT 17 in Salina, KS
with antenna west.
0735 KOLN-DT 25 Lincoln, NE
0745 KJRH-DT 56 Tulsa, OK
KOLR-DT 52 Springfield, MO
KELO-DT 39 Sioux Falls, SD
Insignia PSIP
11.1 KELO-DT
11.2 KTWU-DT 2
11.2 UTV KELO
11.3 KTWU-DT 3
0750 KHIN-DT 35 Red Oak, IA
KMEG-DT 39 Sioux City, IA
KTIV-DT 41 Sioux City, IA
0800 KMEG-14 Sioux City, IA
KDLT-46 Sioux Falls, SD
WOI-DT 59 Ames, IA
WHO-DT 19 Des Moines, IA
KCAU-DT
0830 DTV snow on local KTLJ-CA 43
(probably Omaha)
KDIN-DT 50 Des Moines, IA
KDMI-DT 56 Des Moines, IA
0905 KNWA-50 Fayetteville, AR
0930 KOZK-21 Springfield, MO
KWBM-31 Harrison, AR
KBPI-34 Eureka Springs, AR

April 23, 2008 Tr

0700 KQTV-DT 53 St. Joseph, MO (very rare)
(70.2 as subchannel--no audio or video)
KFDX-39 Newton, IA
KDSM-17 Des Moines, IA
0705 KDMI-DT 56 Des Moines, IA
KCCI-DT 31 Des Moines, IA
1030 WHO-DT 19 Des Moines, IA

Fritze H. Prentice Jr.

3275 State Highway 114W
Star City, AR 71667
kc5kbv@yahoo.com

DTV logs with USD/Hisense STB until Evening of April 30. Zenith (LG) STB from evening of April 30 to present.

Panasonic VCR, RCA 12" B&W click knob TV for analog VHF, Win TV Go Card.
CM4228 UHF antenna, 4 element log periodic for VHF/FM CM7777 Preamp @ 25ft AGL

Tropo Logs - All Times Central

January 26, 2008

1846 **KPLC 7** "Inside Edition"
First non-KATV logging on ch 7

January 27, 2008

0455 **WMAB 2** State Univesity MS MPB/PBS "Bill Moyers Journal"
2006 WKMU 21* Murray KY "KET 1" Jane Austen adaptation
2008 unid 54 CW programming
2010 KETK 56 Jacksonville TX
2010 KETK-DT 22 Jacksonville TX

January 28, 2008

0645 **KLTV 7** Tyler TX local morning news w/"Mr Food Segment".
0844 WLJT-DT 47 Lexington TN

Feburary was a wash, mainly pests from Shreveport/Memphis, etc

March 14, 2008

2041 **KPBI 34** Eureka Springs, AR "Family Guy", MNTV generic ID.

April 6, 2008

0528 KAFT 13 Fayetteville AR
0529 KNWA 51 Rogers AR
0529 KPBI 34 Eureka Springs AR
0530 KQCW 19 Muskogee OK
0531 KMYT-DT 42 Tulsa OK

April 8, 2008

0603 KATC 3* Lafayette LA
local news, DTV transition PSA.
0718 WBRZ 2 Baton Rouge LA
"Good Morning America"

0718 WAFB 9 Baton Rouge LA "Early Show"
0724 KPLC 7 Lake Charles LA strong video
w/ KATV floater
0727 KLTJ 22 Galveston TX
Daystar religious programming
0848 KBCA-41 Alexandria LA
"CW" bug, Judge Maria Lopez
0848 KLAX 31 Alexandria LA
"Good Morning America"
0850 KALB 5 Alexandria LA
very weak over KETS-DT
0857 KLTL-DT 20 Lake Charles LA
LPB/PBS (18-n)
0906 KALB-DT 35 Alexandria LA

April 21, 2008

0623 KLTL 18 Lake Charles LA LPB/PBS

April 22, 2008

1819 WBBJ 7 Jackson TN (audio only)

April 23, 2008

0533 KPOB 15 Popular Bluff MO
(airing WSIL news)
0534 KBSI 23 Cape Girardeau MO

April 24, 2008

0651 WMAU 17 Bude MS

April 30, 2008

0625 **KDTN 2** Denton TX Daystar prog.
0626 KDFW 4 Dallas TX "Fox 4"
over semi local KARK
0627 WFAA 8 Dallas TX very strong signal
0628 **KWTX 10** Waco TX.
Over semi local KTVE
0629 KERA 13 Dallas TX
0637 KDFW-DT35 Dallas TX
0637 KWTX-DT53 Waco TX
0637 KERA-DT 14 Dallas TX
0639 KTVT-DT 19 Fort Worth TX
0645 KSTR-DT 48 Irving TX
0645 KTAQ-DT 46 Greenville TX

May 7, 2008

0618 **WVUE 8** New Orleans LA "FOX 8" news
0625 KETK-DT 22 Jacksonville TX
0639 **WVUE-DT** 29 New Orleans LA
0655 KLWB 50 New Iberia LA
0702 KAZH 57 Baytown TX (Houston metro)
"Tom Peacock Nissan" infomercial

May 10, 2008

0705 KNWA-DT 50 Rogers AR
0705 KNWA 51 Rogers AR
0706 KFSM-DT18 Ft Smith AR
0712 KJRH 2 Tulsa OK
0713 KQCW19 Muskogee OK
0713 KTUL 8 Tulsa OK
0713 KMYT-DT 42 Tulsa OK
0718 KOED 11 Tulsa OK

May 12, 2008

1300 KYTV 3 Springfield MO.
Unusual afternoon logging,
weak with DTV transition
crawler.

2125 KOZK 21 Springfield MO Ozarks Public
TV, "American Experience"

2320 KMIZ 17 Columbia MO
"Jimmy Kimmel Live"

May 14, 2008

0647 **KNOE-DT** 7 Monroe LA
(over weak, but now semi
local KATV 7) Tough to catch
here.

0705 KAQY 11 Columbia LA
(over semi local KTHV 11)

May 19, 2008

0626 WVUE 8 New Orleans
0628 WWL-DT 36 New Orleans
0629 **WDSU-DT** 43 New Orleans
(6-1 //WDSU,
6-2 NBC Weather Plus)

0629 **WGNO-DT** 15 New Orleans (26-1 WGNO
programming, 36-1 relaying
WNOL)

0629 WVUE-DT 29 New Orleans

May 20

0549 KATC 3 Lafayette LA
0552 **KFDM 6** Beaumont TX Local news with
blue "6" logo

0553 WAFB 9 Baton Rouge LA
0554 WVUE 8 New Orleans, very strong signal
0555 KPLC 7 Lake Charles LA.
Audio and floater under KATV 7

0559 KALB-DT 35 Alexandria LA
0602 WWL-DT 36 New Orleans LA
0632 WHLT 22 Hattiesburg MS (sat of WJTV
Jackson MS). Airing WJTV
local morning news

0638 **WDAM 7** Laurel MS Local news "7 On
Your Side" slogan.

0650 **WEAR-DT** 17 Pensacola FL Local news
including beach front shots.

0652 **WMDN-DT** 26 Meridian MS "CBS Morning
News" in lieu of local.
Stretch-o-vision

0700 WGBC-DT 31 Meridian MS NBC "Today"
0711 WMAW 14 Meridian MS MPB/PBS
0711 unid 21 with religious programming.

E-Skip Loggings

May 13, 2008

1735 XEPM 2 Juarez MX "tu canal" logo
Sports programming

1911 KWGN 2 Denver CO
Two And A Half Men,
"Reaper" promo

May 15, 2008

1845 KTVK 3 local weather segment
1915 unid 3 en spanish w/blue "3" logo

May 16, 2008

0845 unid 2 CBC
0915 unid 3 CBC
0958 **KTVQ 2** Billings MT "Q2"
1101 unid 2 ABC "All My Children"
1120 CKPR 2 Thunder Bay ON
(Thunder Bay TV.com)
CBC News
1131 **KTCA 2** St. Paul MN
PBS Kids with TPT logo
1200 KBME 3 Bismark ND
"Mr. Rogers Neighborhood"

1218 unid 2 Global (Canada)
1414 **KOTA-DT 2** Rapid City SD my first DTV
LOG VIA E'S WITH VIDEO
("General Hosptial" was the programming. Two
unbroken segments of 17 and 8 seconds). Was
caught with DVD Recorder and Zenith CECB/STB
unattended.

May 17, 2008

1120 **KDLO-DT 2** Florence SD.
Also detected unattended, but only a flash
of black video, counting as only a PSIP log and not
complete video

May 19, 2008

1751 unid 2 PBS
1753 unid 2 "FOX 2", likely WJBK 2 Detroit
1756 unid 3 CTV "Sports Scene"
1800 KACV 2* Amarillo TX
1813 WTOM 4* Cheboygan MI "Wheel Of Fortune"
1832 unid 2* NBC 2 Bug, fighting with "fox 2"
2031 KTCA 2 St Paul MN PBS "American
Experience"
2050 XEPM 2 Juarez MX

Dennis Park Smith

3605 San Remo Drive
Santa Barbara, CA 93105-2523
Telephone (805) 687-7803

This report is for April, 2008. Only a little activity in
Santa Barbara and in Wasco this time around.
Following is this month's Southern California
coastal tropo between S.B. and San Diego/Tijuana,
up to 200 mi/320 km, nothing outstanding.

Apr 1 AM None (unsettled; occasional
wind, since Mar 26)

Apr 1 AM-5 Eve Out of town, in Wasco

Apr 5 eve - 10 AM None (unsettled, windy)

Apr 10 eve VHF good, UHF fair (warming)

Apr 11 - 13 aft None (not sure why,
still warmer-stable)

Apr 13 eve - 14 Poor

Apr 15 - 16 None (some cooling & wind)

Apr 17 - 18 Variably poor to fair (calm,
stable, morning fog)

Apr 19 - 24 None (unsettled, passing wx
fronts)

Apr 25 – 28 Poor (stable, high pressure, warming)
 Apr 29 – 30 None (windy)

While in Wasco, Apr 1-5, I saw this as a new logging (tropo enhanced):

Apr 2 Tr 31 **KBID-LP** Fresno Azteca America 100 mi N

Last time with Don Voegelé at Santa Barbara, I noted signals of “uncertain distances” which are clarified here.

KBID-LP was new tentative Feb 15 (probably a regular as offset CCI only) but on Apr 2&3 was at times over near-local KBTF-CA 31 Bakersfield (Telefutura, 45 mi SE). KBID is #220 in my reconstructed analog TV station total (starting in the 1950s) plus quite a few tentatives. Wasco DTV remains at 10, starting 2005.

- [1] Those indicated at 50 miles (Ventura, Oxnard) were closer to 45 miles.
- [2] Those at 100 miles (most in LA area, Avalon, Anaheim, etc.) were 90 miles.
- [3] and those at 150 miles (Long Beach, Riverside) were 130 miles.

Best of DX to all, Dennis

DX CONTEST NEWS CONTINUES FROM PAGE 17

<u>DXer</u>	<u>Stations logged</u>	<u>Logging points</u>	<u>Grids</u>	<u>Total Score</u>
Danny Oglethorpe <i>Shreveport, Louisiana</i>	48	96	17	1,632
Steve Rich <i>Indianapolis</i>	36	72	17	1,224
Robert Grant <i>Temperance, Michigan</i>	37	74	12	888
Roy Barstow <i>Teaticket, Massachusetts</i>	24	88	7	616
Douglas Smith <i>Pleasant View, Tennessee</i>	22	44	7	308
Jim Thomas <i>Milliken, Colorado</i>	16	32	3	96

Get your loggings in for next month – both to me and to your DX column editors. Thanks!

**Chart 1
Cable Attenuation**

Type Of Cable	Loss Per 100' In DB'S				
	Ch 2	Ch 13	Ch 14	Ch 48	Ch 83
RG-59/U	2.6	5.4	8.4	10.5	12.0
RG-59/U Foam	2.1	4.1	5.8	7.1	8.0
CL-2700	2.2	4.4	6.5	8.0	9.1
CL-2800	1.6	3.2	4.9	6.0	6.8
RG-11/U	1.4	3.2	4.8	5.8	6.8
RG-11/U Foam	1.1	2.3	3.5	4.3	5.1

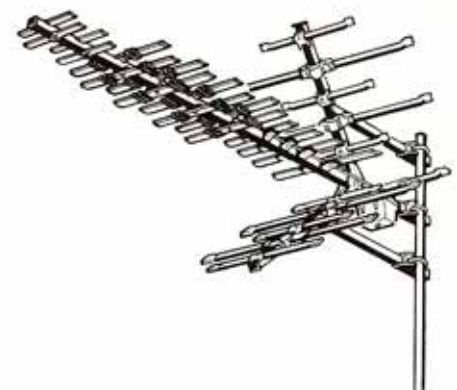


Fig. 1 This is Model CH-9095, the most powerful of the Winegard UHF-only antennas.

SOUTHERN FM DX



JOHN ZONDLO
 4009 DRIFTWOOD CIRCLE
 YUKON, OK 73099
 SOUTHERNFMDX@WTFDA.ORG
 DEADLINE: 15TH

For DXers in AL, AZ, AR, CA, CO, DE, DC, FL, GA, HI, KS, KY, LA, MD, MS, MO, NV, NM, NC, OK, SC, TN, TX, UT, VA, WV, Cuba & Mexico

JUNE 2008

Doug Smith – Pleasant View, TN

5/3 Tr

0942 WMSO 101.3 MS Meridian, "Miss 101," previous log at WJDQ 296
 1000 KSJY 89.9 LA St. Martinville, "This is KSJY," AFR 512
 1000 WMAE 89.5 MS Booneville, "MPB" 151
 1000 WQLT 107.3 AL Florence, "Q107" 124
 1002 WMPN 91.3 MS Jackson, "MPB 91.3" 346
 1015 WRNO 99.5 LA New Orleans, "Rush Radio," legal ID 472
 1020 WINL 98.5 AL Linden, "West Alabama Mental Health" 297
 1025 WFFN 95.3 AL Coaling, "Tuscaloosa's Right Choice" 232
 1025 WBBN 95.9 MS Taylorsville, "Pine Belt Country B95" 356
 1025 WLZA 96.1 MS Eupora, ad for Lasik in Tupelo 226
 1040 WSLY 104.9 AL York, area ads 292
 1040 WJXM 105.7 MS DeKalb, PSA for meeting of University of Alabama alumni in Meridian 274
 1100 W270BK 101.9 TN Clarksville, "V-102.5," new local translator of WVNS 18



John Cereghin – 38 S. Carter Rd. – Smyrna, DE 19977 – jcereghin@gmail.com - www.pilgrimway.org/dx

Sony ST-JX521, Kaito KA-1103, Grundig YB-550PE, various antennas

4/9 Tr

0800 WAYZ 104.7 MD Hagerstown 100



0810 WZQX 88.3 PA Chambersburg 110
 0820 WVEP 88.9 WV Martinsburg, West Virginia Public Radio 157
 4/16 Tr
 0815 WAWZ 99.1 NJ Zarephath, "Star 99.1," Christian 101
 0820 WYFI 99.7 VA Norfolk, Christian, Bible Broadcasting Network 175

4/19 Tr

0830 WVES 99.3 VA Accomac, k 104
 2050 WWZY 107.1 NJ Long Branch, "The Breeze" 107

4/25

2105 WAFX 106.9 VA Suffolk, "The Fox" 107

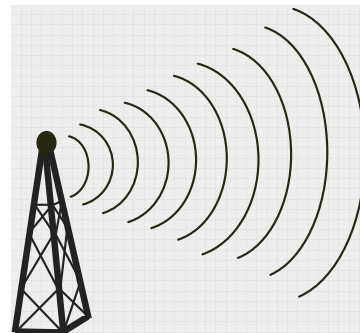
5/7 Tr

0915 WJYJ 90.5 VA Fredericksburg, Christian 131

5/8 Tr

2130 WINC 92.5 VA Winchester, "Wink-FM," tuned in during EAS activation for a tornado warning 132

Northern FM DX



Keith McGinnis
18 Newbridge St., Hingham, MA 02043
longwave@comcast.net 781-875-1944

For Dxers in the following states: CT IA ID IL IN MA ME MI MN MT ND NE NH NJ NY OH OR PA RI SD VT WA WI WY and all of Canada. Please submit by the 10th of each month. If possible please submit in the formats shown Below.

EDITORS NOTE: PLEASE NOTE THAT ANY TYPEWRITTEN OR HANDWRITTEN REPORTS MIGHT BE DELAYED TILL A LATER ISSUE AS TIME PERMITS. ALSO PLEASE KEEP REPORTS AS RECENT AS POSSIBLE (THE LAST 3 MONTHS SHOULD WORK FINE). THANK YOU.

Frank Merrill, P.O. Box 669, Macomb IL 61455 fmerrilljr@yahoo.com

FM DX STARTING 2006

June 10 2006 ES

1820	WPOR	101.9	Portland	ME	
1823	WOZI	101.9	Presque Isle	ME	1213 ad for downtown Caribou
1850				WY	on 93.1, 93.9, 94.5, 94.9, 95.5, 96.1, 96.7, 97.5, 103.7 (and Idaho 98.1)
1855	KMGW	96.7	Casper	WY	825 ad for "the Casper area"
1856	KPIN	101.1	Pinedale	WY	1010 ad for Pinedale area subdivision, GREAT signal for 230 watts
1903	KRVK	107.9	Midwest	WY	825 "Stone Temple Pilots now, on Creek" legal I.D.
1907	KPIN	101.1			
2028	KPMX	105.7	Sterling	CO	659 521-6614, 2006 NJC Summer Basketball camp (INTERNET matched)
2041	KKNL	97.3	New London	IA	60 (GROUNDWAVE) Ft. Madison mail address, and co-ID with 93.5 KKMI

June 26 2006 ES

2107	WKZY	106.9	Cross City	FL	860 "The new 106.9 KZY...whatever we want" (also WXXL-106.7 relog)
2111	WLVO	106.1	Live Oak	FL	824 "The heart of rock & roll, one hundred six point one" & local mention
2116	WCTQ	106.5	Sarasota	FL	1018 Bradenton area V.W. ad (MAY BE RELOG)
2119	WUTL	106.1	Tallahassee	FL	
2121	Unid	96.7	?		"NPR.org" (perhaps an LPFM talking about NPR? Or translator?) Can't resolve.
2123	WYYX	97.7	Bonifay	FL	723 Rock 97X, tickets to Daytona races, Panama City mentions

June 28 2006 ES

1859	XHNRC	93.1	Nueva Rosita	CU	1070 "sistema de Radio Coahuila" but dead air at local ID 1900
------	-------	------	--------------	----	--

July 12 2006 ES

1811		93.7	Ocala	FL	
1900	KIFX	98.5	Roosevelt	UT	1017 "Longer music sweeps on The Fox, KIFX 98.5 Roosevelt/Vernal/Duquesne
1917		97.9	Cheyenne		
1921	KSIT	99.7	Rock Springs	WY	970 BJ Services Co., 1965 Blairtown Road, Rock Springs (ad)
1923	KKPL	99.9	Cheyenne Collins (ad)	WY	742 Chipper's Lanes, 830 North Collins, Fort
1925	KOSI	101.1		CO	
1926	KRQU	104.5	Laramie	WY	781 "Classic rock on 104.5, KRQU"
1928	KPAW	107.9	Loveland	CO	102.5
2000	KFMS	97.5	Coalville	UT	1087 legal ID as Coalville-Provo-"Salt Lake" classical might be CBWV-MB
2030		97.9			

July 14 2006 ES

1930-2000 "TONS of FL Jacksonville on down to Miami, T-SP, etc.
 1950 smooth jazz 107.5, probably Roswell GA, "got away" from me...would've been nice at 564 miles

July 15 2006 ES (big day)

1200					To the top: Corpus, Monterrey NL, etc.
1215	KBBT	98.5	Schertz	TX	880 "San Antonio's best apartment locator" & San Antonio Kia (ads)
1225	KPCL	95.7		NM	
1240					"98.3 and 106.7 FM" heard on 98.3 (see 1300)
1241	KCYQ	97.7	Elsinore	UT	1149 "97.7, KCYQ" jingle
1249			Kanab	UT	101.1 "the new Planet 94-three" full-power simulcaster
1253	KONY	99.9	Colorado City	AZ	1230 "99.9, KONY" jingle, and "kony Country" mention
1300	KARB	98.3	Price	UT	1067 "98.3 and 106.7" followed by legal ID for "KARB Price" only
1303	KIXY	94.7	San Angelo	TX	also Odessa 96.9
1314	KMDG	103.9	Nephi	UT	1120 "You're listening to 107.9 The Mix"/"1079themix.com" (checks out)
1320	KZKS	105.3	Rifle	CO	
1323	Unid	104.9			UPS Store in Delta (probably KRYD Telluride)
1330	KJQY	95.5	Rocky Ford	CO	718 "In the heart of historic downtown Pueblo"—Hot 95.5—SE CO weather
1338		98.3	Gunnison	CO	
1720	CKWY	93.7	Wainwright	AB	1300 (ads) downtown Wainwright; Battleford
1732	CJCQ1	104.5	Meadow Lake	SK	1260 Battleford & Meadow Lake weather, "on Q-98" simulcast

WEATHER DX (Macomb 162.500 off)/GROUNDWAVE—Tropo Scatter

1735	KZZ38	162.500	Trenton	MO	158 legal ID
1745	KXI86	162.500	Morris	IL	133 "You're listening to NOAA Weather Radio KXI86...serving...Morris..."

July 15 2006 (return to FM—ES)

1749	CHQX	101.5	Prince Albert	SK	1134 Cook Municipal Golf Course – Sask. Golf Assn. (may be a relog???)
1751	CFGW2	102.9	Wapella	SK	900 "The Best Mix, Fox-FM"
1753					A relog on "Wadena Radio" 103.5 x SK...again??? 48 watts
1755				SK	98.3, 99.1, 100.7
1759	CKSB8	99.5	Brandon	MB	791 MONO CBC French service
1800	KAUJ	100.9	Grafton	ND	643 "This is Oldies Radio, KAUJ, Grafton, North Dakota"
1802	CJVR2	105.1		SK	(presumed)
1810	Unid	106.7			football game – one team is "The East" (possible CJRX Lethbridge?)
1817	CJDJ	102.1	Saskatoon	SK	1110 Tiger Automotive, 815 Western Drive
1820	CJNS	102.3	Meadow Lake	SK	1260 "on 1050 CJNB and 102.3 CJNS" (I think this is O & O by Wal-Mart???)
1823	CBWZ	104.3	Fairford	MB	880 CBC English MONO
1830	KRQN	107.1	Vinton	IA	140 "107.1 KRQN, great tunes for work or home, 107.1 KRQN" GROUNDWAVE
1900					French Stereo on 88.7 (can't narrow down)
1935	WEVO	89.1		NH	

July 16 2006 ES

1500					relog KIFX-98.5 UT
1512	KODJ	94.1	S.L.C	UT	
1512	KZDX	99.9	Burley	ID	1 206 "Southern Idaho's #1 hit music station, 99-nine The Buzz"
1517	KRAR	106.9	Brigham City	UT	1116 "94.9 The Blaze," Utah carpentry ad (relays KHTB-94.9 per Internet)
1522	KBNZ	104.9	Trementon	UT	1123 "Classic Country 104.9" in-house promo (checked on Internet)
1525	KKMV	106.1	Rupert	ID	1200 "Magic Valley loves its country...we play more of it, Cat Country 106"
1528	KJQN	100.7	Brigham City	UT	1116 Shane Company (SL City) ad, "101.5 The Eagle" (no trace on 101.5)
1532	KMGI	102.5	Pocatello	ID	"KMGI, the best Rock, Bob Seger"//
1540					suddenly FL with WAYF-88.1 and probable WYFE-88.9

1543	KADQ	94.3	Rexburg	ID	
1546	KDLY	97.5	Lander	WY	
1553	Unid	92.9			"Kicks Country 92.9" probably Port Charlotte
1610	WXTB	97.9		FL	
1610	**MAJOR FOOLER** TODAY!				Much of Iowa (Ottumwa, Des Moines, Cedar Rapids, even
	Milford 102.1) fading in and out like skip!!! Apparently a nice opening set up, see below...				

July 16 2006 (TROPO, after the skip)

1700	KSCR	93.5	Benson	MN	419 "KSCR, 93.5 FM Benson, Minnesota" [KKMI-IA phased]
2300	WLCS	98.3	North Muskegon	MI	(RARE! relog) "...kegon" at tune-in, probably N. Muskegon-Muskegon ID
2305	WTNR	94.5	Holland	MI	New Country, Thunder 94.5 (RARE without phasing, nearly 300 miles!)
2325	WFGR	98.7	Grand Rapids	MI	311 "98.7, Grand Rapids Oldies Radio 98.7" between songs [NO phasing!]
2327	WYVN	92.7	Saugatuck	MI	277 "Bruce Springsteen on The Van" [WLSR phased!!]

July 18 2006 ES

0938	WEHM	92.9	Southampton	NY	938 Sayville Chamber of Commerce, "92.9 and 96.9"
0950					97.1, 105.9 New York City
0953					MA on 98.1, 106.1
1036	WLJI	98.3	Summerton	SC	741 AME church announcement, "WLJI [full address]...Gospel 98.3"
1043	WTBF	94.7	Brundidge	AL	662 Paul Harvey's The Rest of the Story weekdays 5:30 on 94.7 and 970; Steve's Tire in Brundidge (ad)
1045	WYYX	97.7	Bonifay	FL	
1047	WBAM	98.9			(NEW MODE, former TR) AL Montgomery 608 WBAM; ad for Clanton AL
1053	WKLS	96.1			(NEW MODE, former TR) GA Atlanta 578 Atlanta ad, sounded like Owl's(?) 96.1 slogan
1058	WVCO	94.9	Loris	SC	784 Legal ID includes Myrtle Beach, NMB
1100	WALI	93.7	Walterboro	SC	
1106	WRNN	99.5	Socastee	SC	
1115	WMXT	102.1	Pamplico	SC	762 "102.1 The Fox"
1118	WEZU	105.9	North M B	SC	804 local ad; newmyrtlebeach.com
1120	WQSD	107.1	Briarcliff	SC	800 272-3000 House of Blues; Dead Dog Saloon; "Sound 107.1"
1129	WHLZ	100.5	Marion	SC	755 Wheels Country weather; PD's Country Leader, Wheels 100.5
1138	WSUY	96.9	Charleston	SC	
1146	WFNC	102.3	Lumberton	NC	756 "Oldies 106.9" jingle (Internet says they simulcast 106.9, at the time)
1149	WAZO	107.5	Southport	NC	830 The Galleria on Wrightsonville Avenue
1156	WMQX	93.1	Winston-Salem	NC	(rare relog, only 640 miles)
1157	WWEA	94.1	Oriental	NC	845 New Bern ad; 94hankfm (RELOG? underlined to be "safe" for now)
1158	WRHT	96.3	Morehead City	NC	860 Hooter's in Morehead City (RELOG? same comment as 94.1)
1159	WWXM	97.7	Garden City	SC	800 "WWXM Garden City-Myrtle Beach"
1200	KKPR	98.9	Kearney	NE	(TROPO off the back! 400 miles)
1203	WAZU	98.3	Oak Island	NC	835 "Weezer, on Surf 98.3, Wilmington's new Rock"
1248	WWWV	97.5		VA	
1251	WTVR	98.1	Richmond	VA	738 light98.com; Charlottesville mention; Area Code 804 # clinical trials
1253	WXGM	99.1	Gloucester	VA	788 Colonial Virginia Bank, Rt. 17 Gloucester Point; "Extra 99.1 FM"
1258	WSVO	93.1	Staunton	VA	640 Staunton ("Stanton") ads; The Valley's Oldies Station, Mix (Kicks?) 93.1
1300	WMDM	97.7	Lexington Park	MD	774 "southern Maryland's rock station"
1303	WNNT	100.9	Warsaw	VA	764 River Country weather (jingle/forecast)
1305	WESR	103.3	Onley	VA	
1312	WICO	97.5	Salisbury	MD	817 "97.5 and 105.9, Cat Country"

August 2 2006 ES

1820	KOPR	94.1	Butte	MT	"on car radio"
------	------	------	-------	----	----------------

November 12 2006 TR

2257/2259	WDCL		KY Somerset		segue into WDYN TN Chattanooga, on 89.7 [WLUJ phased]
2326	WZYP	104.3	Athens	AL	
2338	WIMZ	103.5	Knoxville	TN	

November 13 2006 TR

0005	WASL	100.1	Dyersburg	TN	"more music, more variety, SL-100"
------	------	-------	-----------	----	------------------------------------

0007					Nashville 103.3, 104.5 (Gallatin)
0105	WYDE	101.1	Cullman	AL	481 Bhm., etc. phone #'s and "thesourcefm.com" mention, NO PHASING
0119	WFLQ	100.1	French Lick	IN	(WKAI still off)
0126	WGIC	98.5	Cookeville	TN	"magic 98.5" only 2nd time

November 25 2006 TR/GW

1447	W261CQ	100.1	Decatur	IL	73 WKAI off again; "right here on WLUI"
------	--------	-------	---------	----	---

2007 LOGGINGS

May 9 2007 ES

1200-1230					El Paso/Juarez to 107.5
1243					AZ-95.7, KRST 92.3
1251	KSYU	95.1	Corrales	NM	946 "hot951.com" goes to this on Internet; ad for New Mexico's CW (TV)
1300	KXTC	99.9	Thoreau	NM	

June 5 2007 ES

1130	KERC-LP	93.7	Kermit	TX	913 listing a couple local underwriters
1151	KXOX	96.7	Sweetwater	TX	773 "great times, good country, 96.7 KXOX"
1302	XHUA	90.9	Chihuahua	CI	(legal ID)

June 14 2007 ES

1240					El Paso/Juarez to 107.5
------	--	--	--	--	-------------------------

June 18 2007 ES

1800	CKBW2	93.1	Shelburne Shelburne..."	NS	1319 "...BW-FM 98.1 Bridgewater...93.1
1811	WMGX	93.1	Portland	ME	

June 19 2007 ES

1032	XHPE	97.1	Torreon	CU	
	XHPX	98.3	Ciudad Juarez	CI	
1038	KTEX	100.3	Brownsville	TX	
1058					MUF 107.5 El Paso/Juarez again??
1107	KGRT	103.9	Las Cruces	NM	

June 25 2007 ES

0923	XHMCL	104.1	Monclova	CU	1122 talk about "en el centro de Monclova" **NOTE 1** (also Monclova 100.3)
	KONO	101.1	Fredericksburg	TX	
0928	XHCLO	107.1	Monclova	CU	(TENTATIVE, got away...)
1027	XHMW	102.3	Nuevo Laredo	TA	
1035	XHONG	100.9	Ojinaga	CI	
1441	KSII	93.1	El Paso	TX	
1445	KKFR	92.3	Glendale	AZ	sounded like they said "92.3, KTAR" – call x change? Mention 620 also

June 26 2007 ES...really HUGE day...multiple clouds

0900	CBJ-3	93.1		QC	
0923	CBCE	97.5	Little Current	ON	582 CBC Radio One, Eastern time zone feed
0928	CBCY	102.3	Haileybury	ON	720 ibid.
0938	CHNO	103.9	Sudbury	ON	640 "Big Daddy 103.9 Sudbury, playing..."
0948	Unid	93.5			(French) "The Heat" – French rock
1448	KLJH	107.1	Bayfield	CO	933 Superstation 107.1/"Passion Radio" – Four Corners
1506	KUTE	90.1	Ignacio	CO	942 Pagosa Bakery brings you today's forecast for the KSUT listening area
1513	KITT	100.1	Soda Springs	ID	1093 Lawson Bank ad; enjoy historic Soda Springs [WKAI off again]
1526	KMXB	94.1	Henderson	NV	
[1550	WKAI	100.1			noted back on, in passing]
1631	KPMX	105.7	Sterling	CO	
1638	KDWY	105.3	Diamondville	WY	1038 "You're listening to 105.3, KDWY"
1641	KMCX	106.5	Ogallala	NE	(580-mile relog, very rare)
1644	KEGA	101.5	Oakley	UT	1070 "101.5 The Eagle" and Utah ads
1651	KSIT	99.7	Rock Springs	WY	
1653	KIFX	98.5	Roosevelt	UT	
1656	KBMG	106.1	Evanston	WY	1062 Family Rehab Center in W. Valley City (in Spanish)
1658	KASS	106.9	Casper	WY	825 "Kick 107" (egad, this market's getting LOADED with stations)

1704	KXXL	103.9	Gillette	WY	802 GREAT legal ID "locally owned & operated" "Coal 103.9 Rocks"
1720	KGHL	98.5	Billings	MT	"98-5 The Wolf"
1728	KISQ	98.1	SAN FRANCISCO	CA	1711 (DOUBLE HOP) "Kiss Soulful Fiesta"/981kissfm.com
1735	KLCY	105.5	Vernal	UT	992 "105.5 KLCY" country (This confirms the above path, it's halfway)
1738	KFMQ	106.1	Gallup	NM	1041 RD's Fireworks on North Highway 491
1743	KJJM	100.5	Baker	MT	796 A couple Montana news items, "100.5 the rock"
1751	KQBA	107.5	Los Alamos	NM	907 Mark Chesnutt at Big Rock Casino
1751	KLIB	107.5	Liberal	KS	601 Mr. Burger /Guymon, "Today's Best Variety B-107.5" (NEW mode FORMER TR)
1753	KFVR	106.5	La Junta	CO	710 two Rocky Ford ads in Spanish
1755	KQLV	105.5	Bosque Farms	NM	956 with K-Love programming
1759	KHIL	105.5	Hurley	NM	1108 "KHIL Hurley-Silver City"
1803	Unid	103.5			(FRENCH) (and CBC/KSRE on Channel 6 – this opening's going everywhere!)
1812	KXMT	99.1	Taos	NM	"Radio Exitos" 862 Weather warning "NE Torrence County...includes the Taos area"
1812	KGCX	93.1	Sidney	MT	
1817	KBOM	94.7	Santa Fe	NM	(RELOG?) 916 Albuquerque Journal; Bob Dylan at Journal Pavilion 7/15
1819	KRKS	94.7	Lafayette	CO	
1822	KJAC	105.5	Timnath	CO	755 "1055JackFM" (which is their website), 303 Area Code ad
1826	KSIR	107.1	Bennett	CO	755 "was chasing a bank robbery suspect in the middle of Colfax..."
1836	KRYD	104.9	Norwood	CO	950 "KRYD, KRYD 104.9 and 92-seven"
1842	KILO	94.3	Colo. Springs	CO	761 svr wx warning SE Colorado; Pueblo ad
1849	KYVA	103.7	Grants	NM	1008 Gallup insurance ad, then medical ad done in Navajo
1850	KDZA	107.9	Pueblo	CO	
	KZKS	105.3	Rifle	CO	
1859	KOAY	97.5	Coalville-SLC-Ogden-Provo	UT	"97.5 the Oasis"
1911	KEGH	100.7	Brigham City	UT	
1915	KMOR	101.3	Bridgeport	NE	630 "The region's Rock authority...KMOR, the Rock of the Bluff"
1959	KZZS	98.3	Story	WY	
2000	KYTI	93.7	Sheridan	WY	881 "In HD Stereo, we're KYTI Sheridan, Buffalo and Gillette"
2013	KYOT	103.3	????????????????		KYOT singing jingle, but nothing makes sense – WHAT IS THIS?
2018	KPBR	105.9	Joliet	MT	980 Rockin' Country 105-9 The Bar
2021	KKTY	99.3	Douglas	WY	778 "?? Country, KKTY" very weak
2028	KWYW	99.1	Lost Cabin	WY	978 Y-99, and Wyoming Broadcasters for central Wyoming
	KSQY	95.1	Deadwood	SD	

"tons of other stations not marked down, one of the best skips seen here in years"

June 27 2007 ES

1712	XHRL	98.1	Monterrey	NL	
1718	XHEON	97.9	Torreón		XHOZA-98.7 Zaragoza (parallel, noncommercial talk) TENTATIVE
1741	XELZ	103.5	Torreón	CU	1270 ad mentioning Torreón 4 times
1746	XHMDR	103.1	Tampico	TA	"103.1 en Tampico, followed by Imagen promo"
1759	XHPE	97.1	Torreón	CU	legal ID
	XHCPH	96.9			H D Parral now is "La Tremenda"
1856	XHSU	106.1	Chihuahua	CI	
1907	XHZER	96.5	Zacatecas	ZA	1408 Estereo Cerro, partial ID mentions Zacatecas (new Estado)
1917	XHBUS or XHLOS	97.7			Nuevo Leon mentions

June 28 2007 ES

1225	KKRY	92.3	Miles City	MT	866 "here in Miles City" and local ads
	KZZS	98.3	Story	WY	

June 30 2007 ES

1800					VT and ME fighting 92.9
1907	KWYY	95.5	Casper	WY	
1913	KMXB	94.1	Henderson	NV	
	KTAR	92.3	Glendale	AZ	

July 10 2007 ES

1524	WGZO	103.1	Parris Island	SC	788 "103.1 The Drive" checks (other FL/GA receptions too many to mark)
1700	WIXV	95.5	Savannah	GA	788 weather for Savannah

nothing as far south as central FL except Lakeland 94.1

July 13 2007 ES

0943 KAZI 88.7 Austin TX 810 "KAZI 88.7"
KISS 99.5 TX (MUF 105.9)

July 14 2007 ES

0920 Unid 103.5 FL (inconclusive)
WEAT 104.3 FL (and others to 107.5)
0948 WXKB 103.9 Cape Coral FL
1000 KMDY 90.9 Keokuk IA 36 "90.9 FM KMDY Keokuk and 90.5 FM Macomb" LONG-wanted!! (GROUNDWAVE)

July 26 2007 ES (I *LOVE* CLOSE SKIP OPENINGS!)

1640 WAVF 96.1 Hanahan SC 788 severe weather warning Berkeley, Dorchester, Beaufort counties
1641 WSPX 94.5 Bowman SC 738 Orangeburg ad – "Your Inspiration Station"
1642 WAAW 94.7 Williston SC 706 very brief, w/ local ment & Batesburg
1651 WZSN 103.5 Greenwood SC 636 Greenwood residents saving money every day; SC Educational Lottery
1651 Unid 105.1 TN TN drivers license PSA, but got away
1700 WAGP 88.7 Beaufort SC 785 ID for Beaufort-Hilton Head-Savannah
1701 WACG 90.7 Augusta GA 681 GA Pub Brdcstng (only listing on 90.7)
1703 WBHC 92.1 Hampton SC 745 allhits921.com and partial legal ID, fady
1710 WQIK 99.1 Jacksonville FL 863 mention CBS/47 First Alert Ws; calls
1720 WIIZ 97.9 Blackville SC (it got away, nobody would talk...hiphop, also could be Macon GA) (TENTATIVE)

July 28 2007 ES

1755 WFCC 107.5 Chatham MA
1758 WPAT 93.1 Paterson NJ

gone from FM by 1803

July 29 2007 ES

1200 KVLY 107.9 TX
1520 south Florida to 107.9
1530 two Spanish on 96.7??? one surely Cuba...or both?
1541 CM... 106.9 La Habana CB 1292 Habana mentions, classical music, etc.
1550 WCTQ 106.5 Sarasota FL 1018 "at our website...CTQ.com"
1554 WJPT 106.3 Ft. Myers Villas FL 1085 legal ID, burying WTND-LP
1556 WWUS 104.1 Marathon FL 1222 "great variety all weekend long, U.S. 1 Radio"
1600 WWWK 105.5 Marathon FL 1222 "Radio Exitos en Miami" w phone #
1603 WCVU 104.9 Solana Sea View FL 1057 "your Seaview 104.9 forecast for Charlotte H..." (w/callsign)
1610-1642 CM... 99.9 La Habana CB 1292 jazz with plaintive Spanish commentary, some Cuba mentions
1800 KXOQ 104.3 Kennett MO (TROPO) 293 STRANGE, heard on the low "skip antenna" only – HUH??

August 7 2007 TR... **WEATHER LOGGING**

0036 WXK74 162.450 Pontiac IL 111 legal ID

August 14 2007 TR

1912 KNUJ 107.3 Sleepy Eye MN 337 "Sam 107-three" (KLOW soon replaced it) [KGRS phased same bearing]
2000 KSDN 94.1 Aberdeen SD (526 miles, fading during ID) [KRNA phased, same bearing)
2024 KIXX 96.1 Watertown SD
KKCK 95.7 MN
2200 KDJS 95.3 Willmar MN

August 15 2007 TR**WEATHER LOGGING**

0456 KVV76162.450 WI Racine 216 legal ID

NOTE 1 (June 25, 2007): Local WMXQ-104.1 Colchester (10 miles, similar direction) was ON, but apparently running very low power (estimated 50 watts), and they were closer to 104.2 than 104.1! Something very wrong there.

My KISQ-98.1 logging on June 26 was my *first* U.S.-based "genuine double hop" on FM in 42 years of DX'ing. Years ago I heard Carson City 94.7 at 1547 miles, but the truth of that being true double hop is controversial. Similarly a Sydney NS logging years ago (1588 miles) was most likely a combination of long single hop and groundwave, with many Halifax, Kentville, etc. coming in. Santo Domingo DR (1967 miles) on 89.1 and 92.5 (separate dates and years, long ago) from here were my only true double-hops. I never logged double-hop before moving to Macomb in 1985, neither on TV nor FM.

WHY? Actually I've never understood this – I always thought, back in the Seventies and late Sixties, that double hop from MI to CA should have been *EASY* only requiring two openings lining up and NOTHING ELSE. There were still quite a few unchallenged frequencies in my region, AND often very little if anything at "single hop" in and almost to the Rockies to interfere at "single hop" distance. Similarly, I don't remember seeing many others getting 2ES either, back then. Does anybody understand this at all?

June 26, 2007 – even without this logging – was one of my best Skip sessions so far this Century. I'd have to compare with some of the great 2000 openings [one of the best all-around seasons in recent history for ES and TR], but there's always been controversy whether that year belongs in this Century at all, hehehe.

MEGA-DELAYS ON THIS REPORT: I got a new computer at home in December 2005. That's EXACTLY what happened! I knew right away that a home computer would cut into other activities. In this case, it was keeping track of the DX. Fortunately, this should NEVER happen again!

**Nick Langan 1040 Riverview Drive Florence, NJ 08518
Yamaha TX-900, Sangean HDT-1, APS-13 Antenna**

3/7 Tr

0014	WEBE	107.9	Bridgeport	CT	"Webe 108", HD	111
0036	WJZS	99.3	Block Island	RI	Calls	184
0042	WBMW	106.5	Ledyard	CT	Calls	172
0045	WGMD	92.7	Rehoboth Beach	DE	Calls	100
0047	WZBH	93.5	Georgetown	DE	"The Beach"	113
0050	WOSC	95.9	Bethany Beach	DE	"96 Rock"	119
0051	WAFL	97.7	Milford	DE	"Eagle 97-7"	90
0052	WGBG	98.5	Seafor	DE	"Big Classic Rock"	112
0056	WZEB	101.7	Ocean View	DE	"The Bee"	113
0101	WRNR	103.1	Grasonville	MD	Calls	110
0103	WJKI	103.5	Bethany Beach	DE	"Big Classic Rock"	108
0106	WXJN	105.9	Lewes	DE	"Cat Country"	104
0123	WCXL	104.1	Kill Devil Hills	NC	"Beach 104"	281

3/10 TrS

1541	WAAF	107.3	Westborough	MA	Calls	213
------	------	-------	-------------	----	-------	-----

4/7 Tr

2034	WLIU	88.3	Southampton	NY	Calls, HD	134
2210	WPLR	99.1	New Haven	CT	"99-1 PLR", HD	132
2343	WSDL	90.7	Ocean City	MD	Calls	113

4/8 Tr

1954	WGTS	91.9	Takoma Park	MD	Calls	151
2047	WRKI	95.1	Brookfield	CT	RDS	119
2104	WKCI	101.3	Hamden	CT	RDS	132
2108	WQGN	105.5	Groton	CT	"Q-105"	167
2111	WLBW	92.1	Fenwick Island	DE	"The Wave"	119
2210	WCTY	97.7	Norwich	CT	Calls	169
2213	WURH	104.1	Waterbury	CT	"FM 104-1"	142
2216	WHUD	100.7	Peekskill	NY	Calls	96
2222	WFOX	95.9	Norwalk	CT	RDS	99
2234	WFAS	103.9	Bronxville	NY	Calls	80
2234	WRCN	103.9	Riverhead	NY	"RCN"	118

2312	WUSB	90.1	Stony Brook	NY	Calls	105
2335	WHCN	105.9	Hartford	CT	"The River"	142
2344	WLIX-LP	94.7	Ridge	NY	"WLIX"	112
2345	W235BB	94.9	Hauppauge	NY	"WLIX"	97

4/9 Tr

0012	WCIB	101.9	Falmouth	MA	RDS	241
0015	WJFD	97.3	New Bedford	MA	Portugese	230
0019	WXPB	107.1	Briarcliff Manor	NY	RDS	84
0027	WWRX	107.7	Pawcatuck	PA	RDS	176
0045	WSHU	91.1	Fairfield	CT	//Webstream	116
0109	WROR	105.7	Framingham	MA	RDS	246
0113	WBCN	104.1	Boston	MA	Calls	246
0136	WKAF	97.7	Brockton	MA	//WAAF	240
0139	WTKK	96.9	Boston	MA	RDS	239
0144	WMKK	93.7	Lawrence	MA	"93-7 Mike FM"	258
0146	WGBH	89.7	Boston	MA	RDS, HD	240
0148	WZLX	100.7	Boston	MA	"ZLX"	246
0151	WSRS	96.1	Worcester	MA	//Yes.com	213
0156	WBMX	98.5	Boston	MA	RDS	239
0157	WKLB	102.5	Waltham	MA	"Country 102.5"	239

4/10 Tr

1635	WRRV	92.7	Middletown	NY	RDS	94
1645	WBZZ	105.7	Malta	NY	"Buzz 105.7"	194
1655	WHRL	103.1	Albany	NY	"Channel 103.1"	185
1702	WRWD	107.3	Highland	NY	RDS	117
1707	WRWC	99.3	Ellenville	NY	"WRWD"	111
2111	WLOM-LP	92.7	Ocean City	NJ	Religious 59	
2224	WERQ	92.3	Baltimore	MD	"92Q"	113
2226	WWMX	106.5	Baltimore	MD	RDS	113
2225	WLZL	99.1	Annapolis	MD	SS	126
2228	WIYY	97.9	Baltimore	MD	"98 Rock"	113
2231	WSMJ	104.3	Baltimore	MD	Calls	100
2235	WJFK	106.7	Manassas	VA	Calls	155
2239	WKYS	93.9	Washington	DC	Calls	147
2244	WTGB	94.7	Washington	DC	"The Globe", HD	147
2245	WWIN	95.9	Glen Burnie	MD	"Magic 95.9"	114
2246	WPGC	95.5	Morningside	MD	"PGC", HD	142
2248	WHUR	96.3	Washington	DC	Calls	146
2251	WQSR	102.7	Baltimore	MD	"102-7 Jack FM"	115
2254	WASH	97.1	Washington	DC	"WASH FM"	146
2258	WMZQ	98.7	Washington	DC	Calls	154
2259	WIHT	99.5	Washington	DC	"Hot 99.5", HD	147
2302	WBIG	100.3	Washington	DC	"Big 100.3", HD	154
2303	WAVA	105.1	Arlington	VA	Religious 151	
2308	WLIF	101.9	Baltimore	MD	"Lite FM" 105	
2345	WWWT	107.7	Manassas	VA	Talk	188

4/12 Tr

1620	WBTJ	106.5	Richmond	VA	"The Beat"	239
1703	WDHC	92.9	Berkeley Springs	WV	Calls	185

4/15 Tr

1031	WVRT	97.7	Mill Hall	PA	"Variety 97-7"	151
------	------	------	-----------	----	----------------	-----

4/19 Tr

0039	WPOC	93.1	Baltimore	MD	Calls, HD 119	
0043	WTPA	93.5	Mechanicsburg	PA	Calls	110
0143	WSJW	92.7	Starview	PA	"Smooth Jazz 92.7"	106
0150	WMHX	106.7	Hershey	PA	"Mix 106.7"	95
0153	WBLJ	95.3	Shamokin	PA	"Bill"	102
0157	WBYO	88.9	Sellersville	PA	Calls	35
0159	WHKF	99.3	Harrisburg	PA	"Kiss FM"	110
0201	WXPH	88.7	Middletown	PA	//WXPB	97
0204	WRTL	90.7	Ephrata	PA	//WRTI	75
0208	WRVV	97.3	Harrisburg	PA	"The River"	111
0213	WROZ	101.3	Lancaster	PA	"The Rose"	97
0216	WCAT	102.3	Carlisle	PA	//Yes.com	124
0220	WIOV	105.1	Ephrata	PA	Calls	72
0230	WFRE	99.9	Frederick	MD	Calls	150
2224	WOCM	98.1	Selbyville	DE	"Ocean 98"	119

2246	WQJZ	97.1	Ocean Pines	MD	Calls	122
2251	WTDK	107.1	Federalsburg	MD	"The Duck"	106
2310	WSCL	89.5	Salisbury	MD	//Webstream	110
2321	WKHI	107.5	Fruitland	MD	"Joe FM" 141	

4/20 Tr

2224	W289AD	105.7	Selden	NY	//WSUF	105
2232	WMNR	88.1	Monroe	CT	Calls	116
2244	WSHR	91.9	Lake Ronkonkoma	NY	Calls	102
2250	WKNL	100.9	New Haven	CT	"Kool 101"	166
2301	WRHU	88.7	Hempstead	NY	Calls	75
2304	WPKN	89.5	Bridgeport	CT	//Webstream	116
2308	WNJN	89.7	Atlantic City	NJ	//WNJT	46
2309	WOEL	89.9	Elkton	MD	//Webstream	67
2311	WQRC	99.9	Barnstable	MA	Calls	256
2313	WKHS	90.5	Worton	MD	//WXPB	90
2317	WOCN	104.7	Orleans	MA	"Ocean 104.7"	274
2330	WDNH	95.3	Honesdale	PA	"DNH"	103
2344	WCRI	95.9	Block Island	RI	"W-Bach"184	
2346	WVOS	95.9	Liberty	NY	Local Ads	113
2352	WPLM	99.1	Plymouth	MA	"Easy 99.1"	248

4/21 Tr

0933	WNSX	97.7	Winter Harbor	ME	Calls	459
0943	CHWV	97.3	Saint John	NB	"97.3 The Wave"	569
0947	CBAF-1	102.3	Saint John	NB	FF	569
0949	CIOK	100.5	Saint John	NB	"K-100"	569
1023	WOMR	92.1	Provincetown	MA	Calls	276
2031	WALK	97.5	Patchogue	NY	Calls, HD105	
2044	WBLI	106.1	Patchogue	NY	RDS	105
2104	WRZE	96.3	Nantucket	MA	"The Rose"	255
2134	WZMX	93.7	Hartford	CT	RDS	142
2152	WDRC	102.9	Hartford	CT	"DRC-FM", HD	142
2156	WIHS	104.9	Middletown	CT	Calls	147
2210	WEDW	88.5	Stamford	CT	//Webstream	92
2221	WDRE	105.3	Calverton	NY	RDS	118
2230	WZAI	94.3	Brewster	MA	NPR	274
2234	WFQR	93.5	Harwich Port	MA	"Frank FM"	273
2244	WFHN	107.1	Fairhaven	MA	HD	228
2254	WWYZ	92.5	Waterbury	CT	"Country 92.5", HD	142
2300	WTKL	91.1	North Dartmouth	MA	TOH ID	223
2314	WCTK	98.1	New Bedford	MA	"Cat Country 98.1"	227
2320	WWLI	105.1	Providence	RI	"Lite Rock 105", HD	209
2334	WRLI	91.3	Southampton	NY	Calls	138
2342	WPRO	92.3	Providence	RI	"92 Pro FM"	209

4/22 Tr

0012	WSNE	93.3	Taunton	MA	"93.3 Coast FM"	219
0017	WBOQ	104.9	Gloucester	MA	"North Shore 104.9"	271
0020	WHJY	94.1	Providence	RI	"94 HJY"	214
0024	WFAF	106.3	Mt. Kisco	NY	RDS	94
0028	WKSB	102.7	Williamsport	PA	"Kiss FM"	136
0030	WSPK	104.7	Poughkeepsie	NY	"K-104"	104
0031	WRNQ	92.1	Poughkeepsie	NY	"92.1 Lite FM"	118
0034	WPKF	96.1	Poughkeepsie	NY	"Kiss FM"	121
0035	WRRB	96.9	Arlington	NY	//WRRV	118
0037	WZAD	97.3	Wurtsboro	NY	RDS	103
0040	WCZX	97.7	Hyde Park	NY	RDS	118
0043	WCTW	98.5	Catskill	NY	RDS	152
0045	WOSR	91.7	Middletown	NY	//Webstream	103
0050	WDST	100.1	Woodstock	NY	RDS	135
0100	CBAF-9	107.3	Yarmouth	NS	//Webstream	517
0103	WKSS	95.7	Harford-Meriden	CT	TOH ID	142
0105	WTIC	96.5	Hartford	CT	//Yes.com	154
0110	WSUL	98.3	Monticello	NY	"SUL"	107
0114	WMJX	106.7	Boston	MA	//Yes.com	239
0117	WCCC	106.9	Hartford	CT	Calls	156
0123	WPKT	90.5	Meriden	CT	NPR	142
0134	WILI	98.3	Willimantic	CT	"I-98.3"	172
0141	WMOS	102.3	Stonington	CT	"The Wolf"	178
0150	WCDW	100.5	Susquehanna	PA	"Cool 100"	142
0200	WCDO	100.9	Sidney	NY	TOH ID	153
0212	WZBG	97.3	Litchfield	CT	Calls	144
0217	WKRF	107.9	Tobyhanna	PA	RDS	71
0221	WDNB	102.1	Jeffersonville	NY	"Thunder 102"	112

0234	WSKG	89.3	Binghamton	NY	NPR	147
0246	WRRQ	106.7	Windsor	NY	"Q-107"	142
0252	WLTB	101.7	Johnson City	NY	"Magic 101.7"	147
2111	WXTK	95.1	West Yarmouth	MA	Red Sox BB	260
2134	WFCC	107.5	Chatham	MA	Calls	273
2223	WEZW	93.1	Wildwood Crest	NJ	//WTTH	78
2228	WCZT	98.7	Villas	NJ	"Coast 98.7"	78
2241	WSJQ	106.7	North Cape May	NJ	"Q-107"	80

4/27 Tr

1636	WMRV	105.7	Endicott	NY	"Star 105.7"	153
1646	WDMT	102.3	Pittston	PA	//website 96	
1652	WFRG	104.3	Utica	NY	//webstream	205
1734	WLKA	88.3	Tafton	PA	"K-Love" 107	
2144	WAYZ	104.7	Hagerstown	MD	Calls	147
2205	WUSQ	102.5	Winchester	VA	"Q-102"	196

Jim Pizzi 100 County Road 28 - Palmyra NY - 14522-9440 - 315-597-5898

**Equipment: Anntennacraft 10 Element - Akai AT-V04, w/150's mod
Realistic DX-440 w/150's mod - Sangean HDT-IX**

December 21 2007 Tr

1346	CJRT	91.1	Toronto	ON	Jazz FM 91	
1350	WSQG	90.9	Ithaca	NY	ID@ 1400 w/ WSKC 89.3 & WSQE 91.1	
1359	WCOT	90.9	Jamestown	NY	NEW end of James McDonalad pgm from Family Life Net	

December 23 2007 Tr

1104	WPHD	96.1	Waverly	PA	Cool 96 with Xmas music & Ads	
1130	WCTO	96.1	Easton	PA	NEW Cat Country 96 @ 1138 & ads	
1253	WLAN	96.9	Lancaster	PA	NEW FM 97.1.com calls@1319	

December 23 2007 Ms

0110	Unid	96.9			WFM? Maybe	
------	------	------	--	--	------------	--

December 27 2007 Tr

0110	CFNY	102.1	Toronto	ON	NEW 102.1 The Edge Promos	
0159	CIUT	89.5	Toronto	ON	NEW CIUT 89.5 Univ of Toronto	

January 12 2008 Tr

0320	WILQ	105.1	Williamsport	PA	NEW Weather, Calls, Singing ID jingle	
1023	WDKC	101.5	Covington	PA	NEW KC101	

February 25 2008 Tr

1030	CBOT	90.7	Ottawa	ON	FF talk	
1036	CBL-3	90.7	Orillia	ON	NEW Classical CBC promos @ 1100	
1048	W214??	90.7	Southeast of QTH		NEW CSN, WREQ Ridgebury, WIFF Binghamton	
1059	WETD	90.7	Alfred	NY	NEW Calls, ID Folk mix with some rap too	

March 3 2008 Tr

1829	W239BJ	95.7	Geneva	NY	NEW WRVO Translator	
1835	W239BB	95.7	Lockport	NY	NEW Family Life // to WCOU 88.3	

March 18 2008 Tr

0221	CIQB	101.1	Barrie	ON	NEW We Play Barrie's Best Music B-101	
------	------	-------	--------	----	---------------------------------------	--

March 22 2008 Tr

1049	W2799BO	103.7	Arcade	NY	NEW // 103.1 WCIK Family Life Network	
1100	W283AL	104.5	Canadaigua	NY	NEW ID with WGVA and WFLR mentioned Finger Lakes News Radio	

SIGN UP/Renewal form

Name _____

Address _____ Apt # _____

City _____ State/Prov _____ Zip _____

Country _____ Interests: TV () FM () 30-50() Weather()

email address _____

Sign me up/renew me for: 1 year () 2 years () More ()

Yearly dues \$24 (US), \$26 to (CANADA), \$10 (Electronic VUD)
(Students get a discounted rate of \$15 yearly for the paper VUD.)

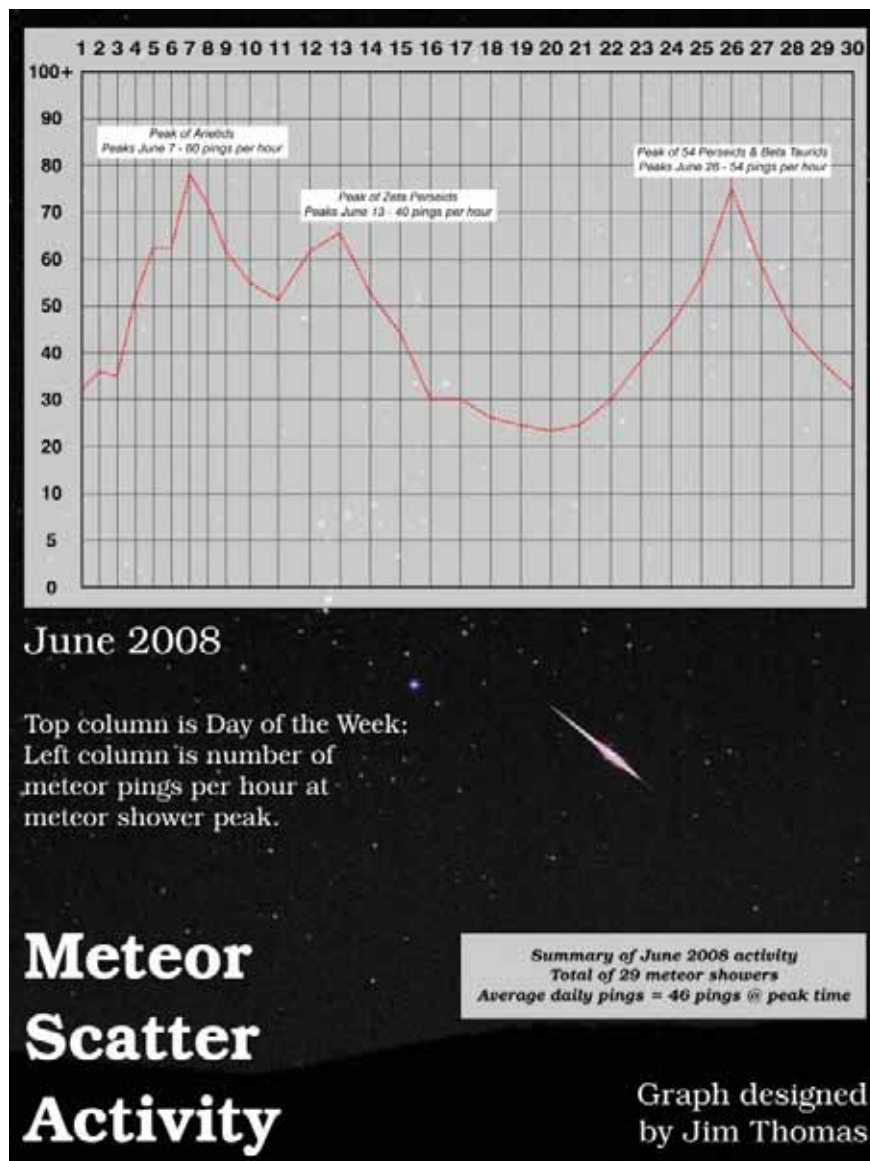
Mail your dues to: WTFDA, P.O. Box 501, Somersville, CT USA 06072

Make your checks/money orders payable to: WTFDA

And *thanks* for your support of the WTFDA!

Return this form with your dues or make a copy of it and return that.

JUNE 2007 METEOR CHART



**THE WORLDWIDE TV-FM DX ASSOCIATION
THE VHF- UHF DIGEST
P.O. Box 501, SOMERSVILLE, CT 06072**

Opinions expressed in this publication are those of the individual contributor and do not necessarily reflect the views of the publisher or board of directors. We reserve the right to edit material to meet publishing standards. Unless previously agreed upon in writing, all material submitted for publication in the VHF-UHF Digest becomes the property of the WTFDA. Reproduction of material from the VHF-UHF Digest without permission of the WTFDA is prohibited. Individuals and other organizations are granted such permission providing proper credits is given to the source.



Established 1967



FIRST CLASS MAIL

NOW! JOIN AND RENEW USING PAYPAL!

Now you can pay for your dues by check, money order and ONLINE with Paypal! If you have a Paypal account you'll be done in a matter of seconds! Pay at our Paypal webpage at <http://fmdx.usciargo.com/join.html> or send your dues to mbugaj@snet.net