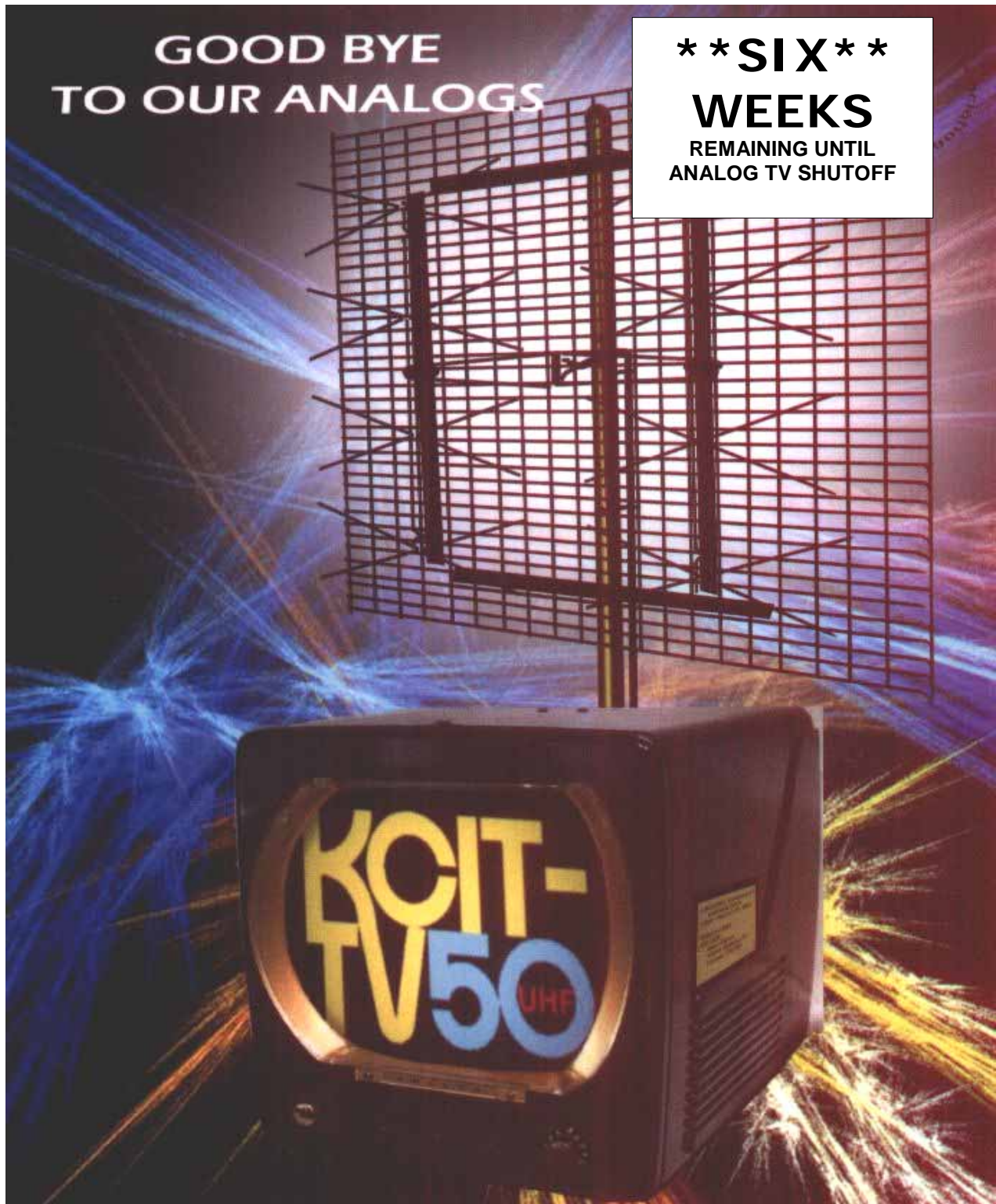


Vhf-Uhf DIGEST

The Official Publication of the Worldwide TV-FM DX Association

JANUARY 2009

The Magazine for TV and FM DXers



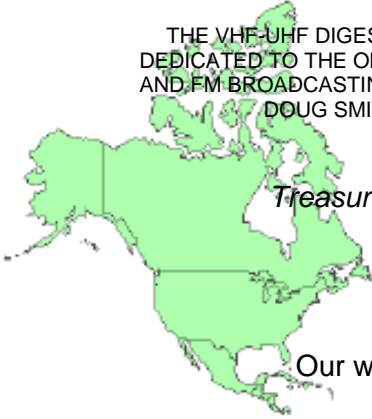
HAPPY NEW YEAR!

TV and FM DXing was never so interesting!

THE WORLDWIDE TV-FM DX ASSOCIATION

Serving the UHF-VHF Enthusiast

THE VHF-UHF DIGEST IS THE OFFICIAL PUBLICATION OF THE WORLDWIDE TV-FM DX ASSOCIATION DEDICATED TO THE OBSERVATION AND STUDY OF THE PROPAGATION OF LONG DISTANCE TELEVISION AND FM BROADCASTING SIGNALS AT VHF AND UHF. WTFDA IS GOVERNED BY A BOARD OF DIRECTORS: DOUG SMITH, GREG CONIGLIO, BRUCE HALL, KEITH MCGINNIS AND MIKE BUGAJ.



Editor and publisher: **Mike Bugaj**

Treasurer: **Keith McGinnis** wtfda.org Webmaster: **Tim McVey**

wtfda.info Site Administrator: **Chris Cervantez**

Editorial Staff: **Jeff Kruszka, Keith McGinnis,**

Fred Nordquist, Nick Langan, Doug Smith,

Peter Baskind, Bill Hale and John Zondlo,

Our website: www.wtfda.org; Our forums: www.wtfda.info

JANUARY 2009



Finally! For those of you online with an email address, we now offer a quick, convenient and secure way to join or renew your membership in the WTFDA from our page at:

<http://fmdx.usclargo.com/join.html>

You can now renew either paper VUD membership or your online eVUD membership at one convenient stop. Use the link above to either join the WTFDA or renew your membership in North America's only TV and DX organization.

CONTENTS

Page Two	2
Mailbox	3
TV News...Doug /Smith	4
FM News...Bill Hale	9
Photo News...Jeff Kruszka	19
WTFDA Contest Update	21
Eastern TV DX...Nick Langan	22
Western TV DX...Nick Langan	23
Northern FM DX...Keith McGinnis	25

Well, what do you want. It's January and even our members down in the Gulf states aren't reporting much. Happy New Year!

FIND US FAST!

WTFDA BOARD OF DIRECTORS

Mike Bugaj, use the WTFDA Mailing address listed below

Doug Smith, 1385 Old Clarksville Pike, Pleasant View, TN 37146-8098

Greg Coniglio, 11825 Genesee St., Alden, NY 14004

Bruce Hall, 5 Stirton Ave., Brantford, ON N3T 1E2

Keith McGinnis, 18 Newbridge St., Hingham, MA 02043

mikeb@wtfda.org

dougs@wtfda.org

gregc@wtfda.org

dbruce@wtfda.org

nfmidx@wtfda.org

THE MAILBOX and all general club correspondence:

Mike Bugaj at WTFDA, PO Box 501, Somersville, CT 06072

mailbox@wtfda.org

TV NEWS

Doug Smith, 1389 Old Clarksville Pike, Pleasant View, TN 37146-8098

dougs@wtfda.org

FM NEWS

Bill Hale, 6124 Roaring Springs Drive, N. Richland Hills, TX 76180

fmnews@wtfda.org

PHOTO NEWS

Jeff Kruszka, 1909 Lost Lake Pl., Pearland, TX 77581

jeffk@wtfda.org

EASTERN AND WESTERN TV DX

Nick Langan, 1040 Riverview Dr., Florence, NJ 08516

nickl@wtfda.org

SOUTHERN FM

John Zondlo, 4009 Driftwood Cir., Yukon, OK 73099

southernfmdx@wtfda.org

NORTHERN FM

Keith McGinnis, 18 Newbridge St., Hingham, MA 02043

nfmidx@wtfda.org

TV and FM STATISTICS

Fred Nordquist, 147 Travis Hill Road, Moncks Corner, SC

stats@wtfda.org

6 METER/2 METER

Peter Baskind, 3225 Forest Hill-Irene Rd, Germantown, TN 38138

ag4ki@yahoo.net

WEBSITE Tim McVey Webmaster <http://www.wtfda.org>

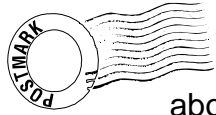
webmaster@wtfda.org



The Mailbox

P.O. Box 501, Somersville, CT USA 06072
MIKE BUGAJ MBUGAJ@SNET.NET

HAPPY DIGITAL NEW YEAR!



It's 2009 and this year is a special year for TV Dxxers. I myself have a lot of questions about our hobby and club, but rather than speculate on the future, I think it's best just to just watch what happens from day to day and eventually all the questions will be answered. So, let's dive right in to 2009 and see if we float to the surface.

MEMBERS AND MORE

We have one new member this month and he is Richard Nelson . Richard is a ham, lives on Ohio and will receive the eVUD every month.

And we have one ex-member who rejoined in December, He's Eric Voytko and lives in Virginia. Nice to see you back again!

During the period of 11/24 to 12/13 we've had renewals received from **Steve Solomon** (MA), **Bill Nollman** (CT), **Tom Bryant** (TN), **Roger Sabella** (IL), **Paul Lafreniere** (MN), **Adam Rivers** (MA), **Randall Trapp** (MN), **Ted Liscewski** (NJ), **Allan Radella** (PA), **Ed Norris** (IN), **David Wurl** (WI) and **Melvyn Larson** (MN). Thank you all for hanging around one more year, and in two cases, two more years.

We received a letter from Bill Draeb who noticed that the state of Wisconsin is missing from the list of states on the Western TV DX header. WI is no longer missing. Neither Nick or myself (or anyone, for that matter), noticed it. Nice going, Bill. Bill also mentioned he was still looking for a DTV box. I think he just might have one by the time you read this.

John Ebeling sent us an email informing us that Bruce Elving went into the hospital on November 30th for some surgery. Carol Elving passed the information to John. She said that Bruce seems to be doing fine now. I sure hope so. I want to see him walk on water again this winter. And that should be easy.



This photo is from the March 2007 Hillsider newspaper and shows Bruce walking on (frozen) Lake Superior. Bruce is on the right.

Well, what did you think I meant about walking on water ???

MORE WEBSITE NEWS

We have some new features at the wtfda.org website that you might like to know about. The first, and largest, is a complete database of stations using RDS (with PS and PI codes and bogus PI codes included). This section of the site is maintained by Fred Nordquist and will be updated frequently.

Also, after over a year, we've finally made available all of the tvfmdx and amdx list archives that were on our old server (before Dreamhost). All of the posts are available as html files by month, and cover the period from August 2005 to January 2007. I've read some of the threads and there's some good reading there. If you're one of those folks who has never subscribed to any of our email lists, reading one will give you some idea about what goes on there.

Login to <http://www.wtfda.org> and look for the RDS tab. Look for the amdx and tvfmdx archives in the menu area.

Here it comes. It's that graph again:



LAST BUT NOW LEAST

Aside from a little TV Es and a few MS bursts in December, it has been a slow month here and for most DXers. So, relax, watch some TV, shovel some snow and we'll see you again in February.



TV News

Douglas E. Smith
 1389 Old Clarksville Pike
 Pleasant View, TN
 37146-8098
w9wi@w9wi.com
<http://www.w9wi.com>

January 2009

Abbreviations:

AF	Applied For (a new station)	NW	New station on the air
Aux	Auxiliary (backup) transmitter	PA	Proposed Amendment
CC	Callsign change	PC	Power (and/or tower height) change on the air
CL	City-of-license change	PG	Power change granted
DC	Converted to DTV	PR	Power change requested
DCC	Digital Companion Channel	RA	Returns to the air
NS DCC	Granted flash-cut to DTV	QC	Channel (frequency) change on the air
DE	License/permit deleted	QG	Channel change granted
DR	Requests flash-cut to DTV	QR	Channel change requested
FC	Programming (format) change	RE	Reinstated (previously-dismissed app.)
FTP	Failure to Prosecute	ROA	Request of Applicant
GA	Granted amendment (to table of channel allotments)	SI	Off the air (silent)
LC	License to Cover	STA	Special Temporary Authority
MX	Mutually Exclusive	XC	Transmitter site changed
NDA	Non-directional antenna	XG	Transmitter site change granted
NS	Permit granted for new station	XR	Transmitter site change requested

News:

(full-power analog stations in **bold face**; LPTV and translators in regular type; full-power digital stations in **bold italics**; low-power digital stations in regular italics)



CANADA:

ALBERTA:

Calgary	36	<i>CFCN-DT</i>	<i>NS 204kw/206m, 51-03-37/114-10-17</i>
Etzikom	12	CBCA-TV-1	Granted permission to switch programming source from CHAT-TV (which is to disaffiliate from CBC) to CBRT Calgary.



PUERTO RICO:

Carolina	51	<i>WRFB-DT</i>	<i>PR>256kw</i>
Fajardo	33	<i>WRUA-DT</i>	<i>PG>50kw</i>
Mayaguez	29	<i>WORA-DT</i>	<i>NW 1000kw/634m, 18-09-03/66-59-21</i>
Mayaguez	51	<i>W51DJ-D</i>	<i>DR 1kw</i>
Naranjito	18	<i>WECN-DT</i>	<i>PG>50kw</i>



USA:

ALABAMA:

Mobile	20	<i>WMPV-DT</i>	<i>PG>700kw</i>
Mobile	23	<i>WDPM-DT</i>	<i>PG>390kw</i>

Montgomery	20	<i>WCOV-DT</i>	<i>PA from ch 16 460kw/518m , 31-58-28/86-09-44</i>
Mount Cheaha	7	<i>WCIQ-DT*</i>	<i>QG from ch 56 34.8kw/576m</i>
Opelika	47	<i>WLGA-DT*</i>	<i>PG>750kw/556m</i>
Sylacauga	38	W63CK	QR from ch. 63, CL from Talladega
ARIZONA:			
Cane Beds	17	<i>K17K-D</i>	<i>NW 10w, 36-54-11/113-51-08 (KUEN-9) (listed as Utah, but "Cane Beds, AZ/Hildale"</i>
Lake Havasu City	51	<i>NEW-LD</i>	<i>AF DCC 5kw, 34-36-11/114-22-14 for K23BJ</i>
Madera Peak	22	K22JD	PG<1kw
CALIFORNIA:			
Chico	28	<i>KKPM-CD</i>	<i>DG 11.5kw</i>
Eureka	29	<i>K67GU</i>	<i>QR from ch. 67 (via ch. 24) 63.2kw, 40-49-32/124-00-05</i>
Fresno	42	<i>NEW-LD</i>	<i>AF DCC 15kw, 37-04-26/119-25-52 for KJEO-LP 32</i>
Glendale	40	<i>K26GN-D</i>	<i>DR 5kw; CL from Lancaster</i>
Glendale	64	<i>K26GN</i>	<i>QR from ch. 26, 9.99kw, 34-13-35/118-03-58 dismissed; five area cities objected (presumably</i>

would have been unable to use 700MHz spectrum for public-safety?)

Gonzales 41 *NEW-LD* *AF DCC 15kw, 36-32-05/121-37-09 for KOTR-LP 2*

Lakeport 4 *K04QR-D* *PR>100w, 38-47-13/122-07-20*

Lakeport 5 *K05MI-D* *PR>300w*

Los Angeles 9 *KCAL-DT** *QG from ch 43 25kw/977m*

Moreno Valley 69 *KMRZ-LP* *PG<400w, 34-02-17/116-48-47*

Riverside 25 *KBLM-LP* *PC>9.55kw*

Sacramento 5 *KCSO-LD* *QG from ch. 11*

Sacramento 15 *KMUM-CD* *DR 15kw, 38-42-28/121-28-32 dismissed*

San Diego 43 *KBOP-CA* *RA w/infomercials*

San Francisco 39 *KCNS-DT* *PG>512m*

San Luis 15 *KSBY-DT* *NW 1000kw/515m*

Obispo

San Luis Obispo 41 *KMMA-CD* *DG 4kw*

Santa Barbara 8 *KZDF-LP* *OFF due to wildfire at transmitter*

Santa Barbara 15 *K15DB* *See KZDF-LP*

Santa Barbara 22 *KWHY-LP* *See KZDF-LP*

Santa Barbara 26 *K26FT* *See KZDF-LP*

Santa Barbara 32 *KSBT-LP* *See KZDF-LP*

Santa Barbara 41 *KVMM-CA* *See KZDF-LP*

Santa Barbara 43 *KTSB-LP* *See KZDF-LP*

Santa Barbara 49 *K49EK* *See KZDF-LP*

Santa Barbara 51 *KBAB-LP* *See KZDF-LP*

Tahoe City 23 *K23DT-D* *DG 4.4kw*

Van Nuys 30 *K55KD-D* *DR 9.99kw*

Ventura 45 *K45DU* *FC; sold by TBN*

COLORADO:

Denver 9 *KUSA-DT** *PG>45kw*

Denver 14 *K57BT-D* *DR 100w*

Denver 47 *KSBS-LP* *PG>100kw; application for DTV on ch. 52 still pending*

DISTRICT OF COLUMBIA:

Washington 7 *WJLA-DT** *PG>30kw*

FLORIDA:

Crestview 18 *WGOX-LP* *QG from ch. 41, 150kw, 30-43-43/86-35-25, CL from Santa Rosa Beach*

Fort Pierce 34 *WTVX-DT* *QC from ch 50 290kw/456m*

Jacksonville 13 *WTLV-DT* *PR>30kw/307m, DA*

Jupiter 53 *WALO-LP* *CC from WWJV-LP*

Key West 36 *WCAY-LP* *QG from ch. 33, 5.44kw, 24-34-05/81-44-03*

Key West 42 *WRKP-LP* *CC from W42DQ*

Miami 3 *WSBS-CD* *AF DCC 300w, 25-59-09/80-11-37 for ch. 50*

Miami 10 *WPLG-DT** *QG from ch. 9, 156kw/309m*

Orange Park 10 *WJXX-DT* *PR>15kw, DA*

Tallahassee 45 *WVUP-CA* *PG>15kw*

GEORGIA:

Augusta 51 *WFXG-DT** *PG>333kw*

Columbus 16 *WYBU-DC* *PG>15kw*

Gainesville 23 *WGGD-LP* *PR<75kw, 34-07-47/83-55-56; CL from Cleveland; PG*

HAWAII:

Hilo 28 *K28JV-D* *PR<9.5kw*

Honolulu 23 *KFVE-DT* *PR>23kw/629m, 21-24-03/158-06-10*

Honolulu 35 *KHNL-DT* *PR>25kw/629m, 21-24-03/158-06-10*

IDAHO:

Bonnors Ferry 11, *K11HM-*, *DG 44w,*

23, *K23IB-D*, *158w,*

32 *K32HA-D* *383w*

Malad City 51 *K51KS-D* *DG from K54AS, 1.6kw*

ILLINOIS:

Chicago 4 *WOCK-CD* *QR from ch. 13, 300w*

Johnston City 15 *W15BU-D* *DR 7kw*

INDIANA:

Clarksville 46 *WJYL-CD* *DR 15kw*

Indianapolis 46 *WALV-CA* *PR>46kw*

Jeffersonville 16 *WNDA-CD* *DR 15kw*

Salem 51 *WMYO-DT** *Granted permission to go non-DA*

IOWA:

Burlington 41 *KGCW-DT* *NW 615kw/388m*

Davenport 34 *KQIN-DT** *PG>368kw*

Des Moines 13 *WHO-DT** *PG>36.5kw*

Ottumwa 15 *KYOU-DT** *PG>360kw/360m, non-DA*

KANSAS:

Topeka 11 *KTWU-DT** *PG>25kw*

Wichita 10 *KAKE-DT** *PG>56.5kw*

KENTUCKY:

Paducah 49 *WDKA-DT** *PG>1000kw*

LOUISIANA:

Baton Rouge 7 *WCBZ-LP* *XC 30-30-21/91-01-24*

Columbia 11 *KAQY-DT** *PG<12.3kw/518m, 32-11-50/92-04-14*

New Orleans 8 *WVUE* *SI, gone DTV-only on ch. 29 (but likely to move to ch. 8 by the time you read this)*

Opelousas 22 *KDCG-DC* *PG>15kw*

MAINE:

Bangor 7 *WVII-DT** *PR 14kw/229m, 44-45-35/68-34-01; PG*

MARYLAND:

Lake Shore 20 *WQAW-LD* *DR from ch. 69, 6.5kw, 39-00-36/76-36-33*

MASSACHUSETTS:

Boston 25 *WFXT* *SI, gone DTV-only on ch. 31*

MICHIGAN:

Detroit 14 WKBD-DT PG<180kw
Saginaw 24 W24DL-D DG from W46CR, 2.33kw
Vanderbilt 45 WFUP-DT* AF 108kw/324m

MINNESOTA:
Austin 20 KSMQ-DT PR<319.2kw; PG

MISSISSIPPI:
Biloxi 13 WLOX-DT* PG>10.9kw
Greenwood 25 WMAO-DT NW 625kw/315m
Hattiesburg 47 W47BP PR>55.8kw, 31-20-32/89-25-06

MONTANA:
Arlee 48 K48EG-D DR 32w, 47-15-48/114-04-50; DG
Ferndale 24 K24ID-D NW 12w, 48-04-05/114-02-16 (KCFW-9)
Plains 5 K05GM-D DR 17w
Plains 7 K07CH-D DR 30w
Plains 11 K11JP-D DR 42w
Polson 50 K50LB QG from K10LP, 200w
Weeksville 48 K48LG-D DR 1.2kw

NEBRASKA:
Beatrice 23 K23AA-D DC 8.8kw
Falls City 46 K46FG-D DC 8.3kw
Hastings 5 KHAS-DT DC 45kw/217m
Hastings 5 KHAS-TV SI, converted to digital
Kearney 13 KHGI-DT QG from ch. 36, 8kw/340m
Lincoln 12 KUON-DT QC from ch 40 13kw/253m
Lincoln 35 KWAZ-LP FC to KTVG-17, Fox
Lincoln 47 KWAZ-LD FC to KTVG-17, Fox (not on yet)
Neligh 50 K50IO-D DC 350w
Niobrara 14 K14MI-D DC 2w
Pawnee City 33 K33AC-D DC 8.5kw
Verdigre 10 K10JW-D DG 6w

NEVADA:
Carson City 29 K29ES-D DG 1.43kw
Fallon 25 NEW AF dismissed (KNPB-5)
Las Vegas 43 K43FO-D DG 14.5kw
Laughlin 32 KMCC-DT NW 1000kw/607m, 35-39-07/114-18-42
Overton 38 K36IE-D QR from ch. 36, 1.8kw
Tonopah 17 NEW AF dismissed (KNPB-5)
Yerington 16 NEW AF dismissed (KNPB-5)

NEW JERSEY:
Secaucus 38 WWOR-DT AF 182kw/312m (aux)
Trenton 49 W49CW-D NW 975w, 40-16-58/74-41-11 (digital companion channel for W25AW)

NEW MEXICO:
Hobbs 45 K45JA NW 70w, 32-23-56/103-09-38

NEW YORK:
Brooklyn 50 WBQM-LD DG 40w
Carthage 7 WWNY-DT* PG>24.9kw

Dewitt 40 WIXT-CD DR 1.8kw
Mineola 45 WLIG-LD QR from ch. 26, 10kw
New York 6 WNYZ-LD DC 300w
New York 44 WNYW-DT AF 228kw/358m (aux)

NORTH CAROLINA:
Concord 44 WUNG-DT* PG>160kw/422m
Raleigh 44 WZGS-CA PG>138kw, 35-47-13/78-43-38
Reidsville 47 WGSR-LD DG 15kw, 36-14-54/79-39-21

OHIO:
Alliance 45 WNEO-DT* PG>500kw
Bowling Green 27 WBGU-DT QC from ch 56 40kw/320m
Bowling Green 27 WBGU-TV SI, converted to DTV.
Canton 49 WDLI-DT QG from ch 39 900kw/292m
Cincinnati 47 WOTH-LD NW 15kw, DCC for ch. 25
Columbus 25 WCPX-LD DG 9.5kw
Lima 44 WTLW SI, converted to DTV
Lima 44 WTLW-DT* QC from ch 47 165kw/207m

OKLAHOMA:
Ardmore 41 KCYH-LD DR 15kw, 34-11-19/97-12-06
Oklahoma City 15 KTBO-DT PG>700kw
Tulsa 26 NEW NS, Oral Roberts University

OREGON:
Astoria 42 K50JF QR from ch. 50, 18kw, 46-17-11/123-53-45
Baker City 20 K20IV-D NW 500w, 44-35-57/117-46-58 (KTVR-13)
Baker City 48 K48DC PC>5kw
Bend 39 KFXO-LD PG>15kw, 44-04-40/121-19-49
Coos Bay 44 K44FH PR<5.42kw, 43-23-30/124-14-57
Disston 11 K11KI-D DR 24w, 43-43-04/122-50-15
Grants Pass 47 K47GI PR<4kw
La Grande 16 KUNP-DT PR>50kw
Lakeview 7 K07NR-D DC 300w
Madras 26 NEW-LD AF DCC 1kw, 44-26-17/120-57-14 for K66BC
Medford 10 KTVL-DT* PR<1001m, 42-04-52/122-43-09; PG
Medford 23 K23EX-D DR 3.42kw
Prineville 23 K23CU-D DR 280w
Wasco 27 K27JX-D DG from K15EY, 15kw, 45-42-43/121-06-58

PENNSYLVANIA:
Harrisburg 7 W07DP-D DG from W35BT, 250w
Hawley 9 WWPS-LP QR from ch. 8, 2.25kw, 41-11-32/74-45-13
Johnstown 8 WWCP-DT* PG>9.3kw
Philadelphia 42 WTXF-DT NS 1000kw/163m, 40-03-29/75-14-21 (aux)
Reading 25 WTVE-DT NW 126kw/

378m, 40-02-30/
75-14-13 (this is the
Philadelphia
transmitter of their
DTS)
Scranton 31 WSWB-DT QR from ch 38
100kw/352m
Washington 20 WWLM-CD DR 15kw
Williamsport 29 WQMY-DT PR<50kw/243 41-12-
01/
77-07-13

SOUTH DAKOTA:
Aberdeen 17 KDSD-DT PG>37.8kw
Eagle Butte 13 KPSD-DT QC from ch 25
27kw/516m
Eagle Butte 13 KPSD-TV SI, converted to DTV
Huron 12 KTTM SI, converted to
digital
Huron 12 KTTM-DT DC 12.6kw/
257m

TENNESSEE:
Chattanooga 13 WRCB-DT* PR>100kw/
370m; amendment
from 87kw
Jellico 23 WPXK-DT PR>815kw/
624m, 36-11-53/
84-13-51;
amendment from
810kw/552m at
different site
Memphis 6 W06CR QG from W26CX, 3kw,
35-12-34/
89-49-01 (apparently
supercedes permit to
move to this site with
no other technical
changes?)
Memphis 15 W15CH PG<103.3kw, 35-12-
34/
89-49-01

TEXAS:
Clear Lake 25 KVDO-LD DG 10kw
Corpus Christi 38 KUQI-DT NS 50kw/
247m, 27-45-32/
97-36-26
Dallas 8 WFAA-DT* AF 26.8kw/
527m (aux)
Dallas 34 KJJM-LD DR 15kw
El Paso 9 KTSM-DT* QG from ch 16
34kw/577m
Fort Worth 19 KTXA-DT PR>1000kw/
500m, 32-34-43/
96-57-12; go non-DA
Fort Worth 38 KFW-LD DR 15kw
Gainesville 28 KPFW-LD CC from K28KE-D
Gainesville 61 KPFW-LP CC from K61HP
Kingsville 31 NEW-LD AF DCC 15kw, 27-40-
10/
97-54-59 for K20EK
Laredo 8 KGNS-DT* QG from ch 15
20kw/312m
Laredo 13 KVTV SI, gone DTV-only on
ch. 31
Longview 51 KCEB-DT PR>1000kw/
379m
Lubbock 17 KDFL-LD DG 1.5kw, 33-30-58/
101-50-54
Lubbock 46 KXTQ-CA PC>26.1kw
Mesquite 50 KATA-CD DG 15kw
Mullin 51 KAXW-LD DR from ch. 61, 15kw,

31-26-41/
97-23-41
Plainview 50 K50LD-D DG from K44GL, 15kw
San Antonio 10 KBNB-LD DR 15kw (I don't think
this is grantable on
channel 10 where the
limit should be 300
watts!)
San Antonio 40 KISA-LD DR 3kw
San Antonio 51 K51JF-D DR 700w
Wolfforth 43 KLCW-DT PG<179kw

UTAH:
Apple Valley 21 K21IL-D NW 75w, 37-07-00/
113-07-50 (KUED-7)
Cedar City 8 K08OE-D NW 60w, 37-38-21/
113-01-53 (KUEN-9)
Cedar City 43 K43JT-D DR 380w, 37-38-21/
113-01-53
Enterprise 42 K42IN-D NW 10w, 37-30-22/
113-39-36 (KUED-7 or
KUEN-9)
Rockville 33 K33JW-D NW 130w, 37-09-09/
113-01-52 (KUED-7 or
KUEN-9)
Saint George 67 K67HK FC: sold by TBN
St. George 57 K57KG-D NW 150w, 37-03-50/
113-34-20 (KUED-7 or
KUEN-9)
Toquerville 19 K19HR-D NW 4w, 37-17-24/
113-16-32 (KUED-7 or
KUEN-9)
Virgin 22 K22IP-D NW 125w, 37-13-54/
113-12-31 (KUED-7 or
KUEN-9)
Washington 44 K44JI-D NW 10w, 37-09-19/
113-52-57 (KUED-7)
Washington 50 K50KC-D NW 250w, 37-09-19/
113-52-56 (KUEN-9)

VIRGINIA:
Grundy 23 WJDG-LP XC 37-01-33/
81-10-51

WASHINGTON:
Bellevue 33 KWPX-DT PG>400kw
Kennewick 15 KVVK-CD DG 15kw, 46-05-51/
119-11-29
Richland 47 K54DU-D DR from ch. 54,
1.35kw
Spokane 39 KHBA-LD PR>2.47kw

WEST VIRGINIA:
Hampshire 34 W34DW-D QG from W38EG-D,
39-26-39/
78-20-52
Huntington 13 WOWK-DT* PG>12.5kw
Romney 23 W23DR-D QG from W27DC-D,
39-18-35/
78-43-01

WISCONSIN:
LaCrosse 58 W58DQ FC: sold by TBN to
another religious
operation
Milwaukee 49 WYTU-LP QG from ch. 63,
137kw
Sister Bay 18 W18CU-D DC 1.95kw
Wittenberg 31 WFXS-DT* QR from ch 50
685kw/325m

WYOMING:
Douglas 11 K11RN-D DR 160w, 42-45-47/

Thanks to Joel Nelson and Robert Grant for information appearing elsewhere in this column.

Ten Santa Barbara, California LPTVs were knocked off the air by a November wildfire. One, K59CD, returned to the air in mid-month.

Well, we're getting down to the wire – and analogs are beginning to disappear early. This month we have eight analogs off; six of them either have or shortly will return with DTV signals on the same channel. (the other two have DTVs operating on different channels and will remain there)

The stations that have converted early include low-band operation KHAS-5 in Nebraska – making for a new low-band DTV in the middle of prime skip target country.

KHAS-DT is running 45 kilowatts so should be quite Es DXable. (it's running seven times the power of common DTV Es target KOTA-2.

You should also notice that the majority of TV News these days is digital. A few analogs going dark, and a few LPTVs, that's about it for the analog side.

The FCC has apparently encouraged stations to participate in mass “transition tests” on or around December 17th and January 15th. Stations are being asked to air a slate on their analog transmitters only warning that analog TV is being shut down in February.

Good DX!

CONTEST REPORT CONTINUED FROM PAGE 21

Douglas Smith <i>Pleasant View, Tennessee</i>	73	202	30	6,060
---	-----------	------------	-----------	--------------

Digital TV:

<u>DXer</u>	<u>Stations logged</u>	<u>Logging points</u>	<u>Grids</u>	<u>Total Score</u>
Danny Oglethorpe <i>Shreveport, Louisiana</i>	78	156	25	3,900
Roy Barstow <i>Teaticket, Massachusetts</i>	94	204	19	3,876
Robert Grant <i>Temperance, Michigan</i>	68	136	17	2,312
Douglas Smith <i>Pleasant View, Tennessee</i>	48	96	18	1,728
Steve Rich <i>Indianapolis</i>	43	86	18	1,548
Jim Thomas <i>Milliken, Colorado</i>	16	32	3	96

Next report will be the last for the 2008 running of the contest. Get your loggings in! – both to me and to your DX column editors. Thanks!

WTFDA EMAIL REFLECTORS
 Enhance your DXing experience! Entertaining and informational.
 For WTFDFA members! Sign Up Today!
 The WTFDA list...send an email to tvfmdx-subscribe@wtfda.info
 The WTFDA AM DX list...send to amdix-subscribe@wtfda.info



FM NEWS

From WTFDA.info and w9wi.com



BILL HALE, 6124 ROARING SPRINGS DR, N. RICHLAND HILLS TX 76180

FMnews@wtfda.org

January 2009

INDEX OF ABBREVIATIONS

APP	application	PTA	Program Test Authority (station has been given authority to begin testing)
APP Mod	Change to an already submitted application	STA	Special Temporary Authority
AUX	auxiliary facilities (backup)	ROA	(at the) request of applicant
CC	call change	XL	Transmitter Location
CL	city of license (change to or from)		
Class	FM license class	AS	American Samoa
CP	construction permit (authority to broadcast with facilities noted)	GU	Guam
CP Mod	change to an already granted CP	NMI	Northern Mariana Islands
DA	directional antenna	VI	Virgin Islands
FC	frequency change (change to or from)		
LC	License to Cover (station has ended testing and has been given authority to begin operation)		
NDA	non-directional antenna		

Note: antenna heights are HAAT except where noted

--- CANADA ---

- CALL LETTER CHANGES -

	<u>Old Call</u>	<u>New Call</u>
BC Big White Ski Village	103.9 NEW	CILK-1
BC Campbell River	99.7 NEW	CIQC *

* - The CIQC call letters once belonged in Montreal when legendary CFCF 600 took on those calls in the early 90's before moving to 940 as CINW in 1999.

- FORMAT and SLOGAN CHANGES -

AB Edmonton	91.7 CHBN	> CHR
BC Campbell River	99.7 CIQC	> Country
BC Kelowna	96.3 CKKO	> Classic Rock: <i>K 96 point 3</i>
BC Vancouver	104.1 CHHR	> <i>Shore 104</i> [upon launch]

--TECHNICAL CHANGES --

			<u>Changes Approved</u>
AB Medicine Hat	105.3 CKMH		60 kw, increase antenna height and relocate transmitter
BC Campbell River	99.7 CIQC		Is on the air with 6 kw // 1490 for 3 months
NB Fredericton	104.5 CJRI		Move from 94.7
NS La Sarre	92.5 CJMM-FM1		1.904 kw/
ON Peterborough	100.5 CKRU (CP)		15 kw; [move from 980 was previously approved, but applied-for frequency was not available]



--TECHNICAL CHANGES --

- GRANTS FOR NEW STATIONS -

			<u>CP granted for:</u>			
AB Chateh	96.9 NEW		14 w; Christian [will be // CIAM-92.7 Fort Vermillion]	BC Vanderhoof	97.9 NEW	50 w; Christian [will be // CIAM-92.7 Fort Vermillion]
AB Cleardale	91.5 NEW		50 w; Christian [will be // CIAM-92.7 Fort Vermillion]	NB New Bandon	99.7 NEW	50 w; Southern Gospel [will be // CJRI-104.5 Fredericton]
AB Fort Chipewyan	95.5 NEW		50 w; Christian [will be // CIAM-92.7 Fort Vermillion]	NB St. Stephen	99.9 NEW	50 w; Southern Gospel [will be // CJRI-104.5 Fredericton]
AB Manning	95.9 NEW		50 w; Christian [will be // CIAM-92.7 Fort Vermillion]	NB Woodstock	101.1 NEW	50 w; Southern Gospel [will be // CJRI-104.5 Fredericton]
AB Meander River	95.9 NEW		50 w; Christian [will be // CIAM-92.7 Fort Vermillion]	NS Dartmouth	92.9 CFDR-FM	100 kw-H//63 kw-V//196 m, 44-39-02/63-39-25; FC from 780 AM
AB Peerless Lake	96.9 NEW		50 w; Christian [will be // CIAM-92.7 Fort Vermillion]	ON Peterborough	100.5 CKRU-FM	5 kw; FC from 980 AM
AB Wabaska	95.5 NEW		50 w; Christian [will be // CIAM-92.7 Fort Vermillion]	ON Sudbury	93.5 CIGM-FM	100 kw/204m, 46-30-03/81-01-12; FC from 790 AM
BC Oliver	106.1 NEW		50 w; Christian [will be // CIAM-92.7 Fort Vermillion]	QC Rivière-du-Loup	103.1 CFYX-FM1	13.3 w // CFYX-FM Rimouski
				SK Big River	92.5 NEW	1.9 kw; Country [will be // CHQX-101.5 Prince Albert]

SK Big River	97.5	NEW	1.9 kw; Country [will be // CKBI-900 Prince Albert]	SK Buckland	100.1	NEW	50 w; Christian [will be // CIAM-92.7 Fort Vermillion]
--------------	------	-----	---	-------------	-------	-----	--

--TECHNICAL CHANGES --

- APPLICATIONS FROM EXISTING/PROPOSED FACILITIES -

AB Cochrane	95.3	CFIT-1	Move to 91.5 + increase antenna height	ON Huntsville	105.5	CFBK	height 43.4 kw + decrease antenna height
MB Winnipeg	106.1	CFJL (CP)	40 kw; previously approved, but applied-for frequency of 104.7 was not available]				
NB Oromocto	103.5	CKHJ-2	250 w + decrease antenna				

--TECHNICAL CHANGES --

- PROPOSALS FOR NEW STATIONS -

BC Lake Cowichan	NEW 98.7		5 w; Community	ON Orilla	89.1	NEW	2.1 kw; Soft AC
NS Amherst	101.7	NEW	40 kw, 32 m	ON Orilla	89.1	NEW	10 kw; AAA
NS Bridgewater	100.7	NEW	10 kw; Country	ON Orillia	98.5	CIOA-FM	APP Mod for 27 w-V/92 m, 44-37-09/79-25-39
ON Bracebridge	102.3	NEW	17 kw; Country	ON Orilla	98.5	NEW	50 w; Tourist Info
ON Brighton	100.9	NEW	1.45 kw; AC/Oldies	ON Wallaceburg	99.1	NEW	1 kw; AC
ON Gravenhurst	101.7	NEW	3.16 kw; All Canadian Music	ON Elmira	99.9	NEW	3.36 kw; Classic Hits
ON Gravenhurst	101.9	NEW	50 w; Tourist Info	ON Elmira	103.7	NEW	3.36 kw; Active Rock
ON Gravenhurst	102.3	NEW	12.5 kw; AC/Oldies	PE Saint Edward	89.9	NEW	5 kw; Classic Hits // CHTN-100.3 Charlottetown
ON Gravenhurst	102.3	NEW	50 kw; AC/Oldies				
ON Gravenhurst	102.3	NEW	6 kw; Soft AC/Easy Listening	PE Saint Edward	91.1	NEW	5 kw; Active Rock // CKQK-105.5 Charlottetown
ON Leamington	91.5	NEW	10.4 kw; CBC Radio One // proposed CBC facility on 97.5 in Windsor				
ON Orilla	89.1	NEW	14.74 kw; AC	ON Gravenhurst	101.9	NEW	AF 25 w/65 m (correction to previous application)
ON Orilla	89.1	NEW	3.3 kw; CHR	QC Riviere-du-Loup	103.1	NEW	NS 13.3 w, to relay CFYX-FM Rimouski
ON Orilla	89.1	NEW	332 w; Classic Rock/Outlaw Country				
ON Orilla	89.1	NEW	3.3 kw; Hot AC				
ON Orilla	89.1	NEW	6 kw; Hot AC				

- DISMISSALS -

AB Wainwright	101.9	CKKY	Denied move from 830 AM	SK Yorkton	100.5	CJJC-FM	
BC Penicton	100.7	CIGV	Ownership change denied due to proposed power reduction not constituting an effective use of the frequency. Sale would have included CIGV-1 98.9 Keremeos and CIGV-2 98.1 Princeton.				50 kw/118 m; FC to 98.5



- OTHERNEWS -

NS Windsor	92.9	CFAB	Granted a 1-year extension to put the new station on the air and move from 1450
------------	------	------	---

--- UNITED STATES AND TERRITORIES ---

FULL POWER and LPFM STATIONS

- CALL LETTER CHANGES -

	<u>Old Call</u>	<u>New Call</u>					
AK Juneau	88.1	KORB	KAIS	MI Cadillac	91.9	NEW	WGCP
AR Heber Springs	100.7	KAWW-FM	KEAZ	MI East Tawas	91.3	WZHN	WRQC
CA Hopland	88.7	KAIS	KORB	MI Frederic	95.3	NEW	WGRL
CA Orleans	89.5	NEW	KHAA	MI Paradise	94.7	NEW	WUPN
CA Pollock Pines	93.1	KJDX	KHJQ	MI Riverside	88.7	NEW	WSIS
CA Weed	102.3	KNTK	KCWH	MS Greenwood	103.3	NEW	WBZL
CO Arriba	95.9	NEW	KMAP	MT Four Corners	90.3	NEW	KLSN
CO Bennett	91.7	NEW	KZWD	MT Livingston	90.1	NEW	KYPM
CO Central City	88.9	NEW	KDAB	MT Rocky Boy's Reservation	88.5	NEW	KHEW
CO Estes Park	90.7	NEW	KEZD	MT Roundup	88.3	NEW	KLMB
CO Springfield	91.7	KYLX	KLXD	NE Seward	89.5	NEW	KMHB
CO Stratton	97.1	NEW	KGGY	NE Tecumseh	91.7	NEW	KMBT
CO Walsenburg	101.3	KWCS	KOCK	NE Valentine	90.7	NEW	KMBV
CO Wiggins	90.7	NEW	KHWD	NH Stratford	98.7	NEW	WTTI
GA Milledgeville	88.3	NEW	WXGC	NM Clayton	90.5	NEW	KLXM
GA Young Harris	90.3	NEW	WBTB	NM Dexter	96.1	NEW	KALN
ID Rathdrum	89.9	KWJT	KYMS	NM Socorro	102.1	NEW	KYRN
IL East St. Louis	101.1	WMVN	WXOS	NY Rapids	90.5	NEW	WLNf
IN Sellersville	93.9	WQKC	WLCL	ND Flasher	105.9	NEW	KKBO
KY Grayson	91.7	NEW	WRYS	OH Cincinnati	95.7	NEW	WRFQ-LP
KS Riley	90.9	NEW	KONZ	OK Balko	95.9	KOPA	KZCU
KS Scott City	88.5	NEW	KHEV	OK Beaver	91.9	KOLX	KLXO
LA Rayne	106.7	KBEB-FM	KKOO	OK Boise City	90.9	NEW	KJHL
MA Baptist Village	89.5	NEW	WJCI	OK Woodward	95.9	KOPA	KZCU
				PA Gap	92.9	WLRY-LP	WRLI-LP

PA LaPorte	91.7	NEW	WEVP	TX Carrizo Springs	93.5	NEW	KAJP
PA Saint Marys	91.1	NEW	WRWV	TX Hearne	88.5	NEW	KEDC
PA Smethport	106.3	WQRM	WXMT	TX Dallas	105.3	KLLI	KRLD-FM
SC Pendleton	95.9	WTCO-FM	WESL	TX Karns	93.1	WMYU	WCYQ
SD Newell	103.7	NEW	KXZT	TX Navasota	92.5	KOBJ	KWUP
SD Wall	107.5	NEW	KXZS	TX Rio Grande City	95.1	NEW	KRGX
TN Karns	93.1	WMYU	WCYQ	TX Uvalde	95.5	KABC-LP	KGTD-LP
TN Lebanon	88.1	NEW	WRSN	VA Bridgewater	105.1	WBHB-FM	WTGD
TN Ooltewah	99.7	WYTY-LP	WYU-LP	WA Cle Elum	89.7	NEW	KWSR
TN Red Bank	91.5	WAWL-FM	WJPB-FM	WA Spokane	90.3	NEW	KWTF
TN South Pittsburgh	97.3	WUUS-FM	WUUQ	WY Douglas	88.7	NEW	KKWY

- FORMAT AND SLOGAN CHANGES -

AL Lisman	107.7	WPRN-FM	> Southern Gospel: <i>God's Country</i>	OH South Zanesville	92.7	WCVZ	> Hot AC
AL Pine Level	97.5	WVRV	> Contemporary Christian	OH Zanesville	102.5	WHIZ-FM	> Country: <i>Highway 102</i>
AL Stevenson	101.7	WMXN-FM	> Classic Hits	OR Condon	93.5	KHAL	> AC: <i>Mix 93 point 5</i>
AK Fairbanks	101.1	KAKQ-FM	> Hot AC	OR Gold Beach	92.7	KGBR	> Hot AC
AK Wasilla	99.7	KMBQ-FM	> AC; now // new KMBQ-1430	PA Bradford	100.1	WBRR	> Classic Rock
CA Lucerne Valley	106.5	KIXA	> Classic Rock	PA Reynoldsville	106.5	WDSN	> Adult Contemporary
GA Meigs	92.3	WQLI	> Adult Contemporary	PA Smethport	106.3	WXMT	> Christmas (temp, pending permanent change)
IL Galena	107.5	WDBQ-FM	> Classic Hits: <i>Q107 point 5</i>	TN Karnes	93.1	WCYQ	> Country
KY Glasgow	105.3	WOVO	> Adult Contemporary: <i>My 105 point 3</i>	TN Red Bank	91.5	WJBP	> Contemporary Christian: Family Life Radio
LA Clinton	91.9	WWRA	> Spanish: <i>Radio Amor</i>	TX Caldwell	107.3	KULF	> Christmas (temp, pending permanent change)
MI Cadillac	92.9	WJZQ	> Hot AC	TX Dallas	105.3	KLLI	> Sports: <i>105 point 3, The Fan; Fox Sports</i>
MI Richland	91.9	WTNP	> Religious Teaching	UT Monroe	100.5	KMXD	> Talk/Sports
MI St. Johns	92.1	WQTX	> Classic Hits: <i>92-X</i>	VA Bridgewater	105.1	WTGD	> Regional Mexican: <i>La Gran D</i>
MN St. Paul	95.3	KNOF	> <i>Praise FM</i> network	WA Sequim	91.5	KSQM	> Variety
MN St. Peter	105.5	KRBI-FM	> Classic Rock	WV Blennerhassett	88.7	WPJY	> Southern Gospel: <i>Joy FM</i>
MO Ballwin	89.7	KYMC	> Christian // KGNA- 89.9 & KGNN 90.3	WI Monona	100.5	WTLX	> Sports; ESPN
MO Chillicothe	98.5	KCHI-FM	> Classic Hits // KCHI- 1010	WY Burns	88.9	KGCQ	> Southern Gospel: <i>God's Country</i>
MT Billings	105.1	KQBL	> Sports				
MT Fairfield	102.7	KEAU	> Rock: <i>The Rock Hog</i>				
MT Highwood	101.7	KZUS	> Top 40: <i>The Blitz</i>				
NE Alliance	91.1	KTNE-FM	> Classical // KUCV-91.1				
NE Holdrege	97.7	KMTY	> Variety Hits: <i>Jack</i>				
NC Aurora	104.5	WAVQ	> Oldies				
TN Karns	93.1	WCYQ	> Country: <i>Q-93</i>				

- TECHNICAL CHANGES -

- NOW ON THE AIR -

AL Athens	104.3	WZYP	100 kw/340 m, 34-49-06/ 86-44-16	ID Parma	101.1	KWYD	100 kw/451 m, 43-24-09/ 116-54-09; CL from McCall; Class C from C0
CA La Mirada	95.9	KFSH-FM	6 kw/100 m, 33-49-53/ 117-48-33	IL Dorsey	89.5	WARW	1.4 kw/101 m, DA, 39-00-44/89-57-13; Class A
CA Mc Cloud	91.9	KLDD	35 w/724 m, 41-20-43/ 122-11-42; Class A	IN Wilkinson	89.1	WSMJ	150 w-V/31 m, 39-52-46/ 85-38-11; Class A
CA Johannesburg	100.9	KRAJ	1.48 kw/399 m, 35-28-38/ 117-41-59	IA Chariton	105.3	KELR-FM	34 kw/182 m, 40-53-23/ 93-01-29; Class C
CA Ridgecrest	104.9	KLOA-FM	1.52 kw/393 m, 35-28-38/ 117-41-59	KY Science Hill	106.1	WYKY	1.95 kw/178 m, 37-07-53/ 84-32-21; Class A
CA San Luis Obispo	88.5	KLVH	2.8 kw/455 m, 35-21-37/ 120-39-20	LA Clinton	91.9	WWRA	5 kw/82 m, 30-49-00/90-48-42; Class A
CO Del Norte	96.5	KSLV-FM	930 w/485 m, 37-43-47/ 106-35-18	ME Blue Hill	89.9	WERU-FM	11.5 kw/261 m, 44-26-04/ 68-35-25
CO Glenwood Springs	95.5	KRVG	1.35 kw/736 m, 39-25-05/ 107-22-01; Class C2 from C3	ME Oakland	88.9	WMDR-FM	100 w-H//50 kw-V/391 m, DA, 44-14-58/70-25-25
CO Mesa	98.9	K255CB	18 w-V/6 m, 39-19-26/ 108-13-17	MD Annapolis	99.1	WLZL	45 kw/157 m, 39-01-48/ 76-44-25
CO Strasburg	101.5	KTNI-FM	97 kw (adds V)/625 m, 39-55-22/103-58-18	MD Westminster	100.7	WZBA	25 kw/210 m, 39-26-50/ 76-46-48
FL Big Pine Key	104.1	WWUS	100 kw/138 m, (to) DA, 24-39-40/81-25-10	MA Taunton	93.3	WSNE-FM	31 kw/180 m, DA, 41-51-56/ 71-17-22
FL Juno Beach	95.5	WLDI	100 kw/282 m, 27-07-19/ 80-23-20	MI Charlevoix	90.9	WTCK	1 w-H//1.1 kw-V/201 m, DA, 45-10-49/85-05-50
FL Key West	98.7	WCNK	100 kw/138 m, (to) DA, 24-39-40/81-25-10	MI North Muskegon	88.9	WHEY	1 kw/48 m, DA, 43-16-45/ 86-20-32; Class A
FL Mount Dora	107.7	WMGF	100 kw/484 m, 28-55-10/ 81-19-07	MI Springfield	90.9	WCFG	700 w-V/107 m, 42-21-20/ 85-20-28
FL Pensacola	88.1	WUWF	100 kw/187 m, 30-24-13/ 86-59-34	MS Tylertown	107.3	WFCG	2.2 kw/168 m, 31-04-39/ 90-04-46
FL Tallahassee	104.1	WGLF	100 kw/430 m, 30-27-04/ 84-00-42	MO Neosho	91.7	KNEO	14 kw/114 m, 36-52-49/ 94-26-59; Class C3
FL Umatilla	102.7	WUFR-LP	80 w/33 m, 28-55-36/81-40-12	MT Fairfield	102.7	KEAU	100 kw/273 m, 47-36-24/ 111-21-31; Class C1
FL Union Park	88.3	WPOZ	13 kw/406 m, 28-36-07/ 81-05-37; Class C1 from C2				

NY Keeseville	104.3	WWOD	25 kw/88 m, DA, XL to 44-31-32/73-31-09; CL from Hartford, Vermont	TX Carrizo Springs	93.5	KAJP	97-36-09; Class C2 from C3
NY Lake George	98.5	WCKM-FM	370 w/393 m, 43-25-12/73-45-37	TX Llano	96.3	KAJZ	6 kw/77 m, 28-30-32/99-52-37
NY Patchogue	106.1	WBLI	CP Mod for 49 kw/152 m, DA, 40-50-32/73-02-25	TX Lovelady	104.3	KHMR	2.3 kw/152 m, DA, 30-40-44/98-34-13
NY Tupper Lake	102.1	WRGR	140 m/441 m, 44-09-35/74-28-34; FC from 102.3	TX Pilot Point	104.9	KZMP-FM	CP Mod for 10.6 kw/153 m, 31-11-30/95-29-32
NC Rose Hill	95.9	W240BN	250 w (adds H)/78 m, 34-51-48/78-02-16	UT Naples	929	KIFX	42 kw/606 m, XL to 33-32-08/96-49-54; Class C0 from C1
ND Cannon Ball	107.5	NEW	CP Mod for 100 kw/237 m, 46-34-19/100-47-42; Class C1	UT St George	91.3	NEW	3.2 kw/515 m, XL to 40-32-16/109-41-57; CL from Roosevelt
OK Chelsea	100.5	KTRF	25 kw/100 m, 36-36-57/95-29-34; Class C3 from A	VT Hartford	95.3	WXLF	CP Mod for 360 w/568 m, DA, 36-50-49/113-29-28; Class C3
OK Lawton	90.3	KVRS	CP Mod for 9.8 kw-V/80 m, DA, 34-31-48/98-33-09; Class C3 from A	WA Pullman	90.7	KZUU	6 kw/87 m, (to) DA, 43-39-14/72-17-44
ME Portland	101.9	WPOR	32 kw/186 m, XL to 43-45-33/70-19-15	WV Webster Springs	100.3	WAFD	420 w/30 m, 46-43-51/117-09-42
PA Wyomissing	91.9	WYTL	CP Mod for 450 w/166 m, DA, 40-11-09/75-57-15; FC from 91.7	WI Antigo	106.1	WACD	32.2 kw/186 m, 38-27-39/80-25-13
SC Florence	91.7	WLPG	3.8 kw/104 m, 30-15-14/82-40-56	WI Clearwater Lake	103.5	WCWL-LP	50 kw/123 m, XL to 45-22-38/89-11-07; Class C2 from C3
SD Spearfish	90.7	KOAR	CP Mod for 500 w/501 m, 44-19-30/103-50-14	WY Casper	96.7	KMGW	96 w-H/30 m, 45-51-28/89-11-15
TN Lebanon	98.9	WANT	5.34 kw/106 m, 36-09-20/86-22-33	WY Cheyenne	90.3	KWYC	2.7 kw/554 m, 42-44-37/106-18-24
TX Corpus Christi	88.7	KKLM	8 kw/264 m, 27-44-29/	WY Wamsutter	97.7	KRAN	34 kw/130 m, 41-13-01/104-26-53; CL from Orchard Valley

- TECHNICAL CHANGES -

- AUXILIARY FACILITIES -

AUX LICENSE ISSUED FOR:				MN Minneapolis	99.5	KSJN	32.6 kw/251 m, 44-58-34/93-16-20
CA Lodi	97.7	KWIN	6 kw/76 m, 38-04-17/121-15-25	MN Richfield	101.3	KDWB-FM	32.45 kw/49 m, 251 m, 44-58-34/93-16-20
CA Oxnard	89.1	KCRU	925 w/299 m, DA, 34-06-47/119-03-34	MN Rochester	101.7	KRCH	400 w/14 m, 44-00-12/92-29-07
CA Sacramento	90.9	KXJZ	4.1 kw/111 m, 38-42-38/121-28-54	MN St. Paul	102.1	KEEY-FM	31.09 kw/251 m, 44-58-34/93-16-20
CO Montrose	96.1	KSTR-FM	700 w/379 m, 39-04-00/108-44-41	MN Lake City	102.5	KMFX-FM	170 w/14 m, 44-00-12/92-29-07
DC Washington	90.9	WETA	22.5 kw/164 m, 38-53-30/77-07-55	NC Winston-Salem	88.5	WFDD	440 w/60 m, 36-08-07/80-16-28
DC Washington	88.5	WAMU	15 kw/122 m, 38-56-09/77-05-33 (3 rd aux facility)	PA Mountain Top	97.1	WBHT	225 w/343 m, 41-10-56/75-52-22
CA Pasadena	89.3	KPCC	600 w/872 m, 34-13-34/118-03-54	TN Cleveland	100.7	WUSY	100 kw/274 m, 35-12-26/85-17-10
CA Sacramento	88.9	KXPR	2.8 kw/76 m, 38-33-10/121-25-09	TN Morrison	105.3	WOWC	830 w/-6 m, 35-41-42/85-46-33
FL Atlantic City	104.5	WFYV-FM	50 kw/171 m, 30-16-34/81-33-51	TN Spencer	107.3	WTRZ	125 w/-6 m, 35-41-42/85-46-33
FL Tampa	89.7	WUSF	100 kw/246 m, 27-50-55/82-15-49	TX Helotes	101.1	KONO-FM	1.3 kw/265 m, 29-31-25/98-43-25
ME Lewiston	107.5	WFNK	15.5 kw/576 m, DA, 43-50-44/70-45-43	TX Holliday	100.9	KWFB	600 w/90 m, 33-53-51/98-32-32
MD Baltimore	102.7	WQSR	8.68 kw/107 m, 39-23-11/76-43-52	TX La Porte	103.7	KHJK	100 kw/555 m, 29-56-09/94-30-39 [2nd aux]
MA Waltham	102.5	WKLB-FM	12 kw/276 m, 42-18-37/71-14-14	TX Mason	99.7	KYRT	750 w/160 m, 30-42-03/99-13-59
MA Worcester	96.1	WSRS	20 kw/212 m, 42-18-34/71-54-10	TX San Antonio	100.3	KCY Y	1.3 kw/265 m, 29-31-25/98-43-25
MI Detroit	104.3	WOMC	58 kw/80 m, 42-28-09/83-06-54	TX Wixon Valley	101.9	KBXT	130 w/35 m, 39-39-01/96-20-57; CP from Franklin
MN Minneapolis	97.1	KTCZ-FM	32.17 kw/251 m, 44-58-34/93-16-20	WA Spokane	99.9	KXLY-FM	1.9 kw/164 m, 47-37-43/117-18-48

- TECHNICAL CHANGES -

- GRANTS FOR NEW STATIONS -

CP GRANTED FOR:				AS Mapusaga	90.5	NEW	750 w/492 m, S14-19-03/W170-45-51; Class C3
AL Argo	88.1	NEW	4 kw/77 m, DA, 33-41-53/86-31-29; Class A	CO Bennett	91.7	KZWD	50 kw/64 m, DA, 39-37-30/104-02-04; Class C2
AL Camden	90.5	NEW	11 kw/112 m, DA, 31-52-15/87-18-30; Class C3	CO Cortez	90.3	NEW	100 w/100 m, 37-28-57/108-30-34; Class A
AK Galena	97.1	NEW	100 w/15 m, 64-44-34/156-50-30; Class D	CO Estes Park	90.7	KEZD	200 w/13 m, DA, 40-21-38/105-31-12; Class A
AK Nulato	99.1	NEW	100 w/5 m, 64-43-59/158-06-25; Class D	CO Stratton	97.1	KGGY	51 kw-H/50 m, 39-11-00/102-46-00; Class C1
AK Ruby	98.1	NEW	100 w/-21 m, 64-44-20/155-28-48; Class D	FL Bronson	91.1	NEW	6 kw/29 m, DA, 29-25-13/

FL Eustis	90.3 NEW	82-39-39; Class A 10 w-H//8.25 kw-V/73 m, DA, 28-58-18/81-45-15; Class C3	NH Colebrook	97.1 NEW	97-16-02; Class A 1.8 kw/42 m, DA, 44-52-41/ 71-28-51; Class A
GA Mimsville	91.1 NEW	4.1 kw/45 m, 31-15-45/ 84-32-25; Class A	NM Dexter	96.1 KALN	50 kw/138 m, 33-23-57/ 104-22-30; Class C2
GA Plainville	104.9 WRBF	1.8 kw/185 m, DA, 34-20-35/ 85-02-20; Class A	NM Reserve	90.1 NEW	100 w-/229 m, 33-42-35/ 108-45-56; Class A
GA Soperton	88.1 NEW	5 kw/87 m, DA, 32-21-15/ 82-37-04; Class A	ND Jamestown	88.1 NEW	4 kw-V/1 m, 46-54-37/ 98-42-28; Class A
ID Plummer	88.3 NEW	2.4 kw-V/288 m, DA, 47-19-37/116-42-55; Class C3	ND Williston	90.7 NEW	10 kw/166 m, 48-02-52/ 103-59-01; Class C2
IN Seelyville	88.9 NEW	150 w/33 m, DA, 39-30-08/ 87-12-38; Class A	OH Bolivar	90.1 NEW	2 kw-V/54 m, DA, 40-39-35/ 81-21-26; Class A
KS Coldwater	90.3 NEW	1 kw/39 m, 37-16-06/ 99-19-33; Class A	OK Fairview	90.3 NEW	490 w/185 m, 36-13-25/ 98-36-07; Class A
KY Owingsville	89.3 NEW	11 kw/54 m, DA, 38-15-34/ 83-40-29; Class C3	OK Goltry	90.5 NEW	35 kw/121 m, DA, 36-40-47/ 98-10-43; Class C2
ME Benedicta	89.3 NEW	13 kw/69 m, 45-47-11/ 68-24-44; Class C3	OK Walters	88.3 NEW	40 kw-V/114 m, DA, 34-16-19/ 98-25-30; Class C2
ME Corinth	90.3 NEW	2 kw/275 m, 45-03-26/ 69-11-27; Class C3	OR Chiloquin	88.1 NEW	1.3 kw/700 m, DA, 42-24- 31/121-40-09; Class C2
MA Fitchburg	90.1 NEW	100 w-/32 m, DA, 42-35-12/ 71-51-12; Class A	TX Muenster	88.7 NEW	4.5 kw-V/165 m, DA, 33-43-43/97-31-36; Class C3
MA Petersham	91.3 NEW	600 w-/53 m, 42-31-30/ 72-16-42; Class A	TX Munday	101.9 NEW	100 kw/245 m, 33-50-52/ 99-38-48; Class C1
MT Roundup	88.3 KLMB	250 w-V/24 m, 46-27-58/ 108-33-20; Class A	TX Stratford	91.1 NEW	100 w-H/36 m, 36-19-31/ 102-03-11; Class A
NE Utica	91.7 NEW	3 kw/100 m, DA, 40-59-52/			

- TECHNICAL CHANGES -

- APPLICATIONS FROM EXISTING/PROPOSED FACILITIES -

			<u>Applies for:</u>		
AL Goodwater	91.1 WTXN	CP Mod for 8.5 kw/113 m, XL to 33-12-28/85-59-17; FC to 90.9; Class A to C3	KS Shawnee	107.7 KMAJ-FM	95-26-59; Class C2 to C1 53 kw/235 m, XL to 38-57-15/ 95-54-43; CL from Topeka via Carbondale; Class C1 from C
AL Munford	92.7 WTDR	250 w/481 m, 33-29-06/ 85-48-32; CL from Talladega	KY Louisville	92.7 WXBH-LP	CP Mod for 29 w/9 m, XL to 38-08-59/85-34-23
AZ Safford	88.5 NEW	20 kw-V/-35 m, DA, 32-54-56/ 109-51-59; Class C3 [also corrects the CL spelling from 'Salfort']	LA Golden Meadow	89.5 NEW	APP Mod for 11 kw/49 m, DA, 29-13-02/90-13-11
AZ Yarnell	99.5 KRPH	CP Mod for 37 kw/150 m, 34-08-46/112-41-58; CL to Morristown	ME Augusta	89.5 NEW	410 w-V/111 m, DA, 44-21-06/ 69-39-30; Class A
AR Cale	91.7 KEJA	CP Mod for 3 kw/136 m, (would drop DA), 33-28-34/ 93-16-23; Class C2 to A	ME Norway	92.7 WOYO-FM	5.2 kw/224 m, XL to 44-17-47/ 70-37-05; Class A to C3
CA Arcata	90.5 KHSU-FM	8.5 kw/459 m, (to) DA, 40-43-37/123-58-22	MI Escanaba	90.9 NEW	APP Mod for 100 kw-V (dropping H)/52 m, 45-42-56/ 87-11-07; Class C1
CA San Mateo	91.1 KCSM	11 kw/113 m, XL to 37-32-08/ 122-20-00	MI Hanover	90.9 WJKZ	APP Mod for 2.8 kw/75 m, DA, XL to 42-10-23/84-53-26; FC from 90.9
CA Temecula	88.9 KRTM	CP Mod for 270 w/932 m, DA, 33-22-09/116-56-04	MI Houghton	89.5 NEW	APP Mod for 50.5 kw-V (would drop H)/153 m, 47-08-27/ 88-32-26; Class C1
CO Merino	94.5 KRGQ	CP Mod for 15 kw/124 m, 40-31-57/103-07-22; CL from Yuma	MI Iron River	88.7 NEW	APP Mod for 6 kw-V (would drop H)/127 m, 45-49-15/ 88-02-25; Class C3
CO Walden	94.1 KEZZ	820 w/528 m, XL to 40-21-16/ 106-41-56; CL to Phippsburg; Class C2 to C3	MI Marquette	89.3 NEW	APP Mod for 100 kw-V (dropping H)/186 m, 46-29-20/ 87-28-43; Class C1
FL Key West	88.3 WAZQ	CP Mod for 100 kw-V (would drop H)/61 m, 24-39-41/ 81-31-39; Class A to C1	MI Munising	90.7 NEW	APP Mod for 100 kw-V (dropping H)/101 m, 46-28-11/ 86-25-05; Class C1
FL Layton	88.7 WNGY	CP Mod for 1.25 kw-V/77 m, 24-45-35/80-57-22; Class A	MS Ocean Springs	103.1 WOSM	CP Mod for 100 kw/204 m, 30-36-21/88-38-51
GA Atlanta	91.9 WCLK	APP Mod for 2.5 kw/94 m, 33-44-56/84-24-27	MN Pine City	91.9 NEW	APP Mod for 25 kw/99 m, XL to 45-58-36/92-53-47; Class C1 to C3
GA Evans	92.3 WAEG	5.4 kw/100 m, 33-35-25/ 82-13-52 (aux)	MS Ste. Genevieve	105.7 KPNT	100 kw/458 m, (to) DA, 38-25-01/90-25-59
GA Louisville	92.1 WPEH-FM	5.4 kw/91 m, 33-00-48/ 82-23-33	NE Kimball	92.3 KYOY	4 kw/30 m, XL to 41-10-02/ 104-24-53; CL to Hillsdale
GA Toombsboro	91.9 NEW	CP Mod for 2.89 kw/146 m, 33-04-38/83-08-48; Class C3 to A	NE Valley	94.9 KRKR	CP Mod for 6 kw/56 m, (would drop DA), XL to 40-46-47/ 96-42-17; FC from 95.1; CL from Lincoln
ID Caldwell	103.5 KSAS-FM	3.2 kw/777 m, 43-45-18/ 116-05-52 (aux)	NY Tupper Lake	102.1 WRGR	CP Mod for 140 w/441 m, 44-09-35/74-28-34; FC from 102.3; Class C3 to A
ID Culdesac	98.5 KZID	CP Mod for 2.5 kw/145 m, DA, 46-27-47/116-24-25; CL from Orofino; revert back to Class A from C3	NC Burgaw	99.9 WKXB	35 kw/178 m (would drop DA), XL to 34-03-02/77-57-20; CL to Boiling Spring Lakes; Class C1 to C2
KS Eureka	88.7 NEW	APP Mod for 36 kw-V/83 m, DA, XL to 38-02-09/96-38-33; Class C1 to C2			
KS Topeka	88.1 KJTY	100 kw/195 m, 39-02-21/			

NC Creedmoor	99.9 WCMC-FM	26.5 kw/206 m, XL to 35-40-35/78-32-08; CL to Holly Springs; Class C3 to C2	TX Ballinger	95.5 NEW	DA, 35-16-32/86-21-37 APP Mod for 25 kw/90 m, 31-40-11/100-19-28; CL to Miles; Class A to C3
NC Franklin	96.7 WNCC-FM	APP Mod 2.55 kw/155 m, 35-08-57/83-30-24; FC to 105.1 via 100.9	TX Breckenridge	93.5 KLXK	12.7 kw/140 m, 32-47-32/98-56-24
NC Hickory	89.1 WRYN	CP Mod for 800 w/93 m, DA, XL to 35-41-20/81-25-18	TX Carrizo Springs	93.5 KAJP	CP Mod for 6 kw/77 m, 28-30-32/99-52-37
NC Rocky Mount	100.7 WRVA-FM	CP Mod for 100 kw/600 m, 35-49-53/78-08-50; CL to Wake Forest	TX Jacksonville	103.7 K279AR	250 w/30 m, 31-59-38/95-03-02; FC to 104.3
ND Jamestown	88.9 KLUU	500 w/87 m, 46-50-05/98-41-31; FC to 89.1	TX Krum	93.7 KNOR	CP Mod for 43 kw/600 m, 33-29-05/97-24-44; Class C1 to C0
OH Celina	94.3 WKKI	5.2 kw/108 m, XL to 40-34-21/84-35-22	TX Markham	92.5 KKHA	CP Mod for 25 kw/100 m, DA, XL to 28-49-55/96-00-40; Class A to C3
OH Troy	89.1 NEW	APP mod for 500 w-V (would drop H)/108 m, DA, XL to 40-06-05/82-04-48	TX Sulphur Bluff	99.7 KYZQ	CP Mod for 6 kw/40 m, XL to 33-14-11/95-17-04; CL to Mount Vernon; Class A
OK Sapulpa	100.9 KXOJ-FM	23.5 kw, 103 m, 36-02-51/96-06-59; Class A to C3			
OR Canyonville	106.9 KPOL-LP	100 w/15 m, XL to 42-55-57/123-17-02	VT Bennington	94.3 WBTV-FM	3 kw/34 m, XL to 42-56-53/73-10-35
OR Gleneden Beach	97.7 KSHL	CP Mod for 7 kw/259 m, 44-00-08/123-06-50	VT Rutland	94.5 WDTV	6 kw/97 m, (to) DA, 43-34-04/73-00-32
PA Kulpmont	91.9 WBYK	1.35 kw/212 m, XL to 40-47-31/76-23-08	WY Cody	91.1 KOFG	APP Mod for 4 kw/549 m, 44-29-46/109-09-09; FC from 91.3
PA Tunkhannock	107.7 WGMF	1.25 kw/221 m, XL to 41-27-07/76-00-33; CL to Dallas	WY Kaycee	92.1 NEW	CP Mod for 3.3 kw/519 m, (would drop DA), XL to 42-44-28/106-18-31; CL to Evansville
SC Charleston	100.5 WALC	25 kw/84 m, DA, 32-46-24/80-00-56	WY Laramie	93.9 KUSZ	6 kw/6 m, XL to 40-25-04/105-08-28; CL to Loveland
SD Hoven	88.3 NEW	APP Mod for 500 w/11 m, XL to 45-16-33/99-48-12; Class A	WY Pinedale	101.1 KPIN	90 kw/262 m, (to) DA, XL to 43-06-22/110-13-48; FC to 101.3; Class C3 to C1
SD Spearfish	107.3 KSLT	100 kw/579 m, 44-19-42/103-50-03; FC to 107.1			
TN Halls Crossroads	96.7 WMYL	2.7 kw/149 m, (would drop DA), 36-04-21/84-01-18			
TN Lynchburg	91.9 WGBQ	CP Mod for 900 w/107 m, (to)			

– APPLICATIONS FOR NEW FACILITIES –

AL Demopolis	88.7 NEW	Applies for: 25 kw/98 m, 32-22-59/87-54-35; Class C3	NY Houghton	88.1 NEW	364 w/-91 m, 42-25-36/78-09-20; Class A
AL Moundville	88.5 NEW	1 w-H/6 kw-V/43 m, DA, 32-59-28/87-37-23; Class A	OH Sinking Springs	90.7 NEW	3 kw/87 m, DA, 38-58-47/83-23-32; Class A
GA Thomson	91.5 NEW	12 kw/79 m, DA, 33-34-00/82-46-14; Class C3	OR Maupin	96.7 NEW	50 kw/-62 m, 45-10-24/121-05-43; Class C2
CT Niantic	89.9 NEW	1.5 kw/865 m, DA, 41-19-07/72-16-16; Class A [reinstatement]	PA Milroy	88.7 NEW	1 w-H/2.5 kw-V/244 m, 40-35-10/77-41-40; Class B1
HI Pepeekeo	89.5 NEW	35 kw/0 (zero) m HAAT/41 m AGL, 19-35-31/155-07-36; Class C1	TX Dalhart	89.3 NEW	500 w/104 m, 36-06-35/102-30-31; Class A
IL Macomb	89.1 NEW	9 kw-V/37 m, 40-36-56/90-33-43; Class B1 [reconsideration]	TX Eden	91.5 NEW	16 kw-V/184 m, DA, 31-22-01/40-02-48; Class C2
KS Olpe	89.3 NEW	875 w/134 m, DA, 38-16-09/96-22-27; Class A	TX Encinal	88.5 NEW	50 kw/149 m, 28-08-20/99-19-15; Class C2
LA Golden Meadow	89.3 NEW	11 kw/49 m, DA, 29-13-02/90-13-11; Class C3	TX Freer	89.3 NEW	100 w-V/30 m, 27-52-53/98-38-01; Class A
ME Kennebunkport	88.3 NEW	250 w/42 m, DA, 43-24-16/70-26-15; Class A	TX Holliday Beach	89.9 NEW	5 kw/52 m, 28-10-18/96-59-50; Class A
NV Elko	89.3 NEW	5 kw/237 m, 40-54-35/115-49-05; Class C2	TX Smiley	90.3 NEW	13 kw/57 m, DA, 29-17-03/97-44-00; Class C3 [reinstatement]
NJ Budd Lake	91.3 NEW	100 w-V/114 m, DA, 40-51-15/74-46-49; Class A	UT Cedar City	88.9 NEW	6.7 kw/794 m, 37-32-29/113-04-04; Class C1
MN Bagley	90.5 NEW	100 kw/126 m, DA, 47-36-04/95-25-03; Class C1	WA Sedro-Wooley	88.9 NEW	2.5 kw/29 m, DA, 48-32-30/122-17-43; Class A [reinstatement]
NM Milan	88.7 NEW	3.2 kw/845 m, DA, 35-15-04/107-35-44; Class C1 [reinstatement]	WI Sheboygan	90.9 NEW	15 kw-V/35 m, DA, 43-52-41/87-46-19; Class A [reinstatement]
NM Ruidoso, NM	89.3 NEW	25 kw/-64 m, DA, 33-19-33/105-41-25; Class C3	WY Dubois	96.3 NEW	9.7 kw/336 m, 43-29-59/109-41-17; Class C2

TRANSLATOR and BOOSTER STATIONS

--CALL LETTER CHANGES--

AL Madison	103.9	<u>Old Call</u> W278AA	<u>New Call</u> W280AA	CO Mesa	98.9	K288BR	K255CB
AZ Tucson	106.3	KGGMG-1	KGGMG-FM1	CT Montville	94.9	W236BM	W235AJ
AR Prairie Grove	107.1	K298BB	K296GA	GA Elberton	96.5	W240BC	W243CI
CA Ferndale, etc	88.7	K206AU	K204GA	GA Tallapoosa	89.7	W208BE	W209BX
CA Santa Clarita	89.3	KPCC-1	KPCC-FM1	IL Dahinda	100.3	W264AZ	W262BT
				MN Fairmont	90.7	K215ES	K214EO

MS Biloxi	88.7	W201BK	W204CE	PR Fajardo	104.7	NEW	WKAQ-FM2
MT Cut Bank	105.1	K288DA	K286BO	TN Columbia	91.9	W217AV	W220EE
MT Deer Lodge	90.9	K213CB	K215EW	TN Hartsville	93.5	W229BG	W228CB
NV Sunrise Manor	96.7	NEW	KHIJ-FM1	TN Red Bank	91.5	WAWL-FM1	WJPB-FM1
NH Claremont	99.7	NEW	WNTK-FM1	UT Union City	102.3	W218BE	W272CL
NH Pittsfield	103.9	W277AV	W280EC	UT Bountiful	104.7	KYLZ-4	KYLZ-FM4
NY Batavia	105.5	W286BQ	W288BZ	UT Ogden	104.7	KYLZ-1	KYLZ-FM1
NY New York	90.7	NEW	WFUV-FM3	UT Provo	104.7	KYLZ-2	KYLZ-FM2
NY Ogdensburg	100.1	NEW	W261BN	VA Rural Retreat	101.1	W263AN	W266BM
NY Poughkeepsie	95.7	W234AY	W239BL	WA Bellingham	88.3	K201FH	K202DV
OR Jacksonville, etc	104.3	K281AG	K282AY	WV Summersville	95.7	NEW	WSWW-FM1
PA Altoona	94.3	WBXQ-FM2	WBXQ-FM1	WI Appleton	101.5	W214BT	W268AU
PA Mifflinville	101.7	W272CI	W269CH	WI Green Bay	106.3	W291BG	W292DR
PA Wellsboro	96.1	W238AQ	W241BF	WI Mauston	92.9	W224BM	W225BF
PA Wyoming	104.5	W280DY	W283BJ				

-TECHNICAL CHANGES -
- NOW ON THE AIR -
(antenna heights are AGL)

AL Madison	103.9	W280BA	99 w/180 m, DA, 34-49-06/ 86-44-16				74-00-11; FC from 94.7; CL from Highland
AK Valdez	91.9	K220AD	1.09 kw (adds V)/220 m, DA, 61-07-46/146-21-27	NC Charlotte	100.3	W262BM	10 w/137 m, DA, 35-16-03/ 80-44-35
CA Ferndale, etc	88.7	K204GA	170 w (adds V)/24 m, DA, 40-30-03/124-17-08; FC from 89.1	ND Valley City	102.7	K274BH	250 w/41 m, 46-55-05/ 97-58-38
CA Mountain Village	98.3	K252DZ	10 w-H/57 m, 37-59-29/ 107-58-21; CL from Redvale	OH Solon	106.1	W291BV	13 w/52 m, 41-26-11/ 81-31-25
CA Santa Clarita	89.3	KPCC-FM1	9 w/13 m, DA, 34-23-10/ 118-19-42	OK Grove	98.5	K253AQ	250 w-V/8 m, 36-37-30/ 94-48-41
CO Basalt	89.3	K207DT	28 w-V/14 m, DA, 39-18-37/ 106-56-53	OK Owasso	94.9	K235BK	140 w-V/90 m, 36-20-02/ 95-47-08
CO Frisco	91.3	K220ER	23 w (adds H)/39 m, 39-29-47/106-01-43; FC from 91.9	PA Berwick	94.7	W234BH	50 w-V/6 m, DA, 41-02-11/ 76-05-10; CL from West Hazelton
CO Nucla	101.7	K269AB	180 w-H/43 m, DA, 38-18-54/ 108-12-14 [power corrected from original APP of 810 Watts]	PA Johnstown	105.7	WLKJ-FM1	342 w/45 m, 40-19-28/ 78-55-01
CT Montville	94.9	W235AJ	6 w/96 m, 41-28-07/ 72-12-15; FC from 95.1	PA Mifflinville	101.7	W272CI	1 w/25 m, 40-56-20/ 76-25-33; FC from 102.3
FL Cocoa	94.7	W234BI	30 w/76 m, 28-16-42/ 80-42-03	PA New Albany	107.3	W297AY	225 w-V/10 m, DA, 41-31-59/ 76-24-10; CL from Dushore
FL Bunnell	106.3	W292DE	250 w/87 m, DA, 29-29-41/ 81-16-23	PA Wellsboro	93.9	W230BM	40 w-V (drops H)/17 m, DA, 41-45-36/77-17-32
FL Fort Lauderdale	93.5	W228BV	10 w/255 m, DA, 25-59-34/ 80-10-27	PA Wellsboro	96.1	W241BF	15 w/14 m, 41-44-51/ 77-18-07; FC from 95.5
FL Wesley Chapel South	92.1	W220DZ	27 w/79 m, 27-59-36/ 82-24-47; FC from 91.9	PR Anasco	104.5	W283BI	45 w/56 m, 18-19-06/ 67-10-49
GA Buford	90.7	W213BR	10 w/91 m, 34-06-20/ 83-55-49; FC from 90.5	RI Providence	93.7	W229AN	30 w (adds H)/5 m, (drops DA), 41-49-14/71-23-01
GA Cordele	102.3	W218CF	250 w-V/9 m, 31-52-16/ 83-43-27; FC from 91.5	SD Rapid City	105.7	K289AI	25 w-V (from H)/12 m, 43-56-26/103-13-45
GA Elberton	96.5	W243CI	250 w/45 m, 34-06-50/ 82-52-52; FC from 95.9	TN Hartsville	93.5	W228CB	80 w (adds H)/56 m, DA, 36-23-37/86-09-55; FC from 93.7; CL from Lebanon
GA Kennesaw	92.1	W275AQ	55 w/14 m, 34-03-57/ 84-43-24; FC from 102.9	TX Canyon	94.5	K233CB	205 w/85 m, 35-02-18/ 101-54-55
GA Tallapoosa	89.7	W209BX	10 w/91 m, 33-47-02/ 85-09-42; FC from 89.5	UT Provo	104.7	KYLZ-FM2	600 w/20 m, DA, 40-18-00/ 111/38/38
IN West Lafayette	92.3	W222AS	19 w/56 m, 40-27-14/ 86-55-44	VA Ashland	102.5	W274AV	140 w/62 m, 37-51-41/ 77-32-25; FC from 102.7
MD Frederick	88.9	W205BL	170 w (adds V)/46 m, (drops DA), 39-29-24/77-29-56	VA Waverly	106.1	W291AJ	27 w (adds H)/78 m, 37-03-00/77-12-05
MI Bessemer	92.9	W225AV	10 w/61 m, 46-29-29/ 90-01-28	WA Bellingham	88.3	K202DV	7 w/43 m, DA, 48-46-57/ 122-22-05; FC from 88.1
MS Biloxi	88.7	W204CE	4 w37 m, XL to 30-27-11/ 88-51-26 ; FC from 88.1	WA Kennewick	88.7	K204CZ	10 w/21 m, 46-06-12/ 119-07-40
NH Bristol	94.5	W233AY	10 w/7 m, 43-32-02/71-45-39; CL from New Hampton	WI Mauston	92.9	W225BG	250 w/53 m, DA, 43-47-16/ 90-11-52; FC from 92.7; relays WRJC-1270
NY Poughkeepsie	95.7	W239BL	10 w/82 m, 41-41-58/	WY Cheyenne	100.3	K262BV	250 w/45 m, (to) DA, 41-08-55/104-57-22

- TECHNICAL CHANGES -
- Construction Permits Granted -
(antenna heights are AGL)

AL Cleveland	95.3	W237DH	100 w-V/9 m, XL to 33-56-44/ 86-37-10; CL from Garden City	CA San Diego	89.1	K206AC	38 w/66 m, XL to 32-50-53/ 117-16-32
AZ Tucson	106.3	KGMG-FM1	10 kw/221 m, DA, 32-17-23/ 111-01-06	CA Susanville	93.3	KJDX	100 kw/352 m, 40-27-13/ 120-34-14; Class 0 from C2
CA Pleasanton	98.1	KISQ-FM2	10 kw-V (from H)/-52 m, DA, 37-39-40/121-50-12	CO Trinidad	99.9	K207BN	170 w-V (drops H)/11 m, XL to 37-08-55/104-30-40; FC from 89.3

GA	Buford	90.7	W213BR	10 w/91 m, 34-06-20/ 83-55-49; FC from 90.5				to 42-17-55/122-44-53; FC from 104.1; CL from Jacksonville	
GA	Decatur	102.9	W275BK	170 w/183 m, XL to 33-45-33/ 84-20-05	OR	Merlin	105.5	K288CP	99 w-H/9 m, DA, XL to 42-28-18/123-18-17
GA	Toccoa	97.7	W249CC	250 w/45 m, (to) DA, XL to 34-31-46/83-22-33	PA	Mifflinville	101.7	W269CH	1 w/25 m, 40-56-20/ 76-25-33; FC from 102.3
ID	Idaho Falls	96.7	K244BJ	250 w (adds H)/26 m, XL to 43-32-43/111-53-14	PA	Tyrone	100.7	W264BZ	11 w-V/41 m, DA, 40-43- 47/78-19-23
IL	Tuscola	98.1	W251AV	240 w/7 m, (to) DA, 39-48-05/ 88-14-08	RI	Warwick	104.7	W284BA	38 w/66 m, XL to 41-45-22/ 71-26-42
LA	Jennings	88.1	K201FO	150 w-V/83 m, 30-11-30/ 92-37-17	SD	Watertown	91.9	K220IT	100 w/24 m, 44-54-23/ 97-06-20
MI	Detroit	98.3	W252BX	17 w-V (drops H)/28 m, 42-19-37/83-09-11	TN	Petersburg	95.9	W240CC	10 w-V/8 m, XL to 35-19-09/ 86-44-12
MN	Golden Valley	90.7	K214DF	10 w/243 m, 44-58-36/ 93-16-15	UT	Ogden	104.7	KYLZ-FM1	500 w/21 m, DA, 41-20-32/ 112-00-30
MO	Mountain Grove	88.7	K201CI	62 w/87 m, 37-06-05/ 92-16-04; FC from 88.1	UT	Park City	98.3	K252EH	99 w-H (drops H)/9 m, DA, 40-41-00/111-31-23
NH	Pittsfield	103.9	W280EC	200 w (adds V)/7 m (drops DA), 43-15-21/71-22-10; FC from 103.3; CL from Barnstead	WV	Birch River	98.1	W251AY	250 w/34 m, XL to 38-21-35/ 80-38-51
NY	Alfred	94.3	W232BQ	5 w-V (drops H)/5 m, (to) DA, XL to 42-16-41/77-46-11	WV	Bluefield	97.1	W246BE	80 w/5 m, XL to 37-15-30/ 81-10-37
NY	Middletown	105.7	W289BE	99 w-V/15 m, DA, 41-27-16/ 74-25-06	WI	Appleton	95.3	W237AA	99 w/119 m, 44-15-37/ 88-22-00
NY	Ogdensburg	100.1	W261BN	38 w/23 m, 44-35-18/ 75-23-14	WI	De Pere	106.3	W292DR	250 w/85 m, XL to 44-21-32/ 87-59-07; FC from 106.1; CL from Green Bay
KY	Okolona	91.1	W216BM	19 w-V/60 m, DA, 38-04-17/ 85-36-12					
OR	Ashland	104.3	K281AG	32 w (adds V)/14 m, DA, XL					

- TECHNICAL CHANGES -
- Grants for New Stations -
(antenna heights are AGL)

UT	Bountiful	104.7	KYLZ-FM4	2.2 kw/19 m, DA, 40-50-05/ 111-52-03					
----	-----------	-------	----------	---	--	--	--	--	--

- APPLICATIONS FROM EXISTING / PROPOSED FACILITIES -
(antenna heights are AGL)

				APPLIES FOR:	NY	Dundee	96.9	W245BL	CP Mod for 110 w/37 m, DA, 42-32-48/77-02-55; CL from Branchport
AZ	Flagstaff	101.7	K269AR	APP Mod for 250 w-H/8 m, DA, 35-14-26/111-35-51; FC to 104.7 as it is being displaced by (the CP for) KQLP(FM) on channel 268C1	NY	Montauk	93.9	W230BH	27 w/27 m, 41-01-56/ 71-58-32
CA	Daly City	101.7	K269FB	13 w/9 m (would drop DA), XL to 37-42-59/122-23-37	NC	Charlotte	93.9	W230AJ	14 m-H (would drop V)/ 22 m, DA, 35-16-02/ 80-54-12; FC to 94.5
NV	Sunrise Manor	96.7	KHIJ-FM1	250 w/49 m, 36-19-19/ 114-55-43	WI	Appleton	101.5	W268AU	55 w/54 m, XL to 44-13-04/ 88-24-33; FC from 90.7
NH	Claremont	99.7	WNTK-FM1	55 w-V/10 m, 43-22-08/ 72-19-37	WI	Green Bay	103.5	W278AU	52 w/37 m, 44-29-29/ 88-01-04

- APPLICATIONS FOR NEW FACILITIES -
(antenna heights are AGL)

CA	San Dimas	98.3	KRCV-1	750 w/8 m, DA, 34-09-16/ 117-48-00	WV	Summersville	95.7	WSWW-FM1	110 w/23 m, DA, 38-16-54/ 80-52-10
NH	Claremont	99.7	WNTK-FM1	55 w-V/10 m, 43-22-08/ 72-19-37					

- DISMISSALS -

AL	Ashland	90.9	-----	APP for new station ROA	IL	Macomb	89.1	-----	APP for new station
AL	York	88.7	-----	APP for new station ROA	IN	Crown Point	90.5	WRTW	CP Modification
AZ	Cottonwood	95.9	KKLD	APP for changes	IA	Creston	89.5	-----	APP for new station (S)
AZ	Wickenburg	96.3	KSWG	APP for change to a CP	LA	Baton Rouge	96.9	WHYR-LP	APP for changes
CA	Codora	91.3	-----	APP for new station (S)	ME	Freeport	89.3	WSMJ	APP for 45 kw
CA	Kettleman City	91.3	-----	APP for new station (73.509 violation)	MO	Clearmont	89.5	-----	APP for new station (S)
CA	Tehachapi	106.7	K240DH	APP for new facilities	MO	Moberly	88.7	KSDQ	APP for CP Mod ROA
CA	Willows	91.1	-----	APP for new station (S)	NE	Davis City	89.5	-----	APP for new station (S)
CA	Trinidad	95.5	KZCC	APP for changes	NV	Las Vegas	93.1	KPLV	CP for aux license ROA
CO	Boulder	97.3	KBCO	APP for changes ROA	NV	North Las Vegas	106.9	K295AJ	CP to move to 107.1
CO	Carbondale	88.5	K201AZ	APP for new facilities	NM	Arroyo Seco	90.9	KRRT	APP for changes
CO	Fort Morgan	95.9	K240DP	APP for new facilities	NM	El Dorado	105.5	K288FL	CP for new facilities (CP expired)
FL	Dunnellon	94.9	WRLE-LP	CP for 72 w, dropping V	NC	Fayetteville	100.1	-----	APP for experimental station
FL	Flagler Beach	97.7	WFBO-LP	Is silent	ND	Sarles	105.9	KCVF	License cancelled/calls deleted
FL	Islamorada	89.3	WRTH	APP for changes	OH	Bellefontaine	88.5	-----	APP for new station
GA	Damascus	89.7	WGIA	APP for change to a CP	OR	Gleneden Beach	97.5	KSHL	CP for 14 kw
GA	Ellijay	101.1	WLJA-FM	APP for technical changes					
IL	McHenry	89.1	-----	APP for new station (S)					

SC Wedgfield	95.5	WIBZ	APP for 4 kw/122 m	UT Smithfield	99.1	KGNT	APP to move to Fort Bridger, WY on 103.9
TN Farragut	104.1	WUCP-LP	APP for technical changes	UT Springdale	88.7	-----	APP for new station
TX Alice	88.5	-----	APP for new station (S)	WY Wheatland	106.3	KMQS	APP for changes
TX Eden	91.5	-----	APP for new station (S)				
TX El Paso	102.1	KPRR	CP for aux license ROA				
TX Los Ojuelos	88.5	-----	APP for new station (S)				
TX Pittsburg	100.5	KLNA-LP	Petition for reconsideration of cancelled license				
TX Rockport	89.9	-----	APP for new station (S)				
TX San Pablo	88.5	-----	APP for new station (S)				
TX Reyes	89.1	-----	APP for new station (S)				
TX Yoakum	90.3	-----	APP for new station				
UT Santa Clara	88.1	-----	APP for new station				

Violations Codes:

- 73.509 - Prohibited overlap
- 73.510 - Antenna systems
- 73.515 - Transmitter location not providing 60 dbu coverage over CoL
- 73.7002 - Fair distribution of service on reserved band FM channels

(S) - settlement

* - Petition for reconsideration has been filed

- OTHERNEWS -

AL Eufaula	96.5	W243BC	License canx; call deleted	IL Garden Prairie	93.5	W228BZ	License canx; call deleted
AZ Parker	93.9	KRIT	Is silent	IA Patterson	105.9	KZWF	Is silent
CA China Lake	102.7	KSSI	Is silent	IA Pleasantville	95.3	KZWU	Is silent
CA Kerman	95.3	KBHH	Is silent	NV Logandale	93.5	KADD	Is silent
FL Holly Hill	88.1	WEAZ	License canx; call deleted	NM El Dorado	105.5	K288FL	License canx; call deleted
FL Palm Bay	88.5	WRYZ	License canx; call deleted	TX Abilene	91.3	KAQD	Is silent
				TX Lubbock	88.1	KTXT-FM	Is silent

FCC Begins Granting Power Increase Requests for Test Purposes
From Radio World online

The FCC has begun granting permission to organizations for further increased FM IBOC power testing. On the Radio World Webinar "What to Watch for in 2009" yesterday, both Milford Smith of Greater Media and Mike Starling of NPR said their companies have further tests planned. Smith later told me WKLB(FM) in Boston has experimental authority to operate its digital power at up to minus 10 dB (from the current -20 dB below analog carrier up to -10 dB). "I'm optimistic we are going to find a middle ground," he said, referring to differences between the testing of the major, mostly commercial radio groups who petitioned the FCC for the change and that of NPR Labs regarding the proposed voluntary digital power increase of up to 10 dB. The increase, Smitty said, needs to be enough of an improvement to solve most of the issues we've got now — having digital coverage match the analog. Talks are ongoing among the broadcast groups that initially asked the FCC to approve a voluntary increase, and iBiquity, NAB, the FCC and NPR, according to Starling and Smith. "The faster we get to an industry consensus the better. The FCC would love a red-ribbon package on their doorstep with a solution," said Smith. Starling said NPR plans additional testing with Minnesota Public Radio and also two NPR-member stations. "We know we've got to solve this indoor coverage shortfall. An unhappy listener is a failed transition." Maybe a controlled increase at a compromise level, coupled with other options is the answer, he indicated. NPR Labs wants to look at single-frequency networks and asymmetrical digital sidebands ... perhaps a station with a first-adjacent neighbor only raises the digital sideband without a neighbor station, is the theory. All parties may have a solution by spring/summer timeframe, they said.

Saga Uses FM translators to Spread Multicast Programming
from Radio World online

Saga Communications has found a twist to HD Radio multicasts. Ira Wilner, Saga Communications chief engineer of its Keene, N.H. cluster, tells me Saga is re-broadcasting its HD2 and HD3 streams on its FM translators. "Thus, we have a large base of listeners who do not have to go out and buy HD Radios, though we do encourage them to do so to listen directly to our digital signals. But in the meantime, while we wait for HD Radio to take off, we've found a way to make it work for us." One Saga FM PD who programmed a holiday music channel (WKNE-HD3 at 103.7 MHz in Keene, N.H.) says he's receiving positive feedback from businesses and individual listeners who have found it, according to Wilner. "It doesn't hurt that the translator is second-adjacent to the powerhouse FM station whose HD3 is originating the programming." Ira says the PD is cross-promoting the holiday music channel on the WKNE main and HD3 channels, and vice-versa — cross-promoting the multicast channels, suggesting that folks buy an HD Radio and use their holiday gift early if it's an HD Radio and enjoy the music now.

+++++
Thanks to Shawn Axelrod, Eric Bueneman, Deane McIntyre and Upper Midwest Broadcasting.com for updates.
If you hear any changes occur on your FM dial, share the news!
 +++++

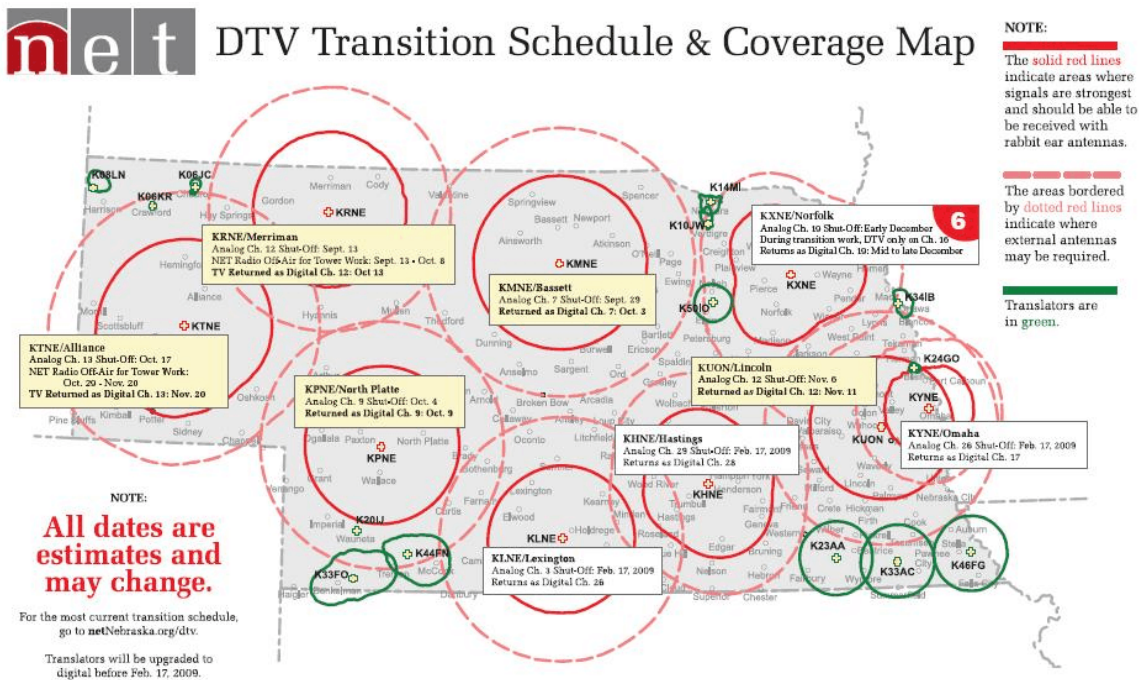


PHOTO NEWS



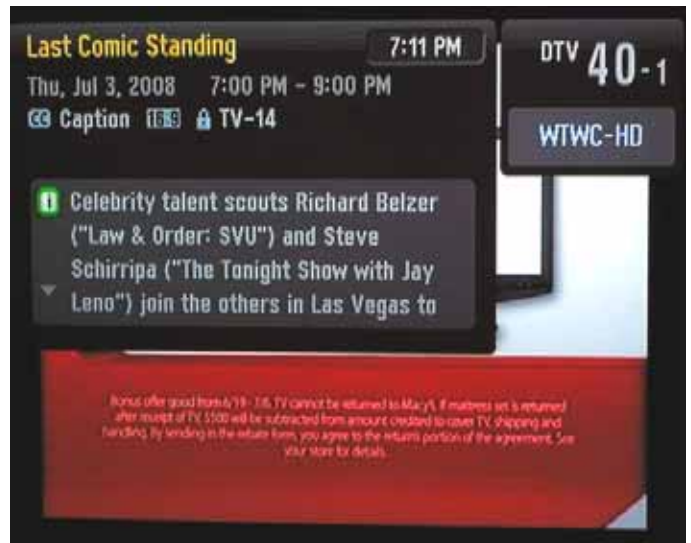
Jeff Kruszka, Editor
 1909 Lost Lake Pl.
 Pearland, TX 77581
 jkruszka@sbcglobal.net

January 2009

We start the New Year off with pics from Jeff Kadet of Macomb, IL:



KOTA-DT-2 Rapid City, SD
 689 mi Es seen 6/25/08
 @1904 CT



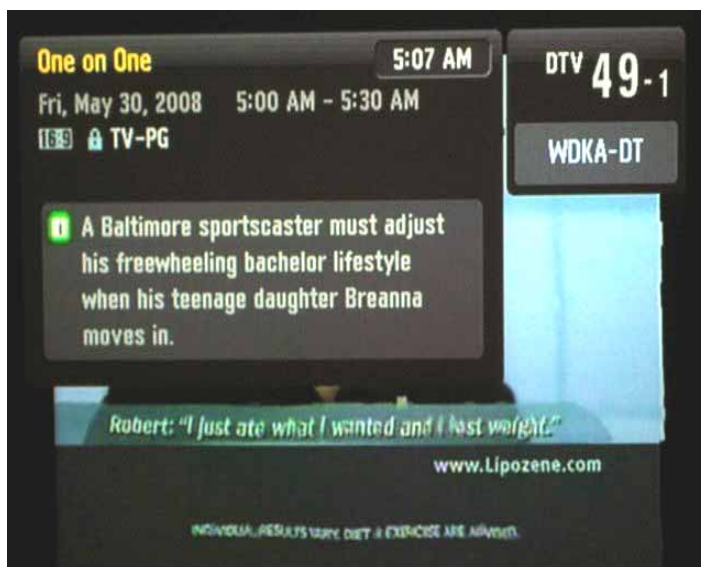
WTWC-DT-2 Tallahassee, FL
 773 mi Es seen 7/3/08
 @1911 CT



WMAZ-DT-4 Macon, GA
 663 mi Es seen 7/3/08
 @1948 CT



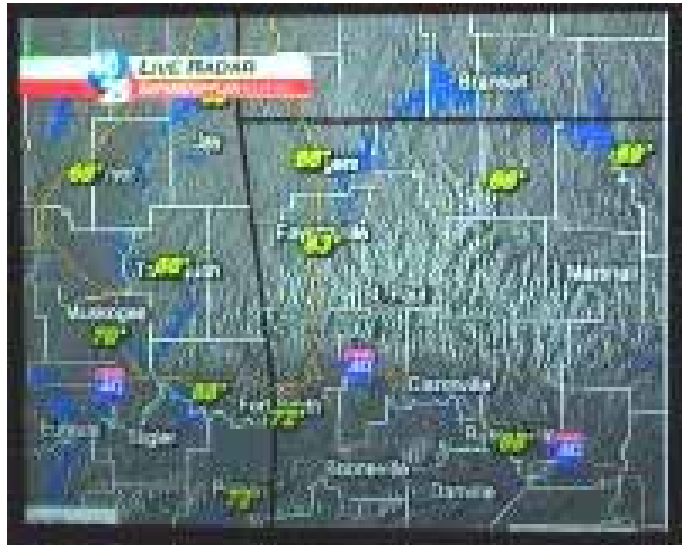
KNWA-DT-50 Springdale, AR
 355 mi Tr seen 6/15/08
 @0436 CT



WDKA-DT-50 Paducah, KY
 256 mi Tr seen 5/25/08
 @0507 CT



KCIT-DT-15 Amarillo, TX
703 mi Tr seen 8/1/08
@0223 CT



KHOG-DT-15 Ft. Smith, AR
431 mi Tr seen 6/15/08
@0452 CT



KOHA-LP-48 Omaha, NE
286 mi Tr seen 7/31/08
@0149 CT



CJMT-69 Toronto, ON
622 mi Tr seen 8/27/08



WILX-DT-57 Onondaga, MI
346 mi Tr seen 8/27/08



KSCW-DT-31 Wichita, KS
410 mi Tr seen 7/31/08
@1351 CT

73's, JEFF

WTFDA DX Contest

Douglas E. Smith
1389 Old Clarksville Pike
Pleasant View, TN
37146-8098
w9wi@w9wi.com
<http://www.w9wi.com>

December 2008 standings

Analog FM:

<u>DXer</u>	<u>Stations logged</u>	<u>Logging points</u>	<u>Grids</u>	<u>Total Score</u>
<i>Randolph Zerr Fort Walton Beach, Florida</i>	<i>1,223</i>	<i>4,506</i>	<i>297</i>	<i>1,338,282</i>
<i>Nick Langan Florence, New Jersey</i>	<i>1,351</i>	<i>5,159</i>	<i>238</i>	<i>1,227,842</i>
<i>Jeff Lehmann Hanson, Massachusetts</i>	<i>807</i>	<i>2,926</i>	<i>128</i>	<i>374,528</i>
<i>Steve Walko Philadelphia, Pennsylvania</i>	<i>363</i>	<i>1,305</i>	<i>135</i>	<i>176,175</i>
<i>Douglas Smith Pleasant View, Tennessee</i>	<i>295</i>	<i>1,022</i>	<i>94</i>	<i>96,068</i>
<i>John Cereghin Smyrna, Delaware</i>	<i>318</i>	<i>1,253</i>	<i>59</i>	<i>73,927</i>
<i>Victor Frank Woodside, California</i>	<i>102</i>	<i>466</i>	<i>8</i>	<i>3,728</i>

Digital ("HD") FM:

<u>DXer</u>	<u>Stations logged</u>	<u>Logging points</u>	<u>Grids</u>	<u>Total Score</u>
<i>Nick Langan Florence, New Jersey</i>	<i>162</i>	<i>482</i>	<i>43</i>	<i>20,726</i>
<i>Jeff Lehmann Hanson, Massachusetts</i>	<i>112</i>	<i>310</i>	<i>29</i>	<i>8,990</i>
<i>Victor Frank Woodside, California</i>	<i>27</i>	<i>86</i>	<i>3</i>	<i>258</i>
<i>Randolph Zerr Fort Walton Beach, Florida</i>	<i>5</i>	<i>10</i>	<i>1</i>	<i>10</i>
<i>Douglas Smith Pleasant View, Tennessee</i>	<i>4</i>	<i>8</i>	<i>1</i>	<i>8</i>

Analog TV:

<u>DXer</u>	<u>Stations logged</u>	<u>Logging points</u>	<u>Grids</u>	<u>Total Score</u>
<i>Danny Oglethorpe Shreveport, Louisiana</i>	<i>266</i>	<i>628</i>	<i>114</i>	<i>71,592</i>
<i>Robert Grant Temperance, Michigan</i>	<i>237</i>	<i>698</i>	<i>87</i>	<i>60,726</i>
<i>Roy Barstow Teaticket, Massachusetts</i>	<i>230</i>	<i>716</i>	<i>76</i>	<i>54,416</i>

(Contest stats continue on page 5)



(Photo courtesy of Michael Temme-Soifer)

Eastern U.S. TV DX

Featuring reports from AL, CT, DC, DE, FL, GA, IN, KY, MA, MD, ME, MI, NC, NH, NJ, NY, OH, PA, RI, SC, TN, VA, VT, and WV, along with the Canadian Provinces of NB, NF, NS, ON, PEI, and PQ.

Send reports by the 15th of each month to:

Nick Langan
1040 Riverview Drive
Florence, NJ 08518
E-mail: nickl@wtfd.org

The Editor's Note

A happy and healthy New Year full of DX to all of the ETVDX readers. Obviously this year figures to be far different than any other year when it comes to TV DX. We all wonder how the DTV switchover will affect the DXing hobby. The full answer to that question, especially from an e-skip perspective, probably won't come until May when the season gets into gear. For now though we hope for one last Es opening or two before the transition date arrives.

James N. Pizzi

100 County Road 28
Palmyra, NY 14522

Equipment: Delhi VIP-307SR VHF
Winegard PR-9032 UHF-Winegard PA 4975 amp
RCA 27" 1994 vintage
Zenith DTT900 DTV STB

10/8 Tr

1200-0700 WIVT-DT 4 NY "DTV-34-1
WIVT-DT"

0738 WBNG-DT 7 NY "DTV-12-1 WBNG-
DT"

0746 WQPX-DT 32 PA "DTV 64-1 ION"

10/15 Tr

0830 WBRE-DT 11 PA Locked "DTV-28-1
WBRE-DT"

0845 WBNG-DT 7 NY Locked

0850 WETM-DT 2 NY Signal – no lock

0908 WNEP-DT 49 PA "DTV-16-1 WNEP-
DT"

1032 WITF 33 PA PBS "Caillou"

1035 WLYH-DT 23 PA "DTV-15-1 WLYH-
DT"

1043 WETM 18 NY Strong

1045 WHTM 27 PA

1046 WTXF 29 PA

1048 WLYH 15 PA "CW15" @ 1100

1051 unID 43 10kz. CCI to WNYS

probably WPMT

11/2 Tr

0800-1000 WPXI 11 PA Steady signal

1030 WEAO 49 OH Into "This Old House"
o/WNYO Buffalo

1040 WSHH 36 NY Now with
Cornerstone (was HSN)

1052 WVPX 23 OH Very strong

1055 WFMJ-DT 20 OH Signal – no lock

1056 WKBN-DT 41 OH Locked

1057 WEAO-DT or WQLN-DT Signal – no
lock

11/23 Es

1948 WMAB 2 MS Tent., PBS
unID 3

1952 WCBI 4 MS Tent., Zero to WIVB

2005 WBRZ 2 LA Tent., Zero to WGRZ

12/9 Tr

0100-0800 WSPX-DT 15 Zenith decode

"DTV 56-3 Ion Life" No video – per Rick Lucas
running only 27 kw. – listed full power 79 kw.

Says Jim: "October/November a few
good trop days. Nov. Es was short lived
and weak. So far December a dud here –
no tropes, Es or Ms activity. Looking
forward to better days."

Robert Seybold

1865 W. Main Road
Silver Creek, NY 14136

Not much to report as I had no time to DX all
season until October and November and then
only occasionally. Equipment: Dualband TV,
Zenith digital converter and small Radio Shack
combo antenna (partially damaged on pole 15-
20 feet above ground). No amps or rotor. No
e-skip logged for first time since 1950 when
started DXing.

I do get super digital signals from all Buffalo
stations and some Toronto and Hamilton
stations also some Erie, PA at times. In late
October and November I did see good analog
and digital signals from Toledo, Cleveland,
Detroit, Fort Wayne, South Bend and a few
others. Also some more distant analog tropes in
November (Ohio, Michigan, Indiana and central
New York and tentative Chicago, Milwaukee).



Western U.S. TV DX

Featuring reports from AK, AR, AZ, CA, CO, HI, IA, ID, IL, LA, KS, MN, MO, MS, MT, ND, NE, NM, NV, OK, OR, SD, TX, UT, WA, WI, and WY, along with the Canadian Provinces of AB, BC, MB, SK, and YT.

Send reports by the 15th of each month to:

Nick Langan
 1040 Riverview Drive
 Florence, NJ 08518
 E-mail: nickl@wtfd.org

The Editor's Note

Happy New Year! Hopefully Santa brought all the DX gear you asked for. We're now under two months till the DTV transition date. As of this writing the winter E-Skip period has been quite inactive, but hopefully we all will get one last chance to see the familiar low VHF analogs that have been staples of DXing Summers for years upon years.

We have reports from Danny, Dennis, and Fritze inside this edition of WTVDX.

Danny Oglethorpe

P.O. Box 8025, Shreveport, LA 71148-8025
 Grid Square EM32
 E-mail: doglethorpe@yahoo.com

2008 WTFDA Contest Report # 17

Analog TV DX Logs

November 2008 Central Time

24 Es

2105 XEWO-2 JAL Guadalajara
 "TVT"

2115 XHG-4 JAL Guadalajara
 "GDL"

25 tropo

0805 Baton Rouge 19, 27

0855 New Orleans 26, 38

Es

1728 unID-2 Mexico "cdc" upper
 right.

26 tropo

0729 Austin, San Antonio

Es

2015 unIDs 2, 4, 5 Note # 1

2030 KPHO-5 AZ Phoenix

Note # 1 I think this was the tailend of an opening. We arrived back home at 2015. UNIDs were from Mexico and the U.S.

Digital TV DX Logs

November 2008 Central Time

26 tropo

0729 KNVA-DT-49 TX Austin

Dennis Park Smith

3605 Sam Remo Drive
 Santa Barbara, CA 93105-2523
 Tel: (805)687-7803

This report is for November 2008. There was still some southern-Calif coastal tropo in the below listing to San Diego/Tijuana up to 200 mi / 320 km, as the rainy/winter season hadn't really hit until late in the month. Observations were with TV rx's with indoor rabbit ears and bow-ties on 1st and 2nd floors.

Nov 1	Poor
Nov 2 – 7 aft	None (Nov 1-4 occas rain)
Nov 7 eve – 8 aft	Variably poor-fair
Nov 8 eve – 11 aft	None (cold wx front)
Nov 11 eve – 14 aft	Var. poor-fair
Nov 14 eve – 16	None (Nov 13-16 windy, dry, hot! See below*)
Nov 17	Very poor
Nov 18	Poor to fair (some cooling)
Nov 19 – 20	Var. fair- <u>good</u>
Nov 21 – 22 aft	Poor (more cooling)
Nov 22 eve	<u>Good</u>
Nov 23 morn	Poor
Nov 29 – 30	Fair

* 10 local LPTVS on Gibraltar Peak went off air Nov 13 due to *Montecito/Santa Barbara wildfire* of Nov 13-19 burning that peak: KZDF-LP 8, K15DB, KWHY-LP 22, K26FT, KSBT-LP 32, KVMM-CA 41, KTSB-LP 43, K49EK, KBAB-LP 51, all off and 9 of them not yet back on through Nov 30. The 10th LPTV there, K59CD, came back on apx Nov 16. Other local xmtrs elsewhere stayed on: La Mesa KSBB-CA 17; Broadcast Peak KEYT 3 /-DT 27, K28GY,

KPMR 38 /-DT21. 230 homes were destroyed. Our home is okay (Don Voegelé's place, too) as we weren't in the fire area.

Notable tropo catches with local LPTVs off air (one new, underlined):

<u>Nov 19-20 tr</u>		Miles
KFMB-TV	8 San Diego CA (CBS) (KZD-LP 8 off)	175 SE
KPBS	15 San Diego CA (PBS) (K15DB 15 off)	185 SE
<u>KBOP-CA</u>	43 San Diego CA (infomercials) (KTSB-LP 43 off)	185 SE
XHDTV	49 Tecate BN ("MyTV13" (K49EK 49 off)	200 SE
KUSI-TV	51 San Diego CA (indep) (KBAB-LP 51 off)	185 SE

Nov 22 Tr 2000 PST
XEWT-DT 32 Tijuana BN (Spanish indep)
200 SE (KSBT-LP 32 off)

XEWT-DT 32 is the first south-of-border DTV I've seen here on my IG HD TV and indoor 2-bay bow-tie on 2nd floor. I have seen it in S.B. with Accurian box and Don Voegelé's big dish antenna.

Best of DX to all Dennis

Fritze H. Prentice, Jr

3275 State Highway 114W

Star City, AR 71667

email: kc5kbv@yahoo.com

web: <http://tvdxseark.blogspot.com>

Antenna: UHF TV--Channel Master 4228
VHF TV/FM --unknown make 4
element log periodic
Preamp: Channel Master 7777 Titan
Rotor GC w/CM rotor control
TV's: Analog: 1984 Vintage RCA 12" B&W
manual tune ('click knobs') mainly for low band
VHF

Durabrand (Orion) 13" Color for UHF and
general VHF
Digital: Panasonic CT1030v 10" Color Monitor
(NTSC in/out) and Zenith DTT900 Converter
Box
PC Capture Card: WinTVGo (PC OS:
Windows XP)
VCR: Panasonic 4 head stereo (2001 vintage)
to archive analog TV
DVD Recorder: Panasonic DMR-ES10 to
archive DTV

Tropo Logs--All Times Central *New Logs

November 13th

10:45pm WMAB 2 State University MS
"Tavis Smiley" with MPB bug, LRC
10:43pm WCFT 33 Tuscaloosa AL "ABC
News 'Nightline'"
10:46pm WHDF-DT 14 Florence AL "Family

Guy"

11:02pm WFIQ-DT 22 Florence AL "BBC
World News"
11:07pm WBBJ-DT 43 Jackson TN
11:12pm WZTV 17 Nashville TN
"Entertainment Tonight"--snow free picture
11:13pm WLMT 30 Memphis TN "Andy
Griffith" weak, but coming in over KLRT-DT
(30) Little Rock
11:14pm WMC 5 Memphis TN "Tonight Show
With Jay Leno" very weak but over KETS-DT
(5) Little Rock
11:16pm WHDF 15 Florence AL "Cheaters"
(new analog logging)
11:20pm WNAB 58* Nashville TN "That 70's
Show" with 'CW58' bug in LRC
11:28pm WNAB-DT 23* Nashville TN //with
WNAB 58
11:30pm WTVF-DT 56* Nashville TN "The
Late Show With David Letterman" (CBS)
11:36pm WUSI-DT 19* Olney IL
11:46pm WNPX-DT 36* Cookeville TN

November 14th

6:30am WZTV-DT 15* Nashville TN with
morning newscast
6:30am WZTV 17 Nashville TN // WZTV-DT
Snow Free analog picture
6:42am WSMV-DT 10* Nashville TN (PSIP
only due to strong semi-local KTVE 10)
6:47am WCBI 4 Columbus MS local morning
news, very strong
6:48am WMAB 2 State University, MS strong
with MPB bug LRC
7:24am WNPT 8* Nashville TN "Curious
George"

November 17th

7:41am W42CY 42 Greenville MS (TBN
Relayer with "Joyce Meyer") KWBF 42 Little
Rock was off the air that morning.

E Skip Logs--All Times Central

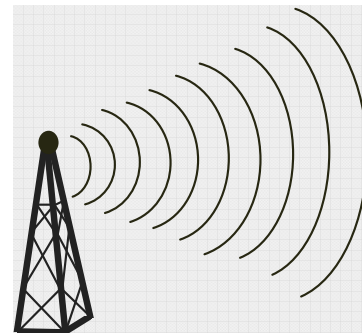
December 14th

8:56pm unid 3 CBC (Mountain Time zone)
with movie "The Polar Express"

Says Fritze: "Except for the November 13-14th opening, it's been a slow six weeks. First skip detected here this winter season, right before I compiled these logs for the Western TV DX Report. Even routine tropo scatter to nearby Memphis and Shreveport has been few and far between.

73, Fritze H. Prentice, Jr."

Northern FM DX



Keith McGinnis
 18 Newbridge St., Hingham, MA 02043
 longwave@comcast.net 781-875-1944

For Dxers in the following states: CT IA ID IL IN MA ME MI MN MT ND NE NH NJ NY OH OR
 PA RI SD VT WA WI WY and all of Canada. Please submit by the 10th of each month.

EDITOR'S NOTE PLEASE SUBMIT ALL REPORTS IN THE FORMAT SHOWN BELOW.

Time(tab)Calls(tab)Freq(tab)City(tab)State(tab)details

Formats can either be plain text, Word or Excel as long as format is adhered to. Any submissions in other formats may not be used at editor's discretion. All Submissions must be in to me by the 10th of each month.

**Nick Langan 1040 Riverview Drive Florence, NJ 08518
 Yamaha TX-900, Sangean HDT-1, Sony XDR-F1HD, APS-13 Antenna**

September 2 Tr

0336	CKNX	101.7	Wingham	ON	"101.7 The One"	428
0340	WCKR	92.1	Hornell	NY	Calls	213
0352	WCIK	103.1	Bath	NY	//FLN webstream	206
0400	WSQA	88.7	Hornell	NY	Legal ID	209
0406	WLKK	107.7	Wthrsfld. Twp.	NY	"The Lake"	250
0412	WLOF	101.7	Attica	NY	//webstream	263
0423	WHLM	103.5	Berwick	PA	Calls	103
0430	WLGL	92.3	Riverside	PA	"Big Country"	116
0442	WQWK	103.1	State College	PA	"Quick Rock 103-1"	162
0451	WWOT	100.1	Altoona	PA	"Hot 92 & Hot 100"	195
0500	WPGM	96.7	Danville	PA	Legal ID	110
0506	WZXR	99.3	S. Williamsport	PA	Calls	136
0514	WILQ	105.1	Williamsport	PA	Calls	136
0521	WQBR	99.9	Avis	PA	"The Bear"	155
0526	WJSA	96.3	Jersey Shore	PA	Religious	156

September 4 Tr

2037	WMVY	92.7	Tisbury	MA	"MVY"	237
2047	WCOD	106.1	Hyannis	MA	"COD"	266
2312	WPXC	102.9	Hyannis	MA	"Pixy 103"	256

September 5 Tr

0132	WRZE	96.3	Dennis	MA	"The Rose"	266
0154	WKPE	103.9	South Yarmouth	MA	"Cape 104"	264
0339	WBBB	96.1	Raleigh	NC	"96 Rock"	373
0348	WDCG	105.1	Durham	NC	"G-105"	375
0423	WGTX	102.3	Truro	MA	"Dunes 102"	278
0533	WSLC	94.9	Roanoke	VA	"Star Country"	352
0546	WVHL	92.9	Farmville	VA	"Kickin' Country"	279

September 11 Tr

0545	WJIV	101.9	Cherry Valley	NY	Calls	185
0551	WYXL	97.3	Ithaca	NY	//webstream	182
0600	WPTR	96.7	Clifton Park	NY	"Pulse 96-7"	197

0612	WKKF	102.3	Ballston Spa	NY	"102-3 Kiss FM"	197
0616	WDLA	92.1	Walton	NY	800# mtchd. sat feed	140
0621	WENI	97.7	Big Flats	NY	"Magic 92-7 97-7"	183

September 19-20 Tr

2236	CJBC-4	99.3	London	ON	FF	392
0049	CBBL	100.5	London	ON	//webstream	392
0105	WTGV	97.7	Sandusky	MI	Legal ID	472
0136	CJEZ	97.3	Toronto	ON	//webstream	339
0201	CJBX	92.7	London	ON	"BX-93"	379
0209	CILQ	107.1	Toronto	ON	//webstream	339
0223	CFPL	95.9	London	ON	"FM 96"	387
0231	CBCL	93.5	London	ON	CBC	392
0304	CFHK	103.1	St. Thomas	ON	"103-1 Fresh FM"	379
0311	CIDC	103.5	Orangeville	ON	"Z 103 dot 5"	372
0322	CHTZ	97.7	St. Catharines	ON	"97-7 Htz FM"	309
0331	CKOT	101.3	Tillsonburg	ON	Area weather	371
0344	CIKZ	106.7	Kitchener	ON	"Kix106online.com"	377
0406	CING	95.3	Hamilton	ON	"Country 95-3"	334
1544	CBOX	102.5	Ottawa	ON	//webstream	376
1548	CIMF	94.9	Hull	QC	"Rock Detente"	376
1550	CBOF	90.7	Ottawa	ON	FF	376
1552	CBO	91.5	Ottawa	ON	//webstream	376
1601	CIHT	89.9	Ottawa	ON	//webstream	376
2241	WEND	106.5	Salisbury	NC	"106-5 The End"	446
2309	WKKT	96.9	Statesville	NC	"96-9 The Kat"	455
2331	WIBT	96.1	Shelby	NC	"961thebeat.com"	478

September 21 Tr

0247	WQDR	94.7	Raleigh	NC	"QDR"	368
0300	WUNC	91.5	Chapel Hill	NC	Legal ID	378
0338	WKSL	93.9	Cary	NC	"93-9 Kiss FM"	375
0343	WSMW	98.7	Greensboro	NC	"98-7 Simon"	399
0351	WPAW	93.1	Winston-Salem	NC	"93-1 The Wolf"	385
0411	WQMG	97.1	Greensboro	NC	"97.1 QMG"	399
0420	WKRR	92.3	Asheboron	NC	"Rock 92"	403
0428	WHPE	95.5	High Point	NC	BBN	406
0433	WVBZ	100.3	High Point	NC	"The Buzzard", HD	396
0438	WTQR	104.1	Winston-Salem	NC	//yes.com	398
0456	WLUS	98.3	Clarksville	VA	"US 98.3"	323
0620	WKZL	107.5	Winston-Salem	NC	//yes.com	385
1011	WWXM	97.7	Garden City	SC	"Mix 97.7", lcl. ads	508
1055	WRCQ	103.5	Dunn	NC	"Rock 103"	408
1057	WWNF	102.3	Goldsboro	NC	"Y-102.9"	374
1105	WHLZ	100.5	Marion	SC	//webstream	475
1113	WYMY	96.9	Goldsboro	NC	SS	373
1131	WRAL	101.5	Raleigh	NC	HD	368
1148	WEGX	92.9	Dillon	SC	"Eagle 92.9"	469
1216	WSOC	103.7	Charlotte	NC	Calls	465
2211	WQDK	99.3	Gatesville	NC	"Q-Country 99.3"	285
2356	WTCB	106.7	Orangeburg	SC	"B-106.7 WTCB"	553

September 22 Tr

1208	WUGN	99.7	Midland	MI	"Family Life Radio"	554
2031	WVNW	96.7	Burnham	PA	"96.7 Star Country"	156

September 23 Tr

0243	WLKH	97.7	Somerset	PA	//WKVP	228
0252	WRKZ	99.7	Columbus	OH	"99-7 The Rock"	435
0256	WWLW	106.5	Clarksburg	WV	Legal ID	307
0318	WYJK	100.5	Bellaire	OH	"100.5 Jack FM"	316
0400	WNJA	89.7	Jamestown	NY	Legal ID	260
0458	WRRN	92.3	Warren	PA	Calls	256
0507	WRTS	103.7	Erie	PA	"Star 104"	301

Jim Pizzi 100 County Road 28 Palmyra, NY 14522-9440
Equip.-Sony XRD-F1HD/Sangean HDT-1X APS-13 FM antenna approx 18'AG
@=NEW

10-14-08 Trop

1139 WLKJ 105.7 Portage PA strong signal
 1215@ WDAS 105.3 Philly PA Calls, Barrack ad

10-24-08 Trop

1023@ WGKR 105.3 Grand Gorge NY g talk-"Sound of Life" 60watts-very strong at times- no ID at TOH

10-27-08 Trop

1029@ WQXA 105.7 York PA "105-7 The X" plus 1057.com ads & promos
 1057@ W283BB 104.5 Fairport NY ID@ 1100 "WCIY 88.9"

11-1-08 Trop

1022 WONE 97.5 Akron OH RDS
 1037@ WAKZ 95.9 Sharpsville PA "95.9 Kiss FM"
 1045 WVNO 106.1 Mansfield OH "WVNO.com", "Mix 106.1"
 1049@ WYHT 105.3 Mansfield OH Ohio weather +"Y105"
 1105@ WCRF 103.3 Cleveland OH Christian rock over WEDG Buffalo

11-5-08Trop/Ms???

1601 Unid 106.1 Ant. aimed SW ?? "Wave 106"

11-7-08 Trop

1513@ WSUL 98.3 Monticello NY "98.3-97.5 SUL" Promo ment. Sullivan county
 1519@ WDNB 102.1 Jeffersonville NY ad "M&M Auto Group" +"Thunder 102"
 1521@ WAVR 102.1 Waverly PA k, "Chioce 102"

11-8-08 Trop

1219 Unid 104.3 Ant. aimed SE ?? Female anncr...New York wx conditions...
 1233 Unid 104.3 " " " ?? "Star 104" oldies

11-12-08 Trop

1400@ W265BX 100.9 Nunda NY // to WCIY 88.9 FLN

11-14-08 Ms

1254 Unid 103.3 ?? ?? Atlanta mentions--lasted about 45 seconds

11-16-08 Trop

1252@ WBCN 104.1 Boston MA Calls mentioned several times--New state

12-14-08 Ms

1505 Unid 98.3 ?? ?? "...Richard...ABC News..."

Slim pickens here for the last of the year. December Ms produced no id's and no tropes. I'll be keeping an ear and eye open January. Hope all had a Merry Christmas and a great New Year to come--Jim Pizzi

**THE WORLDWIDE TV-FM DX ASSOCIATION
THE VHF- UHF DIGEST
P.O. Box 501, SOMERSVILLE, CT 06072**

Opinions expressed in this publication are those of the individual contributor and do not necessarily reflect the views of the publisher or board of directors. We reserve the right to edit material to meet publishing standards. Unless previously agreed upon in writing, all material submitted for publication in the VHF-UHF Digest becomes the property of the WTFDA. Reproduction of material from the VHF-UHF Digest without permission of the WTFDA is prohibited. Individuals and other organizations are granted such permission providing proper credits is given to the source.



Established 1967



FIRST CLASS MAIL

NOW! JOIN AND RENEW USING PAYPAL!

Now you can pay for your dues by check, money order and ONLINE with Paypal! If you have a Paypal account you'll be done in a matter of seconds! Pay at our Paypal webpage at <http://fmdx.usciargo.com/join.html> or send your dues to mbugaj@snet.net