

VHF-UHF DIGEST

The Official Publication of the Worldwide TV-FM DX Association

JUNE 2010

The Magazine for TV and FM DXers



Ch4 Santa Marta Colombia(Caracol)



Ch2 Caracas Venezuela(Tves)



May 3rd Double Hop E skip!
Bill Hepburn Sees
Colombia and Venezuela in Color!

Visit Us At www.wtfda.org

Cover Photos by Bill Hepburn

THE WORLDWIDE TV-FM DX ASSOCIATION

Serving the UHF-VHF Enthusiast

THE VHF-UHF DIGEST IS THE OFFICIAL PUBLICATION OF THE WORLDWIDE TV-FM DX ASSOCIATION DEDICATED TO THE OBSERVATION AND STUDY OF THE PROPAGATION OF LONG DISTANCE TELEVISION AND FM BROADCASTING SIGNALS AT VHF AND UHF. WTFDA IS GOVERNED BY A BOARD OF DIRECTORS: DOUG SMITH, GREG CONIGLIO, BRUCE HALL, KEITH MCGINNIS AND MIKE BUGAJ.



Editor and publisher: **Mike Bugaj**

Treasurer: **Keith McGinnis** wtfda.org Webmaster: **Tim McVey**

wtfda.info Site Administrator: **Chris Cervantez**

Editorial Staff: **Jeff Kruszka, Keith McGinnis,**

Fred Nordquist, Nick Langan, Doug Smith,

Peter Baskind, Bill Hale and John Zondlo,

Our website: www.wtfda.org; Our forums: www.wtfda.info

JUNE 2010



Finally! For those of you online with an email address, we now offer a quick, convenient and secure way to join or renew your membership in the WTFDA. Just logon to Paypal and send your dues to sales@wtfda.org.

Use the address above to either join the WTFDA or renew your membership in North America's only TV and DX organization.

Membership with Paper VUD: \$25/year

Membership with eVUD (.pdf): \$11/year

Over 110 WTFDA members renew their club membership with Paypal. Why not join them?

CONTENTS

Page Two	2
Mailbox	3
TV News...Doug Smith	5
FM News...Bill Hale	12
FCC Facilities Changes	16
Photo News...Jeff Kruszka	20
Northern FM DX...Keith McGinnis	22
6 meters...Peter Baskind	33
Eastern TV DX...Nick Langan	34
Western TV DX...Nick Langan	35
Convention Info	37
TV DX in the Far North	38

There's no Southern FM column this month. It will return next month if DX does.

FIND US FAST!

WTFDA BOARD OF DIRECTORS

Mike Bugaj, use the WTFDA Mailing address listed below
Doug Smith, 1385 Old Clarksville Pike, Pleasant View, TN 37146-8098
Greg Coniglio, 11825 Genesee St., Alden, NY 14004
D.Bruce Hall, 5 Stirton Ave., Brantford, ON N3T1E2 Canada
Keith McGinnis, 18 Newbridge St., Hingham, MA 02043

mikeb@wtfda.org
dougs@wtfda.org
grecg@wtfda.org
dbruce@wtfda.org
nfmdx@wtfda.org

THE MAILBOX and all general club correspondence:

Mike Bugaj at WTFDA, PO Box 501, Somersville, CT 06072

mikeb@wtfda.org

TV NEWS

Doug Smith, 1389 Old Clarksville Pike, Pleasant View, TN 37146-8098

dougs@wtfda.org

FM NEWS

Bill Hale, 6124 Roaring Springs Drive, N. Richland Hills, TX 76180

fmnews@wtfda.org

PHOTO NEWS

Jeff Kruszka, 1909 Lost Lake Pl., Pearland, TX 77581

jeffk@wtfda.org

EASTERN AND WESTERN TV DX

Nick Langan, 1040 Riverview Dr., Florence, NJ 08516

nickl@wtfda.org

SOUTHERN FM

John Zondlo, 4009 Driftwood Cir., Yukon, OK 73099

southernfmdx@wtfda.org

NORTHERN FM

Keith McGinnis, 18 Newbridge St., Hingham, MA 02043

nfmdx@wtfda.org

TV and FM STATISTICS

Fred Nordquist, 147 Travis Hill Road, Moncks Corner, SC

stats@wtfda.org

6 METER/2 METER

Peter Baskind, 3225 Forest Hill-Irene Rd, Germantown, TN 38138

ag4ki@yahoo.net

WEBSITE Tim McVey Webmaster <http://www.wtfda.org>

webmaster@wtfda.org



The Mailbox

P.O. Box 501, Somersville, CT USA 06072
MIKE BUGAJ MBUGAJ@SNET.NET

SKIP SEASON!

Skip season seems to have started a little early this year for a lot of people. There was a big Es opening for eastern DXers on May 3rd and a major opening to NS/NF for northeastern FM Dxers on May 14th. Skip made it to FM for midwestern DXers on the 18th. And this is just the start of it!

Colombia and Venezuela both made it into Ontario on the 3rd and the proof is in the screengrabs on this month's cover taken by Bill Hepburn. These are simply amazing!

MEMBERZ AND MORE!

Let's welcome in three new WTFDA members this month. **Michael Ehrhardt**(NY) and **Steve West**(VA) are both old timers who have been in the club in ages past. Mike knows Bill Thompson and Dave Nieman. I know Steve from swapping tapes with him decades ago and I think he did a VUD article long ago regarding modifying a 7 foot dish and I think it is still in the archives. And lastly we welcome **Jonathan Hamilton**. Jon is in St. Catherines, ON. Welcome to all three of you!

Renewals were received during the period of 4/24 to 5/10 from Timothy Clampit (IL), Steve Naetzker (AZ), Eric Sundius (AZ), Gray Fulk (NC), Larry Kenney (CA), Peter Baskind (TN), Robert Delaney (IL), Neil Griffin (SC), Dan Oetting (DE), Mike Glass (IN), David Sinclair (BC), Michael Beu (TX), Tim Alderman (CA), Fred Nordquist (SC), Jacob Norlund (MN), Nick Langan (NJ) and Jim Gill (FL). Here's a big thank you to all of you for supporting the club. Without you, there isn't any.

HEY I'VE BEEN CANCELLED

If you bothered to look at page two you might notice that the Paypal section has changed a little. We changed the email address you use to renew your memberships because Paypal was automatically billing people because the Paypal account was set up to take subscriptions. That was a mistake and the automatic billing was creating problems and confusion. So, we've taken the subscription button off the WTFDA website and we want you to use the email address (sales@wtfda.org) that's on page two instead. Doing this makes our Paypal account work like a "normal" account.

As a result of this change, some of you will be receiving emails from Paypal that tell you that your subscription has been canceled. If you get one of those emails, ignore it. It's not true. Over the next few months there are around 50 of you who will find one in your inbox. Don't panic, just delete it. We have to get your email address out of the "recurring payment" list and when we do that, a cancellation email gets generated and we can't prevent it.

FM ATLAS #21 IS NOW AVAILABLE!

FM Atlas-21 has been printed and is ready to mail out. Price will be \$19.95 plus shipping, but **Bruce Elving** hasn't figured out what shipping will be, so people ordering from this notice can buy the 288-pages book for \$20 total. It is totally up to date, including computerized maps and directories showing FM stations, translators and low power FM stations of North America, including who is stereo and who suffers from the disease of being monophonic. Has HD, RDS and SCS information for each station. We have 900 of the books to sell; the printer did not quite supply all of the 1000 books we ordered, but they are ready now for the skip DX season! Payment by major credit cards, PayPal, at 1-800-605-2219, or check or money order to "FM Atlas," PO Box 336, Esko MN 55733-0336.

A WELL-DESERVED PROMOTION

WTFDA's Fred Vobbe has been promoted to Corporate Director of Engineering Block Communications of Toledo.

Chief Executive Officer of BCI, Allan Block, said, "Fred has earned this opportunity through hard work, imagination, resourcefulness and loyalty. He has seen our station(s) through transitions to stereo, digital, HD, and most recently our purchase of three other Lima(OH) stations." Way to go, Fred!

POWER MATTERS!

Darn right it does! This from **Cal Glover** down in NC: "I think that WSKY-DT's recent changes might show the way for the FCC to go regarding power allocations for high-band VHF DTV stations. Up until the first week in May, WSKY was operating on (real) Channel 4 at something like 12 kW. Here in Kill Devil Hills,

some 48 miles southeast of the tower, their signal was a very sometimes thing. In fact, it wasn't there most of the time. And when there was a signal, there was lots of pixilation and lock-up. But around May 10, the station moved to (real) Channel 9 and upped their power to around 70 kW. Now they provide a very reliable and stable picture.

Other high-band VHF DTV stations have upped their power, but I don't think that they've gone up to this power level. Maybe the magic number for real VHF replacement footprint coverage with ATSC hovers around 100 kW. With such power, these stations would be able to power through the curtain of electrical interference that tends to sap ATSC on VHF. I'm not sure, however, what kind of co-channel interference issues might arise with such power

levels or how they would manifest themselves on the screen.

With its new power, I would think that WSKY-DT might become a DX target on the east coast and beyond.

HAPPY ANNIVERSARY!

Sources tell us that our own **Steve (McVie) Solomon** out on the Cape celebrated his 25th year of Radio Broadcasting on May 19th. Happy Anniversary, Steve! The first time I met Steve was at his apartment in East Hartford one evening after work when I showed him how to change filters in his receiver. Since then he's become extremely dangerous with a soldering iron.

CHANNEL 2 AND 3 E-SKIP MAPS

Courtesy of Bill Hepburn and offered as pdf files on the tvfmdx email list. You might remember these maps from the old 70s and 80s WTFDA TV Station Guides. Good things never go obsolete.





TV News

Douglas E. Smith
1389 Old Clarksville Pike
Pleasant View, TN
37146-8098
w9wi@w9wi.com
<http://www.w9wi.com>

June 2010

Abbreviations:

AF	Applied For (a new station)	NW	New station on the air
Aux	Auxiliary (backup) transmitter	PA	Proposed Amendment
CC	Callsign change	PC	Power (and/or tower height) change on the air
CL	City-of-license change	PG	Power change granted
DC	Converted to DTV	PR	Power change requested
DCC	Digital Companion Channel	RA	Returns to the air
NS DCC	Granted flash-cut to DTV	QC	Channel (frequency) change on the air
DE	License/permit deleted	QG	Channel change granted
DR	Requests flash-cut to DTV	QR	Channel change requested
FC	Programming (format) change	RE	Reinstated (previously-dismissed app.)
FTP	Failure to Prosecute	ROA	Request of Applicant
GA	Granted amendment (to table of channel allotments)	SI	Off the air (silent)
LC	License to Cover	STA	Special Temporary Authority
MX	Mutually Exclusive	XC	Transmitter site changed
NDA	Non-directional antenna	XG	Transmitter site change granted
NS	Permit granted for new station	XR	Transmitter site change requested

News:

(full-power analog stations in **bold face**; LPTV and translators in regular type; full-power analog stations in ***bold italics***; low-power analog stations in *regular italics*)

* indicates this DTV facility replaces an analog facility on the same channel.



CANADA:

Alberta:

Calgary	29	CFCN-DT	AF 220kw/ 206m
Edmonton	17	CKEM-DT	AF 107kw/ 294m, 53-31-49/ 113-46-50

Ontario:

Ottawa	17	CITY-DT-3	AF 5.1kw/ 215m, 45-13-01/ 75-33-50.
--------	----	-----------	---

Quebec:

Rouyn-Noranda	9	CKRN-DT	AF 19kw/ 220m
Val-d'Or	7	CJDG-DT	AF 21.5kw/ 201m



Puerto Rico:

Arecibo	36	WIMN-CD	QG from ch. 20, 10.4kw
Bayamon	4	W04DK-D	DG from W44CK, 300w, 18-16-48/ 65-51-13



U.S. Virgin Islands:

Christiansted	10	WEYA-LD	DG from ch. 52, 300w, 17-44-48/ 64-50-05
St. Thomas	36	W36DX-D	DG from W29CB, 3.67kw



USA:

Alabama:

Alexander City	31	WAXC-LP	DR 15kw, 32-56-47/ 85-56-33
Mobile	20	WMPV-TV	PC>700kw

Alaska:

<i>Fairbanks</i>	58	<i>NEW-lptv</i>	<i>AF dismissed (TBN)</i>
------------------	----	-----------------	---------------------------

Arizona:

Bullhead City	2, 9,	K02HR,	DR 2w
	11	K09KG, K11LX	
Lake Havasu City	36	K36DU	DR 1kw, 34-36-04/ 114-22-13
Le Chee	33	K33IY-D	PR>100w
Phoenix	31	KPHE-LD	QR from ch. 16
Phoenix	38	K38IZ-D	PR>15kw
Phoenix	46	KDTP-LD	NW 15kw, 33-20-01/ 112-03-45 (DCC for analog 58)
Prescott	45	KPVY-LD	PR>8kw, 33-20-04/ 112-03-33
Yuma	13	KSWT	NW 50kw/ 480m

Arkansas:

Little Rock	14 KHUG-LP	DR 15kw, 34-46-21/ 92-21-29	12 K08HN, K02HI	
California: Avalon	47 KAZA-TV	Adds Spanish religion on 47.2 and a simulcast of KTTV-11 branded 11.3	Aspen 38 NEW-lptv	AF 3kw, 39-13-33/ 106-50-09*; CL from Cedar City, Utah
Eureka	19 K68GT	DC from ch. 68, 1.2kw, 40-44-32/ 124-12-00	Boulder 48 K11QJ	DR from ch. 11, 9.3kw, 39-57-38/ 105-12-44
Hanford	23 KHMM-CD	QG from ch. 14, 15kw, 37-04-19/ 119-25-49	Colorado Springs 30 K30AA	DC 3kw
Litchfield	48, K48DI-D, 50 K50HJ-D	DG 680w, 40-07-01/ 120-19-00	Cortez 7, 9, K07UY, 11 K09DM, K11LP	DR 300w; DG
Los Angeles	3 KVTU-LP	DR 250w, 34-11-14/ 117-42-01 dismissed	Cortez 25 K56JI-D	QR from ch. 56, 100w
Los Angeles	5 KHTV-LP	QR from ch. 48, 500w, 34-13-35/ 118-03-58 dismissed	Crystal 41 K56AD	DC 640w
Los Angeles	10 KVTU-LP	DR 210w, 33-50-59/ 117-39-11	Denver 6 KLPT-LP	XR 39-54-48/ 105-17-33; QR from zero offset to none
Los Angeles	11 KTTV	PR<903m	Denver 7 KMGH-TV	PR>54kw, amendment from 48kw; PG
Los Angeles	44 KHTV-LP	DR from ch. 48, 880w, 34-12-48/ 118-03-41 dismissed	Dove Creek 15, K15GU-D, 17, K17GE-D, 19, K19GB-D, 21, K21GT-D, 23, K23GF-D, 30, K30DC-D, 32, K32EY-D, 34 K34IA-D	DG 350w, 37-45-37/ 108-54-39
Merced	49 KMPH-LD	PR>3.8kw, 37-31-59/ 120-01-33; PG	Gateview 2 K02IK-D	DG 60w, 38-15-43/ 107-15-01
Monterey	46 KMCE-LD	DG from ch. 43, 15kw	Glenwood 42 K42EV-D	DG 575w
Moreno Valley	40 KRMV-LD	DG from ch. 45, 40w, 33-57-42/ 117-16-47	Grand Junction 18 KRMJ	PG<21kw; PC
Ontario	29 KFTR-DT	PR>745kw	Grand Junction 20 KKHD-LD	DG 10kw
Oxnard	24 KBEH	FC: 63.2 now parallel to 63.1; 63.3 new w/Mexicanal; 63.4 new w/Spanish religion.	Grand Junction 36 NEW-lptv	AF 5.3kw, 38-52-39/ 108-13-36*; CL from Logan, Utah
Palm Springs	26 KCWQ-LD	PR>6.5kw	Las Animas 23, K23KN-D, 25, K25LE-D, 29 K29JL-D	QG from K63AF, K65AJ, K69AN, 250w
Palm Springs	36 KVES-LD	DG from ch. 28, 15kw	<i>Pueblo</i> 34 KTLP-LP	PC<1.2kw, 38-22-21/ 104-33-38; from no offset to zero
Redding	10 KMCA-LP	PR>105w, 40-36-40/ 122-22-51	Rifle 34 K34LC-D	DG from K57CR, 1.91kw
Redding	40 K40HE	DC 15kw, 40-20-41/ 121-56-48	Connecticut: Bridgeport 49 WEDW	QC from 52, 170kw/220m
<i>Redding</i>	<i>52 K52JT</i>	<i>NW 150kw, 40-39-18/ 122-31-17</i>	Delaware: Seaford 5 NEW	GA
Riverside	25 KBLM-LD	DG 2kw	Wilmington 49 W40AZ	DR from ch. 40, 5kw, 39-40-45/ 75-50-44
Riverside	35 KRCA	FC to Estrella TV; also, showing "VIDA" on 62.3 but only a test pattern.	Florida: Brownsville 39 W57DU-D	QR from ch. 57, 10kw, 25-59-34/ 80-10-27
Sacramento	49 KSAO-LP	DC 10.3kw	Fort Myers 31 WGCU	PR>422kw/ 292m
San Diego	39 KZSD-LD	DG from ch. 41, 15kw, 32-41-46/ 116-56-08	Fort Walton Beach 49 WAWD	NW 32kw/ 61m, 30-27-14/ 86-51-59
San Francisco	28 KFTL-CA	DC 15kw	Key West 49 WKIZ-LD	DG 125w
San Luis Obispo	16 K16FC	DC 15kw	Maxville 33 WUJF-LD	DG 15kw
Santa Barbara	28 K28GY	DC 2.6kw	Miami 10 WPLG	PR>127.7kw
Santa Barbara	50 KBAB-LD	Dead air since Feb. 4 th .	Miami 41 WJAN-CA	DR 15kw, 25-32-24/ 80-28-07; DG
Susanville	17, K17HE-D, 19, K19GA-D, 31, K31IE-D, 36, K36HH-, 38, K38IU-D, 42, K42GV-D, 46 K46HL-D	DG 360w (chs. 17-38) /340w (chs. 42, 46)	Miami 48 WFUN-LD	fined \$4,000 for operating at 41kw ERP instead of the licensed 15kw.
Vallejo	34 KFSF-DT	PG>370kw/ 498m; PC	Ocala 42 W29AB	DC 517w
Colorado: Ashcroft	19 K19FH	DC 45w	Sebring 51 W51DY-D	DG 2kw
Aspen	4, 6, K04HH, 8, K06HU,	DC 6w		

Tallahassee	49	W49DL-D	DG from W35BN, 15kw
West Palm Beach	13	WPEC	PC>90kw/ 309m
Georgia:			
Athens	31	WSB - 0320AFR	NW 9kw, 33-55-51/ 83-47-00; DRT for ch. 39 Atlanta
Atlanta	28	WTBS-LD	DG from ch. 26, 15kw, 33-48-26/ 84-20-22
Atlanta	50	WANN-LD	DG from ch. 32, 9kw
Augusta	23	WAAU-LP	DR from ch. 18, 15kw, 33-28-33/ 82-00-38
<i>Columbus</i>	<i>38</i>	<i>WANX-LP</i>	<i>QG from ch. 19, 150kw</i>
Warner Robins	38	W38EJ-D	PR 15kw, 32-45-51/ 83-33-32; PG
Hawaii:			
Honolulu	46	KHLU-CD	DG 15kw
Idaho:			
Holbrook	43, 47, 49	K43MF-D, K47MH- K49LB-D	NW 400w, 42-08-19/ 112-37-37
Leadore	11	K11BD	DR
Lemhi	9	K09SD	DR 25w
Lewiston	17	K17JR-D	DG from K15CH, 1kw
Nampa	42	K42JD-D	NS 1kw, 43-37-51/ 116-32-55
Payette	35	K35JU-CD	DG from K17ED, 9.62kw
Pocatello	38	NEW-lptv	AF 15kw, 42-51-58/ 112-30-48*; CL from Wendover, Utah
Preston	21	K21HH	DC 1kw
Salmon	8	K07PV	DR from ch. 7, 18w
Salmon	11	K11TY	DR 18w
Salmon	30	K30BU	DR 10w
Salmon	34	K34CB	DR 70w
Salmon	40, 42, 44	K59AV, K65BG, K69CA	QR from chs. 59, 65, 69, 110w
Sandpoint	30	K16EN	DR from ch. 30, 330w
Tendoy	51	K55AI	DR from ch. 55, 120w
Twin Falls	48	NEW-lptv	AF 15kw, 42-43-46/ 114-25-15*; CL from Logan, Utah
Illinois:			
Champaign	16	W39BH	DR from ch. 39, 13kw
Chicago	49	WOCH-CD	PG>15kw
Rochelle	8	WMKB-LD	XR 41-53-56/ 87-37-23 (John Hancock Center, Chicago)
Indiana:			
Jeffersonville	32	WJYL-CD	QG from ch. 16
Kansas:			
Topeka	44	WIBW - 1208AAW	NW 15kw, 39-00-22/ 96-02-57; DRT for ch. 13 on same tower
Kentucky:			
Corbin	48	WVTN-LP	DR 5kw
Louisville	50	W50CI	DC 15kw
Louisiana:			
Shreveport	47	K47HO	DR 15kw, 32-29-36/ 93-45-55

Maine:			
Bangor	13	WABI-TV	QG from 19, 12kw
Portland	26	WMTW - 0423ABV	NW 6.2kw, 43-39-26/ 70-15-38; DRT for ch. 8 at Poland Spring DR from ch. 4, 97w
St. Francis	5	W04AY	
Maryland:			
Baltimore	11	WBAL-TV	PR>26.6kw
Ocean City	41	W41DQ-D	DG from W65EF, 15kw
Massachusetts:			
Springfield	21	WSHM-LD	DG from ch. 67, 6kw, 42-07-11/ 72-24-39
Michigan:			
Detroit	18	WDWO-CA	DR 15kw
Flint	12	WJRT-TV	QC from 36, 30kw/286m
MICH Flint	28	WCMZ-TV	CC from WFUM
Minnesota:			
Alexandria	27	K27KN-D	DG from K62AU, 1.1kw
Blue Earth	16	K16IM-D	DG from K70DR, 730w
<i>Grand Rapids</i>	<i>23</i>	<i>NEW-lptv</i>	<i>AF dismissed (TBN)</i>
Jackson	40	K18HP	DC 2.1kw
Jackson	43	K43ML-D	QG from K49JU-D, 2.1kw
Redwood Falls	28, 33	K66BB, K62AA	QR from chs. 66, 62, 900w
<i>Redwood Falls</i>	<i>36</i>	<i>K68BJ</i>	<i>QR from ch. 68, 900w</i>
<i>St. James</i>	<i>24, 35, 40, 42, 46, 48</i>	<i>K24CP, K35DC, K40BU, K42AV, K46AA, K48AA</i>	<i>PC>3kw</i>
St. Paul	23	KTCI-TV	PR>700kw/ 411m
<i>Walker</i>	<i>51</i>	<i>K69CP</i>	<i>QC from ch. 69, 850w</i>
Winona	43	K43MO-D	DG from K62EV, 3kw
Mississippi:			
Calhoun City	34	W34BJ	DR dismissed
Hattiesburg	23	WHPM-LD	DG from ch. 30, 8.4kw
Holly Springs	41	WBUY-TV	PR<317m
Pascagoula	51	W51CU	DR 500w; DG
Montana:			
<i>Absarokee</i>	<i>4</i>	<i>K04RE</i>	<i>QG from K10MO, 76w, 45-31-49/ 109-25-33</i>
Ashland	50	K50LT-D	DG from K55FG, 1.04kw; CL from Broadus
Belgrade	17	K20DY	QR from ch. 20, 1.53kw
Circle	14	K14AG	DR 300w, 47-16-04/ 105-23-26; DG
Whitehall	40	K40HL	DR 1.7kw; DG
Nebraska:			
Norfolk	24	K24JG-D	DG from K48CH, 15kw
Nevada:			
Austin	28, 46	K28EI, K46FB	DR 40w; DG on ch. 46
<i>Elko</i>	<i>29, 31</i>	<i>K29JM, K31LB</i>	<i>DG from K57GR & K59EV, 959w</i>
Eureka	21	K21GJ-D	DG 100w, 39-30-41/ 115-57-52

Eureka	47, K47DG-, 51 K51GR-D	DG 300w, 39-26-59/ 115-59-52
Fallon	51 K51IA-D	DG 600w
Fillmore	44 K44EA-D	DG 100w
Hawthorne	22, K22FH-D, 35 K35AX-D	DR 520w; 525w, 38- 27-28/ 118-45-51; DG
Lovelock	34, K34BL, 36 K36GL	DR 460w; DG on ch. 34
Mesquite	35 NEW-lptv	AF 100w, 36-47-45/ 114-07-25*
Pahrump	46 K46KA-D	PG<5.2kw
Schurz	32, K32CQ, 34, K39FA, 36, K36FF, 46 K46CC	DR 173/ 176/ 180/ 201w; DG
Schurz	39 K58CY	DR from ch. 58, 187w
Silver Springs	33 K33IB-D	DG 470w
Yerington	16 K16GM	DC 350w
Yerington	40 K40DV-D	DG 340w
New Hampshire:		
<i>Laconia</i>	15 NEW-lptv	AF dismissed (TBN)
New Mexico:		
Crownpoint	30 K30KV-D	DG from K65FJ, 1kw
Las Vegas	9 K09AI	XR 35-36-16/ 105-15-37
Las Vegas	47 K47GV	PR>320w, 35-36-16/ 105-15-35
Montoya	39 K57BR	DC 1.15kw
<i>Portales</i>	56 NEW-lptv	AF dismissed (TBN)
Taos	30 K30KX-D	DG from K06LE, 220w
Truth or Consequences	22 K22JY-D	DG from K27BN, 130w
New York:		
Albany	12 WNYT	PC>15kw/ 435m
Cobleskill	14 WYBN-LD	DG from ch. 57, 15kw, 42-17-06/ 74-15-54
Cobleskill	41 WUCB-LD	DR 4.6kw; DG
Ithaca	20 WNYI	PR<225m
Monticello	25 W27AL	DC from ch. 27, 2.4kw, 41-39-39/ 74-41-11
New York	5 WNYX-LD	QR from ch. 35, 300w
New York	6 WNYZ-LP	DR 300w, supercedes application to go to ch. 22; DG
New York	22 WXNY-LD	QR from ch. 32, 600w, 40-44-50/ 73-56-38
<i>Ogdensburg</i>	39, NEW-lptv 51	AF dismissed (TBN)
North Carolina:		
Asheville	4 W04DL-D	DG from W41BQ, 300w
Charlotte	22 WCNC-DT	PG>1000kw/ 595m
Jefferson	25 W25AY	DC 1kw
Raleigh	45 WWIW-LD	DG from ch. 66, 15kw
Wilmington	51 W51CW-D	PR<200w, 34-09-54/ 77-56-41
North Dakota:		
Bismarck	26 KNDX	NW 50kw/ 300m
Dickinson	38 K38HA	DC 3.3kw
Grand Forks	27 KCPM	AF 11.1kw/ 56m
Minot	24 KXND	NW 50kw/ 239m

Ohio:

Cincinnati	19 WOTH-CA	CC from WBQC-CA
Cincinnati	47 WBQC-LD	CC from WOTH-LD
Columbus	8 WGCT-CA	DC 120w, 40-01-52/ 82-58-30
Portsmouth	17 WQCW	PC>1000kw/ 396m, 38-30-21/ 82-12-33
Youngstown	36 WYTV	PC>1000kw/ 177m
Oklahoma:		
Altus	46, K46JL-D, 48, K48KY-D, 50 K50KE-D	PR<440w; PG
Elk City	31 K54CM	DC from ch. 54, 470w
Elk City	43, K43KT-D, 45, K45JZ-D, 47, K47LR-D, 49 K49KK-D	NW 460w/ 460w/ 450w/ 450w
Enid	44 K44KC-D	DG from K45EJ, 15kw
Oklahoma City	15 KTBO-TV	AF 7.9kw/ 159m (aux)
Tulsa	10 KTUL	PC>15kw/ 578m, non-DA
Tulsa	44 K44KD-D	QG from K40KC-D, 8.17kw
Oregon:		
Astoria	17 K17HA-D	DG 6.6kw
Astoria	23 K23GK-D	PG>6.2kw
Astoria	34 K34DC	DG 536w; DC
Bend	18 K18JC-D	DG from K53JV, 8.5kw
Grants Pass	16 K16IF-D	NS 1kw, 42-35-43/ 123-22-36
Grays River	35 K35HU-D	DG 1.7kw
Hood River	28, K28CQ, 34, K34KE, 50 K50CE	DR 1.2kw; DG on ch. 34
Lincoln City	38 K38CZ-D	DG 5.823kw
Montgomery Ranch	32 K32CC-D	DG 600w
Newport	29 K29AZ-D	DG 7.6kw
North La Pine	38 K38DT-D	DG 625w
Portland	10 KOPB-TV	PR>77kw
Portland	34 KKEI-LD	NW 15kw, DCC for analog 38
Prineville	46 K46AK-D	DG 1.35kw
Prineville	47 K47LM-D	DG from K52AK, 450w; DC
Rainier	48 K48MA-D	DG from K44HM, 340w
Rockaway	20, K20HT-D, 36, K36GU-D, 41, K41GG-, 44, K44AV-D, 47 K47CD-D	DR 975w; DG
Salem	17 K21GX	DR from ch. 21 (via ch. 4), 8kw
Salem	22 KPXG-TV	PR>1000kw
Salem	27 KSLM-LD	QC from ch. 16, 15kw
<i>Terrebonne</i>	34 K65AE	QC from ch. 65
The Dalles	7 K07YV-D	DG from K64BK, 128w; DC
The Dalles	25 K25KS-D	DG 2.4kw
Tillamook	23 K23JK-D	DG from K52ET, 180w; DC
Pennsylvania:		
Chambersburg	33 W38AN	DC 5kw
Mansfield	45 W45CZ-D	DG from W54AV, 10w
Pittsburgh	51 WTAE-TV	AF 207kw/ 250m (aux)
Reading	25 WTVE	PR>900kw/

		395m, 40-19-52/ 75-41-41
Sharon	31 W29CO	DR 15kw dismissed (going for 4.2kw on existing ch. 29)
Union Town	23 WPXI - 0610ABQ	NW 2kw, 39-51-17/ 79-39-27; DRT for ch. 48 Pittsburgh
South Carolina:		
Columbia	8 WOLO-TV	granted permission to drop DA
Greenville	21 WHNS-DT	PG>400kw/ 762m; NW
South Dakota:		
Edgemont	15 K15HP-D	NW 30w, 43-22-09/ 103-44-01 (KBHE-9)
Pine Ridge	10 K10PS-D	NW 30w, 43-00-58/ 102-34-19 (KBHE-9)
Pringle	39 K39JQ-D	NW 300w, 43-44-43/ 103-28-50 (KBHE-9)
Wagner	8 K08OJ-D	NW 30w, 43-11-21/ 98-04-16
Tennessee:		
Alexandria	17 WRTN-LD	QG from ch. 7, 15kw, 36-15-50/ 86-47-39
<i>Memphis</i>	<i>6 W26CX</i>	<i>QC from ch. 26, 3kw, 35-12-34/ 89-49-01</i>
Nashville	31 WJDE-LD	NW 5.3kw, DCC for analog 24
Texas:		
Beaumont	25 KFDM	PR>275m, drop DA
Childress	21 K21IR-D	PR<250w, 34-26-30/ 100-14-16
<i>Corpus Christi</i>	<i>43 K43MN</i>	<i>DG from K68DJ, 21.5kw</i>
Corsicana	25 K25FW-D	DG 15kw
Dallas	20 KSEX-LD	DG from ch. 57, 15kw
Dallas	25 K25FW	PR>15kw; CL from Corsicana
Denison	21 KWDA-LD	DG from ch. 11, 15kw, 33-33-37/ 96-57-34
<i>El Paso</i>	<i>26 K20KB</i>	<i>QG from K40FW, 150kw</i>
<i>El Paso</i>	<i>38 KSCE</i>	<i>AF 42.16kw/ 557m</i>
Fort Worth	47 KUVN-CD	PR<190w
Harlingen	22 KTLM - 0427ABC	AF 15kw, 26-09-19/ 97-41-28; DRT for ch. 40 in Rio Grande City
Hereford	44 K44GW-D	PR<3kw, 35-10-24/ 101-57-17 dismissed
Houston	28 KUGB-CA	CC from KHMV-CA
Killeen	16 KADT-LP	DR 5kw, 30-51-32/ 97-35-21; DG
Lake Jackson	39 KZHO-LD	QG from ch. 40, 500w, 29-45-31/ 95-22-04
McAllen	20 KSFE-LP	DC from ch. 67, 15kw, 26-05-18/ 98-03-44
McAllen	43 KTLM - 0430ACD	AF 15kw, 26-14-03/ 98-01-59, DRT for ch. 20 Rio Grande City
McAllen	69 KNUC-LP	CC from KSTI-LP
Midland	50 K50JN-D	DG 250w
Missouri City	34 KUVN-CD	DG 15kw, 29-33-44/ 95-30-35; different station from KUVN-LD

Nacogdoches	23 NEW-lptv	ch. 10 Freeport. AF DCC for KNCD-LP ch. 2, dismissed
Quanah	27, K27HM, 29, K29FR, 31, K31HC, 33 K33HG	DR 250w; DG, except ch. 29
San Antonio	42 K42GJ-D	DG 1kw, 29-41-06/ 98-26-59
Tulia	25 K25CP	DR 478w; DG
Tyler	25 K25LG-D	DG from K26GA, 15kw
<i>Uvalde</i>	<i>6 K49HH</i>	<i>QC from ch. 49, 990w, 29-21-46/ 99-37-14</i>
Wellington	31 K31BZ-D	DG, 34-46-32/ 100-11-39
Wichita Falls	46 K46IU-D	NW 10kw, 33-54-31/ 98-29-45
Utah:		
Beaver	36, K36FM-D, 38, K38GF-D, 42, K42EX-D, 44 K44HT-D	DR 310w, 38-27-24/ 112-39-27; DG
Bicknell	38, K52JV-D, 42 K54JV-D	QR from ch. 52/54, 72w
Cedar City	41 K41GE-D	DG 380w
Delta	47 K47HM	DG 100w, 39-21-12/ 112-21-06; DC
Delta	48 K48KS-D	PG>100w; PC
Delta	49 K53JE-D	QR from ch. 53, 150w
Duchesne	23 K23FT-D	DG 426w, 40-21-41/ 110-47-21
Escalante	15 K15EM	DG 90w, 37-47-10/ 111-35-40; DC
Fillmore	32, K57JU- 38, K55KI-D, 40, K59IR-D, 42, K58IQ-D, 50 K52JX-D	QR from chs 32/ 38/ 40/ 42/ 50, 150w
Fillmore	44 K44EA	DC 100w
Hurricane	17 NEW-lptv	AF 1kw, 37-17-22/ 113-16-33*; CL from St. George
Hurricane	21 K21GW-D	DG 50w, 37-09-19/ 113-16-36
Kanab	18, K18DN- 20, K20EC-D, 23, K23DP-D, 28, K28IT-D, 32 K32DC-D	DG 63w
Kanab	27, K27JV-D, 40 K40JM-D	PG>63w; PC
Laketown	10 K10LM	DC 14w, 41-52-55/ 111-16-10
Laketown	12 K12MI	NW 14w, 41-52-55/ 111-16-10
Laketown	48, K48GV, 50 K50GA	DC 286w
Leamington	12 K52JW-D	QR from ch. 52, 79w
Leamington	34, K57JS-D, 36, K56JB-D, 38, K55KH-D, 40, K59IQ-D, 42 K58IP-D	QR from ch. 57/ 56/ 55/ 59/ 58, 950w
Logan	12 KUTF	DC 22.3kw
Logan	16 NEW-lptv	AF dismissed (Cache Co.)
Marysvale	43 K52JU-D	QR from ch. 52
Mount Pleasant	16, K16IB-D, 17 K17JD-D	NW 12w, 39-32-22/ 111-23-17
Nephi	5 NEW-lptv	AF 300w, 39-29-31/ 111-49-37*; CL from Cedar City
Parowan	40, K40CH-D, 46 K46DF-D	DG 250w, 37-50-30/ 112-58-27; DC

Randolph	24, K24EC, 26, K26GH, 34 K34FR	DC 284w
Santa Clara	19 NEW-lptv	AF 150w, 37-09-19/ 113-52-57*; CL from Mesquite, Nev.
Sevier Co.	41 K57JV-D	QR from ch. 57
Spring Glen	49 K57JZ-D	QR from ch. 57
St. George	32 K32FQ-D	DG 225w
Teasdale	36 K53JG-D	QR from ch. 53, 72w
Torrey	40 K55KG-D	QR from ch. 55, 72w
Wayne Co.	43 K59IO-D	QR from ch. 58
Virginia:		
Charlottesville	40 WAHU-CD	DG from ch. 27, 15kw, 37-59-03/ 78-28-52
Danville	45 WMDV-LD	DG from ch. 18, 15kw
Washington:		
Bellingham	45 NEW-lptv	AF dismissed (TBN)
Bellingham	60 K60GV-D	DG 15kw, 48-08-11/ 121-58-53
Camas	28 KOXI-LD	NW 15kw, DCC for analog 20
Grays River	29 K29IB-D	DG from K63AW, 450w; DC
Mount Vernon	28 KIRO - 0403ACH	NW 500w, 48-29-01/ 122-19-24; DRT for ch 39 Seattle
Spokane	13 KXLY-DT	PG 35kw/ 675m, 47-39-34/ 116-57-48, moving off Mt. Spokane
Spokane	20 KREM-DT	PG>1000kw/ 672m, non-DA
Sunnyside	23 K05JO	DC from ch. 5, 2.02kw
Vancouver	44 KOXO-LD	NW 15kw, DCC for analog 51
West Virginia:		
Morgantown	33 WNPB-TV	PC 92kw/457m
Weirton	18 WJPW-CD	DG 15kw
Wisconsin:		
Appleton	27 WACY-TV	PG>1000kw/ 367m
Crandon	12 WMOW	granted permission to go non-DA
Green Bay	41 WGBA-TV	PG>367m
Milwaukee	18 WVTV	PR<745kw
Minocqua	44 W44DB-D	DG from W02CF, 2.5kw
Wyoming:		
Bondurant	17 K69DD	DR from ch. 69 (via ch. 41), 491w
Douglas	9 K09XL	DR 57w; DG
Evanston	19 NEW-lptv	AF 230w, 41-21-01/ 110-54-16*
Lander	22 K22CI	DR 940w, 42-53-43/ 108-43-34; DG
Sheridan	29 KSWY-LP	XC 44-36-10/ 106-55-42
Shoshoni	35 K35CV	DR 880w, 43-27-27/ 108-12-03; DG

Thanks to Dennis Smith for information appearing elsewhere in this column.

* Asterisks mark a number of applications for new LPTV stations in the West which have been amended to specify digital operation. Other changes – often including significant relocations – are included in these

amendments.

- Last month, you read the FCC has proposed to assign channel 4 to Atlantic City, New Jersey. Now, they have also assigned a VHF channel to Delaware; channel 5 will go, as proposed, to Seaford.

The proposal is supported by Sen. Kaufman of Delaware, who wanted FCC to assign a channel to a place where Wilmington residents can benefit.

The FCC ruled that Section 307(b) of the Communications Act requires an equitable distribution of services. Wilmington is already served by 14 full-power stations (most transmitting from Philadelphia) while Seaford is only served by four. The FCC feels it's required to allocate the new channel to Southern Delaware.

As with the Atlantic City proposal, PMCM supports the allocation of channel 5 to Seaford as long as the allocation doesn't preclude the move of a PMCM station from the West to Delaware. In this case, the PMCM station is KJWY-2 Jackson, Wyoming, and it wishes to move to Wilmington. (the transmitter would be in Philadelphia)

The FCC has denied the KJWY move, but PMCM's appeal is pending. The Commission states the channel 5 allotment won't preclude the move of KJWY if the courts overturn the FCC decision.

ABC objects to the allotment. They argue it would prevent a planned 2dB power increase for their WPVI-6 Philadelphia, as well as upgrades at other area stations.

The FCC decided to attach a condition to the new allotment. Anyone building a station on channel 5 will be required to accept interference from WPVI to up to 2% of the population within the service area of the new station. The Commission was not able to identify any other stations, besides WPVI, that would be affected.

Fox also objected. They claim that, since the new station has never had an analog facility, the PSIP rules would require the new station to use major channel 5. Fox's WTTG Washington, which was on analog channel 5, is required to use major channel 5 as well. And any new station in Seaford is likely to have significant coverage overlap with WTTG. Fox fears having two channel 5's will result in confusion, and in some viewers being unable to receive WTTG.

The FCC notes there's an "out" in the PSIP standard that allows assignment of other

major channels when necessary to avoid conflicts. They've indicated the new station will be required to use major channel **36**. This happens to be WTTG's *RF* channel assignment.

Finally, the "Broadcast Maximization Committee" objected on the grounds a new allocation on channel 5 would prejudice a proposal to reallocate channels 5 and 6 for FM radio.

Here, the FCC indicates if a decision is made to reallocate channel 5 to another service, the new Seaford station can be moved to a different channel. (reading between the lines, I suspect the Commission has no intention of reallocating any VHF TV channels to FM radio or any other service.)

- Yes, KSCE-38 El Paso has applied to reactivate their analog transmitter.....

From their STA request filing:

"The station has many indigent former viewers who have been unable to see the religious and non-religious programming offered by KSCE. We estimate there are as many as 500,000 analog receivers still in use in the market. The former analog viewers have been very vocal in contacting the station to say they can no longer receive the signal because they cannot afford either a digital receiver, or a cable or satellite subscription."

Then, referring to the well-publicized drug wars going on just across the border in Cd. Juarez, Chihuahua:

"The Commission is requested to take official notice of the news accounts pertaining to the drug wars that have infested portions of Mexico and particularly Juarez. Because of the rampant violence associated with the drug wars, American citizens in bordering El Paso need to be informed regarding potential dangers in traveling near the border or in crossing the border."

As Trip noted when he posted note of this on his <http://www.rabbitears.info> blog, an Act of Congress prohibits the FCC from granting this request. Congress can't keep the Commission's staff from getting a good laugh out of it though!

- Dennis forwards subchannel data for two Los Angeles-area stations:

KJLA Ventura (RF-49):

Virtual	Name	Description
57-1	KJLA-DT	JTV Jewelry TV
57-2	LATVNET	LATV (Spanish)

57-3	KBC-TV	Korean
57-4	SET	Saigon Entertainment TV
57-5	SGTV	Saigon TV
57-6	VBS-TV	Vietnamese Bcstg. Svcs.
57-7	VYV-TV	Voz y Vision, Spanish relig.
57-8	KVMD-DT	Infomercials & ArtnShant in Armenian
57-9	ZWTV	Asian?
23-4	AVX	VNBC, Asian

KXLA Rancho Palos Verdes (RF-51):

Virtual	Name	Description
44-1	KXLA-DT	Infomercials
44-2	V-TV	Spanish religious
44-3	Sk-TV	"Seoul Korea DTV"
44-4	LSTV	"Little Saigon TV"
44-5	ARIRANG	S. Korea intl. service in English
44-6	IAVC	Asian
44-7	NT DTV	Asian, some English
44-8	ICN	Chinese intl. service in English
44-9	IMPACTO	"Familias Impacto", Spanish religious

- The fine for WFUN-LP Miami was, strangely enough, not for exceeding the power on the station's license. (though they were, in fact, running nearly three times authorized power) Rather, it was for exceeding the maximum power permissible for any digital LPTV. In this particular case, it happens licensed power was equal to the maximum permissible for a digital LPTV. WFUN was also fined \$8,000 for problems with EAS equipment.

- The CBC has applied to convert French-language station CBLFT-25 Toronto back to a full originating station. It has been formally a relay of CBOFT-9 Ottawa. (although it has been originating some local programming in Toronto)

Converting CBLFT back to a full station will allow it to solicit local advertising in Toronto and other areas served by the other Ottawa relays that will be transferred to the Toronto licence. It will also establish a licencing requirement to originate local programming.

No technical changes are proposed.

- I believe KCPM-27 has been dark since their analog was required to sign off last year.

Good DX!



FM NEWS



BILL HALE

6124 Roaring Springs Drive, N. Richland Hills, TX 76180

FMnews@wtfda.org

INDEX OF ABBREVIATIONS

APP: application	FC: frequency change (to or from)
APP Mod: Change to an already submitted application	\$: Stereo
Class FM: license class	STA: Special Temporary Authority
CP: construction permit (authority to broadcast with facilities noted)	XL: Transmitter Location
CP Mod: change to an already granted CP	Note: antenna heights are HAAT except where noted
DA: directional antenna	

— CANADA —

— CALL LETTER CHANGES —

ON Peterborough	96.7	<u>Old Call</u> NEW	<u>New Call</u> CJWV-FM
-----------------	------	------------------------	----------------------------

— FORMAT and SLOGAN CHANGES —

AB Calgary	97.7	CIGY-FM	> Hot AC/Classic Hits: remains <i>Mix 97 point 7</i>
BC Pemberton	98.9	CFPV-FM	> Hot AC - Aboriginal
ON Brantford	92.1	CKPC-FM	> Soft AC
ON Huntsville	105.5	CFBK-FM	Remains AC, but now as <i>FM 105 point 5</i>
ON Ottawa	99.9	CJOT-FM	Now on the air with AC: <i>Love FM</i>

— TECHNICAL CHANGES —

ON Ottawa	99.9	CJOT-FM	<u>Now on the air:</u> 100 kw/161 m, DA, \$, 45-13-01/75-33-50, Class C1
-----------	------	---------	---

— TECHNICAL CHANGES —

NS Middle Musquodoboit	107.3	CKBG	<u>CP granted for:</u> 50 w-v/-18 m, 45-05-19/63-04-01, \$; will be Country & Rock
ON Ottawa	101.9	CIDG-FM	4.5 kw (adds V)/98 m, XL to 45-26-48/75-37-27
ON Owen Sound	92.3	CJOS-FM	CP extended to 9 May 2011 to launch this station

— TECHNICAL CHANGES —

— APPLICATIONS FROM EXISTING/PROPOSED FACILITIES —

AB Olds	104.5	CKJX-FM	<u>Applies for:</u> 35 kw/125 m, 51-45-30/114-05-39
BC Salt Spring Island	107.9	CFSI-FM	970 w/215 m, DA, XL to 48-50-58/123-31-51
ON Kaministiquia	104.5	CFQK-FM	250 w/110 m, 48-30-27/89-27-28; Class LP from A
ON Shuniah Township	103.5	CKED-FM	250 w/170 m, 48-31-27/89-06-53; Class A from LP; is // CFQK-104.5
QC Lasalle	100.1	CKVL-FM	870 w/40 m, XL to 45-25-42/73-39-40; Class A from A1

— TECHNICAL CHANGES —

PROPOSALS FOR NEW STATIONS

AB Three Hills	89.5	NEW	50 w/48 m; Class LP; to relay CIAM-FM Fort Vermilion, Alberta
BC Golden	106.3	CKGR(FM)	890 w/-373 m; move from 1400 kHz
MB Virden	103.3	NEW	3.44 kw/38 m
ON St. Thomas	94.1	NEW	4.37 kw/47 m; would program AC/Oldies

BC Dawson Creek	107.5	CIAM-FM-9	<u>Applies for:</u> AF 50 w/30 m, \$, 55-44-52/120-02-35; Class LP; to relay CIAM-FM Fort Vermilion, Alberta
BC Prespatou	105.5	CIAM-FM-19	AF 50 w/17 m, \$, 56-51-07/121-02-52; Class LP; to relay CIAM-FM Fort Vermilion, Alberta

— DISMISSALS —

ON Owen Sound	106.5	CIXK-FM	PR 63 kw/190 m, 44-30-44/80-57-13 withdrawn
ON Owen Sound	93.7	CKYC-FM	PR 24 kw/214 m, 44-30-44/80-57-13 withdrawn

QC Mont-Laurier	98.3	_____	50 w/33 m; would have simulcast CFOR-99.3 Maniwaki with FF Active Rock; was opposed by CFLO-FM, and denied due to the applicant's record of non-compliance infractions
-----------------	------	-------	--

— OTHERNEWS —

Corus is selling all their radio properties in Quebec to Cogeco Incorporated. The stations involved are CFQR-92.5, CKOI-96.9, CHMP-98.5 and CKAC-730 in Montreal; CFEL-102.1 and CFOM-102.9 in Quebec City; CKOY-104.5 and CHLT-107.7 in Sherbrooke, CIME-103.9 in Saint Jerome, CJRC-104.7 in Gatineau-Ottawa, and CHLN-106.9 in Trois Rivieres. It is unclear as to why CKRS 98.3 in Saguenay-Chicoutimi was not mentioned or whether the deal also includes the licenses for CINF-690 and CINW-940 which recently went dark. Cogeco will either have to apply for an exemption from the common ownership policy or flip some of these stations as they will now be over the allowable number of stations in Montreal, Quebec City, and Sherbrooke. The whole deal is subject to CRTC approval.

— UNITED STATES AND TERRITORIES —

FULL POWER and LPFM STATIONS

— CALL LETTER CHANGES —

	<u>Old Call</u>	<u>New Call</u>		<u>Old Call</u>	<u>New Call</u>	
AL Atmore	105.9	WNSI-FM	WBZR-FM	MI Detroit	98.7 WVMV	WDZH
AL Eutaw	104.3	WQZZ	WWPG	MI Grosse Point Shores	88.3 NEW	WDTE
AK Bethel	91.9	NEW	KJNR	MI Harbor Beach	89.3 NEW	WSMB
AK Kasilof	90.5	KWMD	KRAW	MI Huron Township	89.5 NEW	WDTP
AK Sterling	90.1	KRAW	KWMD	MI Niles	95.3 WAOR	WTRC-FM
AZ Grand Canyon Village	102.5	NEW	KUGO	MN Newport	88.1 NEW	WAJC
AR Jonesboro	89.7	NEW	KJSA	MN White Earth	89.9 NEW	KKWE
CA Avenal	88.7	NEW	KZAV	MS Greenville	97.9 WBAQ	WLTM
CA Cambria	105.3	NEW	KCJZ	NE Norfolk	91.7 KSTJ	KLSB
CA Mountain View	87.9	NEW	KSFH	NM Corrales	95.1 KSYU	KLQT
CA Susanville	96.3	KLZN	KAJK	NY Stamford	90.1 NEW	WANZ
CA Temecula	88.9	KRTM	KSDW	NC Raleigh	94.7 WQDR	WQDR-FM
FL Fernandina Beach	91.7	WJBC-FM	WTRJ-FM	OH Delta	106.5 WRWK	WLQR-FM
FL Okeechobee	106.1	NEW	WMQJ	OH Edon	89.9 NEW	WRRO
FL Palm Beach Gardens	99.5	WAFC-FM	WLLY-FM	OH Washington Court House	105.5 NEW	WCHO-FM
ID Ketchum	89.3	NEW	KDPI	PA Carbondale	91.3 WFUZ	WCIN
IL Pontiac	93.7	WTRX-FM	WJBC-FM	PA LaPorte	90.9 WCIN	WFUZ
IN Napanee	95.7	WYPW	WAOR	SD Chamberlain	89.9 NEW	KGRJ
KS Elk City	94.9	NEW	KBIK	TX Sulphur Bluff	99.7 KRBR	KNOI
KY Mount Sterling	105.5	WMKJ	WWRW	UT Monroe	88.5 NEW	KUXU
LA Opelousas	103.7	NEW	KLWB-FM	UT Monticello	88.1 NEW	KUHU
ME Gouldsboro	101.1	WLEK	WTUX	UT Roosevelt	89.3 NEW	KUOU
ME Madawaska	88.3	NEW	WFHP	VA Lakeside	100.9 WDYL	WHTI
ME York	90.5	NEW	WTYP	VA Richmond	103.7 WMXB	WURV
MN White Earth	89.9	NEW	KKWE	WV Bridgeport	104.1 WDCI	WETT
MI China Township	91.5	NEW	WVMV			
MI Crystal Valley	89.1	NEW	WSMZ			

TRANSLATORS and BOOSTER STATIONS

AL Blue Mountain	107.5	W296BZ	W298BG	OH Toledo	100.9	W264AK	W265CB
AL Demopolis	105.1	W284BY	W286BV	PA Scranton	91.3	NEW	WCIN-1
CA Fall River Mills	107.9	KKLC-1	KKLC-FM1	PR Cayey	97.7	WNVM-1	WNVM-FM1
CO Estes Park	94.3	K230BA	K232EF	PR Mayaguez	104.1	WERR-3	WERR-FM3
NE Nebraska City	88.9	K258BO	K205FG	TN Jefferson City	102.9	W276CE	W275BP
NV Apex	106.9	KONV-FM1	KVGQ-FM1	TN Johnson City	90.1	W214AP	W211CD
NV Sun Valley	87.9	NEW	K200AA	TN Pulaski	98.3	NEW	WKSR-1
NM Bloomfield	107.1	KLJH-2	KLJH-FM2	TX Galveston	91.5	K216CJ	K218EJ
NY Stamford	104.5	W285AT	W283BP	TX Palestine	90.7	K216FC	K214EQ
NC Raleigh	89.3	W260AB	W207CB	WA Raymond	101.1	K269EM	K266BL

— FORMAT AND SLOGAN CHANGES —

— All Facilities —

AL Atmore	105.9	WBZR-FM	> Fox Sports // WBZR-1000	Robertsdale: <i>The Buzz</i>
AL Blue Mountain	107.5	W298BG	Is relaying WAVU-630	Albertville with Southern Gospel: <i>WAVU 630</i>
AL Slocomb	100.5	WLDA	> Classic Hits: <i>Star Greatest Hits 100 point 5</i>	
AZ Winslow	91.3	KAWN	Signs on with Religious Teaching: <i>AFA</i>	
AR Russellville	100.9	KWKK	> Adult Contemporary: <i>River Hits 100 point 9, KWKK</i>	
CA Grass Valley	103.3	KBAA	> Regional Mexican: <i>La Ley</i>	
CA Jackson	94.3	KGRB	> Regional Mexican: <i>La Gran D</i>	
CA Modesto	93.9	KBBU	> Regional Mexican: <i>La Gran D</i>	
CA Paradise	96.7	KZAP	> Talk: <i>Bold Talk 96 point 7</i>	
CA Pescadero	89.3	KPDO	Returns to the air with Adult Alternative: <i>Pirate Cat Radio</i>	
CA Wasco	92.7	KWVP-LP	Is silent	
CO Centennial	101.9	KKHI	> Christian CHR/Rock // KXWA-89.7	
CO Denver	105.1	KXKL	> Classic Hits: <i>Kool 105</i>	
FL Fernandina Beach	91.7	WJBC-FM	> Religious Teaching: <i>97 point 1, The Truth</i>	
FL Fort Lauderdale	103.5	WMIB	> Spanish Hits: <i>Super X 103 point 5</i>	
GA Peachtree City	91.7	WMVW	Signs on with Contemporary Christian // WMVV-90.7: <i>New Life FM</i>	
GA Waycross	96.3	W242BE	Translates WAYX-1230	Waycross: <i>NewsTalk 12-30</i>
ID Boise	105.1	KJOT	> Adult Hits: <i>Variety Rock 105 point 1</i>	
IL Pontiac	93.7	WJBC-FM	> News/Talk // WJBC-1230	Bloomington: <i>The Voice of Central Illinois</i>
IN Napanee	95.7	WAOR	> Classic Rock: <i>South Bend's Classic Rock Station 95 point 7</i>	
IA Elliott	102.9	K275BM	Translates KOAK-1080	Red Oak: <i>Country Sunshine</i>
KS Elk City	94.9	KBIK	Signs on with Adult Standards // KIND-1010	
KY Mount Sterling	105.5	WWRW	> 80s Classic Hits: <i>Rewind 105 point 5</i>	
KY North Corbin	99.1	W256BM	Translates WKFO-1600	Corbin: <i>ESPN AM 1600</i>
MI Detroit	101.1	WRIF	Remains Rock, but is now <i>101, The Riff</i>	
MI Flint	107.9	WCRZ	Remains Adult Contemporary, but is now <i>Cars</i>	
MI Gaylord	106.7	WSRT	> Talk: <i>106 point 7 and 105 point 5, You FM</i>	
MI Gladwin	103.1	WGDN-FM	Remains Country, but is now <i>Coyote Country</i>	
MI Honor	105.5	WSRJ	> Talk // WSRT-106.7: <i>106 point 7 and 105 point 5, You FM</i>	
MI Mackinaw City	94.5	WLJZ	> Classic Rock: <i>The Bear // WAVC-93.9</i>	Mio and the pair is partially

			simulcast over WGFN 98.1 Glen Arbor and WCKC 107.1 Cadillac. 93.9 and 94.5 now carry Detroit Tigers baseball
MI Mio	93.9	WAVC	> Classic Rock: <i>The Bear</i>
MI Niles	95.3	WTRC-FM	> Talk // WTRC-1340: <i>95 point MNC</i> (Michigan's News Center)
MI Rochester Hills	105.5	W288BK	> Now translates WMXD-92.3 Detroit: <i>Mix 92.3</i>
MN New Ulm	88.3	KJTS	Signs on with Religious Programming // KJLY-104.5 (MPR)
MN Princeton	89.7	KPCS	Signs on with Religious Teaching: <i>Rejoice Radio</i> (Pensacola Christian College)
MN Worthington	89.3	KRSW	Returns to the air with Classical // KSJN-99.5 (Minnesota Public Radio)
MO Moberly	105.5	KZZT	> Classic Rock: <i>KZ-105</i>
MO Neosho	99.7	WBTN-FM	Now simulcasts KBTN-1420 Neosho: Classic Country: <i>Country Legends</i>
MO Pleasant Hope	95.5	KTOZ-FM	> Hot AC: <i>Alice at 95 point 5</i>
MO Poplar Bluff	91.7	KPBR	Signs on with Religious Programming: Bott Radio Network
MO St. Louis	103.3	KLOU	Remains Classic Hits, but now uses <i>Rewind 103 point 3</i>
MT Eureka	93.5	KZXT	Signs on with Adult Contemporary: <i>The Tiger</i>
MT St. Regis	99.1	KZJZ	Signs on with Soft Adult Contemporary: <i>Z 93</i>
NV Hawthorne	98.7	KAVB	> Spanish Contemporary Christian
NM Corrales	95.1	KSYU	> Adult Contemporary: <i>Lite 95 point 1</i>
NM Hobbs	91.7	KOBH	Signs on with Contemporary Christian: AFA
NM Socorro	102.1	KYRN	> Smooth Adult Contemporary: <i>Avenue 102 point 1</i>
NY Canaseraga	97.1	WZHD	Signs on with Classic Rock // WMTT-94.7
NY Jamestown	105.9	WOGM-LP	Is silent
NY Unadilla	88.9	WCIJ	Signs on with Contemporary Christian: Family Life
NC Farmville	94.3	WRHD	> Hot Adult Contemporary: <i>Star 94 point 3</i>
ND Jamestown	89.9	KJTW	Signs on with Contemporary Christian: AFA
ND Williston	91.7	KNDW	Signs on with Contemporary Christian: AFA
OH Columbus	99.7	WRKZ	> Remains Rock, but reverts to earlier slogan: <i>99 point 7, The Blitz</i>
OH Hicksville	106.7	WFGA	> Adult Hits: <i>Froggy 106 point 7</i>
OH Toledo	100.9	W265CB	Now relays WXKR-94.5 HD2 Port Clinton: <i>100 point 9, The Zone</i>
OK Guymon	88.9	KNGM	Signs on with Contemporary Christian // KJIL-99.1: <i>Radio for Life</i>
OK Mustang	99.7	KZLS	> Oldies
PA Harvey's Lake	99.9	W260AY	Relays WZMF-730 Nanticoke: <i>Hits of the 60's, 70's and 80's</i>
PA Hawley	105.3	WYCY	> Classic Hits: <i>Classic Hits 105 point 3</i>
PA Mount Pleasant	103.1	WKVE	Returns to the air with Classic Rock: <i>103 KVE</i>
PA Mountain Top	95.3	W237DP	Relays WZMF-730 Nanticoke: <i>Hits of the 60's, 70's and 80's</i>
PA Tunkhannock	104.3	W282BK	Relays WGMF-1460 Tunkhannock
PA Wilkes-Barre	104.5	W283BY	Relays WZMF-730 Nanticoke: <i>Hits of the 60's, 70's and 80's</i>
SC Cheraw	103.3	WJMX-FM	> Hot AC
SC Quinby	95.3	WFRK	Signs on with Classic Rock: <i>Frank FM</i>
SD Aberdeen	90.1	KEEA	Signs on with Contemporary Christian: AFA
TN Clinton	89.9	WDVX	Is silent
TN Jefferson City	102.9	W275BP	Relays WJFC-1480 Johnson City: Country/Bluegrass: <i>Your Lakeway Connection</i>
TX Alice	88.3	KIFR	Signs on with Religious Teaching: AFA
TX Caldwell	91.9	KALD	Is now // KHCB-1400 League City: <i>Keeping Him Close By</i>
TX Cuero	89.9	KTLZ	> Spanish Religious // KDAE-1590: <i>Liberty Radio</i>
TX Freer	95.9	KBRA	Is silent
TX Hebronville	101.7	KEKO	Is silent
TX Karnes City	103.1	KHHL	> Spanish Sports: ESPN Desportes
TX Ozona	94.3	KYXX	> Country // KHOS-FM-92.1: <i>True Country</i>
TX Sonora	92.1	KHOS-FM	> Country: <i>True Country</i>
TX Sulphur Bluff	99.7	KRBR	> Talk: <i>99.7 Real Talk Radio</i>
TX Temple	100.9	K265DV	Relays KRZI-1660 Waco: <i>KRZI, Waco's ESPN Radio</i>
VA Richmond	103.7	WMXB	> Adult Alternative: <i>103 point 7, The River</i>
VA Lakeside-Richmond	100.9	WDYL	> Rhythmic Top 40: <i>Hot 100 point 9</i>
WA Longview	90.3	KWYQ	> Contemporary Christian: <i>K-Love</i>
WA Spokane	105.7	KZBD	> CHR: <i>Now 105 point 7</i>
WY Gillette	88.1	KGLL	Signs on with Contemporary Christian: AFA
WY Lyman	104.7	KYLZ	> AAA: <i>104 Point 7, The Point</i>
WY Rock River	106.1	KLMI	> CHR: <i>106 point 1 The River</i>

— OTHERNEWS —

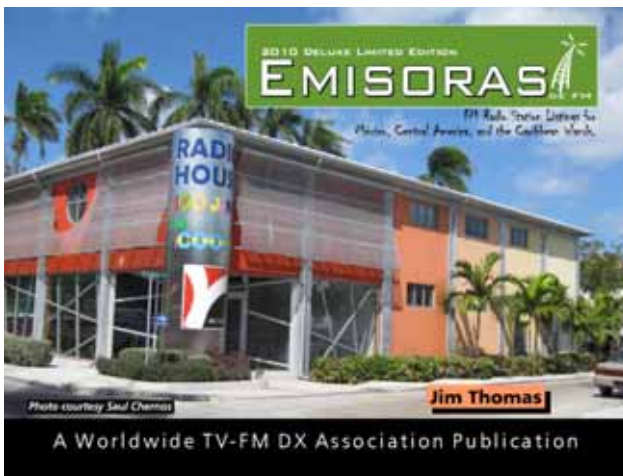
CO Cripple Creek	95.9	K240CH	License cancelled; call deleted per applicant's request
FL North Miami	95.7	WXDJ	Fined \$16,000 "willfully and repeatedly violating Section 73.1206 of the Commission's rules by recording a telephone conversation for broadcast without providing prior notification to the called party"
FL Orlando	91.3	Pirate	Issued a \$10,000 fine to an individual for operating an unlicensed transmitter here
NV Crescent Valley	90.9	K215DN	License cancelled; call deleted
NJ Plainfield	90.1/96.7	Pirate	Issued a \$10,000 fine to an individual for operating an unlicensed transmitters here
NM Des Moines	105.3	KHOD	License cancelled; call deleted
NM Hobbs	91.5	K218BZ	License cancelled; call deleted per applicant's request
NY Bronx	107.3	Pirate	Issued a \$10,000 fine to an individual for operating an unlicensed transmitter here
NY Ithaca	95.9	W240CB	Fined (the owner, Saga Communications of New England) \$10,000 (correct) for false certification of the station
ND Jamestown	90.7	K214BX	License cancelled; call deleted per applicant's request
ND Sarles	105.9	KCVF	License cancelled; call deleted
ND Williston	91.7	K219CB	License cancelled; call deleted
OR Bend	89.9	K210DW	License cancelled; call deleted per applicant's request
SD Aberdeen	90.1	K211CU9	License cancelled; call deleted
TX Knox City	107.3	KTSX	License cancelled; call deleted

 NEWS ITEM: FM IBOC POWER INCREASE HAS TAKEN EFFECT - Those FMs that want to increase IBOC power by 6 dB can now do so and simply notify the FCC by letter within 10 days. That's because the notice procedures for implementing the power increase went into effect on Monday, May 10. Prior to that you needed special temporary authority. There is a new electronic form on the way for e-filing digital notifications in the FCC's CDBS system. However that needs approval from the federal Office of Management and Budget. The new, simpler, form eventually would replace the formal notification letter in which you give the commission details like the date you raised power as well as your analog and digital ERP. Stations still must file for an STA if they want to increase by the full 10 dB or if they are a super-powered FM. Those will be reviewed on a case-by-case basis. As of May 12, 40 stations had been granted an STA. Another 10 were dismissed because they didn't provide enough information. Of the 40 that were okayed, most were for the 6 dB increase (to 14 dB below carrier) or less. Examples of large-market approvals are KSCF, San Diego; KJAQ, Seattle and WRKS, New York. Increases in smaller markets include those at WQNY, Ithaca, New York, WGTD, Kenosha, Wisconsin and KUWC, Casper, Wyoming. The FCC released the power increase order in late January. Nearly half of the applications were filed in February, with the rest divided between March and April filings. One, KDUR, Durango, Colorado was filed on May 4 and approved the next day.

NEWS ITEM: *FM Atlas-21* is available and ready for you to add to your DXing bookshelf. Price will be \$19.95 plus shipping, but Bruce Elving hasn't figured out what shipping will be. So if you order, and mention you read about it in FM News, you can buy the 288-page book for \$20 including postage!! *FM Atlas-21* is totally up-to-date, including computerized maps and directories showing FM stations, translators and low power FM stations of North America, including stereo and monophonic information, HD, RDS and SCS information for each station. Payment by major credit cards, PayPal, at 1-800-605-2219, or check or money order to "FM Atlas" PO Box 336, Esko MN 55733-0336.

NEWS ITEM: Back in the April issue we had word about two new Sangean portable AM and FM HD-capable radios. Since then, I have been attempting to obtain some updated information concerning these radios from the manufacturer. Finally, a local Sangean representative contacted me, but the news is not good. The original Sangean news item stated they were working on two models: one model called the DT-600 with basic features that was slated to be released in June; the second, named the DT-800, was to be a 'high-end' version with a few added features would be out in October. Word now is, that they have decided not to produce the cheaper model and go with the DT-800 only. But, the "DT-800 schedule of production has not been finalised, therefore no initial arrival date in the US is available as yet." I've been promised an update when Sangean finally decides to market this radio. If and when I do, I'll pass that information along.

 Thanks to Shawn Axelrod, Bruce Elving, Deane McIntyre, Dave Schmidt, Bob Seaman, Radio World Online and Upper Midwest Broadcasting for news. If you hear any changes occur on your FM dial, share the news! 73



**THE 2010
 EMISORAS DE FM
 BY JIM THOMAS**

This 100 page book is available as a PDF file ONLY and is free to anyone who has ever bought a book in the past. For new users the 2010 Emisoras is just \$10. Send \$10 via Paypal to sales@wtfda.org. Mention Emisoras de FM when you send money. In return you will receive a password to unlock the publication after you download it at <http://www.wtfda.info>. Checks/money orders also accepted to the club address. **Sorry, but no hard copy of this publication is available.**

FCC FM FACILITIES

June 2010

AF	Applied For (a new station)	PC	Power (and/or tower height) change on the air
Aux	Auxiliary (backup) transmitter	PG	Power change granted
CC	Callsign change	PR	Power change requested
CL	City-of-license change	RA	Returns to the air
DE	License/permit deleted	RE	Reinstated (previously-dismissed app.)
FC	Programming (format) change	ROA	Request of Applicant
FTP	Failure to Prosecute	SI	Off the air (silent)
LC	License to Cover	STA	Special Temporary Authority
NS	Permit granted for new station	XC	Transmitter site changed
NW	New station on the air	XG	Transmitter site change granted
PA	Proposed Amendment	XR	Transmitter site change requested

Changes:

AB Brooks	105.7	CIBQ	QG from 1340 AM, 14kw/46m, 50-30-24/111-53-14	CA Cedarville	88.1	KDUP	PR>1kw
AB Olds	104.5	CKJX-FM	PG>35kw	CA Fair Oaks	94.7	KKDO	CC from KSSJ
AK Fairbanks	224	NEW	PA, class C2	CA Fall River Mills	107.9	KKLC	PC>13kw/641m, 40-54-23/121-49-43; CL from Mt. Shasta
AK Fairbanks	232	NEW	PA, class C2	CA Garberville	89.9	KHSG	CC from KHSG-FM
AK Metlakatla	88.9	KYMR-FM	CC for NS	CA Isla Vista	101.7	KSBL	PR>9.9kw/333m, 33-59-57/119-40-58; amendment from 6.9kw/389m at different site
AK Metlakatla	88.9	KYMR-FM	NW 50w-V/-64m, 55-07-41/131-34-26	CA Jackson	94.3	KGRB	CC from KTTA
AL Argo	88.1	WKRE	PG<63m, 33-39-25/86-26-04	CA Jackson	94.3	KGRB	CC from KTTA
AL Atmore	105.9	WBZR-FM	CC from WNSI-FM	CA Lamont	97.3	NEW	NS 2kw/171m, 35-11-36/118-43-10 (Owens One Co.)
AL Fort Deposit	95.7	WKXN	QG from 95.9, 2.1kw/171m, 31-56-52/86-42-09	CA Merced	106.3	KGAM	CC from KNAH
AL Goodwater	91.1	WQLS	CC from WTXN	CA Merced	106.3	KGAM	CC from KNAH
AL Heflin	91.7	WPIL	PC>1.3kw/26m	CA Riverside	89.7	KSGN	PG 2.75kw/98m
AL Smiths	101.3	WAGH	PR>18kw/108m	CA Susanville	96.3	KAJK	CC from KLZN
AL Waverly	94.3	WGZZ	QC from 100.3, 4.2kw/120m, 32-44-11/85-29-54	CA Yucca Valley	88.1	KYWY	PR 140w/438m, 34-04-55/116-20-32
AR Batesville	88.1	KBAP	CC for NS	CO Durango	91.9	KDUR	PC>6kw-V/-156m (drop H), 37-16-41/107-52-21
AR Mena	88.9	KRMN	CC for NS	CO Estes Park	90.7	KENC	NW 200w-H/140w-V/13m, 40-21-38/105-31-12
AR Nashville	88.5	NEW	req. to add 850w-H (was V-only)	CO Grand Junction	91.3	KMSA	PG>3.1kw/407m
AZ Claypool	97.3	KIKO-FM	PR>710w/984m	CO Holyoke	92.1	KSTH	QR from 92.3, 100kw/64m
AZ Cordes Lakes	101.1	KNRJ	PR 40kw/807m, 34-13-47/112-21-03	CO Julesburg	96.5	KJBL	PG>55kw/-21m
AZ Cottonwood	105.7	KVRD-FM	PG 300w/779m, 34-41-11/112-06-58	CO Julesburg	96.5	KJBL	PR>55kw/-21m
AZ Cottonwood	95.9	KKLD	PR 21kw/799m, 34-41-11/112-07-02	CO Log Lane Village	104.5	KZLL	CC for NS
AZ Eagar	92.5	KTHQ	PR<65kw/359m	CO Montrose	91.9	KJOL-FM	PR>475w/-84m, 38-28-08/107-53-05
AZ Eagar	92.5	KTHQ	PR>62.3kw	CO Mountain Village	95.5	KRKQ	NW 250w/448m, 37-59-29/107-58-21
AZ Florence	103.1	KCDX	PG 42kw/614m, 32-46-44/110-57-46	CO Olney Springs	104.9	KRYE	PG>100kw/79m, 38-03-18/103-53-35
AZ Grand Canyon Village	102.5	KUGO	PG<13.8kw/74m	CO Palisade	98.5	KAAL	CC from KJSA
AZ Payson	89.3	KJPN	CC for NS	CO Palisade	98.5	KAAL	CC from KJSA
AZ Payson	99.3	KMZQ-FM	PR>50kw/147m	CO Pueblo	88.3	KTPL	PR 2.2kw/642m, 38-02-31/105-11-10
AZ Payson	99.3	KMZQ-FM	PR>50kw/147m dismissed but refilled	CO Red Feather Lakes	88.7	KUSZ	CC from KEZC
AZ Phoenix	91.5	KJZZ	NW 10kw/456m (aux)	CO Rye	90.9	KRWA	QG from 91.1, 10kw
AZ Pinetop	106.7	KNKI	PC<61.42kw	CO Silverthorne	90.3	KGQD	PR>300w/-90m, 39-29-44/106-01-44; CL from Fraser
AZ Pinetop	106.7	KNKI	PR>89.3kw/359m, amendment from 61.42kw/357m	CO Springfield	102.5	KLXD	QR from 91.7, 6kw/70m, 37-21-44/102-38-44 dismissed
AZ Show Low	91.3	KSHM	CC for NS	CO Woodland Park	89.5	KILE-FM	PG<-133m, 38-59-36/105-02-48
AZ St. Johns	95.7	KWKM	PG>452m	CT Ledyard	106.5	WBMW	PR>12kw/144m, 41-27-35/71-55-40
AZ Superior	89.9	KZAI	NW 6.5kw/287m, 33-29-33/111-38-23 (aux)	CT North Granby	89.9	WFSJ	CC for NS
AZ Winslow	91.3	KAWN	NW 300w/36m, 35-01-36/110-41-50	CT Sharon	91.9	WHDD-FM	PR<-19m
BC Salt Spring Island	107.9	CFSI-FM	PR<700w/216m	FL Fernandina Beach	91.7	WTRJ-FM	CC from WJBC-FM
BC Salt Spring Island	107.9	CFSI-FM	PR<7kw/216m	FL Fruit Cove	94.1	WSOS-FM	PC<5.5kw/154m, 30-04-08/81-38-50
CA Arcata	90.5	KHSU	CC from KHSU-FM	FL Hialeah	92.3	WCMQ-	PC 31kw/188m, 25-46-
CA Big Bear City	88.7	KFHM	CC for NS				
CA Burney	92.9	KRBN	CC for NS				
CA Cathedral City	98.5	KDES-FM	PR 42.8kw/161m, 33-51-56/116-26-04				
CA Cedarville	88.1	KDUP	PG>1kw				

FL Jasper	107.5	FM	24/80-11-18	KY Calvert City	95.7	WCCK	PC 3.5kw/104m, 37-06-47/88-21-34
FL St. Petersburg	99.5	WJHC	CC for NS	KY Fulton	89.5	WKMT	NW 4.5kw/108m, 36-34-10/88-50-13 (WKMS-91.3)
FL White City	104.7	WQYK-FM	NW 55kw/123m (aux)	KY Grayson	102.3	WUGO	PR 6kw/98m, 38-28-06/82-50-51
GA Aragon	107.1	WFLM	PG 16.5kw/124m, 27-25-16/80-21-25	KY Ledbetter	90.1	WKYP	CC from WHMR
GA Augusta	102.3	WTSH-FM	PG>100kw/158m, 34-15-03/84-59-05; CL from Rockmart	KY Ledbetter	90.1	WKYP	CC from WHMR
GA Augusta	102.3	WZNY	CC from WIBL	KY Mount Sterling	105.5	WWRW	CC from WMKJ
GA Augusta	102.3	WZNY	CC from WIBL	KY Paintsville	98.9	WSIP-FM	PR 100kw/171m, 37-51-31/82-47-39
GA Columbus	90.5	WFRC	PR>25kw/73m, 32-25-58/84-57-02	KY Prospect	98.9	WZKF	PC 43kw/157m, 38-11-31/85-31-11; CL from Salem, Ind.
GA Coosa	93.5	WSRM	PG<3kw/85m, 34-15-21/85-21-29	KY Valley Station	105.9	WAYI	CC from WRVI
GA Dahlonega	88.7	WVDG	CC for NS	KY Valley Station	105.9	WAYI	CC from WRVI
GA Dahlonega	88.7	WVDG	PG 600w/41m, 34-31-12/83-54-43	LA Alexandria	89.5	NEW	AF dismissed (Enterprise Corp. of the Delta) (73.515)
GA Gainesville	106.7	WYAY	AF 1.6kw/274m, 33-48-27/84-20-27 (aux)	LA Alexandria	89.5	NEW	PR<17kw; amendment from 8.3kw
GA Greenville	93.3	WVFJ-FM	PG>88kw/468m, 33-01-56/84-47-27 CX ROA; PG>38kw without changing height or site	LA Pearl River	88.7	NEW	PR<82m, 30-32-09/89-51-52; amendment from 93m at nearby site
GA Lavonia	92.1	WLHR-FM	PR 5kw/109m, 34-21-37/83-05-26	LA Simmesport	90.1	KLJG	CC for NS
GA Marietta	101.5	WKHX-FM	AF 25kw/321m (aux)	LA Springhill	92.9	KTKC-FM	CC from KTKC
GA Omega	107.5	WTIF-FM	PR 6kw/100m, 31-30-34/83-31-13	MD St. Mary's City	88.1	WGWS	PR<1.1kw/53m, 38-08-43/76-22-22
GA Palmetto	104.1	WALR-FM	PG<177m, 33-29-24/84-34-07	ME Bath	89.7	WTBP	PG 10.5kw/87m, 43-52-44/69-37-35
GA Peachtree City	91.7	WMVW	NW 13kw/75m, 33-14-39/84-25-49	ME Corinth	90.3	WWCX	CC for NS
GA Pelham	90.9	NEW	NS 310w/198m, 31-08-05/84-06-16 (Georgia Public Radio)	ME Portland	90.1	WMEA	PR>48.3kw
GA Soperton	88.1	WRJS	CC for NS	MI Detroit	98.7	WDZH	CC from WVMV
GA Thomasville	88.1	WAYT	PG<17kw	MI Greilickville	88.3	NEW	AF 2.4kw-V/176m, 44-57-59/85-46-27 (Grand Traverse Area Catholic Schools)
GA Vidalia	91.5	WGPH	PR 31kw/187m	MI Manistique	92.7	WPIQ	PC>24.5kw/217m, 45-58-00/86-29-17
GA Vidalia	91.5	WGPH	PR 31kw/187m	MI McBain	107.9	WCDY	PR 3.1kw/140m, 44-10-16/85-20-14
GA Waverly Hall	95.7	WIOL	PC 6kw/70m, 32-41-54/84-44-09; CL from Greenville	MI Mount Pleasant	91.5	WMHW-FM	PC 9.1kw H&V (add H)/164m
GU Agana	102.9	KISH	PC>178m	MI Niles	95.3	WTRC-FM	CC from WAOR
GU Agana	95.5	KSTO	PC>178m	MI Portage	96.5	WKZO-FM	CC from WYZO
GU Barrigada	88.1	KHMG	PC>166m	MI Portage	96.5	WKZO-FM	CC from WYZO
IA Pacific Junction	107.7	NEW	PA to delete this channel. Permittee showed the FAA will not approve any transmission site that will provide coverage	MN Eyota	103.9	KDCZ	CC from KLCX
IA Sioux City	88.9	KHGM	CC for NS	MN Eyota	103.9	KDCZ	CC from KLCX
ID Middleton	88.7	KOAY	CC from KTYT	MN Grand Rapids	89.7	KGRP	CC for NS
ID Parma	101.1	KWYD	PR>451m	MN Gunflint Lake	89.1	WBWA	CC for NS
IL Bloomington	90.3	WJWR	PG>18kw, 40-40-59/88-45-43	MN Gunflint Lake	89.1	WKEK	CC from WBWA
IL East St. Louis	89.7	WCBW-FM	FC; sold to WIBI	MN Hawley	89.1	NEW	NS 100kw-V/81m, 46-38-28/96-17-47 (Pioneer Public Broadcasting)
IL Marseilles	96.5	WLWF	CC from WKOT	MN New Ulm	88.3	KJTS	NW 2.4kw/29m, 44-16-07/94-26-21
IL Marseilles	96.5	WLWF	CC from WKOT	MN Newport	88.1	NEW	NS 1.2kw/57m, 44-47-45/93-02-42 (Religious Information Network)
IN Charlestown	104.3	WWPW	CC from WAYI	MN Owatonna	88.9	NEW	AF 18.5kw-V/96m, 44-02-46/93-23-03 (Southern Minnesota Catholic Radio)
IN Charlestown	104.3	WWPW	CC from WAYI	MN Saint Peter	88.7	NEW	AF 20kw-V/75m, 44-26-03/94-12-06 (Southern Minnesota Catholic Radio)
IN Columbus	102.9	WXCH	PC 5.1kw/97m, 39-11-10/85-57-29; CL from Hope	MN Waseca	88.9	NEW	AF dismissed (Minn-Iowa Christian Broadcasting) (settlement)
IN Edinburgh	100.3	WYGB	PC 5.1kw/110m, 39-21-45/85-54-23	MN Winona	89.5	KOAL	PR>2.5kw/210m, 44-04-26/91-34-38
IN Ellettsville	89.9	WOMB	PR 4kw/65m, 39-09-34/86-39-18	MO Lowry City	104.9	KXEA	NW 1.5kw/42m, 38-09-08/93-39-43
IN Greencastle	90.5	WQRA	PR<8.1kw H&V (add H)/136m, 39-35-22/86-33-02	MO Lowry City	104.9	KXEA	PG<1.5kw/42m
IN Greencastle	90.5	WQRA	PR<8kw/129m, 39-35-34/86-33-07 dismissed FTP	MO Lowry City	104.9	KXEA	PR 1.5kw/42m, 38-09-08/93-39-43
IN Muncie	104.9	WERK	AF 3.2kw/95m, 40-09-40/85-22-44 (aux)	MO Lowry City	104.9	KXEA	PR>1.1kw/127m
IN Nappanee	95.7	WAOR	CC from WYPW	MO Mexico	88.3	KJAB-FM	PR>100kw/70m (add H)
IN Tell City	91.3	WWHZ	CC for NS	MO Poplar Bluff	91.7	KPBR	CC for NS
KS Derby	96.3	KZCH	AF 2.95kw-V/111m (aux)	MO St. Charles	89.1	KCLC	PR>50kw/73m, 38-47-14/90-30-28
KS Derby	96.3	KZCH	NS 2.95kw-V/111m (aux)	MO Ste.	88.9	KSEF	PC>20kw/205m; CL from
KS Elk City	94.9	NEW	PR<6kw/83m, 37-15-42/95-45-59				
KS Hays	88.3	KVDM	CC for NS				
KS Lakin	92.5	KGRQ	CC for NS				
KS Overbrook	89.9	KAWR	CC for NS				
KY Barbourville	96.1	WKKQ	PR>100m, 36-51-59/83-54-00				
KY Benton	88.1	WTRT	PR>2.4kw/100m (add H, was V-only)				

Genevieve MO Ste.	88.9	KSEF	Farmington XR 37-47-58/90-33-44	NY Cape Vincent	88.1	WSLZ	10/114-29-53 PG>2kw/92m, 44-06-58/76-20-21
Genevieve MO Wheatland	102.3	KIXK	CC for NS	NY Fulton	104.7	WBBS	AF 25kw/34m, 43-05-32/76-11-22 (aux)
MO Wheatland	102.3	KIXK	NW 220w/49m, 37-56-48/93-24-05	NY Fulton	104.7	WBBS	NS 25kw/34m, 43-05-32/76-11-22 (aux)
MO Wheatland	102.3	KIXK	PG<220w/49m, 37-56-48/93-24-05	NY Ithaca	103.7	WQNY	NS 2.8kw/240m (aux)
MO Wheatland	102.3	KIXK	PG<220w/49m, 37-56-48/93-24-05	NY Ithaca	103.7	WQNY	NW 2.8kw/240m (aux)
MS Benton	88.3	WYAD	PR<640w/91m, 32-51-57/90-08-06	NY Ithaca	97.3	WYXL	NS 700w/177m (aux)
MS Bentonia	92.1	WJNS-FM	PC<4.8kw/111m, 32-33-25/90-20-14	NY Ithaca	97.3	WYXL	NW 700w/177m (aux)
MS D'Iberville	88.1	WOLM	CC for NS	NY Owego	91.9	WHVM	PG<275w/96m, 42-05-40/76-25-20
MS Flora	103.9	WYAB	PR 5kw/99m, 32-26-49/90-18-08	NY Patchogue	106.1	WBLI	PC>49kw-V (was already 49kw-H)
MS Forest	89.1	WMBU	PG>100kw	NY Port Dickinson	106.7	WRRQ	PG>1.2kw/221m, 42-03-22/75-56-39
MS Greenville	97.9	WLTM	CC from WBAQ	NY Syracuse	105.9	WXTL	CC from WLTI
MS Sharon	100.5	WRTM-FM	PG<6kw/100m, 32-33-22/90-03-05	NY Unadilla	88.9	WCJL	NW 5kw-V/241m, 42-23-27/75-19-41
NC Boiling Spring Lakes	99.9	WKXB	AF 1.1kw/236m, 34-14-37/78-07-24 (aux)	of the city.	CA	88.9	KRTM
NC Boiling Spring Lakes	99.9	WKXB	PC<35kw/178m, 34-03-02/77-57-20	Temecula			
NC Burlington	101.1	WZTK	PG<359m, 35-56-15/79-26-30	OH Bowling Green	89.7	WNOC	PG>5.3kw/88m, 41-25-39/83-36-30
NC Chadbourn	89.9	NEW	NS 25kw-V/113m, 34-32-17/78-42-36 (Columbus Co. Schools)	OH Cincinnati	105.1	WUBE-FM	AF 9kw/205m, 39-06-59/84-30-07 (aux)
NC Danbury	88.1	NEW	PR<1.65kw/79m, 36-21-05/79-47-15	OH Cincinnati	105.1	WUBE-FM	NS 9kw/203m, 39-06-59/84-30-07 (aux)
NC Greensboro	97.1	WQMG	CC from WQMG-FM	OH Columbus Grove	93.9	WBKS	CC from WLWD
NC Havelock	105.1	WLVG	CC from WSSM	OH Columbus Grove	93.9	WBKS	CC from WLWD
NC Havelock	105.1	WSSM	FC: sold to Educational Media Foundation (K-Love/Air 1)	OH Kenton	88.9	WKEN	CC for NS
NC Holly Springs	99.9	WCMC-FM	AF 4kw/476m, 35-40-35/78-32-08 (aux); PC>26.5kw/206m, 35-40-35/78-32-08 (main) Aux permit cancelled	OH Millersburg	90.5	WVML	PG>15kw
NC Holly Springs	99.9	WCMC-FM	NS 4kw/476m (aux)	OH Mount Vernon	90.9	WNZR	PC>1.3kw H&V (add H)/57m
NC Holly Springs	99.9	WCMC-FM	NS 4kw/476m (aux)	OH Springfield	100.7	WEEC	PG>8kw (aux)
NC Lexington	94.1	WWLV	CC from WTHZ	OH Springfield	100.7	WEEC	PR>8kw (aux)
NC Lexington	94.1	WWLV	CC from WTHZ	OK Blanchard	97.3	KKNG-FM	CC from KOJK
NC Tarboro	89.1	NEW	PR>950w H&V (add H)/81m, 35-54-30/77-35-25	OK Cache	97.9	KJMZ	PR>100m, 34-34-24/98-28-40
ND Bismarck	101.5	KSSS	NW 14kw-V/199m (aux)	OK Cache	97.9	KJMZ	PR>100m, 34-34-24/98-28-40 but dismissed ROA
ND Jamestown	89.9	KJTW	NW 400w/47m, 46-53-30/98-42-46	OK Guymon	88.9	KNGM	NW 25kw/98m, 36-40-27/101-28-09
ND Mandan	91.3	NEW	PR<4.2kw/195m but add H (was V-only)	OK Lawton	107.3	KVRW	PG 26kw/178m, 34-32-59/98-32-21
ND Williston	91.7	KNDW	NW 250w/36m, 48-10-45/103-33-54	OK Lawton	94.1	KZCD	PR>34.5kw/178m
NE Beatrice	88.9	KNBE	PR>146m	OK Mustang	99.7	KZLS	PR>47kw/155m, 35-35-31/97-51-59; amendment from 35kw/150m at different site
NE Imperial	102.9	KADL	PR>100kw	OK Newcastle	93.3	KJKE	CC from KKNG-FM
NE Shelton	90.5	NEW	PG 3.45kw/36m, 40-38-35/98-43-29	OK Tulsa	103.3	KJSR	PG>395m
NE Waverly	95.1	KRKR	PC<84m	OK Tulsa	103.3	KJSR	PR>395m, amendment from 390m
NH Colebrook	90.3	WEVF	PG>270w/245m, 44-56-49/71-20-27	ON Hearst	94.5	CKHT-FM	PR<130w/50m
NH Lebanon	90.5	WFVA	PR>12w/187m, 43-36-56/72-10-24	ON	104.5	CFQK-FM	PR>250w/110m
NJ Cherry Hill	89.5	WKVP	PR>1.9kw-V/61m, 39-54-43/74-59-21	Kaministiquia			
NJ North Cape May	106.7	WFNE	CC from WKOE	ON Owen	106.5	CIXK-FM	PR 63kw/190m, 44-30-44/80-57-13 withdrawn
NJ North Cape May	106.7	WFNE	CC from WKOE	ON Owen	93.7	CKYC-FM	PR 24kw/214m, 44-30-44/80-57-13 withdrawn
NM Alamo Community	107.5	NEW	NS 6kw/-60m, 34-25-01/107-30-04 (Alamo Navajo School Board)	ON Shuniah Township	103.5	CKED-FM	PR>250w/169m
NM Alamogordo	94.3	KYEE	PR<50kw/-88m, 32-56-42/105-56-46	OR Gearhart	96.5	NEW	AF 6kw/70m, 45-57-11/123-56-14 (Black Hills Broadcasting)
NM Arroyo Seco	90.9	KRRT	PG 4kw-H/-181m	OR Lebanon	103.7	KXPC-FM	PG 90kw/624m, 44-34-49/122-30-07
NM Corrales	95.1	KLQT	CC from KSYU	OR Portland	101.1	KUFO-FM	PC>100kw/502m
NM Farmington	95.7	KPCL	PR>80kw/317m, 36-48-53/107-53-31	OR Portland	101.9	KINK	PG 100kw/502m, 45-30-58/122-43-59
NM Hobbs	91.7	KOBH	NW 250w/48m, 32-42-48/103-05-28	OR Portland	89.9	KOAC	AF 2.8kw-H/473m & 2.6kw-H/483m, both aux
NM Questa	103.7	KLNN	req. to drop V & go H-only	OR Portland	89.9	KOAC	NS 2.6kw-H/483m & 2.8kw-H/473m (aux)
NM Red River	90.1	KRDR	PG>279m, 36-43-44/105-25-29	OR Weston	101.9	KUJJ	NW 600w/253m (aux)
NV Mesquite	88.5	KEKL	PG>85kw/433m, 36-44-	PA Benton	88.5	NEW	PR<200w/5m, 41-14-39/76-25-30
				PA Easton	90.5	WPNJ	CC for NS
				PA Jersey Shore	88.5	WXPI	CC for NS
				PA	91.5	WCIM	PR>1.2kw
				Shenandoah			
				PA	93.3	NEW	AF dismissed (Evangelical Broadcasting Group) (ROA)
				Susquehanna			

PA Tafton	88.3	WLKA	PR<320w/254m, 41-32-37/75-27-44 dismissed 73.515	Estates			56-59 (Bryan A. King)
PA Tunkhannock	91.3	WFUZ	PG>630w-H (drop V)/221m, 41-27-07/76-00-33	TX Victoria	104.7	KVIC	QR from 95.1, 12.7kw
PA Wyomissing	91.9	WYTL	QC from 91.7, 450w/166m, 40-11-09/75-57-15	UT Hurricane	98.9	KROX-FM	CC from KBZB
PR Santa Isabel	98.1	NEW	AF dismissed (Peace Broadcasting Network)	UT Hurricane	98.9	KROX-FM	CC from KBZB
QC Disraeli	107.1	CJLP-FM	PG>208w-V/-40cm (about 20" below average terrain)	UT Hurricane	99.9	KONY	PR 99kw/620m, CL from St. George dismissed
QC Montreal	106.7	CKDG-FM	QR from 105.1, 1.2kw/194m	UT Oakley	89.5	NEW	AF dismissed (Silver Fish Broadcasting) (DA 08-1537)
RI Newport	88.1	NEW	NS 100w/48m, 41-29-48/71-16-33 (RI Public Radio)	UT Price	91.9	KEYP	PG<600w/622m, 39-38-34/110-20-46
SC Columbia	90.5	WUSC-FM	NS 240w/52m, 33-59-47/81-01-39 (aux)	UT Richfield	91.7	KEYR	PG>850w/956m, 38-23-08/112-19-56
SC Cross Hill	94.1	WGFJ	CC from WYOR	UT St. George	95.9	KZHK	PG<595m
SC Cross Hill	94.1	WGFJ	CC from WYOR	VA Fairview Beach	95.9	WGRQ	PG 1.9kw/182m, 38-13-44/77-07-28
SC Gaffney	105.3	WNOW-FM	PC<51kw/395m, 35-21-51/81-11-13; CL (back) from Bessemer City, NC	VA Fort Lee	96.5	WKLR	AF 5kw/120m, 37-26-21/77-25-57 (aux)
SC Gaffney	105.3	WNOW-FM	PG<51kw/395m, 35-21-51/81-11-13	VA Fort Lee	96.5	WKLR	NS 5kw/120m, 37-26-21/77-25-57 (aux)
SC Quinby	95.3	WFRK	NW 3.9kw/125m, 34-13-48/79-44-49	VA Fort Lee	96.5	WKLR	NW 5kw/120m, 37-26-21/77-25-57 (aux)
SC Ridgeland	104.9	WLHH	CC from WWJN	VA Lakeside	100.9	WHTI	CC from WDYL
SD Aberdeen	90.1	KEEA	NW 1kw/30m, 45-28-22/98-30-16	VA Manassas	106.7	WJFK-FM	NW 40kw/155m, 38-47-16/77-19-47 (aux)
SK Prince Albert	88.1	CJLR-FM-3	PR>49kw/148m	VA Nassawadox	96.9	WFAJ	NW 13.5kw/87m, 37-31-46/75-54-44
TX Alamo	104.9	KJAV	PR<99m, 26-13-00/98-05-23	VA Richmond	103.7	WURV	CC from WMXB
TX Alice	88.3	KIFR	NW 23kw-V/89m, 27-45-08/98-07-55 (Family Radio)	VA Tappahannock	89.9	NEW	granted H, was V-only
TX Austin	100.7	KASE-FM	PC>72kw (aux)	VA VI	91.1	WXZT	QR from 90.9
TX Blowout	88.9	KXMP	CC for NS	Christiansted			
TX Caldwell	91.9	KALD	PR>30kw/118m, 30-35-57/96-38-32 reinstated	VT Randolph	102.1	WVXR	CC from WCVR-FM
TX Childress	89.5	KFCH	NW 150w-H/57m, 34-25-22/100-12-13	VT St. Albans	90.5	WXCP	CC for NS
TX Dallas	97.9	KBFB	PG>97kw/574m, 32-35-02/96-57-48	VT Woodstock	93.9	WMXR	PR 3.1kw/139m, 43-38-49/72-21-49; amendment from 3.5kw/130m at different site
TX Deer Park	104.9	KAMA-FM	AF 3.8kw/225m; 15kw/140m, 29-47-26/95-20-43 both aux	WA Clarkston	88.1	KUCC	PG>240w/138m, 46-27-47/116-54-25
TX Deer Park	104.9	KAMA-FM	NS 3.8kw/225m & 15kw/140m, 29-47-26/95-20-43 (aux)	WA Clarkston	88.1	KUCC	PR>240w/138m, 46-27-47/116-54-25
TX El Paso	89.5	KKLY	PC>3.5kw/369m, 31-47-43/106-28-52	WA Wenatchee	89.9	KPLW	PR 5kw/424m, 47-19-25/120-13-56
TX Eldorado	106.5	NEW	PG 6kw/85m, 30-51-55/100-35-36	WA Westport	101.3	KLWA	CC from KABW
TX Flower Mound	96.7	WBAP-FM	CC from KPMZ	WA Westport	101.3	KLWA	PG>4.5kw/52m, 46-53-04/124-00-44
TX Galveston	106.5	KOVE-FM	AF 3.2kw/225m, 29-45-26/95-20-19 & 6kw/140m, 29-47-25/95-20-42 (both aux)	WA Westport	101.3	KLWA	PG>6kw/61m CX ROA; going for (and has permission for) 4.5kw/52m instead.
TX Ginger	91.5	KYFA-FM	CC for NS	WI Tomahawk	91.3	NEW	AF dismissed (Tomahawk Light Broadcasting) (FTP)
TX Goldsmith	94.7	KTXO	PG>6kw/97m, 31-52-02/102-39-18	WV Bridgeport	104.1	WETT	CC from WDCI
TX Hamilton	107.7	KHHG	CC for NS	WV Hillsboro	91.9	WVMR-FM	PG>550w/-11m, 38-11-30/80-11-44
TX Hunt	99.9	KRZS	PR>11kw/129m, 30-08-51/99-13-14 dismissed FTP	WV Hillsboro	91.9	WVMR-FM	PR>550w/-11m, 38-11-30/80-11-44
TX Jefferson	104.5	KJTX	PC 4.4kw/117m	WY Cheyenne	88.1	KAIX	PR<1.9kw/63m
TX Lorena	98.3	KYAR	PG>4.1kw/121m, 31-24-45/97-12-40	WY Cheyenne	90.3	KWYC	PC>20.5kw; CL from Orchard Valley
TX Mason	101.7	KZZM	CC for NS	WY Cheyenne	93.7	KAZY	CC from KAZY-FM
TX Mexia	104.9	KWBT	CC from KROX-FM	WY Gillette	88.1	KGLL	NW 200w-V/85m, 44-13-50/105-27-45
TX Mexia	104.9	KWBT	CC from KROX-FM	WY Lingle	90.7	KUWV	PG<18.5kw/80m, 42-20-06/104-09-53
TX San Angelo	90.1	KNCH	CC from KUTX	WY Moose	98.5	KXJN	CC from KLEP
TX Savoy	107.3	KQDR	PG 3.7kw/128m, 33-42-31/96-24-09	Wilson Road			
TX Seymour	93.9	KSEY-FM	PR>50kw/150m, 33-36-53/99-24-59 dismissed FTP	WY North Rock Springs	101.1	KXJW	QG from 101.3, 1.9kw/155m, 41-39-24/109-09-32
TX Somerville	88.1	KUTX	CC from KNCH	WY Pine Bluffs	95.5	NEW	PR<50kw/93m, 41-09-54/104-21-36; amendment from 40kw/141m at different site
TX South Padre Island	95.3	KZSP	PC>2.9kw/128m, 26-03-14/97-12-47	WY Reliance	89.5	NEW	PG<350w
TX Sulphur Bluff	99.7	KNOI	CC from KRBR	WY Reliance	98.7	KWXR	PG<2.7kw/155m
TX Terrell Hills	106.7	KTKX	CC from KPWT	WY Reliance	98.7	KWXR	PR<2.7kw/155m
TX Terrell Hills	106.7	KTKX	CC from KPWT	WY West	88.1	KGCV	PR>74kw/158m, 41-17-46/105-53-30; CL from Elk Mountain
TX Uvalde	103.5	NEW	NS 6kw/78m, 29-13-01/99-	Laramie			

PHOTO NEWS



Jeff Kruszka, Editor
 1909 Lost Lake Place
 Pearland, TX 77581
 jkruszka@sbcglobal.net

June 2010

We welcome new member and new contributor, Garth Jensen of Markham, ON. Garth uses a CM 4221HD antenna and a homemade pair of rabbit ears for VHF, both connected to a CM7777 pre-amp (mounted in the family sunroom!). Receiver is a Zenith DTT901 digital box and Panasonic TV (TH-50PZ77U).



→ WMAQ-29 Chicago, IL
 446 mi Tr seen 1/16/10
 @0154 ET



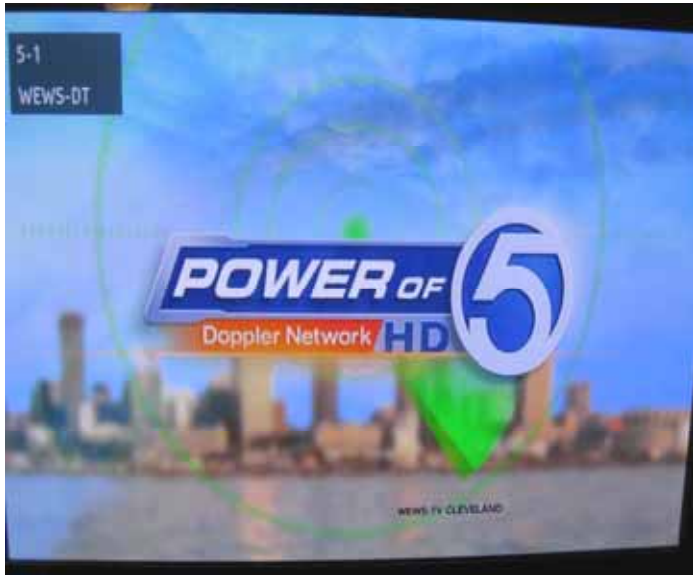
← WBNS-21 Columbus, OH
 333 mi Tr seen 9/12/09
 @2341 ET



→ WDCQ-15 Bad Axe, MI
 222 mi Tr seen 11/13/09
 @0110 ET

← WDIV-45 Detroit, MI
 222 mi Tr seen 9/24/09
 @0459 ET





WEWS-15 Cleveland, OH
214 mi Tr seen 9/19/09
@2349 ET



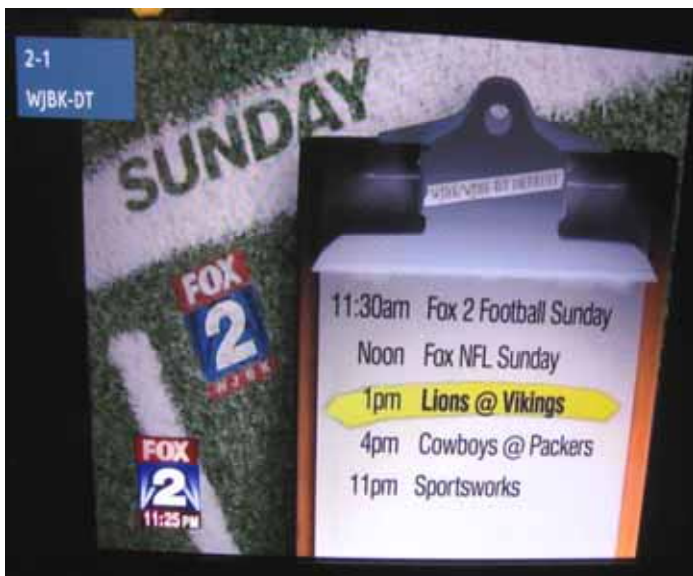
WFUM-28 Flint, MI
222 mi Tr seen 11/8/09
@0230 ET



WFXP-22 Erie, PA
134 mi Tr seen 9/9/09
@0231 ET



WICU-12 Erie, PA
131 mi Tr seen 6/29/09
@0200 ET



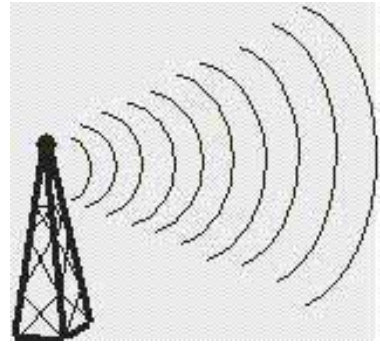
WJBK-7 Detroit, MI
223 mi Tr seen 11/13/09
@0325 ET



WKTV-29 Utica, NY
222 mi Tr seen 9/4/09
@0401 ET

Great photos, Garth! Keep 'em coming. 73's, JEFF

Northern FM DX



Keith McGinnis
18 Newbridge St., Hingham, MA 02043
longwave@comcast.net 781-875-1944

For Dxers in the following states: CT IA ID IL IN MA ME MI MN MT ND NE NH NJ NY OH OR PA RI SD VT WA WI WY and all of Canada. Please submit by the 10th of each month.

EDITOR'S NOTE PLEASE SUBMIT ALL REPORTS IN THE FORMAT SHOWN BELOW.

Time(tab)Calls(tab)Freq(tab)City(tab)State(tab)details

Formats can either be plain text, Word or Excel as long as format is adhered to. Any submissions in other formats may not be used at editor's discretion. All Submissions must be in to me by the 10th of each month.

Jeff Lehmann - N1ZZN Hanson, MA FN42NB Sangean HDT-1X, Yamaha T-85 APS-13

Jan 31 2010 Es

@=New

1617	WKLG	102.1	Rock Harbor	FL	Star 102.1	1293
1617	WRMF	97.9	Palm Beach	FL	RDS 1194	
1618	WRTO	98.3	Goulds	FL	La Kalle, RDS	1265
1619	WEDR	99.1	Miami	FL	99 Jamz, HD	1232
1621	WKIS	99.9	Boca Raton	FL	99.9 Kiss Country,HD	1229
1623	WMXJ	102.7	Pompano Beach	FL	Magic 102.7, HD	1232
1625	WMIB	103.5	Fort Lauderdale	FL	103-5 The Beat	1232
1626	WWWK	105.5	Islamorada	FL	Exitos 105.5	1293
1628	WAMR	107.5	Miami	FL	Amor 107.5, RDS	1232
1630	WXDJ	95.7	N Miami Beach	FL	El Sol 95,RDS	1243
1633	WPOW	96.5	Miami	FL	Power 96	1232
1635	ZNL	97.5	Nassau, Bahamas		Love 97 FM~	1232
1648	WFKZ	103.1	Plantation Key	FL	Sun FM	1305
1719	WSMR	89.1	Sarasota	FL	Life 89.1, RDS	1220
1723	WLTQ	92.1	Venice	FL	92.1 Lite FM	1220
1726	WWRM	94.9	Tampa	FL	Magic 94.9, RDS	1174
1730	WRBQ	104.7	Tampa	FL	Q105	1172

Feb 1 2010 Es

845	WMBX	102.3	Jensen Beach	FL	X102.3, HD, RDS	1164
847	WTNT	94.9	Tallahassee	FL	94-9 TNT	1085
847	WWRM	94.9	Tampa	FL	Magic 94.9, HD, RDS	1174
849	WAVW	92.7	Stuart	FL	Wave 92.7, HD, RDS	1151
849	WPBH	93.5	Port St Joe	FL	Rock 93.5, RDS	1163
855	WQCS	88.9	Fort Pierce	FL	HD	1144
857	WPBZ	103.1	Indiantown	FL	The Buzz, RDS	1164
901	WEAT	104.3	West Palm Beach	FL	Sunny 104.3, HD, RDS	1194
904	WKRO	93.1	Edgewater	FL	1068	
@909	WFLM	104.7	White City	FL	104.7 The Flame	1143
912	WWKA	92.3	Orlando	FL	K 92 FM	1092
912	WRMF	97.9	Palm Beach	FL	RDS	1194
915	WHTQ	96.5	Orlando	FL	HD, RDS	1092
@917	WFLZ	93.3	Tampa	FL	93-3 FLZ, HD	1172
917	WCFB	94.5	Daytona Beach	FL	Star 94.5	1080
919	WLTQ	92.1	Venice	FL	92.1 Lite FM	1220
920	WSCF	91.9	Vero Beach	FL	Christian FM	1133
921	WJIS	88.1	Bradenton	FL	The Joy FM, RDS	1219
@922	WPOZ	88.3	Union Park	FL	Z88.3, HD	1092
924	WSMR	89.1	Sarasota	FL	Life 89.1, RDS	1220
925	WMFE	90.7	Orlando	FL	HD	1092
927	WZZS	106.9	Zolfo Springs	FL	The Bull, RDS	1187
929	WMNF	88.5	Tampa	FL	RDS	1173

@930	WCIF	106.3	Melbourne	FL	1109	
931	WFUS	103.5	Gulfport	FL	US 103-5, RDS	1172
934	WOSN	97.1	Indian Rvr Shores	FL	Ocean 97, RDS	1127
935	WPCV	97.5	Winter Haven	FL	97 Country, RDS	1134
935	WWRZ	98.3	Fort Meade	FL	Max 98.3, RDS	1170
937	WNUE	98.1	Titusville	FL	Mega	1070
937	WKGR	98.7	Fort Pierce	FL	The Gater, RDS	1164
937	WMMO	98.9	Orlando	FL	RDS	1104
938	WLRQ	99.3	Cocoa	FL	Lite Rock 99.3, RDS	1100
939	WQYK	99.5	Saint Petersburg	FL	HD, RDS	1172
939	WRBQ	104.7	Tampa	FL	Q105, HD, RDS	1172
941	WDUV	105.5	New Port Richey	FL	The Dove, RDS	1168
@945	WWLL	105.7	Sebring	FL	105.7 Lite FM	1178
947	WMYZ	88.7	Clermont	FL	Z88.3	1108
947	WXGL	107.3	Saint Petersburg	FL	107.3 The Eagle, HD, RDS	1173
948	WKES	91.1	Lakeland	FL	Moody Radio	1151
948	WWFR	91.7	Stuart	FL	Family Radio, Could Be WFTI	1164
949	WYUU	92.5	Safety Harbor	FL	RDS	1189
959	WOCL	105.9	Deland	FL	Sunny 105.9, RDS	1079
1010	WJHM	101.9	Daytona Beach	FL	102 Jamz, HD	1079
1020	WXTB	97.9	Clearwater	FL	98 Rock, HD, RDS	1168
1030	WBTP	95.7	Clearwater	FL	95-7 The Beat, RDS	1182
1032	WEJZ	96.1	Jacksonville	FL	Lite 96.1, RDS	1007
1032	WXOF	96.3	Yankeetown	FL	96-3 The Fox	1116
1033	WSUN	97.1	Holiday	FL	97X	1168
1034	WSKY	97.3	Micanopy	FL	The Sky, HD	1074
@1035	WTKT	98.5	Crystal River	FL	98.5 KTK, HD	1099
1036	WFYV	104.5	Atlantic Beach	FL	Rock 105, HD, RDS	1007
1037	WJGL	96.9	Jacksonville	FL	96-9 The Eagle, RDS	1007
1052	WAPE	95.1	Jacksonville	FL	HD, RDS	1007
1055	WXXJ	102.9	Jacksonville	FL	X102-9, HD	1007
1058	WUFT	89.1	Gainesville	FL	RDS	1067
@1105	WJUF	90.1	Inverness	FL	WUFT, RDS	1123
@1106	WYFS	89.5	Savannah	GA	898	
1119	WJXR	92.1	MacClenny	FL	Shopping	1021
1133	WJZT	97.9	Woodville	FL	Crusin' 97.9	1090
1134	WBZE	98.9	Tallahassee	FL	Star 98-9, RDS	1090
1221	WMAW	88.1	Meridian	MS	RDS	1210
1907	WGCA	88.5	Quincy	IL	RDS	1071
@1922	WBBE	97.9	Heyworth	IL	Bob FM	943
1929	WIPA	89.3	Pittsfield	IL	WUIS	1043
1935	WBBA	97.5	Pittsfield	IL	RDS	1051
1940	KXMO	95.3	Owensville	MO	1113	
1943	KWWR	95.7	Mexico	MO	96 Country, RDS	1126
1947	KICK	97.9	Palmyra	MO	Kick FM	1084
1949	KRES	104.7	Moberly	MO	RDS	1151
@1950	KRLI	103.9	Malta Bend	MO	1189	
1952	KZZT	105.5	Moberly	MO	KZ105	1128
1957	KCMO	94.9	Kansas City	MO	RDS	1255
@2007	KJTY	88.1	Topeka	KS	Family Life Radio, RDS	1295
2009	KLJC	88.5	Kansas City	MO	Calvary 88.5, RDS	1250
2130	WYNG	94.9	Mount Carmel	IL	924	
2135	KIHT	96.3	Saint Louis	MO	K Hits 96	1048
2140	WAAG	94.9	Galesburg	IL	FM 95, RDS	1006

May 3 Es

1429	WCRJ	88.1	Jacksonville	FL	The Promise	1007
1459	WAYF	88.1	West Palm Beach	FL	Way FM	1176
1459	WJIS	88.1	Bradenton	FL	The Joy FM, RDS	1219
1459	WAYJ	88.7	Fort Myers	FL	Way FM, RDS	1251
1500	WJFR	88.7	Jacksonville	FL	Family Radio	1008
1500	WJUF	90.1	Inverness	FL	WUFT, RDS	1123
1502	WWRM	94.9	Tampa	FL	Magic 94.9, HD, RDS	1174
1503	WSMR	89.1	Sarasota	FL	Life 89.1, RDS	1220
1505	WRMF	97.9	Palm Beach	FL	RDS	1194
1510	WAVW	92.7	Stuart	FL	Wave 92.7, RDS	1151
1513	WAPE	95.1	Jacksonville	FL	RDS	1007
@1515	WRGO	102.7	Cedar Key	FL	Fun 102.7, RDS	1117
1518	WSJT	98.7	Holmes Beach	FL	Smooth 98.7, RDS	1189
1519	WXTB	97.9	Clearwater	FL	98 Rock, HD, RDS	1168
1520	WFUS	103.5	Gulfport	FL	US 103-5	1172
@1522	WYKS	105.3	Gainesville	FL	Kiss 105.3	1072
1524	WCTQ	106.5	Sarasota	FL	106.5 CTQ, RDS	1200
1525	WXGL	107.3	Saint Petersburg	FL	107.3 The Eagle, HD, RDS	1173
@1526	WHGN	91.9	Crystal River	FL	Moody Radio, RDS	1121
1528	ZNM	94.9	Nassau, Bahamas		More 94 FM	~1232
1529	WBTP	95.7	Clearwater	FL	95-7 The Beat, RDS	1182
1531	WXOF	96.3	Yankeetown	FL	96-3 The Fox	1116

1531	WHTQ	96.5	Orlando	FL	HD, RDS 1092	
1532	WRBQ	104.7	Tampa	FL	Q105, RDS 1172	
1535	WYGC	104.9	High Springs	FL	105 The Game 1067	
1535	WOCL	105.9	Deland	FL	Sunny 105.9, RDS	1079
1540	WUFT	89.1	Gainesville	FL	RDS 1067	
1542	WXEL	90.7	West Palm Beach	FL	RDS 1192	
@1542	WFTI	91.7	Saint Petersburg	FL	Family Radio, RDS	1188
1550	WJXR	92.1	MacClenny	FL	The Bargain Channel	1021
1552	WOGK	93.7	Ocala	FL	93.7 K Country, RDS	1082
@1554	WXCW	95.3	Homosassa Sprg	FL	Citrus 95.3 1126	
1555	WDUV	105.5	New Port Richey	FL	The Dove, RDS 1168	
1600	WTMG	101.3	Williston	FL	Magic 101.3 1089	
1604	WXMK	105.9	Dock Junction	GA	Magic 105.9, RDS	952
1606	WLOQ	103.1	Winter Park	FL	RDS 1106	
1611	WPBZ	103.1	Indiantown	FL	The Buzz, RDS 1164	
@1615	WVGL	104.7	Naples	FL	Mix 104.7, RDS 1261	
1617	WPOW	96.5	Miami	FL	Power 96, HD, RDS	1232
1621	WLYX	96.7	Valdosta	GA	Lyx 96 1045	
1622	WRTO	98.3	Goulds	FL	La Kalle, HD, RDS	1265
1623	WKIS	99.9	Boca Raton	FL	99.9 Kiss Country,	HD 1229
@1626	WLYF	101.5	Miami	FL	101.5 Lite FM, HD	1232
1629	WXDJ	95.7	N Miami Beach	FL	EI Sol 95, RDS 1243	
1630	WFLC	97.3	Miami	FL	97.3 The Coast, HD	1232
@1636	WHQT	105.1	Coral Gables	FL	Hot 105, HD 1232	
@1637	WHYI	100.7	Fort Lauderdale	FL	Y100.7, HD 1232	
1641	WHLG	101.3	Port St. Lucie	FL	Coast 101.3, RDS	1154
1642	WMBX	102.3	Jensen Beach	FL	X102.3, RDS 1164	
1642	WJGO	102.9	Tice	FL	102.9 Bob FM, RDS	1244
1649	WZSP	105.3	Nocatee	FL	La Zeta 105.3 1203	
@1650	WEYS-LP	87.7	Miami	FL	Almavision Radio, RDS	
@1656	WGYL	93.7	Vero Beach	FL	93.7 The Breeze, RDS	1133
1658	WSYR	94.7	Gifford	FL	Star 94.7, RDS 1136	
@1700	W263BT	100.5	Clewiston	FL	Radio Fiesta 1201	
1707	WKLG	102.1	Rock Harbor	FL	Star 102.1 1293	
1707	WAMR	107.5	Miami	FL	Amor 107.5, HD, RDS	1232
@1718	WGCU	90.1	Fort Myers	FL	1220	
1720	WMKL	91.9	Hammocks	FL	91.9 The Call 1281	
@1729	WBCG	98.9	Murdock	FL	98-9 The Beach 1220	
1730	WGUF	98.9	Marco	FL	FM Talk 98.9 1265	
1822	WUWF	88.1	Pensacola	FL	HD, RDS 1202	
1916	ZFC	96.1	Freeport, Bahamas		Cool 96 FM	
1918	ZNL	97.5	Nassau, Bahamas		Love 97 FM ~1232	
1927	WBGW	105.9	Fort Lauderdale	FL	Big 105.9 1229	
1929	WMNF	88.5	Tampa	FL	RDS 1173	
1929	WMYZ	88.7	Clermont	FL	Z88.3 1108	
1930	WRMB	89.3	Boynton Beach	FL	RDS 1196	
1936	WCZR	101.7	Vero Beach	FL	Real Radio 1127	
1942	WQOL	103.7	Vero Beach	FL	1127	
1956	WRAZ	106.3	Key Largo	FL	La Raza 1293	
2004	WSUN	97.1	Holiday	FL	97X 1168	

May 14 Es

1011	WAYF	88.1	West Palm Beach	FL	Way FM 1176	
1012	WMGE	94.9	Miami Beach	FL	Mega 94-9, HD, RDS	1232
1013	WPOW	96.5	Miami	FL	Power 96, RDS, HD	1232
1014	WRMB	89.3	Boynton Beach	FL	RDS 1196	
1019	WLRN	91.3	Miami	FL	1230	
1020	WMKL	91.9	Hammocks	FL	91.9 The Call, RDS	1281
1021	WHDR	93.1	Miami	FL	93 Rock 1232	
1021	WMIA	93.9	Miami Beach	FL	93-9 MIA 1232	
1026	WAVW	92.7	Stuart	FL	Wave 92.7, HD, RDS	1151
1029	WXDJ	95.7	N Miami Beach	FL	EI Sol 95, RDS 1243	
1030	ZNL	97.5	Nassau, Bahamas		Love 97 FM ~1232	
1030	WRMF	97.9	Palm Beach	FL	RDS 1194	
1030	WRTO	98.3	Goulds	FL	La Kalle, HD, RDS	1265
1031	WEDR	99.1	Miami	FL	99 Jamz, HD 1232	
1033	WKIS	99.9	Boca Raton	FL	99.9 Kiss Country,	HD 1229
1037	WKEY	93.5	Key West	FL	Key-Z FM 1358	
@1038	WCTH	100.3	Plantation Key	FL	Thunder Country 1305	
1041	WFKZ	103.1	Plantation Key	FL	Sun FM 1305	
1041	WMIB	103.5	Fort Lauderdale	FL	Super X, HD, RDS	1232
@1048	WRMA	106.7	Fort Lauderdale	FL	Romance 106.7 1229	
1050	WBGW	105.9	Fort Lauderdale	FL	Big 105.9, RDS 1229	
@1051	WIRK	107.9	West Palm Beach	FL	1181	
1052	WHQT	105.1	Coral Gables	FL	Hot 105, HD 1232	
1055	WFLC	97.3	Miami	FL	97.3 The Coast, HD	1232
@1056	WLLY	99.5	Palm Beach Gardens	FL	La Ley 1178	
1058	WAMR	107.5	Miami	FL	Amor 107.5, HD, RDS	1232

1103	WCZR	101.7	Vero Beach	FL	Real Radio	1127
1116	WQCS	88.9	Fort Pierce	FL	HD 1144	
1118	WJUF	90.1	Inverness	FL	WUFT, RDS	1123
1119	WXEL	90.7	West Palm Beach	FL	RDS 1192	
1124	WKGR	98.7	Fort Pierce	FL	The Gater, RDS	1164
1128	WOSN	97.1	Indian Rvr Shores	FL	Ocean 97, RDS	1127
1138	WUFT	89.1	Gainesville	FL	RDS 1067	
1147	WJCB	88.5	Clewiston	FL	91 Jams //WJFP	1202
1154	WCNO	89.9	Palm City	FL	1163	
1155	WZZR	94.3	Riviera Beach	FL	Real Radio	1178
1306	WUWF	88.1	Pensacola	FL	HD, RDS	1202
1644	VOCM	97.5	St John's	NF	K Rock, RDS	962
1644	CKSJ	101.1	St John's	NF	Coast 101.1, RDS	961
1645	CHOZ	94.7	St John's	NF	Oz FM, RDS	964
@1647	CKPE	94.9	Sydney	NS	94-9 The Cape, RDS	601
1650	CIOZ	96.3	Marystown	NF	OZ FM 847	
1652	CKUL	96.5	Halifax	NS	Kool 96 dot 5, RDS	404
1658	CBAF-10	88.7	New Glasgow	NS	Première Chaîne	475
@1701	CBN-2	91.1	Corner Brook	NF	CBC Radio 1	783
@1710	CHVO	103.9	Carbonear	NF	Kixx Country	946
1713	CBN	106.9	St John's	NF	CBC Radio 2	961
1715	CBAF-17	105.9	St John's	NF	Première Chaîne	961
@1718	CBN-5	91.7	Mayrstown	NF	CBC Radio 2	848
@1723	CBAZ	97.3	Sheet Harbor	NS	CBC Radio 1	464
@1724	CHER	98.3	Sydney	NS	Max 98.3, RDS	601
@1731	CFOZ	100.3	Argentia	NF	Oz FM 902	
1732	CKTO	100.9	Truro	NS	Big Dog 100.9	451
1735	CJCH	101.3	Halifax	NS	101-3 The Bounce, RDS	404
@1736	CBAX-1	88.9	Charlottetown	PEI	Espace Musique	470
1736	CBAX-2	101.9	St John's	NF	Espace Musique	961
@1738	CKJM	106.1	Cheticamp	NS	//stream	578
@1741	CBAF-11	107.5	Mulgrave	NS	Première Chaîne	531
@1744	CKQK-1	103.7	Elmira	PEI	105.5 K Rock	
1745	CKQK	105.5	Charlottetown	PEI	105.5 K Rock	470
@1747	CBGC	92.5	Carmanville	NF	CBC Radio 1	947
@1748	CBNL	93.7	Clarenceville	NF	CBC Radio 1	923
1749	CBAF-16	94.3	Port Au Port	NF	Première Chaîne	743
1749	CKXG	102.3	Grand Falls	NF	K Rock 894	
@1754	CBIC	107.1	Cheticamp	NS	CBC Radio 1	579
@1759	CKXD	98.7	Gander	NF	98.7 K Rock	915
1802	CJFX	98.9	Antigonish	NS	XFM, RDS	503
@1807	CHTN-1	99.9	Elmira	PEI	Ocean 100	
@1808	CBHF	93.9	NE Margaree	NS	CBC Radio 1, tentative	572
@1817	CJMY	105.3	Clarenceville	NF	Oz FM 923	
@1818	CBNR	95.5	Ramea	NF	CBC Radio 1	759
@1820	CILE	95.1	Havre-St-Pierre	QC	//stream	662
@1825	CKBC	104.9	Bathurst	NB	Max 104.9	461
@1835	CBGA	102.1	Matane	QC	Première Chaîne	497
2040	KDHX	88.1	Saint Louis	MO	HD 1058	

Harry Hayes – Wilkes-Barre, PA 18702

Equipment: Sony XDR-F1HD, FM-6 ant. in attic no amplification @=new

February 13 2010 Ground

1325@ WRVO 89.9 Oswego NY "Member Supported stations of WRVO"
WVIA off due to fire

February 15 Ground

1800@ WUNY 89.5 Utica NY WCNY ID

April 24 Es

1253 KSYN 92.5 Joplin MO "Kissen"

May 3 MS

0959@ WNIJ 89.5 DeKalb IL "WNIJ DeKalb..."

May 3 Es

1321 WSRX 89.5 Naples FL "Praise FM"
1420@ WBHQ 92.7 Beverly Beach FL "Beach 92.7"

1426	WLLD	94.1	Lakeland	FL	RDS ID and HD indication
1445	WFSX	92.5	Estero	FL	"Fox News 92-5"
1508@	WGCU	90.1	Ft. Myers	FL	ID
1510	WRMB	89.3	Boynton Beach	FL	"Moody Radio"
1532	WINK	96.9	Ft. Myers	FL	"The New WINK FM"
1536	WJGL	96.9	Jacksonville	FL	"The Eagle"
1658	KRVS	88.7	Lafayette	LA	RDS ID "KRVS.org"
1700	WMPR	90.1	Jackson	MS	ad for Medgar Evers event, ID
1728	WRKF	89.3	Baton Rouge	LA	ID
1800@	WATU	89.3	Port Gibson	MS	full ID, AFR programming
2000@	WYFO	91.9	Lakeland	FL	full ID
2001@	WAYL	91.9	St. Augustine	FL	ID, and "The Promise Phrase"

The skip season is getting a real early start this year. April 24th is the earliest I've ever experienced any kind of Es by 4 days. Despite the skip and "DX Sherlock" showing double hops toward South America I saw absolutely nothing on the TV. Total logged to date: 1,258. The religious repeater station of KEAR from Scranton on 89.5 has been off the air for about 3 months. It finally came back on, on 5/4 with the same format just in time to block the channel again during skip season! Its repeater on 103.9 has been an open carrier all of these months and it still is now. Isn't this an awful waste of energy? Amazing.

Jeff Falconer, Clinton ON Radios: Sangean HDT-1X, Sony XDR-F1HD
Antennas: APS 13 at 22', rabbit ears New = *, Time in ELT, Distances in miles

Mar 30 Tr

1552	WXXC	106.9	Marion	IN	106-9 Double X-C 297
1807	WUWM	89.7	Milwaukee	WI	NPR News, Milwaukee Public Radio 322

Mar 31 Tr

1821	WBLV	90.3	Twin Lake	MI	Weather, "All Things Considered" 226
1859	WBYT	100.7	Elkhart	IN	C&W, B-100 274
1904	WEEC	100.7	Springfield	OH	SRN News 279
1946	WBIE	91.5	Delphos	OH	Preaching //Internet stream 231

Apr 01 Tr

1641	WOGI	104.3	Moon Township	PA	C&W, Froggy 217
1853	*WXBW	101.5	Gallipolis	OH	Motley Crew tune, Bob FM 334
2345	WJYW	88.9	Union City	IN	Joy FM 290
2355	WBYR	89.9	Woodburn	IN	Ft Wayne's Rock Station 98-9 The Bear 251

Apr 02 Tr

1002	WDFM	98.1	Defiance	OH	Legal ID, Mix 98-1 222
1459	WLWD	93.9	Columbus Grove	OH	Legal ID, Kiss FM (new slogan, ex Wild) 263
2349	WFGY	98.1	Altoona	PA	C&W, Froggy

Apr 04 Tr

1447	WLVQ	96.3	Columbus	OH	Ad for The Grumpy Troll 263
------	------	------	----------	----	-----------------------------

Apr 05 Tr

1956	WSND	88.9	Notre Dame	IN	CLA, calls 275
------	------	------	------------	----	----------------

Apr 07 Tr

1824	WCHO	105.5	Wshngtn CTHouse	OH	Wx, ads, C&W, Buckeye Country 105.5 263
1828	*WMVR	105.5	Sidney	OH	Promo for Cincinnati Reds, AC music, Hits 105-5 267
2041	WBYR	98.9	Woodburn	IN	Rock, 98-9 The Bear 251
2053	WXMG	98.9	Upper Arlington	OH	"The Quiet Storm on Magic 98.9", relog new calls 263

Apr 09 Tr

1539	WLBC	104.1	Muncie	IN	Ment wlbc.com in ad 310
1547	*WPAY	104.1	Portsmouth	OH	C&W, ID at TOH, local nx 349
1602	WBUL	98.1	Lexington	KY	C&W, legal ID, 98-1 The Bull, relog new calls
1606	WGTZ	92.9	Eaton	OH	The New Fly 92-9 300
1653	WEEC	100.7	Springfield	OH	GOS, Your Inspirational Station 279
1905	WBKS	93.9	Columbus Grove	OH	Kiss FM, ment 939kisslima.com, new calls/slogan (ex WLWD, Wild) 226

1924	WLZT	93.3	Ashville	OH	Columbus ads 268
2307	*WQLK	96.1	Richmond	IN	C&W, Kicks 96 311
<u>Apr 09 Ms</u>					
2018	WEJZ	96.1	Jacksonville	FL	".style deli in Jacksonville.", prev via Es 916
2328	*KWKZ	106.1	Charleston	MO	End of C&W song ".C106." 611
<u>Apr 10 Tr</u>					
1128	KDKA	93.7	Pittsburgh	PA	SPT, The Fan 232
<u>Apr 11 Tr</u>					
1949	WMUB	88.5	Oxford	OH	Talk about restaurants in Cincy 327
<u>Apr 13 Tr</u>					
1547	WFCX	94.3	Leland	MI	Traverse City ads 221
1644	WCKC	107.1	Cadillac	MI	The Bear 98.1 And 107.1 191
2339	WCMZ	98.3	Sault Sainte Marie	MI	Jazz 238
2355	WMEE	97.3	Fort Wayne	IN	Calls, Michael Buble song 254
<u>Apr 14 Tr</u>					
2002	WHIO	95.7	Piqua	OH	AM 1290 And FM 95.7, Fox News 274
<u>Apr 15 Tr</u>					
1527	WMBI	90.1	Chicago	IL	Moody Radio over WUCX 349
1539	WPWX	92.3	Hammond	IN	# 1 One In The Streets - Power 92, hip-hop
1553	WMYX	99.1	Milwaukee	WI	Poor with Katy Perry song //website 332
<u>Apr 16 Tr</u>					
1827	WPAY	104.1	Portsmouth	OH	C&W, Power Country 104.1 349
1841	WNUY	100.1	Bluffton	IN	Ads, Y 100-1 265
<u>Apr 16 Ms</u>					
2324	*KCVN	104.5	Cozad	NE	Bott REL //website 956
<u>Apr 17 Ms</u>					
1135	KKDA	104.5	Dallas	TX	Bursts of several hip-hop songs and one ad //website, prev via Es 1130
<u>Apr 21 Ms</u>					
1612	WRXK	96.1	Bonita Springs Es 1185	FL	".in historic downtown Fort Myers.", prev via
<u>Apr 22 Ms</u>					
1944	KWQW	98.3	Boone	IA	Snippets of Glenn Beck Show 632
<u>Apr 23 Tr</u>					
2017	WOSU	89.7	Columbus	OH	All Things Considered, RDS 265
<u>Apr 24 Es: MUF around 94 MHz (my first Apr Es on FM!)</u>					
1148	WKCU	89.7	Miami	FL	CLA music, RDS: 89.7 Classical South Florida, relog, new calls 1247
1203	*WJCB	88.5	Clewiston	FL	Legal ID with long list of translators 1164
1207	WGES	90.9	Cutler Bay	FL	Preacher, RDS: GENESIS 1262
1216	WYUU	92.5	Safety Harbor	FL	SS, ad for Copa Restaurant & Lounge 1090
1217	WPAP	92.5	Panama City	FL	Ad for C&G Sporting Goods, wpapfm.com mention 929
1219	WWIO	88.9	Brunswick	GA	Heard "Marketplace Money on Georgia Public Broadcasting 857
1224	WRWA	88.7	Dothan	AL	In HD, 3 channels TROY-FM 884
1240	*WZKM	89.7	Waynesboro	MS	Richard Land Live pgm interrupted by NWS Tornado Warning, went off part way through. Hope they weren't Hit 905
1245	WMAW	88.1	Meridian	MS	MPB Think Radio, tornado warning in HD 892
1247	WMAU	88.9	Bude	MS	RDS: MPB 88.9 noted in passing 983
1248	WMAB	89.9	Mississippi State	MS	In HD 818

Apr 28 Trs added new Sangean HDT-1X tuner

1756 WEGW 107.5 Wheeling WV Ozzy, The Eagle 107.5, RDS 248

Apr 28 Ms

2357 KXGT 98.3 Carrington ND Delilah, RDS: SUNNY 98.3 883

Apr 29 Ms

0004 KWQW 98.3 Boone IA RDS: "KWPV" bogus call 632
0032 CBW 98.3 Winnipeg MB RDS: CBW 868
1842 WMAU 88.9 Bude MS RDS: "WMPN" 983

Apr 30 Tr

2004 WKZO 96.5 Portage MI wkzo.com, just changed calls from WYZO.
Now TLK //AM 246

May 01 Ms

0941 KIWR 89.7 Council Bluffs IA ".The River." 756

May 01 Tr

1700 WEKU 88.9 Richmond KY Legal ID at TOH 422

May 02 Ms

0042 *WMUM 89.7 Cochran GA RDS 774
0159 *KJTH 89.7 Ponca City OK Several RDS hits, later on at 0302 ".and KZTH
Piedmont." 975
1100 *KBHN 89.7 Booneville AR Perfectly timed ".KBHN." 888

May 02 Tr

1331 WMBI 90.1 Chicago IL Loud with Moody REL, RDS 349

May 03 Tr

1555 WGTZ 92.9 Eaton OH RDS: FLY 929 300
1556 WSNY 94.7 Columbus OH Sunny 263
1600 WBNS 97.1 Columbus OH The Fan WBNS 263

May 03 Es MUF around 93.1

1847 WKES 91.1 Lakeland FL REL, RDS: WKES 1071
1850 WRLX 92.1 West Palm Beach FL RDS: Mia 92.1 1162
1853 WHDR 93.1 Miami FL Rock, RDS: 93 ROCK 1219
1855 WFSX 92.5 Estero FL Ad for Dunkins' Diamonds in Fort Myers,
relog new calls 1192
2036 WQCS 88.9 Fort Pierce FL CLA music, RDS/HD 1118
2037 WKCP 89.7 Miami FL CLA music, RDS: 89.7 Classical South
Florida 1247
2038 WGES 90.9 Cutler Bay FL RDS: GENESIS 1262
2039 *WDNA 88.9 Miami FL In HD 1247
2054 WAYJ 88.7 Fort Myers FL REL, RDS: WAY-FM 1185
2055 *WMYZ 88.7 Clermont FL HD 1032
2057 WSMR 89.1 Sarasota FL Life FM, RDS 1139
2058 WUSF 89.7 Tampa FL RDS: wusf89.7, then HD 1088
2101 WMNF 88.5 Tampa FL Noted in HD in passing 1090
2102 WJIS 88.1 Bradenton FL Joy FM, RDS 1127

May 05 Ms

1557 KDHX 88.1 Saint Louis MO Loud burst - HD. First HD decode via Ms 586

May 06 Tr

2000 WSND 88.1 Notre Dame IN Calls, Chicago Symphony Orchestra 275
2330 WYSO 91.3 Yellow Springs OH Calls 292

Jon Hamilton St. Catharines, ON Radio: Sony XDR-F1HD Antenna: Dipole

Mar 20 Ms

1605 KMAC 99.7 Gainesville MO 833 '43 degrees, K-MAC FM'. New

Apr 24 Es

1642 KBDV 92.7 Leesville LA 1136 Adcon music. '92.7 the Eagle'. Mixing with strong CJBX. New
 1832 WRMB 89.3 Boynton Beach FL 1153 'Billy Graham', Rel. ads. 'Now Back to the Public Square'. New

May 3 Tr

1722 WCSP 90.1 Washington DC 317 'WCSP', Classical music. New

May 3 Es

1507 ZNY 98.7 Nassau Bahamas 1256 'Y 98.7'. 'Bay Street Garage'. New
 1518 WKGR 98.7 Fort Pierce FL 1116 'Tickets for the Florida Marlins'. Tent. log. New
 1520 ZNY 101.9 Nassau Bahamas 1256 Joy FM Caribbean Gospel/R&B Songs. New
 1535 WMBX 102.3 Jensen Beach FL 1116 'thenewx1023.com #1 for Hip-Hop and R&B'. New
 1541 WEAT 104.3 West Palm Beach FL 1153 RDS: Sunny; 'It's Christie here'. 'Mercedes-Benz of N. Palm Beach'. New
 Heard again at 2103
 1543 WMXJ 102.7 Pompano Beach FL 1190 'Majic 102.7'. 'S Florida' Traffic. New
 1550 WNEW 106.3 Jupiter FL 1131 African-American interview. 'Lucille O'Neal will come to Orlando'. New
 1553 WRAZ 106.3 Leisure City FL 1241 Spanish rel. program. (305) #. 'El show de'. New
 1554 WRMA 106.7 Fort Lauderdale FL 1190 'El examen de la ciudadanía'. 'Miami-Dade'. Relog
 1556 WAMR 107.5 Miami FL 1190 Reggaeton music. Chino y Nacho - Niña bonita. New
 1600 WAYF 88.1 West Palm Beach FL 1147 Rel. music. Tent. log. New
 1602 WPOZ 88.3 Union Park FL 1019 Traffic rep. 'Southbound Turnpike'. 'Blessed be your name'. New
 1605 WGNK 88.3 Pennsuco FL 1198 Spanish trfc. 'La 70 N'. 'Victoria'. New
 1607 WMFL 88.5 Florida City FL 1231 Classical/rel. music. 'When Christ died'. Tent. Relog
 1611 WLAZ 89.1 Kissimmee FL 1048 Spanish R&B/Rel. music.; Sp. Reggae. Relog Heard again 2032
 1614 WSMR 89.1 Sarasota FL 1127 Rel. 'Life 89.1, Uplifting & Encouraging'. New
 1616 WRMB 89.3 Boynton Beach FL 1153 Rel. Traffic. 'Military Trail'. 'South Florida'. Relog
 1617 WUSF 89.7 Tampa Bay FL 1073 'St. Petersburg'; 'Tampa, Pinellas' // 90.1 NPR; RDS: WUSF-FM, classical music. New Heard again 1750/2038
 1618 WKCP 89.7 Miami FL 1225 Classical music; 'WKCP'. New Heard again 1800
 1619 WCNO 89.9 Palm City FL 1114 'WCNO'. Traffic. 'I-95 Southbound'. New
 1620 WXVS 90.1 Waycross GA 846 RDS: WXVS-FM. 'GPB'. New
 1626 WSOR 90.9 Naples FL 1173 'On the Jewell'. Tent. log. New
 1630 WASW 91.9 Waycross GA 846 Rel. music. Tent. log. New
 1630 WMKL 91.9 Hammocks FL 1205 Rel. music. Tent. log. New
 1631 WWKA 92.3 Orlando FL 1019 Country music. Tent. log. New
 1637 WHTQ 96.5 Orlando FL 1019 ZZ Top - Sharp Dressed Man. YES
 match. New
 1643 WWRZ 98.3 Fort Meade FL 1067 'max983fm.com'. New
 1740 WGES 90.9 Cutler Bay FL 1231 RDS: WGES-FM Genesis. 'Life FM'.
 1750 WGPU 90.1 Fort Myers FL 1149 NPR. // 89.7. New
 1753 WJIS 88.1 Bradenton FL 1127 'Are you from Largo?', 'Go to thejoyfm.com'. Relog
 1812 WGMX 94.3 Marathon FL 1281 '94-3 the Mix, WGMX'. New
 1815 WGUF 98.9 Marco FL 1196 'WGUF'. New
 1816 WBTP 95.7 Clearwater FL 1078 RDS: WBTP-FM. 'Hillsborough Community College' Ad. New
 1820 WLDI 95.5 Juno Beach FL 1114 '...wpfflorida.com'. New
 1821 WSJT 98.7 Holmes Beach FL 1077 RDS: WSJT-FM. New
 1919 WKGC 90.7 Panama City FL 960 NPR. 'Tonight on WKGC'. New
 2110 WWWK 105.5 Islamorada FL 1241 Spanish salsa music. Tent. log. New
 2118 WCMQ 92.3 Hialeah FL 1205 'Clásica 92'. Relog

Saul Chernos - Burnt River / Toronto ON - 416-364-0725 / schernos@sympatico.ca

Dec 12 MS (Burnt River) – 2009

2015	KLKS	104.3	Breezy Point	MN	Hi 11...K-Lakes meteorologist Phil Genskow
2150	KKSD	104.3	Millbank	SD	on classic hits 104.3 The Fox

Dec 13 MS (Geminids) (BR)

0720	KBCN	104.3	Marshall	AR	Hawaiian Heatwave & 24/7 Fitness ad
0920	KKPR	98.9	Kearney	NE	At Nebraska dot gov
1950	KMJO	104.7	Hope	ND	Visit Forks Equipment Grand Forks

Dec 14 MS Geminids (BR)

0800	*WRQX	107.3	Washington	DC	to ABC News. I'm Karen Chase on Mix 107.3
0804	107.7			Just south of ? River Blvd and we'll replace it
0830	107.3			Bob & Tom...Mike Phelps Jewelers in
					Cummin Terrace Ctr
1005	107.3			Brian Hefty here w/today's AgPhd Radio
					update
0945	107.3			Brought to you by KFC & Squire Shoppe,
					both of Spencer

Dec 16 MS (BR)

0805	*WZOK	97.5	Rockford	IL	Rockford police ofcrs in schools (news)
0830	*KNXR	97.5	Rochester	MN	Its 7:30...Hiller's Flooring...s'ern MN...
0915	CJKR	97.5	Winnipeg	MB	Power 97...Wpg's best rock...snow -18 now
1328	WDDJ	96.9	Paducah	KY	Music, Electric 96-9

Dec 18 MS (BR)

0930	KIOW	107.3	Forest City	IA	Forest City ad
------	------	-------	-------------	----	----------------

Dec 21 MS (BR)

1005	KKBJ	103.7	Bemidji	MN	Wx mentions Park Rapids, Blackduck,
1415	KXKT	103.7	Glenwood	IA	at the Kat.com

Jan 3 MS (BR) Quadrantids - 2010

1559	*KAHR	96.7	Poplar Bluffs	MO	See your southern MO Chevy dealers
2125	KPLO	94.5	Reliance	SD	On stns from the Dakota Radio Group

Jan 4 Es (BR)

0950	WMTM	93.9	Moultrie	GA	RDS noted: CRUISIN'
1002	WJIS	88.1	Bradenton	FL	The Joy FM – weak but mixing with C...

Jan 4 MS (BR)

1620	88.3		TBTv is now
------	------	------	--------	--	-------------

Jan 5 MS (BR)

1215	KQUS	97.5	Hot Springs	AR	for making US-97
------	------	------	-------------	----	------------------

Jan 6 MS (BR)

1215	KTJJ	98.5	Farmington	MO	Ad for Potosi Lumber Company (Potosi MO)
1815	WMTM	93.9	Moultrie	GA	RDS noted: WMTM
1815	KKOW	96.9	Pittsburg	KS	RDS noted: THE KOW

Jan 15 Tr (BR - Cottage Road)

2255	*CKJJ4	103.5	Bancroft	ON	gm //102.3 (UCB)
------	--------	-------	----------	----	------------------

Feb 8

1345	KOWI	97.9	Lamoni	IA	them to rebuild...in the State of IA
------	------	------	--------	----	--------------------------------------

Feb 10 MS (BR)

1535	KTTN	92.3	Trenton	MO	Ag, currently in downt T calm winds (3/1)
1535	92.3		A division of Z-Wall Radio (3/1)
1535	92.3		Temp in Chipwan Falls (3/1)

2235	WDEF	92.3	Chattanooga	TN	Chattanooga seniors
<u>Feb 11 MS (BR)</u>					
1150	KEZO	92.3	Omaha	NE	check out Z-rock website at Z-Ninety
1158	WTTS	92.3	Bloomington	IN	TTS with U2
1205	KQRQ	92.3	Rapid City	SD	it's 6 degrees in Rapid City
<u>Mar 14 MS (BR)</u>					
2315	KOMA	92.5	Oklahoma City	OK	.5 KOMA (prev Es)
<u>Mar 15 MS (BR)</u>					
2315	WKSL	93.9	Cary	NC	Kiss FM dot
<u>Mar 18 MS (BR)</u>					
1250	KSOU	93.9	Sioux Center	IA	Ad: Clive Furniture in Orange City
<u>Apr 12 MS (BR)</u>					
0925	WGLT	89.1	Normal	IL	& in the showroom now @ Brad Barker Honda
0935	KMUW	89.1	Wichita	KS	W News, I'm Carla Eck (Eckers)
<u>Apr 13 MS (BR)</u>					
0945	KKOW	96.9	Pittsburg	KS	RDS: THE KOW (upon checking)
<u>Apr 14 MS (BR)</u>					
0800	KKOW	96.9	Pittsburg	KS	RDS: THE KOW (upon checking)
<u>Apr 16 MS (BR)</u>					
1005	KRNY	102.3	Kearney	NE	the Tri-City's outlook, Barney's ad
<u>May 6 MS (BR) (Aquarids)</u>					
0945	KSUX	105.7	Winnebago	NE	Whr Wakefield is rockin...todays best ctry
1335	KOKX	95.3	Keokuk	IA	Cards ancr Mike Shannon (StLouis v Phila)
<u>May 7 MS (BR)</u>					
0930	89.1			Falls & Thief (or Chief?) River, thunderstorms hi 65
1000	WEVO	89.1	Concord	NH	New Hampshire Public Radio (new MS state)
1645	CBAF1	102.3	St. John	NB	Female CBC French talk
<u>May 8 MS (BR)</u>					
1230	WWWT	107.7	Manassas WTOP	VA	65o day hi, wx updated round clock on
<u>May 9 MS (BR) (May Lyrids)</u>					
0730	CJKR	97.5	Winnipeg	MB	Hail4Villain...here on W's best rock Power
1204	CB..	89.1			CBC announcer Stuart MacLean
<u>May 12 MS (BR)</u>					
1350	WWDV	96.9	Zion	IL	The Drive
<u>May 13 MS (BR)</u>					
0800	WETA	90.9	Washington	DC	Classical WETA
<u>May 14 MS (BR)</u>					
0810	*WEKH	90.9	Hazard	KY	degrees in Lexington & Frankfort
1030	KDWI	89.1	Ottumwa	IA	AM (time) on Iowa Public Radio
<u>May 14 Es (BR)</u>					
1104	KRVS	88.7	Lafayette	LA	RDS: KRVS.ORG; blues
1105	*KRLR	89.1	Sulphur	LA	More Music K-Love jingle, //90.9, 92.7
1106	KIKL	90.9	Lafayette	LA	K-Love //89.1, 92.7
1107	WBKL	92.7	Clinton	LA	K-Love //89.1, 90.9

1108	WJNS	92.1	Yazoo City	MS	Sonlife Broadcasting, phone-in, //91.9
1109	*KCKR	91.9	Church Point	LA	Sonlife Broadcasting, phone-in, //92.1
1111	WPAE	89.7	Centreville	MS	RDS: THE WORD OF GOD WPAE89.7; gt
1112	WMAU	88.9	Bude	MS	RDS: GIVE TO MISSISSIPPI DISASTER
			RELIEF		
1114	KNEK	104.7	Washington	LA	RDS: SCHOOL AND TODAY'S R B
1116	WYOY	101.7	Gluckstadt	MS	RDS: Y 101; CHR music
1117	WWKZ	103.9	Okolona	MS	Gluckstadt ad
1118	105.1		LA	Bossier Civic Center ad
1119	KHXT	107.9	Erath	LA	1079ishot.com, urban, Acadiana's hot music
1120	WMPR	90.1	Jackson	MS	RDS: THE VOICE OF THE C'MUNITY WMPR
1222	KOJO	91.1	Lake Charles	LA	RDS: R. MARIA
1124	KRDJ	93.7	Lafayette	LA	RDS: LAFAYETT
1125	WEMX	94.1	Kentwood	LA	RDS: MAX 94.1 BATON ROUGE'S
1127	KXKC	99.1	Lafayette	LA	RDS: 99.1 KXKC THE COUNTRY MUSIC LEADER
1130	KLIL	92.1	Moreauville	LA	Bernard's Cajun Sea Fry Rrnt in Cottonport
1130	*KTSR	92.1	De Quincy	LA	KissFM921.com, your hit music stn in sw LA
1133	KZMZ	96.9	Alexandria	LA	Alexandria and area ads (Outlaw's BBQ etc)
1140	WTIX	94.3	Galliano	LA	Metairie ad
1144	WAOY	91.7	Gulfport	MS	RDS: AFR-WAOY
1154	WRNO	99.5	New Orleans	LA	Calls
1155	WDVW	92.3	Laplace	LA	RDS: MIX 92.3
1158	WMTI	106.1	Picayune	MS	WMTI Picayune-NO 106.1...true oldies ch'l
1220	W...	89.3		MS	AFR ad mentions Old Hwy 49 in Magee
1824	CBHA	90.5	Halifax	NS	English CBC, mono, As It Happens
1825	CBAF5	92.3	Halifax	NS	French CBC, mono, woman talking
1833	*CJLU	93.9	Halifax	NS	In Touch, with Charles Stanley (matches)

May 15 MS (BR)

0605	KWFC	89.1	Springfield	MO	Auto barn, a Christian-owned business
------	------	------	-------------	----	---------------------------------------

May 16 MS (BR)

0726	WSOR	90.9	Naples	FL	Friends at Moody Radio
0800	90.9			Rebecca Rapids Improvement

May 17 MS (BR)

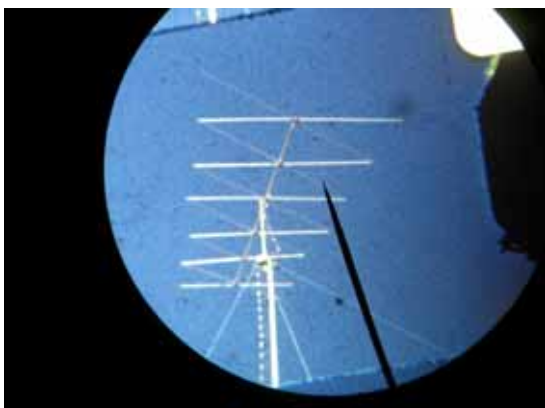
0820	98.3			Today's Light Cooks News for AJ's Truck Stop
------	------	------	--	--	--

May 17 Es (BR)

1839	WSMR	89.1	Sarasota	FL	Life 89.1, gr
1841	WBVM	90.5	Tampa	FL	We're your Spirit FM, gr

Can You Identify This Antenna?

Paul Mitschler found a picture of his very first TV antenna on a frame of old film (see left picture) and created the photo at the right showing now it looked in more detail. The challenge now, for those of you who chose to accept it, is to discover what it's called, who made it and when. Good luck!



This magnified piece of film shows the lead-in wire, but does it attach where Paul thinks it does, or at another point on the antenna?



6 Meter/2 Meter Amateur DX



50 Mhz
The *Magic* Band



Peter Baskind, N4LI
3225 Forest Hill-Irene Rd
Germantown, TN 38138
N4LI@ARRL.net

It's about time. The Summer sporadic-E season has arrived. If the usual pattern for the Summer follows, the first really big opening of the season could come any day now – and, indeed, may have come by the time this goes to press.

A few anemic openings have already occurred. On May 10, much of the southern tier of states was hearing something rare – Peru on 6 meters (50 MHz). Here in Memphis, OA4TT was peaking S5. That was a nice start to Summer 2010, to be sure. Outside my part of the country, it has been a bit slow. Paths between New England and Florida have been active, but that's not at all uncommon. Certainly, the coming weeks will get busier – fast.

Sporadic-E is already off to a strong start in Europe. Mid-May has brought a few 144 MHz (2 meter) openings. Europe does seem to have more intense and frequent high-MUF events. I am not sure why.

There has been a little tropo so far this Spring and Summer, but nothing terribly unusual. Here in my part of the country, the first week of April brought a nearly week-long event with some days quite active. For me, the high point must have been the 6th, with several nice contacts, most notably XE2MVS/DL95 in Monterrey at just over 900 miles. I hope I get a QSL.

* * *

It's contest time! The **ARRL VHF QSO** Party starts June 12. For many, this is the biggest VHF event of the year. Timing is not accidental. ARRL schedules this contest at the expected peak of the Season. When conditions are hot, 6 meters is incredible. Stations may be stacked up from 50.125 to 50.250, or even higher. Further, many folks become "rovers," moving about from grid to grid, some of which may be quite rare. A few years ago, I worked a rover in a Nevada grid so remote, one can barely find a named community anywhere on the map. That's fun.



The fourth weekend in June is always ARRL Field Day. This is the biggest date on the calendar for those who love dehydration, sunburn, and bug bites.

This year, the event begins midday on June 26th. Even if you're not a ham, you might enjoy visiting someone's site – visitors are always welcome. You might even get a chance to work a few stations.

Attention all ham radio operators and WTFDA members!

Peter needs your help, comments and contributions to keep this 6m column going! If you feel that this column is of interest, you can help by supplying Peter with whatever material you find fitting and proper. Email Peter with any ideas you might have for publication. Thanks –*The Management*



WNJT-TV tower, photo by Michael Temme-Soifer

Eastern U.S. TV DX

Featuring reports from AL, CT, DC, DE, FL, GA, IN, KY, MA, MD, ME, MI, NC, NH, NJ, NY, OH, PA, RI, SC, TN, VA, VT, and WV, along with the Canadian Provinces of NB, NF, NS, ON, PEI, and PQ.

Send reports by the 15th of each month to:

Nick Langan
 1040 Riverview Drive
 Florence, NJ 08518
 E-mail: nickl@wtfd.org

The Editor's Note

I think most would agree that we saw a solid start to the E-Skip season in May. In particular, strong openings occurred on the 3rd and 14th, giving pretty much everyone a taste. Notable receptions included Jim Pizzi's log from NY of WLBZ-DT 2 in Bangor, ME via Es on the 14th, at just 445 mi. The weather hasn't been too conducive for tropo, especially across the north, but we look for things to get more interesting in June.

One note of my own to keep an eye or ear out for---there was strong Es activity on the 3rd to South Florida here in the northeast. Both Jeff Lehmann in MA and I heard the audio from WEYS-LP 6 in Miami and saw that it was actually using RDS on its audio, with its PI code translating to the calls "KYTK". The station evidently gets out well, as I was able to aim around the monstrous hash my local WPVI-DT produces to hear it. One to look out for if you have strong E-Skip to the Miami area this season.

Robert Grant (N8NU)

231 E Temperance Rd. Temperance, MI 48182

Rg3d@yahoo.com

Temperance is in SE corner of MI. (EN81fs)

Primary System:

Panasonic TC-P50X1 TV w/integral SDTV tuner.

Channel Master Advantage 3020 on chimney at about 33'

January times EST / May times EDT

Some cities misspelled for space concerns.

All stations logged are ATSC digital unless marked with system identifier.

A → NTSC analog, Americas channels

No "DT" suffixes shown as they have been officially discarded.

2010 DX

1/16 Tr

2100 CKXT1 19 ON London EN92 138
 CKNX A8 ON Wingham EN94 199
 CFTO A9 ON Toronto FN03 248
 CBLFT A25 ON Toronto FN03 248
 CICA A19 ON Toronto FN03 248
 London and Cleveland stations

1/17 Tr

0110 WGRZ 33 NY Buffalo FN02 264
 0115 CITY A57 ON Toronto FN03 248
 0120 CIII A4 ON Owen Sound EN94 225
 0130 CKCO2 A2 ON Warton EN94 250
 (spared from death row?)
 WNEM 22 MI Bay City EN83 118
 0120 CKVR A3 ON Barrie FN04 264
 0330 CHCH A11 ON Hamilton FN03 216
 0410 WBKB 11 MI Alpena EN84 202
 (WTOL in silent period)
 0430 WCMU 26 MI Mt Pleasant EN73 160
 1310 WCMV 17 MI Cadillac EN74 219
 WSMH 16 MI Flint EN73 103
 WEYI 30 MI Saginaw EN83 100
 1330 WPBN 47 MI Traverse C EN74 219

(formerly WFQX [virtual 33])

WFMU 28 MI Flint EN83 73

(now a satellite of WCMU)

(also noted WNDU WKAR WOTV WDCQ)

1/18 Tr

0200 CFTO A9 ON Toronto FN03 248
 CBLFT A25 ON Toronto FN03 248
 0227zcWBKI 19 KY Campbellsvi EM77 310
 0322zcWBXX 20 TN Crossville EM76 393
 0336zcWTVQ 40 KY Lexington EM78 262

(relogs in opening:

Columbus 14, 21, 24, 36, 38

Dayton area 16, 26, 30, 39, 41, 50, 51

Cincy area: 28, 33, 34, 35)

EDT

5/3 Es

1920 unID-A3 Cuba "Mesa Redondo"
 unID A4, Western dub in SS
 unID-A2, // to A4 above

1920 Rebelde-A2 (tentative Habana)

2220 XHRIO A2 TM Matamoros EM15 1355

2230 Cubavisión-3 (tent. Santa Clara)

5/14 Es

1850 CBHT A3 NS Halifax FN84 1021

unID A3 SRC

Alternate receiver:

zc Zinwell ZTA-970A CECB, CM 3020

Says Robert: "Much of the spring I spent reading about great Es openings through the winter on the propagation logger and DX Sherlock (6m), with all the Es just a little too far South or when I was away from the TV. Only time will tell if the May 3 opening was an early start to a great season, or just an off-season fluke.

The Lake Erie tropo that had been around every spring to some degree or another was, for all intents and purposes, completely absent this year, save one catch of WJET 24 Erie I forgot to log.

The good tropo was back in January, when foggy weather and no wind covered a huge area of the interior Eastern US.

Not on temperance log: WUDT-CD 8 (Daystar) is on the air in Detroit, and it performs better than I expected."



Western U.S. TV DX

Featuring reports from AK, AR, AZ, CA, CO, HI, IA, ID, IL, LA, KS, MN, MO, MS, MT, ND, NE, NM, NV, OK, OR, SD, TX, UT, WA, WI, and WY, along with the Canadian Provinces of AB, BC, MB, SK, and YT.

Send reports by the 15th of each month to:
Nick Langan
1040 Riverview Drive
Florence, NJ 08518
E-mail: wtdvx@wtfda.org

The Editor's Note

Several good E-skip openings impacted parts of the west throughout the month of May, with reports from California, Arizona, Montana, and several other states during a few days throughout the month. Gulf of Mexico and plains tropo has been for the most part quiet, but our first widespread heatwave or two should change that. Enjoy the report from Steve N6NKS below, as well as correspondence from Dennis Park Smith and William Draeb.

Steve McGreevy
N6NKS

Dear Nick,

By now, you've been hit with a lot of reports for the great day of 03 May, which I almost missed out on until about 5 p.m. local time here (reports by 6m hams said the Es opening(s) were going all day on that day, and a friend in NM (Mike, WB6EER, near Magdalena, NM) reported his car-radio filled with FM signals as far as Louisiana and possibly Puerto Rico, he says). Interestingly, the opening returned to 27-28 MHz as soon as it was first-light (dawn), and climbed into the low-band TV spectrum by 0830 PDT 04 May, 2010. I feel certain Es is caused by still-unknown emissions from the sun - why are these "outbreaks) global?? Not T-storms like some believe.

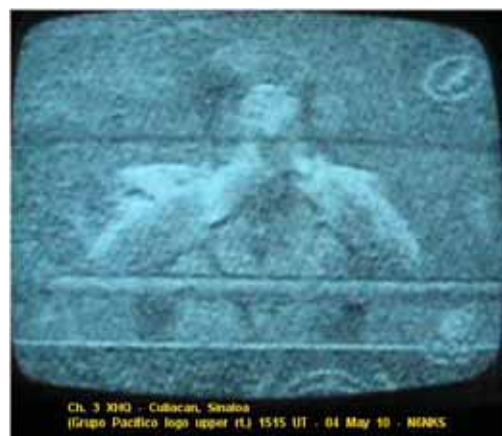
Attached are three photos, shot with a small Olympus camera in movie-mode, then screen shots made of a few decent parts of the movies. I used a small B&W Panasonic Ranger 515 set (very sensitive) and a large log-periodic antenna fed with 300-ohm twin-lead.

I have a growing web page of my own NTSC TV DX made in the Owens Valley of California's northern Mojave Desert region at:
<http://www.auroralchorus.com/tvdx.htm>

We never have had any but very weak low-band signals via tropo or groundwave, so this area is great for TV DXing. Someday, I might get into DTV DXing, but it lacks the "funkyness" of NTSC DXing because I love the QSB, ghosting, negative images, distortion, CCI bars, etc., available with NTSC (I'm old fashioned for being just age 46 I guess). I showed my neighbor this DX and he was thrilled, as he loved old black and white video imagery from the 60's - it reminded him of old-fashioned rabbit-ear TV reception.

Very Best 73,

Steve McGreevy, N6NKS



Dennis Park Smith

3605 Sam Remo Drive
Santa Barbara, CA 93105-2523
Tel: (805)687-7803
Times 24-hour PDT

This report is for April 2010, with sightings at my place. There was very little tropo, along So-Calif coast to San Diego/Tijuana up to 200 mi / 320 km.

Mar30-Apr5 None (windy-cooler, some rain)
Apr 6-8 Variably poor (mostly calm)
Apr 9-17 None (unsettled, rain)
Apr 18-19 Variably poor (calm)
Apr 20-24 None (rainy & windy)
Apr 25-26 Poor (calm)
Apr 27-30 None (some rain, windy)

Apr 8 morning, local analog K28GY 28 SBarb/Goleta/etc at 15 mi W (xltr KCET d28 PBS Los Angeles) left the air. Apr 8 apx noon, silent no-data DTV-28 signal was noted.

Apr 23 evening, the 'new K28GY d28 data & pgmg was on & seen My SBarb DTV total is now 50 (1 new).

I bought a ATSC/NTSC Auvio 7" portable TV at Radio Shack. A disappointment. Both DTV and analog did not have much sensitivity on locals, let alone any distance, even on hilltops. Either defective or just not adequate technology yet. I returned it in 2 weeks.

Best of DX to All Dennis

William Draeb

1304 Ellis St.
Kewaunee, WI 54216

5/7/10

4/4 Tr
1045 WOTV-20 DT
4/14 Tr
1925 WYTU-LD-17 DT
WVCY-22 DT
5/2 Tr
2000 WILX-10 DT
2020 WOOD-7 DT
5/3 Tr
2010 WCMU-26 DT
5/4 Tr
2100 WCMU-26 DT
5/7 Tr
0730 WCMU-26 DT
WCML-24 DT
WLUC-35 DT
WZMQ-19 DT
WJFW-16 DT
0737 WYOW-28 DT
WSAW-7 DT

Not much to report. Hope Es starts soon. Bill.

OWNER'S MANUAL

ALLIANCE HD-73-1

HEAVY DUTY ROTATOR

FOR DIRECTIONAL PERSONAL COMMUNICATION ANTENNAS

Rotator Unit

Control Unit

Includes Instructions for the Proper Installation,
Adjustment and Use of the

Control and Rotator

The Genie Company
A division of Genie Manufacturing, Inc.

NRC/WTFDA Convention 2010

The National Radio Club and the Worldwide TV/FM DX Association are coming to Rochester, New York for their joint 2010 convention!

The convention takes place Friday, August 27-Sunday, August 29 at the Brookwood Inn in Bushnell's Basin, a quaint village along the Erie Canal just east of Rochester.

For early arrivals Thursday night, we'll have an informal dinner and perhaps a Rochester Red Wings baseball game.

On Friday, it's a day full of station tours around Rochester, followed by a cookout at the home of club member Jim Renfrew - and a chance to play with his elaborate DX setup!

On Saturday, we'll have more station tours, followed by dinner, a speaker and the world-famous club auction. (Note: please - no children during the business meeting or speaker's presentation; hold all questions until after the speaker has finished.)

And on Sunday, it's the Quiz before we all go our separate ways.

If you're thinking of a family vacation this summer, Lisa Fybush is organizing family activities for non-radio-geek spouses and children.

Please e-mail scott@fybush.com if you want more details.

--LODGING - Our host hotel is the Brookwood Inn, conveniently located just off I-490 and adjacent to the historic Erie Canal. Rooms are just \$65/night for up to four people, and breakfast is included.

To make your reservation, please call (585) 249-6000 and mention you're with the National Radio Club.

--REGISTRATION - Convention registration information will be announced in May ... for now, save the date, and please let your convention hosts know if you're thinking of attending so we can start to get a head count. Drop Scott a line at scott@fybush.com or 92 Bonnie Brae Ave, Rochester NY 14618. We'll have much more information as the convention gets closer...stay tuned!

Your 2010 Convention Committee: Scott and Lisa Fybush, Jerry Bond, Greg Coniglio, Rick Lucas, and Jim Renfrew



Weak Signal Video in Canada

REPRINTED FROM DX HORIZONS, OCTOBER 1960

"*STILL-the home of the true DXer*"

Television in Canada did not get underway until September 6, 1952, when CBFT signed on with French-English programming in Montreal. Two days later CBLT took to the airwaves in Toronto (on channel 9), and video had finally arrived for an estimated 10,000 set owners in the Toronto area, who had been struggling with fringe area installations for nearly four years, watching snowy but acceptable reception from WBEN-TV, channel 4 in Buffalo.

If one drove north from Toronto in the summer of 1952, only months prior to the inception of local television in Canada, it would have been an education in DX reception. This writer did so, and many details of the trip are still vivid.

For some unexplained sociological reason, Canadians in general, and Ontario residents in particular, wanted video reception in the worst way. '52, you may recall, was the year of the commercial birth of the long yagi. Eight, ten and even twelve element models quickly replaced the time honored four and five element arrays across the U.S. Going north from Toronto, the single and stacked fives, cut to channel 4, evolved into single tens, and then as you approached Barrie on Route 11, double tens. North of Barrie, still on Route 11, and approaching Orillia, double tens had an addition. An antenna mounted pre-amplifier using the then new cascode 6BQ7 tube. Approaching Huntsville and the 200 mile point from WBEN-TV, the antennas thinned out, in quantity, but the quality continued to improve. Now double sets of stacked tens (forty elements) were common, with open wire low loss line and pre-amplifiers at both the antenna and receiver. From Huntsville to North Bay, which nestles on the eastern shore of Lake Nipissing, there are few homes and even fewer television antennas. People in this area tell you of trouble with AM radio reception, and television, they explain, "is just for the city folks" in Toronto.

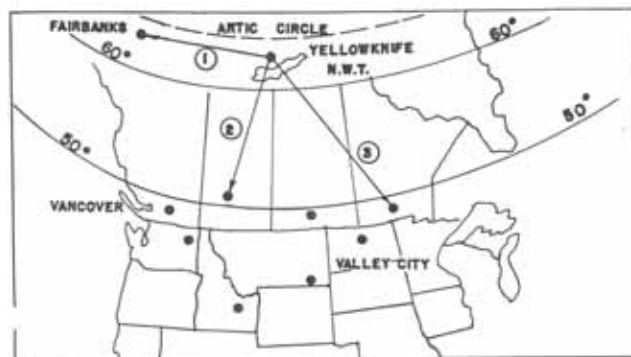
As early readers to DXing Horizons recall, television continued north to North Bay in those years . . . 290 miles from WBEN-TV, North Bay resident Stan Hosken had television, but it took a 276 element antenna to do the job!

But the spirit of weak signal video reception, as evidenced by the early viewers in Ontario, had its effects on the Canadian Board of Broadcast Governors. Pushed by the enthusiastic reception given WBEN television by Toronto residents (all of whom were forced to pay exorbitant fees to import receivers from the U.S.), the BBG quickly OK'ed television for those areas already receiving American stations. It was a matter of pride, explained the

BBG. Canadians should be watching Canadian Television.

TO THE NORTH ... FAR NORTH!

In 1954, the operator of the only radio and record shop in the Northwest Territory ordered a television receiver from Edmonton. The receiver, some yagi antennas, a booster and a few strands of wire were flown in, along with everything and everyone that came to Yellowknife. Harold Glick was his name, and in the next three years, he was to make weak signal television history. Glick had been following with interest articles in Radio-Electronics magazine, which detailed occasional DX reception. Assuming a "why not attitude," he installed the receiver, stacked the yagis, and sat back to await results. He had read of E skip reception, and tropics. Calculating his nearest station to be CFRN-3, Edmonton, Alberta, 640 miles, he ruled out tropics. But skip, he and many others were surprised to find, occurred on an average of eight nights per month . . . not just during the summer, but all year around! And some of his best openings occurred in the spring and fall, when E skip activity over Southern Canada and the United States is practically nil.



Several patterns soon evolved with Glick DX activity. Located on the northern shore of the Great Slave Lake, he was as far due east of Fairbanks, Alaska, (1,000 miles) as he was north of Great Falls, Montana. He was less than 300 miles south of the Arctic Circle, and Aurora Borealis displays were frequent and widespread. He first suspected his semi-regular reception from such stations as KFAR-2, Fairbanks, Alaska, CBWT-4, Winnipeg, Manitoba, KXJB-4, Valley City, North Dakota and CKCK-2, Regina, Sask., was somehow associated with the aurora. He still believes so, although in the six years of experimentation Click has learned not all auroral displays bring DX reception. However, in six years of working with DX reception, Click has never seen more than the occasional burst before 1800 Mountain Standard Time, while DX often lasts until 0200 MST, when KFAR leaves the air for the night in Fairbanks. By southern standards, (continued on page 39)

SIGN UP/Renewal form

Name _____

Address _____ Apt # _____

City _____ State/Prov _____ Zip _____

Country _____ Interests: TV () FM () 30-50() Weather()

email address _____

Sign me up/renew me for: 1 year () 2 years () More ()

Yearly dues \$24 (US), \$26 to (CANADA), \$10 (Electronic VUD)
(Students get a discounted rate of \$15 yearly for the paper VUD.)

Mail your dues to: WTFDA, P.O. Box 501, Somersville, CT USA 06072

Make your checks/money orders payable to: WTFDA

And *thanks* for your support of the WTFDA!

Return this form with your dues or make a copy of it and return that.

WEAK SIGNAL VIDEO DX CONTINUES FROM PREVIOUS PAGE

his station total is not impressive, nor are his distances. Click's greatest distance has been WGR-2, in Buffalo, on several occasions, 2,000 miles. March and September are often the best DX months. May and June are usually the poorest.

Reception closely resembles E skip patterns in the states ... strong video and audio, deep fading, occasional ghosting. It is not aurora, in the sense of the garbled video and audio ... but most observers do believe it is a form of "cross aurora" skip, with the signal riding with and through the aurora laden E layer in much the same way a surf board rides over and with a heavy wave.

EXAMPLE ... TYPICAL SEPT., 1955 (Excerpts from the log of Harold Click, Yellowknife, N.W.T., Canada)

Sept. 2 2100 MST - KFAR (Fairbanks)
3 2100-2340 MST-KFAR, KXJB (Valley City, N.D.), CBWT (Winnipeg)
5 2230-0100 (6th) -CHCT (Calgary, Alberta), CFRN (Edmonton, Alberta),

KHQ-6 (Spokane), KOOK (Billings), KFAR-2

9 2300-2330-KFAR, CBWT 11 2300-2400 - KFAR

12 2100-2200-Channels 2-6

Active, KOOK, KHQ, KID-3 (Idaho Falls) identified.

17 2130-2330 -CKCK, CFRN, CBWT
18-29 Only bursts.

For a two-year period, until near Arctic ice and winds beat it down, Click experimented with a two bay rhombic array. His biggest complaint in six years of DXing? There are two: (1) "DX reception is so frequent up here that several dozen families have ordered TV receivers from Edmonton, and now I have to keep them going! We have a telephone network, and when DX appears, everyone is called so they won't miss any reception. (2) "Most reception occurs late at night ... I lose sleep, and usually only catch the tail end of movies. I've seen station sign-offs a hundred times ... but have never seen one sign-on!"

WTFDA EMAIL REFLECTORS

Enhance your DXing experience! Entertaining and informational.
E-skip alerts! Tropo alerts! DX discussion and more!

For WTFDFA members! Sign Up Today!

The WTFDA list with **194** users...send an email to tvfmdx-subscribe@wtfda.info
And for AM Dxers there's the AMDX list. To join, send a blank email to amdx-subscribe@wtfda.info

**THE WORLDWIDE TV-FM DX ASSOCIATION
THE VHF- UHF DIGEST
P.O. Box 501, SOMERSVILLE, CT 06072**

Opinions expressed in this publication are those of the individual contributor and do not necessarily reflect the views of the publisher or board of directors. We reserve the right to edit material to meet publishing standards. Unless previously agreed upon in writing, all material submitted for publication in the VHF-UHF Digest becomes the property of the WTFDA. Reproduction of material from the VHF-UHF Digest without permission of the WTFDA is prohibited. Individuals and other organizations are granted such permission providing proper credits is given to the source.



Established 1967



FIRST CLASS MAIL

NOW! JOIN AND RENEW USING PAYPAL!

Now you can pay for your dues by check, money order and ONLINE with Paypal! If you have a Paypal account you'll be done in a matter of seconds! Pay at our Paypal webpage at <http://www.wfda.org/join.html>.