

VHF-UHF DIGEST

The Official Publication of the Worldwide TV-FM DX Association

OCTOBER 2010

The Magazine for TV and FM DXers

Troubleshooting Antenna Connection Problems From a Distance



Visit Us At www.wtfdx.org

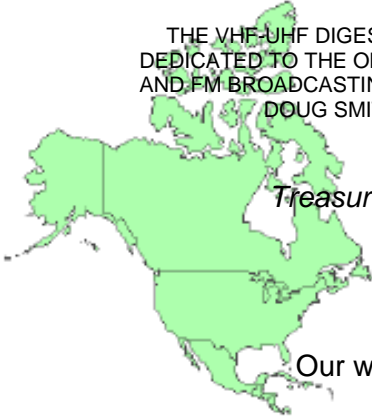
T-R-O-P-O

HOW DO YOU SPELL RELIEF??

THE WORLDWIDE TV-FM DX ASSOCIATION

Serving the UHF-VHF Enthusiast

THE VHF-UHF DIGEST IS THE OFFICIAL PUBLICATION OF THE WORLDWIDE TV-FM DX ASSOCIATION DEDICATED TO THE OBSERVATION AND STUDY OF THE PROPAGATION OF LONG DISTANCE TELEVISION AND FM BROADCASTING SIGNALS AT VHF AND UHF. WTFDA IS GOVERNED BY A BOARD OF DIRECTORS: DOUG SMITH, GREG CONIGLIO, BRUCE HALL, KEITH MCGINNIS AND MIKE BUGAJ.



Editor and publisher: **Mike Bugaj**

Treasurer: **Keith McGinnis** wtfda.org Webmaster: **Tim McVey**

wtfda.info Site Administrator: **Chris Cervantez**

Editorial Staff: **Jeff Kruszka, Keith McGinnis,**

Fred Nordquist, Nick Langan, Doug Smith,

Peter Baskind, Bill Hale and John Zondlo,

Our website: www.wtfda.org; Our forums: www.wtfda.info

OCTOBER 2010



Finally! For those of you online with an email address, we now offer a quick, convenient and secure way to join or renew your membership in the WTFDA. Just logon to Paypal and send your dues to sales@wtfda.org.

Use the address above to either join the WTFDA or renew your membership in North America's only TV and DX organization.

Membership with Paper VUD: \$25/year

Membership with eVUD (.pdf): \$11/year

(subtract \$1.00 if paying by check or m/o)

Over 110 WTFDA members renew their club membership with Paypal. Why not join them?

CONTENTS

Page Two	2
Mailbox	3
TV News...Doug Smith	4
FM News...Bill Hale	12
FCC Facilities Changes	16
Photo News...Jeff Kruszka	20
Coast to Coast TV DX...Nick Langan	22
Northern FM DX...Keith McGinnis	26
Southern FM DX...John Zondlo	37
6 Meters...Peter Baskind	38
Armstrong Wasn't the First	40
Internet Radio Station Makes Leap	42
Renewal Form	43

FIND US FAST!

WTFDA BOARD OF DIRECTORS

Mike Bugaj, use the WTFDA Mailing address listed below
Doug Smith, 1385 Old Clarksville Pike, Pleasant View, TN 37146-8098
Greg Coniglio, 11825 Genesee St., Alden, NY 14004
D.Bruce Hall, 5 Stirton Ave., Brantford, ON N3T1E2 Canada
Keith McGinnis, 18 Newbridge St., Hingham, MA 02043

mikeb@wtfda.org
dougs@wtfda.org
gregc@wtfda.org
dbruce@wtfda.org
nfmdx@wtfda.org

THE MAILBOX and all general club correspondence:

Mike Bugaj at WTFDA, PO Box 501, Somersville, CT 06072

mikeb@wtfda.org

TV NEWS

Doug Smith, 1389 Old Clarksville Pike, Pleasant View, TN 37146-8098

dougs@wtfda.org

FM NEWS

Bill Hale, 6124 Roaring Springs Drive, N. Richland Hills, TX 76180

fmnews@wtfda.org

PHOTO NEWS

Jeff Kruszka, 1909 Lost Lake Pl., Pearland, TX 77581

jeffk@wtfda.org

EASTERN AND WESTERN TV DX

Nick Langan, 1040 Riverview Dr., Florence, NJ 08516

nickl@wtfda.org

SOUTHERN FM

John Zondlo, 4009 Driftwood Cir., Yukon, OK 73099

southernfmdx@wtfda.org

NORTHERN FM

Keith McGinnis, 18 Newbridge St., Hingham, MA 02043

nfmdx@wtfda.org

TV and FM STATISTICS

Fred Nordquist, 147 Travis Hill Road, Moncks Corner, SC

stats@wtfda.org

6 METER/2 METER

Peter Baskind, 3225 Forest Hill-Irene Rd, Germantown, TN 38138

ag4ki@yahoo.net

WEBSITE Tim McVey Webmaster <http://www.wtfda.org>

webmaster@wtfda.org



The Mailbox

P.O. Box 501, Somersville, CT USA 06072
MIKE BUGAJ MBUGAJ@SNET.NET

TROPO!

So far, the month of September has turned out to be a decent month for tropo. I've been scanning the posts on the tvfmdx email list and find that September 2nd, 3rd, 6th, 17th and 18th tended to be the best days of the month for tropo. Steve Solomon and Roy Barstow saw WTAT(24) in Charleston, SC, 770 miles, on the 2nd. There was a path from NJ to NC on the 3rd and a path from MA to NC on the 6th of the month. The 17th showed tropo from ON to VA and other states. And then a really big opening occurred on the 18th which brought FM stations from Nashville and surrounding towns 850 miles into NJ, CT and western MA. Also the same morning another duct formed from NJ into Cleveland and Western MA to Buffalo/Toronto. And the month isn't over quite yet.

MEMBERS AND MORE

This month let's say hello to the following new members: **Donald Barnes** (FL), **Michael Levintow** (and Victor Schmidt) (DC), **Dave Hines** (NY), **Richard Cabral** (MA) and **Peter Luskey** (NY). Peter was at the NRC/WTFDA Convention in Rochester and decided to join.

Glad to have you all aboard!

Now we move on to the renewals from 8/16 to 9/13. We received them from **William Hein** (TN), **William Eckberg** (IL), **Howard Fountain** (GA), **Frank Aden** (ID), **John Tudenham** (MO), **Wolfgang Schneiter** (CA), **James Snow** (GA), **Roosevelt Crawford** (KS), **Melvin Dishong** (GA), **Glen Boche** (MN), **Larry Weil** (NH), **Scott Fybush** (NY), **Lee Freshwater** (FL), **Mike Bugaj** (CT), **Glenn Hauser** (OK), **Trip Erikson** (VA), **Jeff Kadet** (IL), **John Lentz** (WI), **Bob Seaman** (PA) and a rejoin from **John Vervoort** who is now living in Flint, Michigan. Thank you all for staying with us another year!

Peter Luskey writes that he's also a member of the National Radio Club and he's using a Sangean ATS-909 (Radiolabs version) for FM Dxing. I feel sorry for anyone trying to DX the FM band from anywhere near Pinnacle Hill.

John Vervoort is also an NRC member and uses a Sangean ATS-909 for his FM DXing

THE FCC, ENGINEERS AND DTV

Al Tobia posted this on the WTFDA Discussion Boards and I'm re-posting it here. Al says "If you got time (like about 153 minutes total) check out the video of the

forum back on 6/25/10 with Broadcast Engineers and the FCC. They talk about taking spectrum for broadband, channel sharing, is it GOOD or BAD, Distributed Television Systems (TV like cell phone tower methods), issues with VHF low and high band reception, etc. Also power increases, can antennas be made better, a softer approach to the cliff effect, etc.

They bring up spectrum sharing with other services in low-band VHF only, how spectrum sharing would hurt the rest of TV (high-band VHF) and UHF, depending on the area, etc. The first part talks about channel sharing and poor picture quality issues because of it, the next part about DTS systems and one that was already tried in NYC by WCBS-TV, the last part talks about power increases, antennas, etc. with discussion centered around VHF reception issues. You can bounce around to part of video that interest you.

It is overall good if you have time to check it out. Go to FCC website, to FCC LIVE, then to PREVIOUS LIVE EVENTS then to BROADCAST ENGINEER FORUM 6/25/10."

MIDWEST DXERS FALL GTG

It's that time of the year again! There are country fairs and DX Get-Togethers. And the 18th annual fall Midwest DX GTG will be held this year at Branson MO from Nov 5-7 starting around 2pm Friday Nov 5th.

LOCATION
SUPER 8 MOTEL
2480 GREENMOUNTAIN RD
BRANSON MO
PHONE 417 354 8880

Activities include possible station tours on Saturday Nov 6, and a few limited tickets to Silver Dollar City and the Mickey Gilley Theater shows. There will be a short AM DX Quiz with a donated prize and there's a free breakfast available at the Super 8. For those that may want a lower priced Motel there are many in the area.

Location is in center of Branson close to Highway 76. Maps are available of Branson at most business places.

And that's it for October. See you in November! -Mike



TV News

Douglas E. Smith
 1389 Old Clarksville Pike
 Pleasant View, TN
 37146-8098
w9wi@w9wi.com
<http://www.w9wi.com>

October 2010

Abbreviations:

AF	Applied For (a new station)	NW	New station on the air
Aux	Auxiliary (backup) transmitter	PA	Proposed Amendment
CC	Callsign change	PC	Power (and/or tower height) change on the air
CL	City-of-license change	PG	Power change granted
DC	Converted to DTV	PR	Power change requested
DCC	Digital Companion Channel	RA	Returns to the air
NS DCC	Granted flash-cut to DTV	QC	Channel (frequency) change on the air
DE	License/permit deleted	QG	Channel change granted
DR	Requests flash-cut to DTV	QR	Channel change requested
FC	Programming (format) change	RE	Reinstated (previously-dismissed app.)
FTP	Failure to Prosecute	ROA	Request of Applicant
GA	Granted amendment (to table of channel allotments)	SI	Off the air (silent)
LC	License to Cover	STA	Special Temporary Authority
MX	Mutually Exclusive	XC	Transmitter site changed
NDA	Non-directional antenna	XG	Transmitter site change granted
NS	Permit granted for new station	XR	Transmitter site change requested
DG	Granted conversion to DTV		

News:

(full-power digital stations in **bold face**; LPTV and translators in regular type; full-power analog stations in **bold italics**; low-power analog stations in *regular italics*)

* indicates this DTV facility replaces an analog facility on the same channel.



CANADA:

Alberta:

Calgary	21	CBRT-DT	AF 23.5kw/ 276m
Calgary	49	CKAL-DT	NS 100kw/ 378m
Lethbridge	7	CISA-DT	NS 19.7kw/ 201m

Manitoba:

Portage la Prairie	13	CHMI-DT	NS 8.3kw/ 324m
--------------------	----	---------	-------------------

New Brunswick:

Saint John	12	CIHF-DT-2	NS 6kw/354m
------------	----	-----------	-------------

Nova Scotia:

Halifax	8	CIHF-DT	AF 1kw/241m
---------	---	---------	-------------

Ontario:

Ottawa	6	CIII-DT-6	NS 3.3kw/ 261m
Stevenson	22	CIII-DT-22	NS 49kw/ 110m
Toronto	41	CIII-DT-41	NS 100kw/ 503m. Will also replace CIII-TV-55 Fort Erie and serve Barrie.

Quebec:

Baie St.-Paul	36	CKRT-DT-1	NS 150w/1m
Cabano	21	CKRT-DT-4	NS 93w/126m
Degelis	25	CKRT-DT-2	NS 90w/133m
Montreal	10	CFTM-DT	NS 11kw/ 297m
Montreal	12	CFCF-DT	NS 10.6kw/ 300m
Montreal	15	CKMI-DT-1	AF 8kw/298m
Riviere du Loup	13	CKRT-DT-3	NS 114w/49m
St.-Urbain	35	CKRT-DT-5	NS 150w/28m
Trois-Pistoles	8	CHEM-DT	NS 11.5kw/ 291m
Trois Pistoles	19	CKRT-DT-6	NS 385w/47m

Saskatchewan:

Regina	11	CFRE-DT	NS 17.3kw/ 300m
--------	----	---------	--------------------



Puerto Rico:

Guaynabo	35	NEW-lpdtv	AF dismissed (Juan Carlos Mato Barreto)
----------	----	-----------	---



U.S. Virgin Islands:

Christiansted	5	W05AW	DR 300w
---------------	---	-------	---------



USA:

Alabama:

Alexander City	31	WAXC-LD	DG from ch. 64, 15kw
----------------	----	---------	----------------------

Tuscaloosa	6	WUOA	(supercedes permit to go to analog ch. 25) PG>45kw
Alaska:			
Fairbanks	11	KTVF - 0921ACF	AF 150w, 64-48-51/147-41-40, DRT for channel 26
Fairbanks	22	K22EY-D	PG>3.8kw, 64-48-43/147-42-04
Arizona:			
Globe	27	K27KS-D	DG from K59CI, 1kw; DC
Globe Parker	29 5	KDOS-LD NEW-lpdtv	DG from ch. 50, 15kw AF dismissed (Amy Meredith)
Phoenix	25	K25DM	DR 1.5kw
Phoenix	33	KTVW-DT	PC>470kw
Phoenix	46	KDPH-LD	CC from KDTP-LD, but promptly changed back
Quartzsite	21	KRPO-LD	DG from ch. 55, 15kw, 33-43-35/113-37-02
Safford	16	KZOL-LD	DG from ch. 15, 15kw
Safford	34	K34LF-D	DG from K21GC, 15kw
Sun City	32	K53IJ	DR from ch. 53, 1kw, 33-57-21/112-28-34; CL from Peeples Valley dismissed. Going for ch. 21 at same site but with higher power.
Tucson	18	KFTU-CD	DG from ch. 34, 15kw
Tucson	36	K36KP-D	DG from K48GX, 6.7kw, 32-24-54/110-42-56
Winslow	9	K09JZ	CX
Yuma	11	KYMA-DT	QC from 41, 22.3kw/493m
Arkansas:			
Little Rock	20	KKYK-CA	DC 15kw
Van Buren	24	KFSM - 0726AIS	NS 15kw, 35-23-07/94-24-57; DRT for ch. 18 Fort Smith
California:			
Atascadero	46	KSLN-LD	CC from K46KU-D
Bakersfield	10	KERO-TV	PG>10.8kw/1107m
Bakersfield	17	K24GS	DR from ch. 24, 11.86kw, 35-26-17/118-44-22 dismissed; going for ch. 35 at different site
Bakersfield	31	KBTF-CA	DC 14.9kw
Banning	10	KRPE-LD	CC for NS
Barstow	10	K10QO-D	DG from K28IE, 165w, 34-21-08/117-40-27; CL from Victorville
Chalfant Valley	41	K61EJ	DC from ch. 61, 100w
Cherry Valley	8	KILA-LD	DG from ch. 51, 300w, 33-57-42/117-16-47
Chico	28	KKPM-CD	PC>15kw
Fresno	42	KVHF-LP	DC from ch. 4, 15kw, 37-04-26/119-25-52
Indio	11	KVER-CD	DG from ch. 4, 250w, 33-51-56/116-25-58
La Jolla	11	K35DG	DR from ch. 35 dismissed

Los Angeles	3	KVTU-LP	XG 34-13-38/118-04-03
Los Angeles	3	KVTU-LP	DR 85w
Los Angeles	43	KCBS-TV	AF 50kw/424m, 34-11-48/118-15-30 (aux)
Redding	10	KMCA-LP	DC from ch. 2, 105w, 40-36-40/122-22-51
Redding	13	NEW-lpdtv	NS 140w, 40-33-51/122-26-00 (Spirit of Prayer Ministries)
Ridgecrest	19	K19IS-D	DG from K41GO, 650w
Ridgecrest	42	K59AO	DR from ch. 59, 275w, 35-28-48/117-40-59; increase tower height 669m; CL from Inyokern. Supercedes application to go digital in Palmdale on 3.
Sacramento	3	KCSO-LP	DG from ch. 33, 300w
Sacramento	9	KVIE	NW 33kw/553m (aux)
San Bernardino	12	K20IU	QR from ch. 20, 250w, CL from Big Bear Lake dismissed
San Diego	14	KDTF-LD	CC for NS
San Diego	17	KDTF-CA	CC from KBNT-CA
San Diego	51	KBNT-LD	CC from KDTF-LD
San Diego	63	KZTC-LP	CC from K63EN
San Francisco	22	KDTS-LD	DR from ch. 8, 15kw, 37-52-54/121-55-05 dismissed
San Jose	6	KBKF-LP	XC 37-06-39/121-50-37; increase antenna height 552m
San Luis Obispo	50	K50LZ-D	DG from K28FK, 15kw
Santa Barbara	16	NEW-lpdtv	AF dismissed
Santa Maria	20	KWSM-LP	DR from ch. 40, 15kw dismissed, has permit for ch. 32 instead
Santa Maria	48	KPXA-LP	QR from ch. 49, 15kw; CL from San Luis Obispo
Santa Paula	24	KBEH - 0407ABZ	NS 7w, DRT for Oxnard station on same channel
Soledad	22	KKKO-LP	CC from KMBY-LP
Templeton	19	KMBY-LD	CC from KKKO-LD, and before that K19HW-D
Colorado:			
Castle Rock	45	KETD	CC from KWHD
Colorado Springs	57	KXTU-LP	DC 890w
Cortez	32	K32IJ	DR 1kw, 37-21-54/108-08-49
Crawford	24	K24JO-D	DG from K55DR, 220w, 38-42-40/107-36-19 (supercedes permit to go to ch. 34)
Denver	6	KXDP-LP	CC from KLPT-LP
Denver	31	KXDP-LD	CC from KLPT-LD
Fort Collins	43	K43FN	CX
Fort Collins	54	K54IK	CX
Paonia	42	K42JR-D	DG from K58BV, 100w, 38-52-28/107-39-40 (supercedes permit to go to ch. 32)
Salida	20	K20JG-D	PR>690w; PG
Ted's Place	33	KTDS-LD	PR>15kw; CC from K33KK-D

Thomasville	11	K11LM-D	PC>16w
Woodland Park	47	KOAA - 0823ABR	NS 447w, 38-59-12/105-04-08; DRT for ch. 42 Pueblo
Woody Creek	48	K48LO-D	PR>45w
Connecticut:			
Waterbury	20	WCCT-TV	CC from WTXH
District of Columbia:			
Washington	7	WJLA-TV	PR>52kw
Florida:			
Jacksonville	39	W39DF-D	DG from W54CS, 15kw
Key West	40	WMDF-LD	CC from WGAY-LD
Key West	41	WMDF-LP	CC from WGAY-LP
Lealman	43	W43CE-D	DG 15kw, 27-59-36/82-24-46
Melbourne	48	WOPX-TV	PG<411kw/493m, 28-35-12/81-04-58
Miami	10	WPLG	NW 127.7kw/309m
Miami	31	WTVJ	AF 660.7kw/258m, 25-59-09/80-11-37 (aux)
Miami	41	WJAN-CA	DC 15kw, 25-32-24/80-28-07
Palatka	25	WJGV-CD	QG from ch. 48, 9.5kw
Palm Beach	33	WBPB-LD	QC from ch. 11, 15kw, 25-59-09/80-11-37
Panama City	7	WJHG-TV	PR>67kw/262m
Panama City Beach	47	WPCT	PC>132kw
Sebring	51	WGPS-LP	CC from W51DY
Summerland Key	28	W21CT-D	DR from ch. 21, 24-42-22/81-06-46 dismissed
Tampa	31	W56EB	DC from ch. 56, 12kw
Vero Beach	22	W47DW-D	QR from ch. 47, 15kw, 27-07-16/80-23-59 dismissed
West Palm Beach	12	WPTV-TV	AF 63kw/291m (aux)
Georgia:			
Atlanta	22	WSKC-CA	PR>15kw
Atlanta	22	WSKC-CD	DG 15kw, 33-58-38/84-09-23
Columbus	19	NEW-lpdtv	AF 15kw, amendment from 3kw analog
Columbus	38, 40	NEW-lpdtv	AF dismissed (DTV America 1)
Fayetteville	35	WDTA-LP	DC from ch. 53, 15kw, 33-45-45/84-23-14
Norcross	47	WKTG-CA	PR>12.5kw
Toccoa	24	WNEG-TV	PR<100kw/395m, 34-12-28/83-37-48
Warner Robins	38	WRWR-LD	CC from W38EJ-, promptly changed again to WNNG-LD
Hawaii:			
Hanamaulu	12	KESU-LD	AF 200w, 21-58-41/159-29-55, DCC for analog ch. 6
Hilo	23	KWHD	CC from KWHH
Idaho:			
Boise	17	NEW-lpdtv	AF dismissed (Stan V. Smith Trust)

Burley	14	K14IC	DC 384w
Coeur d'Alene	46	K46KE-D	PC>3.6kw
Coeur d'Alene	58	KTYJ-LP	CX
Coolin	9, 11	K09XY, K11UN	DC 17w
Driggs	13	K13QE	DC 10w
Garden Valley	47, 49, 55	K47MA, K49EB, K55GZ	DC 32w
Glenns Ferry	32	KAID - 0604ABA	NW 22w, 42-55-37/115-21-12; DRT for ch. 21 Boise
Lewiston	24	K24JN-D	DG from K53GN, 1.6kw (has already filed to reduce power to 750w)
Malta	23	K23DO	DC 22w
Rexburg	38	KIDK - 0720ABM	NS 4kw, 43-43-16/111-56-30, DRT for ch. 36 Idaho Falls
Terrace Lakes	3, 5, 10	K03ET, K05EY, K10OA	DC 38w
Illinois:			
Carbondale	40	WSIU - 0830ABJ	AF 15kw, 37-42-29/89-14-05
Edwardsville	41	WSIU - 0830ABI	AF 15kw, 38-47-06/89-59-10
Elgin	57	WDCI-LP	CC from W57DN
Lee	14	NEW-lpdtv	AF dismissed
Mount Carmel	12	WCJT-LP	CX
Palatine	40	WESV-LP	CC from W40BY
Rockford	35	WFBN-LD	NW 3.5kw, 42-16-02/89-04-12, DCC for analog 33
Vienna	43	WSIU - 0830ABF	AF 15kw, 37-23-42/88-56-23
Indiana:			
Clarksville	45	WWJS-CA	CC from WNDA-CA
Evansville	7	WEHT	AF 8.73kw/299m (use old main as aux, presuming power/ant. increase for main to 12.5kw/316m is granted...)
Gary	18	WHNW-LD	DG 15kw
Indianapolis	47	WBXI-CA	DR 7.8kw
Jasper	18	WJTS-LP	DR from ch. 27, 15kw, 38-22-53/86-52-26; but already has operating DCC on channel 18?
West Lafayette	20	WUVI-LD	DG from ch. 65, 15kw, 41-06-00/87-13-45
Kansas:			
Emporia	36	KTWU - 0820AAF	AF 15kw, 38-26-52/96-07-56, DRT for 11 Topeka
Great Bend	30	KGBD-LP	CC from K30GD
Lawrence	36	KTWU - 0820AAE	AF 15kw, 38-56-22/95-01-14, DRT for 11 Topeka
Manhattan	47	KTWU - 0820AAD	AF 15kw, 39-13-34/96-37-00, DRT for 11 Topeka
Salina	51	KHDS-LP	CC from K51GC
Topeka	10	KGKC-LP	PR 3kw, 39-00-07/95-03-23; amendment to change site
Topeka	43	KTMJ-CA	DR 15kw
Wichita	17	KPTS -	AF 13.7kw, 37-46-19/

		0827AAT	97-19-19; DRT for ch. 8 Hutchinson; NS
Kentucky:			
Bowling Green	40	WKUW-LD	NW 15kw, 37-02-39/86-11-00; DCC for analog 60
Lexington	36	WKYT-TV	QC from 13, 1000kw/299m
Louisville	24	WKYI-CD	CC from W24BW-D
Louisiana:			
Baton Rouge	21	WBRL-CA	DC 10kw
New Orleans	47	K47JO	DC 15kw
Maryland:			
Salisbury	2	WNDC-LD	DG from ch. 11, 250w, 38-30-06/75-44-07
Salisbury	6	WDCO-LP	CC from W06CF
Salisbury	45	WNGA-LP	DR from ch. 7, 15kw, 38-30-06/75-44-09 dismissed
Massachusetts:			
MASS Springfield	12	WTXX-LP	CC from WESA-LP
Michigan:			
Grand Rapids	11	WGVU-TV	PC 41.5kw/260m
Traverse City	54	W54CR	CX
Minnesota:			
Alexandria	36	K67HI	DC from ch. 67, 810w
Minneapolis	31	WDMI-LP	DC from ch. 62, 15kw, 45-04-05/93-10-29
Rochester	10	KTTC	PG>43.1kw
St. James	22	NEW-lpdtv	AF dismissed (Cooperative TV Assn. of Southern Minn.)
St. James	53, 58	K53JS-D, K58IZ-D	NS DCC for K48AA, ?
Mississippi:			
Grenada	33	WNBD-LD	CC from W33CT-
Pascagoula	51	WGUD-LP	CC from W51CU
Missouri:			
Branson	38	KBNS-CA	CX
Cape Girardeau	28	WSIU - 0830ABG	AF 15kw, 37-24-17/89-34-06
Columbia	2	K02NQ	CX
Jefferson City	38	KZOU-LP	CX
Joplin	30	KCLJ-CD	DG 15kw, 37-03-08/94-23-20
Springfield	21	K21KQ-D	DG from K08MA, 3kw
Montana:			
Deer Lodge	33	KTVM - 0902ACF	NS 5kw, 46-06-05/112-56-58; DRT for ch. 6 Butte
Fort Peck	41, 43, 45	K41BT, K43CQ, K45CH	DC 300w, 48-01-51/106-18-52; CL from Valley Co. (41/43) and Glasgow. (45)
Great Falls	4	KGJC-LD	CC from K04QW-D
Hardin	24	K24GD	DC 322w, 45-44-44/107-32-11
Helena	12	KTVH-DT	NW 17.5kw/713m
Nebraska:			
Omaha	18	KAZO-LD	CC for NS
Nevada:			

Alamo	8	NEW-lpdtv	AF 103w, DCC for K10NV
Austin	41	K41HH	DC 40w
Battle Mountain	11, 13	K11IY, K13JD	DR 100w; DG
Battle Mountain	16, 22, 32, 42	K16FD, K22GM, K32CA, K42DZ	DR 100w; DG
Battle Mountain	19	NEW-lpdtv	AF 100w, 40-37-05/116-41-21; DCC for K06FQ
<i>Cooper Canyon</i>	<i>6</i>	<i>K06FQ</i>	<i>XR 40-37-05/116-41-21; increase antenna height 350m; XG</i>
Elko	10	KENV-DT	DC 1.5kw/567m
Ely	22	K58BC	DR from ch. 58, 400w, 39-15-53/114-53-35 dismissed
Eureka	34	NEW-lpdtv	AF dismissed (Eureka Co. TV District)
Eureka	57	K57BU	CX
Fallon	42	K42JS-D	DG from K44BE, 600w, 39-29-21/118-45-07; DC
Glendale	27	K27JK-D	NW 400w, 36-41-02/114-30-59
Indian Springs	13	NEW-lpdtv	AF 161w, DCC for K07JC; dismissed; going for ch. 8 instead
Jean	34	NEW-lpdtv	AF 597w, DCC for K23BS
Las Vegas	2	KSNV-DT	CC from KVBC-DT
Las Vegas	15	NEW-lpdtv	AF 15kw, 35-56-46/115-02-34; DCC for KELV-LP
Las Vegas	28	KVPX-LP	DR 7.5kw, 35-56-46/115-02-34; supercedes permit to go DTV on ch. 6
Laughlin	40	K40CQ	CX
Mercury	52	K52AC	CX
Mesquite	15	KMSQ-LD	CC from K15IH-
Mesquite	19	KTTB-LD	CC from K19IN-
Mesquite	21	KVMP-LD	CC from K21KK-
Mesquite	25	NEW-lpdtv	AF 515w, DCC for K02FN
North Shore Lake Tahoe	50	K50CM	CX
Reno	18	NEW-lpdtv	AF dismissed
Round Mountain	45	K45EY	DC 100w
Silver Springs	24	NEW-lpdtv	AF dismissed
Sparks	14	KNRC-LD	NW 4.5kw, 39-35-03/119-47-55; CL from Vista
New Hampshire:			
Nashua	13	WYCN-LP	PG<16w, 42-44-26/71-27-21
Pittsburg	34	W18BO	DC from ch. 18, 60w
New Jersey:			
Atlantic City	45	W45CP-D	PR<2kw, 39-52-31/74-09-57; PG
Cape May	48	W48DP-D	XG 39-21-01/74-26-55
New Mexico:			
Alamogordo	42	K42EY	DR 400w, 32-52-21/105-55-54
Albuquerque	14	K14NZ-D	DG from K38IM, 7.66kw
Fruitland	17	NEW-lpdtv	AF 15kw, 36-41-46/108-13-13 reinstated

Las Vegas	33	K33FL	DC 377w
Lordsburg	16	K16IU-D	DG from K40HJ, 300w
Santa Fe	8	KNMD-TV	QC from ch. 9, 5.14kw/1274m
Silver City	28	K23JT-D	QR from ch. 23, 85w
Tecolote	49	K49IL	DC 320w
New York:			
Ithaca	51	W16AX	DR from ch. 16, 15kw
Lake Placid	55	W55AI	CX
New York	6	WNYZ-LP	DR 300w; DG
New York	43	WNYX-LP	DC from ch. 26, 4kw, 40-44-50/73-56-38
New York	49	WNYZ-LP	DR from ch. 6, 1kw dismissed
Rochester	13	WHAM-TV	PG>18kw
Roslyn	43	WNYX-LD	PR<700w, 40-47-16/73-40-08; CL from NYC
Schenectady	25	WNGX-LD	QR from ch. 42, 1.2kw, 42-47-09/73-37-43
Syracuse	43	W38CY	DR from ch. 38, 15kw
Willsboro	46	W67AR	DC from ch. 67, 182w
North Carolina:			
Biscoe	30	W30CR-D	DG 6.9kw
Canton	27	WUNW	PR>503m
Concord	44	WUNG-TV	AF 422kw/232m (aux)
Durham	11	WTVD	PG>45kw
Goldsboro	43	WHFL-LP	DC 7.5kw
Greenville	23	WUNK-TV	PC>1000kw/351m
Raleigh	30	WUNC - 0428AAD	PG<500w, 35-40-28/78-31-40 (DRT for ch. 25 in Chapel Hill)
Raleigh	30	WUNC-DRT	PR<500w, 35-40-28/78-31-40, DRT for Chapel Hill station
Raleigh	48	WRAL-TV	NW 1000kw/467m (aux)
Sylva	44	W44CX-D	DG from ch. 66, 5kw
Ohio:			
Canton	39	WDLI-TV	AF 38.6kw/226m (aux)
Cincinnati	25	WBQC-LP	CC from WOTH-LP
Cleveland	31	WXOX-LP	DR from ch. 65 dismissed
Columbus	23	W23BZ-D	DG 15kw
Columbus	38	WOSU-TV	PC>503kw/329m
Columbus	44	W44DC-D	DG from W43BZ, 15kw
Columbus	48	WSYX	QC (back) from ch. 13, 1000kw/286m
Eastlake	38	W38ET-D	DG from W63CT, 11kw
Mansfield	43	W43CZ-D	DG from W47AB, 11kw
Maplewood	32	W32DS-D	DG from W63AH, 6.8kw, 40-33-10/82-31-02
Millersburg	27	W27DG-D	DG from W69AO, 2kw, 40-35-17/81-29-16
<i>Toledo</i>	<i>48</i>	<i>WMNT-CA</i>	<i>RA with My Network TV</i>
Oklahoma:			
Altus	36,	K36EV,	CX
	38,	K38FJ,	
	40,	K40FL,	
	49	K49FE	

Durant	64	KXDA-LP	CC from K64GW
Elk City	44,	K44AP,	CX
	46,	K46AN,	
	48,	K48AP,	
	50,	K50AL,	
	56	K56EY	
Oklahoma City	21	KTOU-LD	DG 4kw
Oklahoma City	39	KWTV-DT	PC>1000kw/478m
Oklahoma City	45	KOHC-LD	NW 15kw; DCC for analog 38
Oregon:			
Eugene	26	NEW-lpdtv	AF dismissed (CTB Spectrum Services)
Altamont	21	K52AS	DR from ch. 52, 170w, 42-14-16/121-46-00
Arlington	17	K17GK	DC 300w
Astoria	43	NEW-lpdtv	NS 4.3kw, 46-17-11/123-53-45 (Better Life Television)
Baker City	20	K20IV-D	PR>5kw; PG
Brookings	15	K18EP	DR from ch. 18, 1kw
Corvallis	39	NEW-lpdtv	AF dismissed (OPB)
Eugene	16	KMOR-LD	DG from ch. 51, 15kw, 44-06-57/122-59-57
Eugene	28	NEW-lpdtv	AF dismissed (OPB)
Gold Beach	17	K68BB	DR from ch. 68, 1.2kw
Gold Hill	46	K46CH	DR 1.5kw
La Pine	40	K40LL-D	DG from K13JF, 150w, 43-39-01/121-25-44
Madras	46	KGWZ-LD	PC>15kw, 45-31-21/122-44-45
Nesika Beach	20	K20BI	DR 280w
Prairie City	5	K05JL	CX
Pennsylvania:			
Bethlehem	9	WBPH-TV	PG 80.6kw/302m, 40-34-02/75-26-05; PC
Philadelphia	33	WZPA-LP	DR 3kw
Philadelphia	34	WCAU	AF 739kw/180m (aux)
Philadelphia	48	WWJT-LD	XR 40-02-30/75-14-12 dismissed
Pittsburgh	32	WPTG-LP	DR from ch. 69, 2.96kw dismissed
Scranton	49	WNEP-TV	PR>185kw/512m, 41-10-57/75-52-15 dismissed; has permit to go to ch. 50 at 500kw/517m instead
South Carolina:			
Honea Path	28	W65DS	DC from ch. 65, 15kw
Myrtle Beach	8	WGSC-CA	DR 80w, 33-35-27/79-02-55 dismissed
North Charleston	29	WAZS-LD	NW 15kw, DCC for analog 22
North Charleston	31	WJNI-LD	NW 15kw, DCC for analog 42
Tennessee:			
Chattanooga	31	WOOT-LD	AF 15kw, 35-12-26/85-16-52; DCC for analog ch. 6
Clarksville	30	WCKV-LD	AF 10kw, DCC for analog 49
Dyersburg	18	WDYR-CD	DG from ch. 33, 15kw
Johnson City	11	WJHL-TV	PC>34.5kw
Lebanon	44	WJFB	Adds 44.2 (yes, 44, not 66 like it's

Livingston 35 WWWB-LP DR from ch. 25, 15kw, 36-04-01/ 85-11-11 dismissed; going for ch. 3 instead

Memphis 13 **WHBQ-TV** QC from 53, 95kw/308m

Memphis 17 WPGF-LD CC from W17DA-D

Memphis 45 WPGF-LP CC from W06CR

Nashville 40 **WKUV-LP** XR 36-15-50/ 86-47-39; (WZTV/WUXP/WNAB tower) CL from Glasgow, Kentucky.

Texas:

Amarillo 9 **KACV-TV** QR from ch. 8, 30kw/398m, 35-20-33/ 101-49-21

Amarillo 27 NEW-lpdtv AF 15kw, amendment from 10kw analog

Childress 21 K21IR-D NW 250w, 34-26-30/ 100-14-16 (KACV-2)

Corpus Christi 19 NEW-lpdtv NS 15kw, 27-45-32/ 97-36-26 (Daystar)

De Soto 28 KHPK-LP DR 15kw; DG

Del Rio 28 **KYVV-TV** CC from KTRG

Fort Worth 41 **KXAS-TV** AF 826.4kw/ 454m (aux)

Gruver 38, K38BU, DC 420w (KAMR-4, 40, K40DD, KCIT-14, KVII-7, 42, K42CF, KFDA-10) 44 K44CC

Houston 28 KUGB-CA DC 8kw

Irving 48 **KSTR-DT** PC>1000kw

Kress 41 K41CA DR 464w

Laredo 15 KLMV-LD DG from ch. 68, 15kw

Laredo 55 **KNEX-LP** XC 27-24-06/ 99-26-55

Lubbock 48 K48GB-D DG 11.9kw

Lubbock 67 KTGB-LP CC from K67HQ

Memphis 44 K44AK DC 460w, 34-48-18/ 100-36-12

Midland 47 NEW-lpdtv AF 10kw, amendment from analog

New Mobeetie 47 K47GM DC 478w

Odessa 34 NEW-lpdtv AF 15kw, amendment from 10kw analog

Odessa 46 **K46HN** PR>150kw, 31-51-56/ 102-19-31 dismissed

Pipe Creek 47 KAXX-LP CC from K47IJ

San Antonio 29 KAXX-LP DR from ch. 47, 15kw, 29-41-06/ 98-26-59; CL from Pipe Creek

San Antonio 36 KMHZ-LP DR from ch. 11, 3kw

San Antonio 42 KSSJ-LP CC from K42GJ

San Antonio 47 KSAA-LP DR from ch. 28, 500w dismissed

Seminole 44 K44JN CX

Uvalde 16, K16IV-D, DG from K17GL & 27 K27KT-D K45HM, 15/ 8kw, 29-21-46/ 99-37-14

Wichita Falls 24 K24HH-D PR<5kw, 33-53-23/ 98-33-30; PG

Utah:

Beaver 43 K43ME-D NW 350w, 38-27-24/ 112-39-27

Cedar City 9 K09CJ DR 300w

Fillmore 34 K34GO DR 150w

Fountain Green 30, K30KK-D, NW 10w, 39-32-03/ 32, K32JB-D, 111-03-59 34, K34KQ-D, 35,3 K35JK-D, 9, K39KH-D, 40, K40KO-D, 41, K41LE-D, 42 K42IY-D

Heber & Midway 27, K27GC, DR 356w 31, K31FP, 33, K33FX, 35, K35EW, 39 K39HS

Hurricane 21 K21GW DC 50w, 37-09-19/ 113-16-36

Koosharem 39, K39JD-D, PG>63w 43, K43KM-, 47, K47KR-D, 49 K49JP-D

Koosharem 40 K40KP-D NW 2w, 38-28-43/ 111-49-22

Manti 30 K30KJ-D NW 140w, 39-19-24/ 111-46-26

Price 45 K45FW CX

Provo 32 **KUTH-DT** PR>425kw/ 1219m, 40-39-33/ 112-12-07

Richfield 31, K31JI-D, PG>63w 33 K33JF-D

Sevier Co. 33, K33DU-D, DG 10w, 38-30-44/ 39 K39GN-D 111-47-01

Sigurd 16 K16HE-D PG>100w

Summit Co. 14 K63GY DR from ch. 63, 78w; supercedes application to ch. 50

Vermont:

Rutland 63 W63AD CX

Virginia:

Charlottesville 20 WIVC-LP DR from ch. 13, 15kw, 38-25-36/ 78-19-33 dismissed

Danville 45 WMDV-LP DC from ch. 18, 15kw, 36-44-32/ 79-23-02

Harrisonburg 8 W08DY CX

Pennington Gap 4 WKPZ-CA CC from WMEV-LP

Wytheville 3 WLFB-CA CC from WKPZ-LP

Washington:

Bellingham 24 K24IC-D PG>15kw; PC

East Wenatchee 18 K18AD DC 60w

Longview 38 K38LZ-D DG from K34HK, 1.2kw

Olympia 34 KIRO - NW 500w, 47-00-57/ 0403ACA 122-54-59; DRT for ch. 39 Seattle

Omak 17 K17EV DR from ch. 13, 100w

Omak 19, K19AU, DR 930w/ 31 K31AH 650w

Seattle 25 **KZJO** CC from KMYQ

Spokane 13 **KXLY-TV** PR>46kw (supercedes permit to move off Mt. Spokane)

Spokane 28 **KAYU-TV** NW 110kw/ 564m (aux)

Sunnyside 8 K08LU DR 300w

Walla Walla 32 K33EJ DR from ch. 33, 350w dismissed; has permit to cut to DTV on existing ch. 33

Yakima 35 KDHW-LP DC from ch. 45, 15kw, 46-31-52/ 120-30-54

Yakima	39	KWYT-LP	DC 15kw; CC from K39FU
West Virginia:			
Williamson	27	WHJC-LD	PG<7.5kw, 37-42-17/82-12-53; increase antenna height 302m; CL from Charleston; PC
Wisconsin:			
Chippewa Falls	65	WISL-LP	CC from WJJC-LP
Eau Claire	15	WQOW	FC to CW on 18.2 and ThisTV on 18.3
Elk Mound	45	WROE-LP	CC from W45CF
La Crosse	48	WXOW	FC to CW on 19.2 and ThisTV on 19.3
LaCrosse	14	W58DQ	QR from ch. 58, 100w
LaCrosse	58	WJJC-LP	CC from W58DQ
Milwaukee	21	WMKE-LD	DG from ch. 7, 15kw, 43-05-46/87-54-15 (supercedes permit to go to ch. 20) (MPTV tower)
Wausau	18, 33	NEW-lpdtv	NS 5kw, 44-58-59/89-36-10 (Spirit of Prayer Ministries)
Wyoming:			
Casper	12	KCWY-DT	NW 3.2kw/572m, 42-44-37/106-18-24
Cheyenne	20	K14LV-D	DR from ch. 14, 40-05-47/104-54-04 dismissed
Cheyenne	36	K36JO-D	NW 6kw, 41-09-34/104-43-19
Evanston	27	K28DV	DR from ch. 28, 550w
Mountain View	31	K31FW	DR 300w
Sheridan	6	K06AT	PG>3kw, 44-37-20/107-06-57
Sheridan	7	KJCW	CC from KSWY
Sheridan	9	K09XK	DC 2.29kw (significantly exceeds normally permissible power for a VHF LP-DTV)
Shoshoni	38, 40	K38EK-D, K40AQ-D	DG 300w
Sundance	49	K49LM-D	NW 230w, 44-23-17/104-22-35

Thanks to Fred McCormack & Robert Grant for information appearing elsewhere in this column.

An application for a new digital LPTV on channel 16 in Santa Barbara, California has been dismissed. The City of Los Angeles objected – it's my understanding channel 16 is assigned for public safety radio use in Southern California.

The three digital replacement translators in southern Illinois (and the one in Cape Girardeau, Missouri) are to relay WSIU channel 8 in Carbondale.

On September 23rd, the FCC adopted Memorandum Report & Order #10-174, establishing rules for "TV Band Devices", also known as "White Space Devices".

These are unlicensed devices, expected to be used to extend Internet access to currently-unwired locations. "White space" consists of unused TV channels. (the definition of "unused" depends on who you talk to...)

A few highlights:

- A TV Band Device (TVBD) will contact a database and

provide its geographic coordinates. The database will respond with a list of available channels.

- A TVBD must be located some distance outside the protected contour of co- and adjacent-channel TV stations. For co-channel TV stations, the distance must be at least 6km if the antenna is 3m or less above ground; at least 8km if the antenna is between 3 and 10m high; and at least 14.4km if the antenna is more than 10m high. Again, these are distances that the TVBD must be beyond the protected area of the TV station. For adjacent channel operation, the separation is at least 100m for antennas up to 10m high, 740m for higher antennas.

- TVBDs must protect TV translator receive sites, cable system receive sites, and satellite (Dish/Direct) receive sites up to 80km beyond the service contour of the TV station being protected. The TVBD must be at least 80km away from a site receiving a co-channel TV station, and at least 20km from a site receiving an adjacent channel station, if the heading from the receive site to the TVBD is within 30° of the heading to the TV station. The distances are 8 and 2km respectively if the heading is more than 30° off.

- Systems more than 80km from the service contour have 90 days from the effective date of these rules to request a waiver. This waiver would entitle them to protection. New systems (and presumably new stations) would have 90 days from the initiation of service to request a waiver.

- Fixed TVBDs ("base stations") may operate on channel 2, channels 5-35, and channels 39-51.

- Portable TVBDs may not operate on any channel lower than 21.

- TVBDs must check the database of available channels when first turned on, or when moved to a new location.

- If a TVBD is not able to contact the database on a given day, it must shut down by midnight.

- The FCC will consider authorizing TVBDs that use "sensing" instead of the database. These devices must detect a -107dBm signal, using an antenna at least 10m above ground and of zero gain.

- Such TVBDs may use a channel if nothing is detected within 30 seconds. They must continue to check every 60 seconds and cease using a channel within 2 seconds if a signal is detected.

- Devices that use both sensing and the database need not shut down if they sense something but the database says the channel is available.

- The database will be maintained by one or more private firms. These firms may (presumably will) charge for access.

- Fixed TVBDs must transmit an identifying signal. The nature of this signal is not defined.

- For fixed TVBDs, the height of the antenna above ground may not exceed 30m. Also, the elevation of average terrain at the base of the tower may not exceed 76m. This precludes the use of extremely high sites to increase coverage.

- Fixed TVBDs may not exceed 4 watts EIRP. EIRP means ERP relative to a hypothetical "isotropic" antenna, which radiates equally well in all directions in both the horizontal & vertical planes. IIRC, EIRP is 1.8dB less than ERP – so 4 watts EIRP is 6 watts ERP.

- Portable TVBDs may not exceed 0.1 watt EIRP. (0.15

watt ERP) Devices using sensing mode only are limited to 0.05 watt EIRP/0.075 watt ERP.

- The FCC expects these devices to spread their power throughout the channel. There are also "power density" limits – limits to how much power a device is allowed to radiate within a small fraction of their 6MHz channel.

- These limits are 16.7mW/100KHz for fixed devices, 1.67mW/100KHz for portable devices, and 0.83mW/100KHz for sensing-only devices.

- This issue of the *VUD* would probably be more than 100 pages long if I tried to discuss what will be done to protect wireless microphones from TVBD interference.....

So, what does this mean for TV DXers?

I think it depends. I am not an expert on these interference ratios, but it sure seems to me as if these rules are adequate to protect stations within their service areas.

I think the question will be, how well does the FCC enforce these rules? Will devices reliably and accurately report their locations? Will the Commission adequately verify that sensing-only devices actually do sense signals?

I don't think a 6-watt device is going to ruin your reception, or even your DXing, unless you're pretty close. The 100mW devices that will be found in residential areas will be even less of a problem.

And as I posted on the mailing list, I would not be at all sure this service will ever get off the ground. It'll be complicated, expensive, and of questionable reliability. It may be touted as a means of getting broadband into rural areas. But the high cost of infrastructure means that, IMHO, we'll never see these in rural areas unless telecoms providers are re-regulated and required to serve high-cost areas in order to receive the franchise to serve lucrative low-cost areas. I will not be holding my breath.

Stay tuned.

Fred got to some of the LPTV wireless cable sites in outstate Minnesota, and forwards some translator primary info. In all cases, the translators are not modifying the virtual channel numbers broadcast by the primary stations. For example, KMSP-9 comes up as 9.1 not only in the Twin Cities, where you're watching directly from the main Minneapolis transmitter, but also if you're watching translator K14KE in St. James, or K23FO in Jackson, or K27FI in Frost.

The translators, listed by *virtual* channel:

St. James:

- 2 KTCA K26CS
- 4 WCCO K41IZ
- 5 KSTP K30FN
- 9 KMSP K14KE
- 11 KARE K21DG
- 12 KEYC (main xmtr.)
- 17 KTCI K29IE
- 23 WUCW K32GX
- 29 WFTC K34JX
- 45 KSTC K44AD

There is no KEYC translator at St. James; KEYC is available over its own transmitter. (on RF channel 12, as well as virtual channel 12)

At least three *analog* LPTV "cable" channels are available at St. James:

- 16 Discovery K16CG
- 40 TBS K40BU
- 42 CNN K42AV

All three are scrambled. Fred says he knows there are more analog channels here, but due to a receiver programming issue he wasn't able to monitor them.

Jackson:

- 2 KTCA K36IV
- 4 WCCO K35IZ
- 5 KSTP K40LA
- 9 KMSP K23FO
- 11 KARE K19HZ
- 12 KEYC K50KL
- 23 WUCW K43ML
- 29 WFTC K51KT
- 45 KSTC K45EH
- 46 KDLT K41EG

Frost:

- 2 KTCA K40JS
- 4 WCCO K35IU
- 5 KSTP K14KD
- 9 KMSP K27FI
- 11 KARE K31EF
- 12 KEYC K49JG
- 23 WUCW K23FY
- 29 WFTC K29IF
- 45 KSTC K51KB

Most of these primaries carry two (or more) programs:

- 2 KTCA 2.1 "tpt 2", PBS
2.2 "tpt MN"
2.4 "tpt WX"
- 4 WCCO 4.1 CBS (no subs)
- 5 KSTP 5.1 "KSTPDT1", ABC
5.2 "KSTPDT2"
- 9 KMSP 9.1 "KMSP-HD", Fox
29.2 "WFTC-SD", My
- 11 KARE 11.4 "KARE-HD", NBC
11.5 "KARE-WX"
- 12 KEYC 12.4 "KEYC-DT", CBS
12.5 "KEYC-FO", Fox
- 17 KTCI 2.3 "tptLife"
- 23 WUCW 23.1 "WUCW-HD", CW
23.2 "WUCW-SD", CW
- 29 WFTC 29.1 "WFTC-HD", My
9.2 "KMSP-SD", Fox
- 45 KSTC 45.1 "KSTCDT", IND
45.2 "KSTCDT2", ThisTV
- 46 KDLT 46.1 "KDLT-HD", NBC
46.2 "KDLT-US", U-Sports

Interesting, about KARE & KEYC being on minor channels 4 & 5 instead of 1 & 2. Fred says their primary stations are using minor channels 1 & 2, somehow the translators are changing it.

Note that for KTCA and KTCI, there are four virtual channels spread among the two transmitters, all using major channel 2. This is permitted under the ATSC standard, if the two transmitters are co-owned and in the same market. Subs .1, .2, and .4 are on the KTCA transmitter; sub .3 is on the KTCI transmitter.

Note also that Fox's two transmitters serve as backups for each other. KMSP, the Fox affiliate, airs in HD on channel 9.1 on its own transmitter (and translators), and in SD on channel 9.2 on WFTC's transmitter. (and translators) In the other direction, WFTC, the My affiliate, airs in HD on channel 29.1 on its own transmitter, and in SD on 29.2 on KMSP's transmitter.

Fox does the same thing with their New York City transmitters for WNYW and WWOR.

The colon in the name of the city of license for the denied channel 26 LPTV in Oregon is not a typo on my part. (": Eugene")

Good DX!



FM NEWS



BILL HALE

6124 Roaring Springs Drive, N. Richland Hills, TX 76180

FMnews@wtfd.org

INDEX OF ABBREVIATIONS

APP: application
 APP Mod: Change to an already submitted application
 Class FM: license class
 CP: construction permit (authority to broadcast with facilities noted)
 CP Mod: change to an already granted CP
 DA: directional antenna

FC: frequency change (to or from)
 FF: French
 \$: Stereo
 STA: Special Temporary Authority
 XL: Transmitter Location

Note: antenna heights are HAAT except where noted

cc CANADA cc

C CALL LETTER CHANGES C

	<u>Old Call</u>	<u>New Call</u>
NB Néguaç	102.9 NEW	CKMA-FM1
ON Kingston	104.3 CFFX-FM	CKWS-FM

C FORMAT and SLOGAN CHANGES C

AB Calgary	101.5 CKCE-FM	> Hot AC/Rhythmic: <i>Kool 101 point 5</i>
AB Edson	94.3 CFXE-FM	<i>The Eagle</i> [includes CFXH-FM 97.5 Hinton, CFXP 95.5 Jasper, and CFXG-1230 Grande Cache]
AB Red Deer	100.7 CKRI-FM	Now on the air with Adult Contemporary: <i>The River</i>
NS Halifax	105.1 CKHY-FM	Signs on with Modern Rock: <i>Live 105</i>
ON Kingston	104.3 CKWS-FM	> Classic Hits/Oldies
ON London	97.5 CIQM-FM	> Hot Adult Contemporary, but remains <i>EZ Rock</i>
QC Gatineau	96.5 CFTX-FM	> Classic Rock (FF)
QC Rouyn-Noranda	95.7 CHGO-FM-1	Changes its programming source to CJGO-FM 102.1 La Sarre
QC Saguenay	105.5 CKGS-FM	Becomes <i>Kool FM</i>

C TECHNICAL CHANGES C

AB Edmonton	95.7 CKEA-FM	<u>Now on the air:</u> 100 kw/251 m, DA, 53-25-20/113-14-09; Class C1; Adult Alternative: <i>The Sound</i> [reported testing at deadline]
AB Red Deer	100.7 CKRI-FM	100 kw/161 m, 52-18-43/113-57-28; Class C1; Alternative Rock: <i>Live 105</i>
NS Halifax	105.1 CKHY-FM	45 kw-H/225 m, 44-39-03/69-63-39-25; Class C

C TECHNICAL CHANGES C

NB Fredericton	93.3 CIRC-FM	<u>CP granted for:</u> 50 w/38 m, XL to 45-59-01/66-37-51
NS Port Hawkesbury	101.5 CIGO-FM	38.1 kw/171 m, 45-39-00/61-27-57
PE Summerside	92.5 CIOG-FM-1	50 w-V/260 m, XL to 46-24-41/63-47-28; FC from 91.1
SK Prince Albert	88.1 CJLR-FM-3	21 kw-V//49 kw-H/148 m, XL to 53-03-55/105-50-34; \$ from Mono; Class B from A1

C TECHNICAL CHANGES BB

GRANTS FOR NEW STATIONS

BC Hornby Island	96.5 NEW	<u>CP granted for:</u> 5 w/30 m; Class VLP; non-profit English-language developmental community FM station
BC Salt Spring Island	98.5 CIOC-FM-1	45 w-V/662 m, DA, 48-45-12/123-29-30; Class A; Mono; will relay CIOC-FM 98.5 Victoria
BC Hornby Island	96.5 NEW	5 w/30 m;
BC Prince Rupert	99.1 CHTK-FM	1.7 kw/578 m, 54-17-03/130-18-48; \$; Class A
NB Néguaç	102.9 CKMA-FM-1	250 w-V/173 m, 47-14-42/65-04-49; Class A1; \$; FF; will be // CKMA-FM 93.7 Miramichi City
NT Inuvik	98.7 CKRW-FM-2	44 w-V/36 m, 61-28-47/133-02-47; Class LP; Mono; will relay CKRW-AM Whitehorse
ON Barry-s Bay	106.5 -----	12 kw/127 m, 45-29-23/77-43-34; Mono; Class B

C TECHNICAL CHANGES C

C APPLICATIONS FROM EXISTING/PROPOSED FACILITIES C

QC Saint-Donat	89.7 CBF-FM-20	<u>Applies for:</u> 10 kw-H/183 m, XL to 46-20-35/74-12-16 [decrease in power from 11.6 kw] [re-application]
QC Rouyn-Noranda	88.7 CHIC-FM	3.4 kw/103 m, 48-18-05/79-03-09 [re-application]
SK Prince Albert	88.1 CJLR-FM-3	21 kw-V//49 kw-H/148 m, XL to 53-03-55/105-50-34; Class A1 to B
SK Yorkton	100.5 CJJC-FM	21.5 kw-V//50 kw-H//118 m, XL to 51-12-33/102-44-01; Class LP to B; FC to 98.5

C TECHNICAL CHANGES C PROPOSALS FOR NEW STATIONS

			<u>Applies for:</u>
BC Prespatou	105.5	CIAM-FM-19	50 w-V/unknown height, 56-51-07/121-02-52; Class LP; would relay CIAM-FM Fort Vermilion [re-application]
MB Benito	99.1	-----	50 w/24 m, 51-53-02/101-33-18; would relay CJSB-FM Swan River
NF Springdale	89.3	CKCM-1-FM	50 w-V/16 m, 49-29-42/56-04-18; Class LP; \$; would relay CKCM-620 Grand Falls
ON Nipissing	97.1	-----	77.6 kw/136 m, DA, 46-25-10/79-56-04; \$; Class C1; would be Hot AC; FF
ON Toronto	101.3	CHIN-1-FM	350 w/86 m (this is a relay of CHIN-1540, not the separate service of 100.7 FM)
SK Estevan	106.1	-----	100 kw/71 m, 49-03-26/102-55-22; Class C1; Mono; would be Active Rock
SK Humboldt	107.5	-----	100 kw/164 m, 52-15-30/105-23-11; DA; Class C1; \$; would be Classic Rock
SK Humboldt	107.5	-----	100 kw-V//96 kw-H/164 m, 52-15-30/105-23-11; Class C1; \$; would be Variety Hits
SK Island Lake	106.5	-----	33 w/15 m, 54-02-28/109-40-10; English/Cree; First Nations; would program local + 112 hours per week // CJLR-FM La Ronge

C DISMISSALS C

AB Three Hills	89.5	-----	Denied application for new station as a relay for CIAM-FM Fort Vermilion. CIAM filed its annual report late. In addition, CBC objected citing interference to CBCX-FM.
BC Dawson Creek	107.5	CIAM-FM-9	Application for new station denied; would have been a relay of CIAM-FM Fort Vermilion
BC Prespatou	105.5	CIAM-FM-19	Application for new station denied; would have been a relay of CIAM-FM Fort Vermilion
NB Moncton	107.3	CKOE-FM	Application to increase power and relocate transmitter to a taller tower
ON Toronto	95.9	CJKX-FM-2	Application for: power increase; add V; and to modify DA pattern
ON Woodstock	104.7	CIHR-FM	Application for 20 kw and change from Class A to B1

C OTHERNEWS C

AB Edmonton	99.3	CHMC-FM	Granted a change in licence conditions to be an MoR format, changing from Smooth Jazz specialty format
-------------	------	---------	--

CC UNITED STATES AND TERRITORIES CC

FULL POWER and LPFM STATIONS

C CALL LETTER CHANGES C

	<u>Old Call</u>	<u>New Call</u>					
			MT Billings	93.3	KYYA-FM	KURL	
			NM Clayton	90.5	KLXM	KUHC	
			NY Albany	103.1	WHRL	WGY-FM	
AL Camden	90.5	NEW	NY Montauk	104.7	WXLM	WELJ	
AL Valley	95.3	WRLD-FM	NY Westhampton	89.1	NEW	WEEW	
AK Fairbanks	89.1	NEW	ND Jamestown	88.1	NEW	KJKR	
AK Nome	89.3	NEW	OH Cambridge	88.1	NEW	WYBP	
AK Sitka	88.9	NEW	OH Zanesville	88.5	NEW	WSOH	
AZ Rio Rico	107.9	NEW	OK Cordell	99.3	KCDL	KCLI-FM	
AR Crawfordville	101.9	KIYS	OR Gold Beach	101.1	NEW	KTJN-LP	
AR Walnut Ridge	101.7	KRLW-FM	OR Portland	98.7	KUPL-FM	KUPL	
CA Moss Beach	89.3	KLSI	OR Portland	101.1	KUFO-FM	KUFO	
CA Quincy	100.3	KHGQ	OR Sutherlin	101.1	NEW	KSKR-FM	
CA Ridgecrest	90.5	NEW	PA Forest City	100.1	WQFN	WQFM	
CA San Francisco	95.5	KOIT-FM	PA Nanticoke	92.1	WQFM	WFUZ	
CA Shasta Lake City	99.3	KNNN	SD Loomis	88.1	KJAD	KGRH	
CA Tracy	89.5	NEW	SD Pierre	90.7	NEW	KGHW	
CO Gunnison	88.7	NEW	TN Henry	104.7	WMUF-FM	WRQR	
CO Strasburg	101.5	KTNH-FM	TN Sweetwater	98.3	WLOD-FM	WMTY-FM	
GA Hawkinsville	88.5	NEW	TX Coahoma	105.5	KWDC	KXCS	
GA Waycross	103.3	WWSN	TX Ingleside	107.3	KRSR	KAJE	
HI Honolulu	93.9	KIKI-FM	TX Robinson	107.9	KHCK-FM	KWPW	
HI Honolulu	93.9	KHBZ	TX San Augustine	92.5	KQSI	KDET-FM	
KY Corbin	95.3	NEW	TX Sealy	90.7	KCPC	KBCP	
KY Madisonville	91.7	NEW	WA Fall City	98.5	KBSG-LP	KZFX-LP	
LA Baker	107.3	WTGE	WI Mosinee	94.7	WOFM	WOZZ	
LA Baton Rouge	100.7	WYPY	WI Neenah-Menasha	94.3	WROE	WYDR	
LA Delta	92.7	NEW	WI New London	93.5	WOZZ	WRQE	
ME Farmington	100.1	WUMF-FM	WI Sturgeon Bay	99.7	WRQE	WZDR	
MA Deerfield	91.7	WGAJ	WI Superior	102.5	KHQQ	KDWZ	
MA Shirley	89.3	NEW	WY Opal	91.1	NEW	KPMF	
MN Hawley	89.1	NEW					
MO Leadwood	107.1	NEW					

TRANSLATORS and BOOSTER STATIONS

C CALL LETTER CHANGES C

	<u>Old Call</u>	<u>New Call</u>					
AZ Fort McDowell	96.1	K240BD	IA Creston	89.1	K203DB	K206DW	
CA Camarillo	90.3	NEW	KY Lexington-Fayette	101.3	W266BR	W267BH	
CA Coyote	104.1	NEW	KY South Portsmouth	90.5	W215AV	W213BP	
CA Martinez, etc	96.5	KOIT-FM2	ME Lincoln	98.7	W255BI	W254BR	
CO Commerce City	105.1	KTNI-FM1	MI Stephenson	96.7	W297AE	W244CM	
CO Cortez	107.1	KLJH-3	MN Fergus Falls	88.7	K207DP	K204FS	
CO Pagosa Springs	107.1	KLJH-4	MO Richmond	102.9	K273BE	K275BQ	
CO Pinecliffe	103.1	K273BX	MT Shelby	88.9	K258BW	K205FH	
ID Nampa	91.9	K204DV	NV Spring Creek	89.9	K207CF	K210EM	
IA Algona	107.9	K247AR	NV Stateline	99.1	KKFT-1	KKFT-FM1	
OH Piketon	88.9	W214BI	NM Shiprock	104.1	K281AW	K280FL	
OK Enid	98.5	K252DA	SD Pierre	89.7	K212BH	K209FJ	
OR La Grande	101.1	NEW	VA Martinsville	95.3	W290AK	W237DR	
OR Rogue River	101.1	NEW	WA Olympia	103.3	K294BG	K277BQ	
			WA Twisp	89.7	K207CH	K209FG	

C FORMAT AND SLOGAN CHANGES C

C Full Power and LP Facilities C

AZ Globe	100.3	KQMR	> Spanish Urban: <i>L Kalle</i>
AZ Tucson	92.9	KWMT-FM	> Hot Adult Contemporary
AR Cale	91.7	KEJA	Signs on with Religion: <i>Glory FM</i>
AR Camden	89.5	KCAC	Returns to the air with Modern Rock: <i>The Music Alternative KC-89</i>
AR Crawfordsville	101.9	KIYS	> Top 40: <i>101.9 Radio Now</i>
AR Walnut Ridge	101.7	KRLW	> Top 40: <i>Kiss FM</i>
CA Camarillo	95.9	KOCP	> Classic Hits: <i>Rewind 95 point 9</i>
CA Moss Beach	89.3	KARC	> Oldies: <i>Q - FM</i>
CA San Francisco	103.7	KKSF	> Classic Rock: <i>The Band</i>
CA Shasta Lake City	99.3	KQMS-FM	> News/Talk // KQMS-1400 Redding
DE Wilmington	91.7	WMPH	Is silent
FL Holmes Beach	98.7	WSJT	> Top 40: <i>Play 98 point 7</i>
FL Sarasota	89.1	WSMR	Returns to the air with Classical
FL Sarasota	102.5	WHPT	> Rock
FL Tampa	89.7	WUSF	> News/Talk: NPR
GA Peachtree City	96.7	WWLG	> Rhythmic Adult Contemporary: <i>Groove // WWVA-FM 105.7 Canton</i>
HI Honolulu	93.9	KHJZ	> Rhythmic Adult Contemporary: <i>93 point 9 Jamz</i>
IL Casey	91.5	WLHW	Is silent
IL Tuscola	93.5	WEBX	> CHR // WQQB 96.1: <i>Q-96</i>
IN Waynetown	88.1	WSRC	Signs on with Religion
IA Belle Plaine	95.5	KZAT-FM	> Spanish Adult Contemporary
MA Deerfield	91.7	WNNZ-FM	Returns to the air with News/Talk // WNNZ-640
MA Orleans	91.3	WFMR	Signs on with a >Variety-format // WOMR-92.1 Provincetown
MN Duluth	95.7	KDAL-FM	> Classic Hits of the 70s, 80s and 90s: <i>Rock 96</i>
MN Hermantown	92.1	WWAX	> Hot Adult Contemporary: <i>New 92</i>
MN Montevideo	105.5	KMGH	> Classic Rock
MO Bowling Green	94.1	KPVR	> News/Talk: <i>Westplex Talk, 94 point 1; is now Mono</i>
MO Kirksville	91.9	KCKV	> Christian CHR / Rock: <i>Pulse Channel 91 point 9</i>
MO Madison	97.3	KTCM	> Contemporary Christian: <i>Glory 97 point 3</i>
MO Ozark	92.9	KOSP	> Adult Contemporary: <i>Star 92 point 9</i>
NV Las Vegas	101.9	KWID	> Spanish Classic Hits: <i>La Buena 101 point 9</i>
NV Sparks	92.1	KJZS	> Country: <i>92 point 1, The Wolf</i>
NJ Bass River Township	106.5	WBBO	> Country: <i>Thunder 106 // WHTG-FM Eatontown</i>
NV Sun Valley	94.5	KUUB	> Sports (ESPN) // KHIT-1450 Sun Valley: <i>ESPN Radio 94 point 5</i>
NJ Eatontown	106.3	WHTG-FM	> Country: <i>Thunder 106</i>
NJ Ocean Acres	98.5	WKMK	> Top 40: <i>B 98 point 5</i>
NY Albany	103.1	WHRL	> News/Talk // WGY-810: <i>810 WGY</i>
NY Endwell	107.5	WBBJ	> Classic Hits: <i>Big 107 point 5</i>
NY Willsboro	96.7	WXZO	> Top 40: <i>Planet 96 point 7</i>
NC Fletcher	104.3	WQNO	> Top 40: <i>Star 104.3</i>
NC Manteo	98.1	WOBX-FM	> Talk: <i>Newstalk WOBX-FM</i>
NC St. Pauls	107.7	WUKS	Remains Urban AC but is now <i>107 point 7 Jamz</i>
ND Hope	104.7	KMJO	> Adult Hits: <i>Popster FM</i>
OR Tillamook	94.3	KZPT	Is silent
PA Cooperstown	107.7	WUUZ	> Classic Rock: <i>The All New WUZ</i>
PA Forest City	100.1	WQFN	> Sports: ESPN // WEJL-630 Scranton and WBAX-1240 Wilkes-Barre
PA Greenville	107.1	WEXC	> Contemporary Christian: EMF <i>K-Love // WGRP-940 Greenville, PA and WLOA 1470-Farrell, PA until those stations can be sold to new buyers</i>
PA Lock Haven	92.1	WSNU	> Classic Rock: <i>Today's Best Classic Rock</i>
PA Nanticoke	92.1	WFUZ	> Modern Rock: <i>FM 92 point 1</i>
PA Saegertown	94.3	WUZZ	> Classic Rock: <i>The All New WUZ // WUUZ 107.7 Cooperstown</i>
SC Isle of Palms	95.9	WIOP	> Country: <i>Kickin' 95 point 9</i>
SD Rapid City	106.3	KZLK	> Hot AC: <i>She 106 point 3</i>
TN Milan	92.3	WYNU	> Rock: <i>Rock 92 point 3</i>
TN Sweetwater	98.3	WL0D	> Oldies: <i>True Oldies // WMTY-670 Farragut</i>
TX Anson	98.1	KTLT	> Sports // KTCK-1310 Dallas: <i>The Ticket</i>
TX Franklin	103.9	KJXJ	> Rock: <i>Rock 103 point 9</i>
TX Ingleside	107.3	KRSR	> Adult Hits: <i>Jake FM</i>
TX Iowa Park	96.3	KXXN	> Spanish Urban: <i>Max FM</i>
TX Morton	91.1	KQOA	Signs on with EWTN Catholic Religion
TX New Boston	105.1	KTTY	> Spanish Urban: <i>Max FM</i>
TX Pearsall	104.1	KRIO-FM	> Norteno: <i>Norteno 720 // KSAH-720 San Antonio</i>
TX Reno	98.9	KLOW	> Spanish Urban: <i>Max FM</i>
TX Round Rock	105.9	KFMK	> Contemporary Christian: <i>Spirit 105 point 9</i>
WI Mosinee	94.7	WOZZ	> Classic Rock: <i>Rock 94 point 7</i>
WI New London	93.5	WOZZ	> Active Rock: <i>93 Rock</i>
WI Superior	102.5	KDWZ	> Top 40
WI Viroqua	91.9	WDRT	Signed on September 17
WY Rock River	106.1	KLMI	Is silent
WY Warren AFB	92.9	KOLT-FM	Is silent

C Translator and LP Facilities C

Carries the programming of:

CA El Paso de Robles	97.1	K246BO	KHDC 90.9 Chualar
CO Manitou Springs	103.1	K276FL	KRWA 90.9 Rye
CO Redstone	98.7	K254BQ	KRVG 95.5 Glenwood Springs
CA El Paso de Robles	97.1	K246BO	KHDC 90.9 Chualar
FL Englewood	107.5	W298AV	WENG-1530 Englewood
FL Panama City	92.9	W225AG	WPCF-1290 Panama City Beach
FL Panama City	93.3	W227CE	WPCF-1290 Panama City Beach
GA Swainsboro	97.1	W246BQ	WXRS-1590 Swainsboro with Oldies
GA Winder	100.7	W266BW	WLKQ 102.3 Buford
IL Charleston	107.5	W298BF	WEIC-1270 Charleston
IL Shabbona	105.5	W288BW	WCFL 104.7 Morris
IA Anamosa	93.3	K227BL	KMRY-1450 Cedar Rapids
KS Bonner Springs	102.5	K273BZ	KCMO-FM HD2 94.9 Shawnee
LA Metairie	104.9	K285FF	WNKV 91.1 Norco
MD Frederick	88.9	W205BL	WETA 90.9 Washington, DC
MI Rochester Hills	93.9	W230BT	WRCJ 90.9 Detroit
MO Kansas City	102.9	W275BQ	KCXL-1140 Liberty
MO Lees Summit	93.7	K229AU	KCFX 101.1 Harrisonville

MT Sheridan	93.3	K227BM	KBEV 98.3 Dillon
NY Westvale	96.5	W243AB	WOLF-FM 105.1 De Ruyter
OK Edmond	101.1	K266BG	KAWZ 89.9 Twin Falls, Idaho via K208CG 89.5 Oklahoma City
PA Dickson City	95.1	W236BV	WCIG 107.7 Dallas
PA Rome	92.9	W225BC	WCII 88.5 Spencer
SD Rapid City	97.5	K248BT	KKLS-920 Rapid City with Oldies as 97 point 5, The Hills
SD Sioux Falls	92.1	K220JO	KZOY-1520 Sioux Falls with 80s Hits: Sunny Radio
TX Floydada	97.7	K249DU	KBAH 90.5 Plainview
TX Round Rock	105.7	K215FD	KHCB-FM 105.7 Houston
WA Des Moines	92.9	K225AX	KGHO-LP 98.5 Hoquiam via K277BQ 103.3 Olympia
WA Yakima	96.1	K229AD	KLKY 96.1 Stanfield, Oregon
WI Darien	98.7	W254BS	WHAD 90.7 Delafield
WI Green Bay	101.9	W270AJ	WROE 94.3 Appleton
WI Sheboygan	100.5	W263BQ	WRVM 102.7 Suring
WI Sheboygan	103.3	W277BR	WSTM 91.3 Kiel

C OTHERNEWS C

AL Tuscaloosa	102.1	W271AM	License cancelled; call deleted per licensee-s request
FL Lauderdale	95.9	Pirate	Fined an individual \$10,000 for operating an unlicensed transmitter
FL North Miami	90.1	Pirate	Fined an individual \$20,000 for operating an unlicensed transmitter
GA Homerville	98.7	WBTY	Fined \$7000 for failure to file for renewal in a timely manner
ID Challis	94.3	K232CL	Cancelled a \$750 forfeiture issued to this translator
IN Muncie	90.5	WWDS	License cancelled; call deleted
KS Dodge City	92.5	K225AG	License cancelled; call deleted
KY Hardinsburg	94.3	WULF	Fined \$7000 for violation the FCC-s main studio rule
MI Fremont	104.9	W285DU	Is silent
MI Grand Haven	103.3	W277BB	Is silent (STA)
MI Muskegon	96.5	W243BH	Is silent
MI Whitehall	103.3	W277AS	Is silent
MS Hattiesburg	88.5	WUSM	Fined \$3500 for failure to file for renewal in a timely manner and subsequent unauthorized operation
MT Belgrade	99.1	KCMM	Fined \$7000 for failure to file for renewal in a timely manner and subsequent unauthorized operation
NJ Brick Town	91.9	WBGD	License cancelled; call deleted per licensee-s request
NY Smithtown	93.5	W228BI	License cancelled; call deleted
OR Florence, etc	88.3	K202BQ	License cancelled; call deleted
UT Beaver	88.7	K204BV	License cancelled; call deleted
WA Sunnyside	88.1	K201DD	License cancelled; call deleted
WI Marshfield	94.3	K232AR	Fined \$250 for failure to file for renewal in a timely manner
WY Casper, etc	88.7	K204AD	License cancelled; call deleted
WY Gillette	102.3	K272DN	License cancelled; call deleted
WY Riverton	99.9	K260AE	License cancelled; call deleted
WY Thermopolis	88.9	K205BO	License cancelled; call deleted
WY Wright	91.5	K218CA	License cancelled; call deleted

C APPLICATIONS FOR ORIGINAL CONSTRUCTION PERMIT DISMISSED C

[All Translators except where noted]

CT Pawtucket	89.5	-----	RI Block Island	89.9	-----
GA Lincolnton	88.7	-----	RI Charlestown	89.5	-----
MD Parkton	90.7	-----	RI Westerly	89.5	-----
MI Escanaba	90.9	-----	SC Batesburg	88.7	-----
MI Munising	90.7	-----	SC Cross Hill	90.5	----- (3 applicants)
NH Hinsdale	88.9	-----	SC Eutawville	88.9	-----
NH Winchester	88.9	-----	SC Greenwood	90.5	----- (2 applicants)
NM Chaparral	91.5	-----	SC Joanna	90.5	-----
OK Durant	89.1	----- (2 applicants)	SC Saluda	88.7	----- (3 applicants)
PA Hanover	90.7	----- (2 applicants)	SC Simpsonville	90.5	-----
PA Leesport	88.3	-----	SC St. George	88.9	----- (3 applicants)
PA Lockhaven	89.3	----- (2 applicants)	SD Box Elder	91.3	-----
PA Robesonia	88.3	-----	SD Custer	91.3	-----
PA Shrewsbury	90.7	-----	SD Rapid City	91.3	----- (3 applicants)
PR Culebra	88.5	----- (3 applicants)	SD Watertown	90.1	-----
PR Esperanza	88.5	-----	TX Abilene	91.7	----- (2 applicants)
PR Vieques	88.5	-----	TX Barstow	88.3	-----
TX Breckenridge	91.7	-----	VA Lynchburg	91.9	-----
TX Butterfield	91.5	-----	WA Benton City	90.5	-----
TX Eagle Lake	91.1	-----	WA Everett	89.9	-----
TX El Campo	90.9	-----	WA Freeland	89.9	-----
TX Hallettsville	91.1	-----	WA Grandview	89.9	-----
TX Horizon City	91.5	-----	WA Marysville	89.9	----- (4 applicants)
TX Ingram	91.5	-----	WA Quilcene	89.9	----- (2 applicants)
TX Kingsland	91.7	-----	WA Ruby	90.5	-----
TX Marathon	89.3	-----	WA Smokey Point	89.9	-----
TX Marfa	89.3	-----	WA Sunnyside	89.9	-----
TX Port Arthur	89.9	----- (6 applicants)	WA West Richland	90.5	----- (2 applicants)
TX Presidio	88.3	----- (2 applicants)	WI Coloma	90.5	-----
TX Redford	88.7	-----	WI Crandon	96.5	----- (LPFM)
TX Socorro	91.5	-----	WI Cross Plains	90.9	-----
TX Van Horn	88.3	-----	WI Elroy	90.7	-----
TX Weedhaven	91.1	-----	WI Green Bay	97.7	----- (LPFM)
VT Brattleboro	88.9	----- (2 applicants)	WI Hillsboro	90.7	-----
VI Christiansted	88.3	-----	WI Oakdale	90.7	-----
VI Christiansted	88.5	-----	WI Reedsburg	90.5	-----
VI Christiansted	89.1	-----	WI Ridgeway	90.5	-----
VI Frederiksted	88.5	-----	WI Wisconsin Dells	90.5	-----
VA Danville	91.9	----- (2 applicants)			

 Thanks to Shawn Axelrod, Eric Bueneman, Bruce Elving, Deane McIntyre, Radio World Online and Upper Midwest
 Broadcasting.com for news, tips and tidbits..
 If you hear any changes occur on your FM dial, share the news! 73

FCC FM FACILITIES

October 2010

AF	Applied For (a new station)	PC	Power (and/or tower height) change on the air
Aux	Auxiliary (backup) transmitter	PG	Power change granted
CC	Callsign change	PR	Power change requested
CL	City-of-license change	RA	Returns to the air
DE	License/permit deleted	RE	Reinstated (previously-dismissed app.)
FC	Programming (format) change	ROA	Request of Applicant
FTP	Failure to Prosecute	SI	Off the air (silent)
LC	License to Cover	STA	Special Temporary Authority
NS	Permit granted for new station	XC	Transmitter site changed
NW	New station on the air	XG	Transmitter site change granted
PA	Proposed Amendment	XR	Transmitter site change requested

Changes:

AB St. Paul	97.7	CHLW-FM	PR>50kw/80m, relocate XR				amendment from 91.1 at higher power & different site
AK Fairbanks	88.7	NEW	QR from 88.3, 50kw-V/229m, 64-24-39/146-57-31; amendment from 10kw/275m at vastly different site...	AZ Sun Lakes	107.1	KVVA-FM	PR 790w/526m, 33-20-00/112-03-49; CL from Apache Junction
AK Nome	89.3	NEW	AF 2kw-V/-22m; amendment to increase power from 1kw but drop H	AZ Sun Lakes	107.1	KVVA-FM	PR 870w/508m, 33-20-00/112-03-49; CL from Apache Junction; amendment from 790w/526m
AK Sitka	89.3	NEW	AF 1kw-V/-138m, 57-03-01/135-20-07; amendment to change frequency from 88.9; decrease antenna height; drop H (and go V-only); and	AZ Wellton	95.9	KUKY	PR>1.6kw
AL Alexander City	89.7	WJHO	PG>7.6kw/117m, 33-12-28/85-59-17	CA Baker	94.9	KHRQ	PC>1.45kw/404m
AL Alexander City	89.7	WJHO	PR>7.6kw/117m, 33-12-28/85-59-17	CA Ceres	89.5	KBES	150w-H&V on the air (was H-only)
AL Monroeville	88.9	WILF	PR>65kw/118m, 31-18-13/87-02-50	CA Dos Palos	89.5	NEW	NS 50kw/-20m, 36-59-54/120-54-10 (CSN)
AL St. Florian	102.7	WWFA	NW 10kw/141m, 34-45-28/87-30-06	CA Hemet	102.5	NEW	AF dismissed (1st Baptist Church of Hemet)
AL Tuscaloosa	90.7	WVUA-FM	PG>220w/56m	CA Livermore	89.9	NEW	NS 200w-V/-81m, 37-40-44/121-43-22 (University of California)
AL Union Springs	91.3	NEW	NS 13kw/113m, 32-07-06/85-43-10 (Harvest Christian Fellowship)	CA Los Angeles	101.1	KRTH	PG>25kw (aux)
AR Cale	91.7	KEJA	NW 3kw/136m, 33-28-34/93-16-23	CA Los Angeles	93.1	KCBS-FM	PC 27.5kw/1074m
AR Greenwood	101.5	NEW	AF 25kw/100m, 35-18-14/94-09-22; amendment from 6kw at different site	CA Los Angeles	93.1	KCBS-FM	PG>18kw (aux)
AR Mena	88.9	KRMN	NW 500w/19m, 34-35-29/94-13-11; converts from LPFM on 101.1	CA Los Angeles	94.7	KTWW	PG>18kw (aux)
AZ Aguila	107.3	NEW	PR 46kw/150m, 33-53-29/112-59-15; amendment to decrease power & change site	CA North Highlands	89.3	KQEI-FM	PG>3.8kw
AZ Buckeye	106.7	KDVA	QR from 106.9	CA Paicines	91.3	NEW	NS 310w/93m, 36-37-38/121-12-02 (California Assn. for Research & Education)
AZ Claypool	97.3	KIKO-FM	NW 56w/970m, 33-17-20/110-49-45	CA Redlands	104.7	KQIE	PC<1.35kw/213m, 34-02-13/116-58-07
AZ Claypool	97.3	KIKO-FM	QG from 106.1, 670w/1013m, 33-17-20/110-49-45	CA San Jacinto	96.1	KROB	NW 1.4kw/197m (aux)
AZ Concho	104.5	KZXQ	PG>50kw/255m, 34-12-22/109-56-32; CL from Reserve	CA Scotts Valley	89.3	NEW	AF 72w/378m; amendment from 75w
AZ Grand Canyon Village	102.5	KUGO	NW 14kw/74m, 35-56-43/112-10-17	CA Scotts Valley	89.3	NEW	AF dismissed (CSN)
AZ Grand Canyon Village	102.5	KUGO	PR>51kw	CA Shasta	90.1	NEW	NS 9.2kw-V/299m, 40-43-07/122-58-46 (People of Progress)
AZ Mesa	93.3	KDKB	AF 13kw/475m, 33-20-01/112-03-45 (aux)	CA Stockton	100.1	KQOD	XR 37-59-48/121-12-16
AZ Mesa	93.3	KDKB	NS 13kw/475m (aux)	CA Sun City	92.9	KXFG	PR>102m (would increase station to Class B, not sure it's grantable)
AZ Rio Rico	107.9	NEW	NS 1kw/201m, 31-23-47/110-55-20 (Skywest Media)	SD Chamberlain	89.9	KGRJ	PR<21.5kw/78m, 43-47-59/99-18-57
AZ San Lucy	90.7	NEW	AF 6kw/-13m, 32-57-52/112-43-08;	CO Breckenridge	89.5	NEW	NS 285w/498m, 39-27-35/105-58-46 (Summit Public Radio)
				CO Central City	88.9	KDAB	PG<5w-V (drop H)/489m, 39-52-01/105-32-37
				CO Durango	105.3	NEW	AF 25kw/89m, 37-15-43/107-54-22 (KRJ Co.)
				CO Limon	89.5	KYCO	QR from 89.1, 50kw/28m, 39-28-12/103-38-14 (amended to include frequency change)
				CO Loveland	93.9	KRKU	FC; sold to Way FM
				CO Montrose	96.1	KSTR-FM	AF 250w/-90m, 38-28-

CO Olathe	106.5	NEW	08/107-53-05 (aux)	IN Bloomfield	101.1	NEW	AF 6kw/100m, 39-04-48/86-49-25 (Mid America Radio Group)
CO Rico	89.5	KICO	AF dismissed	IN Evansville	90.7	WPSR	PC>14kw
			PG<125w-H (drop V)/-402m, 37-41-32/108-01-55	IN Jeffersonville	95.7	WQMF	AF 2.5kw/205m, 38-03-50/85-43-52 (aux)
CO Rico	89.5	KICO	PR<125w-H/-402m, 37-41-32/108-01-55; drop V & go H-only; amendment from -440m	IN Knightstown	90.7	WKPW	PC>55m, 39-46-01/85-31-00
CO Steamboat Springs	98.9	NEW	AF 1.85kw/183m, 40-27-43/106-50-58 (Ramsey Leasing)	IN Laurel	90.5	NEW	NS 450w/104m, 39-32-31/85-17-23 (Summit Seekers)
FL Gulfport	103.5	WFUS	PR 68kw/472m, 27-49-10/82-15-39	IN Muncie	88.3	WKMV	PC<280w H&V (add H)/103m, 40-09-22/85-25-48
FL High Springs	88.1	NEW	NS 4.3kw/20m, 29-45-28/82-36-19 (Westside Baptist Church)	IN North Judson	91.3	WTMW	PR<200w/55m, 41-13-03/86-46-28
FL High Springs	88.1	NEW	NS 45w/100m, 29-49-16/82-34-24 (Neighborhoods United for a Better Alachua)	IN North Judson	91.3	WTMW	PR<200w/55m, 41-13-03/86-46-28 dismissed 73.7002(c)
FL Horseshoe Beach	94.7	NEW	AF dismissed (Florida Community Radio)	IN Otterbein	91.1	NEW	NS 100w-H/193.08kw-V/52m, 40-26-38/86-59-48 (Harvest Chapel)
FL Kenansville	91.3	NEW	NS 12.9kw/81m, 27-47-35/80-57-35 (CSN)	IN Waynetown	88.1	WSRC	NW 17kw/119m, 40-09-00/86-54-14
FL Key West	104.9	WXXW	NW 1kw/51m, 24-33-18/81-48-05	KS Belle Plaine	99.7	KANR	QR from 92.7, 145m
FL Key West	104.9	WXXW	PR>100kw/138m, 24-39-40/81-25-10	KS Caney	101.1	KEOJ	PG>25kw, 36-59-16/95-49-18
FL Live Oak	100.1	NEW	AF dismissed (Angel Ministries of Lake City)	KS Colby	88.1	NEW	FC; sold to KANZ
FL Palm Coast	91.1	WHYZ	AF 4kw-V/47m (aux)	KS Wellington	92.7	KWME	QR from 93.5, 3.5kw/133m, 37-20-08/97-27-53
FL Palm Coast	91.1	WHYZ	NS 4kw-V/47m (aux)	KY Crittenden	89.1	WKCX	PG>10kw/90m, 38-47-30/84-41-44
FL Palm Coast	91.1	WHYZ	NW 9.2kw/53m, 29-26-08/81-09-21	KY Crittenden	89.1	WKCX	PR>10kw/90m, 38-47-30/84-41-44
FL Tampa	100.7	WMTX	PR>472m, 27-49-10/82-15-39	KY Hopkinsville	98.7	WHOP-FM	PC>2kw/83m (aux)
FL Tampa	93.3	WFLZ-FM	PR>472m, 27-49-10/82-15-39	KY Ledbetter	90.1	WKYP	PC>1.2kw H&V (add H)/168m, 37-02-56/88-36-52
GA Claxton	88.9	NEW	NS 45kw/76m, 32-18-06/81-49-57 (Radio Training Network)	KY Louisville	100.5	WLGX	AF 1.5kw/205m, 38-03-50/85-43-52 (aux)
GA Fort Benning South	99.3	WKCN	PR 32kw/158m, 32-27-59/85-03-22; CL from Lumpkin	KY Prospect	98.9	WNRW	AF 2.5kw/205m, 38-03-50/85-43-52 (aux)
GA Franklin	91.5	NEW	NS 3.5kw/89m, 33-13-49/85-12-46 (The Enon Grove Community Church & Christian Eagle Asc.)	KY Scottsville	99.3	WVLE	PG<3.2kw, 36-47-00/86-17-12
GA Nicholson	89.9	NEW	NS 1kw/90m, 34-11-20/83-26-59 (Common Ground Athens)	LA Baton Rouge	90.3	WBRH	PG<2.8kw/146m, 30-26-36/91-10-54
IA Pleasantville	96.3	KZWU	PG>6kw	LA Delta	92.7	NEW	NS 6kw/81m, 32-19-51/90-59-05 (SSR Communications)
IA Pleasantville	96.3	KZWU	PR>6kw	LA Lake	89.1	KLEC	PG 100w/30m, 32-48-13/91-10-23
ID Cottonwood	90.1	KNWO	PG>550w/616m	MA Middleboro	88.5	NEW	AF dismissed (Home Improvement Ministries)
ID McCall	89.1	NEW	NS 500w-V/590m, 45-00-18/116-08-01 (Idaho Conference of 7th-Day Adventists)	MA	88.5	NEW	NS 1.4kw-V/41m, 41-55-26/70-56-07 (WVBF-1530)
ID Moscow	90.3	NEW	AF 270w/302m, 46-40-54/116-58-13; amendment from 1w-H/110w-V/499m at different site	MD Middleborough Center			NW 490w/437m, 39-34-51/78-54-01
ID Plummer	88.3	KWIS	PR>4.15kw H&V/431m, 47-18-47/116-52-00 dismissed	MD Midland	88.3	WLVV	NW 50w/645m, 44-56-06/70-30-35
ID Weiser	97.3	NEW	AF dismissed (Blessed Sacrament Catholic Church of Ontario)	ME Rangeley	90.5	WRGY	PR>5.9kw dismissed
IL Chicago	101.1	WKQX	PG 8.3kw/358m (aux); PC	MI Athens	88.9	WXVR	ROA
IL Chicago	107.5	WGCI-FM	NS 6kw/171m, 41-52-57/87-38-15 (aux)	MI Bedford	89.7	WSPB	PR>8.1kw
IL Chicago	107.5	WGCI-FM	NS 6kw/171m, 41-52-57/87-38-15 (aux)	MI Harrisville	88.1	WSFP	QG from 88.5, 1w-H/18kw-V/143m, 44-42-12/83-31-27
IL Harvard	88.9	WCNM	granted 7.3kw-H (was V-only)	MI Huron Township	89.5	WDTP	PG 750w/90m
IL Kankakee	88.7	WEGN	PR>5kw/65m, 41-12-27/87-58-22	MI Ironwood	89.7	NEW	NS 1.8kw/105m, 46-27-23/90-07-40 (WXPR)
IL Morris	89.3	NEW	PG 2kw H&V/68m, 41-23-35/88-25-13 (adds H, was V-only)	MI Marquette	91.5	WUPX	PR>1.7kw/126m, 46-30-52/87-29-07
IL Pinckneyville	104.3	NEW	AF dismissed (Pinckneyville Community Radio)	MI Midland	91.9	NEW	AF dismissed (Midland SDA Church) (DA 10-1709)
				MI Olivet	89.1	WOCR	QC from 89.7, 500w/25m
				MN Brainerd	90.7	KBPR	PG>100kw CX ROA
				MN Hinckley	88.5	WGRH	NW 3.8kw/129m, 46-01-28/93-01-21 (MN Public Radio)
				MN Redwood Falls	88.1	KRFI	PG<360w/51m, 44-32-28/95-10-58
				MN Redwood Falls	88.1	KRFI	PR<360w/51m, 44-32-28/95-10-58; amendment from 47m

MN Virginia-Hibbing	90.9	WIRR	PG>100kw/170m CX ROA				antenna height; add H (was V-only); and change site.
MO Jackson	89.9	KRLJ	FC; sold by K-Love				NW 2kw/55m, 41-05-36/84-01-30
MO St. Charles	89.1	KCLC	PC>50kw/73m, 38-47-14/90-30-28	OH Glandorf	88.9	WJTA	granted 100w-H (was V-only)
MS Decatur	91.7	WSQH	PC>18kw; CL from Forest	OH Granville	91.1	WDUB	AF 7kw/132m (aux)
MT Arlee	90.3	KJFT	PG>400w	OH Marion	106.7	WCGX	CX (aux)
MT Livingston	90.1	KYPM	PR<440w/265m	OH Munroe Falls	98.1	WKDD	PC>138m, 41-12-00/81-31-23
NC Bath	90.1	WZPE	PC>4.5kw	OH Munroe Falls	98.1	WKDD	AF 6kw/56m, 41-45-24/81-05-31 (South Shore Broadcasting)
NC Milton	91.9	NEW	AF 100kw/67m; amendment from 85kw/84m	OH North Madison	93.7	NEW	NW 390w/158m, 40-54-53/83-07-32
NC Winston-Salem	104.1	WTQR	PG>528m, 36-22-36/80-22-09	OH Sycamore	89.3	WXMW	NW 6kw-V/90m, 40-50-10/83-14-11 (aux)
NE Norfolk	91.7	KLSB	PG 1.7kw/120m, 42-01-56/97-22-07	OH Upper Sandusky	90.1	WXML	QG from 100.7, 25kw, 36-38-29/95-29-04
NH Hanover	91.3	WEVH	PR>175w	OK Chelsea	100.5	KTFR	NW 26.5kw/90m, 35-37-16/99-22-32
NH Lisbon	89.7	NEW	PR>2.9kw/269m, 44-23-39/71-39-20 dismissed 73.509, 73.510(a), 73.510(b)	OK Hammon	89.9	KTHF	PR>75kw
NJ Brick	91.9	WBGD	CX ROA	OK Loyal	89.3	KIEL	NW 5kw/111m, 34-40-03/97-56-49
NJ Egg Harbor Township	90.5	WXGN	PR 370w/34m dismissed 73.515	OK Marlow	88.7	KFXH	PC>2.45kw H&V/115m; was V-only
NJ Newton	103.7	WNNJ	NS 500w/184m, 41-08-37/74-32-21 (aux)	OK Seminole	89.1	KXTH	PR>5kw/86m (this is the relay of CHIN AM 1540, not the separate service on 100.7 FM)
NJ North Wildwood	91.9	NEW	NS 1.5kw/45m, 39-02-59/74-51-14 (Soul Mates)	ON Toronto	101.3	CHIN-FM-1	PR>20kw denied, station not in compliance with non-technical rules
NM Gallup	90.1	KNIZ	QR from 89.9, 600w/38m, 35-29-39/108-44-32	ON Woodstock	104.7	CIHR-FM	PG 180w/321m
NM Lordsburg	97.9	KPSA-FM	QG from 97.7, 43kw/622m, 32-34-57/108-25-29	OR Astoria	89.7	KOAC-FM	PC>1kw/54m, 44-04-55/123-06-34
NM Reserve	90.1	KDNM	PG 900w-229m, 33-42-35/108-45-56	OR Eugene	88.1	KWVA	PG>36.5kw/648m, 44-47-50/123-32-32
NM Truth or Consequences	91.9	NEW	AF dismissed (NM State University)	OR Independence	102.7	KYTE	NS 8kw/102m, 41-52-34/80-10-29 (Family Life Ministries)
NS Port Hawkesbury	101.5	CIGO-FM	PG>38.1kw	PA Cambridge Springs	89.9	NEW	PR>3.4kw/188m, 41-16-01/75-23-19
NV Amargosa Valley	105.9	NEW	PR 51kw-H/-19m, 36-38-33/116-23-53 amend	PA Hawley	89.1	WBYH	PG<110w/265m, 41-32-49/75-27-42
NV Gerlach	91.5	NEW	PG 900w/0m, 40-39-07/119-21-25	PA Honesdale	90.9	WZZH	PR 1.45kw/202m
NV Jessup	91.7	NEW	NS 5kw/260m, 39-54-35/118-55-15 (Centro Cristiano Vida Abundante)	PA Kulpmont	91.9	WBYK	PG>1.8kw/124m, 41-30-07/76-23-34
NY Cape Vincent	88.1	WSLZ	NW 2kw/92m, 44-06-58/76-20-21 (WSLU)	PA Laporte	91.7	WEVP	NS 12w/148m, 41-54-09/79-02-05 (Muncy Hills Broadcasting)
NY Elma	101.7	WLOF	PG 2.8kw/148m, 42-46-58/78-27-28	PA Scandia	88.5	NEW	QC from 88.7, 7w/-1m
NY Elmira	88.1	WMTQ	PG>90w/372m	PA Waynesburg	99.5	WCYJ-FM	PG>11.5kw/833m, 18-18-36/65-47-41
NY Elmira	88.1	WMTQ	PR>90w/372m	PR Rio Piedras	95.7	WFID	AF 6kw/172m, 18-03-00/66-20-01
NY Gouverneur	90.5	WSLG	PR 2kw/63m, 44-15-32/75-34-40	PR Santa Isabel	98.1	NEW	PG<10kw/183m, relocate XR
NY Port Chester	96.7	WCTZ	PR>3.1kw/141m, 40-54-47/73-46-45	QC St.-Donat	89.7	CBF-FM-20	AF 1.3kw/144m, 33-54-36/79-40-09 (aux)
NY Rosendale	98.9	NEW	AF 1.4kw/209m, 41-50-27/73-59-29;	SC Coward	105.1	WPDT	PC>2.5kw
NY Rosendale	98.9	NEW	amendment from 102.5 AF 1.4kw/209m, 41-50-27/73-59-29;	SD Sioux Falls	90.1	KSFS	PG>20kw/206m, 45-10-31/96-59-14
NY Roxbury	91.3	WIOX	amendment from 102.5 NW 3.3kw/-183m, 42-16-13/74-34-16	SD Watertown	89.1	KJBB	PR>11.5kw/109m, 35-08-45/89-48-48
NY Silver Creek	89.3	NEW	NS 17kw/36m, 42-31-08/79-07-12 (Family Life Ministries)	TN Bartlett	94.9	WKVF	AF 25kw/115m; amendment from 120m
NY Westhampton	89.1	NEW	NS 400w/118m, 40-53-07/72-41-34 (Hamptons Community Radio Corp.)	TN Cookeville	89.9	NEW	PR>175w/86m, 36-20-23/88-51-35
OH Bowling Green	89.7	WNOC	NW 5.3kw/88m, 41-25-39/83-36-30	TN Martin	90.3	WUTM	PC>250w-H/5kw-V
OH Cambridge	88.1	NEW	NS 340w/85m, 39-58-06/81-31-07 (Bible Broadcasting Network)	TN Sneedville	88.5	WSDC	PR>9.4kw
OH Carrollton	90.9	WJDD	PG 270w-H (drop V)/97m	TX Buffalo Gap	93.3	KBGT	NS 1.8kw/106m, 29-25-24/98-25-50 (aux)
OH Carrollton	90.9	WJDD	PR 270w/97m	TX Comfort	95.1	KGSX	PR 130w/26m, 29-20-13/99-09-30
OH Geneva	89.5	NEW	AF 21kw/111m, 41-53-04/80-38-28; amendment to decrease power; increase	TX Hondo	89.9	KHDO	PC>46kw/156m, 31-03-36/93-57-42
				TX Jasper	102.7	KTXJ-FM	PG>180m, 29-00-46/97-40-02
				TX Karnes City	103.1	KHHL	NW 1.1kw/46m, 33-43-41/102-46-29
				TX Morton	91.1	KQOA	XR 29-01-05/99-05-45 dismissed
				TX Persall	103.3	KSAG	NS 23kw/101m, 29-25-24/98-25-50 (aux)
				TX Schertz	98.5	KBBT	

TX Springtown	89.1	KSQX	PR>1w-H/15kw-V (was 3kw H&V)	WI Racine	100.7	WKKV-FM	NS 15kw/119m (aux)
TX Stanton	89.1	NEW	AF dismissed (KENW) (73.509)	WI Viroqua	91.9	WDRT	NW 480w/133m, 43-36-28/90-53-24; community station similar to Madison's WORT-89.9.
TX Weatherford	89.5	KYQX	PR>26kw-V (drop H)	WV Beckley	88.1	WJJJ	PC 840w H&V/348m (was V-only)
UT Orem	107.5	KKAT-FM	FC; sold to K-Love	WV Clay	89.5	NEW	AF dismissed (Clay Co. Communications)
UT Orem	107.5	KKAT-FM	PR 43kw/869m, 40-16-48/111-56-05; to revert to old facilities, superceding permit for 22kw/1243m at different site	WV Craigsville	89.5	NEW	FC; sold to WV Educational Broadcasting Authority
UT Provo	94.9	KHTB	AF 21.5kw/844m, 40-16-58/111-56-11 (aux) PR>79m	WV Kingston	89.7	NEW	AF dismissed (WPCS)
VA Lexington	88.7	WRIQ	NS 34kw/305m (aux)	WV Lindside	106.7	WHFI	PR>6kw
VA Lynchburg	88.3	WRVL	FC; sold to WHRO	WV Marmet	93.3	WKVW	PG 1.7kw/189m, 38-16-25/81-31-27
VA Nassawadox	90.1	WJCN	PG>50kw H&V (add H)/78m, 37-42-42/75-41-10	WV Webster Springs	89.3	new	QR from 89.5, 850w/265m, 38-35-46/80-23-54; CL from Craigsville
VA Nassawadox	90.1	WJCN	PR>50kw/78m, 37-42-42/75-41-10	WY Esterbrook	89.5	KGCY	PG 320w/980m, 42-16-06/105-26-32
VT Royalton	103.1	WRJT	request to go non-DA	WY Jackson	89.1	KHOL	NW 600w/809m, 43-35-50/110-52-12 (aux)
WA McCleary	96.9	KGy-FM	PC>11kw/321m	WY Lingle	90.7	KUWV	PG>14kw/96m, 42-20-03/104-09-56
WA Pullman	89.9	NEW	AF 350w/240m, 46-37-59/117-05-17 (KWSU)	WY Lovell	107.1	KWHO	PR>18kw/419m, 44-34-13/108-49-09; supercedes permit for 100kw/427m at same site
WA Pullman	89.9	NEW	AF dismissed (Radio Free Moscow) (settlement)	WY Manderson	105.7	KYTS	PG>75kw
WA Sequim	91.5	KSQM	PR>2.4kw/-76m, 48-05-01/123-15-57				
WA Westport	101.3	KLWA	PG>5kw/49m				
WI Eau Claire	89.7	WUEC	PG>25kw/195m, 44-48-00/91-27-56				
WI Racine	100.7	WKKV-FM	AF 15kw/119m (aux)				

TV NEWS CONTINUES FROM PAGE 11

FCC proposes drop-dead date for analog LPTV

On September 17th, a drop-dead date was set for analog LPTVs. Sorta. A Further Notice of Proposed Rulemaking and Memorandum Report & Order was released, proposing to further clarify the digital transition for low-power stations, Class A stations, and translators.

- "...we seek comment on whether to adopt an analog shutoff date in 2012,..." That's what I mean by "sorta" – you'd think they could have been more specific!

- They ask whether a later shutoff date – after the proposed transfer of channels 46-51 under the Broadband Plan – or possibly at the end of 2015 – might be in order.

- An earlier shutoff date is proposed for LPTV stations operating above channel 51. (yes, there are still LPTVs up there.) The FCC proposes to require these stations to move below 52 by the end of next year. (this includes *digital* LPTVs operating above channel 51, there are some of these too.)

- The FCC has frozen applications for new analog LPTVs. There will be no new analog low-power stations authorized. (I thought they'd already done that...)

- They have also frozen applications for new or modified LPTVs above channel 51.

Comments will be due within 60 days of publication in the *Federal Register* (probably around the beginning of

December) and reply comments within 90 days. (probably around early March, 2011) I suspect we'll see a shutdown date in mid-summer of 2012.

FM DXers note! This means the death of the "FrankenFMs", channel 6 LPTV stations operated as 87.7MHz FM facilities.

Stations like WNYZ-LP "Pulse 87" in New York, WLFM-LP "The L" in Chicago, and KFMP-LP in Lubbock, Texas have been licensed as analog LPTV stations. Under a loophole in the FCC regulations, the limits on the modulation of a TV sound signal do not seem to apply to low-power stations. And, best I can tell, it was legal for any analog TV station (even full-power stations, when they still existed) to use the FM stereo system. As a result, it's been legal for these channel 6 LPTVs to operate their audio transmitters at 87.75MHz using *FM* technical standards.

This frequency is of course receivable on most ordinary FM radios. (one station is rumored to have pushed things by operating their audio transmitter at 87.9MHz. From what I've heard the FCC didn't buy that & forced them back to 87.75.)

Now, I can't rule out the possibility the FCC will create (by mistake or otherwise..) another loophole..

But I think we can reasonably assume that, when LPTV stations are required to go digital, these 87.75MHz analog audio signals will go away – and with them, the "FrankenFMs".

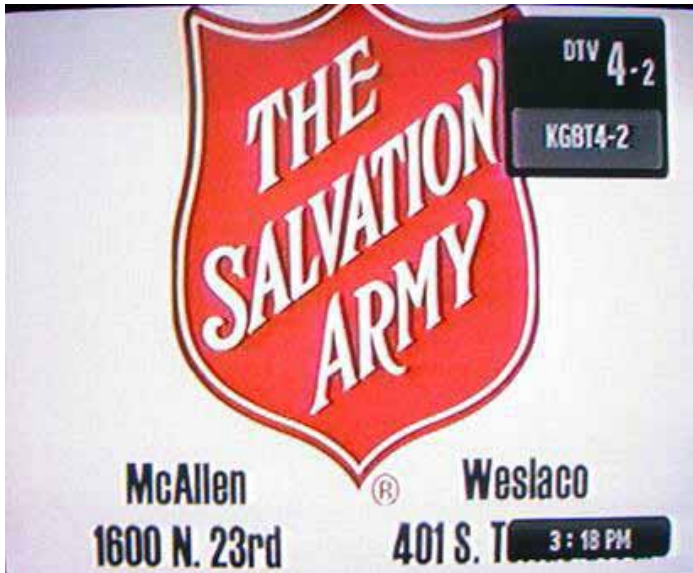


PHOTO NEWS

Jeff Kruszka, Editor
 1909 Lost Lake Place
 Pearland, TX 77581
 jkruszka@sbcglobal.net

October 2010

More great photos from Danny Oglethorpe, of Shreveport, LA:



KGBT-31.2 Harlingen, TX
 496 mi Tr seen 5/6/10



WBBJ-43 Jackson, TN
 366 mi Tr seen 5/6/10



WHLT-22 Hattiesburg, MS
 275 mi Tr seen 5/7/10



KNWS-47 Katy, TX
 224 mi Tr seen 4/14/10



WLBT-30 Jackson, MS
 199 mi Tr seen 4/6/10

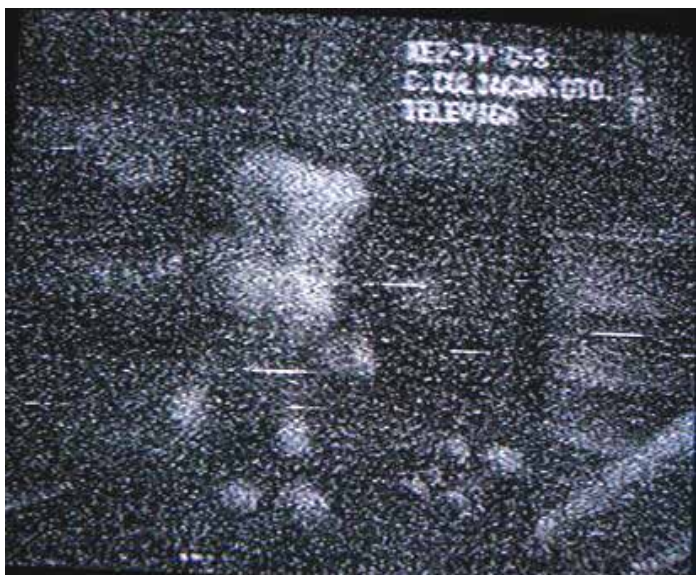
And now for some amazingly clear text IDs from Mexico (how does he do it?!):



XEJ-5 Cd. Juarez, CHIH
747 mi Es seen 6/13/10



XELN-4 Torreon, COAH
753 mi Es seen 3/22/10



XEZ-3 C. Culiacan, GTO
935 mi Es seen 9/8/09



XHAGU-2 Aguascalientes, AGS
897 mi Es seen 5/10/10



XHCOL-3 Atenquique, COL
1097 mi Es seen 4/27/10



XHNCI-4 Manzanillo, COL
1129 mi Es seen 4/27/10
"note canal 4+; are they including offset in the ID now?!"-jk

73's, JEFF



Photo of WHIO-TV tower by Michael Temme- Soifer.

Coast to Coast TV DX

Featuring reports from the entire United States and all of Canada.

Send reports by the 15th of each month to:

Nick Langan

1040 Riverview Drive

Florence, NJ 08518

E-mail: nickl@wtfda.org (East) wtvdx@wtfda.org (West)

The Editor's Note

September featured several tropo openings of note across the eastern half of the country, most notably on the 17th and 18th. DXers in the Midwest reported UHF tropo as far east as Virginia on the 17th. Several DXers in the northeast received over 800 mile tropo to Tennessee on the 18th, but those distances seemed only confined to FM. As we head into October, the best chances for tropo will shift farther south, with the Gulf of Mexico beginning to come into play. The early portion of the month however is favorable for tropo pretty much anywhere east of the Rockies, so keep an eye out.

Jeff Kadet, K1MOD

Box 20, Macomb, IL 61455

<http://www.oldtvguides.com/DXPhotos/>

Icom R7100 w/ video adapter

7 foot dish up 85 feet

CM 1110 up 80 feet

vertically polarized CM1110 up 12'

various 13" TVs

all times are in UTC from Prop Logger postings.

Jul15 09:53 channel 47 mystery solved! - [WHBF-DT-4](#) has a 2.300 W xltr up there because of their lousey coverage on ch. 4. (NEW)

Jul15 10:07 [K44AB-D](#), looks like Keokuk is digital now (NEW)

Jul15 10:39 Muscatine , IA [K42HI](#) 42+ w/TBN. (NEW)

Jul15 13:58 weak SS on ch. 2 to Mexico

Jul16 02:03 XE video ch. 2

Jul16 13:38 Ch.2 - Es EE Canadian to ene; muf ch. 4

Jul16 15:38 WRGB-DT-6 NY video decode

Jul16 17:08 QuÃ©bec , QC CFAP-2 "V" in lower right.

Jul17 01:06 WGVU-DT-11 Grand Rapids 302 mi

Jul17 02:10 getting a yellow bar in the red on ch. 5 - probably WGVK

Jul17 02:17 yup, WSTR-DT-33 in here too

Jul17 02:22 WLWT-DT-35 340 mi

Jul17 02:30 [WKRC-DT-12](#) Cincinnati (NEW)

Jul17 02:50 WCMH-DT-14 Columbus, OH 405 mi

Jul17 02:55 [WLIO-DT-8](#) Lima, OH (NEW)

Jul17 03:03 WPTD-DT-16 Dayton, OH 344 mi

Jul17 03:33 [WBDT-DT-26](#) Springfield, OH 362 mi (NEW)

Jul17 04:36 Angola , IN [WINM-DT-12](#) (NEW)

Jul17 05:01 [WSOT-LP-57](#) Marion, IN 17.5 KW local ID and ads (NEW)

Jul17 06:16 WBNS-DT-21 Columbus, OH 404 mi

Jul17 06:20 WBGU-DT-27 Bowling Green, OH 356 mi

Jul17 14:14 SS video ch. 2

Jul17 21:58 XEPM-2 Juarez + a few other Mexicans

Jul18 00:08 muf ch. 5 to Canada, think Prairie Provinces

Jul18 00:16 SS ch. 6

Jul18 00:29 Stranraer , SK CFQC1-3

00:16 [KXDP-LP-6](#) Denver w/SS sports talk (NEW)

Jul18 00:31 Calgary , AB CICT-2

Jul18 01:00 K02NT Scottsbluff, NE w/static words on screen; no audio

Jul18 01:41 KMEG-DT-39 SiouxCity 324 mi

Jul18 18:27 ch. 2+ Global Canada, not sure of direction

Jul18 18:42 [WIBW-DT-13](#) Topeka, KS 303 mi (NEW)

Jul18 18:45 [KMCI-DT-41](#) Lawrence, KS 230 mi (NEW)

Jul18 18:46 [KUON-DT-12](#) Lincoln, NE 306 mi (NEW)

Jul18 18:48 [KXVO-DT-38](#) Omaha, NE o/WQAD 294 mi (NEW)

Jul18 19:08 GCN website shows Topeka, [K40IJ-D](#) Channel 40 (NEW)

Jul18 20:34 KOTV-DT-45 Tulsa, OK 409 mi

Jul19 05:34 had 2 WIBW's at once, 13 and 44

Jul19 05:48 getting WCMH-DT-14 off the back! I hope to get the 7' dish screened again.

Jul19 07:10 KELO-11 in here too

Jul19 12:33 WSTR-DT-33 Dayton, OH 341 mi

Jul19 14:39 XHRIO-2

Jul19 15:44 XE video chs. 2-6

Jul19 15:50 Saltillo , CL XHAE-5

Jul19 17:34 French Canadian-2

Jul19 18:08 XEPM-2 much better on vertical CM1110 today

Jul19 18:14 cd. Juarez , CI XEJ-5

Jul20 00:32 Regina , SK CKCK-2z CTV

Jul20 00:38 Lloydminster , AB CITL-4

Jul20 00:41 Saskatoon , SK CFSK-4

Jul20 13:48 SS video to s ch. 2

Jul20 16:08 Lethbridge , AB CKAL1-2 "City TV"

Jul20 16:39 Stranraer , SK CFQC-3

Jul20 16:41 CB TP ch. 3 to Cuba

Jul20 16:41 ditto ch. 2

Jul20 18:16 Calgary , AB CICT-2

Jul21 12:25 XEFB-2 Monterrey

Jul22 14:29 TV Azteca7 net ch 2; likely XHTAU Tampico

Jul22 18:44 XEPM-2 Juarez

Jul23 02:09 XHRIO-2

Jul23 12:32 QuÃ©bec , QC CFAP-2 "V" in lower right.

Jul23 13:15 Pembroke , ON CHRO-5 is A channel

Jul24 12:48 QuÃ©bec , QC CFAP-2 "V" in lower right.

Jul24 16:33 XEPM-2 Juarez

Jul25 13:58 Ste-Marguerite-Marie , QC CHAU1-3- // CHAU-5z

Jul25 14:29 Moncton , NB CKCW-2z CTV

Jul25 16:19 CKCK-2 CTV

Jul25 16:34 Stranraer , SK CFQC1-3 CTV

Jul25 17:17 SS ch. 2z sitcom towards FL w/commercials

Jul26 06:31 WTLJ-DT-24 Muskegon, MI 301 mi

Jul26 14:55 WKRN-DT-27 Nashville 358 mi
 Jul27 14:30 Matamoros , TM XHRIO-2
 Jul27 14:47 English religion ch. 5-
 Jul27 15:03 XHPN-3 (seen here more often than listed)
 Jul27 16:36 XHWX-4 Monterrey de K1MOD EN40 IL
 Jul27 16:53 English 5- to west. Perplexing.
 Jul27 17:01 XE ch. 6
 Jul29 05:58 KELO-DT-11 Sioux Falls, SD
 Jul29 06:00 KDLV-DT-26 Mitchell, SD 407 mi
 Jul29 14:02 KDLT-DT-46 Sious Falls, SD 368 mi
 Jul29 23:05 XE video ch. 2
 Jul30 00:01 WKRN-DT-27 Nashville 358 mi
 Jul30 00:05 WPGD-DT-33 Hendersonville, TN 357 mi
 Jul30 00:26 WTVF-DT-50 Nashville (NEW)
 Jul30 02:12 WTVF-DT-5 decode (NEW)
 Jul30 06:10 WUXP-DT-21 Nashville 358 mi
 Jul30 06:11 WNAB-DT-23 Nashville
 Jul30 06:13 WZTV-DT-15 Nashville
 Jul30 07:57 WELF-DT-16 Dalton, GA 477 mi (NEW)
 Jul30 08:50 WBXX-DT-20 Crossville, TN - 456 mi
 Jul30 09:00 WDSI-DT-40 Chattanooga, TN 466 mi (NEW)
 Jul30 10:21 WTCI-DT-29 Chattanooga, TN 466 mi (NEW)
 Jul30 16:01 WUPA-DT-43 Atlanta, GA 578 mi
 Jul30 17:07 XE video ch. 2
 Jul30 17:45 WSTR-DT-33 Dayton, OH 341 mi
 Aug02 03:46 pointed towards KTWU-11 but getting KELO-11 SD
 Aug02 10:46 Nashville 21, 23, 27, 50 (358 mi)
 Aug02 14:22 KSNW-DT-45 Wichita, KS 410 mi
 Aug02 16:16 WHIQ-DT-24 Huntsville, AL 455 mi
 Aug02 22:10 WLLA-DT-45 Kalamazoo, MI 306 mi (NEW)
 Aug02 22:39 WDTN-DT-50 Dayton, OH 343 mi
 Aug03 01:29 WCMH-DT-14 Columbus, OH 405 mi
 Aug03 02:06 WSTR-DT-33 Dayton, OH 341 mi
 Aug03 06:17 WAVE-DT-47 Louisville, KY 313 mi
 Aug03 06:50 KSNW-DT-45 Wichita, KS 410 mi
 Aug03 10:49 WOI-LD-50 Ames, IA 11.5 KW 179 mi (NEW)
 Aug03 11:01 KNWA-DT-50 Rogers, AR 331 mi
 Aug03 22:19 channel 2 all choppy, typical of Au
 Aug04 08:56 WNAB-DT-23 Nashville, TN 363 mi
 Aug04 10:12 WBAY-DT-23 Green Bay, WI 311 mi
 Aug04 14:29 XE video ch. 2
 Aug04 15:13 Cuba-2
 Aug04 15:39 WHCH-LD-40 Chesterton, IN 203 mi 15 KW (NEW)
 Aug04 17:16 XEFB-2 Monterrey
 Aug04 17:22 XHRIO-2
 Aug04 17:38 ch 2 XHY Merida, Yuc. w "SIPSE" logo
 Aug05 01:30 KCDN-LP-35, KTMJ-CA-43, K45IO (KC/Topeka area)
 Aug05 03:20 K33IC Topeka, KS w/TBN (NEW) (302 mi)
 Aug05 04:39 WGVU-DT-11 Grand Rapids, MI 302 mi
 Aug05 05:16 WOTV-DT-20 Battle Creek, MI 306 mi
 Aug05 05:20 WDIV-DT-45 Detroit, MI 416 mi
 Aug05 05:33 WTVS-DT-43 Detroit, MI 411 mi (NEW)
 Aug05 05:43 WMYD-DT-21 Detroit, MI 407 mi
 Aug05 06:14 WWMT-DT-8 Kalamazoo, MI 304 mi (NEW)
 Aug05 06:29 K40IJ-LD-40 Topeka, KS 313 mi 5KW
 Aug05 06:32 KWCH-DT-19 Hutchinson, KS 414 mi
 Aug05 06:40 KSCW-DT-12 Wichita, KS (NEW)
 Aug05 07:17 KSNW-DT-45 Wichita, KS 410 mi
 i think KSNW is my most distant "pest".
 Aug05 08:24 CBEFT 54, 420 miles
 Aug05 08:31 CICO59 Chatham, ON (466 mi)
 Aug05 08:38 serious Canadian CCI on ch. 69 on South Bend.
 Aug05 08:42 ch. 9- must be Windsor
 Aug05 08:49 WOBC-CA-14 Battle Creek, MI w/NOAA radio (312 mi) (NEW)
 Aug05 08:54 something on ch. 5Z; Toronto?
 Aug05 08:57 WOLP-CA-27 with Grand Rapids NOAA weather – (311 mi) (NEW)

Aug05 08:59 WOHO-CA-33 Holland, MI (285 mi) with Grand rapids NOAA - (NEW)
 Aug05 11:32 WLIO-DT-8 Lima, OH 343 mi
 Aug12 02:23 KUON-DT-12 Lincoln, NE 306 mi
 Aug12 11:39 WBAY-DT-23 Green Bay, WI 311 miles
 Aug13 00:27 WKNO-DT-29 Memphis, TN 369 mi
 Aug13 01:51 WQWQ-LP-9 3KW in Paducah, KY; Cape Girardeau mentions plus Oprah program plug. Never knew it existed until i was looking for ch. 9 MS. (NEW)
 Aug13 05:16 KSNW-DT-45 Wichita, KS 410 mi
 Aug13 08:01 KELO-DT-11 Sioux Falls, SD 368 mi
 Aug13 14:56 WTLJ-DT-24 Muskegon, MI 301 mi
 Aug13 15:41 WPTD-DT-16 Dayton, OH 344 mi
 Aug14 15:24 WKNO-DT-29 Memphis, TN 369 mi
 Aug14 15:51 WTUV-DT-23 Memphis, TN 367 mi
 Aug14 16:13 XE video chs. 2-6
 Aug14 20:46 XHGC-5 Net on ch. 3; possibly XHBQ Zacatecas
 Aug15 07:49 WBAY-DT-23 Green Bay, WI 311 mi
 Aug15 20:23 probable XHTAU-2 Tampico Azteca7 net
 Aug18 04:48 WOTV-DT-20 Battle Creek, MI 306 mi
 Aug19 05:16 KEYC-DT-12 Mankato, MN 307 mi (NEW)
 Aug19 10:03 KAUT-DT-40 OKC 500 mi
 Aug19 11:02 KSNW-DT-45 Wichita, KS 410 mi
 Aug19 11:22 WPTD-DT-16 Dayton, OH 344 mi
 Aug19 11:43 KOOD-DT-16 Hays, KS 444 mi - in for a second
 Aug19 13:45 WQPT-DT-23 appears to be AN now killing a very nice channel :-(
 Aug19 13:48 KQIN-DT-34 is AN now, too
 Hopefully – we can hope – this is only for the school months
 Aug19 14:53 KDOR-DT-17 Bartlesville, OK 388 mi (NEW)
 Aug19 15:03 KTBO-DT-15 OKC 501 mi (NEW)
 Aug19 16:03 K40IJ-LD-40 Topeka, KS 313 mi 5KW
 Aug19 16:40 KODE-DT-43 Joplin, MO 313 mi
 Aug19 22:40 KPXM-DT-40 St. Cloud, MN - Ion remapping to 41 -374 mi
 Aug19 22:44 WFTC-DT-29 Minneapolis, MN 341 mi (NEW)
 Aug19 23:23 K16HY-D St. Paul w/ "SMB" PSIP EWTN 15 KW (NEW)
 Aug19 23:30 KSTP-DT-35 St. Paul, MN (NEW)
 Aug20 00:23 WUCW-DT-22
 Aug20 00:40 K14KH in Minneapolis w/3ABN (NEW)
 Aug20 00:51 K43HB Minneapolis w/HSN (NEW)
 Aug20 01:08 WHWC-DT-27 Menomonie, WI 322 mi (NEW)
 Aug20 01:15 K40JT Albert Lea MN, TBN - (NEW)
 Aug20 05:14 W50DR-D La Crosse, WI 234 mi (NEW)
 Aug20 05:32 WQOW-DT-15 Eau Claire, WI 302 mi
 Aug20 06:04 WFXS-DT-31 Wittenburg, WI 310 mi
 Aug20 06:35 WJFW-DT-16 Rhinelander, WI 367 mi
 Aug20 08:02 WBXX-DT-20 Crossville, TN - 456 mi
 Aug22 05:17 WUCW-DT-22 Twin Cities
 Aug22 05:18 KSTC-DT-45
 Aug22 05:25 St. Louis ruining the Minneapolis ch. 31 LPTV again
 Aug22 06:20 WDAY-DT-21 new DTV state #31 557 mi (NEW)
 Aug22 10:32 KSMN-DT-15 Worthington, MN 337 mi
 Aug22 10:57 WDAY-DT-21 still in well and local WMEC-DT-21 will s/on in a few minutes
 Aug22 15:19 KSNW-DT-45 Wichita, KS 410 mi
 Aug22 16:25 K5SW in Okla. got into Manitoba on 2 meters!
 Aug23 01:17 Most twin Cities DTVs barely in but ch 45 is decoding
 Aug23 01:27 KPXM-DT-40 St. Cloud, MN - Ion remapping to 41 -374 mi
 Aug23 05:22 OMG! WDAY-DT-21 Fargo is back in.
 Aug23 06:21 KCGE-DT-16 Crookston, MN w/PSIP "PPB1" (598)
 Aug23 09:06 WDKA-DT-49 Paducah, KY very rare o/KLJB (only 3rd ch. 49) 231 mi. (NEW)
 Aug23 16:13 WBAY-DT-23 Green Bay, WI 311 mi

Aug23 16:20 WCMV-DT-17 Cadillac, MI 410 mi (NEW)
 Aug23 17:38 WNMU-DT-13 Marquette, MI 430 mi
 (NEW) (seen at Frank Merrill's house 2 miles away. My
 VHF antenna is down.) (NEW)
 Aug24 04:18 WFXS-DT-31 Wittenburg, WI 310 mi
 Aug28 08:30 KEFB-DT-34 Ames, IA - new station on air
 i believe - 191 mi (NEW)
 Aug28 08:44 KFPX-DT-39 Newton, IA - rare
 Aug28 09:00 KPXM-DT-40 St. Cloud, MN - Ion
 remapping to 41 -374 mi
 Aug28 10:21 KSTC-DT-45 Twin Cities
 Aug31 19:44 with CM1110 now @ 80' WLF1-DT-11 is
 not always decoding but their bar is always there - 199
 mi
 Sep05 00:08 XEPM-2
 CN8KD (Morocco) confirmed our 6m QSO by email;
 now i just have to get his QSL mgr EA5XX to respond!
 Sep09 01:48 WPGD-DT-33 Hendersonville, TN 357 mi
 Sep09 02:04 WELF-DT-16 Dalton, GA 477 mi
 Sep09 05:41 WBXX-DT-20 Crossville, TN - 456 mi
 Sep09 14:53 except for WBXX's big sig, nothing else of
 note
 Sep12 14:43 KOOD-DT-16 Hayes, KS 445 mi
 Sep12 14:57 KSCW-DT-12 Wichita, KS
 Sep12 15:27 KSNW-DT-45 Wichita, KS 410 mi
 Sep12 15:28 WIBW-DT-13 Topeka, KS 303 mi
 Sep13 11:11 WDBD-DT-40 Jackson, MS 570 mi
 Sep13 12:06 WCFT-DT-33 Tuscaloosa, AL - 514 mi

Analogs at 1919. DTVs at 495. 73, Jeff

Dave Pomeroy

2321 SE Libra Ct.
 Topeka, KS 66605-3505
davepomeroy@sbcglobal.net

July 2010

17 Tr 0830 KSMN-15 Worthington, MN
 KBIN-33 Council Bluffs, IA (over local LPTV 33)
 WTJR-32 Quincy, IL
 0900 KLKN-8 Lincoln, NE
 2320 KSPR-19 Springfield, MO
 KSNF-46 Joplin, MO
 KNWA-50 Rogers, AR
 2330 KHAS-5 Hastings, NE
 18 0600 K23---23 Pawnee City, NE
 K33---33 Beatrice, NE
 0605 K30AL-30 Iola, KS (KTWU-11)
 KOZJ-25 Joplin, MO
 KSPR-19 KSFJ-28 Springfield, MO
 KQCW-20 Muskogee, OK
 0615 KTPX-28 Tulsa, OK
 KRSC-36 Claremore, OK
 0700 KAFT-9 Fayetteville, AR
 0900 KDLV-26 Mitchell, SD
 KHIN-33 Council Bluffs, IA (over local LPTV 33)
 1000 KCAU-9 Sioux City, IA
 Es 1130 UNID-2 Spanish analog "7"
 Tr 1500 KMIZ-17 Columbia, MO
 KLPR-26 KNLC-14 St. Louis, MO
 2115 KSIN-28 Sioux City, IA
 2120 KMEG-39 Sioux City, IA
 2130 KOAM-7 Pittsburg, KS
 2140 KDLT-47 Sioux Falls, SD
 KSMN-15 Worthington, MN
 2210 KTIV-41 Sioux City, IA
 19 0830 KSPR-19 KSFJ-28 Springfield, MO
 23 Es 1100 UNID-2 CBC
 CITO-3 Timmons, ON
 24 Tr 1930 KLKN-8 KOLN-10 KUON-12 Lincoln, NE
 27 Es 1115 XEFB-2 Monterrey, NL

August 2010

18 Tr 1900 KMEG-39 Sioux City, IA
 KSMN-15 Worthington, MN
 KTBO-15 Oklahoma City, OK
 2200 KTIN-25 Ft. Dodge, IA
 KDOR-17 Bartlesville, OK

2210 WCCO-32 Minneapolis, MN
 2215 KAAL-36 Austin, MN
 KTEN-26 Ada, OK
 KCWI-23 Ames, IA
 19 0350 KWKB-25 Iowa City, IA
 KTIV-41 Sioux City, IA
 0400 WXOW-48 LaCrosse, WI
 KNWA-50 Fayetteville, AR
 0600 KLNE-26 Lexington, NE
 KLBY-17 KWKS-19* Colby, KS
 KBSH-7 Hays, KS
 KBSD-6* Ensign, KS (Dodge City)
 21 2200 KDSM-16 Des Moines, IA
 KMSN-15 Worthington, MN
 KMEG-39 KTIV-41 Sioux City, IA
 2230 KDLT-47 Sioux Falls, SD
 KBIN-33 Council Bluffs, IA
 KCAU-9 Sioux City, IA
 KUON-12 Lincoln, NE
 WCCO-32 Minneapolis, MN
 KAAL-36 Austin, MN
 22 0045 K14KE-14* St. James, MN (KMSP-9)
 KSTP-35 Minneapolis, MN
 KEYC-12* Mankato, MN
 KTTC-10* Rochester, MN
 0100 KLBY-17 Colby, KS
 KBSH-7 Hays, KS
 KCCI-8 Des Moines, IA
 WHLA-30 LaCrosse, WI
 KXLT-46* St. Cloud, MN
 WXOW-48 LaCrosse, WI
 KSMQ-20* Austin, MN
 0630 KBSD-6 Ensign, KS
 KSCW-12 Hutchinson, KS
 KTBO-15 Oklahoma City, OK
 KCRG-9 Cedar Rapids, IA
 KTCA-23* St. Paul, MN
 KSTP-35 Minneapolis, MN
 KDCU-31 Derby, KS (Wichita)
 0930 KSPR-28 Springfield, MO
 KOPX-50 Oklahoma City, OK
 KCAU-9 Sioux City, IA
 KWTW-39 Oklahoma City, OK
 KWTW-9* Oklahoma City, OK "Old KWTW"
 KAKE-21 Wichita, KS
 1300 KDLV-26 Mitchell, SD
 2000 WBAY-23 Green Bay, WI (500+ mi.)
 KTBO-15 Oklahoma City, OK
 2210 WDJT-46 Milwaukee, WI
 2215 WTVO-16 Rockford, IL
 2245 KWKB-25 Iowa City, IA
 KYOU-15 Ottumwa, IA
 KCRG-9 Cedar Rapids, IA
 2300 WTJR-32 Quincy, IL
 KRIN-35 Mason City, IA
 2310 WHLA-30 LaCrosse, WI
 2315 WLAX-17* LaCrosse, WI
 KSFJ-28 Springfield, MO
 23 0130 KCWI-23 Ames, IA
 KLBY-17 Colby, KS
 WKOW-26 WISC-50 Madison, WI
 0630 WOI-5 Ames, IA
 0640 WHLA-30 LaCrosse, WI
 0700 KCCI-8 KDSM-16 Des Moines, IA
 2130 KAAL-36 Austin, MN
 2200 KCWI-23 Ames, IA
 26 0730 KMEG-39 Sioux City, IA
 KCWI-23 Ames, IA
 KSIN-28 Sioux City, IA
 27 0830 KMEG-39 Sioux City, IA
 KNWA-50 Rogers, AR
 KHOG-15 Fayetteville, AR

Reception of KEYC-TV (Mankato, MN) on channel 12 on
 August 22 had me confused as I had logged it on

channel 46 January 16. A check with KEYC revealed that they never operated on channel 46 and went from analog channel 12 to DTV channel 12 directly. They have no channel 46 translators. At this point I suspect the channel 46 was a translator in Falls City, NE which normally rebroadcasts KUON on channel 12 from Lincoln. Both KEYC and KUON have PSIP as 12-1. I also thought I had KMSP on channel 14 from Minneapolis on August 22. Turned out to be K14KE-D from St. James, MN. Remapping in DTV continues to cause confusion. Thanks to Glenn Hauser I logged KWTW on channel 9 not long before "Old KWTW" shut down and they were on channel 39 only.

Dennis Park Smith

3605 Sam Remo Drive
 Santa Barbara, CA 93105-2523
 Tel: (805)687-7803
 Times 24-hour PDT

This report is for August 2010, continuing with mediocre southern-Calif coastal tropo up to about 220 mi, steady but poor strength. Not a typically good summer for tropo ducting---until Aug 22, when it finally improved. Late-August stable combination of inversion and high pressure (usually a summer-long pattern) may have made the difference---for a week. Still past years were better yet, even on my small antennas. Another negative may be cold ocean water temps, this summer 55-60F and continuing, compared to 60s and up to 70 in past years. All seen on LG 20" flat screen at my place with inside antennas, except Aug 23 & 26 at Don Voegelé's place with outside antennas.

Jul 25-31	Poor to very poor
Aug 1-5	Variably fair
Aug 6-7	Poor
Aug 8-21	Var. poor/very poor
Aug 22-27	Var. fair (some signals <u>good</u>)
Aug 28	Poor to very poor
Aug 29	None
Aug 30 morn	Very poor, improving
Aug 30-Sep 1	Out of town – WASCO

SBARB, tropo from So-Calif tropo list last month & more stns here, analog & DTV, my place. Apx mi.

Jul 31	2100 57 XHUA A Tijuana (poor)	200
	56 XHUA A-relay Tecate (vy. Poor)	200
	(Both XEW-2 net) Baja N, Mexico	
Aug 1	0500 46 unID (very poor) (so far, no clue)	220
Aug 10	2130 56 XHUA A-relay Tecate (poor)	220
Aug 22	0600 d8 KFMB-TV "8" SanDiego (CBS)	175
	(Over local KZDF-LP 8 SBarb)	
	d10 KGT V "10" SDiego (likely)	175
	(Fighting with local K10PV-D d10,	

effectively cancelling out each other!)

Aug 23	0900, tropo at Don V's place	
	17 KDTF-CA SDiego (Univision)	175
	21 XHTIT Tij (Azteca 7 XHIMT)	200
	(Fair, over local KPMR d21 SBarb)	
	d22 XHUA A-DT "57" Tij (XEW-2)	200
	d23 XETV-DT "6" Tijuana (CW)	200
	27 XHJK Tij (Azteca 13 XHDF)	200
	(Good, o/local KEYT-DT d27 SBarb)	
	d28 XHJK-DT "28" Tij (XHDF 13)	200
	d29 XHTIT-DT "29" Tij (XHIMT 7)	200
	d32 XEWT-DT "12" Tij (indep)	200
	35 K35DG "UCSD-TV" La Jolla	175
	(Poor, University of Calif, San Diego)	
	45 XHBJ Tijuana (Canal 5 XHGC)	200
	(ExInt. Error last time: <u>not</u> XEQ-9 net)	
	69 K61GH? National City CA?	185

(Poor, Milenio network of Mexico)

Aug 24	2015, at my place	
	27 XHJK Tijuana (XHDF 13)	200
	(Poor, o/local KEYT-TV d27 SBarb)	

Aug 25	0300 d22 XHUA A-DT "57" Tij (XEW-2)	200
Aug 26	1100 at Don's place	
	d10 KGT V "10" San Diego (ABC) 175	
	(Over local K10PV-D d10 SBarb)	
Aug 27	0840, at my place	
	d32 XEWT-DT "12" Tij (indep) 200	
	(Over local KSBT-LP 32 SBarb)	

No new Santa Barbara loggings.

WASCO CA AUG 30-SEP 1, seen were new DTV regulars, and analog tropo signal at 150 mi. Seen on same LG, with modest outside antennas.

Aug 30	new regulars eve	
	d31 KBTF-CD "31" Bakersfield	45 mi SE
	(ex-CA) (Telefutura) change from analog 31	
	d34 KCBT-LD "34" Bakersfield	35 mi SE
	(ex-LP)(Coastal TV, etc) change from anlg 34	
	d39 KABE-LD "39" Bakersfield	45 mi SE
	(ex-LP)(Univision) change from analog 39	
	There was no DX at Wasco, except this:	
Sep 1	tr 0600+ (analog, poor)	
	27 K27GZ Mariposa CA (TBN) 150 mi N	

At Wasco, Bakersfield analog activity: noted off, KBFX-CA 58; noted back on, KKEY-LP 11, KDBK-LP 41. Wasco analog total remains 227. Wasco DTV total is now 29 (3 new).

Best of DX to All Dennis

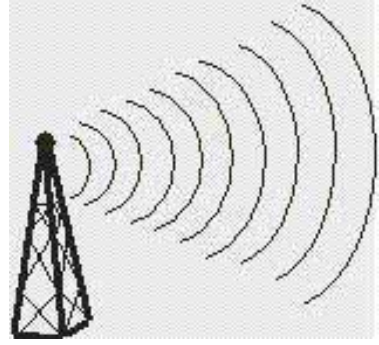
William Draeb

1304 Ellis St.
 Kewaunee, WI 54216

<u>8/3 Tr</u>	
2100	WLNS-36
	WKAR-40
	WLAJ-51
<u>8/4 Tr</u>	
0630	WLLZ-LP-12 (WMKT News)
	CIII-1-12
	CICI-1-3
	CBEC-7
	CHBX-1-7 Tent.
0920	Analog-7, SW, "America One" Network
<u>8/5 Tr</u>	
0630	<u>WGVU-11</u> Video replaced local WLUK
<u>8/8 Tr</u>	
0750	WMOW-12
	WLEF-36
	WJFW-16
<u>8/8 Es</u>	
1020	2-4; E. Canada
<u>8/10 Tr</u>	
0630	WDCQ-15
<u>8/13 Tr</u>	
0625	CKVR-3 News
	CICI-1-3
	unID-4
<u>8/14 Tr</u>	
0525	CKCO-2-2
<u>8/22 Tr</u>	
0635	<u>KTTC-10</u>
	<u>KRIN-35</u>
<u>8/23 Tr</u>	
0635	CKPR-2
	CHFD-4
<u>8/28 Tr</u>	
0900	<u>W30CK</u> Religion. The preacher said this their first day on the air (Ch. 30).

Not much to report this time but a few new ones. Bill.

Northern FM DX



Keith McGinnis
 18 Newbridge St., Hingham, MA 02043
 longwave@comcast.net 781-875-1944

For Dxers in the following states: CT IA ID IL IN MA ME MI MN MT ND NE NH NJ NY OH OR PA RI SD VT WA WI WY and all of Canada. Please submit by the 10th of each month.

EDITOR'S NOTE PLEASE SUBMIT ALL REPORTS IN THE FORMAT SHOWN BELOW.

Time(tab)Calls(tab)Freq(tab)City(tab)State(tab)details

Formats can either be plain text, Word or Excel as long as format is adhered to. Any submissions in other formats may not be used at editor's discretion. All Submissions must be in to me by the 10th of each month.

**Russ Edmunds, WB2BJH Blue Bell, PA 40:08:45N; 75:16:04W, Grid FN20id
 <amfmdxer@yahoo.com>
 FM: Yamaha T-80 w/ Conrad RDS Decoder &
 Onkyo T-450RDS; APS9B @ 15'; Grundig G8**

7/16 - Es

0942	unid	92.1		AL	Promo for Alabama Power
1002	WWGO	92.1	Charleston	IL	Ad for Midwest American Federal Credit Union in Mattoon, Classic Rock new
1002	KBIA	91.3	Columbia	MO	Classical, "Music For Your Morning", female announcer, garbled calls
1008	WQKQ	92.1	Carthage	IL	Bob & Tom " on KQ-92" , weather
1010	unid	92.1			Focus on the Family - none in area listed at this time
1015	WIUM	91.3	Macomb	IL	Classical, ID
1035	KMZA	92.1	Seneca	KS	Country, ID
1047	KRLS	92.1	Knoxville	IA	Local ads, ID
1115	KDQN	92.1	DeQueen	AR	Country, "#1 Country"
1120	WNIW	91.3	LaSalle	IL	Presumed w/ promo for McHenry Coll new
1129	KCHE	92.1	Cherokee	IA	Country Promo Cherokee Creekfest, local ads
1133	WFPS	92.1	Freeport	IL	Country, piece of a liner
1135	WHHI	91.3	Highland	WI	WPR Ideas Network, talk

7/19 - Es

1022	WMPN	91.3	Jackson	MS	Talk Program, call-in, MPB ID
1023	WFIX	91.3	Florence	AL	ID, weather
1032	KAXV	91.9	Monroe	LA	Weather, ID
1035	unid	91.9			Cat Stevens: "Peace Train", Jimi Hendrix: "Time"
1040	unid	91.3			AFA Voting promotion. Only likely possibility is KAKO-OK
1046	KGPQ	99.9	Monticello	AR	ID, promo
1100	KWCK	99.9	Searcy	AR	ID "KWCK Searcy-Heber Springs" new
1100	KASU	91.9	Jonesboro	AR	ID
1109	WKMS	91.3	Murray	KY	RDS Capture, NPR, "Studio 360" promo, returning to "Fresh Air"
1113	KUAF	91.3	Fayetteville	AR	Classical, ID
1114	KTCS	99.9	Fort Smith	AR	ID, Country

7/23 - Es

1148 KBHZ 91.9 Willmar MN Contemporary Christian music, "Praise FM"

Well, the Es season ended abruptly and this is the last of this season's DX from here. The season featured my first Mexican logging on FM but the number of new stations was down, partly due to a number of brief, spotty, low-MUF openings and partly due to many of the better openings occurring during work time, leaving me with only 3 sets of unattended recordings.

Jeff Falconer - Clinton ON EN93fo
Sangean HDT-1X, Sony XDR-F1HD, APS-13 at 22', 10db preamp
New=* New calls={XXXX} Time=ELT Distances=Miles

May 07 Tr

2030 WBNI 89.1 Fort Wayne IN Calls, jazz 254

May 08 Ms

0126 {KSRZ} 104.5 Omaha NE RDS, ex KESY 756
0302 KMHA 91.3 Four Bears ND RDS PI: KMHA, prev via Es 1061
1111 *WBUZ 102.9 La Vergne TN RDS: The Buzz ROCKS 603
1212 {KKPT} 94.1 Little Rock AR RDS PI: KKPT, prev via Es, ex KLPQ 844
1218 WMEZ 94.1 Pensacola FL RDS PI WMEZ, prev via Es 956
1225 {WZBQ} 94.1 Carrollton AL RDS PI: WZBQ, prev via Es, ex WAQT 800
1751 WZEW 92.1 Fairhope AL RDS: 92 ZEW, prev via Es 972
1936 WMPN 91.3 Jackson MS RDS PI: WMPN, prev via Es 923

May 08 Tr

0259 *WOES 91.3 Ovid-Elsie MI Calls, polka music, 550 w 149
0934 *WLKT 104.5 Lexington KY "Central Kentucky's hit station 'The Cat'"
409
0950 (WJJK) 104.5 Noblesville IN Promo for Hoosier Lottery, "Classic Hits
104.5", ex WAJC 354
1042 WCVZ 102.5 Baltimore OH C&W, "Highway 102" 272
1158 WNNF 94.1 Cincinnati OH Ads, "Frequency 94.1" 346
1751 WLBC 104.1 Muncie IN Contest promo 310
1753 WPAY 104.1 Portsmouth OH C&W, "Power Country" 349

May 09 Ms

0022 WBAM 98.9 Montgomery AL C&W, RDS PI: WBAM 842
1050 *KJLU 88.9 Jefferson City MO Jazz, RDS PI: KJLU 661
1200 WMAU 88.9 Bude MS RDS PI: WMPN 983

May 09 Tr

0123 {WDXH} 98.7 Detroit MI Now using these calls, ex WVMV, still "Amp
98.7" 117
2011 WFRN 104.7 Elkhart IN Calls, REL 264

May 10 Tr

1919 WBTU 93.3 Kendallville IN Ad for The Rusty Spur 250

May 11 Tr

1841 WHKO 99.1 Dayton OH C&W, "K-99.1 FM" 302

May 12 Tr

1805 WBOI 89.1 Fort Wayne IN End of IN state nx 254

1914 WPXY 97.9 Rochester NY Calls 202

May 14 Tr

1623 WOSU 89.7 Columbus OH Pledge drive, RDS 263

May 14 Es

1807 *CBAF5 92.3 Halifax NS CBC French, mono 890
1813 *CHNS 89.9 Halifax NS Classic rock, "89-9 Hal FM" 890

May 15 Ms

0132 *KPCS 89.7 Princeton MN ".the Rejoice Broadcast Network." 608
1105 WMAU 88.9 Bude MS RDS PI: WMPN 983

May 16 Ms

0125 CBW 98.3 Winnipeg MB Several bursts, CLA music, RDS 868
0004 KWQW 98.3 Boone IA Ping RDS PI: 'KWPV' 632
1400 WMAU 88.9 Bude MS ".channel 4 MPB." 983

May 17 Tr

2200 WVPW 88.9 Buckhannon WV Legal ID mentioned Buckhannon-Weston, WVPR 320

May 18 Es MUF 102

1853 *KHCT 90.1 Great Bend KS RDS/HD 2 CH 969
1857 KPRD 88.9 Hays KS REL, "Praise Radio" 954
1900 KHCD 89.5 Salina KS "Radio Kansas", RDS/HD 879
1902 *K223BS 92.5 Ness City KS Wx, "High Plains Public Radio", 150 w 1024
1903 *KMML 92.9 Cimarron KS SS Mexican, mono 1057
1907 *KMZA 92.1 Seneca KS C&W, wx, "Kanzaland Radio" 792
1910 *KKDT 93.5 Burdett KS Over local with OLD, "Dave FM", fairly new station 1006

1913 *KERP 96.3 Ingalls KS C&W, "The Marshal" 1057
1914 Unid 96.7 ???? KS Kansas City Royals BB, either KBBE or KSOB ????

1920 KKJQ 97.3 Garden City KS C&W, RDS: Q-97 1067
1924 *KHOK 100.7 Hoisington KS C&W, "100.7 Eagle Country" 963
1927 *KKQY 101.9 Hill City KS C&W, "The Country Bull, Y-102" 983
1928 KXCV 90.5 Maryville MO HD 721

May 20 Tr

1600 WEKU 88.9 Richmond KY Weak legal ID 422
1820 *WYCE 88.1 Wyoming MI Giving contact info (e-mail, phone, etc) 214

May 20 multi hop Es or cloud to cloud Es (no other stations were heard this opening)

1848 *KUYI 88.1 Hotevilla *AZ Several Beatle songs, ID in Hopi and EE at 1900. State # 41! 1613
1935 *KNUA 88.7 Flagstaff AZ Loud with wx report, "Arizona Public Radio KNUA" 1702

May 21 Tr

1550 WPAY 104.1 Portsmouth OH C&W, "Power Country" 349
1551 WLBC 104.1 Muncie IN Ads 310

May 21 Ms

1915 KJTH 89.7 Ponca City OK RDS PI: KJTH 975

May 22 Tr

0117	WJPD	92.3	Ishpeming	MI	C&W, Big Country 92.3 WJPD 353
1107	WZOC	94.3	Plymouth	IN	Jingle ID, Rod Stewart oldie 281
1126	{WKKJ}	94.3	Chillicothe	OH	C&W, calls, ex WFCB 305

May 22 Ms

2258	*KYCU	89.1	Clinton	OK	".you are listening to KCCU." (sister stn) 1086
------	-------	------	---------	----	---

May 23 Ms

0058	*WLBF	89.1	Montgomery	AL	RDS PS: 89.1 Faith Radio, RDS PI: 'KALE' 813
2343	KXGT	98.3	Carrington	ND	RDS PS: Sunny 98.3 883

May 24 Ms

0125	WPWX	92.3	Hammond	IN	RDS PI: WPWX, prev via Tr 334
1139	KTXK	91.5	Texarkana	TX	".here in Texarkana.", prev via Es 983

May 24 Es MUF 94

1826	WDNA	88.9	Miami	FL	Jazz, RDS 1247
1828	WKCP	89.7	Miami	FL	CLA, RDS: Classical South Florida 1247
1830	WFIT	89.5	Melbourne	FL	All Things Considered, RDS 1073
1834	WGES	90.9	Cutler Bay	FL	Preacher, RDS 1262
1835	WLRN	91.3	Miami	FL	News from the Miami Herald, HD 1218
1853	WSOR	90.9	Naples	FL	Moody REL 1191
1857	WLTQ	92.1	Venice	FL	RDS 1136
1858	WOGK	93.7	Ocala	FL	C&W, "K-Country" 990
1945	KUHF	88.1	Houston	TX	HD 3 CH, Marketplace CH1, CLA CH2, SS CH3 1237
1947	*KSUR	88.9	Mart	TX	AFR REL, gave local phone # and address for an event 1204
1953	*KMFA	89.5	Austin	TX	CLA, RDS: KMFA89.5, HD 1280
1957	*KZLV	91.3	Lytle	TX	REL, RDS PS: K-LOVE, RDS PI: KZLV 1373
2000	KGZ	88.1	Abilene	TX	Legal ID "Life changing Christian Music KGZ" 1257

May 25 Tr

1540	WBOI	89.1	Fort Wayne	IN	Calls, news headlines 254
------	------	------	------------	----	---------------------------

May 25 Ms or Es?

2034	KDHX	88.1	Saint Louis	MO	In HD, either long Ms burst or Es 586
------	------	------	-------------	----	---------------------------------------

May 27 Ms

1907	KJTH	89.7	Ponca City	OK	RDS PI: KJTH 975
------	------	------	------------	----	------------------

May 28 Ms

2008	*KJWR	90.7	Windom	MN	Preacher, RDS PI: KJWR 683
------	-------	------	--------	----	----------------------------

May 28 Tr

2046	WZOR	94.7	Mishicot	WI	"Razor 94-7 The Cutting Edge Of Rock" 315
------	------	------	----------	----	---

May 29 Tr

0113	*WTAC	89.7	Burton	MI	REL, "Smile FM", pgm about 1 min behind sister WJOJ 89.7 113
------	-------	------	--------	----	--

May 30 Ms

0001	KJTH	89.7	Ponca City	OK	RDS PI: KJTH 975
1005	WXVS	90.1	Waycross	GA	RDS PI: WXVS, prev via Es 856
1048	WMAU	88.9	Bude	MS	RDS PI: WMPN 983
1434	WMAU	88.9	Bude	MS	RDS PI: WMPN, KJTH and WMAU are becoming Ms pests 983
1446	Unid	88.9	????	??	".the K-Love crew." 100000 watts.com lists 8 possibilities ????
1600	*KJIA	88.9	Spirit Lake	IA	".This is KJIA Spirit Lake, KJWR Windom." (Hrd KJWR 90.9 1st time 2 days ago) 714

May 30 Es MUF 104

1302	WQCS	88.9	Fort Pierce	FL	HD 3 CH, CH1 NPR nx, CH2 CLA, CH3 NWS wx 1118
1306	WSCI	89.3	Charleston	SC	CLA, RDS 744
1319	WRJA	88.1	Sumter	SC	RDS 675
1324	WWWZ	93.3	Summerville	SC	Hip hop, RDS: Z93 JAMZ, prev via Ms 744
1327	*WRZE	94.1	Kingstree	SC	Doobie Brothers, "Sunny", RDS 687
1329	WHTQ	96.5	Orlando	FL	Classic rock, HD 1038
1330	{WNUE}	98.1	Titusville	FL	SS, "La Mega", RDS, ex WGNE 1019
1331	*WSSJ	100.1	Rincon	GA	REL, "Savannah's new Joy 100" 782
1332	WRUMt	100.3	Orlando	FL	SS heard in passing 1037
1336	WTKS	104.1	Cocoa Beach	FL	Ads, HD 1037
1338	WJRR	101.1	Cocoa Beach	FL	Rock music, RDS PI: 'KFJZ' 1037
1341	WWIO	88.9	Brunswick	GA	Noted in passing with HD 857
1341	WJCT	89.9	Jacksonville	FL	Noted in passing with HD 919
1342	WKES	91.1	Lakeland	FL	Moody REL 1071
1343	WJXR	92.1	Macclenny	FL	Home shopping, mono. An Es regular, unique format makes ID easy 919

May 31 Es (very short)

1705	Unid	88.9	????	??	Family Radio beamed 80 degrees for several min. Maybe WFRS Smithport NY at 470 mi. Swapping with hip-hop stn (WERS Boston?)
1717	*WBYO	88.9	Sellersville	PA	Promo for Church event in Ambler PA, "Positive uplifting Word FM", RDS My shortest ever Es (beats my old record by 110 mi)! 389

Jun 01 Ms

2247	KJLU	88.9	Jefferson City	MO	Jazz, RDS PI: KJTH 661
------	------	------	----------------	----	------------------------

Jun 01 Es MUF 92.3

2035	KEOM	88.5	Mesquite	TX	Neil Diamond song, RDS 1108
2036	{KNON}	89.3	Dallas	TX	Jazz, HD, ex KCBI 1130
2054	*KMOC	89.5	Wichita Falls	TX	CLA, HD 1133
2055	*KTXI	90.1	Ingram	TX	CLA, "Your Classical Oasis KPAC" 1341
2056	*KRNH	92.3	Kerrville	TX	C&W, "Real Country 92-3 The Ranch" 1342
2110	KNCT	91.3	Killeen	TX	EZL match to stream 1238

Jul 05 Es

1603	*KMQX	88.5	Weatherford	TX	Beatles song, "88.5 The Ram" 1164
1928	KNGM	88.9	Guymon	OK	REL //KJIL-99.1 1155

Jul 05 Ms

1618	WMSB	88.9	Byhalia	MS	RDS PI: WMSB, prev via Es 754
------	------	------	---------	----	-------------------------------

Jul 05 Tr

1620	WUWM	89.7	Milwaukee	WI	"Milwaukee Public Radio" 322
------	------	------	-----------	----	------------------------------

Jul 10 Tr

0928 *CKAV 106.5 Toronto ON Legal ID 108

Jul 16 Es MUF 92.3

1904 CHNS 89.9 Halifax NS Classic rock, "89-9 Hal FM" 890
1908 CBAF5 92.3 Halifax NS CBC French, mono 890

Jul 16 Tr

1909 *CJOS 92.3 Owen Sound ON New stn testing with OLD \$, "92.3 The Dock",
RDS 84

Jul 16 Ms

2006 CHNIt 88.9 Saint John NB Likely wth burst of Toronto Blue Jays BB
game, prev via Es 766

Jul 17 Es

1222 *XHRYS 90.1 Reynosa MEX Ad mentioning "en Reynosa", RDS PI:
'WWWJ' 1535

Jul 17 Ms

1642 WMAU 88.9 Bude MS RDS PI: WMPN 983

Jul 18 Ms

1257 WMSB 88.9 Byhalia MS Preacher, RDS PI: WMSB 754

Jul 19 Tr

1904 WXDX 105.9 Pittsburgh PA Rock, "105-9 The X" 230

Jul 23 Tr

1617 WUWM 89.7 Milwaukee WI Calls, NPR News 322
1630 WAPL 105.7 Appleton WI Calls over WOOD 325
1834 WIXX 101.1 Green Bay WI Contest promo 326
1847 WHID 88.1 Green Bay WI Talk about oil spill 325
1856 *WHDI 91.9 Sister Bay WI Weak, legal ID "WHDI Ideas Radio Ellison
Bay-Sister Bay" 297

Jul 24 Tr

0049 CHCQ 100.1 Belleville ON C&W, "Cool 100" 206
0107 CFLY 98.3 Kingston ON "Fly FM" 250
0143 CHNO 103.9 Sudbury ON OLD, "Rewind 103-9" (new slogan) 202
1150 *WLRY 88.9 Rushville OH Calls, "The Light 88-9" 269
1546 WUWM 89.7 Milwaukee WI Calls 322
1604 WMYX 99.1 Milwaukee WI Wx, "Milwaukee's Mix" 332
2106 *CFRH 88.1 Penetanguishene ON FF:AC, "Vague FM" 85

Jul 24 Es MUF 99.1

1000 *KGYH 88.5 Beaumont TX "The Gospel Highway" 1145
1023 KUHF 88.7 Houston TX "Car Talk", HD 3 CH 1237
1029 KSBj 89.3 Humble TX REL:AC, RDS/HD 1187
1033 KGNZ 88.1 Abilene TX Calls, "Life Changing Christian Music" 1257
1042 KLDN 88.9 Lufkin TX "Car Talk", "Red River Radio", RDS: KLDN-
FM 1109

1103	KLUX	89.5	Robstown	TX	Jazz, HD 1414
1156	KNTU	88.1	Denton	TX	RDS: The One 1102
1157	KVRK	89.7	Sangster	TX	REL:AC, RDS: artist/song 1082
1159	KETR	88.9	Commerce	TX	Legal ID 1056
1200	*KAOW	88.9	Fort Smith	AR	Legal ID mentioned Fort Smith-Van Buren 885
1202	KCBI	90.9	Dallas	TX	Calls 1130
1203	KMAG	99.1	Fort Smith	AR	C&W, RDS 916
1207	KERX	95.3	Paris	AR	Rock, RDS PS: 95.3 THE REBEL, RDS PI: 'KERX' 880
1208	KHYI	95.3	Howe	TX	C&W, RDS: FM KHYI 1079
1214	*KMMY	96.5	Soper	OK	"My Rock", RDS PS: artist/song, RDS PI: 'KMNC' 1013
1218	KEOM	88.5	Mesquite	TX	OLD, RDS PI: 'KENL' 1108
1220	KNON	89.3	Dallas	TX	Latino music, HD 1130
1236	KSCS	96.3	Fort Worth	TX	C&W, HD 1130
1237	KLUV	98.7	Dallas	TX	Hip-hop, HD 1130

Jul 25 Tr

0937	WUWM	89.7	Milwaukee	WI	Calls, NPR News 322
1036	WYMS	88.9	Milwaukee	WI	"Radio Milwaukee" 322

Jul 27 Ms

1904	KJLU	88.9	Jefferson City	MO	".at The One In Christ Church, 900." (Internet search shows church is in Jefferson City MO) 661
------	------	------	----------------	----	---

Jul 28 Tr

1931	WOJO	105.1	Evanston	IL	SS, "La Buena" 331
1936	WFMT	98.7	Chicago	IL	CLA matched to stream 332
1941	{KDRB}	100.3	Des Moines	IA	"100.3 The Buzz", ex KLYF 626
1956	WDRV	97.1	Chicago	IL	Classic rock, "The Drive" 331
2016	WLS	94.7	Chicago	IL	Billy Joel song matched to stream 332

Jul 29 Tr

1536	WLZT	93.3	Ashville	OH	AC, "Soft Rock 93-3" (new slogan) 268
------	------	------	----------	----	---------------------------------------

Jul 30 Tr

1920	*WBBG	106.1	Niles	OH	OLD, promo for MRN Radio, Youngstown ads 167
------	-------	-------	-------	----	--

Jul 30 Ms

2325	*WHUR	96.3	Washington	DC	RDS PI: WHUR 397
------	-------	------	------------	----	------------------

Jul 31 Ms

2327	KWQW	98.3	Boone	IA	RDS PI: 'KWPV' 632
2357	KWFX	100.1	Woodward	OK	C&W, RDS PI: KWFX 1072

Aug 01 Ms

2340	KJTH	89.7	Ponca City	OK	RDS PI: KJTH 975
------	------	------	------------	----	------------------

Aug 02 Tr

0857	*WJTA	88.9	Glansdorf	OH	Catholic REL, "Holy Family Radio", second day on air 215
0903	CJWF	95.9	Windsor	ON	C&W, "Windsor's FM 95-9", over CFPL blowtorch 124
0913	WBIE	91.5	Delphos	OH	AFR REL 231

0917	WRQN	93.5	Bowling Green	OH	OLD, HD over local 184
1832	WQED	89.3	Pittsburgh	PA	CLA mentioned wqed.org 233

Aug 02 Ms

1100	KUAR	89.1	Little Rock	AR	".of Arkansas, Little Rock.", prev via Es 844
1250	*WVBW	92.9	Suffolk	VA	Bit of old Tommy James song (verified by website), RDS PI: WFOG (old calls) 538
1951	WKZO	96.5	Kalamazoo	MI	RDS PI: WKZO. This was more than likely airplane flutter 228

Aug 03 Tr very intense Aurora with locals missing or weakened

1823	CJRQ	92.7	Sudbury	ON	Classic rock, "Q-92", local CJBX lost in Au 201
1907	*CIGM	93.5	Sudbury	ON	"Hot 93-5", local CBCL masked by Au 196

Aug 04 Tr

1535	*WNRK	90.7	Norwalk	OH	Several WKSU IDs heard under WNFR 173
1540	WFGY	98.1	Altoona	PA	Wx, "Froggy 98" 264
1859	WVPW	88.9	Buckhannon	WV	Legal ID, West Virginia Public Radio 320

Aug 04 Es MUF 88.9

1903	KSUR	88.9	Mart	TX	AFR REL, RDS 1204
1904	KEOM	88.5	Mesquite	TX	OLD, RDS PI: 'KENL' 1108

Aug 08 Ms

1247	*KRSU	91.3	Appleton	MN	RDS PS: M.P.R., RDS PI: KRSU 723
------	-------	------	----------	----	----------------------------------

Aug 09 Tr

2240	WRKR	107.7	Portage	MI	Rock, "107-7 RKR" 218
------	------	-------	---------	----	-----------------------

Aug 10 Tr

1838	WAPL	105.7	Appleton	WI	"The Apple" 325
------	------	-------	----------	----	-----------------

Aug 11 Tr

1525	WYCE	88.1	Wyoming	MI	Calls, wx 214
1537	WKWK	97.3	Wheeling	WV	Ohio Valley wx 246
1552	WRKW	99.1	Ebensburg	PA	Rock, "Rocky 99" 263

Aug 11 Ms

1929	WMAU	88.9	Bude	MS	RDS PI: WMPN 983
------	------	------	------	----	------------------

Aug 12 Ms

2323	KJTH	89.7	Ponca City	OK	RDS PI: KJTH 975
------	------	------	------------	----	------------------

Aug 12 Tr

1541	WPWX	92.3	Hammond	IN	Hip-hop, "Power 92" 334
1959	WZOR	94.7	Mishicot	WI	"Razor 94-7" 315

Aug 13 Ms Perseids; very disappointing with nothing new heard

2327	KWQW	98.3	Boone	IA	RDS PI: 'KWPV' 632
------	------	------	-------	----	--------------------

Aug 14 Tr

0959	*WLMN	89.7	Manistee	MI	Legal ID mentioned sister station WICA. "Car Talk" 238
1200	*WNOC	89.7	Bowling Green	OH	Catholic REL, legal ID, "Annunciation Radio", first day on air 184
<u>Aug 15 Tr</u>					
1814	WLRV	88.9	Rushville	OH	Calls, "Shine 88.9, Radio For Life" 269
<u>Aug 16 Ms</u>					
0011	KUAR	89.1	Little Rock	AR	Jazz, RDS PI: KUAR 844
0103	KWFX	100.1	Woodward	OK	C&W, RDS PI: KWFX 1072
<u>Aug 16 Tr</u>					
0156	WWKR	94.1	Hart	MI	"West Michigan's K-Rock" 235
<u>Aug 17 Tr</u>					
0600	WWIZ	103.9	Mercer	PA	"The Valley's Real Rock, Rock 104" 177
<u>Aug 18 Tr</u>					
0849	WUWM	89.7	Milwaukee	WI	Listing of local events, RDS: WUWM-FM 322
0850	WMYX	99.1	Milwaukee	WI	RDS PI: WMYX 332
0851	WHQG	102.9	Milwaukee	WI	"102-9 The Hog" 327
0903	WPJP	100.1	Port Washington	WI	Catholic REL, "Relevant Radio Milwaukee" 324
0910	WAPL	105.7	Appleton	WI	Led Zeppelin song, "The Apple" 325
0920	WHID	88.1	Green Bay	WI	"WPR Ideas Radio 88.1" 325
0928	WDOR	93.9	Sturgeon Bay	WI	"WDOR Community Bulletin Board", wx 303
0942	WRIT	95.7	Milwaukee	WI	"Oldies 95.7" 323
0951	CFLY	98.3	Kingston	ON	Ads, "Fly FM", RDS: FLY 250
0957	CIKR	105.7	Kingston	ON	"Kingston's K-Rock 105-7" 258
1010	*CJKX1	89.9	Sunderland	ON	C&W //CJKX-95.9, "KX-96" 132
<u>Aug 19 Tr</u>					
1055	WVIB	100.1	Holton	MI	R&B, "V-100" 233
2048	WBCM	93.5	Boyne City	MI	C&W //WTCM-103.5 through local 203
<u>Aug 21 Tr</u>					
0025	{WKGW}	104.3	Utica	NY	C&W, "The Big Frog", ex WKGW 311
0448	WPXY	97.9	Rochester	NY	Ads 202
0102	CKRZ	100.3	Ohswekin	ON	Mix of different music types, legal ID, "The Voice Of The Grand". Only second time heard despite distance 81
0222	W290BI	105.9	Erie	PA	REL: AC //WCTL-106.3, jingle ID, 85 watts 128
0229	*WGWE	105.9	Little Valley	NY	OLD, ID mentioned Salamanca 169
0255	CIGL	97.1	Belleville	ON	AC matched to stream 210
0311	*CFBU	103.7	Saint Catharines	ON	Alternative rock matched to stream, Brock University, 250 w 120
<u>Aug 22 Tr</u>					
0702	*WLQR	106.5	Delta	OH	ESPN SPT, "The Ticket 106.5" 187
1058	*WIBC	93.1	Indianapolis	IN	TLK matched to stream 352
1110	WJJK	104.5	Noblesville	IN	OLD matched to stream 354
<u>Aug 23 Tr</u>					
1031	WONU	89.7	Kankakee	IL	REL:AC, "Shine FM" 365

1629	WLVQ	96.3	Columbus	OH	Classic rock, "Ohio's Best Rock, Q-96 FM 263
1647	CJQM	104.3	Sault Saint Marie	ON	C&W, "Q-104" 248
1701	*WNBY	93.9	Newberry	MI	OLD, "Oldies 93.9", ex 93.5 262
1736	CBSM	89.5	Sault Saint Marie	ON	CBC Northern Ontario 246
1750	*WMKD	105.5	Pickford	MI	C&W, "Big Country 105.5", dual ID for Pickford-Sault Ste. Marie 238
1909	*CFXN	106.3	North Bay	ON	Weak, alternative rock matched to stream 213

Aug 23 Ms

1146	KJTH	89.7	Ponca City	OK	RDS PI: KJTH 975
------	------	------	------------	----	------------------

Aug 26 Ms

0030	KJTH	89.7	Ponca City	OK	RDS PS: artist/song, RDS PI: KJTH 975
0055	Unid	94.7	????	??	RDS PI: 'KBRL', RDS PTY: Classic Rock, pointed W ????
1434	*KNOX	94.7	Grand Forks	ND	RDS PI: KNOX 797

Aug 26 Tr

1444	WZOR	94.7	Mishicot	WI	"Razor 94-7" 315
------	------	------	----------	----	------------------

Aug 29 Tr

0851	WHRM	90.9	Wausau	WI	Talk, "Wisconsin Public Radio", RDS 482
0912	W261BH	100.1	Flint	MI	"K-Love", 38 w 115
0924	WRRK	96.9	Braddock	PA	"Bob FM" 236
1058	WVRN	88.9	Wittenberg	WI	Legal ID, "VCY America" 382
1652	WFLY	92.9	Eaton	OH	ABBA song, RDS: FLY 92.9 300
1658	Unid	93.3	??	??	RDS PI: 'WZUH', RDS PTY: Religious Music, pointed S ????
1703	WAKW	93.3	Cincinnati	OH	Church announcements 342

Aug 29 Ms

1945	Unid	94.9	??	??	RDS PI: 'KBIZ', RDS PTY: Rock, pointed SW
------	------	------	----	----	---

Sep 01 Tr

1320	WQIO	93.7	Mount Vernon	OH	RDS: EAGLE937 226
------	------	------	--------------	----	-------------------

Sep 03 Ms

0023	*KJBI	100.1	Fort Pierre	SD	".100.1 The Eagle, we'll kick of another." 937
0117	Unid	98.3	??	??	RDS PI: 'WFJ', RDS PTY: Sft Rock, pointed W
1226	KUQLt	98.3	Ethan	SD	".at.Foods in Wagner.", pointed that direction 844
2347	KEOM	88.5	Mesquite	TX	RDS PI: 'KENL' 1108

Sep 04 Tr

0724	WMDH	102.5	New Castle	IN	Calls, classic C&W 317
0726	WCVZ	102.5	Baltimore	OH	Now classic rock //WWCD-101.1, "CD 101 and 102.5 FM" 272
0802	WIMT	102.1	Lima	OH	C&W, legal ID, "T-102" 247

Sep 04 Ms

2307	WMAE	88.9	Booneville	MS	RDS PI: WMPN 728
------	------	------	------------	----	------------------

Sep05 Tr

0008	*WOBE	100.7	Crystal Falls	MI	OLD, "B-100 Classic Hits" 354
------	-------	-------	---------------	----	-------------------------------

1538 WBOI 89.1 Fort Wayne IN Loud giving program lineup 254

Sep 05 Ms

1607 WPAS 88.9 Pascagoula MS RDS PI: WPAS 977

John Ebeling, Bloomington, MN Lat: 44.8369 Long: 93.3163 Grid: EN34iu
Two Pioneer TX 9500 tuners, modified, with RDS units
Two Stereo Probe 9 antennas (one hand rotated @ cabin)
Various Tape Recorders One vertically mounted FM dipole

From the cabin in Alborn, MN (Times are CST, as usual).
*=New

July 3, Es

1310	KOYE*	96.7	Frankston	TX	1042 miles
1330	KZPA*	103.7	Jal	NM	1169
1403	KTXC*	104.7	Lamesa	TX	1100
1410	KPZE*	106.1	Carlsbad	NM	1179 (Signal strength meter pegged)

Aug. 21 Tr

1930	KMLV*	88.1	Ralston	NE	435
1938	KBBX*	97.7	Nebraska City	NE	465 Spanish
2000	KTPR*	91.1	Fort Dodge	IA	319
2248	CJRL*	89.5	Kenora	ON	209 Kicks FM

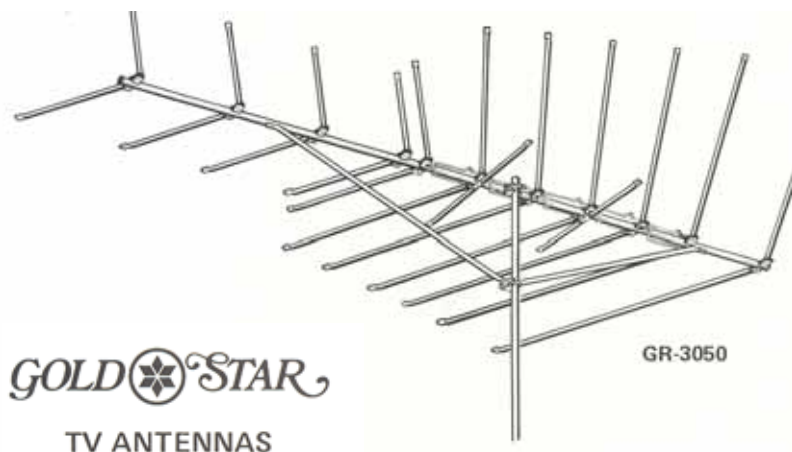
Aug. 27 Tr

1850	KUQL*	98.3	Ethan	SD	354
1912	KNBZ	97.7	Redfield	SD	320 'sunny 97'
1920	KJAM	103.1	Madison	SD	300
1949	KUSO	92.7	Albion	NE	453

>From my Bloomington MN location:

July 29, Tr

1300	KJTS*	88.3	New Ulm	MN	67
1312	KBLR*	97.3	Blair	NE	268
1357	KOLV*	100.1	Olivia	MN	82



Winegard introduces Gold * Star, the best performing, best built "V" line of antennas for television reception.

Gold Star V/U models feature our patented UHF tetrapole driven element. Results in no loss coupling of the VHF and UHF sections of the antenna. A special corner reflector screen acts as both VHF high band directors and UHF reflector. VHF models have full wave directors on the hi-band to increase gain and capture area.



Southern FM DX

John Zondlo – 4009 Driftwood Circle – Yukon, OK 73099

southernfmdx@wtfda.org – Deadline: 15th

October 2010

Eric Sundius – Sierra Vista, AZ 85635 – esundius@yahoo.com – Times MST

Onkyo T450 RDS, Onkyo T9090 II (both IF modified), Jerrold 6 element FM antenna @ 15' AGL with Radio Shack rotor

6/14 Es

1921 KRXF	92.7	OR	Bend, "Local, Independent"
1921 KXIX	94.1	OR	Sunriver, "Power 94," classic hip-hop
1930 KXTG	95.5	OR	Portland, calls, "Trailblazer station"
1946 KODZ	99.1	OR	Eugene, local ads, "Kool 99.1"
2000 KQAK	105.7	OR	Bend, classic rock
2015 KHPE	107.9	OR	Albany, Springfield ads, religion
2017 KXJM	107.5	OR	Banks, Beaverton ads
2028 KJDY	94.5	OR	Canyon City, calls

6/16 Es

2114 KLAD	92.5	OR	Klamath Falls, calls, ads, k
2141 KRXY	94.5	WA	Shelton, "94.5 Roxy.com," "Roxy"
2152 KXTG	95.5	OR	Portland, sports talk radio, Portland refs

6/18 Es

1500 KRLS	92.1	IA	Knoxville, calls, tornado warning, logged in car
-----------	------	----	--

6/19 Es

1508 KZFM	95.5	TX	Corpus Christi, "Hot Z 95," pop
1510 KKBA	92.7	TX	Kingsville, calls, Corpus Christi refs
1602 KJIC	90.5	TX	Houston, Galveston wx, country Gospel, bluegrass
1850 KSHE	94.7	MO	Crestwood, "K-SHE," St. Louis ads
1852 WMIX	94.1	IL	Mt. Vernon, ads
1900 KYKY	98.1	MO	St. Louis, "Y-98"
1916 KDLO	96.9	SD	Watertown, Sioux Falls refs, k
1916 unID	93.5	??	??, "NCR Classic"
1925 KLXS	95.3	SD	Pierre, local ads and wx
1949 KXGT	98.3	ND	Carrington, Valley City ads
1958 CFWD	96.3	SK	Saskatoon, "Wire 96-3," Saskatoon ads
1958 KPSP	97.1	SD	Faith, SD Public Broadcasting
2020 CHBD	92.7	SK	Regina, "Big Dog 92.7," k
2039 CKLF	94.7	MB	Brandon, "Star FM," Ryan Seacrest
2054 CJLR4	90.3	SK	Regina, "MBC FM" via RDS, confirmed via Web
2130 CKSB2	88.7	SK	Saskatoon, FF
2131 CFMC	95.1	SK	Saskatoon, "C95.1-dot-com," Saskatoon refs

6/20 Es

1557 WQST	92.5	MS	Forest, calls via RDS, American Family Radio
1637 KZBK	96.9	MO	Brookfield, calls, pop
1715 CKUA3	97.3	AB	Medicine Hat, calls, classical
1717 CFMC	95.1	SK	Saskatoon, local refs
1734 KHTQ	94.5	ID	Hayden, "Rock 94 and a half," Spokane refs
1747 unID	93.3	??	??, "Big Country 93"

6/23 Es

1840 KTYL	93.1	TX	Tyler, Tyler and Longview ads, logged in car
1900 KBYO	92.7	LA	Farmerville, ID, "Fox FM," talk radio
1930 KABU	90.7	ND	Fort Totten, calls, "The Heartbeat of the Spirit Lake Nation"

It was a good but all too short skip season for me (and everyone else). I especially enjoyed my virtual mini vacations to Canada and the Pacific Northwest. I am very thankful that I received two copies of the new 21st edition of Dr. Bruce Elving's FM Atlas, which has been a huge timesaver in IDing stations. I keep one at home and one in the car. As always, the maps are top notch! 73

6 Meter/2 Meter Amateur DX



50 Mhz
The *Magic* Band



Peter Baskind, N4LI
3225 Forest Hill-Irene Rd
Germantown, TN 38138
N4LI@ARRL.net

We have already discussed how the summer sporadic-E (E_s) season came to an early and abrupt end. It was a bit disappointing, but it is all part of the game. So, the next several weeks are the lean times for VHF hams -- E_s is over and tropo openings are few and far between.

Still the occasional tropo opening does happen. And, since the E_s season ended, there have been a couple of good ones.

Here in the middle of the continent, a very nice band opening surprised us the evening of August first (early in the morning August second, UTC). I was lucky enough to be at the opening's "sweet spot," right at the far end of the duct. I managed to squeeze out EN22 on 2 meters (144 MHz), new grid in Iowa, and two new grids in Minnesota, EN33 and EN35 (a distance of 743 miles). I also worked Bill, K0AWU in EN37, northern Minnesota, at 857 miles. Interestingly, Bill was my first sporadic-E contact on 2 meters ever, back in 2004. He's a good guy and a fine operator; it was fun to work him again. The contact did illustrate, however, just how fickle some tropo openings can be. At my station, K0AWU was often as strong as S7, an easy "armchair" copy. Still, another operator fewer than 30 miles away could barely copy Bill and after a couple of hours of trying, was never able to make a contact, even with me working as an intermediary.

An even better opening materialized the morning of September eighteenth. Again, I was in the right place, almost perfectly at the far end of the duct. While WTFDA FM DXers were hearing paths between Middle Tennessee and Pennsylvania, the 2 meter band was hopping. I squeezed out four new grids – a very nice haul – with EN81 and EN91 in Northern Ohio (grids that, frankly, I should have gotten long ago), EM96 in Southern Virginia, and FN10 in Middle Pennsylvania (the longer of the two contacts being 822 miles). I was also shocked to work two stations in Connecticut, one of which was a whopping 1043 miles out. I had worked both stations multiple times before via E_s , but it was fun to work them again via tropo. Again, these were easy contacts, peaking to S7, strong enough to have a brief but friendly chat.

The most impressive signal on the band during the September opening had to be WA2FGK in FN21. He was strong... *really* strong. Signal was a good, honest S9+20 at 867 miles! The station was so robust that Doug, W9WI near Nashville in EM66, worked him with only 50W and a single-element halo just above the ground. That's amazing for a contact of nearly 700 miles.

Those lucky enough to be in the Plains States got their share of tropo on August 22. It was quite an event – so intense that one ham commented that 144.200, the traditional 2m SSB call frequency, was so busy that "only the strong survived." Perhaps the most interesting contact I saw logged was from Eastern Oklahoma to EN09 in Southern Manitoba, a contact around 1000 miles. The same operator was making QSOs with stations in the Dakotas and Minnesota, all very impressive distances. Despite the intensity of the opening, it was very narrow. While those fewer than 300 miles from me were making near-historic contacts, I was hearing nothing. That again illustrates an important point: with many openings, you're either in the duct or not. Being close just is not enough.

Loggings

Bill Smith, W1OW, 56 Locust St., Douglas, MA 01516 FN42

Nothing noted during August except OZ1DPR/JO45 heard for a few seconds on August 7th.

An almost complete lack of E-skip. QSLs received from SV9GPV (Crete) and J8/W8IF (St. Vincent) to reach 98 confirmed. Maybe I'll get to the 100 mark next year especially if the new Caribbean countries [from the breakup of the Netherlands Antilles] materialize that's supposed to happen on October 10.

Finally, a few QSLs – two from 6m DXer, Bill Smith, one from Jeff Kadet in Illinois, and one from the tropo opening in early August.

CN8KD

CQ: 33
ITU: 37

Mohamed Kharbouche
RABAT - (Morocco)
Loc: IM63NX

To Radio: *K1MOD*

DATE	UTC	MHz	MODE 2 WAY	RS(T)
<i>10/7/2004</i>	<i>17:17</i>	<i>50</i>	<i>CW</i>	<i>599</i>

QSL VIA EA5XX
P.O. Box 4062
03080 - ALICANTE
(Spain)

TNX PSE

ITU ZONE 36 **AZORES** CQ ZONE 14

TERCEIRA ISLAND IOTA

EU - 175

CU3EM

CONFIRMING QSO WITH	DATE			TIME UTC	BAND	MODE 2 WAY	REPORT RST	QSL
	DAY	MONTH	YEAR					
<i>W1NYV</i>	<i>3</i>	<i>7</i>	<i>2003</i>	<i>11:10</i>	<i>50</i>	<i>SSB</i>	<i>59</i>	PSE <input type="checkbox"/> TNX <input checked="" type="checkbox"/>

QTH
LOCATOR
HM6RJQ

Paul Borges
P.O BOX 15R
9702 Angra
AZORES

EU 01
27° 11' W
38° 40' N

Guatemala City
Guatemala

Grid: EK44sn
CQ Zone: 7
ITU Zone: 11

TG9AWS

Confirming QSO with: *W1OW*

03 MAY 10 2234Z 50MHz 2xSSB 5/5

TNX BILL!

QSL manager
W3HMK

STEPHEN WHEELOCK

BIG LAKE, MINNESOTA U.S.A.
SHERBURNE COUNTY • EN35q

KØSIX

CONFIRMING QSO WITH	DAY	MONTH	YEAR	UTC	MHz	RST	MODE 2-WAY	QSL
<i>N4LI</i>	<i>2</i>	<i>8</i>	<i>10</i>	<i>02:44</i>	<i>144.195</i>	<i>53</i>	<i>SSB</i>	PSE <input type="checkbox"/> TNX <input checked="" type="checkbox"/>

Thank Peter - happy to confirm EN35 on two meters!
73 V

VINCE PAVKOVICH
 23260 189th Street NW
 Big Lake, MN 55309
 U.S.A.

The QSL MAIL® - W4WYF

Armstrong Wasn't the Only One

by James E. O'Neal, 09/16/2010

An earlier version of this article misidentified the author of a biography of Edwin Armstrong. It is corrected here to Lawrence Lessing.

You probably know that Edwin H. Armstrong single-handedly invented frequency modulation, delivering a fully developed system in the early 1930s. Perhaps you also have heard that no one else was very much interested in FM, especially after John Carson, an AT&T engineer and FM naysayer, published an analysis in 1922 declaring that FM “inherently distorts without any compensating advantages whatever.”

You also know that Armstrong discarded existing preconceptions about narrowband FM when he began his experimentation, and moved right into wideband transmission as a means of eliminating static and delivering hi-fi audio to listeners. You probably believe too that RCA did everything possible to kill off FM, as it challenged the well-established RCA/NBC broadcasting empire.

According to Gary Frost, who's both an historian and engineer, we've got it all wrong.

Ehret and friends

Frost has just published a fresh look at the genesis of frequency modulation — which, by the way, didn't begin in the 1930s with work done by Armstrong at his Columbia University lab.

Frost's “Early FM Radio: Incremental Technology in Twentieth-Century America” traces FM's beginnings all the way back to 1902 and a patent application submitted by an obscure Philadelphia inventor, Cornelius Ehret.

Ehret described the use of FM for both radiotelegraphy and radiotelephony, and included circuitry for both FM transmission and reception. Frost's research has unearthed a total of 83 FM patents filed between 1920 and 1934. Armstrong received his wideband FM patent near the end of 1933.

Frost's investigation shows that while RCA had the lion's share of these patents (44) — and actually was conducting on-air testing of FM as early as 1925 — GE, AT&T and Westinghouse (notably KDKA's legendary Frank Conrad and others at that station) also were experimenting with this form of modulation.

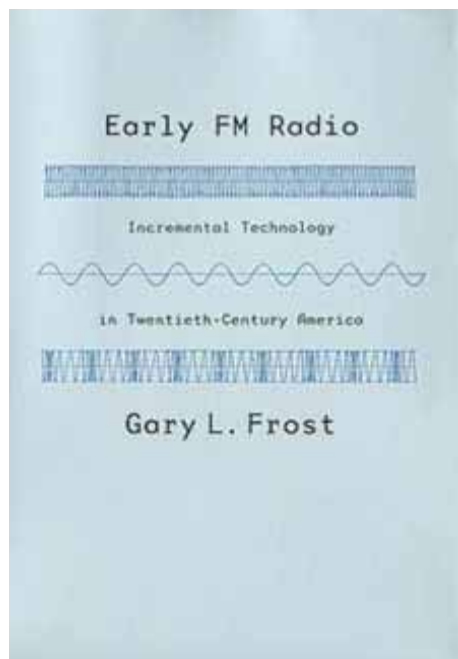
The concept of the FM receiver “limiter” stage is shown to predate Armstrong's wideband FM work, with Frost directing the reader's attention to RCA's Clarence Hansell and patents issued in 1927 and 1928.

The author notes that before the big “breakup” between Armstrong and RCA's David Sarnoff in the mid-1930s, Armstrong was “almost an RCA employee” in terms of having access to radio research work at the company.

However, this was anything but a two-way street, as Armstrong was quite secretive about his own FM work. Frost states that “Armstrong clearly owed much to his [RCA] friends at Riverhead,” and that he applied knowledge of RCA's successes and failures in his own work.

Frost sets right the comments of AT&T's John Carson about FM's ability to distort, and identifies Carson as the father of single-sideband modulation (something that Frost terms “probably more important than hi-fi FM”).

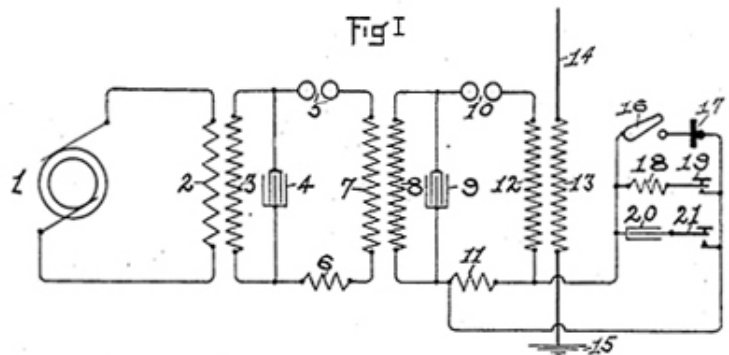
Fixing the record “Early FM Radio” attributes many of the modern misconceptions about FM's early history to biographer Lawrence Lessing and his posthumous tribute to Armstrong, published two years after the inventor's plunge to his death on Jan. 31, 1954.



Lessing's book, "Edwin Howard Armstrong: Man of High Fidelity," is shown by Frost to be a less than accurate representation of the facts leading up to modern FM broadcasting, yet it became the "gold standard" concerning Armstrong and his achievements. (Lessing's dissemination of misinformation has been compounded by later writers who accepted the account without question and echoed portions of it in their own works.)

Frost flags one of the most famous (yet spurious) incidents described by Lessing in connection with the first public demonstration of FM, which occurred on Nov. 6, 1935. Armstrong had arranged for a close friend — Randy Runyon — to broadcast via FM from his Yonkers, N.Y. home to the audience assembled at an Institute of Radio Engineers meeting in Manhattan. In his 1956 book, Lessing described an elaborate battery of sound effects — water being poured, paper crumpled and torn, various forms of music — that were staged as part of the demonstration.

Frost observes: "No one who attended that day reported hearing reproductions — vivid or otherwise — of crumpled paper, oriental gongs, guitars ... Nor could they have, for Armstrong had yet to incorporate the 'high fidelity' circuits into his system that the reproduction of such sound effects requires." Frost adds that this description of sound effects most likely came from a newspaper article that Lessing published some three and- a-half years later.



This is a schematic representation of Cornelius D. Ehret's FM transmitter, shown in his 1905 patent 'Art of Transmitting Intelligence,' discussed in Frost's book. The element at upper right, identified as #17, is a condenser microphone for instantaneously varying the transmitter's frequency.

While I maintain a deep respect for Major Armstrong and his many accomplishments, due to the investigative efforts of Frost I now have to temper that a bit with the reality that this well-documented history provides.

It's been said many times that television was not invented by any one person; the same must now be said for FM broadcasting. While Armstrong played a large part, even personally funding the construction and operation of the world's first FM radio station, Frost proves rather conclusively that he had company along the way in making wideband FM a reality.

"Early FM Radio" presents a refreshing new view of the development of FM radio, and one that is much overdue. It's a must-read for those of us who have spent most of our lives believing that FM was a one-person invention.

I should note that Frost's book is refreshing in another way. He breaks away from the current hertz, kilohertz and megahertz frequency designations, reverting to the "cycles," "kilocycles" and "megacycles" that were in use at the time FM was being invented.

If I could change anything at all about Frost's book, it would be the reproduction on Page 74 of three pages from a 1931 letter from RCA's Hansell to Armstrong. These are compressed into a tiny space of 3.5 x 7.5-inches, making them almost illegible (especially to many of us who arrived on the scene in the decade of the 1930s, or the one immediately following). Hopefully, future editions of Frost's book will provide a little more real estate for these pages and eliminate the need to locate a high-power magnifier to understand why he included them.

"Early FM Radio: Incremental Technology in Twentieth-Century America" is published by the Johns Hopkins University Press.

James O'Neal is technology editor for TV Technology magazine and a frequent contributor to Radio World.

Reprinted from Radio-World

Internet radio station makes leap to airwaves

OCRACOKE ISLAND, N.C.

After a year of being online only, Ocracoke Community Radio WOVV-FM, the island's first legitimate full-power - and legal - radio station, will soon be filling airwaves with local music, news, events and eclectic programming.

Robert Raborn, who launched the idea for the community-focused station more than two years ago, learned Wednesday that funds from a \$67,000 federal grant were finally available to order transmission equipment.

WOVV 90.1 FM could be broadcasting 24 hours a day from the village of this isolated barrier island as soon as this summer.

"This is a unique place out here on Ocracoke, and this is a pretty unique project," Raborn said. "And I think this is the right place to pull it off." When Raborn, 40, learned of an opening on the radio band in 2007, the non profit Ocracoke Foundation agreed to sponsor their application. The 650-watt noncommercial station, supported by donors and operated without advertisements, will officially range from Portsmouth Island to the Ocracoke Pony Pens, he said, but with the island's flat unobstructed expanses of sand and water, coverage may stretch as far as Hatteras village.

The station's studio, built with a \$10,000 grant from the Outer Banks Community Foundation, is on Silver Lake Harbor next to the Anchorage Inn Marina, and the antenna will be soon be built behind the firehouse. Programming and staffing will evolve as progress is made and creative juices flow.

"It's at a real natural Wild West stage now," Raborn said.

Currently, the only reliable radio signal heard on the island comes from an off-island country music radio station. One big impetus for the station was to be able to get out timely and accurate information about storms and other events, said Greg Honeycutt, who has been in charge of fundraising.

"It's going to be extremely valuable," he said. But the station also hopes to be the voice of the community with broadcasts of fishing and surfing reports, updates about school events, airing of county meetings, and coverage of school sporting events. Local musicians have been frequent guests of the station already. Villagers, visitors, businesses, nonprofit donors and out-of-town property owners have responded enthusiastically to fundraising efforts, said Honeycutt, a businessman who moved to the island in 1997 from Dare County.

"This whole thing has been very grass-roots," he said. "We have had a lot of people that have jumped on the bandwagon and see the value of the station."

A \$67,000 grant was awarded last September by the Public Telecommunications Facilities Program, and Honeycutt headed a campaign to raise the required \$22,000 match - which he said was recently met, mostly with large donations from off-island sponsors. Donors also contributed in small amounts online.

CLUB RESOURCES

**WTFDA DISCUSSION BOARDS...[HTTP://WWW.WTFDA.INFO](http://www.wtfda.info)
Register there and take part in the discussions between WTFDAers and the world at large.**

THE WTFDA WEBSITE...[HTTP://WTFDA.ORG](http://wtfda.org)

A Complete library of VUDs from January 1980 to the current VUD

Fred Nordquist's RDS List of all stations using RDS.

AIPA Bulletin Archives.

(Email us for a password to enter the site)

THE WTFDA EMAIL REFLECTOR

Real-Time DX Alerts and DX related discussion.

Send an email to tvfmdx-subscribe@wtfda.info

SIGN UP/Renewal form

Name_____

Address_____ Apt #_____

City_____ State/Prov_____ Zip_____

Country_____ Interests: TV () FM () 30-50() Weather()

email address_____

Sign me up/renew me for: 1 year () 2 years () More ()

Yearly dues \$24 (US), \$26 to (CANADA), \$10 (Electronic VUD)
(Students get a discounted rate of \$15 yearly for the paper VUD.)

Mail your dues to: WTFDA, P.O. Box 501, Somersville, CT USA 06072

Make your checks/money orders payable to: WTFDA

And *thanks* for your support of the WTFDA!

Return this form with your dues or make a copy of it and return that.

FCC FREES UP VACANT TV AIRWAVES FOR “SUPER WI-FI” TECHNOLOGIES

Washington, D.C. -- The Federal Communications Commission today took steps to free up vacant airwaves between TV channels -- called “white spaces” -- to unleash a host of new technologies, such as “super Wi-Fi,” and myriad other diverse applications. This is the first significant block of spectrum made available for unlicensed use in more than 20 years.

TV white space spectrum is considered prime real estate because its signals travel well, making it ideally suited for mobile wireless devices. Unlocking this valuable spectrum will open the doors for new industries to arise, create American jobs, and fuel new investment and innovation. The National Broadband Plan noted the importance of unlicensed spectrum in creating opportunities for new technologies to blossom and recommended that the Commission complete the TV white spaces proceeding as expeditiously as possible.

The Second Memorandum Opinion and Order (Second MO&O) adopted today resolves numerous legal and technical issues. Notably, the Order eliminates the requirement that TV bands devices that incorporate geo-location and database access must also include sensing technology to detect the signals of TV stations and low-power auxiliary service stations (wireless microphones). It also requires wireless microphone users who seek to register in the TV bands databases to certify that they will use all available channels from 7 through 51 prior to requesting registration. Requests to register in the database will be public, thus allowing interested parties to weigh in on any given request.

The Commission is also taking steps to ensure that incumbent services are protected from interference from the use of white spaces in various ways. In particular, today’s *Order* reserves two vacant UHF channels for wireless microphones and other low power auxiliary service devices in all areas of the country. It also maintains a reasonable separation distance between TV White Space device and wireless microphone usage permitted to be registered in the database Action by the Commission September 23, 2010, by Second Memorandum Opinion and Order (FCC 10-174). Chairman Genachowski, Commissioners Copps, McDowell, Clyburn, and Baker. Separate Statements issued by Chairman Genachowski, and Commissioners Copps, McDowell, Clyburn and Baker.

ET Docket Nos. 03-280 and 04-186.

**THE WORLDWIDE TV-FM DX ASSOCIATION
THE VHF- UHF DIGEST
P.O. Box 501, SOMERSVILLE, CT 06072**

Opinions expressed in this publication are those of the individual contributor and do not necessarily reflect the views of the publisher or board of directors. We reserve the right to edit material to meet publishing standards. Unless previously agreed upon in writing, all material submitted for publication in the VHF-UHF Digest becomes the property of the WTFDA. Reproduction of material from the VHF-UHF Digest without permission of the WTFDA is prohibited. Individuals and other organizations are granted such permission providing proper credits is given to the source.



Established 1967



FIRST CLASS MAIL

NOW! JOIN AND RENEW USING PAYPAL!

Now you can pay for your dues by check, money order and ONLINE with Paypal! If you have a Paypal account you'll be done in a matter of seconds! Pay at our Paypal webpage at <http://www.wfda.org/join.html>.