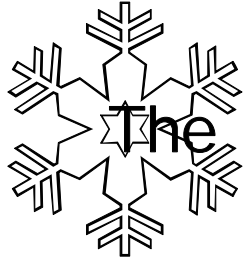


VHF-UHF DIGEST

The Official Publication of the Worldwide TV-FM DX Association

JANUARY 2011



The Magazine for TV and FM DXers



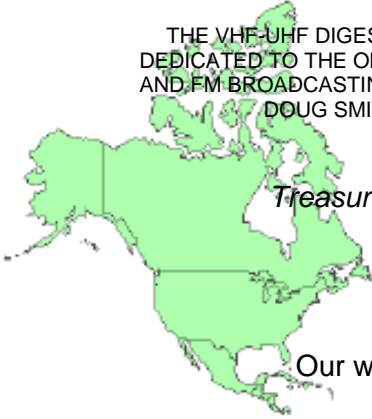
Visit Us At www.wtfda.org

Happy New Year!

THE WORLDWIDE TV-FM DX ASSOCIATION

Serving the UHF-VHF Enthusiast

THE VHF-UHF DIGEST IS THE OFFICIAL PUBLICATION OF THE WORLDWIDE TV-FM DX ASSOCIATION DEDICATED TO THE OBSERVATION AND STUDY OF THE PROPAGATION OF LONG DISTANCE TELEVISION AND FM BROADCASTING SIGNALS AT VHF AND UHF. WTFDA IS GOVERNED BY A BOARD OF DIRECTORS: DOUG SMITH, GREG CONIGLIO, BRUCE HALL, KEITH MCGINNIS AND MIKE BUGAJ.



Editor and publisher: **Mike Bugaj**

Treasurer: **Keith McGinnis** wtfda.org Webmaster: **Tim McVey**

wtfda.info Site Administrator: **Chris Cervantez**

Editorial Staff: **Jeff Kruszka, Keith McGinnis,**

Fred Nordquist, Nick Langan, Doug Smith,

Peter Baskind, Bill Hale and John Zondlo,

Our website: www.wtfda.org; Our forums: www.wtfda.info

JANUARY 2011



Finally! For those of you online with an email address, we now offer a quick, convenient and secure way to join or renew your membership in the WTFDA. Just logon to Paypal and send your dues to sales@wtfda.org.

Use the email address above to either join the WTFDA or renew your membership in North America's only TV and DX organization.

Membership with Paper VUD: \$24/year

Membership with eVUD (.pdf): \$10/year

Over 110 WTFDA members renew their club membership with Paypal. Why not join them?

CONTENTS

Page Two	2
Mailbox	3
TV News...Doug Smith	4
LPFM News...Doug Smith	10
FM News...Bill Hale	12
FCC Facilities Changes	16
Photo News...Jeff Kruszka	19
Coast to Coast TV DX...Nick Langan	22
6 meters...Peter Baskind	23
Ray Dees RDS Decoder	25
Renewal Form	27

Keith and John Z have no reports on hand so Northern and Southern FM DX will not appear this month.

FIND US FAST!

WTFDA BOARD OF DIRECTORS

Mike Bugaj, use the WTFDA Mailing address listed below
Doug Smith, 1385 Old Clarksville Pike, Pleasant View, TN 37146-8098
Greg Coniglio, 11825 Genesee St., Alden, NY 14004
D.Bruce Hall, 5 Stirton Ave., Brantford, ON N3T1E2 Canada
Keith McGinnis, 18 Newbridge St., Hingham, MA 02043

mikeb@wtfda.org
dougs@wtfda.org
gregc@wtfda.org
dbruce@wtfda.org
nfmdx@wtfda.org

THE MAILBOX and all general club correspondence:

Mike Bugaj at WTFDA, PO Box 501, Somersville, CT 06072

mikeb@wtfda.org

TV NEWS

Doug Smith, 1389 Old Clarksville Pike, Pleasant View, TN 37146-8098

dougs@wtfda.org

FM NEWS

Bill Hale, 6124 Roaring Springs Drive, N. Richland Hills, TX 76180

fmnews@wtfda.org

PHOTO NEWS

Jeff Kruszka, 1909 Lost Lake Pl., Pearland, TX 77581

jeffk@wtfda.org

EASTERN AND WESTERN TV DX

Nick Langan, 1040 Riverview Dr., Florence, NJ 08516

nickl@wtfda.org

SOUTHERN FM

John Zondlo, 4009 Driftwood Cir., Yukon, OK 73099

southernfmdx@wtfda.org

NORTHERN FM

Keith McGinnis, 18 Newbridge St., Hingham, MA 02043

nfmdx@wtfda.org

TV and FM STATISTICS

Fred Nordquist, 147 Travis Hill Road, Moncks Corner, SC

stats@wtfda.org

6 METER/2 METER

Peter Baskind, 3225 Forest Hill-Irene Rd, Germantown, TN 38138

ag4ki@yahoo.net

WEBSITE Tim McVey Webmaster <http://www.wtfda.org>

webmaster@wtfda.org



The Mailbox

P.O. Box 501, Somersville, CT USA 06072
MIKE BUGAJ MBUGAJ@SNET.NET

HAPPY NEW YEAR!

I hope you all had a great Christmas holiday and we hope you all will have a dx-filled New Year!

I know many of you northerners have already had your fill of snow. We here in New England have escaped so far, but our luck seems to have run out as a huge nor'easter is developing off the coast today (12/26) and we will end up with 10-24" of snow depending on the location. With luck the roads will be cleared by 12/28 so the VUD can get to the printer and mailed to you before the end of the year. We will see how it all turns out.

MEMBER AND MUCH MORE

During the period from 11/16 through 12/14 we received renewals from Gary Olson (FL), Randall Trapp (MN), Chuck Rippel (VA), Garth Jensen (ON), Ted Liszewski (NJ), Richard Nelson (OH), Bill Nollman (CT), Lewis Kruger (SD), Jim Paige (MI), Rick Shaftan (NJ), John Jefferson (WA), Tom Bryant (TN), Tim Noonam (WI), Brian May (CT), William Norris (IN) and James Niven (TX). Thank you everyone! And everything I have that came in after the 14th will appear here next month.

RARE 2Es

This is something I wanted to mention for at least three months but kept forgetting, and it's one of those things people should know about.

Back on June 29th, WTFDA member Steve Walko (K3PHL) in PA received double hop E skip from KNEV 95.5 Reno, NV, KNIS 91.3, Carson City, NV, KUNR 88.7 Reno, KYFO 95.5 Ogden, UT and KYFO 95.5 Ogden, UT. Steve posted audio of these receptions on the WTFDA discussion boards in the *Got FM DX* forum. Antennas used were either an attic mounted dipole (!) or and APS-9b aimed at 270 degrees.

I've been FM DXing a long time (about 40 years!) and I've never heard of a double hop reception like this before.

So congrats Steve and I'm sorry it took me so long to get the information into the VUD. Maybe next summer I'll use a dipole in the attic instead of the APS-13. Can't hurt.

www.davidgleason.com

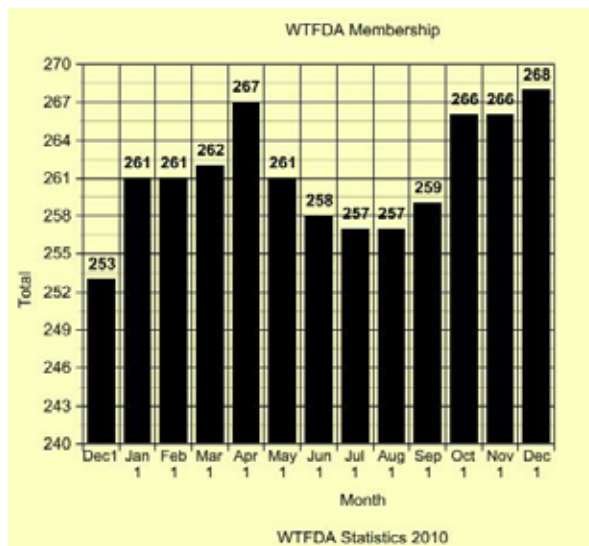
Both Al Tobia and Tom Bryant emailed me within days of each other to make sure I include a link to the David Gleason website, so here it is.

Al says that the site "is a great resource. It shows, to me, an industry at its peak back prior to the 1980s. Just the ads in the old Broadcasting Yearbooks are fun to look at...TV stations boasting that their new tall tower and higher power is your best ad buy."

I noticed myself that many old North American Radio-TV Station Guides (Vane Jones Logs) are scanned as well as some old White's Radio Logs that I have never seen. Then there are Broadcasting Yearbooks dating back to 1935, Radex Magazines, Communications Magazines and equipment catalogs. And that's just scratching the surface.

AND THEN, THERE'S THE GRAPH

Life would not be complete without it...



I know we will end 2010 with at least 262 members. We have one more week to try to surpass 268. Will we do it? Check the graph next month.



**HAPPY
NEW
YEAR!!**

Take care
and we will
see you all
next month-
Mike



TV News

Douglas E. Smith
 1389 Old Clarksville Pike
 Pleasant View, TN
 37146-8098
w9wi@w9wi.com
<http://www.w9wi.com>

January 2011

Abbreviations:

AF	Applied For (a new station)	NW	New station on the air
Aux	Auxiliary (backup) transmitter	PA	Proposed Amendment
CC	Callsign change	PC	Power (and/or tower height) change on the air
CL	City-of-license change	PG	Power change granted
DC	Converted to DTV	PR	Power change requested
DCC	Digital Companion Channel	RA	Returns to the air
NS DCC	Granted flash-cut to DTV	QC	Channel (frequency) change on the air
DE	License/permit deleted	QG	Channel change granted
DR	Requests flash-cut to DTV	QR	Channel change requested
FC	Programming (format) change	RE	Reinstated (previously-dismissed app.)
FTP	Failure to Prosecute	ROA	Request of Applicant
GA	Granted amendment (to table of channel allotments)	SI	Off the air (silent)
LC	License to Cover	STA	Special Temporary Authority
MX	Mutually Exclusive	XC	Transmitter site changed
NDA	Non-directional antenna	XG	Transmitter site change granted
NS	Permit granted for new station	XR	Transmitter site change requested
DG	Granted conversion to DTV	lpdtv	Low Power Digital TV

News:

(full-power digital stations in **bold face**; LPTV and translators in regular type; full-power analog stations in ***bold italics***; low-power analog stations in *regular italics*)

* indicates this DTV facility replaces an analog facility on the same channel.

(No flags this month because for some reason, they refuse to format properly...)

CANADA:

Ontario:

Hamilton	36	CITS-DT	NS 10kw/ 338m
London	14	CITS-DT-2	NS 4kw/ 266m
Ottawa	42	CITS-DT-1	NS 37kw/ 203m

Quebec:

Riviere-du-Loup	29	CFTF-DT	AF 44kw/341m
Sherbrooke	9	CKSH-DT	AF 4.47kw/ 586m
Trois-Rivières	28	CKTM-DT	AF 38.9kw/ 315m

American Samoa:

Pago Pago	11	K11UU	DG 300w; DC
-----------	----	-------	-------------

Guam:

Tamuning	24,	K24JQ-D,	NS 500w
	45,	K45LG-D,	
	48,	K48MO-	
	50	K50MD-D	

Puerto Rico:

Arecibo	2	W02CT-S	NS 300w
Culebra	24	W24DW-	NS 15kw
Fajardo	5	W05DA-D	NS 300w
Mayaguez	2	W02CU-D	NS 300w
Mayaguez	5	W05CY-D	NS 300w
Naguabo	21,	W21DD-	NS 5.7kw/

39	W39DJ-D	15kw
Ponce	5	W05DB-D NS 300w
Ponce	46	W46ES-D NS 15kw
San Juan	36	NEW-lpdtv AF dismissed (Mako Comms.)

U.S. Virgin Islands:

Charlotte Amalie	49	W49DO-D	NS 15kw
Christiansted	45	W45DQ-D	NS 15kw
Frederiksted	42	WEON-LD	DG from ch. 60, 15kw, 17-41-43/ 64-52-57
Frederiksted	43	W43DA-D	NS 15kw
Tutu	50	W50EG-D	NS 15kw

USA:

Alabama:

Birmingham	40	WBMA-LD	DG from ch. 58, 15kw
Dothan	18	W18DY-D	NS 15kw
Mobile	41	WEIQ	PC>464kw/ 180m

Alaska:

Anchorage	24,	K24JP-D,	NS
	30,	K30LE-D,	
	46,	K46LE-D,	
	48	K48ML-D	
Ketchikan	9	K09YQ-D	NS 300w

Arizona:

Douglas	28	K28EY	CX
Phoenix	18	K18JL-D	DG from K25DM, 3.8kw, 33-19-58/ 112-03-59
Phoenix	31	KPHE-LD	QG from ch. 16
Window Rock	45	NEW-lpdtv	AF 2.61kw; DCC for K44BB

Arkansas:

Fayetteville	36	KFFS-CD	DG 15kw
Siloam Springs	33	KKAF-CA	DR 15kw

California:
 Bakersfield 2 K02QZ-D NS 300w
 Big Bear Lake 40 KPCD-LP DR 1kw, 34-14-10/
 117-19-08
 Chico 29 K29JS-D NS 5kw
Corona 39 KVEA PR DTS:
(see text)
*Los Angeles 3 KVTU-LP PG>497w, 34-13-56/
 117-40-09; from minus
 offset to plus*
 Los Angeles 45 KVTU-LP DR from ch. 3, 1.7kw,
 34-11-14/
 117-42-01 dismissed
 Lucerne Valley 17 K54AD QR from ch. 54, 1kw
 Monterey 46 K46LG-D NS 15kw
 Petaluma 3 K14MW-D QR from ch. 14, 300w,
 37-45-19/
 122-27-06 (Mt. Sutro
 Tower, San Francisco)
 Redding 19 K19IV-D NS 1kw
 Sacramento 51 KBTV-CA DC from ch. 8, 15kw
 San Juan 4 K14OD-D NS 300w
 Bautista
 San Luis Obispo 48 KPXA-LD DG from ch. 60, 15kw,
 34-54-36/
 120-11-10
 Santa Cruz 11 KOTR-LD DG from ch. 2, 74w,
 37-06-39/
 121-50-37
 South Lake 12 K12PP CX
 Tahoe
 Susanville 17, K17HE, DC 360w
 31, K31IE,
 36, K36HH,
 38 K38IU
 Victorville 10 K10QO-D DG from K28IE, 165w,
 34-21-08/
 117-40-27
 Yreka 25 K25LR-D CX

Colorado:
 Akron 33, K33FI, DR 199/
 43 K43FS 196w
 Akron 41 K41EV-D DG 190w
 Anguilar 4 K04KB CX
 Anton 45 K45FD DR 211w
 Aspen 34 K34LM-D NS 5kw
*Avon 36 K36DB PG>87w; CL from
 Sweetwater Creek*
 Boulder 48 K48MN-D DG from K11QJ,
 9.3kw
 Broadmoor 21 K21KX-D DG 1.5kw
 Cortez 25 K25LT-D QG from K56JI, 100w
 Del Norte 2 K02KJ CX
 Grand Junction 30 K30LG-D NS 5.3kw
 Holyoke 15, K15FD, DR 208/
 171 K17EU, 342/
 9, K19EG, 217/
 21,2 K21FF, 216/
 5, K25GZ, 215/
 29 K29GI 214w
 Idalia 14, K14LB, DR 197/
 18, K18FO, 196/
 20, K20HM, 194/
 22, K22GO, 193/
 24 K24EZ 192w
 Julesburg 20 K20KO-D NS 140w
 Julesburg 47, K47JH, DR 183w
 49, K49IN, K51IL
 51
 La Veta 3 K03FR CX
 Las Animas 27 K27KX-D DG from K67AH, 250w

Paonia 40 K40LR-D NS 190w
 Peetz 18, K18FN, DR 214/

26, K26FM, 212/
 28, K28FW, 211/
 30, K30FO, 211/
 32 K32EX 210w
 Peetz 20 K20FS-D DG 198w
 Pitkin 17, K17GC, DC 80w, 38-36-21/
 19, K19DS, 106-31-31
 21, K21EF,
 23, K23DX,
 43 K43EG
 Pleasant Valley 14, K14KL, DR 46w
 16, K16ET,
 18, K18GM,
 20, K20GK,
 26, K26GX,
 28, K28IX,
 30 K30GO
 San Luis 2 K02KI CX
 Sterling 44, K44FL, DR 184w; DG
 48 K48DQ
 Sterling 50 K50EE DR from ch. 52, 197w
 Windsor 41 KZFC-LD AF 15kw, 40-38-31/
 104-49-03 DCC for ch.
 36 (to supercede
 permit to flash-cut on
 ch. 36?)
 Wray 44, K44FM, DR 183w/
 46, K46FF, 183w/
 485 K48GA, 182w/
 0 K50FJ 181w
 Yuma 30, K30HA, DR 195w/
 36, K36AC, 192w/
 38, K38AD, 191w/
 42 K42GI 189w

Connecticut:
*Hartford 6 WHCT-LP QR from ch. 38, 3kw
 dismissed*

Florida:
 Bartow 14, W14DQ-, NS 15kw
 36 W36EC-D
 Brownsville 39 W39DH-D QG from W57DU, 6kw,
 25-59-09/
 80-11-37
 Fort Myers 22 W22CL-D DG 15kw, 26-25-22/
 81-37-49
 Key West 19 WEYW-LP XR 24-34-22/
 81-44-29
 Key West 36 WCAY-CD DG 5.74kw
 Layton 16 W16CA-D DG 15kw, 24-49-16/
 80-49-07; CL from Big
 Pine
 Miami 29 WEYS-LD QG from ch. 54
 Miami 29 WJAN-LD DR from ch. 41, 15kw,
 25-59-09/
 80-11-37 dismissed;
 station has flash-cut
 on 41
 Miami 51 WLMF-LD DG from ch. 53, 15kw
 Panama City 6 WHDY-LP CX
 Panama City 16 W16CX-D NS 3kw
 Sebring 38 WGPS-LD DG from ch. 51, 15kw,
 27-27-14/
 81-24-23
 St. Petersburg 38 WSPF-CD DG from ch. 35, 15kw,
 27-49-45/
 82-36-52.
 Tallahassee 47 WWWF- CX
 Tallahassee 48 W48DV-D NS 10kw
 Wabassco 33, W33DB-, NS 15kw
 41 W41DV-D

Georgia:
 Adel 36 W36EB-D NS 15kw
 Augusta 23 WAAU-LD DG from ch. 18, 15kw,

Augusta Dalton	51 16	W51EP-D WELF-TV	33-28-33/ 82-00-38 NS 15kw PR<360kw/ 413m, 34-49-23/ 85-25-06
Fitzgerald Gainesville	39 46	W39DI-D WSB - 0320AFV	NS 15kw NW 5kw, 34-07-32/ 83-51-32; DRT for 39 Atlanta
Helen Helen Macon Newnan	26 49 36 17	W26DX-D W49DM- W36ED-D WSB - 1028ABF	NS 15kw NS 15kw NS 440w NS 10kw, 33-24-43/ 84-50-03; DRT for 39 Atlanta
Hawaii: Anahola Hanamaulu	36 12	K36IJ-D K12QX-D	PG>233w CX NS 200w, 21-58-41/ 159-29-55; DCC for KESU-LP
Idaho: Boise Boise Cambridge Cascade Challis Dingle Glenns Ferry Lava Hot Springs	20 31 17 26 10 9, 11, 13 16 14	KITL-LP K31CI K17KF-D K13GO K10AW-D K09PL, K11PP, K13QY K16JE-D K14MC-D	PR<12kw, increase antenna height 20m DR 90w (suspect typo s/b Montpelier) NS 510w; DCC for K05DC DR from ch. 13, 490w (supercedes application to go to DTV 21) DG 300w, 44-33-09/ 114-05-24 DR 20w NS 430w; DCC for K05DD DG 3w
Montpelier Montpelier Montpelier Pocatello Rexburg	14 19, 21, 23, 25, 27, 29, 33 20 32 34 38	K54DY K19DQ, K21CE, K23BV, K25CK, K27CS, K29BM, K33DR K56FM K52EC KXPI-LD KIDK -	PR<90w DR 90w DR from ch. 56, 225w DR from ch. 52, 90w DG from ch. 24, 5.2kw NW 4kw/71m, 43-43- 16/ 111-56-30; DRT for ch. 36 Idaho Falls
Sandpoint Sandpoint	22 30	K24DW K24DW	QR from ch. 24, 512w; inadvertently proposes to change CL to "Snadpoint" DR from ch. 24, 512w dismissed; going for ch. 22 instead
Twin Falls Twin Falls Twin Falls Twin Falls	10 34 36 58	KTID-LD KXTF K36KU-D KTID-LP	CX PG>49.4kw NS 620w CX
Illinois: Chicago Chicago Plano	33 40 35	WCHU-LD WESV-LP WSPY-LD	DG from ch. 61, 15kw; CL from Rochelle DC 6kw; CL from Palatine DG 15kw

Quincy	46	KZSL-LP	DR from ch. 59, 15kw, 39-04-18/ 90-58-37 dismissed
Rockford Rockford	17 35	W17DN- WFBN-LD	NS 3kw XG 42-15-59/ 89-04-23
Springfield	33	W33AY	DC 4kw
Indiana: Fort Wayne	14, 33, 49, 51	W14DS- W33DC- W49DP- W51EQ-D	NS 15kw/ 15kw/ 3kw/ 12.5kw
Indianapolis Marion Terre Haute	45 15 16, 23, 28	WXIN W15CZ-D W16CZ- W23DZ- W28DZ-D	PR>1000kw NS 15kw NS 10kw/ 5kw/ 8kw
Iowa: Decorah Des Moines Lansing	28 41 38	K14AF K41DD K41AD	DC from ch. 14, 15kw DC 13.3kw DC from ch. 41, 15kw, 43-20-59/ 91-13-16
Rock Rapids Sibley	43 26	K25AA K33AB	DC from ch. 25, 15kw DC from ch. 33, 14kw
Kansas: Wichita	28	K28JB-D	DG 15kw, 37-48-01/ 97-31-29; supercedes permit to go digital on ch. 38 without site change
Louisiana: Baton Rouge	25	WLPB-TV	PC>355kw/ 309m
Crowley Lafayette Lafayette Leesville	4 46 48 51	KAGN-CD KLAF-LD K48MK-D K51FO-D	DG from ch. 31, 300w DG 2.65kw NS 10kw DG 15kw
Maine: Bangor Farmington	31 21	W31CX WGBI-LP	PC>5.25kw, 44-40-39/ 68-45-15 DR 2.28kw; DG
Maryland: Baltimore Havre de Grace	46 49	WBFF W49DN-D	PG>655kw QG from W40AZ, 5kw, 39-40-45/ 75-51-44; CL from Wilmington, Delaware
Massachusetts: Boston Boston Boston Springfield	42 44 45 21	WHDH- WCEA-LP WCEA-LD WSHM-LP	PG>1000kw DR from ch. 58, 15kw, 42-20-57/ 71-04-31 PR<7.5kw, 42-20-57/ 71-04-31 DC from ch. 67, 6kw, 42-07-11/ 72-24-39
Michigan: Detroit Lake City	47 14	W66BV W14DR-D	DC from ch. 66, 2.7kw NS 425w
Minnesota: Bigfork Duluth Grand Rapids	21, 23 21 29	K21KY-D, K23KZ-D K21KZ-D K29EB	DG from K67CA, K69CR NS 77w permit to go digital cancelled

Hibbing	15	K15GT	DG 8.035kw CX	Las Vegas	14	KNBX-CD	QG from ch. 21, 15kw
International Falls	45	K45JD	permit to go digital cancelled	Las Vegas	15	K15IN-D	NS 15kw, 35-56-46/115-02-34; DCC for KELV-LP
Kabetogama	32, 34, 36	K32JZ-D, K34LJ-D, K36LA-D	DG from K65EA, K67EH, K69FD, 100w	Manhattan	6, 10, 12	K06KQ-D, K10LQ-D, K12MW-	DG
Max	36, 38	K36KZ-D, K38MJ-D	DG from K60BL, K62BH	Mesquite	25	K25LU-D	NS 515w; DCC for K02FN
Northome	16, 18	K16JD-D, K18JM-D	DG from K55BY, K60BL	Pahrump	42	K42AA	DC 8.9kw, 35-57-22/115-29-41
Orr	24, 26, 28	K24JR-D, K26KM-, K28LN-D	DG from K59EN, K61EW, K63DV, 497w	Stateline	31	K31KH-D	DG from K59GM, 10.1kw, 38-57-35/119-56-24
Red Lake	41, 43, 45, 47, 49, 51	K41LX-D, K43MY-D, K45LH-D, K47MY-D, K49LO-D, K51LN-D	DG from K59FR, K61CM, K63CI, K65BN, K67BM, K69BT, 476w	Sun Valley	40	K40LQ-D	NS 5w; PR<1w
Redwood Falls	28, 33, 36	K28LL, K33LB, K36KW	QG from K66BB, K62AA, K68BJ, 900w	New Jersey:			
Virginia	47	K47IR	permit to go digital cancelled	Newton	18	WMBC-TV	NW 90kw/309m, 40-44-54/73-59-10; see text
Willmar	28	K28IF	DR 467w	Springville	23	WNAI-LP	DR from ch. 41, 5kw
Mississippi:				New Mexico:			
Jackson	21	WAPT	PG>356m	Capitan	38	K38MI-D	DG from K33GD, 280w
Meridian	42	W42EA-D	NS 1kw	Crownpoint	38	K38AU	DR 2.62kw, 35-54-37/108-46-26
Senatobia	34	WWTW	NW 20kw/239m, 34-43-36/90-09-43; CC for NS	Las Cruces	38	K38MH-D	QG from K41KY
				Mt. Powell	34, 51	K34LL-D, K51LO-D	NS 1kw
Missouri:				Orogrande	4	K04RK-D	NS 300w
Jefferson City	20	KNLJ	PG>316m	Roswell	41	K41LV-D	QG from K15FT, 6.8kw, 33-21-02/104-31-20
Montana:				Santa Fe	14	K14OE-D	NS 15kw
Belgrade	17	K17KB-D	DG from K20DY, 1.53kw	Shiprock	48	K48AW	DR 2.71kw
Belt	17	K17KE-D	NS 12kw	New York:			
Deer Lodge	48	K48MM-D	NS 800w	Massena	18	WNYF-LP	QC from ch. 35, 4kw, 44-29-29/74-51-27
Great Falls	45	KTGF	PG<780w/160	New York	22	WXNY-LD	PG<600w
Havre	28	K28LP-D	NS 3.6kw	New York	33	WCBS-TV	QR from 56, 600kw (aux)
Jefferson City	38	K38LS-D	NS 352w, 46-19-25/112-04-33	Rochester	8	WHSB-LD	QG from ch. 9, 9w
Kalispell	15	K15GP-D	PR>1.26kw	North Carolina:			
Livingston	20	K20KQ-D	NS 15kw; DCC for K66BR	Canton	11	W11AU	DR 30w, 35-34-19/82-54-03
Plains	33	K33LD-D	NS 800w	Edenton	20	WUND-TV	AF 741kw/288m (aux)
Nebraska:				Tryon	11	W11AH	DC 26w, 35-15-58/82-14-39
North Platte	50	K50ME-D	NS 10kw	Wilmington	51	W51CW-	PR>15kw
Nevada:				North Dakota:			
Alamo	8	K08PE-D	NS 103w; DCC for K10NV	Minot	47	K47MX-D	NS 1.9kw
Austin	23	K23KV-D	DG from K28EI, 10w	Williston	11	KWSE	QC from 51, 84.9kw/278m
Battle Mountain	13	K13JD	DC 100w	Ohio:			
Battle Mountain	19	K19IU-D	NS 100w, 40-37-04/116-41-21; DCC	Austintown	46	WJW - 1123AOI	AF 10kw, 40-54-23/80-54-40; DRT for ch. 8 Cleveland. See text.
<i>Caliente</i>	6	<i>NEW</i>	<i>PA from Ely dismissed.</i>	Canton	21	WJW - 1123AOJ	AF 10kw, 40-54-23/80-54-40; DRT for ch. 8 Cleveland. See text.
Carson City	16	K16JB-D	NS 1kw	Canton	39	WIVM-LD	DG from ch. 52, 15kw, 40-53-33/81-12-37
Eureka	14, 16, 28, 41, 45	K14OB-D, K16IZ-D, K28LM-D, K41LU-D, K45LE-D	NS 100w/100w/100w/300w/300w	Canton	49	WDLI-TV	QC from 39, 900kw/292m
Hawthorne	30	K30FS	DC 577w	Delaware	45	WXCB-CD	PR>15kw, 40-36-46/83-07-48
Indian Springs	8	K08PG-D	NS 163w; DCC for K07JC	Marion	39	WOCB-CD	PR>2.4kw, 40-18-47/
Jean	34	K34LI-D	NS 597w; DCC for K23BS				
Las Vegas	6	KVPX-LP	DR from ch. 28, 300w, 35-56-46/115-02-34				

Youngstown	38	W38EU-D	83-03-04 DG from W52DS, 700w	Chattanooga	31	W31DO-D	NS 15kw; DCC for WOOT-LP
Oklahoma:				Clarkrange	3	WWWB-LD	DG from ch. 25, 300w, 36-04-01/ 85-11-11; CL from Livingston
Hollis	35	K35KE-D	DG from K55BQ, 900w; DC	Clarksville	30	W30DE-D	NS 10kw; DCC for WCKV-LP
Oklahoma City	31	KLHO-D	NS 15kw; DCC for analog 17	Dyersburg	18	WDYR-CA	DC from ch. 33, 15kw (supercedes permit to go digital on 34)
Oklahoma City	45	KOHC-CD	DG 15kw, apparently replaced DCC with same facilities.	Olive Hill	30	W30DF-D	NS 250w
<i>Tulsa</i>	<i>46</i>	<i>K46LF</i>	<i>QG from K39CW, 10kw</i>	Texas:			
Oregon:				Amarillo	10	KFDA-	PG>62kw
Altamont	21	K21KV-D	DG from K52AS, 170w, 42-14-16/ 121-46-00	Amarillo	24	K49JL-D	QR from ch. 49 dismissed
Bend	7	KBNZ-LD	PG<250w	Austin	23	KXLK-CA	DR from ch. 40, 15kw, 30-19-23/ 97-47-59
Brookings	15	K15IM-D	DG from K18EP, 1kw	Beaumont	16	K16JC-D	NS 1kw
Coos Bay	14, 30	K14MQ, K30BN	DC 4.82kw/ 4.75kw	College Station	3	K03IJ-D	NS 300w
Eugene	26, 32	K26KL-D, K32JY-D	NS 4kw	Dallas	21	KWDA-LD	PR<2kw, 32-46-48/ 96-48-13; CL from Denison
Gold Hill	27	K27KW-D	DG from K55DQ, 100w	De Soto	22	KNAV-LD	DG 10kw
Grants Pass	22	K22FC	DR 74w	De Soto	33	K33LC-D	QG from K31GL, 15kw
Medford	25	K25LW-D	NS 10w	Del Rio	10	K10QQ-D	NS 300w
Medford	51	K51LM-D	QG from K09YU, 15kw	Eagle Pass	10	K10QP-D	NS 300w
Merlin	33	K33GJ	DR 226w	Eagle Pass	16	K16IY	NS 15kw
Milton	29	K29EG	DC 1kw, 45-49-55/ 118-15-37	Fort Worth	19, 29	KTVT, KTXA	PG>534m, 32-32-36/ 96-57-32
Pinehurst	13	K13PF-D	DG 13w	Garfield	17	KVAT-LP	DC 15kw
Portland	26	K26GJ-D	PG>15kw	Houston	7	KDHU-LD	NW 300w, 29-34-15/ 95-30-37; DCC for analog ch. 50 in Louise, TX
Prospect	2	K02JG-D	DG 13w	Houston	15	KVVV-LP	DR from ch. 53, 15kw, 29-34-15/ 95-30-37
Roseburg	16	KPIC - 1130AAF	AF 478w, 43-12-22/ 123-21-49; DRT for ch. 19; NS	Laredo	19	KLDO-TV	PR>150kw/ 135m
Roseburg	30	K30LH-D	NS 10w	Laredo	27	KXOF-CD	DG from ch. 39, 15kw, 27-30-04/ 99-30-37
Ruch	13	K13PI-D	DG 7w, 42-13-12/ 123-01-59	Laredo	31	KETF-CD	DG from ch. 25, 15kw, 27-31-12/ 99-31-19
Silver Lake	8	K08LG-D	DG 220w	Lingleville	43	K43MX-D	NS 15kw
Warm Springs	30	KOAB - 1214ABV	AF 300w, 44-46-16/ 121-15-42; DRT for ch. 11 Bend	Lubbock	9	K09YX-D	NS 300w
Pennsylvania:				Lubbock	21	K21KW-D	NS 15kw
Darby	15	W36DO-D	QR from ch. 15, 3.8kw	Lubbock	33	KJTV-LD	NW 15kw, 33-30-08/ 101-52-20
Erie	32	W32DH-	PC>2.07kw	Lufkin	24, 25, 41	K24JS-D, K25LV-D, K41LW-D	NS 5kw/ 5kw/ 2kw
Erie	43	WLEP-LD	NW 12kw, 42-02-21/ 80-03-39; DCC for analog ch. 9	McAllen	39	KNDF-LD	DG from ch. 57, 3.41kw
Philadelphia	33	WZPA-LD	DG 3kw, but immediately rescinded	McAllen	48	KTFV-CD	DG from ch. 32, 26- 05-18/ 98-03-44
Philadelphia	38	WPHA-CA	DC 3kw	Memphis	32	K32EH-D	DG 460w, 34-48-18/ 100-36-12; DC
Philadelphia	45	WFMZ - 1216AAE	AF 300w, DRT for ch. 46 Allentown. See text.	Midland	19	K19IW-D	DG from K40FJ, 14.56kw
Philadelphia	46	WFMZ - 1214AAB	AF 4.7kw/ 206m, 40-02-33/ 75-14-34. See text.	Midland	24	NEW-lpdtv	AF dismissed (Mako Comms.)
South Carolina:				Odessa	9	KWES-	PR>94.4kw
Columbia	50	WKDC-LD	DG 15kw	Odessa	36	KZOD-LD	QG from ch. 15, 31- 50-53/ 102-23-13
Myrtle Beach	27	W27DI-D	NS 5kw	Paris	24	K24JT-D	NS 15kw
South Dakota:				Port Arthur	18	K18JK-D	NS 500w
Belle Fourche	19	K19CG	DC 214w	Refugio	25	KXCO-LD	DG from ch. 42, 15kw, 28-02-07/ 97-26-12
Sioux Falls	17	WDSF-LP	DR from ch. 53, 15kw; CC from K53EG	<i>San Antonio</i>	<i>23</i>	<i>KTDF-LP</i>	<i>QG from ch. 18, 12kw</i>
Spearfish	4	K04GW	DC 28w, 44-29-33/ 103-50-05				
Tennessee:							

San Antonio	42	KSSJ-LP	PR>50kw, 29-41-06/ 98-26-59
Tyler	32	K32JX-D	NS 7kw
West Lake Hills	24	KTXU-LD	DG from ch. 47, 15kw
Utah:			
Alton	23, 25	K23KR-D, K25KN-D	NW 38w/ 63w, 37-22- 26/ 112-32-08
Bicknell	42	K42JU-D	QG from K54JV, 72w; QC
Circleville	23, 25, 27	K23KW- K25LS-D, K27KU-D	NS 6w
Delta	44	K44IZ-D	PR>750w
Duchesne	30, 33, 38	K30LF-D, K33LA-D, K38MF-D	NS 102w
East Price	45	K45LI-D	NS 6w
Fillmore	32, 38, 40, 42, 50	K32JW-D, K38MG- K40LO-D, K58IQ-D, K50MC-D	DG from K57JU, K55KI, K59IR, K58IQ, K52JX, 150w; DC
Heber	26	K26IK-D	PG>356w
Heber City	35	K35EW-D	PG>356w
Huntsville	35	K35GG-D	DG 120w
Leamington	8, 9, 10	K08PF-D, K09YW- K10QR-D	NS 38w
Leamington	36	K36KX-D	QG from K56JB, 950w; QC
Manti	9, 11, 13	K09FM, K11FP, K13FF	CX
Marysvale	8	K08PD-D	NS 100w
Marysvale	43	K43MV-D	QC from ch. 52; CC from K52JU
Myton	23	K23FT	DC 426w, 40-21-41/ 110-47-21; CL from Duchesne
Ogden	41	K0UD-LD	DG 5kw
Panguitch	45	K45LF-D	NS 6w
Richfield	31, 33	K31JI-D, K33JF-D	PC>63w
Richfield	32	K32HU-D	PR>63w
Richfield	39	K39KX-D	NS 63w
Roosevelt	40	K40LN-D	NS 85w
Santaquin	6	NEW	PA from Vernal dismissed.
Sigurd	16, 20, 43	K16HE-D, K20JA-D, K43KN-D	PC>100w
St. George	38	KGHD-LD	NS 2kw; DCC for analog ch. 6
Summit Co.	14	K14OC-D	DG from K63GY, 78w
Tabiona	28	NEW-lpdtv	AF 306w, 40-21-41/ 110-47-21; DCC for K29EX
Teasdale	36	K36KV-D	QG from K53JG, 72w; QC
Vermont:			
Manchester	30	W30CN-D	PG<796w
Pownal	46	W46EG-D	PG<538w
Virginia:			
Fairfax	43	WDCN-LD	AF 15kw, 38-56-24/ 77-04-54 DCC for ch. 6
Harrisonburg	48	NEW-lpdtv	AF dismissed (EICB- TV East)
Onancock	14, 18	W30CI, W39CS	DR from chs. 30, 39 8.1kw/ 8kw
Onancock	25, 34	W25AA, W34DN	DR 7.9kw/ 7.7kw

Washington:

Chelan	28	K28KJ-D	DG from K64ES, 2.5kw
East Wenatchee	16	K55FO	DC from ch. 55
Ellensburg	44	K44KJ-D	DG from K39DM, 15kw, 46-53-14/ 120-26-34
Everett	17	K58BW	DC from ch. 58, 500w
Malott	10, 12	K10DK-D, K12CW-D	DG
Methow	9, 11	K09BI-D, K11BM-D	DG 48-02-13/ 119-59-07
Pateros	8, 10, 12	K08AP-D, K10AP-D, K12AV-D	DG 3w/ 20w/ 20w
Riverside	8, 10, 12	K08CY-D, K10DM- K12CV-D	DG
Tacoma	27	KBTC-TV	PR<220m
Wenatchee	36	K36KY-D	NS 15kw

West Virginia:

Summersville	16	W16CY-D	NS 500w
--------------	----	---------	---------

Wisconsin:

Ashland	45	W45CI	permit to go digital cancelled
Galesville	22	W22DT-D	NS 500w
Green Bay	41	WGBA	FC; adds "Cool TV" on 26.2
Green Bay	49	WGBD-LD	DG 15kw
La Crosse	14	W14DP-D	QG from W58DQ, 100w; CL corrected to add space...
Madison	49	WMSN-TV	QG from 11, 310kw/450m

Wyoming:

Bondurant	17	K17JZ-D	DG from K69DD, 491w; DC
Casper	47	K47MW-	NS 900w
Crowheart	18	K18JJ-D	NS 900w
Douglas	9	K09XL	DC 57w
Evanston	27	K27KV-D	DG from K28DV, 550w
Jackson	34	K34LH-D	DG from K56BT, 350w; DC
Lander	22	K22CI	DC 940w, 42-53-43/ 108-43-34
Mountain View	31	K31FW	DC 300w
Shoshoni	35	K35CV	DC 880w, 43-27-27/ 108-12-03

Thanks to Bill Draeb for information appearing elsewhere in this column.

The WMBC-TV transmitter reported new on the air is the #2 transmitter in their Distributed Transmission System. The #1 transmitter is the same one that has operated for years from their New Jersey site. #2 is on the Empire State Building in New York City.

Note that the Austintown, Ohio (channel 46) and Canton (channel 21) Replacement Translators are at the same site. They're also both directional, and suspect in different directions...

The City of St. Petersburg, Florida now has a municipally-owned station on channel 38 again! - for years, the city owned WSUN Radio and its
(CONTINUED ON PAGE 21)

Congress proposes relaxing LPFM restrictions

D. Smith

H.R. 6533, the “Local Community Radio Act of 2010”, has passed both Houses of Congress and has been sent to President Obama for his signature. Since it is highly unlikely Obama will veto the bill, it will be law by the time you read this.

When the LPFM service was created, the FCC initially proposed to allow low-power stations on the 2nd-adjacent (separated by 0.4MHz) and 3rd-adjacent (separated by 0.6MHz) channels to local full-power stations. After considerable lobbying by the National Association of Broadcasters, the FCC dropped 2nd-adjacent channels, but they refused to change their mind on 3rd-adjacent.

After further lobbying, Congress did it for them – passing, in 2001, a law requiring the FCC to place 3rd-adjacent channels off limits. As you might guess, this restriction greatly limited the number of possible LPFM stations. H.R. 6533's primary purpose is to undo the 2001 Act.

Going over the bill point-by-point: (and remembering that I'm a TV engineer, not a lawyer!)

Section 1: simply establishes the “Local Community Radio Act of 2010” name, so people don't have to call it “HR6533”.

Section 2: Repeals the restriction on 3rd-adjacent channels.

Section 3: Orders the FCC to eliminate minimum distance separation requirements for 3rd-adjacent LPFMs. (Section 2 repeals the requirement that the FCC must create these restrictions, but allows the FCC to choose to keep the restrictions. Section 3 orders the FCC to not keep the restrictions.)

Section 3 also prohibits the FCC from further reducing the separation requirements for 1st and 2nd-adjacent operation. However.. it allows the Commission to waive 2nd-adjacent restrictions if applicants use terrain-sensitive methods (Longley-Rice) to establish no interference will result. Stations that receive such a waiver must suspend operation immediately if the FCC notifies them of an interference complaint.

Section 4: Prohibits the FCC from relaxing distance separations from stations (including FM translators) which broadcast

a radio reading service on an analog subcarrier. In practice, few markets have more than one such station, and they're generally in the non-commercial band where there are few LPFMs.

Section 5: Requires that LPFMs, FM translators, and FM booster stations remain equal in status. In other words, a new LPFM cannot bump an existing translator – and a new translator cannot bump an existing LPFM. The Commission is also required to maintain all three of these services as secondary to full-power stations.

Section 6: Requires the FCC to address the potential for LPFM interference to 3rd-adjacent signals at the input of FM translators.

Section 7: For 3rd-adjacent operations.. LPFM stations are required to provide the same interference protection to full-power stations that FM translators are required to provide. LPFMs authorized on 3rd adjacents must, for their first year of operation, periodically broadcast announcements inviting listeners receiving interference to full-power stations to report such interference. LPFMs must relay any such complaints to the FCC and any affected full-power stations within 48 hours and must cooperate in addressing such interference.

LPFMs on 3rd adjacents “...*shall be required...*” to address interference complaints within the protected contour of the full-power station, and “...*shall be encouraged...*” to address all other interference complaints.

In certain circumstances*, 1st, 2nd, 3rd-adjacent, and co-channel LPFMs must protect full-power stations from interference outside those stations' protected contours, to the same extent that FM translators must do so. Protection is not required in areas far enough from the full-power station that a LPFM could be authorized there on the same frequency.

*“Certain circumstances” means the full-power station is licensed to a community in New Jersey. The Act doesn't put it that way – it says “...significantly populated States with more than 3,000,000 population and a population density greater than 1,000 people per one square

mile land area,...” New Jersey and Rhode Island are the only states with more than 1,000 people per square mile, and Rhode Island has only a few more than 1,000,000 residents.

The FCC is required to accept complaints at any distance from a 3rd-adjacent station, and to accept complaints of interference to mobile reception. It doesn't say what the Commission must do with such complaints...

Section 8: Requires the FCC to conduct study on the economic impact of LPFM on full-power commercial FM radio. (in my humble opinion the cost of the study will exceed LPFM's economic impact on commercial FM radio...) The Act does not require any action be taken on the basis of this study.

What does it mean?

LPFM interests would have liked to see more. They'd rather not have to battle with thousands of out-of-state translators for channels; they'd like to have hard-and-fast distance separation requirements beyond which, interference complaints would not be accepted.

But with the NAB so bent out of shape over LPFM, I think you can reasonably assume H.R. 6533 was the best bill LPFM interests would get.

I think the FCC will first address LPFMs that may currently be silent after losing their frequencies to new/modified full-power stations. Some of these stations may be approaching the one-year silence deadline, after which their licenses will be canceled.

Next, I think the FCC will address stations that are operating, but on less-than-optimum frequencies. The LPFM here in Nashville is currently operating under waiver on 2nd-adjacent frequency 107.1. The operation is legal but the LPFM suffers considerable interference from WUHU-107.1 in Kentucky. 103.9 and 94.9 are much clearer frequencies here. I suspect the LPFM will file for one of these frequencies, and I believe the FCC will consider such applications before they consider any for completely new LPFM stations.

Only then will the Commission consider applications for completely new LPFMs.

Fybush.com NorthEast Radio Watch
Tower Site Calendar
2011
Photographs and Text by Scott Fybush

To order your very own 2011 tower calendar for \$18 (\$19.44 for NY residents), send check or money order to
92 Bonnie Brae Ave, Rochester, NY 14618
Credit card orders accepted at
www.fybush.com
Call Scott Fybush at 585-442-5411
Or email Scott at scott@fybush.com



FM NEWS



BILL HALE

6124 Roaring Springs Drive, N. Richland Hills, TX 76180

FMnews@wtfda.org

JANUARY 2011

INDEX OF ABBREVIATIONS

- APP: application
 APP Mod: Change to an already submitted application
 Class FM: license class
 CP: construction permit (authority to broadcast with facilities noted)
 CP Mod: change to an already granted CP
 DA: directional antenna
- FC: frequency change (to or from)
 \$: Stereo
 STA: Special Temporary Authority
 XL: Transmitter Location
- Note: antenna heights are HAAT except where noted

CC CANADA CC

C CALL LETTER CHANGES C

	<u>Old Call</u>	<u>New Call</u>
NF Springdale	89.3 NEW	CKCM-FM1

C FORMAT and SLOGAN CHANGES C

BC Summerland	98.5	CHOR-FM	Now on the air (ex: 1450 kHz) with Adult Contemporary: <i>EZ Rock</i>
NS Middle Musquodoboit	107.3	CKBG-FM	New station is on with Classic Hits
ON Leamington	91.9	CBEW-FM1	Now on the air with CBC Radio 1 // CBEW 97.5 Windsor
ON Windsor	97.5	CBEW-FM	Now on the air (ex: 1550 KhZ) with CBC Radio 1
QC Alma	104.5	CFGF-FM	Is now <i>Planete 104 point 3</i>
QC Montreal	106.3	CKIN-FM	New station is on with a Multilingual format: <i>Skin FM</i>
QC Saguenay	98.3	CKRS-FM	Is now <i>FM 98</i>

C TECHNICAL CHANGES C

		<u>Now on the air:</u>
BC Summerland	98.5	CHOR-FM 100 w-H/348 m, DA, 49-39-34/119-34-22, \$
NS Middle Musquodoboit	107.3	CKBG 50 w-V/-18 m, 45-05-19/63-04-01, Class LP, \$
ON Leamington	91.9	CBEW-FM1 10.45 kw/74 m, DA, 42-06-46/82-39-52, Class B1, Mono
ON Windsor	97.5	CBEW-FM 19 kw/130 m, DA, 42-09-09/82-57-05, Class B, Mono
ON Orilla	89.1	CISO-FM 2.5 kw/154 m, 44-33-15/79-33-21, Class A, \$ [testing]
QC Montreal	106.3	CKIN-FM 300 w-V/194 m, DA, 45-30-10/73-35-46, Class A, Mono

C TECHNICAL CHANGES C

		<u>CP granted for:</u>
AB St. Paul	97.7	CHLW-FM 50 kw/80 m, DA, XL to 54-02-10/111-15-30 [CP]
BC Vancouver	100.5	CFRO-FM 11 kw/571 m; XL to 49-21-11/122-57-37; FC from 102.7 (exchange frequencies with CKPK-FM)
BC Vancouver	102.7	CKPK-FM 100 kw-H (drops V)/590 m; 49-21-11/122-57-37; FC from 100.5 (exchanges frequencies with CFRO-FM)
ON Orilla	89.1	CISO-FM 2.5 kw/154 m, XL to 44-33-15/79-33-21
ON Perth	88.1	CHLK-FM 5.4 kw-V/92 m, DA, 44-54-34/76-16-51
QC Alma	104.5	CFGF-FM 20 kw/136 m, XL to 48-35-34/71-35-23
QC Rouyn-Noranda	98.3	CHUN-FM 3.4 kw/103 m, 48-18-05/73-03-09



C TECHNICAL CHANGES C

GRANTS FOR NEW STATIONS

		<u>CP granted for:</u>
QC Havre St. Pierre	93.7	VF2581 20 w-V/-32 m, 50-35-34/63-10-59, Class LP, \$
QC Havre St. Pierre	98.1	VF2582 20 w-V/-35 m, 50-35-34/63-10-59, Class LP, \$
QC Havre St. Pierre	102.9	VF2583 20 w-V/-38 m, 50-35-34/63-10-59, Class LP, \$

C TECHNICAL CHANGES C

C APPLICATIONS FROM EXISTING/PROPOSED FACILITIES C

		<u>Applies for:</u>
NS Halifax	105.1	CKHY-FM Power increase to 100 kw/185 m, 44-38-47/63-39-37 [re-application]
ON Brockville	91.9	CBOB-FM FC to 106.5, power decrease to 2 kw-H (dropping V)/decrease HAAT to 100 m, 44-38-25/75-37-07
ON Pembroke	104.9	CIMY-FM Power increase to 31.6 kw/91 m, DA, 45-47-21/77-11-04

C TECHNICAL CHANGES C

PROPOSALS FOR NEW STATIONS

			<u>Applies for:</u>
BC Rossland	101.1	CHLI-FM	5 w-V/-17m, 49-04-47/117-47-54; English Community Station
BC Williams Lake	100.7	NEW	5 w/5 m, 52-07-43/122-08-28; Developmental Community Station
NF Northwest River	95.9	NEW	50 w/22 m, 53-31-47/60-08-42: to relay CFLN-1230 Goose Bay
ON Cochrane	102.1	NEW	37w/18 m, 49-03-59/81-01-21; Christian Contemporary
ON Cochrane	104.7	NEW	50w/30 m, 49-03-59/81-01-21; English community station
ON Elora	92.9	NEW	200 w/48m, 43-42-04/80-23-11; English community station
ON Kemptville	97.5	NEW	2.8 kw/80 m, DA, 44-58-24/75-36-04, Class A, Mono; would be Adult Contemporary [re-application]
ON Thamesville	104.3	NEW	50 w/10 m, 42-33-06/81-58-35; Native station, English & Lenape
QC St-Jérôme	102.9	CFOI-FM1	200 w/47 m, 45-49-10/74-00-30, Class A1, \$; to relay CFOI-FM Quebec

			C DISMISSALS C
QC Saguenay	105.9	-----	Application for new station, which would have relayed CKGS-FM, is denied
QC Rivière-du-Loup	102.5	NEW	Application for a new station, which would have relayed CFVD-FM Degelis, is denied

C OTHERNEWS C

CC UNITED STATES AND TERRITORIES CC

FULL POWER and LPFM STATIONS

C CALL LETTER CHANGES C

	<u>Old Call</u>	<u>New Call</u>				
			MO Dixon	90.5	NEW	KFCV
AL Cullman	88.3	NEW	MO Jackson	89.9	KHEZ	KHIS
AL Monroeville	99.3	WMFC-FM	MS Carthage	98.3	WCKK	WKOZ-FM
AZ Apache Junction	90.7	NEW	MS Walnut Grove	96.7	NEW	WCKK
AZ Parker	88.9	NEW	MT Plains	90.5	NEW	KZNP
AR Walnut Ridge	88.9	NEW	NC Danbury	88.1	NEW	WOPR
CA Atwater	91.5	NEW	NC Dillsboro	89.7	NEW	WNQS
CA Carmel Valley	91.3	NEW	NC Tarboro	89.1	NEW	WNIA
CA Marshall	91.5	NEW	NE Broken Bow	88.3	NEW	KJYS
CA Morgan Hill	89.9	NEW	NE North Platte	89.3	NEW	KJTF
CA Point Reyes	91.3	NEW	NJ Barnegat Light	88.1	NEW	WZBL
CO Alamosa	91.9	NEW	NJ Bass River Township	106.5	WBBO	WTHJ
CO Brush	90.5	NEW	NV Gerlach	91.5	KDPW	KGRL
CO Craig	89.7	NEW	NV Gerlach	91.5	KGRL	KFBR
CO Craig	91.1	NEW	OH Grove City	101.1	WWCD	WOSA
CO Estes Park	88.7	NEW	OK Goltry	90.5	KWGT	KGVV
CO Granby	89.1	NEW	OR Madras	89.1	NEW	KBYT
CO Lamar	89.5	NEW	OR Port Orford	91.9	NEW	KDPO
CO Ouray	89.5	NEW	OR Talent	92.9	NEW	KLMD
CO Silverton	89.7	NEW	PA Leesport	88.3	NEW	WYBQ
FL Palm Coast	89.3	NEW	PA Spring Grove	90.7	NEW	WZXY
GA Lumpkin	91.5	NEW	RI Ashaway	96.7	WYCM-LP	WRBZ-LP
ID Menan	90.9	NEW	TX Cedar Lake	89.9	NEW	KQVI-FM
IL Antioch	88.5	NEW	TX Odem	98.3	KLHB	KMJR
IL Round Lake Beach	89.1	NEW	TX Pittsburg	100.5	NEW	KLNA-LP
IL Smithboro	89.9	WTMH	TX Portland	105.5	KMJR	KLHB
IA Fort Dodge	88.7	NEW	VA Nassawadox	90.1	WJCN	WHRE
KS Dodge City	89.1	NEW	WI Allouez	106.7	WZZN	WKRU
LA Cameron	91.7	NEW	WY Kaycee	88.7	NEW	KUWK
LA Wilson	90.9	NEW	WY La Barge	88.9	NEW	KDEB
MI Whitehall	97.5	WEFG-FM				
MO Cape Girardeau	107.9	KHIS-LP				

TRANSLATORS and BOOSTER STATIONS

C CALL LETTER CHANGES C

	<u>Old Call</u>	<u>New Call</u>				
			GA Union	94.7	W235BL	W234BQ
AZ Cottonwood	96.3	K265BU	GA Waleska	90.5	W214AS	W213BV
AZ Holbrook	90.7	K217CN	ID Burley	101.1	K212DR	K266BJ
AZ Pinetop	102.1	K218DV	ID Grangeville	89.3	K204EP	K207EJ
AZ Prescott	100.5	K264AZ	IA Bettendorf	106.1	K288CY	K291BP
AR Clinton	94.7	K237DT	KS Bonner Springs	102.5	K274BR	K273BZ
CA Burney	89.3	K206DY	LA Morgan City	91.5	K215DW	K218EY
CA Napa	90.9	K208DO	MN Brainerd	92.5	W220DW	W223BQ
CA North Edwards	99.1	K253AJ	MN Hibbing	89.3	K205AX	K207ES
CA North Highlands	107.1	K227AU	MO Mooresville	94.7	K229BR	K232EG
CA Quincy	92.7	K221DG	MT Lewistown	106.3	K238AP	K292GB
CO Estes Park	93.7	K232EF	NV Battle Mountain	90.1	K209AT	K211FG
CO Trinidad	99.3	K260BN	NV Winnemucca	90.1	K209DG	K211FE
FL Everglades City	98.1	W284AU	NJ Cape May	90.9	W220BT	W215CE
FL Naples	100.5	W262AJ	NY Ithaca	92.5	NEW	W223BR
GA Homer	107.3	W300BF	NY Jefferson Heights, etc	101.1	W214AH	W266BX
GA Social Circle	94.5	W287BI	OK Ada	90.3	K220IH	K212FZ
GA Tallapoosa	99.1	W205CI	OR Maupin	104.3	K285DC	K282BA
GA Toccoa	91.7	W220CK	PA Lancaster	99.9	W259AA	W260CC

PA Trucksville	89.1	W217BN	W206BU	VA Jonesville	102.5	W272CM	W273BY
SD Rapid City	91.7	K218DX	K219LD	WA Othello	106.9	K298AQ	K295BP
SD Sioux Falls	92.1	K220JO	K221FO	WA Shelton	104.3	K285FJ	K282BB
TN Chattanooga	106.9	W227AK	W295BI	WI Darien	98.7	W255CH	W254BS
TX Mineral Wells	103.5	K281AQ	K278BO	WY Douglas	93.3	K226BC	K227BU
TX Sugar Land	99.7	K260BM	K259AB				

C FORMAT AND SLOGAN CHANGES C

C Full Power and LP Facilities C

AL York	91.3	WSJA	Signs on with Religious Teaching: <i>Good News Network</i> // WLPE 91.7 Augusta
AZ Heber	105.5	KSNX	Signs on with Classic Hits // KZUZ-93.5 Show Low
AR Batesville	88.1	KBAP	Signs on with Religion
CA Corcoran	102.3	KBLO	> Spanish Religion
CO Loveland	93.9	KRKU	> Contemporary Christian: <i>Way FM</i>
CO Rico	89.5	KICO	Signs on with Variety: <i>KSJD, Dry Land Community Radio</i> // KSJD 91.5 Cortez
DE Harrington	88.7	WKNZ	Signs on with Contemporary Christian: <i>88 point 7, The Bridge</i>
FL Titusville	98.1	WNUF-FM	> Spanish Adult Hits: <i>Jose FM</i>
FL Woodville	97.9	WTSM	> Sports: <i>ESPN Tallahassee</i>
GA Forsyth	89.1	WBIB-FM	Signs on with Contemporary Christian
GA Gainesville	106.7	WYAY	> Classic Hits: <i>Atlanta's Greatest Hits, 106 point 7</i>
IL Rantoul	95.3	WSJK	> Talk/Sports: <i>Connect FM/ESPN</i>
IL Tuscola	93.5	WJEK	> Talk/Sports: <i>Connect FM/ESPN</i>
KY Madisonville	91.7	WNLJ	Signs on with Religion
ME Fairfield	93.5	WCTB	> Rock: <i>93 point 5, The Edge</i>
ME Lincoln	90.5	WWLN	Signs on with Southern Gospel: <i>God's Country</i> // WMDR-FM 88.9 Oakland
MI Muskegon	107.9	WSHZ	> Country: <i>Continuous Country Favorites</i> // WMUS 106.9
MI Whitehall	97.5	WEFG-FM	> Adult Contemporary: <i>Sunny 97 point 5</i>
MN International Falls	88.3	KITF	Signs on with News/Talk: <i>Minnesota Public Radio</i>
MN Redwood Falls	88.1	KRFI	Signs on with News/Talk: <i>Minnesota Public Radio</i>
MN Spring Valley	89.1	KVCS	Signs on with Religion: <i>VCY America</i>
MO Elsberry	101.7	KXQX	Returns to the air with 80s and 90s Rock
MO St. Louis	102.5	KEZK	Remains Soft AC, but is now <i>Fresh 102 point 5</i>
NH Plymouth	90.7	WPVH	Signs on with Religion
NJ Barnegat Light	88.1	WZBL	Signs on with Religion: <i>Hope FM</i> // WVBV 90.5 Medford Lakes
NY Utica	100.7	WRCK	> Christian Rock: <i>EMF Air 1</i>
NY Utica	107.3	WKVU	> Contemporary Christian: <i>EMF K-Love</i>
NC East Fayetteville	88.1	WWFJ	Signs on with Southern Gospel
NC Shelby	96.1	WIBT	Remains CHR but with new slogan: <i>Channel 96 point 1</i>
ND Mandan	91.3	KPHA	Signs on with Catholic Religious programming: <i>Real Presence Radio</i> // KVXR-1280 Moorhead and KWTL-1370 Fargo
OH Grove City	101.1	WOSA	> Classical // WOSU 89.7 Columbus
OH Hamilton	89.5	WHSS	Returns to the air with EWTN Catholic Religion // simulcasting new sister stations WNOP-FM 89.5 Versailles, Indiana and WNOP-740 Newport, Kentucky
OH Norwood	100.3	WMOJ-FM	> Rhythmic Oldies, remaining <i>Mojo 100 point 3</i>
OR Baker City	91.9	KESY	Signs on with Contemporary Christian // KTSY 89.5 Boise, Idaho
OR Enterprise	88.7	KETP	Signs on with News/Talk from Oregon Public Radio
PA Clarendon	102.7	WNAE-FM	> Religion: <i>Family Life Ministries</i>
SC Lexington	107.9	WLXM	Returns to the air with Religious Teaching
SD Loomis	88.1	KGRH	Signs on with Religion: <i>Good News Radio</i>
TN East Ridge	107.9	WOGT	> Classic Hits: <i>Big 107 point 9</i>
TX Holliday	90.9	KGVB	Signs on with Southern Gospel: <i>The Gospel Station</i>
TX Odem	98.3	KMJR	> Regional Mexican: <i>La Mejor</i>
TX Portland	105.5	KLHB	> Spanish Adult Hits: <i>Recuerdo</i>
TX Pearsall	103.3	KSAG	Signs on with Spanish Contemporary Christian
TX Pecos	91.3	KPKO	Signs on with Contemporary Christian: <i>AFR</i>
TX Van Horn	91.5	KVHR	Signs on with Contemporary Christian: <i>AFR</i>
UT Coalville	97.5	KZZQ	> Active Rock: <i>97 point 5, The Blaze</i>
UT Ogden	101.9	KENZ	> Alternative Rock: <i>101 point 9, The End</i>
UT Richfield	89.3	KUSL	Signs on with News/Classical from Utah Public Radio
VA Nassawadox	90.1	WHRE	> NPR News/Talk: <i>Public Radio For Hampton Roads</i> // WHRV 89.5 Norfolk
WA Eatonville	104.9	KSGX	> 90s Adult Hits: <i>Seattle's Gen X Radio</i>
WV Summerville	91.3	WSJE	Signs on with Religion
WI Allouez	106.7	WKRU	> Adult Alternative: <i>The Kruze at 106-7</i>
WI Wentworth	88.1	WWEN	Signs on with Contemporary Christian: <i>American Family Radio</i>



C Translator and LP Facilities C

Carries the programming of:

C OTHERNEWS C

AZ Safford	88.5	-----	Application for a new station dismissed
CA Butte City	90.5	-----	Application for a new station dismissed
CA Colusa	90.5	-----	Application for a new station dismissed
CA Janesville	88.9	-----	Application for a new station dismissed
CA Lompoc	xx.x	KRQZ	Finced the former owner (Trinity Church of the Nazarene) \$7000 for failure to

CA Marshall	91.5	KXCF	file for license renewal and subsequent unauthorized operation
CA Susanville	88.9	-----	Is silent
CA Williams	90.5	-----	Application for a new station dismissed
CA Yuba City	90.5	-----	Application for a new station dismissed [2 apps]
DE Camden	100.1	W261AE	Application for a new station dismissed
FL Inglis	104.3	WOGF	Petition for reconsideration of their denied application renewal
FL Melbourne	xx.x	WFIT	Is silent
IN Marengo	89.9	WBRO	Fined \$1500 failing to file for license renewal in a timely manner
			Fined \$10,000 for late filing for license renewal and subsequent unauthorized operation [this dates back to 2004], and license application accepted with call restored
IA Postville	88.3	-----	Application for a new station dismissed
ME Millinocket	90.7	-----	Application for a new station dismissed
MI Calumet	89.1	-----	Application for a new station dismissed
MI Hancock	88.7	-----	Application for a new station dismissed
MI Houghton	88.9	-----	Application for a new station dismissed
MI Houghton	89.5	-----	Application for a new station dismissed
MI Iron Mountain	88.7	-----	Application for a new station dismissed
MI Iron River	89.1	-----	Application for a new station dismissed
MI Marquette	89.3	-----	Application for a new station dismissed [3 apps]
MN Hinckley	106.5	W293AV	Is silent
MO Moberly	89.1	-----	Application for a new station dismissed
NV Fernley	89.1	-----	Application for a new station dismissed [2 apps]
NV Miriam	89.1	-----	Application for a new station dismissed
NY Boonville	89.1	-----	Application for a new station dismissed
NY Prospect	88.5	-----	Application for a new station dismissed
NY Old Forge	89.1	-----	Application for a new station dismissed
NY Westport	88.5	-----	Application for a new station dismissed
NC Clinton	89.1	-----	Application for a new station dismissed
NC Hallowhee	89.7	-----	Application for a new station dismissed
NC Laurinburg	89.3	-----	Application for a new station dismissed
NC Magnolia	89.1	-----	Application for a new station dismissed
NC Oriental	89.9	-----	Application for a new station dismissed
OH Dayton	89.1	-----	Application for a new station dismissed
OH Brookville	89.1	-----	Application for a new station dismissed
OH Miamisburg	89.1	-----	Application for a new station dismissed [2 apps]
OH Middletown	89.1	-----	Application for a new station dismissed
OH Pleasant Hill	89.1	-----	Application for a new station dismissed
OH Troy	89.1	-----	Application for a new station dismissed
OK Adair	88.3	-----	Application for a new station dismissed
PA Erie	89.5	-----	Application for a new station dismissed [4 apps]
PA Fairfield	89.5	-----	Application for a new station dismissed
PA North East	89.3	-----	Application for a new station dismissed
SC Aynor	88.5	-----	Application for a new station dismissed
SC Latta	89.1	-----	Application for a new station dismissed
SC Marion	88.5	-----	Application for a new station dismissed
TX Del Rio	89.1	-----	Petition for reconsideration of their denied application for a new station
TX Eagle Pass	88.1	-----	Application for a new station dismissed
TX Gonzales	88.9	-----	Application for a new station dismissed
TX Greenwood	89.1	-----	Application for a new station dismissed
TX Huldale	89.7	-----	Application for a new station dismissed
TX San Angelo	89.7	-----	Application for a new station dismissed [2 apps]
TX Zapata	89.3	-----	Application for a new station dismissed
UT Lake George	89.3	-----	Application for a new station dismissed
VT Burlington	89.1	-----	Application for a new station dismissed
VT Burlington	89.3	-----	Application for a new station dismissed
VT Essex Junction	89.1	-----	Application for a new station dismissed
VT Jericho	89.1	-----	Application for a new station dismissed
VT Middlebury	88.3	-----	Application for a new station dismissed [2 apps]
VT Middlebury	89.1	-----	Application for a new station dismissed
VT Montpelier	88.9	-----	Application for a new station dismissed [2 apps]
VT St. Johnsbury	89.3	-----	Application for a new station dismissed [2 apps]
VT Vergennes	89.1	-----	Application for a new station dismissed [2 apps]
VT Waterbury	89.3	-----	Application for a new station dismissed
VT Williston	89.1	-----	Application for a new station dismissed
VA Loyalsock	92.7	W224AI	Has petitioned for reconsideration of their license cancellation
VA Montpelier	91.3	-----	Petition for reconsideration of their denied application for a new station
VA Spotsylvania	91.7	-----	Petition for reconsideration of their denied application for a new station
VA Tappahannock	91.7	-----	Petition for reconsideration of their denied application for a new station
WA Clinton	89.9	-----	Application for a new station dismissed
WA Forks	96.7	KBDB-FM	Is silent after their tower took a lightning strike [along with KBIS-1490]
WI Eagle River	89.1	-----	Application for a new station dismissed
WI Iron Mountain	88.7	-----	Application for a new station dismissed
WI Minocqua	89.1	-----	Application for a new station dismissed
WI Park Falls	89.3	-----	Application for a new station dismissed
WI Rhinelander	88.7	-----	Application for a new station dismissed
WY DuBois	106.3	K292BA	Petition for reconsideration of their license cancellation
WY Rawlins	92.7	KIQZ	Is silent

 Thanks to Shawn Axelrod, Eric Bueneman, Bruce Elving, Deane McIntyre, Radio World Online, Upper Midwest Broadcasting and Wisconsin Broadcasting dot com for news.

If you hear any changes occur on your FM dial, share the news! 73

FCC FM FACILITIES

January 2011

AF	Applied For (a new station)	PC	Power (and/or tower height) change on the air
Aux	Auxiliary (backup) transmitter	PG	Power change granted
CC	Callsign change	PR	Power change requested
CL	City-of-license change	RA	Returns to the air
DE	License/permit deleted	RE	Reinstated (previously-dismissed app.)
FC	Programming (format) change	ROA	Request of Applicant
FTP	Failure to Prosecute	SI	Off the air (silent)
LC	License to Cover	STA	Special Temporary Authority
NS	Permit granted for new station	XC	Transmitter site changed
NW	New station on the air	XG	Transmitter site change granted
PA	Proposed Amendment	XR	Transmitter site change requested

Changes:

TN Dickson	91.5	WNRZ	FC; sold to Bott Broadcasting (WCRT-1160)	CO Steamboat Springs	98.9	NEW	36
AB St. Paul	97.7	CHLW-FM	PR>50kw/80m, 54-02-10/111-15-30	FL Charlotte Harbor	92.9	WIKX	NS 1.85kw/183m, 40-27-43/106-50-58 (Ramsey Leasing)
AK Bethel	91.9	KJNR	NW 3kw-V/23m, 60-47-41/161-46-18	FL Jasper	107.5	WJHC	PG 3.1kw/246m (aux); NW
AK Kiana	91.9	NEW	AF 10w-V/-42m, amendment from -28m	FL Key West	91.9	NEW	NW 6kw/90m, 30-31-19/82-57-07
AK Noatak	91.9	NEW	AF 10w-V/-11m, amendment from +11m	FL Key West	91.9	NEW	AF dismissed (Call Communications Group)
AK Sitka	89.3	KQOS	NW 500w-V/-152m, 57-03-02/135-20-02	FL Lake City	88.7	NEW	NS 1kw/50m, 24-33-18/81-48-05 (Clean Air Broadcasting Corp.)
AL Lineville	90.5	NEW	AF 500w/31m, 33-18-22/85-44-42; amendment from 51m	FL Lake City	90.1	NEW	AF dismissed (Call Communications Group; Florida Urban Radio Network Assn.)
AL Monroeville	88.9	WILF	NW 65kw/118m, 31-18-13/87-02-50	FL Orange Park	91.7	WTRJ-FM	NS 700w/34m, 30-10-46/82-42-49 (Grace Covenant Baptist Church)
AL Steele	91.1	WAYU	NW 150w-V/230m, 33-57-30/86-13-01	FL Orange Park	91.7	WTRJ-FM	PR 6.7kw/194m, 30-16-34/81-33-51
AR Batesville	88.1	KBAP	PR>250w-H (from V-only)/39m, 35-47-52/91-40-16	FL Palm Coast	91.1	WHYZ	PR 8.6kw/171m, 30-16-51/81-34-13; amendment from 6.7kw/194m at different site
AR Monticello	90.7	KUEC	PR 100w/42m, 33-36-00/91-48-41	FL White Springs	88.7	NEW	NW 4kw-V/47m (aux)
AR Pine Bluff	89.7	KUAP	PC>50kw/82m	GA Atlanta	94.9	WUBL	NS 300w-V/44m, 30-15-02/82-44-40 (Faith & Action Community Outreach)
AR Searcy	88.7	NEW	AF 1.6kw/86m, 35-12-28/91-46-20 (Educational Media Foundation)	GA Atlanta	96.1	WKLS	NW 37kw/319m, 33-44-41/84-21-36 (aux)
AR Searcy	88.7	NEW	AF 1.6kw/86m, 35-12-28/91-46-20; amendment from 1w-H/40kw-V/91m at different site	GA Atlanta	96.1	WKLS	NW 37kw/319m, 33-44-41/84-21-36 (aux)
AR Vilonia	88.7	NEW	AF dismissed (CSN)	GA Clermont	105.1	WNGA	PG>7kw
AR Walnut Ridge	88.9	NEW	NS 40kw-V/107m, 35-58-31/91-20-09 (Community Broadcasting)	GA Clermont	105.1	WNGA	PR 7kw/187m
AZ Aguila	107.3	NEW	AF 50kw/150m, amendment from 46kw	GA Roswell	107.5	WAMJ	PG>33kw/185m, 33-55-01/84-12-06
AZ Apache Junction	90.7	NEW	AF dismissed (Black Entrepreneur Assn.)	GU Agana	90.1	NEW	AF dismissed (Marianas Educational Media Services)
AZ Apache Junction	90.7	NEW	NS 2kw/18m, 33-27-27/111-29-28 (East Valley Inst. of Technology Dist. #401)	HI Honolulu	90.1	KTUH	PR>5.5kw/508m, 21-20-12/157-49-03
AZ Holbrook	92.1	KZUA	PR<78m, 34-55-13/110-07-53	HI Pahala	91.7	KAHU	PR>-39m, 19-06-02/155-34-09
AZ Willcox	89.5	NEW	AF 100w/15m, 32-16-01/109-50-00 (St. Paul Cultural Broadcasting)	IA Davenport	88.5	KALA	NW 245w/36m, 41-32-26/90-34-56 (aux)
CA Avalon	89.7	NEW	AF dismissed (Primera Iglesia Evangelica de Apostoles y Profetas)	IA Des Moines	94.9	KGGO	AF 15kw/151m, 41-49-51/93-43-53 (aux)
CA Bakersfield	92.1	KPSL-FM	PC 4.2kw/121m	IA Des Moines	94.9	KGGO	NS 15kw/151m, 41-49-51/93-43-53 (aux)
CA Bella Vista	88.5	KKRN	PR 600w/610m	IA Estherville	95.9	KILR-FM	PC>25kw
CA Carmel Valley	91.3	NEW	NS 100w/-347m, 36-28-30/121-43-40 (Colina Alta Ministries)	IA Keokuk	88.1	NEW	AF dismissed (WSUI)
CA Carpinteria	101.7	KSBL	PC>890w/496m, 34-30-10/119-50-56	ID Idaho Falls	100.5	KUPI-FM	QG from 99.1, 193m, 43-21-06/112-00-29; supercedes permit to go to 100.7 with same facilities
CA Coarsegold	94.5	KCGC	PG 480w/352m, 37-25-10/119-44-40	ID Idaho Falls	100.5	KUPI-FM	QR from 99.1 via 100.7
CA Hemet	102.5	NEW	AF 4.7kw/108m, 33-35-26/116-56-23 reinstated	ID Menan	90.9	NEW	AF 750w/241m, 43-47-22/111-58-05; amendment from 650w/252m
CA Johannesburg	98.5	NEW	NS 340w/417m, 35-28-38/117-41-58 (Mt. Wilson FM Broadcasters)	ID Menan	90.9	NEW	PG 750w/241m
CA Marshall	91.5	NEW	PR<100w/-72m (add H, was V-only), 38-09-04/122-53-12	ID Moscow	90.3	NEW	AF 270w/302m, 46-40-54/116-58-13; NS (Radio Free Moscow)
CA Riverdale	98.3	KZLA	PR>25kw/89m, 36-32-37/120-00-22; CL from Huron	ID Moscow	90.3	NEW	AF dismissed (Radio Free Moscow)
CA Susanville	100.7	KGXX	NW 6kw/-161m, 40-26-36/120-38-35	ID St. Maries	92.1	KXJO	NW 200w/7m, 47-20-08/116-34-18
CA Susanville	90.1	NEW	FC; sold to IHR Educational Broadcasting	ID Ucon	104.5	KRID	PG>33kw/182m, 43-32-33/111-53-04
CO Centennial	101.9	KKHI	AF 1.5kw/198m, 39-44-37/104-59-18 (aux); NS	ID Ucon	104.5	KRID	PR>33kw/182m, 43-32-33/111-53-04
CO Centennial	101.9	KKHI	NS 1.5kw/198m, 39-44-37/104-59-18 (aux)	IL Hamilton	88.1	NEW	NS 50kw/130m, 40-30-41/91-19-50 (Bloomington-Normal Broadcasting Corp.)
CO Denver	105.9	KALC	NW 25kw/487m (aux)	IL Le Roy	104.1	WBWN	PC>47kw/100m, 40-25-26/88-52-27
CO Howard	103.1	NEW	AF 6kw/-446m, 38-25-58/105-48-08 (Kona Coast Radio)	IL Lincoln	88.9	WLNK	PG 225w/21m, 40-09-23/89-21-40, basically undoes permit to increase power & move to 89.5
CO Salida	88.1	KMPZ	NW 200w/827m, 38-26-48/106-00-	IL Pinckneyville	104.3	NEW	AF RE 2.6kw/127m, 38-06-57/89-16-48 (Pinckneyville Community Radio)

IN Howe	89.7	WHWE	CX ROA	NC Rennert	105.7	WGQR	req. CL from Elizabethtown
IN Madison	100.9	NEW	AF 6kw/47m, 38-48-20/85-19-41 RE (Cornerstone Community Fellowship at Madison)	NC Smithfield	102.3	WWPL	PC 2.6kw/153m, 35-34-43/78-26-10; CL from Goldsboro
IN Wanatah	88.5	WTMK	FC; sold to WONU	ND Dickinson	90.9	KSLs	PR<2kw/131m, 46-55-15/102-43-49
IN Warsaw	88.7	WQKV	QG from 88.5, 4.5kw/90m, 41-04-26/85-53-46	ND Fort Pierre	90.3	KSLP	PR<2kw/56m
KS Brewster	90.1	KZNK	NW 90kw/305m, 39-14-31/101-21-38	NE Bennington	93.3	KTWI	PR 6.1kw/202m, 41-18-32/96-01-33
KS Chanute	90.3	KJVL	FC; transferred from Great Plains Christian Radio to KANU	NE Crawford	88.1	KCFD	PR>1.5kw/201m, 42-45-38/103-39-26
KS La Harpe	91.9	KFKB	PR<750w/66m; amendment to change CL from Girard	NE Gibbon	97.7	KMTY	PR>100kw/125m, 40-38-33/99-04-52; CL from Holdrege
KS Nashville	88.1	NEW	AF 200w/258m, 37-23-10/98-15-44 (Harvest Time Apostolic Ministries)	NE Hartington	88.3	NEW	PR>100kw/125m, 42-23-44/97-37-17
KS Nashville	88.1	NEW	AF 200w/258m, 37-23-10/98-15-44; amendment from 1kw/57m at different site & on 88.5	NE Lincoln	89.3	KZUM	PR<28m, 40-46-39/96-39-10; amendment to include site change
KS Sun City	88.5	NEW	NS 47kw/146m, 37-38-35/98-49-13 (Joshua Springs Calvary Chapel)	NH Bow	91.5	WCNU	PG>190w/144m, 43-07-05/71-32-57
KS Wichita	90.7	KYWA	AF 3kw-H/48m, 37-41-08/97-20-16 (aux)	NH Claremont	106.1	WHDQ	NW 2kw/326m, 43-23-48/72-18-01 (aux)
KS Wichita	90.7	KYWA	NS 3kw-H/48m, 37-41-08/97-20-16 (aux)	NJ Berlin	88.1	WNJS-FM	PC>1w-H/80w-V/287m
KY Paducah	91.7	WNFC	NW 15kw/90m, 37-03-41/88-50-26	NJ Cherry Hill	89.5	WKVP	PG 1.9kw-V/61m, 39-54-43/74-59-21
LA Cameron	91.7	NEW	PR<100w/9m, 29-47-28/93-19-06	NJ Cherry Hill	89.5	WKVP	PR 1.9kw-V/61m, 39-54-43/74-59-21 reinstated & granted
LA Carencro	103.7	KLWB-FM	PG>14.5kw	NJ Franklin	102.3	WSUS	AF 600w/214m, 41-08-37/74-32-21 (aux)
LA Lafayette	90.9	KIKL	PG 8.2kw/115m	NJ Franklin	102.3	WSUS	NS 600w/214m (aux)
LA Lake Providence	89.1	KLEC	XR 32-45-38/91-10-47	NJ Franklin	102.3	WSUS	PR<218m
LA Slidell	91.3	NEW	NS 100w-H/23kw-V/85m, 30-32-09/89-51-52 (Crisis Pregnancy Help Center of Slidell)	NJ Franklin	102.3	WSUS	PR<218m; amendment from 600w/214m
LA Zachary	93.7	KRDJ	req. CL from New Iberia	NJ New Brunswick	98.3	WMGQ	AF 1.25kw/156m (aux)
MA Boston	103.3	WODS	AF 16kw/270m (aux) (use old main as aux)	NJ New Brunswick	98.3	WMGQ	NS 1.25kw/156m (aux)
MA Boston	103.3	WODS	PC 8.7kw/351m	NJ New Brunswick	98.3	WMGQ	PR<158m, 40-28-37/74-29-33
MA Fitchburg	90.1	NEW	PR>450w/169m, 42-30-27/71-49-37	NJ North Cape May	106.3	WFNE	QG from 106.7, 6kw/91m, 38-59-45/74-50-19
MD California	89.7	NEW	NS 7kw/98m, 38-20-57/76-37-34 (Delmarva Educational Assn.)	NJ Point Pleasant	95.9	WRAT	PR 1.45kw/146m, 40-09-57/74-01-56
MD Leonardtown	91.7	NEW	NS 50kw-V/80m, 38-10-04/76-22-40 (Chesapeake Catholic Radio)	NM Alamo Community	107.5	NEW	PR>10kw-V (drop H)/-41m
MD Morningside	95.5	WPGC-FM	NW 14kw/138m (aux)	NM Truth or Consequences	91.1	NEW	NS 70w-H/1.06kw-V/806m, 32-58-04/107-13-37 (KYCC)
MI Bear Creek Township	89.3	WTLI	PR<17kw	NM Truth or Consequences	91.1	NEW	PR<80w-H/1.2kw-V/805m-H/807m-V; amendment from 589m-H/591m-V
MI Bear Lake	100.7	WCUZ	QR from 100.1, 25kw/132m, dismissed due to inability to change Custer allotment from 100.5 to 93.3.	NV Alamo	91.3	KQLN	NW 500w-V/-280m, 37-23-01/115-10-41
MI Custer	93.3	NEW	PA from 100.5, to allow WCUZ to move from 100.1 to 100.7. Dismissed; mutually exclusive with Onekama proposal.	NV Amargosa Valley	105.9	NEW	PG<51kw-H/-19m, 36-38-33/116-23-53
MI Highland Park	88.1	WHPR-FM	PG>12w H&V (add V), 42-24-29/83-05-30	NV Amargosa Valley	97.9	NEW	PA from 105.9, class C1, dismissed for failure to prosecute.
MI Huron Township	89.5	WDTP	PG 700w/95m	NV Battle Mountain	91.9	KPMJ	NW 100w/684m, 40-37-15/116-41-18
MI Lansing	89.7	WLNZ	PR>1kw H&V (add H)/33m	NV Las Vegas	91.1	KVKL	PC>41kw/325m, 35-37-41/115-16-24
MI Mattawan	92.5	WZUU	PR 4.7kw/111m	NV Logandale	106.1	KSNN	req. CL from St. George, Utah dismissed. Was contingent on Amargosa Valley move from 105.9 to 97.9.
MI Onekama	93.3	NEW	GA, class A, mutually exclusive with Custer proposal.	NV Silverpeak	106.1	NEW	PA, class C, dismissed. Would interfere with 105.9 Amargosa Valley.
MI Saginaw	98.1	WKCO	NW 50kw/104m, 43-25-00/83-55-05 (aux) (use old main as aux)	NY Albany	90.3	WAMC-FM	AF 2.8kw-V/621m (aux)
MI Saginaw	98.1	WKCO	PC>150m, 43-25-04/83-55-06; revert to original facility & use old main as aux	NY Albany	90.3	WAMC-FM	NS 2.8kw-V/621m (aux)
MN Dodge Center	88.1	NEW	AF dismissed (We Have This Hope Christian Radio)	NY Albany	90.3	WAMC-FM	PR>624m (aux)
MN Hibbing	88.7	WHPJ	NW 6kw/41m, 47-25-54/92-56-33	NY Amherst	92.1	NEW	AF dismissed (Monument of Faith Fellowship Center; Helen M. Randall Memorial Baptist Church; Lockport SDA Church
MN Stewartville	88.1	NEW	NS 1.9kw/278m, 43-34-15/92-25-37 (Rochester Community & Technical College)	NY Canaseraga	97.1	WZHD	PG>3.9kw/95m, 42-24-06/77-39-37
MO Ash Grove	91.5	KOOH	PR>75kw/105m	NY Esperance	89.9	WOPG	NW 1.4kw-V/306m, 42-46-29/74-40-55
MO Chillicothe	90.3	KCKE	PG 32kw/82m, 39-46-53/93-18-10	NY Liberty	88.1	WGWR	PR 350w/246m, 41-48-04/74-47-05; amendment to add change in coordinates
MO Steelville	107.3	KLPW-FM	PR 22kw/62m, 38-02-41/91-30-05	NY Port Chester	96.7	WCTZ	PR>3.1kw/143m, 40-54-44/73-46-55; FC, sold to EMF
MS Oxford	105.1	NEW	AF 3.1kw/140m, 34-28-21/89-31-23; amendment from 2.4kw/160m at different site	NY Quogue	91.7	NEW	AF dismissed (Community Bible Church)
MT Arlee	90.3	KJFT	400w H&V on the air (adds H, was V-only)	OH Cincinnati	90.9	WGUC	PR 18.5kw/209m, 39-07-30/84-29-56
MT Arlee	90.3	KJFT	PG>400w	OH Findlay	100.5	WKXA-FM	NW 20kw/115m (aux)
MT Big Timber	89.3	KYPB	NW 500w/126m, 45-45-01/109-57-16	OH Hopedale	91.7	NEW	PR<310w/76m, 40-17-25/80-53-17
MT Fairfield	102.7	KEAU	PR<62.2kw-V (remains 93.3kw-H)	OH New Albany	101.7	WNKO	PG>22kw/107m, 40-08-38/82-38-20
MT Highwood	101.7	KZUS	PR<62.3kw-V (remains 93.4kw-H)	OH Youngstown	88.5	WYSU	PC>115m
MT Kalispell	88.7	KLKM	PC<3.3kw/785m	OK Ada	91.9	KOUA	PR 1.5kw/82m
MT Livingston	90.1	KYPM	NW 440w/265m, 45-35-51/110-32-45	OK Broken Arrow	90.5	KNYD	NW 2w-H/98kw-V/173m, 35-47-51/95-54-02 (aux)
MT Vaughn	103.9	KUUS	PR<2.2kw-V (remains 3.3kw-H)	OK Hugo	91.3	NEW	NS 99kw/91m, 34-00-25/95-27-59 (One Creek Valley Church)
NC Boiling Spring Lakes	99.9	WKXB	NW 1.1kw/236m, 34-14-37/78-07-24 (aux)	OK Loyal	89.3	KIEL	PR>75kw-V (but drop H) dismissed
NC Buxton	91.9	NEW	NS 50kw-H/49m, 35-16-02/75-32-07 (R. Hatteras)	OK Miami	100.9	KGLC	PR>6kw/84m, 36-53-24/94-47-08
NC Engelhard	91.9	NEW	AF dismissed (Spirit Broadcasting Group)				
NC Hillsborough	102.5	WPLW	PC 1.5kw/204m, 36-06-13/78-57-57; CL from Louisburg				
NC Ocracoke	90.1	WOVV	NW 650w/19m, 35-06-43/75-58-38				

OK Seminole	89.1	KXTH	PC>2.6kw				28
OK Seminole	89.1	KXTH	PG>2.62kw H&V (was V-only)/115m	TX Houston	91.7	KTRU	FC; sold to KUHF-88.7. Expected to become classical KUHC.
OK Wilburton	91.1	NEW	AF dismissed (Eastern Oklahoma State College)	TX Houston	93.7	KKRW	AF 37kw/358m, 29-33-44/95-30-35 (aux)
ON Brockville	91.9	CBOB-FM	QG from 106.5, 2kw/98m	TX Laughlin AFB	106.9	KDRX	NW 6kw/100m, 29-24-21/100-39-41
ON Pembroke	104.9	CIMY-FM	PR>31.6kw/91m	TX Laughlin AFB	106.9	KDRX	PG 6kw/100m, 29-24-21/100-39-41
ON Renfrew	96.1	CHMY-FM	PR>7.1kw/129m	TX Midland	89.1	NEW	AF dismissed (Vision Celestial)
OR Chemult	89.5	KSKX	NW 100w/578m, 43-18-20/121-42-58	TX San Antonio	92.9	KROM	AF 2.5kw/106m (aux)
OR Hines	89.1	KODL	PG<300w	TX Springtown	89.1	KSOX	PG>50kw
OR Hines	89.1	KODL	QG from 90.9, 300w/267m	TX Sulphur Springs	91.9	NEW	PR<950w/46m dismissed
OR Hines	90.9	KODL	FC; sold to CSN	TX Sulphur Springs	91.9	NEW	PR>950w/46m, 33-09-05/95-36-13; amendment from 1kw/45m
OR Hood River	90.1	KHRV	PC 65w/227m, 45-39-45/121-28-14	TX Trinity	89.7	KTYR	PR<151m, 31-15-52/95-32-05
OR Siletz	91.7	NEW	AF 880w/297m, 44-45-24/124-02-50 (Firebare)	TX Weatherford	88.5	KMOX	PG>100kw
OR Toledo	91.7	NEW	AF dismissed (Community Presbyterian Church of Waldport)	TX Weatherford	88.5	KMOX	PR>100kw, amendment to add H
PA Elysburg	90.9	NEW	AF 290w/196m, 40-50-18/76-38-47 reinstated (Four Rivers Community Broadcasting Corp.)	TX Wellington	91.7	NEW	NS 2kw/124m, 34-47-24/100-10-24 (La Promesa Foundation)
PA Elysburg	90.9	NEW	AF dismissed (Four Rivers Community Broadcasting Corp.)	UT Beaver	90.7	KEZB	PG<-155m, 38-17-13/112-38-19
PA Farmington Township	106.1	WCOP	PG 3.2kw/135m, 41-26-31/79-26-40	UT Beaver	90.7	KEZB	PR<-155m, 38-17-13/112-38-19
PA Kulpmont	90.5	NEW	NS 375w/212m, 40-47-31/76-23-08 (Apostolic Faith Network)	UT Kanab	105.1	KPLD	QR from 101.1
PA Mount Cobb	90.3	WFTE	PR<12m, 41-23-09/75-24-10	UT Monroe	88.5	KUXU	NW 600w/973m, 38-23-08/112-19-57
PA Philadelphia	90.1	WRTI	NW 10.6kw-H/9.3kw-V/308m, 40-02-19/75-14-14 (aux)	UT Monticello	88.1	KUHU	NW 280w-V/1048m, 37-50-25/109-27-41
PA Summerdale	91.7	WJAZ	PC>1kw/214m	UT Ogden	88.1	KWCR-FM	PG>25w/1249m, 41-12-00/111-52-55
PA Tunkhannock	91.3	WCIN	PC 250w H&V (add H)/350m, 41-31-28/76-04-19	UT Park City	91.9	KPCW	PR 6kw/12m
PA Warminster	89.3	WRDV	PC>85w-H/1.6kw-V	UT Price	91.9	KEYP	PR<99w/327m, 39-36-33/110-48-50
PA Warminster	89.3	WRDV	PG>85w-H/1.6kw-V rescinded, returned to pending status	UT Provo	94.9	KHTB	NW 21.5kw/844m (aux)
PA York	98.5	WYCR	NW 10.5kw/247m, 39-51-26/76-56-54 (aux)	UT Roosevelt	89.3	KUOU	NW 2.5kw-V/524m, 40-32-16/109-41-57
PR Culebra	102.1	WNVE	NW 6kw/178m, 18-19-19/65-17-59	VA Bowling Green	91.3	NEW	AF dismissed (CSN)
RI Providence	88.1	WELH	PC>4kw H&V (add H)/41m, 41-51-27/71-19-06	VA Eastville	91.9	NEW	AF 3.7kw/127m, 37-21-32/75-56-31 (WHRO)
SC Branchville	88.9	NEW	AF 3.6kw-H/18kw-V/90m, 33-12-25/80-36-47 (Spirit Broadcasting Group)	VA Lynchburg	93.7	WKHF	PR>1.6kw/197m
SC Orangeburg	102.9	WQKI-FM	PG 3.7kw/125m; supercedes permit to go to 95.7	VA Montpelier	91.3	NEW	AF dismissed (Synergy Project)
SC Parris Island	103.1	WGZO	PR 11kw/115m, 32-13-36/80-50-53	VA Shenandoah	107.1	NEW	AF 175w/562m, 38-36-05/78-38-01
SC Saint George	88.9	NEW	AF dismissed (Faith Cathedral Fellowship)	VA Sweet Briar	89.5	WNRS-FM	QR from 89.9, 20kw/173m, 37-23-17/78-50-23; supercedes permit for 190m at different site
SD Hartford	91.3	NEW	NS 40kw-V/207m, 43-29-22/97-26-33 (Catholic Chancery Office)	VA Tappahannock	91.7	NEW	AF dismissed (WHRO)
SD Huron	88.7	KVCH	PG>60kw H&V (add H)/161m, 44-11-39/98-19-05	VI Christiansted	90.7	WXZT	QC from 90.9
SD Huron	88.7	KVCH	PR>60kw H&V (was V-only)/161m, 44-11-39/98-19-05	WA Aberdeen	90.3	NEW	NS 25kw/89m, 46-56-01/123-43-56 (Grays Harbor LP FM)
SD Loomis	88.1	KGRH	NW 800w/37m, 43-42-04/98-03-45	WA Chehalis	89.7	NEW	AF dismissed (KBOO)
TN Friendsville	99.1	WNML-FM	PR<93m, 35-42-42/84-01-21; CL from Loudon	WA Clarkston	88.1	KUCC	PR>670w
TN Jefferson City	99.3	WNRX	PR<1kw/86m, 36-06-03/83-30-20	WA Littlerock	89.7	NEW	AF dismissed (Alliance for Democracy, South Puget Sound Chapter)
TN Livingston	89.1	NEW	AF 1.2kw/198m, 36-25-55/85-23-25 (Cookeville Christian Broadcasting)	WA McCleary	89.7	NEW	AF dismissed (Samsno Educational Media)
TN Lynchburg	91.9	WGBO	NW 900w/107m, 35-16-32/86-21-37	WA Montesano	89.7	NEW	AF dismissed (Horizon Christian Fellowship)
TN Martin	90.3	WUTM	PG 175w/86m, 36-20-23/88-51-35	WA Onalaska	89.7	NEW	AF dismissed (Lewis Co. Educational Broadcasting)
TN Memphis	104.5	WRVR	AF 22kw/140m (aux)	WA Palouse	90.1	NEW	AF dismissed (Country Roots Preservation Group)
TN Memphis	104.5	WRVR	NS 22kw/140m (aux)	WA Pullman	89.9	NEW	NS 350w/240m, 46-37-59/117-05-17 (KWSU)
TN Nashville	89.1	WNAZ-FM	FC; sold to Bott Broadcasting (WCRT-1160). Also affects translators: 93.9 Gallatin, 99.5 Clarksville (not on the air),	WI Minocqua	95.9	WMQA-FM	PG>22kw/107m
TX Benavides	107.7	NEW	AF dismissed (Charles E. Crawford)	WI Stoughton	95.9	WBKY	PR 2.65kw/153m, 42-51-15/89-17-41; CL from Portage; amendment from 2.5kw/157m
TX Borger	91.3	NEW	NS 20kw/87m, 35-39-02/101-35-10 (Educational Music Foundation)	WY Hillsdale	92.3	KYOY	PG>6kw/100m, 41-09-58/104-31-16
TX Brownsville	99.5	KKPS	PR>453m, 26-08-56/97-49-18	WY Jackson	106.7	NEW	AF 1.1kw/789m, 43-35-50/110-52-12 reinstated (CSN)
TX East Bernard	89.1	NEW	AF dismissed (Christ is Life Church)	WY Jackson	106.7	NEW	AF 4.2kw/789m, 43-35-50/110-52-12; amendment from 480m and to change site
TX Hamilton	107.7	KHHG	QR from 104.9, 600w/98m, 31-43-08/98-08-39	WY Jackson	89.1	KHOL	AF 600w/811m-H/809m-V, 43-35-50/110-52-12 (aux)
TX Harlingen	94.5	KFRQ	PG>453m	WY Jackson	89.1	KHOL	NS 600w/811m, 43-35-50/110-52-12 (aux)
TX Holliday	90.9	KGVB	PG<7.5kw/107m, 33-44-18/98-54-28	WY Kaycee	88.7	NEW	NS 2kw/72m, 43-53-41/106-40-48 (KUWR)
TX Holliday	90.9	KGVB	PR<7.5kw/107m, 33-44-18/98-54-	WY Lovell	107.1	KWHO	PG>18kw/419m, 44-34-13/108-49-09
				WY Rozet	99.1	KLSX	NW 25kw/96m, 44-17-33/105-26-10

WTFDA DISCUSSION BOARDS

<http://www.wtfda.info>



The WTFDA WEBSITE

<http://www.wtfda.org>

PHOTO NEWS



Jeff Kruszka, Editor
 1909 Lost Lake Place
 Pearland, TX 77581
 jkruszka@sbcglobal.net

January 2011

Roy Barstow checks in again from 'ol Cape Cod (Teaticket, MA). Roy lives in a fantastic location for coastal DX, and his amazing setup of antennas allows him to get stuff like 900+ mi Tr and 2-hop Es.



WMEB-9 Orono, ME
 249 mi Tr seen 7/13/10



WLBZ-2 Bangor, ME
 244 mi Tr seen 7/13/10



WWAY-46, Wilmington, NC
 660 mi Tr seen 7/29/10



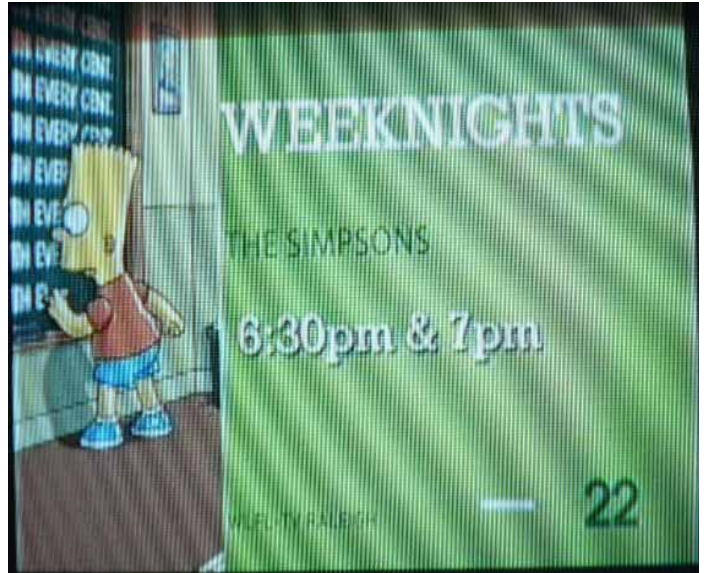
WUNJ-29 Wilmington, NC
 660 mi Tr seen 7/29/10



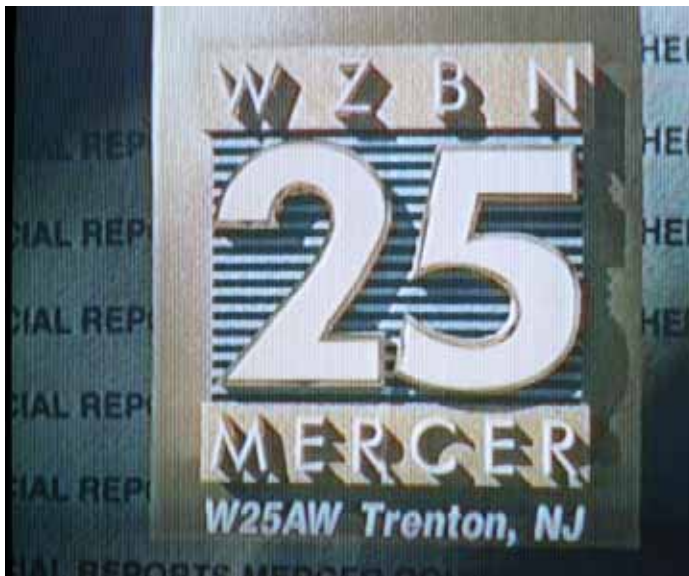
WFXI-8 Morehead City, NC
 550 mi Tr seen 7/29/10



WECT-44 Wilmington, NC
660 mi seen 7/29/10



WLFL-27 Raleigh, NC
587 mi Tr seen 8/10/10



W25AW Trenton, NJ
237 mi Tr seen 8/11/10



WSFX-30 Wilmington, NC
660 mi Tr seen 9/2/10



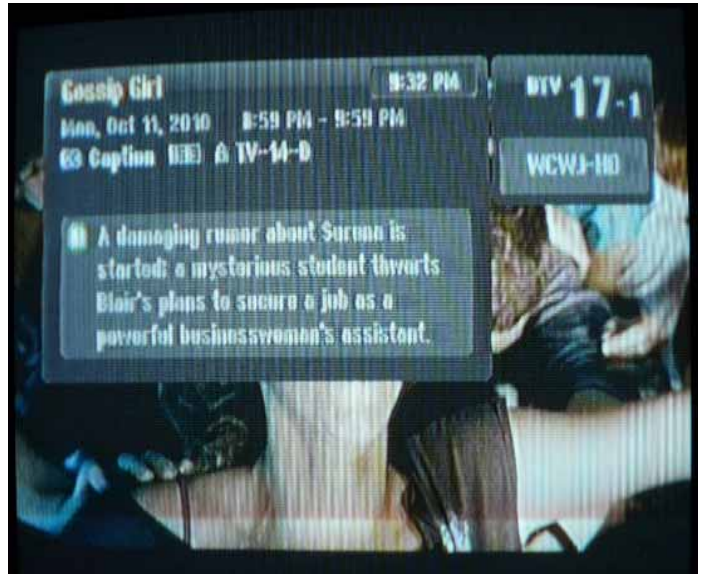
WNCT-10 Greenville, NC
562 mi Tr seen 9/2/10



WVAW-LD-16 Charlottesville, VA
485 mi Tr seen 9/3/10



WCAV-19 Charlottesville, NC
485 mi Tr seen 9/3/10



WCWJ-34 Jacksonville, FL
992 mi Tr seen 10/11/10
"WOW!!!" - jk

73's and best of DX for the new year, JEFF

TV NEWS CONTINUES FROM PAGE 9

associated commercial (full power analog) TV station on channel 38.

The Distributed Transmission System for KVEA-39 near Los Angeles includes the following four transmitters:

- #1 – Mt. Harvard
1000kw/911m, 34-12-48/118-03-41
- #2 – Table Mountain
50kw/702m, 34-22-59/117-39-51
- #3 – Oat Mountain
25.1kw/589m, 34-19-39/118-35-23
- #4 – Oat Mountain
16.7kw/569m, 34-19-39/118-35-23

Yes, there are two at the same site. Presumably they are directional in different directions.

It is not clear which transmitter(s) KVEA wishes to change.

The two channel 6 allotment proposals, in Nevada and Utah were for the *analog* facilities

of KBCJ and KBNY. Both stations have been deleted. The FCC would have considered the proposals anyway, if anyone else had expressed interest in using the channels in their new locations. However, since both allotments were for *analog* stations, the Commission ruled that it "...no longer has the authority to act on rulemaking proposals in the full-power analog television service."

I'm not sure what's up with channels 45 and 46 in Philadelphia. WFMZ already holds a permit for a Replacement Translator with 200 watts on channel 47 at this site. (the KYW-TV 3/RF26 tower) The proposed 300-watt channel 45 transmitter – and the 4.7kw Distributed Transmission System transmitter – would also be on the KYW tower. The channel 45 application was filed only two days after the DTS application.

I suppose it's possible the three transmitters are to be directional in different directions.

Good DX!

WTFDA EMAIL REFLECTORS

Enhance your DXing experience! Entertaining and informational.
E-skip alerts! Tropo alerts! DX discussion and more!

For WTFDFA members! Sign Up Today!

The WTFDFA list with 194 users...send an email to tvfmdx-subscribe@wtfda.info

And for AM Dxers there's the AMDX list. To join, send a blank email to amdx-subscribe@wtfda.info



Coast to Coast TV DX

Featuring reports from the entire United States and all of Canada.

Send reports by the 15th of each month to:

Nick Langan

1040 Riverview Drive

Florence, NJ 08518

E-mail: nickl@wtfda.org (East) wtvdx@wtfda.org (West)

The Editor's Note

Happy New Year! Hopefully your resolutions for 2011 include large amounts of DX. If only we could control the amount we receive. At any rate, we continue to watch for winter E-Skip activity, as there were signs of it brewing during the last couple weeks of December. Keep an eye on the dials. Coast to Coast TV DX wishes you and yours a happy and healthy year to come.

Roy Barstow

Teaticket, MA

Sept. 2

W38DL-D Adams, Ma. New
 24 WTAT Charleston, SC. 777 Miles
 30 WAFX Wilmington, NC. 660 Miles New
 10 WNCT Greenville, NC. 562 Miles New
 34 WCIV Charleston, SC. 777 Miles
 7 WHRE Virginia Beach, Va.
 32 WVIR Charlottesville, Va.
 14 WGPX Burlington, NC. 614 Miles
 34 WPXW Manassas, Va.
 15 WFDC Arlington, Va.
 25 WTVR Richmond, Va.

All the above while Hurricane Earl off Florida

Sept. 3

16 WVAW-LD Charlottesville, Va. 488 Miles
 41 WUTB Baltimore, Md.
 32 and 34 Philly

Sept. 7

34 WPXV Jacksonville, NC. 574 Miles
 44 WECT Wilmington, NC. 660
 32 WITN Washington, NC. 565
 20 WUND Edenton, NC. 495
 9 WSKY Manteo, NC. 530
 47 WYDO Greenville, NC. 562
 47 WCSC Charleston, SC 777
 24 WTAT Charleston, SC. 777
 36 WMMP Charleston, SC. 777

Sept. 18

15 WPSU Clearfield, Pa.
 38 WMAR Baltimore, Md.
 47 WMDT Salisbury, Md.
 48 WRC DC
 35 WDCA DC

Sept. 25

14 WGPX Burlington, NC. 614 Miles
 15 WRPX Rocky Mount, NC. 547
 27 WLFL Raleigh, NC. 587
 32 WITN Washington, NC. 565
 9 WSKY Manteo, NC. 530
 23 WUNK Greenville, NC. 562
 20 WUND Edenton, NC. 495
 34 WPXV Jacksonville, NC. 574

Oct 11

East Va. in strong
 20 WUND Edenton, NC. 495 Miles
 34 WPXV Jacksonville, NC. 574
 34 WCWJ Jacksonville, FL. 992 New #
 2 from FL.

Nov 12

23 WUNK Greenville, NC 562 Miles
 32 WITN Washington, NC. 565
 34 WCIV Charleston, SC. 777
 42 WRAY Wilson, NC. 570
 27 WLFL Raleigh, NC. 587
 10 WNCT Greenville, NC. 562
 24 WTAT Charleston, SC. 777
 36 WMMP Charleston, SC. 777
 50 WCBD Charleston, SC. 777 New

These were the best days for Fall DX. Many other days had good DX down to E.Va. Pa, Md, etc. Was surprised on Oct. 11 to pick up 34 WCWJ Florida and nothing else from FL coming in. It will be only a matter of time and other stations from Miami and other Florida stations start to come in, that is if I am still above ground.

DTV Total = 261

Roy Barstow- Teaticket, MA. Yea OLD CAPE COD

Dennis Park Smith

3605 Sam Remo Drive
 Santa Barbara, CA 93105-2523
 Tel: (805)687-7803
 Times 24-hour PDT

This report is for November 2010. Not much southern Calif coastal tropo to San Diego/Tijuana up to 220 miles, typical of this changing season. It was "best", such as it was, on Nov 15-16. This summer's ocean temp was only 60F and now is 50F, both colder than usual, cutting down on tropo.

Nov 1-5 Variably poor-very poor
 Nov 6-11 None
 Nov 12-15aft Var. poor-very poor
 Nov 15eve-16eve Fair
 Nov 16eve-18 Var. poor-very poor
 (Continues on page 27)

6 Meter/2 Meter Amateur DX



50 Mhz
The *Magic* Band



Peter Baskind, N4LI
3225 Forest Hill-Irene Rd
Germantown, TN 38138
N4LI@ARRL.net

While conditions are quiet on the band, I thought it might be a good time to discuss a part of the hobby that is important to many hams – the exchange of QSL cards. For many hams, their collection is a great matter of pride, the display of which can be rather impressive.

It has been said many times that a QSL card is “the final courtesy” of a contact. This is true, of course. But, there are many reasons to trade QSLs with another operator. Further, there is both art and science involved in QSLing.

A “QSL” is typically a card, often measuring 4”x6”, to commemorate or confirm a contact between two amateur radio operators. They can be traded for many reasons: as a token of a fun or memorable contact, as part of a collection in itself, or as a means to work toward some sort of award or goal. For VHF operators, the VUCC award for confirming 100 grid squares or “WAS,” for working all states on a band, are the most common awards requested.

QSL cards are as varied as the operators who send them. But, at their most basic level, they all should contain some standard, basic information:

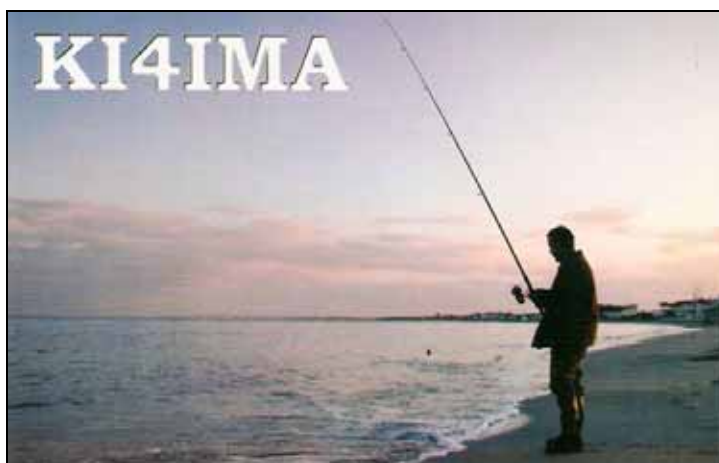
- The callsigns of both stations.
- The location of the sender.
- The date and time of the contact.
- The frequency or band.
- The mode of the contact (e.g., SSB, FM, etc.).
- A signal report.

Beyond that, everything else is optional.

In my years on the bands, I have received many cards. No two are seemingly alike. But, as long as all the information is correct, even the most basic card is sufficient to confirm a contact:

SOUTH CAROLINA	
YORK COUNTY	
GRID SQUARE EM-96	
A A 4 S. C. / EM96	
RIC PORTER	QSO WITH N4LI
PO BOX 392	DATE 9 June 2006 TIME 23:19 GMT
FORT MILL, SC	BAND 6 MTRS MODE SSB X 2
USA 29716	REPORT 57-9992 PSE TNX QSL

Others take aesthetics more seriously. QSL cards can be more than just bare facts; they can be an artistic statement, showing what is important in the operator’s life or what he finds interesting. Very often, these are two-sided affairs, with a picturesque scene on front and the pertinent contact information on the reverse:



Some cards show the operator's shack, antennas, or even his family. The only limitations are imagination and budget. Some hams generate their own cards as needed. With new software programs and high-quality printers, this is an attractive option for many hams. But if one uses a lot of cards, it might be better to patronize one of many vendors that sell cards.

Pre-printed cards can range in price from just a few cents a card to fifteen or twenty cents a card for full-color custom. Some of the best vendors are overseas. My cards were made in Germany, and I have been very happy with them.

The most important thing about QSLing – particularly on VHF – is to have some cards. VHF guys are always looking for grids, and yours might be the one he needs. For now, electronic QSLing – like Logbook of the World, *etc.* -- does not count toward VHF awards. So, the old-fashioned QSL card is still in vogue. While there really is no obligation to return a QSL, failing to do so is considered rude. No one wants to be categorized that way.

AUTOMATED DTV LOGGING

I have been working on a project to automate DTV scanning for the times I can't be in the shack when tropo or Es appears. Many times I (and others as well) have left a tuner on to hopefully decode a new station that we think may be coming in but can't stay in the shack to watch it happen. I had used this method to get my three DTV Es receptions and half a dozen tropo logs. That was good, but I want more!

I have recently purchased and setup a SiliconDust HDHomerun network DTV tuner, with which I can auto scan and save the results to a file. I am sure some of you are familiar with this and maybe are doing it, but I am not aware of it. In fact, I bought the unit with two separate tuners allowing me to use different antennas at the same time. Also, I hope to set up a web site with real time updates of what stations are coming in.

The second part of this project is a special antenna for this purpose. I have been thinking about this for several years and just recently decided to build it. I have 6 independent 4 bay UHF antennas set up in a circle, each 60 deg apart from its neighbor. I bought them on eBay for less than \$40 a pair. These will be accessed one at a time through a 6 position coax switch used in microwave applications. I found quite a few available on eBay as well for \$50 or less. This will save me the cost of 6 coax cables from my tower! The beauty of such

a system is to be able to "look" in six different directions quickly and with computer control without wearing out a rotor. Since I will be using this antenna for scanning I have dubbed it "Scantenna". Unfortunately the onset of winter prevents me from setting it up on my tower, but spring will arrive eventually.

The second tuner on the HDHomerun will be connected to the DX antennas to look for stations on a narrow azimuth. –Mike Glass, Indianapolis

(12/19)My automated DTV (as per Russ KB8U) web site is up now, but not all the features are working yet. To check it out go to: www.n9bnn.ham-radio-op.net/TV

(12/20)My version of Russ Dwarshuis' Automated TV DX web site is now fully functional. Anyone near Indianapolis will be able to see what is going on with DTV DX. However, my antennas are very directional and may not give a clear picture of DX activity in all directions. I hope to have my Scantenna up when the weather warms up a little and see how that works. Right now the antenna azimuth is 115 deg which is towards Cincinnati.

Russ is working on a Windows version of his program that will be easier to use. The current version that I am using runs on Linux and was a bit of a pain to set up, but very worth it. –Mike Glass, Indianapolis

THE RAY DEES RDS DECODER



Those of you using a Conrad RDS Manager for decoding RDS signals from your FM tuner might be interested in this updated decoder manufactured by WTFDA member Ray Dees.

This decoder measures 5 inches long by 5 inches wide and is 2 1/4" tall, just a little larger than the RDS Manager. The display measures 1 1/8" by 2 3/8". The front of the unit has four buttons. Upper left is the on/off power button. Upper right is the mode button. The two bottom buttons adjust brightness and contrast of the display.

The RDS decoder includes a 6vdc wall wort but in the back of the unit you will notice a jack for a USB connector. A USB cable can be connected to your computer to provide power to the unit instead of the wall wort.

In back of the unit is a BNC connector to connect the input from your tuner and in my case I needed to get an RCA-to-BNC adapter from Radio Shack. You will also find a jack for the wall wort, a USB port and a serial port to let you use the RDS Decoder with an older computer that has a port for a serial cable.

Let's talk about the Mode button in the front of the RDS Decoder. Default mode is what you see when you turn on the unit. The display shows you PI code (UL), call letters (UR), program type, title and artist. Also, if the station provides it, you'll read today's date (LL) and time (LR). PI code and call letters show up almost immediately when you tune to a station.

Press the Mode button and you will see the station's radiotext. There are two types of radiotext; A and B. You may read one or the other or both. Press Mode one more time and you will read the default screen in much greater detail.

The RDS decoder functions very well as a standalone unit. PI codes and call signs are almost instant. The unit does not hold the display when you tune from station to station. Use the RDS decoder with your computer and software if you need to see a PI decode (as in overnight unattended DX logging). The RDS decoder will work with Esslinger software or whatever works with the Conrad RDS Manager.

I intend to use mine in the summer as a standalone unit for E skip DXing. In my opinion, it's a very sensitive unit and I don't see a real need to connect it up to my computer.

Ray Dees has a website dedicated to the RDS Decoder. It's <http://www.raydees.com>. Check Ray's site for pricing and ordering information. You can contact Ray at info@raydees.com or look in the *DX Equipment Forum* at <http://www.wtfda.info> to see what Ray is up to at the moment.



Figure 1 Rear View of RDS Decoder

Yagi Dipole for Fringe TV

Constructional Features of the Novel Television Antenna Are Disclosed. Installers Are Displaying Much Interest in the Old Japanese Array.

The mention in a recent issue of RADIO & TELEVISION RETAILING, of the Yagi array as a television antenna has brought a number of inquiries on the subject.

The Yagi array is not exactly new, taking its name from descriptions in Japanese literature of 20 or 30 years ago. The January 1937 Proceedings of the IRE contains a mathematical treatment of the antenna. So far as we know, however, no description has been available on a Yagi array for television, written for the servicer.

The illustrations on this page show a type of Yagi antenna designed and used by Max Weiner, engineer of WNEW, New York, for FM and television reception in outlying areas. With it, according to the designer, stronger signals have been pulled in than with lazy-H type 4-element dipoles on masts twice the height.

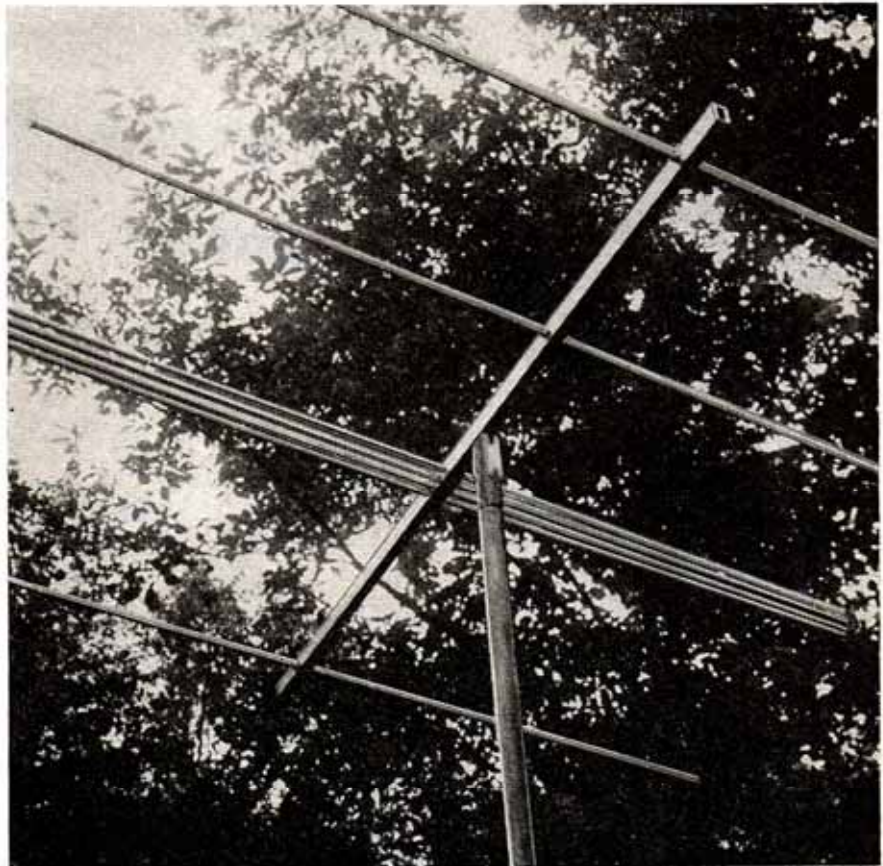
Of particular interest is the report that the array has excellent broadband characteristics, providing a fairly flat response as wide as 28 mc, while showing an extremely sharp directional property.

In one case, says Weiner, signals were fed to a receiver sheltered deep in the lee of a mountain which blocked the direct wave from the transmitter 60 miles distant, by picking the wave's reflection off a mountain several miles distance across the lake.

As seen in the photo and in the diagram, the directors and reflectors are spaced much more closely than with conventional arrays, while an unusual triple folded-dipole cluster makes up the center section. For clarity of connections, the diagram exaggerates the size of this group. The picture brings out more clearly the actual relation of elements.

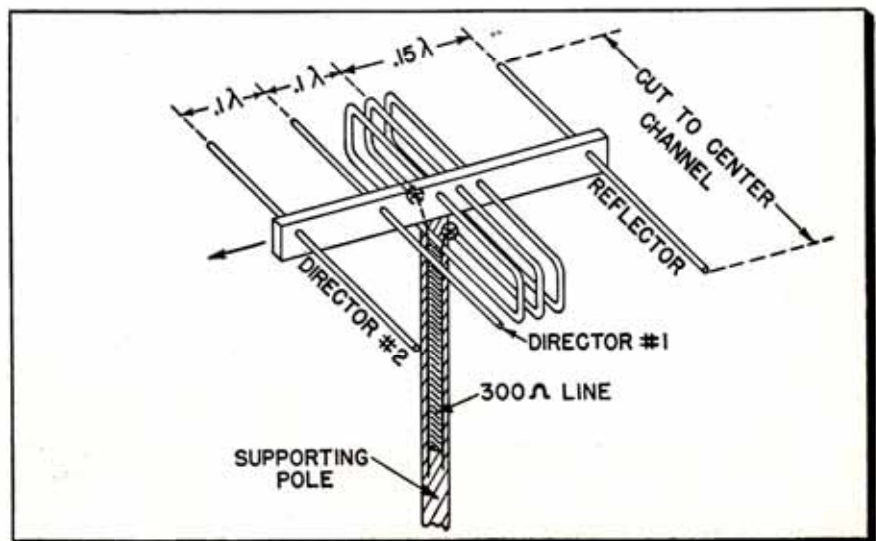
Only the fundamental shape of the Yagi is seen here. In actual construction, the spacing and positioning of elements are very critical, and must be designed around a given center frequency. In particular, the folder dipoles straddling the center or driven element are carefully adjusted experimentally.

As indicated, the center folded dipole has connected to it the 300 ohm transmission line, while the two other folded dipoles are continuous in the form of complete loops. When properly spaced, these "parasitic" elements cause the driven element's impedance to increase with the square of their number.



TV antenna designed and used by New York radio engineer for reception in outlying districts. Excellent broadband characteristics claimed.

For clarity of connections, the diagram exaggerates the size of this group. Photo, above, brings out more clearly the actual relation of elements.



*Thanks to Bob Cooper for the article.

BORED?

Read hundreds of interesting topics on the WTFDA Discussion Boards at <http://www.wtfda.info>

Why not even register and start your own topics??

SIGN UP/Renewal form

Name _____

Address _____ Apt # _____

City _____ State/Prov _____ Zip _____

Country _____ Interests: TV () FM () 30-50() Weather()

email address _____

Sign me up/renew me for: 1 year () 2 years () More ()

Yearly dues \$24 (US), \$26 to (CANADA), \$10 (Electronic VUD)
(Students get a discounted rate of \$15 yearly for the paper VUD.)

Mail your dues to: WTFDA, P.O. Box 501, Somersville, CT USA 06072

Make your checks/money orders payable to: WTFDA

And *thanks* for your support of the WTFDA!

Return this form with your dues or make a copy of it and return that.

COAST TO COAST TV DX CONTINUES FROM PAGE 22

(Dennis Smith's report continues...)

Nov 19-26aft	None
Nov 26eve-27morn	Poor
Nov 27aft-29	None
Nov 30	Very poor

Oct 21-27: Last month, I noted visit to relatives in Corning (Chico/Redding area), northern Calif with my LG TV and bowtie/ears. Of interest there, not mentioned then, were two analog ch-6 LPTVs that are radio stations. One was a 3-way simulcast, KKXX AM 930 Paradise / K283AR FM 104.5 Chico/ **KEFM-LP 6 Chico** (30 mi SE), gospel format, its visual signal only a nondescript computer screen. The other was **KNNN-LP 6 Redding** (50 mi N), country music, no simulcast, heard only in spots car radio FM 87.7. There may be other such ch-6 LPTVs around the USA.

Best of DX to All Dennis

William Draeb

1304 Ellis St.
Kewaunee, WI 54216

9/12 Tr
1940 WOOD-7
WWMT-8

10/6 Tr
0705 WFFT-36
WXSP-15-CD

10/8 Tr
1909 WLLA-45
RTV on 45.2

10/14 Tr
1900 Milwaukee, Chicago U's

10/16 Tr
1845 WCMU-21
2100 WCWF-21 carrying WLUK-11 during N.L.

playoffs
11/8 Tr

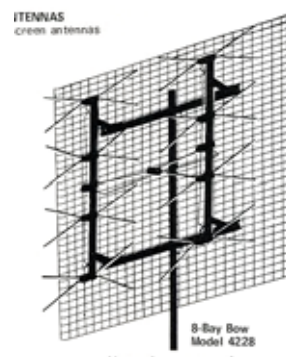
0620 WXSP-15 First time on digital – other Mich.

digitals
0635 WBUP-10
WMOW-12
WOOD-7

11/9 Tr
0615 WDCQ-15
WNEM-22
WEYI-30
WSMH-16
WAQP-48
WCMZ-28
WDIV-45
WTVS-43
WLNS-36
WLAJ-51 w/WWMT-8 news
WJRT-12

11/10 Tr
0600 WDCQ-15
WNEM-22
WCMZ-28
WPXD-31
WEYI-30
WSMH-16
0635 WBSF-46 "CW for Central Michigan"
WAQP-48
0900 CKNX-8 Snowy but rock solid.

Not much DX. Wx turning colder not conducive to DX. WD.



**THE WORLDWIDE TV-FM DX ASSOCIATION
THE VHF- UHF DIGEST
P.O. Box 501, SOMERSVILLE, CT 06072**

Opinions expressed in this publication are those of the individual contributor and do not necessarily reflect the views of the publisher or board of directors. We reserve the right to edit material to meet publishing standards. Unless previously agreed upon in writing, all material submitted for publication in the VHF-UHF Digest becomes the property of the WTFDA. Reproduction of material from the VHF-UHF Digest without permission of the WTFDA is prohibited. Individuals and other organizations are granted such permission providing proper credits is given to the source.



Established 1967



FIRST CLASS MAIL

NOW! JOIN AND RENEW USING PAYPAL!

Now you can pay for your dues by check, money order and ONLINE with Paypal! If you have a Paypal account you'll be done in a matter of seconds! Pay at our Paypal webpage at <http://www.wfda.org/join.html>.