

VHF-UHF DIGEST

The Official Publication of the Worldwide TV-FM DX Association

NOVEMBER 2012

The Magazine for TV and FM DXers

Indian River DX Club
Headquarters
(1965)
Members:
Joey
Tommy
Ritchie
Freddie
And Suzie!



Paul Mitschler



**SPECIAL
HURRICANE SANDY EDITION**

Visit Us At www.wtfdx.org

THE WORLDWIDE TV-FM DX ASSOCIATION

Serving the UHF-VHF Enthusiast

THE VHF-UHF DIGEST IS THE OFFICIAL PUBLICATION OF THE WORLDWIDE TV-FM DX ASSOCIATION DEDICATED TO THE OBSERVATION AND STUDY OF THE PROPAGATION OF LONG DISTANCE TELEVISION AND FM BROADCASTING SIGNALS AT VHF AND UHF. WTFDA IS GOVERNED BY A BOARD OF DIRECTORS: DOUG SMITH, GREG CONIGLIO, KEITH MCGINNIS AND MIKE BUGAJ.



Editor and publisher: **Mike Bugaj**

Treasurer: **Keith McGinnis** wtfda.org Webmaster: **Tim McVey**

wtfda.info Site Administrator: **Chris Cervantez**

Editorial Staff: **Jeff Kruszka, Keith McGinnis,**

Fred Nordquist, Nick Langan, Doug Smith,

Peter Baskind, Bill Hale and John Zondlo,

Our website: www.wtfda.org; Our forums: www.wtfda.info

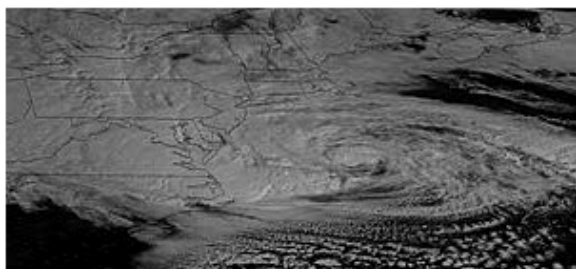


The Mailbox

P.O. Box 501 Somersville, CT 06072

Mike Bugaj - Enfield, CT mikeb@wtfda.org

NOVEMBER 2012



One of the greatest concentrations of WTFDA members is along the northeast corridor of the United States. As Sandy, a monster of a hurricane/nor'easter comes ashore today (10/29) in Southern New Jersey we hope and pray that all of us come out intact. This will be a storm that none of us will ever forget.

Hopefully, after all is said and done, most of us will be able to pick up the pieces and return to our DX hobby. DX equipment can be replaced (except for the APS-13) but lives cannot. So I hope everybody stayed safe inside their homes. This is really scary.

MEMBERS AND MORE

This time around we have one new member and that is Raymond Nahl from New York. Welcome to WTFDA, Raymond!

Also welcome back to Ryan Grabow who has been away from WTFDA for four years and now returns to stay. Ryan is down in Florida and is trying his hand at DTV DXing. I think most people will remember Ryan for his analog Es maps for ch2 through 6 which were professionally made and loved by TV DXers back in the day. If you look, you will still find them on wtfda.org.

Renewals in from the period of 9/20 through 10/18 from Lewis Kruger (SD), Vincent Ferme

(ON), Greg Coniglio (NY), Jim Renfrew (NY), John Tudenham (MO), David Mackes (MD), Bill Hale (TX), Les Prus (VA), John Vervoort (MI) and William Mitchell (OH). Thank you all for your support of WTFDA, and we mean it.

Ray Nahl is better known as W2CH, is interested in TV, FM and weather and lives just north of New York City. I hope his antennas survive Hurricane Sandy.

Ryan Grabow is beginning to build a DTV log with a Channel Master 4228HD with an Insignia NS-DXA1 set top box.

David Mackes writes "I want to thank you and all the other volunteers for their hard work that makes the VUD possible for the rest of us. I truly appreciate it.

I'm looking for a copy of Bob Cooper's Tech Series and I don't see it in the archives. I would be willing to pay for all costs associated with doing that for me. Right now I'm most interested in the stacking article that appeared in the December 1973 issue of the VUD."

David, I think you mean Bob's Tech Notes which appeared in the early VUDs. I don't know if Bob ever bundled them up together but since Bob reads this, I think we'll find out soon.

Also I think we can find the Dec 1973 issue without much of a problem, scan it and put it in the archives. I know some members have them.

Some of the 1970s VUDs that are in the archive have pages missing or torn. I got them for free from an ex-member and didn't know of their condition until I was ready to scan them. Maybe we can work on that if we can find the time.

Well, I have never compiled a VUD in the middle of a hurricane. This is definitely a first. Hope the power stays on. CU in 30, I hope. -m



TV News

Douglas E. Smith
 1389 Old Clarksville Pike
 Pleasant View, TN
 37146-8098
w9wi@w9wi.com
<http://www.w9wi.com>

November 2012

Abbreviations:

AF	Applied For (a new station)	NW	New station on the air
Aux	Auxiliary (backup) transmitter	PA	Proposed Amendment
CC	Callsign change	PC	Power (and/or tower height) change on the air
CL	City-of-license change	PG	Power change granted
CX	Canceled	PR	Power change requested
DC	Converted to DTV	RA	Returns to the air
DCC	Digital Companion Channel	QC	Channel (frequency) change on the air
NS DCC	Granted flash-cut to DTV	QG	Channel change granted
DE	License/permit deleted	QR	Channel change requested
DR	Requests flash-cut to DTV	RE	Reinstated (previously-dismissed app.)
FC	Programming (format) change	ROA	Request of Applicant
FTP	Failure to Prosecute	SI	Off the air (silent)
GA	Granted amendment (to table of channel allotments)	STA	Special Temporary Authority
LC	License to Cover	XC	Transmitter site changed
MX	Mutually Exclusive	XG	Transmitter site change granted
NDA	Non-directional antenna	XR	Transmitter site change requested
NS	Permit granted for new station	lpdtv	Low Power Digital TV
DG	Granted conversion to DTV	DRT	Digital Replacement Translator

News:

(full-power digital stations in **bold face**; LPTV and translators in regular type; full-power analog stations in **bold italics**; low-power analog stations in *regular italics*)



Canada:

Ontario:

Paris 17 CIII-DT QR from 6, 165kw/272m

Quebec:

Montreal 29 CFTU-DT PG 910w/196m



Puerto Rico:

Caguas 2 W20DS-D QR from 20, 3kw, 18-16-50/66-06-38

Guaynabo 51 NEW-lpdtv AF dismissed

Naranjito 24 W24EI QG from W44DM, 15kw, 18-17-34/66-16-02; CL from Cayey

San Lorenzo 2 W29EE QR from 29, 3kw but dismissed



USA:

Alabama:

Birmingham 17 W17DT DG from W46DK, 15kw

Decatur 35 W35DG PR<2.6kw, 34-16-10/86-53-56

Eufaula 41 W41EL NS 1kw, 32-11-26/84-55-26; DCC for

Montgomery 31 WNCF W30BD QC from 32, 720kw/473m, 32-08-58/86-46-51

Tuscaloosa 46 W46BU DC 15kw

Alaska:

Anchorage 45 K45HQ DG 600w, 61-09-42/149-51-09

Fairbanks 14, K14JL, 16, K16DW, 20, K20FF, 26, K26EL, 28, K28ES, 30, K30ET, 34, K34EJ, 36, K36ED, 38, K38EL, 40, K40EN, 42, K42EC, 44, K44EK, 46, K46EH, 48, K48FG, 50 K50EH

10 K10QW XR 63-53-07/148-49-38; XG

Arkansas:

Bonnerdale 16 K16IP XR 34-17-28/93-14-28

El Dorado 21 KCIB-LD PR>8.1kw

Fayetteville 36 KFFS-CA DC 15kw

California:

Bakersfield 8 K24GS DR from 24, 2.7kw, 35-27-14/118-35-37

Bakersfield 17 K08MM DR from 8, 15kw, 35-27-14/118-35-37 dismissed; going for ch. 15 instead

Bakersfield	35	K24GS	DR from 24, 15kw, 35-27-13/ 118-35-37 dismissed; going for ch. 8 instead	Arlington Heights	24	W24EH	DG from W22AJ, 15kw, 41-52-44/ 87-38-08
Eureka	26	K26MH	NS 15kw; DCC for K47EH	Aurora	50	WXFT-DT	NS 210kw/ 477m (aux)
Eureka	35	K35LF	DG from K52FK, 9.08kw, 40-43-36/ 123-58-27	Aurora	50	WXFT-DT	PR 365kw/ 417m, 41-53-56/ 87-37-23
Gustine	29	K29KS	QG from K30MP, 15kw	Chicago	4	WOCK-	PG>1kw
Healdsburg	26	K26JV	XC 38-30-31/ 122-39-43	Chicago	44	WLS-TV	QC from 7, 1000kw/518m
Indio	11	NEW-lpdtv	AF 250w, 33-51-56/ 116-25-58; DCC for ??	Joliet	38	WGBO-DT	PR>650kw/509 41-52- 44/ 87-38-08
Mariposa	47	NEW-lpdtv	AF 15kw, 37-39-46/ 120-27-34; DCC for K27GZ	Peoria	33	W33DV	NS 15kw; DCC for W50DD
Palm Springs	27	K21DO	DR from 21, 4.35kw, 33-52-01/ 116-26-03, but dismissed	Towanda	24, 27, 34, 50	NEW-lpdtv	AF dismissed
Palm Springs	30	K21DO	DR from 21, 5.96kw, 33-52-00/ 116-26-00 dismissed (going for ch 27)	Iowa:			
San Luis Obispo	31	K31KE	DR from K57BC, 15kw; DG	Cedar Rapids	24	KRUB-LP	DC from 65, 3kw
Tahoe City	23	K23DT	PR<3.02kw; PG	Cedar Rapids	45	KCDR-LP	DC from 55, 10kw
Colorado:				Davenport	34	KQIN	PC>199.5kw
Colorado Springs	38	KJCS-LD	PR>5.48kw, 38-46-22/ 104-59-34	Kansas:			
Ted's Place	33	KTDS-LD	PG<1kw	Goodland	10	KBSL-DT	PR<82.4kw/ 274m
Connecticut:				Manhattan	23	NEW-lpdtv	AF 3.75kw; DCC for K31BW
Hartford	19	WRDM-CA	DC from 50, 15kw	Salina	15	K15CN	XR 38-58-29/ 97-04-23
Stamford	19	W19EH	DG from W27CD, 5.7kw, 40-45-26/ 73-42-52	Kentucky:			
Florida:				Bowling Green	32	WKUT-LD	QR from 25, 13.5kw
Daytona Beach	14	WDYB-LP	DC from 28, 10kw, 28- 58-08/ 81-16-31	Louisiana:			
Jacksonville	12	WJKF-CA	DR from 9, 3kw	Columbia	11	KAQY	PG>25kw
Key West	41	WMDF-LD	PC<3.91kw, 24-39-58/ 81-21-32	New Orleans	15	WNOL-TV	NW 600kw/ 252m (aux)
Matecumbe	43	W43AD	PR>3kw, 25-46-24/ 80-11-18; PG	New Orleans	26	WGNO	NW 600kw/ 252m (aux)
Milton	43	WGOX-LD	PR<2kw, 30-54-02/ 87-01-30; CL from Crestview	New Orleans	43	WDSU	PC>1000kw/ 286m
Orlando	23	WUCF-TV	CC from WMFE-TV	Vinton	28, 31, 39	W28EL, W31EA, W39DX	NS 1kw, 30-09-50/ 93-36-46
Panama City	18	WECP-LD	NW 15kw, 30-25-59/ 85-24-51; CBS	Maryland:			
Sebastian	24	WDOX-LD	PC<3kw, 27-26-54/ 80-29-28	Baltimore	11	WBAL-TV	AF 12.6kw/ 286m (aux)
West Palm Beach	12	WPTV-TV	NS 63kw/291m (aux)	Baltimore	38	WMAR-TV	AF 1000kw/ 312m (aux)
Georgia:				Cresaptown	19	W19DY	PR<2.3kw, 39-48-11/ 78-40-21
Helen	26	WHVC-	CC from WHTD-	Massachusetts:			
Vidalia	20	NEW-lpdtv	AF 1kw, 32-22-58/ 82-12-05; DCC for W14CQ	Springfield	51	WDMR-	DC 15kw
Hawaii:				Michigan:			
Honolulu	19	KIKU	NW 40.2kw/ 525m (aux)	Detroit	33	W33BY	DR 4kw, 42-24-29/ 83-05-30
Idaho:				Menominee	31	W31BK	CX
Ashton	13	K13YF	CX	Saginaw	24	W24DL	FC; sold to 3Abn
Coeur d'Alene	41	K41FJ	DC 2.7kw	Traverse City	40	WWTV - 0824AEH	NW 15kw, 44-45-37/ 85-40-58; DCC for ch. 9 Cadillac
Lewiston	17	K15CH	DC from 15, 1kw	Minnesota:			
Illinois:				Mankato	12	KEYC-	PC>52.7kw
Arbury Hills	22	W22EH	QG from W25DW, 15kw	Minneapolis	9	KMSP-TV	NS 32kw/251m (aux)
				Rochester	14	K14PT	DG from K56HW, 15kw
				Mississippi:			
				Columbia	45	W45AA	DC 15kw
				McComb	49	W49ED	PR>2kw, 31-02-35/ 90-29-55

Tupelo	19, NEW-lpdtv 26, 30, 31, 47	AF dismissed	Greensburg	19 WEMW-CD	PR<22w, 40-26-46/ 79-57-51 but dismissed
Montana:			Greensburg	46 WQVC-CA	DR from 28, 674w, 40- 23-34/ 79-46-54
Bozeman	28 KWYB-LD	PR>11.9kw; PG	Johnstown	32 WBYP-CA	DR from 35, 100w
Butte	5 KXLF-DT	PR>15kw dismissed	Johnstown	35 WTOO-CA	DR from 50, 100w, 40- 22-15/ 78-59-02; CL from Altoona
Nebraska:			Johnstown	35 WBYP-CA	DR 2.84kw dismissed (going for ch. 32 instead)
Scottsbluff	2 K02NT	CX	Kittanning	44 WKHU-CA	DC from 60, 6.38kw
Scottsbluff	9 K09YH	PG>500w	Meadville	46 W46FB	DG from W52BQ, 1.92kw, 41-13-41/ 80-20-42
Nevada:			New Castle	27 WPCP-CD	PR<600w, 40-37-11/ 80-05-36
Austin	26 K26EH	DG 50w	Philadelphia	24 WPHA-CD	QG from 38, 15kw
Fernley	29 NEW-lpdtv	AF dismissed	Pittsburgh	15 WIIC-LP	DR from 29, 400w, 40- 37-11/ 80-05-36
Reno	21 KRXI - 0924AHA	PR<3.02kw; PG (DRT for ch. 44)	Pittsburgh	25 KDKA-TV	NS 288kw/ 149m (aux)
Spring Creek	38 NEW-lpdtv	AF dismissed	Pittsburgh	26 W61CC	DR from 61, 15kw
New Mexico:			Pittsburgh	32 WPTG-LP	DR from 69, 2.5kw dismissed; going for (and granted) ch. 49 instead at 15kw
Chama	15 K15JO	QG from K34FD, 208w; QC	South Carolina:		
New York:			Hilton Head	16 W16DK	DG from W35AY, 15kw, 32-15-25/ 80-52-34; DC
Albany	7 WXXA-	PG>15kw	South Dakota:		
Albany	12 WNYT	PG>30kw/412	Pierre	29 KPLO - 0531AGR	NS 115w, 44-22-55/ 100-20-32; DRT for ch. 13 Reliance
Binghamton	7 WBNG-TV	PG>34kw	Tennessee:		
Buffalo	39 WIVB-TV	NS 112kw/ 277m (aux)	Chattanooga	38 WOOT-LD	NS 15kw, 35-15-01/ 85-13-11; DCC for analog ch. 6
New York	6 WNYZ-LD	DG 180w	Lexington	47 WLJT-DT	PR>285kw/ 205m
New York	7 WABC-TV	PG>34kw	Texas:		
Plattsburgh	14 WPTZ	NS 3.98kw/ 853m (aux)	Beaumont	50 K50LH	PG<56w
Schenectady	43 WCWN	NS 326kw/ 342m (aux)	Big Springs(sic)	31 K31KJ	NW 15kw, 32-13-18/ 101-27-30 (KOSA-7)
North Carolina:			Bovina	35 K35CG	CX
Durham	11 WTVD	NW 45kw/ 474m (aux)	Houston	19 KTXH	AF 475kw/ 529m, 29-33-44/ 95-30-35 (aux)
Jacksonville	26 WKGW-LD	CC from W26DW	Houston	26 KRIV	PR>435kw/529 (aux@29-33-44/95-30- 35; they have two auxes)
Jacksonville	41 WJSW-LD	CC from W41DU	Houston	26 KRIV	AF 435kw/ 529m, 29-33-44/ 95-30-35 (aux)
Ogden	39 WJOW-LD	CC from W39DG	Keene	18 KGSW-LP	DC from 31, 15kw
Raleigh	49 WRAZ-DT	NW 1000kw/ 467m (aux)	Odessa	20 KTLE-LP	PG<4.59kw, 31-52-11/ 102-22-39; PC
Rocky Mount	30 WHIG-LP	DR from 33, 15kw	San Antonio	13 KQVE-LD	NW 300w, 29-19-38/ 98-21-17 (DCC for ch. 46 La Vernia)
Sanford	46 WBFT-CA	DR 1.1kw; DG	Sweetwater	46 NEW-lpdtv	DR dismissed
Tryon	32 W32EO	DG from W05AC, 500w, 35-15-58/ 82-14-40	Waco	20 KWBU-	CX
West Asheville	34 W34DX	PR>7kw, 35-35-23/ 82-40-28	Utah:		
Ohio:			Boulder	17 K17JV	NW 3w, 37-53-53/ 111-25-07 (KUPX)
Cleveland	15 WEWS-TV	AF 850.9kw/ 204m (aux)	Clear Creek	28, K28KP, 29, K29IW, 36, K36JT,	NW 6w, 39-38-45/ 110-09-15
Steubenville	21 WSSS-LP	DR from 25, 3kw			
Oklahoma:					
Dickson	30, NEW-lpdtv 49	AF dismissed			
McAlester	16 K16KR	DG from K51EK, 400w, 34-59-13/ 95-42-10; DC			
Oklahoma City	7 KOCO-TV	NS 101kw/ 370m (aux)			
Oregon:					
Astoria	17 K17HA	PR<4.5kw			
College Hill	11 K11GT	DG 150w, 44-00-07/ 123-06-58; DC			
Pennsylvania:					
Beaver	30 WNNB-CD	PR>15kw, 40-26-46/ 79-57-51; PG			
Butler	17 WJMB-CD	PR<1kw, 40-37-11/ 80-05-36			

	38, K38LG, 40, K40KM, 42, K42IU, 44, K44JT, 46, K46KL, 48 K48LS	
East Carbon Co.	39 K39KF	NW 6w, 39-45-22/ 110-59-26
Kanab	16 K16IL	NW 63w, 37-03-35/ 112-31-12 (KUPX)
Logan	15 K15JH	PR>3kw, 41-53-35/ 112-04-40
Mexican Hat	17, K17JH, 19, K19IG, 20 K20KC	NW 6w, 37-08-29/ 109-51-35
Orderville	40 K40LH	NW 38w, 37-16-25/ 112-37-34 (KUPX)
Park City	21 NEW-lpdtv	AF dismissed
St. George	30 KDLO-LP	CX
Virginia:		
Harrisonburg	43 WSVF-CA	DR from 25, 13kw dismissed
Martinsville	40 WYAT-LP	DR 15kw; DG
Richmond	28 W28EN	NS 15kw; DCC for W39CO
Richmond	45 WZTD-LP	DC 15kw
Roanoke	17 WFXR	PR>1000kw/ 614m
Roanoke	28 W28EM	NS 15kw; DCC for W49AP
Suffolk	43 WBTD-LP	DC from 52, 5.09kw, 36-49-14/ 76-30-41
Washington:		
Moses Lake	31 K31KT	XR 47-11-48/ 119-13-29
Othello	47 K47MV	XR 46-46-44/ 118-46-54
Quincy	4 K04RG	PR>1kw
Seattle	22 KCPO - 0603AAV	NW 15kw, 47-36-57/ 122-18-26; DRT for 13 Tacoma
Spokane	36 KSKN	PR>1000kw
Sunnyside	28 K28KW	PR>4.5kw, 46-19-17/ 119-15-19
Vancouver	41 KOXO-CD	DC from 51, 15kw
West Virginia:		
Parkersburg	36 W36ER	PR<5kw, 39-00-13/ 81-57-52; PG
Weirton	18 WJPW-CD	DG 15kw; DC
Wisconsin:		
Eagle River	28 WYOW	PR>80kw; PC>163m
Eau Claire	13 WEAU	CC from WEAU-TV
Milwaukee	8 WMVS	PC>32kw/357
Milwaukee	36 WMVS - 0828AAJ	NW 15kw, 43-05-46/ 87-54-15; DRT for ch. 8
Wyoming:		
Cody	50 K51AK	QC from 51, 975w
Jackson	34 K34LH	CX

KSQA in Topeka, Kansas has filed an unsuccessful must-carry complaint against Cox Cable. KSQA broadcasts on RF channel 12, but their PSIP major channel assignment is 22. (they held a permit to broadcast in analog on that channel; the analog facility was never built, KSQA went on initially as a digital station.)

Over-the-air stations are entitled to must-carry on cable, and they are entitled to be carried on

their over-the-air channel or another channel mutually agreeable to the station and the cable operator.

KSQA argues that by their over the air channel, the FCC means either their RF channel or their PSIP major channel. KSQA would be entitled to be carried on either channel 12 or 22. Cox argued that a station is only entitled to be carried on its PSIP channel – in KSQA's case, 22.

KSQA, of course, would be easier to find on a lower channel. It would, presumably, be between WIBW-TV (Topeka's largest station) on 13 and Topeka PBS outlet KTWU on 11. On channel 22, it would be separated from other popular stations and harder to find.

Cox, on the other hand, is currently carrying WIBW-TV on channel 12 and doesn't want to move them. I would imagine WIBW has been on channel 12 on cable for a very long time, to avoid ingress interference in the analog era. WIBW broadcasts on RF channel 13 – and did so in the analog era as well – which means their PSIP channel is also 13.

The FCC has ruled in Cox's favor; that a station is entitled to carriage on its *PSIP* major channel, not on its RF channel. However, while KSQA's petition was dismissed, it was dismissed "without prejudice". (against refiling)

KSQA has another petition on file which asks that the FCC to allow them to use major channel 12. This petition is still under consideration. The Commission told both parties that, if KSQA's request succeeds, the station may refile its must-carry-on-12 petition. They also suggest such a petition should be unnecessary, as Cox should in that case begin carriage of KSQA on channel 12.

The FCC has granted dozens of new digital LPTVs. "Albert Leo" is a typo in the original, and one station was assigned the bizarre callsign "W14E1"...

AL Tuscaloosa:	21, 32, 40, 44, 47
AZ Golden Valley:	15, 22, 40, 45
AR El Dorado:	25, 30
AR Hot Springs:	14, 34, 38, 41
AR Jonesboro:	38
AR Paragould:	17, 26, 33, 36
AR Texarkana:	32, 35, 36
CA Bakersfield:	24, 30, 35
CA Buttonwillow:	17, 49
CA Gustine:	33, 39, 41, 45
CA Lost Hills:	24
CA Newman:	22, 28
CA Orland:	16, 33, 47
CA Santa Maria:	28
CA Tupman:	32
CO Arriba:	16, 30, 38, 44
CO Seibert:	26, 32

FL Greenville: 21, 25, 35
 FL Madison: 29, 32, 38, 45
 FL Panama City: 20, 33, 43, 50
 GA Byromville: 14, 27, 50
 GA Byron: 20, 48
 ID Blackfoot: 29
 ID Mc Cammon: 34
 IL Jacksonville: 19, 25, 38
 IL Mount Vernon: 36, 38, 42, 48
 IL Quincy: 40, 43
 IN Brazil: 30, 34
 IA Cedar Falls: 14, 21, 32, 34
 IA Fort Dodge: 36, 43, 45
 IA Keokuk: 30
 IA Ottumwa: 17
 KS Fort Riley: 30, 34, 39, 41
 MN Albert Leo: 30, 32, 38, 44
 MN Blue Earth: 45
 MN Brewster: 20, 24, 44
 MN Dakota: 28, 36
 MN Oakland: 14, 19, 34, 47
 MN Racine: 34, 45
 MN Sherburn: 33, 39
 MN St. Charles: 19, 27, 29, 31, 40
 MN Wells: 22, 26, 28, 50

MS Clarksdale: 18, 20, 31, 34, 45
 MS Greenville: 14, 19, 22, 24, 36, 40, 44,
 47
 MS Laurel: 18, 33, 43
 MS Starkville: 17, 22, 27
 MS Tupelo: 38

MT Clancy: 15
 MT Dillon: 30, 36, 38, 42
 MT Glen: 20, 28, 32, 47
 MT Great Falls: 33, 38, 48
 MT Terry: 25, 49
 MT Wolf Creek: 31, 43
 MT Wordon: 26, 44, 47
 NV Battle Mountain: 35, 47, 49
 NV Fernley: 18
 NV Golconda: 42, 44
 NV Imlay: 16, 20, 22
 NV Lovelock: 32, 41, 48
 NV Rocky Point: 14, 16, 25, 28
 NV Spring Creek: 21, 41
 NV Wells: 18, 30
 NV Wendover: 23, 35, 39, 49
 NV Winnemucca: 28
 NY Elmira: 50
 ND Bismarck: 19, 32, 36, 40
 ND Garrison: 21, 27, 43, 48
 ND Williston: 16, 33, 36
 OH Lima: 16, 29, 42, 49
 OK Enid: 36, 42, 48
 OK Geronimo: 33, 35, 41, 42
 PA Dubois: 17, 19, 21, 28
 TX Abilene: 38
 TX College Station: 34
 TX Victoria: 24, 32, 44, 50
 UT Wendover: 26, 41, 44, 47
 WA Centerville: 35, 40, 45
 WV Clarksburg: 26, 42, 49
 WV Roanoke: 20, 35, 45, 47
 WV Sutton: 30, 32, 42
 WI Elk Mound: 16

500mhz Not Enough?

Broadcasting and Cable

By John Eggerton, October 4, 2012

FCC chairman Julius Genachowski said Thursday that the FCC will exceed its 300 MHz target for freeing up spectrum for broadband, a target the commission set in the National Broadband Plan.

"I am proud to announce today that we are on track to exceed our first benchmark of freeing up 300 MHz of spectrum by 2015," he said in a speech to the University of Pennsylvania's Wharton School Thursday, according to a prepared text.

Genachowski gets to that 300-plus through a variety of routes, including the broadcast incentive auctions, though he did not say how much that would contribute to the total. The FCC's initial estimate was 120 MHz, but that total is expected to be less.

"While we can't know yet exactly how many megahertz incentive auctions will free up," he said, "the opportunity is large, particularly given the highly desirable nature of this 600 MHz spectrum for mobile broadband." The FCC just this week released its framework for those auctions, which the FCC hopes to have completed by 2014.

More spectrum is being freed up through other auctions -- 75 MHz of advanced wireless service spectrum to be auctioned by 2015 and allowing unlicensed spectrum use in the TV white spaces, he said.

The Broadband Plan also set a 2020 target of freeing up 500 MHz, but Genachowski suggested that goal may have to be raised given "game-changers" like tablets and machine-to-machine connectivity. "In fact, 500 MHz may not be enough," he said. "Since we issued the National Broadband Plan in 2010, we've seen new developments that have turbocharged mobile demand."



FM NEWS



BILL HALE

6124 Roaring Springs Drive, N. Richland Hills, TX 76180

FMnews@wtfd.org

INDEX OF ABBREVIATIONS

APP: application
 APP Mod: Change to an already submitted application
 Class: FM license class
 CP: construction permit (authority to broadcast with facilities noted)
 CP Mod: change to an already granted CP
 DA: directional antenna
 FF: French language

\$: Stereo
 XL: Transmitter Location change to
 > : an increase to [in technical data]
 < : a decrease to [in technical data]
 []: Calls in brackets signifies assumed or applied-for status

Note: antenna heights are HAAT except where noted

[Editor's note: effective this issue, slogans including the 'point' (example: 105.3) will be written as such, not 105 point 3]. I assume the reader can figure out what is what.]

— CANADA —

— CALL LETTER CHANGES —

		<u>Old Call</u>	<u>New Call</u>
NF	Rocky Harbour	98.1 CHBB-FM1	CHRH-FM
ON	Alliston	92.1 CP	CIMA-FM
ON	Nipissing	97.1 CP	CHYQ-FM
ON	Toronto	88.1 CP	CIND-FM
ON	Uxbridge	105.5 CP	CIUX-FM
YT	Whitehorse	95.3 CP	CFWH-FM1

— FORMAT and SLOGAN CHANGES —

MB	Winnipeg	107.1 CFEQ-FM	> Classical
NB	Mirimichi	99.3 CHFA-FM	> Country, remaining <i>the River</i>
QC	Lévis	102.9 CFOM-FM	New slogan is <i>102.9 FM</i> , remaining Oldies/Classic Hits
SK	Estevan	106.1 CKSE-FM	New station is on with Rock: <i>Rock 106</i>

— NEW STATIONS ON THE AIR —

AB	Stettler	93.3 CKSQ-FM	23 kw/87 m, DA, 52-18-35/112/37/21; Class B1; \$; moved from 1400 kHz
----	----------	--------------	---

— TECHNICAL CHANGES —

— NOW ON THE AIR —

AB	Edmonton	90.1 CHFA-FM	100 kw-H/193 m, XL to 53-30-48/113-17-06; Class C1; Mono; has moved from 680, taking over frequency from CBCX-FM1 Edmonton, which has relocated to 101.1	
AB	Edmonton	101.1 CBCX-FM1	3.931 kw/124 m, XL to 53-32-25/113-29-49; Class A; \$; relocated from 90.1	
AB	Stettler	93.3 CKSQ-FM	23 kw/89 m, DA, 52-18-35/112-37-21; Class B1; \$; has replaced the station formerly on 1400 kHz	
ON	London	99.9 CHJX-FM	>500 w/108 m, DA, 42-59-09/81-14-48; Class A; moved from 105.9	
SK	Estevan	106.1 CKSE-FM	100 kw/71 m, 49-03-26/102-55-22; Class C1; \$	

— TECHNICAL CHANGES —

CP granted for:

NF	Rocky Harbour	98.1 CHRH-FM	50 w-V/16 m, 49-35-47/57-55-17; Class LP; \$; will be // CHBB-FM 95.9 Norris Point
NF	Grand Bank	103.9 [CIJL-FM]	5 w-V/-5 m, 47-05-49/55-44-52; Class LP; \$; will program Newfoundland music, Country music and Gospel
ON	Alliston	92.1 CIMA-FM	3.75 kw/31 m, DA, 44-08-45/79-50-15; Class A; \$; will be "Gold-based AC"
ON	Dryden	104.3 CKQV-FM1	1.8 kw/<50 m, 49-48-40/92-50-56; Class A; \$; will move from 104.5, eliminating interference caused to CKQV-FM2 Kenora and CKQV-FM3 Sioux Lookout
ON	Markham	105.9 CP	New station granted: 1.6 kw/21 m, DA, 43-53-52/79-20-27; Class A; \$; will be News-Talk/AAA days and multi-lingual nights
ON	Sarnia	98.3 CBEF-FM3	New station granted: 2.32 kw/114 m, 42-54-28/82-20-19; Class A; Mono;
ON	Woodstock	103.9 CKDK-FM	>51 kw/<138 m, XL to 43-06-08/80-46-14; Class C1
QC	Hudson/Saint-Lazare	106.7 CP	New station granted: 500 w/94 m, 45-26-35/74-09-27; Class A; EE soft AC
QU	La Tuque	97.1 [CFLM-FM]	New station granted: 32 kw/127 m, DA, 47-25-24/72-45-49; Class B; \$; will replace CFLM-1240

— TECHNICAL CHANGES —

Applies for:

AB Edson	95.3	APP	AM station proposes to move here from 1540 kHz; 50 w
AB Fort Vermillion	105.1	APP	AM station proposes to move here from 1460 kHz; 50 w/
AB Grande Cache	92.3	APP	AM station proposes to move here from 1450 kHz; 50 w
AB High Level	99.5	APP	AM station proposes to move here from 1560 kHz; 50 w
AB Saint Paul	105.5	CHFA-FM9	New station: 3.44 kw/51 m, 53-59-33/111-13-43; Class A; Mono [would be CBC Premiére Chaîne]
MB Flin Flon	102.9	[CFAR-FM]	New station: 191 w; CFAR-590 would remain on the air as a nested repeater
MB The Pas	102.9	[CJAR-FM]	New station: 250 w; CJAR-1240 would remain on the air as a nested repeater
MB Steinbach	88.5	APP	New station: 26 kw-V//61 kw-H/117 m, 49-31-26/96-40-02; Class C1; \$ [would be Country]
MB Thompson	102.9	[CHTM-FM]	New station: 190 w; CHTM-610 would remain on the air as a nested repeater
MB Winkler	103.7	CKMW-FM	67 kw-V//100 kw-H/52 m, 49-07-16/98-04-03; \$; on 88.9 MHz; last June, CKMW-1570 was granted permission to move to 103.7, but now has determined that 88.9 is more suitable
MB Winnipeg	88.1	[CKSB-FM]	100 kw/223 m, 49-46-15/97-30-37; Class C1; Mono; proposed station would replace CKSB-1050; if approved, CKSB-FM10 90.5 Winnipeg would be shut down
MB Winnipeg	107.9	CJNU-FM	460 w/112 m, 49-52-45/97-09-06; Class A; [to] \$; would move to 93.7 from here where they hold a "Special Events License" [Thanks to several folks who pointed out a misprint from last month - - but then they missed all the other mistakes, hi]
NB Frederickton	92.3	CFRK-FM	>100 kw/>138 m, (to) DA, XL to 46-02-26/66-29-24
NB Frederickton	93.1	CIHI-FM	>100 kw/<138 m, (to) DA, XL to 46-02-26/66-29-24; Class B to C1
ON Ottawa	92.7	APP	New station: 51 w/24 m, 45-26-13/75-39-29; Class A1; \$; would be FF Christian
QC St-Fabien-de-Panet	92.5	CIQI-FM-1	17.5 kw/123 m, DA, 46-39-23/70-08-51; Class B; would relay CIQI-FM 90.3 Montmagny

— PROPOSED PROGRAMMING CHANGES —

MB Winnipeg	104.7	CIUR-FM	Applies to reduce the amount of required Canadian content from 40% to 35%
-------------	-------	---------	---

— DISMISSALS and DENIALS —

NF Grand Bank	103.9	-----	Application for a new station is denied
ON Timmins	102.3	CHIM-FM	Application for license renewal denied; affects CHIM-FM1 92.5 North Bay, CHIM-FM2 102.7 Iroquois Falls, CHIM-FM3 99.1 Kirkland Lake, CHIM-FM4 103.5 New Liskeard, CHIM-FM5 93.1 Red Deer, CHIM-FM6 97.3 Sault Ste. Marie, CHIM-FM7 92.5 Elliot Lake, CHIM-FM8 92.7 Chapleau, CHIM-FM9 92.5 Wawa and CHIM-FM10 92.3 Kapuskasing.

— OTHERNEWS —

QC Lévis	96.9	CJMD-FM	Final extension for this new station to sign on is granted to 4 September 2013
QC Ste-Marie-De-Beauce	101.3	CHEQ-FM	Final extension to relocate to 101.5 MHz granted to 18 August 2013

— UNITED STATES AND TERRITORIES —

FULL POWER and LPFM STATIONS

— CALL LETTER CHANGES —

	<u>Old Call</u>	<u>New Call</u>		<u>Old Call</u>	<u>New Call</u>
AL Ashland	98.3 WTXO	WFXO	LA Oak Grove	104.1 CP	KLCJ
AL Southside	105.9 WFXO	WKLS	LA Reserve	94.9 WPRF	WGUO
AK Fairbanks	94.3 CP	KWDD	ME Kennebunkport	104.7 WBQW	WHTP
CA Guerneville	102.7 CP	KWVF	MA Charlton	90.1 WYCM	WYQQ
CA Millers Ranch	89.3 CP	KRBO	MO Gainesville	99.7 KMAC	KBOD
CO Burlington	88.7 CP	KTMJ	NV Fallon	104.1 KZZD	KRZQ
CO Durango	105.3 CP	KXRC	NV Fallon Station	105.3 KRZQ	KZTI
CO Hotchkiss	99.5 CP	KYKL	NV Fernley	107.3 KEHD	KNEZ
FL Callaway	103.5 WAKT-FM	WKNK	NM Carlsbad	90.1 CP	KLRS
FL Jacksonville Beach	92.5 WFJO	WJXL-FM	NY Smithtown	94.3 WIGX	WWSK
GA Crawfordville	94.7 CP	WULK	OK Stillwater	101.3 WQAR	WJKE
IL Macomb	89.7 WLWM	WHPA	TX Kurten	107.7 KKLB	KPWJ
IL Minooka	88.5 CP	WMNK	TX Ranger	98.5 KWBY-FM	KLQM
IN Brazil	92.7 WSDM-FM	WFNB	TX Victoria	89.3 KXGJ	KBRZ-FM
IN Greensburg	89.9 WHOZ	WTRE-FM	VA Iron Gate	101.9 CP	WJVR
IN Liberty	89.7 WKWH	WSDM	WA Deer Park	107.1 KAZZ	KPKL
KY Glasgow	105.3 WOVO	WHHT	WY James Town	93.5 CP	KTEA
KY Horse Cave	106.3 WHHT	WOVO			

TRANSLATORS and BOOSTER STATIONS

— CALL LETTER CHANGES —

	<u>Old Call</u>	<u>New Call</u>		<u>Old Call</u>	<u>New Call</u>
AL Huntsville	93.7 K249BB	W229BL	CO Fort Morgan	89.5 K204FV	K208FS
AL Priceville	104.9 W287AD	W285EN	CO Old Snowmass	105.7 K288FV	K289BP
AK Fairbanks	88.7 K203CT	K204GE	CO Redstone	91.5 K215BD	K218FE
CA Coachella	103.9 CP	K280FO	CO Redstone	105.7 K236AN	K289BQ
CA Desert Center	93.3 CP	K227BL	CO Sterling	88.1 K203DD	K201IP
CA Desert Center	96.9 CP	K245BL	CO Thomasville	91.5 K215BC	K218FF
CA Redding	93.7 K232DQ	K229CA	CO Thomasville	105.7 K235AP	K289BR
CA Santa Clarita	101.9 APP	K29A-1	GA Clayton	94.1 W234BF	W231BX
CA Santa Clarita	107.5 APP	KLVE-1	GA Clayton	100.9 W212AB	W265CL
CA South Lake Tahoe	102.1 CP	K271BT	GA Sylvester	103.1 W272AW	W276CF
CA South Lake Tahoe	101.3 CP	K267BO	HI Honolulu	97.1 K244EF	K246BR

IL Dunlap	104.3	W280DL	W282BS	NY Albion	95.7	W209BF	W239BX
KY Bowling Green	89.3	W216CC	W207CG	NY Cayuga Heights	97.7	CP	W249CD
LA Bunkie	106.3	K289BC	K292GE	NC Winston-Salem	89.1	W260BK	W206CB
MI Grand Haven	103.5	W277BB	W278BN	OR Bend	94.7	K240CG	K237FE
MI Marquette	96.7	WUPG-1	WUPG-FM1	PA East Stroudsburg	101.3	WGGY-2	WGGY-FM2
MN Blue Earth	103.1	K273BQ	K276EH	PA St. Clair	104.7	W220BE	W284CB
MN Hinkley	105.1	K283AN	K286CC	SC Mount Pleasant	101.3	W266BO	W267BK
MN Hinkley	107.1	W293AV	W296CH	SD Pierre	96.3	K241AF	K242CH
MN Mankato	89.1	K204FA	K206DI	SD Spearfish	102.3	K218FD	K272CS
MO Camdenton	90.1	K209AP	K211FU	TN Camden	99.7	W258AV	W259BN
[moved from Sedalia]				TX Aqua Dulce	107.7	APP	KXTM-1
MO Malden	93.3	K229BX	K227BK	TX Del Rio	95.1	CP	K236BL
MO Rolla	102.7	K276DY	K274CD	TX Corpus Christi	104.9	APP	KMIQ-1
MT Helena	91.1	K215CG	K216GJ	TX Victoria	95.9	APP	KHMC-1
NV Olinghouse	107.3	KEHD-FM1	KNEZ-FM1	WA Olympia	89.7	K201EM	K209FO
NV Reno	104.1	KZZD-FM1	KZTI-FM1	WA Spokane	107.1	KAZZ-FM1	KPKL-FM1
NV Reno	106.3	KZHD-1	KZHD-FM1	WI Sturgeon Bay	93.3	W222BO	W233BL
NM Alamogordo	97.1	CP	K246BU	WI Tomahawk	100.7	W265BF	W264CH
NM Grants	107.3	K244DT	K297BG				

— FORMAT AND SLOGAN CHANGES —
— Full Power and LP Facilities —

AL Alexander City	89.7	WJHO	> Contemporary Christian: <i>Praise 89.7</i> [Salem - Today's Christian Music]
AL Fulton	89.3	WJIK	Returns to the air with Religious Teaching
AL Moundsville	88.5	WKUA	Signs on with Christian CHR/Rock: <i>Revocation Radio</i>
AZ Gilbert	103.9	KEXX	> Hot AC
CA Big Pine	90.3	KWBP	Returns to the air with Religious Teaching: <i>KWTW Winning The West</i>
CA Big Pine	91.3	KDOX	Signs on with Contemporary Christian: <i>Pilgrim Radio</i> [Pilgrim Radio]
CA Carmel	101.7	KCDU	> CHR
CA Merced	105.3	KGDM-LP	Returns to the air with Religious Teaching
CA Oildale	95.3	KLLY	> CHR
CA Pescadero	89.3	KPDO	Returns to the air with a Variety format: <i>Pescadero Radio</i>
CA San Jose	92.3	KSJO	Adds slogan <i>U 92.3 FM - The Universal FM</i>
CA Shasta Lake	96.5	KIHP-LP	Returns to the air with Religious Teaching
CA Westwood	88.5	KJCQ	Returns to the air with Religious Teaching: <i>KWTW Winning The West</i>
FL Fort Lauderdale	90.3	WYBP	Returns to the air with Religious Teaching [Bible Broadcasting Network]
FL Key Colony Beach	88.7	WYBW	Returns to the air with Religious Teaching [Bible Broadcasting Network]
FL Key West	88.3	WYBX	Returns to the air with Religious Teaching [Bible Broadcasting Network]
FL Live Oak	97.1	WMLO-LP	Returns to the air with Religious Teaching
FL Marianna	91.1	WHMF	Signs on with Religious Teaching: <i>Radio 74 Internationale</i>
GA Atlanta	92.9	WZGC	> Sports: <i>92.9 The Game</i>
GA Claxton	107.3	WMCD	> Talk: <i>WMCD Fox News 107.3</i>
GA Tallapoosa	88.7	WEYY	> Southern Gospel
HI Hilo	92.7	KHBC	Returns to the air with Hot AC: <i>The Wave @ 92FM</i>
HI Holualoa	92.1	KHWI	Returns to the air with Hot AC: <i>The Wave @ 92FM</i>
IL Chicago	94.7	WLS-FM	> Classic Hits: <i>Chicago's Classic Hits, 94.7</i>
IL Earlville	102.9	WMKB	> Regional Mexican: <i>Mex Mix 102.9</i>
IL Metropolis	98.3	WRIK	> Hot AC: <i>K-98</i> [Dial Global]
IN Brazil	92.7	WFNB	> Adult Hits: <i>92.7 BOB-FM</i>
IN Evansville	105.3	WJLT	Changes slogan to <i>The Classic Hits Station</i>
IN Greenfield	99.5	WZPL	> CHR
IA Adel	88.5	KIHS	Changes slogan to <i>Catholic Radio Iowa</i> // KWKY-1150 Des Moines
KS Baxter Springs	104.3	KCAR-FM	> Hot AC: <i>Star 104.3</i>
KS Dodge City	89.1	KSRP	Signs on with Southern Gospel [Church Planters of America]
KS Kiowa	98.3	KQZQ	Adds the slogan <i>Coyote Country, 98.3 KQZQ</i>
KS Lakin	92.5	KGRQ	Signs on with Regional Mexican
KS Lyons	106.1	KXKU	Changes their slogan to <i>Kicks 106</i> , remaining Country
KY Cave City	103.7	WPTQ	> Country: <i>Howdy 103.7</i>
KY Glasgow	105.3	WHHT	> Classic Rock: <i>105.3, The Point</i> [Dial Global - Classic Rock]
KY Horse Cave	106.3	WOVO	> Adult Contemporary: <i>My 106.3</i> [Dial Global - Adult Contemporary]
KY Prospect	98.9	WNRW	Changes their slogan to <i>98.9 Radio Now</i> , remaining CHR
MA Amherst	89.3	WAMH	Returns to the air with Adult Alternative
MA Lurenburg	91.7	WTYN	Returns to the air with Religious Teaching: <i>Renew FM</i>
MA Shirley	89.3	WQPH	Signs on with Religious Teaching [EWTN]
MI Dearborn	100.3	WNIC	> Adult Contemporary
MI Gaylord	101.5	WMJZ-FM	> Classic Hits
MI Harrison	90.7	WBHL	Signs on with Religion [West Central Michigan Media Ministries]
MI McBain	107.9	WCDY	> CHR
MI McMillan	96.7	WMJT	> Classic Hits
MI Paradise	95.1	WUPN	Signs on with Classic Hits: <i>Radio Eagle 95.1</i>
MI Pentwater	98.7	WLDN	Signs on, stunting (at presstime) as <i>Coast 98.7</i>
MN Warroad	91.7	KOLJ-FM	Returns to the air with Religious Teaching [Lifetalk Radio]
MO Ava	92.1	KKOZ-FM	> News/Talk: <i>Best Radio In The Ozarks</i>
MO Chillicothe	88.1	KLWL	Signs on with Religious Teaching: CSN International
MO Concordia	88.1	KYRV	Returns to the air with Southern Gospel // KIRL 89.3 Osage Beach
MO Hayti	98.7	WGCQ	Returns to the air with Christian CHR/Rock: <i>Air One</i> [Air One]
MO Houston	99.3	KUNQ	Changes their slogan to <i>Big Country 99 - The Rooster</i>
MO Osage Beach	89.3	KIRL	Returns to the air with Southern Gospel // KYRV 88.1 Concordia
MO St. Joseph	91.1	KSJI	> Contemporary Christian: <i>Joy 91.1</i>
MT Lakeside	94.3	KOLK	Signs on with Country
NE Shubert	91.7	KSSH	Signs on with Religious Teaching: <i>My Bridge Radio</i> // KROA 95.7 Grand Island
NV Fernley	107.3	KNEZ	> Talk: <i>K-News 107.3</i>
NH Henniker	91.7	WNEC-FM	Returns to the air with Adult Alternative: <i>FM Alternative Radio</i>
NH Exeter	107.1	WERZ	> CHR: <i>Z 107</i>
NY Frankfort	94.9	WKLL	> Rock
NY Minetto	106.5	WKRH	> Rock
NY North Syracuse	100.9	WKRL-FM	> Rock
NC Greensboro	90.9	WQFS	Returns to the air with Variety [Guilford College]

NC Eton College	89.3	WSOE	Changes their slogan to <i>WSOE 89.3 FM - The Only Alternative</i> , remaining Variety
NC Madison	88.1	WOPR	Signs on with Southern Gospel: <i>Old Paths Radio Network</i>
ND Belcourt	90.1	KSIH	Signs on with Religious Teaching: <i>Radio Maria</i> [Radio Maria Network]
ND Cannon Ball	107.5	KXRV	Changes their slogan to <i>Mojo 107.5</i> , remaining Classic Hits
ND Moffit-Lincoln	90.9	KTWJ	Signs on with Religion [Radio 74 Internationale]
ND Richardton	101.9	KZZQ	> Religion: <i>Real Presence Radio</i>
OH Brunswick	91.9	WKJA	Returns to the air with Religious Teaching
OH De Graff	91.7	WDEQ-FM	Returns to the air with a Variety format
OH Russells Point	93.5	WRPO-LP	> Oldies
OK Broken Arrow	92.1	KTBT	> CHR
OK Carnegie	89.5	KJCC	Adds slogan <i>CSN International</i>
OR Condon	106.1	KWCQ	Changes slogan to <i>107.3, The Beat</i> [to Cumulus - Today's Best Hits]
OR Garibaldi	105.5	KDEP	> Oldies: <i>Oldies 105.5</i> [Cumulus - True Oldies]
OR Grants Pass	99.3	KCMD	Signs on with Classic Hits
PA Bechtelsville	90.5	WZXB	Signs on with Contemporary Christian: <i>The Word FM</i>
PA Newburg	90.1	WZXN	Signs on with Contemporary Christian: <i>The Word FM</i>
SC Georgetown	93.7	WXJY	> Sports: <i>ESPN Radio 100.3, The Team</i>
SC Greenville	95.5	WMXP-LP	Returns to the air with a Variety format
SC Quinby	95.3	WFRK	Adds the slogan <i>Live 95</i>
SD Ipswich-Aberdeen	88.9	KSJP	Signs on with Religion: <i>Lamb of God Radio</i> [EWTN]
TX Hearne	103.1	KVJM	> CHR: <i>Kiss 103.1</i>
TX Kingsville	92.7	KKBA	> Rhythmic AC
TX Kurten	107.7	KPWJ	> Christian AC: <i>Peace 107</i>
TX Midland	95.1	KQRX	> Active Rock: <i>Rock 95.1</i>
TX Raymondville	88.7	KVHI	Signs on with Spanish Religious // KSOX-1240
VT Westminster	101.9	WKKN	> Country: <i>Kixx Country</i>
VA Arlington	105.1	WAVA-FM	Changes slogan to <i>Life Changing Talk Radio</i>
VA Iron Gate	101.9	WJVR	Signs on with Adult Contemporary: <i>101.9, The River</i>
VA Richmond	102.1	WRXL	Changes slogan to <i>XL102, Richmond's Rock Station</i>
VA Spotsylvania	88.3	WQIQ	Signs on with News/Talk: <i>Radio IQ</i> [National Public Radio]
WV Weston	102.3	WFBY	Changes slogan to <i>Classic Rock FBY 102.3</i>
WV Buckhannon	93.5	WBTQ	Changes slogan <i>93.5 BTQ</i> , remaining Hot AC
WI Mauston	92.1	WRJC-FM	> Country: <i>Smash Country 92-9 and AM 1270</i>
WY Pinedale	89.9	KWCN	Signs on with Variety
WY Rock Springs	91.3	KWWM	Signs on with Variety [Western Wyoming Community College]



— Translators —

FL Lehigh Acres	96.5	W243AR	> Sports // WWCN-770 North Fort Myers
FL Suncoast Acres	96.5	W243BM	> Sports // WWCN-770 North Fort Myers
IA Centerville	99.7	K259BS	> Oldies // KCOG-1400 Centerville
IA Des Moines	94.5	K233BT	> Religion // KWKY-1150 Des Moines
MN Russell	103.3	K277AI	> Talk/Sports // KMHL-1400 Marshall
WA Kennewick	107.3	K297BE	> Adult CHR: <i>107.3 The Beat</i> // KWCQ 106.1 Condon, Oregon
WI Mauston	92.9	W225BF	> Country: <i>Smash Country 92-9 and AM 1270</i> // WRJC-1270 Mauston

— OTHERNEWS —

CA Ludlow	102.5	KDUQ	Is silent
CA Merced	105.3	KGDM-LP	Changes frequency from 105.5
CO Lamar	89.5	KTLH	Is silent
FL Fort Lauderdale	96.1	Pirate	Fined an individual \$10,000 for operating an unlicensed transmitter
IL Carlinville	90.1	WTSG	Is silent
IA Boone	99.3	KTIA-FM	Station's application to change City-of-License to Johnstown is denied
IA North English	97.1	KMYQ	Is silent
KY Albany	100.9	WANY-FM	Changes frequency from 106.3
KY Horse Cave	106.3	WOVO	Changes frequency from 106.5
LA Buras	91.9	KMRL	Is silent
MN Pequot Lakes	100.1	WZFJ	Is silent
MI Columbia Township	89.7	W209BR	License cancelled; call deleted
MI Manistee	98.7	W254BL	License and Call Letters reinstated
MI Mount Pleasant	98.9	WQOS-LP	License cancelled; call deleted
MI Saint Louis	105.9	WBSQ-LP	License cancelled; call deleted
MO Bolivar	88.1	K201AA	License cancelled; call deleted
MO Gainesville	99.7	KBOD	Is silent
MO Jefferson City	90.1	K284AO	License cancelled; call deleted
MO St. Joseph	89.7	K209CT	License cancelled; call deleted
NH Stratford	98.7	WTTT	License cancelled; call deleted
NM Silver City	96.5	K243BH	Moved here from Lordsburg
NC Asheville	103.5	WPVM-LP	Is silent
NC Sanford	93.1	W226AV	License cancelled; call deleted
OR Diamond Lake	107.7	KBDF	Is silent
OR Lees Camp	88.7	KTFH	Is silent
OR Seaside	96.5	KCYS	Changes frequency from 98.1
SD Frankfort	89.5	KTUT	Is silent
SD Aberdeen	88.9	K205ED	Is silent due to new full power KSJP signing on; has applied to move to 89.5 MHz
TX Childress	104.1	KCHT	Is silent
WI Ashland	90.9	W215AE	License cancelled; call deleted [displaced by new WUWS]
WY Wamsutter	104.9	KHNA	Is silent

Thanks to Shawn Axelrod, Deane McIntyre, Tim Noonan, Dan Sys, Radio-Insight, Radio World Online and Upper Midwest Broadcasting for news.

If you hear any changes occur on your FM dial, share the news! 73



FM FACILITIES

NOVEMBER 2012

AF	Applied For (a new station)	PC	Power (and/or tower height) change on the air
Aux	Auxiliary (backup) transmitter	PG	Power change granted
CC	Callsign change	PR	Power change requested
CL	City-of-license change	RA	Returns to the air
DE	License/permit deleted	RE	Reinstated (previously-dismissed app.)
FC	Programming (format) change	ROA	Request of Applicant
FTP	Failure to Prosecute	SI	Off the air (silent)
LC	License to Cover	STA	Special Temporary Authority
NS	Permit granted for new station	XC	Transmitter site changed
NW	New station on the air	XG	Transmitter site change granted
PA	Proposed Amendment	XR	Transmitter site change requested

Changes:

City/State/Prov	Freq	Calls	Change
AB St. Paul	105.5	NEW	AF 3.44kw/51m, 53-59-33/111-13-43; to relay CHFA-680 Edmonton
AK Anchorage	105.7	KMVN	CC from KNLT
AK Anvik	89.5	NEW	AF 27w/57m, 62-38-58/160-11-34 (Kuskokwim Public Broadcasting Corp.)
AK College	103.9	KTDZ	PG>28kw/233m
AK Fairbanks	88.3	KZVV	NW 3.2kw/474m, 64-52-45/148-03-10 (Educational Media Foundation)
AK Fairbanks	94.3	NEW	NS 28kw/233m, 64-55-21/147-42-55 (Last Frontier Mediative)
AK Fairbanks	95.9	KXLR	PG>28kw/233m, 64-55-21/147-42-55
AK Grayling	90.5	NEW	AF 50w/-71m, 62-54-22/160-03-50 (Kuskokwim Public Broadcasting Corp.)
AK Holy Cross	91.5	NEW	AF 50w/15m, 62-12-05/159-45-59 (Kuskokwim Public Broadcasting Corp.)
AK Houston	88.7	KJHA	PR>430w/17m, 61-38-45/149-51-52
AK Palmer	95.5	KNLT	CC from KMVN
AK Shageluk	88.5	NEW	AF 50w/-9m, 62-39-20/159-31-49 (Kuskokwim Public Broadcasting Corp.)
AL Andalusia	89.3	WDWZ	PR>1.4kw/103m, 31-18-11/86-29-10
AL Carbon Hill	89.7	KRLE	QR from 91.3, 1w-H/79kw-V/154m, 32-02-01/87-36-48; CL from Oberlin, Kansas...
AL Huntsville	89.3	WLRH	PC>319m, 34-44-13/86-31-45
AL Monroeville	88.9	WILF	PG>87kw
AL Pike Road	93.5	NEW	PA, Class A
AL Selma	100.1	WDXX	PG>150m, 32-22-54/86-56-37
AL Southside	105.9	WKLS	CC from WFXO
AL Talladega	92.7	WTDR-FM	CC from WTDR
AL Union Springs	91.3	WBIL	CC for NS
AR Fayetteville	89.3	KAYH	PC>25kw/112m
AR Lakeview	93.5	KKTZ	PR>16kw/188m
AR Little Rock	89.1	KUAR	NW 39.5kw/311m (aux)
AR Searcy	88.7	KLUY	PG<750w/115m
AZ Colorado City	90.5	NEW	PR<450w/-236m, 37-16-16/112-39-02; amendment from 250w/-244m & to change site
AZ Colorado City	90.5	NEW	QR from 91.3, 250w/-244m, 37-21-55/112-35-30 dismissed
CA Atwater	91.5	KZCF	NW 500w/32m, 37-23-49/120-36-49 (Common Frequency)
CA Big Pine	91.3	KDOX	NW 125w-H/500w-V/926m, 37-24-42/118-11-07 (KNIS)
CA Camarillo	95.9	KOCP	PR<1kw/245m, 34-25-20/119-02-04
CA Carmel Valley	91.3	KZBV	PR<11w/-83m, 36-26-38/121-41-43 dismissed 73.511(a) (doesn't meet minimum Class A facilities)
CA China Lake	102.1	KSSI	QG from 102.7, 1.5kw/396m, 35-28-38/117-41-59
CA Davis	90.3	KDVS	PR>13kw/56m, 38-35-27/121-41-29
CA Garberville	91.1	KMUD	PG>9kw/792m
CA Garberville	91.1	KMUD	PR>9kw/792m
CA Guerneville	102.7	NEW	NS 1.6kw/197m, 38-29-20/123-01-53 (Redwood Empire Stereocasters)
CA Kerman	92.7	NEW	AF 5.4kw/105m, 36-21-21/120-27-41; amendment from 4.9kw/110m
CA King City	91.3	KDRH	PR<450w/-108m, 36-12-23/121-06-49
CA Los Angeles	100.3	KSWD	AF 5kw/199m, 34-09-50/118-11-46 (aux)
CA Mettler	89.7	KSVG	PG 1.7kw/-309m, 34-59-03/118-49-57
CA Newman	90.7	KCUD	PR<1.5kw
CA Old Dale	89.1	NEW	NW 100w/-145m, 34-07-15/115-46-08 (Centro de Intercesion y Adoracion Internacional)
CA Old Dale	89.1	NEW	PR<100w/-145m, 34-07-15/115-46-08
CA Old Dale	89.1	NEW	PR<100w/-145m, 34-07-15/115-46-08
CA Randsburg	102.9	NEW	GA from 102.1, Class A, to allow KSSI-102.7 to upgrade from Class A to Class B1 & move to 102.1
CA San Diego	89.5	KPBS-FM	PC 26kw/209m, 32-50-17/117-14-57
CA Tipton	104.9	KCRZ	PG 3.1kw/141m, 36-14-32/110-52-23
CA Tulare	106.7	KJUG-FM	PG<27.1kw/147m, 36-14-32/118-52-23
CA Weed	102.3	KSIZ	CC from KCWH

CA Willow Creek	99.5	NEW	AF 1.6kw/385m, 40-59-25/123-46-36 (William W. McCutchen III)
CA Yucca Valley	88.1	KRTM	PC>150w/774m, 34-02-16/116-48-48
CO Calhan	104.7	KKCS	FC; sold to Educational Media Foundation
CO Crook	88.7	KOOW	PG>22kw/197m
CO Durango	101.3	KIQX	PC<100kw/127m, 37-15-44/107-54-08
CO Fleming	100.1	KMAP	QG from 92.9, 50kw
CO Fruita	101.5	KGJX	NW 3.02kw/418m, 39-04-00/108-44-45
CO Grand Junction	92.3	KKVT	CC from KJYE
CO Hotchkiss	99.5	NEW	NS 25kw/-16m, 38-52-28/107-39-40 (Educational Media Foundation)
CO Lamar	105.7	KVAY	AF 230w/-9m, 38-05-14/102-37-08 (aux)
CO Olathe	101.9	NEW	AF dismissed
CO Rico	89.5	KICO	PG<125w
CO Rock Creek Park	101.7	KXCL	PR>2.1kw/-9m, 38-43-11/104-43-16
CO Woodland Park	89.5	KILE-FM	PR>50w/-134m, 38-59-49/105-02-46 dismissed 73.511(a) (proposed power below minimum)
FL Coral Gables	90.5	WVUM	PC>5.9kw
FL Fort Meade	98.3	WWRZ	AF 43kw/150m (aux)
FL Immokalee	92.1	WAFZ-FM	AF 370w/60m, 26-24-34/81-25-48 (aux)
FL Jacksonville Beach	92.5	WJXL-FM	CC from WFJO
FL Jupiter	106.3	WUUB	PG<94m, 26-56-20/80-07-02 (aux) CX ROA
FL Marianna	91.1	WHMF	NW 1.9kw/19m, 30-45-03/85-11-19 (R. 74 International)
FL Marianna	91.1	WHMF	PG<19m rescinded
FL Marianna	91.1	WHMF	PG>1.9kw/19m, 30-45-03/85-11-19
FL Melbourne	89.5	WFIT	PC>4.7kw/45m
FL Palm Bay	90.3	WEJF	PG>30kw/147m CX ROA (remains 10kw/123m)
FL Palm Bay	90.3	WEJF	PR>30kw/147m
FL Santa Rosa Beach	102.1	WWAV	PR>146m, 30-24-38/86-37-22
GA Atlanta	90.1	WABE	PR<96kw
GA Atlanta	96.1	WWPW	CC from WKLS
GA Atlanta	96.1	WWPW	PG 97kw/330m
GA Atlanta	99.7	WWWQ	NS 48kw/319m, 33-44-41/84-21-36 (aux)
GA Clermont	105.1	WNGA	PG>7kw/187m, 34-44-55/83-43-43
GA Crawfordville	94.7	WULK	CC for NS
GA Maysville	100.9	NEW	PA, Class A
GA St. Simons Island	92.7	WBGA	PR>16.5kw/123m, 31-10-09/81-32-14
GA Warm Springs	88.1	WJSP-FM	PR>100kw/461m (reinstate expired permit)
GU Dededo	92.7	KMOY	NW 42kw/165m, 13-29-17/144-49-35 (Moy Communications)
HI Aiea	107.9	KKOL-FM	NW 50kw/567m (aux)
HI Honolulu	99.5	KGU-FM	NW 50kw/567m (aux)
HI Kurtistown	102.7	KTBH-FM	QR from 102.5
HI Paauilo	103.9	KNUQ	QG from 103.7
HI Wailuku	91.7	KMNO	PG>110w/935m, 20-46-31/156-14-49
IA Bettendorf	91.1	KNSB	CC from KWNJ
IA Carroll	90.7	KNSC	CC from KWOI
IA Dubuque	89.7	KNSY	CC from KDUB
IA Fort Dodge	88.7	KWOP	PR<200w/37m, 42-33-18/94-07-47; amendment from 3m at different site
IA Fort Dodge	91.1	KNSH	CC from KTPR
IA Hiawatha	89.1	KXGM-FM	PR<3.6kw/94m, 42-01-57/91-40-24
IA Johnson	99.3	KTIA-FM	PA from Boone denied for non-technical reasons.
IA Lamoni	97.9	KNSL	CC from KOWI
IA Mason City	91.5	KNSM	CC from KUNY
IA Montezuma	89.7	KRNF	PG>3.1kw/103m
IA Merville	97.1	KNSX	CC from KWIA
IA Ottumwa	89.1	KNSZ	CC from KDWI
IA Pella	103.3	KAZR	PR<227m, 41-32-18/93-17-58; undo permit to increase to 342m & relocate transmitter
IA Storm Lake	88.1	KOIA	PR>6kw/112m, 42-40-06/94-59-35
ID Burley	91.9	KBWE	PG>4.9kw, from V-only to circular
ID McCall	93.5	NEW	QR from 93.7, 100kw/-24m, 44-21-00/117-17-49
ID Sugar City	96.5	NEW	NS 100kw/34m, 44-07-38/111-26-05 (Kona Coast Radio)
IL Augusta	98.5	NEW	NS 2.75kw/150m, 40-06-36/91-01-48 (Canton SDA Church)
IL Chicago	90.5	WRTE	PG 6w/107m, 41-52-25/87-39-04
IL Clifton	107.3	NEW	PG>96m, 40-57-06/88-10-52
IL Macomb	89.7	WHPA	CC from WLWM
IL Macomb	89.7	WHPA	PC<200w/52m, 40-26-58/90-42-25
IL Minooka	88.5	NEW	PR>200w/32m, 41-29-47/88-17-56
IL Minooka	88.5	WMNK	CC for NS
IL Minooka	88.5	WMNK	NW 200w/32m, 41-29-47/88-17-56
IL Oak Park	102.7	WVAZ	PR>48kw/75m (aux) (amendment from 45kw & to reduce antenna height)
IL Olney	92.9	WSEI	PG>49kw/153m
IL Wonder Lake	91.3	WTZY	NW 4kw/65m, 42-27-53/88-25-29 (Calvary Radio Network)
IN Batesville	103.9	WRBI	XG 39-13-25/85-15-22
IN Brazil	92.7	WFNB	CC from WSDM-FM
IN Goshen	97.7	WSSM	XR 41-36-13/85-55-46
IN Greensburg	89.9	WTRE-FM	PR 930w/67m; CC from WHOZ
KS Dodge City	89.1	KSRP	NW 200w/20m, 37-47-42/100-04-08 (Church Planters of America)
KS Dodge City	89.1	KSRP	PG<200w/20m, 37-47-42/100-04-08
KS Dodge City	89.1	KSRP	PR<100w/20m, 37-47-43/100-04-08; amendment from 200w/18m at slightly different site
KS Lakin	92.5	KGRO	NW 6.2kw/59m, 37-53-26/101-22-39

KS Topeka	88.1	KJTY	PG>100kw/195m, 93-02-21/95-26-59
LA Oak Grove	104.1	KLCJ	PG<350w/12m, 29-48-55/93-06-56
MA Edgartown	88.7	WMEX	PG>1.7kw/66m, 41-26-23/70-34-50
MA Harwich Port	93.5	WFRQ	PG>6kw/77m, 41-41-30/70-08-50
MA New Bedford	97.3	WJFD-FM	NS 29.2kw/129m (aux)
MA New Bedford	97.3	WJFD-FM	NW 29.2kw/129m (aux)
MA New Bedford	97.3	WJFD-FM	XC 41-38-15/70-52-17
MB Winkler	88.9	CKMW-FM	QR from 103.7, from directional to non-directional. Made possible by CBWT(TV)'s move from analog ch. 6 to DTV channel 27.
MB Winnipeg	107.1	CFEQ-FM	FC to classical
MD Annapolis	107.9	WLZL	AF 28kw/126m (aux) (amendment from 32kw)
MD Annapolis	107.9	WLZL	AF 32kw/126m (aux)
MD Annapolis	107.9	WLZL	NS 28kw/126m (aux)
MD Fruitland	107.7	WKHI	PG>22kw
MD Towson	89.7	WTMD	PR 7.4kw/122m, 39-24-10/76-36-12
ME Freeport	89.3	WMSJ	PC>14kw/186m
ME Kennebunkport	104.7	WHTP	CC from WBQW
MI Alpena	105.7	NEW	NS 4.5kw/87m, 45-03-58/83-29-06 (WATZ Radio)
MI Ann Arbor	88.3	WCBN-FM	PG>3kw/51m CX, to remain 200w/54m
MI Ann Arbor	88.3	WCBN-FM	PR>3kw/51m (reinstate expired permit)
MI Burtchville Twp.	89.7	WKKM	PR<300w/64m, 43-04-08/82-28-48; CL from Speaker Twp.
MI Eagle	88.5	WJOM	PG>25kw
MI Grand Rapids	95.7	WLHT-FM	NS 18.2kw/109m (aux)
MI Grand Rapids	95.7	WLHT-FM	NW 18.2kw/109m (aux)
MI Grand Rapids	98.7	WFGR	NS 750w/126m (aux)
MI Grand Rapids	98.7	WFGR	NW 750w/126m (aux)
MI Harrison	90.7	WBHL	PC>10kw/130m, 43-57-17/84-32-59
MI Lakeview	106.3	WGLM-FM	PC<96m, 43-24-18/85-15-56
MI Lakeview	106.3	WGLM-FM	PG<96m, 43-24-18/85-15-56
MI Manistique	88.9	WCRR	PR>50kw; amendment from 100kw/248m
MI Newberry	90.3	WUMI	PG<500w/64m
MI Newberry	90.3	WUMI	PR<500w/64m
MI Pentwater	98.7	WLDN	NW 5.5kw/104m, 43-55-01/86-26-12
MN Grand Rapids	89.7	KGRP	PG 8.9kw/157m
MN Rochester	106.9	KROC-FM	NW 640w/143m, 44-01-59/92-36-10 (aux)
MO Boonville	99.3	KCLR-FM	NS 1.85kw/113m, 38-57-18/92-16-20 (aux)
MO Chillicothe	88.1	KLWL	PG<800w/103m, 39-48-54/93-35-18
MO Fayette	93.9	KSSZ	NS 1.2kw/110m, 38-57-18/92-16-20 (aux)
MO Hayti	98.7	WGCO	PC 4.1kw/89m, 36-12-50/89-41-25
MO Shelbina	89.1	KKWW	PG>13kw/239m
MO Windsor	98.5	KWKJ	PG>44kw/159m
MS Ellisville	102.5	WJKX	PC 11.5kw/256m, 31-31-37/89-08-07
MS Gluckstadt	101.7	WYOY	PG<123m, 32-23-12/90-09-47
MS Indianola	105.7	WIBT	QR from 105.5, 25kw/163m, 33-39-26/90-42-18; amendment from 50kw/150m & to change site
MS Sharon	100.5	WRTM-FM	PC<6kw/100m, 32-31-20/90-04-36
MS Vaiden	102.1	NEW	NS 6kw/68m, 33-178-50/89-44-32 (Valleydale Broadcasting)
MS Washington	103.9	WWUU	PG<255w/100m, 31-33-24/91-23-00
MS Washington	103.9	WWUU	PR<255w/100m, 31-33-24/91-23-00; amendment from 2kw/175m & to delete frequency change to 101.1
MT Billings	90.1	KBLW	PR>1.6kw
MT Choteau	88.7	KUDI	PR>325w/138m, 47-45-21/112-09-42
MT Columbus	90.5	KMTJ	QR from 88.9, 2.3kw/369m, 45-11-40/109-20-30
MT Lakeside	94.3	KOLK	NW 5.5kw/160m, 48-05-39/114-16-11 (KOFI Inc.)
MT Miles City	88.3	NEW	PR<4kw/170m, 46-24-30/105-39-48
MT Plains	90.7	KZNP	QR from 90.5, 1.5kw/460m, 47-27-17/115-39-29
MT Victor	88.7	KXEH	CC from KCBV
MT Victor	88.7	KXEH	PR<1.2kw/100m, 46-13-48/114-14-08
NC Calypso	91.1	NEW	PR>2.2kw/50m, 35-12-26/78-03-20
NC Dillsboro	89.7	WHTD	CC from WNQS
NC Harrisburg	92.7	WPZS	CC from WQNC
NC Indian Trail	100.9	WQNC	CC from WPZS
NC Lumberton	89.5	WLPS-FM	PR>4kw/98m; amendment from 100m
NC Southport	107.5	WAZO	PR<21kw/234m, 34-14-37/78-07-24
NC Wilmington	90.5	WWIL-FM	PR<4kw/189m, 34-14-37/78-07-24
NC Woodfin	105.1	WQNS	QR from 104.9, 4.9kw/62m, 35-35-50/82-36-21; CL from Waynesville; amendment from 5.3kw
NC Wrightsville Beach	103.7	WBNE	PR<22.1kw/151m, 34-05-52/77-58-18
ND Belcourt	90.1	KSIH	NW 25kw/92m, 48-50-37/99-45-02 (R. Maria)
ND Fargo	101.9	KRWK	AF 1kw/28m, 46-51-51/96-49-06 (aux)
ND Fargo	101.9	KRWK	NS 1kw/28m, 46-51-51/96-49-06 (aux)
ND Fargo	101.9	KRWK	NW 1kw/28m, 46-51-51/96-49-06 (aux)
ND Fargo	93.7	WDAY-FM	AF 3kw/33m, 46-51-52/96-49-06 (aux)
ND Fargo	93.7	WDAY-FM	NS 3kw/33m, 46-51-52/96-49-06 (aux)
ND Fargo	93.7	WDAY-FM	NW 3kw/33m, 46-51-52/96-49-06 (aux)
ND Williston	98.5	NEW	NS 100kw/212m, 48-03-31/104-00-05 (Glendive Broadcasting Corp.)
NE Omaha	96.1	KISO	CC form KQBW
NE Sargent	92.3	KHZZ	QR from 92.1, 100kw/254m, 41-29-54/99-25-15
NE Shubert	91.7	KSSH	NW 3.1kw/104m, 40-13-56/95-45-55 (My Bridge Radio)
NE Valentine	90.7	KMBV	PG>2.3kw/33m

NH Meredith	101.5	WWHQ	PR 560w/325m, 43-32-45/71-22-43
NH Plymouth	90.7	WPVH	PC>325w
NH Stratford	98.7	WTTT	CX
NJ Eatontown	106.3	WKMK	AF 1.1kw/154m (aux)
NJ Long Branch	107.1	WWZY	NW 400w/154m, 40-16-41/74-04-41 (aux)
NJ Manahawkin	89.9	WNJM	PR 250w/70m
NJ Toms River Township	91.1	WWNJ	PC<5.8kw/97m, 39-59-49/74-10-23
NJ Toms River Township	91.1	WWNJ	PG<5.8kw/97m, 39-59-49/74-10-23
NJ Toms River Township	91.1	WWNJ	PR<5.8kw/97m, 39-59-49/74-10-23
NL Port aux Choix	96.7	CFNW	QR from 790 AM, 4.3kw/43m, 50-42-19/57-22-00; relays CFCB-570
NM Carlsbad	90.1	NEW	FC; sold to K-Love
NM Carrizozo	100.1	NEW	NS 8kw/365m, 33-25-33/105-59-33 (Hispanic Target Media)
NM Crownpoint	107.3	NEW	PA, class A
NM Encino	88.7	KXNM	NW 18.2kw/89m, 34-40-39/105-41-11 (KXNM Community Foundation)
NM Farmington	95.7	KPCL	PG<26.5kw/313m
NM Hurley	88.1	KOTO	PR 2kw/463m, 32-51-43/108-14-28
NM Las Vegas	107.1	NEW	AF 860w/94m, 35-34-27/105-10-18 (Owensville Communications)
NM Ruidoso	88.5	KENG	PG<71w/921m
NM Ruidoso	91.3	KYCT	FC; sold to K-Love
NM Ruidoso	91.3	KYCT	PR<241w/866m
NM Ruidoso	91.3	KYCT	PR<241w/866m
NM Tularosa	102.7	NEW	NS 50kw/77m, 33-04-58/106-02-21 (Hispanic Target Media)
NS Spryfield	97.5	CIRP-FM	QR from 94.7, 454w
NV Lovelock	106.3	KWNZ	CC from KZHD
NV Reno	88.7	KUNR	PG<651m
NY Buffalo	94.5	WNED-FM	PR 96kw/221m
NY Liberty	88.1	WGWR	PR 38w/246m, 41-48-04/74-47-05
NY Monroe	89.3	WLJP	PR<283m, 41-22-42/74-08-16
NY New York	96.3	WXNY-FM	NW 12.5kw/282m, 40-45-22/73-59-12 (aux)
NY Richfield Springs	88.7	WMHY	PR 614w/116m, 42-55-11/74-57-02
NY Smithtown	94.3	WWSK	CC from WIGX
NY Stillwater	101.3	WJKE	CC from WQAR
OH Bellaire	100.5	WBGI-FM	CC from WYJK-FM
OH Bellevue	92.1	WOHF	PC 5.8kw/103m
OH Cedarville	90.3	WKCD	PC>8.7kw/291m, 39-43-28/84-15-18
OH Dublin	106.7	WCGX	AF 5.3kw/91m (aux)
OH Dublin	106.7	WCGX	PC<3kw/144m, 40-01-02/83-01-11
OH Kettering	99.9	WCHD	CC from WDKF
OH Mason	97.7	WOXY	PC 2.7kw/152m, 39-30-57/84-21-05
OH Munroe Falls	98.1	WKDD	AF 22.75kw/101m (aux)
OH Munroe Falls	98.1	WKDD	NS 22.75kw/101m (aux)
OH Sandusky	89.5	WVMS	PG>5.5kw/30m
OH West Chester	89.9	WLHS	PC 85w/108m, 39-18-58/84-22-11
OK Bennington	96.1	KZRC	XG 33-53-22/96-09-07
OK Durant	91.9	KSSU	PG>3.2kw/106m, 34-02-12/96-25-37
OK Durant	91.9	KSSU	PR>3.2kw/106m, 34-02-12/96-25-37
OK Hartshorne	94.3	NEW	NS 25kw/82m, 34-52-00/95-34-27 (Southeastern Oklahoma Radio)
OK Oklahoma City	88.9	KYLV	NW 29kw/205m, 35-34-24/97-29-08 (aux)
OK Wapanucka	107.5	NEW	PR<1.85kw/130m, 34-25-08/96-11-24
ON Dryden	104.3	CKQV-FM-1	QG from 104.5, to avoid interference to CKQV-FM-2 Kenora & CKQV-FM-3 Sioux Lookout.
ON Windsor	98.3	CBEF-3-FM	NS 2.32kw/114m, 42-54-28/82-20-19 to relay 1550 (ex-540) Windsor
ON Woodstock	103.9	CKDK-FM	PG 51kw/138m, relocate XR 213m NW
OR Coos Bay	89.5	KDCB	NW 55w/148m, 43-21-16/124-14-30 (UCB USA)
OR Gleneden Beach	88.1	KQOC	PG 6.5kw/317m
OR Seaside	96.5	KCYS	QC from 98.1
OR Terrebonne	106.5	NEW	NS 2.4kw/582m, 44-11-53/120-58-40 (Sunriver Broadcasting)
PA Allport	90.5	WRPV	PR<99w/81m, 40-56-29/78-16-14
PA Bechtelsville	90.5	WZXB	NW 1.1kw/172m, 40-24-45/75-50-42 (Four Rivers Community Broadcasting Corp.)
PA Bethlehem	91.3	WLVR-FM	PR>40w
PA New Castle	90.1	WVMN	PG<1.75kw/75m
PA Newburg	90.1	WZXN	NW 5.6kw/14m, 40-10-47/77-30-56 (Four Rivers Community Broadcasting Corp.)
PA Sheffield	105.1	NEW	NS 6kw/79m, 41-47-05/79-05-06 (Radio Partners)
PA Tobyhanna	107.9	WKRF	PG 830w/268m, 41-02-39/75-22-39
PR Hormigueros	106.1	WRRH	PG>650w/642m, 18-08-44/66-58-50
PR Quebradillas	91.7	WZCA	PG>6kw/99m, 18-29-11/66-56-37
PR Santa Isabel	98.1	NEW	PR<133m, 18-01-45/66-21-37; amendment to change V power from same as H to 1.9kw
QC Hudson	106.7	NEW	NS 500w/94m, English soft adcon
QC La Tuque	97.1	CFLM	QG from AM 1240, 32kw/127m
QC St.-Fabien de Panet	92.5	CIQI-FM-1	AF 17.5kw/123m, 46-39-23/70-08-51; to relay CIQI-FM 90.3 Montmagny
SC Anderson	107.3	WJMZ-FM	PG>313m, 34-38-51/82-16-13
SC Barnwell	99.1	WHBJ	CC for NS
SC Pinopolis	105.9	WTUA	QR from 106.1, 67m, 33-10-26/80-00-46
SD Frankfort	89.5	KTUT	PR>91kw/151m, 44-35-24/97-40-46
SD Ipswich	88.9	KSJP	QC from 88.5, 3.3kw/72m, 45-27-13/98-48-10

SD Murdo	100.9	NEW	NS 28kw/204m, 43-56-16/100-40-42 (Agnus Dei Communications)
SD Sioux Falls	97.3	KMXC	PG>260m
TN Alcoa	89.1	WOFM	PR from H-only to circular
TN Etowah	103.1	WLLJ	PG 1.85kw/643m (aux)
TN Etowah	103.1	WLLJ	PR 1.85kw/643m (aux)
TN Goodlettsville	92.1	WQQK	PG 3.5kw/133m
TN Humboldt	105.3	WDVW	CC from WTJW
TN Maynardville	88.3	WYLV	PR<452m, from H-only to circular
TN Norris	106.7	WLYT	CC from WFGW-FM
TN Trenton	97.7	WYJJ	CC from WTGP
TX Allen	103.3	KESN	XG 33-32-14/96-49-54
TX Benavides	107.7	KXTM	PC>100m, 27-43-25/98-16-14
TX Brownwood	91.7	KHBW	NW 420w/148m, 31-43-45/99-01-12 (KHCB)
TX Burke	93.9	KAGZ	PG>50kw/143m, 31-09-15/95-04-42
TX Canadian	90.5	KHHC	QR from 91.1, 120w/-37m, 35-54-12/100-19-55
TX Canadian	91.3	KHHC	QR from 91.1, 120w/-37m, 35-54-12/100-19-55; amendment from 90.5
TX Carthage	88.3	KRTG	PG>14kw/135m, 31-50-40/94-20-44
TX College Station	95.1	KNDE	NS 3.7kw/81m, 30-37-54/96-21-28 (aux)
TX Flatonia	94.3	NEW	AF dismissed (Katherine Pyeatt)
TX Goliad	104.3	NEW	NS 6kw/100m, 28-43-47/97-22-05 (Hispanic Target Media)
TX Highland Village	100.7	KWRD-FM	AF 100kw/564m & 100kw/493m, both aux
TX Hillsboro	102.5	KBRQ	XC 31-49-29/97-09-32
TX Hooks	94.1	KTRG	NW 2.34kw/156m, 33-30-24/94-12-25
TX Iowa Park	96.3	KXXN	PG>100m, 34-02-49/98-39-38
TX Kingsland	104.7	NEW	NS 5.4kw/106m, 30-44-12/98-17-36 (Munbilla Broadcasting Properties)
TX Kurten	107.7	KPWJ	PC>3.5kw/100m, 30-37-12/96-15-13
TX Lubbock	99.5	KQBR	AF 3.8kw/167m (aux)
TX Lubbock	99.5	KQBR	NS 3.8kw/168m (aux)
TX Lubbock	99.5	KQBR	NW 3.8kw/168m (aux)
TX Markham	92.5	KKHA	PR>18kw, 28-52-25/96-08-22
TX New Waverly	91.1	KNLY	PR<2kw dismissed
TX Panhandle	106.1	NEW	NS 25kw/100m, 35-19-35/101-13-22 (Hispanic Target Media)
TX Point Comfort	94.1	KJAZ	PG<11kw
TX Raymondville	88.7	KVHI	NW 2kw/40m, 26-30-58/97-49-09
TX San Marcos	89.9	KTSW	PG>16kw/94m
TX Smiley	90.3	NEW	NW 400w/23m, 29-16-20/97-40-28 (Hispanic Christian Communications)
TX Snyder	89.9	NEW	PR 19kw/139m, 32-45-47/100-53-08; amendment to add site change
TX Snyder	89.9	NEW	PR>19kw/139m
TX Sunset Valley	92.5	KVLR	PR 3.4k4/134m, 30-13-07/97-24-03
TX Victoria	89.3	KBRZ-FM	CC from KXGJ
TX Victoria	89.3	KXGJ	PG>37kw/122m
TX Westbrook	102.3	NEW	PR<250w/34m
TX Westbrooke	102.3	NEW	PG<250w/34m
UT Salina	94.5	NEW	PR>66kw/718m
UT Salt Lake City	90.1	KUER-FM	PC 20.6kw/1244m, 40-39-35/112-12-05
VA Front Royal	90.3	WXDM	PG<190w/-65m, 38-56-59/78-08-50
VA Front Royal	90.3	WXDM	PR<190w/-65m, 38-56-59/78-08-50
VA Iron Gate	101.9	NEW	NS 560w/322m, 37-47-35/79-55-59 (United States CP)
VA Mechanicsville	92.1	WCDX	AF 4.5kw/98m, 37-37-17/77-22-14 (aux)
VA Mechanicsville	92.1	WCDX	NS 4.5kw/98m, 37-37-17/77-22-14 (aux)
VA Spotsylvania	88.3	WQIQ	NW 3.5kw/120m, 38-07-47/77-42-55 (Virginia Tech Foundation)
VI Christiansted	91.9	WVSE	NW 7.4kw/274m, 17-44-51/64-50-11 (Crucian Educational Nonprofit Group)
VT Brattleboro	88.9	WVBA	NW 8.9kw/32m, 42-49-44/72-35-52 (Vt. Public Radio)
WA Oakville	97.7	KOMO-FM	PC 69kw/701m
WA Rainier	90.5	KACS	PR 2.1kw/203m, 46-48-43/122-24-17
WA Union Gap	104.9	KYXE	NW 680w/297m, 46-30-48/120-24-03 (Sunnylands Broadcasting)
WI Brookfield	106.9	WNRG-FM	CC from WZBK-FM
WI Brule	89.9	WWSA	NS 10.68kw/129m (aux)
WI Brule	89.9	WWSA	NW 10.5kw/129m (aux)
WI Brule	89.9	WWSA	PC>92kw/157m
WI Brule	89.9	WWSA	PG>92kw/157m
WI Chilton	92.9	WXMM	PC 5.8kw/102m, 44-04-23/88-15-24
WI Forestville	91.7	WQQA	PR>11.8kw/45m; amendment from 38m
WI La Crosse	90.3	WHLA	NS 3.8kw/269m, 43-48-17/91-22-06 (aux)
WI La Crosse	90.3	WHLA	NW 3.8kw/269m (aux)
WI Menomonie	88.3	WHWC	NS 7.64kw/297m (aux)
WI Menomonie	88.3	WHWC	NW 7.6kw/297m (aux)
WI Waunakee	105.1	WMHX	CC from WCHY
WV Moundsville	96.5	WYJK-FM	CC from WBGJ-FM
WY James Town	93.5	KTEA	CC for NS
WY James Town	93.5	NEW	NS 4kw/272m, 41-33-30/109-21-50 (Kona Coast Radio)
WY Pinedale	89.9	KWCN	NW 75w/131m, 42-50-39/109-55-23 (WCN Inc.)
WY Pinedale	89.9	KWCN	PG<75w/131m



PHOTO NEWS

Jeff Kruszka
1909 Lost Lake Place
Pearland, TX 77581
jkruszka@sbcglobal.net

November 2012

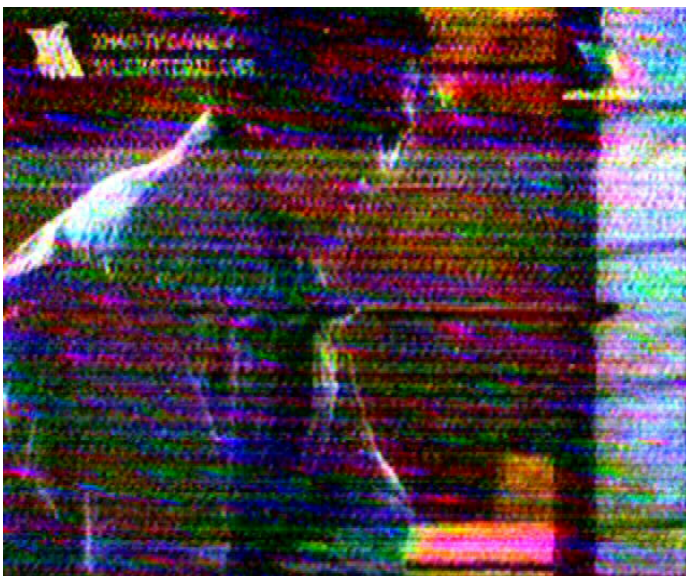
Now more fantastic DX photos from Chris Dunne of Pembroke Pines, FL.



KENS-39 San Antonio, TX
1090 mi Tr seen 4-27-12
"Wow!" - jk



WACP-4 Atlantic City, NJ
981 mi Es seen 6-12-12
"new to air" - jk



XHAO-4 San Cristobal, CHS
1043 mi Es seen May 2012



HRCV-3 Tegucigalpa, HND
942 mi Es seen 7-17-12
"Telesistema"



TGV-3 Guatemala City, GU
1098 mi Es seen 4-24-12

And here's a montage of photos from XEFE-2 Nuevo Laredo, Tamaulipas, 1199 mi Es, as seen on 5-30-12 (they're so big and pretty, I had to show them all):



WITN-32 Washington, NC
481 mi Tr seen 5-30-12

KERA-14 Dallas, TX
1080 mi Tr seen 6-4-12
"Wow Again!!"

As always, fantastic stuff. Thanks, Chris.
73's, JEFF



Coast to Coast TV DX

Featuring reports from the entire United States and all of Canada.

Send reports by the 15th of each month to:

Nick Langan

1040 Riverview Drive

Florence, NJ 08518

E-mail: nickl@wtfda.org

The Editor's Note

Hopefully you've been immersing your downtime with election coverage or the latest on the "Frankenstorm" striking the mid-Atlantic and northeast, because the DX realm has not been offering much in the way of entertainment value. The best report we came across in October was an impressive decode of KENW-DT-27 New Mexico from Dave Pomeroy in Kansas on the 24th. The south should have more tropo to look forward to in November thanks to the always charitable Gulf of Mexico pipeline, but save for a fluke, the season is likely over for those in the north. Time for a fall clean-up of equipment and for us on the east coast, hoping our antennas are still in one piece!

Season summaries with some fine DX from Jim Pizzi, Danny Oglethorpe, and Mike Bugaj can be found inside this edition of C2CTVDX, along with reports from Dennis Smith and Bill Draeb.

Jim Pizzi

100 County Road 28
Palmyra, NY 14522-9440

Antennas: Delhi VIP307SR VHF @ 20'
Winegard PR-9032 UHF w/Winegard PA-4975amp
@ 25'
Magnavox 12" B&W, RCA 20&27"
Zenith STB

Time: EDT
@=NEW
T=Tentative

6-10-12 Tr/Es

1628	CICI-1	3	Elliot Lake, ON	
	CBC//CKWS-11,CHEX-12		355miles	
2002	KNOP	2	North Platte, NE	
	Decode			
2021	CJCB	4	Sydney, NS	ad-
	Steve Lewis Auto Body			
2041@	CFER-2	5	Sept Iles, QU	TVA
	FF,movie"Grand Torino"			
2052	CBIT-2	2	Cheticamp, NS	
	CBC			
2101	CBAFT-3	3	Allardville, NB	
2120	CBGAT-14	2	Carleton, QU	FF
2204	KDLO	3	Florence, SD	
	decode-in past 0100			

6-11-12 Es

0052	KNOP	2	N. Platte, NE
	Decode		

6-12-12 Es

1635	WUVF	2	Naples, FL
	Univision bug LR		

1635	CMBA	2	Havana, CU	
	@1646 "Hola Habana"			
1656	CMEC	3	Santa Clara, CU	
	Cubavision			
1719	CMBC	6	Havana, CU	"
	"			
1833@	XHWX	4	Monterrey, NL	
	1777miles			
1834@	XET	6	" "	1767miles
	Ch5 bug			
1834@	XEFB	2	" "	1768miles
	movie-b&w oldie			
1859	XHPN	3	Piedras Negras CH	
	1631miles bug UR			
1901	UNID	6	? ? ?	
	blank carrier u/o XET			
1924	K04RA	4	Clarksville, AR	
	Decode			

6-19-12Ms/Es

0200-			
0900	WHBF	4	Rock Island, IL
	Decode Ms		
1800	WTVF	5	Nashville, TN
	Decode Es		

FF6-24-12 Ms

0100-			
0930@	WOI	5	Ames, IA
	Decode		

6-25-12 Es

1938	KNOP	2	N.Platte, NE
	Decode		
1940T	K05LU	5	Jefferson City, MO
	antenna WSW preacher, very brief		
1941T	WHBF	4	Rock Island, IL
	Signal-no decode		

6-29-12 Es

0947	WUVF	2	Naples, FL
	HBO promo, cable ad		

1000 CMJC 2 Santiago de Cuba
Cubavision 1586miles

7-3-12 Es

1845 CJCN 4 Grand Falls, NF NTV
bug LR

1851 CBNAT-1 3 Baie Verte,
NF CBC w/Jeopardy

1903@ CBYT-3 2 Bonne Bay, NF
CBC//CBNAT-1

1915T CBNAT-4 6 St Anthony,
NF 10kc offset to CJOH-6-6

1942T CBGAT-3 6
GrandeVallee, QU zero beat offset to

CJOH-6-6

1948 CBGAT-14 2 Carleton, QU
CBJRT Radio Canada/per Vizio
readout short 570miles

2005@ CBYT-9 4 Hawkes Bay, NF
CBC u/o CJCN

7-6-12 TR

0830 WNYT 12 Albany, NY
decode

0853 WYPX 50 Amsterdam, NY
decode

7-7-12 TR

0324 WQHS 34 Cleveland, OH
decode

0329 WPXI 48 Pittsburgh, PA
decode

0904 WBRE 11 Wilkes Barre, PA
decode

7-16-12 Es/2Es?

1740-
1935 unids 2-6 Mex, Cent Amer, All
in SS
Venz, Col????

7-18-12 Es

1152 CKND 2 Minnedosa, MB
news @1200, calls on Vizio

1205@ CKBQ 2 Melfort, SK
Home Improvement show, CTV

promo@1219, zero beat to CKND

1226 unid 4 Ontario
Show promoting northern Ontario

1232 KDLO 3 Florence, SD
decode

2119 unid 3 ant west FOX bug LR
2121 CKYB 4 Brandon, MB CTV

2124 CKND 2 Minnedosa, MB

2125 CBKT-7 3 Warmley, SK ad
"Beehive Flooring" in Saskatoon

2128 CBWFT-7 2 Kenora, ON
FF Radio Canada

7-19-12 Es

19?? WTVF 5 Nashville, TN
decode

2015 unid 3 ant WSW
analog w/infomercial-beauty product

7-20-12 Es

0836 CBIT-2 2 Cheticamp, NS
CBC

0908 CJCB 4 Sydney, NS CTV

0909 CBIT 5
CBC

0911@ CJCB-6 3 Port Hawksbury, NS
//CJCB-4 ads

0927 unid 4 ant ENE

brief-preacher quoting scripture

0928 CJCH-5 2 Sheet Harbor, NS
news promo Steve Murphy

1802 CBYT 5 Corner Brook, NS
CBC

1824 CJCN 4 Grand Falls, NF

1900 unids 2-6 ant ENE all
CBC's

7-22-12 TR

0006 WJAC 34 Johnstown, PA
decode

7-23-12 Es

2017 CBIT 5 Sydney, NS
CBC

2028 CJCN 4 " " CTV

2029 CBIT-2 2 Cheticamp, NS
//CBIT

2052 unids 2-5 ant ENE all
CBC

7-24-12 Es

0911 unids 2,3&5 Cuba
1947 KCWX 5 Fredericksburg, TX

decode 1467 miles

2003 KNOP 2 N.Platte, NE
decode

2015 unid 3 ant WSW
analog/infomercials, in til 2055

2033 **XHBC 3 Mexicali,BCN**
western movie, bug, 2nd time rcvd
2191 miles, in for 40 minutes! (nice! -NL)

2041 KHAS 5 Hastings, NE
decode

2110 KBSD 6 Ensign, KS
decode

8-2-12 TR

0641@ CJMT 40 Toronto, ON
decode. channel change from 51

0707 WNYF-LD 18 Massena, NY
decode 157 miles

0708 CFGS 34 Gatineau, QU

decode 185 miles

0713 CHRO 43 Ottawa, ON

decode 173 miles

0720 CICI 5 Sudbury, ON

CTV 302 miles

0735 CKNX 8 Wingham, ON

strong 210 miles

0736 CIII-4 4 Owen Sound, ON

strong, 210 miles Global

0742 CBLFT 32 Kingston, ON

open carrier-supposed to be shut down

8-3-12 Es

2012 CKND 2 Minnedosa, MB
Global

8-4-12 Es

1055 KOTA 2 Rapid City, SD

decode

1156 unids 4,5 ant west no decodes

8-7-12 TR

0145-

0200 12,26,34,45 Albany, NY all

decoded--170 miles

8-12-12 Es

2200 WHBF 4 Rock Island IL
decode

8-24-12 TR

0905@ CITS-1 42 Ottawa, ON
decode CTS-HD

9-1-12 TR

???? WQLN 50 Erie, PA
decode 158 miles

9-7-12 TR

1030 WNYT-LD 18 Troy, NY
decode 186 miles

Very quiet summer for Es and TR. A few new/needed Canadians. 7-16 opening was OK, but a jumbled mess for the most part. 7-24 surprise w/relog of XHBC-3. Aside from that. ho-hum. As of mid October, no Trops. As quiet as it has been, my next report will probably be in 6 months. Best of DX to all.

Danny Oglethorpe

P.O. Box 8025
Shreveport, LA 71148-8025

E-mail: doglethorpe@yahoo.com

TV DX Photographs: <http://www.TVDXExpo.com>

Mexico TV DX ID Tips: <http://www.TVDXTips.com>

Time used is Central Time.

Only the first logging of each station per report period is listed.

Mexico relay text IDs are generally displayed about five seconds. The time listed for log entry is the time text ID was supered.

March 28, 2012 Es

1100 XHP-3 Puebla, PUE "TV3" logo
1230 XEPM-2 Cd Juarez, CHIH "tucanal" logo
1330 K04QP-D Casas Adobes, AZ KVOA relay
1701 XHCSA-2 San Cristobal, Chiapas Text ID upper left

April 25, 2012 Es

1230 KSNV-DT-2 Las Vegas, NV

June 12, 2012 Es

1813 KLDO-DT-3 Florence, SD
1815 CKYB-4 Brandon, MB Local Nx
1930 CHBX-2 Sault Ste Marie, ON CTV Northern Ontario
2035 CITO-3 Timmins, ON "CTV-TIP5"

June 13, 2012 Es

1948 XHVIZ-3 Villahermosa, TAB Local ads

June 22, 2012 Es

1055 TGV-3 Guatemala Logo upper right
1115 XEWO-2 and XHG-4 Guadalajara, JAL
1125 XEFB-2 Monterrey, NL "Teleactiva"
1129 XHCNL-2 Saltillo, COAH "MTY TV" logo upper right
1215 XHTAU-2 Tampico, TAM "Info7" Nx and text ID upper right 1223
1240 XHFM-2 Veracruz, VER "tele ver"
1258 XHGV-4 Las Lajas, VER "TV Mas"
1424 XEZ-2 San Miguel de Allende, GTO Text ID upper right

1942 XHCH-2 Chihuahua, CHIH "Azteca Chihuahua"

2017 XHQ-2 Guamuchil, SIN "3" logo
2143 XEZ-3 Culican, GTO or Zamorano, QRO "Televisa Quaretaro"

June 24, 2012 Es

1158 XHAJ-5 Las Lajas, VER Veracruz logo and text ID upper right

June 26, 2012 Es

1900 XHLGT-2 Leon, GTO "cdc"

June 28, 2012 Es

1815 XHBC-3 Mexicali, BCN "Televisa Mexicali"
1830 XHBS-4 Los Mochis, SIN "Televisa Los Mochis"
1920 XHSIN-5 Culiacan, SIN Once TV

July 4, 2012 Es

0948 XHSLP-2 San Luis Potosi, SLP Text ID upper left
1002 XHY-2 Merida, YUC "Sipse"
1014 Cuba channel 2
1059 XHQ-3 Culiacan, SIN "3" logo
1110 XHDI-5 Durango, DGO Text ID upper left
1103 XELN-4 Torreon, COAH "La tele de aqui"
1240 XHAE-5 Saltillo, COAH "Televisa Saltillo"
1340 XHDI-6 Cuauhtemoc, DGO "XHDI-5" text ID upper left NEW
1533 XHHSS-4 Hermosillo, SON Text ID upper right
1902 XEJ-5 Cd Juarez, CHIH "N5" Nx and ID

July 6, 2012 Es

1451 XHI-2 Los Mochis, SIN or Cd Obregon, SON "2" logo

July 9, 2012 Es

1255 KFIQ-LP-4 Lubbock, TX "Daystar" **1.19 kW 476 miles** (nice! -NL)

July 13, 2012 Es

1630 HRTG-5 Honduras "El Lider 5" logo
1815 YSR-2 El Salvador "2" logo
1820 XHCAM-2 Campeche, CAMP "Azteca Campeche"
1825 YNTC-2 Nicaragua "2" logo 1475 miles

July 14, 2012 Es

0958 CIII-2 Ontario "Global Toronto"

July 16, 2012 Es

1428 XHCOL-3 Atenquique, JAL Text ID upper left (See Note # 1)
1504 XHDRG-2 Durango, DGO Text ID upper left

July 22, 2012 Es

1615 XHWX-4 Monterrey, NL Text ID upper left
1620 XHAGU-2 Aguascalientes, AGS Text ID upper left

July 24, 2012 Es

1200 KOTA-DT-2 Rapid City, SD
1600 CICI-5 Sudbury, ON "CTV-TIP5"
1730 CBKT-3 Saskatchewan "CBC Saskatchewan News"
1730 CKND2-2 Minnedosa, MB "Global Winnepeg"
1800 WHBF-DT-4 Rock Island, IL

August 2, 2012 Tropo

0740 XEFE-2 Nuevo Laredo, TAM (See Note # 2)
0740 XHPN-3 Piedras Negras, COAH

October 5, 2012 Tropo

0300 XHREY-12 Reynosa, TAM Text ID upper left
0320
0500 XHPNG-6 Piedras Negras, COAH "TV
Azteca" bars and text ID upper right
0505 KIBN-LP-14 Lufkin, TX NEW
0550 KWEX-DT-41 San Antonio, TX NEW

Note # 1 XHCOL-3 serves the city of Colima, but
the text ID shows Atenquique, JAL. That means the
transmitter is on that site in Jalisco.

Note # 2 First time to receive XEFE-2 via tropo.
Previous via Es and MS. 483 miles.

Mike Bugaj
Enfield, CT
Times are EDT

6/12 2Es
**1600 Ch2 Managua, Nic with news, "2" logo on
mic held by reporter while interviewing and
large "NTV" letters behind presenter. Video on
forums.wtfda.org and on my Youtube website.**

7/3 Es
6 meters heavy to Iceland/Scandinavia. Tentative
Iceland at 2020 E4 carrier noted on 66.251160, just
a few hz off from the offset listed by Jurgen Bartels
in Germany on his site. S3. Too weak for video.
Gone at 2037. Will watch this closely next summer.

7/4
1850 Venezuela The Siren 61.249 – 61.2508. No
video just the carrier on the winradio WR-G305.
Audio of this is on my website fmdx.usclargo.com

7/5 Tr
2330 WSYT-19 Syracuse, NY 200
2330 WNEP-50 Scranton, PA 180
2344 WSTM 24 Syracuse, NY 200

7/12 Tr
0051 WACP-4 Atlantic City ID slide
0700 WHRO-16 Norfolk, VA
0710 WUSA-9 Washington, DC
0735 WFDC-15 Arlington, VA
0748 WRC-48 Washington, DC

**7/15 2Es to South America. From 1700-1900.
1830 YVXD-4 Maracaibo, VEN Venevision bug,
comedy show. The video is on YouTube or look
for my stuff under Grump46 on YouTube.
2160miles.**

7/20 Es
2000 WBRA-3 Roanoke decode
2130 WTVF-5 Nashville decode

7/25 Es
0030 CKND-2 Minnedosa MB Grapeville pgm.

8/4 Tr
2300 WRGB-19 Schenectady, NY PSIP also says
WCWN at times.

8/6 Tr
2200 WTXF-42 Philadelphia 200mi
2215 KYW-26 Philadelphia
2220 WCAU-34 Philadelphia

Equipment: Winegard PR-5030 VHF, D100 tuner,
dScaler software, Winegard YA-1713 and PR-8800
for hiband and UHF. Alliance HD-73 rotor for hi
band and UHF. Armstrong for lowband. I hope
hurricane Sandy doesn't knock it all down.

WRDM now digital on ch19 and WDMR local on
ch51. Both local and //.

The one major thing I learned over the summer is
that Iceland is possible on E4.

Dennis Park Smith
3605 San Remo Dr
Santa Barbara, CA 93105-2523
Telephone [\(805\) 687-7803](tel:8056877803)
Times 24-hour PDT

This report is for September 2012. Ocean water
temp has held at 64F. One day Sept. 12 was 65F
(!). Air temps alternated on some days at mid 70sF
with high 80sF inland, and on other days in 80sF
and 100+F inland.

Sep 1-6	Var. poor-fair	Warming some
Sep 7-10	Very poor	Storm John effects
Sep 11-13	None	Calm but unsettled
Sep 14	Good	Warm again, hi- pressure
Sep 15-16	Fair+	Still very warm
Sep 17-30	Fair	Slight cooling

A bit of rain around Sept. 8, tropical and
subtropical, with Pacific Hurricane John whipping
things up. Then, alternately cooling and warming
every few days, back and forth, with tropo getting
lost in the shuffle. But, returning Sept. 13 night,
with tropo quite steady through the second half of
the month.

My error in July report in Sept. 2012 VUD – the
station's call is XHTJB analog & -DT (not XHJTB)
Tijuana. Apologies.

Best of DX to all Dennis

William Draeb
1304 Ellis St.
Kewaunee, WI 54216-1802

Not much to report but some new ones anyway.

9/4 Tr
2150 WNDU-42 over local WPNE

9/11 Tr
1905 WOHO-33 Grand Rapids (WOOD-8 wx
channel)
1910 WBND-34 S. Bend (new channel, was
on 49)
1920 WHNW-18 S. Bend (religion)

9/12 Tr
1320 WCWW-25 S. Bend (CW Network)

Temperatures took a nose dive last night into the
30's. Looks like it'll be a while before tropo returns.
73, Bill.

Northern FM DX



Keith McGinnis
18 Newbridge St., Hingham, MA 02043
longwave@comcast.net 781-875-1944

For Dxers in the following states: CT IA ID IL IN MA ME MI MN MT ND NE NH NJ NY OH OR PA RI SD VT WA WI WY and all of Canada. Please submit by the 10th of each month.

EDITOR'S NOTE PLEASE SUBMIT ALL REPORTS IN THE FORMAT SHOWN BELOW.

Time(tab)Calls(tab)Freq(tab)City(tab)State(tab)details

Formats can either be plain text, Word or Excel as long as format is adhered to. Any submissions in other formats may not be used at editor's discretion.

All Submissions must be in to me by the 10th of each month.

Russ Edmunds, WB2BJH - 15 mi NW of Philadelphia - Grid FN20id

<amfmdxer@yahoo.com>

Yamaha T-80 w/ Conrad RDS Decoder; Onkyo T-450RDS; Tecsun PL-310; modified Sony ICF2010 w/APS9B @ 15'; Grundig G8 w/whip; modified Sony ICF 2010 w/whip

August 1 - Es

18:58	WSCD	92.9	Duluth	MN	Classical
19:00	KUWS	91.3	Superior	WI	ID
19:18	KKXL	92.9	Grand Forks	ND	Promo, ID
19:22	KQDS	94.9	Duluth	MN	Classic Rock, ID
19:30	WMIS	92.1	Blackduck	MN	Rock, ID
19:30	KFSI	92.9	Rochester	MN	Local ads, Contemp. Christian music
19:54	KLCD	89.5	Decorah	IA	Classical, MPR - New

August 5 - Tr

8:53	WIAD	94.7	Bethesda	MD	Rock, station promo
9:20	WDHC	92.9	Berkley Springs	WV	Country, ID

August 12 - Ms

13:59	WLHK	97.1	Shelbyville	IN	Colts (v Rams) FB - New
15:47	KSDR	92.9	Watertown	SD	Crook & Chase Countdown - only one on 92.9 at this time
15:50	KYAL	97.1	Muskogee	OK	Rangers BB vs. Tigers - only one on channel
15:51	KTGL	92.9	Beatrice	NE	Classic Rock, ID

August 12 - Es

21:06	KNTU	88.1	McKinney	TX	Jazz, ID
21:06	KEGL	97.1	Fort Worth	TX	Rock, TX PSA

August 27- Tr

5:00	WBOS	92.9	Brookline	MA	Rock, station liners, TOH ID
------	------	------	-----------	----	------------------------------

September 24 - Tr

21:57	CFLT	92.9	Dartmouth	NS	Local ads, ID - New
21:58	WROR	105.7	Framingham	MA	Classic Rock, ID

22:00	WJFJ	94.9	Montauk	NY	News, ID - New	
23:08	WBOS	92.9	Brookline	MA	Rock, station promo	

Nick Langan
 1040 Riverview Drive
 Florence, NJ 08518
 Sony XDR-F1HD, Sony XDR-S3HD, Sangean HDT-1, Yamaha TX-900 (modified),
 Tecsun PL-310
 APS-13 Antenna @ 25'

@=new
 #=prev. via Es

August 11 Ms

2245	#KMVL	100.5	Madisonville	TX	Texas Rangers BB	1336
------	-------	-------	--------------	----	------------------	------

August 12 Ms

1647	@WTSH	107.1	Aragon	GA	"south107.com"	691
------	-------	-------	--------	----	----------------	-----

August 12 Es

2104	KSKY-1	92.9	Dallas	TX	"The Mark Davis show, mornings from 7 to 10, on 660 AM...", 800w STA of 660 KS	
2108	KVRK	89.7	Sanger	TX	RDS	1302
2135	KHYI	95.3	Howe	TX	"95-3 The Range"	1296

August 24 Tr

0148	@WHRF	98.3	Belle Haven	VA	Classical, //90.3 WHRO	176
0159	@WHRX	90.1	Nassawadox	VA	WHRV Legal ID roundup	185

August 26 Tr

0140	@WZRG	91.9	Kulpmont	PA	"WGRC"	96
0349	@WJMN	94.5	Boston	MA	HD over WPST	239
0526	@WBWZ	93.3	New Paltz	NY	"Rock 93-3", //webstream	117

August 27 Tr

0125	CIOO	100.1	Halifax	NS	"C-100"	648
0203	@CBHY	92.1	Yarmouth	NS	CBC Radio One, NS weather forecast	517
0259	@WVPR	89.5	Windsor	VT	VPR Legal ID Roundup	259
0344	@WTCC	90.7	Springfield	MA	Jazz //webstream	179
0524	#CJCH	101.3	Halifax	NS	"101.3 The Bounce", "1013thebounce.com"	
0528	CKWM	94.9	Kentville	NS	"Magic 94-9", High of 28	625
0533	@WORC	98.9	Webster	MA	"ORC-FM"	197
0659	unID	106.5			93.9 WNYC ID, no translators listed	

August 30 Tr

1104	WNWV	107.3	Elyria	OH	"Cleveland's Smooth FM 107-3 The Wave"	
1105	@WKSU	89.7	Kent	OH	Calls	350
1110	@WFHM	95.5	Cleveland	OH	"Follow the Fish on Twitter, @FishCleveland"	
1115	WHLK	106.5	Cleveland	OH	"The Channel 3 forecast on 106-5 The Lake"	
1117	@WZAK	93.1	Cleveland	OH	Calls	366
1120	WMJI	105.7	Cleveland	OH	//webstream	371
1153	WNCX	98.5	Cleveland	OH	"98-5 NCX Cleveland's Classic Rock"	373
1928	CHYM	96.7	Kitchener	ON	"Chym 96.7"	377
2000	@WSQE	91.1	Corning	NY	WSKG Legal ID Roundup	175
2016	CKPC	92.1	Brantford	ON	"The Jewel"	358

September 1 Tr

0711	@WJNG	100.5	Johnsonburg	PA	"Mega Rock", Brookville, Clearfield ads	
0746	CBBL	100.5	London	ON	CBC Radio Two	392
0944	WRTS	103.7	Erie	PA	"Star 104", Erie ads	301
0952	CJBX	92.7	London	ON	"BX-93"	379
1024	unID	89.7			NPR Car Talk	

August 13 Tr

0022	@WXBQ	96.9	Bristol	VA	Lady Antebellum - I Run To You //yes.com, not WKKT or WIWF	472
0048	#WAEZ	94.9	Greeneville	TN	Promo for new 95.3 Kingsport translator, "electric949.com", Chapparral Used Cars ad	
0158	@WKGV	104.1	Swansboro	NC	K-Love, Legal ID	396
0201	@WXQR	105.5	Jacksonville	NC	Legal ID	413
0927	WHLZ	100.5	Marion	SC	"Wheels 100.5"	475

September 14-15 Tr

2021	CIOO	100.1	Halifax	NS	"C-100"	648
2025	CFLT	92.9	Dartmouth	NS	"Lite 92-9", RDS	648
2032	CFRQ	104.3	Dartmouth	NS	CBC television ad, "Q-104"	647
2043	CJCH	101.3	Halifax	NS	"Halifax's #1 hit music station, 101.3 The Bounce"	648
2054	@CBAX	91.5	Halifax	NS	Blues program //webstream	648
2143	@CJNI	95.7	Halifax	NS	Blue Jays BB thru WBEN	648
2210	CHNS	89.9	Halifax	NS	//webstream	648
0024	CKWM	94.9	Kentville	NS	"Magic 94-9"	625
0033	#CKEN	97.7	Kentville	NS	"Today's Best Country, AVR"	625

October 2-3 Tr

1959	@WDLA	96.7	Halfway	MD	Legal ID, WRDW IBOC off	160
0746	@WZWW	95.3	Bellefonte	PA	"95-3 3WZ"	170

Jeff Falconer, VA3NN - Clinton ON EN93fo

Sangean HDT-1X, Sony XDR-F1HD, APS-13 at 22 , 10db preamp

New=* New calls={XXXX} t=Tentative Time=ELT Distances=Miles

July 05 Tr

2204	KNSR*	88.9	Collegeville	MN	MPR News, weather	654
2303	WOJB	88.9	Reserve	WI	Listing underwriters, several in Hayward, prev by Ms	507
2321	KTCZ	97.1	Minneapolis	MN	Ads	582
2331	KSJN	99.5	Minneapolis	MN	CLA //stream	582
2334	WRHN	100.1	Rhineland	WI	Strong, John Mellencamp song, RDS PS: SAM-FM / PI: WRHN	411
2343	WVCN*	104.3	Baraga	MI	VCY REL	395
2353	WIMK	93.1	Iron Mountain	MI	Classic rock, "93 Rock"	354

July 05 Es briefly mixing with Tr

2230	KPRD	88.9	Hays	KS	REL: AC, "Praise FM"	954
------	------	------	------	----	----------------------	-----

July 06 Tr

0015	WMZK*	104.1	Merrill	WI	Heavy metal //stream	418
0026	WCYE*	93.7	Three Lakes	WI	C&W, weather, "Coyote 93-7"	408
0039	WGKL*	105.5	Gladstone	MI	Calls, Escanaba ads	316
0047	WIFC	95.5	Wausau	WI	Rock, RDS PS: WIFC / PI: WIFC	414

0051	WHDG*	97.3	Rhineland	WI	C&W, "Hodag Country" (a Hodag is a mythological area monster) 397
0059	WIKB	99.1	Iron River	MI	C&W, legal ID 384
0121	WHTO*	106.7	Iron Mountain	MI	Ads, "The Mountain" 356
0124	WUPF*	107.3	Powers	MI	Long string of ads for Escanaba/Marquette, "Eagle 107.3" 321
0129	WHRM	90.9	Wausau	WI	CLA, RDS PS: WHRM, HD 3 CH 414
0144	WAXX	104.5	Eau Claire	WI	C&W, RDS PS: WAXX1045 474
0157	WSUE	101.3	Sault Sainte Marie	MI	"The Soo's Rock Station Rock 101", rare
0205	WOZZ	94.7	Mosinee	WI	Rock, "Rock 94-7", RDS PI: WOZZ / RT: artist/song 430
0213	WUPT*	100.3	Gwinn	MI	"Marquette's 100.3 The Point" 353
0216	WIXX	101.1	Green Bay	WI	Weather 326
0225	WDEZ*	101.9	Wausau	WI	C&W, RDS PS: WDEZ 414
0228	WAPL	105.7	Appleton	WI	Rock, calls 325

July 06 Tr Continued -although not great distances, these were very strong most with RDS / HD for first time here

1549	WSTB	88.9	Streetsboro	OH	Alternative, "The Alternation", rare 170
1551	WZIP	88.1	Akron	OH	Alternative, "Z-88", RDS PS WZIP-Z88 / PI: bogus WVO 175
1556	WCSB	89.3	Cleveland	OH	Alternative, calls, not heard in years, 630 watts 146
1602	WJCU	88.7	University Heights	OH	Alternative, RDS PS: WJCU 147
1604	WAPS	91.3	Akron	OH	Cars tune, RDS PI: WAPS 176
1613	WHOF	101.7	North Canton	OH	HD 2 CH over local CKNX 193
1615	WBBG	106.1	Niles	OH	Promo for Rick Springfield concert, RDS PS: WBBG-FM, HD 167
1619	WRQK	106.9	Canton	OH	Rock over CIXX, RDS PS: ROCK106.9 / PI: bogus KBFQ 193
1640	WUZZ	94.3	Saegertown	PA	Ads, rare 174
1643	WAKZ*	95.9	Sharpsville	PA	Phantom HD over 179 KW CFPL in same direction, 6000 watts 173
1645	{WLLF}	96.7	Mercer	PA	Sports, "ESPN Radio", mono, over CHYM, ex WKTX 171
1648	WRRK	96.9	Braddock	PA	Very strong, ads, RDS PS: Bob FM / PI: WRRK 236
1730	{WPGB}	104.7	Pittsburgh	PA	Calls, headline update, ex WEZE 231
1734	WXDX	105.9	Pittsburgh	PA	Strong, ads, "105-9 The X" 230
1917	{WRQE}	93.5	New London	WI	Rock, calls, over CBCL, ex WOZZ 355
1925	WZOR	94.7	Mishicot	WI	Rock, "Razor 94-7" 315

July 07 Tr

0000	WQED	89.3	Pittsburgh	PA	CLA, legal ID 233
0021	WDSY	107.9	Pittsburgh	PA	C&W, HD 2 CH 231
0024	WMKX	105.5	Brookville	PA	Rock, "Mega Rock" 214
0037	WVKF	95.7	Shadyside	OH	Wheeling area ads, "Hits FM" 248
0051	WOVK	98.7	Wheeling	WV	C&W, "98.7 Country WOVK" 247
0108	WCDK	106.3	Cadiz	OH	Legal ID, "The River"
0148	WBRR	100.1	Bradford	PA	Rock, "Hero 100.1" 184

July 07 Es -MUF 89.7

1447	WJIS	88.1	Bradenton	FL	REL: AC, "The Joy FM", RDS PI: WJIS 1127
1449	WSMR	89.1	Sarasota	FL	CLA. RDS PS: WSMR89.1 / PI: bogus WVO
1450	WUSF	89.7	Tampa	FL	Jazz, HD 2 CH 1088

July 08 Es -MUF 107.7

1522	KJMA	89.7	Floresville	TX	Preacher, RDS PS: KJMA 1370
1527	KMFA	89.5	Austin	TX	RDS PS: KMFA89.5 / PI: bogus WTI 1280
1537	KSTX	89.1	San Antonio	TX	TLK, mono 1370
1540	KRVS	88.7	Lafayette	LA	Cajun music, HD 1093

1543	KITA	89.5	Iota	LA	REL, "Air One" 1109
1549	WMAU	88.9	Bude	MS	TLK, RDS PS: MPB 88.9 / PI: WMPN 983
1550	WRKF	89.3	Baton Rouge	LA	TLK, HD 1056
1554	WPAE	89.7	Centreville	MS	SRN News, RDS PS: WPAE89.7 1008
1557	WMPN	91.3	Jackson	MS	TLK, HD 923
1559	WJNS*	92.1	Bentonla	MS	REL, "Sonlife", legal ID 900
2001	KROI	92.1	Seabrook	TX	Traffic report, ads 1250
1604	KUHF	88.7	Houston	TX	News, HD 3 CH 1237
1609	KKRW	93.7	Houston	TX	Pat Benatar song, RDS PI: bogus KEQI 1237
1616	KITE	93.3	Port Lavaca	TX	Ads, "Oldies 93.3" 1331
1618	KLNO	94.1	Fort Worth	TX	Ads in Spanish 1130
1636	Unid	93.3	?	??	"Mix 93-3", RDS PI: bogus KFZE, either KMJI or KMXV
1639	KDQN	92.1	De Queen	AR	Promo for upcoming news 942
1641	KLIF	93.3	Haltom City	TX	Rock, RDS PS: i93.3 1179
1643	{KDXX}	99.1	Denton	TX	Spanish, HD, ex KFZO 1115
1647	KMAG	99.1	Fort Smith	AR	C&W, "K-Mag", RDS PS: KMAG99.1 916
1648	KADA*	99.3	Ada	OK	AC over CJBC4, RDS PS: KADA / PI: bogus WAS 1019
1649	KPLX	99.5	Fort Worth	TX	Promo for Winstar Casino, HD 1131
1651	KENA*	102.1	Mena	AR	NWS weather warning for western OK, mentioned Mena 927
1654	KDGE	102.1	Fort Worth	TX	AC, RDS PS: The EDGE / PI: KDGE 1131
1659	WBAP	96.7	Flower Mound	TX	Laura Ingraham, legal ID, mono, RDS PS: WBAP 1110
1700	KBOC	98.3	Bridgeport	TX	Spanish, calls at TOH 1110
1704	KNIN	92.9	Wichita Falls	TX	RDS PS: KNIN 1133
1731	KNGM	88.9	Guymon	OK	REL: AC, RDS PS: KJIL 1155
1816	KJTH	89.7	Ponca City	OK	REL: AC, "The House FM" 975
1819	KTTZ*	89.1	Lubbock	TX	Weather, HD 1295
1821	KTHL*	89.3	Altus	OK	REL: AC //KJTH-89.7, "The House FM" 1136
1824	KENW	89.5	Portales	NM	Folk music, RDS PS: KENW FM 1330
1826	KYFM	100.1	Bartlesville	OK	C&W, calls 911
1827	KMMX	100.3	Tahoka	TX	Ads, RDS PS: MIX100.3 / PI: bogus WBF
1828	KONE	101.1	Lubbock	TX	Rock, RDS PS: ROCK 101 / PI: KONE 1301
1829	KATP*	101.9	Amarillo	TX	C&W, "Blake FM" 1221
1830	KZII	102.5	Lubbock	TX	Rock, RDS PS: KISS-FM / PI: KZII 1297
1831	KAMZ*	103.5	Tahoka	TX	Spanish ads 1303
1832	KLSR*	105.3	Memphis	TX	C&W, RDS PI: KLSR 1184
1834	KSEL	105.9	Portales	NM	C&W, RDS RT: KSELCOUNTRY.COM 1330
1836	KBGL	106.9	Larned	TX	Oldies, RDS PI: KBGL 937
1837	KLBB*	107.7	Idalou	TX	Rock, "107-7 The Eagle", RDS PI: bogus KLCC 1298
1841	K252EY*	98.3	Concordia	KS	Long ad string //KNCK-94.9, 250 watts 880
1845	KKEZ	94.5	Fort Dodge	KS	AC over CIBU, RDS PS: MIX-94.5 / PI: bogus WHB 645

July 12 Tr

1858	WBLU	88.9	Grand Rapids	MI	Legal ID //WBLV-90.3, 650 watts, rare 210
------	------	------	--------------	----	---

July 14 Tr

0730	WGZR*	88.9	Alpena	MI	EWTN REL, "Catholic Radio for northern Michigan", 300 watts 143
0743	WCML	91.7	Alpena	MI	TLK, HD 2 CH over 6 mi distant CIBU1 167

July 14 Ms

1124	KUHF	88.7	Houston	TX	1 min long burst in full HD 3 CH!, prev by Es
------	------	------	---------	----	---

July 15 Ms

1222	KEOM	88.5	Mesquite	TX	Carol King song, RDS PS: KEOM-FM 1108
------	------	------	----------	----	---------------------------------------

NE REL: July 16 Es -MUF 93.3

1704	WBSN	89.1	New Orleans	LA	REL: AC, HD 1054
1706	WWNO	89.3	New Orleans	LA	"All Things Considered", HD 3 CH 1054
1710	WNCV	93.3	Shalimar	FL	Classic rock, RDS PS: COAST / PI: WNCV
1903	WJIS	88.1	Bradenton	FL	REL: AC, "The Joy FM", RDS PI: WJIS 1127
1905	WSMR	89.1	Sarasota	FL	CLA, RDS PS: WSMR89.1 / PI: bogus WVO
1910	HIJ20*	88.1	Santo Domingo	DR*	Spanish //stream, RDS PS: PRIMERA/ PI: bogus WVQ, FM country # 8 logged! 1858
2012	WMAU	88.9	Bude	MS	TLK, RDS PS: MPB 88.9 / PI: WMPN 983

July 17 Es

1941	KRVS	88.7	Lafayette	LA	TLK, HD 1093
------	------	------	-----------	----	--------------

July 18 Es

2043	KMPR	88.9	Minot	ND	TLK about the arts in ND //stream 1003
------	------	------	-------	----	--

July 19 Es -MUF 92.5

1933	WLBF	89.1	Montgomery	AL	Preacher, RDS PS: Faith / PII: bogus KALE
2003	WRGC*	88.3	Milledgeville	GA	TLK, HD 813
2006	WQCS	88.9	Fort Pierce	FL	CLA, HD 3 CH 1118
2007	WVDA	88.5	Valdosta	GA	REL, "Air One" 888
2008	WWIO	88.9	Brunswick	GA	CLA, RDS PS: WWIO, HD 857
2012	WPOZ	88.3	Union Park	FL	HD 3 CH 1035
2022	WGCU	90.1	Fort Myers	FL	TLK, HD 2 CH 1158
2026	WFIT	89.5	Melbourne	FL	TLK, RDS PI: WFIT 1073
2028	WMYZ	88.7	Clermont	FL	REL: AC, HD 3 CH 1032
2030	WSMR	89.1	Sarasota	FL	CLA, RDS PS: WSMR89.1 / PI: bogus WVO
2032	WKES	91.1	Lakeland	FL	REL, RDS PS: MOODY RADIO / PI: WKES
2046	WAFZ	92.1	Immokalee	FL	Spanish, RDS PS: LA LEY / PI: WAFZ 1183
2047	WYUU	92.5	Safety Harbor	FL	Tropical music, RDS PS: artist/song / PI: WYUU 1090
2049	WAYJ	89.5	Fort Myers	FL	REL: AC, "Way FM" 1185
2053	WIKX	92.9	Charlotte Harbor	FL	C&W, "Kicks Country Classics" 1153

July 20 Es -MUF 96.5

1939	CKDU	88.1	Halifax	NS	Reggae //stream 890
1940	CHNS	89.9	Halifax	NS	Rock, "89-9 Hal FM" 890
1942	CBAF5	92.3	Halifax	NS	CBC French, mono 890
1943	CKUL	96.5	Halifax	NS	Village People song, RDS PS: KOOL-FM / PI: bogus WAO 890
1947	CJLU	93.9	Dartmouth	NS	Preacher //stream 898
1952	CBAX	91.5	Halifax	NS	CLA, RDS PS: ESPACE MUSIQUE / PI: bogus WJH 890

July 20 Tr

0811	WAPL	105.7	Appleton	WI	Weak with rock //stream 325
1100	WPNE	89.3	Green Bay	WI	Legal ID, "Wisconsin Public Radio" 326
2035	WVAQ	101.9	Morgantown	WV	AC //stream 288
2044	WPCL*	97.3	Spangler	PA	REL: AC, "He's Alive Radio" 256
2049	WRKW	99.1	Wbensburg	PA	Rock, RDS PS: ROCK 99 / PI: WRKW 263
2057	WOWQ	102.1	Du Bois	PA	C&W, "Q-102", rare 229

July 20 Es

1410	KENW	89.5	Portales	NM	CLA, RDS PS: KENW FM 1330
1853	KENW	89.5	Portales	NM	In again with CLA, RDS PS: KENW FM 1330

Jul 23 Ms

1707	KMLV	88.1	Ralston	AC,	RDS PS: K-LOVE / PI: bogus WAD
------	------	------	---------	-----	--------------------------------

POPULAR CALENDAR SHOWCASES BEAUTY OF BROADCAST TOWERS

Twelve years later, what started as a lark is still going strong

ROCHESTER, N.Y. – To some, they're eyesores on the landscape. But to one man, radio and television towers *are* landscapes, and beautiful ones, too. For a dozen years now, journalist/photographer/broadcaster Scott Fybush has created an annual wall calendar featuring artistic photos of important and historic broadcast tower sites from coast to coast, and he's just released the 2013 edition.

"Some people may think all radio towers look alike, but the Tower Site Calendar shows every year that that's not the case," says Fybush, who has worked in radio and television news for more than two decades. The calendar began in 2002 as an outgrowth of his weekly industry news column, NorthEast Radio Watch, and its offshoot, "Tower Site of the Week," a weekly feature at his fybush.com website.



"It has developed a passionate following in the broadcast engineering community," Fybush says. "Engineers are notoriously underappreciated for the hard work they do, and the calendar is one little way I can help show some recognition for the infrastructure that engineers design and maintain to make sure all of us have easy access to radio, TV and our cellphones, too."

The 2013 edition, now shipping from the Fybush Media store (store.fybush.com/store) features a fresh new page design, a spiral

binding, and 13 new pictures taken from Fybush's travels all over North America and beyond. Some of the highlights this year:

- **The Sandia Peak TV/FM antenna farm high above Albuquerque, New Mexico.** At more than 10,000 feet above sea level, this is the highest-elevation site ever featured in the calendar.
- **WFXJ (formerly WJAX), Jacksonville, Florida.** This historic site, built in the 1930s, sits amidst the greens of a golf course.
- **KWAL, Wallace, Idaho.** This unique site features two towers split down the middle by a busy coast-to-coast highway, Interstate 90, as it threads through a narrow valley.
- **WVJS, Owensboro, Kentucky.** A reminder of the impermanence of broadcast infrastructure, this calendar photo features three towers that were dismantled in 2011 after 65 years at the same site.
- **WXXI-TV, Rochester, New York.** A dramatic night photo showing a massive crane in action, removing an analog TV antenna from its 400-foot-high perch after the digital television transition made it obsolete.

In addition to tower photos, the calendar's monthly pages include significant dates in radio and television history, as well as civil and religious holidays.

The 2013 calendars cost \$18.50 each (\$19.98 including sales tax for New York State residents) and can be purchased by check (payable to "Fybush Media") or money order to 92 Bonnie Brae Avenue, Rochester NY 14618. Orders can also be placed with major credit cards, or online at www.fybush.com.

"Engineers email me all the time to ask if their towers can be a featured site or a calendar page," says Fybush, who also anchors newscasts for NPR member station WXXI in Rochester.

Mobile DTV "celebrated" on Capitol Hill

Broadcast Engineering
Fri, 2012-09-21 11:34
Michael Grotticelli

On Sept. 20, the Open Mobile Video Coalition (OMVC), the group promoting Mobile DTV in the U.S., held an all-industry event for members of Congress, Administration officials and others in Washington, D.C. to celebrate the "commercial launch" of the technology and demonstrate nascent devices that can receive the over-the-air broadcasts.

The gathering appeared to be more ceremony than substance, as Mobile DTV has been technically available in some markets for the past year but has found few takers among paying consumers. A similar event showcasing the technology was hosted on Capitol Hill in 2009 (July 28) and a field trial in August of last year. Other tests have been conducted in Atlanta, Seattle, San Francisco and Dallas/Houston, with varying degrees of success (depending upon topology).

With some 130 stations now on the air in 50 U.S. markets, according to the OMVC, Mobile TV is now (theoretically) available to half of Americans. The nation's third largest Telco, MetroPCS, is offering service and a cell phone from Samsung that includes an integrated ACTS-compatible Mobile DTV receiver chip inside.

The event, dubbed "Never Miss A Minute," was presented by the OMVC and its two splinter groups: the Mobile Content Venture (MCV) and the Mobile 500 Alliance. It included a few presentations and several live demonstrations of compatible portable devices receiving signals from local TV stations. The devices on display featured a Samsung Galaxy S Lightray smartphone, some external dongles (for laptops and electronic tablets) and a small Kenwood portable television, which can all receive the special broadcasts. All of the devices carry the new "Dyle" and/or "My DTV" mobile DTV logos, which are designed to ensure consumers shopping at retail outlets that the specific devices can receive the mobile broadcasts.

These broadcasts are facilitated by special equipment that uses the same DTV bandwidth stations already used for their HDTV broadcasts. About 3Mb/s to 5Mb/s of a station's 19Mb/s is dedicated for Mobile DTV transmission.

The MCV is made up of a dozen broadcast groups, including Belo, Cox Media Group, E.W. Scripps Co., Gannett Broadcasting, Hearst Television, Media General, Meredith, Post-Newsweek Stations and Raycom Media, as well as Fox, ION Television and NBC Universal.

The Mobile500 Alliance, whose members include more than 400 commercial and public TV broadcast stations, demonstrated its "My DTV" mobile television service. The group said the service would be available in Seattle and Minneapolis this fall, although some stations in these markets have already fired up their mobile DTV transmitters and are simulcasting their main HDTV channel.

"We are keenly focused on delivering broadcast television to mobile devices so consumers have television when they want it and where they want it," said Colleen Brown, chair of the Mobile500 Alliance board of directors and president and CEO of Fisher Communications.

Thus far, the promise of premium live and on-demand content has not materialized, as content sharing deals are still being worked out. It is also hoped that Mobile TV will help deliver weather alerts and breaking news information to viewers, and the technology can also be applied to future alerting systems as they become available.

The Capitol Hill event also served as a showcase for the newly emerging Mobile Emergency Alert System (M-EAS) that goes far beyond today's electronic text alerts for mobile devices, offering real-time video, maps, photos and urgent information in the event of an emergency. On display were compatible units from LG Electronics and Harris Broadcast.

The M-EAS is currently being standardized by the ATSC, which also developed the (A/153) Mobile Digital TV (aka, Mobile Handheld, or M/H) broadcast standard.

SIGN UP/Renewal form

YEARLY DUES \$10.00 USD for Monthly VUD eZine

Name _____

Address _____ Apt # _____

City _____ State/Prov _____ Zip _____

Country _____ Interests: TV () FM () 30-50() Weather()

email address _____

Sign me up/renew me for: 1 year () 2 years () More ()

I have no computer or access to one. Please send a paper VUD(\$24) ()
Please, 12 month renewals only for paper VUDs. Thank you.

Yearly dues **Mail your dues to: WTFDA, P.O. Box 501, Somersville, CT USA 06072**

Make your checks/money orders payable to: WTFDA

And *thanks* for your support of the WTFDA!

Return this form with your dues or make a copy of it and return that.

WTFDA BOARD OF DIRECTORS

Mike Bugaj, use the WTFDA Mailing address listed below
Doug Smith, 1385 Old Clarksville Pike, Pleasant View, TN 37146-8098
Greg Coniglio, 11825 Genesee St., Alden, NY 14004
Keith McGinnis, 18 Newbridge St., Hingham, MA 02043

mikeb@wtfda.org
dougs@wtfda.org
gregc@wtfda.org
nfmdx@wtfda.org

RENEWALS BY PAYPAL: SEND YOUR DUES FROM THE PAYPAL WEBSITE TO SALES@WTFDA.ORG

Fred Nordquist, 147 Travis Hill Road, Moncks Corner, SC TV and FM STATISTICS stats@wtfda.org

Tim McVey, webmaster WTFDA.ORG WEBSITE webmaster@wtfda.org

Chris Cerventez, webmaster WTFDA.INFO WEBSITE chris cervantez@gmail.com

WTFDA EMAIL REFLECTORS

Enhance your DXing experience! Entertaining and informational.
E-skip alerts! Tropo alerts! DX discussion and more!

For WTFDFA members! Sign Up Today!

The WTFDA list with **200** users...send an email to tvfmdx-subscribe@wtfda.info

And for AM DXers there's the AMDX list. To join, send a blank email to amdx-subscribe@wtfda.info

WTFDA.org Is Back No Password Needed Completely Redesigned

- Lots and Lots of Links
- VUDs from 70s thru 2000
- Memorabilia

<http://www.wtfda.org>



Worldwide TV-FM DX Association
Serving the VHF/UHF DX Enthusiast since 1968

WTFDA FORUMS
<http://www.wtfda.info>

Where DXers Go To Hang Out

FM LIST

Call changes, format changes and new stations are updated to FM List as soon as they are received. [HTTP://WWW.FMLIST.ORG](http://WWW.FMLIST.ORG)

**THE WORLDWIDE TV-FM DX ASSOCIATION
THE VHF- UHF DIGEST
P.O. Box 501, SOMERSVILLE, CT 06072**

Opinions expressed in this publication are those of the individual contributor and do not necessarily reflect the views of the publisher or board of directors. We reserve the right to edit material to meet publishing standards. Unless previously agreed upon in writing, all material submitted for publication in the VHF-UHF Digest becomes the property of the WTFDA. Reproduction of material from the VHF-UHF Digest without permission of the WTFDA is prohibited. Individuals and other organizations are granted such permission providing proper credits is given to the source.



Established 1967



FIRST CLASS MAIL