

VHF-UHF DIGEST

The Official Publication of the Worldwide TV-FM DX Association

MARCH 2013

The Magazine for TV and FM DXers

**BUILT HIS OWN ANTENNA
FROM C.M. SPECS**

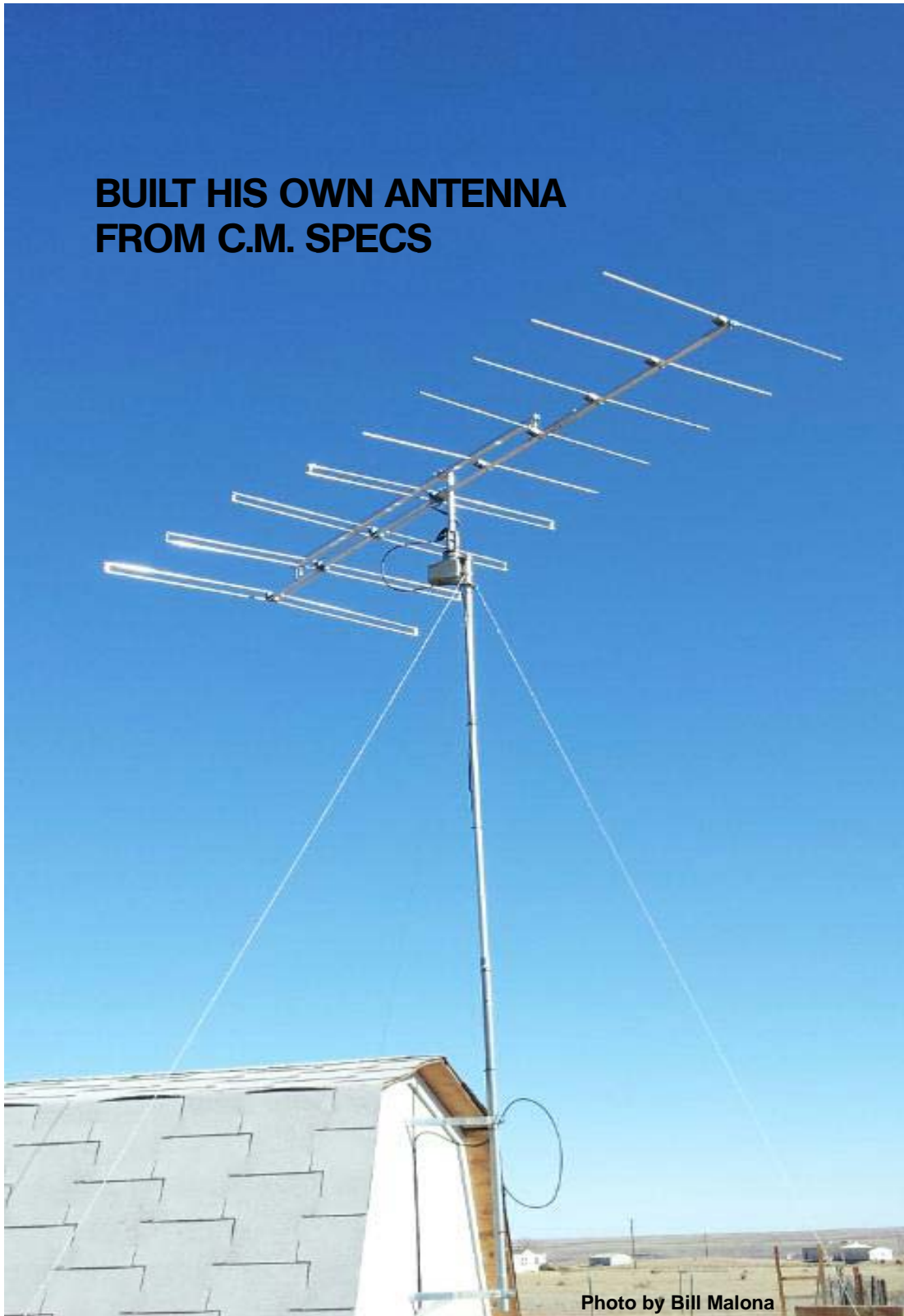


Photo by Bill Malona



Visit Us At www.wtfda.org

*Blizzards in the Northeast and
Heavy Snow in the Midwest
Take a Toll on DXing*

THE WORLDWIDE TV-FM DX ASSOCIATION

Serving the UHF-VHF Enthusiast

THE VHF-UHF DIGEST IS THE OFFICIAL PUBLICATION OF THE WORLDWIDE TV-FM DX ASSOCIATION DEDICATED TO THE OBSERVATION AND STUDY OF THE PROPAGATION OF LONG DISTANCE TELEVISION AND FM BROADCASTING SIGNALS AT VHF AND UHF. WTFDA IS GOVERNED BY A BOARD OF DIRECTORS: DOUG SMITH, GREG CONIGLIO, KEITH MCGINNIS AND MIKE BUGAJ.



Editor and publisher: **Mike Bugaj**

Treasurer: **Keith McGinnis** wtfda.org Webmaster: **Tim McVey**

wtfda.info Site Administrator: **Chris Cervantez**

Editorial Staff: **Jeff Kruszka, Keith McGinnis,**

Fred Nordquist, Nick Langan, Doug Smith,

Peter Baskind, Bill Hale and John Zondlo,

Our website: www.wtfda.org; Our forums: www.wtfda.info



The Mailbox

P.O. Box 501 Somersville, CT 06072

Mike Bugaj - Enfield, CT mikeb@wtfda.org

MARCH 2013



FEBRUARY!

What a month February was. We in the Northeast had our blizzard. You in the Midwest had your foot or more of snow and down Arkansas way you had your snow and ice. Great weather for Dxing, isn't it? That's probably why this VUD is so thin this month.

We could use contributors and contributions to the VUD. Without contributors, there's no VUD. John Z. hasn't had any reports for months and sometimes forgets that he's an editor. I think Peter has already.

We'll take DX reports. We'll take articles. But if we take the DX out of the VUD then there's no reason for the VUD. The other stuff (TV News, FM News, Facilities, etc) could all be put up on a website every month instead.

We have WTFDAers who are also NRC members. The NRC has always had a Musings column where members could talk about anything. That might be interesting reading.

As a matter of fact, I'll ask a question. What are your thoughts about the NRC/IRCA finally doing a convention together? How many of you would have preferred a WTFDA-only convention?? Does it make any difference?

MEMBERS AND MORE

We have a new member this month. He's **Bill Malona** and lives in Colorado. And he's the only person I've ever known who has built his own Probe 9 for FM DXing. It's on the cover this month. Bill got the specifications from those on my own website (fmdx.usclargo.com) and from Brian Beezley's website. The aluminum came from other antennas. I'm happy that my site could play some part in all this. Nice going, Bill!

During the period from Jan 18th through Feb 13th we had renewals come in from **David**

Wurl, Ronald Ehke, Girard Westerberg, Bryce Foster, Carlon Howington, Kaimbridge on the North Shore, **Barry Bauer, Dave Pomeroy, George Rogers** and **Eldon Geiman**. A big thank you goes out to all of you!

From a post on the WTFDA Forums, Chris Dunne writes: "Trying for Bahamas on 104.5 down here just got 500% tougher. I learned today that there is a regional Mexican pirate called "La Equis" (La X) which has quite a swath of coverage....I heard it in south Dade down to that bridge on MM 108 (the best spot for Bahamas FM, where Bahamas barely overrode X*). On the way back, I started hearing it at MM 104, up to about MM 23 on the Turnpike! (That's about a 45-mile ride.) They advertised being at a flea market in Princeton soon. (* Freeport's 104.5 did appear around MM 36.) *DXers look out for this one!*

There are also pirates in Homestead & Fla City on 94.5, 104.7 & 107.3 (horrible audio).

There was a change or two from last trips: Radio Ciudad de la Habana (//AM 820) moved from 94.9 to 94.7. Radio Taino uses 94.7 as well. R Ciudad has ST light on; Taino doesn't. And there is also Radio Marti on 94.7 from 7 to 9:30 pm, erratically. They were on air tonight.

Even though this is an FM thread, it looks like one Canal Habana station moved from ch 38 to ch 40, but I cannot be 100% sure.



And now from Building 19, here's their little FM radio, just right for Dxing your locals. I bet they didn't know it's "tiniest", not "tiniest". Well, what do you want for a buck.

That's it. See you next month! -Mike



TV News

Douglas E. Smith
 1389 Old Clarksville Pike
 Pleasant View, TN
 37146-8098
w9wi@w9wi.com
<http://www.w9wi.com>

March 2013

Abbreviations:

AF	Applied For (a new station)	NW	New station on the air
Aux	Auxiliary (backup) transmitter	PA	Proposed Amendment
CC	Callsign change	PC	Power (and/or tower height) change on the air
CL	City-of-license change	PG	Power change granted
CX	Canceled	PR	Power change requested
DC	Converted to DTV	RA	Returns to the air
DCC	Digital Companion Channel	QC	Channel (frequency) change on the air
NS DCC	Granted flash-cut to DTV	QG	Channel change granted
DE	License/permit deleted	QR	Channel change requested
DR	Requests flash-cut to DTV	RE	Reinstated (previously-dismissed app.)
FC	Programming (format) change	ROA	Request of Applicant
FTP	Failure to Prosecute	SI	Off the air (silent)
GA	Granted amendment (to table of channel allotments)	STA	Special Temporary Authority
LC	License to Cover	XC	Transmitter site changed
MX	Mutually Exclusive	XG	Transmitter site change granted
NDA	Non-directional antenna	XR	Transmitter site change requested
NS	Permit granted for new station	lpdtv	Low Power Digital TV
DG	Granted conversion to DTV	DRT	Digital Replacement Translator

News:

(full-power digital stations in **bold face**; LPTV and translators in regular type; full-power analog stations in **bold italics**; low-power analog stations in regular italics)

CANADA



Alberta
 Red Deer 28 CITV-DT-1 **AF 132kw/ 264m (DTV for analog ch. 10)**



British Columbia
 Kamloops 22 CHKM-DT **AF 30kw/ 150m (DTV for analog ch. 6)**
 Prince George 29 CIFG-DT **AF 30kw/ 482m (DTV for analog ch. 12)**



Ontario
 Hamilton 36 CITS-DT **PR>473kw**
 Kingston 11 CKWS-DT **AF 9.4kw/ 313m**
 Peterborough 12 CHEX-DT **AF 20kw/ 318m**



Puerto Rico
 Aguada 6 W06DA **PR>3kw, 18-09-00/ 66-59-00; PG**
Aguada 63 W63BF CX
 San Lorenzo 29 W29EE **XG 18-16-32/ 66-05-41**

Yauco 54 W54AQ CX



U.S. Virgin Islands
Christiansted 52 WEYA-LP CX



Alabama
 Decatur 35 W35DG **PR<350w, 33-53-28/ 86-55-58; PG**
 Dothan 23 WDON-LD **AF 15kw, 30-55-11/ 85-44-30; DCC for analog 41**
 Huntsville 31 W31DX **PR>15kw, 34-44-12/ 86-31-59; CL from Scottsboro; PG**



Alaska
Fairbanks 24,5K54EW CX
 4



Arizona

Camp Verde 31 K55IY QC from 55, 165w
Prescott 30 K09KV DC from 9, 1.2kw, 34-29-25/ 112-32-00



Arkansas

Bentonville 48 K48MR DC 12.4kw, 36-21-36/94-20-24
Paris 35 KRAH-CD DC from 49, 1.5kw, 35-18-07/ 93-45-42
West Helena 38 K38PA PR<1.7kw, 34-32-46/90-37-16; CL from Cleveland, Miss.; PG; CC from W38FG



California

Bakersfield 18 K18HD PC<12.43kw, 35-26-17/ 118-44-22
Calexico 7 K36FO QC from 36, 3kw, 32-40-30/ 115-22-38
El Centro 56 KHFS-LP CX
Eureka 9 KUVU-LP FC; sold to KBLN
Eureka 29 KECA-LP DG 15kw, 40-43-39/123-58-17; DC
Fresno 17 K17JI DC from K12OZ, 15kw, 36-44-45/ 119-16-57
Los Angeles 34 KMEX-DT NS 40kw/ 222m, 34-09-50/ 118-11-45 (aux)
Ontario 29 KFTR-DT NS 40kw/ 222m, 34-09-50/ 118-11-45 (aux)
Palm Springs 21 K21DO DR 15kw, 33-52-01/116-26-03
Petaluma 4 KTVJ-LP DR from 36 dismissed
Van Nuys 55 K55KD CX
Vista 26 KVSD-LP CC from K26FA



Colorado

Durango 33 KRTN-TV AF 95kw/ 62m, 36-41-48/ 108-10-39; (near Farmington, NM) second transmitter to form DTS
Fort Collins 24 K24JW PR>7.5kw, 40-29-37/105-10-53; PG
La Junta 35 K35DZ DC 134w
Lamar 42 K42EA DC 134w
Las Animas 40 K40DP DC 134w
Pueblo 16 K16KA NW 15kw, 37-38-21/105-22-11 (Sande Family Trust)
Rocky Ford 39 K39ED DC 134w
Springfield 14 K62CT QR from 62 dismissed
Springfield 62, K62CT, 64, K64CT, 66, K66CW, 68 K68CR CX
Woodland Park 33 K33EW DC 134w



Delaware

Dover 5 WMDE PA from Seaford



District of Columbia

Washington 58 WIAV-LP CX



Florida

Big Pine Key 57 W57AM CX
Gainesville 23 WUOF-LD CC from W23DG
Matecumbe 43 W43AD PC>3kw, 25-46-24/ 80-11-18
Miami 22 WFOR- PG<297m
Miami 32 WBFS-TV PR<297m, 25-58-07/80-13-20; PG
St. Petersburg 36 WDNP-LP CC from W36CO



Hawaii

Kailua-Kona 63 K63DZ CX
Lihue 69 K69BZ CX
Wailuku 61 KAMN-LP CX



Idaho

Boise 20 KHFR-LD CC from KITL-LD
Garden Valley 32, K53EF, DC from 53/ 55/ 57, 10w
34, K55GZ, 36 K57FO
Terrace Lakes 11 K11WV QC from K10OA, 47w



Illinois

Arlington Heights 22 WRJK-LP CC from W22AJ
Aurora 20 WPVN-CD PC>15kw, 41-53-21/87-37-36; CL from Chicago
Chicago 6 WKQX- DG 3kw
Chicago 43 WCPX PR>222kw dismissed
Chicago 44 WLS-TV AF 1000kw/ 437m, 41-53-56/ 87-37-23 (aux)
Chicago 44 WLS-TV AF 908kw/ 475m (aux)
Plano 35 WSPY-LD XG 41-50-36/ 88-05-00
Quincy 52 KZSL-LP CX



Indiana

South Bend 42 WNDU-TV NS 631kw/ 282m (aux)



Iowa
Ames 23 KCWI- PR>1000kw
Des Moines 19 KDMI PR>1000kw



Kansas
Dodge City 32 K32JF NW 1kw, 37-45-58/
100-02-03
Garden City 44 K44JV NW 1kw, 37-46-43/
100-53-43
Lawrence 41 KGKC-LD PC>15kw, 39-01-20/
94-30-50



Kentucky
Glasgow 62 WKUG-LP CX



Louisiana
Hammond 38 WSTY-LD AF 15kw, 30-32-29/
90-29-03; DCC for
analog ch 23
Lake Charles 69 KYHT-LP CX
Maurice 38 K38OF XR 30-12-49/ 92-04-
59; CL from Crowley
West Monroe 18 KWMS-LP DC from 17, 14kw



Massachusetts
Boston 58 WCEA-LP CX
New Bedford 22 WLWC PC>425kw/ 222m



Michigan
Battle Creek 20 WOTV PC 255kw/ 329m
Detroit 14 WKBD-TV PR>385kw/ 294m
dismissed but
reinstated; PG



Mississippi
Cleveland 17 WFXW- PR<300w; PG
Houston 45 WKDH-DT CX



Missouri
Branson 25 K25BD PR<50w, 36-39-57/ 93-
13-00; PG; PC
Kansas City 29 KMBC-, NW 91.2kw/
31 KCWE 89.1kw/283m (aux)
Kirksville 33 KTVO PR>174kw



Montana
Bridger 57, K57EW, CX
59, K59DT,
61, K61EX,
63 K63EA
Colstrip 61 K61BL CX
Helena 49 K49EH DC 3.1kw
Sweetgrass 61, K61BZ, CX
63, K63AQ,
65 K65DK
Turner 60 K60BV CX



Nebraska
Grand Island 56 K56FC CX
North Platte 25 KNPL-LD CC from K25KA



Nevada
Caliente 2, 9, K02JO, DC 4w/ 14w/ 40w/
11, K09FL, 40w/ 240w, 37-37-18/
13, K11CN, 114-30-28
45 K13LV,
K45AL
Fish Lake Valley 53, K53EZ, CX
59 K59FH
Incline Village 27 K27LV PR>15kw; PG
Incline Village 28 K36NB QR from 36, 15kw
Indian Springs 8 K08PG NW 123w, 36-34-10/
115-40-33 (KLVX)
Laughlin 63 K63HJ CX
Panaca 4, 6, K04HF, DC 9w/ 60w/ 1.2kw,
43 K06DM, 37-27-34/ 114-27-57
K43DS
Panaca 41 K41MY XC 37-27-51/ 114-28-
12
Ursine 2, 9, K02EG, DC 13w/ 27w/
11, K09FK, 8w/
13, K11OW, 27w/
50 K13LU, 227w, 37-59-01/ 114-
K50DA 13-26



New Mexico
Clovis 49 K49BY DC 1.53kw, 34-26-23/
103-12-44
Hobbs 34 K34KZ NW 7.5kw, 32-46-34/
103-08-35 (Hobbs SDA
Church)
Las Cruces 57 K57BV CX

Thoreau 29 K29KT NW 330w, 35-27-59/
108-14-25
Tohatchi 38 K38AU DC 620w, 35-54-37
/108-46-26; CL from
Crownpoint



New York
Binghamton 23 WBPN-LD PR<80w, 42-05-38/ 75-
57-27
Greece 25 WGCE-CA DR from 6, 15kw, 43-
09-23/ 77-36-31
Kinderhook 15 WNYA-CA PR<59kw, 42-22-20/
73-58-08
Norwood 23 WNPI-DT PR>60.5kw
dismissed



North Carolina
Jacksonville 41 WTMO- XR 34-46-08/ 77-31-
24; XG
Williamston 55 WFTB-LP CX



Ohio
Chillicothe 59 W59DL CX
Conneaut 64 W64AK CX



Oregon
Bend 7 KBNZ-LD PC<250w; PR>3kw;
PG
Klamath Falls 58 K58BG CX
Newport 15 K15DS DC 2kw



Pennsylvania
Darby 11 W36DO QR from 36, 1kw
Greensburg 19 WEMW-CD PR<9kw, 40-23-34/ 79-
46-54
Johnstown 39 WBYP-CA DR from 35, 15kw
New Castle 27 WPCP-CD PR<600w; PG
Pittsburgh 32 WIIC-LP DR from 29, 2.7kw
Pittsburgh 63 W63AU CX
State College 7 W07CD CX



South Dakota
Rapid City 33 K33CO DC 15kw
Rapid City 52 KCPL-LP CX
Reliance 13 KPLO-TV PG>46.9kw/
306m, 43-54-27/ 99-
41-46



Tennessee
Knoxville 24 WDTT-LP DR 1.5kw; DG
Knoxville 43 W43DR PR>15kw, 36-00-13/
83-56-34; CL from
Morristown; PG



Texas
Abilene 60 KAWT-LP CX
Amarillo 26 KXMF-LD CC from K26KE
Beaumont 6 K06PM NW, ThisTV
Beaumont 12 KBMT Adds Cozi TV on 12.3
and MeTV on 12.4
Corpus Christi 61 KCCZ-LP CX
Dallas 4 KHFW-LD QG from 29, 100w, 33-
07-57/ 96-39-39; CL
from Denison; QC
Dallas 24 KQFW-LD XR 32-35-03/ 96-57-
49; XG
Houston 15 KVVV-LD FC: 15.1 The Word;
15.2 CTN; 15.5
African-American
videos; 15.8 blank;
15.3/.4/.6/.7 "open for
lease"
Killeen 30 KPLE-CD DR 15kw
Lubbock 67 KTGB-LP CX
Midland 63 KZMO-LP CX
Odessa 6 K66GG QC from 66, 990w, 31-
47-40/ 102-35-15
Odessa 36 KZOD-LP DG from 62, 100w, 31-
50-53/ 102-23-13
rescinded but refilled
Victoria 29 K29JI CX



Utah
Huntsville 22, K22IU, CX
58 K58FT
Price 35 K35CK DC 300w
Salt Lake City 21, K21JA, CX
46, K46BJ,
59 K59GS
Minersville 5 K05AT CX



Virginia
Roanoke 54 WEDD-LP CX



Washington
Ellensburg 63 K63BZ CX
Monitor 46 K55BN QR from 55 dismissed
Monitor 53, K53AH, CX
55 K55BN
Seattle 24 K24IT PG>2.6kw

Spokane 36 KSKN PG>1000kw
 Vancouver 14 K14HN CX



West Virginia
 Cedarville 28 W28DR PR<10.1kw; PG



Wisconsin
 Milwaukee 30 WPVS-LP DR 15kw, 43-05-46 /87-54-15
 Milwaukee 63 WYTU-LP CX
 Sheboygan 30 WPVS-LD DC from 29, 15kw, 43-05-46/ 87-54-15; see text



Wyoming
 Laramie 61 K61DX CX
 Sheridan 6 KSHW-LP CC from K06AT

Thanks to Jeff Kruszka for some of the information appearing above.

In theory, WPVS-LD in Wisconsin is changing its city-of-license from Milwaukee to Sheboygan. In practice, I'm pretty sure this is a typo. The station recently moved *from* Sheboygan *to* Milwaukee. And, the coordinates given are the WMVS/WMVT tower in Milwaukee.

I believe WLS-TV is planning two auxiliary backup transmitters, one on the Willis (Sears) Tower and the other on the John Hancock Center.

Analog LPTV stations WCEA-LP 58 Boston & WYTU-LP 63 Milwaukee have been deleted. However, both stations have digital companion channels (ch. 45 and ch. 17 respectively) and those digital operations are still in operation.

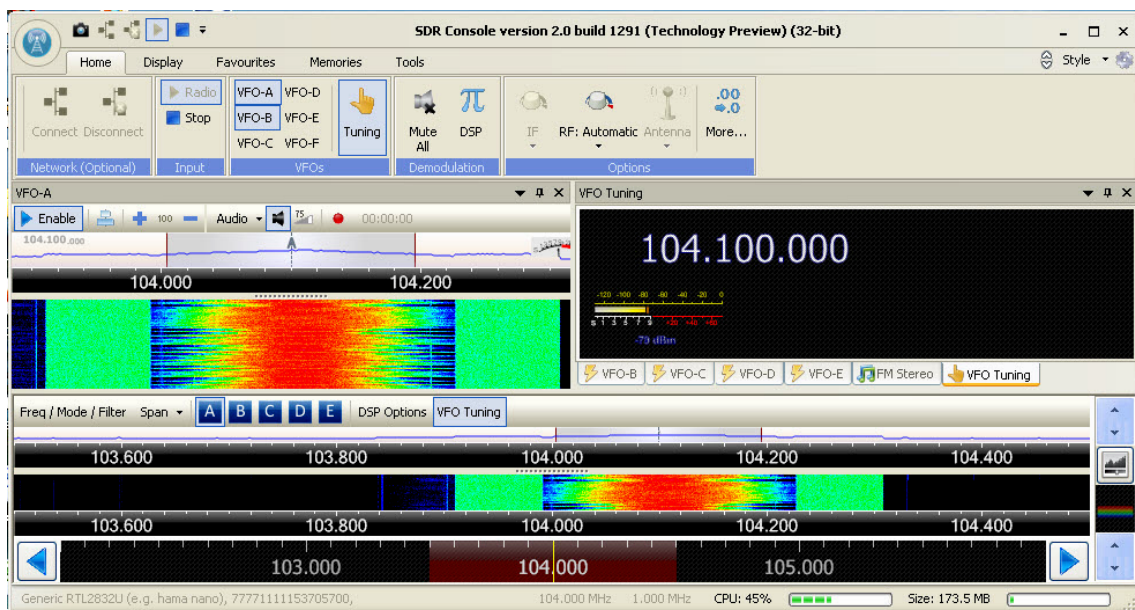
(Obviously, in general the FCC has been busy deleting old analog LPTVs above channel 51! They've also been pretty busy getting rid of idle FM facilities – it looks like they're generally in a cleaning-house mode...)

A three - transmitter Distributed Transmission System (DTS) is on the air on channel 11 in western Virginia. WVPT's facilities:

#1 Staunton	10kw/689m	38-09-54/ 79-18-51
#2 Charlottesville	100w/333m	37-59-00/ 78-29-02
#3 Monterey	8w/470m	38-20-39/ 79-35-47

MORE SOFTWARE FOR RTL 2832 DONGLES

Up until recently the only program designed to interface with the RTL 2832 E4000 USB dongles was a program called SDR# (sharp). Recently though, the developer of SDR Radio Console has developed a new version of his program that does support the dongles. It's a little more difficult to setup since it's designed to work with SDR receivers that tune from longwave through 30 mhz and it takes a longer learning curve, but this software is definitely worth checking out. On FM it will show 1mhz of spectrum. The dongle can be tuned directly from the VFO Tuning window. RF gain can be adjusted without going into any sub menus. Here is a screenshot:





FM NEWS



BILL HALE

6124 Roaring Springs Drive, N. Richland Hills, TX 76180
FMnews@wtfd.org

MARCH 2013

INDEX OF ABBREVIATIONS

APP: application	[]: Calls in brackets signifies assumed or applied-for
APP Mod: Change to an already submitted application	
Class: FM license class	
CP: construction permit (authority to broadcast with facilities noted)	
CP Mod: change to an already granted CP	
DA: directional antenna	
FF: French language	
\$: Stereo	
XL: Transmitter Location	Note: antenna heights are HAAT except where noted

— CANADA —

— CALL LETTER CHANGES —

	Old Call	New Call
NB Blackville	107.7 CJFY-FM	CJFY-FM1
NB Mirimachi	96.7 CJFY-FM1	CJFY-FM
NU Iqaluit	94.7 CP	VF2624

— FORMAT and SLOGAN CHANGES —

AB Edmonton	92.5 CKNG-FM	> Hot AC: <i>Fresh FM</i>
-------------	--------------	---------------------------



— TECHNICAL CHANGES —

ON Windsor	102.3 CINA-FM 5 kW/56 m (DA), 42-17-50/83-01-31; Class A; \$ [multi-lingual]	Now on the air:
------------	--	-----------------



— TECHNICAL CHANGES —

		CP granted for:	
BC Kelowna	103.9 CJUI-FM	> 36.8 kW-H/ < -90 m (DA), XL to 49-46-47/119-30-26	
MB Winnipeg	93.7 CJNU-FM	> 460 W/> 112 m, 49-52-45/97-09-06; Class A (from LP); \$ (from Mono); move from 107.9 [will continue with its nostalgia format]	
NB Fredericton	92.3 CFRK-FM	> 100 kW/ > 138 m (to DA), XL to 46-02-26/66-29-24	
NB Fredericton	93.1 CIHI-FM	> 100 kW/ < 138 m (to DA), XL to 46-02-26/66-29-24	
ON Brighton	100.9 CIYM-FM	> 5 kW/ < 146 m, (to) DA, XL to 44-05-07/77-47-01; Class B1 (from A); \$	
ON Brockville	91.9 CBOB-FM	> 1.532 kW-V// < 1.571 kW-H (adding V)/ > 152 m, DA, 44-38-25/75-37-07; Class A; Mono	
ON Brockville	102.1 CBOF-FM7	< 1.495 kW-V//1.451 kW-H/ > 152 m (to) DA, 44-38-25/75-37-07; Class A; Mono	
QC Montréal	106.3 CKIN-FM	> 1.2 kW-V/194 m, XL to 45-30-11/73-35-48 (DA); Class A; (to) \$; remains an "Ethnic Specialty" commercial station	

— TECHNICAL CHANGES —

GRANTS FOR NEW STATIONS

		CP granted for:	
AB Coleman	102.3 [CBXC-FM]	51 W-H/-169 m, 49-38-54/114-29-50; Class A1; Mono will relay CBR-1010 Calgary [move from 1450 kHz]	
AB Edson	95.3 [CBXD-FM]	50 W/4 m; will relay CBX-740 Edmonton [move from 1540 kHz]	
AB Fort Vermilion	105.1 [CBKC-FM*]	50 W/23 m; will relay CBX-740 Edmonton [move from 1460 kHz]	
AB Grande Cache	92.3 [CBWI-FM#]	50 W/3 m; will relay CBX-740 Edmonton [move from 1450 kHz]	
AB High Level	99.5 [CBKD-FM+]	50 W/18 m; will relay CBX-740 Edmonton [move from 1560 kHz]	
AB Rainbow Lake	101.5 [CBXX-FM]	50 W/11 m; will relay CBX-740 Edmonton [move from 1240 kHz]	
NF Port au Choix	96.7 CFNW-FM	4.3 kW-V/43 m (DA), 50-42-19/57-22-00; Class A; \$; will continue to relay CFCB-570 Corner Brook [this new FM replaces the 790 kHz facility at Port au Choix]	
PE Charlottetown	91.3 CIOG-FM	> 250 W [adds H]/> 41 m, XL to 46-17-22/63-06-16; Class A1 (from LP); \$	
PE Summerside	92.5 CIOG-FM1	> 250 W [adds H]/> 38 m, 46-24-41/63-47-24; Class A1 (from LP); \$	
QC St-Fabien-de-Panet	92.5 CIQI-FM1	17.5 kW/123 m, 46-39-23/70-08-49 (DA); Class B; \$; to relay CIQI-90.3 [Reinstates expired permit]	

- * - New call is assumed as the AM call is CBKC; however there is already a CBKC-FM at Ile-A-La-Crosse, Saskatchewan
- # - New call is assumed as the AM call is CBWI; however there is already a CBWI-FM at Ilford, Manitoba
- + - New call is assumed as the AM call is CBKD; however there is already a CBKD-FM at Buffalo Narrows, Saskatchewan

— TECHNICAL CHANGES —

— APPLICATIONS FROM EXISTING/PROPOSED FACILITIES —

		<u>Applies for:</u>	
NS Aylesford	101.1	VF8023	> 25 kW/> 201 m (to) DA, XL to 45-04-22/64-50-11; Class B from LP; \$; move to 98.7 MHz
ON Erin	88.1	CHES-FM	> 1.25 kw/63 m DA, 43-45-56/80-03-41, Class A1 (from A); \$
ON Fort Frances	89.1	CKSB-FM9	< 5.29 kW-V//<12.35 kW-H, <141 m (to) DA, 48-38-22/93-43-15; Class B; Mono
ON Fort Frances	90.5	CBQQ-FM	< 10.7 kW-V//< 25 kW-H, < 141 m (to) DA, 48-38-22/93-43-15; Class B; Mono
ON Hearst	90.3	CBON-FM26	< 8.34 kW/119 m, 49-38-50/83-30-50; Class B1 (from B); Mono
ON Hearst	91.9	CBCC-FM	< 8.34 kW/119 m, 49-38-50/83-30-50; Class B1 (from B); Mono
ON Toronto	[CP] 88.1	CIND-FM	> 4 kW/< 281 m DA, 43-38-56/79-22-54; Class B (from B1); \$



— APPLICATIONS FOR NEW STATIONS —

AB Wabasca	94.3	APP	6 kW-V/62 m, 55-58-52/113-49-22; Class A; \$ [would be // CHSL-FM 92.7 Slave Lake]
ON Barrie	106.7	CFRH-FM1	175 W/86 m, 44-24-15/79-42-25; Class A1; \$ [would be // CFRH-FM 88.1 Penetanguishene]
ON Prince Edward County	92.3	CJPE-FM	3 kw/71 m, 43-56-34/77-13-38; Class A; \$ [would be a Community station]
QC Montreal	102.9	CILO-FM	50 W/44 m DA, 45-31-48/73-39-34; Class LP; \$ [would be Tamil/South Asian]
QC Murdochville	97.7	APP	98 W/367 m, 48-57-56/65-28-48; Class A; Mono [would replace CBGA-6 1270 kHz]
QC Murdochville	99.5	[CBMJ-FM]	98 W/367 m, 48-57-56/65-28-48; Class A; Mono [would replace CBMJ 750 kHz]



— DISMISSALS —

NS Truro	107.1	CJIS-FM	Application to increase power to 550 W-V and HAAT to 30 m DA (currently 2 W/24 m) has been dismissed.
----------	-------	---------	---

NEWS ITEM: CJIV-FM 97.3 Dryden, Ontario will leave the air by August 31. The station has petitioned the CRTC to delete the license as it does not have the listener base to justify continued operation. The 50-Watts station is owned by Way of Life Broadcasting.

— UNITED STATES AND TERRITORIES —

FULL POWER and LPFM STATIONS

— CALL LETTER CHANGES —

		<u>Old Call</u>	<u>New Call</u>			<u>Old Call</u>	<u>New Call</u>
AL Fort Rucker	103.9	WJRL-FM	WLDA	LA Minden	90.9	CP	KKML
AL Slocomb	100.5	WLDA	WJRL-FM	MA Great Barrington	89.5	CP	WNNU
AZ Ash Fork	99.7	CP	KAFZ	MA Tisbury	92.7	WMVY	WBUA
AZ Salome	90.1	CP	KNGQ	MN Cambridge	105.3	WNSH	WRXP
AZ San Lucy	90.7	CP	KOHH	NE Columbus	90.5	KMMJ-FM	KGKD
AR Caddo Valley	99.7	CP	KHCV	NY Glen Spey	89.5	CP	WUUA
AR Coal Hill	92.7	KLYR-FM	KDYN-FM	NY Greene	88.1	WWSA	WSQN
AR Kensett	105.7	KHAN	KBGB	NC Robbins	88.1	CP	WYTR
		[moving from Clarksville]		ND Williston	98.5	CP	KXWI
AR Siloam Springs	101.1	KLRC	KLAB	NJ Newark	94.7	WRXP	WNSH
CA Huron	89.1	CP	KHRN	NY Glen Spey	89.5	CP	WUUA
CA Tulare	91.9	CP	KPSV-FM	NY Greene	88.1	WWSA	WSQN
CA Weed	102.3	KCWH	KSIZ	OH Hubbard	101.9	WRBP	WYLR
CO Ouray	90.3	CP	KTOW	OH Marion	97.5	WDCM-LP	WDIF-LP
CO Winter Park	88.3	CP	KFFR	OH Upper Arlington	98.9	WJKR	WTOH
FL Eastpoint	91.9	CP	WMVY	OK Ponca City	104.7	KIXR	KQSN
FL Key West	91.9	CP	WKWJ	OK Tahlequah	90.9	KLAB	KLRC
IL Gilman	103.7	WFAV	WYUR	OK Wapanucka	107.5	CP	KZIG
IL Kankakee	95.1	WKIF	WFAV	PA Mohrsville	89.1	WPAZ	WZMV
IL Monee	88.9	WOTW	WGEN-FM	SC Greenville	94.5	WMUU-FM	WGTK-FM
IL Round Lake Beach	89.1	WZKO	WOKL	TX Azle	101.7	KTCY	KYDA
KY Shepherdsville	105.1	WLRS	WESI	TX Dalhart	96.1	KXIT-FM	KBEX
LA Homer	102.3	CP	KQXM	TX Ozona	105.5	CP	KCMZ

TRANSLATOR and BOOSTER STATIONS

— CALL LETTER CHANGES —

		<u>Old Call</u>	<u>New Call</u>			<u>Old Call</u>	<u>New Call</u>
AZ Prescott	89.7	K263AU	K209FN	GA Fort Valley	105.1	W287BW	W286CE
CT Clinton	99.5	W205CE	W258AL	GA Walesla	90.5	W214AS	W213BV
CO Pleasant View	90.9	K216DB	K215FI	HI Waialua	91.1	K217AA	K216GH
CO Redstone	105.7	K236AN	K289BQ	KS Oberlin	91.3	K220JT	K217CY
DE Dover	98.7	W252CH	W254AT	KY Hopkinsville	100.1	W259BL	W261BV
FL Marathon	106.1	W238BU	W291CE	KY Middletown	104.9	W284AM	W285ER

MI	Manistee	98.5	W254BL	W253AR	NY	Fairport	105.1	W283BB	W286AE
MN	Blue Earth	103.1	K273BQ	K276EH	NY	Lowville	98.3	W255CI	W252CK
MN	Hinkley	105.7	W286CC	W289BU	NY	New City	91.9	W219DQ	W220EG
MO	Cairo	102.7	K276FN	K274CE	OR	Astoria	104.5	K242BY	K283BT
MO	Kansas City	101.5	K209EC	K268CF	OR	Langlois	101.3	K213ED	K267BM
MO	Rockaway Beach	103.9	K283BD	K280FP	PA	Brookville	98.7	W290BO	W254BU
MO	St. Louis	96.7	K241BS	K244EP	PA	Danville	105.5	W290CG	W288CF
MT	Great Falls	104.3	K283BQ	K282AV	PA	Kane	99.3	K256BS	W257CW
MT	Missoula	91.9	K204EV	K220JX	PR	Fajardo	98.3	APP	WZOL-3
MT	Ronan	93.9	K231AF	K230BC	SD	Aberdeen	89.7	K205ED	K209FR
NE	Falls City	88.9	K219CE	K205FP	TN	Kodak	100.7	W266AA	W264CJ
NV	Carson City	90.9	K297AS	K215FJ	TX	Quitman	95.1	K234BT	K236BG
NV	Moapa, etc	89.9	K207DY	K210ET	WA	Omak	92.1	K219DQ	K218FH
NM	Portalas	89.1	K220FT	K206EG	WA	Shelton	89.7	K206DR	K209FQ
NM	Sandia	94.5	K298BK	K233CG	WA	Walla Walla	101.7	K266AT	K269FY
NY	Binghamton	89.7	W201CP	W209CI	WY	Laramie	101.7	K272EW	K269FU
NY	Dunkirk	94.9	W236BJ	W235BP					

— FORMAT AND SLOGAN CHANGES —

— Full Power and LP Facilities —

AL	Atmore	105.9	WBZR-FM	Changes slogan to <i>Atmore 105.9</i>
AL	Cullman	101.1	WYDE-FM	Changes slogan to <i>Superstation 101 WYDE</i>
AL	Dozier	90.5	WVPL	Signs on with R&B Oldies/Black Gospel
AK	Dillingham	99.1	KRUP	> Talk/Classic Country
AK	Sterling	105.3	KKNI	Returns to the air with Adult Contemporary: <i>Seward's New Phoenix</i>
AZ	Bagdad	107.7	KFTT	> Oldies [Cumulus - True Oldies]
AZ	Globe	91.9	KVJC	Returns to the air with Religious Teaching: <i>CSN International</i> [Christian Satellite Network]
AZ	Wickenburg	105.3	KHOV-FM	> Spanish Urban: <i>La Kalle 100.3</i>
AR	Ashdown	93.3	KMJI	> Hot AC
AR	Forrest City	93.5	KBFC	Changes slogan to <i>Delta Country 93.5</i>
CA	Big Bear	88.7	KFHM	Signs on with Contemporary Christian
CA	Carlsbad	95.7	KOGO-FM	Changes slogan to <i>95.7 Kiss FM</i>
CA	San Joaquin	105.5	KJZN	Changes network to CBS Sports: <i>105.5, The Game</i>
FL	Jasper	91.7	WWJJ	> Returns to the air with Oldies
FL	Orlando	96.5	WDBO-FM	> Talk: <i>FM 96.5, WDBO</i>
FL	St. Petersburg	91.7	WFTI-FM	> Contemporary Christian [Joy FM Network]
FL	Springfield	95.9	WRBA	Changes slogan to <i>Classic Rock 95.9</i>
GA	College Park	100.5	WNNX	> Rock: <i>Rock 100.5</i>
GA	Valdosta	96.7	WGOV-FM	Changes slogan to <i>V 96</i>
GA	Warrenton	93.1	WCHZ-FM	> Southern Gospel
ID	Boise	105.1	KJOT	> Classic Rock: <i>Variety Rock 105.1</i>
IL	East St. Louis	89.7	WCBW-FM	Adds network New Life Media
IL	Gilman	103.7	WYUR	> Classic Rock: <i>Classic Rock 103.7</i>
IL	Marshall	105.9	WMMC	> Classic Hits
IL	Olney	88.1	WPTH	Changes slogan to <i>Christian Information Radio</i>
IL	Rantoul	95.3	WJEK	> Adult Contemporary: <i>Sunny 95.3</i>
IN	Bloomington	92.3	WTTS	Changes slogan to <i>WTTS FM - World Class Rock</i>
IN	Fort Wayne	90.3	WBCL	Changes slogan to <i>Family Friendly - Commercial Free</i>
IA	Perry	91.7	KICG	Signs on with Classical // KICP 105.9 Patterson [Classical 24]
SC	Forest Acres	94.3	WWNQ	> Country: <i>94.3 The Dude</i>
KS	Fort Scott	104.7	KVCY	Changes slogan to <i>Christian Information Radio</i>
KS	Hutchinson	102.1	KZSN	Changes slogan to <i>102.1, The Bull</i>
KS	Liberal	91.5	KYEH	Signs on with Religious Teaching
KS	Salina	91.7	KCVS	Changes slogan to <i>Christian Information Radio</i>
KY	Central City	101.9	WQXQ	> CHR: <i>Q 102</i>
LA	Buras	91.9	KMRL	Returns to the air with Contemporary Christian: <i>K-Love</i> [K-Love]
LA	Empire	104.5	KWMZ-FM	Returns to the air with 80s Hits
LA	Winnsboro	95.9	KMAR-FM	Changes network to Dial Global - Hot Country Today and changes slogan to <i>Hot Country 95.9</i>
ME	Kennebunk	99.3	WBQQ	Adds network Dial Global - Mainstream Country: <i>99.3, The Wolf</i>
ME	Thomaston	106.9	WBQX	Adds network World Classical Network
MD	Princess Anne	102.5	WOLC	Returns to the air with Religious Teaching: <i>Joy 102.5</i>
MA	Rockland	88.3	WRPS	Returns to the air with Adult Alternative
MA	Tisbury	92.7	WMVY	> News/Talk: Radio Boston [National Public Radio]
MI	Baraga	104.3	WVCN	Changes slogan to <i>Christian Information Radio</i>
MI	Bronson	94.7	WCVM	Changes slogan to <i>Family Friendly - Commercial Free</i>
MI	Constantine	88.5	WGNC-FM	> Classic Country: <i>God N' Country 88.5</i>
MI	Harbor Beach	103.7	WGZE	> Country: <i>Positive Country 103.7</i>
MI	Harbor Beach	89.3	WSMB	Contemporary Christian: <i>Smile FM</i> [Smile FM]
MI	Iron Mountain	91.5	WVCM	Changes slogan to <i>Christian Information Radio</i>
MI	Roscommon	101.1	WGRY-FM	> Sports [CBS Sports]
MI	Saugatuck	92.7	WYVN	Changes network to Cumulus - Classic Hits: <i>Van 92.7, Holland's Classic Hits</i>
MN	Coleraine	96.1	KGPZ	> Country: <i>Z 96 North Country</i>
MN	Cook	88.9	WQRN	Changes slogan to <i>Christian Information Radio</i>
MN	Spring Valley	89.1	KVCS	Changes slogan to <i>Christian Information Radio</i>
MS	Benton	88.3	WYAD	Returns to the air with Black Gospel
MS	Merigold	92.1	WKXY	Changes network to Dial Global - Hot Country Today
MO	Cameron	91.7	WRVX	Changes slogan to <i>Christian Information Radio</i>
MO	Cameron	100.1	KKWK	Adds slogan <i>Classic Hits 100.1, Quick</i>
MO	Marshfield	91.9	KNLM	> Religious Teaching: <i>Catholic Radio</i> [Eternal Word Network]
MT	Helena	105.3	KMTX-FM	Changes slogan to <i>KMTX 105.3</i>
MT	Plentywood	100.1	KATQ-FM	> Classic Rock [Cumulus - Classic Rock]
MT	Scobey	95.7	KCGM	Changes slogan to <i>Voice of The Prairies - KCGM</i>

NH Concord	102.3	WWHK	Returns to the air with Adult Contemporary
NY Mt. Kisco	88.9	WWES	Returns to the air with News/Talk: <i>Northeast Public Radio</i> [National Public Radio]
NY Richfield Springs	88.7	WMHY	Signs on with Religious Teaching: <i>Christian Radio From The Mars Hill Network</i>
NY Rochester	98.9	WBZA	> Rock: <i>98.9, The Buzz</i>
OH Archbold	89.5	WBCY	Changes slogan to <i>Family Friendly - Commercial Free</i>
OH Hubbard	101.9	WRBP	> Contemporary Christian: <i>K-Love</i> [K-Love]
OH Spencerville	88.1	WBCJ	Changes slogan to <i>Family Friendly - Commercial Free</i>
OH Zanesville	91.7	WJIC	Changes slogan to <i>Christian Information Radio</i>
OK Tahlequah	90.9	KLAB	Signs on with Contemporary Christian: <i>The Positive Difference</i>
NC Kinston	102.9	WELS-FM	Returns to the air with Black Gospel: <i>The Best Mix Of Gospel Music</i>
PA Erie	88.5	WMCE-FM	> Oldies: <i>Greatest Hits 88.5</i>
PA Greenville	107.1	WLVX	> Christian CHR/Rock: <i>Air One</i> [Air One]
PA Mohrsville	89.1	WZMV	Signs on with Contemporary Christian: <i>The Word FM</i>
RI Block Island	99.3	WJZS	Changes slogan to <i>Variety 99.3</i>
SC Conway	93.9	WJXY-FM	> Country: <i>93.9, The Outlaw</i>
SC Honea Path	103.1	WRIX-FM	> Talk: <i>Talk Radio 103.1</i>
SD Freeman	90.5	KVCF	Changes slogan to <i>Christian Information Radio</i>
SD Gregory	101.5	KVCX	Changes slogan to <i>Christian Information Radio</i>
SD Huron	88.7	KVCH	Changes slogan to <i>Christian Information Radio</i>
SD Ipswich	88.9	KSJP	Changes slogan to <i>The Lamb</i>
SD Pierre	89.1	KVFL	Changes slogan to <i>Christian Information Radio</i>
TX Campbell	107.1	KRVA-FM	Returns to the air with Country: <i>106.9 The Ranch</i>
TN Decatur	93.9	WQMT	> Spanish CHR: <i>La Caliente</i>
TX Azle	101.7	KTCY	> Christian CHR/Rock: <i>Air One</i>
TX Bay City	101.7	KNTE	> Spanish CHR: <i>Baila 101.7</i>
TX George West	97.9	KXAF	Signs on with 80s Hits: <i>97.9 The Fax Machine</i>
TX Levelland	105.3	KJDL-FM	Changes slogan to <i>Red Dirt Rebel 105.3</i>
TX Pampa	103.3	KDRL	> Classic Rock: <i>Classic Rock</i> [Dial Global - Classic Rock]
TX Point Comfort	94.1	KJAZ	Returns to the air with Country: <i>Texas Country 94.1</i>
TX Refugio	100.5	KRIK	> Regional Mexican
TX San Angelo	106.1	KMDX	> Rhythmic AC
TX White Oak	99.3	KZTK	Changes format to Rhythmic-CHR: <i>Power 99.3</i>
UT Coalville	97.5	KZNS-FM	Changes slogan to <i>The Zone</i>
VT Stowe	101.7	WCVT	Adds network World Classical Network
VA Galax	98.1	WBRF	> Classic Country: <i>Classic Country 98.1</i>
VA Nassawadox	96.9	WFAJ	> Tejano: <i>Amigo 96.9</i>
VA Pound	102.3	WDXC	Changes network to Dial Global - Hot Country Today: <i>Kickin' Country</i>
VA West Point	107.9	WBQK	Changes network to World Classical Network
VA Windsor	105.3	WVMA	Changes their slogan to <i>Now 105.3</i>
WV Buckhannon	93.5	WBTK	> CHR: <i>93.5 BTQ</i>
WI Ashland	95.5	WWMD-LP	Returns to the air with Religious Teaching
WI Eau Claire	90.5	WVCF	Changes slogan to <i>Christian Information Radio</i>
WI Fond du Lac	89.9	WVFL	Changes slogan to <i>Christian Information Radio</i>
WI Manitowoc	102.3	WQTC-FM	> Classic Rock: <i>Q-102</i> [Cumulus - Classic Rock]
WI Milwaukee	107.7	WVCY-FM	Changes slogan to <i>Christian Information Radio</i>
WI Owen	90.1	WVCS	Changes slogan to <i>Christian Information Radio</i>
WI Tomah	98.9	WVCX	Changes slogan to <i>Christian Information Radio</i>
WI Washburn	105.9	WEGZ	Changes slogan to <i>Christian Information Radio</i>
WI Wittenburg	88.9	WVRN	Changes slogan to <i>Christian Information Radio</i>



— Translators —

GA				Atlanta
IN Indianapolis	107.5	W298BB	> Sports // WIBC-FM 93.1 [has moved to Indianapolis]	

— FM and AM Simulcasts —

PA Erie	88.5	WMCE	WMCE-1530 North East
VA Covington	103.5	W278BF	Relays WXCF-1230 Clifton Forge with Country as <i>103.5 Big Country</i>

— OTHERNEWS —

AZ Salome	101.9	KVGG	Is silent
CA Conner	100.3	K262BP	Cancelled license and call letters reinstated
FL Cape Canaveral	103.3	W277AN	Fined \$11,000 for operating with power exceeding their licensed limit from an unauthorized antenna
FL Edgewater	95.1	WLGM-LP	Changes frequency from 95.3
FL Port Saint Lucie	100.7	WEHR-LP	Changes frequency from 100.1 and City-of-License from Port St. Lucie
IL Carmi	103.3	WJHP-LP	License cancelled; call deleted
IL Collinsville	105.7	KPNT	Changes city of license from Ste. Genevieve, Missouri [a move of about 40 miles]
IN Crothersville	89.7	WOJC	Is silent
IA Pocahontas	95.3	KWFF-LP	License cancelled; call deleted
IA Sidney	107.7	KIMI	Changes frequency from 107.9 and City-of-License from Humboldt
IA Tama	97.1	K246AP	License cancelled; call deleted per licensee's request
MS Jackson	98.1	WLEZ-LP	Changes frequency from 103.7
NE Aurora	92.5	KIVE-LP	Is silent
NE Chappell	92.1	K221CU	License cancelled; call deleted per licensee's request
NE Falls City	94.7	K234BL	License cancelled; call deleted per licensee's request
NE North Platte	92.1	K221CJ	License cancelled; call deleted per licensee's request
NE O'Neill	88.7	K204FF	License cancelled; call deleted
NE O'Neill	95.3	K237EH	License cancelled; call deleted
NE Scottsbluff	107.9	KNIF-LP	License cancelled; call deleted per licensee's request
NV Wendover	102.3	KVUW	Is silent
NM Clayton	90.1	KUHC	Is silent
NY Medina	89.7	WFWO	Is silent

NY Morristown	96.7	WYSX	Is silent due to a transmitter fire; streaming continues at: http://hub.am/11XRunz
NY Ogdensburg	98.7	WPAC	Is silent due to a transmitter fire; streaming continues at: http://radio.radiopi.com at deadline
OR Pilot Rock	90.5	KBLU-FM	Is silent
OR Portland	91.1	KRRC	Changes frequency from 97.9
PA Gap	92.9	WLRI-LP	Is silent
PA Chambersburg	100.7	W264AY	License cancelled; call deleted per licensee's request
TN Mill Point	96.3	APP	Application for a new station dismissed
TX Eastland	91.1	KQXE	Is silent
TX Ganado	94.9	KHTZ	Changes frequency from 104.7
TX Pearsall	103.3	KSAG	Is silent
TX Ranger	98.5	KLQM	Is silent
TX Stephenville	89.1	KQXS	Is silent
TX Stratford	91.7	KOGW	Is silent
WA Chinook	94.3	KRKZ-FM	Changes City-of-License from Netarts
WA Ocean Shores	102.1	KSWW	Changes City-of-License from Elma
WI Red Cliff	92.3	WRZC-LP	License cancelled; call deleted
WY Pine Bluffs	105.3	KREO	Is silent

+++++

NEWS ITEM: FM Translator Applications

Around 3000 FM translator applications have been formally dismissed by the FCC. Some have been on the books for up to ten years. Translator stations are those used only to rebroadcast (translate) a full-power station and are limited to 250 Watts. After looking at the list, most are requested by religious or educational organizations. Many dismissed applications failed to provide necessary data, or exceeded the number limits per applicant.

NEWS ITEM: FCC Doesn't Believe Repeat Pirate's Claims

Back in 2011, Whisler Fleurinor succeeded in claiming poverty and getting the FCC to knock down a \$25,000 fine for operating a pirate station to \$500.

Now he's trying the same argument, with no admission of guilt, to whittle down a new fine for operating an unauthorized station on 99.5 MHz in Fort Lauderdale, Fla. However this time the commission is declining that offer and the penalty has progressed to a forfeiture order.

Fleurinor has been cited by the Enforcement Bureau for operating unlicensed stations several times since 2008.

The FCC says Enforcement Bureau agents traced the transmissions to a commercial property Fleurinor owns. He admitted operating the station, but told the FCC he stopped and the only remnant of equipment is a roof antenna. He again argues he can't pay the fine.

The agency said in its decision it doesn't find him credible "given the more reliable record evidence adduced by the Miami Office over a period of several months, and in view of Mr. Fleurinor's past history of repeated noncompliance despite promises to comply."

He is being offered the chance to pay the fine in installments; the agency wants its money within 30 days.

NEWS ITEM: Saltsprings Island's Only Radio Station Is Sold

SALTSPRING ISLAND, BC – Saltspring Island's only community radio station has been sold. CFSI-FM now belongs to Radio Punjab. The sale came as a shock to workers of the station. For years the station on 107.9 MHz has been the sole local community voice and now there is fear that a possible format change could silence that.

Gary Brooks started the radio station three years ago. He says it's time to move on. "The station was put with a brokerage and it was advertised on the internet to see if some professional person could take community radio to where I couldn't," says Brooks.

The station was sold for a little over \$200,000. The sudden sale came as a shock to disk jockey Jamie Alexander.

The new owner of the station, Sukhdave Singh Dhillon is a major player in Indo-Canadian Media. His network Radio Punjab operates in Alberta and throughout the lower mainland. "Well, I have a station near Edmonton in Alberta and I want to change the format in Alberta to the same format we have here in Saltspring Island to a specialty channel," says Dhillon.

Many fear that Dhillon will change the station's tune to cater the Indo-Canadian Community in the Cowichan Valley. "That fear shouldn't exist I don't plan to do that. As you know there is not much Punjabi community here so I don't need to go that way," says Dhillon.

The Saltspring Island community is well represented on the airwaves and Dhillon expects to keep it that way.

The CRTC has already approved the sale and Radio Punjab will get the keys to the station in March.

+++++

Thanks to Shawn Axelrod, Ron Cesarek, Tim Noonan, Ralph Strobel, Dan Sys, Radio World Online and Upper Midwest Broadcasting for news.

If you hear any changes occur on your FM dial, share the news! 73

+++++



FM FACILITIES

MARCH 2013

AF	Applied For (a new station)	PC	Power (and/or tower height) change on the air
Aux	Auxiliary (backup) transmitter	PG	Power change granted
CC	Callsign change	PR	Power change requested
CL	City-of-license change	RA	Returns to the air
DE	License/permit deleted	RE	Reinstated (previously-dismissed app.)
FC	Programming (format) change	ROA	Request of Applicant
FTP	Failure to Prosecute	SI	Off the air (silent)
LC	License to Cover	STA	Special Temporary Authority
NS	Permit granted for new station	XC	Transmitter site changed
NW	New station on the air	XG	Transmitter site change granted
PA	Proposed Amendment	XR	Transmitter site change requested

Changes:

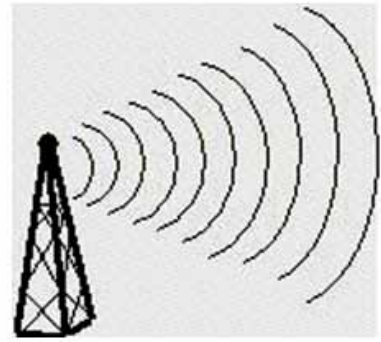
AK Kasilof	90.7	KRAW	QG from 90.5, 1kw/73m
AL Fort Rucker	103.9	WLDA	CC from WJRL-FM
AL Grove Hill	90.1	WDLG	PG>650w/142m, 31-43-43/87-45-04
AL Slocomb	100.5	WJRL-FM	CC from WLDA
AR Caddo Valley	99.7	NEW	PG<3kw/53m, 34-14-20/93-00-19
AR Caddo Valley	99.7	NEW	PR<3kw/53m, 34-14-20/93-00-19
AR Coal Hill	92.7	KDYN-FM	CC from KLYR-FM
AR De Queen	88.7	KBPU	PR>2kw/19m, 34-02-43/94-20-39
AZ Ehrenburg	93.5	NEW	PA from 105.1, class C2, dismissed
AZ First Mesa	104.1	NEW	GA from 97.3, class C
AZ First Mesa	104.1	NEW	PA from 97.3, class C, dismissed
AZ Kachina Village	97.1	KBTK	PA from 105.1, class C2, dismissed
AZ Munds Park	97.1	NEW	GA, class C2
AZ Peach Springs	104.1	NEW	AF 89kw/315m, 37-05-41/113-11-06 (JER Licenses)
AZ Quartzsite	96.5	KBUX	QR from 94.3, 3kw/-47m, 33-41-02/114-13-58
AZ Wickenburg	105.1	KHOV-FM	PA from 105.3, C2 to C0, dismissed
AZ Williams	105.3	NEW	PA, class C2, dismissed
BC Kelowna	103.9	CJUI-FM	PG<36.8kw/-90m, 49-46-47/119-30-26
CA Big Bear City	88.7	KFHM	NW 145w/63m, 34-14-09/116-50-04 (CSN)
CA Camino	88.3	KPCPC	CC from KYCJ
CA Camino	88.3	KYCJ	PG>115w/120m, 38-44-58/120-40-06
CA Carmel Valley	91.3	KZBV	PR>-83m, 36-26-38/121-41-43
CA Lakeport	88.1	KPFZ-FM	PC>300w/655m
CA Mantos	94.3	KRBN	PR 2.7kw/305m, 40-29-36/121-53-34
CA Ridgecrest	90.5	KRSR	NW 3kw/451m, 35-53-53/117-17-18 (R. 74)
CA Ridgecrest	93.7	KKYT	PR>1.5kw/393m, 35-28-39/117-41-58
CA Santa Maria	89.7	KCLM	CC from KHFR
CA Santa Maria	89.7	KHFR	FC; sold to KCLU
CA Santa Maria	89.7	KHFR	req. 2.45kw-H (was V-only)
CA Tulare	91.9	KPSV-FM	CC for NS
CA Tulare	94.9	KBOS-FM	PR>263m, 36-38-11/118-56-33
CA Woodland	101.5	KMJE	PC 5.7kw/100m, 38-35-47/121-40-49
CO Durango	105.3	KXRC	PR 16.5kw/123m, 37-15-46/107-53-58
CO Hotchkiss	99.9	KYKL	QR from 99.5
CT Guilford	91.5	WGRS	PG 405w/31m, 41-17-19/72-39-32 (aux)
CT Guilford	91.5	WGRS	PR<405w/31m (aux)
CT New Haven	99.1	WPLR	AF 17.3kw/236m (aux)
CT Niantic	89.9	NEW	AF withdrawn (WSHU)
CT Norwalk	95.9	WFOX	AF 3kw/67m (aux)
CT Pawcatuck	106.5	WBMW	AF 1.7kw/134m, 41-27-43/72-01-27 (aux)
CT Pawcatuck	106.5	WBMW	PR>12.5kw/141m, 41-26-03/72-00-08
FL Bronson	91.1	WZXJ	PR>3kw/59m
FL Fort Lauderdale	90.3	WYBP	PG>8kw/94m, 26-09-12/80-10-12
FL Islamorada	89.3	WAZQ	NW 1kw/15m, 24-53-49/80-39-31 (One Ministries)
FL Jasper	91.7	WWJJ	PG<105w/23m, 30-31-01/82-56-53
FL Key West	107.9	WMFM	PC<1.2kw/60m, 24-33-18/81-48-05 (database says V-only but application says H&V. V-only not normally allowed above 92MHz.)
FL Key West	107.9	WMFM	PR>100kw/167m, 24-40-36/81-30-39 (restore original operation after several years on temporary 1.2kw/60m facility)
FL Ocala	88.1	WHIJ	PC 1.25kw H&V/117m (was V-only)
FL Panama City	107.9	WPFM-FM	PG 54kw/386m, 30-21-08/85-23-28
FL Port Orange	93.1	WKRO-FM	PG 24.5kw/53m, 29-09-15/80-59-45
GA Cochran	90.9	NEW	CX (Catholic Radio Network)
GA Newton	89.9	NEW	CX (Kansas Catholic Education Radio Corp.)

GA Rochelle	93.1	WWKM	NW 4.65kw/81m, 31-56-54/83-26-02 (Georgia Eagle Media)
GA Rome	97.7	WGPB	PR>17.5kw/120m, 34-15-03/84-59-05
GA Roswell	107.5	WAMJ	PG 18kw/110m (aux)
GA Tignall	96.7	WSGC-FM	QR from 105.3, 25kw
HI Hilo	94.7	KWXX-FM	PG<40kw
HI Honolulu	100.3	KCCN-FM	NW 50kw/567m (aux)
HI Honolulu	105.1	KINE-FM	NW 50kw/566m (aux)
HI Honolulu	105.9	KPOI-FM	NW 50kw/567m (aux)
HI Kilauea	91.9	KAQA	PC>533m, 21-58-36/159-29-55
HI Kilauea	91.9	KAQA	PG>533m, 21-58-36/159-29-55
HI Kurtistown	102.7	KTBH-FM	QG from 102.1, 21kw/28m
HI Pearl City	101.9	KUCD	NW 50kw/567m (aux)
IA Creston	90.9	KLOX	PR>45kw/155m, 41-04-38/94-19-09
IA Hampton	104.9	KLMJ	PG 4.7kw/113m
IA Perry	91.7	KICG	NW 10kw/110m, 42-03-56/93-56-17 (WOI)
IA Waterloo	105.7	KOKZ	PC<399m
ID Kamiah	88.7	KIYE	AF 950w/-383m, 36-13-40/116-01-30 (aux)
ID Weston	99.9	KLZX	QR from 95.9, 100kw
IL Collinsville	105.7	KPNT	PC>54kw/254m, 38-34-28/90-19-32; CL from Ste. Genevieve, Mo.
IL Greenup	93.9	NEW	GA, class A, non-commercial
IL Harvard	88.9	WCNM	PR>8.7kw/45m, 42-24-30/88-36-32
IN Morristown	88.1	WJCF-FM	AF 250w/33m, 39-47-08/85-45-48 (aux) (amendment from 500w-H/29kw-V)
IN Morristown	88.1	WJCF-FM	NS 250w/33m, 39-47-08/85-45-48 (aux)
IN Rochester	92.1	WROI	PG>6kw/57m
KS Effingham	96.9	KDVB	PR>8.1kw/187m, 39-24-12/95-26-18
KS Goodland	89.1	KLXG	QR from 88.9, 250w/64m
KS Goodland	89.1	KLXG	QR from 88.9, 750w/66m, 39-20-24/101-44-05; amendment from 250w/64m & to add site change
KS Lakin	92.5	KGRQ	PG>100kw/53m, 37-53-26/101-22-39
KY Louisville	97.5	WAMZ	PG<169m, 38-11-31/85-31-21
KY Lyndon	103.1	WQNU	AF 6kw/95m, 38-16-03/85-41-53 (aux)
KY Shepherdsville	105.1	WESI	CC from WLRS
LA Belle Rose	106.9	KBRS	CC for NS
LA Cameron	107.1	KMCZ	CC for NS
LA Clinton	91.9	WWRA	PG>25kw/73m, 30-53-11/90-49-32
LA Empire	104.5	KWMZ-FM	PC 9.2kw/250m
LA Kentwood	91.5	WPEF	PG>7.3kw
LA Mindea	90.9	KKML	CC for NS
LA New Roads	88.3	KPCP	PR>10.5kw
MA East Harwich	98.7	WKFY	PG<3.2kw/47m
MA Gloucester	104.9	WBOQ	PC 6kw/98m, 42-389-22/70-56-22
MA Great Barrington	89.5	WNNU	PR<180w/196m
MA Hyannis	102.9	WPXC	AF 500w/13m, 41-39-02/70-17-02 (aux)
MA Hyannis	102.9	WPXC	NS 500w/13m, 41-39-02/70-17-02 (aux)
MA Rockland	88.3	WRPS	PC>46m
ME Bowdoin	88.1	WMEY	NW 100w-H/50kw-V/39m, 44-06-30/69-55-27 (Light of Life Ministries)
ME Dennysville	102.9	WCRO	PG<51kw
ME Dexter	102.1	WKVZ	PR>27kw
MI Constantine	88.5	WGNC-FM	CC from WGCX
MI Goodland Township	88.1	WHYT	PR>12.5kw
MI Grayling	100.3	WQON	CC from WGRY-FM
MI Riverside	88.7	WSIS	PR>50kw
MI Roscommon	101.1	WGRY-FM	CC from WQON
MI Warren	89.1	WPHS	PG>600w
MN Cambridge	105.3	WRXP	CC form WNSH
MO Kansas City	88.5	KLJC	sold to Northwestern College (KTIS etc.)
MS Coldwater	95.3	WEBL	CC from WVIM-FM
MT East Helena	104.1	KHKR-FM	PC>207m, 46-46-06-112-01-22
NB Fredericton	92.3	CFRK-FM	PG>100kw/138m, 46-02-26/66-29-24
NB Fredericton	93.1	CIHI-FM	PG>100kw/138m, 46-02-26/66-29-24
NC Chadbourn	89.9	WZCO	req. 4.5kw-H, was V-only
NC Fuquay-Varina	103.9	WNNL	PG 8.6kw/169m
NC Fuquay-Varina	103.9	WNNL	PR 8.8kw/167m
NC Murphy	88.5	WMQS	PG<49w/196m, 35-07-37/84-01-35
NC Pilot Mountain	89.7	WGIW	PR>1.7kw/118m, 36-25-27/80-37-51 dismissed 73.509 (prohibited overlap) (per Daily Digest) but granted (per CDBS database)
NC Robbins	88.1	WYTR	PG>4.7kw/53m, 35-33-35/79-41-03
NC Woodfin	105.1	WQNS	QG from 104.9, 4.9kw/62m, 35-35-50/82-36-21
ND Belfield	93.9	KXDI	NW 100kw/254m, 46-43-31/102-55-00 (Williston Community Broadcasting Corp.)
ND Berthold	100.7	KNDL	PG<52kw/208m, 48-03-14/101-26-03
ND Williston	98.5	KXWI	CC for NS
NE Columbus	90.5	KGKD	CC from KMMJ-FM
NE Emerson	104.9	KCTY	PG<87m
NE St. Paul	89.5	NEW	CX (Kansas Catholic Education Radio Corp.)
NE Wayne	91.9	KWSC	PG<28m, 42-14-32/97-00-55
NF Port au Choix	96.7	CFNW-FM	QG from 790 AM, 4.3kw/43m, 50-42-19/57-22-00
NJ Burlington	97.5	WPEN	CC from WPEN-FM
NJ Newark	94.7	WFME	FC to country; CC to WNSH pending
NJ Newark	94.7	WNSH	CC from WRXP
NJ North Wildwood	91.9	WSMJ	NW 750w-V/74m, 39-02-58/74-51-14 (Soul Mates)
NS Aylesford	98.7	VF8023	QR from 101.1, 25kw/201m, 45-04-22/64-50-11
NS Truro	107.1	CJIS-FM	PR>550w/30m denied
NV Fallon	89.9	KONV	PG>12.5kw/601m, 39-54-46/118-5-18
NV Las Vegas	91.5	KUNV	PR>12kw/588m, 35-56-45/115-02-35

NY Glen Spey	89.5	WUUA	CC for NS
NY Greene	88.1	WWSA	PR 850w/182m
NY Mount Kisco	106.3	WFME	CC from WDVY
NY Watertown	88.9	WSLJ	PR>280w/130m
OH Columbus	90.5	WCBE	XG 39-57-44/83-00-08 (correction only)
OH Hubbard	101.9	WYLR	CC from WRBP
OH Urbana	102.9	WDHT	NS 4.5kw/129m (aux)
OH Urbana	102.9	WDHT	NW 4.5kw/129m (aux)
OH Yellow Springs	91.3	WYSO	PR36kw/174m, 39-40-19/84-04-34 reinstated
OK Chickasha	105.5	KWCO-FM	AF 600w/6m, 35-03-03/97-56-26 (aux)
OK Chickasha	105.5	KWCO-FM	NS 600w/6m, 35-03-03/97-56-26 (aux)
OK Coweta	88.1	KDIM	PR>100kw-V (was already 100kw-H)
OK Tahlequah	90.9	KLAB	NW 100kw/148m, 36-11-16/94-41-20 (John Brown University)
ON Brighton	100.9	CIYM-FM	PR>5kw/146m
ON Brockville	91.9	CBOB-FM	PG 1.57kw/152m
ON Fort Frances	89.1	CKSB-9-FM	PR<12.35kw
ON Fort Frances	90.5	CBOQ-FM	PR<25kw
ON Hearst	90.3	CBON-FM-26	PR<8.34kw
ON Hearst	91.9	CBCC-FM	PR<8.34kw
ON Sioux Lookout	95.3	CBQT-FM-3	AF 500w/182m, 50-04-26/92-01-29; to relay CBQT-88.3 Thunder Bay
OR Harrisburg	103.7	KXPC-FM	PR<100kw/310m, 44-00-08/123-06-50
OR Huntington	93.5	NEW	PG>100kw/-24m, 44-21-00/117-17-49
OR Madras	96.5	NEW	NS 100kw/149m, 44-55-40/120-43-40 (Tool Shed PDX)
OR Pilot Rock	90.5	KBLU-FM	NW 100w/-217m, 45-22-04/118-52-13 (KBOO)
OR Portland	91.1	KRRC	PG<-15m, 45-30-35/122-36-21
OR Portland	91.1	KRRC	QC from 97.9, -15m, 45-30-35/122-36-21
PA Allport	90.5	WRPV	PR>1.6kw/270m, 41-04-34/78-33-06
PA Beech Creek	89.3	WRWV	PG 4.3kw/244m
PA Erie	88.5	WMCE-FM	CC from WMCE
PA Greenville	88.1	WXTC	NW 1.6kw/-2m, 41-24-51/80-22-50 (Thiel College)
PA Mohrsville	89.1	WZMV	CC from WPAZ
PA Mohrsville	89.1	WZMV	NW 1w-H/7.5kw-V?70m, 40-28-09/76-03-46 (Four Rivers Community Broadcasting Corp.)
PA Newburg	90.1	WZXX	PR>1.24kw-H/6.3kw-V
PA Saint Marys	91.1	WRVI	PR 240w/92m, 41-24-16/78-42-01
PA Spring Grove	90.7	WZXY	PR 160w/225m, 39-51-47/76-57-01
PE Charlottetown	91.3	CIOG-FM	PG>250w
PE Summerside	92.5	CIOG-FM-1	PG>250w
PR Culebra	98.7	WQML	PG>6kw/173m, 18-19-19/65-17-59
PR Santa Isabel	98.1	NEW	PG<133m, 18-01-45/66-21-37
QC Montreal	106.3	CKIN-FM	PG>1.2kw
QC St-Fabien-de-Panet	92.5	CIQI-FM-1	NS 17.5kw/123m, to relay CIQI-90.3. Reinstates expired permit.
SC Gray Court	90.5	NEW	NS 21kw-V/136m, 34-19-20/81-58-57 (St. Joseph's Catholic School)
SC Laurens	90.5	NEW	AF dismissed (Community Broadcast Services)
SC Mauldin	104.9	WROO	QG from 96.7, 720w
SC Pendleton	95.9	WLTE	PG>6kw/95m, 34-37-14/82-41-52
SC Pinopolis	105.9	WTUA	QG from 106.1, 67m, 33-10-26/80-00-46
SC St. George	91.9	WWOS	PR>15kw/129m, 33-21-12/80-35-18
SD Hartford	91.3	KSTJ	PR>41kw/221m
SD Newell	107.9	KXZT	PR>90kw/449m
TN Goodlettsville	92.1	WQQK	PC 3.5kw/133m
TX Alpine	91.7	KRTP	PG>1.4kw/93m, 30-19-09/103-37-04
TX Blowout	88.9	KXMP	PG<125w/135m, 30-24-23/98-34-12
TX Blowout	88.9	KXMP	PR<125w/135m, 30-24-23/98-34-12
TX Carrizo Springs	93.5	KAJP	PR<100w/34m
TX Charlotte	102.3	KSAQ	PG>4.4kw/117m, 28-45-41/98-41-57
TX Detroit	104.3	KFYN-FM	NW 50kw/140m, 33-45-26/95-32-15
TX Dimmitt	91.3	NEW	CX (Catholic Radio of the Texas High Plains)
TX Ganado	94.9	KHTZ	QC from 104.7, 100kw/299m, 28-53-22/96-21-41
TX George West	97.9	KXAF	CC for NS
TX George West	97.9	KXAF	PR>1.6kw/132m; PG; NW (Hispanic Target Media); CC for NS
TX Lockney	98.9	NEW	XG 34-11-05/101-25-59
TX Louise	90.3	KABA	NW 4.9kw/103m, 29-06-05/96-27-19 (Aleluya Broadcasting Network)
TX Odem	98.3	KMJR	PR>100kw/247m, 28-02-07/97-26-11
TX Ozona	105.5	KCMZ	CC for NS
TX Ozona	105.5	KCMZ	PG<100w/-21m, 30-42-00/101-12-21
TX Ozona	105.5	NEW	PR<100w/-21m, 30-42-00/101-12-21
TX Palacios	91.3	NEW	NW 1kw/21m, 28-42-33/96-08-17 (Centro Cristiano de Vida Eterna)
TX Pearsall	103.3	NEW	PA from 93.3, to allow KSAG-103.3 to move to 93.3
TX Pearsall	93.3	KSAG	QR from 103.3, 28-54-44/99-05-02; amendment from 99w/54m at different site & without frequency change
TX Roscoe	93.5	KEPL	CC for NS
TX San Diego	102.5	NEW	PR 5.4kw/105m, 27-48-15/98-24-29
TX Smiley	90.3	KSXT	PR>13kw/45m, 29-17-11/97-40-52; amendment from 7.5kw
TX Tatum	91.5	KHJA	NW 100w/37m, 32-17-24/94-34-28 (Grace Public Radio)
UT Fountain Green	99.9	NEW	PR>5kw
UT Glendale	89.9	KFDJ	QR from 90.5, 40kw/545m, 37-17-45/112-50-34 dismissed
UT Glendale	89.9	KFDJ	QR from 90.5, 40kw/545m, 37-17-45/112-50-34; amendment to add frequency change
UT Glendale	90.5	KFDJ	CC for NS
VA Tazewell	100.1	WKOY	FC to CSN religious
VA Winchester	91.3	WTRM	FC; sold to American Family Association

FCC FACILITIES CONTINUES ON PAGE 19

Northern FM DX Northern FM DX



Keith McGinnis
18 Newbridge St., Hingham, MA 02043
longwave@comcast.net 781-875-1944

For Dxters in the following states: CT IA ID IL IN MA ME MI MN MT ND NE NH NJ NY OH OR PA RI SD VT WA WI WY and all of Canada. Please submit by the 10th of each month.

EDITOR'S NOTE PLEASE SUBMIT ALL REPORTS IN THE FORMAT SHOWN BELOW.

Time(tab)Calls(tab)Freq(tab)City(tab)State(tab)details

*Formats can either be plain text, Word or Excel as long as format is adhered to. Any submissions in other formats may not be used at editor's discretion.
All Submissions must be in to me by the 10th of each month.*

Jeff Falconer, VA3NN - Clinton ON EN93fo
Sangean HDT-1X, Sony XDR-F1HD, APS-13 at 22 , 10db preamp
New=* New calls={XXXX} t=Tentative Time=ELT Distances=Miles

Jan 12 Tr

1418	WONU	89.7	Kankakee	IL	Nice signal, REL: AC, "Shine-FM", RDS PS: Shine / PI: WONU 365
2057	WGNC*	88.5	Constatine	MI	Country gospel music, legal ID "God and Country 88.5, WGNC, Constantine - South Bend. First day on air 236

Jan 14 Ms

1521	KEOM	88.5	Mesquite	TX	Several pings of oldies //stream 1108
------	------	------	----------	----	---------------------------------------

Jan 16 Ms

1523	WVGA	105.9	Lakeland	GA	TLK RDS PI: WVGA 871
------	------	-------	----------	----	----------------------

Jan 17 Ms

1159	WJFM	88.5	Baton Rouge	LA	".The Sonlife Radio Network." (only one on 88.5), previous Es 1052
------	------	------	-------------	----	--

Jan 19 Tr

2346	WAKW	93.3	Cincinnati	OH	REL: AC, "Star 93-3" 342
------	------	------	------------	----	--------------------------

Jan 21 Ms

1233	WKYU	88.9	Bowling Green	KY	30 sec burst, CLA , HD, previous Tr 524
1506	WLBF	89.1	Montgomery	AL	Preacher, RDS PS: Faith Radio / PI: bogus KALE 813
1721	WMUB	88.5	Oxford	OH	".cincymuseum.org.", maybe airplane flutter? 327

Jan 22 Ms

1326	WLTR	91.3	Columbia	SC	CLA music, RDS PI: WLTR 656
------	------	------	----------	----	-----------------------------

Jan 24 Ms

1150 KEOM 88.5 Mesquite TX Carly Simon song //stream 1108

Jan 24 Tr

1213 WMDH 102.5 New Castle IN Calls, C&W 317

Jan 25 Ms

1339 WLBF 89.1 Montgomery AL Preacher, RDS PS: Faith Radio / PI: bogus KALE 813

Jan 29 Ms

1537 KJTH 89.7 Ponca City OK RDS PI: KJTH 975

Jan 29 Tr

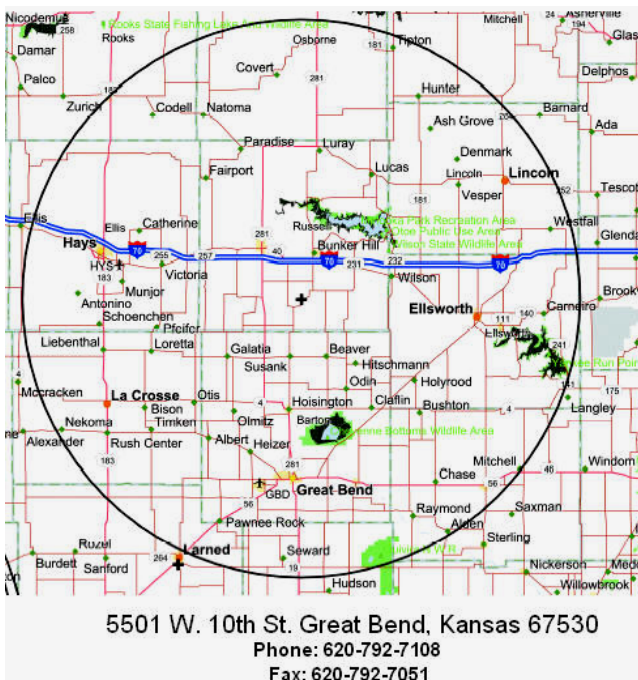
1559 WUWM 89.7 Milwaukee WI Good, EBS Test, Legal ID 322

Feb 02 Ms

1352 WZKM 89.7 Waynesboro MS RDS PI: WZKM / PTY: Religious Music 905

FCC FACILITIES CONTINUES FROM PAGE

WA Aberdeen	104.7	KDUX-FM	NS 40w/117m, 46-55-55/123-44-04 (aux)
WA Burbank	99.1	KUJ-FM	AF 5kw/-15m, 46-13-18/119-11-10 (aux)
WA Burbank	99.1	KUJ-FM	NS 5kw/-15m, 46-13-18/119-11-10 (aux)
WA Hoquiam	95.3	KXXX	NS 40w/117m (aux)
WA Montesano	93.7	KANY	PC>32kw/679m, 47-18-46/123-22-15
WA Ocean Shores	102.1	KSWW	PC 14kw/122m, 46-56-00/123-43-57
WA Pullman	89.9	KMRW	PR 300w/246m, 46-38-03/117-05-22 reinstated
WA Richland	106.5	KEGX	AF 5kw/-15m, 46-13-18/119-11-10 (aux)
WA Richland	106.5	KEGX	NS 5kw/-15m, 46-13-18/119-11-10 (aux)
WA Walla Walla	95.7	KKSR	AF 1.5kw/-15m, 46-13-18/119-11-10 (aux)
WA Walla Walla	95.7	KKSR	NS 1.5kw/-15m, 46-13-18/119-11-10 (aux)
WI Sturgeon Bay	97.7	WODC	CC from WSRG
WI Tomahawk	92.5	WJJQ-FM	PR 19kw/136m
WI Washburn	104.7	WHWA	PG>17.5kw
WV Charleston	97.5	WQBE-FM	NS 1.37kw/65m, 38-21-26/81-40-05 (aux)
WV White Sulphur Spring	93.3	NEW	NS 1.1kw/236m, 37-48-17/80-21-03 (United States CP)
WY Centennial	104.5	KYAP	NW 500w/33m, 41-17-49/106-08-23 (White Park Broadcasting)
WY Centennial	104.5	KYAP	PR>13.5kw/284m, 41-17-06/105-26-41
WY Evanston	89.7	KUWE	NW 2kw/404m, 41-21-14/110-54-38
WY Wamsutter	104.9	KKAR	CC from KHNA



Coverage Map of
 KZRS 107.9
 Great Bend, Kansas



Coast to Coast TV DX

Featuring reports from the entire United States and all of Canada.

Send reports by the 15th of each month to:

Nick Langan
 1040 Riverview Drive
 Florence, NJ 08518
 E-mail: nickl@wtfda.org

The Editor's Note

For most of us, March might be the least appealing month on the DX calendar. Any remnants from the winter E-Skip season have already ceased, and it falls much too early for any early Es outbreaks the summer season has to offer. Meanwhile, the weather in most of the country is usually in too much of a transitional stage to support any tropo openings, with the exception of (as always) areas near the Gulf of Mexico. And if you're really delving deep for signals, there aren't any meteor showers of note within the month either. On the bright side, spring and the promise of active DX conditions are right around the corner.

Bob Seybold checks in with a winter western New York update inside this edition of C2CTV DX, highlighted by some E-Skip he logged from Mexico and Central America, and Dennis Smith gives us the latest from SoCal, where he also viewed some Mexican Es.

Robert Seybold

1865 W. Main Road
 Silver Creek, NY 14136

Dear Nick:

Normally there is little or no DX this time of year, but did have an opening today (2-10-13) so I will report it before I forget. Did have some E-Skip during the holidays so I will report that too.

2/10/13 Tropo

CKNX 8 Wingham strong (analog); Bancroft 2; following all digital: WDIV 45; WWJ 44; WXYZ 41; WGTE 30; TVO 28; CITY TV 31; WBNF 15 (Buffalo low power digital); CFPL 10; also Saginaw 25; Flint 28; Ann Arbor 31; all Erie; Canadians 22, 51, 18, 35, 42, 48, 47, 13; Paris 6, plus regular Toronto, Hamilton with super signals (opening lasted several hours)

E-Skip opening 12/28-29/12

WUVM 4 (new); WUVF 2; WEYS 6 (new); WDVZ 3 (new); XHLS 6; XHBC 3 (new); XEFB 2; TGV 3 (new); XHPN 3; VTV 2 Honduras (new)
Cubans on 2, 3, 5
Canadians on 2, 3 (E-Skip)
Brief digital 3 (unid'd) south

Nice openings 2 days in a row same time period 1700-1900. Band quite heavy especially Channels 2 and 3 (Canadians battling Mexicans and Cubans and Florida and Georgia)

Also Jan 15-16 E-Skip, several Mexicans 1700-1800 PM



A few other trop openings brief and not logged, mainly Toledo, Detroit, and Canadians.

73's

Bob

Dennis Park Smith

3605 San Remo Dr
 Santa Barbara, CA 93105-2523
 Telephone [\(805\) 687-7803](tel:8056877803)
 Times 24-hour PST

This report is for January 2013. Since Dec. end, high temps barely 60F, lows in mid 30s. Jan 10, high 55 low 35, Jan 13-15 55 & 30. Coldest of the season. Ocean temp 55F, Jan 16 to 53F, then back up to 55. Stable & calm since Jan 30, air temp to 70. So-Calif tropo to San Diego/Tijuana/Tecate up to 220 mi:

Dec22-Jan2	None	Rainy, more cooling
Jan2eve-5	Poor	Stable, still kinda cold
Jan 6	None	Some rain
Jan 7 - 9	Poor	Stable/calm, still cold
Jan 10 - 15	None	Wx front, colder

Jan 16 – 23 Very poor warming	Stable, slight
Jan 24 – 29 None	Rain, unsettled, cool
Jan 30 – 31+ Var. poor warming	Stable, some

Don Voegele has been here since mid Dec. He then bought a new LG 24" flat screen. It got the signals okay, but its menu had changed since I got

mine 6 years ago and it isn't as straight-forward as my LG or his Insignia[LG] converter box. He took the TV back to the store.

Sporadic-E DX seen at my place on LG 20" flat screen & bunny ears:

Jan 18 Es Noted 1810 to apx 1935 PST analog ch 2-6 Spanish. Ch 3 1900+ local nx, upper right "3" in elliptical circle. WTFDA link to Danny Oglethorpe's logos showed likely XHQ-TV 3 Culiacan, Sinaloa, Mexico, 1100 mi. (XHQ seen before in May 2010 and July 2011)

Feb 1 Es Noted 1655 to 1715 PST analog ch 2-4 Spanish. Ch 3 1700 ID XHQ again. Ch 4 1700+ maybe XEW net, otherwise no ID.

Jan 21 Don & I went to local Santa Ynez Mtns over SBarb up to 4,000 ft ASL once again to look for signals. As before (last time was Feb 25, 2012), equipment was house-current inverter, LG 20" flat-screen TV, VHF bunny ears, UHF 4-bay conical. We also tried two booster-included bunny ears, but they did not do well. We don't know if their boosters were operating normally or not, as they have been 'well-used' over the years. Our *ordinary* ears antenna did better. Here is what we saw, analog & DTV. Underlined are new signals not previously seen, either in mtns or twon.

San Diego/Tijuana tropo SE apx 200 mi was mediocre.

Los Angeles area, E, 90 mi
 Many L.A. DTV stns, same as seen in town, plus these:
 6 KSFV-CA L.A. (ex Almavision)
 Now Guadalupe TV-radio (Spanish gospel)
 (On car FM 87.7 & also on TV this time)
 d18 KSCI Long Beach "18" Asian
d25 KNET-CD L.A. "25" HSN"

Santa Maria analogs, NW, 45 mi
 30 KDFS-CA S.M. Azteca America
 35 Spanish (not sure about this one)
 51 K51GB S.M. TBN
 (d19 KCOY-TV *not yet ever seen*)



San Luis Obispo, NW, 85 mi
 d15 KSBY S.L.O. "6" NBC

Fresno area, N, indicated miles
 15 KFVD-LP Porterville Daystar 115
 16 KHSC-LP Fresno HSN 160
 d20 KFTV-DT Hanford "21" Uni 180
 d30 KFSN-TV Fresno "30" ABC 180



(From analog days on battery TVs back to year 1965 up to now, many Fresno signals have been noted as regulars in these SBarb mtns, even at that distance.)

Analog: SBarb in-town partially reconstructed total remains at 90, with 1 new seen up in local mtns included, the partially reconstructed total is 113.

DTV: SBarb in-town total is still 58, and with 1 new seen up in local mtns included, total is 63.

Best of DX to all Dennis



Minneapolis, Minnesota 2013 ! August 1st thru 4th, 2013

DX Clubs Announce Minneapolis Convention

The National Radio Club and the International Radio Club of America, in conjunction with the Minnesota DX Club and the Worldwide TV-FM DX Association take great pleasure in announcing their joint "DXer" convention will be held in Minneapolis, August 1st through the 4th , 2013.

Called **LEARNING AND SHARING: 2013**, the conference will combine formal tutorials and technical sessions, gab gatherings, a DX'pedition and ideas on how to enhance radio listening. Show-and-tell, new antenna designs and DX stories will be combined with information on receiver improvements and propagation.

The highlight of the convention will be one of its venues: The Museum of Broadcasting. There we'll see first-hand more than a century's worth of communications artifacts, operate a live Spark-Gap transmitter, learn about the history behind our hobby and see how broadcasts were made from the Museum's vintage radio studio.

The combined auction is going to be a big one this year; the Museum and others will be auctioning some nice communications gear.

Optional tours during the three-day Convention include area radio stations and the Mall of America.

The hotel selected for the 2013 Convention is the Holiday Inn Bloomington South Airport Mall in Minneapolis. The hotel provides free transportation to and from the airport and the Mall of America and will host the Saturday night joint banquet. All hotel rooms have microwave and refrigerator and HD cable. Free WiFi and a Business Center are available. There's a great pool area where we'll have a Hospitality room. Breakfast is provided each morning and there's a Green Mill Restaurant and bar area.

Make your hotel reservations right now to get the special convention rate. call the Holiday Inn at 952-884-8211. Use the registration code "NRC" to obtain the special convention rate of \$79.00 per night. This rate includes tax.

Cost for convention registration is \$45.00. This includes breakfast each day and the Saturday night banquet as well as the amenities at the Museum of Broadcasting and the Friday evening "Pizza-fest" at the Museum.

Your check or Money Order should be payable to: "The National Radio Club". Send it to Skip Dabelstein at 8008 North Iron Ridge Dr., Tucson, AZ 85743-1065. You can contact Skip Dabelstein via email at ckdabel@comcast.net. Once you are registered, we'll send you an information form so we can learn about your special needs and interests. PLEASE register early so we can include you on pre-convention information.

You can also register for the Convention on-line using PayPal. Please note, there is a \$1.00 PayPal fee.

Auction items as well as anything else you wish to send ahead of your arrival should be sent to: Steve Raymer, Museum of Broadcasting, 3517 Raleigh Ave, St. Louis Park, MN 55416-2625. Please put "HOLD FOR DX CONVENTION" on your packages.

If you have questions please contact Host Mark Durenberger at www.durenberger.com.

Last updated January 17, 2013

Major-market stations join to sell spectrum at FCC auction

Broadcast Engineering

So far, 39 broadcasters have stated their interest to sell out, and even more will sign on if the FCC makes its offer a bit more attractive, the group said.

Fri, 2013-01-25 11:56

Michael Grotticelli

A new group of broadcasters — calling themselves the Expanding Opportunities for Broadcasters Coalition — have told the FCC they have 39 stations in the top 12 markets that will participate in the upcoming wireless spectrum auctions.

“We believe there will be enough broadcasters to meet the goal of the FCC’s national broadband plan,” Preston Padden, a former top Fox and Disney executive and head of the coalition, told Adweek. “We’re not yet there, but we’re getting close.”

Padden told the advertising publication that not all of his stations are selling out completely, though he said knows of public stations looking for a complete sale.

More broadcasters will sign on if the FCC makes its offer a bit more attractive, Padden said.

“We told the FCC that they should think about what they’re going to pay these willing stations,” he said. “They should think about the value of the spectrum for the wireless, not the broadcasting, business.”

The number of stations to participate in the auction was revealed in a filing on the framework of the auctions by the coalition to the FCC. The group wants the FCC to reclaim at least 120MHz of spectrum and to make the auction as attractive as possible by not limiting wireless bidders or to name who specific stations can share spectrum with.

To honor the confidentiality requirements of the Spectrum Act and the confidentiality discussion in the FCC’s rulemaking procedures, the coalition would not disclose the identity of its members.

“These are ongoing broadcast businesses with employees, advertisers and viewers,” Padden said. “The need for confidentiality is obvious.”

The coalition is a substitute for the NAB, the primary representative of broadcasters. The NAB has focused on protecting existing broadcasters seeking to remain in business. The coalition is focused on helping broadcasters participate in the auction.

“The Coalition not only believes that the Commission should reallocate 120MHz of broadcast spectrum for wireless broadband; the Coalition believes that the FCC can,” the broadcasters said in their filing. “The Coalition not only believes that the Commission should raise billions of dollars in surplus funds for the construction of a national public safety broadband network; the Coalition believes that the FCC can. And, the Coalition not only believes that the Commission should raise additional funds for deficit reduction; the Coalition believes that the FCC can.”

The coalition wants the FCC to calculate the auction closing conditions on a national basis, meaning that payments to broadcasters in the largest markets could exceed revenues from resale of that spectrum.

“Payments to stations in the very largest markets add value to the spectrum in all the other markets and are the key to generating wireless auction revenue nationwide,” the filing said.

The groups asked the FCC to get rid of a proposed requirement that spectrum-sharers have to come from the same market. Doing this, they said, will encourage more stations to opt in for sharing.

The value of stations, the coalition said, should to be determined by how removing a station impacts the FCC’s ability to clear spectrum for wireless services, rather than enterprise value, signal strength or other factors. In that case, a small, independent station would be just as valuable as that of a larger network affiliate since both use the same amount of spectrum.

The FCC, the coalition noted, needs to resolve spectrum coordination issues with Canada and Mexico as soon as possible.

“The FCC should strive to resolve these border issues as quickly as possible to the extent that they could affect the incentive auction and the corresponding repacking of the broadcast spectrum,” the coalition said.

OMVC Releases Tools for Mobile DTV On VHF Channels

The new "Predictive Model" for reception of High VHF mobile DTV signals will help engineers improve coverage and signal reception

By George Winslow -- Broadcasting & Cable, December 21, 2012

The Open Mobile Video Coalition (OMVC) is releasing new tools that are designed to help broadcast engineers improve the reception of mobile DTV signals on High VHF channels 7 to 13.

Based on extensive research, the new "Predictive Model" for reception of VHF mobile DTV signals is designed to help engineers predict signal coverage for a number of devices. These include automobiles with an antenna mounted on the vehicle; handheld units operating outdoors; and handheld units operating indoors.

The new report complements an earlier UHF Predictive Model that detailed reception characteristics for broadcasters operating on channels 14 and higher.

The new 20-page VHF Propagation Model report can be downloaded [here](#)

Anne Schelle, executive director of the OMVC noted in an interview that the report was part of the group's mission to help broadcasters better understand the technical issues involving mobile DTV broadcasts.

While these broadcasts use existing broadcast spectrum, "the signal qualities of Mobile TV are quite different than HDTV transmissions, because reception antennae in Mobile TV receivers are usually lower to the ground and always on the move," she noted in a statement. "We want broadcasters transmitting on VHF channels 7 through 13 to be aware of what transmission methods best serve a viewer who is walking, or a passenger who is watching while riding in a car."

To do that, she added that "we've opted for a 'semi-empirical' method that uses a blend of actual field reception data and theory. With information about the local terrain, antenna height, frequency, and polarization as well as details about the receiver and atmospheric conditions, we can predict signal strength for mobile broadcasts with this model," Schelle said.

The OMVC is scheduled to integrate its activities with the National Association of Broadcasters by the end of 2012. The move reflects the fact that the work on mobile DTV has moved from a technical phase to a period where these services are being rolled out to consumers, Schelle said. The incorporation of OMVC into the NAB will allow the mobile DTV efforts to draw on the more extensive resources available at the NAB.

The Dyle TV service backed by the Mobile Content Venture has already rolled out in 35 markets and the Mobile500 Alliance is working on another mobile DTV service.

FM LIST!

<http://www.fmlist.org>

Over the winter months, the USA section of FM List has been overhauled. Slogans and formats have been added. Translator originating stations have been added. Information has been obtained from multiple sources so there's no need to search elsewhere online. Here is an example of what you could see if you register on FMList. The frequency is 102.9. This resource is more thorough than the FM Atlas ever was, so register now and be ready for DX season!

frequency	program	location	reg la	regprogram	remarks	Actions
102.900 WKXX		Attalla	AL	Mix 102.9	Hot AC	
102.900 W275AA r:WEUP		Huntsville	AL			
102.900 WNPT-FM		Marion	AL	Catfish Country 102.9	Country	
102.900 K275AZ r:KRLV		College City	AR			
102.900 KOZR-LP		Gentry	AR		Religious	
102.900 KHBZ		Harrison	AR	102.9 the Z	Country	
102.900 KFLO-LP		Jonesboro	AR		Southern Gospel	
102.900 KARN-FM		Sheridan	AR	Newsradio 102.9	News/Talk	
102.900 KQST		Flagstaff	AZ	Q 102.9	CHR	
102.900 KBLX-FM		Berkeley	CA	The Quiet Storm	Urban AC, Jazz	
102.900 KLQV		Carlsbad	CA S	Recuerdo	Spanish Oldies	
102.900 KDPT-LP		Dos Palos	CA			
102.900 K275BH		Elk Grove	CA	Your Christian Companion		
102.900 K275BO r:KAWZ		Las Cruces	CA	CSN	Religious	
102.900 KWM		McFarland	CA S			
102.900 KBLX-FM2		Mount Diablo	CA	The Quiet Storm	Urban AC, Jazz	
102.900 KXLM		Oxnard	CA S	Radio Lazer	Regional Mexican	
102.900 K275BJ r:KXPR/88.9		Placerville	CA	NPR/Capitol Public Radio	NPR/classical	
102.900 KWYL		S. Lake Tahoe	CA		CHR	
102.900 KARS-FM1		Ft. Collins	CO			

SIGN UP/Renewal form

YEARLY DUES \$10.00 USD for Monthly VUD eZine

Name _____

Address _____ Apt # _____

City _____ State/Prov _____ Zip _____

Country _____ Interests: TV () FM () 30-50() Weather()

email address _____

Sign me up/renew me for: 1 year () 2 years () More ()

I have no computer or access to one. Please send a paper VUD(\$24) ()
Please, 12 month renewals only for paper VUDs. Thank you.

Yearly dues **Mail your dues to: WTFDA, P.O. Box 501, Somersville, CT USA 06072**

Make your checks/money orders payable to: WTFDA

And *thanks* for your support of the WTFDA!

Return this form with your dues or make a copy of it and return that.

WTFDA BOARD OF DIRECTORS

Mike Bugaj, use the WTFDA Mailing address listed below
Doug Smith, 1385 Old Clarksville Pike, Pleasant View, TN 37146-8098
Greg Coniglio, 11825 Genesee St., Alden, NY 14004
Keith McGinnis, 18 Newbridge St., Hingham, MA 02043

mikeb@wtfda.org
dougs@wtfda.org
gregc@wtfda.org
nfm dx@wtfda.org

RENEWALS BY PAYPAL: SEND YOUR DUES FROM THE PAYPAL WEBSITE TO SALES@WTFDA.ORG

Fred Nordquist, 147 Travis Hill Road, Moncks Corner, SC TV and FM STATISTICS stats@wtfda.org

Tim McVey, webmaster WTFDA.ORG WEBSITE webmaster@wtfda.org

Chris Cerventez, webmaster WTFDA.INFO WEBSITE chris cervantez@gmail.com

WTFDA EMAIL REFLECTORS

Enhance your DXing experience! Entertaining and informational.
E-skip alerts! Tropo alerts! DX discussion and more!

For WTFDFA members! Sign Up Today!

The WTFDA list with **200** users...send an email to tvfmdx-subscribe@wtfda.info

And for AM DXers there's the AMDX list. To join, send a blank email to amdx-subscribe@wtfda.info

WTFDA.org Is Back No Password Needed Completely Redesigned

- Lots and Lots of Links
- VUDs from 70s thru 2000
- Memorabilia

<http://www.wtfda.org>



Worldwide TV-FM DX Association
Serving the VHF/UHF DX Enthusiast since 1968

Worldwide TV-FM DX Association

WTFDA FORUMS

<http://www.wtfda.info>

Where DXers Go To Hang Out

FM LIST

Call changes, format changes and new stations are updated to FM List as soon as they are received. [HTTP://WWW.FMLIST.ORG](http://www.fmlist.org)

**THE WORLDWIDE TV-FM DX ASSOCIATION
THE VHF- UHF DIGEST
P.O. Box 501, SOMERSVILLE, CT 06072**

Opinions expressed in this publication are those of the individual contributor and do not necessarily reflect the views of the publisher or board of directors. We reserve the right to edit material to meet publishing standards. Unless previously agreed upon in writing, all material submitted for publication in the VHF-UHF Digest becomes the property of the WTFDA. Reproduction of material from the VHF-UHF Digest without permission of the WTFDA is prohibited. Individuals and other organizations are granted such permission providing proper credits is given to the source.



Established 1967



FIRST CLASS MAIL