

# VHF-UHF DIGEST

The Official Publication of the Worldwide TV-FM DX Association

OCTOBER 2013

The Magazine for TV and FM DXers



OK, Lucy, stand perfectly still so Fred and I can watch the game on channel 9 in HD and whatever you do, *don't MOVE an inch* or we'll lose the picture.



Visit Us At [www.wtfda.org](http://www.wtfda.org)

700 DTV Stations Logged!  
and  
Tropo Hits Parts of the Midwest

# THE WORLDWIDE TV-FM DX ASSOCIATION

Serving the UHF-VHF Enthusiast

THE VHF-UHF DIGEST IS THE OFFICIAL PUBLICATION OF THE WORLDWIDE TV-FM DX ASSOCIATION DEDICATED TO THE OBSERVATION AND STUDY OF THE PROPAGATION OF LONG DISTANCE TELEVISION AND FM BROADCASTING SIGNALS AT VHF AND UHF. WTFDA IS GOVERNED BY A BOARD OF DIRECTORS: DOUG SMITH, GREG CONIGLIO, KEITH MCGINNIS AND MIKE BUGAJ.



Editor and publisher: **Mike Bugaj**

Treasurer: **Keith McGinnis** wtfda.org Webmaster: **Tim McVey**

Forum Site Administrator: **Chris Cervantez**

Editorial Staff: **Jeff Kruszka, Keith McGinnis,**

**Fred Nordquist, Nick Langan, Doug Smith,**

**Peter Baskind, Bill Hale and John Zondlo,**

Website: **www.wtfda.org**; Forums: **http://forums.wtfda.org**



## The Mailbox

P.O. Box 501 Somersville, CT 06072

Mike Bugaj - Enfield, CT [mikeb@wtfda.org](mailto:mikeb@wtfda.org)

OCTOBER 2013



Hello and welcome to the Mailbox for October. This month we have a report from long-time WTFDA member Bill Eckberg. Bill lives near Walton, IL and is one of our all time great TV DXers.

Bill wrote me a few days ago to renew his membership and tell me about something that happened to him back on June 24<sup>th</sup>. Here's what he wrote. "At 4:30pm, June 24, a fifty yard wide tornado destroyed my machine sheds and did \$3,600 damage to my home. The 40 foot tower with the CM 1110 antenna came down. The 50 foot tower with the dish was cranked down and survived. Marv Shults got a picture of the storm maps off the Weather Channel the moment it hit. A fascinating picture to see. Consolidated Grain's three million dollar elevator a quarter of a mile away was destroyed. The tornado hopped for 75 miles from north of Muscatine IA to south of Shaffona, IL. It was only fifty yards wide so I and the elevator were the only ones with significant damage. I came home at 7pm and the TV stations were waiting, hi. I'm told I or my home was seen in Rockford, Quad cities and Peoria. Buildings will be replaced." The picture on the right shows us what is left of Bill's shed.



It was just a few years ago in June that a tornado formed in Western MA, crossed the Connecticut River and headed east past Brimfield, MA. That tornado caused much damage and came very close, if not right over, the home of WTFDA member Jeff Rostron. Fortunately there was no major damage. If anyone has ever had any encounters of tornados, hurricanes or any other nasty weather events that affected them or their DX equipment, why not write (or email) here and tell us about it.

This month we welcome **Larry Fussel** N4CBS into the WTFDA. Larry lives in Brewton, AL and does FM and medium wave DXing. Welcome, Larry! And during the period from 8/19 through 9/18 we received renewals from **Lewis Kruger** (SD), **FJ Issard** (ON), **Roosevelt Crawford** (KS), **Bob Timmerman** (IN), **Mark Colombo** (VA), **Howard Fountain** (GA), **Glenn Hauser** (OK), **Glenn Boche** (MN), **William Hein** (TN), **Curtis Sadowski** (IL), **John Tudenham** (MO) and **Bob Seaman** (PA). Thank you all for supporting the WTFDA!

Congratulations goes out to member Ed Phelps for being the first person we know of who has logged 700 DTV stations. As of today he's already surpassed that figure. You can see a photo of Ed's #700 on the WTFDA website (wtfda.org).

The few who still get the paper VUD got them late last month. I sent the pdf to the printer before Labor Day but then there was a multi day delay when the Canon duplicator broke and stayed down for parts. The moral of the story...get the eVUD instead. And with that...see you next month! -Mike



# TV News

Douglas E. Smith  
1389 Old Clarksville Pike  
Pleasant View, TN  
37146-8098  
[w9wi@w9wi.com](mailto:w9wi@w9wi.com)  
<http://www.w9wi.com>

**September 2013**

## Abbreviations:

AF	Applied For (a new station)	NW	New station on the air
Aux	Auxiliary (backup) transmitter	PA	Proposed Amendment
CC	Callsign change	PC	Power (and/or tower height) change on the air
CL	City-of-license change	PG	Power change granted
CX	Canceled	PR	Power change requested
DC	Converted to DTV	RA	Returns to the air
DCC	Digital Companion Channel	QC	Channel (frequency) change on the air
NS DCC	Granted flash-cut to DTV	QG	Channel change granted
DE	License/permit deleted	QR	Channel change requested
DR	Requests flash-cut to DTV	RE	Reinstated (previously-dismissed app.)
FC	Programming (format) change	ROA	Request of Applicant
FTP	Failure to Prosecute	SI	Off the air (silent)
GA	Granted amendment (to table of channel allotments)	STA	Special Temporary Authority
LC	License to Cover	XC	Transmitter site changed
MX	Mutually Exclusive	XG	Transmitter site change granted
NDA	Non-directional antenna	XR	Transmitter site change requested
NS	Permit granted for new station	lpdtv	Low Power Digital TV
DG	Granted conversion to DTV	DRT	Digital Replacement Translator

## News:

(full-power digital stations in **bold face**; LPTV and translators in regular type; full-power analog stations in ***bold italics***; low-power analog stations in *regular italics*)



### Canada



### Ontario

**Kenora** 13 **CJBN-TV** PG>275w/70m



### Quebec

**Montreal** 35 **CFJP-DT** PG>17.71kw/ 298m, 45-31-16/ 73-33-58



### Guam

**Agana** 20 **KUAM-LP** CX



### Puerto Rico

**Carolina** 22 **WVDO-LD** PG>15kw, 18-16-46/ 65-51-12



### USA



### Alabama

**Birmingham** 27 **WBUN-LP** DC 15kw  
**Priceville** 15 **WYAM-LD** QC from 51, 12.2kw



### Arizona

**Parks** 47 **K47GQ** DG 1kw



### California

**Bakersfield** 14 **KXBF-LD** NW 1kw, 35-21-03/ 118-53-42 (Jilynn M. Ernandes); CC from K14NN  
**Fortuna** 38 **KEET – 0825BMR** XR 40-25-02/ 124-07-08; DCC for ch. 11 Eureka  
**Gazelle** 21 **K21LW** NW 610w, 41-44-03/ 122-44-48 (Soda Mountain Broadcasting)  
**Los Angeles** 10 **KIIO-LD** PG>3kw, 34-13-55/ 118-04-18; PC  
**Reedley** 13 **KVBC-LP** CC from KCWB-  
**San Francisco** 39 **KCNS** NW 500kw/ 357m

Stockton 25 KOVR (aux)  
AF 338.6kw/ 435m,  
38-14-50/ 121-30-03  
Vista 26 KVSD-LP DC 7kw, 33-00-32/  
116-58-16



Colorado  
Montrose 39 K33IV QR from 33



Florida  
Panama City 22 WPFN-CA DR 15kw, 30-10-52/  
85-46-43  
Vero Beach 47 W47DW PC>8.97kw, 27-16-29/  
80-17-11  
Wabasso 11 W11DH PR>3kw, 27-13-18/ 80-  
22-07



Georgia  
Atlanta 14 WAGC-LD PC>10kw, 33-48-26/  
84-20-22; CL from  
Athens  
Dublin 35 W35BB DR 15kw, 32-34-30/  
82-52-02  
Gainesville 26 WEMO-LD PC<5kw, 34-19-37/ 83-  
47-45; CL from Helen;  
CC from WHVC-LD  
Helen 26 WEMO-LD CC from WHVC-LD



Hawaii  
Hanamaulu 6 KESU-LP CX



Illinois  
Chicago 29 WMAQ-TV NW 350kw/ 437m, 41-  
53-56/ 87-37-23 (aux)



Indiana  
Fort Wayne 40 WFWA PC>152.8kw



Iowa  
Cedar Rapids 29 KGAN GA from 51; QR from  
51



Kentucky  
Louisville 28 WBKI-LP DC 15kw, 38-21-55/  
85-50-24



Louisiana  
Crowley 38 K380F PR>15kw, 30-02-19/  
92-22-15



Michigan  
Lake City 14 WMNN-LD PR>2.9kw



Minnesota  
Park Rapids 5 K05IV CX



Missouri  
Branson 25 K25BD DC 1.5kw, 36-43-52/  
93-10-02



Montana  
Havre 9 K09ZB PR<200w, 48-29-41/  
109-42-42; PG  
Livingston 20 K20KQ PC<1.4kw  
Plains 48 K48LG PC<1.04kw  
Weeksville 29 K29ID PC>914w



New Mexico  
Albuquerque 39 KRTN-LD PR>15kw, 35-12-54/  
106-27-02  
Albuquerque 47 KTEL-LP DR 15kw, 35-12-54/  
106-27-02  
Carrizozo 51 K51CN CX  
Cuba 35 K35GY CX  
Gallina 48 K48GD CX  
Lordsburg 27, K27FN, CX  
36 K36GA



New York  
Albany 7 WXXA-TV PC>15kw  
Bridgeport 50 WWDG-CD AF 15kw, 43-14-46/  
75-46-25; DCC for  
analog 12  
Hempstead 20 W20CQ NW 1.25kw, 40-47-44/  
73-27-42 (SDA)

		Community Health Service of Greater NY)
Hornell	6 W06AR	CX
Kinderhook	15 WEPT-CA	PC<88kw, 42-25-19/ 73-51-15
Oneida	36 WCUL-LD	AF 15kw, 43-03-57/ 75-40-04; DCC for analog 13
Sylvan Beach	32 WTKO-LD	AF 2.25kw, 43-14-46/ 75-46-25; DCC for analog 15



<b>Oklahoma</b>		
Ardmore	36 K36KE	NW 15kw, 34-12-10/ 97-09-12 (OETA)



<b>Tennessee</b>		
Bristol	9 WOPI-CA	DR
Bristol	36 WAPK-CA	DR 15kw
Knoxville	28 WEZK-LP	DR 15kw
Pigeon Forge	11 WJDP-LD	PR>2kw; PG
Sevierville	22 WJZC-LP	DR 3.5kw



<b>Texas</b>		
Centerville	40 K40KX	NW 700w, 31-11-20/ 95-38-18
Corpus Christi	45 KXCC-CA	DR 15kw, 27-47-26/ 97-27-02 dismissed
McAllen	32 KRZG-CA	DR from 35, 3kw, 26- 16-01/ 98-19-11
Victoria	45 KVTX-LP	DC 15kw, 28-50-42/ 97-07-33



<b>Utah</b>		
Kanarrville	33 K33KF	PR<70w, 37-29-16/ 113-12-17; CL from Parowan



<b>Virginia</b>		
Danville	24 WTLU	CC from WEFC-
Weber Co.	7 WKIN-CA	DR



<b>Washington</b>		
Bridgeport	23, K07BC, 24, K11AS, 25 K13DL	DC from 7/ 11/ 13, 71w
Ellensburg	23 K23KI	XR 46-59-55/ 120-30- 49; XG
Hoquiam	24 K24IT	PR>5kw, 46-56-45/ 123-47-48
Yakima	14 KAPP	PC<287m

Things are a bit slow on the TV front this month. The Commission is pretty busy with FM translator issues – and I suspect LPFM will keep them busy next month.



## USA tests DVB-T2

Advanced Television  
By Chris Forrester  
Sept 25, 2013

A giant 1,223 ft high terrestrial tower, standing on Television Hill in Maryland and which covers the Baltimore-Washington DC region switched to Europe's DVB-T2 (OFDM) digital TV transmission for a few hours in the early hours of March 27. The 800+ kW tower beamed out using an experimental licence issued by the FCC to Sinclair Broadcasting's WNUV-TV station as part of a study to gauge whether DVB-T2 could be the USA's 'next generation' transmission system (the so-called ATSC v3.0).

"Part of that participation may intersect needs to test and evaluate various systems and technologies," Sinclair VP Advanced Technology Mark Aitken wrote to ATSC's president, Mark Richer. "I would like to extend to ATSC that Sinclair will make every reasonable effort to provide support for its ongoing 3.0 activities by providing for the use and access to the WNUV facility to support experimental needs.... We are committed to no specific standard or provider."

The results were excellent, reported Aitken. "The configuration we operated gave us additional data bandwidth yielding 24.92 Mbps [some] 30 per cent more than standard ATSC - with a [carrier-to-noise ratio] of 15.1 dB - same as ATSC - with an [modulation error ratio] of 33.5 dB, and shoulders well within specs at -53dB or better at the output of the system," Aitken said. "We were running and receiving HD programming. For the record, it was received over-the-air with a USB T2 receiver," reported trade magazine TV Technology.



# FM NEWS



**BILL HALE**

6124 Roaring Springs Drive, N. Richland Hills, TX 76180  
FMnews@wtfda.org

## OCTOBER 2012 INDEX OF ABBREVIATIONS

APP: application  
APP Mod: Change to an already submitted application  
Class: FM license class  
CP: construction permit (authority to broadcast with facilities noted)  
CP Mod: change to an already granted CP  
DA: directional antenna  
FF: French language

\$: Stereo  
XL: Transmitter Location change to  
>: an increase to [in technical data]  
<: a decrease to [in technical data]  
[ ]: Calls in brackets signifies assumed or applied-for status  
Note: antenna heights are HAAT except where noted

### CANADA



#### — CALL LETTER CHANGES —

	<u>Old Call</u>	<u>New Call</u>
AB Banff	107.9 CP	CJXB-FM
BC Wells	92.5 CP	CFRD-FM
MB Steinbach	107.7 CP	CJXR-FM

#### — FORMAT and SLOGANS —

MB Brandon	96.1 CKX-FM	> Variety Hits: <i>96.1 Bob FM</i>
NB Saint John	98.9 CJYC-FM	> Classic Hits: <i>Kool 98</i>
NS Amherst	101.7 CKDH-FM	> Country: <i>Today's Best Country</i>
NS Halifax	96.5 CKUL-FM	> AAA: <i>Radio 965</i>
ON Niagara Falls	105.1 CJED-FM	> CHR: <i>2DayFM // CFLZ-FM 101.1 Fort Erie</i>
ON North Bay	106.3 CFXN-FM	> Classic Hits: <i>93.1 The Moose</i>
ON Peterborough	90.5 CJMB-FM	> Sports/Talk
ON Alliston	92.1 CIMA-FM	New station signs on with 'Gold-based' AC
ON Timmins	93.1 CHMT-FM	> Classic Hits: <i>The Moose</i>
PE Summerside	102.1 CJRW-FM	> Hot AC: <i>Spud</i>



#### — TECHNICAL CHANGES — — CHANGES TO EXISTING STATIONS — CP granted for:

BC Prince George	93.1 CFIS-FM	> 494 W/< (-) 34.5 m, XL to 53-53-58/122-46-00; (to) Class A; Mono [Upgrade status from a developmental community station to a regular community station]
BC Vancouver	95.3 CKZZ-FM	> 66 kW/> 707 m DA, 49-21-26/122-57-13; Class C; \$
ON Hearst	91.9 CBCC-FM	< 8.34 kW/119 m, 49-38-50/83-30-50; (to) Class B1; Mono
QC Sainte-Marie-De-Beauce	101.5 CHEQ-FM	> 72 kW/> 89 m (to) DA, 46-23-24/70-59-03; (to) Class C1; \$; frequency change from 101.3



#### — NEW STATIONS ON THE AIR —

MB Winnipeg	88.1 CKSB-FM	100 kW/223 m, 49-46-15/97-30-37; Class C1; Mono [testing at deadline]
ON Alliston	92.1 CIMA-FM	3.75 kW/31 m DA, 44-08-45/79-50-15; Class A;

#### — GRANTS TO EXISTING STATIONS —

CP granted for:

AB Calgary 95.3 CHPK-FM 100 kW/ > 273 m DA, XL to 51-04-21/114-15-38; Class C1; \$

— GRANTS FOR NEW STATIONS —

CP granted for:

AB Banff 107.9 CJXB-FM 550 W/(-) 326 m DA, 51-11-21/115-32-37; Class A; \$; will be AAA [The Banff Centre]

AB Fort Saskatchewan 107.9 CKFT-FM 20 kW/< 61m DA, XL to 53-43-01/113-15-26; Class B1; \$

BC Creston 94.1 CP 2.8 kW-H/602 m DA, 49-09-56/116-40-39; Class C1; \$; will be Hot AC [Vista Radio]

BC Wells 92.5 CFRD-FM 2 W/(-) 211 m, 53-06-10/121-34-03; Class VLP; \$; will be a Developmental Community station with an Eclectic-Folk format [Wells Community Radio Association]

NT Fort McPherson 99.9 [CHAK-FM1] 50 W/61 m, 67-27-26/134-45-58; Class LP; \$ [will replace CBQM-690]

NT Fort Providence 98.9 [CFYK-FM1] 50 W/30 m, 61-18-46/117-35-48; Class LP; Mono [will replace CBQC-1230]

ON Mount Forest 88.7 CP 6 kW-H/100 m, 43-59-00/80-43-59; Class A; Mono [will be Community-oriented, operating 18 hours per day; weekly programming will consist of: 120 hours per week would be local; four hours of Christian programming; five hours would be // CBFW-FM 91.3 Hanover; and one hour from the Canadian Press] [Saugeen Community Radio Inc.]

ON Wellington North 88.7 CP 1.648 kW/73 m, 43-58-45/80-43-55; Class A; \$; [see CP at Mount Forest for programming]

SK Saskatoon 94.1 [CBK-1-FM] 4.1 kW/68 m, 52-05-12/106-40-12; Class A; Mono [programming will be at least 50% Popular Music to Canadian musical content and 20% Special Interest Music to Canadian musical selections]



— APPLICATIONS FROM EXISTING/PROPOSED FACILITIES —

Applies for:

BC Grand Forks 102.3 APP 1.043 kW/(-) 353m, 40-00-39/118-23-29; Class A; Mono; would be Classic Rock and then relay CKGF-FM1 93.3 Christina Lake and CKGF-FM3 103.7 Rock Creek

NB Saint John 88.9 CHNI-FM < 25 kW (adding V)/ > 414 m (to) DA, 45-28-39/66-13-59; Class C; \$; application also proposes to remove 'Specialty Licence Format' entirely from their authorization

ON Arnprior 104.7 CHMY-FM > 1.4 kW/> 142 m (to) DA, XL to 45-19-04/76-19-55; (to) Class A; would move to 97.5 MHz, where (2) prior applications were to move to 107.7 MHz

ON Bolton 105.5 CJFB-FM > 5 kW-H (dropping V)/< 6.1 m, XL to 43-51-10/79-41-33; (to) Class A; \$; move from 102.7

QC Hudson 106.7 CHSV-FM Increase power from 500 to 1,420 watts (2,650 watts Maximim ERP). Raise antenna height and relocate transmitter. Radiation pattern will change from non-directional to directional

QC Louiseville 103.1 CHHO-FM > 4.24 kW-V DA/37 m DA, 46-18-49/72-56-09; Class A; \$



— APPLICATIONS FOR NEW FACILITIES —

AB Hinton 104.9 APP 480 W-V//1.84 kW-H/345 m, 53-24-35/117-47-20; Class B1; \$; would be Active Rock [Newcap]

AB Vegreville 106.5 APP 13 kW/108 m, 53028-26/111-50-39; Class B1; would be Country [Cab-K Broadcasting]

BC Barrière 93.1 CHLW-FM 13.5 W/(-) 145 m, 51-10-54/120-07-28; Class LP; \$; would be a Variety format [North Thompson Radio]

BC Grand Forks 102.3 APP 1.043 kW/(-) 353 m DA, 49-00-39/118-23-29; Class A; \$; would be Classic Rock // CKQR-FM 99.3 Castlegar

BC Grand Forks 107.3 [CBRJ-FM] 252 W, 49-02-00/118-27-04; Class A; Mono; would replace CBRJ 860 kHz

NB Kedgwick 98.1 [CBAF-FM20] 50 W/(-) 14 m, 47-38-45/ 67-21-03; Mono; would replace CBAF-20 990 kHz and continue to relay CBAF-FM 88.5 Moncton

NB St. Stephen 88.1 APP 233 W, 45-11-33/67-15-40; Class A1; Mono; would replace CBAO-990 and continue to relay of CBD-FM 91.3 Saint John

NS Lower Sackville 88.7 APP 250 W/25 m, 44-45-26/63-39-24; Class A1; \$; would be a 'Community' station [Cobequid Radio Society]

ON Carleton Place 107.7 APP 675 W/99 m DA, 45-07-51/76-11-00; Class A; \$; would be 'Gold Based' AC [My Broadcasting Company]

QC Riviere-Au-Renard 106.7 CHGM-FM1 520 W-V/73 m DA; 48-59-52/64-25-52; Class A; \$; would be FF AC and continue to relay CHGM-FM 99.3 Gaspé



— OTHERNEWS —

NS Windsor 99.3 ----- Application rejected for commercial station by D&K Communications because the applicant did not appear to understand the procedures involved with starting up a new radio station, and also due to the potential financial impact a new station could have on CFAB-1450 in Windsor. Call letters would have been CKWI.

ON Arnprior 107.7 CHMY-FM1 Application to rescind license and relocate allotment to Carleton Place, Ontario [see Applications For New Facilities above]

ON Dryden 97.3 CJIV-FM Due to a lack of support, Way Of Life Broadcasting voluntarily



— UNITED STATES AND TERRITORIES —

— CALL LETTER CHANGES —

FULL POWER and LPFM STATIONS

		<u>Old Call</u>	<u>New Call</u>			<u>Old Call</u>	<u>New Call</u>
AZ	Paulden	93.5 CP	KFMS	NJ	Cape May	102.3 WAIV	WSNQ
AZ	Quartzsite	105.9 CP	KNCL	NJ	Cape May Court House	105.5 WSNQ	WAIV
CA	Big Sur	95.9 KMZT-FM	KYZZ-FM	NC	Raleigh	93.5 WVDJ-LP	WRLY-LP
CA	Salinas	97.9 KYZZ	KMZT-FM	NC	Thomasville	103.1 WEOM-LP	WTZO-LP
CA	Shafter	97.7 KSMJ	KNZR-FM	ND	Kindred	92.7 KFNL	KZDR
CO	Dotsero	100.9 CP	KKVC	OH	Englewood	94.5 WLQT	WYDB
FL	Lake Park	100.3 CP	WLML-FM	OH	Norwood	100.3 WCFN	WOSL
FL	Silver Springs Shore	99.7 CP	WGMA	OK	Okeene	101.5 CP	KOCD
GA	Americus	106.9 CP	WGSW	TN	Oak Ridge	88.7 CP	WWQK
GA	Homerville	97.1 CP	WVHY	TX	Benbrook	107.1 KFZO	KESS
IL	Altamont	105.5 CP	WJKG	TX	Dalhart	100.1 CP	KXIT-FM
LA	Haynesville	105.5 CP	KIMW	TX	Hunt	99.9 KRZS	KLKV
ME	Bar Harbor	99.1 WLFE	WBFE	TX	Ingram	96.5 KSYU	KKGN
ME	Gardiner	104.3 WABK-FM	WABK	TX	Refugio	103.7 KOUL	KXAI
ME	Madison	97.5 WIGY	WQSK	WA	Tacoma	103.7 KMTT	KHTP
MD	Oakland	92.3 WWHC	WWHQ	WI	Chilton	92.9 WXMM	WKZY
MT	Fort Benton	95.9 KJCD	KVMO	WI	Nekoosa	105.5 WRCW	WLJY
MT	Roundup	100.1 KTRO	KZMO	WY	Torrington	89.9 CP	KEUW
MT	Whitehall	106.5 CP	KKRK				
NE	Sargent	92.3 KBRY	KHZZ				

TRANSLATOR and BOOSTER STATIONS

		<u>Old Call</u>	<u>New Call</u>			<u>Old Call</u>	<u>New Call</u>
AL	Florence	92.9 W226BL	W225AB	NE	Grand Island	90.3 K220FS	K212GG
AL	Moore's Mill	98.5 CP	W253BM	NJ	Trenton	96.9 CP	W245CC
AR	Nashville	98.5 K254AS	K253BO	NM	Farmington	106.7 CP	K294CC
AR	Walnut Ridge	103.1 K275AZ	K276FJ	NM	Gallup	93.3 K227CB	K225BK
CA	Broadmoor	103.3 CP	K277CH	NM	Las Vegas	103.7 K278BQ	K279BW
CA	San Diego	105.3 KIOZ-1	KIOZ-FM1	NY	Coram	93.3 CP	W227CL
CA	Santa Clarita	96.3 APP	KXOL-1	NY	Middletown	99.9 CP	W260CI
CO	Estes Park	104.7 K231BQ	K248BR	NY	Port Jervis	93.3 CP	W227CM
GA	Canton	101.9 CP	W270CH	NY	Port Jervis	98.9 CP	W255CM
GA	Ellijay	105.1 W289BF	W286BD	NY	Poughkeepsie	99.7 CP	W259BV
IN	Martinsville	100.5 CP	W263CH	NY	Ridge	106.5 W219BA	W293BT
IN	Martinsville	106.9 CP	W295BS	PA	Clarks Green	100.7 CP	W264CP
IA	Ames	89.5 K206AW	K208FV	PA	Milford	105.1 CP	W286CJ
IA	Knoxville	103.7 CP	K279BX	PA	Milford	105.9 CP	W290CK
MI	Athens	92.3 W225BB	W222BS	TN	Nashville	94.9 CP	W235BW
MI	Escanaba	93.7 CP	W229BP	TX	Austin	107.5 CP	K298BP
MS	Byhalia	96.3 W243BB	W242CF	UT	Park City	97.5 KZNS-8	KZNS-FM8
MS	Cedar Hills	93.1 W225BK	W226BS	WA	Tumwater	103.5 CP	K278BW
MT	Bozeman	93.3 CP	K227CC	WI	Bloomer	103.1 CP	W276CP
MT	Missoula	97.9 KDXT-1	KDXT-FM1	WI	Mercer	89.3 W204BY	W207CM

— FORMAT AND SLOGAN CHANGES —

— Full Power and LP Facilities —

AL	Greensboro	99.1	WDGM	Changes slogan to <i>Tide 99.1 FM</i>
AL	Marion	102.9	WNPT-FM	> Classic Country [Dial Global - Classic Country]
AL	Tuskegee	95.9	WQSI	> Talk: <i>FM Talk 95.9</i>
AK	Deering	91.9	KDRG	New station signs on with Variety [Kotzebue Broadcasting, Inc.]
AK	Fairbanks	92.7	KQHE	New station signs on with Religion [Little Flower Ministries]
AK	Kiana	91.9	KIAN	New station signs on with Variety [see above]
AK	Kivalina	91.9	KQVK	New station signs on with Variety [see above]
AK	Meadow Lakes	104.9	KYKA	> Christian CHR/Rock: <i>Air One</i> [Air One]
AK	Noatak	91.9	KUUK	New station signs on with Variety [see above]
AK	Noorvik	91.9	KORI	New station signs on with Variety [see above]
AK	Red Dog Mine Port	91.9	KZNC	New station signs on with Variety [see above]
AK	Selawik	91.9	KIEA	New station signs on with Variety [see above]
AZ	Colorado City	106.1	KXFF	Changes slogan to <i>Sports Radio 106.1</i>
AZ	Phoenix	101.5	KZON	Changes slogan to <i>Live 101.5</i>
AZ	Sun City West	95.1	KVIB	Changes their slogan to <i>95.1 FM Toda Tu Musica</i>





AZ	Wellton	95.9	KUKY	> Regional Mexican: <i>Radio Amigo</i>	
AR	Hot Springs Village	92.9	KVRE	Changes network to Dial Global - Standards	
AR	Walnut Ridge	88.9	KWCV	New station signs on with Religious Teaching [Bott Radio Network]	
CO	Beulah	94.7	KFVR-FM	> Oldies: <i>94.7 Oldies</i>	
CO	Durango	105.3	KXRC	New station signs on with Classic Rock: <i>X Rock 93.1</i>	
CO	Olney Springs	104.9	KRYE	Changes slogan to Tigre FM	
DC	Washington	107.3	WRQX	> CHR: <i>The Deuce</i>	
FL	Crystal River	91.9	WHGN	Changes slogan to <i>Where You Turn For Life</i> [Moody]	
FL	Cutler Bay	90.9	WLFE	> Contemporary Christian: <i>90.9 Life FM</i>	
CT	Hartford	106.9	WCCC-FM	> Classic Rock	
FL	Gretna	93.3	WVFT	Changes slogan to <i>Freedom 93 Talk</i>	
FL	High Springs	88.1	WUBA	New station signs on with Variety	
FL	Lakeland	91.1	WKES	Changes slogan to <i>Where You Turn For Life</i> [Moody]	
FL	Naples	90.9	WSOR	Changes slogan to <i>Where You Turn For Life</i> [Moody]	
FL	Panama City	90.7	WKGC-FM	> BBC News/American Public Media [drops NPR]	
FL	Perry	107.7	WAJP	> Regional Mexican: <i>Radio Amigo</i>	
FL	Sarasota	104.3	WKZM	Changes slogan to <i>Where You Turn For Life</i> [Moody]	
FL	Sunrise	88.5	WKPX	Changes slogan to <i>South Florida's Radio Alternative</i>	
GA	Midway	98.3	WGCO	> Classic Country: <i>98.3 Hank FM</i>	
GA	Savannah	96.5	WJCL-FM	Changes slogan to <i>NASH-FM 96.5</i>	
GA	Waycross	97.7	WWUF	Changes slogan to <i>97.7 The Wolf</i>	
GA	Wrightsville	107.9	WDBN	> Classic Rock: <i>107.9 Jamz FM</i>	
HI	Kurtistown	102.7	KTBH-FM	Returns to the air with Adult Alternative: <i>102.7 The Beach</i>	
IL	Decatur	93.1	WYDS	Changes slogan to <i>93.1 Quickhitz</i>	
IL	Elmwood	97.3	WFYR	Changes slogan to <i>NASH-FM 97.3</i>	
IL	Galesburg	90.7	WVKC	> News/Talk/Classical: <i>Tri-States Public Radio</i> [NPR]	
IL	Gilman	103.7	WYUR	> Country: <i>River Country</i>	
IL	Minooka	88.5	WMNK	New station signs on (format not available at deadline)	
IL	Pittsfield	97.5	WBBA-FM	Changes slogan to <i>Full Service Radio WBBA</i>	
IN	Ligonier	105.9	WNRL-LP	Returns to the air with Spanish Contemporary Christian	
IN	New Castle	102.5	WMDH-FM	Changes slogan to <i>NASH-FM 102.5</i>	
IA	Knoxville	92.1	KRLS	Changes slogan to <i>Today's News &amp; Local Information</i>	
IA	Onawa	102.3	KQNU	Changes slogan to <i>Q 102.3</i>	
KS	Belle Plaine	99.7	KHLT-FM	Changes slogan to <i>99.7 Lite FM</i>	
KS	Burdett	93.5	KKDT	> Country: <i>My Country 93.5</i>	
KS	Concordia	88.3	KVCO	> Rock	
KS	Hays	88.9	KPRD	Adds slogan <i>Praise Radio For Midwest Kansas</i>	
LA	Hammond	103.3	WRQQ	> Classic Hits: <i>Classic Hits 103.3</i>	
LA	Larose	100.3	KLRZ	> Sports: <i>100-3 ESPN</i>	
LA	New Iberia	99.1	KXKC	Changes slogan to <i>NASH-FM 99.1</i>	
ME	Madison	97.5	WQSK	> Adult Contemporary: <i>Kiss 94.5</i>	
ME	Pittston Farm	88.1	WHPF	> Contemporary Christian: <i>Worship FM</i> [Worship FM]	
MI	Mount Forest	91.9	WSMO	New station signs on (format not available at deadline)	
MN	Forest Lake	95.9	WLKX-FM	> Spanish Religion: <i>La Netta 95.9</i>	
MN	Pilager	95.9	WWWI-FM	> Classic Rock: <i>Wings 95.9</i>	
MT	Superior	107.5	KENR	Changes slogan to <i>107.5 Zoo FM</i>	
MO	Knob Noster	105.7	KXKX	Changes slogan to <i>Better Country KIX 105</i>	
MO	Sedalia	92.3	KSDL	Changes slogan to <i>92.3 Bob FM</i>	
NV	Henderson	95.5	KWNR	Changes slogan to <i>95.5 The Bull</i>	
NJ	Taylortown	90.3	WNEQ	New station signs on with Religious Teaching // WFSO	
NM	Carlsbad	90.1	KLRS	88.3 Olivebridge, New York New station signs on with Contemporary Christian [K-Love]	
NY	Cape Vincent	102.7	WLYK	> CHR: <i>Kiss 102.7</i> announcing <i>Kingston's Number 1 Hit Music Station</i>	
NY	Wethersfield Township	107.7	WLKK	> Modern Rock: <i>Alternative Buffalo 107.7</i> and is no longer // <i>WBEN-930 Buffalo</i>	
NC	Belhaven	101.1	WQZL	Changes slogan to <i>Jack FM</i> [Dial Global - Jack FM]	
NC	Hatteras	97.1	WYND-FM	> Contemporary Christian: <i>K-Love</i> [K-Love]	
NC	Hertford	91.3	WHGO	Signs on with Southern Gospel: <i>Go Mix Radio Network</i>	
NC	Jacksonville	92.3	WQSL	> Adult Hits: <i>Jack FM</i> [Dial Global - Jack FM]	
ND	Fargo	101.9	KRWK	> Rock: <i>Rock 102</i>	
ND	Hope	104.7	KMJO	> Adult Contemporary: <i>104.7 Mix FM</i>	
ND	Kindred	92.7	KZDR	Returns to the air with Classic Hits: <i>92.7 The Drive</i>	
OH	Bryan	100.9	WBNO	> Classic Rock: <i>B-Rock 100.9</i>	
OH	Holland	102.3	WPOS	> Christian AC: <i>Proclaim FM</i>	
OH	Kenton	88.5	WKEN	Format is Gospel: <i>Shine FM</i> // WSOH 88.9 Zanesville	
OK	Mustang	99.7	KZLS	> Country: <i>99.7 Hank FM</i>	
OR	Condon	106.1	KWCQ	> Urban Contemporary [Cumulus - Classic Hip Hop/R&B]	
PA	Carlisle	88.3	WDCV-FM	Changes slogan to <i>88.3 The Voice Of Dickinson College</i>	
SC	Darlington	105.5	WDAR-FM	> Contemporary Christian: <i>Positive Hits Sunny 105.5</i> [Salem - Today's Christian Music]	
SC	Georgetown	106.5	WLFF	Changes slogan to <i>NASH-FM 106.5</i>	
SC	Williston	99.9	WUCC	New station signs on with Religious Teaching: <i>Conquering With Christ WUCC 99.9</i>	
TN	Collinwood	94.9	WMSR-FM	> Hot AC: <i>Shoals Modern Hits</i>	
TN	Middleton	100.3	WYDL	> Classic Rock: <i>Rock 100</i>	
TN	Waynesboro	100.7	WMBZ	Returns to the air with Hot AC	
TX	Amarillo	87.7	KBEX-LP	> Tejano: <i>Tejano Power 87.7</i>	

TX Blowout 88.9 KXMP  
 TX Encinal 91.7 KQBI  
 TX George West 93.5 KGWT  
 TX George West 97.9 KXAF  
 TX Georgetown 107.7 KLJA  
 TX Llano 91.7 KVHL  
 TX Rankin 93.7 KXFS  
 TX Refugio 100.5 KRIK  
 TX Reno 98.9 KLOW  
 TX San Diego 102.5 KXAM  
 TX Silsbee 101.7 KAYD-FM  
 TX Taylor 104.3 KLQB  
 TX Zapata 103.9 KJJS  
 UT Price 100.1 KWSA  
 UT Provo 94.9 KHTB  
 VT Swanton 89.9 WNGF

VA Amherst 107.9 WYYD  
 VA Berryville 105.5 WXBN  
 VA Fort Lee 96.5 WKLR  
 VA Nassawadox 96.9 WFAJ  
 VA Richmond 103.7 WURV  
 WA Basin City 97.5 KOLW  
 WA Opportunity 96.1 KIXZ-FM  
 WA Tacoma 103.7 KMTT  
 WV Bethany 88.1 WYZR  
 WV Milton 106.3 WAMX  
 WI Chilton 92.9 WXMM

WI Nekoosa 105.5 WLJY  
 WI Platteville 90.5 WSUP  
 WY Cody 97.9 KTAG  
 WY Douglas 99.3 KKTS-FM

AL Montgomery 107.1 W296AI  
 MN Duluth 90.9 W203AL  
 NY Coram 93.3 W227CL  
 NY Middletown 99.9 W260CI  
 NY Port Jervis 93.3 W227CM  
 NY Port Jervis 98.9 W255CM  
 NC Raleigh 94.3 W232CH  
 OH Dayton 101.1 W266BG  
 OH Riverside 98.7 W254BA  
 OR Portland 102.3 W272EL  
 PA Milford 105.1 W286CJ  
 PA Milford 105.9 W290CK  
 TN Nashville 94.9 W235BW



Signs on with a Variety format  
 > Spanish Religious: *Radio Vida Vision*  
 > Regional Mexican: *Radio Amigo*  
 > Regional Mexican: *Radio Amigo*  
 Changes slogan to *El Sancho 107.7*  
 Signs on with News/Talk: *Texas Public Radio* [National Public Radio]



> Regional Mexican: *Radio Amigo*  
 Adds slogan *Radio Amigo*  
 > CHR: *The Hot FM 98.9*  
 New station signs on with Regional Mexican: *Radio Amigo*  
 Changes slogan to *NASH-FM 101.7*  
 Changes slogan to *La Jefa 104.3*  
 > Regional Mexican: *Radio Amigo*  
 > Modern AC: *The Buzz*  
 > Modern Rock: *Alt 94.9*  
 Adds Contemporary Christian as a second format: *The Light 91.5*



> Modern Country: *New Country 107.9 WYYD*  
 > Country: *Big Country 105*  
 > Classic Rock: *Classic Rock 96.5*  
 > Regional Mexican: *Radio Amigo*  
 Changes slogan to *103.7 Play*  
 > Rhythmic CHR: *Hot 97.5*  
 Changes slogan to *Power 96.1*  
 > Rhythmic Hot AC: *Hot 103.7*  
 Returns to the air with Jazz  
 > Classic Rock: *106.3 The Brew*  
 > Hot AC: *KZ 104.3 // WKZG 104.3 Seymour*  
 > AC: *Y 105.5 // WFHR-1320 Wisconsin Rapids 0600-0800 [Dial Global-Hot AC]*  
 Returns to the air with Adult Alternative  
 > Hot AC [Dial Global - Hot AC]  
 Changes slogan to *Hit Radio 99.3*



— Translators —

> Classic Rock: *The Vault*  
 Returns to the air here, displaced from 88.5 by WSSU Superior, Wisconsin) with Religious Teaching [Family Radio]  
 Signs on with Soft AC // WLIX-LP 94.7 Ridge  
 Signs on with Contemporary Christian/Religious Teaching: *Sound of Life* // WRPJ 88.9 Port Jervis which is // WFGB 89.7 Kingston  
 Signs on with Contemporary Christian/Religious Teaching: *Sound of Life* // WLJP 89.3 Monroe  
 Signs on // WRPJ 88.9 Port Jervis which is // WFGB 89.7 Kingston  
 Signs on with Religion [EMF]  
 > Classic Rock: *95.3 The Eagle* // WZLR 95.3 Xenia  
 > Urban Oldies: *The Soul of Dayton* // WHKO-HD3 99.1 Dayton  
 > Alternative: *Radio 102.3*  
 Signs on // WGWR 88.1 Liberty, NY which is // WFGB 89.7 Kingston, NY  
 Signs on with a Variety format // WNYX 88.1 Montgomery, NY  
 Signs on with Sports: *SportsTalk 830 AM* // WQZQ-830 Goodlettsville

— FM and AM SIMULCASTS —

IL Paris 98.5 WIBQ WBOW-1300 Terre Haute, Indiana  
 LA Berwick 105.9 KBZE KFRA-1390 Franklin  
 MO Piedmont 104.9 KPWB-FM KPWB-1140 Piedmont  
 ND Cavalier 105.1 KAOC KNDK-1080 Langdon; with Country during morning drive, talk during the day, and Sports from Yahoo at night  
 WI Nekoosa 105.5 WRCW WFHR-1320 Wisconsin Rapids; with AC: *Y 105.5 [Dial Global-Hot AC]*; is // from 0600-0800 only  
 WY Casper 99.3 KKTS-FM KKTS-1600 Casper with Hot AC: *Hit Radio 99.3*

— OTHERNEWS —

AZ Kingman 105.9 ----- Application for a new translator station dismissed at the request of the applicant  
 AZ Tucson 95.7 ----- Application for a new translator station dismissed  
 AR Bearden 92.7 CP License granted for a new Class A station  
 CA Greenfield 98.7 CP License granted for a new Class A station  
 CA Placerville 104.3 ----- Application for a new translator station dismissed at the request of the applicant  
 CA San Diego 106.9 ----- Application for a new translator station dismissed  
 CA San Marcos 107.9 ----- Application for a new translator station dismissed at the request of the applicant  
 CA West San Diego 92.9 ----- Application for a new translator station dismissed  
 CA Westwood 88.5 KWLK Is silent  
 CO Edgemont 105.7 CP License granted for a new Class C1 station  
 CO Springfield 91.9 KTTE Changes frequency from 91.7  
 CO Weldona 103.1 KFWA Is silent

FL	Fort Meade	102.9	W275AX	CP granted to change the City-of-Licence to Bartow
FL	Glen St. Mary	97.5	WFBB-LP	CP granted for move from 100.3
ID	Hayden	106.1	CP	License granted for a new Class L1 station
IL	Altamont	105.5	CP	License granted for a new Class A station
IN	Rochester	88.7	WQKV	CP granted to change City-of-License to Warsaw
IN	Speedway	94.3	-----	Application for a new translator station dismissed
IN	Terre Haute	99.5	W258BA	Changes City-of-License from Marshall, Illinois
IA	North English	97.1	KMYQ	Is silent
LA	Franklinton	98.9	WUUU	Is silent
LA	Harrisonburg	94.3	CP	License granted for a new Class C3 station
LA	Oil City	104.9	CP	License granted for a new Class A station
KS	Americus	95.5	CP	License granted for a new Class A station
KS	Atwood	106.3	CP	License granted for a new Class C1 station
LA	Haynesville	105.5	CP	License granted for a new Class A station
ME	Sanford	102.3	W272CG	Changes City-of-License from Biddeford
MI	Harrison	103.9	CP	License granted for a new Class A station
MI	Harrisville	88.1	WSFP	Changes frequency from 88.5 and City-of License from Rust Township
MI	Mount Forest	91.9	WSMO	Changes City-of-License from Mt. Forest
MI	Rust Township	89.7	WJOJ	Changes City-of-License from Harrisville
MI	Speaker Township	89.7	WKKM	Changes City-of-License from Speaker Twp.
MN	Grand Portage	96.9	CP	License granted for a new Class C1 station
MN	Moorhead	98.7	KLTA-FM	Due to a lightning strike on 3 September, KLTA-FM is operating at reduced power (69 kW vs licensed 100 kW) under an STA; they are using a temporary antenna and a replacement not be installed until next spring
MS	Byhalia	96.3	W242CF	Changes City-of-License from Holly Springs
MT	Cut Bank	100.9	CP	License granted for a new Class C2 station
MT	Fort Benton	95.9	KJCD	Is silent
NV	Fernley	94.1	CP	License granted for a new Class C3 station
NJ	Somers Point	90.5	WXGN	Changes City-of-License from Egg Harbor Township
NM	Cloudfcroft	97.9	CP	License granted for a new Class C2 station
NM	Gallup	91.7	KGLP	Fined \$12,000 for Public Inspection File violations
NY	Cape Vincent	93.9	W230BG	License cancelled; call deleted
NC	Buxton	99.9	WHDX	Is silent
NC	Raleigh	93.5	WVDJ-LP	Changes frequency from 107.9
OH	Riverside	98.7	W254BA	CP granted to change City-of-License to Dayton
OK	Okeene	101.5	CP	License granted for a new Class C2 station
OK	Tipton	94.5	CP	License granted for a new Class C3 station
OR	Aloha	97.9	KXPC	Changes City-of-License from Eugene
OR	Burma	104.7	-----	Application for a new translator station dismissed
OR	Goshen	95.3	-----	Application for a new translator station dismissed
OR	Ione	99.5	CP	License granted for a new Class C3 station
OR	Port Orford	88.1	KPOZ	License cancelled; call deleted
PA	New Albany	91.7	WPAL	Changes City-of-License from Laporte
SC	Columbia	106.3	-----	License granted for a new translator station
SC	Walterboro	93.7	WALI	Is silent
SD	Edgemont	105.7	CP	License granted for a new Class C1 station
SD	Pine Ridge	88.7	KVKR	Changes frequency from 88.3
TN	New Tazewell	98.3	WTAZ-LP	License cancelled; call deleted
TX	Bangs	97.9	CP	License granted for a new Class C3 station
TX	Comanche	103.9	CP	License granted for a new Class A station
TX	Hereford	103.5	KJNZ	Is silent
TX	Markham	104.5	CP	License granted for a new Class A station
TX	Mertzson	103.5	CP	License granted for a new Class C2 station
TX	Rollingwood	100.5	-----	Application for a new translator station dismissed at the request of the applicant
TX	Santa Ana	105.5	CP	License granted for a new Class C3 station
TX	South Padre Island	105.1	-----	Application for a new translator station dismissed
TX	Snyder	89.9	KTPR	Is silent
TX	Yoakum	94.3	KYKM	Changes frequency from 92.5
UT	Cedar City	106.1	-----	Application for a new translator station dismissed at the request of the applicant
VT	Poultney	92.5	CP	License granted for a new Class A station
WA	Cle Elum	100.3	KXAA	Changes frequency from 93.7
WA	Dishman	105.7	-----	Application for a new translator station dismissed
WA	Eaglemount	103.1	-----	Application for a new translator station dismissed
WA	Hazel Dell	103.5	K278BU	License cancelled; call deleted
WA	Moses Lake	100.5	KWIQ-FM	Changes frequency from 100.3
WV	Marlinton	106.3	CP	License granted for a new Class A station
WI	Beloit	92.9	WXXD-LP	License cancelled; call deleted
WI	Reedsville	103.1	WOGB	Changes City-of-License from Kaukauna
WY	Elk Mountain	88.1	KGCV	License cancelled; call deleted

\*\*\*\*\*  
NEWS ITEM: FCC Commissioner Mignon Clyburn has proposed that every AM station may apply for a translator on the FM band. The proposal was announced at the NAB/RAB Radio show in Orlando, Florida. Specific details will be announced later.  
\*\*\*\*\*

Thanks to Shawn Axelrod, Tim Noonan, Ralph Strobel, Dan Sys, Radio Insight, Radio World Online and Upper Midwest Broadcasting for news.

If you hear any changes occur on your FM dial, share the news! 73

\*\*\*\*\*



# FM FACILITIES

## OCTOBER 2013

AF	Applied For (a new station)	PC	Power (and/or tower height) change on the air
Aux	Auxiliary (backup) transmitter	PG	Power change granted
CC	Call sign change	PR	Power change requested
CL	City-of-license change	RA	Returns to the air
DE	License/permit deleted	RE	Reinstated (previously-dismissed app.)
FC	Programming (format) change	ROA	Request of Applicant
FTP	Failure to Prosecute	SI	Off the air (silent)
LC	License to Cover	STA	Special Temporary Authority
NS	Permit granted for new station	XC	Transmitter site changed
NW	New station on the air	XG	Transmitter site change granted
PA	Proposed Amendment	XR	Transmitter site change requested

### Changes:

CITY & STATE/PROVINCE	FREQ	CALLSIGN	CHANGES
AB Calgary	95.3	CHPK-FM	PG>273m, 51-04-21/114-15-38
AB Fort Saskatchewan	107.9	CKFT-FM	PG<61m, 53-43-01/113-15-26
AB Hinton	104.9	NEW	AF 1.1kw/345m, rock
AB Vegreville	106.5	NEW	AF 13kw/108m, country
AK Kodiak	100.1	KMXT	PR<271m
AK Kodiak	90.7	KODK	NW 275w/270m, 57-47-23/152-25-54 (Kodiak Public Broadcasting)
AK Seward	90.7	KSVJ	NW 250w/-436m, 60-10-38/149-23-51 (Blessed Hope Baptist Mission)
AL Demopolis	88.7	WMWI	PR>100kw/88m, 32-22-34/87-47-02
AL Linden	98.5	WINL	PG<247m, 32-07-28/87-44-00
AL Linden	98.5	WINL	PR<247m, 32-07-28/87-44-00
AR Bearden	92.7	NEW	NS 6kw/100m, 33-44-28/92-35-26 (Family Life Broadcasting)
AR Caddo Valley	99.7	KWPS-FM	CC from KHCV
AR Fort Smith	93.7	KISR	PG<89kw/315m, 35-42-36/94-08-15
AR Gassville	92.7	KYMT	PR 3.1kw/142m, 36-20-37/92-25-30
AR Goshen	99.5	KAKS	PC<3.1kw/140m, 36-12-20/94-06-06
AR Harrison	102.9	KHBZ	PG<293m, 36-26-10/93-14-36
AR Lowell	101.9	KMXF	NW 10kw/192m (aux)
AR Searcy	88.7	KLUY	PR<650w/102m, 35-15-52/91-47-07
AR Walnut Ridge	88.9	KWCV	NW 50kw/105m, 35-58-31/91-20-09 (Bott)
AZ Casa Grande	88.7	KLKA	QR from 88.5, 83kw/206m, 33-03-39/111-02-59; CL from Globe dismissed
AZ Chandler	88.7	NEW	NS 100kw/50m, 32-49-51/112-08-02 (Arizona Community Media Foundation)
AZ Douglas	95.3	KCDQ	PG>100kw/300m, 32-01-08/110-05-33
AZ Lake of the Woods	104.5	KZXQ	PR>20kw/248m, 34-12-22/109-56-32; CL from Reserve, New Mexico
AZ Paulden	93.5	KFMS	CC for NS
AZ Paulden	93.5	NEW	NS 3.9kw/253m, 34-49-32/112-34-09 (FMI Media)
AZ Quartzsite	105.9	KCNL	CC for NS
AZ San Carlos	94.1	KRDE	NW 2.1kw/1027m (aux)
AZ Tanque Verde	101.1	KKYZ	OQ from 101.7, 24kw/49m, 32-12-01/111-01-03; CL from Sierra Vista
AZ Tucson	89.3	KAIC	QR from 88.9, 1.8kw/12m dismissed 73.3517(e) (grant contingent on other applications, at least one of which was dismissed)
AZ Window Rock	92.3	K222AY	PR<41w, 35-33-33/109-06-21
BC Grand Forks	102.3	NEW	AF 1.043kw/-353m, classic rock. CKGF-FM & its existing relayers at Rock Creek & Christina Lake would become relayers of this station.
BC Vancouver	95.3	CKZZ-FM	PG 66kw/707m
CA Alturas	101.7	KQGD	CC for NS
CA Alturas	101.7	NEW	NS 51kw/-101m, 41-30-17/120-28-55 (L. Topaz Enterprises)
CA Amboy	104.7	NEW	NS 760w/224m, 34-43-10/115-39-15 (Point 5 LLC)
CA Anderson	98.7	K262AM	QC from 100.3
CA Berkeley	94.1	KPFA	NS 36kw/340m (aux)
CA Big Sur	95.9	KYZZ	CC from KZT-FM
CA Ferndale	90.1	KHSF	PC>165w/542m
CA Ferndale	90.1	KHSF	PR>300w/538m
CA Greenfield	98.7	NEW	NS 1.4kw/178m, 36-27-51/121-17-52 (Lotus Communications Corp.)
CA Porterville	99.7	KIOO	PC>25kw/214m
CA Salinas	97.9	KMZT-FM	CC from KYZZ
CA San Andreas	90.7	KQBM	PG 90w/475m, 38-01-23/120-35-26
CA San Andreas	90.7	KQBM	PG>100w H&V
CA San Andreas	90.7	KQBM	PR<1w-H/90w-V/475m, 38-01-23/120-35-26
CA San Andreas	90.7	KQBM	PR>100w
CA San Diego	99.3	K260BY	QR from 99.9, 240w, 33-06-40/117-12-05
CA Westwood	88.5	KWLK	PG<270w/408m, 40-20-15/120-52-11
CA Yucca Valley	90.5	NEW	PG>3.5kw/75m, 34-09-15/116-11-50
CH Tuxtla Gutierrez	93.1	XHREZ-FM	NS

CO Battlement Mesa	102.9	KJXR	NW 6.1kw/-226m, 39-26-25/107-59-06 (Cochise Media Licenses)
CO Centennial	101.9	KXWA	NW 500w/240m, 39-43-45/105-14-08 (aux)
CO Minturn	90.9	KVNC	QG from 90.7, 100w/-211m
CO Olathe	101.9	NEW	AF dismissed (Montrose Christian Broadcasting Corp.)
CO Rock Creek Park	101.7	KXCL	PC>2.1kw/-9m, 38-43-11/104-43-16; CL from Westcliffe
CO Salida	89.7	KADE	CX, off for over a year
CO Severance	103.9	KRKA	CC from KYEN
CO Springfield	91.9	KTTE	QC from 91.7, 150w/64m, 37-24-36/102-37-37
CO Westcliffe	91.9	KLZR	PC<100w/-150m, 38-08-04/105-27-41
CO Westcliffe	91.9	KLZR	PG<100w/-150m, 38-08-04/105-27-41
CO Westcliffe	91.9	KLZR	PR<100w/-150m, 38-08-04/105-27-41
CY Colima	94.9	XHUDC-FM	NS
FL Brighton Reservation	91.3	WTIR	QR from 91.9, 860w
FL Cocoa	99.3	WLRQ-FM	NS 5.5kw/64m, 28-04-42/80-35-56 (aux)
FL Destin	92.1	WECO	PG 19kw/115m, 30-24-38/86-37-22
FL High Springs	88.1	WUBA	NW 110w/15m, 29-48-33/82-36-26 (Neighborhoods United for a Better Alachua)
FL High Springs	88.1	WUBA	PR>220w/21m
FL Indiantown	103.1	WIRK	NW 24.6kw/106m, 26-47-59/80-04-33 (aux)
FL Jensen Beach	102.3	WMBX	NW 24.5kw/106m, 26-47-59/80-04-33 (aux)
FL Lake Park	100.3	NEW	NS 4kw/115m, 26-45-42/80-04-42 (Robinson Entertainment)
FL Miramar	104.3	WAXY-FM	PC<283m, 25-59-09/80-11-37
FL Palm Beach	97.9	WRMF	NW 23.7kw/106m, 26-47-59/80-04-33 (aux)
FL Silver Springs Shore	99.7	NEW	NS 2kw/175m, 29-10-59/82-02-18 (Ricardo D. Arroyo)
FL Silver Springs Shore	99.7	WGMA	CC for NS
FL St. Marks	91.1	WUJC	PC>74kw/139m, 30-30-55/83-52-17
FL Tampa	94.9	WWRM	NS 100kw/363m, 27-49-10/82-15-39 (aux)
FL Tavernier	88.1	WMKJ	CC for NS
FL West Palm Beach	107.9	WEAT	CX ROA (aux)
FL West Palm Beach	107.9	WEAT	NW 25.3kw/106m, 26-47-59/80-04-33 (aux)
FL White City	104.5	WFLM	QR from 104.7, 50kw/113m, 28-25-16/80-21-25
GA Americus	106.9	NEW	NS 5.3kw/74m, 32-03-06/84-10-42 (Victor M. Vickers)
GA Americus	106.9	WGSW	CC for NS
GA Claxton	88.9	WLFH	CC for NS
GA Claxton	88.9	WLFH	NW 45kw/76m, 32-18-06/81-49-57
GA Dalton	105.1	W289BF	QC from 105.1, 34-41-25/84-36-56; CL from Ellijay
GA Homerville	97.1	NEW	NS 6kw/72m, 31-05-52/82-49-11 (Victor M. Vickers)
GA Homerville	97.1	WVHY	CC for NS
GA Nicholson	89.9	NEW	PR<300w/43m, 34-11-26/83-26-07
GA Nicholson	89.9	WXOT	CC for NS
GN Guanajuato	100.7	XHJUA-FM	NS
HI Pahala	91.7	KAHU	PR<800w/-323m, 19-12-00/155-28-54
IA Britt	103.1	KHAM	PR>19kw/115m, 43-55-37/93-41-44
ID Driggs	91.7	K217ED	QR from 91.3, 250w
ID Gooding	100.7	KPDA-FM	PG 70kw/711m, 43-14-49/115-26-08
ID McCall	89.1	KAVY	NW 500w/590m, 45-00-18/116-08-01 (Idaho Conference of SDA)
ID McCall	95.5	NEW	NS 2.7kw/559m, 44-45-54/116-11-54 (Alexandra Communications)
ID Moscow	90.3	KRFP	PG<42w/300m
ID Moscow	90.3	KRFP	PR<42w/300m
ID Mountain Home	99.1	KINF-FM	PG 70kw/711m, 43-14-49/115-26-08; PC
IL Altamont	105.5	NEW	NS 3.6kw/127m, 39-06-26/88-33-44 (Rosemary L. Walters)
IL Chicago	107.5	WGCI-FM	NW 6kw/171m, 41-52-57/87-38-15 (aux)
IL Chicago	88.5	WHPK-FM	PR>125w/48m, 41-47-04/87-36-01; amendment from 40w/43m
IL Hamilton	88.1	WIIM	PR>100kw/91m
IN Ellettsville	105.1	WHCC	PC 1.85kw/182m, 39-11-19/86-41-53
IN Ellettsville	105.1	WHCC	PG 1.85kw/182m, 39-11-19/86-41-53
IN Richmond	95.3	W237AT	PR>85w, 39-53-29/84-56-10 reinstated; PG
IN Terre Haute	99.5	W258BA	XC 39-27-57/87-24-12; CL from Marshall, Illinois
IN Warsaw	88.7	WQKV	PG>13.9kw/86m, 41-08-19/85-53-31; CL from Rochester
JA Autlan de Navarro	102.3	XHANU-FM	NS (U. de G.)
JA Guadalajara	104.3	XHUDG-FM	NS (U. de G.)
JA Puerto Vallarta	104.3	XHUGPV-FM	NS (U. de G.)
JA Zapotlan del Grande	94.3	XHGZ-FM	NS (U. de G.)
KS Americus	99.5	NEW	NS 6kw/83m, 38-17-37/96-13-03 (Robert Young)
KS Atwood	106.3	NEW	NS 100kw/156m, 39-28-50/100-54-34 (Joseph J. Vyzourek)
KS Coffeyville	98.9	KQQF	CC from KKRK
KY Henderson	99.5	WKDQ	AF 13kw/157m (aux)
KY Henderson	99.5	WKDQ	NS 13kw/157m (aux)
LA Carencro	103.7	KLWB-FM	PR>10kw; CL from Opelousas
LA Franklinton	98.9	WUUU	PG>25kw/70m, 30-44-09/90-12-02
LA Haynesville	105.5	NEW	NS 6kw/70m, 33-00-12/93-08-19 (SSR Communications)
LA Tallulah	97.5	KTJZ	PG<60m, 32-24-40/91-11-37
MA Adams	98.9	WNNI	PG 2.6kw/124m, 42-41-54/73-03-54
MA East Harwich	98.7	WKFY	NW 3.2kw/47m, 41-41-37/69-58-29 (Codcomm)
MA Edgartown	88.7	WMEX	NW 95w/6m, 41-27-10/70-33-18 (aux)
MA Falmouth	91.9	WFPB-FM	PC<260w-H/5.2kw-V
MA Worcester	91.9	WBPR	PC<270w
MC Valle de Bravo	104.5	XHVAL-FM	NS
ME Gardiner	104.3	WABK	CC from WABK-FM
ME Madison	97.5	WQSK	CC from WIGY
ME Sanford	102.3	W272CG	PC>50w, 43-25-05/70-48-04; CL from Biddeford
MH Morelia	103.3	XHMICH-FM	NS
MI Carrollton	100.5	WSGW-FM	PC<3kw
MI Grant Township	89.7	WKKM	PR>31kw/27m, 43-04-08/82-28-48; CL from Speaker Township

MI Harrison	103.9	NEW	NS 6kw/95m, 43-59-38/84-50-13 (Max Henry & Associates)
MI Kalamazoo	102.1	WMUK	PG 49kw/151m, 42-25-01/85-31-55
MI LudinGwendolynn Tellezon	97.7	NEW	NS 6kw/93m, 44-03-40/86-25-03 (WGHN Inc.)
MI Marquette	93.3	W227CJ	NW 250w, 46-30-52/87-28-40
MI Mount Forest	91.9	WSMO	NW 6kw/100m, 44-02-11/84-03-18 (Smile FM)
MI Mount Forest	91.9	WSMO	PG 6kw/100m, 44-02-11/84-03-17
MI Mount Pleasant	89.5	WCMU-FM	PG>130m, 43-34-33/84-46-29
MN Alexandria	92.3	KXRA-FM	NW 2kw/27m, 45-52-38/95-22-40 (aux)
MN Alexandria	99.3	KXRZ	NW 2kw/27m, 45-52-38/95-22-40 (aux)
MN Breckenridge	105.1	KQWB-FM	CC from KLTA
MN Grand Portage	96.9	NEW	NS 100kw/273m, 47-58-28/89-45-31 (Resonance Media Group)
MN Marshall	89.9	KRGM	PG>4.25kw
MO Warrensburg	90.9	KTBG	PG>100kw/167m, 38-57-30/94-06-43
MR Cuernavaca	94.1	XHFCSM-FM	NS (cultural)
NB Saint John	88.9	CHNI-FM	PR<25kw/414m
NC Aberdeen	88.3	W202BQ	PC<10w, 35-10-35/79-24-53
NC Cherokee	105.7	W292EJ	QR from 106.3, 10w, 35-29-46/83-20-03; CL from Bryson City
NC Hazelwood	102.9	W237AR	QR from 95.3
NC New Bern	103.9	W280ED	PR>250w, 35-07-59/77-03-56
NC Welcome	91.1	WUNW-FM	PR 180w/54m
ND Bottineau	101.9	KBTO	XC 48-51-06/100-20-04
ND Bottineau	101.9	KBTO	XG 48-51-06/100-20-04
ND Kindred	92.7	KZDR	CC from KFNL
NE Auburn	103.1	KBIE	CC from KNCY-FM
NE Sargent	92.1	KBRY	CC from KHZZ
NE Sargent	92.1	KHZZ	CC from KBRY
NH Exeter	107.1	WERZ	AF 1.2kw/91m, 43-03-11/70-46-04 (aux)
NJ Cape May Court House	105.5	WAIV	CC from WSNO
NJ Cape May	102.3	WSNO	CC from WAIV
NJ Somers Point	90.5	WXGN	PG 350w/32m, 39-16-47/74-34-30; CL from Egg Harbor Township
NM Alamogordo	94.3	KYEE	PG>11.5kw/-118m
NM Las Vegas	93.7	KRMK	PR>100kw/253m, 35-22-17/105-21-55
NM Lordsburg	97.9	KPSA-FM	QR from 97.7, 43kw/622m, 32-34-57/108-25-29
NM Newcomb	89.3	KANF	CX; expired
NM Roswell	102.5	NEW	AF 50kw/115m, 33-23-57/104-22-30; amendment from 20kw/1063m at different site on 95.3
NM Socorro	102.1	KYRN	PR>2.5kw/561m
NM Socorro	99.1	KMXQ	QR from 92.9, 6kw/-55m
NS Lower Sackville	88.7	NEW	AF 250w/25m, English community st.
NV Fallon Station	105.3	KZTI	NS 600w/627m, 40-07-05/118-43-36 (aux)
NY Port Dickinson	106.7	WCDW	CC from WRRQ
NY Westhampton	89.1	WEEW	NW 400w/118m, 40-53-07/72-41-34 (Eastern Tower Corp.)
OH Cleveland	105.7	WMJI	NW 18.6kw/179m (aux)
OH Columbus	97.1	WBNS-FM	NS 26kw/201m, 39-58-13/83-01-27 (aux) (use old main as aux)
OH Englewood	94.5	WYDB	CC from WLQT
OH Hillsboro	107.9	W246CA	QC from 97.1, 55w
OH Norwood	100.3	WOSL	CC from WCFN
OH Worthington	103.9	WJKR	PC 6kw/99m, 39-58-00/83-06-28
OK Beaver	91.9	KLDB	PG>400w/45m, 36-50-23/100-30-40
OK Durant	91.9	KSSU	NW 3.2kw/106m, 34-02-12/96-25-37 (SE Okla. State Univ.)
OK Haileyville	105.9	KQIK-FM	PR>6kw
OK Loyal	89.3	KIEL	PG>75kw/53m
OK Mangum	97.7	KHIM	PG>2.25kw
OK Okeene	101.5	KOCD	CC for NS
OK Okeene	101.5	NEW	NS 46kw/149m, 36-03-38/98-29-41 (FMI Media)
ON Bolton	102.7	CJFB-FM	QR from 105.5, 17.3kw/-19m, 43-51-10/79-41-33
OR Aloha	97.9	KXPC	PR<54kw/387m, 45-29-20/122-41-40
OR Baker City	91.9	KESY	PR 820w/221m, 44-45-57/117-52-49
OR Baker City	93.7	K229AY	XR 44-45-57/117-52-49
OR Diamond Lake	98.1	KBDF	QR from 107.7, 12kw/-190m, 43-19-05/122-11-38; amendment from 6kw/-192m
OR Gearhart	93.3	NEW	NS 1.9kw/177m, 45-57-11/123-56-14 (Resonance Media Group)
OR Malin	100.7	KLKF	CC for NS
OR Siletz	91.7	KYAO	PG<690w/147m, 44-38-40/124-00-50
OR Sutherlin	100.9	KSKR-FM	QR from 101.1
OR Talent	101.1	KLMD	QG from 92.9, 350w/408m, 42-17-52/122-45-00
OR Warm Springs	91.9	KWSO	PR>6.6kw/313m
PA Glenside	96.9	W245AG	PR>26w, 40-05-00/75-10-55; CL from Gladwyne
PA Kulpmont	90.5	WFBA	CC from WXPB
PA Kulpmont	90.5	WFBA	PR>1kw/182m
PA Philadelphia	88.5	WXPB	PR 2.65kw/365m, 40-02-19/75-14-14
PA Pittston	102.3	WHBS	CC from WDMT
PA Susquehanna	100.5	WDRE	CC from WCDW
PR Arroyo	93.3	W225AY	QR from 92.9, 10w, 18-06-47/66-03-06
PR Levittown	88.5	WLUZ	PG>380w/167m, 17-18-00/66-15-48
PR Levittown	88.5	WLUZ	PR>380w/167m, 18-18-00/66-15-48
PR Levittown	88.5	WLUZ	PR>380w/167m, 18-18-00/66-15-48
PR Quebradillas	91.7	WZCA	PC>6kw/99m, 18-29-11/66-56-37
PU Huauchinango	98.9	XHNGO-FM	NS
PU Puebla	106.7	XHPBP-FM	NS (cultural)
PU Santa Isabel Choula	105.9	XHCOM-FM	NS
QC Levis	96.9	CJMD-FM	PG 216w/10m, relocate XR
QC Saint-Léon-Le-Grand	103.1	CHHO-FM	PR>2.3kw
QR Jose Maria Morelos	88.1	XHYAM-FM	NS

SC Saluda	88.7	WKMH-FM	NW 130w-H/51kw-V/120m, 33-57-22/81-54-09 (Spirit Broadcasting)
SC Williston	99.9	WUCC	PG 3.1kw/140m, 33-23-34/81-23-21
SD Edgemont	105.7	NEW	NS 100kw/38m, 43-32-32/104-04-12 (Jackman Holding Co.)
SD Hartford	91.3	KSTJ	PG>100kw/221m
SD Pine Ridge	88.7	KVCR	PC<6kw
SD Wagner	100.9	KXIN	CC for NS
SD Watertown	89.1	KPGT	PR>25.5kw/23m, 44-53-56/97-06-26
CO Dinosaur	100.3	NEW	NS 2.5kw/667m, 40-21-15/109-08-52 (Gary L. Moats II)
TN Alcoa	89.1	WOFM	PR>2.05kw/412m
TN Linden	101.3	WOPC	CC for NS
TN Memphis	104.5	WRVR	PC>22kw/140m (aux)
TN Oak Ridge	88.7	NEW	PG>4.8kw/324m, 36-11-13/84-37-41
TN Oak Ridge	88.7	NEW	PR>4.8kw/324m, 36-11-13/84-37-41
TN Oak Ridge	88.7	WWQK	CC for NS
TN Oak Ridge	88.7	WWQK	granted 2.92kw-V (was H-only)
TN Oak Ridge	88.7	WWQK	PG 4.8kw/324m, 36-11-13/84-37-41
TN Portland	91.5	WBGB	QR from 91.3, 4.66kw/100m, 36-36-54/86-33-59; CL from Scottsville, Kentucky
TX Benbrook	107.1	KESS	CC from KFZO
TX Brackettville	94.7	KVDR	XR 29-30-49/100-22-49
TX Corpus Christi	93.9	KMXR	AF 15.5kw/235m, 27-45-11/97-38-15 (aux)
TX Corpus Christi	99.1	KRYS-FM	AF 15.5kw/235m, 27-45-11/97-38-15 (aux)
TX Dalhart	100.1	KXIT-FM	CC for NS
TX Dalhart	100.1	NEW	NS 50kw/105m, 35-53-46/102-23-03 (Rogco Family I)
TX Ingram	96.5	KKGN	CC from KSYF
TX Lewisville	107.9	KFZO	CC from KESS-FM
TX Llano	01.7	KVHL	PG 1.5kw/153m, 30-40-36/98-33-59
TX Llano	91.7	KVHL	PR<1.5kw/153m
TX Menard	100.9	KXXS	CX ROA
TX Premont	88.1	KLBD	PR>3.5kw/100m dismissed
TX Refugio	103.7	KXAI	CC from KOUL
TX Robstown	99.9	KSAB	AF 15.5kw/235m, 27-45-11/97-38-15 (aux)
TX Santa Anna	105.5	NEW	AF 16.5kw/124m; amendment from 17kw/122m
TX Thorndale	99.3	KOKE-FM	PR>24kw
TX Willis	99.7	KVST	PR>11kw
TX Willis	99.7	KVST	PR>11kw
TX Winters	96.1	KORQ	PR 43.39kw/160m
TX Yoakum	94.3	KYKM	QC from 92.5, 6kw/97m
UT Monticello	88.1	KUHU	PC 225w/1070m
VA Charlottesville	106.9	W294AJ	QC from 106.7, 10w
VA Norfolk	102.9	WOWI	PG>150m, 36-45-19/76-23-07
VC Jalapa	90.5	XHRUV-FM	NS
VT Swanton	89.9	WGLG	CC from WNGF
WA Benton City	90.5	NEW	NS 2.9kw/311m, 46-14-53/119-33-44 (Prosser SDA Church)
WA Bremerton	106.9	KRWM	PR<11.2kw (aux)
WA Clarkston	90.5	KNWV	PR 350w/340m
WA Moses Lake	100.5	KWIQ-FM	QC from 100.3, 50kw/50m
WA Shelton	94.5	KRXY	PG 830w/272m, 47-08-20/123-08-23
WA Yakima	88.5	KYVT	PR>135w/258m, 46-31-57/120-30-43
WI Appleton	91.1	WQVM	PR>42kw/98m, 44-09-46/88-14-37
WI Reedsville	103.1	WQGB	CL granted from Winneconne
WI Tomahawk	100.9	NEW	AF 3kw/149m, 45-21-08/89-39-13 (Results Broadcasting)
WY Kaycee	88.7	KUWK	PG 1.6kw/99m, 43-53-41/106-40-48
WY Kaycee	88.7	KUWK	PR 1.6kw/99m
WY Shoshoni	88.7	KUDA	PG<593m, 43-26-12/107-59-56
WY Shoshoni	88.7	KUDA	PR<593m, 43-26-12/107-59-56
YU Merida	92.1	XHMYL-FM	QG from XEMYL-1000

## RadioShack Says HD Antenna Sales Jump Amid CBS Blackout

Time Warner Customers May Be Growing Impatient

*Published:* August 12, 2013

After two weeks without [CBS](#) on Time Warner Cable in certain markets, some Time Warner Cable customers seem to be taking matters into their own hands.

The blackout, which is affecting 3.2 million customers in New York, Los Angeles and Dallas, has created a double-digit spike in high-definition antennas in those markets at RadioShack, a spokeswoman for the electronics retailer said Monday.

CBS was pulled from Time Warner Cable on Aug. 2 after carriage negotiations collapsed. Both sides have urged viewers to use alternate means to get the network, with CBS suggesting that Time Warner Cable subscribers switch to another pay-TV provider and the cable company reminding viewers of alternatives in streaming web video. —Advertising Age

# PHOTO NEWS



Jeff Kruszka  
 1909 Lost Lake Place  
 Pearland, TX 77581  
 jkruszka@sbcglobal.net

October 2013

A mixed bag this month. We start off with Chris Dunne of Pembroke Pines, FL:



WFTX-35 Cape Coral, FL  
 108 mi Tr seen 4-23-13  
*"local off"*

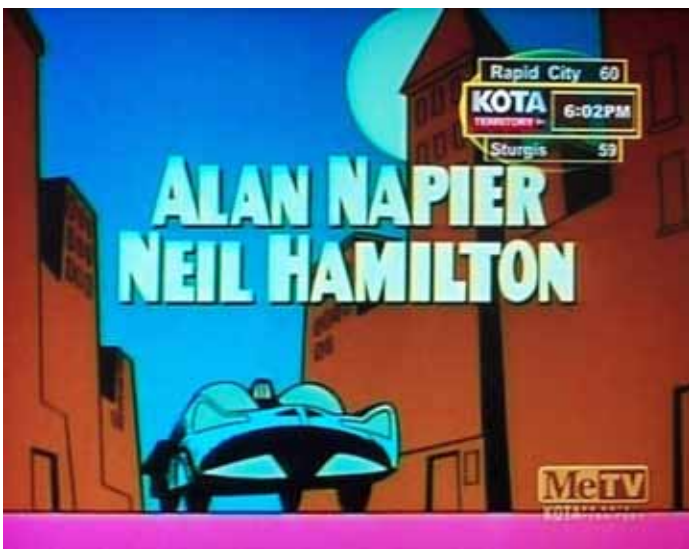


WLZE-LD-51 Ft. Myers, FL  
 106 mi Tr seen 4-23-13  
*"local off"*



YNFA306-6 Managua, NIC  
 1034 mi Es seen 6-8-13  
*"6 logo upper right"*

And a few from Chris Lucas of Poughkeepsie, NY:

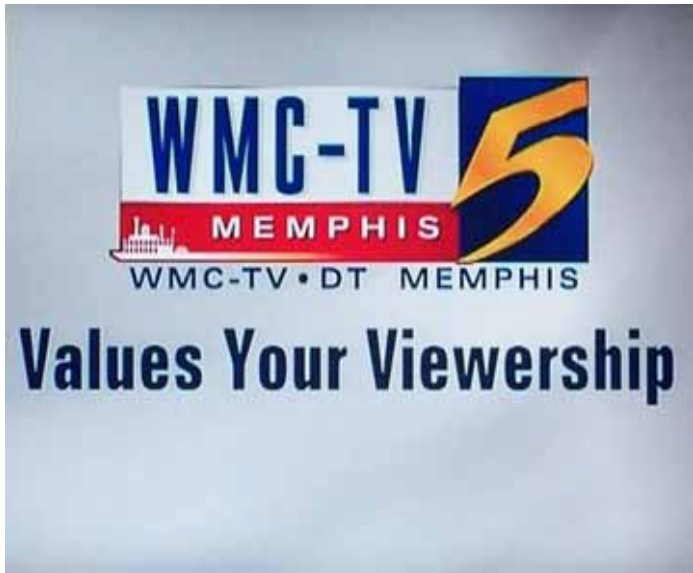


KOTA-2.2 Rapid City, SD  
 1486 mi Es seen 6-1-13

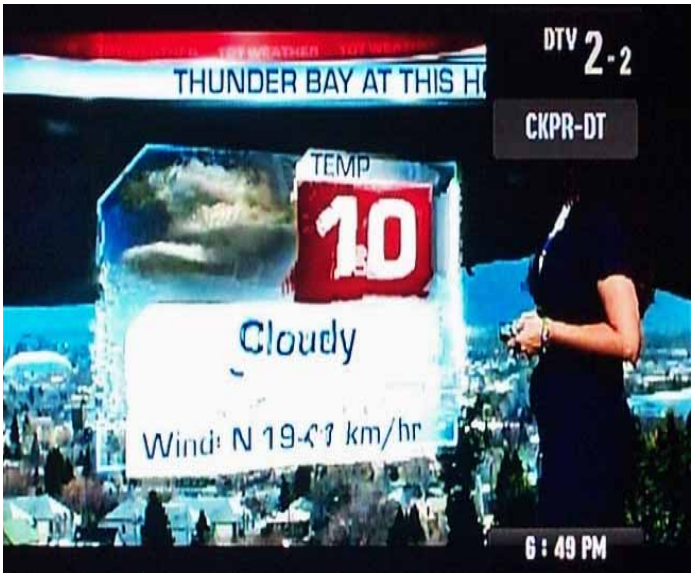


WBRA-3 Roanoke, VA  
 444 mi Es seen 7-3-13





WMC-5 Memphis, TN  
982 mi Es seen 7-3-13



CKPR-2 Thunder Bay, ON  
878 mi Es seen 7-26-13

And finally, a batch of recent skip from Mike Perron, of Eunice, LA:



HRCV-3 Tegucigalpa, HND  
1179 mi Es seen 5-19-13



XHGV-4 Las Lajas, VER  
804 mi Es seen 6-6-13



XHHSS-4 Hermosillo, SON  
1117 mi Es seen 6-26-13



XHTAU-2 Tampico, TAM  
659 mi Es seen 7-9-13

73's, JEFF



**Southern FM DX**

John Zondlo – 4009 Driftwood Circle – Yukon, OK 73099  
[southernfmdx@wtfda.org](mailto:southernfmdx@wtfda.org) – Deadline: 15<sup>th</sup>  
October 2013

**Mike Hunter** – W2MHZ – Box 240 – Neshanic Station, NJ 08853 – DXing from Nags Head, NC – EDT

Grundig G-3 with stock whip antenna barefoot at a few feet above sea level

9/7 Tr

1746 WKNS 90.3 NC Kinston, Public Radio East ID, weak signal 115/185  
1758 WSLC 94.9 VA Roanoke, "Star Country," Taylor Swift at John Paul Jones Arena 278/447

9/9 Tr

0026 WESR 103.3 VA Onley, Dennis Smith Funeral Home ad, duck race fundraiser sale for hospice, funeral announcements 157/253  
0720 WFXK 104.3 NC Bunn, "Foxy 104.3," Durham area traffic 157/253  
0725 WQHQ 104.7 MD Ocean City, "Q-105," Salisbury location of Chesapeake Coffee, Allen Memorial Baptist Church, Nationwide Insurance Billy Staples agent 208/335  
0727 WFMZ 104/9 NC Hertford, RDS ID WFMZ 73/117

9/10 Tr

0712 WGMD 92.7 DE Rehoboth Beach, fishing report, Farrell Cooling and Heating 230/370  
0714 WLFV 93.1 VA Ettrick, "The Wolf, Fresh Country" 166/267  
0717 WNOB 93.7 VA Chesapeake, "Bob," Subway ad City Center Newport News 103/166  
0718 WNYC 93.9 NY New York, Soterios Johnson with news 379/610  
0720 WKSL 93.9 NC Cary, "Kiss FM," rock 184/296  
0727 WDSD 94.7 DE Dover, "Delaware traffic on Routes 13 and 24, ad for Fred Drake auto in Townsend/Odessa area 259/417  
0735 WKZP 95.9 DE Bethany Beach, 959fm.com, Delmarva weather, Delmarva Power storm preparation, Parties Your Way in Berlin 217/349  
0739 WCTG 96.5 VA Chinconteaque, "The Variety Station," ID 175/282  
0801 WLTW 106.7 NY New York, TOH ID, BP Driver Rewards ad, NY area traffic 379/610  
0806 WNNT 107.5 VA Warsaw, "River Country," ad for Handy Stores in Northern Neck 190/306

9/11 Tr

0704 WCOS 97.5 SC Columbia, "South Carolina's Favorite Country," ID, country 327/526  
0713 WDWG 98.5 NC Rocky Mount, "The Big Dawg," Southern National Motorsports Park Lucama, discussion of race season 132/212  
0747 WBIG 100.3 DC Washington, Washington Post ad, local ad locations in Columbia and Beltsville 256/412  
0750 WRDU 100.7 NC Wake Forest, ARS HVAC ars.com, 919 area code, Scotts EC Seed, Jared's Jewelers 172/277

9/12 Tr

1516 WWFG 99.9 MD Ocean City, "Froggy 99.9," Maryland Lottery, Ravens tickets promotion 208/335

9/13 Tr

0755 WFMI 100.9 NC Southern Shores, "Rejoice 100.9" after sermon 48/77  
0756 WWDE 101.3 VA Hampton, "2WD," 2WD ID on RDS 122/196  
0808 WXTG 102.1 VA Virginia Beach, "The Tide," ID 102/164  
0820 WLHC 103.1 NC Robbins, "Life 103.1," Life 103.1 ID, YMCA Family Membership Special, 252-972-9622, Unipest, cleaning service in Rocky Mount 252 AC, Worrell's Seafood in Wilson 227/365

\*\*\*\*\*

**Eric Bueneman** – N0UIH – 631 Coachway Lane – Hazelwood, MO 63042-1347 – CDT – miles/km

Kenwood AR-304 AM/FM/FM Stereo receiver with filter modifications by Bruce Elving, Harman-Kardon TU-920 AM/FM tuner, Antenna Performance Specialties APS-9B at 28' AGL. NOAA Weather Radio DX: Radio Shack PRO-2052 scanner with RS discone at 32' AGL

8/12 Tr

0025 WKDQ 99.5 KY Henderson, local ads, wx, calls, country music 170/274  
0029 WWTN 99.7 TN Hendersonville, "Super Talk 99-7 WTN," local ads, *Red Eye Radio* 265/426  
0137 WIBC 93.1 IN Indianapolis, *Coast to Coast AM* 240/386

8/26 Tr

2024 WJLT 105.3 IN Evansville, local ads, jingle ID, classic hits 165/266

2028 WKDQ 99.5 KY Henderson, call letters, *Taste of Country Nights* 170/274  
 2055 WFIU 103.7 IN Bloomington, classical mx, local underwriting, w/WDBR 210/338  
 2136 WQXQ 101.9 KY Central City, "Today's Hits, Q-102," local ads, CHR, thru WQQL 200/322

8/27 Tr

1122 WSKL 92.9 IN Veedersburg, "Kool 92.9," classic hits, IN #50 190/306

8/28 Tr

0215 WDDJ 96.9 KY Paducah, "Electric 96.9, Today's Hottest Music," CHR 155/249  
 0958 WWYN 106.9 TN McKenzie, "Win 106-9," local ads, country 210/338  
 2118 KMGO 98.7 IA Centerville, "Iowa's Country," country mx 225/362  
 2139 KTTA 92.7 IA Ottumwa, calls, AC 185/298  
 2144 KZIA 102.9 IA Cedar Rapids, "Z-102.9," CHR, over KMMO 230/370



8/29 Tr

2316 KRNA 94.1 IA Iowa City, "Real Rock 94.1 KRNA," rock, through WGFA 225/362  
 2333 KNWS 101.9 IA Waterloo, "Life 101.9," CCM 280/451  
 2337 WLLR 103.7 IA Davenport, "#1 Country, WLLR," wx, country 190/306  
 2339 WPWQ 106.7 IL Mount Sterling, "The Oldies Superstation," local ads, oldies 90/145  
 2346 KOKX 95.3 IA Keokuk, "95.3 KOKX-FM, Cool Oldies," oldies, \$ 125/201

8/30 Tr

0022 KBEA 99.7 IA Muscatine, "B-100," CHR 180/290  
 0033 KCIH 106.1 IA Washington, AC/oldies, calls, community calendar, promo, wx 190/306  
 0049 KZIA 102.9 IA Cedar Rapids, "Z-102.9," request line mention, CDT time check, CHR 230/370  
 0057 WXN85 162.4 IA Fairfield, wx conditions, legal ID, warnings and wx summary 185/298  
 0112 KOEL 98.5 IA Cedar Falls, "K98-5," local ads, promo, *Kickin' It with Kix Brooks* 325/523  
 0135 KCZE 95.1 IA New Hampton, "95-1 The Bull," country, local ads 315/507  
 0148 KRQN 107.1 IA Vinton, "I-107.1," CHR 230/370  
 0158 WGNX 96.7 IL Colchester, "Good News Radio," wx, promo, legal ID, CCM 115/184  
 0213 KDAT 104.5 IA Cedar Rapids, calls, hot AC, jingle ID 230/370  
 0232 WUSN 99.5 IL Chicago, "US 99.5," country, local ads, over WZIM 255/410  
 0929 WXL64 162.4 IA Dubuque, wx almanac for Dubuque, legal ID, warnings 280/451  
 0932 KATF 92.9 IA Dubuque, "92-9 Kat FM," hot AC 280/451

8/31 Tr

0105 WWTN 99.7 TN Hendersonville, "Super Talk 99-7 WTN," local ads, thru WXAJ 265/426  
 0150 KHST 101.7 MO Lamar, country, legal ID 230/370  
 0907 KNWI 107.1 IA Osceola, "Life 107.1," CCM 225/362  
 0922 Peoria IL 93.3, 106.9 140/225  
 0929 KIOA 93.3 IA Des Moines, "Iowa's Greatest Hits," local ads, oldies 255/410  
 0941 WHOP 98.7 KY Hopkinsville, "Light 98.7," AC 205/330  
 0942 WMC 99.7 TN Memphis, "FM 100," promo, local ads, w/WXAJ, WWTN 250/402  
 0959 WJLT 105.3 IN Evansville, local ads, legal ID, classic hits 165/266  
 1004 WQXQ 101.9 KY Central City, "Today's Hits, Q-102," CHR 200/322

9/1 Tr

0000 KZZ66 162.4 IL Galesburg, wx summary, legal ID 155/249  
 0010 WXL61 162.475 IA Cedar Rapids, Burlington record dry months, legal ID 230/370  
 0013 KSJN 99.5 MN Minneapolis, "Classical MPR," classical music, promos, weather 450/724  
 0031 KTIS 98.5 MY Minneapolis, "Uplifting and Encouraging 98.5 KTIS," CCM 450/724  
 0048 WIZM 93.3 WI LaCrosse, "Z-93," CHR, legal ID 350/563  
 0057 KUNI 90.9 IA Cedar Falls, "Iowa Public Radio 3," jazz, legal ID 325/523  
 0105 KNXR 97.5 MN Rochester, CBS nx, ads, wx forecast, sign off, national anthem 380/612  
 0111 WLMD 104.7 IL Bushnell, "Hit Country 104.7," country 125/201  
 0125 KMEM 100.5 MO Memphis, country, PSA, wx forecast 150/240  
 0212 KROC 106.9 MN Rochester, "Today's best music," CHR 380/612  
 0232 KQKQ 98.5 IA Council Bluffs, "Q-98.5," modern AC 325/523  
 0238 KBBX 97.7 NE Nebraska City, "Radio Lobo," local ads, Ranchera mx in SS 315/507  
 0247 WAXX 104.5 WI Eau Claire, "Wax 104.5," local ad, country 420/676  
 0259 KEXS 106.1 MO Ravenwood, Catholic history notes, legal ID 255/410  
 0319 KKWK 100.1 MO Cameron, "Regional Radio Quick," local ads, promo for AM, classic hits 220/362  
 0323 KZBK 96.9 MO Brookfield, "KZBK, The Z," hot AC 155/249  
 0325 KIRK 99.9 MO Macon, "The Captain of Radio," classic hits, KFAV nulled 130/209  
 0350 KIWR 89.7 IA Council Bluffs, "89-7 The River," calls, promo 325/523  
 0351 KBEA 99.7 IA Muscatine, "B-100," calls, CHR 180/298  
 0356 KSOI 91.9 IA Murray, classic hits, calls, IA #65 245/394  
 0421 KXI58 162.4 IL Plano, wx conditions, legal ID, fog advisory 220/362  
 0432 KZZ57 162.475 IL Rockford, wx conditions for IL/WI, forecast for Rockford 250/402  
 0438 KZZ38 162.5 MO Trenton, forecast for Chillicothe, MO/IA/NE conditions 195/314  
 0442 WWWY 106.1 IN North Vernon, "106-1 The River," classic hits 265/426

9/5 Tr

0101 WQXQ 101.9 KY Central City, "Q-102," CHR, WQQL nulled 200/322  
 0148 WYJJ 97.7 TN Trenton, "JJ 97.7," PSA, urban AC 265/426  
 0201 WKSX 98.5 TN Cookeville, "98.5 Kiss FM," legal ID, CHR, over KTJJ 325/523  
 0206 WGFY 104.5 TN Gallatin, "104-5 The Zone," baseball scores, Fox Sports talk 270/435  
 0219 WWTN 99.7 TN Hendersonville, "Super Talk 99-7 WTN," local ads, promo, *Red Eye Radio* 265/426

0230 WTJJ 94.3 TN Dyer, "The TJ Network," local ads, mixing with WMKR, WKYX 200/322  
0750 WKPB 89.5 KY Henderson, "WKU Public Radio," weather, promos 170/274  
0800 WLLE 102.1 KY Mayfield, "Willie 102," classic country, wx forecast, local nx 170/274  
0805 WKYX 94.3 IL Golconda, "News/Talk 94.3 FM, 570 AM," wx, traffic report 160/258  
1642 KMGO 98.7 IA Centerville, "Iowa's Country," country, weather forecast 225/362  
1905 WMOI 97.7 IL Monmouth, "Sunny 97.7," *The John Tesh Show* 145/233  
2134 KIH20 162.4 AL Huntsville, weather conditions, forecast, hazardous wx outlook 345/555  
2224 WXX49 162.475 TN Memphis, wx conditions for TN/AR/MS/AL/MO, legal ID 250/402  
2338 KURB 98.5 AR Little Rock, "B 98.5," *The John Tesh Show* 300/483  
2348 KIGL 93.3 MO Seligman, "Eagle 93.3," northwest Arkansas ads 250/402  
2355 KABZ 103.7 AR Little Rock, "103-7 The Buzz," NFL postgame show, ads, legal ID 300/483  
9/6 Tr  
0012 WXX62 162.4 TN Waverly, middle TN and mid-South wx conditions, legal ID 235/378  
0020 KBMV 107.1 MO Birch Tree, "Positive and Encouraging K-Love," promos, CCM 125/201  
0032 KKPT 94.1 AR Little Rock, "The Point 94-1," classic hits 300/483  
0043 KQUS 97.5 AR Hot Springs, "97.5 US-97," country 330/531  
0049 KHOZ 102.9 AR Little Rock, "102.9 The Z," local ads 230/370  
0105 WWF33 162.5 AL Henagar, weather conditions for AL/TN, forecast, hazardous wx outlook 385/620  
0118 WJXA 92.9 TN Nashville, "Mix 92-9," local ads, wx forecast, *The John Tesh Show* 270/435  
0122 WFFF 93.3 AL New Market, "Journey 93-3," classic hits 345/555  
0303 WUSY 100.7 TN Cleveland, "US-101," legal ID, *After Midnite* 395/636  
0314 WLQK 95.9 TN Livingston, "Light Rock 95.9," AC, over WOLG/WDQN 320/515  
0320 WLLX 97.5 TN Lawrenceburg, "Power 97," country 295/475  
0333 WOOZ 99.9 IL Harrisburg, "Z-100," wx forecast, country, KFAV nulled 130/209  
0358 WTSH 107.1 GA Aragon, "South 107," legal ID, local ads 440/708  
0856 KAMS 95.1 AR Mammoth Spring, "K-Country 95," local ads, country, legal ID, nx 175/282  
0919 WRSA 96.9 AL Holly Pond, "Light 96.9," AC, jingle ID, local ads, through WDDJ 380/612  
0934 KBKB 101.7 IA Fort Madison, "101-7 The Bull," local ads, promo, country 125/201  
2126 WGKS 96.9 KY Paris, *Delilah*, through KUPH, confirmed by Web search 335/539  
2136 KUPH 96.9 MO Mountain View, "96-9 The Fox," local ads, high school football 145/233  
9/7 Tr  
0136 KMMO 102.9 MO Marshall, "Your Radio KMMO," local ads, CDT time check, country 155/249  
0141 WFGS 103.7 KY Murray, "Froggy 103.7," country 190/306  
0239 KOKS 89.5 MO Poplar Bluff, ID in promo, southern Gospel music, through KOPN 145/233  
9/8 Tr  
1835 WKLO 96.9 KY Hardinsburg, "Real Country 96-9," local ads, wx, country 220/3541  
1842 WVG72 162.5 IN Georgia, wx for Bloomington and Bedford, faded to KXI46 205/330  
1846 WITZ 104.7 IN Jasper, call letters, oldies, through digital ACI from KBWX 104.9 190/306  
1858 KIH43 162.475 KY Louisville, 8 to 14 day weather outlook, forecast conditions for IN/KY 250/402  
1950 WVG83 162.425 IN Edwardsport, weather forecast, hazardous wx outlook, over KXI79 170/274  
2002 WVG73 162.525 IN Seymour, IN wx conditions, temp at Bloomington, over WXM90 240/386  
2020 WXL47 162.4 MO Bloomfield, weather conditions for Poplar Bluff 135/217  
2100 WXJ91 162.525 KY Madisonville, legal ID // KXI26 162.45, weather outlook 190/306  
2200 Springfield IL 91.9, 98.7\$, 101.9\$, 103.7\$, 104.5\$ 80/128  
2300 Decatur IL 95.1\$, 102.9\$ 110/177  
2331 I ID // KXI26 162.45, weather outlook 190/306  
2200 Springfield IL 91.9, 98.7\$, 101.9\$, 103.7\$, 104.5\$ 80/128  
2300 Decatur IL 95.1\$, 102.9\$ 110/177  
2331 WZIM 99.5 IL Lexington, "99.5 The Ticket," talk on NFL week 1, promos, local ads 145/233  
9/10 Tr  
0733 KTGR 100.5 MO Fulton, ESPN Sports Center, *Mike and Mike in the Morning* 100/161  
0735 KSSZ 93.9 MO Fayette, "93-9 The Eagle," local news, ads, sports 125/201  
0742 KMFC 92.1 MO Centralia, "K-Love," CCM, talk on prayer, legal ID 90/145  
0814 KTCM 97.3 MO Madison, "Glory 97.3," promo, CCM 110/177



This year's E-skip season has been pretty lackluster, to say the least...only 11 new FM stations have been logged via E-skip; three times that many new FM stations have been logged via tropo since the beginning of May. The E-skip opening of July 15 had the year's highest MUF of 101.7 (by contrast, the highest MUF last season was 162.475 MHz) by pulling in KWGF 101.7. The company that owns the station, Star Radio, also owns WCOY 99.5 in Quincy, IL. The tropo opening of July 24 brought me one Illinois FM station closer to the 200 mark when I pulled WIUW 89.5 through WARW. The Illinois FM total as I write this stands at 196. A few tropo openings also had surprise extensions...the July 25 opening, dominated by stations from Illinois, Indiana, Kentucky and Tennessee, had an extension into Atlanta when WZGC 92.9 took out WSEI. The opening on July 31, dominated by stations from Illinois and Iowa, extended into southwestern Kansas with the log of WNG535 on 162.525 (normally dominated by either WWF75 Bourbon, MO or WXM90 Jacksonville, IL). The previous day's opening brought a new FM translator in K259BB 99.7 Sikeston, MO (relaying local KSIV 91.5 St. Louis). It's the second new FM translator logged this season, and my 170<sup>th</sup> Missouri FM. For a moment, I thought I had WMFS 92.9 with ESPN Radio (I've logged the AM on 680 kHz), but was pleasantly surprised to hear a dual ID for KLSC Malden, MO and AM sister KMAL 1470 kHz. The wee hours of

August 1 brought stations from Illinois and Kentucky, but a tropo opening in the evening hours extended to the Wichita area. The late night hours of August 4 and the wee hours of August 5 brought DX in from Tennessee, Mississippi and Alabama. WZLQ 98.5 made it through KTJJ for my eighth FM from the Magnolia State, while two more Memphis FMs, WQOX 88.5 and WRVR 104.5, made it through before midnight. After midnight, I noted the city of license change from WRSA 96.9, which I previously logged while it was in Decatur, AL. Holly Pond is a small town on U.S. 278 east of Cullman. Another such change was KWNW 101.9, which I had previously noted as KIYS when it was in Jonesboro, AR. Crawfordsville is along U.S. 64 west of Memphis. I also noted my first non-commercial FM from Mississippi when I noted WMAE 89.5 carrying BBC World Service on the Mississippi Public Radio network. The opening of August 8 also went into western Missouri and eastern Kansas, getting as far west as Hutchinson and Wichita going into the wee hours of August 9. The morning hours brought an opening into northwest Indiana and east central Illinois. The August 11 and 12 openings brought stations from Indiana, Kentucky and Tennessee. The FM total as of August 12 now stands at 1,222. 73.

\*\*\*\*\*

**Fred Nordquist** – 147 Travis Hill Road – Moncks Corner, SC 29461 – all new

HDT-1X receiver, APS-13 antenna – 33.21756N 79.95798W – KJ4BUG – Grid FM03AF

4/11 Tr

1042 WOSF 105.3 SC Gaffney, RDS PI: 7B79, PS: Now Playing Song/Artist R&B 167

4/17 Tr

1000 W282AR 104.3 GA Savannah, r-WSEG 1490 ESPN sports 105

5/2 Es

1535 KBXE 90.5 MN Bagley, RDS PI: 14FE PS: KA-BXE Public 1260

5/4 Es

1015 CJWL 98.5 ON Ottawa, "Jewel 98-5" 972

5/11 Es

1028 KNYD 90.5 OK Broken Arrow, RDS PI: 34C7 PS: Religious Music 917

1050 KRPS 89.9 KS Pittsburg, RDS PI: 3E7C, HD 883

1059 KMGV 89.9 MO High Point, rel 795

1106 KCHZ 95.7 KS Ottawa, RDS PI: 1617 PS: KCHZ, adult hits 929

1107 KRBZ 96.5 MO Kansas City, RDS PI: 3D17 PS: KRBZ, rock 913

1128 KCMQ 96.7 MO Columbia, RDS PI: 2FF4 PS: KMCQ, classic rock 776

5/23 Es

1140 KTRL 90.5 TX Stephenville, Carlton Public Radio 1050

5/26 Es

1941 WIAA 88.7 MI Interlochen, RDS PI: 69C8 824

5/27 Es

1800 KUSD 89.7 SD Vermillion, SD Public Radio 1135

5/28 Es

1249 KGVV 90.5 OK Goltry, rel, "My Praise FM" 1047

5/29 Es

1914 CILT 96.7 MB Steinbach, RDS PI: ---- -'WPG' PS: Mix 96 Mix 96 – Soft Rock 1427

1918 CKY 102.3 MB Winnipeg, "102.3 Clear FM" 1439

1918 CKMM 103.1 MB Winnipeg, RDS PI: ---- -'WSB' PS: Virgin Radio Winnipeg's #1 Hi Music..., top 40 1439

1937 KBHP 101.1 MN Bemidji, "KB101" 1249

1940 KKBj 103.7 MN Bemidji, local weather 1256

1958 KQHT 96.1 MN Crookston, RDS PI 3B09 1337

2029 KRVX 103.1 ND Wambleton, RDS PI: ---- -'WSN' PS: Raven, classic rock 1279

2043 KVMI 103.9 ND Arthur, 1321

2043 KBOT 104.1 MN Pelican Rapids, RDS PI: 1423 1251

2046 KARP 106.9 MN Dassell, Twins BB 1127

5/31 Es

1525 KSDR 92.9 SD Watertown, RDS PI: 3FE7 PS: ...SOUTH..., country 1225

1530 KXLG 99.1 SD Millbank, RDS PI: 4DE0 PS: on KXLG, classic rock 1217

1531 KOLV 100.1 MN Olivia, RDS PI 362B, PS: country 1150

1715 KJLT 94.9 NE North Platte, RDS PI: 28F5 PS: kjlt.org + 532-5515, rel mx 1267

1800 KLIL 92.1 LA Moreaville, RDS PI: 2DE7 PS: KLIL 719

6/1 Es

1823 KLYV 105.3 IA Dubuque, local ad 867

1830 KARL 105.1 MN Karl, local ad 1146

2000 KTXG 90.5 TX Greenville, ID 949

6/23 Es

1200 CMBE 94.7 CU Havana, RDS PI: ---- 'WWMO' PS: R Ciudad R Ciudad de la Habana – Top 40 712

1325 KXPn 95.5 TX Scotland, RDS PI: 5397, sports 1056

1420 KKYS 96.5 IA Cedar Rapids, RDS PI: ---- - 'WDG' PS: song/artist, country 881

1427 WABZ 93.9 IL Sherman, RDS 706

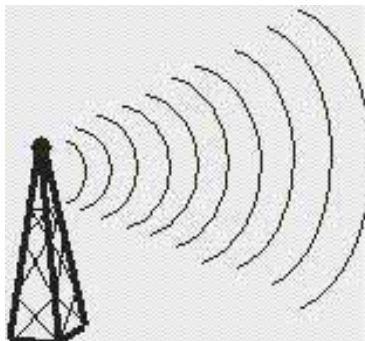
1715 KATR 98.3 CO Wray, "Cat Country 98.3" 1361



1747 KSCB 107.5 KS Liberal, local ad 1220  
 1823 KFLO 89.1 LA Blanchard, local ad 816  
 1847 KGNC 97.9 TX Amarillo, ID 1255  
6/24 Es  
 2033 WZAR 101.9 PR Ponce, RDS PI: 96BD PS: SS-Adult Hits 1330  
7/3 Es  
 1910 WTPL 107.7 NH Hillsboro 816  
 1910 WEBE 107.9 CT Westport, RDS PI: 5F56 663  
 1912 WLTW 106.7 NY New York, RDS PI:13B8 – ‘KBKQ’ PS: Soft 616  
 1925 WORK 107.1 VT Barre, RDS PI: 7B64 PS: #1 FOR CLASSIC....107-1 Frank-FM Oldies – Frank –FM 855  
 1943 WBCL 90.3 IN Fort Wayne, RDS PI: 578B 616  
 2028 WVTK 92.1 NY Port Henry, partial ID, John Tesh Show 823  
7/5 Es  
 1713 CBCR 90.3 ON Kirkland Lake, local weather 681  
 1810 WKJZ 94.9 MI Hillman, “NE MI Hits FM” 842  
 1817 WMTU 91.9 MI Houghton, RDS PI: 765A 1061  
 1928 KACL 98.7 ND Bismarck, Cool987.com 1431  
 1940 KYBB 102.7 SD Canton, RDS PI 4F7B PS: Classic Rock 1146  
 2000 KVXC 101.5 SD Gregory, local ad 605 a/c 1254  
 2044 KROR 101.5 NE Hastings, RDS PI: 3E61 PS: Oldies 1160  
7/6 Es  
 1100 KZCD 94.1 OK Lawton, RDS PI: 523B PS: Z94, rock 1068  
 1101 KWKQ 94.7 TX Graham, ID 1076  
 1125 KWME 92.7 KS Wellington, RDS PI:----, oldies 1025  
 1202 KKDT 93.5 KS Burdett, local ad 1162  
 1204 KVOB 95.5 KS Lindsborg, local ad 1058  
7/9 Tr  
 2335 WBXY 99.5 FL LaCrosse, “The Party Station” 279  
7/10 Tr  
 0023 WQHL 98.1 FL Live Oak, “The Big 98” 269  
 0753 WXHT 102.7 FL Madison, “Hot 102.7” 271  
7/10 Es  
 1825 KZEP 104.5 TX San Antonio, HD 1127  
 1830 KFYS 90.9 TX San Antonio, BBN, rel 1103  
7/11 Es  
 0912 WOLX 94.9 WI Baraboo, RDS PI: 7AD5 878  
 0913 WMAD 96.3 WI Cross Plains, RDS I:1458 – ‘KBQX’ PS: Star Country 865  
 0915 WFRO 99.1 OH Fremont, “The Eagle” 588  
 0917 WBIZ 100.7 WI Eau Claire, RDS PI: 5835 1017  
 0923 WOKB 94.9 IL DeKalb, local ads 775  
7/13 Es  
 1039 KLCH 94.9 MN Lake City, RDS PI: ---- 1018  
 1100 KOGC 88.3 TX Wheeler, multistation ID 1182  
7/14 Es  
 1900 KREP 92.1 KS Belleville, “KR 92-K the best in country” 1076  
7/15 Tr  
 0900 WRAE 88.7 NC Raeford, rel, ID 127  
7/16 Tr  
 0844 W235BM 94.9 SC Mauldin, SS 182  
 1005 WKRI 91.9 SC Cokesbury, oldies, SID 149  
7/25 Tr  
 1337 WWRQ 107.9 GA Valdosta, “Rock 108” 243  
 1400 WDBN 107.9 GA Wrightsville, r&b, “107.9 Jams” 168  
7/29 Tr  
 2009 WUCC 99.9 SC Williston, rel, *The Voice of Truth* 98  
7/31 Tr  
 0122 WEDB 98.1 GA East Dublin, “Magic 98.1” 163  
8/1 Es  
 1011 HISK 103.1 DR Santiago, SS – Super 1092  
8/11 Tr  
 1800 W272CT 102.3 FL Palm Coast, dual station ID WFOY-AM 271  
 2213 WHKQ 103.1 FL Windemere, SS // web 335  
 2248 WWRZ 98.3 FL Fort Meade, RDS PI: ---- - ‘WED’ PS: MAX 98.3, adult hits 387  
8/12 Tr  
 0213 WZJZ 100.1 FL Port Charlotte, “Y100” 473  
 0228 WRXK 96.1 FL Bonita Springs, “96 K-Rock,” HD 480

Local Notes: WXLV-102.5/WEZL-103.5/WRFQ-104.5 IBOC all turned off for months. WSCM-LP 100.1 SC Moncks Corner still on open carrier since June 2012. WALI-93.7 noted on briefly with ID/country music, also WXJY-93.9 // WJXY-93.7 both noted back on with ID, “News Talk that matters.” FM Log totals now at 2481.

# Northern FM DX



Keith McGinnis  
 18 Newbridge St., Hingham, MA 02043  
 longwave@comcast.net 781-875-1944

---

For Dxers in the following states: CT IA ID IL IN MA ME MI MN MT ND NE NH NJ NY OH OR PA RI SD VT WA WI WY and all of Canada. Please submit by the 10<sup>th</sup> of each month.

**EDITOR'S NOTE PLEASE SUBMIT ALL REPORTS IN THE FORMAT SHOWN BELOW.**

***Time(tab)Calls(tab)Freq(tab)City(tab)State(tab)details***

*Formats can either be plain text, Word or Excel as long as format is adhered to. Any submissions in other formats may not be used at editor's discretion.*

***All Submissions must be in to me by the 10<sup>th</sup> of each month.***

---

**Dave Nieman, Bradford, PA FN01qx  
 Sangean HDT-1, Channel Master 4408 @ 21' AGL  
 1500' ASL, -350' HAAT  
 All New to log, All Times Are: EDT, Distance in Miles**

**August 1 Ms**

0936 KJLU 88.9 Jefferson City MO RDS PI: 28F6 PTY: Jazz 755

**August 8 Ms**

0637 KSD 93.7 St. Louis MO RDS PI: 1994 = bogus KDQI, Country 658

**August 10 Ms**

1523 WGFY 104.5 Gallatin TN RDS PI: 6519 PTY: Sports 588

**August 11 Ms**

1024 WMEZ 94.1 Pensacola FL RDS PI: 74D9 PTY: Classic Rock 929  
 Local 94.1 off, tropo relogs Canton OH,  
 Sunbury PA, Brighton NY, Toronto ON &  
 Keyser WV

**August 12 Ms**

0824 WRZE 94.1 Kingstree SC RDS PI: 841A PS: WRZE PTY: Adult Hits 574  
 0851 WZBQ 94.1 Carrollton AL RDS call letters only, format CHR 795  
 1214 KATI 94.3 California MO RDS calls only, playing Country 763

**August 16 Ms**

0936 WCIC 91.5 Pekin IL calls heard, Contemp. Christian 575

**August 21 Ms & GW**

0758 KTLB 105.9 Twin Lakes IA local off, RDS PI: 434B PTY: Oldies 819  
 2000 W285ES 104.9 Smethport PA new lcl // WCID FLN, RDS PI: FFFF (KWI) 17

**August 30 Tr**

0730 W300BV 107.9 Owego NY repeats 1330 WEBO-AM News format 129

Summer skip season has ended but as we know....skip can occur 12 months a year. 73 dave

Randy Miltier, W6NT - Phoenix, OR 97535  
Sony XDR-F1HD, Winegard HD-6055P antenna

Times Pacific

July 20 2013 Es

1227	KNGM	88.9	Guymon	OK	ad, ID
2030	XTASIS	88.9	Hermosillo	MX	RDS

July 21 2013 Es

1047	KTLF	89.9	Colo Sprgs	CO	ID
1055	KNGM	88.9	Guymon	OK	Radio For Life, ID
1101	KBJF	90.5	Nephi	UT	CSN Radio, address

July 26 2013 Es

1110	KUAT	90.5	Tucson	AZ	Website match
1120	KJZZ	91.5	Phoenix	AZ	ID
1122	XTASIS	88.9	Hermosillo	MX	RDS

August 14 2013 Es

1800	KCGY	95.1	Laramie	WY	Y-95 Country.com
1802	KSID	98.7	Sidney	NE	The Blast
1804	K231AA(t)94.1		Boulder	CO	Hip Hop (KPTT) 205w

Note: K231AA 94.1 translator for KPTT only match..tried all hip hop stations. Tried to verify with song title but couldn't get anyone to answer the phone.

Mike Bugaj – 69 Sherman Road – Enfield, CT 06082 NAD 4155, Probe9, Bolin Phase Box, 7 element log-yagi phase antenna. Ray Dees RDS Decoder.

Date	Time	Calls	Freq	City	ST	PI	Pgm
5/11 Es							
1150		WZEW	92.1	Fairhope	AL		The New Zoo 92
1933		WEPR	90/1	Greenville	SC	A6CF	Pty: Public
1936		WDJR	96.9	Enterprise	AL		The New Mix 96.9
1938		WECQ	92.1	Destin	FL	5F7C	
2006		WDNX	89.1	Olive Hill	TN	5DFD	Pty: Rel Music, www.wdcx.org. Lifetalk
2010		WTCD	96.9	Indianola	MS	870B	Pty: Talk, PS=Supertalk Miss.
2014		<b>WQXB</b>	100.1	Grenada	MS	813F	B100, country
2029		KHKN	94.9	Maumelle	AR	138d	PS=TOM-FM, Pty: Rock
2051		WTYS	94.1	Marianna	FL	8956	R/T=WTYS 94.1 REAL Gospel
				Panama City			
2054		WVVE	100.1	Beach	FL	8E42	Pty: Adult Hits
2145		KCKK	88.3	Cedar Rapids	IA	1586	Pty: Jazz
2154		KMGO	98.7	Centerville	IA	A35A	Pty: Country



2200	KWME WMIX- FM	92.7	Wellington	KS	4B54	Pty: Oldies
2203	KTJJ	94.1	Mt. Vernon	IL	753F	Pty: Country
2211	LOMC	98.5	Farmington	MO	431F	Pty: Country
2214	KKDY	100.1	Kimberling City	MO	3632	Pty: Adult Hits, MY-100
2219	<b>KLRC</b>	102.5	West Plains	MO		KDY 24/7 Weather
2233	KKID	90.9	Tahlequah	OK		90.9FM KLRC
2300		92.9	Rolla	MO		ID
5/17 ES						
1121	KUAR	89.1	Little Rock	AR	0000	PS=KUAR89.1
5/19 Es						
2132	KFPW	94.5	Barling	AR	1ED0	PS=KFPW
5/26 Es						
1957	KPLQ	94.1	Hodge	LA	38CA	RDS
5/27 Es						
1830	WIGH	88.7	Lexington	TN	6A6B	Pty: Religious Music
5/29 Es						
2014	WIBW	94.5	Topeka	KS		94.5 Country
2024	KRXL	94.5	Kirksville	MO		94.5 the X
6/1 Es						
1623	KQXL	106.5	New Roads	LA	3CA1	Pty: Soft R&B,
1712	<b>WABR</b>	91.1	Tifton	GA	54D3	Pty: Classical
1726	WBZY	105.3	Bowdon	GA	19EE	Pty: Adult Hits
1804	<b>WPAE</b>	89.7	Centreville	MS	7C48	PS=WPAE89.7
1833	WEMX	94.1	Kentwood	LA	6087	PS=MAX94.1, Pty: Rhythm and Blues
1835	WBBN	95.9	Taylorville	MS	5773	Pty:Country, B95
1902	KQKQ	98.5	Council Bluffs	IA	3B54	Pty: Top 40
1908	<b>KTSB</b>	88.3	Rapid City	SD		list of station underwriters, one in Rapid City NEW!
1912	KNCK	94.9	Concordia	KS		"Shooters" in Concordia adv.
6/23 Es						
1315	WZEW	92.1	Fairhope	AL	972A	Pty: Rock, R/T" THE SOUND OF MOBILE
1319	WHOD	94.5	Jackson	AL		Dixie 94.5
1325	WTUG	92.9	Tuscaloosa	AL	882E	Pty:R&B, PS=92.9WTUG, Old School R&B
1330	WATP	90.9	Laurel	MS	56A5	pty: Religious Talk, R/T=AMERICAN FAMILY RADIO
1332	WUAL	91.5	Tuscaloosa	AL	0000	Pty: Jazz, PS=WUAL-FM,
1334	<b>WFFN</b>	95.3	Coaling	AL	626B	Pty: country, PS=953BEAR, NEW!
1336	WOKK	97.1	Merician	MS	7AAE	PS=97OKK, Pty: Country,
1345	WMPR	90.9	Jackson	MS	75EF	Pty: R&B, www.wmpr.com
7/3/ Es						
1845	WUFT	89.1	Gainesville	FL	8A0D	talk, Pty: News
1848	<b>KLRC</b>	90.9	Tahlequah	OK	2EC8	Pty: Religious Music, ID
1854	WLLD	94.1	Lakeland	FL	72D5	Wild 94.1, Pty: Rhythm and Blues
1856	WWRM	94.9	Tampa	FL	9086	Magic 949
1859	<b>WEJZ</b>	96.1	Jacksonville	FL	95E1	Pty: Top 40,
1901	WJGL	96.9	Jacksonville	FL	6D13	Classic Rock
1904	WSUN	97.1	Holiday	FL	F000	97X
1908	WGCO	98.3	Midway	GA		Georgia's Big 98.3
1910	WKTK	98.5	Crystal River	FL	7108	Pty:Adult Hits, Best Variety of 80s, 90s and Now
1913	<b>WYKZ</b>	98.7	Beaufort	SC		98.7 the River and Delilah
1914	WQYK	99.5	St. Petersburg	FL	8162	Country
1918	<b>WXLY</b>	102.5	N. Charleston	SC	129A	RDS only
1920	WRUF	103.7	Gainesville	FL		Country 103.7 the Gator
1920	WEZL	103.5	Charleston	SC	11CD	Country
1920	WKUB	105.1	Blackshear	GA	FFFF	Pty: none, the Cub
1923	WOKV	194.5	Atlantic Beach	FL	7AB9	news
1928	WAVH	106.5	Daphne	AL	56D1	Pty: talk
1936	KJBX	106.3	Cash	AR	27F5	Pty: Adult Hits PS=Mix106.3 title and artist
1941	WSTI	105.3	Quitman	GA	8626	Pty said classical, R/T= www.mystar1053.com
2000	WFSU	91.5	Tallahassee	FL	63C0	Pty: classical
2002	WBHC	92.1	Hampton	SC		calls, one great hit after another
2004	WAKU	94.1	Crawfordsville	FL	55C0	Pty: Religious Music
2006	WTNT	94.9	Tallahassee	FL	1839	Pty: Country

2011	WAAC	92.9	Valdosta	GA		C93 Valdosta's only country leader
2017	WXVS	90.1	Waycross	GA	9298	Pty: classical, PS=GA Public Radio WXVS 90.1
2024	WFLF	94.5	Parker	FL	620D	News
2035	KJCK	97.5	Junction City	KS	2802	Pty: Top40, R/T=KJCK-FM97.5
2035	KTWA	92.7	Ottumwa	IA		Ottumwa weather
2037	KIOA	93.3	Des Moines	IA	258C	Pty: Oldies
2041	KISO	96.1	Omaha	NE		961kissonline.com
7/5 Es						
1722	WMFS	92.9	Bartlett	TN	74EC	Pty: Sports
1726	WHPY	94.5	Bellevue	TN		Nashville Traffic report
1727	<b>WLUV</b>	97.1	Belle Meade	TN		K-Love
1729	KOMC	100.1	Kimberling City	MO	3632	Pty: Adult Hits PS=My100.1
1734	WRBO	103.5	Como	MS	81B4	Pty: Rhythm and Blues
1735	WRVR	104.5	Memphis	TN	83BF	Pty: Soft Rock
1737	WJLT	105.3	Evansville	IN	6D9D	Pty: Adult Hits PS=My100.1
1740	WAID	106.5	Clarksdale	MS	557B	Quick Cash Stores
1741	KBVA	106.5	Bella Vista	AR	14C6	
1743	WDDD	107.3	Johnson City	IL		3D country
1746	<b>KIGL</b>	93.3	Seligman	MO	15C7	Pty: Classic Rock
1750	KTJJ	98.5	Farmington	MO	431F	Pty: Country
1755	KWTO	98.7	Springfield	MO		Jock 98.7, Sports
1756	<b>KCLR</b>	99.3	Boonville	MO		<a href="http://www.moorefamilyeyecare.com">www.moorefamilyeyecare.com</a>
1800	KIXQ	102.5	Jpolin	MO	2786	Pty: country, PS= KIX102.5
1812	<b>KWKZ</b>	106.1	Charleston	MO	4B35	Pty: country
1814	KOMS	107.3	Poteau	OK		Big Country 107.3
1818	WZBQ	94.1	Carrolton	AL	96D6	rap
1838	KHKN	94.9	Maumelle	AR	138D	Tom FM
1839	KERX	95.3	Paris	AR	1C61	Pty: Rock
1840	KZMZ	96.9	Alexandria	LA	6666	Pty: Classic Rock
1841	<b>KOEA</b>	97.5	Doniphan	MO	3560	Prt: Country mentioned Poplar Bluff
1842	Unid	97.5				Dor 97 dot 5, country?
7/7 Es						
2002	WIZM	93.3	Lacrosse	WI	6C5E	top 40
2005	KIAI	93.9	Mason City	IA	2528	Pty: country
2007	WJJO	94.1	Watertown	WI	6064	PS: title & artist on JJO
2009	KCHA	95.9	Charles City	IA	15FE	
2012	WERN	88.7	Medison	WI	60FF	Pty: classical
2013	<b>KNSZ</b>	89.1	Ottumwa	IA		Iowa Public Radio
2014	<b>KNSH</b>	89.1	Ft. Dodge	IA	342F	Pty: College
2018	<b>KKHQ</b>	92.3	Waterloo	IA		q923.net
2022	KCZE	95.1	New Hampton	IA	17D6	PS: country, PS= the Bull
2043	KCVM	93.5	Hudson	IA	1776	Pty: Adult Hits, R/T= 93.5 the Max
2046	KKEZ	94.5	Ft. Dodge	IA	2AE9	Pty: Top 40, PS- T&A only Mix 94.5 Today's Best Var.
2051	KSMA	98.7	oOsage	IA	40C0	Pty: country
2058	<b>WNIJ</b>	89.1	DeKalb	IL		Calls
2100	KCKK	88.3	Cedar Rapids	IA	1586	Pty: jazz
2103	WMBI	90.1	Chicago	IL	747A	Pty: Religious Talk
2108	<b>KMLV</b>	88.1	Ralston	NE	A3E3	K-Love
2120	KGGO	94.9	Des Moines	IA	FFFF	95-KGGO
7/8 Es						
1032	WPAS	89.1	Pascagoula	MS	7C56	Pty: Religious Music R/T= WPAS 89.1
7/11 Es						
0923	WSMR	89.1	Sarasota	FL	F000	classical
0926	WLTQ	92.1	Venice	FL	13B2	Pty: Adult Hits, 92-1 the Coast
0927	WLLD	94.1	Lakeland	FL	72D5	Wild, Pty of R&B
0929	waro	94.5	Naples	FL	5670	classic rock
0930	WWRM	94.9	Tampa	FL	9086	Magic 94-9
1013	<b>WPOZ</b>	88.3	Union Park	FL	7DC9	Z 88.3, Positive Hits RT=XLTR oh 99.7
1019	WKES	91.1	Lakeland	FL	6F8A	Pty: religious talk
1025	WCTQ	106.5	Sarasota	FL	1BEE	PS=106.5CTQ, Pty= country
1026	<b>WJSJ</b>	105.3	Fernandina Beach	FL		EE/SS dance music
1039	<b>WJGM</b>	105.7	Baldwin	FL		105.7 the Gospel
1047	WQGA	103.3	Waycross	GA		103Q
1049	WYNR	102.5	Waycross	GA		102.5 YNR, country
1116	WYUM	101.7	Mt. Vernon	GA		real country all the time - onion country
1118	WBZE	98.9	Tallahassee	FL	59DA	Pty: Adult Hits, Star 98.9

1120	WFBX	94.5	Parker	FL	620D	
1122	WFSU	91.5	Tallahassee	FL	63C0	
1129	WAKU	94.1	Crawfordsville	FL	55C0	Wave 94 Pty= religious music
7/12 Es						
0918	WSMR	89.1	Sarasota	FL		
7/13 Es						
1400	KRNA	94.1	Iowa City	IA		ID, KRNA Iowa City, a Cumulus station
7/26 Es						
1044	WQPR	88.7	Muscle Shoals	AL	A87F	Pty: public, PS=apr.org
1053	WYNU	92.3	Milan	TN	956E	Pty =classic rock
1057	KHLR	106.7	Benton	AR	23AB	PS=KHLR-FM, Pty R & Blues, Heartbeat 106.7
1058	KFEB	107.5	Campbell	NO	1D9D	pty: CHR, 107.5 the Pulse
1100	<b>KJBX</b>	106.3	Cash	AR	27F5	Pty: Adult Hits
1103	KWKZ	106.1	Charleston	MO	4B35	Pty: country
1105	WFGS	103.7	Murray	KY	628A	Pty: Country
1107	KKDY	102.5	West Plains	MO	2ACE	PS:1025KDY, RT=Today's hot new country 102.5 KDY
1121	<b>WQRL</b>	106.3	Benton	IL	A8AD	Pty: oldies
1123	<b>KRZK</b>	106.3	Branson	MO	431C	Pty: Country
1126	<b>KOMT</b>	107.5	Mountain Home	AR		Star 107.5
1136	KOSU	107.5	Altus	OK		
1143	KGRS	107.3	Burlington	IA	21A4	
1152	WDAF	106.5	Liberty	MO	5C99	Country
1204	KTHR	107.3	Wichita	KS	42F3	Pty: none, 107.3 the Brew
1208	KEYN	103.7	Wichita	KS	1D0D	Pty: oldies
1209	KQLA	103.5	Ogden	KS	3B5E	Christmas Carols Pty: soft rock, RT: KQLA103.5
1221	KNCK	94.9	Concordia	KS		Agmark in Concordia
1223	<b>KJCK</b>	97.5	Junction City	KS	2802	Pty: Top 40
1235	KUSO	92.7	Albiob	NE	46B2	Pty: country
8/3 Es						
1136	WECQ	92.1	Destin	FL	5F7C	Pty: Top 40
1147	KQXY	94.1	Beaumont	TX		Beaumont Civic Center mentioned
1200	<b>KTSR</b>	92.1	De Quincy	LA	4411	Pty: Top 40
8/13 Tr						
1812	<b>WPEN</b>	97.5	Burlington	NJ	1812	sports
9/7/13 Tr						
0906	<b>W248BG</b>	97.5	Durham	NY		Rip 97.9 after weather, relays WRIP Windham, NY
0920	WZAD	97.3	Wurtsboro	NY		Country Countdown
9/9 Tr						
1930	WNKI	196.1	Corning	NY		Wink 106
2014	WZZO	95.1	Bethlehem	PA		The Valley's Best Rock
2250	WODE	99.9	Easton	PA		00 nine the Hawk, classic rock
9/19 Tr						
0859	WWSK	94.3	Smithtown	NY		The Shark...Everything that Rocks
9/20 Tr						
0818	WTOP	103.5	Washington	DC		News and callsign
0835	Unid	105.1	SSW			Religious teaching, probably WAVA VA
2021	WJLK	94.3	Ashbury Park	NJ	6D94	PTY: Rock, all alone, 94 three the point
2136	<b>WJSE</b>	106.3	N. Cape May	NJ	6E44	PS=The Rock alternative
2158	WJKI	103.5	Bethany Beach	DE		Classic Rock 98.5
9/21 Tr						
0829	WQCB	106.5	Brewer	ME		Q106.5 Country
0830	WLKZ	104.9	Laconia	NH	72D1	PTY: Classic Rock,
0839	WMCM	103.3	Rockport	ME		97 One the Bear
0906	<b>WJJB</b>	96.3	Gray	ME		sports, Big Jab
0914	CHSJ	94.1	St. John	NB		94 Country
0916	WARX	93.9	Lewiston	ME		Air One



# Coast to Coast TV DX

Featuring reports from the entire United States and all of Canada.

Send reports by the 15<sup>th</sup> of each month to:

Nick Langan  
1040 Riverview Drive  
Florence, NJ 08518  
E-mail: [nickl@wtfd.org](mailto:nickl@wtfd.org)

## The Editor's Note

Across the north, and particularly in and around the Great Lakes, September produced some respectable tropo. An opening in the Midwest on the 4<sup>th</sup> brought some DTV DX across the Appalachians from IN to VA and IL to NC. Jay Novello in NC reported a decode of WAPT-21 Jackson MS on the 23<sup>rd</sup>, a distance of over 700 miles. And solid tropo took place between the northern mid-Atlantic and New England on the 21<sup>st</sup>. Any tropo that happened, however, seemed very much confined to areas east of the Mississippi, and there was nothing of note reported in the deep south. One would expect that to change as we head into October.

During some of the aforementioned tropo this month, Ed Phelps in KY notched his 700<sup>th</sup> DTV log, with a decode from WVNS-8 Lewisburg WV on the 5<sup>th</sup>. Ed is the first DXer to reach this most impressive milestone, in spite of the seemingly constant threats of thunderstorm activity in the Bluegrass State. Congrats, Ed!

### Danny Oglethorpe

P.O. Box 8025  
Shreveport, LA 71148-8025

E-mail: [oglethorpedxer@gmail.com](mailto:oglethorpedxer@gmail.com)  
TV DX Photographs: <http://www.TVDXExpo.com>  
Mexico/Latin America TV DX ID  
Tips: <http://www.TVDXTips.com>

Time used is Central Time.

Only the first logging of each station per report period is listed. No DTVs under 400 miles via tropo reported unless LP, new, or unusual. No unIDs are listed unless unique.

Mexico relay text IDs are generally displayed about five seconds. Time listed for log entry is the time text ID was supered.

Corrections to previous report:  
XHBC-3 was not new; rather the station was running "news."  
XHCGA-6's logo was upper left, not upper right.

\*\*\*\*\*

Regarding Glenn Hauser's report in the September VUD:

"1616 on 2, ad for Comfort Plus in Waterloo. That town next to Kitchener is west of Toronto, not directly served by any of the ch 2 stations, probably just on the Toronto feed to all of them"

CKCO-2 Warton relays CKCO Kitchener, ads and all.

### July 30, 2013 Tropo

0540 XEFB-2 Monterrey, NL Color bars; sign-on later  
0542 XHWX-4 Monterrey, NL Text ID upper left

"Can't assume it's XEFB in Monterrey since ch 34 in Monterrey is relayed on ch 2 in Saltillo (and even ch 2 in Tampico takes some programming from Monterrey, altho only in mornings, I think.)"

Tampico (XHTAU) also relays Monterrey on Saturday afternoons.

\*\*\*\*\*

### July 15, 2013 Es

0820 XHLGT-2 Leon, GTO "cdc" upper right  
0855 XHG-4 Guadalajara, JAL GDL on nx  
0855 XHP-3 Puebla, PUE "TV3" upper right  
1415 CIII-2 Bancroft, ON Global

### July 16, 2013 Es

1005 XHBC-3 Mexicali, BCN "Televisa Mexicali" upper left  
1010 XHQ-2 Guamuchil, SIN XHQ-3 logo upper right

### July 21, 2013 Es

1200 Cuba 3 Nx logo upper right  
1200 Cuba 2 Soccer  
1208 Cuba 4 // 3 Nx  
1220 Cuba 5 Soccer // 2

### July 26, 2013 Es

0945 CHBX-2 Sault Ste Marie, ON "CTV TIP5"  
0945 CTV Timmins or Elliot Lake, ON //2  
0955 CICI-5 Sudbury, ON //2  
1105 CKYB-4 Brandon, MB  
1105 CKND-2 Minnedosa, MB "Global Winnipeg" lower right  
1705 KOTA-DT-2 Rapid City, SD

0643 XHOR-14 Matamoros, TAM Text ID upper right  
 0643 XHX-10 Monterrey, NL (Assumed) XEW  
 0709 XET-6 Monterrey, NL Text ID upper left

July 31, 2013 Tropo

0500 XHPN-3 Piedras Negras, COAH Egg logo on news later  
 0500 XHPNG-6 Piedras Negras, COAH Text ID later  
 0611 KFXL-DT-29 Lufkin, TX NEW  
 0650 XEFE-2 Nuevo Laredo, TAM Logo upper right

August 4, 2013 Es

2015 XEPM-2 Cd Juarez, CHIH "tucanal" upper right

August 7, 2013 Tropo

0745 XERV-9 Reynosa, TAM Promo w/calls

August 7, 2013 Es

1420 XEWO-2 Guadalajara, JAL "TV Masvision"

August 8, 2013 Tropo

0612 XHCJ-4 Nueva Rosita, COAH Text ID upper right NEW  
 0902 KZTV-DT-10 Corpus Christi, TX 400 miles

September 1, 2013 Es

2015 XHP-3 Puebla, PUE "TV3" logo upper right

Pretty good tropo in late July and early August brought one new log from Mexico (XHCJ-4). I focused on low-band VHF as I needed better ID photos from XEFB-2 and others via tropo.

## FM Receiving Antennas

H.W. Secor Radio-Craft 1948

Best reception on FM is possible only with an outside antenna. The indoor antenna is more liable to pick up interference from power lines and electrical apparatus, and generally delivers a weaker signal to input terminals of the receiver.

The higher the FM antenna can be erected, the stronger are the signals, in most cases. If the antenna is low, it may be impossible to receive all the stations in the area. FM signals follow the line-of-sight to a great extent, and the receiving antenna should therefore be as high as possible. There is some bending of the signal due to refraction. This accounts for satisfactory reception of FM programs at distant locations, even when the receiving antenna is not as high as theory might demand.

The receiving antenna should be tried in several different locations. Sometimes moving it from one end of a roof to the opposite end spells the difference between poor and good reception. Flexible indoor antennas, when used, can be tested in a number of different positions – under the carpet, on the wall hidden behind a picture, etc. Keep all FM antennas away from metal masses, metal pipes and electric wires.

### SIMPLEST FM ANTENNA

The simplest FM antenna is the dipole. It is usually cut to resonate at 98mhz, the center of the FM Band. The length of the whole dipole is one-half wave length at 98mhz, or 56.7 inches. Each leg of the dipole is one-half this, or 28.3 inches.

For general purposes, the half-wave length in feet is found from the formula

$$L = \frac{492 - 6\%}{f}$$

Where f is the frequency in mhz. The 6% corrects for effects due to the capacitance added by the insulators at the ends of the dipole. For a more accurate calculation, use a correction factor of 7.5% for 98mhz and 3/8-inch diameter tubes or rods for the dipole.

The factor varies with the frequency and the diameter of the antenna elements.

The ordinary simple dipole does not have an even response of the 88-108 mhz FM band. A *broad-band* antenna is needed for tuning over the wide frequency range. The folded dipole, illustrated below, has been widely adopted for FM because of its broad frequency response.

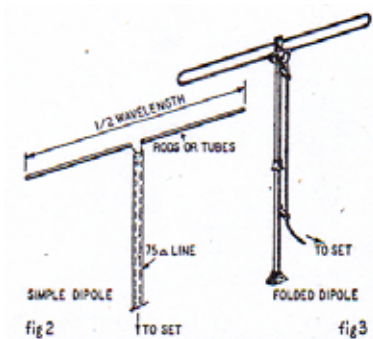


fig2 fig3  
 Figs. 2 and 3—The simple and folded dipole

The frequency response of a simple dipole can be broadened simply by overlapping the inner ends of the two elements. The dipole elements are made slightly longer than 1/4 wavelength. This extra length makes the antenna inductive. The inductance is compensated for by introducing a capacitance, created by overlapping the inner ends of the tubes.

The average simple dipole has approximately 75 ohms of impedance at the center, at its resonant frequency. The impedance of a folded dipole is about 300 ohms.

(to be continued)

# KNIFE EDGE REFRACTION

## “Something for Nothing at VHF/UHF”

By Robert B. Cooper ZL4AAA

Break-In December 1993

In the June 1935 edition of QST Australian Amateur Ross A. Hull working in America for ARRL, reported on his experiments in the 5metre band. Hull had found, contrary to all observed data to that time, that VHF signals did not cease to exist at their radio horizon. Hull found 5 metre signals out to distances of 300 km were dependable at amateur power levels. His observations continued to be referenced in IRE (IEEE) publications well into the 1950s as a turning point in scientific thinking about VHF wave propagation.

In 1950 another amateur operator newly relocated to the small, remote town of Tanana, Alaska, found FM broadcast band (100MHz) reception coming to his home from a transmitter at Anchorage: 420km away. While such reception is hardly unique for short periods of time, the Tanana reception was consistent: stable signals that upon investigation never varied more than -3dB.

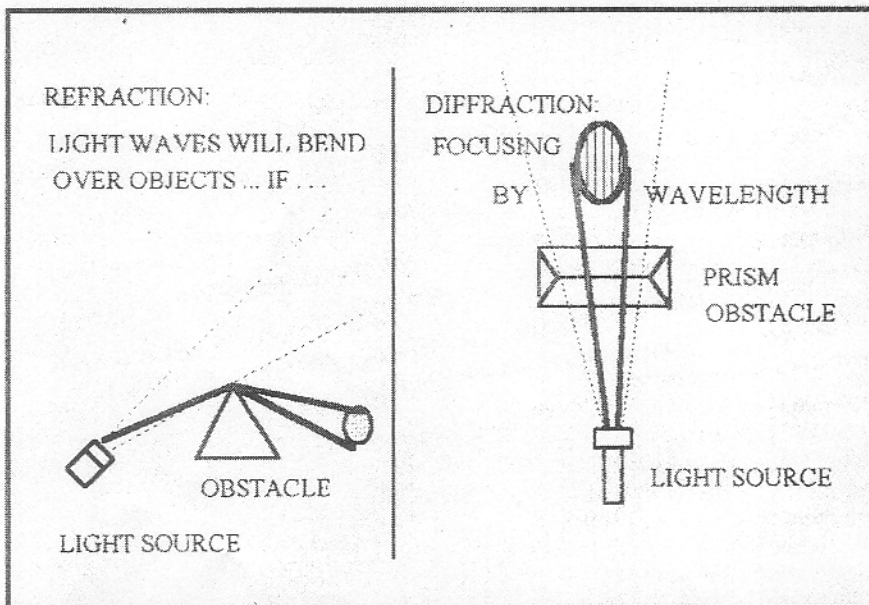
Through the 1950s scientific curiosity about the Alaskan path produced a blizzard of scientific literature including papers sprinkled in the Proceedings of the IRE. One study in particular (“Obstacle Gain Measurements Over Pikes Peak at 60 to 1,046 Mhz., Proceedings of the IRE, October 1955, page 1467) carefully defined how much “gain” could be anticipated when a tall mountain peak appears on the path between a (VHF, UHF, SHF) transmitter and receiver.

New Zealand has some of the most spectacular and irregular terrain in the world. Our terrain complicates line of sight coverage for commercial and private VHF (UHF) transmitters and lends itself quite ideally to the propagation of such signals over distances not dissimilar to the Alaskan observations.

### What is Knife Edge?

VHF/UHF signals follow optical laws of physics closely enough that early propagation studies for planned VHF transmitters relied solely upon well understood optical rules. Optical rules state that a ray path will exist between any two points that have unobstructed visual sighting ability.

Following the studies of Hull and others, the line of sight” optical rules were modified to include a new element. The term radio line of sight (RLOS) was adopted to describe the observed conditions where radio propagation differed from visual (beam of light) propagation. Hull found that while rays of propagated light would cease to propagate around or through solid obstacles (ie, a hill, tall building, or “over” the visual horizon). VHF (UHF) radio waves continued past these obstacles, although at reduced amplitudes (ie, signal levels). Further study reasoned that the lower atmosphere has a dielectric constant which at 50, or 500MHz, alters the straight-ahead flight path of a signal. In other words, if a VHF signal was to be



transmitted through a perfect vacuum, it would indeed travel in a perfectly straight line. But in a medium such as our atmosphere, the moisture content of the atmosphere (ie, the refractive index) alters the pathway of the signal causing it to bend ever so slightly as it travels forward. It is this “bending process” which carries the signal over or around a hill and past the visual horizon; although with a reduction in signal level.

In the process of better understanding the true propagating features at VHF (UHF) another phenomenon was observed. It remained for the quite spectacular report of Anchorage FM band reception at a distance of 420km to focus scientific attention to the scattered reports of “gain over an obstacle”.

Following optical laws of physics, a beam of light when directed into an obstacle stops. But there are situations where a beam of light directed at a sharply defined object appears to spill over the edge of the object. What eluded scientists was the frequency difference between light and VHF radio waves. To create a situation where light waves refract (deflect from the original ray path) or diffract (break up into a series of spectrum or wavelength defined bands of light) requires a quite perfect vacuum (for the transmission of light) and very carefully controlled object (obstacle) design inside of the vacuum to interrupt the ray path of the light beam. In other words, given the laboratory, equipment and conditions, a light beam can be made to refract (bend over something) or diffract (break up into its individual wavelength components). It was assumed the same sort of precision would be required for radio waves to refract.

The theorists were wrong in their postulating: they had not properly considered the difference in wavelength between light and VHF (UHF); nor had they considered that as the wavelengths became longer, the laboratory precision at the obstacle point in the path also relaxes.

Knife edge refraction is a natural occurrence in our environment. As the IRE report appearing in October 1955 related, a properly placed, properly proportioned mountain in between a transmitter and a receiver can enhance the received signal level by 25dB or more; that's 25 dB more than one might expect on the same path (length) minus only the obstacle.

Putting this into practical amateur terms:

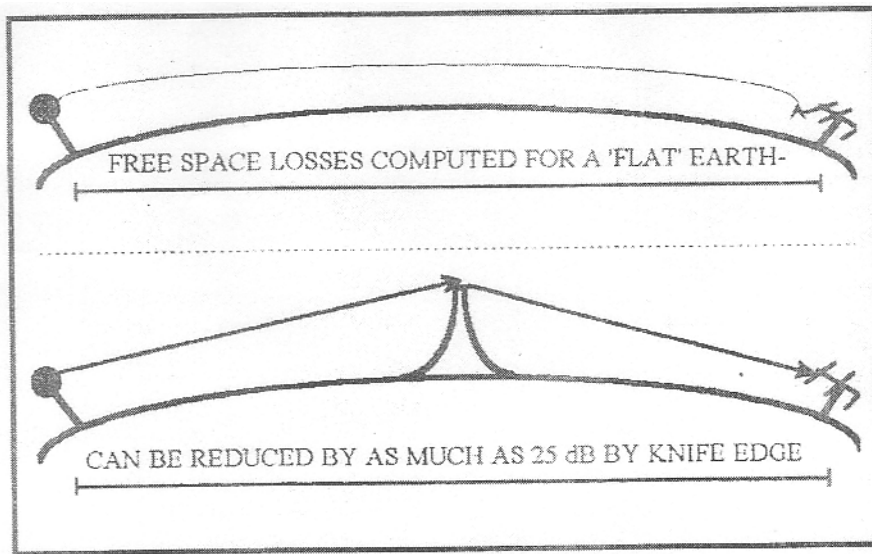
1. Gaining 25dB on a path of 200km length is the same as raising the transmitter power by 25dB; ie, raising from 100W to 42,670W, or,

2. If you were using a dipole antenna for receiving, enlarging the antenna to an array of 64 10-element Yagis.

Obviously a well placed peak or mountain top "on path" can be a very effective amplifier between two points. And best of all, the peak costs nothing to maintain (well, almost nothing), uses no electrical power, and does not clutter up your yard with several hundred linear metres of aluminium tubing!

### Mechanics of knife edge

Driving in my car, equipped with the usual amateur appointments (a 144/440 dual band mobile rig) and the usual creature comforts (including an FM car radio) equips me to observe the effects of knife edge while in motion. Unless you happen to live in "just the right spot", it is likely to be far more observable (and useful) away from home than at home. Let's see why.



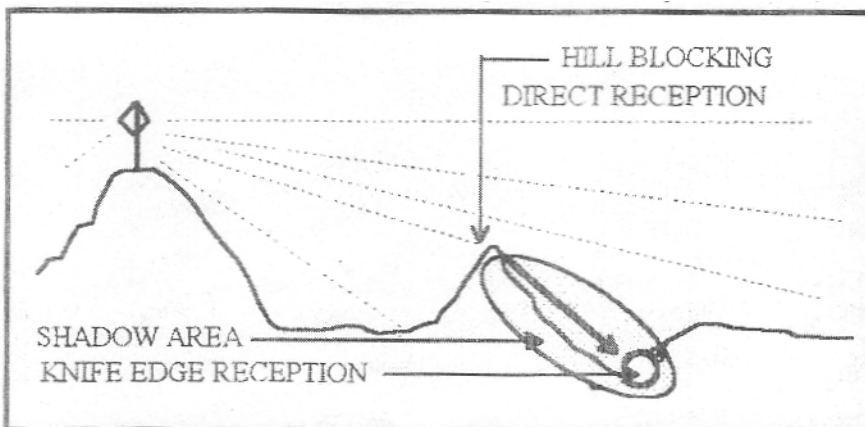
An obstruction "on-path" may enhance signals.

Knife edge is a focusing effect form of propagation. Recall that in the diffraction of light waves, the individual frequency elements are broken into their component parts and displayed separately; not unlike the rainbow you see in the sky. The parallel effect at VHF/UHF is the highly defined "focused spot" where a ridge or mountain top along the path "illuminates" a patch of ground with signal(s) at a distant point. In searching for knife edge "focused spots" you find areas as small as a few metres in width or square, where the distant signal(s) suddenly appear, and disappear. The physical shape of the refracting peak, its location along the path between transmitter and receiver, and the frequency of the refracted wave(s) all interact to determine the size and shape of the patch of ground where the "focused signal(s)" reappear.

A clear understanding of knife edge requires a reasonable grounding in the basics of VHF/UHF wave propagation.

VHF/UHF transmitting antennas are typically placed on elevated sites to gain maximum line-of-sight (visual) coverage. TV and FM broadcast antennas, commercial two-way radio antennas (including cellular telephone) are examples of this philosophy. The path loss (ie, the number of decibels of signal not found at the receiving site but measured at the transmitting site) is the "loss" on a path. Path loss begins within the first metre of distance from the radiating element in a transmitting antenna, losses in excess of 40dB at 100MHz within the first 50 wavelengths at the operating frequency are expected.

Transmission losses between the transmitting antenna and the visual horizon can be accurately computed for any VHF/UHF frequency. TV and FM broadcasters routinely compute these losses in forecasting their coverage areas. If you know, for example, your radiated power is 325,000kW (some major centre band III TV transmitters), and you also know that from a transmitting antenna height of 440 metres above sea level you will have a visual line of sight to 86.5km, you can then compute how much signal level will be measurable at that point (86.5 km "out") on a dipole receiving antenna say 10m above ground.



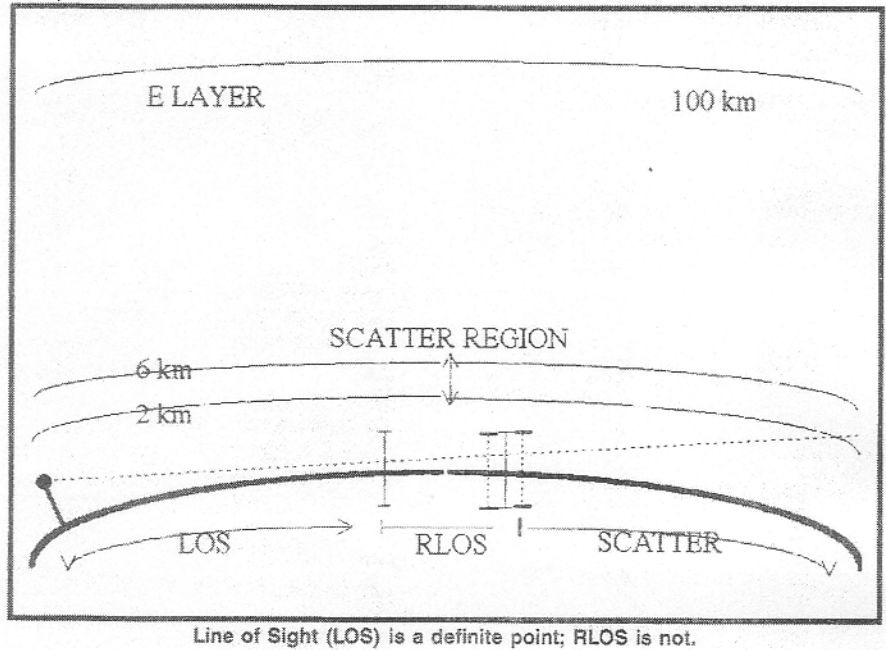
Even close to a transmitter a hill can simultaneously block reception and cause knife edge "hot spots".

A 146 or 438MHz repeater operator could, if he wished, make the same computations to determine the relative "field intensity" of his signal at his own visual horizon. The important factor to know and understand is not how this is done (although it is not a complicated computation but rather to understand that once you know the frequency, and distance to the visual horizon, you can quickly determine how many decibels of path loss will occur. If you start out with 325kW, and the path loss is 50dB for a particular distance, your received signal will be 50dB below 325 kW. If you use the same frequency and the same distance and start out with 50W, your received power level will be 50dB below SOW. It is all about dBs.

At the visual horizon, where, prior to amateur experimenter Ross Hull, scientists believed VHF (and UHF as well although the term UHF was not as of then invented), new factors came into the equation. As Hull proved, VHF (UHF) signals do not cease at the visual horizon; they travel beyond. Ultimately, when scientists understood the effects of the air on signal propagation, and calculated its effects, a new term was born. They called it the radio horizon.

The visual horizon is an exact spot: the last point you can see (with or without the aid of visual magnification) before the curvature of the earth causes you to lose "sight of" what lies beyond that point. At the visual horizon, where VHF (UHF) signals launch into a slightly bent forward path, the signal levels are computable. Beyond the visual horizon to the edge of the new area (the radio horizon) signal levels are also computable. But not with the accuracy of visual line of sight.

Between the visual horizon and the radio horizon, the signals depend upon the dielectric constant of the air for transmission efficiency. Air is notoriously homogenized; that is, its moisture content and temperature is constantly mixed by (a) seasons, (b) passing weather fronts, and (c) time of day (warmer in the daytime, cooler at night). In any measured spot, the air's temperature and moisture content is also modified by the earth's surface immediately below the air; over a lake or over the ocean there is far more water content in the air (for example) than over a desert.



So if we depend on the dielectric constant of the air to determine the "efficiency" of the transmission medium, and that "efficiency" changes daily (hourly), one might suspect that the point which we call the radio horizon also changes; daily or hourly. Under "more efficient" air, the radio horizon is further "out" than under "less efficient" air.

Radio horizon path lengths are computed based upon "average dielectric constants". On a scale of 1 to 10, 5 is "average" but during certain seasons "3" is more normal than "5" while at other times of the year "8" is more normal than "5". In other words, any radio system beyond visual line of sight and into the "radio line of sight" region must expect reasonable variations in received signal levels as efficiency of the air transmission medium wanders about either side of what is considered "average" (normal) for that geographic region.

Now let's place some numbers on all of this. We'll start with commercial television sites for reasons to become more clear further on in this analysis.

1. Waiatarua is the primary transmission site for IV (1, 2, 3 SKY and TAB) in Auckland plus virtually all Auckland region FM broadcasters. The Waiatarua tower has two antennas spaced along its 100 m height with an average height of transmitting antennas 440 m above sea level (mASL). The computed RLOS is 86.51km; this assumes from a height of 440 m the surrounding terrain is fiat and at sea level.

2. Visual line of sight (LOS) from the same point is approximately 65km. This establishes a region between 65km "out" and 86+ km "out" where the signal levels present depend upon the efficiency of the lower atmosphere as a transmission medium.

3. Beyond RLOS is the infinite region termed scatter. Here the signal levels are almost totally dependent upon the homogenized mix of the lower atmosphere (up to a height above ground of 6km).

There is a rule of thumb concerning knife edge:

Ideally, the knife edge refraction point (ie, the peak or mountain) must have LOS to both the transmitter and the intended receiver point(s).



Given this condition, the signal levels propagated by knife edge will exhibit amazing stability; very long term fading is limited to  $\pm 3\text{dB}$ .

Lacking LOS from the knife edge point to either end, RLOS is a second (less desirable) choice. When there is RLOS rather than LOS the signal stability suffers; long term fades vary within a  $\pm 10\text{dB}$  range. You can visualize why this would be true; if at either end of the circuit the path covers a region where the ever changing lower atmosphere dielectric constant is a factor, the signal levels will vary as the constant varies.

### Practical knife edge

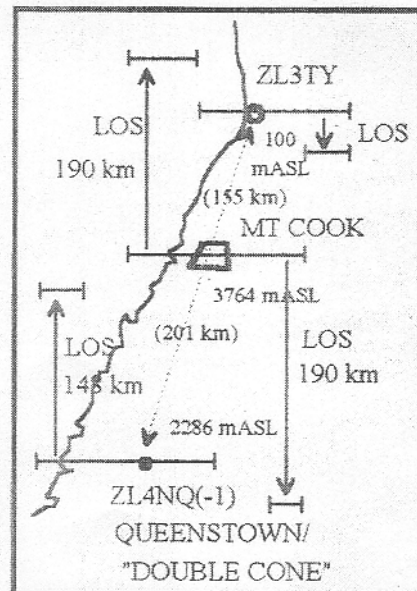
Robert McQuarrie ZL31Y lives in Greymouth, elevation approximately 100 mASL. Some 356 km south of ZL3TY is the ZL4NQ(-1) Paciket Digipeater at 2286 mASL. Bob reports the digipeater signal to be “virtually constant with very little fading.” A quick analysis reveals 3764mASL Mt Cook virtually straddles the path at a point 201km north of ZL4NQ(-1) and 155km south of ZL3TY.

A diagram here illustrates the three elements to the path:

1. Line of sight from the ZL3TY 2m antenna is 31km to the south.
2. Line of sight from Mt Cook is 190km in all directions, but only if the horizon is not cluttered by other peaks (ic, irregular terrain).
3. Line of sight from ZL4NQ(-1) at its 2286 mASL height on Double Cone is 148km; again, subject to clutter on the horizon from other surrounding peaks.

The sum of these three LOS ranges is 369km, slightly more than 10km outside of the actual distance.

In an Ideal situation, both ZL3TY and ZL4NQ(-1) could visually “see” Mt Cook, the suspected knife edge point. And if Mt Cook were positioned at the midway point along the 355 km path (ie, 177.5 km from both), this would be the case. However, with Mt Cook closer to the ZL3TY end of the circuit than the ZL4NQ(-1) end of the circuit, the greater distance falls to the southern portion of the path. This happens to work out OK because the ZL4NA(-1) transmitter site itself has substantial elevation (2286 mASL) and this added height more than makes up for the greater distance to Mt Cook from ZL4NQ(-1).



So the ZL3TY to ZL4NQ(-1) path meets all of the criteria for high quality, dependable knife edge VHF communications: LOS from the knife edge point to both ends of the circuit.

Curious about the possibilities for knife edge in the Far North, the writer set out to criss-cross virtually all of the North Island beyond Whangarei to pinpoint locations where Auckland area VHF (and UHF) signals were consistently available via knife edge. Here’s the process.

Department of Survey and Land “topo-rnaps” are available in several scale series. The 1:250,000 series maps require three separate maps (Nos 262-1, 262-2 and 262-3) to display everything north of an east-west line that has Huntly and Te Aroha on the southern boundary. Strapping the three maps together, you have a contiguous visual display of the top 300km of New Zealand.

This makes it possible to pinpoint and mark both ends of a path (example: Port Waikato Auckland repeater site and Coopers Beach on Doubtless Bay, where I live). The Department of Survey & Land will deliver the maps with a plastic coating for a few dollars more per map; very handy since you may now draw, and then rub off, various point-to-point connecting lines with coloured grease marking pens.

The distance from Port Waikato to Coopers Beach is 225 km. The height of the Port Waikato repeaters (146.625, 439.000 National Link) is a few metres over 400 mASL. Other Auckland VHF/UHF repeaters include 146.900 on Mt Puketutu, 146.900 on Ruaotewhenua and 438.500 (Mt Eden).

Like all potential knife edge paths, there are three individual LOS/RLOS calculations to make: the (R)LOS coverage from the receiving end (Coopers Beach), the same from the transmit end (Waikato as an example) and, of course, the knife edge point along the path.

1. Waikato: 400 mASL is an RLOS of 82.5km; LOS of 62km.
2. Coopers Beach: 100 mASL is an RLOS of 41km and an LOS of 31 km.

The RLOS sum is  $82.5+41=123.5\text{km}$ . The LOS sum is  $62+31=93\text{km}$ . The path length is 225 km so we need a peak on-path and close enough to both ends to cover as a minimum RLOS of  $225-123.5 (101.5\text{km})$ , or, an LOS of  $225-93=132\text{ km}$ .

In the case of RLOS, the peak would need to be not less than 610 mASL if it happens to be in the exact middle of the path and no taller peaks fall on the path which shadows (blocks) the peak’s RLOS view of either end of the circuit.

In the case of LOS, the peak would need to be 130 mASL and also fall in the exact middle of the path, with no intervening peaks on the path to block LOS from the peak to either end.

Unfortunately neither condition is met. The tallest peak along the path is called Maungaru 419 mASL) and is located well south of the midpoint. Additionally, a 300—350m ridge just south of Coopers Beach blocks my path. Am I out of luck?

Perhaps not for a spot has been found where 142.625 is available from my mobile just 2km from my home. We’ll continue next month in Break-In.

# Cuba Performs Digital TV Test With Good Results

Glenda Pardo Prensa Latino  
August 12, 2013



(Prensa Latina) A team of Cuban specialists in this capital performs transmission tests to eight channels of digital television and six radio stations with satisfactory results. The Cuban Institute of Radio and Television (ICRT) digitally produced four of these channels: musical, informative, juvenile and Multivision (nationwide).

In statements to Prensa Latina, Eusebio Garnier, technical director of that institution, said that Havana has five transmitters which work with the Chinese standard to carry out the experiment.

Some families and institutions in the capital had access to 45 000 set-top boxes that enable to test reception levels, he said.

Juan Carlos Gonzalez, technical chief for the implementation of digital television, said that among the advantages of this technology are the added values that receivers can access.

"The public will have an interactive menu that will offer news, weather, programming guides and access to a selection of documents from the Cuban collaborative encyclopedia EcuRed" he said.

Specialists believe that this experiment may encompass other parts of the country by the end of the year.

Therefore, the provinces of Artemisa, Mayabeque, Villa Clara and Cienfuegos, and the special municipality of Isla de la Juventud began to change the infrastructure of the TV centres.

To assess the quality of the signal, and the impact on the population of the capital, the people who received the decoders signed a contract in which they commit to provide information about the product until 30 August.

Cuban companies Radio Cuba and Copextel are responsible for placing the transmitters in different parts of the island and provide technical support for set-top boxes.

According to experts, the experiment has good results, but until December they will not offer a conclusive assessment of the testing phase that began last April.

---

## Historic Verie W2XCR 2800kc.



# SIGN UP/Renewal form

YEARLY DUES \$10.00 USD for Monthly VUD eZine

Name \_\_\_\_\_

Address \_\_\_\_\_ Apt # \_\_\_\_\_

City \_\_\_\_\_ State/Prov \_\_\_\_\_ Zip \_\_\_\_\_

Country \_\_\_\_\_ Interests: TV ( ) FM ( ) 30-50( ) Weather( )

email address \_\_\_\_\_

Sign me up/renew me for: 1 year ( ) 2 years ( ) More ( )

I have no computer or access to one. Please send a paper VUD(\$24) ( )  
*Please, 12 month renewals only for paper VUDs. Thank you.*

Yearly dues **Mail your dues to: WTFDA, P.O. Box 501, Somersville, CT USA 06072**

**Make your checks/money orders payable to: WTFDA**

**And *thanks* for your support of the WTFDA!**

Return this form with your dues or make a copy of it and return that.

## WTFDA BOARD OF DIRECTORS

Mike Bugaj, use the WTFDA Mailing address listed below  
Doug Smith, 1385 Old Clarksville Pike, Pleasant View, TN 37146-8098  
Greg Coniglio, 11825 Genesee St., Alden, NY 14004  
Keith McGinnis, 18 Newbridge St., Hingham, MA 02043

mikeb@wtfda.org  
dougs@wtfda.org  
gregc@wtfda.org  
nfmdx@wtfda.org

**RENEWALS BY PAYPAL: SEND YOUR DUES FROM THE PAYPAL WEBSITE TO SALES@WTFDA.ORG**

Fred Nordquist, 147 Travis Hill Road, Moncks Corner, TV and FM STATISTICS SC stats@wtfda.org

Tim McVey, webmaster WTFDA.ORG WEBSITE webmaster@wtfda.org

Chris Cerventez, webmaster WTFDA.INFO WEBSITE [chriscervantez@gmail.com](mailto:chriscervantez@gmail.com)

## WTFDA EMAIL REFLECTORS

Enhance your DXing experience! Entertaining and informational.  
E-skip alerts! Tropo alerts! DX discussion and more!

*For WTFDFA members! Sign Up Today!*

The WTFDA list with **200** users...send an email to [tvfmdx-subscribe@wtfda.info](mailto:tvfmdx-subscribe@wtfda.info)

And for AM DXers there's the AMDX list. To join, send a blank email to [amdx-subscribe@wtfda.info](mailto:amdx-subscribe@wtfda.info)

## Our Official Website

<http://www.wtfda.org>

- News and Links
- VUDs from 70s thru 2000
- Memorabilia

## WTFDA Database

Of U.S. Canadian and Mexican FM Stations. Sortable and searchable.

<http://db.wtfda.org>



Worldwide TV-FM DX Association  
Serving the VHF/UHF DX Enthusiast since 1968

## WTFDA FORUMS

<http://www.wtfda.info>

Where DXers Go To Hang Out



Find us on:  
**facebook®**

**THE WORLDWIDE TV-FM DX ASSOCIATION  
THE VHF- UHF DIGEST  
P.O. Box 501, SOMERSVILLE, CT 06072**

Opinions expressed in this publication are those of the individual contributor and do not necessarily reflect the views of the publisher or board of directors. We reserve the right to edit material to meet publishing standards. Unless previously agreed upon in writing, all material submitted for publication in the VHF-UHF Digest becomes the property of the WTFDA. Reproduction of material from the VHF-UHF Digest without permission of the WTFDA is prohibited. Individuals and other organizations are granted such permission providing proper credits is given to the source.



*Established 1967*



## **FIRST CLASS MAIL**