

VHF-UHF DIGEST

The Official Publication of the Worldwide TV-FM DX Association

JANUARY 2014

The Magazine for TV and FM DXers



KPNY 102.3
Alliance, Nebraska

Photo courtesy of KPNY



Visit Us At www.wtfda.org

Happy New Year! **2014**

THE WORLDWIDE TV-FM DX ASSOCIATION

Serving the UHF-VHF Enthusiast

THE VHF-UHF DIGEST IS THE OFFICIAL PUBLICATION OF THE WORLDWIDE TV-FM DX ASSOCIATION DEDICATED TO THE OBSERVATION AND STUDY OF THE PROPAGATION OF LONG DISTANCE TELEVISION AND FM BROADCASTING SIGNALS AT VHF AND UHF. WTFDA IS GOVERNED BY A BOARD OF DIRECTORS: DOUG SMITH, GREG CONIGLIO, KEITH MCGINNIS AND MIKE BUGAJ.



Editor and publisher: **Mike Bugaj**

Treasurer: **Keith McGinnis** wtfda.org Webmaster: **Tim McVey**

Forum Site Administrator: **Chris Cervantez**

Editorial Staff: **Jeff Kruszka, Keith McGinnis,**

Fred Nordquist, Nick Langan, Doug Smith,

Peter Baskind, Bill Hale and John Zondlo,

Website: **www.wtfda.org**; Forums: **http://forums.wtfda.org**



The Mailbox



P.O. Box 501 Somersville, CT 06072

Mike Bugaj - Enfield, CT mikeb@wtfda.org

JANUARY 2014

Hello and welcome to January! Let us hope that the month of January turns out better for DXers like Jeff Falconer and Bill Hepburn, both of whom got caught in that terrible ice storm before Christmas that ran from Maine to the midwest. Bill reported about 1.1" of ice covering everything and Jeff had about ¾" of ice on his APS-13. As far as we can tell, no equipment got totaled in that event, which was just plain rain in many areas to the south.

We welcome **Stephen Parker** to the WTFDA. Stephen lives in London, ON and for all we know, he could be Robert Ross' neighbor.

During the period from 11/14 through 12/22 we had renewals from **Russel Lay, Bill Nollman, Randall Trapp, Wolfgang Schneiter, Ted Liczewski, Edward MacDonald, Marv Shults, Edward Ritchie, Matt Sittel, Les Prus, Roger Sabella, Chester Jaffee, Tom Bryant and Garth Jensen.** Thanks everyone for staying part of WTFDA!

From **Paul Mitschler** speaking of the October VUD cover "That was a great cover. I would say almost perfect for our hobby. My only complaint was that I just had to get that episode. It was from the "Lucy Show" series done after the divorce and the series "I Love Lucy."

What is **Bob Cooper** doing these days? Well, he writes: "I am nearly completed with copying DXing Horizons issues and they will be posted where already exist CATJ, CSD, SatFACTS and more. Also 99.9% completed is "Who invented CATV?" and it is at

<http://theoldcatvequipmentmuseum.org/220/226/index.html>. The same site address ending in .org will take you to a "Coop" selection within which you will find the aforementioned publications and when ready, DXing Horizons as well. Many (most?) group members will probably find value here."

Gary Hickerson mentions in the November VUD, page 30 that the frequency for KMAG was shown as 99.7 when it really should be 97.9. Oops. Gary Writes "But that's not why I'm writing to you. KMAG offices is just 5 miles from me so I got the idea to copy this page and a few others and take it over and show them. That's what I did. I explained about the club and DX and showed them the logging. I told them that on June 1st, Mr. Gauthier heard them in Canada at 1322 miles away! They seemed to enjoy this information and the fact that they were being heard so far away."

Bob Hawkins makes a correction to the December VUD FM News... "page 12 I can assure you that WSPM 89.1 (Catholic Radio) and WIRE 91.1 (Hot AC as Radio Mom) do not simulcast—nor have they in years if ever. Actually I believe WSPM was recently sold and the ownership between the two stations is no longer the same." I'm glad Bob caught that and I'm really glad to know that people read the columns!

Chris Dunne reports from Florida: "What I thought was a Cuban on 107.9 in the lower Keys on my car radio was actually Radio Marti. I thought to myself, what about WMFM in Key West? Well, turns out that WMFM & Marti must have some kind of LMA deal or other, similar to what WPIK 102.5 had a few years back. So, beware, if you catch SS on 107.9 come Es season! When Marti was on 94.7, they ran only from 7 to 9:30 pm nightly. This was out of that time frame. BTW, no idea how much power WMFM is running; can't be the 100 kW they're allowed. By Mile Marker 25, West Palm Beach was coming in to battle it." And that's all for this time. We'll see you next month! -Mike





TV News

Douglas E. Smith
 1389 Old Clarksville Pike
 Pleasant View, TN
 37146-8098
w9wi@w9wi.com
<http://www.w9wi.com>

January 2014

Abbreviations:

AF	Applied For (a new station)	NW	New station on the air
Aux	Auxiliary (backup) transmitter	PA	Proposed Amendment
CC	Callsign change	PC	Power (and/or tower height) change on the air
CL	City-of-license change	PG	Power change granted
CX	Canceled	PR	Power change requested
DC	Converted to DTV	RA	Returns to the air
DCC	Digital Companion Channel	QC	Channel (frequency) change on the air
NS DCC	Granted flash-cut to DTV	QG	Channel change granted
DE	License/permit deleted	QR	Channel change requested
DR	Requests flash-cut to DTV	RE	Reinstated (previously-dismissed app.)
FC	Programming (format) change	ROA	Request of Applicant
FTP	Failure to Prosecute	SI	Off the air (silent)
GA	Granted amendment (to table of channel allotments)	STA	Special Temporary Authority
LC	License to Cover	XC	Transmitter site changed
MX	Mutually Exclusive	XG	Transmitter site change granted
NDA	Non-directional antenna	XR	Transmitter site change requested
NS	Permit granted for new station	lpdtv	Low Power Digital TV
DG	Granted conversion to DTV	DRT	Digital Replacement Translator

News:

(full-power digital stations in **bold face**; LPTV and translators in regular type; full-power analog stations in *bold italics*; low-power analog stations in regular italics)



USA



Alabama

Montgomery 17 W17DX XR 32-20-06/ 86-17-16



Alaska

Ketchikan 9 K09YQ NW 300w, 55-22-14/ 131-43-02 (Wolf Point Bcstg.)



Arizona

Phoenix 18 K25DM DR from 25, 3kw, 33-19-58/ 112-03-59
 Phoenix 20 KPAZ-TV PC>1000kw
 Prescott 20 K50LV QR from 50, 1.2kw, 34-29-25/ 112-31-57



Arkansas

Hot Springs 14, KQPS-LD, PR<4kw; PG; NW
 34, K34MO,
 41 K41NH



California

Bakersfield 27 KEBK-LP DC from 47, 15kw
 Bishop 20 KVME-TV NS 350w/ -230m, 37-22-32/ 118-23-37 (aux)
Los Angeles 3 KVTU-LP PR<125w, 34-10-55/ 118-12-13
 Moreno Valley 40 KRMV-LP DR 1.5kw, 33-57-42/ 117-16-47; CL from Walnut
 Palm Springs 26 KCWQ-LD PG>6.5kw
 Santa Rosa 2 KFTY-LD CC from K02QO



Colorado

Grand Junction 27 KGJT-LP DC 1.94kw
 Thomasville 5, K05JA, CX
 14 K14LQ
 Woody Creek 39 K39HE CX



Florida

Beverly Hills 33 WGCT-LD QR from 32, 100w, 28-32-09 /82-30-09; CL from Crystal River
 Panama City 2 WPAF-LP CX
 Tallahassee 31 WDDM-LD PR<3kw; NW



Georgia

Albany 23, W23DU, NW 3kw, 31-36-13/ 84-38 W38EM 08-53
 Athens 12 W12DO NW 720w, 33-59-18/ 82-53-39 (DTV Innovators)
 Athens 26 W26EM NW 4.33kw, 33-59-18/ 82-53-39 (DTV Innovators)
 Athens 38 W38EP NW 14kw, 33-51-27/ 83-05-45 (DTV Innovators)
 Augusta 20, W20CZ, PR 4kw; NW
 35, W35CU,
 46 W46EK
 Gainesville 26 WLVO-LD CC from WEMO-LD



Illinois

East St. Louis 47 WRBU FC; sold to Tri-State Christian TV (WTCT-27)
 Rockford 13 WREX PG>24.4kw CX; remains 18kw
 Rockford 33 WFBN-LP CX
 Rockford 35 WFBN-LD XC 42-15-59/ 89-04-23



Kentucky

Bowling Green 14, W14DG, PR 4kw; NW
 35, WCTZ-39 LDW39CZ
 Hazard 16 WKHA PR<38.2kw/ 385m
 Louisville 28 WDYL-LD CC from WBKI-LP
 Pikeville 24 WKPI-TV PR<44.9kw/ 433m



Louisiana

Crowley 31 KAGN-CD DG 15kw



Michigan

East Lansing 40 WKAR-TV NW 90kw/ 145m (aux)



Minnesota

Fergus Falls 2 K02MM CX
 Worthington 22 K22HJ DC 1.8kw



Missouri

Springfield 15 K15CZ DR 15kw, 37-10-59/ 93-18-12; PG



Montana

Billings 24, K24IQ, NW 1kw, 45-48-26/
 33 K33KP 108-20-24 (CTB)
 Drummond 20, K20KL, CX
 26, K26KA,
 35, K35JT,
 45 K45LA
 Havre 9 K09ZB PR<121w; PG
 Three Forks 31, K31KR, NW 1kw, 45-46-04/
 44, K44JW, 111-34-45 (CTB)
 46, K46KO,
 48 K48LV
 Wyola 21, K21KD, NW 1kw, 47-07-13/
 30, K30KN, 104-28-41 (CTB)
 40, K40KQ,
 42 K42JB



Nevada

Lund 40, K40MA, NW 3.54kw, 39-14-59/
 43, K43NA, 114-59-59
 48 K48MW
 Pahrump 27 KPVT-LD AF 15kw, 35-57-21/
 115-29-42; DCC for analog 30



New Jersey

Atlantic City 49 WWSI PC>860kw/ 279m, 39-44-04/ 74-50-28



New Mexico

Carlsbad 23 K23MV PG<7.9kw, 32-26-17/
 104-16-37; NW (KENW)



New York

Olean 25 WVTT-LD DG 3kw CX; remains analog
 Plattsburgh 14 WPTZ NW 3.98kw/ 853m

Rochester 16 WXXI-TV (aux)
PR>236kw/ 151m



North Carolina

Charlotte 16 WCEE-LP CC from W16CF
Charlotte 28 WGTB-CD PR>10kw
Wilmington 22, W22DQ, PR 3kw/ 4kw/ 4kw/
26, W26DR, 4kw; NW
43, WADA-LD,
49 W49DH



North Dakota

Jamestown 2 K02DD CX



Ohio

Bucyrus 28 WMNO-CA DC from 22, 7.5kw, 40-
37-39/ 83-07-48
Cleveland 6 WLFM-LP DR



Oklahoma

Enid 48 KUOC-LD PR<4kw; PG; NW
Oklahoma City 23 KSBI QR from 51, 1000kw/
330m



Oregon

Grants Pass 22 K22FC XR 42-27-14/ 123-19-
06
Klamath Falls 44 K44DZ PC>12kw
Medford 23 K23EX DC 3.42kw
Roseburg 16 KPIC NW 478w, 43-12-22/
123-21-49; DCC for ch.
19



Pennsylvania

Greensburg 19 WEMW-CD PR>12kw, 40-18-51/
79-34-03; amendment
from 9kw, to change
site, and correct city
from "Greenburg"; PG
Philadelphia 48 WWJT-LD PC>10kw



South Dakota

Brookings 50 K50DG DC 4.5kw
Pierre 14 K14IO DC 1.6kw
Pierre 32 K32FW DR 1.61kw, 44-22-19/

Watertown 32 K32DK 100-24-28
DC 2.28kw, 44-51-56/
97-06-21



Tennessee

Clarksville 30 W30DE NW 10kw, 36-31-39/
87-21-30



Texas

Austin 35 KVAT-LD QR from 17
Corpus Christi 20, K20JT, PR>6kw
29 K29IP
Midland 32 KKSBLD PG>14.99kw, 32-04-
05/ 102-13-51
San Antonio 29 KSAA-LP DR from 28, 15kw



Utah

Manila 30, K30LY, NW 89w (72w on ch.
36, K36LE, 30), 40-57-34/ 109-25-
38, K38MT, 00 (KUTV, KBYU,
39, K39LB, KSTU, KJZZ, KUCW)
40 K40LY
Park City 45 K45AX DR 80w; DG



Virginia

Roanoke 3 WBRA-TV PC>9.8kw/ 614m



Washington

Hermiston 43, K43MG, NW 1kw, 45-58-48/
51 K51KY 119-17-45 (CTB
Spectrum Services)
Moses Lake 22, K22JK, NW 1kw, 47-05-20/
29, K29JB, 119-15-24 (CTB)
42 K42KA
Quincy 32 K32JE NW 500w, 47-05-21/
119-41-03 (CTB)



Wisconsin

Bloomington 22 W22CI PG>1.93kw, 42-54-09/
90-56-47; PC





FM NEWS



BILL HALE

6124 Roaring Springs Drive, N. Richland Hills, TX 76180

FMnews@wtfda.org

JANUARY 2014

INDEX OF ABBREVIATIONS

APP: application
 APP Mod: Change to an already submitted application
 Class: FM license class
 CP: construction permit (authority to broadcast with facilities noted)
 CP Mod: change to an already granted CP
 DA: directional antenna
 FF: French language

\$: Stereo
 XL: Transmitter Location change to
 > : change to [in formats]
 < : an increase to [in technical data]
 > : a decrease to [in technical data]
 []: Calls in brackets signifies assumed or applied-for status

Note: antenna heights are HAAT except where noted

CANADA



— CALL LETTER CHANGES —

	<u>Old Call</u>	<u>New Call</u>
AB		
BC Prince George	107.3 CP	VF2658
BC Quesnel	96.1 VF2073	CFNR-FM1
NF Stephenville	98.5 CP	CIOS-FM

— NEW STATIONS ON THE AIR —

MB Flin Flon	102.9 CFAR-FM	600 W/28 m, 54-46-03/101-51-06; Class A; Mono [is // CFAR-590]
ON Markham	105.9 CFMS-FM	2.5 kW/9 m DA, 43-54-09/79-22-55; Class A; \$ [AAA days / Sri Lankan-Tamil nights]
ON Cobourg	89.7 CFWN-FM	700 W/9 m, 43-58-05/78-10-38; Class A; \$ [Community/Variety]
ON St. Thomas	103.1 CFHK-FM	50 kW/150 m DA, 42-50-47/81-08-51; Class B; \$



— FORMAT and SLOGAN CHANGES —

MB Flin Flon	102.9 CFAR-FM	New station is on // CFAR-590 with AC: <i>AR Radio</i> [Arctic Radio]
MB Winnipeg	100.7 CFJL-FM	> to Soft AC
MB Winnipeg	107.1 CKCL-FM	> Classical (days) / Jazz (nights): <i>Classic FM 107</i>
NS Halifax	95.7 CJNI-FM	> News-Talk (days) / Sports (nights)
ON Sault Ste. Marie	100.5 CHAS-FM	> Hot AC: <i>Kiss 100.5</i>
ON Sudbury	105.3 CJMX-FM	Changes slogan to <i>Kiss 105.3</i>



— TECHNICAL CHANGES —

GRANTS FOR NEW STATIONS

		<u>CP granted for:</u>
BC Barriere	93.1 CHLW-FM	14 W/(-) 144 m, 51-10-54/120-07-28; Class LP; \$;
BC Prince George	107.3 VF2658	50 W-V/83 m DA, 53-54-11/122-42-09; Class VLP; \$; will be // VOAR-1210 St. John's, NL (Non-commercial, Religion; Prince George Seventh Day Adventist Church)
BC Quesnel	96.1 CFNR-FM1	6.5 Watts/23 m, 53-01-42/122-44-51; Class VLP; Mono [Northern Native Broadcasting; station replaces the cancelled VF2073 and will relay CFNR-FM 92.1 Terrace]
BC Williams Lake	92.1 CBYK-FM1	275 W/(-) 216 m, 52-08-31/122-09-28; Class A; Mono [will replace CBRL-860 and continue to relay CBYK 94.1 Kamloops]
ON Orangeville	89.1 CHES-FM1	50 W/29 m, 43-55-22/80-05-58; Class LP; \$ will be // CHES-FM 88.1 Erin



GRANTS TO EXISTING STATIONS

CP granted for:

NS Aylesford	98.7 VF8023	< 25 kW/< 201 m DA, XL to 45-04-22/64-50-11; (to) Class B; moves from 101.1 and will remain non-commercial religious
--------------	-------------	--

NT Yellowknife	98.9	CFYK-FM	< 5.5 kW (adds V)/< 50 m, 62-26-50/114-21-37; Class A; Mono
ON Manitowadge	89.7	CBEB-FM	> 4.78 kW (adds V)/< 174 m, 49-08-21/ 85-49-23; (to) Class B1; Mono
QC Longueuil	98.5	CHMP-FM	< 100 kW/ > 299 m, 45-30-20/73-35-30; Class C1; \$
QC Montréal	92.5	CKBE-FM	< 100 kW/ > 299 m, 45-30-20/73-35-30; Class C1; \$



— TECHNICAL CHANGES —
APPLICATIONS FROM EXISTING/PROPOSED FACILITIES

Applies for:

ON Paris	88.3	CJIQ-FM	(Add) 7.729 kW-V//> 8.22 kW-H /< 249 m DA, 43-15-39/80-26-38; Class B (to) Mono
ON Scarborough	105.9	CJVF-FM	Applies to temporarily move to 102.7 with 6.5 watts immediately while the CRTC makes its formal decision on the their application for its move to that frequency with 1.2 kW at 77 m. This move was necessitated by the launch of CFMS-FM 105.9 in nearby Markham
QC Trois-Rivières	89.9	CIRA-FM2	> 3.2 kW-V/< 54 m (to)DA, XL to 46-22-06/72-29-50; Class A; \$



— APPLICATIONS FOR NEW FACILITIES —

Applies for:

AB Spruce Grove	88.1	APP	6 kW/152 m, 53-38-45/114-00-14; Class B1; \$
ON French River	102.7	CKUC-FM	42 W-V/66 m, 46-06-30/80-31-48; Class LP; \$; would be variety
NS Hubbards	88.7	CKVE-FM	1.08 kW/150 m, 44-31-31/64-05-11; Class A; \$; would be a 'Community station'
ON Orangeville	101.5	APP	625 W/55 m, 43-56-59/80-07-37; Class A; \$; would be AC/Oldies
ON Welland	89.1	NEW	3.1 kW/131 m DA, 43-00-27/79-10-40; Class A; \$; would be Country

— CP EXTENSIONS GRANTED —

AB Manning	93.3	CKYL-FM6	Has now until October 17, 2014 to get this new 880 watt relay for CKYL-610 Peace River on the air
BC Lake Cowichan	98.7	CICV-FM	Has now until August 9, 2015 to move this station to 97.5 and increase power to 50 watts
MB Virden	103.3	CJVM-FM	Has now until October 14, 2014 to get this new 3.44 kW watt Country-Hot AC station on the air
NB Neguac	102.9	CKMA-FM1	Has now until August 6, 2014 to get this 250 Watt relay for CKMA 93.7 Miramichi on the air
SK Leask	93.7	CHEC-FM	Has now until February 14, 2015 to get this Aboriginal station on the air



— OTHERNEWS —

AB Spruce Grove	88.1	-----	Golden West has withdrawn its application for a new station
NS Spryfield	97.5	CIRP-FM	Application for a power increase has been denied by the CRTC
ON Toronto	88.1	CIND-FM	Is now on the air with 4 kW/281 m, 43-38-56/79-22-54; Class B; \$

NEWS ITEM: After studying the possibility of allowing a new commercial station on the air in Saskatoon, it was determined that the market is not economically sound enough to support such an operation. The CRTC then issued a freeze on applications for new commercial stations in Saskatoon for at least two years.

— UNITED STATES AND TERRITORIES —



— CALL LETTER CHANGES —

FULL POWER and LPFM STATIONS

	<u>Old Call</u>	<u>New Call</u>		<u>Old Call</u>	<u>New Call</u>
AL Gardendale	97.3	WZNN	LA Donaldsonville	104.9	KYPY
AZ Ajo	102.9	CP	MI Benton Harbor	89.9	WAYO
AZ McNary	97.7	CP	MI Grand Rapids	89.9	WAYG
AR Bismarck	93.5	KHRK	MI Kalamazoo	88.3	WAYK
AR Malvern	101.5	KIXV	MS Calhoun City	102.3	CP
CA Hamilton City	101.7	KCKS	MT Lewistown	107.9	CP
CA Helendale	91.7	CP	MT Pablo	99.7	KKMT
CA Newman	90.7	KCUD	MT Ronan	92.3	KQRK
GA Augusta	102.3	WZNY	NM Silver City	91.3	CP
GA Cochran	107.5	WRWR-FM	NY Mexico	103.9	WVOA
ID Boise	99.1	KINF-FM1	NC Bolivia	106.3	WLTT
ID Boise	100.7	KPDA-FM3	NC Dillsboro	89.7	WNQS
ID Gooding	100.7	KPDA-FM	OK Mooreland	106.1	KLSI
ID Mountain Home	100.7	KINF-FM	OK Ringwood	104.9	CP
IL Freeport	106.9	CP	OK Savanna	102.9	CP
IN Bloomfield	101.1	CP	OR Canyonville	92.3	KMKR
then . . .		WDCK	PR Santa Isabel	98.1	CP
IN Goshen	97.7	WSSM	TX Del Rio	89.3	CP
IN Oolitic	88.9	WMYJ-FM	TX Greenwood	89.1	KSHJ-FM
LA Anacoco	103.1	CP	WY Byron	92.1	CP

TRANSLATOR and BOOSTER STATIONS

			<u>Old Call</u>	<u>New Call</u>				<u>Old Call</u>	<u>New Call</u>
AL	Birmingham	105.9	CP	W290CN	GA	Brunswick	106.5	CP	W293CH
AL	Dothan	96.1	CP	W241CB	GA	Columbus	101.7	CP	W269CT
AL	Livingston	99.9	W262BQ	W260CE	GA	Cumming	97.5	CP	W248BV
AL	Montgomery	92.7	CP	W224CR	GA	Cuthbert	99.7	W207CJ	W259CA
AL	Montgomery	93.7	CP	W229BT	GA	Dallas	99.3	CP	W257DF
AL	Mount Olive	107.3	CP	W297BJ	GA	Damascus	99.7	CP	W259CD
AL	Tuscaloosa	92.1	CP	W221DB	GA	Macon	96.9	CP	W245CG
AL	Tuscaloosa	92.5	CP	W223BZ	GA	Macon	103.9	CP	W280EO
AK	Delta Junction	93.9	K231BU	K230BH	GA	Palmyer	99.9	CP	W260CN
AZ	Chilean Mill	94.1	CP	K231CF	GA	Rome	98.7	CP	W254CF
AZ	Crown Castle	92.9	CP	K225BV	GA	Rome	99.5	CP	W258CH
AZ	Groom Creek	91.3	K258AL	K217FX	GA	Sofkee	103.3	CP	W277CL
AZ	Hackberry	92.9	CP	K225BU	HI	Kihei	95.5	CP	K238BR
AZ	Havasu Heights	104.9	CP	K285GQ	HI	Kihei	96.1	CP	K241BZ
AZ	Kingman	95.7	CP	K239CA	HI	Moloka'a	101.7	CP	K269GD
AZ	Lake Havasu City	107.5	CP	K298BS	HI	Princeville	100.9	CP	K265ET
AZ	Lake Havasu City	107.9	CP	K300CQ	ID	Blackfoot	99.9	CP	K260CD
AZ	Mohave Valley	99.7	CP	K259CK	ID	Boise	99.1	KINF-FM1	KPDA-FM1
AZ	Nothing	98.7	CP	K254CB	ID	Boise	100.7	KPDA-FM3	KINF-FM3
AZ	Parker	93.5	CP	K228FF	ID	Couer d'Alene	99.1	CP	K256CE
AZ	Parker	103.7	CP	K279CC	ID	Fremont County	106.7	CP	K294CG
AZ	Peach Springs	104.7	CP	K284CB	ID	Idaho Falls	93.9	CP	K230BL
AZ	Phoenix	101.9	CP	K270BZ	ID	Jerome County	95.1	CP	K236BS
AR	Harrison	99.1	CP	K256CF	ID	Montpelier	92.7	K222CC	K224EJ
AR	Jonesboro	98.5	CP	K253BQ	ID	Moscow	104.7	CP	K284BW
AR	Van Buren	101.1	CP	K266BS	ID	Pocatello	100.3	CP	K262CH
CA	Angels Camp	99.3	CP	K257FN	ID	Pocatello	105.9	CP	K290CE
CA	Auburn	98.9	CP	K255CN	IL	Bloomington	92.5	CP	W223CA
CA	Beaumont	106.5	CP	K293BZ	IL	Centralia	100.9	CP	W265CW
CA	Carmel Valley	93.5	CP	K228FD	IL	Charleston	93.3	CP	W227CR
CA	Corning	92.1	CP	K221GA	IL	Decatur	95.5	CP	W238CH
CA	Grover City	98.5	CP	K253BR	IL	Decatur	96.5	CP	W243DF
CA	Guadalupe	98.7	CP	K254CA	IL	Decatur	105.5	CP	W288CY
CA	Lake Los Angeles	101.5	CP	K268CO	IL	Lincoln	97.1	CP	W246CO
CA	Lancaster	97.3	CP	K247BU	IL	Mount Vernon	102.9	CP	W275CB
CA	Laytonville	102.7	CP	K274CK	IL	Normal	92.1	CP	W221CY
CA	Morro Bay	94.5	CP	K233CQ	IL	Pekin	99.1	CP	W256CH
CA	Palm Desert	107.7	CP	K299BI	IL	Peoria	99.5	CP	W258CJ
CA	Palmdale	96.5	CP	K243BW	IL	Quincy	93.7	CP	W229BU
CA	Patterson	102.9	CP	K275CE	IL	Springfield	104.9	CP	W285EX
CA	San Bernardino	106.3	CP	K292GN	IL	Stonington	107.1	CP	W296CT
CA	Soledad	92.1	CP	K221FZ	IL	Waukegan	92.1	CP	W221DD
CA	Tassajara	93.7	CP	K229CN	IL	Wilmington	96.9	CP	W245CE
CA	Ventura	94.3	CP	K232EW	IN	Frankfort	97.5	CP	W248BX
CA	Walltown	100.1	CP	K261EF	IN	Frankfort	98.3	CP	W252CX
CA	Watsonville	95.1	CP	K236BX	IN	Frankfort	102.1	CP	W271BX
CO	Black Hawk	103.9	CP	K280FZ	IN	Frankfort	106.1	CP	W291CS
CO	Divide	106.7	CP	K294CH	IN	Indianapolis	101.3	CP	W267BR
CO	Fort Collins	97.5	CP	K248CH	IN	Logansport	96.7	CP	W244DF
CO	Golden	101.5	CP	K268CK	IN	Seymour	101.1	CP	W266CH
CO	Grand Junction	102.9	CP	K275CC	IA	Amana	90.1	K209BQ	K211FX
CO	Hilltop	107.9	CP	K300CP	IA	Burlington	104.9	CP	K285GR
CO	Monument	93.9	CP	K284CA	IA	Council Bluffs	102.3	CP	K272FE
CO	Palisade	96.9	CP	K245BU	IA	Davenport	97.5	CP	K248CE
CO	Skinner	99.3	CP	K257FO	IA	Des Moines	106.9	CP	K295CB
CO	Westcreek	104.7	CP	K284CA	IA	Dubuque	103.9	CP	K280FY
CT	Danbury	96.1	CP	W241CA	IA	Keokuk	97.5	CP	K248CF
CT	Milbrook	102.1	CP	W271BW	KY	Atwood	99.9	CP	W260CM
DE	Lewes	96.7	W245BH	W244DC	KY	Bowling Green	97.7	CP	W249CS
DE	Roxanna	94.3	CP	W232CL	KY	Bowling Green	98.3	CP	W252CV
FL	Auburndale	107.5	CP	W298BO	KY	Bowling Green	98.9	CP	W255CO
FL	Bradenton	103.1	CP	W276CR	KY	Madisonville	103.3	CP	W277CK
FL	Brandon	106.5	CP	W293CG	KY	Owensboro	98.7	CP	W254CC
FL	Clearwater	106.5	CP	W293CK	KY	Philpot	98.3	CP	W252CW
FL	Daytona Beach	94.1	CP	W231CN	KY	Victoria	92.9	CP	W225BX
FL	Eatonville	103.7	CP	W279CO	KY	Whitesville	97.9	CP	W250BW
FL	Fort Pierce	97.5	CP	W248BW	KY	Winchester	96.5	CP	W243DG
FL	Immokalee	99.7	CP	W259CC	LA	Hammond	94.5	CP	K233CP
FL	Jupiter	96.3	CP	W242CI	LA	Hammond	95.1	CP	K236BU
FL	Killearn	106.7	CP	W294BT	LA	Tallulah	93.1	CP	K226BZ
FL	Lakeland	107.1	CP	W296CS	ME	Brunswick	94.9	CP	W235CD
FL	Melbourne	101.5	CP	W268CB	ME	Lewiston	105.5	CP	W288CW
FL	Melbourne	101.9	CP	W270CK	MD	Warwick	100.5	CP	W263CQ
FL	Monticello	100.3	W259BK	W262CC	MA	Pittsfield	97.3	CP	W247CB
FL	New Smyrna Beach	102.9	CP	W275BZ	MA	Westchester	97.7	CP	W249CU
FL	Palm Bay	101.7	CP	W269CU	MI	Benton Harbor	106.1	CP	W291CR
FL	Port St Lucie	97.1	CP	W246CP	MI	Deerfield	95.9	CP	W240CT
FL	Sarasota	105.1	CP	W286CQ	MI	Galesburg	101.7	CP	W269CS
FL	Stuart	99.3	CP	W257DE	MI	Grand Haven	102.5	CP	W273CI
FL	Suncoast Estates	96.5	CP	W243BM	MI	Iron Mountain	105.9	CP	W290CO
FL	Venice	104.7	CP	W284CJ	MI	New Baltimore	93.7	CP	W229BV
FL	West Palm Beach	99.9	CP	W260CL	MI	Norway	105.3	CP	W287CJ
FL	Winter Garden	92.7	CP	W224CQ	MI	Saginaw	102.9	CP	W275CA
GA	Americus	105.5	W235BO	W288CV	MI	Saginaw	103.3	CP	W277CM

MN	Bayport	105.5	CP	K288GR	OR	Mosier	106.3	CP	K292GO
MN	Duluth	90.9	W203AL	W215CG	OR	Nehalem	91.1	K219KU	K216DM
MN	Detroit Lakes	93.1	CP	K226CA	OR	Pendleton	100.3	CP	K262CJ
MN	Grand Rapids	99.5	CP	W258CG	OR	Salem	97.5	CP	K248CD
MN	Rochester	95.1	CP	K236BT	PA	Altoona	104.5	CP	W283BZ
MN	Roseau	97.3	CP	K247BS	PA	Collegeville	97.1	CP	W246CS
MS	Beech Springs	92.1	CP	W221DE	PA	Erie	102.9	CP	W275BX
MO	Ava	101.9	CP	K270CA	PA	Newberry	97.1	CP	W246CU
MO	Bolivar	102.9	CP	K275CD	PA	Philadelphia	94.9	CP	W235CE
MO	Cabool	103.9	CP	K280GA	PA	Reading	106.5	CP	W293CL
MO	Cape Girardeau	94.7	CP	K234CH	PA	Scranton	100.9	CP	W265CU
MO	Hannibal	93.3	CP	K227CH	PA	Shippensburg	100.5	CP	W263CM
MO	Jackson	105.5	CP	K288GP	PA	South Williamsport	96.7	CP	W244DB
MO	Jackson	107.7	CP	K299BH	PA	Temple	99.7	CP	W259CB
MO	Jefferson City	97.1	CP	K246CA	PA	Waynesboro	99.3	CP	W257DZ
MO	Joplin	100.5	CP	K263BK	SC	Columbia	96.1	W240AX	W241BX
MO	Joplin	101.5	CP	K268CP	SC	Columbia	105.5	CP	W288CX
MO	Mexico	93.5	CP	K228FE	SC	Greenville	105.3	CP	W287CH
MO	Moberly	106.5	CP	K293BX	SC	Orangeburg	92.7	CP	W224CS
MO	Nevada	107.3	CP	K297BM	SC	Orangeburg	98.7	CP	W254CE
MO	Osceola	94.5	CP	K233CN	SD	Milbank	100.3	K208FG	K262CK
MO	West Plains	96.1	CP	K241BY	SD	Rapid City	101.5	CP	K268CN
MT	Bozeman	103.9	CP	K280FX	TN	Clarksville	99.1	CP	W256CI
MT	Butte	107.9	CP	K300CR	TN	Shelbyville	95.1	CP	W236CI
MT	Kalispell	99.7	KKMT-FM1	KQRK-FM1	TX	Abilene	98.5	CP	K253BT
MT	Kalispell	104.7	CP	K284CC	TX	Alice	94.3	CP	K232EX
MT	Kalispell	105.9	CP	K290CF	TX	Alice	95.1	CP	K236BW
MT	Whitefish	93.9	CP	K230BJ	TX	Amarillo, North	92.7	CP	K224EF
MT	Whitehall	97.3	CP	K247BV	TX	Big Spring	101.1	CP	K266BT
NE	Millard	104.9	CP	K285GP	TX	Buna	96.9	CP	K245BT
NE	Nebraska City	105.5	CP	K288GS	TX	Cleburne	95.5	CP	K238BQ
NE	Omaha	94.5	CP	K233CO	TX	College Station	102.7	CP	K274CM
NE	Omaha	94.9	CP	K235CD	TX	Corsicana	107.3	CP	K297BL
NV	Carson City	106.1	CP	K291CB	TX	Del Valle	103.9	CP	K280FW
NV	Carson City	100.5	CP	K263BL	TX	George West	92.7	CP	K224EI
NV	Fernley	100.5	CP	K263BI	TX	Hillsboro	93.3	CP	K227CJ
NV	Hawthorne, etc.	90.7	K213BE	K214FA	TX	Hillsboro	93.7	CP	K229CO
NV	South Lake Tahoe	97.7	CP	K249ES	TX	Huntsville	93.1	CP	K226BY
NH	Hebron	95.9	CP	W240CS	TX	Huntsville	105.9	CP	K290CD
NH	Holderness	96.5	CP	W243DE	TX	Kerrville	91.9	K209EW	K220KA
NJ	Rio Grande	99.5	CP	W258CF	TX	Kerrville	97.5	CP	K248CG
NJ	Salem	97.1	CP	W246CT	TX	Legion	91.9	K209EW	K220KA
NJ	Tremley	96.7	CP	W244DD	TX	Marshall	107.9	CP	K300CO
NM	Alamogordo	97.5	K246BU	K248CB	TX	Plainview	94.9	CP	K235CC
NM	Farmington	88.5	CP	K203EB	TX	Plainview	105.5	CP	K288GQ
NM	Raton	99.7	CP	K259CJ	TX	Port Lavaca	98.3	CP	K252FL
NM	Raton	100.7	CP	K264BS	TX	San Antonio	99.9	CP	K260CC
NM	Silver City	91.3	CP	KRXG	TX	San Marcos	99.9	CP	K260CB
NM	Truth or Consequences	106.5	CP	K293BY	TX	Seguin	95.7	CP	K239BZ
NY	Albion	95.7	W209BF	W239BX	TX	Texarkana	99.7	CP	K259CI
NY	Bath	107.1	CP	W296CR	TX	Three Rivers	92.3	CP	K222CH
NY	Canandaigua	103.3	CP	W277CN	TX	Victoria	92.7	CP	K224EH
NY	Corning	106.7	CP	W294BU	TX	Waco	94.1	CP	K231CG
NY	Dunkirk	100.5	CP	W263CN	TX	Waco	105.7	CP	K289BU
NY	Flanders	94.5	CP	W233BX	UT	Beaver	103.5	K279AO	K278BZ
NY	Gordon Heights	98.1	CP	W251BY	UT	Bountiful	107.1	APP	KEGH-2
NY	Hauppauge	107.1	CP	W296CQ	UT	Cedar City	98.5	CP	K253BU
NY	Richford	101.3	CP	W267BQ	UT	Greenville	99.1	CP	K256CG
NY	Sanborn	95.3	CP	W237EB	UT	Manti	93.9	CP	K230BK
NY	Saranac Lake	97.7	CP	W249CV	UT	Moroni	98.1	CP	K251BJ
NY	Saratoga Springs	93.1	CP	W226BU	UT	Nephi	98.1	CP	K251BV
NC	Boone	96.5	CP	W243DH	UT	Ogden	107.1	APP	KEGH-1
NC	Chapel Hill	92.1	CP	W221DC	UT	Provo	107.1	APP	KEGH-4
NC	Durham	93.1	CP	W226BV	UT	Salt Lake City	107.1	APP	KEGH-3
NC	Hickory	100.5	CP	W263CP	UT	Smithfield	94.1	CP	K231CD
NC	Hickory	100.7	CP	W264CU	UT	Tooele	95.7	CP	K239BX
NC	High Point	92.7	CP	W224CP	VT	Montpelier	98.3	CP	W252CU
NC	Indian Trails	94.7	CP	W234BZ	VA	Berryville	96.1	CP	W241BZ
NC	Lexington	95.9	W216BI	W240CU	VA	Berryville	96.7	CP	W244DE
NC	West Jefferson	93.5	CP	W227CQ	VA	Charlottesville	106.9	W294AJ	W295BR
ND	Bismarck	99.7	CP	K259AF	VA	Christiansburg	97.1	CP	W246CR
OH	Cincinnati	99.5	CP	W258CI	VA	Harrisonburg	102.5	CP	W273CJ
OH	Dayton	97.1	CP	W246CQ	VA	Marion	93.3	CP	W227CQ
OH	Findlay	99.1	CP	W256CJ	VA	Mountain Lake	97.5	CP	W248BY
OH	Findlay	99.5	CP	W258CE	VA	Williamsburg	97.7	CP	W249CT
OH	Ironton	95.3	CP	W237EA	VA	Wise	107.5	CP	W298BP
OH	Ironton	95.7	CP	W239CC	WA	Ariel	96.7	CP	K244EV
OH	Lucas	103.5	CP	W278BS	WA	Auburn	102.1	K229BP	K271BS
OH	Middleport	102.5	CP	W273CK	WA	Centralia	93.3	CP	K227CG
OH	Youngstown	99.5	CP	W258CK	WA	Centralia	98.1	CP	K251BW
OK	Ardmore	93.3	CP	K227CI	WA	East Wenatchee	105.1	CP	K286CA
OK	Durant	94.1	CP	K231CE	WA	Ephrata	101.1	CP	K266AZ
OK	Muskogee	100.7	CP	K264BT	WA	Richland	99.5	CP	K258CN
OK	Oklahoma City	98.5	CP	K253BV	WA	Richland	100.5	CP	K263BJ
OK	Ponca City	105.3	CP	K287BH	WA	Tacoma	100.3	CP	K262CI
OR	Azalea	92.5	K222AF	K223BW	WA	Wenatchee	107.5	CP	K298BR
OR	Bethany	95.1	CP	K236BV	WV	Lewisburg	97.3	CP	W247BZ
OR	Cottage Grove	102.7	CP	K274CL	WV	Wheeling	94.9	CP	W235CC

WI Appleton	97.3	CP	W247BY	WI Peshtigo	97.3	CP	W247BX
WI Beaver Dam	105.5	CP	W288CZ	WI Plymouth	105.1	CP	W286CR
WI Eau Claire	94.7	CP	W234CA	WI Sheboygan	105.3	CP	W287CI
WI Howard	92.1	CP	W221DA	WY Buffalo	90.9	K269DE	K215FL
WI Madison	100.9	CP	W265CV	WY Cheyenne	92.5	CP	K223CJ
WI Milwaukee	104.7	CP	W284CI	WY Jackson	98.9	CP	K255CM
WI Nekoosa	100.9	CP	W265CR				

— FORMAT AND SLOGAN CHANGES —
— Full Power and LP Facilities —

AL Gardendale	97.3	WEZZ-FM	> Soft AC: <i>Easy 97.3</i>	
AL Livingston	96.3	WLYB	Signs on with Rhythmic AC: <i>96.3 LYB</i>	
AK Fairbanks	96.9	KYSC	> Classic Rock: <i>96.9 Fairbanks Classic Rock</i> [Westwood One - Classic Rock]	
AZ Dolan Springs	105.7	KOAS	> Rhythmic Oldies: <i>Old School 105.7</i>	
AZ Eloy	91.1	KVNG	Signs on with Religious Teaching: <i>Grace 91.1 FM</i>	
AZ McNary	100.3	KZMQ	Signs on with Country: <i>The Country Superstation</i>	
AZ Sierra Vista	100.9	KZMK	> CHR	
AR Bismarck	93.5	KIXV	> Country: <i>Kix 93.5</i>	
AR Fayetteville	96.7	KCYT	> Country: <i>The Coyote</i>	
AR Malvern	101.5	KHRK	> Active Rock: <i>101.5 Real Rock Radio</i>	
CA Atwater	91.5	KZCF	Returns to the air with an undetermined format	
CA Borrego Springs	91.3	KKJD	Signs on with Religious Teaching: <i>Quality Christian Radio</i>	
CA Gualala	100.5	KTDE	> Classic Rock: <i>The Tide 100.5</i>	
CA Los Angeles	94.7	KTWV	> Urban AC: <i>The Wave</i>	
CA Marshall	91.5	KXCF	Returns to the air with Talk	
CO Denver	87.7	KXDP-LP	> Regional Mexican: <i>87.7 to La Invasora</i>	
CO Lamar	93.5	KLMR-FM	> Oldies	
CO Pagosa Springs	106.1	KWUF-FM	Changes slogan to <i>Sam 106.1</i>	
FL Ft. Lauderdale	106.7	WRMA	> Tropical: <i>Ei Zol 106.7</i>	
FL Gifford	94.7	WPHR-FM	Changes slogan to <i>Hot Country 94.7</i>	
FL Key West	107.9	WMFM	Changes slogan to <i>Ei Zol 106.7</i>	
FL Tavernier	88.1	WMKJ	> Christian CHR/Rock: <i>Call FM</i>	
FL White Springs	88.7	WJLN	Signs on with an undetermined format	
GA Ashburn	105.7	WFFM	> Country: <i>The Flame 105.7</i>	
GA Athens	90.5	WUOG	> Adult Alternative	
GA Cochran	107.5	WRWR-FM	> Black Gospel: <i>Praise 107.5</i>	
GA Unadilla	99.9	WNNG-FM	> Talk: <i>NewsTalk 99.9</i>	
HI Honolulu	105.9	KPOI-FM	Adds slogan: <i>The Rock You Live On</i>	
ID Gooding	99.1	KINF-FM	> Talk: <i>NewsRadio 99.1</i>	
ID Melba	102.7	KZMG	Returns to the air with Hot AC: <i>My 102.7</i>	
ID Mountain Home	100.7	KPDA-FM	> Regional Mexican: <i>La Poderosa 100.7</i>	
IL Altamont	105.5	WJKG	In response to a query posed last month regarding WJKG's format, <u>Andy Bolin</u> in Centralia, Illinois writes: ". . . is now <i>Jack FM</i> playing 'what they want' with the format moving from 98.9 in Effingham after they (98.9) changed to ESPN Sports. This thing really doesn't get out (at least in my direction). Question is will this have any signal in Effingham after W288CH Neoga IL comes on air?"	
IL Antioch	88.5	WSFI	Signs on with Religion [EWTN]	
IL Chicago	100.3	WILV	> AC	
IL Chicago	101.1	WIQI	> Rhythmic AC	
IL La Salle	99.3	WAJK	> Hot AC: <i>99.3 WAJK</i>	
IL Mount Zion	99.3	WXFM-FM	Changes slogan to <i>80's, 90's & Today</i>	
IL Peoria	106.9	WSWT	> Hot AC	
IL Round Lake Beach	89.1	WOKL	Signs on with Contemporary Christian: <i>K-Love</i>	
IN Bloomfield	101.1	WMYJ-FM	Signs on with Christmas music . . . then ???	
IN Rockville	104.9	WAXI	Adds slogan: <i>True Oldies 104.9 WAXI</i>	
IN Salem	97.9	WSLM-FM	> Classic Hits: <i>97.9 FM Classic Hits</i> [Cumulus - Classic Hits]	
IN South Whitley	101.1	WMYQ	> Adult Contemporary: <i>My Q 101.1</i>	
IA Atlantic	95.7	KSWI	> Classic Hits: <i>KS 95.7</i>	
IA Waverly	89.9	KWAR	> Adult Alternative: <i>The Circuit</i>	
KS Ogden	103.5	KQLA	> Country: <i>Q Country 103.5</i>	
LA Carencro	103.7	KLWB-FM	> Changes network to Westwood One - NBC Sports Network	
LA Leesville	92.7	KBDV	Adds Talk as a secondary format	
LA Maurice	106.3	KYMK-FM	Returns to the air with Adult Alternative: <i>106.3 Radio Lafayette</i>	
MD California	89.7	WXMD	Signs on with Religious Teaching	
MA Edgartown	88.7	WMEX	> Jazz/Adult Standards	
MI Benton Harbor	89.9	WCXB	> Contemporary Christian: <i>Family Friendly 91.3 WCSG</i>	
MI Detroit	93.1	WDRQ	> Country: <i>Nash FM 93.1</i>	
MI Grand Rapids	89.9	WCXG	> Contemporary Christian: <i>Family Friendly 91.3 WCSG</i>	
MI Kalamazoo	88.3	WCXK	> Contemporary Christian: <i>Family Friendly 91.3 WCSG</i>	
MN Hinckley	91.9	WINH	Signs on with News/Talk: Minnesota Public Radio [NPR]	
MO Cuba	107.3	KLPW-FM	> Sports [ESPN Radio]	
MO Scott City	93.9	KGKS	> Classic Hits: <i>93.9 The River</i> [Cumulus - Classic Hits]	
NJ Long Branch	107.1	WWZY	> Modern AC: <i>107.1 FM</i>	
NJ Tuckerton	99.7	WBHX	> Modern AC: <i>107.1 FM</i>	
NM Clovis	102.3	KKYC	> Classic Rock	
NM Silver City	91.3	KRXG	Signs on with News/Talk/Classical	
NM Socorro	92.9	KMXQ	Returns to the air with an undetermined format	
NY Altamont	104.9	WZMR	> Adult Alternative: <i>104.9 The Peak</i>	
NY Johnson City	101.7	WLTB	> Hot AC: <i>Magic 101.7</i>	
NY North Salem	90.1	WJZZ	Signs on with Jazz/Adult Standards	
NY Port Henry	92.1	WVTK	> Adult Contemporary	
NC Belhaven	101.1	WQZL	> Country: <i>The Wolf</i>	

NC	Bolivia	106.3	WLTT	> Country: <i>The Dude</i>
NC	Jacksonville	92.3	WQSL	> Country: <i>The Wolf</i>
NC	Topsail Beach	93.7	WNBT	> Country: <i>The Dude</i>
OK	Snyder	100.3	KJCM	> Classic Hits: Classic Hits 100.3 [Westwood One - Classic Hits/Oldies]
OR	Ione	99.5	KZLY	Signs on with Regional Mexican: <i>La Ley 99.5</i>
OR	Malin	100.7	KLKF	Signs on with Contemporary Christian: <i>K-Love</i>
OR	Sutherlin	100.9	KSKR-FM	Changes slogan to <i>Jelli 101</i>
PA	Bloomsburg	91.1	WBUQ	Returns to the air with Adult Alternative
PA	McConnellsburg	88.7	WWCF	Returns to the air with Adult Alternative
PR	Culebra	98.7	WNVE	> Spanish Contemporary Christian: <i>Nueva Vida</i>
SC	Eastover	107.5	WNKT	Changes network to CBS Sports: <i>107.5 The Game</i>
TN	Camden	95.9	WRJB	> Adult Contemporary: <i>Magic 95.9</i>
TN	New Johnsonville	89.9	WAYW	Returns to the air with Contemporary Christian: <i>Way FM</i>
TN	Oak Ridge	88.7	WWQK	Signs on with Religious Teaching: <i>The Life FM</i>
TN	Selmer	93.9	WSIB	> Adult Contemporary: <i>Mix 93.9</i>
TX	Bovina	96.5	KKNM	> Classic Country: <i>The Ranch</i>
TX	Eagle Pass	92.7	KINL	> Hot AC [Westwood One- Hot AC]
TX	Farwell	98.3	KICA-FM	> Hot AC: <i>Fun 98.3</i>
TX	Tatum	91.5	KHJA	Signs on with Religious Teaching: <i>Encouragement FM</i>
WA	Fall City	98.5	KWJZ-LP	Returns to the air with Variety
WA	Union Gap	104.9	KYXE	> Spanish Religious: <i>La Estacion de Familia</i>
WI	Two Rivers	98.9	WEMP	New station has signed on with Easy Listening/Oldies; station faced a December 16 deadline, so the fact they are on-the-air may be limited until they complete facilities adjustments



— Translators —

IA	Cedar Rapids	107.5	W298BM	Returns to the air // KGYM-1600, after a tower relocation to 42-02-42/91-38-48 with 250 Watts at 140 meters
----	--------------	-------	--------	---

— NEW TRANSLATOR STATION AFFILIATIONS —

			<u>Power (Watts)</u>	<u>Will Relay:</u>
AL	Birmingham	105.9	W290CN 38	WVFJ-FM 93.3 Greenville, Georgia [Cont Christian]
AL	Dothan	96.1	W241CB 80	WIZB 94.3 Abbeville [Contemporary Christian]
AL	Montgomery	92.7	W224CR 10	WAXU 91.1 Troy, which relays
				WAFR 88.3 Tupelo, Mississippi [Religious Teaching]
AL	Montgomery	93.7	W229BT 27	WYFK 89.5 Columbus, Georgia, which relays
				WYFA 107.1 Waynesboro [Religious Teaching]
AL	Mount Olive	107.3	W297BJ 250V DA (165°)	WJRD-1150 Tuscaloosa [Oldies]
AL	Tuscaloosa	92.1	W221DB 250	WJRD-1150 Tuscaloosa [Oldies]
AL	Tuscaloosa	92.5	W223BZ 13	KRLE 89.7 Carbon Hill [Contemporary Christian]
				KLVR 91.9 Middletown, California [Cont Christian]
AZ	Chilean Mill	94.1	K231CF 10	KNLB 91.1 Lake Havasu City [Religious Teaching]
AZ	Hackberry	92.9	K225BU 62	KZUL-FM 104.5 Lake Havasu City [AC]
AZ	Havasu Heights	104.9	K285GQ 99 DA (270°)	KWFH 90.3 Parker [Contemporary Christian]
AZ	Kingman	95.7	K239CA 250V	KZUL-FM 104.5 Lake Havasu City [AC]
AZ	Lake Havasu City	107.5	K298BS 99V DA (135°)	KRCY-FM 96.7 Lake Havasu City [Classic Hits]
AZ	Lake Havasu City	107.9	K300CQ 99V DA (274°)	KNKK 107.1 Needles, California [Hot AC]
AZ	Mohave Valley	99.7	K259CK 82 DA (064°)	KVAL 104.9 Cal-Nev-Ari, Nevada [Hot AC]
AZ	Nothing	98.7	K254CB 250V DA (045 & 265°)	KPPV 106.7 Prescott Valley [Adult Contemporary]
AZ	Parker	93.5	K228FF 15.5V	KRRK 100.7 Desert Hills [Classic Rock]
AZ	Parker	103.7	K279CC 15.5V	KVYL 93.7 Mojave Valley [Adult Standards]
AZ	Peach Springs	104.7	K284CB 15.5	KZUL-FM 104.5 Lake Havasu City [AC]
AZ	Phoenix	101.9	K270BZ 250 DA (090°)	KLVK 89.1 Fountain Hills, which relays
AR	Harrison	99.1	K256CF 34	KCMH 91.5 Mountain Home [Religious Teaching]
AR	Jonesboro	98.5	K253BQ 250	KJBX 106.3 Cash [Adult Contemporary]
AR	Van Buren	101.1	K266BS 250	KKRI 88.1 Pocola, Oklahoma, which relays
				KLRD 90.1 Yucaipa, California [Christian CHR/Rock]
CA	Angels Camp	99.3	K257FN 3	KVMR 89.5 Nevada City, Nevada [Variety]
CA	Auburn	98.9	K255CN 4	KLVB 99.5 Citrus Heights, which relays
				KLVR 91.9 Middletown, California [Cont Christian]
CA	Beaumont	106.5	K293BZ 7 DA (circular w/a null toward 045°)	KWVE-FM 107.9 San Clemente [Religious Teaching]
CA	Carmel Valley	93.5	K228FD 4 DA (circular w/a null toward 235°)	KZBV 91.3 Carmel Valley [Christian CHR/Rock]
CA	Corning	92.1	K221GA 10	KVMR 89.5 Nevada City [Variety]
AZ	Crown Castle	92.9	K225BV 10 DA (160°)	KLVK 89.1 Fountain Hills, which relays
				KLVR 91.9 Middletown, California [Cont Christian]
CA	Grover City	98.5	K253BR 20 DA (290°)	KIHC-890 Arroyo Grande [Religious Teaching]
CA	Guadalupe	98.7	K254CA 10 DA (060°)	KSJV 91.5 Fresno [Spanish Talk/Standards]
CA	Lake Los Angeles	101.5	K268CO 210 DA (070°)	KBIG 104.3 Los Angeles [Hot AC]
CA	Lancaster	97.3	K247BU 55	KXRD 89.5 Victorville [Christian CHR/Rock]
CA	Laytonville	102.7	K274CK 10	KORB 88.7 Hopland [Christian CHR/Rock]
CA	Morro Bay	94.5	K233CQ 20 DA (278°)	KSBQ-1480 Santa Barbara [Spanish Oldies]
CA	Palm Desert	107.7	K299BI 50 DA (130 - 270°)	KLRD 90.1 Yucaipa [Christian CHR/Rock]
CA	Palmdale	96.5	K243BW 55	KGBM 89.7 Randsburg, which relays
				KLRD 90.1 Yucaipa [Christian CHR/Rock]
CA	Patterson	102.9	K275CE 70	KLVN 88.3 Livingston, which relays
				KLVR 91.9 Middletown, California [Cont Christian]
CA	San Bernardino	106.3	K292GN 10 DA (230°)	KJVA-LP San Bernardino [Spanish Religious]
CA	Soledad	92.1	K221FZ 10 DA (105°)	KORB 88.7 Hopland [Christian CHR/Rock]
CA	Tassajara	93.7	K229CN 10V DA (060°)	KMPO 88.7 Modesto [Spanish Talk/Standards]
CA	Ventura	94.3	K232EW 7 DA (circular w/a null from 010-190°)	KPCC 89.3 Pasadena [News/Talk]
CA	Walltown	100.1	K261EF 250 DA (270°)	KEAR-FM 88.1 Sacramento [Religious Teaching]
CA	Watsonville	95.1	K236BX 10 DA (circular w/a null @ 175°)	KSRI 90.7 Santa Cruz, which relays
				KLRD 90.1 Yucaipa [Christian CHR/Rock]

CO Black Hawk	103.9	K280FZ	24 DA (160-320°)	KYGT-LP 102.7 Idaho Springs
CO Divide	106.7	K294CH	60 DA (090°)	KCMN-1530 Colorado Springs [Oldies]
CO Fort Collins	97.5	K248CH	60	KXGR 89.7 Loveland [Religious Teaching]
CO Golden	101.5	K268CK	2 DA (000°)	KLDV 91.1 Morrison, which relays
CO Grand Junction	102.9	K275CC	90	KLVR 91.9 Middletown, California [Cont Christian]
CO Hilltop	107.9	K300CP	5	KAFM 88.1 Grand Junction [Variety]
CO Palisade	96.9	K245BU	250	KXWA 101.0 Centennial [Contemporary Christian]
CO Skippers	99.3	K257FO	10 DA (050°)	KAFM 88.1 Grand Junction [Variety]
CO Westcreek	104.7	K284CA	10 DA (130)	KRWA 90.9 Rye, which relays
CT Danbury	96.1	W241CA	250 DA (circular w/ a null toward 180°)	KXGR 89.7 Loveland [Religious Teaching]
CT Milbrook	102.1	W271BW	45 DA (120°)	KVUU 99.9 Pueblo [Hot AC]
DE Roxanna	94.3	W232CL	80	WEZN-FM 99.9 Bridgeport [Adult Contemporary]
FL Auburndale	107.5	W298BO	38	WKCI-FM 101.3 Camden [CHR]
FL Bradenton	103.1	W276CR	80	WWCJ 89.1 Cape May, New Jersey, which relays
FL Brandon	106.5	W293CG	38 DA (circular w/a null toward 225°)	WWFM 89.1 Trenton, New Jersey [Classical]
FL Clearwater	106.5	W293CK	99 DA (circular w/a null toward 160°)	WPOZ 88.3 Union Park [Contemporary Christian]
FL Daytona Beach	94.1	W231CN	100 DA (circular 100° - 300°)	WYFO 91.9 Lakeland, which relays
FL Eatonville	103.7	W279CO	250 DA (circular w/ a null at 230°)	WYFB 90.5 Gainesville [Religious Teaching]
FL Fort Pierce	97.5	W248BW	250	WYFO 91.9 Lakeland, which relays
FL Immokalee	99.7	W259CC	50	WYFB 90.5 Gainesville [Religious Teaching]
FL Jupiter	96.3	W242CI	80	WYFE 88.9 Tarpon Springs, which relays
FL Killearn	106.7	W294BT	10	WYFB 90.5 Gainesville [Religious Teaching]
FL Lakeland	107.1	W296CS	32 DA (circular w/a null toward 270°)	WHOG-FM 95.7 Ormand-by-the Sea [Classic Rock]
FL Melbourne	101.5	W268CB	10 DA (circular w/a null toward 250°)	WRMQ-1140 Orlando [Black Gospel]
FL Melbourne	101.9	W270CK	38 DA (262°)	WQOL 103.7 Vero Beach [Classic Hits]
FL New Smyrna Beach	102.9	W275BZ	120	WAFZ-1490 Immokalee [Regional Mexican]
FL Palm Bay	101.7	W269CU	1 DA (270 - 060°)	WREH 90.5 Cypress Quarters [Cont Christian]
FL Port St Lucie	97.1	W246CP	20V	WPSL-1590 Port St. Lucie [Talk]
FL Sarasota	105.1	W286CQ	250	WSRZ-FM 107.9 Coral Cove [Oldies]
FL Stuart	99.3	W257DE	80	WEJF 90.3 Palm Bay [Contemporary Christian]
FL Suncoast Estates	96.5	W243BM	250	WRXK 96.1 Bonita Springs [Rock]
FL Venice	104.7	W284CJ	19	WREH 90.5 Cypress Quarters [Cont Christian]
FL West Palm Beach	99.9	W260CL	170 DA (335°)	WJCB 88.5 Clewiston [Black Gospel/Urban Cont]
FL Winter Garden	92.7	W224CQ	27	WYFO 91.9 Lakeland [Religious Teaching]
GA Brunswick	106.5	W293CH	38	WYFS 89.5 Savannah [Religious Teaching]
GA Columbus	101.7	W269CT	250	WAGH 101.3 Smiths [Urban AC]
GA Cumming	97.5	W248BV	4	WNEE 88.1 Patterson [Easy Listening]
GA Dallas	99.3	W257DF	31	WBZY 105.3 Bowdon [Regional Mexican]
GA Damascus	99.7	W259CD	30 DA (360°)	KJWA 89.7 Trinidad, CO, which relays
GA Macon	96.9	W245CG	5	KRWA 90.9 Rye, Colorado, which relays
GA Macon	103.9	W280EO	250	KXGR 89.7 Loveland, Colorado [Religious Teaching]
GA Palmyer	99.9	W260CN	250	WBKG 88.9 Macon, which relays
GA Rome	98.7	W254CF	250	WAFR 88.3 Tupelo, Mississippi [Religious Teaching]
GA Rome	99.5	W258CH	170	WWWD 102.1 Bolingbroke [Contemporary Christian]
GA Sofkee	103.3	W277CL	250	WJYZ-960 Albany [Black Gospel]
HI Kihei	95.5	K238BR	9V DA (270°)	WTSH-FM 107.1 Aragon [Country]
HI Kihei	96.1	K241BZ	250	WQTU 102.3 Rome [Adult Contemporary]
HI Moloa'a	101.7	K269GD	80V (220°)	WIBB-FM 97.9 Fort Valley [Urban Contemporary]
HI Princeville	100.9	K265ET	8	KAOI-FM 95.1 Wailuku [Adult Alternative]
ID Blackfoot	99.9	K260CD	250	KRYL 106.5 Haiku [Country]
ID Couer d'Alene	99.1	K256CE	250	KHPR 88.1 Honolulu [Classical/News/Talk]
ID Fremont County	106.7	K294CG	10	KQNG-570 Eleele [CHR]
ID Idaho Falls	93.9	K230BL	250	KBYI 94.3 Rexburg
ID Jerome County	95.1	K236BS	62	KKZX 98.9 Spokane, Washington [Classic Rock]
ID Moscow	104.7	K284BW	100 DA (140-290°)	KBYR-FM 91.5 Pocatello [Cont Christian]
ID Pocatello	100.3	K262CH	75V DA (175°)	KBZQ 93.7 Pocatello [Country]
ID Pocatello	105.9	K290CE	210 DA (circular w/ a null at 180°)	KBYI 94.3 Rexburg [News/Classical]
IL Bloomington	92.5	W223CA	80	KHTR 104.3 Pullman, Washington [Classic Hits]
IL Centralia	100.9	W265CW	170	KCVI 101.5 Blackfoot [Modern Rock]
IL Centralia	105.5	W288CO	80	KLCE 97.3 Blackfoot [Urban Contemporary]
IL Charleston	93.3	W227CR	80	WSOG 88.1 Spring Valley [Religious Teaching]
IL Decatur	95.5	W238CH	250 DA (90, 175 & 280°)	WOLG 95.9 Carlinsville, which relays
IL Decatur	96.5	W243DF	80	WRYT-1080 Edwardsville [Religious Teaching]
IL Decatur	105.5	W288CY	200 DA (140-310°)	WVYN 90.9 Bluford [Contemporary Christian]
IL Decatur	105.9	W290CL	250	WGMR 91.3 Effingham, which relays
IL Lincoln	97.1	W246CO	55	KHOJ-1460 St. Charles, Missouri [Rel Teaching]
IL Mount Vernon	102.9	W275CB	80	WYDS 93.1 Decatur [CHR]
IL Normal	92.1	W221CY	170	WDCR 88.9 Oreana [Religious Teaching]
				WEJT 105.1 Shelbyville [Adult Hits]
				WZNX 106.7 Sullivan [Rock]
				WLWJ 88.1 Petersburg [Religious Teaching]
				WIHM-FM 88.1 Harrisburg [Religious Teaching]
				WLWJ 88.1 Petersburg [Religious Teaching]

IL	Pekin	99.1	W256CH	19	WLSE 103.3 Canton [Religion]
IL	Peoria	99.5	W258CJ	10	WSOG 88.1 Spring Valley [Religious Teaching]
IL	Quincy	93.7	W229BU	1	KEFL 91.5 Kirksville, Missouri, which relays
IL	Springfield	104.9	W285EX	27	KHOJ-1460 St. Charles, Missouri [Rel Teaching]
IL	Stonington	107.1	W296CT	20	WOLG 95.9 Carlinville, which relays
IL	Waukegan	92.1	W221DD	20	WRYT-1080 Edwardsville [Religious Teaching]
IL	Wilmington	96.9	W245CE	210V DA (200°)	WOLG 95.9 Carlinville [Religious Teaching]
IN	Frankfort	97.5	W248BX	140	WZKL 91.7 Woodstock [Cont Christian]
IN	Frankfort	98.3	W252CX	250	WLMM-LP 103.9 Channahon [Religious Teaching]
IN	Frankfort	102.1	W271BX	250 DA (000 - 180°)	WSHW 99.7 Frankfort [Adult Contemporary]
IN	Frankfort	106.1	W291CS	250	WSHW 99.7 Frankfort [Adult Contemporary]
IN	Indianapolis	101.3	W267BR	27	WSHW 99.7 Frankfort [Adult Contemporary]
IN	Logansport	96.7	W244DF	38	WBRI-1500 Indianapolis [Religious Teaching]
IN	Seymour	101.1	W266CH	28	WHLP 89.9 [Religious Teaching]
IA	Council Bluffs	102.3	K272FE	99	WAUZ 89.1 Greensburg, which
IA	Burlington	104.9	K285GR	50	WYGS 91.1 Hope [Southern Gospel]
IA	Davenport	97.5	K248CE	41	KFFF 93.3 Bennington, Nebraska [Classic Country]
IA	Des Moines	106.9	K295CB	115	KAIP 88.9 Wapello, which relays
IA	Dubuque	103.9	K280FY	19 DA (circular w/a slight null toward 090°)	KLVR 91.9 Middletown, California [Cont Christian]
IA	Keokuk	97.5	K248CF	205	KAIP 88.9 Wapello, which relays
KY	Atwood	99.9	W260CM	70 DA (30 - 175°)	KLVR 91.9 Middletown, California [Cont Christian]
KY	Bowling Green	97.7	W249CS	250	KLOV 89.3 Winchester, Oregon [K-Love]
KY	Bowling Green	98.3	W252CV	250	KIAD 88.5 Dubuque, which relays
KY	Bowling Green	98.9	W255CO	13	WAFR 88.3 Tupelo, Mississippi [Cont Christian]
KY	Madisonville	103.3	W277CK	250	KEFL 91.5 Kirksville, Missouri [Religious Teaching]
KY	Owensboro	98.7	W254CC	250 DA (340 - 140°)	WKCX 89.1 Crittenden, which relays
KY	Philpot	98.3	W252CW	20 DA (210 - 020°)	WMWX 88.9 Miamitown, Ohio [Classic Rock]
KY	Victoria	92.9	W225BX	5	WKYU-FM 88.9 Bowling Green [News/Talk/Classical]
KY	Whitesville	97.9	W250BW	250 DA (090°)	WAYD 88.1 Auburn, which relays
KY	Winchester	96.5	W243DG	10	WAYM 88.1 Spring Hill, Tennessee [Cont Christian]
LA	Hammond	94.5	K233CP	10	WLUV 97.1 Belle Glade, Tennessee, which relays
LA	Hammond	95.1	K236BU	250	WTTT-FM 106.9 Madisonville [Adult Contemporary]
LA	Tallulah	93.1	K226BZ	99	WXCM 97.1 Whitesville [Classic Rock]
ME	Brunswick	94.9	W235CD	1	WBFI 91.5 McDaniels [Cont Christian/Rel Teaching]
ME	Lewiston	105.5	W288CW	250	KJWA 89.7 Trinidad, CO, which relays
MD	Warwick	100.5	W263CQ	55	KRWA 90.9 Rye, Colorado, which relays
MA	Pittsfield	97.3	W247CB	10	KXGR 89.7 Loveland, Colorado [Religious Teaching]
MA	Westchester	97.7	W249CU	100 DA (160°)	WKCM-1160 Hawesville [Classic Country]
MI	Benton Harbor	106.1	W291CR	120	WAXG 88.1 Mount Sterling, which relays
MI	Deerfield	95.9	W240CT	170	WAFR 88.3 Tupelo, Mississippi [Religious Teaching]
MI	Galesburg	101.7	W269CS	120	WAQY 91.7 Gulfport, Mississippi, which relays
MI	Grand Haven	102.5	W273CI	38	WAFR 88.3 Tupelo, Mississippi [Religious Teaching]
MI	Iron Mountain	105.9	W290CO	10	WBSN-FM 89.1 New Orleans [Christian/Rel Teaching]
MI	New Baltimore	93.7	W229BV	250	WATU 89.3 Port Gibson, Louisiana [Cont Christian]
MI	Norway	105.3	W287CJ	250	WWWA 95.3 Winslow [Contemporary Christian]
MI	Saginaw	102.9	W275CA	2	WEZR-1240 Lewiston [Soft AC]
MI	Saginaw	103.3	W277CM	15	WVVB 90.5 Medford Lakes, New Jersey
MN	Bayport	105.5	K288GR	27	WNGN 91.9 Argyle, New York
MN	Detroit Lakes	93.1	K226CA	170	WSRS 96.1 Worcester [Adult Contemporary]
MN	Grand Rapids	99.5	W258CG	19	WUFN 96.7 Albion, which relays
MN	Rochester	95.1	K236BT	99V DA (060°)	KFLT-FM 88.5 Tucson, Arizona [Cont Christian]
MN	Roseau	97.3	K247BS	225	WSAE 106.9 Spring Arbor [Adult Contemporary/Contemporary Christian]
MS	Beech Springs	92.1	W221DE	250	WSAE 106.9 Spring Arbor [AC/Cont Christian]
MO	Ava	101.9	K270CA	140	WMCQ 91.7 Muskegon [Religious Teaching]
MO	Bolivar	102.9	K275CD	170	WMVM 90.7 Goodman, which relays
MO	Cabool	103.9	K280GA	140	WRVM 102.7 Suring [Religious Teaching]
MO	Cape Girardeau	94.7	K234CH	115	WNIC 100.3 Dearborn [Adult Contemporary]
MO	Hannibal	93.3	K227CH	140	WRVM 102.7 Suring, Wisconsin [Religious Teaching]
MO	Jackson	105.5	K288GP	115	WAKL 88.9 Flint [Contemporary Christian]
MO	Jackson	107.7	K299BH	33	WPRJ 101.7 Coleman [Christian CHR/Rock]
MO	Jefferson City	97.1	K246CA	205	KNXR 97.5 Rochester [Easy Listening]
MO	Joplin	100.5	K263BK	170	KKEQ 107.1 Fosston [Contemporary Christian]
MO	Joplin	101.5	K268CP	15	WJRF 89.5 Duluth [Christian CHR/Rock]
MO	Mexico	93.5	K228FE	50	KMFX-FM 102.5 Lake City [Country]
					KNTN 102.7 Thief River Falls [News/Talk]
					WFTA 101.9 Fulton [Adult Contemporary]
					KSCV 90.1 Springfield, which relays
					KSIV-FM 91.5 St. Louis [Religious Teaching]
					KSCV 90.1 Springfield, which relays
					KSIV-FM 91.5 St. Louis [Religious Teaching]
					KHJM 89.1 Dexter [Religious Teaching]
					KSIV-FM 91.5 St. Louis [Religious Teaching]
					KCGR 90.5 Oran, which relays
					KSIV-FM 91.5 St. Louis [Religious Teaching]
					KHJM 89.1 Dexter [Religious Teaching]
					KMCV 89.9 High Point, which relays
					KSIV-FM 91.5 St. Louis [Religious Teaching]
					KSCV 90.1 Springfield, which relays
					KSIV-FM 91.5 St. Louis [Religious Teaching]
					KBJO 88.3 Bronson, Kansas, which relays
					WAFR 88.3 Tupelo, Mississippi [Cont Christian]
					KBKC 90.1 Moberly, which relays
					WRYT-1080 Edwardsville [Religious Teaching]

MO Moberly	106.5	K293BX	250 DA (250 - 040°)	KLTI-1560 Macon [Soft AC]
MO Nevada	107.3	K297BM	250	KYLF 88.9 Adrian, which relays KSIV-FM 91.5 St. Louis [Religious Teaching]
MO Osceola	94.5	K233CN	100V DA (circular w/ a null toward 180°)	KYRV 88.1 Concordia [Southern Gospel, although sources claim KYRV is currently silent]
MO West Plains	96.1	K241BY	205	KSCV 90.1 Springfield, which relays KSIV-FM 91.5 St. Louis [Religious Teaching]
MT Bozeman	103.9	K280FX	250	KBMC 102.1 Bozeman [News/Classical]
MT Butte	107.9	K300CR	10V	KJLF 90.5 Butte
MT Kalispell	104.7	K284CC	70V DA (080 - 200°)	KALS 97.1 Kalispell
MT Kalispell	105.9	K290CF	34	KMBM 90.7 Polson [Religious Teaching]
MT Whitefish	93.9	K230BJ	28 DA (circular w/a null toward 300°)	KFLF 91.3 Somers [Religious Teaching/Christian CHR/Rock]
MT Whitehall	97.3	K247BV	23V	KJLF 90.5 Butte [Religious Teaching]
NE Millard	104.9	K285GP	99	KMLV 88.1 Ralston [Contemporary Christian]
NE Nebraska City	105.5	K288GS	250	KLCV 88.5 Lincoln
NE Omaha	94.5	K233CO	250	KCRO-660 Omaha [Religious Teaching]
NE Omaha	94.9	K235CD	50	KHLW 89.3 Tabor, Iowa [Religious Teaching]
NV Carson City	100.5	K263BL	250 DA (020°)	KNIS 91.3 Carson City [Contemporary Christian]
NV Carson City	106.1	K291CB	10	KOLC 97.3 Carson City [Modern AC]
NV Fernley	100.5	K263BI	6	KAWZ 89.9 Twin Falls, Idaho [Religious Teaching]
NV Laughlin	99.3	K257FM	250V DA (190°)	KZZZ-1490 Bullhead City, Arizona [News/Talk]
NV South Lake Tahoe	97.7	K249ES	10	KWTM 90.9 June Lake, California [Rel Teaching]
NH Hebron	95.9	W240CS	230	WVNH 91.1 Concord [Cont Christian/Rel Teaching]
NH Holderness	96.5	W243DE	250	WEVO 89.1 Concord [News/Talk]
NJ Rio Grande	99.5	W258CF	200	WJPH 89.9 Woodbine [Southern Gospel]
NJ Salem	97.1	W246CT	4.5 DA (223°)	WVBV 90.5 Medford Lakes [Religious Teaching]
NJ Tremley	96.7	W244DD	10	WRDR 89.7 Freehold Township [Religious Teaching]
NM Farmington	88.5	K203EB	16	KAWZ 89.9 Twin Falls, Idaho [Religious Teaching]
NM Raton	99.7	K259CJ	99	KCRT-FM 92.5 Trinidad, Colorado [Classic Rock]
NM Raton	100.7	K264BS	99	KBKZ 96.5 Raton [Country]
NM Truth or Consequences	106.5	K293BY	10	KBWK 88.7 Truth or Consequences [which hasn't signed on, as of yet]
NY Bath	107.1	W296CR	60	WKPQ 105.3 Hornell [Country]
NY Canandaigua	103.3	W277CN	27 DA (110°)	WYLF-850 Penn Yan [Adult Standards]
NY Corning	106.7	W294BU	8	WKPQ 105.3 Hornell [Country]
NY Dunkirk	100.5	W263CN	13	WCOM-FM 89.3 Silver Creek, which relays WCIK 103.1 Bath [Contemporary Christian]
NY Flanders	94.5	W233BX	80V DA (circular w/ a null toward 080°)	WSUF 89.9 Noyack [News/Talk]
NY Gordon Heights	98.1	W251BY	10	WEGO 91.7 Quogue [Talk]
NY Hauppauge	107.1	W296CQ	10	WSUF 89.9 Noyack [News/Talk]
NY Richford	101.3	W267BQ	250 DA (045 and 240°)	WEBO-1300 Owego [News/Talk]
NY Sanborn	95.3	W237EB	79V DA 9(110°)	WZXV 99.7 Palmyra [Religious Teaching]
NY Saranac Lake	97.7	W249CV	10	WNGN 91.9 Argyle [Religious Teaching]
NY Saratoga Springs	93.1	W226BU	80	WYKV 94.5 Ravena, which relays KLVR 91.9 Middletown, California [Cont Christian]
NC Boone	96.5	W243DH		
NC Chapel Hill	92.1	W221DC	200 DA (055°)	WDUR-1490 Durham [Regional Mexican; sources claim WDUR is silent ; can anyone confirm?]
NC Durham	93.1	W226BV	99 DA (135°)	WPLW 102.5 Hillsborough [CHR]
NC Hickory	100.5	W263CP	250 DA (circular w/ a null @ 140°)	WKVS 103.3 Lenoir [Country]
NC Hickory	100.7	W264CU	250 DA (085 & 265°)	WFAE 90.7 Charlotte [News/Talk/NPR]
NC High Point	92.7	W224CP	10	KAWZ 89.9 Twin Falls, Idaho [Religious Teaching]
NC Indian Trails	94.7	W234BZ	10	WTJY 89.5 Asheboro [Southern Gospel]
ND Bismarck	99.7	K259AF	250	KXMR-710 Bismarck [Sports; ESPN]
OH Cincinnati	99.5	W258CI	10	WORI 93.1 Harrison [Christian CHR/Rock]
OH Dayton	97.1	W246CQ	19	WYDA 96.9 Troy, which relays KLVR 91.9 Middletown, California [Cont Christian]
OH Findlay	99.1	W256CJ	2	WBIE 91.5 Delphos [Religious Teaching]
OH Findlay	99.5	W258CE	250	WBCY 89.5 Archbold [Cont Christian/ Rel Teaching]
OH Ironton	95.3	W237EA	250V DA (280 - 110°)	WKEE-FM 100.5 Huntington, West Virginia [CHR]
OH Ironton	95.7	W239CC	250	WLRX 107.1 Ironton [Comedy]
OH Lucas	103.5	W278BS	55	WVMC-FM 90.7 Mansfield [Contemporary Christian]
OH Middleport	102.5	W273CK	13	WPJY 88.7 Blennerhassett, West Virginia [Contemporary Christian]
OH Youngstown	99.5	W258CK	250 DA (340-110° & 1 30-250°)	WWGY 95.1 Grove City, Pennsylvania [Country]
OK Ardmore	93.3	K227CI	99	KQCV-FM 95.1 Shawnee [Religious Teaching]
OK Durant	94.1	K231CE	250	KSEO-750 Durant [Contemporary Christian]
OK Muskogee	100.7	K264BT	80	KQCV-FM 95.1 Shawnee [Religious Teaching]
OK Oklahoma City	98.5	K253BV	50 DA (010 - 070° & 090 - 150°)	KYLV 88.9, which relays KLVR 91.9 Middletown, California [Cont Christian]
OK Ponca City	105.3	K287BH	250	KARF 91.5 Independence, Kansas [Rel Teaching]
OK Tahlequah	96.3	K242CK	250	KTLQ -1350 Tahlequah [Classic Country]
OR Azalea	92.5	K223BW	9	KDOV 91.7 Medford [Religious]
OR Bethany	95.1	K236BV	4 DA (180°)	KKCW 103.3 Beaverton [Adult Contemporary]
OR Cottage Grove	102.7	K274CL	18 DA (330°)	KEUG 105.5 Venata [Adult Hits]
OR Mosier	106.3	K292GO	55	KCGB-FM 105.5 Hood River [Hot AC]
OR Pendleton	100.3	K262CJ	140 DA (100°)	KZIU-FM 101.9 Weston [CHR]
OR Salem	97.5	K248CD	23 DA (090°)	KWAX 91.1 Eugene [Classical]
PA Altoona	104.5	W283BZ	10	WPCL 97.3 Spangler, which relays WAIJ 90.3 Grantsville, Maryland [Southern Gospel/ Contemporary Christian]
PA Collegeville	97.1	W246CS	25	WVBV 90.5 Medford Lakes [Religious Teaching]

PA Erie	102.9	W275BX	10 DA (230°)	WCGF 89.9 Cambridge Springs [Cont Christian]
PA Newberry	97.1	W246CU	99	WVRT 97.7 Mill Hall [CHR]
PA Philadelphia	94.9	W235CE	9 DA (070 - 190°)	WVBV 90.5 Medford Lakes [Religious Teaching]
PA Reading	106.5	W293CL	6	WVBV 90.5 Medford Lakes [Religious Teaching]
PA Scranton	100.9	W265CU	25 DA (circular w/ a null at 340°)	WBYH 89.1 Hawley [Contemporary Christian]
PA Shippensburg	100.5	W263CM	10 DA (circular w/ a null toward 130°)	WZXQ 88.3 Chambersburg, which relays WBYO 88.9 Sellersville [Contemporary Christian]
PA South Williamsport	96.7	W244DB	10 DA (270°)	WCOG-FM 100.7 Galeton [Contemporary Christian]
PA Temple	99.7	W259CB	13V DA (160°)	WZMV 89.1 Mohrsville, which relays WBYO 88.9 Sellersville [Contemporary Christian]
PA Waynesboro	99.3	W257DZ	10 DA (circular w/ a null at 105°)	WZXQ 100.1 Piketon, Ohio [CHR]
SC Columbia	105.5	W288CX	250	WVOC-FM 100.1 West Columbia [News/Talk]
SC Greenville	105.3	W287CH	27	WLFJ-660 Greenville [Contemporary Christian]
SC Orangeburg	92.7	W224CS	200 DA (310°)	WGFG 105.3 Branchville [Country]
SC Orangeburg	98.7	W254CE	250 DA (310°)	WQKI-FM 102.9 Orangeburg [R&B Oldies]
SD Rapid City	101.5	K268CN	20	KLMP 88.3 Rapid City [Religious Teaching]
TN Clarksville	99.1	W256CI	250 DA (circular w/ a null at 170°)	WCVQ 107.9 Fort Campbell [Contemporary Christian/Religious Teaching]
TN Shelbyville	95.1	W236CI	250 DA (circular w/ a null at 340°)	WBUZ 102.9 La Vergne [Modern Rock]
TX Abilene	98.5	K253BT	140	KAGT 90.5 Abilene [Christian CHR/Rock]
TX Alice	94.3	K232EX	15	KBNJ 91.7 Corpus Christi, which relays KVMV 96.9 Mc Allen [Cont Christian/Rel Teaching]
TX Alice	95.1	K236BW	115	KLIT 93.3 Ranchitos Las Lomas [Spanish Religious]
TX Amarillo, North	92.7	K224EF	250	KXRI 91.9 Amarillo [Christian CHR/Rock]
TX Big Spring	101.1	K266BT	140	KMMZ 101.3 Crane [Regional Mexican]
TX Buna	96.9	K245BT	250	KJAS 107.3 Jasper [Adult Contemporary]
TX Cleburne	95.5	K238BQ	250 DA (055 and 255°)	KYQX 89.5 Weatherford [Soft AC]
TX College Station	102.7	K274CM	99	KNDE 95.1 College Station [CHR]
TX Corsicana	107.3	K297BL	250 DA (110°)	KCBI 90.9 Dallas [Cont Christian/Religious Teaching]
TX Del Valle	103.9	K280FW	9	KVLR 92.5 Sunset Valley, which relays KLVR 91.9 Middletown, California [Cont Christian]
TX George West	92.7	K224EI	250	KJAS 107.3 Jasper [Religious Teaching]
TX Hillsboro	93.3	K227CJ	50	KYDA 101.7 Azle [Christian CHR/Rock]
TX Hillsboro	93.7	K229CO	140	KNON 89.3 Dallas [Variety]
TX Huntsville	93.1	K226BY	250	KMVL-FM 100.5 Madisonville [Classic Country]
TX Huntsville	105.9	K290CD	250	KFAH 99.1 Pineland [Adult Contemporary]
TX Kerrville	97.5	K248CG	35	KZLV 91.3 Lytle [Contemporary Christian]
TX Marshall	107.9	K300CO	250	KLHV 88.5 Cotton Valley, Louisiana, which relays KLVR 91.9 Middletown, California [Cont Christian]
TX Plainview	94.9	K235CC	99	KJNZ 103.5 Hereford
TX Plainview	105.5	K288GQ	99	KRBL 105.7 Idalou [Modern Rock]
TX Port Lavaca	98.3	K252FL	250	KMPI 90.5 Mc Coy [Spanish Religious]
TX San Antonio	99.9	K260CC	169	KZLV 91.3 Lytle [Contemporary Christian]
TX San Marcos	99.9	K260CB	250	KMPI 90.5 Mc Coy [Spanish Religious]
TX Seguin	95.7	K239BZ	250	KMPI 90.5 Mc Coy [Spanish Religious]
TX Texarkana	99.7	K259CI	250	KKLT 89.3 Texarkana, which relays KLVR 91.9 Middletown, California [Cont Christian]
TX Three Rivers	92.3	K222CH	200	KEKO 101.7 Hebronville [Spanish Religious]
TX Victoria	92.7	K224EH	140	KMPI 90.5 Mc Coy [Spanish Religious]
TX Waco	94.1	K231CG	50	KYAR 98.3 Lorena [Christian CHR/Rock]
TX Waco	105.7	K289BU	250	KBBW-1010 Waco [Talk/Religious Teaching]
UT Cedar City	98.5	K253BU	250	KPLD 105.1 Cedar City [Hot AC]
UT Greenville	99.1	K256CG	170	KCHG 88.9 Cedar City [Religious Teaching]
UT Manti	93.9	K230BK	60 DA (circular w/a slight null at 020°)	KUTC 93.7 Mount Pleasant [Hot AC]
UT Moroni	98.1	K251BJ	250	KLGL 94.5 Salina [Classic Hits]
UT Nephi	98.1	K251BV	41	KUTC 93.7 Mount Pleasant [Hot AC]
UT Smithfield	94.1	K231CD	190 DA (340°)	KNKL 88.7 North Ogden [Contemporary Christian]
UT Tooele	95.7	K239BX	10V	KUER-FM 90.1 Salt Lake City [News/Talk/Jazz]
VT Montpelier	98.3	W252CU	250V DA (010°)	WDEV-FM 96.1 Warren [News/Talk/Sports]
VA Berryville	96.1	W241BZ	120	WTRM 91.1 Winchester [Religious Teaching]
VA Berryville	96.7	W244DE	120	WHFW 89.7 Winchester [Religious Teaching]
VA Christiansburg	97.1	W246CR	145 DA (320-150°)	WKNV-890 Fairlawn [Southern Gospel]
VA Harrisonburg	102.5	W273CJ	5 DA (270°)	WTTX-FM Appomattox [Southern Gospel]
VA Marion	93.3	W227CQ	7	WPIR 88.1 Hickory [Southern Gospel/Rel Teaching]
VA Mountain Lake	97.5	W248BY	38V DA (270°)	WMMT 88.7 Whitesburg [Variety]
VA Williamsburg	97.7	W249CT	90	WNOH 105.3 Windsor [CHR]
VA Wise	107.5	W298BP	10 DA (310°)	WTJY 89.5 Asheboro, North Carolina [Southern Gospel]
WA Ariel	96.7	K244EV	2	KPLU-FM 88.5 Tacoma [Jazz/News]
WA Centralia	93.3	K227CG	99V	KANY 93.7 Montesano [Country]
WA Centralia	98.1	K251BW	50V	KANY 93.7 Montesano [Country]
WA East Wenatchee	105.1	K286CA	250	KKRV 104.7 Wenatchee [Country]
WA Ephrata	101.1	K266AZ	60	KPLW 89.9 Wenatchee [Contemporary Christian]
WA Richland	99.5	K258CN	99 DA (300 - 100°)	KRKG Pasco [Classic Rock]
WA Richland	100.5	K263BJ	250	KEYG-FM 98.5 Grand Coulee [Classic Rock]
WA Tacoma	100.3	K262CI	215	KWAO 88.1 Ocean Park [Christian CHR/Rock]
WA Tumwater	95.3	K237FR	125V	KGY-FM 96.9 McCleary [Country]
WA Wenatchee	107.5	K298BR	23	KLUW 88.1 East Wenatchee, which relays KLVR 91.9 Middletown, California [Cont Christian]
WV Lewisburg	97.3	W247BZ	250V DA (090°)	WSLW-1310 White Sulphur Springs [Sports]
WV Wheeling	94.9	W235CC	10	WKJL 88.1 Clarksburg, which relays WAIJ 90.3 Grantsville, Maryland [Southern Gospel/ Contemporary Christian]

WI Appleton	97.3	W247BY	55	WDKV 91.7 Fond du Lac [Contemporary Christian]
WI Beaver Dam	105.5	W288CZ	170	WVCX 98.9 Tomah, which relays
WI Eau Claire	94.7	W234CA	250	WVCY-FM 107.7 Milwaukee [Religious Teaching]
WI Howard	92.1	W221DA	250 DA (circular w/ a null toward 140°)	WQRB 95.1 Bloomer [Country]
WI Madison	100.9	W265CV	250-V DA (110°)	WNFL-1440 Green Bay [Sports]
WI Milwaukee	104.7	W284CI	16 DA (241°)	WIBA-FM 101.5 Sauk City [Classic Rock]
WI Nekoosa	100.9	W265CR	120V	WLVE 105.3 Mukwonago, which relays
WI Peshtigo	97.3	W247BX	250	KLVR 91.9 Middletown, California [Cont Christian]
WI Plymouth	105.1	W286CR	10	WRVM 102.7 Suring [Religious Teaching]
WI Sheboygan	105.3	W287CI	38	WLWR-LP 107.7 Marinette [Variety]
WY Cheyenne	92.5	K223CJ	50	WPF 90.5 Sturgeon Bay [Contemporary Christian]
WY Jackson	98.9	K255CM	16	WPF 90.5 Sturgeon Bay [Contemporary Christian]
				KRND-1630 Fox Farm [Regional Mexican]
				KHOL 89.1 Jackson Hole [Variety]

Note: Unless otherwise specified, the Directional Antenna (DA) number indicates in which the ERP is at its maximum

— APPLICATIONS FOR NEW LPFM STATIONS —

			Power (Watts)/ Antenna Ht (m)	Applicant:
AK Unalakleet	95.9	APP	100-H/0	Bering Light Corp.
AS Tafuna	94.5	APP	100-H/0	Life Inc Ministry
FL Lehigh Acres	107.7	APP	100-H/15	Ministerio Cristiano Principe De Paz Inc.
FL Palatka	100.5	APP	24-H/60	Downtown Palatka, Inc.
IA Waterloo	97.1	APP	100-H/1	Humanity's Hope Foundation, Inc.
LA Husser	99.9	APP	100-H/27	Living Water Baptist Church of Laplace, Inc.
OH Troy	107.1	APP	100-H/(-) 6	Troy Community FM
PR Cabo Rojo	98.1	APP	18.6-H/68	Clubradio PR Community Inc.
PR Guanica	107.9	APP	100-H/24	Onda Cultural Del Sur Inc.
TX Carthage	95.1	APP	100-H/23	First Baptist Church, Carthage, Texas
VA Warrenton	96.7	APP	7.4-H/106	Verdun Adventure Bound, Inc.

— FM and AM SIMULCASTS —

VT Addison	93.7	WIFY	WFAD-1490 Middlebury [Oldies: <i>Cruisin</i> 93.7]
VT Addison	93.7	WRSA	WRSB-1420 St. Albans [Oldies: <i>Cruisin</i> 93.7]

— OTHERNEWS —

AL Adamsville	95.1	-----	Application dismissed for a new LPFM station
AL Livingston	96.3	WLYB	New Class A station signs on with 3.4 kW/100 m at 32-37-33/88-12-03
AL Jasper	100.1	WQJJ-LP	Is silent
AK Anchorage	97.7	-----	Application dismissed for a new LPFM station
AK Anchorage	104.5	-----	Application dismissed for a new LPFM station
AK Anchorage	104.5	-----	Application dismissed for a new translator station
AK Dillingham	96.1	-----	Application dismissed for a new LPFM station
AK Port Alsworth	94.3	K232ES	New translator station signs on
AZ Eloy	91.1	KVNG	New Class C2 station signs on with 740 W/827 m DA at 32-43-07/111/27/00
AZ Golden Valley	97.1	-----	Application dismissed for a new LPFM station
AZ Leupp	106.5	CP	CP granted for a new Class C1 station with 51 kW/98 m DA (circular w/slight null at 140°) at 35-23-42/110-52-52
AZ McNary	97.7	KZMQ	New station granted with 7 kw/248 m, 34-12-22/109-56-32
AZ Nogales	107.1	-----	Application dismissed for a new LPFM station
AZ Tucson	96.7	-----	Application dismissed for a new LPFM station
AR Ozark	105.5	-----	Application dismissed for a new LPFM station
AR Heber Springs	101.1	-----	FCC has added Channel 270C3 here
AR Lake Village	103.5	CP	CP granted for new Class C3 station with 20 kW/72 m at 33-20-07/91-07-33
CA Big Pine	90.3	KWBP	Is silent
CA Cedarville	88.9	KVYA	Application dismissed for a frequency change to 91.5 as they remain silent
CA Chula Vista	107.1	-----	Application dismissed for a new LPFM station
CA Coalinga	97.3	KQNO	License cancelled; call deleted
CA Concow	100.3	KBJK	Changes City-of-License from Quincy
CA Culver City	99.1	-----	Application dismissed for a new LPFM station
CA Encinitas	90.9	-----	Application dismissed for a new LPFM station
CA Fairfax	96.1	-----	Application dismissed for a new LPFM station
CA Fort Bragg	98.5	KSAY	License cancelled; call deleted
CA Geyserville	95.1	-----	Application dismissed for a new LPFM station
CA Goleta	96.3	KVRY-LP	License cancelled; call deleted
CA Grass Valley	103.3	KBAA	Fined \$10,000 for Public Inspection File violations
CA Helendale	91.7	CP	CP granted for new translator with 100 w/244 m, 34-43-16/117-10-44
CA Indio	95.1	-----	Application dismissed for a new LPFM station
CA Indio	97.1	-----	Application dismissed for a new LPFM station
CA Kettleman City	107.7	CP	CP granted for a new Class A station with 6 kW/63 m at 35-59-42/119-58-06
CA La Quinta	98.9	-----	Application dismissed for a new LPFM station
CA La Grange	107.5	KZED-LP	License cancelled; call deleted
CA Lebac	98.1	-----	Application dismissed for a new LPFM station
CA Mettler	98.9	CP	CP granted for a new Class A station with 6 kW/(-) 89 m at 35-00-56/118-56-05
CA Morro Bay, etc	102.3	K272CG	License cancelled; call deleted per licensee's request
CA Northern Apple Valley	98.3	K252CQ	License cancelled; call deleted
CA Oakland	96.9	-----	Application dismissed for a new LPFM station
CA Oroville	107.1	KRBS-LP	Is silent
CA Rancho Mirage	100.1	-----	Application dismissed for a new LPFM station
CA Redding	97.7	-----	Application dismissed for a new LPFM station
CA Rialto	98.3	K252EI	License cancelled; call deleted
CA Riverdale	98.3	KZLA	Changes City-of-License from Huron
CA San Diego	88.1	-----	Application dismissed for a new LPFM station
CA San Francisco	90.9	-----	Application dismissed for a new LPFM station

CA San Jose	92.9	-----	Application dismissed for a new LPFM station
CA San Francisco	102.5	-----	Application dismissed for a new LPFM station
CA Santa Clarita	101.9	KSCA-FM1	New LPFM station is on the air with 90 W-V at 34-19-48/118-35-56
CA Victorville	88.9	K205BH	License cancelled; call deleted
CA Visalia	94.1	KFSC-LP	License cancelled; call deleted
CA Wasco	92.7	CP	CP granted for a new Class A station with 6 kW/42 m at 35-34-35/119-22-32
CO Canyon Valley	92.7	K224CE	License cancelled; call deleted per licensee's request
CO Carbondale	98.5	-----	Application dismissed for a new LPFM station
CO Colorado Springs	103.5	-----	Application dismissed for a new LPFM station
CO Eagle	106.3	KIFT-FM6	License cancelled; call deleted per licensee's request
CO Empire	106.3	KIFT-FM3	License cancelled; call deleted per licensee's request
CO Greeley	89.1	-----	Application dismissed for a new LPFM station
CO Gunnison	88.5	K203BB	License surrendered; call deleted
CO Nunn	98.5	-----	Application dismissed for a new LPFM station
CO Pagosa Springs	106.1	KWUF-FM	Changes frequency from 106.3
CO Steamboat	106.3	KIFT-FM2	License cancelled; call deleted per licensee's request
CT Bridgeport	100.3	-----	Application dismissed for a new LPFM station
CT North Stonington	98.9	-----	Application dismissed for a new LPFM station
CT Somers	97.5	-----	Application dismissed for a new LPFM station
DE Newark	99.9	-----	Application dismissed for a new LPFM station
FL Belleview	102.7	-----	Application dismissed for a new LPFM station
FL Citra	106.5	-----	Application dismissed for a new LPFM station
FL Gainesville	103.3	-----	Application dismissed for a new LPFM station
FL Greeacres	88.7	-----	Application dismissed for a new LPFM station
FL Homestead	104.7	-----	Application dismissed for a new LPFM station
FL Hudson	102.1	-----	Application dismissed for a new LPFM station
FL Jupiter	93.3	-----	Application dismissed for a new LPFM station
FL Lakeland	94.7	-----	Application dismissed for a new LPFM station
FL Loxahatchee	107.1	-----	Application dismissed for a new LPFM station
FL Miami	97.5	-----	Application dismissed for a new LPFM station
FL Ocala	97.7	-----	Application dismissed for a new LPFM station
FL Ocala	107.9	-----	Application dismissed for a new LPFM station
FL Orlando	93.9	-----	Application dismissed for a new LPFM station
FL Palm Bay	107.9	-----	Application dismissed for a new translator station
FL Port Charlotte	96.5	-----	Application dismissed for a new LPFM station
FL Tampa	100.1	-----	Application dismissed for a new LPFM station
FL Sebring	91.7	WJFH	Changes frequency from 91.5
FL St. Petersburg	91.7	WFTI-FM	License cancelled; call deleted per licensee's request
FL West Palm Beach	104.9	-----	Application dismissed for a new LPFM station
FL White Springs	88.7	WJLN	New Class A station signs on with 650 W/40 m DA at 30-15-01/82-43-48
FL Williston	95.3	-----	Application dismissed for a new LPFM station
GA Douglas	94.9	-----	Application dismissed for a new LPFM station
GA Fayetteville	102.1	-----	Application dismissed for a new LPFM station
GA Pembroke	99.1	WBAW-FM	Is silent
GA Plains	105.9	CP	CP granted for new Class A station with 6 kW/93 m at 32-05-34/84- 16-56
GA Waycross	89.7	-----	Application dismissed for a new LPFM station
HI Haleiwa	104.7	K284AL	Application dismissed to move to 92.7
HI Kapaa	96.5	-----	Application dismissed for a new LPFM station
ID Gooding	99.1	KINF-FM	Changes frequency from 100.7
ID Mountain Home	100.7	KPDA	Changes frequency from 99.1
ID Shelley	107.9	KAOX	Changes frequency and City-of-License from 107.3 at Kemmerer, Wyoming
ID Soda Springs	100.1	KITT	Is silent
ID Sun Valley	94.5	KSKI-FM	Changes frequency from 103.7
IL Antioch	88.5	WSFI	New station signs on with Religion [EWTN]
IL Chicago	107.9	-----	Application dismissed for a new LPFM station
IL Crystal Lake	101.5	-----	Application dismissed for a new LPFM station
IL Effingham	100.5	W263AQ	Changes City-of-License from Mattoon with 250 W/134 m at 39-06-26/88-33-44
IL Hamilton	88.1	WIIM	License cancelled; call deleted
IL Ottawa	101.3	-----	Application dismissed for a new LPFM station
IL West Salem	101.1	CP	CP granted for new Class A station with 3.4 kW/136 m at 38-19-14/88-02-37
IN Bloomfield	101.1	WMYJ-FM	New Class A station signs on with 3.8 kW/128 m at 39-05-23/86-44-25
IN Jeffersonville	98.3	-----	Application dismissed for a new LPFM station
IN South Whitley	101.1	WMYQ	Is silent
IN Terre Haute	90.7	WMHD-FM	Is silent
IN Versailles	89.5	WNOP-FM	License cancelled; call deleted
IA Davenport	88.1	-----	Application dismissed for a new LPFM station
KS Kansas City	100.5	-----	Application dismissed for a new LPFM station
KS Pratt	107.7	-----	Application dismissed for a new LPFM station
KY Hopkinsville	103.9	-----	Application dismissed for a new LPFM station
LA Anacoco	103.1	CP	CP granted for new Class C3 station with 25 kW/100 m at 31-20-06/93-25-58
LA Husser	99.9	CP	CP granted for a new LPFM with 100 W/27 m at 30-40-46/90-20-12
LA Husser	99.9	-----	Application dismissed for a new translator per applicant's request
LA La Place	107.9	-----	Application dismissed for a new LPFM station
LA Slidell	92.7	-----	Application dismissed for a new LPFM station
LA Wilson	90.9	WJVI	Is silent
ME Vinalhaven	91.1	-----	Application dismissed for a new LPFM station
MD Bethesda	96.7	-----	Application dismissed for a new LPFM station
MD Cumberland	94.7	-----	Application dismissed for a new LPFM station
MD Oakland	95.7	-----	Application dismissed for a new LPFM station
MA Dorchester	102.9	APP	Applications reinstated for new LPFM stations (2)
MA Fall River	88.1	-----	Application dismissed for a new LPFM station
MA Lawrence	92.1	-----	Application dismissed for a new LPFM station
MA Norton	96.5	-----	Application dismissed for a new LPFM station
MA Quincy	91.3	-----	Application dismissed for a new LPFM station
MA Somerville	94.9	-----	Application dismissed for a new LPFM station
MA Warren	97.7	-----	Application dismissed for a new LPFM station
MI Detroit	95.9	-----	Application dismissed for a new translator station
MI Detroit	102.3	-----	Application dismissed for a new LPFM station

MI	Flint	96.7	-----	Application dismissed for a new translator station
MI	Highland Park	88.1	WHPR-FM	Application dismissed for a power increase
MI	Redford	88.5	-----	Application dismissed for a new LPFM station
MS	Fayette	101.5	-----	Application dismissed for a new LPFM station
MS	Leakesville	101.1	-----	Applications dismissed for new LPFM stations (2)
MS	Long Beach	100.5	-----	Application dismissed for a new LPFM station
MS	Ocean Springs	103.7	-----	Application dismissed for a new LPFM station
MT	Circle	101.7	-----	Application dismissed for a new LPFM station
MT	Lewistown	107.9		Is silent
MT	Roundup	88.1	KLMB	Changes frequency from 88.3
NE	Alliance	102.3	KPNY	Changes frequency from 102.1
NE	Omaha	99.3	-----	Application dismissed for a new LPFM station
NE	Scottsbluff	101.7	K269DO	Is silent [due to upgrade of KPNY 102.3 Alliance]
NE	Sidney	95.7	K239BE	Is silent [due to upgrade of KPNY 102.3 Alliance]
NV	Amargosa Valley	106.1	KZNV	Is silent
NV	Pioche	107.7	APP	Application dismissed for a new Class C station
NV	Sayville	93.5	-----	Application dismissed for a new LPFM station
NH	Madbury	89.5	-----	Application dismissed for a new LPFM station
NH	Nashua	95.1	-----	Application dismissed for a new translator station
NH	Nashua	95.1	-----	Application dismissed for a new LPFM station
NH	Pelham	98.9	-----	Application dismissed for a new LPFM station
NH	Stratford	98.7	WTTT	License cancelled; call deleted
NJ	Clearbrook Drive	98.9	-----	Application dismissed for a new LPFM station
NJ	Glassboro	98.5	-----	Application dismissed for a new LPFM station
NJ	New Brunswick	103.9	-----	Application dismissed for a new LPFM station
NM	Artesia	107.9	-----	Application dismissed for a new LPFM station
NM	Carlsbad	102.5	-----	Application dismissed for a new LPFM station
NM	Chama	92.7	-----	Application dismissed for a new LPFM station
NM	Clovis	104.1	-----	Application dismissed for a new LPFM station
NM	Cuba	101.7	-----	Application dismissed for a new LPFM station
NM	Deming	107.5	-----	Application dismissed for a new LPFM station
NM	Gallup	107.9	-----	Application dismissed for a new LPFM station
NM	La Mesita Negra	101.7	-----	Application dismissed for a new LPFM station
NM	Las Cruces	106.5	-----	Application dismissed for a new LPFM station
NM	Maljamar	105.1	KWMW	Is silent
NM	Moriarty	101.1	-----	Application dismissed for a new LPFM station
NM	Raton	107.1	-----	Application dismissed for a new LPFM station
NM	Ruidoso	91.3	KKLB	Is silent
NM	Shiprock	107.9	-----	Application dismissed for a new LPFM station
NM	Silver City	91.3	KRXG	New Class C3 station signs on with 620 W-H/432 m at 32-51-48/108-14-28
NM	Socorro	107.9	-----	Application dismissed for a new LPFM station
NM	Taos	96.9	-----	Application dismissed for a new LPFM station
NM	Taos	105.5	CP	CP granted for a new Class A station with 4 kW/(-) 192 m at 36-23-22/ 105-35-09
NM	Tatum	107.1	KTUM	Is silent
NM	Tucumcari	106.5	-----	Application dismissed for a new LPFM station
NY	Amenia	103.7	-----	Application dismissed for a new LPFM station
NY	Athens	93.9	-----	Application dismissed for a new LPFM station
NY	Athens	96.7	-----	Application dismissed for a new LPFM station
NY	Buffalo	88.5	-----	Application dismissed for a new LPFM station
NY	Buffalo	102.1	-----	Application dismissed for a new LPFM station
NY	Cooperstown	101.5	-----	Application dismissed for a new LPFM station
NY	Geneva	89.5	WEOS	Changes frequency from 89.7
NY	New York	102.3	-----	Application dismissed for a new LPFM station
NY	North Salem	90.1	WJZZ	New Class A station signs on with 440 W/(-)13 m DA (140°) at 41-23-03/ 73-34-35
NY	Plattsburgh West	100.7	WPLB	Is silent
NY	Redwood	88.5	-----	Application dismissed for a new LPFM station
NY	Rochester	92.9	W225AR	Changes City-of-License from Webster; raises power to 250 Watts DA (circular pattern with a null toward 250°) at new XR site; and changes primary station from WCIY 88.9 Canadaigua to WHIC-1460 Rochester
NY	Spring Valley	90.5	Pirate	The FCC has fined an individual \$10,000 for willful and repeated violations of operating an unlicensed transmitter on 90.5 MHz
NC	Albemarle	101.5	-----	Application dismissed for a new LPFM station
NC	Asheville	103.3	-----	Application dismissed for a new LPFM station
NC	Dillsboro	89.7	WNCM	License cancelled; call deleted
NC	Pleasant Garden	96.5	-----	Application dismissed for a new LPFM station
NC	Raleigh	90.1	-----	Application dismissed for a new LPFM station
NC	Statesville	102.5	-----	Application dismissed for a new LPFM station
OH	Ashland	94.5	-----	Application dismissed for a new LPFM station
OH	Cleveland	101.7	-----	Application dismissed for a new LPFM station
OH	Dayton	104.3	-----	Application dismissed for a new LPFM station
OH	Ottawa	97.1	-----	Application dismissed for a new LPFM station
OH	Willard	90.9	WSHB	Is silent
OK	Ringwood	104.9	KEUC	New Class A station signs on with 400 W-H/78 m at 36-23-19/98-18-00
OK	Stillwater	106.7	-----	Application dismissed for a new LPFM station
OK	Tahlequah	91.9	-----	Application dismissed for a new LPFM station
OK	Wayne	101.1	CP	CP granted for a new Class A station with 6 kW/100 m DA (circular w/null at 245°) at 34-54-02/97-20-32
OR	Bly	97.3	-----	Application dismissed for a new LPFM station
OR	Chiloquin	93.1	-----	Application dismissed for a new LPFM station (3 apps)
OR	Coquille	105.3	-----	Application dismissed for a new LPFM station
OR	Harrisburg	103.7	KNRQ	Changes City-of-License from Lebanon
OR	Ione	99.5	KZLY	New Class C3 station signs on with 1.8 kW/370 m at 45-29-12/119-25-52
OR	Portland	90.3	-----	Application dismissed for a new LPFM station
OR	Portland	96.7	-----	Application dismissed for a new LPFM station
OR	Portland	103.7	K242AF	Changes frequency from 93.7 (awaiting call assignment to K279xx)
OR	Stayton	94.9	KPIK-LP	Application for power increase at lower antenna height dismissed per

applicant's request				
OR	Sutherlin	100.9	KSKR-FM	Changes frequency from 101.1
PA	McConnellsburg	88.7	WWCF	Is silent
PA	State College	101.1	WFGE	Changes City-of-License from Tyrone [no technical changes]
SC	Anderson	99.5	-----	Application dismissed for a new LPFM station
SC	Charleston	88.9	W205BJ	Applies for a frequency change to 90.3
SC	Clinton	95.7	-----	Application dismissed for a new LPFM station
SC	Clinton	96.7	-----	Application dismissed for a new LPFM station
SC	Greenville	99.5	W249CB	Changes frequency from 97.7 (Awaiting call assignment to W258xx)
SC	Greenwood	97.9	-----	Application dismissed for a new LPFM station
SC	Greenwood	102.3	-----	Application dismissed for a new LPFM station
SC	Greer	104.3	-----	Application dismissed for a new LPFM station
SC	Newberry	105.3	-----	Application dismissed for a new LPFM station
SC	Ora	95.7	-----	Application dismissed for a new LPFM station
SC	Pelzer	99.5	-----	Application dismissed for a new LPFM station
SC	Pickens	95.1	-----	Application dismissed for a new LPFM station
SC	Seneca	106.5	-----	Application dismissed for a new LPFM station
SC	Spartanburg	104.5	-----	Application dismissed for a new LPFM station
SC	Union	104.1	-----	Application dismissed for a new LPFM station
SC	Woodruff	97.3	-----	Application dismissed for a new translator station
TN	Chattanooga	100.1	-----	Application dismissed for a new LPFM station
TN	Dayton	101.1	-----	Application dismissed for a new LPFM station
TN	Strawberry Plains	101.5	-----	Application dismissed for a new LPFM station
TX	Bangs	90.9	-----	Application dismissed for a new translator station
TX	Baytown	94.9	-----	Application dismissed for a new LPFM station
TX	Canadian	91.3	KHHC	Changes frequency from 91.1
TX	Dallas	95.7	-----	Application dismissed for a new LPFM station
TX	Dallas	97.9	-----	Application dismissed for a new LPFM station
TX	Denton	99.9	-----	Application dismissed for a new LPFM station
TX	Edinburg	93.5	-----	Application dismissed for a new LPFM station
TX	El Paso	98.3	-----	Application dismissed for a new LPFM station
TX	Fort Worth	104.1	-----	Application dismissed for a new LPFM station
TX	Freer	89.1	KBTD	Changes frequency from 89.3
TX	Houston	99.7	-----	Application dismissed for a new LPFM station
TX	Killeen	103.7	-----	Application dismissed for a new LPFM station
TX	Laredo	98.5	-----	Application dismissed for a new LPFM station
TX	Montgomery	106.3	-----	Application dismissed for a new LPFM station
TX	Nacogdoches	102.5	-----	Application dismissed for a new LPFM station
TX	Odessa	106.1	-----	Application dismissed for a new LPFM station
TX	Red Oak	95.3	-----	Application dismissed for a new LPFM station
TX	San Antonio	99.9	-----	Application dismissed for a new LPFM station
TX	Sherman	99.9	-----	Application dismissed for a new LPFM station
TX	Snyder	103.9	-----	Application dismissed for a new LPFM station
TX	Wichita Falls	102.9	-----	Application dismissed for a new LPFM station
UT	Paragonah	99.5	CP	CP granted for a new Class A station with 6 kW/(-) 219 m at 37-54-56112-46-07
UT	Roy	95.5	-----	Application dismissed for a new LPFM station
UT	Salt Lake City	92.1	-----	Application dismissed for a new LPFM station
UT	Salt Lake City	95.7	-----	Application dismissed for a new LPFM station
VT	Hartford	104.3	WMVY	Is silent
VA	510 Lansbury Drive*	105.3	-----	Application dismissed for a new LPFM station
VA	Bedford	98.5	-----	Application dismissed for a new LPFM station
VA	Rocky Mount	95.7	-----	Application dismissed for a new LPFM station
VA	Woodbridge	101.9	-----	Application dismissed for a new LPFM station
WA	Bothell	104.9	-----	Application dismissed for a new LPFM station
WA	Ellensburg	98.1	-----	Application dismissed for a new LPFM station
WA	Olympia	103.3	-----	Application dismissed for a new LPFM station
WA	Seattle	89.1	-----	Application dismissed for a new LPFM station
WA	Seattle	98.5	-----	Application dismissed for a new LPFM station
WA	Tacoma	88.9	-----	Application dismissed for a new LPFM station
WA	Tulalip	102.1	-----	Application dismissed for a new LPFM station
WV	Glennville	99.3	-----	Application dismissed for a new LPFM station
WV	Salem	99.9	WVBL-LP	License cancelled; call sign deleted
WV	Waverly	92.5	-----	Application dismissed for a new LPFM station
WI	Green Bay	88.5	-----	Application dismissed for a new translator station
WI	La Crosse	92.9	-----	Application dismissed for a new LPFM station
WI	Ripon	92.1	K221DM	Is silent (station lost its transmitter site and is looking for a new location)
WI	Waupun	103.3	W277AC	Changes City-of-License from Clyman

* Honest! Since this item has been deleted from the FCC's database, we can't investigate whether the applicant really entered '501 Lansbury Drive' as the city. But, after doing some research, we found such an address in Danville, so it's suspected that was the intended City-of-License.

+++++

If anyone can fill in the undetermined formats of the stations listed above (WJLN and KMXQ) in question, please let us know. Thanks! - Editor

NEWS ITEM: Statement of Commissioner AJIT PAI on Revising the Communications Act of 1934
 "I welcome the announcement by Chairman Fred Upton and Subcommittee Chairman Greg Walden that the Energy and Commerce Committee of the U.S. House of Representatives will examine how to modernize the Communications Act to reflect the realities of a 21st century marketplace. Some provisions of the Act have yellowed with age, unchanged, since the Great Depression; even those of more recent vintage predate the transformative impacts of the Internet, competition, and innovation. In a converged industry, it does not make sense to apply different rules to providers and technologies that compete in the same markets. Convergence is now the norm, and consumers, companies, and the Commission would be better off if our laws and regulations recognized as much. As the Committee moves forward with its work, I stand ready and able to assist in whatever way I can."

Uh-oh. What impact this 'modernization' will have on our DX hobby remains to be seen. - Editor

 Thanks to Shawn Axelrod, Andy Bolin, Tim Noonan, Ralph Strobel, Dan Sys, Indiana Radio Watch, Radio Insight,
 Radio World Online and Upper Midwest Broadcasting for news.
 If you hear any changes occur on your FM dial, share the news! 73

THAT WAS THE YEAR THAT WAS

Month	Cpys	Pgs	Printing \$	Postal \$	Other \$	Details
January	75	40	79.76	39.71	196.00 + 56.00	2 years Dreamhost + P.O.B.
February	75	40	79.76	43.90		
March	75	24	47.86	48.40		
April	75	28	55.83	46.00	31.89	Envelopes
May	75	32	68.93	28.40		
June	75	32	68.93	44.90	523.56	FM Database dev.
July	75	40	68.93	47.30	209.42	FM Database dev.
August	75	56	111.30	59.28		
September	75	64	111.30	79.95		
October	70	36	103.97	26.40	31.89	Envelopes
November	70	36	129.35	35.00		
December	70	36	75.21	31.26		

The above chart shows our expenses for the year 2013. Almost all of our expenses centered around the paper VUD, which currently is sent to 51 members (47US/3CAN/1NZ). This number continues to drop slowly as some who previously received the paper VUD fail to renew.

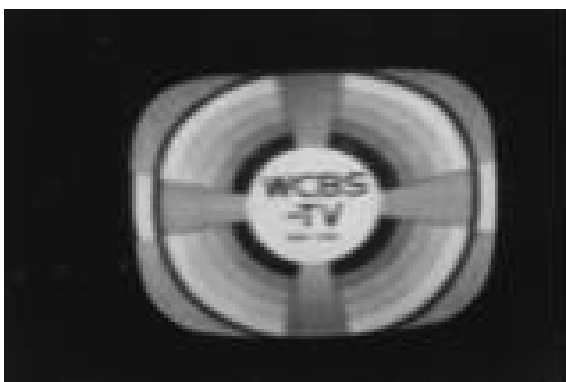
The largest expense in 2013 was the development of the WTFDA FM Database in June and July by the Dwayne, LLC in Honolulu. This was the club's most ambitious project in a long time.

Club membership stands at about 230 at the end of December. That number has been more or less constant through the year.

As of December 27th we have \$1933.10 in our account at Citizens Bank and \$99.95 in our Paypal account for a grand total of \$2033.05 on hand.

Also just before Christmas we moved both the tvfmdx email list and the amdx email list from Dreamhost, where we were experiencing major blocking & delivery problems, over to Google Groups. The FM Database continues to be hosted at Dreamhost while the the WTFDA Website and Forums are hosted at Hostgator.

The WTFDA Board of Directors thanks you for supporting the WTFDA in 2013!





FM FACILITIES

JANUARY 2014

AF	Applied For (a new station)	PC	Power (and/or tower height) change on the air
Aux	Auxiliary (backup) transmitter	PG	Power change granted
CC	Callsign change	PR	Power change requested
CL	City-of-license change	RA	Returns to the air
DE	License/permit deleted	RE	Reinstated (previously-dismissed app.)
FC	Programming (format) change	ROA	Request of Applicant
FTP	Failure to Prosecute	SI	Off the air (silent)
LC	License to Cover	STA	Special Temporary Authority
NS	Permit granted for new station	XC	Transmitter site changed
NW	New station on the air	XG	Transmitter site change granted
PA	Proposed Amendment	XR	Transmitter site change requested

Changes:

City/State/Province	Freq	Callsign	Change
AB Spruce Grove	88.1	NEW	AF 6kw/152m, 53-38-45/114-00-14
AB Spruce Grove	88.1	NEW	AF withdrawn (Golden West)
AL Gardendale	97.3	WEZZ-FM	CC from WZNN
AL Lineville	90.5	WZEV	NW 100w/80m, 33-17-55/85-41-24 (B. Jordan Communications Corp.)
AL New Hope	103.5	WHWT	FC; sold to Educational Media Foundation
AR Bearden	92.7	KBEU	CC for NS
AR Bismarck	93.5	KIXV	CC from KHRK
AR Lake Village	103.5	NEW	NS 20kw/72m, 33-20-07/91-07-33 (Eternity)
AR Malvern	101.5	KHRK	CC from KIXV
AZ Ajo	102.9	KXCD	CC for NS
AZ Eloy	91.1	KVNG	NW 740w/827m, 32-43-07/111-24-00 (CSN)
AZ McNary	97.7	NEW	NS 7kw/248m, 34-12-22/109-56-32 (Cochise Media Licenses)
BC Williams Lake	92.1	CBYK-FM-1	QG from CBRL 860 AM, 275w/-216m,
CA Alameda	92.7	KREV	PG 6kw/100m, 37-42-58/122-23-38
CA Alameda	92.7	KREV	PR 6kw/100m, 37-42-58/122-23-59
CA Alturas	103.3	NEW	NS 60kw/618m, 41-32-29/120-16-35 (Point 5 LLC)
CA Desert Center	101.1	KNBQ	NW 1kw/-110m, 33-43-10/115-23-42 (Sunnylands)
CA Ferndale	90.1	KHSF	PC>300w/538m
CA Helendale	91.7	NEW	NW 100w/244m, 34-43-16/117-10-44 (Centro de Intercesion y Adoracion Internacional)
CA Lancaster	106.3	KGMX	PR>100m
CA Livermore	107.3	KLVS	PR 880w/894m, 37-52-54/121-55-05
CA Mettler	98.9	NEW	NS 6kw/-89m, 35-00-56/118-56-05 (Point 5 LLC)
CA Montecito	92.9	KJEE	PR>3.3kw/277m, 34-29-56/119-49-09
CA Ridgecrest	93.7	KZFX	CC from KKYT
CA San Andreas	90.7	KQBM	PG 100w/475m, 38-01-23/120-35-26
CO Steamboat Springs	105.7	NEW	PR>210w/517m, 40-27-04/106-45-06
CT Fairfield	91.1	WSHU-FM	PC>195m
CT Hartford	93.7	WZMX	NS 700w/262m, 41-46-27/72-48-20 (aux)
CT Hartford	96.5	WTIC-FM	NS 16kw/262m (aux)
CT New Britain	100.5	WRCH	NS 5kw/262m, 41-46-26/72-48-20 (aux)
FL Brighton Reservation	91.9	WTIR	PG>2.8kw/32m
FL Clermont	88.7	WMYZ	PR>31kw/113m
FL New Port Richey	91.5	WCIE	PC>75kw/389m, 28-10-56/82-46-06
FL Sebring	91.7	WJFH	QC from 91.5, 2kw/137m
FL St. Petersburg	91.7	WFTI-FM	CX ROA
GA Augusta	102.3	WEKL	CC from WZNY
GA Augusta	105.7	WSCG	CC from WEKL
GA Milner	105.9	WFAL	CC for NS
GA Pembroke	99.3	WBAW-FM	QR from 101.7, 100kw/246m, 32-07-37/81-48-48;
GA Plains	105.9	NEW	NS 6kw/93m, 32-05-34/84-16-56 (Family Life Broadcasting)
HI Pahala	91.7	KAHU	PC 800w/-323m, 19-12-00/155-28-54
IA Knoxville	92.1	KRLS	PR>25kw/91m; amendment from 94m
ID Gooding	99.1	KINF	CC from KPDA-FM
ID Gooding	99.1	KPDA-FM	QC from 100.7; NW 225w/71m, 43-35-42/116-08-39 (aux)
ID Gooding	99.1	KPDA-FM	NS 225w/71m, 43-35-42/116-08-39 (aux)
ID Grangeville	88.3	KKAG	XR 45-51-48/116-07-22 (suspect correction only)
ID Grangeville	90.9	KKRH	XR 45-51-48/116-07-22 (suspect correction only)
ID Mountain Home	100.7	KINF-FM	NS 225w/71m, 43-35-42/116-08-39 (aux)
ID Mountain Home	100.7	KINF-FM	QC from 99.1; NW 225w/71m,
ID Mountain Home	100.7	KPDA	CC from KINF-FM
ID Pocatello	93.9	KZBQ	QR from 93.7, 100kw/333m, 42-51-46/112-31-03
ID Shelley	107.9	KAOX	QC from 107.3, 100kw/193m, 43-21-06/112-00-29; CL

ID Sugar City	96.5	KAZZ	PG<5kw/160m, 44-10-30/11-25-47
ID Sun Valley	107.5	KYZK	AF 100w/661m, 43-39-42/114-24-07 (aux)
ID Sun Valley	95.3	KECH-FM	AF 100w/661m, 43-39-42/114-24-07 (aux)
IL Antioch	88.5	WSFI	NW 6.1kw/115m, 42-28-49/88-11-42
IL Cuba	98.1	NEW	NS 4.9kw/112m, 40-29-18/90-07-19 (Family Life Broadcasting)
IL East Moline	101.3	KUUL	PR 8.1kw/363m, 41-32-49/90-28-35
IL Freeport	106.9	NEW	PR 4.358kw/119m, 42-19-43/89-46-49
IL Freeport	106.9	WHRD	CC for NS
IL Round Lake Beach	89.1	WOKL	NW 550w/127m, 42-23-35/88-01-05
IL West Salem	101.1	NEW	NS 3.4kw/136m, 38-19-14/88-02-37 (VLN Broadcasting)
IN Bloomfield	101.1	WMYJ-FM	NW 3.8kw/128m, 39-05-23/86-44-25
IN Versailles	89.5	WNOP-FM	CX ROA
KS Baxter Springs	104.3	KCAR-FM	PC 3.5kw/127m, 37-04-10/94-32-49
KS Dodge City	89.1	KSRP	PR>450w/18m, 37-45-18/100-01-05
KY Morgantown	99.1	WWKN	PR>1.1kw/73m, 37-13-45/86-42-42
LA Franklinton	98.9	WUUU	PR>25kw/100m, 30-44-12/90-12-04; amendment from
ME Orono	91.9	WMEB-FM	NW 600w/35m (aux)
MI Benton Harbor	89.9	WCXB	CC from WAYO
MI Clyde Township	90.1	WXPZ	PR>5kw/57m, 42-35-29/85-56-07
MI Detroit	98.7	WDZH	NS 50kw/103m (aux)
MI Grand Rapids	89.9	WCXG	CC from WAYG
MI Highland Park	88.1	WHPR-FM	PR>44w
MI Highland Park	88.1	WHPR-FM	PR>44w dismissed 73.509(b) (prohibited)
MI Kalamazoo	88.3	WCXK	CC from WAYK
MI Marquette	90.1	WNMU-FM	XC 46-21-10/87-51-15
MN Duluth	89.5	WJRF	NS 875w/181m (aux)
MO Steelville	107.3	KLPW-FM	PR>8.9kw/165m, 38-02-24/91-30-53
MS Mound Bayou	101.7	NEW	AF 2kw/75m, 33-52-49/90-42-24; amendment from
MS Vardaman	99.5	NEW	NS 1.8kw/122m, 33-49-10/89-16-00 (Eternity Records Co.)
MT Lewisstown	107.9	KZLM	CC for NS
MT Roundup	88.1	KLMB	QC from 88.3, 3.5kw/142m, 46-15-03/108-29-01
NC Dillsboro	89.7	WNQS	PR<590w/133m, 35-16-06/83-10-00
NC Lexington	94.1	WWLV	FC; sold to Educational Media Foundation
NC Milton	91.9	NEW	CX (Calvary Chapel of Roanoke)
NC Welcome	91.1	WUNW-FM	NW 180w/54m, 35-53-01/80-12-05 (WUNC)
ND Dickinson	92.1	KZRX	NW 780w/90m (aux)
ND Horace	89.5	KFAA	PR>5.6kw/51m, 46-52-20/96-50-56
NE Alliance	102.3	KPNY	QC from 102.1, 412m, 41-50-28/103-04-27
NE Bennington	93.3	KFFF	NS 1.3kw/62m, 41-15-55/95-59-26 (aux)
NE Omaha	99.9	KGOR	NS 115kw/152m, 41-07-09/95-59-58 (aux)
NH Exeter	107.1	WERZ	PR 1.05kw/98m, 43-03-11/70-46-03 (aux)
NH Stratford	98.7	WTTT	CX
NJ Camden	106.9	WKVP	CC from WWIQ
NJ Cherry Hill	89.5	WYPA	CC from WKVP
NJ Trenton	94.5	WPST	req. to drop DA & go non-directional
NM Carlsbad	90.3	KLRS	PR>1.12kw
NM Taos	105.5	NEW	NS 4kw/-192m, 36-23-22/105-35-09 (DMC Broadcasting)
NS Hubbards	88.7	NEW	AF 1.08kw/150m, English community
NS Lower Sackville	88.7	NEW	AF 250w/25m, English community
NV Beatty	97.9	KACE	CC for NS
NV Elko		KZMG	CC from KPHD
NY Roxbury	91.3	WIOX	FC; sold to WSKG
OH Cridersville	99.3	WVLO	PR>730w; amendment from 900w
OH Hamilton	89.5	WHSS	PC>1kw/118m, 39-25-48/84-37-43
OH Lexington	89.5	WFOT	granted 360w H&V, was V-only
OK Guymon	91.3	KGUY	PG>800w
OK Mooreland	106.1	KLSI	CC from KXIJ
OK Mooreland	107.3	KXIJ	QR from 106.1, 30kw/193m, 36-22-31/99-28-31
OK Sapulpa	100.9	KXOJ-FM	PR>15kw/129m, 35-58-02/96-02-14
OK Wayne	101.1	NEW	NS 6kw/100m, 34-54-02/97-20-32 (KXOJ Inc.)
ON Huntsville	88.7	NEW	NS 5.7kw/182m, English community
ON Markham	105.9	CFMS-FM	PG 2.5kw/9m, 43-54-09/79-22-55
ON Orangeville	101.5	NEW	AF 625w/55m, adcon/oldies
ON Paris	88.3	CJIQ-FM	PR>8.22kw/249m
ON Scarborough	102.7	CJVF-FM	QR from 105.9, 6.5w to avoid interference with new CFMS-FM Markham
ON St. Thomas	103.1	CFHK-FM	PG>60kw/180m, 42-56-59/81-15-52 "to avoid interference with new CFMS-FM Markham
ON Welland	89.1	NEW	AF 3.1kw/131m, country
OR Canyonville	92.3	KWRZ	CC from KMKR
OR Malin	100.7	KLKF	NW 420w/675m, 42-05-48/121-37-57 (Educational Media Foundation)
OR Pilot Rock	90.5	KBLU-FM	PG>240w/77m, 45-20-50/118-51-27
OR Sandy	88.7	KZRI	CC from KXPC
OR Welches	90.3	KXPC	CC from KZRI
PA Bellefonte	90.3	WJVM	PG<361m, 41-03-05/77-22-51
PA Pen Argyl	89.5	WWPJ	PG >500w/324m, 40-53-05/75-15-42
PA Pittsburgh	99.7	WSHH	NS 22.5kw/220m (aux)
PA State College	101.1	WFGE	CL changed from Tyrone
QC Longueuil	98.5	CHMP-FM	PG>100kw/299m
QC Montreal	92.5	CKBE-FM	PG>100kw/299m
QC Trois-Rivieres	89.9	CIRA-FM-2	PR<3.2kw/54m, 46-22-06/72-29-50
SC Chesterfield	89.3	WRFE	PG>33kw/88m, 34-45-59/80-15-55
SC Swansea	103.9	WHXT	PR 5.8kw/207m, 33-46-52/80-55-14; CL from Orangeburg

SD Reliance	94.5	KPLO-FM	PC<283m, 43-54-27/99-41-46
SD Rosebud	99.5	NEW	NS 400w/73m, 43-11-32/100-51-50 (DJ Broadcasting)
TN Union City	104.9	KYTN	NS 340w/20m, 36-25-27/89-04-00 (aux)
TN Union City	105.7	WQAK	NS 340w/20m, 36-25-27/89-04-00 (aux)
TX Brenham	94.1	KLTR	PR>50kw/61m, 30-12-23/96-20-13; amendment from 150m
TX Brownwood	89.3	KPBE	CX ROA
TX Corpus Christi	88.7	KKLM	PC>13.8kw
TX Del Rio	88.5	KVFE	PG<76m, 29-21-54/100-51-18
TX Encino	91.1	KZTX	PR>1.3kw/128m, 26-53-27/98-08-25; CL from Falfurrias
TX Farmersville	92.1	KXEZ	PR 1.65kw/193m
TX Galveston	106.5	KOVE-FM	NW 2.4kw/140m, 29-47-26/95-20-43 and
TX Greenwood	89.1	KAGP	CC from KSHJ-FM
TX Hebbroville	91.9	KAZF	CX ROA
TX Llano	106.5	KAJZ	QG from 96.3, 1.94kw/175m, 30-40-36/98-33-59
TX Marathon	91.5	KDKY	FC; sold to Marfa Public Radio
TX Premont	100.7	KMFM	CX ROA
TX Rankin	93.7	KXFS	PR>14kw/78m
TX Rio Grande City	88.3	KXJT	PR 2.65kw/149m, 26-25-41/98-49-38
TX Sanger	89.7	KVRK	AF 4.8kw/522m, 33-32-14/96-49-54 (aux)
TX Sanger	89.7	KVRK	NS 4.8kw/522m, 33-32-14/96-49-54 (aux)
UT Manti	105.1	KAUU	NS 350w/337m, 39-19-23/111-46-23 (aux)
UT Paragonah	99.5	NEW	NS 6kw/-219m, 37-54-56/112-46-07 (Jackman Holding Co.)
UT Randolph	107.9	KUDD	PR 89kw/647m, 40-52-16/110-59-43; CL from Roy
UT Smithfield	103.9	KGNT	PC>6kw/-47m
WA McCleary	96.9	KYYO	CC from KGY-FM
WI Adams	106.1	WCWI	CC from WDKM
WI Two Rivers	98.9	WEMP	NW 6kw/89m, 43-59-03/87-45-55 (Metro North Communications) (using WLKN-98.1's facilities)
WI Waupaca	91.5	WAUP	CX ROA
WY Daniel	104.3	KFZE	CC from KYPT
YT Yellowknife	98.9	CFYK-FM	PG>5.5kw/50m

CUBA MANUFACTURES ITS OWN 32 INCH INTEGRATED DIGITAL TELEVISIONS

November 27, 2013

Havana, Cuba (CAN) – A Cuban 32-inch screen digitally integrated television set will be shown on Wednesday at the twelfth edition of the Technological Week Event.

The new television set is produced by the Electronic Industry Enterprise, opened in a close relationship with its Chinese developers.

The set is undergoing tests for its final registration in the industrial output record. The price of this set is very competitive and its high quality guarantees its successful entry in the market. The new equipment introduces several innovations, such as the reproduction of music, videos and photos, besides its normal reception of TV signals.

The Technological Week event is focusing on the application of electronics to educational processes and to the sustainability of telecommunications in Cuba.

THE WTFDA EMAIL LISTS HAVE MOVED!

The email lists formerly known as tvfmdx and amdx have been moved to Google Groups. The tvfmdx list is now known as WTFDA and the am list is now known as MWDX.

To join the new FM/TV list, send an email to WTFDA+subscribe@googlegroups.com.

To join the new MWDX list, send an email to mwdx@googlegroups.com.

Those who were on the old lists have been moved to the new lists and there is no need for those users to subscribe again. Those members with Google email addresses or Google accounts can also read the lists and post directly from the list home page on Google.

Mike Bugaj and Russ Edmunds are your admins on the new lists and are available to help in any way.



PHOTO NEWS

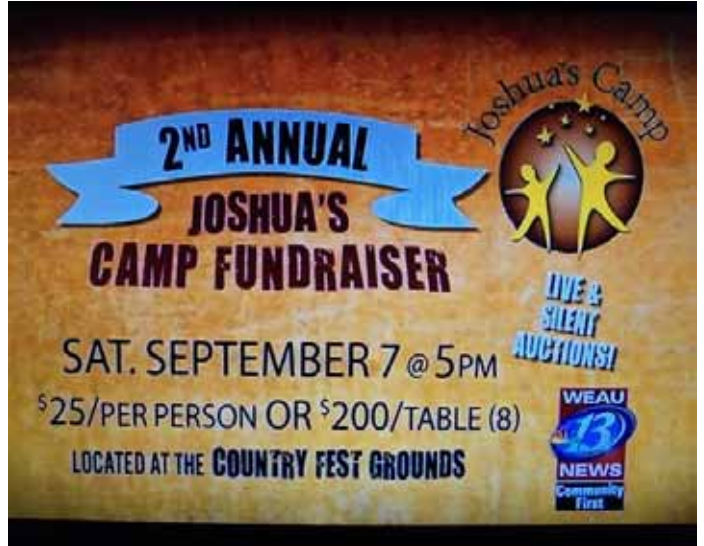
Jeff Kruszka
 1909 Lost Lake Place
 Pearland, TX 77581
 jkruszka@sbcglobal.net

January 2014

Happy New Year! We start off with a couple from Ed Phelps, Benton, KY:



WJHL-11 Johnson City, TN
 352 mi Tr seen 7-30-13



WEAU-38 Eau Claire, WI
 556 mi Tr seen 9-3-13

...and now 3 from Danny Oglethorpe, Shreveport, LA:



KABB-30 San Antonio, TX
 341 mi Tr seen 7-31-13



KCWX-5 Fredericksburg, TX
 338 mi Tr seen 7-30-13



KUVM-CD 34.1 Missouri City, TX
 227 mi Tr seen 9-27-13

...and one from Eric Bueneman, of Hazelwood, MO:



CFQC1-3 Stranraer, SK
1200 mi Es seen 7-15-13

And finally, one from Harry Hayes, of Wilkes Barre, PA. I believe this is the first time I've printed something from Harry. His equipment is a Zenith 1999 Sentry TV, Zenith DTT901 box, 6' dish in attic w/window screening, and Winegard AP 4700 preamp.



WTEN-26 Albany, NY
145 mi Tr seen 9-20-13

73's and Happy New Year, JEFF

KEN KEW
With the News

10:05 Weeknights

KGLO-TV
CHANNEL

3

MASON CITY



*A veteran of the mike
with a style you'll like!*

FROM JOHN VERVOORT



Coast to Coast TV DX

Featuring reports from the entire United States and all of Canada.

Send reports by the 15th of each month to:

Nick Langan

1040 Riverview Drive

Florence, NJ 08518

E-mail: nickl@wtfda.org

The Editor's Note

We hope you had a wonderful Christmas and holiday season, and here's to a great, DX-filled 2014! There has been some winter E-skip around, for the most part cresting at the 6-meter amateur band, with the exception of a couple of brief openings with higher MUF on the 3rd and 11th of December, mainly confined to the east coast.

You may have by now seen this news elsewhere, but in case you missed it, a new VHF low-band DTV is on the air in my neck of the woods, as KJWP-DT-2 utilized an FCC loophole to relocate from Jackson, WY to "Wilmington, DE". KJWP-DT is now transmitting from the Roxborough antenna farm in Philadelphia as of early November, and with an ERP of 9.36 kW, it's been reported to get out pretty well and should be a good E-skip target for those in range. Meanwhile within 25 miles of my location, I now have VHF-low DTVs on 2 (KJWP), 4 (WACP), and 6 (WPVI). One man's pest is another man's skip target.

We have a couple reports to help ring in the new year, as Bob Seybold proves that there is plenty of DTV DX to be had with an active fall tropo season in Western New York, while Dennis Smith updates us on SoCal DX.

Bob Seybold

1865 W. Main Rd.
Silver Creek, NY 14136

Nick:

I believe I should send in a DX report as there has been a lot of DX at my location since mid-August till now which is October 13th. The best has been in recent days with tropo in 100 to 400+ mile range on most days and all night conditions.

8-16-13 to 8-30-13 – some tropo on almost daily basis with 0500-0930 and 1600-2400 the best results but on some occasions in all night – Canadians CKVR 3, CHPL 10, CHCH 31, Omni 48 London, TVO 18 London, TVO 28, CITY TV-44, CITY 31 Woodstock (repeating CITY-TV 44 Toronto); CKVP 35 and 42 (repeating CKVR 3 Barrie); CHCJ 35 Omni 40 & 47 Toronto; CKCO 13; Wingham 8 (analog); Bancroft and Warton 2 both analog, also Kearns 2 (analog), CIII 22 Stevenson on occasion, also WDIV, WXYZ, WWJ Detroit frequently with WDIV 4 the best; WHTV 18 WLHJ Lansing often; Cleveland 3, 5, 61 often; Toledo 30 often also Toledo 68, 11 & 13 now and then; WBGU 27 Bowling Green; Peterborough 12 and 27; Ion 31 (Detroit or Ann Arbor? *Probably WPXD-DT-50 Virtual 31 Ann Arbor – NL*) always in when WDIV Detroit is in; most of above received often throughout month of September.

More recently in late September WROC 8 Batavia Ion 51 and most Rochester digitals; WANE 13 Ft. Wayne several times, also South Bend 46 WUPV

36; WEYI 25, also Flint, Bay City, Grand Rapids, Battle Creek, Kalamazoo digitals also other Fort Wayne, also new WRLM 47 Canton, also Indiana digitals on 50, also digitals on one opening Cincinnati, Dayton, Columbus, Chicago, and Indianapolis.

On one recent super all night and early morning I had over 100 digital loggings such as Channel 3 (3), Channel 4 (3), Channel 5 (4), Channel 6 (4), Channel 7 (3), Channel 8 (3), Channel 9 (1), Channel 10 (3), Channel 11 (2), Channel 12 (5), Channel 13 (4), Channel 14 (2), Channel 15 (3), Channel 16 (3), Channel 17 (5), Channel 18 (4), Channel 19 (1), Channel 20 (1), Channel 21 (3), Channel 22 (1), Channel 23 (6), Channel 24 (1), Channel 25 (3), Channel 26 (4), Channel 27 (3), Channel 28 (2), Channel 29 (2), Channel 30 (5), Channel 31 (4), Channel 32 (1), Channel 33 (1), Channel 34 (1), Channel 35 (1), Channel 36 (2), Channel 38 (1), Channel 39 (2), Channel 40 (1), Channel 41 (3), Channel 42 (1), Channel 43 (4), Channel 44 (2), Channel 45 (4), Channel 46 (2), Channel 47 (4), Channel 48 (1), Channel 49 (2), Channel 50 (4), Channel 51 (4), Channel 53 (1), Channel 67 (4), Channel 68 (1), and Channel 69 (1). On this occasion the scan system on my digital receiver was loaded with antenna movement punching numbers in and out at rapid rate. In fact locked in my system now has up to 6 decoded signals on same channel. For example Channel 50 has 50-1, 50-2, 50-3, 50-4, 50-5, 50-6, 50-7.

Even though I did not log any super distant loggings there was a lot out to 400 miles or so with

many good days with hours of DX. Mild quiet days and cool nights created ideal conditions. Also new WBTB 39 on air now (digital). Also had several lon network stations seen but never caught any city and state location as they decoded as for example lon 31 or some other numbers but no call letters noted so several mystery loggings. That's it for now.

Dennis Park Smith

3605 San Remo Dr
 Santa Barbara, CA 93105-2523
 Telephone (805) 687-7803
 24-hour PST (now standard time, for only 4 months)

This report is from November 3 to December 13, 2013.

It has gotten colder. Tropo has tapered off to only a little at times, but mostly none. Ocean water temp Nov 5 to 62F/17C, steady until Nov 25 down to 61F/16C. Dec 6 to 59F/15C. Dec 11 down to 57F/14C.

Air temps highs mid Nov up to 80F/27C, then tapering off, by mid Dec barely 60F/16C. Lows steady 50F/10C until Dec 10 morning touching 32F/0C.

Distances are approximate. So-Calif tropo ducting to San Diego/Tijuana/Tecate from 175 mi/280 km up to 220 mi/350 km SE:

Nov 3 – 5	None	Cooler, low pressure	
Nov 6 – 7	Poor	Warm, breezy, hi-press.	
Nov 8 – 15	Var. poor-fair	Warm, stable, hi-press.	
Nov 16 – 24	None	Cool, unsettled, lo-press, some	rain Nov 20-22
Nov 25 – 27	Var. poor-fair	Cool, stable-barely	
Nov 28 – 29	None	Unsettled, some rain	Nov 29
Nov30-Dec3	Poor	Mild, stable, hi-press.	
Dec 4 – 11	None	Colder, some rain	Dec 7
Dec 12 – 13	Poor	Just a tad warmer	

Local analog KZDF-LP 8 Santa Barbara has been translator via satellite of KEMO-TV rf 32 "50" Santa Rosa/San Francisco (Azteca America). In late Oct KZDF lost its satellite signal, and as of Nov 13 has been completely off air. (..forever? Ihopelhopelhope)

To the WTFDAer in nearby Goleta: I misplaced your phone number. Could you give me another call? Apologies.

Best of DX to All Dennis



Thanks to John Vervoort

Northern FM DX



Keith McGinnis
 18 Newbridge St., Hingham, MA 02043
 longwave@comcast.net 781-875-1944

For Dxers in the following states: CT IA ID IL IN MA ME MI MN MT ND NE NH NJ NY OH OR PA RI SD VT WA WI WY and all of Canada. Please submit by the 10th of each month.

EDITOR'S NOTE PLEASE SUBMIT ALL REPORTS IN THE FORMAT SHOWN BELOW.

Time(tab)Calls(tab)Freq(tab)City(tab)State(tab)details

Formats can either be plain text, Word or Excel as long as format is adhered to. Any submissions in other formats may not be used at editor's discretion.

All Submissions must be in to me by the 10th of each month.

**Jeff Falconer, VA3NN - Clinton ON EN93fo
 Sangean HDT-1X, Sony XDR-F1HD, APS-13 at 22 , 10db preamp
 New=* New calls={XXXX} t=Tentative Time=ELT Distances=Miles**

November 10 Ms

1622 WECQ 92.1 Destin TX Contest promo, "Q-92", RDS PI: WECQ, previous Es 943

November 11 Ms

1400 KEOM 88.5 Mesquite TX Legal ID 1108

November 19 Ms

0027 WBAM 98.9 Montgomery AL ".here in all of south - central Alabama." 842

November 19 Tr

0846 WHKO 99.1 Dayton OH C&W, "K-99.1 FM" 302

November 23 Tr

2248 WGL* 102.9 Huntington IN Oldies, to TOH legal ID with Fort Wayne, CBS News, last heard as WOWO on 103.1 271
 2319 WMLX 103.3 Saint Marys OH Ads, "Mix 103-3", rare 247

November 23 Ms

2259 WMSI 102.9 Jackson MS RDS PI: WMSI / PTY: Country, previous Es
 2323 KESN 103.3 Allen TX RDS PS: ESPN / PI: KESN / PTY: Sports, previous Es 1078

November 24 Ms

0133 KXKC 99.1 New Iberia LA Ad, RDS PI: KXKC 1083
 0210 WGSY 100.1 Phenix City AL RDS PI: WGSY 700
 1538 KEZK 102.5 Saint Louis MO RDS PI: KEZK 574

November 24 Tr

1149 WJYW 88.9 Union City IN REL: AC, "The Joy FM" 290

November 25 Ms

1902 WMAE 89.5 Booneville MS TLK, RDS PI: WMPN 728

November 29 Ms

2239 KUAR 89.1 Little Rock AR RDE PS: KUAR / PTY: News 844

November 30 Ms

1206 KXGT 98.3 Carrington ND RDS PI: bogus WFJ / PTY: Soft Rock 883

December 05 Ms

1554 WMAE 89.5 Booneville MS TLK, RDS PI: WMPN 728
1557 WXVS 90.1 Waycross GA TLK, RDS PI: WXVS 856

December 05 Tr

1555 WOR1* 90.1 Harrison OH REL: AC, "Air One" 358

December 07 Tr

1145 WOR1 90.1 Harrison OH In again, REL: AC, "Air One" 358

Roger Gravelle

42 Little Creek Place

Port Stanley ON N5L 1K1

Equipment: Sony ST S555ES and 6 Element Antenna 20 ft AGL

April 26 TR/GW

1600 CBEE 88.1 Chatham ON Replacement for 1550 AM 60 NEW
1645 UNID 87.7 ID as Cleveland Sound with ad for "Mel's Bar and Grill" "Special Kindergarten Sandwich" Audio of Ch 6 WLFM or Pirate?
1700 CKDX 88.5 Newmarket ON The Jewel 138 NEW

May 14 TR/GW

1500 WEFR 88.1 Erie PA Gospel 70 NEW
WMCE 88.5 Erie PA 70 NEW
WERG 90.5 Erie PA 70 NEW
WQLN 91.3 Erie PA 70
WXBB 94.7 Erie PA Bob FM 70 NEW
WXKC 99.9 Erie PA Interference from Sarnia
WQHZ 102.3 Erie PA Through local from London ON 70 NEW
WRTS 103.7 Erie PA Bob FM 70

May 25 TR/GW

1135 CHGK 107.7 Stratford ON 54 NEW

August 20 TR

1506 WTLR 89.9 State College PA True Life Radio "How prayer helps to resolve Everyday Problem" 270 NEW
1530 WKSU 89.1 Thompson OH 80 **NEW**

SOUTHGATEARC.ORG

Page last updated on: Tuesday, December 24, 2013

CPB Board hears troubling predictions for spectrum auctions and repacking

Published on Current.org, December 10, 2013

By Dru Sefton

CPB Board members got an ominous preview Monday of the corporation's upcoming white paper about spectrum issues in public broadcasting.

At a meeting at CPB's headquarters in Washington, D.C., Harry Hawkes of Booz & Co.'s media and technology practice told board members that if the FCC goes ahead with plans to clear 120 MHz of spectrum for use by mobile devices, 110 to 130 pubcasting stations will need to shift due to repacking even if their operators don't participate in the auction.

"That means that one-third of the system could have to change channels," noted Vincent Curren, CPB's c.o.o. "This will likely be more disruptive than the digital transition. This will be a major undertaking for our industry over the next several years."

CPB commissioned the white paper, due out early next year, to inform policy discussions within the system about spectrum issues. The FCC announced last week that spectrum auctions [will be conducted in mid-2015](#); repacking of the remaining bandwidth is expected to occur soon after. CPB SVP Michael Levy said the corporation will soon use the Booz data to compose a letter to "communicate our concerns and sense of opportunity" to new FCC Chairman Tom Wheeler, along with members of Congress, national pubcasting partners and stations.

Those concerns include [reimbursements to pubcasters](#). While Congress has set aside \$1.75 billion of auction proceeds to repay all broadcasters for costs associated with the disruption, translators are not covered, Hawkes said. He estimated that 200 to 250 low-power pubcasting translators for rural areas may need to move to new channels at an estimated systemwide cost of \$3 million to \$4 million.

Pubcasters in several states are "highly reliant" on translators, Hawkes said, such as Utah, New Mexico, Wyoming, Idaho, Colorado and North Carolina.

Beyond the translator issue, pubcasters continue to struggle with decisions regarding spectrum, Hawkes said. So far, Booz representatives have interviewed more than 40 station executives, and nearly 90 stations participated in a dynamic-inquiry webinar on the topic.

Booz is discovering that pubTV executives "vary in their understanding" of spectrum auctions, Hawkes said. Many are concerned because there is "no consistent way of gauging whether an auction will occur in their market," which depends on where wireless companies want spectrum, he said.

While some pubTV stations are open to participating in the spectrum auction, Hawkes said, "most believe that continuing to offer multicast channels and over-the-air content is critical" to the mission of public broadcasting.

Some pubcasters are considering an option offered by the FCC option to shift their signals to VHF; others are concerned about interference and broadcast quality in that lower band, Hawkes said. Stations are also curious about the option of channel sharing, for which they would sell part of their spectrum and partner with nearby broadcasters to share signals.

CQ to realign publications

CQ Communications, Inc. has announced plans to realign its roster of publications and to launch an exciting new online supplement to its flagship magazine, **CQ Amateur Radio**.

"The hobby radio market is changing," said CQ Communications President and Publisher Dick Ross, K2MGA, "and we are changing what we do and how we do it in order to continue providing leadership to all segments of the radio hobby." CQ Communications is currently the only publisher in the United States serving the broad radio hobby, from broadcast band DXing to amateur radio moonbounce and satellite communications. CQ itself has been amateur radio's leading independent

voice for seven decades.

Effective with the February 2014 issue of CQ, said Ross, content from the magazine's three sister publications, Popular Communications, CQ VHF and WorldRadio Online, will be incorporated into CQ's digital edition as a supplement to be called "CQ Plus." With this change, hobby radio enthusiasts of all types will be able to go to a single source - CQ - for articles on the broader aspects of hobby radio, from shortwave listening and scanner monitoring to personal two-way services and Internet radio, as well as amateur radio. Richard Fisher, KI6SN, currently Editor of both Popular Communications and WorldRadio Online, will be Editor of CQ Plus.

"Our primary audience is ham radio operators," explained Ross, "but very few hams began their radio involvement as amateurs. Most of us started out as shortwave listeners, broadcast band DXers, CBers or scanning enthusiasts. Many continue to be involved in many different aspects of the radio hobby in addition to amateur radio."

"By consolidating four specialized publications into one," Ross continued, "we will be better able to keep these multidimensional readers informed on all aspects of the radio hobby while simultaneously exposing those who are not hams to all the excitement and opportunities that amateur radio has to offer. We see this as a win-win for all of our readers and our advertisers, who will now be able to reach a wider and more diverse audience."

The expanded material will be an integral part of the digital edition of CQ, and will be included as part of a standard digital subscription. Each month's digital edition will simply continue beyond where the print edition ends, offering supplemental material on all aspects of hobby radio communication and will include selected columns carried over from the other magazines. The added digital content will make full use of the multimedia opportunities presented by digital publications.

Current subscriptions to Popular Communications, CQ VHF and WorldRadio Online will be converted to CQ subscriptions - and receive CQ Plus at no additional charge! Details will be posted on each magazine website.

Regulator wants viewers to talk about the future of Canadian TV

By Terry Pedwell, The Canadian Press October 24, 2013

OTTAWA - The country's broadcast regulator wants Canadians to help it predict the future of the ever-evolving television industry. The Canadian Radio-television and Telecommunications Commission has opened what it hopes will be a month-long dialogue among Canadians about how they watch TV. In particular, the regulator urges participants to imagine how they'd like to watch television in the future. CRTC chairman Jean-Pierre Blais says he understands that viewing habits have already been dramatically altered through the distribution of programming online and on wireless devices.

But what about the future? "Many still enjoy network-scheduled programming on their TV sets, but the viewing habits of many others are changing," Blais said in a statement.

"Let's Talk TV: A Conversation with Canadians, is an opportunity for all Canadians to tell us what they think of their television system and how they would like to see it changed." The "Let's Talk TV" campaign will certainly also focus on the Harper government's proposal to introduce so-called pick-and-pay cable and satellite television services, aimed at allowing subscribers to select and pay for individual channels. Last week's speech from the throne outlined how the government wants Canadians to be able to choose the channels they want to watch, without having to pay for the ones they don't. The CRTC expects it'll get an earful on the issue, said Blais. "We've been hearing some frustration from Canadians for some time about the costs of cable and satellite," he said. "So I wouldn't be surprised if Canadians came to our conversation and raised issues related to that as well."

The regulator wants to hear by Nov. 22 what people think about what's on TV, how they receive programming and whether they have enough information to make good viewing choices.

LOCAL DX CLUB ORGANIZED

One evening last week a bespectacled man with a penchant for television DXing (long-distance tuning) sat in his living room and watched a program called "The Ch 2 Soda Shop" The program was originated, from Deliver, Colo., and the man in the Buffalo living' room (Kenneth Bush of 60 Grace St.) noticed that the variety show devoted a great deal of time to acknowledging letters from other DXers who watched it from long distances.

On 'the spur 'of the moment,.Ken Bush placed a call to KFEL-TV In Denver and told them he was receiving a clear audio and visual Signal of the program here.

On receiving the message, the emcee of the "Soda Shop" literally jumped up and down, saying, "That's the farthest distance we've had a report from yet!"

Bush had hardly hung up his Denver call when his phone buzzed again. On the other end of the line was Thomas Carberry of 53 Fries St. in Tonawanda. Coincidentally, Carberry had been watching the same program and it took a Denver television station to Introduce two DX fans In this area to one another.

It was then that the two men—along with DXers Kenneth Stoll of 421 East St. and Art Collins of 68 Amber St.— conceived the idea of forming a club founded on their mutual interest. They are now attempting to contact all DXers in the area who would like to become members of the club for purposes of exchanging information on favorable conditions, logs and other data. They will also publicize Information of new stations which have been reached by members, exchange DXing hints and discuss boosters and equipment. The four charter members are enrolling fans at their home addresses and with an eye on 13- year old Donald Voegelé of Lancaster, whose DXing exploits were reported in this column last week—stress the fact that there is no age limit for membership in the club.

Among these four DXers alone, 134 long-distance stations have already been logged. Collins reports 45 VHF and two UHF stations; Bush, 34 VHF; Stoll, 27 VHF and two UHF; and Carberry, 23 VHF and one UHF.

"People don't really need expensive installations to get into this hobby," Ken Bush explained, "but, of course, the more you do put into it, the more results you get."

Asked to put into layman's language the principles which make DXing possible, Bush explained that wave propagation (by which long-distance TV signals are transmitted) is brought about by the changing conditions in the atmosphere, troposphere and ionosphere (second and third layers of the atmosphere). Quite frequently, technical writers claim that solar changes are responsible for an influx of signals.

The VHF television signal, as it is transmitted, is generally not supposed to travel more than 40 to 60 miles because, after that distance,, the signal continues out in a straight line into space. As it does not follow the curvature of the earth, It is not picked up by the receiving antenna.

When these waves of signal reach the atmosphere and penetrate to the tropospheric layer, they reflect along this medium and curve back to earth. They are then picked up on the receiving array and the distance viewing potential is about 500 miles. As this particular type of reception increases with signal frequency, it is most often received on channels seven through 13. In other cases—also depending on weather changes, barometric changes brought about by atmospheric pressure variations, time and season — transmitted signals enter space and ionosphere E layer, roughly 50 miles above the earth's s u r f a c e . The signals bounce off heavily ionized particles and return to earth at the rate of 300 to 1,500 miles a skip. Under extraordinary conditions, multiple hops will bring signals from the transmitting antenna. These signals are found, particularly during the months of May through August, jamming channels two through six and can be very easily recognized by their intensities, which often produce a picture q u a l i t y comparable to that from local channels.

These intense signals are also characterized by sudden appearances and abrupt departures. They sometimes remain on the screen for only a matter of seconds.

All told, DXing requires a little luck and a great deal of patience and time in monitoring a TV set during favorable hours and weather conditions. Late night hours generally seem to yield the best conditions, so many of the fans lose a great deal of sleep in pursuing this unusual hobby.

Published on FierceWirelessTech (<http://www.fiercewireless.com/tech>)

T-Mobile 600 MHz study shows LTE can share channels with nearby TV stations

December 18, 2013 | By Tammy Parker

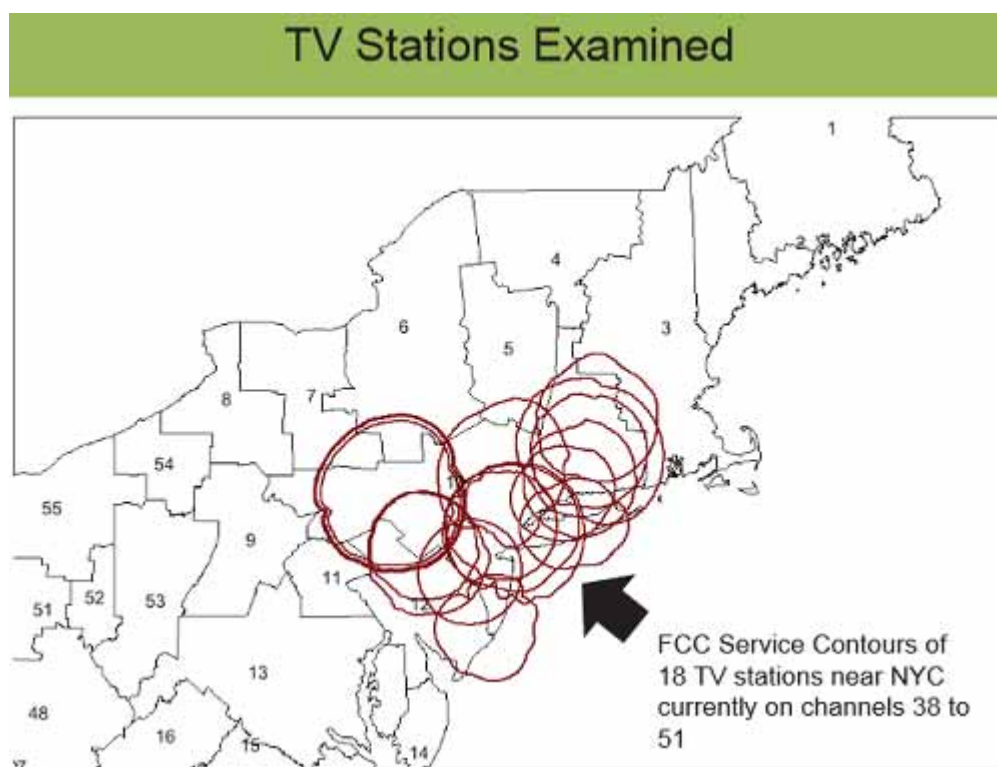
T-Mobile US ([NYSE:TMUS](#)) says its research shows that LTE networks could operate side by side with co-channel, broadcast TV signals even in some of the nation's most densely populated areas.

LTE services can operate "in the presence of co-channel, over-the-air television operations in geographically nearby market areas, even in a region as densely populated as the northeastern United States when sufficient terrain and distance separation exists," said T-Mobile in an *ex parte* filing with the FCC.

The filing referenced a Dec. 13 meeting involving T-Mobile legal and technology policy executives Kathleen Ham, Steve Sharkey and Chris Wieczorek. They met with numerous FCC leaders from the Incentive Auction Task Force, Wireless Telecommunications Bureau, Office of Engineering and Technology, and Media Bureau. Also participating were representatives of technical consulting firm Roberson and Associates, which prepared the study for T-Mobile.

The point of the meeting was to examine T-Mobile's research regarding co-channel and adjacent channel interference and consider ways the FCC might open up spectrum for cellular communications even when in-market TV stations are operating on nearby airwaves. T-Mobile's test results appear to support use of market variability in the band plan being designed the upcoming 600 MHz incentive auctions of TV broadcast spectrum. Market variability could come into play if the FCC recovers different amounts of TV broadcast spectrum in different markets.

T-Mobile's co-channel analysis looked at some 10,000 cell sites and 18 television stations in and around New York in a total of 19 Economic Areas (EAs). The operator said its analysis revealed that while "most broadband LTE cell sites in the New York EA would experience interference from in-market television stations, LTE cell sites outside of the New York EA would exhibit considerably less interference."



FCC service contours of 18 TV stations near New York City. (Source: T-Mobile / Roberson and Associates)

In fact, the operator found that cell sites in the majority of markets outside of the New York EA would be largely or entirely unimpaired as a result of co-channel TV operations inside the New York EA.

T-Mobile suggested it may be possible to "accommodate a small number of different regional band plan variations, where regional EA clusters have the same bandplan (sic)." The operator said this is not the most desirable scenario but may be necessary "if insufficient spectrum is recovered nationally in the incentive auction."

Broadcasters have opposed the market variability approach, saying it would entail a host of engineering challenges and could produce harmful interference to broadcasters as well as wireless operators because the two groups would end up sharing channels in adjacent markets.

In comments and a [presentation](#) submitted last summer to U.S. Rep. Henry Waxman (D-Calif.), Rick Kaplan, executive vice president of Strategic Planning of the National Association of Broadcasters, contended that if channel 47 were licensed to a high-power TV broadcaster in New York and also licensed to a wireless operator in Philadelphia or New Haven, Conn., there could be significant interference between the services unless "significant mitigation techniques" such as large geographic separation between the services, were undertaken.

Although T-Mobile discussed licensing services based on EAs and regional EA clusters, the ultimate 600 MHz band plan might offer licenses for even smaller geographic areas. The Wireless Telecommunications Bureau is considering an approach [advocated](#) by the Competitive Carriers Association, which wants 600 MHz licenses to be issued for Partial Economic Areas (PEAs) rather than the larger EAs. The bureau is soliciting public input with comments and replies due next month.



THESE CLASSIC
ITEMS FROM WAKR
CH23 TOTAL NEWS
1970

AND

KCMT CH7
SUPPLIED BY
JOHN VERVOORT



SIGN UP/Renewal form

YEARLY DUES \$10.00 USD for Monthly VUD eZine

Name _____

Address _____ Apt # _____

City _____ State/Prov _____ Zip _____

Country _____ Interests: TV () FM () 30-50() Weather()

email address _____

Sign me up/renew me for: 1 year () 2 years () More ()

I have no computer or access to one. Please send a paper VUD(\$24) ()
Please, 12 month renewals only for paper VUDs. Thank you.

Yearly dues **Mail your dues to: WTFDA, P.O. Box 501, Somersville, CT USA 06072**

Make your checks/money orders payable to: WTFDA

And *thanks* for your support of the WTFDA!

Return this form with your dues or make a copy of it and return that.

WTFDA BOARD OF DIRECTORS

Mike Bugaj, use the WTFDA Mailing address listed below
Doug Smith, 1385 Old Clarksville Pike, Pleasant View, TN 37146-8098
Greg Coniglio, 11825 Genesee St., Alden, NY 14004
Keith McGinnis, 18 Newbridge St., Hingham, MA 02043

mikeb@wtfda.org
dougs@wtfda.org
gregc@wtfda.org
nfmdx@wtfda.org

RENEWALS BY PAYPAL: SEND YOUR DUES FROM THE PAYPAL WEBSITE TO SALES@WTFDA.ORG

TV and FM STATISTICS

Fred Nordquist, 147 Travis Hill Road, Moncks Corner, SC

stats@wtfda.org

WTFDA.ORG WEBSITE

Tim McVey, webmaster

webmaster@wtfda.org

WTFDA.INFO WEBSITE

Chris Cerventez, webmaster

chriscervantez@gmail.com

WTFDA EMAIL REFLECTORS

Enhance your DXing experience! Entertaining and informational.
E-skip alerts! Tropo alerts! DX discussion and more!

For WTFDA members! Sign Up Today!

Send an email to WTFDA+subscribe@googlegroups.com

And for AM DXers use MWDX+subscribe@googlegroups.com

Our Official Website

<http://www.wtfda.org>

- News and Links
- VUDs from 70s thru 2000
- Memorabilia

USA/CAN/MEX

Database of FM Stations. Sortable and searchable and up to date!

<http://db.wtfda.org>



Worldwide TV-FM DX Association
Serving the VHF/UHF DX Enthusiast since 1968

WTFDA FORUMS
<http://www.wtfda.info>

Where DXers Go To Hang Out



Find us on:
facebook®

**THE WORLDWIDE TV-FM DX ASSOCIATION
THE VHF- UHF DIGEST
P.O. Box 501, SOMERSVILLE, CT 06072**

Opinions expressed in this publication are those of the individual contributor and do not necessarily reflect the views of the publisher or board of directors. We reserve the right to edit material to meet publishing standards. Unless previously agreed upon in writing, all material submitted for publication in the VHF-UHF Digest becomes the property of the WTFDA. Reproduction of material from the VHF-UHF Digest without permission of the WTFDA is prohibited. Individuals and other organizations are granted such permission providing proper credits is given to the source.



Established 1967



FIRST CLASS MAIL