

NORWAY TO SHUT DOWN FM STATIONS IN 2017, REPLACING WITH DIGITAL AUDIO BROADCASTING SYSTEM (DAB)

JOINT WTFDA/NRC/IRCA CONVENTION TO BE HELD IN FORT WAYNE

E-SKIP BEGINS!

The Official Publication of the Worldwide TV-FM DX Association



METEOR SHOWERS

Eta Aquariids
APRIL 19 – MAY 26

Delta Aquariids
JULY 21 – AUG 23



INSIDE THIS VUD

[CLICK TO NAVIGATE](#)

- | | |
|----------------------------------|-----------------------------|
| 02 Page Two | 26 Coast to Coast TV |
| 04 TV News | 29 Northern FM DX |
| 10 FM News | 44 Bulletin Board |
| 23 Convention Info | 49 Norway FM Shutoff |
| 24 Photo News | 51 Cleveland Ch 31 |

THE WORLDWIDE TV-FM DX ASSOCIATION

Serving the UHF-VHF Enthusiast

THE VHF-UHF DIGEST IS THE OFFICIAL PUBLICATION OF THE WORLDWIDE TV-FM DX ASSOCIATION DEDICATED TO THE OBSERVATION AND STUDY OF THE PROPAGATION OF LONG DISTANCE TELEVISION AND FM BROADCASTING SIGNALS AT VHF AND UHF. WTFDA IS GOVERNED BY A BOARD OF DIRECTORS: DOUG SMITH, GREG CONIGLIO, KEITH MCGINNIS AND MIKE BUGAJ.



Editor and publisher: **Ryan Grabow**

Treasurer: **Keith McGinnis** wtfda.org Webmaster: **Tim McVey**

Forum Site Administrator: **Chris Cervantez**

Editorial Staff: **Jeff Kruszka, Keith McGinnis,**

Fred Nordquist, Nick Langan, Doug Smith,

Bill Hale, John Zondlo and Mike Bugaj

Website: www.wtfda.org; Forums: <http://forums.wtfda.org>

PAGE TWO

The Page You Turn To for News of the WTFDA and the TV/FM DX World

Mike Bugaj - mikeb@wtfda.org

May 2015

WINTER HANGS ON

Winter seems determined to hang on, especially in the Midwest and northeastern United States despite the fact that May is only a day or two away. There's a low pressure trough sitting over the Midwest resulting in cool temperatures, clouds, rain, thunder, some frost...conditions that are not helpful for tropo DX.

On the other hand I've seen some reports of FM E-skip down in the gulf states and over on the west coast (OR-AZ) in April and for some the season may be starting early. The rest of us just sit and wait.

MEMBERS AND MORE

During the period of Mar 12th through Apr 19th we received renewals from Paul Crego (NY), Dave Nieman (PA), James Brown (VA), Frank Drobny (CA), Frank Merrill (IL), Pat Dyer (TX), David Cox (AL), Luis Franceschi (PR), Richard Porter (IL), Charles Burnham (NY), Robert Grant (MI), Chris Dunne (FL), David Pierce (VA), Ivan Silva (BRA), Chris Cervantez

(IL), Danny Buntin (OK), Gary Hickerson (OK), John Hourigan (CO), Peter Taylor (WA) and Fred McCormack (MN). Thank you everyone for supporting the club!

GRUNDIG G8 vs. ETON TRAVELER III



I've been looking around for a small AM/FM portable radio with RDS that I could pack in a suitcase with some earbuds for use on our upcoming vacation and I read somewhere on the NRC website about the Eton Traveler III.

The report said it was pretty hot on AM and also FM, so based on my luck with the Grundig G8, I decided to buy one and found one for a very good price on eBay. Based on my

experience with the G8, I thought its performance should be equal to, or slightly better than the G8.

If you look at the photo you'll see that both radios are about the same size. The whip on the Eton is about 4" smaller than the G8.

One difference right at the start is that the Eton takes four double-A batteries while the G8 just takes three.

Both radios are similar from the front. Both have that map of the world and the dial for the various time zones. The maps, the dial and all the buttons on the right side of the dial are identical.

With the front door shut, the buttons you find on the upper left of the G8 are the same buttons you find on the Traveler III under the display. Both have a stereo plug for headphones on the left along with a plug for an AC adapter. And on the right side you find the tuning and the volume controls. The tuning works the same as the G8. The volume works the same except that when you turn down the volume all the way the word "mute" shows on the display.

And this leads me to the display. Gosh I wish Eton would have used the same display that the G8 uses. I have grown to hate the Eton's display. There are three settings to the display: off, low and brighter. The display is fine using room lighting in a home and it is fine when used outside at night...very easy to see. But take that radio outside in the daytime and it's almost impossible to read anything on the display. This radio was not made to take to the beach and listen while laying in a beach chair, even with a beach umbrella for shade. And since that's what I intended to do with it, I will need to find a solution to the display problem.

I did some A-B comparisons with both radios to judge selectivity and sensitivity. I sat them next to each other, tuned in the same station on both radios and compared.

On FM I found that the Eton brings in weak stations more clearly than the G8, even though the whip antenna is shorter. I tried this test five or six times with weak FM stations and each time the Eton delivered a stronger and cleaner signal than the G8.

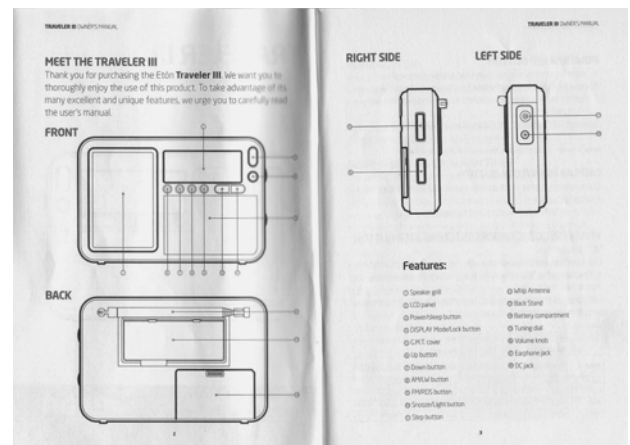
Next I attempted to check the selectivity of each set. I already know how good the G8 is for selectivity. The results were inconclusive. At this point I consider it a draw.

I also did a couple of quick comparisons on AM. My house is horrible for AM reception. In one test the G8 picked WTIC 1080 out of the noise better than the Eton. In a second test a few minutes ago, both were about the same.

The Eton will tune 64-108mhz. The manual shows you how to set it that way.

RDS shows PS, Pty, RT and data. RDS will decode when the radio detects stereo.

The included manual is nice but it doesn't tell you everything. One would assume that pressing the "ON" button would turn the radio on, but in reality you may need to press it two or three times, and that also applies to turning it off. Sometimes turning the tuning dial a notch doesn't change the frequency. You need to turn it a second time. If the display is lit when you turn off the radio, the display won't turn off unless you press the snooze/light button to manually turn it off. My first set of batteries drained completely because I didn't know this.



If you already have a G8 and don't care about RDS, keep your G8. If you DX FM and you need the RDS, buy the Traveler III. Remember what I said about the display.

Go online and read the reviews of this radio. Remember it's not perfect. I wouldn't pay big bucks for this radio. I would stop at \$45 (and I bought mine for much less than that.)

I hope someone out there finds this information useful. —Mike Bugaj



TV News

Douglas E. Smith
1389 Old Clarksville Pike
Pleasant View, TN
37146-8098
w9wi@w9wi.com
<http://www.w9wi.com>

May 2015

Abbreviations:

AF	A pply F or (a new station)	NW	N ew station on the air
Aux	A uxiliary (backup) transmitter	PA	P roposed A mmendment
CC	C allsign change	PC	P ower (and/or tower height) change on the air
CL	C ity-of-license change	PG	P ower change g rant
CX	C anceled	PR	P ower change r equested
DC	C onverted to D TV	RA	R eturns to the air
DCC	D igital C ompanion C hannel	QC	Channel (?frequency??) change on the air
NS	Granted flash-cut to DTV	QG	Channel change g rant
DCC		QR	Channel change r equested
DE	License/permit d eleted	RE	R einstated (previously-dismissed app.)
DR	R equests flash-cut to D TV	ROA	R equest of A pplicant
FC	Programming (?format??) change	SI	Off the air (? s ilent??)
FTP	F ailure to P rosecute	STA	S pecial T emporary A uthority
GA	G rant a mmendment (to table of channel allotments)	XC	Transmitter site c hanged
LC	L icense to C over	XG	Transmitter site change g rant
MX	M utually E xclusive	XR	Transmitter site change r equested
NDA	N on- d irectional a ntenna	lpdtv	Low Power Digital TV
NS	Permit granted for n ew station	DRT	D igital R eplacement T ranslator
DG	G rant c onversion to D TV		

News:

(full-power digital stations in **bold face**; LPTV and translators in regular type; full-power analog stations in **bold italics**; low-power analog stations in regular italics)



Puerto Rico
Aguadilla
Ceiba

34 WELU
23 W23EM
PC<41.6kw
NS 15kw, 18-17-04/ 65-40-28 (TV Red de PR)



USA



Alabama
Anniston
Ashville

9 WGWW
47 WOIL-CD
CC from WJSU-TV
PG<3kw, 33-24-41/ 86-12-27; CL from Talladega

Montgomery
Moundville

31 WNCF
3 WDVZ-CA
PC>478m, 32-08-57/86-46-43
DC 3kw, 33-28-51/ 87-24-03; CL from Greensboro

Tuscaloosa

33 WSES
CC from WCFT-TV

**Arizona**

Lake Havasu City 45 KLHU-CA DC 420w
 Phoenix 41 KPFD-CD DG 5kw
 Tucson 42 KUVE-CA AF 10kw; DCC for analog 38; dismissed

**California**

Agoura Hills 3 KVTU-LP PR<370w, 34-19-26/
118-34-50
 Bakersfield 15 K08MM NS 5kw; DCC for analog 8
 Garberville 10 K10HX CX
 Hoopa 11 K11NE CX
 Lompoc 10 K10OG DG 3kw
 Lompoc 17 KLDF-CA DR 1.4kw; DG
 Lompoc 45 NEW-lpdtv AF 250w, 34-31-28/
120-17-22; DCC for K10OG; reinstated but dismissed
 Los Angeles 22 KMRZ-LD PR<1.5kw, 34-12-47/
118-03-41
Los Angeles 34 KMEX-DT PG>225m (aux)
 Miranda 8 K08LD CX
 Monterey 5 K05NA PG>1kw
Ontario 29 KFTR-DT PG>225m (aux)
 Ontario 30 KCIO-LD PR>500w, 34-11-15/
117-41-53
 Orleans 8 K08HJ CX
 Redding 10 KMCA-LD PG>100w
 San Juan 4 K04RS PR<10w, 37-06-54/
121-49-11; PG
 Bautista 12 K12QZ PR>2.98kw, 35-09-23/
120-38-10; PG
 San Luis Obispo 42 KSBO-CA DR 15kw; DG
 Santa Maria 30 KDFS-CA DR 14.4kw; DG
 Yreka 32 K32LQ NS 605w, 41-43-31/
122-37-32; DCC for analog 41

**Colorado**

Denver 19 KTVD NS 987kw/328m (aux)
 Denver 35 KCNC-TV NS 950kw/324m (aux);
NW

**Delaware**

Dagsboro 14 W14DK PC<2.34kw,
38-40-00/75-35-00
 Wyoming 24 W24EM QG from W49EF

**Florida**

Beverly Hills 33 WGCT-LD QG from 32, 1kw,
28-32-09/ 82-30-09;
CL from Crystal River
 Crystal River 33 WGCT-LD QC from 32, 1kw,
28-32-09/ 82-30-09
 Gainesville 17 W17DH PG>10kw, 29-46-35/
82-16-50
 Gainesville 25 WFEO-LD PC>10kw
 Gainesville 45 WYME-CA DR; DG
 Layton 16 W16CA PG<1kw, 25-00-23/
80-31-15; DC
 Live Oak 20 W20EA PC>11kw, 30-11-17/
82-32-21
 Ocala 35 W35CZ XG 29-46-35/ 82-16-50
 Ocala 44 W44DS NW 5kw, 29-25-04/ 82-
32-58 (DTV America);
PR<3kw, 29-21-31/
82-19-42
 Ocala 50 WFEF-LD PG>6kw, 29-04-44/
82-05-30
 Orlando 36 WZXZ-CA DR 15kw dismissed;
DC 1kw, 28-34-07/
81-13-55
 Port Charlotte 27 WBKH-LD PR<7kw; PG; PC
 Sebring 38 WALM-LD PG>15kw, 27-30-38/
81-31-53
 Wabasso 33 W33DB XG 27-07-18/ 80-23-19;
PR>15kw, 27-01-30/
80-10-42

**Georgia**

Atlanta 6 WTBS-LP QG from 26, 3kw, 33-
48-26/ 84-20-22
 Augusta 27 W27DY PR>10kw dismissed
 Blairsville 36 WBUD-LD NS 1kw, 34-14-15/ 84-
09-27; DCC for analog
38
 Columbus 34 W34EW NS 10kw, 32-31-52/ 85-
01-37 (DTV America 1)
 Valdosta 13 WBFL-CA DR 2kw, 30-40-08/
83-19-31; DG

Valdosta 30 WVCZ-LD PG<500w, 30-45-13/
83-21-20; PC
Valdosta 35 WBVJ-LP DR 1.5kw, 30-58-13/
83-17-12; DG



Idaho

Boise 25 KFLI-LD PR>15kw, 43-48-57/
116-46-10
Bonners Ferry 40 K40MT QC from K51IN, 230w
Lewiston 25 K25NZ QG from K51HY, 1.5kw



Illinois

Champaign 24 W24EN NS 4.4kw; DCC for
W39BH
Jacksonville 49 WEEJ-LD PR<6kw; PG
Mount Vernon 48 W48EH XR 38-23-18/ 89-15-19
Rockford 47 WYCH-LD XC 41-52-48 /88-55-30



Indiana

Lafayette 23 W23EA PG<6kw
Lafayette 35 W35CY XR 40-23-24/ 86-51-51;
XG
Marion 22 W22DV PR<10kw, 40-44-46/
85-10-23
Terre Haute 28 W28DZ XG 39-31-37/ 87-00-02
Wolcott 30, W30DI, PC>11kw, 40-14-36/
33, W33DE, 86-41-20
39 W39DM
Wolcott 33, W33DE, PR<6kw, 40-02-34/
39 W39DM 86-27-48; PG



Iowa

Cedar Falls 14, K14PR, PR 6kw
21, K21MI,
32, K32KZ,
34, K34MM,
46 K46MK



Kansas

Kansas City 25 KCKS-LD PG>15kw, 39-05-31/
94-56-42; CL from
Topeka



Kentucky

Bowling Green 14 W14DG PR>5kw



Louisiana

Shreveport 14 KBXS-CD NS 3kw, 32-28-25/
93-46-13; DCC for
analog 50



Michigan

Lake City 14 WMNN-LD XR 44-14-56/ 85-18-48;
XG



Minnesota

Minneapolis 11 KARE NS 30kw/ 356m (aux)
Rochester 28 K28LW PR>6kw
Rochester 49 K49MQ PR>10kw, 44-18-37/
92-46-13



Missouri

Columbia 24, K24JY, PR<3kw; PG
25, K25NR, PR<1kw,
27, K27MG, PR<6kw; PG
29 K29KV PR<6kw; PG
Columbia 39 K39MB PR<3kw, 38-47-27/
92-17-43
Jefferson City 32, K32KV, PR<2kw,
36, K36LJ, PR>15kw,
38 K38OO PR<5kw
Jefferson City 33 K33MN XR 38-47-27/ 92-17-43



Montana

Deer Lodge 48 K48MM NW 800w, 46-06-06/
112-57-57
(Montana Media)

Helena 12 KTVH-DT **PC<671m, 46-49-29/
111-42-12**

Helena 29 KMTF **PC<646m, 46-49-29/
111-42-12**

Whitefish 38 K38OE NW 12kw, 48-00-51/
114-22-07
(Montana Media)

Woodsbay 7 K07EN XG 48-01-14/
114-03-29



Nebraska

Alliance 13 **KTNE-TV** **SI, see text**

Crawford 6 K06KR SI, see text

Harrison 8 K08LN SI, see text



**Nevada
Las Vegas**

Pahrump 20 K44AA AF 15kw, 35-57-21/
115-29-42; DCC for
analog 44

Reno 44 **KRXI-TV** **PC>950kw**



New Jersey

Springville 41 WDUM-LP CC from WNAI-LP



New Mexico

Clovis 26 K26CD DR 4.59kw; DG

Magdalena 32 K32LP NS 1kw, 33-37-32/ 107-
09-25 (Landover 2)



**New York
Glens Falls**

39 WRGB – NS 15kw, 43-18-17/ 73-
1231AMA 45-07; DCC for
Scenectady ch. 6

New York

33 **WCBS-TV** **PG 600kw/ 312m
(aux); NS
400kw/223m, 40-48-
08/ 74-14-49 (aux)**

Watertown 45 W45EI NS 5kw, 44-10-14/ 75-
40-35 (DTV America)



North Carolina

Boone 24 WLNN-CD DG 15kw, 36-14-05/
81-42-22

Burnsville 20 W20EE NS 100w; DCC for
W12AU

Cherokee 14 W14EN NS 100w; DCC for
W05AF

Fayetteville 15 WNCB-LD PR>6kw

Fayetteville 22 WIRP-LD PG>6kw

Greenville 14 WIED-LD PG>6kw

Spruce Pine 10 W10AK DR 100w; DG

Spruce Pine 19 W19EK NS 100w; DCC for
W06OD

Wilmington 22 W22DQ XR 34-07-53/ 78-11-17

Wilmington 43 WADA-LD PR>13.2kw



Ohio

Canton 21 W21DI PC<4kw, 40-36-42/ 81-
42-17; PR<2kw,
40-58-59/ 81-41-03

Canton 27 W27DL PC<3kw, 40-24-59/
81-52-06

Canton 43 W43DB XC 40-46-41/ 81-27-02

Cleveland 32 WRAP-LP PR<8.7kw, 41-22-57/
81-42-06; PG



Oklahoma

Enid 42 K42LL PG>7kw, 35-44-23/ 97-
29-02; PC

Enid 48 KUOC-LD PR 6kw, 36-03-24/ 97-
25-26; PG

Tulsa 8 **KJRH-TV** **NS 24kw/ 504m (aux)**



**Oregon
Bend**

Eugene
Grants Pass
Portland
Tillamook

18 KOHD
15 KORY-CA
47 K47GI
41 KOXO-CA
24 KPWC-LD
GA from 51
DC from 41, 13kw
DC 329w
DC from 51, 15kw
PR>15kw, 44-58-40/
123-23-47; PG



Pennsylvania

Berwick
Clarks Summit

Freedom

Hazleton
Milford

Pittsburgh

Williamsport

47 W47AO
24 W24DB
31 WWBP-LP
35 WYLN-LP
25 W25EZ
31 WIIC-LP
9 W05BG
DG 15kw
DR 5kw, 41-26-09 /
75-43-44; DG
DG 938w, 40-37-11/
80-05-36 CX
DG 5.5kw
QG from W43CN, 6kw,
41-00-35/ 74-35-39; CL
from Port Jervis, NY
AF 15kw; DCC for
analog 29; but
dismissed
AF 750w; DCC for
analog 5



Rhode Island

Providence
Providence

36 WRIW-CD
50 WJAR
QR from 50
PA from 51,
1000kw/306m



South Carolina

Charleston
Florence
Murrells Inlet
Myrtle Beach
Myrtle Beach

34 WGWG
44 W44CU
8 WGSC-CD
15 W15CY
27 W27DI
CC from WMMP
PR>15kw
PR>140w
PG>4kw
PG<6kw



**Tennessee
Chattanooga**

Cleveland

Cleveland

29 WTCI

25 WPDP-LP

27 WTNB-CA

**PR 160kw/352m;
amendment from
200kw**

DR 1kw, 35-08-05/
84-37-21; DG
DC 15kw



Texas

Amarillo
Beaumont
College Station

Corpus Christi

Corpus Christi

Corpus Christi

Corpus Christi

Dayton

Denison

Gainesville

Hereford

Houston

Houston

Lingleville

Lubbock

Lufkin

McAllen

Mineral Wells

Robstown

Sherman

14 K14NO
16 K16JC
34, KZCZ-LD,
41 K41LT

7 KTMV-LP

22 K47DF

35 KHCC-LP

45 KXTM-LP

5 KTDJ-LD

23 KQDA-LD

48 K48NY

44 KYAM-LD

39 KZHO-LD

49 KEHO-LD

31 K31MU

46 KXTQ-CA

14 KIBN-LP

32 KRZG-LD

21 K21KJ

40 KINE-LP

13 KJDA-LD

PC>11kw
PG>3kw
PG>6kw
AF 650w, 27-46-09/
97-26-54; DCC for
analog 8
DC from 47, 15kw,
27-44-29/ 97-36-09
DR 230w, 27-46-09/
97-26-54
AF 1.2kw, 29-26-29/
98-30-21; DCC for
analog 21
NS 2.998kw, 30-06-35/
94-01-42; DCC for
analog 47; NW
PR 1kw, 33-34-26/
96-28-43; PG
PC<100w, 33-20-43/
96-38-34
XC 35-12-27/
101-50-19
XR 29-34-34/ 95-30-36;
XG
PR>15kw, 29-48-17/
95-12-18; PG
XR 32-32-11/ 97-24-45
DC 15kw
DC 15kw
NS 3kw, 26-16-01/
98-19-11; DCC for
analog 35
PR<5kw, 32-32-11/
97-24-45; PG
AF 200w, 27-46-10/
97-26-55; DCC for
analog 44
NW 3kw, 34-01-58/ 96-
48-00 (Hispanic Family
Christian Network)

Victoria	7	KBHO-LD	PG>1kw, 29-02-37/ 96-31-05
Victoria	10	K10PL	PR<100w, 29-16-09/ 97-38-08
Victoria	30	KVHM-LP	AF 14kw, 28-46-42/ 97-02-50; DCC for analog 31
Woodville	4	KAHO-LD	XR 29-48-17/ 95-12-18; XG



Virginia

Bristol	9	WOPI-CA	DC
Danville	24	WFFP-TV	CC from WTLU
Front Royal	20	WAZF-CA	NW 6.5kw, 39-17-44/ 77-42-15; DCC for analog 28
Harrisonburg	14	WAZH-CA	NW 15kw, 38-50-59/ 78-08-53; DCC for analog 24
Woodstock	45	WAZT-CA	DC from 10, 4.8kw, 38- 52-19/ 77-41-55



Washington

Hoquiam	24	K24IT	PR<2kw, 46-10-41/ 123-26-11
Prosser	34	K34MZ	NS 1.37kw; DCC for K10NQ
Spokane	36	KSKN	PC>1000kw



West Virginia

Charleston	21	WOCW-LP	DR 15kw, 38-24-27/ 81-54-12
Clarksburg	13	WVUX-LD	PR 300w, 39-16-33/ 80-17-38; PG
Huntington	23	WSAZ-TV	NS 724kw/ 367m (aux)



Wisconsin

Eau Claire	20	W20DU	PG>6kw
------------	----	-------	--------



Wyoming

Casper	16	K16JI	PR>12.6kw, 42-51-00/ 106-21-46
Cheyenne	16	K16LE	NS 9kw, 40-49-59/ 104-47-58; DCC for K49AY
Laramie	50	KHDE-LD	XC 40-17-50/ 105-04-33

As widely expected, the FCC has decided to suspend the requirement for LPTV and TV translator stations to convert to digital by the first of September. The deadline will however remain for Class A stations. Any such station that hasn't converted by September 1st will be required to suspend operation until its digital facility is ready.

Furthermore, any Class A station that hasn't completed its digital facility by May 29th will only be protected from interference within the area served by its *analog* facility, even if their *digital* facility has greater coverage.

KTNE-13 in western Nebraska is off the air after the station's antenna fell off the tower. The tower itself is intact, and KTNE-FM, which broadcasts from the same tower, is unaffected & still on the air.

This is an unusual failure! The tower itself is larger and more structurally complex. Any forces that might damage the structure are more likely to destroy the tower than the antenna.

It's a miracle the antenna didn't hit anything critical on the way down. Antennas *have* fallen off towers before, usually while maintenance is in progress. Almost always, they strike either the tower or one or more of the guy wires. Either collision generally brings the entire tower down.

I would imagine a temporary antenna will be hung from the side of the tower while repairs are performed. Two translators received their programming feed from KTNE and are also off the air.

FM NEWS

for

CANADA and USA

MAY 2015

BILL HALE
FMNews@wtfda.org

INDEX OF ABBREVIATIONS USED IN FM NEWS

APP: application
APP Mod: Change to an already submitted application
Class: FM license class
CoL: City-of-License
CP: construction permit (authority to broadcast with facilities noted)
CP Mod: change to an already granted CP
DA: directional antenna
EE: English language
FF: French language

\$: Stereo
SS: Spanish language
STA: Special Temporary Authorization
XL: Transmitter Location change to
> : change to [in formats]
< : an increase to [in technical data]
> : a decrease to [in technical data]
[]: Calls in brackets signifies assumed or applied-for status

Note: antenna heights are HAAT except where noted

CANADA



CALL LETTER ACTIONS

	<u>Old Call</u>	<u>New Call</u>
BC		
AB Fort McKay	106.3 CP	CIYU-FM
BC Abbotsford	92.5 CFUN-FM1	CKKS-FM1
BC Chilliwack	107.5 CFUN-FM	CKKS-FM
BC Creston	94.1 CP	CKCV-FM
ON Little Current	103.1 CP	CHAW-FM
ON Timmins	105.5 CP	CJTK-FM5
QC Perce	91.9 CP	CKRJ-FM

NEW STATIONS ON THE AIR

ON		
BC Surrey	106.9 VF2689	41 W/52 m, 49-08-26/122-53-18; Class LP; \$
ON Ottawa	92.7 CJVN-FM	50 W-V/41 m, 45-26-13/75-39-29; Class LP; \$

— **FORMAT and SLOGAN CHANGES** —

BC Surrey	106.9	VF2689	Signs on with Punjabi: <i>My FM</i>
BC Vancouver	104.9	CFUN-FM2	Changes slogan to: <i>Kiss Radio</i> : Includes CFUN-FM 107.5 Chilliwack and CFUN-FM1 92.5 Abbotsford
ON Chatham	95.1	CKUE-FM	> Variety Hits: <i>Cool FM</i> [includes CKUE-FM1 100.7 Windsor]
ON Ottawa	92.7	CJVN-FM	New station is on with FF [last reported as being in 'test mode']
QC Rouyn-Noranda	96.5	CHOA-FM	> Hot AC: <i>Rythme FM</i> [includes CHOA-FM1 103.5 Amos & CHOA-FM2 103.9 La Sarre]



— **TECHNICAL CHANGES** —

GRANTS FOR NEW STATIONS

CP granted for:

AB Sylvan Lake	88.5	[CKLK-FM]	1.5 kW/150 m DA, 52-18-43/113-57-32; Class A; \$ [will be Hot AC and Modern Rock/Alternative]
ON Manitoulin Island (Little Current)	103.1	[CHAW-FM]	35.2 kW/178 m, 45-57-07/81-56-42; Class B; \$ [will be Country: <i>Country 103.1</i>] [Craig Timmermans]
ON Timmins	105.5	CJTK-FM5	800 W/61 m, 48-28-33/81-18-47; Class A; \$ [will be Christian // Eternacom's CJTK-FM 95.5 Sudbury with some local programming]



GRANTS TO EXISTING STATIONS

CP granted for:

BC Trail	94.9	CBTA-FM	> 6.1 kW-V//< 14.2 kW-H/505 m, 49-05-30/117-49-16; Class C; Mono
NF Botwood	95.6	CKMY-FM	> 47 kW-H (deletes V)/< 210 m, XL to 49-11-51/55-22-01; (to) Class C1; \$ [also changes CoL from Rattling Brook]
NF Corner Brook	92.3	CKOZ-FM	> 7.665 kW-H (deletes V)/< 141 m, XL to 48-56-01/57-58-00; (to) Class B1; \$
NS Mulgrave	107.5	CBAF-FM11	> 47.86 kW-V//< 100 kW-H/< 192 m (to) DA, 45-35-56/61-24-44; Class C; Mono
ON Hearst	91.1	CINN-FM	< 28 kW (adds V)/> 41 m (to) DA, XL to 49-41-14/83-39-05; Class B; \$
ON Thunder Bay	90.5	CKSI-FM	< 250 W-H (deletes V)/< 27 m, XL to 48-25-32/89-16-08; (to) Class A1; Mono [this is an upgrade to the current facility which uses the station solely to broadcast pre-recorded tourist information and messages informing residents and visitors of weather and road conditions, community events and emergencies, as well as attractions and services in the Thunder Bay area; the new license does not impose a limit the amount of advertising that may be broadcast]
QC Montréal	102.3	CINQ-FM	> 2.1 kW-V/90 m DA, 45-31-50/73-35-55; Class A; \$



APPLICATIONS FROM EXISTING/PROPOSED FACILITIES

Applies for:

AB Rocky Mountain House	94.5	CHBW-FM	< 810 W/> 66 m, XL to 52-19-58/114-54-11; Class A; (to) \$
BC Campbell River	104.5	CBYT-FM	< 250 W/< 115 m, 50-03-13/125-19-35; Class A1; Mono [calls corrected from last issue]
BC Pender Harbour	104.7	CIPN-FM	350 W-V/> 268 m; XL to 49-36-56/124-00-27; Class A; Mono
NB Lameque	90.3	CBAF-FM18	97.7 kW-V//< 100 kW-H (adds V)/< 97 m DA, XL to 47-49-01/65-08-50; (to) Class C; Mono [change in CoL to Grande-Anse; will continue to be // CBAF-FM 88.5 Moncton]



NB Lameque	95.3	CBAL-FM2	95.1 kW-V//< 100 kW-H (add V)/< 97 m; XL to 47-49-01/65-08-50; (to) Class C [CoL change to Grande-Anse and frequency change to 88.3; will continue to be // CBAL-FM 98.3 Moncton]
NF Corner Brook	92.3	CKOZ-FM	> 7.665 kW-V (deletes H)/< 141 m, XL to 48-56-01/57-58-00; (to) Class B1; \$
ON Erin	91.7	CHES-FM	2.5 kW/63 m DA, 43-45-56/80-03-41; Class A; \$ [would move from 88.1]
ON Ottawa	101.9	CIDG-FM	< 19.5 kW/< 100 m DA, XL to 45-22-11/75-42-11; (to) Class B1; \$ [frequency change to 101.7]
QC Amos	88.3	CBFX-FM3	47.75 kW-V//<100 kW-H (adds V)/< 189 m DA, XL to 48-12-01/78-07-15; (to) Class C1; \$
QC Amos/Val D'Or	91.5	CHLM-FM1	45.6 kW-V//< 100 kW-H (adds V)/< 189 m DA, XL to 48-12-01/78-07-15; (to) Class C1; Mono
QC Fort-Coulonge	101.9	CHIP-FM	11.9 kW/91 m, 45-45-41/76-35-00; Class B; \$ [frequency change from 101.7 only]
QC Malartic	101.1	[CBMN-FM]	50 kW/189 m DA, 48-12-01/78-07-15; Class x; \$/Mono [The CBC has applied to convert Radio One CBMN-1230 in Malartic, Quebec to FM. Programming will continue to originate at CBVE-FM 104.7 Quebec City. If approved, Radio One's CBML 570 in Val-d'Or will be shut down as the new FM station will cover the entire Malartic-Val-d'Or/Amos region]



APPLICATIONS FOR NEW FACILITIES

AB Sylvan Lake	88.3	APP	Applies for: 50 kW/119 m DA, 52-20-51/114-13-46; Class B; \$ [would be Country; Golden West]
----------------	------	-----	--

DENIALS AND DISMISSALS

AB Ponoka	89.7	APP	Application denied for 10 kW/111 m; would have been Country [Blackgold Broadcasting]; The CRTC was concerned about a possible negative impact on existing stations in Wetaskiwin and Lacombe.
ON Aurora	91.7	APP	Application denied for 150 W/180 m here; would have been a rebroadcaster for CFMS-FM 105.9 Markham
ON Timmins	102.3	APP	Application denied 32 W-V/76 m here plus nine rebroadcasters (see last month's issue for list); would have been Christian [William Rowe]; a competing application was awarded to Eternacom in Timmins (see Grants for New Stations)

— OTHERNEWS —

AB Banff	101.1	CFPE-FM	License cancelled; call deleted. The Banff Centre requested the revocation of the licence for this EE-language tourist information station. The licensee stated that it is no longer in a viable financial position to support th(e station).
AB Banff	103.3	CFPF-FM	License cancelled; call deleted. The Banff Centre requested the revocation of the licence for this FF-language tourist information station. The licensee stated that it is no longer in a viable financial position to support th(e station). [see note below]
AB Wetaskiwin	93.5	CIHS-FM	[see note below]
BC Salt Spring Island	107.9	CFSI-FM	[see note below]
ON Toronto	88.9	CIRV-FM	Fairchild Radio has applied to set up a Subsidiary Communications Multiplex Operation (SCMO) for CIRV-FM which will broadcast Portuguese language programming from Heart Broadcasting. This service is currently available on the SCMO for CBL 94.1 in Toronto, however an agreement could not be reached to renew the contract.
ON Toronto	106.5	CKAV-FM	(with CKAV-FM2 106.3 Vancouver, CKAV-FM3 88.1 Calgary, CKAV-FM4 89.3 Edmonton and CKAV-FM9 95.7 Ottawa [see note below]
QC Rimouski	96.5	CKMN-FM	[see note below]

[note: the aforementioned stations have been summoned to appear before the CRTC on May 13th to show cause why their licenses should not be suspended or revoked due to ongoing issues of non-compliance]



— UNITED STATES AND TERRITORIES —



— CALL LETTER ACTIONS —

FULL POWER STATIONS

		Old Call	New Call		Old Call	New Call	
AK	Akiachak	92.7 CP	KHKY	NM	Tohatchi	101.5 CP	KTNN-FM
AK	Iliamna	98.1 CP	KAMN	NC	Bethel	98.9 WNRB-FM	WLXB
AR	Clarendon	104.1 KBRI-FM	KBRI	OH	Ashtabula	91.7 WLGO	WVMU
FL	Sugarloaf Key	105.7 CP	WGAY	OK	Woodward	95.9 KZCU	KCSC-FM
GA	Plains	105.9 CP	WPLI	PA	Philadelphia	96.5 WRDW-FM	WZMP
ID	Gooding	99.1 KXTA	KXTA-FM	PA	Pittston	102.3 WHBS	WMQX
IL	Cuba	98.1 CP	WILP	TX	Harlingen	88.9 KMBH-FM	KJFF
IL	Loves Park	91.1 WGSF	WILV	VA	Pamplin City	90.5 WEQP	WWEQ
IN	New Washington	88.3 WARA	WARA-FM	VA	Rustburg	91.7 WWEM	WEQP
IA	Hiawatha	89.1 KXGM-FM	KXGM	WA	Covington	104.5 KMCQ	KLSW
LA	Jean Lafitte	107.5 KXMG	KNOL	WA	Tacoma	91.7 KXOT	KYFQ
MS	Mound Bayou	101.7 CP	WZYQ	WV	White Sulphur Spring	93.3 WKCJ	WVIC
NJ	Canton	101.7 WJKS	WDEL-FM				

[Note: call changes in RED have been reported by third-party sources, but at deadline do not appear in the FCC database]

LPFM STATIONS

		Old Call	New Call		Old Call	New Call	
AL	Jacksonville	103.5 CP	WCOC-LP	IN	Decatur	103.5 CP	WRFD-LP
AL	Pelham	93.3 CP	WPLX-LP	IN	Jeffersonville	98.5 CP	WJHI-LP
AK	Anchorage	94.1 CP	KHRM-LP	IN	Warsaw	93.9 WIOE-LP	WLQZ-LP
AK	Dillingham	101.7 CP	KUBY-LP	KY	Frankfort	104.1 CP	WYDX-LP
AZ	San Xavier	102.5 CP	KWAK-LP	LA	Lafayette	93.1 CP	KNHS-LP
AZ	Show Low	98.7 KSXL-LP	KPKX-LP	LA	Lafayette	95.9 CP	KZYD-LP
AZ	Tucson	90.1 CP	KCDS-LP	LA	Monroe	106.7 CP	KIEZ-LP
AZ	Yuma	92.5 CP	KYVD-LP	LA	New Orleans	90.3 CP	WAMF-LP
CA	Fresno	103.3 CP	KOFP-LP	LA	West Monroe	95.3 CP	KEWZ-LP
CA	Petaluma	103.3 CP	KPCA-LP	MA	Winchester	99.9 CP	WQEB-LP
CA	Red Bluff	92.5 CP	KNKJ-LP	MI	Gobles	93.3 CP	WXHW-LP
CA	Sacramento	106.9 CP	KUTZ-LP	MO	Poplar Bluff	101.9 CP	KPBM-LP
CA	San Diego	101.1 CP	KVIB-LP	MO	Webb City	98.5 CP	KWEB-LP
CT	Cromwell	104.5 CP	WQSA-LP	MT	Choteau	95.5 CP	KETI-LP
CT	Cromwell	104.5 CP	WQSA-LP	MT	Hot Springs	101.9 CP	KJFK-LP
FL	Ft. Myers	94.9 CP	WFKM-LP	MT	Missoula	105.5 CP	KFGM-LP
FL	Gainesville	104.1 CP	WGVC-LP	NV	Reno	100.5 CP	KJLR-LP
FL	Jacksonville	98.5 CP	WRPE-LP	NJ	Ramtown	104.7 CP	WJUI-LP
FL	Kissimmee	104.5 CP	WTMS-LP	NY	Flushing	105.5 CP	WQEQ-LP
FL	Titusville	93.7 CP	WSVJ-LP	NC	Salisbury	107.1 CP	WLJZ-LP
GA	Marietta	99.1 CP	WIEH-LP	OH	Fostoria	104.1 CP	WLBK-LP
GA	Moultrie	98.3 WYSH-LP	WLOV-LP	OH	Paulding	102.7 CP	WMYW-LP
HI	Honolulu	97.9 CP	KQHU-LP	OK	Norman	95.5 CP	KXOU-LP
HI	Lihue	94.9 CP	KESU-LP	OK	Norman	107.1 CP	KOUJ-LP
IL	Chicago	98.3 CP	WQEG-LP	OK	Tulsa	103.9 CP	KOKT-LP
IL	Chicago	107.1 CP	WCXP-LP	PA	Greencastle	93.7 CP	WRGG-LP
IL	Donnellson	100.9 CP	WTGT-LP	PA	Philadelphia	92.9 CP	WJFN-LP
IL	Ottawa	94.5 CP	WRWO-LP	PA	Phoenixville	98.5 CP	WXPM-LP

PR Moca	93.7	CP	WMAA-LP	TX Sacramento	106.9	CP	KUTZ-LP
SD Sioux Falls	104.3	CP	KSTJ-LP	TX Weslaco	99.1	CP	KEWT-LP
TN Dechard	107.7	CP	WLBX-LP	VA Charlottesville	92.3	CP	WXRK-LP
TN Knoxville	103.9	CP	WOGO-LP	VA Charlottesville	97.9	CP	WREN-LP
TN Knoxville	103.9	CP	WOZO-LP	VA Rustburg	91.7	WWEM-LP	WEQP-LP
TN Memphis	100.5	CP	WJLL-LP	WA Aberdeen	94.3	KYAB-LP	KAHC-LP
TX Corpus Christi	100.3	CP	KSRB-LP	WA Walla Walla	107.3	CP	KTNH-LP
TX Edinburg	95.7	CP	KRRH-LP	WA Wenatchee	107.9	CP	KJHS-LP
TX Emory	102.5	CP	KRER-LP	WV Charleston	88.1	CP	WTSQ-LP
TX Houston	102.5	KAYZ-LP	KMAZ-LP	WV Charleston West Side	92.1	CP	WSVQ-LP
TX Mission	97.9	CP	KFCC-LP	WV Ravenswood	92.5	WTGH-LP	WTHM-LP
TX Richardson	95.7	CP	KUTD-LP				

¹ - Share Time Agreement

TRANSLATOR and BOOSTER STATIONS

		Old Call	New Call			Old Call	New Call
AL Anniston	103.9	W282BD	W280ER	MN Fairmont	88.1	K204FM	K201IU
AK Seward	95.1	K233CC	K236CC	MS Meridian	100.9	W212BV	W265CZ
CA Big Bear City	102.5	K274CH	K273CO	NY Watertown	104.5	W281AA	W283CC
CO Colorado Springs	92.3	K223CB	K222CR	NC Boone	99.1	W258CL	W256CV
CO East Salt Creek, etc	96.7	K247CC	K244FB	OR Myrtle Creek	97.9	K247CE	K250BK
FL Avon Park	107.5	W299AU	W298BU	PA Dushore	97.1	W299BM	W246DC
FL Tallahassee	94.5	W232BO	W233AQ	PA Garden View	103.1	W277BJ	W276CU
FL Twentymile Bend	97.1	W244BK	W246CI	PA Irwin	92.3	W221CX	W222CB
FL Zolfo Springs	107.5	W299AU	W298BU	PA Williamsport	105.5	W290BS	W288DE
GA Albany	107.3	W203AT	W297BQ	PR Mayaguez	96.9	APP	WNRT-2
GA Atlanta	101.9	CP	W270CP	TX Barker	94.1	K217DP	K231CN
HI Lahaina	102.9	KMKV-1	KMKV-FM1	UT Greenville	99.7	K256CG	K259CS
ID Boise	99.1	KXTA-FM3	KXTA-FM4	VA Madison Heights	98.3	W204AZ	W252DE
ID Sandpoint	104.5	KNHK-3	KNHK-FM3	VA Smithfield	102.5	W272CC	W273CS
IL Casey	94.7	W232CJ	W234CK	VA Sterling	104.5	W282BA	W283CD
IN Frankfort	93.5	W231CB	W228CX	WA Shelton	103.5	K281BM	K278CG
KY Glasgow	95.7	W238BV	W239BT	WI Chippewa Falls	101.7	W272CY	W269CV
MD Rockville	104.7	W232CB	W284CQ	WY Jackson	101.3	K264BY	K267BV
MI Charlevoix	94.9	W236CB	W235CL	WY Torrington	89.5	K210AF	K208FY

— FORMAT AND SLOGAN CHANGES —

Full Power Stations

AL Auburn	97.7	WKKR	Changes network to Westwood One - Mainstream Country
AL Birmingham	99.5	WZRR	Adds network: Westwood One - Nash Icon
AL Georgiana	107.7	WFXX	Changes network to Westwood One - Adult Contemporary
AL Greenville	94.3	WQZX	Changes network to Westwood One - Mainstream Country
AL Linden	98.5	WINL	Changes network to Westwood One - Mainstream Country
AL New Market	93.3	WWFF-FM	Adds network: Westwood One - Nash Icon
AL Roanoke	102.3	WELR-FM	Changes network to Westwood One - Mainstream Country
AL Rockford	105.1	WRFS	Signs on with Soft AC: <i>105.1 The Lake</i>
AL Selma	100.1	WDXX	Changes network to Westwood One - Mainstream Country
AL Stevenson	101.7	WMXN-FM	Changes network to Westwood One - Classic Hits
AK Nisiski	93.3	KXBA	Changes network to Westwood One - Classic Hits
AK Sitka	103.1	KSBZ	Changes network to Westwood One - Classic Rock
AZ Cottonwood	95.9	KKLD	Changes network to Westwood One - Classic Hits
AZ Douglas	96.5	KDAP-FM	Changes network to Westwood One - Mainstream Country
AZ Heber	105.5	KSNX	Changes network to Westwood One - Classic Hits
AR Arkadelphia	100.9	KDEL-FM	Changes network to Westwood One - Mainstream Country
AR Bearden	92.7	KBEU	Signs on with Sports: <i>Fox Sports Radio 92.7</i> [Fox Sports Radio]
AR Bryant	93.3	KKSP	> Christian AC: <i>93.3 The Fish</i>
AR Cedarville	94.9	KRMW	Adds network: Westwood One - Nash Icon
AR Cherokee Village	98.3	KFCM	Changes network to Westwood One - Classic Hits
AR Crosett	104.9	KAGH-FM	Changes network to: Westwood One - Mainstream Country
AR England	96.5	KHTE-FM	Changes slogan to: <i>96.5 The Answer</i> , as they remain Conservative Talk
AR Ft. Smith	100.7	KLSZ-FM	Adds network: Westwood One - Nash Icon



AR Hatfield	104.1	KENA-FM	Changes network to Westwood One - Mainstream Country
AR North Crossett	102.7	KWLT	Changes network to: Westwood One - Classic Rock
AR Warren	105.5	KWRF-FM	Changes network to Westwood One - Mainstream Country
AR Yellville	101.7	KCTT-FM	Changes network to Westwood One - Classic Hits
AZ Lake Havasu City	96.7	KRCY-FM	Changes network to Westwood One - Classic Hits
CA Crescent City	94.3	KCRE-FM	Changes network to Westwood One - Adult Contemporary
CA Oak View	106.3	KRRF	Adds network: Westwood One - Nash Icon
CA Ventura	95.1	KBBY-FM	> AC: <i>The New 95.1 KBBY</i>
CA Westwood	88.5	KWLK	Returns to the air with Religious Teaching
CO Alamosa	93.5	KALQ-FM	Changes network to Westwood One - Mainstream Country
CO Fruita	101.5	KGJX	Changes network to Westwood One - Classic Hits
CO Gunnison	102.3	KVLE-FM	Changes network to Westwood One - Adult Contemporary
CO Hayden	107.3	KQZR	Changes slogan to: <i>Reel 95.5 & 107.3</i>
CO Salida	92.3	KVRH-FM	Changes network to Westwood One - Hot AC
CO Woodland Park	89.5	KILE-FM	Returns to the air with Classic Hits
FL Greenville	90.3	WYJC	> Christian CHR/Rock: <i>Effect Radio</i>
FL Key West	90.1	WKWR	Returns to the air with Contemporary Christian: <i>K-Love</i>
FL Marianna	100.9	WJAQ	Changes network to Westwood One - Mainstream Country
FL Sebastian	95.9	WSJZ-FM	> Rock: <i>95 Rock</i> [is no longer // WLZR-1560 Melbourne]
FL St. Marks	91.1	WUJC	Changes slogan to: <i>CSN International</i>
FL Starke	106.3	WEAG-FM	Changes network to Westwood One - Mainstream Country
GA Americus	94.7	WDEC-FM	Changes network to Westwood One - Adult Contemporary
GA Americus	98.7	WISK-FM	Changes network to Westwood One - Mainstream Country
GA Donalsonville	106.3	WGMK	Changes network to Westwood One - Classic Rock
GA Jeffersonville	93.7	WPEZ	Changes network to Westwood One - Adult Contemporary
GA Jesup	105.5	WIFO-FM	Changes network to Westwood One - Mainstream Country
GA Meigs	92.3	WQLI	Changes network to Westwood One - Adult Contemporary
GA Moultrie	93.9	WMTM-FM	Changes network to Westwood One - Classic Hits
GA Sylvester	102.1	WNUQ	Adds network: Westwood One - Nash Icon
GA Tennille	101.9	WJFL	Changes network to Westwood One - Adult Contemporary
GA The Rock	88.9	WKEU-FM	Changes network to Westwood One - Classic Rock
GA Trion	95.7	WATG	Changes network to Westwood One - Classic Rock
GA Tybee Island	102.1	WZAT	Adds network: Westwood One - Nash Icon
GA Woodbury	94.5	WFDR-FM	> Urban Contemporary: <i>Streetz</i> // WSTR-HD3 94.1 Smyrna, W233BF 94.5 Atlanta and WIPK 94.5 Calhoun
HI Volcano	107.7	KKOA	Changes network to Westwood One - Mainstream Country
ID McCall	89.1	KAVY	> Contemporary Christian: <i>89.5 KTSY</i>
ID Pocatello	93.7	KZBQ	Changes network to Westwood One - Mainstream Country
ID Twin Falls	98.3	KSNQ	Changes network to Westwood One - Classic Rock
IL Atlanta	96.3	WLGN	Changes network to Westwood One - Mainstream Country
IL Breese	97.5	WDLJ	Changes network to Westwood One - Classic Rock
IL Staunton	105.3	WAOX	Changes network to Westwood One - Hot AC
IL Pontiac	93.7	WJBC-FM	Adds network: Westwood One - Nash Icon
IL Streator	106.1	WYYS	Changes network to Westwood One - Classic Hits
IN Greencastle	94.3	WREB	Changes network to Westwood One - Adult Contemporary
IN Linton	93.3	WQTY	Changes network to Westwood One - Classic Hits
IN Martinsville	102.3	WCBK-FM	Changes network to Westwood One - Mainstream Country
IN Royal Center	103.7	WHZR	Changes network to Westwood One - Mainstream Country
IN Salem	97.9	WSLM-FM	Changes network to Westwood One - Classic Hits
IA Garnavillo	100.1	KCTN	Changes network to Westwood One - Mainstream Country
IA Iowa Falls	95.3	KIFG-FM	Changes network to Westwood One - Classic Hits
IA Ottumwa	92.7	KTWA	Changes network to Westwood One - Adult Contemporary
IA Villisca	95.3	KCSI	Changes network to Westwood One - Mainstream Country
IA Webster City	95.7	KQWC-FM	Changes network to Westwood One - Adult Contemporary
IA West Des Moines	92.5	KJJY	Adds network: Westwood One - Nash Icon
IA Winterset	101.7	KPUL	Changes slogan to: <i>Pulse 101.7</i>
KS Concordia	94.9	KNCK-FM	Changes network to Westwood One - Hot AC
KS Emporia	101.7	KVOE-FM	Changes network to Westwood One - Mainstream Country
KS Emporia	104.9	KFFX	Changes network to Westwood One - Hot AC
KS Garden City	97.3	KKJQ	Changes network to Westwood One - Mainstream Country
KY Carrollton	95.3	WIKI	Changes network to Westwood One - Mainstream Country
KY Cave City	103.7	WHHT	Adds network: Westwood One - Nash Icon



KY Corbin	107.3	WCTT-FM	Changes network to Westwood One - Hot AC
KY Lebanon Junction	99.3	WKMO	Adds network: Westwood One - Nash Icon
KY Madisonville	106.9	WTTL-FM	Changes slogan to: <i>TTL 106.9</i>
KY Morehead	96.3	WIVY	Changes network to Westwood One - Adult Contemporary
KY Morehead	106.1	WMOR-FM	Changes slogan to: <i>Mix 106</i>
KY Richmond	101.5	WVLK-FM	Adds network: Westwood One - Nash Icon
KY Salyersville	106.5	WRLV-FM	Changes slogan to: <i>Pure Country 106.5</i>
KY Scottsville	91.5	WBGB	Changes network to Westwood One - Classic Hits
KY Springfield	102.7	WOKH	Changes network to Westwood One - Adult Contemporary
LA DeRidder	97.9	KQLK	Adds network: Westwood One - Nash Icon
LA Eunice	105.5	KEUN-FM	Changes network to Westwood One - Mainstream Country
LA Jonesville	105.1	KZKR	Changes network to Westwood One - Classic Rock
LA Lake Charles	103.3	KBIU	Changes network to Westwood One - Adult Contemporary
LA Oak Grove	96.7	KWCL-FM	Changes network to Westwood One - Classic Hits
MD Crisfield	97.9	WBEY-FM	Changes network to Westwood One - Mainstream Country
MD Mountain Lake Park	104.5	WKHJ	Changes network to: Westwood One- Adult Contemporary
MD Oakland	92.3	WWHQ	Changes network to: Westwood One - Mainstream Country
MD Pocomoke City	92.5	WICO-FM	Changes slogan to: <i>Delmarva's Talk Stations 92.5/1320</i>
MD Snow Hill	101.1	WRYD	Adds network: Westwood One - Nash Icon
MA Webster	98.9	WORC-FM	Adds network: Westwood One - Nash Icon
MI Adrian	95.3	WQTE	Changes network to Westwood One - Mainstream Country
MI Charlevoix	107.9	WCZW	Changes network to Westwood One - Classic Hits
MI Hudson	102.5	WBZV	Changes network to Westwood One - Classic Rock
MI Ironwood	106.9	WUPM	Has returned to the air with their Hot AC format with 170 Watts transmitting from the tower/antenna of co-owned W225 92.9 Ironwood. On April 1 their 300-foot tower collapsed due to a wind storm.
MI Luna Pier	98.3	WMIM	Adds network: Westwood One - Nash Icon
MI Manistique	92.7	WRPP	Changes network to Westwood One - Classic Rock
MI Menominee	103.7	WHYB	Changes network to Westwood One - Classic Hits
MI Newaygo	92.5	WLAW	Adds network: Westwood One - Nash Icon
MI North Muskegon	98.3	WLCS	Changes network to Westwood One - Classic Hits
MI Palmer	98.3	WRUP	Changes network to Westwood One - Classic Rock
MI Port Huron	102.3	WGRT	Changes network to Westwood One - Adult Contemporary
MI Saugatuck	92.7	WYVN	Changes network to Westwood One - Classic Hits
MI Speaker Township	89.7	WKKM	Returns to the air with Contemporary Christian: <i>Smile FM, Michigan's Positive Hits</i> [Smile FM]
MI Traverse City	107.5	WCCW-FM	Changes network to Westwood One - Classic Hits
MI Whitehall	97.5	WWSN	Changes network to Westwood One - Adult Contemporary
MN Bagley	96.7	KKCQ-FM	Changes network to Westwood One - Mainstream Country
MN Blackduck	104.5	WQXJ	Changes network to Westwood One - Classic Hits
MN Browerville	99.7	KXDL	Changes network to Westwood One - Classic Hits
MN Fergus Falls	96.5	KJJK-FM	Changes network to Westwood One - Mainstream Country
MN Grans Rapids	96.9	KMFY	Changes network to Westwood One - Adult Contemporary
MN Hibbing	106.3	WMFG-FM	Changes network to Westwood One - Classic Hits
MN Park Rapids	92.5	KXKK	Changes network to Westwood One - Mainstream Country
MN Springfield	94.7	KNSG	Changes network to Westwood One - Classic Hits
MN Walker	101.9	KQKK	Changes network to Westwood One - Adult Contemporary
MO Cape Girardeau	102.9	KEZS-FM	Changes network to Westwood One - Mainstream Country
MO Caruthersville	105.1	KCRV-FM	Changes network to Westwood One - Classic Hits
MO East Prairie	105.3	KYMO-FM	Changes network to Westwood One - Classic Hits
MO Eldon	92.7	KLOZ	Changes network to Westwood One - Hot AC
MO Gainesville	99.7	KBOD	Changes network to Westwood One - Mainstream Country
MO Lake Ozark	102.7	KQUL	Changes network to Westwood One - Classic Hits
MO Naylor	99.9	KZMA	Changes network to Westwood One - Adult Contemporary
MO Scott City	93.9	KGKS	Changes network to Westwood One - Classic Hits
MO Thayer	92.3	KSAR	Changes network to Westwood One - Mainstream Country
MS Bude	104.3	WMJU	Changes network to Westwood One - Hot AC
MS Clarksdale	96.5	WKDJ-FM	Changes network to Westwood One - Mainstream Country
MS Columbia	96.7	WFFF-FM	Changes network to Westwood One - Adult Contemporary
MS Grenada	92.3	WOHT	Changes network to Westwood One - Classic Hits
MS Prentiss	98.3	WJDR	Changes network to Westwood One - Mainstream Country
MS Prentiss	104.9	WCJU-FM	Changes network to Westwood One - Classic Hits
MT Chinook	101.3	KRYK	Changes network to Westwood One - Hot AC
MT Dillon	98.3	KBEV-FM	Changes network to Westwood One - Adult Contemporary
MT Plentywood	100.1	KATQ-FM	Changes network to Westwood One - Classic Rock
NE Chadron	97.5	KQSK	Changes network to Westwood One - Mainstream Country



NE Fairbury	99.5	KUTT	Changes network to Westwood One - Mainstream Country
NE Kearney	98.9	KKPR-FM	Changes network to Westwood One - Classic Hits
NV Cal-Nev-Ari	104.9	KVAL	Changes network to Westwood One - Hot AC
NV Las Vegas	93.1	KPLV	Changes slogan to <i>93.1 The Party</i>
NH Keene	97.7	WSNI	Changes network to Westwood One - Adult Contemporary
NM Albuquerque	96.3	KBZU	Adds network: Westwood One - Nash Icon
NM Church Rock	103.7	KYVA-FM	Changes network to Westwood One - Classic Hits
NM Cloudcroft	96.7	KNMB	Changes network to Westwood One - Hot AC
NM Clovis	99.9	KTQM-FM	Changes network to Westwood One - Adult Contemporary
NM Ruidoso	101.5	KIDX	Changes network to Westwood One - Classic Rock
NY Fredonia	96.5	WBXX	Changes network to Westwood One - Mainstream Country
NY Hornell	92.1	WCKR	Adds network: Westwood One - Nash Icon
NY Little Valley	105.9	WGWE	Changes network to Westwood One - Classic Hits
NY Norwich	95.3	WBKT	Changes network to Westwood One - Mainstream Country
NY Riverhead	103.9	WRCN-FM	Adds slogan: <i>LI News Radio</i>
NY Seneca Falls	99.3	WLLW	Changes network to Westwood One - Classic Rock
NY Walton	92.1	WDLA-FM	Changes network to Westwood One - Mainstream Country
NY Wellsville	93.3	WQRW	Changes network to Westwood One - Hot AC
NY Wellsville	103.5	WJQZ	Changes network to Westwood One - Classic Hits
NC Manteo	98.1	WOBX-FM	> Sports: <i>98.1 The Score</i> [Fox Sports Radio]
NC Roanoke Rapids	102.3	WPTM	Changes network to Westwood One - Mainstream Country
NC Sanford	105.5	WFJA	Changes network to Westwood One - Classic Hits
OK Elk City	94.3	KXOO	> Classic Hits: <i>Kool FM</i> [Cumulus - Classic Hits]
OH Bellevue	92.1	WOHF	Changes network to Westwood One - Classic Hits
OH Cleveland	102.1	WDOK	Changes slogan to: <i>Star 102</i>
OH Cleveland	104.1	WQAL	Changes network to Westwood One - Hot AC
OH Geneva	104.7	WKKY	Changes network to Westwood One - Mainstream Country
OH Middleport	92.1	WYVK	Changes network to Westwood One - Classic Hits
OK Comanche	105.3	KDDQ	Changes network to Westwood One - Classic Rock
OK Durant	106.3	KLBC	Changes network to Westwood One - Mainstream Country
OK Elk City	94.3	KXOO	Changes network to Westwood One - Classic Hits
OK Elk City	96.5	KECO	Changes network to Westwood One - Mainstream Country
OK Lahoma	95.7	KXLS	Changes network to Westwood One - Hot AC
OK Marlow	92.1	KFXI	Changes network to Westwood One - Mainstream Country
OK North Enid	107.1	KNID	Changes network to Westwood One - Mainstream Country
OK Stillwater	101.1	KVRO	Changes network to Westwood One - Classic Hits
OK Sulphur	106.1	KIXO	Changes network to Westwood One - Mainstream Country
OK Wewoka	104.7	KSLE	Changes network to Westwood One - Classic Hits
OR Hermiston	100.1	KQFM	Changes network to Westwood One - Adult Contemporary
OR Hood River	105.5	KCGB-FM	Changes network to Westwood One - Hot AC
OR Monmouth	95.1	KSND	Adds network Bustos Media- La Gran D
OR Stanfield	96.1	KLKY	Changes network to Westwood One - Classic Rock
PA Brookville	103.3	WKQL	Changes network to Westwood One - Classic Hits
PA Curwensville	102.9	WOKW	Changes network to Westwood One - Adult Contemporary
PA Ellwood City	92.1	WKPL	Changes network to Westwood One - Classic Hits
PA Lock Haven	92.1	WSQV	Changes slogan to: <i>92.1 WSQV The Valley's Best Rock</i>
PA Meadville	100.3	WGYV	Changes network to Westwood One - Mainstream Country
PA Oil City	98.5	WGYI	Changes network to Westwood One - Mainstream Country
PA Philadelphia	96.5	WRDW-FM	> CHR: <i>Amp Radio</i>
PA Pittston	102.3	WMQX	> Rock AC: <i>Max 102</i>
PA Uniontown	99.3	WPKL	Changes network to Westwood One - Classic Hits
SC Clemson	105.5	WCCP-FM	Remains Sports: <i>The Roar</i> [now CBS Sports and is // WAHT-1560 Clemson]
SC Lexington	98.5	WOMG	Adds network: Westwood One - Nash Icon
SC Chesterfield	107.3	WVSZ	Changes network to Westwood One - Mainstream Country
SC Lancaster	107.1	WRHM	Changes network to Westwood One - Mainstream Country
SC Murrells Inlet	94.5	WYEZ	> Adult Contemporary: <i>94.5 The Tide</i>
SC Pamplico	102.1	WMXT	Changes network to Westwood One - Classic Hits
TN Cookeville	89.9	WRIM	Returns to the air with Religious Teaching: <i>Risen Radio</i> [EWTN]
TN East Ridge	107.9	WOGT	Adds network: Westwood One - Nash Icon
TN Henry	104.7	WMUF	Changes network to Westwood One - Mainstream Country
TN Kingsport	104.9	WKOS	Changes slogan to: Nash Icon: <i>104.9 NashIcon</i>
TN Madisonville	99.5	WYGO	Changes network to Westwood One - Adult Contemporary
TN Nashville	95.5	WSM-FM	Adds network: Westwood One - Nash Icon
TN Spencer	107.3	WTRZ	Changes network to Westwood One - Adult Contemporary
TN Sweetwater	98.3	WMTY-FM	Changes slogan to: <i>Oldies 98.3</i>



TN Tusculum	103.1	WIKQ	Changes network to Westwood One - Mainstream Country
TX Andrews	105.5	KAFT-FM	Changes network to Westwood One - Mainstream Country
TX Breckenridge	93.5	KLXK	Changes network to Westwood One - Mainstream Country
TX Carthage	104.3	KGAS-FM	Changes network to Westwood One - Mainstream Country
TX Eastland	97.7	KATX	Changes network to Westwood One - Classic Hits
TX Eldorado	89.7	KWTR	Signs on with Unavailable Format
TX Jasper	107.3	KJAS	Changes network to Westwood One - Adult Contemporary
TX Malakoff	95.9	KCKL	Changes network to Westwood One - Mainstream Country
TX Mountain Home	103.7	KAXA	Changes network to Westwood One - Mainstream Country
TX Pineland	99.1	KFAH	Changes network to Westwood One - Adult Contemporary
TX Rusk	97.7	KWRW	Changes network to Westwood One - Classic Hits
TX Hebronville	98.7	KOTX	Returns to the air with Regional Mexican: <i>Tekila FM</i>
UT Blanding	92.7	KBDX	Changes network to Westwood One - Classic Hits
UT Roosevelt	98.5	KIFX	Changes network to Westwood One - Adult Contemporary
UT Vernal	105.5	KLCY	Changes network to Westwood One - Mainstream Country
VA Buffalo Gap	95.5	WBOP	Changes network to Westwood One - Adult Contemporary
VA Clincho	92.1	WDIC-FM	Changes network to Westwood One - Classic Hits
VA Gloucester	99.1	WXGM-FM	Changes network to Westwood One - Adult Contemporary
VA Lebanon	107.3	WXLZ-FM	Changes network to Westwood One - Mainstream Country
VA Narrows	101.3	WZFM	Changes network to Westwood One - Classic Hits
VA Norton	106.3	WNVA-FM	Returns to the air with Modern Rock: <i>99.3 The X</i>
WA Colfax	102.5	KRAO-FM	Changes network to Westwood One - Hot AC
WA Forks	96.7	KBDB-FM	Changes network to Westwood One - Adult Contemporary
WA Kelso	94.5	KLYK	Changes network to Westwood One - Hot AC
WV Dunbar	94.5	WYNL	> Christian AC: <i>New Life 94.5</i> [is no longer // WVTS-1240 Dunbar]
WV Bethlehem	105.5	WUKL	Changes network to Westwood One - Classic Hits
WV Vienna	100.1	WDMX	Changes network to Westwood One - Classic Hits
WI Beaver Dam	95.3	WXRO	Changes network to Westwood One - Mainstream Country
WI Hallie	103.7	WWIB	Changes slogan to: <i>We Are Family</i>
WI Manitowoc	102.3	WQTC-FM	Changes network to Westwood One - Classic Rock
WI Milwaukee	93.3	WLDB	> Hot AC: <i>Trending Radio 93.3</i>
WI Milwaukee	96.5	WKLH	Changes slogan to: <i>Hometown Rock 96-5</i>
WI Neillsville	92.7	WPKG	Changes network to Westwood One - Hot AC
WI Neillsville	107.5	WCCN-FM	Changes network to Westwood One - Classic Rock
WI Sturtevant	104.7	WDDW	Adds network Bustos Media- La Gran D
WI Winneconne	103.9	WVBO	Changes network to Westwood One - Classic Hits
WY Hudson	105.1	KTUG	> Hot AC: <i>105.1 The Pulse</i>
WY Pine Bluffs	95.5	KEZF	> Unavailable Format
WY Afton	98.7	KRSV-FM	Changes network to Westwood One - Mainstream Country
WY Casper	102.5	KHOC	Changes network to Westwood One - Adult Contemporary
WY Casper	103.7	KQLT	Changes network to Westwood One - Mainstream Country
WY Casper	106.9	KASS	Changes network to Westwood One - Classic Rock
WY Rock Springs	95.1	KYCS	Changes network to Westwood One - Hot AC
WY Rock Springs	96.5	KQSW	Changes network to Westwood One - Mainstream Country
WY Rock Springs	99.7	KSIT	Changes network to Westwood One - Classic Rock



LP Stations

CA Big Pine	97.7	KOGI-LP	Signs on with Ethnic
CA Red Bluff	92.5	KNKJ-LP	Signs on with Religious Teaching
IN Kokomo	104.9	WTSX-LP	Signs on with Variety
MA Lynn	89.3	WCDV-LP	Signs on with Spanish Religious
MI Ironwood	102.1	WCPP-LP	Signs on with Variety



FL Jacksonville	95.5	WSKR-LP	Signs on with Variety [University of North Florida]
FL West Palm Beach	101.1	WDZP-LP	Signs on with R&B Oldies
GA Waycross	103.9	WEWZ-LP	Signs on with Variety
HI Waimea	107.3	KRWK-LP	Signs on with Religious Teaching
IA Oskaloosa	95.7	KMFH-LP	Signs on with Religious Teaching: <i>My Fathers House</i>
KS Ulysses	100.3	KQUI-LP	Signs on with Spanish Religious
KY Vine Grove	96.9	WENS-LP	Signs on with Spanish Religious
NE Alliance	103.9	KLPH-LP	Signs on with Religious Teaching [Spirit Catholic Radio Network]
NE Sidney	107.5	KJAM-LP	Signs on with Religious Teaching [Spirit Catholic Radio Network]
NE Clay Center	93.9	KKOP-LP	Signs on with Variety
NE Kearney	100.9	KNEY-LP	Signs on with Religious Teaching
NY Geneva	105.7	WHWS-LP	> Adult Alternative
NY Woodstock	104.1	WIOF-LP	Signs on with Variety
OH Defiance	92.9	WDCM-LP	Signs on with Unavailable Format
OK Norman	107.1	KOUJ-LP	Signs on with Religious Teaching
OR Rogue River	94.3	KRRC-LP	Signs on with Religious Teaching
TN Gatlinburg	101.1	WJFS-LP	Signs on with Religious Teaching
UT Logan	101.7	KXUT-LP	Signs on with Classic Country
WA Entiat	99.1	KORE-LP	Signs on with Variety // K290CH 105.9 Wenatchee
WA Walla Walla	107.3	KTNH-LP	Signs on with Religion [Walla Walla Catholic Radio]



Translators

AL Smyrna	107.7	W299BX	> Black Gospel: <i>Praise 107.7</i> // WCNF-700 Dothan
AZ Chandler	94.9	K235CB	> Soft AC: <i>95.1 The Oasis</i> // KOAI 95.1 Sun City West
GA Suwanee	93.5	W228CA	> Urban AC: <i>Kiss 104.1</i> // WALR-FM 104.1 Palmetto
MD Baltimore	106.1	W291BA	> Gospel: <i>Praise 106.1</i>
MD Cumberland	105.7	W289BR	> AC: <i>105.7 The River</i> // WTBO-1450 Cumberland
MD Hagerstown	102.1	W271BV	> AC: <i>102.1 More-FM</i> // WVEG-HD2 106.9 Myersville
MA Keene	99.1	W256BJ	> AAA: <i>93.9 The River</i> // WRSI 93.9 Turners Falls and WRSY 101.5 Marlboro, Vermont
MI St. Claire	105.5	W288BT	> Rock: <i>Rock 105.5</i> // WHLS-1450 Port Huron & WHLX-1580 Marine City
MS Southaven	100.1	W261CE	> Classic Hits: <i>99.3 Guess-FM</i> // WGUE-830 Memphis [99.3 is W257CY Memphis]
NH Keene	103.1	W276CB	> Classic Rock: <i>Keene Classics</i>
NM Albuquerque	107.5	K298BY	> Sports [Fox Sports Radio] // KXKS-1190 Albuquerque
SC Mauldin	94.9	W235BM	Changes slogan to: <i>La Jefa 94.9 FM & 1070 AM</i>
TN Memphis	105.5	W288BJ	> Classic Hits: <i>99.3 Guess-FM</i> // WGUE-830 Memphis [99.3 is W257CY Memphis]
TX Montoya	93.5	K228FH	> Rhythmic Oldies: <i>Hot 93.5</i> // KPRR-HD2 102.1 El Paso



HELP! If you live in the listening area of any of the stations listed with an **unavailable format**, or catch them via DX, please check in and let us know so we may add it to the database.

— FM and AM SIMULCASTS —

AL Smyrna	107.7	W299BX	Is heard on: WCNF-700 Dothan with Black Gospel: <i>Praise 107.7</i> Smyrna
MD Cumberland	105.7	W289BR	WTBO-1450 Cumberland with AC: <i>105.7 The River</i>
MD Pocomoke City	92.5	WICO-FM	WICO-1320 Pocomoke City
MA Plymouth	99.1	WPLM-FM	WPLM-1390 Plymouth, MA with Soft AC: <i>Today's Easy 99.1</i>



MI	St. Claire	105.5	W288BT	WHLS-1450 Port Huron & WHLX-1580 Marine City with Rock: <i>Rock 105.5</i>
NM	Albuquerque	107.5	K298BY	KXKS-1190 Albuquerque with Sports: [Fox Sports Radio]
SC	Clemson	105.5	WCCP-FM	WAHT-1560 Clemson with Sports: <i>Roar</i> [CBS Sports Network]
SC	Mauldin	94.9	W235BM	WCSZ-1070 Sans Souci with Spanish: <i>La Jefa 94.9 FM & 1070 AM</i>
TN	Memphis	105.5	W288BJ	WGUE-830 Memphis with Classic Hits: <i>99.3 Guess-FM</i>

**Translator power levels are in Watts;
Antenna heights are HAAT, except where noted # when the height is AGL**

— NEW BOOSTER STATIONS GRANTED —

			<u>Power (Watts) / Ant Ht</u>	<u>Licensee:</u>
HI	Lahaina	102.9	KMKV-FM1 250 / 37 DA	Educational Media Foundation
ID	Sandpoint	104.5	KNHK-FM3 200 / 14 DA	Radio Station KMJY LLC

— APPLICATIONS FOR NEW BOOSTER STATIONS —

			<u>Power (kW) / Ant Ht</u>	<u>Applicant:</u>
CA	Santa Clarita	92.3	KRRL-1 .32-V DA / 3	AMFM BROADCASTING LICENSES, LLC
CA	Santa Clarita	102.7	KIIS-1 .2-V DA / 3	CITICASTERS LICENSES, INC.
CA	Santa Clarita	103.5	KOST-1 .38-V DA / 3	AMFM BROADCASTING LICENSES, LLC
CA	Santa Clarita	104.3	KBIG-1 .38-V DA / 3	AMFM BROADCASTING LICENSES, LLC

*** - Antenna Heights for Booster stations are AGL**

— NEW LPFM STATION GRANTS —

			<u>Power (Watts)/Ant Ht</u>	<u>Licensee:</u>
AZ	San Xavier	102.5	KWAK-LP 50 / 17	Tohono O'odham Nation
AZ	Tucson	90.1	KCDS-LP 50 / (-) 24	Iglesia Centro De Sanidad
AR	Bentonville	103.3	CP 100 / 7	Bentonville Information
AR	Springdale	98.9	CP 49 / 43	Community Educational Radio
CA	Red Bluff	92.5	KNKJ-LP 100 / (-) 7	Calvary Chapel Red Bluff
CA	San Diego	101.1	KVIB-LP 50 / (-) 19	Positive Hope Inc.
CA	San Jose	92.7	CP 50 / (-) 142	Center for Careers and Training
CA	Santa Rosa	⁵ 100.5	CP 2 / 278	City of Truth
CA	Santa Rosa	⁵ 100.5	CP 1.4 / 310	Ya-Ka-Ama Indian Education & Development
FL	Cape Coral	107.7	CP 63.6 / 38	Get a Life! Foundation, Inc.
FL	Fort Lauderdale	99.5	CP 9.3 / 96	Genesis Center for Growth and Development, Inc
FL	Fort Lauderdale	102.1	CP 40.6 / 43	American Network Media Inc
FL	Fort Myers	94.9	CP 78.5 / 82	Radio Free Fort Myers, Inc.
FL	Hallandale	102.3	CP 16 / 74	The Truth Will Set You Free Inc.
FL	Hialeah Gardens	99.5	CP 100 / 30	Iglesia Misionera Pregoneros De Justicia De Florida, Inc.
FL	Miami	² 92.7	CP 100 / 28	Tabernacle of Glory Community Center Inc
FL	Miami	² 92.7	CP 100 / 29	1Miami, Inc.
FL	Miami	96.9	CP 100 / 24	Power One Ministries, Inc.
FL	Miami	103.1	CP 100 / 30	Beware Inc.
FL	Miami Shores	99.5	CP 84 / 33	Barry University
FL	North Miami	² 92.7	CP 30 / 54	Actions for Better Future
FL	Orlando	99.9	CP 100 / 28	Musica Sublime Inc.
FL	Ormond Beach	³ 107.1	CP 100 / 22	We've a Voice, Inc.
FL	Ormond Beach	³ 107.1	CP 77.1 / 34	Pal of Florida, Inc.
FL	St. Petersburg	96.3	CP 100 / 25	African People's Education and Defense Fund, Inc
GA	Douglasville	102.1	CP 21 / 65	Unlimited Recovery Broadcasting Inc
GA	Marietta	99.1	WIEH-LP 30.3 / 53	Semeadores De Boas Novas, Inc
GA	Smyrna	106.3	CP 28 / 55	Artportuntiy Knocks
IL	Chicago	98.3	CP 87 / 32	Legend Media Network Group
IN	Jeffersonville	98.5	WJHI-LP 100 / 28	Greater Clark County Schools
LA	Monroe	106.7	KIEZ-LP 100 / 30	Business Exchange Network, Inc
LA	Lafayette	94.9	CP 100 / 21	Proyecto Hispano De Ayuda a La Comunidad
LA	Lafayette	95.9	CP 100 / 30	Louisiana Folk Roots, Inc.

LA New Orleans	90.3	WAMF-LP	100 / 26	Affiliated Media Foundation Movement, Inc.
MA Winchester	99.9	WQEB-LP	26 / 58	Winchester School of Chinese Culture
MO Poplar Bluff	101.9	KPBM-LP	50.9 / 42	Black River Public Radio
MT Choteau	95.5	KETI-LP	38.6 / 48	Waves of Wisdom, Inc.
OK Norman	95.5	KXOU-LP	43.1 / 45	University of Oklahoma
OK Tulsa	103.9	KOKT-LP	100 / 2	Electron Benders
NY Ocean Beach	104.7	CP	100 / 9	Fire Department of Ocean Beach, Inc.
PA Philadelphia	92.9	WJFN-LP	100 / 25	South Philadelphia Rainbow Committee Community Center, Inc.
PA Phoenixville	98.5	WXPM-LP	54 / 41	Tri-county Community Programming Fund
PR Moca	93.7	WMAA-LP	100 / 30	Behind the Sound Corp.
TN Knoxville	¹ 103.9	WOGU-LP	32 / 53	United Mountain Defense
TN Knoxville	¹ 103.9	WOZW-LP	32 / 53	Appalachia Community Fund
TN Memphis	100.5	WJLL-LP	82.1 / 33	General Habitat Corporation
TX Austin	101.9	CP	36 / 212	Third Coast Activist Resource Center
TX Brownsville	94.9	CP	50 / 36	Templo Shekina Inc.
TX Brownsville	99.1	CP	47 / 44	Immaculate Heart Cenacle Association
TX Canton	97.5	CP	22.5 / 171	St. Therese Catholic Church
TX El Paso	97.1	CP	50 / (-) 33	Sin Fronteras Organizing Project
TX Harlingen	99.9	CP	50 / 30	Prayer Well Educational Association
TX Harlingen	104.5	CP	50 / 32	Knights of Columbus Home Association
TX McAllen	105.9	CP	20 / 66	Calvary Chapel McAllen Metro
TX Mission	97.9	CP	42 / 82	El Divino Redentor De Las Asambleas De Dios, Inc.
TX Richardson	95.7	KUTD-LP	36 / 50	University of Texas at Dallas Amateur Radio Club
TX San Antonio	⁴ 101.5	CP	50 / 6	Esperanza Peace and Justice Center (no details)
TX San Antonio	⁴ 101.5	CP	80 / 34	Lighthouse Network, Inc. (No details)
TX San Antonio	⁴ 101.5	CP	50 / 15	Martinez Street Women's Center (no details)
TX Sugar Land	98.3	CP	33.5 / 60	Positive Broadcasting Company
TX Terrell	105.7	CP	39.9 / 192	Believers International Broadcasting
TX Weslaco	99.1	CP	50 / 33	La Primera Asamblea De Dios
VA Charlottesville	92.3	WXRK-LP	21 / 63	Blue Ridge Free Media
WA Wenatchee	107.9	KJHS-LP	100 / (-) 74	Cor Christi
WI Milwaukee	101.7	CP	100 / 22	Alive MKE

¹ - Share Time/Transmitter Agreement (No specific sharing agreement in applications)

² - Share Time Agreement (1Miami, Inc proposed programming from 0900-1200, 1300-2400; no details from ToGCC or AfBF)

³ - Share Time Agreement (Pal of Florida proposed 84 hrs/wk; no details from We've a Voice)

⁴ - Share Time/Transmitter Agreement (No specific sharing agreement in applications)

⁵ - Share Time Agreement (Ya-Ka-Ama proposed 0700-2400 M-F and 0900-2400 Sat-Sun; City of Truth 0700-0900 Sat-Sun)

— APPLICATIONS FOR NEW LPFM STATIONS —

			<u>Power (Watts)/Ant Ht</u>	<u>Licensee:</u>
AR Tontitown	98.9	APP	100 / 29	Total Life Community Education Foundation
TX Houston	92.5	APP	22 / 47	Fundacion Arte Catolico Cristiano

LPFM power level is in Watts; antenna height is HAAT, except where noted * when it is AGL

— INFORMAL OBJECTIONS FILED AGAINST LPFM APPLICATIONS —

CA Cupertino	92.9
FL Merritt Island	93.1

— LPFM APPLICATIONS DISMISSED —

AL Montgomery	90.3	IL Evanston	¹ 98.3	SC Hopkins	98.9
FL Hialeah Gardens	¹ 99.5	NJ Orange	95.9	TX Austin (2 apps)	94.3
CA Cupertino	92.9	NJ Orange	95.9	TX El Paso	97.1
CA San Jose	92.7	NJ Parsippany	92.7	TX Edinburg	98.9
FL Malabar	105.7	NJ Passaic	95.9	WA Edmonds	107.3
FT St. Petersburg	¹ 96.3	OR Portland	105.5	WA Renton	92.3

¹ - Lost to a competing applicant [see New LPFM Station Grants]

— LPFM PETITIONS FOR RECONSIDERATION SUBMITTED —

CA Anaheim	101.5	FL Tampa	100.1	OR Madras	94.9
CA Long Beach	101.5	GA St. Simons Island	105.3	OR Sweet Home	93.9
CA Los Angeles	101.5	OR Bend	93.5	OR Sweet Home	96.7
CA West Covina	101.5	OR Bend	94.9	OR Sweet Home	103.1
CA West Sacramento	92.9	OR Brownsville	97.3	PR Mayaguez	107.9
FL Jacksonville	98.5	OR Cascadia	98.1	TX Garland	92.9
FL Sefner	107.9	OR Lebanon	92.7	TX Odessa	94.1

— OTHERNEWS —

AK Iliamna	98.1	CP	New Class D station granted with 100 W / (-) 47 m [Big River Public Broadcasting Corporation]
AK Juneau	92.7	KVIM-LP	Is silent
CA Ludlow	100.1	KHWZ	License cancelled; call deleted
CA Palm Desert	98.1	K251BX	Changes CoL from Indio
CO Brush	90.5	KBEI	Is silent
CO Loma	102.5	KDVC	Is silent
CT Danbury	103.7	W279CI	Changes CoL from Georgetown [station has yet to sign on]
DE Hockessin	95.3	CP	CP (for new LPFM) cancelled per permittee's request [Sanford School]
FL Dogwood Lakes Estate	91.1	WAGE	License cancelled; call deleted
FL Fort Myers	106.3	WJPT	Changes CoL from Ft. Myers
FL Kissimmee	92.7	WKIE-LP	Changes frequency from 105.5 [station has yet to sign on]
FL St. Petersburg	102.1	WPBW-LP	Changes frequency from 106.1
FL Winter Garden	99.7	WIDT-LP	Changes CoL from Lake Mary and frequency from 99.9 [station has yet to sign on]
GA Nashville	102.9	W275AY	License cancelled; call deleted per licensee's request
HI Kaunakakai	102.3	KMKK-FM	Is silent
ID Rexburg	106.3	KQEZ	Changes frequency from 98.1
ID Shelley	98.1	KGTM	Changes frequency from 106.3
IN Howe	91.9	WQKO	Is silent
IA Coggon	88.7	CP	New Class A station granted with 5 kW-V/95 m DA at 42-27-26/91-34-49 [Plus Charities]
IA Des Moines	97.7	K269EJ	Changes frequency from 101.7 [exchange with KPUL-FM]
IA Rockford	92.9	KYME	License cancelled; call deleted
IA Sac City	104.7	KEWS	License cancelled; call deleted
IA Winterset	101.7	KPUL-FM	Changes frequency from 99.5 [exchange with K269EJ]
KS Andover	93.5	KDGS	Changes frequency from 93.9 [exchange with KOTE]
KS Eureka	93.9	KOTE	Changes frequency from 93.5 [exchange with KDGS]
KY Louisville	see text	Pirate	Fined an individual \$15,000 for willful and repeated operation of an unlicensed radio transmitter on 87.5 and 99.5 MHz
MD Cambridge	101.5	WHCP-LP	Changes frequency from 101.7 [station has yet to sign on]
MS Mound Bayou	101.7	CP	New Class A station granted with 2 kW/81 m at 33-52-49/90-42-24; Changes frequency from 101.9 [Fuss, Fenty L]
MT Boulder	105.9	KEME-LP	Changes frequency from 106.3
MT Montana City	105.9	KWLG-LP	Changes frequency from 106.3
NH Plymouth	96.9	W245AF	Changes CoL from Ashland
NM Raton, etc.	104.7	K284AC	License cancelled; call deleted per licensee's request
NY New York	91.9	Pirate	Fined an individual \$20,000 for operating an unlicensed transmitter
NY North Salem	90.1	WQCD	Is silent
NC Ramseur *	105.9	W290CJ	Changes CoL from Liberty [station has yet to sign on]
ND New England	95.7	KQLZ	Is silent [again]
PA Allentown	106.5	W293BW	Changes CoL from Schnecksville
PA Hazleton	99.1	WEVB-LP	Changes frequency from 98.9 [station has yet to sign on]
PA Hazleton	99.3	WCDH-LP	License cancelled; call deleted
PA Masontown	106.9	WRIJ	Is silent
PA Williamsport	105.5	W288DE	Changes CoL from Turbotville
TN Kingsport	106.1	W291CP	Changes CoL from Blountville
TX Austin	102.9	KIJZ-LP	Changes frequency from 96.1
TX Bay City	88.1	KEDR	Is silent
TX Bracketville	90.3	CP	Changes CoL from Uvalde [station has yet to sign on]
TX Quinlan	95.5	KTTR-LP	Changes frequency from 95.7 [station has yet to sign on]
TX Sweetwater	88.9	KDMR-FM	License cancelled; call deleted [station failed to sign on]
UT Greenville	99.7	K259CS	Changes frequency from 99.1 [station has yet to sign on]
VA Sterling	104.5	W283CD	Changes CoL from Leesburg
WA Hoquiam	99.9	KGHO-LP	Changes frequency from 98.5

WV Clarksburg	88.1	WKJL	Is silent
WI Mukwonago	101.3	WFAQ-LP	Changes frequency from 92.9
WY Jackson	101.3	K267BV	Changes CoL from Hoback Junction [station has yet to sign on]

* - Spelling correction from last issue

+++++

NEWS ITEMS: Go 96.3 Minneapolis Launches GoTV

An interesting technical evolution has launched at KTWN-FM 96.3 Edina, Minnesota

KTWN-FM has launched "Go TV" with all the on-air elements of the radio station adding an online video component. Music videos play for whichever songs are playing, on-air talent are live on camera, and the imaging has a video component. On-air audio commercials are replaced with video spots. The only thing that hasn't made the jump to video is the station's Minnesota Twins baseball broadcasts. As MLB retains digital rights to all game broadcasts, "Go 96.3" continues its regular music programming online during baseball games.

INSTANT INSIGHT: This is a technical innovation that more radio stations can and should be doing. It adds an additional revenue stream through video spots and the ability for different types of listener interaction. The internet blurs the lines between radio and television and text and allows a station to be all of the above.

! **FM Station totals as of 31 March: 10,740**

+++++

**Thanks to Shawn Axelrod, Tim Noonan, Dan Sys, Radio Insight, and Upper Midwest Broadcasting for news.
If you hear any changes occur on your FM dial, share the news! 73**

+++++



WTFDA / NRC / IRCA CONVENTION 2015 INFO

With big thanks for your patience as we've been busy negotiating for a good rate...I'm pleased to announce that hotel registration is now open for the NRC/IRCA/WTFDA/Decalcomania DX Convention, July 10-12, 2015 in Fort Wayne, Indiana!

Our hotel will be Don Hall's Guesthouse Hotel, [1313 W. Washington Center Road, Fort Wayne IN 46825](#), and our specially-negotiated rate is \$85 per room per night. That includes comfortable lodgings and a very tasty breakfast buffet each morning. The hotel is conveniently located right off I-69, the main drag through Fort Wayne.

Reservations for the hotel are due by JUNE 10, 2015 and must be made directly with the hotel by calling 260-489-2524 or 1-800-348-1999.

The Group Number is 7110. **PLEASE BE SURE TO GIVE THE GROUP # TO MAKE SURE WE ARE PROPERLY CREDITED FOR ALL THE ROOMS THE CLUBS ARE USING!**

Once you've made your reservation, please drop me a line at scott@fybush.com so I can keep track of who's staying with us.

Stay tuned in the next few days for additional registration information. I expect the registration fee to be about \$55/person, which will include a Hall's-catered banquet at the hotel Saturday night, a convention program and meeting room snacks. We'll also be making tickets available separately for a Fort Wayne TinCaps baseball game on Friday night, July 10 at Fort Wayne's beautiful Parkview Field downtown.

See you in WOWO-land!!

Your Convention Host,

Scott Fybush
scott@fybush.com



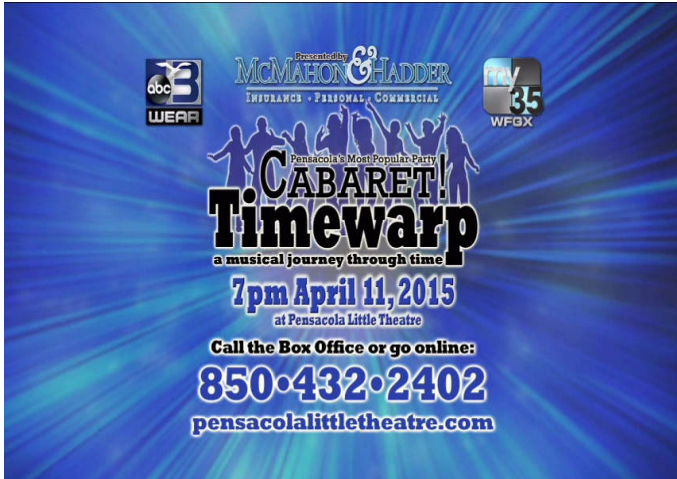
PHOTO NEWS



Jeff Kruszka
 1909 Lost Lake Pl.
 Pearland, TX 77581
 jkruszka@sbcglobal.net

May 2015

Spring tropo returns here to the Gulf Coast. Some nice photos this month from Ryan Grabow of Ft. Myers, FL:



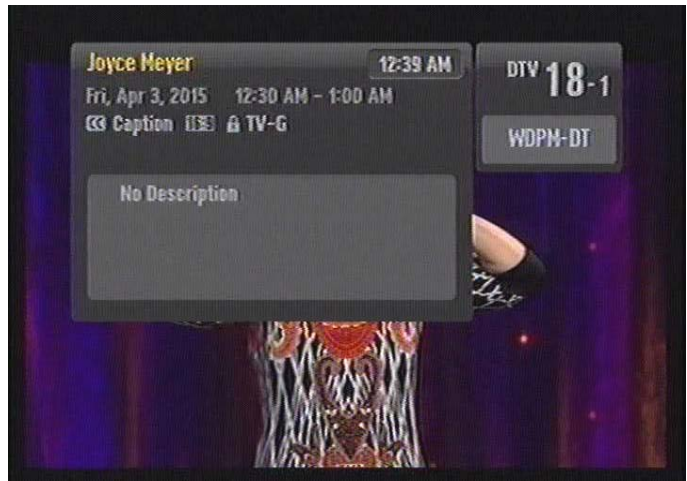
WEAR-17 Pensacola, FL
 448 mi Tropo seen 4-2-15



WKRG-27-2 Mobile, AL
 460 mi Tropo seen 4-2-15



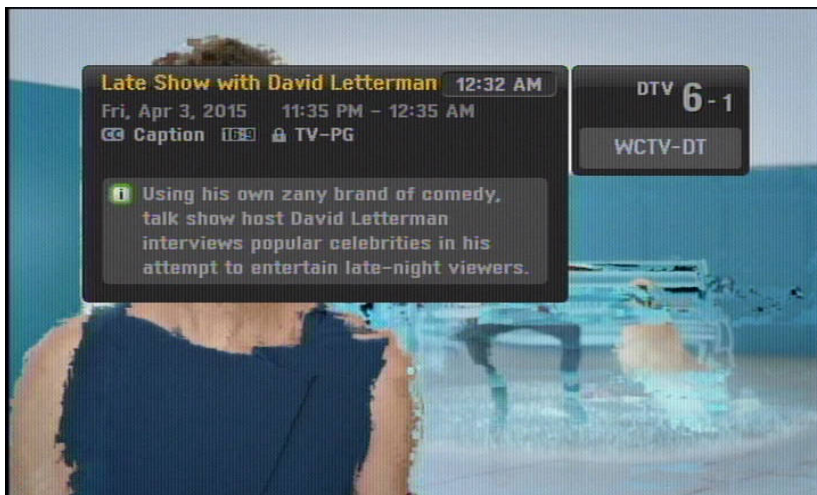
WFNA-25 Gulf Shores, AL
 458 mi Tropo seen 4-2-15



WDPM-23 Mobile, AL
 446 mi Tropo seen 4-2-15
 "new log"



WTXL-27 Tallahassee, FL
311 mi Tropo seen 4-4-15



WCTV-46 Thomasville, GA
310 mi Tropo seen 4-4-15

And before I forget it, here's a great analog catch from Mike Perron, of Eunice, LA:



XHFW-9 Tampico, TAM
666 mi Tr seen 11-24-14

73's, JEFF



Coast to Coast TV DX

Featuring reports from the entire United States and all of Canada.

Send reports by the 15th of each month to:

Nick Langan
42 Holly Park Drive
Tabernacle, NJ 08088
E-mail: nickl@wtfd.org

The Editor's Note

We finally made it! After the long winter in the east and a mainly barren DX winter in most locales, the calendar beckons the beginning of the 2015 E-skip season. It is a most inexact science predicting Es, but with a few early brief spurts of 6-meter Es activity, including an opening on the 18th of April across the plains that reached FM MUF, we cross our fingers that we are in for a rebound year after 3 consecutive below-average seasons of activity across the board.

A notable early season tropo event affected the Great Lakes on the 3rd of April, with a tip of the hat to Steve Rich's DTV decodes of Rochester and Buffalo NY stations from Indianapolis – an uncommon path.

Dennis Park Smith

3605 San Remo Dr
Santa Barbara, CA 93105-2523
Telephone (805) 687-7803
24-hour PST

My previous report was to mid February 2015. The report this time is only a catch-up on some overlooked March-2015 observations. There have been major distractions, taking my attention away from any recent DX activity.

There has been tropo here on occasion, but I have not kept track of it. It is still So-Calif tropo ducting to San Diego/Tijuana/Tecate, Calif, USA and northern Baja Calif, Mexico, from approx. 175mi / 280km up to 220mi / 350km SE.

On [Tuesday] March 10, mid morning, at Don Voegele's place with his big antennas, I observed these tropo analogs. They are presented here to show that they were still on the air at least as of then.

- 35: K35DG "UCSD-TV" La Jolla, Calif
(Univ. Calif. San Diego) 175mi/280km
- 39: KZSD-LP San Diego, Calif (Azteca America)
175mi /280km
- 49: XHDTV Tecate, Baja Calif (MundoFox)
220mi/350km
- 56: XHUA A-relay Tecate, Baja Calif
(XEW-2 network) 220mi/350km

Best of DX to All Dennis

Dave Pomeroy

2321 SE Libra Ct.
Topeka, KS 66605-3505

2014

August

- | | | | |
|----|------|----------|-----------------|
| 8 | 0800 | KSPR-19 | Springfield, MO |
| 16 | 0900 | K38GH-38 | Russell, KS |
| 18 | 2040 | KDMI-19 | Des Moines, IA |
| | | KCWI-23 | Ames, IA |
| | 2045 | KWKB-20 | Iowa City, IA |
| | 2130 | KWQC-36 | Davenport, IA |

KTVO-33 Kirksville, MO
 KYOU-30 Kirksville, MO
 (translator for KYOU-15, Ottumwa, IA)
 WTJR-32 Quincy, IL
 2200 WQAD-38 Rock Island, IL
 2250 WQPT-23 Moline, IL
 KRIN-35 Waterloo, IA
 19 0800 KTBO-15 KOCB-33 KSBI-23
 (formerly on 51) OKC
 21 0700 KPTS-17* Wichita, KS
 (xltr of KPTS-8 Hutchinson, KS)
 23 0920 KOZJ-25 KSNF-46 Joplin, MO
 0937 KPLR-26* St. Louis, MO
 0940 KNLJ-20 Jefferson City, MO
 0947 KOMU-8 KMIZ-17 Columbia, MO
 1029 WTJR-32 Quincy, IL
 24 1130 KSMQ-20 Worthington, MN
 25 0815 KDMI-19 Des Moines, IA
 26 0600 KGKC-LD* Kansas City, MO
 (licensed to Lawrence, KS)
 KBJO-LD 16 KNPB-LD 26 St. Joseph
 WTJR-32 Quincy, IL
 29 0800 KOHA-LD 48 Omaha, NE (analog)

September

1 0800 KSMI-LP 30 Wichita, KS
 KDCU-31 Derby, KS
 (over KCWE-31, Kansas City, MO)
 7 2200 KDMI-19 KD SM-16 Des Moines, IA
 KCWI-23 Ames, IA
 KTIN-25 Ft. Dodge, IA
 8 0800 KOZJ-25 KSNF-46 Joplin, MO
 23 0900 KMEG-39 Sioux City, IA
 30 0800 KSPR-19 KOZL-28 Springfield, MO
 K46FG-46 Falls City, NE
 K33AC-33 Pawnee, NE

October

24 0700 WTJR-32 Quincy, IL
 KWKB-25 Iowa City, IA
 25 0845 WTJR-32 Quincy, IL
 WYZZ-28 Bloomington, IL
 WAND-17 Decatur, IL
 WSEC-15 Jacksonville, IL
 0900 WCIA-48 Champaign, IL
 WTWO-36* Terre Haute, IN
 WRTV-25 Indianapolis, IN
 0930 KMEG-39 Sioux City, IA
 KOHA-LD 48 Omaha, NE
 0945 KOPX-50 KWT V-39 KSBI-23
 KTBO-15 KOCB-33 OKC
 1000 KAUT-40 Oklahoma City, OK
 (over local K40IJ-40 Topeka)
 1100 KNLC-14 St. Louis, MO

1130 KMPX-30 Decatur, TX
 K30AE-D 30 Alva, OK (OETA)
 1230 KPLR-26 KDNL-31 KSDK-35 St. Louis
 WFIE-46* Evansville, IN
 1235 KETC-39 St. Louis, MO
 KNLJ-20 KOMU-8 Columbia, MO
 1255 KMIZ-17 Columbia, MO
 26 0930 KSBI-23 KWT V-39 KTBO-15
 Oklahoma City, OK
 1000 KQCW-20 Tulsa, OK
 KOCB-33 Oklahoma City, OK

December

6 1000 WROB-26* Topeka, KS
 2200 KOTV-45 Tulsa, OK
 KDOR-17 Bartlesville, OK
 8 0700 KSBI-23 KTBO-15 KOCB-33 KOPX-50
 OKC
 12 1010 WCCO-32 Minneapolis, MN
 KTIN-25 Ft. Dodge, IA
 1100 KSIN-28 Sioux City, IA
 1125 KDLH-33* Duluth, MN
 1150 KQDS-17* Duluth, MN
 1155 KSMN-20 Worthington, MN
 KSTC-45 KTCI-23 Minneapolis, MN
 WUCW-22* St. Paul, MN
 KMEG-39 Sioux City, IA
 1305 KAAL-36 Austin, MN
 1330 WEAU-38 Eau Claire, WI
 1700 WBAY-23 Green Bay, WI

KCKS-LD 25* Topeka, KS noted on the air one night. Didn't write down date and have not seen it since. Transmitter is supposedly south of Lawrence, KS and is operated by the same company that operates WROB-LD 26 in Topeka which runs ThisTV on channel 26.1. I have tried to contact WROB but have not been successful PSIP on channel 25 was for KCKS-LD. Station will apparently try to reach the Kansas City market. KCWE-31 in KC recently dropped ThisTV on channel 31.2 and added Movies!

January 2015

25 1100 KUKC-LP 20* Kansas City, MO
 (KUKC-48 switch from analog channel 48 to digital channel 20.1. I am about 60 miles east of their transmitter on the east side of Kansas City. It is Univision and in about 90% of the time. On analog channel 48 it was rarely seen.)

February
 7 0900 KGBD-38 Russell, KS
 (KAKE-10 translator)
 KSBI-23 KTBO-15 Oklahoma City, OK
 KSIN-28 KMEG-39 Sioux City, IA
 1030 KACU-9 Sioux City, IA

March
 16 0830 KWQC-36 Davenport, IA
 KSBI-23 KOPX-50 KWTW-39
 KOCB-33 OKC
 KYOU-15 Otumwa, IA
 KFDX-28* Wichita Falls, TX
 KOCW-14 Hoisington, KS
 KGBD-LD 30 Great Bend, KS
 0915 KDDC-LD 32* Dodge City, KS
 20 1100 K30AE-D 30 Alva, OK
 22 KBJO-16 KNPG-30 St. Joseph, MO

April
 7 0700 K30AE-D 30 Alva, OK
 0745 KOOD-16 Bunker Hill, KS
 0800 KOCB-33 KWTW-39 KTBO-15
 KBSD-6 Dodge City, KS
 KAKE-10 Wichita, KS
 0830 KPTS-8 Hutchinson, KS
 8 0800 KSBI-23 KTUZ-29 KWTW-39
 KOCB-33 KOPX-50 OKC
 KOCM-46 Norman, OK
 KRSC-36 Claremore, OK
 K38AK-D 38 Ponca City, OK
 K30AE-D 30 Alva, OK
 0900 KOCO-7* Oklahoma City, OK
 1030 KTFD-15* Boulder, CO
 (This one was a real surprise. Tropo from the west is very rare into Colorado. Approximately 500 miles)
 13 0900 KMIZ-17 Columbia, MO
 K45IO-D Kansas City, MO
 KYOU-15 Ottumwa, IA
 KTVO-33 Kirksville, MO
 0920 WISC-50 Madison, WI
 KCWI-23 Ames, IA
 KRIN-35 Waterloo, IA

Ryan Grabow
 Fort Myers, FL
 egrabow.com/dx

Equipment: CM 4228HD 8-Bay UHF Antenna @ 15' AGL, CM 4220HD 2-Bay UHF Antenna, Three Insignia NS-DXA1 Converter Boxes, Philips PT902 Portable DTV.

Underlined stations are new. All times Eastern. Distances in miles/kilometers. Stations under 250km omitted unless new or rare.

12/19 Tr
 0030 WEAR-17 Pensacola, FL 448/721
 0030 WMPV-20 Mobile, AL 446/718

12/24 Tr
 0020 WSNN-LD-39 Sarasota, FL 65/104 *new calls*
 0020 WPEC-13 West Palm Beach, FL 103/166
 0020 WHDT-42 Stuart, FL 101/163

3/27 Tr
 0110 WSFL-19 Miami, FL 111/178

4/3 Tr
 0030 WALA-09t Mobile, AL 458/738
 0030 WEAR-17 Pensacola, FL 448/721
 0030 WMPV-20 Mobile, AL 446/718
 0030 WDPM-23 Mobile, AL 446/718
 0030 WFNA-25 Gulf Shores, AL 458/737
 0030 WKRG-27 Mobile, AL 460/740
 0030 WHBR-34 Pensacola, FL 448/721

4/4 Tr
 0010 WTXL-27 Tallahassee, FL 311/500
 0010 WTWC-40 Tallahassee, FL 312/502
 0010 WCTV-46 Thomasville, GA 310/499
 0030 WSCV-30 Fort Lauderdale, FL 112/180

Slim pickins' compared to this time last year. Nevertheless I managed three new catches, taking my DTV total up to 88. We'll see how late April into May goes.

For the catches I have, I've been capturing higher-quality recordings by capturing directly to my computer (rather than going through VHS). The more steady signals I've captured in HD using my USB tuner. The YouTube DX compilation I make this summer should look a lot nicer. 73s

Northern FM DX



Keith McGinnis
18 Newbridge St., Hingham, MA 02043
longwave@comcast.net 781-875-1944

For Dxers in the following states: CT IA ID IL IN MA ME MI MN MT ND NE NH NJ NY OH OR PA RI SD VT WA WI WY and all of Canada. Please submit by the 10th of each month.

EDITOR'S NOTE PLEASE SUBMIT ALL REPORTS IN THE FORMAT SHOWN BELOW.

Time(tab)Calls(tab)Freq(tab)City(tab)State(tab)details

Formats can either be plain text, Word or Excel as long as format is adhered to. Any submissions in other formats may not be used at editor's discretion.

All Submissions must be in to me by the 10th of each month.

Jeff Falconer, VA3NN – Clinton ON EN93fo
Sangean HDT-1X, Sony XDR-F1HD, APS-13 at 22 , 10db preamp
New=* New calls={XXXX} t=Tentative Time=ELT Distances=Miles

January 07 Ms

1145 WQIK 99.1 Jacksonville FL RDS PI: bogus KFZE 919

January 07 Tr

1524 WSIP 98.9 Paintsville KY Briefly, C&W, "New Country 98-9 WSIP" 407

January 11 Ms

0815 KEOM 88.5 Mesquite TX Oldies // stream 1108

January 12 Ms

1814 WLBF 89.1 Montgomery AL Preacher, RDS PS: Faith FM / PI: WLBF 813

1830 KUAR 89.1 Little Rock AR RDS PI: KUAR 844

January 17 Tr

0014 WORL 90.1 Harrison OH REL: AC, "Air One" 358

January 18 Ms

0222 KNWC* 96.5 Sioux Falls SD RDS PI: KNWC 752
0231 KBYZ 96.5 Bismarck ND Classic rock, RDS PS: artist/song / PI: KBYZ
961
0305 KWFX 100.1 Woodward OK C&W, RDS PI: KWFX 1072
1100 WYFK* 89.5 Columbus GA Perfectly timed ping, legal iD at TOH "...a
beacon of inspiration WYFK,
Columbus..." 777
1230 WMPR 90.1 Jackson MS RDS PS: WMPR / PI: WMPR 915

January 19 Ms

1601 WBOJ 88.5 Lumpkin GA REL: AC, RDS PS: The Truth / PI: WBOJ 823

January 23 Ms

2356 KXGT 98.3 Carrington NN RDS PI: bogus WFJ 883

January 25 Tr

0100 WVRN 88.9 Wittenberg WI Legal ID 382
0300 WPNE 89.3 Green Bay WI Legal ID, CLA music 326
1044 WUWM 89.7 Milwaukee WI Underwriters list 322

January 25 Ms

1144 KUTT 99.5 Fairbury NE Ad //stream 829
1229 KHAZ 99.5 Hays KS Ad, RDS PS: artist / stream / PI: KHAZ,
previous Es 979

January 30 Ms

1638 KCMP 89.3 Northfield MN HD 578

February 01 Ms

1644 WUEC* 89.7 Eau Claire WI RDS PI: WUEZ / PTY: Public 499

February 07 Ms

1246	KWFX	100.1	Woodward	OK	C&W, RDS PI: KWFX 1072
1346	KKWK	100.1	Cameron	MO	Several bursts of classic rock //stream, previous Es 696

February 07 Tr

1326	WSJP	100.1	Port Washington	WI	Weak, Catholic REL, "Relevant Radio" 324
------	------	-------	-----------------	----	--

February 14 Ms

1122	KCCM	91.1	Moorhead	MN	CLA music, RDS PI: KCCM 766
1140	KEZO	92.3	Omaha	NE	"...on Z-92..." by female DJ, same one on stream 756
2227	KEZO	92.3	Omaha	NE	"...in downtown Omaha..." 756

February 14 Tr

1145	WPWX	92.3	Hammond	IN	R&B to TOH legal ID that mentioned only Chicago 334
------	------	------	---------	----	---

February 15 Ms

0409	KFKF	94.1	Kansas City	KS	C&W, RDS PI: KFKF 744
1113	KSHE*	94.7	Crestwood	MO	RDS PI: bogus WDU / PTY: Rock 575

February 15 Tr

1047	WCVM*	94.7	Bronson	MI	"Sunday Morning Prayers on WBCL" 228
------	-------	------	---------	----	--------------------------------------

February 16 Ms

1544	KJWR	90.9	Windom	MN	REL: AC, RDS PS: KJWR 683
------	------	------	--------	----	---------------------------

February 21 Tr

1132	KQYB*	98.3	Spring Grove	MN	"...This is KQ98..." 512
------	-------	------	--------------	----	--------------------------

March 01 Ms

0146	KMXN	92.9	Osage City	KS	C&W / RDS PI: KMXN, previous Es 803
------	------	------	------------	----	-------------------------------------

John Jefferson

Madras OR

**All loggings at home w/ McIntosh MR80 tuner & indoor Terk FM PRO antenna
except as noted**

All logs are for 2014

New *

1/3/14 - MS except KJCH tropes

0922	KLLC*	97.3	San Francisco	CA	San Jose ref - 450 mi.
0949	KRWM	106.9	Bremerton	WA	Puyallup Garden Show -195 mi - yes, meteor scatter!
1010	KFRC*	106.9	San Francisco	CA	Northern California ref
1048	KVTI	90.9	Tacoma	WA	classical // 89.1 (KFAE Richland WA) - meteor scatter
1151	KJCH*	90.9	Coos Bay	OR	g talk // 89.9 (KKJA Redmond) - tropes
1310	KING	98.1	Seattle	WA	violin-viola duo veried on website - meteor scatter

1/3 - tropes at The Hill (2.7 mi s of Madras just off US 26)

1432	KZOK*	102.5	Seattle	WA	Calls (local KGBZ-LP off) - 200 mi
1445	KANY*	93.7	Montesano	WA	Calls (moved to mtn nw of Shelton WA) - 215 mi

1/21 - MS

1147	CBKS*	105.5	Saskatoon	SK	Mozart Sym#41 w/ Symphony Nova Scotia - 830 mi
------	-------	-------	-----------	----	--

1/29 tropes

1057	KZZL*	99.5	Pullman	WA	Moscow ID ad - 230 mi
------	-------	------	---------	----	-----------------------

1/30 tropes

1310	KFLS*	96.5	Tulelake	CA	Kix 96, the Basin's better country stn - 175 mi (local KWLZ off)
------	-------	------	----------	----	--

2/5 - MS

0959	KXSR*	91.7	Groveland	CA	91-7 ...SR - 450 mi (local KWSO's IBOC off)
------	-------	------	-----------	----	---

2/6 - MS

0805 CBBC* 91.7 Lethbridge AB ...at 9:05 am, CBC Radio.... - 490 mi

3/10 - trops

1304 KJKL* 88.7 Selma OR K Love // 90.5 - 205 mi

3/16 - MS

0623 CHBN* 91.7 Edmonton AB Canadian ad - 680 mi

3/30 - MS

0732 KISQ* 98.1 San Francisco CA ...only at Lucky & Bay Area SaveMarts....

4/2 - trops

1106 KPBX* 91.1 Spokane WA NPR nx - 265 mi

4/3 - MS

1351 XETRA* 91.1 Tijuana BCN 91-X - 860 mi

5/7 - ES, MUF 97.3

1955 KKSS* 97.3 Santa Fe NM My Kiss 97.3 - 1000 mi

5/10 - MS

1144 KMXV* 104.3 Grand Junction CO Grand Junction ref - 735 mi

5/16 - MS

1046 KSON* 97.3 San Diego CA KSON dot.... - 825 mi

5/17 - trops

1315 KARO* 98.7 Nyssa OR Air1 dot com - 225 mi

5/24 - ES, MUF 97.9

0746	KESD*	88.3	Brookings	SD	Car Talk // 91.1 (below) - 1190 mi
0752	KGFX*	92.7	Pierre	SD	Announcer was Carissa, verif online- 975 mi
0757	KSEZ*	97.9	Sioux City	IA	The place where racing rocks (veried online) - 1235 mi
0758	KTSD*	91.1	Reliance	SD	Car Talk // 88.3 - 1205 mi
0800	KNSW*	91.7	Worthington	MN	Minnesota PR nx - 1250 mi

5/24 - trop

1111	KOLW*	97.5	Basin City	WA	rock (local KNLN off) - 160 mi
------	-------	------	------------	----	--------------------------------

5/29 - ES, MUF 106.5 1120 - 1128

1037	KAJR*	95.9	Indian Wells	CA	Musicians' Alley, Palm Desert - 750 mi
1048	KQVO*	97.7	Calexico	CA	KPBS nx (KQVO relays KPBS San Diego) - 855 mi
1050	KXCM*	96.3	29 Palms	CA	Hot Country, ment. 92.1 - 735 mi
1056	XHMOE*	90.7	Mexicali	BCN	Calexico ad - 865 mi
1105	KKCM*	92.1	Joshua Tree	CA	Yucca Valley, 96-3 High Desert, 92-1 Low Desert - 765 mi
1115	KTAR*	92.3	Glendale	AZ	KTAR nx - 900 mi
1117	KOOL*	94.5	Phoenix	AZ	94-5 Cool FM - 900 MI
1118	KIIM*	99.5	Tucson	AZ	Kim FM - 975 mi
1126	KUPD*	97.9	Tempe	AZ	Valley Honda, KUPD - 900 MI
1130	XHNGS*	96.7	Nogales	SO	Nogales, Sp - 1020 mi
1131	KNOG*	91.7	Nogales	AZ	Sp talk often in 1030-1157, in sync w/ XHNGS - 1010 mi
1133	KCMT*	92.1	Green Valley	AZ	Sp music & talk 1034 - 1133, in sync w/ 91.7 & 96.7
1138	KFLR*	90.3	Phoenix	AZ	g talk when KJZZ in on 91.5
1138	KJZZ*	91.5	Phoenix	AZ	nx, KJZZ

5/30 - ES on Pioneer car radio 6 blocks from house - MUF 91.7

1155	KHCS*	91.7	Palm Desert	CA	Light g music, "This is our music on KHCS"
------	-------	------	-------------	----	--

6/2 - MS

0820	KZTQ*	97.3	Carson City	NV	CarsonValleyInn.com - 370 mi
------	-------	------	-------------	----	------------------------------

6/3 - ES, MUF 107.1

1323	KQLV*	90.7	Santa Fe	NM	K Love
1349	K215EL*	90.9	North Moab	UT	KUER - 715 mi
1355	KKIM*	94.7	Santa Fe	NM	Radio Lobo
1359	KTGW*	91.7	Fruitland	NM	Farmington, ment KLJH 107.1 (w/ xlator in Framington) - 855 mi
1401	KQLV	90.7	Santa Fe	NM	K Love // 90.5
1406	KABQ*	104.7	Bosque Farms	NM	KABQ - 1015 mi
1413	KNKT*	107.1	Armijo	NM	g talk 1413-1423 while Albuquerque in-1000
1413	KRST*	92.3	Albuquerque	NM	KRST - 1000 mi
1417	KABQ	104.7	Bosque Farms	NM	NM Lottery
1421	KRWN*	92.5	Farmington	NM	Four Corners, Durango, Farmington refs - 855 mi
1423	KLVO*	97.7	Belen	NM	Santa Fe ad in Sp - 1000 mi
1424	KMGA*	99.5	Albuquerque	NM	NM Lottery
1427	KLQT*	95.1	Corrales	NM	Channel 95-1 - 995 mi

6/6 - MS

0701	KEMC*	91.7	Billings	MT	Group sta ID, two KYP... 's included - 635 mi
------	-------	------	----------	----	---

6/11 - MS

0622	????	98.1	????	??	Star 98 - could be either UT or ID station....
------	------	------	------	----	--

6/14 - MS

0818	????	98.1	????	??	Star 98 - could be either UT or ID station....
------	------	------	------	----	--

6/15 - MS

0720	KBUL*	98.1	Carson City	NV	In Reno, a resort-style swimming pool....
------	-------	------	-------------	----	---

6/17 - MS

0634	KFRC	106.9	San Francisco	CA	"ACBS nx time", losing the "k" sound off the front....
------	------	-------	---------------	----	--

6/17 - ES, MUF 107.5

1800	KTHQ*	92.5	Eagar	AZ	Northland Pioneer College (in Showlow), Holbrook refs - 940 mi
------	-------	------	-------	----	--

1812	????	96.1	????	??	X 96-1 (country & Sp mixing, not sure which was X 96-1)
1832	KJRT*	88.3	Amarillo	TX	pledge drive for Turning Point, g (veried online) - 1255
1836	KGNC*	97.9	Amarillo	TX	KGNC-FM
1858	KANW*	89.1	Albuquerque	NM	KANW
1859	KHCT*	90.9	Great Bend	KS	Radio Kansas funded by.... - 1280 mi
1939	KERP*	96.3	Ingalls	KS	96-3 The Marshall, country ment - 1180 mi
1941	KKJQ	97.3	Garden City	KS	Western Plains Med complex, KS wx, Q-97
1946	KANZ*	91.1	Garden City	KS	j // 90.1 - 1150 mi
1946	KZNK	90.1	Brewster	KS	j // 91.1 - 1075 mi
1946	KUNC*	91.5	Greeley	CO	Longmont Museum ref - 890 mi
2001	KBGL	106.9	Larned	KS	KBGL Great Bend - Hays - 1225 mi
2011	KSSA	105.9	Ingalls	KS	Que buena
2100	KZNK	90.1	Brewster	KS	High Plains PR

6/18 - MS

1700	KDOV*	91.7	Medford	OR	This is KDOV ninety(clear MS burst) - 175 mi
------	-------	------	---------	----	--

6/23 - ES, MUF 107.3

1816	KBBX*	97.7	Nebraska City	NE	Sp w/ KBBK Lincoln on 107.3 - 1300 mi
1825	KBBK*	107.3	Lincoln	NE	b1073.com, John Tesh Show ment - 1295 mi
1828	KGAC*	91.5	St. Peter	MN	talk, MPR, emphasizing the "M"
1832	KGAC	91.5	St. Peter	MN	classical music
1838	KCLH*	94.7	New Caledonia	MN	Classic Hits 94.7, Classic Hits Radio- 1450 mi
1845	KDSD*	90.9	Pierpont	SD	j // 89.7 // 91.1 - 1145 mi
1845	KUSD*	89.7	Vermillion	SD	j // 90.9 // 91.1 - 1215 mi
1845	KTSD	91.1	Reliance	SD	j // 90.9 // 89.7
1852	KTWB*	92.5	Sioux Falls	SD	KTWB, Sioux area - 1230 mi
1857	KGFX	92.7	Pierre	SD	KGFX-FM

6/25 - MS

0700	KISQ	98.1	San Francisco	CA	Albertson's & California ment in ad
0701	KTWV	94.7	Los Angeles	CA	Los Angeles ref - 715 mi
0900	KIFM*	98.1	San Diego	CA	...FM San Diego

6/25 - ES w/ Pioneer car radio across town to driveway, MUF 90.9

1252	CBX*	90.9	Edmonton	AB	Beethoven Sym#8 just starting in driveway
------	------	------	----------	----	---

6/28 - MS

1133 KISQ 98.1 San Francisco CA ...a reminder from 98-1 Kiss FM....

6/29 - ES, MUF 98.7

1859 KHUI* 89.1 Alamosa CO Radio Bilingue net ID incl KHUI & KBBF-940
1900 KRRT* 90.9 Arroyo Seco NM KUNM net ID - 985 mi
1902 KELU* 90.3 Clovis NM gr // 90.5, K Love - 1185 mi
1912 KENW* 89.5 Portales NM Bruckner Symphony #7 (part of SFSO
concert), clear 3 minutes on rabbit ears! -
1190 mi

6/30 - ES, MUF 107.1

1750 KSJR* 90.1 Colleegeville MN c & talk // 90.7 - 1305 mi
1750 KBPR* 90.7 Brainerd MN c & talk // 90.1 - 1305 mi
1752 WWJO* 98.1 St. Cloud MN St. Cloud, 98country.com - 1320 mi
1809 KKBO* 105.9 Flasher ND The Big Rig, k - 1015 mi
1811 KZTK* 103.9 Arthur ND baseball, Enderlin ment, veri online - 1175 mi
1822 WTBX* 93.9 Hibbing MN wx, WTBX - 1375 mi
1829 CBYG* 91.5 Prince George BC Can nx, Victoria temps, "As It Happens" - 610

7/3 - ES, MUF 94.7

1254 KRKS* 94.7 Lafayette CO g talk, Dr. Evans (veried online) - 870 mi

7/5 - ES, MUF 106.1 @ 1642

1646 KBAC* 98.1 Las Vegas NM NM ad - 1085 mi
1653 KWRI* 89.1 Bartlesville OK Air1 // local 89.3 - 1450 mi
1658 KCFN* 91.1 Wichita KS g, Pastor Jack Marshall, Wesley Biblical
(veried online) - 1350 mi
1702 KZUH* 92.7 Minneapolis KS 92.7 the New Zoo - 1270 mi

7/6 - ES, MUF 107.9

0852 KOLB* 88.3 Hartington NE Catholic R, Spirit 88.3 - 1190 mi
0852 KNEN* 94.7 Norfolk NE Norfolk & Nebraska refs - 1210 mi
0853 KXKT* 103.7 Glenwood IA Kat 103.7, k - 1305 mi
0859 KKIT* 90.3 Sioux City IA KKIT - 1235 mi
0902 KRRO* 103.7 Sioux Falls SD Rockin' w/ the Rev, 103-7 the Crow - 1230 mi
0905 KUOO* 103.9 Spirit Lake IA Sheldon ad - 1305 mi
0911 KQRN* 107.3 Mitchell SD Q 107-3 - 1160 mi

0913	KISD*	98.7	Pipestone	MN	KISD oldies - 1230 mi
0917	KXAC*	100.5	St. James	MN	Madelia ad - 1305 mi
0918	KRRW*	101.5	St. James	MN	St. James, Country 101.5
0923	KATO*	93.1	New Ulm	MN	wx, Minnesota 93, k - 1310 mi
0925	KDBX*	107.1	Clear Lake	SD	South Dakota wx - 1205 mi
0944	KJWR	90.9	Windom	MN	Kinship Christian Radio, kinship.org - 1295
0945	KATO	93.1	New Ulm	MN	Mankato ad
0949	KLMP*	88.3	Rapid City	SD	KLMP the Light - 890 mi
0952	KTWB	92.5	Sioux Falls	SD	...TWB Big Country
1716	KKJQ	97.3	Garden City	KS	Dodge City, K-97
1723	KJOV*	90.7	Woodward	OK	KJIL - 1280 mi
1729	KUCO*	90.1	Edmond	OK	With Heart & Voice, KUC.... - 1410 mi
1736	KYCM*	89.1	Clinton	OK	Chicago SO, Comanche County ref - 1330 mi
1816	KZBT*	93.3	Midland	TX	B-93 - 1345 mi
1817	KACV*	89.9	Amarillo	TX	Latin jazz (Putumayo World Music the pgm) (local KKJA off)
1832	KPRF*	98.7	Amarillo	TX	rock, Jack FM, 987jackfm.com =
1836	KMTH*	98.7	Maljamar	NM	San Francisco SO, Beethoven - 1245 mi
1856	KLAQ*	95.5	El Paso	TX	KLAQ El Paso - 1200 mi
1900	KYSE*	94.7	El Paso	TX	Sp, El Paso
1901	KINT*	93.9	El Paso	TX	Sp, El Paso
1902	KSII*	93.1	El Paso	TX	93.1 Kiss FM
1911	KRWG*	90.7	Las Cruces	NM	Thistle & Shamrock - 1160 mi
1914	XHUAR*	106.7	Ciudad Juarez	CH	Sp - English song mix
1927	KSII	93.1	El Paso	TX	93.1 Kiss FM is El Paso's best mix
1958	XHAHC*	90.9	Chihuahua	CH	La caliente (Chihuahua ref @ 1950); in 1936- 2022 - 1390 mi

7/7 - trops

0635	KSKF*	90.9	Klamath Falls	OR	Jefferson Public Radio - 180 mi
------	-------	------	---------------	----	---------------------------------

7/7 - ES, MUF 106.9

1654	KJOV	90.7	Woodward	OK	KJIL
1700	KOOL	94.5	Phoenix	AZ	KOOL ID
1728	KNCK*	94.9	Concordia	KS	NCK wx alert, Kansas - 1270 mi
1733	KREP*	92.1	Belleville	KS	Belleville ref, wx alert north-central KS, KR 92 - 1265 mi
1737	KTPK*	106.9	Topeka	KS	Country Legends 106-9 - 1385 mi
1739	KROR*	101.5	Hastings	NE	Ad for Stoltenburg Irrigation (in Cairo NE) - 1190 mi
1741	KRVN*	93.1	Lexington	NE	Cozad & Kearney ad - 1115 mi
1745	KJWM*	91.5	Grand Island	NE	Catholic talk - 1195 mi
1753	KHNE	89.1	Hastings	NE	Performance Today; NE wx alerts // 91.1 - 1190 mi

1753	KUCV	91.1	Lincoln	NE	Performance Today; NE wx alerts // 89.1 - 1295 mi
1838	CFWE*	89.9	Lac la Biche	AB	CFWE (KKJA suffering heat stroke all month) - 780 mi
1843	CJXX*	93.1	Grande Prairie	AB	Big Country 93.1, Canada; temp up to 30 degrees; bigcountryxx.com - 710 mi
1859	CBYJ*	88.3	Fort St. John	BC	CBC Radio in Prince George at 91.5 - 775 mi
1908	CBKQ*	89.7	Dawson Creek	BC	Discussion of Canadian spectrum usage - 740 miles
1909	CBYG	91.5	Prince George	BC	Discussion // 89.7
1912	CBYJ	88.3	Fort St. John	BC	Discussion // 89.7 & 91.5
1917	KISZ*	97.9	Cortez	CO	Cortez ad - 825 mi
1938	KSMM*	101.5	Liberal	KS	Sp, La Mexicana - 1190 mi
1939	KLDG*	102.7	Liberal	KS	101.7 the Legend
1940	KSSA	105.9	Ingalls	KS	La que buena
1943	KAIG*	89.9	Dodge City	KS	Air 1 - 1195 mi
1944	KSCB*	107.5	Liberal	KS	B-107-5, urban
1949	KHEY*	96.3	El Paso	TX	Dick Poe ad (veried he's in El Paso)
1959	KMTH	98.7	Maljamar	NM	from the campus of East NM U in Portales....
2007	KUSD	89.7	Vermillion	SD	University of SD Vermillion
2009	KLAQ	95.5	El Paso	TX	KLAQ
2011	KSOU	93.9	Sioux Center	IA	KSOU

7/10 - ES, MUF 98.7

1025	KELU	90.3	Clovis	NM	K Love // 90.9 & 90.7 (& local 90.5!)
1026	KLHK*	90.9	Hobbs	NM	K Love // 90.3 & 90.7 - 1275 mi
1027	KQLV	90.7	Santa Fe	NM	K Love // 90.3 & 90.9
1052	KXKQ*	94.5	Safford	AZ	Cat Country 94; making AZ the brightest star - 1010 mi
1055	KXKQ	94.5	Safford	AZ	Safford ref
1106	KNAG*	90.3	Grand Canyon	AZ	KNAU, NPR nx - 760 mi
1106	KNAU*	88.7	Flagstaff	AZ	Horn quintet o/ local KZRI; noted thru 1136 - 840 mi
1114	K222??*	92.3	Flagstaff	AZ	Horn quintet // 88.7: new xlator being tested!
1647	KOFX*	92.3	El Paso	TX	El Paso ad
1806	KSJE*	90.9	Farmington	NM	Beethoven Violin Concerto: had to call stn to verify: the website was wrong!
1858	KRSH*	95.9	Healdsburg	CA	KSRO Santa Rosa nx (KSRO is 1350 AM) - 430 mi
1900	CBWY*	92.7	Jackhead	MB	Can nx before & after CILT (below) - 1160
1900	CILT*	96.7	Steinbach	MB	local nx, whether to have pedestrian lights on corner! - 1215 mi
1906	KPRF	98.7	Amarillo	TX	Jack FM

7/11 - ES, MUF 94.7

0831	XHHB*	94.7	Hermosillo	SN	Radio Sonora - 1200 mi
0833	XHSOA*	91.5	Caborca	SN	Sp - Sonora ref - 1070 mi

7/17 - MS

0901	KHYY*	106.9	Minatare	NE	Hottest country hits ... KH...Y.... - 920 mi
------	-------	-------	----------	----	--

7/19 - MS

0930	KFRC	106.9	San Francisco	CA	KCBS
------	------	-------	---------------	----	------

7/19 - trops

1044	KKKJ*	105.5	Merrill	OR	KKKJ - 175 mi
------	-------	-------	---------	----	---------------

7/20 - ES, MUF 100.9

1822	XHAHC	90.9	Chihuahua	CH	Chihuahua, La caliente
1841	KMVP*	98.7	Phoenix	AZ	bb, St Louis vs Dodgers on ESPN
1852	XHHQ*	97.1	Hermosillo	SN	Sp music in w/ 90.7 La caliente, 93.1, & 94.7
1855	XHHLL*	90.7	Hermosillo	SN	La caliente, strong but distorted signal
1856	XHEPB*	93.1	Hermosillo	SN	Mexican refs
1857	XHEZ*	90.7	Caborca	SN	Sp ESPN, Kershaw ment o/XHHLL
1859	KTTI*	95.1	Yuma	AZ	KTTI Yuma ID - 900 mi
1900	XHHLL	90.7	Hermosillo	SN	La caliente
1906	KLCF	91.1	Truth or Consequences	NM	wx in Pinetop & T or C - 1085 mi
1918	KSII	93.1	El Paso	TX	El Paso ad
1932	KTTI	95.1	Yuma	AZ	KTTI
1934	KLJZ*	93.1	Yuma	AZ	Z-93
1946	KNAA*	90.7	Show Low	AZ	Prairie Home Companion // 88.7 - 930 mi
1953	KNAU	88.7	Flagstaff	AZ	PHC
2008	KPHF*	88.3	Phoenix	AZ	g // local KPFR 89.5

7/28 - trops

2059	KTAC*	93.9	Ephrata	WA	..heard in Pasco, Kennewick....(KTAC//KGDN there) - 195 mi
------	-------	------	---------	----	--

7/30 - MS

0600	KWNR*	95.5	Henderson	NV	New Country 95-5 the Bull (KBFF Portland at low power) - 590 mi
------	-------	------	-----------	----	---

8/2 - MS

1258 KQQM* 88.3 Miles City MT Radio 74, g music - 460 mi (KLBR 88.1's IBOC off)

8/5 - MS

0727 K202DM* 88.3 Barstow CA Disc of SOS (KSOS 90.5 Las Vegas) - 695 mi

8/9 - MS

0841 KYFO* 95.5 Ogden UT Promo for Adventures in Odyssey (airs @ 10am MDT) - 520 mi

8/9 - ES, MUF 100.9

1638 KLJZ 93.1 Yuma AZ Yuma ad - in like a local!
1643 KUKY* 95.9 Wellton AZ Los Exitos, Sp music & talk w/ 93.1 also in 1636-1652 - 900 mi
1659 KQSR* 100.9 Yuma AZ KQSR Yuma, Star 100.9, good stereo separation!
1732 XHEZ 90.7 Caborca SN Dodgers game, then ad w/ Caborca ref
1734 XHCBR* 100.1 Caborca SN Sp music o/ Bend xlator
1802 KRCY* 96.7 Lake Havasu City AZ L. Havasu C. ad, current Crazy wx - 795 mi
1828 KKLD* 95.9 Cottonwood AZ KKLD the Cloud - 765 mi
1830 XHSOS* 97.3 Aguas Calientes SN La Ranchera - 1100 mi
1853 KDKB* 93.3 Mesa AZ KDKB rocks Arizona - 900 mi
1853 KNAI* 88.3 Phoenix AZ Sp (w/ Phoenix stations @ 90.3, 91.5, 92.3)
1900 KNAG 90.3 Grand Canyon AZ Prairie Home Companion, KNAU

8/11 - MS

0627 KCHH* 95.5 Worden MT News Radio 95.5 - 635 mi

8/12 - MS

0355 KVYA* 103.7 Church Rock NM Classic Hits KYV.... - 955 miles
0456 ???? 103.7 ???? ?? Right now in the Hub City....
1600 KHFM* 95.5 Santa Fe NM ...on 103.1 FM.... (KHFM has xlator there)
1811 KWNR 95.5 Henderson NV Number 4 on the Bull....
1853 ???? 95.5 ???? ?? Rocky Country....
1905 KFRC 106.9 San Francisco CA KCBS
2134 KCHH 95.5 Worden MT This is NewsTalk Radio 95.5

8/15 - MS

1000	KIOI*	101.3	San Francisco	CA	...Water World California. Next on Star 101.... - 465 mi
1545	KLOS*	95.5	Los Angeles	CA	I-605 & I-5 traffic & Telegraph as alternative.... - 715 mi

8/15 - ES, MUF 107.1

1957	KGFX	92.7	Pierre	SD	KGFX
2011	KPHF	88.3	Phoenix	AZ	g // local KPFR 89.5
2011	KBAQ*	89.5	Phoenix	AZ	Beethoven Leonore Overture#3 breaking thru KPFR!
2012	KMVP	98.7	Phoenix	AZ	Desert ref & sports
2014	KNAA	90.7	Show Low	AZ	Scriabin // 88.7
2014	KNAU	88.7	Flagstaff	AZ	Scriabin // 90.7
2015	KLPX*	96.1	Tucson	AZ	KLPX
2023	KLVA*	105.5	Casa Grande	AZ	gr // 90.5, K Love - 955 mi
2037	KFLX*	92.5	Chino Valley	AZ	92-5 and 104-1 - 810 mi

9/5 - trops

0702	KTIK*	93.1	New Plymouth	ID	CBS Sports Radio - 250 mi
------	-------	------	--------------	----	---------------------------

9/10 - MS

0727	KSON	97.3	San Diego	CA	from San Diego's #1....
------	------	------	-----------	----	-------------------------

9/29 - MS

0641	KAML	97.3	Gillette	WY	97-3 Camel FM.... N- 775 mi
------	------	------	----------	----	-----------------------------

9/30 - MS

0615	????	98.1	????	??	Star 98 - could be either UT or ID station....
0703	KISQ	98.1	San Francisco	CA	Our Pressure Center is next on Kiss....

10/26 - MS

0745	KWRK*	96.1	Window Rock	AZ	...WRK Capital.... - 855 mi
------	-------	------	-------------	----	-----------------------------

10/27 - MS

0739 CFMY* 96.1 Medicine Hat AT ...J & Kirby from My 96.... (DJ's are KJ & Kirby) - 610 mi

10/28 - MS

0813 KTAR 92.3 Glendale AZ KTAR

11/4 - MS

0728 KUFX* 98.5 San Jose CA 408 a/c in ad - 505 mi

11/4 - trops

0849 KTIK 93.1 New Plymouth ID sports talk
0849 KSRV* 96.1 Ontario OR Boise Valley ref while KTIK in - 250 mi (KSRV & KTIK co-sited)

12/5 - MS

0735 KDES* 98.5 Cathedral City CA ...to San Bernardino (traffic report, seemingly) - 730 mi

12/10 - MS

0618 ???? 98.5 ???? ?? Cordon Bleu College (which has ads on KLUC Lav Vegas and KRXQ Sacramento!)

12/12 - MS

2159 KUFX 98.5 San Jose CA K-Fox

12/13 - MS

0722 KEYG 98.5 Grand Coulee WA on the Key (yes, MS!) - 240 mi

12/14 - MS

0843 KRZR* 103.7 Hanford CA Fresno applications.... - 580 mi

12/27 - MS

1013 KIOI 101.3 San Francisco CA Star 101-3 (please note the time!)



DX Bulletin Board Loggings

for April 1st thru 21st, 2015

wtfdadxbb.vci.net

Date/Time (UTC)	Message
Apr 21 13:53	Ms several pings on lo chs. Some w Doppler shift. de Ed W-KY EM56
Apr 21 13:52	Ms had abt 10 sec worth of an a.m. news pgm in EE on ch 2. Canadian, I'd guess. de Ed W-KY EM56
Apr 19 02:14	Es 6z w SS... over Memphis Franken FM channel clogger... de Ed W-KY EM56
Apr 19 02:11	Es 3z MX w lots of political ads. Gala (I think) logo Ir de Ed W-KY EM56
Apr 19 01:42	Es up to ch 5 now... MX... de Ed W-KY EM56
Apr 19 01:41	Es 2- w "MTY" logo Ir de Ed W-KY EM56
Apr 19 01:39	Es 2- w Rel pgm in SS de Ed W-KY EM56
Apr 19 01:38	Es HRJS-2z San Pedro Sula Honduras -suddenly in - Vica logo UR (1323 mi) de Fred SC FM03af
Apr 19 01:21	Es sub-decode DTV 4 bmg w de Ed W-KY EM56
Apr 19 01:20	Es 4z w SS bmg w-sw de Ed W-KY EM56
Apr 19 01:12	Es 2z w "tu canal" logo LR. XEPM, I guess. Thought it had gone DTV de Ed W-KY EM56
Apr 19 00:28	Es 2z bmg w-sw... SS. de Ed W-KY EM56
Apr 19 00:21	Es hearing CO & NE on 6M de Ed W-KY EM56
Apr 19 00:11	Es DTV pilots on 2 & 3 bmg w-nw de Ed W-KY EM56
Apr 18 22:28	Tr 88.9 WSND Notre Dame IN classical music, calls 275 mi de jEFF ON EN93fo
Apr 18 16:32	Es now a 2z has jumped in... de Ed W-KY EM56
Apr 18 16:20	Es a 2+ butting heads w the 2- de Ed W-KY EM56
Apr 18 16:18	Es 2- bmg S. SS. Futbol. Weak. de Ed W-KY EM56
Apr 17 15:48	Tr W15DJ 15/38 Sister Bay, WI *3.9KW* at 355 mi de MikeG IN EM69
Apr 17 15:46	Tr Correction WPNE 15/38 is not correct de MikeG IN EM69
Apr 17 14:32	Es UNID-2Z south - likely Cuba/Haiti/Dom Rep mixing, with 6m cq from Cuba de Fred SC FM03af
Apr 17 13:37	Tr WXYZ 41/7, Detroit, MI 230 mi. just decoded 1st time today. de indysteve IN EM69
Apr 17 13:16	Tr WDCQ 15/19, Bad Axe, MI 279 miles de indysteve IN EM69
Apr 17 13:15	Tr WDCQ 15/19 Bad Axe, MI at 275 mi de MikeG IN EM69
Apr 17 13:14	Tr WTVS 43/56 Detroit, MI 233 mi de MikeG IN EM69
Apr 17 12:23	Tr WCMU 26/14 Mt Pleasant, MI at 257 mi de MikeG IN EM69
Apr 17 12:03	Tr WPNE 15/38 Green Bay, WI 300 mi NEW #367 de MikeG IN EM69
Apr 17 03:27	Es still in on ch 2/3/4 - FM MUF was up to 104.1 at 2211edt (new loggings were XHEVZ-93.9 VER 1409 mi, XHTVH-94.9 TAB 1323 mi, XHVT-104.1 TAB 1323 mi de Fred SC FM03af
Apr 17 02:02	Es into FM - SS noted on 89.7/93.9/94.9 de Fred SC FM03af

- Apr 17 01:36** Es 91.5 Rel. Preacher. de Jon ON FN03
Es still in from Mexico on ch 2/3/4 after stepping out for an hour web meeting-recorded
- Apr 17 01:08** 1 hour of 88.1-94.9 on SDR Play/SDR Console in case muj went into FM
de Fred SC FM03af
- Apr 16 23:52** Es UNID-2+ Mexico Aztea 7 logo UR -- also UNIDs on ch 3/4 -very strong signals
de Fred SC FM03af
- Apr 16 20:26** Au 8 MUF - 3 Elliot Lake in + plus other weak carriers/DTV pilots - de WRH ON FN03
- Apr 16 02:01** MS 903.9 WSPQ MO West Plains - "...Expo at the west Plains Civic Center" relog at 2157
de Saul ON FN04
- Apr 15 20:13** One of these days I'll ID an Au >600 miles - pretty sure I've seen sigs from 4 Brandon
& 4 Sydney - de WRH ON FN03
- Apr 15 19:59** Au 4 MUF - very weak - usual suspects, carriers 3z Elliot, 3+ Timmins, 4- Hearst -
de WRH ON FN03
- Apr 14 15:17** Ms 90.1 WXVS Waycross, GA RDS PI/PS 856 mi de Jeff ON EN93fo
- Apr 14 02:00** Tr 96.3 WRHT Morehead City NC (374 mi.) TOH ID de w2njl NJ FM29
- Apr 13 12:15** Tr odd condx w lcls KFVS12, KBSI 22/23 Cape Girardeau, MO & WTCT 17/27 Marion,
IL down to sub-decode levels... de Ed W-KY EM56
- Apr 12 15:50** Tr 91.9 WSMO Mount Forest, MI "Smile-FM". More and more Smile FMs all the time
NEW 129 mi de Jeff ON EN93fo
- Apr 12 15:06** Tr WPBM-CD 46/31 Scottsville KY 132 mi "WPBM-DC" de Ed W-KY EM56
- Apr 12 15:05** Tr WCZU-LD 39 Bowling Green KY 122 mi de Ed W-KY EM56
- Apr 12 14:25** Tr good conditions from NC & Atlanta area DTVs - also new logging of WGSJ-CD 11
Murrells Inlet SC 58 mi de Fred SC FM03af
- Apr 11 14:53** Tr Atlanta area FMs noted in - eg WWPW-96.1 Power 96-1 256 mi de Fred SC FM03af
- Apr 11 04:38** Tr a few Birmingham area DTVs at 250-ish mi de Ed W-KY EM56
- Apr 11 02:40** Tr WMIA 93.9 Miami Beach FL - The New My 93-9 502mi de Fred SC FM03af
- Apr 11 02:29** Tr WXDJ-106.7 Ft Lauderdale FL SS anncts 499 mi de Fred SC FM03af
- Apr 11 02:10** Tr strong coastal - WRMF-97.9 Palm Beach RDS 446 mi de Fred SC FM03af
- Apr 10 21:36** WDKA 49 Paducah, KY is back on air. de Ed W-KY EM56
- Apr 10 04:28** Tr WPBF 16 Tequesta FL 422 mi de Fred SC FM03af
- Apr 8 04:38** Tr a few AL DTVs out to 250 mi de Ed W-KY EM56
- Apr 6 11:45** WNDY 32/23, Marion/Indy has added sister WISH on 23.3 in HD 1080i.
de indy steve IN EM69
- Apr 6 04:12** Ms 89.7 WUSF Tampa, FL RDS previous Es 1088 mi de Jeff ON EN93fo
- Apr 4 14:10** Tr KCWE 31/29 Kansas City MO @ 140 mi. NEW! over KWBM Harrison AR 42 mi (to
the south) de Jim-T MO EM37
- Apr 3 21:00** WKMU 36/21 Murray KY is back on air de Ed W-KY EM56
- Apr 3 17:24** Tr [13:08] 48 WYDC Corning, NY - 145 mi - new via autoscanner - only 8 kW ! -
de WRH ON FN03
- Apr 3 16:26** Tr 94.5-WNED Buffalo, NY classical. At least it's something! 257mi.
de dtvdexer NY FN31
- Apr 3 16:08** New sub-ch on WQHS 34 Cleveland : 61.2 UNIMAS - de WRH ON FN03

Apr 3 16:02 Tr 91.5 WBIE Delphos, OH 299 mi., ID at TOH AFR station (NEW)
 de Dave-N PA FN01qx
Apr 3 15:56 Tr WKYC-17/3 Cleveland just decoded only TV today for me de Dave-N PA FN01qx
Apr 3 15:48 Tr 23 WVPX Akron, OH - 179 mi relog - well at least it's something - de WRH ON FN03
Apr 3 15:36 Tr 92.1 WOHF Bellevue, OH still hanging in at 222 mi. with oldies and excell. sig.
 de Dave-N PA FN01qx
Apr 3 15:28 Tr WQLN 50/54, Erie, PA 347 mi. New log. de indysteve IN EM69
Apr 3 15:24 Tr 98.1 WDFM Defiance, OH 316 mi. over WKDD Akron, OH @ 167 mi.
 de Dave-N PA FN01qx
Apr 3 15:11 Tr WNYO 49, Buffalo, NY 443 mi. New log. de indysteve IN EM69
Apr 3 15:10 Tr WGRZ 33/2, Buffalo, NY 436 mi. New log. de indysteve IN EM69
Apr 3 14:57 Tr WUHF 28/31, Rochester, NY 493 mi. New log. de indysteve IN EM69
Apr 3 14:56 Tr WXXI 16/21, Rochester, NY 493 mi. New log. de indysteve IN EM69
Apr 3 14:43 Tr WKBW 38/7, Buffalo, NY 431 mi. New log...?? Need to check. de indysteve IN EM69
Apr 3 14:37 Tr WFXP 22/66, Erie, PA 347 mi. New log. de indysteve IN EM69
Apr 3 14:36 Tr 107.7 WPFX Luckey, OH 259 mi., calls + 107.7 The Wolf (NEW)
 de Dave-N PA FN01qx
Apr 3 14:20 Tr 93.9 WBKS Columbus Grove, OH 292 mi., RDS with calls & 93.9KISS relog
 de Dave-N PA FN01qx
Apr 3 14:14 Tr 95.7 WIMX Gibsonburg, OH, "Mix 95.7". 243 mi. New! de Jon ON FN03
Apr 3 14:01 Tr WKBN 41/27, Youngstown, OH 298 mi. de indysteve IN EM69
Apr 3 13:55 Tr 113.6 DJB Cleveland, OH - 183 mi relog - no voice wx heard - de WRH ON FN03
Apr 3 13:52 Tr 18 WISE Fort Wayne, IN - 322 mi - new sub-ch 33.2 MyTV - de WRH ON FN03
Apr 3 13:51 Tr 18 WDTJ Toledo, OH - 229 mi - new - 68.1 WDTJ-LD - de WRH ON FN03
Apr 3 13:50 Tr 98.9 WBYS Woodburn, IN "98-9 the Bear". 321 mi. New! de Jon ON FN03
Apr 3 13:43 Tr 100.1 WFCV Bluffton, IN, Bott Stream Match. 348 mi. New! de Jon ON FN03
Apr 3 13:43 Tr 162.40 Sandusky, OH destroying local Toronto - de WRH ON FN03
Apr 3 13:39 Tr 106.1 WVNO Mansfield, OH in HD 3 channels de Jeff ON EN93fo
Apr 3 13:38 Tr UHF getting in to Jackson MI, Fort Wayne now - de WRH ON FN03
Apr 3 13:38 Tr 100.1 WSWR Shelby, OH, Stream Match. 236 mi de Jon ON FN03
Apr 3 13:37 Tr 162.55 KHB59 Cleveland, OH - rare relog o/local - 170 mi - de WRH ON FN03
Apr 3 13:27 Tr rare Elmira TV relogs - 145 mi - de WRH ON FN03
Apr 3 13:22 Tr 105.5 WWWM Sylvania, OH, Stream Match, 251 mi. New! de Jon ON FN03
Apr 3 13:09 Tr 89.7 WNOC Bowling Green, OH, Catholic Prayers, 252 mi de Jon ON FN03
Apr 3 13:05 Tr 97.9 WNCI Columbus, OH legal ID / RDS bogus KCTT 263 mi de Jeff ON EN93fo
Apr 3 13:03 Tr 91.3 WGTE Toledo, OH, "WGTE.org", 244 mi. New! de Jon ON FN03
Apr 3 12:57 Tr 100.9 WMJK Clyde, OH, "Coast1009.com". 230 mi. New! de Jon ON FN03
Apr 3 12:51 Tr 104.1 WQAL Cleveland, OH, "Q104". On Top of Buffalo. 178 mi. de Jon ON FN03
Apr 3 12:35 Tr 99.3 W257CV Butler, OH "Positive Hits 99.3" 250 watts NEW! 204 mi
 de Jeff ON EN93fo

Apr 3 12:34 Tr 90.1 WXML Upper Sandusky, OH, "NewVision.fm", 253 mi de Jon ON FN03
Apr 3 12:12 Tr 92.7 WQEL Bucyrus, OH calls/rock, 2nd time here de Jeff ON EN93fo
Apr 3 12:08 Tr 88.3 WAUI Shelby, OH AFR religion, 900 watts, NEW de Jeff ON EN93fo
Apr 3 11:54 Tr 102.9 WDHT Urbana, OHIO RELOG Ads for Springfield. ID as "HOT 102.9". Hip Hop Mx de Rob-VA3SW ON EN92
Apr 3 11:03 Tr 94.3 WKKJ Chillicothe, OH legal ID 305 mi de Jeff ON EN93fo
Apr 3 10:49 Tr 105.7 WZOM Defiance, OH C&W "The Bull" de Jeff ON EN93fo
Apr 3 10:36 Tr 107.9 WVMX Westerville, OHIO NEW STN !! FM # 2500 LOGGED!! 3 KW Central Ohio Ads "Mix 107.9" IDs Weather Report de ROB VA3SW EN92 de Rob-VA3SW ON EN92
Apr 3 10:25 Tr 94.1 WBNI Roanoke, IN LOUD calls/classical music NEW! de Jeff ON EN93fo
Apr 3 10:21 Tr 107.9 WJFX New Haven, IN "Hot 107.9" NEW! de Jeff ON EN93fo de Jeff ON EN93fo
Apr 3 10:18 Tr WADL 39/38, Mt. Clemens, MI 247 mi. de indysteve IN EM69
Apr 3 10:17 Tr 106.9 WXXC Marion, IN "Star 106.9" 297 mi de Jeff ON EN93fo
Apr 3 10:17 Tr WEWS 15/5, Cleveland, OH 251 mi. de indysteve IN EM69
Apr 3 10:16 Tr CHWI 16, Wheatley, ON 245 mi. de indysteve IN EM69
Apr 3 10:15 Tr Most Dayton/Columbus FMs blasting in!! de Rob-VA3SW ON EN92
Apr 3 10:10 Tr 101.7 WLDE Fort Wayne, IN loud "Fun FM" relog new calls (last heard in 1980!) de Jeff ON EN93fo
Apr 3 10:07 Tr 88.5 WMUB Oxford, OHIO RELOG NPRi News items, Wx for Cinci 302 Miles de Rob-VA3SW ON EN92
Apr 3 09:55 Tr 88.1 WDPR Dayton, OHIO RELOG @ 600 Watts!! HD Capture and Classical Music. Full Scale!!! de Rob-VA3SW ON EN92
Apr 3 09:53 Tr 96.3 WLVQ Columbus, OH, rock "QFM" 263 mi de Jeff ON EN93fo
Apr 3 09:48 Tr 91.5 WHKC Columbus, OH "Freedom FM" only 2nd time heard 265 mi de Jeff ON EN93fo
Apr 3 09:45 Tr 88.5 WMUB Oxford, OH strong weather/traffic for Cinncy 327 mi de Jeff ON EN93fo
Apr 3 09:32 Tr 94.7 WSNY Columbus, OH "Sunny 95" 263 mi de Jeff ON EN93fo
Apr 3 08:53 Tr 100.7 WEEC Spingfield, OH calls/religious music 279 mi de Jeff ON EN93fo
Apr 3 08:47 Tr 94.9 WONB Ada, OH "94.9 The beat" rare 229 mi de Jeff ON EN93fo
Apr 3 08:45 Tr 99.7 WRKZ Columbus, OH rock "The Blitz" over 9 mi away CIYN1 263 mi de Jeff ON EN93fo
Apr 3 08:35 Tr 106.5 WRZX Greenville, OH "Big 106-5" relog new calls 287 mi de Jeff ON EN93fo
Apr 3 08:33 Tr 103.3 WMLX Saint Marys, OH RDS 243 mi de Jeff ON EN93fo
Apr 3 07:10 Tr 97.3 WMEE Ft. Wayne, INDIANA RELOG 97.3 WMEE ID and Pop Music de Rob-VA3SW ON EN92
Apr 3 06:39 Tr 97.1 WLHK Shelbyville, INDIANA RELOG @ 336 Miles! C/W Music HANK-FM Ads for Noblesville de Rob-VA3SW ON EN92
Apr 3 06:10 Tr 102.5 WMDH Newcastle, INDIANA RELOG "Nash FM 102.5" IDs C/W Music. de Rob-VA3SW ON EN92

- Apr 3 05:13 Tr 99.7 WUGN Midland, MI, "Family Life Radio", 274 mi de Jon ON FN03
- Apr 3 05:00 Tr 100.1 WFCV Bluffton, INDIANA RELOG @ 6 KW Relig Talk BOTT RADIO NETWORK Legal ID WFCV Bluffton/Ft. Wayne de Rob-VA3SW ON EN92
- Apr 3 04:54 Tr 98.9 WBYS Woodburn, INDIANA RELOG Blasting in with RDS and THE BEAR IDs Rock Mx. de Rob-VA3SW ON EN92
- Apr 3 04:42 Tr 95.7 WCMB Oscoda, MI, // 90.1 WUCX, 239 mi de Jon ON FN03
- Apr 3 04:37 Tr 105.9 WJOT Wabash, INDIANA NEW STN!! 3 KW @ 281 Miles OLDIES and "105.9 The bash" IDS // Live Webfeed as well de Rob-VA3SW ON EN92
- Apr 3 04:24 Tr 105.1 WQHK Hometown, INDIANA RELOG Ad for Car Collision joint in Ft. Wayne de Rob-VA3SW ON EN92
- Apr 3 04:17 Tr 99.7 WSHW Frankfort, INDIANA RELOG @ 330 Miles!! "Indiana's Best Rock Shine 99" de Rob-VA3SW ON EN92
- Apr 3 03:43 Tr 93.7 WFRR Walton, INDIANA NEW STN!! 6 KW Christian with WFRN IDs and Promos. de Rob-VA3SW ON EN92
- Apr 3 03:07 Tr 88.5 WGNC Constantine, MI. RELOG "God and Country 88.5 WGNC" ID C/W Mx 9.7 KW de Rob-VA3SW ON EN92
- Apr 3 02:54 Tr 104.1 WVGR Grand Rapids. MICHIGAN RELOG NPR Michigan Radio Talk Pgm RDS also de Rob-VA3SW ON EN92
- Apr 3 02:49 Tr 98.5 WNWN Coldwater, MICHIGAN Battle Creek/Coldwater Ads de Rob-VA3SW ON EN92
- Apr 3 02:45 Tr 93.7 WBCT Grand Rapids, MICHIGAN B-93 IDs Grand Rapids Ads C/W Music de Rob-VA3SW ON EN92
- Apr 3 02:41 Tr 93.3 WBTU Kendallville, INDIANA RELOG C/W Music ID as " US 93-3" Indiana Ads de Rob-VA3SW ON EN92
- Apr 3 02:36 Tr 90.3 WBCL Ft. Wayne, INDIANA RELOG RDS and Christian Mx also ID sung out de Rob-VA3SW ON EN92
- Apr 1 11:58 Tr WADL 39/38, Mt. Clemens, MI 247 mi. de indysteve IN EM69



CALL FOR PAPERS AND TALKS

We're setting up the schedule of informal talks and presentations for the joint IRCA/NRC/WTFDA/DECALCOMANIA convention in Fort Wayne in July. If you're interested in sharing some DX-ing experience with us; perhaps presenting a talk on any subject useful to DX-ers assembled, please contact Mark Durenberger.

Mark4@durenberger.com

We can provide you with audio/visual support for slides and audio playback and even duplicate any handouts you might like to share.

We're interested in your experiences so please get in touch!

Norway To Switch Off FM In 2017

Within two years from now, the shutdown of national FM-networks begins in Norway. The switchover will begin in the North and will be implemented region by region.

Written by Av Mari Hagerup for Radio.no [April 16, 2015]

Source: <http://radio.no/2015/04/norway-to-switch-off-fm-in-2017/>



Thursday, the Ministry of Culture announced a national FM-switch off, to complete the transition to digital radio. Norway is making an historical move into a new radio era, being the first country in the world to decide upon an analogue switch-off for all major radio channels. With DAB and digital radio, listeners will be provided with more radio channels and greater diversity in content.

Thor Gjermund Eriksen, head of NRK, says:

- This is an important day for everyone who loves radio. The minister's decision allows us to concentrate our resources even more upon what is most important, namely to create high quality and diverse radio-content to our listeners.

The DAB-coverage in Norway now exceeds FM-coverage. DAB provides Norway with 22 national channels, as opposed to five channels transmitting nationwide on FM.

Switch-off begins 11th January 2017

The decision gives Norwegians a final date for the transition to digital radio, a process persisting for several years. Trygve Rønningen, CEO and editor in chief P4, says:

- We can finally complete the work that has been on-going for many years. This is the best solution for all listeners throughout Norway, as they now have a better radio.

Switch-off starts in Nordland county 11th January 2017 and ends with the northernmost counties Troms and Finnmark 13.12 2017.

Coordinated

NRK, P4 Group and SBS Radio will turn off all its FM broadcasts simultaneously in two of six regions. In four regions however, NRK Radio will lead the way in FM-switch off. Lasse Kokvik, CEO of SBS Radio says:

- The national radio industry have agreed upon a rapid and coordinated plan for the transition, with considerations taken on not giving unreasonable competitive advantages through FM-closing.

Look to Norway

Today's decision makes Norway the first country in the world to set a final date for FM-switch off. Several countries in Europe and Southeast Asia, however, are in similar processes, choosing DAB-technology as the backbone of future radio distribution.

Ole Jørgen Torvmark, CEO of Digital Radio Norway says:

- The White Paper from 2011 and a unique collaboration between the radio industry is the main reason why Norway is far ahead in the transition to digital radio. Many countries are now looking to Norway to learn.

Ensures a long life for radio

Radio on digital platforms ensures the radio media a long life for years to come. The Radio Industry is better equipped to evolve with listener`s needs and are thus better enabled to adopt to the ever changing patterns of media consumption.

Norway began the transition to DAB in 1995. In recent years two national and several local DAB-networks has been established. 56 per cent of radio listeners use digital radio every day. 55 per cent of households have at least one DAB radio, according to Digitalradio survey by TNS Gallup, continuously measuring the Norwegian`s digital radio habits.

Regional plan for FM switch-off

Region	Aktør	Dato	Befolkning (ca)	
Nordland	FELLES	11.01.2017	240	4,7 %
Trøndelag, Møre og Romsdal	NRK	08.02.2017	700	13,7 %
	P4, Radio Norge, lokalradio	21.04.2017		
Telemark, Buskerud, Hedmark og Oppland	NRK	26.04.2017	825	16,2 %
	P4, Radio Norge, lokalradio	16.06.2017		
Sogn og Fjordane, Hordaland, Rogaland, Agder	NRK	21.06.2017	1 365	26,8 %
	P4, Radio Norge, lokalradio	15.09.2017		
Østfold, Vestfold, Oslo, Akershus	NRK	20.09.2017	1 735	34,0 %
	P4, Radio Norge, lokalradio	08.12.2017		
Troms, Finnmark	FELLES	13.12.2017	235	4,6 %
			5 100	100,0 %

[Link to the announcement](#)

For further information, please contact:

Mari Hagerup, Head of communication, Digital Radio Norway

Cell: 0047 920 46 088, Mail: hagerup@radio.no

Background

Norway is in a transition from analogue to digital radio for all national channels and some local channels. Digital radio expands radio reach and multiplies the number of national channels. More than 90 per cent of the population can now listen to 22 national radio channels. The national DAB networks have equally high and partly higher population coverage than national FM networks. DAB coverage along roads is generally better than FM-coverage.

Stats for digital radio in Norway *

- 56 % of radio listeners use digital radio daily
- 44 % of listeners only use FM radio daily
- 20 % of private cars are equipped with DAB radio
- 55 % of all Norwegian households have at least one DAB radio.
- 7.9 million radio sets will be affected by FM-extinction. FM radios can be upgraded or recycled.

* *Digital radio survey , TNS Gallup 2015*

DAB Coverage

NRK: at least 99,5 % coverage on DAB

Commercial radio: 92.8 % coverage on DAB

Community radio: 50 % DAB coverage on DAB

DAB-coverage on roads are generally higher than on FM. All FM-transmitters in tunnels will be replaced with DAB.



Futurecast Preps Cleveland ATSC 3.0 Test

Will test the next generation broadcasting technology at Tribune owned WJW-TV

Written by *George Winslow* for *Broadcasting & Cable* [April 2, 2015]

Source: <http://www.broadcastingcable.com/news/technology/futurecast-preps-cleveland-atsc-30-test/139406>



The backers of the Futurecast Universal Terrestrial Broadcasting System are planning a test of the technology later this spring on Cleveland's Channel 31.

Futurecast, which was codeveloped by LG Electronics, its U.S. R&D subsidiary Zenith, and GatesAir, is a proposal for the "physical layer" of the ATSC 3.0 broadcast system currently being put together by the Advanced Television Systems Committee.

Last year, the backers conducted tests at WKOW-TV in Madison, Wis. of the system, which can broadcast 4K Ultra HD content and two robust mobile TV streams in a single 6-Megahertz channel.

The 2014 tests collected nearly 50,000 pieces of data from scores of reception sites including challenging reception areas inside buildings, in fast-moving vehicles and at locations ranging from downtown to 50 miles from the transmitter.

GatesAir has received a special temporary experimental broadcast license from the FCC to operate a full-power Channel 31 transmitter in the Cleveland area.

It will use the license to test Futurecast over the next six months using the transmitter and broadcast facilities of WJW-TV, the Tribune Media-owned Fox affiliate in Cleveland.

"Enabling the ability to offer new services and capabilities like 4K, mobile and interactive services are of keen interest to Tribune Media, Pearl TV and NAB Labs," said Larry Wert, Tribune's president of broadcast media. "The new standard will need to be more robust, flexible and extensible, and we're looking forward to seeing how Futurecast and other proposed systems will work in real-world conditions."

FCC Suspends September 1, 2015 Deadline for LPTV and Translator Stations to Shift from Analog to Digital

Written by *Jessica Nyman* for *commlawcenter.com*

Source: <http://www.commlawcenter.com/2015/04/fcc-suspends-september-1-2015-deadline-lptv-translator-stations-shift-analog-digital.html>

The FCC's Media Bureau issued a [Public Notice](#) today announcing that it would immediately suspend the September 1, 2015 digital transition date for LPTV and TV translator stations. The FCC's Second Report and Order had established the September 1 deadline for LPTV, TV translator, and Class A TV stations to terminate analog operations and transition to digital. However, in its [Third Notice of Proposed Rulemaking](#), the FCC recognized that the upcoming spectrum auction and repacking process would likely displace a substantial number of LPTV and TV translator stations, and that 795 LPTV and 779 TV translator stations had not yet completed their digital conversion. Seeking to avoid requiring those stations to incur the costs of the digital transition prior to completion of the auction and repacking, the FCC proposed suspending the transition deadline. In today's Public Notice, the FCC concluded that suspending the digital transition deadline would be appropriate to permit analog LPTV and TV translators to postpone construction of digital facilities that could be impacted by the spectrum auction and repacking.

The FCC's decision, however, does not affect Class A TV stations, which are still required to complete the digital transition by the September 1 deadline. Class A stations that do not complete construction of their digital facilities by 11:59 pm, local time, on **September 1, 2015** will be required to go dark until they complete construction of their digital facilities.

Additionally, although Class A stations are not required to cease analog transmissions until September 1, their digital facilities must be licensed or have an application for a license on file by **May 29, 2015** for those digital facilities to be fully protected by the FCC in the repacking process. Any Class A station that fails to meet the May 29 Pre-Auction Licensing Deadline will be afforded protection based solely on the coverage area and population served by its analog facilities, as set forth in the Incentive Auction Report and Order.

The FCC has not announced when the new transition date will be, other than to say the deadline will come after final action in its LPTV DTV proceeding. According to the Third NPRM, the FCC is weighing the benefit of waiting until the close of the auction to establish a new deadline—which would allow the FCC to take into account the overall impact of the repacking process—against announcing a deadline sooner than the end of the auction, which could provide more certainty to LPTV and translator stations about when the digital transition will end and expedite the completion of that transition.

Mexican DTV Conversion Progress

From a post by *Raymie Humbert* on the *WTFDA Forums* [April 14, 2015]

Source: <http://forums.wtfda.org/showthread.php?91113-OPMA-is-changing&p=33566#post33566>



Four months from now pretty much every TV station in Mexico will need to be on in digital. So how is the country doing?

Well, a lot better since I began tracking digitalization status at the start of this year.

Three analog shutoffs

Three markets have shut off their analog stations: Nuevo Laredo, Matamoros-Reynosa, and Mexicali. These border markets were exceptionally ready (ready for *years*) and also the first to transition in the IFT era.

Additionally, one station has opted to flash-cut to digital: XHPUE Puebla. They join XHCMO and XHILA as the only stations to ever turn off analog early.

Marked national improvement

Digital television service is now readily available in many urban areas of the country, and we're starting to see the spillover into rural Mexico.

Some notable areas that have received multiple digital stations:

Cd. del Carmen, Campeche, first city in southeastern Mexico to have all analog television stations also in digital.

Campeche, Campeche, which brought on all stations except its state network, authorized, and also added a new SPR transmitter.

Colima, Colima, which brought on five stations in a month and is only missing its state network, authorized

Tepic, Nayarit, which has seen four of its six stations get on digital

Oaxaca, Oaxaca, which got 6 of its 7 stations in a period from December to February

Hermosillo, Sonora, which had one digital station and now has six

Cd. Obregón, Sonora, which now has all commercial stations in digital

Cd. Victoria, Tamaulipas, which had one station on and now has all of them (one of which is co-channel)

More encouragingly, smaller markets are beginning to join the fray. San José del Cabo BCS (Azteca), Zacatlán Puebla (Televisa), Cerro Azul Veracruz (Televisa) and Valladolid-Tizimín-Kahua Yuc. (both) have digital television service, and in the case of Zacatlán and Cerro Azul it took semi-DX reception from others to confirm the presence of these stations.

But still a long way to go

That said, there are still quite a few cities where I don't think any digital television stations are operating. Here are some of the biggest:

La Paz, BCS
Tuxtla Gutierrez, Chiapas
Hidalgo del Parral, Chihuahua
Northern Coahuila (multiple areas)
Chilpancingo, Guerrero
Tamazunchale, SLP

There are also many, many state networks that face digitalization. These state networks are digitalized at least in part:

Distrito Federal*, Guanajuato, Jalisco, Morelos*, Edomex, Nuevo León**, Puebla*, Querétaro*

**All-digital networks*

***Monterrey xmtr only, co-channel operation*

These hold authorizations:

Aguascalientes, BCS, Campeche, Colima, San Luis Potosí

Digitalization appears near-ish for some others:

Oaxaca, Sonora (Telemex)

The rest of the states have no state network or no known authorizations or plans for digital television. Most of the states that are in digital have a bunch of transmitters that will need to be converted. State network laggards are holding some markets back from digital parity (notable examples: Aguascalientes, Villahermosa, Mérida). I expect the largest state networks to shed many transmitters, particularly Sonora and Oaxaca (the two nets combined represent about one in eight TV stations in Mexico).

There are also several university television stations (XHUNES, XHUAD, XHUS) that don't have a clear path to digitalization.

Yes, it's happening

A lot of us thought Mexico wouldn't get this far. They did, and it looks like the pressure of time has finally spurred the broadcasters to make the necessary investments. Sometimes it seems that this blog is little more than "a digital station signed on in city X, on channel Y with network Z".

But it's happening and I have no doubt that Mexico will make the December 31, 2015 deadline.

SIGN UP & Renewal Form

YEARLY DUES \$10.00 USD for Monthly VUD E-ZINE

Print this form and send it with your dues.

Name _____

Address _____ Apt # _____

City _____ State/Prov _____ Zip _____

Country _____ Interests: TV () FM () 30-50 () Weather ()

E-Mail Address _____

Sign me up/renew me for: 1 year () 2 years () More () _____

Mail your yearly dues to: WTFDA, P.O. Box 501, Somersville, CT USA 06072
Make your checks/money orders payable to: WTFDA
And *thanks* for your support of the WTFDA!

WTFDA BOARD OF DIRECTORS

Mike Bugaj, use the WTFDA Mailing address listed above
Doug Smith, 1385 Old Clarksville Pike, Pleasant View, TN 37146-8098
Greg Coniglio, 11825 Genesee St., Alden, NY 14004
Keith McGinnis, 18 Newbridge St., Hingham, MA 02043

mikeb@wtfda.org
dougs@wtfda.org
gregc@wtfda.org
nfmdx@wtfda.org

RENEWALS BY PAYPAL: SEND YOUR DUES FROM THE PAYPAL WEBSITE TO SALES@WTFDA.ORG

TV and FM STATISTICS

Fred Nordquist, 147 Travis Hill Road, Moncks Corner, SC
stats@wtfda.org

WTFDA.ORG WEBSITE

Tim McVey, webmaster
webmaster@wtfda.org

VHF-UHF DIGEST

Ryan Grabow, 7351 Pinnacle Pines Dr #B21, Fort Myers, FL 33907
egrabow4@comcast.net

WTFDA FORUMS WEBSITE

Chris Cerventez, webmaster
chriscerventez@gmail.com

To join, send an e-mail to

EMAIL REFLECTORS

TV and FM: WTFDA+subscribe@googlegroups.com **AM:** mwdx+subscribe@googlegroups.com

WTFDA WEBSITE

<http://www.wtfda.org>

- News and Links
- VUDs from 70s thru 2000
- Memorabilia

WTFDA FORUMS

<http://forums.wtfda.org>

- Join in the conversation with fellow members!
- Get help with unIDs

FM DATABASE

<http://db.wtfda.org>

Database of US, Canadian and Mexican FM Stations. Sortable, searchable and up to date!



Like us on Facebook: [TV & FM DXing](#)

