



VHF-UHF DIGEST

The Magazine for TV and FM DXers

DIGEST

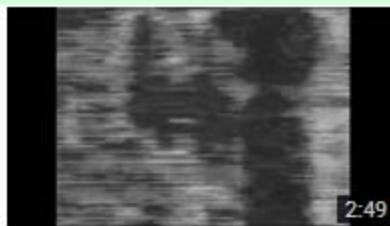
March 2016



CLICK ME!



FMDX 1758km tropo 102.3 Chennai FM Gold ID 24 03 15
28 views • 11 months ago



TVDX TV Jornal Recife Brazil Ch A2 Received in Portugal 17th Ap...
246 views • 10 months ago



4011 Mile / 6455 km FMDX
583 views • 6 years ago



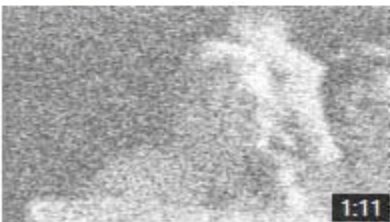
TV DX from Saint Petersburg, FL (Tropo 1989)
254 views • 2 weeks ago



High Band Es 7/6/2004 - WDAM 7 Laurel, MS Part 2
1,383 views • 6 years ago



DTV DX: WPDE South Carolina at 591 miles.
184 views • 1 year ago



HJBH-4 Santa Marta Colombia May-29-2013 1800 EDT - 2,120 ...
167 views • 2 years ago



Central America TV & FM E skip 7-25-09
3,268 views • 6 years ago



KERA DT14 Dallas 1,080-mile Tropo TV DX from South Florida ...
543 views • 3 years ago

NO DX AT HOME?

WATCH DXING'S GREATEST HITS ON **YouTube**

The Official Publication of the Worldwide TV-FM DX Association



- 02 The Mailbox
- 03 TV News
- 12 FM Facilities **NEW EDITOR NEEDED**

INSIDE THIS VUD

- 22 Photo News
- 24 Coast to Coast TV DX
- 26 Southern FM DX

CLICK TO NAVIGATE

- 30 WHAG Changes
- 31 Antenna TV Affiliates
- 32 ELAD Analog S-Meter

DX REPORTS/PICS FROM: Chris Lucas (NY) and Fred Nordquist (SC)

Let's feature your DX in the next VUD. Send it in!

THE WORLDWIDE TV-FM DX ASSOCIATION

Serving the UHF-VHF Enthusiast

THE VHF-UHF DIGEST IS THE OFFICIAL PUBLICATION OF THE WORLDWIDE TV-FM DX ASSOCIATION DEDICATED TO THE OBSERVATION AND STUDY OF THE PROPAGATION OF LONG DISTANCE TELEVISION AND FM BROADCASTING SIGNALS AT VHF AND UHF. WTFDA IS GOVERNED BY A BOARD OF DIRECTORS: DOUG SMITH, GREG CONIGLIO, KEITH MCGINNIS AND MIKE BUGAJ.



Editor and publisher: **Ryan Grabow**

Treasurer: **Keith McGinnis** wtfda.org Webmaster: **Tim McVey**

Forum Site Administrator: **Chris Cervantez**

Editorial Staff: **Jeff Kruszka, Keith McGinnis, Fred Nordquist, Nick Langan, Doug Smith, John Zondlo and Mike Bugaj**

Website: www.wtfda.org; Forums: <http://forums.wtfda.org>



The Mailbox

PAGE TWO

P.O. Box 501 Somersville, CT 06072

Mike Bugaj - Enfield, CT mikeb@wtfda.org



March 2016

As we slide into March we can report that there was very little to report during February, possibly the slowest month of the year for our type of DXing. Most of us are now turning our attention to May, June and July when Es arrives. With all of the new translators out there relaying AM radio stations, there ought to be some good opportunities for new Es loggings for some people, but for others there will be less as their remaining open frequencies vanish.

MEMBERS AND MORE

This month we welcome Ron Hunsicker (PA) and Michael Schaffer (PA) to the WTFDA. Mike is in Easton and has the ham call KA3JAW. Ron lives in Wyomissing and his interest is FM. Glad to have both of you aboard!

Renewals received during the period from January 14th through February 11th arrived from Charles Gauthier (QC), Tim Noonan (WI), Kaimbridge (MA), George Rogers (GA), Mike Cooper (TX), Joe Perge (OH) and Charles Burnham (NY). We told you things were slow. Thank you all for your support of the WTFDA!

According to a post on our email list from former WTFDA member Scott Fybush, Carol Elving, wife of deceased FM Atlas publisher and WTFDA member Bruce Elving, passed away recently. We have no other details.

THE CONVENTION!



Dxers in AM, FM and TV, including the NRC, IRCA, WTFDA and DecalcoMania will gather on September 9-11, 2016 in Kansas City, MO. It will be held at the Hyatt Place Kansas City Airport, 7600 NW 97th Terrace, I-29 sw of exit 10.

Hotel Registration: 1-816-891-0871x3, ask for the group rate for the National Radio Club. The group code is G-NRCC. Reservations will need to be secured by 8/18/16.

<http://kansascityairport.place.hyatt.com/en/hotel/home.html> Rates are \$99.00 per night for 1 to 3 persons per room plus taxes and fees. Plan to arrive on Thursday for 3 nights and ends on Sunday noon. Free airport transfers and breakfast each morning.

Convention Registration: \$55.00 per person which includes a free Friday evening pizza party and Saturday evening banquet. Checks made payable to NATIONAL RADIO CLUB and sent to ERNEST J. WESOLOWSKI, 13312 Westwood Lane, Omaha, NE 68144-3543. Pay-Pal available – add one dollar. Please mention which clubs you belong to for club treasury info. Dale Hamm, Mark Durenberger, Carl Dabelstein and Ernie are your hosts. CU Next month - Mike

TV News

Douglas E. Smith
 1389 Old Clarksville Pike
 Pleasant View, TN
 37146-8098
w9wi@w9wi.com
<http://www.w9wi.com>





March 2016

Abbreviations:

- Aux **A**uxiliary (backup) transmitter
- FTP **F**ailure to **P**rosecute
- ROA **R**equest of **A**pplicant
- STA **S**pecial **T**emporary **A**uthority
- LPDTV **L**ow **P**ower **D**igital **T**V
- DRT **D**igital **R**eplacement **T**ranslator

News:

(full-power digital stations in **bold face**; LPTV and translators in regular type; full-power analog stations in **bold italics**; low-power analog stations in *regular italics*)

Location	RF Ch	Callsign	Notes
			
British Columbia			
<i>Bullhead Mountain</i>	8	<i>CJDC-TV-2</i>	<i>FC to CTVtwo</i>
<i>Dawson Creek</i>	5	<i>CJDC-TV</i>	<i>FC to CTVtwo</i>
<i>Prince Rupert</i>	6	<i>CFTK-TV-1</i>	<i>FC to CTVtwo</i>
<i>Terrace</i>	3	<i>CFTK-TV</i>	<i>FC to CTVtwo</i>
			
Alabama			
Mobile	47	WWBH-LP	Application for new station, 15kw, 30-36-44/87-38-41; digital companion to analog 44

Location	RF Ch	Callsign	Notes
----------	-------	----------	-------



Alaska

Anchorage	32	K32KB	New to air. 15Kw, 61-20-11/149-30-48 (Denver Digital Television)
-----------	----	-------	--



Arkansas

Fort Smith	20	KFLU-LD	Requests power reduction to 6kw
Fort Smith	29	K29KW	Requests power reduction to 6kw
Paragould	26	KPMF-LD	Call changed from K26MF
Texarkana	32	KLIA-LD	Requests power increase to 6kw



California

Banning	5	KRVD-LP	Converted from analog channel 33, 3kw, 33-57-41/117-16-47
Keyes	47	KFMS-LD	Power increased to 8kw, 37-54-49/120-59-57
Los Angeles	8	KFLA-LD	Requests site change to 34-13-35/118-03-58; granted
Morgan Hill	2	KQRO-LD	Call changed from KØ2QX
Palm Springs	12	KYAV-LD	Power increased to 250 watts
Poway	36	KUAN-LD	Application for new station, 5kw, digital companion to analog 48
Redding	50	K50GP	Power reduced to 3kw, 40-15-31/122-05-20
Sacramento	45	KAHC-LP	Call changed from K45HC; power increased to 15kw, 38-38-53/121-28-37
Santa Rosa	49	KQTA-LD	Call changed from K49KS
Stockton	32	KFKK-LD	Power increased to 10kw, 37-38-59/121-01-23



Colorado

Mesa	13	K13IF	Requests power decrease to 2 watts, 38-43-29/108-48-31; granted
------	----	-------	---



District of Columbia

Washington	32	WRZB-LD	Power increase to 15kw granted
------------	----	---------	--------------------------------

Location	RF Ch	Callsign	Notes
----------	-------	----------	-------



Florida

Live Oak	20	WKBJ-LD	Power increased to 5kw, 30-16-34/81-33-51
Sebastian	24	WDOX-LD	Granted power reduction to 4.55kw, 27-01-30/80-10-42
Wabasso	33	WXOD-LD	Requests power reduction to 4.45kw, 27-01-30/80-10-42; granted & on the air; call changed from W33DB



Georgia

Athens	22	WQDS-LD	Call changed from W22DS
Atlanta	38	WIGL-LD	Power increased to 15kw, 33-44-41/84-21-36; moved from Athens
Macon	49	W49EO	Requests power increase to 6kw
Suwanee	24	WVND-LD	Site changed to 34-02-30/84-02-12
Swainsboro	43	W43CY	Power increased to 6kw, 32-24-24/82-03-44; requests site change to 32-10-16/81-44-03; granted




Idaho

Boise	25	KFLL-LD	Requests power reduction to 6kw
Twin Falls	17	KYTL-LD	Requests site change to 42-43-44/114-24-55; granted



Illinois

Jacksonville	49	WEEJ-LD	Site changed to 39-38-12/89-43-18; requests power increase to 10kw, 39-46-10/89-34-28
Quincy	40	W4ØDM	Requests power reduction to 6kw; granted; site changed to 39-26-43/91-15-36
Rockford	17	WIDN-LD	New to air, 6kw, 41-57-35/89-09-13 (DTV America); requests site change to 42-19-19/89-00-40; granted & on the air
Rockford	22	W22EE	New to air, 6kw, 41-53-23/89-08-26 (DTV America); requests site change to 42-17-32/88-58-04; granted
Rockford	24	W24EB	New to air, 6kw, 41-53-23/89-08-26 (DTV America); requests site change to 41-48-21/89-39-31; granted & on the air; requests further site change to 41-39-54/90-08-14
Rockford	40	W4ØDF	New to air, 6kw, 41-57-35/89-09-13 (DTV America); requests site change to 41-48-21/89-39-31; granted & on the air

Location	RF Ch	Callsign	Notes
			
Indiana			
Evansville	33	W33CU	Requests power increase to 10kw, 37-44-59/88-21-52; granted
Fort Wayne	16	W16CU	New to air, 5kw, 40-58-37/84-57-58 (DTV America); requests power increase to 15kw, 41-01-26/85-03-50
Fort Wayne	29	WEDX-LP	Requests power increase to 6kw; granted; call changed from W29DX
Fort Wayne	41	W41DS	New to air, 6kw, 40-58-37/84-57-58 (DTV America); requests power increase to 15kw, 41-01-26/85-03-50
Fort Wayne	43	W43DI	Power reduction to 6kw granted; New to air, 6kw, 40-58-37/84-57-58 (DTV America); requests power increase to 15kw, 41-01-26/85-03-50
	49	WODP-LD	
Lafayette	31	WUDP-LD	Requests site change to 40-03-51/86-29-29; granted power increase to 15kw, 39-53-39/86-12-21
Terre Haute	28	WUDZ-LP	Requests power increase to 7.5kw, 39-53-39/86-12-20; granted



Iowa			
Cedar Falls	14	KBBA-LD	Call changed from K14PR
Fort Dodge	28	K28NF	Requests site change to 42-00-27/94-14-26; granted
Fort Dodge	36	KAJR-LD	Site changed to 41-58-49/93-44-23; call changed from K36MR; requests power increase to 15kw, 41-49-48/93-36-53; granted
Fort Dodge	45	K45MM	Site changed to 41-58-49/93-44-23; requests power increase to 15kw, 41-49-48/93-36-53
Ottumwa	17	K17LU	Requests power reduction to 6kw



Kansas			
Kansas City	22	KMJC-LD	Requests power increase to 15kw, 38-35-09/94-37-13
Topeka	38	KCMN-LD	Power reduced to 3kw, 39-01-09/95-30-09; requests power increase to 4kw, 39-00-44/95-01-46; granted
Topeka	46	K46MA	Power reduced to 3kw, 39-01-09/95-30-09; requests site change to 39-00-44/95-01-46

Location	RF Ch	Callsign	Notes
----------	-------	----------	-------



Kentucky

Bowling Green	32	WKUT-LD	Requests site change to 37-05-35/86-03-49; granted
Pikeville	24	WKPI-TV	Power changed to 44.9kw/433m (minor correction only)



Louisiana

Crowley	36	K36MG	Requests power reduction to 6kw
Lafayette	43	K43MS	Requests power increase to 6kw
Lafayette	47	K47NC	Requests power reduction to 6kw
Lafayette	48	K48MK	Requests power reduction to 6kw



Michigan

Detroit	19	WUDL-LD	Requests move from ch. 47, 11.6kw, 42-26-52/83-10-23
Detroit	23	WUDT-LD	Converted to digital, 15kw
Midland	23	WIEK-LD	Requests power increase to 6kw
Midland	25	W25ET	Requests power increase to 6kw
Midland	38	W38FK	Requests power reduction to 6kw
Midland	42	W42EJ	Requests power reduction to 4kw
Midland	49	W49EG	Requests power reduction to 6kw



Minnesota

Minneapolis	43	KMBD-LD	Requests power increase to 15kw
-------------	----	---------	---------------------------------



Mississippi

Lumberton	33	W33DT	Requests site change to 29-54-38/90-11-45
-----------	----	-------	---



Missouri

Columbia	14	K14OI	Power reduced to 6kw, 38-39-55/92-49-12; requests site change to 38-45-12/93-20-05; granted
----------	----	-------	---

Location	RF Ch	Callsign	Notes
Jefferson City	32	K32KV	New to air, 15kw, 38-47-27/92-17-43 (DTV America); reuquests power reduction to 6kw, 38-39-55/92-49-12
Joplin	18	K18JV	Site changed to 36-42-00/94-59-29; requests site change to 36-30-26/95-27-14; granted
Joplin	20	K20KY	Site changed to 37-08-18/93-43-18; requests power increase to 15kw, 37-13-24/93-14-29; granted
Joplin	26	K26KY	Site changed to 36-42-00/94-59-29; requests site change to 36-30-26/95-27-14; granted
Joplin	27	K27LA	Site changed to 37-08-18/93-43-18; requests power increase to 15kw, 37-13-24/93-14-29; granted
Joplin	38	KIAP-LD	New to air, 6kw, 37-03-07/94-42-26; requests site change to 37-04-42/94-14-20
Joplin	39	KZLL-LD	Site changed to 36-42-00/94-59-29
Joplin	47	K47NH	Site changed to 37-08-18/93-43-18; requests power increase to 15kw, 37-13-24/93-14-29; granted



Nebraska

Beatrice	21	KWBE-LD	Call changed from K21LE
Grand Island	21	KMLF-LD	Requests site change to 40-55-30/98-20-24; granted
Hastings	30	KGHK-LD	Call changed from K3ØMQ; requests site change to 40-36-08/98-50-21; granted



New Jersey

Teaneck	20	W19EH	Moved from ch. 19, 1.6kw, 40-45-08/73-58-04 (47 th & 1 st , near the United Nations, NYC)
---------	----	-------	---



New Mexico

Las Vegas	33	K33FL	Power decreased to 345 watts, 35-36-12/105-15-30
-----------	----	-------	--



New York

Olean	20	W20AB	Requests power increase to 15kw, 42-03-03/78-25-10
-------	----	-------	--

Location	RF Ch	Callsign	Notes
----------	-------	----------	-------



North Carolina

Greenville	45	WPDU-LD	Call changed from W45DU
Lumberton	41	WHEH-LD	Requests power increase to 6kw
Washington	39	WGDO-LD	Requests power reduction to 6kw
Wilmington	22	W22DQ	Requests power increase to 6kw, 34-07-53/79-11-17; granted



North Dakota

Horace	30	KXJB-LD	Call changed from K30LG
--------	----	---------	-------------------------



Ohio

Canton	25	W25EK	Requests power reduction to 500 watts, 41-29-13/81-41-01
Canton	27	WEKA-LD	Power increased to 5kw, 41-29-13/81-41-01



Oklahoma

Enid	42	KBZC-LD	Call changed from K42LL
------	----	---------	-------------------------



South Carolina

Florence	14	W14EB	Requests site change to 34-52-32/80-47-50; granted & on the air; requests power increase to 10kw, 35-11-55/80-52-36
Florence	35	WUCV-LD	Requests site change to 34-52-32/80-47-50; granted & on the air; requests power increase to 15kw, 34-59-13/81-16-49
Myrtle Beach	15	W15CY	Requests power increase to 15kw, 33-32-02/79-59-14; granted
Myrtle Beach	23	WLDW-LD	Requests power increase to 15kw, 33-32-02/79-59-14

Location	RF Ch	Callsign	Notes
----------	-------	----------	-------



South Dakota

Lowry	44	K44ME	New to the air, 4.24kw, 45-23-50/99-56-29 (South Dakota Five County TV Translator District)
-------	----	-------	---



Texas

Amarillo	14	KAUO-LD	Call changed from K14NO; requests power reduction to 3kw, 35-10-20/101-57-13
Beaumont	16	K16JC	Requests power increase to 15kw, 30-06-34/94-01-41
Beaumont	19	K19JY	Requests site change to 30-06-34/94-01-41
Beaumont	23	K23MJ	Requests power increase to 10kw, 30-06-34/94-01-41
Beaumont	40	KBMN-LD	Granted power increase to 6kw
College Station	49	K49LC	Requests power increase to 6kw
Lubbock	21	KDKW-LD	Call changed from K21KW; requests power reduction to 2.88kw, 33-32-29/101-49-16
Lufkin	25	K25LV	Requests power increase to 6kw; granted
Lufkin	33	K33KO	Requests power decrease to 6kw, 31-44-18/94-35-31
Lufkin	41	K41LW	Requests power increase to 6kw; granted
Lufkin	47	K47NF	Requests power increase to 6kw; granted
Port Arthur	18	K18JK	Requests power increase to 9kw, 30-06-34/94-01-41
Port Arthur	44	K44MC	Requests power increase to 15kw, 30-06-34/94-01-41
Port Arthur	46	KULC-LD	Requests power increase to 15kw, 30-06-34/94-01-41
San Antonio	23	KGSA-LP	Call changed from KTDF-LP



U.S. Virgin Islands

Charlotte Amalie	22	WMNS-LP	Converted to digital with 3.75kw, 18-21-19/64-58-35
------------------	----	---------	---



Washington

Ellensburg	6	K06QH	Requests site change to 47-09-37/120-47-33
Ellensburg	23	K23KI	Requests power reduction to 50 watts, 47-19-29/121-53-18; granted
Omak	33	K11DM	Application for new station, 100 watts; DCC for analog 11
Omak	35	K09DG	Application for new station, 100 watts; DCC for analog 9
Spokane	34	KGPX-TV	Corrects site coordinates to 47-35-57/117-17-57

Location	RF Ch	Callsign	Notes
----------	-------	----------	-------



West Virginia

Summersville	16	WZTS-LD	Requests site change to 37-55-40/80-58-11
--------------	----	---------	---



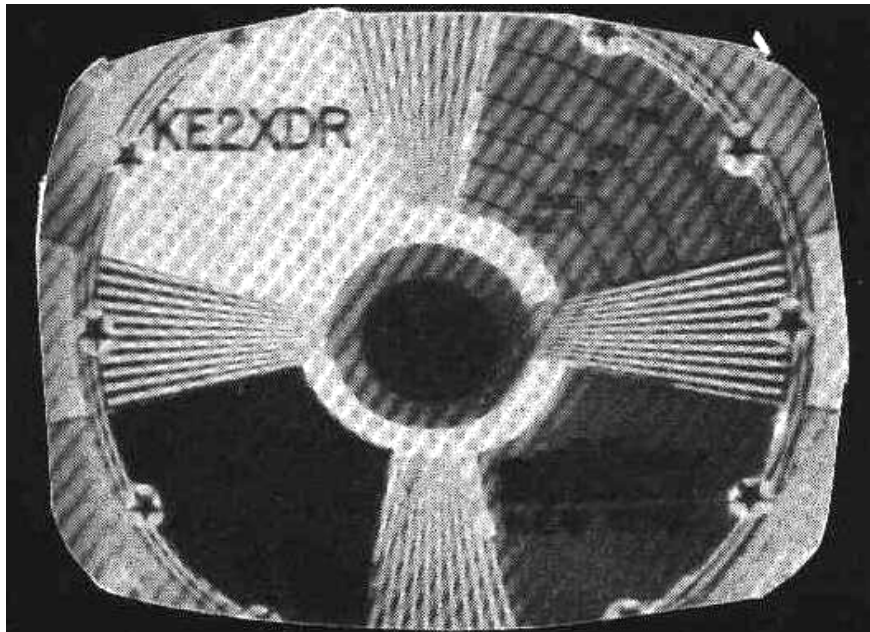
Wisconsin

Eau Claire	20	W20DU	Power increased to 15kw, 44-58-34/93-16-20
Madison	8	WZCK-LP	Call changed from WØ8CK
Madison	36	WZCK-LD	Requests power reduction to 100 watts
Wausau	14	W14EA	Requests power reduction to 6kw
Wausau	19	W19DR	Requests power reduction to 6kw
Wausau	21	W21DG	Requests power increase to 6kw
Wausau	29	W29EH	Requests power reduction to 6kw
Wausau	34	W34EO	Requests power increase to 6kw
Wausau	47	W47EK	Requests power increase to 6kw



Wyoming

Laramie	17	KWYM-LP	Call changed from KXJB-LP
Shoshoni	38, 40, 44	K38EK, K4ØAQ, K44IR	Requests site change to 43-26-16/107-59-45



FM Facilities Report

March 2016

Check FM Database at <http://db.wtfda.org> for technical data, formats, slogans and RDS Data for Individual Stations not shown in this Monthly Report.

Abbreviations:		
AF- New Station Applied For	NS-New Station Permit Granted	RA>Returns to the Air
Aux- Auxiliary Backup Transmitter	NW-New Station on the Air	ROA-Request of Applicant
CC- Call Change	PC-Power/Height Change Granted	XG-new site granted
CL-City of License	PG-Power Change Granted	XC-transmitter site changed
CX-Canceled	QG-Frequency Change Granted	

The month of February found a good number of translator grants for AM radio stations. Expect the same for next month.

AL	Grove Hill	90.1	WDLG	PC>650w/142m, 31-43-42/87-45-03
AL	Grove Hill	90.1	WDLG	PC 650w/142m, 31-43-43/87-45-04
AL	Florence	95.7	W239BY	NW 120w,34-51-25/87-33-25; relays WDXE-FM-98.3
AL	Muscle Shoals	100.1	W261BY	NW 80w,34-51-25/87-33-25; relays WLLX-97.5
AL	Boligee	107.3	WQZZ	PG>6kw/81m
AL	Guntersville	96.3	W242CO	QG from W287CA-105.3, 200w, 34-20-14/86-16-46; CL from Corbin, Ky.; to relay WGSV 1270
AL	Mobile	93.3	W227DA	QG from W258AQ-99.5, 250w, 30-43-34/88-09-06; CL from Citronelle; to relay WLPR 960
AL	Alexander City	96.3	W242CP	QG from W270AO-101.9, 250w, 32-57-03/85-59-07; CL from Winona, Miss.; relays WBNM 1050
AL	Birmingham	95.3	W237EK	QG from W256CK-99.1, 250w, 33-26-36/86-52-50; CL from Albany, Ga.; relays WYDE 1260
AL	Huntsville	107.5	W298BZ	QG from W263CI-100.5, 34-47-53/86-38-24; CL from Jackson, Tenn.; relays WLOR 1550
AL	Tuscaloosa	101.3	W267CA	QG from W277CO-103.3, 99w, 33-10-30/87-33-18; CL from Tupelo, Miss.; relays WACT 1420
AK	Seward	91.7	KIBH-FM	STA for 100w/-508m,60-09-42/149-23-28
AK	Wasilla	94.1	KEGR-LP	NW 29m,61-34-25/149-23-14
AK	Galena	88.1	KIYU-FM	QC from 97.1
AZ	Yuma	100.3	K262CN	NS 50w/35m, 32-40-32/114-35-49
AZ	Douglas	91.7	KRMC	PC<6kw/-38m, 31-20-48/109-33-28
AZ	Buckeye	95.9	K240DC	PG>250w, 33-34-09/112-33-33; to relay KESZ-99.9
AZ	Page	98.3	K252FG	PG>250w, 37-00-37/111-40-48; to relay KPGE-1340
AZ	Dewey-Humboldt	97.5	KMVA	STA for 5kw/15m,34-14-05/112-22-02 due to tower damage
AZ	Sun City West	95.1	KOAI	STA for 5kw/15m,34-14-05/112-22-02 due to tower damage
AZ	Tucson	88.5	KFLT-FM	PG 1.5kw-H (was V-only)
AZ	Aguila	95.5	K238CB	QG from K229CI-93.7, 250w, 34-41-15/112-07-01; to relay KQNA 1130
AZ	Winslow	97.1	K246BI	FC; to relay KYCA 1490
AR	Marion	100.7	W264CO	PG<99w, 35-08-45/89-48-48; to relay WCRV-640
AR	Bentonville	103.3	KOBV-LP	PG>35m, 36-22-21/94-12-35
AR	Rogers	99.9	K260CS	QG from K221EH-92.1, 250w, 36-17-54/94-10-22; CL from Parsons, Kans.; to relay KLTK 1140
AR	Paragould	103.7	K279CQ	QG from K290BS-105.9, 36-01-46/90-35-50; CL from Batesville; to relay KDRS 1490

AR	Pine Bluff	93.7	K229CX	QG from K277BT-103.3, 200w, 34-36-05/92-26-56; to relay KAFN 690
BC	Dawson Creek	96.7	CJGY-FM-2	NS 280w/91m, 55-46-58/120-12-52, to relay CJGY-FM Grande Prairie, Alberta
BC	Fort St. John	97.1	CJGY-FM-1	NS 510w/252m, 56-16-45/121-02-40, to relay CJGY-FM Grande Prairie, Alberta
BC	Surrey	89.1	CKYE-FM1	AF 250w/123m, to relay CKYE 93.1 & overcome interference from KISM-92.9 IBOC
CA	Westwood	101.9	K270BS	NS 10w/753m, 40-14-22/121-01-54
CA	Anza	96.3	KOYT-LP	NW -50m, 33-34-48/116-39-23
CA	King City	106.9	K295BZ	PG<10w, 36-12-25/121-08-15; CL from Soledad; to relay KRKC-FM-102.1
CA	Soledad	94.7	K234CS	QG from 105.5, 36-32-05/121-37-14; to relay KDRH-91.3
CA	Sonora	102.7	K274CG	PG>72w, 38-00-30/120-21-44; to relay KVML-1450
CA	Anza	96.3	KOYT-LP	NW -50m, 33-34-48/116-39-23
CA	Bakersfield	103.5	KRHM-LP	PG>26m, 35-16-30/119-01-54
CA	Cottonwood	89.3	K207CE	PG>5w; relays KEFX-88.9
CA	Santa Clarita	101.5	KZLNQ-LP	NW -121m,34-25-45/118-34-51
CA	Grass Valley	103.3	KBAA	PG 1.3kw/216m,39-10-04/120-51-50
CA	Santa Clarita	101.5	KZLNQ-LP	NW -121m,34-25-45/118-34-51
CA	Santa Maria	102.9	K275CJ	QG from K233CQ-94.5, 91w, 34-53-52/120-35-21;
CA	Yuba City	96.5	K243CF	QG from K228EC-93.5, 200w, 39-12-21/121-49-10; CL from Crescent City;
CA	Chico	106.1	K291BZ	NW 99w/464m, 39-39-04/121-27-43 (Butte Broadcasting); to relay KYIX 104.9
CA	Corona	100.7	K264CI	QG from K244EW-96.7, 13w, 33-49-45/117-38-20; CL from Palmdale; relays KBRT 740
CA	Fresno	96.1	K241CL	QG from K222CA-92.3, 200w, 36-44-28/119-51-12; CL from Paulsell; relays KEYQ 980
CA	Santa Maria	92.9	K225CG	QG from K289BX-105.7, 250w, 34-53-52/120-35-23; CL from Visalia; relays KTAP 1600
CO	Yuma	99.9	K207EG	QC from 89.3
CO	Colorado Springs	93.9	KCMJ-LP	NW -122m, 38-49-54/104-47-05
CO	Cortez	92.3	K222AD	PG>250w, 37-21-00/108-33-08; to relay KVFC-740
CO	Yuma	99.9	K207EG	QC from 89.3; to relay KLDV-91.1
CO	Colorado Springs	107.1	KWIR-LP	CX, off over a year
CO	Colorado Springs	93.9	KCMJ-LP	NW -122m, 38-49-55/104-47-05
CO	Colorado Springs	95.7	K239CH	QG from K262CD-100.3, 99w, 38-49-08/104-46-32; CL from Vail; to relay KCBR 1040
CO	Pueblo	107.5	K298GC	QG from K223CH-92.5, 250w, 38-18-55/104-37-03; CL from Breckenridge; to relay KAVA 1480
CO	Boulder	98.9	K255DA	QG from K295BY-106.9, 250w, 40-00-43/105-11-16; CL from Buford, Wyo.; to relay KVCU 1190
CO	Denver	104.7	K284CI	QG from K296GQ-107.1, 99w, 39-43-45/105-14-08; CL from Pine Bluffs, Wyo.; to relay KDCO 1340
CO	Granby	100.7	K264BO	PC<99w, 39-43-45/105-14-08; to relay KLDV 91.1
CO	Denver	95.3	K237GG	QG from K277BR-103.3, 50w, 39-43-46/105-14-08; CL from Sterling; relays KLDC 1220
CO	Fountain	107.3	K294CH	QC from 106.7, 250w, 38-46-15/104-51-20; CL from Divide; relays KQSC 1530
CT	Danbury	102.5	W273CN	NW 150w, 41-14-29/73-27-13; to relay WNPR-90.5
CT	Manchester	102.5	WYPH-LP	PG<13m,41-47-50/72-30-45
CT	Milford	101.7	W269DB	QG from W244DD-96.7, 250w, 41-17-43/72-58-24; CL from Tremley, N.J.; to relay WFIF 1500
CT	Danbury	94.5	W233CF	QG from W286CJ-105.1, 99w, 41-22-27/73-26-47; CL from Milford, Penna.; relays WAXB 850

CT	Harford	94.1	W231CZ	QG from W265CO-100.9, 30w, 41-47-48/72-47-50; CL from Vassalboro, Me.; relays WCCC 1290
CT	Southington	96.1	W241CG	QG from W236CK-95.1, 250w, 41-33-42/72-50-41; CL from Westport, N.Y.; relays WXCT 990
DE	Wilmington	92.9	W225CH	QG from W231CM-94.1, 110w, 39-43-46/75-33-07; CL from Southampton, N.Y.; to relay WILM 1450.
FL	Nassau Village	104.9	W285FE	NW 250w, 30-29-48/81-46-52
FL	Sarasota	98.9	W255CC	PC>200w
FL	Nassau Village	104.9	W285FE	XG 30-19-22/81-38-34; to relay WJKV-90.9
FL	Pensacola	106.9	W295AP	NW 250w, 30-25-59/87-13-09; to relay WRNE-980
FL	Sarasota	105.1	W286CQ	NW 250w, 27-32-42/82-34-27; to relay WCTQ-106.5
FL	Sarasota	98.9	W255CC	PC>200w; to ; to relay WSRQ-1220
FL	Cocoa	96.9	WRRQ-LP	NW 38m, 28-21-21/80-44-47
FL	Miami	104.7	WAYG-LP	PG 43m
FL	White City	104.5	WFLM	QC from 104.7,50kw/113m,27-25-16/80-21-25
FL	West Palm Beach	92.5	W223CJ	PG>245w,26-34-29/80-14-32; relays WWRF-1380
FL	Oakland Park	101.9	WOIB-LP	NW 30m,26-12-06/80-07-56
FL	Palm Coast	106.9	WJDS-LP	NW 29m,29-32-51/81-12-32
FL	White City	104.5	WFLM	QC from 104.7, 50kw/113m, 27-25-16/80-21-25
FL	Oakland Park	101.9	WOIB-LP	NW 30m,26-12-07/80-07-57
FL	Palm Coast	106.9	WJDS-LP	NW 29m,29-32-52/81-12-33
FL	Bradenton	97.5	W248CA	NW 20w, 27-32-41/82-34-28; relays WWBA 820
FL	Sarasota	98.3	W252DF	QG from W255CC-98.9, 215w; to relay WSRQ 1220
FL	Vero Beach	105.7	W289CF	QG from W257DE-99.3, 250w, 27-37-12/80-25-01; CL from Stuart; to relay WTTB 1490
FL	Bronson	91.1	WZXJ	CX ROA
FL	Pensacola	103.7	W279CY	QG from W266AS-101.1, 250w, 30-27-09/87-14-26; CL from Carrabelle; to relay WPNN 790
FL	Sarasota	103.9	W280EV	QG from W277CP-103.3, 250w, 27-20-08/82-28-20; CL from Port Charlotte; to relay WSDV 1450
FL	Tallahassee	100.9	W265DG	QG from W293CO-106.5, 250w, 33-25-48/84-07-52; to relay WKKP 1410 (site is in McDonough, Ga. southeast of Atlanta)
GA	Ashburn	105.3	W287CC	NS 120w/35m, 31-44-33/83-39-37
GA	Brunswick	107.3	W297BN	NS 120w/43m, 31-11-39/81-29-30
GA	McRae	98.9	W201DB	QC from 88.1, 75w, 32-03-39/82-51-24; to relay WRHI 1340
GA	Toccoa	93.1	W249CC	QG from 97.7, 250w, 34-31-45/83-22-33 CX ROA, to remain on 97.7.
GA	Canton	102.9	WPCG-LP	Relays WNEG-630
GA	Toccoa	93.1	W226BY	QC from 102.7, 78m, 34-09-14/84-30-44
GA	Elberton	99.7	W287CM	QG from W249CC; to relay WNEG 630
GA	Atlanta	103.7	W279CZ	QC from 105.3; to relay WSGC 1400
GA	Augusta	104.7	W284CX	QG from W256CE-99.1, 99w, 33-44-56/84-24-27; CL from Somerset, Ky.; relays WIFN 1340
GA	Columbus	102.5	W273CW	QG from W260CN-99.9, 220w, 33-30-23/81-57-44; CL from Palmyer; relays WYNF 1340
GA	Marietta	106.3	W292EV	QG from W286BE-105.3, 250w, 32-27-28/84-53-08; CL from Dawson; relays WBOJ 1270
GA	Marietta	106.3	W292EV	QG from W286AZ-105.1, 250w, 33-55-38/84-30-06; CL from Albany; relays WFOM 1230
HI	Kailua	94.5	K233DC	NW 10w, 19-43-28/155-55-10
HI	Kailua	94.5	K233DC	NW 10w, 19-43-28/155-55-10; to relay KMKV-102.1
ID	Weiser	97.3	KFOA	NW 5kw/503m, 44-25-53/117-14-54

ID	Weiser	97.3	KFOA	NW 5kw/503m, 44-25-53/117-14-54
ID	Boise	98.9	K255CX	QG from K201EO-88.1, 250w; to relay KARO-98.7
ID	Victor	99.7	K259CL	FC; to relay KART 1400
IL	Park Forest	99.1	W256CL	NW 100w, 41-23-54/87-33-26
IL	Pekin	103.9	W280EJ	NS 10w/51m, 40-34-54/89-34-05
IL	Homewood	95.1	W236CF	NW 150w, 41-37-15/87-40-33; to relay WTMX-101.9
IL	Park Forest	99.1	W256CL	NW 100w, 41-23-54/87-33-26
IL	Rockford	99.3	WTPB-LP	PC 43m, 42-16-09/89-00-28
IL	Vandalia	103.1	WEMV-LP	NW 42m, 38-56-41/89-06-09
IL	Effingham	96.3	W242CK	NW 250w,39-06-26/88-33-44; relays WMCI-101.3
IL	Effingham	96.3	W242CK	NW 250w, 39-06-26/88-33-44; relays WMCI 101.3
IN	Seymour	94.5	W233BU	NS 80w/40m, 38-58-45/85-52-45
IN	Muncie	102.9	W275AJ	PG>250w, 40-05-37/85-23-32; to relay WXFN-1340
IN	Spencer	100.3	W208BT	QC from 89.5, 2w; to relay WRIK-750
IN	Bloomington	104.1	WCYI-LP	NW
IN	Jeffersonville	98.5	WJHI-LP	NW 35m,38-19-03/85-42-45
IN	New Haven	101.3	WHNH-LP	NW 23m,41-04-14/85-01-08
IN	Bloomington	104.1	WCYI-LP	NW 102m,39-09-12/86-31-01
IN	New Haven	101.3	WHNH-LP	NW 23m,41-04-15/85-01-08
IN	Jasper	99.1	W256DA	QG from W280EJ-103.9, 250w, 38-21-02/86-56-26; CL from Pekin, Ill.; to relay WITZ 990
IN	Newburgh	93.1	W226CB	QG from K241BU-96.1, 250w, 37-57-16/87-25-07; CL from Cuba, Mo.; to relay WGAB 1180
IN	Terre Haute	97.9	W250BZ	QG from W238AX-95.5, 250w, 39-27-28/87-28-50; CL from Savanna, Ill.; to relay WIBQ 1230
IA	Fort Madison	97.7	K249EP	NS 250w/90m, 40-43-31/91-27-09
IA	Hiawatha	104.1	K281BS	NW 170w,42-01-57/91-40-25; relays WLKU-98.9
IA	Spirit Lake	98.9	K255CY	QG from K201IU-88.1,43-24-15/95-03-44; CL from Fairmont, Minn.;relays KICD-FM-107.7
IA	Hiawatha	104.1	K281BS	NW 170w, 42-01-57/91-40-25; relays WLKU 98.9
IA	Waterloo	92.7	K224FA	QG from W240BX-95.9, 250w, 42-26-45/92-22-29; CL from Platteville, Wis.; to relay KNWS 1090
IA	Boone	101.5	K268CX	QG from K234BB-94.7, 250w, 42-02-55/93-53-54; CL from Harlan; to relay KDLF 1260
IA	Davenport	92.1	K221GG	QG from W279CM-103.7, 200w, 41-37-58/90-24-38; CL from Mount Vernon, Ill.; relays WFXN 1230
KS	Burlingame	98.5	KSAJ-FM	PG>69kw/351m,39-00-22/96-02-57;CL from Abilene
KS	Olathe	96.9	K245CC	QG from K263AT-100.5, 38-56-10/94-50-41; CL from Crete, Nebr.; to relay KCCV 760
KS	Wichita	97.5	K248CY	QG from K232EJ-94.3, 250w, 37-42-47/97-14-51; CL from Fort Scott; to relay KFH 1240
KS	Kansas City	100.7	KCGG-LP	NW 121m, 39-00-58/94-41-23 NEVA Reno 97.7 KRBP-LP PG 113m, 39-35-03/119-48-05
KS	Newton	106.9	K295CL	QG from K225CD-92.9, 250w, 38-02-39/97-22-21; CL from El Dorado; relays KJRG 950
KY	Atwood	99.9	W260CM	NS 70w/130m, 38-45-46/84-36-25
KY	Bowling Green	98.9	W255CO	PG>99w, 36-57-36/86-32-49
KY	Morrill	105.9	W290CS	NS 5w/133m, 37-30-10/84-13-09
KY	Paducah	103.3	W277CH	NW 250w, 37-08-33/88-39-02; to relay WRIK-750
KY	Hazard	90.9	WEKH	STA extended to operate at 550 watts pending transmitter replacement

KY	Princeton	103.3	W277CK	FC; to relay WWKY 97.7
LA	Kentwood	91.5	WPEF	PC>7.3kw
LA	Heflin	105.5	KIMW	PG<97m
LA	Kentwood	91.5	WPEF	PC>7.3kw
LA	Bastrop	99.7	K256CN	NW 250w, 32-40-20/91-55-06, relays KRJO-1680
LA	Bastrop	99.7	K259CU	QG from K256CN-99.1, 250w, 32-40-20/91-55-06; to relay KRJO 1680
LA	Plaquemine	88.1	KPAQ	PC>90kw/91m
LA	Dunn	99.1	K202DF	QC from 88.3;relays WJFM-88.5
ME	Yarmouth	102.3	W272BV	STA 19w, 43-47-38/70-11-27, relays WMDR-FM-88.9
MD	Glen Burnie	92.9	W225BT	NS 19w/69m, 39-07-50/76-40-53
MD	Cumberland	106.1	WRQE	PC>5.4kw/430m
MD	Denton	100.5	W263CW	QG from W273CJ-102.5, 250w, 38-53-53/75-51-04; CL from Harrisonburg, Va.; to relay WKDI 840
MD	Baltimore	106.9	W295BX	QG from W282BT-104.3, 110w, 39-18-42/76-29-29; CL from Bellefonte, Penna.; to relay WFSI 860
MD	Halfway	100.5	W263CR	PG>250w, 39-37-36/77-42-39; relays WWEG 106.9
MA	Belchertown	101.7	WAIY-LP	QG from 97.9
MA	Boston	88.9	WERS	XX Adds IBOC with 160 watts
MA	North Adams	107.1	WMNB-LP	NW -152m,42-42-01/73-06-27
MA	North Adams	107.1	WMNB-LP	NW -152m,42-42-02/73-06-2
MA	Haverhill	92.1	W221DN	QG from W249AW-97.7, 205w, 42-46-23/71-06-01; CL from Lebanon, N.H.; to relay WCEC 1490
MA	New Bedford	98.1	WCTK	PC 44kw/159m, 41-37-20/70-55-09
MI	Big Rapids	99.1	W256CC	NW 250w/78m, 43-39-49/85-28-54
MI	Charlotte	95.9	W240CO	NS 45w/51m, 42-30-38/84-49-35
MI	Russellville	97.3	W247CG	NW 80w, 42-59-07/83-41-07
MI	Big Rapids	99.1	W256CC	NW 250w/78m, 43-39-49/85-28-54; to relay WBRN-1460
MI	Grand Rapids	92.3	WRVU-LP	NW 26m, 42-51-03/85-36-26
MI	Schoolcraft	89.5	WOFR	PG>33kw
MI	Muskegon	106.1	WMMT-LP	PG<24m,43-13-06/86-14-41
MI	Holland	99.7	W259CO	QG from W227BB-93.3, 250w, 42-47-40/86-06-22; CL from Fremont; to relay WHTC 1450
MI	Grand Rapids	98.3	W252DG	QG from W258CJ-99.5, 250w, 42-57-25/85-54-07; CL from Peoria, Ill.; to relay WVHF 1140
MN	Albertville	97.7	K249ED	XG 45-20-12/93-23-30; to relay KTCZ-FM-97.1
MN	Red Lake Falls	94.1	KTRF-FM	PC>98m
MN	Duluth	98.1	W251CD	QG from K226BF-93.1, 250w, 46-47-27/92-06-59; CL from Moose Lake; to relay WDUL 970
MN	Fairmont	98.9	K201IU	FC; to relay KICD-FM 107.7.
MN	Red Wing	98.9	K255CZ	QG from K263AL-100.5, 44-32-14/92-31-20; CL from Madison; to relay KCUE 1250
MS	Macon	99.3	W203BN	QC from 88.5
MS	Meridian	88.5	W203CA	QG from W204BT-88.7;relays WPCS-89.5
MS	Vicksburg	107.7	W299CC	QG from K288FC-105.5, 250w, 32-21-29/90-48-18; CL from Camden, Ark.; to relay WVBG 1490
MO	Edina	97.1	K246BW	NS 250w/71m, 40-10-41/92-20-09
MO	Mexico	93.5	K228FE	NS 50w/57m, 39-11-39/91-56-27
MO	Monroe City	102.7	K274CF	NS 250w/58m, 39-39-29/91-44-32
MO	Vandalia	106.3	K292GI	NS 250w/54m, 39-17-07/91-36-01

MO	La Belle	102.5	K273CG	XG 40-07-02/91-55-01; to relay KEFL-91.5
MO	Columbia	106.5	K293CI	QG from K252FE-98.3;relays KMFC-92.1
MO	Branson	98.1	K251BZ	QG from K270CA-101.9, 250w, 36-43-52/93-10-02; CL from Ava; to relay KOMC 1220
MO	Joplin	102.1	K271AL	PG<28w, 37-04-37/94-32-15 CX; granted move to 99.9 at Sapula (sic), Okla. & relay KYAL 1550
MO	Kansas City	104.7	K284CH	QG from K274CF-102.7, 52w, 38-58-42/94-32-01; to relay KCXL 1140
MO	Springfield	96.9	K245CA	QG from K283BY-104.5, 250w, 37-13-25/93-14-30; CL from Eldon; to relay KBFL 1060
MO	Sullivan	94.1	K231CP	QG from K295AM-106.9, 250w, 38-12-40/91-09-39; CL from Trenton, Mo.; to relay KTUI 1560
MO	Union	92.7	K224EZ	QG from K289AY-105.7, 210w, 38-28-55/91-02-27; CL from Camdenton; to relay KLPW 1220
MT	Hamilton	104.1	K279BD	QC from 103.7, 46-30-34/113-58-45
MT	Hamilton	104.1	K279BD	QC from 103.7, 46-30-34/113-58-45; to relay KMSO-102.5
MT	Missoula	103.7	K281BK	NW 250w, 46-48-30/113-58-38; to relay KMSO-102.5
MT	Shelby	99.5	K205FH	QC from 88.9; to relay KQJZ-1340
MT	Butte	101.5	K268CI	PC<210w; relays KBOW 550
NE	Kearney	106.9	K295BI	XC 40-43-42/99-07-47; to relay KRVN-880
NE	McCook	97.5	K248CX	QG from K225BO-92.9, 40-11-31/100-39-06; CL from Colby, Kans.; to relay KBRL 1300
NE	North Platte	92.5	K223CQ	QG from K229CE-93.7, 41-08-10/100-45-38; CL from Holyoke, Colo.; to relay KODY 1240
NE	Omaha	104.1	K281CJ	QG from K224EA-92.7, 99w, 41-13-59/95-58-02; CL from Atlantic, Ia.; to relay KOMJ 1490
NE	Omaha	106.5	K293CJ	QG from K229CG-93.7, 110w, 41-18-47/96-00-36; CL From Emporia, Kans.; to relay KCRO 660
NE	Broken Bow	96.3	K242CU	QG from K250AP-97.9, 250w, 41-23-48/99-37-03; CL from Pierre; relays KCNI 1280
NE	York	103.5	K278CI	QG from K282BE-104.3, 40-50-34/97-35-17; CL from Hastings; relays KAWL 1370
NV	Lovelock	101.9	K270BT	NS 10w/631m, 40-07-06/118-43-39
NV	Tonopah	101.3	K267BX	QC from 90.7
NV	Las Vegas	97.9	KIOF-LP	NW -49m, 36-13-01/115-07-00
NV	Laughlin	106.3	K292EU	PG>200w, 35-14-48/114-44-32; to relay KJJJ-102.3
NV	Indian Springs	99.3	KRGT	PC 35kw/657m,36-19-16/115-34-15
NV	Indian Springs	99.3	KRGT	PC 35kw/657m,36-19-16/115-34-15
NH	Bedford	105.1	WBNH-LP	NW -60cm, 42-56-48/71-30-56
NH	Laconia	107.3	W297BS	QG from W298AH-107.5, 170w, 43-32-26/71-27-46; CL from Claremont; to relay WEMJ 1490
NJ	Pennsauken	95.3	W237EH	NW 250w, 39-55-34/75-03-12
NJ	Marmora	97.7	W249CM	PG>250w, 39-22-35/74-33-44; to relay WSJO-104.9
NJ	Pennsauken	95.3	W237EH	NW 250w, 39-55-34/75-03-13; to relay WVCH-740
NJ	Jersey City	97.5	W248CG	STA to relay WVIP-HD4 & operate at 10 watts
NJ	Perth Amboy	104.7	W284BW	PG>250w,40-29-16/74-18-30;CL from Franklin Township;relays WPAT-FM-93.1
NJ	Marlton	94.9	W235BZ	PG>22w, 39-56-03/74-53-39; relays WVVB 90.5
NJ	Parsippany	94.3	W232CY	QG from W283BY-104.5, 250w, 40-51-52/74-21-08; CL from Toms River; relays WXMC 1310
NM	Clayton	90.5	KUHC	PC>300w
NM	Clayton	90.5	KUHC	QC from 90.3, 300w

NM	Las Cruces	93.5	K228FI	PG>18w,32-18-33/106-49-24;relays KLCF-91.1
NM	Albuquerque	92.9	K225CH	QG from K297BG-107.3, 4w, 35-13-00/106-27-07; CL from Grants; relays KDSK 1240
NY	Jamestown	91.9	W203BV	QC from 88.5
NY	Rochester	104.3	WAYO-LP	NW 48m, 43-09-35/77-34-44
NY	Troy	105.3	WOOC-LP	NW 26m, 42-43-55/73-39-02
NY	South Fallsburg	99.7	WJUX	PG 1.4kw/208m, 41-48-04/74-47-05
NY	Jamestown	91.9	W203BV	QC from 88.5; to relay WYFQ-FM-93.5
NY	Redwood	98.5	W253BU	QG from W250BX-97.9, 10w; to relay WLNG-92.1
NY	Utica	88.5	W201BS	QC from 88.1; to relay WPCS-89.5
NY	Bethpage	105.5	WDBA-LP	PG 124m, 40-47-44/73-27-42; NW
NY	Farmingdale	105.5	WDBA-LP	NW 124m, 40-47-44/73-27-42
NY	Rochester	104.3	WAYO-LP	NW 48m, 43-09-35/77-34-44
NY	Troy	105.3	WOOC-LP	NW 26m, 42-43-55/73-39-02
NY	Corning	106.7	W294BU	PG>99w;relays WKPQ-105.3
NY	Montauk	93.9	W230BH	PG>99w dismissed ROA; going for 250w on 104.5 with site change;relays WACM-1490
NY	Elmira	106.9	W295BY	QG from W296CR-107.1, 90w, 42-01-55/76-47-02; CL from Bath; relays WENY 1230
NY	Seneca Falls	106.5	W293CV	QG from W277CI-103.3, 200w, 42-54-55/76-46-28; CL from Erie, Penna.; relays WSWF 1110
NC	Wilmington	90.5	WWIL-FM	PC>31kw
NC	Bryson City	101.3	W267AD	PC<19w, 35-19-38/83-20-09
NC	Wilmington	90.5	WWIL-FM	PC>31kw
NC	Charlotte	102.3	W272DP	QG from W269CY-101.7, 35-15-06/80-41-12; CL from Mooresville; to relay WBAV-FM-101.9
NC	Franklin	101.3	W267AD	PC 19w, 35-19-38/83-20-09; to relay WSNW-1150
NC	Winston-Salem	88.9	W205CP	NW 250w, 36-05-24/80-15-05, relays WWLV-94.1
NC	Durham	96.5	W243DK	XG 35-42-50/78-49-04;relays WCMC-FM-99.9.
NC	Blowing Rock	99.7	W259BZ	FC; to relay WAIZ 630
NC	Gastonia	100.7	W264CZ	QG from W287CH-105.3, 240w, 35-13-56/81-16-37; CL from Greenville, S.C.; to relay WGNC 1450
NC	Charlotte	92.1	W221DO	QG from W245CG-96.9, 250w, 35-11-33/80-53-14; CL from Macon, Ga.; to relay WNOW 1030
NC	Winterville	93.7	W229CL	QG from W280ED-103.9, 35-32-15/77-25-06; CL from New Bern; relays WNOS 1450
ND	Bismarck	102.5	KDAK-LP	NW 68m, 46-49-38/100-46-27
ND	Bismarck	102.5	KDAK-LP	NW 68m, 46-49-38/100-46-28
ND	Kulm	102.3	K272CW	CX ROA; relayed KFBN-88.7
OH	Cleveland	93.7	W229CG	NW 19w, 41-29-01/81-36-02
OH	Columbus	94.1	WGRN-LP	NS 15m, 39-59-37/83-02-09 change site
OH	Cleveland	93.7	W229CG	NW 19w, 41-29-01/81-36-02; to relay KHRI-90.7
OH	Cumminsville	90.5	W213CB	QG from W217BI-91.3, 10w, 39-07-19/84-32-52; to relay KAWZ-89.9
OH	Columbus	94.1	WGRN-LP	NW 15m, 39-59-37/83-02-09
OH	Hinckley	101.7	W269BS	QG from W215BS-90.9, 210w; relays WKDD-98.1
OH	Canton	94.5	W233CE	QG from W288CN-105.5, 210w, 40-50-03/81-25-49; CL from Upland, Ind.; to relay WILB 1060
OH	Columbus	90.5	WCBE	XC 39-57-44/83-00-08
OH	Columbus	105.3	W287CP	QG from W241BR-96.1, 99w, 39-58-16/83-01-40; CL from Meadville, Penna.; relays WYTS 1230

OH	Logan	103.3	W277CX	QG from W273CK-102.5, 250w, 39-31-43/82-23-06; CL from Middleport; relays WLGN 1510
OH	Toledo	100.3	W262CT	QG from W299BP-107.7, 190w, 41-38-49/83-36-18; CL from Newark; relays WCWA 1230
OK	Duncan	102.1	K271BY	NW 250w, 34-35-11/98-08-35
OK	McAlester	96.3	K242CJ	NS 250w/76m, 34-55-14/95-44-23
OK	Duncan	101.7	K269GL	QG from K271BY-102.1, 99w, 34-36-27/98-16-26; to relay KJRF-91.1; NW
OK	Stillwater	99.5	K258CV	QG from K261EC-100.1, 50w,36-06-41/97-18-06;relays KSMJ-LP-100.9
OK	Muskogee	102.9	K275CK	QG from K280FR-103.9, 35-46-58/95-22-38; CL from Clinton, Mo.; to relay KBIX 1490
OK	Sapula(sic)	99.9	K260CR	QG from K271AL-102.1, 250w, 36-02-35/95-57-11; CL from Joplin, Mo.; to relay KYAL 1550
OK	Norman	99.3	K257GA	QG from K222CB-92.3, 35-13-04/97-24-37; CL from Yates Center, Kans.; to relay KREF 1400
OK	Tulsa	97.9	K250BN	QG from K280GA-103.9, 250w, 36-05-13/95-51-33; CL from Cabool, Mo.; to relay KETU 1120
OK	Tulsa	104.9	K285GW	QG from K242CJ-96.3, 29w, 36-06-25/95-47-13; CL from McAlester; relays KXTD 1530
ON	Grimsby	88.5	NEW	AF 4kw
ON	Stauffville	102.9	CIWS-FM	QR from 102.7 to avoid being bumped by new CJRK-FM Scarborough
OR	Madras	96.5	KDOI	NW 30kw/339m, 44-50-24/121-13-55
OR	Waldport	93.7	NEW	NW 9kw/132m, 44-38-40/124-00-50
OR	Warm Springs	91.9	KWSO	PG 4.1kw/347m
OR	Newport	95.7	K239BO	NW 145w/274m,44-45-24/124-02-53; relays KSHL-97.7
PA	Denver	92.9	W225CF	NS 99w, 40-22-29/75-53-05
PA	Highspire	100.5	W210BX	QC from 89.9, 2w
PA	Reading	91.3	WXAC	PC>210w/12m, 40-22-09/75-54-46
PA	Berwick	89.5	W208BU	NW 10w, 41-05-44/76-20-24; relays KEBR-88.1
PA	Harrisburg	100.5	W210BX	QC from 89.9, 2w; to relay WSOX-96.1
PA	Muncy	105.9	W290CV	QG from W215AF-90.9, 10w, 41-13-02/76-57-27; to relay WKDN-FM-88.3
PA	New Providence	93.9	W284BF	QG from 104.7, 250w/6m, 40-01-04/76-18-32 CX ROA, to remain on 104.7 at old site
PA	Warren	100.7	W264AT	PC>210w, 41-51-37/79-10-59; to relay WCOT 90.9
PA	Allentown	92.7	W224AU	PG<7w,40-34-18/75-25-48; relays WWFM-89.1
PA	Butler	88.7	W204CR	QG from W257DK-99.3, 13w,40-52-28/79-54-11; relays WCOH-FM-107.3
PA	Huntingdon	97.7	W249DD	QG from W244DB-96.7, 108w, 40-24-52/77-54-10; CL from South Williamsport; to relay WHUN 1150
PA	Lancaster	93.1	W226CC	QG from W254CM-98.7, 220w, 40-02-17/76-18-23; CL from Washington, N.J.; to relay WLAN 1390
PA	Williamsport	93.7	W229CK	QG from W243DB-96.5, 105w, 41-13-07/76-57-29; CL from Kingston, N.Y.; to relay WRAK 1400
PA	Mehoopany	97.5	W246DC	QC from 97.1, 200w, 41-30-45/76-04-16; CL from Dushore; to relay WVIA-FM 89.9
PA	Philadelphia	104.9	W285FF	QG from W246CT-97.1, 99w, 39-57-05/75-09-38; CL from Salem, N.J.; relays WWDB 860
RI	Coventry	95.1	WWRI-LP	NW 59m, 41-41-34/71-37-55 WASH Camas 102.7 KIEV-LP QC from 102.5, 30m, 45-39-23/122-23-04
SC	Seneca	103.5	W278BZ	QG from W267AD-101.3, 250w, 34-41-15/82-59-13; CL from Franklin, N.C.; to relay WSNW 1150
SD	Hot Springs	91.5	K218EH	CX, license surrendered
TN	Memphis	96.7	W244BY	PG<99w, 35-09-16/89-49-20; to relay KJMS-101.1
TN	La Follette	104.9	WTNQ	PC 6kw/53m,36-13-38/84-08-34

TN	Nashville	100.5	WBOU-LP	PG 15m,36-07-42/86-51-05
TN	Nashville	101.5	WXNA-LP	PG>30m,36-10-37/86-46-41
TN	Sevierville	104.1	W281BQ	QG from W229BE-93.7, 250w, 35-52-42/83-33-18; CL from Gatlinburg; to relay WSEV 930
TN	Morristown	97.9	W250BR	XC 35-58-23/83-12-49; to relay WLIK 1270
TN	Nashville	105.1	W286CY	QG from W300CH-107.9, 250w, 36-09-49/86-46-45; CL from Coldwater, Miss.; to relay WNVL 1240
TX	Athens	97.5	K248CP	NS 250w, 32-12-23/95-52-12
TX	Canadian	103.5	K281CF	QC from 104.1, 250w
TX	Clarendon	91.5	K218FI	PC>250w, 34-56-08/100-53-22
TX	Kerrville	92.7	K224EQ	NS 92w/102m, 30-04-44/99-07-59
TX	Marshall	107.9	K300CO	NS 250w/60m, 32-31-30/94-20-58
TX	Sweetwater	105.5	K288GM	NS 140w/70m, 32-27-43/100-25-54
TX	Garland	107.1	KYEB-LP	NW 83m, 32-54-04/96-41-14
TX	San Angelo	100.5	KCGF-LP	NW 30m, 31-29-05/100-27-25
TX	Uvalde Estates	103.5	KEWP	PG<21m, 29-12-22/99-48-02
TX	Canadian	103.5	K281CF	QC from 104.1, 250w; to relay KVAS-88.7
TX	Clarendon	91.5	K218FI	PC>250w, 34-56-08/100-53-22; to relay KJRT-88.3
TX	Del Valle	92.9	K225CA	PG>250w, 30-19-23/97-47-58; to relay KVLR-92.5
TX	Victoria	92.7	K224EH	NW 115w, 28-48-58/97-03-58; to relay KXAI-103.7
TX	Bangs	90.9	KBNG-LP	PG 49m
TX	Garland	107.1	KYEB-LP	NW 83m, 32-54-04/96-41-14
TX	Killeen	95.1	KMYB-LP	NW 42m, 31-05-01/97-44-18
TX	San Angelo	100.5	KCGF-LP	NW 30m, 31-29-05/100-27-26
TX	Dalhart	257	K257FC	STA 50w,35-53-11/102-23-31; existing tower damaged beyond repair
TX	Wichita Falls	107.9	KXWF-LP	PG 24m,33-54-44/98-29-32
TX	Bonham	95.7	K239CG	QG from K259CT-99.7, 250w, 33-33-16/96-13-24; CL from Prescott, Ark.; to relay KFYN 1420
TX	Brenham	101.5	K286CW	QG from K254BV-98.7, 99w, 29-39-55/95-23-47
TX	Decatur	95.5	K238CC	QG from K300CO-107.9, 33-19-45/97-44-11; CL from Marshall; to relay KVTT 1110
TX	Houston	96.9	K245CB	QG from K256CB-99.1, 125w, 30-04-37/95-24-52; CL from Shiner; to relay KYOK 1140
TX	San Angelo	94.3	K232FG	QG from K263AS-100.5, 31-28-41/100-27-53; CL from Flat; to relay KCRN 1340
TX	San Antonio	92.1	K221GF	QG from K258CQ-99.5, 99w, 29-25-13/98-30-22; CL from Alice; to relay KCHL 1480
TX	Mexia	101.5	K268BQ	XC 31-56-03/96-25-35; to relay KSUR 88.9
UT	Salt Lake City	88.3	KCPW-FM	PG>750w/203m,40-48-17/111-53-48
UT	Orem	91.7	KOHS	PG 1kw/-238m, 40-18-00/111-38-38
UT	Park City	91.7	KPCW	QG from 91.9, 1.8kw; PG>6kw/-12m CX ROA
UT	South Jordan	92.5	KUUU	PG>3.7kw/1197m
VA	Culpeper	95.3	W237CA	PC>178w
VA	Culpeper	95.3	W237CA	PC>178w; to relay WCVA-1490
VA	Roanoke	101.9	W270CU	QG from W272DI-102.3, 130w, 37-15-01/79-56-00; to relay WGMN-1240
VA	Suffolk	96.9	W245CK	PG<99w, 36-48-37/76-16-58; to relay WPMH-1010
VA	Blacksburg	95.5	W238BN	PG>250w, 37-11-12/80-28-54; CL from Orange; to relay WWVT 1260
VA	Blackstone	92.7	W224DB	QG from W230BW-93.9, 230w; relays WKLV 1440
VA	Onley-Onancock	105.7	W289CE	QG from W241BZ-96.1, 250w, 37-43-02/75-41-00; CL from Berryville; to

VA	Charlottesville	93.7	W229CN	relay WESR 1330 QG from W291AN-106.1, 8w, 37-59-06/78-28-48; CL from Eden, N.C.; relays WKTR 840
WA	Husum	103.7	K279BU	NS 10w/370m, 45-44-31/121-34-43
WA	Richland	100.5	K263BJ	NW 16w, 46-14-08/119-19-13
WA	Pasco	100.1	KRKG-FM	QC from 93.7
WA	Chinook	89.1	K206CL	NW 16w, 46-17-10/123-53-50; to relay KAWZ-89.9
WA	Kennewick West	104.9	K285FN	PC>250w, 46-06-15/119-07-48; to relay KRKG-FM-93.7
WA	Richland	100.5	K263BJ	NW 16w, 46-14-08/119-19-13; to relay KWDR-93.5
WA	Sequim	102.9	K272ER	QC from 102.3; relays KAWZ-89.9
WA	Seattle	102.1	KXSU-LP	NW 106m,47-36-25/122-19-07.
WA	Seattle	102.1	KXSU-LP	NW 106m,47-36-25/122-19-07
WA	Olympia	104.7	K284CG	QG from K277CB-103.3, 250w, 47-03-54/122-56-52; CL from Sampson; to relay KBUP 1240
WA	Kennewick South	94.1	K231CB	FC; to relay KTRP 1450
WA	Chattaroy	97.7	KJMR-LP	NW -90m, 47-54-57/117-19-54 QG from K234BU-94.7, 250w, 47-41-39/117-20-03; CL from Ephrata; relays KTRW 630
WA	Spokane	96.5	K243CG	
WA	Wenatchee	98.7	KFXP-LP	NW -48m, 47-22-58/120-17-31
WV	Wheeling	94.9	W235CC	NS 10w/94m, 40-03-41/80-45-08
WV	Parkersburg	104.9	W285EQ	PG>48w; to relay WMRT-88.3
WV	Charleston	95.7	W239CH	QG from W236AD-95.1, 38-21-26/81-40-05; CL from Lawrenceville, Va.; to relay WVTS 1240
WV	Ripley	90.7	WLKV	PC<2.5kw/88m, 38-48-29/81-43-05
WV	Hinton	98.3	W252DH	QG from W239CC-95.7, 50w, 37-42-53/80-57-09; CL from Ironton; relays WMTD 1380
WV	Martinsburg	93.7	W229CM	QG from W225BT-92.9, 250w, 39-27-48/77-59-11; CL from Glen Burnie, Md.; relays WEPM 1340
WV	Point Pleasant	94.1	W231CY	QG from W290BC, 170w; relays WBGS 1030
WI	Beaver Dam	105.5	W288CZ	NS 170w/16m, 43-27-39/88-49-17
WI	Medford	102.7	W220DY	QC from 91.9; to relay KWNO-1230
WI	South Milwaukee	103.3	W277CV	PG<120w, 42-51-20/87-50-41; CL from Waukegan, Ill.; to relay WNOV- 860
WI	Cedarburg	104.5	W283CJ	QG from W286CO-105.1, 250w,43-17-36/87-59-23; CL from Port Washington; relays WMBZ-92.5
WI	Kenosha	98.1	W251BU	PG>250w,42-36-32/87-50-56; CL from Racine; relays WRJN-1400
WI	Marshfield	93.7	W229CJ	QG from W232AR-94.3, 50w
WI	Green Bay	103.5	W278AU	PG>250w; to relay WAPL 105.7
WI	Madison	104.7	W284CW	QG from W279CD-103.7, 250w, 43-10-10/89-15-38; CL from Ashland; to relay WNWC 1190
WI	Stevens Point	99.1	W256CZ	QG from W272CN-102.3, 29w, 44-31-37/89-37-31; CL from Ashland; to relay WLBL 930
WI	Wisconsin Rapids	91.7	WRAO	PC>30kw/50m, 44-17-58/89-56-55
WI	Medford	103.3	W277CW	QG from W242BB-96.3, 250w, 45-05-10/92-34-19; to relay WIXK 1590
WI	Eau Claire	98.7	W254CN	QG from W285EV-104.9, 44-46-38/91-28-29; CL from Houlton; relays WBIZ 1400
WY	Cheyenne	101.1	K266CC	QG from K277BP-103.3, 250w, 41-08-09/104-48-07; CL from Eden; to relay KRAE 1480
WY	Cheyenne	97.5	K248CZ	QG from K245BE-96.9, 130w, 41-08-09/104-48-07; CL from Custer, S.D.; to relay KFBC 1240

PHOTO NEWS



Jeff Kruszka
1909 Lost Lake Pl.
Pearland, TX 77581
jkruzka@sbcglobal.net

March 2016

More great stuff from Chris Lucas of Poughkeepsie, NY:



WFMJ-20 Youngstown, OH
353 mi Tr seen 11-29-15
“only 2nd time received”



WPTD-16 Dayton, OH
561 mi Tr seen 11-29-15



CFPL-10 London, ON
386 mi Tr seen 11-29-15



WMAR-38 Baltimore, MD
223 mi Tr seen 11-5-15
"Over WWOR"



WNJT-43 Trenton, NJ
112 mi Tr seen 11-5-15

73's, Jeff



Coast to Coast TV DX

Featuring reports from the entire United States and all of Canada.

Send reports by the 15th of each month to:

Nick Langan
 42 Holly Park Drive
 Tabernacle, NJ 08088
 E-mail: nickl@wtfda.org

The Editor's Note

February and March are historically the quietest DX months of the calendar year, and that so far has held true in 2016 as there were no recent off-season Es openings reported. Two solid instances of Gulf of Mexico tropo were observed by DXers in and around the gulf coast on the 12th and 19th of February. But – we've made it through another winter, one that was not particularly harsh weather-wise throughout the continent.

We welcome a report Fred Nordquist in SC, who checks in with DTV loggings from the past two seasons.

Fred Nordquist

147 Travis Hill Rd
 Moncks Corner, SC

FM03af - 33.21756N 79.95798W
 Times - ELT. Distance in Miles.

ELT CALL	CH	PU	CITY	NOTES	MILES
----------	----	----	------	-------	-------

7/3/13 Es

1837	WACP	4	NJ	Atlantic City DTV Es #5	531
------	------	---	----	-------------------------	-----

7/29/13 Tr

0810	WTMQ-LD	41	NC	Jacksonville	176
------	---------	----	----	--------------	-----

8/10/13 Tr

2215	WUJF-LD	33	FL	Jacksonville	224
------	---------	----	----	--------------	-----

8/11/13 Tr

2248	WGCT-LD	45	FL	Beverly Hills	341
2340	WTOG	44	FL	St Petersburg	397
2341	WQJY969	56	FL	Jacksonville Dish Network - Mobile TV Transmitter	224

8/12/13 Tr

0043	WFTX	35	FL	Cape Coral	457
------	------	----	----	------------	-----

9/11/13 Tr

0940	WDRN-LD	40	NC	Fayetteville	142
------	---------	----	----	--------------	-----

9/12/13 Tr

0943	WRGX-LD	23	AL	Dothan	374
------	---------	----	----	--------	-----

4/2/14 Tr

0142	WFTV	20	FL	Daytona Beach Relays WFTV 39	308
------	------	----	----	------------------------------	-----

5/8/14 Tr

2302	CMBA	2	CU	Havana SS	712
2302	CMBR	4	CU	Havana SS	712
2302	CMBA	6	CU	Havana SS	712

5/10/14 Es

0958	HITM	5	DO	Santo Domingo	1193
------	------	---	----	---------------	------

6/22/14 Es

2010	WGWG-LP	6	IL	Chicago Audio on 87.7 - Chicago ads	731
------	---------	---	----	-------------------------------------	-----

7/1/14 Tr
0744 WTMV 39 NC Wilmington - 145
0745 WPXU 34 NC Jacksonville ION 170

7/21/14 Es
1103 CJC1- 6 NS Inverness CTV 1325

7/27/14 Tr
0838 WTMH-LD 21 NC Kinston - 195
0852 WTMV-LD 39 NC Wilmington - 145

7/29/14 Es
0732 KXKW-LP 6 LA Lafayette LA
Radio Country 732

9/12/14 Es
1416 StOrM TV 2 HT Port-au-Prince
FF-StOrM TV 1118

10/8/14 Tr
2135 WTMO-CD 31 FL Orlando o/local 31
using 4 bay bowtie ant in attic! 331

10/27/14 Tr
1025 WSQY-LD 38 SC Spartanburg
Infomercial - no TDIS 184

11/30/14 Es
1411 CKYB-TV 4 MB Brandon CTV +
offset NFL FB 1529

4/10/15 GW
2220 WGSJ-CD 11 SC Murrell's Inlet
Tourest info 58

6/14/15 Tr
2228 WDYB-LD 14 FL Daytona Beach
SS 304

6/30/15 Es
0854 WVOA-LP 6 NY Westvale - 710

7/30/15 Tr
0746 W14DC-D 14 VA Portsmouth HSN
324
0755 WVAD-LD 25 VA Chesapeake - 324

8/14/15 Tr
0916 WIGL-LD 38 GA Athens - 186
0923 WLGA 30 AL Opelika - 287

8/15/15 Tr
0744 WPXH 45 AL Gadsden - 378

10/21/15 Tr
2255 WNCB-LD 15 NC Fayetteville - 112

11/10/15 Tr
1129 WUUG 17 GA Athens - 233
1140 WPXA 31 GA Rome ION 280
1221 WJHG 18 FL Panama City - 373
1239 WMAW 49 MS Meridian - 536
1818 WFSG 38 FL Panama City - 402
1840 WHLT 22 MS Hattiesburg - 556
1850 WNCN 31 AL Montgomery - 403
1853 WLOX 39 MS Biloxi - 562
1859 WIIQ 19 AL Demopolis - 463
1902 WDPM 23 AL Mobile - 483

12/14/15 Tr
2359 WVIR* 32 VA Charlottesville NBC
402

All above are new loggings.

TV Totals = 630 (including 310 DTV)

TV DX Equipment:

ATV:Panasonic 11" Color (CT-1120B).*

DTV: LG 24LN451B - **connected to Zenith

DTT900 DTV STB (both with manual channel
tuning).

Haugpauge WinTV HVR950Q Hybrid TV Stick
and SW

Antennas:

UHF: Roof/tripod mounted CM 4251 Parascope (7'
parabolic-screened 1 inch chickenwire) (25'AGL),
** Yaesu G450a Rotor & CM7777 Mast Mounted
preamp.* RG-11 Coax Cable.

Winegard KU-420 (4-Bay Bowtie)(16'AGL in attic)
connected to JVC AV-32230 TV & Insignia NS-
DXA1 DTV STB.

*VHF: RS VU-90XR w/Yaesu G450a rotor (20' AGL
Pole mast mounted below APS-13 FM Antenna) -
RG-11 Coax Cable.

Other equipment /software/dx aides:

TSReader Lite SW - DTV TSIP IDs.

Kodak Easyshare Digital Camera - ID photos.

DX related propagation/databases internet
websites (WTFDA/government/radio amateur/etc).

73-Fred



Southern FM DX

John Zondlo – 4009 Driftwood Circle – Yukon, OK 73099

southernfmdx@wtfd.org – Deadline: 15th

March 2016

Fred Nordquist – 147 Travis Hill Road – Moncks Corner, SC – 33.21756N 79.95798W – ELT

5/14/15 Es

0937 WPMJ 94.3 IL Chillicothe, Catholic radio talk 743
0937 WZPN 96.5 IL Farmington, ID, "96.5 ESPN" 751
0940 WBHW 88.7 IN Loogootee, RDS PI: 5818, religious music 548
0951 KHOI 89.1 IA Story City, RDS PI: 23FO 963
1001 KXGM 89.1 IA Hiawatha, Air 1, multi-station ID 882

6/2/15 Es

1933 WCMD 89.9 VT Barre, *Family Life Blended*, matched program schedule 883
2001 CBAE 90.5 NB Campbellton, ID, CBAF 106.1, CBC NB weather 1239
2001 WVNH 91.1 NH Concord, ID, New Hampshire Gospel Radio 840
2028 WRCU 90.1 NY Hamilton, RDS PI: 81D4 704
2058 CISO 89.1 ON Orillia, "Sunshine 89" 783
2103 KSFS 90.1 SD Sioux Falls, ID, "K-Love" 1152
2108 K235CA 94.9 SD Sioux City, RDS PI: 3FC5 'KSCJ', KSCJ translator, BB 1099

6/17/15 Es

1034 KTLF 90.5 CO Colorado Springs, RDS PI: 434F, ID 1438
1042 K233CG 94.9 OK Ponca City, RDS PI: 36E0 'KOSU', KOSU 91.7 translator 996
1101 KJLG 91.9 KS Emporia, RDS PI: 2989 'KJRL', religion 977
1104 KJHL 90.9 OK Boise City, KJIL.com promo 1295
1105 KJOV 90.7 OK Woodward, KJIL.com promo 1124
1117 KWOU 88.1 OK Woodward, RDS PI: 2158 'KGOU', PS: KGOU PUBLIC 1126

6/20/15 Es

1124 KCYT 96.7 AR Fayetteville, RDS PI: 17CB 832
1135 KKNG 97.3 OK Blanchard, Oklahoma Catholic network 1015
1136 KEYE 93.7 TX Perrytown, My FM 1198

6/23/15 Es

0659 WDTE 88.3 MI Grosse Point Shores, RDS PI: 5E86 659
1624 CIYN-2 90.9 ON Port Elgin, RDS PI: 6C45 'WIYN', PS: MY FM MY FM – CLASSIC ROCK 781
1825 KDMG 103.1 IA Burlington, RDS PI: 6904, country 810
1825 KZTP 104.3 IA Sibley, local phone # 372-4829 1110
1825 WZFJ 104.3 MN Breezy Point, "The Pulse" 1191
1825 KILJ 105.5 IA Mt. Pleasant, local ad 832
1826 KLTE 107.9 MO Kirksville, local weather 857
1828 WHSM 101.1 WI Hayward, ID 1073
1829 WLFZ 101.9 IL Springfield, RDS PI: 724F, country 700
1829 KMCR 103.9 MO Montgomery City, RDS PI: 2FF5, PS: KMCR-FM ADULT HITS 757

1846 CKCL 107.1 MB Winnipeg, classical music/announcements, skip // 99.9 CFWM Winnipeg 1452
 1901 KNSC 90.7 IA Carroll, Iowa Public Radio, KNSL ID 1016
 1902 KBBX 97.7 NE Nebraska City, Spanish, SS/EE ID 1035

6/29/15 Es

2054 KQIC 102.5 MN Willmar, RDS PI: 3B12, oldies 1153
 2054 WXSS 103.7 WI Wauwatosa, RDS PI: 934A, "Kiss-FM" 806
 2055 WMKD 105.5 MI Pickford, RDS PI: 755F 940
 2059 WAXX 104.5 WI Eau Claire, RDS PI: 5715 985
 2059 KDDG 105.5 MN Albany, RDS PI: 1840 1156
 2059 WFON 107.1 WI Fond du Lac, RDS PI: 6355, PS: K107.1 ADULT HITS 862
 2100 WNWC 102.5 WI Madison, RDS PI: 793A, variety 852
 2101 WKKO 99.9 OH Toledo, "K-100," Cumulus – Nash 614
 2101 WRCO 100.9 WI Richland Center, ID 897
 2101 WKQX 101.1 IL Chicago, RDS PI: A7C7, ID 731
 2101 WCWI 106.1 WI Adams, RDS PI: 5C34, PS: WI106 WI 106 ADULT HITS 912
 2101 WSPY 107.1 IL Plano, RDS PI: 85CE 750
 2102 WJMK 104.3 IL Chicago, RDS PI: 6DAE, adult hits 730
 2102 WEGZ 105.9 WI Washburn, VCY America 1096
 2103 WQON 100.3 MI Grayling, RDS PI: A861, "Q100.3, rock 824
 2103 WMZK 104.1 WI Merrill, ID, "WI Classic Rock" 971
 2103 WSRB 106.3 IL Lansing, RDS PI: 85EB, soft R&B 711
 2104 WWLI 105.1 RI Providence, RDS PI: 8FE6, PS: Lite Rock 105 753
 2105 WMDC 98.7 WI Mayville, RDS PI: 74A8, adult hits 844
 2105 WSRJ 105.5 MI Honor, RDS PI: 85F3 850
 2106 WHZZ 101.7 MI Lansing, ID, "101.7 Mike FM – Capital City" 700
 2115 WGFM 105.1 MI Cheboygan, RDS PI: 650E, rock 864
 2117 WDET 101.9 MI Detroit, RDS PI: 5D0F, talk 653
 2120 WNNO 106.9 WI Wisconsin Dells, local ad for BJ's TV/Appliance 891
 2126 WHQG 102.9 WI Milwaukee, RDS PI: 68CA, rock 806

6/30/15 Es

0843 WTPA 92.1 PA Palmyra, ID, local traffic conditions 526
 0844 WRBT 94.9 PA Harrisburg, local Harrisburg ad 521
 0848 WFRY 97.5 NY Watertown, RDS PI: 63AE 774
 0852 WCIH 90.3 NY Elmira, FLN announcements 623
 0854 WDWN 89.1 NY Auburn, multi-station ID 697
 2001 WCMW 103.9 MI Harbor Springs, local promo, ID 890
 2055 KTCO 98.9 MN Duluth, RDS PI: 426E 1134
 2057 WZEE 104.1 WI Madison, RDS PI: 9718, Top 40 852
 2057 WRXP 105.3 MN Cambridge, "Sports Radio 105 The Ticket" 1105
 2058 WVBO 103.9 WI Winneconne, local promo, ID 882
 2102 WLUN 100.9 MI Pinconning, ESPN baseball, local Ford ad 767
 2104 WHWA 104.7 WI Washburn, WPR, classical 1096
 2106 WFRI 100.1 IN Winamac, religious, dual station ID 649
 2109 WWWW 102.9 MI Ann Arbor, "W4 Country" 658
 2110 WSAG 104.1 MI Linwood, 1400 AM 757
 2114 WIXX 101.1 WI Green Bay, RDS PI: 6C35, PS: song/artist, ID, news 885
 2117 WHBZ 106.5 WI Sheboygan Falls, RDS PI: 6757, rock (not in WTFDA database) 837
 2123 WLUM 102.1 WI Milwaukee, RDS PI: 73C8, rock 808
 2128 KLZZ 103.7 MN Waite Park, RDS PI: 2FAF, classic rock 1137
 2135 WWFW 103.9 IN Fort Wayne, RDS PI: 8F58, soft rock 616
 2135 WRDF 106.3 IN Columbia City, RDS PI: 81DF, religious talk 623
 2137 WTRV 100.5 MI Walker, "100.5 The River" 745

2142 WBBL 107.3 MI Greenville, RDS PI: 5771, sports 737
2145 WCZE 103.7 MI Harbor Beach, "Cozy FM" 741

7/29/15 Es

1749 XEUN 96.7 DF Mexico City, RDS PI: A123 'KABJ', SS, classical 1517

8/11/15 Es

1147 KQRC 98.9 KS Leavenworth, RDS PI: 3BFC 913
1159 WHUD 100.7 NY Peekskill, RDS PI: 692F 652

8/15/15 Es

1646 CBL-4 97.1 ON Owen Sound, CBC Radio 2 797

8/17/15 Es

1259 KTUF 93.7 MO Kirksville, ID 845

8/18/15 gw

0958 W293BZ 106.5 SC Hilton Head, RDS PI: 75C7 'WMXZ', PS: Light Easy Going Favorites,
WLFF translator 86

8/25/15 Es

1641 WKPL 92.1 PA Ellwood City, RDS PI: A7A1, PS: Pickel 92.1 Pickel, classic rock 522
1642 KDKA 93.7 PA Pittsburgh, RDS PI: 18F0, talk 499

9/18/15 Tr

0941 WTFM 98.5 TN Kingsport, RDS PI: 8762, ID 254

9/21/15 Tr

0045 WGMW 99.5 FL LaCrosse, RDS PI: 65CE, "Gold 99.5 99.7" 279
1450 WMVV 90.7 GA Griffin, "New Life FM" 241

10/22/15 gw

1137 W290CD 105.9 SC Darlington 76

11/10/15 Tr

1108 WJLV 94.7 MS Jackson, "K-Love" 603
1325 WKXI 107.5 MS Magee, RDS PI: 716E, "Kixie" 575
1343 WUHT 107.7 AL Birmingham, RDS PI: 8A41, "Hot 1077" 395
1349 WZZK 104.7 AL Birmingham, RDS PI: 9940, ID 395
1401 KMVX 101.9 LA Monroe, slogan twice "Mix 101.9" 707
1452 WSTH 106.1 AL Alexander City, "South 106," country 321
1514 WMXS 103.3 AL Montgomery, "Mix 103-3" 366
1556 WHLW 104.3 AL Luverne, RDS PI: 6858, black Gospel 371
1623 WDLT 104.1 AL Saraland, ID, Kiss 2 station ID 485
1716 WFFX 103.7 MS Hattiesburg, ID, local ads 548

12/25/15 Es

2332 K266AN 101.1 IA Atlantic, ID, "KSAN Radio Atlantic" 999

12/30/16 Es

1023 CBV-1 96.7 QC St. Georges de Beauce, Radio-Canada Premiere 1059
1025 CBJ 93.7 QC Chicoutimi, Radio-Canada Premiere
1200 CBF-11 96.1 QC Asbestis, RDS PI: B204, PS: ICI PREM, French Canadian 989
1204 WMOO 92.1 VT Derby Center, ID 914
1204 CJAB 94.5 QC Chicoutimi, local weather 1162

1209 CBMI 93.9 QC Baie-Comeau, local weather, CBC Radio, EE, 1261
 1219 WEVF 90.3 NH Colebrook, RDS PI: 615F 931
 1222 CHLC 97.1 QC Baie-Comeau, ID, // CIEL 1261
 1225 CFJO 97.3 QC Thetford Mines, local ads, weather, CITU 990
 1227 WIFY 93.7 VT Addison, "The Point" 836
 1229 CIHO 96.3 QC St. Hilarion, FFc, ID 1109
 1231 CHOX 97.5 QC La Pocatiere, local ad 1107
 1246 WTHT 99.9 ME Auburn, RDS PI: 879D, "The Wolf" 904
 1251 WXXK 100.5 NH Lebanon, RDS PI: 93C4, country 830
 1251 CIBM 107.1 QC Riviere-du-Loup, local weather 1134
 1252 WSCY 106.9 NH Moultonborough, RDS PI: 847C 849
 1253 WZEI 101.5 NH Meredith, "Sports Radio WZEI" 849
 1253 WLKZ 104.9 NH Wolfboro, RDS PI:72D1, rock 849
 1255 CFVM 99.9 QC Amqui, local obits 1255
 1259 CIEL 103.7 QC Riviere-du-Loup, local ad 1135
 1300 WKIT 100.3 ME Brewster, RDS PI: 6FF3, classic rock 991
 1300 WBOQ 104.9 MA Gloucester, RDS PI: 58C8, "North Shore 104.9" 814
 1301 W247AO 99.5 NH Plymouth, multi-station ID 853
 1301 WBYA 105.5 ME Islesboro, "Classic Hits Frank FM" 966
 1303 CFWJ 99.1 QC St. Gabriel-Brando, RDS PI: CC04, FFc 968
 1303 WGY 103.1 NY Albany, 810/103.1, ID 735
 1305 CBAF-1 102.3 NB St. John, Radio-Canada Premiere 1116
 1305 CKOY 107.7 QC Sherbrooke, jingle, COGECO program 942
 1306 WRVE 99.5 NY Schenectady, "99-5 The River" 726
 1307 WINU 104.9 NY Altamont, RDS PI: 6B2E 726
 1308 WKKF 102.3 NY Ballston Spa, "Kiss 102-3," DJ Elvis Duran 744
 1351 CIKR 105.7 ON Kingston, RDS PI: C764, local announcement 779
 1352 WKRL 100.9 NY North Syracuse, ID, local ad for Drivers Village (my worst Clay NY QRM
 pest at 1000' east of QTH) 716
 1359 WITF 89.5 PA Harrisburg, RDS PI: 6BBB 520
12/31/15 Es

 1417 KCSD 90.9 SD Sioux Falls, RDS PI: 171F, SDPB 1148
 1433 KELQ 107.9 SD Flandreau, news, talk, weather 1170
1/1 Tr

 1833 WISK 98.7 GA Americus, ID, "Best Country" 262

All above loggings are new to fm log, which now stands at 3042. Most of the posted Es loggings are a result of a detailed review of the SDR Console/AirSpy I/Q Data Files. Antenna - APS 13 73-Fred



Interested in contributing to the VHF-UHF Digest?

We're looking for a dedicated FM DXer to take over the *FM News* column.

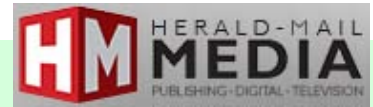
E-Mail Ryan Grabow if you're interested.

ryang@wtfda.org

WHAG unveils programming changes after losing NBC

Written by Mike Lewis for *Herald-Mail Media* [Feb 19, 2016]

Source: http://www.heraldmillmedia.com/news/local/whag-unveils-programming-changes-after-losing-nbc/article_12ae2ffe-d775-11e5-bcab-db238a049dad.html



As its affiliation with the NBC television network ends this summer, Hagerstown's WHAG-TV will increase its news, lifestyle, sports, weather and community programming and expand into new parts of the four-state area, according to a company news release.



The station also has plans for prime time shows, blockbuster movies and other entertainment programming, the release said.

Herald-Mail Media reported Thursday that NBC and WHAG-TV would end their affiliation this summer after more than 40 years.

In the release issued Friday evening, Hugh Breslin, vice president and general manager of WHAG-TV, said this is "a very exciting time for WHAG-TV and our local viewers."

He called the action an "unprecedented expansion" of the station's programming.

Nexstar Broadcasting Group Inc., which owns WHAG, "will be investing approximately \$1 million to relocate WHAG-TV's news bureaus, open additional field offices, add over a dozen news and production personnel, develop new on-air graphics and purchase new equipment, weather technology and traffic systems to complement the additional programming," the release said.

The launch is scheduled for July 1. WHAG-TV will continue to be available on the same cable, satellite and over-the-air channels.

"The investment reflects WHAG's history of significant local news viewership with the majority of advertiser and audience interest in WHAG's local content programming," the release said.

"In addition, the station will hire additional marketing and sales personnel," the release said. "Nexstar's investment to expand WHAG-TV's local news programming and staff highlights the company's organization-wide commitment to broadcasting excellence and enhanced service to local communities in the four-states region."

The station will add more than 20 hours of local news to its new weekly broadcast schedule, boosting the total to more than 50 hours per week, the release said.

In addition to more hours, WHAG-TV plans to expand into new geographic areas by adding original newscasts unique to local viewing communities in Maryland and Northern Virginia, as well as what it called "West Virginia's only available statewide local news."

The release notes the "news expansion directly addresses the needs of the local communities outside the Beltway, particularly in Montgomery County, Md., and Northern Virginia, by bringing viewers the only full-coverage local television news programming targeted to their local communities."

The release said that that the station's "journalists will deliver news from its repositioned news bureaus in Winchester, Va., and Germantown, Md., to better reflect the station's expanded coverage area."

WHAG "expects to open an additional office in the Centerville, Va., area in the first quarter of 2017. WHAG-TV studios are currently outfitted with advanced production resources and technologies, including state-of-the-art HD cameras, weather forecasting equipment and locally-themed news sets. However, Nexstar will invest in other equipment and technology resources to support the over 20 additional hours of local news," the release said.

When reached by telephone Friday evening, Breslin referred a reporter to the release and declined to comment further.

The release does not specifically address Hagerstown or Washington County, but it does refer to commitments to "hometown businesses," "local communities" and "Western Maryland."

WHAG has been operating since 1970. It has been affiliated with NBC since its inception. The station's expanded news coverage will be complemented by other entertainment programs, Breslin said.



Antenna TV Adds 26 New Stations

Written by Adam Buckman for *TVNewsCheck* [Nov 17, 2015]

Source: <http://www.tvnewscheck.com/article/90099/antenna-tv-adds-26-new-stations>



Tribune's Antenna TV dignet has added 26 new affiliates over the last 6-8 weeks — an increase brought about, at least in part, by the anticipated arrival of vintage *Johnny Carson* shows on the TV-oldies channel starting Jan. 1.

"The Carson announcement definitely captured [stations'] attention," said Sean Compton, president of strategic programming and acquisitions for Tribune Broadcasting, in an interview with TVNewsCheck. He was referring to the widely reported announcement in August that Antenna TV [had acquired the rights to air episodes of *The Tonight Show Starring Johnny Carson*](#) in a deal with Carson Entertainment Group. The classic Carson shows — which haven't been seen since they first aired on NBC — will air at 11 p.m. ET weeknights.

Antenna TV announced today that its affiliate lineup has grown to 125 in recent months to reach 88% of U.S. TV households. The new affiliates for the Tribune-owned dignet include stations owned by Sinclair, Tegna, Red River Broadcast Co., Deerfield Media and Gocom Media, the company said.

The new Antenna affiliates include: WPGH Pittsburgh; WNUV Baltimore; WZTV Nashville; WSYX Columbus, Ohio; WSTR Cincinnati; WLOS Greenville-Spartanburg, N.C.; WTCN West Palm Beach, Fla.; WTTO Birmingham, Ala.; WTLV Jacksonville, Fla.; KTHV Little Rock, Ark.; KTUL Tulsa, Okla.; WKEF Dayton, Ohio; WCHS Charleston-Huntington, W.Va.; WLUK Green Bay, Wis; WSMH Flint, Mich.; WUHF Rochester, N.Y.; WMNT Toledo, Ohio; WLTX Columbia, S.C.; WCSH Portland-Auburn, Maine; WRSP Champaign, Ill.; KCEN Waco, Texas; WTGS Savannah, Ga.; KDLT Sioux Falls, S.D.; KVRR Fargo, N.D.; and KQDS Duluth, Minn.

"In the four years since Antenna TV has launched there has been a great response from viewers enjoying the classic programming, and from stations seeing an increase in revenue," Compton said in a statement. "This latest round of affiliates adds 16 million additional households to Antenna TV's reach and we are looking forward to continued growth for the network."

Antenna TV's lineup of classic shows includes *The Jeffersons*, *All in the Family*, *Family Ties*, *Leave It To Beaver* and *Mr. Ed*.

Installing MaxDbSm with ELAD FDM-SW2 – January 28th, 2016

Bill Nollman

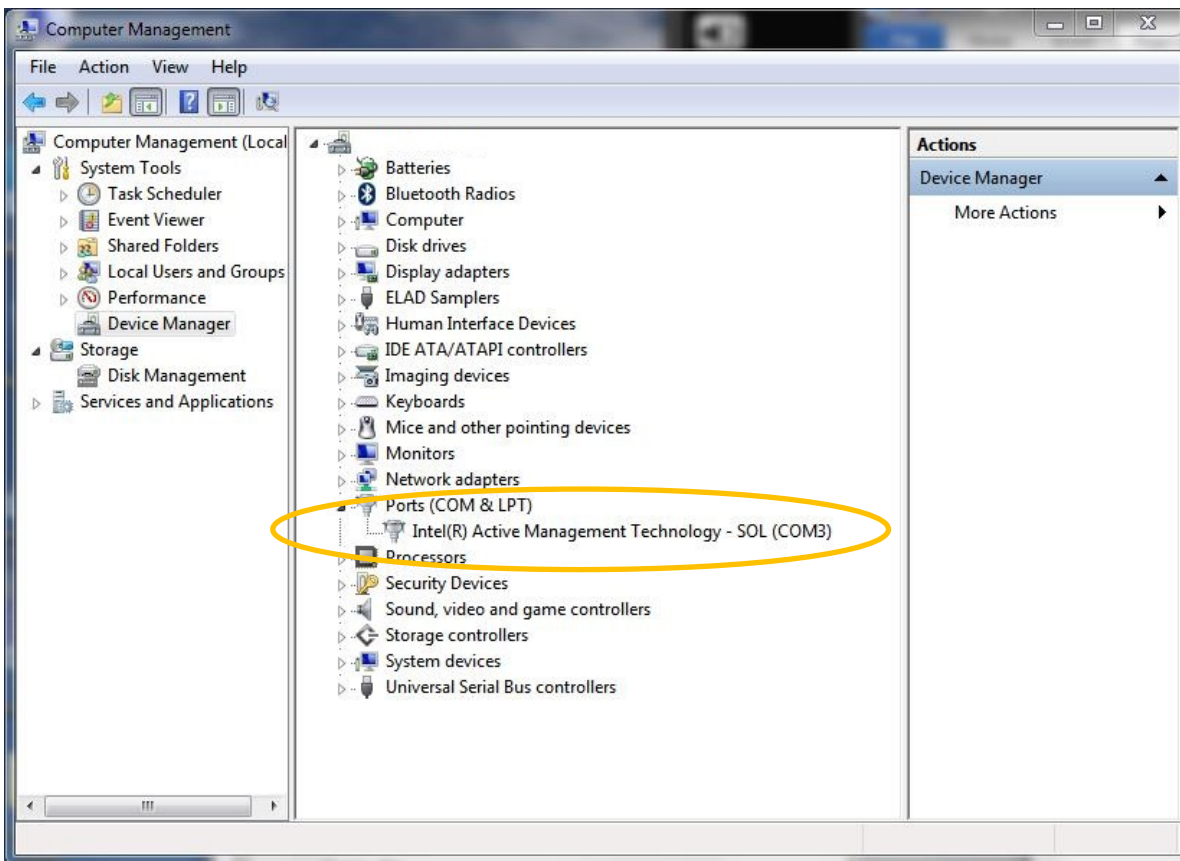
Instructions for Adding an Old Style S-Meter to an Elad FDM-S2 SDR

1. Original ELAD Yahoo Group Discussion where the source for Com0Com and the S-meter software were documented:

https://groups.yahoo.com/neo/groups/elad_sdr_en/conversations/topics/1494

2. Device Manager showing existing “Ports” – only COM3 currently exists on this computer.

When we are done Com0Com will have installed and configured 2 new ports automatically with nothing else to configure!



3. Download Com0Com – choose 64 or 32 bit depending on your OS.

<https://code.google.com/archive/p/powersdr-iq/downloads>

When you run it the installer will tell you if it is not the correct version so grab both 32 and 64 bit if unsure.

https://code.google.com/archive/p/powersdr-iq/downloads

Google Code Archive

Projects Search About

Project **powersdr-iq** Export to GitHub

Source

Issues Page 1 of 2

Wikis 1 2 Next >

Downloads

File	Summary + Labels	Uploaded	Size
PowerSDRv2.4.4_for_Homemade_Rigs.zip	PowerSDR v2.4.4 for Homemade SDR transceivers	Jan 6, 2013	1.91MB
setup_com0com_W7_x86_signed.exe	Com0Com v3.0.0.0 W7 x86 (32bit) signed	Nov 2, 2012	218.97KB
setup_com0com_W7_x64_signed.exe	Com0Com v3.0.0.0 W7 x64 (64bit) signed	Nov 2, 2012	229.34KB

4. Download the S-Meter Software (I used the first one).

MaxDbSm_v1.2.msi - <https://drive.google.com/file/d/0BxupmtzLoSNHVEwwYWMYX2FDUFk/view?usp=sharing>

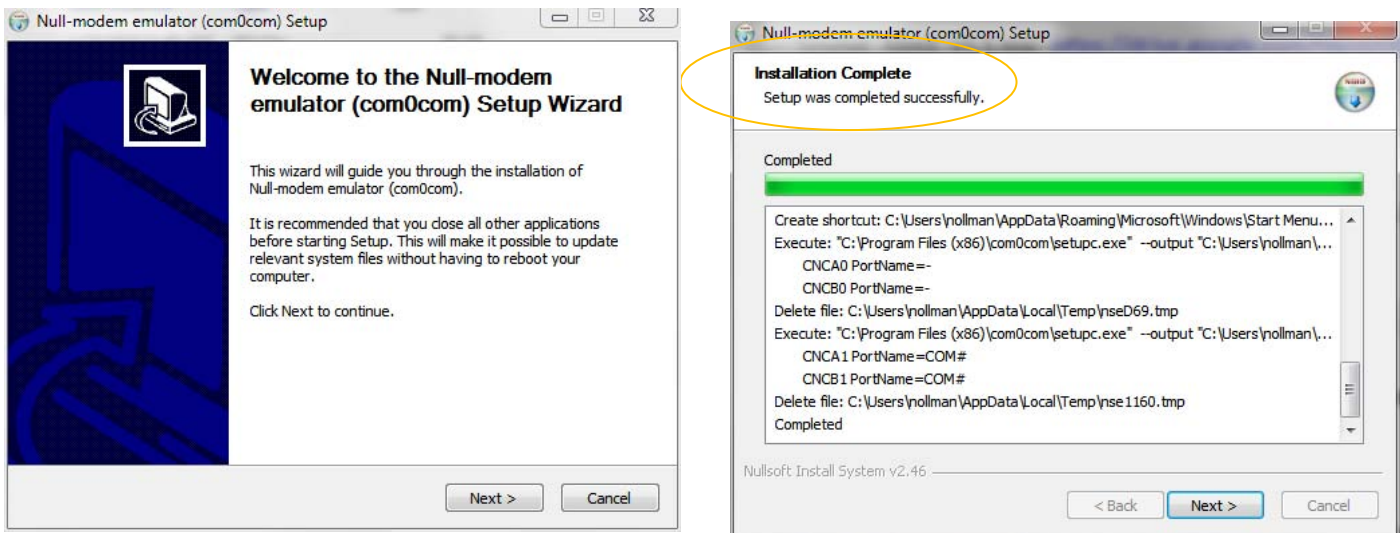
Smeter_fdm_v1.0.msi - <https://drive.google.com/file/d/0BxupmtzLoSNHMDf0ZXAx1doODA/view?usp=sharing>

Smeter_fdm1_v1.1.msi - <https://drive.google.com/file/d/0BxupmtzLoSNHVUxsdExnbHZsNlK/view?usp=sharing>

5. Install Com0Com

Run the Com0Com setup file - `setup_com0com_W7_x64_signed.exe`

Step through the install boxes and wait until it shows Installation Complete.



Click Next, and Finish.

There is no need to run Setup.

Re-check your installed Ports in Device Manager and you will see 2 new COM ports.

Make note of the 2 COM port numbers as you will need these to setup the S-meter and FDM-SW2.

In my case the first port was COM7 and the second COM8. Yours is likely to be different.

6. Install S-meter.

Run the setup file - MaxDbSm_v1.2.msi

The dialog boxes are in Italian.

Just click the lower right most box until the installer exits. Next is "Avanti", Finish is "Chiudi".

There will be an icon on your desktop named "MaxDbSm" – double click it to start the S-meter.

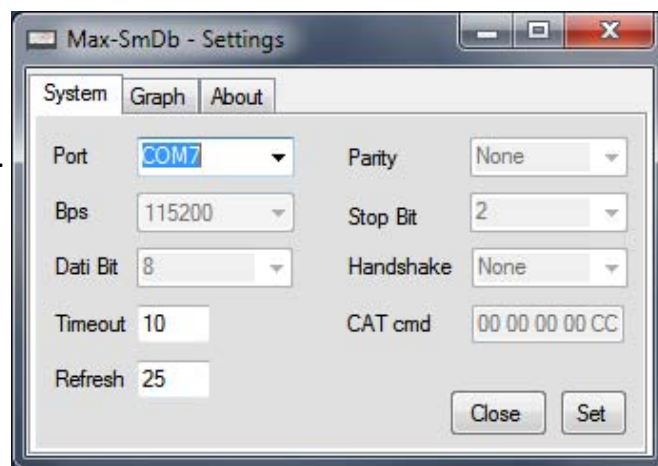
Click the "S" button for Settings.

In the "Port" dropdown box select the lowest number COM Port that was installed by Com0Com. In my case COM7.

Click Set, Click Close.



7.



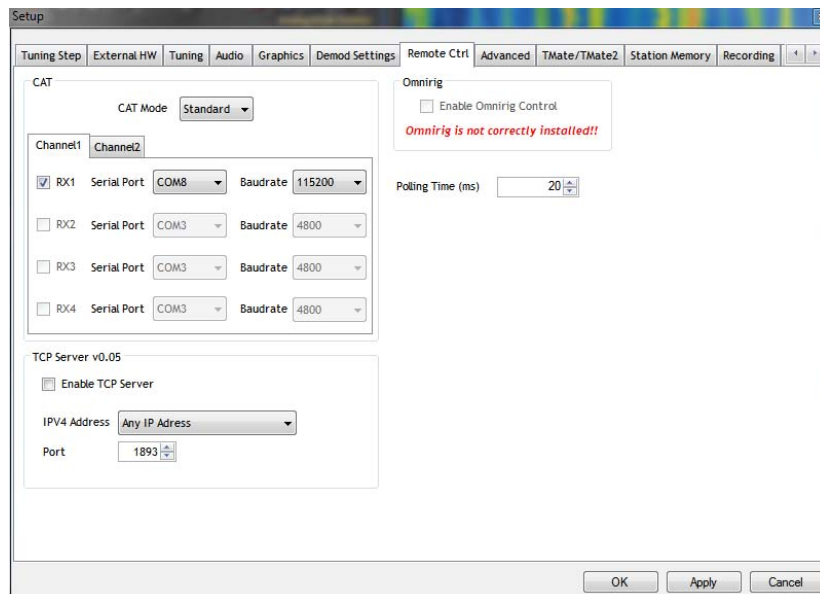
Configure FDM-SW2 to communicate with the S-meter.

If not already running Start FDM-SW2 and click SET / Remote Ctrl Tab.

Click RX1, Set the Serial Port to the higher COM Port that was installed by Com0Com (COM8 in my case).

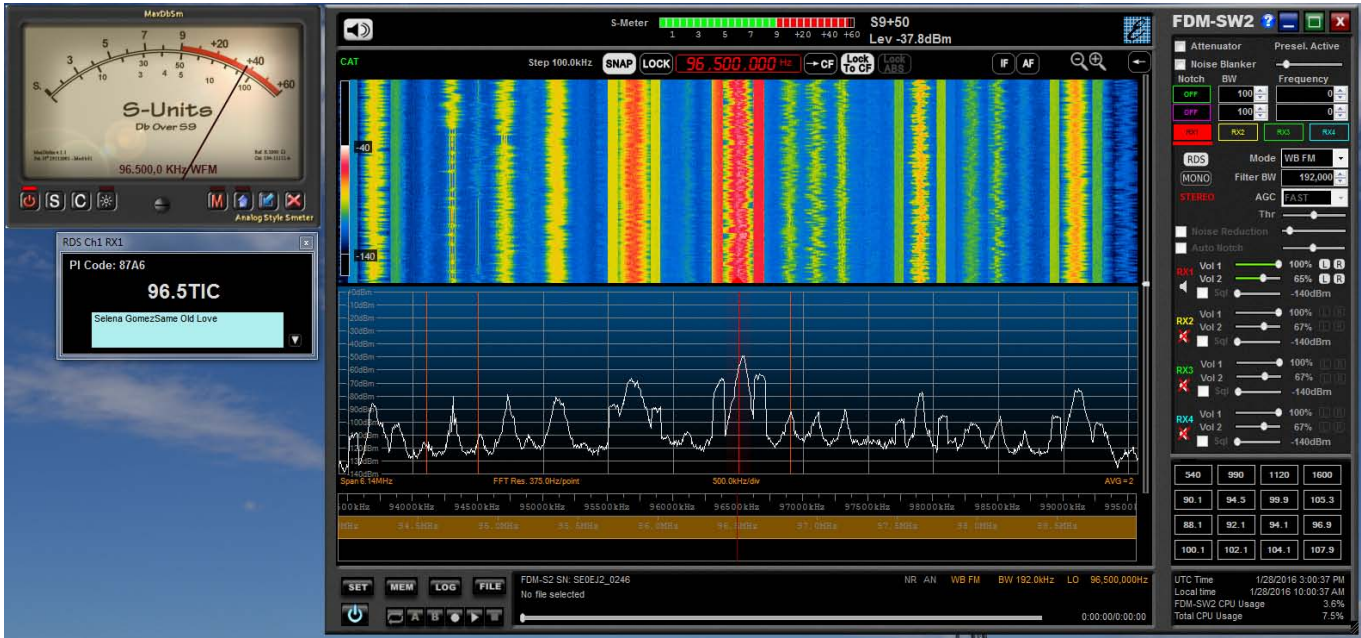
Set Baudrate to 115200.

Click Apply, Click OK.



8. Start the S-meter

Click the red power button on the lower left corner and you should instantly have a signal with the frequency and mode displayed at the bottom of the MaxDbSm.



UPCOMING METEOR SHOWERS

DATA FROM THE
AMERICAN METEOR SOCIETY
amsmeteors.org



Shower	Activity Period	Maximum		Radiant		Velocity km/s	r	Max. Time ZHR	Moon	
		Date	S. L.	R.A.	Dec.					
Lyrids (LYR)	Apr 18-Apr 25	Apr 22	032.5°	18:10	+33.2°	45.5	2.1	18	0400	14
Eta Aquariids (ETA)	Apr 24-May 19	May 07	046.8°	22:36	-00.5°	66.5	2.4	40	0400	01

SIGN UP & Renewal Form

YEARLY DUES \$10.00 USD for Monthly VUD E-ZINE

Print this form and send it with your dues.

Name _____

Address _____ Apt # _____

City _____ State/Prov _____ Zip _____

Country _____ Interests: TV () FM () 30-50 () Weather ()

E-Mail Address _____

Sign me up/renew me for: 1 year () 2 years () More () _____

Mail your yearly dues to: WTFDA, P.O. Box 501, Somersville, CT USA 06072
Make your checks/money orders payable to: WTFDA
And *thanks* for your support of the WTFDA!

WTFDA BOARD OF DIRECTORS

Mike Bugaj, use the WTFDA Mailing address listed above
Doug Smith, 1385 Old Clarksville Pike, Pleasant View, TN 37146-8098
Greg Coniglio, 11825 Genesee St., Alden, NY 14004
Keith McGinnis, 18 Newbridge St., Hingham, MA 02043

mikeb@wtfda.org
dougs@wtfda.org
gregc@wtfda.org
nfmdx@wtfda.org

RENEWALS BY PAYPAL: SEND YOUR DUES FROM THE PAYPAL WEBSITE TO SALES@WTFDA.ORG

TV and FM STATISTICS

Fred Nordquist, 147 Travis Hill Road, Moncks Corner, SC
stats@wtfda.org

WTFDA.ORG WEBSITE

Tim McVey, webmaster
webmaster@wtfda.org

VHF-UHF DIGEST

Ryan Grabow, 7351 Pinnacle Pines Dr #B21, Fort Myers, FL 33907
ryang@wtfda.org

WTFDA FORUMS WEBSITE

Chris Cerventez, webmaster
chriscerventez@gmail.com

To join, send an e-mail to

EMAIL REFLECTORS

TV and FM: WTFDA+subscribe@googlegroups.com **AM:** mwdx+subscribe@googlegroups.com

WTFDA WEBSITE

<http://www.wtfda.org>

- News and Links
- VUDs from 70s thru 2000
- Memorabilia

WTFDA FORUMS

<http://forums.wtfda.org>

- Join in the conversation with fellow members!
- Get help with unIDs

FM DATABASE

<http://db.wtfda.org>

Database of US, Canadian and Mexican FM Stations. Sortable, searchable and up to date!



Like us on Facebook: [TV & FM DXing](#)

