



## THE DTV REPACK: PHASE ONE BEGINS!

The Official Publication of the Worldwide TV-FM DX Association



**02 Mailbox**

**03 TV News**

**20 FM Facilities**

### INSIDE THIS VUD

**23 FM News**

**31 Full Power FMs on  
Channel 5 or 6?**

**32 Photo News**

[CLICK TO NAVIGATE](#)

**35 Coast to Coast TV DX**

**37 Northern FM DX**

**49 Southern FM DX**

# THE WORLDWIDE TV-FM DX ASSOCIATION

*Serving the UHF-VHF Enthusiast*

THE VHF-UHF DIGEST IS THE OFFICIAL PUBLICATION OF THE WORLDWIDE TV-FM DX ASSOCIATION DEDICATED TO THE OBSERVATION AND STUDY OF THE PROPAGATION OF LONG DISTANCE TELEVISION AND FM BROADCASTING SIGNALS AT VHF AND UHF. WTFDA IS GOVERNED BY A BOARD OF DIRECTORS: DOUG SMITH, KEITH MCGINNIS, JIM THOMAS AND MIKE BUGAJ.



*Editor and publisher:* **Ryan Grabow**

*Treasurer:* **Keith McGinnis** wtfda.org/info *Webmaster:* **Tim McVey**

*Forum Site Administrator:* **Chris Cervantez**

*Editorial Staff:* **Jeff Kruszka, Keith McGinnis, Fred Nordquist, Nick Langan, Doug Smith, John Zondlo and Mike Bugaj**



## The Mailbox

PAGE TWO

P.O. Box 501 Somersville, CT 06072

Mike Bugaj - Enfield, CT mikeb@wtfda.org



OCTOBER 2018

DUES RECEIVED			
DATE	NAME	S/P	EXP
8/29/2018	David Lang	CT	8/19
9/3/2018	David Braun	DE	6/19
9/9/2018	Russel Lay	NC	10/19
9/9/2018	Larry Van Horn	NC	9/19
9/14/2018	Ron Cesarek	FL	10/19
9/16/2018	Bill Hale	TX	10/19
9/18/2019	Steve Wiseblood	TX	10/19
9/24/2018	Mike Bugaj	CT	9/19
9/26/2018	John Tudenham	MO	9/19

Welcome to October! Es season is over and there's just a little time left for tropo season before we head back to the cave to spend the winter.

This month we welcome David Lang and Larry Van Horn to the WTFDA. David lives in Groton, CT, which is probably one of the few decent places left in CT for coastal tropo FM DXing. And I think most are familiar with Larry Van Horn. Larry is down there in Brasstown, NC and among other things, he's the former editor of Monitoring Times. Glad to have both of you with us! Hope you enjoy the WTFDA. And thanks to all of you out there for supporting the WTFDA!



## VHF Propagation Map

APRS mapping suspended pending an open source solution.

Watch this page for updates.

Jon, NG0E

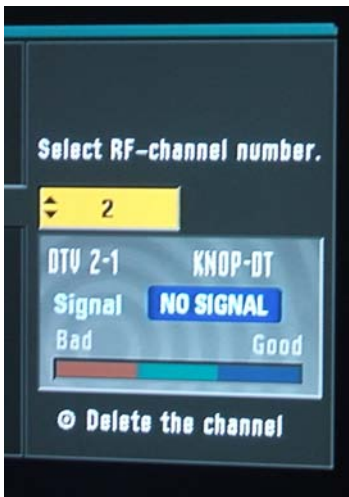
25 September 2018

By now just about everyone has seen this notice when trying to view the APRS propagation maps. After doing a little poking around I found that Google made some sweeping changes to its Maps API products and they are not good for developers. According to geoawesomeness.com, "The Standard (no access to customer support) and Premium plans are being merged into one pay-as-you-go pricing plan. And the new fee structure is not pretty. Google is raising its prices by more than 1,400%." Small developers are being hit hard by the new rates and are scrambling to find alternative mapping providers. DXMaps had to deal with this a few months back and now NG0E has his turn. We hope that eventually the APRS maps will return, even if the format is a little different.

And we will see you next month! -Mike

# TV News

Douglas E. Smith  
 1389 Old Clarksville Pike  
 Pleasant View, TN  
 37146-8098  
[w9wi@w9wi.com](mailto:w9wi@w9wi.com)  
<http://www.w9wi.com>



October 2018



Location	RF Ch	Callsign	Notes
<b>Alabama</b>			
Enterprise	14	WZBJ-LD	Returned to the air Sept. 13 <sup>th</sup> , not sure whether this channel or ch. 41.
Enterprise	26	WGEI-LD	Returned to the air Sept. 18 <sup>th</sup> .
Huntsville	31	WWHL-LP	Moved from 33, 1.85kw; CL from Decatur
<b>Louisville</b>	<b>44</b>	<b>WGIQ</b>	<b>Requests STA 870kw/226m, interim antenna while post-repack ch. 30 antenna is installed; granted</b>
Mobile	12	WMOE-LP	OFF Sept. 8 <sup>th</sup> pending construction of permanent facility
Moody	13	WBMG-LD	OFF Sept. 5 <sup>th</sup> pending construction of permanent facility on ch. 13
Tuscaloosa	21	W21DM	OFF Sept. 6 <sup>th</sup> pending construction of permanent facility
Tuscaloosa	29	W29DT	OFF Sept. 6 <sup>th</sup> pending construction of permanent facility
<b>Arizona</b>			
Flagstaff	3	K03ID	Requests power increase to 3kw, 34-42-05/112-07-02
Gila River Indian Co.	21	NEW-Iptv	Application for new station dismissed at request of applicant; intended to be a modification of existing KGRQ-LD.
Mesa	35	KPNX	Requests STA to broadcast in ATSC 3.0 over KFPH-CD transmitter
Phoenix	13	KDPH-LD	From 46, 3kw; granted
Phoenix	35	KAET, KPHO-TV, KTVK	Request STAs to broadcast in ATSC 3.0 over KFPH-CD transmitter.
Sierra Vista	28	K28OY	Granted digital conversion from analog K20FO, 15kw
<b>Tolleson</b>	<b>31</b>	<b>KPPX-TV</b>	<b>Granted STA for interim antenna, 125kw/513m while co-located KTAZ moves to post-repack ch. 29</b>
Tucson	36	KUVE-CD	Requests STA for this channel, 14kw
Window Rock	33	K33QC	From K45LU; granted
Yuma	27	K33MD	From 33 dismissed
<b>Arkansas</b>			
Bentonville	28	K28NT	From K48MR, 10kw; granted
El Dorado	20	K20OC	From K18AB, 15kw; granted
<b>Eureka Springs</b>	<b>25</b>	<b>KXNW</b>	<b>Moved from 34, 130kw/218m</b>
Harrison	8	KTOK-LP	Granted power reduction to 300 watts

<b>Location</b>	<b>RF Ch</b>	<b>Callsign</b>	<b>Notes</b>
<b>Hot Springs</b>	<b>26</b>	<b>KVTH-DT</b>	<b>Requests STA, 55kw/47m, interim facility during repack work; granted</b>
Hot Springs	34	K34MO	OFF Sept. 20 <sup>th</sup>
Hot Springs	41	K41NH	OFF Sept. 20 <sup>th</sup> w
Jonesboro	30	K30MF	Returned to the air Sept. 21 <sup>st</sup>
Texarkana	24	KLIA-LD	From 32, 6kw; granted
Texarkana	32	KLIA-LD	OFF Sept. 20 <sup>th</sup>
<b>Baja California Sur</b>			
Cabo San Lucas	35	XHCPBS-	New station, 14.290kw/285m, 22-55-46/109-51-51 "TV Mar"
La Paz	23	XHCPBC-	New station, 10kw/-56m, 24-09-42/110-17-52 "TV Mar"
<b>California</b>			
Altadena	8	KTAV-LD	From 46, 2kw, 34-32-49/118-12-47; CL from Lancaster; granted
Atascadero	33	KCCF-LD	From 46, 15kw, 35-16-55/120-48-45; granted
Bakersfield	32	KEBK-LD	From 27; granted
Banning	5	KRVD-LD	OFF Aug. 23 <sup>rd</sup> , evicted by site owner & U.S. Forest Service
<b>Ceres</b>	<b>15</b>	<b>KBSV</b>	<b>Granted STA 500 watts/44m, 37-35-00/120-57-23; lost lease, and existing equipment was damaged while being removed.</b>
Chico	14	K15HV	From 15 dismissed, not eligible to file in displacement window
Chico	18	K18ND	Granted power reduction to 2.18kw
<b>Chico</b>	<b>36</b>	<b>KHSL-TV</b>	<b>Moved from 43, 170kw/462m</b>
Chico	50	KBIT-LD	License canceled
<b>Cotati</b>	<b>5</b>	<b>KRCB</b>	<b>From 23, 9.65kw/622m; modification from 980 watts/627m</b>
Fresno	5	KVHF-LD	Requests STA for this channel, 2.05kw; T-Mobile
Fresno	14	KJEO-LD	From 32; granted
Indio	8	KVPS-LD	Requests power increase to 3kw
Litchfield	30	K30PZ	From K48DI; granted
Modesto	12	K12XJ	From K49EO, 2kw; granted
Monterey	24	KMCE-LD	From 43; granted
Redding	2	K02RK	From K51LK, 3kw; granted
<i>Redding</i>	6	<i>KNNN-LP</i>	<i>OFF Sept. 14<sup>th</sup>, "technical issues"; analog station</i>
Redding	23	K51LK	Requests STA for this channel, 15kw; to share temporarily on co-owned KRDT-CD
Ridgecrest	30	K30QC	From K35HO, 650 watts; granted
Sacramento	14	KEFM-LP	Request for digital conversion from analog ch. 6 dismissed. Not eligible for filing in displacement window.
Sacramento	30	KAHC-LD	From 45, 15kw
Sacramento	33	KMSX-LD	From 42; granted
<i>San Diego</i>	6	<i>KRPE-LP</i>	<i>Granted site change to 32-41-46/116-56-13; analog station</i>
San Diego	16	KDTF-LD	Requests STA for this channel, 15kw
<b>San Diego</b>	<b>19</b>	<b>KSWB-TV</b>	<b>Requests STA 294kw/567m, interim antenna while post-repack ch. 26 antenna is installed; granted</b>
San Diego	20	KZSD-LP	Requests STA for this channel, digital, 7.3kw, 32-41-47/116-56-10 replacing analog ch. 41
San Jose	14	KBKF-LP	Request for digital conversion from analog ch. 6 dismissed. Not eligible for filing in displacement window.
San Juan Bautista	4	K04RS	Requests power increase to 1kw, 37-07-07/121-50-01
San Rafael	8	KDAS-LD	From 48, 10 watts, 37-55-43/122-35-15; amendment from 500 watts
Santa Barbara	17	KSBB-CD	Granted STA to operate in ATSC 3.0. Will simulcast in ATSC 1.0 on co-owned KEYT-TV.
Santa Maria	29	KQMM-CD	OFF Sept. 6 <sup>th</sup> pending delivery of new transmitter
South Lake Tahoe	14	K14SD	From K48LA; granted
Stateline	16	K16NI	From K40JV, 15kw; granted
Walnut	40	KRMV-LD	Returned to the air Sept. 25 <sup>th</sup>

<b>Location</b>	<b>RF Ch</b>	<b>Callsign</b>	<b>Notes</b>
Weed	24	K24NL	From K38LL; granted
Weed	31	K31PF	From K39KM, 500 watts; granted
<b>Coahuila</b>			
<b>Monclova</b>	<b>33</b>	<b>XHMTCO-</b>	<b>Granted facilities change to 45.052kw/-122m (I suspect previous HAAT of 157m was wrong)</b>
Saltillo	19	XHWX-TDT-1	13.605kw/-109m; see text
<b>Colorado</b>			
Aguilar	35	K35OR	From K46JN; granted
<b>Arvada</b>	<b>40</b>	<b>KDNF-LD</b>	<b>From 44, 84kw/344m, 39-35-59/105-12-37; to share on KRMT Denver</b>
Bayfield	21	K21OG	From K46FM, 430 watts, 37-11-03/107-29-08; granted
Colorado Springs	29	KTLO-LD	From 49, 15kw; granted
Crested Butte	31	K31PH	From K45CY; granted
Crested Butte	32	K32BL	From K47BL; granted
Crested Butte	34	K34BW	From K49BW; granted
Del Norte	35	K35OO	From K46JO; granted
Fort Collins	31	KRMA-DRT	Requests STA for this channel, 13.1kw, ex-ch. 47
Gateway	16	K16MR	From K45IT, 100 watts; granted
Gateway	23	K23NX	From K47JR, 100 watts; granted
Gateway	25	K25PC	From K49IO, 100 watts; granted
Julesburg	33	K33PZ	From K45IS; granted
Julesburg	36	K36IL	From K51IL; granted
Lake George	19	K19MN	From K45KB; granted
Montrose	23	K49JX	Requests STA for this channel, 11.7kw, 38-18-55/108-12-17; granted
Montrose	35	K35NS	Moved from K39MK
Pagosa Springs	36	K36PY	From K40GE, 37-11-32/107-05-57; granted
Paonia	35	K35ON	From K42JR; granted
Parlin	28	K28DC	From K39DC; granted
Parlin	30	K30DU	From K41DU; granted
San Luis	35	K35OQ	From K44IX; granted
Sargents	24	K24LZ	From K47LZ; granted
Sargents	25	K25KR	From K49KR; granted. DUPLICATE CALLSIGN, there is already a K25KR in Round Mountain, Nevada
Silt	20	K20OE	From K49AH, 39-25-21/107-22-33; granted
Wray	14	K14SA	From K44FM, 183 watts; granted
<b>Connecticut</b>			
<b>Hartford</b>	<b>31</b>	<b>WTIC-TV</b>	<b>Requests STA for 120kw/456m for interim antenna</b>
<b>Hartford</b>	<b>45</b>	<b>WEDH</b>	<b>Requests STA for 120kw/456m for interim antenna</b>
<b>New Haven</b>	<b>21</b>	<b>WTXX-LD</b>	<b>From 34, 1000kw/220m, 41-03-10/73-33-47; to share on WEDW Bridgeport; CL from Springfield, Mass.; STA for this change dismissed. But refiled &amp; granted.</b>
<b>New Haven</b>	<b>45</b>	<b>WEDY</b>	<b>Moved from 41, 490kw/505m, 41-42-13/72-49-55; sharing on WEDH Hartford</b>
<b>Waterbury</b>	<b>20</b>	<b>WCCT-TV</b>	<b>Granted STA 89kw/456m, presumed interim facility during repack</b>
<b>Durango</b>			
Cuencamé	30	XHRCDU-	New station, 4.061kw/-47m, 24-52-21/103-41-49
Durango	13	XHPBDR-	New station, 5kw/39m, 24-01-32/104-40-50; SPR
<b>Florida</b>			
Alachua	40	W40CQ	OFF Sept. 11 <sup>th</sup> pending move to ch. 32
Crestview	36	WGOX-LD	From 43; granted
Crystal River	33	WGCT-LD	Power increased to 15kw, 27-50-51/82-15-49

<b>Location</b>	<b>RF Ch</b>	<b>Callsign</b>	<b>Notes</b>
Gainesville	15	WNFT-LD	Returned to the air Sept. 5th
Key West	27	WGZT-LP	Granted STA, 10 watts, 24-33-14/81-47-19; lost licensed site; returned to the air under STA Sept. 9 <sup>th</sup> .
Matecumbe	43	W43CB	OFF Aug. 24 <sup>th</sup> pending move to ch. 3
Melbourne	20	WSCF-LD	Requests STA to operate with an antenna 15m lower than licensed; granted
Melbourne	36	W36FF	From W47DA, 15kw; granted
Miami	8	WGEN-LD, WVFW-LD	Co-owned stations plan to synchronize their signals to alleviate predicted mutual interference over at least 61% of their coverage area. Both stations are 3kw and only 25km apart.
Ocala	31	WRCZ-LD	From 35 dismissed, not eligible to file in displacement window
Orlando	25	WFEF-LD	From 50, 15kw; granted
<b>Panama City</b>	<b>16</b>	<b>WJHG-TV</b>	<b>Granted new post-repack auxiliary backup transmitter, 16kw/232m, 30-26-00/85-24-51</b>
Panama City	16	W16CX	OFF Sept. 7 <sup>th</sup> pending construction of permanent facility
<b>Panama City</b>	<b>28</b>	<b>WFSG</b>	<b>Requests STA to transition from ch. 38 on original schedule, in Phase 1, instead of by Sept. 13<sup>th</sup>. Tower crew detoured to another site when parts weren't ready at WFSG. STA granted.</b>
Panama City	35	WECP-LD	From 29; granted
St. Petersburg	34	WDNP-LD	From 36, 11.5kw, 27-55-55/82-24-04; amendment from 15kw & to change site
Sebring	36	W23CN	From 23, 15kw; granted
Tampa	8	WTBT-LD	From 45, 3kw; granted
Wewahitchka	17	WEWA-LD	OFF Sept. 15 <sup>th</sup> ; lost site lease

### **Georgia**

Atlanta	15	WAGC-LD	From 14, 15kw; granted
Atlanta	30	WBUD-LD	Form 36, 34-02-31/84-02-12; CL from Blairsville; granted
Augusta	19	WBPI-CD	Moved from 49, 15kw
Augusta	32	WDYH-LD	From 27; granted
Carrollton	23	W23EV	From W13DJ, 8.1kw, 33-33-51/85-01-03; granted
Columbus	20	WCGZ-LD	From 21, 7kw, 33-00-10/85-08-05; CL from La Grange; granted
La Grange	16	W16ED	From W26DS, 15kw, 33-00-10/85-08-05; granted
Macon	18	WPGA-LP	STA from analog ch. 50 dismissed, unnecessary
<b>Monroe</b>	<b>44</b>	<b>WHSB-TV</b>	<b>Requests STA 500kw/310m, 50% power due to tube failure; granted. Expects to remain on half power until move to ch. 22 in August 2019.</b>
Savannah	30	WXSX-LD	From 46, 15kw; granted
Savannah	33	WDID-LD	From 26, 15kw, 32-03-35/81-20-42; granted
Savannah	41	WHDS-LD	OFF Sept. 13 <sup>th</sup> due to Hurricane Florence & T-Mobile; expects to return on ch. 20.
Warner Robins	31	WMUB-LD	From 38; granted

### **Hidalgo**

Pachuca	13	XHPBPA-	New station, 2.5kw/73m, 20-06-33/98-44-09; SPR
---------	----	---------	--

### **Idaho**

Boise	19	KBTI-LD	From 41; granted
Boise	35	KZAK-LD	Moved from 49
Boise	43	KIWB-LP	OFF Sept. 21 <sup>st</sup> , T-Mobile
Boise	51	KCBB-LD	OFF Sept. 21 <sup>st</sup> , T-Mobile
Bonnars Ferry	17	K46HZ	Requests STA for this channel pending coordination with Canada.
Bonnars Ferry	26	K50GL	Requests STA for this channel pending coordination with Canada.
Coeur d'Alene	30	K30QA	From K41FJ; granted; STA dismissed as unnecessary
Cottonwood	15	K15MA	From K39CT, 1.1kw, 46-04-00/116-27-51; granted

<b>Location</b>	<b>RF Ch</b>	<b>Callsign</b>	<b>Notes</b>
Cottonwood	23	K23NL	Form K48DH, 200 watts; granted
Garden Valley	26	K26OW	From K51FL, 10 watts, 44-02-21/115-48-44; granted
Hagerman	18	K18NF	From K49IT, 252 watts; amendment from ch. 25 (which was a typo); granted
Hagerman	25	K25OX	Moved from K47JW, 252 watts
Holbrook	21	K21OA	From K43MF, 42-07-02/112-39-26; granted
Juliaetta	22	K43GE	From 43, 50 watts; amendment from 2 watts
Leadore	25	K25PY	From K38OG; granted
Lewiston	34	K34QC	From K17JR, 1.4kw; granted
Malad	18	K18NC	From K39KK; granted
Malad	32	K32NV	From K49KB; granted
Priest Lake	36	K36PW	From K42GT, 9 watts; granted
Salmon	29	K29LY	Moved from K49IC, 110 watts
Salmon	30	K30PW	From K42JX; granted
Salmon	32	K32NQ	From K40LW; granted
Salmon	36	K36PM	From K44KM; granted
Sandpoint	21	K21NG	Moved from K48DX, 705 watts
Soda Springs	21	K21MR	Moved from K49HU, 42-37-59/111-41-33
Soda Springs	25	K25OI	Moved from K47HF, 42-37-59/111-41-33
Soda Springs	32	K32LX	Moved from K41GK, 42-37-59/111-41-33
Soda Springs	34	K34NF	Moved from K39GZ, 42-37-59/111-41-33
Twin Falls	24	K24NN	From K42JJ, 15kw; granted

### Illinois

Arlington Heights	11	WRJK-LD	From 22, 400 watts; granted
Champaign	27	W27EL	From W39BH, 5kw; granted
Davenport	26	WUEB-LD	From 24; granted. Suspect they mean Davenport, Iowa.
Jacksonville	27	WEEJ-LD	From 49, 15kw, 39-46-10/89-34-29; site just east of Springfield; granted
Jacksonville	49	WEEJ-LD	OFF Sept. 19th
Mount Vernon	29	WLEH-LD	From 48; granted; OFF Sept. 19th
Mount Vernon	34	W34FI	From W42EM, 15kw, 38-40-53/90-12-01; granted; site is in St. Louis
Peoria	23	W23ET	From W35DE, 10kw; granted
Quincy	40	W40DM	OFF Sept. 19 <sup>th</sup>
Rochelle	18	WMKB-LD	Granted digital conversion from analog ch. 25, 9kw
Rockford	11	WYCH-LD	From 47, 2kw; granted
Rockford	17	WIDN-LD	Returned to the air Sept. 19 <sup>th</sup>
Rockford	28	WIFR-LD	From 23; granted
Rockford	28	WODF-LD	From 40, 15kw, 41-37-10/90-17-47; granted (site is near the Mississippi River across from Le Claire, Iowa)
Springfield	5	WBDI-LD	From 14, 39-46-10/89-34-29; granted
Sterling	27	W27EJ	From W48CK, 15kw; granted; STA dismissed as unnecessary

### Indiana

Evansville	27	W27DH	OFF Sept. 6 <sup>th</sup> pending construction of permanent facility
Evansville	33	W33CU	OFF Sept. 5 <sup>th</sup> pending construction of permanent facility
Fort Wayne	16	W16CU	OFF Aug. 31 <sup>st</sup> pending construction of permanent facility
Fort Wayne	30	W30EH	From W41DS, 5kw, 41-05-56/85-08-42; granted
<b>Fort Wayne</b>	<b>34</b>	<b>WISE-TV</b>	<b>Requests STA for interim antenna pending installation of permanent unit</b>
Fort Wayne	43	W43DI	OFF Aug. 31 <sup>st</sup> pending construction of permanent facility
Fort Wayne	49	WODP-LD	OFF Aug. 22 <sup>nd</sup> pending construction of permanent ch. 17 facility at new site
Indianapolis	24	WCZA-LD	From 15, 2kw, 40-08-56/85-56-06; CL from Marion; granted
Lafayette	29	W29FA	Granted digital conversion from analog W51DU, 15kw
South Bend	35	WBND-LD	From 34; granted



<b>Location</b>	<b>RF Ch</b>	<b>Callsign</b>	<b>Notes</b>
Terre Haute	23	W23DZ	OFF Sept. 4 <sup>th</sup> pending construction of permanent facility
Wolcott	9	WUDM-LD	From W49DS, 3kw, 41-17-23/87-17-59; granted; call changed from KPDS-LD; OFF Sept. 5 <sup>th</sup> pending construction

### Iowa

Cedar Falls	14	K14PR	OFF Sept. 2 <sup>nd</sup> pending construction of permanent facility
Cedar Falls	21	K21MI	OFF Sept. 2 <sup>nd</sup> pending construction of permanent facility
Cedar Falls	31	KMKI-LD	From 46; granted
Cedar Falls	32	K32KZ	OFF Sept. 2 <sup>nd</sup> pending construction of permanent facility
Cedar Falls	34	K34MM	OFF Sept. 2 <sup>nd</sup> pending construction of permanent facility
Cedar Falls	46	K46MK	OFF Sept. 2 <sup>nd</sup> pending construction of permanent facility
Davenport	32	KQCT-LD	Granted digital conversion from analog ch. 44
Davenport	33	K33QA	From K20KF; granted
Ottumwa	28	KGLU-LD	From 17; granted

### Jalisco

Ciudad Guzmán	11	XHPBGZ-	New station, 5.5kw/257m, 19-39-53/103-27-28; relays XHUDG Guadalajara
<b>Guadalajara</b>	<b>9</b>	<b>XHQMGU-</b>	<b>New station, 50.183kw/354m, 20-36-03/103-21-51; "Ocho TV" (but virtual channel 10...)</b>
<b>Guadalajara</b>	<b>23</b>	<b>XHPBGD-</b>	<b>New station, 125kw/374m, 20-36-03/103-21-51; Once TV</b>
<b>Guadalajara</b>	<b>31</b>	<b>XHSFJ-TDT</b>	<b>Power increased to 193.13kw/323m</b>
<b>Guadalajara</b>	<b>33</b>	<b>XHJAL-TDT</b>	<b>Power increased to 192.69kw/323m</b>
<b>Guadalajara</b>	<b>34</b>	<b>XHTDJA-</b>	<b>New station, 200kw/332m, 20-36-03/103-21-51; Multimedios; on the air. Currently with test pattern on 6.1; Milenio TV on 6.2; and Teleritmo on 6.3.</b>
Lagos de Moreno	9	XHPBLM-	New station, 3.13kw/66m, 21-21-23/101-57-02; relays XHUDG Guadalajara
Puerto Vallarta	13	XHPBPV-	New station, 5kw/-157m, 20-36-43/105-13-30; SPR
Puerto Vallarta	27	XHCPPV-	New station, 90kw/-338m, 20-36-47/105-13-41; "TV Mar"

### Kansas

Kansas City	19	KCKS-LD	From 25, 39-08-58/94-56-45; granted
Salina	23	KSNL-LD	Moved from 47
Salina	29	KHDS-LD	Moved from 51

### Kentucky

<b>Ashland</b>	<b>36</b>	<b>WKAS</b>	<b>From 26, 63.2kw/152m; amendment from 63.2kw/147m</b>
Augusta	16	W16EB	From W20CT; granted
Bowling Green	20	WKUT-LD	From 32, 5kw, 37-26-54/85-52-48 (Upton); granted
Bowling Green	32	WKUT-LD	OFF Sept. 6 <sup>th</sup> pending construction of permanent facility
Bowling Green	34	W34FG	From W14DG, 15kw, 37-03-49/86-26-06; granted
<b>Danville</b>	<b>19</b>	<b>WDKY-TV</b>	<b>From 31; granted</b>
Louisa	32	W32FD	From W28DD, 120 watts; granted
<b>Somerset</b>	<b>17</b>	<b>WKSO-TV</b>	<b>From 14, 49.1kw/447m; amendment from 49.1kw/446m; granted</b>

### Louisiana

Alexandria	33	K33MP	Returned to the air Sept. 18 <sup>th</sup> .
Lafayette	21	K21OM	From K18JF, 5kw, 30-10-59/92-21-49; granted
Lafayette	47	K47NC	OFF Sept. 7 <sup>th</sup> pending construction of permanent facility
Lake Charles	14	KYHT-LD	From 43, 15kw, 30-15-09/92-56-43 granted
Lake Charles	21	K45HY	From 45, 10kw; amendment from ch. 22
<b>Minden</b>	<b>32</b>	<b>KPXJ</b>	<b>From 21, 1000kw/502m; granted</b>
Opelousas	39	K39JV	Requests power reduction to 1.22kw, 30-36-46/91-45-41
Shreveport	30	K30QB	From 47, 15kw; amendment from 13.5kw; granted



<i>Location</i>	<i>RF Ch</i>	<i>Callsign</i>	<i>Notes</i>
<b>Maryland</b>			
Baltimore	25	WNUV	From 40, 920kw/373m; amendment from 920kw/381m; granted; moved.
Baltimore	38	WMAR-TV	Requests STA 660kw/312m to operate at 2/3 power after transmitter failure; granted
<b>Massachusetts</b>			
Boston	4	WHDT-LD	From 38, 3kw; granted
Boston	31	WFXT	Requests STA 280kw/332m, 42-18-37/71-14-12; interim facility while antenna at existing site is replaced for post-repack ch. 34
Boston	36	WBTS-LD	From 46, 15kw; granted
Foxborough	10	WMFP	Moved from 18, 5kw/142m, 42-00-38/71-02-40; CL from Lawrence. Moved on Sept. 6 <sup>th</sup> to share on WWDP.
Springfield	20	WSHM-LD	From 21; granted
Springfield	23	WDMR-LD	From 51; granted
<b>Ciudad de México</b>			
Mexico	11	XHTDMX-	Facilities set 170kw/342m, 19-31-59/99-07-50
Tultepec	11	XHTDMX-1	Granted DTS, 9.998kw/-1.8m, 19-42-16/99-07-31
<b>Michigan</b>			
Cadillac	9	WWTV	On reduced power of 2.7kw from Sept. 1 <sup>st</sup> after transmitter fire.
Cadillac	32	WFQX-TV	OFF Sept. 1 <sup>st</sup> after transmitter fire; sharing on WWTV
Detroit	33	WHPS-CD	Call changed from W33BY
Escanaba	48	WJMN-TV	Requests STA for interim pre-repack antenna, 121kw/287m
Midland	34	WIEK-LD	From 23, 8kw, 43-10-14/84-45-33 (near St. Johns); granted
Muskegon	49	WMKG-CD	Requests STA for 5kw from temporary transmitter pending authorization of new site
<b>Michoacan</b>			
Huetamo	11	XHPBHU-	New station, 1.196kw/-162m, 18-38-46/100-53-55; SMRTV
Uruapan	15	XHJGMI-	New station, 100w/-126m, 19-25-24/102-03-58
<b>Minnesota</b>			
Lake Crystal	25	K43JE	Requests STA for this channel, 7.5kw; amendment from ch. 18
Minneapolis	19	KKTW-LD	Power reduced to 435 watts, 44-59-44/93-26-56; moved from Buffalo, Minn.
Olivia	31	K49AJ	Requests STA for this channel
Rochester	15	K15JM	OFF Sept. 2 <sup>nd</sup> pending construction of permanent facility
Rochester	28	K28LW	OFF Sept. 2 <sup>nd</sup> pending construction of permanent facility
Rochester	46	KXLT-TV	Requests STA 113kw/341m to operate on only lower half of antenna. Upper half damaged by lightning.
Rochester	49	K49MQ	OFF Sept. 2 <sup>nd</sup> pending construction of permanent facility
St. Cloud	38	K38OH	OFF Sept. 2 <sup>nd</sup> pending construction of permanent facility
St. James	13	K13AAR	From K38MY, 3kw, 43-56-12/94-24-39; granted (KEYC-TV tower, Lewisville)
<b>Mississippi</b>			
Batesville	22	WEBU-LD	From 11, 15kw, 34-13-57/90-01-10; CL from Webb; granted
Biloxi	32	WLOX	Moved from 39, 525kw/397m
Clarksdale	30	WQEK-LD	From 18, 10kw; granted
Columbus	27	WCBI-TV	Moved from 35, 599kw/584m on Sept. 14 <sup>th</sup> .
Greenville	47	W47EM	OFF Sept. 7 <sup>th</sup> pending construction of permanent facility
Hattiesburg	27	W27EH	Granted digital conversion from analog W42CW, 5kw
Tupelo	14	W14EQ	Granted digital conversion from analog W40BZ, 5kw, 34-09-20/ 88-38-34

<i>Location</i>	<i>RF Ch</i>	<i>Callsign</i>	<i>Notes</i>
Tupelo	49	WEPH	Granted STA, 40kw, for temporary transmission line pending switch to post-repack ch. 17 antenna
<b>Missouri</b>			
Jefferson City	33	K33QE	From K32KV, 15kw, 38-45-26/93-37-47; granted
Joplin	18	KIAP-LD	From 38, 15kw; granted
Joplin	20	K20KY	OFF Sept. 20 <sup>th</sup>
Joplin	24	KRLJ-LD	From 45, 15kw; granted
Joplin	27	K27LA	OFF Sept. 20 <sup>th</sup>
Joplin	28	KJPX-LD	Granted digital conversion from analog ch. 35, 10kw
Joplin	38	KIAP-LD	Returned to the air Sept. 20 <sup>th</sup>
Joplin	45	K45LR	OFF Sept. 20 <sup>th</sup>
Joplin	47	K47NH	OFF Sept. 20 <sup>th</sup>
Kansas City	14	KUKC-LD	From 20; granted
Kansas City	15	K15MB	From K45IO; granted
Poplar Bluff	32	K32NX	From K39CP, 1.98kw; granted
St. Louis	15	K15KP	From K38HD, 38-34-05/90-19-55; amendment to change site, lost lease on previous site; granted
St. Louis	30	WODK-LD	Requests STA for 8.7kw, 38-26-15/90-28-41
Springfield	16	KOZK	Granted STA 94.88kw/442m, 37-10-26/92-56-28, post-repack facility on KYTV tower. (presumably supersedes 11kw STA on pre-repack ch. 23)
West Plains	36	K36NN	Moved from K38HE
<b>Montana</b>			
Ashland	14	K48MC	STA for this channel dismissed, unnecessary
Billings	32	K32NP	From K28LF, 15kw; granted
Billings	34	K34PO	From K33KP, 15kw; granted
Colstrip	26	K26OX	From K38MC; granted
Kalispell	28	K28OG	From K44FR; granted; STA dismissed as unnecessary
Kalispell	29	K29AA	OFF Sept. 16 <sup>th</sup> pending move to post-repack channel.
Plains	34	K34PQ	From K48LG, 1.04kw; granted
Polson	29	K29LQ	Moved from K41IW
Polson	35	K35NB	Moved from K50LB
Whitefish	31	K38OE	Granted STA for this channel
Whitehall	33	K33OV	Moved from K40HL
Whitehall	36	K36OS	Moved from K49KA, 1.7kw
Woods Bay	22	K22MG	Moved from K48EO
<b>Nayarit</b>			
Acaponeta	27	XHRTNA-	New station, 32.7kw/92m, 22-26-37/105-25-20; RTD Nayarit
Tepic	26	XHRTTS-	New station, 29.9kw/549m, 21-32-01/104-54-31; RTD Nayarit
<b>Nebraska</b>			
Lincoln	11	KBLI-LD	From 31, 3kw, 40-51-10/96-40-37; amendment from ch. 34
Lincoln	18	K18CD	Site changed to 40-49-17/96-39-44
Lincoln	31	K31LI	OFF Sept. 3 <sup>rd</sup> pending construction of permanent facility
Lincoln	32	KAJS-LD	OFF Sept. 3 <sup>rd</sup> pending construction of permanent facility
Lincoln	34	KQLD-LD	OFF Sept. 3 <sup>rd</sup> pending construction of permanent facility
Lincoln	41	K41LP	OFF Sept. 3 <sup>rd</sup> pending construction of permanent facility
McCook	21	K21OI	From K44FN; granted
Omaha	22	WOWT	Granted STA for 46.5kw/418m, reduced power due to tube problem

<b>Location</b>	<b>RF Ch</b>	<b>Callsign</b>	<b>Notes</b>
<b>Nevada</b>			
Austin	28	K28QD	From K44LL; granted
Austin	35	K35OP	From K46FB; granted
Battle Mountain	34	K34PP	From K42DZ; granted
Beowawe	36	K36PN	From K40CA, 1kw, 40-37-04/116-41-24; granted
Eureka	29	K29NK	From K49LG; granted
Fallon	21	K21NY	From K42JS, 600 watts; granted
Fallon	25	K25PQ	From K51IA, 600 watts; granted
Golconda	22	K22NU	From K51BW, 40 watts, 41-09-17/117-28-17; granted
Golconda	24	K24NQ	From K38LX, 160 watts, 41-09-17/117-28-17; granted
Hawthorne	15	K15LG	From K50AI; granted
Hawthorne	29	K29MG	From K48GG; granted
Imlay	27	K27OC	From K41GI, 20 watts, 40-34-23/118-13-24; granted
Imlay	28	K28QC	From K39CX; granted
Lake Tahoe	19	K19MK	From K49MD; granted
Las Vegas	26	KGNG-LD	Moved from 48
Lund	21	K21OK	From K43NA; granted
Lund	23	K23ON	From K45HS; granted
Lund	25	K25PX	From K47HV; granted
Lund	27	K27OH	From K49AM; granted
Lund	29	K29NH	From K40MA, 3.55kw; granted
McDermitt	14	K14SE	From K42KW; granted
Pahrump	25	KPVM-LD	Granted STA for this channel, 14kw, 36-12-25/115-57-38
Pahrump	31	K31OY	From K42AA; granted
Panaca	30	K30QE	From K41MY; granted
Round Mountain	33	K33PY	From K45EY, 35 watts; granted
Ruth	19	K19MM	From K39LE; granted
Ruth	21	K21OJ	From K44KP; granted
Starr Valley	35	K35OI	From K39GL; granted
Valmy	20	K20OD	From K39IR, 40-56-19/117-23-38; granted
Valmy	27	K27OM	From K40LI, 40-56-19/117-23-38; granted
Verdi	27	K27OD	From K51DJ; granted
Walker Lake	23	K23OK	From K42DS, 480 watts; granted
Winnemucca	30	K30PX	From K45BJ, 185 watts, 41-00-38/117-46-04; granted
Winnemucca	32	K32NR	From K47CH, 185 watts
Winnemucca	36	K36PO	From K49BK, 185 watts, 41-00-38/117-46-04; granted
Yerington	19	K19MJ	From K40DV, 340 watts; granted
<b>New Hampshire</b>			
Charlestown	26	WYCU-LD	Returned to the air Aug. 23 <sup>rd</sup>
<b>New Jersey</b>			
Atlantic City	7	WMGM-LP	Power increased to 120 watts, 39-23-37/74-31-11 ANALOG station
<b>New Mexico</b>			
Alamogordo	30	K42EY	Requests STA for this channel, 700 watts; T-Mobile.
Alamogordo	34	K34CR	Granted conversion to digital, 1kw, 32-49-47/105-53-15
Albuquerque	34	K34PZ	From K38IM, 15kw; granted
Capitan	28	K28PS	From K38MI; granted
Capulin	21	K21OE	From K42CH; granted
Capulin	23	K23OP	From K44CG; granted
Capulin	25	K25PW	From K46BY; granted
Capulin	27	K27OL	From K48JH; granted
Capulin	29	K29NJ	From K50DY; granted

<b>Location</b>	<b>RF Ch</b>	<b>Callsign</b>	<b>Notes</b>
Datil	21	K21OH	From K48HL; granted
Farmington	36	K36PP	From K40FI; granted
Gallup	19	K19MP	From K48GK; granted
Gallup	36	K36PV	From K39EW; granted
Grants	25	K25PN	License canceled
<i>Grants</i>	46	<i>K46FI</i>	<i>License canceled (analog)</i>
Las Cruces	22	K22NM	From K42DJ; granted
Moon Ranch	23	K23OO	From K43MQ; granted
Ramah	31	K31OX	From K40MF; granted
Silver City	17	K17OB	From K45EC; granted
Socorro	33	K33PG	Granted digital conversion from analog K46HY; moved
Truth or Consequences	33	K33PE	From K40GH, 500 watts, 33-08-53/107-17-14; granted
Tucumcari	21	K21OF	From K38FP; granted
Zuni	26	K26OV	From K39FY, 830 watts; granted
Zuni Pueblo	33	K33QD	From K43OT; granted
<b>New York</b>			
<b>Buffalo</b>	<b>31</b>	<b>WNED-TV</b>	<b>From 43, 175kw/332m; amendment from 333kw/332m, to reduce interference to CITY-DT-2 Woodstock, Ontario.</b>
Burlington	31	W31BP	OFF Sept. 6 <sup>th</sup> , transmitter failure
Elmira	17	W26BF	From 26 dismissed, not eligible to file in displacement window
Glens Falls	32	W32FC	From W47CM, 1.42kw; granted
<b>New York</b>	<b>33</b>	<b>WCBS-TV</b>	<b>Application for pre-repack backup transmitter, 447kw/397m, 40-44-54/73-59-09</b>
New York	35	WNYX-LD	Returned to the air Sept. 25th
<b>New York</b>	<b>36</b>	<b>WCBS-TV</b>	<b>Application for post-repack backup transmitter, 241kw/496m; granted</b>
New York	41	W41DO	OFF Sept. 1 <sup>st</sup> , T-Mobile
<i>Syracuse</i>	39	<i>WNDR-LP</i>	<i>License cancelled</i>
<b>North Carolina</b>			
Boone	27	W27EK	From W41DL, 450 watts; granted
Bryson City	21	W21DV	From W40CW, 15kw; granted
Canton	10	W10DF	From W11AU, 35-34-05/82-54-24; granted
Durham	36	W36FG	From W24CP, 3kw; granted
Jefferson	30	W30EF	From W25AY, 4kw; granted
Kinston	26	WTMH-LD	From 21, 9kw; granted
Marion	34	W34FH	From W20DD, 11.5kw; granted
Oxford	23	WUNC-DRT	From 46, 8kw; granted; granted STA for reduced power of 2.5kw until WUNK vacates ch. 23 next September
Raleigh	4	WAUG-LD	From 8; granted
Raleigh	31	WIED-LD	From 14, 15kw; granted
Tryon	7	W07DT	From W11AH; granted
Weaverville	18	W18EP	From W09AR, 500 watts; granted
Wilmington	7	WDQB-LD	From 22, 2kw; granted
Wilmington	30	WDZA-LD	From W20DA, 15kw, 34-07-54/78-11-16; granted
<b>North Dakota</b>			
<b>Fargo</b>	<b>36</b>	<b>KVLY-TV</b>	<b>New backup transmitter granted, 92.6kw/467m</b>
<b>Grand Forks</b>	<b>27</b>	<b>KCPM</b>	<b>Returned to the air Sept. 15<sup>th</sup>, 1.25kw/18m, 47-56-44/97-01-19</b>

<b>Location</b>	<b>RF Ch</b>	<b>Callsign</b>	<b>Notes</b>
<b>Nuevo Leon</b>			
China	19	XHWX-TDT-5101w/26m	
Escobedo	19	XHWX-TDT-328w/-77m	
Galeana	19	XHWX-TDT-981w/-29m	
García	19	XHWX-TDT-2120w/-222m	
<b>Guadalupe</b>	<b>11</b>	<b>XHFN-TDT-9</b>	<b>Moved from 17</b>
<b>Guadalupe</b>	<b>12</b>	<b>XHWX-TDT-4</b>	<b>Moved from 19, 9.27kw/-28m</b>
Linares	19	XHWX-TDT-8101w/16m	
Montemorelos	19	XHWX-TDT-7101w/55m	
<b>Monterrey</b>	<b>36</b>	<b>XHPBMY-</b>	<b>New station, 60kw/140m, 25-37-34/100-19-11; Once TV</b>
Sabinas Hidalgo	19	XHWX-TDT-68.549kw/-40m	
<b>Oaxaca</b>			
Matías Romero	13	XHPBMR-	New station, 1kw/415m, 16-44-27/95-05-38; SPR
<b>Ohio</b>			
Columbus	15	W15EM	From W23BZ, 39-56-14/81-03-16; granted
Columbus	17	W17EB	From W44DC, 15kw; granted
Columbus	26	WCSN-LD	From 33; granted
Columbus	29	W29EG	Requests power reduction to 1.39kw, 39-55-18/82-56-16; from Zanesville
Dayton	10	WWRD-LD	From 32, 3kw; granted
Defiance	26	WNHO-LP	Call changed from WDFM-LP
<b>Lima</b>	<b>8</b>	<b>WLIO</b>	<b>Granted STA for 14.8kw/148m, 54% power due to transmitter failure.</b>
Lima	15	WOHL-CD	From 35, 11.5kw, 40-46-32/84-07-14; amendment to power
Lima	23	W23DE	OFF Sept. 1 <sup>st</sup> pending approval of request to move to ch. 17
Pomeroy	31	WJOS-LD	From 45; granted
Toledo	6	WDMY-LP	Granted STA from ch. 38, 2.9kw, analog
<b>Toledo</b>	<b>23</b>	<b>WNWO-TV</b>	<b>Requests STA 120kw/222m, 41-41-00/83-24-49 for temporary post-repack operation from WTVG's tower pending repairs to WNWO tower; granted.</b>
Youngstown	31	W44CR	Requests STA for this channel; to be displaced by T-Mobile. Channel 31 is temporary until August 1 <sup>st</sup> , 2019 when WQED Pittsburgh moves to ch. 4 and W44CR can move to ch. 13. On August 2 <sup>nd</sup> , WYTV moves from 36 to 31 and would displace W44CR.
<b>Oklahoma</b>			
Altus	21	KKTM-LD	From 17, 15kw; granted
Durant	27	K27MV	From K46AI, 13kw; granted
Idabel	22	K22MT	Moved from K23HY, 9.5kw
<b>Oklahoma City</b>	<b>23</b>	<b>KSBI</b>	<b>Requests STA for unspecified reduced power due to power supply failure</b>
<b>Tulsa</b>	<b>12</b>	<b>KGEB</b>	<b>Moved from 49, 21.5kw/182m</b>
Tulsa	46	K46LF	OFF Sept. 1 <sup>st</sup> , T-Mobile
<b>Oregon</b>			
Ashland	14	K14SC	From K39EF, 500 watts; granted
Bend	31	K31NO	Requests STA for reduced power of 8.26kw until new transmitter is delivered in 2019
Cave Junction	29	K29NI	From K51BV; granted
Klamath Falls	34	K34QA	From K39DP, 8.5kw; granted
London Springs	23	K23OS	From K43LQ; granted
London Springs	31	K31PI	From K51EY; granted
Tillamook	6	KPWC-LD	From 24, 3kw, 44-58-37/123-08-33; granted

<i>Location</i>	<i>RF Ch</i>	<i>Callsign</i>	<i>Notes</i>
<b>Pennsylvania</b>			
Charleroi	40	WMVH-CD	Returned to the air Sept. 7 <sup>th</sup>
Darby	25	W25FG	From W36DO, 2.5kw; granted
<b>Erie</b>	<b>12</b>	<b>WICU-TV</b>	<b>Requests power change to 6.8kw/289m, 42-02-16/80-03-43; amendment from 8kw/307m &amp; to change site.</b>
<b>Erie</b>	<b>16</b>	<b>WSEE-TV</b>	<b>Requests STA 45kw/271m, to operate at 60% power until station can move early to ch. 21 in mid-December; granted.</b>
Freedom	19	WWBP-LP	From 31 dismissed, not eligible to file in displacement window
<b>Puebla</b>			
<b>Puebla</b>	<b>15</b>	<b>XHMTPU-</b>	<b>New station, 123kw/117m, 19-04-29/98-20-42; Multimedios</b>
Tehuacán	13	XHPBTH-	New station, 5kw/-199m, 18-27-50/97-25-27; SPR
Zacatlán	11	XHPBZC-	New station, 180 watts/71m, 19-56-25/97-57-42; relays XHPUE- Puebla
<b>Puerto Rico</b>			
Aguada	16	W16DX	From W49CZ, 15kw; granted
<b>Aguadilla</b>	<b>17</b>	<b>WVEO</b>	<b>Returned to the air Sept. 6<sup>th</sup> under STA for 34.3kw/309m, 18-19-25/67-10-11 (WIOB-FM tower)</b>
Anasco	34	W34FK	From W33CY, 18-08-52/66-58-58; granted
Caguas	44	W44DH	OFF July 31st
Guayama	31	W31DV	Granted power reduction to 5kw, 18-15-54/66-05-06
Mayaguez	15	W15EI	From W44DW, 1.9kw, 18-18-41/67-11-24; granted
Mayaguez	30	WNTE-LD	From 36, 14kw; amendment from 15kw & to drop site change
San Juan	20	W20EJ	From W26DK, 15kw; granted
<b>San Juan</b>	<b>26</b>	<b>WIPR-TV</b>	<b>Returned to the air Aug. 25<sup>th</sup> on post-repack channel with interim facilities 250kw/776m, 18-15-54/66-05-06</b>
San Juan	38	WWXY-LD	OFF Aug. 1 <sup>st</sup> , unable to complete construction on post-repack ch. 6 on time.
Yauco	35	W35DS	From W36EP, 10kw, 18-04-41/66-44-54; granted
<b>Querétaro</b>			
<b>Irapuato</b>	<b>8</b>	<b>XHQZ- TDT-1</b>	<b>20.017kw/1020m</b>
<b>Querétaro</b>	<b>19</b>	<b>XHQZ-TDT</b>	<b>Moved from 40</b>
Querétaro	11	XHPBQR-	New station, 15kw/311m, 20-31-45/100-21-42; educational
<b>San Luis Potosí</b>			
<b>San Luis Potosí</b>	<b>10</b>	<b>XHROSL-</b>	<b>New station, 164kw/-80m, 22-08-42/100-57-25</b>
<b>Sinaloa</b>			
Culiacán	13	XHPBCL-	New station, 5kw/100m, 24-46-50/107-23-19; SPR
<b>Sonora</b>			
Guaymas	13	XHPBGY-	New station, 1kw/408m, 27-56-33/110-54-16; SPR
<b>Magdalena</b>	<b>14</b>	<b>XHMDTU-</b>	<b>New station, 75kw/-78m, 24-01-12/104-43-27; Multimedios</b>
<b>South Carolina</b>			
Columbia	16	WKDC-LD	From 50; granted
Greenville	50	WNGS-LD	Power reduced to 8kw
Myrtle Beach	31	W31EM	From W26DT, 5kw, 33-35-28/79-02-54; granted
Myrtle Beach	35	WYDJ-LD	From 40, 15kw, 33-32-03/79-59-14 (WHLZ-FM tower near Manning); granted
North Charleston	23	WAZS-LD	From 29; granted
North Charleston	28	WJNI-LD	From 31; granted

<b>Location</b>	<b>RF Ch</b>	<b>Callsign</b>	<b>Notes</b>
Spartanburg	38	WSQY-LD	OFF June 15 <sup>th</sup> , probably permanently. Co-owned analog WSQY-LP ch. 51 has a permit to convert to digital on ch. 29.
<b>South Dakota</b>			
Brookings	25	K25OU	Moved from K50DG
Rapid City	32	K22JU	From 22 dismissed, not eligible to file in displacement window
<b>Sioux Falls</b>	<b>21</b>	<b>KDLT-TV</b>	<b>Requests STA for 257kw/465m, to transition early (in October) to interim post-repack antenna pending replacement of ch. 47 antenna with permanent ch. 21 antenna</b>
<b>Tennessee</b>			
Alexandria	17	WRTN-LD	From 7, 12kw; granted
<b>Chattanooga</b>	<b>14</b>	<b>WDSI-TV</b>	<b>Moved from 40, 120kw/306m</b>
Chattanooga	15	WCNT-LD	Granted conversion to digital from analog 36, 15kw, 35-20-37/85-14-00 near Soddy-Daisy
Chattanooga	19	WOOT-LD	From 38; granted
Chattanooga	27	WYHB-LD	From 44 dismissed; going to ch. 25 instead
Jackson	19	W19ED	Returned to the air Sept. 21 <sup>st</sup>
Jackson	34	WYJJ-LD	From 27, 15kw; granted
Jackson	49	W49EK	OFF Sept. 21 <sup>st</sup>
<b>Kingsport</b>	<b>27</b>	<b>WKPT-TV</b>	<b>Granted STA 200kw/676m, 36-25-55/82-08-15 to operate from adjacent tower while post-repack antennas for WKPT, WAPK-CD, and WOPI-CD are installed.</b>
Knoxville	16	WEZK-LD	Granted conversion to digital from analog 28, 15kw
Knoxville	21	W21DW	Moved from W14CX, 4.4kw
Knoxville	30	W30EG	From W45DF, 15kw; granted
Knoxville	33	WKXT-LD	From 43, 15kw; granted
Lebanon	11	W11BD	OFF Aug. 29 <sup>th</sup>
Memphis	35	WBXP-LD	From 44, 10kw; granted
South East Memphis	34	WFBI-LD	From 33; granted
<b>Texas</b>			
Amarillo	24	K24NR	Granted digital conversion from analog K45IQ, 10kw
Beaumont	6	KIPS-LD	Returned to the air Aug. 25 <sup>th</sup>
Beaumont	16	K16JC	OFF Sept. 4 <sup>th</sup> pending construction of permanent facility
Beaumont	25	KOPS-LD	From 50; granted
Beaumont	50	KOPS-LD	Returned to the air Aug. 25 <sup>th</sup>
Britton	3	KODF-LD	From 27, 2.5kw, 32-35-02/96-57-48; granted
Dallas	11	KQFW-LD	From 24, 3kw, 32-25-43/97-06-34; granted
Dallas	13	KHFD-LD	From 51, 3kw; granted
Forbes	20	K20NY	From K27JJ; granted
Groveton	10	KLNK-LD	From 48, 900 watts, 30-58-40/94-49-28; granted
Gruver	34	K34PX	From K44CC, 420 watts; granted
Hereford	27	KYAM-LD	From 44; granted
Houston	3	KZHO-LD	From 39, 3kiw, 29-45-36/95-21-49; granted
Jasper	34	KVHP-LD	STA for this channel dismissed, unnecessary
Keene	22	KGSW-LD	From 18, 7kw; granted
La Feria	23	KCWT-CD	Requests STA, 5kw from new site 26-05-19/98-03-45 (same as authorized in construction permit, but at reduced power); granted
Lubbock	15	K15LV	From K31MX, 3kw
Lubbock	19	KLBB-LD	Requests digital conversion from analog ch. 48, 15kw
Lubbock	22	KMYL-LD	From 15, 15kw
Lubbock	24	KXTQ-CD	From 46, 15kw
<b>Lubbock</b>	<b>35</b>	<b>KJTV-TV</b>	<b>Application for new backup transmitter, 470kw/267m</b>
Lubbock	36	KYLU-LD	Granted digital conversion from analog ch. 49, 15kw



<b>Location</b>	<b>RF Ch</b>	<b>Callsign</b>	<b>Notes</b>
Memphis	24	K24NK	From K38AP; granted
Mineral Wells	11	K11XN	From K21KJ, 200 watts, 32-32-12/97-24-46; granted; site is near Burleson
<b>Nacogdoches</b>	<b>15</b>	<b>KYTX</b>	<b>From 18, 648kw/454m</b>
New Mobeetie	22	K22NS	From K39AN; granted
San Angelo	41	KEUS-LD	Moved from 41, 15kw
San Antonio	25	KISA-LD	From 40, 15kw dismissed; not eligible to file in displacement window.
Stephenville	22	K22NR	From K27LU; granted
Wolfforth	33	KJTV-CD	Requests digital conversion from analog ch. 32, 15kw
<b>Wolfforth</b>	<b>43</b>	<b>KLCW-TV</b>	<b>Application for new backup transmitter, 115kw/267m</b>
<b>Utah</b>			
Alton	30	K30OE	Moved from K25KN, 32 watts
Alton	32	K32LZ	Moved from K21IH, 60 watts
Alton	36	K36NO	Moved from K38MS, 22 watts
Blanding	10	K10RK	Moved from K42AD, 150 watts
Blanding	11	K11XH	Moved from K38AJ, 150 watts
Delta	31	K31OJ	From K44IZ, 750 watts; granted
Duchesne	27	K27NP	From K40HS, 65 watts; granted
Helper	27	K27NQ	From K33KG, 70 watts; granted
Logan	22	K22MH	Moved from K50LW, 150 watts
Long Valley Junction	7 – 13	K07ZT, K08PX, K09ZK, K10RF, K11XB, K12WZ, K13AAD	Moved from K48EK, K32HR, K50GD, K46EO, K41LC, K44FU, and K42IW. 22 watts on most channels.
Montezuma Creek	16	K16MQ	Moved from K33JN
Montezuma Creek	20	K20NG	Moved from K10PB, 110 watts
Nephi	18	K18MJ	Moved from K35JL, 36 watts
Nephi	20	K20OB	Moved from K41LL, 36 watts
Nephi	22	STA	From ch. 39; granted
Nephi	26	STA	From ch. 43; granted
Ogden	31	KQTI-LD	Requests STA for this channel pending delivery of permanent antenna
<b>Ogden</b>	<b>35</b>	<b>KUCW</b>	<b>Granted STA, see text for information on antenna issues.</b>
Orangeville	20	K20NQ	From K47KK, 340 watts; granted
Price	28	K28PG	From K17GT, 259 watts; granted
<b>Salt Lake City</b>		<b>ALL</b>	<b>See text for information on antenna failure here.</b>
<b>Salt Lake City</b>	<b>19</b>	<b>KJZZ-TV</b>	<b>Moved from 46, 312kw/1256m. See text for information on antenna issues.</b>
Salt Lake City	21	KEJT-CD	Moved from 50
Salt Lake City	23	KBTU-LD	OFF Sept. 8 <sup>th</sup> pending construction of permanent facility; bumped by KSL-TV
<b>Salt Lake City</b>	<b>27</b>	<b>KUED</b>	<b>Moved from 42, 374kw/1266m, 40-39-33/112-12-10. However, see end of article for information on shared-antenna issues.</b>
<b>Salt Lake City</b>	<b>30</b>	<b>KTVX</b>	<b>See text for information on antenna issues.</b>
Spring Glen	20	K20NP	From K51IC, 195 watts; granted
Vernal	27	K27NO	From K15DI, 300 watts; granted
Vernal	28	K28PF	From K51AO, 170 watts; granted

<b>Location</b>	<b>RF Ch</b>	<b>Callsign</b>	<b>Notes</b>
<b>Vermont</b>			
Bennington	21	W21CQ	Returned to the air Sept. 13 <sup>th</sup> ; analog
Burlington	27	W16AL	From 16, 15kw
Pownal	20	W46EW	From 46, 1.26kw, 42-51-52/73-13-59; amendment from 603 watts & to (slightly) change site; granted
Rutland	23	W23EU	From W20CS; granted
<b>Virginia</b>			
Hampton	51	W51DO	License canceled
Richmond	28	WWBK-LD	OFF Aug. 20 <sup>th</sup> pending construction of permanent facility
<b>Washington</b>			
<b>Bellingham</b>	<b>14</b>	<b>KVOS-TV</b>	<b>From 35, 780kw/799m; amendment from 362kw/799m</b>
Hermiston	21	K21NX	From K43MG, 1.5kw; granted
North Bend	15	K15MI	From K25CH; granted
Pasco	20	K20KG	OFF Aug. 23 <sup>rd</sup> due to lightning damage
Wenatchee	23	K51DR	STA from ch. 51 dismissed
Yakima	25	K25PV	From K51JG, 15kw; granted
<b>West Virginia</b>			
<b>Charleston</b>	<b>29</b>	<b>WCHS-TV</b>	<b>Moved from 41, 533kw/514m</b>
<b>Wisconsin</b>			
Baraboo	43	W43BR	See text
<b>Eau Claire</b>	<b>25</b>	<b>WQOW</b>	<b>Moved from 15, 253kw/280m</b>
Green Bay	18	W30BU	From 30 dismissed, not eligible to file in displacement window.
Green Bay	33	WWEA-LD	From 14, 15kw, 44-20-00/87-58-55; from Wausau; granted
<b>La Crosse</b>	<b>15</b>	<b>WHLA-TV</b>	<b>Application for post-repack backup facility, 100kw/286m; granted &amp; on the air.</b>
Madison	24	WZCK-LD	From 36, 15kw; granted
Waukesha	23	WTAS-LD	Granted digital conversion from analog ch. 47, 15kw
Wausau	35	WODR-LD	From 19, 15kw, 44-20-00/87-58-55; granted; site is near Green Bay
<b>Wyoming</b>			
Cody	25	K25OV	Moved from K50MY, 708 watts
<b>Zacatecas</b>			
Zacatecas	22	XHFZC-	New station, 10.001kw/622m, 22-44-22/102-33-18, cultural Three DTS relayers (Jerez, Ojocaliente, and Fresnillo) already known; now we have the tech facilities on the main transmitter.
Zacatecas	30	XHZAE-	New station, 10.028kw/546m, 22-44-22/102-33-18, cultural

Utah continues to use more space in this column than any other state(grin). There is no connection to the fact I spent much of my recent vacation in Utah. (and greatly enjoyed the state's scenery)

In mid-September – while I was in St. George – the Salt Lake City stations moved to a common post-repack antenna. Apparently it didn't work very well. KJZZ-TV's request to the FCC for Special Temporary Authority said viewers are having major problems receiving all the stations on the new antenna. The other stations just said there were issues with the antenna.

Stations affected:

KBYU-TV	17	(STA 169kw/1257m)
KJZZ-TV	19	(STA 165kw/1128m)
KSL-TV	23	(STA 165kw/1267m)
KUED	27	(STA 158kw/1266m)
KTVX	30	(STA 151kw/1256m)
KUCW	35	(STA 162kw/1257m)

All STAs are for backup antennas on a separate tower at 40-39-35/112-12-08. (very close to the failed antenna)

I expect to hear from the rest of the Salt Lake City stations eventually...

The two Nephi, Utah translators are authorized under Special Temporary Authority. That STA has been amended to specify channels below 38.

Thanks again to Raymie Humbert for information from Mexico. Many of these stations have been on the air for up to a year, but the information just saw public release this month. All Mexican TV stations have a -TDT suffix on the callsign; I'm deleting that suffix here to save space. Many relayers of XHWX-TDT in Coahuila and Nuevo Leon are not new, but I've just become aware of them, and their channels are changing due to the repack.

SPR is the Mexican State Public Broadcasting System. It originates Canal Catorce (14) and relays three Mexico City stations to other parts of the country. (Canal Once (11, XEIPN), an educational station; Canal 22 (XEIMT), a cultural channel; and TV UNAM. (National Autonomous University of Mexico)) In addition, it carries Ingenio TV (an educational channel only available via SPR); and on some transmitters it relays Canal del Congreso. (you might call it "Mexican C-Span", channel 45 in Mexico City)

Canal Once is on 26 SPR transmitters, but it also has 17 transmitters of its own. Two of those are new and listed above.

W43BR in Wisconsin is an enigma. Around 2000, I began to see occasional reports of a station on channel 43 in Baraboo, about 50km north of Madison. There was no sign of the station in the FCC database, but the call letters were plausible. I never saw the station, but I haven't had an analog TV available up there since I left Madison at the end of 1990.

This week, W43BR appeared in the FCC's Licensing & Management System. Or rather, a STA for a channel 43 in Baraboo appeared. It doesn't bear any call letters. The station is requesting extension of Special Temporary Authority they've held since 1997. It says the station was originally authorized at a time when the FCC indicated they weren't accepting any applications for new LPTVs. They said they'd apply for a "regular" license once the Commission began accepting such applications. The Commission did hold a LPTV filing window in 2010, but only for "rural" stations. Baraboo is too close to Madison to count as "rural". They planned a second window for "non-rural" stations but it appears the repack put an end to that.

Last month we noted that five LPTVs in Colorado have been assigned “conforming” callsigns. K50LP becomes K29LP; K43AH becomes K29AH; K43JJ becomes K36JJ; etc.. Seven more have happened – again, only in Colorado. (I have no idea why) Translators in other states have been granted moves but with non-conforming callsigns. This month’s Colorado grants have created a duplicate... there are now two K25KRs. The other one is in Nevada.

Phase 1 of the repack transition has been in progress for two weeks now. At the end of August, the FCC released additional notes about the transition.

The testing period of Phase 1 began at 12:01am (local time, presumably at the transmitter) on September 14th. Beginning on this date, Phase 1 stations may begin testing on their post-repack channels. (but keep reading) They may also begin permanent operation on their post-repack channels, shutting down their pre-repack facility. (but again, keep reading) The Commission has made it clear stations ARE NOT to broadcast programming on both channels at the same time. (it doesn't explicitly prohibit transmission of test patterns on the post-repack channel while the pre-repack transmitter is broadcasting programs)

Stations in a "Linked Station Set" must coordinate both testing and permanent operation with other stations in that set. For example, Linked Station Set #4 contains WGIQ Louisville, Alabama, moving from ch. 44 to ch. 30; and WLGA Opelika, moving from ch. 30 to ch. 17. WGIQ cannot move until WLGA does; it would cause massive interference. Many Linked Station Sets contain more than two stations, making this coordination tricky. In some cases, stations not in a Linked Station Set still have special conditions that must be met before they can move. For example, stations being repacked to channel 14 must ensure they don't interfere with existing two-way radio operations below 470MHz.

The Commission will allow stations to use temporary interim channels to maintain service. They also mention "temporary joint use of a channel" – a temporary channel-sharing arrangement. ~~I don't know of any such arrangements right now,~~ but wouldn't doubt we might see some by the time the repack is vcomplete. *(after typing that, the FCC approved a request for WTXX-LD New Haven, Connecticut to share on the WEDW Bridgeport transmitter until June 22<sup>nd</sup>, 2019. WTXX is being displaced from ch. 34 by Hartford's WTIC. They plan to eventually move to ch. 29, but they can't do it right now because of WUTF west of Boston. WUTF moves to ch. 19 next June, and at that time WTXX can restart their own transmitter on 29.)*

Stations may obtain a single six-month extension of their repack construction permit. Permitted circumstances are limited – weather; unavailability of equipment or tower crews; tower lease issues; unusual technical challenges; or delays in government approvals. "Financial hardship" will only be accepted if a station is in bankruptcy.

# FM Facilities Report

This information is reprinted from Doug Smith's FM News Information posted in the WTFDA Forums <http://forums.wtfda.org>. The WTFDA FM Database is also updated with this information. <http://db.wtfda.org>

## Abbreviations:

**AF-** New Station Applied For  
**Aux-** Auxiliary Backup Transmitter  
**CC-** Call Change  
**CL-** City of License  
**CX-** Canceled

**NS-** New Station Permit Granted  
**NW-** New Station on the Air  
**PC-** Power/Height Change Granted  
**PG-** Power Change Granted  
**QG-** Frequency Change Granted

**RA-** Returns to the Air  
**ROA-** Request of Applicant  
**XG-** new site granted  
**XC-** transmitter site changed  
**PR/QR-** Power or Freq requested

## October 2018

AL Florence 104.7 W284DO NS 250w, 34-51-53/87-39-14 (WVNA-FM 105.5 Muscle Shoals)  
 AL Florence 105.1 W286DP NS 250w, 34-45-23/87-40-43 (WLAY-1450 Muscle Shoals)  
 AL Florence 96.7 W244EF NS 99w, 34-45-23/87-40-43 (WVNA-1590 Tusculmbia)  
 AL Huntsville 92.9 W225AH PC>250w, 34-47-37/86-37-51; CL from Center Hill (WQRV-100.3)  
 AL Huntsville 92.9 W225AH PG>250w, 34-47-37/86-37-51 (WQRV-100.3)  
 AL Mobile 96.5 W243CY XC 30-43-34/88-09-06; CL from Tillmans Corner  
 AL Troy 96.3 W242DA NW 250w, 31-50-05/85-56-00 (WTBF-970)  
 AL Tuskegee (sic) 98.1 W251CM NW 250w, 32-35-46/85-51-07 (WACQ-580 Tuskegee)  
 AL Waverly 100.3 WAUA NW 130w/30m, 32-43-34/85-34-36; PR>930w/57m, 32-39-24/85-32-13  
 AK Elim 97.3 K247CV NS 250w, 64-37-06/162-15-30 (KICY-850 Nome)  
 AK Nenana 99.1 KNNA-FM CC for NS  
 AK Scammon Bay 94.3 KSCM CC for NS  
 AK Seward 103.1 K276FF PC<135w, 60-06-48/149-26-18 (KPEN-FM 101.7)  
 AK Toksook Bay 91.9 KNUN CC for NS  
 AB Taber 89.5 CIAM-FM-23 PG>41m, relocate XR  
 AZ Ash Fork 99.7 KAFZ PG>999w/757m, 35-12-00/112-12-18  
 AZ Catalina 89.7 KAZK PG>250w/1202m, 32-26-31/110-46-51  
 AZ Payson 99.3 KEMP PG>50kw/140m.  
 AZ Show Low 107.9 K300CL PC>250w, 34-12-22/109-56-32  
 AZ Tanque Verde 104.9 KWCX-FM PG<3kw/-253m, 32-18-30/110-43-45; CL from Willcox  
 AR Fort Smith 88.9 KAOV PG>20kw/147m  
 AR Mena 89.3 KRMN QG from 88.9, 1.8kw/12m  
 AR Wynne 92.5 KWYN-FM PG>150m  
 BC Chilliwack 92.3 CIVL-FM-1 AF 4.6kw/-346m, 49-05-56/121-58-31; to relay Abbotsford  
 CA Banning 88.7 K204GG PG>14w, 34-02-13/116-58-07  
 CA Hanford 104.5 KOOH-LP PG<-18m, 36-19-33/119-38-50  
 CA Healdsburg 96.7 KNOB PG 2.5kw/156m, 38-44-08/122-50-55  
 CA Isla Vista 101.7 KSBL PG>1.65kw/675m, 34-01-45/119-47-00; CL from Carpinteria  
 CA Monterey 94.3 K232FZ NS 10w, 36-35-09/121-55-19 (KPFA-94.1 Berkeley)  
 CA Muscatel 100.3 K262DK NS 27w, 36-47-04/119-51-08 (KFRR-104.1 Woodlake)

CA Pomona 103.1 K276GK PG<10w, 34-08-32/117-43-17; CL from San Bernardino  
 CA Santa Ana 100.7 KPPH-LP XG 33-40-51/117-59-10  
 CA Santa Barbara 106.5 K293CK PG>250w, 34-30-11/119-50-59  
 CA South Oroville 104.9 KYIX PG<255w, 39-39-04/121-27-45  
 CO Black Forest 102.3 K272FP QG from K283AS-104.5, 250w, 39-02-47/104-41-38; CL from Hayden (KLIM-1120 Limon)  
 CO Broomfield 92.5 KWOF PG>92.7kw/307m  
 CO Denver 89.3 KUVO PG 12kw/342m, 39-40-24/105-13-03  
 CO Glenwood Springs 101.3 K239AW QC from 95.7, 99w, 39-25-08/107-22-10; CL from Craig (KGLN-980)  
 CO Montrose 96.5 K245AB QC from 96.9, 50w  
 CO Springfield 91.9 KLXL CX ROA  
 CO Sterling 96.9 K245DG NS 250w, 40-57-32/102-55-32 (KSID-FM 98.7 Sidney, NE.)  
 CT Avon 106.3 WSPV-LP PC<-23m, 41-46-39/72-51-42  
 CT Hartford 88.9 WJMJ PC>2.3kw/436m, 41-42-13/72-49-57  
 DE Seaford 98.5 WUSX CC from WKHI  
 FL Auburndale 92.7 W224CF XC 27-56-35/81-54-45  
 FL Eustis 90.3 WIGW XG 28-58-31/81-45-12  
 FL Hallandale 102.3 WEXI-LP PG 37m, 25-59-08/80-07-44  
 FL Lafayette 99.9 WXTY CC from WANK  
 FL Lynn Haven 104.3 WGSX PG 4.1kw/122m, 30-11-00/85-46-34  
 FL Miami 94.3 WMIV-LP QC from 107.9, 15m, 25-44-00/80-17-26  
 FL Panama City 102.5 W273DU NS 250w, 30-11-00/85-46-34 (WPAP-92.5)  
 FL Port Charlotte 98.1 W251CU XG 26-59-01/82-03-05  
 FL Port St. Lucie 101.3 WHLG PG 3.3kw/133m, 27-16-30/80-17-11  
 FL Venice 95.9 W240DP PG<210w, 27-09-03/82-27-51  
 FL WV Palm 91.5 W215CL QC from 90.9, 160w, 26-42-26/80-03-06  
 FL WV Palm Beach 104.7 W284CR XC 26-42-26/80-03-06  
 GA Claxton 107.3 WLKG CC from WZBX  
 GA Darien 92.7 WSSI PG>17.5kw/122m, 31-11-39/81-29-31  
 GA Gainesville 100.3 W262AL PG>105w, 34-18-46/83-47-12 (WCON-FM 99.3)  
 GA Louisville 103.5 W278CO NW 250w, 33-00-48/82-23-33 (WPEH-1420)  
 GA Macon 93.1 W226BZ CX ROA (WDDO-980)  
 GA Millen 94.9 WPMX CC from WHKN

GA Rocky Ford 106.5 WLCD CC from WZBX  
 GA Statesboro 102.9 WQTS CC from WHKN  
 HI Kihei 95.5 K238BR PC>130w, 20-42-33/156-15-49 (KEWE-1240)  
 HI Kihei 98.7 K254CS XC 20-42-33/156-15-49  
 ID Sandpoint 97.7 KTAQ-LP PG>-102m, 48-16-21/116-34-44  
 IA Dubuque 104.3 K282CF NS 13w/62m, 42-31-04/90-36-52 (KNWS-FM 101.9)  
 IA Marshalltown 97.9 K251BB PC<125w, 42-02-55/92-57-43  
 IA Waverly 100.9 K265EH PG<140w, 42-46-21/92-22-35  
 KS Pittsburgh (sic) 105.7 K289CS QG from K258BF-99.5, 250w, 37-29-02/94-51-08; CL from Warsaw, Mo. (KKOW-860)  
 KY Barbourville 92.3 W222CW PG>250w, 35-15-07/80-49-43 (WTCC-870)  
 KY Berea 106.7 WLFX PC>14.5kw/133m, 37-39-36/84-09-00  
 KY Brandenburg 93.5 WMMG-FM PG<85m, 37-59-09/86-11-04  
 KY Hopkinsville 104.7 W284DP NS 1w, 36-40-53/87-24-35 (WHOP-1230)  
 LA Monroe 104.5 K283DA NS 38w, 32-30-21/92-08-55 (KJGM-88.3 Bastrop)  
 LA Slidell 91.3 WNLS CC from WGNON  
 ME Bangor 98.7 W254DR NS 250w, 44-50-53/68-45-05 (WKVV 101.7)  
 ME Portland 91.5 W272BV QC from 102.3, 20w  
 MD Fruitland 107.7 WGBG-FM CC from WKHI  
 MA Amherst 94.3 W232BW PC>250w  
 MA Medford 98.1 W251CR NW 130w, 42-25-52/71-05-19 (WZBR-1410 Dedham)  
 MA Northampton 101.5 W268CZ PC<175w, 42-21-49/72-25-24  
 MA Westfield 97.3 W247DL NS 250w, 42-05-05/72-42-14 (WHYN-FM 93.1 Springfield)  
 MI Bear Lake 100.7 WCUZ PG>15.5kw/129m, 44-36-38/86-09-38  
 MI Detroit 107.1 W296DY PG>99w, 42-28-11/83-06-55  
 MI Gladstone 103.9 W280GB NS 250w, 45-51-29/87-03-06 (WQDC 97.7)  
 MI Menominee 99.1 W256DW NS 55w, 45-03-58/87-39-55 (WQDC 97.7)  
 MI Mount Clemens 102.7 WDKL CC from WPCR  
 MI Port Huron 91.3 WRSX CC from WSGR-FM  
 MI Port Huron 92.7 W224DT NW 125w, 42-58-37/82-27-52 (WHLX-1590)  
 MI Zeeland 98.9 W255DI NW 210w, 42-43-56/86-06-08 (WPNW-1260)  
 MI Zeeland 98.9 W255DI XG 42-43-56/86-06-08  
 MN Hutchinson 96.5 K243CQ NW 250w, 44-54-24/94-21-59 (KDUZ-1260)  
 MN Morris 107.7 K299BX NW 250w, 45-36-11/95-53-14 (KMRS-1230)  
 MN North Branch 91.7 W219DT PG>250w, 45-18-32/92-59-07  
 MN Pipestone 94.1 K231DG NW 250w, 43-53-52/95-56-50 (KLOH-1050)  
 MN Pipestone 99.3 K257FP XC 43-53-52/95-56-50  
 MN St. Paul 95.7 K239CJ PC>250w  
 MS Tupelo 94.7 WKIU-LP PC 30m  
 MS Tupelo 94.7 WKIU-LP QG from 94.9, 30m  
 MO East Prairie 105.3 KYMO-FM PC>6kw  
 MO Florissant 97.5 KWAP-LP QG from 97.7  
 MO Kansas City 100.1 KONN-LP PG<7m, 39-05-34/94-33-47  
 MO Neosho 100.1 K264CS PC>250w  
 MO Poplar Bluff 98.3 K252EE PC<205w  
 MO Poplar Bluff 98.3 K252EE PG<205w

MT Gallatin Gateway 105.1 K286CY NS 250w, 45-38-20/111-15-56 (KBZM-104.7 Big Sky)  
 MT Great Falls 104.3 K282CE NS 99w, 47-31-57/111-16-38 (KHTC-1490 Malmstrom AFB)  
 MT Helena 95.9 K240EM XG 46-46-07/112-01-21 (KMTX-105.3)  
 MT Plentywood 100.1 KATQ-FM PG>21m, 48-46-01/104-32-43  
 NE Humboldt 90.1 KTTE CX ROA  
 NE Schuyler 103.1 K276FB PC>250w, 41-04-23/97-12-25 (KAWL-1370)  
 NV Carson City 96.9 K245DC NW 40w, 39-15-26/119-42-36 (KZTQ-1270 Sparks)  
 NV Owyhee 97.3 KZNI CX ROA  
 NH Concord 104.3 W282AF PC>10w, 43-13-08/71-26-26  
 NJ Hammonton 104.5 W283DN QG from 104.1, 250w, 40-19-02/76-56-49  
 NJ Jersey City 97.5 W248CG PC>250w  
 NM Las Cruces 102.7 K274DC NS 67w, 32-18-33/106-49-24 (KWML-570)  
 NY Buffalo 94.1 W231EA NW 150w, 42-38-09/78-46-07 (WDCZ-970)  
 NY Celoron 95.3 WLKW CC from WLKW-FM  
 NY Dannemora 107.1 WPLA PC>6kw  
 NY Lake Placid 105.5 WLPW PC>7.5kw/55m, 44-15-43/74-01-22  
 NY Liverpool 107.5 W298DC NW 250w, 43-08-00/76-20-20 (WFBL-1390 Syracuse)  
 NY Oneida 106.3 WCIT-FM PC 1.75kw/189m, 43-02-12/75-26-38  
 NY South Glens Falls 96.9 W245DA NW 250w, 43-19-45/73-38-54 (WENU-1410)  
 NY Spencerport 95.5 W238DE NW 250w, 43-09-51/77-47-02 (WYSL-1040 Avon)  
 NC Carolina Beach 106.7 WFBT PC>5.3kw, 34-05-03/77-53-18  
 NC Cherryville 92.3 W222CO NW 250w, 35-22-26/81-24-16 (WCSL-1590)  
 NC Dobson 95.9 W240DQ NW 100w, 36-24-19/80-39-27 (WYDZ-1560)  
 NC Eden 95.9 W240EG NS 250w, 36-27-24/79-45-40 (WTQR-104.1 Winston-Salem)  
 NC Mocksville 96.5 W243EC NW 250w, 35-52-49/80-32-40 (WDSL-1520)  
 NC Morganton 100.9 W265DY NS 250w, 35-47-40/81-43-12 (WCIS-760)  
 NC Raleigh 88.9 WRKV CC from WSHA  
 ND Beulah 95.7 KQLZ PG>27.5kw/175m, 46-43-31/102-55-00; CL from New England  
 OH Cleveland 106.9 W295DE NW 195w, 41-22-45/81-43-12 (WTAM-1100)  
 OH Hinckley 101.7 W215BS QC from 90.9, 250w (WGAR-FM 99.5 Cleveland)  
 OH New Boston 106.7 W294CN NW 250w, 38-43-45/82-57-11 (WIOI-1010)  
 OH Portsmouth 95.7 W239CQ NW 250w, 38-43-22/82-59-56 (WNXT-1260)  
 OH Wauseon 94.3 W232CM PC<130w  
 OK Beaver 90.9 KLXO CX ROA  
 OK Elk City 98.1 K251CN NW 250w, 35-24-22/99-29-54 (KADS-1240)  
 OK Tulsa 104.9 K285GW PG>190w  
 OK Waukomis 106.3 KWEO CC for NS  
 OK Weatherford 104.9 KONZ CX ROA  
 ON Marathon 107.5 CBLM-FM NW, 3.935kw/280m, 48-45-11/86-34-53; CBC Radio 1; replaces two 40-watt AM stations; same tower as CBN-FM-29 102.3 and CFNO-FM 93.1.  
 OR Beaverton 98.3 KFFD-LP PC<-60m, 45-31-22/122-39-32  
 OR Beaverton 98.3 KFFD-LP PG>-38m

OR Portland 96.7 KNUM-LP CC from KZRY-LP  
 OR Roseburg 106.3 K292HH NW 99w, 45-29-20/122-41-40 (KPDQ-800 Portland)  
 PA Bradford 107.5 W298CM NW 250w, 41-57-54/78-37-01 (WESB-1490)  
 PA Clearfield 98.5 W253CU NW 200w, 41-04-05/78-31-07 (WCPA-900)  
 PA Corry 101.5 W268CJ XC 41-59-57/79-41-59  
 PA Glen Lyon 99.9 W260AY PC>250w, 41-10-58/75-52-10; CL from Wilkes-Barre (WCFT-FM 106.5)  
 PA Latrobe 97.3 W247CX PC>160w, 40-20-12/79-16-46  
 PA Latrobe 97.3 W247CX PG>160w, 40-20-12/79-16-46  
 PA Lock Haven 89.3 W207BM PG>55w, 41-08-03/77-28-09  
 PA Masontown 106.9 WMKF CC from WDKL  
 PA Philadelphia 96.1 W241CH PG>250w  
 PA WV Grove 91.7 WZWG PG>400w/144m  
 PA Wilkesburg 107.3 W283CB QC from 104.5, 250w, 40-24-47/79-51-14 (WAMO-660)  
 PR Aguada 94.5 WQHD-LP PC 30m, 18-18-18/67-11-22  
 SC Atlantic Beach 103.5 W278CB XC 33-51-08/79-03-21 (WJXY-1200)  
 SC Charleston 107.7 W299CY PG>250w, 32-49-27/80-00-10  
 SC Greenwood 98.5 W253BL PC>250w  
 SC Hammond Crossroads 102.1 W271DJ NS 250w, 33-36-13/80-47-48 (WRJA-FM Sumter)  
 SC Hemingway 90.9 WLGJ OFF due to Hurricane Florence but RA by Sept. 21st  
 SC Sumter 107.9 W300EC NS 250w, 33-54-08/80-17-12 (WWKT-FM 99.3 Kingstree)  
 SC Winnsboro 93.9 WSCZ OFF due to Hurricane Florence but RA by Sept. 21st  
 TN Cleveland 94.9 WTNE-LP PG>27m  
 TN Covington 101.9 W270DR NS 250w, 35-35-12/89-38-21 (WKBL-1250)  
 TN Greenfield 92.7 W224DR XG 36-09-26/88-47-57  
 TN Lawrenceburg 103.9 WBKV QC from 106.7, 76m, 35-22-36/87-23-17; FC, sold to Educational Media Foundation; CC from WTNX  
 TN South Pittsburg 104.9 W285FW NW 250w, 35-00-57/85-42-00 (WEPG-910)  
 TX Alpine 98.7 K254CW NS 250w, 30-19-08/103-37-05 (KVLV-1240)  
 TX Balch Springs 99.9 KYBS-LP PC<25m, 32-43-45/96-33-30  
 TX Brownsville 100.7 KBNH-LP PG 29m, 25-57-07/97-29-20  
 TX Corsicana 107.9 K300DS NS 100w, 32-04-36/96-29-27 (KCKL-95.9 Malakoff)  
 TX Dimmitt 102.7 K274DG NS 250w, 34-35-10/102-18-41 (KDHN-1470)  
 TX Greenshores 107.9 K300DU NS 50w, 30-11-30/97-57-23 (KOKE-FM 99.3)  
 TX Guthrie 107.7 KJAG CC from KLXY  
 TX Hebbroville 104.3 KUFA PG<5.5kw/59m, 27-20-37/98-39-49  
 TX Houston 98.7 K254BZ PG<200w, 29-47-01/95-35-34; CL from Fairbanks  
 TX Mason 104.1 KMSN PG<25kw/96m, 30-46-35/99-17-54  
 TX Rockwall 104.1 KRWJ-LP PG 30m  
 TX San Angelo 93.9 KSAO CC from KCRN-FM  
 TX Springtown 89.1 KSQX PC>47kw/56m  
 TX Sulphur Bluff 99.7 KETE PG<2.3kw/113m, 33-19-52/95-18-53  
 TX Terrell 102.5 K273DA NW 190w, 32-44-23/96-18-01 (KPYK-1570)  
 TX Wichita Falls 92.5 K223DE QC from K211ED-90.1, 10w, 33-54-01/98-32-18 (KZKL-90.5)

TX Wichita Falls 92.5 K223DE QG from K211ED-90.1, 10w, 33-54-01/98-32-18 (KZKL-90.5)  
 UT Cedar City 98.5 K253BU PC>250w, 37-30-30/113-39-39  
 UT Manti 107.9 K300DT NS 40w, 39-19-18/111-46-11 (KPVO-99.9 Fountain Green)  
 UT Shivwits 106.9 K295CY QG from K281CE-104.1  
 UT St. George 106.5 K293CU QG from K294BY-106.7, 99w  
 UT St. George 97.1 K246CX QG from K299BY-107.7, 250w, 36-50-59/113-29-31  
 UT St. George 99.5 K258DS QG from K231BP-94.1, 250w, 36-50-59/113-29-31  
 UT Toquerville 104.1 KSGX PG<14kw/610m, 36-50-48/113-29-28  
 VT Burlington 107.5 W298DD NS 55w, 44-24-12/73-26-02 (WVPS-107.9)  
 VA Big Stone Gap 92.5 W223AA XC 36-54-50/82-53-40 (WLS-1220)  
 VA Big Stone Gap 92.5 W223AA XG 36-54-50/82-53-40 (WLS-1220)  
 VA Galax 100.7 WXMM-LP QG from 100.1, 58m, 36-41-35/80-56-09  
 VA Hillsville 95.9 WFOG-LP XG 36-44-29/80-43-26  
 VA Roanoke 104.3 W282CK NW 99w, 37-16-06/79-54-46 (WFJX-910)  
 WA Auburn 102.1 K271BS PC>250w, 47-18-21/122-14-53  
 WA Camas 102.7 KIEV-LP QC from 102.5  
 WA Camas 102.7 KIEV-LP QG from 102.5  
 WA Ocean Park 88.7 KLOY PC>900w/317m  
 WA Redmond 98.5 K253CG PG>250w, 47-32-37/122-06-27  
 WA Republic 103.5 K278CS XG 48-39-06/118-43-18  
 WA Sequim 101.3 K267CT QG from K269HB-101.7, 90w  
 WA Tumwater 105.7 K289CQ PG>15w; PC  
 WV Lewisburg 107.1 W296EE QG from W242BD-96.3, 85w  
 WV Moundsville 97.7 W249DU NS 60w, 39-54-19/80-46-43 (WVLY-1370)  
 WV South Charleston 89.3 WSHA CC from WWLA  
 WI Fond du Lac 93.7 W229DE NW 250w, 43-46-22/88-26-50 (WFDL-1170 Waupun)  
 WI La Crosse 107.3 W297CT NS 250w, 43-44-52/91-17-54 (WXYM-96.1 Tomah)  
 WI Madison 107.9 W300BM PG<170w, 43-03-21/89-32-06  
 WI Merrill 104.1 WXVM PG<8.3kw/144m, 44-53-17/89-39-03  
 WI Oshkosh 95.7 W239CV NS 250w, 44-02-10/88-31-59 (WJOK-1050 Kaukauna)  
 WI Sparta 89.3 WEQS PG>10kw/127m, 43-52-05/90-37-23  
 WY Cheyenne 104.1 K281DD PG>250w, 41-09-35/104-43-18  
 WY Cody 91.1 KOFG PG<4kw/444m, 44-34-20/108-49-13







# FM NEWS - OCTOBER 2018

[Visit [db.wtfda.org](http://db.wtfda.org) to stay up-to-date on the latest FM programming]

Editor: Bill Hale [w\\_r\\_hale@sbcglobal.net](mailto:w_r_hale@sbcglobal.net)

Send updates to: [fmnews@wtfda.org](mailto:fmnews@wtfda.org)



AL Florence 96.7 W244EF  
[Calls assigned to new station; will be News/Talk: 'News Talk 1590' // WVNA-1590]

AL Florence 104.7 W284DO  
[Calls assigned to new station; will be Classic Rock: 'Rock 105.5, The Big Dog' // WVNA-FM 105.5]

AL Florence 105.1 W286DP  
[Calls assigned to new station; will be Country: 'Shoals Country' // WLAY-1450]

AL Huntsville 105.3 W287CH  
Talk: 'Talk 105.3 & 1450' // WTKI-1450

AL Jackson 97.9 WJLQ-LP  
[Is silent]

AL Sylacauga 100.9 K265DV  
Adult Contemporary: 'B 101' // WFEB-1340



SYLACAUGA'S BEST HITS & ALL TIME FAVORITES

---

AK Elim 97.3 K247CV  
[Calls assigned to new station; will be Southern Gospel/Ethnic // KICY-850]

AK Nenana 95.1 KNEE  
[Calls assigned to new station]

---

AB Edmonton 92.5 CKNG-FM  
Variety Hits: 'The Chuck'

---

AZ Phoenix 95.5 KYOT  
[Call change from KYOT-FM]

---

AR Fort Smith 101.9 K270BR  
Classic Rock: '101.9 The River' // KISR 93.7 HD3




---

AR Little Rock 103.3 K277DP and  
AR Little Rock 105.5 K288EZ  
Urban Gospel: 'Rejoice 105.5' // KZTS-1380

AR Malvern 101.5 KLBL  
Classic Hits: 'Kool 101.5'

---

BC Stewart 98.1 CFNR-FM-3  
New station on the air with Aboriginal/Classic Rock: 'First Nations Radio' // CFNR-FM 92.1

BC Vanderhoof 95.9 CIRX-FM-1  
Country: 'Valley Country' [formerly // CIVH-1340, now deleted]

CA Agua Dulce 96.7 KLQS-LP  
Returns with Variety

CA Baker 107.1 K296HB  
Ranchera: 'La Ranchera' // KSDT-1320

CA Barstow 101.3 KWIE  
[Is silent]

CA Big Pine 90.3 KWBP  
Returns with Religious Teaching: 'Radio Mount Lebanon'

CA Corona 101.5  
[Is silent]

CA Delano 105.3 KBFP-FM  
Adult Contemporary: 'Sunny 105.3'



CA Healdsburg 96.7 KNOB  
Alternative Rock: '96 X'

CA Kettleman 107.7 KZQT  
[Is silent]

CA Monterey 94.3 K232FZ  
[Calls assigned to new station; will be Variety: 'Listener Sponsored Pacifica Radio' // KPFA 94.1]

CA Muscatel 100.3 K262DK  
[Calls assigned to new station; will be Modern Rock: 'New Rock 104.1' // KFRR 104.1]

CA Nipomo 105.5 KYGS-LP  
Returns with Christian CHR/Rock [Radio 74 Internationale]

CA Palm Desert 99.9 K260DE  
Variety: 'Coachella FM' // KCOD-1450

CA Rio Vista 91.5 KRVH  
Variety : 'Radio Rio'

CA Riverdale 98.3 KZLA  
[City-of-License change from Huron]

CA San Joaquin 105.5 KJWL  
Classic Hits : 'K-Jewel'




---

CA San Jose 92.7 KCXU-LP  
[Is silent]

CA Vallejo 106.5 KVVC-LP  
[Call change from KFDN-LP]

CA Victorville 106.1 K291CM  
Ranchera: 'Que Buena' // KVTR-1590

---

CO Broomfield 92.5 KWOF  
Sports: Attitude 92.5; includes K269AE 101.7; includes call change from KWOF

CO Glenwood Springs 101.3 K267CH  
News/Talk: 'NewsTalk 960' // KGLN-969; move  
from 95.7 as K239AW

CO Glenwood Springs 106.7 KGWS-LP  
[Is silent (Financial)]

CO Montrose 96.5 K243CN  
Contemporary Hit Radio: 'Magic 93.1 // KMGJ  
93.1; move from 96.9 as K245AB

CO Ridgway 103.7 KSNN  
Soft AC: 'The River'



CO Sterling 96.9 K245DG  
[Calls assigned to new station; will be Adult  
Contemporary: 'Sky FM' // KSID-FM 98.7]

DE Seaford 98.5 WUSX  
Country: 'US 98-5 Everything Country'; call  
change from WKHI



FL Fort Lauderdale 93.5 W228BV  
[License deleted]

FL Jacksonville 98.7 W254CW  
Gospel Music: 'Gospel 1400' // WZAZ-1400

FL Kissimmee 97.9 W250CE  
Spanish Talk: 'Acción 97.9' // WRSO-810



FL Lafayette 99.9 WXTY  
Adult Hits: 'Tally 99.9' [call change from  
WANK]

FL Miami 94.3 WMIV-LP  
[Frequency change from 107.9; is silent]

FL Milton 94.5 W233CM  
Sports: '94.5 ESPN Pensacola' // WYCT 98.7  
HD2



FL Orlando 93.1 W226BT  
Talk: 'NewsRadio 102.5 WFLA' // WFLF-540

FL Panama City 102.5 W273DU  
[Calls assigned to new station; will be Country:  
'Panama City's Country Station' // WPAP 92.5]

FL Winter Park 91.5 WPRK  
Returns with Variety: 'WPRK 91.5'

GA Ashburn 105.7 WFFM  
[Is silent; includes W265CC 100.9]

GA Bainbridge 99.3 W257BS  
Country // WMGR-930 & WSEM-1500

GA Buford 102.3 WLKQ-FM  
Regional Mexican: 'La Raza 102.3' [includes WTSH  
107.1 & W296BB 107.1]



GA Claxton 107.3 WLKG  
[Call change from WGBX; is silent pending sale to  
EMF]

GA Cleveland 101.9 WAZX-FM  
Regional Mexican: 'La Que Buena Atlanta'

GA Dallas 102.1 W271DK  
[Calls assigned to new station; will be Religious  
Teaching/Gospel: 'The Voice of the Old Time  
Religion' // WDPC-1500]

GA Darien 92.7 WSSI  
[City-of-License change from St. Simons Island]

GA Donaldsonville 99.1 W256DG  
Country // WSEM-1500

GA Lyons 96.9 W245DN  
[Calls assigned to new station: will be Oldies: '1340  
Oldies WBBT' // WBBT-1340]

GA Macon 93.1 W226BZ  
Urban Contemporary/Gospel // WDDO-980;  
License reinstated after being cancelled]

GA Meigs 92.3 WQLI  
Classic Country: 'Q 92.3'

GA St. Simons Island 94.7 WWEZ-LP  
Returns with Easy Listening

GA Savannah 90.1 WHCJ  
Variety: 'The Voice Of Savannah State University'

GA Statesboro 88.5 WSLT  
Urban Gospel

GA Statesboro 102.9 WQTS  
[Call change from WHKN]

GA Talking Rock 100.1 WNSY  
Regional Mexican: 'La Raza 102.3-107.1' ['102.3'  
refers to // WLKQ-FM Buford]

ID Hailey 105.5 KLCW-LP  
[Is silent]

ID Pocatello 92.7 K224EL and

ID Pocatello 101.1 K266BY  
Adult Hits: 'Cannonball 101' // KEII-690

ID Pocatello 101.1 K266AF  
Adult Hits: 'Cannonball 101' // KNBL-1260]



IL Macomb 93.1 W226CH  
Classic Country // WCAZ-1510

IN Fort Wayne 103.9 WWFW  
80s-90s Hits: 'Sunny FM'



IN Muncie 92.5 W223CZ and  
IN Muncie 102.9 W275AJ  
Sports: 'Muncie Sports 102.9 FM' // WXFN-1340  
IN Muncie 104.9 WERK  
Classic Hits: '104.9 FM WERK'  
IN New Albany 104.7 W284AD  
Urban Gospel: 'to Praise Power 104.7' //  
WLOU-1350  
IN Richmond 101.7 W269BP  
Classic Hits: 'The Point' // WHON-930



IN Trafalgar 92.3 WTTS  
[City-of-License change from Bloomington]  
IA Dubuque 104.3 K282CF  
[Calls assigned to new station; will be  
Contemporary Hit Radio: 'KISS 107.5' // KKDM  
107.5]  
IA Marshalltown 96.7 KCRM-LP  
[Is silent (Tornado damage)]  
IA Marshalltown 97.9 K250CA  
Contemporary Christian: 'K-Love' // KKLK  
88.3; move from 98.1 as K251BB  
IA Postville 89.1 KPVL  
Classic Hits: 'Northeast Iowa Community  
Radio'  
IA Sioux City 104.5 K283AG  
Country: '99.9/104.5 The Outlaw' // WNAX-FM  
HD2 ['99.9' refers to K260BO Yankton, SD]



KY Cynthiana 101.3 W267CW  
[Calls assigned to new station: will be Classic  
Hits: 'Classic Hits 1400' // WCYN-1400  
KY Hopkinsville 104.7 W284DP  
[Calls assigned to new station; will be Talk:  
'News Talk 1230' // WHOP-1230]  
KY Lexington 101.9 W270DE  
Spanish: 'Poder' // WLRT-1250]  
KY Owensboro 99.1 W256CF  
Talk: 'NewsTalk 1490AM - 99.1FM' // WOMI-  
1490  
KY Shepherdsville 105.1 WGHL  
Alternative Rock: 'Alt 105.1'

LA Baton Rouge 96.9 WHYR-LP  
Variety: 'Baton Rouge Community Radio'  
LA Crowley 102.9 KAJN-FM  
[Is silent]  
LA Monroe 104.5 K283DA  
[Calls assigned to new station; will be Religious  
Teaching: 'Sonlife Radio Network' // KJGM 88.3]  
LA Rayne 106.7 KPCZ-FM  
[Call change from KSIG-FM]  
LA Slidell 91.3 WNLS  
[Call change from WGON]

ME Bangor 98.7 W254DR  
[Calls assigned to new station; will be Contemporary  
Christian: 'K-Love' // WKVV 101.7]  
ME Portland 91.5 W218CZ  
Southern Gospel: 'God's Country 88.9' // WMDR  
88.9 [Move from 102.3 as W272BV]  
ME Sanford 92.1 WXEX-FM  
Oldies: 'The Seacoast's Oldies Station'; includes  
W248BP 97.1 and WXEX-1540

MD Fruitland 107.7 WGBG-FM  
Classic Rock: 'Big 107.7'



MD Newark 94.9 WKHI  
[Call change from WAMS]  
MA Medford 98.1 W251CR  
R&B Oldies: '98.1 The Urban Heat' // WZBR-1410  
MA Westfield 97.3 W247DL  
[Calls assigned to new station; will be Hot AC: 'Mix  
93.1' // WHYN-FM 93.1]



MI Benton Harbor 102.5 W273BM  
Talk/R&B Oldies: 'Southwest Michigan's Great  
Radio' // WHFB-1060  
MI Bloomfield Hills 88.1 WBFH  
Contemporary Hit Radio: 'The Biff'  
MI Gladstone 103.9 W280GB  
[Calls assigned to new station; will be Adult  
Standards: 'WDBC 680' // WDBC-680]  
MI Menominee 99.1 W256DW  
[Calls assigned to new station; will be Religious  
Teaching: 'Christian Information Radio' // WVCY-  
FM 107.7]  
MI Orchard Lake 89.3 WBLD  
Variety: '89.3 Lakes FM'  
MI Port Huron 91.3 WRSX  
Returns with News/Talk: 'Michigan Radio'  
MI St. Johns 92.1 WQTX  
Adult Hits: 'Fuel 92.1'





MN Big Lake 107.5 W298CE  
Oldies: 'The Big Q' // WQPM-1300

MN Calhoun Beach 96.7 K244FE  
Sports: 'KFAN Plus' // KFXN-FM 100.3 HD2  
[FOX Sports]

MN Forest Lake 95.9 WLKX-FM  
Classic Hits: 'The Killer Bee'; includes  
W298CE 107.5 & WQPM-1300

MN Morris 95.7 KKOK-FM  
Country: 'New 95-7'

MN New Ulm 97.3 K247CU  
Talk/Country: 'KNUJ AM 860 + 97.3' // KNUJ-860

MN Sleepy Eye 107.3 KNUJ-FM  
Classic Hits: 'SAM FM 107.3'

MN Thief River Falls 88.3 K202BK  
News/Talk/Classical: 'Prairie Public Radio' //  
KUND 89.3

MS Hazlehurst 92.9 WDXO  
Adult Hits: 92.9 Jack FM' [// WOEG-1220]

MS Indianola 105.7 WDTL  
[Frequency change from 105.5]

MS Sherman 95.1 WLEE-FM  
Sports: 'ESPN Mississippi 95.1 The Fan'  
(ESPN Radio Network); call change from  
WONA



MS Vaiden 95.1 WONA-FM  
Signs on with Country: 'The Hawg'; call change  
from WZMS

MO Bunker 106.3 KQBD  
Soft AC: 'Sunny 104.5'

MO Mansfield 95.9 KCKH  
[Call change from KTRI-FM]

MO Neosho 100.1 K261ET  
Classic Country: 'Real American Country' //  
KBTN-1420; move from 100.7 as K264CS

MT Butte 94.1 KOPR  
Adult Hits: 'Kopper 94'; includes K288AW  
105.5 & K294BZ 106.7



MT Gallatin Gateway 105.1 K286CY  
[Calls assigned to new station; will be Country:  
'K-SCY' (heard as "K-Sky") // KSCY 106.9]

MT Great Falls 104.3 K282CE  
[Calls assigned to new station; will be Oldies:  
'1490 AM The Patriot' // KHTC-1490]

MT Hamilton 98.7 KHKM  
Adult Hits: 'Max 98.7/96.9';  
includes K245AP 96.9



MT Kalispell 90.9 KSPL  
[Is silent]

MT Whitefish 99.5 K258AP  
[Move from 99.1 as K256CM]

NE Humboldt 90.1 KTTE  
[License cancelled; call deleted]

NV Carson City 92.1 KRAT-FM1  
Call change from KWFP-FM2]

NV Reno 100.5 KJLR-LP  
Returns with Spanish Religious

NV Sparks 92.1 KRAT  
[Call change from KWFP]

NB McAdam 95.5 CBZF-FM-1  
News/Talk: 'CBC Radio One' [formerly CBAX-600]

NH Lebanon 90.35 WVFA  
Contemporary Christian/Southern Gospel: 'We're  
the Valley's Fresh Alternative'

NM Albuquerque 103.7 K279BP  
Smooth AC: '103.7 The Oasis' // KOAZ-1510

NM Carlsbad 93.9 K230CI  
Regional Mexican: 'La Raza' // KATK-740

NM Espanola 91.1 K216GQ  
[Frequency move from 90.3 as K212AN]

NM Grants 102.1 K271CP  
Spanish: 'K-New Mexico' // KNMM-1150

NM Las Cruces 102.7 K274DC

[Calls assigned to new station;  
will be Oldies: 'Cool Oldies 104.5'  
// KWML-590; ('104.5' refers to  
K283CG)]



NY Alfred 101.9 WZKZ  
Country: 'KZ 102' [includes W242CT 96.3 &  
WOEN-1360]

NY Binghamton 89.3 WSKG-FM  
Classical/News/Talk

NY Buffalo 96.5 W243DX  
R&B Oldies: 'Power 96.5' // WUFO-1080

NY Dannemora 107.1 WPLA  
Adult Hits: 'What The . . . FM 107.1'; call change  
from WWWF

NY Essex 101.3 WCPV  
Sports: '101.3 The Game; network to FOX Sports]

NY Ithaca 97.7 W249DW  
 News/Talk: 'NewsRadio 870' // WHCU-870  
 NY Johnstown 102.9 W279BS and  
 NY Northville 104.3 W282CU  
 Soft AC: 'The Star' // WIZR-930 [Westwood  
 One - Lite AC]  
 NY Liverpool 107.5 W298DC  
 Unavailable as WFBL-1390 is Silent  
 NY Speculator 96.5 WYVS  
 Hot AC: 'Vacation Station'



NC Albemarle 103.3 W277DK  
 Classic Hits: 'Magic 103.3' // WZKY-1580  
 NC Albemarle 107.3 W297CF  
 Talk: '107.3 FM & 1010 AM WSPC' // WSPC-  
 1010  
 NC Bolivia 106.3 WUDE  
 [Is silent]  
 NC Charlotte 92.3 W222CW  
 [Move from 106.9 as W295CD]  
 NC Eden 95.9 W240EG  
 [Calls assigned to new station; will be Country:  
 'New Country Q104.1' // WTQR 104.1]  
 NC Havelock 105.1 WHAR  
 [Is silent]  
 NC Lumberton 102.3 WFVL  
 [Is silent]  
 NC Morganton 100.9 W265DY  
 [Calls assigned to new station; will be Southern  
 Gospel: 'AM 760, The Cross' // WCIS-760]  
 NC Pine Knoll Shores 92.7 WBNK  
 [Is silent]  
 NC Rose Hill 100.5 W263DF and  
 Rose Hill 101.1 W266DL  
 Urban Gospel: 'The Vine Connection' //  
 WEGG-710  
 NC Swainsboro 104.1 WKGV  
 [Is silent]  
 NT Fort Smith 97.9 CFYK-FM-1  
 News/Talk: 'CBC Radio One' [Formerly  
 CBD1-860]  
 NT Gahcho Kue Mine 91.5 CIXU-FM  
 New station on the air; format unavailable [De  
 Beers Canada]  
 NT Gahcho Kue Mine 94.5 CIXV-FM  
 New station on the air; format unavailable [De  
 Beers Canada]  
 NT Gahcho Kue Mine 97.5 CIXW-FM  
 New station on the air; format unavailable [De  
 Beers Canada]  
 NT Gahcho Kue Mine 100.5 CIXY-FM  
 New station on the air; format unavailable [De  
 Beers Canada]

NS Chapel Island 93.7 CIYR-FM  
 Aboriginal/Variety: 'Mniku Radio' [Potlotek  
 Communications Society]  
 NS Halifax 105.1 CKHY-FM  
 Active Rock/Hard Rock Classics: 'Rock 105.1'



NS Middle Lahave 93.7 CHLU-FM  
 Format is Unavailable  
 OH Cortland 99.9 W260DQ  
 [Calls assigned to new station; will be Religious  
 Teaching // WKTU-830]  
 OH Dayton 105.5 W288DT  
 [License cancelled; call deleted]  
 OH Hinckley 101.7 W269BS  
 [Move from 90.9 as W215BS]  
 OK Beaver 90.9 KLXO  
 [License cancelled; call deleted]  
 OK Frederick 91.5 KCBK  
 Returns with Southern Gospel: 'The Gospel Station'  
 OK Idabel 96.7 KBEL-FM  
 Country: 'Idabel's First, 96.7 FM KBEL' // KBEL-  
 1240



OK Ponca City 104.7 KQSN  
 Country: '104.7 The Bull'  
 OK Tipton 94.5 KSOC  
 [Call change from KOEE]  
 ON Thunder Bay 99.9 CJUK-FM  
 Classic Hits: 'The Bay'  
 ON Tillonsburg 101.3 CKOT-FM  
 Adult Contemporary: 'Easy 101.3'  
 OR Burns 92.7 KSQB  
 Unavailable [Is silent]  
 OR Madras 96.5 KJIV  
 [Call change from KSQI]  
 OR McMinnville 93.5 KKJC-LP  
 [Is silent]  
 OR Portland 89.5 KVBE-LP  
 Returns with Variety  
 OR Portland 96.7 KNUM-LP  
 [Call change from KZRY-LP]  
 OR Portland 99.9 W260DK  
 Ethnic: 'Russian Radio' // KOOR-1010  
 OR Wilsonville 91.1 KXVY-LP  
 Returns with Variety  
 PA Altoona 107.1 W296ED  
 Adult Standards: 'Great Music; Local Sports' //  
 WWGE-1400; move from 106.9 as W295DD

PA Beaver Falls 95.7 W239CR  
Talk: 'Beaver County Radio' // WMBA-1460

PA Beaver Falls 99.3 W257EA  
Talk: 'Beaver County Radio' // WBVP-1230]

PA Berwick 103.5 WMMZ  
Classic Rock: 'The River 105 & 103.5'; includes  
W280FJ 103.9 & W288CF 105.5

PA Carbondale 107.9 W300DQ and

PA Clarks Summit 93.5 W228CN  
Sports: '1400 The Game' // WICK-1400 &  
WCDL-1440

PA Easton 103.7 W279DM  
Sports: '1230 & 1320 AM Fox Sports Radio' //  
WEEEX-1230

PA Gap 92.9 WTPA-LP  
[Call change from WLRI-LP; remains Silent  
(Financial reasons)]

PA Harrisburg 104.5 W283DN  
[Format Unavailable as will be // newly-granted  
850 in Enola, PA; move from 104.1 as  
W281BN at Hammonton, NJ]

PA Honesdale 106.7 W294BJ  
Sports: '1400 The Game' // WCDL-1440

PA Johnstown 101.3 W267CM  
Adult Standards: 'Great Music & Local Sports'

PA Lancaster 94.5 WDAC  
Religious Teaching: 'Hope 94.5'; includes five  
translators (see the FM Database for details)

PA Pottsville 101.9 WAVT-FM  
Hot AC: 'T-102'

PA Scranton 104.9 WWRR  
Classic Hits: Classic Hits: 'The River 105 &  
103.5'; includes WMMZ 103.5, W264CG  
100.7, W285FT 104.9 & WYCK-1340

---

PR Aguada-Mayaguez 94.5 WQHD-LP  
[City-of-License change from Aguada]

PR Culebra 98.7 WNVE  
Returns with Spanish Contemporary Christian:  
'Nueva Vida'

PR Guayama 106.5 W293DE  
Returns with Spanish: 'Radio Caribe' // WIBS-  
1540

PR Ponce 105.1 WIOC  
Returns with Contemporary Hit Radio: 'Fresh  
99.9 FM' // WIOA 99.9

PR San Juan 94.3 W232DH  
Spanish News/Talk: 'Noti Uno' // WUNO-630;  
move from 104.9 as W285DL

---

QC Saint Remi 104.9 CHOC-FM  
[Is silent]

QC Saguenay 98.3 CILM-FM  
Contemporary Hit Radio: 'O 98.3; includes  
CKGS-FM 105.5 Saguenay-La Baie

---

RI Kingston 90.3 WRIU  
Variety

---

SK Assiniboia 98.1 CFGY-FM  
[Call change from CHOG-FM; new station not  
yet on the air]

SC Atlantic Beach 95.5 W238CJ and  
Conway 99.9 W260DN  
[Unavailable as // WNMB-900 is silent]

SC Georgetown 101.1 WLMC  
Oldies: 'The Soul of Georgetown'; includes  
W266DG 101.1

SC Greer 105.7 W289DS  
Regional Mexican: 'Activa' // WOLI-910

SC Hammond Crossroads 102.1 W271DJ  
[Calls assigned to new station; will be News/Talk:  
'South Carolina Public Radio' // WRJA-FM 88.1]

SC Hampton 92.1 WBHC-FM  
Adult Contemporary: '92.1 The Wave'



SC Sumter 107.9 W300EC  
[Calls assigned to new station; will be News/Talk:  
'South Carolina Public Radio' // WRJA-FM 88.1]

---

SD Eagle Butte 93.5 KIFI  
New station signs on with Variety: 'KIFI FM 93.5'

SD Yankton 99.9 K260BO  
Country: '99.9/104.5 The Outlaw' // WNAX-FM HD2  
[104.5' refers to K283AG Sioux City, IA]



TN Covington 101.9 W270DR  
[Calls assigned to new station; will be Southern  
Gospel // WKBL-1250]

TN Greeneville 95.5 W238DC  
Country/Talk: 'Hometown Radio' // WGRV-1340

TN Kingston 94.1 W231DY  
Contemporary Hit Radio: 'The Vibe' // WBBX-1410

TN Knoxville 97.1 W246DH  
Oldies: 'Mid-Century Radio WKCE AM 1180'

TN Lawrenceburg 97.5 WLLX  
Country: '97.5 & 98.3 WLX'; includes W278CH  
103.5 Muscle Shoals, AL

TN Lawrenceburg 103.9 WBKV  
[Frequency change from 106.7; call change from  
WTNX]

TN Lebanon 91.5 WFMQ  
[Is silent]

TN Loretto 98.3 WLXA  
Country: '97.5 & 98.3 WLX'

TN Madisonville 106.3 W292GA  
[Calls assigned to new station; will be Talk //  
WRKQ-1250]

TN Nashville 98.3 W252CM  
News/Talk: 'TalkRadio 98.3' // WLAC-1510



TN Smyrna 94.7 W234DF  
Spanish Religious: 'Radio Moody' // WYJV-710

TN Waverly 93.5 W228DG  
Oldies: 'AM 1060, Playing the Best of 30 Years of Rock & Roll' // WQMV-1060

---

TX Bullard 94.3 KZXM  
Classic Country: 'Real Country 94.3'

TX Cedar Park 95.3 KGSR  
Adult Alternative: 'Austin City Limits Radio'

TX Comanche 100.1 K261EZ  
Classic Country: 'Comanche Country 1550-100.1' // KCOM-1550

TX Corsicana 107.9 K300DS  
[Calls assigned to new station; will be Religious Teaching: 'American Family Radio' // KATG 88.1]

TX Cuney 99.7 KOEE  
[Call change from KSOC]

TX Dimmitt 102.7 K274DG  
[Calls assigned to new station; will be Country: 'The Twister, 1470 AM KDHN' // KDHN-1470]

TX Grand Prairie 92.9 KGPJ-LP  
Spanish Religious: 'Radio Por Gracia De Dios'

TX Greenshores 107.9 K300DU  
[Calls assigned to new station; will be Country: '99.3 KOKE-FM' // KOKE-FM 99.3]

TX Guthrie 107.7 KJAG  
[Call change from KLXY]

TX Houston 95.3 KCDE-LP  
New station signs on with Spanish Religious

TX Kerrville 96.9 K245DE  
[Move from 97.5 as K248CG]

TX Jacksonville 95.1 KEBE-FM  
[Calls assigned to new station]

TX Oakwood 94.5 KETW  
[Calls assigned to new station]

TX Pittsburg 103.1 KMPA  
Tejaño: 'Que` Pasa'

TX Round Rock 88.1 KNLE-FM  
[Is Silent]

TX Rusk 103.9 K280CL  
Classic Hits // KTLU-1580

TX San Angelo 93.9 KCRN-FM  
Religious Teaching: 'Keeping Him Close By'

TX San Saba 100.3 K262DF  
Classic Country: 'Texas FM 106' // KNUZ 106.1

TX South Padre Island 92.7 KESO  
[Is silent]

TX South Padre Island 95.3 KZSP  
[Is silent]

TX Waco 94.1 K231CG  
Sports: 'CBS Sports 94.1' // KWBT 94.5 HD2

TX Wichita Falls 92.5 K223DE  
Contemporary Christian: 'K-Love' // KZKL 90.5; move from 90.1 as K211ED

---

UT Beaver 90.7 KEZB  
Returns with Religious Teaching: 'Radio Beaver 90.7'

UT Gunnison 95.7 KUTC  
Classic Rock: '95.7 The Boss' [Includes K237AD, K251AQ, K269GH and K292GM]

UT Manti 107.9 K300DT  
[Calls assigned to new station; Format is Unavailable as // KPVO 99.9 is Silent]

UT Randolph 107.9 KUMT  
News/Talk: 'Talk About Good, KUMT 107.9'; includes KUMT-FM1, KUMT-FM2, KUMT-FM4 and KUMT-FM5

---

VT Burlington 107.5 W298DD  
[Calls assigned to new station; will be News/Talk: 'Vermont Public Radio' // WVPS 107.9]

VT Waterbury 103.3 WWMP  
Adult Hits: 'Free 103.3'



VA Culpeper 95.3 W237CA  
Country: 'Today's Country' // WCVA-1490

VA Norfolk 91.1 WNSB  
Urban Contemporary: 'Hot 91'

VA Richmond 94.1 W231DP  
Adult Hits: 'Boomtown Richmond' // WULT-1540

VA Suffolk 92.9 WVWB  
Adult Contemporary: '92.9 The Wave'

---

WA Camas 102.7 KIEV-LP-FM1  
[City-of-License change from Washougal]

WA Kent 95.3 K237GM  
Ethnic (Punjabi): 'KZIZ Radio Punjab' // KZIZ-1560

WA Ocean Park 88.7 KLOY  
[City-of-License change from Astoria, OR]

WA Tacoma 95.3 KTQA-LP  
Returns with Variety

---

WV Moundsville 97.7 W249DU  
[Calls assigned to new station; will be News/ Talk: 'AM 1370 Valley's Watch Dawg' // WVLY-1370]



WI Delafield 90.7 WHAD  
News/Talk: 'Wisconsin Public Radio'

WI La Crosse 107.3 W297CT  
[Calls assigned to new station; will be Adult Contemporary: 'Mix 96.1' // WXYZM 96.1]

WI Mauston 92.9 W225BF  
Country: 'Smash Country 92.9' // WRJC-1270

WI Milwaukee 101.3 WKJJ-LP and Milwaukee 101.3 WPJQ-LP  
[Are silent; lost shared tower site]



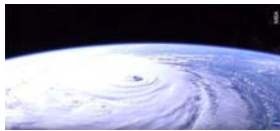
WI Oshkosh 95.7 W239CV  
 [Calls assigned to new station; will be Religious  
 Teaching: 'Relevant Radio' // WJOK-1050]



WI Park Falls 90.3 WHBM  
 News/Talk: 'Ideas Network' [Wisconsin Public  
 Radio]

WY Cheyenne 104.1 K281DD  
 Variety: 'K-Rocky 88.7 // KRKY-FM 88.7; call  
 change from K227CP on 93.3]

WY Gillette 97.3 KAML-FM  
 Hot AC: 'Camel-FM, Today`s Hit Music'  
 WY Pine Bluffs 95.5 KYWY  
 Religion; call change from KEZF  
 WY Warren AFB 103.3 KRAN  
 Classic Country: '103.3 The Range'



**Although many have probably returned to the air by now, the FCC's last update issued on 26 September reported the following stations were off due to Hurricane Florence:  
 Your update to the appropriate FM DX column is appreciated!**

**Georgia**

WMGV 95.1 Montezuma

**North Carolina**

WBNK 92.7 Pine Knoll Shores  
 WNBU 94.1 Oriental  
 W232CH 94.3 Raleigh  
 WKXS-FM 94.5 Leland  
 W238AV 95.5 Wilmington  
 W240AS 95.9 Wilmington  
 WRHT 96.3 Morehead City  
 W247BS 97.3 Hope Mills  
 WMNX 97.3 Wilmington  
 W249BX 97.7 Southern Pines  
 WZKT 97.7 Walnut Creek  
 WXNR 99.5 Grifton  
 WKXB 99.9 Boiling Spring Lakes  
 W263BA 100.5 Wilmington  
 W269DF 101.7 Wilmington  
 WIKS 101.9 New Bern

W270AW 101.9 Sanford  
 WFVL 102.3 Lumberton  
 W275BW 102.9 Fayetteville  
 WELS-FM 102.9 Kinston  
 WFNE-LP 103.5 Wake Forest  
 W280EP 103.9 Lumberton  
 WKGV 104.1 Swansboro  
 WHAR 105.1 Havelock  
 WSFL-FM 106.5 New Bern  
 WKFV 107.3 Clinton  
 WAZO 107.5 Southport

**South Carolina**

WLGI 90.9 Hemingway \*  
 WGNI 102.7 Wilmington\*  
 WTIB 103.7 Williamston\*

\* - Off the air with programming sent to another (unspecified) station

# Full Power FMs on channel 5 or 6?

DOUG SMITH ON THE WTFDA FACEBOOK GROUP

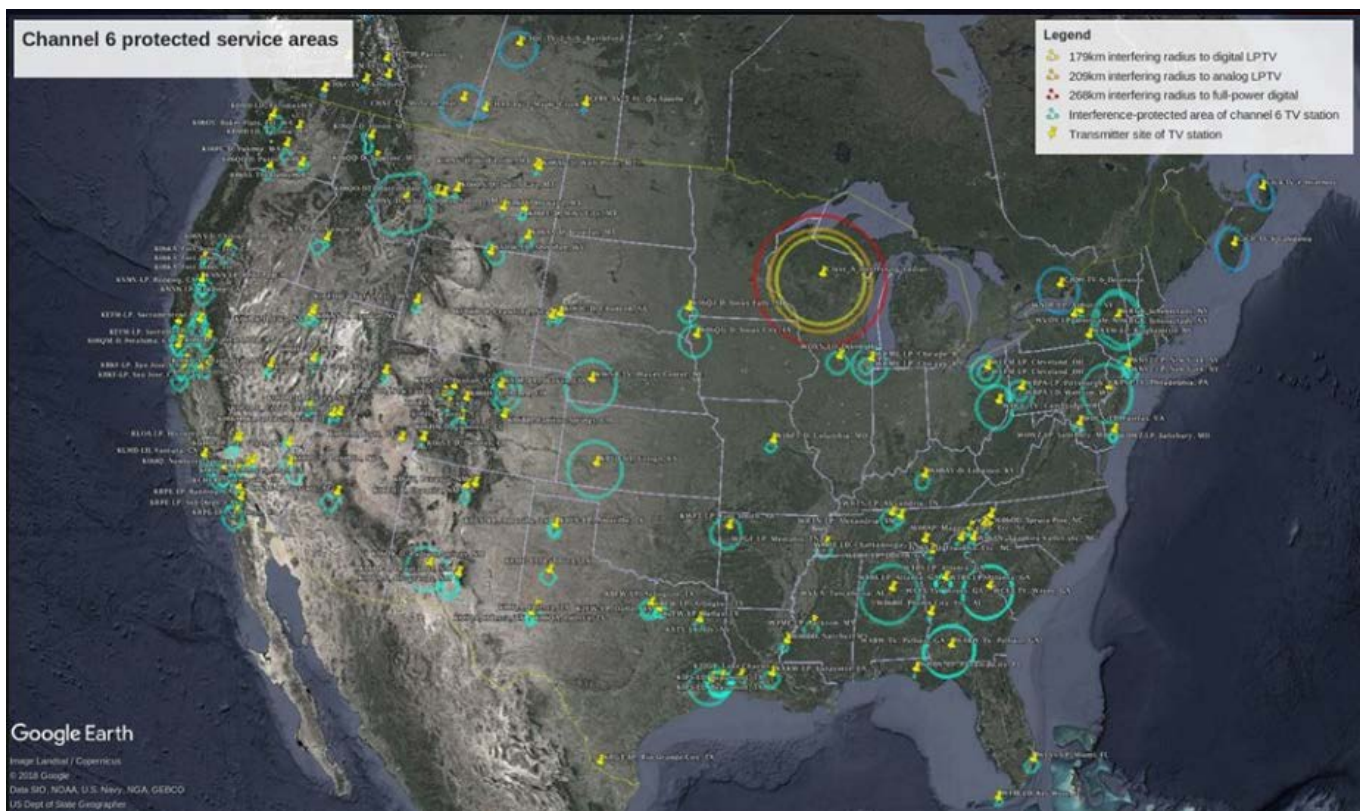
From time to time, people suggest TV channels 5 and 6 should be reallocated to FM radio. I see it proposed as additional LPFM spectrum; I see it proposed as a way to get AM stations an FM signal.

These proposals seem to forget that there are still TV stations on these frequencies.

This map shows the interference-protected service areas of TV stations on channel 6.

The circles in northern Wisconsin show the areas over which a Class A FM station would cause interference, if operated on a frequency within channel 6 spectrum. The yellow circle is where it would interfere with a digital LPTV; the orange, where it would interfere with an analog LPTV; the red, where it would interfere with a full-power TV station. (They do not reflect an actual Wisconsin station. Just imagine moving these circles to wherever in the country you're thinking about having an FM station in 82-88MHz. If one intersects with a blue or green circle -- you're out of business...)

Obviously huge swaths of the country would be off-limits to channel 6 radio operation. Including the entire Eastern Seaboard, and nine of the ten largest U.S. cities. (San Antonio would be the lucky outlier)



# PHOTO NEWS



Jeff Kruszka  
1909 Lost Lake Pl.  
Pearland, TX 77581  
[jkruzka@sbcglobal.net](mailto:jkruzka@sbcglobal.net)

October 2018

---

Yes, there's still plenty of analog signals out there to be had. Especially if you live in S. Florida like Chris Dunne!



YNFA302 Managua, NIC  
1038 mi Es  
Seen 8-18-18



Caracol TV 2  
Colombia  
? mi Es seen 7-15-18



Oye TV 4 Panama  
? mi Es seen 7-15-18



Señal  
Colombia 

Señal Colombia 5  
? mi Es seen 7-15-18



 Canal  
Institucional

Canal Institucional 4  
Colombia  
? mi Es seen 7-15-18



XHCCU-TDT-39  
Cancun, QR  
510 mi Tr seen 7-21-18





Telecaribe 3  
Monteria, COL  
1225 mi Es seen 7-25-18



WJLP-3 Middletown, NJ  
1052 mi Es seen 8-20-18



### The VHF-UHF Digest needs a new editor!

Your humble VUD editor is getting busy on the weekends and is looking for another WTFDA member to take over publishing duties next year. Our new publisher should be organized and familiar with word processing programs like Word and OpenOffice. Could it be you?

E-Mail Ryan Grabow if you're interested: [ryang@wtfda.org](mailto:ryang@wtfda.org)



# Coast to Coast TV DX

Featuring reports from the entire United States and all of Canada.

Send reports by the 15<sup>th</sup> of each month to:

Nick Langan

42 Holly Park Drive

Tabernacle, NJ 08088

E-mail: [nickl@wtfd.org](mailto:nickl@wtfd.org)

---

## *The Editor's Note*

A rainy weather pattern for a large area of the eastern U.S., including the effects of Hurricane Florence, was not conducive to much in the way of tropo activity in September. The Great Lakes and Midwest had its moments, including a large opening stretching from the mid-South all the way into the Canadian Maritimes on the 13<sup>th</sup>.

---

### **Christopher Dunne**

Pembroke Pines, FL

2018 TV DX July-September

\* = new from home

7/15 Es

2 CLM CARACOL, beautiful/color!

2 NCG Managua

3 RCN CLM, not seen in 18 years

3 CLM CARACOL

4 NCG Managua

4 PNR OyeTV\*

4 CLM CARACOL

4 CLM Canal Institucional

5 CLM Senal Colombia

6 CLM 5JA-8351 Canal Uno, Bucaramanga, picture battling local WEYS

7/16 Es

2 CIII2 ON Global

DT 2 KJWP DE Wilmington

DT 3 WJLP NJ Monmouth Twp

DT 6 WPVI PA Philadelphia, first time decoded with a picture

7/18 Es

2 DOM Tele Antillas (TA)

7/21 Tr

DT 39 XHCCU QR Cancun\*

DT 21 XHCCN QR Cancun\*

(my first 2 DT's outside USA!)

7/22 Es

2 CLM CARACOL

2 VEN TVes

3 CLM Monteria, "Telecaribe"

7/24 Es

2 HTI Port-au-Prince, StormTV

4 HTI Port-au-Prince, Radio Tele Éclair

7/25 Es

2 TA again  
3 Telecaribe again, best reception ever, color  
5 DOM "Telemicro," telenovela

7/27 Es

2 TVes again]  
3 VEN TVes  
2 TA again

7/31 Es

2 TA again!  
2 HTI again  
4 DOM CERTV, "4 RD" UR  
4 CLM CARACOL  
5 Telemicro again

8/1 Es

DT 2 KJWP again  
DT 3 WJLP again

8/15 Es

3 VEN "Televen"

8/18 Es

2 NCG again  
4 NCG again

8/19 Es

2 PNR TVN, rare to see on 2!  
3 PNR Colon, TVN  
4 PNR Cd de Panama, RPC TV

8/20 Es

DT 2 KJWP again  
DT 3 WJLP again, but seeing/hearing their radio  
station subchannels

9/13 Es

2 NCG again  
2 PNR "TVMax," 1960s B&W videotape sitcom,  
//video stream  
2 HND San Pedro Sula, "VTV"  
2 SLV YSWR San Salvador, Flintstones cartoon in  
SS  
3 PNR TVN again  
3 GTM TGV Guatemala City  
4 NCG again  
4 HND San Pedro Sula, "Telecadena 7/4"

Thank you Lord!

CLM = Colombia  
DOM = Dominican Republic  
HTI = Haiti  
HND = Honduras  
GTM = Guatemala  
NCG = Nicaragua  
PNR = Panama  
VEN = Venezuela

cd

---

# Northern FM DX



Keith McGinnis  
18 Newbridge St., Hingham, MA 02043  
longwave@comcast.net 781-875-1944

For Dxers in the following states: CT IA ID IL IN MA ME MI MN MT ND NE NH NJ NY OH OR  
PA RI SD VT WA WI WY and all of Canada. Please submit by the 10<sup>th</sup> of each month.

EDITOR'S NOTE PLEASE SUBMIT ALL REPORTS IN THE FORMAT SHOWN BELOW.

***Time(tab)Calls(tab)Freq(tab)City(tab)State(tab)details***

*Formats can either be plain text, Word or Excel as long as format is adhered to. Any submissions in other formats may not be used at editor's discretion.*

***All Submissions must be in to me by the 10<sup>th</sup> of each month.***

**Russ Edmunds  
Blue Bell, PA  
( 15 mi NW of Philadelphia ) Grid FN20id**

**RSP1a SDR, Yamaha T-80 & T-85, each w/ Conrad RDS Decoders;  
Onkyo T-450RDS; Tecsun PL-310 ( 3), all w/APS9B @ 15';  
modified Sony ICF2010, all w/4 el 144 mHz yagi**

Time	CALL	FREQ	CITY	ST	RDS PI & PROG DETAILS	DIST
------	------	------	------	----	-----------------------	------

**July 4 2018 Es**

2048	KQSD	91.9	Lowry	SD	3C17 RDS Capture	1297
------	------	------	-------	----	------------------	------

**July 8 2018 Es**

1000	KPNE	91.7	North Platte	NE	4519 RDS Capture	1354
1038	WCTQ	92.1	Venice	FL	13B2 RDS Capture	987
1038	WVIJ	91.7	Port Charlotte	FL	8CF5 RDS Capture	988
1945	KTFX	101.7	Warner	OK	ID 1129	
1946	KOSU	91.7	Stillwater	OK	36E0 RDS Capture	1354



July 9 2018 Es

955	WAYF	88.1	West Palm Beach	FL	ID 978	
958	WCMQ	92.3	Hialeah	FL	Spanish, Miami ads	1031
958	WFEZ	93.1	Miami	FL	ID 1019	
959	WRMB	89.3	Boynton Beach	FL	South FL weather	982
1003	WLRN	91.3	Miami	FL	737B RDS Capture	1018
1004	WAVW	92.7	Stuart	FL	Weather, ID 937	
1007	WAYF	88.1	West Palm Beach	FL	571D RDS Capture	978
1021	WVKV	95.3	Nashville	GA	8D35 RDS Capture	768
1030	WUSF	89.7	Tampa	FL	8B51 RDS Capture	940
1032	WMGB	95.1	Montezuma	GA	ID 704	
1032	WJTG	91.3	Fort Valley	GA	Family Life Radio	701
1034	WTNT	94.9	Tallahassee	FL	12FA Country, WFLA PI	831
1034	WGTF	89.5	Dothan	AL	6673 RDS Capture	838
1035	WFSQ	91.5	Tallahassee	FL	63C0 RDS Capture	856
1035	WUWF	88.1	Pensacola	FL	8BB9 RDS Capture	941
1037	WJIS	88.1	Bradenton	FL	6D4E RDS Capture	987
1039	WJIS	88.1	Bradenton	FL	ID 987	
1102	WWIO	88.9	Brunswick	GA	8F9E RDS Capture	710
1103	WLFS	91.9	Port Wentworth	GA	7248 RDS Capture	640
1106	WOLR	91.3	Lake City	FL	973F RDS Capture	816
1207	KJLT	94.9	North Platte	NE	28F5 RDS Capture	1338
1207	KPNE	91.7	North Platte	NE	4519 RDS Capture	1354
1209	KMLV	88.1	Ralston	NE	A3E3 RDS Capture	1087
1210	KIWR	89.7	Council Bluffs	IA	276D RDS Capture	1087
1218	KMGZ	95.3	Lawton	OK	Local ads, ID 1326	
1219	KBBN	95.3	Broken Bow	NE	Local ad traced back to this	1277
1223	KNNU	92.3	Antlers	OK	Classic Country, local ad - New	1194
1235	KXNE	89.3	Norfolk	NE	Classical, // 91.5 and 90.3	1150
1235	KMNE	90.3	Bassett	NE	Classical, // 91.5 and 89.3	1268
1235	KRNE	91.5	Merriman	NE	Classical // 89.3 and 90.3	1378
1239	KBRB	92.7	Ainsworth	NE	ID 1279	
1239	KORN	92.1	Parkston	SD	36BF RDS Capture	1200
1250	KRNE	91.5	Merriman	NE	3E3A RDS Capture	1378
1254	KUSD	89.7	Vermillion	SD	46A7 RDS Capture	1136
1307	KORN	92.1	Parkston	SD	368F RDS Capture	1200
1311	KLXS	95.3	Pierre	SD	Country, ID 1309	
1312	KLXS	95.3	Pierre	SD	ID 1309	
1316	KQSD	91.9	Lowry	SD	3C17 RDS Capture	1297
1733	KAYL	101.7	Storm Lake	IA	Station promo	1043
1800	KOIA	88.1	Storm Lake	IA	ID 1034	
1932	WVFS	89.7	Tallahassee	FL	8CB0 RDS Capture	840
1942	WUNV	91.7	Albany	GA	8ADF RDS Capture	763
1944	WKSJ	94.9	Mobile	AL	Station promo	973
1945	WAQY	91.7	Gulfport	MS	0000 RDS Capture	1028
1946	WAPR	88.3	Selma	AL	Alabama Public Radio	844
1947	WZEW	92.1	Fairhope	AL	972A RDS Capture	980
1947	WXYK	107.1	Gulfport	MS	ID 1024	

1949	WLBF	89.1	Montgomery	AL	71D3 RDS Capture	809
1949	WPAS	89.1	Pascagoula	MS	7C56 RDS Capture	993
1949	WELL	88.7	Waverly	AL	6061 RDS Capture	764
1953	WTGF	90.5	Milton	FL	8775 RDS Capture	936
1953	WJHO	89.7	Alexander City	AL	6D30 RDS Capture	770
1955	WLWI	92.3	Montgomery	AL	Country, ID 809	
1956	WEGS	91.7	Milton	FL	5FE6 RDS Capture	934
1958	WUWF	88.1	Pensacola	FL	8BB9 RDS Capture	941
1958	WMVW	91.7	Peachtree City	GA	768F RDS Capture	695
2000	WUWF	88.1	Pensacola	FL	8BB9 ID 941	
2000	WYFK	89.5	Columbus	GA	Multi-station ID; this best fits skip zone	
2000	WPCS	89.5	Pensacola	FL	ID 947	
2000	WSTF	91.5	Andalusia	AL	ID 869	
2000	WWNO	89.9	New Orleans	LA	Pledge announcements	1090
2001	KMRL	91.9	Buras	LA	0000 RDS Capture	1099
2002	WILF	88.9	Monroeville	AL	ID, "The Life FM" 898	
2010	WACV	93.1	Coosada	AL	Talk program, AL-specific topics - New	
2012	WFXX	107.7	Georgiana	AL	ID 873	
2013	WRLD	95.3	Valley	AL	82AD RDS Capture	749
2014	WHKR	102.7	Rockledge	FL	Country, "Nash 102.7"	873
2026	WJSP	88.1	Warm Springs	GA	GA PB weather	726
2032	WZRH	92.3	LaPlace	LA	829D RDS Capture - New	1119
2038	WTUL	91.5	New Orleans	LA	88E7 RDS Capture	1094
2042	WOTB	88.7	Pearl River	LA	0000 ID 1054	
2045	WMBV	91.9	Dixon's Mills	AL	7487 RDS Capture	887
2052	KQKI	95.3	Bayou Vista	LA	3B4C RDS Capture	1158
2059	WGUO	94.9	Reserve	LA	Country, ID 1104	
2113	WMAU	88.9	Bude	MS	75EB RDS Capture	1056
2114	KITA	89.5	Iota	LA	270E RDS Capture	1194
2120	KPAQ	88.1	Plaquemines	LA	0000 RDS Capture	1131
2130	WJIS	88.1	Bradenton	FL	ID 987	

### July 10 2018 Es

1322	KWFC	89.1	Springfield	MO	4A9C RDS Capture	994
1329	KYLF	88.9	Adrian	MO	Bott Net ID, weather specific for SW MO	
1338	KMUW	89.1	Wichita	KS	31CE RDS Capture	1198
1346	KHCD	89.5	Salina	KS	22B3 RDS Capture	1176
1348	KRSW	89.3	Worthington	MN	3ECE RDS Capture	1060
1603	KHNE	89.1	Hastings	NE	4519 RDS Capture	1196
1631	KJIA	88.9	Spirit Lake	IA	ID 1048	
1635	KGKD	90.5	Columbus	NE	Weather, ID 1159	
1636	KEZO	92.3	Omaha	NE	Rock, "Z 92 The Rock of Omaha"	1089
1638	KUSO	92.7	Albion	NE	46B2 RDS Capture	1191
1639	KMLV	88.1	Ralston	NE	A3E3 RDS Capture	1087
1647	KNSW	91.7	Worthington	MN	343E RDS Capture	1088
1647	KFHC	88.1	Ponca	NE	1DEC RDS Capture	1116
1649	KXGM	89.1	Hiawatha	IA	4D64 RDS Capture, Air One - New	862

1649	KRKR	95.1	Waverly	NE	3DF9	RDS Capture - New	1123
1650	KORN	92.1	Parkston	SD	36BF	RDS Capture	1200
1654	KXNE	89.3	Norfolk	NE	4519	RDS Capture	1150
1657	KTTN	93.5	Worthington	MN	Classic Rock, weather		1060
1658	KRLS	92.1	Knoxville	IA	3E14	RDS Capture	938
1659	KNGA	90.5	St. Peter	MN	MN Public Radio ID		999
1700	KSTJ	91.3	Hartford	SD	417F	RDS Capture, EWTN	1161
1704	KSUI	91.7	Iowa City	IA	4198	RDS Capture	844
1714	KIWR	89.7	Council Bluffs	IA	276D	RDS Capture	1087
1714	KHKE	89.5	Cedar Falls	IA	2384	RDS Capture - New	901
1718	KCSI	95.3	Red Oak	IA	ID 1045		
1719	KJWM	91.5	Grand Island	NE	Religious talk, "Spirit Catholic Radio"		
1729	KNSZ	89.1	Ottumwa	IA	3441	RDS Capture	898
1733	KQSD	91.9	Lowry	SD	3C17	RDS Capture	1297
1739	KAYA	91.3	Hubbard	NE	AFR, only one in skip zone on freq		1111
1740	KLNE	88.7	Lexington	NE	4519	RDS Capture	1286
1741	KICJ	88.9	Mitchellville	IA	255D	RDS Capture	947
1746	KHOI	89.1	Story City	IA	23F0	RDS Capture - New	959

July 11 2018 Es

1140	WAYF	88.1	West Palm Beach	FL	ID	978	
1743	WPAE	89.7	Centreville	MS	7C48	RDS Capture	1082

July 12 2018 Es

1729	WMIB	103.5	Fort Lauderdale	FL	ID	1019	
1730	WAYF	88.1	West Palm Beach	FL	ID	978	
1745	WJIS	88.1	Bradenton	FL	ID	987	
1755	WLRN	91.3	Miami	FL	737B	RDS Capture	1018
1756	WSMR	89.1	Sarasota	FL	8579	RDS Capture	988
1756	WFIT	89.5	Melbourne	FL	62BF	RDS Capture	888
1756	WAYJ	89.5	Naples	FL	5721	RDS Capture	1037
1757	WZTU	94.9	Miami Beach	FL	14F8	RDS Capture	1031
1758	WMKL	91.9	Hammocks	FL	7567	RDS Capture	1043
1758	WURN	107.1	Key Largo	FL	Spanish traffic report		1082
1758	WCKT	107.1	Lehigh Acres	FL	Country, ID	1026	
1759	WYFE	88.9	Tarpon Springs	FL	ID, BBN	915	
1759	WFEZ	93.1	Miami	FL	ID	1019	
1759	WAVW	92.7	Stuart	FL	ID	937	
1800	WUSF	89.7	Tampa	FL	8B51	RDS Capture	940
1800	WTBH	91.5	Chiefland	FL	Southern Gospel, ID		854
1801	WCTQ	92.1	Venice	FL	13B2	RDS Capture	987
1809	WPYO	95.3	Maitland	FL	ID	873	
1810	WKNK	101.7	Callaway	FL	Tampa area traffic	897	
1811	WAPE	95.1	Jacksonville	FL	5632	RDS Capture	767
1813	WBVM	90.5	Tampa	FL	597A	RDS Capture	939

1813	WYFS	89.5	Savannah	GA	949C RDS Capture	653	
1813	WTOT	101.7	Graceville	FL	Oldies, ID 855		
1816	WOLR	91.3	Lake City	FL	973F RDS Capture	816	
1818	WKTO	88.7	Edgewater	FL	710C RDS Capture	834	
1820	WWKA	92.3	Orlando	FL	Countrry, ID 863		
1820	WOLR	91.3	Lake City	FL	973F RDS Capture	816	
1822	WWRM	94.9	Tampa	FL	9086 RDS Capture	940	
1824	WJLF	91.7	Gainesville	FL	6D8F RDS Capture	830	
1828	WDVH	101.7	Trenton	FL	Local promo, "The Joy Network"		844
1832	WMLV	89.7	Miami	FL	758B RDS Capture	1052	
1833	WQCS	88.9	Fort Pierce	FL	7F2E RDS Capture	925	

July 16 2018 Es

1048	WMLV	89.7	Miami	FL	758B RDS Capture	1052	
1051	WCMQ	92.3	Hialeah	FL	5B38 RDS Capture	1031	
1051	WFEZ	93.1	Miami	FL	Soft rock, local ads	1019	
1052	WAYF	88.1	West Palm Beach	FL	571D RDS Capture	978	
1053	WLRN	91.3	Miami	FL	737B RDS Capture	1018	
1053	WZTU	94.9	Miami Beach	FL	14FB RDS Capture	1031	
1057	WDNA	88.9	Miami	FL	5DE6 RDS Capture	1052	
1059	WMKL	91.9	Hammocks	FL	7567 RDS Capture	1043	
1104	WAYJ	89.5	Naples	FL	5721 RDS Capture	1037	
1114	WCKT	107.1	Lehigh Acres	FL	ID 1026		
1119	WSMR	89.1	Sarasota	FL	8579 RDS Capture	988	
1121	WEOW	92.7	Key West	FL	CHR, local ads 1128		
1122	WZFL	93.5	Islamorada	FL	ID 1093		
1122	WKYZ	101.7	Key Colony Beach	FL	Rock, ID 1127		
1124	WAPE	95.1	Jacksonville	FL	ID 767		
1133	WCZR	101.7	Vero Beach	FL	Talk, ID 907		
1140	WQCS	88.9	Fort Pierce	FL	7F2E RDS Capture	925	
1145	WTIR	91.9	Brighton Reservtn	FL	Classic Country 960		
1149	WVUM	90.5	Coral Gables	FL	8E30 RDS Capture	1037	
1151	WCTQ	92.1	Venice	FL	13B2 RDS Capture	987	
1152	WXHT	102.7	Madison	FL	Weather ID 801		
1153	WRMB	89.3	Boynton Beach	FL	Moody promo, ID 982		
1155	WEGS	91.7	Milton	FL	ID 934		
1216	WJLU	89.7	New Smyrna Bch	FL	6D9E RDS Capture	834	
1234	WAVW	92.7	Stuart	FL	Country, local ads 937		
1240	KPAQ	88.1	Plaquemines	LA	0000 RDS Capture	1131	
1311	WZEW	92.1	Fairhope	AL	972A RDS Capture	980	
1314	WSCF	91.9	Vero Beach	FL	Religious talk, "Christian FM"	913	
1332	WPAE	89.7	Centreville	MS	7C48 RDS Capture	1082	
1352	WPEF	91.5	Kentwood	LA	"Lifesongs Radio", multistation ID - New		
1418	KBAN	91.5	DeRidder	LA	AFR, weather alert 1193		
1750	KGZ	88.1	Abilene	TX	ID 1458		
1758	WGTF	89.5	Dothan	AL	6673 RDS Capture	838	
1759	WECQ	92.1	Destin	FL	5F7C RDS Capture	915	

1800	KRVS	88.7	Lafayette	LA	ID 1169		
1804	WRWA	88.7	Dothan	AL	"Troy Public Radio", NPR	846	
1816	ZNH	91.7	Nassau	NW	68A3 Rap, Hip Hop, RDS Capture		1087
1826	WKSJ	94.9	Mobile	AL	Country, ID 973		
1828	WUWF	88.1	Pensacola	FL	8BB9 RDS Capture	941	
1830	WMVW	91.7	Peachtree City	GA	768F RDS Capture	695	
1831	WTGF	90.5	Milton	FL	8775 RDS Capture	936	
1832	WTBH	91.5	Chiefland	FL	Gospel, ID 854		
1836	WEGS	91.7	Milton	FL	5FE6 RDS Capture	934	
1836	W269CT	101.7	Columbus	GA	Country, "South 106"	756	
1858	WGUO	94.9	Reserve	LA	Country, ID 1104		
1859	WMAU	88.9	Bude	MS	75EB RDS Capture	1056	

July 17 2018 Es

1830	WPAS	89.1	Pascagoula	MS	7C56 RDS Capture	993	
------	------	------	------------	----	------------------	-----	--

July 18 2018 Es

1106	KOSU	91.7	Stillwater	OK	36E0 RDS Capture	1354	
------	------	------	------------	----	------------------	------	--

July 19 2018 Es

1727	KSQX	89.1	Springtown	TX	413F RDS Capture	1334	
------	------	------	------------	----	------------------	------	--

July 20 2018 Es

1007	KHCD	89.5	Salina	KS	22B3 RDS Capture	1176	
1012	KMFC	92.1	Centralia	MO	A334 RDS Capture; K-Love	899	
1015	KDKD	95.3	Clinton	MO	ID 998		
1045	KYLF	88.9	Adrian	MO	Bott; Alistair Begg, per site	1024	
1045	KMOE	92.1	Butler	MO	Promo for MO State Fair, ID	1026	
1045	KSIV	91.5	St. Louis	MO	Bott, Alistair Begg, per site	810	
1051	KJTH	89.7	Ponca City	OK	29B9 RDS Capture	1229	
1053	KWOU	88.1	Woodward	OK	2158 RDS Capture, KGOU PI	1334	
1056	KICT	95.1	Wichita	KS	Local event promos	1203	
1057	WIL	92.3	St. Louis	MO	ID 815		
1058	KAXR	91.3	Arkansas City	KS	AFR, local ID	1184	
1058	KSIV	91.5	St. Louis	MO	406D RDS Capture	810	
1059	KCVZ	92.1	Dixon	MO	ID 917		
1100	KQOH	91.9	Marshfeld	MO	ID, "Catholic Radio"	971	
1100	KGVV	90.5	Goltry	OK	ID into "Adventures in Odyssey"	1256	
1100	KMXL	95.1	Carthage	MO	3211 ID	1047	
1101	KTTS	94.7	Springfield	MO	442C RDS Capture	978	
1102	KOSU	91.7	Stillwater	OK	36E0 RDS Capture	1354	

1105	KTBT	92.1	Broken Arrow	OK	1259 RDS Capture	1159
1108	KWTU	88.7	Tulsa	OK	Classical, ID1142	
1109	KWGS	89.5	Tulsa	OK	4AC6 RDS Capture	1156
1118	KNYD	90.5	Broken Arrow	OK	34C7 RDS Capture	1160
1119	KBRU	94.7	Oklahoma City	OK	1472 RDS Capture	1256
1121	KQSM	92.1	Fayetteville	AR	Sportstalk, ID	1052
1122	KAYH	89.3	Fayetteville	AR	Preacher, local church announcements	
1123	KJCV	89.7	Country Club	MO	Bott promo	1045
1125	KRMW	94.9	Cedarville	AR	Rock, ID	1075
1126	KQCV	95.1	Shawnee	OK	Bott ID	1198
1128	KCMH	91.5	Mountain Home	AR	ID - New	967
1129	KWCV	88.9	Walnut Ridge	AR	Bott // others	918
1129	KAOW	88.9	Fort Smith	AR	1182 RDS Capture; AFR	1211
1134	KKRI	88.1	Pocola	OK	114A ID & RDS Capture	1092
1134	KAMS	95.1	Mammoth Spring	AR	2C2A ID & RDS Capture	908
1138	KWLB	93.1	Red Oak	OK	Rock, "The Mix", "Mountaineer Radio"	
1141	K226BS	93.1	Fort Smith	AR	Country, only one in skip zone - New	1095
1141	KSAR	92.3	Thayer	MO	Sports, ID	915
1142	KERX	95.3	Paris	AR	1C61 Sports, ID	1077
1144	KHPQ	92.1	Clinton	AR	2412 RDS Capture	958
1146	KDYN	92.7	Coal Hill	AR	Country, ID - New	1045
1155	KAWA	89.7	Sanger	TX	4668 RDS Capture, audio ID	1278
1159	KOLI	94.9	Electra	TX	361E RDS Capture	1368
1200	KMKT	93.1	Bells	TX	ID	1247
1211	KSSU	91.9	Durant	OK	ID	1236
1215	KDQN	92.1	DeQueen	AR	Country, ID	1121
1231	KFXI	92.1	Marlow	OK	1F92 ID & RDS Capture	1300
1233	KMOC	89.5	Wichita Falls	TX	311E RDS Capture	1350
1240	KAJT	88.7	Ada	OK	SONLIFE - only one on freq - New	1222
1356	KJCC	89.5	Carnegie	OK	CSN - only one on freq - New	1293

### July 22 2018

1855	WGSG	89.5	Mayo	FL	SONLIFE ID	826
1856	WFLJ	89.3	Frostproof	FL	"The Joy Network" //	91.7 939
1856	WJLF	91.7	Gainesville	FL	Cont Christian music; "The Joy Ntwk	830
1857	WPOZ	88.3	Orlando	FL	7DC9 RDS Capture	868
1858	WWKA	92.3	Orlando	FL	Country, ID	863
1903	WAYJ	89.5	Naples	FL	5721 RDS Capture	1037
1930	WNFK	92.1	Perry	FL	Local ads, "The Zone"	835

### July 23 2018 Es

1556	CBN-5	91.7	Marystown	NF	CBC Music promo - New	1111
1557	CBIS	92.1	Sydney	NS	Dual ID including 1140 AM - New	864
1600	CKPE	94.9	Sydney	NS	ID, news	864
1602	CBGA-8	93.5	Iles de la Madeleine	QC	CBC French news	830

1605	CHOZ	94.7	St. John's	NF	C557 RDS Capture	1228
1715	WAOY	91.7	Gulfport	MS	0000 RDS Capture; AFR	1028
1725	KNGM	88.9	Guymon	OK	KJIL promo	1432
1802	WMBV	91.9	Dixon's Mills	AL	7487 RDS Capture	887
1813	WMAW	88.1	Meridian	MS	75EB RDS Capture	920
1813	WMAU	88.9	Bude	MS	75EB RDS Capture	1056

July 25 2018 Es

1002	KGRM	91.5	Grambling	LA	Station promo	1102
1005	KNTE	101.7	Bay City	TX	Spanish/Mexican music	1417
1010	KYFL	89.5	Monroe	LA	4FED RDS Capture	1072
1013	KAMS	95.1	Mammoth Spring	AR	114A RDS Capture	908
1014	KCMH	91.5	Mountain Home	AR	ID 967	
1016	KHPQ	92.1	Clinton	AR	2412 RDS Capture	958
1017	WQKQ	92.1	Dallas City	IL	7FFC RDS Capture	837
1017	KAVX	91.9	Lufkin	TX	1239 RDS Capture	1240
1018	KXCV	90.5	Maryville	MO	4D05 RDS Capture	1032
1018	KASU	91.9	Jonesboro	AR	ID 887	
1018	WKMS	91.3	Murray	KY	ID 600	
1019	KZLE	93.1	Batesville	AR	Rock, local ads	941
1025	KHML	91.5	Madisonville	TX	KHCB Network pgm, this is nearest	1313
1029	KJLG	91.9	Emporia	KS	KJIL promo/ID - New	1124
1036	KNDE	95.1	College Station	TX	Station promo, rock - New	1353
1042	KNCT	91.3	Killeen	TX	Instrumental versions of pop songs	1401
1050	KVNE	89.5	Tyler	TX	48CA RDS Capture	1224
1050	KWAA	88.9	Mart	TX	4A18 RDS Capture	1368
1100	KGLY	91.3	Tyler	TX	ID 1233	
1107	KTXK	91.5	Texarkana	AR	ID into NPR's "1-A"	1146
1113	KVLU	91.3	Beaumont	TX	Classical, ID1263	

July 29 2018 Es

828	WPAS	89.1	Pascagoula	MS	7C56 RDS Capture	993
1037	WBSN	89.1	New Orleans	LA	58B0 RDS Capture	1090
1113	WSMR	89.1	Sarasota	FL	8579 RDS Capture	988

July 31 2018 Es

1101	KJTH	89.7	Ponca City	OK	29B9 RDS Capture	1229
1108	KZNA	90.5	Hill City	KS	HPPB Net ID1302	

Mike Bugaj – 69 Sherman Rd., Enfield, CT 06082  
 RSP-1 w/APS13, Bolin phase box and 7 element DIY phase antenna. This report  
 for July and August 2018.

May 18 Tr

1605 W268cz 101.5 Amherst MA f001 NEW

July 9 Es

1035 WJBT 93.3 Callahan FL 1c99  
 1032 WSMR 89.1 Sarasota FL 8579  
 1039 WUFT 89.1 Gainesville FL  
 1041 WMFQ 92.9 Ocala FL Q 92.9  
 1050 WAAC 92.9 Valdosta GA Hyundai of Valdosta adv.  
 1051 WNFK 92.1 Perry FL

July 10 Es

1656 KKOT 93.5 Columbus NE 2be7  
 1656 WQKQ 92.1 Dallas City IL KQ 92  
 1658 KANU 91.5 Lawrence KS 1166  
 1659 KMUW 89.1 Wichita KS 31ce  
 1659 KHCD 89.5 Salina KS 22b3 radio Kansas  
 1700 KRLS 92.1 Knoxville IA 3e14  
 1700 KJWM 91.5 Grand Island` NE NEW Spirit catholic radio  
 1700 KWJP 89.7 Paola KS NEW id  
 1700 KCVG 89.9 Hastings NE 1770 NEW Bott radio network  
 1705 KZUH 92.7 Wellington KS  
 1707 KLNE 88.7 Lexington NE 4519  
 1707 KHNE 89.1 Hastings NE 4519 NEW  
 1707 KJTY 88.1 Topeka KS 29ca  
 1712 KSSZ 93.9 Fayette MO 4175 NEW  
 1713 KDGS 93.5 Andover KS NEW Power 93.5  
 1717 KTBG 90.9 Warrensburg MO 424c  
 1718 KICT 95.1 Wichita KS 2567  
 1718 KCSI 95.3 Villisca-Red Oak IA  
 1721 KLIQ 94.5 Hastings NE 2dec NEW  
 1722 KDAM 94.3 Hartington NE NEW unclaimed freight in Yankton  
 1725 KQRC 98.9 Leavenworth KS 3bfc  
 1726 KRKR 95.1 Waverly NE 3df9  
 1743 KJCK 97.5 Junction City KS 2802  
 1800 KIOS 91.5 Omaha NE NEW Omaha public radio  
 1800 KREP 92.1 Belleville KS NEW KR 92 Belleville-Concordia  
 1802 KMUW 89.1 Wichita KS 31ce



### July 12 Es

1745	WZFL	93.5	Islamorada	FL	9739	NEW
1753	WAYF	88.1	West Palm Bch	FL	571d	
1756	WLLD	95.1	Lakeland	FL	72d5	
1759	WSOR	90.9	Naples	FL	85ad	
1800	WSMR	89.1	Sarasota	FL	8579	
1804	WUSF	89.7	tampa	FL	8b51	
1825	WBGF	93.5	Belle Glade	FL	57ed	
1829	W277DE	103.3	Waycross	GA	NEW	Jack's Way radio WAYR-550 xltr

### July 16 Es

1102	WDOG-FM93.5	Allendale	SC	NEW	WDOG-FM 1460/93.5 id
------	-------------	-----------	----	-----	----------------------

### July 20 Es

1125	KOYN	93.9	Paris	TX	3775	
1128	KVRE	92.9	Hot Springs Vill	AR	kvre.com	
1130	KIKT	93.5	Cooper	TX	2637	NEW 1392mi

### August 13 Es

1812	KJWR	90.9	Windom	MN	2a11	NEW pty=religious music
1812	WHWC	88.3	Menomonie	WI	6962	pty=yalk
1812	KRSW	89.3	Worthington	MN	3ece	pty=classical
1813	WUEC	89.7	Eau Clair	WI	89e2	NEW pty=public
1814	KNBJ	91.3	Bemidji	MN	3277	pty=news
1816	KLGA	92.1	Algona	IA	2da8	pty=adult hits
1817	KOYY	93.7	Fargo	NB	NEW	Top 40
1817	WJJO	94.1	Watertown	WI	6d64	pty=rock
1818	WHHI	91.3	Highland	WI	67e2	pty=public
1818	KNSK	91.1	Ft. Dodge	IA	3432	pty=public
1821	WSHN	89.3	Munising	MI	NEW	K-LOVE
1823	KCRB	88.5	Bemidji	MN	1703	NEW pty=classical
1823	KMSU	89.7	Mankato	MN	3198	pty=college
1824	KNSW	91.7	Worthington	MN	343e	pty=news
1824	KZSE	91.7	Rochester	MN	53dc	NEW pty=news
1825	KITN	93.5	Worthington	MN	271b	93.5 Rock IT FM Radioworks
1830	KLKK	103.7	Clear Lake	IA	2e1a	pty=classic rock
1832	KTYC	102.7	Northwood	IA	SuperHits	102.7
1832	KZCR	103.3	Fergus Falls	MN	Z103,	rock, real rock z103
1832	KUOO	103.9	Spirit Lake	IA	464a	pty=adult hits
1833	KYBA	105.3	Stewartville	MN	Y105	FM
1834	WRIS	106.7	Mt. Horab	WI	826e	NEW pty=rock
1835	KUXX	105.7	Jackson	MN	Extreme	Country 105.7

1836	KFMC	106.5	Fairmont	MN	a334	NEW	pty=soft rock
1836	KVIK	105.7	Decorahia	IA	484e		pty=classic rock
1836	KICD	107.7	Spencer	IA	NEW		Big Country 107-7
1837	KSUX	105.7	Winnebago	NE	K-soo	105.7	country
1837	WDDW	104.7	Sturtevant	WI	5cf8		pty=language (Spanish)
1837	WSJY	107.3	Fort Atkinson	WI	8532		pty=soft rock
1837	KVSK	107.5	Unknown		4952		Total Country Bob-FM 107.5 ???
1838	WKCH	106.5	Whitewater	WI	6f4b	NEW	pty=oldies
1839	KNEI	103.5	Waukon	IA	32c4		pty=country
1840	KLSS	106.1	Mason City	IA	2ef2		pty=top 40
1844	WPVL-FM107.1		Platteville	WI	NEW		The Extreme 107.1
1847	KIOW	107.5	Forest City	IA	NEW		Lots of local advs.
1847	WMHX	105.1	Waunakee	WI	7525	NEW	pty=top 40
1848	KAUS	99.9	Austin	MN	121a		KAUS country
1850	WMGN	98.1	Madison	WI			Magic 98
1851	WIBA	101.5	Sauk City	WI	19e2		pty=classic rock
1855	WMYX	99.1	Milwaukee	WI	760f		pty=adult hits
1855	CBQX	98.7	Kenora	ON	89.3/990am		CBC Radio One
1858	KHBT	97.7	Humbolt	IA			the Bolt
1900	WKKV-FM100.7		Racine	WI			Milwaukee county news
1903	KGRR	97.3	Epworth	IA	21a3	NEW	pty=public
1908	WJOD	103.3	Ashbury	IA	6ddb		pty=country
1913	KCVM	93.5	Evansdale	IA	1776		
1914	KKEZ	94.5	Fort Dodge	IA	2ae9		no pty
1922	CJKR	98.3	Winnipeg	MB	ca64		pty=rock
1925	KKCT	97.5	Bismarck	ND	FFFF	NEW	pty=top 40 PS-HOT97.5
1926	KQDY	94.5	Bismarck	ND	3aa6		pty=country

**Harry Hayes - Wilkes-Barre, PA**  
**Equipment: Sony XDR-F1HD rcvr., FM-6 in attic**

July 10 Es

1658	KFRX	106.3	Lincoln	NE			Voice ID
1705	KXNE	89.3	Norfolk	NE			RDS ID
1718	KMNE	90.3	Bassett	NE			RDS ID, New
1730	KTDV	91.9	State Center	IA			Voice ID "The Dove", New

July 12 Es

1826	WFLZ	93.3	Tampa	FL			RDS ID
1830	WRBQ	104.7	Tampa	FL			RDS ID
1830	WLLD	94.1	Lakeland	FL			RDS ID

### July 20 Es

1100 KNYD 90.5 Broken Arrow OK Voice ID

### July 22 Es

1000 KLNE 88.7 Lexington NE Voice ID

### July 23 Es

1530 CBNM 90.3 Marystown NF CBC & Local News  
1550 CIOZ 96.3 Marystown NF RDS ID "OZ FM"  
1623 CKNI 91.9 Moncton NB "91.9 The Edge"

### August 5 Es

1053 WRKF 89.3 Baton Rouge LA RDS ID  
1106 KLSU 91.1 Baton Rouge LA Jazz Music, RDS ID  
1108 WLRN 91.3 Miami FL Discussion about drugs, RDS ID  
1120 KRRQ 95.5 Lafayette LA "Q-95.5"  
1140 KUT 90.5 Austin TX Black Lives Matter, discussion, RDS ID  
1108 WLRN HD-291.3 Miami FL Orchestral music

### August 13 Es

1055 WJIS 88.1 Bradenton FL RDS ID  
1140 KASU 91.9 Jonesboro AR "Your Connection for Music", Voice ID  
1200 KSNU 90.3 Voice ID heard twice  
1807 WRLS 92.3 Hayward WI Ment. Hayward, "Wisc Radio News", New  
1821 WLST 95.1 Marinette WI Marinete in ad, "Cat Country", New  
1827 KBXE 90.5 Baxley MN "KAXT" RDS ID, New  
1833 WHBM 90.3 Park Falls WI RDS and Voice Full ID, New  
1838 KNOW 91.1 Minneapolis MN RDS ID  
1839 KNOW HD-2 91.1 Minneapolis MN Voice ID and mention Twin Cities  
1840 KNOW HD-3 91.1 Minneapolis MN "World Business Report"  
1846 KCMP 89.3 Northfield MN RDS ID  
1853 KNGA 90.5 St. Peter MN RDS ID ex KGAC

Total stands at 1541 stations received in NE PA in 48 years, and 19 HD subchannel 2 and above receptions which I enjoy making note of in the last 3 years. I DX on a casual basis by just sitting at the RX or DXing as I work in the studio here. No auto-logging or monitoring half the band at one time on a computer RX for me. I still prefer the old fashioned way. In the past year the mid band, from 97.3 through 99.9 has been blocked by strong "white noise", making that portion of the band very unusable. This range is equal on either side of 98.5 which would seem to indicate something amiss with the WKRZ signal. Even other local stations in this frequency range are noisy.



Southern FM DX

John Zondlo – 4009 Driftwood Circle – Yukon, OK 73099

[southernfmdx@wtfda.org](mailto:southernfmdx@wtfda.org) – Deadline: 15th

October 2018

**Chris Dunne**

3/25 Tr – From Everglades City/Chokoloskee FL

KEDT	90.3	TX	Corpus Christi
WBLX	92.9	AL	Mobile
KMXR	93.9	TX	Corpus Christi
KZFM	95.5	TX	Corpus Christi
KLTG	96.5	TX	Corpus Christi, “Beach”
WABD	97.5	AL	Mobile
KNTE	101.7	TX	Bay City, assumed, SS NBA coverage
KLTN	102.9	TX	Houston
KBYC	104.5	TX	Markham, “La Bahia”
KXXF	105.3	TX	Winnie, “Free”
KHCB	105.7	TX	Houston, TOH ID
KIOC	106.1	TX	Orange, “Big Dog”
KHPT	106.9	TX	Conroe
KQQK	107.9	TX	Beaumont, “El Norte”

5/3 Tr

WSFL	106.5	NC	New Bern
<u>WEND</u>	106.5	NC	Salisbury

5/6 Es

<u>R. Apocalipsis</u>	87.5	GT	Coatepeque, SS program “Jehova Es Mi Pastor,” search leads to this (any differing info?)
HJ..	88.7	COL	??, “R. Policia,” two possible there
<u>HOEB</u>	88.7	PN	??, “Que Buena”
<u>HRKE</u>	88.7	HN	Copan, “Ejucutiva Stereo,” 100 watts
<u>HRNT</u>	89.1	HN	La Entrada, “La Mera Braza”
HJCF	89.1	COL	Barranquilla, “Tropicana”
HRNL	89.1	HN	Comayagua, “Estereo Veca”
TIYA	89.1	CR	San Jose, assumed, “Mas Musica....La Super Estacion”
<u>HRKW</u>	90.3	HN	Copan, “R. Sultana”
HR..	91.7	HN	??, // Radio HRN, 2 or more possible

5/7 Tr

WJLH	90.3	FL	Flagler Beach, TOH ID, local WYBP off
------	------	----	---------------------------------------

5/10 Tr

WALC	100.5	SC	Charleston, “His Radio,” full quieting o/l-block
------	-------	----	--

5/29 Es

HJ..	91.7	COL	Riohacha, “Cardenal Stereo,” IDed by WTFDA member
------	------	-----	---

6/3 Es from Key Largo FL

KQCH 94.1 NE Omaha, "Channel 941," RDS, 1400+ mi (actually unsure date)  
WORO 92.5 PR San Juan, "Oro 92.5"

6/4 Es from Davie FL

ZBM 89.1 BM Hamilton, "Ocean 89," RDS

6/24 Es

KZPS 92.5 TX Arlington, "Lonestar"  
WCTO 96.1 PA Easton, "Cat Country"  
WPYX 106.5 NY Albany, "Pyx 106"

6/28 Es

WPCD 88.7 IL Champaign, promo, young guy imitating Hank Hill  
WVJC 89.1 IL Mt. Carmel, "The Bash"  
WBOI 89.1 IN Fort Wayne  
WFPL 89.3 KY Louisville, RDS o/WRMB  
WMAE 89.5 MS Booneville, RDS  
KISR 93.7 AR Fort Smith, o/u I-block

7/15 Es

HJH25 88.6 COL Barranquilla, "Besame"  
HJCF again  
HJ.. 90.1 COL Barranquilla, assumed, "Caracol"  
HJL25 91.0 COL Cienaga de Oro, "Vida," steady over 3 minutes

7/16 Es

WMTO 87.7 NC Moyock, "Streetz 87.7," null of WEYS  
WRAU 88.3 MD Ocean City, "WAMU" o/WGNK  
WMVY 88.7 MA Edgartown  
WEVO 89.1 NH Concord  
WNCK 89.5 MA Nantucket, ID  
CKPC 92.1 ON Brantford, "Jewel 92"  
WRRN 92.3 PA Warren, o/WCMQ  
WCPT 92.5 IL DeKalb  
WKSE 98.5 NY Niagara Falls, "Kiss"  
WRMM 101.3 NY Rochester, local ad only, many HD off here including 101.5  
WEZX 106.9 PA Scranton, "Rock 107," RDS  
WWWT 107.7 VA Manassas  
WVPS 107.9 VT Burlington, RDS  
162.45 VA Roanoke, wx for Roanoke, new  
162.525 PA State College, wx for State College, new

7/21 Es from Scout Key FL

HI.. 87.9 DR ??, "Extrema," mentioned Cotui  
WCRP 88.1 PR Guayama, "Inspira"  
WRTU 89.7 PR San Juan, RDS  
TIJX 90.3 CR San Jose, "Sinfonola"  
WIDA 90.5 PR Carolina, "Vida"  
ZCSS 90.9 BV Road Town?, "Caribbean Super Station," ZCSS RDS  
unID 91.1 ?? ??, French, St. Martin?  
WODA 94.7 PR Bayamon, "LA 94," RDS  
HIJP 94.9 DR Santo Domingo, "Kiss"  
WJKC 95.1 VI Christiansted, local ad

ZJB 95.5 Montserrat, ZJB RDS and ads  
WPRM 99.1 PR, San Juan, SALSOUL RDS  
WVIS 106.1 PR Vieques, "Radio Joe," slogan in English

7/21 Es from Key Largo

HO.. 91.5 PN ??, "Crisol," 3 possible  
"KLAS" 89.1? JM ??  
RJR 94.3 JM ??, last two very short Es!

7/23 Es

ZBM 89.1 BM ??, w/World Cup coverage

7/31 Es

unID 89.1 ?? ??, a CBC Canadian  
?? 91.7 JM ??, JMC Kingston (new)

8/3 Es

CKAR 88.7 ON Huntsville, // stream  
WBFO 88.7 NY Buffalo  
WKSX 89.1 OH Thompson, "WKSU"  
WNIJ 89.5 IL DeKalb  
CJBC 90.3 ON Toronto, // stream  
WBLV 90.3 MI Twin Lake, "Blue Lake Public Radio"

Thank you, Lord! Thanks go out also to any and all WTFDA members who helped me out with former unID's, station info, abbreviations, etc.

---

**Fred Nordquist** – Moncks Corner, SC – FM03AF – all new

Receivers: Sangean HDT-1X & AirSpy with latest version of SDR Console (v3.0 Build 1070 Beta 2 -compiled 3/2/18), Antenna: APS-13. Earlier loggings result of further review of SDR I/Q recordings.

6/25/2015 Es

1045 KANH 89.7 KS Emporia, RDS PI: 1159 971

6/13/2017 Es

1729 WFOX 95.9 CT Southport, RDS PI: 635F 652  
1741 WKFY 98.7 MA East Harwich, RDS PI: 6FAA 800  
1756 WAAF 107.3 MA Westborough, local Boston promo 773  
1800 WOSR 91.7 NY Middletown, multistation ID 650  
1802 WBFB 97.1 ME Bangor, RDS PI: 57CF 983  
1809 WYRY 104.9 NH Hinsdale, NASH Icon 775  
1811 WSEN 103.9 NY Mexico, ID Central NY 94.1/103.9 749

6/18/2017 Es

1722 WCIS 105.1 NY Deruyter, Family Life 704

6/14/2018 Es

0918 Por Encima 92.9 DR Navarrett, RDS PI: 4E81 – 'KXRL,' PS: POR ENCIMA, SS, not in WTFDA db, has webpage 1133  
1850 HISD 96.1 DR Santo Domingo, RDS PI: FFEF = 'WNF,' PS: Quisqueya, SS, now in WTFDA db 1193

6/15 Es

1351 WODA 94.7 PR Bayamon, RDS PI: 79EE, SS 1351  
1536 WTJX 93.1 VI Charlotte Amalie, EE ID, NPR VI 1384  
1650 WZIN 104.3 VI Charlotte Amalie, EE, local ads 1382  
1810 KOMT 93.5 AR Lakeview, RDS PI: 745  
1811 KIMY 93.9 OK Watonga, RDS PI: 2670, religious 1058  
1819 KQSM 92.1 AR Fayetteville, The Ticket 821  
1822 KTFR 100.5 OK Chelsea, RDS PI: 42BF, SS 908  
1822 KOSN 107.5 OK Ketchum, RDS PI: 36E0 – 'KOSU,' PS: KOSU NPR, news 909  
1823 KBCN 104.3 AR Marshall, NW AR announcement 744  
1825 KSMM 101.5 KS Liberal, RDS PI: 36E0 – 'KYCE,' SS, local ad 1204  
1825 KTGX 106.1 OK Owasso, RDS PI: 42DF, Twister, HD 917  
1826 KHBZ 102.9 AR Harrison, RDS PI: 22AF, ad 784  
1826 KOSB 105.1 OK Perry, RDS PI: 36CD, PS: KOSB 1008  
1829 KJMT 97.1 AR Calico, rock, RDS PI: 290F, news 726  
1830 KNID 107.1 OK North Enid, RDS PI: 3327, country 1046

6/18 Es

0923 R. Bavaro 90.3 DR Bavaro, SS, Radio Bavaro, not in WTFDA db, has webpage 1228  
0925 HIDM 93.5 DR Mao, SS, Radio Marien 1090  
0932 HITS 93.7 DR Tamayo, SS, Hits FM 1158  
0937 HIZZ 101.1 DR Santo Domingo, SS, Z101 1192  
0937 HIOB 107.3 DR Santo Domingo, SS, RDS, Suave 107 1108  
0939 HICH 105.1 DR Santa Cruz De Barahona, SS, La Mega 1172  
1000 WKAQ 104.7 PR San Juan, RDS PS: KQ105 1341  
1016 WZNT 93.7 PR San Juan, RDS PI: 9811, PS: Z93, SS, adult hits 1351  
1018 WVSE 91.9 VI Christiansted, SS, religious 1421  
1022 HICI 103.9 DR Santo Domingo, SS, Telemicro owner 1132  
1456 HIZZ-1 101.3 DR La Colonia, SS, parent owner ad 1144  
1456 HIZZ-7 101.5 DR Moca, Los Amaceyes, SS, // HICI-7 1109  
1458 HIBE 103.3 DR Santo Domingo, SS, Los 40 1192  
1459 HIFT 105.7 DR Santo Domingo, SS, La Bakana 1192  
1500 HIJM 101.9 DR Santiago, SS, local ads 1107  
1502 HIRT 104.1 DR Santo Domingo, SS, Caliente 104 1192  
1515 HIKQ 94.5 DR Santo Domingo, RDS PI: FFFF, PS: 94.5, SS, La Invencible 1181

6/19 Es

2020 WTCX 96.1 WI Ripon, local info 871

6/20 Es

1121 KXKU 106.1 KS Lyons, RDS PI: 4DD4 1062  
1716 W226BA93.1 NY Elmira, RDS PI: ---- - 'WKR,' The Drive 639  
1758 CJFO 94.5 ON Ottawa, RDS PI: C9F9, PS: Unique FM, French 876  
1758 WQRW 93.5 NY Wellsville, RDS PI: A8B8 630  
1759 WBLK 93.7 NY Depew, RDS PI: 5874 670  
1802 CFJB 95.7 ON Barrie, RDS PI: ---- - 'WKG' 769  
1802 WCFX 95.3 MI Claire, 95-3 CFX 772

1802 WMSX 96.1 NY Buffalo, HD 670  
 1812 CHCQ 100.1 ON Belleville, RDS PI: C409, PS: Q 774  
 1814 CHUR 100.5 ON North Bay, RDS PI: C5F1, PS: song/artist, Kiss 100.5 904  
 1815 WKGS 106.7 NY Irondequoit, RDS PI: 1FBE – 'KFZA,' Kiss 106-7 697  
 1816 CILQ 107.1 ON Toronto, RDS PI: ---- - 'WPD,' Q107 720  
 1820 WLKK 107.7 NY Wethersfield Township, RDS PI: F000, PS: Buffalo Rock 656  
 1821 CKFG 98.7 ON Toronto, RDS PI: ---- - 'WKS' 721  
 1821 CIMY 104.9 ON Pembroke, RDS PI: C7E0, My FM 880  
 1821 CHBY 106.5 ON Barry's Bay, 106-5 Moose FM 856  
 1824 CKBY 101.1 ON Smiths Falls, RDS PI: CBCF, PS: country Local Traffic, Country 101 845  
 1843 CICZ 104.1 ON Midland, The Dock 781

6/22 Es

1303 WBDL 102.9 WI Reedsburg, rock, B102 898  
 1307 W224DN 92.7 WI Shell Lake, Ink 92-7 1070  
 1312 WVTY 92.1 WI Racine, 92-1 The Shore 789

6/25 Es

1621 WYPR 88.1 MD Baltimore, HD, record shortest Es to date 460  
 1624 WPLJ 95.5 NY New York, RDS PI: 7D6B, adult hits 615  
 1625 WWUH 91.3 CT West Hartford, RDS PI: 90CF, Language? 708  
 1628 WRDR 89.7 NJ Freehold Township, The Bridge 576  
 1629 WPKN 89.5 CT Bridgeport, ID 669  
 1630 WQBU-2 92.7 NY Brooklyn, RDS PI: 7F16, PS: Buena, Spanish 616

6/27 Es

0951 CBF-20 89.7 QC Saint-Donat, RDS PI: B204 – 'NPR,' French 956  
 0953 CBGA-20 92.3 QC Pointe-a-La-Garde, RDS PI: B204 – 'NPR,' PS: ICI PREM, French 1239  
 0956 WKGB 92.5 NY Conklin, RDS PI: 1FAD – 'KFYJ,' PS: GA..., rock 654  
 0958 WZZD 88.1 PA Warwick, RDS PI: 59CA – 'WBYO' 528  
 1002 CKBE 92.5 QC Montreal, RDS PI: CC24, PS: CABE, Top 40 913  
 1006 WITH 90.1 NY Ithaca, RDS PI: 6BBD 672  
 1006 W221CW 92.1 NY Ithaca, RDS PI: 85E7 – 'WSQX,' public 672  
 1043 WXXI 91.5 NY Rochester, HD 697  
 1048 CBFX-2 90.7 QC Sherbrooke, RDS PI: ---- - 'WJH,' PS: ICI MUS 945  
 1100 CBCD 92.5 ON Pembroke, CBC News FM  
 1107 WDCD 96.7 NY Clifton Park, RDS PS: WDCD 744  
 1114 CBCK 107.5 ON Kingston, RDS PI: B202, PS: CBC Radio 1, talk 787  
 1115 WXXS 102.3 NH Lancaster, Kiss 102-3 891  
 1120 CHLM 90.7 QC Rouyn-Noranda, RDS PS: ICI R-C, French 1040  
 1123 WREM 101.3 NY Canton, RDS PI: AF82, PS: WARM 101.3, soft rock 823  
 1126 CJPX 99.5 QC Montreal, RDS PI: CAF1, French 913  
 1126 CKOF 104.7 QC Gatineau, RDS PI: CD85 879  
 1126 CBVE 104.7 QC Quebec, RDS PI: B202 – 'NPR' 1039  
 1133 CJMF 93.3 QC Quebec, RDS PI: CB59, PS: FM93, French 1039  
 1136 CITF 107.5 QC Quebec, RDS PI: C88B – 'WXB,' PS: song/artist news 1039  
 1206 CBAA 97.9 NB Neguac-Allardville, RDS PI: ---- - 'WJE,' CBC Radio 1 1237

6/30 Es

1029 WMUS 107.9 MI Muskegon, RDS PI: 1672 775



### 7/3 Es

1230 6YA-65796.1 JM Port Antonio, English, Stylz FM 1061  
1232 6YA-65996.5 JM Kingston, RDS PI: 1234 – 'KAVS,' PS: RFI, English, R. France International 1068  
1233 6YA-65796.7 JM Mandeville, English, Stylz FM 1055  
1240 6YA-646105.3 JM St. Ann's Bay, English, FYAH 105 1035  
1300 6YA-65590.9 JM Negril, English, Nationwide 90 1036  
1936 KKCX 103.1 TX Ballinger, RDS PI: 2AA9, PS: Country, country 1176  
1945 WWOZ 90.7 LA New Orleans, RDS PI: A945, HD 636

### 7/9 Tr

0808 WESM 91.3 MD Princess Anne, RDS PI: 6118, PS: Jazz, jazz 420  
0825 WKLR 96.5 VA Fort Lee, classic rock, HD 319  
0842 WKNC 88.1 NC Raleigh, HD 192  
0845 WHRE 91.9 VA Eastville, HD 365  
0900 WWOZ 99.3 VA Accomac, local ad, weather 399  
0900 WBOC 102.5 MD Princess Anne, ID 415  
0900 WLQC 103.1 NC Sharpsburg, RDS PI: 7356 222  
0900 WKPE 103.9 MA South Yarmouth, RDS PI: 709A, country 792  
0900 WQHQ 104.7 MD Ocean City-Salisbury, ID 442  
0900 WPUR 107.3 NJ Atlantic City, Cat Country 107.3 524  
0901 WNOR 98.7 VA Norfolk, FM 99, local announcements 325  
0905 WBBC 93.5 VA Blackstone, Bobcat Country 287  
0906 WVWB 92.9 VA Suffolk, RDS PI: 8CAC, PS: PR99, adult hits 323

### 7/14 Es

1221 6YA-63488.7 JM Lucea, English, Mellow FM, local ads // 88.1 1031  
1221 6YA-63488.3 JM Bamboo-Lillyfield, English, Mellow FM, local ads // 88.1 1050  
1221 6YA-63488.1 JM Negril, English, Mellow FM, local ads 1038

### 7/15 Es

1806 KJKE 93.3 OK Newcastle, RDS PI: 28CC 101.5

### 7/16 Es

1146 KEYJ 107.9 TX Abilene, RDS PI: 1D09  
1148 KLBQ 101.5 AR Junction City, RDS PI: 2D36, PS: KLVQ 101.5 – THE HOG, country 733  
1150 KIXB 103.3 AR El Dorado, RDS PI: 2777, PS: song/artist, country 748  
1158 KXYL 102.3 TX Coleman, AM 1380 KBWD ID 1131  
1202 KYXA 106.7 LA Homer, RDS PI: 51B6, PS: song/artist, Top 40 778  
1202 K256DE 99.1 TX Waxahachi, Spanish, AM 1390 KVEC SID 976  
1204 KNRB 100.1 TX Atlanta, Sonlife, religious 815  
1211 K240DS 99.1 TX Waxahachi, Spanish, AM 1390 KVEC SID 976  
1221 KALK 97.7 TX Winfield, RDS PI: 1128, PS: K-LAKE, oldies 880  
1227 KSQX 89.1 TX Springtown, RDS PI: 413F, religious 1025  
1235 K222DD 92.3 TX Gainesville, ID, AM 1580 KGAF 988  
1259 KJOK 102.7 OK Hollis, ID – The Big Dog, classic rock 1142  
1800 K216BT 91.1 OK McAlester, ID 911  
1800 KMZE 92.3 OK Woodward, Z92, ID 1124  
1806 KJJP 105.7 TX Amarillo, RDS PI: 28BD, HD 1255  
1809 KWPW 107.9 TX Robinson, RDS PI: 4BB4, Power 108, HD 1009  
1810 KQIK 105.9 OK Haileyville, RDS PI: 3B1A, country 900  
1811 KGOU 106.3 OK Norman, RDS PI: 2158, public 1002  
1813 KEYU 102.9 TX Amarillo, RDS PI: 1D14, Spanish, HD 1257  
1817 KDRL 103.3 TX Pampa, local ads 1205  
1818 KVSP 103.5 OK Anadarko, RDS PI: 4957, over local 1073

1819 KQIZ 93.1 TX Amarillo, RDS PI: 3B29 1255  
 1821 K226BS 93.1 AR Fort Smith, local ads 838  
 1822 KARX 107.1 TX Canyon, RDS PI: 11D1 1259  
 1834 KSCL 91.3 LA Shreveport, ID, Centrol Texas 800  
 1834 KTBB 97.5 TX Troup, RDS PI: 4247, news 877  
 1839 WBKL 92.7 LA Clinton, RDS PI: 585B, PS: K-LOVE, K-Love, religious 671  
 1839 WEMX 94.1 LA Kentwood, RDS PI: 6087 662  
 1840 KRGL 98.5 LA Ringgold, RDS PI: 3D8B, PS: KRGL, religious 768  
 1853 KOUA 91.9 OK Ada, RDS PI: AF37 965  
 1859 KAYM 90.5 OK Weatherford, weather, ID 1080  
 1900 KKML 90.9 LA Minden, multistation ID  
 1901 WBSN 89.1 LA New Orleans, RDS PI: 592D 634  
 1910 WGUE 94.9 LA Reserve, Gumbo 949 678  
 1910 WRNO 99.5 LA New Orleans, RDS PI: 82EC, HD 628  
 1917 KKND 102.9 LA Belle Chasse, RDS PI: 2BD, R&B 629

7/28 Es

1031 La Makana 105.9 DR Santiago, has web page 1109

8/5 Es

1135 KSSH 91.7 NE Shubert, RDS PI: 3DF9 – ‘KRKR,’ PS: RADIO, religious, My Bridge 998  
 1151 KTXV 106.9 MO Jefferson City, RDS PI: 449A, PS: FREE... 793

8/13 Es

1947 KJTS 88.3 MN New Elm, RDS PI: 29C4, religious, Kinshipradio.org 1088  
 1947 KMMK 88.7 IA Coggon, RDS PI: A3F2, PS: KMMK, religious talk 888  
 1951 WIRR 90.9 MN Virginia-Hibbing, RDS PI: 6B93, PS: MPR, classical music 1191

FM Log Total to date: 3901



**UPCOMING METEOR SHOWERS**

**Orionids** Active from September 23rd to November 27<sup>th</sup>



The Orionids are a medium strength shower that sometimes reaches high strength activity. In a normal year the Orionids produce 20-25 shower members at maximum. In exceptional years, such as 2006-2009, the peak rates were on par with the Perseids (50-75 per hour). At this time we are unable to predict exactly when the Orionids will be exceptional but there are theories that there may be a 12 year period in this cycle.  
 Radiant: 06:20 +15.5° - ZHR: 25 - Velocity: 41 miles/sec (swift - 67km/sec) - Parent Object: 1P/Halley

**Southern Taurids** Active from September 23rd to November 19th , 2018

The Southern Taurids are a long-lasting shower with several minor peaks in October and November. The shower is active for two months but rarely produces more than five shower members per hour, even at maximum activity. The Taurids (both branches) are most notable for colorful fireballs and are often responsible for an increased number of fireball reports from September through November.  
 Radiant: 03:12 +12.8° - ZHR: 5 - Velocity: 17 miles/sec (slow - 27km/sec) - Parent Object: 2P/Encke

# SIGN UP & Renewal Form

YEARLY DUES \$10.00 USD for Monthly VUD E-ZINE

Print this form and send it with your dues.

Name \_\_\_\_\_

Address \_\_\_\_\_ Apt # \_\_\_\_\_

City \_\_\_\_\_ State/Prov \_\_\_\_\_ Zip \_\_\_\_\_

Country \_\_\_\_\_ Interests: TV ( ) FM ( ) 30-50 ( ) Weather ( )

E-Mail Address \_\_\_\_\_

Sign me up/renew me for: 1 year ( ) 2 years ( ) More ( ) \_\_\_\_\_

**Mail your yearly dues to: WTFDA, P.O. Box 501, Somersville, CT USA 06072**  
**Make your checks/money orders payable to: WTFDA**  
**And *thanks* for your support of the WTFDA!**

## WTFDA BOARD OF DIRECTORS

**Mike Bugaj**, use the WTFDA Mailing address listed above  
**Doug Smith**, 1385 Old Clarksville Pike, Pleasant View, TN 37146-8098  
**Keith McGinnis**, 18 Newbridge St., Hingham, MA 02043  
**Jim Thomas**, 4877 W Blue Jay Ln, Springfield. MO 65803

[mikeb@wtfda.org](mailto:mikeb@wtfda.org)  
[dougs@wtfda.org](mailto:dougs@wtfda.org)  
[nfmdx@wtfda.org](mailto:nfmdx@wtfda.org)  
[jethomas@wtfda.org](mailto:jethomas@wtfda.org)

**RENEWALS BY PAYPAL: SEND YOUR DUES FROM THE PAYPAL WEBSITE TO [SALES@WTFDA.ORG](mailto:SALES@WTFDA.ORG)**

### TV and FM STATISTICS

**Fred Nordquist**, 147 Travis Hill Road, Moncks Corner, SC  
[nordquis@homesc.com](mailto:nordquis@homesc.com)

### WTFDA.ORG WEBSITE

**Tim McVey**, webmaster  
[webmaster@wtfda.org](mailto:webmaster@wtfda.org)

### VHF-UHF DIGEST

**Ryan Grabow**, editor and publisher  
[ryang@wtfda.org](mailto:ryang@wtfda.org)

### WTFDA FORUMS WEBSITE

**Chris Cerventez**, webmaster  
[chriscervantez@gmail.com](mailto:chriscervantez@gmail.com)

## WTFDA EMAIL REFLECTOR

To join send an e-mail to: [WTFDA+subscribe@googlegroups.com](mailto:WTFDA+subscribe@googlegroups.com)

### WTFDA WEBSITE

<http://www.wtfda.org>

- News and Links
- VUDs from 70s thru 2016
- Memorabilia

### WTFDA FORUMS

<http://forums.wtfda.org>

- Join in the conversation with fellow members!
- Get help with unIDs

### FM DATABASE

<http://db.wtfda.org>

Stations in the USA, Canada, Mexico, Central America, and parts of the Caribbean



**Like us on Facebook: [TV & FM DXing](#) (public) & [WTFDA](#) (members only)**

