



VHF-UHF
The Magazine for TV and FM DXers

DIGEST

January 2019



The Official Publication of the Worldwide TV-FM DX Association



DXing 2019!

Paul Mitschler

IN THIS ISSUE

The Panama DTV Transition
Costa Rica FM News
In the Beginning....
DXers' Pets
More ATSC 3.0 News
The Russian DTV Transition and more!

**Winter FM Es Reported on
December 28th**



THE VHF-UHF DIGEST

JANUARY 2019

THE WORLDWIDE TV-FM DX ASSOCIATION

Serving the UHF-VHF Enthusiast

THE VHF-UHF DIGEST IS THE OFFICIAL PUBLICATION OF THE WORLDWIDE TV-FM DX ASSOCIATION DEDICATED TO THE OBSERVATION AND STUDY OF THE PROPAGATION OF LONG DISTANCE TELEVISION AND FM BROADCASTING SIGNALS AT VHF AND UHF. WTFDA IS GOVERNED BY A BOARD OF DIRECTORS: DOUG SMITH, KEITH MCGINNIS, JIM THOMAS AND MIKE BUGAJ.



Treasurer: **Keith McGinnis** wtfda.org/info *Webmaster:* **Tim McVey**
Forum Site Administrator: **Chris Cervantez**
Editorial Staff: **Jeff Kruszka, Keith McGinnis, Fred Nordquist, Nick Langan, Doug Smith, John Zondlo and Mike Bugaj**



Your WTFDA Board of Directors

Doug Smith
dougs@wtfda.org

Mike Bugaj
mikeb@wtfda.org

Keith McGinnis
nfmdx@wtfda.org

Jim Thomas
Jim-T@wtfda.org

Renewals by mail: Send to WTFDA, P.O. Box 501, Somersville, CT 06072. Check or MO for \$10 payable to WTFDA.
Renewals by Paypal: Send your dues (\$10USD) from the Paypal website to sales@wtfda.org

Our WTFDA.org website webmaster is Tim McVey, webmaster@wtfda.org. Our WTFDA Forums webmaster is Chris Cervantez, Chriscervantez@gmail.com. Fred Nordquist is in charge of club statistics at nordquis@homesc.com


Our email reflector is on Googlegroups. To join, send an email to WTFDA+subscribe@googlegroups.com
Visit our club website at <http://www.wtfda.org>. Participate in our forums at <http://forums.wtfda.org>.

Our real-time (prop logger) bulletin board is located at <http://wtfdadxbbs.vci.net>. Only WTFDA members can participate.



You can find WTFDA on Facebook. Our group is called **TV and FM Dxing**. This is a public group. We also have a private group called **WTFDA**. This group is just for WTFDA Members.

Searchable Online Directory of North American FM Radio Stations
United States, Canada, Mexico, Central America & The Caribbean



This site is dedicated to the memory of WTFDA member Dr. Bruce Elving, creator and publisher of the FM Atlas

A guide for DXers, Hobbyists and Radio Listeners

The WTFDA FM Database is administered and updated by your fellow WTFDA members. It is completely free to use. You can find it at <http://db.wtfda.org>.



The Mailbox

P.O. Box 501 Somersville, CT 06072
Mike Bugaj - Enfield, CT mikeb@wtfda.org



DUES RECEIVED

DATE	NAME	S/P	EXP
12/1/2018	Chris Kadlec	MI	10/19
12/2/2018	Adam Rivers	CT	12/19
12/4/2018	Nigel Ward	ON	11/19
12/6/2018	Gary Olson	FL	8/19
12/6/2018	Raymie Humbert	AZ	12/19
12/8/2018	William Norris	IN	12/19
12/15/2018	Rick Shaftan	NC	12/19
12/15/2018	Tom Bryant	TN	12/19
12/16/2018	Chester Jaffee	CA	12/19
12/20/2018	Russ Edmunds	PA	12/19
12/20/2018	Paul Mitschler	NM	12/20
12/22/2018	Bill Nollman	CT	11/19
12/11/2018	Fred McCormack	MN	12/19
12/23/2018	James Niven	TX	12/19

THE SITUATION

Hi and welcome to the Mailbox for January 2019. It's the start of another year and with that start comes another change.

Now that Ryan Grabow is no longer publishing the VHF-UHF Digest, Mike Bugaj has returned to publish the digest once again after doing the paper VUD from 2001 through half of 2014. The VUD will pretty much remain in the same form as it was under Ryan's tenure, but one or two small changes have been made. If you look through the pages of this VUD, you'll find them.

While Ryan was doing the publishing, Mike was submitting both the FM Facilities column and the Mailbox column each month. Sometimes the Mailbox column was small with very little material to work with. Other times it filled up about a page and a half. What you may find in the future is that if there isn't enough material to put together a proper column, the column may not appear that month. Also Mike's workload may determine whether or not the column appears.

We are still looking for a person to do the publishing duties and we will continue looking for one. Mike does not intend to publish the digest indefinitely. We are hoping that someone volunteers to do the job, but if no one does, the club may have to find another way to get the information to you without a monthly publication, and that's not the way we want to go unless we're forced into it.

DOUBLE HOP!

On Facebook recently (12/24) Rick Shaftan (NC) posted about an 1800+ mile Eskip catch from last June. Here's his post and here is the RDS capture.

"Getting through summer eskip "tapes" and I've got about a zillion new stations. But one stands out. I'm up to 1911 on 6/20 and got a clean RDS hit on CJVR Melfort SK @ **1855** miles for the FM Eskip record and a new province. This same opening earlier in the day was full of 500-600 mile skip into Ohio, Indiana and Ontario."



CLUB 2018 STATS

Up until 2014 the club printed a paper VHF-UHF Digest and our membership always ran somewhere around +/- 225 members. Once paper went away, our membership dropped, and for the years since 2014 it has always hovered around 180-190 people. So I'm not sure why this is has happened but for the first time since we discontinued the paper VUD, our membership at the end of the year has reached 202! I know this is useless information for most people, but it's a milestone for us!

Our bank balance as of December 1st is around \$4700. Our expenses are the two webhosts, Hostgator and Dreamhost, three StationIntel subscriptions, safe deposit box (\$50) and printing costs associated with publishing 10 paper Digests every month (around \$100) for those either without computers or unable to use them..

Should we spend some of this money on WTFDA hats or T-shirts? Or something else? What would you people like? Email me.

And that's all for February. Have a great month!

ATSC 3.0 THE NEXT MAJOR BROADCAST STANDARD EXPLAINED

Written for *Digital Trends* [November 2018]

<https://www.digitaltrends.com/home-theater/atsc-3-0-ota-broadcast-standard-4k-dolby-atmos/>



You might not have heard about it much yet, but in the coming years, you're sure to hear the term ATSC 3.0 a lot, and with good reason: It could be a massive overhaul for antenna-based TV, also known over-the-air (OTA) TV. If you think the days of paying attention to broadcast TV are over, you should read on.

ATSC 3.0 may sound like the name of a new Star Wars vehicle, or possibly a standardized test required to get into grad school. But in fact, it's a major upgrade for antenna TV, designed to allow for 4K resolution and even a major sound upgrade to broadcast TV. The switch could be as significant as the transition from analog broadcasts

to digital HD — except this time it's going to be a whole lot easier. Follow us below to find out all you need to know about ATSC 3.0.

What is ATSC 3.0?

ATSC is the latest version of the Advanced Television Systems Committee standards, defining how exactly television signals are broadcast and interpreted. OTA TV signals currently use version 1.0 of the ATSC standards, which were introduced all the way back in 1996, initiating the switch from analog to digital TV that was finalized in the U.S. in 2009. Unlike the current standard, ATSC 3.0 makes use of both over-the-air signals and your in-home broadband to deliver an experience closer to cable or satellite.

If you're wondering what happened to ATSC 2.0, it was basically outdated before it had the chance to launch. All of the changes that were added in ATSC 2.0 have been integrated into ATSC 3.0, which is now close enough to launch that ATSC 2.0 was essentially skipped.

What are the benefits?



The first major benefit is picture quality. While the current ATSC 1.0 standard caps out at 1080p — and even that is rare to find when it comes to OTA TV — the new standard allows [4K UHD](#) broadcast. That's not all either. Other picture quality upgrades, including [high dynamic range](#) (HDR), wide color gamut (WCG), and high frame rate (HFR) are all part of the new provision. The standard also allows for possible extensions later on, which could allow for additional benefits to picture quality, possibly including [8K resolution](#).

ATSC 3.0 also include benefits for reception, meaning you should be able to receive more channels in higher quality without the need for a large antenna. Audio quality is increased as well, using Dolby AC-4 instead of AC-3, allowing for broadcasts of up to 7.1.4 channel audio to support object-based sound formats like [Dolby Atmos](#) and [DTS:X](#). AC-3 is limited to just 5.1 channel surround.

In addition to the picture and audio improvements, ATSC 3.0 also makes it possible to watch broadcast video on mobile devices like phones and tablets as well as in cars. Advanced emergency alerts are also part of the standard, including better geo-targeting, which means advancements like the ability to broadcast evacuation routes to the areas that need that information.

What are the downsides?

ATSC 3.0 is not backward compatible with ATSC 1.0, which means that if your TV doesn't include an ATSC 3.0 tuner, you'll need an external converter to make use of those signals. Fortunately, due to the way that the newer standard works, you would only need one converter box no matter how many devices you're watching on, meaning it won't be nearly as much of a hassle as the move from analog to digital.

One other possible downside, depending on how you look at it, is that the same geotargeting that allows for advanced emergency alerts can also be used for targeted ads. This means that the ads you see on TV will start to more closely resemble what you see online. If this doesn't bother you on the web, it shouldn't bother you on your TV, but it is something to be aware of.

How does it work?

As mentioned above, ATSC 3.0 combines OTA broadcast signals with your home internet. At the base level, actual programming like shows and movies are broadcast and received over the air, while commercials are provided over the internet. Three different video formats are supported: Legacy HD, which supports resolutions up to 720×480; Interlaced HD, which supports signals up to 1080i; and Progressive Video, which supports resolutions from 1080p up to 4K UHD.

An ATSC 3.0 tuner will have two connections: One to your antenna, and another — either via Wi-Fi or Ethernet — to your Wi-Fi router. The benefit here is that you'll only ever need one antenna in your home, since other set-top boxes, smart TVs, and mobile devices in your home will receive the TV signals over Wi-Fi. This is somewhat similar to the way master DVR and satellite boxes are employed by cable and satellite companies use, only without the need for specialized equipment.

Am I going to need a new TV?

The short answer is no. As explained above, if your TV doesn't support ATSC 3.0, you'll be able to get by with an external converter box. That's if you want to receive ATSC 3.0 signals at all. This time, it's your choice.

The switch from analog NTSC video to digital ATSC video was a mandatory one, with a plan for a full switchover and a deadline for that switch from very early on. When the [FCC approved ATSC 3.0](#), it did so in a way that allowed stations to broadcast in the new format on a voluntary basis. This is not a mandatory switch. More to the point, stations that do voluntarily broadcast in ATSC 3.0 must continue to offer ATSC 1.0 signals for at least five years after the switch.

That said, newer TVs that include ATSC 3.0 tuners will be able to make use of all the benefits of the new standards by default. If your current TV doesn't support 4K or HDR, you'll need to upgrade to view that programming. Then there is the matter of the future. As mentioned earlier, unlike ATSC 1.0, the new version allows for extensions, which could mean eventually you may need to [upgrade to an 8K TV](#) to take advantage of everything the standard has to offer.

When can we expect ATSC 3.0 to arrive?

Various television stations have been conducting test broadcasts of ATSC 3.0 since 2014, but this was before the standard was even fully finished. In October 2018, major station groups including Fox, NBC, Tegna, and Nexstar Media Group announced their support for a 2020 rollout of ATSC 3.0. Voluntary rollouts are expected to begin in 2019, but it will likely be a while longer before the new standard is anything resembling common.

Is anyone already broadcasting in ATSC 3.0?

In the U.S., test markets have begun rolling out using the finalized version of the standard. In November 2017, the National Association of Broadcasters was [granted a license](#) to begin operating a "living laboratory" in Cleveland, broadcasting ATSC 3.0 in full power. Similarly, seven broadcasters are preparing to [launch a "model market"](#) in Phoenix. More recently, a single station has begun broadcasting the standard [in Chicago](#) and another will [soon come to Dallas](#).

Outside of the U.S., the standard is already being adopted. The three major local broadcasters in South Korea — MBC, KBS, and SBS — began broadcasting ATSC 3.0 in May 2017. The 2018 Olympic Winter Games in South Korea will be broadcast using the new standard.

So when will I be able to use it?

As mentioned above, we won't begin to see many broadcasters initiating voluntary rollouts beginning in 2019, especially since the standard was only accepted by the FCC in November. TVs, DVRs, and converter boxes with support for ATSC 3.0 will trickle out slowly at first, with early adopters likely able to start watching ATSC 3.0 signals by 2020. For the rest of us, it might be a while.

As for a full switchover, that will be a long time if and when it even happens. Since this isn't a mandatory switch, broadcasters can continue to use ATSC 1.0 for as long as they like. Even on a station-by-station basis, with the mandatory five-year period that stations must offer ATSC 1.0 signals, a station that started broadcasting the new standard in 2018 wouldn't be able to drop ATSC 1.0 entirely until 2023.

In addition, there is always the possibility that something else may come along and replace ATSC 3.0 before it gains a foothold. This has happened before: You might have noticed that this article doesn't mention ATSC 2.0, which was superseded by ATSC 3.0 before it even had the chance to be finalized, as it was already quickly becoming out of date.

Assuming it does take over, the adoption of ATSC 3.0 will likely be a slow one. If you're jumping at the chance, you don't have to wait for too long, but if you're put off by the idea, it's something you can safely ignore for at least a few more years.

Panama is heading toward digital television



The National Authority of Public Services (ASEP) coordinates with the operators of over-the-air television, the necessary actions to set a date for television users to prepare to migrate to digital television, which incorporates more channels and content, in addition to a better image and high quality sound.

During a conversation with representatives of social media, the administrator of the ASEP, Roberto Meana Meléndez, together with his team, reported that before making any decision, it is necessary to ensure and certify that the coverage of the digital signal is comparable to the analogue and that all households are prepared to receive the digital television signal, which is using DVB-T technology.

"Once this decision has been made, which we will announce in the same way, tasks will be promoted to continue boosting the market of the receivers (DVB-T set-top boxes and televisions) and information will be provided to users about this technological change and its benefits", Meana Meléndez said. The digital signal allows the audience to appreciate, for free, a better image quality, better sound and elimination of images with shadow or "ghost" effect, which projects a greater clarity.

The administrator of the ASEP informed that after actions undertaken by the institution, based on the advances on the part of the channels that operate in digital television, that as of April 2019, only television's will be sold and marketed on a national level that have the DVB-T format, which are recommended by the Technical Commission. The Technical Commission is made up of representatives of the Radio and Television industry, which are technical entities of the State.

"This type of action will bring us closer to monitoring the development of each of the phases, mainly the number one phase comprising the provinces of Panama, Panama West and Colon, to then be able to speak to the country about a partial analogue blackout," he said.

IN THE BEGINNING there were no Desktop Computers

Publishing the VHF-UHF Digest from Then to Now

Mike Bugaj

THE FIRST VUDs

It's hard to believe, but back in 1968, when the WTFDA began, there was no internet. There were no pdf files, no Microsoft Word and no Facebook, email lists or forums. The WTFDA needed a way to disseminate DX information to its members, and a paper publication was the way. So the VHF-UHF Digest was born.

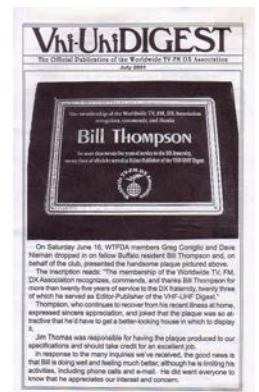


Back then there were no office copiers. Copies were made by cranking them out using a mimeograph machine. A master containing print and graphics was clipped to the cylinder of the mimeograph, and every time the cylinder made a 360 degree turn, a sheet of paper was fed into and out of the machine. The print was black or sometimes purple. That is how the VUDs were published until 1974. The machines were fast, but print quality for the most part was not good and hard to read. Early VUDs were sometimes difficult to read because of this method and the coarse type of paper used.

Once the copies were run off on the duplicating machine, printed on both sides, they were stapled, folded into three parts and stuffed into envelopes, where they were then mailed. You won't find any of these old mimeographed VUDs on the WTFDA website because of the poor print quality.

OFFSET PRINTING

Somewhere in the 70s, I think it was in the summer of 1974, the club threw out the duplicating machine and switched publication of the VUD over to commercial offset printing. This switch resulted in much improved print quality but at higher cost. Bill Thompson used this method during his 23 years as editor and publisher of the VUD. Bill's last published issue was in July, 2001. This was the last issue published by offset printing.



AND THEN...

And then we were without an editor/publisher and the club was in a crisis mode. I was familiar with printing since I was a copier technician for a copier dealer in Hartford. I volunteered for the job, although I had no publishing experience. I just felt that it couldn't be as hard as what I had to deal with during the week and besides, it just seemed interesting and I felt I could do it. Early on I had serviced old electrostatic copiers. Those machines used coated copy paper which usually moved through a liquid toner bath and were wrung out by a couple of heavy rollers. Fortunately these machines were being rapidly replaced by plain paper copiers, which delivered print quality almost at a par with offset printing, and at less cost. And that's how I had the VUD printed during the 15 years I was publisher.



At the very beginning, I had no cover. I had the stencils that Bill used to make his covers but those were no help to me at all. All I had was Microsoft Word, which I didn't know that well, and a computer. Somehow I had to duplicate Bill's cover on my monitor. It was a task. I scanned one of Bill's paper VUDs on a flatbed scanner and saved the individual elements. The "Vhf-Uhf Digest" heading on my first VUD cover at left is one of them. Using MS Word, I played with lines until I got them to look just like they did on his covers. It took hours and lots of trial and error but the finished product looked pretty good.

My first VUDs were pretty rough, now that I look back on them. I was still trying to understand MS Word. The copiers I was using to print the pages didn't have the quality I wanted. I kept plugging away at it. In the beginning I had around 240 VUDs printed each month and, of course, there were no pdf files. Everything I received from the editors came as MS Word files, or text files.

ENTER THE PDF

A short time later, when the dust began to settle, I realized that I had all these MS Word files that had been sent to me for VUD publication and maybe I could still put them to use, as in a pdf file, or what became known as the eVUD. The first eVUD was offered to members in September 2001. If you look at the first eVUDs on the WTFDA website you'll notice that there are no cover pages. They just start at page two. The reason for that is that MS Word would blow up the cover page when I tried to convert it to pdf. The results were ugly. It was only after I found a program called PagePlus online that I was able to convert the Word cover to something that would be turned into a pdf file intact. The first eVUD with a proper cover page was in June 2004.

The first few eVUDs were almost all in black and white. It wasn't until June of 2002 that color began to show up in Photo News.

PRINTING

For at least the first ten years, I would have each page of the VUD printed out on legal-size paper using the laser copier in my basement. Then I would take that stack of pages to a printer and have him turn them into booklets. Then I'd bring back the booklets, stuff them into envelopes, add the postage and mail them. It's work. But toward the end I found that I could just take the pdf file that I used for the eVUD and send it to the printer's website and have him download my pdf and print it on his digital copier. This saved me time and made copy quality even better! The text and photo quality of these VUDs were as good as the old offset printed books.

FINALLY

In 2014 the paper VUD was discontinued in favor of the pdf eVUD, which then became the VUD. Those who were not receiving the pdf version were given three month notice of the change, and many were not happy at all. But most WTFDAers were already receiving both the paper and eVUD so the change was not difficult. I regret that people left, but it had to be done. We looked for someone to publish just the pdf version because we didn't believe that we could find somebody to publish both pdf and paper.

PUBLISHING MOVES TO FLORIDA

Ryan Grabow took over the VUD publishing with the August 2014 issue. Ryan changed the VUD from being a legal size pdf document (which it had to be for paper 6"x9" booklet printing) to a letter size pdf document with the January 2015 VUD. Ryan has my heartfelt gratitude for taking on a job that nobody else wanted to do and for doing a superb job with it. I know the rest of the board of directors feels the same way.

AND SO that's how VUD printing moved from duplicating machine to offset printing to digital copier/duplicator to 100% electronic PDF printing. We have an electronically printed pdf publication now which is a far cry from the old mimeo machine. What a trip it's been.





January 2019

South of the Border FM NEWS

*The Latest News from the
WTFDA Online Database
of FM Radio Stations*

*Jim Thomas
South of the Border Editor*

Here are recent format flips that have happened on FM radio stations in San José, Costa Rica, as reported in the WTFDA FM Database.



TIYA 89.1 San José “CRC 89.1”
news-talk radio



TIPGS 90.7 San José “Q’Teja”
tropical-adult contemporary



TIHB 94.3 San José “Momentos Reloj”
romantica



TIMAR 105.9 San José “Urbano 106”
urban English contemporary hits, with English dj’s



TIOA 107.5 San José “107.5 Yeah!”
English rock

IRCA Mexican Log, 21st Edition (Winter 2018) *** NOW AVAILABLE ***



The IRCA MEXICAN LOG lists all AM stations in Mexico by frequency, including call letters, state, city, day/night power, slogans, schedule in UTC/GMT, formats, networks and notes. The call letter index gives call, frequency, city and state. The city index (listed by state, then city) includes frequency, call and day/night power. The transmitter site index (listed by state, then city) tabulates the latitude and longitude of transmitter sites.

This is an indispensable reference for anyone who hears Mexican AM radio stations.

Pricing now at cost!

Prices: IRCA/NRC members – \$7.00 (US),

\$8.50 (Canada),

\$12.00 (México),

\$14.00 (rest of the world).

Non-IRCA/NRC members – add \$2.00.

Size: 8½ x 11 inches

To order, send the correct amount (in US funds payable to IRCA) to:
IRCA GOODIE FACTORY, 9705 MARY NW, SEATTLE WA 98117-2334.

Or, order through PayPal to email:
phil_tekno@yahoo.com (Phil Bytheway).

The Russian Television Transition from Analog to Digital Begins

The Russian Federation began to shut down their analog television transmitters on December 3, 2018. The first to go was the Tyer Region (RTRS) at 9:15am that day when over 100 transmitters were shut down leaving four analog channels remaining. All Federal broadcasting will be digital on January 1, 2019.

WTFDA member Chris Kadlec explains in a post on Faceook: Just like here, many channels will continue to air an analog signals in the outlying republics. State and commercial channels are free to continue broadcasting in analog at their own expense anywhere in the country, while all analog channels will continue to display the letter "A" on the screen. The converter boxes are currently priced at \$USD9 to 11 in Russia and must support DVB-T2 standard and MPEG4 video compression. Everyone will be able to receive two main sets of channels (мультиплексы), the first being the required state channels (10 total) with Russia 1, Russia 24, Russia Culture, NTV, TV Center, and Match (a sports channel) and the second having the entertainment, etc. channels of "Star" (Armed Forces of the Russian Federation), Savior (Russian Orthodox Church, Moscow Patriarchate), Mir (an international state-run television company broadcasting in Russia, Belarus, and Kazakhstan), CTC, Muz TV, etc. The first package has some other channels too, and also will carry Radio Russia, Mayak and Vesti FM. All in all, the two packages carry more than 2 dozen free channels. (And you can see the official details at the rtrs.ru site).

Ukraine made the switch on Sept. 1st but they weren't ready for it because they hadn't given enough time for planning. A court blocked the shutdown of some analog stations because of it, but they turned them off anyway, so you could say that hasn't gone as smoothly as Russia's surely will.

PHOTO NEWS



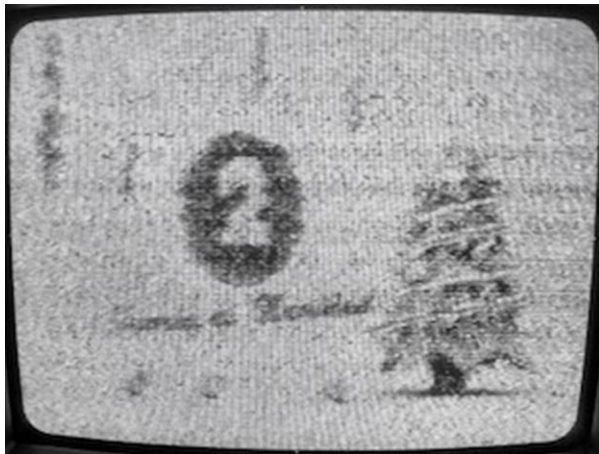
Jeff Kruszka
1909 Lost Lake Pl.
Pearland, TX 77581
jkruszka@sbcglobal.net

January 2019

More photos from Chris Dunne in Pembroke Pines, FL:

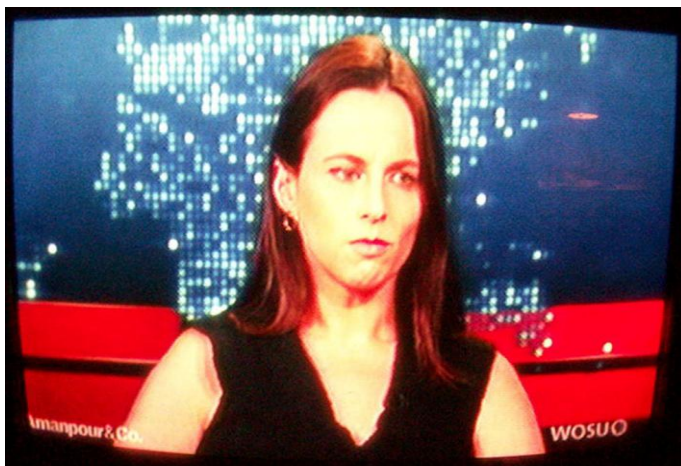


HRTS-3
Tegucigalpa, Honduras
930 mi Es seen 12-13-18
"Telesistema Informativo (TSi) logo upper right"



YSWR-2
San Salvador, El Salvador
1033 mi Es seen 12-13-18

And one from Harry Hayes, from Wilkes-Barre, PA:



WOSU-38
Columbus, OH
380 mi Tr seen 10-4-18

TV News

Douglas E. Smith
 1389 Old Clarksville Pike
 Pleasant View, TN
 37146-8098
w9wi@w9wi.com
<http://www.w9wi.com>



January 2019

Location	RF Ch	Callsign	Notes
Aguascalientes			
Aguascalientes	47	XHSPRAG	CC from XHOPAG; 70.966kw/438m, 21-39-41/102-13-25
Alabama			
Alabaster	15	W15AZ	Returned to the air Dec. 18 th at reduced power of 450 watts, 33-13-45/86-42-56
Enterprise	38	WFRW-LD	Call changed from WGCW-LD
Hoover	45	WPXH-TV	Proposes reallocation from Gadsden; no technical changes. See text.
Mobile	18	WMPV-TV	From 20, 900kw/529m; granted
Alaska			
Ketchikan	13	KUBD	Granted power increase to 410w/130m, 55-20-59/131-40-28
Arizona			
Fortuna	2	KBFY-LD	From 41, 10 watts; granted
Gila River Indian Co.	21	KGRY-LD	OFF Nov. 29 th pending displacement to new channel. (the engineer preparing this application listed his title as "Signal Wiz":))
Gila River Indian Co.	29	K29KO	License canceled, reason not given
Globe	16	K16FB	Requests STA 5.1kw, to operate at reduced power to avoid interference to KHRR Tucson's post-repack facility on the same channel.
Globe	31	K31NV	Moved from K43IB
Phoenix	14	K14RK	Moved from K38IZ
Phoenix	29	KTAZ	Moved from 39, 595kw/545m. However... see text below.
Tucson	16	KHRR	Moved from 40. However... see text below.
Tucson	35	K21CX	Granted STA for this channel, 9.2kw, pending approval of permanent operation.
Tucson	36	KUVE-CD	Moved from 42, 15kw
Arkansas			
Fort Smith	33	KWFT-LP	Granted STA for this channel, 15kw, pending move to ch. 6
Pine Bluff	34	KASN	Granted STA to transition late, by Dec. 3 instead of by Nov.

Location	RF Ch	Callsign	Notes
30th. High winds & thunderstorms.			
California			
Bakersfield	42	KZKC-LP	OFF Nov. 30 th pending grant of displacement to new channel
Corona	39	KVEA	Returned to full power Dec. 13 th .
Cotati	5	KRCB	From 23, 18.6kw/463m, 37-45-19/122-27-10 (Sutro Tower, San Francisco)
Lucerne Valley	30	KIJR-LP	Granted STA for this channel, 15kw, 33-51-58/116-26-03
Monterey	14	K46LG	From 46, 2.2kw
Monterey	24	KMCE-LD	Converted to digital from analog ch. 43, 15kw
Porterville	23	KTFF-DT	Moved from 48, 330kw/811m
Redding	2	K51LK	Granted STA for this channel, 100 watts, 40-39-31/122-22-23; T-Mobile. Wished to share on KRDT-CD pending approval of displacement to ch. 23 but neither application has seen action.
Redding	10	KMCA-LD	Requests power increase to 135 watts, 40-32-39/122-30-06
Sacramento	47	NEW-xltr	Requests STA for translator, 7kw, 38-32-59/121-27-20 near 3 rd & Stockton (Sky Earth Network) Dismissed.
San Bernardino	24	KPXM-TV	Moved from 38, 1000kw/900m, 34-13-36/118-04-02
San Diego	31	KSDY-LD	From 50; amendment from ch. 25
San francisco (sic)	6	NEW-xltr	Request for experimental STA, 3kw, 37-47-36/122-24-51 (apartment building at Clay and Jones St.) (Sky Earth Network)
San francisco (sic)	47	NEW-lptv	Request for experimental STA, 15kw, 37-47-36/122-24-51 (apartment building at Clay and Jones St.) (Sky Earth Network) Dismissed.
San francisco (sic)	47	NEW-lptv	Above request apparently superseded by application for two-site DTS. First site would be 15kw/109m at the above location. Second site would be 15kw/25m at the same coordinates as the translator application in Sacramento. Dismissed.
San Juan Bautista	4	K04RS	Granted power reduction to 150 watts
San Luis Obispo	32	K50LZ	Granted STA to transition early, by Apr. 12, 2019 instead of by Mar. 13, 2020.
San Luis Obispo	36	KSBO-CD	Granted STA to transition early, by Apr. 12, 2019 instead of by Mar. 13, 2020.
Santa Ana	28	KDTV-CD	Requests STA 1.6kw, 38-40-08/122-37-54; to rebuild at new site after old site was destroyed in last year's fires.
Santa Cruz	14	KAAP-LD	From 11, 15kw, 37-12-32/121-46-31 dismissed. Not eligible to participate in displacement window, as ch. 11 facility was not operating by the deadline.
South Eureka	21	K21OO	From K50MR; granted
Tahoe City	23	K23DT	OFF Nov. 27 th , displaced by KRXI
Yreka	34	K34OW	Moved from K47DV
Campeche			
Campeche	27	XHTMCA	49.035kw/119m, 19-48-50/90-34-49; Telsusa, virtual 13.x
Campeche	32	XHSPRCC	CC from XHOPCC; 8.184kw/137m, 19-48-57/90-34-37
Cd. del Carmen	25	XHTMCC	150kw/36m, 18-39-31/91-50-07; Telsusa, virtual 13.x
Chiapas			
San Cristóbal de las Casas	51	XHSPRSC	CC from XHOPSC; 4.305kw/1246m, 16-44-21/92-41-11
Tapachula	42	XHSPRTP	CC from XHOPTP; 7.388kw/-200m, 14-56-01/92-16-07
Tuxtla Gutiérrez	31	XHSPRTC	CC from XHOPTC; 8.966kw/-33m, 16-44-06/93-08-38

<i>Location</i>	<i>RF Ch</i>	<i>Callsign</i>	<i>Notes</i>
Chihuahua			
Cd. Cuauhtémoc	30	XHICCH-2	129.78kw/171m, 28-23-38/106-50-56; relays Chihuahua
Cd. Delicias	30	XHICCH-1	25.89kw/88m, 28-09-25/105-27-12; relays Chihuahua
Cd. Juárez	28	XHMTCH	45kw/-50m, 31-44-36/106-28-56
Chihuahua	30	XHICCH	140.68kw/207m, 28-38-48/106-03-00; virtual 44.x
Coahuila			
Monclova	33	XHMTCO	45kw/-5m, 26-55-09/101-26-14
Colima			
Colima	41	XHSPRCO	CC from XHOPCO; 5.249kw/94m, 19-11-05/103-41-15
Colorado			
Arvada	40	KDNF-LD	From 44, 84kw/344m, 39-35-59/105-12-37; to share on KRMT Denver.
Denver	18	KRMA-TV	Power reduced to 750kw/292m, 39-43-49/105-15-02
Glenwood Springs	44	K44DF	License canceled
Pueblo	23	K23OU	From K48CU, 15kw, 38-21-45/104-33-36; amendment from ch. 18; granted
Silt	47	K47AC	License canceled
Connecticut			
Hartford	22	WUTH-CD	Requests STA to transition early, by Aug. 2, 2019 instead of by Jan. 17, 2020.
Hartford	38	WHCT-LD	Granted power reduction to 1.2kw. STA for same facilities dismissed. (unnecessary)
New London	28	WHPX-TV	Requests power increase to 500kw/505m, 41-42-13/72-49-55, the WTIC-TV tower.
Norwich	9	WEDN	Returned to full power (from 35-55%) Dec. 6 th .
Durango			
Durango	13	XHPBDR	5kw/37m, 24-01-18/104-40-57
Durango	29	XHMTDU	94.5kw/47m
Florida			
Boca Raton	25	WBEC-TV	Moved from 40
Jacksonville	39	W39DF	OFF Dec. 2 nd pending move to ch. 30
Jupiter	5	W05DH	W47DW STA request for this channel, 3kw, 26-41-00/80-04-34; CL from Vero Beach dismissed. Presumably unnecessary as has been granted the same channel move, although at a different site.
Lakeland	18	WMOR-TV	Requests tower height reduction to 459m for post-repack facility.
Lakeland	19	WMOR-TV	Requests STA for 842kw/394m; interim antenna while permanent post-repack antenna is installed; granted.
Leesburg	7	WACX	From 40, 53.2kw/494m
Marianna	26	WBIF	Granted STA to transition late, by Apr. 12, 2019 instead of by Nov. 30, 2018. Hurricane Michael.
Miami	21	WPXM-TV	Moved from 35, 225kw/279m, 25-57-31/80-12-43
Miami	38	WBEH-CD	Call changed from WPMF-CD
Orlando	6	WATV-LD	From 47, 3kw, 28-35-13/81-04-58; amendment to change site
Pensacola	19	W19CO	Returned to the air Dec. 5 th
St. Petersburg	19	WTOG	From 44, 700kw/458m, 27-49-47/82-15-58; granted
Georgia			
Albany	36	WGCW-LD	Call changed from W36EG

Location	RF Ch	Callsign	Notes
Atlanta	2	WUVM-LD	From 4, 3kw; granted
Columbus	24	WXTX	Moved from 49, 200kw/339m
Cordele	34	WSST-TV	Moved from 22, 66.2kw/111m
Macon	50	WPGA-LP	OFF Sept. 1 st pending move to digital ch. 18
Toccoa	28	W15EK	From W08EG, 15kw; amendment from ch. 15
Guanajuato			
Celaya	20	XHSPRCE	CC from XHOPCE; 14.74kw/1001m, 20-20-23/100-58-00
León	34	XHSPRLA	CC from XHOPLA; 39.02kw/98m, 21-09-50/101-42-49
Hawaii			
Honolulu	26	KWBN	Moved from 43, 4.58kw/577m
Kaneohe	32	KPXO-TV	Granted STA 680 watts/81m, 21-25-21/157-45-25 on a hill near the Marine Corps base. To operate post-repack Distributed Transmission System on Site #1 only. Site #2 in the Nanakuli Forest Reserve will be added by April of 2019.
Hidalgo			
Pachuca	13	XHPBPA	Site change to 20-06-23/98-44-17
Idaho			
Boise	15	KKJB	Moved from 39, 20.7kw/534m
Coeur d'Alene	27	K27NC	Moved from K46KE, 4kw
Cottonwood	23	K23NL	Moved from K48DH, 200 watts
Grangeville	16	K16LS	Moved from K43CI
Grangeville	19	K19BY	Requests power reduction to 560 watts
Illinois			
Chicago	4	WOCK-CD	Requests power increase to 3kw
Joliet	35	WGBO-DT	From 38, 615kw/418m
Peoria	23	W23ET	From W35DE rescinded ROA
Indiana			
Fort Wayne	24	WPTA	Granted 305kw/229m; power changed.
Fort Wayne	34	WISE-TV	Granted power increase to 456kw/229m
Fort Wayne	36	WODP-LD	From 49, 15kw, 41-05-57/85-08-42; amendment to change site
Indianapolis	8	WIIH-CD	OFF Dec. 10 th due to transmitter failure
Lafayette	51	W51DU	Returned to the air Oct. 13 th but off again Nov. 19th, "technical reasons"
Iowa			
Fort Dodge	45	KCYM-LD	OFF Dec. 14 th pending construction of permanent facility
Lansing	31	K39LW	Requests STA for this channel, 5kw pending permanent authorization.
Mason City	24	KIMT	Granted STA for 475kw/466m. Station replaced planned horizontal-only antenna with elliptically-polarized antenna. Transmitter isn't powerful enough to reach authorized 610kw with this antenna. Station has filed application to make this facility permanent at 472kw/466m.
Rock Rapids	33	K33PV	Requests site change to 43-22-35/96-11-48
Sioux City	32	KMEG	Moved from 39
Spencer	20	KBVK-LP	Requests STA for this channel; bumped from ch. 21 by KDLT-TV Sioux Falls.

Location	RF Ch	Callsign	Notes
Jalisco			
Ejutla	23	XHAUM-6	From 38, 800w/70m; granted
Guadalajara	23	XHPBGD	125kw/370m, 20-36-02/103-21-53
Guadalajara	34	XHTDJA	140kw/330m
Guadalajara	43	XHSPRGA	CC from XHOPGA; 29.95kw/355m, 20-36-12/103-21-37
Puerto Vallarta	13	XHPBPV	5kw/-121m, 20-36-36/105-13-45
Kentucky			
Richmond	9	WOBZ-LD	Requests power increase to 3kw, 37-39-35/84-08-59; from East Bernstadt
Richmond	21	WUPX-TV	Granted reallocation from Morehead. No technical changes involved. Requests site change to 37-47-18/84-40-49 west of Richmond, 465kw/354m.
Louisiana			
Lake Charles	18	KVHP	Moved from 30, 400kw/393m
Lake Charles	24	KFAM-CD	Moved from 14
Leesville	22	K22NI	Moved from K51FO
West Monroe	19	KARD	Moved from 36, 691kw/524m
Maryland			
Salisbury	17	WNDC-LP	From 11, 15kw, 38-23-12/75-17-25; amendment from ch. 2 & to change site
Massachusetts			
New Bedford	17	WLWC	Moved from 22, 1000kw/228m, 41-29-41/71-47-04; sharing on WPXQ-TV Newport, R.I.
Cd. de México			
México	30	XHSPRMA	CC from XHOPMA; 116.26kw/327m, 19-32-02/99-07-36
Edo. México			
Toluca	30	XHSPREM	CC from XHOPEM; 168.662kw/1275m, 19-44-23/99-45-27
Michoacan			
Morelia	44	XHSPRMO	CC from XHOPMO; 10.93kw/256m, 19-43-19/101-16-10
Uruapan	44	XHSPRUM	CC from XHOPUM; 9.431kw/471m, 19-27-16/102-02-23
Minnesota			
Duluth	26	K26KF	Returned to the air Dec. 5 th but off again on the 6 th
Duluth	35	K35JN	Returned to the air Dec. 5 th but off again on the 6 th
International Falls	18	K18MB	Moved from K51CM
International Falls	22	K22MZ	Moved from K47NW
International Falls	24	K24MT	Moved from K49BU
Jackson	22	K22MY	Moved from K36IV, 1.9kw
St. James	13	K13AAR	OFF Dec. 6 th pending construction of permanent facility
Worthington	18	K18MO	Requests STA for this channel, 1.2kw, to operate at reduced power pending module replacement. Apparently unnecessary, as has already filed for license-to-cover at 2.5kw, 43-37-01/95-41-20 for conversion from K22HJ.
Mississippi			
Cleveland	16	WPYM-LD	Moved from 38, 12kw, 34-32-46/90-37-16 (Phillips Community College, West Helena, Arkansas)

Location	RF Ch	Callsign	Notes
Fulton	24	W24EP	Moved from W39CA, 11kw
Jackson	14	WDBD	Moved from 40, 675kw/598m
Vicksburg	36	WLOO	Moved from 41, 950kw/582m
Missouri			
Joplin	25	KFKY-LD	From 20, 37-12-07/93-14-02; amendment from ch. 24 & to change site
Marshfield	14	K14SH	From K17FU; amendment from ch. 26
St. Joseph	9	KNPG-LD	Site change granted to 39-45-02/94-50-25
St. Joseph	15	KNPN-LD	From 26; granted
St. Joseph	28	KCJO-LD	Requests power increase to 1.75kw; granted
Montana			
Billings	24	K24IQ	Returned to the air Dec. 12 th .
Billings	29	K29MM	Moved from K38LU, 15kw
Billings	32	K32NP	Moved from K28LF, 15kw
Billings	34	K34PO	Moved from K33KP, 15kw
Great Falls	25	K25LM	Returned to the air Dec. 7 th but off again the next day
Great Falls	35	K35KC	Returned to the air Dec. 7 th but off again the next day
Kalispell	2	K02RJ	Moved from K51HT, 100 watts
Kalispell	25	K25KZ	Returned to the air Dec. 7 th but off again the next day
Kalispell	28	K28OG	Moved from K44FR
Kalispell	30	K30PT	From K15GP; granted
Kalispell	36	KTMF-LD	Moved from 42, 2.48kw
Three Forks	21	K21NJ	Moved from K44JW, 11.5kw
Three Forks	23	K23NZ	Moved from K48LV, 15kw
Whitefish	31	K31PD	Moved from K38OE, 48-00-48/114-21-59
Wyola	21	K21KD	Returned to the air Dec. 4 th
Wyola	30	K30KN	Returned to the air Dec. 4 th
Wyola	40	K40KQ	Returned to full power Dec. 13 th
Wyola	42	K42JB	Returned to full power Dec. 13 th
Nayarit			
Tepic	11	XHPBTP	26kw/332m, 21-31-59/104-54-44
Nebraska			
Scottsbluff	9	K09YH	STA for 70 watts dismissed. Transmitter repaired, STA no longer needed, station back to authorized 500 watts.
Nevada			
Las Vegas	21	KLSV-LD	Moved from 50, 10kw
Las Vegas	41	K41IO	OFF Dec. 5 th pending construction on new channel as K30PL.
<i>Laughlin</i>	47	<i>KNTL-LP</i>	<i>OFF Dec. 14th pending conversion to digital ch. 35</i>
Mina	27	K27OI	Moved from K45HV, 38-23-42/118-03-08
Mina	32	K32NW	Moved from K40GA, 38-23-42/118-03-08
Reno	23	KRXI-TV	Requests STA for 10kw/836m; post-repack equipment has malfunctioned and cannot yet operate at full power; granted.
New Jersey			
Atlantic City	24	W23EP	From W48DP; amendment from ch. 23
Morristown	17	WNMF-LD	OFF Nov. 26 th , lost tower lease. Granted STA for 5 watts, 40-47-18/74-15-18 in West Orange.
Paterson	22	WNJJ-LD	Requests STA for this channel, 2.9kw. See text.
New Mexico			

Location	RF Ch	Callsign	Notes
Caballo	28	K28QE	Moved from K18LP
Farmington	32	K32JT	Returned to the air Dec. 10 th but off again the next day
Farmington	46	K46KV	Returned to the air Dec. 10 th but off again the next day
New York			
Buffalo	32	WUTV	From 36; power & site changes pending.
Buffalo	36	WIVB-TV	From 32, sharing on WNLO; power and site changes pending. Lost coverage on new channel, and cannot be upgraded on ch. 32.
Buffalo	36	WNLO	From 32; see WIVB
Corning	39	WJKP-LD	OFF Dec. 19 th pending move to ch. 14
Corning	41	W41DB	OFF Dec. 19 th pending move to ch. 15 digital
New York	29	WPXU-LD	From 12, 65 watts (not kilowatts)
Watertown	19	WTKJ-LP	Returned to the air Dec. 7 th but off again the next day
North Carolina			
Charlotte	24	WCNC-TV	Granted 857kw/592m
Hendersonville	15	W15EJ	From W31AZ, 15kw, 34-56-26/82-24-40; amendment from ch. 16
Statesville	46	WSOC-DRT	OFF Nov. 30 th pending move to ch. 12
Tryon	16	W16DZ	From W19CR, 175 watts; amendment from 500 watts to avoid interference to W16DY
Wilmington	7	WDQB-LD	From 22 rescinded ROA
Wilmington	30	WDZA-LD	From 20 rescinded ROA
Winston-Salem	32	WUNL-TV	Operating at approximately 50% power since Dec. 6th.
Nuevo Leon			
Guadalupe	25	XHAW-1	Granted power increase to 20kw/106m, 25-40-15/100-03-51
Monterrey	16	XHSPRMT	CC from XHOPMT; 35.544kw/100m, 25-37-42/100-18-48
Monterrey	36	XHPBMY	60kw/297m, 25-37-39/100-19-17
Oaxaca			
Matías Romero	13	XHPBMR	1kw/423m, 16-44-31/95-05-38
Oaxaca	35	XHSPROA	CC from XHOPOA; 18.14kw/-201m, 17-04-17/96-43-40
Ohio			
Bowling Green	22	WBGU-TV	Application for new auxiliary backup transmitter, parameters not given. Moved from 27, 137kw/320m.
Lima	18	WPNM-LP	Call changed from WLQP-LP
Lima	38	WAMS-LP	Call changed from WLMO-LP
Newcomerstown	26	WIVD-LD	From 22, 15kw; amendment from ch. 14
Toledo	36	WMNT-CD	Granted STA to transition late, by Jan. 18 th instead of by Nov. 30 th . Had to switch transmitter vendors in midstream due to delivery date and billing issues.
Oklahoma			
Ardmore	19	K19II	Returned to the air Dec. 4 th but off again on the 5 th . Will eventually move to ch. 26 but not until 2020.
Ardmore	22	K22JQ	Returned to the air Dec. 4 th but off again on the 5 th
Ardmore	24	K24IW	Returned to the air Dec. 4 th but off again on the 5 th
Enid	19	K19IR	Returned to the air Dec. 5 th but off again the same day
Enid	33	KUOC-LD	Granted STA for 750 watts. (site is near the Chandler Park Swimming Pool, Tulsa)
Oklahoma City	19	KUOT-CD	OFF Nov. 6 th pending move to ch. 21; displaced by KAUT.

Location	RF Ch	Callsign	Notes
Oklahoma City	22	KTOU-LD	Operating at 50% power since Dec. 13 th due to storm damage
Oklahoma City	27	KFOR-TV	Granted power increase to 600kw/467m, 35-34-07/97-29-21; sharing tower at Britton Rd. & Kelley Ave. with KAUT-43 & KOPX-62.
Woodward	35	KUOK	Granted STA for reduced power of 3.2kw. Already on air.
Oregon			
Ashland	14	K14SC	Moved from K39EF, 500 watts
Bend	14	KBND-LP	From 41, 2.3kw, 44-04-38/121-20-01; granted
Hermiston	21	K21NX	Moved from K43MG, 1.5kw. Listed as Hermiston, Washington but best I can tell there is no such place. Transmitter is however located in Washington.
Lincoln City	23	K38CZ	Requests STA for this channel, 5.823kw; to use interim antenna for post-repack channel pending completion of full power facilities.
Medford	16	KDSO-LD	Call changed from KDOV-LP
Medford	28	K28GG	Returned to the air Nov. 29 th
Milton-Freewater	24	K24ME	Moved from K51DF
Phoenix	29	K29LL	Moved from K47LD, 1kw
Portland	36	KKEI-CD	STA to transition from ch. 38 early dismissed. Requested transition date not specified, but the testing period for KKEI's Phase 2 has already begun. (so a STA is unnecessary)
Prineville	19	K46AK	Requests STA for temporary antenna on this channel, 1.35kw
Rockaway Beach	44	K44AV	OFF Dec. 18 th pending completion of move to K17NJ
Roseburg	14	K14QQ	From K47HT, 4kw, 43-12-07/123-22-58
The Dalles	29	K51EH	From 51, 1.28kw
Warrenton	51	KHPN-LD	Returned to the air Dec. 8 th but off again the next day
Pennsylvania			
Allentown	9	WLVT-TV	Moved from 39, 80.6kw/333m, sharing on WBPH-TV Bethlehem alongside WFMZ-TV Allentown & WPPT Philadelphia.
Allentown	25	WTFX-DRT	From 38, 14.6kw; granted (WFMZ-TV tower)
Bethlehem	9	WBPH-TV	Power increased to 80.6kw/333m, 40-33-52/75-26-24; moved to tower of sharing guest WLVT-TV Allentown.
Butler	17	WJMB-CD	Returned to the air Nov. 30 th
Chambersburg	35	W35DR	From W33CR, 15kw; amendment from ch. 34
Erie	21	WSEE-TV	Requests STA for 51.1kw/203m; for temporary side-mount post-repack antenna pending installation of permanent antenna. Granted.
Scranton	18	WVIA-DRT	Moved from 44
Washington	20	WWLM-CD	Returned to the air Nov. 29 th
Puebla			
Puebla	15	XHMTPU	122.5kw/256m
Puebla	30	XHSPRA	CC from XHOPPA; 31.94kw/87m, 19-04-38/98-20-45
Puebla	32	XHTMPT	109.825kw/247m, 19-04-26/98-20-50; Telsusa, virtual unknown
Tehuacán	13	XHPBTH	5kw/-64m, 18-27-40/97-25-42
Puerto Rico			
Aguada	7	WSTE-DT	Requests site change to 18-19-18/67-10-26, 25kw/354m; to relocate DTS site #2 of Ponce station to co-owned WLII-DT antenna
Anasco	8	W08EJ	Granted STA for 100 watts, 18-18-46/67-10-56; temporary tower pending repairs to permanent site.
Ponce	2	W02CS	Granted power reduction to 2.8kw

Location	RF Ch	Callsign	Notes
Querétaro			
Querétaro	30	XHSPRMQ	CC from XHOPMQ; 11.273kw/340m, 20-31-59/100-21-28
Rhode Island			
Providence	25	WCRN-LD	OFF Dec. 21 st
Sinaloa			
Culiacán	13	XHPBCL	5kw/89m, 24-46-47/107-23-30
Mazatlán	41	XHSPRMS	CC from XHOPMS; 28.655kw/91m, 23-12-16/106-25-27
Sonora			
Cd. Obregon	31	XHSPROS	CC from XHOPOS; 57.352kw/229m, 27-26-49/109-46-40
Guaymas	13	XHPBGY	1kw/460m, 27-56-29/110-54-19
Hermosillo	27	XHSPRHA	CC from XHOPHA; 43.8kw/219m, 29-03-55/110-56-26
South Carolina			
Honea Path	16	W16DY	From W28DB, 10kw; amendment from ch. 15
Tabasco			
Villahermosa	38	XHSPRVT	CC from XHOPVT; 13.922kw/97m, 17-57-19/92-57-10
Tamaulipas			
Matamoros	15	XHVTV	Granted power reduction to 35kw/88m, 25-52-32/97-29-56
Tampico	35	XHSPRTA	CC from XHOPTA; 20.42kw/198m, 22-31-46/98-06-37
Tennessee			
Franklin	36	WNPX-TV	Proposes reallocation from Cookeville. No technical changes involved. See text. Proposal dismissed, reason not given.
Jackson	21	WJKT	Requests STA 56.9kw/256m, for interim post-repack antenna while permanent antenna is installed.
Lewisburg	29	W29DM	OFF Dec. 3 rd ; tower has been disassembled. Requests power reduction to 3.92kw at new site 35-37-05/87-02-33.
Lexington	27	WLJT-DT	From 47, 80kw/167m; granted & on the air (aux backup transmitter)
Texas			
Abilene	10	K10QL	Returned to the air Dec. 11 th but off again the next day
Austin	22	KLRU	Granted STA for approximately half power due to tube damage. STA says 700kw but that's authorized <i>full</i> power, presumably STA is actually 350kw.
Beaumont	29	KITU-TV	Moved from 33, 920kw/312m
Belton	46	KNCT	Sold to Gray TV, owners of KWTX ch. 10. Operates on non-reserved channel, so commercial operation is allowed.
Brownsville	35	KNWS-LP	From 64, 5kw, 26-09-02/97-30-59; amendment from ch. 27. Station is officially licensed on channel 64 but has been on channel 27 under STA, presumably since 2009.
Conroe	32	KPXB-TV	Operating at reduced power (45%, 450kw) since Nov. 23 rd due to transmitter failure. Returned to full power Dec. 4 th .
El Paso	48	K48IK	License canceled.
Fort Worth	38	KVFW-LD	Returned to the air Dec. 21 st
Houston	20	KQHO-LD	OFF Nov. 29 th pending grant of displacement to new channel
Houston	43	KHLM-LD	OFF Dec. 1 st , T-Mobile.
Jasper	34	KVHP-LD	Requests STA for reduced power of 7.8kw pending installation of additional amplifier modules.
Laredo	8	KGNS-TV	Granted STA 5kw/277m for emergency antenna due to failure

Location	RF Ch	Callsign	Notes
Laredo	10	KXNU-LD	of 52-year-old existing antenna & feedline. New station on the air, 3kw, 27-31-46/99-31-16
Odessa	15	KMLM-DT	Moved from 42, 27.9kw/145m
Odessa	20	KTLE-LP	STA 15kw, 31-53-50/102-20-16 dismissed.
Rio Grande City	8	K48OL	From 48, 3kw, 26-18-11/98-37-19
Victoria	16	K22JW	From 22, 28-48-07/96-33-10; amendment from ch. 27.
Turks & Caicos			
Providenciales	16	CTN	Granted permit for new station, 15.8kw/35m, 21-47-59/72-16-27. See text.
Utah			
Aurora	12	K12XD	Moved from K51BK, 130 watts
Montezuma Creek	10	K10PB	License canceled
Montezuma Creek	20	K20NG	License canceled
Richfield	17	K17MV	Moved from K36CB, 165 watts
Richfield	18	K18ME	Moved from K38AQ, 165 watts
Richfield	20	K20MS	Moved from K40AB, 165 watts
Richfield	21	K21MY	Moved from K44DU, 165 watts
Richfield	22	K22MP	Moved from K35GQ, 165 watts
St. George	17	K17JQ	Returned to the air Dec. 9 th but off again the next day
St. George	19	K19LV	Granted power increase to 700 watts
St. George	23	K23NY	Moved from K25JS, 200 watts
St. George	40	K40KZ	Returned to the air Dec. 9 th but off again the next day
Salt Lake City	34	KUTV	Requests STA, problems with antenna pattern; granted.
Santa Clara	33	K33PC	Moved from K48JD, 200 watts, 37-09-18/113-52-59
Wendover	27	K27KM	Returned to the air Dec. 8 th but off again the next day
Veracruz			
Coatzacoalcos	46	XHSPRCA	CC from XHOPCA; 20.51kw/97m, 18-08-11/94-26-15
Xalapa	35	XHSPRXA	CC from XHOPXA; 64.35kw/1315m, 19-35-37/97-05-24
Virginia			
Harrisonburg	20	WHSV-TV	Moved from 49, 271kw/666m, 38-09-55/79-48-44 near Warm Springs
Norfolk	6	WMTO-LP	Issued Notice of Violation for excessive aural power of 12.4kw. See text; this might (or might not) impinge on "FrankenFMs".
Washington			
Baker Flats	32	K32MC	Moved from K46LI
Hermiston	21	K21NX	See Hermiston, Oregon.
Issaquah	18	KIRO-DRT	Granted STA for this channel, 3.8kw; T-Mobile, but no longer needed. Granted regular operation; completed construction; filed for license-to-cover; then asked FCC to dismiss the license-to-cover application. Translator was interfering with its own reception of KIRO-TV over the air on channel 39. Filed for STA to operate at 1.7kw to prevent that interference.
Moses Lake	19	KUMN-LD	Granted site change to 46-58-23/119-46-15, south of George. Washington.
Point Pulley	18	K18NI	From K47LG, 2.2kw; granted
Puyallup	18	K18NH	From K49IX, 4.4kw; granted
Seattle	12	KUSE-LD	From 46, 3kw; amendment from 15kw on ch. 18; granted.
Stemilt	17	K17OF	From K49KV, 60 watts; amendment from 1.2kw to avoid interference to K18AD. Granted.

Location	RF Ch	Callsign	Notes
Yakima	19	K19JX	OFF Dec. 17 th pending tower replacement
Yakima	20	K20LQ	OFF Dec. 17 th pending tower replacement
Yakima	22	K22NZ	From K51JG, 15kw; granted

West Virginia

Romney	21	W23DR	From 23; amendment from ch. 33.
--------	----	-------	---------------------------------

Wisconsin

Janesville	21	WIFS	Requests power change to 175kw/454m.
Madison	11	WISC-TV	Requests STA to transition early, by Sept. 7, 2019 instead of by May 1, 2020. Would allow WISC to transition at the same time as co-located WMSN-TV, saving \$180,000.
Milwaukee	29	WPVS-LP	Requests STA for 148 watts, 43-29-03/87-55-19; (a farm between Fredonia & Belgium) to build temporary analog facility to preserve license pending move to ch. 9 in Milwaukee tower farm. Granted, and on the air.

Wyoming

Dubois	16	K16LT	Moved from K47LK
Greybull	19	K19KW	Moved from K41KM, 1.15kw
Mountain View	36	K36OU	Moved from K47MB, 300 watts, 41-06-19/110-12-38
Sundance	15	K15KM	Moved from K49LM, 920 watts
Teton Village	16	K16LM	Moved from K41KH, 500 watts

Yucatan

Mérida	23	XHSPRME	CC from XHOPME; 33.6kw/96m, 20-56-00/89-34-39
Mérida	24	XHTMYC	160.6kw/88m, 20-55-57/89-34-43; Telsusa, virtual 13.x
Tizimin	27	XHTMYU	80.12kw/61m, 20-41-45/88-13-16; Telsusa, virtual 13.x

Zacatecas

Zacatecas	47	XHSPRZC	CC from XHOPZC; 21.557kw/532m, 22-44-37/102-33-06
-----------	----	---------	---

Thanks again to Raymie Humbert for information from Mexico, and to Jim Thomas for the Turks and Caicos item!

Turks and Caicos are a small collection of islands off the southeast end of the Bahamas. Unlike the Bahamas, they're still a British possession. DXing a station this far offshore may seem unlikely. However, the WTFDA once had a member living here, and he logged (via tropo) UHF stations as far north as Maine. I believe this is an analog station, but it isn't entirely clear. (there appears to be a typo in the license regarding the emission designator)

Phase 1 of the repack is now (theoretically) complete. You're seeing a few of the completed channel changes in this month's column – you should expect to see many more in the near future.

In Phoenix, KTAZ's post-repack signal on channel 29 was weaker in the city than expected. After investigation, engineers found the directional antenna had been installed backwards. Directional antennas are marked at the factory, signaling to the installers which side of the antenna should face north. The mark... was on the wrong side of the antenna. The backwards signal isn't interfering with anything, so KTAZ will continue to operate until it's possible to get a tower crew out to reorient the antenna.

And in Tucson, KHRR wasn't able to achieve its authorized 396kw power on post-repack channel 16. The power amplifiers in the channel 16 transmitter didn't deliver enough output. Replacement amplifiers are on order.

WNJJ-LD in New Jersey wishes to temporarily take over the W22EW-D transmitter. WNJJ was displaced by T-Mobile late last year. They must return to the air by the end of 2018 or lose their license. However, the FCC has not yet acted on their application to move to channel 30.

The same firm owns W22EW. (and the W22EW transmitter is at the same site) The STA request calls for W22EW to go temporarily dark, and WNJJ to take over the transmitter. W22EW already has approval to move to channel 5, so it's not at risk of running afoul of the off-over-a-year regulation. WNJJ can't stay on channel 22 forever though; it will eventually be displaced by WDVb-CD and WTBV-TV when they leave channel 23 in Phase 4.

(While looking up this data, I noticed WTBV's city-of-license is misspelled "Jersey City" in the database...)

Ion proposes to "move" several of their stations. WPXH in Alabama, WUPX in Kentucky, and WNPX in Tennessee do not propose to make any technical moves – they only propose to change their "cities of license". ("principal community", in the regulations)

I'm not entirely sure why they're making these moves *now*. At one time, there were certain "clerical" requirements that meant the city of license needed to be near the transmitter, and that it needed to be near the community the station actually intended to serve. Cookeville, Tennessee is 70 miles east of Nashville. (I had to do the math when I saw WNPX's application to build a digital transmitter *in* Nashville. I was convinced it wasn't legal. It was legal, by four miles.)

These rules have been almost entirely repealed. Best I can tell, the only remaining reason to move WNPX is the requirement to keep a physical record of attempts by political candidates to buy airtime on the station, at a publicly-accessible location in Cookeville. That requirement expires in the near future. (such records now are required to be uploaded to the FCC website instead. Not that I've ever seen a political ad on Ion – I'm not convinced such records even exist.) That, or maybe someone doesn't like seeing "Cookeville" on the hourly station ID? The move in Alabama is similar; Hoover is a Birmingham suburb, Gadsden a small city 57 miles east of Birmingham.

The proposed move in Nashville has been withdrawn. No reason is given.

The Notice of Violation issued to WMTO-LP cites two different figures for the maximum permissible aural power of a channel 6 LPTV. WMTO (which was using a separate FM transmitter to generate their aural signal) was in violation of both figures, but the figure the FCC regards as authoritative could have consequences for so-called "Franken FM" stations.

Analog TV stations operating on channel 6 have an aural signal on 87.75MHz. This signal can be received on FM radios, if they tune that far out of the FM band. There are, of course, no full-power analog TV stations left on channel 6. However, *low*-power stations still exist. Some of these stations are programming their aural signals as FM radio stations. Probably the best known is WRME-LP Chicago, "Me-TV FM 87.7".

The Notice of Violation states at one point the maximum permissible ERP for a channel 6 LPTV station is 3kw. At the end of the same paragraph, it says the maximum permissible aural power is 660 watts. FCC regulation 73.1560 says the aural ERP is not to exceed 22% of the visual. 22% of 3kw is 660 watts. However, LPTV stations are regulated under part 74, not part 73. Regulation 74.780 contains a list of Part 73 regulations that are applicable to LPTV stations. *73.1560 is not on that list*. I am not a lawyer, but the way I read that, the 22% power limit does not apply to LPTVs. And the way I read that, the maximum permissible aural power for an analog channel 6 LPTV is 3kw.

Again, either way WMTO is in trouble. But if the Commission's interpretation is that the 660-watt figure is correct, then *all* Franken-FMs have a problem.

73.1570 is also not on the list. This is the regulation that defines 100% modulation of an analog TV aural carrier as +/-25KHz. 73.1545 is not on the list. This is the regulation that requires the frequency of the analog TV aural carrier be 4.5MHz above the visual carrier.

If the FCC regards 73.1560 as applicable to analog LPTVs, it is reasonable to presume 73.1545 and 73.1570 are also applicable. And if those regulations are applicable, a channel 6 LPTV's aural signal must be on 87.75MHz. That frequency is not tunable by most FM radios. (many channel 6 LPTVs have been operating their aural signals on other frequencies within the 82-88MHz band – usually 87.7 or 87.9MHz) “Franken-FMs” use an aural deviation of +/-75KHz. This is 100% modulation for FM radio. If 73.1570 applies, then aural deviation is limited to +/-25KHz – 33% modulation.

This all becomes a moot point in 2-1/2 years. The repack will be complete on July 3rd, 2020. A year later, the FCC will cease to authorize analog operation of LPTV stations – and it will cease to be possible to receive any kind of TV audio on an FM radio.

The channel 6 and 47 experimental STA applications in “San Francisco” are from the same party responsible for numerous other ungrantable applications over the years. Neither application explains what type of experiments are planned.



DXers PETS

And you thought we weren't serious about this last month. We were. Our friend on the left is Boo Boo, Boo is owned by Jeff Kruszka (TX) and likes to spend time laying in the nearest bowl. Our friend in the center is Peanuts, companion of Harry Hayes (PA). Peanuts likes to listen to the radio and can often be found sitting on important documents.



And finally, on the right, we have McDougal. McD likes to wear a bandana and can often be found chasing cats, like the two on the left. He can also be found assisting at antenna installations. McD keeps Jim Thomas (MO) company. Send us your pet photo and we'll put it here as space allows.



FM NEWS - January 2019

Editor: Bill Hale fmnews@wtfd.org
Visit db.wtfd.org to stay up-to-date on the latest
FM programming changes



- AL Butler 93.5 WMKQ
[Call change from WCLR]
- AL Fish Pond 96.5 W243AP
[License cancelled; call deleted]
- AL Jasper 101.9 WQJJ-LP
[Is silent]
- AL Quitman 98.9 WLYJ
[Call change from WMSO]

- AK Central 96.3 KCNN
[Calls assigned to new station]
- AK Eagle River 92.5 K223BJ
[Format is Unavailable as // KVNT-1020 is Silent]
- AK Fairbanks 97.5 K248DK
News/Talk: 'Heartbeat Of Alaska, 97.5 FM and 660 AM' // KFAR-660



- AB Edmonton 96.3 CKRA-FM
Soft AC: 'Breeze'



- AZ Avondale 105.5 KAIZ
Christian CHR/Rock: 'Air1'; Call change from KLVA
- AZ Oro Valley 102.1 KFMA
Rock: 'Tucson's Rock Station'
- AZ Sierra Vista 96.9 K245DF
[Move from 107.5 as K298BZ]
- AZ Superior 89.9 KLVA
Contemporary Christian: 'K-Love'; Call change from KZAI
- AZ Tucson 96.1 KLPX
Classic Rock: 'Number One For Classic Rock'



- AZ Tucson 104.1 KFLT-FM
Returns to the air with Contemporary Christian: 'Family Life Radio'; Call change from KQTH]

- AR Greenbriar 94.5 K233BF
[Format is Unavailable as // KLRG-880 is Silent]
- AR Hot Springs 105.9 KLAZ
Contemporary Hit Radio: 'Arkansas' Hit Music Station'



- AR Monticello 98.9 K255AM
[License cancelled; call deleted]
- AR Paron 99.1 KILB-LP
Southern Gospel

- BC Vancouver 104.3 CKLG-FM
Soft AC: 'The Breeze'



- CA Atascadero 103.9 KRUR-LP
[Is Silent]
- CA Bakersfield 99.7 K259DA
[Move from 107.9 as K300CZ] CA Lemon Grove 93.7 K229DP
[Unavailable as new // KJUX-1400 is not yet on the air]
- CA Napa 96.9 K245DK
[Calls assigned to new station; will be Sports/Talk // KVON-1440]
- CA Palm Springs 95.5 K238BB
[License cancelled, Call deleted]
- CA Petaluma 96.9 K245DJ
[Calls assigned to new station; will be News/Talk: 'KSRO Newstalk 1350 AM' // KSRO-1350]
- CA Sacramento 95.7 KUGA-LP
[Is Silent]

CA Sacramento 97.3 KZAC-LP
[Is Silent]
CA San Diego 100.7 KFMB-FM
Variety Hits: '100.7 San Diego'



CA San Francisco 93.7 K229DD
[Move from 101.3 as K267BO at South
Lake Tahoe]
CA Santa Cruz 90.7 KSRI
Format is Unavailable [includes K265CY
100.9 & K281CA 104.1]
CO Colorado Springs 106.7 K294DB
Format is Unavailable as // KJME-890 is
Silent
CO Fort Collins 88.3 KVXO
[Call change form KVXQ]



CO Weld 103.1
KFWA
[Is silent]



FL Belle Glade 92.5 W223AJ **and**
FL Lewiston 100.5 W263BT **and**
FL La Belle 105.1 W286DO
Country: 'Pure Country WAFC' // WAFC-590
FL Destin 106.9 W295CY
News/Talk: 'NewsTalk 1470' // WNWF-1470
FL Holmes Beach 98.7 WPBB
Classic Rock: '98.7 The Shark'

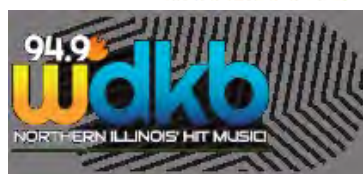


FL Homestead 88.1 WRGP
Variety: 'The Roar'
FL Miami 104.7 WAYG-LP
New station signs on with Religious
Teaching: 'God's Way Radio'

FL Ocala 97.9 WRGE-LP
Soft Christian: 'The Refuge - God Eternal'
FL Okeechobee 100.9 W244DW
Country: 'True Country AM 1570 and FM
100.9' // WOKC-1570
FL Panama City 96.3 W242BF
Rock: '96 Rock' // WDIZ-590
FL Panama City 107.9 WPFM
Returns to the air with Contemporary
Christian: 'K-Love'
FL St. Augustine Beach 95.5 W238DI
[Move from 95.7 as W239CN]
FL Saint Cloud 95.9 WGRL-LP
Spanish Religious: 'Alpha 95.9 FM'
FL Sarasota 106.9 W295BH **and**
FL Venice 95.9 W240DP
Classic Hits: 'The New SRQ' // WSRQ-1220



FL Tallahassee 96.9 W245CB
Format is Unavailable as // WCVC-1270 is
silent
FL Winter Garden 99.3 WGPD-LP
[Move from 99.7; Call change from
WDDT-LP]
GA Brunswick 100.3 WWZR-LP
Soft Christian: 'The New Joy 100.3'
ID Soda Springs 100.1 KCHQ
[Is Silent due to transmitter failure; call
change from KQJK]



IL Decatur 107.9 WLLU-LP
New station signs on with Variety: 'Love Life
Community Radio'
IL DeKalb 92.5 WCLR
Contemporary Christian: 'K-Love'; Call
change from WCPT-FM

IL DeKalb 94.9 WDKB
Hot AC: '94.9 WDKB'

IL DuQuoin 97.1 W246DU
Adult Contemporary: 'Sunny 97.1 // WDN-1580]

IL Harvey 95.9 W240EI
[Calls assigned to new station; will be Urban Gospel: 'The Big Gospel Xpress 1570 AM' // WBGX-1570]

IL Oregon 95.7 WSEY
Adult Contemporary: 'Sky 95.7'

IL Taylorville 96.5 W243DN
Oldies: 'Cousin' 96.5' // WMKR 94.3 HD2



IN Elkhart 101.9 W270DK
Adult Standards: 'Frank 1340' // WTRC-1340

IN Jasper 99.1 W256DA
Spanish Adult Hits/Talk: 'Juan 99.1' // WITZ-990

IN Richmond 95.3 W237AT
Country: '95.3 The Legend' // WQLK 96.1 HD3

KS Dodge City 93.9 KZRD
[Is Silent]

KS Topeka 106.9 KTPK
Country: 'My Country 106.9'



KY Caneyville 103.5 W278DA
[Move from 103.3 as W277DQ]

KY Pikeville 95.9 W240CL
[Move from 106.5 as W293BP]

LA Belle Chasse 102.9 KMEZ
Urban AC: 'Z102.9' // KKND 106.7; Call change from KKND

LA Port Sulphur 106.7 KKND
[Urban AC: 'Z 102.9' // KMEZ 102.9; Call change from KMEZ



LA Ruston 96.3 K242DA
Urban Gospel: 'Rejoice 96.3 FM and 1490 AM' // KRUS-1490

ME Fairfield 93.5 WCTB
Country: 'Cruisin Country'

MD Salisbury 102.9 W275CK
Classic Rock: 'The Vault 103.5 & 106.1 // WJKI-1320; '103.5 refers to WJKI-FM Bethany Beach and '106.1' refers to WXSH Pocomoke City

MA Springfield 98.1 W251CT
Country: '98.1 Nash Icon' // WHLL-1450

MI Battle Creek 92.9 WPGG-LP
[Is Silent; lightning damage]

MI Detroit 98.7 WDZH
Soft Adult Contemporary: '98.7 The Breeze'

MI Grand Rapids 94.9 W235BN **and**

MI Lowell 99.5 W256DF
Classic Country: 'Jethro FM' // WYGR-1530



MN Babbitt 106.7 KZJZ
Religious Teaching: 'Real Presence Radio' [EWTN]

MN Minneapolis 102.9 KMNB
Country: '102.9 The Wolf'



MN St. James 100.5 KXAC
Classic Hits: 'Magic 100.5'

MN Saint Paul 99.1 WVIC-LP
Returns to the air with Variety

MS Clarksdale 97.5 W248CL
[Move from 105.7 as W289AP]

MS Cleveland 98.3 WBYB
Returns to the air with Oldies: 'Oldies 98.3'



MS Jackson 94.3 W232DD
Variety: 'WPBQ 94.3 FM & 1240 AM'

MS Magee 96.9 WSMP-LP
Soft Christian: 'Renew 96.9'

MS Quitman 98.9 WLYJ
[Call change from WMSO]

MT Lewistown 107.9 KZLM
Religious Teaching: 'Your Network Of Praise'

MT Roundup 88.1 KXEM
Religious Teaching: 'Your Network Of Praise'

MT St. Regis 99.3 KVGJ
[Move from 99.1] (expect the logo to change slightly!)



MT Somers 91.3 KFLF
[Is Silent]

MT Whitefish 104.7 K284CV
[Move from 93.9 as K230BJ]

NE Allen 100.9 KWTN
[Call change from KHSK]

NE Blair 97.3 KOBM-FM
Oldies: 'Boomer 94.5, 97.3, 104.1 & 1490' // KOMJ-1490; Call change from KBLR-FM



NE North Platte 98.1 K251CP
Classic Hits: '98.1 FM' // KOOQ-1410

NV Elko 95.3 KRJC
Country: "All American Country 95.3 KRJC"



NH Keene 104.1 W281AU
Oldies: 'Pure Oldies 104.1' // WKNE 103.7 HD3



NJ Pennsauken 107.9 WPPZ-FM
R&B Oldies: 'Classix 107.9'



NJ Sussex 98.3 W252DY
Adult Contemporary: '106.9 WYNY' // WYNY ('106.9' refers to W295AQ Milford, PA)

NM Albuquerque 100.9 K265CA
Soft AC: '100.9 The Breeze' // KZRR 94.1 HD2



NM Albuqu 103.7 K279BP
erque
Soft AC: 'The Breeze' // KOAZ-1510

NM Farmington 100.9 K265FJ
Spanish Adult Hits: 'Juan 1280' // KRZE-1280

NM Hobbs 88.3 KLHK
[Frequency change from 90.9]

NM Milan 98.3 K252FS
Religious Teaching // KSFE-1080

NY Binghamton 94.3 WLRP-LP
[Is Silent]

NY Buffalo 96.1 WMSX
Soft AC: '96.1 The Breeze'

NY Buffalo 107.3 W297AB
R&B Oldies: 'Classic R&B 107.3' // WWWS-1400



NY Chenango Bridge 104.1 WWYL
Contemporary Hit Radio: '104.1'



NY Fulton 98.5 W253BZ
[Move from 89.1 as W206BH]

NY Fulton 98.9 W255DC
[Move from 98.7 as W254CI]

NY Mohawk 97.5 WHMV-LP
Variety: 'The Valley's Own, V97.5 FM'



NY Penn Yan 93.9 W230CZ
Classic Hits // WYLF-850

NC Reidsville 93.5 W228DS
[Unavailable as // WREV-1220 is Silent]

NC Wilson 101.1 WJQY-LP
 [Frequency change from 100.3]
 NC Winterville 107.5 W298BX
 [City-of-License change from New Bern]



NS New Glasgow 94.1 CKEC-FM
 Adult Contemporary: 'Mix 94.1'
 NS New Glasgow 97.9 CKEZ-FM
 Classic Rock: 'Z97.9'



OH North Canton 101.7 WHOF
 80s & 90s Hits: 'Sunny 101.7'
 OH North Madison 93.7 WQGR
 Oldies: 'Gold 93.7'
 OH Solon 106.1 W291BV
 Urban: 'Real 106.1' // WAKX 96.5 HD2



OK Norman 107.1 KOUJ-LP
 Christian CHR/Rack: 'The Rock Of
 Salvation'
 OK Tulsa 93.3 K227DT
 [Calls assigned to new station; will be
 Sports: '107.7 The Franchise' // KRXO-
 1270; '107.7' refers to KRXO-FM]

OK Tulsa 104.1 K281CO
 [Move from 103.9 as K280GO]
 OK Waukomis 106.3 KWOF
 New station signs on with Classic Country:
 '106.3 The Wolf'

OR Maupin 103.7 K282BA
 [License cancelled; call deleted]

OR Wilsonville 91.1 KXVY-LP
 [Is Silent]

PA Altoona 107.7 WMES-LP
 Religious Teaching: 'The Messenger'

PA Bellefonte 90.3 WJVM
 Returns to the air with Religious Teaching:
 'Voice of Divine Mercy'

PA Corry 98.9 WHYP-LP
 Signs on with Adult Alternative: 'Corry's
 Radio Alternative'

PA Lancaster 94.5 WDAC
 Religious Teaching: 'WDAC 94.5 The Voice
 Of Christian Radio'



PA Milford 106.9 W295AQ
 Adult Contemporary: '106.9 WYNY' //
 WYNY-1450

PR Arecibo 106.5 WNIK-FM
 Spanish Easy Listening: 'Super K 106'

PR Dorado 105.3 W287DP
 [Calls assigned to new station; will be
 Spanish News/Talk: 'Radio Isla 1320 AM' //
 WSKN-1320]



OK Hennessy 97.7 KHRK
 New station signs on with Classic Rock:
 '97.7 The Hawk'

OK Lone Wolf 98.7 KHWL
 News/Talk: '98.7 News Radio'

PR Viequez 103.9 W280GC
 [Calls assigned to new station; Format is
 Unavailable as // WIVV-1370 is silent]

QC Kipawa 104.1 CKFF-FM
 [Calls assigned to new station; will be Country]



SK Assiniboia 98.1 CIAT-FM
 [Calls assigned to new station]
 SK Esterhazy 99.5 CJEZ-FM
 [Calls assigned to new station]



SC Camden 98.7 W254DO
 Classic Country: 'Carolina's Country Classics' // WCAM-1590
 SC Charleston 96.9 WIWF
 Classic Hits: '96.9 The Wolf'



TN Clarksville 94.9 WGIC-LP
 Signs on with Religious Teaching: 'Wings of Gabriel' (Eternal Word TV Network)
 TN Decatur 93.9 WQMT
 Regional Mexican: 'Que Buena 101.9' // WOCE 101.9
 TN Morristown 93.3 W227DH
 Classic Country: 'Country Legends 93.3 & 1300 AM' // WMTN-1300
 TN Morristown 105.7 W289BQ
 Classic Hits: 'WCRK 105.7 FM - Hometown Radio' // WCRK-1150
 TN Shelbyville 95.9 W240EF
 [Move from 95.7 as W239CT]
 TN Tullahoma 88.5 WKTH
 [Call change from WLYJ]

TX Dalhart 88.7 K204GQ
 [Move from 88.1 as K201IF]
 TX Diboll 103.7 K279DC
 Sports // KSML-1260

TX Dumas 88.7 K294GP
 [Move from 88.1 as K201IA]
 TX Italy 93.5 K228GA
 [Move from 92.9 as K225CE]
 TX New Waverley 91.1 KNLY
 Returns to the air with Regional Mexican: 'La Jefa'
 TX Pampa 88.7 K204GO
 [Move from 88.1 as K201IO]
 TX Presidio 95.3 KOJP
 [Calls assigned to new station]
 TX Waco 94.1 K231CG
 [License cancelled; call deleted]



VA Bristol 93.3 W227DT
 Religious/Southern Gospel: 'Inspiration & Southern Gospel' // WZAP-690
 VA Goochland 100.5 WJFN
 [Call change from WVNZ-FM]
 VA Narrows 97.3 W247DC
 Bluegrass: 'The Ridge AM 990 and FM 97.3' // WNRV-990
 VA Winchester 102.9 W275BV
 Adult Hits: '102.9 The Valley' // WXVA-610
 WA Aberdeen 104.1 K281CG
 [Move from 103.9 as K280GE]
 WV Lewisburg 107.7 W299CZ
 [Move from 107.1 as W296EE]



WI Fond du Lac 93.7 W229DE and
 WI Manitowoc 107.9 W300EE
 [Calls assigned to new station; will be Adult Contemporary/Talk // WOMT-1240]
 WI Monroe 95.5 W238CB
 Classic Country: 'Classic Big Country AM 1260' // WEKZ-1260

Photo News Continues on page 36.

FM Facilities Report

This information is reprinted from Doug Smith's FM News Information posted in the WTFDA Forums <http://forums.wtfda.org>. The WTFDA FM Database is also updated with this information. <http://db.wtfda.org>

Abbreviations:

AF- New Station Applied For	NS- New Station Permit Granted	RA- Returns to the Air
Aux- Auxiliary Backup Transmitter	NW- New Station on the Air	ROA- Request of Applicant
CC- Call Change	PC- Power/Height Change Granted	XG- new site granted
CL- City of License	PG- Power Change Granted	XC- transmitter site changed
CX- Canceled	QG- Frequency Change Granted	PR/QR- Power or Freq requested

January 2019

AK Juneau 94.9 K235DA XG 58-22-11/134-33-08	CA Palm Desert 103.1 KQPS CC from KEZN
AK Savoonga 89.3 KKLK NW 90w/-72m, 63-41-45/170-28-44 (Nome SDA Church)	CA Palm Desert 98.1 K251BX PC>158w
AK Soldotna 104.5 K283AB XC 60-31-58/151-04-51	CA Palm Desert 99.9 K260DE NW 50w, 33-44-00/116-23-06 (KCOD-1450 Palm Springs)
AL Birmingham 94.1 W231DE PG>99w	CA Palm Springs 95.5 K238BB CX ROA (KMRO-90.3)
AL Butler 93.5 WMKQ CC from WCLR	CA Ridgecrest 90.5 KRSR CX ROA
AL Cordova 92.5 WYDE-FM CC from WXJC-FM	CA San Francisco 104.1 K281BU PC>93w
AL Cullman 101.1 WXJC-FM CC from WYDE-FM	CA San Francisco 95.3 K237GZ XG 37-41-13/122-26-03 (San Bruno Mtn.)
AL Dothan 102.1 W271DN NS 99w, 31-13-23/85-22-02 (WDYG-1450)	CA San Jose 92.7 KCXU-LP PG -147m
AL Mobile 94.5 W233CX NS 250w, 30-42-24/88-03-43 (WNLG-1410)	CA Santa Cruz 90.7 KSRI PG<230w CX ROA; remains 320w
AL Pelham 93.3 WPLX-LP PG 44m, 33-18-11/86-49-37	CA Shasta 97.7 K249EW XC 40-39-15/122-31-26
AR El Dorado 89.7 K209DT PG>205w, 33-12-41/92-42-16	CA Simi Valley 99.1 KWSV-LP PC>11m
AR Little Rock 99.9 K260DT NS 99w, 34-42-56/92-20-24 (KTUV-1440)	CO Fort Collins 88.3 KVXO CC from KVXQ
AR Monticello 98.9 K255AM CX, off over a year	CO Rifle 102.1 K271BA PG>50w, 39-30-42/107-44-57 (KKVT-100.7)
AR TXRna 107.5 K298DB NS 250w, 33-27-25/94-10-59 (KOSY-790)	CO Rifle 103.3 K277DC QG from K276AI-103.1, 39-30-42/107-44-57
AZ Avondale 105.5 KLVA PC 800w/941m, 33-16-24/112-16-48; CL from Casa Grande	CO Rye 104.9 KRYE PG 25kw/55m, 37-56-40/104-59-56; "undoes" permit for 100kw/81m at Olney Springs
AZ Casa Grande 101.9 K270CV QG from K271CR-102.1, 32-50-04/111-38-15; CL from Sun Lakes (KZAI-89.9)	CO South Fork 100.9 K265ED CX 73.3598(e) (CP expired) (KRZA-88.7)
AZ Claypool 96.5 KIKO-FM QC from 97.3, 30kw/966m	CO Steamboat Springs 96.9 KBCR-FM PC 3kw/533m, 40-27-05/106-45-04
AZ Old Pascua Village 100.7 KPYU-LP CC for NS	CO Steamboat Springs 98.9 KCOQ PC>2.1kw/543m, 40-27-16/106-44-34
AZ Rough Rock 99.5 KCAZ NW 3.9kw/486m, 36-21-06/109-49-51	CT Bloomfield 98.7 WGZO-LP PC 30m, 41-50-38/72-39-52
AZ Taylor 100.5 K263CA QG from 100.7, 34-12-22/109-56-32	CT Hamden 92.9 W225DI QR from W226AG-93.1, 10w; QG
AZ Tucson 88.5 KTUK CC from KFLT-FM	DE Bethany Beach 103.5 WJKI-FM CC from WJKI
CA Arcadia 91.1 K216EM PG>99w	FL Cantonment 104.5 W283CU NW 250w, 30-27-09/87-14-26 (WNVY-1070)
CA Bakersfield 98.1 K251CT QG from K239BB-95.7, 250w, 35-26-43/119-12-27; CL from Taft (KAFY-1100); PG 80w, 35-23-07/119-09-26 at Taft CX in favor of Bakersfield	FL Hollywood 98.5 Pirate NOUO issued, Wiley St.
CA Bakersfield 99.7 QC from 107.9, 80w, 35-38-21/119-01-40; CL from Lancaster (KJPG-1050)	FL Marianna 102.1 W271DM NS 250w, 30-47-01/85-15-20 (WTOT-980)
CA Carmel Valley 104.7 K284CZ NS 175w, 36-39-36/121-32-29 (KRXA-540)	FL Miami 103.1 W276DV NS 99w, 25-46-20/80-11-20 (WWFE-670)
CA Hollister 90.7 KHRI PG>5kw/-99m CX ROA; remains 170w/-111m	FL Miami 92.7 W224EH NS 250w, 25-38-58/80-19-59 (WSUA-1260)
CA Lebec 98.1 KCGV-LP CX, off over a year	FL Miami Gardens 103.9 Pirate NOUO issued, NW 22nd Ave.
CA McCloud 91.9 KLDD PC>1.1kw/447m, 41-13-19/122-18-27	FL Miami Gardens 91.7 Pirate NOUO issued, NW 2nd Ave.
CA Monterey 94.7 K234DH NS 250w, 36-29-37/121-54-15 (KRML-1410 Carmel)	FL Orlando 99.5 W258DD QG from W284CJ-104.7, 166w, 28-32-23/81-22-46; CL from Oviedo

FL Pensacola 105.3 W287DA NW 250w, 30-27-09/87-14-26 (WVTJ-610)
 FL Sarasota 99.1 W256DI PG<165w, 27-20-22/82-27-56
 FL St. Augustine 106.3 W292DE OQ from W294CM-106.7, 225w, 29-51-01/81-19-49; CL from Crescent Beach
 FL St. Augustine Beach 95.5 W238DI OQ from 95.7
 FL St. Petersburg 97.1 W246CY PG<100w, 27-46-03/82-39-39; CL from Bradenton
 FL Tampa 101.9 W270DU PG<235w
 FL West Palm Beach 103.7 W279DG PC>250w, 26-44-00/80-05-11
 FL West Palm Beach 104.1 W281CJ NW 247w, 26-44-00/80-05-11 (WPSP-1190 Royal Palm Beach)
 FL Winter Garden 100.7 W264DV NS 112w, 28-27-12/81-25-12 (WOKB-1680)
 FL Winter Haven 97.1 W246DX NS 250w, 28-04-31/81-49-19 (WWBF-1130 Bartow)
 GA Atlanta 99.3 W257DF PC>15w, 33-44-41/84-21-36 (WCLK-91.9)
 GA Augusta 97.3 WMFJ-LP PG>97m, 33-25-15/82-03-41
 GA Cochran 96.7 W244CL PG<150w, 32-28-03/83-34-45 (WDXQ-1440)
 GA Cornelia 107.7 W299AT PC>250w, 34-30-07/83-30-44
 GA Hawkinsville 96.1 W241CO XG 32-28-03/83-34-45
 HI Hilo 99.3 K257GV NS 250w, 19-41-48/155-03-05 (KIPA-1060)
 ID Aberdeen 96.1 KWFI-FM CC from KID-FM
 ID Boise 105.5 K288HG NS 99w, 43-45-18/116-05-52 (KFXD-630)
 ID Bonners Ferry 97.3 K247AJ CX 73.3598(e) (CP expired)
 ID Driggs 102.1 KWFO-FM CC from KCHQ
 ID Fairfield 99.9 KXCD CC from KXML
 IL Chicago 98.3 W252AW PC<90w, 41-51-11/87-37-22 (WMBI-FM 90.1)
 IL DeKalb 92.5 WCLR CC from WCPT-FM
 IL Evanston 95.9 W240EH NS 250w, 42-01-19/87-42-40 (WCGO-1590)
 IL Rockford 96.1 W241DF NS 225w, 42-16-45/89-02-12 (WROK-1440)
 IN Elkhart 101.9 W270DK NW 250w, 41-40-29/85-56-51 (WTRC-1340)
 IN Indianapolis 93.5 W228CX PG>250w
 IN Terre Haute 96.9 WUZA-LP CC from WEVX-LP
 KS Hays 88.5 K203FB PG<140w, 38-57-29/99-21-07
 KS Salina 106.7 K294DI NS 250w, 38-50-30/97-36-34 (KSAL-1150)
 KS Scott City 94.5 KSKL PG<93m, 38-16-39/101-17-50; significant move of 44km to the west-southwest, between Lakin and Leoti.
 KY Brandenburg 93.5 WMMG-FM PC<3.4kw/85m, 37-59-09/86-11-04
 KY Caneyville 103.5 W278DA NW 250w, 37-19-04/86-36-26 (WLBO-1570 Morgantown)
 KY Caneyville 103.5 W278DA OQ from 103.3, 37-19-04/86-36-26
 KY Cumberland 105.9 W290DH NS 250w, 36-58-25/82-59-15 (WCPM-1280)
 LA Lafayette 104.1 KOFA-LP PG 30m, 30-13-11/92-03-49
 MA Orange 97.3 WJDF Station given 60 days to pay roughly \$9,600 in five years' delinquent regulatory fees or show why

they don't owe them. Failure to act may result in revocation of the WJDF license.
 ME Augusta 97.5 W248CB PC<170w, 44-19-41/69-45-54
 MI Bridgeport 98.5 W254DS NW 5w, 43-20-34/83-53-53 (WJMK-1250)
 MI Bridgeport 99.3 W257EO OQ from W254DS-98.5
 MI Detroit 107.1 W296DY PC>99w, 42-28-11/83-06-55
 MI Detroit 98.3 W252BX PC<115w, 42-19-45/83-02-23 (WDMK-105.9)
 MI Hancock 107.3 W297CD NW 250w, 47-06-05/88-35-29 (WMP-920)
 MN Faribault 98.1 K251CS NS 250w, 44-15-49/93-16-25 (KDHL-920)
 MN Stillwater 107.5 K298DD NS 150w, 45-03-15/92-49-42 (KLBB-1220)
 MN Verndale 101.3 K278CU NS 250w, 46-23-43/94-57-54 (KSKK-1070)
 MN Waite Park 93.9 W230DG NS 250w, 45-33-36/94-08-20 (KXSS-1390)
 MO Columbia 107.5 KLJE-LP OQ from 107.3, 33m, 38-56-37/92-19-17
 MO Eldon 101.9 KZWV PG 28kw/201m, 38-22-14/92-24-54
 MO Fredericktown 94.3 K232FS NW 250w, 37-47-55/90-33-44 (KYLS-1450)
 MO St. Louis 93.3 K227DS NS 99w, 38-38-09/90-11-45 (KATZ-1600)
 MO Stockton 107.1 KIRS CC from KRWP
 MS Meridian 102.7 W274CH NS 250w, 32-20-39/88-42-40 (WQMS-1500 Quitman)
 MS Yazoo City 100.3 W262DE NW 80w, 32-52-03/90-23-44 (WELZ-1460 Belzoni)
 MT Baker 99.1 K256DH OQ from 99.7
 MT Billings 103.3 K277DS NS 99w, 45-45-59/108-27-19 (KBUL-970)
 MT Columbus 90.5 KMTJ PC>1kw/375m, 45-11-39/109-20-30
 MT Glendive 96.5 KDZN PC>100kw/151m, 47-05-01/104-48-05
 MT Huntley 98.9 K213DY QC from 90.5, 50w, 45-45-34/108-27-05 (KMTJ-90.5)
 NC Dobson 95.3 W237FG OQ from W240DQ-95.9, 190w
 NC Greenville 92.7 W224EI NS 250w, 35-32-15/77-25-06 (WGHB-1250 Farmville)
 NC Red Springs 98.5 W253DC NS 250w, 34-53-05/79-04-29 (WYDU-1160)
 NC Roxboro 103.7 W279BW PG>250w, 36-17-58/78-53-26
 NC Washington 92.9 W225DH NS 250w, 35-29-14/77-02-42 (WNCT-1070 Greenville)
 NC Wilson 101.1 WJQY-LP QC from 100.3, 18m, 35-44-11/77-58-37
 NC Winterville 107.5 W298BX XC 35-32-15/77-25-06; CL from New Bern (WECU-1570)
 ND Grand Forks 92.5 K223DF NS 250w, 47-55-12/97-01-44 (KWTL-1370)
 ND Jamestown 107.1 K296HH NW 250w, 46-53-30/98-42-46 (KQDJ-1400)
 ND Valley City 96.3 K242CZ NW 250w, 46-56-07/98-00-42 (KOV-1490)
 NE North Platte 98.1 K251CP NW 250w, 41-11-25/100-44-56 (KOOQ-1410)

NE Omaha 104.1 K281CJ PC<99w, 41-13-59/95-58-02
 NH Manchester 101.5 W268DK NS 99w, 42-58-54/71-35-21 (WGIR-610)
 NJ Lakewood Township 93.5 W228EH NW 250w, 40-02-39/74-04-41 (WOBM-1160)
 NJ Prospect Park 91.7 Pirate Issued NOUO and Notification of Harmful Interference (NOHI) to aircraft communications on 120.4MHz. (Planten Ave.)
 NM Roswell 91.1 K216BJ PC>250w, 33-23-43/104-35-18
 NS Digby 107.1 CBHA-FM-1 NS 420w/257m, 44-40-38/65-43-59; to relay CBHA-FM Halifax (Radio One)
 NV Crescent Valley 101.5 K215DN CX 73.3598(e) (CP expired) (KUNR-88.7)
 NV Fallon 89.7 KQNV QG from 89.9, 3.2kw/60m, 39-28-00/118-46-26
 NY Au Sable 97.9 WXMS PC>2.5kw
 NY Fulton 98.5 W206BH QC from 89.1, 200w, 43-17-41/76-26-35; CL from Lyons Falls (WOSW-1300)
 NY Fulton 98.9 W254CI QC from 98.7, 210w, 43-17-41/76-26-35; CL from Camillus
 NY Hauppauge 94.9 W235BB PG>15w, 40-48-26/73-10-48; PC
 NY Hempstead 107.1 W296CQ PG>140w, 40-41-08/73-36-37; CL from Melville
 NY New York 102.3 W272DX QG from W283BR-104.5, 250w, 40-50-59/74-10-59; CL from Dansville (AM facility in Upper Mtclair)
 NY Rochester 96.1 W241DG NS 99w, 43-08-08/77-35-02 (WHAM-1180)
 NY Utica 106.9 W295DI NS 99w, 43-08-39/75-10-45 (WIBX-950)
 NY Utica 107.7 W299DA NS 99w, 43-08-34/75-10-34 (WUSP-1550)
 NY Utica 88.1 W201DQ QG from W293CD-106.5, 10w
 OH Akron 93.5 W228EL NS 250w, 41-03-53/81-34-59 (WAKR-1590)
 OH Cleveland 106.9 W295DE PG<146w
 OH Crestline 98.7 WYKL PC>2.6kw/113m, 40-45-27/82-47-22
 OH Sandusky 93.5 W228EN NS 250w, 41-19-51/82-35-57 (WLEC-1450)
 OH Solon 106.1 W291BV PC>200w, 41-22-45/81-43-12
 OH Wilberforce 88.9 WCSU-FM PC 400w/94m
 OK Hennessey 97.7 KHRK NW 3.9kw/100m, 36-12-59/97-54-54
 OK Tulsa 104.1 K280GO QC from 103.9, 99w, 36-06-25/95-47-13
 OK Tulsa 93.3 K227DT NS 8w, 36-15-55/95-42-37 (KRXO-1270 Claremore)
 OK Waukomis 106.3 KWOE NW 6kw/100m, 36-12-59/97-54-54
 ON Englehart 105.7 CJTK-FM-7 PG<3.4kw/45m
 OR Albany 96.9 K245DI NS 250w, 44-39-16/123-00-57 (KWIL-790)
 OR Christmas Valley 95.9 K240BX PG>250w, 43-09-53/120-52-45
 OR Coos Bay 105.1 K286CR NW 250w, 43-22-07/124-12-11 (KMHS-1420)
 OR Hillsboro 99.1 K256DG NS 99w, 45-29-13/122-54-34 (KUIK-1360)
 OR Roseburg 96.3 K242DD NS 190w, 43-12-22/123-21-50 (KTBR-950)
 PA Elizabethtown 102.1 W271DA NW 140w, 40-09-45/76-34-36 (WPDC-1600)

PA Erie 103.3 W277DS NW 200w, 42-00-03/79-52-33 (WZTE-1530)
 PA Jonestown 99.3 W257CK QG from W260AY-99.9, 99w, 41-07-35/76-15-59; CL from Glen Lyon
 PA Pittsburgh 102.9 W275DB NS 4w, 40-29-27/79-58-55 (WAOB-860 Millvale)
 PA Wilkinsburg 107.3 W297BU XG 40-26-22/80-02-41
 PR Aguadilla 105.1 W286DL NW 250w, 18-19-39/67-09-55 (WVOZ-1580 Morovis)
 PR Juncos 95.1 W236DS NS 250w, 18-14-17/65-55-56 (WLEY-1080 Cayey)
 PR San Juan 99.5 W258DT NS 250w, 18-21-00/66-06-47 (WBMJ-1190)
 QC Saint-Rémi 104.9 CHOC-FM CX, license expires at the end of the year & will not be renewed.
 RI Providence 102.9 W275DA NS 115w, 41-51-56/71-17-17 (WRPA-1290)
 SC Columbia 103.5 W278CY NS 250w, 34-02-38/80-59-51 (WVOC-560)
 SC Greenville 101.5 WZWK-LP CC from WBWT-LP
 SC Swansea 103.9 WHXT PG 17.5kw/120m, 33-48-34/81-02-56; CL from Orangeburg
 SD Sioux Falls 96.9 K245DH NS 250w, 43-28-48/96-41-05 (KXRB-1140)
 TN Chattanooga 98.7 W254DB PC<99w, 35-07-45/85-20-02
 TN Cookeville 96.9 WJNU-LP PC<21m
 TN Gallatin 100.7 W264CR XG 36-21-22/86-34-29
 TN Hohenwald 99.5 W258DS NS 250w, 35-31-22/87-32-40 (WMLR-1230)
 TN Manchester 95.9 W239CT PC>250w, 35-22-40/86-21-54 (WHMT-740 Tullahoma)
 TX Amarillo 103.9 K280EU XC 35-06-50/101-49-16
 TX Batesville 97.9 KDVO NW 5.2kw/107m, 29-00-08/99-31-56 (Carlos Lopez)
 TX Chalk Hill 94.9 K235CV NW 250w, 32-20-13/94-39-13 (KDOK-1240 Kilgore)
 TX Dalhart 88.7 K204GQ QG from K201IF-88.1, 142w
 TX Dallas 95.5 KVWR-LP PG 60m
 TX Dumas 88.7 K204GP QG from K201IA-88.1
 TX Garland 92.9 KYYE-LP PG 36m
 TX Houston 88.7 KUHF PG>596m, 29-34-15/95-30-37
 TX Italy 93.5 K228GA QG from K225CE-92.9, 200w, 32-22-43/96-52-18; CL from Hillsboro (KBFB-97.9)
 TX Laredo North 104.1 K281CB PG<40w, 27-43-27/99-26-56
 TX Memphis 101.5 KHNZ NW 120w/46m, 34-43-30/100-32-11 (Route 66 Media)
 TX Moran 104.1 KCKB PG<78m, 32-32-29/99-03-28
 TX Pampa 88.7 K204GO QG from K201IO-88.1
 TX Richardson 95.7 K239DA NS 200w, 32-46-13/96-57-37 (KKLF-1700)
 TX Richmond 107.1 K296HJ PG>250w, 29-34-40/95-49-51; CL from Brookshire (KODA-99.1)
 TX San Antonio 101.5 KIEI-LP NW 30m, 29-36-38/98-29-49 (Lighthouse Network)
 TX Seguin 95.5 K238BZ PG>200w, 29-31-46/98-21-41
 TX Texarkana 105.9 K290CP NW 114w, 33-24-30/94-02-47 (KTFS-940)

TX Texarkana 105.9 K290CP PG<114w, 33-24-30/94-02-47
TX Texarkana 107.9 K300DW NS 230w, 33-25-45/94-07-11
(KCMC-740)
TX Waco 94.1 K231CG PG<10w, 31-31-16/97-10-39; CL from
Temple
TX Waco 99.3 K257GO QG from K256BW-99.1, 31-32-15/97-05-
32 (KLRK-1590); QC
UT Gunnison 100.9 K265FM NS 250w, 39-19-18/111-46-11
(KUTC-95.7)
UT Gunnison 102.1 K271DB NS 250w, 39-19-18/111-46-11
(KLGK-94.5)
UT Provo 99.9 K260DS NW 233w, 40-05-21/111-49-19 (KWLO-
1580 Springville)
VA Dale City 97.7 WJEV-LP PG 60m, 38-38-54/77-20-34
VA Farmville 91.3 WMLU PC>440w/24m, 37-17-52/78-23-42
VA Marion 92.5 W223DE NW 250w, 36-51-22/81-30-18 (WSNQ-
1330)
VT Brattleboro 106.9 W295CO NW 85w, 42-50-47/72-41-17
(WINQ-1490)

WA Aberdeen 104.1 K281DE QG from K280GE-103.9, 250w
WA Blaine 105.3 K287CI NW 45w, 48-59-48/122-38-52 (KVRI-
1600) (former KWPZ-106.5 tower within 300m of the Canadian
border)
WA Blaine 95.7 K239CY NW 45w, 48-59-48/122-38-52 (KARI-
550)
WA Spokane 103.5 K278CY NW 99w, 47-35-58/117-17-57 (KGA-
1510)
WA Walla Walla 98.7 K254DK PG<34w; CL from Dayton
WA Yakima 101.3 K267CV NS 250w, 46-31-59/120-30-14 (KIT-
1280)
WV Hico 106.9 WQTZ-LP CX ROA
WI Amery 107.3 W297CU NS 250w, 45-29-27/92-11-32 (WXCE-
1260)
WI Milwaukee 99.7 WIWI-LP PC>33m, 42-59-24/87-57-02

REPACKING MADNESS!

CHRIS LUCAS

From a Post on the TV and FM DXing List

A reminder that Phase 2 of the DTV Repack begins today (12/1/18), and is the longest phase, with a deadline of April 12, 2018. Stations in Phase 2 that are changing channels can start testing today, and move anytime up to April 12. Stations in many markets across the country are assigned Phase 2, including Miami, Denver, Houston, and Los Angeles. Nothing in the Northeast..... closest stations to me (Poughkeepsie) that are moving are WSEE-16>21 Erie, PA, and WHSV 49>20 Harrisonburg, VA.

Most markets of any size with multiple stations changing channels will require co-ordination between stations. Here's an example from Phase 4. Something as "simple" as WVPX Akron, OH moving from ch 23 to ch 22 involves the following.....

WVPX can't move from 23 to 22 until WJAC in Johnstown,, PA moves from 34 to 35. Here's how....

WVPX can't move to 22 until WFXP moves off 22 to 26.

WFXP can't move to 26 until WVIZ moves off 26 to 35 and WNYB moves from 26 to 5.

WVIZ can't move to 35 until WYTV moves from 36 to 31.

WYTV can't move to 31 until WBNX moves from 30 to 17.

WBNX can't move to 17 until WKYC moves from 17 to 19.

WKYC can't move to 19 until WFMJ moves from 20 to 33.

WFMJ can't move to 33 until WNPB moves from 33 to 34 (and WQHS moves from 34 to 36-- and WQHS can't move to 36 until WYTV moves off 36..... Oh oh, we have an endless loop!!)

And WNPB can't move to 34 until WJAC moves from 34 to 35!!!!

And by the way, WPXI in Pittsburgh can't move from 48 to 23 until WVPX makes its move.

There'll be a quiz on this tomorrow!!!

SIGN UP & Renewal Form

YEARLY DUES \$10.00 USD for Monthly VUD E-ZINE

Print this form and send it with your dues.

Name _____

Address _____ Apt # _____

City _____ State/Prov _____ Zip _____

Country _____ Interests: TV () FM () 30-50 () Weather ()

E-Mail Address _____

Sign me up/renew me for: 1 year () 2 years () More () _____

Mail your yearly dues to: WTFDA, P.O. Box 501, Somersville, CT USA 06072

Make your checks/money orders payable to: WTFDA

And *thanks* for your support of the WTFDA!

FM NEWS CONTINUES FROM PAGE 31

WI Sheboygan 107.3 WCLB
Contemporary Hit Radio: 'Z-107' [Includes
W297CK Sheboygan]
WI Two Rivers 97.1 W246DY
[Calls assigned to new station; will be
Classic Country: 'Cub Country 980 AM' //
WCUB-980]
WI Waupun 103.3 W277AC
Oldies/News: 'The Source' // WFDL-1170
[also // W229DE 93.7]



WY Jackson 96.3 K242BU
Spanish Adult Hits: 'Juan 1340 & 96.3' //
KSGT-1340

BREAKING NEWS!

E skip broke out on the evening of December 28th from approximately 1945 to 2050 EST. The MUF reached the low end of FM at times. The main path was from New England/New York to the Upper Midwest. FM Dxers from New York, New Jersey, New York, Ohio and Ontario worked stations from North and South Dakota, Minnesota, Nebraska, Manitoba and western Ontario.