

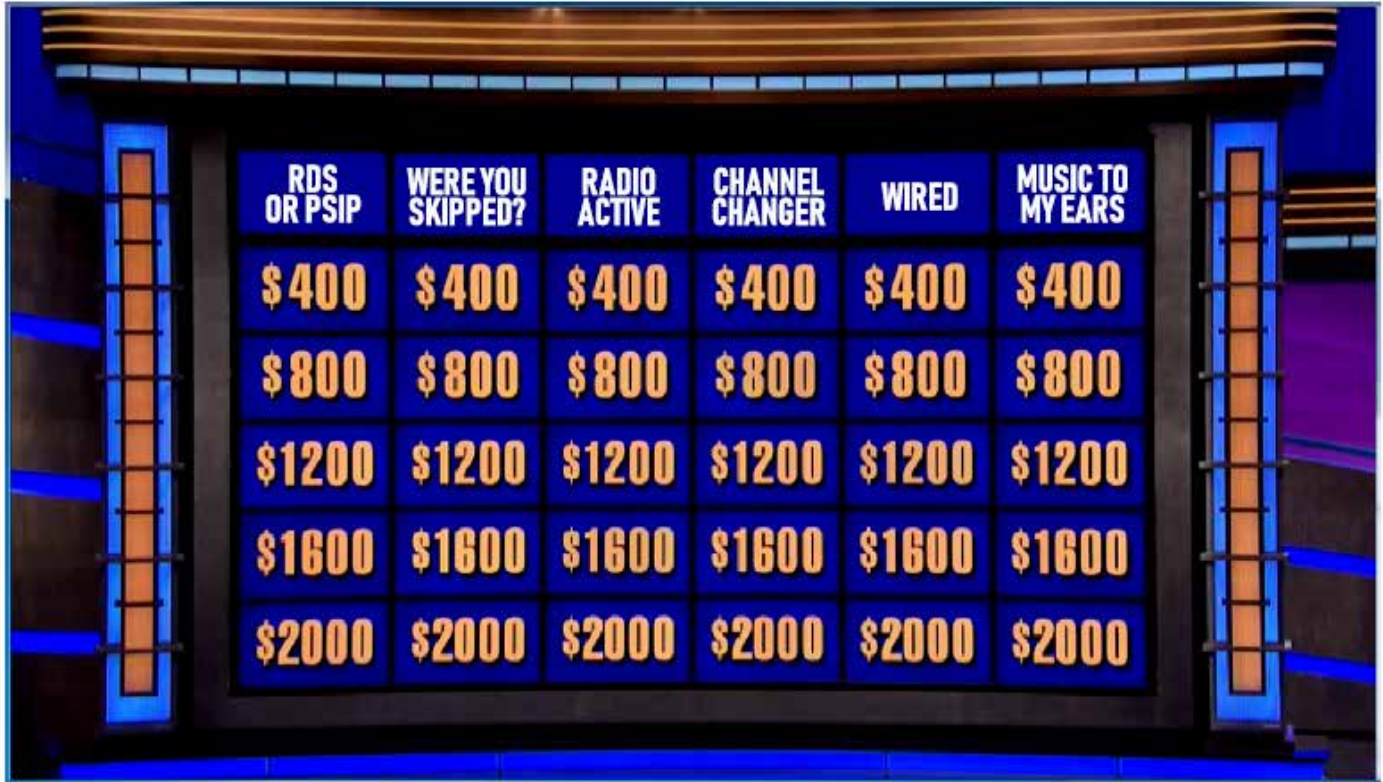


VHF-UHF
The Magazine for TV and FM DXers

DIGEST
March 2019



The Official Publication of the Worldwide TV-FM DX Association



IS YOUR 2019 DX SEASON IN JEOPARDY?

WTFDA dx resources can help you
be a winner this dx season!

IN THIS ISSUE

The First ATSC 3.0 Dongle
Proposed Rulemaking for Non-Comm
and LPFM Applications
Even more ATSC 3.0 News
DXers' Pets
...and all the rest!

**Alex, I'll take Radio Active for
\$400, please!**



THE VHF-UHF DIGEST

THE WORLDWIDE TV-FM DX ASSOCIATION

Serving the UHF-VHF Enthusiast

THE VHF-UHF DIGEST IS THE OFFICIAL PUBLICATION OF THE WORLDWIDE TV-FM DX ASSOCIATION DEDICATED TO THE OBSERVATION AND STUDY OF THE PROPAGATION OF LONG DISTANCE TELEVISION AND FM BROADCASTING SIGNALS AT VHF AND UHF. WTFDA IS GOVERNED BY A BOARD OF DIRECTORS: DOUG SMITH, KEITH MCGINNIS, JIM THOMAS AND MIKE BUGAJ.



Treasurer: **Keith McGinnis** wtfda.org/info *Webmaster:* **Tim McVey**
Forum Site Administrator: **Chris Cervantez**
Editorial Staff: **Jeff Kruszka, Keith McGinnis, Fred Nordquist, Nick Langan, Doug Smith, John Zondlo and Mike Bugaj**



Your WTFDA Board of Directors

Doug Smith
dougs@wtfda.org

Mike Bugaj
mikeb@wtfda.org

Keith McGinnis
nfmdx@wtfda.org

Jim Thomas
Jim-T@wtfda.org

Renewals by mail: Send to WTFDA, P.O. Box 501, Somersville, CT 06072. Check or MO for \$10 payable to WTFDA.
Renewals by Paypal: Send your dues (\$10USD) from the Paypal website to sales@wtfda.org or go to <https://www.paypal.me/WTFDA> and type 10.00 or 20.00 for two years in the box.

Our WTFDA.org website webmaster is Tim McVey, webmaster@wtfda.org. Our WTFDA Forums webmaster is Chris Cervantez, Chriscervantez@gmail.com. Fred Nordquist is in charge of club statistics at nordquis@homesc.com

Our email reflector is on Googlegroups. To join, send an email to WTFDA+subscribe@googlegroups.com
Visit our club website at <http://www.wtfda.org> . Participate in our forums at <http://forums.wtfda.org>.

Our real-time (prop logger) bulletin board is located at <http://wtfdadxbb.vci.net>. Only WTFDA members can participate.

You can find WTFDA on Facebook. Our group is called [TV and FM Dxing](#). This is a public group. We also have a private group called [WTFDA](#). This group is just for WTFDA Members.



The WTFDA FM Database is administered and updated by your fellow WTFDA members. It is completely free to use. You can find it at <http://db.wtfda.org>. Only the FCC and Radio-Locator are listed before us in Google searches.

FM Radio Station Database

db.wtfda.org/ ▼

Database of US Canadian Mexican Central American and Caribbean FM Radio Stations.



The Mailbox

P.O. Box 501 Somersville, CT 06072
Mike Bugaj - Enfield, CT mikeb@wtfda.org



DUES RECEIVED

DATE	NAME	S/P	EXP
2/1/2019	Gordon Cooper	WA	2/20
2/2/2019	Lynn Burke	VA	4/20
2/4/2019	Mike Schaffer	FL	3/20
2/5/2019	George Rogers	GA	3/20
2/18/2019	Joshua Moore	AR	3/20
2/21/2019	Jeff Wolf	MD	2/20
2/21/2019	Tim Noonan	WI	1/20
2/24/2019	John Kosinski	CT	2/20

This month we welcome two new WTFDA members. One is John Kosinski who lives in Southern CT and the other is Joshua Moore from Arkansas. Welcome to both of you and I hope you find WTFDA enjoyable and useful. And thank you to the rest of our renewing member for your support of the WTFDA!

THE PICTURE



Last month's cover featured a photo of a group of guys standing next to some towers with many, many antennas on them. The question was

asked "what is this?"

Bill Hale asked Fred Vobbe of WLIO and this is what Fred told him: "Judging from the element size, I would say this is an early receive head-end for picking up TV signals. They were common on some locations where there was a base out in the middle of nowhere, and they wanted to get a signal from 100+ miles away. The Canadians had an impressive one up in Quebec on a mountain which was above the base, and it reliably received stations 160 miles away. It was impressive."

CM PREAMP

Over on the TV-FM Dxing Facebook group, **Steve Rich** posted this: "Yesterday I received the new Channel Master 7778HD preamp with dual inputs (VHF/UHF) just like the older 7778 & 7777 models. This one has a gain switch for 20 dB or 26 dB gain on UHF, and 16 dB or 23 dB gain on VHF. I've been testing the UHF portion indoors in my basement today and comparing it to the older 7778 and 7777 dual input models. So far it seems to be performing quite well. When the local weather warms up I hope to do further testing outdoors."

THE TOP 500 TOH IDS

If you like to listen to top of the hour IDs, this is for you. **Chris Kadlec** reports: "I have also posted a project that was nine months in the making, my 500 Top-of-Hour IDs from here in West Michigan. There are 6 hours of 500 TOH IDs from La Crosse to Buffalo and Marquette to Columbus, with 30 bonus IDs and more, plus a 55-page guide. They are all separated by market area into individual downloadable compilations for those with that niche interest (I was never one of those people, but wanted to document my regular FM band before translators killed it, and they started to pop up immediately after!). The content may be more valuable in 10 or 20 years I suppose, but for now, it seems to be the most extensive collection of Great Lakes radio." <http://www.chriskadlec.com/radio/top-of-hour>



Sinclair Plans to Launch Next Gen ATSC 3.0 Over-the-Air TV in 26 Markets in 2019

By [Luke Bouma](#) February 15, 2019

Cord Cutters News



Yesterday Cord Cutters News interviewed Mark Aitken, VP of Advanced Technology for Sinclair. During our talk, we dove deep into the future of 3.0 OTA TV and what it means for cord cutting.

First, you may be wondering what is ATSC 3.0 OTA TV? ATSC 3.0 is a new standard that will bring a long list of new features to over-the-air TV. Two main features that will really excite cord cutters are 4K HDR picture with better sound and better over-the-air TV coverage.

There are other great features such as detailed custom weather alerts and interactive news stories. Yet the biggest selling point for cord cutters is the fact that ATSC 3.0 does a far better job covering a larger areas compared to the current OTA TV standard.

During our interview, Aitken relayed how committed Sinclair is to the next gen 3.0 OTA TV. “We are committed completely to the transformation of our business to this new platform...” When talking about how quickly 3.0 OTA TV will roll out, Aitken went on to say, “We will have inside of this year roughly 26 markets on the air with 3.0 services.”

Sinclair has not announced what markets will get the new 3.0 OTA TV standard this year. Sinclair is looking at all their options from partnering with other station owners to using a partnership in markets they own multiple stations in to ensure that the current OTA standard continues to broadcast for the required five additional years as they roll out the new 3.0 OTA TV standard.

So, what does this mean for the end consumer? According to Aitken, in areas that the current over-the-air TV standard would only allow one HD and two SD channels, this new standard could offer five HD channels and ten SD channels. This means more TV channels offering more options for the end users.

So how will you get these new channels on your TV if your TV does not support 3.0? According to Aitken, Sinclair plans to “seed the market with low-cost transition devices.” These devices will include devices meant for your TV as well as devices like a USB dongle that will work on phones, tablets, and computers. Sinclair also plans to offer tablets with ATSC 3.0 built in that will allow you to access over-the-air TV at home and on the road through your tablet.

“This is an opportunity for broadcasts to reinvent the entirety of their business.” Aitken went on to say, “the long-held idea of TV everywhere will become a reality.” We are not just talking about at your home. Aitken was very clear that Sinclair is looking at expanding OTA TV from something that happens inside your house to something that happens on the go from your car to when you are at the park, for example.

Sinclair is not just looking at this as a way to bring TV to Americans. Sinclair also plans to use ATSC 3.0 to offer data needed for a wide range of products including data for cars. Soon your car may get traffic and weather updates from ATSC 3.0. The options for the data side of ATSC 3.0 are just getting started.

As for when this will happen, Aitken did not have a date. There are some FCC rules like a four-month notice rule before the transition will happen. So, at the earliest, we are likely looking at very late spring or summer as the absolute earliest possible time for ATSC 3.0 to start rolling out.

FCC Report 2/17: New Proposed Rulemaking Seeks To Streamline Non-Comm & LPFM Applications

Feb 17, 2019 Radioinsight by Lance Venta

FCC Actions



The FCC has issued a proposed rulemaking for how they process and license competing applications for non-commercial and LPFM stations. The rulemaking proposes to simplify the procedures by:

- Eliminate the current requirement that NCE applicants amend their governing documents to pledge that localism/diversity be maintained in order to receive points as “established local applicants” and for “diversity of ownership”
- Improve the NCE tie-breaker process and reduce the need for mandatory time-sharing
- Clarify aspects of the “holding period” rule by which NCE permittees must maintain the characteristics for which they received comparative preferences and points
- Reclassify as “minor” gradual changes in governing boards with respect to non-stock and membership LPFM and NCE applicants
- Extend the LPFM construction period from 18-months to a full three years
- Allow the assignment/transfer of LPFM construction permits after an 18-month holding period and eliminate the three-year holding period on assigning LPFM licenses.

The full rulemaking proposal [can be read here](#).

The requirement that licensees file paper copies of station documents including transfers of control, management agreements, LMA or Time Brokerage Agreements, and Joint Sales Agreements has been eliminated. The documents just need to be filed into each station’s Online Public File.

The agency also has eliminated the Form 397 Broadcast Mid-Term Report due to redundancy with the Online Public File.

The First ATSC 3.0 Dongle

Wipro Limited (NYSE: WIT, BSE: 507685, NSE: WIPRO), a leading global information technology, consulting and business process services company, today announced the launch of its Next-Gen ATSC 3.0 solution for Pay TV service providers, original equipment manufacturers (OEMs), original design manufacturers (ODMs), smart TV manufacturers and semiconductor companies based in North America. The company has partnered with Airwavz.tv, a Seattle-based startup, pioneering the design and sale of NextGen TV receivers and antennas, for this solution.



ATSC 3.0 is a major version of the ATSC standards for television broadcasting created by the Advanced Television Systems Committee. Wipro's Next-Gen ATSC 3.0 solution provides full support for hybrid TV viewing and enables viewing of broadcast video content on a range of devices such as set-top-boxes (STBs), smart TVs, media gateways, mobiles, tablets, dongles and in-car entertainment units. This solution enables its customers to quickly build immersive and interactive receiver solutions and position themselves uniquely within the hybrid TV viewing user segment. The solution will be compatible with Android TV and other operating systems, thus enabling quick integration on the desired device.

The solution incorporates both legacy ATSC 1.0 and Next-Gen ATSC 3.0 delivery systems, with a multi-process architecture and well-defined abstraction layers for easy porting. It also provides multi-type application support across HTML5, Android, iOS and native apps, and comes pre-packaged with Wipro's MPEG DASH and HbbTV components for multi-screen delivery.

Wipro's Next-Gen ATSC 3.0 solution has been enabled using **Airwavz RedZone Receiver (RZR)** dongle, which is a hybrid ATSC 1.0 & 3.0 digital TV front-end tuner-demodulator that easily plugs into a standard PC, laptop or other OTT device over USB interface.

Wipro's hybrid-TV viewing solution comes equipped with a plethora of next-gen enabler features, such as broadband services, security, watermarking, file download, 4K, immersive audio, 3D TV, VoD media players and TTML closed captions, in addition to primary features such as Live TV, electronic service guide, parental controls, emergency warning alert and multi-language support.

Notice the sale price on the right.



The National Radio Clubs *AM Radio Log* - 39th Edition



The National Radio Club's AM Radio Log

A listing of U.S. and Canadian AM Broadcasting Stations

The 39th Edition for 2018-2019



The National Radio Club, the world's oldest and largest Broadcast Band DX Club, is proud to announce the publication of the 39th edition of the *AM Radio Log*, the most comprehensive source of information on AM radio stations in the United States and Canada. Over 10,000 updates have been made since last year! New for this year is a cross reference by State/Province in frequency order, ideal for targeting needed areas. Additional references include FM simulcasts, regional groups of stations, a cross-reference of those stations that are licensed to use IBOC (In Band On Channel) digital audio, and a comprehensive list of FM translators that simulcast AM broadcasters. The *AM Radio Log* contains 302 pages of data plus 12 pages of instructions in an 8-1/2" x 11" size, 3-hole punched, which fits nicely into a 1", 3-ring binder. Pricing is as follows (all US\$):

To the United States (Priority Mail) – members \$26.95, non members \$32.95

To Canada (Global Priority Mail) – members/non members \$40.25

Outside US/Canada (Global Priority Mail) – members/non members \$51.25

Order by mail by check or money order in US funds to:

National Radio Club, P.O. Box 473251, Aurora, CO 80047-3251. Or order using your Pay Pal account at: <http://www.nationalradioclub.org/>

Loma de la Vigía Antenna Park

This view was captured on a rooftop of the television station located at the Loma de la Vigía antenna park, Trinidad, Sancti Spiritus, Cuba on November 14, 2015. The distant mountain range is the Sierra del Escambray with its Parque Topes de Collantes.

FM DXER'S EDUCATION

your bright future

Get
100%
Off!

*Oh wait, its
already free.*

Es Season - 2019 Admission Open

WE HAVE THE BEST FM DATABASE IN THE WESTERN HEMISPHERE

Its the WTFDA Searchable Online Directory of North American FM Radio Stations.

This directory is the ONLY database you need during any fast-paced E-skip opening. The accuracy of the listings speak for themselves. In a recent independent survey of radio station listings for Cuba, Radiocubana, the government license bureau, rated the WTFDA FM Database with a 92.47% accuracy rating.

In a recent comparison with the other guys that locate radio stations, how did they stack up?

WTFDA FM DB, # listings

Cuba, 357 FM listings
Dominican Republic, 287
Haiti, 297
Jamaica, 286
Guatemala, 431

The other guys

Cuba, 1 listing
Dominican Republic, 13
Haiti, 2
Jamaica, 1
Guatemala, 3

WTFDA FM DB

- Unlimited lookups
- No advertisements
- No subscriptions
- Direct contact with editors.

The other guys

- Limited lookups*
- Banner ads
- Monthly subscriptions starting at \$50 per month.
- Generic email with no guarantee of reply.

**Limits can be removed by paying a monthly fee.*

Worldwide TV-FM DX Association

WTFDA FM Database - [Http://db.wtfda.org](http://db.wtfda.org)

TV News

Douglas E. Smith
 1389 Old Clarksville Pike
 Pleasant View, TN
 37146-8098
w9wi@w9wi.com
<http://www.w9wi.com>



Location	RF Ch	Callsign	Notes
Alabama			
Alabaster	15	W15AZ	OFF Feb. 2 nd , searching for new tower site for W15AZ and co-owned W47EI.
Dothan	20	WJJN-LD	Requests STA for this channel, 140 watts; see below.
Dothan	49	WJJN-LD	OFF Jan. 15 th pending grant of STA to operate on channel 20 at reduced power. Has permit for channel 20 but cannot operate at full power until WCOV-TV moves to ch. 22.
Florence	14	WHDF	Requests STA 90kw/275m; interim pre-repack antenna pending installation of permanent post-repack antenna.
Gadsden	26	WTJP-TV	Requests STA 550kw/329m; to operate at "less than 80% of authorized power" (55%) due to transmitter failure.
Huntsville	31	WWHL-LD	Granted power increase to 2.84kw, 34-42-02/86-53-55.
Tuskegee	22	WBMM	Requests STA 12.2kw/321m; interim antenna pending installation of permanent antenna for post-repack ch. 18.
Arizona			
Globe	25	KFPB-LD	From 50, 5.5kw; granted.
Oro Valley	27	K27OP	Moved from K16EO.
Arkansas			
Bentonville	32	KWNL-CD	Call changed from KHMF-CA.
Fort Smith	43	KQRY-LD	Call changed from KXUN-LP.
Hot Springs	23	K23OW	From K38OS, 10kw, 34-32-34/92-52-32; granted
Rogers	50	KNWA-TV	Requests STA 76kw/232m; interim pre-repack antenna while permanent post-repack antenna is installed. Modified to specify 775kw/232m.
Winslow	31	KPBI-CD	Call changed from KWNL-CD.
California			
Bakersfield	28	KDBK-LD	From 41; granted
Bakersfield	28	KZKC-LP	Granted conversion from analog 42, 15kw, 35-27-14/118-35-40; sharing on KDBK-LD.
Fort Jones	13	K13HU	Granted conversion to digital, 6 watts, 41-28-00/122-55-44.

Location	RF Ch	Callsign	Notes
Fresno	33	KSDI-LP	Requests conversion to digital, 4.3kw, 37-04-27/119-25-57.
Fresno	44	KSDI-LD	Permit for Digital Companion Channel cancelled Feb. 25 th .
Los Angeles	27	KTBV-LD	From 12, 100 watts, 34-44-41/118-43-40; amendment to change site & reduce power. Granted.
Los Angeles	40	KVHD-LD	OFF Feb. 7 th pending approval of sharing agreement.
Palm Springs	3	K03IV	Permit granted for new station, 200 watts, 33-51-59/116-26-03 (Miriam Media)
Petaluma	28	KQRM-LP	From 2, 15kw, 37-41-14/122-26-05; to share on KCNZ-CD San Francisco transmitter.
Poway	17	KUAD-LD	From 40, 387kw/547m; sharing on KNSD San Diego transmitter; granted.
Redding	10	KMCA-LD	Requests power increase to 175 watts, 40-32-40/122-30-06; amendment from 135 watts
Riverside	32	KRMV-LD	From 40, 4kw, 33-57-42/117-16-50; granted
San Diego	17	KNSD	From 40, 387kw/547m; granted.
San Diego	20	KZSD-LD	Converted from analog ch. 41, 7.3kw, 32-41-47/116-56-10.
San Diego	31	KSDY-LD	From 50; granted.
San Diego	31	KTCD-LD	From 46, 140 watts; granted. Different site from KSDY & presumably the two can co-exist.
San Francisco	40	KMMC-LD	Requests STA 2.8kw; reduced power due to amplifier issues.
San Luis Obispo	32	K32LT	From K50LZ, 12.5kw; granted & moved.
Santa Maria	29	KQMM-CD	Returned to the air Feb. 20 th .
Stockton	25	KOVR	Granted power increase to 1000kw/609m.
Vista	25	KHAX-LD	From 49, 1kw; granted.
Colorado			
Breckenridge	26	K26GY	Granted power reduction to 68 watts, 39-37-00/106-04-38.
Breckenridge	28	K28HI	Granted power reduction to 68 watts, 39-37-00/106-04-38.
Denver	10	KHDT-LD	Call changed from KZDN-LP.
Denver	33	KRMA-TV	Requests STA 250kw/331m; interim antenna pending installation of permanent post-repack antenna.
Durango	33	KRTN-TV	Granted power reduction to 30kw/83m, 37-15-46/107-54-00.
Fort Collins	16	KBRO-LD	Requests power reduction to 1.4kw.
Connecticut			
Hartford	32	WRNT-LD	Granted STA for digital operation on this channel, 8kw.
Hartford	35	WHCT-LD	From 38, 15kw, 41-42-13/72-49-55; granted
New London	28	WHPX-TV	From 34, 500kw/505m, 41-42-13/72-49-55; amendment to change site. (to WTIC-TV/WEDH/WEDY/WCCT-TV tower)
Florida			
Duck Key	29	W29CW	OFF Jan. 31 st pending conversion to digital.
Fort Myers	50	WINK-TV	Requests STA 567kw/388m, 26-47-09/81-47-46; interim pre-repack facility at WXCW Naples site pending installation of post-repack antennas for WINK and WXCW.
Jacksonville	22	WUBF-LD	From 29, 15kw, 30-16-34/81-38-11; granted & returned to the air on this channel Feb. 27 th (station had been off on ch. 29)
Jupiter	5	W05DH	Granted site change to 26-41-31/80-04-34, a hotel near Palm Beach International Airport.
Key West	16	W16CL	OFF Jan. 31 st pending conversion to digital.
Key West	25	W25DQ	OFF Jan. 31 st pending conversion to digital.
Miami	17	WPMF-CD	Requests STA for this channel (vs. authorized ch. 38), 5.1kw, 25-58-08/80-13-19. Interim facility pending installation of permanent ch. 17 antenna. Also listed as WBEH-CD but I can't find that call in the record.

<i>Location</i>	<i>RF Ch</i>	<i>Callsign</i>	<i>Notes</i>
Miami	18	W18EU	From W17DG, 25-59-35/80-10-26; granted.
Miami	18	WTXI-LD	From 33, 25-59-35/80-10-26; to share on W18EU.
Miami	26	WLRN-TV	Requests STA 765kw/301m; to operate on post-repack channel at reduced power until permanent transmitter can be delivered.
Naples	28	WZVN-TV	Requests power increase to 1000kw/455m.
North Miami	34	NEW	Requests STA, presumably for new station. 15Kw, 25-45-00/80-11-45. Doesn't explain why they need an STA – the documentation consists of 32 pages of religious text with no mention of television.
Orlando	25	WFEF-LD	Moved from 50, 15kw.
St. Petersburg	34	WDNP-LD	From 36, 11.5kw, 27-55-55/82-24-04; granted.
Tampa	35	WTAM-LD	From 28; granted.
Vero Beach	19	WMMF-LP	OFF Feb. 26 th pending conversion to digital.
Wabasso	8	WXOD-LD	From 33, 2kw; granted.
Georgia			
Albany	36	WGCW-LD	New station oin the air, 4.3kw, 31-36-47/84-11-18.
Athens	18	WUVG-DT	From 48, 1000kw/328m; granted.
Athens	32	WSB-DRT	From 31, 10kw; granted.
Atlanta	14	WAGC-LD	Returned to the air Feb. 2 nd .
Augusta	21	WDRF-LD	Requests power increase to 15kw, 33-55-39/81-29-45. Site is east of Batesburg, S.C..
Savannah	33	WDID-LD	From 26, 15kw; granted.
Hawaii			
Kailua-Kona	25	KSIX-TV	Call changed from KLEI-TV. (virtual channel 6)
Lahaina	2	KITM-LD	OFF Feb. 1 st , wind damage.
Milolii	3	NEW	Requests STA to replace (expired?) K03IK, 125 watts, 19-31-00/155-55-08. Proposes to operate in ATSC 3.0.
Idaho			
Boise	27	KBKI-LD	New station on the air, 15kw, 43-48-57/116-46-14.
Burley	30	K30QH	From K44JA, 15kw, 42-26-01/113-37-29; granted.
Grangeville	19	K19BY	Granted power reduction to 560 watts; power reduced.
Twin Falls	16	KCJY-LD	Requests conversion from analog ch. 38, 15kw; amendment from ch. 30.
Illinois			
Chicago	4	WOCK-CD	Granted power increase to 3kw.
Joliet	35	WGBO-DT	New aux (backup) transmitter authorized, 330kw/418m.
Salem	29	W29CI	On reduced power (50%) since Jan. 31 st pending installation of new transmitter.
Indiana			
Fort Wayne	25	WPTA	Requests power increase to 444kw/229m.
Indianapolis	8	WIIH-CD	Returned to the air Feb. 14 th .
Kansas			
Colby	17	KLBY	Requests STA 313kw/223m; to operate at half power pending transmitter repairs.
Lawrence	25	KMCI-TV	Granted STA 1000kw/306m; interim antenna pending installation of post-repack antennas for KMCI and co-owned KSHB-TV.
Topeka	22	K22OA	From K40IJ; amendment from ch. 33.
Wichita	34	KFVT-LD	STA for this channel, 8kw dismissed. Station has been granted regular operation on ch. 27.

Location	RF Ch	Callsign	Notes
Wichita	40	KFVT-LD	OFF Feb. 12 th pending repair of Internet connection. Station receives its programming across the network.
Kentucky			
Glasgow	11	W11DJ	Granted site change to 37-13-10/86-18-16
Lexington	21	WKYT-TV	From 36, 900kw/296m; granted.
Richmond	25	WUPX-TV	Granted principal community change from Morehead. Requests move from ch. 21, 465kw/354m, 37-47-18/84-40-49; amendment to change site.
Louisiana			
Alexandria	30	K30QG	From K47DW, 10kw; granted.
Shreveport	28	KTBS-TV	Granted STA 1000kw/457m, interim antenna while KPXJ's post-repack ch. 32 antenna is installed on the same tower.
Maine			
Waterville	17	WPFO	Requests power increase to 1000kw/479m, 43-55-29/70-29-27, tower behind Dielectric antenna factory, Raymond. Dismissed, but apparently refiled & granted.
Minnesota			
Birchdale	31	K31PK	From K42KV; granted & moved.
Birchdale	35	K35MY	From K38NP; granted.
Duluth	15	K15ML	Permit granted for new station, 1kw, 46-47-16/92-07-02 (Mako Communications)
Red Lake	20	K20MN	From K51LN; granted.
Red Lake	22	K22MF	From K49LO; granted.
Red Lake	24	K24MM	From K47MY; granted.
Red Lake	32	K32MF	From K45LH; granted & moved.
Red Lake	36	K36OA	From K41LX; granted & moved.
St. James	18	K18NE	From K41IZ, 400 watts, 44-06-28/94-35-56; granted.
Virginia	22	K22MR	Granted power reduction to 55 watts.
Walker	15	K15LH	License canceled
Walker	49	K49CU	License canceled
Mississippi			
Gulfport	48	WXXV-TV	Requests STA 13kw/44m, 30-29-42/89-06-23; to reactivate temporary DTV facility from 2002, pending completion of post-repack facility. Site is station's studio near Swan Rd. & US-49.
Lumberton	33	W33EG	From W32EM, 10kw, 30-33-04/88-27-06; granted
Tupelo	40	W40BZ	OFF Feb. 15 th pending conversion to digital W14EQ.
Missouri			
Joplin	23	KODE-TV	From 43, 700kw/322m, 37-04-33/94-33-17; granted.
Joplin	24	KZLL-LD	Granted STA for 2kw.
Joplin	46	KSNF	Requests STA 104kw/267m; amendment from 136kw/267m.
Montana			
Ashland	16	K16MY	Moved from K50LT, 1.04kw, 45-36-08/105-56-12.
Billings	25	K25BP	Request to move to 45-46-04/108-27-29, 1.48kw dismissed. Would interfere with K24IQ. (K25BP is co-located with K24IQ; proposed to move to a different location & reduce power, but apparently not enough of a reduction)
Billings	27	K27IM	Granted power reduction to 810 watts, 45-46-04/108-27-29.
Billings	29	K29MM	OFF Jan. 15 th pending sale.

Location	RF Ch	Callsign	Notes
Billings	34	K34PO	OFF Jan. 15 th pending sale.
Bridger	26	K26NN	Moved from K38LV, 1kw.
Drummond	22	K22MI	Moved from K45LA, 167 watts.
Fort Peck	22	K22MN	Moved from K41BT.
Fort Peck	24	K24MV	Moved from K39GF.
Fort Peck	26	K26NS	Moved from K43CQ.
Fort Peck	31	K31NS	Moved from K47CY.
Fort Peck	35	K35NF	Moved from K49CF.
Fort Peck	36	K36OC	Moved from K45CH.
Hinsdale	22	K22MJ	Moved from K42FP.
Hot Springs	29	K29ND	Moved from K42JA.
Joplin	32	K32NN	From K38DZ, 351 watts, 48-51-17/111-08-32; granted.
Joplin	33	K33PR	Moved from K42DD, 351 watts.
Livingston	28	K48NS	Granted STA for this channel.
Livingston	32	K32MS	Moved from K46LY.
Philipsburg	15	K15KW	Moved from K40LF.
Plains	34	K34PQ	Moved from K48LG.
Poplar	15	K15KR	Moved from K48IA.
Nebraska			
Neligh	33	K33OW	Moved from K32HI.
Nevada			
Las Vegas	33	KSNV	Requests STA 4kw/-12m, 36-07-58/115-08-54; see below.
Laughlin	20	K20NW	Moved from K44JR.
Reno	28	K28QI	Permit granted for new station, 1kw, 39-35-08/119-42-53 (CTB Spectrum Services)
Sparks	28	K28QH	Permit granted for new station, 250 watts, 39-35-01/119-48-00 (John Fiori)
New Hampshire			
Hanover	36	W36FE	From W50DP, 15kw, 43-42-32/72-09-15; granted.
New Jersey			
Hackettstown	29	W29EV	From W49BE, 1.5kw; granted.
Linden	36	WNJU	Requests STA 415kw/496m, 40-42-47/74-00-47; to add permission to use the lower antenna on One World Trade Center on pre-repack channel. Already has permission to use the upper antenna. Requests permit for new backup transmitter, 500kw/310m, 40-45-22/73-59-11
Middletown Township	3	WJLP	Requests STA 15kw/340m; to increase power at existing site pending construction of facility at World Trade Center.
Ocean View	34	WSJZ-LD	From 33, 9.4kw, 38-38-36/75-12-57; granted.
New Mexico			
Aztec	27	K27ND	Moved from K44GC.
Santa Fe	29	KWBQ	OFF Jan. 30th; transmitter failure; returned to the air Feb. 28th.
New York			
Buffalo	23	WBXZ-LD	From 17 dismissed. Would interfere with WPXJ-TV Batavia.
New York	7	WABC-TV	Application for new auxiliary backup transmitter, 100kw/214m, 40-48-08/74-14-46 (Eagle Rock, NJ)
New York	28	W28ET	From W26DB, 15kw, 40-57-39/73-55-21 (Armstrong tower, Alpine NJ)

<i>Location</i>	<i>RF Ch</i>	<i>Callsign</i>	<i>Notes</i>
New York	36	WNBC	See WNJU Linden, N.J.; WNBC shares on the WNJU transmitter.
Rochester	11	WNIB-LD	From 42, 3kw; amendment from ch. 30.
Syracuse	36	WSPX-TV	From 15, 82kw/452m, 42-56-42/76-01-27; WNTQ-93.1 site.
North Carolina			
Brevard	32	W32FI	From W02AG, 2kw; granted.
Canton	10	W10DF	From W11AU, 130 watts.
Charlotte	18	WCCB	From 27, 963kw/364m.
Marion	22	W22FB	From W51EE, 15kw; granted.
Statesville	48	WHWD-LD	OFF Nov. 23 rd , "technical issues on displacement channel".
Wilmington	18	WQDH-LD	From ??, 15kw, 34-10-52/77-55-49; granted.
Wilmington	30	WSFX-TV	Requests STA 112kw/590m; to operate at reduced power until this summer when it can move to ch. 29.
North Dakota			
Fargo	2	KVNJ-LP	OFF Feb. 3 rd , antenna malfunction.
Grafton	14	K14SJ	Permit granted for new station, 4kw, 48-25-01/97-26-06.
Ohio			
Akron	30	WBNX-TV	Application for new pre-repack auxiliary transmitter, 638kw/253m.
Cleveland	20	WLFM-LD	Granted conversion from analog ch. 6, 15kw.
Columbus	18	WCBZ-CD	Requests STA 9kw to avoid interference to WKEF Dayton, until the latter moves to channel 34.
Defiance	35	WNHO-LD	Requests site change to 41-17-33/84-32-02.
Lima	17	W23DE	Returned to the air Feb. 27 th on this channel.
Lima	44	WTLW	Requests STA for 15kw/149m on this channel; to temporarily share on co-owned WOIW-LD pending completion of facility for ch. 2.
Youngstown	32	WYFX-LD	From 19, 5.3kw; granted.
Oklahoma			
Bartlesville	36	KDOR-TV	Moved from 17.
Claremore	32	KRSU-TV	Moved from 36, 133kw/252m.
Duncan	26	KSWX-LP	From 31, 15kw, 34-35-35/98-19-06; amendment from 14kw & to change site. Granted.
Oklahoma City	25	KWTV-DT	Moved from 39, 748kw/478m.
Sallisaw	26	KXUN-LD	Call changed from KQRY-LD.
Tulsa	16	KWHB	Moved from 47, 26kw/182m, 36-02-35/95-57-12.
Oregon			
Baker Valley	24	K24MC	Moved from K42AI.
Corvallis	8	K08PZ	Moved from K47OP, 100 watts.
Cottage Grove	36	K36NL	Moved from K50CT.
Eugene	9	KEZI	Requests move to 44-17-27/123-32-22; 21.6kw/738m; granted.
La Grande	25	K25OJ	Moved from K41MU
La Grande	32	K32LY	Moved from K47NR
Lincoln City	23	K23OC	Moved from K38CZ, 15kw.
Portland	16	KORS-CD	Returned to the air Feb. 14 th .
Portland	20	KOXI-CD	Returned to the air Feb. 13 th .
Portland	25	KOIN	New auxiliary backup transmitter in operation, 57.1kw/488m.
Portland	35	KORK-CD	Returned to the air Feb. 14 th .
Portland	38	KKEI-CD	Returned to the air Feb. 12 th .
Williams	7	K07HS	Granted conversion to digital, 2 watts.

<i>Location</i>	<i>RF Ch</i>	<i>Callsign</i>	<i>Notes</i>
Pennsylvania			
Erie	43	WLEP-LD	License cancelled.
Harrisburg	7	W07DP	Granted power increase to 3kw, 40-24-24/77-18-31.
Philadelphia	21	WEFG-LD	From 48, 15kw, 40-04-58/75-10-55; granted.
Reading	24	W24CS	Power increased to 5kw.
Scranton	33	WQPX-TV	From 32, 700kw/377m, 41-26-06/75-43-34.
Puerto Rico			
Aguadilla	17	WVEO	Requests power reduction to 35.2kw/305m, 18-19-26/67-10-12.
Anasco	34	W34FK	Requests STA to operate at reduced power of 2kw. See text.
Arecibo	35	WCCV-TV	From 46, 60kw/521m, 18-14-00/66-45-33; granted.
Ceiba	18	W18DZ	Requests STA to operate at reduced power of 2kw. See text.
Fajardo	13	WORO-DT	Operating since Feb. 1st at reduced power of 19.5kw & reduced antenna height. Increase over previous reduced power of 1.75kw.
Mayaguez	32	W32DZ	Requests STA to operate at reduced power of 2kw., 18-18-50/67-10-53. See text. Not sure how this co-exists with WIPM-TV Mayaguez on the same channel.
Naguabo	25	W25FD	Requests STA to operate at reduced power of 2kw. See text. Listed in some places as W25FA but that's in New Jersey.
Ponce	19	WQTO	Granted STA to operate only site #1 of two-transmitter DTS, 696kw/310m, 18-04-41/66-44-54. Pending completion of site #2.
San Juan	20	W20EJ	Moved from W26DK, 15kw.
Santa Isabel	18	W18DQ	Requests site change to 17-58-45/66-36-48 (R. Leo site, Ponce); granted.
Toa Baja	17	W17DL	Requests STA for 1.5kw, 18-16-43/66-06-37. See text.
Toa Baja	25	W25EF	Requests STA for 2kw, 18-15-54/66-05-06. See text.
Trujillo Alto	17	W34ED	Requests STA to operate at reduced power of 1kw on this channel, 18-01-53/66-07-08. See text.
Villalba	16	W16CW	Requests STA to operate at reduced power of 1.5kw. See text.
Rhode Island			
Providence	17	WRIW-CD	From 36, 1000kw/228m, 41-29-42/71-47-05; to share on WPXQ-TV Newport. Granted & moved.
South Carolina			
Columbia	25	WZRB	From 47, 155kw/192m.
Greenville	2	WGGG-TV	Requests STA to transition early, by June 21st instead of by September 6th. To avoid antenna work during hurricane season.
Greenville	16	WGGG-TV	Requests STA 45.8kw/339m, interim facility. Justification PDF file is unreadable.
South Dakota			
Gettysburg	17	K17KW	Power increased to 4kw, 45-23-50/99-56-30 near Lowry.
Sioux Falls	42	KAUN-LP	OFF Jan. 24 th , equipment problems.
Watertown	28	K28OE	From K42FI, 6.516kw; granted.
Tennessee			
Chattanooga	19	W00T-LD	Requests STA 6.32kw, to operate at reduced power pending WBXX-TV Crossville's move to ch. 31 in Phase 5.
Chattanooga	44	WYHB-CD	Requests STA 7.5kw, 35-12-36/85-16-42 for temporary pre-repack facility pending move to ch. 25 in September. Granted.
Cleveland	5	WTNB-CD	From 27, 3kw; amended to 1.67kw, 35-12-26/85-16-52 (overlooking

Location	RF Ch	Callsign	Notes
			Chattanooga); granted.
Texas			
Amarillo	45	K45IQ	OFF Feb. 13 th pending conversion to digital K24NR.
Big Spring	33	KCWO	Call changed from KWAB-TV.
Corpus Christi	24	KCCX-LD	Granted conversion to digital, 15kw.
Corpus Christi	49	KCBO-LP	Converted to digital, 800 watts.
El Paso	20	KTFN	Moved from 51, 1000kw/524m.
El Paso	27	K26KJ	Requests STA for 250 watts pending completion of permanent facilities.
Fort Worth	11	KUVN-CD	From 47, 2.2kw, 32-48-30/97-07-51; granted. Channel 22 last month was a typo.
Fort Worth	38	KVFW-LD	OFF Jan. 15 th pending resolution of mutually-exclusive displacement applications.
Garland	33	KUVN-DT	Permit granted for new auxiliary backup transmitter, 280kw/517m, 32-32-36/96-57-33.
Houston	19	KTXH	Operating at approximately 50% power from Jan. 28th, due to repack tower work.
Jasper	34	KVHP-LD	Granted STA 7.8kw, to operate at reduced power pending installation of enough amplifiers to reach authorized 15kw.
Kingsville	31	K31KK	OFF Jan. 23 rd , transmitter damaged by power surge.
Laredo	31	KXOF-CD	Call changed from K25GN.
Longview	28	KCEB	See KTBS-TV Shreveport, La.; KCEB shares on the KTBS transmitter.
McAllen	34	KSOY-LD	From 44; granted.
Missouri City	10	KUVM-LD	From 34, 3kw; sharing on KHLM-LD Houston.
Odessa	46	K46HN	OFF Feb. 12 th pending conversion to K25QA digital.
Robstown	44	KINE-LP	License cancelled.
Rosenberg	30	KXLN-DT	Application for new post-repack backup transmitter, 200kw/579m, 29-34-16/95-30-38; granted.
San Antonio	27	K27LF	Requests STA to operate at 53% power pending repair to lightning damage.
Sherman	28	K28QF	From K31LQ, 15kw; granted.
Texarkana	15	KTAL-TV	Requests STA 240kw/373m; interim antenna while post-repack ch. 26 antenna is installed.
Victoria	27	KUNU-LD	Requests STA 10kw, to avoid interference from repacked WOAI-TV San Antonio on ch. 28.
Victoria	34	KVTX-LP	Requests STA for this channel (from ch. 45), 10.6kw; amendment from ch. 23.

U.S. Virgin Islands

Sion Farm	18	W18EN	Requests STA to operate at reduced power of 2kw, 17-44-45/64-47-11; see below.
Tutu	31	W31EJ	Requests STA to operate at reduced power of 2kw, 18-21-28/64-58-17; see below.

Utah

Carbon Co.	15	K15LP	From K30JN, 340 watts; granted.
Ogden	35	KUCW	Requests STA 432kw/1259m pending FCC approval of changed directional pattern. Antenna was manufactured incorrectly.
Salt Lake City	30	KTVX	Requests STA 390kw/1256m; see KUCW Ogden. (shared antenna)
Santa Clara	10	K10RP	From K49AS, 1kw; granted.

Virginia

<i>Location</i>	<i>RF Ch</i>	<i>Callsign</i>	<i>Notes</i>
Ashland	8	WUPV	Granted STA to transition early, by April 25 th instead of by March 13, 2020.
Crozet	15	WUDW-LD	Granted power increase to 8kw, 37-30-46/77-36-05.
Manassas	35	WPXW-TV	From 34, 949kw/234m, 38-57-50/77-06-17.
Newport News	34	WJHJ-LD	Granted digital conversion from analog ch. 39, 15kw.
Portsmouth	14	W14DC	Requests STA for new site 36-48-57/76-27-59. Lost existing site. Has permit for ch. 26 facility at new site but can't use that channel until WRLH-TV vacates it.
Woodstock	20	WAZT-CD	Granted power increase to 10.8kw.
Washington			
Clarkston	36	K36NZ	Moved from K49EV, 6kw.
Spokane	17	KWSU-DRT	Requests STA for 600 watts (half power) due to transmitter failure.
Spokane	34	KGPX-TV	Granted power reduction to 60kw/465m, 47-35-35/117-17-50; power reduced.
Vancouver	31	KEVE-LD	From 36, 8.6kw; granted.
Yakima	22	K51JG	STA to operate on this channel until new channel 25 antenna can be installed has been dismissed. Reason not given. Apparently refiled as it's been granted.
Yakima	29	KCYU-LD	Requests site change to 46-31-52/120-30-54.
Wisconsin			
Chippewa Falls	21	WEUX	Requests STA 170kw/185m, interim post-repack antenna while permanent post-repack antenna is installed.
Chippewa Falls	49	WEUX	Requests STA 170kw/185m, interim prew-repack antenna while permanent post-repack antenna is installed.
Eau Claire	38	WEAU	Returned to full power Feb. 14 th .
Tigerton	4	W04CW	License cancelled.

KSNV holds an existing STA to broadcast in ATSC 3.0 on channel 33 during April's NAB Convention. The existing STA allows for 42kw from their existing site on Black Mountain. (this does *not* affect KSNV's normal ATSC 1.0 operation on channel 22)

They now request a STA for a second site, for the same period, to demonstrate Single Frequency Networks. (SFNs) The second site will be in a parking lot (the "Blue Lot") on the northeast side of the Las Vegas Convention Center. (the lot will be secured – if I recall properly, this is where the LVCC stashes the shipping crates vendors use to deliver the equipment they will show on the exhibit floors.)

Reduced-power STAs in Puerto Rico and the U.S. Virgin Islands are, of course, due to lingering damage from Hurricane Maria.






FM NEWS - March 2019

Editor: Bill Hale fmnews@wtfda.org
Visit db.wtfda.org to stay up-to-date on the latest
FM programming changes



- AL Alexander City 96.3 W242CP
Country: 'Kix 96.3' // WSGN-1050
- AL Decatur 105.5 W288EC
Urban Gospel: 'xxx' // WFJL-1000; move
from 94.7 as W234AD at Athens
- AL Dothan 102.1 W271DN
Oldies // WDIG-1450
- AL Douglas 94.7 W234DI **and**
- AL Florence 96.7 W244EF
Unavailable as // WVNA-1590 is Silent
- AL Florence 105.1 W286DP
Unavailable as // WLAY-1450 is Silent
- AL Gadsden 91.5 WLGQ
Contemporary Christian: 'K-Love'; call
change from WSGN
- AL Huntsville 107.5 W298BZ
[Move from 100.5 as W263CI at Jackson]
- AL Oneonta 95.3 W237DH
Adult Contemporary: 'WCRL Radio' //
WCRL-1570
- AL Opelika 96.7 WMXA
Hot AC: 'Mix 96.7'
- AL Sylacauga 100.3 W262DY
Country: 'Kix 100.3' // WYEA-1290
- AL Waverley 100.3 WAUA
New station signs on with
Country 

- AB Calgary 101.5 CKCE-FM
Hot AC: 'Today Radio'



- AB Cochrane 91.5 CKXY-FM
[Calls assigned to new station]

- AK Circle 93.9 KRLL-FM
[Calls assigned to new station]
- AK Nenana 99.1 KNNA-FM
Signs on with Variety/News/Talk [NPR]
- AK Primrose 107.1 K296GW
[License cancelled; calls deleted]
- AK Soldotna 92.5 K223DG
Calls assigned to new station; will be Talk:
'News-Talk 92' // KSRM-920

- AZ Wickenburg 93.7 KFJE
[Calls assigned to new station]

- AR Ashdown 103.9 KPGG
Classic Country: '98.5 & 103.9 The Pig'
[98.5 refers to it now being // KHDY
Clarksville, Texas]


- AR Jonesboro 89.7 KJSA
Religious Teaching: 'Radio 74
Internationale'

- BC Cranbrook 106.5 VF2497
License cancelled; call deleted

- BC Penticton 92.9 CFUZ-FM
New station signs on with
Community Radio



- BC Prince George 102.7 VF5008
Christian: 'Native Hope Radio'; satellite-fed
from Nashville, TN [correction from last
issue]

- BC Telegraph Creek 92.7 CIAM-FM-28
New station signs on with
Christian: 'Refresh Radio' // 
CIAM-FM 92.7

- BC Victoria 107.3 CHBE-FM
Hot AC: 'Virgin Radio'



- CA Cedarville 91.5 KVYA
[Frequency change from 88.9]

- CA Coalinga 88.3 KDKL
[Is Silent]

- CA Crescent City 105.9 KCCQ-LP
Religious Teaching: 'Radio 74
Internationale'

- CA Lake Isabella 93.3 K227DD
[Move from 95.7 as K239AZ]

CA Panorama City 101.5 KROJ-LP
 [Calls assigned to new station]
 CA Paradise 102.9 K275CO
 [Move from 98.1 as K251AV]
 CA Ridgecrest 90.5 K213CH
 [License cancelled; calls deleted]
 CA Riverdale 98.3 KZLA
 R&B Oldies: 'Old School 98.3 FM'



CA San Fernando 105.5 K288HH
 [Calls assigned to new station; format is
 Unavailable as // KWIF-1500 is Silent]
 CA Santa Cruz 90.7 KSQD
 Community Radio: '90.7 K-Squid'
 CA Victorville 98.1 KRXV-FM1
 [Calls assigned to new station; will be Hot
 AC: 'Highway Vibe' // KRXV-FM]
 CA Wofford Heights 98.1 KRWI
 Adult Contemporary: 'Rewind 98.1'

CO Black Forest 102.3 K272FP
 [Move from 104.5 as K283AS] 148039
 CO Grand Junction 107.3 K297BR
 Classic Country: '107.3 The Outlaw' // KGJX
 101.5 HD4



CO Rifle 103.3 K277DC
 [Move from 103.1 as K276AI]
 CO Silt 98.7 K254CO
 Sports: 'The Team - Sports 1340' // KTMM-
 1340
 CO Snowmass Village 103.9 KSNO-FM
 Classic Hits: 'The Mammoth KSNO'
 [includes KSNO-FM1 Glenwood Springs]
 CO Windsor 99.1 KUAD-FM
 Country: 'New Country 99.1'

CT Fairfield 88.5 WVOF
 Variety: 'Fairfield
 University Radio'



FL Alachua 92.5 WNDD
 [Call change from WNDDT]



FL Fort Myers 95.3 WOLZ
 Classic Hits: '95.3 OLZ'
 FL Okeechobee 106.1 WLMX
 [Call change from WAFC-FM]
 FL Panama City 91.7 WFFL
 Returns to the air with Religious Teaching:
 'The SONLIFE Radio Network'
 FL St. Augustine 95.5 W239CN **and**
 FL St. Augustine 103.9 W280EY
 Classic Hits: 'WSOS 103.9' // WSOS-1170
 FL St. Augustine 106.3 W292DE
 [Move from 106.7 as W294CM]
 FL The Villages 88.7 WMYZ
 [City-of-License change from Clermont]
 FL Silver Springs 95.5 WYND-FM
 Classic Rock: 'Wind FM' [call change from
 WNDD]

GA Dahlonega 88.7 WCDG
 Talk: 'North Georgia Talk And Teach Radio'
 GA Millen 94.9 WPMX
 Adult Contemporary: 'Eagle 94.9'
 GA Elberton 99.7 W259DH
 [Move from 99.1 as W256DF]
 GA Marietta 106.3 W292EV
 Sports: 'The Sports X 1230 AM & 106.3 FM'
 // WFOM-1230
 GA Rocky Ford 106.5 WMCD
 Country: '106.5 The 'Boro'
 GA Smithboro 89.1 WAKP
 Variety: 'Victorious 89.1'
 GA Statesboro 99.7 W259CH
 Contemporary Hit Radio: '# 99.7' // WPTB-
 850
 GA St. Marys 94.3 W232DA
 Contemporary Christian/Religious
 Teaching: 'The Lightjouse' // WWIO-1190;
 Move from 105.9 as W290AX at Waycross
 GA Statesboro 107.7 W299CT
 News: 'Fox News 107.7' // WWNS-1240

GA Summerville 99.1 W256DP

Classic Country:
'WZQZ FM 99.1 & AM
1180' // WZQZ-1180



HI Kaunakakai 95.9 KKHI
[Is Silent]

ID Lewiston 94.9 KPLL-LP
Contemporary Christian: 'Positive Life
Radio'



ID Twin Falls 95.1 K236BS
Classic Hits: 'Magic 95.1' // KYUN 102.1
HD3

IL Cicero 91.5 WJCY
[Is Silent]

IL Elmwood Park 107.9 WLEY-FM1
[City-of-License move from Cicero]



IL Galatia 98.9 WISH-FM
Hot AC: '98.9 FM Wish'

IL Macomb 93.1 W226CH
Classic Country: Classic Country/Farm //
WCAZ-1510

IL Mount Vernon 94.5 W233CY
[Calls assigned to new station]

IL Plano 102.5 W273CZ
Classic Hits: 'The Squirrel'; move from
106.1 as W291BW at Seward]

IL Robinson 94.3 W232DC
[Move from 100.3 as W262BI]

IN Brazil 92.7 WFNB
Rock: '92.7 The Rock'



IN Evansville 103.5 WIAH-LP
Religious Teaching: 'WIAH, The Mother Of
The Redeemer Radio'

IN Lebanon 98.7 W254DU
Calls assigned to new station; will be Adult
Standards: 'Community Radio' // WILO-
1570; also // W245CO 96.9

IN Madison 96.7 WORX-FM
Hot AC: 'WORX 96.7 FM'

IN Madison 100.9 W265DK
Classic Hits: 'WXGO 1270 AM & 100.9 FM'
// WXGO 1270

IN Orleans 102.5 WPHZ
Adult Contemporary: '102.5 Lite FM'

IN Portland 91.7 WBSJ
[Silent due to transmitter failure]

IA Hampton 104.9 KLMJ
Country/Adult Contemporary: 'Radio On
The Go'



IA Parkersburg 95.7 K239CO
[License cancelled; calls deleted]

IA Parkersburg 98.9 KQCR-FM
Adult Contemporary: Radio On The Go'

IA Postville 89.1 KPVL
[Is Silent]

IA Sioux City 97.1 K246CJ
Regional Mexican: 'La Fiesta 97.1' // KZOI-
1250

IA Storm Lake 88.1 KOIA
Religious Teaching: 'Today's Best Catholic
Radio Station'

IA Waterloo 106.5 K293CH
Country: 'Corn Country 106.5' // KCVM
93.5 HD2



KS Atwood 106.1 KYVZ
Classic Hits: 'Super Hits 106.1 FM'



KS Baxter Springs 104.3 KCAR-FM
Classic Hits: 'The Rewind on 104.3'

KS Emporia 96.9 K245BQ
Adult Contemporary/Talk: 'Live and Local' //
KVOE-1400

KS Hugoton 91.7 K219MB
 [Move from 92.3 as K222AK]
 KS Pittsburg 107.9 K300DE
 Sports: 'The Sports Edge' // KSEK-1340



KY Garrison 98.3 WPAY-FM
 Country: 'WPAY 98.3 Country Superstars'
 KY Hazard 96.9 W245CP
 Classic Rock: 'WZQQ Rock 96.9' // WKIC-1390
 ['WZQQ' refers to 96.9 Hyden]
 KY Henderson 96.5 W243CU **and**
 KY Henderson 107.9 W300ED
 Classic Hits: 'WSON 860 AM - 96.5 FM' // WSON-860
 KY Hyden 97.9 WZQQ
 [Call change from WKIC]
 KY Lexington 101.1 W266DS
 [Calls assigned to new station; will be Talk: 'NewsRadio 630' // WLAP-630]
 KY Louisville 100.9 WCHQ-LP
 Variety: 'Louisville's Local Music Station'
 LA Hammond 103.7 W279DB
 [Move from 103.5 as W278AT]
 LA Lafayette 104.1 KQFA-LP
 [CP reinstated after being cancelled]
 LA Monroe 99.7 K259CU
 [City-of-License change from Bastrop]
 MD Bel Air 107.5 W298CG **and**
 MD Chesapeake City 100.5 W263CQ **and**
 MD Havre de Grace 104.7 W284BE
 Classic Hits: 'WHGM Gold' // WHGM-1330



MD Bethesda 94.7 WIAD
 Classic Hits: '94.7 The Drive'
 MD Pocomoke City 106.1 WXSH
 Classic Hits: 'Xtra 106.1'
 MA Fall River 95.9 W240EB
 [Calls assigned to new station; will be Talk/Sports: The Legendary WSAR 1480' // WSAR-1480]

MA Fitchburg 106.1 W291DA
 Religious Teaching: 'Renew FM' // WFGL-960



MA New Bedford 101.3 W267CY
 Classic Hits: 'Big 101.3' // WNBH-1340
 MA Newburyport 96.3 WJOP-LP
 New station signs on with Classical/Jazz
 MI Athens 99.7 W259CR
 [Move from 92.3 as W222BS]
 MI Bloomfield Hills 88.1 WBFH
 Variety: 'The Biff'



MI Gaylord 101.5 WMJZ-FM
 Classic Hits: 'Northern Michigan's Home For Classic Hits'
 MI Grayling 100.3 WQON-FM1
 [Calls assigned to new station; will be Classic Rock: 'Q100.3' // WQON 100.3]
 MI Greenville 107.3 WTNR
 Country: 'Thunder 107.3'; call change from WBBL-FM



MI Holland 94.5 WKLQ
 [Call change from WTNR]
 MI Holland 99.7 W259CO
 Talk: 'Real News Now - 99.7 and 1450 WHTC' // WHTC-1450
 MI Manistee 101.5 WMTE-FM
 Classic Hits: 'Northern Michigan's Home For Classic Hits'
 MI St. Louis 105.9 W290DR
 Calls assigned to new station; will be Classic Country: 'The Big M' // WMLM-1520
 MI Saugatuck 92.7 WYVN
 Classic Hits: '92.7 The Van'



MN Grand Marais 95.3 WVVE
[Is silent]

MN Montevideo 98.3 K252GF
Country: 'Your News & Information Station'
// KDMA-1460

MN Red Wing 98.9 K255CZ
[Move from 100.5 as K263AL]

MN Rochester 106.5 K293CV
[Move from 106.7 as K292EM]

MN St. Joseph 99.9 KCML
Adult Contemporary: '99.9 Lite FM'



MN Virginia 92.1 W221AU
Adult Contemporary: 'Today's Hits And All
Of Your Favorites' // WEVE-FM 97.9



MS Pascagoula 105.9 WXYK
Contemporary Hit Radio: '105.9 The
Monkey' [calls and format move from 107.1]

MS Starkville 102.1 W271DI
Sports: '1230 The Team'

MS Winona 98.1 W251CN
Format is Unavailable as // WLEE-1570 is
Silent

MO Springfield 107.5 K298CI
Travel Information; 'Voice of the Ozarks';
move from 97.3 as K247AT

MT Billings 95.9 K240ET
[License cancelled; calls deleted]

MT Kalispell 95.3 K237GF
[Move from 94.7 as K234BZ]

NE Omaha 106.5 K293CX
[Move from 104.1 as K281CJ]

NE Omaha 106.7 K294DJ
[Move from 106.5 as K293CJ]

NL Lewisporte 101.3 CKXG-FM-1
License cancelled; call deleted

NL Port aux Basques 96.7 CFGN-FM
New station signs on with
News/Talk: '570 AM Local News
Now' // CFCB-570 moving from
1230 kHz



NL St. Anthony 100.3 CBNA-FM
New station signs on with
Variety // CBY-900 moving from
600 kHz



NH Meredith 101.5 WZEI
Sports: '101.5 WEEI Sports Radio Lakes
Region' [partially // WEEI-FM 99.7]



NJ Burlington 92.9 W225DJ
Calls assigned to new station; will be
Gospel Music: 'Victory AM 1460 WIFI' //
WIFI-1460

NJ Elizabeth 107.9 W300DM
Format is Unavailable as // WJDM-1530 is
Silent

NJ Lakewood Township 104.1 W281CK
[Move from 93.5 as W228EH]

NJ Parsippany 94.3 W244DU
Spanish Contemporary Christian: 'Radio
Cantico Nuevo'

NY Binghamton 89.3 WSKG-FM
News/Talk: 'National Public Radio' [Includes
six associated full-power FMs (see below)
and seven translators]



NY Binghamton 91.5 WSQX-FM
Classical: 'Classical 24' [Includes three
translators]

NY Cornell 88.7 WSQA
News/Talk: 'National Public Radio'


NY Corning 91.1 WSQE
News/Talk: 'National Public Radio'

NY Elmira 103.3 W277DW
[Move from 102.9 W275AB]

NY Greene 99.1 WSQN
News/Talk: 'National Public Radio'

NY Islip 100.7 W264DG
Spanish Contemporary Christian: 'Radio
Canteco Nuevo' // WNYH-740; move from
101.1 as W266CI at Ithaca

NY Ithaca 90.9 WSQG-FM
News/Talk: 'National Public Radio'

NY New York 89.9 WKCR-FM
Variety 

NY Newport 106.1 WGLU-LP
[Is Silent]

NY Oneonta 91.7 WSQC-FM
News/Talk: 'National Public Radio'

NY Odessa 89.9 WINO
News/Talk: 'National Public Radio'

NY Portville 96.7 WVTT
[Is silent]

NY Webster 88.1 WKEL
[Is Silent]



NC Charlotte 94.7 W234BY
Sports: 'FOX Sports Charlotte 1660 AM and 94.7 FM' // WBCN-1660

NC Denton 100.1 WBXB
R&B Oldies/Gospel Music: 'The-B'

NC Dobson 95.3 W237FG
[Move from 95.9 as W240DQ]

NC Franklin 91.3 WFQS
News/Classical: 'NPR Classical Music & More'

NC Hatteras 97.1 WKHC
[Call change from WYND-FM]

NC Lockwoods Folly Town 99.1 WGHW
Returns to the air with Southern Gospel: 'Old Paths Radio Network'

NC Mebane 94.3 W232DT
Country // WSML-1200

NC Murphy 88.5 WMQS
News/Classical: 'NPR Classical Music & More'

NC Oriental 94.1 WNBU
Oldies: 'Groovin' Oldies 94.1 & 97.9' [Includes W250CJ 97.9 Winterville which is // WRHD-HD2 94.3]



NC Smithfield 94.3 W232DO
Format is Unavailable as // WMPM-1270 is Silent

NC Tarboro 96.3 W242DG
[Calls assigned to new station; will be Urban Gospel/R&B Oldies // WCPS-760]

NC Wilmington 94.1 W231CL
Regional Mexican: 'La Raza 94.1' // WLSG-1340

NC Winston-Salem 96.7 W244DO
[License cancelled; calls deleted]

NS Halifax 96.5 CKUL-FM
Adult Contemporary: 'The Breeze'

OH Columbus 98.5 WSAX-LP
Jazz



OH Elyria 100.3 W262DM
[Calls assigned to new station; will be News/Talk/Sports: 'The News Station' // WEOL-930]

OH Hilliard 105.7 WXZX
Sports: '105.7 The Brew'



OH Warren 97.7 W249EE
[Calls assigned to new station; format is Unavailable as // WHTX-157 is Silent]

OK McAlester 105.1 KTMC-FM
Classic Rock: 'Rock 105.1'



ON Marathon 107.5 CBLM-FM
New station signs on with News/Talk: 'CBC Radio One Thunder Bay' // CBQT-FM 88.3

ON Nipigon 92.5 CJOA-FM-1
Calls assigned to new station; will be Contemporary Christian: 'UCB Canada' // CJOA-FM 95.1



ON Toronto 93.5 CFXJ-FM
Rhythmic CHR: 'Flow 93.5'



OR Grants Pass 93.1 K226CY
[Move from 92.9 as K225AC]
OR Madras 107.1 KTOB-LP
[License cancelled; calls deleted]
OR Portland 89.5 KVBE-LP
[Is Silent]
OR Portland 96.7 KICN-LP
[Is Silent]
OR Portland 101.5 KXYQ-LP
[Is Silent]

[The three above stations share a malfunctioned combiner at the transmitter site that has been removed and sent for repairs]



PA Altoona 99.7 W259DG
Oldies: 'Toona 1430' // WVAM-1470
PA Altoona 107.1 W296ED
Adult Hits: '107.1 Jack FM' // WYUP-1400
PA Bloomsbury 91.1 WBUQ
Variety: 'The Revolution'
PA Greensburg 105.1 W286CZ
[Move from 95.3 as W237CX]
PA Johnstown 101.3 W267CM
Classic Hits // WKGE-850
PA Jonestown 99.3 W257CK
[Move from 99.9 as W260AY]
PA Philadelphia 101.1 WBEB
Adult Contemporary: 'B 101.1'



PA Pittsb 99.1 W256DE urch
[Move from 96.7 as W244CU]
PA Red Hill 103.7 W279DC
[Move from 99.9 as W260BD at Honey Brook]

PA Williamsport 88.1 WKWP
[Is Silent]

PR Aguada-Mayaguez 90.7 WQHD-LP
[Frequency change from 94.5]

QC Lachute 104.9 CJLA-FM
Adult Contemporary: 'WOW 104.9 102.1'
(Includes CHPR-FM 102.1 Hawkesbury, ON)

QC Sherbrooke 93.7 CFGE-FM
Hot AC: 'Rhythme 93.7 & 98.1' [includes CFGE-FM-1 98.1 Magog]

SK Assiniboia 98.1 CIAT-FM
New station signs on with
Country: 'Cat Country'



SK Carrot River 101.1 VF2212
[Deleted from IDSEC databse]

SK Meadow Lake 105.7 CFDM-FM
License cancelled; call deleted

SK Waterhen Lake 97.7 CIWL-FM
Variety: 'Waterhen First Nation'



SC Charleston 107.7 W299CY
Religious Teaching: 'Moody Radio' //
WCDC-950

SC Georgetown 93.7 WXJY
Contemporary Hit Radio: 'Hits 93.7'
(W283CQ 93.7)

SC Georgetown 107.5 W298CO
Country: 'Coast Country 107.5' // WGTN-1400

SC Ladson 106.3 WJNI
Religious Teaching: 'Moody Radio'

SC Sumter 94.7 WWBD
Classic Rock: '94.7 The Hog'

TN Brentwood 99.1 W256DV
[License cancelled; calls deleted]

TN Clarksville 105.5 W288DQ
Country: '105.5 The Bull' // WVWB-1400

TN Waverley 105.1
WVWF
Classic Country:
'The Wolf'
[Includes
W280FN 103.9 7 WVWK-790]



TX Amarillo 92.7 K224EF
Format is Unavailable as // KZIP-1310 is
Silent

TX Austwell 105.9 KIBQ
[Is Silent]

TX Canyon 101.3 K267CQ
Sports: 'Sports Radio 1440' // KNSH-1550
[fed by KPUR-1440]

TX Clarksville 98.5 KHDY-FM
Classic Country: '98.5 & 103.9 The Pig'
(includes K257GD 99.3) [103.9 refers to
now // KPGG Ashdown, Arkansas]



TX Corpus Christi 92.1 K221GP
Spanish Religious/Regional Mexican 'La
Tejanita 1330' // KINE-1330

TX Dumas 106.1 K291AQ
[CP to move to 106.3 cancelled]

TX Italy 93.5 K228GA
[Move from 92.9 as K225CE]

TX Midland 107.5 K298CF
[License cancelled; calls deleted]

TX New Boston 95.1 KEWL-FM
Classic Hits: 'The
Rewind On 95.1'



TX Odessa 107.5 K298CE
[License cancelled; calls deleted]

TX Pearsall 103.3 KJAK
[Call change from KPER; remains Silent]

TX Slaton 92.7 KVCE
Religious Teaching: 'Christian Information
Radio'; call change from KJAK

TX Stanton 105.9 KXQT
[Call assigned to new station]

TX Wheeler 98.9 KXNZ
Classic Rock:
'Legends 98.9'
[Frequency
change from
103.9]



UT Provo 99.9 K260DS
Classic Hits: 'Utah's Goat' //
KWLO-1580



UT Salt Lake City 99.1 K256AE
Soft AC: 'Easy 99.1' // KJMY 99.5 HD2;
move from 99.3 as K257GJ



VT Brandon 101.5 WEXP
Classic Hits: 'One Oh One, The One'
[Includes WCVT 101.7 Stowe]

VA Blackstone 92.7 W224DB
[Move from 93.9 as W230BW]

VA Leesburg 101.7 W269DH
Variety: 'Stereo 103.3' // WTRI-1520 [fed by
WPRB 103.3]

VA Manassas 106.7 WJFK-FM
Sports: '106.7 The Fan'

VA Richmond 101.7 W269DC
[Move from 103.7 as W279BA]

VA Richmond 105.1 W296DJ
Sports: '910 The Fan' // WRNL-910

VA Rocky Mount 104.5 W283CQ
Contemporary Hit Radio: 'Hits 93.7' //
WYTI-1570

VA Tappahannock 105.5 WRAR-FM
Adult Contemporary: 'The Best Of The 80`s,
90`s & Today'

VA Winchester 102.9 W275BV
Classic Hits: '102.9 Valley FM' // WXVA-610



WI Beloit 92.3 W222AU **and**

WI Janesville 98.9 W255CZ
Adult Hits: 'The Beat 92.3 FM & 98.9 FM' //
WBEL-1380

WI Medford 107.1 W296DL
Country: 'Kicking' Country' // WIGM-1490

WI Milwaukee 97.3 WRNW
Sports: '97.3 The Game'

FM NEWS CONTINUES ON PAGE 35

FM Facilities Report

This information is reprinted from Doug Smith's FM News Information posted in the WTFDA Forums <http://forums.wtfda.org>. The WTFDA FM Database is also updated with this information. <http://db.wtfda.org>

Abbreviations:

AF- New Station Applied For	NS-New Station Permit Granted	RA>Returns to the Air
Aux- Auxiliary Backup Transmitter	NW-New Station on the Air	ROA-Request of Applicant
CC- Call Change	PC-Power/Height Change Granted	XG-new site granted
CL-City of License	PG-Power Change Granted	XC-transmitter site changed
CX-Canceled	QG-Frequency Change Granted	PR/QR-Power or Freq requested

March 2019

<p>AL Lisman 107.7 WHSL NW 6kw/100m, 32-05-27/88-13-57 AK Circle 93.9 NEW NW 85w/-27m, 65-49-38/144-03-58 AK False Pass 88.1 NEW NS 90w/-228m, 54-51-24/163-24-44 (Aleutian Peninsula Broadcasting) AK Haines 102.3 KHNS PG>3kw/-284m, 59-13-06/135-25-49 AK Juneau 99.3 K257CN PC>250w AK Soldotna 92.5 K223DG NS 250w, 60-31-26/151-03-23 (KSRM-920) AL Huntsville 105.3 W287DH XC 34-44-36/86-31-56 AL Huntsville 107.5 W263CI QC from 100.5, 34-47-53/86-38-24; CL from Jackson, TN. (WLOR-1550) AL Jasper 101.9 WQJJ-LP OFF Oct. 17th, loss of sites. (studio & transmitter) AL Lisman 107.7 WHSL NW 6kw/100m, 32-05-27/88-13-57 AL Notasulga 90.3 W212AP PC<13w AL Stewartville 98.3 WFXO PG>9kw/148m AR Clarendon 104.1 KBRI PG<24kw/98m AR Fort Smith 99.5 K258CE PC<39w AR Harrisburg 95.9 KWHF PC 42kw/136m AR Huntsville 97.5 K248DM NW 250w, 36-04-48/93-43-19 (KURM-790 Rogers) AR Little Rock 103.3 K277DP NW 250w, 34-47-49/92-29-19 (KZTS-1380 North Little Rock) AR Mansfield 103.5 KHGG-FM QG from 103.1, 4.1kw/122m, 35-11-01/94-07-44; CL from Waldron AR Marshall 98.7 K254DB NW 250w, 35-54-04/92-36-57 (KCGS-960) AR Waldron 104.7 KQBK CL granted from Booneville AZ Buckeye 95.9 K240DC PC>250w, 33-34-09/112-33-33 (KESZ-99.9 Phoenix) AZ Buckeye 95.9 K240DC XG 33-34-02/112-33-26 AZ Casa Grande 104.3 K282CG NS 250w, 33-00-07/111-40-25 (KFLT-830 Tucson) AZ Catalina 93.3 K227DE NW 250w, 32-28-56/110-54-39 (KUAZ-1550 Tucson) AZ Cienega Springs 101.7 KXBB NW 3.1kw/291m, 34-07-29/114-12-39 AZ Huachuca City 101.7 KXKR PG<6kw/-50m, 31-38-15/110-20-07 AZ Kingman 98.7 KGPS-LP PC<-51m, 35-14-33/114-02-11 AZ Lake Havasu City 101.9 K270AD PC>99w, 34-33-06/114-11-37 (KRCY-FM 96.7) AZ Lake Havasu City 102.7 K270AD QG from 101.9, 250w, 34-33-</p>	<p>00/114-11-38 AZ Lake Havasu City 106.3 K292GC XG 34-33-00/114-11-38 AZ Lake Havasu City 89.3 KAIH PG>1.5kw/119m, 34-29-10/114-13-08 AZ Lake Havasu City 94.3 K232EI XG 34-33-00/114-11-38 AZ Lake Havasu City 96.3 K242AR PG>250w, 34-33-00/114-11-38 (KRCY-FM 96.7) AZ Old Pascua Village 100.7 KPYU-LP PG>-18m, 32-14-52/110-59-09 AZ St. Johns 91.7 K219LB XC 34-30-15/109-23-00 AZ Yuma 100.3 K262DI NS 50w, 32-43-22/114-38-35 (KBLU-560) BC Queen Charlotte 104.9 CBYQ-FM PG<890w/-14m, 53-14-16/131-55-06 CA Camarillo 95.9 KCAQ PG<1kw/245m, 34-25-20/119-02-04 CA Cedarville 91.5 KVYA QC from 88.9, 280w/-36m, 41-38-13/120-05-28 CA Chico 103.9 K280GL PC>250w CA Chico 94.5 KWQA-LP PC<-18m, 39-43-21/121-50-34 CA Ferndale 97.7 KJNY QG from 99.1 CA Folsom 102.9 K275BJ PG>60w, 38-38-31/121-05-25 (KAHI-950 Auburn) CA Fresno 104.5 K283CY NW 250w, 36-33-12/119-45-10 (KWRU-1300) CA Lake Isabella 93.3 K239AZ QC from 95.7 CA Los Angeles 92.7 K224EY PG>250w, 34-02-57/118-15-22; CL from San Marino (KKLQ-100.3) CA Morada 107.9 KIMU-LP QG from 98.1; CL from Stockton. CA Murrieta 104.1 KKLM PG 1.2kw/226m, 33-28-52/117-10-59 CA Palm Desert 95.5 K238AK PG>45w CA Paradise 102.9 K251AV QC from 98.1, 190w, 39-39-04/121-27-43 (KPAY-1290 Chico) CA Perris 91.1 KKLP PG>285w/464m CA Point Bonita 100.1 KGXY-LP QG from 99.3, 22m, 37-49-22/122-31-43 CA Redding 96.5 K243CT NW 99w, 40-39-15/122-31-12 (KCNR-1460 Shasta) CA Santa Clarita 88.9 K205EP XC 34-19-48/118-35-56 CA Studio City 91.9 K220HC PC>200w (KKLQ-100.3 Los Angeles) CA Yankee Hill 90.7 K214EE PC<4w CO Black Forest 102.3 K283AS QC from 104.5, 39-02-47/104-41-38; CL from Hayden (KLIM-1120 Limon)</p>
--	---

CO Breckenridge 88.1 K201IL PC>125w, 39-37-49/106-02-49
CO Broomfield 90.7 K213FH QG from 90.5, 75w, 39-53-31/105-14-19; CL from Golden
CO Cortez 92.3 K222AD PC>250w, 37-21-00/108-33-08
CO Denver 104.7 K284CI PG>250w
CO Denver 92.9 K225BS XC 39-46-20/104-58-56
CO Erie 104.7 K284BY XC 40-00-43/105-11-16
CO Fort Collins 106.3 K292GK PG>180w (KUAD-FM 99.1 Windsor)
CO Rifle 100.3 K262CB PC>44w, 39-30-42/107-44-57 (KMGJ-93.1 Grand Junction)
CO Rifle 102.1 K271BA PC>50w, 39-30-42/107-44-57 (KKVT-100.7 Grand Junction)
CO Rifle 103.3 K276AI QC from 103.1, 39-30-42/107-44-57
CO Rifle 95.1 K236BA PG>50w, 39-30-42/107-44-57 (KMOZ-FM 92.3 Grand Junction)
CO Silt 98.7 K252DZ QG from 98.3, 250w, 39-30-42/107-44-57; CL from Mountain Village (KNAM-1490); QC
CT Hartford 100.9 W265EB NW 220w, 41-46-00/72-40-38 (WPOP-1410)
CT Putnam 97.1 W246DN NW 250w, 41-54-09/71-53-44 (WINY-1350)
DC Washington 88.5 WAMU PG 47kw/156m, 38-56-10/77-05-33
DE Wilmington 101.5 W268DH NS 250w, 39-43-46/75-33-07 (WWJZ-640 Mount Holly, N.J.)
FL Belle Glade 107.1 W296DN NW 250w, 26-42-43/80-40-59 (WSWN-900)
FL Belle Glade 93.5 WBGF PG>23.5kw/103m, 26-39-54/80-38-38
FL Cocoa 104.5 W283DJ XG 28-20-43/80-46-08
FL Delray Beach 101.1 W266DP NW 125w, 26-26-01/80-05-31 (WPOM-1600 Riviera Beach)
FL Fort McCoy 97.9 WVET-LP PC>23m
FL Key WV 103.3 W277DX NS 250w, 24-34-17/81-44-25 (WKWF-1600)
FL La Belle 105.1 W286DO NW 250w, 26-46-40/81-25-39 (W AFC-590 Clewiston)
FL Lake Worth 96.9 W245AY PG<100w, 26-35-20/80-12-44
FL Miami 92.7 WIBE-LP PG>32m, 25-48-32/80-15-50
FL Miramar (sic) 103.1 WUGR-LP NW 11m, 25-59-15/80-15-01
FL Panama City 93.1 W226CJ PG>230w
FL St. Augustine 106.3 W294CM QC from 106.7, 250w, 29-51-01/81-19-49
FL The Villages 102.7 W274BR PC>250w, 28-54-16/81-57-36; CL from Lady Lake (WVLG-640)
FL The Villages 88.7 WMYZ PC>35kw/82m, 28-54-16/81-57-36
FL Winter Garden 99.3 WGPDP-LP QC from 99.7, 30m, 28-33-29/81-35-57
GA Atlanta 98.9 W255CJ PG<144w (WWWQ-99.7)
GA Atlanta 99.3 W257DF PG>99w, 33-48-18/84-29-40
GA Columbus 104.9 WFXE PG>7.3kw/149m
GA Elberton 99.7 W259DH QG from W256DF-99.1, 34-06-50/82-52-52; CL from Fortsonia
GA Lawrenceville 92.5 W223CQ PC>250w, 33-59-11/84-03-25; CL from Lilburn (WLKQ-FM 102.3)
GA Manchester 97.3 W247CJ PG<230w, 32-51-06/84-42-06
GA St. Marys 94.3 W290AX QC from 105.9, 250w, 30-45-51/81-36-40; CL from Waycross (WWIO-1190)
GA St. Marys 94.3 W290AX QC from 105.9, 250w, 30-45-51/81-36-40; CL from Waycross (WWIO-1190)

GA Trenton 101.3 W267CX NW 250w, 34-51-48/85-23-35 (WKWN-1420)
HI Hawi 96.1 KNKR-LP XG 20-14-23/155-50-02
HI Kualapuu 103.1 KFNZ NW 3.4kw/511m, 20-50-41/156-54-04
IA Council Bluffs 106.5 K281CJ QG from 104.1, 41-15-14/95-50-06
IA Oskaloosa 90.5 KIGC QG from 88.5, 1kw/54m, 41-17-42/92-39-02
IA Waterloo 105.1 K286CI XC 42-30-08/92-20-27
IA Waterloo 106.5 K293CH NW 250w, 42-30-08/92-20-27 // KCVM-93.5 Evansdale
ID McCall 94.5 K233BJ OFF Jan. 2nd, equipment failure.
ID Parma 101.1 KKYD PC<100kw/221m, 43-47-50/116-33-32
ID Sebree 99.1 K258DJ QG from 99.5, 10w, 43-12-20/115-33-56
ID Silver City 103.9 KCNU PG<380w/698m, 43-00-25/116-42-13
IL Alton 107.1 W296DR PG>250w, 38-55-41/90-13-03
IL Fairfield 103.3 W262AZ QC from 100.3, 250w, 38-22-46/88-19-33; CL from Sullivan, Ind. (WFIW-1390)
IL Kewanee 102.1 W271BL PG>250w, 41-13-36/89-56-05 (WJRE-102.5 Galva)
IL Mount Vernon 94.5 W233CY NS 120w, 38-18-50/88-56-09 (WMCL-1060 McLeansboro)
IL Pittsfield 92.1 W221BX PG>170w, 39-40-45/90-45-53 (WRMS-790 Beardstown)
IL Plano 102.5 W291BW QC from 106.1, 25w, 41-39-55/88-34-34; CL from Seward (WSQR-1180 Sycamore)
IL Robinson 94.3 W262BI QC from 100.3, 250w, 39-00-21/87-46-35 (WTAY-1570)
IN Cicero 91.5 WJCY OFF Feb. 5th, lease not renewed.
IN Evansville 100.1 W261CW NW 4w, 37-58-40/87-33-08 // WPSR-90.7
IN Lebanon 98.7 W254DU NS 5w, 40-00-14/86-28-14 (WILO-1570 Frankfort)
KS Garden City 102.9 K275CT XG 37-59-52/100-54-25
KS Hays 88.5 K203FB PC<140w, 38-57-29/99-21-07
KS Hugoton 91.7 K222AK QC from 92.3, 250w, 37-10-39/101-20-46 (KHYM-103.9 Copeland)
KS Liberal 106.3 K292HJ NS 250w, 37-02-12/100-54-33 (KGYN-1210 Guymon, OK.)
KY Glasgow 103.1 W276DO NW 250w, 36-59-02/85-52-20 (WCLU-1490)
KY Irvine 100.7 WCYO PC 11kw/151m, 37-39-36/84-09-00
KY Lexington 101.1 W266DS NS 220w, 38-02-06/84-27-02 (WLAP-630)
LA Arabi 89.5 K208FC PG<10w, 29-57-00/90-04-16
LA Hammond 103.7 W278AT QC from 103.5, 250w, 30-30-31/90-30-18; CL from Winona, Miss. (WFPR-1400)
LA Monroe 99.7 K259CU XC 32-31-39/92-06-08
MA Brockton 101.1 W247CB NW 220w, 42-03-01/71-03-42 (WATD-1460)
MA Dedham 94.9 W235CS PG>72w, 42-18-41/71-13-00
MA Fall River 95.9 W240EB NS 250w, 41-43-27/71-11-21 (WSAR-1480)
MA Greenfield 92.3 W222CH PG>250w, 42-31-59/72-35-33 (WFAT-700 Orange-Athol)
MA New Bedford 101.3 W267CY NW 250w, 41-37-20/70-55-09 (WNBH-1340)
MA Southbridge 101.1 W266DK NW 250w, 42-03-59/71-59-28 // WESO-970
MD Baltimore 106.9 W282BT QC from 104.3, 110 watts, 39-18-42/76-

29-29; CL from Bellefonte, PA. (WFSI-860)
 MD Salisbury 102.9 W275CX NW 250w, 38-21-39/75-37-00 (WICO-1320)
 ME Bowdoin 88.1 WMEY PG>100w-H/50kw-V/64m
 ME Sanford 104.3 W282CS PG>250w, 43-25-11/70-48-09
 MI Athens 99.7 W222BS QC from 92.3, 250w, 41-37-24/85-20-49 (WBET-1230 Sturgis)
 MI Athens 99.7 W222BS QC from 92.3, 250w, 41-37-24/85-20-49 (WBET-1230 Sturgis)
 MI Beaver Island 100.1 WVBI-LP PC>47m, 45-41-11/85-31-38
 MI Holly 94.1 W231CV PC>210w, 42-41-25/83-17-53 (WUFL-1030 Sterling Heights)
 MI Iron Mountain 105.9 W290CO PG<10w, 45-49-07/88-02-43 (WMVM-90.7 Goodman, Wis.)
 MI Lowell 99.5 W258DF NW 250w, 43-01-22/85-20-21 (WYGR-1530 Wyoming)
 MI Midland 107.7 W299CK NW 250w, 43-36-53/84-13-15 (WMPX-1490)
 MI Munising 97.7 W249DR NW 250w, 46-24-53/86-40-32 (WQXO-1400)
 MI Niles 107.5 W298CQ NW 80w, 41-49-23/86-17-02 (WNIL-1290)
 MI Saginaw 96.5 W243EO NS 250w, 43-28-24/83-50-40 (WSGW-790)
 MI St. Joseph 106.1 W291DK NW 250w, 42-04-19/86-22-15 (WSJM-1400)
 MI St. LAs 105.9 W290DR NS 250w, 43-21-08/84-36-22 (WMLM-1520)
 MN Glencoe 96.1 K241DE NS 250w, 44-46-41/94-07-40 (KGLB-1310)
 MN Hayfield 98.9 K253CH QG from 98.5
 MN Litchfield 95.9 W269DA QC from 101.7, 250w, 45-07-02/94-33-13; CL from Ironwood, MI. // KLFD-1410
 MN Moorhead 90.7 KWLJ-LP PG>37m
 MN Montevideo 98.3 K252GF NS 250w, 44-56-03/95-44-47 (KDMA-1460)
 MN Pine City 106.5 W293DA XG 45-54-10/92-57-33
 MN Red Lake 105.3 NEW NS 100kw/192m, 47-49-55/95-25-01 (Red Lake Nation)
 MN Red Wing 98.9 K263AL QC from 100.5, 44-32-14/92-31-20; CL from Madison (KCUE-1250)
 MN Saint Paul 99.1 WVIC-LP PG>2m, 44-58-33/93-04-03; PC
 MN St. Paul 99.1 WVIC-LP PG>2m, 44-58-33/93-04-03
 MO Osage Beach 89.3 KIRL PG>4kw/109m, 38-13-24/92-45-41
 MS Columbus AFB 105.3 WACR-FM PG>50kw/118m, 33-44-41/88-39-44
 MS Hollywood 89.7 KQMP PG>8kw/55m, 34-45-41/90-23-36
 MT Big Sky 91.9 K222CJ QG from 92.3, 10w, 45-16-28/111-23-34 (KGLT-91.9 Bozeman)
 MT Columbus 88.5 K203AI PC>250w, 45-37-13/109-15-26
 MT Evergreen 97.9 K258BW QG from 99.5, 205w, 48-00-50/114-21-58
 MT Kalispell 103.5 K278BI PC>250w (KIBG-100.7 Bigfork)
 MT Kalispell 105.7 K289CF XG 48-00-50/114-21-58
 MT Kalispell 95.3 K234BZ QC from 94.7, 250w (KKMT-92.3 Ronan)
 MT WV Yellowstone 90.7 KPWY OFF Jan. 29th, satellite dish feeding programming damaged by winter weather.
 NC Auburn 93.5 W228CZ XG 35-40-35/78-32-08
 NC Charlotte 92.3 W222CW XG 35-15-07/80-49-43

NC Dobson 95.9 W240DQ PC>190w
 NC Durham 101.9 W270DT PG>120w
 NC Wake Forest 106.5 W243CT QG from 96.5, 250w, 35-56-25/78-28-45
 ND Carrington 100.1 K261EW NW 250w, 47-26-43/99-07-24 (KDAK-1600)
 ND Grand Forks 95.3 K237ER PG<170w
 ND Jamestown 97.1 K246AM XC 46-53-30/98-42-46
 ND Lisbon 107.3 K297BX NW 250w, 46-26-15/97-41-22 (KQLX-890)
 NE Grand Island 98.5 K253CS NS 250w, 40-47-11/98-22-00 (KRVN-880 Lexington)
 NE Lincoln 106.7 K293CJ QG from 106.5, 250w, 40-48-42/96-42-10
 NE Sidney 95.7 K239BE PG>250w, 41-07-52/102-58-20 (KSID-1340)
 NJ Burlington 92.9 W225DJ NS 240w, 40-04-58/74-47-39 (WIFI-1460 Florence)
 NJ Lakewood Township 104.1 W228EH QG from 93.5, 225w, 39-52-31/74-09-57
 NJ Manahawkin 105.7 WCHR-FM PG<13kw/139m, 39-52-31/74-09-57
 NJ Toms River 92.7 WOBF-FM PG 1.6kw/139m
 NM Clayton 104.5 K283CV XG 36-26-38/103-11-25
 NM Los Lunas 104.3 K282CD NW 250w, 34-47-54/106-48-58 (KSPA-920)
 NM Tularosa 88.1 KNMA NW 3.34kw/487m, 32-49-47/105-53-10
 NV Fallon 102.5 NEW-190452 PG<180w/14m, 39-28-25/118-46-40
 NY Essex 101.3 WCPV PC<241m, 44-24-19/73-25-55
 NY Essex 101.3 WCPV PG<1kw/241m, 44-24-19/73-25-55
 NY Islip 100.7 W266CI QC from 101.1, 250w, 40-48-27/73-10-48; CL from Ithaca (WNYH-740 Huntington)
 NY Middletown 95.3 W237EV NW 250w, 41-27-16/74-25-06 (WDLA-1490 Port Jervis)
 NY Oneida 101.1 W266DJ NW 250w, 43-05-04/75-41-35 (WMCR-1600)
 NY Syracuse 101.7 W269DT NW 50w, 43-03-01/76-09-02 (WHEN-620)
 NY Syracuse 106.3 W292EY PG>99w
 NY Watkins Glen 101.9 W270BY XG 42-32-40/76-59-35
 NY Willsboro 96.7 WXZO PG<1kw/241m, 44-24-19/73-25-55
 OH Elyria 100.3 W262DM NS 25w, 41-16-10/82-00-16 (WEOL-930)
 OH Enon 103.3 W277AO PG>250w (WULM-1600 Springfield)
 OH Loudonville 107.7 WXXF PG 4.2kw/119m, 40-40-20/82-18-15
 OH Portsmouth 88.3 WSGR PG>1.7kw/233m, 38-45-42/83-03-41; CL from New Boston
 OH Warren 97.7 W249EE NS 35w, 41-03-23/80-38-44 (WHTX-1570)
 OH Willoughby 101.5 W268CO PG>190w, 41-35-30/81-21-04
 OK Altus 93.5 KWHW-FM PG<45kw/88m, 34-37-35/99-20-10
 OK McAlester 91.9 KBCW-FM PG>5kw/132m
 OK Okeene 101.5 KOCD PC<14kw/88m, 36-07-11/98-15-44
 OR Grants Pass 93.1 K225AC QC from 92.9
 OR Jordan Valley 90.9 KGCL PG<1kw/670m, 43-00-25/116-42-13
 OR Klamath Falls 104.3 K282CB NW 250w, 42-12-56/121-47-51 (KLAD-960)
 OR Klamath Falls 92.9 K225CW NW 250w, 42-12-56/121-47-51 (KAGO-1150)
 PA Berwick 103.5 WMMZ PC 1.05kw/239m, 41-06-50/76-14-16
 PA Canadohta Lake 105.7 WUUK-LP PG>45m, 41-49-45/79-49-58
 PA Clarion 94.1 W231DR NW 250w, 41-11-33/79-22-05 (WWCH-

1300)
 PA Greensburg 105.1 W237CX QC from 95.3, 105w, 40-17-20/79-42-04; CL from Bridgeport, W. Va. (WKFB-770 Jeannette)
 PA Hazleton 100.1 W261DQ NW 55w, 40-56-23/75-58-04 // WAZL-1490
 PA Jonestown 99.3 W260AY QC from 99.9, 99 watts, 41-07-35/76-15-59; CL from Glen Lyon.
 PA Pittsburgh 99.1 W244CU QC from 96.7, 99w, 40-26-46/79-57-51; CL from Warren (WJAS-1320)
 PA Red Hill 103.7 W260BD QC from 99.9, 10w-H/30w-V, 40-20-33/75-27-31; CL from Honey Brook (WPAZ-1370 Pottstown)
 PA Warren 96.7 W244DY NW 220w, 41-48-50/79-10-04 (WNAE-1310) (replaces W244CU which moved to Pittsburgh)
 PA Wilkes-Barre 105.5 W288BE PC>10w, 41-10-58/75-52-10
 PA Wilkes-Barre 92.5 W223CC XC 41-11-01/75-52-02
 PR Aguada-Mayaguez 90.7 WQHD-LP QG from 94.5, 97m, 18-21-16/67-11-34
 PR Mayaguez 89.1 W206AF PG>250w, 18-08-55/66-58-54 (WPUC-FM 88.9 Ponce)
 PR Ponce 92.1 W221EB NW 250w, 17-58-51/66-36-48 (WPPC-1570 Penueles)
 SC Columbia 105.9 W290CY PG>240w, 34-04-28/81-03-56
 SC Greenville 105.9 W290BW PC<99w, 34-56-04/82-24-15
 SC Summerville 93.3 WWWZ PG<50kw/149m, 32-54-19/79-55-24
 SD Brookings 95.5 K238AX PG<50w, 44-19-01/96-47-02 (KNSW-91.7 Worthington, MN.)
 SD Redfield 99.9 K260DG NW 250w, 44-53-53/98-30-23 (KQKD-1380)
 TN Bellevue 94.5 WHPY-FM PC>6kw/100m
 TN Clarksville 105.5 W288DQ NW 80w, 36-30-57/87-20-57 (WVWB-1400)
 TN Dyersburg 100.1 WASL XG 36-06-02/89-29-11 (correct coordinates)
 TN Kingsport 98.5 WTFM PG 70kw/696m, 36-25-53/82-08-16
 TN Knoxville 101.5 W268BP XG 36-00-21/83-56-20 (WVLZ-1120 Montville)
 TN Lobelville 98.5 W253DD NS 250w, 35-45-56/87-49-50 (WMAK-1570)
 TN Lookout Mountain 97.7 W249BR XC 35-00-35/85-20-36 (WFLI-1070)
 TN Memphis 93.7 K280FN QG from 103.9, 99w, 35-10-29/89-50-43; CL from Cuba, Mo. (WCRV-640 Collierville)
 TN Shelbyville 100.7 W264DJ NW 250w, 35-29-02/86-26-38 (WZNG-1400)
 TN Shelbyville 94.5 W233CQ NW 25w, 35-37-14/86-25-35 (WLIJ-1580)
 TN Union City 95.5 W238CU NW 250w, 36-25-40/89-02-05 (WENK-1240)
 TN Walnut Hill 101.9 W270BN PG>230w
 TX Amarillo 96.5 K243CE PG<55w, 35-06-50/101-49-16 (KRBG-88.7 Umbarger); NW
 TX Amarillo 99.7 KBZD PG<22kw/96m
 TX Balch Springs 99.9 KYBS-LP PC>64m, 32-44-28/96-36-28
 TX Boerne 103.9 K268CR QC from 101.5, 180w, 29-50-26/98-49-32; CL from San Antonio (KBRN-1500)
 TX Canadian 102.9 K275CM PG<120w, 35-54-17/100-23-16
 TX Canadian 88.1 K201BM PG<30w
 TX College Station 102.7 K274CM PG<195w, 30-41-16/96-25-32

TX Crockett 93.5 KBPC PG>50kw/150m, 31-19-58/95-47-12
 TX Dallas 95.3 K237HE NS 250w, 32-46-43/96-43-51 (KTXV-890 Mabank)
 TX Graham 99.9 K260DN XG 32-43-31/97-56-38 (KOXB-89.9 Breckenridge)
 TX Houston 101.7 KVGK-LP NW 17m, 29-51-56/95-25-52
 TX Houston 105.3 K287BQ PC<20w, 29-37-23/95-33-07; PR>99w, 29-45-30/95-22-03
 TX Houston 97.3 K247CP PG>250w, 29-44-56/95-28-55
 TX Houston 98.7 K254BZ PG<60w, 29-44-56/95-28-55
 TX Houston 99.5 K258DA PC>120w, 29-48-19/59-20-39 (KTBZ-FM 94.5)
 TX Italy 93.5 K225CE QC from 92.9, 200w, 32-22-43/96-52-18 (KBFB-97.9 Houston)
 TX Laredo 93.1 K226CZ NS 50w, 27-34-44/99-30-09 (KLAR-1300)
 TX Mason 104.1 KMSN NW 25kw/96m, 30-46-35/99-17-54
 TX Moran 104.1 KCKB NW 25kw/78m, 32-32-29/99-03-28
 TX Muleshoe 93.3 KVRQ NW 1.3kw/39m, 34-18-57/102-45-21
 TX New Braunfels 103.1 K276GR NW 250w, 29-43-50/98-07-12 (KGNB-1420)
 TX New Braunfels 103.9 K280GC PG>167w
 TX O'Donnell 97.7 KWNF NW 4kw/122m, 32-58-43/101-49-54
 TX Padre Island 100.5 KNPI-LP QC from 93.3, 19m, 27-37-29/97-18-24
 TX Roma 97.7 KRIO-FM PC 2.25kw/131m, 26-26-13/99-03-34
 TX Sanderson 102.7 KEVG NW 100kw/145m, 30-09-00/102-24-09
 TX Sanger 89.7 KAWA PG>95kw/572m; PC
 TX Sherman 92.3 K222CD PG>250w, 33-30-55/96-36-51
 TX South Houston 92.5 KJJG-LP PG<25m, 29-38-01/95-13-12
 TX Stanton 105.9 KXQT NW 50kw/117m, 31-57-38/101-58-23
 UT Cedar City 92.5 K223CN XG 37-38-54/113-05-31
 UT Logan 93.3 K227CO PG>99w, 41-48-44/111-47-30
 UT St. George 104.5 K283DB NS 200w, 37-04-06/113-31-04 (KDXU-890)
 UT Tremonton 88.1 KUAO PG>8.6kw/359m, 41-53-43/112-04-43
 VA Blackstone 92.7 W230BW QC from 93.9, 230w
 VA Charles City 89.7 WNVU PC>27kw/70m, 37-31-40/77-22-48
 VA Chester 92.7 W224EB NW 250w, 37-22-53/77-25-38 (WNTW-820)
 VA Christiansburg 93.1 W226AT PG<45w
 VA Reston 98.3 W252DC PG<150w, 38-53-45/77-08-08
 VA Richmond 101.7 W279BA QG from 103.7, 250w, 37-32-15/77-26-11 (WVNZ-1320)
 VT Brattleboro 99.5 W258DQ NW 99w, 42-53-20/72-36-46 (WTSA-1450)
 VT Northfield 88.3 WNUB-FM PG 270w/-113m, 44-08-24/72-39-36; PC
 WA Brewster 99.3 K257DN PG>250w, 48-04-00/119-48-42
 WA High Rock 107.3 KWJZ-LP PC>30m, 47-47-23/121-57-39
 WA Kennewick 106.9 K297BE QG from 107.3, 250w (KOFO-100.1 Pasco)
 WA Prosser 95.3 K237GY NW 205w, 46-11-12/119-45-13 (KZXR-1310)
 WA Republic 103.5 K278CS NW 250w, 48-39-06/118-43-18 (KOMW-680 Omak)
 WA Walla Walla 98.7 K254DK PC<34w
 WA Yakima 88.5 KYVT PG>650w/258m



DX Pets

**“Having your pet sit on your SDR or climb across your keyboard as you DX really increases your enjoyment of the hobby”
-anonymous**



These two are Amber and Molly, and belong to Frank Aden.



And here we have Sunshine (L) and Billy Bob (R). These curious guys belong to Tommy Adair. We found both cats complaining about the lack of empty sleeping space on the shelves behind them and plotting to toss some of the receivers to the floor.

Want your pets photo here? Send a picture to mikeb@wtfda.org

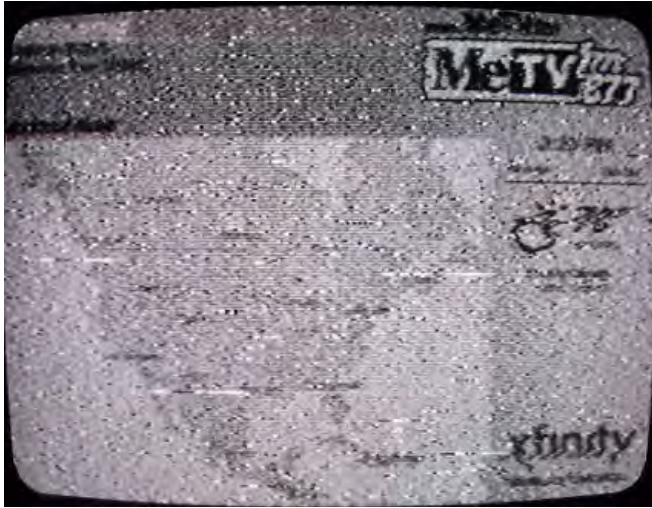
PHOTO NEWS



March 2019

Jeff Kruszka
1909 Lost Lake Pl.
Pearland, TX 77581
jkruszka@sbcglobal.net

A few more from Danny Oglethope in Shreveport, LA:



WRME-LP-6 Chicago, IL
735 mi Es
Seen 6-6-18 @ 1500 CT
"MeTV fm 87.7"



K04QP-4 Casa Adobes, AZ
1004 mi Es
Seen 6-20-18 @ 1410 CT



CKYB-4 Brandon, MB
1234 mi Es
Seen 6-4-18 @ 0859 CT
"Red River EX (Exhibition)"

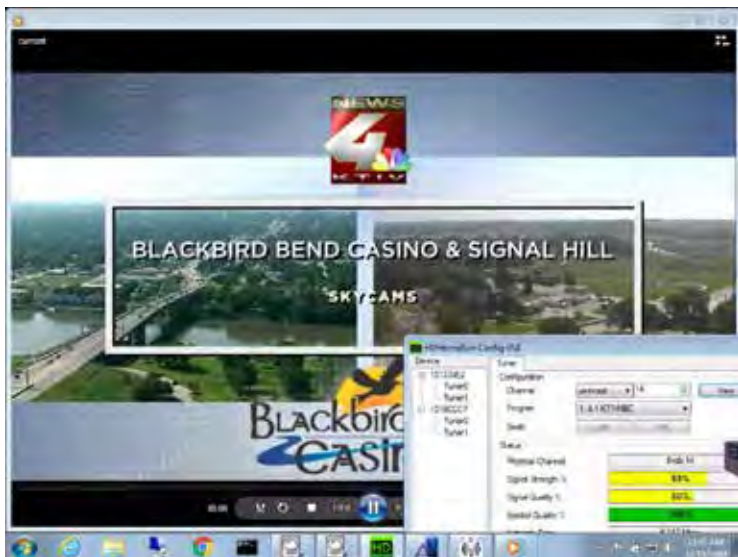


YSWR-2 San Salvador, ES
1322 mi Es
Seen 7-13-18 @ 1010 CT



YSWA-6 San Salvador, ES
1322 mi Es
Seen 7-9-18 @ 1830 CT

And here's one from Steve Rich from his remote DX site in Milford, IL:



KTIV-14 Sioux City, IA
464 mi Tr
Seen 12-15-18 @ 1200 CT



Coast to Coast TV DX

Featuring reports from the entire United States and all of Canada.

Send reports by the 15th of each month to:
Nick Langan
42 Holly Park Drive
Tabernacle, NJ 08088
E-mail: nickl@wtfda.org

The Editor's Note

For the Northwest and Upper Midwest, it's been a long, cold stretch of winter that does not look to break anytime soon, while March also seems to be the new favorite month for snow across the Northeast. Yes, not exactly inspiring images of conditions prime for DX anywhere, but take solace in the fact that we are a mere two months away from being able to reasonably watch for E-skip.

We have reports submitted to WTFDA forum from Roy Barstow and Doug Allen inside this edition of C2CTVDX.

Roy Barstow

Falmouth, Cape Cod, MA

2/5 Tr
At 9:30 AM -

16 WHRO VA. in and out.
23 NJTV
28 MD.
52 NJTV
63 WMBC- With many sub-channels. 63-12 WBTK
65 WEDY

At 10:30 AM

3-12 WTKR, 10-12 WAVY, and 13-12 WVEC.
16 WHRO VA. now with a stable signal.
33 WTVZ VA.
40 NJ.
48 TBN- believe NJ.

Maybe more later.

Doug Allen K4LY

Inman, SC EM85wb

2/19 Tr
New loggings yesterday morning, 2/18/19 of WMPV-20 Mobile AL at 443 miles and WJTC-45 Pensacola at 442 miles, plus many relogs of 200 and 300 mile closer in stations. Using 4 bay CM antenna at 80' plus RCA preamp.

I've also recently logged several Orlando stations at 440 miles, but they are almost regular here spring and fall.



TESTS PROVE IT!

• ELIMINATE MISMATCH
With Adjustable Impedance

• GET HIGHER GAIN
With Wider Spaced Elements

CHANNEL MASTER'S

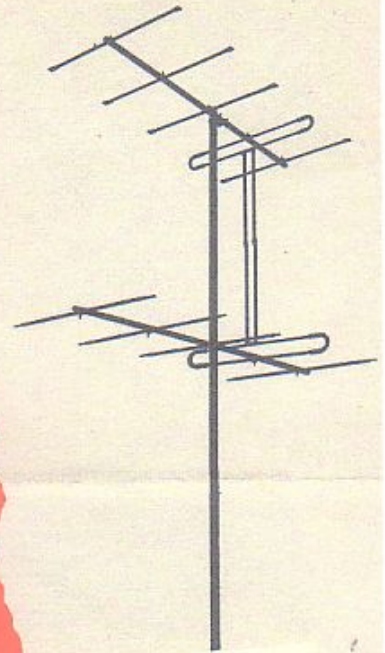
WONDERFUL NEW

Z-MATCH YAGI*

An entirely new antenna development that achieves
100% perfect match to 300 ohm line, in single or
stacked arrays.



* PAT. APPLIED FOR



Z-Match — The Yagi That Has Everything!

- Higher Gain On All Installations.
- Adjustable Impedance.
- BOTH Single And Stacked Yagis Match 300 ohms Perfectly.
- Outperforms Standard Yagis.
- Longer Crossarm (.6 wave length on low band; .8 wave length on high band) Means Higher Gain, Narrower Lobe, And Better Rear Rejection.
- 100% Gain In Stacking.
- No Extra Stacking Bars Needed.
- A Product Of Channel Master Research.

Read

the FACTS about Yagi Mismatch as published
in Radio and Television News.

SIGN UP & Renewal Form
YEARLY DUES \$10.00 USD for Monthly VUD E-ZINE
 Print this form and send it with your dues.

Name _____

Address _____ Apt # _____

City _____ State/Prov _____ Zip _____

Country _____ Interests: TV () FM () 30-50 () Weather ()

E-Mail Address _____

Sign me up/renew me for: 1 year () 2 years () More () _____

Mail your yearly dues to: WTFDA, P.O. Box 501, Somersville, CT USA 06072
Make your checks/money orders payable to: WTFDA
And thanks for your support of the WTFDA!

FM FACILITIES CONTINUES FROM PAGE 29

- WE Moundsville 97.7 W249DU NW 60w, 39-54-18/80-46-43 (WVLY-1370)
- WI Berlin 104.7 WZOS PG>6kw/100m
- WI Eau Claire 89.7 WUEC Correct coordinates to 44-48-00/91-27-56
- WI Merrill 104.1 WXVM PC 8.3kw/144m, 44-53-16/89-39-02
- WI Milwaukee 101.3 WPJQ-LP PG 43-05-41/88-00-36 (Faith Church, 77th & Hope Ave.)
- WV Weirton 100.9 W234AV QG from 94.7, 180w, 40-15-14/80-50-35; CL from Punxsutawney, PA. (WEIR-1430)
- WY Cheyenne 104.1 K281DD XG 41-08-09/104-48-07 (KRKA-103.9 Severance, CO.)
- WY Douglas 88.1 KRKY-FM QG from 88.7, 23kw/101m
- WY James Town 93.5 KREO PG>2.34kw/323m
- WY Pine Bluffs 95.5 KYWY NW 9.2kw/160m, 41-25-29/104-07-45

FM NEWS CONTINUES FROM PAGE 25

YT Whitehorse 96.1 CKRW-FM
 New station signs on with
 Adult Contemporary: 'The
 Rush' moving from 610 kHz



A Bit O' News:

Colonial Radio Group, Inc. is selling the following stations to On Air, Inc for \$615,600:

- Country WAGL 103.9 'The Eagle' Eldred, PA (includes WAGL-FM1 Bradford, PA)

- Classic Country WTTT 96.7 'Eagle Country Throwbacks' Portville, NY (includes W256BS 99.1 Olean, NY)
- Adult Hits WXMT 106.3 'The Mountain' Smethport, PA (includes WXMT-FM1 Bradford, PA and W254BQ 98.7 Olean, NY) Colonial Radio Group stations on 99.1, 98.7 and 96.7 are off-the-air at this time.

- Thanks to **Dave Nieman** Bradford, PA