



VHF-UHF

The Magazine for TV and FM Dxers

DIGEST

June 2019



The Official Publication of the Worldwide TV-FM-DX Association



The 2019 Es Season Gets Tuned Up!

"This just in - those Ontario guys nab the first FM Es of the 2019 season. And on a similar note, recently repacked WHDF 2 Florence, Alabama makes landfall in Grimsby ON, on WTFDA member Bill Hepburn's LG TV!"

BREAKING NEWS

WTFDA BB - May 10 14:02 Es 88.9 WDNA Miami, FL. with Legal ID in News. Nice Fade Up 1st FM Es of the Season! de Rob-va3sw ON En92

WTFDA NEWS

IN THIS ISSUE

The First Dongle for Cuban DTV
Phase 3 Repack Results
PHASE FOUR OF THE REPACK STARTS THIS MONTH!
DID YOU MISS THE MAY E SKIP? YOU'RE NOT ALONE

THE VHF-UHF DIGEST

THE WORLDWIDE TV-FM DX ASSOCIATION

Serving the UHF-VHF Enthusiast

THE VHF-UHF DIGEST IS THE OFFICIAL PUBLICATION OF THE WORLDWIDE TV-FM DX ASSOCIATION DEDICATED TO THE OBSERVATION AND STUDY OF THE PROPAGATION OF LONG DISTANCE TELEVISION AND FM BROADCASTING SIGNALS AT VHF AND UHF. WTFDA IS GOVERNED BY A BOARD OF DIRECTORS: DOUG SMITH, KEITH MCGINNIS, JIM THOMAS AND MIKE BUGAJ.



Treasurer: **Keith McGinnis** wtfda.org/info *Webmaster:* **Tim McVey**
Forum Site Administrator: **Chris Cervantez**
Editorial Staff: **Jeff Kruszka, Keith McGinnis, Fred Nordquist, Nick Langan, Doug Smith, John Zondlo and Mike Bugaj**



Your WTFDA Board of Directors

Doug Smith
dougs@wtfda.org

Mike Bugaj
mikeb@wtfda.org

Keith McGinnis
nfmdx@wtfda.org

Jim Thomas
Jim-T@wtfda.org

Renewals by mail: Send to WTFDA, P.O. Box 501, Somersville, CT 06072. Check or MO for \$10 payable to WTFDA.
Renewals by Paypal: Send your dues (\$10USD) from the Paypal website to sales@wtfda.org or go to <https://www.paypal.me/WTFDA> and type 10.00 or 20.00 for two years in the box.

Our WTFDA.org website webmaster is Tim McVey, webmaster@wtfda.org. Our WTFDA Forums webmaster is Chris Cervantez, Chriscervantez@gmail.com. Fred Nordquist is in charge of club statistics at nordquis@homesc.com

Our email reflector is on Googlegroups. To join, send an email to WTFDA+subscribe@googlegroups.com
Visit our club website at <http://www.wtfda.org> . Participate in our forums at <http://forums.wtfda.org>.

Our real-time (prop logger) bulletin board is located at <http://wtfdadxbb.vci.net>. Only WTFDA members can participate.

You can find WTFDA on Facebook. Our group is called [TV and FM Dxing](#). This is a public group. We also have a private group called [WTFDA](#). This group is just for WTFDA Members.



The WTFDA FM Database is administered and updated by your fellow WTFDA members. It is completely free to use. You can find it at <http://db.wtfda.org>. Only the FCC and Radio-Locator top us on Google searches.

FM Radio Station Database

db.wtfda.org/ ▼

Database of US Canadian Mexican Central American and Caribbean FM Radio Stations.



The Mailbox

P.O. Box 501 Somersville, CT 06072
Mike Bugaj - Enfield, CT mikeb@wtfda.org



DUES RECEIVED

DATE	NAME	S/P	EXP
4/27/2019	Nick Langan	NJ	4/20
5/8/2019	Rich Lucas	NY	6/20
5/8/2019	Fred Nordquist	SC	5/20
5/15/2019	Dan Dankert	CA	5/20
5/15/2019	Paul Snider	ON	5/20
5/16/2019	Mike Glass	IN	4/20
5/18/2019	Dan Oglethorpe	LA	5/20
5/18/2019	Peter Laws	OK	6/20
5/18/2019	Michael Temme-Soifer	NJ	5/20
5/18/2019	Kurt Nelson	PA	5/20
5/19/2019	Jon Klingerman	PA	5/20
5/19/2019	Doug Allen	SC	5/20
5/20/2019	Heidi Roach	PA	9/20
5/20/2019	Rod O Connor	ME	5/21
5/20/2019	Jerry Bond	NY	5/20
5/20/2019	Ed Phelps	KY	5/20
5/20/2019	Owen Wood	PA	5/20
5/29/2019	Sheryl Paszkiewicz	WI	5/20
5/29/2019	Chad Bryan	OH	4/20



WHERE IS THE SKIP?

That's the question on everyone's minds; just where is the Es this season? Nobody ever said that May would be one of the best months of the year for E skip...far from it, but excluding the little bit of 6 meter and A2 skip so far, the season seems pretty bleak. Of course, it could all turn around in June, and it probably will. But still there are those Dxers out there moaning and groaning and complaining about the season being a washout. Just hang in there for a little bit. If the season doesn't improve by the end of July then you'll know we're in trouble.

Thanks to everyone for renewing and showing your support of the WTFDA!

ONE LOG HE MISSED

Doug Speheger sent in the following: I saw your post about the Mar FM log you got 23 years after the fact. Although not as exciting as logging a double-hop (which I still have yet to do), but I did have one station I officially logged 14 years after I heard it. I was getting back into town after a storm chase on 4/17/2002 and made a note in my chase log that I trying to pick up 97.3 in Weatherford OK to hear if the late storms were doing anything out there, but was instead picking up "Topeka's 97 County" which turned out to be WIBW/97.3/Topeka KS (270-280 miles away). Going through my chase logs for something else in 2016, I saw that note and wondered if I had ever logged them in my radio database. And I hadn't. It still took some digging as WIBW moved to 94.5 later in 2002. -Doug Speheger

THE REPACK KEEPS REPACKING

June 22nd is the big day for folks on the east coast as Phase 4 of the repack begins. By the time August 2nd rolls around Dxers around these parts will finally know how bad the damage to the TV bands will be and whether it will be worth the effort to DX TV any longer. That is, if we already don't know.

* WQED will move to channel 4 between June 27th and July 1st according to a tweet from WQED on Twitter (Andrew Knafel).

And on the ATSC 3.0 scene, WJAR in Providence will begin broadcasting ATSC3.0 by November 1st.



Joe Fela passed away at the age of 76. He lived in South Plainfield, NJ. He was a DXer and WTFDAer for many many years and didn't leave the club until IBOC killed the FM band there and he just gave up and quit.

Joe and I were always in contact. He'd call me when midwest tropo was up and sometimes I'd call him when I noticed Es. This was before the internet, if you can imagine. I drove down to his house in South Plainfield a few times when he hosted local get-togethers. He DXed with a McIntosh MR78, which was the only tuner that could cut through all the NYC/Philly FM garbage where he lived. I always wanted one. He introduced me to antenna phasing and I loved to play with his Bolin phase box and I imagined what it would do at my house. He came up here to my home once or twice when pinball conventions were held in town and I always saw him at NRC conventions when the club hosted them in Enfield at the old Harley Hotel. He genuinely was a nice guy.

Joe was also crazy about pinball machines. He was sort of a "pinball wizard". Even back in the 80s he had plenty of pinball machines in his house. When I found machines at flea markets I'd send him photos of them but he would tell me that he already had them. Pinball took the place of FM DXing. He also did some AM radio DXing, but pinballs were his real love.

I found a bit of information about Joe in pinball forums This is from pinside.com posted by one Mike-K: "Sorry to say that another pinball lover has moved on. Joe Fela from South Plainfield NJ has passed at 76 years old. He was a die hard pinball collector that like most of us had more machines then he would ever get to. He had a massed around 170 machines in his collection, From 1953 through 2015. He had to sell a bunch to cover his living expenses over the last few years, mostly the more expensive digital's. Still can't believe he got 6 grand for his Joust! He was feeling weak and went to the hospital for some test and 8 days later was gone. Wanted to let the people that remember him know, as he could not make the Allentown or York show for at least the last 8 years. His size and legs could not do it anymore. He told me when I first met him in 1992 that he bought his first machine around 1982 , High Hand. Like all of us he had plenty of stories of machines he should NOT have bought and the ones he wish he did! That second one we all have a story to tell. I have at least 5 machines I wish I did not walk away from 😞RIP Joe, I hope they DO have that perfect Gameroom in the sky!"

And I hope that the FM dial is less congested up there so he can get back to one of his favorite hobbies, FM Dxing. I know he hated IBOC with a passion. I hope there's no IBOC up there either. RIP.

And that's all for this month.



Repack Rolls Into Phase 3 Despite Some Delays

Phase 2 of the FCC's 10-phase schedule to move stations to new frequencies following the FCC's incentive auction went fairly smoothly according to both the FCC and vendors involved in getting the necessary new equipment in place. Out of 115 stations slated to move in Phase 2, only 13 missed the April 12 deadline and, of those, four have since made the transition. The FCC grants of phase changes and STAs are helping keep the repack on track, says Don Doty of tower firm Stainless. "I have to compliment a government agency that said it was going to be flexible and then followed through."

by Harry A. Jessell and Glen Dickson May 2, 2019 11:57 EDT



The second phase of the FCC's post-incentive-auction repack of the TV band ended on April 12 with only minor slippage in the tight 10-phase repack plan, according to Jean Kiddoo, head of the commission's Incentive Auction Task Force.

After some shuffling of stations of between phases, 115 stations were slated to shift to new channels in Phase 2. Of those, Kiddoo said, 102 made the deadline and 13 others bought more time by getting FCC approval to move into later phases — 12 into Phase 3 and one into Phase 5.

Kiddoo downplayed the phase-shifting, saying the 13 stations' moves to their new channels were "virtually complete" when the deadline came. "They were waiting for delivery of one thing or another just to finish it off."

In fact, she said, four the 13 have completed their moves since the deadline, leaving only nine still behind the original schedule as of yesterday.

The FCC has also greased the process by liberally granting Special Temporary Authority to stations to broadcast on interim antennas if they fall behind on the work on their permanent antennas. According to an FCC spokesman, 18 STAs were granted in Phase 2.

The interim antennas usually degrade coverage, but they allow stations to vacate their old channels and meet their phase deadlines. The FCC's principal goal is to vacate the old channels so they can clear the wireless spectrum.

All in all, Kiddoo says, "we are very pleased" with the progress of the repack.

Following the incentive auction, in which the FCC sold 70 MHz of TV spectrum to wireless carriers and split the proceeds with broadcasters, the FCC had to repack — or reorganize — the TV band to segregate the remaining TV spectrum from the newly allocated wireless spectrum.

The repack plan devised by the FCC involves moving 987 stations to new channels in 10 phases over three years ending in July 2020. As of yesterday (May 1), Kiddoo said, the repack is 50 stations ahead of schedule with 253 of 987, or 26%, having made their moves.

But Kiddoo acknowledged that she can make the "ahead-of-schedule" boast mostly because of T-Mobile's "Phase Zero" program, in which the wireless carrier (and major auction winner), paid broadcasters to move early, prior to Phase 1.

An FCC spokesperson added that the repack got off to fast start also because all the stations in Puerto Rico moved early as they rebuilt their transmission facilities in the wake of Hurricane Maria that struck the island in 2017.

Kiddoo said she does not anticipate any major delays in the remaining eight phases.

“We have already begun our outreach to Phase 3 and Phase 4 stations,” she said. “We’ve have not had any waiver requests or anything like that.”

Consulting engineers, tower companies and RF equipment vendors that are involved with the work of reinforcing towers and installing or moving antennas have expressed concerns that they may not be able to keep pace with the FCC schedule as the deadlines of upcoming phases shorten.

But Kiddoo said she was confident broadcasters can keep to the schedule as it moves into the critical summer phases.

“Our transition plan was very comprehensive in terms of taking every factor we could conceive of into account. We took resource restraints like tower crews into account. We took weather into account. We tried to avoid hurricane season in some places and blizzard season in others.

“The broadcasters are working with each other. I think there has been an effort in a lot of the markets for stations to coordinate so they transition at the same time so viewers are rescanning at the same time.

“There are always surprises and we will deal with those as they come, but we can’t anticipatorily predict that that is going to happen.”

In one sense, the later phases have more time since all stations got the repack schedule at the same time in 2017, Kiddoo said. “They had their channel assignments even before the auction ended.”

The FCC has been winning praise for accommodating broadcasters with phase changes and STAs.

“We met all of our [internal] target dates, with the exception of one project where we had a delay,” says Don Doty, business development manager at tower firm Stainless. “The FCC professed to being flexible, and they were flexible — it was not a case of poor planning, but issues that were outside of the station’s control and our control.”

The exception was a project in Columbus, Ohio. Work has been delayed there because of trouble in Oklahoma, he said.

“If it wasn’t snowing or icing [in Oklahoma], then it’s wind. If you look at the weather forecast for last week and this week, it’s 10 days straight where there was always rain. And because the weather is volatile, the wind is always roaring, which is a problem when you’re working at 1,500 feet.

“I have nothing but praise for the FCC, for putting into action what they were saying they were going to do,” added Doty. “I have to compliment a government agency that said it was going to be flexible and then followed through.”

The Phase 2 stations that missed their deadline and slipped into Phase 3 include **WOHL-CD Lima, Ohio**; KNMT and KATU, both Portland, Ore.; KVLV Fargo, N.D.; KSHV Shreveport, La.; KOPX Oklahoma City; KALO Honolulu; KBCA Alexandria, La.; KTMD Galveston, Texas; KZJL and KYAZ, both Houston; and KTBU Conroe, Texas.

KONKA has a dongle that you can use to watch Digital TV on your mobile or PC (+ Photos)

Jorge Noris / @jorgenoris May 17, 2019

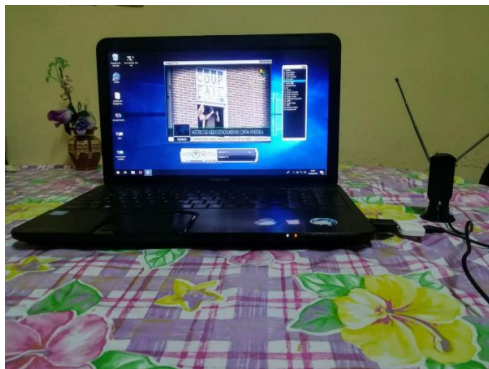


Digital TV has arrived in Cuba to stay and several are the set-top boxes - "boxes" - that have been technically certified [by LACETEL](#). Various types and shapes, hybrid televisions and even set-top boxes with Android, but the KONKA dongle is the first one that will allow you to watch

How many has not happened to them that for reasons other people are not at home and you miss that favorite soccer game or TV show? With this Dongle you will have Digital TV in your pocket.

This device developed by KONKA together with Tiendas Caribe, has a rather small design, where we only find a micro USB connector and at the other end the opening to connect the antenna.

In its box comes with the *dongle* two antennas, a mustache with a suction cup to put it on a table, and a clip to hang it on the screen of the laptop or PC. It also has a grab antenna in case you want to watch TV on your mobile while you are away from home. It also has a micro USB to USB adapter to connect it to the PC, an adapter to connect an outdoor antenna.



On the operating system, we will have to see how the software necessary for both Windows and Android is finally distributed. In the case of mobile devices or tablets, [Apklis](#) could be of help to share the application.

In addition to the *dongle*, the user must install an application on their smartphone to watch digital television, and their phone must be compatible with **OTG (On the go)**. You must also have Android 4.4 or higher to install the KONKA TV application.

The version for Android terminals. Once the application is installed, we connect the dongle and the user must scan to find the available channels (only the first time). After the initial configuration of the first time, the application will run automatically as soon as the dongle is connected.

With this device, you can watch TV or listen to the radio, in the case of those who do not have FM Radio incorporated in their terminal. Also, once the application is open we can choose the channel of our preference, or even record the program on our smartphone.





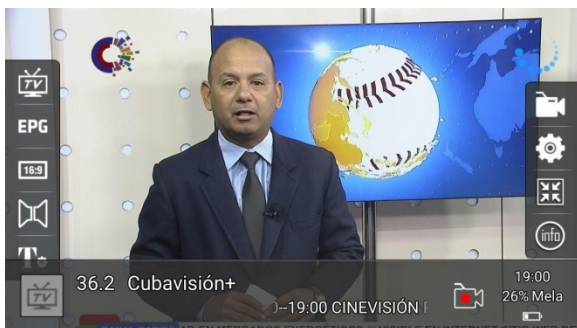
The Digital TV signal arrives on the PC The PC version is as easy as a video player. Not only can we watch Digital TV on our TV or Android device, we can also access it from the computer thanks to the KONKA dongle. The only requirement is to have Windows 7 or higher.

The program to watch TV is not different from any video player, it has a panel where you will control the actions of the same and a window where the selected channel will be played.

As in the Android application, you will have to scan the signal to find the channels, it would have been good if this was done automatically, but at least in this version of the software you must do it manually.

Obviously the quality of the image will depend on the quality of the signal. In the panel you will always see how it behaves, as well as the possibility of accessing the Electronic Program Guide and the data broadcasting service.

You can also record the programming directly on your PC, open a small window if you are waiting for a program or if you simply want to know how the ball goes at the time of the novel.



This device does not come to replace the traditional set-top boxes unless you have the PC connected by HDMI cable to the TV, but it does complement those moments when you do

I think this phrase: "Some program on another channel ..." could be more technically adjusted to the concept of TVD. Actually, the receiver tunes 1 channel. All the TVD and Radio Programs are present on this channel (eg: 38.1, 38.2, 38.3 ...,

but always the tuner **MUST** be on the 38 for example). You can see 38.1 and 38.2 etc. provided you do not leave the 38. For example, you cannot see 38.1 and at the same time an HD channel because they are on another frequency (36 for example) Therefore, in the TVD the concepts of CHANNEL and PROGRAM are different from what is usually said. You could try to say something like: "... if you are waiting for some other digital program within the same channel, for example, if you want to know how the ball goes at the time of the novel.

It is as small as a Cuban peso.



Note: This article appears at <https://tinyurl.com/y4stnegn>. It was originally written all in Spanish. Translation was done by Google translation. The link was supplied by Chris Dunne posting on the WTFDA Forums (<http://forums.wtfda.org>).

TV News

Douglas E. Smith
 1389 Old Clarksville Pike
 Pleasant View, TN
 37146-8098
w9wi@w9wi.com
<http://www.w9wi.com>



June 2019



Location	RF Ch	Callsign	Notes
Alabama			
Alexander City	16	W16DV	Granted power increase to 8kw/132m, 32-44-11/85-29-54.
Demopolis	25	WJMY-CD	Granted STA 1.44kw/214m.
Gadsden	26	WTJP-TV	Returned to full power Feb. 20th, but returned to reduced power (less than 80%) Apr. 25th pending further transmitter repairs. Back to full power May 22nd.
Greenville	35	NEW-lptv	Application for new station dismissed. Would interfere with WBIH (34) Selma & WKNI-LD (35) Andalusia.
Hoover	45	WPXH-TV	City granted from Gadsden; 300kw/318m, 33-29-02/86-48-21.
Montgomery	17	WOFC-LD	From 38, 15kw/64m, 32-19-42/86-16-12; amendment from ch. 30; denied for procedural reasons. See below.
Montgomery	22	WCOV-TV	From 20, 670kw/528m.
Montgomery	26	WIDB-LD	From 15, 8.2kw/59m, 32-19-42/86-16-12; granted.
Montgomery	32	W45DS	From 45, 15kw/93m.
Tuscaloosa	22	WEEL-LD	From 47, 15kw/127m, 33-13-07/88-05-47; amendment from ch. 33. Amendment denied. Reason not given, but probably same as WOFC-LD Montgomery.
Tuscaloosa	26	W26FC	From W40DL, 15kw/127m, 33-13-07/88-05-47; granted.
Tuscaloosa	34	W34FN	From W44DQ, 15kw/127m; granted.
Alaska			
Anchorage	33	KDMD	Requests power increase to 34.28kw/300m; granted.
Arizona			
Globe	25	KFPB-LD	Moved from 50, 5.5kw/477m.
Kingman	25	K25QE	Request to change to 15kw/95m, 35-11-29/114-03-17 (major change) dismissed. Insufficient information provided to determine whether FAA tower registration is required, and station didn't reply to request for further information.
Arkansas			
El Dorado	20	K20OC	From K18AB, 9.2kw/50m; granted.
Fayetteville	19	KJNM-LD	From 25, 15kw/114m dismissed.

Location	RF Ch	Callsign	Notes
Fort Smith	5	KQRY-LD	From 43, 3kw/242m, 35-47-49/94-10-05; granted & moved.
Fort Smith	20	K20OL	From K40LK, 15kw/45m, 35-30-18/94-14-23; granted.
Fort Smith	22	K22OC	From K49MR; granted.
Fort Smith	29	KKTN-LD	From 23, 15kw/45m, 35-30-18/94-14-23; granted. Call changed from K23KT.
Paragould	34	K33MV	From 33, 15kw/137m, 36-16-41/90-23-44.
Pine Bluff	34	KASN	Moved from 39.
Springdale	14	K40NE	From 40, 15kw/132m. Dismissed.
California			
Bakersfield	45	KABE-CD	Requests STA 15kw/397m, 35-26-20/118-44-27; to temporarily share on co-owned KUVI pending completion of new tower for both stations. Suspect a typo, it should probably be 620kw/404m. Granted.
Ceres	15	KBSV	Requests power reduction to 500 watts/41m, 37-35-21/120-57-27.
Clovis	27	KGMC	From 43, 385kw/584m, 37-04-19/119-25-53; granted & moved. Requests STA 205kw/648m; granted.
Fort Jones	13	K13HU	Converted to digital, 6 watts/360m.
Indio	8	KVPS-LD	Requests power increase to 300 watts/-116m, 33-42-52/116-12-38. Granted & increased.
Los Angeles	3	KVHD-LD	From 40, 700 watts/861m.
Mission Peak	26	KTVU-DRT	From 48, 2.15kw/655m, 37-29-17/121-52-03.
Modesto	27	K27OT	From K31MN; granted.
Monterey	24	KMCE-CD	Requests site change to 37-03-28/121-46-34.
Oroville	29	K29NU	Application for Digital Companion Channel for K08NH; 5kw/5m. Granted.
Palermo	4	K04QC	Requests conversion to digital, 3kw/5m.
Petaluma	28	KQRM-LP	Requests change to 12.5kw/410m. (sharing on KCNZ-CD S.F.) Granted. Requests further change to 15kw/383m.
Redding	10	KMCA-LD	Power increased to 175 watts/163m, 40-32-40/122-30-06.
Sacramento	11	NEW-sta	Application for experimental STA dismissed.
Sacramento	20	K20JX	Requests power increase to 15kw/117m, 38-38-53/121-05-54.
Sacramento	21	KSPX-TV	From 48, 1000kw/445m, 38-14-50/121-30-07; granted.
Salinas	4	K04RS	OFF May 4 th . Unable to receive input signal from KQRO-LD; can't get Internet access to feed that way. Moved from 51.
San Diego	16	KDTF-LD	Moved from 51.
San Francisco	28	KCNZ-CD	Requests change to 12.5kw/410m; granted.
San Francisco	28	KMTP-TV	Requests change to 12.5kw/410m; granted. (sharing on KCNZ-CD)
San Francisco	28	KOFY-TV	Requests change to 12.5kw/410m; granted. (sharing on KCNZ-CD)
San Jose	23	KSCZ-LD	From 20, 15kw/678m; granted.
San Luis Obispo	12	K12QZ	Power increased to 2.98kw/136m, 35-09-24/120-38-14.
San Rafael	4	KQSL-LD	Granted site change to 37-45-19/122-27-10. (Mt. Sutro, San Francisco)
Twentynine Palms	23	KVMD	Application for two-site Distributed Transmission System. DTS #1: 201kw/779m, 34-02-17/116-48-50. (Snow Peak, Banning) DTS #2: 165.9kw/890m, 34-12-48/118-03-44. (Mt. Harvard, Altadena)
Coahuila			
Villa Hidalgo	23	XHLNA-1	Permit granted for new shadow, 1.15kw/-1m, 27-47-28/99-52-32.

Location	RF Ch	Callsign	Notes
Colorado			
Colorado Springs	25	KZCS-LP	OFF May 6 th pending completion of displacement facilities.
Denver	30	KLPD-LD	Moved from 28, 15kw/231m.
Denver	30	KZCO-LD	Moved from 17, 15kw/231m, 39-43-46/105-14-10; sharing on KLPD-LD.
Gateway	9	K09ZS	Moved from K13IF, 20 watts/542m.
Gateway	16	K16MR	Moved from K45IT, 100 watts/542m.
Gateway	23	K23NX	Moved from K47JR, 100 watts/542m.
Gateway	25	K25PC	Moved from K49IO, 100 watts/542m.
Mesa	17	K17NI	Moved from K31DW.
Mesa	33	K33PB	Moved from K41AE, 750 watts/895m.
Mesa	35	K35NQ	Moved from K43AB.
<i>Pagosa Springs</i>	43	<i>K43GT</i>	<i>Returned to the air May 30th. Analog.</i>
Pueblo	14	K14SS	From K43NE, 15kw/86m, 37-59-15/103-34-04; granted.
Pueblo	21	KGHB-CD	Moved from 27.
Pueblo	32	K32OG	From K41ME, 15kw/86m, 37-59-15/103-34-04; granted.
Pueblo	33	K33QI	From K38ND, 15kw/86m, 37-59-15/103-34-04; granted.
Windsor	36	KZFC-LP	OFF May 6 th pending completion of displacement facilities.
Wray	15	K15MD	Moved from K39LU.
Wray	16	K16NH	Moved from K41MT.
Wray	31	K31IH	Returned to the air May 1 st .
Wray	39	K39LU	Returned to the air May 1 st .
Wray	41	K41MT	Returned to the air May 1 st .
Connecticut			
Stamford	49	WEDW	Granted city-of-license change from Bridgeport.
Florida			
Destin	27	W22EV	From 22, 15kw/62m, 30-30-48/86-27-54.
Fort Myers	27	WLZE-LD	From 20.
Gainesville	25	WJXE-LD	Calls changed from WFEO-LD.
Gainesville	33	WBXG-LD	License canceled.
Miami	8	WVFW-LD	From 34, 3kw/254m, 25-59-10/80-11-36; granted.
Miami	18	W18EU	From W17DG, 15kw/248m; granted.
Orlando	4	WVCI-LD	From 16, 3kw/106m, 28-35-40/81-25-12; granted.
Orlando	25	WFEF-LD	OFF Apr. 30 th pending restoration of Internet feed. Returned to the air May 9 th .
Panama City	14	W44DL	From 44; amendment from ch. 15; denied. See WOFC-LD Ala.
Panama City	15	W50ER	From 50, 15kw/50m, 30-07-37/85-35-25. Dismissed.
Panama City	27	W27EO	From W43DQ, 15kw/50m, 30-07-37/85-35-25; granted.
Panama City	31	W31EP	From W33DA, 15kw/60m, 30-07-37/85-35-25; granted.
Panama City	35	WECP-LD	From 29, 15kw/331m.
Port St. Lucie	21	WSLF-LD	From 35, 15kw/124m.
St. Petersburg	44	WTOG	Requests STA for 417kw/452m, 27-50-52/82-15-49; interim pre-repack antenna pending completion of post-repack facility. Granted.
Tallahassee	7	W29EQ	From 29, 2kw/116m.
Tallahassee	43	WBXT-LD	License canceled.
Wabasso	11	W11DH	Granted power increase to 3kw/64m, 27-33-19/80-22-06.
Georgia			
Albany	26	WDRJ-LD	From 17, 15kw/95m, 31-26-44/84-07-54.
Albany	28	WFDY-LD	From 24, 15kw/122m, 31-34-41/84-11-06; amendment from ch. 32. Dismissed. Not displaced, and thus not eligible for displacement window.

Location	RF Ch	Callsign	Notes
			Refilled for 9kw/109m at same site.
Albany	32	WDRJ-LD	From 17, 1kw/95m; dismissed.
Albany	36	WGCW-LD	Requests power increase to 5kw/88m; granted.
Atlanta	3	WTHC-LD	From 42, 3kw/93m, 33-25-57/84-26-25; granted.
Atlanta	20	WPCH-TV	Requests STA 805kw/330m, 33-44-41/84-21-36; interim pre-repack antenna on alternate tower pending completion of post-repack facilities.
Atlanta	30	WBUD-LD	From 36, 15kw/178m, 33-48-26/84-20-22; granted.
Augusta	34	W43CX	From 43, 15kw/127m; dismissed.
Augusta	35	W35DV	From W41DW; granted.
Columbus	10	W25EM	From 25, 3kw/53m, 32-23-54/84-55-54.
Columbus	23	WUED-LD	From 24, 15kw/94m, 32-30-44/85-00-41; granted.
Columbus	31	WRDP-LD	From 17, 15kw/126m, 32-19-16/84-47-28; dismissed.
Dalton	16	WELF-TV	Application for backup transmitter, 255kw/393m.
Macon	26	WGXA	From 16, 540kw/243m; granted.
Macon	36	W36ED	Requests power increase to 15kw/35m. Dismissed, would interfere with two other applications.
Savannah	20	WHDS-LD	Requests STA 1.02kw/104m, 32-02-43/81-07-21; interim facility pending completion of permanent post-repack facility.
Savannah	46	WXSX-LD	License canceled.
Guanajuato			
Irapuato	31	XHLGG-2	Granted power reduction to 7.5kw/66m, 20-36-24/101-13-57.
Idaho			
Boise	12	KIWG-LD	Calls changed from K15IW. Move to ch. 12 dismissed.
Boise	12	K50LX	From 50, 3kw/779m. Dismissed.
Driggs	13	K13QE	Requests power increase to 40 watts/499m, 43-47-18/110-56-08. Granted.
Payette	17	K17ED	OFF May 23 rd pending replacement of HVAC and transmitter.
Rexburg	20	K20MQ	From K43JD, 170 watts/248m, 43-47-22/111-58-08; granted.
Illinois			
Champaign	14	W26DZ	From 26, 15kw/112m, 39-18-05/88-56-12.
Chicago	24	WFLD	Requests power increase to 1000kw/520m; granted.
Effingham	33	W33EK	From W46ER, 15kw/123m, 39-15-01/88-22-47; granted.
La Salle	32	WSPY-LD	Returned to the air May 22 nd .
Mount Vernon	27	W27EN	From W36EU, 15kw/101m, 38-19-42/88-46-14; granted.
Naperville	35	WWTO-TV	Returned to full power May 3 rd , sharing on WLPD-CD Plano. However, back on reduced power on the 14 th .
Ottawa	18	WAUR-LD	Returned to the air May 22 nd .
Plano	35	WLPD-LD	Returned to full power May 3 rd . However, back on reduced power on the 14 th .
Quincy	17	W17EH	From W43DP, 15kw/158m; granted.
Sugar Grove	40	W40CN	STA for 7.5kw/47m dismissed.
Indiana			
Evansville	15	NEW-lptv	Application for new station dismissed; would interfere with WYYW-CD on the same channel.
Evansville	18	WZDS-LD	From 12, 15kw/34m, 37-57-48/87-36-34; amendment from ch. 35 denied.
Evansville	24	W19DL	From 19, 15kw/11m.
Evansville	30	WELW-LD	From 14; amendment from ch. 35 denied, see WOFC-LD Alabama.
Fort Wayne	31	W04DU	From 4, 15kw/85m; amendment from ch. 28. Dismissed. See WOFC-LD Alabama.

Location	RF Ch	Callsign	Notes
Gary	24	WPWR-TV	Requests power increase to 1000kw/520m; sharing on WFLD Chicago. Granted.
Indianapolis	47	WBXI-CD	Requests STA 4.5kw/238m, 39-53-39/86-12-21; interim pre-repack antenna.
South Bend	36	WHME-TV	Application for pre-repack aux, 85.7kw/184m; granted.
South Bend	42	WNDU-TV	Requests STA 209kw/274m; interim pre-repack antenna pending installation of post-repack unit.
Iowa			
Burlington	21	KGCW	Requests tower height increase to 316m.
Des Moines	16	KDSM-TV	OFF May 17th, transmission line failure. Sadly, a tower worker died on May 22nd after falling from the KDSM tower while trying to repair the line.
Des Moines	24	KRPG-LD	Site changed to 41-49-05/93-12-35 (between Des Moines & Marshalltown)
Fort Dodge	17	KEOF-LD	From 43, 15kw/152m; granted.
Fort Dodge	21	KAJR-LD	Moved from 36 (between Des Moines & Marshalltown)
Fort Dodge	26	KCYM-LD	Moved from 45, 15kw/130m (between Des Moines & Marshalltown)
Keokuk	14	K14SU	From K38OX, 15kw/158m; granted.
Keokuk	29	K29NV	From K30NF, 15kw/117m; granted.
Sioux City	31	K45LM	From 45, 15kw/156m, 42-28-55/96-18-51.
Jalisco			
Barra de Navidad	31	XHNCI-1	From 39, 200 watts/-44m, 19-12-14/104-41-01; granted.
Kansas			
Topeka	16	KAJF-LD	OFF May 22 nd , HVAC system not working.
Topeka	38	KCMN-LD	OFF May 22 nd , HVAC system not working.
Wichita	15	KSNW	From 45, 650kw/313m; granted.
Kentucky			
Bowling Green	35	WCTZ-LD	Power increased to 15kw/321m, 36-16-05/86-47-45 (American Towers, Nashville – same site as WNPX-28) See text.
Louisville	13	WBXV-LP	License canceled.
Louisiana			
Alexandria	45	K45IY	License canceled May 29 th .
Monroe	23	K23OZ	From K47OD, 14.3kw/88m, 32-31-12/92-19-01; granted.
Maine			
Fort Kent	16	W16DA	Requests power change to 3.5kw/22m, 47-08-40/67-57-27.
Portland	15	WGME-TV	From 38, 1000kw/500m; granted.
Maryland			
Salisbury	19	WRUE-LD	Requests power increase to 15kw/136m, 38-06-47/75-39-15. (Pocomoke City) Granted.
Salisbury	20	W20EL	From W48ED, 15kw/95m; amendment from ch. 26 @ 12kw. Amendment denied.
Salisbury	21	WBOC-TV	Requests STA 200kw/205m; interim pre-repack antenna pending installation of post-repack unit. Granted.
Massachusetts			
Boston	5	WFXZ-CD	From 24, 6.7kw/363m, 42-18-11/71-13-05; sharing on WGBH-TV
Boston	20	WBZ-TV	Application for new post-repack aux at alternate site,

<i>Location</i>	<i>RF Ch</i>	<i>Callsign</i>	<i>Notes</i>
Boston	32	WGBX-TV	922kw/350m, 42-18-11/71-13-05. Some sites might say pre-repack on ch. 30, due to a website glitch. Granted.
Boston	39	WSBK-TV	Requestgs power increase to 922kw/388m. Requests STA for 128kw/331m, 42-18-11/71-13-05; interim pre-repack facility pending move. Granted.
Cd. de México			
México	45	XHHCU-	Granted power increase to 179.14kw/542m, 19-32-07/99-07-48.
Michigan			
Kalamazoo	32	WXMI-DRT	Moved from 30, 1kw/123m.
Midland	35	W35DQ	From W42EJ, 7kw/107m, 43-12-00/83-33-30.
Traverse City	36	W36FH	From W19DQ, 15kw/9m, 44-43-54/85-37-21; granted.
Minnesota			
Alexandra (sic)	29	K40LT	From 40.
Duluth	16	K21KZ	From 21, 10kw/160m, 46-47-07/92-07-16.
Duluth	27	KCWV	Returned to the air May 2nd.
Duluth	32	K18KU	From 18, 15kw/159m, 46-47-16/92-07-02; amendment from ch. 28 denied. See WOFC-LD Alabama.
Fergus Falls	8	K08QE	Granted tower height increase to 208m.
Minneapolis	25	KJNK-LD	Requests STA for reduced power of 1kw/243m pending move to channel 8.
St. James	7	K07AAH	From K38MY, 3kw/295m, 43-56-12/94-24-39; granted.
Virginia	22	K22MR	Power reduced to 55 watts/149m.
Mississippi			
Greenville	23	W23FB	From W40DN, 15kw/90m; granted.
Greenville	29	W29FH	From W44DR, 15kw/90m; granted.
Natchez	30	W30CC	Requests power reduction to 100 watts/33m. Will not build CP to move to ch. 6 as W06DD.
Starkville	23	W23FD	From W27DS; granted.
Tupelo	26	W26FF	From W27DW; granted.
Missouri			
Columbia	26	K26KH	Requests site change to 38-47-28/92-17-44; 15kw/193m. (northwest of Ashland) Granted.
Columbia	30	KQFX-LD	Requests digital conversion from analog ch. 32, 15kw/330m, 38-46-29/92-33-23; dismissed.
Columbia	35	K35OY	From K39MB, 15kw/103m, 38-47-54/92-17-22; granted.
Joplin	32	K38DZ	Moved from 38, 351 watts/859m.
Kansas City	32	KSMO-TV	Moved from 47, 750kw/358m.
Springfield	19	KYTV	Moved from 44, 1000kw/624m.
Montana			
Billings	23	K23HI	OFF Apr. 26 th pending conversion to digital.
Billings	25	K25BP	Requests power reduction to 1.48kw/108m.
Bozeman	29	KDBZ-CD	From 42.
Great Falls	17	KJJC-TV	Calls changed from KJJC.
Nebraska			
Hastings	28	KHNE-TV	Operating at reduced power of 4.45kw effective May 28th, pending completion of power increase to 400kw/368m.
Omaha	45	KMTV-TV	Granted STA 497kw/205m; interim pre-repack facility due to

Location	RF Ch	Callsign	Notes
transmission line failure.			
Nevada			
Carson City	18	NEW-lptv	AF dismissed, would interfere with KRNS-CD Reno on the same channel.
Fallon	34	K42JS	From 42.
Las Vegas	12	K12XL	From K47OC, 3kw/328m, 35-37-41/115-16-27; granted.
Reno	28	K28NP	Requests power increase to 1kw/654m; granted.
Shurz	28	K46CC	Moved from 46, 200 watts/352m.
Silver Springs	14	K14ST	From K50LN, 100 watts/587m; granted.
New Hampshire			
Littleton	48	WLED-TV	Requests STA 61.25kw/391m; amplifier failures. Granted.
Nashua	32	WYCN-CD	Requests power increase to 922kw/388m, 42-18-37/71-14-12; sharing on WGBX-TV Boston, Mass.
New Jersey			
Glassboro	26	WQAV-CD	From 50, 15kw/241m, 39-44-04/74-50-27; granted.
Middletown Township	3	WJLP	Requests STA 26.5kw/340m. Temporary power increase to ensure station "scans in" when viewers rescan for the repacked UHF stations.
Morristown	17	WNMF-LD	Request for site change to 40-47-18/74-15-18 dismissed. Would interfere with land-mobile on ch. 16. OFF Apr. 20 th , "technical issues".
New Mexico			
Albuquerque	20	KNMQ-LD	Moved from 43, 15kw/1247m.
Las Cruces	14	KCWF-LP	Application for Digital Companion Channel, 1kw/174m.
Ruidoso	16	K16BZ	Returned to the air May 21 st .
Santa Fe	30	KWPL-LD	Requests power reduction to 15kw/110m, 35-04-04/106-46-49.
New York			
Buffalo	38	WKBW-TV	Operating at 40% power due to tube failure in main transmitter and inability to reach full power on backup. Returned to full power May 23rd.
New York	3	WNWT-LD	From 50, 6.96kw/340m, 40-45-22/73-59-11; to share on WJLP-LD Middletown Township, N.J.. Calls changed from WBQM-LD.
New York	13	WASA-LD	From 25, 1.2kw/261m, 40-45-08/73-58-02 (Trump World Tower); to share on WKOB-LD. Granted.
New York	31	WPXN-TV	Requests STA 70kw/519m; temporary power reduction pending completion of repack. Granted.
Newburgh	28	WEPT-CD	From 22, 15kw/460m, 41-43-08/73-59-45; granted.
Port Jervis	22	W22EW	Requests power reduction to 1.87kw/207m; amendment to change back to existing site. Granted & reduced.
Riverhead	29	WLNY-TV	Application for post-repack backup, 139kw/191m.
Roslyn	8	W08EP	From W26DC, 1kw/123m, 40-48-26/73-10-46; granted.
Saranac Lake	34	WYCI	Requests STA 11.4kw/97m, 44-20-28/74-07-42 (Mt. Pisgah Ski Area). To operate from only DTS site #2 pending completion of Site 1. Returned to the air from this site on May 24th.
Schenectady	34	WMHT	Requests STA for 252kw/349m; interim pre-repack antenna pending installation of post-repack unit.
Southampton	18	WVH-CD	From 50, 15kw/146m, 40-58-11/72-20-47; granted.
Syracuse	19	WSYT	Application for new pre-repack aux, 540kw/415m, 42-52-50/76-11-59.

<i>Location</i>	<i>RF Ch</i>	<i>Callsign</i>	<i>Notes</i>
North Carolina			
Archer Lodge	32	WFPX-TV	From 36, 170kw/564m, 35-49-53/78-08-43; granted; sharing on WRPX-TV Rocky Mount.
Bat Cave	29	W41DI	Moved from 41, 3.5kw/297m, 35-25-25/82-15-35.
Burlington	26	WGPX-TV	From 14, 125kw/502m, 35-52-14/79-50-24; granted.
Burnsville	7	W09AS	From 9, 195 watts/438m.
Charlotte	21	W21CK	Returned to the air May 18 th .
Greenville	36	WEPX-TV	Requests power increase to 850kw/275m, 35-12-03/77-11-13. Granted.
Jacksonville	16	WPXU-TV	From 34, 425kw/218m, 34-29-42/77-29-18. Granted.
Jacksonville	34	WPXU-TV	Requests STA 6kw/166m, 34-29-42/77-29-18; interim pre-repack facility at new post-repack site, pending move to ch. 16. Granted.
Lumberton	26	WHEH-LD	Moved from 41, 10kw/101m, 35-15-06/80-41-11.
New Bern	18	W42EF	From 42, 15kw/70m, 34-44-20/76-47-56; amendment to change site.
New Bern	20	W20EM	From W28EC, 15kw/63m, 35-06-33/77-06-09; granted.
New Bern	31	WFEJ-LD	From 42, 15kw/70m, 34-44-20/76-47-56; amendment from 53m & to change site.
Raleigh	16	WBXU-LD	License canceled.
Raleigh	30	W30EK	From W18EH, 1.67kw/37m, 35-56-30/78-06-09; granted.
Reidsville	19	WGSR-LD	Moved from 47, 11.2kw/72m, 36-21-36/79-39-50.
Rocky Mount	32	WRPX-TV	From 15, 170kw/564m, 35-49-53/78-08-43.
Statesville	12	WSOC-DRT	Moved from 46, 3kw/393m, 35-50-00/80-42-14.
Tryon	7	W11AH	From 11, 61 watts/563m.
Wilmington	19	W23EL	From 34, 15kw/124m, 34-10-52/77-55-49.
North Dakota			
Bismarck	15	K15MQ	From K48MT; granted.
Fargo	10	K46KY	From 46, 3kw/125m.
Fargo	36	KVLY-TV	New post-repack aux on the air, 92.6kw/467m.
Ohio			
<i>Cleveland</i>	<i>32</i>	<i>WRAP-LP</i>	<i>OFF Apr. 30th pending conversion to digital</i>
Columbus	25	WCPX-LP	Requests conversion to digital, from analog ch. 48, 15kw/119m, 40-01-31/83-01-45. Granted.
Columbus	33	WCSN-LD	Requests STA for interim facility only 6m high on the same tower. OFF May 10 th pending rebuild of studios & transmitter.
<i>Sandusky</i>	<i>41</i>	<i>W41AP</i>	<i>License canceled.</i>
Youngstown	20	WFMJ-TV	Application for new pre-repack auxiliary transmitter, 375kw/233m. Granted & on the air.
Zanesville	30	WHIZ-TV	From 40, 500kw/169m; granted.
Oklahoma			
Ardmore	20	K20OH	From K24IW, 15kw/289m, 34-01-58/96-48-01; granted.
Ardmore	22	K22JQ	Requests power increase to 15kw/289m, 34-01-58/96-48-01; granted.
Ardmore	26	K26PA	From K19II, 15kw/289m, 34-01-58/96-48-01; granted.
Ardmore	34	KWRW-LP	Requests digital conversion from analog 44, 15kw/33m, 34-46-10/97-17-40.
Duncan	20	K47KI	Moved from 47, 10kw/191m.
Enid	36	KZMB-LD	Granted power increase to 15kw/8m, 37-34-38/97-21-44.
McAlester	14	K14SV	From K40NG, 15kw/92m; granted.
Oklahoma City	18	KOPX-TV	Moved from 50, 200kw/467m, 35-34-07/97-29-21.

<i>Location</i>	<i>RF Ch</i>	<i>Callsign</i>	<i>Notes</i>
Oklahoma City	19	KAUT-TV	Moved from 40, 635kw/467m, 35-34-07/97-29-21.
Ponca City	22	K22OD	From K23LJ, 13.5kw/539m, 36-35-42/97-34-39; granted.
Oregon			
Ashland	14	K14SC	Request to convert to ATSC 3.0, see text.
Astoria	28	K28FP	Request to convert to ATSC 3.0, see text.
Astoria	30	K30QL	From K38NC; granted.
Glendale	18	K18LU	Moved from K41KL.
Jacksonville	15	K15KL	Moved from K45KE, 135 watts/-136m.
Medford	28	K28GG	Request to convert to ATSC 3.0, see text.
Milton	34	K22JJ	Moved from 22.
Portland	46	KGWZ-LD	Returned to the air May 19 th but off again the next day, T-Mobile.
Prineville	25	K25GA	Request to convert to ATSC 3.0, see text.
Salem	36	KJWY-LD	Requests site change to 44-59-49/123-09-15; 271m. Granted.
Silver Lake	11	K11RM	License canceled.
Williams	7	K07HS	Converted to digital, 2 watts/152m.
Pennsylvania			
Bolivar	22	WTOO-CD	Requests STA 40 watts/397m; interim facilities pending resolution of attempt to sell the station. (and build permanent facilities) From 23, 15kw/327m, 40-22-16/78-59-01; granted.
Charleroi	29	WWAT-CD	Requests STA 6 watts/145m, 40-26-46/79-57-50; interim facilities pending resolution of attempt to sell the station. (and build permanent facilities) From 45, 15kw/173m, 40-08-16/79-57-28; granted.
Erie	12	WICU-TV	Requests STA 6.5kw/241m; interim facility pending installation of permanent antennas for WICU-TV & co-located WSEE. Granted.
Erie	18	WXTM-LD	From 47, 6kw/13m.
Greensburg	28	WPCB-TV	Requests STA 112kw/248m; interim post-repack antenna pending completion of permanent facility. Granted.
Harrisburg	21	WHP-TV	Requests power increase to 1000kw/369m; granted.
Lancaster	21	WXBU	Requests power increase to 1000kw/369m; granted. Sharing on WHP-TV Harrisburg.
Middleburg	21	W21DY	From W16CO, 15kw/262m, 40-18-56/76-57-08
Philadelphia	29	WELL-LD	From 30; granted.
Philadelphia	30	KYW-TV	Requests STA 420kw/273m, 40-02-39/75-14-25; interim post-repack facility. Granted.
Philadelphia	33	WPSG	Requests STA 440kw/273m, 40-02-39/75-14-25; interim post-repack facility. Granted.
Pittsburgh	19	WBYD-CD	Requests STA 440 watts/145m; interim facilities pending resolution of attempt to sell the station. (and build permanent facilities) From 39, 15kw/222m, 40-26-23/79-43-10; granted.
Pittsburgh	26	WOSC-CD	Requests STA 15kw/145m; interim facilities pending resolution of attempt to sell the station. (and build permanent facilities) Granted power increase to 30kw/178m.
Pittsburgh	30	WPTG-CD	Requests STA 15kw/145m; interim facilities pending resolution of attempt to sell the station. (and build permanent facilities)
Red Lion	14	W14DF	Granted power increase to 15kw/213m, 39-54-18/76-34-57.
Scranton	34	WSWB	From 31, 120kw/379m.
Puerto Rico			
Aguada	16	W16DX	From W49CZ, 15kw/308m; granted.
Benitez	33	WJWN-DRT	Application for Digital Replacement Translator, 5.4kw/540m,

Location	RF Ch	Callsign	Notes
			18-16-38/65-51-13 dismissed. Most of the DRT's coverage area would be outside that of WJWN's pre-repack facility, and grant would preclude grant of W44DH's displacement application.
Ceiba	32	WIVE-LP	Application for Digital Companion Channel, 15kw/906m; granted.
Ceiba	32	W23EM	From 23, 15kw/-22m, 18-15-20/66-01-25.
Vieques	33	W33ED	Requests power increase to 15kw/906m, 18-16-43/65-40-12. Granted.
Quintana Roo			
Cancún	32	XHTMQR-	Permit granted for new station, 80.61kw/83m, 21-13-58/86-51-10.
Chetumal	34	XHLQR-	Permit granted for new station, 67.4kw/98m, 18-30-14/88-17-45.
Rhode Island			
Providence	30	WCRN-LD	From 25, 15kw/198m, 42-05-44/71-13-49. (near the Foxboro, Mass. football stadium) Granted.
South Dakota			
Sioux Falls	21	KDLT-TV	Requests STA 12.5kw/465m; amendment from 257kw. I have no idea what's actually happening here:(
Sioux Falls	47	KDLT-TV	OFF Apr. 15th, "small fire at one of our tower sites." Back on the air in a few days at reduced power. Requests STA 25kw pending transmission line & transmitter replacement. Icing caused damage to transmission line and caused the transmitter to catch fire... STA amended to 589kw, 25kw was a typo.
Tennessee			
Crossville	20	WBXX-TV	Requests STA 480kw/699m; interim side-mount pre-repack antenna pending installation of post-repack antenna.
Crossville	31	WBXX-TV	Application for post-repack auxiliary; 415kw/699m.
Franklin	36	WNPX-TV	Granted power reduction to 550kw/365m, 36-31-36/86-41-14; city from Cookeville.
Jellico	18	WPXK-TV	From 23, 1000kw/513m, 36-00-19/83-56-23; granted.
Knoxville	30	WVLT-TV	Requests STA 398kw/551m; to operate at reduced power due to amplifier failure.
Lewisburg	29	W29DM	Requests power increase to 5.2kw/65m, 35-37-01/87-02-40. Granted.
Memphis	44	WBXP-LD	License canceled.
Nashville	35	WCTZ-LD	See Bowling Green, Kentucky.
Texas			
Abilene	12	K12XA	Requests digital conversion from K49HT, 3kw/87m, 32-06-02/98-20-47. Granted.
Amarillo	18	K18HL	OFF Apr. 29 th pending conversion to digital.
Arlington	25	KPXD-TV	Moved from 42, 1000kw/371m, 32-35-25/96-58-24.
Austin	33	KVUE	Requests STA 990kw/306m; interim antenna while KEYE constructs its post-repack facility.
Austin	49	KNVA	Requests STA 184kw/287m; interim pre-transition antenna.
Baytown	31	KUBE-TV	Moved from 41, 1000kw/580m. Requests STA 600kw/508m; interim facility while other stations on the same tower complete repack work. Granted.
Beaumont	31	K34LK	From 34, 10kw/95m, 30-08-25/93-58-45 dismissed.
Bryan	20	K20KJ	Requests power reduction to 3kw/84m, 30-39-00/96-32-48.

Location	RF Ch	Callsign	Notes
			Granted.
College Station	24	K24NW	From K45LK; granted.
College Station	49	K49LC	Returned to the air May 21 st , but off again on the 23 rd .
Conroe	33	KTBU	Moved from 42.
Corpus Christi	16	KXCC-LD	Returned to the air May 17 th under STA on this channel, 15kw/66m, 27-50-21/97-43-16.
Dallas	8	WFAA	Requests STA 37.9kw/426m, 32-35-17/96-58-35; auxiliary facility while co-located KDFI installs its post-repack antenna. (WFAA is not repacked) Dismissed as unnecessary, see below. Also requests to license this facility as a permanent auxiliary. Granted. This makes the STA unnecessary. Auxiliary facility is operational.
Galveston	22	KTMD	From 48; granted & moved.
Houston	21	KZJL	Moved from 44, 880kw/595m.
Houston	27	KBPX-LD	Moved from 46, 15kw/323m, 29-45-37/95-21-50.
Houston	27	KQHO-LD	Moved from 20, 15kw/323m, 29-45-37/95-21-50. Sharing on KBPX-LD.
Houston	29	KEHO-LD	Moved from 49, 15kw/95m.
Lubbock	9	KRDJ-LD	From 25, 3kw/117m dismissed.
Lubbock	14	K14PZ	Requests power increase to 15kw/95m; granted.
Lubbock	18	K26LK	From 26, 15kw/86m.
Port Arthur	26	KULC-LD	From 46, 15kw/150m, 30-06-36/94-01-42; amendment from ch. 33.
Port Arthur	33	K18JK	From 18, 15kw/101m; dismissed.
Port Arthur	33	KULC-LD	From 46, 15kw/150m, 30-06-36/94-01-42; dismissed.
San Antonio	34	KCOR-CD	OFF May 23 rd , must move existing transmitter to new site.
Stephenville	22	K22NR	From K27LU, 15kw/113m; granted.
Texarkana	26	KTAL-TV	Moved from 15, 888kw/485m.
Tyler	19	K19LQ	Granted power increase to 9kw/53m.
Victoria	23	KVCV-LD	From 48, 15kw/81m, 28-58-29/97-04-53; granted.

U.S. Virgin Islands

Charlotte Amalie	36	WTJX-TV	Granted STA 50kw/505m.
-------------------------	-----------	----------------	-------------------------------

Utah

Antimony	29	K44JU	Moved from 44, 33 watts/-36m.
Antimony	30	K40IX	Moved from 40, 33 watts/-36m.
Antimony	31	K42IX	Moved from 42, 33 watts/-36m.
Antimony	32	K41LD	Moved from 41, 33 watts/-36m.
Antimony	33	K39IZ	Moved from 39, 33 watts/-36m.
Antimony	34	K38JS	Moved from 38, 33 watts/-36m.
Antimony	35	K46IV	Moved from 46, 33 watts/-36m.
Circleville	14	K14RG	Moved from K31IY, 45 watts/-224m.
Circleville	15	K15KX	Moved from K33JD, 45 watts/-222m.
Circleville	22	K22MU	Moved from K23KW, 45 watts/-222m.
Fountain Green	27	K27NG	Moved from K39KH, 50 watts/-153m.
Fountain Green	28	K28OO	Moved from K40KO, 50 watts/-153m.
Fountain Green	31	K31NX	Moved from K42KY, 50 watts/-153m.
Fountain Green	33	K33OU	Moved from K38MV, 50 watts/-153m.
Logan	11	K32JP	Moved from 32, 118 watts/550m.
Logan	13	K30KI	Moved from 32, 118 watts/550m.
Logan	20	K45GL	Moved from 45, 2.82kw/550m.
Logan	28	K51GA	Moved from 45, 2.82kw/550m.
Logan	30	K43GR	Moved from 45, 2.82kw/550m.
Logan	32	K47HW	Moved from 45, 2.82kw/550m.
Logan	34	K41GQ	Moved from 45, 2.82kw/550m.

Location	RF Ch	Callsign	Notes
Logan	36	K49FS	Moved from 45, 2.82kw/550m.
Veracruz			
Xalapa	19	XHTMVE-	Permit granted for new station, 700 watts/797m, 19-35-30/97-05-39.
Virginia			
Charlottesville	35	WAHU-CD	From 40, 15kw/350m.
Norfolk	14	WNLO-CD	From 45, 7.72kw/220m.
Norfolk	32	WPXV-TV	Granted power reduction to 865kw/348m, 36-49-00/76-28-05.
Roanoke	27	WPXR-TV	From 36, 609kw/624m, 37-11-56/80-09-00; granted.
Woodstock	24	WDCO-CD	Requests STA for this post-repack channel, 1.6kw/150m, 38-56-24/77-04-53. (WRC-TV tower, Massachusetts & Nebraska Avenues, Washington DC) Planned to use ch. 24 from a new site, but the site was sold & WDCO hasn't been able to negotiate a lease with the new owners. Can't use ch. 24 at the old site as it would interfere with other stations. Granted power increase to 3.35kw/151m.
Washington			
Ellensburg	32	K32IG	Requests power increase to 120 watts/380m. Granted.
Kennewick	30	K30QM	From K40KS, 1kw/25m; granted.
Pasco	21	K21OT	Application for Digital Companion Channel for K04OI, 11.2kw/366m, 46-06-13/119-07-53. Granted.
Seattle	25	KING-TV	From 48, 715kw/232m.
Tacoma	14	KTBW-TV	Requests STA 45.75kw/461m; interim pre-repack facility pending installation of post-repack antenna. Granted.
Yakima	18	K18NL	From K17KI, 12.1kw/-26m; granted.
Yakima	20	K20LQ	Returned to the air May 30 th .
Yakima	29	KCYU-LD	Converted to digital from analog 41, 15kw/267m, 46-31-52/120-30-54.
West Virginia			
Clarksburg	19	W19DU	Requests power increase to 5kw/198m; dismissed. Would interfere with land-mobile in Pittsburgh.
Clarksburg	21	W21EB	From W40DG, 5kw/198m; granted.
Fairmont	16	WUSV-LD	Granted power increase to 15kw/154m.
Parkersburg	34	W34FE	From W51EG, 15kw/130m, 39-14-48/81-25-01.
Williamson	27	WHJC-LP	OFF Apr. 21 st , transmitter malfunction.
Wisconsin			
Chippewa Falls	21	WEUX	Requests STA 635kw/164m; increase in power for existing STA for interim post-repack antenna while permanent antenna is installed.
Eau Claire	26	W21DH	From 21.
Green Bay	30	W30BU	Granted conversion to digital, 15kw/189m.
La Crosse	26	W26FD	From W33DG, 15kw/57m, 44-01-24/91-26-21; granted.
Madison	20	WHA-TV	Power increased to 200kw/453m.
Minocqua	17	W17EG	Application for new Digital Companion Channel for W02CF, 15kw/40m. Granted.
Wyoming			
Clareton	31	K31LF	Requests power reduction to 245 watts/102m, 43-44-40/105-28-03

Location	RF Ch	Callsign	Notes
Jackson	30	K30MY	(Wright, Wyo.) Granted.
Lovell	27	K40JU	Granted power change to 500 watts/321m, 43-27-42/110-45-15.
Rawlins	15	K15MP	From 40, 1.2kw/83m, 44-51-36/108-29-47; CL from Cody. From K51IZ, 2.75kw/308m, 41-40-53/107-14-13. Granted.

Yucatan

Valladolid	24	XHVAD-	Granted power change to 3.49kw/54m, 20-42-29/88-12-08.
------------	----	--------	--

Zacatecas

Apozol	35	XHAG-4	Permit granted for new station, 450 watts/-297m, 21-28-06/103-05-16.
--------	----	--------	---

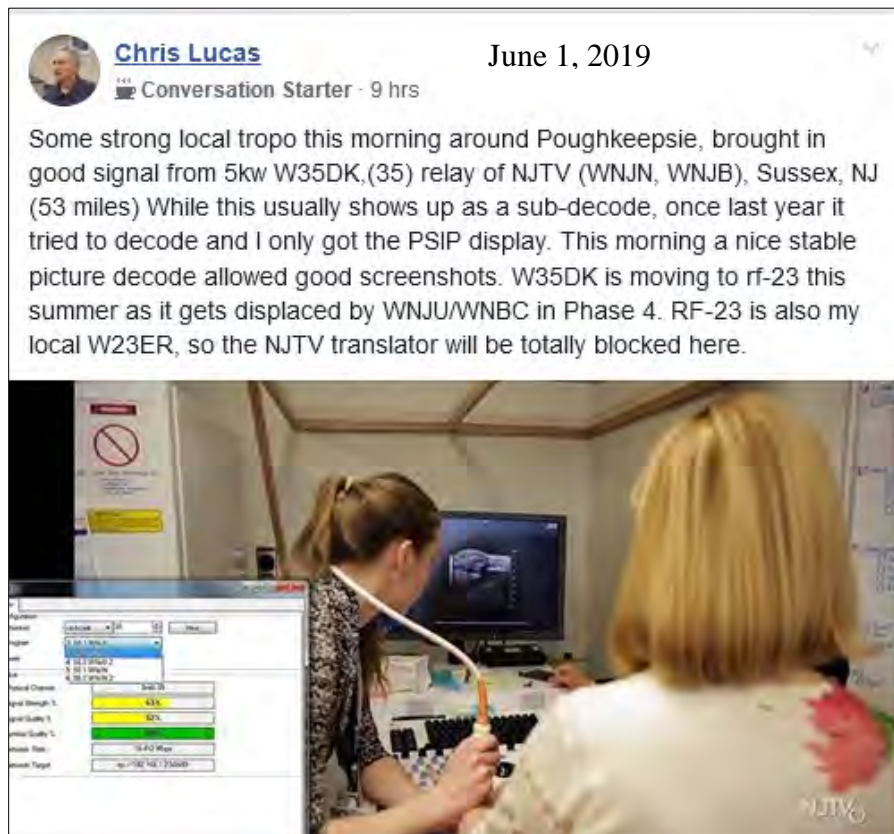
WatchTV in Oregon has applied for (and been granted) permission to convert four of their LPTV stations to ATSC 3.0. The stations say they expect to switch to the new standard on July 1st. A press release says there will also be two “gap fillers”, but I cannot find any record of these transmitters in the FCC-LMS database.

Full-license stations converting to ATSC 3.0 must arrange to be simulcast in ATSC 1.0 on some other station. This regulation does not apply to LPTVs. The stations need not arrange an ATSC 1.0 simulcast, and they will not do so.

WOFC-LD in Alabama and several other LPTVs fell afoul of application procedures. It seems you can't amend a displacement application to specify a different channel. You must cancel that application, and then file a *new* application for the alternative channel.

I have observed WCTZ-LD “Bowling Green, Kentucky” testing on a number of occasions. (the station is actually in Nashville) They're using the TSID 1111, which is assigned to WFFT in Fort Wayne, Indiana. The signal hasn't been up for more than an hour at a time.

As always, thanks to Raymie Humbert for Mexican information.





FM NEWS - JUNE 2019

FM Call Letter and Programming Changes

Editor: Bill Hale fmnews@wtfda.org



Visit db.wtfda.org to stay up-to-date



- AL Eufaula 92.7 WKZJ
Urban AC/R&B Oldies: 'K-92.7'
- AL Lisman 107.7 WHSL
[Is Silent]
- AL Montgomery 94.5 WUMO-LP
Returns to the air with Urban Gospel/Jazz
- AL Selma 105.3 WVCA
[License cancelled; calls deleted]
- AB Fort McMurray 91.1 CKOS-FM
Christian CHR/Rock
- AK Fairbanks 106.9 KRGW
[Calls assigned to new station]
- AK Igiugig 106.9 KIGI
[Calls assigned to new station]



- AZ Bisbee-Douglas 88.3 K202EM
News/Talk/Jazz // KUAS-FM 88.9;
frequency change from 88.9 as K205CG
- AZ Cave Creek 90.7 K214DN
[Call change from K216GN]
- AZ Globe 106.1 K291CU
Oldies: 'Juke Box 1240' // KJAA-1240
- AZ Jerome 100.5 KZRJ-LP
Returns to the air with Variety
- AZ Marana 106.9 K295CZ
[Calls assigned to new station; will be
Spanish Religious: 'Radio Ebenezer' //
KSAZ-580]
- AZ Sierra Vista 98.1 K251CQ
[Calls assigned to new station; will be
Classic Country: 'K-Tan Classic Country' //
KTAN-1420]
- AZ Wilcox 98.1 K251CG
Format is Unavailable as // KHIL-1250 is
Silent]

- AR Bentonville 98.3 KKEG
Rock: '98.3 KKEG - The Rock Station'



- AR Bonneville 105.9 K290BU
[CP to move to Sallisaw, OK cancelled]



- BC Terrace 103.1 CJFW-FM
Country: 'BC North's Pure Country'
- CA Coalinga 88.3 KDKL
Returns to the air with Contemporary
Christian: 'K-Love'; includes K269FA 101.7
and K300CC 107.9, both Huron and
K238AH 95.5 King City
- CA Compton 97.5 KRSB-LP
[License cancelled; calls deleted]



- CA Encinitas 97.3 KWFN-FM5
[Calls assigned to new station; will be
Sports: '97.3 The Fan' // KWFN 97.3]
- CA Escondido 97.3 KWFN-FM4
[Calls assigned to new station; will be
Sports: '97.3 The Fan' // KWFN 97.3]
- CA Highland 92.5 KQLH-LP-FM1
[Calls assigned to new station; will be Adult
Standards // KWLH-LP 92.5]
- CA Long Beach 101.5 KZXA-LP
[License cancelled; calls deleted]
- CA Los Angeles 96.7 KGAP-LP
[Calls assigned to new station]
- CA Marysville 104.3 K282BS
[Moves from 96.9 as K245AU at East
Quincy]
- CA Ramona 97.3 KWFN-FM2
[Calls assigned to new station; will be
Sports: '97.3 The Fan' // KWFN 97.3]
- CA Redlands 101.7 KXSB-FM1
[Calls assigned to new Booster Station; will
be Regional Mexican; "Radio L" // KXSB
101.7]

- CA San Marcos 97.3 KWFN-FM3
[Calls assigned to new station; will be Sports: '97.3 The Fan' // KWFN 97.3]
- CA Santa Cruz 90.7 KSQD
Variety: '90.7 KSQD'
- CA Santa Paula 95.9 KCAQ-FM5
New Booster Station signs on with Urban Contemporary: 'Q 95.9' // KCAQ 95.9
- CA Shafter 97.7 KNZR-FM
Talk: 'KNZR 1560 AM and 97.7 FM' // KNZR-1560



- CA Stockton 103.7 K279DB
Talk: 'Power Talk 1360' // KWSX-1280
['1360' refers to KFIV Modesto]
- CA Thousand Oaks 107.9 KNJR-LP
Returns to the air with Religious Teaching
- CA Ventura 100.3 KPUV-LP
Returns to the air with Variety
- CA Weed 102.3 KHWA
[Call change from KSIZ]
- CA West Covina 101.5 KEHS-LP
[License cancelled; calls deleted]
- CA Yolano 103.1 KDLZ-LP
Returns to the air with Variety

- CO Beulah 94.7 KRYE
Regional Mexican: 'Tigre FM'; call change from KRYE; includes KRYE-FM1 Pueblo
- CO Boulder 98.5 KYGO-FM1
[License cancelled; calls deleted]
- CO Colorado Springs 104.3 K282BU
Religious Teaching: '1580 the Trumpet' // KFCS The Trumpet'
- CO Denver 92.9 K225BS
Variety // KUVU 89.3
- CO Fleming 100.1 KRFD
[Is Silent]
- CO Montrose 97.5 K248AE and
- CO Montrose 106.3 K292HA
Sports: 'ESPN 1450 AM Montrose' // KAVP-1450



- CO Pueblo 94.7 KRYE-FM1
[Call change from KFVR-FM1]
- CO Rye 104.9 KFVR
[Is Silent]



- CT Hamden 92.9 W225DI
[Moves from 93.1 as W226AG]
- CT Hartford 103.3 W277DT
Talk: 'Trump 103.3' // WDRC-1360; also // WSNB-610 & WMMW-1470
- CT Meriden 102.5 W273DS
Talk: 'Trump 103.3' // WMMW-1470; also // WSNB-610 & WDRC-1360
- CT Southport 95.9 WFOX
Rock: 'The Fox'



- FL Fort Myers 90.5 WGGM-LP
Returns to the air with Urban Gospel
- FL Orlando 99.5 W258DD
Tropical: 'Viva FM' // WONQ-1030
- FL Panama City 103.9 WDPT-LP
[Is silent]



- GA Calhoun 94.5 WIPK
Urban Contemporary
 - GA Commerce 94.7 W234DJ
[Format is Unavailable as // WJJC-1270 is Silent]
 - GA Commerce 95.9 W242BN
[License cancelled; calls deleted]
 - GA Cornelia 99.3 WCON-FM
Classic Country: 'My Country 99.3'
 - GA Metter 105.9 W290DI
Contemporary Christian: 'Better Metter' // WHCG-1360
 - GA Milner 105.9 WFAL
Religious Teaching: 'Good News Network'
-
- HI Honolulu 92.7 K224FR
Sports: 'ESPN Honolulu 92.7 FM and 1420 AM' // KKEA-1420

- ID Cottonwood 90.1 KNWO
Classical/News: 'Northwest Public Broadcasting'; includes K274BK Kamiah
- ID Moscow 91.7 KRFA-FM
Classical/News: 'Northwest Public Broadcasting'; includes K272DO Orofino
- ID Weiser 99.9 K260CU
Oldies: 'Kool FM' // KKOO-1260



-
- IL Fairfield 103.3 W277CZ
[Moves from 100.3 as W262AZ at Sullivan]
 - IL Herrin 92.7 WVZA
Alternative: '92.7 Alt 2K'



-
- IN Anderson 101.1 W266DM **and**
 - IN Anderson 103.7 W279CL
Oldies: 'The New 103.7 & 1240 WHBU' // WHBU-1240
 - IN Cannelton 93.3 W227CO **and**
 - IN Tell City 106.7 W294CG
Adult Hits: '93.3 Jack FM' // WTCJ-1230
 - IN Elkhart 98.7 WLFQ-LP
Returns to the air with Urban Gospel
 - IN Gary 92.7 W224EA
Talk: 'The Voice Of Northwest Indiana' // WLTH-1370
 - IN La Porte 106.5 W293DR
Classic Rock // WLOI-1540
 - IN Lawrence 93.9 WNDX
[Call change from WYRG]
Rock: '93.9 X'



- IA Madrid 96.1 KNWM
Contemporary Christian: 'Life 107.1/96.1/100.7' ['107.1' refers to KNWI Osceola; '100.7' refers to W264CD Des Moines]
- IA Osceola 107.1 KNWI
Contemporary Christian: 'Life 107.1/96.1/100.7' [includes W264CD Des Moines; '96.1' refers to KNWM Madrid]
- IA Oskaloosa 90.5 KWPU
[Frequency change from 88.5; call change from KIGC]

-
- KY Cadiz 100.9 W265BW
Oldies: 'Oldies Radio WHVO' // WKDZ-1110 [also // WHVO-1480]
 - KY Monticello 95.7 W239CP
Classic Country: 'WFLW 95.7' // WFLW-1360
 - KY Princeton 103.3 W277CK
Classic Hits: 'WPKY 103.3 FM & 1580 AM' // WPKY-1580



-
- LA Moss Bluff 104.9 KZWA
Urban AC: 'Live 104.9'



-
- A Division of Life of Life Ministries, Inc.
- ME Augusta 94.3 W232CU
Southern Gospel: 'God's Country 88.9' // WMDR-FM 88.9
 - ME Augusta 100.9 W265DP **and**
 - ME Brunswick 94.7 W234CG
Contemporary Christian: 'The Arrow' // WMDR-1340 (Worship Radio Network)
 - ME Fryeburg 91.5 WBQF
News/Talk: 'The Maine Public Broadcasting Network'
 - ME Lewiston 91.5 WRBC
Variety

WRBC 91.5 FM

ME Lewiston 95.3 W237ET and
 ME Lewiston 105.5 W288CW
 Hot AC: 'Maine's Big Z' // WEZR-1240; also
 // WEZR-FM 92.7

MB Brandon 101.1 CKXA-FM
 Country: 'Brandon's Pure Country 101'



MD Potomac 94.3 W232DE
 Ethnic (Korean): 'Radio Zindagi' // WCTN-
 950; moves from 99.3 as W257BW at New
 Tripoli, PA

MD Salisbury 105.5 WLSW
 [Call change from WLWV]

MA Marshfield 95.9 WATD-FM
 Adult Contemporary:
 'The South Shore`s
 Radio Station'

MA Newberry 88.3 WVCA
 [License cancelled; calls deleted]

MI Battle Creek 92.9 WGPG-LP
 Returns to the air with Religious Teaching:
 'Lifetalk Radio'

MI Holland 99.7 W259CO
 News/Talk: 'The Goat 1300 AM/94.1 FM' //
 WHTC-1450

MI Olivet 89.1 WOCR
 Adult Alternative: 'The One'



MN Alma 99.7 W259CG
 Country: 'WBHA 1190 AM & 99.7 FM'

MN Minneapolis-St. Paul 91.1 KNOW-FM
 Classical: 'Minnesota Public Radio'

MN Red Wing 98.9 K255CZ
 Classic Country: 'KCUE 1250 AM & 98.9
 FM' // KCUE-1250

MN Rochester 88.7 KMSE
 Alternative: 'The Current'

MN Rochester 91.7 KZSE
 Classical: 'Minnesota Public Radio'

MS Columbus AFB 105.3 WACR-FM
 [Is Silent]

MS Sherman 95.1 WLEE-FM
 Classic Country: '95.1 The Farm'

MO Columbia 107.5 KLJE-LP
 [Frequency change from 107.3]

MO Kansas City 90.5 KLHW-LP
 Returns to the air with Religious Teaching:
 'Lifetalk Radio'

MO Osage Beach 89.3 KIRL
 Oldies

MO Osage Beach 98.7 K254BE
 Soft AC // KMYK 93.5 HD4

MT Black Eagle 102.3 K272DU
 [License cancelled; calls deleted]

MT Churchill 100.7 KXLB
 [City-of-License change from Livingston]

MT Eureka 88.3 KEUR-LP
 [Frequency change from 107.7]

MT Helena 93.1 K226BI and
 MT Townsend 92.9 K225DA
 Classic Hits: 'Helena's Greatest Hits': //
 KKGR-680



MT Helena 100.1 KMEH-LP
 Returns to the air with Variety; frequency
 change from 107.9

MT West Yellowstone 92.9 KEZQ
 CP to move to Iona, ID cancelled]

NE North Platte 92.5 K223CQ and
 NE North Platte 106.1 K291BW
 Talk: 'News Talk 1240' // KODY-1240

NE Omaha 99.5 K258DC
 Regional Mexican: ' La Nueva 1020 AM to
 La Nueva 99.5 FM and
 1020 AM' // KMMQ-1020



NV Winnemucca 92.7 KWNA-FM
 Country: 'All American Country'

NB Oromocto 103.5 CKHJ-2-FM
 Country: 'Fredericton's Pure Country 103.5'
 // CKHJ-1260

NH Henniker 99.1 WNNH
 Classic Hits: 'Frank-FM'

NH Laconia 98.3 WLNH-FM
 Classic Hits: 'Frank-FM'

NH Laconia 107.3 W297BS
 Contemporary Hit Radio: '105.5 JYY' //
 WEMJ-1490 [105.5 JYY refers to WJYY
 Concord]



NH Nashua 106.3 WFNQ
 Classic Hits: 'Frank-FM'
 NH Somersworth 98.7 WBYY
 Classic Hits: 'Frank-FM'
 [The four 'Frank-FM' stations above are networked]

NJ Alpine 94.3 W232AL
 [Is Silent; CP to move here from Pomona, NY, when it be // WNSH 94.7 HD4 with Christian: 'Bridge Radio']

NJ Hazlet 103.9 WCNM
 [Call change from WPD]

NJ Pemberton 88.9 WBZC
 Contemporary Christian: 'Word FM'

NM Clovis 104.7 K284DA
 [Moves from 104.9 as K285HK]

NM Espanola 99.9 KTRO-LP
 Returns to the air with Religious Teaching

NM Espanola 106.3 K292GV
 Regional Mexican: 'Que Dice' // KDCE-950;
 City-of-License move from Santa Fe

NM Gallup 90.1 KNIZ
 Variety: 'KNIZ Radio'

NM Santa Fe 100.7 K264BH
 Regional Mexican: 'Que Dice' // KDCE-950;
 [City-of-License move from Espanola]



NY Coram 93.3 W227CL **and**

NY Medford 106.9 W295CK
 Spanish Contemporary Christian: 'Radio Cántico Nuevo' // WLIM-1440

NY Glen Spey 89.5 WUUA
 [Is silent]

NY Hempstead 98.3 WKJY
 Adult Contemporary: '98.3 K-Joy'

NY Hempstead 107.1 W296CQ
 [City-of-License change from Melville]

NY Hoosick 97.5 WHAZ-FM
 Returns to the air with Religious Teaching: 'Alive Radio Network'

NY Ithaca 97.7 W249DW
 News/Talk: 'NewsRadio 870 AM & 97.7 FM' // WHCU-870

NY Lockport 105.3 W287CV
 Talk/Sports: 'Our Hometown Radio' // WLVL-1340

NY Oneida 101.1 W266DJ
 Adult Contemporary: '101 The Wave' // WMCR-1600

NY Saratoga Springs 93.3 W227DW
 Classic Hits: 'Star Radio' // WSSV-1160

NY Shirley 96.5 W243BF
 Spanish Contemporary Christian: 'Radio Cántico Nuevo' // WNYG-1580

NY Utica 88.1 W201DQ
 Religious Teaching: 'Adirondack Praise Radio' // WNGG 90.9 ; call change from W293CD

NY West Hampton 100.3 WAPP-LP
 Returns to the air with Religious Teaching



NC Burlington 95.1 W236BO **and**

NC Mebane 94.3 W232DT
 Country: 'Maverick Radio 1200 & 95.1' // WSML-1200

NC Charlotte 100.5 **W263xx**
 [Moves from 104.5 as W283AY at Conway; **[call change pending]**]

NC Franklin 91.3 WFQS
 News/Classical: 'NPR Classical Music & More'

NC Hillsborough 102.5 WPLW-FM
 [Call change from WPLW]

NC Murphy 88.5 WMQS
 News/Classical: 'NPR Classical Music & More'

NC West Jefferson 93.5 W228CW
 Country: 'The Farm 580 AM & 93.5 FM' // WKSK-580

NT Fort Liard 95.1 CIAM-FM-30
 Christian: 'Refresh Radio' // CIAM-FM 92.7

NS Truro 99.5 CKTY-FM
 Country: 'Nova Scotia's Pure Country 99.5'

OH Cincinnati 101.5 W268CM
 Urban Talk: 'The Buzz'



OH Ironton 107.1 WAWT
[Call change from WLRX]
OH Portsmouth 98.3 WPAY-FM1
[New Booster Station signs on with Country:
'WPAY 98.3 Country Superstars' // WPAY
98.3
OK Norman 103.3 **K277xx**
Sports: '1560 The Franchise 2' // KEBC-
1560; moves from 104.7 as W284AZ at
Borger, TX [call change pending]



ON Kingston 98.9 CKLC-FM
Country: 'Kingston's Pure Country 99'
ON Kitchener 98.5 CKWR-FM
New station granted; will be Adult
Alternative (days)/Variety (nights)
ON Listowel 100.1 CHLP-FM
New station granted; will be Adult
Contemporary
ON London 92.7 CJBX-FM
Country: 'London's Pure Country 92.7'
ON Ottawa 93.9 CKKL-FM
Country: 'Ottawa's Pure Country 94'
ON Pembroke 96.7 CHVR-FM
Country: 'Pembroke's Pure Country 96.7'
ON Peterborough 105.1 CKQM-FM
Country: 'Central Ontario's Pure Country
105'
ON Sudbury 91.7 CICS-FM
Country: 'Sudbury's Pure Country 91.7'
ON Toronto 88.9 CIRV-FM
South Asian: 'RED
FM'



PA Clarion 94.1 W231DR
Country: 'The Goat 1300 AM & 94.1 FM' //
WWCH-1300
PA Gettysburg 93.7 W229DK
Adult Contemporary: 'Happy' // WGET-1420

PA Hanover 95.3 W237EN
Adult Contemporary: 'Happy' // WHVR-1280
PA Punxsutawney 100.9 W265DI
Sports: 'Fox Sports 1540 - 100.9 FM' //
WECZ-1540
PA Tobyhanna 107.9 WKRF
Contemporary Hit Radio: '98.5 KRZ' //
WKRZ 98.5
PA Williamsport 88.1 WKWP
Returns to the air with Contemporary
Christian: 'K-Love'



PR San Juan 91.3 WIPR-FM
Classical: 'Allegro 91.3'



RI West Warwick 106.9 W295DJ
[Calls assigned to new
station; will be Sports:
'ESPN Sports 1450' //
WPVD-1450]



SK Corman Park (Saskatoon)
100.9 CIAM-FM-29
Christian: 'Refresh Radio' // CIAM-FM 92.7
SK Regina 92.7 CHBD-FM
Country: 'Regina's Pure Country 92.7'



SC Andrews 100.7 WYEZ
[Call change from WGTN]
SC McConnells 92.1 W221EO
[Moves from 91.7 as W219CH at Lowrys]
SC Murrells Inlet 94.5 WTKN
Talk: 'Talk 94.5 WTKN'; call change from
WYEZ
SC Moncks Corner 92.5 WCKN
Country: '92.5 Kicking' Country'

- SC Orangeburg 103.9 WHXT
Urban Contemporary: 'Hot 103.9 and 93.9'
[93.9' refers to WSCZ Winnsboro]
- SC Winnsboro 93.9 WSCZ
Urban Contemporary: 'Hot 103.9 and 93.9'
[103.9 refers to WHXT Orangeburg]



- TX Chalk Hill 94.9 K235CV **and**
TX Henderson 107.9 K300CX **and**
TX Kilgore 105.3 K287AJ
Classic Hits: 'All-Hit Radio' // KDOK-1240



- TN Chattanooga 107.3 W297BX
Format is Unavailable as // WNOO-1260 is
Silent]
- TN Collingwood 94.9 WMSR-FM
Country: '94.9 The Bull'
- TN Cookeville 96.9 WJNU-LP
Returns to the air with Religious Teaching
- TN Gallatin 107.9 W300EA
[Calls assigned to new station; will be Adult
Hits // WHIN-1010]
- TN Memphis 104.1 W281BR
R&B Oldies: 'Memphis Soul 104.1' //
WMSO-1240
- TN Tullahoma 88.5 WKTH
Contemporary Christian: 'K-Love'

- TX Dallas 92.9 K225CM
Talk: '660 AM, The Answer' // KSKY-660
- TX Emory 98.3 KKVI-LP
Returns to the air with Urban Gospel/Jazz
- TX Fort Worth 88.7 KTCU-FM
Variety: 'FM 88.7, The Choice'
- TX Fredericksburg 101.3 K267AO
Americana/Adult Alternative: Sun Radio
103.1 // KDRP 103.1 via KTSN 88.9
- TX Houston 101.5 KHSX-LP
Returns to the air with Urban Gospel
- TX Mont Belvieu 97.5 KFNC
Sports: 'ESPN Houston 97.5'; includes
KFNC-FM1 Houston
- TX Odem 98.3 KMJR
Spanish Religious: 'Radio Nueva Vida'
- TX Port Isabel 105.5 KLME
[Calls assigned to new station]



- TX Amarillo 89.1 KXLV
Returns to the air with Contemporary
Christian: 'K-Love'
- TX Amarillo 92.7 K224EF
Regional Mexican // KZIP-1310
- TX Balch Springs 99.9 KYBS-LP
Urban Gospel/Jazz
- TX Beeville 91.3 KVFM
[Is Silent]
- TX Big Wells 102.1 KHBE
Spanish CHR [RadioVocem]
- TX Boerne 103.9 K280GR
[Move from 105.3 as K287BQ]
- TX Cedar Park 93.3 KGSR
Soft Adult Contemporary: 'Star 93.3'

- TX San Antonio 98.1 KCTC-LP
[Calls assigned to new station]
- TX San Antonio 98.9 KQAN-LP
[License cancelled; calls deleted]
- VT Castleton 91.3 WIUV
[License cancelled; call deleted]



- VA Charlottesville 107.9 W300DV
News/Talk/Sports: 'News Talk 107.5
WCHV' // WCHV-1260; also // WCHV-FM

107.5
 VA Reston 105.5 W288BS
 Talk: 'Radio Sputnik' // WZHF-1390
 VA Roanoke 104.9 WSTV
 [Call change from WJJS]
 VA Salem 93.5 WJJS
 [Call change from WSNV]
 VA West Point 107.9 WBQK
 News: 'All News 102' // WXTG-FM 102.1



WA Bellingham 91.7 KZAZ
 Classical/News: 'Northwest Public
 Broadcasting'
 WA Chehalis 88.9 KSWS
 Classical/News: 'Northwest Public
 Broadcasting'
 WA Clarkston 90.5 KNWV
 Classical/News: 'Northwest Public
 Broadcasting'
 WA Clarkson 93.5 K228DU
 [Move from Lewiston, ID]
 WA Ellensburg 90.7 KNWR
 Classical/News: 'Northwest Public
 Broadcasting'
 WA Forks 91.5 KNWU
 Classical/News: 'Northwest Public
 Broadcasting'
 WA Goldendale 100.1 KVGDL-P
 [Is Silent]
 WA Manson 88.3 KHNW
 Classical/News: 'Northwest Public
 Broadcasting'
 WA Moses Lake 91.5 KLWS
 Classical/News: 'Northwest Public
 Broadcasting'; includes K210DK Ellensburg
 & K212FK Wenatchee
 WA Mount Vernon 89.7 KMWS
 Classical/News: 'Northwest Public
 Broadcasting'
 WA Omak 90.1 KQWS
 Classical/News: 'Northwest Public
 Broadcasting'

WA Oroville 90.9 KPBG
 Returns to the air with Variety: 'Spokane
 Public Radio'
 WA Port Angeles 90.1 KNWP
 Classical/News: 'Northwest Public
 Broadcasting'
 WA Seatac 106.5 KQWZ-LP
 Returns to the air with Variety
 WA Tacoma 90.9 KVTI
 Classical/News: 'Northwest Public
 Broadcasting'
 WA Walla Walla 89.7 KWWS
 Classical/News: 'Northwest Public
 Broadcasting'
 WA Yakima 88.5 KYVT
 Classical/News: 'Northwest Public
 Broadcasting'
 WA Yakima 90.3 KNWY
 Classical/News: 'Northwest Public
 Broadcasting'



WV Berkeley Springs 92.9 WXDC
 Oldies: 'Cool 92.9' [includes W228DU 93.5]
 WV Martinsburg 93.7 W229CM
 Talk/Sports: 'Panhandle News Network' //
 WEPM-1340; also // WCST-1010
 WV Martinsburg 97.5 WLTF
 Adult Contemporary: 'Today's 97.5' [after a
 short stint as CHR: 'Lite 97.5; call change
 from WKMZ]
 WV Weirton 100.9 W271CZ
 [Moves from 94.7 as W234AV]
 WV Williamson 102.5 W273BC
 Talk/Sports: 'Talk Radio' // WBTH-1400



WI Madison 92.7 W224EG
 News/Talk: 'Talk 92.7' // WTTN-1580
 WY Douglas 88.1 KRKY-FM
 [Frequency change from 88.7]

FM Facilities Report

This information is reprinted from Doug Smith's FM News Information posted in the WTFDA Forums <http://forums.wtfda.org>. The WTFDA FM Database is also updated with this information. <http://db.wtfda.org>

Abbreviations:

AF- New Station Applied For	NS-New Station Permit Granted	RA>Returns to the Air
Aux- Auxiliary Backup Transmitter	NW-New Station on the Air	ROA-Request of Applicant
CC- Call Change	PC-Power/Height Change Granted	XG-new site granted
CL-City of License	PG-Power Change Granted	XC-transmitter site changed
CX-Canceled	QG-Frequency Change Granted	PR/QR-Power or Freq requested

JUNE 2019

AK Dillingham 104.9 KAKD NW 19w/66m, 59-02-42/158-27-07
 AK Igiugig 106.9 KIGI CC for NS
 AB Taber 102.5 CIAM-FM-23 QG from 89.5, 1.5kw/46m
 AZ Cave Creek 90.7 K216GN QC from 91.1.
 AZ Marana 106.9 K295CZ NS 1w/1202m, 32-26-31/110-46-51 (KSAZ-580)
 AZ Nogales 99.1 KOFH PG>6kw/95m, 31-23-40/110-55-46
 AZ Sierra Vista 98.1 K251CQ NS 50w/-28m, 31-32-47/110-16-29 (KTAN-1420)
 AZ Tucson 105.7 K265CW Permit from 100.9 cancelled, 99w/595m, 32-14-56/111-06-59 (KKYZ-101.7 Catalina Foothills)
 AR Forrest City 100.1 K261EA PG>250w/126m, 35-03-16/90-44-36 (KWYN-FM 92.5 Wynne)
 AR Little Rock 99.9 K260DT NW 99w/118m, 34-46-07/92-21-08 (KTUV-1440)
 AR North Little Rock 104.3 KJSS-LP PC>1m, 34-45-23/92-15-58
 AR Sherwood 97.7 K249FE PG<250w/23m, 34-46-07/92-21-08
 CA Chico 104.5 K283AR PG<104w/472m
 CA Chico 105.7 K291BZ QG from 106.1, 245w/473m
 CA Fresno 93.3 KCFZ-LP OFF Apr. 28th, interference to studios of another station at the site.
 CA Garberville 89.1 KADV CC from KGKV
 CA Los Angeles 101.5 KFQM-LP NW 100w/9m, 34-02-46/118-33-16
 CA Los Angeles 101.5 KQBH-LP NW 8m, 34-02-41/118-12-11
 CA Los Angeles 106.3 K292HC PG 4w/46m, 34-03-41/118-18-31
 CA Los Angeles 96.7 KGAP-LP NW 100w/-71m, 34-12-21/118-19-41
 CA Los Angeles 99.1 KFEP-LP PG 190m, 34-07-32/118-22-11; NW
 CA Los Angeles 99.1 KLDB-LP XG 34-07-32/118-22-11; NW
 CA Monterey 89.3 K208CW QG from 89.5, 250w/206m, 36-35-09/121-55-19 (KLVM-88.9 Santa Cruz)
 CA Monterey 95.9 K240EV NW 250w/185m, 36-33-09/121-47-17 (KNRY-1240)
 CA Panorama City 101.5 KROJ-LP NW 100w/-31m, 34-15-47/118-25-06
 CA Weed 102.3 KHWA CC from KSIZ
 CA Yolano 103.1 KDLZ-LP PC>6m, 38-26-53/121-38-32; CL from Sacramento
 CO Akron 103.7 KAKR NW 1kw/104m, 40-08-56/103-17-04
 CO Monte Vista 101.3 K267BQ PG>250w/21m, 37-36-10/106-08-58; CL from Lake City (KSLV-1240); PC
 CO Montrose 92.5 K223BR PC<41w/19m, 38-31-00/107-51-08

CO Sterling 88.1 K201IP PC<72m, 40-31-57/103-07-22
 CT Hamden 92.9 W226AG QC from 93.1, 10w/236m
 CT Hartford 103.3 W277DT NW 250w/136m, 41-46-00/72-40-38 (WDRG-1360)
 FL Bradenton 100.1 WBPV-LP PC>12m, 27-28-00/82-40-43
 FL Bradenton 100.1 WBPV-LP XG 27-28-01/82-40-44
 FL Clearwater 106.1 W291CW PG>250w/171m, 27-50-52/82-45-49
 FL Daytona Beach Shores 99.5 WLOV-FM PC 5.45kw/105m
 FL Hialeah 92.3 WCMQ-FM PG 17kw/261m, 25-45-47/80-11-27
 FL Marianna 100.9 WJAO PG>6kw/96m, 30-46-04/85-15-02
 FL Marianna 102.1 W271DM PG<250w/83m, 30-46-04/85-15-02
 FL Miami 104.7 W284CT PG<23w/242m
 FL Nassau Village 104.9 W285FE PG>250w/212m, 30-16-51/81-34-13
 FL North Miami Beach 95.7 WRMA PG 17kw/261m, 25-45-47/80-11-27
 FL Tampa 102.9 W275AZ PG>250w/81m, 28-00-34/82-28-48 (WFUS-103.5 Gulfport)
 FL Tampa 106.7 W294CR PG>250w/106m
 FL Tampa 96.7 W244EG NW 99w/63m, 28-00-40/82-29-53 (WWBA-820 Largo)
 GA Atlanta 100.1 W239AY QG from 95.7, 99w/85m, 33-55-01/84-12-06; CL from Cordele (WPLO-610 Grayson)
 GA Decatur 102.9 W275BK PC 115w/338m
 GA Savannah 99.7 W259DE NW 180w/142m, 32-03-25/81-08-47 (WSOK-1230)
 IN New Albany 88.9 W205BT PG>80w/10m, 38-15-36/85-48-15
 IA Marshalltown 96.7 KCRM-LP NW 100w/30m, 42-02-56/92-54-35
 IA Marshalltown 96.7 KCRM-LP XG 42-00-21/92-53-39
 IA Waverly 100.9 K265EH PC 140w/115m, 42-46-21/92-22-35
 KS Lawrence 104.7 K284BS PC<50w/197m, 38-53-46/95-10-29
 KS Parsons 106.7 K294DE NW 250w/70m, 37-20-35/95-13-55 (KLKC-1540)
 LA Lake Charles 88.3 KBYS PG>4kw/122m, 30-13-48/93-12-56
 LA Opelousas 92.9 KOCZ-LP QG from 103.7
 ME Brunswick 94.7 W234CG PC>250w/118m, 43-54-12/70-02-13
 ME Sanford 104.3 W282CS PG>250w/146m
 MD Potomac 94.3 W257BW QC from 99.3, 250w/63m, 39-02-12/77-12-09; CL from New Tripoli, PAa. (WCTN-950)
 MA Dedham 94.9 W235CS PC<40w/178m, 42-14-49/71-02-54
 MA Greenfield 100.5 W263DE PG 250w/-53m, 42-36-12/72-36-20

MA Lawrence 102.9 W275BH PG>215w/134m
 MN Coon Rapids 107.1 KTMW NW 5.5kw/148m, 44-58-09/93-12-27 (aux)
 MN Maple Grove 99.1 KPJT-LP PG<9m, 45-03-59/93-22-43
 MN Rochester 104.9 K285EL PC>250w/19m, 44-01-08/92-27-56
 MN Rochester 93.5 K228FY NW 250w/20m, 44-00-12/92-29-06 (KFAN-1270)
 MN Rochester 96.9 K245CX NW 250w/19m, 44-01-08/92-27-56 (KROC-1340)
 MS Collins 95.1 W236DD NW 250w/74m, 31-38-04/89-34-23 (WAML-1340)
 MS Columbia 89.5 WPRG PG<250w/59m
 MO Columbia 107.5 KLJE-LP QC from 107.3, 33m, 38-56-37/92-19-17.
 MO Joplin 97.5 K258BF QG from 99.5, 250w/109m, 37-04-10/94-32-49 (KKOW-860 Pittsburg, KS.)
 MO St. LAs 106.1 K291CW PG>250w/64m; NW 38-42-04/90-26-48 (KTRS-550)
 MT Baker 99.1 K256DH NW 250w/178m, 46-30-20/104-12-36 (KFLN-960)
 MT Churchill 100.7 KXLB CL granted from Livingston.
 MT Eureka 88.3 KEUR-LP QC from 107.7, -236m, 48-52-49/115-02-40
 MT Helena 100.1 KMEH-LP QC from 107.9, 100w/-109m, 46-35-57/112-01-22
 MT Plentywood 100.1 KATQ-FM PC>21m, 48-46-01/104-32-43
 MT Plentywood 107.1 K296HF NW 250w/19m, 48-46-01/104-32-43 (KATQ-1070)
 MT Plentywood 107.1 K296HF PG<250w/19m
 NE Grand Island 98.5 K253CS NW 250w/80m, 40-47-11/98-22-00 (KRVN-880 Lexington)
 NE Omaha 90.7 KVNO PG 9kw/191m, 41-18-32/96-01-33
 NH Laconia 107.3 W297BS PC>250w/237m, 43-33-09/71-34-45
 NH Wolfeboro 104.9 WLKZ PG 620w/310m
 NJ Alpine 94.3 W232AL PG<50w/216m, 40-57-39/73-55-23 (WNSH-94.7 Newark)
 NJ Atlantic City 95.5 W238CZ NW 250w/95m, 39-22-35/74-33-43 (WPGG-1450)
 NJ Burlington 92.9 W225DJ NW 240w/48m, 40-04-57/74-47-38 (WIFI-1460 Florence)
 NJ Hazlet 103.9 WCNM CC from WPDI
 NM Albuquerque 96.9 K245CD PG>250w/1213m
 NM Clovis 104.7 K285HK QC from 104.9
 NM Espanola 106.3 K292GV PC>250w/135m, 36-05-52/106-07-18
 NM Grants 88.7 KFCY QC from 91.9, 77w/820m, 35-15-08/107-35-45
 NM Santa Fe 100.7 K264BH PC<90w/23m, 35-41-20/105-58-42; CL from Espanola
 NM Silver City 93.7 K229DS NS 50w/57m, 32-46-21/108-17-47 (KNFT-102.9 Bayard)
 NY Hempstead 107.1 W296CQ PG>100w/69m, 40-42-59/73-34-57
 NY Rhinebeck 105.3 W287BG PG>73w/147m (WHVC-102.5)
 NY Rochester 107.1 W296EF NW 99w/73m, 43-10-13/77-40-23 (WDCX-990)
 NY Rochester 97.1 WEPL-LP PC 44m
 NY Shirley 96.5 W243BF PG<30w/129m
 NY Utica 88.1 W293CD QC from 106.5, 10w/170m
 NY Watkins Glen 101.9 W270BY PC>250w/180m
 NC Cary 98.5 W253CY NW 150w/171m, 35-47-35/78-45-38 (WQDR-

570 Raleigh)
 NC Charlotte 100.5 W283AY QG from 104.5, 250w/255m, 35-17-14/80-41-45 (WGIV-1370 Pineville)
 NC Eden 95.9 W240EG PG 200w/162m, 36-14-54/79-39-21
 NC Elkin 103.5 W278CZ PG<250w/48m, 36-15-07/80-56-08
 NC Marion 103.9 W280FP NW 250w/280m, 35-39-32/81-59-39 (WBRM-1250)
 NC Raleigh 92.9 W225DF NW 250w/266m, 35-41-07/78-43-14 (WQDR-FM 94.7)
 NC Sparta 107.3 W297CM NW 250w/186m, 36-29-30/81-07-49 (WCOK-1060)
 OH Youngstown 102.3 W272EI NW 99w/217m, 41-04-48/80-38-25 (WLOA-1470 Farrell, Penna.)
 OH Zanesville 91.7 WJIC PC 4.1kw/121m
 OK Hartshorne 94.3 KPPO PG>2kw/97m, 34-50-41/95-34-46
 OK Weatherford 100.3 K262CW PC>250w/106m, 35-33-03/98-43-57
 ON Listowel 100.1 CHLP-FM NS 8kw/83m, 43-44-26/80-56-01; adcon (Five Amigos)
 OR Cannon Beach 89.3 K208AZ QG from 89.5, 250w/28m, 45-54-43/123-57-41 (KMUN-91.9 Astoria)
 OR Cannon Beach 89.5 K208AZ PG>250w/28m, 45-54-43/123-57-41
 OR Christmas Valley 95.9 K240BX PG>250w/341m, 43-09-53/120-52-45
 OR Rockaway Beach 88.5 KLON QG from 90.3, 60w/389m, 45-27-59/123-55-11
 OR The Dalles 101.5 KDOA PG 175w/564m, 45-42-43/121-06-56
 OR Tillamook 90.3 KAIK QG from 88.5, 30w/373m
 PA Berwick 94.7 W234BH PC>225w/240m, 41-06-50/76-14-16
 PA Bethlehem 98.5 W253CC PC>250w/10m
 PA Canton 100.3 WHGL-FM PG 3.6kw/265m
 PA Jersey Shore 88.5 WXPI PC<110w/-157m, 41-12-08/77-16-16
 PR Hatillo 94.5 W233CW NW 250w/277m, 18-23-32/66-59-45 (WNVI-1040 Moca)
 RI WV Warwick 106.9 W295DJ NS 2w/43m, 41-45-22/71-26-42 (WPVD-1450)
 SC Andrews 100.7 WYEZ CC from WGTM-FM
 SC Murrells Inlet 94.5 WTKN CC from WYEZ
 SD Brandon 89.5 K208EX PG 100w/45m, 43-37-02/96-35-31
 TN Bristol 105.7 W289BZ PG<250w/668m; PC
 TN Franklin 106.3 W292ED PG<149w/132m; CL from Spring Hill (WLVU-97.1 Belle Meade) TN Johnson City 97.7 W249AH PG<250w/670m; PC
 TN Gallatin 107.9 W300EA NS 250w/136m, 36-28-05/86-28-41 (WHIN-1010) (Music Mountain, where WPGD-50's analog signal used to be)
 TN Morrison 105.3 WOWC PG>6kw/100m, 35-33-10/85-58-47
 TN Portland 101.7 W269DQ NW 250w/68m, 36-34-36/86-29-50 (WQKR-1270)
 TX Amarillo 93.5 K203FF QC from 88.5, 250w/72m; 35-14-33/101-47-03; CL from Guymon, OK. (KDJW-1360)
 TX Amarillo 96.5 K243CE PG>99w/105m
 TX Bangs 90.9 KBNG-LP XG 31-42-46/99-07-40; XC
 TX Dallas 92.9 K225CM PC<1w/85m
 TX Doss 88.1 KGKV CC from KGLF
 TX Eldorado 89.7 KWTR PG<51kw/64m, 30-51-55/100-35-36
 TX Houston 96.1 KCDF-LP CC for NS
 TX Huntsville 101.7 KSAM-FM PG>15.5kw/127m, 30-41-58/95-31-48

TX Odessa 93.7 KYOD-LP PG 31m, 31-52-05/102-22-41
TX Port Isabel 105.5 KLME NW 1.2kw/110m, 26-03-12/97-12-47; CC for NS
TX Porter 101.7 K269GT PG 60w/34m, 30-05-19/95-14-40 (KBXX-97.9 Houston)
TX San Antonio 98.1 NEW-194682 NW 5m, 29-26-35/98-30-31
UT Glendale 89.9 KFDJ QG from 90.5, 27kw/541m, 37-17-45/112-50-34
UT North Moab 90.9 K215EL PG<250w/-210m, 38-33-53/109-32-40
VA Richmond 105.1 W286DJ NW 250w/177m, 37-36-51/77-30-56 (WRNL-910); CL from Frederick, Md.
VA Richmond 105.1 W286DJ PG<250w/177m, 37-36-51/77-30-56
VA Roanoke 104.9 WSTV CC from WJJS

VA Salem 93.5 WJJS CC from WSNV
WA Aberdeen 105.1 KCFL-LP PG 104m, 46-55-55/123-43-59
WA Pasco 104.5 KTZB-LP PC<-12m
WA Spokane 89.1 K206CQ PG>250w/416m, 47-34-52/117-17-47 (KAGU-88.7)
WV Charleston 88.9 W205CG PC>250w/94m, 38-22-31/81-39-23
WV Kingwood 96.7 WKMM PC>550w/241m, 39-27-25/79-35-26 (suspect coordinates are a correction only)
WI Madison 92.7 W224EG NW 250w/123m, 43-10-09/89-15-38 (WMAD-92.1 tower, Sun Prairie) (WTTN-1580)
WI Shawano 94.5 WRGW-LP PG<3m, 44-46-41/88-36-29

TRANSLATOR INTERFERENCE COMPLAINTS AND RESOLUTION

RadioInsight May 9, 2019 Lance Venta

The Federal Communications Commission today adopted a Report and Order that streamlines and improves the FM translator interference complaint and resolution process.

FM translator stations rebroadcast the signal of an AM or FM station. The increasing number of FM translator stations, as well as their growing economic importance for AM and digital FM stations, has led to industry interest in improving the rules governing FM translator interference complaints. Currently, even one listener complaint, at any distance from the desired FM station, can result in an FM translator station having to cease operations. Moreover, there are often prolonged disputes over the validity of the interference claim.

Today's Order provides additional certainty and reduces the costs and burdens of the existing interference claim and resolution process by:

1. Allowing translator operators to change frequency to any available same-band channel as a minor change in response to interference issues
2. Establishing a minimum number of listener complaints, proportionate to the population the complaining station serves, that a station would need to submit with any claim of interference
3. Standardizing the contents of each listener complaint
4. Establishing interference resolution procedures that permit, but do not require, complaining listeners to cooperate with remediation efforts, and implementing an alternative, technically-based process for demonstrating that interference has been resolved
5. Establishing an outer contour limit for actionable interference complaints while allowing waivers of that limit for interference complaints that meet specified criteria

The Commission, by the way, put complaints from Dxers at the bottom of the list and felt that interference reports against a translator from Dxers with towers and fringe antennas to not be representative of legitimate interference issues.



PHOTO NEWS

June 2019

Jeff Kruszka
 1909 Lost Lake Pl.
 Pearland, TX 77581
 jkruszka@sbcglobal.net

Here's some recent tropo from Danny Oglethope in Shreveport, LA:



WDBD-14 Jackson, MS
 198 mi Tr
 Seen 4-17-19 @ 0545 CT



WDSU-43 New Orleans, LA
 282 mi Tr
 Seen 4-20-19 @ 0753 CT



WFNA-25 Gulf Shores, FL
 376 mi Tr
 Seen 4-17-19 @ 0630 CT



WJTC-45 Pensacola, FL
387 mi Tr
Seen 4-17-19 @ 0605 CT



KGLA-42 Hammond, LA
282 mi Tr
Seen 4-20-19 @ 0810 CT



And here's the antenna that gets it all – the rebuilt Finco P-5 dish at a temporary height of 11 feet agl.



Coast to Coast TV DX

Featuring reports from the entire United States and all of Canada.

Send reports by the 15th of each month to:

Nick Langan

42 Holly Park Drive

Tabernacle, NJ 08088

E-mail: nickl@wtfda.org

The Editor's Note

I'm old enough to remember when May was an E-Skip month! Several of the past few Mays, at least here out east, have featured very little in the way of Es activity, a diverting trend from yesteryear. Yet, that did not seem to affect last year's very productive June for many, so we hope for a repeat.

Doug Smith W9WI

Pleasant View, TN EM66

16 May 2019

09:00 31 WLMT TN Memphis

09:04 29 WKNO TN Memphis

18 May 2019

07:38 30 WIAT AL Birmingham

07:39 50 WBRC AL Birmingham

Multiple loggings of "WFFT" on channel 35 appear to be the use of an incorrect TSID by WCTZ-LD. WFFT (Fort Wayne, Indiana) is licensed on channel 36 and is being repacked to channel 20. The assigned TSID for WFFT is... decimal 1111. (i.e., something someone is likely to punch into the equipment if they don't know what they're supposed to be inputting... WCTZ has no assigned TSID. The FCC will assign TSIDs for LPTVs upon request, and WCTZ's owners have obtained a proper TSID (9519) for their other LPTV at the same site, WKUW-LD.)

SIGN UP & Renewal Form
YEARLY DUES \$10.00 USD for Monthly VUD E-ZINE
Print this form and send it with your dues.

Name _____

Address _____ Apt # _____

City _____ State/Prov _____ Zip _____

Country _____ Interests: TV () FM () 30-50 () Weather ()

E-Mail Address _____

Sign me up/renew me for: 1 year () 2 years () More () _____

Mail your yearly dues to: WTFDA, P.O. Box 501, Somersville, CT USA 06072
Make your checks/money orders payable to: WTFDA
And *thanks* for your support of the WTFDA!

