



# VHF-UHF DIGEST

The Magazine for TV and FM DXers

January 2020



*The Official Publication of the Worldwide TV-FM DX Association*

# 2020

**DXERS EYE CHART**

**I B O C**

**A N D T H E**

**R E P A C K**

**W I L L D R I V E**

**Y O U C R A Z Y**

**E S K I P F 2**

**A U R O R A**

**T R O P O**

**Will You See Your Dx in 20/20?**

**IN THIS ISSUE**

**Using a RTL-SDR Dongle to Listen to HD Radio  
And all the usual stuff.**

# THE VHF-UHF DIGEST

## THE WORLDWIDE TV-FM DX ASSOCIATION

*Serving the UHF-VHF Enthusiast*

THE VHF-UHF DIGEST IS THE OFFICIAL PUBLICATION OF THE WORLDWIDE TV-FM DX ASSOCIATION DEDICATED TO THE OBSERVATION AND STUDY OF THE PROPAGATION OF LONG DISTANCE TELEVISION AND FM BROADCASTING SIGNALS AT VHF AND UHF. WTFDA IS GOVERNED BY A BOARD OF DIRECTORS: DOUG SMITH, KEITH MCGINNIS, JIM THOMAS AND MIKE BUGAJ.



*Treasurer:* **Keith McGinnis** [wtfda.org/info](http://wtfda.org/info) *Webmaster:* **Tim McVey**  
*Forum Site Administrator:* **Chris Cervantez**  
*Editorial Staff:* **Jeff Kruszka, Keith McGinnis, Fred Nordquist, Nick Langan, Doug Smith, John Zondlo and Mike Bugaj**



### Your WTFDA Board of Directors

**Doug Smith**  
[dougs@wtfda.org](mailto:dougs@wtfda.org)

**Mike Bugaj**  
[mikeb@wtfda.org](mailto:mikeb@wtfda.org)

**Keith McGinnis**  
[nfmdx@wtfda.org](mailto:nfmdx@wtfda.org)

**Jim Thomas**  
[Jim-T@wtfda.org](mailto:Jim-T@wtfda.org)

Renewals by mail: Send to WTFDA, P.O. Box 501, Somersville, CT 06072. Check or MO for \$10 payable to WTFDA.  
Renewals by Paypal: Send your dues (\$10USD) from the Paypal website to [sales@wtfda.org](mailto:sales@wtfda.org) or go to <https://www.paypal.me/WTFDA> and type 10.00 or 20.00 for two years in the box.

Our WTFDA.org website webmaster is Tim McVey, [webmaster@wtfda.org](mailto:webmaster@wtfda.org). Our WTFDA Forums webmaster is Chris Cervantez, [Chriscervantez@gmail.com](mailto:Chriscervantez@gmail.com). Fred Nordquist is in charge of club statistics at [nordquis@homesc.com](mailto:nordquis@homesc.com)

Our email reflector is on Googlegroups. To join, send an email to [WTFDA+subscribe@googlegroups.com](mailto:WTFDA+subscribe@googlegroups.com)  
Visit our club website at <http://www.wtfda.org> . Participate in our forums at <http://forums.wtfda.org>.

Our real-time (prop logger) bulletin board is located at <http://wtfdadxbb.vci.net>. Only WTFDA members can participate.

You can find WTFDA on Facebook. Our group is called [TV and FM Dxing](#). This is a public group. We also have a private group called [WTFDA](#). This group is just for WTFDA Members.



The WTFDA FM Database is administered and updated by your fellow WTFDA members. It is completely free to use. You can find it at <http://db.wtfda.org>. Only the FCC and Radio-Locator top us on Google searches.

### FM Radio Station Database

[db.wtfda.org/](http://db.wtfda.org/) ▼

Database of US Canadian Mexican Central American and Caribbean FM Radio Stations.



# The Mailbox

P.O. Box 501 Somersville, CT 06072  
Mike Bugaj - Enfield, CT mikeb@wtfda.org



## DUES RECEIVED

DATE	NAME	S/P	EXP
12/1/2019	Chris Kadlec	MI	10/20
12/5/2019	Neal Mclain	TX	12/20
12/6/2019	Brian May	CT	12/21
12/8/2019	William Norris	IN	12/20
12/15/2019	James Herkimer	NY	1/21
12/16/2019	Rick Shaftan	NC	12/20
12/16/2019	Chester Jaffee	CA	12/20
12/16/2019	Tom Bryant	TN	12/20
12/20/2019	Lee Freshwater	FL	12/21
12/20/2019	MusicRadioAirchecks	NY	1/21
12/28/2019	Chris Lucas	NY	12/20
12/29/2019	Daniel Kelley	MI	1/21
12/29/2019	Flavio Archangela	BRA	11/20
12/29/2019	Adam Rivers	CT	12/20
12/30/2019	Les Prus	VA	12/20
12/30/2019	Russ Edmunds	PA	12/20
12/30/2019	Barry Bauer	DE	12/20

Welcome to new WTFDA members Neal Mclain, James Herkimer, Dan Kelley and Dave Freeman. Thank you everybody for your support of the WTFDA.

## MORE FROM BOB

If you thought Bob Cooper's DX report in the last VUD was interesting, here is more from Bob about DXing from the Turks and Caicos. Bob writes "Just a few updating thots to the December piece. I did log 11-Galveston/Houston before leaving at a distance I do not recall; but must be pushing 1700 miles. Over that 3 day period on 2m worked every state from Fla to Me and all but two on 70cm/432. Left Provo with 25+ 2m states as far inland as Iowa et al largely because of Es. On 6m ended up with 49 (missed Alaska by 15 minutes!) but already had 6m WAS from California and later Oklahoma. The amount of Es that reached 2m was amazing to me - often just a small area such as SE Ohio but the Es

forming over the Bahamas (Bermuda triangle???) was far more frequent than any place I have ever lived. The 1600 mile circle from Provo went into Kansas and south well into SA, Mexico and east past the eastern Caribbean. Provo at 22North was on the very precisely defined northern edge of the night time TE (transequatorial) from SA. It would begin around 4pm local from Africa and sweep west like clockwork until midnight or so exiting from Peru and Chile. Channel 2 from Lima (Peru) was so strong around 11pm nightly I tried receiving it with a 12" alligator clip lead and it was still strong! Fond memories and now YOU have channel packing!" (Bob also noted that KGUL to Provo was 1493.155 miles.)

## YOUR DUES AT WORK

Some of you may have noticed that we have spent some money and have upgraded the WTFDA Forums website to the newest version of vBulletin after finding out that the old version we used was at end-of-life and would no longer be supported. Thanks to Jim Thomas for supplying the header graphic (one of three we can use) and Chris Cervantez for doing the upgrade. If you haven't been there in a while, go check it out.

Our next step is to take that site and move it back over to Dreamhost, where it originally began. This move should happen sometime in January

## THANKS!

As I start on year #2 of my second tour as VUD publisher (when will it end, he asks himself) let me say THANK YOU to everyone who helped me this past year with articles, VUD covers, RDS info for the DB...you name it. Thank you very much! -Mike



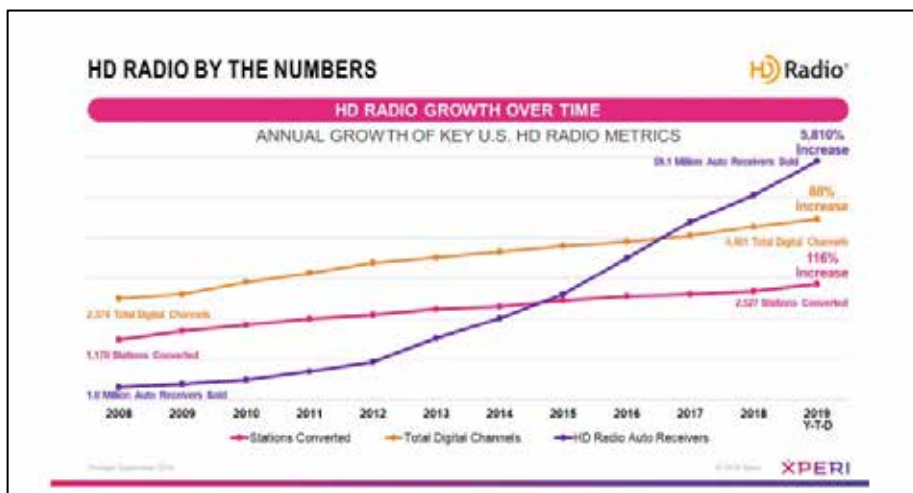
## NAB and NPR Press FCC to Allow Asymmetric Sidebands

That option now requires experimental authority

[Susan Ashworth](#) · December 17 2019

Calling it unfinished business from seven years ago, the NAB and NPR joined Xperi, parent company of HD Radio, in asking the FCC to allow FM stations to operate with asymmetric sideband power levels without going through the hoops of asking for experimental authority.

They have [asked the FCC to initiate a rulemaking](#) to that end, saying it would advance the nation’s voluntary deployment of digital radio and improve digital FM service for listeners.



*Though HD Radio is on the rise across the nation, more can be achieved if the FCC is willing to revise its technical rules when it comes to standard use of asymmetric sideband operation, according to the NAB, NPR and Xperi in a recent filing.*

They cite the number of radio stations that have been converted to digital broadcasts — some 2,500 stations offering more than 2,190 additional multicast channels HD Radio. By

authorizing asymmetric sideband operation on a routine basis, stations would be able to maximize HD Radio service coverage areas to replicate their analog as much as possible within existing digital power limits, the organizations told the FCC.

In the FCC’s First Report and Order in the digital radio proceeding, the commission authorized FM stations to operate with digital effective radiated power equal to 1% of analog power (or -20 dBc). That was modified in 2010 when all FM IBOC stations received authority to operate at -14 dBc. Today, the accepted current formula uses symmetric sidebands for all calculations, which the filers said eliminates a viable path for many stations to increase power on at least one sideband.

Even though there was little opposition to permanent authorization of asymmetric digital sideband operation in a previous comment cycle in 2012, the FCC has taken no further action on the matter, the filers said.

“As the commission considers the next steps toward its goal of creating an all- digital radio broadcast environment, it can strengthen the existing digital radio ecosystem and facilitate the continued growth of digital radio by addressing an important matter left unresolved in the prior rulemaking,” the three said.

“Authorization of asymmetric sidebands will help stations improve reception of HD Radio services at minimal cost to them or to the commission.”

# USING AN RTL-SDR 820T DONGLE TO LISTEN TO HD RADIO

Listen to All Channels of HD Radio, view album art, weather and traffic



These dongles were all the rage a few years back when they first appeared. For many of us, these were our first introduction to software-designed radios (SDRs). Then along came the SDRplay RSPs and the Airspys and we moved on. Our dongles were placed or misplaced in kitchen drawers or on shelves somewhere and we gradually forgot about them.

Then somebody figured out a way to use those dongles for HD radio listening and the RTL SDRs had a brand new use. Now anyone who had one of these things could listen to HD radio and all of its sub-channels without buying an HD radio. If the station had album art, you could see it. If it offered traffic and weather you could see the maps and the radar for the station's listening area.

I would recommend that anyone try the graphical interface first. For one thing, it's much faster to get going. Doing this by command line takes a bit more knowledge and a ton of time, as in over an hour. If you install the graphical interface, here are some screenshots.



This is the graphical interface. There are five tabs with the most interesting being the info, album art and maps tabs. To change stations you will have to stop the program, move up or down to a new channel and stream number (remember the main channel is always #1), and start the program. You cannot tune analog stations with this program! Give the program 5-10 seconds to lock on to the HD stream before audio begins.

One thing you cannot do with the NRSC5 interface is record audio. If recording audio is important to you, you'll need to set up the program via command line. Bill has outlined how to do this. It takes time. If you want to see the graphics and record audio then you need to install both the graphical interface and command line.

It's winter. It's cold outside and besides shoveling snow you probably have nothing better to do, so why not try this, especially if you have an 820T dongle laying around.

So, thank you Keith McGinnis for telling Bill Nollman about this, and thank Bill for telling me about it and asking me to try it. It is an interesting project and I learned a few things in the process. That's always good.

## Installing RTL-SDR with SDR# software and HD Radio Decoding.

If SDR-Sharp is already working with your RTL-SDR, skip to step 5.

1. Install SDR-Sharp - <https://airspy.com/download/> (unzip into a folder, no setup.exe)

2. Install .Net 4.8 & Reboot -

[https://dotnet.microsoft.com/download/dotnet-framework/net48?utm\\_source=getdotnet&utm\\_medium=referral](https://dotnet.microsoft.com/download/dotnet-framework/net48?utm_source=getdotnet&utm_medium=referral)

3. Quick Start Guide to install correct RTL-SDR drivers -

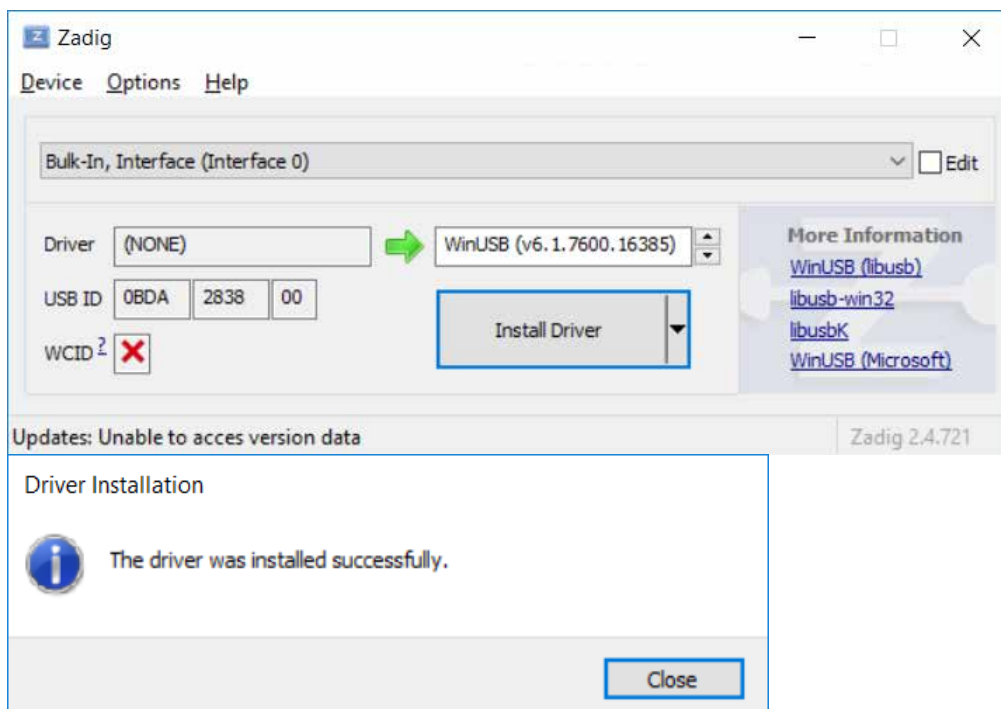
<https://www.rtl-sdr.com/rtl-sdr-quick-start-guide/>

- Double click on install-rtlsdr.bat (in the SDR-Sharp folder)

- Plug in the RTL-SDR dongle. It will auto-install a driver. Wait for "Device is Ready" message in about 30 seconds.

- In the SDR-Sharp directory run zadig.exe (Right click, Run As Administrator).

- The Zadig window should look like below. Click Install Driver.



4. Start SDRSharp.exe to test that the RTL dongle works (select the SDR from the list and click the Play button).

## 5. Windows GUI for HD Radio decoding software - NRSC5-GUI.

- Download and use WinRAR or WinZip to extract the NRSC5-GUI files –

Go here - <https://github.com/zefie/nrsc5-gui/releases> and download [nrsc5-gui\\_1.2.2.rar](https://github.com/zefie/nrsc5-gui/releases/download/v1.2.2/nrsc5-gui_1.2.2.rar)

Or Direct Download -

[https://github.com/zefie/nrsc5-gui/releases/download/v1.2.2/nrsc5-gui\\_1.2.2.rar](https://github.com/zefie/nrsc5-gui/releases/download/v1.2.2/nrsc5-gui_1.2.2.rar)

- Download, unzip and copy libwinpthread-1.dll into the same folder as nrsc5-gui.exe - <https://www.dll-files.com/libwinpthread-1.dll.html>

- Double-click to Run nrsc5-gui.exe.

- **You can stop here if you like the Windows version** or continue on with the command line version.

## 6. Command Line Version of HD Radio decoding software.

- Directions are here - <https://github.com/theori-io/nrsc5> - and copied below.

- Benefits of Command Line include:

Recording to WAV (using the -o option)

Faster switching between subchannels on the same frequency (when running press 0, 1, 2, 3 to switch).

Dump album art, weather and traffic to a folder.

## Compile on Windows using MSYS2

- MSYS2 is a command-line tool (like cmd.exe) that is a programming package manager and can compile code.

- Install MSYS2 - <http://www.msys2.org/> - Click and download msys2-x86\_64-20190524.exe.

- Run MSYS2 using the "MSYS2 MinGW 32-bit" shortcut. (Or use the 64-bit shortcut if you prefer a 64-bit build.)

- In the MSYS2 window run the following commands.

```
$ pacman -Syu
```

If this is the first time running pacman, you will be told to close the terminal window. After doing so, reopen using the same shortcut as before.

```
$ pacman -Su
```

```
$ pacman -S git
```

```
$ git clone https://github.com/theori-io/nrsc5.git
```

```
$ nrsc5/support/msys2-build
```

This will take about an hour or longer to complete.

Create a folder called C:\temp\nrsc-cli (or whatever you want to call it).

Look in C:\msys64\mingw64\bin (or C:\msys64\mingw32\bin) for these two files - **libnrsc5.dll** and **nrsc5.exe**

Copy the two files into C:\temp\nrsc-cli



## Run Command Line HD Radio.

Open a "cmd" window (or msys2) and type `C:\temp\nrsc5\nrsc5.exe 102.9 0`

This will start the decoding of 102.9 on the HD1 channel (0=HD1, 1=HD2, 2=HD3, 3=HD4).

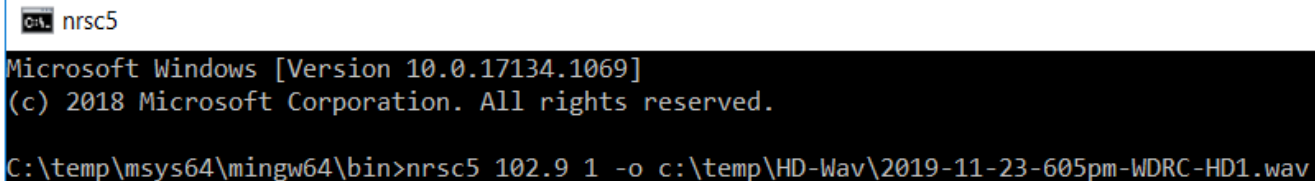
If the signal is strong it should decode within 10 seconds. Watch the text for indications of poor signal or loss of sync.

If 102.9 has multiple HD channels you can switch between them by pressing 0, 1, 2, 3.

Press Q to stop decoding without having to kill the cmd window.

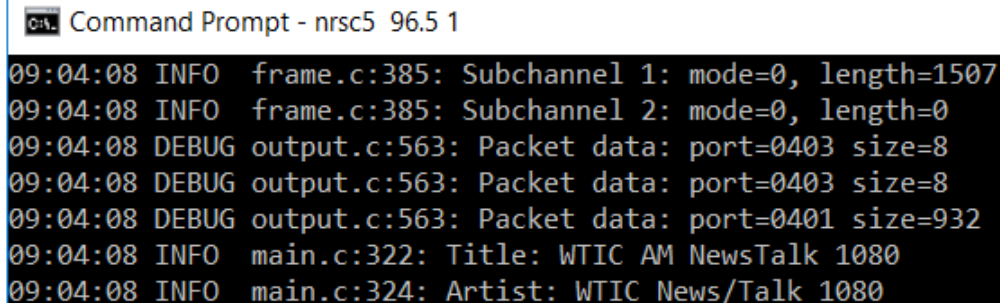
To capture HD audio to a wav file (you won't hear the audio but a wav file will be created).

```
C:\temp\nrsc5\> nrsc5.exe 102.9 1 -o  
c:\temp\HD-Wav\2019-11-23-605pm-WDRC-HD1.wav
```



```
C:\temp\msys64\mingw64\bin>nrsc5 102.9 1 -o c:\temp\HD-Wav\2019-11-23-605pm-WDRC-HD1.wav
```

Note below, you can see the number of HD subchannels (in this case Subchannel 1 and 2).



```
09:04:08 INFO frame.c:385: Subchannel 1: mode=0, length=1507  
09:04:08 INFO frame.c:385: Subchannel 2: mode=0, length=0  
09:04:08 DEBUG output.c:563: Packet data: port=0403 size=8  
09:04:08 DEBUG output.c:563: Packet data: port=0403 size=8  
09:04:08 DEBUG output.c:563: Packet data: port=0401 size=932  
09:04:08 INFO main.c:322: Title: WTIC AM NewsTalk 1080  
09:04:08 INFO main.c:324: Artist: WTIC News/Talk 1080
```

# TV News



January 2020

Location	RF Ch	Callsign	Notes
<b>Alabama</b>			
<b>Bessemer</b>	<b>14</b>	<b>WDBB</b>	<b>From 18, 675kw/637m, 33-28-48/87-25-50. Granted.</b>
Huntsville	34	WHVD-LD	Returned to the air Dec. 22 <sup>nd</sup> at unspecified reduced power.
Montgomery	19	WDSF-LD	OFF Dec. 14 <sup>th</sup> pending construction of permanent facility.
Montgomery	39	WETU-LD	OFF Dec. 2 <sup>nd</sup> . Tower owner WCOV-TV had to remove WETU antenna to allow installation of post-repack WCOV antenna. Also requests waiver of "off-over-a-year" rule as WCOV's work may not be complete in time.
Scottsboro	27	WNAL-LD	Requests power increase to 7.95kw/399m, 34-44-13/86-31-59. (Monte Sano, Huntsville)
<b>Troy</b>	<b>19</b>	<b>WIYC</b>	<b>Granted STA 132kw/322m; interim reduced-power post-repack facility.</b>
Tuscaloosa	23	WVUA-CD	Returned to the air Dec. 12 <sup>th</sup> .
<b>Tuscaloosa</b>	<b>36</b>	<b>WSES</b>	<b>From 33, 800kw/661m; granted.</b>
<b>Arizona</b>			
Gila River Indian Co.	28	K28MO	Granted 15kw/477m, 33-19-57/112-04-00
Globe	18	K16FB	Moved from 16, 10kw/990m.
Many Farms	30	K30GL	Power changed to 5.11kw/727m, 36-27-37/109-05-36.
Phoenix	46	KDPH-LD	Returned to the air Dec. 22 <sup>nd</sup> at unspecified reduced power.
<b>Tucson</b>	<b>19</b>	<b>KTTU</b>	<b>Operating at reduced power of approximately 1kw since Nov. 22<sup>nd</sup>. Unable to switch back to main transmitter &amp; bad weather (deep snow) at site will delay repairs.</b>
<b>Baja California Sur</b>			
<b>La Paz</b>	<b>22</b>	<b>XHCTLP-</b>	<b>100kw/-27m, 24-09-48/110-17-58</b>
<b>California</b>			
Agoura Hills	3	KVTU-LD	Power increased to 3kw/615m, 34-19-27/118-34-54
<b>Concord</b>	<b>39</b>	<b>KTNC-TV</b>	<b>See sharing host KCNS San Francisco.</b>
Crowley Lake	27	K27DV	Canceled Dec. 18 <sup>th</sup> .
<b>Fremont</b>	<b>39</b>	<b>KEMO-TV</b>	<b>See sharing host KCNS San Francisco.</b>
Fresno	14	KJEO-LD	Moved from 32, 15kw/659m, 36-44-45/119-17-03. (KSEE-TV tower, Squaw Valley)
Fresno	33	KSDI-LP	Power changed to 4.3kw/579m, 37-04-27/119-25-57. (Auberry)

<b>Location</b>	<b>RF Ch</b>	<b>Callsign</b>	<b>Notes</b>
Los Angeles	8	KFLA-LD	Granted permission to operate in ATSC 3.0.
Los Angeles	26	KMRZ-LD	Returned to the air Dec. 20 <sup>th</sup> on this channel under STA, 300w/-35m, 34-03-48/118-21-11;
Palm Springs	6	STA-746604	Application for temporary analog station, 30 watts/-109m, 33-43-23/116-18-15. (Indian Wells Tennis Garden) Live Sports Radio, same as other recent low-band analog STAs.
Riverside	32	KRMV-LD	Granted power increase to 6.63kw/507m, 33-57-37/117-16-43.
San Diego	15	KVSD-LD	OFF Dec. 10 <sup>th</sup> , signal on temporary channel 15 not financially viable. Waiting for reimbursement of costs before moving to permanently authorized ch. 35.
<b>San Francisco</b>	<b>7</b>	<b>KGO-TV</b>	<b>Requests STA 35kw/448m. To intermittently use what will become KRON-TV's permanent auxiliary antenna as an interim antenna pending other repack work on Sutro Tower. Granted.</b>
<b>San Francisco</b>	<b>39</b>	<b>KCNS</b>	<b>Requests STA 750kw/357m; interim use of pre-repack aux pending construction of post-repack ch. 32 facility. Granted.</b>
<b>San Jose</b>	<b>49</b>	<b>KSTS</b>	<b>Requests STA 220kw/667m; interim pre-repack facility pending installation of post-repack antenna. Granted.</b>
<b>San Mateo</b>	<b>43</b>	<b>KPJK</b>	<b>CC from KCSM-TV.</b>
Santa Barbara	20	NEW-LPTV	Dismissed. Would interfere with LAPD and LA Fire communications.
Stateline	40	K40JV	OFF Nov. 25 <sup>th</sup> . Displaced by repack and unable to move until summer.
Tahoe City	34	K23DT	From 23, 5kw/887m. Requests STA for 5 watts/874m pending move to post-repack ch. 34. STA granted.
Visalia	22	KNXT	Moved from 50, 126kw/828m.
<b>Colorado</b>			
<b>Colorado Springs</b>	<b>26</b>	<b>KKTV</b>	<b>Power increased to 350kw/720m.</b>
Colorado Springs	46	KTLO-LP	OFF Dec. 11 <sup>th</sup> . Actually, at greatly reduced power, station is not sure anyone can receive it. Has been operating on this channel under STA. (licensed for ch. 49) May need to remain dark until able to move to ch. 29.
Denver	33	KMAS-LD	License canceled Dec. 6 <sup>th</sup> .
<b>Pueblo</b>	<b>25</b>	<b>KOAA-TV</b>	<b>From 42, 1000kw/677m, 38-44-39/104-51-48.</b>
<b>Delaware</b>			
Dagsboro	14	W14DK	OFF Nov. 26 <sup>th</sup> . Transmitter problems, and owner cannot locate their engineer(?!)
<b>Durango</b>			
<b>Durango</b>	<b>7</b>	<b>XHFGL-</b>	<b>32.281kw/225m, 24-03-15/104-50-52</b>
Durango	11	XHPBDG-	1.486kw/-14m, 24-03-18/104-37-48
Durango	13	XHPBDR-	Permit surrendered.
<b>Florida</b>			
<b>Clermont</b>	<b>17</b>	<b>WKCF</b>	<b>Application for aux transmitter, 1000kw/427m.</b>
Daytona Beach	36	STA-746720	Granted STA 75 watts/21m, 29-11-06/81-04-17; to operate from Jan. 22 <sup>nd</sup> through the 27 <sup>th</sup> from the Daytona International Speedway.
Fort Myers	27	WLZE-LD	Granted STA 5.7kw/368m; temporary post-repack facility pending replacement of permanent tower.
<b>Fort Myers</b>	<b>31</b>	<b>WINK-TV</b>	<b>Granted STA 579kw/388m.</b>
<b>Fort Walton Beach</b>	<b>14</b>	<b>WFGX</b>	<b>Requests STA 168kw/115m; equipment delivery &amp; crew delays. Granted.</b>
Jacksonville	30	W30EE	OFF Nov. 23 <sup>rd</sup> , mask filter failure.

<i>Location</i>	<i>RF Ch</i>	<i>Callsign</i>	<i>Notes</i>
Lakeland	18	WMOR-TV	Granted new aux, 841kw/394m.
Leesburg	40	WACX	Granted STA 600kw/427m; interim side-mounted antenna as repack work continues at top of tower.
Live Oak	17	WFXU	From 48, 13.4kw/124m.
Melbourne	43	WVEN-TV	Requests STA 165kw/428m; interim pre-repack facility pending installation of post-repack antenna. <b>Granted.</b>
Miami	22	WFOR-TV	Operating at 50% power since Dec. 16 <sup>th</sup> pending transmitter replacement.
Naples	23	WXDT-LP	Returned to the air Nov. 24 <sup>th</sup> . Maybe. "Paperwork" lists both this station and WZDT-LP, both of which had temporary authority to be off the air.
Naples	32	WXCW	Requests STA 85kw/388m, 26-47-09/81-47-46; interim post-repack facility pending replacement of WINK-TV tower, on which the permanent WXCW antenna will be located. <b>Granted.</b>
Naples	36	WZDT-LP	See WXDT-LP above.
Orlando	5	STA-747096	Requests STA 5 watts/8m, 28-32-20/81-24-11; Live Sports Radio; Dec. 30 <sup>th</sup> through Jan. 2 <sup>nd</sup> at Camping World Stadium.
Orlando	16	WRCF-CD	From 35, 15kw/194m, 28-35-13/81-04-58.
Orlando	28	WRBW	From 41, 450kw/422m (aux)
Orlando	33	WOFL	From 22, 433kw/422m (aux)
Pensacola	35	WJTC	Granted STA 156.1kw/438m; interim post-repack antenna pending installation of permanent unit.
Sebastian	29	WDOX-LD	From 24, 5kw/113m, 27-27-59/80-27-54. Dismissed; displacement distance exceeds 30 miles.
Tallahassee	30	WVUP-CD	From 45, 15kw/260m.
Tampa	4	STA-747093	Requests STA 5 watts/23m, 27-58-33/82-30-12; Live Sports Radio; Dec. 30 <sup>th</sup> through Jan. 2 <sup>nd</sup> at Raymond James Stadium.
Tampa	29	WFTS-TV	Granted STA 923kw/323m.
Wabasso	11	W11DH	Granted power increase to 1.5kw/117m, 27-16-31/80-17-10.
<b>Georgia</b>			
Atlanta	20	WANN-CD	Converted to digital from analog ch. 32, 11.4kw/329m.
Atlanta	42	WTHC-LD	OFF Dec. 10 <sup>th</sup> pending move to ch. 3.
La Grange	20	WCGZ-LD	OFF Nov. 7 <sup>th</sup> pending consummation of sale.
<b>Guanajuato</b>			
Leon	36	XHTMGJ-	100kw/38m, 21-09-53/101-42-46
<b>Hidalgo</b>			
Pachuca	13	XHPBPA-	Permit surrendered.
<b>Idaho</b>			
Council	11	K11WR	Requests power increase to 100 watts/-69m.
Juliaetta	22	K22NX	Moved from K43GE, 50 watts/61m.
<b>Illinois</b>			
Aurora	22	WXFT-DT	See sharing host WLS-TV Chicago.
Charleston	30	WEIU-TV	Moved from 50, 174kw/141m.
Chicago	22	WLS-TV	Moved from 44, 1000kw/437m (aux).
Macomb	36	WMEC	Requests STA 100kw/131m; interim antenna pending delivery of permanent antenna. Seems to be same facilities as authorized except 3 meters higher – which I would think wouldn't be approved? <b>Granted.</b>

<b>Location</b>	<b>RF Ch</b>	<b>Callsign</b>	<b>Notes</b>
Mount Vernon	9	W42EM	From 42, 3kw/86m, 38-21-54/89-53-24; amendment from 179m & to change site to New Athens, Ill. (from Missouri)
<b>Indiana</b>			
<b>Indianapolis</b>	<b>22</b>	<b>WXIN</b>	<b>Moved from 45, 1000kw/304m.</b>
Indianapolis	26	WISH-DRT	Granted power reduction to 15kw/190m, 39-53-25/86-12-20.
<b>Kokomo</b>	<b>15</b>	<b>WTTK</b>	<b>Moved from 29, 450kw/304m.</b>
Marion	26	WNDY-DRT	See sharing host WISH-DRT Indianapolis.
<b>Iowa</b>			
Cedar Falls	32	KFKZ-LD	OFF Dec. 12 <sup>th</sup> pending weather appropriate for transmission line repairs.
Rock Rapids	33	K33PV	From K43LX, 15kw/146m, 43-22-36/96-11-49; granted. Apparently missing tower data reported last month has been supplied.
<b>Jalisco</b>			
<b>Puerto Vallarta</b>	<b>13</b>	<b>XHPBPV-</b>	<b>Permit surrendered.</b>
<b>Kentucky</b>			
Bowling Green	19	WCZU-LD	Requests STA for this channel, 7kw/181m. Granted.
<b>Louisville</b>	<b>14</b>	<b>WLKY</b>	<b>Operating at reduced power of 490kw/330m since Dec. 12<sup>th</sup>. Post-repack main antenna failed on that date.</b>
Louisville	25	WBNM-LD	Moved from 50; calls changed from W50CI.
<b>Louisiana</b>			
Baton Rouge	48	W48DW	Returned to the air Dec. 18 <sup>th</sup> at unspecified reduced power.
<b>Maine</b>			
Fort Kent	16	WWPI-LD	Requests STA 4.1kw/51m, 46-43-43/68-00-01; to operate under CP pending Canadian approval. Granted.
<b>Maryland</b>			
Havre de Grace	49	WWDD-LD	Returned to the air Dec. 22 <sup>nd</sup> at unspecified reduced power.
<b>Massachusetts</b>			
Boston	30	WCRN-LD	Granted STA 7.2kw/198m; interim post-repack operation pending installation of permanent transmitter.
Pittsfield	5	WRGB-DRT	From 19, 3kw/302m, 42-32-37/73-17-14 (Jiminy Peak). Displaced by WYPX-TV Amsterdam. Granted.
Winchendon	22	WVMA-CD	From 47; granted.
<b>Michigan</b>			
<b>Ann Arbor</b>	<b>50</b>	<b>WPXD-TV</b>	<b>Granted STA 52kw/252m; interim pre-repack facility pending installation of permanent post-repack unit.</b>
<b>Kalamazoo</b>	<b>22</b>	<b>WLLA</b>	<b>New aux on the air, 384kw/255m.</b>
<b>Lansing</b>	<b>28</b>	<b>WSYM-TV</b>	<b>Requests STA 147.5kw/205m; interim post-repack use of pre-repack antenna on "wrong" channel pending installation of permanent antenna.</b>
<b>Missouri</b>			
Columbia	18	K18KK	Granted power increase to 15kw/352m, 38-46-32/92-33-25. (same antenna as KMIZ)
Columbia	22	KQFX-LD	Converted to digital from analog ch. 32, 10kw/352m, 38-46-32/92-33-25. (same antenna as KMIZ)

<b>Location</b>	<b>RF Ch</b>	<b>Callsign</b>	<b>Notes</b>
Columbia Kansas City	30 35	KQFX-LD KCDN-LD	Returned to the air Nov. 20 <sup>th</sup> . From 22. Returned to the air Dec. 18 <sup>th</sup> at reduced power of 368 watts.
<b>Montana</b>			
Bozeman	29	KDBZ-CD	Requests site change to 45-38-20/111-15-48; 15kw/206m.
<b>Great Falls</b>	<b>7</b>	<b>KRTV</b>	<b>Power changed to 32.5kw/146m.</b>
Livingston	28	K48NS	Requests STA for this channel. Granted.
<b>Nevada</b>			
Las Vegas	30	K30PL	Returned to the air on this channel Dec. 3 <sup>rd</sup> , at reduced power. Formerly K41IO. Back to full power of 15kw/343m.
Laughlin	35	KNTL-LP	Converted to digital from analog ch. 47, 15kw/702m.
Pahrump	25	KPVM-LD	Requests STA to operate in ATSC 3.0.
<b>New Jersey</b>			
<b>Atlantic City</b>	<b>4</b>	<b>WACP</b>	<b>Power increased to 34kw/258m.</b>
Atlantic City	29	W29FF	Moved from W45CP.
<b>Linden</b>	<b>35</b>	<b>WNJU</b>	<b>Requests power reduction to 356.2kw/520m (aux)</b>
<b>New Mexico</b>			
<b>Albuquerque</b>	<b>36</b>	<b>KASY-TV</b>	<b>Requests STA 41kw/1278m; to operate at reduced power due to feeding problems. Granted for 102.5kw. (apparently amendment filed)</b>
<b>Santa Fe</b>	<b>29</b>	<b>KWBQ</b>	<b>Granted STA 98kw/1275m; to operate at 40% power pending permanent repairs. See KASY-TV Albuquerque, with which it shares an antenna.</b>
Zuni Pueblo	33	K33QD	Moved from K43OT.
<b>New York</b>			
Corning	39	WJKP-LD	Returned to the air Dec. 6 <sup>th</sup> but off again on the 11th pending move to ch. 14.
Corning	41	W41DB	Returned to the air Dec. 6 <sup>th</sup> but off again on the 11th pending move to ch. 15.
Ellenville	30	WYNB-LD	Requests power increase to 15kw/497m, 41-41-06/74-21-22. Granted. Calls changed from W30AZ.
Monticello	31	WZPK-LD	From W25DY, 14.7kw/497m, 41-41-06/74-21-22; granted. (Mt. Mongola, Ellenville) Calls changed from W31EY.
<b>New York</b>	<b>11</b>	<b>WPIX</b>	<b>Granted new aux, 13.2kw/301m, 40-44-54/73-59-09.</b>
<b>New York</b>	<b>35</b>	<b>WNBC</b>	<b>See sharing host WNJU Linden, N.J.</b>
<b>Plattsburgh</b>	<b>14</b>	<b>WPTZ</b>	<b>Requests STA 250kw/818m, 44-31-33/72-48-55. Antenna destroyed by fire. Interim antenna on adjacent tower, shared with WCAX-TV Burlington, Vt. Granted.</b>
Ridge	22	WCBS-DRT	Power reduced to 10.4kw/174m.
<b>Rochester</b>	<b>22</b>	<b>WXXI-TV</b>	<b>Application for new auxiliary backup transmitter, 195kw/133m. Granted.</b>
White Lake	39	WYJH-LD	Calls changed from W39DB.
<b>North Carolina</b>			
<b>Asheville</b>	<b>20</b>	<b>WUNF-TV</b>	<b>Moved from 25. Two site DTS. Site #1: 1000kw/551m, 35-13-20/82-32-58. Site #2: 1.73kw/-145m, 35-28-25/83-19-23.</b>
<b>Greenville</b>	<b>19</b>	<b>WYDO</b>	<b>Requests STA 146kw/123m; interim post-repack facility</b>

<i>Location</i>	<i>RF Ch</i>	<i>Callsign</i>	<i>Notes</i>
Hendersonville	15	WDKT-LD	<b>pending installation of permanent antenna. Granted.</b> Calls changed from W31AZ.
Hickory	28	WTVI-DRT	Requests STA 2kw/254m; interim operation on post-repack channel.
<b>Jacksonville</b>	<b>28</b>	<b>WUNM-TV</b>	<b>Requests STA 38kw/147m; interim post-repack antenna pending installation of permanent antenna. Granted.</b>
Raleigh	15	WRAZ	<b>From 49, 800kw/554m, 35-40-29/78-31-39. (aux); Granted &amp; moved.</b>
Raleigh	15	WRTD-CD	<b>See sharing host WRAZ.</b>
Winston-Salem	15	WHWD-LD	From 48, 15kw/81m, 36-05-25/80-15-05.
<b>Oaxaca</b>			
Matias Romero	13	XHPBMR-	<b>Permit surrendered.</b>
<b>Ohio</b>			
Dayton	33	WHIO-TV	<b>New aux on air, 1000kw/286m. This means the temporary share on the WPTD transmitter is no longer necessary.</b>
<b>Oklahoma</b>			
Lawton	25	K25IC	<i>OFF Dec. 3<sup>rd</sup> pending site move.</i>
Poteau	19	KSJF-CD	From 34. Withdrawn; inadvertently filed. (they meant only to specify a new antenna, on existing channel 34.)
<b>Ontario</b>			
Toronto	18	CITY-DT	<b>From 47, 49kw; granted. See text.</b>
Toronto	30	CFMT-DT	<b>From 44</b>
<b>Oregon</b>			
Portland	42	KPXG-LD	Returned to the air Dec. 20 <sup>th</sup> at unspecified reduced power.
Roseburg	36	KTCW	<b>From 45, 100kw/109m; granted.</b>
Salem	33	KRCW-TV	<b>Requests STA 42.3kw/488m, 45-31-13/122-44-41; interim operation from alternate tower while KOIN &amp; KATU (which share its tower) complete repack work. Granted. Application to "permanetize" this STA as an auxiliary backup transmitter. Granted, and permanetized.</b>
Warrenton	22	KHPN-LD	Granted STA 1kw/-27m, 46-05-52/123-47-48. Has available low-powered equipment for immediate installation. Returned to the air with this equipment on Dec. 1 <sup>st</sup> .
<b>Pennsylvania</b>			
Altoona	33	WJAC-DRT	From 22; granted.
Bolivar	22	WTOO-CD	From 23, 15kw/326m, 40-22-16/78-59-02; granted.
Boyetown	21	WFMZ-DRT	Application for new Digital Replacement Translator, 2kw/109m, 40-19-03/75-38-59.
Charleroi	29	WWAT-CD	From 45, 15kw/173m, 40-08-16/79-57-28.
Pittsburgh	20	WPGH-TV	<b>Moved from 43, 800kw/303m.</b>
Pittsburgh	21	WPNT	<b>From 42, 721kw/312m; granted &amp; moved.</b>
Scranton	21	WNEP-TV	<b>From 50, 760kw/509m, 41-10-55/75-52-16. See text.</b>
Scranton	21	WVIA-TV	<b>See sharing host WNEP-TV.</b>
<b>Puebla</b>			
Tehuacan	13	XHPBTH-	<b>Permit surrendered.</b>
<b>Puerto Rico</b>			

<b>Location</b>	<b>RF Ch</b>	<b>Callsign</b>	<b>Notes</b>
Mayaguez	22	W22FA	Granted power change to 15kw/622m.
Mayaguez	28	WTPM-LD	From 45, 8.2kw/604m, 18-08-53/66-58-59; granted.
Naguabo	25	W25FD	From W21DD, 15kw/268m, 18-16-23/66-05-35; sharing on W25EF Toa Baja. (see below)
Toa Baja	17	W17DL	Requests power reduction to 5.6kw/268m, 18-16-23/66-05-35. Granted.
Toa Baja	25	W25EF	Requests site change to 18-16-23/66-05-35; 15kw/268m; granted.
<b>Quintana Roo</b>			
Chetumal	20	XHTMCH-	80kw/70m, 18-31-36/88-16-34
Solidaridad	19	XHTMTU-	80kw/74m, 20-39-46/87-03-02
<b>Rhode Island</b>			
Providence	2	WSBE-TV	Moved from 21, 10kw/273m.
Providence	30	WCRN-LD	Returned to the air Dec. 4 <sup>th</sup> on this channel under STA. 7.2kw/198m, 42-05-44/71-13-48 just off I-95 in Foxboro, Mass.
<b>Sinaloa</b>			
Culiacan	13	XHPBCL-	Permit surrendered.
<b>Sonora</b>			
Guaymas	13	XHPBGY-	Permit surrendered.
Rayon	15	XHRON-	50w/-669m, 29-42-33/110-33-52
<b>South Carolina</b>			
Beaufort	44	WJWJ-TV	Requests STA 47.8kw/77m; interim pre-repack facility pending installation of post-repack antenna. Granted.
Charleston	30	W49EE	From 49, 11.6kw/52m.
Columbia	22	WACH	Moved from 48, 460kw/464m.
Florence	23	WLDW-LD	Power reduced to 3kw/100m, 34-08-04/79-47-47.
Hardeeville	26	WTGS	Requests STA 193.7kw/241m; equipment delivery & crew delays. Granted.
Honea Path	16	W28DB	Moved from 28, 13.4kw/321m.
Myrtle Beach	26	W26DT	OFF Nov. 12 <sup>th</sup> (after only four days on the air) pending consummation of sale.
Sumter	31	WKTC	Moved from 39, 426kw/391m.
<b>South Dakota</b>			
Mitchell	26	KDLV-TV	Operating at half power (500kw) since Dec. 5 <sup>th</sup> , due to partial transmitter failure.
<b>Tamaulipas</b>			
Nuevo Laredo	35	XHCTNL-	143.787kw/44m, 27-29-27/99-30-03
Rio Bravo	29	XHRBA-	34.529kw/148m, 25-56-04/97-51-16
<b>Tennessee</b>			
Cleveland	23	WFLI-TV	Moved from 42, 550kw/306m, 35-09-39/85-19-06.
Jackson	32	WQEO-LD	Requests power change to 15kw/331m, 35-16-33/89-46-38. WATN-24/WLMT-30 tower near Memphis.
Lewisburg	29	W29DM	Power increased to 5.2kw/65m, 35-37-01/87-02-40. Adjacent to WKOM FM 101.7 tower, Reservoir Hill, Columbia.
Memphis	6	WPGF-LP	Power change granted to 3kw/240m, 35-12-34/89-49-01. Analog "FrankenFM". Power changed.
Nashville	36	WTVF	Application to convert post-repack STA to permanent auxiliary, 1000kw/313m.



<b>Location</b>	<b>RF Ch</b>	<b>Callsign</b>	<b>Notes</b>
<b>Texas</b>			
Austin	20	K34FM	From 34, 15kw/187m, 30-19-21/97-48-04; sharing on KADF-LD. Granted & moved.
<b>Dallas</b>	<b>8</b>	<b>WFAA</b>	<b>Requests power reduction to 45.6kw/510m.</b>
Fort Worth	11	KUVN-CD	Moved from 47, 2.2kw/130m, 32-48-30/97-07-51
Fredericksburg	35	KHPF-CD	Returned to the air Nov. 25 <sup>th</sup> on this channel.
Groveton	2	KLNK-LD	Power changed to 3kw/57m, 30-36-46/95-02-29. Near the shores of Lake Livingston.
<b>Irving</b>	<b>34</b>	<b>KSTR-DT</b>	<b>Requests STA to operate with as-built facilities pending correction of an incorrect antenna pattern in the database. Also files to modify the database to reflect the correct pattern. The database has been modified. Moved from 48, 1000kw/517m.</b>
Midland	32	KFAW-LD	Requests site change (back) to 32-04-05/102-13-53; granted. Requests STA 1kw/149m pending installation of new feedline & antenna.
San Antonio	33	KSSJ-LD	Requests STA for this channel, 5w/115m, 29-26-30/98-30-23 pending arrival of permanent antenna. Granted.
<b>Temple</b>	<b>9</b>	<b>KCEN-TV</b>	<b>Operating at reduced power since Nov. 30<sup>th</sup> due to amplifier failure. ERP not specified but 2kw transmitter output. Returned to full power Dec. 16<sup>th</sup>.</b>
Tyler	35	KPKN-LD	Requests site change to 32-27-16/95-07-50 ; 15kw/154m. Granted.
Tyler	48	KTPN-LD	Returned to the air Dec. 18 <sup>th</sup> .
Victoria	34	KVTX-LP	Requests STA 15kw/141m; interim (lower) post-repack antenna pending replacement of transmission line. Granted.
Wichita Falls	40	K40HZ	OFF Dec. 3 <sup>rd</sup> pending site move.

### Utah

**Note: Many Utah translators have been displaced to different channels. The list appears at the end of this month's column.**

Ogden	31	KQTI-LD	Requests STA 500 watts/-13m, 41-09-57/112-00-55. Temporary site pending ability to move to Farnsworth Peak. (in the spring, when weather permits) STA request withdrawn due to incorrect antenna pattern, then refilled with correct pattern, then dismissed.
Salt Lake City	12	KSUD-LP	Requests STA for this channel pending move to ch. 33. 3kw/685m, 41-47-03/112-13-58 near Tremonton.

### Vermont

Burlington	20	WCAX-TV	Requests STA 273kw/818m, 44-31-33/72-48-55. Antenna destroyed by fire. Interim antenna on adjacent tower, shared with WPTZ Plattsburgh, N.Y. Granted.
Montpelier	20	WNNE	See sharing host WPTZ Plattsburgh, N.Y. – or WCAX-TV above, which shares an antenna with WPTZ.

### Virginia

Charlottesville	19	WVIR-TV	Granted STA for this channel, 71kw/306m, 37-59-04/78-28-51. To use WCAV's old interim facility pending delivery of equipment to move to ch. 2. WCAV has moved to WVIR's old channel 32.
Charlottesville	32	WCAV	Moved from 19, 205kw/329m.
Danville	30	WZBJ	See sharing host WDBJ Roanoke.
Portsmouth	26	W14DC	Moved from 14, 15kw/215m, 36-48-57/76-27-59.

<b>Location</b>	<b>RF Ch</b>	<b>Callsign</b>	<b>Notes</b>
Richmond	34	WZTD-LD	Moved from 45.
<b>Roanoke</b>	<b>30</b>	<b>WDBJ</b>	<b>Moved from 18, 1000kw/604m.</b>
<b>Virginia Beach</b>	<b>29</b>	<b>WVBT</b>	<b>Requests STA 815kw/220m; interim pre-repack antenna pending installation of permanent unit.</b>

### **West Virginia**

Charleston	16	W16CE	Returned to the air Nov. 1 <sup>st</sup> but appears to have immediately gone dark again. Equipment failure is blamed. Returned to the air Dec. 2 <sup>nd</sup> , hopefully to stay(grin)
------------	----	-------	--

### **Wisconsin**

Madison	23	W23BW	Request to increase power to 15kw/122m dismissed. FCC feels it would interfere with an application on file for this channel – in Sioux Falls, South Dakota???
Milwaukee	9	WPVS-LP	Requests STA 50 watts/2m, 43-00-12/87-55-37; interim analog operation pending completion of permanent digital facility. Site seems to be the roof of a store at 12 <sup>th</sup> & Lincoln on the South Side.

### **Wyoming**

Evanston	16	K16HW	Power increased to 394 watts/432m.
Little America	34	K45GO	Moved from 45.
Sunlight Basin	29	K29IG	Site changed to 44-45-14/109-22-30.

Thanks to Raymie Humbert for information in this month's column.

The two Toronto stations have been granted permission to swap post-repack channels.

The WATN-24/WLMT-30 tower near Memphis is home to LPTV station WQEO-LD. It's also next door to a TV repair shop. Believe it or not, such things still exist! The shop's website, unfortunately, makes no mention of antenna installation.

WNEP-TV in Pennsylvania was repacked from channel 50 to channel 16. The station received the necessary permits and built the channel 16 facility. They began pre-transition testing of the new facility during Phase 4 and were prepared to put it permanently on the air by the end of the phase, on August 2<sup>nd</sup>.

However, during testing... the NYPD complained of interference.

TV channels 14-20 are available for assignment to public-safety agencies for two-way radio service in thirteen metropolitan areas. In New York City, channels 14, 15, and 16 are available. In the specified areas, public-safety is priority and protected from interference from TV stations.

The FCC moved WNEP to Phase 7 to provide time for further analysis. They have since determined that channel 21 is available for use by WNEP.

Form 399, filed in July 2017, indicates the station expected to spend \$2.1 million on the move to channel 16. This money was to be reimbursed from the pool of auction proceeds. I suppose... there will be another significant expenditure to replace the channel 16 gear with equipment for channel 21. There will also need to be a time extension. Phase 7 ends in a month, but the FCC has yet to provide WNEP final approval to operate on channel 21.

Numerous Utah translators have moved to new channels. Where new powers, heights, or sites aren't given, they haven't changed from the old facility. Note that in East Price and Helper, all high-VHF channels are now in use.

<b>Location</b>	<b>Power, height, and site</b>	<b>Station(s)</b>
Carbon Co.	340 watts/610m	K30JN=>15; K25JM=>16; K27KG=>17;

Location	Power, height, and site	Station(s)
a.k.a. Columbia a.k.a. Price:		K39KF=>K18MY; K47ME=>K19MF
Cedar City:	250-300 watts/369-375m	K08PJ, K10PN, K12QQ power increases
Clear Creek:	70 watts/-45m	K48LS=>K27NY; K46KL=>K30PQ; K44JT=>K31OT; K42IU=>K32NI; K38LG=>K33PO; K40KM=>K35OD
Coalville:	107 watts/-219m, 40-55-26/111-23-53	K21JM=>15; K27IZ=>28; K25KJ=>36
East Price:	70 watts/-76m	K34JT=>7; (34 watts) K40KE=>K08QF; K38KS=>9; K42HV=>K10RL; K36JV=>11; K28KS=>13; K45LI=>25; (28 watts) K29JP=>26; K41LJ=>27
Heber:		K39HS=>32
Helper:	70 watts/-160m	K20LN=>7; K35LC=>K08QG; K49ME=>9; K36JU=>K10RN; K51JX=>11; K50MN=>12; K43NP=>13; K31KO=>25; K33KG=>K27NQ
Henefer:	110 watts/-104m, 40-58-40/111-26-10	K23JR=>28; K27JA=>30; K25KI=>34; K24HM=>36
Laketown:	339 watts/336m (VHF); 75 watts/338m (UHF)	K46GD=>K08PW; K10LM & K12MI power increases; K42HT=>K14RM; K43OP=>K16MK; K45MZ=>21
Morgan:		K26IJ=>K27NH
Orangeville:	340 watts/544m	K45JN=>18; K46JK=>19
Park City:	93 watts/-14cm	K39HP=>K32MK; K25DL=>34
Peoa:	105 watts/48m	K40NV=>29; K21IY=>31; K25KK=>K36PK
Price:		K44IS=>12, 70 watts/-77m; K19EX=>30
Randolph:	84 watts/352m, 41-37-31/111-07-26	K13QJ=>28; K11BF=>K29MY; K38GN=>K31OB; K24EC=>32; K09BA=>K33PS; K26GH=>K35NN
Samak:	63 watts/-89m, 40-37-56/111-15-37	K25KM=>14; K26IM=>32; K27JB=>K33OX; K24IF=>34; K23IQ=>36
Scofield:	72 watts/-162m	K45KW=>27; K23IU=>28; K49KY=>K29MT; K43MC=>K30PO; K41LB=>34
Spring Glen:		K49LQ=>K14RU; K50LJ=>29; K26LP=>32; K43NO=>34
Summit Co.:	309 watts/806m	K41GS=>K20ND; K49FY=>23; K51FY=>K24MU; K43AA=>K25OY
Tabiona:		K28LV=>20
Toquerville:	60 watts/159m, 37-17-24/113-16-32	K19HR=>32; K21GW=>33
Wanship:	114 watts/-299m, 40-48-33/111-23-44	K21JL=>14; K25KL=>34; K23IP=>36
Wanship:	110 watts/-107m, 40-58-40/111-26-14	K26LF=>K31OD
Wendover:		K22KP=>K21NI

# FM NEWS - January 2020

FM Call Letter and Programming Changes

Editor: Bill Hale [fmnews@wtfd.org](mailto:fmnews@wtfd.org)

Visit [db.wtfd.org](http://db.wtfd.org) to stay up-to-date

New or changed data is in *italics*

Format and slogan help needed from DXers, like you:

KOYH 95.5 Elaine, AR; KRVY-FM 97.3 Starbuck, MN; WPCK 104.9 Denmark, WI

---

AL Centre 100.5 W263BW  
Country/Southern Gospel: 'Southern,  
Country, And American Proud' // WEIS-990



---

AL Florence 105.1 W286DP  
Returns to the air, as does // WLAY-1450,  
with Country: 'Shoals Country'

---

AK Anchorage 94.1 KHRA-LP  
[Call change from KHRM-LP]

AK Fairbanks 95.9 KXLR  
Rock: 'X Rock 95.9'

AK Fairbanks 107.9 K300DL  
Sports: 'ESPN Radio Fairbanks 820AM and  
107.9 FM'

---

AZ Globe 106.1 K291CU  
Oldies: 'Arizona's Jukebox' // KJAA-1240

---

AR Batesville 93.1 KZLE  
Classic Rock: 'Classic Rock 93 KZLE'

AR Cotton Plant 107.3 KERL  
Adult Hits: 'Bob FM'

AR Elaine 95.5 KOYH  
Contemporary Christian: 'Smile FM' [station  
is owned by 'Smile FM' in Michigan, so you  
may hear 'Smile FM, Michigan's Positive  
Hits' as their slogan. Beware!]

AR Wynne 102.9 K275BR **and**

AR Wynne 106.9 K295CT  
Classic Country: 'KWYN 1400AM' //  
KWYN-1400



---

BC Celista 94.7 CILC-FM  
[Is Silent]

BC Clinton 98.9 CBUU-FM  
New station signs on with Variety: 'CBC  
Radio One Kamloops' // CBYK-FM 94.1;  
moved from 1070 kHz

BC Lillooet 93.9 VF2144  
[Deleted from ISEDC Database]

BC Lytton 102.3 CIAK-FM  
[Deleted from ISEDC Database]

BC Nakusp 99.9 CBUM-FM  
New station signs on with Variety: 'CBC  
Radio One Kamloops' // CBYK-FM 94.1;  
moved from 900 kHz

BC Riley Creek 98.7 VF2098  
[Deleted from ISEDC Database]

BC Riley Creek 104.5 VF2194  
[Deleted from ISEDC Database]



---

CA Bakersfield 103.5 KSVG-LP  
[Calls assigned to new station]

CA Coachella 93.7 KCLB-FM  
Rock: 'Real Rock 93.7 KCLB'

CA Lodi 95.5 KLDI-LP  
[Is Silent]

CA Marysville 94.3 KXMJ-LP  
[Is Silent]

CA Milbrae 96.1 KQEM-LP  
[License cancelled; calls deleted]

CA Newport Beach 103.1 KDLE  
Spanish CHR: 'Viva 103.1' // KDLD 103.1

CA San Diego 105.3 KTOZ-FM1  
[License cancelled; calls deleted (at  
licensee's request)]

CA Pacheo 100.1 KEBX-LP  
Returns to the air with Variety

CA	San Francisco	104.9	K285HD
	[License cancelled; calls deleted (at licensee's request)]		
CA	Santa Monica	103.1	KDLD
	Spanish CHR: 'Viva 103.1' // KDLE 103.1		
CA	Victorville	104.7	KHVI-LP
	[Calls assigned to new station]		
CO	Durango	105.3	KXRC
	Classic Rock: 'X-Rock 105.3'		
CO	Lamar	105.7	KVAY
	Country: 'Southeast Colorado's Best Country at KVAY 105.7'		



CO	Strasburg	97.7	KPLS
	[Call change from KSJL]		



CT	New Haven	99.1	WPLR
	Classic Rock: '99.1 PLR'		
CT	Southport	95.9	WFOX
	Rock: '95.9 The Fox'		
CT	Willimantic	98.3	WILI-FM
	Contemporary Hit Radio: 'I-98.3'		



FL	Boca Raton	95.3	W237BD and
FL	Boca Raton	103.9	W280DU and
FL	Lauderdale Lakes	96.9	W245BC
	Talk: 'FM Money Talk Radio' // WWNN-1470		
FL	Destin	106.9	W295CY
	News/Talk: 'Newstalk 1140' // WPNS-1140		
FL	Florida City	88.5	WMFL
	[Is Silent]		
FL	Fort Myers	106.3	WJPT
	Soft AC: 'Sunny 106.3'		
FL	Islamorada	105.3	WWWK
	Regional Mexican: 'Adictiva Network'		

FL	Jupiter	106.9	W295BJ and
FL	North Palm Beach	92.5	W223CJ and
FL	North Palm Beach	95.9	W240CI and
FL	North Palm Beach	101.7	W269DS
	Classic Rock: 'The Surf' // WSVU-960		
FL	Madison	92.5	W223DG
	Returns to the air with Classic Country: '1230 Country' // WMAF-1230		
FL	Naples Park	101.1	WAVV
	Soft AC: 'Relaxing Favorites'		
FL	Newberry	100.5	WHHZ
	Alternative Rock: '100.5 The Buzz'		



GA	Americus	88.7	WKMW
	[Call change from WFRP]		
GA	Blairsville	93.1	WUCG-LP
	[Is Silent]		
GA	Claxton	107.3	WAWS
	[Call change from WL GK]		
GA	Cochran	96.7	W244CL
	Classic Country; '96 Country' // WDXQ-1440		
GA	Columbus	90.5	WKCC
	[Call change from WFRC]		
GA	Donaldsonville	99.1	W256DG
	[License cancelled; calls deleted, includes co-owned WSEM-1500 (at licensee's request)]		
GA	Gainesville	107.9	WJPV-LP
	[Is Silent]		
GA	Rutland	95.9	W240BK
	Sports: 'Fox Sports 910 AM -1310 AM The Game' // WPCH-1310		
GA	Sylvester	102.1	WPFQ
	[Call change from WNUQ; is Silent]		
GA	Vidalia	97.7	WTCQ
	Classic Rock: 'Your Favorite Q 98'		
HI	Kaunakakai	98.9	KIOM-LP
	[Is Silent]		
ID	Boise	103.9	KFFI-LP
	[Calls assigned to new station; will be Spanish]		
IL	Casey	94.7	W234CK
	Religious Teaching: 'Word Power Family Radio' // (assumed) WPFR-FM 93.7		



IL	Coal City	100.7	WRXQ
	Rock: 'Q Rock 100.7'		
IL	East St. Louis	89.7	WCBW-FM
	[Is Silent]		
IL	Kankakee	91.1	WBEK
	News/Talk: 'Chicago Public Radio' // WBEZ 91.5		
IL	Morton	102.3	WKZF
	R&B Oldies: 'KZ 102.3'; call change from WNGY		
IL	Murphysboro	105.1	WTAO-FM
	Rock: 'TAO Rock 105'		



IN	Chesterton	89.5	WBEW
	Urban Contemporary: 'Vocalo Radio'		
IN	Cole	88.5	WNPP
	Religious Teaching; Call change from WJCF-FM		
IN	Evansville	91.5	WJWA
	[Call change from WUEV]		
IN	Fort Wayne	103.9	WWFW
	Variety Hits: '103.9 Wayne-FM'		
IN	Peru	98.5	WMYK
	Rock: 'Rock 98.5 WMYK'		
IN	Rushville	91.9	WIZI
	[Call change from WRLN; remains Silent]		



IA	Muscatine	93.1	KMCS
	Rock: '93.1 The Buzz'		



KS	Cimarron	92.9	KMML
	[Is Silent]		
KS	Dodge City	93.9	KZRD
	Regional Mexican: 'La Mexicana'		

KS	Hays	105.7	KRMR
	[Is Silent]		
KS	Hoisington	95.5	K238CK
	[Move from 97.7 as K249FA]		
KS	Larned	101.5	K268DN
	[Is Silent, as is // KNNS-1510]		
KS	Keoti	99.9	KWKR
	Rock: 'The Rock 99.9'		



KY	Lawrenceburg	102.1	WKYL
	Classic Hits: 'Passport Radio' [Includes WKYW-1490 and their // W228CL 93.5 Frankfort]		



LA	Jonesville	105.1	KZKR
	Classic Rock: 'Rock 105'		
ME	Gardiner	100.3	W262DP
	[Move from 106.3 as W292FZ]		
ME	Sanford	92.1	WXWX-FM
	Oldies: 'The Seacoast Oldies Station' (includes W264BP 97.1 // WXEX-1540)		



MD	Hurlock	100.9	WAAI
	Classic Country: 'WAAI Classic Country'		



MI	Alpena	88.9	WGZR
	Religious Teaching: 'Relevant Radio'		

MI Big Rapids 96.5 W243EN **and**  
 MI Big Rapids 99.1 W256CC **and**  
 News/Talk: 'NewsRadio 1460' // WBRN-1460  
 MI Big Rapids 107.7 W299BE  
 Country: 'Big Country 100.9' // WWBR 100.9  
 MI Charlevoix 90.9 WTCK  
 Religious Teaching: 'Relevant Radio'  
 MI East Tawas 91.3 WGJU  
 Religious Teaching: 'Relevant Radio'  
 MI Gaylord 92.1 W221CA  
 Religious Teaching: 'Relevant Radio' // WMQU-1230  
 MI Gaylord 106.7 WSRT  
 [Is Silent]  
 MI Glen Arbor 95.5 WGFE  
 Rock: 'Rock 105' // WGFM 105.1  
 MI Greilickville 88.3 WTCY  
 Religious Teaching: 'Relevant Radio'  
 MI Interlochen 88.7 WIAA  
 [Is Silent]  
 MI Iron River 97.9 W250CQ  
 Country: 'True Country' // WFER-1230  
 MI Iron River 99.1 WIKB-FM  
 Classic Rock: 'Classic Hits WIKB'  
 MI Mackinaw City 88.5 WIAB  
 [Is Silent]  
 MI Mackinaw City 94.5 WYPV  
 Adult Contemporary: 'Northern Michigan's Music Leader'  
 MI Thompsonville 106.3 WWMN  
 Adult Contemporary: 'Northern Michigan's Music Leader'; includes W299CB Manistee



MN Eden Prairie 88.1 K201DN  
 [License cancelled; calls deleted]

MN East Grand Forks 97.5 K248DH  
 Classic Rock: 'Rock 95' // KGFK-1590 ['95' refers to K239BG 95.7]  
 MN Red Lake 105.3 WRLN  
 [Call change from WIZI]  
 MN Saint Paul 99.1 WVIC-LP  
 [Is Silent]  
 MN Starbuck 97.3 KRKY-FM  
 Classic Rock: 'The Kangaroo 97.3'



MS Natchez 106.3 W292FK  
 R&B Oldies: 'Jam'n' // WNAT-1450



MO Cameron 100.1 KKWK  
 Classic Rock: 'Classic Rock 100.1'  
 MO Lexington 107.7 K299BS  
 Returns to the air with Religious Teaching: 'Life 92 - Bott Radio Network' // KLEX-1570  
 ['Life 92' refers to KAYX 92.5]  
 MO Neosho 100.1 K261ET  
 Classic Rock: 'Classic Rock 99.1'  
 MO St. Louis 97.1 KFTK-FM2  
 [License cancelled; calls deleted]

MT Billings 96.3 KRZN  
 Alternative Rock: 'The Zone 96.3'  
 MT Billings 98.1 K251CI  
 Oldies: '98.1 K-Bear' // KYVA-730  
 MT Choteau 88.7 KUDI  
 Contemporary Christian: 'Your Connection'

NV Elko 89.3 KLKR  
 [Is Silent]  
 NV Fallon 89.9 KQNV  
 Returns to the air with Contemporary Christian: 'K-Love'

NL Grand Falls - Windsor 94.5 CHEV-FM  
 [Calls assigned to new station]

NB	Edmunston	92.7	CJEM-FM	Adult Contemporary: 'Frontiere FM'; includes CKMV-FM 95.1 Grand-Sault
NH	Exeter	92.1	WXWX-FM	Classic Hits: 'Seacoast Oldies' // WXEX-1540 (includes W246BP 97.1 & W298CU 107.5)
NM	Albuquerque	99.9	KAQR-LP	[Calls assigned to new station]
NM	Cloudcroft	97.9	KTMN	Classic Rock: 'Rock 97.9'
NM	Farmington	100.9	K265DO	[License cancelled; calls deleted]
NM	Gallup	90.1	KNIZ	[Is Silent]
NM	Gallup	93.7	KXXI	Classic Rock: 'Classic Rock 93-X'



NY	Alfred	101.9	WZKZ	Country: 'The Ride 96.3 and 101.9' (96.3 refers to W242CT Olean)
NY	Batavia	89.5	W208AM	[License cancelled; calls deleted]
NY	Binghamton	94.3	WLRP-LP	Returns to the air with 'Religious Teaching'
NY	Binghamton	100.9	W265AX	[License cancelled; calls deleted]
NY	Buffalo	98.9	W255DH	Classic Hits: 'Classic Hits 104.1'
NY	Cortland	89.7	W209AF	[License cancelled; calls deleted]
NY	Elmira	91.1	W216AB	[License cancelled; calls deleted]
NY	Kingston	91.7	WKGW	[Call change from WFRH]
NY	Mina	95.9	WLTM	Talk: 'iHeart Podcast 95.9'
NY	Olean	96.3	W242CT	Country: 'The Ride 96.3 and 101.9' // WOEN-1360 ('101.9' refers to WZKZ)
NY	Oneonta	91.7	W219AG	[License cancelled; calls deleted]
NY	Vestal	89.7	W209AJ	[License cancelled; calls deleted]
NC	Burlington	103.7	W279DS	Sports: 'WSJS Sports Hub' // WPCM-920



NC	Burlington	104.5	W283BT	and
NC	Jamestown	104.9	W285EU	and
NC	Winston-Salem	101.5	W268CG	and
NC	Winston-Salem	103.1	W276DS	
				Sports: 'WSJS Sports Hub' // WSJS-600 [Fox Sports Radio]
NC	Charlotte	100.5	W263CY	and
NC	Charlotte	103.3	W277CB	
				Urban Contemporary: 'Streetz 100.5 and 103.3' // WGIV-1370
NC	Charlotte	107.1	WJPK-LP	
				[Calls assigned to new station]
NC	High Point	104.5	W283	
				Sports: 'WSJS Sports Hub' // WMFR-1230
NC	Hendersonville	102.5	WMYI	
				Variety Hits: '102.5 The Lake'
NC	Mooresville	105.9	W290DK	
				Talk: 'News Talk WSIC' // WSIC-1400
NC	Roanoke Rapids	95.9	WVTV-LP	
				[Call change from WEZU-LP]
OH	Loudonville	107.7	WXXF	
				Soft AC: 'The Breeze'
OH	Zanesville	104.1	WJFZ-LP	
				[License cancelled; calls deleted]
OK	Alva	105.7	KRDR	
				Classic Hits: 'Classic Hits 105.7'
OK	Oklahoma City	100.5	KATT-FM	
				Rock: 'Rock 100.5 FM, The Katt'



ON	London	98.1	CKLO-FM	
				Classic Rock: 'Classic Rock Free 98.1'



OR	Burns	92.7	KHTZ	
				[Call change from KSQB]



OR Canyonville 92.3 KWRZ  
Sports: 'The Score'; includes K250BK 97.9 and KSKR-1490

OR Coos Bay 101.1 K266DD  
Talk: 'NewsTalk 630 and 101.1 KWRO' // KWRO-630

OR Coquille 97.3 KSHR-FM  
Country: '97.3 Hot Country'

OR McMinnville 99.1 K256DF  
Oldies: 'KLYC The Cruise' // KLYC-1260

OR North Bend 94.9 KTEE  
Hot AC: 'The Tee 94.9-95.7'; includes K239AL Coos Bay

OR Prineville 93.7 KURT  
Religious Teaching: 'Worship 24/7' [Guadeloupe Radio Network]

OR Tillamook 99.7 W256BP  
[License cancelled; calls deleted (at licensee's request)]

PA Jenkintown 103.9 WPHI-FM  
Urban Contemporary: 'Hip Hop 103.9'

PA Mansfield 90.3 W212AE  
[License cancelled; calls deleted]

PA Murraysville 88.1 WKHO  
Easy Listening: 'Easy 88.1 KGO' [is // KQV-1410]

PA Williamsport 94.9 W235BA  
Rock: 'Rock 94.9' // WRKK-1200



QC Baie Des Moutons 98.5 CFTH-FM-2  
[Is Silent]

QC Harrington Harbour 97.7 CFTH-FM-1  
[Is Silent]

QC Kegaska 89.9 CFTH-FM-3  
[Is Silent]

QC St-Fabien-de-Paroisse 90.3 FM-1  
New station is on the air with Hot AC (French) // CIQI-FM 90.3



RI Woonsocket 95.1 W236CW  
News/Talk/Sports: 'Your Community Radio' // WNRI-1380



SC Darlington 105.9 W290CD  
Classic Rock: 'Rock 94.1 - 97.9 - 105.9' // WRZE 94.1 (includes W250BJ 97.9)

SC Greer 105.7 W289BS  
[Is Silent, as is // WOLI-910]

SC Woodruff 95.9 W240BO and

SC Woodruff 101.7 W269DM  
Classic Hits: 'Classic Hits' // WQUL-1510

---

TN Henry 104.7 WHNY-FM  
[Call change from WHNY]

TN Rockwood 93.3 W227EB  
[Move from 103.9 as W280FK]



TX Crowell 98.9 KTUT  
[Changes calls from KKKQ]

TX Cuney 99.7 KVUT  
[Call change from KOEE]

TX Dallas 89.3 KNON  
Returns to the air with Variety: 'Voice Of The People - KNON'

KY Glasgow 104.7 W284DH  
Sports: 'The Score 104.7' // WCDS-1230

TX Goldthwaite 100.5 KRNR  
[Frequency move from 107.3]

TX Houston 92.5 K223CW  
Tropical: 'Rumba 92.5 & 880' // KJOZ-880

TX Kingsville 92.7 KKBA  
Rock: 'Rock 92.7'

TX Matagora 106.1 KPYM  
Returns to the air with Religion

TX Midland 95.1 KQRX  
Rock: 'Rock 95.1'

TX Sherman 90.7 K214CK  
[License cancelled; calls deleted]

TX Victoria 99.3 KGXG-LP  
[Is Silent]

TX Waco 99.3 K257GO  
Sports // KEKR-1590

---

UT North Ogden 88.7 KUAO  
[Is Silent]

VT Rutland 97.1 WZRT  
Contemporary Hit Radio: 'Z97.1'



VA Norfolk 91.1 WNSB  
Urban Contemporary: 'Blazin` Hot 91'

VA Vinton 101.5 WVMP  
Adult Alternative: 'The Mountain 101.5'



WI Rothschild 100.5 WAVL  
Adult Contemporary: 'Wave 100.5'

WI Spooner 95.3 WGMO  
Classic Rock: 'Classic Rock 95 GMO'

WI Wausau 99.5 W258DK  
Sports: 'Sports Fan 1230' // WXCO-1230



WA Centralia 101.3 K267CX  
Calls assigned to new station; will be Talk:  
'Lewis County's News Leader' // KELA-1470

WA Prosser 101.7 KZXR-FM  
Regional Mexican: 'La Zeta'

WA Republic 101.9 K270AE  
[License cancelled; calls deleted]

WA Spokane 103.5 K278CY  
Sports: '103.5 The Game' // KGA-1510



WV Barrackville 93.1 WFGM-FM  
Contemporary Christian: 'The Journey'

WV Morgantown 92.1 W221DR  
Contemporary Christian: 'The New Journey  
FGM'; includes W221DR Morgantown and  
// WFGM-1300



**We need YOUR help!** Hundreds of stations broadcast HD signals (HD-2, HD-3, HD-4) in addition to their standard FM signal, many as the source for translators. Those of you with an HD receiver can help us. Just scan the 'dial' and report the formats and slogans you hear on each HD- signal (especially translators). Your report will be recognized here in *FM News!*

**Thanks to Mike Bugaj and Jim Thomas for submitting lists.** Their data is being compiled and matched with information in the **FM Database.**





# FM FACILITIES

January 2020

This information is reprinted from Doug Smith's FM News Information posted in the [WTFDA Forums](#). The [WTFDA FM Database](#) is also updated with this information.

**Abbreviations:**

<b>APPLICATION FILED- New Station Applied For</b>	<b>NS-New Station Permit Granted</b>	<b>RA&gt;Returns to the Air</b>
<b>Aux- Auxiliary Backup Transmitter</b>	<b>NW-New Station on the Air</b>	<b>ROA-Request of Applicant</b>
<b>CC- Call Change</b>	<b>PC-Power/Height Change Granted</b>	<b>XG-new site granted</b>
<b>CL-City of License</b>	<b>PG-Power Change Granted</b>	<b>XC-transmitter site changed</b>
<b>CX-Canceled</b>	<b>QG-Frequency Change Granted</b>	<b>PR/QR-Power or Freq requested</b>

- AL Decatur 94.3 W232DL NW 250w/40m, 34-36-44/86-59-28 (WWTM-1400 via microwave)
- AL Mobile 104.5 KGDH-LP PC<50w/18m, 30-42-27/88-06-48
- AL Mobile 104.5 KGDH-LP PG 50w/18m, 30-42-27/88-06-48
- AK Anchorage 94.1 KHRA-LP CC from KHRM-LP
- AK Juneau 100.7 KXLL PC>2kw-H/396m, 58-23-31/134-42-52
- AK Juneau 102.7 KRNN PC>2kw-H/396m, 58-23-31/134-42-52
- AR Clarksville 88.5 KQLO-LP QC from 97.5, 100w-H/-16m
- CA Bakersfield 103.5 KSVG-LP CC for NS
- CA Bakersfield 103.5 NEW-197633 PG<100w/3m, 35-25-23/119-14-04; NW
- CA Escondido 97.3 KWFN-FM-4 NW 53w-H/160w-V/318m, 32-58-52/117-06-58 (KWFN San Diego)
- CA Oakland 96.1 KEXU-LP PG>100w/-50m, 37-47-00/122-14-11
- CA Oxnard 99.3 KJBU-LP QG from 99.1, 100w/13m, 34-09-54/119-09-19
- CA Pacheco 100.1 KEBX-LP PG<50w/-36m, 38-00-36/122-07-20
- CA San Marcos 97.3 KWFN-FM-3 NW 10w-H/30w-V/356m, 33-06-32/117-09-18 (KWFN San Diego)
- CA Sutter Creek 107.5 KCYF-FM NW 20w/108m, 38-24-05/120-44-55
- CA Tracy 89.5 KBCC PG>240 watts/-81m, 37-42-34/121-28-41
- CA Victorville 104.7 NEW-196930 NW 100w/18m, 34-33-47/117-24-13
- CA Walnut 104.7 KQEV-LP PG 29w/55m, 34-03-54/117-50-46
- CA Watsonville 97.3 KXWS-LP PG>50w/19m
- CO Golden 96.9 K245CM PC>73w/225m (KKCL-1550)
- CO New Castle 90.1 K211EQ PC>75w/-118m, 39-33-56/107-31-01 (KTLF-90.5 COrado Springs via satellite)
- CT Derby 106.5 W293AU PC>250w-V/125m, 41-23-30/73-03-12 (WSHU-FM 91.1 Fairfield)
- DE Rehoboth Beach 99.1 WWSX-LP PG>71w/36m, 38-43-17/75-07-19
- FL Islamorada 105.5 WWWK PG<50kw/69m, 25-01-40/80-30-27
- FL Lantana 95.1 W236CV PC>250w/127m (WPBR-1340)
- GA Sylvester 102.1 WPFQ CC from WNUQ
- HI Paauilo 103.9 KNUQ PC 14.5kw-H/1758m, 20-42-23/156-15-39

ID Boise 103.1 NEW-197572 QG from 103.9, 50w/-143m, 43-40-52/116-16-11

ID Boise 103.9 KFFI-LP CC for NS

ID Lewiston 101.5 KATW PC 75kw/340m, 46-27-27/117-06-07

ID McCall 91.7 KBSM PC>220w/602m, 45-00-30/116-08-03

IL Chicago 104.7 W284DA PG<50w-V/363m, 41-53-21/87-37-36 (WRDZ-1300 La Grange via Internet)

IL Kankakee 95.1 WFAV PC>3.1kw/110m

IL Morton 102.3 WKZF CC from WNGY

IL Rochelle 93.5 W228DT NW 250w/54m, 41-55-22/89-03-27 (WRHL-1060 via microwave)

IN Cole 88.5 WNPP CC from WJCF-FM

IN Evansville 91.5 WJWA CC from WUEV

IN Evansville 91.5 WJWA PC<6.1kw/37m, 37-58-18/87-31-54

IA Cedar Rapids 102.3 K272GB NW 250w/137m, 42-02-42/91-38-49 (KGYM-1600 via microwave)

IA Cedar Rapids 107.5 K298BM PC<250w/137m (KZIA-102.9 via microwave)

KS Hoisington 95.5 K238CK LC 250w/610.6, 38-21-45/98-45-51 (KVGB-1590 Great Bend via 5.8GHz data link)

KY Cynthiana 101.3 W267CW NW 250w/42m, 38-23-58/84-17-16 (WCYN-1400 via microwave)

LA Baton Rouge 102.1 KZLU-LP NW 22w/63m, 30-27-01/91-07-54

LA New Orleans 93.7 WXNO-LP NW 2w-H/203m, 29-57-08/90-04-13

ME Orono 93.3 W227BE PC>170w/32m, 44-50-40/68-48-07 (WHMX-105.7 Lincoln OTA)

MA Haverhill 106.1 W291CC PC>225w/170m, 42-46-23/71-05-59 (WNBP-1450 Newburyport)

MA Hyannis 94.7 W230AW QC from 93.9, 160w/141, 41-33-32/70-35-43 (WPXC-102.9 OTA)

MI Houghton 92.7 W224AO PC 250w/-33m, 47-07-11/88-33-05 (WGGL-FM 91.1 Houghton OTA)

MI Petoskey 103.3 W277DY NW 250w/308m, 45-19-17/84-52-33 (WMKT-1270 Charlevoix OTA)

MI Petoskey 104.7 W284DF PC>250w/302m (WMBN-1340 OTA)

MI Traverse City 95.9 WLJW-FM-1 AF 2.2kw/-23m, 44-42-52/85-37-41 (booster)

MN Albert Lea 101.9 K270BQ PC<250w/49m, 43-39-27/93-18-25; CL from Northwood, Ia. (KJLY-104.5 Blue Earth OTA)

MN Red Lake 105.3 WRLN CC from WIZI

MN St. Paul 99.1 WVIC-LP PC>100w/30m, 44-57-18/93-02-33

MO Washington 107.1 K296HA PC<250w/142m, 38-46-45/90-43-44 (KRAP-1350 via microwave)

MT Billings 105.5 K288HA NW 250w/159m, 45-45-37/108-27-11 (KBLG-910 via microwave)

MT Billings 98.1 K251CI NW 250w/159m, 45-45-37/108-27-11 (KYA-730 via microwave)

NE Lincoln 107.9 KJFT-LP PG>100w/28m, 40-48-54/96-38-50

NV Las Vegas 91.1 KVKL-FM-1 NW 70 watts/543m, 35-56-45/115-02-41 (KVKL via satellite)

NJ Lakewood Township 104.1 W228EH QC from 93.5, 225w/141m, 39-52-31/74-09-56 (WOBM-1160 via microwave)

NM Albuquerque 99.9 KAQR-LP CC for NS

NM Los Alamos 107.5 KQBA-FM-1 PG 5kw-V/52m, 35-40-43/105-59-28

NM Santa Fe 94.7 KLBU-FM-2 PG 5kw-V/52m, 35-40-43/105-59-28

NY Elmira 102.9 W273BZ QG from 102.5, 35w-V/184m, 42-01-55/76-47-01 (WCIH-90.3 Ridgebury, PA. OTA)

NY Mohawk 97.5 WHMV-LP PC>100w-H/-27m, 42-59-39/75-01-09

NY Odessa 89.7 WINO QG from 89.9, 2kw/170m, 42-19-44/76-37-31

NY Shirley 94.5 W231CX QC from 94.1, 250w-H/54m, 40-47-55/72-52-38 (WBLI-106.1 Patchogue OTA)

NC Burnsville 104.7 W284DK NW 100w/440m, 35-56-17/82-17-46 (WKYK-940)

NC Charlotte 107.1 WJPK-LP CC for NS

NC Dunn 102.7 W249DE QC from 97.7 (WCKB-780)

NC Raleigh 106.5 WSMU-LP QG from 106.7, 34w/51m, 35-40-35/78-32-07  
 NC Roanoke Rapids 95.9 WVFV-LP CC from WEZU-LP  
 NS Sheet Harbour 94.7 CHHR-FM NS 45w/-19m, 44-55-24/62-32-19; English community.  
 OK Oklahoma City 97.7 KCYI-LP QG from 97.7, 18w/71m, 35-39-57/97-27-36  
 OR Albany 105.3 KHJJ-LP PG<100w/20m, 44-36-21/123-05-05  
 OR Brookings 105.3 K287CF PC>250w/187m (KURY-910 via microwave)  
 OR Portland 105.5 KXRU-LP PG<100w/11m, 45-32-31/122-34-43  
 PA Greencastle 93.7 WRGG-LP NW 9w/98m, 39-47-29/77-40-29  
 PA Greensburg 105.1 W286CZ PG<75w/106m, 40-19-17/79-35-27 (WKFB-770 Jeannette)  
 PA Jersey Shore 88.5 WXPI PG>950w/190m, 41-20-52/77-07-15  
 PA Reading 99.3 W257DI PC 100w/-13m, 40-20-46/75-57-49 (WLEV-100.7 Allentown OTA)  
 PA Washington 91.7 WNJR PG>400w/123m, 40-07-52/80-14-30  
 RI Westerly 103.1 W228AU QC from 93.5, 250w/31m, 41-21-57/71-50-09; CL from North Bennington, Vt. (WBLQ-1230 OTA)  
 SD Vermillion 101.5 K268DP NW 250w/107m, 42-55-21/97-03-58 (KVTK-1570 studio feed)  
 TN Henry 104.7 WHNY-FM CC from WHNY  
 TN Memphis 104.1 W281BR PC>250w/207m, 35-12-34/89-49-01 (WMSO-1240 Southaven, Miss. via microwave)  
 TN Memphis 104.1 W281BR PC>250w/207m, 35-12-34/89-49-01 (WMSO-1240 Southaven, Miss. via microwave)  
 TN Nashville 106.3 WXNS-LP PG<100w/12m, 36-11-26/86-46-46 (cellular tower at the I-65/I-24 junction north of downtown)  
 TN Rockwood 93.3 W227EB QG from W280FK-103.9, 250w/328m, 35-55-51/84-49-06 (WYHM-580 via Internet)  
 TX Crowell 98.9 KTUT CC from KKKQ  
 TX Cuney 99.7 KOEE PG>1.4kw/167m, 32-08-42/95-19-53  
 TX Cuney 99.7 KVUT CC from KOEE  
 TX El Paso 92.7 K224FC PC>99w/498m (KVIV-1340 via Internet)  
 TX Goldthwaite 100.5 KRNR QC from 107.3, 3.8kw/128m  
 TX Greenville 98.3 KKVI-LP PG<100w/25m, 32-54-58/95-44-31  
 TX Hartley 90.5 KUHC PG>6kw/91m, 36-06-35/102-30-33  
 TX Kerrville 107.7 K299CA NW 250w/67m, 30-03-52/99-08-17 (KERV-1230 via Internet)  
 TX Lefors 101.3 KHNZ PG>1.4kw/90m, 35-25-56/100-45-12; CL from Memphis, Tex.  
 TX Stinnett 91.7 KPWD PG<250w/108m, 35-50-38/101-26-47  
 TX Tomball 95.3 KTTF-LP PG 52w/42m, 30-05-48/95-37-41  
 TX Victoria 99.1 K256DJ QC from 99.9 (via 100.5) (KXBJ-96.9 El Campo OTA)  
 UT Enoch 93.9 KUQU NW 1.75kw/843m, 37-32-29/113-04-07 (aux)  
 UT Heber City 104.7 KNIV-FM-6 LC 250w/-268m, 40-31-38/111-23-59 (KNIV Lyman, Wyo.)  
 UT Monroe 88.3 KUXU QC from 88.5, 2.5kw/973m  
 WV Beckley 101.7 W268AZ QC from 101.5 (WRRL-1130 Rainelle OTA)  
 WI Madison 99.1 WIDE-LP PG>49w/43m, 43-03-07/89-27-24  
 WI Marinette 92.5 WLCJ-LP PG>100w/27m, 45-06-29/87-36-54  
 WI Neillsville 98.5 W253CN NW 250w/138m, 44-35-30/90-37-11 (WCCN-1370 via Internet)  
 WI Rice Lake 107.7 W299CQ NW 250w/169m, 45-30-31/91-46-27 (WAQE-1090)  
 WI Rice Lake 96.5 W243ED NW 250w/165m, 45-30-31/91-46-27 (WJMC-1240)

# PHOTO NEWS



Jeff Kruszka  
1909 Lost Lake Pl.  
Pearland, TX 77581  
jkruszka@sbcglobal.net

January 2020

Happy New Year! First up we hear from Marv Shults of Toulon, IL, who according to my records I have not posted photos from in over a decade! Good to hear from you, Marv. The first photo is a screenshot from KWQC-6 Davenport, IA in Oct. 2019 on its 70<sup>th</sup> anniversary. KWQC originally signed on as WOC-5 in 1949, but was forced to move to channel 6 in 1952 due to interference from WOI-5 in Ames, IA. They changed calls in 1986 after being sold. One interesting tidbit is that the station was founded by B.J. Palmer, founder of the Palmer College of Chiropractic (which was across the street from the studios) and considered to be the developer of the chiropractic method. Supposedly the WOC calls stood for the “Wonders of Chiropractic,” although the Palmer family never attested to such.



And here is how KWQC looks today:



And here's a late season tropo photo from Chris Dunne of Pembroke Pines, FL. This is a relog, but for Chris it was special because it was taken during the noon news report.



WCTV-46 Thomasville, GA  
385 mi Tr  
Seen 11/29/19

---

**NEW!** Super antenna pulls in amazing signals! Best antenna money can buy (it's free)! With a non-descript dial that magically tunes to the best signal! Complete with dual twin lead to hook up to your separate VHF/UHF terminals. Get yours TODAY!



# SIGN UP & Renewal Form

YEARLY DUES \$10.00 USD for Monthly VUD E-ZINE  
Print this form and send it with your dues.

Name \_\_\_\_\_

Address \_\_\_\_\_ Apt # \_\_\_\_\_

City \_\_\_\_\_ State/Prov \_\_\_\_\_ Zip \_\_\_\_\_

Country \_\_\_\_\_ Interests: TV ( ) FM ( ) 30-50 ( ) Weather ( )

E-Mail Address \_\_\_\_\_

Sign me up/renew me for: 1 year ( ) 2 years ( ) More ( ) \_\_\_\_\_

**Mail your yearly dues to: WTFDA, P.O. Box 501, Somersville, CT USA 06072**  
**Make your checks/money orders payable to: WTFDA**  
**And *thanks* for your support of the WTFDA!**



Active from December 27th to January 10th, 2020

The Quadrantids have the potential to be the strongest shower of the year but usually fall short due to the short length of maximum activity (6 hours) and the poor weather experienced during early January. The average hourly rates one can expect under dark skies is 25. These meteors usually lack persistent trains but often produce bright fireballs. Due to the high northerly declination (celestial latitude) these meteors are not well seen from the southern hemisphere.

**Shower details - [Radiant](#): 15:18 +49.5° - [ZHR](#): 120 - **Velocity**: 26 miles/sec (medium - 42.2km/sec) - **Parent Object**: 2003 EH (Asteroid)**

**Next Peak** - The Quadrantids will next peak on the Jan 3-4, 2020 night. On this night, the moon will be 58% full.