



VHF-UHF
The Magazine for TV and FM DXers

DIGEST

September 2020



The Official Publication of the Worldwide TV-FM DX Association



THE VHF-UHF DIGEST

The Worldwide TV-FM DX Association

Serving the TV, FM, 30-50mhz Utility and Weather Radio DXer since 1968

THE VHF-UHF DIGEST IS THE OFFICIAL PUBLICATION OF THE WORLDWIDE TV-FM DX ASSOCIATION DEDICATED TO THE OBSERVATION AND STUDY OF THE PROPAGATION OF LONG DISTANCE TELEVISION AND FM BROADCASTING SIGNALS AT VHF AND UHF. WTFDA IS GOVERNED BY A BOARD OF DIRECTORS: DOUG SMITH, SAUL CHERNOS, KEITH MCGINNIS, JAMES THOMAS AND MIKE BUGAJ

Treasurer: **Keith McGinnis** wtfda.org/info *Webmaster:* **Tim McVey**
Forum Site Administrator: **Chris Cervantez**
Creative Director: **Saul Chernos**
Editorial Staff: **Jeff Kruszka, Keith McGinnis, Fred Nordquist, Nick Langan, Doug Smith, John Zondlo and Mike Bugaj**



The WTFDA Board of Directors

Doug Smith dougs@wtfda.org	Saul Chernos saul@wtfda.org	James Thomas Jim-T@wtfda.org	Keith McGinnis nfmdx@wtfda.org	Mike Bugaj mikeb@wtfda.org
--	--	--	--	--

Renewals by mail: Send to WTFDA, P.O. Box 501, Somersville, CT 06072. Check or MO for \$10 payable to WTFDA.
Renewals by Paypal: Send your dues (\$10USD) from the Paypal website to sales@wtfda.org or go to <https://www.paypal.me/WTFDA> and type 10.00 or 20.00 for two years in the box.

Our WTFDA.org website webmaster is Tim McVey, webmaster@wtfda.org. Our WTFDA Forums webmaster is Chris Cervantez, Chriscervantez@gmail.com. Fred Nordquist is in charge of club statistics at nordquis@homesc.com

Our email reflector is on Googlegroups. To join, send an email to WTFDA+subscribe@googlegroups.com

Visit our club website at <http://www.wtfda.org> . Participate in our forums at <http://forums.wtfda.org>.

Our real-time (prop logger) bulletin board is located at <http://wtfdadxb.vci.net>. Only WTFDA members can participate.

You can find WTFDA on Facebook. Our group is called TV and FM Dxing. This is a public group. We also have a private group called [WTFDA](#) just for WTFDA Members.



The WTFDA FM Database is administered and updated by your fellow WTFDA members. It is completely free to use and can serve up to 500 users a day during the spring, summer and fall.



THE DATABASE CREW

Bill Hale
Mike Bugaj
Jim Thomas
Fred Nordquist
Nick Langan



The Mailbox

P.O. Box 501 Somersville, CT 06072
Mike Bugaj - Enfield, CT mikeb@wtfda.org



DUES RECEIVED

DATE	NAME	S/P	EXP
8/2/2020	Rich McVicar	NY	7/21
8/10/2020	Heidi Roach	PA	9/21
8/17/2020	Rick Lewis	WA	8/21
8/17/2020	Melvin Murray	FL	8/21
8/19/2020	Glenn Hauser	OK	8/21
8/28/2020	David Sinclair	BC	7/21

We have a short list this month. We thank you all for your support of the WTFDA!

THOUGHTS!

We have two replies to Gary Siegel's thoughts in last month's VUD. The first is from Paul Mitschler: "I found the Siegel article on counting stations fascinating. Before reading his article I was not aware of how complex things have become. My sloppy record keeping over the years along with apartment moving just seemed to make record keeping too confusing. Consequently now I am left with just a memory of my first analog TV DX, first color signal on my a color TV, first UHF station, first TV DX in French and Spanish, and first co-channel on channel 80. My DX-ing, since digital replaced analogs, has been limited to looking at lists from WTFDA and I thank you and your staff for that!"

Here's the second from Russ Edmunds: "Re Gary Siegel's suggestions, I have to disagree. I don't find his arguments for counting each sub-channel separately to be convincing. My reasoning is that counting all of the different sub-channels on TV or FM would be counting based on programming rather than on transmitters. I would consider that artificially

inflating totals, even if that isn't the stated intent. This wouldn't impact me at all as I don't DX TV, and as I mostly don't use anything for FM which is capable of receiving the sub-channels, so I have no stake in what is decided.

Changing the distance limit for DXers to try to evade IBOC hiss is an interesting idea, although I'm not sure how many DX'ers would be inclined to take advantage of it. Given my proximity to the local transmitters here, I could probably benefit from that to a good degree, although I probably wouldn't as remote power and a good mobile antenna would be needed."

NEED SOME COAX?



Bill Nollman is one of those people who have given up FM DXing at home due to severe band congestion and instead takes a DX trip to some remote area every year in an attempt to log some new stations.

He has another trip scheduled soon and talks about it. " If you happen to DX on the road like I do 99% of the time you know what a pain it is to spool up 100+ feet of RG6 and if you use heavy duty rotor wire even worse. I have an FM DX trip to Western PA coming up where I need to run out at least 230 feet to clear the top of a hill and 350 feet to get even higher. To be prepared, I combined my two 200' runs of 8 wire rotor cable and 400 feet of RG6 and spooled them up on this Ames garden hose cart. Super easy to roll out when I arrive and back when I leave. And my back and shoulder should be happy too.



Also, RG6 loses ~2dB per 100 feet at FM. So I did a test and connected rabbit ears and took some DB readings. Then attached the 400 feet of coax and sure enough levels were down about 6dB. Then put a Kitz KT-501 "at the antenna" and adjusted the gain. It perfectly brought the gain back up to pre-coax levels with plenty more gain to go. I might go one step further and unsolder the gain pot and attach it to the 3 unused wires in the rotor cable for gain adjustment at the radio. Maybe."

GET LONG DISTANCE FM and FM STEREO



MOD.
SF-8
\$23.65

NEW
Winegard
**STEREOTRON
FM ANTENNA**
(GOLD ANODIZED)

Perfect companion for your FM or FM-STEREO receiver. A high-gain 8-element antenna designed especially for long distance FM reception — up to 200 miles or more, depending on conditions. Pulls-in weak FM signals that "built-in" and small FM antennas can't receive. Gives you a far greater selection of FM stations — far more FM enjoyment.

Model SF-8, \$23.65

**MORE POWER FOR FRINGE
AREA FM RECEPTION**

Special 2-Nuvistor amplifier mounts on antenna. Greatly amplifies and strengthens all FM signals.

Mod. AP-320, \$39.95



VAN'S

**RADIO and
TV SERVICE**

1511 S. 12th Street

Dial GL 8-2159

**VAN'S, THE ONLY STORE THAT HAS ALL
THOSE CLASSIC FM AND TV ANTENNAS
YOU'VE USED FOR THE PAST 50 YEARS!**

IN STOCK NOW!*

CHANNEL MASTER WINEGARD
ANTENNACRAFT FINCO TACO and More!

(* Get them before your dream ends and you wake up.)

IMPORTANT NOTICE!

The WTFDA Forums (forums.wtfda.org) are now
back online on a new host and server.

2,628,000^{*} MINUTES

*5 YEARS

Story by Steve Rich
and Mike Glass

Editorial & Graphics by
Jim Thomas

Racking Up the DTV Numbers in Milford Illinois

"People will generally accept facts as truth only if the facts agree with what they already believe."

- Andrew Aitken Rooney

From A Few Minutes With Andy Rooney (A 60 Minutes segment).

"Today is the 5th anniversary of the Milford, IL remote DTV DX site, thanks to Mike G. To date, 887 DTV DX stations logged."

- Steve Rich, the Milford, Illinois HDHomerun tuner operator

From the WTFDA DX Bulletin Board, July 20, 2020.

The late Andy Rooney was known for joking around about everyday facts of life. The "facts as truth" is, and you can believe this - Milford, Illinois sits in a sweet spot for DTV DX. But the location for DTV DX in Milford, Illinois is no joke. The numbers speak for themselves.

July 20, 2020, marked the fifth anniversary of the Milford, Illinois DTV dxing site going live on the RabbitEars Live Bandscan, a service that hosts many HDHomerun tuners from various locations around the US, all set up to log DTV DX. This all happens automatically, whether the operator is "tuned in" or the HDHomerun tuner is running unattended. Many of the Live Bandscan participants tuners are set up to continually scan the VHF & UHF frequencies, looking for live signals, and after each sweep of the dial, it sends the report to the RabbitEars Live Bandscan server. DXers anywhere in the world can check the status of current DX on any one of the Live Bandscan tuners either through a map or a grid page.

Follow along as Steve Rich recounts the events that shaped the DTV dxing site which is located in Milford, Illinois.

That story and more, in this edition of **2,628,000 Minutes**.

Racking Up the DTV Numbers in Milford Illinois



Here's the Milford story, as told by Steve Rich.

Thanks to electronic advances in computers and internet capabilities, millions of people are currently working from home instead of a work office due to the coronavirus pandemic. With this concept in mind, my local DXing friend, Mike Glass, devised a way to remotely DX DTV. He had already utilized a software program in operation by Michigan Dxr Russell Dwarshuis in late 2010, which was then connected to a new website known as RabbitEars.info. By December 2010, Mike had this setup working at his house and a short time later had it operating at my house. This was part of the early stage of auto-scanning or auto-logging that many DTV DXers are currently utilizing via RabbitEars.info.

Mike continued to visualize beyond this in regards to the actual DX reception location. At the time, Mike and I were both living in suburban Indianapolis, which meant we had to deal with strong local stations. What if we could pick a more DX-friendly location and control the equipment remotely? This led Mike to acquiring permission from his brother-in-law who owned rural property just across the IN/IL state line near Milford, IL, 85 miles south of downtown Chicago, to install DXing equipment on this site.

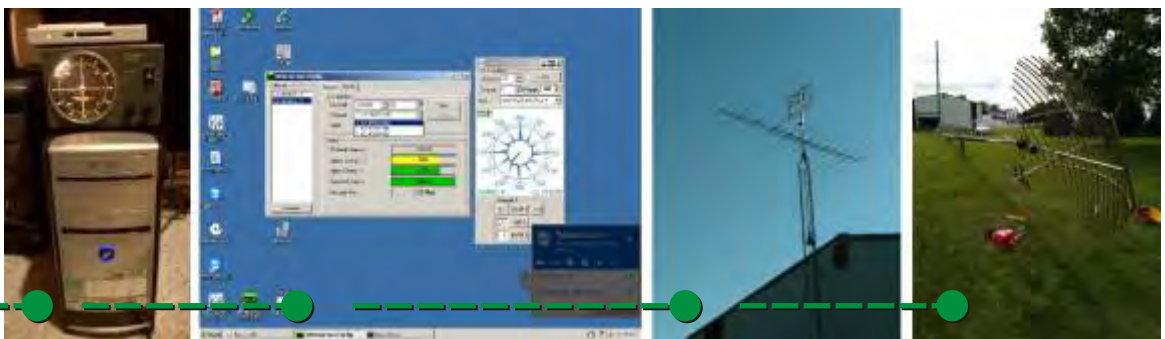
By July 20, 2015, Mike and I (mostly Mike....) had created a remote controlled DXing operation. It allowed virtually everything needed to DX DTV with the one exception of no video/audio from the stations. But leave it to Mike, that a short time later he added software which provided a screen to watch and listen to received stations. This particular location with the two nearest full-power DTVs being 28 and 43 miles distant, opened up more channels for DXing. Plus the rural location provided much lower noise and interference factors which can degrade weak signals.



The new setup officially went online via the internet July 20, 2015 and connected to RabbitEars.info the next day. Within the first week 157 DTV stations were logged, which was a great sign that the location was working well. On the evening prior to the setup's first anniversary, the 500th DTV station entered the Milford log book. Mike and I knew within a few weeks that we had a choice DX location, but it definitely exceeded our expectations. As of July 20, 2020, the fifth anniversary, the log total was 885. (As of August 7, 2020 the log total was at 896)

The initial operation consisted of a SiliconDust HDHR-US tuner, a computer loaded with programs/software to perform various functions, a 30 ft. tower, a Yaesu 450A rotor, two horizontally stacked 91XG (Yagi) UHF antennas, an Antennacraft CS-1100 VHF (2-13) antenna and a Channel Master 7778 (old-style, dual inputs) preamp. The tuner contains two separate tuners, so both can be set for 24/7 scanning of channels or one tuner can be manually controlled like operating a TV or set-top box at home.

Milford's Tools of the Trade



For The Complete Timeline & Photos of the Milford IL DTV DX site, jump on over to the WTFDA Forums:

[Http://www.wtfda.org/forums/forum/wtfda-dx-talk/dx-equipment/10299-remote-dtv-dx-site](http://www.wtfda.org/forums/forum/wtfda-dx-talk/dx-equipment/10299-remote-dtv-dx-site)



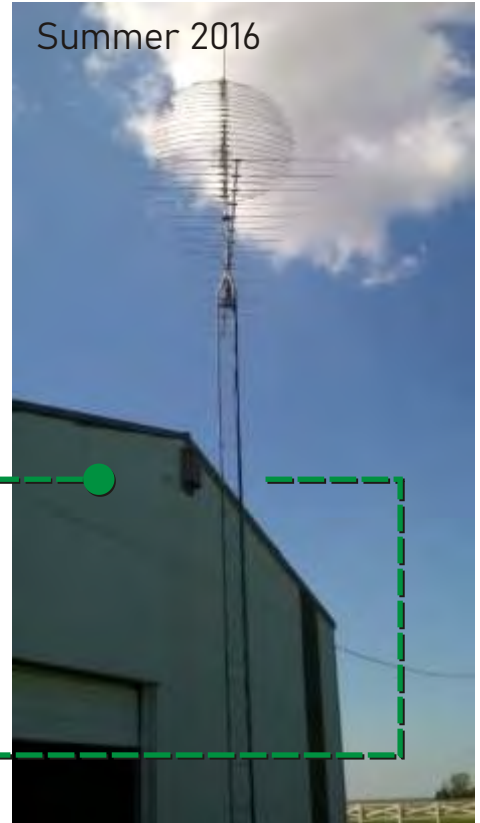
The Milford Timeline

Summer 2015



This was the very first setup in July 2015 with a 30 ft. Tower, horizontally stacked 91XG UHF Yagi antennas, Antennacraft CS-1100 VHF (2-13) antenna, an older model Channel Master 7778 (dual inputs) preamp and a Yaesu G-450A rotor.

Summer 2016



On May 5, 2016, we switched out the UHF Yagi stack with a Finco P-7, 7 foot parabolic.

Fall 2018



In the Summer of 2017 we started the 100 ft. tower project. By Nov. 2017 we were able to raise the bottom 42 ft. Section of that tower. It took a lot of Mike's mechanical engineering training and skills to develop a workable plan to get this beast anchored in the ground and then figure out what was needed to use a 10,000 pound heavy-duty winch to raise & lower the tower on its hinged base.

Getting the winch pole (a used utility pole) installed was a whole project in itself. A lot of steps, planning and road trips from Indy went into this vital part of the tower project.

By August 31, 2018, we were able to raise & lower the entire 100 foot tower for the first time. Success!!! Next step, to add antennas, rotor, and pre-amp.

September 10, 2018 we raised the tower for Dxing after installing all the needed equipment.

Spring 2019



In the Spring of 2019 just hours after some very good tropo reception into Canada, a severe thunderstorm with very high winds snapped our 40 ft. Tower and destroyed the antennas. Here's a pic of the redo: a 30 foot tower, another Antennacraft CS-1100 and a new Channel Master 4228HD (8 bay) UHF antenna.

Spring 2019



In early June 2019 we replaced the stacked Yagis and VHF-hi antennas with a single Channel Master 4251 (7 ft. UHF parabolic).

Steve's DX Notes

Racking Up
the DTV
Numbers
in
Milford
Illinois



Logged 265 DTV stations in just two weeks, and 305 after four weeks

September 24 & 25, 2015 logged the first Canadians with CHWI 16/16, Wheatley, ON 287 miles & CHCH 51/51, London, ON 333 miles

In October 2015 received WMAU 18/17, Bude, MS 663 miles, personal tropo distance record to date

November 29, 2015 the scanning tuner snagged WCBS 33/2, NYC, NY @ 713 miles

Between July 20 & Dec 1, 2015 the log book had reached 429

December 5th, 2015 brought in two Toronto DTVs at 469 miles

December 29, 2015 received first DTV via Es over 1300 miles, CKSA 2/2, Lloydminster, AB 1367 miles

Dec 31, 2015 first 300-watt DTV via Es: WKOB-LD 2/42, NYC, NY @ 713 miles

Received KUSD 34/2, Vermillion, SD 500 miles New state via tropo

June 27, 2016 got as far as Buffalo, NY @ 484 miles

September 14, 2016 - KWCH 19/12, Hutchinson (Wichita), KS 570 miles

On the eve of the first anniversary, logged the 500th DTV station, K24IM-D 24/12, Keosauqua, IA 227 miles, a translator for KIIN 12, IA Never expected this many logs within the first year! All about location!!!

September 4, 2016 new tropo distance record with KTXA 29/21, Fort Worth, TX 767 miles

October 24, 2016 Mike set up a newer, more powerful computer which now allows for screenshots of stations received

January 26, 2017 Almost reached the Gulf coast with WFNA 25/55, Gulf Shores, AL @ 687 miles

April 26, 2017, WFGX 50/35, Fort Walton Beach, FL (transmitter across state line in AL) 692 miles

January 12, 2018 New log: KOCB 33/34, OKC, OK 641 miles

Logged a new state June 30, 2018, WGPT 36/36, Oakland, MD 447 miles

July 8, 2018 another new state: WMYV 33/48, Greensboro, NC 535 miles

Happy 4th of July via KTIV 14/4, Sioux City, IA 464 miles on July 4, 2020





Setting Up Your DTV Auto-Logger



<https://www.rabbitears.info/>

Joining the RabbitEars Live Bandscan

Last updated on January 15, 2019, by Mark Colombo.

Note: These instructions will focus on Windows users. Users of Linux or Mac should e-mail Mark Colombo with any additional questions. Find his address at his website.

Joining the RabbitEars Live Bandscan requires only a few items.

- ✓ HDHomeRun receiver
- ✓ Always-on computer (Windows, Mac, or Linux) and Internet connection

The HDHomeRun receiver has two tuners and attaches directly to your home network. The HDHR2 or HDHR3 receiver can be found used or refurbished for around \$50 on eBay or Amazon. I can also recommend the HDHR5, which is currently new enough that it will be hard to find used. While the HDHR4 also works, there have been some issues with how it reports signal levels on channels without stations actively being received. Do NOT buy the HDHR Prime for the live bandscan; it is a cable-only receiver.



Once you have your tuner, install the official software from SiliconDust. (If you are using Windows XP, the latest official software no longer works, but I can provide an older version that does.) Once the official software is installed, you need to e-mail me with a few details:

- ✓ The tuner's 8-digit ID number
- ✓ Whether you will be using tuner0 or tuner1
- ✓ What operating system you will be using
- ✓ Your geographic coordinates
- ✓ How you would like to be identified, if at all, beyond your location
- ✓ Information you're willing to share about your antenna setup

Then I need to do some server-side configuration and send you the code to install and run for your operating system. The software runs from the command line, and has several useful switches:

- ✓ -t /tuner0/ - Allows you to choose whether to use tuner0 or tuner1
- ✓ -x FFFFFFFF - If you have multiple HDHR receivers on your network, allows you to specify which one to use
- ✓ -o 52,WWWWW,37,KKKK - If certain stations do not contain identifying information, you can force them to send with this switch
- ✓ -d - Outputs debugging information for use if the scanner is not functioning properly for you

If you run it without any switches, it will default to using tuner0 on the first tuner it finds. To run it with switches in Windows, (press Enter wherever {Enter} appears):

- ✓ Windows XP:
 - Start > Run > type: cmd{Enter}
 - Type: C:{Enter}
 - Type: cd "Program Files\TV Channel scan\bin"{Enter}
 - Then type scan_tuner.exe and follow it with your switches and Enter; for example:

```
scan_tuner.exe -t /tuner1/ -x 101B48F4{Enter}
```

- Unless you used the -d switch, the software will not give you feedback
- To see it scan, open the HDHomeRun Config utility and click the tuner you are using. The scan will go down from 69 to 2, then upload and repeat
- Close the window or type Ctrl+C to kill the auto-scanner
- ✓ Newer Windows:
 - Start > type: cmd{Enter}
 - Type: C:{Enter}
 - Type: cd "Program Files (x86)\TV Channel scan\bin"{Enter}
 - Then type scan_tuner.exe and follow it with your switches and Enter; for example:

```
scan_tuner.exe -t /tuner1/ -x 101B48F4{Enter}
```

- Unless you used the -d switch, the software will not give you feedback
- To see it scan, open the HDHomeRun Config utility and click the tuner you are using
 - The scan will go down from 69 to 2, then upload and repeat
- Close the window or type Ctrl+C to kill the auto-scanner

If you encounter any problems, e-mail me.



Setting Up Your DTV Auto-Logger (continued)



One Mac user sent me these pointers about running the software:

- Had to make the script executable
- Had to install Brew, then cpanm, then JSON (I am no expert on these, I just Googled the error I got)
- Had to use the -p option to define the path to hdhomerun_config, which is /usr/local/bin/hdhomerun_config

Separately, here are some instructions a user sent me for using a Raspberry Pi:

- ✓ Install a clean Raspbian OS on the Raspberry Pi.
- ✓ Update Raspbian OS.
- ✓ If rebooted enter:
 - ✓ sudo apt-get update
 - ✓ sudo apt-get install libgtk2.0-dev
 - ✓ sudo cpan JSON
 - ✓ sudo cpan LWP
- ✓ Create the "tvdx" directory under /home/pi
- ✓ Create the "bin" and "etc" directories in the "tvdx" directory and place the Bandscan software in the correct directories.
- ✓ Download the Linux Silicon Dust HDHomerun GTK firmware for the model you have from:
 - ✓ <https://www.silicondust.com/support/linux/>
 - ✓ libhdhomerun (source)
 - ✓ HDHomeRun Config GTK (source)
- ✓ Follow the instructions for HDHomeRun Config GTK instructions on the download page.
- ✓ Edit the bin/scan_tuner.pl file with your site information. Make sure you know where the hdhomerun_config file is located on your system. It could be in /usr/local/bin or /usr/bin. Point the my \$CONFIG_PROGRAM line in the scan_tuner.pl file to the correct location.
- ✓ From the tvdx/bin directory enter ./scan_tuner.pl and see if there are any error messages. If so, correct and rerun. If no error messages come up, the spots are being sent to the main server and should begin to show up on the main map shortly.

Once the software is known to work, you will want to set your computer to run it automatically, in the background, every time it starts. In Mac and Linux, you should be able to use crontab as normal to automate the process (please e-mail me with questions). In Windows, the process is more complicated:

- ✓ Windows XP:
 - Coming soon
- ✓ Newer Windows:
 - Stop the auto-scanner if you have it running manually
 - Start > type Admini > click on "Administrative Tools" under Control Panel in the search results
 - Double-click on "Task Scheduler"
 - In the pane at the right, click "Create Task"
 - Type "HDHR Scanner" in the "Name" field
 - Under Security Options, choose "Run whether user is logged on or not"
 - In the Triggers tab, click the New button
 - Set Begin the task to "At startup", and click "OK"
 - In the Actions tab, click the New button
 - Under Settings, click Browse
 - Navigate to the folder scan_tuner.exe is installed in and click the Open button
 - If you are using any command line switches noted above, put them in the Add Arguments (optional) field
 - Click "OK" and then "OK" again
 - In the pane at the left, click "Task Scheduler Library"
 - In the center top pane, find the HDHR Scanner entry, right-click it, and click "Run"
 - If you check the HDHomeRun Config tool, you should see the scan occurring; you're done!

If you have any further questions which are not answered here, please let me know. Enjoy!

TV News – September 2020

Douglas E. Smith
Nashville, TN
w9wi@w9wi.com
<http://www.w9wi.com>

Location	RF Ch	Callsign	Notes
Alabama			
Birmingham	32	WBMA-LD	From 40; granted.
Opelika	17	WLGA	From 30, DTS. Site #1: 550kw/537m, 32-19-16/84-47-28 (Cusetta, Ga.) Site #2: 589kw/424m, 32-51-07/84-42-06 (Manchester, Ga.) Granted.
Scottsboro	27	WNAL-LD	Requests power to 9kw/399m, 34-44-13/86-31-59; amendment from 7.95kw. Granted. Yes, for channel 27. (narrative says "The proposed facility, as amended, would operate on television channel 72")
Selma	25	WAKA	Application for new aux, 238kw/464m; granted & on the air.
Tuskegee	18	WBMM	Application for new aux, 18.7kw/321m; granted & on the air.
Arizona			
Bowie	26	K26PM	Permit granted for new LPTV, 1kw/-22m, 32-21-06/109-29-30 (Landover 2 LLC)
Lake Havasu	14	K14TD	Permit granted for new LPTV, 250w/-149m, 34-27-29/114-21-04 (Landover 2 LLC)
Parker	21	K21PB	Permit granted for new LPTV, 800 watts/-51m, 33-42-13/114-13-07 (Landover 2 LLC)
Parker	30	K30QT	Permit granted for new LPTV, 1kw/320m, 33-40-04/114-03-34 (Landover 2 LLC)
Phoenix	20	KPAZ-TV	Operating at unspecified reduced power less than 80% since July 18 th due to equipment failure. That power is now specified as 50%.
Roll	32	K32OP	Permit granted for new LPTV, 1kw/29m, 32-47-43/113-32-46 (Landover 2 LLC)
Salome	18	K18NS	Permit granted for new LPTV, 1.5kw/10m, 33-35-26/113-28-18 (Landover 2 LLC)
Salome	28	K28QP	Permit granted for new LPTV, 1.5kw/10m, 33-35-26/113-28-18 (Landover 2 LLC)
Sentinel	28	K28QO	Permit granted for new LPTV, 1kw/40m, 32-51-41/113-12-33 (Landover 2 LLC)
Shonto	23	K23PL	From K38CX, 2kw/46m, 36-37-10/110-34-53. Granted.
Tucson	19	KTTU	Returned to full power Aug. 3 rd .
Tucson	25	KMSB	Returned to full power Aug. 2 nd .
Yuma	7	NEW-187200	Application for new LPTV dismissed; Mexican objection. Would interfere with channel 7 in Mexicali.
Yuma	32	K32OQ	Permit granted for new LPTV, 1kw/48m, 32-41-41/114-36-47 (Landover 2 LLC)
Arkansas			
Jonesboro	30	K30MF	License canceled Aug. 24 th .
Little Rock	16	WPYM-LD	Power reduced to 2.5kw/44m, 34-30-04/90-59-32; city from Cleveland, Miss.

Location	RF Ch	Callsign	Notes
California			
Blythe	17	K17OQ	Permit granted for new LPTV, 1kw/110m, 33-37-03/114-46-24 (Landover 2 LLC)
Cherry Valley	8	KILA-LD	Requests power to 600 watts/748m, 33-47-57/117-37-24.
Desert Center	19	K19MY	Permit granted for new LPTV, 500w/66m, 33-45-00/114-31-20 (Landover 2 LLC)
Desert Center	25	K25QN	Permit granted for new LPTV, 1kw/-37m, 33-40-58/115-14-53 (Landover 2 LLC)
Desert Center	30	K30QU	Permit granted for new LPTV, 1kw/-37m, 33-40-58/115-14-53 (Landover 2 LLC)
Desert Center	32	K32OS	Permit granted for new LPTV, 1kw/-125m, 33-39-40/115-43-03 (Landover 2 LLC)
Fresno	30	KFSN-TV	Application for aux, 51kw/-191m, 37-04-37/119-26-04. Granted.
Holtville	17	K17OR	Permit granted for new LPTV, 1kw/23m, 32-46-11/115-16-49 (Landover 2 LLC)
Holtville	19	K19MX	Permit granted for new LPTV, 1kw/23m, 32-46-11/115-16-49 (Landover 2 LLC)
Imperial	33	K33QO	Permit granted for new LPTV, 2kw/34m, 32-47-32/115-45-53 (Landover 2 LLC)
Los Angeles	7	KABC-TV	Application for new aux, 29kw/906m. Granted & on the air.
Los Angeles	21	KTAV-LD	Requests power reduction to 15kw/336m, 34-07-08/118-23-33. Granted.
Lost Hills	35	K35PI	Permit granted for new LPTV, 1kw/6m, 35-17-46/119-15-15 (Landover 2 LLC)
Palm Springs	10	K10QV	Requests power increase to 230w/194m, 33-48-06/116-13-31.
Palm Springs	25	K25QM	Permit granted for new LPTV, 1kw/190m, 33-52-03/116-26-01 (Mako Communications LLC)
Palm Springs	32	K32OR	Permit granted for new LPTV, 5kw/190m, 33-52-03/116-26-01 (Mako Communications LLC)
Riverside	7	KRCA	See sharing host KABC-TV Los Angeles.
Salinas	10	K10RU	Permit granted for new LPTV, 1.5kw/800m, 36-32-05/121-37-13 (Mako Communications)
Salinas	18	NEW-181803	Application for new LPTV dismissed. (Mako Communications)
San Diego	16	KDTF-LD	Requests STA 3kw/568m; to operate at 20% power to ensure it isn't interfering with Los Angeles County public safety operations.
Santa Barbara	22	K22OM	Application dismissed, settlement. (Channel 51 of San Diego)
Santa Barbara	22	K22OP	Permit granted for new LPTV, 15kw/528m, 34-30-10/119-51-00 (Point Broadcasting Co.)
Santa Barbara	28	K28GY	OFF June 10 th . Tested briefly on new ch. 19 but must resolve interference issues with KCOY-TV Santa Maria on the same channel.
Santa Barbara	35	NEW-LPTV	Application dismissed; two competing applicants showed this one has gone out of business.
Santa Barbara	35	K35PJ	Permit granted for new LPTV, 1kw/389m, 34-28-14/119-40-34 (DTV America)
Santa Barbara	36	K36QH	Application for new LPTV, 15kw/266m, 34-27-57/119-40-40; amendment for slight change in site; granted. (Mt. Wilson FM Broadcasters)
Victorville	23	K23OM	Moved from K47CC, 8.87kw/473m, returning to the air Aug. 4 th .
Winterhaven	21	K21PA	Permit granted for new LPTV, 1kw/29m, 32-42-40/114-57-39 (Landover 2 LLC)
Winterhaven	23	K23PI	Permit granted for new LPTV, 1kw/29m, 32-42-40/114-57-39 (Landover 2 LLC)
Winterhaven	26	K26PN	Permit granted for new LPTV, 1kw/9m, 32-45-49/114-50-17.

Location	RF Ch	Callsign	Notes
Winterhaven	29	K29NQ	(Landover 2 LLC) Permit granted for new LPTV, 1kw/9m, 32-45-49/114-50-17
Winterhaven	31	K31PX	(Landover 2 LLC) Application for new LPTV dismissed; Mexican objection. Would interfere with San Luis Rio Colorado.
Colorado			
Castle Rock	15	KETD	Moved from 45, 200kw/315m.
Denver	27	KAVC-LD	From 33, 2kw/61m, 40-05-59/104-54-04; CL from Loveland. Granted.
Denver	30	KLPD-LD	Granted digital conversion from analog ch. 28, 1kw/-54m, 39-57-35/105-12-56.
Denver	30	KZCO-LD	See sharing host KLPD-LD.
Loveland	30	KAVC-LD	Permit from ch. 33 canceled Aug. 12 th . Remains on ch. 33 but see Denver.
Woodland Park	33	KPDD-LD	Calls changed from K33EW.
Connecticut			
Hartford	34	WTIC-TV	New aux on the air, 100kw/456m.
Hartford	35	WHCT-LD	Returned to the air July 22 nd .
District of Columbia			
Washington	31	WETA-TV	Moved from 27, 1000kw/257m.
Washington	36	WDCA	See sharing host WTTG.
Washington	36	WTTG	Permit granted for new aux, 290kw/159m, 38-57-50/77-06-17.
Florida			
Daytona Beach	11	WESH	Granted power increase to 64.6kw/512m.
Fort Myers	27	WLZE-LD	Requests STA 5.7kw/368m; temporary site pending completion of new WINK-TV tower. (to which WLZE-LD will relocate) Granted.
Jacksonville	14	WFOX-TV	Moved from 32, 663kw/289m.
Jacksonville	19	WJAX-TV	Requests STA 851kw/149m; interim sidemount antenna pending replacement of WJCT-9 antenna on the same tower.
Key West	21	W21EK	Permit granted for new LPTV, 15kw/63m, 24-33-20/81-48-05 (Alma Corp.)
Live Oak	33	NEW-182933	Application for new LPTV dismissed. Too close to Jacksonville – this filing window was only for stations at least 121km from a major city.
Madison	20	K20OV	Permit granted for new LPTV, 1kw/47m, 30-25-18/83-33-20. (CTB Spectrum Services) (yes, a K call in Florida)
Miami	3	W03BU	From W43CB, 3kw/191m, 25-46-20/80-11-29; granted.
Miami	4	WMDF-LD	Requests power to 3kw/192m, 25-46-20/80-11-29.
Miami	18	WTXI-LD	Requests STA 15kw/216m; sharing on W17DG.
Naples	16	WANA-LD	Site changed to 26-20-30/81-42-38; 15kw/198m.
Naples	18	WUVF-LD	Site changed to 26-20-30/81-42-38; 15kw/198m. FM translators on 95.7 and 105.9 have also moved to this site.
Ocala	18	WQFT-LD	Requests power reduction to 800 watts/134m, 29-11-00/82-02-17.
Ocala	21	WKMG-LD	Calls changed from W21DX.
Orlando	28	WRBW	Moved from 41, 450kw/422m (aux)
Orlando	33	WOFL	Moved from 22, 433kw/422m (aux)
Orlando	35	WFTV	Application for new aux, 1000kw/568m, 28-16-45/81-01-24. Granted & on the air.
Palm Beach	29	WDOX-LD	Moved from 24, 5kw/113m, 27-27-59/80-27-54.
Panama City	24	W24EO W24EY	Application for new LPTV, 5kw/50m, 30-21-15/85-54-27; granted. Some question as to whether the calls are W24EO or W24EY.

Location	RF Ch	Callsign	Notes
St. Petersburg	34	WDNP-LD	Competing application dismissed in settlement. Requests STA 2kw/95m; to operate post-repack facility at reduced power pending installation of permanent transmitter.
Tallahassee	30	WVUP-CD	Moved from 45.
Tampa	45	WTBT-LD	OFF July 20 th pending move to ch. 8.
Georgia			
La Grange	20	WCGZ-LD	From 21, 15kw/133m, 32-43-57/85-01-21.
Macon	50	WPGA-LP	OFF Aug. 1 st pending conversion to digital on ch. 18.
Hawaii			
Kailua-Kona	25	KSIX-TV	OFF Aug. 13th pending relocation of transmitter.
Wailuku	21	KLEI	Requests STA 2.1kw/-119m; interim site pending move.
Idaho			
Boise	9	KBOI-TV	Granted power increase to 35kw/862m.
Boise	33	KBSE-LD	Requests conversion to ATSC 3.0.
Boise	34	KCBB-LD	Requests conversion to ATSC 3.0; granted.
Twin Falls	23	KPIF-LD	Moved from 48, 15kw/170m.
Illinois			
<i>Champaign</i>	27	W27EL	<i>Returned to the air Aug. 5th on this channel, ex-W39BH.</i> Requests permanent permission for ch. 27, 15kw/74m; supersedes permit to go to ch. 32. Granted.
Champaign	34	W34EH	License canceled Aug. 24 th .
Chicago	12	WBBM-TV	Requests power increase to 10.9kw/500m; amendment to accept interference from a WREX-13 (Rockford) power increase, if WREX accepts interference from WBBM's increase.
Chicago	24	WFLD	Requests STA 435.5kw/510m, 41-52-44/87-38-08; backup to temporary post-repack facility. Granted.
Moline	31	WQAD-TV	Moved from 38, 1000kw/328m.
Rockford	13	WREX	Requests power increase to 30kw/212m. See WBBM-TV Chicago.
Sugar Grove	27	W27EB	From W40CN, 7.05kw/86m, 41-50-18/88-04-49; amendment to change site. (tower crew not available. Station already has an antenna available at the amended site.) Granted.
Indiana			
Evansville	12	WEHT	Moved from 7, 14kw/315m.
Gary	24	WPWR-TV	See sharing host WFLD Chicago.
Terre Haute	23	W23DZ	License canceled Aug. 24 th .
Iowa			
Davenport	32	KQCT-LP	Requests STA 2kw/254m, 41-18-45/90-22-46; interim post-repack transmitter.
Des Moines	8	KCCI	Requests power increase to 44.6kw/597m; amendment from 49.7kw, to prevent interference with KLKN Lincoln, Nebraska.
Keokuk	30	K30NF	License canceled Aug. 24 th .
Ottumwa	17	KGLU-LD	License canceled Aug. 24 th .
Sioux City	16	KEJK-LD	License canceled Aug. 24 th .
Kansas			
Topeka	20	K20KR	License canceled Aug. 24 th .

<i>Location</i>	<i>RF Ch</i>	<i>Callsign</i>	<i>Notes</i>
Kentucky			
Bowling Green	20	WKUT-LD	Request for permission to go silent withdrawn; station was able to return to the air Aug. 12 th , before FCC permission to be off was necessary.
Bowling Green	34	W34FG	Moved from W14DG, 15kw/208m, 37-03-49/86-26-07, returning to the air Aug. 4 th but off again on the 5 th , citing "technical issues".
Louisville	32	WDRB	Operating at 40% power since July 28th due to transmission line problems (inside the building). Returned to full power August 3rd.
Louisiana			
Alexandria	25	K25PZ	Requests STA for move from K33MP, 4.8kw/2m, 31-18-30/92-26-44 at the KALB-TV studios, pending construction of authorized ch. 25 facilities roughly 30km away. Granted.
Alexandria	33	K33MP	Returned to the air Aug. 21 st under STA.
Lake Charles	7	KPLC	OFF Aug. 27th, Hurricane Laura destroyed STL tower and severely damaged studio roof. Personnel have not yet been able to reach the transmitter site to determine if it's survived. Pictures of the collapsed STL tower have been widely circulated on TV and social media.
Lake Charles	18	KVHP	Probably also OFF Aug. 27 th . Shared studio facilities with KPLC, and pre-hurricane STL tower photos show a dish pointed at the KVHP tower west of the city.
Shreveport	23	KSLA	Moved from 17, 190kw/541m.
Maine			
Portland	31	WCSH	Application for new aux, 1000kw/495m, 43-51-30/70-42-39. Granted & on the air.
Portland	32	WMNE-LP	Requests STA 2kw/235m, 43-51-06/70-19-38; interim reduced-power digital conversion.
Presque Isle	16	WWPI-LD	Granted STA 15kw/331m, 46-33-04/67-48-32 to operate requested new facilities pending Canadian coordination. Granted permanent permit as above, and on the air with said facilities. Apparently Canadian concurrence was given.
Maryland			
Annapolis	21	WMPT	Permit granted for new aux, 800kw/239m.
Baltimore	12	WBAL-TV	Moved from 11, 30kw/305m.
Baltimore	27	WMAR-TV	Requests STA for 250kw/261m. The 850kw/276m temporary antenna failed. Granted. Moved from 38, 830kw/307m.
Massachusetts			
Worcester	19	WUTF-TV	Moved from 29, 970kw/374m, 42-18-37/71-14-12.
Michigan			
Flint	29	W29FG	Permit granted for new LPTV, 15kw/84m, 43-10-23/83-40-51; DCC for W09CK.
Lansing	29	WLNLM-LD	Requests STA 15kw/94m; to operate with requested facilities pending Canadian concurrence.
Pinconning	22	WKNX-LD	Granted conversion to digital, 15kw/117m, 43-28-27/83-50-45.
Traverse City	7	W07DQ	Permit granted for new LPTV, 3kw/167m, 44-46-13/85-41-43 (Roy E. Henderson)
Minnesota			

<i>Location</i>	<i>RF Ch</i>	<i>Callsign</i>	<i>Notes</i>
Duluth	18	KQDS-TV	Moved from 17, 1000kw/297m.
Worthington	18	K18MO	OFF July 29 th , antenna damage.
Mississippi			
Bruce	14	WYMP-LD	From W07BN, 3kw/108m, 34-24-12/89-24-13; amendment to change site. Granted. Calls were briefly W14EW.
Calhoun City	26	WMPJ-LD	From 34, 3kw/107m, 34-24-12/89-24-13; calls from W34BJ; was briefly W26FK.
Clarksdale	31	W31DZ	License canceled Aug. 24 th .
Greenville	15	WFXW	Returned to full power July 27th.
Meridian	13	WTOK-TV	Granted STA 235kw/129m; to increase power on interim antenna from 119kw. Normal maximum digital power on high VHF is 160kw.
Missouri			
Cape Girardeau	28	WSIU-DRT	New replacement translator on the air, 5kw/202m, 37-24-23/89-33-44.
Kansas City	14	KUKC-LD	Moved from 20.
Montana			
Hardin	22	KHMT	Requests STA 500kw/248m; to operate at half power due to tube failure. Granted. Returned to full power Aug. 18th.
Nebraska			
Lincoln	35	KLKN-DRT	From 31, 5.6kw/55m. Granted.
Neligh	27	K27NI	Moved from K50IO, 350w/120m, 42-02-39/98-02-02
New Jersey			
Atlantic City	4	WACP	Operating at 37% power (12.73kw) since June 25th pending transmitter repairs. Returned to full power July 9th.
Newton	18	WMBC-TV	Requests power increase to 250kw/520m, 40-42-47/74-00-47; amendment from 700kw/477m. To use 1 World Trade Center upper UHF master antenna, shared with WCBS, WPXN, and WWOR, instead of a side-mounted antenna.
New Mexico			
Caballo	20	K20HA	Granted conversion to digital, 240 watts/755m.
Magdalena	34	K34QU	Permit granted for new LPTV, 1kw/-12m, 33-37-32/107-09-28 (Landover 2 LLC)
Magdalena	36	K36QF	Permit granted for new LPTV, 1kw/-12m, 33-37-32/107-09-28 (Landover 2 LLC)
Orogrande	7	K07AAL	Permit granted for new LPTV, 1.5kw/512m, 32-49-47/105-53-15 (One Ministries)
Roswell	33	K50IA	From 50, 2kw/12m, 33-23-03/104-35-16.
New York			
Albany	32	W47CM	Moved from 47, 1.51kw/-2m, 42-58-17/73-50-42.
Bath	20	W20BL	Returned to the air Aug. 26 th .
Buffalo	16	WNYO-TV	Moved from 49, 575kw/329m, 43-01-32/78-55-42.
Buffalo	30	W30BW	Power reduced to 1.69kw/91m, 42-16-35/78-39-30.
Buffalo	32	WUTV	Moved from 14, 1000kw/329m, 43-01-32/78-55-42.
Cobleskill	14	WYBN-LD	Requests STA 5kw/336m; reduced power at request of FCC.
Corning	22	WECY-LD	Returned to the air Aug. 26 th .
Elmira	23	WETM-TV	Request for power increase to 265kw/375m withdrawn. But apparently refiled, as it was granted on Aug. 24th.

Location	RF Ch	Callsign	Notes
Hamburg	18	WDTB-LD	From 29, 15kw/174m, 42-52-49/78-52-35.
Hornell	16	W16BE	Returned to the air Aug. 26 th .
New York	2	W02CY	From W41DO, 500w/261m, 40-45-08/73-58-02; granted.
New York	2	W28ES	Requests STA for this channel, 300w/261m, 40-45-08/73-58-02, sharing with W02CY. Not sure why the power levels differ. (in digital TV, stations sharing a channel operate with identical technical facilities – indeed, there is only one transmitter.)
New York	24	WNYE-TV	Granted power increase to 180kw/310m.
Rochester	20	WAWW-LP	Returned to full power August 1 st .
Rochester	30	WAWW-LP	From 20, 11.5kw/108m, 43-08-07/77-35-06; amendment from 12kw. Granted.
Roslyn	9	W09CZ	Requests STA 500 watts/77m, 40-45-13/73-49-25. Lost site. Proposed interim facility at co-owned W268BY-101.5. Interim site is an office building on Kissena Avenue in Queens. Granted. Returned to the air with these STA facilities Aug. 13 th .
Syracuse	16	W16EA	OFF Aug. 11 th pending equipment repairs.
Syracuse	18	WTVH	Requests STA 58.8kw/393m, 42-56-42/76-07-06; interim reduced-power post-repack facility. Granted.

North Carolina

Andrews	20	W20EK	Moved from W49DB, 9kw/608m.
Bat Cave	6	W06AQ	License canceled Aug. 10 th .
Brasstown	5	W05AP	License canceled Aug. 10 th .
Bryson City	8	W08AN	License canceled Aug. 10 th . (replaced by digital W30DX)
Burnsville	12	W12AU	License canceled Aug. 10 th .
Charlotte	27	WGTB-CD	Moved from 28, 15kw/407m.
Cherokee	5	W05AF	License canceled Aug. 10 th .
Greenville	14	WIED-LD	License canceled Aug. 13 th .
Lumberton	34	WPEM-LD	Requests STA 15kw/147m; interim antenna, originally-planned unit too heavy for tower.
Maggie Valley	6	W06AP	License canceled Aug. 10 th . (replaced by digital W15DR) (this one was off when I visited Maggie last October)
Oteen	6	W06AL	License canceled Aug. 10 th .
Oxford	23	WLXI-DRT	See sharing host WUNC-DRT.
Oxford	23	WRAY-DRT	See sharing host WUNC-DRT.
Oxford	23	WUNC-DRT	Requests STA 4kw/89m; to operate at half power because air conditioning can't keep up.
Robbinsville	11	W11AQ	License canceled Aug. 10 th . (replaced by digital W14EG)
Spruce Pine	6	W06OD	License canceled Aug. 10 th .
Sylva	5	W05AE	License canceled Aug. 10 th . (replaced by digital W17DS)
Wilmington	20	WDZA-LD	License canceled Aug. 13 th .
Wilmington	22	WDQB-LD	License canceled Aug. 13 th .
Wilmington	26	WDRL-LD	License canceled Aug. 13 th .

North Dakota

Grand Forks	30	K30LR	OFF June 29 th , equipment issues. Returned to the air Aug. 19 th .
Minot	21	K21GQ	Requests power reduction to 2kw/24m, 48-17-00/101-24-15.
Williston	28	K28QQ	From K40DE, 1kw/42m, 48-10-45/103-33-44. Granted.

Nova Scotia

Sydney	25	CJCB-TV	Requests conversion to digital on this channel, 37kw/188m, 46-05-53/60-18-43; to share CIHF-DT-7 ch. 27 antenna.
---------------	-----------	----------------	---

Ohio

Alliance	29	WNEO	Moved from 45, 465kw/251m.
-----------------	-----------	-------------	-----------------------------------

Location	RF Ch	Callsign	Notes
Canton	23	KODV-LD	OFF July 31 st pending transmitter repairs.
Cleveland	13	W48CH	Moved from 48, 300w/73m, 41-54-20/80-34-15.
Cleveland	26	WEKA-LD	Requests STA 5kw/96m, 41-29-13/81-41-01; city from Canton.
Cleveland	30	WVIZ-DRT	Application for new LPTV, 8.5kw/65m, 41-30-12/81-40-29.
Loudonville	13	WIVX-LD	Requests power increase to 3kw/139m, 40-59-06/81-41-34.
Oklahoma			
Enid	36	KZMB-LD	License canceled Aug. 24 th .
Oklahoma City	34	KWRW-LP	Converted to digital from analog K44BQ, 15kw/33m, 34-46-10/97-17-40.
Tulsa	23	KTUO-LD	Power reduced to 1.35kw/48m, 35-53-38/95-35-07.
Pennsylvania			
Altoona	33	W43BP	Moved from 43, 1.58kw/-76m, 39-51-16/78-37-52.
Darby	25	W25FG	From W36DO, 2.5kw/182m; granted.
Freedom	2	WWBP-LP	From 31, 3kw/180m, 40-37-12/80-05-36; amendment from ch. 27 & to change site.
Harrisburg	30	W30EV	From W07DP, 5kw/219m; granted.
Harrisburg	35	WGAL-DRT	Granted move from ch. 49; moved.
Pittsburgh	36	W36FK	Moved from W52BO, 3.38kw/96m, 41-14-49/79-54-00.
Red Lion	3	WEVD-LD	Site changed to 40-07-20/77-04-12; 3kw/274m. Moved from Dover, Delaware.
Scranton	32	W59DG	Moved from 59, 3.88kw/102m, 42-01-45/76-12-33
Towanda	20	W20EI	Granted site change to 41-41-02/76-28-59. Probably correction only.
Puerto Rico			
San Sebastian	33	WJWN-TV	Returned to the air July 31st at 6% power.
Yabucoa	17	W17EP	Power granted to 15kw/-22m, 18-15-20/66-01-25.
South Carolina			
Anderson	35	WMYA-TV	Moved from 14, 750kw/320m.
Columbia	7	WOLO-TV	Application for new aux, 12.7kw/508m; granted & on the air.
Florence	26	WWMB	Moved from 21, 655kw/581m.
Florence	27	WPDE-TV	Moved from 16, 580kw/600m.
Florence	44	W44CU	License canceled Aug. 13 th .
Myrtle Beach	14	W14DJ	License canceled Aug. 13 th .
Myrtle Beach	27	WUDI-LD	License canceled Aug. 13 th .
Myrtle Beach	36	WFXB	Application for new aux, 254kw/429m; granted & on the air.
Myrtle Beach	39	W39CY	License canceled Aug. 13 th .
Myrtle Beach	40	WYDJ-LD	License canceled Aug. 13 th .
Pickens	5	W05AO	License canceled Aug. 10 th . (replaced by digital W31DY)
South Dakota			
Rapid City	20	K20KI	License canceled Aug. 24 th .
Rapid City	22	K22JU	License canceled Aug. 24 th .
Sioux Falls	20	KABY-LD	Returned to the air Aug. 13 th but off again on the 17th with equipment issues.
Sioux Falls	23	K56GF	Requests power reduction to 2kw/56m, 43-34-26/96-38-55. Already on this channel under construction permit.
Tennessee			
Collegedale	11	W11DM	Moved from W21BZ, 3kw/159m.
Knoxville	33	WKXT-LD	Requests STA 2kw/279m, 35-59-44/83-57-23; interim reduced-power post-repack facility.

<i>Location</i>	<i>RF Ch</i>	<i>Callsign</i>	<i>Notes</i>
Texas			
Amarillo	15	KCIT	Returned to full power Aug. 17th.
Bakersfield	25	K25QO	Permit granted for new LPTV, 1kw/162m, 30-55-03/102-12-11 (CTB Spectrum Services)
Balmorhea	24	K24OI	Permit granted for new LPTV, 800 watts/6m, 30-59-54/103-45-25 (CTB Spectrum Services)
Brownsville	27	KNWS-LP	Moved from 64, 15kw/92m, 26-09-02/97-30-59.
Bryan	30	K30QR	Permit granted for new LPTV, 15kw/52m, 30-39-10/96-23-07. (Daij Media LLC)
College Station	35	K35PH	Permit granted for new LPTV, 3kw/112m, 30-41-07/96-14-57
Corpus Christi	26	K26PO	Permit granted for new LPTV, 5kw/79m, 28-02-08/97-26-12 (DTV America)
Corpus Christi	33	K33QP	Permit granted for new LPTV, 500 watts/104m, 27-47-28/97-27-03 (Mako Communications)
Corpus Christi	36	K36QG	Permit granted for new LPTV, 300 watts/63m, 27-47-50/97-24-14 (CTB Spectrum Services Two)
Dallas	22	KNAV-LP	Converted to digital, 15kw/321m.
Decatur	30	KMPX	Requests STA 29.5kw/544m; tube failure.
Del Rio	14	K14SK	Application for new LPTV dismissed, Mexican objection. Would interfere with Cd. Acuña. (J.B. Salazar)
Del Rio	23	K23PK	Application for new LPTV dismissed, Mexican objection. Would interfere with Cd. Acuña & Piedras Negras. (J.B. Salazar)
Del Rio	27	K27OZ	Permit granted for new LPTV, 2kw/99m, 29-20-40/100-51-40 (Marcos G. Guajardo)
Del Rio	29	K29OA	Permit granted for new LPTV, 2kw/99m, 29-20-40/100-51-40 (Jim McPhetridge)
Fort Stockton	27	K27PA	Permit granted for new LPTV, 1kw/24m, 30-56-30/103-19-13 (CTB Spectrum Services)
Georgetown	29	KHPX-CD	Returned to the air Aug. 25 th on this channel, ex-ch. 28; 189 watts/160m. (see Round Rock)
Harlingen	21	KLUJ-TV	From 34, 33.9kw/283m; granted & moved.
Irving	34	KSTR-DT	OFF Aug. 12th, ATSC 3.0 compression gear failed.
Junction	34	K34QV	Permit granted for new LPTV, 100 watts/69m, 30-27-48/99-44-12 (CTB Spectrum Services)
Kent	17	K17OT	Permit granted for new LPTV, 1kw/30m, 31-03-28/104-13-04 (CTB Spectrum Services)
Lake Dallas	31	KAZD	STA 1000kw/509m, 32-35-16/96-58-00 dismissed.
Laredo	17	K17OS	Permit granted for new LPTV, 1kw/36m, 27-24-01/99-26-42 (Marantha Church of Laredo)
Lufkin	16	KIMD-LD	License canceled Aug. 24 th .
McAllen	35	KAZH-LP	Moved from 39, 5kw/109m.
Midland	32	KFAW-LD	Power increased to 15kw/149m.
Odessa	30	KWWT	Granted power increase to 500kw/147m.
Round Rock	25	KHPZ-CD	Returned to the air Aug. 25 th on this channel, ex-ch. 15; 85 watts/160m. (see Georgetown)
Sheffield	30	K30QS	Permit granted for new LPTV, 1kw/118m, 30-41-37/101-38-49 (CTB Spectrum Services 2)
Sheffield	31	K31PW	Permit granted for new LPTV, 1kw/118m, 30-41-37/101-38-49 (CTB Spectrum Services 2)
Sheffield	32	K32OT	Permit granted for new LPTV, 1kw/118m, 30-41-37/101-38-49 (CTB Spectrum Services 2)
Stamford	44	KIDT-LD	OFF Aug. 13 th , bumped by land mobile.

Vermont

<i>Location</i>	<i>RF Ch</i>	<i>Callsign</i>	<i>Notes</i>
Burlington	7	WVNY	Moved from 13, 14kw/831m.
Burlington	16	WFFF-TV	Moved from 43, 40kw/839m.
Virginia			
Hampton	11	WVEC	Requests power increase to 45kw/357m.
Hampton	31	WHRO-TV	Moved from 16, 1000kw/375m.
Harrisonburg	30	WSVW-LD	Power reduced to 12kw/505m. See also Massanutten.
Harrisonburg	36	WSVF-CD	Power increased to 15kw/505m. See also Massanutten.
Massanutten	34	WHSV-DRT	Power increased to 15kw/505m. See also Harrisonburg.
Norfolk	15	W15DO	New station on the air, 1.2kw/122m, 35-50-14/77-04-56.
Washington			
Vancouver	30	KPDX	Operating (in ATSC 3.0) at 73% power since July 28th. Operation at higher power creates excessive out-of-band interference.
West Virginia			
Huntington	21	W45BW	Moved from 45, 3.35kw/80m, 39-00-13/81-57-53
Parkersburg	8	WVMY-LD	Returned to the air Aug. 27 th .
Parkersburg	20	WOVA-LD	Moved from 22, 15kw/191m, 39-21-00/81-33-55.
Wisconsin			
Baraboo	16	W43BR	Requests STA for digital operation on this channel, 15kw/295m, 43-25-50/89-39-13. Station doesn't appear in most databases as it has no regular license – it's been operating under Special Temporary Authority since May 1997. STA granted.
Eau Claire	17	WEAU	Moved from 38, 740kw/616m.
Wyoming			
Casper	18	K18JQ	Returned to the air July 24 th , but off Aug. 11th, equipment issues.
Casper	36	KCBZ-LD	Returned to the air July 24 th , but off Aug. 11th, technical reasons.

STATIONS OFF IN LAKE CHARLES

Hurricane Laura is known to have knocked KPLC-7 Lake Charles, Louisiana off the air. Widely circulated photos have shown the KPLC studio-transmitter link (STL) tower collapsed into the station's studio building in downtown Lake Charles. The photo below was lifted from the KPLC website. The station's staff had moved to safety at Baton Rouge sister station WAFB. (hence, the WAFB logo)

KPLC personnel, in notifying the FCC the station was off, told the Commission they have not yet been able to reach the station's transmission tower northeast of the city. Presumably the transmitter is off the air at this time. Whether the tower still stands is unknown.

KVHP-29 is operated from the same building as KPLC and is presumed also off the air. The KVHP tower is to the west of the city – the opposite direction from the KPLC tower.

The FCC also operates a Disaster Information Reporting System.(DIRS) As of the day after landfall, TV stations KARD-14 Monroe; KBCA-41 Alexandria; KMLU-11 Columbia; and WNTZ-48 Natchez, Miss. report they're off the air. (as do fourteen FM radio stations, nine FM translators, and one AM station. One FM station reports being off, but able to reroute its programming to a different station.) My past experience is that reporting to DIRS is not particularly good. That still seems to be the case, as I *highly* doubt only one AM station is off when 14 FMs are. Indeed, I'm aware of a second AM station that has reported it's off on Facebook. (of course, it is also possible many stations have lost their

Internet access and are unable to report)



kplctv.com

W09CZ RETURNS TO AIR:

W09CZ Roslyn, New York went temporarily dark in August 2019. It returned to the air under Special Temporary Authority on August 11th, four days before its license would be lost. Stations returning to the air after a silent period file a notice of resumption with the FCC. These notices usually contain a brief PDF attachment simply stating the station returned on a particular date.

W09CZ's notice is more elaborate than most. They included photos of their transmitting antenna and their equipment. The equipment is too small to reproduce here but seems to consist of a transmitter of single "rack unit" height (1-7/8"); an MPEG encoder of the same size; a smaller RF filter; a network router; and some small device with a USB thumb drive attached. A TV station in a space about 1.5m wide by 1.5m deep by maybe 50cm tall.



W09CZ FCC filing

ALL NETWORKS IN HARRISONBURG:

The LPTV, Class A, and Digital Replacement Translator in Harrisonburg and Massanutten, Virginia are all located at the same site & co-owned.

Network	Channel
ABC	3.1
CBS	43.2
CBS	3.5
Fox	43.1
NBC	30.1
NBC	3.2
CW	30.2
My	3.4
Circle	30.3
Ion	3.3

ATSC 3.0:

KDFW-4 will be carried in ATSC 3.0 on host station KSTR-DT Irving.



FM NEWS - SEPTEMBER 2020

Editor: Bill Hale fmnews@wtfda.org
Visit db.wtfda.org to stay up-to-date on the latest
FM programming changes



PLEASE NOTE

99% of the changes that appear in FM News, and thus are copied into the WTFDA database, are compiled from commercial sources the WTFDA subscribes to: 'StationIntel' and 'radioINSIGHT'. The remaining items are furnished by readers who report differences. So, if you hear a station locally or via DX, and the format/slogan differs from that which appears in our database, let us know and we'll do our best to make it right. Submit updates only in the format seen here, making it easier to update the database and the column. We have several listings where the **Formats and slogans** are **Unknown** (highlighted in **Red**). If you can help, please do.

Updates this month are from the following: **Eric Bueneman (EB-MO)**. We appreciate your help!

AL Arab	107.1	W296DM	AZ Parker	93.5	K228FF
Classic Country: 'Fun Classic Country' // WRAB-1380			License cancelled; calls deleted		
AL Auburn	101.1	W266BJ	AZ Parker	103.7	K279CC
Sports: 'AM 1230 WAUD' // WAUD-1230			License cancelled; calls deleted		
AL Linden	98.5	WINL	AZ Parker	105.1	K286CB
Country: 'Dixie Country 98.5 - 100.1' // WDXX 100.1			License cancelled; calls deleted		
AL Madison	96.5	W243EP	AZ Parker	105.7	K289BW
Move from 94.7 as W234AD			License cancelled; calls deleted		
AL Phenix City	100.1	WGSY	AZ Yuma	95.1	KTTI
Call change from WHTY			Country: '95.1 KTTI'		
AL Selma	100.1	WDXX			
Country: 'Dixie Country 98.5 - 100.1' // WINL 98.5					
AL Stewartville	98.3	WFXO			
Sports: 'Fox Sports Central Alabama' (Fox Sports Radio)					
AL Tallassee	99.9	WQNR			
Adult Hits: 'Kate FM 99.9'					



AK Palmer 90.7 K214FK
Move from 88.3 as K202CB

AZ Morristown 99.5 KRPH
Format Unknown [Morristown is on US 93 northwest of Phoenix. Anyone traveling in that vicinity? Your help is appreciated!]

AZ Parker 92.7 K224FH
License cancelled; calls deleted

AZ Parker	93.5	K228FF
License cancelled; calls deleted		
AZ Parker	103.7	K279CC
License cancelled; calls deleted		
AZ Parker	105.1	K286CB
License cancelled; calls deleted		
AZ Parker	105.7	K289BW
License cancelled; calls deleted		
AZ Yuma	95.1	KTTI
Country: '95.1 KTTI'		



AR Bearden	92.7	KBEU
Talk: '92.7 News Talk'		
AR Clarksville	88.5	KQLO-LP
Frequency move from 97.5		
AR East Camden	95.3	KCXY
Country: 'Y-95.3'		
AR Perryville	91.9	KWQX
New station signs on with Unknown Format		
AR Sherwood	97.7	K249FE
Regional Mexican: 'Radio La Raza' // KMTL-760		

CA Atascadero	103.9	KRUR-LP
License cancelled; calls deleted		
CA Agua Dulce	97.5	KLQS-LP
Returns to the air with Variety		

CA Indio 92.7 KKUU
Rhythmic-CHR: 'U 92.7'

CA Los Angeles 94.7 KTWV
Adult R&B: 'The Wave' [includes K244AM China Lake]

CA Santa Cruz 90.5 W213AH
License cancelled; calls deleted

CA Sausalito 100.9 K265DI
License cancelled; calls deleted per licensee's request



CO Salida 91.3 KTPF
Contemporary Christian: 'The Light'

CO South Fork 91.9 KTML
Contemporary Christian: 'The Light'

CO Steamboat Springs 91.7 KTSG
Contemporary Christian: 'The Light'

CO Sterling 89.9 KTAD
Contemporary Christian: 'The Light'

CO Trinidad 90.7 KTDL
Contemporary Christian: 'The Light'

CO Walsenburg 89.3 KTAW
Contemporary Christian: 'The Light'



CO Brush 90.5 KBEI
Contemporary Christian: 'The Light'

CO Canon City 89.1 KTLC
Contemporary Christian: 'The Light'

CO Colorado Springs 90.5 KTLF
Contemporary Christian: 'The Light'

CO Dolores 89.5 KTCF
Contemporary Christian: 'The Light'

CO Glenwood Springs 88.1 KDNK
Variety/News/Talk: 'KDNK 88.1 Community Radio'

CO Leadville 90.9 KTOL
Contemporary Christian: 'The Light'

CO Montrose 89.9 KTMH
Contemporary Christian: 'The Light'

CO Ouray 105.7 KWGL
Classic Country: 'The Range 105.7 FM - 98.1 FM' ['98.1' refers to K251BG Redlands; includes K247BK Grand Junction and K260BZ Aspen]

CO Pagosa Springs 89.7 KTPS
Contemporary Christian: 'The Light'

CO Pueblo 88.3 KTPL
Religious Teaching: 'KTPL Word'

CO Rifle 90.9 KRJX
Contemporary Christian: 'The Light'

CO Rifle 105.3 KZKS
Classic Rock: 'The Drive 105' [includes K291CA 106.1]



CT Bloomfield 95.3 W237EO
Religious Teaching: 'Life Changing Radio 1550 AM - 95.3 FM' // WSDK-1550



FL Bartow 99.9 W260DA
Spanish: 'Ritmo 99.9 FM - 1460 AM' // WQXM-1460 FL Bradenton 96.1 W241DH
Ethnic: 'Radio Nouvelle Lumiere' // WTPA-1590

FL Bithlo 92.7 W224DY **and**

FL Winter Garden 98.5 W253CS
Return to the air with Unknown Format // WLAA-1600 **[any help??]**

FL Daytona Beach 100.7 W264DP
Spanish CHR // WPUL-1590

FL Florida City 88.5 WMFL
Is Silent

FL Graceville 101.7 WTID
Call change from WTOT

FL Jacksonville 89.9 WJCT-FM
News: 'WJCT News 89.9'

FL Key Colony Beach 101.7 WKYZ
Adult Alternative: 'Pirate Radio 96.7 and 101.7'

FL Marianna 102.1 W271DM
Country // WTOT-980

FL Okeechobee 96.7 W244DW
Country: 'WOKC AM 1570 and FM 100.9' // WOKC-1570

FL Orlando 99.9 WIME-LP
Returns to the air with Spanish CHR

FL Ormond Beach 107.1 WZEA-LP
Is Silent

FL Riviera Beach 94.3 WRLX
Spanish Hits: 'Mia 94.3'; call change from WZZR

FL Sebring 104.9 WVDV-LP
Is Silent

FL Vero Beach 101.7 WCZR
Talk: '92.1 Real Radio' // WZZR 92.1

FL West Palm Beach 92.1 WZZR
Talk: '92.1 Real Radio'; call change from WRLX; // WCZR 101.7

FL White City 104.5 WFLM
Urban Adult Contemporary/R&B Oldies: '104.5 The Flame'

GA Calhoun 103.5 W278CD
Returns to the air with **Format Not Available** // WEBS-1030

GA Canton 104.5 W283DP
Move from 103.9 as W280FY

GA Helen 100.9 W265EH
Move from 100.3 as W262CE at Clayton

GA Highland Pines 94.7 W234BX
Talk: 'BIN' // WHTY-1460

GA Savannah 96.9 W245DD
Is Silent, as is // WBMQ

HI Honolulu 94.7 KUMU-FM
Hot AC: 'KUMU 94.7'

HI Lihue 93.5 KQNG-FM
CHR: 'KONG FM 93.5' [includes K288CJ Eleele and K234DF Hanalei]

HI Lihue 104.5 K283CQ
Country: K283CQ 104.5 // KUAI-570

ID Kimberly 97.5 K248BZ **and**
ID Rupert 100.5 K263BX
Classic Rock: 'Balanced Rock' // KXTA-970

IL Bloomington 101.5 WBNQ
CHR: '101.5 WBNQ-FM'

IL Bloomington 102.1 W271DC
News/Talk: 'WJBC 1230' // WJBC-1230

IL Du Quoin 97.1 W246DU
Soft AC/Oldies: '97.1 Me TV-FM // WDQN-1580

IL Edwardsville 88.7 WSIE
Smooth Jazz/R&B: '88-7 The Sound' **(EB-MO)**

IL LeRoy 104.1 WBWN
Country: 'B-104'

IL Macomb 90.5 W213AH
License cancelled; calls deleted

IL Pekin 88.5 WBNH
Religious Teaching: '88.5 FM WBNH'

IL Peoria 102.9 WWKJ-LP
Is Silent

IL Taylorville 92.7 WUSW
News/Talk:
'News-Talk 92.7, 94.7 and 970 WMAY [//WMAY-970]



IN Columbus 102.9 WXCH
Classic Hits: 'Mojo 102.9 FM'

IN Edinburg 100.3 WYGB
Country: 'Korn Country 100.3'

IN Earl Park 98.1 WIBN
Classic Hits: '98 Gold'

IN Fort Wayne 100.9 W265CY
Sports: '1380 The Fan' // WKJG-1380

IN Indianapolis 101.3 W267BR
License cancelled; calls deleted

IN Ligonier 105.9 WNRL-LP
License cancelled; calls deleted

IN Marengo 89.9 WBRO
License cancelled; calls deleted

IN New Albany 104.7 W284AD
R&B Oldies: 'The Original Soul of Louisville' // WLOU-1350

IN Oakland City 94.1 WWPO-LP
License cancelled; calls deleted



IN Rensselaer 97.7 WLQI
Classic Rock: 'The Q 97.7'

IN Rensselaer 104.5 W283CO
Classic Country: 'The Bear 104.5 FM - 1560 AM' // WRIN-1560



IA Davenport 107.9 KRQC-LP
Is Silent

KS Coffeyville 98.9 KQQF
Contemporary Christian: 'Sonshine 98.9'

KS Great Bend 88.1 KRTT
Religious Teaching: 'Divine Mercy 88.1
Great Bend'

KS Hays 88.1 KVDM
Religious Teaching: 'Divine Mercy 88.1
Hays'

KY Bardstown 97.1 W246AT **and**

KY Lebanon 94.9 W235DB
Country: 'Hometown Radio' // WBRT-1320

KY Coal Run 103.1 WPKE-FM
Classic Rock: 'Rock 103.1 FM' [includes
W224CV 92.7 Hazard, KY]

KY Elkhorn City 104.3 W282BZ
Sports: 'Fox Sports East Kentucky' //
WEKB-1460

KY Frankfort 1047.1 WYDX-LP
Is Silent

KY Harrodsburg 99.5 W258DH
Classic Country:
'The Rooster 99.5'
// WHBN-1420



KY Jamestown 95.5 WKYD-LP
License cancelled; calls deleted

IN North Vernon 97.7 W249DG
Country: 'KORN 97.7 FM and 1460 AM' //
WJCP-1460

KY Pikeville 93.1 WDHR
Country: '93.1 WDHR'

KY Pikeville 98.1 W251AI
Classic Hits: 'Music Radio WPKE 98.1 -
WPRT 104.5' // WPKE-1240 [includes
W283AP 104.5 Prestonburg, KY]

KY Renfro Valley 94.9 WKUR-LP
License cancelled; calls deleted



LA Alexandria 107.9 KCJM-LP
License cancelled; calls deleted

LA Houma 105.7 K289CG
Talk/Sports: 'KMLB
105.7 FM - 540 AM' //
KMLB-540



LA Lake Charles 99.5 KNGT
Country: 'Gator 99.5'



ME Augusta 94.7 W234DQ
Move from 94.3 as W232CU

ME Lewiston 95.3 W237ET **and**

ME Lewiston 105.5 W288CW
Adult Hits // WEZR-1240

ME Mexico 100.7 WIGY-FM
Call change from WRMO-FM

ME Mexico 100.7 WIGY-FM
Country: 'WOYO Country 92.7 - 100.7'; call
change from WRMO-FM ['92.7' refers to
WOYO-FM]

ME Norway 92.7 WOYO-FM
Returns to the air with Country: 'WOYO
Country 92.7 - 100.7' ['100.7' refers to
WIGY-FM]

ME Rumford 98.3 W252DS
Adult Hits // WIGY-780

ME South Paris 96.9 W245CQ
Adult Hits // WPNO-1450

ME Yarmouth 88.3 WYAR
Adult Standards: 'WYAR 88.3 FM'

MD Mountain Lake Park 104.5 WKHJ
Call change from WKHJ-FM

MA Nantucket 89.5 WNCK
News/Talk/Classical: 'WNCK 89.5'

MA Nantucket 97.7 WAZK
Adult Alternative: '97.7 ACK FM'

MI Chocoday Township 94.9 WUPZ
Christian Rock: '94.9 The Bay'

MI Coldwater 95.5 W238CD
Classic Hits: 'WTVB 1590 AM and 95.5 FM'
// WTVB-1590

MI Escanaba 93.5 W228DQ
Talk/Sports: 'NewsTalk 93.5 - 600' //
WCHT-600

MI Grand Ledge 92.9 WLMI
Oldies: 'Cruisin' 92.9 Greatest Hits'

MI Grayling 100.3 WQON
Classic Rock: 'Q 100' [// WYPV 94.5 &
WWMN 106.3]

MI Gulliver 102.5 WCMM
Country: '102five The Moose'

MI Ishpeming 92.3 WJPD
Country: 'Fresh Country 92.3'

MI Mackinaw City 94.5 WYPV
Classic Rock: 'Q 100' [// WQON 100.3 & WWMN 106.3]

MI Manistee 97.9 WMLQ
Returns to the air with Talk: 'News 97 & 98' [// WLDN 98.7]

MI Manistique 98.5 W254CG
Classic Country: 'The Maverick 1490 - 98.5' // WTIQ-1490

MI Petoskey 107.1 W296EJ
Move from 98.3 as W252DA

MI Port Huron 102.3 WGRT
Adult Contemporary: 'WGRT 102.3 FM'

MI Powers 107.3 WUPF
Christian Rock: 'Eagle 107.3'

MI Stephenson 106.3 WGMV
Classic Country/Sports: 'Maverick 106.3'

MI Thompsonville 106.3 WWMN
Classic Rock: 'Q 100' [// WYPV 94.5 & WQON 100.3]



MN Faribault 97.9 K250CD
Move from 98.1 as K251CS

MN La Crescent 102.7 WKBH-FM
Classic Rock: '102.7 WKBH'; call change from KQEG



MS Vicksburg 101.3 WBBV
Country: 'River 101.3'

MS Winona 98.1 W251CN
Format/Slogan Unknown // WLEE-1570
[any help is appreciated]



MO Bellefontaine 101.9 K270BW
Christian CHR/Rock: 'Boost Radio' // KLJY 99.1 HD2 (EB-MO)

MO Buffalo 99.9 KBFL-FM
Sports: 'ESPN Radio Jock 96.9 - 99.9 - 1060 AM' [includes K245CA 96.9; partially // KBFL-1060]

MO Ferguson 89.5 KCFV
CHR/Classic Hits: '89-5 The Wave' (EB-MO)

MO Houston 99.3 KUNQ
Country: 'The Rooster 99.3'

MO Potosi 97.7 KHZR
Christian CHR/Rock: 'Boost Radio' (EB-MO)

MO Springfield 93.3 K227AO
Talk: 'KWTO News Talk Radio' // KWTO-560

MO Springfield 98.7 KTXR-FM
Adult Hits: '98.7 The Dove'



MO Springfield 101.3 KWTO-FM
Call change from KTXR



MT Lewistown 105.9 KQPZ
Rock: 'RK 95'

MT Lewistown 106.9 K295BQ
Country: 'KXLO 106.9FM - 1230AM' // KXLO-1230

NE Falls City 107.1 K296HK
Classic Hits: 'AM 1230 FM - 107.1 KTNC' // KTNC-1230

NE Grand Island 104.3 K282BR
Is Silent, as is // KMMJ-750

NE Norfolk 98.7 K254CX and

NE West Point 98.3 K252EG
Classic Country: 'KTIC 840 AM - 98.3 FM - 98.7 FM The Bull' // KTIC-840



NV Incline Village 100.1 KTHX-FM
Adult Alternative: 'The X 100.1 FM'

NV Reno 105.7 KOZZ-FM
Classic Rock: '105.7 KOZZ'



NH Peterborough 92.1 WDER-FM
 Religious Teaching: 'Life Changing Radio
 1320 AM and 92.1 FM'; includes W221EM
 92.1 // WDER-1320

NJ Atlantic City 103.7 WMGM
 Rock: '103.7 WMGM Rocks'

NJ Cape May Court House 88.1 WJPG
 Contemporary Christian: 'South Jersey's
 Praise FM'

NJ Egg Harbor 90.5 WXGN
 Is Silent

NJ Kearney 95.9 WNJI-LP
 Is Silent

NJ Woodbine 89.9 WJPH
 Contemporary Christian

NM Los Alamos 107.1 K296GI
 Is Silent, as is // KRSN-1490

NM Socorro 91.9 KXFR
 Is Silent



NY Corinth 107.1 WKBE
 Classic Country: 'Big Country 107.1'

NY Glen Spey 89.6 WUUA
 Returns to the air with Ethnic

NY Hornell 92.1 WCKR
 Hot AC: 'Fun 92.1'

NY Hudson Falls 101.7 WNYQ
 Christian Rock

NY North Salem 90.1 WPUT
 Is Silent

NY Portville 96.7 WUDE
 Call change from WAGL

NY Rochester 100.5 WDWI
 Adult Contemporary: 'Mix 100.5'

NC Bolivia 106.3 WYAY
 Call change from WPGL, and just before
 that, from WUDE

NC Burlington 95.1 W236BO **and**

NC Mebane 94.3 W232DT
 Country: 'Maverick 1200 AM - 95.1 FM' //
 WSML-1200

NC China Grove 93.7 W229DL
 Move from 106.1 as W291DL

OH Cleveland 90.3 WCPN
 News/Talk: 'Your NPR Station'

OH Columbus 104.5 W283CL
 Religious Teaching: 'The Word 880 AM -
 104.5 FM WRFD' // WRFD-880

OH Elyria 100.3 W262DM
 News/Talk/Sports: 'AM 930 and 100.3 FM'
 // WEOL-930

OR Burns 92.7 KZHC-FM
 Call change from KSQB

OR Eugene 96.1 KZEL-FM
 Returns to the air with Classic Rock: '96.1
 KZEL'

OR Lone 99.5 KZLY
 Regional Mexican: 'La Reyna 99.5 FM'



PA Clarks Summit 93.5 W228CN **and**
 PA Honesdale 106.7 W294BJ
 Oldies: '1400 WICK The Mothership' //
 WICK-1400

PA Kittanning 103.7 W279DN
 Talk: 'WTYM 1380' // WTYM-1380

PA Latrobe 97.9 W250CP
 Classic Rock: '103.1 KVE' // WXVE-1570
 [WKVE 103.1]

PA Susquehanna 100.5 WDRE
 Modern/Alternative Rock: '100.5 The Drive'

PA Tidioute 89.1 WCGT
 Call change from WGIP

RI Warwick 92.7 W224DG
 Religious Teaching: 'Life Changing Radio
 1590 AM - 92.7 FM' // WARV-1590

RI Westerly 103.1 W276DF
 CP moving to North Bennington, etc,
 Vermont on 93.5 as W228AU is cancelled

SC Georgetown 93.7 WPGI
Call change from WYAY
SC New Ellenton 102.7 WGUS-FM
Soft AC: 'Sunny 102.7'



SC Rock Hill 93.5 W268DM
Contemporary Christian: 'The Light FM' // WAVO-1150

TN Alamo 93.1 WTJS
Talk: 'WTJS 93.1 The Talk of Jackson' // WKBL-1250]

TN Ashland City 103.9 W280FN
Country: '103.9 The Bear' // WVWZ-790

TN Calhoun 97.9 WYMA-LP
License cancelled; calls deleted

TN Cleveland 96.9 W245DZ
Move from 97.1 as W246DG

TN Columbia 107.7 WVOO-LP
License cancelled; calls deleted

TN Cornersville 89.9 WLWW
Contemporary Christian

TN Crossville 96.9 W245BJ
Talk: 'WAEW 96.9 FM - 1330 AM' // WAEW-1330

TN Crossville 97.7 W249DA
Sports: '97.7 FM - 1490 AM The Ticket' // WCSV-1490

TN Englewood 104.9 W285GC
Christian Rock: '104.9 The Mountain' // WENR-1090



TN Jackson 89.3 W207CQ
Move from 100.1 as W261CF

TN Jackson 90.1 WKNP
Is Silent

TN Lawrenceburg 93.1 W226AF **and**

TN Lawrenceburg 106.1 W291DG
Adult Hits: 'The X 106.1 FM - 93.1 FM' // WWLX-590

TN Lawrenceburg 95.3 W237FD **and**

TN Lawrenceburg 105.3 W287AA
Classic Country: 'The Legend' // WDXE-1370

TN Lebanon 101.9 W270DM
Classic Country/Jazz: 'Real Country' // WKDA-900

TN Spencer 93.1 WSPE-LP
License cancelled; calls deleted

TN Winchester 106.9 W295AV
License cancelled; calls deleted



TX Bee Hive 104.9 KTXS-FM
Classic Hits: 'The Horn 104.9 FM - 1260 AM'

TX Beaumont 107.9 KQQK
Tejano: 'El Norte 107.9 FM'

TX Crockett 93.5 KDVB
Call change from KBPC

TX Crockett 102.9 K275AS **and**

TX Crockett 105.5 K288HF
Adult Standards/Talk: 'KIVY 1290 AM - 102.9 FM' // KIVY-1290

TX Freeport 103.3 KJOJ-FM
Regional Mexican: 'La Raza 98.5 - Y103.3' // KTJM 98.5]

TX Guthrie 107.7 KJAG
Country: 'American Cowboy Radio'

TX Laredo 98.5 K253CU
Move from 93.1 as K226CZ

TX Madisonville 98.9 K255AR **and**

TX Madisonville 102.7 K274DB
Adult Standards: 'KMVL 1220 AM - 98.9 FM' // KMVL-1220

TX Mesquite 107.1 KPBM-LP
Spanish Religious

TX Port Arthur 98.5 KTJM
Regional Mexican: 'La Raza 98.5 Y 103.3' // KJOJ-FM 103.3]

TX Sherman 92.7 K224FV
Move from 92.3 as K222CD

TX Smilie 103.9 KBQQ
Country: 'No Bull Radio'

TX Victoria 97.5 K248CS
Adult Standards // KITE-1410

TX Westlake Hills 104.9 K236AY
Sports: 'The Horn 104.9 FM - 1260 AM' // KTAE-1260

UT Salt Lake City 94.5 KZSK-LP
Returns to the air with Spanish Religious

VA Culpeper 103.1 WJMA
Country: '103.1 Today's Country' [includes WCVA-1490 and // W237CA 95.3]

VA Norfolk 92.5 W223DA
Returns to the air with Spanish Religious: 'Nueva Vida Claremont 670' // WRJR-670

VA Staunton 94.3 WTON-FM
 Classic Rock: 'Star 94.3'
 VA Virginia Beach 102.1 WXTG-FM
 Urban Contemporary: 'Streetz 87.7'



WA Eatonville 104.9 KTDD
 Contemporary Christian: 'Positive Uplifting Music'
 WA Seattle 102.5 KZOK-FM
 Classic Rock: 'KZOK 102.5'

WV Summersville 96.7 W244EL
 Move from 96.5 as W243CA
 WV Williamson 96.5 WXCC
 Country: 'WXCC 96.5 Coal Country'
 WV Williamson 102.5 W273BC
 Sports/Talk: 'Mountaintop Sports' // WBTH-1230



WI Eau Claire 98.7 W254CN
 Sports: '98.7 The Fan' // WBIZ-1400
 WI La Crosse 104.9 WGSL
 Contemporary Christian/Religious Teaching: 'Prayz Network'; call change from WLXR-FM
 WI Madison 90.5 W213CE
 Move from 90.9 as W215AQ
 WI Waukesha 101.1 W266DR
 Sports: '540 AM ESPN' // WAUK-540
 WI West Salem 100.1 WLCW
 Contemporary Christian: 'K-Love'; call change from WKBH

WY Laramie 89.3 KTDX
 Contemporary Christian: 'The Light'





FM FACILITIES

SEPTEMBER 2020

This information is reprinted from Doug Smith's FM News Information posted in the [WTFDA Forums](#).
The [WTFDA FM Database](#) is also updated with this information.

Abbreviations:

CC – Call Change

CL – City of License

Cx – License Canceled

NS – New Station Granted

NW – New Station On The Air

PC-Power and/or Height Change Granted

PG-Power Change Granted

QG-Frequency Change Granted

RA>Returns to the Air

ROA-Request of Applicant

XG-new site granted

XC-transmitter site changed

- AL Arab 107.1 W296DM PC>250w/198m, 34-20-41/86-26-23 (WRAB-1380 via Internet)
- AL False Pass 88.1 KFPS NW 90w/-228m, 54-51-21/163-24-51
- AL Gadsden 101.9 W270DQ NW 250w/163m, 34-01-55/86-00-36 (WAAX-570 via microwave)
- AL Madison 96.5 W243EP QG from W234AD-94.7, 250w/159m, 34-44-01/86-43-44; CL from Decatur (WTKI-1450 Huntsville via W287DH)
- AL Palmer 90.7 K214FK PG 250w/-56m, 61-37-16/149-01-24 (KJLP-88.9 OTA)
- AL Phenix City 100.1 WHTY CC from WGSY
- AR Little Rock 99.9 K260DT PG>250w/84m, 34-37-26/92-20-43 (KTUV-1440)
- AZ Buckeye 106.7 KDVA PG 6kw/93m, 33-27-01/112-35-58
- AZ Chinle 98.3 K252ER OFF July 21st pending site move.
- AZ Sun Lakes 107.1 KVVA-FM PG 2.05kw/508m, 33-20-00/112-03-49
- CA Bakersfield 107.5 K289CN QC from 105.7, 250w-V/25m (KLHC-1350)
- CA Boulder Creek 90.1 KBCZ PG>91w/-82m, 37-08-09/122-07-12
- CA Cathedral City 92.3 K222DA PC>99w/156m (KWCY-1340 via Internet)
- CA Lake Isabella 93.5 K228GB NW 78w/809m, 35-42-21/118-33-34 (KRWI-98.1 Wofford Heights studio feed)
- CA Los Banos 91.9 K220GR PC>80w/-23m, 36-59-54/120-54-14 (KQVI-FM 89.9 Cedar Lake, TXs)
- CA Marysville 104.3 K282BS OFF July 21st; studios of primary station KMYC-1410 gutted by fire.
- CA Morgan Hill 89.9 KHCF OFF July 7th, lost site.
- CA Morgan Hill 89.9 KHCF OFF July 7th, lost site.
- CA Palm Desert 99.9 K260DE OFF Aug. 6th, financial distress.
- CA Quartz Hill 104.7 K284CD PC<7w/643m (KODV-89.1 Barstow OTA)
- CA Sacramento 99.7 K259CN OFF July 24th, lost site.
- CO Aspen 88.9 KCJX-FM2 NW 140w/-316m, 39-11-47/106-48-15
- DC WAington 90.1 WCSP-FM PG 24kw/216m, 38-57-01/77-04-46
- DE Camden 100.1 W261AE PG>250w/32m, 39-06-14/75-40-42 (WKNZ-88.7 Harrington OTA)
- FL Cross City 88.5 WUFQ PC>20kw/87m, 29-34-10/82-46-59
- FL Orlando 96.5 WOEX CC from WDBO-FM
- FL Orlando 99.9 WIME-LP PC<100w/21m, 28-33-07/81-07-00
- FL Ormond Beach 107.1 WZEA-LP OFF Aug. 7th, water damage.
- FL Sebring 104.9 WVDV-LP OFF Aug. 7th, operation from temporary site is interfering with alarm system at adjoining business.
- FL Tampa 106.7 W294CR PG<250w/47m, 27-56-52/82-23-44 (WQBN-1300 Temple Terrace feed)
- FL Tavernier 96.9 WKEZ-FM XG 25kw/68m, 25-01-40/80-30-27

FL WILston 101.3 WTMG QC from 92.1, 3.5kw/134m, 29-25-09/82-32-57
 GA Canton 102.5 W273CT PC>120w/4m, 34-28-35/84-26-17 (WYYZ-1490 Jasper studio feed)
 GA Canton 104.5 W283DP QG from W280FY-103.9, 1w/-57m (WCHK-1290); QC
 GA Elberton 99.7 W259DH OFF June 30th, LMA not renewed.
 GA Helen 100.9 W265EH PG<30w/376m, 34-44-55/83-43-42 (WNEG-630 via Internet)
 HI Hilo 90.3 KCIF PR 2kw/380m, 19-35-21/155-07-26
 HI Hilo 99.3 K257GV PG>250w/8m, 19-35-21/155-07-26 (KIPA-1060 via Internet)
 HI Kahului 102.5 K273DN PC<99w/891m, 20-46-20/156-14-40 (KMVI-900 via Internet)
 HI Wailuku 106.1 K291CZ QG from K262DJ-100.3, 250w-H/892m (KNUI-550 via microwave); QC
 IA Davenport 107.9 KRQC-LP OFF July 8th, struck by lightning
 IA Decorah 88.7 KLNI OFF July 20th, electrical power work.
 ID Cambridge 93.5 K228CZ PG<60w/577m, 44-32-01/116-39-25; CL from New Meadows (KBSX-91.5 Boise OTA)
 ID Grangeville 92.1 K221BA PG>250w-V/-95m, 45-51-48/116-07-25; CL from Kamiah. (KORT-FM 92.7 via microwave)
 ID Grangeville 96.9 K245CH QG from K227CC-93.3, 166w/709m, 45-51-48/116-07-27 (KORT-1230 via Internet)
 IL Columbia 104.9 KMJM-FM CC from KLLT
 IL Kankakee 89.3 W207CL OFF Aug. 10th, anTNa destroyed by Aug. 10th derecho.
 IL Peoria 102.9 WWKJ-LP OFF July 27th, transmitter problems.
 IL Sullivan 107.7 W299CP OFF Aug. 1st, site lease expired. Moving to tower of AM primary station.
 IN Auburn 102.3 WGBJ PC>6kw/100m
 IN Evansville 91.5 WJWA PG 500w/190m, 37-53-17/87-32-37
 IN Portland 91.7 WBSJ OFF Aug. 18th, transmitter failure and replacement is unaffordable.
 IN Portland 91.7 WZJR CC from WBSJ
 IN Terre Haute 96.9 WUZA-LP OFF July 6th, water damage.
 KS Hays 105.7 KMDG CC from KRMR
 KY Frankfort WYDX-LP OFF July 19th, transmitter malfunction.
 KY Lebanon 106.5 W293DG NW 220w/80m, 37-35-12/85-12-15 (WLBN-1590 via Internet)
 MA Framingham 102.1 W271CU OFF July 9th pending financing.
 MA Medford 98.1 W251CR OFF July 9th pending financing.
 MA Turners Falls 93.9 WRSI PG>4.9kw/111m, 42-34-15/72-38-41
 MD Baltimore 94.3 W232CL PC>100w/128m, 39-15-19/76-40-30 (WRBS-1230)
 ME Augusta 94.7 W234DQ PG 250w/-6m, 44-19-41/69-45-52 (WWWA-95.3 Winslow studio feed)
 ME Mexico 100.7 WIGY-FM CC from WRMO-FM
 MI Lansing 93.3 W227DO NW 125w/106m, 42-41-29/84-33-29 (WXLA-1180 Dimondale; "same analog feed as WXLA STA")
 MI Petoskey 107.1 W296EJ PG 99w/308m, 45-19-17/84-52-33 (WSRT-106.7 Gaylord OTA)
 MN Detroit Lakes 96.9 K245CU NW 250w/117m, 46-43-19/95-50-38 (KDLM-1340 via microwave)
 MN Dilworth 99.3 K257EP PG>250w/87m (KLDQ-100.7 Harwood, N.D. OTA)
 MN FairMT 88.3 K202EN QC from K208FJ-89.5, 205w/39m, 43-37-45/94-29-01 (KLBF-89.1 Lincoln, N.D.)
 MN FairMT 97.1 K246CW NW 250w/98m, 43-37-45/94-29-01 (KSUM-1370 via microwave)
 MN Faribault 97.9 K250CD QC from K251CS-98.1, 44-15-44/93-16-31 (KDHL-920 via microwave)
 MN La Crescent 102.7 WKBH-FM CC from KQEG
 MN Ortonville 94.5 K233DL PG<250w/23m, 45-18-07/96-25-56 (KDIO-1350 studio feed)
 MN St. Paul 92.9 W225AP PG>250w-V/236m, 44-58-36/93-16-16 (KTCZ-FM 97.1 MNeapolis OTA)
 MO Ste. Genevieve 105.3 K287CE QC from 104.7 (KSGM-980)
 MT Bozeman 98.1 K251CU QC from K252GE-98.3, 250w/201m, 45-38-16/111-16-07 (KBMC-102.1)
 MT Great Falls 104.3 K282CE NW 99w/94m, 47-31-56/111-16-40; filed incorrectly, appears as application for new full-power station.
 MT Kalispell 105.7 K289CF PC<250w/790m, 48-00-50/114-22-01 (KLKM-88.7 OTA)
 MT Livingston 88.7 K204GR PC<250w/201m, 45-38-16/111-16-07 (KBMC-102.1 studio feed)
 MT Whitefish 104.7 K284CV QC from K230BJ-93.9, 125w/790m, 48-00-50/114-22-01 (KIBG-100.7 Bigfork OTA)

NC Bolivia 106.3 WPGI CC from WUDE
 NC Bolivia 106.3 WYAY CC from WPGI
 NC Boone 92.5 W225AA QC from 92.9, 10w/408m, 36-14-06/81-42-06 (WNCW-88.7 Spindale OTA)
 NC China Grove 93.7 W229DL PG 250w/62m, 35-34-21/80-35-21 (WRNA-1140 studio feed)
 NC Eden 92.5 W223DJ PG<250w/78m, 36-26-25/79-39-45 (WLOE-1490)
 NC Granite Falls 98.7 W254DX NW 250w/54m, 35-47-03/81-24-33 (WYCV-900 via microwave)
 NC Highlands 106.5 W293BX PC<214w/332m (WHZT-98.1 WILamston, S.C. OTA)
 NC Lumberton 103.9 W280EP PC<38w/76m (WYBH-91.1 Fayetteville OTA)
 NC Mayodan 97.5 W248DG PG>250w/88m, 36-13-12/79-48-31 (WMYN-1420)
 NC Rocky Mount 98.1 W251CX NW 250w/104m, 35-54-44/77-50-05 (WRMT-1490)
 NC Wake Forest 105.5 W288BQ OFF Aug. 18th pending change in primary station.
 NC Weldon 97.1 W246DQ NW 250w/135m, 36-27-40/77-33-51 (WSMY-1400 via microwave)
 NC West Asheville 99.5 W258CA PC>250w/304m (WLFA-91.3 studio feed)
 ND Jamestown 89.1 KJKL PG<1.7kw-V/81m, 46-50-05/98-41-35; PC
 NE Chadron 97.5 KQSK PC<100kw/255m, 42-38-06/103-06-13
 NH ClareMT 94.7 W234BN PC>220w/168m, 43-23-35/72-18-12 (WCNL-1010 Newport via Internet)
 NH Manchester 103.5 W278CJ PG 250w-V/16m, 43-00-38/71-30-13 (WGAM-1250)
 NH Meredith 101.5 WWLK-FM CC from WZEI
 NH Nashua 90.3 W212AF PG>250w/29m, 42-44-57/71-28-49 (WEVS-88.3 via Internet)
 NJ Kearney 95.9 WNJI-LP OFF Aug. 6th, anTNa damaged by Isaias.
 NJ Millville 104.1 W281CM NW 100w/129m, 39-27-32/75-12-11 (WJBR-FM 99.5 Wilmington, Del. via
 NJ Somers Point 90.5 WXGN OFF Aug. 17th, "...evaluating future operational plans."
 NV Moapa 92.3 K222BM OFF Aug. 1st, anTNa damaged by windstorm.
 NV Winnemucca 90.7 K214EV QG from 90.5, 17w-V/562m, 41-00-39/117-46-03 (KNIS-91.3 Carson City
 NY Albany 97.5 W248AX XC 100w/5m, 42-41-18/73-47-00 (WNGN-91.9 Argyle OTA)
 NY Canaseraga 97.1 WBOF CC from WZHD
 NY Dannemora 107.1 WWFK CC from WPLA
 NY Elmira 101.7 W269BK PC>99w/181m, 42-07-51/76-47-25; CL from Horseheads (WCBF-96.1 OTA)
 NY Elmira 88.9 W205BR PG>10w/158m, 42-01-55/76-47-01 (WPCS-89.5 Pensacola, Fla. via satellite)
 NY Middletown 95.3 W237EV NW 250w-V/30m, 41-27-16/74-25-05 (WDLC-1490 Port Jervis)
 NY Mount Kisco 88.9 WWES OFF June 14th, electrical outage.
 NY Mount Kisco 89.7 W209CJ OFF June 15th, site lost power & owner not wilng to repair.
 NY MTour Falls 104.9 WPHD CC from WNGZ
 NY North Salem 90.1 WPUT OFF Aug. 12th, attempts to restore power after Isaias damaged transmitter.
 NY Plattsburgh West 100.7 WPLA CC from WIRY-FM
 NY Portville 96.7 WUDE CC from WAGL
 NY Remsen 105.5 W288EG QC from W291CT-106.1, 10w/-31m, 43-12-14/75-23-09 (WNGG-90.9 Gloversville OTA)
 NY Riverhead 104.9 W285FX PG>250w/139m, 40-50-32/73-02-23 (WFTU-1570)
 OH Cleveland 105.3 W287DQ PG 180w/33m, 41-26-50/81-35-26 (WKDD-98.1 Munroe Falls OTA)
 OK Watonga 93.9 KIMY PC 6kw/99m, 35-54-19/98-23-13
 OR Port Orford 105.5 KUPO-LP PC>100w/-15m, 42-45-33/124-29-09
 PA Ambridge 95.7 W239CR PG<250w/74m, 40-35-08/80-12-10; CL from Beaver Falls (WMBA-1460 studio feed)
 PA Greensburg 105.1 W286CZ PC<75w/106m, 40-19-17/79-35-27 (WKFB-770 Jeannette)
 PA Hazleton 94.7 W234BH PC>250w/171m, 40-58-09/75-57-27 (WBWX-1280 Berwick via Internet)
 PA Latrobe 104.5 WKHJ CC from WKHJ-FM
 PA Mansfield 97.9 W250BI QG from 95.1, 68w/77m (WMTT-820 Horseheads, N.Y. via Internet)
 PA Renovo 106.9 WVSQ CC from WQKK
 PA Tidioute 89.1 WCGT CC from WGIP

PA Towanda 93.5 W228CH QC from W230AP-93.9, 10w/88m, 41-46-33/76-25-57 (WCIN-91.3)

PR Cayce 97.7 WNVN-FM1 PG>100w-H/490m

QC MTréal 100.1 CKVL-FM PG>2kw/38m

RI Woonsocket 99.9 W236CW QC from 95.1, 250w/125m, 41-59-50/71-27-18 (WNRI-1380)

SC Columbia 96.1 W241DJ XG 250w/71m, 34-02-39/80-59-50 (WFMV-620 Cayce via microwave)

SC Due West 95.3 WEGG CC from WYPJ

SC GAgetown 93.7 WPGI CC from WYAY

SC Greenville 92.1 W221EK NW 250w/264m, 35-14-34/82-26-08 (WCSZ-1070 Sans Souci)

SC Loris 106.7 W294CW NW 250w/57m, 34-02-04/78-52-58 (WLSC-1240)

SD Brookings 93.7 KBRK-FM Granted STA to operate at approximately 50% power due to water in f

TN Cleveland 105.9 W290CA OFF July 2nd, primary WTSE is off

TN Cleveland 96.9 W245DZ OQ from W246DG-97.1 (WALI-1280 Dayton via Internet)

TN Jackson 89.3 W207CQ PG 10w/108m, 35-39-15/88-47-14 (WAYW-89.9 New Johnsonville via Internet)

TN Kingston 90.1 WKTS OFF July 22nd, STL failure.

TN Oliver Springs 106.1 WVZL CC from WJRV

TX Alpine 98.7 K254CW PC<250w/86m (KVLV-1230)

TX Alpine 98.7 K254CW PG 250w/86m (KVLV-1240)

TX Amarillo 88.3 KJRT PG 20kw-H/74m, 35-06-50/101-49-18

TX El Paso 97.1 KAWU-LP OFF Aug. 5th pending move to Franklin Mountain.

TX Fort Worth 96.3 KSCS PC 100kw/478m, 32-34-54/96-58-33

TX Groveton 98.1 KFON OFF Aug. 5th, anTNa damaged by storm.

TX Humble 101.7 K269GT OFF Apr. 15th pending site move.

TX Laredo 98.5 K253CU PG 50w/80m, 27-31-13/99-31-20 (KLAR-1300 via Internet)

TX Marshall 92.3 KDPM CC from KCUL

TX Mexia 101.5 K268BQ PC<99w/29m, 32-26-26/96-51-24 (KWAA-88.9 Mart OTA)

TX Mexia 92.1 K221FI PG>150w/29m, 32-16-35/96-51-45 (KYFP-89.1 Palestine OTA)

TX Sherman 92.7 K224FV QC from K222CD-92.3, 50w-H/37m, 33-25-21/96-37-20 (KBFB-97.9 Dallas OTA)

TX Smiley 90.3 KSXT OFF June 28th, transmitter failure.

TX Stanton 105.9 KXQT OFF June 22nd, transmitter failure.

UT Logan 93.3 K227CO PC 99w-V/-66m, 41-48-44/111-47-33 (KBLQ-FM 92.9 via Internet)

UT Provo 99.9 K260DS PG<85w/836m, 40-16-57/111-56-13 (KWLO-1580 Springdale via Internet)

UT Richfield 99.3 K257AZ PG<10w/15m, 38-38-01/112-03-38 (KMGR-99.1 Nephi OTA)

VA Big Island 103.9 WHTU PG 190w/540m, 37-28-14/79-22-34

VA Emporia 89.3 WPZR NW 10.5kw/133m, 36-53-53/77-48-10

VA Richmond 107.7 W299DB NW 50w/67m, 37-37-18/77-22-13 (WLES-590 Bon Air)

VA Roanoke 101.9 W270CU PG>34w/-24m (WZZI-106.9 Bedford)

VT Newport 103.1 W276DK NW 250w-V/2m, 44-57-13/72-08-12 (WIKE-1490 studio feed)

WA Enumclaw 106.5 K293AY OFF June 26th, receive anTNa destroyed.

WI Green Bay 89.3 WPNE NW 1.85kw/115m, 44-24-35/88-00-05 (aux)

WI La Crosse 104.9 WGSL CC from WLXR-FM

WI Madison 90.5 W213CE QG from W215AQ-90.9, 250w/168m (WERN-88.7 OTA)

WI West Salem 100.1 WLCW CC from WKBH-FM

WV St. Marys 107.9 W300AQ PG<175w/108m (WHNK-1450 Parkersburg via Internet)

WY Jackson 101.3 K267BV OFF July 6th, lost programming source.

WY Teton Village 99.3 K257FT OFF July 6th, lost programming source.



PHOTO NEWS

September 2020

Jeff Kruszka
 1909 Lost Lake Place
 Pearland, TX 77581
 jkruszka@sbcglobal.net

Some recent tropo photos from Chris Lucas in Poughkeepsie, NY:



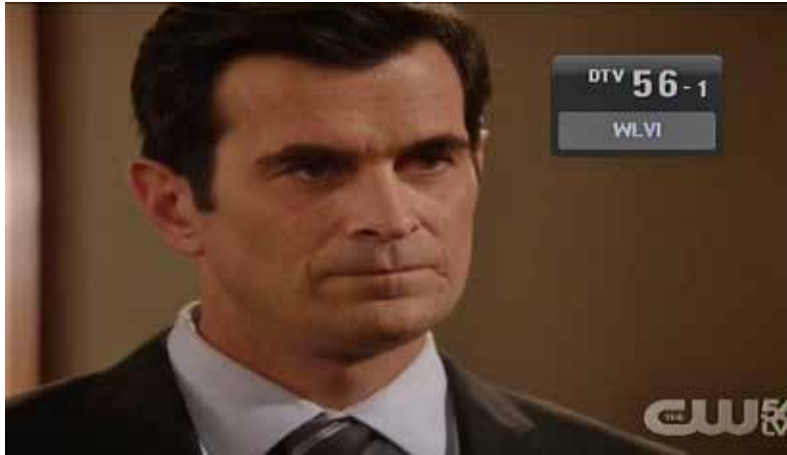
WHYY-13 Wilmington, DE
 139 mi Tr seen 7/5/20



WHDH-35 Boston, MA
 140 mi Tr seen 7/9/20



WGGB-26 Springfield, MA
 71 mi Tr seen 7/9/20



WLVI-35 Cambridge, MA
140 mi Tr seen 7/9/20
"Shared with WHDH"



WSBK-21 Boston, MA
140 mi Tr seen 7/9/20



WSBE-2 Providence, RI
133 mi Tr seen 7/9/20
"Es catch for others"



WMDT-29 Salisbury, MD
246 mi Tr seen 7/16/20



Southern FM DX

John Zondlo – 4009 Driftwood Circle –
Yukon, OK 73099

southernfmdx@wtfda.org – Deadline: 20th
September 2020

For DXers in.....



.....and Mexico

Fred Nordquist – Moncks Corner SC - FM03AF – EDT – all new

Sangean HDT-1X, AirSpy with SDR Console (v3.0.20), APS-13 antenna

6/21 Es

1823 WKVJ 89.7 NY Dannemora, RDS PI: 713B, adult hits 853
1823 CIRA-2 89.9 QC Trois-Rivières, RDS PI: C850, FFc, adult hits 989

6/25 Es

1000 KBGM 91.1 MO Park Hills, American Family Association, MO weather 674
1017 KXAC 100.5 MN St. James, RDS PI: 4CBE, oldies 1072
1018 WQUD 107.7 IL Erie, RDS PI: A873, PS: WQUD, adult hits 802

7/4 Es

1321 KXAI 103.7 TX Balcones Heights, RDS PI: 4CC4, PS: S/A AIR 1, rel, COL from Refugio TX 1097
1331 W234DN 94.7 LA Norco, RDS PI: A2F6 – ‘KGLA,’ PS: Tropical 94.7, SS 686
1333 KRVE 96.1 LA Brusly, RDS PI: 1FQA, PS: S/A The River, soft rock 674
1340 KNRG 92.3 TX New Ulm, RDS PI: 0000, PS: KNRG, country 1015
1408 KPAQ 88.1 LA Plaquemine, RDS PI: 0000, PS: afr.net, AFR 697

7/5 Es

1154 CBV-8 90.1 QC Thetford Mines, RDS PI: B204, PS: ICI Premera FFc, talk 998
1312 K233BT 94.5 IA Des Moines, RDS PI: 4B34, PS: Catholic, religious talk 945
1318 K293CI 106.5 MO Columbia, RDS PI: A339, K-LOVE RDS needs update 792

7/14 Es

1235 XHMIA 89.3 YC Kanasín, SS, “Tunueva expression de radio” 1030
1239 ZNK 96.1 BH Nassau, EE, KISS-FM/Ed Fields Bahama program 586
1249 WYBW 88.7 FL Key Colony Beach, religion, TTB Dr. McGee 591

8/15 Es 1902-1908 MN/WI/MI MUF: 96.1

1902 WSMZ 88.3 MI Crystal Valley, multi-station ID 797

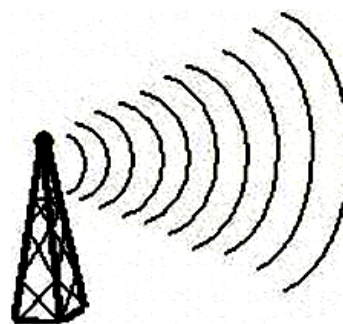
8/16 Es 1059-1210 MS/TX/LA MUF: 101.1

1125 KRLQ 94.1 LA Hodge, local ad 752
1126 WJLV 94.7 MS Jackson, RDS PI: 6D9F, adult hits (previously via Tr) 603
1129 KMYX 92.3 LA Rayville, “92-3 The Wolf” 693
1133 KCUL 92.3 TX Marshall, RDS PI: 1758, talk 838
1135 KAPW 99.3 TX White Oak, SS, “Mega 993” 871
1135 KRMD 101.1 LA Oil City, RDS PI: 3E1F 810

All above new to log, except for WJLV. Also many relogs. New loggings prior to 8/15 are the result of closer review of SDR IQ recordings. FM Log Total to date = 4139,

Northern FM DX

Northern FM DX



Keith McGinnis
 Hingham, MA
 longwave@comcast.net

For D~~x~~ers in the following states CT IA ID IL IN MA ME MI MN MT ND NE NH NJ NY OH OR PA RI SD VT WA WI WY and all of Canada.

EDITORS NOTE. PLEASE SUBMIT ALL REPORTS IN THE FORMAT SHOWN BELOW.
 All Submissions must be in to me by the 10th of each month.

Russ Edmunds
 Blue Bell, PA
 (15 mi NW of Philadelphia) Grid FN20id

2 each RSP1a SDR,

June 24 Es

10:36	KNON	89.3	Dallas	TX	RDS Capture, ID	33CD	1310
11:47	WPCS	89.5	Pensacola	FL	RDS Capture	7C8A	947
12:13	WPAS	89.1	Pascagoula	MS	RDS Capture	7C56	993
12:35	WYLD	98.5	New Orleans	LA	RDS Capture	1529	1090
12:38	WGUO	94.9	Reserve	LA	ID	1104	
13:03	KITA	89.5	Iota	LA	RDS Capture	270E	1194
13:10	KVNE	89.5	Tyler	TX	RDS Capture	48CA	1224
15:59	KURB	98.5	Little Rock	AR	RDS Capture	368B	1009
17:12	KETR	88.9	Commerce	TX	RDS Capture	1C8F	1235
17:13	KALR	91.5	Hot Springs	AR	RDS Capture	112F	1043
17:21	KUAR	89.1	Little Rock	AR	RDS Capture	44E1	1011
17:21	KLTY	94.9	Arlington	TX	RDS Capture	2F12	1318
17:52	WPEF	91.5	Kentwood	LA	Religious music, "LIFESONGS"		1056
17:55	WJHO	89.7	Alexander City	AL	RDS Capture	6D30	770
17:55	WRKF	89.3	Baton Rouge	LA	RDS Capture	8295	1121
17:55	KPAQ	88.1	Plaquemines	LA	RDS Capture	0000	1131
17:58	WLXW	89.7	Waynesboro	MS	K-Love	950	
18:00	WWRA	91.9	Clinton	LA	Spanish music, "R. Amor"		1083
18:02	KLFT	90.5	Kaplan	LA	"Christ the King Radio"		1193
18:02	WZRH	92.3	LaPlace	LA	Rock, "Alt 92.3"		1119
18:04	WMAW	88.1	Meridian	MS	RDS Capture	75EB	920
18:05	KNCT	91.3	Killeen	TX	Instrumental standards		1401
18:07	WCSO	90.5	Columbus	MS	RDS Capture	5DB2	856

June 25 Es

9:26	KBXX	97.9	Houston	TX	ID	1354	
9:26	KHFI	96.7	Georgetown	TX	ID - New	1435	
9:40	KTYR	89.7	Trinity	TX	Spanish relig, R. Aleluya string ID	1294	
9:40	KVLL	94.7	Wells	TX	Spanish talk, music - presumed	1258	
9:46	KMFA	89.5	Austin	TX	RDS Capture	3032 1435	
9:47	KBPA	103.5	San Marcos	TX	ID, RDS Capture	142A 1449	
9:49	KRXT	98.5	Rockdale	TX	Country, on-air classifieds - New	1385	
9:49	KLDN	88.9	Lufkin	TX	Red River Radio	1244	
9:50	KUT	90.5	Austin	TX	ID	9995 1438	
9:50	KHML	91.5	Madisonville	TX	Tony Evans // KHCB Net	1222	
9:53	KASE	100.7	Austin	TX	Country, ID - New	1435	
9:55	KNUE	101.5	Tyler	TX	Country, "Big D & Bubba Show"; RDS Capture	3460 1221	
9:55	KWOU	88.1	Woodward	OK	NPR, OK state news	1334	
9:58	KYFL	89.5	Monroe	LA	RDS Capture	4FED 1072	
10:00	KFLO	89.1	Blanchard	LA	ID	1171	
10:00	KBPC	93.5	Crockett	TX	KHCB Net ID	1297	
10:00	KTYL	93.1	Tyler	TX	Kid Kraddick Show, per list	1221	
10:00	KATG	88.1	Elkhart	TX	AFR, local ID	1265	
10:02	KAKV	88.9	El Dorado	AR	ID	1119 1076	
10:04	KALD	91.9	Caldwell	TX	RDS Capture	1121 1367	
10:06	KAMX	94.7	Luling	TX	RDS Capture	114F 1435	
10:07	KVNE	89.5	Tyler	TX	RDS Capture	48CA 1224	
10:07	KWAA	88.9	Mart	TX	RDS Capture	4A18 1368	
10:08	KOYE	96.7	Frankston	TX	Reg. Mex, "La Invasora" - New	1252	
10:08	KNCT	91.3	Killeen	TX	RDS Capture	329B 1401	
10:11	KHKN	94.9	Maumelle	AR	RDS Capture	138D 1009	
10:16	WACO	99.9	Waco	TX	RDS Capture	54EA 1372	
10:17	KEWL	95.1	New Boston	TX	Rock, ID	1153	
10:17	KBYB	101.7	Hope	AR	RDS Capture	1515 1115	
10:17	KFRO	95.3	Gilmer	TX	Rel teaching, presumed this	1205	
10:20	KKXT	91.7	Dallas	TX	RDS Capture	2CD1 1310	
10:23	KLTY	94.9	Arlington	TX	RDS Capture	2F12 1318	
10:24	KBFB	97.9	Dallas	TX	RDS Capture	1327 1310	
10:25	KGLY	91.3	Tyler	TX	RDS Capture	210E 1233	
10:29	KURB	98.5	Little Rock	AR	RDS Capture	368B 1009	
10:30	KSBJ	89.3	Humble	TX	ID	1308	
10:30	KUAR	89.1	Little Rock	AR	RDS Capture	44E1 1011	
10:36	KETR	88.9	Commerce	TX	RDS Capture	1C8F 1235	
10:36	KEGL	97.1	Fort Worth	TX	RDS Capture	1B37 1326	
10:37	KSCS	96.3	Fort Worth	TX	Country, ID	1326	
10:37	KLUV	98.7	Dallas	TX	ID	1296	
10:38	KBOC	98.3	Bridgeport	TX	Spanish talk, music - presumed this as nothing else in zone - New	1309	
10:46	KNTU	88.1	McKinney	TX	RDS Capture	3456 1295	
10:48	KUCA	91.3	Conway	AR	Alt rock - ID'ed by Nick	1002	

10:51	KHYI	95.3	Howe	TX	ID	1365
10:55	KYDA	101.7	Azle	TX	RDS Capture	4FAE 1262
11:08	KMOC	89.5	Wichita Falls	TX	RDS Capture	311E 1350

June 26 Es

12:46	WGSG	89.5	Mayo	FL	RDS Capture	665A 826
12:47	WOLR	91.3	Lake City	FL	RDS Capture	973F 816
12:47	WJLU	89.7	New Smyrna Bch	FL	RDS Capture	6D9E 834
12:48	WWKA	92.3	Orlando	FL	Country, ID	863
12:58	WGTF	89.5	Dothan	AL	RDS Capture	6673 838
13:15	WAYF	88.1	West Palm Beach	FL	RDS Capture	571D 978
13:55	WAYJ	89.5	Naples	FL	RDS Capture	5721 1037
14:22	WFSW	89.1	Panama City	FL	RDS Capture	63C6 902
14:22	WSCF	91.9	Vero Beach	FL	RDS Capture	8469 913
14:22	WMKL	91.9	Hammocks	FL	RDS Capture	7567 1043
14:26	WFLJ	89.3	Frostproof	FL	"Joy FM" Cont Christian	939
14:27	WLRN	91.3	Miami	FL	RDS Capture	737B 1018
14:27	WMLV	89.7	Miami	FL	RDS Capture	758B 1052
14:28	WZTU	94.9	Miami Beach	FL	RDS Capture	14F8 1031
14:28	WRMB	89.3	Boynton Beach	FL	RDS Capture	82C5 982
14:28	WFEZ	93.1	Miami	FL	Weather, ID	1019
14:28	WRLX	94.3	Riviera Beach	FL	Spanish, presumed	964
14:29	WVUM	90.5	Coral Gables	FL	RDS Capture	8E30 1037
14:30	WPSF	91.5	Clewiston	FL	Screaming Chrstn Rock - "The Call"	
14:31	WQCS	88.9	Fort Pierce	FL	RDS Capture - wrong PI - 5BA2=WCQS-NC	
					5BA2	925
14:31	WAVW	92.7	Stuart	FL	Country, "The Wave"	937
14:45	WAKX	98.7	Palm Coast	FL	Ad for Sandy James Fine Foods	807
14:45	WIRK	103.1	Indiantown	FL	Country, ID	949
14:47	WMBX	102.3	Jensen Beach	FL	Urban, ID	949
14:50	WRTO	98.3	Goulds	FL	Spanish talk, presumed this	1052
14:52	WRMF	97.9	Palm Beach	FL	Current rock, presumed based on skip zone	
15:51	WMAW	88.1	Meridian	MS	RDS Capture	75EB 920
15:52	WOTB	88.7	Pearl River	LA	Religious, "The Bridge"	1054
15:53	WGUO	94.9	Reserve	LA	Country, ID	1104
15:53	WZRH	92.3	LaPlace	LA	Current rock, "Alt 92.3"	1119
15:54	WPEF	91.5	Kentwood	LA	"Lifesongs"	0000 1056
15:58	KTDY	99.9	Lafayette	LA	RDS Capture	4292 1169
15:58	WFFN	95.3	Coaling	AL	RDS Capture	626B 825
15:58	KAVK	89.3	Many	LA	RDS Capture	122C 1131
16:01	WRKF	89.3	Baton Rouge	LA	RDS Capture	8295 1121
16:01	kxkc	99.1	New Iberia	LA	Country, ID	1154
16:02	KITA	89.5	Iota	LA	RDS Capture	270E 1194
16:02	WMAU	88.9	Bude	MS	RDS Capture	75EB 1056
16:04	WLXW	89.7	Waynesboro	MS	RDS Capture	7420 950
16:06	WMPN	91.3	Jackson	MS	RDS Capture	75EB 986
16:10	WYLD	98.5	New Orleans	LA	RDS Capture	1529 1090
16:10	WAOY	91.7	Gulfport	MS	RDS Capture	0000 1028

16:11	WUWF	88.1	Pensacola	FL	RDS Capture 8BB9	941
16:12	WPAS	89.1	Pascagoula	MS	RDS Capture 7C56	993
16:14	WPCS	89.5	Pensacola	FL	RDS Capture 7C8A	947
16:29	KPAQ	88.1	Plaquemines	LA	RDS Capture 0000	1131

July 5 Es

11:29	WGUO	94.9	Reserve	LA	Classic Country, ID	1104
11:30	WYLD	98.5	New Orleans	LA	ID 1090	
11:40	WKSJ	94.9	Mobile	AL	RDS Capture 17ED	973
11:46	KQID	93.1	Alexandria	LA	ID 1112	
12:11	WFFN	95.3	Coaling	AL	RDS Capture 626B	825
12:20	WUWF	88.1	Pensacola	FL	RDS Capture 8BB9	941
12:27	KVLO	101.7	Humnoke	AR	ID 48A0	982
12:27	KHKN	94.9	Maumelle	AR	RDS Capture 138D	1009
12:28	KSCS	96.3	Fort Worth	TX	ID 1326	
12:29	WZLB	103.1	Valparaiso	FL	Ad for Step One Automotive Group in Ft. Walton Beach - New	927
12:30	KLUV	98.7	Dallas	TX	ID 1296	
12:33	KURB	98.5	Little Rock	AR	RDS Capture 468B	1009
12:37	KBFB	97.9	Dallas	TX	Rap, local ad	1310
12:37	KEGL	97.1	Fort Worth	TX	RDS Capture 1B37	1326
12:42	WTIX	94.3	Galliano	LA	RDS Capture 87BB	1099
12:45	KZMP	104.9	Pilot Point	TX	Indian music, talk	1278
12:45	KYDA	101.7	Azle	TX	Air 1 4FAE	1262
12:49	KHYI	95.3	Howe	TX	Classic Country, ID	1365
12:55	KMCO	101.3	Wilburton	OK	Local ads - New	1171
12:55	KWFB	100.9	Holliday	TX	Rock, ID, "Bob FM" - New	1356
12:58	KERX	95.3	Paris	AR	ESPN Sports talk	1077
12:58	KTWF	95.5	Scotland	TX	ID - New	1359
12:59	KQCV	95.1	Shawnee	OK	Bott religion, ID	3A89 1198
13:00	KWFS	102.3	Wichita Falls	TX	Country, ID , "The Bull" - New	1349
13:00	KLAW	101.3	Lawton	OK	RDS Capture - New 2D22	1330
13:00	KTFX	101.7	Warner	OK	ID 42C5	1129
13:05	KVOO	98.5	Tulsa	OK	RDS Capture 48EE	1160
13:09	KOLI	94.9	Electra	TX	RDS Capture 361E	1368
13:10	KMGZ	95.3	Lawton	OK	ID 1326	
13:15	KVSP	103.5	Anadarko	OK	Promo and ID4957	1131
13:15	KRXO	107.7	Oklahoma City	OK	Sports Talk	1256
13:15	KVRW	107.3	Lawton	OK	ID 1326	
13:17	KACO	98.5	Apache	OK	Country, OK PSA's mixing w/ KVOO	1265
13:18	KBRU	94.7	Oklahoma City	OK	RDS Capture 1472	1256
13:18	KWEN	95.5	Tulsa	OK	Promo for Home/Garden Expo of OK, Bartlesville ad	1160
13:18	KTSO	100.9	Sapulpa	OK	Ad for Jim Norton Chevrolet - New	1163
13:20	KNAH	99.7	Mustang	OK	Country, ID - New	1267
13:24	WTGE	100.7	Baton Rouge	LA	RDS Capture 8774	1121
13:24	WYNK	101.5	Baton Rouge	LA	Ad for Avant Tous Beauty Bar & Spa - New	
13:35	KCMO	94.9	Shawnee	MO	Rock, ID 1029	

13:36	KKZU	101.7	Sayre	OK	ID	1365	
13:36	KMGL	104.1	Oklahoma City	OK	ID	1248	
13:37	KMXN	95.1	Carthage	MO	RDS Capture	3211	1047
13:38	KLSI	102.3	Mooreland	OK	ID - New	1334	
13:40	KTHR	107.3	Wichita	KS	Ad for Rusty Eck Ford		1198
13:44	KCVW	94.3	Kingman	KS	Bott religion - only one on channel		1240
13:51	KICT	95.1	Wichita	KS	RDS Capture	2567	1203
13:51	KRBB	97.9	Wichita	KS	RDS Capture	3CFF	1202
13:52	KHMY	93.1	Pratt	KS	ID	1242	
13:52	KQZQ	98.3	Kiowa	KS	Country, ID	1265	
13:52	KDJM	101.7	Lindsborg	KS	"Homecoming Radio"		1198
13:53	KTLI	99.1	El Dorado	KS	K-Love - only one in skip zone - New		1172
13:54	KSMM	101.5	Liberal	KS	Regional Mexican music		1390
13:55	KQLA	103.5	Ogden	KS	Country, ID	1134	
13:55	KLDG	102.7	Liberal	KS	Classic Country, "The Legend" - New		1406
13:55	KEYN	103.7	Wichita	KS	ID	1203	
13:56	KNCK	94.9	Concordia	KS	ID	1192	
13:58	KAHE	95.5	Dodge City	KS	Ad for Shelter Ins / Jason Putnam		1354
14:02	KWME	92.7	Wellington	KS	Station promo - New		1208
14:04	KHAQ	98.5	Maxwell	NE	Classic Rock, ID	1331	
14:04	KGBL	100.9	Lakin	KS	Country, ID	1404	
14:09	KZUH	92.7	Minneapolis	KS	ID	1189	
14:10	KSKU	94.7	Sterling	KS	Current rock / hip hop, local PSA		1237
14:15	KKDT	93.5	Burdett	KS	Country, ID	1304	
14:17	KSAJ	98.5	Burlingame	KS	Soft rock, ID - New	1091	
14:18	KHCA	95.3	Wamego	KS	Contemporary Christian music, "Angel 95"		
14:24	KCLY	100.9	Clay Center	KS	Ad for Wilder Auto Body		1162
14:31	KWKN	95.3	Wakeeney	KS	Sports talk, Kansas focus - New		1302
15:07	KOSU	91.7	Stillwater	OK	RDS Capture	36E0	1245
15:09	KWOU	88.1	Woodward	OK	RDS Capture	4B98	1334
15:30	KHNE	89.1	Hastings	NE	ID	1196	
19:19	KSLZ	107.7	St. Louis	MO	Local TV Weather	810	
19:26	WJEK	95.3	Rantoul	IL	Cont Christian, "Christian FM" - New		677
19:28	WYNG	94.9	Mount Carmel	IL	K-Love - only one in skip zone	679	
19:40	WWVR	98.5	Paris	IL	Classic Rock, ID - New	661	
19:42	KQKL	95.3	Keokuk	IA	RDS PS: KOKX prior call	859	
19:42	WFBQ	94.7	Indianapolis	IN	Rock, ID	578	
19:42	WBBN	95.9	Taylorsville	MS	Rock, ID	986	
19:43	WRHK	94.9	Danville	IL	Ad for Bud's Car Stereo & Home Theater		
19:44	KXKC	99.1	New Iberia	LA	Country, ID	1154	
19:45	WIBC	93.1	Indianapolis	IN	RDS Capture	69E4	569
19:46	WDZQ	95.1	Decatur	IL	RDS Capture	5F2E	732
19:49	WYDS	93.1	Decatur	IL	Hip Hop, ID	726	

Jul 26 Es

18:26	WKOR	94.9	Columbus	MS	Country, ID	A78D	852
18:26	WYMX	99.1	Greenwood	MS	ID	948	
18:26	KZRZ	98.3	West Monroe	LA	RDS Capture	53D7	1061

Continues on page 43

SIGN UP & Renewal Form

YEARLY DUES \$10.00 USD for Monthly VUD E-ZINE

Print this form and send it with your dues.

Name _____

Address _____ Apt # _____

City _____ State/Prov _____ Zip _____

Country _____ Interests: TV () FM () 30-50 () Weather ()

E-Mail Address _____

Sign me up/renew me for: 1 year () 2 years () More () _____

Mail your yearly dues to: WTFDA, P.O. Box 501, Somersville, CT USA 06072

Make your checks/money orders payable to: WTFDA

And *thanks* for your support of the WTFDA!

FM NEWS CONTINUED FROM PAGE 42

18:27	WTCD	96.9	Indianola	MS	RDS Capture 870B	948
18:28	WYOY	101.7	Gluckstadt	MS	RDS Capture 958C	986
18:28	KXKZ	107.5	Ruston	LA	RDS Capture - New 4DD9	1104
18:28	KJLO	104.1	Monroe	LA	RDS Capture 28F0	1066
18:28	WDMS	100.7	Greenville	MS	RDS Capture 5DDE	985
18:29	KLXE	93.5	Calhoun	LA	K-Love, only one is skip zone - New	
18:29	KRGL	98.5	Ringgold	LA	Religious talk, KHCB net	1131
18:29	WADI	95.3	Corinth	MS	RDS Capture 54FE	804
18:29	WBYB	98.3	Cleveland	MS	RDS Capture 59BD	959