



VHF-UHF DIGEST

The Magazine for TV and FM DXers

December 2020



The Official Publication of the Worldwide TV-FM DX Association

Steve Rich
2 days ago

New DTV log from Payson, IL: WAKA 25/8, Selma, AL 584 miles. New log since repack on 42. Several other new logs from Birmingham, AL area: WBRC 29/6 and WTTQ "CW" 21/21 @ 501 miles, and WSES 36/33, Tuscaloosa, AL 485 miles.

Screenshots supplied by Steve Rich from posts on the new WTFDA Weme group.

GREAT MIDWEST THANKSGIVING TROPO 2020



This month
The new WLogger!
And
WTFDA Transition from
Facebook to Weme.com

Steve Rich
2 days ago

From the Payson, IL remote site, brief decodes of WAPT 21/16, Jackson, MS 522 miles & WJTV 12/12, Jackson, MS 524 miles. WJTV with PSIP decode only, no video decode.

Call Sign	Frequency	Distance	Signal	Quality
WAPT	21.161	522	62%	31
WJTV	12.12	524	67%	31

THE VHF-UHF DIGEST

The Worldwide TV-FM DX Association

Serving the TV, FM, 30-50mhz Utility and Weather Radio DXer since 1968

THE VHF-UHF DIGEST IS THE OFFICIAL PUBLICATION OF THE WORLDWIDE TV-FM DX ASSOCIATION DEDICATED TO THE OBSERVATION AND STUDY OF THE PROPAGATION OF LONG DISTANCE TELEVISION AND FM BROADCASTING SIGNALS AT VHF AND UHF. WTFDA IS GOVERNED BY A BOARD OF DIRECTORS: DOUG SMITH, SAUL CHERNOS, KEITH MCGINNIS, JAMES THOMAS AND MIKE BUGAJ

Treasurer: **Keith McGinnis** wtfda.org/info *Webmaster:* **Tim McVey**
Forum Site Administrator: **Chris Cervantez**
Creative Director: **Saul Chernos**
Editorial Staff: **Jeff Kruszka, Keith McGinnis, Fred Nordquist, Nick Langan, Doug Smith, John Zondlo and Mike Bugaj**



The WTFDA Board of Directors

Doug Smith dougs@wtfda.org	Saul Chernos saul@wtfda.org	James Thomas Jim-T@wtfda.org	Keith McGinnis nfmdx@wtfda.org	Mike Bugaj mikeb@wtfda.org
--	--	--	--	--

Renewals by mail: Send to WTFDA, P.O. Box 501, Somersville, CT 06072. Check or MO for \$10 payable to WTFDA.
Renewals by Paypal: Send your dues (\$10USD) from the Paypal website to sales@wtfda.org or go to <https://www.paypal.me/WTFDA> and type 10.00 or 20.00 for two years in the box.

Our WTFDA.org website webmaster is Tim McVey, webmaster@wtfda.org. Our WTFDA Forums webmaster is Chris Cervantez, Chriscervantez@gmail.com. Fred Nordquist is in charge of club statistics at nordquis@homesc.com

Our email reflector is on Googlegroups. To join, send an email to WTFDA+subscribe@googlegroups.com

Visit our club website at <http://www.wtfda.org>. Participate in our forums at <http://forums.wtfda.org>.

Our real-time (prop logger) bulletin board is located at <http://logger.wtfda.org>. Only WTFDA members can participate.

Our new social media site is at Weme.com. <https://mewe.com/join/tvandfmradiodx>. Register and join the group.



The WTFDA FM Database is administered and updated by your fellow WTFDA members. It is completely free to use and can serve up to 500 users a day during the spring, summer and fall.



THE DATABASE CREW

Bill Hale
Mike Bugaj
Jim Thomas
Fred Nordquist
Nick Langan



The Mailbox

P.O. Box 501 Somersville, CT 06072
Mike Bugaj - Enfield, CT mikeb@wtfda.org



Welcome to the Mailbox for December. We hope you all had a great Thanksgiving and that your Christmas and Hannukkah seasons are festive. And as the year 2020 begins to fade into the sunset, we hope that 2021 becomes a much better year for all of us than 2020 was.

During the month of November we received renewals from Marv Shults, Stephen Naetzker, Chris Kadlec, Matt Sittel, John Jefferson, George Mileon, Al Kopec, Bill Nollman and Ted Liszewski. Thanks everyone for your support of the club. And we welcome Richard Colgan to the WTFDA.

Richard is from Austin Texas and was a WTFDA member back in the '70s as well as Executive Secretary of the old ANARC (Association of North American Radio Clubs) in the '80s. Welcome Richard!

We've received a bit of sad news. Some of you may remember a WTFDAer by the name of Bill Kretschmer. Bill hosted the 1989 WTFDA Convention in North Syracuse, NY and had many TV and FM DX reports in the V.U.D. Sometime later he moved from the Syracuse area to Harwich, MA on the Cape, where he recently passed away. I'd like to thank Bill Nollman and Fred Nordquist for the information.



The New WTFDA Logger

CHANGE ONE. A few months ago we said there were going to be some changes, and here's the first. The old "Bulletin Board" (logger) will be going offline soon. It has already been replaced with the new WTFDA logger, which is already online. If you had any experience with the old logger you can see now that FM logs are created from one menu and TV logs are created from another. If you look beneath the logging creation area you will see the actual output screen which holds 50 loggings at a time. As new logs are added, older logs push to the bottom of the log list where they are eventually moved to the log archive for the month and stored there. At the moment there is no

separate chat section for the logger but there is a comment area for up to 120 characters, which should be a help. The creator of the new logger, WTFDA member Bryce Foster, has some big add-ons for the logger planned for the future. Bryce deserves a huge amount of thanks for his work on this new logger (and for learning Python).

We think we have notified everyone who made use of the old logger about the new logger but we might have missed someone, so if we missed you, we invite you to register there at <http://logger.wtfda.org> the first time you visit. And after you register you will need to wait until you are confirmed as a WTFDA member and added to the list of users. This could be as little as a few minutes or a few hours, depending on when we see your registration. But we will see it. Although we have no chat area on the logger, we now do have something that works really well and we will tell you about it on the next page, and this is our *next change*.



CHANGE TWO. Our second change is a change regarding social media. We are moving away from Facebook because of many of Facebook's current problems. MeWe is a fast-growing Facebook alternative of around 12 million people. It offers a platform like FB but also includes a very nicely designed chat feature for users of the group, as opposed to FB chat which lets you chat with anyone on Facebook whether in the group or not. This chat feature is becoming well used by club members who post on the club's WLogger.



The chat window initially appears as a smaller window on the bottom right of the group page. It can be made larger and then much larger by clicking on the double-arrowed line on the upper right side. When fully expanded it looks like the graphic on the left.

So what can you do on MeWe? You can read the posts and comment, chat real-time with other members, read the latest VUD, Doug's FM and TV weekly facility updates, weekly StationIntel format and slogan change updates, technical articles

or old radio and TV related articles going back to the 1940s. That's just the start. You can also download the MeWe app for your android phone from the Google Play Store to stay in touch with WTFDA wherever you go. It works great! There also are apps available for IOS and Mac.

For those who may be fearful of all social media, I suggest you go to <https://mewe.com> and read about it. Also here is a Thanksgiving message from Mewe Admin: *Today I'm thankful for the 11.6 million people that have joined MeWe. I consider it a great honor that you have given of your time to move here. I know it's not easy to switch social networks because during the move you will lose some connections and it takes work to learn a new app. My hope and belief is that you will gain much more than you lose.*

At MeWe we are committed to building a platform for the people, not for governments or corporations. We believe in freedom and self-expression. We believe that truth is more powerful than lies. It is not our job to be arbiters of what is true but to build a safe place for people to connect and share ideas without manipulation.

Thank you for giving MeWe a chance to earn your trust and ensure that the next generation social network empowers you, instead of seeking to influence and control you.

If you would like to grow with us on MeWe, go to our tvandfmradiodx group by [clicking here](#) or by typing <https://mewe.com/join/tvandfmradiodx> into your browser address bar and registering. Once that is done we add you to the group and the process is finished. Our group is private and nobody gets into the group except WTFDA members.

What's in the future for us on Facebook? The WTFDA group will soon be disbanded. The remaining group, TV and FM DXing, might also be at some time since out of 1,360 members there are only about 60 WTFDA members there, which is only ten more than the WTFDA group. So time will tell. With MeWe, we think we will gain much more than we lose.

HDHR5-4K

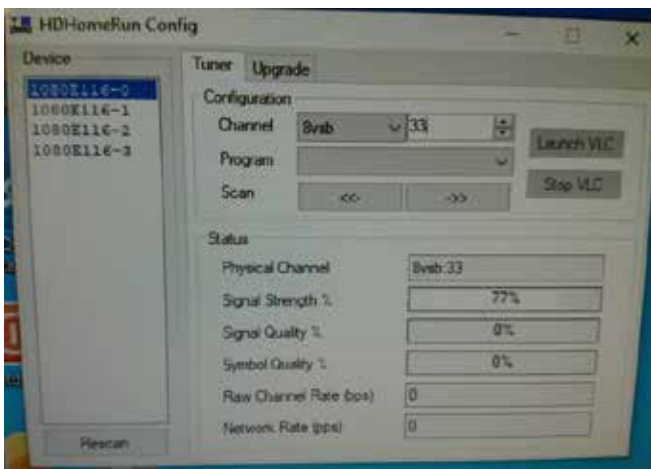
Steve Rich



Here's my first review of the new HDHR5-4K tuner I posted on FB Oct 24th.

"I've been testing the new SiliconDust HDHR5-4K tuner against other tuners at my house this morning using semi-local WTIU 33/30, Bloomington, IN @ 58 miles. This station's signal is right around the threshold point of decoding, so it sometimes pixelates or briefly drops out. Reception is from a CM 4251 UHF parabolic antenna @ 38' with a Winegard pre-amp plus a 4 dB gain distribution amp which provides service to several tuners in the house.

So far the HDHR5-4K works fine with my locals and a few stations around 37-40 miles distant, but WTIU @ 58 miles has never decoded on the new tuner even once during the week I've now had it. This morning, I was able to receive this station via a 24" LG HDTV, a 10-year-old 46" Sony HDTV, a 12-year-old Insignia STB and the older SiliconDust HDHR-US. The HDHR-US barely decoded but when I applied some attenuation in the line it was quite good. Meanwhile, after trying various connections, cables, attenuation, etc. I have still not seen



ANY decode of this station via the new HDHR5-4K. I've attached pics of the various decodes, in order, from this morning. I plan to go mobile soon to see if this station will decode via the new tuner in a different location away from my house.

Any other testing results of the new HDHR5-4K tuner? BTW, I currently don't have any local/area stations broadcasting in 3.0 so I am unable to test its ability with this standard. "

Since this time I have been able to receive WTIU a few times when the signal was stronger. But overall, I'm not really pleased with its reception so far. It is very sensitive

to overload and Trip confirmed this, too. Overload was brought up by another new 4K tuner user at the SiliconDust website. He ended up removing his pre-amp before stations would decode. Not a good report for those of us DXing weak signals which generally need a pre-amp. Hopefully 3.0 signals will decode easier than 1.0.

TV News – December 2020

Douglas E. Smith
Nashville, TN
w9wi@w9wi.com
<http://www.w9wi.com>

Location	RF Ch	Callsign	Notes
Alabama			
Anniston	9	WGWW	Granted power increase to 19.1kw/396m, 33-36-24/86-25-03.
Birmingham	18	W18ET	From W20DE, 15kw/201m; granted. Bumped by WABM.
Enterprise	14	WFRW-LD	OFF Nov. 1 st .
Enterprise	26	WGEI-LD	OFF Nov. 1 st .
Homewood	21	WTTO	Moved (back) from 28, 1000kw/422m
Huntsville	19	WHNT-TV	Requests power increase to 530kw/533m.
Arizona			
Flagstaff	30	K30DT	Requests power increase to 15kw/201m; granted.
Gila River Indian Co.	28	KGRY-LD	Calls changed from K28MO. Different license from the previous KGRY-LD on channel 21.
Phoenix	22	KPDF-CD	From 41, 15kw/470m, 33-20-04/112-03-44.
Phoenix	33	KTVW-DT	Granted power increase to 560kw/510m.
Arkansas			
Fort Smith	27	KFTA-TV	Requests power increase to 1000kw/305m.
Harrison	21	K21JS	Requests STA 100w/205m; has equipment to build facility at reduced power.
Jonesboro	27	KAIT	From 8, 1000kw/527m.
Little Rock	28	KARZ-TV	Requests power increase to 340kw/538m.
Paragould	24	KPMF-LD	OFF Nov. 13 th pending replacement of transmission line. (WATN-24/WLMT-30 tower, Memphis)
California			
Bakersfield	25	KGET-TV	Requests power increase to 1000kw/425m.
Bakersfield	31	KBTF-CD	Power reduced to 14.2kw/389m, 35-26-17/118-44-27.
Cherry Valley	19	KILA-LD	From 8, 15kw/748m.
Chico	3	KXVU-LP	Moved from 17, 100 watts/370m.
Fresno	7	KAIL	Requests power increase to 48.8kw; amendment from 80kw.
Fresno	16	KHSC-LD	Requests STA 13.1kw/577m. Granted. To prevent interference with land mobile on Tejon Peak.
Fresno	33	KSDI-LD	Requests STA 4.3kw/579m. Granted. Shares antenna with KHSC-LD.
Lompoc	17	KLDF-CD	Requests conversion to digital, 15kw/239m, 34-44-30/120-26-49.
Los Angeles	21	KTAV-LD	Power increased to 15kw/336m, 34-07-08/118-23-33.
Los Angeles	31	KCBS-TV	New aux on the air, 209kw/952m, 34-13-38/118-04-03. Requests power increase to 316kw for this aux; granted.
Monterey	23	KMUV-LD	From 21, 15kw/705m; granted.
Morongo Valley	22	KJHP-LP	Moved from 18, 15kw/187m.
Palm Springs	10	KGBY-LD	Calls changed from K10QV.
Paradise	30	KCVU	From 20, 500kw/431m; granted.
Redding	15	KRCR-TV	From 7, 1000kw/1095m.
Redding	26	KGEC-LD	OFF Oct. 23 rd , transmitter failure.
Sacramento	9	KVIE	Requests power increase to 35.1kw; amendment from 33kw.

Location	RF Ch	Callsign	Notes
San Diego	15	KVSD-LD	Requests STA 98.9 watts/262m, 33-06-55/117-09-04. Must resume operation by Dec. 10 th to avoid off-over-a-year revocation, but cannot resume on old channel 26 because of the repack. Repack funding to build new facility on ch. 35 was only very recently approved, and construction cannot be completed on time. Channel 15 is currently authorized as a studio-transmitter link and can be used without interference.
San Francisco	28	KBCW	New aux on the air, 680kw/517m.
San Francisco	29	KPIX-TV	Requests power reduction to 1000kw/490m.
San Luis Obispo	36	KSBO-CD	Requests power increase to 15kw/438m.
Santa Barbara	28	KVMM-CD	Requests power increase to 15kw/249m.
Santa Maria	29	KQMM-CD	Requests power change to 15kw/564m, 34-54-36/120-11-14.
Santa Maria	30	KDFS-CD	Requests conversion to digital, 15kw/436m.
Stockton	23	KQCA	Requests power increase to 1000kw/579m.
Vallejo	34	KFSF-DT	Granted power increase to 850kw/499m, 37-45-19/122-27-10.
Colorado			
Bailey	23	KPDD-LD	Power reduced to 3kw/8m, 39-21-34/105-22-10
Grand Junction	7	KLML	Calls changed from KGBY.
Grand Junction	36	KLML-LD	Calls changed from KGBY-LD.
Woodland Park	23	KPDD-LD	Requests power reduction to 3kw/8m, 39-21-34/105-22-10; granted
Florida			
Clearwater	21	WCLF	Granted power reduction to 770kw/412m, 27-49-11/82-15-38.
Clearwater	26	WXAX-CD	Requests conversion to digital, 15kw/403m.
Lakeland	18	WMOR-TV	To convert to ATSC 3.0.
Orlando	26	WKMG-TV	Power increased to 1000kw/515m.
Panama City	24	W24EY	Requests power increase to 15kw/104m, 30-19-42/85-41-22. Granted.
Tallahassee	33	WNXG-LD	Calls changed from WUFX-LD.
Tampa	12	WTVT	ATSC 3.0 host for WMOR-TV Lakeland.
Vero Beach	10	WWCI-CD	Requests power increase to 3kw/77m.
West Palm Beach	19	WBWP-LD	Moved from 25, 9kw/153m.
Georgia			
Albany	29	W48DU	Requests STA for this channel, 100w/1m; has equipment to build facility at reduced power.
Albany	29	WFXL	From 12, 1000kw/253m. Would supersede W48DU's application.
Atlanta	21	WPBA	Requests power increase to 105kw/265m.
Atlanta	35	WDTA-LD	Power reduced to 6kw/331m, 33-44-41/84-21-36.
Augusta	27	WRDW-TV	From 12, 800kw/484m.
Baxley	15	WPHJ-LD	Power changed to 15kw/62m, 31-49-53/81-47-20.
Carrollton	23	W23EV	Moved from W13DJ, 8.1kw/155m.
Savannah	23	WTOC-TV	From 11, 1000kw/442m.
Valdosta	30	WVCZ-LD	Requests STA 100w/36m; has equipment to build facility at reduced power.
Hawaii			
Kailua-Kona	25	KFVE	Granted power reduction to 11.7kw/-199m, 19-37-00/155-56-59.
Wailuku	21	KLEI	Granted power reduction to 2.1kw/-119m, 20-46-32/156-19-42.
Idaho			
Boise	20	KBOI-TV	From 9, 625kw/862m.
Boise	29	KIWB-LD	Moved from 43, 15kw/483m, 43-44-213/116-08-15.

<i>Location</i>	<i>RF Ch</i>	<i>Callsign</i>	<i>Notes</i>
Payette	17	K17ED	Requests power increase to 15kw/158m.
Twin Falls	34	KXTF	Requests power increase to 230kw/162m.
Illinois			
Champaign	27	W27EL	OFF Nov. 9 th , transmitter failure.
Chicago	19	WGN-TV	Requests power increase to 803kw/496m.
Galesburg	8	WMWC-TV	Requests power increase to 39kw/330m.
Oswego	10	WAOE	Requests CL from Peoria, see text.
Peoria	25	WEEK-TV	Requests power increase to 536kw/212m.
Plano	32	WLPD-CD	Requests power increase to 15kw/351m, 41-53-56/87-37-23. (John Hancock Center, Chicago)
Springfield	11	WCIX	Requests power increase to 10kw/176m.
Sugar Grove	27	W27EB	Moved from W40CN, 7.05kw/86m, 41-50-18/88-04-49 (College of DuPage campus, Glen Ellyn) Requests power increase to 15kw/393m, 41-53-21/87-37-36 (Trump Tower, Chicago)
Indiana			
Fort Wayne	24	WPTA	Requests power increase to 592kw/229m.
Indianapolis	24	WUDZ-LD	Operating at 17% power since Nov. 6 th , defective amplifier.
Salem	16	WBKI	Requests power increase to 860kw/390m.
Iowa			
Cedar Rapids	32	KCRG-TV	From 9, 1000kw/607m.
Kentucky			
Lebanon	6	W06AY	Granted power increase to 300 watts/173m, 37-13-57/85-52-06. Site is between Horse Cave and Munfordville.
Louisville	36	WAVE	Returned to full power Oct. 2nd.
Louisiana			
Lake Charles	21	K21OB	From K45HY, 10kw/89m, 30-18-43/93-20-15; granted.
Monroe	24	KCWL-LD	Moved from 40, 15kw/171m.
Maryland			
Hagerstown	23	WDVM-TV	Requests power to 1000kw/326m, 39-08-17/77-49-58. Site is between Purcellville and Berryville, Virginia – but is actually about 150m inside West Virginia.
Salisbury	28	WGDV-LD	Moved from 32, 15kw/287m.
Salisbury	29	WMDT	Moved from 47, 246kw/307m. Permit granted for new aux, 320kw/201m; new to the air.
Massachusetts			
Boston	20	WBZ-TV	Requests power increase to 1000kw/388m.
Boston	33	WCVB-TV	Requests power increase to 1000kw/388m.
Winchendon	22	WVMA-CD	Requests power to 15kw/21m, 42-36-03/72-22-59; site is between Orange and Greenfield.
Michigan			
Cadillac	31	WVIU-LD	From 35, 15kw/336m.
Marquette	35	WLUC-TV	Granted power increase to 100kw/258m, 46-20-11/87-50-56.
Mt. Pleasant	28	WBWM-LD	Requests power reduction to 2.85kw/-1m, 43-36-14/84-45-49. Granted.
Petoskey	19	WYST-LD	From 14, 15kw/276m.
Sault Ste. Marie	8	WGTQ	Granted power increase to 60kw/288m.

<i>Location</i>	<i>RF Ch</i>	<i>Callsign</i>	<i>Notes</i>
Minnesota			
Duluth	26	K26KF	Requests STA 100w/86m; has equipment to build facility at reduced power.
Duluth	35	K35JN	Requests STA 100w/85m; has equipment to build facility at reduced power.
Minneapolis	21	WUMN-LD	Moved from 17.
Minneapolis	30	KSTC-TV	Application for new aux, 1000kw/363m; granted & on the air.
St. Paul	35	KSTP-TV	Granted power increase to 1000kw/457m, 45-03-45/93-08-22.
Mississippi			
Clarksdale	30	WQEK-LD	OFF Nov. 13 th pending replacement of transmission line. (WATN-24/WLMT-30 tower, Memphis)
Gulfport	25	WXXV-TV	Requests STA 42.65kw/297m, 30-44-49/89-03-30; temporary antenna, permanent facility damaged by Hurricane Zeta.
Missouri			
Cape Girardeau	32	KFVS-TV	From 11, 473kw/609m.
Columbia	17	KMIZ	Requests power increase to 231kw/352m.
Hannibal	22	KHQA-TV	From 7, 750kw/271m.
Jefferson City	29	KRCG	From 12, 1000kw/308m.
Joplin	34	K41KX	Requests STA for this channel, 100w/141m, 37-04-35/94-32-33; has equipment to build facility at reduced power. Antenna height amended to 37 meters. Granted.
Kirksville	33	KTVO	Power increased to 425kw/290m.
Rolla	36	K36KA	License canceled Nov. 5 th .
Springfield	10	KOLR	Requests power increase to 34kw/631m.
St. Louis	25	K25NG	Requests power to 15kw/149m, 38-34-28/90-19-32; community tower used by most St. Louis FM stations.
St. Louis	26	KPLR-TV	Requests power increase to 1000kw/333m., 38-32-07/90-22-23.
Montana			
Billings	16	KBGS-TV	Granted power increase to 38.6kw/167m, 45-46-01/108-27-29.
Bozeman	13	KBZK	Requests conversion to DTS by adding second site at Livingston: 150 watts/382m, 45-41-47/110-46-07.
Butte	20	KTVM-TV	From 6, 1000kw/591m.
Great Falls	25	K25LM	Requests STA 100w/68m; has equipment to build facility at reduced power.
Great Falls	35	K35KC	Requests STA 100w/68m; has equipment to build facility at reduced power.
Kalispell	25	K25KZ	Requests STA 100w/801m; has equipment to build facility at reduced power.
Missoula	20	KECI-TV	From 13, 925kw/610m.
Scobey	26	K26PD	New LPTV on the air, 239 watts/70m, 48-47-51/105-21-26.
Nebraska			
Beatrice	21	KWBE-LD	OFF Oct. 26 th , antenna damaged by ice & water.
Kearney	18	KHGI-TV	From 13, 1000kw/338m.
Lincoln	10	KOLN	Requests power increase to 66.1kw/454m; amendment from 480m. Granted.
Omaha	20	KETV	Requests power increase to 1000kw/396m.
Omaha	22	WOWT	Operating at reduced power of 660kw since Oct. 10th due to equipment failure; requests STA for this power.
Nevada			

<i>Location</i>	<i>RF Ch</i>	<i>Callsign</i>	<i>Notes</i>
Las Vegas	19	KHDF-CD	Requests power increase to 15kw/353m, 36-00-36/115-00-23.
Las Vegas	21	KHSV	From 2, 1000kw/386m.
Las Vegas	26	KGNL-LD	Requests power increase to 15kw/543m, 35-56-46/115-02-37; granted & increased.
Las Vegas	30	K30PL	OFF Oct. 30 th , lost lease.
Las Vegas	36	K36NE	Requests power increase to 15kw/353m, 36-00-36/115-00-23.
Lund	27	K49AM	Moved from 49.
New Hampshire			
Manchester	9	WMUR-TV	Granted power increase to 7.35kw/312m, 42-59-01/71-35-23.
New Jersey			
Newton	18	WMBC-TV	Requests power to 250kw/520m, 40-42-47/74-00-47.
Vineland	17	WUVP-DT	See sharing host WPHL-TV Philadelphia.
New Mexico			
Alamogordo	24	K24CT	Converted to digital, 15kw/518m, 32-49-48/105-53-14.
Albuquerque	24	KNAT-TV	Operating at unspecified reduced power of less than 80% since November 8th.
Farmington	21	K46KV	Requests STA for this channel, 50w/77m; has equipment to build facility at reduced power.
Farmington	32	K32JT	Requests STA 100w/77m; has equipment to build facility at reduced power.
Silver City	28	K28LK	Granted power reduction to 9.2kw/466m.
New York			
Albany	12	WNYT	Requests power increase to 86kw/414m.
New York	11	WPIX	Requests power increase to 26kw/405m.
Saranac Lake	34	WYCI	Requests reauthorization of a second site at Terry Mountain; 200kw/529m, 44-34-27/73-40-29.
Schenectady	35	WRGB	From 6, 1000kw/392m.
Syracuse	17	WSYR-TV	Requests power increase to 285kw/402m.
Syracuse	18	WTVH	Granted power reduction to 109kw/393m, 42-56-42/76-07-06.
Watertown	19	WTKJ-LP	Requests STA 100w/116m; has equipment to build facility at reduced power.
North Carolina			
Andrews	20	W20EK	Requests STA for 800 watts/608m.
Burnsville	7	W09AS	Moved from 9, 195 watts/438m.
Canton	27	WUNW	Requests power increase for DTS Site #1 to 115kw/505m, 35-34-07/82-54-26. Remaining five sites unchanged. Amendment from 50kw.
Charlotte	20	WDMC-LD	Requests STA for this channel, 15kw/188m. Granted. To use old antenna pending delivery of permanent antenna.
Greenville	25	WUNK-TV	Operating at 8% power (80kw) since Oct. 24th due to output RF switch failure. Returned to full power Nov. 6th.
Jacksonville	41	WTMQ-LD	OFF Oct. 26 th pending move to ch. 32.
Manteo	17	W17CT	Returned to the air Nov. 2 nd . But off again Nov. 18 th , same issue as last time...
Ogden	35	WTMV-LD	OFF Nov. 25 th , financial reasons.
Smithfield	23	WARZ-CD	Requests STA 987 watts/312m, 35-40-35/78-32-07; to return to pre-repack site on post-repack channel. Granted. Requests increase to 15kw/333m.
Tryon	7	W11AH	Moved from 11, 61 watts/563m.

<i>Location</i>	<i>RF Ch</i>	<i>Callsign</i>	<i>Notes</i>
Wilmington	21	WUNJ-TV	Moved from 29.
North Dakota			
Fargo	2	KCPM-LP	Calls changed from KVNJ-LP.
Fargo	23	K23LB	License canceled Nov. 23 rd -- appears to have been off the air since Nov. 7, 2017.
Ohio			
Cincinnati	20	WLWT	Requests power increase to 1000kw/309m.
Dayton	31	WDTN	Moved from 50, 1000kw/330m.
Lima	15	WOHL-CD	Requests power increase to 15kw/179m.
Portsmouth	15	WQCW	Application for new aux, 617kw/332m; granted & on the air.
Springfield	31	WBDT	See sharing host WDTN Dayton.
Toledo	35	WLMB	From 5, 375kw/170m.
Oklahoma			
Ardmore	20	K24IW	Requests STA for this channel, 100w/69m, 34-01-58/96-48-01; has equipment to build facility at reduced power. Amended to specify antenna height of 49m. Granted. Site is near Madill.
Ardmore	22	K22JQ	Requests STA 100w/59m, 34-01-58/96-48-01; has equipment to build facility at reduced power. Amended to specify antenna height of 49m. Granted. Site is near Madill.
Ardmore	26	K26PA	Requests STA from K19II, 100w/51m, 34-01-58/96-48-01; has equipment to build facility at reduced power. Granted. Site is near Madill.
Enid	32	K19IR	Requests STA for this channel, 100w/53m; has equipment to build facility at reduced power. Granted.
Oklahoma City	15	KTBO-TV	OFF Oct. 27th, tower destroyed by ice storm.
Oklahoma City	19	KAUT-TV	Requests power increase to 750kw/467m.
Oklahoma City	27	KFOR-TV	Requests power increase to 800kw/467m.
Oklahoma City	36	KUOK-CD	Requests STA 366 watts/41m, 35-24-54/97-30-33; temporary site, tower collapsed in ice storm.
Tulsa	26	KOTV-DT	From 45, 730kw/491m (aux); granted & moved.
Oregon			
Eugene	15	KORY-CD	Requests power increase to 15kw/265m, 44-00-07/123-06-54.
Eugene	28	KVAL-TV	From 13, 1000kw/441m.
Medford	16	KTVL	From 10, 350kw/1001m.
Portland	21	KPXG-LD	Moved from 42.
Warrenton	22	KHPN-LD	Requests STA for this channel, ex-ch. 51, 100w/-30m; has equipment to build facility at reduced power.
Pennsylvania			
Charleroi	29	WWAT-CD	Returned to the air Nov. 6 th .
Charleroi	32	WMVH-CD	Requests power increase to 15kw/110m.
Kittanning	32	WKHU-CD	Requests power increase to 15kw/82m.
Lancaster	8	WGAL	Granted power increase to 59kw/419m.
Philadelphia	17	WPHL-TV	Requests power increase to 1000kw/321m.
Philadelphia	31	WTFX-TV	Operating at reduced power of 70kw since Nov. 17th, transmission arc.
Philadelphia	32	WZPA-LD	Granted STA 11.2kw/206m pending completion of construction. OFF Oct. 31 st pending antenna system repairs. Back on Nov. 11 th .

<i>Location</i>	<i>RF Ch</i>	<i>Callsign</i>	<i>Notes</i>
Pittsburgh	26	WOSC-CD	Power increased to 30kw/178m.
Pittsburgh	27	WTAE-TV	Requests power increase to 1000kw/269m.
Uniontown	22	WWKH-CD	Requests power increase to 15kw/332m.
Washington	36	WWLM-CD	Requests power increase to 15kw/98m.
Puerto Rico			
Aguada	25	WQHA	Requests power increase to 21kw/455m, 18-13-57/66-45-42.
Aguadilla	17	WVEO	Requests power reduction to 35.2kw/305m; granted & reduced
Mayaguez	15	W44DW	Moved from 44, 1.9kw/326m, 18-18-42/67-11-25.
Yauco	17	WIRS	See sharing host WVEO Aguadilla.
South Carolina			
Hilton Head Island	30	W30CV	Requests power increase to 13.7kw/148m, 32-13-39/80-51-15.
Sumter	29	WRJA-TV	Requests power increase to 167kw/355m.
South Dakota			
Rapid City	21	KNBN	Granted power increase to 100kw/211m.
Tennessee			
Chattanooga	9	WTVG	Granted power increase to 90kw/316m.
Jackson	32	WQEO-LD	OFF Nov. 13 th pending replacement of transmission line. (WATN-24/WLMT-30 tower, Memphis)
Lebanon	25	WJFB	Requests power increase to 1000kw/407m, 36-16-05/86-47-45 (WPGD-50, and before that WNPX-28, tower, Joelton)
Memphis	15	W15EA	OFF Nov. 13 th pending replacement of transmission line. (WATN-24/WLMT-30 tower)
Memphis	24	KPMF-LD	See Paragould, Arkansas.
Memphis	29	WKNO	Operating at half power since Nov. 1st, transmitter failure. Returned to full power Nov. 23rd.
Memphis	30	WMC-TV	From 5, 515kw/308m. Would prevent WQEK from using ch. 30.
Memphis	30	WQEK-LD	See Clarksdale, Mississippi.
Memphis	32	WQEO-LD	See Jackson, Tennessee.
Texas			
Abilene	10	K10QL	Requests STA 100w/2m; has equipment to build facility at reduced power.
Abilene	40	KTES-LD	OFF Oct. 28 th , ice storm damage to antenna system. KTES has a STA for channel 26, it might have been operating on that channel.
Amarillo	20	KVII-TV	From 7, 1000kw/519m.
Austin	21	KXAN-TV	Requests power increase to 1000kw/395m.
Beaumont	32	KAOB-LD	From 27, 7kw/156m; granted
Dallas	32	KDAF	Requests power increase to 1000kw/535m.
Houston	14	KVQT-LD	From 21; granted.
Killeen	15	KZAU-LD	From 13, 15kw/87m, 30-58-03/98-12-58.
Lubbock	29	KNKC-LD	Power increased to 15kw/122m, 33-30-58/101-50-56.
McAllen	27	KRZG-CD	From 32, 15kw/93m.
Odessa	7	KOSA-TV	Granted power increase to 51.7kw/226m, 31-51-51/102-34-43.
Odessa	30	KWWT	Requests power increase to 500kw/204m, 31-51-51/102-34-43.
San Antonio	25	K25OB	Requests power increase to 15kw/374m.
Tyler	24	K46KW	Requests STA 100w/4m; has equipment to build facility at reduced power.
Tyler	35	KPKN-LD	Operating at 23% power since Oct. 30 th due to amplifier failure.
Wolfforth	23	KLCW-TV	OFF Oct. 29th, falling ice destroyed combiner.

<i>Location</i>	<i>RF Ch</i>	<i>Callsign</i>	<i>Notes</i>
Utah			
Garrison	31	K38KB	Moved from 38.
Garrison	33	K40JH	Moved from 40.
Garrison	34	K49JQ	Moved from 49.
Leamington	14	K38MQ	Moved from 38.
Leamington	15	K25JG	Moved from 25, 950w/-108m.
Leamington	17	K42JW	Moved from 42.
Leamington	18	K40LV	Moved from 40.
Leamington	19	K19MA	Moved from K23IJ, 950w/-108m.
Leamington	20	K34LP	Moved from 34.
Leamington	21	K27IY	Moved from 27, 950w/-108m.
Ogden	24	KPNZ	Requests power to 530kw/1171m, 40-39-12/112-12-09.
Salt Lake City	33	KSUD-LP	Converted to digital from analog ch. 45, 7.5kw/1123m, 40-40-57/112-12-12
St. George	15	K40KZ	Requests STA for this channel, 100w/-145m, 37-03-49/113-54-25; has equipment to build facility at reduced power. Granted.
St. George	17	K17JQ	Requests STA 100w/16m; has equipment to build facility at reduced power.
Wendover	31	K31OW	Requests STA for this channel from analog K27KM; 100 watts/158m, 40-45-13/114-01-12; has equipment to build facility at reduced power. Previous STA request at nearby site dismissed, too close to Wendover Airport.
Vermont			
Bennington	23	WZPJ-LD	OFF Nov. 3 rd pending move to new location.
Virginia			
Bristol	30	WCYB-TV	From 5, 825kw/743m.
Grundy	14	WLFG	Requests STA to operate DTS site #1 (between Abingdon & Lebanon) at approximately 50% power due to arcing within the mask filter.
Virginia Beach	7	WTPC-TV	Requests power increase to 139kw/310m.
Washington			
Tacoma	27	KBTC-TV	Power increase granted to 575kw/231m.
West Virginia			
Bluefield	17	WVVA	Requests power increase to 700kw/370m.
Clarksburg	22	W22CY	Requests STA 3.5kw/78m, 39-18-02/80-20-36; to operate new site at reduced power pending tower reinforcement; Granted. Returned to air Oct. 30 th under this STA. OFF Nov. 18 th .
Huntington	22	WSAZ-TV	New aux granted, 601kw/332m, 38-30-36/82-13-10. Apparently not rescinded, as it's now on the air...
Lewisburg	11	WVNS-TV	Power increased to 10kw/566m.
Parkersburg	14	W16CV	Requests STA for this channel, 100w/12m, 39-23-04/81-26-44; has equipment to build facility at reduced power.
Parkersburg	21	W24DS	Requests STA for this channel, 100w/12m; has equipment to build facility at reduced power.
Wisconsin			
Green Bay	18	WLUK-TV	From 12, 500kw/384m.
Janesville	24	WDMW-LD	Requests further move to 42-55-53/88-25-29, 250w/37m. Proposed site is along Hwy. 59 about five miles southwest of Waukesha. This station is moving in the direction of Milwaukee.

Location	RF Ch	Callsign	Notes
Madison	11	WISC-TV	Granted & moved.
Madison	23	W23BW	Power increased to 46.9kw/469m. Requests power increase to 15kw/122m.
Wyoming			
Sunlight Basin	29	K29IG	Requests power reduction to 220 watts/504m. Granted.

QSY & QRO: TECH CHANGES:

Early in the digital conversion, in 2004, the FCC froze any technical changes that would have interfered with the process. Power increases, site changes, and requests to move to different channels were generally off-limits. Now that the repack is complete, the floodgates have been opened for these changes.

Fifty-seven stations have filed to increase power and/or tower height. One has filed for a major site change. Luckily, it's my local WJFB. Assuming this is granted & built, we'll no longer need an attic antenna to receive MeTV(grin).

Twenty-two stations have filed to move from VHF channels to UHF. All received VHF assignments in the original DTV conversion and have been stuck there ever since. Six stations will be (assuming grants) moving from low VHF: KTVM-6 Butte, Montana; KHSV-2 Las Vegas; WRGB-6 Schenectady, New York; WLMB-5 Toledo, Ohio; WMC-5 Memphis; and WCYB-5 Bristol, Virginia. At the end of analog, there were three digital stations transmitting on channel 5 from Tennessee. Now, there will be none.

Most of the VHF=>UHF moves belong to either Gray Television (6) or Sinclair Broadcast Group. (14). Many of these appeared the day after Thanksgiving - leading me to believe there are plenty more to come.

CLOSE ELECTION:

Section 315(b)(1)(A) of the Communications Act requires broadcast stations sell political advertising at the best volume discount offered to non-political advertisers, even if the campaign doesn't buy enough to qualify for the discount. ("lowest unit rate") This requirement only applies to advertising bought by a candidate (or their campaign) - not to political parties; third-party PACs; or campaigns for referenda.

The requirement also only applies for the 60 days leading up to a general election. The regulation appears to assume demands for political advertising will end when the polls close.

Not in 2020.... The day before the November 3rd election, the FCC issued a Public Notice. It appears numerous broadcasters contacted the Commission and asked whether they were required to offer the volume discount for advertising purchased by campaigns *after* November 3rd. (the Commission ruled the volume discount obligation ends after Election Day.)

ELECTION PT. 2:

I expect the election to have little or no effect on the regulation of television.

There are five Commissioners on the FCC. They are appointed by the President and confirmed by the Senate to five-year terms. A Chairman is designed by the President. No more than three Commissioners may be members of the same political party. (in practice, this means three are

members of the President's party and two are of the other party) All terms end on June 30th. (of which year depends on when the Commissioner was appointed.)

The next term to expire is Chairman Ajit Pai's, on June 30th, 2021. Commissioner Rosenworcel's term expired on June 30th of this year; she is allowed to remain in place until the current session of Congress ends (probably Jan. 3rd) unless her replacement is appointed & confirmed first. Rosenworcel is a Democrat; if current President Trump appoints a replacement, that replacement will also need to be a Democrat to preserve the 3/2 split. It is acceptable for a President to reappoint an existing Commissioner to an additional term. Chairman Pai is a Republican. Presumably, President Biden will appoint a Democrat to replace him; this preserves the 3/2 split but flips the majority.

In any case, in recent years partisan behavior has been mostly reserved for common-carrier communications policy. (like Net Neutrality - a policy forbidding Internet providers from treating different websites differently) Recent major broadcast initiatives like the digital conversion, AM Improvement, and the repack have been truly bipartisan.

The AM Improvement project isn't partisan - the Democrats don't oppose it - but it appears to be very much Chairman Pai's pet project. I suspect with Pai's departure next summer, neither party's members on the Commission will pay much attention to AM radio. With the repack done, TV will probably also see little attention from the Commissioners, and they've largely ignored FM for years.

Things will happen in Washington, but those things that affect broadcasting will be largely actions of Commission staff, not the Commissioners themselves.

MULTISTATE MEMPHIS:

Four LPTV stations licensed to three states share a single tower and transmission line. All four are off following transmission line failure. KPMF-LD Paragould, Arkansas; WQEK-LD Clarksdale, Mississippi; WQEO-LD Jackson, Tennessee; and W15EA Memphis are all temporarily shut down. These stations operate from the WATN-24/WLMT-30 tower in the Memphis antenna farm. While looking up the site on Google Maps, I noted this is the tower I see when exiting I-40 to visit IKEA Memphis... and is very close to Gillis TV Service. Yes, there is still a TV repair shop in Memphis!

How can a LPTV station licensed to Paragould, Arkansas transmit from Memphis, 80 miles away? Full-power TV stations are required to provide a minimum signal strength across their city of license. (the amount depends on the channel) This regulation does not apply to LPTVs. The LPTV service grew out of the TV translator service, where stations were intended to relay a full-power station into a place where that station's main signal couldn't reach. Powers were limited, and in many cases could not serve an entire community. Indeed, in many cases TV translators were designed to serve unincorporated rural areas - not reaching any official community at all. Establishing community coverage requirements simply didn't make sense.

MY KIND OF TOWN:

Superficially, the move of WAOE from Peoria, Illinois (population 115,007) to Oswego (30,355) doesn't seem to make much sense. The transmitter is not moving; it's already on the old WWTO-TV tower near Ottawa, Illinois. (while WAOE is operating on the same channel as WWTO did before selling its channel in the repack, WAOE is much lower on the tower & using only 1/8 the power)

But Oswego is in Kendall County - and that's in the Chicago market. The move will get WAOE on cable in Chicago, if it can deliver a decent signal to the cable headends at its own expense.

ATSC 3.0 STATUS SCORECARD

2020 Nov. 13th

Stations **in bold with green background** are broadcasting in ATSC 3.0. They are carrying the stations listed to the right. Stations in normal font on white background are broadcasting in ATSC 1.0 and simulcasting the programs of the ATSC 3.0 station(s) for the benefit of viewers without ATSC 3.0 receivers.

DXers should be aware... that a station may not be what it appears. If you see WUXP Nashville, you are **not** actually tuned to WUXP. You're actually tuned to WZTV. The proof is in the RF channel. WUXP will come up as RF channel 20 – the same as WZTV – but different from the channel 21 assignment that comes up in FCC records. In some cases, different subchannels are transmitted over different transmitters! WNAB's channel 58-1 is broadcast over the WKRN transmitter; WNAB 58-2, 58-3, and 58-4 are broadcast over WTVF. Again, the proof is in the RF channel: 58-1 on RF-27; 58-2, 58-3, 58-4 on RF-36.

City, State		
KXLK-CD 40	7.1 KTBC	
	40.1 KXLK-CD	
	62.1 KAKW-DT	
	31.1 KTFO-CD	
KBVO-CD 14	14.1 KBVO	
	36.1 KXAN-TV	
	42.1 KEYE-TV	
	54.1 KNVA	
KAKW-DT 62	40.1 KXLK-CD	KXLK normally simulcasts KAKW 62.1.
KEYE-TV 42	51.2 KBVO-CD	Unclear whether virtual 14 or 51.
	51.3 KBVO-CD	
KNVA 54	51.1 KBVO-CD	Unclear whether virtual 14 or 51.
KTFO-CD 31	40.2 KXLK-CD	KXLK normally simulcasts KTFO 31.1.
KXAN-TV 36	51.4 KBVO-CD	Unclear whether virtual 14 or 51.
Boise, Idaho		
KBSE-LD 33		Carrying a suite of scrambled channels, no ATSC 1.0 simulcast.
KCBB-LD 34		Carrying a suite of scrambled channels, no ATSC 1.0 simulcast.
Dallas, Texas		
KSTR-DT 49	4.1 KDFW	
	23.1 KUVN-DT	
	49.1 KSTR-DT	
KUVN-DT 23	49.1 KSTR-DT	
	49.3 KSTR-DT	
Denver, Colorado		
KBRO-LD 49		Will not simulcast in ATSC 1.0.
Detroit, Michigan		
WWJ-TV 62		Details unknown.
WMYD 20	4.1 WDIV-TV	
	2.1 WJBK	
	7.1 WXYZ-TV	
WDIV-TV 4	20.2 WMYD	
WJBK 2	20.3 WMYD	
WXYZ-TV 7	20.1 WMYD	
Lansing, Michigan		

	WKAR-TV 23		Has STA for ATSC 3.0 broadcasts on a separate channel, not affecting ATSC 1.0 broadcasts.
Las Vegas, Nevada			
	KVCW 33	3.1 KSNV 8.1 KLAS-TV 13.1 KTNV-TV 33.1 KVCW	
	KLAS-TV 8	33.3 KVCW 33.4 KVCW 33.5 KVCW	
	KSNV 3	33.2 KVCW	
	KTNV-TV 13	33.1 KVCW	
Mobile, Alabama			
	WFNA 55	5.1 WKRG-TV 35.1 WFGX 55.1 WFNA	
	WJTC 44	3.1 WEAR-TV 15.1 WPMI-TV 44.1 WJTC	
	WEAR-TV 3	44.2 WJTC 44.3 WJTC	
	WFGX 35	55.2 WFNA 55.3 WFNA 55.4 WFNA	
	WKRG-TV 5	55.1 WFNA	
	WPMI-TV 15	44.1 WJTC	
Nashville, Tennessee			
	WNAB 58	2.1 WKRN 17.3 WZTV 58.1 WNAB	
	WUXP 30	5.1 WTVF 17.1 WZTV 30.1 WUXP	
	WKRN-TV 2	58.1 WNAB	
	WTVF 5	58.2 WNAB 58.3 WNAB 58.4 WNAB	
	WZTV 17	30.1 WUXP-TV 30.2 WUXP-TV 30.3 WUXP-TV	
Norfolk, Virginia			
	WNLO-CD 45	10.1 WAVY-TV 45.1 WNLO-CD 33.1 WTVZ-TV 43.1 WVBT	
	WVBT 43	45.1 WNLO-CD	WNLO normally simulcasts WVBT.
Oklahoma City			
	KAUT-TV 43	4.1 KFOR-TV 5.1 KOCO-TV 25.2 KOKH-TV 34.1 KOCB 43.1 KAUT-TV	
	KFOR-TV 4	43.1 KAUT-TV	
	KOCB 34	43.4 KAUT-TV	
	KOKH-TV 25	43.2 KAUT-TV 43.3 KAUT-TV	

Orlando, Florida		
WRCF-CD 43	43.1 WVEN-DT	WRCF & WVEN simulcast. FCC filing says other Orlando stations are expected to join.
WVEN-DT 43	43.1 WRCF-CD	
Phoenix, Arizona		
KASW 61	10.1 KSAZ-TV	
	15.1 KNXV-TV	
	45.1 KUTP	
	61.1 KASW	
KFPH-CD 35	5.1 KPHO-TV	
	8.4 KAET	
	12.1 KPNX	
	33.1 KTVW-DT	
	35.1 KFPH-CD	
KNXV-TV 15	61.1 KASW	
KPHO-TV 5	35.4 KFPH-CD	
KPNX 12	35.3 KFPH-CD	
KSAZ-TV 10	61.2 KASW	
	61.5 KASW	
	61.6 KASW	
KTVW-DT 33	35.1 KFPH-CD	
Pittsburgh, Pennsylvania		
WPNT 22	4.1 WTAE-TV	
	22.1 WPNT	
	53.1 WPGH-TV	
WPGH-TV 53	22.1 WPNT	
WTAE-TV 4	22.2 WPNT	
	22.3 WPNT	
	22.4 WPNT	
Portland, Oregon		
KKEI-CD 38		Simulcasts, if any, unknown.
KORS-CD 16		Simulcasts, if any, unknown.
KOXO-CD 41		Simulcasts, if any, unknown.
KPDX 49	8.1 KGW	
	10.1 KOPB-TV	
	12.1 KPTV	
	49.1 KPDX	
KRCW-TV 32	2.1 KATU	
	6.1 KOIN	
	32.1 KRCW	
KATU 2	32.1 KRCW-TV	
KGW 8	49.2 KPDX	
	49.4 KPDX	
KOIN 6	32.2 KRCW-TV	
	32.3 KRCW-TV	
	32.4 KRCW-TV	
KORK-CD 35	35.2 KKEI-CD	Using KORK major virtual channel #.
	35.3 KORS-CD	
	35.4 KOXO-CD	
KPTV 12	49.1 KPDX	
	49.3 KPDX	
K14SC		Listed by FCC as participating but no info.
K25GA		Listed by FCC as participating but no info.
K28FP		Listed by FCC as participating but no info.
K28GG		Listed by FCC as participating but no info.

Raleigh, North Carolina

WARZ-CD 34	22.1 WLFL	No details. Co-owned with WRAL.
WRDC 28	17.1 WNCN	
	11.1 WTVD	
	40.1 WUVC-DT	
WLFL 22	28.1 WRDC	
WNCN 17	28.2 WRDC	
WRAL-TV 5	34.1 WARZ-CD	
WTVD 11	28.3 WRDC	

Salt Lake City, Utah

KJZZ-TV 14	2.1 KUTV
	4.1 KTVX
	14.1 KJZZ
	30.1 KUCW
KTVX 4	14.3 KJZZ
	14.4 KJZZ
KUCW 30	14.1 KJZZ
KUTV 2	14.2 KJZZ
	14.5 KJZZ

San Antonio, Texas

KMYS 35	35.1 KMYS	KMYS will not carry KABB's or WOAI's programming in ATSC 3.0.
KABB 29	35.1 KMYS	
WOAI 4	35.2 KMYS	
	35.3 KMYS	

Santa Barbara, California

KSBB-CD 17	3.2 KEYT-TV	KIFI-TV located at Idaho Falls, Idaho; KYAV-LD located at Palm Springs; KNPN-LD located at St. Joseph, Mo. All four are local all-news channels.
	8.4 KIFI-TV	
	12.2 KYAV-LD	
	26.3 KNPN-LD	
KEYT-TV 3	3.2 KSBB-CD	KSBB-CD simulcasts KEYT's 3.2.

Seattle, Washington

KONG 16	13.1 KCPQ	Presumably carrying KONG programs but details unknown.
	16.1 KONG	
	25.1 KZJO	
KUNS-TV 51	4.1 KOMO-TV	Presumably carrying KONG programs but details unknown.
	7.1 KIRO-TV	
	51.1 KUNS-TV	
KCPQ 13		
KIRO-TV 7	51.2 KUNS-TV	
	51.3 KUNS-TV	
KOMO-TV 4	51.1 KUNS-TV	
KZJO 25		

Springfield, Massachusetts

WFXQ-CD 22	
WWLP 22	22.1 WFXQ-CD

Tampa, Florida

WMOR-TV 32	
WFTS-TV 28	32.1 WMOR-TV
WTSP 10	32.2 WMOR-TV



FM NEWS - DECEMBER 2020

Editor: Bill Hale fmnews@wtfda.org

Visit db.wtfda.org to stay up-to-date on the latest FM programming changes






PLEASE NOTE

99% of the changes that appear in FM News, and thus copied into the WTFDA database, are compiled from commercial sources the WTFDA subscribes to: 'StationIntel' and 'radioINSIGHT'. The remaining items are furnished by readers who report differences. So, if you hear a station locally or via DX, and the format/slogan differs from that which appears in our database, let us know and we'll do our best to make it right. Submit updates only in the format seen here, making it easier to update the database and the column. We have several listings where the **Formats and/or slogans** are **Unknown** (highlighted in **Red**). So, if you can help, we welcome your inputs.

Thanks to Chris Kadlec [CK-MI] and Tim Noonan [TN-WI] for their updates this month.

MERRY CHRISTMAS AND A DX-FILLED NEW YEAR FROM ALL OF US HERE AT FM NEWS

AL	Bay Minette	96.7	W244DZ	AZ	Tanque Verde	104.9	KWCX-FM
	Is Silent, as is // WTOF-1110				City-of-License change from Willcox		
AL	Demopolis	88.7	WMWI	AZ	Taylor	103.5	KVBX
	Is Silent				Call change from KXBK; station remains Silent		
AB	High River-Okotoks	100.9	CKUV-FM	AZ	Vail	104.5	KXZK
	AC: 'The Eagle 100.9'				Frequency move from 103.7		
				AR	Jacksonville	100.3	KDJE
					Modern/Alternative Rock: 'The Edge 100.3'		
AK	Fairbanks	98.1	KWLF	BC	Canyon Creek	104.7	VF2471
	CHR: 'K-Wolf 98.1'				Deleted from ISEDC database		
AK	Kasilof	106.9	KFSE	BC	Fort St. James	94.7	CIRX-FM-2
	Rock: 'The Fuse 106.9 FM'				Deleted from ISEDC database		
AK	Nenana	91.9	KIAM-FM	BC	Hazelton	98.1	VF2163
	City-of-License change from North Nenana				Deleted from ISEDC database		
AZ	McNary	97.7	KXMQ	BC	Parson	96.7	VF2428
	Returns to the air with Adult Hits: '97.7 Rewind'				Deleted from ISEDC database		
AZ	Mesa	105.1	KFXV-LP	BC	Vernon	105.7	CICF-FM
	Frequency move from 99.5				Country: 'Pure Country'		
AZ	Phoenix	107.5	K298CK				
	Talk: 'La Onda 107.5 FM - 1190 AM' // KNUV-1190			CA	City Of Angels	95.9	KBYN
AZ	Phoenix	102.9	K275CL		City-of-License change from Arnold		
	Move from 99.1 as K256DK			CA	Crescent City	106.7	K294CX
AZ	Show Low	98.5	KRFM		Talk/Sports: 'News, Talk and Sports 1240 AM - 106.7 FM' // KPOD-1240		
	Hot AC: 'Mix 98'						
AZ	Show Low	107.9	K300CL and				
AZ	Taylor	100.5	K263CA				
	Country: 'K-Bear' // KXSL-1470						

CA Isla Vista 101.7 KSBL
City-of-License change from Carpinteria

CA Laguna Beach 104.7 KXRN-LP
Frequency move from 93.5 and City-of-
License change from Laguna Niguel

CA Lake Isabella 93.5 K228GB
Frequency move from 93.3 as K227DD

CA Marshall 91.5 KXCF
Returns to the air with Adult Alternative:
'Jive Radio'

CA Oxnard 99.3 KJBU-LP
Frequency move from 99.1

CA Pacheco 100.1 KEBX-LP
Is Silent

CA Sacramento 95.7 KUGA-LP
Is Silent

CA San Pedro 100.7 KCLA-LP
Is Silent

CA Ventura 97.9 K250BV
Talk: 'News Talk 1590 KVTA' // KVTA-1590

CA Watsonville 97.3 KXWS-LP
Frequency move from 102.1

CA Willows 98.3 K252FN
Is Silent, as is // KIQS-1560

CO Boulder 94.1 K231AA **and**

CO Golden 94.1 K231BQ
News/Talk: 'KOA News Radio 850 AM and
94.1 FM' // KOA-850

CO Cortez, etc. 101.7 K269HG
Moves from 100.9 as K265DC

CO Grand Junction 100.3 KWSI-LP
Is Silent

CO Sanford 91.3 KASV
License cancelled; call letters deleted per
licensee's request

CT Canaan 89.3 WSGG
City-of-License change from Norfolk

CT Milford 101.9 W270DL
Religious Teaching: 'Life Changing Radio
1500 AM and 101.9 FM' // WFIF-1500



CT Westport 102.1 W271DO
Frequency move from 102.5 as W273CN

FL Bonita Springs 96.1 WRXK-FM
Rock: '96 K-Rock'

FL Bonita Springs W268AH 101.5 **and**

FL Fort Myers W282BY 104.3
News/Talk: 'WJBX 104.3 FM - 101.5 FM -
AM 770' // WJBX-770

FL Chattahoochee 100.1 W261DU
Is Silent, as is // WTCL-1580

FL Naples 90.3 WBGY
Frequency change from 88.1

FL Melrose Park 99.5 W258CZ
Ethnic (Creole): 'WSRF 1580 AM and 99.5
FM' // WSRF-1580



FL Fort Lauderdale 102.1 WNGK-LP
Format is Unknown

FL Melbourne 92.7 W224DJ
News/Talk: '92.7 FM WMMB' // WMMB-
1270 and WMMV-1350

FL Naples 90.3 WBGY
Frequency change from 88.1

FL Orlando 93.1 W226BT **and**

FL Orlando 94.1 W231CT
Talk: 'Newsradio WFLA
Orlando' // WFLF-540



GA Augusta 101.9 W270CY
Talk: 'News Talk WGAC' // WGAC-580

GA Bowdon 105.3 WRDG
Urban AC: '105.3 The Beat'

GA Brunswick 98.7 W254DO
News/Talk: 'News - Talk -
Sports' // WGIG-1440



GA Canton 105.7 WBZY
Spanish CHR: 'Z 105.7 and 96.7'

GA East Point 100.1 W261DL
Talk: 'News Talk' // WMDG-1260

GA Harlem 95.1 WGAC-FM
Talk: 'News Talk WGAC' // WGAC-580

GA LaGrange 90.9 WOAK
Is Silent

GA Norcross 93.3 W227DN
Returns to the air with Ethnic: 'Fistful of Radio' // WTZA-1010

GA Peachtree City 91.7 WMVW
Soft Christian/Religious Teaching: 'New Life Radio'

GA Pinehurst 98.3 WCEH-FM
Sports: 'Middle Georgia's ESPN' [WWKM 93.1, WXKO-1150 // W226BZ 103.1]

GA Rochelle 93.1 WWKM
Sports: 'Middle Georgia's ESPN' [WCEH-FM 98.3, WXKO-1150 // W226BZ 103.1]



GA Savannah 99.7 W259DE **and**
GA Savannah 103.5 W278BO
Urban Gospel // WSOK-1230

GA Sylvania 103.3 W227DI
Is Silent, as is // WSYL-1490

GA Union City 96.7 WBZW
Spanish CHR: 'Z 105.7 and 96.7'

ID Hayden 97.5 KOTF-LP
Changes frequency from 106.1

ID Sun Valley 107.5 KYZK
Country: 'Mountain Country 107.5'



IL Bethalto 95.5 KXBS
Changes calls from WFUN

IL Marion 90.1 WAWJ
Changes City-of-License from Du Quoin

IL Princeton 90.7 WZIV
Contemporary Christian: 'Z90.7'

IL Springfield 88.9 WTTT
Frequency move from 88.3

IL Springfield 96.9 K245CA
Easy Listening: 'Red Bluff's Best Music' // KBFL-1060

IL Wheaton 88.1 WAIW
Contemporary Christian: 'K-Love'

IN Wabash 89.5 W208BY
Move from 88.5 as W203AS

IA Dyersville 99.3 KDST
Classic Country: 'Real Country 99.3'

IA Elkader 96.7 K244FQ
Adult Contemporary: 'Today's Hits and Yesterday's Favorites' // KADR-1400



IA Garnavillo 100.1 KCTN
Country: 'KCTN Country 100.1'

IA Humboldt 97.7 KHBT
Adult Contemporary: '99.7 The Bolt'



IA Stanton 88.7 KFOM
Is Silent

KS Haven 97.1 KIBB

Format Not Available

KS Hays 105.7 KMDG
Returns to the air with Religious Teaching: 'Divine Mercy 105.7'

KS Wellington 92.7 KWME
Is Silent



KY Aubur n 96.7
WBVR-FM

Country: 'The Beaver 96.7'

KY Bowling Green 94.5 W233CZ
Oldies: 'WBGN 1340 AM - 94.5 FM' // WBGN-1340

KY Brandenburg 93.5 WMMG-FM
Variety: 'WMMG 93.5 The Best Mix!'



KY Cave City 103.7 WHHT
Country: 'Nash 103.7'

KY Smiths Grove 107.1 WUHU
Hot AC: 'WUHU 107.1 FM'



LA New Llano 98.3 KDLA
Is Silent

LA New Orleans 93.7 WXNO-LP
Changes City-of-License from Marrero

ME Bath 105.9 WBCI
Religious Teaching: 'Life Changing Radio 105.9'

ME Lewiston 95.3 W239ET
 Moves from 95.3 as W237ET; remains
 Silent as // WIGY-780 remains off the air



MB Dauphin 97.3 CIDM-FM
 Aboriginal/Country: 'First Nations Radio' //
 CINC-FM 96.3

MN Mora 95.5 KBEK
 Adult Contemporary: 'Nice 95.5'
 MN Owatonna 94.7 K234DB
 Oldies: 'AM 1390 KRFO' // KRFO-1390
 MN Owatonna 104.9 KRFO-FM
 Country: 'Kat Kountry 105'
 MN Pine City 106.5 W293DA
 Classic Country: 'Anthem Country' //
 WCMP-1350

MA Boston 100.7 WZLX
 Classic Rock: '100.7 WZLX
 Classic Rock'



MA Greenfield 97.3 WLPV-LP
 Frequency move from 107.9

MA Leicester 101.5 W268CQ
 Religious Teaching: 'Life Changing Radio
 760 AM and 101.5 FM' // WVNE-760

MA Wellfleet 90.1 WRYP
 Returns to the air with Religious Teaching:
 'Renew FM'

MS Pascagoula 99.1 WKNN-FM
 Country: 'K 99.1 Country'
 MS Tupelo 101.1 W266BC
 Talk: 'Tupelo's News and Talk' // WKMQ-
 1060

MI Detroit 98.7 WDZH
 Modern/Alternative Rock: 'Alt 98.7'



MO Cuba 101.7 KQXQ
 License cancelled; call letters deleted
 MO Kansas City 98.5 KPPZ-LP
 Changes frequency from 100.5
 MO Montgomery City 103.9 KMCR
 Adult Contemporary: 'More Music and a
 Better Variety'
 MO St. Louis 96.3 KFUN-FM
 Urban Adult Contemporary:
 '96.3 The Lou'; changes
 calls from KNOU-FM



MI Frankfort 92.3 WBNZ
 Rock

MI Grand Rapids 101.3 WBFX
 Oldies: '101.3 Big FM'

MI Hillman 103.5 WXHR-LP
 Frequency move from 97.3

MI Iron River 97.9 W250CQ
 Country: 'WFER 97.9 FM and 1230 AM' //
 WFER-1230

MI Iron River 99.1 WIKB-FM
 Classic Rock: 'WIKB 99.1 FM'



MO St. Louis 99.5 KSIQ-LP
 Call change from KTGP-LP
 MO St. Louis 100.7 K264CY and
 MO St. Louis 104.5 K283CI
 Gospel Music/Religious Teaching // WGNU-
 920
 MO Springfield 96.9 K245CA
 Adult Standards: 'Red Bluff's Best Music' //
 KBFL-1060


MI Zeeland 99.3 WJQK
 Contemporary Christian: 'Joy 99'

MT Baker 100.5 KJJM
 Classic Rock: 'The Rock 100.5 FM'
 MT Black Eagle 98.3 K252EW
 Sports: 'Fox Sports Radio 1400 AM and
 98.3 FM' // KXGF-1400
 MT Cascade 104.9 KIKF
 Country: 'The Wolf 104.9'
 MT Deer Lodge 96.9 KQRV
 Is Silent

MT Fairfield 102.7 KINX
 News/Talk

LOCAL REGIONAL
KINX 102.7
AND STATE WIDE
 More news, more information, more often

MT Highwood 106.1 KQDI-FM
 Rock: 'Q106 Rocks'



NE Beatrice 94.7 K234CW
 Talk: 'Kwee-Bee' // KWBE-1450





NE Maxwell 98.5 KHAQ
 Classic Rock: 'The Hawk 98.5'

NV Dayton 100.1 KTHX-FM
 Changes City-of-License from Incline Village

NV Sunrise Manor 99.3 KRGT
 Changes City-of-License from Indian Springs

NB Saint John 96.1 CINB-FM
 Classic Hits: 'Oldies 96'



NH Dublin 89.9 WVKJ
 Is Silent

NH Rochester 107.7 W299CX
 Sports: 'Fox Sports AM 930' // WPKX-930

NJ Burlington 92.9 W225DJ
 CHR: 'WiFi 92.9'



NJ Edison 103.9 W280GA
 Talk: 'BIN' // WWRL-1600

NJ North Cape May 106.3 WJSE
 Adult Alternative: '106.3 WJSE'

NJ Palermo 101.9 W270DV
 Move from 101.3 as W267CU

NM Albuquerque 96.9 K245CD
 Talk: 'Conservative Talk ABQ' // KDAZ-730

NM Armijo 107.1 KNKT
 Contemporary Christian/Religious Teaching:
 'KNKT 107.1'

NM Santa Clara 95.1 KNUW
 Talk: 'Talk Radio 95.1'

NY Buffalo 92.9 WBUF
 Rock: 'Everything That Rocks'



NY Conklin 92.5 WKGB-FM
 Rock: '92.5 KGB'

NY Endwell 107.5 WBBI
 Country: 'New Country B107.5'

NY Hornell 106.9 W295CW
 Talk: 'AM 1480 WLEA' // WLEA-1480

NY Jamestown 93.3 WWSE
 Hot AC: 'SE 93'

NY Jamestown 101.3 W267CN
 Talk/Soft AC: 'WJTN 101.3 FM - 1240 AM' //
 WJTN-1240



NY Lakewood 106.9 WKZA
 CHR: '106.9 Kiss FM'

NY Medford 106.9 W295CK and

NY Port Jefferson 93.3 W227CL
 Soft AC/Oldies: 'The Breeze' // WLIM-1440

NY Poughkeepsie 98.5 W253BV
 Move from 99.7 as W259CW

NY Rochester 96.1 W241DG
 News/Talk: 'Newsradio WHAM 1180' //
 WHAM-1180



NY Utica 98.3 W252DO
 Tropical: 'El Zorro Radio Latino 98.3 FM and
 1420 AM' // WNRS-1420



- NC Beech Mountain 106.1 WWMY
Country: 'Highway 106.1 - 102.3'
- NC Black Mountain 106.9 WMIT
Changes City-of-License from Asheville
- NC Blowing Rock 107.5 W298CL **and**
- NC Boone 95.3 W237EG
CHR: 'Pulse Boone' // WXIT-1200
- NC Boone 101.1 W266DN **and**
Newland 96.5 W243DH
Talk/Oldies: 'WATA 1450 & AM 96.5 FM' // WATA-1450
- NC Granite Falls 98.7 W254DX
Move from 94.5 as W233CR
- NC High Point 100.3 WMKS
CHR: 'Hits 100.3'
- NC Jefferson 102.3 WMMY
Country: 'Highway 106.1 - 102.3'
- NC Raleigh 106.5 WSMU-LP
Changes frequency from 106.7
- NC Rocky Mount 98.1 W251CX
Gospel Music: 'STEP 98.1' // WRMT-1490

- ND Fargo 93.1 W226CL
Talk: 'News Talk 970 WDAY' // WDAY-970
- ND Tioga 92.7 K224FJ
Talk: 'AM 1090 The Flag' // KTGO-1090



- OH Akron 103.7 W279DW
News/Talk // WHLO-640



- OH Baltimore 102.5 WWCD
Has moved to an internet only platform with Regional Mexican: 'La Grande 102.5 FM'; Call change from WWCD
- OH Bryan 103.5 WKJH-LP
Southern Gospel: 'Southern Gospel Music for Northwest Ohio'



- OH Chillicothe 92.7 W224BR
News/Talk: 'Chillicothe's Original' // WBEX-1490
- OH Cleveland 99.5 WGAR-FM
Country: 'WGAR 99.5'
- OH Cleveland 100.7 WMMS
Rock: '100.7 WWMS'
- OH Columbus 92.9 W225CS
Adult Alternative: 'CD 92.9' // WMYC-1580
- OH Elyria 107.3 WNWV
Modern/Alternative Rock: '107.3 JenY'
- OH Fostoria 105.7 W289CP
Sports: 'ESPN Radio 1430 AM and 105.7 FM' // WFOB-1430
- OH Hilliard 105.7 WXZX
Adult Alternative: 'Columbus' Alternative 105.7'
- OH Munroe Falls 98.1 WKDD
Hot AC: '98.1 KDD'
- OH Wadsworth 97.1 WWWW-LP
Variety: 'Wadsworth Community Radio 97.1'



- OK Ada 94.9 WONB
Format is Unknown
- OK Carnegie 89.5 KJCC
Is Silent
- OK Carter 88.3 KSYE
License cancelled; call letters deleted per licensee's request
- OK Cushing 101.5 K268DK
Country // KUSH-1600
- OK Elk City 100.7 KPFS-LP
Changes City-of-License from Canute
- OK Oklahoma City 101.9 KTST
Country: 101.9 Twister'



- OK Oklahoma City 106.1 K291CX
News/Talk: 'Newsradio 1000 KTOK' // KTOK-1000



- ON Embrun 107.9 CJRO-FM-2
New station granted; will be Community Radio // CJRO-FM 107.7

- ON Georgina 92.7 CKOU-FM
New station signs on with Country: 'K-Country'
- ON Kemptville 97.5 CKVV-FM
Variety Hits: 'Moose FM'



- ON Prescott 107.9 CKPP-FM
Variety/Classic Hits: 'Moose FM'
- ON Thunder Bay 95.1 CJOA-FM
Contemporary Christian: 'Thunder Bay 95.1' [includes CJOA-FM-1 92.5 Nipigon]
- ON Waterloo 98.5 CKWR-FM
Changes City-of-License from Kitchener
- ON Windsor 88.7 CIMX-FM
Country: 'Pure Country 89'
- ON Windsor 93.9 CIDR-FM
Adult Contemporary: 'Virgin Radio'



- OR Burns 92.7 KZHC-FM
Country
- OR Canyon City 94.5 KJDY-FM
Country: 'The Voice of Grant County' (includes K240EZ 95.9 and KJDY-1470)
- OR McMinnville 90.3 KSLC
Classical: 'All Classical Public Media'



PORTLAND

- OR Pilot Rock 92.1 KUMA-FM
Classic Rock: 'Party 92.1 - Classic Hits Now'



- OR Prineville 93.7 KURT
Contemporary Christian

- PA Allentown 101.7 W269DY
Move from 99.5 as W258BM at Bethlehem
- PA Avis 99.9 WQBR
Country/Americana: 'Bear Country Radio 99.9'
- PA Boyertown 107.5 WBYN-FM
Contemporary Christian/Religious Teaching: 'WBYN-FM 107.5 Alive'



- PA Butler 97.3 W247DF
Country: 'Butt Kickin' Country' // WBUT-1050
- PS Jenkintown 103.9 WPHI-FM
News: 'KYW Newsradio 1060 - 103.9' [// KYW-1060]



- PA Media 100.3 WRNB
Urban Contemporary
- PA Mountain Top 97.1 WBHT
CHR: '97BHT Today's Hit Music' [// WBHD 95.7]
- PA Pittsburgh 100.1 W261AX
News/Talk: '100.1 FM and 1020 AM KDKA' // KDKA-1020
- PA Pittsburgh 107.3 W297BU
Urban Contemporary: 'WAMO 107.3' // WAMO-660
- PA Reading 103.7 W279CB
Is Silent, as is // WBYN-1160



- QC Degelis 95.5 CFVD-FM
Hot AC: 'Plaisir 105.5' [Includes CFVD-FM2 92.1 Pohenegamook & CFVD-FM3 92.1 Squatec]
- QC Ste-Marie-de-Beauce 105.3 CHCT-FM
New station signs on with Country (French): 'Hit Country 105.3'

- RI Coventry 95.1 WWRI-LP
Is Silent
- RI Pascoag 91.5 WSJQ
Contemporary Christian: 'The Q 90.1'



- RI Providence 102.9 W275DA
News/Talk: 'The Public's Radio' // WPVD-1290

- SC Columbia 96.1 W241DJ
Gospel Music: 'Millennial FM' // WJTB-FM 95.3 HD3
- SC Columbia 105.1 W286CT
Religious Teaching: 'Worship and Word Network' // WJTB-FM 95.3 HD2
- SC Greenville 92.5 WESC-FM
Country: 'Carolina's Country'
- SC Greenwood 102.7 W274CC
R&B: 'Magic 102.7' // WCZZ-1090

SC New Ellenton 102.7 WGUS-FM
Adult Contemporary: 'Sunny 102.7'



SC North Myrtle Beach 101.3 W267DE
Move from 99.9 as W260DN

SC St. Matthews 94.9 W235CH
Is Silent, as is // WPCO-1230

SD Lowry 100.7 KMLO
Country: 'Country 101'

SD Reliance 94.5 KPLO-FM
Country: '94 Country'

TN Bolivar 96.7 WMOD
Country: 'Real Country 96.7'



TN Cleveland 96.9 W245DZ
Soft AC: 'Alive 96.9' // WALI-1280; moves
from 97.1 as W246DG

TN Cookeville 104.7 W284DR
Move from 104.3 as W282AG

TN Cornersville 89.9 WZTN
Contemporary Christian: 'Z89.9'; call
change from WLWW

TN Crossville 96.9 W245BJ
Talk: 'Talk Radio 96.9 FM and 1330 AM
WAEW' // WAEW-1330



TN Crossville 97.7 W249DA
Sports: 'Sports Radio 97.7 FM and
1490AM' // WCSV-1490

TN Crossville 99.3 WPBX
Adult Hits: 'Mix 99.3'



TN Crossville 102.5 WOWF
Country: '102.5 WOW Country: 'Today's
Country and the Legends'



TN Franklin 106.7 WNFN
Changes City-of-License from Millersville

TN La Follette 104.9 WTNQ

Format Unknown

TN Lakesite 105.1 WALV-FM
Sports: '105.1 FM
ESPN'



TX Bishop 106.9 KMZZ-FM1
License cancelled; call letters deleted per
licensee's request

TX Borger 104.3 KQFX
Is Silent

TX Brownsville 99.9 KRVT-LP
Changes City-of-License from Rancho Viejo

TX Dumas 103.5 K278DB
Move from 103.7 as K279AT

TX Jasper 101.5 K268DO
Returns to the air, as does // KCOX-1350,
with Talk: '1350 Newstalk'

TX Kerrville 107.7 K299CA
Country: 'The Buck'// KERV-1230

TX Port Arthur 107.3 KSAP-LP
Frequency move from 96.9

TX Round Rock 105.9 KFMK
Contemporary Christian: 'K-Love'

TX Stinnett 91.7 KPWD
Changes City-of-License from Lefors

TX Temple 93.9 K230CH **and**

TX Temple 100.9 K265DV
Sports: 'Fox Sports UMHB' // KTON-1330



TX Wimberley 94.3 KWVH-LP
Frequency move from 94.1

TX Winnie 105.3 KXXF
Adult Hits: '105.3 Free FM'



UT Coalville 103.1 KLO-FM
Call change from KSQN-FM


UT Ogden 103.1 KLO-FM2
Call change from KSQN-FM2

UT Salt Lake City 94.5 KZSK-LP
License cancelled; call letters deleted

UT Salt Lake City 103.1 KLO-FM4
Call change from KSQN-FM4

UT North Salt Lake 103.1 KLO-FM7

Call change from KSQN-FM7
 UT Provo 103.1 KLO-FM6
 Call change from KSQN-FM6
 UT Park City 103.1 KLO-FM8
 Call change from KSQN-FM8
 UT Bountiful 103.1 KLO-FM9
 Call change from KSQN-FM9
 UT Saratoga Springs 90.5 KBJF
 Changes City-of-License from Nephi

VA Lakeside 100.9 WJSR
Format is Unknown
 VA Lynchburg 88.3 WRVL
 Contemporary Christian: 'The Journey FM'
 VA Marion 92.5 W223DE
 Classic Hits: 'KZ101' // WHNK-1330
 [WUKZ-1010 // W266BM 101.1 &
 W286DG 105.1]
 VA Midlothian 96.1 W241AP
 News-Talk: 'Newsradio
 1140 AM - 96.1 FM' // 
 WRVA-1140
 VA Richmond 105.1 W286DJ
 Sports: '910 AM - 105.1 FM The Fan' //
 WRNL-910
 VA Shawsville 102.5 WARJ
 Contemporary Christian: 'Air 1'; call change
 from WBZS

WA Eatonville 104.9 KTDD
 Christian CHR: 'Worship 24/7'
 WA Hoquiam 104.7 KDUX-FM
 Changes City-of-License from Aberdeen
 WA Kelso 91.1 KTJC
 Is Silent
 WA Longview 99.9 K260DH
 Country: 'Real Country' // KBAM-1270
 WA Montesana 89.1 KGHE
 Changes City-of-License from Elma
 WA Vashon 88.1 KWAO
 Changes City-of-License from Ocean Park

WV Parkersburg 98.1 W251CP **and**
 WV Saint Marys 107.9 W300AQ
 Oldies: 'True Oldies' // WVAM-1450
 WV Wheeling 98.7 WOVK
 Country: '98.7 Country'

WI Elk Mound 94.1 WIAL
 Changes City-of-License from Eau Claire
 WI Janesville 92.7 W224DE
 News/Talk: 'WCLO 1230 and AM 92.7 FM'
 // WCLO-1230
 WI Lake Hallie 92.9 WECL
 Changes City-of-License from Elk Mound
 WI Madison 104.1 WZEE
 CHR: 'Z104 Madison'



WI Milwaukee 105.7 W289CB
 Hip-Hop: 'Hot 105-7' // WXSS 103.7 **HD2**
[TN-WI]
 WI Rhinelander 91.7 WXPB
 News/Talk/Variety: 'Local Public Radio'



WI Wrightstown 106.3 W292DR
 News/Talk: 'Appleton's News-Talk 1150' //
 WHBY-1150

WY Cheyenne 90.3 KWYC
 Returns to the air with Religious Teaching:
 'CSN International'
 WY Douglas 88.7 KRKY-FM
 Changes frequency from 88.1
 WY Freedom 103.3 K277DT
 Move from 103.9 as K280EG
 WY Rock Springs 103.5 K278CV
 Adult Standards/News: 'Unforgettable
 Memories' // KRKK-1360





FM FACILITIES

DECEMBER 2020

This information is reprinted from Doug Smith's FM News Information posted in the [WTFDA Forums](#).
The [WTFDA FM Database](#) is also updated with this information.

Abbreviations:

CC – Call Change

CL – City of License

Cx – License Canceled

NS – New Station Granted

NW – New Station On The Air

PC-Power and/or Height Change Granted

PG-Power Change Granted

QG-Frequency Change Granted

RA>Returns to the Air

ROA-Request of Applicant

XG-new site granted

XC-transmitter site changed

AL Harvest 97.3 W247AT OFF Aug. 31st, transmitter modulation problems.
AB Bonnyville 98.7 CHFA-14-FM AF 12.3kw/148m, 54-10-55/110-51-59; to relay CHFA-10-FM Edmonton.
AZ Phoenix 99.1 K256DK QC from K246CH-97.1, 250w-H/267m, 33-29-34/111-38-26 (KIKO-1340 Apache Junction via Internet)
AZ Prescott 101.7 K269EE OFF Sept. 16th.
AZ Tucson 96.5 K243CC PG 195w-V/579m, 32-14-56/111-07-01 (KLTU-88.1 Mammoth studio feed)
BC Bella Coola 103.5 CBYG-FM PG 250w/-453m
CA Carmel Valley 91.3 KZBV OFF Aug. 25th, wildfires.
CA Chualar 91.7 K219LL OFF Aug. 25th, wildfires.
CA King City 106.9 K295BZ PG<250w/-124m, 36-12-25/121-08-19 (KRKC-FM 102.1 studio feed)
CA Lemoore 94.1 K231DC NW 110w/62m, 36-18-47/119-43-52 (KJOP-1240 studio feed)
CA Palm Desert 97.1 KXCP-LP PG 100w/-80m, 33-51-03/116-23-35
CA Palmdale 99.1 K256BS PG>10w/649m, 34-32-50/118-13-00 (KODV-89.1 Barstow OTA)
CA Sacramento 103.1 KUTZ-LP PC>100w/10m, 38-34-38/121-28-41
CA Sacramento 95.7 KUGA-LP OFF Nov. 2nd pending transfer to new owners.
CA San Pedro 100.7 KCLA-LP OFF Nov. 11th, pending move within existing building.
CA Santa Cruz 89.9 KFER OFF Aug. 25th, wildfires.
CO Cortez 100.9 K265DC OFF Oct. 15th, interference to/from KZNM? (explanation document seems unrelated)
CO Cortez 101.7 K269HG PG 7w/408m, 37-21-54/108-08-48 (KNMI-88.9 Farmington, N.M. OTA)
CO Del Norte 104.1 K281CU PC>250w/-296m, 37-41-26/106-34-46 (KSBK-100.3 Blanca OTA)
CO Golden 98.1 K251CV QC from K255DA-98.9, 250w/209m, 39-43-59/105-14-14; CL from Boulder (KVCU-1190 Boulder via Internet)
CO Grand Junction 100.3 KWSI-LP OFF Sept. 9th, lost too many volunteers to continue operation.
CO Nathrop 89.5 K208DP OFF Nov. 14th, 2019; to be relocated.
CO Sanford 91.3 KASV CX Nov. 4th. Admitted being off over a year.
CT Bridgeport 103.3 W277DP PG 250w-V/-9m, 41-10-44/73-11-28 (WCUM-1450)
CT Westport 102.1 W271DO QG from W273CN-102.5, 250w-V/66m, 41-13-14/73-14-17 (WSHU-FM 91.1 Fairfield)
FL Baldwin 105.7 WJGM PC 12.5kw/142m, 30-22-29/82-01-41
FL Bonita Springs 103.5 W278DD PG<250w/72m, 26-20-30/81-42-38 (WWCN-99.3 Fort Myers Beach OTA)

FL Bradenton 96.1 W241DH OFF May 1st pending move to new site.

FL Crestview 101.1 W266DF NW 250w/160m, 30-46-02/86-35-07 (WJSB-1050 studio feed)

FL Fort Myers 90.1 WGPU-FM PG<4.4kw/75m (aux); PC

FL Hialeah 96.1 W241DI PC>250w/161m (WACC-830)

FL Key WV 103.3 W277DX PG>250w/35m, 24-34-21/81-44-24 (WKWF-1600 OTA)

FL Miami 101.1 W266DW NW 150w/154m, 25-46-24/80-25-16 (WSUA-1260 via microwave)

FL Panama City 93.1 W226CJ OFF Dec. 3rd, lost all sponsors due to hurricane damage & COVID.

FL Port St. Joe 97.3 WDBW-LP OFF Oct. 20th, antenna damage.

FL Sarasota 106.9 W295BH PC>250w/145m, 27-20-23/82-27-55 (WSRQ-1220)

FL Tampa 102.9 W275AZ PG<170w/74m, 27-59-37/82-24-46 (WFUS-103.5 Gulfport)

FL Twentymile Bend 97.5 W248CK PG<175w/122m (WLVJ-1020 Boynton Beach via Internet)

GA Blairsville 93.1 WUCG-LP PG 100w/-121m, 34-52-21/83-58-02

GA Columbus 104.9 WFXE PC>7.3kw/149m

GA Hawkinsville 103.9 WGLH CC from WQXZ

GA La Grange 90.9 WOAK OFF Oct. 13th, tower knocked down by bulldozer... STA dismissed, back on the air at reduced power.

GA Rome 92.7 W224DS NW 120w/226m, 34-14-02/85-13-50 (WGJK-1360 OTA)

ID Boise 91.5 KBSX PG>10.5kw/827m

ID Sun Valley 91.1 KBSS PG>750w/570m

ID Twin Falls 107.9 K300AZ PG<15w-V/-21m, 42-33-46/114-26-38 (KAGF-LP 105.5 OTA)

IL Bethalto 95.5 KXBS CC from WFUN-FM

IL Lincoln 106.5 W293DJ OFF Sept. 23rd, lease expired.

IL Winnetka 88.1 WNTH OFF Sept. 20th, several problems in tower replacement project.

IN Columbia City 91.5 WJHS PG 3.5kw/52m, 41-09-07/85-29-42

IN Fort Wayne 100.5 WQSW-LP Granted STA 100w/10m, 41-07-08/85-05-50; temporary facility pending move to new site.

IA Montezuma 89.7 KVCJ PC>100kw/151m, 41-12-14/92-51-08

IA Sioux City 91.9 K220HO OFF Nov. 21st, unable to receive primary station.

IA Spencer 91.9 K220HY OFF Sept. 8th, antenna failed.

KS Paola 89.7 KWJP OFF Nov. 16th, evicted from transmitter site.

KS Wichita 95.9 KYOM-LP OFF Aug. 30th, financial reasons.

KY Fisherville 94.9 W235CZ PG<55 watts/50m, 38-10-46/85-26-39 (WLCR-1040 Mt. Washington via Internet)

KY Lexington 101.9 W270DE NW 45w/86m, 38-03-56/84-29-13 (WLRT-1250 Nicholasville via Internet)

LA Lake Charles 98.3 W252AQ OFF Aug. 27th, tower damage from Hurricane Laura.

LA New Llano 98.3 KDLA OFF Aug. 27th, transmitter destroyed by Hurricane Laura.

ME Lewiston 95.7 W239ET QG from W237ET-95.3, 250w/131m, 44-12-17/70-33-09 (WIGY-1240 via microwave)

ME Millinocket 102.5 W273DJ PG<250w/-60m, 45-40-26/68-43-14 (WSYY-1240)

ME Portland 91.3 W218CZ QG from 91.5, 250w/6m (WWWA-95.3 Winslow via Internet)

MD Baltimore 101.9 WLIF PC>2.7kw/296m, 39-20-05/76-39-02 (aux)

MD Baltimore 106.5 WWMX PC<10.5kw/296m

MD Baltimore 97.9 WIYY PC 13kw/294 (ME)

MD Catonsville 105.7 WJZ-FM PC 399w/296m (aux)

MASS Orleans 105.3 W287DE XG 250w/9m, 41-46-46/70-00-34 (WFPB-1170 via Internet)

MI Albion 99.9 W260BH PC>250w/28m, 42-15-32/84-46-55 (WFPM-LP 99.5 Battle Creek OTA)

MI Escanaba 93.5 W228DQ NW 250w/131m, 45-48-17/87-10-16 (WCHT-600 OTA)

MI Fort Gratiot Township 97.3 W247CU PG>150w/81m (WGRT-102.3 Port Huron OTA)

MI Pittsfield Township 102.3 W272DG PG>80w-V/24m (WTAC-89.7 Burton OTA) (application says antenna is installed in a tree)

MI Southfield 105.5 W288DW NW 99w/68m, 42-29-01/83-18-44 (WDEO-990 Ypsilanti)

MN Baudette 94.5 KPMI-FM NW 1kw/30m, 48-42-49/94-40-39 (aux)

MN Montevideo 96.7 KRAM-LP PC>100w/17m

MN North Branch 91.7 W219DT PG>250w/19m, 45-18-36/92-59-02 (WAJC-88.1 Newport OTA)

MS Columbia 102.7 W274CB NW 250w/22m, 31-14-19/89-50-19 (WCJU-1450 studio feed)

MS Jackson 102.1 W271DF PG<60w/127m, 32-23-13/90-09-47 (WIIN-780 Ridgeland OTA)

MS Jackson 102.1 W271DF XR 60w/127m, 32-23-13/90-09-47; amendment from 250 watts (WIIN-780 Ridgeland OTA)

MS Jackson 98.1 W251DB OFF Nov. 13th pending retuning of combiner -- shares antenna with W225BK and possibly in the future with W271DF.

MO Farmington 95.9 KYLS-FM1 NW 800w/6m, 37-46-50/90-24-25

MO Lebanon 96.3 K242AN OFF Aug. 3rd, construction work at transmitter site.

MO St. LAs 96.3 WFUN-FM CC from KNOU

MT Deer Lodge 96.9 KQRV OFF Nov. 17th, owner/operator ill.

MT Bozeman 104.1 K281CX PG<250w/201m, 45-38-16/111-16-08 (KYWL-1490)

MT Butte 99.3 K257AF OFF Nov. 17th, owner/operator ill.

MT Kalispell 96.5 K243CM QG from K297BJ-107.3, 250w/120m, 48-10-34/114-21-00 (KGEZ-600 via Internet)

MT Missoula 106.3 K292GH PC>250w-V/127m, 46-13-46/114-14-01 (KMSO-102.5 via Internet) (Downing Mtn., Hamilton)

NE Allen 100.9 KWTN OFF Sept. 21st pending move to new location. (and, presumably, to 97.1)

NE Nebraska City 99.3 K257GW OFF Sept. 4th, moving equipment.

NV Bunkerville 96.7 KYLI PC<2kw-H/1075m

NV Carson City 102.5 K273AF PC>250w/630m (KCMY-1300 via microwave) (same site as KKFT-99.1 Gardnerville)

NV Carson City 90.9 K215FJ QG from K297AS-107.3, 8w/604m, 39-12-50/119-46-14 (KYSA-88.3 Sparks OTA)

NV Gardnerville 99.1 KKFT PC>1.9kw/635m, 39-15-29/119-42-40

NV Gardnerville 99.1 KKFT PG>1.9kw/635m, 39-15-29/119-42-40

NV Las Vegas 99.7 KHYZ-FM2 PC<170w/493m, 35-56-44/115-02-34

NV North Las Vegas 94.9 K235CL OFF Oct. 22nd, lost transmitter site.

NV Winnemucca 90.7 K214EV LC 17w-V/562m, 41-00-39/117-46-03 (KNIS-91.3 Carson City via satellite)

NH Dublin 89.9 WVKJ OFF Nov. 10th, lost electrical service at transmitter.

NJ Millville 104.1 W281CM QG from W289BY-105.7, 250w/261m, 39-41-43/75-17-54 (WJBR-FM 99.5 Wilmington, Del. via Internet)

NJ Palermo 101.9 W270DV QG from W267CU-101.3 (WIBG-1020 Ocean City studio feed)

NY Alden 100.9 W265DQ PG<230w/88m, 42-46-14/78-24-47 (WCJW-1140 Warsaw via W279BO)

NY Bath 95.7 W239BK PC<50w/-39m, 42-21-27/77-19-16 (WMTT-820 Horseheads via W267CJ)

NY Elmira 88.9 W205BR PC>10w/158m, 42-01-55/76-47-01 (WPCS-89.5 Pensacola, Fla. via satellite)

NY Plattsburgh WV 107.1 WWFK CL granted from Dannemora.

NY Ray Brook 100.7 WPLA PG<3.1kw/-52m, 44-15-43/74-01-20; CL from Plattsburgh WV

NY Warrensburg 93.5 WSLP QG from 93.3, 120w/404m, 43-25-12/73-45-35; CL from Saranac Lake

NY Wellsville 91.7 W219CK PC>250w/2m, 42-06-59/77-55-05 (WCOV-FM 89.1 Friendship OTA)

NC Raleigh 106.5 WSMU-LP QC from 106.7, 34w/51m, 35-40-35/78-32-07

NC Spruce Pine 101.1 W266DO NW 170w/469m, 35-52-48/82-06-15 (WTOE-1470)

OH Baltimore 102.5 WWLG CC from WWCD.

OH Delhi Township 98.1 WDTZ-LP PG 32w/52m, 39-05-20/84-36-15
 OK Carnegie 89.5 KJCC OFF Oct. 26th, tower & antenna damaged by ice storm.
 OK Carter 88.3 KSYE CX Nov. 4th. Admitted being off over a year.
 OK Kingfisher 105.3 KINB Granted STA 230w/108m, 35-35-30/97-51-58; tower destroyed by ice storm.
 OK McAlester 91.1 K216BT PC<115w/108m, 34-59-13/95-42-11 (KNYD-90.5 Broken Arrow via Internet)
 OK Muskogee 104.9 K285FI OFF Oct. 10th, antenna damage to primary station KWRI Bartlesville.
 OK Sand Springs 106.5 K293AP OFF Oct. 10th, antenna damage to primary station KWRI Bartlesville.
 OK Tahlequah 100.5 K263AM OFF Oct. 10th, antenna damage to primary station KWRI Bartlesville.
 OK Tulsa 98.9 K255BE OFF Oct. 10th, antenna damage to primary station KWRI Bartlesville.
 OK Woodward 90.7 KJOV PC<26kw/97m
 ON Embrun 107.7 CJRO-FM-1 NS 40w/69m; to relay Carlsbad Springs station on same frequency.
 OR Ashland 107.9 K300BE OFF Sept. 8th, destroyed in Almeda fire.
 OR Glide 105.3 K287BF OFF Sept. 11th, destroyed by Archie Creek fire.
 PA Butler 97.3 W247DF NW 250w/99m, 40-53-51/79-53-21 (WBUT-1050 via Internet)
 PA Carlisle 107.3 W297CO NW 250w/90m, 40-17-23/77-08-09 (WIOO-1000 via microwave)
 PA Carlisle 107.3 W297CO NW 250w/90m, 40-17-23/77-08-09 (WIOO-1000 via microwave)
 PA Corry 94.1 W231DW NW 250w/15m, 41-56-10/79-39-19 (WWCB-1370 studio feed)
 PA Kane 101.7 WXZY-LP PC 10w/90m
 PA Mexico 107.5 W298CR PG>210w/391m, 40-34-20/77-30-50 (WJUN-1220 via Internet)
 PA New Castle 97.5 W248DJ NW 250w-H/111m, 40-57-14/80-19-02 (WUZZ-1280 studio feed)
 PA New Castle 97.9 W250CW NW 250w-H/111m 40-57-14/80-19-02 (WKST-1200 studio feed)
 PA Philipsburg 104.1 W281CB NW 250w/-8m, 40-53-39/78-11-51 (WPHB-1260 OTA)
 PA Phoenixville 98.5 WXPM-LP PG 100w/25m
 PA WV Chester 95.3 W237EW NW 120w/8m, 39-57-59/75-37-50 (WCHE-1520 via Internet)
 PA WV Chester 95.3 W237EW PC>120w/8m, 39-57-59/75-37-50 (WCHE-1520 via Internet)
 PR Arecibo 93.3 W227DY NW 180w/37m, 18-27-24/66-45-19 (WMIA-1070 via microwave)
 RI Coventry 95.1 WWRI-LP OFF pending reorganization.
 SC Charleston 102.9 WBEI-LP PC<100w/9m, 32-47-49/79-57-16
 SC Society Hill 91.1 WEBK PG<5.6kw/64m
 SD Carpenter 107.5 K298BI CX Nov. 19th
 SD Milbank 95.1 K236CU NW 250w/56m, 45-11-42/96-38-18 (KMSD-1510 OTA)
 SD Sioux Falls 105.5 K288GA XC 220w/68m, 43-29-14/96-47-05 (KNWC-FM 96.5 OTA)
 TN Columbia 100.7 W264AD PG<250w/83m (WLLX-97.5 Lawrenceburg OTA)
 TN Cookeville 104.7 W284DR PG 250w/68m, 36-11-03/85-24-41 (WKXD-FM 106.9 MTerey OTA)
 TN Murfreesboro 100.5 W263AI PG>250w/143m, 35-58-55/86-34-58 (WGNS-1450 via W270AF)
 TN Portland 91.5 WNTC QC from 91.3, 1.6kw-H/72m, 36-34-36/86-29-50
 TX Abilene 94.7 K234DA NW 250w/15m, 32-27-04/99-46-17 (KYYW-1470 studio feed)
 TX Abilene 94.7 K234DA PG<250w/15m, 32-27-04/99-46-17 (KYYW-1470 studio feed)
 TX Austin 91.3 K217GJ PC>250w-V/163m, 30-17-54/97-49-55; CL from Kyle (KAZI-88.7 OTA)
 TX Bishop 106.9 KMZZ PC<6kw/75m, 27-40-17/97-44-18
 TX Borger 104.3 KQFX OFF Oct. 29th, antenna damaged by ice storm.
 TX Cuney 99.7 KVUT OFF Sept. 4th pending completion of new site.
 TX Cuney 99.7 KVUT PG>1.6kw/154m, 32-08-42/95-19-53
 TX Dumas 103.5 K278DB QG from K279AT-103.7, 250w-V/119m (KDDD-800 via Internet)

TX Fredericksburg 101.3 K267AO OFF Nov. 2nd, electrical issues.
 TX Greenville 95.3 KHYI-FM1 NS 800w/58m, 33-06-10/96-10-13
 TX Hempstead 94.1 KLTR PG>23.5kw/205m, 29-59-53/96-26-15
 TX Houston 106.1 K291CE PG<40w/302m, 29-45-31/95-22-04 (KGLK-107.5 Lake Jackson via Internet)
 TX Kermit 93.7 KWXW PC<6kw/80m, 31-51-06/103-08-12
 TX Mexia 101.5 K268BQ PG>99w/48m, 32-31-19/96-57-23 (KWAA-88.9 Mart OTA)
 TX Pampa 102.5 K273CR PG<95w-V/45m, 35-31-31/100-59-21 (KPDR-90.3 Wheeler via Internet)
 TX Point Comfort 94.1 KJAZ PG<6kw/86m, 28-33-12/96-36-32
 TX Todd Mission 105.3 KTWL PG 8kw/148m, 30-20-20/95-55-45
 TX Woodrow 91.5 K218DI OFF Nov. 15th pending move to new tower.
 UT Coalville 103.1 KLO-FM CC back from KSQN
 UT Salt Lake City 94.5 KZSK-LP CX Nov. 5th
 VT St. Johnsbury 104.1 W281CC PG<65w/220m (WSTJ-1340 via Internet)
 VA Norfolk 102.5 W273DZ PG 250w/74m, 37-16-27/76-44-45 (WRJR-670 Claremont via Internet)
 VA Virginia Beach 105.7 W289CI PC<99w/102m, 36-48-58/76-12-06 (WKGM-940 Smithfield via Internet)
 WA Chelan 105.5 K288GN OFF Oct. 31st, unable to afford tower rent.
 WA Pullman 102.1 K271CU NW 210w/518m, 46-48-40/116-54-59 (KQQQ-1150 via microwave)
 WA Wenatchee 89.9 KPLW-FM1 AF 90w/112m, 47-49-34/120-07-53
 WV Bridgeport 104.1 WVIW OFF Nov. 15th, transmitter issues.
 WV South Charleston 102.3 W272DW PC>250w/87m (WSCW-1410 studio feed)
 WI Beloit 95.7 W239CD OFF Oct. 29th, lost lease.
 WI Green Bay 97.9 W250CV PG<250w/124m, 44-24-32/88-00-03 (WGBW-1590 Denmark via Internet)
 WI La Crosse 107.1 W296EH PG 250w/234m, 43-44-52/91-17-55 (WKBH-FM 102.7 La Crescent, MN.)

Notice: Two issues ago we informed you that the FM Facilities column would be ending with the December 2020 issue of the VHF-UHF Digest unless someone volunteered to continue the column. As of this date there has been zero interest, so the column ends with this issue.

To those who are interested in facilities information, you can still find it posted weekly at the WTFDA forums and also reposted weekly at the WTFDA's new home for social media, WeMe.com and also in more detail than we provide here.

To continue reading facilities info on WeMe, join our TV and FM Radio DX group by clicking on [this link](#) or by typing the following into the address bar on your computer: <https://mewe.com/join/tvandfmradiodx>. You will find both TV and FM facilities in the files section of the group.

SIGN UP & Renewal Form

YEARLY DUES \$10.00 USD for Monthly VUD E-ZINE
Print this form and send it with your dues.

Name _____

Address _____ Apt # _____

City _____ State/Prov _____ Zip _____

Country _____ Interests: TV () FM () 30-50 () Weather ()

E-Mail Address _____

Sign me up/renew me for: 1 year () 2 years () More () _____

Mail your yearly dues to: WTFDA, P.O. Box 501, Somersville, CT USA 06072
Make your checks/money orders payable to: WTFDA
And *thanks* for your support of the WTFDA!



Geminids

Next period of activity: December 4th, 2020 to December 17th, 2020

The Geminids are usually the strongest meteor shower of the year and meteor enthusiasts are certain to circle December 13 and 14 on their calendars. This is the one major shower that provides good activity prior to midnight as the constellation of Gemini is well placed from 22:00 onward. The Geminids are often bright and intensely colored. Due to their medium-slow velocity, persistent trains are not usually seen. These meteors are also seen in the southern hemisphere, but only during the middle of the night and at a reduced rate.

Shower details - Radiant: 07:28 +32.2° - ZHR: 150 - **Velocity: 22 miles/sec (medium - 35km/sec) - **Parent Object**: 3200 Phaethon (asteroid)**

Next Peak - The Geminids will next peak on the Dec 13-14, 2020 night. On this night, the moon will be 1% full.