



**VHF-UHF**  
The Magazine for TV and FM DXers

**DIGEST**

February 2021



*The Official Publication of the Worldwide TV-FM DX Association*

## **THE ZAPPERBOX**



Available to reserve now!

**\$249**

**THE SECOND NEXT-GEN  
CONVERTER BOX**

**AVAILABLE SOMETIME IN THE 2<sup>ND</sup> QUARTER OF 2021**

# THE VHF-UHF DIGEST

## The Worldwide TV-FM DX Association

Serving the TV, FM, 30-50mhz Utility and Weather Radio DXer since 1968

THE VHF-UHF DIGEST IS THE OFFICIAL PUBLICATION OF THE WORLDWIDE TV-FM DX ASSOCIATION DEDICATED TO THE OBSERVATION AND STUDY OF THE PROPAGATION OF LONG DISTANCE TELEVISION AND FM BROADCASTING SIGNALS AT VHF AND UHF. WTFDA IS GOVERNED BY A BOARD OF DIRECTORS: DOUG SMITH, SAUL CHERNOS, KEITH MCGINNIS, JAMES THOMAS AND MIKE BUGAJ

*Treasurer: Keith McGinnis* [wtfda.org/info](http://wtfda.org/info) *Webmaster: Tim McVey*  
*Forum Site Administrator: Chris Cervantez*  
*Creative Director: Saul Chernos*  
*Editorial Staff: Jeff Kruszka, Keith McGinnis, Fred Nordquist, Nick Langan, Doug Smith, John Zondlo and Mike Bugaj*



### The WTFDA Board of Directors

Doug Smith <a href="mailto:dougs@wtfda.org">dougs@wtfda.org</a>	Saul Chernos <a href="mailto:saul@wtfda.org">saul@wtfda.org</a>	James Thomas <a href="mailto:Jim-T@wtfda.org">Jim-T@wtfda.org</a>	Keith McGinnis <a href="mailto:nfmdx@wtfda.org">nfmdx@wtfda.org</a>	Mike Bugaj <a href="mailto:mikeb@wtfda.org">mikeb@wtfda.org</a>
--	--	--	--	--

**Renewals by mail: Send to WTFDA, P.O. Box 501, Somersville, CT 06072. Check or MO for \$10 payable to WTFDA. Renewals by Paypal: Send your dues (\$10USD) from the Paypal website to [sales@wtfda.org](mailto:sales@wtfda.org) or go to <https://www.paypal.me/WTFDA> and type 10.00 or 20.00 for two years in the box.**

Our WTFDA.org website webmaster is Tim McVey, [webmaster@wtfda.org](mailto:webmaster@wtfda.org). Our WTFDA Forums webmaster is Chris Cervantez, [Chriscervantez@gmail.com](mailto:Chriscervantez@gmail.com). Fred Nordquist is in charge of club statistics at [nordquis@homesc.com](mailto:nordquis@homesc.com)

Our email reflector is on Googlegroups. To join, send an email to [WTFDA+subscribe@googlegroups.com](mailto:WTFDA+subscribe@googlegroups.com)

Visit our club website at <http://www.wtfda.org> . Participate in our forums at <http://forums.wtfda.org>.

Our real-time prop logger is located at <http://logger.wtfda.org> . Only WTFDA members can participate.

The public WTFDA FM Radio Station Database is administered and updated daily by your fellow WTFDA members. It is completely free to use and serves over 500 users daily in season.

Our new social media site is at Weme.com. <https://mewe.com/join/tvandfmradiodx>. Register and join the group. Only WTFDA members can participate and many already have.





# The Mailbox

P.O. Box 501 Somersville, CT 06072  
Mike Bugaj - Enfield, CT [mikeb@wtfda.org](mailto:mikeb@wtfda.org)



Here we are back for another month. There is absolutely nothing happening this month and nobody is telling us anything even if there was. But what do you expect for the middle of winter. One positive thing about February, at least up here in the northeast, is that sunset is 5pm now instead of those awful 4:20pm sunsets we had around the 20<sup>th</sup> of December. And daylight time begins in March!

Renewals were received in January from Adam Rivers, James Pizzi, David Wurl, Paul Mitschler, Dave Pomeroy, Chester Jaffee, Russel Lay, Jennifer Lewis, Calvin Glover, John Edwardson and Rick Shaftan. We welcome new member Ron Wing (KS). I think Ron was a member eons ago, long before I took on the publishing. Also welcome back to Wolfie Schneiter in SoCal. Nice to see you back. Welcome everybody and thanks for supporting the club.

This month's cover features the [Zapperbox](#), an ATSC3.0 tuner that's more affordable. The box was supposed to be available in February but due to some problem with the chip used inside, the date has been pushed up to sometime in Q2 of 2021.

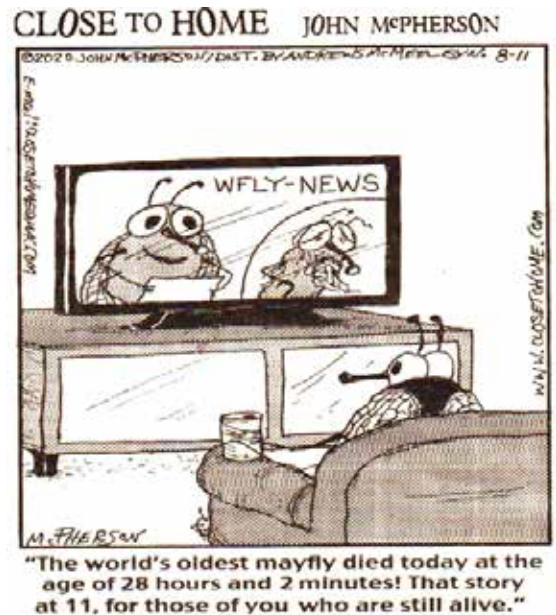
There was some question about the suitability of the box for DTV DTV DXing, but Jim Thomas posted this response from the Zapperbox development team on our MeWe forum recently: *The ZapperBox development team sent me an email this afternoon, explaining that their in-house team has written 100% of the code for the ZapperBox M1 and there isn't any code included in the script to block signals from any stations. The person replying said that the DRM coding being used is to only prevent recording of 4K media and distribution of copyrighted material. He said the way the box is designed is that it should work perfectly as a DTV receiver for DX.* So we will see for ourselves, eventually.

I found some sad news while looking over some posts on the NRC email list. Rick Dau posted there that long time NRC (and WTFDA) member John Tudenham passed away on January 28<sup>th</sup>. He was 91. John worked for the post office, had a first class radio op license and spent time DXing the 6 meter band. He was a decades old WTFDA member. He will be missed.

Time goes on. We all get a little older each day. It just happens.

Looking at the positive side, though. The vast majority of us live longer than mayflies.

See you next month.



# ATSC 3.0 in 2021: Why it's Still Early Days for Antenna TV's Big Upgrade

Cord-Cutter Confidential 1/22/21 Jared Newman

**Even in 2021, NextGen TV seems far off from mainstream adoption.**



Every so often, I'll get an email from a fellow cord-cutter who's worried about future-proofing for ATSC 3.0.

The big broadcast TV upgrade, also known as [NextGen TV](#), represents a major leap over the current ATSC 1.0 standard for antenna users, promising 4K

HDR video support, [Dolby Atmos and DTS-X audio](#), on-demand video, and [possibly better reception](#). But since ATSC 3.0 is incompatible with today's TV tuners, cord-cutters will eventually need new TVs, tuner boxes, or [over-the-air DVRs](#) to take advantage. If you hear enough industry hype for the new standard, you might reasonably wonder whether it's worth buying ATSC 1.0 hardware anymore.

From what I've heard, though, not much has changed since last year, when I wrote that most people [shouldn't be seeking out ATSC 3.0 hardware yet](#). While more stations are broadcasting in ATSC 3.0 than a year ago, the vast majority are still in an experimental phase, and major TV networks haven't yet committed to features such as 4K and on-demand video. Compatible hardware also remains expensive and scarce, and even Dave Arland, a spokesman for the ATSC standards body, acknowledged via email that it's "very early days" for the standard.

Some NextGen TV hardware options do exist today, and we'll likely see some more later this year. Still, I would advise against blowing your budget on ATSC 3.0 gear right now, or delaying your cord-cutting plans just for the sake of future-proofing.

## **ATSC 3.0: Where are the 4K broadcasts?**

The biggest question mark for ATSC 3.0 is at what point broadcasters will adopt key features such as 4K HDR video and Dolby Atmos audio. While [more than 90 stations](#) around the United States are broadcasting in the new standard today, Arland said that they're mostly focused on getting on the air and meeting simulcast requirements. (Per FCC guidelines, broadcasters that launch NextGen TV stations must also air their main channels in ATSC 1.0 until at least February 2023.) A provider in Boise, Idaho called [Evoca](#) is offering a 4K channel currently, but only as part of a broader paid service.

Major TV networks such as ABC, CBS, NBC, and Fox could be a complicating factor as well. Even if those networks support ATSC 3.0, none of them have made broad commitments to any particular ATSC 3.0 feature, Arland said. 4K alone can be a major undertaking for networks, which for the most part haven't been offering the format on cable or streaming services either. (One notable exception is Fox, which has started [delivering some sporting events in 4K](#).)

Bear in mind that ATSC 3.0 isn't just for antennas. The industry is also pushing for its adoption in cable TV systems, with Arland calling it "essential" for broadcasters. My guess is that we won't see broad proliferation of NextGen TV features until cable providers like Comcast are on board, and right now they're [just in the testing phase](#).

In the near term, we could see broadcasters adopt NextGen TV for local content, so you might get perks like on-demand video for weather or news. The standard also supports a dialog-boosting feature called Voice+, which Arland said is simple to implement. You can expect that to be adopted in advance of other features like 4K HDR video.

But if you're hoping to plug in an antenna and watch local NFL games or primetime shows in 4K HDR, it could be a while before that's a reality.

## Hard-to-find hardware



Even if you want to future-proof your cord-cutting setup, consumer-facing options are currently quite limited.

On the TV front, Sony is promising 16 new sets this year with NextGen TV support, while LG says all of its new 4K and 8K sets will support NextGen TV in 2021.

The situation is less clear with other vendors. Samsung hasn't committed to any specifics (though the company said via email that it has more ATSC 3.0 models on the way), and other vendors like TCL didn't announce any

new sets at the big [CES trade show](#) last week. Arland said other vendors could launch compatible TVs later this year, but didn't provide any details. (For now, the NextGen TV website has [a list of available sets](#).)

External set-top boxes might also be an option in lieu of replacing your entire TV, but so far the only consumer-friendly option is SiliconDust's [HDHomeRun Connect 4K](#), a [\\$200 networked tuner](#) that supports both ATSC 1.0 and ATSC 3.0. Like other HDHomeRun tuners, the 4K model hooks up to an antenna and connects to your Wi-Fi router with an ethernet cable, then streams the video into the HDHomeRun app on various devices. (It can also serve as a DVR with some [additional hardware](#), and is compatible with third-party DVR services, such as [Plex](#) and [Channels](#).) At a \$50 price premium over the ATSC 1.0 version, it's a fine way for power users to maintain forward compatibility.

The HDHomeRun Connect 4K became the first ATSC 3.0 tuner for consumers when it launched last fall.

The HDHomeRun Connect 4K was a bit of a surprise when it launched last fall, and SiliconDust CEO Nick Kelsey [said last week](#) that a version with built-in DVR is coming in March, similar to the current [HDHomeRun Scribe](#). Still, the company's moves don't seem to have pushed other devices to market any faster.

Nuvvyo, makers of the Tablo DVR, is still evaluating hardware and software options, much as it was last year, said Laura Slater, the company's product marketing manager. "However, we don't think the standard is mature or widely available enough yet to warrant launching a consumer-level NextGenTV product," she added.



The other main option on the horizon is [Zapperbox](#), a \$250 set-top box that was announced back in May 2020. It'll be sold directly to consumers in the second quarter of 2021, and will also be licensed to other companies that want to put their own brand name on the hardware. Gopal Miglani, the president and founder of BitRouter, whose

software is powering the ZapperBox, says the plan is to add a USB port to the product so it can support DVRs and additional tuners.

Of course, we can expect more hardware and lower prices over time, we're still a long way from the days of sub-\$50 converter boxes.

### **ATSC 1.0 isn't going away yet**

Again, it's worth reiterating that the FCC requires broadcasters to simulcast their channels in both ATSC 1.0 and ATSC 3.0 until at least February 2023. This is achieved through channel-sharing arrangements, where a pair of stations agree to host one another's feeds through careful collaboration.

Those requirements haven't changed since last year, and stations can still keep their ATSC 1.0 feeds active for longer than the FCC requires. With [16 million households](#) tuning into over-the-air TV today, it's hard to imagine a forced hardware migration happening in just a couple of years.

All of which brings me to a conclusion similar to what I offered a year ago: If you're already planning to buy a high-end TV that happens to support ATSC 3.0, great. And if you're looking at an HDHomeRun tuner as part of your over-the-air DVR setup, maybe consider spending \$50 more on the ATSC 3.0 model.

Otherwise, proceed with your cord-cutting strategy undeterred. You [might not even need an antenna](#) in the first place.

# This Week in History, 1948: Vancouverites get their first glimpse of TV, from Seattle

*First image seen by locals was the old Indian head test pattern*

John Mackie

Nov 14, 2020 • November 14, 2020 • 3 minute read

On Nov. 12, 1948, radio technician Ed Mullins went up the mountainside in the British Properties to give Vancouverites a glimpse of the future: “a shimmering patch of light (that) wavered wildly and formed a picture.”

For the reporters and photographers who braved the pouring rain, it was their first glimpse at television.

Mullins had assembled his own TV set in 1947 in anticipation of a broadcast out of Seattle. After months of delay, Seattle’s first TV station, [KRSC](#), began broadcasting a test pattern in mid-November, and Mullins was able to tune in.

“Mullins’ TV set looks much like an ordinary radio, with the exception of the huge tube at the top which forms the image,” wrote Jim Hazelwood in *The Sun*. “When the set is turned on, the face of the tube is lit by a square of light which flickers and explodes into a thousand disjointed pieces when static interferes.

“His difficulty in getting a clear picture was heightened by the fact that technicians in Seattle were making adjustments at the same time.

“The picture we saw would probably be a disappointment to the average onlooker. It was an Indian head surrounded by circles and other geometric patterns.”

The Indian chief test pattern had been designed by RCA in 1939 for the company’s [TK-1A Monoscope TV camera](#), as a “convenient means of obtaining an image for video testing of the transmitting equipment.” It was used by many TV stations and networks through the 1960s.

Seattle’s first live broadcast was on Nov. 25, 1948, a high school championship football game between West Seattle and Wenatchee.

“Set owners — estimated at about 1,500 — watched the game in the comfort of their homes while 13,000 shivered (at Memorial Stadium) in the rain and wind that swept the field,” a wire story said in the Nov. 26 Sun.

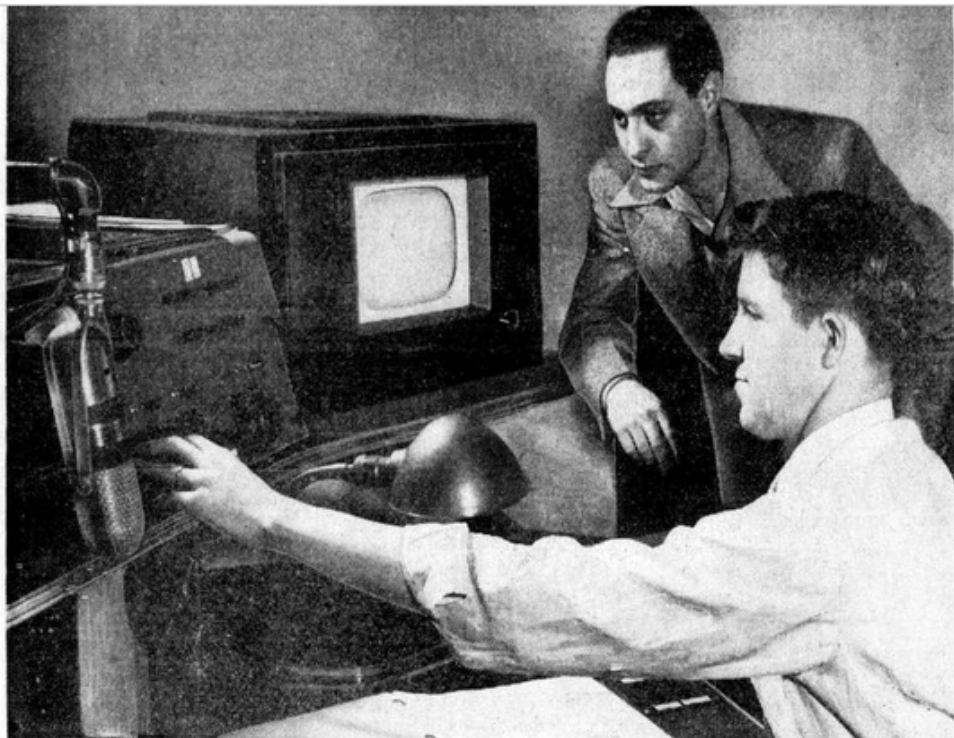
The game sounds like it was a dud: the teams “battled in the mud to a 6-6 deadlock.” But it was a hit with viewers, although the signal wasn’t very strong: the wire story noted that “under average conditions, KRSC’s signal will be picked up perfectly within a 45-mile radius.”

On Jan. 6, The Sun’s Ralph Daley was dispatched to the Emerald City to check out the new phenomenon. The headline for his story was “Seattle Catches Television Fever.”

“When radio station KRSC-TV went off the air through technical difficulties one recent night, several telephone operators went slightly daffy,” Daly reported. “In three hours, 20 minutes, they logged a deluge of more than 8,000 calls. It was the sharpest example yet of how Seattle has gone for television.

“What made the numbers of calls even more remarkable is that there are only 2,500 television sets operating here, though the number is increasing every day. Some 250 sets are in taverns.

“For five hours nightly, KRSC parades children’s stories, sports events, world newsreels and local on-the-spot coverage of Seattle life through Seattle living rooms.”



### *Seattle Has Television — and It's Good!*

**MASTER CONTROL** in the northwest's first television station, Seattle's KRSC-TV, watches every minute of the five hours daily programming for clarity and focus

of the image. Here engineer Lee Mudgett is at the controls, watched by youthful station manager Lee Schulman in background.



Daly was impressed.

“Television is not only working as practically as old-style radio, but a properly installed and adjusted receiver can literally bring the world into your living room with all the clarity, reality and vividness of a first-class motion picture,” he wrote.

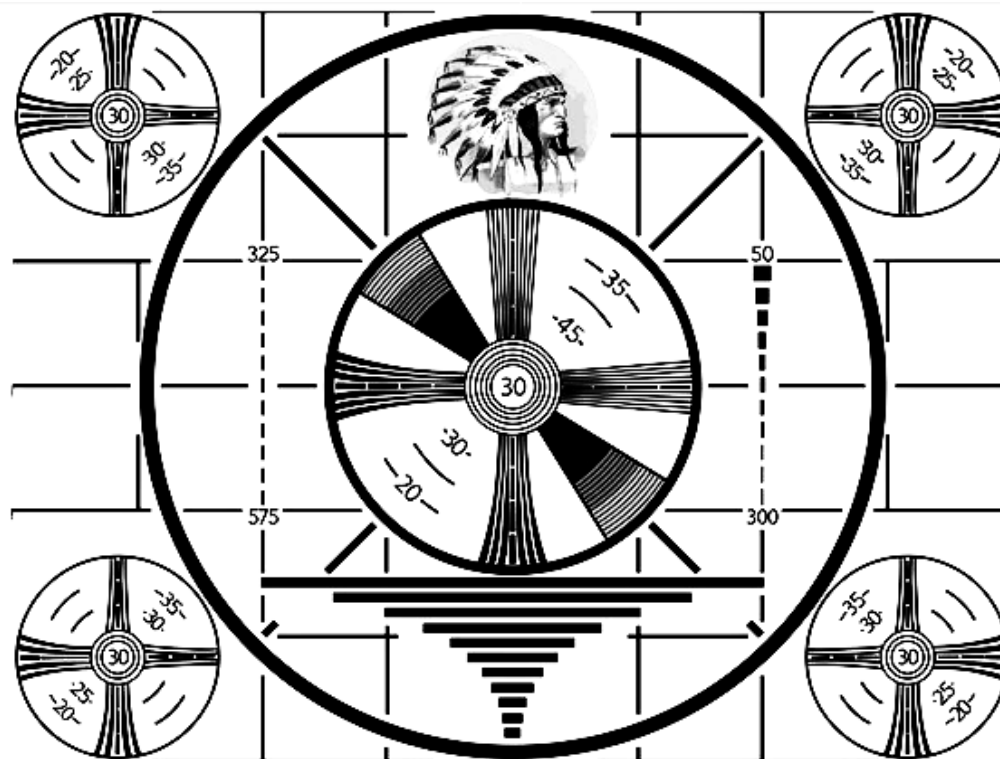
“It carries a sense of immediacy that motion pictures cannot seem to capture. It can report life, from a hockey game to a detailed tour of a newspaper plant, with more insight than you can gain on the spot yourself.”

There was one big problem: the cost. Daly said the start-up cost of KRSC was \$1 million (about \$10.8 million today), and that it didn't expect to start making money for five years.

As it turned out, the station was sold for \$300,000 a few months after it launched. Rebranded KING-TV, it remains a fixture of the Pacific Northwest.

Canadians were anxious to get TV. Toronto's Addison Industries took out a full-page ad in The Sun on Nov. 18, advertising a new FM/AM radio that was designed so you could add a TV on top to “enjoy television when available in your city.”

But the local technician Mullins cautioned that TV wouldn't be available to most Vancouverites until a local transmitting station was installed. As it turned out, that was five years off: the first local TV broadcast wasn't until Dec. 16, 1953, when the CBC went on the air.



The “Indian Head” test pattern was developed by RCA in 1939 and used on television through the 1960s. PNG

This article edited from an article in the Vancouver BC Sun and submitted by WTFDA David Sinclair of Vancouver BC.

# TV News – February 2021

Douglas E. Smith  
Nashville, TN  
[w9wi@w9wi.com](mailto:w9wi@w9wi.com)  
<http://www.w9wi.com>

Location	RF Ch	Callsign	Notes
<b>Alabama</b>			
Montgomery	21	WETU-LD	Moved from 39, 15kw/175m.
<b>Arizona</b>			
Fortuna	2	KBFY-LP	From 41, 150w/43m, 32-40-58/114-37-33. Also requests STA for these facilities pending permanent approval.
<b>Mesa</b>	<b>18</b>	<b>KPNX</b>	<b>From 12, 1000kw/555m; granted.</b>
<b>Phoenix</b>	<b>10</b>	<b>KSAZ-TV</b>	<b>New aux on air, 38.4kw/500m, 33-20-03/112-03-43,</b>
Phoenix	32	KEJR-LD	Granted power increase to 15kw/463m.
Phoenix	46	KDPH-LD	Returned to the air Dec. 31 <sup>st</sup> at unspecified reduced power.
<b>Arkansas</b>			
<b>Little Rock</b>	<b>32</b>	<b>KARK-TV</b>	<b>Operating at reduced power of 70kw since Dec. 27<sup>th</sup> due to transmission line failure.</b>
Texarkana	19	KTEV-LP	Requests conversion to digital, 410w/23m; granted.
<b>California</b>			
Big Bear Lake	6	KZNO-LP	Requests power increase to 3kw/873m; granted.
Chico	30	KKTF-LD	OFF Jan. 5 <sup>th</sup> , displaced by KCVU's move from ch. 17.
Los Angeles	27	KTBV-LD	Returned to the air Dec. 22 <sup>nd</sup> .
Palm Springs	21	K21DO	Granted power to 15kw/182m, 33-52-00/116-26-03.
Porterville	9	KVVG-LD	From 51, 900 watts/1m, 36-20-10/119-11-12.
Santa Barbara	28	KVMM-CD	Granted power increase to 15kw/249m.
South Lake Tahoe	14	K14SD	Requests STA 175 watts/925m; temporary antenna until spring weather permits installation of permanent unit. Granted. Former K48LA.
<b>Stockton</b>	<b>23</b>	<b>KQCA</b>	<b>Granted power increase to 1000kw/579m.</b>
<b>CDMX</b>			
<b>México</b>	<b>29</b>	<b>XHCTMX</b>	<b>Power to 295.568kw/183m, 19-32-13/99-07-35.</b>
<b>Chiapas</b>			
Comitan de Dominguez	27	XHCTCR	New station, 4kw/86m, 16-14-24/92-08-32
Ocosingo	27	XHCTCR	New station, 4kw/-253m, 16-54-06/92-05-58
San Cristobal de las Casas	27	XHCTCR	New station, 10kw/568m, 16-44-28/92-41-11
<b>Tuxtla Gutierrez</b>	<b>27</b>	<b>XHCTCR</b>	<b>Power to 39.977kw/-38m, 16-44-07/93-08-34</b>
<b>Colorado</b>			
Boulder	12	K27MA	Returned to the air Jan. 21 <sup>st</sup> on this channel.
<b>District of Columbia</b>			
Washington	24	WMDO-CD	Requests move from ch. 30 & power reduction to 15kw/151m; to share on WDCO-CD Woodstock, Va. instead of WIAV-CD Washington. Both sharing hosts are on the same tower. Granted.

<b>Location</b>	<b>RF Ch</b>	<b>Callsign</b>	<b>Notes</b>
Washington	30	WIAV-CD	Converting to ATSC 3.0. (which is the reason for WMDO changing sharing hosts)
<b>Florida</b>			
Chiefland	33	WXCK-LP	Requests conversion to digital, 6.25kw/55m; granted.
Green Acres	48	STA-760456	Requests STA for new station, 400 watts/15m, 26-58-24/80-15-00; wishes to broadcast Sunday church services to the Haitian-American community. It doesn't say which church, and the tower coordinates appear to be in an uninhabited swamp.
Jacksonville	11	WJKF-CD	Requests conversion to digital from analog ch. 9, 3kw/92m, 30-16-36/81-33-57.
Jacksonville	17	WJVF-LD	Power reduced to 2kw/28m, 30-36-36/81-45-18. Requests increase to 15kw/159m, 30-16-35/81-33-51; (WQIK-FM site) Calls changed from W17DQ.
Lakeland	15	W15EP	From W36EC, 8kw/28m, 28-01-36/81-53-31; granted
Naples	30	WWDT-CD	Requests power increase to 15kw/123m; granted.
Orlando	3	W14DQ	From 14, 3kw/105m, 28-32-27/81-22-40; city from Bartow.
Panama City	10	WGOM-LP	Returned to the air in digital on Jan. 28 <sup>th</sup> ; 3kw/78m, 30-10-34/85-48-20.
Tampa	4	W04ST	Requests STA 5 watts/23m, 27-58-33/82-30-12; Jan. 20 <sup>th</sup> – Feb. 7 <sup>th</sup> at Raymond James Stadium. (the Super Bowl is held here on the 7 <sup>th</sup> . Applicant is Live Sports Radio.) ANALOG. Granted.
<b>Georgia</b>			
Athens	7	WGTV	Moved from 8, 62kw/327m.
Dawson	7	WACS-TV	Requests power increase to 26.3kw/336m; granted & moved.
Suwanee	24	WVND-LD	Requests power increase to 15kw/199m, 33-48-26/84-20-22; granted.
<b>Hawaii</b>			
Kula	17	K17GR	Returned to the air Jan. 29 <sup>th</sup> , 5 watts/1138m.
<b>Hidalgo</b>			
Pachuca de Soto	8	XHPEAH	New station, 5kw/-95m, 20-06-31/98-44-04
<b>Idaho</b>			
Boise	33	KBSE-LD	Power increased to 15kw/493m; converted to ATSC 3.0.
Boise	34	KCBB-LD	Power increased to 15kw/493m; converted to ATSC 3.0.
Kamiah	11	K11KO	Sold to Idaho Public TV
Payette	17	K17ED	OFF Dec. 19 <sup>th</sup> pending transmission line repairs. Granted power increase to 15kw/158m.
Twin Falls	34	KXTF	Granted power increase to 230kw/162m.
<b>Illinois</b>			
Arlington Heights	11	WRJK-LP	Requests STA 90w/457m, 41-52-44/87-38-08; amendment from 400 watts.
Chicago	6	WRME-LP	Requests conversion to digital, same parameters as analog.
Peoria	25	WEEK-TV	Granted power increase to 536kw/212m.
Sugar Grove	27	W27EB	Requests move from Trump Tower to John Hancock Center, 41-53-56/87-37-23. Station has been OFF since Nov. 23 <sup>rd</sup> .
<b>Indiana</b>			
Fort Wayne	2	WLMO-LD	Moved from 51, 3kw/121m, 41-06-24/85-11-46.
Marion	28	WIWU-CD	Returned to the air Dec. 28 <sup>th</sup> , but off on Jan. 12 <sup>th</sup> .

<b>Location</b>	<b>RF Ch</b>	<b>Callsign</b>	<b>Notes</b>
<b>Salem</b> Wolcott	<b>16</b> 9	<b>WBKI</b> KPDS-LD	Station has been sold. <b>Granted power increase to 860kw/390m.</b> Operating at reduced power of 1.5kw since Jan. 12 <sup>th</sup> due to amplifier failure.
<b>Jalisco</b>			
Puerto Vallarta	8	XHCPAF	New station, 6.64kw/-63m, 20-42-26/105-13-10
<b>Kansas</b>			
Wichita	29	K29NL	From K15DD, 15kw/148m, 37-46-26/97-30-53; granted.
<b>Kentucky</b>			
Lebanon	6	W06AY	Requests further power change to 600 watts/21m, 36-55-28/86-12-56. Site is a rural church between Glasgow and Bowling Green.
<b>Louisiana</b>			
<b>Monroe</b>	<b>8</b>	<b>KNOE-TV</b>	<b>Requests power increase to 34.2kw/579m; granted.</b>
<b>Maryland</b>			
Havre de Grace	24	WWDD-LD	From 49, 15kw/145m, 39-30-54/76-14-25; granted. Returned to the air on this channel Dec. 29 <sup>th</sup> at reduced power of 5kw. Requests STA to cover this operation.
<b>Massachusetts</b>			
<b>Boston</b>	<b>20</b>	<b>WBZ-TV</b>	<b>Granted power increase to 1000kw/388m.</b>
<b>Boston</b>	<b>32</b>	<b>WGBX-TV</b>	<b>Requests power increase to 1000kw/388m.</b>
<b>Boston</b>	<b>33</b>	<b>WCVB-TV</b>	<b>Granted power increase to 1000kw/388m.</b>
Boston	38	WHDT-LD	Granted waiver of off-over-a-year rule. Bumped from ch. 38 by T-Mobile. Has ordered equipment, but because of weather & COVID, antenna cannot be installed in time.
<b>Edo. México</b>			
Ixtapaluca	29	XHCTMX	New station, 4kw/223m, 19-20-44/98-53-45
Tultepec	29	XHCTMX	New station, 3kw/110m, 19-42-20/99-07-20
<b>Michoacan</b>			
Los Reyes	10	XHCSAF	New station, 999 watts/-170m, 19-34-33/102-27-47
<b>Mississippi</b>			
Hattiesburg	27	W27EH	Returned to the air Jan. 21 <sup>st</sup> in digital on this channel, ex-W42CW analog.
Meridian	21	W00K-LD	Calls changed from W21DB.
Tupelo	40	W40BZ	OFF Jan. 25 <sup>th</sup> pending conversion to digital ch. 14.
<b>Missouri</b>			
Cape Girardeau	8	WSIU-DRT	Requests power reduction to 3kw/202m, 37-24-23/89-33-44 (KBSI-23 tower)
<b>Columbia</b>	<b>17</b>	<b>KMIZ</b>	<b>Granted power increase to 231kw/352m.</b>
Kansas City	15	K15MB	Move from K45IO withdrawn pending amendment. Refiled & granted.
St. Louis	30	W0DK-LD	Operating at reduced power of 4.2kw since Jan. 5 <sup>th</sup> due to amplifier failure.
Springfield	21	KRFT-LD	Requests power increase to 15kw/88m, 37-14-23/93-17-08; granted.

<b>Location</b>	<b>RF Ch</b>	<b>Callsign</b>	<b>Notes</b>
Springfield	25	KFKY-LD	Operating at reduced power of 1.02kw since Jan. 6 <sup>th</sup> due to amplifier failure.
Springfield	29	K29LK	Requests power increase to 15kw/283m, 37-13-09/92-56-57 (KSPR-TV site, Fordland) Granted.
<b>Montana</b>			
Great Falls	25	K25LM	Requests STA 100w/68m; has equipment to build facility at reduced power. Granted & on the air.
Great Falls	35	K35KC	Requests STA 100w/68m; has equipment to build facility at reduced power. Granted & on the air.
Kalispell	25	K25KZ	Requests STA 100w/801m; has equipment to build facility at reduced power. Granted & on the air.
Thompson Falls	4	K04QV	Granted power increase to 100 watts/303m.
<b>Nebraska</b>			
Lincoln	32	KAJS-LD	OFF Dec. 28 <sup>th</sup> , antenna damaged in storm. Returned to the air Jan. 20 <sup>th</sup> .
<b>Omaha</b>	<b>22</b>	<b>WOWT</b>	<b>Returned to full power Jan. 14<sup>th</sup>.</b>
<b>New Hampshire</b>			
<b>Nashua</b>	<b>32</b>	<b>WBTS-CD</b>	<b>See sharing host WGBX-TV Boston.</b>
<b>New Jersey</b>			
Atlantic City	7	WMGM-LP	License canceled Jan. 7 <sup>th</sup> .
Morristown	17	WNMF-LD	Silent STA request withdrawn, station is back on the air Jan. 14 <sup>th</sup> .
<b>New Mexico</b>			
<b>Albuquerque</b>	<b>35</b>	<b>KNME-TV</b>	<b>Power reduced to 250kw/1285m, 35-12-45/106-27-00.</b>
Carlsbad	17	K17MN	Requests STA 3.8kw/46m, 32-26-10/104-11-16; existing license specified wrong coordinates. Also requests permanent permit for these corrected coordinates.
Farmington	21	K46KV	Requests STA for this channel, 50w/77m; has equipment to build facility at reduced power. Granted & on the air.
Farmington	32	K32JT	Requests STA 100w/77m; has equipment to build facility at reduced power. Granted & on the air.
Las Cruces	14	KCWF-LP	Requests conversion to digital on this channel, from analog ch. 20.
<b>Santa Fe</b>	<b>8</b>	<b>KNMD-TV</b>	<b>Requests power increase to 16.6kw/1274m; granted &amp; increased.</b>
<b>Santa Fe</b>	<b>27</b>	<b>KASA-TV</b>	<b>Granted 369kw/1290m; to switch antennas on the same tower. See STA granted last month – this will “permanetize” the STA.</b>
<b>Santa Fe</b>	<b>29</b>	<b>KWBQ</b>	<b>Requests power increase to 245kw/1290m.</b>
<b>New York</b>			
Buffalo	30	W30BW	Requests power increase to 15kw/172m, 42-38-10/789-43-00; city from Olean.
<b>Ithaca</b>	<b>13</b>	<b>WNYI</b>	<b>Requests STA 4kw/260m; to operate at reduced power due to air conditioning problems. Granted.</b>
New York	2	W41DO	Granted STA 300w/253m, 40-45-08/73-58-02; to share on WKOB-LD pending resolution of mutually-exclusive applications for ch. 33.
New York	5	WNYX-LD	Returned to the air Jan. 5 <sup>th</sup> .
New York	10	WNYX-LD	Returned to the air Jan. 5 <sup>th</sup> .
New York	23	WXNY-LD	Requests STA for this channel, ex-ch. 32; 1kw/300m, 40-44-54/73-59-09; interim post-repack facility on Empire State Building. Granted.
Olean	20	WWHC-LD	Requests power increase to 5kw/230m, 42-43-07/78-33-46.

<b>Location</b>	<b>RF Ch</b>	<b>Callsign</b>	<b>Notes</b>
Syracuse	16	WZLH-LD	Calls changed from W42EB.
Westvale	15	WVOA-LD	Application for Digital Companion Channel for analog ch. 6, 15kw/50m; amendment to change city.
<b>North Carolina</b>			
Boone	24	WLNN-CD	License canceled Jan. 25 <sup>th</sup> .
<b>Canton</b>	<b>27</b>	<b>WUNW</b>	<b>Operating at approximately 66% power since Dec. 29<sup>th</sup> due to amplifier failure.</b> <b>Returned to full power Jan. 19<sup>th</sup>.</b>
<b>Edenton</b>	<b>29</b>	<b>WUND-TV</b>	<b>Moved from 20, 657kw/490m.</b>
Raleigh	33	W33EI	OFF Jan. 20 <sup>th</sup> , antenna issues.
Spruce Pine	31	W31DI	Power increased to 4.8kw/469m.
Zionville	30	W30CS	Requests power increase to 1.5kw/572m; granted & increased.
<b>Nuevo Leon</b>			
Sabinas Hidalgo	36	XHCTSH	New station, 10kw/-86m, 26-29-01/100-11-13
<b>Ohio</b>			
<b>Cincinnati</b>	<b>20</b>	<b>WLWT</b>	<b>Granted power increase to 1000kw/309m.</b>
Cleveland	30	WVIZ-DRT	Permit granted for new station, 8.5kw/65m, 41-30-12/81-40-29; Cleveland State University campus.
Dayton	9	WRCX-LD	Returned to the air Jan. 8 <sup>th</sup> on digital channel 9, 3kw/292m; ex-analog ch. 40.
Mansfield	20	WOHZ-CD	Requests power reduction to 4kw/30m, 40-47-01/82-08-10.
<b>Oklahoma</b>			
<b>Oklahoma City</b>	<b>21</b>	<b>KTBO-TV</b>	<b>Requests STA 15kw/211m, 35-22-10/97-27-40; to temporarily share on KUOT-CD pending replacement of tower destroyed by ice storm.</b> <b>Dismissed. OFF Oct. 27<sup>th</sup>.</b>
Tulsa	23	KTUO-LD	Requests power increase to 15kw/137m, 36-09-46/95-58-45. Granted.
<b>Oregon</b>			
Portland	20	KOXI-CD	Requests power increase to 13.5kw/521m; granted & increased.
<b>Portland</b>	<b>26</b>	<b>KGW</b>	<b>Granted channel reassignment from ch. 8, 1000kw/539m.</b> <b>Filed necessary application to implement this move.</b>
Warrenton	22	KHPN-LD	Returned to the air Dec. 21 <sup>st</sup> under STA 100 watts/-30m.
Wedderburn	4	K04MG	OFF Jan. 4 <sup>th</sup> , cooling fan failure.
<b>Pennsylvania</b>			
Boyetown	27	WFMZ-DRT	New Digital Replacement Translator on air, 10kw/109m, 40-19-03/75-38-59
Butler	17	WJMB-CD	Requests power increase to 15kw/115m.
Chambersburg	20	W33CR	From 33, 15kw/410m.
Kittanning	32	WKHU-CD	Returned to the air Jan. 13 <sup>th</sup> .
Pottsville	29	W29FQ	From W28DP; granted.
State College	34	W34FL	Power increased to 15kw/305m, 40-55-10/77-58-27; city from Brookville.
<b>Puebla</b>			
<b>Puebla</b>	<b>4</b>	<b>XHCSBA</b>	<b>New station, 17kw/40m, 19-04-32/98-20-42</b>
<b>Puerto Rico</b>			
Aquadilla (sic)	20	WPRU-LP	License canceled Jan. 14 <sup>th</sup>

<b>Location</b>	<b>RF Ch</b>	<b>Callsign</b>	<b>Notes</b>
Aquadilla (sic)	24	WSJX-LP	License canceled Jan. 14 <sup>th</sup> .
Toa Baja	17	W17DL	Power reduced to 3kw/268m, 18-16-23/66-05-35.
Toa Baja	19	W19EY	From W25EF, 3kw/268m, 18-16-23/66-05-35; granted.
Yabucoa	17	W17EP	Granted power change to 15kw/268m, 18-16-23/66-05-35.
<b>San Luis Potosi</b>			
Rioverde	26	XHCTRV	Call changed from XHCTSL-n; apparently now a station in its own right, vs. a shadow (translator) of San Luis Potosi.
<b>South Carolina</b>			
<b>Allendale</b>	<b>21</b>	<b>WEBA-TV</b>	<b>Granted power increase to 371kw/240m.</b>
Murrells Inlet	8	WGSC-CD	Requests STA 675 watts/252m, 33-35-28/79-02-54; operating at 30% power since Nov. 13 <sup>th</sup> due to storm damage to antenna. Granted.
Murrells Inlet	8	WGSI-CD	See sharing host WGSC-CD.
<b>Sumter</b>	<b>29</b>	<b>WRJA-TV</b>	<b>Granted power increase to 167kw/355m.</b>
<b>South Dakota</b>			
Sioux Falls	27	KCWS-LP	OFF Oct. 22 <sup>nd</sup> , ventilation problem causing transmitter to overheat. Returned to the air Jan. 6 <sup>th</sup> .
<b>Tennessee</b>			
Knoxville	17	WDTT-LD	From 24, 15kw/552m; granted.
<b>Lebanon</b>	<b>25</b>	<b>WJFB</b>	<b>Granted power increase to 1000kw/407m, 36-16-05/86-47-45. I-24 West &amp; Old Hickory Boulevard, same tower as WPGD-50 &amp; used by WNPX-28 before the repack.</b>
<b>Texas</b>			
Abilene	10	K10QL	Requests STA 100w/2m; has equipment to build facility at reduced power. Granted & returned to the air.
Bryan	20	K20KJ	Requests power increase to 15kw/94m, 30-29-14/96-10-34.
College Station	49	KNXG-LD	Calls changed from K49LC.
Groveton	2	KLNK-LD	Requests power increase to 3kw/301m, 29-45-31/95-22-04 (Wells Fargo Plaza, Houston)
Kingsville	31	K31KK	Operating at less than 80% power since Jan. 8 <sup>th</sup> due to air conditioning failure.
McAllen	11	KJST-LP	From 28, 3kw/87m, 26-15-25/98-13-55; granted.
McAllen	27	KRZG-CD	Moved from 32, 15kw/93m.
<b>Nacogdoches</b>	<b>15</b>	<b>KYTX</b>	<b>Application for new aux, 393kw/411m.</b>
San Antonio	25	K25OB	OFF Dec. 24 <sup>th</sup> , transmission line has holes & is full of water...
Wichita Falls	16	K16LO	Requests power increase to 15kw/76m, 33-58-20/98-45-36; city from Lawton, Oklahoma.
Wichita Falls	26	K26NK	Requests STA 15kw/122m, 33-53-18/98-34-09; temporary site. Tower destroyed by vandalism. Granted. Station has been off since Dec. 18 <sup>th</sup> .
<b>U.S. Virgin Islands</b>			
Charlotte Amalie	22	WMNS-LD	Airing color bars since Nov. 25 <sup>th</sup> , satellite (or more likely, receiver) failure. Returned to regular programming Jan. 25 <sup>th</sup> .
<b>Utah</b>			
Enterprise	15	K15LJ	Moved from K34FW, 30 watts/353m.
Logan	17	K17II	Requests STA 250w/-249m, 41-47-14/111-49-59.
Rockville	29	K29MJ	Moved from K40FU, 130 watts/-227m.
St. George	14	K14RO	Moved from K39JZ, 250 watts/62m; granted.

<b>Location</b>	<b>RF Ch</b>	<b>Callsign</b>	<b>Notes</b>
St. George	15	K40KZ	Returned to the air Dec. 23 <sup>rd</sup> on this channel, 100 watts/-145m.
St. George	17	K17JQ	Returned to the air Dec. 23 <sup>rd</sup> , 100 watts/-145m.
Toquerville	34	K34OT	Moved from K23FQ, 107 watts/183m, 37-17-22/113-16-36.
Wendover	31	K31OW	Granted STA for this channel from analog K27KM; 100 watts/158m, 40-45-13/114-01-12; has equipment to build facility at reduced power. On the air.

#### **Vermont**

Bennington	23	WZPJ-LD	Power increased to 15kw/277m, 42-38-13/74-00-03
------------	----	---------	---

#### **Washington**

Seattle	17	KCTS-TV	From 9, 1000kw/249m.
Spokane	15	KHQ-TV	Operating at half power since Jan. 13 <sup>th</sup> pending delivery of replacement part.
Tacoma	13	KCPQ	Requests power to 160kw/287m, 47-36-56/122-18-30; KZJO-25 tower, 18 <sup>th</sup> & Madison, Seattle.
Vancouver	30	KPDX	Granted STA 540kw/528m; to operate at 73% power in ATSC 3.0. Full-power operation generates unacceptable spurious emissions.

#### **West Virginia**

Bluefield	17	WVVA	Granted power increase to 700kw/370m.
-----------	----	------	---------------------------------------

#### **Wyoming**

Casper	8	KPTW	Requests power increase to 20kw/568m; granted.
--------	---	------	--

#### **MEXICAN NOTES:**

As always, thanks to Raymie Humbert for information from Mexico. All Mexican station call signs contain a -TDT suffix, omitted here for space. ("TDT" = "Televisión Digital Terrestre", or "Terrestrial Digital Television") As with U.S. distributed transmission systems (DTSSs), the "shadows" of a Mexican station all share the same call letters. (which is why there are four XHCTCRs in Chiapas)

#### **ION SUBCHANNELS TO GO AWAY:**

E. W. Scripps has announced ION Plus, Qubo, and ION Shop will be closed at the end of the month. These networks are carried on the .2, .3, and .4 subchannels of ION's owned-and-operated stations.

As previously announced, Bounce, Court TV, Court TV Mystery, Grit, and Laff will be moved to the ION stations when their contracts with other stations expire. No announcements have been made as to which subchannels these will end up on, but Laff has already replaced QVC on the .5 subchannels of some stations. HSN currently airs on .6.

A small number of non-ION stations carry ION Plus; they will also lose the channel.

#### **ORTOGRAFÍA EN PUERTO RICO**

El ortografía de la ciudad de licencia de los estaciones WPRU-LP y WSJX-LP debe ser Aguadilla. (no "Aquadilla")

The spelling of the city-of-license of stations WPRU-LP & WSJX-LP is Aguadilla. (not "Aquadilla") My apologies for any grammatical or spelling errors in the above sentence...

TV News Continues on last page





# FM NEWS - FEBRUARY 2021

Editor: Bill Hale [fmnews@wtfda.org](mailto:fmnews@wtfda.org)  
Visit [db.wtfda.org](http://db.wtfda.org) to stay up-to-date on the latest  
FM programming and call letter changes



## PLEASE NOTE

99% of the changes that appear in FM News, and thus copied into the WTFDA database, are compiled from commercial sources the WTFDA subscribes to: 'StationIntel' and 'radioINSIGHT'. The remaining items are furnished by readers who report differences. So, if you hear a station locally or via DX and the format/slogan differs from that which appears in our database, let us know and we'll do our best to make it right. Submit updates/changes to [fmnews@wtfda.org](mailto:fmnews@wtfda.org). We welcome your inputs.

---

AL	Anniston	93.5	W228EK
	Urban AC: '935 WHOG The Hog' // WHOG-1120		
AL	Centreville	101.3	W267DA
	Southern Gospel: 'WBIB Radio' // WBIB-1110		
AL	Henagar	94.5	WJSD-LP
	License cancelled and callsign deleted 1/5/2021 per licensee's request		
AL	Huntsville	105.3	W287DH
	Soft AC: 'Easy 105.3' // WTKI-1450		
AL	Montgomery	94.5	WUMO-LP
	Is Silent		

---

AK	Anchorage	101.3	KGOT
	CHR		
AK	Anchorage	103.1	KMXS
	Hot AC: 'The Mix 103.1'		
AK	Palmer	88.9	KJLP
	Inspirational Gospel: 'Alaska's Praise'		

---

AB	Edmonton	103.9	CISN-FM
	Country: 'CISN 103.9 Country'		
AB	Red Deer	106.7	CFDV-FM
	80s-90s Classic Hits: 'Rewind Radio'		

---

AZ	Cordes Lakes	101.1	KZCE
	Changes calls from KNRJ		
AZ	Green Valley	97.1	KYWD
	Hot AC: 'My 97.1'		
AZ	Mayer	98.3	KKFR
	Rhythmic-CHR: 'Power 98.3 & 96.1'		
AZ	Old Pascua Village	100.7	KPYU-LP
	Is Silent		

---

AZ	Quartzsite	96.5	KBUX
	Oldies: 'KBUX 96.5 FM'		
AZ	Quartzsite	105.9	KCNL
	Classic Rock: 'Q 105.9'		
AZ	Show Low	99.7	KKZN-LP
	Returns to the air with Oldies		
AZ	Sun City West	95.1	KOAI-FM
	Classic Hits: 'The Wow Factor 95.1 - 94.9'; includes K235CB Chandler		
AZ	Tucson	92.9	KMIY
	Country: '92.9 The Bull'		




---

AR	Benton	106.7	KBZU
	Sports (ESPN): '106.7 Buzz'; changes calls from KHLR		



AR	Hot Springs	96.7	KLXQ
	Classic Rock: '96.7 The Rocket'		



AR	Sherwood	94.7	K249FE
	Regional Mexican: 'Radio La Raza' // KMTL-760		



AR	Texarkana	107.1	KTFS-FM
	Talk: '107.1 FM The News Talk KTFS'		

---



- BC Kelowna 101.5 CILK-FM  
Hot AC: 'Move 101.5'; includes CILK-FM-1  
93.1 Big White Mountain
- BC Penticton 97.1 CJMG-FM  
Hot AC: 'Move 97.1'; includes CJMG-FM-2  
99.5 Oliver
- BC Vancouver 103.5 CHQM-FM  
Hot AC: Move 103.5'

- 
- CA Arcadia 103.9 KTNX  
Classic Rock: 'The Zone'
  - CA Arvin 95.7 KKCA  
Returns to the air with Variety
  - CA Coalinga 90.7 KFRP  
License cancelled; call letters deleted per  
licensee's request
  - CA Fortuna 100.3 KWPT  
Classic Rock: 'The Point 100.3 FM - 102.9  
FM' ('102.9' refers to K275BI Eureka)
  - CA Gerber 99.7 KTOR  
Regional Mexican: 'Radio Mexicana 99.7'



- CA Guadalupe 97.1 KRTO  
Rhythmic CHR: 'Fuego 97.1'
- CA Hamilton City 104.7 KEGE  
Regional Mexican: 'Radio Mexico'
- CA Marysville 94.3 KXMJ-LP  
Returns to the air with Variety
- CA Monterey 95.9 K240EV  
Classic Hits // KNRY-1240
- CA Muir Beach 99.3 KGXY-LP  
Returns to the air with Variety
- CA Porterville 101.3 K267CG  
Regional Mexican: 'La Ley 1450 AM and  
101.3 FM' // KTIP-1450
- CA Prunedale 89.7 KNVM  
Contemporary Christian: 'K-Love 90s'
- CA Red Bluff 92.1 K221GJ  
Talk: 'Crack Radio' // KRAC-1370
- CA Salinas 97.3 K247BL  
Spanish Religious: 'El Sembrador Radio' //  
KKMC-880

- CA Willows 98.3 K252FN  
Regional Mexican: 'La Ranchera 1560 AM -  
98.3 FM' // KIQS-1560

- 
- CO Aspen 103.1 KSPN-FM  
Adult Alternative: 'KSPN Colorado'



- CO Basalt 106.1 KNFO  
Talk/Sports: 'KNFO FM 106.1 - 94.1 - 105.5  
94.3' [includes K232AD Roaring Fork,  
K242AV Thomasville, K288DA Vail, etc.,  
K289BQ Redstone, KNFO-FM1 Glenwood  
Springs and K298AT Rifle, all Colorado]
- CO Security 105.5 KRDO-FM  
KRDO AM/FM [// KRDO-1240]



- CO Colorado Springs 95.7 K239CH **and**
- CO Colorado Springs 98.5 K253AH  
Urban Contemporary: 'Blazin' 98.5' // KPPF-  
1040
- CO Dove Creek 103.5 KPGX  
Changes calls from KDVK
- CO Salida 92.3 KVRH-FM  
Hot AC: 'The Peak 92.3'



- CO Salida & Buena Vista 102.9 K275CR  
80s Hits: 'The Valley 102.9' // KGKG-1340

- 
- CT Hartford 100.9 W265EB  
News/Talk: 'News Radio WPOP 1410 -  
100.9' // WPOP-1410
  - CT Kent 97.5 W248CZ  
News/Talk: 'Robin Hood Radio' // WHDD-  
1020
  - CT Hartford 105.9 WHCN  
Classic Hits: 'The River 105.9'

- 
- DE Milford 102.1 W271CX  
Classic Hits: 'Cool 102.1 - 930 AM' //  
WNCL-930

DE Wilmington 93.5 W228DY  
 News/Talk: 'The Voice of Central Jersey' // WCTC-1450  


DE Wilmington 96.9 W245CJ  
 Urban AC: 'Jammin' 96.9' // WXYC-1510

FL Bayonet Point 99.1 W256CT **and**  
 FL Brandon 96.7 W244BE **and**  
 FL Gulfport 94.5 W233AV **and**  
 FL West Tampa 105.9 W290BJ  
 News/Talk: 'News Radio' // WFLA-970



FL Jacksonville 88.7 WJFR  
 Returns to the air with Religious Teaching: 'Family Radio'

FL Lake City 99.7 W259CU  
 Classic Rock: 'The Zone' // WGRO-960

FL Ormond Beach 107.1 WAVX-LP  
 Is Silent after returning to the air temporarily with Christian Rock: 'Reign Radio'; changes calls from WZEA-LP

FL Perry 92.1 WNFK  
 Classic Rock: 'The Zone'

FL Poinciana 99.9 WJRQ-LP  
 Returns to the air with Variety

FL Tampa 106.7 W294CR  
 Spanish: 'Super Q 106.7' // WQBN-1300



GA Barnesville 104.9 W285FK  
 Classic Hits: 'My Fox FM' // WBAF-1090

GA Blairsville 93.1 WUCG-LP  
 Returns to the air with Christian Rock

GA Cleveland 101.9 WAZX-FM  
 Regional Mexican: La Que Buena 101.9FM

GA Cochran 107.5 WRWR  
 Urban AC: 'KISS 107.5'

GA Columbus 104.5 W283DF  
 CHR: 'Hits 104.5' // WIOL-1580

GA Dahlonega 88.7 WCDG  
 Country: 'WCDG 88.7 FM'

GA Fort Valley 105.1 W286CE **and**  
 GA Macon 99.5 W258AP  
 Urban Gospel: 'Praise 99.5' // WYPZ-900

GA Lincolnton 98.7 WLCZ  
 Inspirational Gospel: WLCS 98.7

GA Macon 94.7 W234CQ **and**  
 GA Warner Robins 95.5 W238CG  
 Urban Contemporary: 'Fox-FM' // WBML-1350



GA Tignall 105.3 WSGC-FM  
 Returns to the air with Country

GA Trenton 101.3 W267CX  
 Talk: 'News Radio 1420 AM - 101.3 FM KWN' // WKWN-1420

GA Trenton 106.1 W291CF  
 Country: 'Mix 106.1 and WJTW 95.7' // WJTW-1480 ('95.7' refers to W239CO Chattanooga)

HI Aiea 107.9 KKOL-FM  
 Classic Hits: 'Honolulu's Decades 107.9'



IL Altamont 105.5 WJKG  
 Adult Hits: '105.5 & 100.5 Jack FM'

IL Casey 104.3 WCBH  
 CHR: '104.3 The Party'



IL Downers Grove 88.3 WDGC-FM  
 Returns to the air with Variety

IL Effingham 96.3 W242CK **and**  
 IL Effingham 99.5 W258CQ **and**  
 IL Neoga 107.7 W299CO  
 Talk: 'News Talk AM 1090 - 99.5 FM - 96.3 FM' // WCRA-1090

IL Greenville 102.7 W274CE **and**  
 IL Vandalia 104.7 W284BI  
 Adult Contemporary: 'WPMB AM 1500 - 104.7 FM - 102.7 FM' // WPMB-1500

IL Sullivan 106.7 WZNX  
 Rock: 'The Fox 106.7'

IL Tinley Park 101.5 W268CY  
Is Silent, as is // WWHN-1510

IL Wheaton 88.1 WLWX  
Changes calls from WAIW

---

IN Elkhart 101.9 W270DK  
Soft AC: 'The Hart of Elkhart' // WTRC-1340

IN Fort Wayne 100.5 WQSW-LP  
Returns to the air with Variety: 'Bridging The Gap Through Music'



IN Oolitic 88.9 WMYJ  
Is Silent

IN Terre Haute 96.9 WMKI-LP  
Returns to the air with Modern/Alternative Rock



IN Warsaw 99.7 W259BJ  
News/Talk: 'News Now Warsaw 1480 AM - 99.7 FM' // WRSW-1480

IN Warsaw 107.3 WRSW-FM  
Classic Hits: '107.3 WRSW'




---

IA Des Moines 94.1 KDRA-LP  
License cancelled and callsign deleted per request of licensee

IA Huxley 99.3 KTIA-FM  
Religious Teaching: 'The Truth'



KS Cawker City 96.3 KZDY  
Adult Contemporary: 'Z 96.3 The Lake'

KS Chanute 99.9 K260DF  
Country: 'My Country 99.9 FM - 1460 AM' // KKOY-1460



KS Chanute 105.5 KKOY-FM  
CHR: 'Hot 105.5'

KS Downs 94.1 KDNS  
Country: 'KD94 Country'

KS Marysville 94.1 K231AX  
Classic Country: 'Classic Country 1570 - 94.1 FM KNDY' // KNDY-1570




---

KY Frankfort 104.1 WYDX-LP  
Returns to the air with Variety

KY Owensboro 92.9 W225CL **and**

KY Owensboro 100.5 W263BG  
Classic Hits: 'WVJS 92.9 FM - 1420 AM // WVJS-1420'

---

LA Kentwood 91.5 WPEF  
Is Silent

LA Lafayette 97.7 K249EY  
Oldies: 'The Rewind 1330 AM & 97.7 FM' // KVOL-1330

LA Lafayette 99.5 K258DQ  
Religious Teaching: 'Catholic Radio for Acadiana 99.5' // KSLO-1230

LA New Orleans 93.7 WXNO-LP  
New station signs on with undetermined format

LA Oak Grove 104.1 KLCJ  
News/Talk: 'News Talk 98.5 FM - 1520 AM - 1330 AM' [K253CO 98.5, KFXZ-1520 & KVOL-1330]



LA Ruston 89.1 KLPI  
Adult Alternative: 'Ruston's Rock Alternative'

---

ME Biddeford 93.5 W228EE **and**

ME Portland 107.1 W206CZ  
Soft AC: '107.1 - 93.5 The Bay' // WVAE-1400



ME Brunswick 91.1 WBOR  
Is Silent

ME Portland 98.5 W253DA  
News/Talk: 'NewsRadio AM 560 - FM 98.5' // WGAN-560

ME Portland 101.5 W268CS  
 Classic Country: 'The Outlaw 101.5 - 970' // WZAN-970



MD Havre de Grace 103.7 WXYC-FM  
 Urban AC: 'Jammin' 96.9' // WXYC-1510  
 [includes W245CJ 96.9 Wilmington, Delaware]



MA West Barnstable 90.7 WKKL  
 Returns to the air with Classic Rock



MI Adrian 103.9 WLEN  
 Adult Contemporary: 'Person To Person Radio FM 103.9'

MI Flint 107.3 W297CG  
 Classic Hits: 'K107.3' // WWCK-1570



MI Rochester Hills 90.3 KDTI  
 Contemporary Christian: 'K-Love 2000s'

MI Shepherd 92.3 W222CP  
 Classic Country: 'Buck 830 - 92.3 // WMMI-830

MO Bowling Green 94.1 KNBS  
 Changes calls from KPVR

MO Cape Girardeau 101.9 K270CN  
 Hot AC: '101.9 The Block' // KJXX-1170

MO Cameron 91.7 WRVX  
 Returns to the air with Religious Teaching: 'Christian Information Radio' (VCY America Radio Network)

MO Chaffee 104.7 KREZ  
 Soft AC: '104.7 The Bridge'



MO Marshall 102.9 KMMO-FM  
 Country: 'KMMO 102.9 FM - 1300 AM' [KMMO-1300]

MO Potosi 97.7 KQBS  
 Contemporary Christian: 'Boost Radio'; changes calls from KHZR

MT Kalispell 96.5 K243CM  
 Oldies: 'KGES AM 600 AM - FM 96.5' // KGEZ-600

MT Kalispell 101.9 KXZI-LP  
 Returns to the air with Bluegrass

MT Missoula 93.3 KGGL  
 Country: 'Eagle 93.3'



MT Missoula 105.9 KYJK  
 Adult Hits: '105.9 Jack FM'

MT West Yellowstone 92.9 KEZQ  
 Classic Hits

NE Alliance 102.3 KPNY  
 Contemporary Christian: 'My Bridge Radio'

NE Beatrice 88.3 KQIQ  
 Contemporary Christian: 'My Bridge Radio'

NE Grand Island 95.7 KROA  
 Contemporary Christian: 'My Bridge Radio'

NE Gretna 90.1 KZLW  
 Contemporary Christian: 'My Bridge Radio'

NE Shubert 91.7 KSSH  
 Contemporary Christian: 'My Bridge Radio'

NE Valentine 90.7 KMBV  
 Contemporary Christian: 'My Bridge Radio'

NE Waverly 95.1 KRKR  
 Contemporary Christian: 'My Bridge Radio'

NV Pahump 106.9 KWKI-LP  
 Returns to the air with Variety: 'Independent Community Radio'



NB Fredericton 106.9 CIBX-FM  
 Hot AC: 'Move 106.9'



NH Bartlett 101.1 WJSK-LP  
 License cancelled per licensee's request

NH Campton 105.7 WLKC  
Returns to the air with Contemporary  
Christian: 'K-Love'

NH Concord 102.3 WAKC  
Contemporary Christian: 'K-Love'; changes  
calls from WXRG

NH Whitefield 99.1 WYKC  
Is Silent; changes calls from WNYN

NJ New Brunswick 93.5 W228DY  
Contemporary Christian: 'K-Love' // WCTC-  
1450

NJ Wood Ridge 94.3 WSBP-LP  
Is Silent

NM Los Alamos 107.1 K296GI  
Is Silent, as is // KRSN-1490

NM Las Cruces 92.7 K224FI  
Talk: 'News-Talk 92.7 and 1450' // KOBE-  
1450



NM Las Cruces 99.5 KXPZ  
Country: 'Zia Country 99.5'



NM Mesilla Park 104.9 KMVR  
Hot AC: 'Magic 104.9'

NM Portales 91.7 KPCV  
Is Silent

NM Santa Fe 99.9 K260CT  
Adult Hits/Spanish Adult Hits: 'K-Suave  
Radio' // KSWV-810



NY Buffalo 94.5 WNER-FM  
Classical: 'WNER Classical'

NY Dansville 100.1 W261DS  
Classic Hits: '1400 WDNV' // WDNV-1400

NY Hoosick Falls 97.5 WHAZ-FM  
Returns to the air with Religious Teaching:  
'Alive Radio Network'

NY Jamestown 89.7 WNJA  
Classical: 'WNED Classical'

NY Portville 96.7 WUDE  
Is Silent

NY Waverly 102.1 WAVR  
Classic Hits: 'The Choice FM 102- AM 960'  
[WATS-960]



NC Asheville 103.3 WSFM-LP  
Variety: '103.3 Asheville FM'

NC Bryson City 94.1 W231BQ  
Country: 'Ninety Four One Classic Country'  
// WBHN-1590



NC Burlington 106.3 W292FF and

NC Greensboro 96.3 W242CD  
Urban Gospel: 'The Light' // WKEW-1400

NC Fairmont 97.5 W248DC  
Southern Gospel: 'The Light' // WFMO-860

NC High Point 102.5 W273DH and

NC Winston-Salem 103.5 W278BM  
Urban Gospel: 'The Light' // WPOL-1340

NC Old Fort 99.9 WKSF  
Country: '99.9 Kiss Country'



ND Hope 104.7 KMJO  
Talk: The Mighty 790 [// KFGO-790]



ND Minot 106.9 KHRT-FM  
Contemporary Christian: 'K-Heart 106.9'

NT Yellowknife 100.1 CJCD-FM  
Classic Hits: 'True North FM; includes  
CJCD-1 100.1 Hay River

NS Halifax 100.1 CIOO-FM  
Hot AC: Move 100.1'



OR Corvallis 105.9 KORC-LP  
Variety



OH Cincinnati 92.5 WOFX-FM  
Classic Rock: '92.5 The Fox'

OH Cincinnati 94.1 WNNF  
Country: 'Cat Country 94.1'

OH Cincinnati 98.5 WRRM  
Adult Contemporary: 'Warm 98.5'

OH Dublin 89.9 WVKJ  
Returns to the air with Religious Teaching:  
'A Voice For King Jesus' (VCY America  
Radio Network)

OH Newark 98.7 W254CT  
Soft AC: 'Kate 98.7' // WCLT-1430



OH Oberlin 107.7 W299CJ  
Classic Country: 'Gold Country 1320 AM &  
107.7 FM' // WOBL-1320

OH Portsmouth 107.5 WZZZ  
Classic Rock: 'The Breeze 107.5'

OR Klamath Falls 88.9 KJKF  
Contemporary Christian: 'K-Love 2000s'

OR Rogue River 94.7 KRRM  
Returns to the air with Classic Country

OR Salem 91.1 KSQI-LP  
Returns to the air with Variety

OR Toledo 100.7 K264  
Classic Hits: '100.7 The Otter'

PA Easton 105.5 W288DS  
UC:Hip-Hop: 'Loud 95.5' // WEST-1400

PA Gap 92.9 WNUZ-LP  
Returns to the air with News/Talk

PA Grantham 90.7 WVMM  
Variety: 'Pulse Radio'

PA Kitanning 103.7 W279DN  
Classic Hits: '103.7 The River' // WTYM-  
1380

PA Latrobe 97.3 W247CX and

PA Latrobe 98.7 W254CR  
Adult Hits: '98.7 Jack FM' // WCNS-1480



ON Brockville 104.9 CFJR-FM  
Hot AC: 'Move 104.9'

ON Kingston 98.3 CFLY-FM  
Hot AC: 'Move 98.3'

ON Ottawa 100.3 CJMJ-FM  
Hot AC: 'Move 100.3'

ON Peterborough 99.7 CKPT-FM  
Hot AC: 'Move 99.7'

ON Saint Catharines 105.7 CHRE-FM  
Hot AC: Move 105.7'

ON Smiths Falls 92.3 CKBY-FM  
Country: 'Country 92.3'; changes calls from  
CJET-FM

ON Smiths Falls 101.1 CJET-FM  
News-Talk: 'City News // CIWW-1310  
Ottawa; changes calls from CKBY-FM

PR Guanica 107.9 WJED-LP  
Returns to the air with Spanish

PR Vieques 90.1 WVQR  
Returns to the air with Spanish: 'WVQR  
90.1'

RI Providence 105.1 WWLI  
Adult Contemporary: 'Lite 105'

SC Camden 99.5 W258DL  
Inspirational Gospel:  
'WEAF 1130 AM and  
99.5 FM' // WEAF-  
1130



SC Due West 95.3 WEGG  
Changes calls from WYPJ

SC Florence 104.5 W283AB  
Talk: 'News Talk 1400 AM' // WJMX-1400

SC Johnston SC WLFW  
Southern Gospel: 'The Life FM'

SC Sandy Springs 104.3 WFOX-LP  
Changes calls from WZFN-LP

SC Scranton 98.7 W254DG  
Inspirational Gospel: 'WALD 1080 AM and  
98.7 FM' // WALD-1080

---

SD Clear Lake 107.1 KDBX  
Classic Rock: 'The Hawk 107.1'

---

TN Athens 94.5 W233CI  
Talk/Oldies: 'WYXI FM 94.5 - AM 1390' //  
WYXI-1390

TN Clarkeville 105.5 W288DQ  
Is Silent, as is // WNZE-1400

TN Clarksdale 94.9 W235CX **and**

TN Clarksdale 97.5 W248CL  
Are Silent, as is // WROX-1450

TN Covington 92.1 W221CR **and**

TN Memphis 101.5 W268DD  
News/Talk: 'WREC News Radio 92.1 - 600'  
// WREC-600

TN Hixton 101.1 W266DU **and**

TN Lookout Mountain 97.7 W249BR  
Oldies // WFLI-1070

TN Memphis 87.7 WPGF-LP  
Classic Rock: 'Drake Hall Memphis Radio'

TN Memphis 104.1 W281BR  
Urban Adult Contemporary: 'The Trend on  
WAVN' // WMSO-1240

TN Nashville 105.1 W286CY  
Spanish Hits: 'Activa 105.1 FM - 1240 AM' //  
WNVL-1240

TN Tiptonville 97.3 WTNV  
Country: 'Eagle 97.3'



---

TX Anson 98.1 KTLT  
Modern/Alternative Rock:  
'98.1 The Phantom'



TX Bay City 101.7 KNTE  
Regional Mexican: 'La Raza 98.5 Y 103.3' //  
KTJM 98.5 and KJOJ-FM 103.3



TX Cedar Park 93.3 KGSR  
Hot AC: 'Lucy 93.3'

TX College Station 95.1 KNDE  
CHR: 'Candy 95.1'



TX El Paso 96.3 KHEY-FM  
Country: '96.3 KHEY Country'

TX El Paso 102.1 KPRR  
Rhythmic CHR: 'Power 102.1'

TX Fort Worth 92.1 K221GV  
Talk: 'BIN' // KKGM-1630

TX Hearne 103.1 KVJM  
CHR: '103.1 Kiss FM'

TX Junction 94.7 K234DE  
Oldies: 'KMBL 1450 AM and 94.7 FM' //  
KMBL-1450

TX Paris 93.9 KOYN-FM  
Country

TX Paris 96.3 K242BC  
Country: 'Classic Country 1490 AM - 96.3  
FM' // KPLT-1490



TX Reno 98.9 KLOW  
Contemporary Christian: 'Trumpet Radio'

TX Texarkana 105.9 K290CP  
Gospel Music: 'KTFS 940 AM' // KTFS-940

TX Wheelock 100.9 KVMK  
Country: 'Maverick 100.9'



---

UT Freeport 103.9 K280GX  
Religious Teaching: 'The Truth' // KUTR-  
820

---

VT Royalton 103.1 WZKC  
Contemporary Christian: 'K-Love'; changes  
calls from WRJT



VA Big Stone Gap 92.5 W223AA  
Classic Hits: '92.5 The Vault' // WLSD-1220



VA Danville 105.9 W290DA  
Adult Contemporary: 'Country Legends  
105.9' // WMPW-970

VA Norfolk 102.5 W273DZ  
Spanish Religious: 'Nueva Vida' // WRJR-  
670

VA Onley-Onancock 103.3 WESR-FM  
Adult Contemporary:  
'The Shore 103.3 FM'



VA South Boston 95.3 WHLF  
Adult Contemporary: '95.3 WHLF'

VA Winchester 92.5 WAIW  
Changes calls from WLWX

---

WA Vancouver 97.5 KDOA-LP  
Changes calls from KVNK-LP

---

WV Berryville 105.5 WINC-FM  
Hot AC: 'Wink FM'

WV Kingwood 107.7 WFSP-FM  
Classic Hits/Oldies:  
'Good Time Oldies  
107.7'



WV Ravenswood 92.5 WTHM-LP  
Classic Rock: 'Jackson County's Classic  
Rock'



---

WI Cornell 99.9 WGNW  
Returns to the air with Contemporary  
Christian/Religious Teaching: 'The Family'



WI Milwaukee 96.1 W241CI  
Urban Gospel: 'WGLB AM  
1560 and 96.1 FM' //  
WGLB-1560



WI Milwaukee 101.9 W269DL  
Talk: '101.7 The Truth' // WGKB-1510  
[Thanks: John Rieger]

GKB

[EST. 1997]

101.7 FM MILWAUKEE

WI Plymouth 98.5 W253CW  
Country: 'Cow Country' // WGXI-1420



WI Rhinelander 101.3 W267AF  
Sports (FOX Sports Radio): '101.3 & 1240  
The Game' // WOBT-1240

WI Wausau 98.9 W255DN  
Sports: 'Sports Fan 98.9' // WXCO-1230

---

WY Cheyenne 106.3 KLEN  
Country: 'Y-95 Country' (Westwood One -  
Mainstream Country)



**SIGN UP & Renewal Form**  
**YEARLY DUES \$10.00 USD for Monthly VUD E-ZINE**  
Print this form and send it with your dues.

Name \_\_\_\_\_

Address \_\_\_\_\_ Apt # \_\_\_\_\_

City \_\_\_\_\_ State/Prov \_\_\_\_\_ Zip \_\_\_\_\_

Country \_\_\_\_\_ Interests: TV (  ) FM (  ) 30-50 (  ) Weather (  )

E-Mail Address \_\_\_\_\_

Sign me up/renew me for: 1 year (  ) 2 years (  ) More (  ) \_\_\_\_\_

**Mail your yearly dues to: WTFDA, P.O. Box 501, Somersville, CT USA 06072**  
**Make your checks/money orders payable to: WTFDA**  
**And *thanks* for your support of the WTFDA!**

**TV NEWS CONTINUES FROM PAGE 16**

**ELECTION PT. 4:**

Earlier, I'd noted Commissioner Rosenworcel's term expired last June. I thought she could only remain on the Commission until the past session of Congress ended in early January. However... On the 22<sup>nd</sup>, she was named Chair, replacing Commissioner Pai who resigned two days earlier. I'm frankly not sure how that works. President Biden does have the power to reappoint Rosenworcel to another term – maybe I'm missing that news within the news of her elevation to Chair.

Pai's departure means there's an open seat on the FCC. Theoretically it could go to a member of either party but in practice a Democrat will almost certainly be appointed. (if anyone in Washington is reading this, I'd be interested in the post{grin}!)