

Happy New Year - Watch for Possible January E Skip!

January 2026 #15

GOOD-BYE BOX 501. We begin 2026 with a major announcement. As of January 1st, our club address is no longer PO Box 501 Somersville, CT 06072. The box has been closed and the key has been returned. Anything sent to the Somersville address will be forwarded to Keith McGinnis' address in Massachusetts.

The reason for the box closure is, of course, the lack of incoming mail. We no longer collect dues and 99% of the money we get comes from new member joining fees and most of them arrive by Paypal. In 2025, the cost of the box was \$80 for the year with an increase in 2026. That's a steep price to pay for keeping a box that collects mostly junk mail during the year.

New members can still join with a check, but they will have to contact us first for instructions on where to send it. This is stated clearly [here](#) on our website.



CHRISTMAS STATIONS WINNERS! One person was the winner of the Airspy HF+ Discovery Our lucky winner is Mark Bailey in Montesano, WA. Congrats, Mark!

Our three runners up won the goodie bag from Me-TV in Chicago. The items in the bag are valued at \$25-\$30. Our winners are Chris Kadlec (MI), Jerry Bond (NY) and Tommy Adair (MS).

Thank you to everyone who took a chance and submitted their local Holiday station lists.

PREAMPS FOR FM? Bob Hawkins read the article in last month's issue and here are his thoughts on preamps for FM...

I am a big believer that preamps, TV or FM, are over-prescribed. The one exception to that rule is the Teledesic TV line of antennas with built-in preamps but that is beyond the primary FM scope of this discussion.

If you have a tuner with an analog signal level meter on it, look at the meter on a clear frequency such as 87.9 and remove the antenna. (Thinking about this, many SDR's may have an adequate signal meter too). If the meter drops ANY, your tuner is already more sensitive than the noise floor at your antenna making a preamp a losing proposition. Wanna prove this to yourself? Grab one of those 0-25db attenuators and put it in line with your receiver and tune in a weak signal. Now, dial in some attenuation. Meter is dropping but look how many db you need to lose to suffer any audible loss. I'd say a preamp with less than 250' of good RG6 is a non-starter. While on this topic, make note of how much loss you can tolerate and leave it there. If you have overload in any direction, check it again. It will be better or gone. At what cost? None...you already verified that. A lower signal meter reading is not always a bad thing.

Now, on the subject of splitters. I have a huge (24' long boom) Innovntenna FM Yagi at 61'. 125' of RG6. Looking around my shack, it is passively split multiple times....McIntosh MR 78, Sony FM HD tuner, an FM web server, 2 SDR's, rabbitears fm bandscanner and an FM Modulation monitor. And I have a 4.9KW FM station on site....120' from my yagi. Right now I am listening to WSGS Hazard KY at 210 miles on a 29 degree winter day. Here is what an FM yagi does split 7 ways with no preamp : https://rabbitears.info/tvdx/fm_one_tuner_map/16 . I rest my case.

Perhaps someone out there might need a preamp but it would probably involve UHF TV, a mountaintop site & 500' feet of RG6 to get to that home in the valley.

STATS ON THE WTFDA WEBSITE. In case you didn't know it, we have a statistics section on the WTFDA website. This section has been maintained by Fred Nordquist, then temporarily by Bill Nollman until recently. Matt Sittel has agreed to take it over and do a major overhaul to the stats column to make it easier for dxers to read and post their stats. Some sections will be eliminated. But he will only do it if he finds enough interest from the WTFDA membership.

So, Matt would like you to enter your basic stats to gauge interest in the stat overhaul project. Please click on the graphic below and enter your basic stats.

WTFDA Statistics - Data Submission Form

Here is a simple document that allows you to enter your current log totals for FM, TV and/or NWR. If you don't actively DX a particular band, just enter a 0 for the log total. At this point, all that we are updating is your overall log counts, and not counts by propagation mode or state (yet). This initial document is simply to gauge interest in continuing to present log totals at your current QTH on the WTFDA web site.

If you are signed in to Google, you should be able to update your totals at any time by returning to this document. Otherwise, you will need to enter everything again.

If you have any questions, comments or suggestions, e-mail Matt Sittel (msittel@wtfda.org).

If there is enough interest among the membership, he will go ahead with this major project. If there is not enough interest, he will not. It's as simple as that. (Matt can be reached at msittel@wtfda.org).

NEW MEMBERS. In the month of December, due to the generosity of one WTFDA member, we welcome AV (Darien, IL) and Bixby (Burlington, NJ) to the WTFDA. Also joining the WTFDA is Michael Meredith from Grosse Point, MI. Welcome to all of you.

We end 2025 with 278 members. We have around \$4000 in the bank. That's not much compared to the other clubs, but then we don't have the expenses they do. We just dropped the post office box, and our subscription to StationIntel, which this year cost \$250 has also ended. We decided not to split the cost of another StationIntel subscription with the NRC this year for the first time, saving us another \$125. We've always had issues with SI's accuracy, so the end of SI subscriptions is no major loss. We get the info elsewhere. Our major expenditure is with Dreamhost hosting, and our IT guy (Jason) has it all worked out so that's costing us about \$20 a month. I also need to tell you that Jason was "paid" very well for his work on the logger and database in 2025 even though he told us he didn't need it.

So, 2026 should be an interesting year with more giveaways, more skip (we hope) and more fun! Stay tuned!

From the FMDX-NA Email List on groups.io

Bill Nollman (CT) on meteors: What's better than snow on Christmas morning? it's hours of edited Meteor Scatter!

[This is 60+ hours of edited ELAD S3 captures](#) and hundreds of ID'ed Meteor Scatter pings and trains from a few days and nights this October in Western, PA. This was my 3rd year at this MW DXpedition and this year I had two 24MHz ELAD S3's capturing overnight for 10 hours, each with its own APS-13, laptop and 20TB HDD. One APS13 was near the house at the top of the hill and the other about 400 feet away and 30 feet below the hilltop with a wide open West-North view to reduce the western PA and Pittsburgh locals. Both antennas had a Kitz FM pre-amp.

SDR-Console Analyser and the Rabbitears Autologger helped to find the Meteors. Simon even "fixed" Analyser at my request to allow the display to go wider than 3MHz (I liked 12MHz) and 5 lines/sec for over 10 hours. With those fixes I was able to scan 10 hours of captures and then scroll the display looking for the meteor pings.

For the RDS fans I captured every single SDR-Console RDS display which honestly is the way I was able to ID 99% of the pings.

I suggest having the Excel file open as you listen to the MP3's as hours of Meteor Scatter can lull you to sleep. Once you've lost your place it's game over!

[Dropbox link to Excel list of stations received](#) (which has the RDS screen shots) and MP3's of the audio - (this might open in Dropbox but might work better if you download it first) -

Rabbitears Map - https://rabbitears.info/tvdx/fm_one_tuner_map/79

From Stuart Carlson (MI)

Hello FM DXers,

Here's my first full E-skip year in review (no IDable winter E-skip yet, but still hoping!):

Locations: Ann Arbor, MI; Dexter, MI; Frankfort, MI

Radios used: DX-286, TEF6686 portable, DP-666, TEF6687 portable, car radio

Antennas used: telescopic whip, Stellar Labs omni

14 E-skip events (F = from Frankfort):

5/18, 5/20 (1 log), 5/24, 6/3 (x2, F), 6/17, 6/26 (F), 7/4, 7/13 (1 log), 7/21 (x2 - 1 night log), 8/13, 8/22, 12/29 (2 UNIDs)

States heard from home: AL, AR, CO, FL, KS, LA, MO, NB, NE, OK, SK, TAM, TX

States heard from Frankfort: AL, CO, DE, FL, KS, LA, MD, NC, OK, SC, TX, VA

Farthest log: 90.1 XHRYS in Reynosa, TAM, Mexico - 1,394 miles on 5/24

Shortest log: 89.3 WALN in Carrollton, AL - 669 miles on 5/24 (one mile shorter than 90.7 KFXI in Joplin, MO on 7/4)

Farthest log from Frankfort: 89.5 KBMM in Odessa, TX - 1,247 miles on 6/26 (one mile farther than 88.3 KPAQ and 89.1 KSTX in San Antonio, TX that same day)

Shortest log from Frankfort: 105.3 WOSF in Gaffney, SC - 693 miles on 6/26

Highest MUF: 107.9 WNCT in Greenville, NC (792 miles) on 6/26

Highest MUF from home: 107.7 KRXO in Oklahoma City, OK (870 miles) on 7/4

Lowest power log: 92.3 K222CL in Amarillo, TX - 99 watts at 1,047 miles on 6/26

Lowest power log from home: 97.7 KHRK in Hennessey, OK - 3.9 kW at 864 miles on 7/4

Most logs: 6/26 (54)

Most logs from home: 7/4 (43 plus one pending)

Longest event: 7/4 (participated off and on from 11:01am to 6:51pm EDT)

Goals for winter and next summer season: New Mexico, Wyoming, Georgia, Dakotas, Mississippi, New England, another 107-area MUF log, new short skip record, 1 kW or less log from home, full participation in a multiple-hour opening, and extensive IQ recording on my Airspy R2 with GQRX.

And last from Pat Martin (OR):

I'll chime in with my totals for the year. I am amazed to have 7 E Skips this season, two were Double Hops. I think that's the most I have had in years.

First June 27th, So CA was in, then the first Double Hop, XHPMAZ-FM Mazatlan' Sin. @ 1857 miles. The second Double Hop was on August 13th, with skip into East Texas, Arkansas, and even Louisiana KXKS-93.7 Shreveport @ 1837 miles.

Two noteworthy meteor skips this year, KFSK-100.9-2 KW-Petersburg AK 5/20 and KSTK-101.7-3 KW-Wrangell AK on 9/8. Both 800+ miles. For the NW the opening into AR/LA was top notch. I would give the season an "A" compared to the last couple of years, since I got back into the FM hobby.

The Alaskans were received on the Discovery SDR. The Double Hops on the TEF 6686.

Receivers: Discovery SDR, Six TEF-6686's

Antennas: APS-13, SB-9, two FM-6's at 45 degree angle, Korner 9.2, as well as a CM Dipole shaped in an X.

Going back to the late 60s, when I first started, totals at 1204. There may be a few that have been lost from the old long books through the years.

Happy New Year to all. May 2026 be a good year!



XHPMAZ-FM

TV News

October/November 2025

D. Smith

Merged, due to the government shutdown.

St	City	Call	Ch (VC)	Notes
AK	Juneau	K06QP	6 (6)	Returned to the air 10/24 with new facilities 215w/-407m, 58-17-59/134-24-52.
AK	Sitka	KTNL-TV	7 (7)	Returned to the air Oct. 10th.
AL	Dothan	WJJN-LD	20 (49)	Returned to the air Sept. 28 th .
AR	Eureka Springs	K23PW	23 (22)	Granted move from K12XB, 15kw/111m, 36-00-27/93-42-04
AR	Fayetteville	LSR	3	STA Oct. 24 th & 25 th , Reynolds Razorback Stadium 5w/28m, 36-04-05/94-10-44.
AZ	Camp Verde	K18DD	18 (18)	Power increased to 13.8kw/770m.
AZ	Gila River Indian Co.	KGRF-LD	21 (29)	STA to operate on channel 21, paperwork issues with permit for permanent move from channel 19.
AZ	Lake Havasu	K25QW	25 (5)	OFF Oct. 14 th pending repairs; requests power increase to 15kw/-54m, 34-53-58/114-35-51.
CA	Hemet	KSCD-LD	27 (27)	Requests power reduction to 3kw/482m, 33-49-49/116-57-14.
CA	Palm Springs	KRET-CD	31 (45)	Returned to the air Oct. 6 th .
CA	Porterville	KFVD-LD	15 (15)	Requests power reduction to 15kw/52m, 36-30-20/119-32-36; granted.
CA	Redding	KMCA-LD	10 (10)	Granted power increase to 107w/-73m, 40-34-27/122-25-50.
CA	Redding	K19NH	19 (27)	Requests power increase to 1.5kw/1,045m, 40-36-10/122-39-04.
CA	Redding	KRVU-LD	21 (21)	Granted power increase to 15kw/1,045m, 40-36-10/122-39-04.
CA	Sacramento	K20JX	20 (19)	Requests power increase to 15kw/157m, 38-35-16/121-29-26; granted.
CA	Salinas	KMBT-LD	12 (12)	OFF Oct. 15 th , technical issues with studio-transmitter link.
CA	Salinas	K33QY	33 (10)	OFF Sept. 28 th , equipment failure.
CA	Salinas	KMMD-CD	28 (39)	Requests power increase to 15kw/717m, 36-45-23/121-30-09; granted.
CA	San Fernando	KPCD-LD	27 (27)	Power increased to 15kw/657m, 34-14-10/117-19-07.
CA	Santa Barbara	K10PV	19 (6)	Requests move from ch. 10, 12kw/273m, 34-27-57/119-40-42; amendment from 267m. Granted.
CA	Simi Valley	K03JG	3 (35)	Granted move from K35PJ, 2kw/-51m, 34-15-13/118-50-33.
FL	Bartow	W28FJ	28 (36)	Granted move from W15EP Lakeland, 14kw/58m, 27-56-11/82-13-04.
FL	Destin	WFBD	29 (48)	Converts to DTS by adding second site, 80kw/192m, 30-36-41/87-36-26 on the WPMI-15 tower between Mobile and Pensacola.

St	City	Call	Ch (VC)	Notes
FL	Fort Walton Beach	W31EP	31 (31)	Power increased to 15kw/70m, 30-26-20/86-37-32.
FL	Jacksonville	WJKF-CD	28 (9)	Requests move from ch. 11, 15kw/217m, 30-16-37/81-33-57. Amendment to show agreement to provide existing channel 11 equipment to W06DI Jasper, which will seek FCC permission to move to channel 11 instead of channel 28.
FL	Key West	W21EK	21 (21)	OFF Sept. 26 th pending transmitter replacement.
FL	Key West	W22FI	22 (22)	OFF Sept. 26 th pending transmitter replacement.
FL	Pensacola	WBQP-CD	33 (12)	Requests move from ch. 12, 15kw/142m, 30-26-24/87-14-01; granted.
FL	Vero Beach	W25ER	25 (16)	Requests power increase to 15kw/92m, 27-26-13/80-21-09; granted.
FL	Wildwood	WYKE-CD	25 (47)	Power increased to 15kw/98m, 28-51-17/82-10-53.
GA	Atlanta	LSR	5	STA Dec. 6th, Mercedes-Benz Stadium 5w/47m, 33-45-20/84-24-04; granted.
GA	Atlanta	WTBS-LD	6 (6)	Requests power increase to 3kw/115m, 34-02-29/84-13-37; granted. ATSC 3.0.
GA	Columbus	W29FD	29 (43)	Returned to the air Nov. 20 th .
GA	Rome	WPXA-TV	16 (14)	Withdraws request to change city to Alpharetta.
GA	Valdosta	W26FJ	26 (26)	OFF Sept. 29 th pending transmitter replacement.
GA	Waycross	W33EV	33 (19)	OFF Oct. 16 th pending construction of new facilities.
GA	Waycross	W34GA	34 (30)	Moved from W30FA Homerville. Relays WTOC-TV Savannah.
ID	Boise	K30RD	30 (11)	Granted move from K11XP, 15kw/491m, 43-44-24/116-08-12.
ID	Boise	KPSW-LD	32 (8)	Granted move from ch. 8, 15kw/491m, 43-44-24/116-08-12.
ID	Boise	KTVB	23 (7)	Moved from ch. 7, 1000kw/806m.
ID	Cambridge	K17KF	17 (7)	Returned to the air Sept. 29 th .
ID	Cascade	K29NB	29 (7)	Returned to the air Sept. 26 th .
ID	Council	K33RC	33 (7)	Requests move from K23KY, displaced by KTVB. 460w/-85m. Granted. OFF on old channel Sept. 26 th .
ID	Glenns Ferry	K16JE	16 (7)	Returned to the air Sept. 26 th .
ID	McCall	K15IO	15 (7)	Returned to the air Sept. 29 th .
ID	Nampa	KTVJ-LD	26 (3)	Requests power reduction to 15kw/779m & city change to Boise; granted.
IN	Evansville	WTVW	22 (7)	Requests relocation to 37-51-57/87-34-04 & slight power reduction to 1000kw/297m.
KY	Lexington	LSR	3	STA Oct. 23 rd through 26th, Kroger Field 5w/34m, 38-01-22/84-30-18.
LA	Houma	KFOL-LD	30 (30)	Granted power reduction to 15kw/73m, 29-36-56/90-47-34.
LA	New Orleans	KNLD-LD	24 (28)	Power reduced to 15kw/138m, 29-54-39/90-11-46. Relays KDTN-2 Denton, Texas. Returned to the air Oct. 17 th with these facilities.
ME	Bangor	W15DS	15 (15)	Granted power increase to 2.5kw/300m.

St	City	Call	Ch (VC)	Notes
ME	Bangor	W34EQ	34 (34)	Granted power increase to 2.5kw/300m.
MI	Alpena	WCML	24 (6)	Returned to the air Nov. 21st.
MN	Minneapolis	LSR	5	STA Dec. 17th-25th, US Bank Stadium 5w/5m, 44-58-26/93-15-34; granted.
MN	Minneapolis	KTCJ-LD	24 (50)	Granted move from ch. 13, 15kw/87m.
MN	St. Cloud	KMWE-LD	17 (17)	Requests power increase to 15kw/235m, 44-58-34/93-16-21.
MO	Columbia	LSR	4	STA Oct. 15th-19th, Memorial Stadium 5w/14m, 38-56-08/92-20-04.
MO	Jefferson City	K33MN	33 (33)	Requests power increase to 15kw/201m, 38-53-21/92-15-43.
MO	Kansas City	KPXE-TV	30 (50)	Operating at unspecified reduced power since Nov. 6th. “High reverse power” – symptom of antenna or transmission line failure.
MS	Biloxi	WXVO-LD	19 (7)	Requests power increase to 15kw/151m, 30-29-10/88-42-53; granted.
MS	Fulton	W24EP	24 (39)	OFF Sept. 15 th pending sale.
MS	West Point	WLOV-TV	26 (27)	Request to move here from ch. 16 withdrawn. Had planned to share WCBI-TV’s tower (which would require the channel change) but that agreement has been terminated.
MT	Butte	KXLF-TV	15 (4)	Moved from ch. 5, 1000kw/636m.
MT	Missoula	KPAX-TV	25 (8)	Moved from ch. 7, 600kw/654m.
MT	Phillipsburg	K15KW	16 (11)	Requests move from ch. 15, displaced by KXLF-TV. Also requests STA for immediate move. Withdrawn. Will request entirely new LPTV on ch. 16 when the FCC opens a filing window.
MT	Phillipsburg	K27PN	27 (13)	Requests move from K25LF, displaced by KPAX-TV. Also requests STA for immediate move. Granted.
NC	Wilmington	WUNJ-TV	21 (39)	Returned to the air Oct. 21st.
ND	Minot	K35MM	35 (42)	Granted power increase to 15kw/-10m.
NE	Broken Bow	K31OC	31 (7)	OFF Oct. 28 th , high winds damaged antenna.
NE	Crawford	K06KR	6 (13)	OFF Nov. 11 th , antenna issues.
NE	Omaha	K36QD	36 (21)	Granted power increase to 15kw/98m, 41-07-03/96-12-24.
NH	Westmoreland	WYBM-LD	15 (15)	Returned to the air Oct. 8 th .
NJ	Atlantic City	W24ET	24 (24)	Power increased to 15kw/131m. Relays WLPH-CD Philadelphia.
NJ	East Orange	WNYX-LD	4 (34)	Requests power increase to 3kw/159m, 40-47-17/74-15-18.
NM	Las Cruces	KRWG-TV	23 (22)	Requests conversion to DTS by adding second transmitter in the El Paso, Texas antenna farm. 3.15kw/586m, 31-48-55/106-29-22.
NM	Ruidoso	K31MW	31 (7)	Requests STA for reduced power of 645 watts; transmission line failure. Relays KOAT-TV Albuquerque.
NV	Las Vegas	KLVG-LD	6 (6)	OFF Oct. 15 th , but not really. Notification was filed for the wrong station. Doesn’t say which station is actually

St	City	Call	Ch (VC)	Notes
				off. (grin!)
NY	Albany	WUCB-LD	34 (32)	Granted move from ch. 32, 15kw/324m, 42-37-39/74-00-38; from Cobleskill.
NY	Gouverneur	WVNG-LD	29 (9)	Moved from ch. 9, 5kw/112m, 44-32-01/75-05-49.
NY	Plainview	WLGJ-LD	30 (17)	Granted power increase to 7.5kw/106m, 40-47-44/73-27-40.
NY	Rochester	WNIB-LD	11 (42)	Requests STA 398 watts; transmitter failure.
NY	Watertown	WTKJ-LD	19 (19)	Returned to the air Oct. 13 th with new facilities, 15kw/79m, 44-06-58/76-20-20.
OK	Ada	KTEN	17 (10)	Returned to full power Oct. 30 th .
OK	McAlester	K15LM	15 (19)	Requests power increase to 750 watts; granted.
OR	Bend	K28MH	28 (28)	Requests power increase to 10kw/193m, 44-04-38/121-20-01; granted.
OR	Medford	K20KV	20 (20)	Requests power increase to 2kw/-240m, 42-17-51/122-45-04.
OR	The Dalles	K07YV	7 (6)	OFF Nov. 8 th , antenna broke in half in storm. (!)
PA	Harrisburg	W14FE	14 (42)	Granted move from W25FE Chambersburg, 15kw/264m, 40-16-37/77-16-35.
PA	Harrisburg	WLZH-LD	34 (18)	Power increased to 15kw/209m. Relays WBPH-TV.
PA	Harrisburg	WCZS-LD	33 (35)	Granted move from ch. 30 Chambersburg, 10kw/264m, 40-16-37/77-16-35.
PA	Lebanon	WLHY-LD	7 (49)	Granted move from ch. 31, 3kw/370m, 40-15-45/76-27-50. ATSC 3.0.
PA	Washington	WWLM-CD	36 (20)	OFF Sept. 27 th pending a solution to interference with 911 communications.
PR	Mayaguez	WOST	20 (14)	Returned to the air Oct. 17th.
PR	Mayaguez	W27DZ	27 (51)	Returned to the air Oct. 17 th .
PR	Ponce	WQTO	25 (26)	OFF Oct. 14th, lightning damage.
PR	Quebradillas	WWKQ-LD	34 (19)	Returned to the air Oct. 17 th .
SC	Beaumont	W29EN	29 (29)	Converted to ATSC 3.0.
SC	Dillon	W19FC	19 (32)	Requests power increase to 13.8kw/111m, 34-42-02/79-06-31; granted.
SC	Greenville	WSQY-LD	29 (51)	Returned to the air Nov. 10 th with reduced power of 100 watts pending tower repairs.
TN	Knoxville	LSR	4	STA Oct. 16 th - 19 th , Neyland Stadium 5w/-14m, 35-57-18/83-55-38.
TN	Memphis	WKNO	29 (10)	Returned to full power Nov. 17th, transmitter replaced.
TN	Memphis	WQEK-LD	17 (36)	Returned to the air Sept. 30 th .
TN	Nashville	WNAB	30 (58)	Returned to the air Oct. 9th. ATSC 3.0; WNAB programs continued to air in ATSC 1.0 over the WTVF transmitters.
TN	Pigeon Forge	WJDP-LD	22 (11)	Granted move from ch. 11, 15kw/493m, 36-00-19/83-56-23.
TX	Austin	LSR	3	STA Oct. 16 th - 19 th , Circuit of the Americas 100w/47m, 30-07-45/97-38-14.
TX	Big Spring	K35MF	35 (35)	Granted power increase to 15kw/72m.
TX	Big Spring	K36PZ	36 (28)	Granted power increase to 15kw/72m.

St	City	Call	Ch (VC)	Notes
TX	Brownsville	KXFX-CD	20 (67)	Requests power increase to 15kw/277m, 26-07-15/97-49-19.
TX	Corpus Christi	KQSY-LD	30 (30)	Requests STA for 33% power (5kw) pending replacement of failed antenna.
TX	Marshall	K14NR	14 (19)	Returned to the air with new facilities, 15kw/133m, 32-33-34/94-24-37; moved from Tyler.
UT	Logan	KJDN-LD	6 (39)	Granted power reduction to 200w/147m, 41-36-41/111-57-09. Power reduced.
UT	Logan	K11XG	11 (15)	Granted power reduction to 200w/147m, 41-36-41/111-57-09. Power reduced.
UT	Salt Lake City	KPDR-LD	22 (19)	Power increased to 15kw/911m, 40-36-28/112-09-29.
UT	Wendover	K08QM	8 (8)	OFF Oct. 6 th pending repairs & relocation.
VA	Lynchburg	WZBJ-CD	19 (24)	Granted power increase to 15kw/583m, 37-18-55/79-38-05. ATSC 3.0.
VA	Norfolk	WMTO-LD	6 (22)	Returned to the air Oct. 23 rd .
WA	Bellingham	K30RC	30 (??)	Granted power reduction to 7.5kw.
WA	Omak	K26GV	26 (26)	Granted power increase to 2kw.
WA	Spokane	KDYS-LD	32 (32)	Granted power increase to 10kw/415m, 47-35-47/117-18-01.
WI	Rhineland	K18NQ	33 (18)	Requests move from ch. 18, 2.5kw/32m, 45-14-16/88-30-44.
WV	Morgantown	W02DA	2 (35)	Granted move from W05DL.

Guide to abbreviations:

- CC** Callsign change
- NW** New station on the air
- OFF** Station is off the air
- PC/PG/PR** Power and-or antenna height change on the air/granted/requested
- QC/QG/QR** Channel change on the air/granted/requested
- RA** Station returned to the air, or returned to full power after QRP
- ST-C/ST-G/ST-R** Special Temporary Authority in use/granted/requested for reduced facilities

> and < symbols indicate increase or decrease in coverage respectively.

Entries **in boldface** are full-power stations; all others are LPTVs or Class A.

LSR = Live Sports Radio.

These stations operate from sporting events. Video consists of rotating screens of information related to the event, and instructions for operating the receivers rented (or bought?) by attendees. Audio is analog FM, usually relaying the AM/FM station covering the game for the home team. (however, LSR is willing to provide their own content) The audio and video transmitters are separate and not necessarily co-located. (but both will be on-premises)

The FCC was closed for October and early November, along with other government agencies. Public access to the LMS database was also shut down. This had the effect of preventing any new filings. (even if the filing party acknowledged there would be no action on their application until reopening)

Continued on page 13

FCC GRANTS AND ACTIONS

From fcc.today and the FCC

January 2026

AK	K237HI	95.1	Ninilchik	COL changed from Seward-Woodrow, ex 95.1 (K236CC)
AL	WVMB-LP	107.9	Madison	initial calls
AR	KEUD	89.9	Eudora	mod, ERP/HAAT to 50kw/52m, move site to 33-06-34 91-15-37
AR	KWLR-FM1	96.9	Little Rock	mod 1.4kw, 34-46-20 92-21-28
AR	KOCJ-LP	97.1	Springdale	mod, 11w/86m, 36-10-48 94-05-10
AZ	KVAM	89.7	Flower Pot	change ERP/HAAT to 8w/753m
AZ	KWFH	90.3	Parker	mod, increase HAAT to 815m
AZ	KUDS-LP	92.1	Sedona	Change HAAT to -97m
AZ	K225CL	92.9	Wickenburg	change ERP to 155w, move site to 34-29-24 112-32-01
AZ	K222AY	92.3	Window Rock	change ERP/HAAT to 190w/131m
CA	K271DD	102.1	Bakersfield	Silent 10/5/25, no primary, STA extended
CA	KWWV	106.1	Cayucos	change COL from Santa Margarita, change COL/HAAT to 1.25kw/439m
CA	K205EJ	88.9	Chester	mod, 10w-v/904m, 40-13-57 121-01-09
CA	K207CE	89.3	Cottonwood	mod, 1w-v/398m, 40-20-41 121-56-52
CA	KOCP-FM4	104.7	Granada Hills	change ERP to 2kw, move site to 34-19-27 118-34-54
CA	K279BV	103.7	Johnstonville	Change ERP to 10w, move site to 40-26-48 120-21-29
CA	K272FI	102.3	Lancaster	Silent 8/29/25 primary KOSS (AM) is silent
CA	K296GX	107.1	Lancaster	Silent 8/29/25 primary KOSS (AM) is silent
CA	K296GX	107.1	Lancaster	change ERP to 155w, move site to 34-32-50 118-12-47
CA	K219MF	91.7	Lewiston	Ex 91.9 (K220IR)
CA	WUGR-LP	103.1	Miramar	mod, ERP/HAAT, 67w/37m
CA	KGAY-FM	103.1	Palm Desert	ex KMEE
CA	KUBU-LP	96.5	Sacramento	Silent 9/26/25 pending move and construction
CA	K201JG	88.1	Susanville	Ex 88.9 (K205EK)
CA	KMEE	92.1	Thermal	ex KGAY-FM
CA	KWCB-LP	94.7	Wasco	license cancelled
CA	KFSC-LP	93.1	Watsonville	initial calls
CA	K214FT	90.7	Westwood	Ex 91.3 (K217GN)
CO	K204GY	88.7	Brush	Ex 92.3 (K222DR) change ERP/HAAT to 250w/50m, move site 40-16-32 103-38-35
CO	K223CU	92.5	Colorado Springs	license cancelled
CO	W223DM	92.5	Colorado Springs	Ex 96.5 (K243AM)
CO	KLLM	89.5	Georgetown	mod, 10w/500m, 39-47-42 105-45-49
FL	W260CL	99.9	Cocoa	mod, 230w, 28-25-03 81-14-34

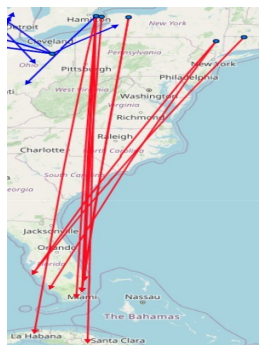
FL	W284DV	104.7	Daytona Beach	Ex 94.1 (W231CN)
FL	NEW	101.1	Doral	mod, ERP/site, 100w/22m, 25-46-01 80-29-23
FL	WFRH-LP	99.5	Miami	mod, 100w/29m, 25-34-53 80-22-27
FL	WNRH-LP	107.9	New Port Richey	mod, 89w/32m, 23-10-34 82-44-28
FL	NEW	93.3	Ocala	mod, 10w/92m, 29-10-38 82-08-41 (788224)
FL	NEW	93.3	Ocala	mod, 10w/24m, 29-10-38 82-08-41 ((788397)
FL	WOZP-LP	101.1	West Palm Beach	mod, ERP/site, 42w/46m, 46-42-49 80-05-35
FL	W223CJ	92.5	West Palm Beach	change ERP to 240w`
FL	W246DX	97.1	Winter Haven	moved site to 28-05-08 81-49-12
GA	W273CT	102.5	Canton	change ERP to 240w, move site to 34-16-06 84-29-49
GA	WLVG	105.1	Clermont	Change ERP/HAAT to 6.8kw/297m
GA	K271DF	102.1	Conner	Silent 10/5/25, no primary, STA extended
GA	W216CR	91.1	Milledgeville	Ex 90.9 (W215CE)
GA	WWEZ-LP	94.7	St. Simons Island	mod, HAAT/site, 25m, 31-08-57 81-23-20
IA	KFIM-LP	102.1	Carroll	license cancelled
IA	KCVD	88.1	Des Moines	ex KDPS
ID	KICC-LP	102.7	Post Falls	mod, 47-37-20 116-59-19
IL	W203CE	88.5	Charleston	Ex 90.5 (W213AW)
IL	WQNA-LP	95.7	Springfield	change ERP/HAAT to 15w/75m, move site to 39-48-06 89-38-59
IN	WWQI	91.3	Morristown	Silent 12/1/25 transmitter problems
IN	WJUK-LP	105.7	Plymouth	change HAAT to 14m
IN	W208CA	89.5	Warsaw	Ex 91.3 (W217BZ)
KS	K203EU	88.5	Hutchinson	mod, 170w-v, 38-02-57 98-00-45
KY	W276DO	103.1	Glasgow	mod, 250w, 36-59-02 85-53-30
KY	W294DB	106.7	Glasgow	ex 98.5 (W253BN), mod, 250w, 36-59-02 85-53-30
KY	WYJO-LP	92.5	Morehead	initial calls
KY	WBGH	107.3	Munfordville	ex WLLI
LA	K244GA	96.7	Lake Charles	Ex 96.5 (W243EQ), change ERP to 115w
MA	WMCB-LP	107.9	Greenfield	mod, 100w/-81m, 42-35-15 72-35-58
MA	WNEF	91.7	Newburyport	Chanfe ERP to 1.8kw, add HD
MB	CHNW-FM	94.3	Winnipeg	change HAAT/site to 145m , 49-58-17 96-54-46 (100kw)
MD	W224EM	92.7	Annapolis	COL changed from Wye Mills, change ERP/HAAT to 75w/86m, move site
MD	WDCJ	104.1	Waldorf	ex WPRS-FM
MD	WLNO	104.1	Waldorf	ex WDCJ, WTPS 1240 gets the WDCJ calls
ME	W243EU	96.5	Bangor	Ex 98.3 (W252CT), moved site to 44-39-30 68-39-30
ME	WJAH-LP	94.5	Union	change HAAT to -3m
MN	KONX-LP	102.9	Alexandria	ex KVSL-LP
MO	KCPZ-LP	95.3	Kansas City	mod, 100w/28m, 38-56-29 94-32-25

MO	K271CC	102.1	Mountain Grove	change ERP to 120w, move site to 37-08-07 92-15-00
MO	K217GC	91.3	Nevada	Change ERP tp 170w, move site to 37-50-58 94-22-51
MO	KLJT	88.1	St. Louis	change ERP/HAAT to 41kw/232m, move site to 38-25-05 90-26-12
MO	KLJT	88.1	St. Louis	change ERP/HAAT to 41kw/232m, move site to 38-25-05 90-26-12
MS	NEW	91.7	Jackson	mod, 47w/44m, 32-17-48 90-12-23
MS	W259BP	99.7	Meridian	Silent 10/17/25, financial problems
MS	W217CN	91.3	Waynesboro	change ERP to 10w, move site to 31-41-18 88-41-24
MT	K207FP	88.9	Cut Bank	mod, 23w/51m, 48-37-34 112-19-10
NC	WBT-FM	107.9	Charlotte	ex WLNK
NC	WLNK-FM	100.9	Indian Trail	ex WPZS
NC	W289BL	105.7	Rocky Mount	change ERP to -25w-V, drops H, move site to 35-57-44 77-49-34
NC	W217CO	91.3	Wilson	Ex 88.3 (W202CD)
NJ	WNJC-LP	107.9	Atlantic City	initial calls (778673)
NJ	WYYO-LP	107.9	Atlantic City	initial calls (778210)
NJ	W298DI	106.5	Port Norris	move site to 39-54-34 75-05-59
NM	KJSS-LP	106.5	Shiprock	initial calls
NV	NEW	91.3	Crystal	change ERP/HAAT to 100w/-147m, move site to 36-29-26 116-09-57
NV	KXXP	91.3	Crystal	initial calls
NV	K211DC	90.1	Las Vegas	change ERP to 10w, moved site to 36-00-27 115-00-27
NY	WTEV-LP	93.1	Andes	mod, 100w/-91m, 42-11-30 74-47-07
NY	WGCC-LP	104.1	Geneva	change ERP/HAAT to 100w/15m, site to 42-51-58 76-56-23
NY	W298DL	107.5	Rochester	COL changed from Greece, ex 107.9 (W300DG)
OH	W239CQ	95.7	Portsmouth	Silent 8/12, primary WNXT 99.3 is silent
OK	KBOJ	89.7	Chickasha	ex KRHO
OR	KTHT-LP	94.1	Eugene	ex KDJZ-LP
OR	KXRU-LP	105.5	Portland	mod, 100w/-3m, 45-31-37 122-34-48
PA	W296CD	107.1	Jonestown	mod, 200w, 41-04-45 76-15-33
PA	W288EP	105.5	Montoursville	Ex 105.7 (W289CV)
PR	WYAJ-LP	103.3	Moca	initial calls
RI	WRIA-LP	104.7	Newport	mod, 31w/53m, 41-30-13 71-18-43
SC	WMXG	89.3	Chester	ex WBT-FM
SC	WAGS-LP	99.7	Laurens	mod, 100w/2m, 34-31-00 82-00-07
TN	W267BI	101.3	Cleveland	mod, 250w/133m, 35-10-54 84-50-54
TN	WNOG-LP	107.5	Collegedale	initial calls
TN	W263AE	100.5	Columbia	COL changed from Lewisburg
TN	W264AD	100.7	Franklin	COL changed from Columbia
TN	WNKM-LP	107.1	Knoxville	initial calls
TN	W244CW	96.7	Murfreesboro	moved site to 35-58-55 86-34-58

TN	NEW-LP	98.3	Tallahoma	new CP, 100w/27m, 35-23-53 86-08-40
TX	K280GV	103.9	Atlanta	Silent 11/17/25 due to construction
TX	KBLC	91.5	Fredericksburg	Change ERP/HAAT to 2.7kw/125m, move site to 30-12-06 48-37-21
TX	KZAR	106.3	Gonzales	ex KMLR
TX	KKYL-LP	94.1	Kyle	Ex 94.3
TX	KMLR	97.7	McQueeney	ex KZAR
TX	KZSM-LP	104.1	San Marcos	mod, 100w/24m, 29-51-16 97-53-14
TX	K247AZ	97.3	Sand Springs	Silent 12/7/25 xltr can't get a strong signal from its primary
UT	K274DI	100.7	Cedar City	mod, 250w, 37-50-31 112-58-31
UT	K223CN	93.5	Cedar City	change ERP to 250w, move site to 37-50-31 112-58-31
UT	KNRS-FM	105.9	Centerville	change HAAT to 1249m
UT	KPVO	89.9	Fountain Green	mod, ERP/HAAT to 11w/-179m, move site to 39-37-55 111-39-20
UT	KZNT	97.1	Salt Lake City	change ERP/HAAT to 20.5kw/1249m
UT	KAAS-FM	106.7	Spanish Fork	change ERP/HAAT to 20.5kw/1249m
VA	W218CQ	91.5	Accomac	mod, 80w/53m, 37-43-03 75-40-59
VA	W248DG	97.5	Martinsville	COL changed from Mayodan, NC
VA	W270CU	101.9	Roanoke	Silent 1/19/25, no primary, STA extended
WA	KVRQ	89.3	Cathlamet	initial calls
WA	K215FY	90.9	Mount Vernon	Ex 90.3 (K212GO)
WA	K205GL	88.9	Olympia	mod, 140w/49m, 47-00-19 122-56-40
WI	WMWK	88.1	Milwaukee	mod, 4.6kw/280m, 43-05-46 87-54-15
WI	NEW	103.7	Monona	mod, HAAT to 3m, move site to 43-07-03 89-21-54
WI	WOMT-FM	98.9	Two Rivers	ex WEMP
WY	KIQZ	92.7	Rawling	Silent 12/5/25 financial distress, owner wants to sell

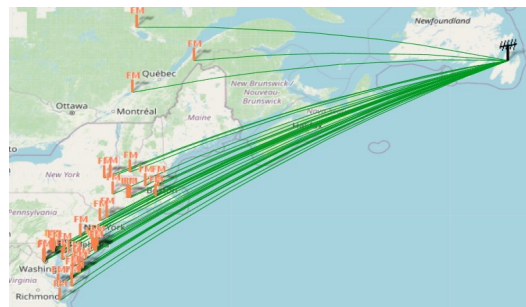
TV NEWS CONTINUED FROM PAGE 9

And, it made it impossible to see past filings, permits, and licenses. Interestingly, there were a number of public releases and speeches delivered by Commissioners during the shutdown. As has been the case with past government shutdowns (including those caused by severe weather), filing deadlines have been extended – for example, if your station was expected to file notification of being off the air due to technical failure during the shutdown, you were allowed to file it after reopening.

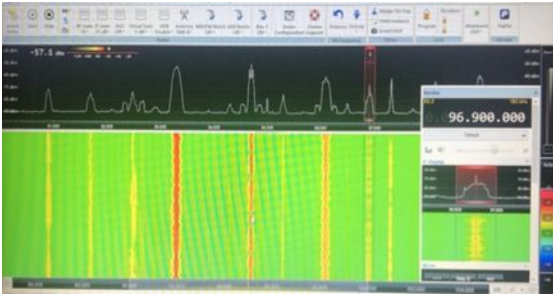


December 24th
Es 1900 EST

Line of Sight



December 28
Es



Format Flips

and branding, too

John Zondlo - fmdxweb@cox.net

January 2026

AL

Well, this is a little unusual for a LPFM. WXKI 100.7 Battleground AL is now on with a country format. It goes by "X-101 FM," which sounds more like branding for a rock station.

Niche formats are the heartbeat of LPFM radio. Fitting that description is WIAR-LP 92.7 Fort Payne AL with it's Spanish Religious programming.

CA

Another LPFM new to the air this month is KCHC-LP 102.3 in Chowchilla CA. It's running a Spanish Religious format and calling itself "La Voz de Chowchilla."

GA

What exactly is Variety programming? Back in the day, that could well have been used for stations with block programming, like rock from 6-10AM, country from 10AM-2PM, etc. WDOL-LP 104.1 Athens GA is now on with Variety programming.

IN

The Hoosier state's Taylor University has flipped WCJC 99.3 Van Buren IN and WXXC 106.9 Marion IN to their WBCL 90.3 Fort Wayne signal. The Upland IN university recently purchased the stations for \$435k.

I grew up in Indiana. Yes, the State of Basketball (like MN is the State of Hockey). And people are talking about IU football this time of year? At least they are in Bloomington, where WWZN (formerly WGCL) 1370 and translator W254DP 98.7 have switched from Conservative Talk/Sports to all Sports as "98.7 The Zone." It's said that kids from Indiana are born with a basketball. Not me. I got a puck.

Up in northeast Indiana is a new Christian AC station, "92.7 The Light." It's airing programming from Christian FM Media's "Today's Christian Music." Formerly CHR, the station is W224BY 92.7 Angola, fed by WLKI HD-2 100.3 Angola.

IA

Bott Radio Network is now airing its programming on KCVD 88.1 Des Moines IA. Bott bought the station from the Des Moines school district, which owned the station as KDPS.

KY

WKYW 1490 and W228CL 93.5, both in Kentucky's capital, Frankfort, are on the air with a new format. Classic Rock "93.5 The Goat" replaces Hot AC "Pop Radio 93.5" on the pair.

LA

Well, voodoo hasn't worked so far for iHeart in New Orleans, but they still keep trying. WFFX 103.7 Marrero LA has changed its format slightly from Hot AC to Rhythmic AC, but retained the "Voodoo 103.7" branding. iHeart is now positioning the station as "New Orleans' Feel Good Station."

OH

River Radio Ministries has flipped 4 Ohio stations to the syndicated Boost Radio Hip Hop format from Gateway Media in St. Louis. Boost replaces the River on WJEE 90.1 Boliver, WHEI 88.9 Tiffin, W204CU 88.7 Findlay W216AH Ashland.

MD

WINX 94.3 St. Michaels MD has switched from Country to Yacht Rock as “Dockside Radio.” The format features such artists as Steely Dan, Toto and Jimmy Buffett.

MA

“Cool 102” WCIB 101.9 Falmouth MA has come out of stunting with Christmas music even cooler. The station is now Oldies, positioning as “Feel Good ‘60’s and ‘70’s Hits.” The previous format was Classic Hits.

Add WEIB 106.3 Northampton MA to the list of silent stations returning to the air. Off since last April, WEIB will air the Christian Preaching “Life Changing Radio” network. Before signing off, WEIB was running a Smooth Jazz format.

MI

In the Grand Rapids market, Soft AC WTRV 100.5 Walker MI, “100.5 The River,” has flipped to Classic Hits.

MO

Guess what? Yep, EMF strikes again. Look for K-Love on now silent KJMO 97.5 Linn MO. It’s been silent since Cumulus took it and KMFC 92.1 Centralia MO off the air in March. New call letters are likely to follow.

MT

A couple stations have returned to the air in the land of the Montana State Bobcats. KHDV 107.9 Darby MT is back on with Classic Hits as “Rocket 108” and KMSO 102.5 Missoula returns with its previous Hot AC format as “102.5 Mountain FM.” Both had been silent since the end of last year when the previous owners retired and pulled the plug on the stations. Hey Bobcats, nice job beating cross state rival Montana in the FCS playoffs.

NV

We have a trade to announce in Las Vegas and it doesn’t involve the Golden Knights or the Raiders. Lotus Communications is moving Classic Country “94.7 Hank FM” from K234BS 94.7 Las Vegas to K255CT 98.9 Henderson. The current “Fox Sports 98.9” will move down the dial to 94.7. I heard the 98.9 signal a few years ago during an Es opening when my local KYIS 98.9 was off the air. It was easy to identify, as the station feeding it, KLAV 1230, was running a Wild-Golden Knights playoff game.

NY

Family Radio has sold W213AC 90.5 Hyde Park NY to Hudson Valley Public Radio. That brings a change for the translator, which will switch from rebroadcasting WFME 92.7 Garden City NY to relaying WJZZ 88.1 Montgomery NY.

NC

Ready for another EMF station La Grange NC? The owner of the K-Love network, the 800 pound gorilla of Christian radio, now owns WGTL 88.3 there and will change it from Southern Gospel.

WBT 1110 Charlotte NC has moved its News/Talk programming to co-owned 107.7 from 99.3, taking the WBT-FM call letters with it. New programming will appear on the AM signal. The WMXG call letters move to 99.3 Chester SC, and will simulcast as “Mix 100.9” with WLNK 100.9 Indian Trail NC.

ON

In Ontario, Local Radio Lab has switched 4 of its stations to AAA. LRL hopes it will copy the success of its CIND 88.1 Toronto, known as “Indie 88.” The stations, which are all rebranded as “Indie FM,” include CIMA 92.1 Alliston, CJML 101.3 Milton, CKMO 101.5 Orangeville and CJFB 102.7 Bolton. All are running the same music log, which will vary a little from what CIND is using.

PR

In Puerto Rico, WVBM-LP 92.1 Vega Baja is new to the air with a Spanish Tropical format. It goes by “Las Vegas FM.”

SC

Classic Rock WROQ 101.1 Anderson SC is no more. It’s now Country as “101.1 Big Buck Country.”

TN

Main Street Media has flipped a couple more of its TN stations to their Christian AC “The One” programming. Classic Country WSMT 1050/W288DO Sparta is now “105.5 The One” and Sports WCSV 1490/W249DA Crossville is now “97.7 The One.” Both stations are serviced by Christian FM Media’s “Today’s Christian Music” network.

Joining the cadre of LPFMs new to the air this month is WNKM-LP 107.1 Knoxville. It’s on with Religious Programming from the LifeTalk radio network.

TX

The Corpus Christi market has a new country station. Former Regional Mexican KAJE 107.3 Ingleside TX is now “Hot Country 107.3.”

K212FV Goodrich TX is switching from rebroadcasting KPFT 90.1 Houston to airing KEOS 89.1 College Station. It’s all due to Pacifica selling the translator to Brazos Educational Radio.

San Antonio is one of the markets Connoisseur Media has made changes in since acquiring Alpha Media. There they’ve brought back Alternative “103.3 The App” on K277CX Terrell Wells, which is fed by KTFM HD2 94.1 Floresville TX. “The App” was on the translator previously til April 2017. It replaces Sports on the frequency.

KHSP-LP 94.3 Huntsville TX is now on the air. It runs Christian programming as “The Spirit of Huntsville.”

The DFW Metroplex is a hotbed for LPFM stations. I count 22 of them on LPFMDatabase, tho that number depends on how far out one thinks the Metroplex extends. All that to say that KERB-LP 99.9 Grand Prairie TX is on the air with a Spanish Religious format.

UT

The Salt Lake City market is a little softer now. Classic Alternative KLO 103.1 Coalville started stunting with Christmas music 10/7 and has finally changed to Soft AC as “Coast 103.1.”

WI

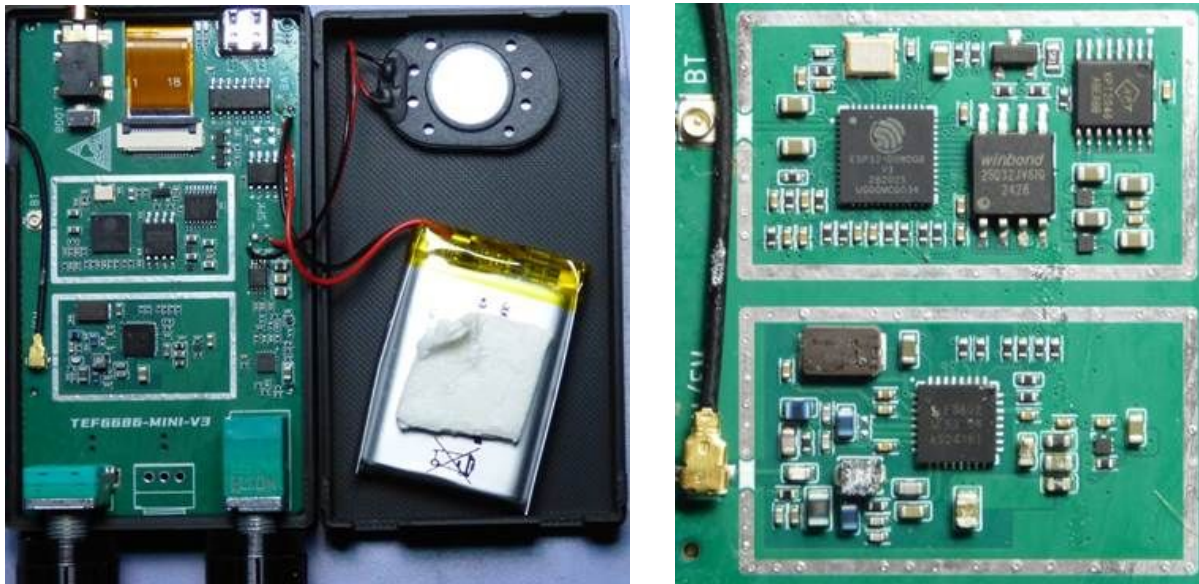
Liberal Talk isn’t working quite as well for Civic Media as they had hoped. The Wisconsin based company bought up numerous stations across the Badger state over the last few years, switching them to their Liberal Talk network. In Wisconsin Rapids, tho, they’ve changed from that to ‘60s/’70’s Oldies on WFHR 1320 and its translator, W248DE 97.5. And in Amery WI, WLAK 1260 and W298DK 107.5 are simulcasting Country WSCM 95.7 Baldwin. Expect more changes soon.

=====
Sources: Indianaradio.net, Northpine, Radiolnsight, Hisair.net, LPFM Database, IRCA’s DX Monitor, InsideRadio, Radiolnk, and radio biz connections

This will likely be my last small TEF6686 radio review. It's covering the new black button/case radio. It comes with Megatron V2.00.15-Mod16 firmware.



Notice how the display does not show the station's PI. Even the detailed RDS display does not show that. The Megatron software is used with the DP-666 radios. It shows the capability of also receiving the 118 – 137 AM Aircraft frequencies. However, this TEF6686 radio does not have the local oscillator required for that and so receives 10 MHz on what's labeled as 120 MHz. I have found that the included version of firmware has about 2 dB better sensitivity than the regular PE5PVB firmware. It is easy to "upgrade" to that. I was glad to see that somebody decided to pay a few cents more for the smaller ESP32 IC found in this unit.



First seeing that back panel speaker, I wondered why the radio had a coin battery. It doesn't sound too bad but as expected was lacking in low bass response. Its RF and RDS sensitivities were in the center of the range of TEF6686 radios.

Jumping to a TEF6687A radio, I decided to see how much the 6687 improved the stereo reception of weak signals via its FMSI Stereo Improvement feature. I thought that providing a recording of the change would be better than showing a SNR change. The difference seems more dramatic when listening via a good pair of

headphones. It goes from a tiring noise to something that I can live with. The stereo separation also improves. I guess that purchasing a 6687 radio is about the only way to be somewhat sure of getting a TEF668xA radio these days. I haven't seen or heard of a "TEF6687 radio" which did not have a TEF6687A inside. You just need to stay away from those "TEF6686, TEF6687" radios which do not allow choosing the desired model. They chose and send you a TEF6686...

Notice how the display does not show the station's PI. Even the detailed RDS display does not show that. The Megatron software is used with the DP-666 radios. It shows the capability of also receiving the 118 - 137 AM Aircraft frequencies. However, this TEF6686 radio does not have the local oscillator required for that and so receives 10 MHz on what's labeled as 120 MHz. I have found that the included version of firmware has about 2 dB better sensitivity than the regular PE5PVB firmware. It is easy to "upgrade" to that. I was glad to see that somebody decided to pay a few cents more for the smaller ESP32 IC found in this unit.

First seeing that back panel speaker, I wondered why the radio had a coin battery. It doesn't sound too bad but as expected was lacking in low bass response. Its RF and RDS sensitivities were in the center of the range of TEF6686 radios.

Jumping to a TEF6687A radio, I decided to see how much the 6687 improved the stereo reception of weak signals via its FMSI Stereo Improvement feature. I thought that providing a recording of the change would be better than showing a SNR change. The difference seems more dramatic when listening via a good pair of headphones. It goes from a tiring noise to something that I can live with. The stereo separation also improves. I guess that purchasing a 6687 radio is about the only way to be somewhat sure of getting a TEF668xA radio these days. I haven't seen or heard of a "TEF6687 radio" which did not have a TEF6687A inside. You just need to stay away from those "TEF6686, TEF6687" radios which do not allow choosing the desired model. They chose and send you a TEF6686...



Touching on the time display will change the time region to date and time. Touch it again and you see PI & ID. For the picture I set the radio to an iHeart station using an incorrect PI. In spite of that, it shows the correct call. Touch the frequency and you get the direct frequency select keypad. That makes it easier going from 88.1 to 107.9. Hit the left side of the PS display and the frequency will step down one interval. Hit its right side and it goes up. A pdf of the manual is attached. As previously said, it is the manual for the NANO radio. Since that came with a NANO

menu screen picture with Chinese characters, I changed that picture to the same menu on the black radio. If a radio comes with a Chinese menu, choose its third row. That sometimes changes the display to English. If not, it is easy to change from the top row of that submenu.

The NANO's come with a different revision of the Megatron software so its functions are close to identical with the black radio. Even if you do not own either radio, since the menu options are very similar to regular PE5PVB software, it is a handy reference..

I have not figured out yet how to update the Megatron software. It should be capable of being changed to the regular PE5PVB software--the Megatron software in the NANO radio can be. I have done that with my NANO's but not my black radio because I don't know how to go back to the Megatron software.

TV DX and Photos

Eric Bueneman N0UIH 631 Coachway Ln, Hazelwood, MO 63042-1347
Email: n0uiheric@gmail.com - Deadline the 10th of the month



This month, the column starts with an DX capture from **David Austin** of Columbia, SC. He uses a Zapperbox M1 with a Televes VHF/UHF antenna at 450 feet above sea level.



WJXT 18 (4) Jacksonville, FL
268 miles (431 km) tropo
Seen November 19, 2025
at 0756 EST

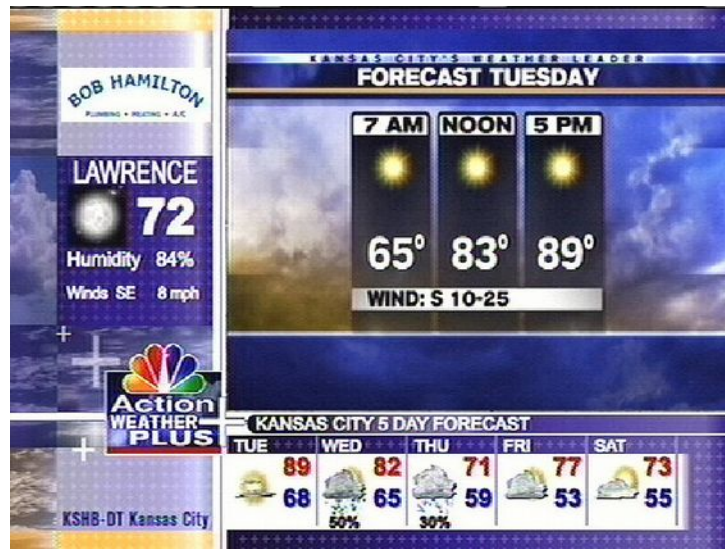
Now, let's turn back the clock to 2009, the year of the completion of the digital transition for full-power stations. My last local analog full-power stations (KTVI 2, KMOV 4, KSDK 5, KETC 9 and KPLR 11) signed off at midnight on June 12, 2009. KNLC 24, KDNL 30 and WRBU 46 signed off on February 12, 2009. Here's some of the best DX captures from 2009.



WCFN 13 (49) Springfield, IL
80 miles (128 km) tropo
Seen August 16, 2009
(Now on RF 11)



KOLR 10 (10) Springfield, MO
 195 miles (314 km) tropo
 Seen July 15, 2009
(Still on RF 10)



KSHB 42.2 (41.2) Kansas City, MO
 225 miles (362 km) tropo
 Seen August 24, 2009
(Now on RF 36)



WDRB 49 (41) Louisville, KY
250 miles (402 km) tropo
Seen November 8, 2009
(Now on RF 32)



WOI 5 (5) Ames, IA
275 miles (443 km) tropo
Seen August 24, 2009
(Still on RF 5)



WHIO 41.2 (7.2) Dayton, OH
340 miles (547 km) tropo
Seen November 8, 2009
(Now on RF 33)



WRGT 30 (45) Dayton, OH
340 miles (547 km) tropo
Seen November 8, 2009
(Now on RF 36)



WOSU 38.2 (34.2) Columbus, OH
410 miles (660 km) tropo
Seen November 9, 2009
(Now on RF 16)



WRGB 6 (6) Schenectady, NY
900 miles (1448 km) E-skip
Seen July 29, 2009
(Now on RF 35, first E-skip capture)

I hope that 2026 brings better conditions than I've had the past two years. Thanks to David for his capture of WJXT! I look forward to your logs and photos! 73 and good DX from the Florissant Valley Dial Twister.



Published using 100% linux
Congrats! You've made it to the last page!
-The END-