

E SKIP ON THE 26TH OF FEBRUARY?

MARCH 2026 #17

NEW MEMBERS. Since February is one of the most boring months of the year for most types of DX, one wouldn't expect to see new people joining DX clubs when they are probably spending their time on more important things like clearing snow off their roofs and driveways. This is the case in February 2026; plenty of snow and a scarcity of TV and FM DX signals. In other words, we got no new people last month.

Financially, the club is in good shape. Since the post office box is gone, we no longer have to pay a yearly fee, which will save us around \$100 this year, and more in the future. Our biggest expense is internet related. Our webhost charges us ~\$25 a month for wtfda.org, db.wtfda.org and WLogger.wtfda.org. This charge is not per site, but for all three combined. We paid our IT guy Jason \$800 for his work on the logger and the database last year and we spent around \$100-200 for the giveaway. We did not renew our subscriptions to Inside Radio and Stationintel, which saves us around \$300 a year (one subscription at full price and one more split with the National Radio Club). We don't miss it. That's all I can think of for money going out.

We had a few dollars come in from various members last year. We thank them for their generosity. If you want to "renew" (although it's not necessary anymore), we will take your \$10 and add it to the checking account. It will help pay the club bills and buy me beer (joking, of course. I buy my own beer).

Since we have no official club address, if you really need to mail something to me, email me and I'll give you my home address. We hardly got any incoming mail to Box 501 last year so I doubt I'll be flooded with mail.

WEATHER RADIO IN CANADA TO BE DISCONTINUED. Per Bill Hepburn on the logger: *The entire Weatheradio Canada network will be shutdown on March 16. The service has been operating since 1977. (The only remaining Canadian stations on this band will be the coast guard stations in BC. Note also that the other coast guard stations across Canada on 161.xx will remain on the air).* As expected, there has been a backlash to this decision.



APS13 DOWN. Nick Langan's antenna in NJ came down in heavy snow and winds on February 23rd. Nick wrote an article about the event in his [blog on Radio World](#). Fortunately, the antenna should be salvageable. The chimney mounts, on the other hand, will probably not be.

Many years ago I ran into the same situation when my chimney mounts met the same fate as Nick's. Also, fortunately for me, the TV antenna survived. But I learned a lesson. I never used chimney mounts again. I switched to a five foot tripod, put ten feet of mast into it, then installed guy wires, a rotor and antenna and never had a problem again.

VERIFYING WYOMING FM STATIONS. If you've been active in AM DX circles for any length of time, you are probably familiar with the name Paul Walker (some members are cringing right now). Paul is originally from Connecticut and is a genuine radio nerd. Some of the places he worked at were in Wyoming and, more recently, a stint in Alaska for a few years at a small station up there. But now he's back in Wyoming again and it is from there that he emailed me a few days ago. So, here is that email...

From Paul Walker:

Not only am I gearing up for FM DX season myself, I'm eager to answer reception reports for anyone who logs any of our Laramie, WY stations over the air during tropo or eskip.

KLMI 106.1 (50KW C2), KIMX 104.5 (15KW C2), KRQU 98.7(110 Watt Class A) and K244FN 96.7 (250 Watts)

KLMI has dynamic RDS with changing info.. song title/artist data, station slogans and info on alerts/watchers/warnings when the EAS goes off. KIMX has RDS but it only displays the station name. K244FN and KRQU don't have RDS... yet.

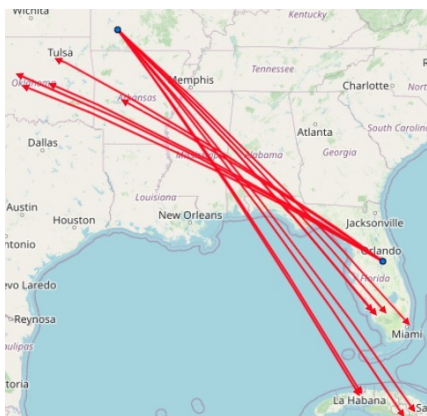
If anyone happens to log the AM, on 1210 which is only running 10 watts right now, 24/7, I'd be gobs-macked

If you log one of the Wolf Creek Broadcasting Stations, I want a picture of the RDS where applicable and a short video or audio clip recording of what you hear/saw. Links to uploaded audio is ok.

Keep it short and sweet. Tell me where you are, what radio and antenna you use along with the time/date of your reception and what you heard. Email it to paul@myhits106.com

We don't have stickers or QSL cards but I'll confirm reports as timely as I'm able. I'm the news guy for the stations, doing the 7am, noon and 5pm news, community interviews, I assist in all sorts of operational matters and host the PM Drive show for 106.1 (The later having been going on for 7 1/2 years.. one of the best variety formatted stations out there!).

Let's hope that many of us log Wyoming in a few months.



E SKIP IN FEBRUARY? Yes there was, and I have the screengrab from the WLogger to prove it. Jim Thomas in Missouri logged Cuban television (analog). He logged CMBA & CMBC from Havana and CMBQ-4/CMEC from central Cuba. And Stuart (W8SRC) was visiting Orlando at the time and logged KRQV, KQEV-FM, KWFF and KJKE from Oklahoma at the same time.

This event occurred during the midday on Thursday, February 26th while most of us were working or cleaning snow off our roofs and drive-ways or just not thinking at all of skip in February. However, this event once again proves that skip is sporadic. CU next month. -Mike

FCC GRANTS AND ACTIONS

From fcc.today and the FCC

March 2026

AL	WKRE	Argo	88.1	Silent 1/30/26 lost lease
AL	W232DL	Decatur	94.3	Silent 1/24/26 primary WWTM is silent due to storm damage
AL	W237EK	Birmingham	95.3	change primary to WXJC 850
AL	W241AI	Gorgas	96.1	change primary to WKVV-HD2 K-Love Eras
AL	W245CS	Birmingham	96.9	change primary to WYDE 1260
AL	W247AT	Huntsville	97.3	Silent 21/24/26 storm damage
AR	KIJA	Sulphur Springs	88.5	initial calls
AZ	KMUR-FM1	Bullhead City	88.3	new station, old permit cancelled
AZ	KGHR	Tuba City	91.3	Silent 1/30/26 needs new transmitter
AZ	KRPJ	Wickenburg	91.9	change primary to KHRI 90.7 Air1
AZ	K257CD	Phoenix	99.3	change primary to KMLE-HD3 (unk format)
CA	KCUD	Newman	89.5	Silent 2/13 applied to change freq due to interference issues
CA	KRXU	Willows	90.5	initial calls
CA	K219ME	San Luis Obispo	91.7	Ex 90.7 (K214ET)
CA	KPAP	Joshua Tree	91.9	initial calls
CA	KXST	Terminous	91.9	initial calls
CA	NEW	Terminous	91.9	ERP 1.4kw/17m from 1.5kw/20m, move site to 38-02-38 121-25-04
CA	K225CG	Santa Maria	92.9	change primary to KRTO 97.1 (Fuego 97.1)
CA	K242DI	Stockton	96.3	Ex 99.7 (K259AU)
CA	KTPI-FM	Mojave	97.7	Silent 12/31/25 lost program source
CA	KYOE	Port Arena	102.3	Silent 12/23/25 storm damage and possible sale
CA	KGMX	Lancaster	106.3	license cancelled
CA	K294CS	Fallbrook	106.7	Silent 2/3/26 transmitter issues
CO	K205CK	Grand Junction	88.9	Silent 1/9 technical reasons
CO	K220AH	Gunnison	91.9	change primary to KLOV 89.3
CT	W271DT	Bridgeport	102.1	COL change from Shelton
FL	WLPY-LP	Homestead	90.1	move site to 25-34-53 80-22-26
FL	W214BD	Gifford, Vero Beach	90.7	change primary to KLOV 89.3
FL	WQPN-LP	Miami	94.3	license cancelled
FL	WDAE-FM	Clearwater	95.7	ex WRUB
FL	W248CK	Twentynine Bend	97.5	change primary to WPBR 1340
FL	WANS-LP	Lauderdale Lakes	100.3	initial calls
FL	WIKD-LP	Daytona Beach	102.5	Silent 2/23, 30 day STA for maintenance
FL	W280DU	Boca Raton	103.9	change primary to WPBR 1340

FL	WPNX-LP	Pensacola	107.7	ERP 45w/45m from 41w/47m, move site to 30-24-47 87-13-08
FL	W300DL	Melbourne	107.9	license cancelled
FL	W300EF	Naples	107.9	Silent 2/1 loss of primary (WAVV-HD2)
GA	WQLR	Americus	88.7	ex WKMW (Fid 90111)
GA	W216CS	Dublin	91.1	Ex 90.9 (215BM)
ID	KKSV	Ketchum	89.3	ex KZSV (Fid 763565)
IL	K268AY	Seward Township	101.5	change primary to WCKL-HD4 Radio Nueva Vida
IL	WRNI-LP	Bloomington	105.3	initial calls
KS	K219MB	Hugoton	91.7	Silent 2/2/26 financial distress
KS	KDKQ-LP	Derby	105.9	Change HAAT from 30m to 24m
MA	W253CD	East Longmeadow	98.5	ERP 190w-V from 250w H&V, move site 5 mi east to 42-07-12 72-24-37
MD	WJOS-LP	Little Orleans	103.1	170w/71m from 100w/27m, move site to 39-41-38 78-22-54
MS	WLRK	Greenville	91.5	Silent 2/12 tower issues
MS	WLIN-FM	Durant	103.7	ERP 8.4kw/100m from 5.6kw/103m
NC	WBSY-LP	Bryson City	98.5	move site to 35-27-02 83-27-45
NC	WAOG-LP	Aberdeen	100.7	Silent 2/16 financial distress
NC	WQZL	Belhaven	101.1	Silent 2/21 financial distress
ND	KXRP	Bismarck	91.3	ERP 5.5k/199m from 4.2k/199m, move site to 46-35-24 100-47-41
NE	KBVW	Winnebago	88.9	ERP 360w/113m from 4kw/113m at same site
NJ	WCBS-FM6	East Brunswick	101.1	1400w
NJ	WCBS-FM5	Ashbury Park	101.1	600w
NJ	WCBS-FM4	New Brunswick	101.1	100w
NM	KNHO	Roswell	88.1	Silent 2/2/26 antenna issues
NM	KGGA	Gallup	88.1	190w from 1.2kw, no other changes
NM	K218AK	Artesia	91.5	license cancelled
NM	K284DA	Clovis	104.7	Silent 2/3/26 lost program source
NV	K277DL	Washoe Valley	103.3	Silent 2/5/26 technical issues
NY	WQLV	Chateaugay	94.7	ex WQLR (Fid 69847)
NY	W259DJ	Volney	99.7	change primary to WOLF-HD2, the Dinosaur, classic hits
NY	W282BI	Coxsackie	104.3	license cancelled
NY	W274BZ	Amsterdam	104.7	Silent 1/1/26 WVTL 1570 too costly to operate, seeks to sell both
NY	W233AH	Monticello	106.5	change primary to WALL-1349, classic hits
NY	WZGR	Wethersfield Twnshp	107.7	ex WLKK
OH	WAOM	Mowrystown	90.5	15kw/54m from 1.3kw/54m at current site
OH	W257CU	Columbus	99.3	change primary to WKVR-HD2 K-Love 2000s
OH	W287CL	Lancaster	105.3	change primary to WKVR-HD2 K-Love 2000s
OK	KFPP	Woodward	88.9	initial calls

OK	K226BR	Enid	93.1	move site to 36-25-14 97-52-30
OK	KFPP-LP	Woodward	93.3	license cancelled
OR	KVZN	Bandon	88.1	ERP 120w/-9m from 470w/424m, move site to 43-07-09 124-24-16
OR	KBDM	Boardman	88.3	Silent 1/23 no power to transmitter
OR	KHYK	Altamont	89.9	ERP 100w/112m from 3.5kw/211m, move site to 42-16-11 121-44-51
OR	WRFR	Vale	90.7	ERP 3.4kw/119m from 140w/106m
OR	K218EX	Klamath Falls	91.5	change primary to KHRI-HD2, Radio Nueva Vida ?
PA	WCOB	State College	88.3	1.85kw/192m from 1.8k/209m move site to 40-54-20 77-50-30
PA	WCDD	Jersey Shore	88.5	ex WXPI
PA	W209CV	Reading	89.7	Ex 89.3 (W207AE)
PA	W238ED	Titusville	95.5	change primary to WCGV 1320, Family Life Network
PA	WXPI-LP	Williamsport	97.1	initial calls
PA	WCDF	Millersburg	98.9	ex WQLV
PA	WCDM	Elizabethtown	100.5	ex WQBG silent 2/2/26 pending move
PA	WJJA-LP	Stroudsburg	104.7	ERP 67w/27m from 75w/35m, move site to 41-00-18 75-17-10
PA	W295DN	Danville	106.9	Ex 105.5 (W288CF), 10w at current site
PA	W261AX	Pittsburgh	1--.1	change primary to KDKA-HD2
PR	WIGC-LP	Caguas	91.7	initial calls
SC	W246CV	Spartansburg	97.1	change primary to WFBC-FN, CHR
SC	WYBB	Folly Beach	98.1	33kw/171m from 23kw/199m, move site to 32-49-05 79-50-07
SC	WRHG-LP	Charleston	102.9	ex WBEL-LP
SC	WCOO	Kiawah Island	105.5	move site to 32-49-05 79-50-07, HAATto 171m from 178m
TN	WKTH	Tullahoma	88.5	Silent 1/12/26 tower and antenna system damaged
TN	W262CN	Hendersonville	100.3	change primary to WLWU-HD3 K-Love Christian Oldies (?)
TX	KKJX	Maydelle	91.7	Silent 2/1/26 antenna problems
TX	K219BX	El Paso	91.9	license cancelled
TX	K221GC	Austin	92.1	change primary to KVLR-HD3 Boost Radio
TX	K223CZ	Gonzales	92.5	Silent 6/30/25 primary KCTI is silent
TX	K233DB	San Antonio	94.5	change primary to KTFM-HD3, unk format
TX	K234AM	Groves	94.7	change primary to KLTW-HD2
TX	KHYI-FM1	Howe	95.3	Silent 2/11 synchro issues
TX	K247AZ	Sand Springs	97.3	Silent 2/2/26 antenna failure at primary KLVW
UT	K209CJ	Tooele	89.7	change primary to KKLW-HD2 Air1
VA	W269DH	Leesburg	101.7	Silent 1/9/26 loss of program source
VT	W256CW	Rutland	99.1	change primary to WRVT-HD3 unk format
WA	K201DX	Walla Walla	88.1	change primary to KHRI-HD2, Radio Nueva Vida ?
WA	KDNC	Manson	89.1	Silent 12/17/25 power supply issue, 6 month STA
WA	K235DF	Blaine	93.1	COL change from Montesano

Continues on page 14

FCC Moves Ahead With NCE Translators

Commission sets out its proposed eligibility requirements and caps

By Randy J. Stine Feb 18, 2026

The FCC now has set in motion plans to open a window for noncom broadcasters to apply for new FM translators, the first such window ever.

We [told you about this pending action](#) earlier. After a unanimous vote Wednesday, the FCC officially has embarked on the plan, though it's taking comment on certain details. It said this initiative is intended to support noncommercial broadcasting and preserve the airwaves for future local services.

Chairman Brendan Carr said in a prepared statement: "This will particularly benefit educational broadcasters, to allow them to extend the programming their stations provide to the public and reach remote, rural and underserved communities."

The chairman called it a "unique" window and an opportunity to promote the continued growth of noncom service in the FM band.

As of December 2025 there were 4,755 noncom FMs in the United States, [according to FCC data](#), compared to about 2,140 NCE stations in the year 2000. NCE stations consist primarily of public broadcasters, college radio stations and religious broadcasters.

Dates for the window have not been set but it is expected in late 2026.

The window will be an opportunity for noncommercial FM, low-power FM and noncommercial AM stations to obtain translators and extend the services they provide, the FCC said.

Full details have yet to be released, but Media Bureau officials said the FCC tentatively has decided to tighten down the requirements, though it is asking for comments.

The window would be limited to applications for new NCE FM translator station construction permits in the reserved band, which is FM Channels 201–220, better known as 88.1 to 91.9 MHz. The plan would exclude applications for major modifications to existing translators in that band.

The commission also plans to limit applications nationally to 10 per applicant, to avoid "speculative filings and protect spectrum for local radio services." Any entity filing more than the maximum would trigger a review and the Media Bureau would retain the applications that were filed first, dismissing others that exceed the limit.

The commission noted that it has imposed eligibility restrictions and limits in prior windows to comply with the Local Community Radio Act of 2010, which requires it to ensure that licensing is available for all secondary services.

Continues on page 14

TV News

February 2026

D. Smith

St	City	Call	Ch (VC)	Notes
AL	Birmingham	W11DT	11 (30)	Granted move from W30ES Columbus, Miss.; 3kw/316m, 33-28-51/87-24-03.
AL	Birmingham	W25FZ	25 (30)	Granted move from W30EL Montgomery; 15kw/243m, 33-23-51/86-39-41.
AL	Mobile	W06DP	6 (42)	Requests move from W27EH Hattiesburg, Miss.; 3kw/112m, 30-53-57/88-13-42.
AL	Montgomery	W14FF	14 (4)	Granted move from W03BW Midland City; 15kw/581m, 31-58-29/86-09-44.
AL	Montgomery	W35EI	35 (14)	Granted move from W14FC Opelika; 15kw/79m, 32-24-13/86-11-47.
AL	Tuscaloosa	WEEL-LD	5 (22)	Grabted move from ch. 22, 3kw/371m, 33-28-51/87-24-03.
AL	Tuscaloosa	WUDX-LD	35 (28)	Granted move from ch. 28, 15kw/129m, 33-11-52/87-29-05.
AR	Fayetteville	LSR	3	STA application dismissed. Would have operated from Reynolds Razorback Stadium on Oct. 24 th & 25 th of last year.
AR	Little Rock	K27PP	27 (30)	Granted move from K19MC Bonnerdale; 12.5kw/265m, 34-47-33/92-28-43.
AR	Morrilton	KRAH-CD	35 (35)	Granted power increase to 15kw/295m, 34-47-33/92-28-43.
AZ	Casas Adobes	K17PF	17 (4)	Moved from K04QP, 15kw/602m.
AZ	Globe	KDVD-LD	25 (50)	Moved from Phoenix; power increased to 15kw/475m.
AZ	Phoenix	LSR	3	Requests STA 5w/-9m, 33-26-56/112-04-14; Phoenix Convention Center West Hall, 3/5/26-3/7/26. Granted.
CA	Anderson	K34RE	34 (20)	Granted move from K22MD, 7.5kw/1065m.
CA	Clovis	K13AAZ	13 (45)	Granted move from K02QP Chowchilla; 3kw/564m, 37-04-26/119-25-55.
CA	Fresno	K08QW	8 (21)	Granted move from K21PI Monterey; 3kw/96m, 36-39-40/120-10-03.
CA	Fresno	K19NB	19 (19)	Granted move from Gustine; 12kw/58m, 36-42-15/119-44-34.
CA	Indian Wells	LSR	6	Requests STA 30w/-105m, 33-43-23/116-18-15; BNP Paribas Open, Indian Wells Tennis Garden, 3/1/26-3/15/26. Granted.
CA	Los Angeles	KSGA-LD	3 (3)	Power reduced to 2.45kw/189m, 34-08-43/117-47-49.
CA	Petaluma	KFMY-LD	6 (15)	Requests power increase to 2.5kw/665m. Granted.
CA	Redding	KMCA-LD	10 (10)	Granted power reduction from 107 watts to 101.
CA	Redding	K16IW	16 (16)	Requests power increase to 15kw/430m. Granted.
CA	Sacramento	KYUB-LD	7 (15)	Requests move from ch. 15 Yuba City.

St	City	Call	Ch (VC)	Notes
				Amended to 1.6kw/158m. Granted.
CA	Sacramento	K11XS	11 (11)	Granted move from Modesto, 3kw/227m, 38-14-24/121-30-07.
CA	Sacramento	KKRR-LD	29 (12)	Granted move from ch. 20 Ceres, 15kw/565m, 38-15-54/121-29-28.
CA	Sacramento	KSTV-LD	32 (32)	Returned to the air Jan. 13 th .
CA	Temecula	K03JB	3 (51)	OFF Jan. 24 th , lost programming source.
CO	Antonito	K29ME	29 (11)	OFF Sept. 28 th , 2025 pending replacement of damaged equipment. Initially filed on wrong form.
CO	Boulder	KPDD-LD	26 (35)	Granted move from ch. 4 Denver; 10kw/-39m, 40-00-43/105-11-18.
CO	Colorado Springs	KCSX-LD	17 (12)	Calls changed from K17OE.
CO	Denver	KBRO-LD	3 (34)	Granted relocation to 39-40-31/104-52-24; 3kw/77m.
CO	Denver	KVAI-CD	4 (36)	Granted move from ch. 36 Avon; 3kw/226m, 39-43-46/105-14-10.
CO	Fort Collins	KHSB-LD	25 (33)	Granted move from ch. 33 Steamboat Springs; 15kw/-266m, 40-20-17/105-35-24.
CO	Las Animas	KPDL-LD	35 (43)	Calls changed from K35MZ.
DC	Washington	W13DW	13 (35)	Granted move from Annapolis, Md.; 3kw/199m, 38-52-28/77-13-24.
DE	Dover	WLZH-LD	14 (18)	Requests move from Harrisburg, Penna.; 15kw/112m, 39-12-05/75-33-53.
FL	Bartow	W36EC	36 (34)	OFF Aug. 15 th , 2025. No idea why this wasn't filed earlier.
FL	Cape Coral	WFTX-TV	34 (36)	Sold to Sun Broadcasting, Inc. (WINK-TV & WXCW)
FL	Destin	WDES-CD	22 (58)	Granted power increase to 15kw/383m, 30-36-45/87-38-42.
FL	Ingle	W16EN	16 (26)	Granted move from W26FJ Valdosta, Ga.; 15kw/82m, 30-31-04/82-07-08.
FL	Jacksonville	W11DV	11 (6)	Granted move from W06DI Jasper; 3kw/222m, 30-16-37/81-33-57.
FL	Jacksonville	W12DT	12 (57)	Granted move from W23FJ Jennings; 3kw/222m, 30-16-37/81-33-57.
FL	Lake City	W11DU	11 (44)	Granted move from W23FI Valdosta, Ga.; 300w/12m, 30-15-15/82-40-55.
FL	Odessa	WTBZ-LD	8 (14)	Granted move from ch. 14 Gainesville; 3kw/92m, 28-23-17/82-32-00.
FL	Orlando	W04EC	4 (32)	Requests move from W19EM Melbourne, 3kw/75m, 28-31-41/81-14-53; amendment from ch. 12.
FL	Pensacola	WCTU-LD	11 (46)	Returned to the air Jan. 25 th . Granted move from ch. 22; 3kw/322m, 30-41-17/87-47-54.
FL	Tallahassee	W07DZ	7 (20)	Requests move from W14EU, 3kw/129m, 30-29-33/84-17-13. Granted.
FL	Tallahassee	W21ES	21 (17)	Requests move from W17EM Panama City, 15kw/200m, 30-34-26/84-12-13; amendment to change city to Tallahassee.

St	City	Call	Ch (VC)	Notes
FL	Tallahassee	W34GB	34 (44)	Granted move from W17ES Adel, Ga.; 15kw/250m, 30-34-26/84-12-13.
FL	Williston	W24FE	24 (28)	Granted move from W28FD Lake City; 15kw/180m, 29-15-35/82-34-05.
GA	Atlanta	WUVM-LD	2 (4)	Operating at 19% power due to antenna/feedline issue. Returned to full power Jan. 29 th .
GA	Augusta	W34FO	34 (34)	OFF Feb. 4 th pending relocation.
GA	Darien	W30FF	30 (19)	Granted move from W33EV Waycross, 15kw/82m, 31-19-25/81-35-16.
GA	Macon	W32FN	32 (32)	OFF Feb. 4 th pending relocation.
GA	Savannah	W34GC	34 (29)	Granted move from W29EN Beaufort, S.C.; 15kw/126m, 32-03-55/81-21-05.
GU	Hagatna	KGTF	12 (12)	OFF Jan. 21st, transmitter issues. (GU is Guam) Returned to the air Feb. 20th at 50% power pending power supply repairs.
ID	Boise	K18OD	18 (4)	Granted move from K26OW Garden Valley; 15kw/854m, 43-45-21/116-05-57.
ID	Cambridge	K19NL	19 (4)	Granted move from K11PB; 1.5kw/-31m, 44-32-01/116-39-35.
ID	Challis	K18OE	18 (10)	Granted move from K12LS; 1.5kw/779m, 44-33-09/114-05-25.
ID	Council	K26QA	26 (4)	Granted move from K11WR; 460w/-82m, 44-39-48/116-26-29.
ID	Crouch	K16OC	16 (4)	Granted move from K08QB; 740w/-88m, 44-07-44/116-00-10.
ID	Driggs	K25RC	25 (10)	Granted move from K13QE, 500w/493m.
ID	Kamiah	K28RA	28 (12)	Granted move from K13AP; 1kw/126m, 46-11-49/116-02-37.
ID	McCall	K31QH	31 (4)	Granted move from K11WT; 500w/604m, 45-00-29/116-08-04.
ID	Swan Valley	K26QD	26 (10)	Granted move from K13QH; 100w/-297m, 43-27-23/111-20-50.
IL	Chicago	W11DW	11 (7)	Granted move from W07DD Champaign; 3kw/98m, 41-14-54/88-13-23. Site is near Braidwood, 52 miles southwest of downtown Chicago...
IN	Elizabeth	W17EU	17 (6)	Granted move from W06DG Evansville; 15kw/72m, 38-02-38/86-10-54.
IN	South Bend	W09DN	9 (22)	Granted move from W22FH; 3kw/185m, 41-36-20/86-12-46.
IN	South Bend	WCUH-LD	21 (16)	Granted move from ch. 23 Fort Wayne; 15kw/90m, 41-37-20/86-15-31.
KS	Kansas City	K09AAI	9 (3)	Granted move from K15NC Manhattan; 3kw/163m, 39-01-20/94-30-50.
KS	Topeka	K15NE	15 (29)	Granted move from K29OC Chapman, 3.8kw/149m, 38-58-34/95-48-34.
KY	Glasgow	WDNZ-LD	11 (11)	Requests move to 37-02-06/86-10-41; 2kw/129m.
KY	Lexington	LSR	3	STA application dismissed. Would have operated from

St	City	Call	Ch (VC)	Notes
LA	Columbia	K12XQ	34 (8)	Kroger Field on Oct. 23 rd - 26 th of last year. Requests move from ch. 21 Monroe. Granted; 15kw/552m, 32-11-51/92-04-14.
LA	Lake Charles	KGCH-LD	36 (32)	Granted move from ch. 32; 15kw/336m, 30-23-47/93-00-04.
LA	Monroe	KLTM-TV	29 (13)	Requests move from ch. 13, 331kw/545m; amendment from 1000kw. Granted.
LA	New Orleans	W30EZ	30 (30)	Granted move from Slidell, 15kw/245m, 29-57-15/89-56-59.
LA	Shreveport	K24MO	24 (46)	Granted move from Tyler, Tex.; 15kw/221m, 32-23-20/94-01-11.
LA	Shreveport	KLGV-LD	25 (36)	Granted move from Longview, Tex.; 15kw/110m, 32-42-19/93-38-24.
LA	Shreveport	KTBS-TV	28 (3)	Requests STA for reduced power & antenna height of 750kw/457m pending repairs of ice storm damage. Granted.
MA	Boston	WCRN-LD	30 (13)	Relocated to 42-14-49/71-02-54; antenna height increased from 200m to 228m.
MI	Grand Rapids	WBWM-LD	16 (28)	Granted move from Mt. Pleasant; 15kw/196m, 42-44-14/85-37-16.
MI	Grand Rapids	W20FA	20 (48)	Granted move from W27ED; 10kw/153m, 42-33-52/85-27-31.
MI	Lansing	W27ET	27 (27)	Granted move from Saginaw, 15kw/117m, 42-53-30/84-34-31.
MI	Petoskey	W28DY	28 (28)	Granted move from Sault Ste. Marie, 12kw/289m, 45-30-05/85-01-49; amendment to add city change.
MN	Minneapolis	K10RZ	10 (15)	Granted move from K15IS Willmar; 3kw/85m, 45-00-10/93-39-07.
MN	Rochester	K16OB	16 (22)	Granted move from K22LJ Mason City, Ia.; 8kw/161m, 44-01-59/92-36-11.
MN	Rochester	K17PK	17 (35)	Granted move from K35PA Mason City, Ia.; 15kw/95m, 43-58-16/92-24-55.
MN	St. Cloud	K27PO	27 (29)	Granted move from K29NY Alexandria; 15kw/121m, 45-30-02/94-14-33.
MO	Columbia	LSR	4	Request for STA, Memorial Stadium, Oct. 15th-19th, 2025 dismissed, reason not given.
MO	Kansas City	KTPE-LD	26 (31)	Granted power increase to 15kw/107m, 39-01-20/94-30-50.
MO	Kansas City	KPXE-TV	30 (50)	Same site as K09AAI Kansas City, Kansas. Returned to full power Jan. 21st after transmission line repaired.
MO	St. Louis	WXSL-LD	21 (14)	Granted power increase to 15kw/276m, 38-34-28/90-19-32.
MS	Fulton	W24EP	24 (39)	OFF Sept. 15 th , 2025. Station sold, new owners are arranging an engineering evaluation.
MT	Butte	K24MP	24 (9)	Granted power increase to 15kw/571m.
MT	Great Falls	KRTV	7 (3)	Requests STA to operate both their old facility on ch. 7 and the new one on ch. 22 simultaneously.

St	City	Call	Ch (VC)	Notes
				K11WK Stanford can't reliably receive ch. 22; this translator feeds others across northern Montana. Granted.
MT	Great Falls	KRTV	22 (3)	Requests STA to operate new facility at 522kw/181m. Paperwork filed with wrong antenna height. Granted.
MT	Libby	K18KD	18 (9)	Granted tower height increase from 96m to 111m.
MT	Libby	K22KS	22 (8)	Granted tower height increase from 96m to 111m.
MT	Libby	K24KJ	24 (4)	Granted tower height increase from 96m to 111m.
MT	Libby	K26LM	26 (3)	Granted tower height increase from 96m to 111m.
MT	Libby	K30MJ	30 (7)	Granted tower height increase from 96m to 111m.
MT	Quartz Creek	K16KZ	16 (23)	Granted tower height increase from 96m to 111m.
NC	Bakersville	WUNW-DTS3	27 (27)	OFF Jan. 28th, damaged by winter storm. Affects only this transmitter – the other WUNW DTS transmitters are still operating. Returned to the air Feb. 13th.
NC	Buxton	WHOB-LD	11 (50)	Requests move from ch. 35, 3kw/277m, 36-08-09/75-49-27.
NC	Charlotte	W36FG	5 (24)	Requests move from W36FG Durham; granted. 3kw/161m, 35-36-19/80-26-30.
NC	Charlotte	W15EB	15 (21)	Operating at reduced power of 7kw/149m since Jan. 27 th due to damaged amplifier. Returned to full power Feb. 18 th .
NC	Charlotte	W33EY	33 (33)	Granted move from W06DK Pageland, S.C.; 15kw/74m, 35-11-56/80-52-36.
NC	Greensboro	WIRP-LD	24 (27)	Granted move from ch. 10 Raleigh, 15kw/46m, 36-09-10/79-45-09.
NC	Greenville	W35DW	35 (45)	OFF Jan. 11 th , Internet connectivity issues. Returned to the air Feb. 19 th .
NC	Lilesville	W17EE	17 (36)	OFF Feb. 24 th , equipment failure.
NC	Raleigh	W06DN	6 (18)	Granted move from W22FC Greenville; 3kw/516m, 35-40-35/78-32-07.
NC	Waynesville	W25GA	25 (13)	Granted move from W12AR, 15kw/348m, 35-34-05/82-54-25.
ND	Fargo	K20PE	20 (47)	Granted move from K22NL Wadena, Minn.; 11kw/354m, 46-40-29/96-13-41.
ND	Fargo	K26QC	26 (17)	Granted move from K18NT Grand Forks; 15kw/196m, 47-00-28/97-12-03.
ND	Fargo	K31MP	31 (31)	Granted move from Grand Forks; 15kw/46m, 46-52-28/96-47-04.
NE	Lincoln	KIUA-LD	16 (15)	Granted move from ch. 15, 15kw/55m, 40-49-23/96-43-13.
NJ	Beach Haven	WZPA-LD	5 (33)	Requests move from ch. 32 Philadelphia, 3kw/132m, 39-33-20/74-44-46.
NJ	Edison	WDYJ-LD	23 (60)	Granted move from ch. 33 NYC, 8kw/83m, 40-28-41/74-17-57.
NM	Albuquerque	KAOE-LD	14 (22)	Granted move from Santa Fe, 15kw/258m, 35-12-58/106-27-07.

St	City	Call	Ch (VC)	Notes
NM	Antelope Wells	K25QU	25 (22)	Permit for new station canceled.
NV	Las Vegas	K10RX	10 (8)	Granted move from Arrowhead; 3kw/-63m, 36-04-00/114-57-24.
NV	Las Vegas	KNBX-CD	14 (31)	OFF Feb. 13 th , testing.
NV	Las Vegas	KEGS-LD	24 (30)	Requests power reduction to 15kw/106m, 36-06-58/115-11-12. Granted.
NV	Winchester	K34RJ	34 (43)	Requests move from K36NE Las Vegas; 15kw/106m, 36-06-58/115-11-12.
NY	Monticello	WZPK-LD	22 (29)	Granted move from ch. 9, 5kw/147m, 41-20-18/73-53-39.
NY	Olean	WVTT-CD	11 (34)	Requests STA for 40% power due to amplifier failures. Granted.
OH	Cleveland	W13DS	13 (48)	Requests change to 1.45kw/121m. (coverage won't change significantly)
OH	Toledo	WNWO-TV	23 (24)	Requests STA for 50% power pending transmission line repairs. Returned to full power Feb. 11th.
OR	Cottage Grove	K34LR	18 (38)	Request to move from ch. 34 dismissed.
OR	Eugene	KORY-CD	15 (15)	Antenna height increased from 268m to 277m.
OR	Portland	KPME-CD	15 (41)	Calls changed from KOXO-CD effective 3/2/26.
OR	Portland	KOXI-CD	20 (20)	Power increased from 13.5kw to 15kw.
PA	Charleroi	WMVH-CD	32 (26)	Power increased from 4.65kw/110m to 15kw/125m; site changed to 40-23-49/79-57-32.
PA	Erie	W24EU	24 (28)	OFF Jan. 27 th , equipment failure.
PA	Harrisburg	W23FP	23 (47)	Calls changed from W36EY for move from ch. 36 Berwick.
PA	Millersburg	W05DO	5 (36)	Requests move from W25FG Philadelphia, 3kw/281m, 40-15-45/76-27-50.
PA	Millersburg	W25FE	14 (42)	Requests move from ch. 25 Chambersburg, 15kw/250m, 40-18-56/76-57-08.
PA	Millersburg	WCZS-LD	33 (35)	Requests move from ch. 30 Chambersburg, 15kw/241m, 40-18-56/76-58-08.
PA	Pittsburgh	W03CD	3 (32)	Requests move from W32FY Clarksburg, W. Va.; 1.3kw/92m, 40-17-36/80-03-05; amendment from 1.4kw.
PA	Uniontown	WWKH-CD	22 (35)	Power increased from 4.92kw to 15kw.
SC	Charleston	WQHI-LD	33 (33)	Granted move from Myrtle Beach, 15kw/76m, 33-11-24/79-56-29.
SC	Myrtle Beach	W11DR	11 (11)	Granted move from Wilmington, N.C.; 3kw/300m, 33-39-38/79-03-34.
SC	Orangeburg	WPAM-LD	16 (16)	Granted move from Lexington; 15kw/64m, 33-28-39/80-49-10.
TN	Dickson	WDHC-LD	18 (11)	Requests STA to operate on new channel at reduced power of 300w/101m and alternate site 36-06-31/87-22-14. Granted.
TN	Knoxville	LSR	4	STA application dismissed. Would have operated from Neyland Stadium Oct. 16 th through the 19 th of last year.
TN	Lebanon	WJFB	25 (44)	Operating from generator at 25% power since late-January ice storm. Utility power down.

St	City	Call	Ch (VC)	Notes
				Returned to full power Feb. 4th.
TN	Memphis	W08ES	8 (21)	Requests move from W21EC, 3kw/60m, 34-55-02/89-47-39; city from Tupelo, Miss. Amendment to change new site.
TN	Memphis	KPMF-LD	24 (26)	Requests STA for 25% power Feb. 24 th ; transmitter not making rated output.
TX	Austin	LSR	3	STA application dismissed. Would have operated from the Circuit of the Americas Oct. 16 th through the 19 th of last year.
TX	Beaumont	K30RB	30 (10)	Requests move from K10RT; 300w/7m, 29-58-36/93-56-03. Granted. Returned to the air on old ch. 10 Feb. 25 th .
TX	Bryan	K20KJ	20 (28)	Granted STA for 50% power due to amplifier/combiner issue.
TX	Bryan	KAGS-LD	23 (23)	Granted STA for 50% power due to equipment failure. Returned to full power Feb. 4 th .
TX	Dallas	KNAV-LD	22 (22)	Antenna height increased from 238m to 318m.
TX	Denton	KHFD-LD	13 (16)	Requests site move to 33-28-48/97-03-24; 3kw/183m. Amendment to change city from Dallas.
TX	Odessa	KOSA-TV	7 (7)	Requests move from ch. 31, 48kw/226m; to “undo” permission to move to ch. 31.
TX	Paris	KXIP-LD	24 (12)	License canceled Feb. 27 th .
TX	San Antonio	KCOR-CD	27 (34)	OFF Feb. 2 nd , transmitter failure. Returned to the air Feb. 27 th .
TX	San Antonio	KVDF-CD	31 (31)	OFF Jan. 24 th , high reflected power. (antenna or transmission line failure)
TX	Valley Mills	K12XA	15 (49)	Requests move to ch. 15, 15kw/78m, 28-16-45/81-01-24; amendment from ch. 17 Abilene.
UT	Salt Lake City	KJDN-LD	2 (39)	Granted move from ch. 6 Logan; 3kw/886m, 40-36-28/112-09-29.
UT	Salt Lake City	K05MX	5 (26)	Granted move from Nephi; 3kw/1171m, 40-39-34/112-12-08.
UT	Salt Lake City	K09AAJ	9 (3)	Requests move from K31QF, 3kw/886m.
VA	Fairfax	WDCN-LD	6 (6)	OFF Feb. 11 th , “technical problems”.
WA	Bellingham	K30RC	30 (30)	Moved from K12XV, 7.5kw/686m.
WI	Baraboo	WPDR-LD	8 (31)	Moved from ch. 35 Tomah, 15kw/315m, 43-25-40/89-39-14. See below.
WI	Baraboo	W16EM	16 (36)	Granted move from W36FN, 15kw/293m, 43-25-50/89-39-13. Adjacent to WOLX-FM 94.9 tower.
WI	Milwaukee	W21EF	21 (8)	Granted move from Fond du Lac, 15kw/74m, 43-05-18/87-54-13. (across the street from WTMJ-TV ch. 4)
WI	Milwaukee	W25GB	25 (30)	Granted move from W30BU Green Bay; 15kw/156m, 43-24-24/88-18-32. Site is near Allenton, 33 miles northwest of downtown.
WI	Sayner	W21DS	21 (7)	Operating at unspecified reduced power since Feb. 13 th due to transmitter issue.

St	City	Call	Ch (VC)	Notes
WI	Stevens Point	W31EV	31 (33)	Returned to full power Jan. 30 th .

Guide to abbreviations:

- CC** Callsign change.
- LSR** Live Sports Radio (VERY low-power temporary stations at sporting events.)
- NW** New station on the air.
- OFF** Station is off the air.
- PC/PG/PR** Power and-or antenna height change on the air/granted/requested.
- QC/QG/QR** Channel change on the air/granted/requested.
- QRP** Station is operating at reduced power.
- RA** Station returned to the air, or returned to full power after QRP.
- ST-C/ST-G/ST-R** Special Temporary Authority in use/granted/requested for reduced facilities.

Entries **in boldface** are full-power stations; all others are LPTVs or Class A.

TECHNICAL NOTES:

WPDR-LD Baraboo:

I have not yet seen this one clear the FCC, but a viewer near Baraboo reports seeing this station on its new physical channel 31. (and still relaying WKBT La Crosse – probably via the Internet)

FCC FACILITIES CONTINUES FROM PAGE 5

WI	K208FO	Prarie du Chien	89.5	Silent 12/24/25 transmitter failure
WI	WLUM	Milwaukee	102.1	ex WLUM-FM
WV	WHFI	Lindside	106.7	Silent 1/26/26 transmitter failure

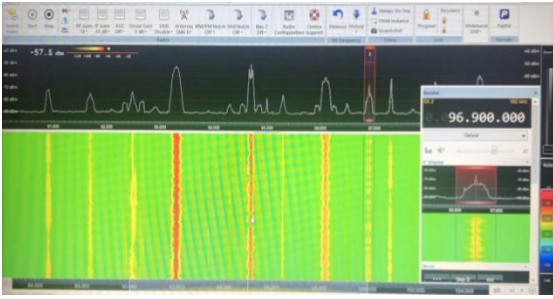
NEW NCE TRANSLATOR CONTINUES FROM PAGE 6

It noted that a 2003 FM translator window generated more than 13,000 applications and left thousands pending for years. The mass filings forced it to impose remedial processing rules later to protect LPFM spectrum.

Filing limits in the noncommercial full-power windows of 2007 and 2021, the FCC said, helped reduce “daisy chains” of mutually exclusive filings and allowed applications to be processed efficiently.

A [draft of the public notice](#) had indicated that tribal LPFM entities would be limited to four applications nationwide, while other LPFM applicants would be limited to two. Presumably those caps are in the final notice, which had not been released at this writing.

A period of public comment will be opened once the public notice (MB Docket 26-20) is published in the Federal Register.



Format Flips

and branding, too

John Zondlo – fmdxweb@cox.net

March 2026

AZ

A few moves in the Valley of the Sun. KAJM 104.3 Camp Verde AZ has moved its Rhythmic AC format to translator K257CD 99.3 Phoenix, which is fed by KMLE HD3 107.9 Chandler. The Mega branding remains as “Mega 99.3” for the translator. KAJM, meanwhile, is now Soft AC as “Sunny 104.3.” “Relaxing Favorites for a better workday” is KAJM’s new positioning statement.

FL

WWLY 100.1 Panama City FL has revamped its Classic Country format, going from “Wild Wille 100” to “Rebel Radio.” It positions itself now as “Country Music with Grit.” Hmmmm. I’m a bit skeptical. The station is launching with a library of 3,000 songs. A bit much, I think. It’ll get pared down, I’m sure, in short order. They do plan to play one live recording an hour, which is novel.

IL

The 104.3 spot on the dial in Chicago is now WSCR-FM “104.3 The Score.” It’s a simulcast of WSCR 670. As the name implies, it’s a Sports station. I feel old now saying I used to listen to 104.3 in Chicago when it was WJJD-FM. What a great Country station that was!

MD

W228ER Annapolis MD, fed by WYRE 810 in MD’s capital city, is getting coverage in the nation’s capital on WTOP HD4. The HD channel is feeding W228DI Silver Springs MD, giving the programming coverage on 93.5 translators from DC to Annapolis. WYRE and translator go by “93.5 WRNR,” tho the WRNR call is not the call for the station. A mess, but it works for them.

MN

The Winona MN area has a new fan. KWMN 99.3 Rushford has changed branding from “The Winona Sports Network” to “The Fan Winona.” It reflects their decision to carry a lot of daytime programming from KFXN 100.3 Minneapolis, which is known as “100.3 KFAN.”

WRLN 105.3 Red Lake MN, owned by the Red Lake Nation, has switched from Block Programming to Variety Hits. While the various blocks are gone, morning jock Rez Dawg is still around from 7-10AM, and Pow-wow music will still air 10AM-1PM daily.

Tribal stations are a treat to listen to, if you ever get one via Es or trops.

NV

Variety Hits is back on the menu at KYMT 93.1 Las Vegas. It’s been Classic Rock since 2018, after spending a couple years as Variety Hits as “93.1 The Mountain.” The new format is branded as “Neon 93.1.” How fitting for Vegas is that?

NY

WGR 550 Buffalo is making a big splash on FM in Buffalo and Rochester with its sports programming. WZGR 107.7 Wethersfield Township NY and W284AP 104.7 Buffalo have added the WGR signal, as has W239BF 95.7 Rochester and AM parent WROC 950. The FM signals in Buffalo had been Country, while the Rochester twosome was already Sports.

NC

A couple dormant North Carolina stations are back on the air with Conservative Talk. WCXL 104.1 Kill Devil Hills is getting its programming from Bloomberg, while WZPR 92.3 Nags Head airs Salem Media Network fare.

OH



WXZQ Piketon OH has flipped from Conservative Talk to Classic Hits as “Q-100.1.” The Conservative Talk format has moved to W240DZ 95.9 and AM parent WXIC 660, both in Waverly OH. Owner Total Media Group has switched Adult Contemporary WVNU 97.5 Greenfield OH to Rock. With it comes a branding change from “Lite 97.5” to “Pure Rock 97.5.”

OR

A legendary brand is back in Portland OR. Rock formatted KUFO is now on K275CH Gresham, fed by KINK HD2 101.9 Portland. 15 years ago the calls and format were booted off 101.1 in the Rose City. The KUFO call letters have been parked on 970 in Portland for quite a time now.

PA

On the air and DX-ready is WTUU-LP 94.5 Hazelton PA. It’s known as “TU 94.5,” and features Spanish programming.

Another Spanish language station now on the air in PA is WJJA-LP 104.7 Stroudsburg with a Tropical format going by “Mixx 104.7.”

TX

Deep in the heart of Texas, K221GC is now airing Boost Radio fed by KVLR HD2 92.5 Sun Valley TX. Very interesting, since Boost Radio comes from Gateway Creative in St. Louis, the same company that outbid EMF for 88.1 there. EMF owns KVLR, which is Air 1.



In the Hub City, K222CQ 92.3 Lubbock has flipped to Conservative Talk as “92.3 The Hub.” It’s fed by KTTU HD4 97.3 Lubbock. It was formerly Hip Hop at “92.3 The Vibe. Texas Tech women’s basketball PBP guy Ryan Hyatt often refers to the Lubbock area as the “Hub-o-plex,” a little dig at DFW being called the “Metroplex.”

Tejano is out, Christian AC is in at KQTC 99.5 Christoval TX. “Spirit of Truth Radio” is a commercial alternative to Christian non-comms in the San Angelo market. And yes, those non-comms include K-Love and Air 1.

VA

How about that? A new Yacht Rock station in a market where you’ll actually find yachts (unlike Miami OK last month). AC WTWV 92.9 Suffolk VA positions itself as “Yacht Rock for Coastal Virginia” with artists like The Doobie Brothers and Steely Dan. The station is known as “92.9 The Wave.”

WI

WEMP 98.9 Two Rivers WI is now simulcasting WOMT 1240 Manitowoc WI, with the FM call changing to WOMT-FM. Gone is the Easy Listening music on WEMP, exchanged for the Full Service AC programming of WOMT.

=====
Sources: Indianaradio.net, Northpine, Radiolnsight, Hisair.net, LPFM Database, IRCA’s DX Monitor, InsideRadio, Radiolnk, and radio biz connection

TV DX and Photos

Eric Bueneman N0UIH 631 Coachway Ln, Hazelwood, MO 63042-1347
Email: n0uiheric@gmail.com - Deadline the 10th of the month



This month, I will be profiling the best video captures from my seventh year of DTV DXing, 2011, the second full year after the transition for full power stations.



KHQA 7.2 (7.2) Hannibal, MO
85 miles (137 km) tropo
Seen July 3, 2011
(Now on RF 22)



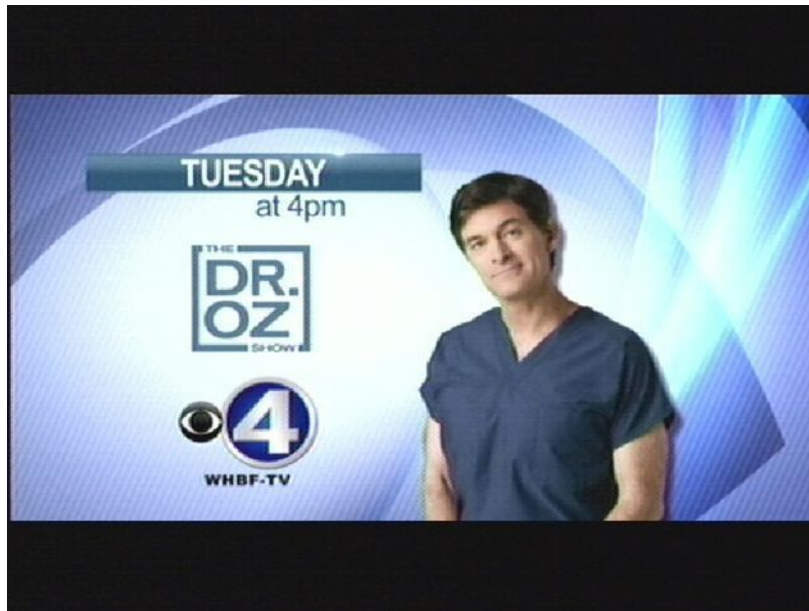
KMIZ 17.3 (17.3) Columbia, MO
105 miles (169 km) tropo
Seen July 3, 2011
(Then relaying KZOU-LP analog 32; main station still on RF 17)



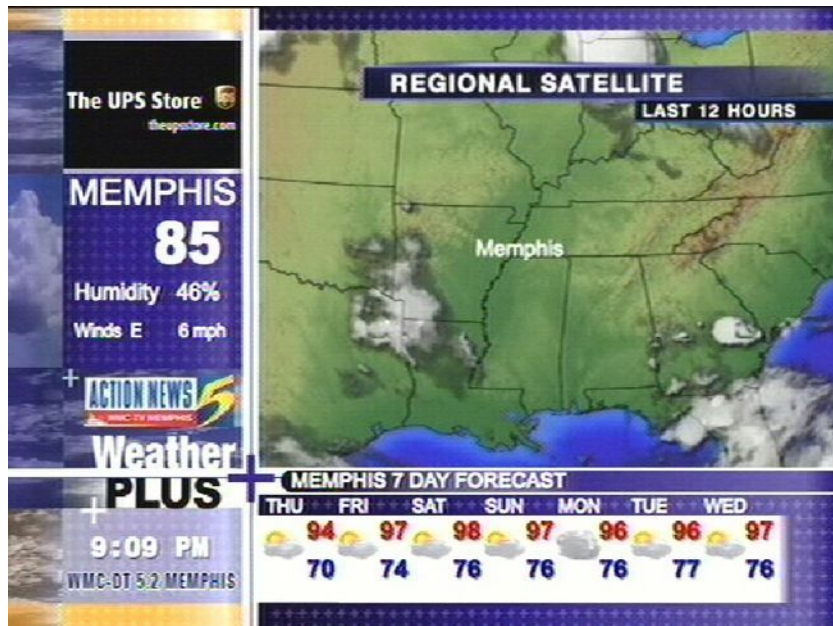
WEEK 25.1 (25.1) Peoria, IL
140 miles (225 km) tropo
Seen May 23, 2011
(Still on RF 25)



WEHT 7 (25) Evansville, IN
165 miles (266 km) tropo
Seen July 27, 2011
(Now on RF 12)



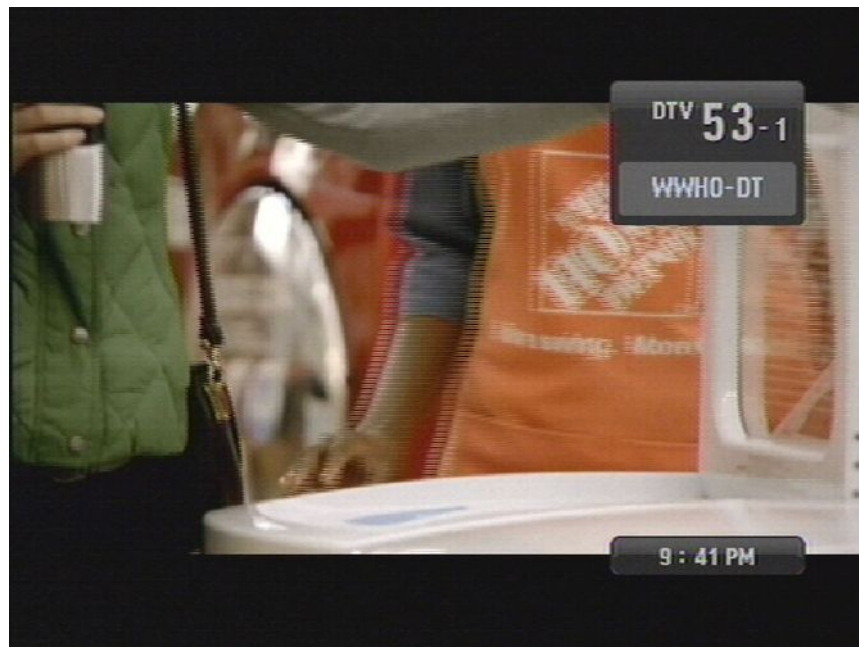
WHBF 4 (4) Rock Island, IL
 185 miles (298 km) tropo
 Seen August 1, 2011
(Still on RF 4; my closest low-band DTV)



WMC 5 (5) Memphis, TN
 250 miles (402 km) tropo
 Seen June 30, 2011
(Now on RF 30)

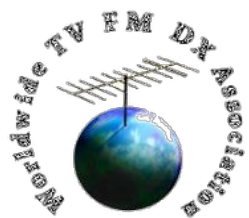


WKAR 40.2 (23.2) East Lansing, MI
 395 miles (635 km) tropo
 Seen November 24, 2011
(Now on RF 33)



WWHO 46 (53) Chillicothe, OH
 400 miles (644 km) tropo
 Seen November 24, 2011
(Now on RF 23)

In the next edition, I'll take a look back at 2012, the third full year after the digital transition for full power stations. I look forward to your logs and photos! 73 and good DX from the Florissant Valley Dial Twister.



Line of Sight is a publication of the Worldwide TV-FM DX Association. Our websites are <https://wtfda.org>, our FM database at <https://db.wtfda.org> and our Wlogger at <https://wlogger.wtfda.org>.

Line of Sight publisher is Mike Bugaj (mike@wtfda.org). The WTFDA Board of Directors consists of Mike Bugaj, Jim Thomas (jim@wtfda.org), Keith McGinnis (longwave@comcast.net) and Nick Langan (nick.langan@gmail.com).

Line of Sight editors are Eric Bueneman, John Zondlo and Doug Smith. Doug's email is dougw9wi@gmail.com, John's is fmdxweb@cox.net and Eric's email is n0uiheric@gmail.com.

Dues: An initial "joining fee" of \$10USD is collected at time of signup. After that, no further dues/renewal fees are needed. You will continue to be a WTFDA member unless 1. you tell us to cancel your membership or 2. we are unable to contact you by email for three consecutive months. At that point you will be removed from our membership list and will no longer have access to our logger. Our method of contacting you is by sending *Line of Sight* to you every month. If more than three issues to you bounce, you will be deleted as a WTFDA member and reinstated, if necessary, by sending a \$10USD reinstatement fee via Paypal or check payable to WTFDA. Email us for for information.

WTFDA is a hobby club, completely run by unpaid volunteers. We strive to present information and data as accurately as possible, however accuracy is not guaranteed.



100% Published with
Linux using LibreOffice
and Master PDF Editor