

A BIT OF ES, A LITTLE GULF TROPO AND AN OBSCENE AMOUNT OF NEW LPTV APPLICATIONS

APRIL 2026 #18

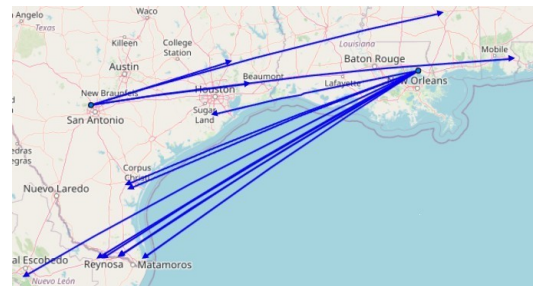
NEW MEMBERS. During March we welcome Anthony Mann (Australia) and Carl Dabelstein (MN) to the WTFDA. Tony is a long-time veteran Dxer and Carl is a long-time AM radio Dxer who wants to give FM a go. Welcome to the both of you.

PROPAGATION. The Southern states saw some very strong, long haul tropo on March 20 and 21. Jim in San Antonio reported these:

2026-03-21 10:06 Tr 95.9 WBBN TAYLORSVILLE, MS Pine Belt Country - B95 ID,
2026-03-21 08:56 Tr 100.7 KKHT-FM LUMBERTON, TX
2026-03-21 08:28 Tr 97.1 KLVH CLEVELAND, TX
2026-03-21 08:16 Tr 101.5 WTKX-FM PENSACOLA, FL TK101 ID

Loyd Van Horn in LA heard these:

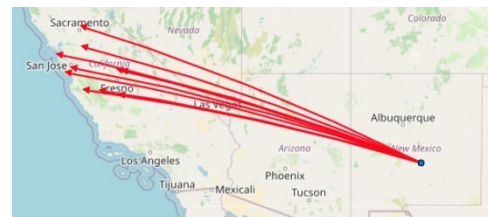
2026-03-20 07:16 Tr 93.9 KMXR CORPUS CHRISTI, TX ID, RDS,
2026-03-20 07:08 Tr 106.3 KZAR GONZALES, TX RDS
2026-03-20 07:04 Tr 106.5 KOVE-FM GALVESTON, TX SS REL mx,
2026-03-20 07:00 Tr 102.7 KJXK SAN ANTONIO, TX RDS decode,
2026-03-21 05:21 Tr 94.5 KFRQ HARLINGEN, TX
2026-03-21 05:14 Tr 102.5 XHRR-FM REYNOSA, TAMPS
2026-03-21 05:07 Tr 93.9 KMXR CORPUS CHRISTI, TX
2026-03-21 05:06 Tr 96.5 KLTG CORPUS CHRISTI, TX New!
2026-03-21 05:01 Tr 92.7 KESO SOUTH PADRE ISLAND, TX
2026-03-21 04:58 Tr 92.1 KROI SEABROOK, TX
2026-03-21 04:56 Tr 90.1 XHRYS-FM REYNOSA, TAMPS
2026-03-21 04:53 Tr 104.1 KBFM EDINBURG, TX
2026-03-21 04:25 Tr 92.5 XHSRO-FM MONTERREY, NL



*All loggings and screengrabs taken from the WTFDA WLogger

And then there was that unexpected 4 minute Es event from New Mexico to California observed by Hal in Corrizozo on the 29th. Blink and you missed it.

2026-03-29 19:01 Es 94.5 KBAY GILROY, CA RDS
2026-03-29 19:01 Es 94.5 KGEN-FM HANFORD, CA RDS
2026-03-29 19:00 Es 88.1 KZSC SANTA CRUZ, CA RDS
2026-03-29 19:00 Es 90.1 KYCC STOCKTON, CA TOH ID
2026-03-29 19:00 Es 92.1 KRDA CLOVIS, CA RDS
2026-03-29 19:00 Es 93.7 KSXS FRESNO, CA RDS PI FFFF
2026-03-29 19:00 Es 94.7 KKDO FAIR OAKS, CA Weak ID
2026-03-29 19:00 Es 93.9 KEXA KING CITY, CA
2026-03-29 19:00 Es 95.3 KBHH KERMAN, CA
2026-03-29 19:00 Es 95.7 KGMZ-FM SAN FRANCISCO, CA



AND NOW THE GOOD STUFF. As you may or may not know, the FCC recently opened a window for new LPTV stations and received applications for over 2,000 new LPTV channels. We already know that the UHF band is filled with LPTVs and full power stations, and many cities already have no available channels.. That leaves lowband and highband VHF. So, if you are interested in all this change like most of us are, please read Doug Smith's TV News and go to the rabbitears.info page that Doug provides. Especially interesting to me are the maps of channels 2-6 where Mark plots every application received on each channel. For TV DXers, it ain't pretty. We might be at the point where the FCC has finally succeeded in choking the VHF band as much as they have ruined UHF and FM. But we will see, won't we? Yep, we will. CU next month.-Mike

Traveling the High Seas with Rabbitears' Mark Colombo

Mark and Elizabeth recently struck out on a High Seas adventure, on February 20th. Here is a brief recap of their trip, in Mark's words.

We drove from DC through Greensboro and Charlotte to Columbia, then through Augusta, Savannah, and Jacksonville to Gainesville, and then through Ocala, Hernando (WTSP-4 is on the air!), and Orlando to Port Canaveral. We boarded the ship Feb. 20th. We were in the Dominican Republic on the 22nd, then Puerto Rico on the 23rd, Coco Cay on the 26th and disembarked on the 27th.

We boarded Star Trek: The Cruise IX which went first to Puerto Plata, DR, and then to San Juan, PR, and finally to Coco Cay. Returned to Port Canaveral after a week and then took the Amtrak AutoTrain home. I gathered TV data for RabbitEars along the way, plus FM RDS information at the hotels and on the ship. The cruise was a blast; I won't forget seeing William Shatner perform Rocket Man live! We're signed up to go again next year, out of New Orleans this time and to different ports, and I hope to get more updates then!



View of Parque La Puntilla Puerto Plata

Photo, Mark Colombo.

The WTFDA FM DB gets an RDS update!

236 kHz		89.10 MHz	
ERRORS A: B: C: D:		-44.8 dBm	
PS PANORAMA		PI: FFFF	
PTY 0/None		ID: Unknown	
RT+ No RT+ available		PTYN N/A	
EON No EON available		Dynamic PTY	
AF No AF available		Artificial head	
RT DONDE HABLA LA GENTE		Compressed	
		Has stereo	
		ECC N/A	
		LIC N/A	
		PIN N/A	

The Dominican Republic has 301 licensed FM stations. Mark's collection of RDS data provided updates for 64 stations in the WTFDA FM Database.

Adventures in DXing

- N2KZ Karl Zuk

An American in Spain

It must have been an omen. After a 7 hour flight, our Boeing 767-400 taxied into Adolfo Suárez Madrid-Barajas Airport at last! A remarkable welcome was seen from my porthole window. Peeking out from a hazy cloudy sky was a brilliant rainbow.



Rainbow at Madrid Airport. [N2KZ pics].

Quite a beginning to a 10 day excursion visiting four different locales across central and southern Spain! My family and I were ready for adventure.

After a 75 minute puddle-jump flight from Madrid to Málaga on Southern Spain's Costa del Sol, my wife and I drove farther south along the coast to the resort town of Marbella (pronounced Mar-Bay-Ah.) We arrived and discovered paradise.



Location of Marbella and Málaga on the coast of southern Spain. [Base map: OpenStreetMap]

Warm and wonderful, it was 62°F / 17°C in the balmy February sun without a cloud in the sky. Look carefully from our balcony view over the Alboran Sea and you could see the mountaintops across the water in Morocco. Life is good!

Technical Orientation

When in Spain, you need to convert to European power standards: 220-240 volts at 50 Hz alternating current. Plugging in North American 120 volt devices



Mountains of Morocco seen in the distance from Marbella.

without voltage conversion can produce explosive results! Many 'wall warts' and especially Apple computer and phone power supplies are designed to handle 220 volts making expatriate and tourist lives much easier.

Read carefully what voltages your device can handle BEFORE you plug it in! The plug standard in Spain is Type F (Schuko)— a hefty round connector with two hardy round pins and a ground tab. I much prefer using a dedicated adapter to cumbersome (and possibly dangerous and flakey) 'universal' adapters ready for many plug standards. Americans going to Spain should look for a "NEMA 5-15R to Europe Schuko CEE7/7 Power Plug Adapter SF Cable YL-2215". Plug the Schuko end into the wall outlet. Plug your device into the familiar "American" socket on the other side of the adapter. Now you have a solid connection to power. Life will be simpler when you do!



Schuko or Type F plug is used for 230 volt AC power connections in much of Europe.

My next move was to change the medium wave standard on my radio from 10 kHz to 9 kHz spacing appropriate for European listening. You are trading in your American 530-540-550 kHz and so on progression for the European 531-540-549 kHz... scheme.

What am I hearing on 1476 kHz (or any other medium wave frequency?) Refer to the indispensable MWLIST frequency guide providing everything you might want to know about the originating broadcasters when listening to medium wave in this area of the world. (https://www.mwlist.org/mwlist_quick_and_easy.php) You are now ready to DX in Southern Spain!

What am I hearing on 1476 kHz (or any other medium wave frequency?) Refer to the indispensable MWLIST frequency guide providing everything you might want to know about the originating broadcasters when listening to medium wave in this area of the world. (https://www.mwlist.org/mwlist_quick_and_easy.php) You are now ready to DX in Southern Spain!

Adventure Begins!

The ride from Málaga to Marbella reminded me of the Pacific Coast Highway in California. Headed south, we rode along the base of small mountains and an occasional city on highways that were remarkably clean

and smooth. This was a theme during our entire visit to Spain. All the roads were meticulously maintained without the slightest bump to navigate. We never saw a pothole! The cities were equally clean and meticulously landscaped. Most refreshing: everyone was so congenial. Strangers and friends greet each other with cordial ‘good mornings’ and ‘good days’ and there is always an air of peace and tranquility. It was so welcoming and refreshing.

Sitting on a balcony in Marbella, I did not have to look far to find exotic listening. 531 kHz hosts the powerful and multi-lingual Radio Algérie Internationale broadcasting with 600 kW from F’Kirina, Algeria — a remote location between Algiers and Tunisia. One click up on 540 kHz, you’ll find 300 kW SNRT serving Marrakech, Morocco (parallel on 595 kHz.) 549 kHz is another 600 kW superpower — an Algerian relay of the lively and varied programming of Jil-FM. All three stations can be heard with very modest AM radios across the sea in Marbella, Spain and far beyond — day and night. In America, you can sample these services live and in full quality on-line via the Internet.



Domestic radio begins with the omnipresent RNE — Radio Nacional de España. It is the official national state-owned public service radio broadcaster offering six individual radio programming networks heard throughout Spain on FM and DAB/DAB+. Radio Nacional is their main channel not unlike America’s NPR with a variety of news, talk, music and entertainment. Radio Clásica is devoted to classical music. Radio 3 serves younger demographics: Más música, más cultura, más creatividad. Radio 4 serves the Catalan population. Radio 5 is RNE’s 24 hour news service and Radio Exterior España is the descendant of RNE’s international shortwave service now distributed online, via DAB/DAB+ and worldwide satellite. RNE has something for everyone — and everyone listens!



On the 30th of December 2025, RNE ceased operations of all of their 34 medium wave transmitters across Spain after 88 years of service. Suddenly, dozens and dozens of previously occupied medium wave frequencies became open for DXing. RNE stations once could be heard all over Europe and beyond at night. Now, without their signals, the medium wave band is comparatively clear for distant listening more than ever before.

Overall, very few broadcasters in Spain still operate on medium wave. I understood immediately why the FM band was so very full of stations — and — why there were so many news and talk radio stations on FM. All the legacy medium wave stations had been moved to new FM frequencies to continue operations.

A Digital Future

In turn, many stations have now taken a further step into the future by finding their slot on local high-VHF DAB/DAB+ ensembles. (FM stations in Spain do not use hybrid analog with digital piggy-back transmissions like our HD Radio in North America. All DAB in Spain is discrete digital-only in multiple station ‘ensembles’, broadcast within the high-VHF band of 174 – 240 MHz.)

Spain’s DAB/DAB+ distributes many stations multiplexed onto a single carrier simultaneously. The audio clarity is pristine — like you are directly connected to their studio. No fading! No static! Since a multitude of stations are gathered together on the ensemble, you don’t have to hunt up and down the dial to find what you want to listen to. Using your car’s touch screen or manual tuner you can quickly review and select all the stations you are capable of receiving quickly and efficiently. Many areas are served by several ensembles but all the available stations combine to become a single continuous list from which to choose. It’s like having an all-inclusive router with you wherever you go. Quick and easy station selection!

DAB+, MHz	Radio	Transmitter
190.640 (7B)	Activa FM	Marbella
	Radio Adventista	
	Bikini FM	
	Chilli FM	
	D-Blues	
	D-Classica	
	D-Jazz	
	JammFM Radio	
	Jelou Radio	
	MasterMix	
	Memory FM	
	MuyBuena	
	Premium Radio	
	Radio Radio Network	
	RTL 102.5	
	Spectrum FM	

One of three DAB+ ensembles that serve Marbella. This is frequency block 7B (190.640 MHz).

Spain is quickly proceeding to move all radio stations onto DAB/DAB+ digital broadcasting via the high-VHF band (174 to 240 MHz.) In Madrid, there are six jam-packed DAB ensembles carrying 65 audio services. In Málaga, three ensembles present 40 total stations. It is hoped that eventually all radio broadcasts will migrate to operating exclusively on DAB/DAB+ only.

Today’s old-style analog FM listening in Spain can be challenging. Broadcast allocations in Spain use both odd and even frequencies (i.e. 100.2 or 101.6 MHz) — and — make use of every conceivable channel reaching

down to 87.5 MHz up to 108.0 MHz. I understand that most FM broadcast stations in Spain use circular polarization although there is no mandated standard.

One very useful feature on my AM/FM portable was used continually: The FM **DX/ATT**enuation switch. I encountered many places where overload and intermodulation were rampant. One frequency listing I found detailing Madrid analog FMs showed 119 FM stations on the air in this metropolis. The band is packed!

¿Hablas inglés?

Marbella, on Spain's Costa del Sol, is strategically placed directly opposite the coastline of Morocco — and — northeast of the British Overseas Territory of Gibraltar. This area seems to be an oasis for British and German tourists. Many signs around town are tri-lingual with local restaurants and clubs catering to their tastes.

Tuning up and down the FM band in Marbella, you can find broadcasts in English if you are patient and persistent. I found two stations that relay BBC programs: **Talk Radio Europe** on 91.9 MHz relays the BBC World Service evenings and overnights. TRE originates in Estapona, Spain, (just down the coast from Marbella,) specifically for English speaking listeners. Mornings on TRE you will hear "Daybreak with Dave" (Hodgson) with news and talk all about Spain. The timbre of English you hear on-the-air on the radio in Spain is almost always British-accented, reflecting their primary transient tourist audience. American-sounding English is hard to find.

Another curious logging was a station I could just barely pull through on 99.5 FM. Evenings it would relay BBC Radio 5 Live from Britain with no local IDs at all. A fellow member of the British DX Club, Jorge Garzón – EA1FOV, helped me out with this one. It is a local outlet of the **British Forces Broadcasting Service** on the air primarily for British armed forces personnel based in Gibraltar. Fascinating!



TRE's Dave Hodgson. [Credit: TRE]



A fun discovery was a lively and fresh music station in English: Chilli.fm with studios in the Puerto Banús neighborhood of Marbella locally on 91.5 FM with a total of four transmitters covering the entire Costa del Sol region. I was very impressed with their sophistication and slick professional presentation. First rate! They use an American-made Omnia VOLT processor for their MP3 processing and DAB+ creating a silky enjoyable sound. Listen in! <https://chilli.fm>.



Chilli.fm Marbella studio. [Credit Chilli.fm].

Right on the heels of Chilli.fm is the powerful signal of Spectrum FM on 91.3 FM also fanned out up and down the southern coast of Spain and even including the Canary Islands with multiple transmitters. You'll hear a formulaic hot pop hits format with no lack of commercials presented in English.

Another dominant signal demands attention: Málaga's Central FM "playing the hits everyday" on 103.9 FM. Their free-form format reminds me of a local community or college station. Very familiar music with live DJs in English all day long.

Spooky Tropo

Here's something I bet you have never experienced: Listening to FM in Marbella can seem oddly haunted. Sitting on the seacoast, directly across from Morocco, it is not unusual to witness early morning tropospheric ducting. While casually listening to local FM stations from Spain, the Moroccan stations can inject strong signals via tropo into Marbella, enough to capture the frequency you are tuned to. You can be listening to Whitney Houston one moment and be superseded by Moroccan chants or choruses or announcers in Arabic or French the next. Surprise!

A couple of strong AM stations in Spanish can also be heard in Marbella: 1458 kHz Radio Algeciras, part of the nationwide SER talk/news network from just west of Gibraltar — and — Radiolé on 1584 kHz with a fascinating format heralding the traditional music of Spain. It broadcasts from the autonomous city of Ceuta on the African side of the Gibraltar Strait that is governed under the auspices of Spain. Radiolé is a very unusual and educational listen introducing the world to Spain's rich musical heritage.



Marbella was the only place in Spain where I

heard some of the remaining British medium wave stations after dark: BBC Radio 5 Live on 693 kHz and 909 kHz and TalkSport on 1053 kHz and 1089 kHz. Later, after we traveled away from Marbella, we could hear, late at night, London's Lyca Radio on 1458 kHz "playing the latest Bollywood hits, as well as UK Asian hits, Bhangra, sprinkled with a few old-skool beltors." I was in a new world of listening. I never knew what I would hear next.

Castles and Towers

Our adventure continued now traveling inland to the enchanting little city of Alcalá la Real along the N-432 heading towards Cordoba. The rolling mountains and ultra-modern road and tunnels made for quite a memorable ride. Along the way we marveled as we passed by the snowy Sierra Nevada mountaintops while we



Location of Alcalá la Real. [Base map: Open-StreetMap].

basked in 65°F / 18°C sunshine during our drive. We tried hard not to think about the coming blizzard about to hit New York City!

In Alcalá, we stayed at a three-story walk-up B&B nestled among the narrow streets in town. Alcalá la Real is host to an ancient castle fortress: La Fortaleza de la Mota going back to 379 B.C. featuring impressive stone work and majestic views from ancient perches 3500 feet high.

Across town, on the opposing hill from the castle, is a fairly complex telecommu-



Castle fortress at Alcalá la Real.

nications site. Nearby, a local sculptor has created a unique outdoor museum of his stone carvings, great and small, that sit within a vast forest of short and stout olive trees. Spain produces over 70% of the world's olives and olive oil. Viewing the olive trees from afar looks like an endless piece of dark green corduroy with the trees planted in long precise rows to maximize production. You would swear that the olive trees go on forever. They do!



Olive Trees on N-432 road to Alcalá la Real and Cordoba.

Since our B&B was located only about half a mile from Alcalá la Real's multiple transmitter site, FM DX-ing proved challenging. The FM side of my radio was totally swamped with very powerful signals. At the top of the list was the local affiliate of the Onda Cero nationwide news/talk network on 99.0 FM. Locally-run community station Radio Alcalá owned the top of the FM band on 107.6 FM. Being literally in the shadow of the towers, my ability to DX anything on FM from this location was impossible.



The most dominant local medium wave station here is an affiliate of another news/talk network — COPE from Granada — also quite strong on 900 kHz just south down the N-432 from Alcalá la Real.



My most interesting catch inland was the thunderous megawatt signal (yes, one million watts) of the familiar Trans World Radio on 1467 kHz broadcasting from Roumoules, France just north of Marseille on the



French Riviera coast about 650 miles away from me. Just after 10:00 p.m. local time, TWR hits the air with a repetitive interval signal that runs for over 15 minutes. At 10:20 p.m., they begin broadcasting evangelism in Arabic until 11:35 p.m. every night... then they leave the air. Pow! It is hard to miss.

Not According to Plan

Our original itinerary was to drive south back to Málaga for one night and then catch an early flight back to Madrid and transfer to our long flight home to New York. The day before our planned return to America we received a message from United Airlines declaring that our flight back to Newark Airport had been **canceled** due to a record-breaking blizzard back home. All plans had to be re-negotiated. Every possible flight was overbooked!

Instead of flying from Málaga back to Madrid, we took the Renfe AVE high-speed train. On this trip, I traveled across land faster than any other time in my life! Our cruising speed gracefully maintained 300 km/h or 186.4 mph without a rumble — an extremely smooth ride. You could literally watch the world fly by. It was amazing to tour Spain in ultra-speed — so much to see so fast!



Spanish state railway company (Renfe) high speed train.

Welcome to Madrid

No flights were available for three days allowing us to thoroughly enjoy an extended visit in Spain's capital city, Madrid. It is a spectacular metropolis with a history almost as old as time itself. Marvel at The Royal Palace — the largest in all of Europe. Revel in the delicious cafés and bakeries all around town. You'll find many parks and tree-lined boulevards, beautiful, varied architecture and stunning churches and historical buildings — even the remains of city-limit entrances from Roman times. So much to see and do!

I found only four medium wave stations strong enough to break through the urban RFI noise of Madrid. On the contrary, the FM band was an endless

blur of signals without a single frequency unused from end to end.

Within this melee, I found only one FM station primarily in English: FM 100.4 Vaughan Radio that longs for you to “Empower Your English!” It's raison d'être is to tutor their listening audience to not only become fluent in English but to also learn common figures of casual speech and intonation. Besides radio, the Vaughan Group offers in-person English language classes and diploma recognition for graduates. A station dedicated to encouraging the use of the English language... Fascinating!

All across Spain, I enjoyed a warmth and welcoming from everyone I met. Attempts to speak Spanish to locals are always appreciated. Your Anglo accents give you away instantly! More often than not, this clued locals to shift gears to communicate with you in English. Many of them speak English very well — a grand relief to us tourists! The feeling of welcome followed us wherever we went.

Never Far From Home

While we were waiting to find our way back to The Big Apple, we would watch up-to-the-minute reports from New York via our cell phones! Around the clock, American TV newscasts and repeat broadcasts from WABC 7 and WNBC 4 could be seen effortlessly via streaming using their phone apps 24 hours a day. Full access to YouTube was just as easy. We could also see our home surveillance cameras and view forecasts and statistics through NOAA and Weather Underground apps.

New York broadcast radio was also readily available. I could listen to Morning Edition from WAMC Albany... but it begins at 11:00 a.m. CET in Spain! (There is a six hour time difference between Eastern Standard Time and Central European Time.) It was the next best thing to being there.

I Have a Vision

Broadcast television is pivotal and popular throughout Spain. It is an essential continual conveyance of Spanish culture, news and entertainment



Street café and bakery, Madrid.

and a fixture in every restaurant or public place you might visit.

Television in Spain seems to be quickly leaning towards exclusive distribution via IP streaming. Many weather-worn UHF antennas can still be seen on rooftops and just about everywhere you go — but how many are actually being used? In our hotel visits, we could see a select 60 or more channels on the flat screens in our rooms specifically catering to their international tourist clientele. Several satellite TV providers also offer Spanish TV channels along with international offerings to transient foreign visitors.



Rooftop UHF TV antennas.

Also noted was the deployment of advanced cutting-edge telecommunication technologies in Spain. Radio is quickly moving toward all-digital distribution in DAB/DAB+ on dedicated frequencies on high VHF. Many popular radio services are also broadcast via television distribution providers as part of their complete entertainment packages. Spain passed a mandate in March 2025 insisting that all new televisions, over 40 inch screen size, must be capable of full 4K TV resolution using the DVB-T2 standard. TVE's La 1 channel is already broadcasting in 4K 24 hours a day. New standards of quality and reliability are being rapidly adopted with excitement throughout the country. Added value: the Government of Spain does not require annual license fees from television and radio users. You are free to go!

What Do You See?

Spain's public television broadcaster — TVE (Televisión Española) — is the fulcrum and primary source of programming throughout the country, directly associated with its radio equivalent — RNE.

TVE continually broadcasts five services: La 1 — the place to go for the important and most popular programs, La 2 — with entertainment and culture in mind, TDP Teledeporte for sports, 24 Horas '24h' TVE's all-news channel and Clan for children. TVE's offerings attract about 16% of all viewership.



Two private TV companies have a lock on the

largest audiences: Atresmedia is the largest network in Spain based on two channels - Antena 3 and laSexta (6). Mediaset España offers Telecinco (5) and Cuatro (4.) Altogether, these four 'generalist' channels capture about half of all Spanish viewing.

Watching TV in our hotel rooms was an international festival of content with additional channels originating from Portugal, Germany, France, Turkey, Italy, Hong Kong, BBC News Europe from Britain, Al Jazeera from Doha and a multitude of channels, each in a different spoken language, from CGTN — the China Global Television Network.

Viewing habits in Spain are very, very similar to what you would expect in America — except everything was in Spanish! All across Spain, the world stops when local team soccer games are in progress. You'll hear cheers from every bar, restaurant, lobby and public meeting place when 'the game' is on the air.

Away from the sports channels, day and night you'll see novelas (soap operas,) shopping channels, endless amounts of talk shows, authoritative news and commentary programs and many documentaries. Honestly, all of these choices also provide a wonderful way to learn Spanish. Watch and listen carefully and you'll quickly understand what is being said.

Cuando terminan las vacaciones

(When vacation is done)

Visiting Spain was a remarkable experience - being dropped into a completely different world unlike anything you could find in North America. It is such a beautiful place where everyone seems so happy, peaceful and optimistic. How refreshing to be in a country filled with new ideas and perspectives. I'll remember the stunning seashores, wonderful museums, palaces and castles, the vast olive tree farms and being surrounded by majestic mountains. I miss it already! And now, I have to switch my radio back to 10 kHz AM spacing!

Until next month, *hasta que nos volvamos a encontrar* (until we meet again). 73s es dit dit de N2KZ "The Old Goat."



Radio Station URLs

- All of these services are available on TuneIn:
- Radio Algeria Internationale:** <https://my.radioalgerie.dz/fr/rai>
- SNRT Morocco:** <https://snrtlive.ma/fr/alidaa-alwatania>
- JIL FM Algeria:** <https://my.radioalgerie.dz/fr/jilfm>
- RNE Nacional:** (click 'en directo') <https://www.rtve.es/play/radio/rne/>
- Talk Radio Europe:** <https://www.talkradioeurope.com>
- BFBS Gibraltar:** <https://www.bfbs.com/radio/stations/bfbs-gibraltar>
- Chilli.fm:** <https://chilli.fm>
- Central FM:** <https://www.centralfm.com/player-central-fm.html>
- Radio Algeciras:** <https://cadenaser.com/radio-algeciras/>
- RadioLé:** (click 'directo') <https://www.radiole.com>

FCC GRANTS AND ACTIONS

From fcc.today and the FCC

April 2026

AK	K236CC	Ninilchik	95.3	250w-v from 125w-v at current site
AK	K259BK	Seward	99.7	new site 60-06-13 149-26-16
AL	W273AJ	Athens	102.5	27w-v from 19w-v at new site 34-46-57 86-55-59
AL	W291DC	Birmingham	106.1	250w from 100w at current site
AL	W245GS	Birmingham	96.9	Silent 2/27/26, primary WYDE-FM is silent
AL	WYDE-FM	Cordova	92.5	Silent 3/1/26 exploring programming and sales options
AL	WSJA	York	91.3	Silent 3/17/26 technical reasons
AZ	KDAP-FM	Douglas	96.5	6kw/-9m from 3kw/9m at new site 31-22-08 109-31-47
AZ	K300CQ	Lake Havasu City	107.9	adds horiz. Pol. At new site 34-33-06 114-11-40
AZ	K287BL	Lake Havasu City	92.1	90w-v from 10w-v at current site
AZ	KAZK	Pinon	89.7	COL from Catalina AZ
AZ	KUAE-FM	Safford	91.7	125w/1330m from 120w/1309m at current site
CA	K271DD	Bakersfield	102.1	change primary to KQMX 105.7 Que Buena 105.7
CA	KWTF	Bodega Bay	88.1	Silent 7/31/25 lost site, STA extended
CA	K271DF	Conner	102.1	change primary to KQMX 105.7 Que Buena 105.7
CA	KNSJ	Descanso	89.1	Silent 2/18/26 tower destroyed
CA	K264CK	Fresno	100.7	new site 36-49-00 119-52-56
CA	KLBP-LP	long Beach	99.1	Silent 2/16/26 equipment problems
CA	K262DK	Muscatel	100.1	Silent 11/15/25 pending sale
CA	KDEZ	North Shore	91.1	115w/204m from 120w/188m at current site
CA	K215GB	Porterville	90.9	Silent 3/6/26 tower failure due to storm
CA	KSDE-LP	San Dimas	101.5	100w/-43m from 100w/-104m at new site 34-05-50 117-47-53
CA	KPBJ-LP	Shadow Hills	95.9	100w/-167m at new site 34-15-05 118-22-35
CA	KLCA	Tahoe City	96.5	HAAT from 903m to 908m, at new site 39-18-37 119-53-05
CA	K220FR	Thousand Oaks	91.9	Silent 3/10/26 lost tower site
CO	KVJZ	Breckenridge	91.7	Silent 9/26/25 power problems
CO	K284CI	Denver	104.7	new site 39-40-17 105-13-08

CO	K284BY	Erie	104.7	210w from 250w at current site
CO	KRNX	Rye	104.9	ex KRNX-FM
CO	K216FW	Steamboat Springs	91.1	Silent 2/25/26 audio problems
CT	WCBS-FM3	Stamford	101.1	2.5kw cp
CT	WXBK-FM3	Stamford	94.7	2.5kw cp
DE	W238DJ	Milford	95.5	Ex 102.1 (W271CX), 240w from 250w at current site
FL	W237BD	Boca Raton	95.3	change primary to WDJA 1420
FL	WJTK	Columbia City	96.5	Silent 2/19/26 tower issues
FL	WVUM	Coral Gables	90.5	4.9kw/44m from 4.4kw/78m at new site 25-43-16 80-16-44
FL	WJZX-LP	Crestview	94.5	57w/40m from 30w/54m at new site 30-45-36 86-39-17
FL	W251AL	Fort Myers	98.1	Silent 2/25/26 lost site
FL	WQCS	Fort Pierce	88.9	11kw/400m from 100kw/133m at new site 27-07-20 80-23-19
FL	W291AL	Fort Pierce	106.1	Silent 3/16/26 technical changes
FL	W217BL	Jacksonville	91.3	Silent 2/5/25 technical reasons
FL	W295BJ	Jupiter	106.9	change primary to WSTU 1450
FL	WGSX	Lynn Haven	104.3	17kw/122m from 4.1kw/122m at current site
FL	W240CI	North Palm Beach	95.9	change primary to WDJA 1420
FL	W297AG	Stuart	107.3	Silent 3/16/26 technical changes
FL	W275AZ	Tampa	102.9	change primary to WDAE-HD3
GA	WTOC-FM	Clayton	95.7	Silent 2/25/26 pending move to Toccoa, GA
GA	W282DE	Macon	104.3	27w from 13w at current site
GA	W203CG	Macon	91.7	12w from 19w at current site
GA	W243DQ	Marietta	96.5	250w-v, adds H pol.
GA	W245DT	Meldrim	96.9	COL from Swainsboro at new site 32-03-32 81-17-54
GA	WTOC-FM	Toccoa	95.7	COL from Clayton GA 960w/250m from 1kw/230m, new site 34-31-46 83-22-33
GA	W211CJ	Warner Robbins	90.1	Ex 103.1 (W276BK), 50w from 99w at current site
HI	KCQA	Anahola	88.1	Silent 2/17/26 pending license transfer and xmtr relocation
HI	K272GC	Honolulu	102.3	change primary to KKEA 1420 ESPN 1420
HI	K224FR	Honolulu	92.7	change primary to KHKA 1500 NBC Sports 1500
HI	K218FQ	Kalaloa	91.5	Ex 91.3 (K217GG), new site 19-43-04 155-55-06
ID	KEZQ	Iona	92.9	37kw/440m from 46kw/633m at new site 43-30-03 112-39-49

IL	WGNN	Fisher	102.5	10kw/88m from 6kw/100m at current site
IL	W217BJ	Freeport	91.3	new site 42-19-39 89-37-10
IL	W244BQ	Park Ridge	96.7	75w at 41-52-44 87-38-08
IL	WPOK	Pontiac	93.7	ex WJBC-FM
IL	W243DN	Taylorville	96.5	change primary to WMKR-HD3
IN	WXXC	Marion	106.9	Silent 2/15/26 lost lease
IN	W288DN	Marion	105.5	change primary to WMRI 960 ESPN 860
IN	WCJC	Van Buren	99.3	Silent 2/15/26 lost lease
IS	K267CY	Des Moines	101.3	license cancelled
KS	K208ER	Parsons	89.5	170w-v from 140w-v at current site
KY	W285ER	La Grange	104.9	change COL from Prospect, at new site 38-27-03 85-25-28
KY	WLXX	Richmond	101.5	Silent 3/11/26 pending sale by Cumulus
LA	K279AL	Baton Rouge	103.7	Silent 2/17/26 technical reasons
LA	K274AL	Denham Springs	102.9	Silent 2/17/26 technical reasons
LA	NEW	Oak Grove	102.3	new op, 67w/37m 32-51-41 91-23-00
LA	KWLL-FM	Rayne	106.7	ex KPCZ-FM
LA	KTLN	Thibodaux	90.5	650w from 10kw, same HAAT and site650w
LA	KNCB	Vivian	105.3	Silent 3/17/26 pending sale
LA	K281CY	Vivian	104.1	Silent 3/17/26 pending sale
MA	WUMT	Kingston	91.7	COL from Marshfield, 450w/164m from 1.1kw/25m at new site 41-56-02 70-35-08
MA	WQPE	Somerset	91.5	license cancelled
MD	W228DI	Silver Spring	93.5	change primary to WTOP-FM-HD4
MI	WHHQ-LP	Escabana	97.7	100w/8m from 80w/34m at new site 45-44-41 87-03-28
MI	WMNW-LP	Imlay City	94.3	initial calls
MI	WLAW-FM	Whitehall	97.5	license cancelled
MI	W256DM	Whitehall	99.1	license cancelled
MN	K204ES	Brainerd	88.7	115w-v from 80w-v at new site 46-20-55 95-13-29
MN	KNNZ	Hawley	89.1	Silent 9/30/25 founder passed away
MN	KCLP	Luvurne	101.1	ex KLQL
MN	WMLA-LP	Moses Lake	99.7	license cancelled
MS	W262DE	Belzoni	100.3	COL from Yazoo City, new site 33-11-18 90-27-10

MS	WRBJ-FM8	Flowood	97.7	27w, 32-19-22 90-09-27 cp
MS	W251CN	Winona	98.1	Silent 2/26/26 technical faults
NC	WLRK	La Grange	88.3	ex WGTL
NC	WGTL	La Grange	91.5	Ex WLRK
NC	W262CE	Murphy	98.7	Silent 2/25/26 pending move to Murphy and new freq.
NC	WZPR	Nags Head	92.3	3.4kw/90m from 10kw/117m at new site 35-51-54 75-38-58
NJ	WYYO-LP	Atlantic City	107.9	move site to 39-23-43 74-23-04
NJ	WNJD	Cape May	102.3	1.4kw/100m from 6kw/57m at new site 39-05-33 75-40-24
NM	KQBA-FM1	Los Alamos&Santa Fe	107.5	change COL from Los Alamos
NV	KNTC	Tonopah	103.3	ex KRXX
NY	WCBS-FM2	Brentwood	101.1	650w cp
NY	W296EK	Brentwood	107.1	change primary to WLID 1370
NY	WCBS-FM1	Farmingdale	101.1	2.5kw cp
NY	W213AC	Poughkeepsie	90.5	10w-h/319 from 17w-h/319m, at new site 41-43-14 73-59-40
OH	W219AZ	Gallipolis	91.7	Silent 1/27/26 no internet access
OH	W281AL	Harbor View	104.1	155w-v from 19w H+V at current site
OH	WFGU	Peebles	91.1	initial calls
OH	WLRY	Rushville	88.9	4.2kw/91m from 1.1kw/91m at current site
OH	WFGU-LP	Winchester	88.1	license cancelled
OK	KAJT	Ada	88.7	20kw/81m from 31kw/73m at new site 34-46-37 96-35-25
OK	KFPS	Elk City	88.3	initial calls
OK	KPFS-LP	Elk City	100.7	license cancelled, KPFS 88.3 now on the air
OK	KBEZ	Ketchum	88.3	200w-H/8m-H from 3kw/91m at new site 36-28-47 95-02-56
OK	KINB	Kingfisher	105.3	Adds HD (HD1,2 & 3)
OR	KOMP-LP	Days Creek	107.9	license cancelled
OR	KGNY-LP	LaPine	92.1	initial calls
OR	K248DD	Portland	97.5	175w-v from 155w-h&v at new site 45-27-17 122-33-03
PA	W268CJ	Corry	101.5	New site 41-51-01 79-38-02
PA	WCDF	Millersburg	98.9	870w/262m from 780w/273m at current site
PA	WXPM-LP	Phoenixville	98.5	100w/28m from 79w-H/25m at new site 40-11-15 75-33-58
PA	W269CF	Scranton	101.7	Silent 8/31/25 extensive repairs needed to WARM 590, extended STA

PA	W236EC	Williamsport	94.9	200w/64m from 220w/64m, at new site 41-16-50 76-50-03
RI	WJXP	Narragansett Pier	91.5	initial calls
SC	WXBE	Beaufort	88.3	Silent 3/24/26 lost site
SC	WAGS-LP	Laurens	99.7	new site 34-31-00 82-00-08
SD	KMZM	Madison	103.1	ex KJAM-FM
TX	KRMX	Bellmead	104.9	25kw/99m from 6kw/100m at current site
TX	KMIL	Cameron	105.1	15.5kw/81m from 15kw/100m at new site 30-37-40 97-08-29
TX	KEGL	Fort Worth	97.1	100kw/508m from 97kw/100m at new site 32-34-65 96-58-33
TX	K232GE	Georgetown	94.3	Ex 100.3 (K262DG) at current power and site
TX	K210FE	Goodrich	89.9	50w/31m-v, 30-37-11 94-56-46
TX	K210FE	Goodrich	89.9	180w/31w from 50w/31m
TX	KCRQ	Junction	103.3	Silent 1/29/26 due to ice storm damage, now pending move
TX	K238BZ	Seguin	95.5	Silent 1/10/26 power supply failure
TX	KVLM	Tarzan	104.7	HAAT 154m from 187m at new site 32-05-11 102-17-12
VA	WGFW	Drakes Beach	88.7	50kw/75m from 10kw/75m at current site
VA	W282CN	Gretna	104.3	Silent 2/27/26 antenna destroyed by lightning strike
VA	W269DH	Leesburg	101.7	Silent 1/9/26 loss of program source
VA	W269DH	Leesburg	101.7	100w/78m from 13w at current site
VA	W270CU	Roanoke	101.9	10w from 80w at current site
WA	K293AY	Enumclaw	106.5	at new site 47-13-09 121-50-34
WA	K203FZ	Goldendale,the Dale	88.5	13w, 45-42-24 121-05-32
WA	K220JL	Walla Walla	91.9	250w from 135w, at new site 46-01-35 118-19-47
WI	W276CO	Fond du Lac	103.1	change primary to WMBZ 92.5
WI	WLWR-LP	Marinette	107.7	100w/9m from 100w/29m at new site 45-07-28 87-37-23
WI	WIBR-LP	Marshfield	93.1	license cancelled
WV	WGYE	Mannington	102.7	Silent 2/10 equipment damage from lightning strike

Weatheradio Canada was officially shut down on March 16, 2026, due to increased costs and the availability of more viable alternatives for weather information. The service had been operational since 1976 and provided weather alerts across Canada.

TV News

April 2026

Doug Smith

Here we go. I'm afraid it's a doozy. There's a TON of major changes for LPTV stations, plus two pages worth of LPTV callsigns involuntarily changed.

I didn't even try to list the applications for new LPTVs. Trip has a list under his Freeze Lift Tools; I've got a link in the article.

Spoiler #1: if your low-VHF band is empty, it may not be staying that way.

Spoiler #2: There's a fair chance one or more of your local LPTVs will be moving away to a different city. Unfortunately it's equally likely at least one LPTV will be moving *to* your city from somewhere else.

St	City	Call	Ch (VC)	Notes
AL	Birmingham	WRDY-LD	8 (32)	Granted move from ch. 32 Tuscaloosa; 3kw/261m, 33-26-39/86-52-46. Also assigned calls W08EU?
AL	Birmingham	W13DX	13 (31)	Granted move from W32FJ Montgomery; 2.69kw/215m, 33-23-51/86-39-41.
AL	Mobile	W06DP	6 (42)	Granted move from W27EH Hattiesburg, Miss.; 3kw/112m, 30-53-57/88-13-42.
AL	Montgomery	W24FI	24 (13)	Granted move from W13DT, 15kw/176m, 32-22-04/86-15-42.
AR	Fort Smith	KQRY-LD	25 (36)	Granted move from ch. 34 Lowell; 15kw/136m, 35-26-51/94-21-55.
AR	Hot Springs	K23OW	23 (39)	Operating at 8% power (800 Watts) since Mar. 11 th due to interference issues. Returned to full power Mar. 25 th .
AR	Paris	KRAH-CD	35 (35)	Requests move from Morrilton & power increase to 15kw/392m, 34-47-56/92-29-45. Granted.
AR	Siloam Springs	KSJF-CD	19 (34)	Granted move from Fort Smith; 12.5kw/109m, 36-08-50/94-11-26.
AR	Siloam Springs	KWFT-LD	19 (30)	OFF Mar. 5 th , transmitter failure.
AR	Springdale	KFDF-CD	34 (44)	Granted move from ch. 25 Fort Smith; 12kw/109m, 36-08-50/94-11-26.
AZ	Phoenix	K23PL	7 (38)	Requests move from ch. 23 Shonto; 1.5kw/458m, 33-19-57/112-03-59
AZ	Phoenix	K17ED	23 (17)	Requests move from ch. 17 Payette, Ida.; 15kw/448m, 33-19-57/112-03-59.
AZ	Tucson	K29OM	15 (41)	Requests move from ch. 29 Springfield, Mo.; 15kw/587m, 32-14-57/111-07-01.
CA	Bakersfield	KRPC-LP	30 (33)	Requests move from ch. 33 Rapid City, S.D.; 15kw/-44m, 35-19-12/118-47-20.
CA	Chico	K07AAP	7 (51)	Granted move from K29OI Redding; 1kw/352m, 39-57-29/121-42-53.
CA	Chico	KKTF-LD	24 (30)	Requests STA for 6.5% power (970 watts) pending

St	City	Call	Ch (VC)	Notes
				transmission line repairs. Granted.
CA	Eureka	K35LF	35 (35)	Requests STA for reduced power 330w/448m due to antenna system issues.
				But also listed as canceled March 3 rd ?
CA	Fresno	KFVD-LD	15 (15)	Granted move from Porterville; 15kw/62m, 36-49-00/119-52-56.
CA	Indio	K02RL	2	Canceled March 3 rd .
CA	Lodi	KZHD-LD	4 (52)	Granted move from ch. 22 Rohnert Park; 1.5kw/218m, 38-14-24/121-30-07.
CA	Middletown	KFTY-LD	2 (45)	OFF Feb. 17 th , power amplifier failure.
CA	Modesto	W34EY	28 (38)	Requests move from ch. 34 Huntsville, Ala.; 10kw/92m, 37-38-59/121-01-27.
CA	Nicolaus	KKPM-CD	28 (28)	Granted power reduction to 13.9kw/147m, 38-38-53/121-28-41.
CA	Palm Springs	KVPS-LD	8 (8)	OFF Sept. 16 th , 2025, inadvertently not filed. Station is already testing on new channel 19. License-to-cover filed Mar. 19 th .
CA	Salinas	K33QY	33 (10)	Returned to the air Mar. 1 st .
CA	San Diego	K28QQ	30 (40)	Requests move from ch. 28 Williston, N.D.; 15kw/538m, 33-00-33/116-58-21.
CA	San Francisco	K06RA	6 (4)	Granted move from K04SF Modesto; 1kw/-28m, 37-43-34/122-13-48 adjacent to Oakland airport.
CA	Stockton	KUKR-LD	7 (27)	Granted move from ch. 26 Santa Rosa; 1.1kw/221m, 38-14-24/121-30-07/
CA	Visalia	KKDJ-LD	6 (6)	Calls changed from KMCF-LD. ATSC 3.0.
CA	Visalia	KTVG-CD	18 (8)	Calls changed from KKDJ-CD; was briefly KMCF-CD.
CA	Yuba City	K34RI	34 (23)	Granted move from K23PH Chico, 15kw/39m, 39-13-38/121-39-04.
CO	Boulder	KPDD-LD	26 (35)	OFF Mar. 21 st pending move from ch. 4 Denver.
CO	Denver	KVAI-CD	4 (36)	Moved from ch. 36 Avon; 3kw/226m, 39-43-46/105-14-10.
CO	Las Animas	K35MZ	35 (43)	Call change to KPDL-LD dismissed, remains K35MZ.
CO	Pueblo	KTLP-LD	34 (46)	Requests move to 37-27-28/105-51-44. Official city to remain Pueblo but new site is in Alamosa.
CO	Salida	K31IX	31 (8)	OFF Feb. 27 th , equipment failures.
CT	Hartford	WVMA-CD	29 (17)	Granted move from ch. 23 Providence, R.I.; 10kw/164m, 41-41-00/72-12-55.
CT	Hartford	KQMM-CD	32 (29)	Requests move from ch. 29 Santa Maria, Cal.; 15kw/187m, 41-47-48/72-47-49.
CT	New Haven	WDVZ-CD	32 (3)	Requests move from ch. 3 Tuscaloosa, Ala; 15kw/273m, 41-26-02/72-56-43.
DC	Washington	W13DW	13 (35)	Granted move from Annapolis, Md.; 3kw/199m, 38-52-28/77-13-24. Requests modification to 3kw/217m, 38-57-50/77-06-17; granted.
FL	Boca Raton	WKWT-LD	33 (42)	Granted move from ch. 2 Key Largo; 15kw/91m, 26-09-13/80-10-11.

St	City	Call	Ch (VC)	Notes
FL	Bradenton	WXPX-TV	29 (66)	Requests site move & antenna height reduction; 218kw/445m, 27-50-33/82-15-44.
FL	Fort Myers	K16OF	35 (49)	Requests move from ch. 16 Lawton, Okla.; 15kw/124m, 26-29-17/81-55-46.
FL	Gainesville	WOCD-LD	18 (27)	Granted move from ch. 27 Ocala; 15kw/90m, 29-44-24/82-23-12.
FL	Gainesville	W35EP	35 (50)	Granted move from W32EZ Jacksonville; 15kw/114m, 29-24-33/82-15-12.
FL	Islamorada	W03CC	3 (21)	Granted move from W21EK Key West; 3kw/95m, 24-53-44/80-39-49.
FL	Islamorada	W35EO	35 (3)	Granted move from W22FI Key West; 15kw/95m, 24-53-44/80-39-49.
FL	Jacksonville	WGVT-LD	7 (26)	Granted move from ch. 26 Gainesville; 3kw/70m, 30-19-11/81-46-25.
FL	Key West	WEYW-LD	19 (19)	OFF Mar. 20 th , possibly deleted.
FL	Miami	WGCE-CD	16 (6)	Requests move from ch. 26 Rochester, N.Y.; 3kw/126m, 25-59-35/80-10-26.
FL	Orlando	W04EC	4 (32)	Granted move from W19EM Melbourne, 3kw/75m, 28-31-41/81-14-53; amendment from ch. 12.
FL	Orlando	WWCI-CD	12 (10)	Requests move from ch. 10, 3kw/131m, 28-37-16/81-24-34; amendment from ch. 36.
FL	Orlando	WYHB-CD	25 (39)	Requests move from Chattanooga, Tenn.; 15kw/97m, 28-34-28/81-27-46.
FL	Palm Beach	WXOD-LD	8 (24)	Granted move to 26-34-31/80-14-31 & antenna height reduction to 321m.
FL	Pensacola	W26FP	26 (4)	Granted move from W27EO Panama City; 15kw/158m, 30-24-13/86-59-34.
FL	Pensacola	W32GD	32 (27)	Granted move from W27EP Destin; 15kw/225m, 30-23-46/86-59-13.
FL	St. Cloud	W15EO	15 (15)	Requests move from Sebastian; 15kw/407m, 28-16-45/81-01-24.
FL	Summerland Key	WYMI-LD	28 (28)	Granted site change to 25-01-40/80-30-27 & antenna height reduction from 151m to 55m.
FL	Tallahassee	W07DZ	7 (20)	Granted move from W14EU, 3kw/129m, 30-29-33/84-17-13. Granted.
FL	Tallahassee	W11DZ	11 (29)	Granted move from W29FN Panama City; 3kw/208m, 30-21-32/84-36-38.
FL	Tallahassee	W17EW	17 (16)	Granted move from W25FK Panama City; 15kw/108m, 30-21-32/84-36-38.
FL	Tallahassee	W21ES	21 (17)	Granted move from W17EM Panama City, 15kw/200m, 30-34-26/84-12-13; amendment to change city to Tallahassee.
FL	Tallahassee	WGEI-LD	26 (27)	Granted move from ch. 27 Enterprise, Ala; 15kw/45m, 30-34-17/84-22-57.
FL	Tallahassee	WTXL-TV	27 (27)	Requests slight antenna height reduction from 518m to 514m. (antenna replacement) Granted.
FL	Tallahassee	W31FL	31 (21)	Granted move from W21EL Valdosta, Ga.;

St	City	Call	Ch (VC)	Notes
				15kw/179m, 30-29-33/84-17-02.
FL	Tampa	W11EA	11 (5)	Granted move from W05CO Sarasota; 3kw/73m, 28-00-35/82-28-47.
FL	Tampa	WFWC-CD	31 (45)	Requests move from ch. 16 Fort Wayne, Ind.; 13kw/127m, 27-59-37/82-24-46.
GA	Atlanta	WCNT-LD	5 (36)	Granted move from ch. 15 Chattanooga, Tenn.; 1.75kw/133m, 34-09-14/84-30-44.
GA	Atlanta	W17EV	17 (29)	Granted move from W29DN Athens; 15kw/35m, 33-40-31/84-33-38.
GA	Atlanta	W24FG	24 (19)	Granted move from W19DN Macon; 6.7kw/115m, 33-33-46/84-20-28.
GA	Atlanta	WDWW-LD	28 (28)	Returned to the air Mar. 6 th .
GA	Augusta	WGUS-LD	23 (23)	Requests call change from WAAU-LD, effective Mar. 25 th .
GA	Augusta	W27EW	27 (9)	Granted move from W32FZ; 15kw/182m, 33-30-21/81-57-43.
GA	Augusta	W34FO	34 (34)	Granted power increase to 15kw/182m, 33-30-21/81-57-43.
GA	Columbus	W28FK	28 (23)	Granted move from W23FN Albany; 15kw/207m, 32-27-29/84-53-08.
GA	Conyers	W28FM	28 (32)	Granted move from W32FN Macon; 15kw/100m, 33-43-51/83-46-00.
GA	Conyers	W30FE	30 (20)	Granted move from W20DL Macon; 9kw/100m, 33-43-51/83-46-00.
GA	Sandy Springs	W35EM	35 (26)	Granted move from W26EM Athens; 15kw/129m, 34-03-27/84-18-18.
HI	Hilo	K20NX	20 (20)	OFF Mar. 13 th , storm damage.
HI	Lihue	K32IX	32 (32)	OFF Mar. 13 th , storm damage.
HI	Wailuku	K28NN	28 (28)	OFF Mar. 13 th , storm damage.
IA	Sioux City			Returned to the air Mar. 25 th .
IA	Sioux City	K23PX	23 (31)	See Sioux City, South Dakota.
ID	Boise	KTVJ-LD	26 (3)	Granted move from K31PP; 15kw/-4m, 42-32-05/96-22-23.
ID	Idaho Falls	K08QX	8 (8)	Moved from ch. 6, 15kw/778m, 43-45-21/116-05-57.
ID	Pocatello	K20MO	22 (15)	Granted move from K21JC Pocatello; 3kw/462m, 43-30-04/112-39-46.
ID	Pocatello	K24OR	24 (16)	Requests move from ch. 20, 15kw/319m, 42-51-50/112-31-13.
ID	Pocatello	K24OR	24 (16)	Granted move from K16NQ; 15kw/259m, 42-51-50/112-31-13.
IL	Aurora	WAUR-LD	29 (29)	Granted power reduction to 1.4kw/396m, 41-53-21/87-37-36.
IL	Oswego	WTVK-DTS2	10 (59)	Site is on the Trump Tower in downtown Chicago. Requests STA for half power of 7.5kw at old site, PA fault.
IL	Oswego	WTVK-DTS2	10 (59)	Granted power reduction from 13.85kw to 13.25kw. (Chicago site, John Hancock Center)

St	City	Call	Ch (VC)	Notes
IL	Oswego	WTVK-DTS3	10 (59)	Granted new site, 200w/89m, 42-08-14/87-58-57. (Waukegan)
IL	Oswego	WTVK-DTS4	10 (59)	Granted new site, 2.5kw/32m, 41-35-43/87-30-08. (Gary, Ind.)
IL	Oswego	WTVK	10 (59)	OFF Mar. 17 th due to technical issues. Doesn't say which site is off. (there are two known active and permits for two more)
IL	Peoria	W29FT	29 (33)	Granted move from W31EH Springfield; 15kw/274m, 40-38-45/89-10-45.
IL	Saulsbury	W34GD	34 (18)	Granted move from W27DF Quincy; 15kw/73m, 39-44-22/90-02-43.
IN	Corydon	W19EW	19 (19)	Granted move from Evansville; 15kw/124m, 38-14-00/86-22-46.
IN	Corydon	W27EX	27 (10)	Granted move from W10DG Evansville; 15kw/124m, 38-14-00/86-22-46.
IN	Indianapolis	W15EA	24 (42)	Requests move from ch. 15 Memphis, Tenn.; 15kw/147m, 39-53-39/86-12-21.
IN	Indianapolis	W32GB	32 (19)	Granted move from W19FD Terre Haute; 11kw/311m, 39-24-14/86-08-41.
KS	Hutchinson	KPTS	33 (8)	Requests move from ch. 8, 1000kw/244m.
KS	Kansas City	K20PF	20 (40)	Granted move from K22OA Topeka; 15kiw/127m, 39-06-32/94-47-02.
KS	Kansas City	K22PD	22 (36)	Granted move from K36IO Manhattan; 15kw/127m, 39-38-21/95-23-29.
KS	Kansas City	K27PS	27 (23)	Granted move from K23LE Sedalia, Mo.; 5.25kw/120m, 39-04-59/94-28-50.
KS	Topeka	K28RB	28 (32)	Granted move from K32JQ Manhattan; 15kw/135m, 38-58-34/95-48-34.
KS	Wichita	K25RD	25 (19)	Granted move from K32MG Enid, Okla.; 15kw/148m, 37-20-08/97-27-54.
KY	Bowling Green	WTNO-CD	35 (22)	Requests move from ch. 22 New Orleans, La.; 15kw/324m, 36-16-05/86-47-45.
KY	Glasgow	WDNZ-LD	11 (11)	Requests move from Bowling Green; 37-02-06/86-10-41; 2kw/129m. Granted.
KY	Louisville	K27OW	26 (40)	Requests move from ch. 27 Rochester, Minn.; 15kw/144m, 38-03-47/85-44-23.
LA	New Orleans	KJUN-CD	11 (30)	Granted move from ch. 7 Morgan City; 3kw/215m, 29-55-13/90-01-29.
LA	New Orleans	WLMS-LD	25 (25)	Requests move from Columbus, Miss.; 15kw/40m, 29-55-13/90-01-29.
LA	New Orleans	W30EZ	30 (30)	Granted power increase to 15kw/275m, 29-57-15/89-56-59.
LA	Shreveport	K31QI	31 (36)	Granted move from K36MU Texarkana, Ark.; 15kw/161m, 32-34-33/93-52-07.
MA	Boston	WJCB-LD	3 (21)	Granted move from ch. 30 Windsor, Vt.; 3kw/113m, 42-00-38/71-02-40.
MA	Boston	WHDT-LD	4 (3)	Requests power increase to 3kw/180m,

St	City	Call	Ch (VC)	Notes
				42-21-31/71-03-30. Granted.
MA	Boston	KFGX-LD	13 (35)	Requests move from ch. 35 Fargo, N.D.; 3kw/42m, 42-24-51/71-12-37.
MA	Boston	WSHM-LD	23 (33)	Granted move from ch. 20 Springfield; 15kw/194m, 42-18-37/71-14-12.
MA	Boston	WBGT-CD	28 (46)	Requests move from Rochester, N.Y.; 2kw/188m, 42-05-44/71-13-49.
MD	Baltimore	KSBO-CD	20 (42)	Requests move from ch. 36 San Luis Obispo, Cal.; 6.5kw/227m, 39-00-37/76-36-32.
MD	Columbia	WLZB-LD	32 (40)	Granted move from ch. 14 Baltimore; 15kw/105m, 39-15-20/76-30-40.
ME	Lewiston	W33EZ	33 (32)	Granted move from W32FS Bangor; 15kw/40m, 44-09-04/69-54-48.
ME	Portland	WFYW-LD	22 (41)	Granted move from ch. 35 Fairfield; 15kw/352m, 43-51-30/70-42-39.
MI	Detroit	K16KM	33 (16)	Requests move from ch. 16 Bemidji, Minn.; 3kw/63m, 42-28-16/83-12-01.
MI	Detroit	W29CI	35 (29)	Requests move from ch. 29 Salem, Ill.; 10kw/162m, 42-26-53/83-10-23.
MI	Grand Rapids	W36FK	36 (46)	Requests move from Altoona, Penna.; 15kw/80m, 42-58-53/85-47-38.
MI	Pinconning	W21ET	21 (20)	Granted move from W31FI Traverse City; 15kw/57m, 43-56-25/83-55-50.
MN	Minneapolis	W11DX	11 (26)	Granted move from W26FG Eau Claire, Wis.; 3kw/310m, 44-54-41/92-59-11.
MN	Minneapolis	K33LN	33 (33)	Requests STA for temporarily reduced power of 10.5kw (70%) due to damaged power amplifier. Granted.
MN	Minneapolis	KRZG-CD	36 (35)	Requests move from ch. 27 McAllen, Tex.; 15kw/242m, 44-58-34/93-16-21.
MN	Rochester	K27OW	27 (40)	License canceled March 2 nd .
MO	Chesterfield	K27OY	18 (27)	Requests move from Fredericktown; 13.5kw/177m, 38-26-15/90-28-41. Recently granted move to Fredericktown from Memphis, Tenn.
MO	Fredericktown	K27OY	18 (27)	Granted move from Memphis, Tenn.; 500w/44m, 37-30-06/90-18-35. See Chesterfield.
MO	Kansas City	WJMB-CD	35 (60)	Requests move from ch. 17 Butler, Penna.; 15kw/197m, 39-00-57/94-30-25.
MO	Springfield	K18OG	18 (17)	Granted move from K16IS Pittsburg, Kans.; 15kw/67m, 37-14-29/93-26-12.
MO	Springfield	K27PR	27 (16)	Granted move from K21JS Harrison, Ark.; 15kw/177m, 37-12-17/93-08-23.
MO	Springfield	K32PF	32 (41)	Granted move from K34NJ Joplin; 8kw/150m, 37-04-06/93-18-32.
MO	Wentzville	K16OE	16 (21)	Granted move from K21PD Columbia; 15kw/90m, 38-49-00/90-45-30.
MS	Boonville	WCRN-LD	32 (31)	Requests move from Boston, Mass.; 15kw/134m, 34-18-45/88-37-32.
MS	Bude	WMAU-TV	18 (17)	Requests STA for 50% power during transmitter

St	City	Call	Ch (VC)	Notes
MS	Holly Springs	WBUY-TV	26 (40)	replacement. Requests site move & tower height reduction to 950kw/230m, 35-12-34/89-49-01; granted.
MS	Jackson	WHCQ-LD	9 (8)	Granted move from Cleveland, Miss; 3kw/115m, 32-42-07/90-22-02.
MS	Jackson	W33FA	33 (19)	Granted move from W19EF Greenville; 15kw/157m, 32-39-28/90-30-27.
MS	New Augusta	WXVO-LD	36 (11)	Granted move from ch. 19 Pascagoula; 15kw/319m, 30-45-19/88-56-44.
MS	Tupelo	W19FM	19 (40)	Granted move from W14EQ; 15kw/44m, 34-09-21/88-38-34.
MT	Great Falls	KRTV	7 (3)	Requests power increase to 1000kw/181m. Modify license to match as-built; antenna is 35m higher than previously believed.
MT	Philipsburg	K16OD	16 (11)	Granted move from K15KW; 39w/471m, 46-15-49/113-15-03.
MT	Sidney	K17PL	17 (5)	Granted move from K13IG; 3.35kw/37m, 47-47-26/104-07-20.
NC	Charlotte	W06DO	6 (14)	Granted move from W14FB Florence, S.C.; 3kw/60m, 35-01-43/80-35-04.
NC	Charlotte	K17JI	22 (12)	Requests move from ch. 17 Fresno, Cal.; 15kw/104m, 35-11-56/80-52-36.
NC	Charlotte	KZMM-CD	26 (22)	Requests move from ch. 35 Fresno, Cal.; 10kw/103m, 35-15-06/80-41-11.
NC	Charlotte	WPYM-LD	30 (38)	Requests move from ch. 16 Little Rock, Ark.; 15kw/45m, 35-10-42/80-55-43.
NC	Fayetteville	WBFT-CD	16 (46)	Granted move from ch. 36 Sanford; 15kw/203m, 35-03-35/78-59-23.
NC	Fayetteville	W25GC	25 (27)	Granted move from W15DC Florence, S.C.; 15kw/114m, 34-53-06/79-04-28.
NC	Franklin	W12DU	12 (13)	Granted move from W11AJ; 3kw/658m, 35-10-12/83-34-53.
NC	Lumberton	W31FK	31 (17)	Granted move from W35EF Wilmington; 15kw/110m, 34-42-02/79-06-31.
NC	Maggie Valley	W15DR	15 (13)	Power increase application withdrawn. Not grantable as filed. Will review & try again..
NC	Raleigh	WNCB-LD	30 (16)	Granted move from ch. 29 Fayetteville; 15kw/82m, 35-42-51/78-49-03.
NC	Winston-Salem	KPTO-LD	32 (41)	Requests move from ch. 32 Pocatello, Ida.; 15kw/98m, 36-07-01/80-03-32.
NJ	Beach Haven	WZPA-LD	5 (33)	Granted move from ch. 32 Philadelphia, 3kw/132m, 39-33-20/74-44-46.
NM	Albuquerque	K33OB	33 (50)	Requests move from Roswell; 15kw/137m, 35-03-57/106-47-00.
NV	Las Vegas	K10RX	10 (8)	Moved from Arrowhead; 3kw/-63m, 36-04-00/114-57-24. Relays KCSG Cedar City. Requests power increase to 3kw/332m, 36-00-34/115-00-23. Granted.

St	City	Call	Ch (VC)	Notes
NV	Las Vegas	KEGS-LD	24 (30)	Converted to ATSC 3.0. Requests STA to operate at 5G 3GPP "5G Broadcast" from April 3 rd through the 24 th , including the National Association of Broadcasters convention. Granted.
NV	Las Vegas	STA	33	10w/-1386m, 39-07-49/115-09-08; One Media Technologies, Apr. 16th-23rd at the Las Vegas Convention Center, to demonstrate ATSC 3.0 receiver capabilities. Granted.
NV	Winchester	K34RJ	34 (43)	Granted move from K36NE Las Vegas; 15kw/106m, 36-06-58/115-11-12.
NY	Beacon	KABH-CD	30 (17)	Requests move from ch. 17 Bend, Ore.; 4.75kw/147m, 41-20-18/73-53-39.
NY	Beacon	KORS-CD	31 (16)	Requests move from ch. 16 Portland, Ore.; 10kw/160m, 41-16-51/74-13-59.
NY	Beacon	KORK-CD	35 (34)	Requests move from ch. 35 Portland, Ore.; 15kw/160m, 41-16-51/74-13-59.
NY	New York	KTVG-CD	10 (8)	Requests move from ch. 18 Visalia, Cal.; 3kw/228m, 40-46-03/73-57-43. New site is Trump Palace, 68 th St. & 3 rd Ave., Manhattan.
NY	Newburgh	KKEI-CD	32 (38)	Requests move from ch. 36 Portland, Ore.; 15kw/160m, 41-16-51/74-13-59.
NY	Olean	WVTT-CD	11 (34)	OFF Mar. 6 th due to damaged power amplifiers.
NY	Poughkeepsie	WSIO-LD	32 (51)	Requests move from ch. 33 Peoria, Ill.; 15kw/368m, 41-43-08/73-59-45.
NY	Rochester	W21EV	27 (45)	Requests move from Huntington, W.Va.; 15kw/85m, 43-03-51/77-49-54.
OH	Cadiz	W26FQ	26 (20)	Granted move from W20DY; 15kw/109m, 40-03-33/81-12-58.
OH	Cadiz	W32GE	32 (28)	Granted move from W28FC; 15kw/109m, 40-03-33/81-12-58.
OH	Cincinnati	WKUT-LD	19 (25)	Granted move from ch. 20 Bowling Green, Ky.; 15kw/137m, 38-51-01/84-54-26.
OH	Cincinnati	K26PI	30 (15)	Requests move from ch. 26 Kansas City, Kans.; 15kw/148m, 39-18-42/84-30-46.
OH	Cleveland	W23BW	21 (23)	Requests move from ch. 23 Madison, Wis.; 15kw/99m, 41-29-13/81-41-01.
OH	Columbus	W20FB	20 (21)	Granted move from W21EA Parkersburg, W.Va.; 15kw/94m, 39-56-44/82-37-32.
OH	New Philadelphia	W20DY	26 (20)	Requests move from Cadiz; 15kw/127m, 40-21-22/81-16-37.
OH	New Philadelphia	W28FC	32 (28)	Requests move from Cadiz; 15kw/127m, 40-21-22/81-16-37.
OH	Pomeroy	W25FR	25 (25)	Granted move from Clarksburg, W.Va.; 15kw/98m, 39-07-50/82-01-14.
OH	Youngstown	WIVD-LD	26 (26)	Granted move from Canton; 15kw/124m, 41-14-12/80-26-01.
OK	Oklahoma City	K17JN	17 (17)	Granted move from Enid; 15kw/140m,

St	City	Call	Ch (VC)	Notes
				35-24-54/97-30-38.
OK	Oklahoma City	KSBI	23 (52)	Requests power reduction to 540kw. Granted.
OK	Oklahoma City	K30RE	30 (43)	Granted move from K34NE Lawton; 15kw/148m, 35-24-54/97-30-38.
OK	Okmulgee	KTPX-TV	28 (44)	Requests site move & power increase to 750kw/465m, 36-01-15/95-40-32. Granted.
OK	Tulsa	K25RE	25 (40)	Granted move from K27OB; 15kw/112m, 36-06-37/96-02-06.
OR	Coos Bay	K15KF	15 (23)	Requests site change & slight antenna height reduction to 5kw/179m, 43-23-25/124-07-50.
OR	Cottage Grove	K34LR	18 (38)	(re-)Requests move from ch. 34.
OR	Klamath Falls	KFTS	33 (22)	Granted antenna height increase from 649m to 651m.
OR	Maupin	KBDH-LD	19 (29)	Granted move from ch. 29 Bend; 500w/-63m, 45-10-23/121-05-49.
OR	Portland	KBDH-LD	8 (29)	Requests move from ch. 29 Bend; 3kw/333m, 45-40-44/122-22-02.
OR	Portland	KRHP-CD	14 (14)	Granted power increase to 10kw/46m, 45-31-17/122-33-42.
OR	Portland	KPME-CD	15 (41)	Power increased to 15kw/512m.
OR	Portland	K17OY	17 (17)	Granted move from Centerville, Wash.; 15kw/268m, 45-27-17/122-33-02.
OR	Portland	K19NM	19 (27)	Granted move from K27PI; 15kw/301m, 45-51-33/122-27-18.
OR	Portland	K27PQ	27 (28)	Granted move from K28FP Astoria; 5kw/-44m, 45-35-38/122-42-33.
OR	Salem	K04SG	4 (17)	Granted move from K16JS Eugene; 3kw/294m, 44-58-58/123-08-36.
PA	Allentown	WRLD-LD	5 (30)	Granted move from ch. 30 Kingston; 800w/280m, 40-34-02/75-26-04.
PA	Allentown	W09DB	26 (5)	Requests move from ch. 9 Williamsport; 15kw/280m, 40-34-02/75-26-04.
PA	Allentown	W26FO	26 (24)	Granted move from W24ET Atlantic City, N.J.; 15kw/140m, 40-23-05/75-20-56.
PA	Allentown	WLPH-CD	36 (34)	Granted move from ch. 26 Philadelphia; 15kw/268m, 40-34-02/75-26-04.
PA	Altoona	WTOO-LD	17 (50)	Granted move from ch. 22 Clearfield; 15kw/288m, 40-34-04/78-26-25.
PA	Coopersburg	W32GF	32 (69)	Granted move from W24CS Reading; 15kiw/318m, 40-33-52/75-26-24.
PA	Harrisburg	WHLZ-LD	9 (19)	Granted move from ch. 16, 1kw/236m, 40-18-19/77-00-27. The calls W09DO also appear for this station.
PA	Harrisburg	W23FP	23 (47)	Granted move from W36EY Berwick; 15kw/383m, 40-15-45/76-27-50.
PA	Harrisburg	WHVL-LD	26 (29)	Granted move from ch. 27 State College; 12kw/268m, 40-07-20/77-04-12.
PA	Harrisburg	W29FZ	29 (19)	Granted move from W19FN State College;

St	City	Call	Ch (VC)	Notes
				15kw/268m, 40-07-20/77-04-12.
PA	Hazleton	WYLN-CD	27 (35)	Granted move from ch. 26, 15kw/154m, 40-58-10/75-57-23.
PA	Millersburg	W05DO	5 (36)	Granted move from W25FG Philadelphia, 3kw/281m, 40-15-45/76-27-50.
PA	Millersburg	W14FG	14 (42)	Granted move from W25FE Chambersburg, 15kw/250m, 40-18-56/76-57-08.
PA	Millersburg	WCZS-LD	33 (35)	Granted move from ch. 30 Chambersburg, 15kw/241m, 40-18-56/76-58-08. Also listed as W33FE (new channel) & W30FH (old channel)
PA	New Freedom	W28FL	28 (46)	Granted move from W10DE Washington, D.C.; 4kw/124m, 39-30-54/76-33-34.
PA	Philadelphia	K21DO	32 (21)	Requests move from ch. 21 Palm Springs, Cal.; 15kw/206m, 39-44-04/74-50-27.
PA	Pittsburgh	W02DB	2 (35)	Granted move from W35DI Roanoke, W. Va.; 3kw/92m, 40-17-36/80-03-05.
PA	Pittsburgh	W03CD	3 (32)	Granted move from W32FY Clarksburg, W. Va.; 1.3kw/92m, 40-17-36/80-03-05; amendment from 1.4kw.
PA	Pittsburgh	W05DN	5 (25)	Granted move from W25FS Clarksburg, W.Va.; 3kw/147m, 40-07-39/80-09-38.
PA	Pittsburgh	WIIC-LD	13 (31)	Granted move from ch. 10, 425w/180m, 40-26-46/79-57-50.
PA	Reading	W29FV	29 (49)	Granted move from W16EJ Harrisburg; 15kw/238m, 40-19-19/75-53-34. ATSC 3.0.
PA	Scranton	WDUM-LD	28 (41)	Granted move from ch. 16 Philadelphia; 15kw/228m, 41-02-37/75-36-21.
PA	Shrewsbury	W30FG	30 (30)	Granted move from W03CE Lancaster; 8kw/124m, 39-30-54/76-33-34.
PA	Williamsport	W32GG	32 (5)	Granted move from W09DB; 15kw/348m, 41-13-08/76-57-26.
PR	Ponce	WQTO	19 (26)	Returned to the air Mar. 3 rd at 25% power.
PR	San Juan	WIPR-TV	26 (6)	Granted power reduction to 200kw/259m for DTS Site #1 only. Sites #2 and #3 unchanged. Requests power increase to 750kw/761m, 18-06-34/66-03-03. (for Site #1 only, or eliminate #2 & #3?)
RI	Providence	K28MS	11 (46)	Requests move from ch. 28 Bismarck, N.D.; 2.5kw/72m, 41-55-15/71-30-40.
RI	Providence	WTXX-LD	26 (34)	Granted move from ch. 29 Springfield, Mass.; 15kw/100m, 41-36-52/71-38-05.
SC	Columbia	W20FD	20 (16)	Granted move from W33DN Florence; 15kw/81m, 33-57-12/80-55-10.
SC	Columbia	WFGZ-LD	32 (22)	Requests move from ch. 22 Gainesville, Fla.; 15kw/158m, 34-03-24/80-58-49.
SC	Greenwood	W16EE	16 (16)	Granted move from Augusta, Ga.; 15kw/119m, 34-28-15/81-52-53.
SC	Myrtle Beach	W35EL	35 (22)	Granted move from W22FN Wilmington, N.C.;

St	City	Call	Ch (VC)	Notes
				15kw/151m, 33-43-51/79-04-31.
SC	Sumter	W18FH	18 (12)	Granted move from W16EL Augusta, Ga.; 15kw/80m, 33-54-28/80-21-44.
SD	Aberdeen	K33MI	33 (46)	OFF Feb. 25 th ; then, on Mar. 6 th , requested STA to return to the air at reduced power of 3kw/89m, 45-28-29/98-31-38. STA granted. Using temporary transmitter pending repairs to main unit. Returned to full power Mar. 13 th .
SD	Sioux City	K25RB	25 (22)	Granted move from K22KD Sioux Falls; 10kw/285m, 42-30-53/96-18-16. Tower is in Sioux City, Iowa.
TN	Carthage	WNSH-LD	3 (9)	Granted move from ch. 9 Nashville; 3kw/151m, 36-09-13/86-22-46. Site is near Gladeville in Wilson Co., same tower as W29FR.
TN	Carthage	W04EB	4 (35)	Granted move from W35DZ Cookeville; 3kw/151m, 36-09-13/86-22-46. Site is near Gladeville in Wilson Co., same tower as W29FR.
TN	Dickson	WDHC-LD	18 (11)	Returned to the air Feb. 14 th at 4kw/204m, 36-17-36/87-18-20 near Cunningham west of Ashland City. Requests move to WDKN AM 1260 tower, 36-06-31/87-22-14; 4kw/101m.
TN	Lexington	W32EV	32 (18)	Granted move from Adamsville; 15kw/40m, 35-43-00/88-22-55.
TN	Memphis	WNBA-LD	7 (2)	Requests move from ch. 34, 3kw/275m, 35-10-29/89-50-43; granted & moved.
TN	Memphis	W08ES	8 (21)	Requests move from W21EC, 3kw/60m, 34-55-02/89-47-39; city from Tupelo, Miss. Amendment to change new site. Granted.
TN	Memphis	WEBU-LD	10 (22)	Granted move from ch. 22 Oxford, Miss.; 3kw/139m, 35-06-44/89-53-31.
TN	Memphis	WPRQ-LD	11 (12)	Granted move from ch. 12 Clarksdale, Miss.; 3kw/142m, 35-06-44/89-53-31.
TN	Memphis	W12DR	12 (17)	Granted move from Jackson; 3kw/73m, 35-10-45/89-57-49.
TN	Memphis	WBII-CD	20 (20)	Requests move from Holly Springs, Miss.; 15kw/148m, 35-06-44/89-53-31.
TN	Memphis	KPMF-LD	24 (26)	Requests STA for 25% power Feb. 24 th ; transmitter not making rated output. Granted. Returned to full power Mar. 15 th .
TN	Memphis	WMPJ-LD	27 (34)	Granted move from ch. 26 Oxford, Miss.; 15kw/180m, 35-16-33/89-46-38.
TN	Murfreesboro	W11DY	11 (26)	Granted move from W26ET Chattanooga; 3kw/76m, 35-55-07/86-15-12. East of Lascassas. ATSC 3.0.
TN	Nashville	W08ET	8 (26)	Granted move from W26FM Glasgow, Ky.; 3kw/357m,

St	City	Call	Ch (VC)	Notes
				36-16-05/86-47-45.
TN	Nashville	WJNK-LD	12 (34)	On one of the towers west of I-24 at Old Hickory Boulevard northwest of town. Granted move from ch. 34; 3kw/219m, 36-16-05/86-47-45.
TN	Nashville	W22FQ	22 (18)	On one of the towers west of I-24 at Old Hickory Boulevard northwest of town. Granted move from W18EW Jackson; 15kw/101m, 36-10-20/86-34-32.
TX	Austin	K15NF	15 (22)	Between Central Pike and I-40 East east of Hermitage. Granted move from K22OK Calvert; 15kw/108m, 30-40-27/97-48-42.
TX	Austin	WKHU-CD	35 (60)	Requests move from ch. 32 Kittanning, Penna.; 15kw/223m, 30-19-24/97-48-00.
TX	Beaumont	K30RB	30 (10)	Moved from K10RT, 300w/7m, 29-58-36/93-56-03.
TX	Dallas	K07AAE	7 (31)	Granted move from Lingleville; 3kw/104m, 32-54-04/96-41-15.
TX	Dallas	KTLN-CD	10 (8)	Requests move from ch. 15 Bakersfield, Cal.; 3kw/378m, 32-35-22/96-58-13.
TX	Dallas	KLDF-CD	22 (17)	Requests move from ch. 17 Lompoc, Cal.; 15kw/318m, 32-35-22/96-58-13.
TX	Denton	KHFD-LD	13 (16)	Granted site move to 33-28-48/97-03-24; 3kw/183m. Amendment to change city from Dallas.
TX	El Paso	KWHY-LD	22 (36)	Requests move from ch. 26 Roswell, N.M.; 12kw/21m, 31-49-53/106-05-44.
TX	Fort Worth	KJLN-LD	26 (50)	Requests move from ch. 29 Joplin, Mo.; 10kw/66m, 32-40-19/97-19-01.
TX	Gainesville	K26KC	26 (7)	Granted move from Dallas; ATSC 3.0.
TX	Houston	KHXL-LD	12 (7)	Granted move from ch. 7 Huntsville; 2.25kw/99m, 29-42-18/95-44-56.
TX	Laredo	KLMV-LD	15 (15)	OFF Mar. 5 th pending replacement of obsolete transmission equipment.
TX	League City	K12XZ	12 (15)	Granted move from K200M Beaumont; 3kw/129m, 29-35-36/95-03-13.
TX	McAllen	KSXF-LD	10 (56)	Requests move from ch. 23 Sioux Falls, S.D.; 3kw/104m, 26-20-08/98-09-45.
TX	San Antonio	KFLZ-LD	6 (6)	Requests power increase to 1kw/129m.
TX	Sherman	K200H	20 (24)	Granted move from Ardmore, Okla.; 15kw/352m, 33-32-14/96-49-55.
TX	Sherman	K22PE	22 (19)	Granted move from K26PA Ardmore, Okla.; 15kw/352m, 33-32-14/96-49-55.
TX	Tyler	KTWC-LD	19 (12)	Granted move from ch. 34 Crockett; 15kw/165m, 32-15-34/95-22-04.
TX	Tyler	KKPD-LD	30 (30)	OFF Feb. 25 th , “unresponsiveness of the transmitter”. Sounds like a network/Internet issue.
TX	Tyler	KPKN-LD	35 (35)	Notified as OFF Feb. 25 th , but withdrawn Mar. 11 th . Filed for wrong station – it’s KKPD-LD that was off.
TX	Willis	K28QN	28 (29)	Granted move from Conroe; 15kw/179m,

St	City	Call	Ch (VC)	Notes
				30-22-44/95-31-42.
UT	Grantsville	K08QM	8 (8)	Granted move from Wendover; 3kw/-172m, 40-35-58/112-28-52. Returned to the air from new site Mar. 6 th . Application says it rebroadcasts WMBF-TV Florence, South Carolina???
UT	Hildale	K09SU	9 (4)	Requests power increase from 40 watts to 130. Granted.
UT	Salt Lake City	KPDR-LD	3 (19)	Granted move from ch. 22; 3kw/886m, 40-36-28/112-09-29.
UT	Salt Lake City	K06QZ	6 (15)	Granted move from K11XG Logan; 3kw/886m, 40-36-28/112-09-29.
UT	Salt Lake City	K09AAJ	9 (3)	Granted move from K31QF; 3kw/886m, 40-36-28/112-09-39.
UT	Salt Lake City	KBTU-LD	10 (23)	Granted move from ch. 15, 3kw/1128m, 40-04-56/112-12-12.
UT	Salt Lake City	WQQZ-CD	15 (14)	Requests move from Ponce, Puerto Rico (?!), 5kw/1128m, 40-40-56/112-12-12.
UT	Wendover	K08QM	8 (18)	Returned to the air Mar. 6 th .
VA	Fairfax	WDCN-LD	6 (6)	OFF Feb. 11 th , "technical problems". Returned to the air Mar. 2 nd .
VA	Norfolk	W18FI	18 (26)	Granted move from W26EY Manteo, N.C.; 15kw/106m, 36-48-37/76-16-57.
VA	Norfolk	W22EN	22 (22)	Granted move from Manteo, N.C.; 15kw/106m, 36-48-37/76-16-57.
VA	Norfolk	W24EC	24 (24)	Granted move from Manteo, N.C.; 14.8kw/106m, 36-48-37/76-16-57.
VA	Norfolk	W28CJ	28 (28)	Granted move from Manteo, N.C.; 15kw/244m, 36-32-55/76-11-16.
VA	Norfolk	W30DN	30 (30)	Granted move from Manteo, N.C.; 15kw/244m, 36-32-55/76-11-16.
VA	Norfolk	WTVZ-TV	33 (33)	OFF Mar. 9th; license canceled at licensee's request.
VA	Roanoke	W24FH	3 (24)	Requests move from W03BX Sutton, W. Va.; 15kw/604m, 37-11-38/80-09-25; amendment from 300w/398m & to change site.
VA	Roanoke	W29FS	4 (29)	Requests move from W04DZ Sutton, W. Va.; 15kw/604m, 37-11-38/80-09-25; amendment from 300w/398m & to change site.
VA	Roanoke	W35EN	18 (35)	Requests move from W18FB Sutton, W. Va.; 15kw/604m, 37-11-38/80-09-25; amendment from 300w/398m & to change site.
VA	Sussex Co.	W18FJ	18 (44)	Granted move from W15DO; 500w/20m, 36-57-27/77-10-22.
VT	Brattleboro	WYBM-LD	31 (15)	Granted move from ch. 15 Westmoreland, N.H.; 15kw/13m, 42-53-22/72-36-50.
WA	Baker Flats	K32MC	32 (7)	Requests tower relocation to 47-19-09/120-14-21 & antenna height reduction to 361m. Granted.
WA	Seattle	K08QY	8 (2)	Granted move from K15IQ; 1.9kw/145m, 47-16-43/122-30-46. Moved.

St	City	Call	Ch (VC)	Notes
WA	Seattle	K31FD	12 (31)	Requests move from ch. 31 Boise, Ida.; 3kw/701m, 47-30-16/121-58-10.
WA	Seattle	K21GQ	15 (21)	Requests move from ch. 21 Minot, N.D.; 7.5kw/94m, 47-47-25/122-03-49.
WA	Seattle	K20NF	20 (23)	Granted power increase to 15kw/205m, 47-36-55/122-18-33.
WA	Walla Walla	KWWO-LD	17 (47)	Granted move from ch. 32, 15kw/202m, 45-48-00/118-22-40.
WI	Baraboo	WPDR-LD	8 (31)	Moved from ch. 35 Tomah, 15kw/315m, 43-25-40/89-39-14.
WI	Green Bay	W35EQ	35 (18)	Granted move from W33EW Rhinelander; 15kw/195m, 44-20-00/87-58-56.
WI	Green Bay	W33FC	36 (33)	Granted move from W36EI Wausau; 15kw/93m, 44-26-21/88-21-34.
WI	La Crosse	W29FW	29 (22)	Granted move from W22FK Baraboo; 7.5kw/196m, 43-44-52/91-17-55.
WI	Madison	W33FB	33 (25)	Granted move from W25FT Baraboo; 5.25kw/119m, 43-03-09/89-28-36. WKOW-27 radar tower, Tokay Blvd.
WI	Mattoon	W11EB	11 (31)	Granted move from W35DM Minocqua; 1kw/-3m, 45-00-49/89-02-26.
WI	Sayner	W21DS	21 (7)	Operating at 60% power since Feb. 13 th due to transmitter issue. ABIP inspection (see text) found antenna is 5.1m higher than licensed; station will file STA to increase HAAT to 145m. Granted.
WI	Siren	K11YA	11 (17)	Granted move from K17OV Duluth; 1kw/48m, 45-46-13/92-24-54.
WV	Charleston	W20FC	20 (25)	Granted move from W25FX Sutton; 15kw/93m, 38-22-31/81-39-20.
WV	Huntington	W27EF	27 (30)	Granted move from Charleston; 15kw/308m, 38-30-36/82-13-10.
WY	Evanston	K18OH	18 (4)	Granted move from K36OU Mountain View; 1.2kw/427m, 41-21-04/110-54-22.
WY	Freedom	K33DS	33 (2)	Granted move to 43-07-08/111-07-49 & power increase from 72 watts/-69m to 200 watts/684m.
WY	Gillette	KOPA-CD	9 (12)	Returned to the air Mar. 12 th .
WY	Thayne	K12LI	12 (6)	Granted move to 43-07-08/111-07-49 & tower height increase from -69m to 684m.

Guide to abbreviations:

CC	Callsign change.
LSR	Live Sports Radio (VERY low-power temporary stations at sporting events.)
NW	New station on the air.
OFF	Station is off the air.
PC/PG/PR	Power and-or antenna height change on the air/granted/requested.
QC/QG/QR	Channel change on the air/granted/requested.
QRP	Station is operating at reduced power.

RA Station returned to the air, or returned to full power after QRP.
ST-C/ST-G/ST-R Special Temporary Authority in use/granted/requested for reduced facilities.

Entries **in boldface** are full-power stations; all others are LPTVs or Class A.

TECHNICAL NOTES:

NEW LPTVs & MAJOR CHANGES:

For years, there's been a freeze on applications for new LPTV stations or major changes to existing stations. This freeze has now been lifted, and thousands of applications have been filed. (just shy of 2,200)

Applications for major changes appear in the list at the top of this article. Again, a technical change is "major" if the station could operate the proposed new facility, and its existing facility, at the same time without interfering with itself.

For example, if you look at Modesto, California you see W34EY. This station proposes to move from its existing channel 34 operation in Huntsville, Alabama to a new facility on channel 28 in Modesto. A channel 28 station cannot interfere with channel 34 – and a station in California cannot interfere with one in Alabama! Definitely a "major" change!

Compare with the following listing for KKPM-LD channel 28 Nicolaus. It proposes to remain on the same channel, while reducing power and antenna height. The new facility would interfere with the old one, making this a "minor" change.

The point is, the proposed new channel 28 facility in Modesto could just as easily be licensed to an entirely new station – so W34EY needs to compete with any potential new operators on an equal basis. The proposed new channel 28 in Nicolaus could *not* be licensed to an entirely new station as it would interfere with KKPM's ongoing operation.

The sheer number of new-station applications is overwhelming. Trip Ericson has done an impressive job of reporting them on the RabbitEars website; I refer you to http://rabbitears.info/static.php?name=freeze_lift_tools.

WPDR-LD Baraboo:

~~I have not yet seen this one clear the FCC, but a viewer near Baraboo reports seeing this station on its new physical channel 31. (and still relaying WKBT La Crosse — probably via the Internet)~~
This application cleared the FCC on March 10th. I don't know if it's still relaying WKBT – I would expect it to switch to WISC-TV Madison.

Speaking of WISC-TV translators... If you read Trip's Freeze Lift Tools mentioned above, you'll find something interesting: applications for three new translators in the Madison market using the same facilities as translators that already exist – and applied for by the same owner. Seems weird, doesn't it?

Trip advises they're applying to convert from Digital Replacement Translators to ordinary translators. At the time they were first licensed, during the repack, applications for entirely new translators were not being accepted. Digital Replacement Translator applications were accepted, as the Commission

figured some stations would lose coverage as a result of their new repack facilities. (definitely the case for WISC, which moved from channel 50 to channel 11 with all the problems VHF DTV faces...)

But a Digital Replacement Translator is, legally, tightly tied to the station it relays. It must be a 100% relay, and it cannot be converted to a LPTV station. (thus, it cannot originate its own programming)

If these applications are granted, the translators will receive their own callsigns for the first time. Digital Replacement Translators' callsigns are the same as those of the station relayed – in other words, there are *three* WISC-TVs.

There's one more new translator requested with existing facilities; channel 22 on Krell Hill near Spokane, Washington, a Digital Replacement Translator for KXLY-TV. It may not be surprising to learn KXLY-TV and WISC-TV are co-owned(grin).

W21DS Sayner:

ABIP is the Alternative Broadcast Inspection Program. Stations in states with this program (Wisconsin is one of them) may ask their state broadcasters' association to send an engineer to inspect their operation. These voluntary inspections will cover the same topics an FCC engineer would. If the station passes voluntary inspection, it receives a certificate which will "immunize" the station against an FCC random inspection for three years. (the station may still be inspected if the Commission receives a specific complaint) If the station fails the voluntary inspection, it's given time to correct the shortcoming.

TV News Extra – LPTV call changes

March 2026

D. Smith

In a FCC proceeding in mid-March, the FCC announced some significant changes to LPTV, TV translator, and Class A TV rules. Probably the most obvious to DXers are the involuntary callsign changes for 54 TV translators. (see list below) Regulation 74.791 has, for at least twenty years, specified that the callsign of a TV translator must "be made up of a prefix consisting of the initial letter K or W followed by the channel number assigned to the station and two additional letters and a suffix consisting of the letter –D". The process to convert from a translator to a LPTV, or vice-versa, had been informal; I suspect many stations didn't realize changing status would require a callsign change.

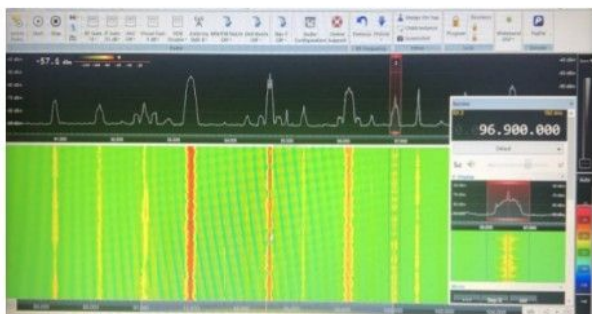
(Why convert? A TV translator is not required to comply with the EAS regulations, because it is a 100% relay of some other station which *is* required to comply. On the other hand, a TV translator must be a *100% relay* of its "primary" station – it cannot air split advertising or separate sports broadcasts. A LPTV may originate as much of its own programming as it wishes.)

The March proceeding formalizes the conversion process. A translator must file for modification of license if it wishes to convert to LPTV, and vice-versa. It also *requires* all new LPTV and Class A stations to adopt four-letter calls. (Those which already hold number-letter calls may keep them. 89% of Class A stations have already adopted four-letter calls.) All three types of station – LPTV, TV translator, and Class A – must select a "city of license" whose borders overlap with the station's interference-protected service area. We'll no longer have cases where a LPTV station moves 100 miles and continues to ID with a city it can no longer reach.

While not new, the Commission also reminded station operators that a station that fails to operate for more than 30 days for reasons under the control of the licensee will be regarded as having discontinued operation. The FCC *may* choose to cancel the station's license. (*may*, not *will*. Full-power stations may remain off the air for up to a year, but if they're still off after 366 days their license *must* be canceled.)

Old Call Sign	New Call Sign	City	State
WSFG-LD	W31FM-D	Berry	AL
KJNE-LD	K22PF-D	Jonesboro	AR
KMEE-LD	K32PG-D	Phoenix	AZ
KHAX-LD	K25RF-D	Vista	CA
KXZQ-LD	K35PU-D	Durango	CO
KLML-LD	K36QV-D	Grand Junction	CO
WHMR-LD	W16CA-D	Homestead	FL
WKIZ-LD	W29FX-D	Key West	FL
WVFW-LD	W08EV-D	Miami	FL
WGEN-LD	W08EW-D	Miami	FL
WKMG-LD	W21DX-D	Ocala	FL
WQIX-LD	W25GF-D	Baxley	GA
WKSJ-LD	W24FJ-D	Rome	GA
KBCI-LD	K09ZC-D	Bonnars Ferry	ID
KMNZ-LD	K31QK-D	Coeur D'alene	ID
WEIJ-LD	W17EX-D	Fort Wayne	IN
WSWY-LD	W20FE-D	Indianapolis	IN
KGKT-LD	K14TN-D	Lawrence	KS
KSMI-LD	K30RF-D	Wichita	KS
WBNM-LD	W25GD-D	Louisville	KY
WJGP-LD	W25GE-D	Kalamazoo	MI
KSFZ-LD	K29OM-D	Springfield	MO
KJJC-LD	K07AAR-D	Helena	MT
KEXI-LD	K35PV-D	Kalispell	MT
WCEE-LD	W17EY-D	Charlotte	NC
WILT-LD	W33FF-D	Wilmington	NC
WYCU-LD	W26FR-D	Charlestown, Etc.	NH
WNYK-LD	W20FF-D	Teaneck	NJ
KMSQ-LD	K15NG-D	Mesquite	NV
WXNJ-LD	W05DJ-D	New York	NY
WNYD-LD	W29FY-D	New York	NY
WNYP-LD	W25FA-D	New York	NY
WNJJ-LD	W30FI-D	New York	NY
WDMY-LD	W06DQ-D	Toledo	OH
KTWM-LD	K16OF-D	Lawton	OK
KWRW-LD	K34RL-D	Oklahoma City	OK
KUBN-LD	K09AAK-D	Madras	OR
KJWY-LD	K36QX-D	Salem	OR
WCZS-LD	W30FH-D	Chambersburg	PA
WHLZ-LD	W21EU-D	Harrisburg	PA
WRZH-LD	W03CE-D	Lancaster	PA
WSPZ-LD	W19FN-D	State College	PA

KABY-LD	K20PH-D	Sioux Falls	SD
KIDV-LD	K34RK-D	Albany	TX
KIDU-LD	K17PM-D	Brownwood	TX
KRTX-LD	K20PG-D	San Antonio	TX
KUWB-LD	K22PH-D	Bloomington	UT
KCSG-LD	K18OI-D	Salt Lake City	UT
KVBT-LD	K26QF-D	Santa Clara, Etc.	UT
WFIG-LD	W05DP-D	Charlotte Amalie	VI
KUMN-LD	K19NN-D	Moses Lake, Etc.	WA
KXHG-LD	K13ABZ-D	Sunnyside	WA
KWCZ-LD	K08QZ-D	Sunnyside-Grandview	WA



Format Flips

and branding, too

John Zondlo - fmdxweb@cox.net

April 2026

AR

In NW Arkansas you'll find KOJC-LP 97.1 Springdale is now on the air with Spanish religious programming.

FL

WWCN 99.3 Fort Myers Beach is now Christian AC as "Positively 99." It formerly was Spanish Tropical as "Playa 99.3."

IL

Connoisseur Media is flippin' crazy after its purchase of Alpha Media. The latest flip is WSSR 96.7 Joliet IL. It's no longer Hot AC as "Star 96.7." WSSR is now Classic Hits as "The 9-6-7." Chicago radio legend Eddie Volkman, late of WBBM-FM Chicago, anchors morning drive. I had a chance to listen to the station during a recent trip to that area and my old stomping grounds in NW Indiana. It's pretty much your basic Classic Hits station.



Nash Icon is out the door at WJBC-FM 93.7 Pontiac IL. It's now Classic Hits, airing it's previously streaming-only Classic Hits "Route 24 Radio" brand. Along with the format change comes new call letters, WPOK-FM. Kudos to the station for its emphasis on live and local programming, with local morning and midday shows, high school sports, a local daily talk show and farm programming.

IN

NE Indiana has seen Adams Radio Group flip W245CA 96.9 Fort Wayne to a simulcast of Country WBTU 93.3 Kendallville. The move gives "US 93.3" a stronger signal in the Summit City.

IA

KRQN 107.1 Vinton IA, in the Cedar Rapids market, is now “Radio Pig,” a Classic Hits station replacing Regional Mexican formatted “El Gallo.” “Radio Pig” will feature hits from the 60’s to the early 90’s. An apt branding for a station in one of the top pork producing states in the country.

KS



In the Sunflower State, Murfin Media is changing several of its stations to Classic Rock as “The Rock of Kansas.” Stations involved include KSNP 97.7 Burlington, KKOY 105.5 Chanute, K300DE 107.9 Pittsburg, and KIND 94.9 Elk City.

LA

Acadia Broadcast Partners has made a big change in the Lafayette LA market. KPCZ 106.7 Rayne not only flips to Soft Oldies as “Cool 106.7,” but also changes calls to KWLL.

MD

WEMA-LP 94.3 Fort Washington MD is new to the airwaves with Variety programming.

MA

W266DQ 101.1 Weymouth MA has flipped from Oldies to Classic Hits. The translator rebroadcasts WMEX 1510 Quincy MA.

MI

Nope, it wasn’t an April Fool’s joke. WCXT 98.3 Hartford MI has switched back to Adult Contemporary after just one year as Alternative.

MN

Country KLQL Luverne MN has changed to Rock as “The Rock Farm.” The station has also changed its call letters to KCLP.

MO

KSDT-LP 100.5 is now on the air in St. Joseph MO. The format is religious programming.

NE

The Tri-Cities area of central Nebraska is getting accustomed to some changes. GI Family Radio has moved Classic Country “103.5 The Legend” from the HD-4 signal of KRGI-FM 96.5 Grand Island and translator K278JBR 103.5 Grand Island to KKJK 103.1 Ravenna NE. With that comes a rebranding as “103.1 KJ Country,” with the positioning statement “The Best of the 90’s, 2000’s and Today.” So what happened to KRGI HD-4 and K278BR? It’s Classic Hip Hop now. And in Gibbon NE, GI has flipped Rock KMTY 97.7 to a hybrid Rock/Sports station “97.7 The Zone.” It’ll carry Omaha based Sports programming from KOZN 1620 Omaha.

CHR KSWN 93.9 McCook NE is no more, swapped for Christian AC as “93.9 Jett FM.” It’s a commercial station owned by Legacy Communications going up against a couple of Christian AC’s in the market.

NY

Country “101.3 The Wolf” WCPV Essex NY is now simulcasting WVMT 620 Burlington VT.

NC

W225CJ 92.9 Asheville NC has switched from ESPN Sports to a rebroadcaster of Conservative Talk WWNC 570 Asheville.

NS

In Atlantic Canada, CKHZ 103.5 Halifax is still country, but rebranded as “Country 103.5.” Their positioning statement is “Where Real Country lives,” and it’s more gold-based than before. Oh, and even more important, the station is live and local 6A-6P.

OH

WGBM-LP 104.9 Crestline OH is new to the air. The station features religious programming and is known as “104.9 The Truth.”

PA

W297CL 107.3 Levittown, fed by WBCB 1490, is switching to Fideri News Network’s podcasts and high school sports coverage. More local programming is in the offing.

In Nittany Lion country WWRO-LP 100.5 State College PA is now on and airing religious programming.

SC

Connoisseur Media has rebranded WARQ 93.5 Columbia SC, going from “Live 93.5” TO “93.5 The Bubble.” The Hot AC format lives on on the station.

SD

In Madison SD, KJAM-FM has rebranded as “Amazing Madison 103.1,” but still retains its Country format. The branding matches that of its local website.

TN

In TN, Classic Rock WENR 1090 Englewood and translator W288EL Athens have changed to Variety Hits as “105.5 Jake FM.” Not real creative on the branding, tho, using the well worked “We Play Anything” mantra.

VA

Hot Adult Contemporary “103.7 Your Variety” WURV 103.7 Richmond VA has changed to CHR as “Hot 103.7.” New positioning for the station is “All The Hits.” Which begs the question, if a station bills itself as playing all the hits, shouldn’t they play the hits of all formats? Now that would be an all over the road format.

WA

In Ellensburg Way, KELL-LP 98.3 is airing Variety programming. It’s known locally as “ECR: Ellensburg Community Radio.”

WV

WRRR-FM St. Mary’s WV has flipped from Adult Contemporary to Classic Country. The former “Lite Rock 93R” is now branded as just “93 R.” The station is using Nash Icon programming from Westwood One.

=====
Sources: Indianaradio.net, Northpine, Radiolnsight, Hisair.net, LPFM Database, IRCA’s DX Monitor, InsideRadio, Radiolnk, and radio biz connections

TV DX and Photos

Eric Bueneman N0UIH 631 Coachway Ln, Hazelwood, MO 63042-1347
Email: n0uiheric@gmail.com - Deadline the 10th of the month



TV DX Logs and Photos is proud to welcome a new reporter this month! **Chris Lucas** DXes from Poughkeepsie, NY, who sends in these pictures from a tropo opening on March 4. I have WDIV in my logbook, but on the pre-repack channel, 45. Here's his excellent pictures.



WDIV 32 (4) Detroit, MI
480 miles (772 km) tropo
Seen March 4, 2026

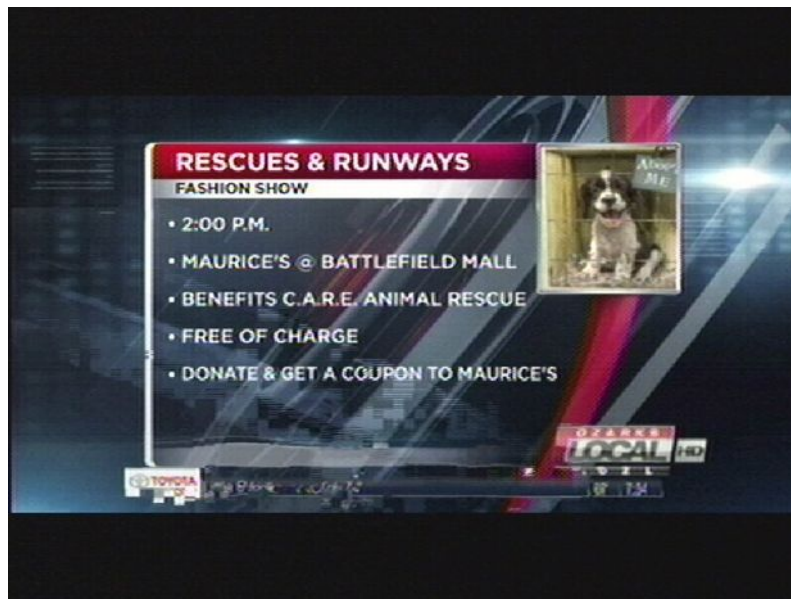


WTVS 20 (56) Detroit, MI
478 miles (769 km) tropo
Seen March 4, 2026

Without further ado, I will be profiling the best video captures from my eighth year of DTV DXing, 2012, the third full year after the transition for full power stations.



KOLR 10 (10) Springfield, MO
195 miles (314 km) tropo
Seen July 27, 2012
(Still on RF 10)



KOZL 28 (27) Springfield, MO
195 miles (314 km) tropo
Seen July 27, 2012
(Now sharing with KRBK on RF 22; RF 28 now used for ATSC 3.0 service)

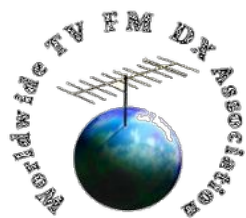


KAIT 8 (8) Jonesboro, AR
 195 miles (314 km) tropo
 Seen July 27, 2012
 (Now on RF 27)



KOTA 2.3 (3.3) Rapid City, SD
 760 miles (1,223 km) E-skip
 Seen June 10, 2012
 (Now on RF 7; RF 2 now used by KHME virtual 23)

In the next edition, I'll take a look back at 2013, the fourth full year after the digital transition for full power stations. I look forward to your logs and photos! 73 and good DX from the Florissant Valley Dial Twister.



Line of Sight is a publication of the Worldwide TV-FM DX Association. Our websites are <https://wtfda.org>, our FM database at <https://db.wtfda.org> and our Wlogger at <https://wlogger.wtfda.org>.

Line of Sight publisher is Mike Bugaj (mike@wtfda.org). The WTFDA Board of Directors consists of Mike Bugaj, Jim Thomas (jim@wtfda.org), Keith McGinnis (longwave@comcast.net) and Nick Langan (nick.langan@gmail.com).

Line of Sight editors are Eric Bueneman, John Zondlo and Doug Smith. Doug's email is dougw9wi@gmail.com, John's is fmdxweb@cox.net and Eric's email is n0uiheric@gmail.com.

Dues: An initial "joining fee" of \$10USD is collected at time of signup. After that, no further dues/renewal fees are needed. You will continue to be a WTFDA member unless 1. you tell us to cancel your membership or 2. we are unable to contact you by email for three consecutive months. At that point you will be removed from our membership list and will no longer have access to our logger. Our method of contacting you is by sending *Line of Sight* to you every month. If more than three issues to you bounce, you will be deleted as a WTFDA member and reinstated, if necessary, by sending a \$10USD reinstatement fee via Paypal or check payable to WTFDA sent to the address we give you. Email us for information.

WTFDA is a hobby club, completely run by unpaid volunteers. We strive to present information and data as accurately as possible, however accuracy is not guaranteed.



100% Published with
Linux using LibreOffice
and Master PDF Editor

