

ARE YOU READY TO RUMBLE?

MAY 2026 #19



Since we're only 30 days or so away from the start of skip season 2026, it seems to me that this cover from Bob Cooper's April 1963 DX Horizons is appropriate. Are you ready for skip? Do you have your SDRs tuned up, your antenna elements straightened, your rotors unfrozen? Your SP9s ordered? Your doctor and dentist appointments all rescheduled for after August 15th? Don't be like me and find yourself in a dentist's chair while at the same time, Dxers all around your area are hearing double hop from the Azores on FM (true story).

FROM TIM NOONAN: The 32nd annual **Madison-Milwaukee Get-Together** is on Saturday, August 15, beginning at 1 p.m. It is an all-band event, returning to the Milwaukee area this year. The address is 801 E Park Blvd, Oak Creek WI 53154. Contact me for more information at DXing2@aol.com or 414 813-7373. Good DX, Tim Noonan

FROM LES RAYBURN posting on the Wlogger: The new DXtra.com web site was developed by Bob Griffin, KC2JJM. It utilizes the FCC FM database as it's source. One big achievement is getting the Longley-Rice terrain model to display on a GPU. Computation time is under 1 second with a Nvidia GPU. If you have ever been curious about the terrain between a station and your receiver, now you can easily visualize it. I'm also curious to see how well his tropo display compares with

the APRS Map.

What would you say if UHF channels 28 to 36 were removed from service. Would your comments be printable? It's a possibility and you can read about it in this newsletter. Also, somewhere in this issue, you'll find an honest-to-goodness real reception report of mine of the coastal tropo on April 7, thanks to the Wlogger.

That's it for this month and I hope we don't have to wait until Memorial Day weekend for our first Es opening up here. Let's go, skip! CU next time. -Mike

DX Central Announces the 2026 Summer of DX Challenge: The Biggest, Most Advanced Logging Event Yet



MANDEVILLE, LA — DX Central is thrilled to announce the return of the hobby's most exciting seasonal event: The 2026 Summer of DX Challenge! Running from **May 2 through August 31, 2026** at summerofdx.com, this year's challenge pushes the boundaries of radio monitoring with brand-new bands, entirely new challenges, and a revolutionary, custom-built data terminal that makes logging easier than ever before.

For the first time in the event's history, NOAA Weather Radio (NWR) joins Medium Wave (AM) and FM Broadcast Band II (FM) as an official challenge category, opening up an entirely new layer of tropospheric and meteor scatter chasing for scanner enthusiasts.

To handle the massive influx of summer logging, DX Central has completely eliminated registration requirements and launched a brand-new, custom-coded interactive dashboard.

New Features for 2026 Include:

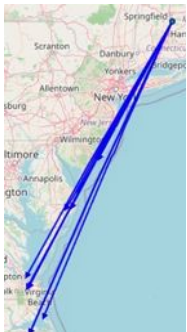
- **Frictionless Logging & Bulk Import:** Say goodbye to typing out callsigns and cities! The new terminal features a click-to-log Database Search utilizing WTFDA and Mesa Mike databases. Prefer to upload your logs rather than enter manually? The new Bulk Import tool allows you to upload CSVs directly from FMList, MWList, and WLogger, automatically mapping your data and updating your score in real-time.
- **The Multiplier Scoring Engine:** Borrowing from traditional Ham Radio contests, DXers now earn massive score multipliers for every unique US State, Canadian Province, and International Country they log per band.
- **The John Cereghin Century Club:** The legendary Grid Square challenge expands! DXers who log 100 unique US Maidenhead Grids on MW, FM, (20 on NWR) will earn our prestigious Century Club certificate, with endorsements for every 50 additional grids (10 for NWR).
- **County Hunters & Rovers:** Chase US Counties across all three bands, and take your gear on the road! The new "Rover" category allows mobile DXers to activate rare grids and counties for special recognition.
- **Bi-Weekly Bounty Hunts:** Tune in to our DX-themed Internet radio station, *DX Radio* (thisisprobablydxradio.com), for encrypted 'targeted intercepts' hidden through secret broadcast codewords revealed at the top of each hour. Enter the codeword into the DX Central terminal to unlock clandestine, time-sensitive DXing missions!

The 2026 Summer of DX active logging window opens on **Saturday, May 2, 2026 at 0100 UTC** and closes on **Monday, August 31, 2026 at 2359 UTC**. All receptions must be solely from this time period to qualify. To ensure everyone has plenty of time to review their SDR recordings, the DX Central terminal will remain open to accept logs and bulk uploads until September 30, 2026.

Whether you are a seasoned FM Sporadic E chaser, a dedicated MW night-owl, or firing up a weather radio for the first time, the 2026 Summer of DX has a challenge for you.

Get your receivers ready, prepare your antennas, and prepare to log! For more information, to view the live leaderboards, and to access the logging terminal, visit summerofdx.com

FM DX Report - Mike Bugaj - 69 Sherman Rd, Enfield, CT TEF and/or HF + Discovery



Coastal tropo from the evening of April 9 (11pm Thurs-12:30am Friday) plus two logs (WRSF and WLBW) from around 9am on the 10th. All are relogs except WFMI which I finally heard for the 1st time. Usually WRNX is too much for them. What is unusual is that I took down my phase antenna, an SP9, to check it over (found some rust) and put a dipole in its place temporarily but this worked so good that I may just make it permanent. So what I'm using now is an APS13 and a dipole into a Bolin phase box. I'm using both my TEF radio webserver and SDRConnect at the same time. What I needed to do is put an attenuator inline with the APS13 to knock it down a couple of db to get the nulls, but I'm surprised it works so well. Anyway, my last tropo to North Carolina was back in last September. -Mike

Tr	92.1	WLBW	FENWICK ISLAND	DE	K-LOVE	283 (miles)
Tr	105.7	WRSF	COLUMBIA	NC	Still there from last night, weaker but still there Dixie 105.7	466
Tr	100.9	WFMI	SOUTHERN SHORES	NC	Gospel Music, WRNX phased out NEW log,	438
Tr	95.1	WAYV	ATLANTIC CITY	NJ	WRKI phased out	207
Tr	105.7	WRSF	COLUMBIA	NC	Dixie 105.7. Had to phase out WHCN HD sideband.	466
Tr	104.5	WNVZ	NORFOLK	VA	Z104, completely covering all the local translators	397
Tr	99.7	WYFI	NORFOLK	VA	super strong!	408
Tr	94.9	WPTE	VIRGINIA BEACH	VA	RDS 7E36	410
Tr	88.3	WGBZ	OCEAN CITY	MD	RDS	289

FCC GRANTS AND ACTIONS

From fcc.today and the FCC

May 2026

AL	WFPW	Battens Crossroads	91.3	57w-v from 700w h&v
AR	K298CV	Fayetteville	107.5	Silent 4/2/26 taken off air by Cumulus
AZ	K235CB	Chandler	94.9	220w from 250w, new site 33-20-03 112-03-43
AZ	KVAM	Flower Pot	89.7	38w from 8w at current site
AZ	K241BQ	Ft. McDowell	96.1	95w from 140w, new site 33-20-03 112-03-43
AZ	KYLK	Yuma	100.9	ex KQSR
CA	KITS-FM4	Antioch	105.3	license cancelled
CA	KHTS-FM	El Cajon	93.3	ERP 50kw/150m from 29kw/198m at new site 32-43-48 117-05-06
CA	KPHI-LP	Happy Camp	94.9	initial calls
CA	KLOD-LP	McCloud	95.7	initial calls
CA	KMSH-LP	Mount Shasta	95.5	initial calls
CA	KITS-FM2	Pleasanton	105.3	license cancelled
CA	KGB-FM	San Diego	101.5	ERP 50kw/150m from 50kw/152m at same site
CA	KZAQ-LP	Santa Barbara	96.5	Silent 4/10/26 construction at current site
CA	K300AO	Santa Rosa	107.9	Ex 93.3 (K227DZ) at current site
CA	KPSV	Tulare	91.9	Silent 1/19/26 transmitters malfunction
CA	KCBP	Westly	95.5	Silent 4/14/26 technical issues
CA	KYRC-LP	Yreka	94.7	initial calls
CO	K237CY	Cedar Creek	95.3	COL from Fort Collins
CO	K222DS	Fort Collins	92.3	new site 40-32-47 105-11-55
CO	KLLM	Georgetown	89.5	Silent 4/10/26 relocating to new site
CO	KPKL	Placerville	90.7	ex KLMQ
DE	W296BS	Milford	105.1	Silent 4/21/26 lost site
FL	W282BY	Fort Myers	104.3	Silent 3/16/26 lost site
FL	W291AL	Fort Pierce	106.1	change primary to WPSL 1590
FL	W292DE	St. Augustine	104.3	new site 29-51-02 81-19-48
FL	W297AG	Stuart	107.3	change primary to WPSL 1590
FL	W239CG	Tallahassee	95.7	250w at new site 30-28-12 85-17-16
GA	WBIB-FM	Forsythe	89.1	Silent 3/6/26 internet failure
HI	K207FQ	Kihel	89.3	Ex 90.3 (K212FS) at new site 20-42-22 156-15-39
IA	KDBU	Dubuque	88.9	initial calls
IA	KCMR	Mason City	97.9	15kw/96m from 6kw/96m at new site 43-07-17 93-11-34

ID	KJJI-LP	Boise	97.3	initial calls
ID	KFFI-LP	Boise	103.1	Silent 4/16/26 unknown interference problem
ID	K208GS	McCall	89.5	Ex 89.9 (K260AO) at new site 45-00-07 116-08-07
ID	K204GZ	McCall	88.7	Ex 99.1 (K256AN)
ID	KISU-FM	Pocatello	91.1	5.4kw/304m from 5kw-v only/307m new site 42-52-02 112-30-52
IN	W203CF	Williamsport	88.5	13w from 19w-v at current site
KY	WJCE	Paintville	89.7	initial calls
MA	W279DH	Haverhill	103.7	250w from 100w at new site 42-39-14 71-13-00
MA	WJDV-LP	Marlborough	96.5	HAAT to 93m from 28m at new site 42-20-09 71-32-38
ME	WWLN	Lincoln	91.5	5.6kw/147m from 12kw/131m at current site
MI	W262DE	Belzoni	100.3	new site 33-10-24 90-28-51
MI	NEW	Detroit	102.3	new CP, 47w/44m, 42-22-19 83-03-50
MI	W273DD	Grand Rapids	102.5	Silent 4/22/26 financial distress
MI	WLXT	Petoskey	96.3	13kw/317m from 100kw/299m at new site 45-19-34 94-52-43
MI	W296EJ	Petoskey	98.3	new site 45-19-34 84-52-43
MI	W284DF	Petoskey	104.7	new site 45-19-34 84-52-43
MI	W277DY	Petoskey	103.3	new site 45-19-34 84-52-43
MI	W224DT	Port Huron	92.7	license cancelled
MI	WTRX	Speaker Township	91.5	ex WKKM
MN	KVCS	Spring Valley	89.1	Silent 2/23/26 transmitter problem, loss of site connectivity
MN	KPPS-LP	St. Louis Park	97.5	Silent 4/13/26 lost site
MS	W288DU	Canton	105.5	license cancelled
NC	WYHG	Wadesboro	93.5	ex WTFQ-FM
NC	WEHB-LP	Wadesboro	98.3	license cancelled
NE	K201JH	Columbus	88.1	ex 89.7 (K209FS)
NJ	WNJI-LP	Maplewood	95.9	Silent 4/5/26 lost site, rent too high
NJ	WZYE-LP	Maplewood	95.9	Silent 4/5/26 lost site, rent too high
NJ	W250AK	Rio Grande	97.9	250w from 38w at new site 39-02-58 74-51-12
NV	K296HP	North Las Vegas	107.1	250w from 99w at current site
NV	K205DP	Winnemucca	88.9	license cancelled
NY	W295BW	Grand Island	106.9	change primary to WEBR 1440
NY	W296ER	Medford	107.1	Ex 96.5 (W243ES), ERP 7w from 3ow at current site
NY	W267AL	Syracuse	101.3	130w-v from 108w-v at new site 53-58-26 76-11-50
NY	WKEL	Webster	88.1	13kw/82m from 15kw/85m at new site 43-04-17 77-05-34
OH	WSGV-LP	Marion	106.7	initial calls

OK	K226BR	Enid	93.1	Silent 4/14/26 xltr sold
OR	K223CV	Albany	92.5	change primary to KPIK-LP
OR	KBKR	Baker	95.3	ex KKBC-FM
PA	W259CB	Reading	99.7	23w from 99w-v at new site 40-21-15 75-53-54
PA	WZWG	West Grove	91.7	400w-v from 160w-v at current site
PR	WERR-FM1	Caguas	104.1	Silent 4/19/26 lightning damage
SC	WCJG-LP	Bath	93.3	HAAT 11m from 3m
TN	W289BZ	Bristol	105.7	200w from 250w-v at current site
TN	W262DS	Columbia	100.3	Ex 100.5 (W263AE) at current site
TX	K222BE	Borger	92.3	new site 35-38-34 101-29-03
TX	K293CM	Dallas	106.5	Silent 2/28/26 lost site
TX	KIFN-LP	Decatur	99.9	HAAT 24m from 15m at current site
TX	KOLI	Electra	94.9	Silent 3/30/26 taken off air by Cumulus
TX	KACQ	Lometa	101.8	Silent 3/18/26 awaiting parts
TX	K280GU	Lubbock	103.9	Silent 3/31/26 primary KKAM 1340 is silent
TX	KZYW-LP	Seagoville	106.9	30w/54m from 75w/35m at new site 32-41-42 96-29-51
UT	KXQX	Big Water	92.5	COL from Tusaya, AZ, 3.2kw/303m, new site 37-00-37 111-40-51
UT	KXUT	Orderville	93.3	COL from Page, AZ, 17kw/574m, new site 37-17-43 112-50-45
VA	WLYH-FM	Big Island	103.9	ex WHTU
VA	WCWM	Williamsburg	90.9	license cancelled
VA	WCWM-FM1	Williamsburg	90.9	license cancelled
VT	W295CO	Brattleboro	106.9	License cancelled, primary WINQ 1490 cancelled
WA	KRNW-FM	Deer Park	107.1	ex KPKL
WI	W241CI	Milwaukee	96.1	new site 43-02-19 87-54-08
WV	WVUC-LP	Buckhannon	107.5	100w/29m from 12w/83m at new site 38-59-24 80-10-07
WV	WRLF-FM	Fairmont	94.3	ex WRLF, which goes to 1490 in Fairmont
WV	WZST-FM	Westover	100.9	ex WZST, which goes to 920 in Fairmont
WY	KUWC	Casper	91.3	7.2kw/557m from 530w/544m at current site
WY	KYOY-FM1	Cheyenne	92.3	new cp, 190w, 41-09-35 104-43-20

TV News

May 2026 - Doug. Smith

St	City	Call	Ch (VC)	Notes
AR	El Dorado	KCIB-LD	21 (5)	License canceled Apr. 13 th .
AZ	Topock	K21FU	21 (5)	Requests antenna height reduction from 1,752m to 465m. I suspect the old figure is a typo. Granted & implemented.
CA	Middletown	KFTY-LD	2 (45)	OFF Feb. 17 th , power amplifier failure; returned to the air Apr. 4 th .
CA	Modesto	W34EY	28 (38)	Requests move from ch. 34 Huntsville, Ala.; 10kw/92m, 37-38-59/121-01-27. Amended to 15kw/94m, 38-38-53/121-28-41.
CA	San Fernando	KPCD-LD	27 (27)	License canceled Apr. 7 th .
CA	Santa Ana	KRVD-LD	10 (6)	Requests power increase to 2.91kw/288m, 33-58-19/117-57-00; amendment from 3kw/317m.
CA	Twentynine Palms	KVMD	23 (31)	DTS site #2 (Mt. Harvard) off Apr. 13th due to lightning. Site #1 (Snow Peak) still on.
CO	Antonito	K29ME	29 (11)	Returned to the air Mar. 30 th .
CO	Pueblo	K19LA	19 (43)	Requests move to 38-22-44/104-33-26; 7.8kw/158m.
CO	Pueblo	KQAF-LD	35 (43)	Requests move to 38-22-44/104-33-26; 10.8kw/153m.
DC	Washington	W04EA	4 (13)	Granted move from Rapidan, Va.; 1.7kw/159m, 38-56-24/77-04-53.
DC	Washington	STA	4	Application for special temporary authority, 5w/-27m, 38-52-23/77-00-27; Nationals Stadium, 4/23/26-9/22/26. Granted.
DC	Washington	KORY-CD	13 (15)	Requests move from ch. 15 Eugene, Ore.; 3kw/217m, 38-57-50/77-06-17.
DE	Dover	WLZH-LD	14 (18)	Granted move from ch. 34 Harrisburg, Penna.; 15kw/112m, 39-12-05/75-33-53.
FL	Bradenton	WXPX-TV	29 (66)	Granted site move & antenna height reduction; 218kw/445m, 27-50-33/82-15-44.
FL	Jacksonville	W23FJ	12 (57)	Requests STA for a temporary facility on this channel, 700w/14m, 30-16-37/81-33-57. See below. Granted.
FL	Jacksonville	WJKF-CD	28 (9)	Moved from ch. 11; 15kw/282m, 30-16-37/81-33-57.
FL	Miami	WJAN-CD	33 (41)	Requests antenna height reduction to 15kw/56m, 25-53-30/80-22-19. OFF Apr. 12 th .
FL	Miami Gardens	STA	3	Application for special temporary authority, 100w/39m, 25-57-27/80-14-21; Hard Rock Stadium, Miami Grand Prix, 5/2/26-5/4/26.
FL	Ocala	WOCX-LD	20 (16)	Power increased to 10.8kw/108m, 29-13-00/82-08-58.
FL	Vero Beach	WVWW-LD	30 (30)	Power increased to 12.5kw/135m, 27-36-06/80-23-33.
GA	Atlanta	WSKC-CD	14 (22)	Relocated to 33-48-26/84-20-22; tower height increased to 15kw/313m; returned to the air with these

St	City	Call	Ch (VC)	Notes
				new facilities.
GA	Atlanta	KVMM-CD	28 (41)	Requests move from Santa Barbara, Cal.; 8kw/261m, 33-48-26/84-20-22.
GA	Baxley	W25GF	25 (19)	Requests power reduction from 8kw to 5.9kw. Granted.
HI	Hilo	K20NX	20 (20)	OFF Mar. 13 th , storm damage. Returned to the air Mar. 31 st .
HI	Wailuku	KMAU	12 (12)	Returned to the air Apr. 16th.
IL	Aurora	WAUR-LD	29 (29)	Requests STA for half power of 7.5kw at old site, PA fault. Granted.
IL	Quincy	WVDM-LD	21 (40)	OFF Mar. 23 rd , damaged controller.
IN	Evansville	WTVW	22 (7)	Moved to new site 37-51-57/87-34-04; antenna height reduced (slightly) from 301m to 297m.
KY	Glasgow	WQTN-LD	26 (26)	Requests call change from W26FM.
LA	Crowley	KAGN-CD	31 (31)	Returned to the air Apr. 7 th ; off since 9/21/25 due to lightning hit at KAJN-CD Lafayette. KAGN relays KAJN off-air.
LA	Lafayette	KAJN-CD	19 (19)	Returned to the air Apr. 7 th ; off since 9/21/25 due to lightning hit.
LA	New Orleans	WTNO-CD	22 (22)	OFF Apr. 2 nd , two damaged power amplifiers.
MA	Boston	K33EJ	31 (33)	Requests move from ch. 33 Walla Walla, Wash.; 15kw/171m, 42-31-54/70-59-10.
MI	Cadillac	WGCP-LD	23 (23)	Requests STA for unspecified reduced power due to power supply failure. Granted. Requests call change from W23EB.
MI	Pinconning	W21ET	21 (20)	Requests antenna height increase to 67m, 43-41-49/83-58-47.
MN	Minneapolis	K33LN	33 (33)	Requests STA for temporarily reduced power of 10.5kw (70%) due to damaged power amplifier. Granted. Returned to full power Apr. 15 th .
MO	Marshfield	K14SH	14 (14)	Requests antenna height increase from 81m to 607m & relocation to 37-13-09/92-56-57. Granted. Operating at unspecified reduced power since Apr. 9 th due to "massive equipment failure".
MO	St. Louis	KPTN-LD	19 (7)	Power increased from 7kw to 15kw.
MS	Bude	WMAU-TV	18 (17)	Requests STA for 50% power during transmitter replacement. Granted.
NC	Murphy	W31AN	31 (33)	Granted STA for 31% power (3.6kw) due to amplifier combiner failure.
NC	Raleigh	WWKH-CD	30 (35)	Requests move from ch. 22 Uniontown, Penna.; 15kw/82m, 35-42-51/78-49-03.
ND	Bismarck	KXMB-TV	12 (12)	Requests power increase to 21kw/437m.
NE	Broken Bow	K31OC	31 (7)	Returned to the air Apr. 6 th .
NE	Crawford	K06KR	6 (13)	Off since 11/11/25 with antenna issues; returned to the air Apr. 7 th at 25% power. (7 watts)
NM	Albuquerque	KAZQ	17 (32)	Returned to the air Mar. 1st.
NM	Albuquerque	KTVS-LD	23 (36)	Returned to the air Mar. 2 nd .
NM	Silver City	K27PF	27 (4)	Requests move from K12QW, 1.7kw/308m,

St	City	Call	Ch (VC)	Notes
				32-50-40/108-14-20; granted & on the air.
NV	Elko	KENV-DT	10 (10)	Requests permission to remain on ch. 10 and cancel permit to move to ch. 29.
NV	Hawthorne	K15LG	15 (5)	Requests change to 661w/959m, 38-27-27/118-45-54. See text.
NV	Hawthorne	K20FR	20 (4)	Requests change to 564w/957m, 38-27-27/118-45-54.
NV	Hawthorne	K29MG	29 (2)	Requests change to 661w/959m, 38-27-27/118-45-54.
NV	Hawthorne	K30FS	30 (8)	Requests change to 577w/956m, 38-27-27/118-45-54.
NV	Hawthorne	K33GZ	33 (27)	Requests change to 240w/956m, 38-27-27/118-45-54.
NV	Las Vegas	KEGS-LD	24 (30)	Moved to new site 36-06-58/115-11-12; 15kw/106m.
NV	Las Vegas	KEYI-LD	35 (35)	Returned to the air Apr. 27 th under STA for 4kw/-20m (40% power)
NY	Buffalo	WBNE-CD	15 (15)	OFF Apr. 9 th , transmitter issues.
NY	Manhattan	WNDT-CD	12 (17)	OFF Apr. 1 st , see below.
NY	New York	WMBQ-CD	32 (46)	OFF Apr. 1 st , see below.
NY	Smithtown	WFTY-DT	23 (67)	Operating at unspecified reduced power since Apr. 13th, "failed transmitter subsystem". Returned to full power Apr. 22nd.
OH	Canton	WQDI-LD	21 (20)	Power increased to 15kw.
OH	Canton	WEKA-LD	26 (41)	Power increased to 10kw.
OH	Canton	KONV-LD	28 (23)	Power increased to 14kw.
OH	Columbus	W20FB	20 (21)	Requests antenna height reduction to 76m, 39-58-00/83-06-28.
OR	Coos Bay	K15KF	15 (23)	Requests site change & slight antenna height reduction to 5kw/179m, 43-23-25/124-07-50. Granted.
OR	Portland	KPME-CD	15 (41)	Returned to the air Apr. 16 th .
PA	Pittsburgh	STA	3	Application for special temporary authority, 30w/-69m, 40-26-46/80-00-55; Acrisure Stadium, NFL Draft, 4/22/26-4/25/26.
PA	Washington	WWLM-CD	36 (20)	Returned to the air Apr. 8 th .
PR	San Juan	WIPR-TV	26 (6)	Requests power increase to 750kw/761m, 18-06-34/66-03-03; granted.
SC	Greenville	WSQY-LD	36 (51)	Moved from ch. 29, 9.5kw/367m.
TX	Austin	K11XZ	11 (36)	Granted move from K36LD, 3kw/126m, 30-13-07/97-24-02. ATSC 3.0.
TX	Dallas	K26KC	26 (7)	Requests relocation to 33-31-38/97-24-55; power increase to 15kw & tower height reduction to 127m.
TX	Houston	KDFS-CD	29 (30)	Requests move from ch. 30 Santa Maria, Cal.; 15kw/95m, 29-48-06/95-14-04.
TX	Lubbock	K32OV	32 (24)	Requests STA for reduced power of 7.05kw/123m; damaged power amplifier. Returned to full power Apr. 6 th .
TX	Lufkin	KTRE	24 (9)	Moved to this channel (from ch. 9); 300kw/140m. Requests STA to continue on ch. 9, see below. STA granted.
TX	Mullin	KAXW-LD	35 (35)	OFF Mar. 23 rd , "transmitter not responding".
TX	San Antonio	KVDF-CD	31 (31)	Returned to the air Apr. 18 th .
VA	Roanoke	WBRA-TV	13 (15)	Moved from ch. 3, 66kw/630m.

St	City	Call	Ch (VC)	Notes
WI	Wittenberg	W26EE	26 (30)	OFF Apr. 14 th , “complete transmitter failure”.
WV	Cedarville	W28DR	28 (9)	OFF Apr. 15 th , transmitter struck by lightning.
WY	Gillette	KOPA-CD	9 (12)	Returned to the air Mar. 12 th , but off again Apr. 13th. Transmitter power output issues.

Guide to abbreviations:

- CC** Callsign change.
- LSR** Live Sports Radio (VERY low-power temporary stations at sporting events.)
- NW** New station on the air.
- OFF** Station is off the air.
- PC/PG/PR** Power and-or antenna height change on the air/granted/requested.
- QC/QG/QR** Channel change on the air/granted/requested.
- QRP** Station is operating at reduced power.
- RA** Station returned to the air, or returned to full power after QRP.
- ST-C/ST-G/ST-R** Special Temporary Authority in use/granted/requested for reduced facilities.

Entries **in boldface** are full-power stations; all others are LPTVs or Class A.

TECHNICAL NOTES:

W23FJ Jacksonville:

Hold onto your hats:)

In August 2024, W06DI Jasper and WJKF-CD ch. 11 Jacksonville filed mutually-exclusive applications to move to channel 28 in Jacksonville. On May 17th, 2025, W23FJ temporarily suspended operation pending reactivation with new facilities. W06DI and W23FJ are commonly owned.

A week before Christmas, W06DI’s owners reached an agreement with the owners of WJKF. The W06DI application for channel 28 was withdrawn, and WJKF’s application granted. W06DI refiled for channel 11, and W23FJ for channel 12. The two stations would share a common antenna. On February 23rd, the FCC granted the W06DI and W23FJ applications.

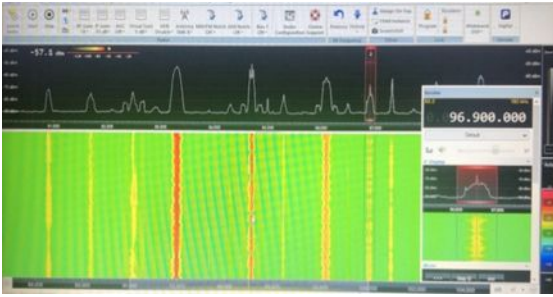
The agreement between the W06DI and WJKF owners called for WJKF’s no-longer-needed channel 11 equipment to be transferred to W06DI. Because of the common antenna, some of that equipment would be used for both W06DI and W23FJ. WJKF has informed W06DI that this equipment should be available shortly after May 1st.

That’s dangerously close to W23FJ’s May 17th deadline. If, for some reason, the two stations are unable to get channel 12 working by that date, the W23FJ license will automatically expire. For that reason, the station is seeking a temporary reduced-power facility to get *something* on the air before the 17th.

KTRE Lufkin:

KTRE held a permit to move from ch. 9 to ch. 24. They completed construction and tests on the new channel and filed for a license-to-cover. However, many viewers are reporting they can’t receive the channel 24 facility. (located on the same tower as channel 9)

TV News continues on page 14



Format Flips

and branding, too

John Zondlo - fmdxweb@cox.net

May 2026

CA

How about a couple changes in California? KGIL 98.5 Johannesburg is now “98.5 The Heat” with a Rhythmic Hot AC format formerly heard on KRAJ 100.9 Johannesburg. KRAJ, meanwhile, is now Country as “Thunder Country 100.9.” Both stations are owned by Adelman Broadcasting.

KERW 101.3 Los Osos CA has gone Classic Country as “101.3 The Grade.” It had been a non-commercial Adult Album Alternative (AAA) station simulcasting KCRW HD-2 89.9 Santa Monica. The station is now running as a commercial operation.

On with religious programming is new KWVP-LP 96.9 in LaGrand CA.

FL

Miami FL has a lot of low powered radio stations, but at least this one is legal. WFRH-LP 99.5 is on the air with Spanish Religious programming.



KY

It took several months of stunting as a CHR station to get W294DB Glasgow KY to the point of switching to Adult Contemporary as “Zing 106.7.” The translator relays WHHT-HD3 103.7 Cave City.

MD

In the Hagerstown MD market, “100.9 The Goat” WIKG 1380 and translator W265DU 100.9, both Waynesboro PA, have flipped from Sports to CHR as “100.9 Next FM.” “Hagerstown’s Home for What’s Next” is their positioning statement. Guess it wasn’t the greatest of all time after all.

MI

Civic Media is at it again. This time the Wisconsin-based company has flipped Talk/Sports W297CD 107.3 and it’s AM, WMPL 920, both Hancock MI, to Oldies as “Yooper 107.3.” Civic has flipped many of its talk stations to Oldies in recent months. Maybe you know this, maybe you don’t, but Yooper refers to folks from Michigan’s Upper Peninsula.

NE

Out Grand Island way, KSYZ 107.7 Grand Island has changed from Variety Hits to Adult Contemporary. They retain their branding as “107.7 The Island.”

NY

Geneva NY has a new station on the air. Its WGCC-LP, which is running Variety programming.

1440 WEBR Niagara Falls NY has switched from Oldies to Soft AC as “The Breeze.” It affects their two translators, W287CV 105.3 Lockport and W295BW 106.9 Grand Island. Positioning statement for the new format is “Buffalo’s Smooth Hits.”

NC

WYQS 90.5 is now airing the “BPR Classic” Classical music format from Blue Ridge Public Radio. With the update comes a change in city of license from Mars Hill NC to Asheville and a change from a Class A station to a C3.

In Jacksonville NC WXQR 105.5 has returned to its rock roots as “Rock 105.5.” The station had been airing a Spanish Rhythmic format.

OH

It only took 7 months for Total Media Group to decide that Conservative Talk was not what they wanted on WIRO 106.7 Ironton OH. The station is now Adult Contemporary as “Star 106.7.” Whatever the format, WIRO has a distinct advantage in the market as the local home for The Ohio State University Buckeye radio network. FWIW, my alma mater opens the 2026 football season at OSU. At least my Ball State Cardinals get a nice paycheck for going there.

KLLY 95.3 Bakersfield CA is once again known as “Kelly 95.3.” The heritage branding was last used from 1984 to 2015. The station retains its CHR format in [Condorstown](#).

ON

In the Toronto market, Alternative CFNY 102.1 Brampton has moved on to Classic Alternative. It’s still “102.1 The Edge.” Owner Corus calls the format “Iconic Alternative,” patterned after co-owned CFGQ 107.3 Calgary and CJKR 97.5 Winnipeg.

RI

WVEI 103.7 Westerly RI is no more. It’s now non-commercial News/Talk as WPVD under new ownership, Ocean State Media. So what becomes of Boston Red Sox games on the radio in Providence? The Sox are now heard on WWBB 101.5 Providence, a Classic Hits station.

TX

K273BJ 102.5 Dallas TX is now rebroadcasting KSKY 660 Balch Springs TX. “660 The Answer” is now on the translator thanks to Salem Media giving up the license for its former partner, KTNO 620 Plano TX. So sad to see so many AMs give up the ghost so far this year, but it does open up a frequency for me here in Oklahoma.

The El Paso market has a new bilingual Variety Hits thanks to XHTO 104.3 Juarez making the switch from CHR. Owner Grupo Audiorama is airing its “KY” (pronounced “calle”) format, known as “La radio de la ciudad” (City Radio), which also airs on several of their stations in northern Mexico.

UT

In the Beehive state, Redrock Media has made a couple changes in its St. George station group. KZYN 104.1 Toquerville has gone from Classic Rock to Variety Hits as “104.1 Jack FM.” And Country KUTQ 102.3 La Verkin has rebranded as “102.3 Zion Country.”

VT

It’s a trimulcast! WTNN 97.5 Bristol VT is now airing Great Eastern Radio’s “Froggy” Country format, along with co-owned WJKS 104.3 Keeseville NY and WWFY 100.9 Berlin VT.

VA

The branding has changed but the format is the same. W282CA 104.3 Richmond VA is still Classic Country but branded at “Neon Country 104.3.”

WV

Classic Hits is the format for new to the air LPFM WXEE-LP 94.7 Welch WV.

WY

A tip of the hat to Wolf Creek Broadcasting for switching KHAT 1210 and translator K244FN 96.7, both Laramie, from Country to Classic Country. The stations are now known as “True Country 96.7.”

=====
Sources: Indianaradio.net, Northpine, Radiolnsight, Hisair.net, LPFM Database, IRCA’s DX Monitor, InsideRadio, Radiolnk, and radio biz connections

Group Asks FCC to OK Repurposing 9 TV Channels for Wireless Use

By Leslie Stimson, *Inside Towers* Washington Bureau Chief



Days before the National Association of Broadcasters' show began in Las Vegas this week, a group asked the FCC to clear a block of what it calls "underutilized" UHF broadcast television spectrum to be auctioned for flexible wireless use aimed at 5G and future 6G services.

In its [Petition for Rulemaking](#), Landover Saturn 5 LLC asks the agency to repurpose nine television channels, namely Channels 28-36, or 554-608 MHz. Clearing these nine channels would create approximately 50 MHz of usable spectrum representing 17 billion MHz-POPs nationwide, according to the group. Such a move could involve repacking more than 40 percent of U.S. TV stations, reports *Policyband*.

"The United States is entering an era of unprecedented demand for low-band spectrum as wireless networks evolve toward 6G, satellite direct-to-device connectivity, AI infrastructure, and ubiquitous broadband coverage. Yet despite rapidly growing demand, the supply of low-band spectrum available for flexible wireless use remains limited," the group says in its petition.

Landover tells the Commission it's not a broadcast television licensee, but has standing to seek the Petition for Rulemaking "as a direct consumer and developer of: (i) broadcast television spectrum; and (ii) low-band wireless spectrum addressing national 6G deployment goals." Landover and its leadership "have successfully built and exited multiple U.S. nationwide and European wireless networks across diverse spectrum bands," it tells the agency. For more than a decade the company has pursued 600 MHz spectrum and "cultivated substantial institutional relationships with U.S. broadcasters through negotiations on various initiatives, including executing term sheets with the largest tier 1 broadcasters" as well as independent and rural broadcasters, it adds.

Landover is now engaging broadcasters as commercial partners under what it calls "voluntary, negotiated market-based agreements that recognize and preserve their economic interests and ongoing service obligations." After it gets enough broadcaster participation to support a uniform nationwide repurposing and repacking framework, "Landover [would] request, if necessary, that the Commission assist in relocating any remaining non-participants to available channels below 28," it states.

Landover proposes a public-private partnership that uses private capital and expertise rather than federal funding to accomplish the task, stating it would be a neutral sponsor responsible for "coordinating broadcaster participation, managing spectrum clearing and repacking below Channel 28." It proposes to implement the monetization of the repurposed spectrum, with Commission oversight.

The group cites the Commission's 600 MHz Broadcast Incentive Auction 1001 as demonstrating the value of repurposing broadcast spectrum for wireless use, but says that it required years of preparation and resulted in "over \$13 billion in federally funded transition costs." In contrast, Landover says its proposed method would be privately financed and completed in about 24-36 months and impose no repack costs or "burdens" on the federal government.

The group says, "it has the financial resources, technical expertise, and broadcaster relationships necessary for the success of this ambitious initiative." Landover estimates the auction that it would conduct could generate roughly \$15 billion for the U.S. Treasury while shifting participating broadcasters into shared NextGen TV (ATSC 3.0) arrangements.

"Participating broadcasters would voluntarily monetize underutilized spectrum in Channels 28 to 36 while continuing to deliver their broadcast signals through channel sharing below Channel 28. This approach enables broadcasters to convert under-monetized spectrum assets into capital at a time when industry revenues are under significant pressure, while preserving service to the public viewers and communities, explains the company.

TV NEWS CONTINUED FROM PAGE 10

The station believes the problem is interference from KIBN-LD Lufkin, also operating on channel 24. Low-power stations like KIBN are a "secondary service"; they may be displaced from their channel if they interfere with "full-power" stations like KTRE. Quoting from the STA application: "Gray believes the interference is largely the result of a low power station, KIBN-LD, Lufkin, TX that also operates on Channel 24. Gray has contacted Edge Spectrum, Inc., the licensee of KIBN, asking that they cease operating. Edge agreed to cooperate. "

I find it interesting a STA is necessary. Regulation 74.734(a) requires a LPTV station to file with the FCC the contact information of someone who can promptly shut the transmitter off if the Commission deems necessary. One would think KIBN would have been shut down long before KTRE could file the STA request.

WMBQ-CD New York City & WNDT-CD Manhattan:

WNDT-CD shares on the WNET transmitter. WNET is also the ATSC 1.0 simulcast host for WLIW Garden City, whose own transmitter is ATSC 3.0. WLIW has added an additional subchannel, which doesn't leave enough bandwidth for WNDT to continue to operate on the WNET transmitter.

WMBQ, like WLIW, is operating in ATSC 3.0. As a Class A ATSC 3.0 station, WMBQ must arrange for its programming to be simulcast in ATSC 1.0 over some other transmitter. That transmitter was WNDT.

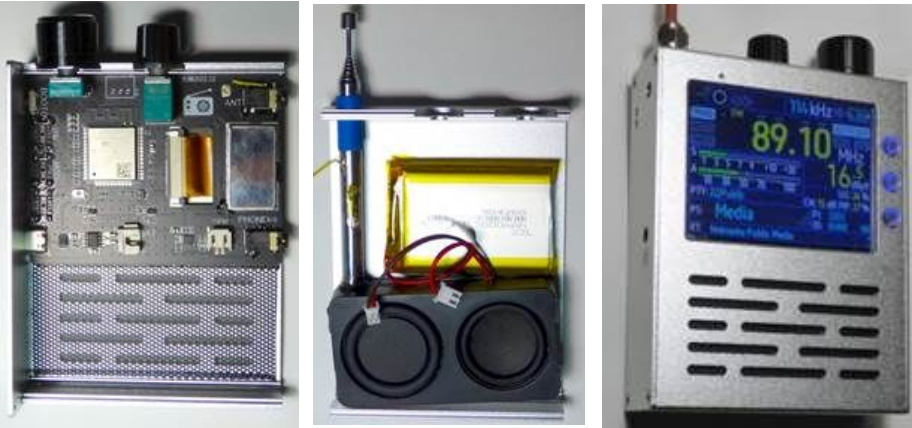
With WNDT off the air, WMBQ doesn't have a 1.0 simulcast host, and must go dark as well. Both stations are looking for other options.

Assorted translators, Hawthorne, Nevada:

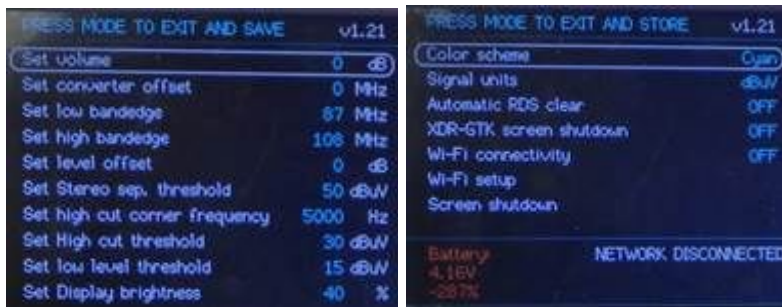
These are VERY minor changes. I suspect the licensee found the tower coordinates were slightly wrong and corrected them. This would also cause the listed antenna heights above average terrain to change slightly. (the antennas have not actually moved)

I thought that I got a sexy new TEF6686 radio due to it having the largest size display that I have seen on a portable radio and a nice set of front speakers.

It was purchased from AliExpress: [TEF6686 Full Band Radio Receiver LW/MW/SW/FM/AM Portable Built-in Antenna - AliExpress 44](#) Its speakers do sound better than most other portable 6686 radios. Its whip antenna is firmly mounted, and it would be very hard to break off from the radio without destroying the rest of the radio at the same time. The inside of the radio is shown below.



It came with very outdated firmware, V1.21. Its only two menus are shown below.



It does not have the choice of frequency steps as well as many other things and does not have any frequency memory with that firmware. Its lighted buttons are nice. They are normally blue but turn red when pressed. It comes with an external antenna jack that is just an 1/8" headphone-like jack. They apparently used a stereo jack with both of its hot inputs connected to the antenna input. That means that if you use the common mono 1/8" plug to F jack adapter the antenna signal will be shorted to ground when the adapter is fully plugged in. And the whip antenna is not disconnected when an external antenna is connected. The 1/8" antenna jack was something that I could not live with. I removed that jack and antenna and mounted an F connector jack for an external antenna (or F connector whip) in the perfect size hole left after the whip was removed.

The radio comes with a headphone jack and boot and reset buttons. I was able to get the radio's firmware updated.

I thought that I might be able to live with its limitations if it was as sensitive as a normal TEF6686 radio. I put it on the bench and found that it was 11 dB less sensitive than a typical 6686 radio. The RDS sensitivity was down about the same amount. It was the worst 6686 radio that I have tested! I think that I have some new dumpster food.

TV DX and Photos

Eric Bueneman N0UIH 631 Coachway Ln, Hazelwood, MO 63042-1347
Email: n0uiheric@gmail.com - Deadline the 10th of the month



In this month's edition, as we get closer to another DX season, I will be profiling the best video captures from my ninth year of DTV DXing, 2013, the fourth full year after the transition for full power stations.



W40CV 40 (17) Jacksonville, IL
70 miles (113 km) tropo
Seen August 30, 2013

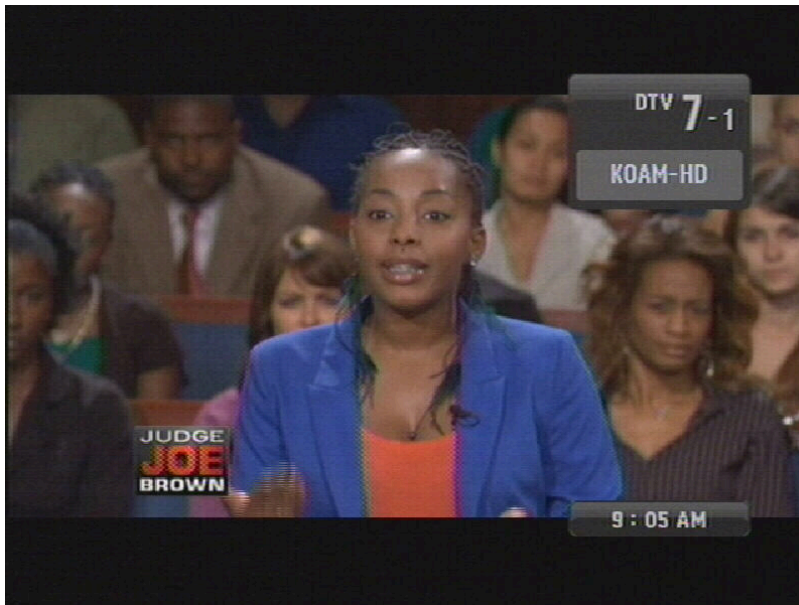
(Relaying WAND 17/17 Decatur, IL; main station now on RF 20, relay now W29ES 29/17)



W29CI 29 (29) Salem, IL
95 miles (153 km) tropo
Seen August 30, 2013
(Still on RF 29)



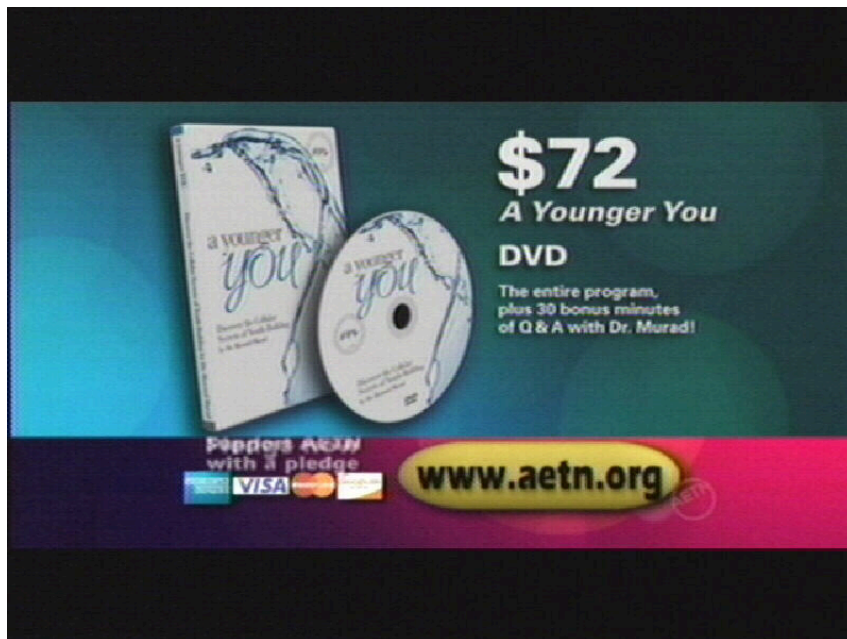
WBKO 13.2 (13.2) Bowling Green, KY
 220 miles (354 km) tropo
 Seen May 19, 2013
 (Still on RF 13)



KOAM 7 (7) Pittsburg, KS
 260 miles (416 km) tropo
 Seen June 28, 2013
 (Still on RF 7)



WSMV 10 (4) Nashville, TN
270 miles (435 km) tropo
Seen May 19, 2013
(Still on RF 10)

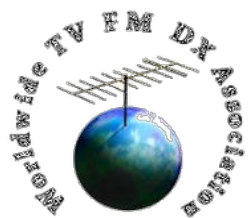


KAFT 9 (13) Fayetteville, AR
280 miles (451 km) tropo
Seen June 4, 2013
(Still on RF 9)



KTWU 11.1/11.3 (11.1/11.3) Topeka, KS
 285 miles (459 km) tropo
 Seen June 27, 2013
 (Still on RF 11)

In the next edition, I'll take a look back at 2014, the fifth full year after the digital transition for full power stations, along with post-transition analog TV DX. I look forward to your logs and photos! 73 and good DX from the Florissant Valley Dial Twister.



Line of Sight is a publication of the Worldwide TV-FM DX Association. Our websites are <https://wtfda.org>, our FM database at <https://db.wtfda.org> and our Wlogger at <https://wlogger.wtfda.org>.

Line of Sight publisher is Mike Bugaj (mike@wtfda.org). The WTFDA Board of Directors consists of Mike Bugaj, Jim Thomas (jim@wtfda.org), Keith McGinnis (longwave@comcast.net) and Nick Langan (nick.langan@gmail.com).

Line of Sight editors are Eric Bueneman, John Zondlo and Doug Smith. Doug's email is dougw9wi@gmail.com, John's is fmdxweb@cox.net and Eric's email is n0uiheric@gmail.com.

Dues: An initial "joining fee" of \$10USD is collected at time of signup. After that, no further dues/renewal fees are needed. You will continue to be a WTFDA member unless 1. you tell us to cancel your membership or 2. we are unable to contact you by email for three consecutive months. At that point you will be removed from our membership list and will no longer have access to our logger. Our method of contacting you is by sending *Line of Sight* to you every month. If more than three issues to you bounce, you will be deleted as a WTFDA member and reinstated, if necessary, by sending a \$10USD reinstatement fee via Paypal or check payable to WTFDA sent to the address we give you.. Email us for for information.

WTFDA is a hobby club, completely run by unpaid volunteers. We strive to present information and data as accurately as possible, however accuracy is not guaranteed.



100% Published with
Linux using LibreOffice
and Master PDF Editor

Mint 22.3