

VHF - UHF DIGEST

Volume 1, number 9

September, 1968

Monthly publication of the WORLDWIDE TV FM DX ASSOCIATION. Published at Milwaukee, WI. 53204 the first week of each month. Address all correspondence to and make checks payable to the club at HQ, (Box 5001).

Effective with this issue, (the last to be sent to a WIRC member), we release all ties with the WIRC. Those WIRCers who have renewed are now WTFDXAers while those who have not were never WTFDXAers in the sense that they were never paid members. Should they have any grievance with him to whom their money was paid, they will have to write Joe Johnston in Philadelphia; any and all obligations of WIRC are hereby terminated from the Milwaukee HQ of WTFDXA. While most physical effects of the WIRC were received in the transfer last December and January, the club treasury was never received. Since the former editor saw fit to confiscate the treasury, (the exact amount will probably never be determined because the books are hopelessly in error for the 3 years that Joe ran the club,) the exact loss to the club is not determinable. Those properties of the club that were received were approximately equal to the cost of sending Digests to the 27 members on the books at the time of transfer of HQ, and in conscience I felt obligated to this extent because those members paid their dues for 12 issues in good faith and it was not their fault that they were swindled. (I have been taken similarly 3 times so I know what it is like.) However the obligation is now ended, and this now becomes issue #9 of volume # ONE of the Worldwide TV-FM DX Association. On our own reputation we will grow.



STATIONS OPERATING (AS OF JULY 15, 1968)

53223

Commercial FM 1859
Educational FM 348

TOTAL ON AIR 2207

FM COMPLETED ACTION

New Grants:

Angola, Ind., 100.1 mc. (James A. Chase) 3 kw.
Slidell, La., 105.3 mc. (Faulkner Radio) 27 kw.
Topeka, Kan., 107.7 mc. (Midland Broadcasters) 52.1314 kw.
Alexandria, La., 100.3 mc. (KDBS Inc.) 10 kw.
Vacaville, Calif., 95.3 mc. (N. Calif. Broadcasters) 5 kw.
Anchorage, Alaska, 101.3 mc. (KYAK Inc.) 45.36 kw.
Roanoke, Ala., 95.3 mc. (Earl Manning) 2.5 kw.
Pryor, Okla., 104.5 mc. (L.L. Gafaney) 100 kw.
Kaukauna, Wis., 104.9 mc. (Fox River Comm.) 3 kw.
Doland, Calif., (J.L. Koonce) 98.5 mc., 12.5 kw.
Cleveland, Miss., 92.7 mc. (T.P. Conguista) 3 kw.
Seneca Falls, N.Y. (Water Falls) 99.3 mc., 3 kw.
Westerville, Ohio, 103.9 mc. (Mid-Ohio Com.) 2 kw.
Ladysmith, Wis. 92.9 mc. (Flambeau Broadcasting) 35 kw.
Elizabethtown, Ky., (Hardin City Broadcasters) 106.3 mc., 3 kw.
Walterboro, S.C. (Walterboro Broadcasting) 100.9 mc., 3 kw.
Thomasville, Ga., 107.1 mc. (Thomasville Broadcasting) 3 kw.
Benton, Ark., 107.1 mc. (Saline Broadcasting) 3 kw.
Springdale, Ark. 104.9 mc. (A. Johnson) 3 kw.
Roseville, Calif., 93.5 mc. (D.C. Reeves) 3 kw.
Hawkinsville, Ga., 103.9 mc. (Tri-County) 3 kw.
Warner-Robins, Ga., 101.7 mc. (WRBN Inc.) 3 kw.
Cynthiana, Ky., 106.3 mc. (WCYN) 3 kw.
North East, Pa., 102.3 mc. (J.D. Brownyard) 3 kw.

Call Letter Changes:

WDMS-FM, Lynchburg, Va., Granted WJJS-FM
WIBC-FM, Indianapolis, Ind., Granted WNAP (FM)
WNQT (FM) Gainesville, Fla, Granted WFOX (FM)
KHBY-FM, Monterrey, Calif., Granted KWAU (FM)
KATN-FM, Boise, Idaho, Granted KBBK-FM
*WNIU (FM) De Kalb, Illinois, Granted WNIU-FM
WAAB-FM, Worcester, Massachusetts, Granted WAAF (FM)
WCRQ (FM) Providence, Rhode Island, Granted WLKW-FM
EMAP (FM) Dallas, Texas, Granted KXXK (FM)
KOME (FM) Centrallia, Washington, Granted KELA-FM
WJOY-FM, Stockton, Calif., Granted KJAY-FM
WSEB-FM, Sebring, Florida, Granted WANZ (FM)
KXOL-FM, Fort Worth, Texas, Granted KCWM (FM)
KATZ (FM), Woodland, Calif., Granted KRBT (FM)
WCOS (FM), Miami Beach, Florida, Granted WBUS (FM)
WSGM-FM, Staunton, Va., Granted WSGM (FM)
WJVA-FM, South Bend, Indiana, Granted WRBR (FM)
WPHB-FM, Augusta, Ga., Granted WZZW (FM)
KDBS (FM) Alexandria, La., Granted KDBS-FM
WMI-FM, Biloxi, Mississippi, Granted WBIL (FM)
WTPP-FM, Poughkeepsie, N.Y., Granted WSPK (FM)
WBNO-FM, Bryan, Ohio, Granted WWMS-FM

Call Letters Issued:

Topeka, Kan. (Midland) KEWI-FM
*Grinnell, Ia., (Grinnel Col) KDIC-FM
Waukon, Ia. (Sweeney) KNEI-FM
*Wilkes-Barre, Pa., (Kings Col.)
WKKC (FM)
Independence, Kan. (Central Broadcasters) KIND-FM
*Grove City, Pa. (Grove City Col.)
WSAJ-FM
Eugene, Ore. (Pacific NW) KENW (FM)

- *Springfield, Mo. (Baptist Bible College) KWFC (FM)
- *Chattanooga, Tenn. (Tennessee Temple College) WDYN (FM)
- Doageville, Wis. (Dodge Pt. Broadcasting) WDMP-FM
- *Moberly, Mo. (Moberly Board of Education) KMIS (FM)
- San Antonio, Texas (Waterman Broadcasting) KTSA-FM
- Potsdam, Ny. (St. Lawrence Radio) WPDM-FM
- Sag Harbor, N.Y. (EAST Coast Broadcasting) WLNQ-FM
- Salisbury, Md. (Delmarva) WICO-FM
- St. Cloud, Min. (WJON) WJON-FM
- Endicott, N.Y. (WENE Inc) WENE-FM
- Indio, Calif. (Del Ray) KINI (FM)
- *Cedar Rapids, Ia. (Coe College) KCOE-FM
- Hazlehurst, Miss. (S.W. Broadcasting) WMDC-FM
- The Dalles, Ore. (Cunningham) KCIV-FM
- Leesburg, Fla. (Heard) WLBE-FM
- Hutchinson, Kan. (Sound Sales) KSKU (FM)
- Erie, Pa. (Burbach) WAGO-FM
- Siaux Falls, S.D. (Northwestern College) KNWC-FM
- Tazewell, Va. (Tazewell) WTZE-FM
- Yakima, Wash. (Goetz) KIT-FM
- Houma, La. (La. Territory) KHOM (FM)
- *Menomonie, Wis. (Stout State Univ.) WVSS (FM)
- Wichita, Kan. (Mr. D. Radio) KEYN-FM
- Pipestone, Minn. (KLOH) KKLP (FM)
- Wadena, Minn. (KWAD Inc.) KKWS (FM)
- New Philadelphia, O. (Tuscarawas) WNPQ

Other Changes Allowed:

- WRFL (FM) Winchester, Va. ERP to 1kw. - ant to 1340'
- WNOR-FM, Norfolk, Va., ant to 165'
- WLAC-FM, Nashville, Tenn. ERP to 5.3kw. - ant 410'
- KNIR-FM, New Iberia, La., ERP to 150kw. - ant. 139'
- WVVO-FM, Mount Vernon, Ohio, ERP to 20 kw.
- KVET-FM, Austin, Texas, ERP to 41 kw. - ant to 1200'
- WAPL-FM, Appleton, Wis., ant. to 210'
- WLAG-FM, La Grange, Ga. ERP to 29.5 kw.
- WPLY (FM) Troy, N.Y. ERP to 9.7 kw.
- KECR (FM) El Cason, Calif. ant. to 520'
- WNES-FM, Central City, Kan. ERP to 50kw.
- WIFI (FM) Philadelphia, Pa. ERP to 50 kw.
- *WSUW (FM) Whitewater, Wis. ERP to 230 w.
- WCIL-FM, Carbondale, Ill. ERP to 28 kw.
- WORS-FM, Detroit, Mich. ERP to 15.5 kw.
- *KOBC (FM) Joplin, Mo. change freq. to 91.1mc.
- WCED-FM, Dubois, Pa. ERP 50kw. - ant to 500'
- WFYC-FM, Alma, Mich. ant. to 300'
- WPAG-FM, Ann Arbor, Mich., ant. to 300'
- WPVA-FM, Petersburg, Va., ERP to 2.7 kw. - ant to 245'
- WFNY (FM) Racine, Wis., ERP to 3 kw. - ant to 270'
- WNAP (FM) Indianapolis, Ind., ERP to 29.5 kw. - ant to 370'
- KDNA (FM) St. Louis, Mo. ERP to 63 kw. - ant to 370'
- WCHS-FM, Charleston, W. Va., ERP to 14.5 kw. - ant to 830'
- KHJ-FM, Los Angeles, Calif., ERP to 58 kw. - ant. to 2930'
- WOOO-FM, DeLand, Fla., ERP to 76 kw. - ant to 245'
- KMPL-FM, Eikeston, Mo., ERP to 3 kw. - ant. to 205'
- KMOB-FM, Manot, N.D., ERP to 27.5 kw., - ant to 600'
- WHNR (FM) McMinnville, Tenn., change freq. to 103.9 mc. from 101.7
- KAFF-FM, Flagstaff, Ariz., ant to -240'
- WKCI-FM, Hartford, Conn., ERP to 13 kw., - ant to 860'
- *WNIU-FM, DeKalb, Ill, change freq. from 89.7 mc. to 89.5 mc.
- WMSK-FM, Morganfield, Ky., ERP to 2.85 kw. - ant to 180'
- WTOA (FM) Trenton, N.J. ERP to 10.5 kw.
- KAPE-FM, Santa Fe, N.M. ERP to 30 kw.
- KMOD (FM) Tulsa, Okla, ERP to 50 kw. - ant to 380'
- WRLC-FM, Palmyra, Pa., ERP to 3 kw.
- KSOM-FM, Ontario, Calif., ERP to 3 kw. - ant to -400'
- WRLJ (FM), Jacksonville, Fla., move transmitter, ERP 100kw. - ant 230'
- *WHCH (FM), South Hadley, Mass., move transmitter
- *KLOC (FM), Eugene, Ore., move antenna, antenna to 720'
- WNOV-FM, York, Pa., ERP to 2.15 kw. - ant to 720'
- WKVM-FM, San Juan, P.R., Ant to 1,100'

THANKS TO:

- Morrie Goldman,
Chicago, Ill.
- Bill Bens,
Cincinnati, O.
- Joseph Fela,
Newark, N.J.

(OUR COLUMN STATISTICS
CONTRIBUTORS FOR
THIS MONTH)

- WUPR-FM, Utado, P.R., move ant. and trans., ERP 50 kw. - ant. 690'
- KXXK (FM) Dallas, Texas, ERP to 60 kw. - ant. to 110'
- KPGM (FM) Los Altos, Calif., change location of studio
- *WESU (FM) Middletown, Conn., ERP to 1.9 kw. - ant to 48'
- KEQR (FM) Chico, Calif., Ant. to 300'
- WELL-FM, Freeport, Ill., add vert. Polariz., ERP 19.5 kw.-ant.150'
- *WOI-FM, Ames, Ia., ERP to 100 Kw. - ant to 440'
- WCLV (FM), Cleveland, O., ERP to 27 kw.- ant to 640'
- WNRE-FM, Circleville, Ohio, change freq. to 107.1 from 104.9 mc.
- WAKW (FM) 93.3 mc., Cincinnati, Ohio, ERP to 10 kw.
- CFBC-FM, St. John, N.B., change freq. from 96.1 to 98.9 mc.
- WFOY-FM, St. Augustine, Fla., ERP to 2.55 kw.
- *KSJN-FM, New Brighton, Minn., ERP to 6.7 kw. - ant. to 890'
- WIFM-FM, Elkin, N.C. ERP to 3 kw. - ant to 60'
- WNOK-FM, Columbia, S.C. ERP to 100 kw. - ant to 460'
- WJOY-FM, Burlington, VT., ERP to 3.3 kw.
- KERI (FM) Bellingham, Wash., ERP to 60 kw. - ant to 2310'
- *KSDA (FM) La Sierra, Calif., ERP to 1.5 kw.
- *WSKS (FM) Wabash, Ind., cancel license and delete call letters
- WOTT-FM, Watertown, N.Y., move trans., ERP to 41 kw. - ant 285'
- WGUC (FM) Cincinnati, Ohio, ERP to 20 kw. - ant to 610'

ACTION APPLIED FOR OR REQUESTED

Applications for new FM stations:

- | | |
|------------------------------------|--|
| Vero Beach, Fla., 93.5mc., 3kw. | Jeffersonville, Ind., 95.7 mc., 50 kw. |
| Amite, La., 107.1 mc., 3 kw. | |
| Milford, Ohio, 107.1mc. 3 kw. | *Boynton Beach, Fla., 92.1mc. 3 kw. |
| Uniontown, Pa., 99.3 mc. 3 kw. | Dawson, Ga., 92.1 mc., 3 kw. |
| Glendale, Ariz., 92.3mc. 28.7kw. | Washington, Ga., 100.1 mc., 3 kw. |
| *St. Helen, Mich., 105.5 mc. 3 kw. | *Hinsdale, Ill., 88.5 mc., 10 w. |
| Rochester, N.Y., 103.9 mc. 3kw. | Salem, Ill., 97.7mc., 3 kw. |
| Rutland, VT., 98.1 mc., 50 kw. | Sioux Falls, S.D., 93.5 mc., 3 kw. |
| La Crosse, Wis., 95.9 mc., 1kw. | Big Bear, Calif., 101.7mc., 3 kw. |
| Miami, Fla., 89.7 mc, 90.8 kw. | Upland, Calif., 95.1 mc., 20 kw. |
| Blacksburg, Va., 90.7 mc. 010 kw. | Hammond, La., 107.1 mc., 3 kw. |
| Norton, Va., 106.3 mc., .7kw. | Saginaw, Mich., 107.1 mc., 3 kw. |
| *Lincoln, Ill. 88.7mc., 10 w. | Raytown, Mo., 100.7 mc., 100 kw. |
| Dexter, Mo., 102.3 mc., 2.36kw. | Chillicothe, Ohio, 94.3 mc., 3 kw. |
| Hamilton, Mont., 95.9 mc. 2 kw. | *Erie, Pa., 88.5 mc., 119 kw. |
| Ocean City, N.J. 106.3 mc. 3kw. | Nanticoke, Pa., 92.1 mc., 3 kw. |
| Clovis, N.M. 99.1 mc. 28.99 kw. | North East, Pa., 102.3 mc., 3 kw. |
| New Albany, Ind., 103.9 mc. 3 kw. | Henrietta, N.Y., 103.9 mc., 3 kw. |
| Oswego, N.Y., 89.9 mc., 41 kw. | Myrtle Beach, S.C., 101.7 mc., 3kw. |

TIDBITS AND ITEMS OF INTEREST TO FM DXERS

- # The FCC has given permission for an experimental broadcast by WAPA-TV, San Juan, P.R.; the station will be allowed to transmit English language sound tracks over WIAC-FM in San Juan to accompany WAPA-TV movies which are transmitted on TV with Spanish sound tracks. Permission will exist for one year.
- # The FCC has ordered Blue Ridge Broadcasters, owners of KDFR (FM) in Tulare, Calif., to show cause why their license should not be revoked.
- # Chicago's fine arts FM station, WFMT (FM), was recently sold to WGN Continental. The sale was approved by the FCC. However the decision has been over-ruled by the courts. An appeal is expected.
- # Two recent stations to take the air are WPDE, 96.7, Paris, Ky., and WKIT, Wilmington, Ohio, 102.3 mc., according to Bill Bens.
- # Target Date for WPAG-FM - Ann Arbor, Mich., (107.1) is 9/14/68.

ANARC CONVENTION REPORT

The third annual convention of the Association of North American Radio Clubs concluded on August 18th in Omaha, Nebraska as DXers from all parts of the United States returned to their homes with happy memories of a very successful get-together.

DXers began arriving as early as Thursday evening, Aug. 15, and by the time the convention officially got underway Friday evening, a good sized contingent was on hand, comparing verifications and swapping stories about DX. Other visitors arrived Saturday, some who stayed for the entire meeting, others who could only attend the afternoon or evening sessions.

High point of the 1968 ANARC convention was the Saturday night banquet. About 35 DXers, wives, and other guests enjoyed the evening's activities, which included an illustrated talk by D.W. Brehm, representing the Northwestern Bell Telephone Co. A special phone connection was made from Omaha to the North American Air Defense Command headquarters in Colorado Springs. Duty officer Major Dan Rosenthal explained by phone the workings of the NORAD radar defenses and communications systems.

Earlier Saturday, most of the convention goers travelled to Offutt Air Force Base for an escorted tour of the Strategic Aerospace Command Headquarters. The visit included a tour of the base MARS station, a C-97K aircraft and other points of interest. Leaving Offutt, the DXers went to the KFAB AM and FM transmitter site near Omaha for a tour of the facilities.

Following the Saturday night banquet, Glen Hauser, a member of the ANARC Man of the Year Committee, announced the 1968 winner of the award. Honored as ANARC's Man of the Year was William P. Eddings, Altoona, Penn., executive editor of the North American SW Association and an active supporter of ANARC. ANARC Executive Secretary Gerry L. Dexter, Lake Geneva, Wis., accepted the award on behalf of Eddings and read a statement of appreciation from the winner.

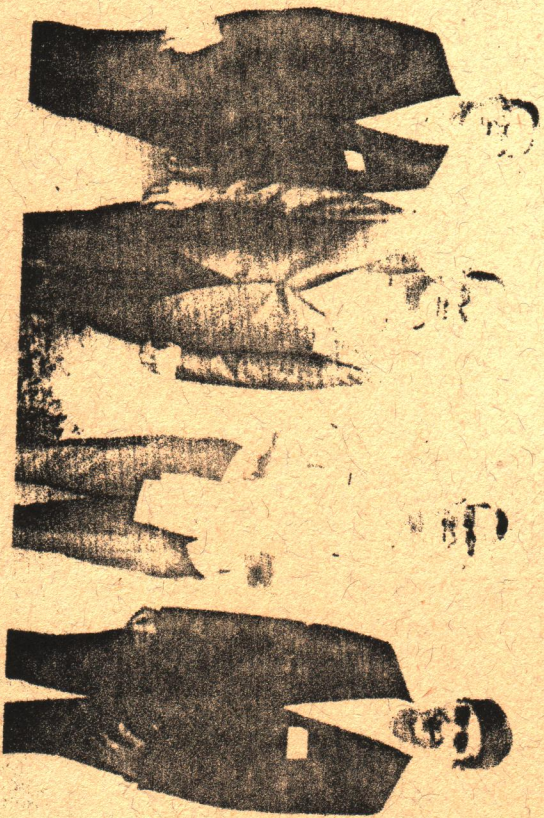
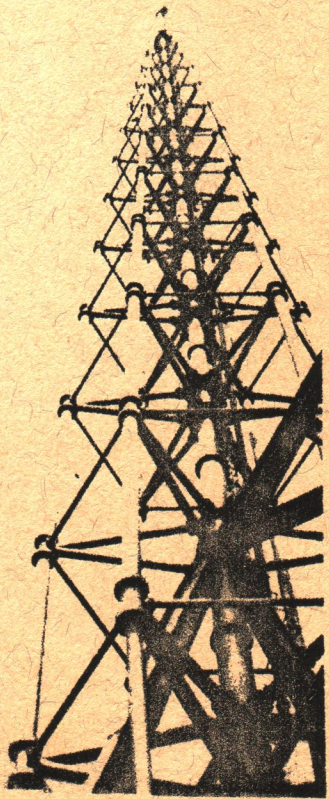
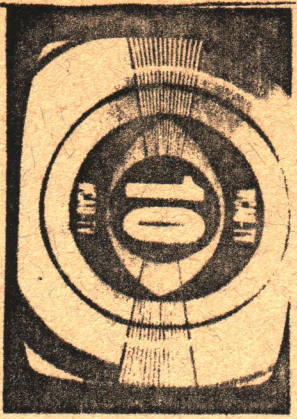
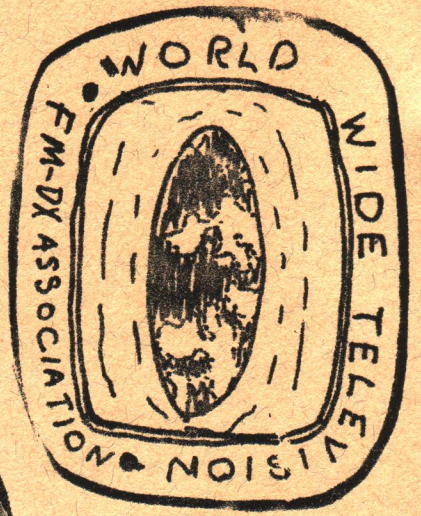
Every registered convention visitor received at least two prizes in the drawing that followed. Top prizes went to Gunnar Carlsson of Sweden, the most distant visitor, and to Ferdinand Dombrowski, Milwaukee, Wis. Carlsson won an antenna rotor and Dombrowski won an FM antenna. Winner of the Nebraska Criss-Cross game, a crossword puzzle covering DXing subjects, was Davis Fischer, Lincoln, Neb., who scored 177 points out of a possible 180.

Discussions by leading DXers in three phases of the hobby highlighted the Saturday morning session. Bruce Reynolds, Warrensburg, Mo., discussed medium wave DXing; Richard Wood, Honolulu, Hawaii, spoke on comparative reception conditions on medium and short wave in the US and Hawaii; and Morrie S. Goldman presented a color slide and motion picture explanation of television DXing.

During the convention several special confabs were held by individual clubs and ANARC committee chairmen and representatives met with Carlsson, representing the European DX Council to discuss mutual problems and areas of future cooperation. The ANARC convention was covered by local television station KMTV-3, Omaha, and several DXers saw themselves on TV, as a result, Saturday evening. The convention also received newspaper coverage.

In all, besides overseas visitors Carlsson and Wood, DXers from 11 states, including California, New York, Maryland, and Connecticut attended. All active ANARC clubs were represented.

Credit for organizing a convention that ran like clockwork goes to Ernest Wesolowski, of Omaha, to whom many thanks are due!



VHF radio

Robert B. Cooper, Jr.
P.O. Box 1355 (KV4FU)
Frederiksted, St. Croix
Virgin Islands 00840

"The radio world from 30-54 MHz."

A basic understanding of the mechanics of skip propagation is useful when DXing on any band. The same mechanics apply in basic form whether we are discussing the E layer, (sporadic E or Es), or the F2 layer.

Above approximately 2 MHz, virtually all of the energy radiated from a transmitting antenna travels only as far from the xtr as the radio horizon ALONG THE GROUND. The radio horizon is roughly the same distance as the visual horizon, (i.e. line of sight), PLUS another third of that distance. If the antenna is 100 ft above average terrain (AAT), and the visual horizon is 10 miles, then the radio horizon is 10 plus 3.3 or 13.3 miles. Beyond that distance the majority of the energy radiated from the antenna ceases to continue following the surface of the earth and meanders off thru the atmosphere, stratosphere, and finally the ionosphere.

If you are receiving the signal of the station at perhaps 25 miles, you are receiving the "fall-out" portion of the radiated energy which is trapped within the layer of air closest to the earth's surface. As this trapped energy moves farther from the xtr, it is attenuated by each mile it travels until it eventually exhausted. At or near the radio horizon it is very easy to receive this fall-out, but to receive the very weak signal yet remaining at 100 miles requires a very sensitive receiver and effective receiving antenna.

But what happens to the primary energy - the signal which travels away from the earth's surface at a tangent angle beyond the radio horizon? It eventually reaches the ionosphere, and in VHF spectrum the first layer with which we are concerned is the E layer. This layer has a normal height of 50-70 miles. To picture its effect on radio/TV signals, visualize a clandestine re-broadcast station with a tower that varies from 50-70 miles high. It can pick up any strong signal within its own radio horizon and rebroadcast that signal in the opposite direction to its other radio horizon. Since this "tower" is 50-70 miles tall it has a radio horizon of 700-750 miles, not just 13.3 miles as with the 100 ft tower! Of course this clandestine station has its limitations;

- A. it rebroadcasts only in the opposite direction from the receiving direction, (e.g., receive from east, BC west.)
- B. it is not a fixed-location station, hence its constant moving affects your reception depending on whether it moves toward or away from you, or along parallel lines.
- C. its power changes constantly causing fading at the rcvr.
- D. its power source is unknown so we cannot predict or control it from here on earth, even to turn it on or off.
- E. it USUALLY must be half way between you and the station it is rebroadcasting; if you draw a line from original station to you, the re-BC xtr is at the half-way point at a height of 50-70 miles, equidistant from each end.

These are the primary conditions which must be met for our magical E layer rebroadcast unit to function as mentioned, but there is another point to be mentioned. As the operating power increases, so also does the maximum frequency increase. For example, when the power (strength) is sufficient to re-broadcast channel 6, (82-88 MHz), over a path of 1400 miles, at the same time it is capable of re-broadcasting channel 2 (54-60 MHz) only 700 miles. In other words, the same clandestine xtr will re-broadcast different channels different distances at the same time. (For example, let us say there is a clandestine hovering over Wichita, Kansas. Some one in North Dakota receives a Texas station on ch.6, like Corpus Christi; but someone in Texarkana receives North Platte, Nebraska on ch.2 -- a considerably shorter distance!)

This special relationship between overall power (of the clandestine xtr) and the distance it will cover on a given frequency or channel is the basis for the importance we attach to monitoring DX in the 30-50 MHz band for skip conditions. The following table illustrates this:

1400 miles	-nil-	-nil-	-nil-	-nil-
1200 miles	1400 miles	-nil-	-nil-	-nil-
1000 miles	1200 miles	1400 miles	-nil-	-nil-
800 miles	1000 miles	1200 miles	-nil-	-nil-
600 miles	800 miles	1000 miles	-nil-	-nil-
500 miles	700 miles	900 miles	-nil-	-nil-
400 miles	600 miles	7-800 miles	13-1400 mi	-nil-
300 miles	500 miles	6-700 miles	11-1200 mi	13-1400 mi
35 MHz	43 MHz	ch. 2	ch. 6	FM band

The table indicates conditions at a given time on all frequencies in which we are interested. Reading across the bottom line, for example, when 300 mile skip (be sure its not trop) is heard on 35 MHz, we may expect to see and hear skip as high as the FM band (88-108 MHz) at distances of 1400 miles. By monitoring these 2-way or one-way radio channels in the 30-50 MHz band we have a WARNING DEVICE to alert us of skip conditions which may soon reach TV and FM frequencies. (Note that not all Es becomes strong enough to cause TV signals to skip. You may hear several hours of 1200 mile skip on 43.22 MHz and there may never be any TV skip, simply because the power level isn't sufficient to reflect frequencies as high as the TV channels.

Everything said about the E layer is true of the F2 layer, also, with a few changes:

- the F2 layer exists at a height of 140-175 miles and therefore enables skip over much longer distances becuz the "tower" is higher and therefore the radio horizon is farther.
- The F2 layer is ionized over much larger areas of the earth at the same time -- it isn't spotty or patchy like E layer skip.
- the F2 layer is quite predictable, with a high degree of accuracy given basic information like sunspot count, time of day, location of xtr and receiver. Hence, it can be predicted when a certain area can expect to receive skip from any other area.

More about F2 layer skip next month.

It appears that the smoothed sunspot count for July was in excess of 125, the highest count to date for the current cycle. This is great news for the coming Autumn F2 season. It now appears likely that there will be a few days in November when European TV signals will be received east of the Rocky Mt as high as 48 MHz+. The ham 6 meter band may also produce a few peak openings between the west coast and Japan, and eastern states may receive stations in west central and perhaps interior Africa. My observations from this apparently advantageous spot in the east-central Caribbean are premature at this writing because my equipment arrived from California only August 3rd. However, in mid-Aug. good 10 m reception from western Europe, all of SO. America, many Pacific islands and the W5,6,8,9 and Ø districts of the USA territories. The peak MUF at this time is between 1600 and 0000 GMT.

Observer Pat Dyer of Austin, Texas reports a couple of peak MUFs up to 38 MHz from his location to northern So. America even in July. So the signs are indeed promising for the coming months of the Fall and Winter current sunspot cycle... Until next month... 73s, R.B.C.

PART II: INEXPENSIVE WAVETRAPS
FROM TRANSMISSION LINE

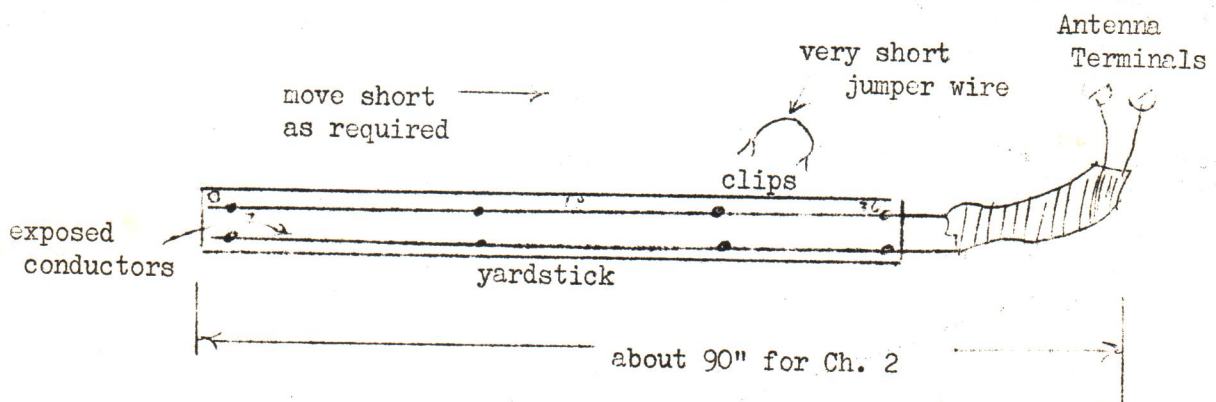
In part I, it was noted that wavetraps are highly desirable for reducing adjacent channel interference or harmonic interference caused by a strong local or a strong DX station. Instructions for constructing effective wavetraps from 300 ohm line (stubs) were given, along with a formula for determining the approximate length of line for a trap for any frequency and type of transmission line.

ADJUSTABLE TRAPS

Enough insulation can be stripped from a single length of transmission line to permit adjustment from ch. 2 to ch. 13 as needed. This can be tricky, however, since the hanging conductors could accidentally short and tune the stub to a shorter length.

Accidental shorting can be prevented by mounting the conductor portion on a board (yardstick is ideal) and keeping the conductors spread with thumbtacks or staples. Figure 2 shows this arrangement. Channels 2 through 6 (and, of course, 7 through 83) then can be trapped by moving a shorting device (wire with alligator clips at each end) between the exposed conductors on the yardstick. However, the conductor portion now has a velocity factor of almost 1.0 (free space); therefore the overall electrical length of the stub must be increased. Since the conductor portion between ch. 2 and 6 is about 30 inches, the electrical length of this portion must be increased to $1/.85 \times 30$ or about 33.5 inches. Therefore, at ch. 2, add about four inches, for an actual stub length of $86" + 4" = 90"$.

Graduations on the yardstick are convenient reference points. For example, if positioned as shown in Figure 2, 0 inches could equate Ch. 2, 5.5 inches might equal ch. 7, 8.0 inches might equal ch. 3, etc. A chart can be set up to equal all channels to an equivalent dimension of the yardstick. If interference from 6 meters (50 to 54 MHz) is noted, make stub longer by about 9.6 inches.



• = Tacks or
staples to
hold cond.
to yardstick

Figure 2

TRAPS FOR UHF

Traps work equally well at UHF. From the chart, however, it is apparent that lengths are short. In fact, a 1/8 inch movement will shift the trap by one channel (6 MHz). It may be better to tune a 3/2 wavelength stub. Or, build the adjustable trap for ch. 2 through 6; traps for all UHF channels will fall in this range.

A STUB THAT AMPLIFIES?

The stub, as explained in Part I, works by reducing the signal on a given frequency. But stub builders -- especially those who build the adjustable type -- may find (to their delight) that the signal of a given channel increases when a stub is shorted at a given point! This is not a function of the 1/2 wavelength stub, but rather a phenomenon caused by tuning out the reactance of the antenna to reduce standing waves and allow more signal to be delivered to the receiver. (Do not expect this to happen on all channels or even a single channel.) This topic will be described in detail in a later construction project and will, I'm sure, open the door to more identification of more stations, especially those received via traps.

TRAPS USING OTHER TYPES OF TRANSMISSION LINE

Traps may be built from any type of transmission line. In fact, other types (only flat 300 ohm has been considered thus far) have distinct advantages; but use whatever is available.

The insulation of tubular line can be easily removed by slicing a small section at the side with a sharp knife and peeling back the insulation to reveal the conductor. This type is quite stiff and may be difficult to mount on a board. Velocity factor should be close to that of flat line.

Coax can be used, but its velocity factor is about 0.66. Adjust stub length per the formula given in table 1, Part I. Actually, coax is easier to "short"; simply stick a pin or nail through the outer conductor so that it makes contact with the inner conductor. Repeat at various lengths to determine the exact point.

Open wire is, obviously, easy to "short". Its velocity factor is about 0.95 to 0.99 (not quite 1.0 due to the spacers). In fact, DXers can make 300 ohm open line by spacing two #18 conductors (usually copperweld) 0.5 inches apart.

73's

Dave

EXPLANATION OF PHOTOS:

Front page: decal from "Radio Caracas Television" received from station on ch. 2 by Glenn Hauser of Enid, Oklahoma, received by multiple-hop Es on 30 May, 1968.

Page 2: reprint of Morrie Goldman's design for a club emblem, a new design by Bill Heusmann of Steger, Illinois; TP of ch. 10, WCAU-TV Philadelphia; tower of WFLD-32 in Chicago; a group photo of 4 of our members who attended the ANARC convention in Omaha recently: from L to R: Bill Heusmann, F. Dombrowski, Glenn Hauser, and Morrie Goldman; -1968.

EASTERN DX

Editor: Morrie Goldman
8046 S. Euclid Avenue
Chicago, Illinois 60617

This column is for all television reporters east of the Mississippi River-SEPTEMBER
Deadline: 10th of each month

Lots to report this month, skip tapered off a little but tropes increased. Man did it increase! Without further ado, lets go to the reports.

Bill Draeb, Ellis Street, R.R. #2, Kewaunee, Wis. 54216 (CDT)

July 30 Es 1320 KOA-4 Denver, 1359 KOB-4 Albuquerque. July 3 trop 1945 WCAE-50 St. John Ind., 2155 WANE-15, WPTA-21, WKJG-33 all Ft. Wayne Ind. July 5 trop 2110 WLFI-18 Lafayette, Ind., WICD-15 Danville, July 6 0655 WLFI-18, WANE-15, WIMA-35 Lima Ohio, WKNX-25 Saginaw, Mich., 0708 WFIE-14 Evansville, WEHT-25 Henderson, Ky., 0710 WPTA-21, 0719 WSEE-35 Erie, Pa., 0725 WKTR-16, WAKR-23 Akron, Ohio, 0736 WKBD-50 Detroit, 0738 WJET-24 Erie, Pa., 0750 WICD-15, 0810 WXIX-19 (NEW) (Newport, Ky.), 0848 WEEK-25, WMBD-31 both Peoria, WICS-20 Springfield, Ill., July 8 Es 1825 CBHT-3 Halifax, N.S., CJBR-3 Rbmowski Que, 2000 WHIC-3 Hartford, Conn. Lots of un-IDs up to and including channel 6. July 10 tropes WCMU-14 Mt. Pleasant, Mich., KMEG-14 (new) Sioux City, Iowa, WKNX-25, WICD-15 (these at 2150) at 2225 KUHI-16 (new) Joplin, Mo. July 11 tropes: WMBD-31, 1235 WEEK-25, WT L-12 (all Peoria), WICS-20, WLFI-18, 1613 WVIZ-25 Cleveland, Ohio, 1625 WCMU-14, WKNX-25, WICD-15 (these at 1631), 1735 WFMJ-21, WKBN-27, WYTV-33 all Youngstown, Ohio, WAKR-23, 1808 WANE-15, WPTA-21, WKJG-33, WIMA-35, WKTR-16, WKEF-22, 1825 WDHO-24, Toledo, WKBF-61 Cleveland, 1829 WUCM-19 Bay City, Mich., 1830 WICD-15, WKBD-50, WTVS-56 Detroit, (last two at 1836, 1837 WNED-17 Buffalo, N.Y., 1951 WEEQ-35 La Salle, Ill., WAND-17 Decatur, Ill., 2010 WICA-15 Ashtabula, Ohio, 2012 WJET-24, 2112 WSEE-35, 2116 WNYP-26 James town, N.Y. July 12 tropes 0540 WFMJ-21, 0546 WKNX-25, 0535 WMBD-31, 1237 WLFI-18, 1612 WDHO-24, WJET-24, WVIZ-25, 1622 WSEE-35, 1625 WKBN-27, WYTV-33, WAKR-23, 1631 WTVS-56, 1632 WNYP-26, 1635 WCMU-14, 1641 WKBF-61, 1644 WKBD-50, 1648 WEEK-25, 1700 WKJG-33, 1705 WUCM-19, 2131 WICS-20, WIRL-19. On the 11th I saw a record 44 UHF stations in here which really had me jumping. There was co-channel interference on chs 15, 16, 17, 18, 19, 20, 21, 22, 23, 24, 25, 26, 27, 33, & 35. It was quite a mental strain to keep track of what was coming in! HI! July 17 Es 1835 WWAY-3 Wilmington, NC, 1928 WUNC-4 Chapel Hill, N.C. 2100 CBHT-3 Halifax, NS. July 21 tropes 0700 WMBD-31, WEEK-25, at 0823, 0823 WLFI-18, 0915 WLKY-32 Louisville, Ky., 1300 WKTR-16, WKEF-22 both from Dayton, July 22 trop 1925 WEEK-25, WMBD-31, 2000 WICD-15, 2019 WIRL-19, 2109 WLFI-18, 1945 WKJG-33, WIMA-35 Lima, Ohio, 2143 WKTR-16. July 23 tropes WUCM-19, Saginaw, Mich., WKTR-16, Saginaw, WFMJ-21, WKBN-27, (both Youngstown, Ohio), WAKR-23 Akron, Ohio, WDHO-24 Toledo Ohio, WJET-24 Erie, Pa., WNYP-26 Jamestown, N.Y., WKYC-3, WEWS-5, WVIZ-25, WJW-8, WKBF-61 (all Cleveland), everything sees at 1240. July 25 tropes 0618 WKNX-25, 1240 WLFI-18, 1945 WKJG-33, 2050 WANE-15, WPTA-21, 2119 WICD-15. July 26 tropes 1930 WKTR-16, 1932 WLFI-18, 1933 WANE-15, 1937 WKEF-22, 1947 WICD-15, 2120 WDHO-24, WGSF-28 Newark, Ohio, 2135 WCMU-14 Mt. Pleasant, Mich., WUCM-19 WKNX-25. July 30 tropes 1940 WXIX-19 Newport, Ky., 1946 WLKY-32, 1954 WICD-15, 2032 WAND-17, WIRL-19, WICS-20 Springfield, Ill., WEEK-25, 2038 WMBD-31, 2109 WFIE-14 Evansville, Ind., WEHT-25 Henderson, Ky., 2134 WTVK-26 Knoxville, Tenn. (a surprise return). 2159 WKTR-16 WKEF-22. July 31 Es 1700 KBTX-3 Bryan, Texas, KIII-3 Corpus Christi, Texas, WOAI-4, KENS-5 both San Antonio, Texas. Aug 2 tropes 1955 WCMU-14, WUCM-19, 2018 WICD-15, WLFI-18, WLKY-32, 2020 WKTR-16, 2024 WAND-17. Aug 4 0630 WKYC-3, WJW-8, 0634 WKBD-50, 0705 WKNX-25, 0850 WICD-15, 0855 WEEK-25, WMBD-31. Tropes have been holding up well here; not much Es though. I was quite surprised to see WTVK-26 again; I thought it would be at least five years or so before they would show up again, but it's been only 6 months & 9 days since I last saw them. They weren't as strong this time however, but they were powerful enough to over-ride WCIU-26 which usually dominates the channel. Guess that's all the DX for a while so 73's and good DX. (Those two new stations bring your total up even more/ 400+ must seem close enough to smell! touch! or even log! MG)

Mark Lewis, 224 Horiton St., Downsview, Ont. Canada (EDT)

July 11 9:00PM-931 PM WKOW-27 Madison Wis. 560 miles, WTV-18 Milwaukee from 10:45PM to 11:01PM at 495 miles, Un-ID-30,31 OR 32 same direction as Madison and Milwaukee with non net baseball game, any ideas? (Ferdie and I both believe this one to be WFLD -32 Chicago. MG) July 12 WMTV-15 Madison at 7:54 AM with tp, 560 miles, tent WTV-17 Rockford, Ill, tp with lg 17 s/on abt 7:59. Rcvd till 8AM with Today show but next to no color; 580 miles. WOC-6 Davenport Iowa tp at 7:45AM, WTV-9 Cadillac Mich at 7:01 AM over CFTO. All were tropes. Several other old stations were seen again: 6 Lansing, 5 Saginaw, 25 Saginaw, 11 & 13 Toledo and fantastic signals from Rochester, NY's WHEC and WROC (July 12). (Sounds like you really scored big on the 11th and 12th. I wonder if you broke any station distance records? In the future please send all reports direct, thanks - IG)

Bill Bens, 5575 Spruce Wood Drive, Cincinnati, Ohio 45239 (EST)

Not too much to report this time. As of 7-28, I have 249 FM stations in the log. Latest DX: (all tropes except CFBC) 7-10 2245 WHAD-90.7 WI, 2315 WROK-97.7 IL. 7-11 0000 WBKV-92.5 WI (s/off), 0001 WFMRO96.5 WI (s/off), 0027 WEAU-104.5 WI, 0045 WMBD-93.3 IL. 7-14 0100 WDOK-102.1 OH (now 100,000 watts), 7-19 0430 CFCA-105.3 CN, 7-25 2231 WNAP-93.1 IN, 7-26 1044 WHA-88.7 WI, 7-27 1714 CFBC-96.1 CN, 7-28 0801 WMZK-97.9 MI WNCI-off; WLAC-QRM, 0900 WSTO-96.1 KY. During WHAD s/off they mentioned their power as 10,000 watts. But the VJ says 75,000 watts. Sounded like more than 10,000! Help! (My 1967 BC Yearbook also says 75kw. Can anyone help? MG)

Joseph Fela, Jr., 167 Goodwin Avenue, Newark, New Jersey 07112 (EST)

July produced quite a bit of DX, particularly on FM. FM first: 7-9 WAMC-90.3 NY a-round 5:30PM, 7-12 7:39PM WOBM-92.7 NJ over almost local WLIR-92.7 NY, 11:04 s/off WRFL-92.5 Va., 11:07 WBPZ-92.1 Pa., 11:58 s/off WFLY-92.3 NY. 7-13 6:30AM WCCC-106.9 Conn. and WSH-106.7 Pa., 11:05 PM s/off WBOC-94.3 Md., 11:06 WINE-95.1 Conn., 11:45 WDKC-106.5 NY. 7-14 WYBC-94.3 Conn. at 12:01AM, 12:05 s/off WHIL-107.9, 5PM WGBH-89.7 Mass., 10:43 WSRS-96.1 Mass., 10:58 s/off WHAV-92.5 Mass., 11:07 WPJB-105.1 R.I. w/possible s/off. 7-15 tent. WAEZ-94.9 Fla. on Es but opening too weak and not long enough. 7-18 7PM WOI-90.1 Iowa on Es, verie back stating report indicated I also heard KSJR Collegeville, Minn. I probably had an incorrect program detail which may have been KSJR. 7-22 9:05PM WPLM-99.1. 7-26 11:12PM WVEC-101.3 Va., 11:28 WGH-97.3 Va. and 11:47 WFMN-103.1 NY. On TV, here's what was seen - 7-8 KARD-3 Kansas, also French in for a few seconds, CBWFT?, 6:16 add thru very local WCBS-2 for Milwaukee Federal - Could this have been WBAY? 6:27 KTVO-3 Iowa, 6:31 KDAL-3 Minn., 6:58 WISC and KGLO IDs on 3. All of these on Es of course. 7-15 more Es. 6:59PM WCIX-6 Fla. thru semi local WFIL Pa. 7-18 Es - 6:18PM add photographed for co. on SD., tent sent to KDLO-3 (via KELO) which replied it definately was their signal, 6:26 KGLO-3 Iowa, KDAL and an Un-ID educational also noted. (Check with KLNE-3 for ed. un-id. MG) 7-26 Excellent trop opening to South w/WYAH-27, WHRO-15, WVEC-13, and WAVY-10 (all Va.) all pounding in. 7-26 Another trpp opening: WSBK-38, WGBX-44 and WKBG-56 all Boston around 9:30PM. Other trop openings were also noted but since nothing really good was seen, I'll leave them out to conserve space. If anyone is interested in which FMers run all night, here are a few, most are probably unaware of WPRO-92.3 R.I. w/automated good music, WFME-94.7 NJ (probably all night or at least to 3 AM local time) w/100% religious pgming like WBYO-107.5, WGCN-96.1 Pa., plus virtually all the Philadelphia comercial FMers, including WIFT-92.5 which is apparently now up to full power. WHBI-105.9 also seems to be all night...73 for now. (Thanks for the fine report Joe. I'm sure the all nighters will be appreciated by FM DXers. I'm told WBAY does carry adds for business concerns all over Wis. including Milwaukee. IG)

Gary A. Olson, 5901 W. Brown Deer Rd., Apt. 107, Brown Deer, Wis. 53223 (CDT)

21 new stations logged and total log at 21 for the new location. Locals here are WTMJ-4, WITI-6, WISN-12, WMTV-18 and WWS-10. All Milwaukee. 7-6 tropes WSAU-7 Wausau, WKBK-7 Chicago, WGN-9 Chicago, WFLD-32 Chicago, WSBT-22 S.Bend, 7-8 7PM WGBH-2 Boston Es, KYW-3 Philadelphia Es, WCBS-2 New York Es, 7-10 WOOD-8 Grand Rapids, WBAY-2 Green Bay, WSBT-22 South Bend, WKBT-8 LaCrosse, 7-11 WKZO-3 Kalamazoo, WLUK-11 Green Bay, WAOW-9 Wausau, WBBM-2, Chicago, 7-14 Un-ID Es ch 2-3 @ 2-3PM. 7-17 Un-ID Es ch 2-3 @ 7:45PM. 7-18 tropes WPBN-7 Traverse City. (Looks like you'll finally log WMVT! MG)

Bob Astmann, 191 Louvaine Drive, Kenmore, NY 14223

(EDT)

I'm 19, an electrical engineering major at Clarkson College of Technology, Potsdam, NY. TV DX totals are 46 logged and 34 vfd. in 12 states + Ontario, since 1965. FM began in '66 with present totals at 67/49, 5 states + Ontario. Here are some of my loggings durring the current season: 6-5 tropes WDOK-102.1 Cleveland 0133, WCRF-103.3 Cleveland 1605, 6-6 WEIV-103.7 Ithaca, NY 0130, WPIC-102.9 Sharon, Pa. 0134, WNEM-102.5 Gaginaw, Mich. 0145, WWWW-106.7 Detroit, Mich. 0300, 6-10 tropes WYDD-104.7 Pittsburgh, Pa. 0033, WLOA-96.9 Pittsburgh.0054, 6-15 tropes WUOM-96.7 Ann Arbor, Mich. 2158, 6-16 tropes WERE-98.5 Cleveland, Ohio 0055, 6-17 tropes WNUF-100.7 Pittsburgh 0058, 6-20 Es WUSF -89.7 Tampa, Fla. 1859, WGNB-101.5 St. Petersburg, Fla. 1914, WYOR-105.1 Coral Gables, Fla. 1948, WPKM-104.7 Tampa, Fla. 2023, WDBO-92.3 Orlando, Fla. 2042, WAEZ-94.9 Miami, Fla. 2117, 6-29 tropes WWSW-94.5 Pittsburg, Pa. 0204, 7-1 CKWS-96.3 Kingston, Ont. 0050, 7-2 tropes WBRB-102.7 Mt. Clemens, Mich. 0125, 7-8 tropes CKWW-88.7 Windsor, Ont. 0120, 7-22 tropes WOOD-105.7 Grand Rapids, Mich. 0029...TV...6-8 tropes WCNY-24 Syracuse, NY 2100, 6-9 WEWS-5 Cleveland, 2100, 6-21 tropes WPSX-3 Clearfield, Pa. 1530, Es KATC-3 Lafayette, La. 2130, Es WEAR-3 Pensacola, Fla. 2145, 6-23 tropes WWJ-4 Detroit 0130 (220 miles), WXYZ-7 Detroit 0224, 7-8 Es KLNE-3 Lexington, Nebr. 2000, 7-9 Es WEDU-3 Tampa, Fla.1950, 7-11 tropes CKSO-5 Sudbury ,Ont. 0220 (275 miles), WSYR-3 Syracuse, NY 2059, 7-14 tropes WSPD-13 Toledo, Ohio 0216, Some other Es catches were WBAP-5 Ft. Worth, KFSA-5 Ft.Smith, WPTV-5 Palm Beach, KCMO-5 Kansas City, KFYR-5 Bismarck ND, WMCT-5 Memphis rovd durring the last few years. Thats it for this month. (Welcome to WTFDXA Bob and thanks for your first report. What equipment are you using for DX? MG)

Carlton Howington, 13880 Greenland Ave., Uriontown, Ohio 44685

(EDT?)

6-20 Big FM Es day here.KO V-91.3 started at 5:55PM, KSYM-90.3, WFLA-93.3, WGBS-96.3, WMYB-92.1, WTMA-95.1, KCUR-89.3, KFLA-94.5, WTAN-95.7, WCSC-96.9, WNDB-94.5, WWOE-99.9, WDBO-92.3, WCOF 95.9, WKTZ-96.1, WPRK & WFSU-91.5, WSPB-106.3, WIXX-105.9, KNOK-107.5, KICS-93.5, all between 6 & 9 PM. WMYB is my shortest Es at 520 miles & WPRK is 330 watts. 6-21 WWMT-95.7 5:45PM, WGOS-93.9, WSWN-93.5, Cuba on 88.3 & 90.5 5:45PM, 6-22 tropes good, WMBI in like a local & WFMR-96.5, WJJD-104.3, WMIL-95.7, WFNW-92.1, all around 1PM. 6-23 WSEN-92.1 with cw mx, WFCR-88.5 at 7:01AM at 460 miles, WBRU-90.9 at 550 miles, & CFRC-91.9 at 8 AM s/on. 6-29 Es WACO-99.9 at 6:05PM, WRR-101.1, KPLT-99.3, WJL-103.7 & KDOK-101.5 at 7:16PM. 7-11 WCAL-89.3 at 11PM, 7-13 CFRC-91.9 in like a local at 1AM, WGMS-103.5 at 1:08AM, CKWS-96.3 at 1:10AM, WHAT-96.5 at 1:30AM. 7-14 WFIL-102.1 at 11:15 PM local WDOK was off, WPEN-102.9 at 11:45PM, WCAO-102.7 at 11:45 PM. 7-15 BIG DAY HERE. WIPR-91.3 at 6PM, this is my most distant logging on FM at 1800 miles, could this be double hop on FM? The reception was not strong, just over WBKY and only lasted about 5 minutes then faded out and in again around 6:50PM. Any help??? 7-16 WGSU-89.3 s/on at 7AM. 7-17 ZBM-89.1 at 6:38PM with mx in stereo. 7-24 Es WKRD.93.5 at 7:05PM(new state) . 7-27 tent. CHNS-96.1 at 6:15PM. Not too much TV to report. 7-8 KETS-2 at 5PM (new), 7-22 UHF good WSWO-26 at 8PM (new). 7-26 uhf hot to west - all between 5:30 & 8AM WSBT-22, WKJG-33, WANE-15 WTVO-17, WLBC-49, WSJV-28, WKEF-22, WCEE-23, WKNX-25, WLFI-18, all but WLBC were snow free. FM veries up to 181 in 24 states plus Puerto Rico & Bermuda. Verie back from WIPR was less than a week air mail both ways. 73's (MY FM Es experience has been limited, but just going on the TV-FM similarities I'd say your WIPR could be either single or double hop. Maybe one of our more experienced FM-DXers can lend a hand? MG)

Roger W. Winsor, 718 N. Fremont Road, Valparaiso, Indiana

(CDT)

7-5 tropes WNUF-100.7 Hartford, Ind. 12:00M, WCTW-102.5 New Castle, Ind. 12:15AM, WCRA-95.7 Effingham, Ill. 12:30AM, WTAY-101.7 Robinson, Ill. 12:30AM. 7-16 WSIU-91.9 Carbondale, Ill. 12:30AM s/off, WGNU-106.5 Granite City, Ill. 12:40AM, WKRC-101.9 Cincinnati, 0100. WJBI-94.1 Cincinnati, 0110, WTHI-99.9 Terre Haute, Ind. 11:04PM, WFMS-95.5 Indianapolis, Ind. 12:00PM. 7-21 WMT-96.5 Cedar Rapids, Iowa 11:03 (NOT ON 104.5), WELL-98.5 Freeport, Ill., 11:30, WGEM-105.1 Quincy, Ill., 11:25, 7-23 WJR-96.3 Detroit, 12:40AM, CJRT-91.1 Toronto, Ont., 12:55AM, CKDS-95.3 Hamilton, Ont., 1:00AM, CFCA-105.3 St. Catharines, Ont., 1:20AM, CHIN-100.7 Toronto, 1:40AM, WNAP-93.1 Indianapolis, Ind., 2:00AM, WCAR-92.3 Detroit, 4:57AM, WLEW-92.1 Bad Axe, Mich., 5:00AM, WLDM-95.5 Detroit, 5:00AM. 7-26 WTOS-103.7 Wausau, Wis., 12:15AM, WRAY-98.1 Princeton, Ind., 9:45...TV... 7-9 CBFT-2 Montreal, 10:30PM, CBHT-2 Moncton, N.B., 10:00PM, CBHT-3 Halifax, N.S., 9:00PM, CHSJ-4 St. John, N.B., 7:30PM. 7-11 CFPL-10 London, Ont., 12:24AM s/off. 7-13 CKCW-2 Moncton, N.B., no call tp from 7:30AM until 12:00N then faint s/on. WLBZ-2 Bangor, Maine, 9:30AM. 7-21 WMT-2 Cedar Rapids, Iowa, 10:30AM, KTVO-3 Ottumwa, Iowa, 10:30,

WGEM-10 Quincy, Ill., 11:00AM, 7-20 KPLR-11 St. Louis, Mo. 12:40AM, KSD-5 St. Louis, Mo., 12:45AM s/off, WHA-21 Madison, Wis., 10:03PM. 7-23 WSPD-13 Toledo, Ohio 12:13AM a/off, ???-9 no call Indian Head tp @ 5:00AM. ENE of me. Can anyone help? WTRF-7 Wheeling, W.Va., multi-color tp @ 5:25AM w/call, just as tuning in WXYZ over, WIIC-11 Pittsburg, Pa. tp @ 5:00AM u/WTOL-tp. New state. KMOX-4 St. Louis, Mo., 5:40AM. 7-26 WBNS-10 Columbus, Ohio at 9:30AM, 7-27 WTVY-4 Dothan, Ala., 4:30PM. 7-28 WEDU-3 Tampa, Fla., 2:28PM s/on, WTHS-2 Miami, Fla., 2:30PM, CMH-3 tent ??? Santa Clara, Cuba, SS audio o/WEDU ID @ 3:00PM. 7-29 KNOP-2 N. Platte, Neb. 6:00PM, KWGN-2 Denver, Col., 6:00-6:30PM, KRMA??-6 Denver, Col., No call tp noted @ 6:05PM, KOA-4 Denver, 6:03-6:15 PM. 7-31 KETS-2 Little Rock, Ark., 7:03PM, KRGV-5 Weslaco, Texas 5:00PM, KMID-2 Midland Texas 6:30PM, KGBT-4 Harlington, Texas 5:00PM. 8-4 WSAU-7 Wausau, Wis. (2:15AM s/off), 8-5 KROC-10 Rochester, Minn., 11:05PM, 8-6 KEYC-12 Mankato, Minn., 12:00 s/off, WTCN-11 Minneapolis, Minn. audio only during rx @ 12:05AM. (Sorry I can't lend a hand with your un-id-9. For years I've had a channel trap on 9 giving it 60db of attenuation to reduce 9's splatter on 8,10,11,12 and 13! Since my new yagi is ~~in~~ places the splatter I've pulled the trap and have just begun dxing on ch 9. Before local s/on of course, Hi! MG)

Frank Wheeler, 6589 Wattsburg RD., Erie Pa. 16509 (EST)

I like the Bulletin very much, it is something like the old AIPA. Here's my report for July. It's not as good as June, but I did manage to get two new ones. 7-1 WTVN-6 Columbus, Ohio 9PM; rcvd a nice letter verie, 7-8 KJAC-4 Port Arther, Texas 4:32PM, KETS-2 Conway, Ark., 5:00PM, KARK-4 Little Rock, Ark., 5:30PM, KVOO-2 Tulsa, Okl., 6:00PM, KMTV-3 Omaha, Neb., 6:07 PM, KARD-3 Wichita, Kans., 6:15PM, KCKT-2 Great Bend, Kans., 6:17PM, KTVS-3 Sterling, Col., 9:00PM, KFDX-3 Wichita Falls, Tex., 10:25PM. 7-9 WTHS-2 Miami, Fla. 6:30PM. 7-11 trop WOC-6 Davenport, Iowa 9:00PM (533 miles), 7-12 WFRV-5 Green Bay, Wisc., 4:43PM (461 mile trop), 7-13 CKSO-5 Sudbury, Ont. 9:30AM (trop 313 miles - NEW), 7-14 KPRC-2 Houston 12:45PM, WLBT-3 Jackson, Miss., 12:55PM, KATC-3 Lafayette, La. 4:00PM. 7-18 KOTA-3 Rapid City, SD 11:30AM. 7-29 KCKT-2 Great Bend, Kans., 4:30PM, CBHT-3 Halifax, NS 7:30PM. Rcvd a very friendly and informative verie, including station history etc., from KCEN-TV. The Chief Engineer, Curtis M. Casey is also a TV-DXer, having 35 reports over 1000 mile distance. Maybe we could get him to join the WTFDXA! My totals are now 215 rcvd with 184 veries. 73s. (Congratulate them on adding two more to your already high DX list. I'd be happy to see Mr. Casey become a member. We'll send him a sample issue. MG)

Don Eggert, 1925 East Bowman Street, South Bend, Indiana 46613 (EST)

Since this is my first report after just joining the club, perhaps a little intro is in order. The age here is 20, and I'm a Junior in College. I've been DXing on TV since the winter of 1965 when I saw my first Es. My equipment for TV consists of a 32 element Channel Master VHF antenna and a corner reflector for UHF. The rcvr is an RCA portable. DX during this summer has been quite good, with many new stations and 6 new states logged. Here is my most recent DX; (new loggings only) 7-8 CJCB-4 at 1826 at 1826, CJCH-5 at 1829 (1080 miles). 7-11 WHO-13 surprised me at 0245 with tp since conditions didn't seem good (367 miles), WAOW-9 and WSAU-7 at 1830 (270 miles) both bombing Chicago, WWUP-10 at 2345 (330 miles). 7-12 KBKA-2 at 0445 (330). 7-17 WKTV-2 1830 (555). 7-20 WKRC-12 at 0545 s/on (195) (finally giving me all Cincy VHF stations) 7-22 WBEN-4 at 0010 with tp (375), WAVE-3 believed to be testing at 0537 (240). KPLR-11 at 0000 (293) for state #34, KWAB-4 at 1730 (1035) a goodie due to low ERP. and states #35 in the form of KETS-2 at 2010 (570). Totals here on VHF are 160 logged from 35 states, 7 prov., Cuba, and Mexico. On UHF 42 loggings from 6 states. New ones on UHF include 7-22 WUCM-19 at 2236 (180), 7-23 7-23 WFMJ-21 at 0545 (280) with tp and WKBN-27 at 0556 s/on, 7-25 WVIZ-25 at 1540 and on with tp (223), WHA-21 at 2130 (195), 7-31 WAKR-23 at 2200 (240) with WSBT on, and WYTV-33 at 2229 over WKJG. In case anyone might be interested here are the dates I noted Es during the summer: 5-25, 28, 30, 31; 6-1, 4, 5, 8, 9, 18, 19, 20, 21, 22, 24, 29, 30; 7-4, 8, 9, 12, 17, 23, 25, 30, 31, 8-4. I would have to say the openings on 5-28, 6-20 and 6-21 were the best of the season, with around 20 differant stations seen per day. On 8-4 I noted a rather unusual opening at 2345 EST, the latest I've seen in a couple of years, but only the usual Texans were seen. 73 & DX. (Glad to see your first report, Roger Winsor previously noted to me how your total are so rapidly building. MG)

Frank Merrill, Jr., 1790 Jewell Road, Milan, Michigan 3160 (EST)
 7-8 WRBR-103.9 S.Bend, 2355. 7-9 WTLC-105.7 Indianapolis 0012. 7-10 WNUO-98.5 DeKalb
 Ill., 2131, WRVB-102.5 Madison 2200, WSUW-91.7 Whitewater Wis., 2302, WRWC-103.1 S.
 Eloit, Ill., 2330 WLUV-96.7 Loves Park, Ill., 2330, 7-11 KSJR-90.1 Collegedale, MN
 7-15 WFAW-107.3 Fort Atkinson, WI., 2330, 7-17 ZBM-89.1 HAMILTON, BY MUDA
 7-21 WWMS-100.9 Bryan Ch. (x-WBNO) 2009, WMRO-107.9 Aurora Ill. 2011, 7-24
 WJLB-89.7 Boston 1815, WERS-88.9 Boston 1819, 7-26 WTHM-103.1 Lapeer, MI., 0900, 7-28
 WNAP-93.1 Indianapolis 0147, 7-31 WFMS-95.5 Indianapolis 0130, WGRP-107.1 Greenville
 PA, 8-4 WKSN-101.7 Jamestown NY 2306, 8-5 WLBC-93.7 Depew NY 0430, TV... 7-15 WSWO-26
 Springfield Ch., 1828, 7-22 WLFI-18 Lafayette Ind. 2100. C??-4 (Canadian Maritimes)
 1825 - assigned to ch4, not + or -4. Zero offset over WWJ. (CHSJ-4 ?? MG) Unfortunately
 I wasn't around to catch the big tropes opening during the evening of 7-11, but I hear
 that it was one of the best openings this year. I was at Bill Raczko's home in Toledo
 (a BCB DXer) en route to Akron for the weekend, and I was able to check his TV for DX
 (ant. fixed at NNE). Zero offset QRM was visible against the Mich. locals on ch 2, 6, 7,
 (probably WDAY, WLUC and WSAU), as well as against WKYC-3, probably WISC. Certainly
 the surprise of the year was when I turned on the KIH-18 the evening of 7-17, and
 heard this loud signal on 89.1 with no other skip apparent. I got a good twenty
 minutes of programing, but no QSL back yet (I sent a tape and two IRC's). ZBM-FM gives
 me three countries on FM now, and I really want the QSL. When I heard WSUW on 7-10 I
 thought that they were only ten watts, but my visit with Carlon Howington (part of the
 Akron weekend) showed they were 265 watts; still I'm not complaining. 105.3 is the
 only frequency where I've heard only one station. As to previous tentatives, KOCV-
 91.3 said "no" to my 6-20 tent. logging, then came a QSL letter came from KUEF. KTCU
 -89.1 said "no" to my 6-29 tentative.....perhaps that was ZMB also? My 7-24 C??-4
 catch is still a mystery because of the Canadian postal strike; I still think that CJCB
 was the one assigned exactly on Ch. 4, or am I wrong? Re Roger Winsor's 7-68 report:
Is WFKO on 92.5? Well, that's it; PRAY FOR TROPS and best DX to all! (I'm probably
 wrong but I thought that CHSJ-4 is also "0" offset. Perhaps someone knows for sure!
 Congratulations on ZBM! MG)

Bill Grant, 16 Goulding Street, Worcester, Mass. 01609 (EDT)

7-14 1230 WSB-2 Atlanta, Ga., 1235 WPHL-17 Philadelphia, Pa. (tropes), WRBL-3 at 1300
 Columbus, Ga., 1400 WESH-2 Daytona Beach, Fla., 2305 WNEP-16 Scranton, Pa., (tropes),
 7-15 2230 WPHL-17 Philadelphia, Pa. (tropes), 7-17 1230 WTHS-2 Miami, Fla., 1630 CJOX-
 3 Argentia, Nfld., 1915 KMTV-3 Omaha, Neb., 7-22 1900 WSAV-3 Savannah, Ga., 2000 WRBL-
 -3 Columbus, Ga., 2030 WDIQ-2 Dozier, Ala. 7-23 1230 WESH-2 Daytona Beach, Fla. 7-24
 1900 WISC-3 Madison, Wis., 1905 WZZM-3 Kalamazoo, Mich., 1920 WTMJ-4 Milwaukee, Wis.,
 2100 CKPR-2 Port Huron, Ont., 2200 WTWO-2 Terre Haute, Ind. 7-26 1230 WESH-2 Day-
 tona Beach, Fla., 7-29 2250 CJOX-3 Argentia, Nfld. 8-8 1730 KETS-2 Little Rock, Ark.,
 1800 WREC-3 Memphis, Tenn. Well it looks like another TV-DX season is slowly com-
 ing to an end. Observed DX openings during the last two weeks have been short and
 very weak. However it was a good DX season at this QTH though nothing spectacular
 was logged. I wish I had more time for DXing but such was not the case. However,
 I believe my log is representative of DX conditions this season in the northeast US.
 Best of DXing... (Thanks for the TV-Guide excerpt you mailed me, it helped to clear
 up a few un-ids & f July 8. MG)

Bill Heusmann, 3116 Sangamon Street, Steger, Illinois 60475 (CDT)

My DXing this month was interrupted by a two week vacation trip during which I was
 certain I was missing some really great Es. Personally, I've found this season
 to be rather disappointing. I did log some new stations, but I was hoping to break
 my old distance record, which I failed to do. But, tropes have been very good for me
 and I've had my first experience with MS, so things aren't too bad. 7-13 11:30 WCAK-3
 Burlington, Vt., 12:35 Un-ID CBC-3 (CBHT?), 12:47 Same cartoons as 3 & 6. NE. Also 3,
 7-16 0530 KMOX-4 St. Louis (NEW), 0600 WPBN-7 Traverse City, Mich. (NEW), 0615 WHO
 (NEW), 0630 WEAU-13 Eau Claire, Wisc. (NEW), 0700 WISN-12 (NEW),
 1715 un-id Can.-CHSJ?. 7-17 10:49 Un-id NBC-2 under local WBBM, KMID-??, 11:00
 KIII-3 Corpus Christi, Tx, 1130 WTVJ-4 Miami, 1154 Temporary tp under WBBM, WCIX-??
 8-5 0500-0630 WHIO-7 Dayton (NEW), WAVE-3 Louisville (NEW), WTVW-7 Evansville, Ind.,
 (NEW), WCPO-9 Cincinnati (NEW) KHQA-7 Hannibal, Mo., 1400 WMT-2 Cedar Rapids, Ia. (NEW),
 1406 KROC-10 Rochester, Mn. (NEW), 8-8 1800 WKBD-50, WTVS-56 Detroit, WLMA-35 Lima,
 Ch., WLBC-49 Muncie, Ind., 2230 WKIX-19 Cincinnati (NEW), 8-9 0505 WFLC-3 Hartford.

My first MS, quite a thrill. 8-11 0500 WCBS-2 NYC (MS-NEW), 0615 WKY-4 Oklahoma City (MS), 0617 WLWT-5 Cincinnati, 8-12 0520 WDEF-12 Chattanooga TN, 0525 WHNT-19 Huntsville, AL!!!, 0558 Un-ID over WZZM-13, tent CKCO, 0545 WSIX-8 Nashville, TN., This pushes my UHF record to 480 miles. Both WDEF and WHNT were coming in quite well and I didn't even have an inch of film in the house. Complete frustration!!! For those looking for Chicago, Morrie and I have found that WBBM-2 is very seldom off the air. I guess I can give up hope for Es this year, but I won't complain if tropes hold up! (Agreed 100%. With success in tropes like you've been having, I don't see how anyone could complain! mg)

Morrie Goldman, WA9RAQ, Editor CDT

Un-ID Es on July 12, 13, & 14. July 14 6:10AM WLWT-5 with WLW type tp - Cincinnati, Un-ID "First Edition News" 4 SE at 6:26AM, 4:55PM Un-ID Es. July 16 Es CBC News-3 5:00PM to 5:10 then Regional News, 5:16PM WCAX-3 Add for Business Systems of Vermont Burlington, Vt., 5:25PM Un-ID-3 "Lanne-3 News". July 20 Un-ID-7 5° S. of East Signing OFF AT 6:13AM! (with American flag, jets, etc.). Aug 11 MS Un-ID tp NBC type on 4 at 6AM, KRLD-4 Dallas at 6:15AM with tp, 6:25AM WKY-4 Oklahoma City, Ok. with tp, 6:26AM WCIV-4 Charleston, SC with tp, KRLD-4 again with tp at 6:28AM. Aug 12 tropes WDEF-12 at 5:25AM with a custom tp, 5:40AM WJRT-12 Flint, Mich., 6:05AM WPBN-7 Traverse City, Mich. Aug 14 morning: WMTV-15 Madison, WANE-15 Ft. Wayne, WICD-15 Champaign Ill., WPTA-21 Ft. Wayne, WCEE-23 Freeport, Ill., WDHO-24 Toledo, Ohio, WKNX-25, WIMA-35 Lima, Ohio, WTOL-11 Toledo. Aug 15 Un-ID-10 s/on 5:30 se (times on un-id-10 may be incorrect due to messy notes), 5:40AM WTOL-11 Toledo, Offset bars on WZZM-13 Grand Rapids - same dir. ID-9 SE at 5:58 PM - too weak for pgm detail, 6:55AM (again time may be wrong) IH tp on 10 followed by CBS "Summer Semester" from SE, 5:47AM WPBN-7 Traverse City with very strong signal. Aug 19 Q scale on ch.16 from South at 3:45PM - tent. WUSI-Olney, Ill. Aug 19 Confirmed - WUSI-16 ON THE AIR AT LAST! Rcvd modified RETMA tp with large call letters at 3:00PM. Before 3PM a resolution chart was being broadcast. It seem that everyday from 3-3:30PM WUSI broadcasts their tp then a movie.....My ch.12 yagi seems to be doing a good job. Though I've not had time to give it a good test I can say that with the AB-3 (Blonder Tongue) booster it seems to have about 3 times more high band gain than my CL-4X and AF-220N. The two unid stations rcvd on 10 and the one on 9 were only visible on the yagi and not to be seen on the CL-4X. Also today during mid day with no visible good trop it hauled in WJRT-12 and KFVS-12 while seperating them from the WISN QRM. WZZM-13 Grand Rapids is now always in with a watchable picture (if you like a little eye strain HI!) where as I needed a trop for the CL-4x to receive it. I hope there's still enough tropes left this yr for this antenna to prove its worth. The yagi, which is a cut channel 12 Winegard 10 element, seems to work well across the entire high band. Directivity is excellant. The ANARC convention in Omaha was very enjoyable. After watching 2 full flights leave for Omaha, Bill Heusmann and I, flying Stand-by finally got on the 5PM flight Friday. That night was full of plenty of talking and comparing log notes. Saturday morning was talks on various phases of DX, including mine on TV. At 1PM the group left for a tour of Offutt Air Force Base, home of the Strategic Air Command. After the tour Glen Hauser, Ferdie Dombrowski, Bill Heusmann and I separated from the group. The group went to KFAB-AM FM for a tour, we went to visit KMTV-3 TV in Omaha and KETV-7 TV studios. Both were very enjoyable. At KMTV, we were even allowed to wonder about the station. Both stations showed great hospitality. Saturday evening was a talk on "Communications and Defense" by a rep. of Northwestern Bell. A line direct to NORAD Hq. was also set up. Saturday evening was also the big dinner and door prizes - I won a Hygain Antenna HAM balun and two records, Ferdie won an FM antenna from Taco. Everyone won two prizes! Sunday morning was more DX talk.... While I'm now typing at 9:45PM Aug 21 an Es opening popped in. Strong signals are up to channel 4 but weakening fast. It's now 10:07PM 3 & 4 are dead with no ID's, a signal from the South is still whipping out local 2. Further details next month. ... If you receive your Sept issue late, it's probably my fault do to sending in my column late.

73's and BEST of DX, Morrie

Dennis Park Smith
 450 Poplar Ave.
 Wasco, California
 93280 U.S.A.

WESTERN DX

SEPTEMBER 1968

For TV and FM reports west of the Mississippi River

Deadlines: 15th of each month

After 20 September or thereabouts, my school address takes effect:
 321 Santa Barbara Street, Santa Barbara, California 93101

The skip season in July has had its ups and downs. It started off slowly early in the month and picked up, apparently peaking on the 11th and dying after the 12th. After mid-month, it started up again and maintained a medium pace to the end of the month, as reports indicate. Es has been reported on these dates in July: 1, 3, 4, 5, 6, 8, 9, 10, 11, 12, 14, 15, 17, 18, 20, 21, 22, 23, 24, 25, 26, 27, 28, 29, 30, 31.

I overlooked a note from Frank Merrill last time. He notes addition of WXTA-94.3 to the Cards baseball list; heard 7/2.

Fred Nordquist, 411 Dart, White Sands Missile Range, N. Mex. 88002

Lots of DX to report this month with TV totals up to 109 and FM to 53. All DX via Es, as usual. New Roberts 770X tape recorder has been added to the arsenal, so now the juicy DX will be caught permanently. TV DX IDs snapped on an Instamatic 340 w/closeup lens. About 20 have been snapped thus far. Here's July DX without further ado. TV DX -

Date/CL-Ch/Loc/Time/Dist/Remarks	Date/CL-Ch/Loc/Time/Dist/Remarks
3 KTVU-2 CA 1300 965	11 WMT -2 IA 1318 1040 Hardware ad
4 KDIX-2 ND 1000 1220 Realtor ad	KTVU-2 CA 2300 965 Thur. Show.
WEAR-3 FL 1330 1150 A&P ad	Also KDLO KBOI KID KCRA 1318-2300.
WTVY-4 AL 1300 1235 Sealtest ad	12 KOOK-2 MT 1300 930 ID
*WDIQ-2 AL 1600 1200 NET	KRTV-3 MT 1330 1075 Furn. Barn ad
5 *WSIL-3 IL 0847 1075 TP	17 WMT -2 IA 1311 1040 ID
*WFRV-5 WI 0829 1290 Gr. Bay NX	20 UnIDs on 2, 3, & 4 1300 & 1825.
*KORN-5 SD 0900 900 Paul Dixon	23 KTVI-2 MO 1743 1005 Local NX
*WDSM-6 WI 0828 1220 4th Jul NX	*CKPR-2 Ont1805 1425 Markets
KAUS-6 MN 0845 1085 ID	*KFYR-5 ND 1900 1040 Corvin ad
6 XEW-2 & XEZ-3 MX 1158	sCKCK-6Sask1921 1140 Dance
8 KVOO-2 OK 1230 665 ID	Also KCTA KOTA WCCO KOOK KRTV
KYTV-3 MO 1230 820 Man w/Mike	*KFBB-5 MT 2007 1075 Rodeo ad
CBWFT3 Man1258 1305 TP	UnID-4 SD 1845 ?? Rapid City ads
*KXJB-4 ND 1300 1080 Fargo ad	24 KOOK-2 MT 1300 930 ID
CBWT-6 Man1259 1305 ID	26 UnID-3 Mex w/XEMN ad 1903.
KTVI-2 MO 2201 1005 Len Wilson	UnID-4 Mex1755 Possible Guadalajara.
*KSD -4 MO 2200 1145 ID	*KGBT-5 TX 1800 685 Globe Daysad
9 WDCN-2 & WREC-3 IDs 2000&2030	27 XEW-2 & XEZ-3 SS 1242.
10 *KFEQ-2 MO 2200 825 Local NX	28 WBRZ-2, KJAC-4, & WDSU-6 IDs 1700
*KCKT-2 KS 2230 605 ID-'Tonight'	29 WDCN-2 & WREC-3 IDs 2100.

FM DX

Date CL MHz State Time Remarks	Date CL MHz State Time-Remarks
3 WTTM- 92.3 IN 1306 ID-TC-WX	11 UnID-96.1 IN Possible WGLM. @2014
KHOB- 95.7 NM 1307 NX-fringe	21 KCNM-92.1 NM MoR mx @1240. Fringe
7 KPET-100.3 TX 1345 RR - EGW	23 KURL-97.1 MT 1953 Yellowstone Elect.
8 KSGM-105.7 MO 1237 ID	All FM DX via Es except as noted
KLIZ- 95.7 MN 1241 ID	otherwise. A rare EGW opening into
KQWB- 94.7 MN 1246 SID - RR	West Texas on the 7th & 8th bagged
KVBC- 94.7 ND 1247 Sports	several new ones. Much FM DX has been
KOYL- 97.9 TX 1837 WX - EGW	overlooked due to TV DXing this summer.
KNFM- 92.3 TX 1846 MoR mx-EGW	Will be job hunting up in NY Aug 19-24
UnID- 90.9 IL 2148 NX of ILL,	and expect to see some DXers on the way.
probableWILL-very strong signal.	Then it will be three short mo. left to
9 WDLF- 92.3 FL 2037 RR	DX here in NM, with all-time highs at-
WLNF-101.5 FL 2109 MoR mx	tained w/TV & FM DX. 73.

(You've had a good season there so far, Fred. It will be interesting to compare New York to New Mexico for Es and trop results. dps)

Stu Grade, 2828 So. Cornelia, Sioux City, Iowa 51106

DX since last report: FM 6/8 WARI-94.3 Abbeville AL (957) @ 1429 via MS or Es (signal lasted about 2 minutes, faded rapidly, no other DX heard); 6/15 KFJB-101.1 Marshalltown IA (204) @ 0820 s/on; 6/16 new KASI-107.1 Ames IA (163) testing, not on reg. sked at that time, hrd @ 0750; 6/19 good trop into Illinois WIVC-106.9 Peoria (355) @ 0825, WJBM-104.1 Jerseyville (400) @ 0900—wasn't listed in Jones or '67 Broadcasting, WSMI-106.1 Litchfield (404) @ 0900; WGNU-106.5 Granite City (410) @ 0929 C&W mx, KADI-96.5 St. Louis (410) over KXTR @ 0933, KSHE-94.7 Crestwood (410) @ 1005, KRXL-94.5 Kirksville (244) @ 0948; 6/20 Es to South: WMTS-96.3 Murfreesboro @ 2025, WMDE-98.7 Greensboro (960) @ 2033, WHPE-95.5 High Point (965) @ 2034, WKPT-98.5 Kingsport (888) @ 2040, WJIZ-96.3 Albany GA (992) @ 2058. Skip was so unstable that signals didn't stay long enough to get reports.

TV DX has been improved by a new receiver, a 1968 Zenith 295 sq.in. color set, which works very well. DX with the Zenith: 7/18 KYNE-26 Omaha (88) @ 0753 then parallel to Nebr. ETV net stations; 7/21 KTVH-12 Wichita-Hutchinson (12) @ 0755 TP. 8/4 morning brought excellent trop to the east due probably to a stationary front to the east of me: WZZM-13 Grand Rapids (530) @ 0400 s/off—my best trop DX so far, WKBT-8 La Crosse (266) @ 0105 movie "Hatari," WEAU-13 Eau Claire (288) @ 0121 not strong but dominating the channel, WSAU-7 Wausau (370) @ 0140 Double feature movie, KMSP-9 Minneapolis (240) @ 0100 fairly strong, WCCO-4 @ 0050, and tentative KSTP-5 St. Paul @ 0100—heard NBC promos so WFRV and WNBQ also possibilities. Reports out to all 8/4 trop DX.

Veris back from WGEM-105.1, WUFT-5, WJGA-92.1, KSIS-92.1.

I am using a Gavin indoor rabbit-ears antenna for TV now, but have a Knight "Colorset 55" and rotor on order which should help DX-wise.

73's and best of DX to all.

(It could be that a long-lasting meteor trail might have caused your 8 June DX—comments, anyone? Was all your recent DX (including trop) on rabbit ears, Stu? dps)

Morton D. Meehan, PO Box 214, North Palm Springs, California 92258

On April 1st, I became Manager of our Palm Springs Vehicle office, so no longer have apartment in Van Nuys area. I'm living at my cottage on the sands just outside of Desert Hot Springs and about 10 miles north of Palm Springs.

DX is impossible here due to electric pole noises so until electric company does something I don't DX and that is AM, FM, & SW. Raleigh Biss, NRC NNRC IRCA member who runs a TV repair shop in Palm Springs, tells me he has never had any FM DX in the many years he has been here on the desert. He has seen TV DX often. Using a non-directional omnidirectional FM antenna, I can get Oceanside, San Diego, Los Angeles, Riverside etc. Haven't heard any DX except perhaps the time the Long Beach station overrode Hemet on 105.5.

On UHF, besides the local translators, I get a trace of Los Angeles 28, 34, & 40, and also snowy pictures from time to time from two San Diego stations on 39 and 15.

However, I have been busy with the new job and work on the house, so I haven't had much time to DX.

I plan on driving into Hollywood on Saturday for the IRCA Convention—about 115 miles from here.

(I remember how surprisingly many VHF TV & FM signals were in that area, travelling through by rail last summer, but didn't know that UHF was getting over the hills from the coast. I'll see you at the convention, Mort. dps)

Randy Miltier, 1760 Whitwood Ln #3, Campbell, California 95008

Hi all. DX hasn't been too bad considering the low band is full of locals. DX during July shows:

11	1950 KAUZ-TV	6	Wichita Falls, Tex.	Fair sd, poor pic.	1350mi
	2002 KFDX-TV	3	Wichita Falls, Tex.	Good w/sd and pic	1350mi
21	1048 KTVS	3	Sterling, Colo.	Fair to poor w/sd & pic	1060mi
28	1128 UnIDed	4		Good sd & pic w/"Time for Americans" ABC/CBS	
	1200 KNOP-TV	2	N. Platte, Neb.	Poor	1250mi
	1230 KTWO-TV	2	Casper, Wyo.	Fair to poor	925mi
29	1656 CKOS-TV	3	Yorkton, Sask.	Good sound, no pic	1380mi
	1711 CKOS-TV3	6	Wynyard, Sask.	Good sd, poor pic	1350mi
	1733 KRTV	3	Great Falls, Mont.	Good sd & fair pic	910mi
	1800 KLNE-TV	3	Lexington, Neb.	Good sd & fair pic	1260mi

Tentatives were sent to KXLF-TV and KDUH-TV on the unIDed ch. 4 logged 7/28. This is my first year writing stations for verification and I must admit it's a lot of fun. My first TV verie was a letter from CKSA-TV on a tentative report; others are KAUZ-TV, KTVS, and an 8"x10" card from KFDX-TV. Reports are out to KNOP-TV, KTWO-TV, KRTV, and KLNE TV. Reports were sent to CKOS-TV ch 3 and CKOS-TV3 ch 6 (satellite) but the Canadian mail strike brought them back. My long sought XLTV has finally been identified as KXLF-TV, thanks to Bill Draeb's photo in the July issue of the Digest. Local KNEW-TV ch 32 in San Francisco is now on a regular schedule, 3:30 to 10:30 PM.

On the FM scene, KSJO San Jose and KOIT San Francisco are on an acid rock format and KSAN-FM San Francisco is on mostly a soul format with a little touch of the acid rock now and then. Good DX.

(I also had some Canadian veries that had to wait, but are finally on the way. You've got a good list of DX through lose locals, Randy. Hope we can meet someday soon. dps)

Dave Pomeroy, 623 Missouri, Lawrence, Kansas 66044

All DX since May 1:

					CDT
5- 1	KYNE-26	Omaha, Nebr.	Trops		8:30 am
	KTVH-12	Hutchinson, Ks			
	KAKE-10	Wichita, Ks.			
5- 2	KUHI-16	Joplin, Mo.			8:00 am
	KOTV- 6	Tulsa, Okla.			
	KOED-11				8:35 am
	(KTWU-11 local off air for 3 days)				
	KVOO- 2				
5- 3	KBOI- 2	Boise, Idaho	Es		10:30 am
5-14	KUON-12	Lincoln, Nebr.	Trops		am
	KOED-11	Tulsa, Okla.			
	KUHI-16	Joplin, Mo.			
	KTEN-10	Ada, Oklahoma			8:30 am
	WUNB- 2	Columbia, N.C.	Es		10:00
	WSJK- 2	Sheedville, Tenn.			
	KTVK- 3	Phoenix, Ariz.			
5-24	KTVK- 3	Phoenix, Ariz.			8:00 pm
5-25	KUTV- 2	Salt Lake City, Utah			10:30 am
	KID - 3	Idaho Falls, Id.			11:00
	KBOI- 2	Boise, Idaho			
5-28	KPRC- 2	Houston, Texas			11:55 am
	KATC- 3	Lafayette, La.			12:00 N
	WRBL- 3	Columbus, Georgia			
6-11	KUHI-16	Joplin, Mo.	Trops		10:00 am
6-19	KMEG-14	Sioux City, Iowa			8:00 am
	KYNE-26	Omaha, Nebr.			8:05
6-20	KTWO- 2	Casper, Wyo.	Es		5:10 pm

(6-20)	WTEV- 6	Tiverton, R.I. (New Bedford, Mass.)	6:01 pm	(Es)
	WGR - 2	Buffalo, N.Y.	6:29	
	WSYR- 3	Syracuse, N.Y.	6:30	
	KID - 3	Idaho Falls, Id.	9:00	
-	KUTV- 2	Salt Lake City, Utah	9:39	
6-21	KIII- 3	Corpus Christi, Texas	5:30 pm	
	XEFE- 2	Laredo, Tamps. (test pattern)	5:33	
	XEPM- 2	Juarez, Chih. (test pattern)		
	KMID- 2	Midland, Texas	5:39	
	WSAV- 3	Savannah, Ga.	7:05	
	WPSX- 3	Clearfield, Pa.	9:00	
-	WTIC- 3	Hartford, Connecticut	10:00	
6-22	XEFB- 3	Monterrey, N.L.	1:00	
	KGBT- 4	Harlingen, Texas (over WDAF-4)		
	WOAI- 4	San Antonio, Texas	1:10	
	XHY - 3	Merida, Yucatan	1:25	
	KID - 3	Idaho Falls, Idaho		
	KRGV- 5	Weslaco, Texas-- (over KCMO-5)		
	UnID- 6	(possibly XET-6) (Spanish)		
6-24	CBWFT-3	Winnipeg, Manitoba (test pattern)	1:50 pm	
	CKCK1-6	Willow Bunch, Saskatchewan	2:00	
	CKCK- 2	Regina, Sask.	2:15	
	KOOK- 2	Billings, Montana	2:30	
	CKOS- 3	Yorkton, Sask.	3:00	
7-17	WSYR- 3	Syracuse, N.Y.	8:00	
8- 7	KXNE-19	Norfolk, Nebr. (first positive ID)	10:55	Trops
	KHQL- 8	Albion, Nebr. (weather bulletin)		
	KMEG-14	Sioux City, Iowa (GOP convention)	1:10 am	
FM:				
4-30	KCFA 98.9	Spokane, Wash.	Es	11:45 am
6-21	WSRS 96.1	Worcester, Mass.		6:15 pm
-	WBLK 93.7	Depew, New York (record request)		6:25 pm
6-22	WUSF 89.7	Tampa, Florida		6:29 pm

Five new TVs bring Lawrence total to 165. Certainly enjoy FM skip since I can't predict its origin like I can VHF and UHF TV. A baby daughter born 6-17-68; have spent most of time in Kansas City since then. Some good skip and tropes in color there—especially WTAR-3, KUHI-16, and KYTV-3.

Am in process of looking for permanent job in ETV so may not have many more reports from Kansas.

(Thanks, Dave. Congratulations on the new addition to your family.)

Glenn Hauser, 1312 West Oak Avenue, Enid, Oklahoma 73701

As an addendum to my comments last time about free info by telephone, I should point out that PR and VI can also be reached in some cases, and most points in Mexico are attainable, but this requires the nerve to go thru your local operator. In addition, knowledge of Spanish helps, as does extreme patience with the unhurried and inefficient service which is the norm of the area. Indeed, "DXing" by telephone can be more of a challenge than DXing by the ionosphere, hi. They might even put you through to the party instead of merely giving the number!

For those of you despairing of buying the \$10 Broadcasting Yearbook, a free "directory" of US and Canadian FM stations is now available from McIntosh Laboratory, Inc., 2 Chambers St., Binghamton NY 13903. It appears to be copied from BCY; at least the random order of listings within each frequency matches. CPs and other niceties of BCY are omitted from this list however. And for those of you despairing of all the inconsistencies, inadequacies and errors in BCY itself, rejoice!—I have sent them a two-page letter delineating them in detail. If others join me, the Yearbook may be much improved in subsequent years....

In the FM portion of my report (including last month), a hyphen following a call indicates that the suffix -FM properly follows it. It is not safe to assume the station was mono, unless this specified by M, since the stereo indicator was burnt out at times. As before, if distance is given, station is new. The total of stations definitely identified at Enid has reached 478, an increase of over 276% since the beginning of the season here, when the total was 127. (\$-definitely stereo)

Jul	CST	Call	MHz	Prop	Location	Comments
3	2101	WHBQ-	105.9	T	Memphis TN	ID. Shreveport at Memphis BB
	2103	WREC-	102.7		Memphis TN	TN Nx; KJEM no problem
	2107	WMC-	99.7		Memphis TN	rock as usual
	2238	WNAT-	95.1		Natchez TN	ID, "Kaleidoscope"
	2255	KJET-	107.7		Beaumont TX	"Soul Request Line," s/off 2302; 490mi
	2304	WJMI	99.7		Jackson MS	local wx by YL; s/off ment affl WRBC, SSB, off 2306; 520mi
	2309	WJDX-	102.9		Jackson MS	local ads
	2311	KAYD	97.5		Beaumont TX	ID in passing, ment Astroworld contest; 490mi
4	0557	KFAV	92.1		Fayetteville AR	gospel mx; 0601 ID; was KFAV?
	0619	KLYX	101.1		Memphis TN	ABC FM Nx, ID, ABC-FM promo
	0622	KARK-	103.7		Little Rock AR	"Solid Gold on Kay-Rock"
	0942	WMCF	92.7	E	Stuart FL	mx, 1019 287-prefix want ads
	0945	WFLA-	93.3		Tampa FL	\$ mx, 1008; 1012 Skyview Theatre
	0946	WDAE(?)	100.7		Tampa FL	\$mx, Rustolium ad; 1003 FL nx w/reverb; "WDA-" ID hrd, seems changed from WATL WDAE is an AM station there; 1070mi
	0950	WTAN(?)	95.7		Clearwater FL	\$BGmx; 1008 FLnx; 1010 local ad; 1029 KRST-like ID, but call missed; 1055mi
	0952	WKAT-	93.1		Miami Beach FL	interview ment Am Legion, Biscayne Blvd; 0953 Holsum ad
	0953	WDBO-	92.3		Orlando FL	reminiscences ment Orlando
	0955	WCOF-	95.9		Immokalee FL	local nx; 2.95kw
	0955	WOMA	94.9		Tallahassee FL	Daytona carace; 1001 ID; xWTNT-:
	0957	WMOP-	93.7		Ocala FL	mx, 1000 ID "WMOP Sunshine Nx"; 1035mi
	0957	WVFM	94.1		Lakeland FL	FL nx, 1016 ABC Nx, 1019 682-pfx local sponsor; 1020 Grove Theatre
	0959	WNFM	94.5		Naples FL	Mx; sung ID w/harp BG
	1005	WYRL	102.3		Melbourne FL	Fifth Ave Drug, 723-3231; C&W
	1007	WKIS-	100.3		Orlando FL	FNB Orlando ad; 1100mi
	1014	WSPB-	106.3		Sarasota FL	FL nx; only one listed
	1021	WSLI-	96.3	T	Jackson MS	MS nx; also signs of WNAT-95.1
	2226	KQUE	102.9		Houston TX	KQUE Sports
	2303	KLEF	94.5		Houston TX	s/off msg after KGAF off; Beaumont/PA stns in too; 480mi
Tentatives on Independence Day: WSWN-93.5-FL WDEC-94.3-GA WMCD-100.1-GA						
WAEZ-94.9-FL WGBS-96.3-FL WEZY-99.3-FL WTOT-100.9-FL WCKS-101.1-FL WBGW						
98.9-FL WWQS-105.1-FL WLMC-103.1-FL WFYN-92.5-FL.						
5	0550	KCWM	99.5		Fort Worth TX	new call for KXOL; "KCWM \$ Country" sung ID
	0802	KGVM-	99.1	E	Idaho Falls ID	\$ pop; 0813 N Hwy Cafe; 0814 ID; 890mi
6	2115	KCTA-	103.3	T	Sinton TX	weird opening; nothing else from area hrd; gospel mx, ID Sinton & "serving great SW"; 575mi
9	1926	WEAS-	93.1	E	Savannah GA	mx; 1930 ID
	1934	WTOC-	94.1		Savannah GA	classmx; 2003 local nx ment Armstrong State College, then JohnDoremus show; 1000mi
	1959	WNDB-	94.5		DaytonaBeachFL	FL ad; ABC nx(if WNFM is NBC, then...)
	2000	WWBD-	92.7		Bamberg SC	in, ID, out; 970mi
	2029	WITN-	93.3		Washington NC	AM&FM ID by sleepy announcer; 1155mi
	2100	WFLA-	93.3		Tampa FL	\$ ID
Plus 9 July tentatives: WFDR-93.3-GA WTMA-95.1-SC WAMU-88.5-DC.						

(Jul)

- 11 1149 WPMP- 99.1 MSPascagoula MS Ben Franklin store in Moss Point,
o/KMAG; 680mi
- 1231 WJGA- 92.1 E Jackson GA MBS nx, 1235 AM&FMID, SocSec pgm; 3kw, 810mi
- 1237 WTMA- 95.1 Charleston SC rock, 1239 ment "TMA listeners"
- 1250 WRNA 95.1 Charlotte NC ID, EDT, Veteran PSA, automated \$nx; exWIST
- 1302 WGPL 93.1 Winston-Salem NC gospel mx, ment Thomasville Rd
- 11 Jul tentatives: WPTF-94.7-NC, WOUB-88.5-OH WMOA-94.3-OH WDBJ-94.9-VA
WOSU-89.7-OH; also a stn on 94.5 S, MBS, ment Meadowville shop center.
--an unusual 10-day hiatus in mid-season---
- 22 0730 KTBC- 93.7 T Austin TX \$ ID
- 0759 KEBE-106.5 Jacksonville TX KDOK-101.5 Tyler ID only after TSN Nx!
- 23 1752 KWHO- 93.3 E SaltLakeCity UT M, mx, 1805 Mormon nx, ant -93ft, 805mi
- 1753 KNEV 95.5 Reno NV \$mx, 1829 ID "serving 65% of Reno-Sparks
homes," wx, 1850 excellent \$; 1200mi
- 1754 KFMC 96.1 Provo UT \$ mx, 1803 nx of SLC area; 780mi
- 1757 KBYU- 88.9 Provo UT \$ talk "around the world," BYU ment.
570w, ant listed -1380ft(?), 780mi
- 1758 KUER 90.1 SaltLakeCity UT nx of UT, 1759 ID; 1809 weekly
Spanish pgm; 1.1kw, 805mi
- 1758 KCPX- 98.7 SaltLakeCity rapid area nx, 1801 Riverton Chevy,
snow basin ad. 1.2kw, 805mi
- 1759 KSL- 100.3 SaltLakeCity \$ ad 487-0344, 1800 nx; 805mi
- 1801 KSOP-104.3 SaltLakeCity CW mx, QRM KOFM-104.1; ant -195ft
- 1833 KSRN 104.5 Reno NV \$ mx, 1835 Reno ment, 1907 Trailer
Sales ad, ID, "\$ 104"; 1200mi.
Nothing hrd on Reno's 105.7
- 1834 KVLV- 99.3 Fallon NV nx by local; strong!: 1838 Univ Nev
ment, Churchill cnty: 2.9kw, 1150mi
- 1840 KUNR 88.1 Reno NV "Science in News" by Dr. Miles Dresser
of Wash St Univ, 1845 ID; 1200mi. QSL says still
10 watts ERP, marginal coverage in some parts of
Reno! (I think they now have 18W, indicating 2-
bay ant. w/ their 10W xmtr. Very good! dps)
- 1848 KXOA-107.9 Sacramento CA M mx, local ad 1854; 1285mi
- 1853 KRBT 102.5 Woodland CA \$ mx, 1859 ID, "serving northern CA
and western NV"; 1305mi; ex-KATT
- 1854 KHIQ 105.1 Sacramento CA \$ talk, split chs, 1855 mx, 1900 Sac.
ment; 1285mi
- 1901 KBRG 105.3 SanFrancisco CA SF ment, \$, Italain mx; 1345mi
- 1901 KFRC-106.1 SanFrancisco M mx, 1906 Oakland ment; 1345mi
- 1901 KMPX 106.9 SanFrancisco \$ mx; only possibility; 1345mi
- 1902 KGO- 103.7 SanFrancisco \$ pop music; 1345mi
- 1902 KDFC 102.1 SanFrancisco M class, 1916 Tannhäuser anmt,
Barclay's Bank of CA; 1345mi
- 1903 KPEN 101.3 SanFrancisco \$ mx, 1917 great \$, 1929 ID; 1345mi
- 1904 KRON- 96.5 SanFrancisco M mx, 1929 PSA, 1930 "Chronicle stn"
ID, PDT; 1345mi
- 1904 KKHI- 95.7 SanFrancisco \$ clas, 1920 Morris Plan, Mimi & Rudolf
love duet, 1928; 1954 MBS nx delayed; 1345 mi:
elegant French horn QSL says most distant report.
- 1904 KPFA 94.1 Berkeley CA M talk, 1934 nx by YL, 1947 quote
Oakland Tribune; 1330mi
- 1905 KOIT 93.3 SanFrancisco \$ dentist PSA. "KOIT 93," 1950 Tower
Records; 1345mi
- 1907 KBEE-103.3 Modesto CA M CBS nx; listed 100% dup AM (CBS); 1265mi
- 1910 KBAY 100.3 San José CA car svc ad, ment El Camino Real, 1931
\$ Ford ad; 1315mi
- 1917 KNBR- 99.7 SanFrancisco \$ mx; only stn this freq west of
Kansas City! 1345mi

(Jul)

- (23) 1918 KABL- 98.1 San Francisco \$ Bay Bridge ment; 1330mi
 1918 KXRQ 98.5 Sacramento CA George hairstylist, ID, 446-2387; 1285mi
 1925 KCBS- 98.9 San Francisco \$ mx; Spokane only other possibility,
 and no opening from there; 1345mi
 1934 KTBT 94.3 Garden Grove CA \$ rock, 1935 PDT, Costa Mesa Psychedelic
 Clothes, "Underground 94," salute Orange Cnty; 1kw
 1140mi (I believe may be higher ERP now. dps)
 1949 KVEG- 92.3 Las Vegas NV M Horseshoe Restaurant; 955mi
 1950 KFRE- 93.7 Fresno CA Epilepsy in Fresno Cnty PSA, ID; 1215mi
 23 Jul tent's: (all CA) KCRA-96.1 KJML-106.5 (in Portuguese) KJAX-99.3w/BB
 KSFR-94.9w/ABC-FM KONG-92.9 KALX-90.7 KFBK-92.5 KDOL-97.7 KNHS-89.7 KDB
 93.7w/BB & weak mod, KSCO-99.1 and lots of unIDs.
 24 0404 KWPM- 93.9 T West Plains MO Ozarks GOO (Grand Ole Opry) promo,
 QRM KBUY, 330mi
 26 1204 WBAG- 93.9 E Burlington NC Piedmont wx o/KSPI
 1205 WPTF- 94.7 Raleigh NC end NBC nx, ID, 1220 \$ clas
 1213 WFMA 100.7 Rocky Mount NC CW mx, ID promo, 1110mi
 1226 WGPL 93.1 Winston-Salem gospel
 Tentatives of 26 Jul: WBBB-101.1-NC and WEED-92.1-NC.
 27 0418 WZZM- 95.7 MS Grand Rapids MI ID, ex-WKLV; Delta Aquarid shower, 790mi
 0459 WPTF- 94.7 Raleigh NC "Raleigh NC"
 1011 WDBO- 92.3 E Orlando FL FL nx
 1022 WMCF 92.7 Stuart FL Martin Cnty Mobile Homes, "Trading Post"
 27-Jul tentatives: WSWN-93.5-FL and WKAT-93.1-FL.
 28 1114 XEJT- 89.2 Altamira Tams 1116 Relojería Scantú ad, Tampico,
 1120 CST, 1136 ID, 1231 CST, 1233 ID (R. Onda?),
 1234 Carta Blanca, agn 1458; 990mi
 1240 XEDA- 90.5 México DF Pink Panther, 1243 CST, Presidensoda
 ad, 1243 LL: E at Instituto Cultural Norte-americano,
 13-26-43, "R. Trece" ID, "un sonido internacional"
 (How true!), 1504 ID; 1180mi
 1245 XEJB- 92.0 Ciudad Victoria Tams LA mx, 1247 ad, "Mi Desgracia"
 song, 1305 rancho mx, 1314 Transportes Tamau-
 lipas, Coca Cola ads, ID & sung "Canal 97, Mejor
 Programación," 1429 ID; 895mi. ex-88.8
 1307 XEH- 93.2 Monterrey NL Castillo ad, R. Actualidades ID, US
 rock M, 1333; 1403 nx, 1404 XEH ID, agn 1529; 750mi
 1308 XET- 94.1 Monterrey NL \$, a needle-pinner indicating power
 increase along with freq ch from 94.0. 1309 CST
 1312 CST as 1314, "música de las montañas," 1325
 ID, 1333. 1528 ID, 1540 "94.1"; 750mi
 1337 XHCRO-92.5 Monterrey NL(?) LA instl mx o/KXLS, \$, 1345 "multiple"
 ID and advice to acquire adequate receiving an-
 tenna (tnx, anyway, hi); 1530 Prregonero de Monterrey
 (nxdpaper) ad; 2TH not specified; would be 750mi
 1347 XENV- 90.0 Monterrey NL rock, R. Alegría sung ID, CST as 12:2,
 M, 750mi
 1348 XEJB 96.5 Monterrey NL ID after Presidensoda ad, CST 12:2,
 1534 weakly, LA mx; 750mi
 1403 KRFM 95.5 Phoenix AZ "Quizas" \$; 820mi
 1415 KTAR- 98.7 Phoenix AZ sports talk, 1416 Monitor: 825mi
 1416 KMND- 93.3 Mesa AZ \$ John Doremus mx and ad 1422 for
 Courtesy Chevy; 810mi
 1418 KOOL- 94.5 Phoenix AZ \$ pop; 825mi
 1419 KNIX 102.5 Phoenix AZ ABC nx, \$, 1420 no ID, mx; 820mi
 1425 KFMB-100.7 San Diego CA mx, 1427 PDT, 1429 nx, 1430 CBS; 1115mi
 1426 KDIG 98.1 San Diego CA vocal, 1430 ID "if anyone should ask."
 (Well, the FCC and I would, hi.) 1115mi
 1426 KOGO- 94.1 San Diego CA clas mx, M; 1115mi

(Jul)
 (28) 1427 KLRO 94.9 San Diego CA \$pop, 1429 Gestetner, 1431 \$95, ID; 1115mi
 1432 KECR 93.3 El Cajón CA M mx; 1105mi
 1433 KOWN- 92.1 Escondido CA \$ mx, 1433 Crown Pool ad, split ch, synd mx; 1105mi, 3kw, ant -56ft.
 1435 KARL- 95.9 Carlsbad CA \$ lite mx; 3kw, 1120mi
 1435 KFMX 96.5 San Diego CA \$ rocky, 1440 Jean Kramer Fashions in La Jolla ad; 1115mi
 1436 KUDE-102.1 Oceanside CA \$ background mx; 1120mi
 1436 KSDO-103.7 San Diego CA M clas, 1440 anmt Karelia Suite; 1115mi
 1438 KNOB 97.9 Long Beach CA \$ mx, 1445 sung ID; 1150mi
 1439 KBBL 99.1 Riverside CA M gospelly; 1105mi (Bible?)
 1440 KDUO 97.5 Riverside CA \$ BG mx, 1445 So CA Edison in LA 626-5351 ad; 1105mi
 1441 KTBT 94.3 Garden Grove CA \$ Smith Ford in Garden Grove
 1442 KPOL- 93.9 Los Angeles CA \$ lite clas; 1443 ID, "Mx from cloud 9," they're numbering the Es clouds already.... 1160mi
 1446 KHJ- 101.1 Los Angeles nx by local, 1448 MJB Coffee "for the West," sports; 1145mi
 1447 KSRF 103.1 Santa Monica CA M State Mutual Savings at S.M. 1165mi kw 2.hrz/1.35vrt, -175ft.
 1448 KTYM-103.9 Inglewood CA ad for 9225 S Broadway in LA; 1.6kw, 1160mi
 1449 KMET 94.7 Los Angeles \$ pop, YL ID "Kay-met music"; 1145mi
 1451 KNX- 93.1 Los Angeles \$ pop o/KGNC; 1145mi
 1451 KFAC- 92.3 Los Angeles \$ lite, 1453 Boston Pops anmt; 1145mi
 1451 KPFK 90.7 Los Angeles talk; 1145mi
 1452 KABC- 95.5 Los Angeles M OM vocal; 1145mi
 1546 WAEZ 94.9 Miami Beach FL (how's that for a switch?), \$ M.B. promo, WOCN "Ocean Radio" 1450 ID
 1557 X ? 95.5 Guadalajara Jal \$ mx, 1604 ID "Estéreo-Rey"; 1140mi must be new. Info op has no XEREY or XHREY there
 Tent's for 28 Jul: XE---88.8-Tams weak when XEJT strong; XHFO-92.1-DF (no sign of XEZ-92.2 incidentally), KELT-94.5-TX, XHMLS-98.1-Tams, XEOY-100.9-DF, KQXX-98.5-TX, XHNOE-93.7-Tams (related to KNOE & WNOE?), 5-letter call like X-DPM-97.9 called "98," CST no QTH given; KBUZ-104.7-AZ; following CA: KGB-101.5 KITT-105.3 KJLH-102.3 KCBH-98.7 KKOP-93.5 KNHS-89.7 KFMW-99.9
 29 0400 KTOP-100.3 T Topeka KS "Top of the hour news"
 0430 KFAB- 99.9 Omaha NB M ID, MOR mx; 355mi
 0432 WEEC 100.7 MS Springfield OH s/on anmt: Studio in Springfield Shopping Center: xmtr Snyder Hill 2½mi NW; only Springfield on freq, 795mi
 0501 WBIR-103.5 Knoxville TN "One of Knoxville's most attractive shopping centres"; 770mi
 0509 WSPA- 98.9 Spartanburg SC nx: power outage in Simpsonville; 895mi
 0530 KOWH- 94.1 T Omaha NB M synd clas, no ID; 0535 Omaha nx; 350mi
 0532 KICS- 93.5 Hastings NB ABC nx, 0535 local ad, "R. Kicks" ID; 3kw, 290mi
 0538 KROA 103.1 Aurora NB \$ NB nx, ID, 0539 Workman Motors; new unlisted station, 310 mi
 0602 KJSK-101.1 Columbus NB \$ NB nx: 350mi
 1858 KVEG- 92.3 E Las Vegas NV M nx, 1905 CW mx, "Kay-Vegas country"
 1902 KLUC- 98.5 Las Vegas NV \$ nx/wx "85° in Valley," Las Vegas, UPI ment: 955mi
 1903 KRGV 101.9 Las Vegas NV CCI w/KFNB, 1920 Las Vegas ad; 955mi
 1906 KDOL- 97.7 Mojave CA pop vocal, 1907 Total Comfort System ad of So CA Edison in LA 626-5351, CW mx, 1910 Tehachapi ad, 1914 cut off air, 1921 ID after sports; 3kw, ant -125ft, 1130mi
 1924 KKOP 93.5 Redondo Beach CA mx; 1932 ID, PDT, plug "Artistry in Action" at 7:00, 1933 LA South Bay wx; 3kw, 1160mi

29 Jul tentatives: WATM-104.1-AL by MS; KMJ-97.9-CA.

30	0359	WHOL- 95.7	MS Olean NY	ID in s/on; 1105mi
	0414	CJOB- 97.5	Winnipeg Man	\$, "currently in Winnipeg 57°"; 1105mi
	0459	WVAF 99.9	Charleston WV	Send name, address, to WCAW; 895mi
	0505	WIAL 94.1	Eau Claire WI	Eau Claire weather; 670mi
31	0400	WRAY- 98.1	Princeton IN	"Stay tuned to WRAY-FM for the finest..."
	1502	WBLR- 92.1	E Batesburg SC	SC nx, 1503 ID; 930mi, 3kw
	1537	WRVA- 94.5	Richmond VA	Downtown helicopter traffic report, 1538 EDT, 88° in the Commonwealth, ID
	1540	WSSV- 99.3	Petersburg VA	AM&FM sung ID; 3kw, 1125mi
	1541	WCMS-100.5	Norfolk VA	Tidewater ment, C&W
	1541	WVEC-101.3	Hampton VA	M vocal, 1544 Chismun Concrete 722-7491
	1547	WENC- 99.1	Whiteville NC	M sports, 1549 WAF PSA, NC wx; 1080mi
	1552	WTSB- 95.7	Lumberton NC	M Southern Nat'l Bank, 1553 sung "Radio" PSA, 1554 AM&FM ID
	1558	WDEH- 95.3	Sweetwater TN	M State Vocational School 745-6940 in Athens, "N. Sweetwater," Bledsoe Cnty, 1615 Monroe Cnty in promo
	1559	93.5	Lenoir NC (?)	M "Lenoir Drug Co"; no stn known (Possibly new in Lenoir TN listed as CP 93.5 2.85kW in Broadcasting mag, late 1967. dps)
	1559	WITN- 93.3	Washington NC	\$ WITN-FM ID
	1601	WFNC- 98.1	Fayetteville NC	\$, low mod, M&O Chevy of Fayettev.; 1060mi
	1603	WSOC-103.7	Charlotte NC	\$ WSOC News; 950mi
	1603	WRRZ-107.1	Clinton NC	nx, 1604 Samson Tire, 1605 "WRRZ Action 88"; 1090mi
	1606	WRKB- 99.7	Kannapolis NC	M Puritan Laundry of Kannapolis; 960mi
	1607	WXRC 95.7	Hickory NC	M Western Piedmont Nx, 1659 Hickory ment
	1608	WPTF- 94.7	Raleigh NC	M Supreme Brake & Alignment, Raleigh
	1610	WMNC- 92.1	Morganton NC	M Giles Used Cars; 3kw, 900mi
	1611	WRNA 95.1	Charlotte NC	\$ Mayflower Transit 333-5316, ID w/TC: "12min. beyond 6"; ex-WIST
	1615	WEPM- 97.5	Martinsburg WV	M Ward Mobile Homes, Winchester
	1617	WTAP-103.1	Parkersburg WV	M Reds BB, per Merrill's list; 730w, 905mi
	1619	WTBO-106.1	Cumberland MD	M Pirates BB, Atl Impl Gas (Merrill); 1055mi
	1620	WFTM- 95.9	Maysville KY	M Reds/Pirates BB, per Merrill's list 3kw, 780mi
	1621	WGUC 90.9	Cincinnati OH	M clas, 1628 Cult. Calendar by YL, ment Cincy Public Schools; 750mi
	1621	WGWR- 92.3	Asheboro NC	M ment Chapel Hill, 1624 Mid-State Motors, 1632 Yates Thrift Store; 1000mi
	1629	WFBC- 93.7	Greenville SC	\$ ID, plug Braves BB; 845mi
	1634	WCBE 90.5	Columbus OH	M clas, 1639 ID, "Music Room"; 835mi
	1638	WWSW- 94.5	Pittsburg PA	M stn promo; 1000mi
	1639	WCOL- 92.3	Columbus OH	M rock, ID, TC; 835mi
	1642	WAEF- 98.5	Cincinnati OH	\$ Ham ad, Cincy ment; 750mi
	1643	WHBM 103.9	Xenia OH	M YL re Green Cnty Harness Races; 1kw, 785mi
	1644	WGPL 93.1	Winston-Salem NC	ID, 1658 "T-N Nx" (?) (Band full at this point)
	1645	WPEG 97.9	Concord NC	Kimbell's Furniture in Concord; 960mi
	1645	WSIX- 97.9	Nashville TN	M ID, "Country Milestones"; 610mi
	1646	WWMO-102.1	Reidsville NC	M 349-5452 Irene's Beauty Salon; 1000mi
	1647	WKIX- 96.1	Raleigh NC	M "Big Kix"
	1652	WBZI 95.3	Xenia OH	M Lang's Chevy, Cci BB; 3kw, 750mi
	1655	WCNW- 94.9	Fairfield OH	M Cincy nx; 750mi
	1655	WIFN 95.9	Franklin IN	M Glen Barnett Insurance in Whiteland 535-4176; 3kw, 675mi
	1701	WLXN 94.1	Lexington NC	M Thomasville ad in nx; 1005mi
	1705	WKPT- 98.5	Kingsport TN	\$ NBC Nx, ID /list; 3kw, 690mi
	1845	WKMO 93.5	Kokomo IN	M Red/Pirate BB, Iron City Beer ad; per Merrill's

Tentatives for 31Jul: WVOT-91.9-TN WSMC-90.7-TN WOUB-88.5-OH WOSU-89.7-OH WCSU-88.9-OH WNDU-92.9-IN.

Due to late identifications, etc., the following are additions or corrections to my report appearing in August VUD:

- 20/6 1614 WIST- should be WRNA, 1732 WHFI should be 94.7
- 21/6 1541 WTNT- should be WOMA
- 29/6 0826 KCNM should be Carlsbad NM, no thanx to VJ!--450mi
- 1812 WGUS should be North Augusta SC
- add 1827 WLSN 99.3 EElizabethtonTN Carter County Ford, 1828 ID; 865mi new on air; hrd as WRSN
- 1911 WRCM 92.1 JacksonvilleNC ID, plug GOO; 3kw, 1140mi; ex-WJNC

TV report; distances given for stations new to Enid log

Jul	GST	Call	Ch	Prop	Location	Comments
1	0800	XEW/0	2	México	Guadalajara	frequent TCs w/clockface
3	1050	XEW/0	2	México	Guadalajara	dubbed Dick van Dyke
	1100	XEZ	3(E)	El Zamorano	Qro	//2
4	0929	WESH	2	Daytona Beach	FL	ID
	1151	XEW/0	2	México	Guadalajara	ending "My Favorite Martian," ID
	1700	XEZ	3	El Zamorano	Qro	//2
	1700	XHFM	2	Veracruz	Ver	prog summary, maybe at s/on, earlier RTMA-like TP; 1732 Olympic-tie-in ID; again at 1948
	1726	XHCH	2	Chihuahua	Chih	ID, ".en el cielo de Chihuahua." 1st seen from this state; 710mi; list only lkw xmtr /power
	2234	KTRK	13	Houston	TX	ID in Joey Bishop
	2305	KWTX	10	Waco	TX	central TX forecast; "TX" ID
5	0801	KOTA?	3	Rapid City	SD ?	SD news; or KDLO
	0825	KID	3	Idaho Falls	ID	eastern ID wx
	0825	KBOI	2	Boise	ID	local news
	0858	KOOK	2	Billings	MT	ID, ment "seen on ch 7 in Sheridan."
	1029	CKCK	2	Regina	Sask	ID, 1030 Friendly Giant in colour now
	2059	WESH	2	Daytona Beach	FL	ID; earlier likely WUSN
6	1003	XEW/0	2	México	Guadalajara	ID; women's program
8	1159	KOOK	2	Billings	MT	ID
9	1945	XEZ	3	El Zamorano	Qro	México DF ad, variety pgm; also unids
10	2025	KTVN	2	Reno	NV	NV wx /from SE USA
11	1229	WRBL	3	Columbus	GA	ID, much QRM--de CFRN?
	1229	WSB	2	Atlanta	GA	audio ID; much QRM but no Venezuela this time!
	1259	WFMY?	2	Greensboro	NC ?	tentative; CBS; ties in w/FM
	1559	WESH	2	Daytona Beach	FL	local ad
	1901	KTVN	2	Reno	NV	local nx, again at 2003!
	1950	WBBM	2	Chicago	IL	CBS Thursday movie, 1953 ID
18	0859	KBOI	2	Boise	ID	ID; VCI
	0905	"CBWFT"	3	Winnipeg	Man	TP showing only "Winnipeg"
20	1142	WESH	2	Daytona Beach	FL	plug "With This Ring" show
22	0807	KHFII	4	Austin	TX	talking to kids re going to Hemis-fair; about 420mi for 85.1 audio kw (input to FM rx)
	1616	WSB	2	Atlanta	GA	editorial cartoon (too much of a /rarity on American TV)
	1900	WUND	2	Columbia	NC	ID
	1929	CKPR	2	Port Arthur	Ont	ID; also Canadian on 3
	2028	CKCK	2	Regina	Sask	local Buffalo Days ad (not WGR!)
23	0959	KXII	12	Ardmore	OK	ID slide showing "Translator Ch. 2, Paris (TX) KXII"
	1735	KUTV	2	Salt Lake City	UT	NBC west: also SLC on FM
	1802	KRTV	3	Great Falls	MT	wx w/MT map
	1849	KTVN	2	Reno	NV	NV wx
	1924	KORK	3	Las Vegas	NV	NV Savings ad
25	1929	WESH	2	Daytona Beach	FL	ID
26	1159	KTVN	2	Reno	NV	ID; Canada earlier on 2

(Jul)

(26) 1227 XEW/0 2 México/Guadalajara ID w/grotesque, 1230 dubbed "F-Troop"
 27 0959 WESH 2 Daytona Beach FL WKIS Radio ad
 1359 XEW/0 2 México/Guadalajara "Canal 2" ID slide w/Aztec calendar
 1400 XEZ 3 El Zamorano Qro cariaturas //2 (= cartoons)
 28 1121 KIII 3 Corpus Christi TX local ad in local interview pgm; 605mi
 1129 KRIS 6 Corpus Christi TX ID (on FM 87.76 and TV)
 1140 XEZ 3 El Zamorano Qro ch 2 promo
 1152 XEFB 3 Monterrey NL color bars & marimba mx; 1159 3 in
 circle; 1400 ID, XEMN Música Norteña radio stn ad,
 again 1554. 1555 promo for "Esa Chica" lunes 630 en color.
 1235 XEW 2 México DF //3 fútbol: Universidad v. Toluca
 1247 XHZ 6 El Zamorano Qro old US movie w/subtitles, 1323 4-
 station ID; local quality at times
 1329 XHIA 2 Torreón Coah vertical ID; 1703 TP break with 2 in
 middle; 1719 programming again, ID
 1338 XET 6 Monterrey NL 10-kHz QRM w/XHZ
 1423 XETV 6 Tijuana BCN on FM 87.75: Hitchcock; 1424 driv-
 ing PSA, 1432 National City ad
 1543 XHCH? 2 Chihuahua Chih ? RTMA TP, mx; 1629 ID faded: XH-- TV
 29 0442 (CATV) 2 G Enid OK minute-long back-&-forth scans of 7
 weather dials with local messages at each end; weak,
 leak radiation. 0502, 20-kHz QRM w/KCKT-even!
 Less than 1 mile, probably.
 1628 XEW 2 E México DF soapera, 4even and 5even QRM also
 1657 XEZ 3 El Zamorano Qro //2 toothpaste ad
 1857 KORK 3 Las Vegas NV Bank of Las Vegas; 1912 ID
 1900 KBOI 2 Boise ID ID
 1959 WESH 2 Daytona Beach FL ID
 30 1701 XHY 3 Mérida Yuc (view), ID, plug olympics
 31 0920 XEZ 3 El Zamorano Qro "Entrevista Deportiva" (sports inter-
 1859 WDIQ 2 Dozier AL "Gimnasia" sexy exys until 0030
 Univ of AL slide, "Power of Dollar"

All above loggings made on usual antenna, but stuck in direction of Dallas; hereafter my CT90 was available on rotatable FM mast, 25 feet high, with a knife switch to choose between TV antennas.

Television total stands at 341 stations, including the CATV-2, but but not yet including WITV-7. In an upcoming Statistics column, I plan to discuss CATV as DX, and render a detailed breakdown of my FM and TV loggings. Until the next, 73 de Glenn.

(Not much signal from most Utah FMs (and KFRE-93.7 CA) would go east, but that amount found its way to Glenn's receiver. They are under western slopes of mountains. And, what else can one add to such a report where perseverance and patience have paid such handsome dividends.)

Dennis Smith—a correction last month, per KFDX-3 verie--slogan is "tvIII"—the fuzzy picture looked like "k III" but wasn't quite that.

Jul	PST	Call	Ch	Location	Miles	Prop	Program notes
15	0958	UnIDs-2,3,4-weak				Es	
16	1235	? 2				Es	Romper Room School
	2000	UnIDs-2, weak					
17	0659	KTVS 3		Sterling, Colo.	950	Es	ID, ornate slide
18	1925	KMID 2		Midland, Texas	1050	Es	local ads, IDs, NBCpgms, s/off2105
	1929	KACB 3		San Angelo, Tex.	1160		ads, ID w/KRBC-9
20	0735	CBUT 2		Vancouver, BC	970	Es	Test pattern
	1011	KMID 2		Midland, Tex.	1050		ID, NBC Baseball
	1322	KCKT 2		Great Bend, Ks.	1170		end NBC BB, Kans.State Network
21	1059	KOOK 2		Billings, Mont.	930	Es	ID, contest, CBS Soccer
22	1615	CKCK? 2		Regina, Sask.?	1300	Es	tent., TV2 TelePulse News
23	0915	? 2				Es	CBS Andy Griffith Show
29	2000	UnIDs-2,3				Es	

30 0930 WKY 4 Oklahoma City 1250 Es lcl ads, Whistle contest, write WKY-
 0959 KCKT 2 Great Bend, Ks. 1170 "This is the Kansas State Network"
 31 0740 ? 2 Es color bars
 22 1629 KEBS 89.5 San Diego CA 225 Tr ID, pgm fr CBC, 1655PSA&ID, cl.mX
 780 watts; S.D. State College
 31 0554 KTSM 99.9 El Paso TX ? 800 MS "...99.9 megahertz..KP(orKT).."
 Aug 1 0445 ? 99.9 MS various short bursts; blank
 carrier, 0455 to 0459 1-kHz tone, blank to 0500 (s/on?)
 15 eve. KERS 90.7 Sacramento CA 240 Tr Tent, but could hardly be any-
 thing else; hrd under KPFK fades; mostly pop mx;
 recent change from 88.9 & up ERP; Sac'to State College

New loggings are underlined. Wasco totals heard: TV 127 with 1 new and FM 168 with 1 new plus KERS.

I was not at home between 23 & 29 July so probably missed some skip. However, in spite of my observation at the top of page 1 about the medium pace of Es through late July, I have found that in looking over the reports more carefully, most of you had another excellent peak around the end of the month on both TV and FM. I don't know why it wasn't any good here at this location.

I hope those of you who are attending the ANARC Convention will enjoy it as I did last year—by the time you read this, it will be history. Though not an IRCA member, I am attending its convention in Los Angeles 23-26 August and expect to meet others with TV-FM interests.

Best of DX to all

Dennis

FROM NOW ON SEND ALL FM REPORTS TO ROGER WINSOR, 718 N. Fremont Rd.
 Valparaiso, IN. 46383

HEADQUARTERS NEWS:

Morrie Goldman's emblem design is being reprinted this month and a design by Bill Heusman is also being printed; Bill has another design which will appear next month as I didn't have room in this issue.

As noted at the end of the eastern and western columns, a new FM editor takes over next month for all reports worldwide. The eastern & western columns will contain only TV as they were originally intended.

Roger Bunney's column will not appear this month by my fault—lack of time to type it out. However, since I now have help at HQ I shall have more time for this and hopefully resume the "Around the Clubs" column, and begin the mammoth TV and FM and translator station lists, etc.

Some Canadians have not sent \$3.50 which is the annual fee; today a note from the bank was received indicating that a check in July had a 50¢ fee deducted to clear the Canadian Imperial Bank of Commerce. I haven't checked yet who sent that check as 50¢ must be deducted from the \$3.50 of course. This has only happened one or two times before but it is an occasional problem with personal checks on Canadian banks.

I ordered a cassette tape recorder recently so I will be taping DX for the first time, (anticipating F2 skip from overseas this Winter).

We will resume sunspot counts next issue, also, courtesy Henry Gac.

We need a contest editor yet, and a new FCC editor. Gary wishes to be of more help at HQ and hence wishes to relinquish the FCC column for that purpose. He says he will send the information to the new editor if necessary since he subscribes to Broadcasting. If the new editor is a Canadian and can get Canadian DOT info, also, so much the better. Or if a Canadian and an American each write from their own country's new station news, this is acceptable. We are in transition at HQ and hope to improve the club with added help at HQ instead of one person alone.

STATISTICS

SEPT.
1968

Vol. 7
No. 9

EDITOR: Glenn Hauser 1312 West Oak Enid OK 73701 USA. Next deadline: 10 October 1968

CHANNEL 3 TVDX RECORDS

Call	Location	Miles	DXer	Location	Comments
WRBL	Columbus GA (AL)	1955	Dennis Smith	Wasco CA	now in GA
KTVK	Phoenix AZ	1895	Richard Nieman	Buffalo NY	
KIEM	Eureka CA	2190	Frank Hill	Gallipolis OH	
KCRA	Sacramento CA	1395	Ed Rugel	Independence KS	
KEYT	Santa Barbara CA	2225	Robert Seybold	Dunkirk NY	
KDZA	Pueblo CO	690	Bedford Brown	Hot Springs AR	now off air
KTVS	Sterling CO	1215	Wayne Plunkett	Weston Ont	
WTIC	Hartford CT	2495	Robert Cooper	Fresno CA	
WEAR	Pensacola FL	1905	Robert Cooper	Fresno CA	now in AL
WEDU	Tampa FL	1320	Larry Addison	Fridley MN	
WSAV	Savannah GA	2405	Doris Johnson	Longview WA	
KMAU	Wailuku HI	2585	Doris Johnson	Longview WA	
KID	Idaho Falls ID	1675	Steve Weinstein	Pittsburgh PA	
WCIA	Champaign IL	1455	Jim Grover	Crossfield Alta	
WSIL	Harrisburg IL	1825	Doris Johnson	Longview WA	
KGLO	Mason City IA	1465	Robert Cooper	Fresno CA	
KARD	Wichita KS	1505	Ghislain Girard	Arvida PQ	
WAVE	Louisville KY	1840	Robert Cooper	Fresno CA	now in IN
KATC	Lafayette LA	1295	Karl Aiken	Kingston Jamaica	
KTBS	Shreveport LA	1785	Doris Johnson	Longview WA	
WKZO	Kalamazoo MI	1835	Robert Cooper	Fresno CA	
KDAL	Duluth MN	1570	Robert Cooper	Fresno CA	
WLBT	Jackson MS	1965	Doris Johnson	Longview WA	
KTVO	Kirksville MO	1585	Doris Johnson	Longview WA	
KYTV	Springfield MO	1640	Doris Johnson	Longview WA	
KRTV	Great Falls MT	1214	Stephen Dionne	Binghamton NY	
		tie	Randy Miltier	Campbell CA	
KLINE	Lexington NB	1380	Norris Doyle	Pittsburg CA	
KORK	Las Vegas NV	1120	Dave Pomeroy	Lawrence KS	
WSYR	Syracuse NY	2310	Robert Cooper	Fresno CA	
WBTW	Charlotte NC	1230	Karl Aiken	Kingston Jamaica	
WWAY	Wilmington NC	1315	Fred McCormack	Fargo ND	
WNBK	Cleveland OH	2060	Doris Johnson	Longview WA	later KYW, now WKYC
WPSX	Clearfield PA	1220	Jack Keane	Houston TX	
WRCV	Philadelphia PA	2390	Robert Cooper	Fresno CA	now KYW
KDLO	Garden City SD	1410	Donald Ruland	Holly Hill FL	
KOTA	Rapid City SD	1380	Marc DeLorenzo	Hyannis MA	
WRCB	Chattanooga TN	1225	Fred Nordquist	W.S.M.R. NM	was WRGP
WREC	Memphis TN	1870	Doris Johnson	Longview WA	
KBTX	Bryan TX	1430	Jim Dillon	Regina Sask	
KIII	Corpus Christi TX	1500	Karl Aiken	Kingston Jamaica	
KACB	San Angelo TX	1150	Robert Cooper	Fresno CA	
KFDX	Wichita Falls TX	1525	Doris Johnson	Longview WA	
WMVT	Burlington VT	2475	Robert Cooper	Fresno CA	now WCAX
WSVA	Harrisonburg VA	1050	Glenn Hauser	Enid OK	
WTAR	Norfolk VA	2365	Robert Cooper	Fresno CA	
KLEW	Lewiston ID (WA)	1900	William Brocks	Mount Morris PA	
WSAZ	Huntington WV	2125	Doris Johnson	Longview WA	
WISC	Madison WI	1650	Doris Johnson	Longview WA	
CFRN	Edmonton Alta	2275	Ron Boyd	Truro NS	
"CBWT"	Winnipeg Man	1430	Robert Cooper	Fresno CA	was ch 4 now "CBWFT"
CJOX	Argentia Nfld	1275	Wayne Plunkett	Weston Ont	
"CBHT"	Halifax NS	2915	Robert Cooper	Fresno CA	

CKVR	Barrie Ont	1240	Jim Dillon, Regina Sask	
CKSO1	Elliot Lake Ont	1190	Don Ruland, Holly Hill FL	properly CKSO-TV-1
"CBFT2"	Mont Laurier PQ	1265	Fred Nordquist, Tulsa OK	
CJBR	Rimouski PQ	1405	John Pirch, Richmond MO	
CFQC1	Stranraer Sask	1240	Fred Nordquist, Tulsa OK	properly CFQC-TV-1
CKCS	Yorkton Sask	1305	Robert Cooper, Fresno CA	
PRF3	São Paulo Brasil	5015	Bedford Brown, Hot Springs AR	
(CMQ)	Consolación del Sur Cuba	1305	Glenn Hauser, Enid OK	
CMKJ	Holguín Cuba	3180	Doris Johnson, Longview WA	
CMH	Santa Clara Cuba	2910	Doris Johnson, Longview WA	
TGBOL	Guatemala Guatemala	2355	Robert Cooper, Fresno CA	
XEZ	El Zamorano Qro	1620	Robert Cooper, Fresno CA	
XHY	Mérida Yucatán	1465	Steve Weinstein, Pittsburgh PA	
XEM	Mexicali BCN	1275	Stevens, Revelstoke BC	now XHBC
WIPM	Mayagüez PR	1390	Kelly T. Andrews, Goldsboro NC	
YVKS	Barcelona Venezuela	1015	Karl Aiken, Kingston Jamaica	
YVKS	Barquisimeto Venezuela	740		(alternate possibility: Synchronized)
TOTAL for 68 stations:		117804	(tie counted once; lesser of alternates)	

Analysis: Ranked by number of records held, Robert Cooper is first, with 16; Dee Johnson second with 14; Karl Aiken third with 4; Fred Nordquist fourth with 3 (but from two different locations); and a number tied for fifth with 2. Distancewise, Cooper wins again, with 31425 miles, or 27% of the total; Dee Johnson next, with 29110 miles (25%); Bedford Brown is third, with 5705; Karl Aiken fourth, 4765; Fred Nordquist fifth, 3730. The average distance of the 68 stations is 1730 miles (for July's ch 2 stats, the figures are 71 and 1890). A few of the more obvious stations for which no records were found are KVUE Salem OR and CFTK Terrace BC. See something wrong? Report it!

ADDITIONS AND REVISIONS TO CHANNEL 2 TVDX RECORDS

KBOI	Boise ID	1440	Bill Heusmann, Steger IL	
WTWO	Tombé Haute IN	1160	Fred Nordquist, W.S.M.R. NM	
KNOP	North Platte NB	1180	Fred Nordquist, Rochester NY	
-CATV-*	White Sands Missile Range NM	0	Fred Nordquist, W.S.M.R. NM	*KTSM-9, El Paso TX
-CATV-*	Enid OK	0	Glenn Hauser, Enid OK	*local weather dials
KUSD	Vermillion SD	905	Fred Nordquist, W.S.M.R. NM	
WDCN	Nashville TN	1145	Fred Nordquist, W.S.M.R. NM	
WSJK	Sneedville TN	1340	Fred Nordquist, W.S.M.R. NM	
CKSA	Lloydminster Alta	1370	Don Eggert, South Bend IN	
YSR	San Salvador El Salvador	1410	Steve Kamp, Irving TX	
XHCH	Chihuahua Chih	710	Glenn Hauser, Enid OK	
YVKS	Maracaibo Venezuela	2770	Glenn Hauser, Albuquerque NM	No record if alternate synchronized Caracas outlet received.

Is CATV DX? Not if it comes over a wire, we feel. But when it leaks out and radiates thru the air, for however short a distance, it is "DX" of a local nature. There are at least two precedents for counting CATV among DX totals: virtually all DXers include "local" stations they can receive all the time; and for many years BCB DXers have been logging and counting campus-limited carrier-current stations which escape the power lines. ... Since this column is based on "standards," we invite your comments on this and other problems. Eventually, the standards arrived at in the twilight months of the AIPA will be presented and discussed.

REVISED ALLTIME TVDX DISTANCE RECORDS, BY CHANNEL

14	T	KMEG	Sioux City IA	460	Bill Draeb, Kewaunee WI	100768
71	T	W71AC	Rhineland WI	125	Bill Draeb, Kewaunee WI	needed
73	T	W73AD	Rhineland WI	125	Bill Draeb, Kewaunee WI	needed
80	T	W80AC	Rhineland WI	125	Bill Draeb, Kewaunee WI	needed

We still have no records at all for channels 37, 44, 58, 63, 64, 65, 68, 69, and 81. If you've seen a station on any of these, you've got it made! Lots of luck on the first.

Response to FM stats request has been, shall we say, underwhelming. Come on, FMers! Here's your first chance to do with FM what's been done all along with TV. Before deducing your editor with "Class A" channel totals, please note that I inadvertently omitted one such channel from the list in July: 101.7 MHz.

Class A survey is blessed with two respondents. Dennis Smith reports that he has heard 25 "A" stations of his 168 total at Lando CA QTH, hopefully all of which are from the US, since the percentage, 15%, would be deceptive otherwise. Further, at Little Creek VA, the figures are 14, 8% of 177, and at New York NY, 14, 25% of 57 total. Glenn the editor claims the following: 73 "A" or 16% of a US total of 450 at the Enid QTH.

Thanks to all who reported this bimonth; would that their numbers expand henceforward.

Your editor, as he types, is about to undergo a four-year term of enlistment in the United States Air Force. This will doubtless cause some problems, not the most of which will be the maintenance of this column. I beg for indulgence during the first few months, when basic training, schooling, etc., may force me to miss a column or two. If I luck out, I may have a leave in Enid beginning just about the deadline date at the head of this month's column... Kindly fill in the questionnaire below, detach, and return to my Enid address. Complete as many items as you can, or if you need more time, let me know you're working on it, please. Until the next, '73 de Glenn

WTFDXA FM SURVEY

Heard only preferred, specify whether stats below are heard only or verified only. Common date of effectiveness preferred: close of business 30 September. Specify date of validity of stats below: Stations outside 88-108 MHz are excluded.

Part One: Stations

Number of FM stations logged _____
Number of Canadian FM stations logged _____
Number of other FM stations logged _____
Number of FM stations logged by Es _____
Number of FM stations logged by MS _____
Number of US FM stations logged on "A" channels: 92.1 92.7 93.5 94.3 95.3 95.9 96.7 97.7 98.3 99.3 100.1 100.9 101.7 102.3 103.1 103.9 104.9 105.5 106.3 and 107.1 MHz _____
On which FM channel have you logged the MOST stations? _____ How many? _____
On which FM channel have you logged the LEAST stations? _____ How many? _____
---N.B.: A "superchannel" includes all stations in 1 MHz, e.g. 88.0 to 88.9999999.....
On which FM superchannel have you logged the MOST stations? _____ How many? _____
On which FM superchannel have you logged the LEAST stations? _____ How many? _____
---YOU define what "best" is, and apply it in the following:
Best FM station received (call, freq., QTH, date, prop.) _____
Best FM station received by Es (call, freq., QTH, date) _____
Best FM station received by tropo (call, freq., QTH, date) _____
Best FM station received by MS (call, freq., QTH, date) _____
Most distant FM station received (call, freq., QTH, date, dist.) _____
Lowest power FM station received (call, freq., QTH, date, distance, power) _____

Part Two: States, Provinces

Number of US FM states logged _____
Number of US FM states logged by Es _____
Number of US FM states logged by MS _____
Number of US FM states logged 88-92 MHz _____
Best three US FM Es states by number of stations logged #: #: #:
Best three US FM tropo states by number stations logged #: #: #:
Best three US FM states by number stations logged, all props #: #: #:

NAME: _____ All DX in above stats received at following location(s) _____
On my word as an honorable DXer, I affirm that to the best of my knowledge, all objective information above is true and accurate (Check) _____

NEWS SIDELIGHTS ----- ANARC CONVENTION '68

Air travel presented difficulties for some distant visitors to the convention....Ed Krejny, Middleburg Heights, Ohio boarded his plane in Cleveland early Saturday evening expecting a smooth flight. Bad weather in Chicago kept the plane on the ground first....then take-off time was moved up to nearly midnight...then scrubbed entirely.... poor Ed had to finally find an empty spot on another plane.....he made it all right...but by the time he got to Omaha it was after 5 A.M.....

...Members of the TV and FM DX clan from the Chicago area (Morrie Goldman and Bill Heusmann) had their share of delay too....flying standby as "students" they were held off three planes before they found space on an Omaha-bound flight.....

.....Glenn Hauser, Enid, Okla., made it for his second ANARC convention (the last being in K.C. in 1966)...chances are this was Glenn's last fling with the gang as he is now in training for a long (but not too long - we hope) stint with the Air Force.... both Sam Simmons and Andy Kasperson were both members of the armed forces who made the scene at Omaha.....

.....some of the ANARCers became instant TV stars -- Richard Wood, and Don Jensen among others were seen on KMTV-3 newsfilm of the proceedings on Sat. nite. KMTV filmed at the convention site the previous evening.....

WORLDWIDE TV-FM DX ASSN.
P.O. BOX 5001
MILWAUKEE, WISCONSIN
53204

PRINTED MATTER