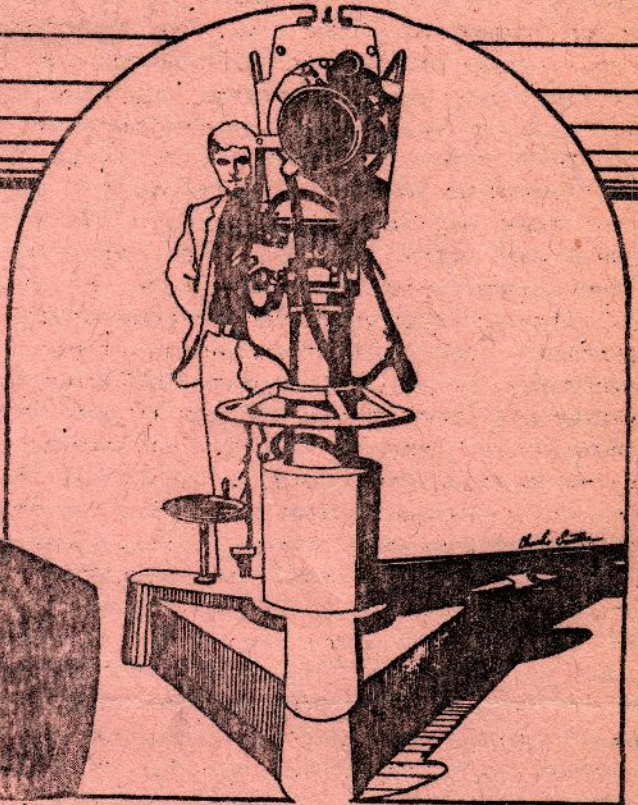


VHF·UHF DIGEST

JANUARY 1971

OBSERVING THE
TV-FM DX SCENE



3RD ANNIVERSARY
ISSUE

BACK-ISSUES: STILL AVAILABLE ARE:
DECEMBER, 1969, AND FEBRUARY, 1970 TO DATE.

THIS MONTH WE OFFICIALLY CELEBRATE OUR THIRD ANNIVERSARY AS THE WTFDA. MEMBERS WHO HAVE JOINED IN THE PAST YEAR OR SO AND MAY NOT BE FAMILIAR WITH THE CLUB'S ANCIENT HISTORY MIGHT LIKE TO KNOW A FEW FACTS ABOUT WTFDA AND ITS FOUNDERS. THERE WAS, FOR SIX YEARS OR SO, A CLUB CALLED THE WVMRC: WORLDWIDE MONITORS RADIO CLUB, A GENERAL ALL-BAND CLUB. AND FOR A TEN YEAR PERIOD ENDING IN EARLY 1963 THERE WAS A TV/FM ONLY CLUB CALLED THE AIPA: AMERICAN IONOSPHERIC PROPAGATION ASSN. ALTHO THERE WAS ALWAYS A NEED FOR A TV/FM ONLY CLUB IN THE YEARS 1963-67, THERE WAS NONE & NO ONE CARED ENOUGH TO START A NEW ONE. THE WVMRC MIRACULOUSLY SURVIVED THROUGHOUT ITS RELATIVELY LONG HISTORY ALTHOUGH IT HAD A MEMBERSHIP OF ONLY 27 IN LATE 1967 WHEN THE CHANGE WAS EFFECTED--A CHANGE IN NAME AND FORMAT TO THE PRESENT WTFDA. THIS CHANGE WAS PROMPTED AT THE AUGUST, 1967 ANARC CONVENTION IN CHICAGO WHERE THE WVMRC PRESIDENT HAD DISCUSSIONS WITH DENNIS SMITH, WAYNE PLUNKETT AND OTHERS ABOUT THE NEED FOR AN EXCLUSIVE TV/FM CLUB. SHORTLY THEREAFTER WVMRC BECAME WTFDA AND HQ WAS MOVED TO MILWAUKEE IN DECEMBER, 1967. THE FIRST MILWAUKEE VUD WAS PUBLISHED IN MID-JANUARY, ALTHO A SMALL TRANSITION ISSUE WAS PUBLISHED IN NOVEMBER IN PHILADELPHIA (OLD HQ) TO ANNOUNCE THE CHANGEOVER TO CURRENT MEMBERS.

GROWTH OF WTFDA WAS HELPED BY THE DEMISE OF THE CDXC: CANADIAN DX CLUB IN EARLY 1967, TOO. CDXC HAD THE BEST TV/FM SECTION ON THE CONTINENT--EDITED BY WAYNE PLUNKETT--AND HELPED KEEP MANY AIPAERS TOGETHER DURING THE INTERVENING YEARS WHEN THERE WAS NO EXCLUSIVE CLUB FOR THEM. SINCE THE EARLY MONTHS, DESPITE THE POOR QUALITY OF EARLY VUDS, THE CLUB HAS GROWN STEADILY, ALTHOUGH IN 1970 THE GROWTH-RATE SLOWED CONSIDERABLY TO THE CONSERVATIVE RATE OF OTHER CLUBS.. THE CURRENT APPROXIMATE 160 MEMBERS IS MUCH LARGER THAN THE AIPA EVER HAD, AND THE DIGESTS ARE CONSIDERABLY LARGER AND MORE INFORMATIVE THAN THE AIPA BULLETINS EVER WERE. AS EXPECTED, ONLY A FEW OF THE WVMRC MEMBERS EVER RENEWED THEIR MEMBERSHIP IN THE WTFDA WHEN THEIR WVMRC MEMBERSHIPS EXPIRED; ONLY TWO WVMRCERS ARE STILL WITH US TODAY, THREE YEARS LATER. SOME MAY FIND SIGNIFICANCE IN THE FACTS THAT OVER HALF OF OUR EDITORS WERE ACTIVE IN THE AIPA, BUT ONLY ABOUT 15% OF OUR TOTAL MEMBERSHIP WAS IN THE AIPA. THE LONG DXING EXPERIENCE OF EX-AIPA MEMBERS HAS HELPED WTFDA AS WELL AS THE FACT THAT WE KNOW WHAT MISTAKES WERE MADE IN THE AIPA AND HAVE TRIED NOT TO DO THE SAME IN WTFDA. SOME OF US ALSO WERE SUBSCRIBERS TO OTHER MAGAZINES AND CLUBS WHICH HAD DX COLUMNS AND THIS HAS ALSO INFLUENCED OUR OPINIONS OF WHAT A CLUB SHOULD AND SHOULD NOT DO.

FSD

HQ NEWS

ANY COLUMNS THAT MAY BE MISSING THIS MONTH, OR POSSIBLY EVEN SMALLER THAN EXPECTED, CAN PROBABLY BE BLAMED ON THE ANNUAL POSTAL SERVICE RUSH WITH ALL ITS HEADACHES TO THE USPS AS WELL AS TO ITS PATRONS (VICTIMS MAY BE A BETTER WORD FOR IT). SOME EDITORS ARE EXPECTED TO MAIL COLUMNS A LITTLE EARLIER AND HENCE THESE COLUMNS MAY BE SMALLER BECAUSE OF THE EARLIER MAILING. OTHER COLUMNS MAY BE MAILED AS USUAL AND NOT GET HERE IN TIME. AND LAST OF ALL IS THE ULTIMATE PROBLEM OF HANDLING THE FINISHED VUDS WHEN THEY ARE MAILED, WHICH AT THIS EARLY DATE WE EXPECT WILL BE BETWEEN CHRISTMAS AND NEW YEAR'S DAYS.

I'D LIKE TO WISH A HAPPY HOLIDAYS TO ALL MEMBERS ON BEHALF OF THE ENTIRE STAFF OF THE WTFDA. WE THANK YOU FOR CHRISTMAS, NEW YEARS AND HANUKKAH CARDS RECEIVED THE PAST FEW WEEKS WHICH WE ARE NOT ABLE TO ANSWER PERSONALLY. 1970 WAS NOT A VERY GOOD YEAR IN MANY WAYS, DXWISE, ECONOMICALLY AND OTHERWISE, SO I AM SURE NO ONE WILL MISS IT VERY MUCH. FOR WTFDA AS NOTED ELSEWHERE, IT WAS A MIXED YEAR. THERE WERE GOOD MONTHS AND BAD AS USUAL. THE PURCHASE OF A NEW MIMED IN APRIL WAS AN UNFORSEEN DRAIN ON THE TREASURY BUT WE HAPPENED TO BE IN VERY GOOD CONDITION AT THE TIME. WE HAVE BEEN SLOWLY RECOVERING FROM THAT SUDDEN JOLT BUT THE RECOVERY IS SLOWER THAN IN THE PREVIOUS TWO YEARS BECAUSE OUR OVERALL GROWTH RATE SLOWED DOWN IN 1970 FINALLY, AND OUR PROFIT MARGIN IS MUCH LOWER AS WE HAVE ABSORBED INFLATIONARY PRICE RISES IN THE NEARLY TWO YEARS SINCE THE LAST RAISE IN MEMBERSHIP FEES. THE SLOW ECONOMY NATIONALLY WE FEEL HAS HAD SOME IMPACT TOO BUT THIS IS IMPOSSIBLE TO MEASURE.

SINCE WE HAVE BEGUN A NEW YEAR, WE MUST START THINKING AHEAD TO THE 3RD ANNUAL WTFDA CONVENTION SOMETIME THIS SUMMER. ANYONE INTERESTED IS ASKED TO WRITE IN TO HQ. THE PREVIOUS HOSTS I AM SURE WILL HAVE SUGGESTIONS THAT CAN BE HELPFUL IN MAKING PLANS. SO START THINKING ABOUT IT

F.C.C. NEWS

Charles A. Dobbins
12851 Longacre
Detroit, Michigan 48227

NEW STATIONS FINAL ACTIONS

Colby,KS 100.3 100 kw. AAT 614 ft.
Dillon,MT. 98.3 1 kw. AAT 480 ft.
Helena,Ak. 107.3 28.03 kw. AAT 278 ft.
*Kent,CT 88.9 TPO 10 w. AAT N/A.
Melford,MA. 91.5 10 kw. AAT 75 ft.
Muskegon,MI. 104.5 50 kw. AAT 499 ft.

Newport,NH. 104.9 3 kw. AAT 255 ft.
Oneida,NY. 106.3 3 kw. AAT 186 ft.
Prince Frederick,MD. 92.7.2.4 kw. AAT 465 ft.
Salida,CO. 92.1 3 kw. AAT -1,218 ft.
Troy,AL. 105.7 100 kw. AAT 397 ft.

INITIAL APPLICATIONS

*Auburn,AL. Auburn University seeks 91.1 10 w. AAT 138 ft.
Butte,MT. WBOW Inc. seeks 94.1 25.7 kw. AAT 1836 ft.
Cayey,FR. Santiago Grevi seeks 97.7 .14 kw. AAT 1120 ft.
Columbia,MO. Mikro-Dawn Inc. seeks 98.3 3 kw. AAT 100 ft.
Columbia,SC. S.C. Educ.TV Comm. seeks 91.3 20 kw. AAT 854 ft.
Great Falls,MT. KMON Inc. seeks 94.5 38.5 kw. AAT 314 ft.
Green Cove Springs,FL. Mel-Lin Inc. seeks 92.7 3 kw. AAT 300 ft.
Jupiter,FL. Lighthouse Bdcstg Inc. seeks 92.1 3 kw. AAT 215 ft.
Maryville,MO. Clark Bdcstg Co. seeks 95.3 3 kw. AAT 233 ft.
McKean,PA. gtd 102.3 1.515 kw. AAT 110 ft.
Murphysboro,IL. Sunshine Bdcstg Co. seeks 104.9 2.44 kw. AAT 198.3 ft.
Oelwein,IA. Hawkeye Bdcstg Inc. seeks 92.1 100 kw. AAT 372 ft.
Paragould,AR. Progressive Bdcstrs of Ark. seeks 104.9 3 kw. AAT 253 ft.
Picayune,Miss. Tung Bdcstg Co. seeks 106.3 3 kw. AAT 177 ft.
Riviera Beach,FL. Francis Kegel seeks 94.3 1.59 kw. AAT 300 ft.
Rochelle,IL. Rochelle Bdcstg Co. seeks 102.3 3 kw. AAT 181 ft.
Shell Lake,WI. Charles R. Lutz seeks 95.3 20 kw. AAT 854 ft.
Wallace,NC. Dolphin Bdcstg Co. seeks 94.3 3 kw. AAT 295 ft.
West Haven,CT. New Haven College Inc. seeks 88.7 3 kw. AAT 151 ft.
Wilkes-Barre,PA. Wilkes College seeks 90.7 .175 kw. AAT 1,020 ft.

.....
.Comm FM (on air) 2,157.
. (not on air) 131 .
.Total auth. 2,288 .
.Educ FM (on air) 427 .
. (not on air) 44 .
.Total auth. 471 .



CALL LETTER APPLICATIONS

Beckley,WV. Waldron Bdcstg Corp. req WCIR-FM McKean,PA. Mikro-Dawn Inc. req WMDI(FM)
Chanute,KS. Neosho County Bdcstg req KNOY-FM Muskegon,MI. Multi-Com Inc. req WQWQ-FM
Columbia,MO. Contemporary Media Inc. req KFMZ(FM) Perry,IA. Perry Bdcstg Co. req KDLS-FM
Franklin,PA. NW Penna Bdcstg Co. req WVEN(FM) Thomasville,GA. Thomasville Bdcstg Co. req
Helena,Ak. Superior Bdcstg Co. req KCRI(FM) WWTR-FM
Kent,CT. Kent School Inc. req *WKSB(FM) Tylertown,MS. Tylertown Bdcstg Co. req WTYL-FM

CALL LETTER ACTIONS

Ashboro,NC. RCR Ltd. gtd WQSA
Clinton,IA. Valley Bdcstg Co. gtd KCLN-FM
Freeport,IL. Freeport Bdcstg Co. gtd WACI(FM)
Middlesboro,KY. Cumberland Gap Bdcstg Co. gtd WMIK-FM
Morrow,O. Little Miami Sch. gtd *WLMH(FM)
Ocean Springs,MS. Charles H. Cooper gtd WOSM(FM)
Porterville,CA. Gateway Bdcstrs gtd KIOO(FM)
Pulaski,TN SBG Enterprises Inc. gtd WMGL(FM)
Rapid City,SD Rushmore Bdcstg gtd KFFM(FM)
San Marcos,TX. Advance Inc. gtd KRMH(FM)
Santa Rosa,CA. Redwood Bdcstrs gtd KZST(FM)
Seattle,WA. Nathan Hale School gtd *KNHC(FM)
Sioux Falls,SD. Sioux Falls Coll. gtd *KCFS(FM)
Sonora,CA. Harold Bdcstg Co. gtd KVML-FM
Yuma,AZ. Lan-Jol Enterprises gtd KALJ(FM)

AUTHORIZED STARTS

Aberdeen,SD. *KASD(FM) 90.1 TPO 10 w.
Boston,MA. *WRBB(FM) 91.7 TPO 10 w.
Buena Park,CA. *KBPK(FM) 90.1 TPO 10 w.
Charleston,SC. WEZL(FM) 103.5 25 kw. AAT 275 ft.
Corinth,MS. *WALP(FM) 90.5 TPO 10 w.
Des Moines,IA. KRNT-FM 102.5 50 kw. AAT 540 ft.
Fulton,MO. KKCA(FM) 97.7 3 kw. AAT 300 ft.
Hammondsport,IN. WEKT(FM) 98.3 2 kw. AAT 360 ft.
Holdridge,NE. KUVR-FM 103.1 2.7 kw. AAT 155 ft.
Indianapolis,IN. *WEDM(FM) 91.1 TPO 10 w.
Marshall,MI. WALM-FM 104.9 3 kw. AAT 300 ft.
Miami,FL. *WMCU 89.7 3 kw. AAT 880 ft.
Middletown,WI. WMAD-FM 106.3 3 kw AAT 300 ft.
Panama City Beach,FL. WGNE-FM 98.5 100 kw. AAT 130 ft.
Port Huron,MI. *WSCR-FM 91.3 TPO 10 w.
Pueblo,CO. *KTSC-FM 89.5 TPO 10 w.
Roseburg,OR. KRSB(FM) 103.1 2.7 kw. AAT 220 ft.

EXISTING FM STATIONS

CALL LETTER APPLICATIONS

Hazard, KY. WKIC-FM Mountain Bdcstg. Serv. req. WSGS(FM)
 Johnson City, TN. Tri-Cities Bdcstg WJCW-FM req WQUT(FM)
 Lowell, MA. WLLH Inc. WLLH-FM req WSSH(FM)
 Lubbock, TX. Corbin-Bdcstg Co. KEFM(FM) req KLLL-FM
 New Haven, CT. Metro Conn. Media Corp. WNHC-FM req WPNN(FM)
 Philadelphia, PA. Richer Communications Inc. WFIL-FM req WIOQ(FM)
 Racine, WI. WRAC Bdcstg CO. WRAC-FM req WRKR(FM)
 San Antonio, TX. Inter-American Radio Inc. KCCR-FM req KQXT(FM)
 Springfield, MA. Masscom Bdcstg Inc. WMAS-FM req WHVY-FM
 Teaneck, NJ. Fairleigh Dickinson Univ. req *WFDU(FM)
 Tulsa, OK. Boston Bdcstg Co. KRAV(FM) req KFMJ-FM

CALL LETTER ACTIONS

Atlantic Beach, FL. WKTU Inc. WKTU-FM gtd WJNJ-FM
 Dover, DL. Dover Bdcstg Co. WDOV-FM gtd WDSO(FM)
 Ft. Collins, CO. Ft. Collins Bdcstg Co. KFME(FM) gtd KLIK-FM
 Hazelton, PA. Hazelton bdcstg Inc. WAZL-FM gtd WVCD(FM)
 New Bedford, MA. Gray Communications Inc. WBSM-FM gtd WGCY(FM)
 Salina, KS. Salina F-M Inc. KAFM(FM) gtd KSKG(FM)
 Sinton, TX. Bdcstg Corp of the Sou.-W. KCTA-FM gtd KOUL(FM)
 Spokane, WA. Bellevue Bdcstrs KTWD(FM) gtd KEZE-FM

CHANGES TO ALREADY EXISTING STATIONS

WRSA(FM) Decatur, GA. gtd CP for new ant. and ant. sys. AAT 300 ft.
 WTOW-FM Baltimore, MD. gtd CP for new xmtr and ant. AAT to 700 ft.
 *WCFM(FM) Williamstown, MA. gtd CP to chge freq to 91.9 and chge ant. and type xmtr.
 *WCMU-FM Mount Pleasant, MI. gtd CP to chge freq to 89.5 and chge xmtr loc.
 WLXN(FM) Lexington, NC. gtd CP to install xmtr; ERP 7.3 kw.
 WTNC-FM Thomasville, NC. gtd CP to install new xmtr and ant.; AAT 255 ft.
 WEYA(FM) Bayamon, PR. gtd CP to chge xmtr loc and ant. sys. ERP to 31 kw. AAT 110 ft.
 KCEH(FM) Los Angeles, CA. gtd CP for new xmtr and ant. AAT 1180 ft.
 WOIV(FM) Deruyter Township, NY. chge equipment and inc ERP from 5.2 kw. to 42 kw.
 WZPR(FM) Meadville, PA. gtd CP for new ant. AAT 570 ft.
 *WSUS(FM) Stevens Point, WI. gtd CP to chge xmtr loc.
 *WSUW(FM) Whitewater, WI. gtd CP to chge xmtr loc, xmtr and ant. sys. AAT 185 ft.
 WBYU(FM) New Orleans, LA. gtd CP to chge xmtr loc, xmtr and ant. ERP 100 kw. AAT 570 ft.
 WBEA(FM) Elyria, O. gtd lic. to alter ant. sys.
 WVAN-FM Altoona, PA. gtd CP to install new ant.
 *WDYN(FM) Chattanooga, TN. gtd CP for new aux. xmtr and aux. ant. for oper. on 89.7mhz.
 WUCF(FM) Stuart, FL. gtd CP to install new xmtr and ant.
 WFMT(FM) Chicago, IL. gtd CP to install aux. xmtr on 98.7 and chge ant. sys.; AAT 1150 ft.
 KCKN-FM Kansas City, MO. gtd CP for new xmtr and ant. sys.
 *WUFV(FM) New York, NY. gtd CP for new aux. xmtr to oper. on 90.7mhz.
 WMRN-FM Marion, O. gtd CP to chge ERP to 25 kw. chge xmission line; ant. hgt. 340 ft.
 WREC-FM Memphis, TN. gtd CP to install aux. ant. to oper. on 102.7 mhz.
 WKDA-FM Nashville, TN. gtd CP to chge xmtr loc. and chge ant. sys. ant hgt. 410 ft.
 From Dick Clark of the SUNNY(lucky!) south(Fort Lauderdale, Fla.) comes the following:
 WSUR 95.3 Fort Myers and WGYL 93.6 (off freq) Vero Beach both on the air.
 CMBC 90.5 Radio Progreso (Habana) is the only FM he has been receiving and they broad-
 cast the same programs as does their AM outlet.
 Here is hoping the 71 season will bring everyone many DX openings and new stations.

FM-DX

Editor: Roger W. Winsor
718 N. Fremont Road
Valparaiso, Indiana
46383

Mike Bugaj 197 Boston Road Middletown, Connecticut 06457

This report begins on 8/10 and all times are EST except EDT when daylight time was in effect. 8/10 WEZS 103.7 Richmond 0030 in stereo, WMAL 107.3 Washington 0032 also \$, CKGM 97.7 Montreal 0225 progressive like WHCN and heard many times since. 8/11 WLOB 97.9 Portland 0013 w/rock, WKOP 99.1 Binghamton 0205 after WNEC s/off. 8/12 caught the end of Es with one catch WOMA 94.9 Tallahassee in perfect. 8/13 almost positive I heard Oshawa mentioned on 94.9, so possible CKQS @3AM (troops out to that direction with WHFM and the following heard: WMIV 95.1 Bristol Center 0245; WOIV 105.1 DeRuyter both religious and //CBN programming.) 8/16 had Es with KHAK 98.1 Cedar Rapids, @5:10P and new state in KLIN 107.3 Lincoln 5:22 in \$. 8/20 new WQRC 99.9 Barnstable at 0613 in \$. Up to 9/20 now with WMNB 100.1 N. Adams s/off @0056. 9/25 WETA 90.9 Wash. @0600 s/on. 9/26 WMUA 91.1 Amherst ten watts @65 miles up the valley 0121. 10/8 new WHVW 97.7 Hyde Park IDs as "Stereo 9Z-7" 0616. 10/9 WGLS 89.7 Glassboro 0625 w/nx. 10/10 WAIC 91.9 Springfield 10 watts and WSCB 89.9 same city also 10 watts both strong @ 0135. I should add that everything logged since 10/9 was done with a Lafayette LR 1000TA. I sold my Realistic STA 65 for \$115 and used the cash to buy this new receiver. What a difference! 10/17 my first aurora with WRIS 92.1 Hayward, WI 9:30P, WNBI 98.3 Park Falls 9:45, WOBT 107.9 Rhino lander 9:55 and WWJC 105.1 Superior at 9:59. 11/6 strong Es WGNE 98.5 Panama City 6pm, WJGA 92.1 Jackson, GA 6:05, WCOA 100.7 Pensacola 6:32, WKEU 97.7 Griffin 6:35, WIRB 96.9 Enterprise 6:44, WABF 92.1 Fairhope 6:45. 11/8 Although I first suspected aurora and my antenna was pointed north for the entire period, I think the following was Es: WDSU 93.3 New Orleans @ 7pm; WSJC 107.5 MaGees 7:25; WDEM 105.3 Macon 7:30; WGKA 92.9 Atlanta 7:35; WJMI 99.7 Jackson 7:39; and WOKK 97.1 Meridian @7:49. Two skip openings in November is not bad at all. Totals as of 11/22 are 370 logged from 30 states and Canada. New veries WGMS, WNCT. Sent for Cadco's IPA FM booster over 2 months ago, but so far the thing has not arrived. Anyone else get slow delivery?? Have a fine Christmas and New Year. 73.

Bil Lipis Post Office Box 325 El Cajon, California 92022

Seems to be a new Mexican station on 91.3 24 hrs NSP which is rebroadcasting AM station XETRA 690kHz. The FM station is not in stereo, whereas XETRA is using the Kahn method of stereo AM. The 91.3 station is pretty weak, but audio is high. Sounds like they are picking up the audio with a mike next to an AM portable! IE no treble or bass. (Any IDs on this one Bill, or maybe a Mexican pirate. Hi hi RWW) The 100.1 XHOK Tijuana station is strong here, but doesn't seem like 100kw, they do have a strong vertical signal though. Local KSDO 103.7 has gone from classical music to country! They will shortly go stereo and change calls to KZKZ????KZ Country! 73. (Welcome to the column Bill, hope to hear from you often, and thanks for the nice personal comments. RWW)

Frank E. Aden, Jr. 5805 Flamingo Drive Boise, Idaho 83704

I had a real good opening the 8th. I use a Realist FM stereo w/a conical T antenna w/preamp. 100mc Religious mx ??, 94.7? KWFR 7:35 to 9:50, 94.3 KDLK Del Rio @9:40, 97.3 KEEZ San Antonio 9:29, 102.7 KTFM San Antonio 9:45, KPAK 94.7 El Paso 10:00p, KBIM Roswell 94.9 10:00 and KRID Dallas 9:00PM. 73. (Welcome Frank. You certainly need a Vane Jones Log, would advise getting one. Hope to hear from you often also. RWW)

Albert J. Kopeck R. D. 1 Himrod, New York 14842

7/12 0040 WDET 101.9 Detroit relogged @309miles. 7/26 0301 WYDD 104.7 in Pittsburgh, Pa. #214 @315m, 0332 WVNO 106.1 Mansfield, Ohio relog @313m. 7/29 2040 CKWW 88.7 Windsor, Ont. relog @307m. 8/2 0600 WNCI 97.9 Columbus, Ohio #315 @360m. 8/10 0537 WKJF 93.7 Pittsburgh #317 @214m. 8/16 0600 WITH 104.3 Baltimore, Md. relog @226m, 0627 WFMD 99.9 Frederick Md. #318 @220m. 9/24 2023 CKBY 105.3 Ottawa, Ontario #319 @198m. 10/3 0825 WVCC 101.7 Einesville, Pa. #320 @189m. 10/11 new local @1000 WEKD 98.3 Hammondsport, NY #321 @21 miles. Verifications received from WFOY for #314 (stations received, not all verified.) I took advantage of Allied's summer sale to add their 395 stereo receiver to the shack here. Though it's certainly no AR15 I suspect, it does represent a considerable improvement over previous equipment here.

Waldo F. Bishop PO Box 1678 Tallahassee, Florida 32302

This report covers a period from 8/11 to 11/15. DX non existent most of this period, very bad drought: 9/14 WWSL Slidell, La 105.3 @340m. 10/23 WTCV Memphis 104.5 @450m; WQSB Albertville, Ala. 105.1 @275. 11/11 WREC Memphis 102.7 @450, WJXD Jackson, Miss 102.9 @375 and WTGI Hammond, La. 103.3 @370. Above hardly worth reporting, but all new to me. Was lucky to catch Es on 11/8: Noted intense Es on ch 2 @1850, didn't hit FM until 1853, then so strong for about 10 minutes wiped out all except my 4 locals. 1900 to 1910 logged WKCR 89.9 NY; WFCR Amherst, Mass 88.5; WMEH Bangor Maine 90.9; WMAJ State College, Pa 103.1; WNYR Rochester, NY 101.3; WOSC Fulton, NY 104.7. 1915 WDDS 93.1 Syracuse, NY; 1920 WAER 88.3 same city. MUF 107.7. Had a lull until 1931 when I heard following ID @99.5 "WPBS Colton (Coulton?)" However WPBS is 98.9 and never ID as Colton per them and I have a local on 98.9, so was just one of those DX things. 1940 KJAE Lakewood, Colorado 107.5 (or KJ as they call themselves); 1944 WEBR 94.5 Buffalo: then more Colorado stations up to 2015: KCSU 90.9 Ft. Collins first hrd @1910 stayed until approx 2115, most persistent of all. KBPI 105.9 Denver: 2015 KAVI Rocky Ford 95.9 relog from 6/3. At 1957 KLZ 106.7 Denver: East again to WBPO 92.9 Buffalo. For a good 40 minutes up to 2100 had Mexican on 97.9 probably XETIA, but no ID. Between 2015 to 2045 KHOW and KLIR both Denver, and KVOR 97.9 Colo. Springs. Mexican station and KCSU out at approx 2115 and opening over. (Waldo, WNIU changed to ~~xxxxxx~~ 89.5 2 years ago, VJ is just a little behind. RWW)

Hank Holbrook 7211 Chestnut Street Chevy Chase, Md. 20015

All DXing from the cottage at Fair Haven, Maryland overlooking the Herring and Chesapeake Bays 15 miles below Annapolis, Maryland. Stations logged and reported since my last report: 10/24 WKKW ex WAEB 104.1 Pa. 2121 to 2205, QSL ord received; 11/27 WAVT ex WPPA 101.9 Pa. 1746 to 1817; 11/28 WQWK 96.7 Pa. 0636 to 0558 poor signal, rarely hrd and WDSB 94.7 Dover, Delaware ex WDOV 1232 to 1300. Verifications received since my last report: WETA 90.9 vf (verie form), KJCK 94.5 PPC (Prepared card) and WHMD 91.5 PPC. Veries stand at 565 stations in 31 states and from Ontario, Quebec and Manitoba in Canada plus Bermuda, Puerto Rico and Cuba. 73.

Roger W. Winsor 718 N. Fremont Road Valparaiso, Indiana 46383

No DX to report. Changes locally: WRSV 101.9 is now "WCIR stereo 102" and WEXI 92.7 has dropped RR format, now just another MoR like 15 others in town.

Pat Dyer 327 Solar Drive San Antonio, Texas 78227

I should have waited a day or two last time before sending my report. I would have then been able to include the news of the night of Nov. 8 before it was ancient history. That night I first got around to checking the FM band about 1930 CST. What I found were signals all the way to 108 MHz. I hope all Es openings are not that wild on FM since I never could decide which freq to stay on and wait for IDs. I only managed one sure ID, 2000 WHIA 90.3 WI. I did hear several other WI, IW and MN stations, but no IDs. There were just too many of them. Band had faded out by 2030 or so. All this was with my Wards 621 and 18" whip! With other modes of propagation, I've been pretty luck recently. The night of Dec. 2 brought evidently good duct formation from north Texas. 2200 KLBK 94.5 Lubbock (350), 2205 KSEL 93.7 o/KTBC which is 80 miles. 12/3 0215 KRID 92.5 Dallas, 0222 WFAA 97.9 Dallas, 0232 WBAP 96.3 Ft. Worth, 0238 KVIL 103.7 Dallas, 0300 KROB 99.9 Robestown. Other new tropes for me have been KLOL 101.1 Houston, KTXN 98.7 Victoria and KNCT 91.3 Killeen. So far, including locals, my total is 37 stations in 3 states. The way TV Es has been around here this past week, December should produce some FM Es openings. I hope IDs will be easier to come by than Nov. 8 was.

Dick Clark 4110 Bayview Drive Ft. Lauderdale, Florida 33508

Hi everyone. This week I am reporting from the most southern point of the US Key West. The FM reception in this part of the world is very good. Would you believe only one Cuban FM station? The only thing I can say is nothing new as stations goes from my home or here. That was quite a surprise. Ron Schatz and I have Panasonic radio FM/AM/SW/LW/SCA with a Ameco preamps and a Archer FM anyenna on a 5' pole. All DXing from 10/30 from 5PM to 7PM and 0100 to 0200: 89.7 WMCU Miami strong; WUSF Tampa good, 90.5 CMBC Havana NSP, 91.3 WPHS Miami fair, 91.7 WERS Boynton Beach weak, 92.1 WHMS Hialeah weak to poor, WDBO Orlando fair NSP, 92.5 WFPN strong local, 92.7 WCCF Punta Gorda good NSP, 93.1 WKAT Miami Beach good NSP, 93.3 WFLA Tampa good NSP, 93.5 WSMN Belle Glade weak, 93.6 WGYL Vero Beach weak to fair (off freq.), 93.9 WBUS Miami Beach good NSP, 94.5 WNPB Naples good, 94.9 WOCN Miami Beach good NSP, 95.3 WSOR Ft. Myers good, 95.9 WCOF Immokalee good, 96.3 WJHR Miami good, 96.5 WHOO Orlando fair 24 hrs, 96.9 WINK Ft. Myers good, 97.3 WIOD Miami good 24 hrs, 97.9 WDTN Palm Beach good to fair, 99.1 WEDR Miami fair to poor, 99.5 WTCX St. Petersburg fair, 99.9 WWOQ Boca Raton fair to poor, 100.3 WXOS Plantation Keys strong local 24 hrs, 100.7 WMJR Ft. Lauderdale good NSP, 100.7 WDAF Tampa good NSP, 101.1 WCKS Cocoa poor, 101.5 WWPB Miami good, WGN P St. Petersburg poor, 101.9 WHEW Ft. Myers good, 102.3 WYRL Melbourne poor 24 hrs, 102.7 WRED Pompano Beach fair 24 hrs, 103.1 WLOQ Winter Park poor NSP, 103.3 WBRD Bradenton fair NSP, 103.5 WSRF Ft. Lauderdale fair 24 hrs, 104.1 WPKF Cocoa poor, 104.5 WFTAT Palm Beach good, 104.7 WPKM Tampa fair NSP, 105.1 WYOR Coral Gables good NSP, 105.9 WAXY Ft. Lauderdale good NSP, 106.7 WFTL same good NSP, 107.3 WWBA St. Petersburg good NSP, 107.7 WORJ Mt. Dora fair to poor and 107.9 WPBF Palm Beach good NSP. Well that is a complete list of all the stations I get in Key West. Also want to say that we are going to have a get together in Florida on Dec. 27. Please call Ron Schatz in Miami Beach or myself. The # is 945 4915 in Miami Beach. Well good DX to all. NSP is never off the air, 24 hours means that they do go off once a week. (AN 6 is another way RWW)

Marv Garber 2539 Kessler Blvd., Lincoln, Nebraska 68502 CST

Nov. 8 very intense Es open to SE, SW and later to east. Started @1745 and lasted till 2115. This was the strongest opening since 7/6! TV Es seen chs 2 to 6. Though I'm not an active FM DXer, I logged KFAC 92.3 Los Angeles, CA, KTAR 98.7 Phoenix, Ariz, KOOL 94.5 and KMFO same, plus KMAC(?) between 1930 and 2000 on a portable AM/FM rx.

Bill Heusmann 1527 24th Des Moines, Iowa 50311 CST

Nov. 8 along with the TV Es seen on chs 2 to 6, I heard my first FM Es, with excellent Texas, New Mexico and Arizona reception right up to 104.7 KBUZ Mesa ~~XXXX~~.

Don Ruland 2714 Stetson Lane Houston, Texas 77043 CST

Nov. 8 very strong Es session noted here; FM as high as 107.5 WCCN Neils ville, WI and 106.5 KPRI San Diego, CA. This was one of the strongest and most intensive openings seen in recent years.

Fred McCormack

Des Lacs, North Dakota 58733 CST

All FM DX in November was in the first week. On 11/3 KKWB 104.9 Breckenridge MN was logged @2256, and on 11/4 WGGP 105.1 Duluth, MN @0058, KEHG 107.1 Fosston, MN @0100, KIVE Glendive, MT @0131, KFAM 104.7 St. Cloud, MN @0240, KRSI 104.1 St. Louis Park, MN @0604, WJON 101.7 St. Cloud (395 mi) @0612, WLOL 99.5 Minneapolis @0615, KROC 106.9 Rochester (520) @0710, WJMC 96.3 Rice Lake, WI (500) @0713, KBEW 100.9 Blue Earth, MN (475) @0845, KICD 107.7 Spencer, IA (470) @0854, KLEM 99.5 Le Mars, IA (455) @1012 and in the afternoon KROC again at 1658. This was a very consistent tropo opening, lasting through the night and day of the 4th. Unfortunately, no new stations were logged. The much reported Es opening of 11/8 was also good here in ND, but I was away and had to hear about it second hand from my brother. He logged numerous FMs ranging from Texas to California, most which were needed in my logbook. Well, perhaps there will be an opening in December to make up for missing this one. (Fred, why not get your brother to join WTFDA and this FM column??RWW)

Waldo F. Bishop P. O. Box 1678 Tallahassee, Florida 32302

This skimpy report covers period 11/15 through 12/10: Although I have only six loggings to include, they include 2 new states and one new tropo dist. for me. 11/19 WRBD 102.7 Pompano Beach, FL (400); new tropo distance set on 11/29 with reception of KOYL Odessa, TX 97.9 @1072 miles. 11/30 2 new states w/reception of WGN U106.5 (666) and KASU Jonesboro, AR 91.9 (530). Also WLSM 107.1 Louisville, MS @340 mi. 12/7 WNOK Columbia, SC 104.7 (300).

Bill Lipis of El Cajon has sent along this article about FM antennas in cars: I see the NAB and Kaiser Broadcasting did a study on the GM T shaped AM/FM ant. which consists of copper wires laminated inside the windshield. The study concluded that the ant. resonated at 90.2mc, favoring the low end of the band. The ant. is directional and FM reception is inferior to the standard car whip. Using the windshield wipers makes FM reception almost unuseable. AM reception is also greatly reduced. Despite the windshield ants poor performance, GM will continue to use it on 1971 model cars. A modification kit is available from GM dealers that improves AM/FM reception. It consists of a '69 standard whip antenna!! (Keeps the stock moving nicely I bet. Hi hi. RWW)

CENTRAL DX

Roger H. Brown
624 Evergreen
E. Lansing, MI 48823

January 1971

Next deadline: January 15

TV-DX, AS NOTED BY ENTHUSIASTS IN WI, IL, IN, MI, OH, PA AND EASTERN CANADA

If you have the time and patience...and "intestinal fortitude"...to haul yourself out of the sack nearly every morning before dawn...your Winter DXing could be very exciting. Continued congratulations to Hal Cooper and Bill Draeb for getting up...and getting a good share of the action. No excuses everyone...get your alarm clocks fixed!

The reporting period saw DX trail off to near nothing...and reports dwindle to just six. Several watchful people had good results from a not too unusual tropo opening at November's end. DXers Goldman and Olson in Chicago, Cooper in suburban Detroit and Lewis near Toronto (plus your editor) had good results...mostly on the November 28, 29 and a portion of the 30th. The opening was mostly to the SW...to Kansas City from Chicago...and West (to Minnesota here in E. Lansing).

Then there was that early a.m. business. Nearly everyone caught the Es opening the evening of November 8. How many got up early to catch the super Auroral opening preceding the Es on the 7th. Harold Cooper did...and caught a confirmed KOTI-2, Klamath Falls, Oregon, plus un-ids to channel 11. Read on...

Harold Cooper, 29800 Ann Arbor Trail, Westland, Mich. 48185 EST

11-4 MS 0648 KCMO-5 Kansas City, Mo.	11-29 Tr 1900 KIIN-12 Iowa City (perfect)
11-5 MS 0300 KGNC-4 Amarillo, Tx.	1930 WFLD-32, WICD-15 Danville
11-6 Es 1945 WPBT-2 Miami, Fla.	2005 WMTV-15 Madison, Wi.
1950 WESH-2 Daytona Beach, Fla.	2110 WICS-20, WJYJ-14
2000 WEDU-3 Tampa, Fla.	2115 WKOW-27 Madison
(where did that opening come from?)	2125 tent KVFD-21 Fort Dodge
11-7 AEs 0355 <u>KOTI-2 Klamath Falls, Ore.</u>	2145 WTVO-17 2155 WXIX-19 Cincy
plus un-ids to ch 11, 'til about	2200 WAND-17 Decatur, Il.
0600	2230 WCEE-23 Freeport, Il.
11-8 Tr 1840 WILL-12 Urbana, Il, WFLD-32	2250 WUSI-16 Olney, Il.
Chicago	11-30 Tr 0030 WMBD-31 Peoria
Es 1900 KFDX-3 Whichita Falls	0645 WLEX-18 Lexington, Ky.
<u>KMID-2 Midland, Tx.</u>	0655 WKYT-27 Lexington, Ky.
1915 KCEN-6 Temple, Tx.	0700 WLFI-18, WSNS-44, WMBD-31
1930 KENS-5, WBAP-5, KRIS-6	1500 WMTV-15, WVTV-18, WXXW-20,
2000 KTXT-5 Lubbock, Tx.	WCIU-26, WKOW-27, WFLD-32,
2030 <u>KAVE-6 Carlsbad, N.M.</u>	WSNS-44; WPGH-53, WNEP-16,
11-16 Tr 2100 WFLD-32, WXXW-20 Chicago	WDAU-22, WBRE-28
11-27 MS 0705 WBAP-5 Fort Worth	1530 WKON-52 Owenton, Ky.
11-28 MS 0630 <u>WFLA-8 Tampa, Fla.</u>	1730 WUOB-20 Athens, Oh.
(congratulations!)	1830 WFYI-20 Indianapolis
Tr 1400 WSNS-44, WFLD-32, WCEE-23,	2200 <u>WQEX-16 Pittsburg</u>
WTVO-17	
1500 WVTV-18 1640 <u>WKOW-27 Madison,</u>	
<u>Wi.</u>	

Noted an intense Auroral opening early on November 7...stations as high as channel 11 produced some type of audible sounds. KOTI-2 has been verified. For me at least the tropo has been pretty decent this season. It's kind of strange that nobody outside of Westland was too lucky. Caught WFLA-8 by accident while turning antenna from WISH-8 to WJW-8...a full five second burst without interference. (...nice accident Harold. You've seen more DX than most people ever see! RB)

Ferdie Dombrowski, P.O. Box 5001, Milwaukee, Wi. 53204 CST

12-2 Tr 2035 Peoria, Rockford Us,
WKNX-25 Saginaw, WCMU-14 Mt. Pleasant
12-6 Es 1300 weak, no IDs, but presume
Texas as OK City paging in.

12-11 F2 ORTF on F-1 (41.25 audio) finally
at 1048 until 1050. Notified by
phone call! (nice going Ferdie)

My lack of European DX has me worried and puzzled, as does my lack of domestic DX when others are getting it. Antenna seems to be OK. I'm using both receivers (for European TV) since my cheap portable often works better! (bet the reception on 12-11 helped pull you out of the doldrums Ferdie! Guess Milwaukee was in a bad pocket on 11-28 and 29. I noted WTV-18 then but with much less strength than Madison. RB)

Morrie Goldman, 5815 N. Christiana Ave., Chicago, Il. 60645 CST

11-8 Tr 1753 WKTR-16 Dayton 2133 TentR
WKEF-22 Dayton 323R
2015 WANE-15 Ft. Wayne 2332R
2035 KDUB-40 Dubuque, Ia. 3335N
11-11 Tr all day WLFI-18, WICS-20, KDUB-40
11-29 Tr eve WUSI-16, WAND-17, WLFI-18,
WICS-20, WDHO-24, WEEQ-35
2100 KFVD-21 Ft. Dodge, Ia. 3444N
2110 KDNL-30 St. Louis 4543R
WGTE-30, WTIU-30, 2154 WKBD-50
2202 KCIT-50 Kansas City 3443N

11-29 (cont.) Tr 2211 KBMA-41 KanCity 3445N
2230 WXOW-19 LaCrosse, Wi 4533N
11-30 Tr 0645 WLKY-32 Louisville 5555R
0658 WMUB-14 Oxford, Oh. 3445R
0659 WKMJ-68 Louisville 4545N
0702 WKMA-29 Somerset, Ky. 4445N
WKON-52 Owenton, Ky. 4445N
0708 WIMA-35 Lima, Oh.
0713 WKJG-33 Ft. Wayne, In.
12-2 Tr eve WCMU-14, WKNX-25 Mich.

Only antenna up now is 7' dish (finally!! RB) so I'll miss most of the MS this winter. Peoria and Danville in daily. Jacksonville 70%, Fon du Lac 50%, Dubuque 30%. Dish now at 51'. Really great having an antenna up again! (Uncle Sam has called Morrie so he'll again be out of circulation for a little while! Some day....RB)

Gary Olson, 1203 Kenton Rd. Deerfield, Il. 60015 CST

11-6 Tr eve WCMU-14 Mt. Pleasant plus many
Us to 250 miles.
11-29 Tr 1900 WDHO-24 Toledo, WICD-15,
WUSI-16
2100 KVFD-21 Ft. Dodge, Ia.
2130 KDNL-30 St. Louis, Mo.
2145 WFYI tent.

11-29 (cont.) Tr 2012 KCIT-50 KCity, Mo.
2055 WKBD-50 Detroit
2300 WTIU-30 Bloomington, In.
WGTE-30 Toledo
WTOL-11 Toledo
2330 WJYJ-14 Jacksonville
12-2 Tr eve excellent to 250 miles.

Hope we'll see some more good tropo on occasion this winter. Unfortunately I missed the goodies on the morning of 11-30 (me too Gary. See you Christmas maybe? RB)

Bill Draeb, Ellis St. R#2, Kewaunee, Wi. 54216 CST

11-15 MS 0620 KGNC-4 Amarillo, Tx.
0907 CJCB-4 Sydney, N.S. (1305 mi.)
11-16 MS 0550 WLBZ-2 Bangor, Me.
11-20 MS 0515 WCBS-2 NYC, 1518 WMAR-2
Baltimore, 0553 WABI-5 Bangor
11-22 MS 0543 WCBS-2 NYC
11-27 MS 0503 WCBS-2, WMAR-2, 0510 WKTU-2
Utica

11-30 Tr 0515-0620 WTTV-4, WTRF-7,
WCPO-9, WISH-8, WTHI-10, WBNS-10,
WKRC-12, WHAS-11, WLWI-13,
WSTV-9, WICD-15, WKPC-15, WKJG-33,
1225 WLFI-18, WKEF-22, WMUB-14,
WCMU-14, WDHO-24, WUCM-19,
1632 WKTR-16, 1640 WADR-23,
WVVU-24, WKNX-25, WVIZ-25, WUAB-43

Draeb (cont.)

12-6 MS 0537 WCBS-2, 0540 WLWD-2
0547 WTVN-6 Columbus for
about 7 seconds

12-6 (cont.) Es weak from SSW on ch 2-3
no ids.

No new stations this month...a little more MS than usual. (let's look for a good thaw and some tropo Bill...if you can still get up that hill from downtown Kewaunee. RB)

Mark Lewis, 224 Honiton St., Downsview, Ont. Canada EST

11-29 Tr 2345 WICD-15 Danville (505)
approaching snowfree. WICS-20 (585),
WNDU-16 (375)
2356 WJJY-14 Jacksonville (625) weak
WKJG-33 (340), WSBT-22, WDHO-24
WFLD-32
2357 Unid 30

11-30 Tr 0000 WAND-17 Decatur (560)
0023 WKEF-22 Dayton (330)
0026 WUSI-16 Olney (560)
0031 Un-id 50...suspect either
WCAE-50 or KCIT-50. (I think
WCAE was off by then Mark.
RB)

Best UHF I've ever seen...in 3 1/3 years! Equipment includes 40' tower with a 6' Jerrold dish and .412 transmission line, into a BTX-11a convertor. CICA swamps me but they are nulled in my direction...and sign off at 2200. (hope KCIT comes through with a verie Mark. RB)

Roger H. Brown, 624 Evergreen, E. Lansing, Mi. 48823 EST

11-26 Tr 1430 WFLD-32, WSNS-44
plus Ft. Wayne, So Bend,
Cleveland Us very good
1830 WMTV-15 Madison
11-29 Tr 1730 WMTV-15, WKOW-27,
a sign of KDUB-40, WICD-15
strong.
2315 WUSI-16 Olney, Il.
thru WNDU

11-29 (cont.) Tr 2328 WFYI-20 Indianapolis
2330 WICS-20 tent.
11-30 Tr 0010 WJJY-14 Jacksonville
0015 WLKY-32 Louisville
0030 Madison Us snow free
0110 WCIA-3 Champaign (at s/off
after WKZO s/off
0145 WKBT-8 LaCrosse, Wi.
0150 KROC-10 Rochester, Mn.

The opening lasted into 11-30, but work prevented further DXing. KROC provided state #39 and much happiness in the Brown household. Very weak here, but ID'd.

Thus passeth another session. Your editor will be moving in a month or two...two miles East of present QTH, and hopefully to a better DXing location. At least we're escaping some ancient vegetation (very tall trees) and getting together a better antenna set-up. More on that as time passes. Thanks to all faithful reporters for getting us through the slow months. The doldrums of winter are upon us. Have faith people, April is just a few weeks away! To close the reading, this thought: don't EVER believe all that you read in the paper. Score: Big Company 1, Editor 0. Figure that out friends.....73s, BEST DX! Rog

MARY A. OLSON
1203 EMTON RD.
DEERFIELD, ILL. 60015

STATIONS OPERATING (AS OF NOVEMBER 1, 1970)

UHF ETV 111
UHF Com 184
VHF ETV 85
VHF Com 512

Total Authorized Stations On The Air 892

New Stations Reported On The Air:

- *KGTF (TV) ch. 10, Agana, Guam, took the air Nov. 1
- WYEA-TV, ch. 38, Columbus, Ga., took the air Oct. 29
- KVEW (TV) ch. 42, Kennewick, Wash., took the air Oct. 30

Stations Reported Off The Air:

- WHTV (TV) ch. 24, Meridian, Miss., left the air Oct. 13

Miscellaneous Changes:

- *ch. 65, New Haven, Conn., - application for ETV station dismissed
- WENS (TV) ch. 22, Pittsburgh, Pa. - cancel CP and delete call letters

FCC COMPLETED ACTION

Call Letter Changes:

- KVET-TV, ch. 24, Austin, Tex., to KVUE (TV)
- KKBC-TV, ch. 34, Lubbock, Tex., to KMXN-TV

New Call Letters Issued:

- Medford, Ore., ch. 8 (Liberty TV) granted KSYS (TV)

Other Changes Allowed:

- WICS (TV) ch. 20, Springfield, Ill. - ERP to 142 kw.-ant.1454'
- WHO-TV, ch. 13, Des Moines, Ia., ERP to 316 kw. - ant.2400'
- KJDO-TV, ch. 45, Rosenberg, Tex., ERP to 1410 Kw.
- WDCA-TV, ch. 20, Washington, D.C., to 3090 kw.
- WKBG-TV, ch. 56, Cambridge, Mass., to 1660 kw.
- WKBS-TV, ch. 48, Burlington, N.J., to 2140 kw.
- WOND-TV, ch. 53, Atlantic City, NJ., ERP to 603 kw.

ACTION APPLIED FOR OR REQUESTED

Applications For New Stations:

- *Bowling Green, , ch. 27 (Ohio ETV Comm.) 498 kw. - will duplicate programs of WBGU-TV)
- *Cambridge, O., ch. 44 (Ohio ETV Comm.) 423 kw.
- *Dayton, O., ch. 45, (Ohio ETV Comm.) 515 kw.
- *Green Bay, Wis., ch. 38 (Ed. Com. Bd.) 1021 kw.
- Ashland, Ky., ch. 61, (Trico Inc.) 1775 kw.
- Worcester, Mass., ch. 66 (Gemini Broadcasting) 13 kw.

Miscellaneous Requests:

- San Francisco - ETV parties there have requested the ETV reservation be changed from ch. 60 to 32

TIDBITS AND MISCELLANEOUS ITEMS OF INTEREST TO TV DXERS

- # Allocations changes: add ch. 63 to Oxnard, Calif; add ch. 26 to New Haven, Conn; add ch. 59 to New London, Conn. and delete ch. 26; add ch. 23 to Marion, Ind. and delete ch. 23 from Muncie, Ind.; add ch. 53 to Gastonia, NC and ch. 66 to Monroe, NC; add ch. 10 to Clarksville, Tenn.
- # KO8FL, a translator for KEYT-3 in Santa Barbara, Calif., is now up to 360 w. and has moved its transmitter to a better location

* Thanks to Dennis Smith (and any others I've missed this month) *
* for contributions to the column. Your news items are appreciated *

TIPS FOR DX, DX/BUILDER

Part VII: Conclusion

The intent of this series was to describe how several simple devices such as pads, S-meters, and dipoles could be used individually or together to increase your "DX-ability". True, most of these devices and techniques will aid the DXer/builder, who represents a minority among active TV/FM DXers. However, now as I conclude this series, I'm convinced that it was worthwhile, based on letters received from other DXers.

We certainly have a greater share of DXers in the WTFDA trying to improve their DX-ability by building various devices than we had in the AIPA. But -- most important of all -- some non-technical DXers think enough of their DXing hobby to try to build, or arrange for others to build for them, DX devices. The "awareness" of DX potentials is something that Bob Cooper and I have tried to instill via our columns.

No, TV repair men or design engineers were not trying to make you. (Besides you couldn't hack the pay based on 10 or 11 dollars per hour "earned" by some of our "skilled" construction workers). But I would feel no pity for a DXer who, for example, complains that stacking a second all-channel antenna didn't "improve the picture much" when all that fellow had to do was reread VUDs on the subject of stacking and spend maybe 30 minutes of time and 50 cents worth of parts building a 3 db pad so he could "see" on the tube what a 3 db signal change looks like at various signal levels. (Of course, maximum gain increase when stacking or combining is actually 2.5 db, or 28% at best, and lower at other frequencies. But improved directivity and front-to-back ratio is chancy, at best, with multi-channel antennas.)

S-METER

- 1) See signal changes, although AGC voltage swing is not directly proportional to signal levels.
- 2) Record relative signal changes daily, during openings, etc. to broaden scope of weather/DX relationship.
- 3) Use to "tune up" traps, filters, amplifiers, etc. where eyeballing the tube can't give optimum results.
- 4) Detect failures in preamps, receiver RF and IF stages.

PADS

- 1) Reduce or remove receiver cross-modulation and overload.
- 2) Remove preamp overload and cross-mod.
- 3) Show what a change in signal of 3 db, 6 db, etc. does to actual signal level.

DIPOLES

- 1) Cover portion of band not covered by other antennas.
- 2) Mount vertically to receive repolarized skip.

S-METER/PADS

- 1) Calibrate S-meter, so actual changes in signal strengths can be computed in terms of % or db change.
- 2) Compute gains and losses of preamps, and insertion losses.
- 3) Compute differences in gain, front-to-back ratios, etc. of various antennas.
- 4) Check results when building antennas, etc. against results anticipated.

S-METERS/PADS/DIPOLES

- 1) Determine actual antenna gain, front-to-back ratio, etc.

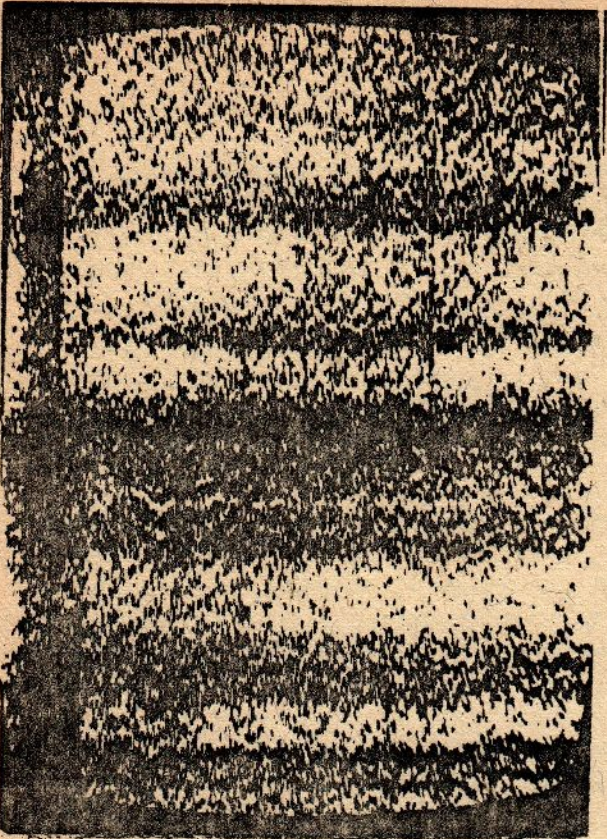
End of series.

73s

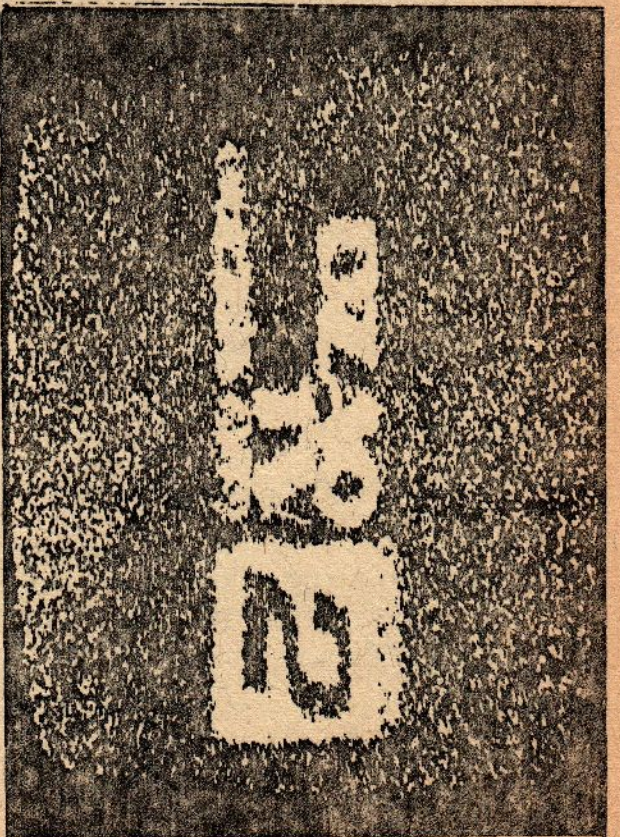
Dave



REINA TYPE T.P. AIR-TV, CH E4
NEW DELHI, INDIA 1846 MI



CHINESE T.P. 57.75MHZ F2 (2109TST, 9/26/70)



DZAO-TV, CH A2 QUEZON CITY (MANILA) PHILIPPINES
1259 MI, E5



AFKN, CH A2 SEOUL, KOREA F2 2184 MI
CALL LETTER IN LOWER RIGHT

Glenn Hauser, editor
Aerospace Audiovisual Service
Box 31093 AFB GA

(temporary address)

JANUARY 1971

THE LAST FEW DAYS IN THAILAND BROUGHT MORE TV DX FROM KOREA, PAKISTAN, USSR AND FRANCE, PLUS THOSE JAPANESE FM LINKS AGAIN, ALL WITH AN FM ANTENNA AIMED FIXED AT BANGKOK.

17 Nov. HSRP-FM on 102.5 MHz AT 1115 (T.S.T.) OPERATED BY ROYAL AIR FORCE AT TUNGMAHAMEK. AT 1915 ON 105.5 SOUNDTRACK FOR HSTV-

E3 (SOUNDTRACKS OF FOREIGN TV SHOWS IN ORIGINAL LANGUAGE ARE SIMULCAST ON FM, WHETHER JAPANESE, ENGLISH OR WHATEVER.) AT 1920, SOUNDTRACK OF HSA-E7 ON 102.75 MHz.

19 Nov. 0721, TTV Radio on 95.0 MHz, English //674 kHz, sports and music. This service is on 0600-1100 weekdays, resuming at 1600. We later had a long conversation with the announcer/salesman who said the financial situation was getting tight. 1630 on 97.0 MHz, chimes and Thai talk; another Public Relations Dept. (PRD) outlet. At 1652 best reception yet from ORTF, 41.25 MHz, drama with sound effects until 1729 when went to relay of Bordeaux radio service; Limoges contr is closest. Lasted until 1810. 1829 on 28840 kHz, chimes for 3 o'clock, indicating Iran, then chanting, music: probably 4x 7210 but not heard there. 1944 on 99.5 another Bangkok station, Thai talk about Mao; 1953 on 101.5, stereo jazz, English announcement from ISCU-FM, Jhulalongkorn University in Bangkok. Visiting later, I found it a bustling, well-equipped student station. At 2000, an MS burst of a timesignal overrode; no telling whence. Other Bangkok FM relay.

20 Nov. 1340 on 56.25 MHz (ch R1 audio), Russian talk out by 1350; also at 1340: AFKM-A2 with Indianhead TP ghostly out good sync; 1355 strong 5 kHz CCI. 1358, NHK-FM on 55.77 MHz, Japanese, timesig, news. 1405, NHK 2nd net on 57.37 MHz, Japanese weather as sked: "miribaru" for millibar. 1413, another Jap on 60.28 MHz. 1428 Vladivostok Radio on 56.25 MHz very strong over Jap. with program "Radio stantsiya Tikhii Okhean" = Pacific Ocean Radio. At 1535 it cut on again, then QM from a second station. 1559, ID, timesig, Malay news from Moscow. 2103, Karachi-74, English news re disaster; 2110 chanting straight thru to 2150 fadeout.

21 Nov. 0702 Honolulu pager on 35.22 MHz.

During a visit to Bangkok a few days later we discovered that TTV Radio's Thai program on 870 kHz is parallel 98.7 FM (English Sunday afternoons). 1150 is //94.5. Two other stations of the prime minister's office on 1520 kHz was heard around 96 MHz on FM. And Bangkok's 1570 kHz station announced it was also on 98 MHz FM.

Loose ends. On 7 Oct. I heard a Soviet station in non-Russian. Richard Wood says it may be Tadzhik, in which case I would have been receiving Dushanbe. Pat Dyer says daily reception of Singapore-95.8 is most likely equatorial Es scatter.

In Hawaii we spent ten enjoyable days. We took some slides of the locals for future reference (hopefully), including a KHON-TV promo slide for "Hauser's Memory"...what could have been more apropos??? At Hickam AFB/Honolulu we heard the familiar Soviet video buzz on 49.75 MHz; but other VHF DX limited by nearby naval SV station NPM feeding into A-2586's 4.5 MHz IF. We did hear the 35.22 pager well enough to get an ID for the Hawaiian Telephone Company. Called them on our Hawaiian Telephone but they could not tell me anything about it, suggesting I write instead. Back in Oklahoma we again heard its characteristic 2-tone FM. The only TV station outside Honolulu visible there on rabbit ears was KHVI-12 Jailuku. At the University of Hawaii we visited stereo 10-watter KUH 90.5. At Honokaa on the north shore of Hawaii, we pulled in one Honolulu FM on the RF619 portable, KAIM-95.5.

South Vietnam. Details of Vietnamese television as supplied to us by the American engineer who built the stations: VTVN (government) network: Saigon, ch A9, 250 kw ERP visual; Hue, ch A7, 40 kw; Qui Nhon, ch A7, 50 kw; Can Tho, ch A7, 250 kw; tapes are bicycled (literally?) for daily programming at 1600-2100 TST or 2130; Fridays to 2400.

AFVN (American) network, ch A11, 40 kw at: Saigon, Tuy Ho a, Nha Trang, Qui Nhon, Pleiku, Da Nang, Quang Tri; ch A13, 40 kw at Chu Lai; translator on ch A78 at Can Tho, 8 watts relaying Saigon; programming at 1100-2330 or 2400; except Quang Tri, 1600-2330 or 2400. 50 kw FM outlets are at the same places except Tuy Hoa, all on 99.9 MHz, part simulcast AM, part separate. Saigon, at least, is 24 hr/day. Another informant says GI-run pirate FM stations are quite widespread.

Philippine TV, a brief history from Benjamin T. Gamboa of ABS-CBN: "The first television signal was aired October 1953 on Channel 3, (now Channel 2), with a power of 2KW input to the antenna. The antenna, a three bay Supertumstile, was mounted on a 420 ft. self-supporting tower of 350 ft. above-sea-level. The station was licensed to the Bolinao Electronics Corporation, now ABS-CBN Broadcasting Corporation. The second television station went on the air September 24, 1957 on Channel 9 with a power of 5KW radiated from an RCA TFD stacked dipole antenna, sharing the same tower of Channel 3. The station was owned by the Chronicle Broadcasting Network which later integrated operations with the Alto Broadcasting System, a division of Bolinao. The other channels, namely 13, 7, 5, 11, came on the air in that order with average gaps of two years between initial telecasting.

"In 1969, ABS-CBN Broadcasting sold to Kanlaon Broadcasting System TV Station Channel 9. The Philippine government issued another channel allocation to ABS-CBN now Channel 4 and to accomodate this additional, we moved down Channel 3 to Channel 2 with corresponding increase in power input, change in tower height and antenna gain. Channels 2, 4, 9 program partly in color shows with a ratio of 70:30 monochrome to Color. We have a stereo multiplexer radio station operating on 102.1 Mhz. with a power of 10KW (dual polarity antenna 700 ft. above sea level).

"Your signal report is actually the third we received from Thailand. The first one was received by a Filipino resident who went to visit a friend in Bangkok in early part of 1962. He reported very clear reception of picture and sound using ordinary antenna. We were operating on Channel 3 at that time. The second report came from an American Serviceman stationed somewhere around the Chaingmae (sic) area. He sent us a recorded report of the aural reception and a description of the program materials seen. The observation was made approximately around 1965 to 66 and we were still operating on Channel 3. Unfortunately, records of these reports have been misplaced. We are keeping your reports on file for future reference."

Gordon Simkin is a familiar name to AIPA old-timers; he was international DX editor for some time. We've finally located him--in Chiang Mai, Thailand, but home is Auburn, California. We're hoping he'll resume activity. George Petersen in Queensland has been getting Soviet/Chinese ch 1 video and Korean FMs once again.

BBC-TV Offsets, from EBU list provided by Roger Bunney (kHz freq, wattpower, location)

41452.8	5.5	Carmarthen	41500	3000	Divis
41476.4	6.25	Kendal		10	Llangollen
41480	2575	Redruth	41516.8	4500	Ashkirk
41483.1	53	Pitlochry		325	Llandridod Wells
41483.2	1425	Llanddona		30	Skegness
	130	Scarbo rough		6.25	Penifiler
	62.5	Churchdown Hill		5	Lochgilp head
	12.5	Sheffield	41530.4	5	Wensleydale
41496.9	40	Weardale	41534	95	Grantown
41500 (?)	50000	Crystal Palace		12.5	Weymouth
(?)	1750	Thrumster			

ORTF Offsets show 41230, 2.5kw at Bastia, 41253.2, 35w, La Rochette. All others are not specified, but presumed even (41250).

This is the last Australasian Scene column, altho eventually someone else may revive it. Statistics contributors--please bear with us and send reports to address at head of column; we should be getting back in business next month.

Until the next, 73 de Glenn

1971

TV FM DX BIBLIOGRAPHY

update

In the January 1970 WUD, we presented a "TV-FM DX Bibliography," a listing of all known sources of articles and mentions of TV and FM DXing within published magazines and books. Perhaps you have found some of these historical articles of our hobby in libraries and old book stores.

We had stated that these articles were found by consulting Readers Guide to Periodical Literature—an index to magazine articles, in most libraries—as well as by searching school and public library shelves and used magazines in bookstores. Since then, additional appropriate articles have been found through the Wireless Engineer, a British periodical whose article index of many electronics magazines is also listed in IRE Proceedings 1946-64. Another index similar to Readers Guide, covering many electronics publications around the world, The Engineering Index, uncovered many more interesting articles. These listings are responsible for the following articles, from many North American as well as European sources. Most were found in local public and college libraries, though a few were not; those articles not found are noted as listed in the index, indicated by question marks in most cases as the index strangely gave no details about these periodicals.

Again, however, in spite of the pages that follow, this will never be considered complete. Even if all books and magazines were located, there would be the matter of smaller regional-area magazines (such as local radio-television program publications) and newspapers, of which there are many, to say the least.

There is one other area I did not consider—perhaps altogether the richest source of historical information on TV and FM DXing, which, like newspapers, I could not consider, unfortunately—the DX club bulletins. There have been many that have come and gone over the years, covering all phases of DXing. They could not be considered because most of us do not have access to many clubs' bulletins beyond those of which we are members—unless we are club representatives or publishers which gives those many such issues through such as ANARC or on an exchange mailing basis. But even this is just for current issues as printed. Perhaps this could be another of the possibilities of the proposed ANARC "DX museum." I honestly don't know if it would be an impossible project or not. At any rate, for anyone who might have some interest or access, here is a little information on some of them. The American Ionospheric Propagation Association (AIPA) was active from Autumn 1953 to Spring 1963, a successful TV-DX club for many years. It also included FM-DX starting around 1959. The National Radio Club (NRC) had something of a TV-DX section for summer activity of its BCbers, but was dropped in late 1955 with a tie to join AIPA for further TV-DXing. The oldest and largest DX club, general-coverage New York News Radio Club (NNRC), had the best and most active FM-DX column of any club at that time from 1955 to 1960, edited by Bruce Elving, 4 to 8 pages a month of enthusiastic reporting. Before that, FM was handled in the Statistics column as early as 1953, and after, along with TV, has had a small "corner" of 2 to 4 pages, or in connection with the Statistics column. From 1964 to 1968, the Canadian DX Club (CFXC) had a very active TV-FM section edited by Wayne Plunkett, with FM separately from 1964 by Dennis Smith. These are North American clubs. In Europe, the Europa DX TV Club was active for about a year, 1963-64. The WTFDA has been active in both TV and FM and other VHF-UHF DX since 1967, reaching for worldwide coverage. Also, there are many general coverage (MW-SW-FM-TV) clubs, large and small, past and present, with TV-FM columns that are nearly always very small compared to the MW and SW sections. Thanks to Bruce Elving for providing some of this info. There are still many columns and clubs that may have been active in FM and TV fields, but we don't know of them.

Following is our bibliography update—a further listing of articles and items pertaining to DXing of FM and TV broadcast.

Denni Smith

NORTH AMERICAN PUBLICATIONS

Scientific review

Electronics

- Nov 1944 "RTPB on FM" FCC VHF committee study short burst propagation, 42-50MHz
- Dec 1944 "A Report on the FCC Frequency Allocation Hearing" FM(42-50)& TV, DXprop
- Jan 1945 "Measurement of VHF Bursts" Observation of bursts, FM(42-50 MHz) & TV.
- Dec 1948 "Airliner Television" Tests of TV reception on passenger airline.
- Dec 1948 "Train Television" Tests of TV reception aboard passenger train.
- Mar 1949 "Train Television" More details of above.
- Aug 1950 "Mobile FM Broadcast Reception" Tests of automobile FM reception.
- Oct 1951 "Horn Antenna for Television" Tests in Skaneateles NT; const.details.

Physical Review

- 1 Nov 1946 "On the detection of Meteors by Radio" SW-VHF MS study, FM mention.
- 15 Jan 1947 "Ionization by Meteoric Bombardment" SW & VHF-FM MS observations.

Electronic hobby and repair

Science and Electronics (formerly Radio-TV Experimenter)

- Jun/Jul 1970 "A DXer's Open Sesame to Old Mexico" Don Jensen AM-SW-FM-TV, lists

Ham and broadcast industry

Audio (Radio before mid-1940's)

- Dec 1945 "Irregularities in Radio Transmission" Part 1. O.P. Ferrell.
- Jan 1946 As above, Part 2. These 3 parts give details of VHF propagations
- Feb 1946 As above, Part 3. on FM 42-50 MHz: MS, aurora, tropo, Es.
- Oct 1969 "An Empirical Study of FM Antennas" Error-ridden article. FM-DX mention but called rare; line-of-sight formulae 'prove' old VHF notions!

Electronic Industries (sometimes titled Tele-Tech, sometimes both)(now Electronic Engineer)

- Jul 1944 "FCC Studies 'Bursts'" 42-50-FM & TV burst (MS) DX study, Es also noted.
- Nov 1944 "FM 'Bursts' Should Diminish" Article infors F2 DX rather than MS.
- Dec 1945 "FM Tests: Statement by FCC" Arguments re diff btw 42-50 & 88-108 FM.
- Dec 1945 "Tropospheric Study of FM Transmission" Compares 42-50 with 88-108 FM.
- Feb 1946 "Propagation Effects" Tropo and Es study with 42-50 & 88-108 FM.
- May 1947 "FM Rapidly Spreads Over the US" 88-108 report. US FM station map.
- May 1947 "Operating FM Stations Total 300" Station list, both bands.
- May 1947 "Tropospheric Report" FM (42 MHz) tropo study, weather fronts.
- Jun 1955 "Factors Affecting Radio Propagation in the TV and FM Bands" DX props.
- Oct 1957 "VHF Propagation by Ionized Meteor Trails" Part 1.
- Nov 1957 As above, Part 2. 1957 IRE Wescon Convention Record article reprint.

CQ

- Nov 1956 "Propagation" Regular column, this month detailed F2 TV DX discussion.
- Jul 1963 "VHF" Regular column. TV DX mention.
- Mar 1964 "A Look at the Remainder of the Sunspot Cycle" Cycle 19 decline study.
- Jan 1969 "The Sunspot Story—1969" Cycle 20 information.
- Nov 1969 Propagation Special issue. Many articles on propagation, SW, VHF, etc.

QST

- "The World Above 50 Mc." Regular ham column, further TV-FM DX mentions:
1947- Jan. 1970- Jan Apr Jul.

- Dec 1959 "Transequatorial Propagation of VHF Signals" Ham&TV, so. Africa-Europe.

Ham Radio

- Aug 1970 "High-Performance VHF Bandpass Amplifier" Cooper. Descrip, const.details

FM-TV Magazine (originally FM)

- Jul 1948 "FM-TV Controversies Continue" Prop.& allocation questions re FM & TV.

Communications

- Apr 1940 "Notes on FM Transmitters" Uses of new FM system. FM station list.
- Aug 1943 "FM and UHF" FM history and present status. FM station list.

Technical journals

Proceedings of the I.R.E. (Institute of Radio Engineers) (Since January 1963,
Proceedings of the I.E.E.E. (Institute of Electrical and Electronics Engineers))

Nov 1928 "Radio Stations of the World on Frequencies above 1500 Kilocycles"
 Station list, all xmtrs except amateurs btw 1500 and 51360 kHz.

Mar 1933 "A Study of the Propagation of Wavelengths between Three and Eight
 Meters" and "Notes on Propagation of Waves below Ten Meters in
 Length" Two articles: 44 & 61 MHz observations around NY City.

Jul 1941 "Observations of Frequency-Modulation Propagation on 26 Megacycles"
 Study of 26.3-MHz FM broadcast signal by ionospheric skip.

Jul 1947 "Propagation Studies on 45.1, 474, and 2800 Megacycles Within and Be-
 yond the Horizon" Observations around New York City, FM xmtrs.

Mar 1948 "Reflections of Very-High-Frequency Radio Waves from Meteoric Ioniza-
 tion" Es & MS prop. of FM and TV signals, 42 to 84 MHz.

Jun 1949 "Tropospheric Effects in Ionospheric-Supported Radio Transmission"
 Combined ionospheric-tropospheric studies, using MW, SW, & VHF-FM.

Dec 1952 "Field Strengths Recorded on Adjacent FM Channels at 93 MC over
 Distances from 40 to 150 Miles" 92.9 and 93.1 reception.

Jan 1953 "Radio Transmission beyond the Horizon in the 40- to 4,000-MC Band"
 VHF and UHF (TV-audio & other xmtrs) reception up to 325 miles.

Jan 1953 "Field Strength of KC2XAK, 534.75 MC Recorded at Riverhead, N.Y."
 UHF TV audio observations.

Jan 1953 "Auroral Effects on Television" (in Correspondence section) Ithaca NY

Oct 1955 "Some Applications of the Monthly Median Refractivity Gradient in
 Tropospheric Propagation" Several-year VHF study, includes FM.

Oct 1955 "Obstacle Gain Measurements over Pikes Peak at 60 to 1,046 Mc"
 150-mile diffraction tests, included Denver TV signals.

Oct 1955 "The Use of Angular Distance in Estimating Transmission Loss and
 Fading Range for Propagation through a Turbulent Atmosphere over
 Irregular Terrain" Whee! Anyway, includes VHF TV & FM signals.

Transactions of the I.R.E.: Antennas and Propagation (PGAP series)

Dec 1952 "Meteorological Effects on VHF Propagation" FM-TV Chicago-Urbana study

Journal of Atmospheric and Terrestrial Physics

1 1950 "Comparison of Tropospheric Reception at 44.1 MC, and at 92.1 MC, over
the 167 Mile Path, Alpine, New Jersey to Needham, Massachusetts
1947-1948" FM broadcast.

Apr 1953 "Correlations of 100 MC Radio Propagation with Certain Meteorological
Variables" Largely-tropospheric FM study in Texas.

1957 IRE Wescon Convention Record, Part 1 (Microwaves, Antennas and Propagation)

"A Meteor-Burst System for Extended Range VHF Communications" Includes VHF TV
Communication and Electronics (American Institute of Electrical Engineers Transactions)

Mar 1958 "Wide-Band Ultrahigh-Frequency Over-the-Horizon Equipment" and "The
Miami-Havana Radio System and Its Integration in the Telephone
Networks" Two articles, UHF TV & telephone scatter relay system.

Journal of the Society of Motion Picture and Television Engineers

Feb 1960 "Troposcatter Communications for Intercontinental TV Transmission"
Discussion of much then-recent testing and information.

Books, pamphlets and publications

Television, a series of books published by RCA Review, Volumes 1 (1936), 2 (1937),
 3 (1946), 4 (1947), 5 (1950), 6 (1950). Development of television, 1933 to 1950
 Collections of articles originally appearing in RCA Review and IRE Proceedings.

Communications Handbook 1970 (Popular Electronics publication). This yearly issue has
 excellent article "DX'ing the TV and FM Bands" by Gary Olson. Propagations,
 equipment, varies, the WTFDA. One of the hobby's best recent articles. \$1.35
 on newsstands or from Gilfer Associates, Box 239, Park Ridge, New Jersey 07656.

Books, pamphlets and publications (continued)

Vane A. Jones: North American Radio-TV Station Guide, Howard W. Sams & Co., Inc., Indianapolis, Indiana 46206, sixth edition, 1970, \$21.95. AM-FM-TV station lists. Available from publisher and from Gilfer and some electronics dealers.

Man of High Fidelity: Edwin Howard Armstrong by Lawrence Lessing. First published by J.B. Lippincott Co., 1956; new edition by Bantam paperbacks, 1969, \$1, available from bookstores. Armstrong invented and developed FM broadcast; without him, we probably wouldn't have it today. DX mentions are few and general: skip interference problem on the old 42-50-MHz band (with political interference), p 211-213 and scatter tests, p 217-219. However, the book makes important and startlingly revealing reading; it is highly recommended to all interested in broadcasting.

A History of Broadcasting in the United States by Erik Barnouw, Vol 1 (to 1933) "A Tower in Babel," Vol 2 (1933-1953) "The Golden Web." Publ Oxford University Press, 1966 & 1968. (Vol 3 in preparation.) \$9 each vol. Emphasis on but not limited to USA. No real DXing info but is mentioned as it is the outstanding book on the subject, for any interested in broadcast history. Filled with bibliographical references. Worth the price; also probably in school or public libraries.

EUROPEAN (and elsewhere) PUBLICATIONS (Some are in libraries around the world)

Electronics magazines

Wireless World

- Dec 1947 TV-DX item in "World of Wireless" section.
- Mar 1959 "European Television Stations" List, map, card photos, for distant IDing.
- Aug 1969 TV-DX in "Letters to the Editor" section.
- Sep 1969 "Long-distance Television Reception" Euro. list, card photos, standards.
- Oct 1969 "Identifying Television Transmissions" More of above, DX interests.

Television - Servicing, Construction, Colour, Development (formerly Practical Television)

Charles Rafarel continues to write monthly "DX-TV" column; magazine also has other European TV news and articles. US subscribers: now \$6/yr (11.75/2yrs, 16.00/3yrs). Uncertain about prices elsewhere. Subscription Dept, IPC Magazines Ltd, Carlton House, 66-69 Gt. Queen Street, London WC2, England.

Hi-Fi News

Austin Uden has been writing "FM Diary," a monthly column about FM DX and station news, though the latter and programming have been of greater concern lately than DX conditions. Column isn't in latest issue (August); don't know if cancelled or just missing. Magazine continues, however, to have FM and high-fidelity news from British and European activity. Annual UK subscription is 44s, overseas 47s or \$5.60. Link House Publications Ltd., Dingwall Avenue, Croydon, Surrey, CR9 2TA, England.

Télévision (French or Belgian?)

Mar-Apr 1956 "Long-Distance Television Reception in the USSR" Digest of TV-DX reports from Radio mag. (Moscow), Nov-Dec 1955.

Radio-Revue TV (Belgian mag.) (?)

Jun 1951 "Long-Distance Reception of Television" Belgian TV Es in May 1951.

Radioshau (Austria?)

Feb-Mar 1960 "VHF and Television Reception over Great Distances" 30-100 MHz.

Scientific review

Nature (London)

- 4 Apr 1953 "Multiple Bursts of Signal in Long-Distance Very-High-Frequency Propagation" TV burst reception, 40-60 MHz, meteor & lightning influence.
- 21 Nov 1953 "Non-standard Radio Propagation" June TV Es, seen in Ottawa.
- 26 Apr 1958 "Long-Distance Radio Propagation above 30 Mc/s." VHF DX study, TV.

Broadcast industry

BBC Engineering Monograph (London)
 Mar 1966 "Sporadic E Ionization and Television Interference" Band-I TV Es study

BBC Quarterly
 Jan 1948 "Radio Propagation in the Frequency Range 40-100 Mc/s" F2,Es,tropo
 Autumn 1953 "Interference to Television via Sporadic E on May 17, 1953" Ch-1 Es

RSGB Bulletin
 Mar 1957 "The Reception of Chrystal Palace Transmission in Australia" BBC TV F2

The Journal of the Television Society (London)
 Jan-Mar 1935 "Reception of the BBC 30-Line Television Transmission in Madeira"
 MW mechanical TV reception on island off NW African coast since 1929
 Dec 1938 "Some Aspects of the Propagation of Ultra-Short Waves" Discussion
 includes VHF TV propagations, tropospheric and ionospheric.
 Jul-Sep 1957 "Scatter Propagation and its Application to Television" UHF scatter
 Jul-Sep 1958 "Reception of Australian Television in New Zealand" Es, Nov-Feb.
 Apr-Jun 1960 "Problems of UHF Television: Propagation" tropo in UK & North Sea

Technical journals

The Proceedings of The Institution of Electrical Engineers (London)
 Apr-May 52, Part 3A "A Survey of British Research on Wave Propagation with Particular Reference to Television," "Ionospheric Influences in Television Reception," "Long-Distance Propagation in Relation to Television in the United Kingdom" Followed by discussion. Includes TV F2, Es, tropo.
 May 1957, Part B "Long-Distance Propagation at 94.35 Mc/s over the North Sea" Study of North Sea tropo using FM xmtr in Holland, receivers in UK.
 Mar 1960, Part B "VHF Field-Strength Measurement over Paths in the Irish Sea involving Mountain Obstacles" TV-signal diffraction measurements.

The Journal of the British Institution of Radio Engineers (London)
 Jan 1961 "Reception of BBC Television Sound Transmissions on 41.5 Mc/s at Halley Bay, Antarctica" Monitoring of F2 TV video & audio, Apr-Oct 1958.

The Marconi Review (Chelmsford, Essex, England)
 2nd Quarter 1963. Many articles, studies with VHF-UHF propagations, broadcasting

Point to Point Telecommunications (Chelmsford)
 Oct 1960 "A Tropospheric Scatter Link over a 200 mile Path" UHF TV scatter tests

Proceedings of the Institution of Radio Engineers, Australia (Sydney)
 Jun 1960 "Tropospheric Propagation at VHF" tropo tests using Melbourne TV xmtrs

Annales de Radioelectricite (Paris)
 Oct 1953 "Report of Propagation Tests on 45 and 66.6 Mc/s in the Central Mediterranean" Prop. studies across Med. Sea, including TV signals.

Annales des Telecommunications (Paris)
 Aug-Sep 1953 "Long-Distance Propagation of Metre Waves" FM tropo, Es study, Paris

Tijdschr. ned. Radiogenoot. (Dutch?)
 # 3 1960 "Weather Conditions during Television Reception from East Germany and Italy" Distant studies.

Archiv der elektrischen Übertragung (Germany)
 Oct 1959 "Extraordinary Propagation Conditions for Ultra Short Waves" FM Es.

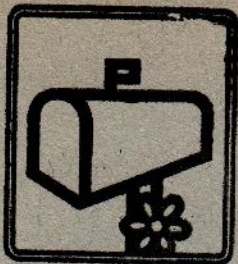
Hochfrequenztechnik und Elektroakustik (Leipzig)
 Nov 1956 "Observations of Long-Distance Reception in the 3-meter Broadcast Band" FM tropo studies, central Europe.

Nachrichtentechnik (Berlin)
 Jun 1954 "Long-Distance USW Reception" FM tropo studies.

Tech. Mitt. schweiz. Telegr.-Teleph. Verw. (Swiss?)
 1 May 1953 "Study of Ultra-Short-Wave Propagation over the Barrier presented by the Alps" FM tropo-diffraction tests, Switzerland.

Z. Met. (German?)
 Jul-Aug 1954 "Influence of Weather Conditions on the Characteristics of USW Long-Distance Reception" FM tropo tests.

MAILBAG



A hearty Happy New Year greeting from everyone at the WTFDA mailbox. We hope that for all of you the coming year will have even more joy than the one past. For all of you too we wish you 12 full months of the best in TV, FM and all other DX!

The Christmas spirit on the part of several members is appreciated and is hereby acknowledged. The following friends were thoughtful enough to provide assistance to our mimeo fund: John Ebeling (\$.2), Carlton Howington (\$.13.50), Waldo Bishop (\$.1), and Dave Swanson (\$.1.17). These welcome gifts are helping to offset our large expenditure of the year for the new mimeo -- which has certainly made our bulletin look a lot better.

Now here's a rundown on some of the new members in the fold as of late:

V.D. LeCompte, 949 Belle St., Waterloo, Ia. 50701
Andrew Bolin, 709 Lincoln, Charleston, Ill. 61920
Don Voegele, 5 Braemer Rd., Torrens Park, So. Australia,
5062, Australia
Florence M. Cohen, Box 328, Golden's Bridge, NY, 10526
Ronald A. Schmidt, 204 Harvester Ave., Winona, Minn. 55987
Neal Files, 115 Ave. D., Fort Dodge, Ia. 50501
Peter Hobday, 120 Charlotte St., Canandaigua, NY 14424
Tom Little, 14403 Triskett Rd., Apt. 102, Cleveland, O. 44111
John A. Wudar, 286 Woodslide Dr., Buffalo, NY 14220
Bernard LeCompte, 1 Ter rue de Sampigny, 77-Melun, France
Keith Wilson, Apt. 401 - 8708 Franch St., Vancouver 14, B.C.

Recent renewals include:

Bob Hawkins	Bill Lipis	Carlton Howington
R. Grace (2 years)	Waldo Bishop	B. Draeb (2 years)
R. Eddy	Al Phillips	D. Swanson (2 years)
M. Bugaj	C. Dobbins	R. Stein (2 years)
	G. Morgan	

Let's turn to some news about the members - particularly some of our newest members: One of that number who heard about WTFDA from the recent article in Communications Handbook is Kevin O'Donnell of Dallas, Texas. Kevin reports he's been at the dials about a year and a half. He's been on the other side of the dials too -- participating in radio plays on radio WRR. Among his future plans (besides logging a couple hundred stations) is attendance at Loyola University with a major in communications. Richard Davidson is another of our versatile compatriots. Besides teaching music in the public schools, Rich is a part time announcer for WHTG AM + FM in Eatontown, N.J. His main interest was originally in AM DX, but more recently his thoughts have shifted to TV and FM with a reception of WXEX-8 his best catch to date. WPE8KLD is the call which Cleveland-area DXer Bob Dister uses. Skillfully combining the hobby of photography with his DX interest he has managed to take a number of photos of his reception. Bob reports he has yet to receive E-Skip, but he has more than made up for that with some fine tropo catches. Bob - hope we hear more from you and the others as time goes on!

We'd like to bid farewell to our good friend Bill Fait. Bill announces he is leaving the ranks of those active in TV, FM, and VHF DX. Bill, it's been a pleasure having you with us so long; hope you'll come back again someday (and be sure and hold a warm spot in your heart for WTFDA!)

73's for this month. See you all at the same spot in 30 days!

DXing EDUCATIONAL FM.

88-92mc

By Bruce F. Elving
Milwaukee Address: 3000 North Oakland Avenue
Milwaukee WI 53211

In more ways than programming, the FM stations found between 88.1 and 91.9 MHz are different from those between 92.1 and 107.9 MHz. Those in the lower frequency range never carry commercials, operate shorter average schedules than do the other stations, vary in power from the $2\frac{1}{2}$ -watt WTSC Potsdam, NY, to Ann Arbor's 230,000-watt WUOM, and are usually under-represented in DXing logs.

There are some 435 noncommercial, educational stations operating between 88 and 92 on FM, as well as 15 other educational stations that operate at scattered points on the dial within the commercial band (92 to 108 MHz). Four of the exceptions -- educational FM stations that have invaded the commercial band -- are in Michigan alone, while, interestingly, there is one commercial station using an educational channel by international agreement: CKWW-FM Windsor, Ontario, 88.7.

While education has 20 percent of the spectrum space allocated to FM radio broadcasting, it accounts for 16.6 percent of the nation's 2,610 on-the-air FM stations. Any DXer who has less than 10 percent of his FM loggings within the 88 to 92 MHz area may justifiably question why his totals run proportionately less for the educational part of the dial. For example, only 53 out of the 926 stations that I have received in Duluth, Minnesota, are on the educational channels. This figures to only 5.7 percent of the total. I suspect that the same experience is true for almost all FM DXers. The reason for this apparent discrepancy warrants further consideration, and may well indicate how most of us stand to reap a harvest from a rich potential source of DX.

It is true that the educational channels in most parts of the country have been comparatively slow to fill up with high-powered, fulltime stations, thus leaving many open, ready-for-DX frequencies, while on the commercial channels -- especially in the eastern states -- congestion is a real impediment to a lot of potential DX. In the light of this knowledge, it is surprising that such a high proportion of FM station loggings continues to be on the crowded commercial channels. Part of the reason, of course, may be that the growth in educational FM is a comparatively recent phenomenon, with government only now getting into the financing of public radio in a big way. More importantly, however, are several practical problems in DXing educational radio that should be analyzed with a view of closing the gap between one's DXing success on the commercial channels and one's success in tuning in what may well prove to be the most promising portion of the FM dial: the lowest four megahertz.

This time of year, during almost any kind of DX opening at all, is "prime" time to capture many of the educational stations that have eluded past efforts at picking them up. There are several types of educational FM station, each with its peculiar programming and operating characteristics. The principal types of educational FM stations are:

University and college stations. Often distinguishable by their call letters (WRUR, University of Rochester; WUOM, University of Michigan), these stations almost always operate evenings at least five days a week. Those with professional staffs (WKAR-FM East Lansing, MI, WHA-FM, WPKV, et al.) operate the year 'round irrespective of school vacations, although some are silent on either Saturday or Sunday. According to Corporation for Public Broadcasting data, the average schedule of stations in this general category is 12 hours per day (usually afternoons and evenings), seven days a week, 52 weeks a year.

Student-operated university and college stations (WAER Syracuse, NY, WRFW River Falls, WI) typically operate afternoons and very late into the night (or early morning), but may be silent during much of the summer, at spring break, Thanksgiving vacation and during the Christmas-New Year's period. Such stations are often easiest to receive after midnight, after the more powerful educational stations and networks may have left the air, during fall and spring tropo openings. A few of these stations (WAER; WSUP Platteville, WI) operate around-the-clock marathons covering one or two entire weekends during the school year, and thereby are, for short periods, true "clear channel" stations on FM.

Local boards of education are increasingly adding FM stations of their own. Again, the call letters will often identify such stations: WBOE Cleveland, WFBE Flint. The school board stations are often the toughest of all to receive by DXers, as they typically are only on the air during the hours schools are in session for instructional purposes only (example: Chicago's WBEZ operates 8:30 a. m. to 3:15 p. m. M-F during the school year). During the summer months when DX is the hottest almost all of these stations are silent. Similar are the high school stations, like WCSQ Central Square, NY, that operate into the evening, but have early sign-offs and almost never provide service during the productive (for DX) summer months or during the prime time for December skip -- Christmas vacation.

There are, of course, exceptions to these patterns. With the Corporation for Public Broadcasting now pumping money into educational radio (as well as TV), stations will soon be drastically increasing their schedules. National Public Radio, a national interconnected network of public radio stations, begins a two-hour live networking schedule April 1, 1971. The exact hours of this network are not certain as of this writing, but it is expected to be in the mornings, probably 8:30 to 10:30 EST, meaning that some 92 educational radio stations will be signing on early enough to carry this network live. Other stations will almost certainly join this network, which will emphasize news and public affairs, and the network will almost certainly expand, most probably into weekend morning slots. The CPB has, in fact, set a goal of 1976 by which most of the nation's educational radio stations should be on the air with an 18-hours-per-day schedule.

Another trend has been in the activation of new educational stations with the help of the federal government. This development has been most significant among educational TV stations seeking educational radio licenses. Applications for new high-powered educational FM stations have been filed by ETV concerns in Syracuse, Memphis, and Pittsburgh, while there were 52 joint radio-television licenses held by public broadcasting organizations as of July 1, 1970.

Indeed, the days of a wide-open 88-92 portion of the FM dial may be soon over, and now, during winter and spring openings, one can possibly tap some of the close-by, low-powered, limited-hours stations that, as time goes by, may be either phased out and supplanted by wide-coverage noncommercial stations, or eclipsed by them, making the DX that is today's nice challenge tomorrow's impossibility.

This fall was excellent for off-season skip, extending into FM. Should this trend continue through winter and spring, it would be a good idea to give priority to DXing the 88-92 MHz region. Whatever is picked up on those channels during educational radio's peak broadcasting periods may be of the never-to-be-heard-again variety, and will reward the DXer both in helping to build totals and in increasing the quality of his average loggings. Some 45 percent of all educational FM stations operate with only 10 watts of power. Ten watts is adequate for skip, but there is a correlation between low power and short operating hours. Few 10-watters broadcast 52 weeks a year, and maintain the long hours of the larger public radio stations. So your chances of getting a 10-watter by skip are reduced, not merely because of the lower power.

involved, but because of the fact that such stations usually aren't around when skip is at its hottest. Thus only two of my 53 educational stations are 10-watters (or 3.8 percent of the total), neither of which was received by means of skip.

Aside from physical and operational differences between commercial and educational FM stations, the programming of public radio is often such as to discourage attention, from the standpoint of the person spinning the dial looking for frequent mentions of call letters and station promotions. Fifty-minute lectures, hour-long speeches, complete operas (with interruptions only between acts) and symphonies demand uninterrupted presentation. Sometimes the required identification is at more than one-hour intervals, and this is perfectly legal, as the FCC and most listeners would prefer that a speech, play, opera or long classical or jazz work continues until its conclusion or logical interruption within the work itself. Classical music, once a mainstay of commercial FM, has been relegated to educational stations in more than one market. Virtually all classical music in Minneapolis and Columbus, OH, is now available mainly on educational stations, whereas formerly commercial stations had it. A knowledge of how classical music is programmed on radio and an appreciation of the music itself, I believe, is essential to success in DXing a maximum number of stations between 88 and 92 MHz.

Other programming on educational radio often resembles radio in the pre-TV era, where every 15 minutes or half hour something different is presented. Many of these programs emanate from National Educational Radio, a taped network service with headquarters in Washington, DC. A very few educational stations are "modern" formatted, with d-j announcers, short musical selections, and public service items instead of commercials. WOUB-FM Athens, Ohio, is an example of such a station, which happens to program country music, fulltime, with 50 kw vertical and 50 kw horizontal ERP, 91.3. On educational radio there may be a lot of amateurish chatter by students getting their first on-air experience in broadcasting to the other extreme where program experimentation involving unconventional formats, where thought and art that is controversial and even distasteful to a majority is deliberately sought out and broadcast, and where music forms you don't usually hear elsewhere, such as ethnic folk and dixieland jazz, reign supreme.

With more money going into public radio, larger educational FM stations will be joining the more than 400 now on the air. Existing stations will get power increases, sometimes to the chagrin of channel 6 TV stations that are always quick to holler about alleged interference from the educational FM band, which immediately abuts their channel. Before that happens and from now until May 20, when some of the school stations will be leaving the air for the summer, is the time to try, during "off-season" openings, for educational FM DX.

As a side-benefit, most educational stations are enthusiastic about listener mail received from outside their service areas, and promptly verify -- not with a perfunctory card, but with a warm, sincere letter. Many stations publish their own program schedules, and are quick to send DXers free guides to their programming (I have a file of program guides from over 50 educational FM stations). Even if you do not collect verifications, a note from a listener at a great distance can be treasured at an educational radio station, where students, faculty and staff alike may long remember the time when, as WFBE wrote me: ". . . our signal was heard 20 times the distance our engineers calculated we should be received."

DXing 88-92 MHz is a rewarding experience, and the goal of 10 percent of one's loggings on FM within that region is entirely reasonable.

Comments on December Editorial

THE EDITORIAL COMMENT ON THE HQ PAGE LAST MONTH WAS A PERSONAL OPINION OF THE PUBLISHER AND SHOULD NOT BE INTERPRETTED AS THE OFFICIAL OPINION OF W.T.F.D.A. NO OTHER STAFF MEMBER WAS CONSULTED AS TO HIS OPINION ON THE SUBJECT BUT I KNOW THERE ARE MANY PEOPLE WHO AGREE WITH ME, INSIDE AND OUTSIDE THE CLUB. THE FOLLOWING LETTER WAS RECEIVED FROM A W.T.F.D.A. MEMBER WHO IS EDITOR OF COMMUNICATIONS HANDBOOK AND POPULAR ELECTRONICS:

GENTLEMEN:

I HAVE JUST READ THE "BLAST" IN REFERENCE TO P.E. AND SEVERAL CONTEMPORARY HOBBY ELECTRONICS PUBLICATIONS. THE CONCEPT THAT ANY ONE--OR ALL--OF THESE HOBBY PUBLICATIONS ARE OUT TO "SCREW" THE SUBSCRIBER IS CHILDISHNESS BEYOND DESCRIPTION. UNDOUBTEDLY THE INDIVIDUAL WHO WROTE THE EDITORIAL IS FAR TOO IMMATURE TO REALIZE THAT HOBBY ELECTRONICS PUBLICATIONS--FOR SAKE OF THEIR OWN SURVIVAL--MUST CHANGE THEIR EDITORIAL OUTLOOK. ALL SHADES OF DXING, WHETHER SWL, TV, BCB, ETC., REPRESENT AN INSIGNIFICANT PORTION OF THE READERSHIP OF ANY ONE OF THESE PUBLICATIONS. HOWEVER, FOR THE PAST DECADE, THESE SAME MAGAZINES HAVE LITERALLY SUBSIDIZED THIS PORTION OF THE ELECTRONICS HOBBY, AND EVEN TODAY ALL OF US CONTINUE TO SHOW MORE INTEREST AND GOOD WILL TOWARD THE VARIOUS HOBBY CLUBS THAN QUITE OBVIOUSLY THE SAME CLUBS CAN RECIPROCATE IN KIND.

FRANKLY, I AM DISGUSTED BY THIS EDITORIAL. I BELIEVE EVERYONE IS ENTITLED TO HIS PERSONAL OPINION, BUT CERTAINLY NOT UNTIL THEY HAVE THE FACTS AND THE MATURITY TO EVALUATE THE INFORMATION. IT WOULD APPEAR TO ME THAT IF THE W.T.F.D.A. WANTED CONTINUED SUPPORT FROM THE VARIOUS HOBBY ELECTRONICS PUBLICATIONS, IT SHOULD ADOPT A CONSIDERABLY IMPROVED RATIONAL CONCEPT OF ITS OWN INTERESTS.

VERY TRULY YOURS,
OLIVER P. FERRELL
EDITOR

PUBLISHER'S NOTE:

I AM SURE NO ONE QUESTIONS THE RIGHT OF A PUBLISHER TO MAKE A PROFIT BY CHANGING ITS EDITORIAL POLICY TO REFLECT THE INTERESTS SHOWN A MAJORITY OF THE READERSHIP. I DO HOWEVER QUESTION THE POLICY OF SUDDENLY SPRINGING IT ON THE MEMBERSHIP/READERSHIP SUDDENLY AND WITH NO PRIOR NOTICE WITHOUT AN OFFER TO REFUND THE REMAINING PART OF THE SUBSCRIPTION IN LIEU OF A SUBSCRIPTION TO ANOTHER PUBLICATION WHICH THE READER MAY NOT WANT.

NOW THAT TWO OF US HAVE SOUNDED OFF, HOW ABOUT OPINIONS FROM MORE OF OUR READERS? FEW PEOPLE MAY BE INCLINED TO WRITE TO A MAGAZINE WITH PRAISE, AND I AM AS GUILTY AS ANYONE, BUT WHEN WE WRONGLY SCREWED WE ARE MORE INCLINED TO COMPLAIN. WE WANT TO HEAR ARGUMENTS FOR BOTH SIDES SO WRITE IN TODAY BEFORE YOU FORGET.

FSD

NOTES

I DON'T WISH TO APPEAR TO BE APOLOGIZING FOR LAST MONTH'S EDITORIAL BUT THE 1971 COMMUNICATIONS HANDBOOK IS NOW ON THE NEWSSTANDS. BESIDES THE USUAL COVERAGE OF HAM, AM, CB AND SHORTWAVE THERE ARE TWO ARTICLES FOR THE PUBLIC SAFETY BAND DXERS WHICH WE RECOMMEND. THE FIRST IS A 4-PAGE LISTING OF STATIONS, AND THE SECOND IS A 4-PAGE LISTING OF POLICE/FIRE MONITOR RECEIVERS. THERE IS ALSO A LISTING OF CLUBS IN WHICH WE ARE LISTED, AND WE GREATLY APPRECIATE IT. WE HAVE ALREADY RECEIVED SEVERAL INQUIRIES BECAUSE OF THE LISTING AND WE STILL RECEIVE OCCASIONAL INQUIRIES DUE TO LISTING A YEAR AGO!! FSD

EASTERN DX

Dave Pomeroy
KCSD-TV
1211 McGee St.
Kansas City, Mo. 64106

Deadline: January 15

The "surprise" skip opening of November 8 which Dennis Smith and Roger Brown raved about in the December VUD apparently didn't amount to much in the eastern United States as only one reporter has indicated any Es that evening and that was from Louisiana in the "western" area covered by this column. I was in Washington, D.C. on that evening and don't know if KC was affected--from reports I may have missed a good opening. The morning of the 8th did produce some tropo at a Pittsburgh motel with UHF's from Canton, Lorain, Youngstown, Akron, and Cleveland in clear on an indoor antenna. None were noted on the evening of the 7th. Enjoyed talking with Bob Cooper in Overland Park, Ks. at a recent CATV meeting and with Gary Olson at the NAEB in Washington, D.C.

Ronald J. LeBlanc, 2524 Arizona Dr., Marrero, Louisiana 70072

10-13 T 1800 WDIQ-2 Dozier,AL	10-23 T 2000 WDIQ-2 Dozier, AL
10-14 1930 WDIQ-2 (239 mi.)	11-7 E 1600 XEW-2 Mexico City
10-17 E 2130 WJBK-2 Detroit,MI	1600 UNID-2 Spanish
10-22 T 1800 KHOU-11 Houston,TX	to UNID-3 Spanish
to KPLC-7 Lake Charles	1800 UNID-5 Spanish
2400 KTRK-13 Houston(321)	1800 UNID-2,3,5 NNW
11-11 T 1700 KTHV-11 Little Rock	
KLFY-10 Lafayette,LA	to WTVM-9 Columbus,GA
KATC-3 Lafayette,LA	2400 WMAA-29 Jackson, MS
KALB-5 Alexandria,LA	WTOK-11 Meridian,MS
KTVE-10 El Dorado,AR	WDIQ-2 Dozier, AL
KHTV-39 Houston, TX	WSB-2 Atlanta, GA
WKRK-5 Mobile, AL	1730 WTOG-44 Tampa (488)
WEAR-3 Pensacola,FL	to WSRE-23 Pensacola,FL
11-13 1730 WTOG-44 Tampa (488)	1930 WGIQ-43 Louisville,AL
WALA-10 Mobile(138)	to WDIQ-2 Dozier,AL
KLNI-15 Lafayette,LA	WEIQ-42 Mobile,AL(138)
WLBT-3 Jackson,MS	
WLOX-13 Biloxi,MS	
WBRZ-2 Baton Rouge	"The Es opening on 11/8/70 was one
WAFB-9 Baton Rouge	of the strongest I've seen this
KPRC-2 Houston, TX	year but there was so much CCI I
KBMT-12 Beaumont,TX	couldn't identify anything." Total
WJTV-12 Jackson, MS	now 142 stations.

(Thanks for your regular and neat reports during 1970! dp)

Jeff Kadet (W3CRH), Box 732, Easton Hall, U.of Md.,College Park,Md.
11-22 GW WGSP-50 Washington, D.C.(new local, noticed testing)

The Eastern TV-DX column includes DXer's in the following states:

ALABAMA	KENTUCKY	NEW HAMPSHIRE	TENNESSEE
CONNECTICUT	LOUISIANA	NEW JERSEY	VIRGINIA
DELAWARE	MAINE	NEW YORK	VERMONT
D.C.	MARYLAND	NORTH CAROLINA	WEST VIRGINIA
FLORIDA	MASSACHUSETTS	RHODE ISLAND	
GEORGIA	MISSISSIPPI	SOUTH CAROLINA	

Joe Kureth, P.O. Box 572, Southern Pines, North Carolina 28387 (EST)
 10-2 T 0830 WCES-20 Wrens, GA 10-10 T 0758 WETA-26 Washington, DC
 10-3 0830 WJKS-17 Jacksonville 0800 WBOC-16 Salisbury, MD
 2330 WATU-26 Augusta, GA 0813 WBRE-28 Wilkes-Barre
 10-10 0730 WTAF-29 Phila.(400) 0815 WCVW-57 Richmond, VA
 0745 WHNB-30 N.Britain, CT Total now 127 with 9 new

Clint Day, 22 Cross St., Westerly, Rhode Island 02891 (EDT/EST)
 7-22*E 1630 KETS-2 Little Rock, AR 7-8 T 2200 WPHL-17 Philadelphia, PA
 10-6*T 2200 WVPT-51 Staunton, VA to WTAF-29 Philadelphia, PA
 2100 WXTV-41 Paterson, NJ 2400 WAVY-10 Portsmouth, VA
 *1969 to WNJU-47 Newark, NJ WVEC-13 Norfolk, VA
 2300 WEDW-49 Bridgeport, CT WHYY-12 Wilmington, DEL
 2200 WBRE-28 Scranton, PA 7-9 2100 WPHL-17 Philadelphia, PA
 2200 WNEP-16 Scranton, PA 7-14 2300 WPHL-17 "clear as a movie"
 2200 WLIW-21 Garden City, NY to WKBS-48 Philadelphia, PA
 (all NYC & Phila U's except 25,35) 2400 WTAF-29 Philadelphia, PA
 7-7 T 2200 WYAH-27 Portsmouth, VA 2330 WMPB-67 Baltimore, MD
 to WAVY-10 Portsmouth, VA 10-8 0300 WCAU-10 Philadelphia, PA
 2400 WVEC-13 Norfolk, VA 0315 WJZ-13 Baltimore, MD
 7-8 WYAH-27 Portsmouth, VA 0330 WNBC-4 New York, NY

(Glad to get your report. Hope they will be more frequent in 1971.
 Clint's antenna system is a little unique in that it consists of
 aluminum foil strips and aluminum wire folded dipoles taped to the
 ceiling and "custom-oriented." Receiver is a 19" RCA portable with
 a BTU-25 UHF converter. dp.)

a.n.a.r.c.

edxc.

h.g.

ANARC AND EDXC HAVE BOTH ACQUIRED NEW EXECUTIVES IN RECENT MONTHS. THE EUROPEAN DX COUNCIL HAS MOVED OUT OF SCANDINAVIA FOR THE FIRST TIME WITH ELECTION OF ALAN THOMPSON, 16 ENA AVE., GLAMORGAN, NEATH, ENGLAND. ASSN OF NORTH AMERICAN RADIO CLUBS IS NOW IN KANSAS WITH THE ELECTION OF WENDEL CRAIGHEAD, 2110 WEST 74TH TERRACE, PRAIRIE VILLAGE, KANSAS 66208, USA..

BOTH ORGANIZATIONS ARE SEEKING A LOCATION FOR THEIR 1971 CONVENTIONS, BUT EDXC IS NEAR A FINAL VOTE ALREADY SELECTING FROM WEST BERLIN, GREAT BRITAIN, AND FINLAND. ANARC DOESN'T EVEN HAVE AN OFFER AS YET; IT HAS BEEN FELT IN THE PAST THAT A CLUB ALREADY PLANNING A CONVENTION OF ITS OWN CAN INCLUDE AN ANARC CONVENTION IN CONJUNCTION WITH ITS OWN FOR MUCH LESS EFFORT THAN WOULD BE EXPENDED IN PLANNING TWO SEPARATE CONVENTIONS. THERE ARE IN EFFECT TWO COMMITTEES WORKING SIDE BY SIDE WITH SOME MUTUAL FACETS AND SOME INDEPENDENT FACETS. EUROPE HAS NEVER HAD ANY PROBLEM FINDING WILLING HOSTS AS WE DO IN NORTH AMERICA, WHICH AGAIN PROVES THAT EUROPEANS ARE NOT ONLY MORE AVID DXERS BUT MORE AVID CONVENTION GOERS. IT'S A PITY THIS IS TRUE BECAUSE SO MUCH FUN CAN BE HAD AT A CONVENTION THAT IT'S A WONDER MORE PEOPLE DON'T ATTEND THEM. BCBERS AND THE TV/FM CULT ARE THE AVID CONVENTION-GOERS IN NORTH AMERICA BUT THERE IS A NOTICABLE LAXITY OF INTEREST ON THE PART OF SWLS WHO ARE PROBABLY THE LARGEST SINGLE GROUP OF DXERS IN THE WORLD.

VHF-UHF DIGEST IS THE OFFICIAL MONTHLY PUBLICATION OF THE WORLDWIDE TV-FM DX ASSN. PUBLISHED THE LAST WEEK OF EACH MONTH, THE VUD CIRCULATED MONTHLY TO MEMBERS, AND MAILED AT MILWAUKEE, WIS. WHICH IS W.T.F.D.A. HQ, TOO. PLEASE INFORM HQ PROMPTLY OF ANY CHANGE OF ADDRESS. IF NOT INFORMED IN TIME, YOUR VUD WILL BE DESTROYED BY THE POST OFFICE IF MAILED THIRD CLASS WHICH IS NOT FORWARDABLE.

TO PREVENT THE LOSS OF YOUR VUD IN THIS MANNER, WE SUGGEST YOU SEND HQ 20¢ TO MAIL THE ISSUE FIRST CLASS, WHICH IS FORWARDABLE.

MEMBERSHIP RATES:

\$4.50 ONE YEAR USA, CANADA
 \$8.50 TWO YEARS

(ADD \$2 PER YEAR FOR FIRST CLASS MAILING.)

VHF RADIO

Pat Dyer
327 Solar Drive
San Antonio, Texas 78227
Deadline: 15th of month

For the second straight month now the column has a number of contributors.

Rick Stein, 456 Barrymore Place, North Brunswick, NJ 08902 has been very active using mostly a Lafayette P-175 with hi-low band antenna on roof. Some loggings with a Regency Hi-Lo Scanner. EST used.

Oct 28:	1312, KOB 246 d	Spokane, WA-p
1600, KMA 628 e	1424, KMF 964 e	Los Angeles-c
Oct 29:	1438, KMA 628 b	Temple City, CA-cp
1100, KMF 964 e	1502, KOD 572 ?	?
1140, KKK 647 a	1528, KFX 250 ?	?
KKC 748 a	1535, KOY 919 ?	?
1240, KIZ 648 a	Nov 15:	
1241, KOA 534 d	1315, KOB 282 d	Wallace, MT-p
1243, KOB 246 d	1316, KOA 616 d	Thompson, MT-p
1244, KOB 418 d	1320, KOB 622 d	Conrad, MT-cp
1248, KOA 966 d	1322, KMA 628 f	Los Angeles-cp
1250, KOG 975 d	1330, KOA 216 d	Great Falls, MT-cp
1252, KOG 973 d	1331, KOH 209 d	Pocatello, ID-p
1257, ? d	1335, KCS 562 ?	?
1258, KOH 209 d	1337, KOH 907 d	Butte, MT-cp
Nov 1:	? d	Pocatello, ID-cp
1251, KMA 628 c	1340, KOH 267 d	Am. Falls, ID-cp
1313, KGD 612 ?	1345, KCN 847 d	Blackfoot, ID-p
1509, KMA 628 c	1347, KOA 966 d	Helena, MT-p
1520, KMA 628 c	1348, KOB 207 d	Gt. Falls, MT-p
1605, KMA 628 c	1350, KOH 285 d	Boise, ID-p
1618, ? d	1351, ? d	Caldwell, ID-p
1619, KOA 525 d	1406, KOE 538 d	Dillon, MT-cp
1624, KOG 982 d	1409, KME 375? d	Sausalito, CA
KOG 991 d	1411, KOB 732 d	Newport, WA-cp
KOG 969? d	1413, KOG 973 d	Burley, ID-cp
1629, KOH 218 d	Nov 18:	
1632, KOG 986 d	1300, KMF 964 e	Los Angeles-c
1636, KOH 230 d	Nov 25:	
KOG 974 d	1220, NØEPO, NØTVI,	
KOH 285 d	NØPHG 40/ SF ?, CA-m	
1637, KOF 925 d	1313, KMF 964 e	Los Angeles-c
KOB 279 d	1317, KOB 418 d	Davenport, WA-cp
1638, KOB 246 d	1318, KOG 982 d	Twin Falls, ID-cp
KOA 534 d	KOG 986 d	Gooding, ID-cp
1639, KOB 651 d	1319, KOA 534 d	Spokane, WA-cp
1640, KOB 207 d	1327, KRV 248 g	Kingman, AZ-sp
KOE 204 d	1330, KMA 628 bc	Los Angeles-cp
1641, KOB 418 d	Nov 28:	
1648, KOA 398 d	1258, KMA 628 bc	Los Angeles-cp
1656, KOI 861 d	1301, KOE 538 d	Dillon, MT-p
? d	? d	Pocatello, ID-cp
1657, ? d	1309, KOB 330 d	Colville, WA-p
1658, KOH 603 d	1339, KOH 230 d	Emmett, ID-cp
Nov 5:	1351, KOB 406 d	Ritzville, WA-p
1048, KMA 628 e	1359, KOH 218 d	Caldwell, ID-cp
1235, KOA 534 d	1401, KOB 418 d	Davenport, WA-cp

1405, KOB 846 d Libby, MT-p	1314, ? d Bozeman, MT-p
1406, KME 375? d Sausalito, CA	KOH 230 d Emmett, ID-cp
1408, KGH 228 d? ?	1317, KCS 562 d? ?
1409, KOE 271 d Columbia Falls, MT-p	1319, KOH 209 d Pocatello, ID-p
<u>Dec 5:</u>	1320, ? d Am. Falls, ID-p
1240, KOE 931 d? ?	1332, KCN 847 d Blackfoot, ID-p
1248, KGH 228 d? ?	1336, KMF 964 e Los Angeles-c
1258, KOH 218 d Caldwell, ID-cp	1337, ? d Missoula, MT-p
KOG 622? d Helena, MT-cp	KOA 722 d Missoula, MT-cp
1302, KMA 628 bc Los Angeles, CA-cp	1346, KOG 973 d Burley, ID-cp
1304, KOI 861 d Mtn Home, ID-cp	1347, KOG 982 d Twin Falls, ID-cp

MHz code after call--a: 37.18; b: 39.24; c: 39.28; d: 39.82; e: 39.98; f: 39.48; g: 39.18. For other codes, see end-of-column list.

Morrie Goldman, WA9RAQ, 5818 N. Christiana Ave., Chicago, IL 60645
noted good DX with an S-94 and PH-6 Yagi. KMD 342 is daily fare. CST

Nov 1: 1014-1150, ORTF Ch 1 (France), new, 41.25 MHz
BBC-1, 41.5 MHz, occasional
1020-1030, peak of signals, ORTF fairly strong, slight fading

Hank Holbrook, 7211 Chestnut Street, Chevy Chase, MD 20015 offers
some more QSLed DX from his Fair Haven, MD cottage. GMT used.

<u>7-28:</u>	-	KGA 611	154.19	Washington, DC (fire, 300 w)
<u>8-24:</u>	1354,	KKA 982	42.02	Hattiesburg, MS (state police, 330 w)
<u>10-31:</u>	-	KOB 282	39.82	Wallace, ID (police)
	1710,	KOH 224	39.82	Payette, ID (sheriff, 100 w)
	1721,	KCN 847	39.82	Blackfoot, ID (police, 60 w)
	1733,	KOA 525	39.82	Moscow, ID (police, 300 w)
	1754,	KOB 622	39.82	Conrad, MT (sheriff, 100 w)
<u>11-7:</u>	0200,	KRG 767	33.90	Easton, MD (county fire, 100 w)
<u>11-14:</u>	1736,	KOA 534	39.82	Spokane, WA (sheriff)
	1740,	KOB 416	39.82	Davenport, WA (sheriff)
	1745,	KOA 966	39.82	Helena, MT (sheriff, 100 w)

Ferdinand Dombrowski, 1311 West Madison Street, Milwaukee WI 53204
noted a good bit of DX this period. All frequencies in MHz, CST used.

<u>Oct 31:</u> 40-rtty and buzz tone	<u>10:</u> Eugene Long Beach	<u>17:</u> KMD 342 Long Bch, 1145
<u>Nov 1:</u> same and KMD 342 Long Beach KJU 806 43.6-Spanish	<u>11:</u> Long Beach KMD 342	<u>18:</u> KMD 342 Long Beach
<u>Nov 2:</u> KMD 342 Long Beach KUA 300	<u>13:</u> 39-Sp., 1235 Long Bch, 1340 KMD 342 40-buzz 41.5, 1635	<u>20:</u> same <u>22:</u> same and WWA 335
<u>Nov 4:</u> KMD 342 Long Beach	<u>14:</u> 41-Sp., 1000 KMD 342, 1235	<u>23:</u> KMD 342, 1210 Long Beach
<u>Nov 5:</u> same and 40-buzz tone 45.5-VOA harmonic	<u>15:</u> KMD 342 Long Bch, 1100 KOA 796	<u>24:</u> same and KUA 300
<u>Nov 6:</u> KMD 342 Long Beach	<u>16:</u> KMD 342, 1025 Long Beach	<u>25:</u> KMD 342 WWA 335 Long Bch, 1035
<u>Nov 8:</u> Long Beach	<u>17:</u> Oakland, 1133	<u>26:</u> WWA 335, 1215
<u>Nov 9:</u> 40-buzz tone		<u>27:</u> KMD 342 Long Bch, 1015
		<u>28:</u> same and WWA 335

28: KSC 645
 29: KMD 342, 1230
 WWA 335
 D2: Long Bch, 1220
 3: KMD 342, 1115
 5: Long Beach
 KMD 342, 1145

6: Long Bch, 1100
 KMD 342, 1200
 OK City, 1300
 7: KMD 342, 1107
 Long Bch, 1117
 8: KMD 342, 1445
 9: KMD 342, 1100

9: Long Bch, 1200
 10: same and
 41 and 48-CA ?
 11: ORTF, 41.25, 1048
 (France)

XX

Now, my loggings. Allied A-2586 with built-in whip and 30 feet of indoor random wire. All F2 unless noted otherwise. CST used. New

N16: 0850, Scranton
 0855, Wilkes-Barre
 0900, KGA 361
 KGE 831
17: 1045, KIM 905 (Es)
 1055, KCC 482
 1100, KCA 695
 KOA 748
 1128, KCD 697
 1140, KCC 266
 1300, KCF 801
 1345, KCB 897
 1400, KCA 378
 1430, KOP 303
 1500, KEJ 451
18: 1550, KOP 303
 1600, KOA 748
20: 0930, KCC 482
 1600, KOA 748
 1800, KIM 905 (Es)
 1900, KIY 508 (Es)
 KIQ 510 (Es)
 1915, KIQ 999 (Es)
 2020, KOE 257 (Es)
22: 1055, KCC 482
 KGT 577
 1105, KCC 266
 1200, KCJ 829
 1205, KCB 897
 1245, Scranton
 EGC 226
 1255, KGC 223
 1300, KGD 273
 1302, KGD 214
 1329, KCD 244
 1330, KGE 831
 1400, KOA 748
 KRG 767
 1430, KGC 334
24: 1130, KCA 378
 1135, KCC 482
 1232, KOA 748
 1325, KOP 303
 KCC 266
 1340, KOA 796
 KCB 897
25: 1000, WWA 335
26: 1030, KCC 266

26: 1030, KCC 482
 1100, KCC 748
 1300, KCA 378
27: 1035, Scranton
 Wilkes-Barre
 1040, KOP 303
 1050, KCC 266
 1055, KGB 827
 1100, KGT 577
 KGC 524
 KGD 273
 KOA 748
 1200, KOA 796
 1355, KCC 482
28: 0930, KCC 482
 1100, KCC 266
 KGB 857
 1300, KCB 897
 1355, WWA 335
29: 1055, Scranton
 1100, KCC 266
 1155, KMD 342
 WWA 335
30: 0900, KCC 482
D3: 1255, KCC 482
 2040, Mex Cy (Es)
4: 0855, KCC 482
 0900, KCA 695
 KGE 831
 1720, KME 438 (Es)
 1815, KFL 936 (Es)
 1820, Mex Cy (Es)
 2040, KCC 881 (Es)
 2220, EIM 905 (Es)
5: 1230, Long Bc (Es)
 1835, Mex Cy (Es)
6: 1110, KCC 482
 1125, KCC 266
 1145, Scranton
 1148, KCA 647
 1155, Wilkes-Barre
 1205, KGC 223
 1214, KCB 897
 1333, KCE 803
 1344, KCA 394
 1400, KGD 273
 1430, KOP 303

6: 1500, KCA 695
 KGD 214
 1540, KLX 592
 KEJ 451
 KIF 650 (Es)
7: 0850, KCC 266
 KCC 482
 0858, KRG 767
 KGE 831
 0900, KGD 214
 KGC 524
 0920, Scranton
8: 1110, KCC 482
 1200, KOA 748
 1228, KOA 796
 1245, WWA 335
 1257, KCA 591
 1322, KOP 303
 1456, KCF 582
 1500, KCA 695
 KCA 706
 KOK 418
 1530, Eugene
 1552, KCD 244
9: 0930, KOP 303
10: 1050, KGC 223
 1055, KCC 482
 1100, KGC 524
 1135, KCB 897
 1158, KCA 378
 1205, KCC 266
 1225, Scranton
 1230, Wilkes-Barre
 1300, KGA 361
 KGD 273
 1305, Albany
 1315, KDK 766
 1400, KGE 831
 1406, New York
 1423, KOP 303
 1442, KGT 577
 1500, KEJ 451
 1504, KCA 591
 1540, KCE 587
 1600, KCA 695
11: 0930, KCC 482
12: 1035, KCC 482

