

# VHF-UHF DIGEST

1973  
MARCH

In this issue...

IDENTIFYING

**NON-ENGLISH DX**



?



# **publishers' notes...**

**WTFDA HEADQUARTERS, P.O. BOX 163, DEERFIELD, IL 60015 USA**

**MORE CONVENTION NEWS...** Plans for the 1973 WTFDA convention continue to shape up well. This year's convention should unquestionably be the largest ever! Dunkirk, New York provides a very ideal location, as it is near to a large percentage of our members. You might also make a wise decision to combine your convention trip with a longer vacation. Western New York State is a most scenic area, in addition to being on the doorstep of many vacation areas. WTFDA's convention is scheduled for August 2nd, 3rd, 4th and 5th.

**COMING SOON...** Keep your eyes open for the first announcement of the release of WTFDA's TV STATION GUIDE. The publication will include maps arranged by channel, of all TV stations in North and Central America. The GUIDE will also feature the most up-to-date listing of TV stations to be found anywhere!

**BOB'S TEK NOTES CONFUSION...** There has been some confusion involving "Bob's Tek Notes" recently. Last December, Bob started a series about adjacent channel interference. Part I of that series was followed by no column, and this month Bob begins a new topic. As nearly as we can tell, Part II was lost in the mail. So, this month we have a new (and interesting) topic, and hopefully, next month we'll have a re-write of Part II of the adjacent channel feature.

**BREAKING THE LANGUAGE BARRIER...** This month, Richard Wood begins Part I of a two part article, especially designed for us non-linguists. The article outlines ways of identifying stations broadcasting in Spanish, French and Portuguese. Richard has an unbelievable linguistic background. In addition to having taught language at many universities throughout the world, Richard can converse in more languages than we can name!

**MORE RESPONSE TO HELP...** We now have a forth typing volunteer. He is Warren Bird of Durham, North Carolina. Another artist (making three) has also joined our ranks. Sharon Pavey, Dave Egan's girl friend, shows us some bedroom humor on page 35. Member, Jim Hayes, prepared this month's cover, and Wanda Prus, a cartoon inspired by the spring season.

**FEBRUARY Es!!!** Yes, it is true... Es continued through January, and well into February! Glenn Hauser and Ron Le Blanc did especially well. When you start reading this month's report columns, you'll start to realize that those weren't just little openings either! The unusual winter action was most pronounced in the southern reporting areas. Virtually no reports were received by Roger Brown; hence there is no Central TV DX column this month. It would also seem that there was a lack of northern FM DX, as no column was received from Roger Winsor either.

**MORE FM REPORT CONTROVERSY...** We have still not yet adopted a standardized FM report format, or policy. This is a very important topic and we urge you to send your comments to your FM DX editor. In addition to the questions we posed in January, what are your thoughts on the following: Limiting each reporter to a given amount of space each month (perhaps 1 page); Conversion of all reports (FM) to a paragraph style; Elimination of describing ads heard, and other non-format, non-schedule programming information.



# WTFDA MAILBOX



TERRY COLGAN  
P.O. Box 18268  
Serna Station  
San Antonio, TX 78218

It's not too late to make a New Year's resolution to help WTFDA in 1973. Just take a look at page 3 of the October '72 VUD, decide what you can do for the Club, inform HQ, and then do it!

HQ reports these new members:

Warren Bird	Durham, NC	thru FM Atlas
Joe R. Brenner	Kitchener, ON	sponsor unknown
Paul Caltagirone	Ithaca, NY	thru FM Atlas
Gregg A. Calkin	Ottawa, ON	thru Glenn Hauser
Charles Conner	New Orleans, LA	sponsor unknown
Ronald L. Fenton	Kempton, IL	thru Commo World
Paul Flatt	Minneapolis, MN	thru CADCO
Charles E. Hermann Jr.	Fox River Grove, IL	thru Commo Hdbk
Gerald Katz	Northvale, NJ	thru CADCO
Paul Maritato	Elizabeth, NJ	thru Commo World
Joseph W. McLaughlin	Baltimore, MD	thru MWDXC
Dick Nelson	Simi Valley, CA	sponsor unknown
Larry Payne	Fairbanks, AK	Welcome!
Steve Richfield	Seattle, WA	thru Commo World
J. Rodberg	Raleigh, NC	sponsor unknown
Keith Schildt	Arlington Hgts, IL	sponsor unknown
Ken Simon	West Palm Bch, FL	thru Richard Clark
Edward C. Tafel	Syracuse, NY	sponsor unknown
James Vernon	Palacios, TX	thru Commo World
Clarence G. White	Warrensburg, MO	sponsor unknown
Michael Wimer 879	New Castle, PA	sponsor unknown
Paul D. Wyrick	Indianapolis, IN	thru Poptronics

Now, the news!!!

Gregg Calkin reports his primary interest as the SWBC with a Drake SW4A and a Hallicrafters S-108. Gregg's interest in TV DX began in 1963 and has been strengthened by visits with Glenn Hauser and a few interesting catches while in Mexico.

Ken Simon has logged 17 states (16 verified) and seven countries (five QSL'd) on the TV channels; with only one UHF and two FM loggings.

Ellensburg, WA DXer Craig Clements tunes the TV-FM bands with a Symphonic three-inch TV receiver, a Sony FM rx, a 5-el yagi for the FM band, and a Radio Shack all-band TV yagi.

William Dickerman, Williamsport, PA has logged about 80 FM stations on his Zenith R7000Y-1 since February 1971. Bill's most distant catch is WJR, 96.3 MHz.

TV is the first DX choice of Jeff Curtis, Toledo, OH, with FM the second, and MW third. Jeff uses either a Zenith or GE TV hooked to a Channel Master antenna and rotator atop a 40-foot tower and a 30-foot stationary antenna. For FM, he uses an Electroponic receiver, and for MW, a Westinghouse 3-band 14-tr. radio.

Besides holding ham license W9LMC, John Hathaway listens to TV, FM, and VHF radio from his Champaign, IL shack. John's equipment consists of RCA and Motorola TV-receivers, a Ross three-band (VHF-low, VHF-high, and aero) portable, and a Zenith FM receiver.

Texan, James Vernon takes time out from his studies at the University of Houston to DX TV and BCB. (Jim, if you're ever in S.A., give me a call at 655-9531. -tc)

Dunkirk, MD DXer, Tom Yingling reports the following equipment in his shack: Sony 7-inch portable b&w TV, Zenith 20-inch color TV, Lafayette LT-725 tuner, Lafayette 200 VHF receiver, Allied 60 el. LP TV antenna and a 20 el. FM yagi (both antennas on rotators).

Recent additions to Ye Ed's shack include a Heathkit GR-98 aero receiver, and a noise blanker built from plans in the October 1968 Poptronics.

73 til next month,

*Terry*

# T V HONDURAS

Travel, research,  
newspaper acquisition,  
and photography by: **G. A. CALKIN**



There are three stations or networks currently operating in Tegucigalpa, two of which have sister stations or repeaters in other areas:

**TELESISTEMA HONDUREÑO, S.A.**

Address: Tegucigalpa Stations:  
Channel A3 - Tegucigalpa ("3TV" photo at left)  
Channel A7 - San Pedro Sula

**TELEDIFUSORA DE HONDURAS, S.A.**

Address: Lomas Tepeyac, Apto. 848, Tegucigalpa, D.C. Cable Address: Movicentro Telephones: 2-1114, 2-1115, 2-1116 Station: Channel A11 - Tegucigalpa Note: Frequently identifies on slide as "Tele-América" or "Tele-Once"

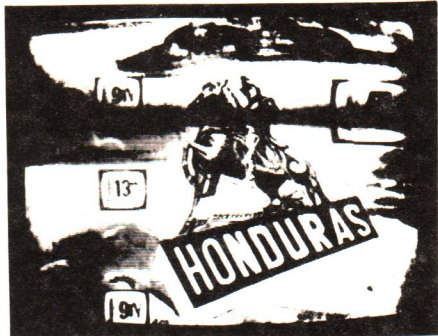
Programming is dominated by US and British shows and movies on all channels. All are dubbed in Spanish, not subtitled as in México.

**COMPANIA TELEVISORA HONDUREÑA, S.A.**

Address: Colonia Florencia, Carretera Suyapa, Aptl Postal 734, Tegucigalpa, D.C.  
Cable Address: TELEVISION  
Telephones: 2-5514, 2-5515, 2-1475  
Stations: Ch. A5 - Tegucigalpa (HRTG-TV, photo at right)  
Ch. A9 - Francisco Morazán (estado)  
Ch. A9 - Yoro (estado)  
Ch. A13 - San Pedro Sula (HRYA-TV)

Note: Reportedly an ABC affiliate.

Below are programme summaries for all three networks on a typical July Thursday. Emblems are network symbols which normally appear over the ID slide.



Jueves 13 de Julio de 1972



**CANAL REGIONAL**

**PROGRAMACION DE**



DIA: JUEVES 13 DE JULIO DE 1972

**JUEVES**

11:45 Patrón  
12:00 Muñequitos  
12:30 Los Héroes de Hoggan  
1:00 Deportilandia  
1:30 Cine de la Tarde  
3:00 Cierre  
4:30 Patrón  
4:45 Documental  
5:00 El Mundo de los Niños  
6:00 La Sombra de un Pecado  
6:30 Noticiero Eco con: Freddy Cuevas B.  
7:00 Vista 72 con: Moisés Ulloa Duarte  
7:30 Los Locos Adams  
8:00 Matrimonio a la Francesa  
8:30 Dr. Bea Casey  
9:30 Largo Metraje  
11:05 Cine

11:20 Apertura de Audición  
11:25 Así es Honduras  
11:30 Muñequitos  
12:00 Panorama Infantil  
12:45 Pequeñeces  
1:15 Jueves Musical  
1:45 Cierre de Audición  
4:30 Apertura de Audición  
4:30 El Super Agente 86  
5:00 La Cruz de Marisa Cruces  
6:00 Muñequitos  
6:30 Popeye y sus Amigos  
7:00 El Show del Loco Valdés  
7:30 Natacha  
8:30 Sublime Redención  
9:00 El Gran Chaparral  
10:00 Los Campeones  
11:00 Cierre de Audición

**JUEVES**

3:30 Serie de Episodios  
4:00 Tele Cine  
5:00 Muñequitos  
5:30 Los Tres Chiflados  
6:00 De Turno con la Angustia  
6:30 PANDILLA DE LOS OSOS  
REVOLTOSOS  
7:00 Mi Mujer es Hechicera  
7:30 Ironside  
8:30 Centro Médico  
9:30 El Barón  
10:30 Acción en el Tres  
11:00 Cierre de Audición

11:00 a.m. Patrón de Ajustes  
11:30 a.m. Muñequitos  
11:45 a.m. Club del Hogar  
12:15 p.m. El Show del 7  
1:30 p.m. Tele Cine  
2:00 p.m. Tele Cine  
3:00 p.m. Tele Cine  
4:30 p.m. Tele Cine  
5:00 p.m. Los Osos Revoltosos  
6:00 p.m. El Maravilloso Mundo de la Cocina  
6:30 p.m. Tele Diario  
7:00 p.m. Patrulla Juvenil  
8:00 p.m. Hombres de Ley  
8:30 p.m. Los Atrevidos  
9:30 p.m. Hilo de Vida  
10:30 p.m. Especiales del 7  
11:00 p.m. Cierre de Audición.

composition by G. Hauser



# IDENTIFYING

# Non-English

# DX

by Richard E. Wood

As for the SW DX-er, the most useful languages for the VHF-UHF DX-er are Spanish, French and Portuguese. But owing to the distance of even north-coast Brazil (not the most developed part, with fewer VHF stations), Portuguese will rarely be heard by the U.S. WFD A'er, except as an immigrant language on stations in the New Bedford MA area. French may be received on TV from Haiti, Martinique and Guadeloupe; but current lists show no FM operation there yet, nor TV or FM in St. Pierre et Miquelon. WFD A'ers, then, will hear FF mainly from Canada, from New England border stations, and from Louisiana in its Cajun variety. Let us examine Spanish first.

**SPANISH.** The noble language of Castille needs no introduction. Its maximally differentiated system of 5 cardinal vowels (a, e, i, o, u), without length distinction, makes it particularly suitable for radio use, intelligible under QRM and QRN conditions which turn English with its diphthongs and triphthongs incomprehensible. The SS alphabet is like that of EE, though most letters have different names; but ch, ll and ñ count as separate letters; e.g., ch is the 4th. letter of the SS alphabet. It is essential to write the tilde on ñ, e.g. when addressing a report "Estimados señores"; the ~ is as much a part of ñ as the dot of i.

A word is stressed on the last syllable if it ends in a consonant other than s or n (which occur in final position most often as plural markers on nouns/adjectives and verbs, respectively). If it ends in a vowel, it is stressed on the next-to-last syllable. All exceptions are marked with an acute accent. Thus: radiodifusión, estación, end-stressed and ending in -n; Hernández, César Chávez (both horribly mispronounced by most U.S. network announcers in a pseudo-FF accent), penultimate-stressed and ending in a regular consonant.

Adjectives agree for number and gender:

	sg.		plu.	
masc.	estimado señor	"dear sir"	estimados señores	"dear sirs"
fem.	estimada señora	"dear madam"	estimadas señoras	"dear madams"

SS has maintained high unity among educated speakers; more than, say, EE or PP. A common radio announcer's dialect has been developed. It can be heard on SW from most major stations. I recommend familiarization through listening to the VoA (6190 kHz, evenings), R. Habana Cuba (11760, 11930, 15300 kHz, etc. etc. all day); XERMX México (15385 kHz all day), etc.

Station ID is sometimes by phrases like "Esta es..." (this is); "Aquí..." (here [is]); "Sintonizan (con)..." (you are tuned to), "Está(n) escuchando ..." (you are listening to). However, on FM and TV such introductory phrases may not be used; ID may be in more conversational, casual style, in the middle of a series of commercials, or in passing by a DJ. Call letters are never used in Cuba, very rarely in Guatemala and Panamá; but fairly often in Mexico and some other countries; perhaps in incomplete or fanciful form; e.g. from Honduras' HRN I have heard "la N [ene] más grande de Honduras" (the biggest N in Honduras) as well as the full "HRN" [ache erre ene]. An equally positive ID is the frequently announced nombre (name, sometimes equated with the U.S. "slogan", but actually the official name); La Chica Musical, Fórmula Melódica (Mex.), R. Rebelde (Cuba). These names should be given in any realistic station list. In Cuba there is frequent reference to the government agency Instituto Cubano de Radiodifusión, ICR [i ce erre].

A reception report in SS is a necessity for smaller stns in Latin America; some big city stns may be reported in EE, but a SS report will draw a better response. A bilingual, SS-FF (plus EE) report form - which I wrote - is available from Gilfer Associates (P.O. Box 239, Park Ridge, NJ 07656) in pads. It could be used for FM and utilities; with some adaptation, for TV. Of course, a personal letter in fluent SS always draws the best response!



Station ID by accent is for the expert, not the beginner; it is easier with non-professional speakers who may be heard in interviews, on-the-air phone calls, etc. The Cuban/Caribbean/North Coast S. American accent is notable.

Easier clues are local currencies; quetzales in Guatemala, lempiras in Honduras, colones in both El Salvador and Costa Rica, córdobas in Nicaragua, balboas in Panamá, bolívares in Venezuela, pesos in every other country likely to be heard, and, oh yes, dólares en Puerto Rico. Almanacs and atlases will also guide you in the political subdivisions of each country - estados in Mexico, departamentos in Colombia, etc. Certain government institutions crop up in newscasts - e.g. Mexico has Secretarías (e.g. de Educación Pública) while other countries have Ministerios. All Mexican stations (FM, AM, SW) carry La Hora Nacional del Gobierno Mexicano, a patriotic dramatic program, at 10 p.m. Sunday evenings (CST). On Cuban stns you are bound to hear reference to "Territorio Libre en América"; "comités para la defensa de la Revolución"; "el primer ministro Comandante Fidel Castro", also called "máximo líder de la Revolución", etc. Watch for marathon all-day Castro speeches, often in an increasingly hoarse voice. Musical styles are a useful guide to ID, too, but go beyond the scope of this article. However, the very basic breakdown is between tropical and non-tropical rhythms; Mexican mariachis, charros, norteña music; Guatemalan marimba tunes; Argentine polkas; the plaintive Ecuadorian-Peruvian pipe music; all these and many more are non-tropical. All Afro-Cuban rhythms including merengues (Dominican Rep.), cumbias (Colombian coast) and all styles with an insistent drum rhythm are tropical. But tropical music is often played even in Mexico; station format lists, as they are gradually created for FM's in Mexico and points south, will distinguish "tropical"; "Latin romantic"; "marimba"; "norteña folklore"; "novelas and poetry" and other distinctive formats just as they are distinguished in the U.S. format categories of "Country Gospel", "EL", "MoR"; "Soul", etc.

Brief elementary SS lessons in EE are carried on HCJB Quito's show "Passport", beamed to NA at 8:10 p.m. EST Mon. & Thu. on 9560, 11745 and 15115 kHz, SW.

FRENCH. You have all heard the tongue of Voltaire and Hugo, too. If you need practice, in the U.S. North try CJBC Toronto 860 kHz, CBF Montréal 690 kHz and everywhere a host of SW stns including Paris on 21585 and 21620 kHz mornings, 15120 kHz afternoons; CBC 21595 kHz days; etc. The nasal vowels and stress pattern which sounds to EE ears like accentuation of the last syllable of most words are easily recognized. In standard Parisian FF, but not in non-standard Canadian and Louisiana dialects, the typical r formed at the back of the throat (uvular r) is heard; in Canada and LA, except from trained CBC announcers and speakers on big city (Montreal, Quebec) commercial stns, the r is trilled at the tongue-tip as in Scots. Canadian vowels sound unlike those of Paris - on and an tend to sound like in. Canadian stressed a, e.g. in Canada, Montréal, is lengthened to the sound of Eng. jaw or all. Should you ever doubt whether an unid. signal is from Canada or from still French territories such as Martinique, watch for the EE words in Canada, rather numerous in sports reports, for instance, and pronounced as in North American EE, though in the middle of a running FF text.

Local stn ID on the CBC FF Network is preceded by "Ici Radio-Canada" and then goes straight into the call and location (sometimes the province, rather than city). Other ID formulae are "Vous écoutez..." (you are listening to), "Vous êtes à l'écoute de..." (same); "Votre poste..." (your station,). Learn to recognize the FF alphabet - too long to give here - particularly such letters as e, g, h, j, w, y, z which have names quite different from those of EE (or SS).

Words for "station" are "poste" or "station"; "broadcast" is "émission"; "broadcasting" is "radiodiffusion"; the CBC is the "Société Radio-Canada".

Reports in FF are strongly recommended for independent FFC stns and to Haiti, Guadeloupe, etc. To CBC stns a FF report is not really necessary; technical personnel is often of EE background even at stns where programming is in FF. Indeed, some FF stns in Western Canada are relays of programming from Montreal, without local FFC personnel. Phrases often heard in newscasts include "Le Premier Ministre, monsieur Trudeau"; "le gouvernement fédéral" or "...canadien" or "québécois"; "le parti progressiste conservateur" or "...libéral" or "... québécois" or "...créditiste"; "le gouvernement du Québec"; "l'Assemblée Nationale"; etc.

NEXT MONTH: BRAZILIAN PORTUGUESE.

*Richard E. Wood*



# Bob's Tek-Notes

by Robert B. Cooper, Jr.

## DX and NO DX ... IN THE FLORIDA KEYS

Those who know me well have observed from time to time that I have a continuing love affair with long haul, reliable tropo. My all-too-brief stint in the U.S. Virgin Islands several years back left me with the distinct impression that over the water paths in the semi-tropics are totally unlike anything that we have the opportunity to experience here on the immediate North American continent. And during the past several years, with my involvement with CADCO, I have had the repeated opportunity to work with people who make it their business to install and operate long-haul over the water TV receiving systems all along the coastal line of the Gulf of Mexico.

During the first two weeks in January, a business trip was combined with a vacation for the family down into the "Lower Keys"; in and around Key West, Florida.

For the un-initiated, the over-the-water tropo in the Gulf region is very predictable; and reliable. Several CADCO equipment users along the Mexican side of the Gulf have 80-90 percent reliable systems in the 350-400 mile range; pulling signals over paths that we normally only associate with tropo band openings.

In the Keys, Marathon (in the mid-Keys) and Key West (at the far end of the lower-Keys) have cable TV service. The rest of the island chain is totally dependent upon off-the-air reception. The Miami to Key West path is approximately 145 miles long. About 1/3rd of this path length passes over the south Florida swamps; the rest skirts in and out of the Key chain proper. The Keys head as much west as south as they leave the eastern tip of Florida proper, so that Key West is virtually due south of the Tampa-St. Pete area, on the west coast of Florida. And Miami is north east by east.

Miami channels 4,7 and 10 are picked up off-the-air at Key Largo, just off the Florida mainland, by the Marathon and Key West CATV systems; and microwaved by the telephone company down to the respective CATV systems.

As you leave the Florida mainland and enter the Keys at Key Largo, you begin to notice typical fringe area antennas; 40-60 feet above ground. At Key Largo, on a typical home antenna system, channel 2 and 4 Miami are noisy; channel 6 is excellent; channels 7 and 10 vary up and down but average good. The distance is approximately 50 miles to Miami; but much less to channel 6 at Princeton, Florida. WTVJ-4 is noisy because of their peculiar antenna pattern; while channel 2 suffers from co-channel from ICR-2 in Habana; 150 miles to the south/southwest.

By the time you approach Marathon, antennas have become very large; and even a deep fringe antenna produces noisy signals on 2,4,7, and 10; 6 still remains noise free. Co-channel on channel 2 becomes a considerable problem here and very few people in Marathon and further down the Keys ever watch educational channel 2 Miami. There are many stacked deep fringe antennas in Marathon; such as two bay 3617 arrays and so on. Most antennas have pre-amps on them, although a local FM station (100.3) overloads all but the best pre-amps. About half of the antennas are directed (with rotors) towards Fort Myers on 11 and there are a few 7 foot UHF dishes here for WBBH-20 Fort Myers. (WBBH carried the blacked out in-Miami Miami Dolphin football games this past fall.) Most of the antenna installations in Marathon are put in with care and they show the signs of professionals at work; not the typical do-it-yourself installation.



## BOB'S TEK NOTES - February

As you leave Marathon and head further down-Keys to the southwest, television reception from Miami becomes progressively more difficult. Between co-channel on 2 and 6 and the low average input levels from Miami, reception can only be described as poor.

The Key West CATV system is one of the oldest in the nation; and it has never been rebuilt or updated in its 20 plus years of existence. The microwave feed into the system (and the newer Marathon system) is first rate. But what the cable company does to the signals from that point on can only be described as inferior. Consequently, while off-the-air reception is lousy, CATV reception is not much better. It is stronger, but the color phase shift, ghosts and other distribution system problems make it far from satisfactory. The Key West system barely serves the city limits, and like many cities, the city limits extend far beyond the municipal boundaries as far as housing is concerned.

Our CADCO man in the area is Winn Spurlin, who operates Electro-Vision Antenna Systems at Stock Island just northeast of Key West proper. Winn has spent the past year or more trying to educate people in the non-cable areas that network programming is network programming; and that reception from Fort Myers and Tampa/St. Pete is just the same as Miami as far as program content; only better and more reliable as far as reception goes. A custom CADCO AmpliFilter for low band (2-6) and high band (7-13) was designed for Winn for the Keys, and with it he has been producing the finest off-the-air TV in the lower Keys for the past six months.

The Miami path, as noted, is about 145 miles to Key West. And as noted, the first portion of this path is across the south Florida swamp land. In fact, if you lay out a "path profile" from the transmitters of 2, 4, and 10 Miami, you find that their signals graze across at ground level for several miles just before the over water path on down the Keys begins. This creates a very unusual fading situation for the Miami signals from Marathon on down; the signals have a short, choppy fade that averages 25-35 db per fade. When there is poor (cold front) weather present, the "short-choppy fade" rate that is always present (except during heavy inversions) is modulated by a longer time base slow, rolling fade.

The Fort Myers (to the Keys) and Tampa/St. Pete (to the Keys) paths, on the other hand, and virtually all-over-water from the transmitter sites. The average distance to Fort Myers from the Keys is very similar to the distance to Miami. Signals, however, average 10-12 db higher from Fort Myers and the short, choppy fade is almost non-existent. And the Tampa/St. Pete signals, over a path that averages 250 miles, are at about the same level as the Miami signals, or 2-3 db higher; even though the path is more than 100 miles longer. Again, the transmitters are close to the water and the signals travel over land for only a few miles before they are greeted by the overwater path to the south.

In the lower Keys, Fort Myers 20 (150 miles) is snowfree 90 percent of the time or better; being bothered only by a very occasional short, choppy fade of less than 1/2 second duration, or now and again by the meandering cold front that moves in across the region from the northwest.

VUD contributor Robert Frantz of Fort Lauderdale has installed a very nice channel 20 receiving system at the Sportsmen Lodge in Key West, for the Dolphin football games. Using a horizontal stack of four yagi antennas, a pre-amplifier and a channel 20 to 9 converter, Key West football fans have been able to follow the Dolphin home football games this season. Good job Bob!

In the Lower Keys, the Cubans are a particular problem. Since Key West is but 90 miles from Habana, and Haban now has channels 2 and 6 in operation, channels 2 and 6 from Miami are of course not exactly CCI free. Channel 2 suffers the most, although either ICR-2 or ICR-6 are snowfree when you rotate even a modest antenna towards Habana.

At Winn Spurlin's shop, we had a deep fringe antenna at 130 feet to play with on VHF and



a seven foot dish at 135 feet. With an assortment of pre-amplifiers (both VHF and low noise UHF), the only ingredient missing was sufficient time to really find out what the over-water paths did produce.

First to the Cubans:

- (1) ICR-TV on channel 2 is usually zero-beat to Miami 2. This makes it 2 zero, as we previously suspected. It does jump on occasion, to something around 8 kc offset; undoubtedly due to transmitter oscillator problems.
- (2) ICR-TV on channel 6 is usually a 10 kHz beat against WCIX; although there are times when it jumps to zero beat. In the former (10 kHz beat) case, it is either 6- or 6 + (Miami being 6 zero). When it jumps, it ends up pretty close to Miami. The audio on 6 ICR-TV is outstanding, producing full quieting when the video is not even showing a beat against the WCIX signal! (On the other hand, WCIX audio seemed low all through the Keys)
- (3) ICR-6 repeats on channel 9, and channel 9 peaks up east of the Habana transmitters. Channel 9 has an excellent signal in the lower Keys, and is zero beat to WFTV-9 Orlando; which makes it 9 zero offset. This station is apparently in Matanzas, east of Habana. Years ago it was an affiliate of channel 4 Habana (no longer on the air ).
- (4) ICR-6 also repeats on channel 12, and channel 12 peaks up 10-15 degrees west of the Habana heading. It is assumed that this is the old CMBJ-12 Habana transmitter, now located on the Isle de Pines off the Cuban coast to the south. This signal is weaker than the others noted, and on occasion the video modulation is very washed out. However, it is either very washed out, or very good; there is no in between state for it. The offset on this transmitter appears to be 12 zero.
- (5) ICR-2 repeats on channel 13, and channel 13 peaks up 15-20 degrees west of Habana. This station has an excellent signal in the Keys, and it appears to be a 13 zero offset since it has a 10 kHz beat with WTVT-13 (13 minus). I would place its location at Pinar del Rio, west of Habana.
- (6) ICR-2 was also seen once with a strong signal on channel 11, peaking towards Matanzas. No offset information was available on this one since it was off the air more then it was on, although when on, it had a strong signal in Key West.

No other CCI from Cuba was noted; and it is pre-sumed that these 6 stations make up most if not all of the regular TV fare for the Habana and west region of Cuba.

ICR-2 and ICR-6 run test patterns through most of the early and late afternoon periods. Channel 6 goes to U.S. (old Disney) cartoons around 1700 hours, complete with the original English audio. The programming on channels 2 and 6 never apparently runs parallel, except when Castro is making a speech. We did note a Russian language movie, with spanish sub-titles, on channel 6 one evening, and a French language movie on channel 2 without sub-titles another evening. This procedure may not be regular, but it could explain some of the "strange" language reports on Es that have accumulated through the years. They could turn out to be Cubans after all of the fuss that has been created!

There was no sign of the Rebalde Network stations on channels 3 and 5 that some have reported through the years.

At Winn's shop, we spent a little time (too little!) checking out UHF and VHF towards the "states" also.

On UHF, some of the more interesting observations were as follows:



- (A) Channel 20 Gainesville (330 miles) was loggable at least 80 percent of the time, even through closer WBBH-20.
- (B) Channel 17 Jacksonville (385 miles) is present 80 percent of the time, even though it comes down the land mass of Florida most of the path.
- (C) Closer UHF's (WXLN-40, WTOG-44) are snowfree 99 percent of the time, even though 200-250 miles away.
- (D) Channel 14 in Pelham, Georgia (450 miles) is the most distant regular UHF (ie. 80 % of the time and better). It is a mostly overwater path also.
- (E) Channel 26 in NEW ORLEANS (635 miles) is logged so often (like 50% of the time) it cannot be counted as "DX". Likewise, Mobile, and other southern Alabama, peninsula of Florida UHF's are in a good part of the time.

On VHF, WESH-2, WDBO-6, WJXT-4, WFGA-12, WUFT-5 are always in there with CCI at least; and 25 % of the time or better they have good signals. WEAR-3 and WJGH-7 are detectable with CCI at least 80% of the time, although they are 520 miles. New Orleans VHF stations have regular late night movie watchers in the Keys at 635 miles ... we ran into one fellow who subscribes to the New Orleans edition of TV GUIDE so that he can compare the movies from there with his local (so to speak) movie fare.

Conditions quit over the Gulf only when a cold front moves through; then it is a 8-14 hour span when nothing moves across the front. If the front stops moving south before it is located between the Keys and St. Pete, for example, signals build very strong and hold until the front dissipates, and starts back north as a warm front.

I had the poor luck of not having any tropo while I was there. Everything was normal (including one dandy cold front that shut it all down). There was some Es noted; around 1800-1930 on January 4th KTBS-3 Shreveport (about 800 miles) was logged along with bunches of CCI on 2-5. I was handicapped by being stuck with a fixed 3617 directed at Miami at the time, which placed the Es off to the side of the antenna. Again, with the same fixed antenna on Miami, between 1800 and 2000 on the 13th, XHTV-4, XHGC-5 and lots of CCI on 2 and 3 was noted off of the back of the 3617 antenna on Es (about 1,000 miles).

Note that most of these paths are north/south in nature. Chances are that equivalent distances on east-west paths would not be quite so productive. Key West is around 400 miles from Merida on the Yucatan peninsula in Mexico, but there was no definite sign of the Merida signals during the periods I looked for them on tropo.

For those along the Gulf coast who might want to try for some Cubans on tropo, channels 9 and 13 look to be the best bet. 11 and 12 would be the second best bets.

The Keys should be a dandy place (at least the lower Keys) to spend some time during the annual March/April tropo sessions. They are also within single hop Es distance of many of the northern South American countries, and most of central America. One week of average conditions should produce around 100 stations logged from here; and with some tropo to work with, the total could climb to 200 or better very shortly. With no local stations at all, including low band, Es reception has got to be something else from down there.

If you have the opportunity to spend some time in the Keys, drop in at ElectroVision on Stock Island and ask Winn Spurlin to let you play with the antenna installation there. You will probably never again be happy with "DX conditions" back at home .... wherever home may be!

73, Bob Cooper, Jr. *Bob*

Time to renew? A change to 1st class will bring your VUD faster!



Conducted by:

David T. Janowiak  
3661 South 46 Street  
Greenfield, Wisc.  
53220

## RECEIVER QUESTIONS AND COMMENTS

RECEIVER EVALUATION, SCREEN SIZE

Quite often, I receive requests from W7FDM members to evaluate a particular TV receiver (RX) or pick the best from among several RXs owned by members. First, without model numbers and a schematic, an evaluation is virtually impossible. But, among top of the line RXs lately -- especially B & W -- there isn't really a lot of difference. Second, since the condition of a RX (assuming it is used) can vary, my evaluation might not coincide with what a DXer discovers for himself.

Of particular note, however, is the mistaken notion by some members that screen size is related to RX performance. Generally, screen size has nothing to do with performance. However, RX manufacturers often sell their top of the line chassis only in a large screen. This is particularly true of color RXs. Since B & W RXs receive little attention, manufacturers may use a single chassis only (with slight modifications) for all B & W RXs regardless of screen size.

If you have access to several RXs, try each on VHF and UHF. Check for selectivity and sensitivity, etc. Perhaps one works better on VHF, another on UHF. Or, maybe resolution is better on one. In the absence of technical know-how or the means of operating a RX at peak efficiency, comparison is really all you can do.

RECEIVER SENSITIVITY WHEN USED WITH LOW NOISE PREAMPS

The quality and condition of the RX used in your DX system is, obviously, very important. Poor sensitivity, lousy selectivity, and finicky sync circuits will ruin most chances for critical DX, even if a well-designed and installed antenna system is used.

When state-of-the-art VHF and UHF preamps \* are used ahead of the RX, however, the importance of the RX diminishes somewhat. For example, a preamp using an amplifying device with lower noise figure than that used as RF amp in the RX will primarily determine the "system" (antenna, T-line, preamp, RX) noise figure and produce improved system sensitivity. Obviously, this does nothing to the RX selectivity and sync circuit operation, except that the sync circuits would stabilize with much less antenna signal.

Ironically, many DXers who use well-designed preamps also use quality Conrac or Zenith RXs. This is another case of the rich getting rich ...etc. These DXers usually have the dollars and interest needed to strengthen every link in their DX system. A RX, a fair antenna, better RX, and finally good preamps and better antenna system seem to be a common progression.

However, when a DXer buys, builds, or has built good preamps for VHF and UHF \* and adds decent LB, HB, and UHF antennas, his need for a \$400 Conrac or used, hot Zenith chassis in top shape diminishes. Good preamps literally bring to life average RXs. For example, at UHF, the CMAU added to any system with a 7 foot Pimco dish will greatly improve the system sensitivity, undoubtedly due to a less than efficient internal tuner or outdoor converter. Several converters tried "behind" my own 7' dish and CMAU "head-end" really wouldn't change the net result.

I should caution readers against using any preamp. Commercial preamps usually lag the state-of-the-art by several years. For those of you who cannot obtain the quality type of preamps mentioned, concentrate on the RX and antennas. If you have a good antenna and amp system, though, don't expect dramatic improvements in system sensitivity by obtaining a quality RX.

\* Tuneable VHF preamps using JFET transistors such as the 2N5397, E300, and U310 are used by several DXers today. These preamps are either the CADCO version or similar types built as a result of success of Bob Cooper, Jerry Pulice, and the writer with multiple stage devices. At UHF, the Blender Tongue CMAU, in areas free of strong locals, is most popular.



# FCC TV NEWS

Deadline: Don Ruland, editor  
4448 68th Place  
15th of mo. Kenosha, WI 53140  
MARCH 1973

## APPLICATIONS FOR NEW STATIONS

Jacksonville, FL--(ch 4) 100-kw vis., 20-kw aur., 932' AAT. Note:  
Three individual applications mutually exclusive with  
existing station WJXT-4 Jacksonville.  
Lakeland, FL--(ch 32) 206.34-kw max. & 133.7-kw hor. vis., 41.3-kw  
max. & 26.7-kw hor. aur., 742' AAT.

## CHANGES GRANTED IN STATIONS OPERATING

Los Angeles, CA--(ch 34) KMEX-TV granted CP 1-16-73 for change to  
500-kw max. & 251-kw hor. vis., 100-kw max. & 50.1-kw hor. aur.  
Lafayette, LA--(ch 10) KLPY-TV granted license 1-26-73 for change to  
302-kw vis., 44.7-kw aur.  
St. Louis, MO--(ch 9) ETV) KETC granted license 1-26-73 for change to  
295-kw vis., 58.9-kw aur.  
Great Falls, MT--(ch 3) KRTV granted license 1-26-73 for change to  
87.1-kw vis., 10-kw aur.  
Youngstown, OH--(ch 27) WKBN-TV granted license 1-26-73 for change to  
1000-kw max. & 457-kw hor. vis., 100-kw max. & 45.7 kw hor.aur.  
Charlotte Amalie, VI--(ch 10) WENB-TV granted PTA 1-26-73 for 52.5-kw  
vis., 5.2-kw aur.

## CHANGES REQUESTED IN STATIONS OPERATING

Hartford, CT--(ch 24 ETV) WEDH requests mod. of CP for change to 808-kw  
max. & 680-kw hor. vis., 82-kw max. & 69-kw hor. aur.  
Tampa-St. Petersburg, FL--(ch 8) WFLA-TV requests mod. of license for  
change to 30.2-kw aur.

## MODIFICATION OF CONSTRUCTION PERMITS REQUESTED

Panama City, FL--(ch 13) WTBE requests mod. of CP for 275-kw vis.,  
55-kw aur., 1402' AAT.  
Boston, MA--(ch 68) WQTV requests mod. of CP for 723-kw max. & 395-kw  
hor. vis., 184-kw max. & 100-kw hor. aur., 726' AAT.

## CONSTRUCTION PERMITS CANCELLED (DELETE CALL LETTERS)

Mt. Vernon, IL--(ch 13) WIEW-TV.  
Rochester, NY--(ch 31) WPHY.

## REQUESTS FOR CALL LETTERS

Dallas-Ft. Worth, TX--(ch 33) KBFI-TV requests KXTX-TV.

## CHANGE IN CALL LETTERS

Allen Park, MI--(ch 20) WXON, WXON-TV (formerly WJMY).

## TV STATE OF THE INDUSTRY (AS OF 2-5-73)

Stations operating: Grand total: 926 (603 VHF; 323 UHF).  
Commercial: 696 (510 VHF; 186 UHF). ETV: 230 (93 VHF; 137 UHF).  
Permittees not yet on the air: Grand total: 86 (13 VHF; 73 UHF).  
Commercial: 69 (12 VHF; 57 UHF). ETV: 17 (1 VHF; 16 UHF).  
Applications pending for new stations: Grand total: 71 (33 VHF; 38 UHF).  
Commercial: 48 (28 VHF; 20 UHF). ETV: 23 (5 VHF; 18 UHF).  
Translator stations: Licensed: 2741 (1879 VHF; 862 UHF). Permittees:  
204 (111 VHF; 93 UHF). Applications: 77 (50 VHF; 27 UHF).

As you may have noticed, the information in the FCC Columns (both TV and FM) is often times considerably "after-the-fact". You can help us correct this, and fill a very big void, by relaying any pertinent data you come across directly to the editor. This could include new stations seen, stations off the air, power or antenna changes, or any information you feel would be of interest to your fellow DX enthusiasts.

73's,

Don



# FCC FM NEWS

Bruce F. Elving, Editor  
1646 N. Prospect Avenue - Apt. 414  
Milwaukee WI 53202

New stereo stations include **WDOW-FM 97.7 Dowagiac MI** and **WRCP-FM 104.5 Philadelphia, and now on to other news from the FCC and from interested readers.**

## New Construction Permits

Travis Air Force Base CA \*91.5 10 [Bruce Rummel solves the Mammoth Lakes mystery of last month (see below), but does anybody know where Travis AFB is?]  
Americus GA 97.7 3000 h,v; 300'  
Lake Forest IL \*89.9 10 Lake Forest College  
Normal IL 96.7 3000 h,v; 300'  
Louisville KY 103.9 2350 h,v; 332'  
Monroe LA \*88.7 10 [See story about this station in last month's column, comments by Mike Dornier, Jr.]  
Presque Isle ME \*91.1 10  
Muskegon Heights MI 101.7 3000 h,v; 155'  
Port Huron MI \*91.9 WORW 10 [Replaces former WFCL, which was deleted]  
Leland MS 94.3 3000 h,v; 175'  
Southern Pines NC WIOZ  
107.1 3000 h,v; 300'  
Galion OH 102.3 3000 h,v; 144'  
Central Point OR \*91.7 10  
Nanticoke PA 92.1 670 h,v; 550'  
Georgetown SC 106.3 3000 h,v; 130'  
Teasdale UT K237AE 95.3 10 [To relay KSL-FM 100.3 Salt Lake City UT]  
Pennington Gap VA 105.5 3000 -58'  
Newport WA \*91.5 10  
Fort Gay WV \*89.9 10 [This is the station referred to in Robert Eddy's comments in the Sept., 1972, column.]

Front Royal VA WFFV 99.3 [not on 103.9 where formerly listed] 3000 300'  
Olympia WA KAOS \*89.3 10 Evergreen State Coll.  
Spokane WA KSCF \*91.9 10

## Changes In Facilities

Mobile AL WAGB-FM 97.5 to 440' (100000 h,v)  
Sierra Vista AZ KSWA 100.9 3000 h, 2660 v (-46)  
San Francisco CA KRON-FM 96.5 33000 h,v; 1410'  
Washington DC WASH 97.1 22500 h,v; 690'  
Miami FL WMYQ 96.3 98000 h,v; 794'  
Atlanta GA WABE \*90.1 30000 h,v (410')  
Fulton KY WFUL-FM 99.3 685, 150'  
Monticello KY WFLW-FM 101.7 710 h,v; 560'  
St. Louis MO KSLQ 98.1 100000 h,v; 540'  
Missoula MT KUFM \*89.1 to -980' (4300 h)  
Vineland NJ WDWL-FM 92.1 3000 h,v; 250'  
Bryan OH WBNO-FM 100.9 3000 h,v (154'): This station I have never heard nor seen reported in DX columns. Tell me about it!  
Yellow Springs OH WYSD \*91.5 400' (2400 h)  
Tulsa OK KBJH 98.5 660' (100000 h,v)  
Charleston SC WSCI \*89.3 540' (100000 h,v)  
Columbia SC WRRY to 364' (ERP presumably reduced from 3000, but exact figure unknown until I check with FCC)  
Dallas TX WFAA-FM 97.9 99000 h,v; 1680'  
Fort Worth TX KSCS [Calls changed from WBAP-FM] 96.3 to 99000 h,v (1440')  
Roanoke VA WLRJ 92.3 10000 h,v; -57' [That's 100 kw, not 100 kw, so place your comma carefully!]

## Dual-City Identifications Granted

Granite City IL WGNU-FM 106.5 to Granite City IL-Saint Louis MO  
Bethesda MD WJMD 94.7 to Bethesda MD-Washington DC

## Back on the Air

Clare MI WCRM-FM 95.3 3000 160' [Interim operating authority granted]

Richfield MN WRAH 101.3 10 [former WPBC-FM] 100000, 225', according to Variety, which claims WRAH programs the hits of the past two years.

## Off The Air

Milwaukee WI WYMS \*88.9, contradicting last month's report. Last minute FCC and technical delays responsible, according to Director Bob Suchy, who says WYMS will operate 9 am to 3:30 pm Mon.-Fri.

## Call Letter Changes and Assignments

Mobile AL 94.9 WKSJ-FM (from WKSJ)  
Montgomery AL \*90.7 WHCR  
Tucson AZ 94.9 KAIR-FM (from KAYN)  
Fayetteville AR \*88.9 KUAF  
Elk Grove CA \*90.1 KEGH  
Gilroy CA 94.3 KSNR (from KPER)  
Los Angeles CA 100.3 KIQG (from KFOX-FM; changes to rock)  
Northridge CA \*88.5 KCSN (KEDC-FM)  
Santa Rosa CA 99.3 KRVF-FM  
Danbury CT \*91.7 WXCJ W. CT St. Col.  
Hamden CT \*88.7 WQAQ Quinnipiac College  
Hartford CT \*88.3 WQTQ Bd. of Ed.  
Ocala FL 93.7 WUFZ (WMOF-FM; adds \$2)  
Plano IL 107.1 WSPY  
Indianapolis IN 94.7 WFBB (was WFBM-FM; changes to rock)  
Webster City IA 95.9 KWQC-FM (was KWAW, then silent for some two years; returns to the air?)  
Pikeville KY \*90.7 WQOZ  
Gorham ME \*91.1 WMPG  
Bay City MI \*91.3 WCHW  
Houston MO 99.3 KSCM-FM (KBCT-FM)  
Butte MT \*91.5 KMSM \$2)  
Claremont NH 106.1 WECM (WTSV-FM; adds)  
Utica NY 98.7 WIBQ (not WIBQ-FM)  
Bridgeton NC 106.5 WSLF (WVWB-FM)  
Burlington-Graham NC 101.1 WNCC (not WBBB-FM)  
Charlotte NC 95.1 WROQ (WRNA)  
Rockingham NC \*91.1 WRSH  
Wanchese NC 95.3 WOBH-FM  
Bellevue OH 92.1 WNRR  
Findlay OH \*88.3 WLFC  
Ironton OH 107.1 WITO  
Bethlehem PA \*91.3 WLVR  
" Adds \$2: 95.1 WEVZ (WGPFA-FM)  
Johnson City TN \*89.5 WETS  
Memphis TN 105.9 WEZI (WHBQ-FM)  
Oak City UT 107.1 K296AB (not K296AA; rebroadcasts KALL-FM 94.1 Salt Lake City UT)  
Rural Wayne County UT 107.1 K296AA (not K296AB; KALL-FM relay)  
Roanoke VA \*90.1 WVWR-FM

**Deletions**  
IN 103.9 [See Louisville]  
Suring WI WHMD \*91.5 As predicted in this column in Dec., deleted with the move of WHKW \*89.3 to Green Bay WI.

## On the Air and DX Ready!

Arcata CA KAHS \*91.5 10  
Canton NJ WNNN 101.7 3000 275' mono  
Highland Park NJ WVHP \*90.3 10  
Alfred NY WETD \*91.3 10  
Paul Smiths NY WPSA \*89.1 10  
Plainview NY WPOB \*88.5 10  
Pittsburgh PA WQED-FM \*89.3 43000 500' \$2  
Houston TX KTSU \*90.9 10

Bruce Rummel, Fleetwood PA, says Mammoth Lakes CA is at 37° 37' 35" N latitude and 118° 58' 53" W longitude in Mono County, 26 miles south of Mono Lake. Then I looked closer and found it's about 35 miles NW of Bishop CA. WKDU \*91.7 Phila., WFDU \*89.1 Teaneck have V.

Mike Collins, Stratford CT, reports WATR-FM 92.5 Waterbury CT is to go \$ when it goes full power (16000 h,v; 790'), and will seek WENU calls with a beautiful music format. "Regarding stations shutting off their pilot lights, very few in this area do it now (for mono records or news, that is). In CT, only WTIC-FM 96.5 Hartford does it for news, network, talk or sports programs among commercial stations (not sure of the noncommercial stations). In New York City WNYC-FM 93.9, WQXR-FM 96.3, WBAI 99.5 and WRVR 106.7 shut off their stereo pilot lights for monaural programs, while WNBC-FM does so during the all-night simulcast of WNBC (AM) and for network shows such as Monitor. On Long Island all the commercial band \$ stations leave their lights on continuously." Mike also reports that WRNW 107.1 Mount Kisco NY is now progressive rock, 6 am-Midnight and still has not moved to Briarcliff Manor; it was off for 4-5 days in January, "and I thought they were in the process of moving. . . they are also still mono."



Mike Collins also comments on the spiraling value of FM stations, pointing out that in 1969 WBNR (AM) Beacon NY purchased WSPK 104.7 Poughkeepsie for \$125,000. Three years later (1972), WBNR's competitor, WGNY Newburgh NY, is paying \$400,000 for WFFM 103.1 Newburgh, a Class A 3000 watts station covering only a 23 mile radius. WSPK, on the other hand, has a signal covering all the Hudson Valley from Albany to New York city. The new tower of WRCH-FM New Britain CT is up and lighted, Mike reports, but it is still not in operation; WRCH-FM will operate with 20000 h,v; from Rattlesnake Mountain, 720'. "Regarding the item on 88.7, Hamden is only about 5 miles from New Haven, and is the location of WPLR's transmitter (licensed to New Haven), so if a construction permit has been granted to a Hamden college, 88.7 will be shared three ways (with the two in New Haven). One of these according to local papers is WNHU 88.7 the University of New Haven. WNNR \*88.1 Monroe CT, billed as 'New England's first high school FM station' during the summer, still has not begun operation. It had been scheduled to begin in September or October of 1972." Mike also sends a list of stations he knows of broadcasting in matrix four-channel, which I am not publishing, since the entire field of 4-channel is so fast-changing, and there is so much confusion surrounding the system(s) [including indictments heard from industry sources that the matrix system of FM broadcasting is "fake"] that I prefer not to devote space to 4-channel broadcasting in this column where space is a premium. ERROR LAST MONTH: KBHB-FM 93.1 Sturgis SD is 1060', not 60' - a computer error just like in Vane Jones!

Mike's letter concerning stations that shut off their stereo pilot when conducting monophonic broadcasts prompted me to do some quick checking. Here's a list of stations I discovered that shut off the \$ pilot: Chicago: WFMT 98.7, WXRT 93.1 [I just recently discovered that WXRT has resumed \$ broadcasting after several years without it, but their \$ is confined to after 10 p. m. and a rock show; not their usual Spanish language format], WMAQ-FM 101.1, WDAI 94.7, WMBI-FM \*90.1; Elmwood Park IL WXF 105.9; Milwaukee WI WBGS 102.9; WPMR 96.5; Zion IL WKZN 96.9; all eight (no longer nine) stations of the "Wisconsin Educational Radio Network" [note that the old Wisconsin State Broadcasting Service has been abandoned, and is no longer given as the network cue]. I really wonder how much \$ there is in stations like WMAQ-FM and WQFM 93.3 Milwaukee which have an "old gold" rock format; seems most of the records they play are ancient 45s and are not \$. WBEZ \*91.5 Chicago never has \$, although their program guide lists \$. Al Ellis reports WUOM, WVGR in MI were to go \$. Although I have seen the \$ light on these stations from time to time, no true \$ programming was heard; it was definitely monophonic. Apparently, they need more time to iron out bugs. The sale of WEFM 99.5 Chicago is to go to the courts, so Zenith is still the operator of this pioneer FM station with an excellent signal. The sale of WKFM 103.5 Chicago to RKO General has been approved, so expect some programming and call letter changes here. KMOD 97.5 Tulsa has applied to be sold to the owners of KGNW (AM) that city, rather than to Herb Gross, who's had his share of troubles with the FCC in connection with his ownership interest in WGGR 105.1 Duluth MN.

Andy Bolin, Charleston IL, reports that WEZI 105.9 Memphis [former WHBQ-FM] is now easy-listening MOR, WFMQ 94.7 Indianapolis drops MOR for 1952-62 rock, automated, WLVE 94.9 Baraboo has dropped rock for MOR; WKLO-FM 99.7 Louisville KY is now \$ at times during their gospel programming, WBNQ 101.5\$ Bloomington IL is now 24 hours of "solid gold" (off Tuesday mornings), and WEIC-FM in his home town now is only 19 hours a day duplicating WEIC (AM) fulltime, except Sunday nights (still \$, I assume).

Robert Eddy, Newport OH, reports since WCDR \*90.1 Cedarville OH moved to \*90.3, WMBI-FM Chicago has become a regular there—his most distant regular at about 400 miles. WQED-FM \*89.3 Pittsburgh has a good signal at about 110 miles. Adela Ossowski, 412 E. 12 Street, Erie PA, would like to hear from anyone knowing on what date WQED-FM came on the air. "This is the only Pittsburgh FM station that I can get with some regularity. Pittsburgh is only 135 miles from Erie, but because of the hills in between, I only heard Pittsburgh maybe once or twice. I can only get WQED-FM when WERG \*89.1 Erie is not on the air. WERG is only a 10-watt station, but I live only one mile from it."

Joseph Smith, Jr., Johnson City NY, notes that WKOP-FM 99.1 Binghamton NY is not \$ and has no intention of going \$. WEBO-FM 101.7 Owego NY plans to go \$ soon. WHRW \*90.9 Binghamton will go from 10 to 250 watts and \$ this summer. WMRV 105.5 Endicott has the same MOR sound as WRFM New York (is WMRV \$ yet?). WNB-FM 98.1 Binghamton wants new call letters WQYT and will drop ABC-FM news.

Other news: KWHP 97.7 Edmond OK is now \$ (rock); and Worcester's Bill Grant says WWEL (ex WHIL-FM) 107.9 Medford MA is now \$ with MOR. FM ATLAS readers write that WSLI-FM 96.3 Jackson MS is only classical two hours a day. WKYX-FM 93.3 Paducah KY's new owners discovered that the station did not meet certain FCC standards, the station was shut down for a short period, but everything is O.K. now. Al Ellis and Allen Rockford both commented on the poor \$ of NY state's Christian Broadcasting Network. 73, 73



Ronald J. LeBlanc 2524 Arizona Drive Marrero, Louisiana 70072 (CST)

"Believe it or not, ten days of skip have been noted here since my last report. Skip in on Dec. 13,14,17,19,20 and Jan. 1,4,8,12,14. Tropo down for this time of year. Last good opening was in October. Am now in the process of building a five stage high-band pre-amp. Henry McCoy and I have already completed his and we hope to have mine finished before the next good tropo opening."

12-13 Es	1712 WMAR-2	Baltimore	4332R1006	12-25 Tr	2208 WAAY-31	Huntsville	3345R0375
	1800 KTCA-2	St. Paul, MN	3232R1052	12-28	1730 KHTV-39	Houston, TX	4454R0321
	1818 KDKA-2	Pittsburgh	3322R0930		1745 KTRK-13	Houston, TX	3333R0321
	1841 WMT-2	Cedar Rapids, IA	0841		2210 WTOG-44	St. Pete, FL	3445R0488
	1900 KUSD-2	Vermillion, SD	0969		2220 WXL-40	Sarasota, FL	3335R0503
12-14	1824 KNOP-2	N. Platte, NE	2122R0983	12-29	WCOV-20, WYEA-38, WSFA-12, WBMG-42	AM	
	1830 KUSD-2	Vermillion	2022R0969	1-1 Es	1725 UNID-2	North	
12-17	1530 CKCO-2	Warton, Ont	4332R1125	1-3 Tr	2200 WBMG-42	Birmingham	4455R0320
12-19	1800 KDLO-3	Watertown SD	3322R1112		2201 WIIQ-41	Demopolis, AL	5555R0220
	1810 KORN-5	Mitchell, SD	4433R1055		2230 WMSL-48	Decatur, AL	3335R0375
	1830 KUSD-2	Vermillion	3222R0969		2300 WAAY-31	Huntsville	3345R0375
	2230 KTCA-2	St. Paul, MN	2022R1052		2301 WHNT-19	Huntsville	3345R0375
12-20	1845 KDLO-3	Watertown SD	3122R1112		2330 WRIP-61	Chatanooga	2235R0460
	1900 KUSD-2	Vermillion	2122R0969		0115 WBRC-6	Birmingham	3455R0320
12-23 Tr	1200 WHIQ-25	Huntsville	3345R0375	1-4	0630 WNTV-29	Greenville SC	3345N0581
	1230 KDNL-30	St. Louis, MO	5555R0610	Es	1800 WPBT-2	Miami, FL	3233N0686
	1231 WBIQ-10	Birmingham	4342R0320	1-8	2045 XEW-2	Mexico City	4332R0917
	1232 WBMG-42	Birmingham	5555R0320		2048 XHGC-5	Mexico City	3333R0917
	1540 WHBQ-13	Memphis, TN	4353R0366	1-12	1725 YSR-2	El Salvador	4322R1132
	1600 WIIQ-41	Demopolis AL	3455R0322		1735 HRTG-5	Honduras	4334R1125
	1630 WMSL-48	Decatur, AL	3445R0375		1803 TGV-3	Guatemala	4323R1102
	1730 WKNO-10	Memphis, TN	4343R0366	1-14	1817 CKCO-2	Warton, Ont	3332R1125
	1830 WJSP-28	Columbus, GA	4555R0337	1-19 Tr	PM KHTV-39, WXL-40, WTOG-44,		
	2100 WAAY-31	Huntsville	4555R0375		KHOU-11, KTRK-13, KLRN-9, KFDM-6		
	2330 WTVM-9	Columbus, GA	3122R0337	1-20	0130 WBBH-20	Ft. Myers, FL	3345R0564
	2338 WYEA-38	Columbus, GA	3455R0337	Es	1525 YSR-2	El Salvador	3332R1132
12-24	2400 WHTV-24	Meridian, MS	3255N0185		1616 TGV-3	Guatemala	2023R1102
	0030 WCKT-7	Miami, FL	2255R0686	1-25 Tr	1715 WXL-40	Sarasota, FL	3555R0503
	0053 WRIP-61	Chatanooga	2235N0460		1717 WTOG-44	St. Pete, FL	3335R0488
	0103 WSB-2	Atlanta, GA	2235R0406	1-30	1735 KERA-13	Dallas, TX	3334R0456
	0107 WJHG-7	Panama City, FL	RO275		1800 KDTV-39	Dallas, TX	2225R0456
	0120 WFTV-9	Orlando, FL	3445R0510	2-3 Es	1600 WGR-2	Buffalo, NY	3222R1098
	0125 WAPI-13	Birmingham	3035R0320		1627 CKVR-3	Barrie, Ont	3232R1110
Other stations seen:	WXL-40, WTOG-44, KHTV-39				1724 WMAQ-2	Chicago, IL	3324N0838
	KHF1-42, KTRK-13, KHOU-11, KBMT-12				1730 CKCO-2	Warton, Ont	2222R1125
12-25	1830 WBMG-42	Birmingham	4555R0320		1823 WBYA-2	Green Bay WI	3222R1006
	1831 WBIQ-10	Birmingham	3142R0320	2-5 Tr	to TX, AL, MS, FL, and GA		
	1832 WIIQ-41	Demopolis AL	4555R0220	2-7 Es	1705 XEW-2	Mexico City	4444R0917
	1900 WMSL-48	Decatur, AL	2225R0375		1720 XHGC-5	Mexico City	4444R0917
	2200 WHIQ-25	Huntsville	3345R0375				Report for 12-13/2-4; total now 280 sta.

Richard Peary 216 Acadia Circle Fairfield, Alabama 35064 (EST)

1-21 Tr 2000 WEAR-3 Pensacola, FL 1-21 Tr 2001 WDIQ-2 Dozier, AL

"Beginning at 5:30 (Feb. 7) I received four Mexican stations on ch. 2-4. ... I saw a slide advertising XEW Radio. Could the TV station have the same call letters? (Yes, see LeBlanc's entry for 2-7 above. You were viewing XEW-2 from Mexico City. dp) Channels 3 and 4 had the same programming. ... There were so many stations on channel 2 that I couldn't tell which station it was." (I am sending your comments in detail to Les Prus for solution in his CCI column. dp)

Robert B. Frantz 4380 N.W. 42nd Street Ft. Lauderdale, Florida (EST)

1-20 Tr	0900 WJKS-17	Jacksonville, FL	(290)	1-30 Tr	1005 WRBT-33	Baton Rouge, LA	(740)
	0905 WBBH-20	Ft. Myers, FL	(115)		1015 WMEF-24	Orlando, FL	(175)
	0910 WXL-40	Sarasota, FL	(160)		1030 WTVV-36	Austin, TX	(1081)
	0915 WTOG-44	Tampa, FL	(180)				

"This report form is great. Hope we get one with each monthly publication. I've made some big changes in equipment; 55 ft. tower, JUP-4 parabolic, 2-CMAU-LN-75 pre-amps in a series (60 db gain) Also using 2 Sony 750 B/W sets for two stations at once."

Paul D. Traska 64 Weaver Street Buffalo, New York 14206 (EST)

10-27 Tr	0200 WTV-17	Rockford, IL		1-18 Tr	1000 WBNB-12	Binghamton, NY	
12-14	1730 WXON-20	Detroit, MI	"52 new stations for '72; 173 for '73 in log."				

Bruce Rummel R.D. 1 Box 385 Fleetwood, Pennsylvania 19522 (EST)

"Here is a report on what was caught here during today's much-needed sporadic E opening:"  
 1-14 Es 1655 CKPR-2 Thunder Bay, Ont.(862) 1-14 Es 1817 KTVI-2 St. Louis,MO (789)  
 "Receiver is a Heathkit GR-169 and I was using a microphone stand for an antenna during the above opening. Total stations is now 42, of which 35 are almost always in, with only 8 fit to watch. Six stations caught so far on Es; best tropo WYAH-27 at 250 miles two summers ago."

David J. Egan 12a Andrew Valleyfield, Quebec (EST) (January 8-February 4)

1-8 Es 1703 WJXT-4 Jacksonville RI100	1-18 Tr 0620 WSYR-3 Syracuse, NY 4341R0175
1720 WSIL-3 Harrisburg, IL R0930	0625 WHEN-5 Syracuse, NY 4332R0175
1828 UNID-3 "Sesame Street" WEDU?	0630 WRGB-6 Schenectady, NY 4433R0170
1-10 Au 2320 UNID-3 "strong QRM"	0632 CJOH-6 Desoronto, Ont. 3232R0165
2325 UNID-4 "slanted CCI"	0634 WKTV-2 Utica, NY 3433R0150
1-13 Tr 1028 CJOH-13 Ottawa, Ontario R0085	0635 WGR-2 Buffalo, NY 1032R0290
1828 CBOFT-9 Ottawa, Ontario R0085	0637 WHEC-10 Rochester, NY 4324R0225
1-17 2300 2-QRM WGBH-2/WUTV-2/WGR-2	2309 CBVT-11 Quebec City 3133R0180
3-penetration from WSYR-3	2217 WNPE-16 Watertown, NY 3335R0125
4-QRM from Buffalo/Quebec City	Es 2229 UNID-3 j NBC--local ads
5-QRM from Toronto, Syracuse	1-19 Tr 1215 CKTM-13 Trois-Rivieres, Quebec
6-penetration from Deseronto	Au 2015 strong 2-6; weak on channel 7
7-penetration from Watertown	1-20 2010 UNID-3 strong at times
8-slight QRM from Rochester	1-21 Tr 1829 WNPE-16 Watertown 5445R0125
QRM heavy from Maine	1845 WXXI-21 Rochester, NY 3135R0225
9-QRM from WNYS-9/CFTO-9/WMUR-9	1-27 Au 2030 strong aurora on ch. 2-9 No ID
10-Moderate QRM from WHEC-10/WTEN-10	28 1804 UNID-18 Heavy offset on WNPI-18
11-CKSW Kingston, Ontario	2-2 ?? 1940 UNID-12 heavy offset bars on
QRM from Durham/Quebec City	CFCF for 2 min. Es or Ms?
12-No QRM	2-3 Es 1703 WML-4 New Orleans 5423R1380
13-Heavy QRM over CJOH from	1707 UNID-5 CBS CST WKRG Mobile?
Rochester/Trois-Rivieres	1725 UNID-4 "Hee Haw" Audio only
2304 WHEN-5 Syracuse, NY 4442R0175	?? 1737 UNID-3 "Inversion time again."
2305 WXXI-21 Rochester 3235R0225	"I got slanted CCI, turned the fine tuning
2306 WNPE-16 Watertown, NY 2225R0125	to knock out local picture materialized, re-
2309 WUTV-29 Buffalo, NY 2225R0290	sembling a circular test pattern--in the
2311 UNID-34 Binghamton, NY?	negative. The interior of the circle was

interior circle. Since I had WML New Orleans on that day, plotting in a straight line from Valleyfield thru New Orleans shows mid-Mexico. Help wanted to ID this one. WTVY in Dothan, Alabama finally sent back a letter (first time I've heard from them since June 1968) for DX last summer. By the way, KXJB-4 in Valley City, North Dakota wrote back and said it was thm I got by aurora on August 13, 1972. (1150 miles) 1972-73 seems to be a strange one, in weather (80% of the days so far are 15-20 degrees above normal; almost all the snow is gone--we usually have about four feet of it on the ground), and in DX (unid Ms or Es on chs. 12 & 18, aurora up to channel 9, skip in the negative (channel 3 on February 3).)" (Would suspect some of your mysterious high-band VHF and UHF reception is, in reality, very short tropo. Any solutions by other WTFDA members? dp)

This column is for WTFDA TV-DXer's in the following states and provinces:

MAINE	NEW HAMPSHIRE	VERMONT	CONNECTICUT	MASSACHUSETTS	RHODE ISLAND	NEW
JERSEY	PENNSYLVANIA	MARYLAND	VIRGINIA	DELAWARE	DISTRICT OF COLUMBIA	
NORTH CAROLINA	SOUTH CAROLINA	GEORGIA	FLORIDA	ALABAMA	MISSISSIPPI	NOVA
SCOTIA	NEWFOUNDLAND	PRINCE EDWARD ISLAND	LOUISIANA	TENNESSEE	KENTUCKY	
NEW BRUNSWICK	QUEBEC	ONTARIO	(Let's here from all of you soon! dp)			

**Make Your Convention  
Plans Now**





# VHF UTILITY DX

Pat Dyer  
5315 Silvertip Drive  
San Antonio, TX 78228  
Deadline: 12th of month

MARCH 1973

Hank Holbrook, 7211 Chestnut St., Chevy Chase, MD 20015 QSLed, GMT

8-1: 1511, KID 651 37.26 Cookeville, TN (police)  
9: 0118, - 119.2 vic Washington, DC ('AIRFORCE 2'; vp's 707)  
11: 1442, CF-TJT 132.5 nr New York, NY (Air Canada 960; DC-8; 25 w)

Richard T. Colgan, P.O. Box 18268, Serna Station, San Antonio, TX 78218  
now with 993 loggings since 12 Feb '72; Realistic Pro-2, Midland 13-920;  
Petersen HL-44; A/S MON-8 at 40 feet; GMT used.

10-24: 1902, KGG 651 33.70 Derby, CT (fire)  
25: 0300, KPV 831 154.13 Austin, TX (fire)  
27: 1731, KOH 894 33.70 Winslow, WA (county fire)  
1736, KCB 979 33.90 Norwich, CT (fire)  
28: 1844, KEJ 451 33.78 Toms River, NJ (county fire; 200 watts)  
1846, KCE 681 33.70 Rockland, ME (fire; 100 watts)  
1947, KCG 491 33.70 Wallingford, CT (fire)  
2003, KCD 472 33.94 Windsor Locks, CT (fire)  
29: 1731, KCE 287 33.94 Rocky Hill, CT (fire)  
1732, KET 47 33.98 Chico, CA (state fire)  
1841, KDQ 324 33.78 Lavallette, NJ (fire)  
2011, - 35.50 Uniontown, PA (mobile-phone)  
31: 2230, KCD 379 33.70 Lincoln, ME (fire)  
2300, KCE 579 33.78 Keene, NH (fire)  
2311, KCD 246 33.70 South Yarmouth, MA (fire)  
2325, KCC 493 33.94 Simsbury, CT (fire)  
11-2: 0125, KQM 678 155.28 Houston, TX (special emergency)  
0409, KKI 438 155.13 San Marcos, TX (police)  
6: 0401, KQB 230 39.58 Pomeroy, OH (sheriff)  
0414, KDQ 224 39.58 Logan, OH (sheriff)

Now, my loggings; Allied A-2586 with 30-ft indoor random-wire antenna;  
All Es unless noted, \* F2, \*\* F2 backscatter; new underlined; GST used.

<u>1-13:</u> 1142, L Beach	3: 1918, KQD 313	<u>7:</u> 1725, KOE 257
1203, KME 438	2128, L Beach	1728, KIN 645
1312, KFL 936	2209, KFL 943	1731, KIY 508
1450, KMA 829	<u>4:</u> 1213, KMA 829 **	<u>8:</u> 1451, Portland *
<u>14:</u> 1320, L Beach	1214, KFL 936 **	1500, KJR 354 *
<u>15:</u> 1546, L Beach	1222, KKJ 460 **	1525, KLF 527 *
<u>20:</u> 1350, KIN 645	1332, OK City **	1751, KME 438
2123, L Beach	1340, KKV 690 **	1843, KFL 936
<u>21:</u> 1341, KLF 527 *	<u>5:</u> 1754, KIN 645	1846, KSC 645
1430, KFL 936 **	1834, KMA 829	<u>9:</u> 1503, KAI 927
<u>26:</u> 1602, KKV 690 **	<u>6:</u> 1356, KFL 936 **	1525, KDN 407
1950, L Beach	1422, KKJ 460 **	1611, KFJ 891
<u>2-3:</u> 1350, KKJ 460 **	1705, KFL 936	1626, KDN 402
1742, KIY 508	1710, L Beach	2118, L Beach
1815, KIN 645	1716, KMA 829	(1-11: 1215, solar noise)

KAI 927 35.34 Denver, CO-tp	KKV 690 35.62 Houston, TX-tp
KDN 402 35.54 Omaha, NE-tp	KLF 527 35.22 Honolulu, HI
KDN 407 35.22 Co. Springs, CO-tp	KMA 829 35.58 San Diego, CA-tp
KFJ 891 35 + Columbus, OH-tp	KME 438 35.22 Orange, CA-tp
KFL 936 35 + (west)-tp	KOE 257 43.58 Phoenix, AZ
KFL 943 35.58 Las Vegas, NM	KQD 313 35.50 Dayton, OH-tp
KIN 645 35.22 Miami, FL-tp	KSC 645 35.58 Chicago, IL-tp
KIY 508 35.22 Orlando, FL	- 35.58 Long Beach, CA
KJR 354 33.90 Seattle, WA-f	- 35.58 OK City, OK
KKJ 460 35.22 Dallas, TX-tp	- 35.26 Portland, OR-mp

f-fire; mp-mobile phone  
tp-tone ID pager

73, Pat

WA5IYX

# SOUTHERN FM DX

Editor: Richard E. Wood  
820 Arlington Ave.  
Baton Rouge LA 70806  
Tel. (504) 343-7771  
Deadline: 13th. of month



-----  
FEATURING FM FROM LOUISIANA TO MARYLAND  
-----

Larry I. Voot, 8213 Springfield Village Dr., Springfield VA 22152

Fisher 500-TX receiver w/ Finco FM4G antenna at 25 ft. Time is EST.  
New loggings underlined.

Caught my first January Es since started FM DXing in 1968. The 14th brought 5 newies and 2 relogs; 1637-1745 WPCS 89.3 Pensacola FL (800); 1645-1725 WVMI 93.7 Biloxi MS (870) w/ \$ RR; 1657 WBYU 95.7 New Orleans LA (950) w/ news item on Gretna LA. Had this stn in '68 as WVMT; 1658-1747 WVNO 89.9 New Orleans w/ \$ CL & info on prog guides; 1659 WCKW 92.3 La Place LA (950) (did you note their shamefully cracked, distorted audio on net feeds? REW); 1704 WTYL 97.7 Tylertown MS (890) w/ wx & sports; and finally, 1712-1714 WRNO, The Rock of New Orleans in briefly over local powerhouse WGAY 99.5. WGAY is only 15 mi. from here, so I'll now be paying more attention to "local" freqs during Es openings. Prompt QSLs in from WVMI, WVNO, WTYL and WRNO. Total now 444 stns hrd. 73, Larry. (Tx for support in a very thin month, and for comments on format, which will be taken into account. Your 1/14 Es has me mourning the lack of reciprocity that day, as I did check the bands at that time; Ron reports nothing, either. REW)

Ronald J. LeBlanc, 2524 Arizona Dr., Marrero LA 70072 CST 1/3/73 to 2/11/73

Channel Master 3617 at 65ft with rotor, Winegard SC-650 at 20ft w/ rotor.  
Heathkit AR-1500 FM \$ rx.

1/3/73 Tr 2030 WAPI 94.5 Birmingham AL (320), 2245 WWAG 94.1 Carrollton AL \$ EL (280), 2301 WQYN 89.7 Chattanooga TN CL (460), 2320 WCRT 96.5 Birmingham \$ EL (320), 2330 WDEF 92.3 Chattanooga TN \$ EL (460), 2340 WENN 107.7 Birmingham Soul (320), 0000 WBIR 103.5 Knoxville TN \$ s/off (549).

1/4/73 Tr 0115 WEZK 97.5 Knoxville TN \$ EL (549), 0132 WERC 106.9 Birmingham RR (320).

1/8/73 Es 2135 XEJT 89.2 Altamira, Tamps. EE mx, Johnny Mathis (are you sure of freq? I made it 89.0. REW), 2145 XEUN 96.1 México D.F., opera (917), 2146 XETIA 97.9 Guadalajara, Jal., dominant thru the whole opening (same here, REW), (1050), 2200 XHRO 95.5 Guadalajara, \$, sounded like FF mx (that's right, their format is continental mx, REW), plus unid. 96.3. (Any more on tape?)

1/12/73 Es 1745 HRN 92.9 Honduras. Lots on tape, need translation.

1/15/73 Tr 1700 till, (till when? REW) Many E. TX stns hrd.

1/19/73 Tr 2040 KBER 100.3 San Antonio TX C&W (510), 2310 KITY 92.9 C&W San Antonio \$, 2330 KEXL 104.5 San Antonio \$ RR, 2335 WLCY 94.9 Tampa FL RR \$ (488), 2345 WWBA 107.3 St Petersburg FL EL \$ (488).

1/20/73 Tr 0000 WQXM 97.9 Clearwater FL EL \$ (488), 0105 KBUC 107.5 San Antonio TX C&W (510) First time hrd on new fq. (Kinda slow w/ that one, Ron, hi, REW)

1/30/73 Tr 1750 KRLV 92.5 Dallas TX \$ nx (456) (Note call change is listed in Bruce's Feb. column, don't know effective date, REW), 1802 KBUY 93.9 Ft. Worth TX SS (485), 1805 KFAD 94.9 Arlington TX Pop (470). (Careful Ron, that one changed to KAMC last May. Please update your stn list, REW). 1808 WBAP 96.3 Ft Worth \$ EL "\$ 96 Gd music that U can live w/". 1825 KFWD 102.1



Ronald J. LeBlanc (Cont.)

Dallas \$ Pop (456), 1945 KTBC 93.7 Austin TX \$ Cash & Carry Grocery ad.

2/3/73 Es 1600 to 1630 unid. 92.9, 91.3, 91.7, 94.5, Direction NNE.

2/4/73 Tr into TX: Houston, Austin, San Antonio, Corpus Christi.

2/5/73 Tr 2055 WABB 97.5 Mobile AL \$ RR (138). New stn on for the first time this day. Telephoned them, they were surprised to hear they were getting out as far as New Orleans. Said they would QSL if I wrote. (They have, for me, REW) Stn. no. 395. Others that same night to San Antonio, Houston, Dothan AL. (I got Jacksonville FL and Savannah GA loudly that night, REW)

2/7/73 Es Big SS opening. Skip in on TV for 4 1/2 hrs., on FM about 1 1/2 hrs. Lots on tape, need translation. Unid on 92.9, 88.9, 89.1, 90.5, 93.9 CL, 97.9, 92.1, 88.7, 88.3, 89.3, 105.7, 89.7, 91.3 EE; on 89.1 IDed Stereo Jet (if freq. is exact, is Guadalajara, Jal., REW), 100.1, 96.7, 96.1, 88.9 XMM México D.F., 92.9 XEQ México D.F., 104.9 English, RR, 106.5. Probably lots I missed, some were in EE and I passed them by thinking they were semi-locals. (Yes, I missed that one, REW)

Dr. Richard E. Wood, 820 Arlington Ave., Baton Rouge LA 70806. CST.

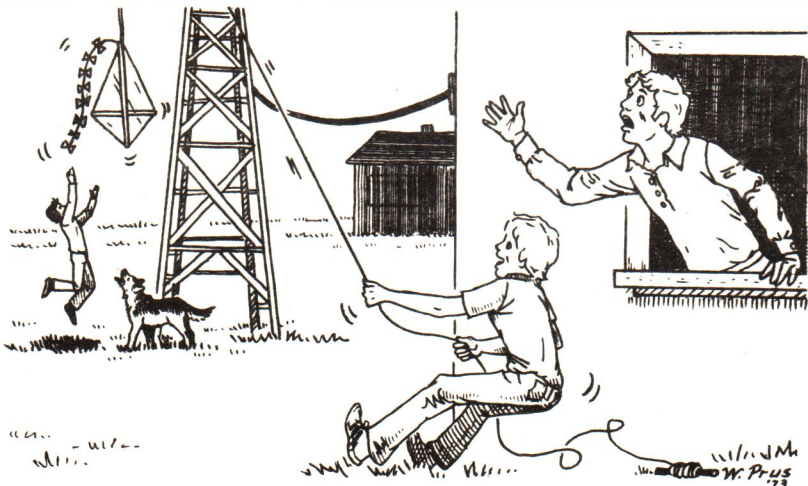
As I foolishly missed the skip of 2/7, and also of 2/3, I have very little new to report, except the new WABB 97.5 in Mobile which will be an easy skip catch for northerners; rather distinctive underground/contemp. RR format. Have kept busy building my TV antenna; as it is close to my FM quad in position and height, I have noted the phasing effect described by Glenn Hauser last month, though not used it to practical ends yet. Now, my scant log:

Feb. 5

0757-0815 Tr WTLD 94.3 Lake City FL

505 loc bank ad, CBS net nx, ID as "WDSR [stands for "way down upon the Suwanee River"] & WTLD "FM" \$", Cadillac ad, live MoR ann first day; UG/Contemp. RR, 2 DJ's, good \$, phone # given.

2230-2300 Tr WABB- 97.5 Mobile AL



# WESTERN FM DX

Editor:  
Mike Dornier, Jr.  
1409 Hymelia Avenue  
Metairie, Louisiana 70003

DX FROM THE LAND OF BEGINNING AGAIN

Glenn Hauser, Box 62, Von Ormy, TX 78073

Jan 10 - Feb 7 (CST)

A nice variety of FM DX this month--more Guatemalans, two new 10-watters, kilowatt-plus Jacksonville tropo, and a couple of much-wanted Monterrey stations. Total now at 581 (Es 354, Tropo 252, MS 37, duplications 62). States: 36 plus DC, tropo 14, MS 18, duplications 16); 1 province, 8 estados and 5 other countries.

Jan 12: 1815, Es 89.0 YSRI San Salvador ES (1205 mi), story with dramatization; 1827 maybe more like 89.95 mhz; 1830 ads incl. Preparacion H, 25-17-65 phone, ACI 88.8 grows, covering CST TC; 1837 gone... 1817 90.0 YSU- San Salvador ES, 1205 mi, YSU promos, 1818 combinex nx w/Diario El Mundo; 1819 phone rep from Nic. I.O enying attempt on Somoza and Jineteo tremor and blasting irresponsible journalists; 1837 gone while Guatemala remains... 1825 88.8 TGRT- "La Fabulosa," Guatemala, Guatemala (1135 mi), talk, 1837 narration--story!; 1834 pgm "La Calle Donde Tu Vives"; letters from listeners; 1858 promo SERCANA--Servicio Centroamericano de Noticias; 1910 gone, 1913 back briefly and at 1934-1935... 1825 88.7 Honduras? overmodulated, ACI 88.8 bothers; 1847 man and woman dialog; 1859 in and out without ID... 1826 88.1 TG-- "Fabuestereo," Guatemala (1135 mi): § "Fascination"; 1837 vy § German song; 1910 gone; 1935 back w/OC, 1935:25 mx, 1936 gone... 1828 94.8 TG-- R. Cadena Maya, Guatemala (1135 mi) EE pop vocal; 1843 R. Cadena Maya promo, and "...aquí en la capital, TGDX, 1510 AM, 89.6 FM" (see logging below), also claiming 14 other affiliates; 1846 mono mx. This may be main mountaintop xmtr and 896 the link?... 1835 89.6 TGDX, R. Cadena Maya, Guatemala, Guat., R. Centroamericana, (1135 mi) EE pop, R. Centroamericana ID, 6:37 TC; llantera ad in centavos, zona 8, 44-8-14 and 40-3-18 phones; wkr than others and soon gone... 1838 93.95x R. Sonora, Guatemala (1135 mi), talk about Nicaraguan rumors, into marimba and ID in passing; 1841 ad, letter from listener in NY to host, Sr. Curuchit; 1848 lecture on education; vy weak; REW in Guatemala 13 months ago had this on 94.1 mhz... 1844 WUSF 89.7 Tampa FL (990 mi) "All Things Considered," delayed, previously IDed here; also marginal FL Es has accompanied CA before ... 1844 TG-- R. Centro(?), Guatemala, (1135 mi), R ID as "el unico Radio-----" (fade); hvv ACI from local KMPM 96.1, reduced w/phasing; mx; 1852 anmt about futbol in Quetzaltenango; 1905 Sherwin-Williams ad o/KMPM briefly, gone... 1854 TG-- 98.6 R. Mundial, La Cadena Azul, Guatemala, Guat (1135 mi), Cadena Azul promo "proyectada al nivel nacional", R. Mundial promo, mx courtesy "Radioperiodico El Debate"; 1908 still good; 1910 gone as MUF plunges... 1903 94.9 WLCY-(?) Largo FL(?) § el, more easterly. (It might also have been WKSJ- Mobile. --ed.).

Jan 13: 1234 KVEG- 92.3 Las Vegas NV (1065 mi), 1232 NW Mutual mx, 1234 end, ID "Sound of Today, Music of Las Vegas"; 1254 CCI KFAC... 1255 KLYM 94.1 (?) Henderson NV, EL upbeat... 1236 KILA 95.5 (?) Henderson NV, pgm from Moos Angeles abt children's mental health; doubtful KLOS due format; not TX stn... 1239 KUSC- 91.5 Los Angeles CA (1185 mi), jazz, 1241 ID by YL, more jazz; vy scattered; later, solid... 1246 KPFD 94.1 (?) San Diego CA, lite classical mx, anmt; vy fadey... 1251 KPSC 88.7 Claremont, CA (1160 mi), bits of rock; 1257 ug, 1258 black DJ but no ID; only 88.7 known in southern CA... 1254 KFAC 92.3 Los Angeles CA (1190 mi), lite cl piano mx, CCI KVEG... 1254 KVCR 91.9 Santa Bernardino CA (1140 mi), vintage C&W, 1300 Metropolitan Opera... 1256 KCRW- 89.9 Santa Monica CA (1205 mi) French lessons; 1303 Japanese lessons; 1308 one of last stations in, 1310 gone; what else?... 1257 KLLW 89.7 Riverside CA (1145 mi) religious organ mx; 1257 //88.3!... 1257 KPOS 89.3 Pasadena CA (1185 mi), OC, 1301 slavic song, Eng anmts, polka pgm; 1302 Polka-time anmt; what else?... 1258 KEDC- 88.5 Northridge, CA (1210 mi), story; 1301 KEDC-FM pgm promo, another kid story; 1308 still one of last in, 1310 gone ... 1257 KEMR 88.3 Loma Linda CA, (1135 mi), 10-watt still; religious organ mx //89.7, 1258 promo "Morris Vendon nightly at 6:30 on KEMR-LIU Radio," then live 7th Day Adventist service... 1300 KPFK 90.7 Los Angeles CA (1190 mi), rock; 1304 Folk Mx Calendar in So. CA; CCI... 1302 KLOH 88.1 Long Beach CA (?), cl mx, 1308 still, 1310 gone...

Jan 15: 1502 KESY 106.5 Galveston TX, Gw, (235 mi), ID, ex-KGBC... 2006 KVPI- 93.5



## WESTERN FM DX

Ville Platte LA (Tr), 535 mi, strong, soul; 2017 UN PSAs, 2018 ID... 2036 KWHI- 106.3 Brenham TX (150 mi), wx, ID as "Downtown Brenham," wrap-up girls' bkb cvg; low level audio; earlier: cue tape on air...

Jan 16: KBIM- 94.9 Roswell NM (410 mi), end Ai nx, mx, NW; 0717 ID, MST, ad... 0720 KPNE 95.3 Big Spring TX (260 mi) west TX Wrecking ad, NW, nx, "1270 Total Action Radio News," yulck!... 0724 KLLL- 96.3 Lubbock TX (345 mi), nx, Apache Xmen Svc ad... 0727 KSJT 97.5 San Angelo TX (185 mi), presumed, since SS, NW, in KEEZ SB... 0751 KQIP 96.9 Odessa TX (290 mi), ID jingle 0758; EL; fog layer over area... 1546 La Chica Musical 98.1, Monterrey NL (265 mi), ID "Estereo," EE R&R; 1600 jingle 6 times; 0007 ID w/ Monterrey, ack. phone reqs; 0034 ID jingle; 0100 ID, more mx; AN?... 1559 XET- 94.1 Monterrey NL (265 mi), "94" SS ID... 1606 XHSRO 92.5 Monterrey NL (265 mi), EE EL SW; 1700 singleword "Stereoey" ID o/mx; 2213 same ID technique between words in song; 1704 XHQQ 93.2 Monterrey NL, R. Actualidades, (265 mi), SS nx, 1704 sports; locutor: Mario Garza Peraza; Notimex cast originating at XEPB w/relays by XEH, XENN, XHQQ, then ID only as XEH & XHQQ, 93.2 R. Actualidades; high mod. cut thru KITV-92.9 sideband; 2202 still, very loud mx.

Jan 17: 1230 La Chica Musical-Monterrey 98.1 (265 mi) still in, 1242 CCI from XHMLS separable... 1242 XHMLS 98.1 Matamoros Tamps, "La Chica Musical," (245 mi), SS QRM to Monty; 1304 Chica ID here too!; 1311 jingle (always same), adstring, Banco Internacional de Tamaulipas (antes: Banco de Matamoros); 1324 local ad; ID as "en el 98 punto 1 de su radio, FM-estereo"; 1403 XHMLS ID no DJ; mx is more EL than Monty...

Jan 19: WUSF 89.7 Tampa FL at 1935, tropo, (990 mi) cl mx east; 1944 vy weak talk; 2006 //PBS Inaugural Concert; 2031 better; 2050 mostly gone, oocl MS of station... 2032 WWNO 89.9 New Orleans LA (510 mi) tropo, cl mx, not Inaug conc; 2051 good; 2058 ID, pgm guide sub pitch...

Jan 26: XHMLS 98.1 Matamoros, Tamps., "La Chica Musical," (245 mi) usual; 2202 off; much earlier than Monty s/off.

Jan 30: 1031 WUSF 89.7 Tampa Fla (990 mi), rock; also TV from area; 1102 ID; MS enhance at 1110, 1114, 1117... 1056 WBYU 95.7 New Orleans LA (515 mi), ad, ID mostly u/KIKK; EL CCI to KIKK... 1059 WLCY- 94.9 Tampa FL (965 mi), ID, \$95, Tampa-St Petersburg; MS CCI... 2104 WWNO 89.9 New Orleans LA (510 mi) jazz talk... 2127 WPCS 89.3 Pensacola Fla(Ala) (660 mi), hymns.

Feb 3: 1802 WBYN 89.7 Chattanooga TN (875 mi), sermon... 1802 WKES 88.9 Chattanooga TN (875 mi) hymn... 1802 88.5 WFDD-? Winston-Salem NC (?) cl mx; Greensboro on TV... all of these three by Es... 1911 WMKY(?) 90.3 Morehead KY, Es; bkb coverage; Dayton-Louisville on TV; game cov vy choppy, brief; same TV's in; 1940 and later oocl signs of MUF above 88...

Feb 4: 2340 WUSF 89.7 Tropo Tampa FL (990 mi) lighter nx; 2343 end, EST; "Undergrnd Railroad" ubiquitous pgm, underwritten this hr by MacDonald's hamburgers; ID as "Alternative Radio" w/elec. sound effects.

Feb 5: 0020 WLPR 96.1 Mobile AL (640 mi), oldtime "Bulldog Drummond" show; 0029, end, local annts; 0035 s/off, 38 kw, Lord's prayer... 0021 WQUE (?) 93.3 New Orleans LA? EL. Tampa? 0058 WBYU 95.7 New Orleans LA (515 mi), s/off to 6 a.m., tinny anthem; 0500 check: La poor, no FL, but fog at 0915... 0935 WPCS 89.3 Pensacola FL (AL) (660 mi), hymns; 0945 ID; 1230 still; 1415 vy good; 1639, 1701 AFM nx, 1705 WMEZ credit; 1925 still; 2043 still, 2129 end Music Hall, ID, NWS, wx... 1007 WUSF 89.7 Tampa FL (990 mi) underground; 1148 same level as KPFT, cl mx; 1230 still tho UHF TV gone; 1300-1345 audible on car radio in San Antonio; 1415 good; 1625, 1627 still; 1700 out, 1723 back; 1925 still, 2107 still, 2255 back, 0003 offbeat nx... 1012 tropo WJCT- 89.9 Jacksonville FL (1020 mi), ID, cl mx, much wkr than WUSF; previously by Es; 1107 ORTF transcription in French--maybe WWNO? (Probably not. WWNO for a while operated until 1 a.m., but now has cut back to the original 2300 s/off. There is a local French program, "GODOFIL presents" but I doubt this is what you heard, for the latter has a good many segments in English.--ed.); 2202 cl mx; 2216 no CCI detectable but other Jax FMs in... 1146 WLCY- 94.9 Tampa FL (965 mi) rock, east, WUSF also in... 1938 WWNO 89.9 New Orleans LA (510 mi), cl mx, east; N.O. TV in; 2202 cl-or WJCT?... 2214 WFAM 91.1 Jacksonville FL (1020 mi), jazz,

## WESTERN FM DX

2216 ID, ad for Jones College Apts; (I did a double-take on hearing an ad in this part of the band, also. Perhaps it is legal for an educational institution to "advertise" its services directly connected with its operation. This should spark a lively debate. --ed.)  
 SS customs PSA; previously by Es... 2223 WJAX 95.1 Jacksonville FL (1020 mi) ID, jingle, no KTRM-; previously MS.

Feb 6: 0015 WFLA- 93.3 Tampa FL (990 mi), FL nx headlines, KITTY off; 0016 R ID as WFLA 8 FM, nx and wx... 0018 ? 99.5 Fred Allen oldtime radio show; COI; weak LA? (probably WRNO, which runs oldtime radio shows nightly at 0000... 1744 KPBS 89.5 San Diego CA by Es (1115 mi), local interview re highway construction... 1747 XHIS- 90.3 Tijuana BCN (1105 mi) mx NW COI o/u/KSYM... 1801 KPKK (?) Los Angeles CA, COI w/KUT NW.

Feb 7: 1856 Es TGRT- 88.8 R. Fabulosa, Guatemala, Guat. (1135 mi), MUF finally up; TV opening began 1626 f/in loud upb mx; 1955 revolutionary political party (PR) pgm (daily at 7:45), then ending w/disclaimer "en tiempo pagado...opiniones ajenas a la estacion," 1959 Fabucadena ID, 2019 still, sports; 2032 fading down... 1859 un-ID w/ intro drama "Pueblo Muerto," soon gone; 1924 mx... 1901 XEBS- 89.7 Mexico DF "La Chica Musical" (690 mi) vals w/SS lyrics; usual breathy YL ID... 1901 XEDA- 90.5 R. Imagen, Mexico DF, loud mx, south; 1901 XHM- 88.9 Mexico DF "Oasis" EE EL, G&W; 1918 Mex ad; 1923 back... 1902 XHFO 92.1 R. Tr. madora, Mexico DF, over KNET briefly... 2000 Fabuestereo 88.1 Guatemala NOT heard; must be off as Fab-88 pounding in... 2002 R. Cadena Maya, Guatemala 94.8 (1135 mi) net ID; 2020 still; 2023 //89.6; 2033 fading... 2002 96.1 R. Sistema Nuevo Mando, Guatemala (1135 mi), sports cov all over KMFM w/net ID, jingle, claiming to serve six major markets and one secondary; remote from Estadio Nacional w/Gillette march; Lima, Peru, municipal team v. Guat municipal; 2020 still strong; 2025 ads mostly o/KMFM... 2026 R. Mundial, 98.6, Guatemala (1135 mi) funny song "Tengo Una Vaca..." for kids, canned laughter, 2021 ID in passing... 2009 100-107 mhz no sign of any Guatemalans above 98.6... 2015 un-ID 89.7 album cuts, seemsSSSE, not S (Mexico DF); not //94.8... 2017 YSU- 90.9 San Salvador ES (1205 mi) "aqui en Centroamerica..." briefly...

more Feb 7: 2023 R. Cadena Maya 89.6 (1135 mi), sports //94.8 but much weaker here ... 2036 FKCA 91.5 Phoenix, AZ (835 mi) classical mx, NW; double-hop probably /2138 back possible Central America-AZ, NV few minutes... 2037 KTDB 89.7 Ramah NM (700 mi) 31st state by Es; Navajo talk on income tax; 2052 still; 2100 gone; 2111 back w/more Navajo; 2120 final f/in... 2040 KAXR 88.5 Flagstaff AZ (855 mi) 10-watt much weaker on meter than others, but fully quiet; cl mx; 2052 still; 2054 YL blind PSA w/peppy mx background, more cl mx w/out smt; 2100 Nat'l Guard PSA, mx; 2103 R EDF PSA, AZ mx, 2106 fading a bit; 2108 Nat'l Guard disaster PSA; 2109 wx snowing, ID, Jim Hatton reporting, into aria w/out smt; 2119 still... 2041 KVWV- 93.5 Show Low AZ (745 mi) giving phone addr for news items, ID, "Voice of Show Low from the White Mtn," USDA PSA then R. Nederland transcription--a cultural oasis! 2113 still, EL; 2122 still; 2130 out... 2043 KLVM 94.1 Henderson NV (1050 mi) United Way PSA, Silver Nugget ad, ID w/mx; 2113 ad; 2122 still, 2129 ID... 2045 KILA 95.5 Henderson NV (1050 mi) sounds like 500 kw! religious organ mx; 2051; 2058 LV mission ad, ID; 2114 mx organ; 2123 still... 2045 KORK 97.1 Las Vegas NV (1065 mi) ads for store, housing, "#97 KORK-FM LV" ID: ACI from KEEZ-97.3 local; 2115 EL, 2122 still; 2137 all LV FM down and out... 2047 KLUC- 98.5 Las Vegas NV (1065 mi) Don MacLean song; 2049 ID, ads; 2115 ad; 2123 still; 101.9 probably in too but blocked... 2051 KVEG- 92.1 Las Vegas NV (1065 mi) rock; 2113 good; 2122 all LV vy strong, sounds like TV audio; outdoor action, helicopter sounds, not //local TVs; 2057 seems SS dialog; 2111 gone; ch 6 xltr off freq???... 2114 KALJ 95.1 Yuma AZ (970 mi) btfl mx; 2117 nx, car ad, Yuma wx; vy scatterly; thry edge of patch; 2138 open over. 73.

Pat Dyer, 5315 Silvertip Drive, San Antonio, Texas 78228

All times CST.

The good winter Es season keeps going along. Jan 12: 1835, with TV Es only evident to Ch 4, find Spanish on apx 88.8; Radio Fabulosa, Guatemala City, Guatemala, as Guatemala most often mentioned in items (though they mentioned YSKL, El Salvador and HRN, Tegucigalpa to confuse things)(1120 mi), getting spotty by 1855 and likely out apx 1905...

Jan 13: 1230, TV Es only to Ch 3 but FM seemed open to 95.5 or so and vy quickly gone (within 5 minutes) to West; 1250, this time TV 4 and 5 in and FM at apx 90.3 and 91.7, no IDs on hour and soon out after.



WESTERN FM DX

Jan 19: evening trop up on TV, 2100, KELT, 94.5 Harlingen TX (235 mi) with automated mx, ID, stereo 95.

Feb 3: good TV Es thru Ch 5, frequent FM checks found nil 1800-2000.

Feb 6: 1740, TV to ch 6, likely Mexico, no FMs found. Es.

Feb 7: 1900, Es at 88.9, with 1903, XHM Mexico City DF (690 mi) "Un Oasis en FM" slogan, soon out; back agn 1917 and 1925... also tentative XEBS-FM 89.7 Mexico City... 1955 Es agn "Radio Fabulosa," Guatemala City, Guatemala 88.8, slogan ID... 2000 "Radio Centroamericana," 94.9 Guatemala City, giving a list of many of the country's MW AM stations and a TGFM 94.2 in Guatemala City; confusing to say the least... 2010 another Guatemala City station apx 98.5 to 98.9 (sorry) apparently IDed as "Radio Mundial." More confusion (Glenn says it's 98.6--see his article above. ed.)... 2030 Guatemalan 98 about gone and by 2035 even 88.8 gone... 2035 not wasting any time. Organ religious mx on 95.5 (similar to a July un-ID) which finally IDed at 2100 as KILA Henderson NV (1050 mi) -- in until 2130... 2100 KLUC-FM 98.5 Las Vegas NV, psa followed with ID, auto (1070 mi)... 2130 KELT on trop with local ad.

Feb 8: TV MUF to Ch 4 2045-2115, several FM scans found nil. Local snow-ice storm froze antenna rotor at n.e.

Feb 9: 1715, Es hits on ch 6 on TV and at 1724, KELT noted with Es CGI... 1725 WSAI 94.1 Cincinnati OH (1020 mi) with local ad. Many un-IDs up to 98.5... 1735 FM Es likely out (though TV well into ch 4 and 5 to 1800)... 1815-1820, a few 88's in and out on Es... 1915 un-ID Es agn in 88 range... 1925 most likely "Radio Fabulosa" again in on Es for a few minutes judging from the audio quality and announcer format. Es at 1950 and 2050 on TV into ch 6 but none found on FM.

The way things have been with FM Es you'd think it was May already. The second winter snow storm here, though, makes it very clear it isn't. I am planning to get a better TV antenna system to use with the FM as the sensitivity of the Allied 426 is a lot less than the Wards with an indoor random wire. But with all the spurious local responses on the latter, the 426 w/good antenna may yet live up to my hopes for a decent FM receiving system. An AJ-15 will be about the last resort. 73.



## A Radio Course in TV-DX!

From March to September, Holland's RADIO NEDERLAND is broadcasting a course in TELEVISION DX, written by Jim Vastenhou. Each five-minute lesson will be aired twice, two weeks in a row on the Thursday "DX JUKE BOX". Even the most rudimentary shortwave receiver should have no trouble pulling in Radio Nederland's superpower relay on Bonaire. The course in TVDX will appear within the 35-minute DXJB program, which usually begins about 12 minutes into each transmission--but occasionally starts immediately, especially in the 2300 GST program. Among the more easily heard of the eleven English transmissions each day:

0030-0150 GST	11730 kHz
1230-1350	21570
1530-1650	11730, 9715
2000-2120	11730
2300-2420	9715, 11730

Be sure to adjust for local daylight shifting time, as these transmissions remain on standard time throughout the year. Frequencies subject to change; write Radio Nederland, Box 222, Hilversum, Holland, for further schedules. GH

In addition, FREE printed texts of each lesson are available, in groups of four. To receive the next batch, you must answer a few simple questions covering info in the course.

# Regional Television Networks

By Les Prus

Alaska Television Network KTVA-11 , KTVF-11 , KIFW-13

Midnight Broadcasters (Alaska) KFAR-2 , KENI-2 , KINY-8

Great West Group (Mont,Wyo) KTWO-2 , KFBB-5 , KULR-8  
 KGVC-13 , KTVM-6 , KCFW-9



Television Network of Idaho KTVE-7 , KTVR-13 , KQVT-11 , KIFI

KAKE land Stations KAKE-10 , KUPK

Kansas Broadcasting System (KBS) KTVH-12 , KAYS-7 , KTVG-6 , KLCE-10



Kansas State Network (KSN) KARD-3 , KCKT-2 , KGLD-11 , KOMC-8



The Kansas State Network

## Montana TV Network

KTVQ-2 , KXLF-4 , KRTV-3 , KPAX-8



KTVQ-2 (Billings) KRTV3 (Great Falls)  
 KXLF-TV4 (Butte) KPAX-TV8 (Missoula)

Nebraska TV Network KHOL-13 , KHPL-6 , KHQL-8 , KHTL-4



Dakota Giant Network (ND) KFYR-5 , KMOT-10 , KUMV-8

Keystone 72 (PA) WLYH-15 , WSBA-43

KELO land TV Network (SD) KELO-11 , KDLO-3 , KPLO-6



West Texas TV Network KTXS-12 , KWAB-4 , KLBK-13 , KMOM-9

KTXS-TV

KWAB-TV

KLBK-TV-AM-FM

KMOM-TV



ABILENE-SWEETWATER

BIG SPRING

LUBBOCK

MIDLAND-ODESSA-MONAHANS

Central Wisconsin Combination

WSAU-7 , WMTV-15  
 (Madison)



## Wisconsin TV Network

WKOW-27 , WXOW-19 , WAOW-9







# CCI

Leslie J. Prus  
1615 Pierre Street  
Manhattan, Kansas 66502  
(Phone: 913-537-7886)

Unidentified TV DX

MARCH 1973

The start of another DX season is underway, and most of us have been preparing ourselves for the spring tropo and summer Es by getting our receivers, equipment, and antennas into top shape. However, in DXing, technique is often as important in logging stations as the hardware, and there are several ways that you can upgrade the former while waiting for the snow on the tube to melt away.

Usually, the really important DX catches are the most difficult to receive, and a double-hop or high-band E-skip reception may only last a few short minutes. Try to become familiar with network and local station programs so that you can recognize a show immediately. Now is the time to determine the differences between "Sesame Street" and "Electric Company," between "Buck Owens" and "Porter Wagoner," and between "Hathayoga" and "Jack La Lanne." Being able to tell the weekday game shows and soap operas apart will definitely be of value when the DX openings occur.

You will be able to do much of your own CCI work (and ease the load on this column) if you have good up-to-date reference material. The WTFDA station list and single-channel maps are excellent station identification aids, and for local station program information, the various editions of TV GUIDE just can't be beat. I'd recommend that each TV DXer not only save his local TVG issues to help ID other members' loggings in this column, but also obtain editions of TV Guide from areas that may be frequently logged by Es or tropo. You can order these editions from TV Guide regional offices or from other WTFDA members, now that the membership list has been printed.

John Sally, 29926 Truman Avenue, Wickliffe, Ohio 44092

Sun Jan 14 Es 2 1750 EST --- "Hathayoga" PTA: Florida. Definitely the Miami station, but whether it is WTHS or WPET (sharetimers) I don't know. Perhaps a Florida DXer can check when one signs off and the other comes on. I've noted WTHS mornings and WPET evenings.  
4 1755 EST - - local movie "A Sunday Movie for the First Time," with the title of the film unknown. PTA: Fla Suspect WTVJ or WJXT



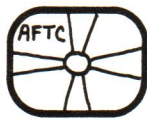
Jerry Pulice, 143 Gibson Ave, Staten Island, New York 10308

Thu Oct 26 Tr 7 0555 EDT - - 3/4 color bars (?-?-2) as at right, with white square at bottom two bar-widths long. Zero offset to WABC (Ø) and direction was west. The only (Ø) stations west of New York are WTRF which isn't on till 0900, and WLS with an 0730 EST s-on. Since the offset info may have been in error, readers in NE US in the eastern time zone please check their locals' CBs.  
Sun Jan 14 Es 3 1420 CST - - local movie "A Night at the Opera" with the Marx Bros. PTA: MS Suspect WLBT-3



David Kable, 29247 Waldensa Drive, Wickliffe, Ohio 44092

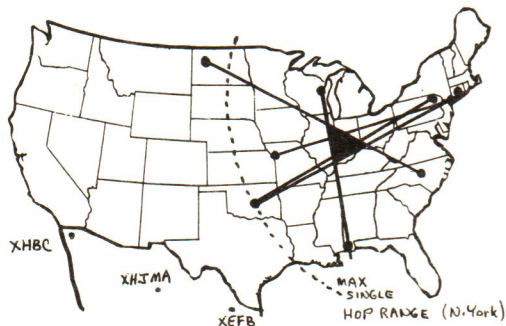
a summer afternoon, 1971 - - "AFTC" Test Pattern, as at right, on a channel 2 station logged by Es. PTA unknown, though probably west of Mississippi river or in extreme southeast US, Mexico or Cuba.



March 1973

Jerry Pulice, 143 Gibson Avenue, Staten Island, New York 10308

Sun Dec 17 Es 3 1200 CST - - Spanish movie with Mexican accents. Suspect double-hop into Mexico rather than single hop to Cuba. KQTV-2 St. Joseph, Mo. logged at the same time. PTA: Mexico



The map above right is an Es plot for 1200 CST on December 17, 1972. With Jerry logging KQTV-2, Fred McCormack (ND) logging WFMY-2, WSAZ-3, WRAL-5, Bob Cooper (OK) logging WTIC-3, Jim Hayes (PA) KOCO-5, and Bill Draeb receiving WKRG-5 (all this from Feb VUD DX columns), an interesting pattern emerges. The Es clouds were in a position to give Jerry skip from Mexico rather than Cuba, and Bob's long-distance WTIC logging of 1400 miles does support the contention that more than one cloud may have been involved. The inability of having all the lines intersect at a common point also points to the multiple cloud theory. There is a probability that double-hop Es occurred, but there should have been an Es "cloud" somewhere in the vicinity of eastern Oklahoma to give that second hop into Mexico, but as yet, none has been reported.

Pat Dyer, 5315 Silvertip Drive, San Antonio, Texas 78228

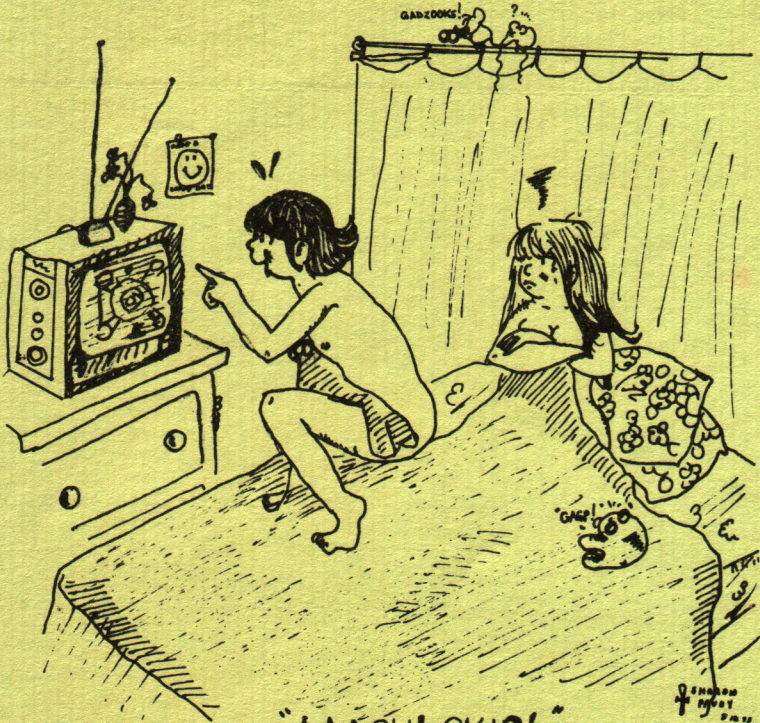
Sat Jul 29 Es 3 1400 CDT - - local movie, western. PTA: Central US and midwest. Possibilities: KOTA, KGL0, WISC, WCIA, WSIL, WAVE, WKZO, WKYC, WRCB.  
 2 1920 CDT - - "I Dream of Jeanie," PTA: North Central  
 3 1928 CDT --- "Hee Haw" Both KGL0 and KDAL check.  
 Tue Aug 1 Es 6 2103 MDT --- "Mod Squad" Definitely XETV-6  
 Thu Aug 10 Es 2 0058 EDT - - Ad mentioned Lakefront Drive in College Park. Suspect WSB, WBBM, WMAR, WESH. One (LFD) is in Chicago, the other (CP) is in Baltimore. Where can BOTH be found?  
 6 1810 CDT - - "Merv Griffin" continuing past 1830. PTA: Central US and Midwest, Rockies.  
 Thu Aug 17 Es 2 1020 MDT - - "Divorce Court" PTA: North Central or Rockies. KWGN-2?  
 Sat Aug 19 Es 4 1910 EDT - - "David Steinberg" PTA: Southeast US  
 Suspect: WTJV, WJXT, WIVY, WCBI.  
 Sat Nov 25 Es 2 2015 PST --- "All in the Family" KNXT-2 checks  
 Wed Dec 20 Es 2 1830 CST --- "Golddiggers" Definitely WBBM-2  
 2 1835 CST --- "Dragnet" Definitely WBAY-2  
 Fri Feb 9 Es 6 1800 CST --- "Lawrence Welk" Definitely WHIS-6 !

Paul D. Traska, 64 Weaver Avenue, Buffalo, New York, 14206

Mon Apr 10 Es 2 0100 CDT - - ID slide with a palette (upon which an artist mixes his paints) as at right. PTA: South Central U.S.







"AAAGH! SKIP!"

SHARON  
1987  
P. 12



SERVING THE  
VHF-UHF DX  
ENTHUSIAST



P. O. BOX 163  
DEERFIELD, ILLINOIS 60015

The VHF-UHF DIGEST is the monthly publication of the Worldwide TV-FM DX Association. WTFDA is a nonprofit organization and a member club in the Association of North American Radio Clubs.

Dues: US and Canada: \$7 third class mail and \$9 first class, per year. Overseas: \$8 per year.

VUD Back Issues Available: (1972) May, July, August, September, October, November, December, January, February, March.

All back issues are 75¢ each, by special 4th class or 1st class.

#####

WTFDA Emblem Rubber Stamp: \$2 (Design is as shown at top center of this page. Full size is 1 1/2".)

FM Atlas and Station Directory: \$2.50 3rd class, \$3 1st class. By Dr. Bruce F. Elving, WTFDA FCC FM column editor. Very detailed, and probably the most accurate FM listing available. Offset printed.

Stationery: Features official WTFDA emblem printed in blue. Ideal for all your correspondence. 45 sheets: \$1.

LOG Sheets: Perfect for keeping your running log neat and organized. Punched for a three ring binder. Pad of 100: \$2.

VUD Boxes: A great way to keep your copies of the VHF-UHF DIGEST neat and protected. Very attractive and a bargain at \$1.25!

Station Report Forms: For requesting QSL's. 45 sheets: \$1.

DX Column Report Forms: For reporting to columns. Free w/ SASE

All persons contributing their efforts for the Worldwide TV-FM DX Association, including editors, writers, artists, reporters and board members do so without any monetary compensation. Dues and all other revenue cover printing, postage and other expenses.

The WTFDA is governed by a five man board of directors. Board members are Dave Janowiak, Bruce Elving, Ferdinand Dombrowski, Gary Olson and Morrie Goldman. VUD Editor: Morrie Goldman; Publishers: Gary Olson & Morrie Goldman; Comptroller: Gary Olson; Bookkeeper: Bruce Elving; Sample & Supply Processing: Dave Janowiak

THIRD CLASS