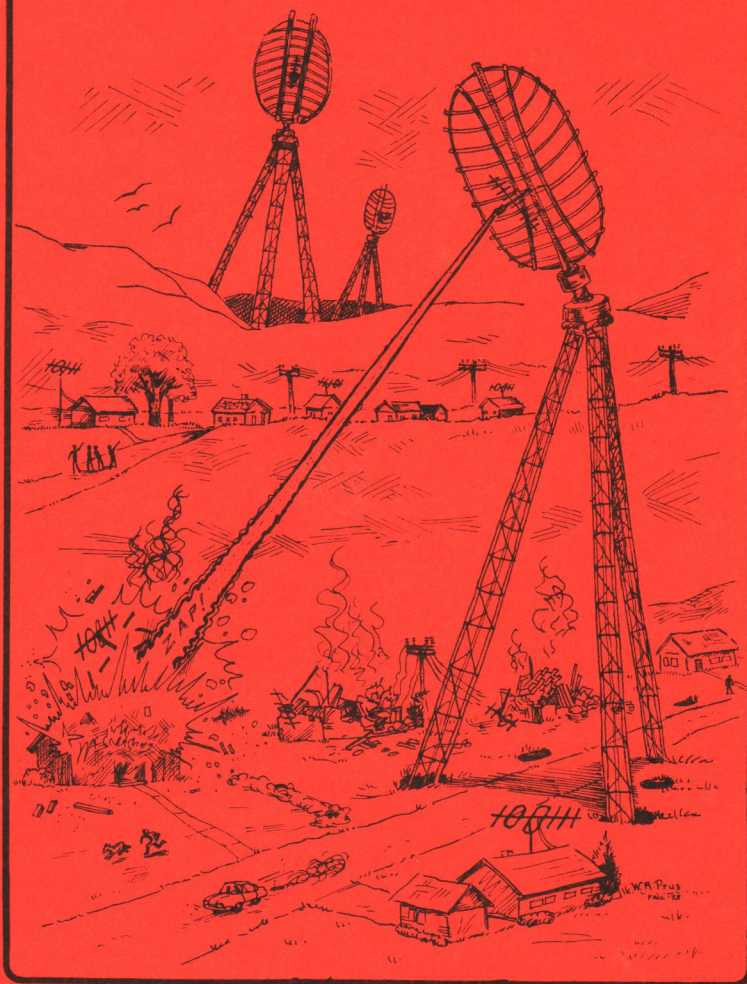


VHF-UHF DIGEST

1973
OCTOBER



publishers' notes...

WTFDA HEADQUARTERS, P.O. BOX 163, DEERFIELD, IL 60015 USA

INVASION FROM MARS!.. This month's cover highlights the 1938 Orson Welles broadcast, based on "The War of the Worlds". Through the creativity of Wanda Prus, we view Martian tripods destroying only the homes equipped with FM antennas. With that in mind, see how many FM stations you can log on Halloween, broadcasting this popular feature. If you should hear loud crashing noises from outside and suddenly see a parabolic peering through the window, it's time to quit!

ACTIVITIES CHAIRMAN STILL NEEDED... As of this date, we are still in need of an activities chairman. The post was described in the September VUD and is very much worth considering. If the position sounded of interest and you'd like to help the club, drop us a line today.

A POOR TROPO SEASON?.. Outside of a couple of scattered days, the fall tropo season hasn't produced much action. The unseasonably cold and wet fall weather has squelched one of our favorite forms of DX. Let's hope that the tropo has only been delayed and not washed out.

EDITORS NEEDED... In the coming months, WTFDA will be in need of several new editors. As described elsewhere in this issue, Mike Dorner has found it impractical to continue editing WESTERN FM-DX. A replacement editor for this post is needed immediately. Glenn Hauser will soon be stepping down as STATISTICS editor (if interested, write to Glenn directly) and in the Spring, Dave Pomeroy will step down as EASTERN TV-DX editor (if interested, write to Dave directly). All of these positions require good typing skills and a modest amount of work. Most DXers find that the increased contact with other members is quite enjoyable. No stencil work is required, as columns are typed on ordinary paper. A two dollar postal credit is given to editors.

ARE YOU PREPARED FOR WINTER?.. Just as one needs to prepare for the DX season, a pre-winter check is also in order. Pay special attention to guy wire connections and hooks. Winter winds can be stronger than you might expect... Check all your feed line and rotor connections and see that the leads won't flap in the wind. Is your array the way you want it? A change probably can't be made again until the warm weather of 1974.

BITS... Don't forget about last month's survey form. If you haven't yet done so, fill it out and mail to Terry Colgan. Let your views be known!.. The December-January meteor showers will be here soon, prepare now with this month's "Bob's Tek Notes"... The DXING INTRO (NMP) is in the process of being typeset. If you've been waiting, hold on!.. Another reminder that WTFDA will no longer accept third class renewals. You'll find that first class service is much faster and VUD's are envelope sealed. We will continue to attempt to fight inflation by maintaining the first class dues at \$9. Quite a bargain, considering that most other ANARC clubs are \$10+... Several new members have commented about their "large" totals. They should keep in mind that for ranking purposes, their total must conform with the WTFDA Guidelines. A copy can be found in the May 1973 VUD (available for 75¢ from HQ)...

Gary and Morrie

Terry Colgan
P.O. Box 18268
Serna Station
San Antonio, TX 78218

WTFDA MAILBOX



It's October, and a good time to start dropping hints to the wife and kids about that new receiver or antenna you'll be buying yourself for Christmas.

Again this month, WTFDA welcomes a fistful of new members:

| | | |
|---------------------|-----------------------|------------------------|
| Bill Bens | 481 E. Chelsea Circle | Ft. Mitchell, KY 41017 |
| James A. Brown, Jr. | 1400 S. Joyce St. | Arlington, VA 22202 |
| Bob Bundy | 37 N. Main St. | Homer, NY 13077 |
| Kenneth Chatterton | R.F.D. #2 | Mannsville, NY 13661 |
| John F. Combs | 816 W. Harvard St. | Orlando, FL 32804 |
| Dale Connally | 7065 Cantaloupe St. | Van Nuys, CA 91405 |
| Ricky Glasgow | P.O. Box 16 | Ackerman, MS 39735 |
| Randall D. Goodwin | Northeast Points | Shelburne Cay, NS |
| Carey L. Jones | 1032 Penn | Columbus, IN 47201 |
| Hubert Miller | 6811 Woodlawn NE #32 | Seattle, WA 98115 |
| Mark Reboul | 132 Ramblewood Rd. | Morrestown, NJ 08057 |
| Marvin E. Robbins | 7805 Woolworth Ave. | Omaha, NE 68124 |
| Dan Sheedy | P.O. Box 31 | Encinitas, CA 92024 |
| Jim Sokol | 1319 Spruce St. | Reading, PA 19602 |
| Edwin E. Turner | P.O. Box 114 | Siasconset, MA 02564 |

Now to the news.

When not teaching weight-lifting, DAN SHEEDY DXes the broadcast and shortwave bands and occasionally tunes the FM bands. Dan's equipment includes an SPR-4, a Joystick antenna and an FET BCB loop.

MARV ROBBINS spends most of his time on the FM and SWBC frequencies, using a Hammarlund HQ-180A and a Scott 342-C. Marv also spends a little time on the TV and VHF-UHF utility bands.

RICKY GLASGOW is a converted SWL whose recent DX catches include CMBL-5, Santiago, Cuba, and KTVQ-2 in Billings, MT.

WTFDA welcomes back RANDALL GOODWIN. His equipment includes a Heathkit GR-371, a 7-ft. UHF dish and a high-band yagi atop a 75-ft. tower.

JOHN COMBS just started using a new log-keeping style, but before switching, he'd logged 20 stations in 11 states, one province, and El Salvador. John notes that because of locals, his viewing is confined to channels 3 and 4.

"Hillbilly" BILL BENS moved to Kentucky only to discover his membership had expired. Bill notes that he'll probably be fairly inactive since he can't erect an outside antenna.

Alden, NY member, JERRY MONROE, holds ham call WH2CQR in addition to BCB, TV and FM DXing. Jerry's shack contains an RCA TV, a 19 el VHF yagi, and a Hammarlund SP-600.

DALE CONNALLY spends his working hours as a Revox Service Technician; and his spare time FM DXing with a Revox A76 tuner, a Telefunken BJ56 dual-conversion FM receiver, an Ameco PCFM pre-amp, 2 Winegard SC-650's and an Alliance V-100 rotator.

Student broadcast engineer, GARY KNAACK, outfitted his Elm Grove Village, IL, "DX den" with a Panasonic TR-910VN TV receiver coupled to a Jerrold PAU-500 antenna, and a Panasonic SA-5500 FM receiver.

KEN CHATTERTON has been DXing since 1946, but lost all logs and QSL's in a 1964 fire. He uses a Matsushita 730 AM-FM receiver with a transistorized pre-amp 19 el VHF/UHF LP antenna at 30 feet. Ken lists his interests as AM, FM, SW, and TV, in that order.

Response to the membership survey has been fair, with 30 questionnaires received at typing time. This survey is important as it will determine editorial policy for the VUD, as well as providing statistics on WTFDA membership. If you've not mailed the survey included in your September VUD, please do so before October 30. It'll be the best 8¢ you'll spend for WTFDA!

73 in '73,

Terry

TECHNI-

CORNER

Conducted by:

David T. Janowiak
3661 South 46 Street
Greenfield, Wisc.
53220

TURN YOUR ATTENTION TO ALLIANCE ROTATORS PART II

ALLIANCE MOTORS

Although the control boxes of all four Alliance rotator types vary, all Alliance motors (term used to describe the complete motor in a weatherproof, zinc, die-cast housing) look very much alike. In fact, they are virtually alike inside and outside!

Figure 4 is a close-up of an Alliance motor. Any Alliance motor. At the right center is a removable piece of cast housing held by the two larger nuts. This housing and its mating waterproof gasket, when removed, reveal the four or five terminals to which the interconnecting cable must be tied. The two small screws (at lower right) crimp the cable, preventing cable motion.

NOTE: Figure 4 shows an older motor. Now, a single plastic piece replaces the two separate metal pieces that covered the terminals and crimped the cable.

The vertical antenna mast fits through the center of the motor housing. The top and bottom U-bolts grip this mast and force it against cylinder flanges. Because this cylinder is geared to the motor, as the motor shaft rotates, this cylinder, the U-bolts, mast, and--of course--antenna rotate also. Rotation through 360° takes about 55 seconds.

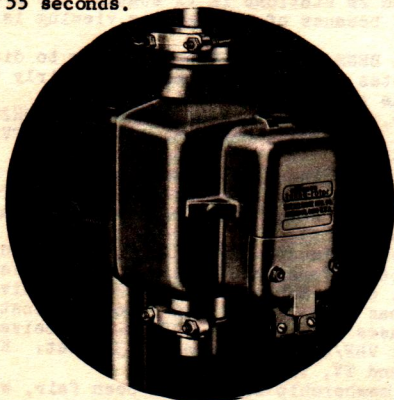


FIGURE 4. ALLIANCE MOTOR

Beneath the top U-bolt is a rubber shroud that keeps water from running down the antenna mast and into the housing. The color of this shroud allows a match of that particular motor and a particular control box: black shroud for K-22, yellow for T-45, blue for U-100, and green for C-225.

The housing is held to the support mast by four screw/bolts (two are visible on the left of Figure 4) and a holding nut/bolt that pass through a support bracket. Several holes in this bracket allow connection of guy wire.

Unfortunately, the motor cylinder can accommodate antenna masts no larger than 1 3/8 inches outer diameter. Some rotators take up to two inch masts.

Inside the motor housing are the bidirectional motor, magnetic brake, gearing, position sensor and--on some models--overload sensor. All motors, gearing, and braking are identical. Items are lubricated for life.

The motor is a two-winding type that receives from 24 to 28 volts ac from a step-down transformer in the control box. Motor torque (the ability to produce motion) is adequate, although not as great as the Cornell Dubilier types. Motor braking (stopping) is excellent, and very little "coast" occurs when motor power ceases. Unlike some Cornell Dubilier versions that "wind mill" (antenna blows off direction because motor brake does not hold), I've never seen an Alliance brake fail to hold.

Any rotator becomes sluggish as temperatures drop. Consumer Reports noted that Alliance motors operated better at lower (zero and below) temperatures than Cornell Dubilier types.

The gearing simply translates the higher motor shaft speed into a slower, but higher torque, cylinder movement. This same gearing produces (in part) the position indication signal. This may be a simple end of travel contact closure, resistance change, or incremental contact operation, depending upon the control box. (to be described later). In fact, with a bit of "rework", one motor can be made to work with a different control box. For example, a motor for a manual T-45 control box can be easily modified for use with an automatic U-100 control box. However, indiscriminate "mixing" of motors and control boxes without modification may cause component failure. If you pick up several motors and control boxes at hamfests or closeouts, be sure the components match before they are connected. Early versions of Alliance motors may not have used the present color code, or shroud color may have faded; consequently, you may have to look inside the motor and identify it based on the type of position sensor used.

Alliance motors may be used with antenna/mast loads of up to 20 pounds. Between 20 and 300 pounds, or if antenna weight is distributed several feet above the motor, the thrust bearing bracket (Figure 5) is needed. This bracket, which mounts to the support mast about a foot below the motor, accepts most of the antenna/mast weight and transfers this weight to the mast. As the motor rotates, the antenna mast spins on a lubricated, pivoting bracket that connects via a U-bolt to the antenna mast. The motor, therefore, provides only the torque needed to turn the antenna; the thrust bearing and support mast carry the weight.

Where large wind catching antennas such as 6 and 7 foot UHF parabolics are used, some DXers have mounted the thrust bearing several feet below the rotor to distribute the bending moment of the antenna mast (and, therefore, reduce motor side thrust) over a wider area. As Alliance points out in their literature, the forces exerted on a given antenna mounted five feet above the motor are five times the force exerted on the same antenna mounted one foot above the rotator.

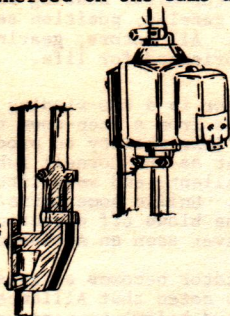


FIGURE 5. THRUST BEARING

Properly installed, Alliance motors will withstand winds of up to 100 miles per hour. For any larger fringe antenna, whatever the weight, I'd strongly recommend the thrust bearing (about \$3 wholesale). It's darn cheap insurance.

Through the years, several "minor" changes in Alliance motor hardware have occurred. Most of these changes are improvements. For example, U-bolts used to clamp the antenna mast to the cylinder flange had very fine threads. Often, these threads would strip if removed often. Now, these U-bolts are more rugged and use thicker threads. Also, the mating collar of these U-bolts is much thicker and stronger now.

Older Alliance motors used the metal cable crimp for tension relief as mentioned in the note. Overtightening could crimp the cable. The plastic cover with two slotted holes holds the cable adequately now without danger of overcrimping.

CONTROL BOXES

So let's look at complete Alliance models.

K-22:

This is the "bottom-of-the-line" Alliance rotator. It sells for about \$20 wholesale, but isn't often advertised or stocked in some stores. However, several stores use the K-22 for (1) demonstration or sales promotion and (2) as a part of a complete package of antenna, cable, hardware, etc. Four-wire cable is required.

A rather simple control bix (Figure 6) mounts a control bar and round lens. Depress one end of the bar and the motor operates in one direction. Depress the other end of the bar and motor rotation reverses. Since this is a manual type, motor rotation ceases when the bar is released. Operation is silent.



FIGURE 6. K-22 CONTROL BOX

No position indication is given except at the "end of travel" (north direction) when a light beneath the control box lens lights. Obviously, this is not the rotator for a DXer for, unless you time the rotation from a full north position, you never know where the antenna is aimed!

Electrical control is rather simple. Depression of one end of the bar connects low voltage ac from the control box via the cable to one motor winding, causing rotation. Rotation ceases when the bar is released because ac voltage is disconnected. Depression of the other end of the bar connects ac voltage to the reverse motor winding for reverse rotation. At the extreme end of travel in either direction, a cam-operated switch closes to complete an ac voltage path back to the light in the control box.

Although I've never installed or used a K-22, I doubt if a motor overcurrent device is used. Consequently, the lit light also warns that motor rotation has ceased and the bar should be released. If the bar is not released, motor torque and current would be very high (the motor is trying to turn, but can't), and motor winding burnout could eventually occur.

While the K-22 is a decent rotator, you really cannot evaluate its accuracy or repeatability. How can you when you have no position indication? Again, the K-22 is not for DXers.

Next, we'll look at the popular Alliance manual T-45 and automatic U-100 and C-225 versions.

73, Dave

Bob's Tek-Notes

by Robert B. Cooper, Jr.

EMPHASIZING THE SCATTER IN METEOR SCATTER

Since the dawn of long haul television reception and DXing one form of reception has proven to be the one and only reliable DX mode; and that is MS or meteor scatter.

Meteor scatter is always with us; day in and day out, meteorite particles bombard the earth's gravitational fields and trail into the ionosphere at sometimes awesome speeds where friction causes the particles to heat up and burn. The burning trajectory of the ignited particles leaves behind the particle entry path an ionized trail of gases in the E layer of the ionosphere. And this trail, or column as some call it, has momentary ability to reflect VHF signals back to earth at some distant point; typically hundreds of miles distant, and perhaps as far as 1,500 miles distant.

The subject of meteor DXing has been covered here previously. The basics of how the system functions will not be repeated at this time.

In the summer and fall of 1970, this enthusiast set out to explore the possibilities of meteor reception on high band VHF TV. This study was designed to develop a data base for possible future use in designing a serious high band meteor-chase program. For this particular DXer, stuck out in the boondocks of Oklahoma where station concentrations are low and the populous areas of the eastern seaboard (with all of its TV stations) are from 900 to 1,500 miles away ... high band MS seems to be the one method whereby approximately 140 high band stations operating in the 900 to 1,500 mile circle might be logged.

The 1970 project was concentrated on channel 7; with four home brewed long yagis peaked on channel 7, and a total of 50 db of pre-amplifier gain. The 1970 program began during the annual August Perseids Shower and ran through the end of the year. Results were such (six channel 7 MS stations positively identified) that were encouraged to do it again, better, at the earliest convenience.

Nearly 2-1/2 years passed before the next opportunity arose to try again. In "Phase 2" we set out to study high band MS up through channel 13 with particular emphasis on channels 8 and 11.

Once again the program was kicked off in mid summer, just ahead of the annual August

Perseids shower (what better way to break in a new meteor set up?).

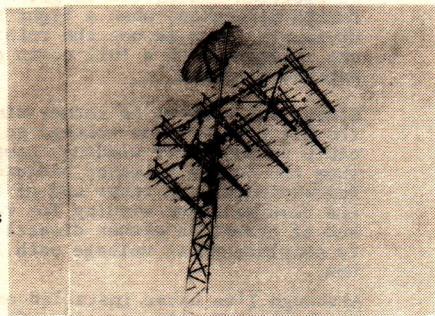
The antenna system designed for this year's project was something new for long haul work; but it satisfied an objective.

(1) The array had to have excellent directivity because it would be well above ground and 300-400 mile typical morning tropo must not interfere with the weak MS reception mode.

(2) The array had to have moderately good gain because in high band MS, that is the one key ingredient that you cannot replace in other ways.

(3) The array had to work over all of the high band channels (7-13), and well over the entire range, because all 7 channels were prime targets for MS.

The "Phase 2" array is shown below.



This array consists of 8 Channel Master model 1273 high band log antennas, considerably modified structurally, and arranged in a four-wide by two-high pattern. The array is 180 feet above ground to the center.

One other consideration was expandability. If the 8 bay array showed promise, the array would be expanded by 6 or 9 db in size to either 32 antennas or 64 antennas in "Phase 3".

The main long term objective is very simple ... I want a high band antenna array and system which I can point at virtually any high band station within 900-1,500 miles, and when they are trans-

mitting (and the channel is clear) ... and I will be able to see residual scatter level signals from them.

This is not as far fetched as it sounds. And it has almost no practical value as far as "watching television" over such distances is involved ... except in very isolated situations.

In the early-AM period, from approximately 5 to 7 local time, random meteorites are in some abundance virtually every day of the year. And these random meteorite (particles) cause almost constant bursts and over-lapping bursts of a very weak level. You can determine this for yourself by connecting a VHF to HF converter to a communications receiver, switching on the BFO and listening on the proper HF-i.f. for carriers on the TV video carrier frequency. The +, θ , and - offset frequencies are "busy" more often than not on virtually all high band channels.

To take these exceedingly weak signal levels (down around .01 to .1 uV) and make something useful out of them so that a standard (or modified) TV receiver will "build a picture" out of these weak levels is simply a matter of adequate receiving system gain.

The 8 bay log array has a measured gain of approximately 16.5 db over a reference dipole on channel 13; 16.00 db on channel 7.

And this is adequate, even with this relatively speaking small antenna array, to bring results on a non-shower morning.

In fact, it is important to understand that a shower is predominantly an increase in larger-size meteorites; and that larger meteorites tend to produce better (stronger and longer lasting) bursts. But ... that on most non-shower (so-called random) mornings that the level is also quite acceptable. Only the strength and duration of the random bursts is less appealing than during a shower morning.

In my own situation there are nearly 150 high band stations in the magic 900-1,500 mile circle; which have not been logged yet. Some will never be logged simply because the channel is not going to be "clear" in their direction when they are on the air. But approximately 100 of these can be logged ... and hopefully will be with phases "3" and "4" of this project.

During "Phase 1" six channel 7 MS stations were logged and identified; WMAL at 1148 mi-

les, KTVB at 1137 miles, WPBN at 895 miles, WITN at 1150 miles, WBDBJ at 982 miles and WTRF at 965 miles.

During Phase "2", to date, these additional new stations have been logged: WGHP-8 at 1030 miles, WXEX-8 at 985 miles, WROC-8 at 1245 miles, WBAL-11 at 1165 miles, WTOC-11 at 995 miles, WIIC-11 at 1020 miles, WCKT-7 at 1240 miles and WJCT-7 at 995 miles.

All of these stations have been logged in the 5-6:30 AM period with the exception of WIIC and WBAL; both were added during the peak hours of the Perseids August 12th in the afternoon period (and during regular programming!).

Additionally, on August 12th, tests were run on KTTV-11 Los Angeles (1127 miles) with numerous programming bursts noted in the 11:30-12:30 (noon) period.

(Logging both coasts on channel 11 in one day has to have some class!)

OK ... so the existing array of 8 Channel Master 1273 logs could be duplicated and the results would be worthwhile. But is this array large enough?

NO ... it is not. But it is getting close. WCKT-7, for example, was logged positively within 30 minutes of our first try on a non-shower morning. WJCT-7 was logged within 10 minutes of our first try ... on a morning with a burst count of only 11! This is an array that you can point at a station .. and log that station.

But it is not good enough.

The antenna gain for consistent results on non-shower morning requires something like 27 db (of antenna). That (with 1273 logs) is equal to 128 antennas. Even for me, that is ambitious... if it has to be rotated.

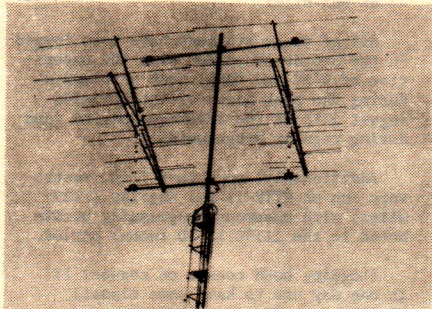
OK ... so I am not going to rotate 27 db of antenna ... but 21 db of antenna could be rotated. And 27 db of antenna could be fixed in a couple of desirable directions.

So begins "Phases 3 and 4".

At the same time the low band antenna system is being up-graded. Some concentration on (locally occupied) channels 4 and 5 recently has produced

a number of new loggings. But one of the problems associated with meteor scatter propagation (and DXing) is that it robs one of a bunch of sleep on a regular basis. I can't see any good reason to spend several mornings trying to nab the WOAY-4 test pattern waiting for the right kind of burst, if a bigger antenna would produce the right kind of burst the first five minutes or so after I wanted that station.

The present modest low band array is shown below.



pening up low band log antenna patterns. By stacking two Channel Master 1226 low band logs side by side (10 foot horizontal spacing/adjustable to 12 feet), the pattern of the array became very similar to the front pattern on a good quality ten element wide spaced yagi (ie. 22.5 degree front lobe) ... a considerable improvement over a single 1226 log.

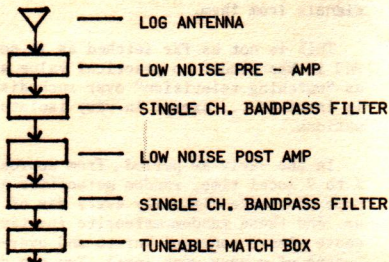
But the array is very small, and has low gain (on the order of 9.5 db on the best channel).

So the "Phase 3" antenna for low band will increase the array size from 2 antennas to 16 antennas, stacked four antennas wide by four antennas high. The gain will still not be very good (17 db) but it is about as big as can be rotated comfortably. And the extra 7 db of antenna gain will certainly improve things in the scatter-level department.

So far the discussion has been on the subject of antennas. There is more to MS DXing than simply big antennas. System gain is equally important, and system signal plus noise to noise ratio is even more important.

Gain is easy to get ... and easy to mis-use. The typical single channel lash up we use is shown in diagram one; and it consists of a very low noise high gain single channel pre-amplifier followed by a single channel bandpass filter with steep adjacent channel skirts, followed by a

second low noise high gain pre-amplifier, followed by yet another single channel steep skirted bandpass filter.



The output of this pre-system package drives a tuneable "match box" that matches the unpredictable input impedance of a television tuner to the 75 ohm system, on a single channel basis, and then into one of several different demodulator (receiver) units.

The total gain of the pre-system package is typically between 55 and 60 db. No ... there is not too much noise build up because the first pre-amplifier has a noise figure of not over 1.5 db and heavy bandpass filtering of the actual active pre-amplifiers and the passive filters ahead of the demodulator keep out of passband video products (ie. noise) down 50-60 db on a typical high band channel.

Problems? Yes, there are a few. For one thing, even the two stack low band log and the slightly larger 8 stack high band log are ripe candidates for tropo. Kansas City, Dallas and Memphis are constant problems on channel 5 early in the morning. Alexandria (Louisiana) and St. Louis are in there tearing up the channel more often than not ... and that is with a small two stack array. 16 antennas on low band will be positively wicked for tropo unless great care is exercised in horizontal spacing of the antennas, and, non antenna tower passives such as guy lines and antenna support members are kept out of the way (they tend to disturb the log antenna patterns).

The large high band array to be built will be even worse.

Can you do it with fewer antennas? Only if you resign yourself to MS DXing during the showers. And you have plenty of good low noise gain. -30-

The Wrong Move

by Willitt Fadeout, Jr.

It was April when I finally got moved into the new house. I was never particularly fond of this part of the country, but it was either that or pass up my first big company promotion. So, with wife, kids and DXing gear, our house was soon becoming a home.

Two days after the movers left, half of everything was still packed and the kids were still devouring our diet of drive-in hamburgers and chop suey to go. Everyone who's made a move has gone through the same thing. The pots and pans seem to have vanished and all the furniture just doesn't quite fit. But it was easy to spot the DXing antennas and other gear, so I was determined to drop everything and get the sky-hook up.

With the help of a local antenna service, the array went up smoothly. In between bites of the leftover Wing Aling chop suey, the technician and I complimented each other on how good my green metalized "Video Vacuum" antenna looked. I couldn't get over how impressive it looked atop the 50' yellow tower. It's too bad that the electrical results weren't as impressive though. Reception was down right crummy. My local stations 22 miles away came through well enough, but other stations 50 - 70 miles away were always weak, unstable and noisy. As if that wasn't bad enough, my new next door neighbor stopped talking to me. He was as positive as he needed to be that it was my "green monster" that was ruining his TV picture. "I haven't had a decent TV picture since that thing went up", he screamed. I suggested that perhaps his set needed a new tube or an antenna that wasn't so bent up. He was outraged, "That set and antenna has done fine for me for a dozen years! er so, and it woulda kept goin for another dozen if you hadn't put that ----- thing up!"

Well a month went by, my reception had still not included any DX and my neighbor still wasn't talking. In fact, he was building a new fence. During that same month, three building inspectors came by (they had a report that my tower was a hazard), and no less than 28 "wrong number" phone calls at odd hours. Another week went by without DX and without much sleep, due to my neighbor's new pet coyote.

Bad results or not, I was determined to leave my "green monster" flying, making it a sort of stand-off with neighbor Jones. But then a miracle happened. My neighbor gave up and asked if I wouldn't take a look at his set (I later found out that his wife convinced him that he had a lousey excuse for watching TV in the bar). I agreed, and said that I'd be over after dinner-- as long as the coyote was tied up.

About seven I went next door and knocked at the back entrance. In the background I could hear what sounded like Mickey Mouse in Spanish. Bill Jones came to the door with a grin and said, "Come on in, you're just in time to see this darn interference at its worst." I followed Bill into the den, turned to the TV set and just about fell over. The channel selector was set on channel 3 and two strong Spanish stations were alternating back and forth. I glanced at my watch, it was three minutes to seven. Still time to run home and photograph two double hop ID's-- or maybe even triple hop! Bill muttered something about his set acting this way every night, but I was already half-way out the door. I shouted that I had to check something and I'd be right back. When I dashed into the house, the set was already on. The kids were watching the "Water Company" on educational TV (formerly the "Electric Company", but it was pre-empted once too often), so I gave them a buck to buy ice cream and flipped to channel 3-- nothing. Oh, oh! Maybe the rotor's pointed the wrong way? I spun it back and forth, checking ALL the channels and STILL nothing!! I was about to tear my hair out! Forty-five seconds before seven-- There's still time, I'll go back next door! Without bothering to knock, I ran into Bill's house and into the den. There, on the screen, NO, NO, it can't be! The call letters were too clear to be true! Two unbelievable catches like that, both clear! YVVK-TV 3, Barcelona, Venezuela and HJRN-TV "en Medellin" Colombia. In my excitement and haste, I hadn't even stopped to think of why Bill's "junk" was picking up double-hop, while my late model color set and "Video Vacuum" wasn't picking up a trace. I was still puffing and staring at a now blank screen.

It was at least five minutes past seven before I started to regain my senses. The skip was gone. I flipped the channel selector back and forth to no avail. All the channels were dead. Even the locals were buried under some mysterious hash. "NOW do you believe me", Bill blurted. "It's that big green antenna of yours that's causing all the trouble!" I was still puzzled by all that had happened. Why should that old TV and bent up antenna pick up double hop skip so well, when I couldn't get anything with my expensive DX gear. Maybe that old antenna was bent into some never discovered sky wave shape. Only picking up skip and no ground wave. Hmmm.. The guy who discovered that could become king of the DXers and get rich to boot! Bill again interrupted my concentration, "Are you goin to do somethin or not? I could sue ya..know!" It does this every night? I queried.. Hmm.. But what if it isn't the antenna.. What if that old TV of his has developed a phase canceling, re-shaping character that's bringing through those signals. If I discovered that, even the Japanese would want to use it. The royalties would be huge.. I could retire and move to.. "If you're not goin to do nothin, leave now!" I had to think fast.

Just a minute Bill, I've got an idea that will solve your problem completely. "Oh yea, what's that?" How about if I give you my new antenna and my color TV set for your old set and antenna. You know I feel kind of bad about this thing and I'd like to set things straight.

"Well.."
I'll even put up the antenna for you!
"OK, it's a deal, but I hope it clears up that noise. Hey, you're not such a bad guy after all."

I thanked Bill and we made the exchange the next day. Despite my wife thinking that I was crazy, I was still convinced that I made a fantastic deal. But the family still wasn't so easy to convince, so part of my new raise was spent on a new color set.

That evening, the family relaxed in front of the new color Tv, rabbit ears and all, while I carefully tuned the 1959 wonder. Not taking any chances I even traded Bill's old ribbon line for my new coax. 6:30, 6:45, 7:00, 7:30.. Nothing. No YVVK or HJRN, or even my local. Just snow, and weak snow at that.

After a week I was beginning to get discouraged. Could I have done something wrong? Maybe I shook the set too much when I moved it, or maybe I accidentally leaned on one of the accurately bent elements. There must be an answer.

A month later I was still pondering where I went wrong. It couldn't have been a dream, because I did trade sets. The silence and my concentration was again broken by the sound of a voice-- my wife talking on the phone. I don't normally ease drop, but something caught my attention. Right when she said something about a new gadget the Jones's got.. "yes Martha, it's the greatest thing. It must be nice to be able to record your favorite programs.. I think they call it a video recorder.. It plays in color too!" . . . I think I'll take up tennis.

MORE NEWSCAST NOMENCLATURE (cf August VUD, page 34), contributed by Clark Golubic (G), Ken Simon (S), and compiler Glenn Hauser (H):

| | | | | | |
|-------------------------|---|---------------------------|---|-----------------------------|---|
| 2 KWGN Big News | G | 6 WPVI Action News | G | 10 WALA Newsbeat | G |
| KQTV Newswatch | H | WJAC News Today (1 pm) | G | WTAJ TV 10 Action News | G |
| 3 KTVS 10th Hour Report | H | News Tonite (6 pm) | G | WBIR Action Ten | H |
| KYW Eyewitness News | G | 11th Hour News | G | WBNS Eyewitness News (12n) | G |
| KARD Sixty (12 noon) | G | Weekend Report | G | Eyewitness 90 (6pm) | G |
| 4 WTAE Channel 4 News | G | (11 pm Sat, Sun) | | 11 WIIC News/watch | G |
| KGBT Six O'Clock News | G | 7 WCKT The Big News | S | WPIX Harper News (10pm) | G |
| WFBC The Scene | H | WABC Eyewitness News | G | WTOC Evening News (6pm) | G |
| WSM The Scene | H | WDAM Night Report (10 pm) | G | KKTV TV eleven News | H |
| KDFW Eyewitness News | H | WTRF Noon Hour Report | G | 12 WBOY Newsbeat | G |
| WTVJ The World Tonight | S | Evening Report (7) | G | 13 KRDO Perspective News | H |
| (11 pm) | | 11 O'Clock Report | G | WQED Newsroom | G |
| 5 WENS Eyewitness News | G | 8 WGAL 6 O'Clock Report | G | KERA Newsroom | H |
| KPLX Eyewitness News | G | 11th Hour Report | G | 23 WLTV Reporter 23 | S |
| WPTV Dateline (90) | S | KTUL Move Closer to | H | 29 WTAF News Now | G |
| WDTV Channel 5 News | G | Your World | | 36 KTVV Eyewitness News | H |
| KRGV Big 5 News | G | 9 WSOC Eyewitness News | H | 40 WCMC Garden State Report | G |
| WKRC Total News Hour | G | WSTV News Hour | G | WICZ News at 6 | G |
| WNEM 10:00 Report | G | KWTV Newsroom 9 | H | News at 11 | G |
| 12 WDSU Newswatch | G | 10 WCAU Newsroom | G | 41 KWEX Reporter 41 | H |

FCC FM NEWS

Bruce F. Elving, Editor
P. O. Box 24
Adolph MN 55701

New Construction Permits

AL Selma 100.9 3000 h,v; 300' Replaces WTQX-FM, which apparently deleted [see Aug., 1973 VUD, p. 9].
AR Searcy 99.3 3000; 153' Final decision.
CO Fort Collins 107.9 100000 h,v; 198'
MS Mississippi State *89.1 10
MO Chillicothe 103.9 1850 h,v; 160'
NY Rochester 103.9 3000 h,v; 300' Final decision.
NC Boiling Springs *88.3 4700 h,v; 225'
OH Dayton *88.1 10
TX Dallas *90.9 100000; 1260'
TX Harlingen 96.1 100000 h,v; 460'
UT Logan K288AK 105.5 10 [Translator of KSL-FM 100.3 Salt Lake City UT]
WA Omak K296AE 107.1 10 [KHQ-FM 98.1 Spokane WA translator]
WA Sunnyside 96.7 3000; 28' Charleston
WV Charleston W224AA 92.7 1 [WBES 96.1/

Deletions (Construction permits "forfeited")

CA Mariposa K221AB 92.1
K228AA 93.5

On the Air and DX Ready

AZ Sierra Vista KTAN-FM 100.9 3000 h, 2660v; -46' [Calls changed from KSWA]
CA Jackson KNGT 94.3 165 h,v; 1090'
CT Westport WMP1 *90.3 300 h,v; 110'
ME Farmington WKTJ-FM 99.3 1500 h,v; 402'
MO Jefferson City KLLM*-FM *88.9 41000 h,v; 255', mono, soul; heard in Duluth first night on the air; Aug. 21, 1973.
NY Greece WGNM*-FM *90.1 10
NY Mount Kisco WARY *88.3 10
NC Southern Pines WIOZ 107.1 3000 h,v; 300'
OH Middletown WMPQ-FM 92.1 1900 h,v; 370'
OR Bend KICE 100.7 50000 h, 20000v; 520' [See Aden, Sept. VUD, p. 15]

OR La Grande KEOL *91.9 10
PA Johnstown WJML-FM 96.5 50000 h,v; 490' [Calls, too]
SD Yankton KQHU 104.1 5 MOR 100000; 430' [See my report, Sept. VUD, p. 32]
TX Columbus KULM 98.3 3000 h,v; 195'
VT Colchester WNPV *88.7 10
WA Newport KUBS *91.5 10
Guam, Agana KSTO 95.5 2600 h,v; 47' [Calls, too; power changed - F2 skip anyone?]

Changes in Facilities

520'
CT West Hartford WUHU *91.3 1000 h,v; /
IA Cedar Falls KUNI [still operating on *88.1 as KHKE] *90.9 94000 h,v; 1780'
IN Auburn WIFF-FM 105.5 3000 h,v; 300'
IN Portland WPGW-FM 100.9 180' 3000 h,v
LA New Orleans WQUE 93.3 460' (93000h,v)
ME Presque Isle-Caribou WDHP 96.9 to 440' (100000 h,v)
MD Bethesda WJMD 94.7 24000 h,v; 670'
MD Havre de Grace WHDG 103.7 17500 (340')
MI Ishpeming WJPD-FM 92.3 470' (100000h,v)
MI Bay City-Saginaw WHNN 96.1 [Calls changed from WBCN-FM; dual-city ID granted.] Rock format.
MI Saginaw WKCO 98.1 50000 h,v; 340' Still heard in mono in August; rumor had it that WKCO would go stereo.
NY Buffalo WBNY 96.1 480' (50000 h,v)
NY Fulton WOSG-FM 104.7 15000 h,v; 310'
NY Hempstead WVHC *88.7 470 h, 110 v; 180' (reduces coverage)
NC High Point WHPG-FM 95.5 100000; 470'
PA Lancaster W GAL-FM 101.3 4600 h,v; 1290' (coverage unchanged)
PA Pittsburgh WTAE-FM 96.1 50000 h,v; 500'
TN Nashville WAMB-FM 92.9 510' (100000)
TX El Paso KTSW-FM 99.9 87000 h,v; 1820'

Call Letters Assigned

AK Juneau *104.3 KTOD
AZ Globe 100.3 KIKO-FM
CA San Francisco San Francisco.
*90.3 KUSF [from KQMA] U. of /
106.1 KFRC-FM [KKEE]
CA Santa Barbara 99.9 KTYD-FM [KTYD]
CA Sonora 92.7 KROG [KVML-FM]
CO Sterling 96.7 KIAG
CT Waterbury 92.5 WNYZ [WENU]
FL Key West 95.5 WIAB
FL Sebring 105.5 WSKP*-FM
HI Honolulu 93.1 KGMQ [KGMW-FM]
IL Paris 98.5 WACF [WPRS-FM]
IN Richmond 96.1 WQLK [WGLM]
MI Tawas City 101.7 WDB1*-FM
MS Ellisville 102.3 WBSJ
MS Jackson 95.5 WLN1 [WFXM]
MO Kansas City 104.3 KBEQ [KBEY; see Brown, VUD, Sept., p. 15.] [mercial]
MO St. Louis 102.5 KEZK [KQNA; goes com-
OH Tiffin *88.9 WHE1 [Replacing extra-
legal *WHCR; see VUD, July, p. 7]
NM Farmington 92.9 KRWN
NY Binghamton 99.1 WAAL [WKOP-FM. Hank
Holbrook in MD heard only the calls on this one, and wrote wondering where WAAL is.]
PA Sharon 102.9 WYFM [WPIC-FM]
TN Hendersonville 92.1 WBYQ [WHVT]
TX Beaumont *91.3 KVLU: Lanar University
TX Brownwood 99.3 KLSN [KFRN-FM]
UT Ogden 101.9 KQPD [KBCC]
VT Burlington 92.9 WEFZ [WVNY]
WA Spokane *89.7 KMS1*-FM
WV Keyser 94.1 WKLP-FM
WJ Shell Lake 95.3 WKCF

Variety reports that WYSP 94.1 Philadelphia has switched from MOR to rock, and KFMU 94.9 Kansas City MO is adding v.

FM INDUSTRY NOTES AND READERS' REPORTS AND COMMENTS - Contributions Welcome

This month we'll begin with the oldest and progress to the most recently-received. They begin with:

Hank Holbrook, Chevy Chase MD, who likes to verify stations that change call letters, notes the following new call letter stations in operation: Chattanooga TN *88.9 WKES [was WNGW]; Bridgeport CT 99.9 WEZN [WPBS; now "easy-listening" MOR]; Petersburg VA 99.3 WPLZ [WSSV-FM], and "WESK 92.7 Prince Frederick MD now with mood music and call changed to WUJS."

Dave Pomeroy, Topeka KS, sends a clipping pertaining to the application for a new FM station in Topeka [106.9 mhz?] filed by the Shawnee Broadcasting Co. The station will carry "general contemporary pop music with jazz and rhythm and blues. . . the station would cover an estimated audience of 225,000 and would reach to Lawrence." [Very conservative coverage estimate, indeed, for a 100-kw station.]

Bill Grant, Worcester MA, sent an ad put in the local paper by WCLW *91.3 (80 w, -377) "WCLW is beginning a period of equipment tests. If you should notice any television interference on especially Channel 6, please note the time and the nature of the interference and call us at 793-7585." Bill has not heard any testing, as he's officed under WICN *90.5, "which slops all over

the low end of the band." He regrets that he did not get to the WTFDA convention, noting that he has moved into a new house just before the convention. "The location is 750' ASL (250' higher than previous location) and open to the east and southwest for tops. . . Also 3 miles from the nearest FM station. Antenna system has yet to be installed."

Dave Walcutt, Carbondale IL, writes to say that the Holiday Inn shows have been cancelled, with the last two stations to carry the program located in Jefferson City and Memphis. This was told to Dave by "Kathy Finley, 'secretary to Donna Holiday'" in Memphis TN. [I thought it was Dolly H.!

W. Bruce Dean, Seekonk MA, sent an extremely interesting article about WBRU 95.5 Providence RI: "FM Transmitter at Brown Cause of Interference" to physics and biology experiments on the campus. The trouble developed when WBRU became 50000 h,v; 220' last December, and the station offered to reduce power certain times of the day, but this was not satisfactory to the researchers. The professors were accused of opposing WBRU because they didn't like its progressive rock format, but this charge was denied. WBRU is now looking for a new transmitter site, but continues to operate legally on 95.5 with the above-listed facilities. Bruce adds: "WBRU is

directional with its new facilities, with a null limiting ERP to 20 kw to the north, towards WHRB 95.3 Cambridge MA. [I noted from its program guide of several years ago that CFRC-FM-AM Kingston, Ontario, severely limits its on-the-air operation to only a few hours a day, mainly on weekends, because of interference caused to campus experiments; strange that this long-established operation has not by now changed its transmitter sites.]

Marvin E. Robbins, Omaha, says that WCCO-FM 102.9 Minneapolis MN, now operating with 100000 h,v; 1250' gets out nicely. WCCO-FM is still on limited hours of 10 a. m. to 10 p. m. Mon.-Sat. (silent Sundays), but this will gradually increase as the FM staff is increased, and 24-hours-per-day operation is realized. [WCCO-FM is comparatively weak in the Duluth area; John Ebeling also noticed this when vacationing in NE MN.; I suspect inadvertent directionality because WCCO-FM's antenna is mounted on the south side of the tower (supporting structure).] Marv, on a trip to the Chicago area, also noted that the new KXGI-FM 101.7 Fort Madison IA is \$, while the following, listed elsewhere as \$ are not: KHAK-FM 98.1 Cedar Rapids IA; WKEL-FM 92.1 Kewanee IL. On the trip the "worst signal was KNNT-FM 106.5, which barely made it to the 80-M Interstate north of Davenport. KMAO-FM 95.3 Maquoketa only E IA FM not heard; KOUR-FM 95.3 seemed dominant for miles and miles [Independence IA]. Also, there is a KTAV 92.1 from "Pella-Knoxville" on with 100% religious programming -- gets out nicely -- not Stereo though!"

Russell F. Brown, St. Joseph MO, reports now that KSLQ 98.1 St. Louis 100000 h,v; 578' went to that power "they now pour in seldom dropping out of stereo. I even heard them swamping poor little KOSE-FM about 10 miles from Osceola AR. I've received a report from someone hearing an ID from Helena AR on 107.5, but while down there I couldn't even find them on 103.1, let alone 107.5." [See VUD, May, 1973, p. 15 (Higgins).]

Mike Dorrner, Nome AK, reports that there is some interest locally in starting the area's first FM station, but economics might alliterate against this. Mike observes that in LA WVSL 105.3 Slidell is being sold to the owners of WNNR (AM) New Orleans -- the facility that once operated WRGM [now WEZB]. WVSL will probably move to New Orleans. "I see that Riverton WY has a new 10-watt. That's the first FM grant [outside of translators] to that state since 1968 [KFBC-FM Cheyenne]. Wyoming is definitely the last of the fifty in FM progress. KNEZ-FM 96.7 McPherson KS is a new grant; this represents a revival of their FM station which goes back to the post-war era. KMHG 102.7 Lincoln NE has been bought by KFOR (AM) there -- another FM revival (KFOR-FM 102.9 was verified in Duluth prior to its deletion -- 1952?). The owner of KGKO Benton AR has re-applied for 107.1 there; he had a permit with the call KDOM there in 1969-70 but let it lapse

Al Ellis, Brantford, Ontario, sent copies of some recently acquired FM QSLs in which it is confirmed that the following have vertical polarization: WLIF 101.9 Baltimore MD, WFYC-FM 104.9 Alma NJ, and WVIA-FM *89.9 Scranton PA. WVIA-FM replaced WUSV Scranton, and during the transfer, January 1970 to April 23, 1973, the facility was silent.

Dennis Smith, Wasco CA, mentioned that long-silent KCBH 93.7 Chico CA is back on the air with automated easy listening music, and KONO 98.5 Delano CA was off the air briefly but has returned.

Bill Dickerman, Williamsport PA, notes WVCD 97.9 Hazleton PA is now in \$, MOR (25000 h,v; 660'), "the velvet sounds of \$ 97-9, WVCD Hazleton, your beautiful island." Bill says HCJB-2 Guayaquil, the largest city in Ecuador, broadcasts noon to 10 p. m. on 102.5 in \$. HCJB also plans to start an MOR formatted station with regular gospel messages in Quito beginning shortly. [A similar item I ran across concerned TGNA-FM 100.8 Guatemala, which expects soon to be in \$ 24 hours a day with good music and a gospel message.] Bill

quoted from a letter he'd received from WYZZ 92.9 Wilkes-Barre PA: "Oftentimes, some stations modulate so heavily (with resultant distortion) that the listener thinks a station has a stronger carrier when it doesn't. Since WYZZ modulates at a lower level than most, we have better fidelity and less distortion. Our field strength tests show that WYZZ is the strongest toward the west, and that we have a clear co-channel. For example, WBRE-FM, WVCD and WQYT [WMBF-FM] chop each other up and cancel each other in Luzerne County and many areas of northeastern Pennsylvania. . . WYZZ is the only station in the area that meets the mileage separation requirements from other co-channel stations." Finally, WVIA-FM plans to increase its tower height and go to a new antenna. Bill would like to know my deadline each month. It is generally the first Tuesday before the 20th of each month when the interval is four days or greater (plus or minus five days): simple enough? Pittsburgh's WPZZ 94.5 has shifted from MOR to hard rock [will the "EZ" call letters remain?]. Another correspondent says WFWV 106.3 Blairstown NJ is not yet on the air, while WRNN 107.1 is still identifying as Mount Kisco instead of Briarcliff Manor (NY).

Dr. Richard E. Wood, Baton Rouge LA, corrects the WQQQ listing at the bottom of my Sept. column (p. 14). WQQQ is in Easton, not Erie PA.

Paul E. Petosky, Munising MI, says WHNN 96.1 Bay City-Saginaw MI [former WBCM-FM] now calls itself the Coyote and "Super WHNN." WNNR *90.1 Marquette MI plans to apply for 100 kw (now they are 320, -37'), and maybe this is why WCMU went from 90.1 to *89.5 when WCMU increased power. Ishpeming MI 107.1 has applied for calls WMOQ. And an application is being filed by local people for an FM stereo station on 100.1 in Marquette: "a 24-hour radio station which will serve Marquette and the surrounding area from studios in the Ramada Inn." Here's something from the WRVM 102.7 Suring WI program guide:

Baton Rouge, Louisiana

Dear Sirs,

I am delighted to report reception today of your FM station on its 102.7 MHz frequency, heard here in Louisiana's capitol, a distance of 1005 miles. Excellent, remarkable reception . . . you are the first station I have heard on 102.7 with my 100 kilowatt local, WJBI-FM, active on neighboring 102.5 KHz! This unprecedented reception witnesses to your positively overwhelming strength and clarity at the time.

A Distant Listener

(The above listener was using special, sophisticated equipment.)

from the FCC, Washington DC 20036. I have not studied my copy of the agreement yet, but Glenn makes these observations, which I am sure will be augmented by writings in his own columns.

"The document sets forth a number of technical parameters and, for the first time, establishes an allocation table for Mexican cities within 199 miles of the border [and, for the first time, educational FM stations within 88-108 mhz in the United States are allocated]. Of greatest interest to DXers is the large-scale reshuffling of frequencies and stations on the Mexican side--while only one U. S. station is being made to move (KTAI Kingsville TX, from 91.9 to 91.1), and from Class D to Class A). Specific Mexican assignments are made whereby "the Tijuana/San Diego and Juarez/El Paso conflicts are alleviated. . . Also shown are class of station, power, and for the first time, antenna height above average terrain. However," Glenn editorializes, "these last two (and possibly some of the frequencies) appear subject to the usual variety of errors in data supplied by the Mexican government."



FCC TV NEWS — DATA

Roger H. Brown
1617 Linden St.
E. Lansing, MI 48823
October 1973

NEW STATIONS ON THE AIR

Laredo, TX--(ch 13)--KVTV expected to begin programming on 9-1-73

STATIONS LEAVING THE AIR

Santa Rosa, CA--(ch 50)--KFTY off on 8-8-73, vows to return on 11-16-73

APPLICATIONS FOR NEW STATIONS

Sumter, SC--(ch 27 ETV)--New, 1015-kw max. vis., 200-kw max. aur., 1150 ft. AAT

CONSTRUCTION PERMITS GRANTED

Booneville, MS--(ch 12 ETV)--New, 45 kw max. vis., 9 kw max. aur., 750 ft. AAT
granted CP 8-27-73

CHANGES GRANTED IN ACTIVE STATIONS

Cleveland, OH--(ch 25 ETV)--WVIZ-TV granted CP 8-9-73 for change to 650-kw vis.,
130-kw aur.

Williston, ND--(ch 8)--KUMV-TV granted CP 8-16-73 for change to 170-kw vis., 30-kw
aur.

Hagerstown, MD--(ch 25)--WHAG-TV granted special temporary authorization for change
to 680-kw vis., 120-kw aur., 1230 ft. AAT

Midland, TX--(ch 18)--KDCD-TV granted STA 8-29-73 for change to 9-kw vis., 1-kw aur.,
400 ft. AAT

Tallahassee, FL--(ch 11 ETV)--WFSU-TV granted program test auth. 9-12-73 for change to
316-kw vis., 32-kw aur.

NEW CALL LETTERS ASSIGNED, CALL LETTERS CHANGED

Milwaukee, WI--(ch 24)--granted WCGV Eagle Butte, SD--(ch 13 ETV)--granted KPSD-TV
Naples, FL--(ch 26)--granted WEVU Nashville, TN--(ch 8)--granted WNGE (was WSIX-TV)

MISCELLANEOUS

WNYS-TV Syracuse, NY denied request to add ch 52 to Corning, NY. Ch 52 remains assigned
to Ithaca, NY.

Asheville, NC--CP granted there for translator W62AC, 100Q-w, a good DX possibility.
Michigan allocations table has been changed: ch 31 to Ann Arbor, ch 22 to Mt. Clemens
(which would conflict with Global ch 22 in Windsor), ch 44 to Port Huron and ch 42
to Saginaw. Rumors here are of commercial ch 31 in Ann Arbor.

TV STATE OF THE INDUSTRY as of mid-September 1973

931 stations on the air (603 VHF, 328 UHF); 695 commercial (511/184); 236 educ. (92/144)
77 CPs not yet on (5 commercial Vs, 55 comm. Us; 4 educ. Vs, 13 educ. Us)
70 applications pending for new stations (37 Vs, 33Us)

Please forward unusual information to me, if you have it. That's it for this time.

73, Rog



Canadian Radio-Television
Commission

Conseil de la Radio-Télévision
Canadienne

J. JOEL ROSENBERG & MARK L. LEWIS
47 PANNAHILL RD 599 GAINSBOROUGH RD
DOWNSVIEW -ONT- LONDON
416-633-1769 519-471-0978

NORTH OF THE BORDER:

FOR NEWS IN CANADIAN BROADCASTING

OCT. '73

TV APPROVALS

PORT-AU-PORT, NFLD ch. 13# .504/.101 kw. dir Sat of RABEO-CANADA via ANIK satel.
KEARNS (Kirkland L.), ONT CPOL-TV-2 ch. 2 Press: 14.6 kw EHAAT 722
Preps: 38.5 kw EHAAT 733 (CBC)
KEARNS, ONT OKSO-TV-3 ch. 11 Press: 65 kw Preps: 162 kw (OTV)

TV APPLICATIONS

BONNYVILLE, ALTA ch. 6 67 kw. dir Sat of CBXFT Edmonton (Radio-CANADA)
LAG LA BICHE, ALTA CFRN-TV-5 Press: 49 w. EHAAT 170d Preps: 1.225 kw. EHAAT 126d (CTV)
YORKTON, SASK ch. 10 39.24/5.35 kw. omni by CKOS-TV -for NEW CTV affil.
WYNARD, SASK ch. 12# 61/12.2 kw. by CKOS-TV NEW-- Sat of ch. 10 above (CTV)

FM APPLICATIONS

PEACE RIVER, ALTA 95.9 MHz 44 watts omni NEW (CBC)
THOMPSON, MAN 99.9 MHz 86 watts omni NEW (CBC)

FEATURE of the MONTH

Your co-editor of this column, Mark Lewis, now resides in what might be termed "the co-channel capital of the world"...London, Ontario; a city of 220,000 located at the midpoint between the transmitter farms of Toronto and Detroit (each about 110 miles distant). London has but one local FM outlet: CFPL-FM 95.9 @ 179 kw. CKOT-FM 100.5 is the next distant station, but only radiates 1,135 watts. All other stations are 40 or more miles distant. Thus, the DXer with a reasonably selective RX and directional ant. finds himself without any images on the dial, and 2 or more stations per freq. It is certainly a novelty to suddenly be able to FM DX without dozens of high powered locals and man-made electrical noise.

CFPL-FM 95.9 changed format on Sept. 9. They are now broadcasting a mix of programming including MOR, CL, JZ, RK, FK, and Pubaffairs. Midnight-6 am. is originated remotely from "Radio Western" at the Univ. of Western Ont. in London with studios at the university. CFPL anticipates that their new programming will meet new CRTO FM policy to be debated in Ottawa on Oct 24. I predict that other CDN FM outlets will follow the CFPL-FM example and adopt similar prgm "mixes". They now ID as "Stereo 96..London, Canada" with plenty of jingles. They had requested the call OING, to accompany the format switch, but CRTO turned them down, claiming a "freeze" on FM calls until after the policy hearings; thus, the "Stereo 96" route. CKLW-FM 95.9 Windsor is also experimenting with format. Daytime monitoring reveals C&W in § with some evening JZ-MOR and overnight classics...more next month.

NOTESend ideas &/or info for FEATURE to MARK at London address.

TIBBITS

###As mentioned above, FM POLICY hearing in Ottawa on Oct. 24.
###CKAT-FM North Bay has been purchased by CFCH-AM. New owners have promised no FM simulcast of AM which should agree with new policies.
###CKWL-FM Verdun PQ is the first french Solid Gold Rock ... (automated)
###"The Flying Toilet" is the name given to ANIK I, the CDN domestic satellite. The residents of Ft. Simpson in our far north were promised ANIK translator services for Sept & many residents purchased colour sets in Aug in honour of the 1st TV best. One problem: the ANIK ground stations, fully installed are without elect.power. It seems xmtrs were installed, but the local hydro-elec. commission did not live up to their part of the bargain: so no TV till Apr.'74. Ground stations at Rankin Inlet & Norman Wells are also without power, so delayed s tarts there too. The slogan above is also indicative of the prgm of CBO-TV relayed by ANIK: Northern residents complain of lack of "local" programming with relevance for the North.
###Call letters for ANIK stns have changed from CBT*-TV-* to CBD*T: for example- ch. 8 Watson L., YT CBTE-TV-1 now CBDAT. ***For Sept UPDATE to CDN GUIDE ..send SASE (CDN stamp) or addressed envelope & 10¢ coin to DOWNSVIEW address above. 73's..

OCTOBER 1973

Deadlines:

- 11 October (7T FMSB)
- 12 November (8T TVSB)
- 10 December (9T 90)



Editor:

Glenn Hauser

K O S U - F M

Okla. State Univ.

Stillwater OK 74074

89 MHZ FMDX RECORDS

| Mhz | Prop | Call | Location | Miles | Dxer, Location |
|------|------|--------|---------------------|-------|---------------------------------|
| 89.0 | Es | YSRI- | San Salvador E S | 1215 | Pat Dyer, San Antonio TX |
| 89.1 | Es | ZBM- | Hamilton Bermuda | 1385 | Andy Bolin, Charleston IL |
| | Tr | KMUW | Wichita KS | 640 | Russ Brown, Saint Joseph MI |
| | Au | KMUW | Wichita KS | 640 | Russ Brown, Saint Joseph MI |
| 89.2 | Es | XEJT- | Tampico Tams | 990 | Glenn Hauser, Enid OK |
| 89.3 | Es | WPCS | Pensacola FL (AL) | 1420 | Fred McCormack, Des Lacs ND |
| | Tr | WPCS | Pensacola FL (AL) | 800 | Carlton Howington, Uniontown OH |
| | MS | WHKW | Chilton WI | 1165 | Russ Brown, Saint Joseph MI |
| 89.4 | Au | WCAL- | Northfield MN | 500 | Glenn Hauser, Von Ormy TX |
| | Es | TGD- | Quetzaltenango Guat | 1095 | Frank Merrill, Milan MI |
| 89.5 | Es | WPKN | Bridgeport CT | 1365 | Glenn Hauser, Von Ormy TX |
| | Tr | WMOT | Murfreesboro TN | 840 | Robert Cooper, Oklahoma City OK |
| | MS | WNIU | Dekalb IL | 1035 | Glenn Hauser, Von Ormy TX |
| 89.6 | Au | WPKN | Bridgeport CT | 790 | Glenn Hauser, Von Ormy TX |
| | Es | TGD- | Guatemala Guat | 1130 | Andy Bolin, Charleston IL |
| 89.7 | Es | WGBH- | Boston MA | 1475 | Glenn Hauser, Von Ormy TX |
| | Tr | WMCU | Miami FL | 1155 | Robert Cooper, Oklahoma City OK |
| | MS | KGCC | Denison TX | 1120 | Glenn Hauser, Von Ormy TX |
| 89.9 | Au | WCOSU- | Columbus OH | 620 | Larry Vogt, Springfield VA |
| | Es | WJCT- | Jacksonville FL | 1625 | John Ebeling, Bloomington MN |
| | Tr | WJCT- | Jacksonville FL | 1020 | Fred McCormack, Des Lacs ND |
| | MS | WHSA | Brule WI | 905 | Glenn Hauser, Von Ormy TX |
| | Au | WHSA | Brule WI | 505 | Larry Vogt, Springfield VA |
| | | | | | Frank Merrill, Milan MI |

CHANNEL 6 SKIP TVDX RECORDS

| Call | Location | Miles | Dxer, Location | Logos |
|-------|--------------------|-------|-----------------------------------|-------|
| WBRC- | Birmingham AL | 1275 | Fred McCormack, Des Lacs ND | |
| KUAT- | Tucson AZ | 1970 | Bob Berg, Norfolk VA | |
| KVIQ- | Eureka CA | 1220 | Fred McCormack, Des Lacs ND | |
| KVIE | Sacramento CA | 1290 | Robert Cooper, Oklahoma City OK | |
| KSBY- | San Luis Obispo CA | 1415 | Robert Grace, Franklin TX 77856 | |
| KRMA- | Denver CO | 1485 | Larry Vogt, Springfield VA | |
| WNHC- | New Haven CT | 1180 | Bedford Brown, Hot Springs AR | |
| WDBO- | Orlando FL | 1530 | Ron Boyd, Truro NS | |
| WCIX- | South Miami FL | 1410 | Dave Egan, Valleyfield PQ | |
| WCTV | Tallahassee FL | 1520 | Fred McCormack, Des Lacs ND | |
| KCIX | Nampa ID | 1405 | Ferdinand Dombrowski, Okauchee WI | |
| KTLE | Pocatello ID | 1185 | B. J. Bingham, Festus MO | |
| WFEM- | Indianapolis IN | 1235 | Fred Nordquist, W.S.M.R. NM | |
| WOC- | Davenport IA | 1325 | Morris Foote, Middleton ID | |
| KTVC | Ensign KS | 1630 | Chislain Girard, Arvida PQ | |
| WPSD- | Paducah KY | 975 | Bill Grant, Worcester MA | |
| WDSU- | New Orleans LA | 1760 | Robert Cooper, Fresno CA | |
| KTAL- | Shreveport LA | 1035 | Peter Sawatzky, Waterloo Ont | |
| WCSH- | Portland ME | 1095 | B. J. Bingham, Festus MO | |
| WJIM- | Lansing MI | 1875 | Robert Cooper, Fresno CA | |
| WLUC- | Marquette MI | 1240 | Don Ruland, Holly Hill FL | |
| KMMT | Austin MN | 1455 | Ron Boyd, Truro NS | |
| WDSM- | Duluth MN | 1250 | Fred Nordquist, W.S.M.R. NM | |
| WABG- | Greenwood MS | 1170 | Fred McCormack, Des Lacs ND | |
| KMOS- | Sedalia MO | 1165 | Jeff Kadet, Needham MA | |
| KTVM | Butte MT | 1260 | David Rosenstock, Chicago IL | |
| KHPL- | Hayes Center NE | 1290 | William Hider, Binghamton NY | |
| WOW- | Omaha NE | 2120 | Raul Medina, Managua Nicaragua | |
| KAVE- | Carlsbad NM | 1405 | John Parillo, Girard OH | |
| WHAM- | Rochester NY | 1130 | R. Sanders, Stillwater OK | |
| WRGB | Schenectady NY | 2380 | Robert Cooper, Fresno CA | |
| WECT | Wilmington NC | 1540 | Fred McCormack, Des Lacs ND | |

STATISTICS

OCTOBER 1973

| | | | |
|--------|--------------------|------|---------------------------------|
| WDAY- | Fargo ND | 1385 | Norris Doyle, Pittsburg CA |
| WTVN- | Columbus OH | 1090 | Fred McCormack, Des Lacs ND |
| KOTV | Tulsa OK | 1405 | Norris Doyle, Pittsburg CA |
| KOIN- | Portland OR | 2135 | Robert Seybold, Fredonia NY |
| WJAC- | Johnstown PA | 1370 | Pat Dyer, Gunbarrel Hill CO |
| WPVI- | Philadelphia PA | 1420 | Fred McCormack, Des Lacs ND |
| WTEV | Providence RI | 1330 | Les Prus, Manhattan KS |
| WJBF | Augusta GA (SC) | 1395 | Glenn Hauser, Leadville CATV CO |
| KPLO- | Reliance SD | 1245 | Randy Miltier, Campbell CA |
| WATE- | Knoxville TN | 1295 | Fred Nordquist, W.S.M.R. NM |
| KFDM- | Beaumont TX | 1385 | Mike Collins, Stratford CT |
| KRIS- | Corpus Christi TX* | 1520 | Morris Foote, Middleton ID |
| KCEN- | Temple TX | 1460 | Norris Doyle, Pittsburg CA |
| KCMC- | Texarkana TX | 1405 | Morris Foote, Middleton ID |
| KSYD- | Wichita Falls TX | 1525 | Doris Johnson, Longview WA |
| WTVR | Richmond VA | 1335 | Glenn Hauser, Von Ormy TX |
| WHIS- | Bluefield WV (VA) | 1275 | Fred McCormack, Des Lacs ND |
| KHQ- | Spokane WA | 1850 | Robert Seybold, Dunkirk NY |
| WITI- | Milwaukee WI | 1720 | Dennis Smith, Wasco CA |
| KSPR- | Casper WY | 940 | Bill Draeb, Kewaunee WI |
| CHAT- | Medicine Hat Alta | 1195 | Robert Cooper, Arcadia OK |
| CHCA- | Red Deer Alta | 1315 | Bill Draeb, Kewaunee WI |
| CHCK- | Victoria BC | 1065 | Pat Dyer, Gunbarrel Hill CO |
| "CBWT" | Winnipeg Man | 1295 | Jerry Pulice, Staten Island NY |
| CHSJ-1 | Bon Accord NB | 1070 | Dave Janowiak, Joliet IL |
| CJON- | St. John's Nfld | 1835 | Barney Rauch, Peoria IL |
| CJCB-1 | Inverness NS | 1350 | Bill Heusmann, Steger IL |
| CFUL- | Timmins Ont | 1170 | Glenn Hauser, Enid OK |
| "CELT" | Toronto Ont | 1310 | Larry Godwin, Amarillo TX |
| "CBMT" | Montréal PQ | 1400 | Glenn Hauser, Enid OK |
| CKCK-2 | Willow Bunch Saak | 1175 | Fred Nordquist, W.S.M.R. NM |
| CHSS- | Wynyard Saak | 1335 | Robert Seybold, Dunkirk NY |
| XETV | Tijuana BC | 2145 | Robert Seybold, Dunkirk NY |
| XEHL- | Guadalajara Jal | 2020 | Robert Seybold, Dunkirk NY |
| XET- | Monterrey NL | 1325 | Bedford Brown, Chicago IL |
| XHTI- | Puebla Pue | 1120 | Robert Cooper, Oklahoma City OK |
| XHZ- | El Zamorano Gro | 1065 | Glenn Hauser, Enid OK |
| XENH- | Hermosillo Son | 1310 | B. J. Bingham, Festus MO |
| CMJL- | Camagley Cuba | 1320 | Bedford Brown, Hot Springs AR |
| CMQ- | Habana Cuba | 2430 | Robert Cooper, Fresno CA |
| YNSA- | Managua Nicaragua | 1410 | Glenn Hauser, Von Ormy TX |
| WIPR- | San Juan PR | 1185 | Don Ruland, Holly Hill FL |

CHANNEL 80 TVDX RECORDS

| | | | |
|-------|---------------------|-----|---------------------------------|
| K8#CN | Mariposa etc CA | 140 | Dennis Smith, Wasco CA |
| K8#AW | Dubuque IA (on 80?) | 605 | Robert Cooper, Oklahoma City OK |
| K8#CK | Beaidji MN | 315 | Fred McCormack, Des Lacs ND |
| K8#CP | Beatrice NE | 330 | Robert Cooper, Oklahoma City OK |
| K8#BT | Selling etc OK | 85 | Robert Cooper, Oklahoma City OK |
| K8#AY | Booker etc TX | 175 | Robert Cooper, Oklahoma City OK |
| K8#ED | Matador TX | 110 | Glen Neal, Sayre OK |
| K8#AU | Memphis etc TX | 60 | Glen Neal, Sayre OK |
| K8#AJ | San Saba TX | 130 | Glenn Hauser, Von Ormy TX |
| K8#AS | Texhoma etc TX | 145 | Glen Neal, Sayre OK |
| K8#AT | Gruver TX | 35 | Glen Neal, Sayre OK |
| W8#AC | Rhineland WI | 125 | Bill Draeb, Kewaunee WI |

CHANNEL 81 TVDX RECORDS

| | | | |
|-------|--------------------|-----|---------------------------------|
| W8#AJ | Cattaraugus etc NY | 100 | J Jo#l Rosenberg, Downsview Ont |
| K8#AN | Alva OK | 100 | Robert Cooper, Oklahoma City OK |
| K8#AR | Cheyenne etc OK | 25 | Glen Neal, Sayre OK |



Primary
 KQED-9
 KHQA-7
 KTHI-11
 KUON-12
 KWTV-9
 KFDA-10
 KVII-7
 KFDA-10
 KCEN-6
 KFDA-10
 KVII-7
 WLUK-11

WNED-17
 KOCO-5
 KVII-7

goodbye

Your editor would like to take this opportunity to announce his resignation as Statistics Editor sometime in the indefinite future. If you would like to take over, please write for more information on the references, techniques and time required. ...until the next, 73 de Glenn

SOUTHERN • FM DX

Editor: Richard E. Wood
820 Arlington Ave.
Baton Rouge LA 70806
Tel. [504] 343-7771
Deadline: 13th.

FEATURING FM DX FROM LOUISIANA TO MARYLAND

Bill Feidt, 8708 Contee Rd., Apt. 14, Laurel MD 20810

The Perseids MS turned out to be a total bust for me; didn't note even 1 burst. Delta Aquarids was much better. August began very poorly, but Tr did pick up toward the end of the month and into beginning of September.

8/19: Tr 0630 WRFY 102.5 Reading PA (94) vy strng, EL to ID on half-hr.

8/23: Tr 1900 WCHR 94.5 Trenton NJ (133) vy gd at times; mixed WDAC/WRVQ; new here, but may have had them since format is religion & may have mistaken them for WDAC.

8/31: Tr 1830 WSCI 89.3 Charleston SC (472) vy strng on peaks, folk mx to ID; stayed q. gd during most of eve. till s/off.

This marked the beginning of excellent tropo to the S. Wash. D.C. was at the time experiencing vy stagnant wx u/ the infl. of a stationary High w/ no thunderstorm activity. Ducting broke down completely w/ onset of thunderstorms 9/3.

9/1: Tr 1900 WXRI 105.3 Portsmouth VA (166) fair w/ Gospel format; normally WAAV slop precludes this reception.

2310 WBBS 99.9 Jacksonville NC (308) gd w/ Soul/Rock format; spots Wilm'ton & J'ville; sx & wx 2345; can find no data on this one, but FCC chan. assignments show 99.9 as Wilm'ton.

2350 WAAV 102.7 Wilmington NC (350) fair, WL; ID on hour. ✓QRM.

9/2: Tr 0002 WQSM 98.1 Fayetteville NC (300) poor to fair, ID, C&W; WCAU 0010 WAFR 90.3 Durham NC (250) fair briefly, funds marathon. 0100 WEZC 104.7 Charlotte NC (352) good, EL to "E-Z nx" on hr.

9/3: Tr 1930 WGET 107.7 Gettysburg PA (52) fair, beaut. mx w/ WSNJ QRM. Superpest WFSI 107.9 (24 hr NSP) had apparently been temporarily felled by severe local thunderstorms.

Noted a vy brief Es opening on 9/5 around 1900 w/ unid's on 89.7 and 90.3, but muf was down to Ch. 2 by 1915. All times EST and that's it for another month. 73. (Thanks for monthly support, Bill; I missed that 9/5 Es, if it happened here. REW)

Hank Holbrook, 7211 Chestnut St., Chevy Chase MD 20015

DXing from Fair Haven MD cottage overlooking the Herring & Chesapeake Bays 15 mi. below Annapolis MD.

Spent much of my 3-wk. vacation in Aug. at the cottage and had some chance to listen for once. The skip opening of Aug. 10 was the latest summer skip noted in this area since I started FM DXing back in 1959.

Underlined have already verified. Power shown if listed on verie. EDI.

88.7 WNHU West Haven CT 240 Tr 8/3 2248-2348 soul, then RR 2300, nx 2330; hrd several times since

94.9 KFMU Kansas City MO 975 Es 100 kw 8/10 ad's, wx. 1200; Gd. mx, Sound of Mx. etc. 1159-1204

91.3 KBIA Columbia MO 855 Es 100 kw 8/10 1201-1206 mx, wx, CL.

88.9 WLCC Lincoln IL 700 Es 4.6 kw 8/10 1229-1239 ID, Radio Bible Cts.

91.3 KDCR Sioux Center IA 913 Es 48 kw 8/10 1248-1300 Portals of Prayer, nx

91.3 WVUH West Hartford CT 290 Tr 1.8 kw 8/11 0751-0829 RR

99.3 WPLZ Petersburg VA 125 Tr 8/12 0327-0350 \$ 99 wx, ID, EL; "Escape to Happy Sound of WPLZ"; ex-WSSV

90.7 KMMU St. Louis MO 740 MS 8/12 0300-0406 ID; RR, nx at 0400 (surely not continuously? REW)

91.7 WHUS Storrs CT 290 Tr 3.16 kw 8/12 2324-2357 s/off, RR. Vy hvy QRM 10 w WKDU pest in Philadelphia! Their most distant rpt.

99.9 WEZB Bridgeport CT 250 Tr 8/14 0342-0405 EZ mx, wx 0400, ex-WPSB.

Hank Holbrook (Cont.)

88.9 WMBW Chattanooga TN 540 MS 100 kw 8/15 0750-0905. CL, nx 0800, CL.
 92.7 WJJS Port Republic MD 15 Tr 3 kw 8/15 1653-1717 Backgrd mx, nx.
 1700. Ex-WESM.
 99.9 WQQQ Easton PA 175 Tr 8/19 0727-0807. Hvy GRM WEZB.
 Rel. then on a Sun. AM. EL 0800,
 Ex-WEEEX.

Many other stns noted on 8/12 Es but I either had them or went unid. Best were KANU breaking thru local WBJC on 91.5 and KSOZ a powerhouse on 88.1 (here them on most Es openings here). There was an excellent trop opening to New England Aug. 23, during much of the day and evening but I could find nothing, much to my frustration. Best DXwise were WAAF the Rock of New England breaking thru local WMAL in the early afternoon on 107.3. Have hrd WAAF in the early AM when WMAL off but never thru them before. WFCR Amherst MA was breaking thru WAMU on 88.5 which only happens on really good openings. WKCI CT was all by itself much of the day on 101.3. In fact I hrd a slew of CT stns at good level. Varies now at 661 in 31 states, Ont., P.Q. and Man., plus Cuba, Bermuda & P.R. This should just about take care of the season here but might stumble onto some fall DX. With fuel shortage will probably close the cottage several months this winter. 73. (Thanks for support in a DX-short month, Hank. I have taken the liberty of converting to 24-hour clock; those times just before noon and midnight seem clearer in that system, and it is more scientific, too. As you know, our skip results are being computerized by Mel Wilson. REW)

Dr. Richard E. Wood, 820 Arlington Ave., Baton Rouge LA 70806. CDT.

A lovely morning duct up the Mississippi and beyond its northern reaches gave me my first Wisconsin trop, a previously-heard Es catch. My only regret was that I did not make it out of bed before 8 a.m. that morning. It was a true sudden duct; previous evening's conditions had given so sign of a superb opening, or I would have set my alarm. All August 22:

Tr
 0815-0830 WIFC Wausau WI 1005 C&W, loc spots, SID; prev by Es; my most northerly (not most distant) Tr
 0830-0845 KNOX - St. Louis MO 567 EL atmt, FM ID, comtry calendar; un.
 0830-0900 KGRV St. Louis MO 567 library show, EL/MoR standards; un.
 To change call, format, ownership soon
 0830-0900 K BUR - Burlington IA 718 MoR auto, \$, loud, full SID
 0843-0900 KSGN - Sts. Genevieve MO 543 C&W, many local spots, mono, // AM.
 0911-0930 KSHE Crestwood MO 565 spots neighboring citias, K-SHE, RR
 0926-0930 WOKZ - Alton IL 581 Upper Alton wash spot, MoR

Plus relogs numerous St. Louis area, WILL - Urbana, WWT0 Peoria IL 105.7 loud (first logging at switch-on 0810), many in 500-mile plus range. Zero conditions since then, massive low-pressure waves, steady rain.

Dennis Smith 450 Poplar Avenue Wasco, California 92280 (Jan -21 Aug) (PST)

My last report was at the end of December 1972 in the Feb-73 column. Since then, little mobile DX has been hrd around Calif., and I've been in Wasco only occasionally for a few days each in early Feb and mid-Apr., and 27 Jun - 5 Aug, and probably 20 - 30 Aug. No real DX has been noted--only new stns on the air.

While in Santa Barbara for a few days in early July, hrd new KEWE 95.7 Camarillo CA (3 kw, 50 mi), KOVA 105.5 Ojai, CA (130 w on mtn, 50 mi) el & classical, and on tropo inversion KAPX 107.9 San Clemente CA (28.5 kw, 150 mi). Inversion is generally quite consistent along strth Calif. coast btwn Santa Barbara and San Diego areas, sometimes quite intense. At this time KPMB-FM 100.7 San Diego CA (30 kw, 175 mi) was noted near sea level location over KHAY 100.7 Ventura CA (38.6 kw, 45 mi).

During the Feb. and Apr. days in Wasco, noted KEWE 95.7 Camarillo CA (3 kw, 95 mi) and KUNA 96.1 San Luis Obispo CA (3.8kw, 75 mi, el). KUNA was KATY-FM w/xmtr downtown behind mtns, so never hrd it; now on mtn w/ KSBY-FM-TV.

In July in Wasco, hrd KPFC-FM 106.7 Pasadena CA (25.5 kw, 125 mi, rock) only because local KN5M 106.7 Tulare (770w on mtn, 80 mi) has quit 24 hr sked. No Es heard at all.

I have decided to include XETRA-91.3 Tijuana in my log. It was hrd March 1968 but not added since I didn't know anything about the stn. then. Wasco FM log is now at 197. Best of DX.

WESTERN FM DX

Editor:
Mike Dorner, Jr.
Box 988
Nome, Alaska 99762

DX FROM THE LAND OF BEGINNING AGAIN

Pat Dyer, Box 988, 5315 Silvertip Drive San Antonio, Texas 78228

During the Perseid meteor shower I thought I'd try to see as well as hear the meteor bursts (I'd watched the displays avidly 1958-1963). I had always figured that most of the FM (or TV bursts) would be from meteors too close to the horizon to see very well. The near full moon and scattered clouds Aug 11-12-13 didn't help that either. Anyway, as expected, a lot more were "heard" than seen; some seen without any associated burst; but a couple were noted with 10-15 second FM bursts apx 2-3 seconds after the meteor had faded. This about the only mode of DX where you can see what is doing it! All times CST.

Aug 10: 1150, trop KAMC 94.9 Arlington TX (245 mi) local ads; rock.

Aug 11: 0824 KLCN-FM 96.1 Blytheville Ark (655 mi) c&w, ID. Only my third Arkansas stn, making #2 by MS; total by MS is only 5.

Aug 12: several tentative Mexico City stations, one from Guatemala, one from S. Dakota.

Aug 17: trop well up into Houston-Dallas areas; some experiments with the International Crystal SAX-1 amplifier show it does work well ahead of the SX-62, but still needs more gain.

Aug 19: trop agn into Houston-Dallas vry strong.

Aug 20: 0015 KILF-FM 100.3 Houston, Tex (185 mi) public service type pgm, 0030 id, //AM; FM t/off rapidly. Local KBRR- 100.3 off; this logging sure along time coming.

Aug 23: 1928 KSJN 91.1 Minneapolis MN (1065 mi) id, cx mx

KSJR 90.1 Collegeville MN (1110 mi) had been //91.1

1931 KTIS-FM 98.5 Minneapolis MN, id. Several other tentative Minneapolis stns.

Aug 24: 0139 KBFM 104.1 Edinburg TX (220 mi) id

0200 KAYD 97.5 (KEEZ on) Beaumont TX (275 mi) id, mor.

0201 WFAA-FM 97.9 Dallas TX (250 mi) nx

0205 KIES-FM 93.3 Killeen TX (125 mi) mor, id's

0813 KGAF, 94.5 Gainesville TX (310 mi) c&w, id

0830 KTAI-FM 98.1 Texarkana TX (365 mi) c&w, id

0859 KULP-FM 96.9 El Campo TX (140 mi) el, id.

With two SAX-1 preamps in series, SX-62 does perform better (though the noise figures for them appear rather high), but range 85-105 so need still additional unit for high end of band. Using home-brew (from magazine article) tuneable trap on Allied 426 with good results in cutting out local cross modulation problems. WLRN-FM verified my June 5 tent log, as have KRCC-FM (June 6), KVEG-FM (June 4), KCUE-FM (June 5), and KJER (July 22). A few more tents still out. 73.

Glenn Hauser,

620 North Husband

Stillwater OK 74074

at Enid Oklahoma

2907D 1125 99.3 Tr KOYY- El Dorado KS 115 local anmts; portable & IPA; o/KLOR

at Stillwater, Oklahoma

0508D 1271 98.3 Es CBW- Winnipeg, Man 940

set up for it since "CBWFT"-3 but it wasn't at this moment, so maybe long MS? CBC anmts; giving Box 500, Toronto add id

1730 98.3 Gw KABI- Abilene KS 195

1925 95.9 Gw KRBB Sallisaw OK 130

1934 89.5 Gw KWGS Tulsa OK 60

"775-9109" request line

cl, east; supposed to be off this month; 1939

UT junkiet, to Rucatan promo

sermon NE, superburst; many others

2009 90.1 MS WMBI- Chicago IL 635

2150 98.5 Gw KLAZ Little Rock AR 280

acid rock; 2159 id

0608M 0754 88.1 Tr KSOZ Point Lookout MO215

organ mx; 0800 id/wsame NPR ditty as KSYM;

music course; the ID as public radio, not

carrying Watergate coverage.

0708T 1016 101.1 MS WBAY- Green Bay WI 745

Green Bay mentioned

0808W 0630 98.5 WHLD Niagara Falls NY 1060 local reference to Niagara in news

1627 88.5 WFDD Winston-Salem NC 930 cl; 1630 amrt, fade

1628 90.3 WAFR Durham NC 1000 *soul; 1634 YL anmt; vy lo mod, ID in psng
 0908 2345 92.1 Gw KTBA Broken Arrow OK 70 local, Tulsa ads
 2347 91.5 KANU Lawrence KS 220 jazz, NNE
 2348 90.5 KXCV Maryville MO 315 hard rock, NNE
 2349 90.9 KCMW Warrensburg MO 255 hard rock, NNE
 2350 93.3 KWKI Kansas City MO 245 national nx; 2355 KC wx, id
 1008F 0852 98.5 Es WYGR Hanover PA 1105 ad ment *US Business Rte 15S, Gettysburg & Crystal Lake
 0903 98.1 Gw KOCO- Lawton OK 130 UPI, not Ai nx; Robt Grabbe in Tokyo Report
 0917 97.5 Es WAKR- Akron OH 895 sung ad for FNB of Akron
 0918 98.1 WQYT Binghamton NY 1190 Fiddler/roof; 930 *Endicott ad; #98 wx, id, "Velvet Sounds."
 0923 97.3 WHCU- Ithaca NY 1165 § cl o/u/WIBW, KWTO; 0932 cl
 0959 98.3 Ms WQLI Ottawa IL 570 "WQLI News"
 1029 98.5 WHLD Niagara Falls NY Niagara Savings in western NY ad
 1059 97.5 WDWS Champaign, IL 545 Central IL Olds/Cad ad
 1108S 0445 101.9 Gw KFNB Oklahoma City OK 50 s/on
 0505 99.9 KLJR Wichita Falls TX 175 s/on KLJR-Texas jingle
 0545 102.9 KDTX Dallas TX 230 SS ads
 0624 97.5 Gw KGUS Hot Springs AR 250 local temp, time
 1208D 0430 93.7 Gw KISR Fort Smith AR 155 "Kisser" ID's
 0459 93.9 Ms WBAG- Burlington NC 970 s/on
 0459 94.3 Tr KAMO- Rogers AR 160 s/on
 0500 94.1 KEZQ Little Rock AR 280 wx, promo ment KMYO(??)
 0517 100.5 Ms WLBG Laurens SC 845 Greenville auditorium promo; Laurens ad, on Greenville Hwy; Mobile homes
 0532 101.3 KFPI- Wichita KS 100 nx; backscatter; antenna east by Ms burst
 0759 102.7 WRVM Suring WI 760 id, 65°, 0930 id, agn (KAFG absent)
 1002 102.7 Tr WRSC- Memphis, TN 395 local nx; FM103 Music.
 1045 102.7 WAAV Wilmington NC 1075 id
 1132 106.1 WRFS Alexander City AL 660 "here in Alexander City," nx, ad
 1141 106.5 WQLR Kalamazoo MI 740 FNB of MI, Kalamazoo ad
 1649 88.9 Es XHM- Mexico DF 1150 Ron Bacardi ad, id
 1308 0503 102.3 Gw KCAB- Dardanelle AR 230 s/on with AM
 0630 97.5 KGUS Hot Springs AR id
 0631 97.5 Tr KWTX- Waco TX 315 local anmts
 1408 2130 90.5 KXCV Maryville MO NNE Kent Concert; 2157 ID, asking listener opinion on advancing "Static in §" rock to 10:15 start (later: rejected 8:1): 0003 end NA and off
 2145 90.9 KCMW Warrensburg MO Jazz Workshop; 0004 still
 2146 91.1 KSJN New Brighton MN 650 north cl; narration, discussion, 2230 end "Conversations in Music," id; "classical 1 to s/off"; 0000 still in
 2147 90.1 WOI- Ames, Iowa 450 NNE cl piano not //91.1
 2233 97.1 KTCR- Minneapolis MN 645 MN nx; 2359 id, 24 hr, 50 kw § c&w
 2244 97.5 KNXR Rochester MN 595 ID, FM car radio ad; 2302 ABC-FM nx; 2305 into MN nx, wx, s/off.
 2255 107.9 KFMW Waterloo, Iowa 510 UPI nx, E IA wx, §108 Olde Golde
 2259 100.3 WHO- De Moines, Iowa 425 local nx
 2317 100.7 WBIZ- Eau Claire WI 665 Lakefront Temp 63°; 2320 local Holiday Inn; 0006 "Holiday INN Nighttime", but local origination
 2320 99.5 WLWL Minneapolis MN 645 "99-5 FM§ Minneapolis-St Paul--The Music Box, where you recognize every song or you can send it back to us."
 2328 93.7 WATL- Minneapolis MN 645 Merit Chevy on I-94 in St Paul, id, FM car radio promo
 2343 97.3 Tr KIMI Des Moines IA 425 ad, on IA State Fair Grounds; Gospel
 1508W 0000 100.7 WBIZ- Eau Claire WI AM&FM nx, "The Entertainers from Eau Claire"
 0359 104.9 KRKZ Carthage MO 165 s/on /KDMC; Ai nx
 1708 2206 106.9 KJMM Muskogee OK 95 addr PO Box 36; ending weeknight 1½ hr clas- sic show, asking for reports
 1808S 0015 107.3 KARD- Wichita KS 110 s/off
 0915 90.1 WOI- Ames, Iowa cl, a few anmts
 0930 90.1 Ms KSJR Collegeville MN 670 id
 1028 90.1 WMBI- Chicago IL sermon; ant NNE
 1908 0750 90.1 Tr WOI- Ames, Iowa cl; 0759 id; in& out all day; K88C off month

October, 1975

2008M 2030 90.1 Tr WOI- Ames, Iowa steady w/cl
 2308 1755 89.1 Es XHRA- Guadalajara, Jal 1105 (SS on this freq-KMUW!!)mx; 1759 \$Jet id;
 1806 apologizing for no news all day; lines
 out; 1807 promo Chet Huntley exclusively in
 Mexico on XHRA; 1811 This Day in History
 on KMJW and measured; doubt it varies; live
 (sked 8:15 am, 6:15 pm exclusive); freq exactly
 dj is Jack Smith; 1842 f/in again.
 1826 88.9 XHM- Mexico DF Impala 73 ad in DF
 1827 88.32 XERCN- Mexico DF 1130 (cf 9 July 88.33, likely this); nestro
 siguiente programa; id ment 50 kw (on AM),
 gas PSA, freq measured, f/out; lowpwr link
 mx, quick fade; 1854 rock w/hum; 1858 "Ima-
 gen" one word ID by child
 1832 90.5 XEDA- Mexico DF 1130 16-96-77 for requests; YL anncr, rock,
 squeezes for KOSU 91.7
 1843 91.3 XHJL Guadalajara Jal 1105 mx, La Chica Masical id, address
 1855 89.7 XEBS- Mexico DF 1130 sports, nx, 0700 mx, 0708 id, in for some
 0109S 0655 88.5 Tr KUMR Rolla Mo 315 time

Decided to move up here so I could get Mexico better. Seriously folks, I'm with KOSU-FM, Oklahoma's NPR affiliate, on 91.7 mhz. We're very interested in DX reports but surprisingly few trickled in this summer. If you heard KOSU and did not send a report, feel free to do so now, either to me or to Mgr. Ed Paulin. The first month of FM DXing here produced some nice Es, tropo and MS catches. Until the next, 73, Glenn.

Dennis Smith 450 Poplar Avenue Wasco, California 93280 (to 31 Aug) PST

I didn't think there would be any more DX through end of Aug, but there was some, probably the only "real" FM-DX noted this summer, even though just tropo.

GW/tropo has been at its usual summertime level here, with TV (VHF-UHF) and FM out to 250 mi, esp. in mornings; stable air layers and inversion. Stability was interrupted in mid-August by breezes and cooling; signals fell. While still cool, perhaps with higher altitude duct, VHF-TV low band and FM were stronger than usual (high band and UHF did not come up) on 24 Aug eve: id 2200, KBBF 89.1 Santa Rosa CA (420w on mtn, 270 mi), Eng & Spanish, poor signal. This condition went into early hours of 25 Aug, awoke 0330, hrd unIDs 89.5 (tent. KPOO San Francisco) 89.7, 90.1; On 26 Aug, awoke after 0400, finally after years caught (id 0415) KLRO 94.9 San Diego CA (37.57kw, 220 mi, Gospel mx, good). Not hrd before because of local KBOS 94.9 Tulare CA (770w on mtn, 80 mi) and (after midnite) potent KSAN 94.9 San Francisco (35 kw, 225 mi), but this time northern California was down while southern California was better. Since then, to end of month, the stable hot temps. and inversion have returned.

Total Wasco FM log is 199. This includes 1 city-of-license change and 3 frequency changes, including recently-changed KFIG 101.1 Fresno (ex-94.5) which may still be debatable points. Best of DX.

Mike Dorner, Box 988, Nome, Alaska 99762

(All times BDT; June 15-)

There is nothing to report. The FM band is dead, absolutely dead. There are a few signals of OC in the 88-100 mhz band, but never any modulation-- probably point-to-point stations, or harmonics of a lower mhz. The nearest FM is Fairbanks (KUAC); never heard. There are three or four FMs in Anchorage, 576 air miles away over two mtn ranges; never heard. Juneau will have a low on shortly, but that's 800 miles away. Seattle is 1200 miles away. Both economics and terrain militate against FM here; we have talked about putting an FM on the air, and there's quite a bit of interest in FM, but until the economics pick up, there will not likely be any new stations, at least outside of Fairbanks. Nome has 2500 people, and it is the largest city on one thousand miles of coastline of western Alasika. Public AM stations operate in Nome, Bethel, and Kotzebue, with others planned for Dillingham and Kodiak; they do not run NPR but programs largely for Eskimo and Indians. The population of whites tends to be rugged individualist with not a high level of education, and NPR would not seem to be what they would listen to anyway.

As of this issue, I am resigning as Western FM DX editor. I urge public-spirited members to step forward and take over the position. Ideally someone from the Western U.S. would be sought, but it doesn't matter. If you're interested, immediatly contact Morrie Goldman, 5815 North Christiana Ave. Chicago, Illinois 60659.

Thanks to all who contributed, particularly to new members.

Jim Pizzi 300 Park, Orcutt, California 93454 (Jan thru 26 July) (PDT)

Ed. note: Dennis Smith sent in Jim's report with his own, and added this comment: "He sends it to me along with his TV-DX report for whatever interest it has for me (and it does, for MUF figuring, etc.) but he says he neither has time to send a separate report for FM nor to make up program tips which he believes is what you want (he is busy with his brothers in developing and running a hi-fi store in Santa Maria.) I tend to believe that any report, even if just a straight list, is useful for propagation interest if it includes dates and times."

| | | | | | |
|--------|---------|-------|------------------|----|---------------------------------------|
| May 21 | | | Jun 4 | | |
| 1430 | 89.9 tr | KCRW | Santa Monica | CA | 1935 91.7 Es KTOY Tacoma, Wash |
| May 26 | | | | | 1935 92.9 KVGM Bellingham, WA |
| 1250 | 92.7 Es | unID | (LBJ estates ad) | | Jun 5 |
| 1300 | 92.3 | KNPM | Midland | TX | 0802 105.1 Es KNIT- Abilene TX |
| 1309 | 101.3 | KNAP- | Fredericksburg | TX | 0803 105.3 KOAX Dallas TX |
| 1330 | 100.3 | KTLC | Dallas | TX | 0804 107.5 KNOK- Fort Worth TX |
| 1332 | 100.7 | KASF | Austin | TX | 0808 92.1 KBAD- Carlsbad NM |
| 1335 | 105.1 | KNIT- | Abilene | TX | 0809 102.1 KPFD Fort Worth TX |
| 1337 | 94.9 | KFAD | Arlington | TX | 0810 93.7 KSEL- Lubbock TX |
| 1340 | 95.7 | KLDG | Hobbs | NM | 0815 98.7 KNUS Dallas TX |
| 1345 | 97.1 | KWXI | Fort Worth | TX | Jun 16 |
| Jun 3 | | | | | 2106 100.7 tr KRSA- Salinas CA |
| 2022 | 92.3 Es | KNPM | Midland | TX | 2115 101.1 KEIG Fresno CA (new freq.) |
| 2024 | 92.1 | KBAD- | Carlsbad | NM | Jun 25 |
| 2025 | 95.7 | unID | (possibly Hobbs | NM | 1002 94.5 Es KBMC Eugene OR (C&W mx) |

FM QSL CORNER

Greg Kelley
108 Archer Street
Staunton, Virginia 24401

Hello fellow DX'ers...my name is Greg Kelley and I will become the new FM QSL Editor. Its seems to me that since there has not been a FM QSL report section since April, a lot of you must have new QSLs. Lets try to get QSLs and have a big column. Below is a short QSL report and a few words on myself.

North Carolina: Eden-WEAF 94.5, used my QSL form and S.A.S.E., Verified in 6 days for mint stamp. (On the 3rd try!)

Virginia : Culpeper-WCUL 103.1, verified by using my QSL form in 5 days for mint stamp.
Harrisonburg-WEMC 91.7, sent letter QSL in 8 days for mint stamp.
Richmond-WRFK 106.5, sent blue & red QSL Card in 8 days for mint stamp.
Roanoke-WVWR 90.0, verified by using my QSL form in 5 days for mint stamp.

My receiver for FM DX is a Zenith Transoceanic 7000Y and the antenna is a whip. My elevation is 1600 feet, but a 20 mile drive caput you over 3500 feet. There are two hills around me. One to the East and West, rising about 5 degrees.

Under normal conditions I receive 26 cities and towns which total about 50 stations. The most distance station received is Williamsburg, Va. at 135 miles, with 9 more stations between 100 and 118 miles. Due to all the stations I receive very little skip, although I did QSL Omaha, Nebraska. I have about 160 QSLs but a lot comes from my DX trips.

I will be looking forward to hearing from all of you.
Deadline is 12th of month.

EASTERN TV DX

Dave Pomeroy
KTWU-Channel 11
Signal Hill
Topeka, Kansas 66604

Although a few June reports still appear in this month's Eastern TV-DX column I'm started to get caught up and only have a couple of reporter's columns not listed. For July and August, skip activity continued to dominate TV-DXing with some tropo occurring at some scattered locations. From the reports listed this month, Es occurred on 15 days in July and 4 days in August. While skip was scattered throughout the month of July, the 25th seemed to bring the best reception with 5 Eastern DXer's reporting skip on that date. July 27 was also productive with 4 reporters indicating skip. In August, the 10th was the skip highlight with 3 reports of skip. Tropo was also reported throughout the months of July and August with July 7 and 8 reflecting Tropo from New York to Alabama.

Frank Wheeler 6589 Wattsburg Road Erie, Pennsylvania 16509 (EDT)

| | | | | | |
|---------|-----------------------------------|-----------|----------------------|--|-----------|
| 7-3 Es | KNOP-2 N. Platte, NE | 4413R1066 | 7-24 Es | KWGN-2 Denver, CO | 4444R1292 |
| | KLNE-3 Lexington, NE | 5532R1016 | | KDIX-2 Dickenson, ND | 4433R1169 |
| Tr | WNDU-16 South Bend, IN | 3345R0318 | | KFYR-5 Bismark, ND | 5534R1066 |
| 7-4 | WWOW-5 Chicago, IL (new call? dp) | 7-25 | KTVI-2 St. Louis, MO | 4444R0595 | |
| | WBBM-2 Chicago, IL | 3345N0405 | 7-27 | CBHT-3 Halifax, Nova Scotia | 4433R0804 |
| | WITI-6 Milwaukee, WI | 4445R0410 | | CJCH-5 Halifax, Nova Scotia | 4434R0804 |
| | WGN-9 Chicago, IL | 4445R0405 | 7-28 | KUSD-2 Vermillion, SD | 5445R0851 |
| 7-6 | CBLFT-25 Toronto, Ontario | 3355N0118 | | KTIV-4 Sioux City, IA | 4444R0830 |
| 7-8 | WITI-6 Milwaukee, WI | 3133R0410 | | KMTV-3 Omaha, NE | 5444R0815 |
| 7-11 Es | KXJB-4 Valley City, ND | 3311R0943 | | KLNE-3 Lexington, NE | 4432R1016 |
| | KTEW-2 Tulsa, OK | 4444R0943 | | KNOP-2 N. Platte, NE | 4433R1066 |
| | KTVS-3 Sterling, CO | 4322R1188 | 8-1 | 0800 KATC-3 Lafayette, LA | |
| 7-12 | KCKT-2 Great Bend, KS | 4111R1015 | 8-3 | Tr 1028 CJMO-6 (Where is this one? dp) | 313 |
| 7-13 Tr | WJMN-3 Escanaba, MI | 2222N0431 | 8-5 | Es 1130 KWGN-2 Denver, CO | R |
| Es | KWGN-2 Denver, CO | 3422R1322 | 8-8 | 1200 KNOP-2 N. Platte, NE | R |
| 7-23 | KNOP-2 N. Platte, NE | 1211R1066 | 8-10 | 1130 WMAB-2 State College, MS | R0840 |
| Tr | WXON-20 Detroit, MI | 4440R0155 | | 1131 WLBT-3 Jackson, MS | R0882 |
| Es | KNOP-2 North Platte, NE | 1311R1066 | | 1218 KCKT-2 Great Bend, KS | R1015 |
| 7-24 Tr | CJOH-6 Ottawa, Ontario | 2411R0313 | | | |

"I sure was glad to meet all you fellows at the convention, but wish I could have stayed for the banquet. I hope the next time Bob has a convention it can be some other week besides the first or second week in August. ... If you went up on the hill at Bob's farm house I imagine you got a lot of DX that Sunday morning. KWGN was coming in but that was all I got, you fellows probably got more." (We didn't get up the hill Sunday, but saw Es)

Peter C. Gennuso 636 Main Street DDunkirk, New York (EDT)

| | | | | |
|---------|-----------------------------------|---------|-----------------------------------|-------|
| 7-15 Tr | 0830 WFMJ-21 Youngstown, OH | 7-25 Es | 0715 KPRC-2 Houston, TX | N1260 |
| | 0901 WAKR-23 Akron, OH | | 0719 WMT-2 Cedar Rapids, IA | N0650 |
| 7-17 | 1700 WGTB-30 WDOH-24 Toledo, OH | | 0722 KMTV-3 Omaha, NE | N0875 |
| | 2135 WUAB-43 Lorain, OH | | 0734 KTVI-2 St. Louis, MO | |
| 7-18 | 0818 WAKR-23 Akron, OH | 7-28 | 1232 KUSD-2 Vermillion, SD | |
| | 2207 WBGU-57 Lima, OH | | 1302 KNOP-2 North Platte, NE | |
| | 2210 WXON-20 WKBD-50 Detroit, MI | | 1315 KMTV-3 Omaha, NE | |
| 7-19 | 0800 CHEX-12 Peterborough, Ont. | | 1504 KTVS-3 Sterling, CO | N1250 |
| | 0832 WILX-10 Lansing, MI | 8-4 | Tr 0501 CHNB-4 North Bay, Ontario | |
| | 0845 WEYI-25 Saginaw, MI | 8-5 | 0301 CJOH-13 Ottawa, Ontario | |
| | 0920 WUHQ-41 Battle Creek, MI | Es | 1924 KUSD-2 Vermillion, SD | |
| | 0920 WOTV-8 Grand Rapids, MI | | 1929 WEDU-3 Tampa, FL | |
| 7-21 | 2322 CITY-79 Toronto, Ontario | | 2030 KOA-4 Denver, CO | N1325 |
| 7-22 Es | 1515 WESH-2 Daytona Beach, FL | | 2100 KLNE-3 Lexington, NE | |
| | 1703 WEDU-3 Tampa, FL | 8-7 | Tr 0900 WANE-15 Ft. Wayne, IN | |
| 7-23 Tr | 0800 WWUP-10 Sault Ste. Marie, MI | | 0902 WNDU-16 South Bend, IN | N0375 |
| | 0839 WWTW-9 Cadillac, MI | | 0920 WSBT-22 South Bend, IN | N0375 |
| | 0857 WXXI-21 Rochester, NY | | 0925 WKJG-33 Ft. Wayne, IN | |
| | 0929 CJOH-8 Ottawa, Ontario | | 0933 WLF1-18 Lafayette, IN | N0400 |
| Es | 1846 CKCW-2 Moncton, NB | | 0945 WARD-19 Johnstown, PA | |
| 7-24 | 1802 KDLO-3 Watertown, SD | 8-10 Es | 1300 KARD-3 Wichita, KS | N1025 |
| | 1831 KDIX-2 Dickenson, ND | 8-11 Tr | 0745 WSTV-9 Steubenville, OH | |
| | 1900 KFYR-5 Bismark, ND | | 0747 WFMJ-21 Youngstown, OH | |

"August 11-22 dead except for usual tropo. Total log at 120 stations with 29 UHF [good opening on 8-7 brought 6 new on UHF in 45 minutes--have not seen any of them since."

Harry Hayes 9 Henry Street Wilkes-Barre, Pennsylvania 18702 (EST)
 7-3* Es 1700 KUSD-2 Vermillion,SD 3522R1070 7-25*Es 1205 KTVI-2 St.Louis,MO 3033R0730
 1719 WCCO-4 St.Paul,MN 4555R 1213 KLINE-3 Lexington,NE5044R
 "With Thunderstorm warning, Mr.Prus take note" 1230 KARK-4 LittleRock 3521R0990
 1730 KDUH-4 Hay Spring,NE 3333N1370 1303 KCKT-2 Great BendKS3333R
 1745 KXJB-4 Valley City,ND2045R 1315 WDAF-4 Kansas City 3533R
 7-11 2200 KFDX-3 Wichita Falls 4332R1310 1320 KARD-3 Wichita,KS 5555R1150
 7-21*Tr 1556 WGR-2 Buffalo,NY 3122R0195 1430 KTEW-2 Tulsa, OK 5532R1054
 2030 WBZ-4 Boston,MA 4444N0260 1430 KYTV-3 Springfield 3433R
 2300 WGBH-2 Boston,MA 4244R0260 1500 KARD-3 Wichita, KS 5555R1150
 2300 WCVB-5 Boston,MA 3222R0260 1510 KQTV-2 St.Joseph,MO4411R0990
 2300 WNAC-7 Boston,MA 1433R0260 7-27* 1747 CJON-6 St.John's,Nfld. 3545R
 7-25*Es 1130 WTWO-2 Terre Haute,IN4023N 1800 UNID-4 "repeat of CJON-6.What
 1158 KQTV-2 St.Joseph,MO 5333R0990 would calls be?"
 "That about concludes it for this month. A thing I noticed with Maritime Es openings
 over the years is that for one thing they don't happen that often but also they seem to
 climb to channel 6 rather fast when they do occur." *reception in Thornhurst,PA (10mi)

Bob Seybold Bennett Road Dunkirk, New York (EDT)

6-19 to 26 Tr WNPE-16 WNEP-16 WMHT-17 WJAN-17 Canton,OH WCDC-19 N.Adams,MA WNPI-18 NY
 WARD-19 Johnstown,PA WLFI-18 WHIZ-18 WSYE-18 WUMC-19 WUTR-20 Utica,NY WXON-20 Detroit
 WVTB-20 WPTA-21 WHP-21 WDAU-22 WKAR-23 WCNY-24 WDHO-24 WEYI-25 WTPA-27 WSJV-28 IN
 WBRE-28 WGTE-30 WHNB-30 WNYC-31 WRLP-32 WKJG-33 WITF-33 WBJA-34 WOSU-34 Columbus,OH
 WLIO-35 Lima,OH WENY-36 WSBK-38 WLVT-39 WICZ-40 WTTA-41 WXTV-41 WUHQ-41 WSBA-43 PA
 WVIA-44 WNEO-45 Alliance,OH WSKG-46 WKBD-50 WEDN-53 WTVS-56 WKBG-56 WBGU-57 Bowling
 Green,OH and 5 UHF translators for WNED-17 WCBS-2 WTIC-3 WBZ-4 WRGB-6 WABC-7 WNAC-7
 WLWC-4 WKZO-3 WOTV-8 Grand Rapids,MI WTVN-6 WBNS-10 WLWD-2 WLWT-5 WDTV-5 WTOL-10 PA
 WKRC-12 WJRT-12 Flint,MI CBOFT-9 Ottawa,Ont(rare) CJOH-13 Ottawa,Ont(also rare)
 "Due to size of this report, I will only list E-skip of 6/26/73 even though skip was
 in on the 19th,20,21,23,24,& 25. Some days real good opening but general run of skip
 all single hop--Cubans best."
 6-26 Es KTVI-2 KUSD-2 KLINE-3 KOA-4 KORN-5 KTVS-3 KARD-3 KNOP-2 KRMA-6 KWGN-2 KQTV-2 MO
 KDIX-2 KTVO-3 KYTV-3 KDLO-3 KOTA-3 KHTL-4 Superior,NE KMOX-4 KOAA-5 KDSJ-5 KMOS-6 MO
 6-27 to 6-30 "Great period for E-skip starting with 6/27. Terrific opening 1700 till
 2300 orlater. Almost every possible skip station in southeast U.S. Observed 4 to 5
 deep on channels 2-6. WPBT-2 WDIQ-2 WCBD-2 KETS-2 WBRZ-2 WSB-2 WMAB-2 KTEW-2 Tulsa
 WSJK-2 WUND-2 "possible Nashville on channel 2--Did WSIX-8 shift to channel 2?"
 (There was to be a switch of channel 2 and 8 in Nashville so it may have taken
 place by now. Move should help both stations. PBS station did not have financial
 resources to increase power on channel 2 so gets full power on channel 8 this way,
 dp) WEAR-3 WEDU-3 WSAV-3 WRBL-3 KTBS-3 KATC-3 WRCC-3 WLBT-3 KFDX-3 WRCB-3 WTVY-4 AL
 KARK-4 WWL-4 WCB1-4 WFBC-4 WSM-4 WKRC-5 KFSA-5 WAGA-5 KALB-5 WMC-5 WLAC-5 WBR-6
 WDSU-6 WJBF-6 WABG-6 KRAL-6 KAUZ-6 WATE-6 KCMC-6(Where is this station, Bob? I
 can't find it in TV FACTBOOK. Is it a new call? dp) UNID-6 Cuba
 6-28 WESH-2 WTVJ-4 WEDU-3 WEAR-3 WTHS-2 WBRZ-2 KATC-3 Lafayette,LA
 6-29 1700-2200 WUND-2 WFMY-2 Greensboro,NC WCBD-2 WEDU-3 WEAR-3 WSAV-3 KATC-3 WBTV-3 NC
 WWAY-3 WUNC-4 WCIV-4 WUFT-5 WAGA-5 WRAL-5 WCSC-5 WECT-6 WCTV-6 Tallahassee, FL
 6-30 KCKT-2 Great Bend,KS KARD-3 Wichita,KS
 7-1 Tr WNDU-16 WSBT-22 South Bend,IN WNPE-16 WDAU-22 WBRE-28 Scranton,PA WSYE-18 WENY-36
 Elmira,NY WNPI-18 WNPE-16 WUTR-20 WUMC-19 MI WXON-20 WKBD-50 WTVS-56 Detroit,MI
 WKAR-23 WEYI-25 WGTE-30 WDHO-24 Toledo,OH WKJG-33 WBJA-34 WICZ-40 Binghamton, NY
 WBGU-57 Bowling Green, OH CITY-79 Toronto,Ont "snow-free" 5 translators of WNED-17

Bill Thompson 1907 Seneca Street Buffalo, New York 14210 (EDT)

7-3 Es 1759 WEDU-3 Tampa,FL 2152R 7-8 Tr 0001 WWUP-10 Sault Ste. Marie, MI
 Tr 2259 WNM-5 Bay City, MI 4543R 7-11 Es 1946 WREC-3 Memphis,TN 4323N
 7-6 1900 WTOL-11 WSPD-13 Toledo,OH 2058 KFSA-5 Ft. Smith, AK 4433N
 2044 CFPL-10 CKCO-13 Ontario 2058 KOTV-6 Tulsa, OK 4313N
 7-7 0155 WWJ-4 Detroit, MI 3545N 2059 WATE-6 Knoxville,TN 3312N
 1929 WJIM-6 Lansing, MI 3444N 2127 KHAS-5 Hastings, NE 4423N
 2000 KCRG-9 Cedar Rapids, IA 3333N 2159 KTBS-3 Shreveport,LA 4313R
 2059 WWTV-9 Cadillac, MI 4553N 7-19 Tr 0633 WSTV-9 Steubenville,OH 2144N
 2200 CICA-19 CBLFT-25 Toronto,Ontario7-22 0940 WNY-7 Watertown,NY 4242R
 2255 WKAR-23 E.Lansing,MI 3444N 7-23 0030 CKWS-11 CHEX-12 CJOH2-6 strong
 2259 WEYI-25 Saginaw, MI 4544N Es 1959 CJBR-3 Rimouski, Que 2132N
 2301 WNM-5 Bay City, MI 4343R 2008 CBHT-3 Halifax, NS 3132N
 2330 Rochester/Syracuse VHF's CJOH2-6 2013 CJCB-4 CBIT-5 Sydney,NS N
 2340 CNXN-8 Wingham,Ontario 4454R 7-24 2011 KDLO-3 SD 7-28 1347 KLINE-3 NE

Ronald J. LeBlanc 2524 Arizona Drive Marrero, Louisiana 70072 (CDT)

| | | | | | | | |
|---|------------------------------|----------------|------------|----------|-------------------------------------|--|--------------|
| 6-9 Es | "in & out all day from 1530" | 6-18 Es | 2229 WOI-5 | Ames, IA | 3132R0854 | | |
| 6-10 | 2230 KTCA-2 | St. Paul, MN | 3022R1052 | 6-20 | 1853 YSR-2 | El Salvador | 3032R1132 |
| 6-12 | 2300 YSR-2 | El Salvador | 3022R1132 | | 2026 XEW-2 | Mexico City | DF 2122R0917 |
| 6-13 | 1900 WUND-2 | Columbia, NC | 3132R0900 | 6-24 | 1356 WPBT-2 | Miami, FL | 3332R0686 |
| | 2120 KTVS-3 | Sterling, CO | 4233R1025 | | 1415 WPVT-5 | W. Palm Beach | FL 3233R0666 |
| | 2121 KWGN-2 | Denver, CO | 3122R1000 | | 1545 WUND-2 | Columbia, NC | 3022R0900 |
| | 2158 KMID-2 | Midland, TX | 2022R0741 | | 1622 WWAY-3 | Wilmington, NC | 3022R0780 |
| 6-15 | 1900 KDKA-2 | Pittsburgh | 3122R0930 | | 1715 UNID-2,3 | Spanish again | |
| | 1940 WMAR-2 | Baltimore, MD | 4433R1006 | | 1845 XEW-2 | Mexico City, DF | 4332R0917 |
| | 2050 KDLO-3 | Watertown, SD | 3022R1112 | | 1959 KUSD-2 | Vermillion, SD | 3122R0969 |
| | 2100 KTCA-2 | St. Paul, MN | 3122R1052 | | 2003 KDLO-3 | Watertown, SD | 3022R1112 |
| | 2147 KOAA-5 | Pueblo, CO | 2023R1000 | | 2030 KWGN-2 | Denver, CO | 3022R1000 |
| 6-16 | 1221 CKCO-2 | Wiarnton, Ont. | 3232R1125 | | 2059 KTCA-2 | St. Paul, MN | 3352R1052 |
| | 1500 KWGN-2 | Denver, CO | 4132R1000 | 6-26 Tr | 0030 KYTV-3 | Springfield, MO | 3145R0542 |
| | 2030 WJBK-2 | Detroit, MI | 4433R0945 | | 0031 KETS-2 | Little Rock, AK | 3345R0350 |
| 6-17 | 1200 XEW-2 | Mexico City | 3232R0917 | 6-27 | 1702 WCBS-2 | New York City | 3222R1174 |
| | 1221 XHP-3 | Pubela, Pue. | 3022R0900 | | 1712 WSYR-3 | Syracuse, NY | 3122R1190 |
| 6-18 | 2159 KTCA-2 | St. Paul, MN | 3122R1052 | | 1716 WGR-2 | Buffalo, NY | 3222R1098 |
| | 2159 KDAL-3 | Duluth, MN | 3032R1169 | | Tr | 2000 to east Texas--Houston, Corpus C/ | |
| | 2227 KUSD-2 | Vermillion, SD | 3132R0969 | 6-29 Es | "skip in at 1720" "looks like Cuba" | | |
| (Total now 292 stn; 33 states; 6 countries) | | | | 6-30 | 1700 KNOP-2 | 1730 KWGN-2 | 1800 KTVS-3 |

Dr. Richard E. Wood 820 Arlington Avenue Baton Rouge, Louisiana 70806 (CLT)

"I am finally equipped for TV DX and beginning to enjoy it. I use a single low-band Winegard and two horizontally stacked high-band Winegard on a CDR pushbutton/dial rotor atop a 40 foot pole; also a Lafayette 7 foot Parabolic dish at a similar height on a simple CDR rotor. A trap is at time usage on the high-band to trap out local WAFB-9. Main TV is a '69 color Motorola. Base of my antennas is at 55ft above sea level. Locals here are 2, 9, and 33. ... I will be reporting monthly from now on."

3-23 0130 KHOU-11 0135 KTRK-13 Houston, TX 2000 WEAR-3 Pensacola, FL 4-2 Es HRTG-5 Tegucigalpa, Honduras 1820 YSU-4 San Salvador, El Salvador 6-3 1530 KHAS-5 Hastings, NE 1357 KOAA-5 Pueblo, CO 6-6 1215 WDAY-6 Fargo, ND 6-14 1410 TNC-2 Havana, Cuba (WBRZ-2 off the air) 6-15 1900 Tr MMAU-17 Bude, MS (seen regularly since dish installed) 8-5 1100 Es WBEN-4 Buffalo, NY 1900 KUSD-2 Vermillion, SD 1930 KOTA-3 Rapid City, SD 2006 WNEW-5 New York City, NY

James F. Armington Rt. 8 Box 75 Dothan, Alabama (CDT)

| | | | | | | | | |
|---------|-------------|----------------|----------------|-----------|--------------|------------------|--------------|-----------|
| 6-8 Es | 1800 KUSD-2 | Vermillion, SD | 5522R1002 | 6-27 Es | 1830 WITI-6 | Milwaukee, WI | 3432N0850 | |
| | 1808 KDLO-3 | Watertown, SD | 5533R1117 | | 2000 WJMN-3 | Escanaba, MI | 3422R1000 | |
| | 1817 KMTV-3 | Omaha, NE | 5532R0900 | 6-30 | 1830 CKVR-3 | Barrie, Ontario | 4032N0965 | |
| | 1825 KORN-5 | Mitchell, SD | 5554R1090 | 7-1 Tr | 0045 WTVG-9 | Chatanooga, TN | 2333R0260 | |
| | 2000 KLNE-3 | Lexington, NE | 5444N1036 | | 0641 WDAM-7 | Hattiesburg, MS | 3333R0260 | |
| 6-11 | 1230 CKCO-2 | Wiarnton, Ont | 5423R0965 | 7-7 | 2200 WDMA-40 | Anniston, AL | 1233N0175 | |
| 6-12 | 1230 KNOP-2 | N. Platte, NE | 4323R1109 | 7-8 | 0615 WCBT-4 | Columbus, MS | 3344N0240 | |
| 6-13 | 1330 KMID-2 | Midland, TX | 5545R1000 | | 0620 WVUE-8 | New Orleans, LA | 3544R0300 | |
| | 1400 KFDX-3 | Wichita, KS | 3522R0790 | | 0625 WAFB-9 | Baton Rouge, LA | 2344R0350 | |
| 6-18 | 1227 WBAY-2 | Green Bay, WI | 5422R0940 | | 0630 WWL-4 | New Orleans, LA | 3333R0300 | |
| | 1228 CKCO-2 | Wiarnton, Ont | 5422R0965 | 7-13 GW | 1415 WDTB-13 | Panama City, FL | 5555N0070 | |
| | 1242 WCBS-2 | New York, NY | 5522R0890 | 7-22 Es | 1100 WJBK-2 | Detroit, MI | 5555R0780 | |
| | 1330 WSYR-3 | Syracuse, NY | 5531N0987 | | 1102 WCBS-2 | New York, NY | 3533R0890 | |
| (QSL) | 1600 KRMA-6 | Denver, CO | 4423N1240 | | 1530 CKCO-2 | Wiarnton, Ont. | 5555R0965 | |
| | 1650 KOAA-5 | Pueblo, CO | 4323R1221 | 7-25 | 1330 CJIC-2 | Sault Ste. Marie | N1080 | |
| | Tr | 2205 WCFT-33 | Tuscaloosa, AL | 1234N0195 | 7-26 Tr | 2230 WETV-30 | Atlanta, GA | 1233N0195 |
| 6-19 Es | 1135 CKCO-2 | Wiarnton, Ont | 5421R0965 | | 2230 WHAE-46 | Atlanta, GA | 2334N0195 | |
| | 1227 WMT-2 | Cedar Rapids | 4333R0840 | 7-27 Es | 1200 KMID-2 | Midland, TX | 5554R1000 | |
| | 1230 GLO-3 | Mason City | 3021R0900 | | 1230 KIII-3 | Corpus Christi | 5433R0765 | |
| 6-24 | 1145 XEW-2 | Mexico City | 3323N1202 | 8-8 Tr | 0730 WMAB-2 | Ackerman, MS | 2333N0245 | |
| | 2030 KYCU-5 | Cheney, WI | 4423R1288 | Es | 1730 WMT-2 | Cedar Rapids | IA 5432R0840 | |
| 6-27 | 1800 WFRV-5 | Green Bay, WI | 4522R0930 | | 1800 WBAY-2 | Green Bay, WI | 4032R0940 | |

"Not much DX around here in July and August. Logging of channel 13 in Panama City will probably mean I will be saying goodbye to most channel 13 DX. I just recently put up a UHF antenna, but I haven't had a good tropo opening since to try it out."

Morris Sorensen Box 245 Bala, Ontario POC 1A0 (EDT)

| | | | | | | | |
|---------|-------------|---------------|---|---------|--------------|---------------|---|
| 7-27 Es | 1400 KTEW-2 | Tulsa, OK | N | 8-27 Tr | 1800 WEWS-5 | Cleveland, OH | R |
| 8-27 Tr | 1759 WJW-8 | Cleveland, OH | N | | 1801 WTOL-11 | Toledo, OH | N |

Pte. J.A. Markewicz CFB Cornwallis, Nova Scotia (ADT)

"I never put my full address above as by the Thanksgiving weekend, I'll be posted to Quebec. I'm using a 1972 19" Sony with its own antenna. Lots of Es noted but too much semi-local interference on 2-6. I thought Winnipeg was bad with 3 and 6 blocked. One problem noted is the lack of local ID's on the ATV stations. The sign on announcements give the calls and locations of CJCH Halifax; CKCW Moncton; and CJCB Sydney but neglects to give the channels or even locations of the ten repeaters (satellites) of these three stations."

| | | | | | | | | |
|--------------|--------|------------------------|------------------------|--------------|--------------|--------------|--------------|-------|
| 8-22 Tr 1300 | CKCW-2 | Moncton, NB | 3333R | 8-23 Tr 1030 | WABI-5 | Bangor, ME | | |
| 1320 | CBHT-3 | Halifax, NS | 2323R | 1200 | WMED-12 | Calais, ME | | |
| 1500 | CHSJ-4 | St. John, NB | 4444R | 8-24 | 0835 | WSCH-6 | Portland, ME | 4444R |
| 1800 | CJCH-6 | Caledonia, NS | 4444R | 0900 | WGAN-13 | Portland, ME | 4444R | |
| 1830 | CKCW-9 | St. John, NB | 4444R | 8-25 | 1000 | CHSJ-6 | Bon Accord | |
| 1930 | CHMT-7 | Moncton, NB | 3333R | 1130 | CBAF-11 | Moncton, NB | 2222R | |
| 8-23 | 0830 | WLBZ-2 | Bangor, ME (over CKCW) | 1300 | CBHT-13 | Halifax, NS | | |
| 0930 | WBZ-4 | Boston, MA (over CHSJ) | 1600 | CBAF-3 | Yarmouth, NS | | | |
| 1000 | WEMT-7 | Bangor, ME (over CHMT) | | | | | | |

David J. Egan 12a Andrew Valleyfield, Quebec J6S B2 (EDT)

"Due to a power failure across Quebec on July 3, channels in Montreal wer off the air between 5:50 thru 6:40. Unfortunately, there was no DX around so nothing resulted. However, it is the first time I remember all four Montreal stations off so long. This report is a little shorter than reports have been from me lately. Working as a disc jockey now at a local theatreque so most of my DX is early week or during night. Work on weekends."

| | | | | | | | | |
|--------------|--------|------------------|-------------------|--------------|---------|-----------------------------|---------------|-------|
| 7-9 Es 2307 | KMOX-4 | St. Louis, MO | R0945 | 8-5 Es 2100 | KHTL-4 | Superior, NE | R1300 | |
| 2329 | WOI-5 | Ames, IA | R1015 | 0817 | KQTV-2 | St. Joseph, MO | R1125 | |
| 7-21 | 0705 | WESH-2 | Daytona Beach, FL | R1185 | Tr 2310 | WXXI-21 | Rochester, NY | R0225 |
| 0723 | WSAV-3 | Savannah, GA | R0975 | 2310 | WUTV-29 | Buffalo, NY | R0265 | |
| Ms 0710 | WLWD-2 | Dayton, OH | R0650 | 2315 | WSEE-35 | Erie, PA | R0370, | |
| 7-22 Es 1117 | WJXT-4 | Jacksonville, FL | R1100 | 8-6 Ms 2411 | UNID-10 | "strong-plus burst on WHEC" | | |
| 7-25 Es 1205 | WTVY-4 | Dothan, AL | R1145 | 8-10 Es 1304 | KARK-4 | Little Rock, AK | R1200 | |
| 1214 | WSB-2 | Atlanta, GA | R0965 | 1305 | WCBJ-6 | Columbus, MS | R1120 | |
| 1230 | WRBL-3 | Columbus, GA | R1130 | 1318 | WJXT-4 | Jacksonville, FL | R1100 | |

"FM's from Birmingham, Jacksonville, and others unidentified. Skip up through FM at peak 1543."

| | | | | | | | | |
|--------------|----------|-----------------------|-------------|-------|---------|-------------------|-----------------------|-------|
| 1530 | WATE-6 | Knoxville, TN | N0835 | 8-17 | 1746 | WPTV-5 | Palm Beach, FL | R1335 |
| 1535 | WBRC-6 | Birmingham, AL | R1050 | 8-25 | 0256 | CHEX-12 | Peterborough, Ontario | R0220 |
| 1600 | WMC-5 | Memphis, TN | R1100 | 8-29 | 0108 | WBJA-34 | Binghamton, NY | N0240 |
| 1627 | WUNC-4 | Chapel Hill, NC | R0700 | 0147 | WBNG-12 | Binghamton, NY | R0240 | |
| 1650 | WCSC-5 | Charleston, SC | R0910 | 0153 | WFBG-10 | Altoona, PA | R0280 | |
| 1729 | WECT-6 | Wilmington, NC | N0790 | 0210 | CFTO-9 | Toronto, Ontario | R0285 | |
| 1800 | WTAR-3 | Norfolk, VA | N0635 | 0543 | WOR-9 | New York City, NY | N0310 | |
| 7-28 | 1319 | KARD-3 | Wichita, KS | R1340 | 0549 | WBNG-12 | Binghamton, NY | R0240 |
| 1357 | WDAF-4 | Kansas City, MO | R1115 | 0551 | CFTO-9 | Toronto, Ontario | R0285 | |
| 7-31 Tr 0111 | WGBH-2 | Boston, MA | R0250 | 0608 | WBRE-28 | Wilkes-Barre, PA | R0280 | |
| 0205 | WCBB-10 | Augusta, ME | N0220 | 0615 | WDAU-22 | Scranton, PA | N0280 | |
| 0148 | WENH-11 | Durham, NH | R0215 | 0654 | WNEP-16 | Scranton, PA | R0280 | |
| 0257 | WMEB-12 | Oron, ME | N0265 | 0655 | WCDC-19 | N. Adams, MA | R0180 | |
| 0316 | CBFT2-3 | Mont Laurier, PQ | N0120 | 0647 | WICZ-40 | Binghamton, NY | R0240 | |
| Au 0334 | UNID-2,6 | "strong to northwest" | | 0849 | WCNY-24 | Syracuse, NY | R0175 | |
| Tr 0437 | CFTO-9 | Toronto, Ontario | R0290 | 0856 | WSKG-46 | Binghamton, NY | R0240 | |
| 8-5 | 0320 | WKBW-7 | Buffalo, NY | R0290 | | | | |
| 0325 | CKTM-13 | Trois Rivieres, PQ | R1115 | | | | | |
| 0341 | CFTO-9 | Toronto, Ontario | R0285 | | | | | |
| Es 1100 | WWL-4 | New Orleans, LA | R1395 | | | | | |
| 1930 | WREC-3 | Memphis, TN | R1100 | | | | | |
| 1939 | WTVY-4 | Dothan, AL | R1145 | | | | | |

"As of September 1, total received is now 190 with 171 verified. On FM on 7-25 I heard WFAM-91.1 (Jacksonville) and Birmingham, AL at about 106.3 with QRM from WIBK."

John F. Combs 816 W. Harvard Street Orlando, Florida 32804 (EDT)

"This is my first report since joining the WTFDA recently. My first experience with TV-DX was 6 or 7 years ago when I picked up KQTV-2, via Es at our summer home in Vermont, but I never took it seriously until about 14 months ago. Total log is now 22 stations from 11 states, Puerto Rico, Canada, and El Salvador. I'm presently saving ... to purchase new DX equipment (Arent we all? dp) ... I'm 15--only significant troop has been WTOG-11 (245mi)"

| | | | | | | | | | |
|--------------|---------|--------------------|-------------------|--------------|---------------|----------------|-------------|----------------|-------|
| 5-25 Es 1914 | YSU-4 | San Salvador | N1110 | 7-22 Es 1624 | WTAE-4 | Pittsburgh, PA | R0830 | | |
| 6-4 | 1722 | WKY-4 | Oklahoma City, OK | N1075 | 7-27 | 1255 | KNAB-4 | Big Spring, TX | T |
| 6-13 | 1528 | CBOT-4 | Ottawa, Ontario | N1235 | 8-4 | 1751 | WAPA-4 | San Juan, PR | N1020 |
| 1550 | CKCO1-2 | Georgian Bay, Ont. | N1250 | Equip: 1969 | Sears 11" BW; | Channel 4 | Dipole ant. | | |

Ken R. Simon 528 Pilgrim Road W. Palm Beach, Florida 33504 (EDT)

| | | | | | |
|----------------------|----------------------|-----------------------------|---------|---|-------------------------------|
| 6-2 Es | 1930 WSYR-3 | Syracuse, NY 5431R1190 | 6-10 Es | 1110 WSIL-3 | Harrisburg, IL 4421R |
| 6-3 | 0859 KTVI-2 | St. Louis, MO 5442R1020 | 6-11 GW | 1858 WFTV-9 | "auxiliary tower-325 ft.) |
| | 0930 KTEW-2 | Tulsa, OK 5442R1160 | 6-12 | 0730 W64AD-64 | "rebroadcasting TVN-6" |
| | 0946 KFDX-3 | Wichita Falls, TX 1180 | 6-13 Es | 1710 WSYR-3 | Syracuse, NY 5521R |
| | 1100 WGR-2 | Buffalo, NY 3321R1100 | | 1700 WBAY-2 | Green Bay, WI 4021R |
| | 1110 KDFW-4 | Dallas, TX 4542N1040 | | 1730 WPSX-3 | Clearfield, PA 5521R |
| | 1030 WBRZ-2 | Baton Rouge 4431N0720 | | 1730 CBMT-6 | Montreal, Quebec 5021N |
| | 1032 KATC-3 | Lafayette, LA3331R0760 | | 1800 WTAE-4 | Pittsburgh, PA 3321R |
| | 1045 KJAC-4 | Port Arthur 4521R0840 | | 1817 WWJ-4 | Detroit, MI 2221R |
| | 1050 KBTX-3 | Bryan, TX 5443R0960 | | 1930 WJAC-6 | Johnstown, PA 3021N |
| | 1050 KPRC-2 | Houston, TX 5443R0830 | 6-14 Tr | WBBH-20 | WTVX-34 WTOG-44 WXLT-40 5555R |
| | 1100 KIII-3 | Corpus Christi R | 6-15 Es | 2030 KYTV-3 | Springfield, MO 4021R |
| | 1300 WJMN-3 | Escanaba, MI 3321R1380 | | 2030 KMTV-3 | Omaha, NE 0241N |
| | 1305 WBAY-2 | Green Bay, WI R1320 | Tr | 2030 W69AA-69 | Hollywood, FL 2455N |
| | 1320 KTV0-3 | Ottumwa, IA R1180 | 6-17 Es | 1640 WCBS-2 | New York City, NY 4421R |
| | 1725 KETS-2 | Little Rock 5532N0900 | | 1640 WPSX-3 | Clearfield, PA 4421R |
| | 1900 KQTV-2 | St. Joseph, MO3311R1220 | | 1640 WTIC-3 | Hartford, CN 4321R |
| Tr | 2205 WMFE-24 | Orlando, FL 2015N0140 | | 1830 WGR-2 | Buffalo, NY 0421R |
| 6-4 Es | 1620 WKY-4 | Oklahoma City N1160 | | 1840 CKVR-3 | Barrie, Ontario 4021R |
| | 1700 KPRC-2 | Houston, TX 3321R0830 | | 1930 WLWD-2 | Dayton, OH 4421R |
| | 1830 KARD-3 | Wichita, KS 4421N | 6-18 | 1700 WISC-3 | Madison, WI 4421R |
| | 1830 KIII-3 | Corpus Christi 2221R | | 1704 WCIA-3 | Champaign, IL 4021R |
| | 2030 KQTV-2 | St. Joseph, MO3321R1220 | | 1705 WTOW-2 | Terre Haute, IN 4421R |
| 6-5 | 1630 WSIL-3 | Harrisburg, IL R | 6-20 | 1600 XEW-2 | Mexico City, DF 5421R |
| | 1630 KTV0-3 | Kirksville, MO 4021R | | 1600 XHCV-3 | Coatzacoalcos, Ver. 4421N |
| | 1632 WHBF-4 | Rock Island 2221R1020 | | 1830 KFDX-3 | Wichita Falls, TX 4021R |
| | 1645 WCIA-3 | Champaign, IL0221R | 6-24 | 1140 WTIC-3 | Hartford, CN 3321R |
| | 1650 WTOW-2 | Terre Haute, IN 0221R | | 1200 WCBS-2 | New York City, NY 3321R |
| | 1735 WSYR-3 | Syracuse, NY 4421R | | 1230 CKCO1-2 | Wiarnton, Ontario 5542R |
| | 1805 KYW-3 | Philadelphia, PA 3421R | | 1230 WSYR-3 | Syracuse, NY 4421R |
| | 1815 WWJ-4 | Detroit, MI 3341N | | 1427 KPRC-2 | Houston, TX 4421R |
| | 1905 WTAE-4 | Pittsburgh, PA 4421N | | 1440 KGBT-4 | Harlingen, TX 4421R |
| | 1814 WFIL-6 | Philadelphia, PA 4421N | | 1445 KIII-3 | Corpus Christi, TX 4421R |
| | 1907 WRTV-6 | Indianapolis, IN 2321N | | 1445 KBTX-3 | Bryan, TX 4321R |
| | 1910 WKYC-3 | Cleveland, OH 3321R | | 1510 KDFW-4 | Dallas, TX 3321R |
| | 1918 WOC-6 | Davenport, IA2121N1020 | | 1600 WABG-6 | Greenwood, MS 4421N |
| | 1920 WITI-6 | Milwaukee, WI2221N1020 | | 1630 WPSD-6 | Paducah, KY 3321N |
| | 2230 WBBM-2 | Chicago, IL 4421R | | 1637 WRTV-6 | Indianapolis, IN 4532R |
| | 2300 WCIA-3 | Champaign, IL 5523R | | 1730 WJIM-6 | Lansing, MI 4421R |
| | 2301 WTOW-2 | Terre Haute, IN 4423R | | 1810 CKCO1-2 | Wiarnton, Ontario 4421R |
| 6-6 | 0715 KYTV-3 | Springfield, MO 5521R | 6-27 | 1812 WJBK-2 | Detroit, MI 4421R |
| | 0725 WBRZ-2 | Baton Rouge, LA 5521R | 6-29 | 1730 WTIC-3 | Hartford, CN 4421R |
| | 0730 KTBS-3 | Shreveport, LA 4021R | 6-30 Tr | 0135 WJXT-4 | Jacksonville, FL 2025R |
| | 1710 WCAX-3 | Burlington, VT N1320 | | 0203 WLTV-12 | Jacksonville, FL 1015N |
| | 1825 WSYR-3 | Syracuse, NY 4421R | | 0845 WJKS-17 | WMFE-24 WTVX-34 WXLT-40 |
| | 1827 WKTV-2 | Utica, N ^y 3421N | Es | 1400 WGBH-2 | Boston, MA 5021R |
| | 1830 CBFT-2 | Montreal, Quebec 2421N | | 1417 WTIC-3 | Hartford, CN 4321R |
| 6-8 GW | 0700 W64AD-64 | "rebroadcasting CMQ" | | 1720 CKVR-3 | Barrie, Ontario 4421R |
| Es | 1900 KGLO-3 | Mason City, IA 3321R | 7-4 | 1030 KTVI-2 | St. Louis, MO 5421R |
| | 1905 WMT-2 | Cedar Rapids 3321R | 7-7 | 2330 WCIA-3 | Champaign, IL 5321R |
| | 1920 KTV0-3 | Kirksville, MO 3321R | 7-8 | 1955 KTBS-3 | Shreveport, LA 4021R |
| | 2358 WDBO-6 | Orlando, FL 4433R | - | 2030 KPRC-2 | Houston, TX 4221R |
| "about 12 hrs. after | collapse of tower of | | | 2203 KATC-3 | Lafayette, LA 4121R |
| WDBO-6, WFTV, and | WDIZ-FM Orlando, FL" | | 7-9 | 1615 KIII-3 | Corpus Christi, TX 4221R |
| 6-9 Es | 1000 KQTV-2 | St. Joseph, MO 3321R | | "NET 8-first logging with 'Televisa Logo' I'm | |
| | 1110 KTVI-2 | St. Louis, MO 3421R | | guessing on stations within 700-1250 limit." | |

Paul D. Traska 64 Weaver Street Buffalo, New York 14206 (EDT)

| | | | | | |
|--------|--------------|----------------------|--------|--|-------------------|
| 6-6 Es | 1830 KPOL-6 | Reliance, SD 4433N | 8-5 Tr | 2100 WTVS-56 | Detroit, MI 4444R |
| 6-11 | 1305 WBAP-5 | Ft. Worth, TX 4333N | | 2100 WKBD-50 | Detroit, MI 4444R |
| 7-7 Tr | 0300 WLS-7 | Chicago, IL 3333N | | 2115 WGTE-30 | Toledo, OH 4444R |
| 7-26 | 0135 CHNB-4 | North Bay, Ont 4433N | 8-6 | 1930 WIPB-49 | Muncie, IN 3333R |
| 7-31 | 0230 WNEW-5 | New York City 3333R | | 2000 WEYI-25 | Saginaw, MI 4444R |
| | 0230 WABC-7 | New York City 3333R | | 2000 WLIO-35 | Lima, OH 3333R |
| | 0230 WCBS-2 | New York City 3333R | | [Paul's log now totals 203 with 4 new this | |
| '8-5 | 2100 WBGU-57 | Lima, OH 4444R | | time. Philco 68 RCA 72; CMA 34 ele. amp.] | |

CENTRAL TV DX

Don Ruland
4448 68th Place
Kenosha, WI
53140

OCTOBER 1973 / DX from WI, IL, IN, MI, OH / Next deadline: October 15th

As summer and E-skip CX begin to wind down, things traditionally start popping tropo-wise in the Great Lakes states. This year is no exception, and our annual August-October filing appears to be off to a great start, as evidenced by this month's reports.....

James H. Gould, R. R. #3, Kokomo, IN 46901 (CDT)

- | | |
|-------------------------------------|---|
| 7-7 Tr 1550 KROC-10 Rochester (405) | 8-22 Tr 0555 KNOE-8 Monroe (650) |
| 1600 KIIN-11 Des Moines (390) | 0607 KTHV-11 Little Rock (520) |
| 1600 KCRG-9 C. Rapids (300) | 0610 WLBT-3 Jackson (620) |
| 1710 KWVL-7 Waterloo (340) | 0621 WHO-13 Des Moines (390) |
| 1730 KIIN-12 Ia. City (280) | 0633 KMBC-9 Kansas City (460) |
| 7-8 Tr 0055 CHEX-12 Peterborough | 2218 WBIR-10 Knoxville (340) |
| 0055 CHCH-11 Hamilton (375) | 8-23 Tr 0415 WBIR-10 Knoxville |
| 0112 CFTO-9 Toronto (405) | 0425 WBRC-6 Birmingham (470) |
| 0121 CKCO-13 Kitchener (350) | 0430 WIIC-11 Pittsburgh (320) |
| 0125 CPPL-10 London (305) | 0445 WTAJ-10 Altoona (425) |
| 0308 WHTN-13 Huntington (245) | 0533 KLFY-10 Lafayette (790-- longest tropo seen--ed.) |
| 7-10Es 0750 CBHT-3 Halifax | 0600 KTHV-11 Little Rock (520) |
| 7-12Tr 2030 WEIR-10 Knoxville (340) | 8-25 Tr 1330 KROC-10 Rochester |
| 7-13Tr 0642 WSLS-10 Roanoke | 1330 KCRG-9 Cedar Rapids |
| 0645 WMUL-33 Huntington | 1450 KIIN-12 Iowa City |
| 7-15Es 1600 WPBT-2 Miami | 1450 KIIN-11 Des Moines |
| GW 2200 WCAB-50 St. Johns, IN | 1700 WAEO-12 Rhinelander (375) |
| 8-19Tr 0130 KIIN-12 Iowa City | 8-26 Tr 1245 KROC-10 Rochester |
| 8-20 " 0700 WHO-13 Des Moines (390) | 1250 KELO-11 Sioux Falls (600) |
| 0700 WMTV-3 Madison (235) | 1310 KMEG-14 Sioux City (540) |
| 0700 KROC-10 Rochester | 1315 WOI-5 Ames (410) |
| 0700 KEYC-12 Mankato (470) | 1320 KEYC-12 Mankato (470) |
| 8-21 " 0630 KMBC-9 K. C. (460) | 1328 WTCN-11 Minneapolis (480) |
| 0655 KEYC-12 Mankato | 1405 KVPD-21 Ft. Dodge (430) |
| 0657 KOLR-10 Springfield (445) | 1405 KDSB-16 Aberdeen-Tent. (700) |
| 0700 KODE-12 Joplin (520) | 8-27 Tr 0557 WTCN-11 Minneapolis (480) |
| 0710 WHO-13 Des Moines (390) | |

Jim reports he is hoping to replace his present antenna system. He currently uses a 7' Channel Master dish for UHF with Channel Master UHF pre-amp, atop a 95' tower. For VHF, Jim hopes to add a quad-array (Channel Master "Quantum") which will be boosted by a Winegard AC-913 amp. A Conrac model 1021-C audio-video receiver is on order to round out the system. (Your results are pretty impressive now, Jim...the new system sounds like we'll be hearing a lot from you in the future...ed.). Log "over 270".

David Janowiak, 3661 S. 46th St., Greenfield, WI 53220 (CDT)

- | | |
|-----------------------------------|--------------------------------|
| 6-6 Es 1800-CKCK-2 Regina | 7-8 Tr 0530-WUAB-43 Lorain |
| 2300 KDX-2 Dickinson | 0700 WAKR-23 Akron |
| CKBI-5 Prince Albert | CFTO-9 Toronto |
| CFPK-3 Terrace, B.C. † | WLYH-15 Lebanon, Pa. † |
| CJDC-5 Dawson Creek † | WKBF-61 Cleveland |
| CKOS-3 Yorkton | WDHO-24 Toledo |
| CJFF-5 Swift Current | WSEE-35 Erie |
| CKMT-4 Moose Jaw | WDAU-22 Scranton (650+) |
| CKSA-2 Lloydminster | WBRE-28 Wilkes-Barre (650+) |
| CBXT-5 Edmonton | 7-10 Es 0740 WLBZ-2 Bangor |
| CFQC-1-3 Stranraer Sask. | 0750 CBHT-3 Halifax |
| 7-2 Tr p.m. WBGU-57 Bowling Green | 0800 WQAX-3 Burlington, VT |
| 7-7 Tr a.m. WSEE-35 Erie (400) | 0800 CBFT-2 Montreal |
| 2230-WENY-36 Elmira (600+) | 1130 CKSA-2 Lloydminster |
| 2400 WSEE-35 Erie | 7-17 Tr 0623 W71AE LaSalle, IL |
| WICZ-40 + WBJA-34 | |
| Binghamton (600+) | |
| WUTV-29 Buffalo | |
| WYTV-33 Youngstown | |
| CELT-25 Toronto | |

Dave summarizes the 6-6 Es opening as "the most enjoyable in many years.... haven't DXed from 7-17 to 8-10 due to vacation, illness in family, work, etc.....log at 425".

Marvin Shults, R. R. #2, Toulon, IL 61483 (CDT)

| | | | |
|--------------|--------------------------------------|--------------|---------------------------|
| 8-13 Tr 0815 | WISH-8 & WLWI-13 Indianapolis | 8-21 Tr 1930 | WHMB-40 Indianapolis |
| | 0825 WUHQ-41 Battle Creek | 1930 | WIPB-49 Muncie |
| | 0850 WKBD-50 Detroit | 8-26 Tr 1030 | WKJG-33 Fort Wayne |
| | 0855 WTVS-56 Detroit | 2100 | WDHO-24 & WGTE-30 Toledo |
| | 0859 WKJG-33 & WFTA-21 Fort Wayne | 2100 | WUHQ-41 Battle Creek |
| | 0915 WOSU-34 Columbus T | 2100 | WIPB-49 Muncie |
| 8-17 Tr 0658 | WHO-13 & KRNT-3 Des Moines | 2130 | WKBD-50 & WTVS-56 Detroit |
| | 0700 KEYC-12 Mankato, MN | 2130 | KVPD-21 Fort Dodge, IA |
| 8-19 Tr 1000 | KFVS-12 Cape Girardeau | 2130 | KMEG-14 Sioux City |
| 8-20 Tr 2030 | WUSI-16 Olney, IL | 2130 | WPNE-38 Green Bay |
| | 2100 KMTC-27 Springfield, MO | 2130 | WILL-38 Terre Haute |
| | 2158 KEMA-41 Kansas City | 2159 | WGVC-35 Grand Rapids |
| | 2200 KROC-10 Rochester | 2200 | WAKR-25 Akron T |
| | 2200 KDN-11 Des Moines | 8-27 Tr 0759 | WDHO-24 Toledo |
| | 2215 KCBJ-17 Columbia, MO | 0759 | WFIE-14 Evansville |
| | 2229 KHNE-29 Hastings, (448) | 0825 | WUHQ-41 Battle Creek |
| | 2300 KRCG-13 Jefferson City | 0859 | WKJG-33 Fort Wayne |
| 8-21 Tr 0659 | KTSB-27 Topeka | 0859 | WUAB-43 Lorain, OH |
| | 1845 WILL-38 Terre Haute | 0900 | WKBD-50 & WTVS-56 Detroit |
| | 1850 WFIE-14 Evansville | 1029 | WGTU-29 Traverse City |
| | 1858 KMTC-27 Springfield | 8-28 Tr 0645 | KEYC-12 Mankato |
| | 1858 KCBJ-17 Columbia | 0650 | WFIE-14 Evansville |
| | 1900 WVUT-22 Vincennes, IN | 0659 | WKBT-8 LaCrosse, WI |
| | | 8-29 Tr 0727 | WKJG-33 Fort Wayne |

Three new UHF's bring log to 267...

Keith Schildt, 2833 N. Jackson Dr., Arlington Heights, IL 60004 (CDT)

| | | | |
|--------------|------------------------|--------------|----------------------------|
| 7-3 Tr 0900 | WJIM-6 Lansing (208) | 7-21 Tr 1200 | WOTV-8 Grand Rapids (176) |
| 7-16 Tr 2200 | WTVS-10 Milwaukee (93) | 8-3 Tr 1645 | WUHQ-41 Battle Creek (159) |
| 7-21 Tr 0800 | WKZO-3 Kalamazoo (139) | 1735 | WZZM-13 Grand Rapids |

Present log at 25...Keith has been a member for over a year, but faces much difficulty in getting through the Chicago locals...equipment includes 1965 Zenith with all channel antenna...would like to hear from other DXers in Chicago area.

Paul E. Petosky, Box 140, Munising, MI 49862 (EDT)

| | | | |
|--------------|--------------------------------|--------------|----------------------------|
| 1-20 Tr 2300 | CHLT-5 Toronto (395) | 6-12 Tr 0130 | CFPT-9 Toronto (395) |
| 5-23 Es 2300 | WESH-2 Daytona (1230) | 6-21 Es 1929 | WFMY-2 Greensboro (800) |
| 5-25 Es 2000 | WLBE-2 Bangor (865) | 7-12 Tr 2400 | WLS-7 Chicago (315) |
| 5-27 Es 1200 | WCBS-2 New York (740) | 7-12 Tr 2028 | CKPR-2 Thunder Bay (170) |
| | 1930 WUND-2 Columbia, NC(905) | 2300 | CELAT-1-8 Manitowadge |
| 5-28 Es 1842 | WFBC-4 Greenville (825) | 2300 | CELAT-3-9 Wawa,ONT (140) |
| | 1850 WAGA-5 Atlanta (880) | 2330 | CELAT-4-11 Marathon,ONT |
| 6-3 Tr 0225 | WNEM-5 Bay City (240) | 2330 | CELAT-13 Geraldton (229) |
| 6-5 Es 1914 | WBRZ-2 Baton Rouge (1130) | 7-13 Tr 0032 | WZZM-13 Grand Rapids(240) |
| 6-6 Es 1859 | KTVG-6 Dodge City (905) | 7-17 Tr 0020 | WTTW-11 Chicago (315) |
| | 1928 KHTL-4 Superior,NE (720) | 0035 | WGN-9 Chicago |
| | 2028 CKCK-2 Regina (890) | 2355 | CKRS-12 Jonquiere,QUB(730) |
| | 2056 WWL-4 New Orleans (1155) | 7-23 Es 1925 | WCVB-5 Boston (810) |
| | 1929 KCKT-2 Great Bend (835) | 7-24 Tr 2330 | WOTV-8 Grand Rapids (240) |
| | 2228 KTEW-2 Tulsa (850) | 7-27 Es 2334 | CKCK-2 Regina (890) |
| | 2315 KRLD-4 Dallas (1080) | 7-29 Tr 0144 | WJRT-12 Flint (275) |
| | 2321 WBAP-5 Ft. Worth (1100) | Es 0247 | CKSA-2 Lloydminster (1150) |
| | 2329 KPHO-5 Phoenix (1600--- | 8-5 Au 0100 | CKCK-2 Regina (890) |
| | not P2, Paul, but maybe 2-hop) | 0054 | KOA-4 Denver (1030) |
| 6-7 Es 1225 | KTVQ-2 Billings (1045) | 0105 | KTWO-2 Casper (990) |
| | 1220 KXLF-4 Butte (1230) | Es 1831 | KWGN-2 Denver |
| | 1248 KFBB-5 Great Falls (1160) | 1929 | KTWO-2 Casper |
| 6-8 Es 2200 | WBAP-5 Fort Worth | Tr 0142 | WABO-12 Rhinelander (140) |
| | 2206 KDFW-4 Dallas | 8-13 Tr 2330 | CELAT-2-12 White River |
| 6-9 Tr 0140 | WSAU-7 Wausau (170) | 8-26 Tr 2155 | WCCO-4 Minneapolis (328) |
| 6-10 Es 2300 | KTEW-2 Tulsa (850) | 2215 | WTCN-11 Minneapolis |
| | 2300 KGNC-4 Amarillo (1100) | 2230 | KTSP-5 St. Paul (326) |
| | 2330 WKY-4 Okla. City (950) | 2326 | WOC-6 Davenport (355) |
| | 2335 KMID-2 Midland (1305) | 8-27 Tr 0030 | Chicago-Milwaukee VHF's |

Fetosky (continued)

8-27 Tr 0150 WISC-3 Madison (274)
 8-28 Tr 0055 WEAU-13 Eau Claire(260)
 9-3 Tr 0350 WMT-2 Cedar Rapids(400)

Paul has been TV DXing since 1954...he says "I don't want to throw anybody, but I am near 2,000 TV stations logged...total includes stations that are now off the air, or have changed call letters." Equipment includes a 20" Admiral 1968 color receiver, Channel Master model 1210-B color-vector VHF/FM antenna at 60' with a model 0043 Channel Master pre-amp and CDE rotor. Paul's log totals do not include UHF, but he hopes to add some stations here as he has a Channel Master 7' dish atop his tower, and is planning on adding a Channel Master 0070 UHF amp this fall. Paul, I know the rest of the members would like to know just how you count your loggings...e.g., do you count your stations more than once as you receive them again???

Roger H. Brown, 1617 Linden St., E. Lansing, MI 48823 (EDT)

| | | | |
|---------|--------------------------------|---------|---------------------------------|
| 8-21 Tr | 1325 KDNL-30 St. Louis (410) | 8-26 Tr | 0245 WQAD-8 Moline (340) |
| | 1325 WICS-20 Springfield(340) | | 1620 WTCN-11 Minneapolis |
| | 1715 KCBJ-17 Columbia (480) | | 1620 KMSP-9 Minneapolis(470) |
| | 1730 KRCG-13 Jeff City (490) | | 2310 KMEG-14 Sioux City(595) |
| | 1800 KETC-9 St. Louis (410) | | 2359 KCRG-9 Cedar Rapids |
| | 1900 WAND-17 Decatur (300) | 8-27 Tr | 0005 KVPD-21 Ft.Dodge (480) |
| 8-22 Tr | 0045 WKYT-27 Lexington (330) | | 0014 KXNE-19 Norfolk (630) |
| | 0045 WLEX-18 Lexington | | 0017 WKOW-19 LaCrosse(380) |
| 8-23 Tr | 0015 KDNL-30 St. Louis | | 0020 WOC-6 Davenport (350) |
| | 0015 WICS-20 Springfield | | 0220 WCCO-4 Minneapolis(470) |
| | 0025 WDXR-29 Paducah (450) | | 0730 WTCN-11 Minneapolis |
| | 0045 WTIU-30 Bloomington(260) | | 1320 CICA-19 & CELPT-25 ONT |
| | 0045 KETC-9 & KPLR-11 St.Louis | | 1320 WUTV-29 Buffalo (290) |
| | 0830 WHNT-19 Huntsville (560) | | 2100 WNEB-17 Buffalo |
| | 0830 WMSL-48 Decatur,AL (560) | | 2100 WNPE-16 Watertown(420) |
| | 0830 KDNL-30 St. Louis (410) | | 2155 WSYE-18 & WENY-36 Elmira |
| | 1940 WOUK-44 Cambridge (270) | 9-7 Tr | 2200 WTCN-11 Minneapolis |
| | 1940 WCTB-20 Athens, OH | | 2200 WEAU-13 Eau Claire |
| | 1940 WMUL-33 Huntington (330) | 9-8 Tr | 0050 WSVN-47 Norton (420) |
| | 1940 WHIZ-18 Zanesville | | 0100 WKPT-19 Kingsport(410) |
| | 1940 WTAP-15 Parkersburg | | 0125 WDBJ-7 Roanoke (410) |
| 8-26 Tr | 0005 KDUB-40 Dubuque (300) | | 0200 WKXI-12 Winston-Salem(500) |
| | 0030 WAEO-12 Rhinelander (310) | | 0230 WSLI-10 Roakoke (410) |
| | 0045 KRCC-10 Rochester (420) | | 0400 WAVY-10 Norfolk (600) |

Your persistence really paid off on 9-8, Rog...Norfolk, VA to Lansing is a very difficult path, directly in line with the Allegheny mountains. Rog reports installation of his new Blonder-Tongue CMA-Ub UHF pre-amp as of 9-10-73...very noticeable improvement over CMA-U. Log stands at 407.

Bill Draeb, Ellis St., R. R. #2, Kewaunee, WI (CUT)

| | | | |
|---------|---------------------------------|---------|--------------------------------|
| 6-10 Es | 2227 KLNE-3 Lexington,NE(669) | 6-15 Tr | 0540 CHCH-11 Hamilton (394) |
| | 2227 KGNC-4 Amarillo (991) | | 0546 WBNS-10 Columbus (395) |
| | 2230 KOA-4 Denver (952) | Es | 2024 WOAI-4 San Antonio (1215) |
| | 2230 KRMA-6 & KWGN-2 Denver | | 2059 KCPX-4 Salt Lake (1264) |
| 6-11 Es | 1131 KBTX-3 Bryan,TX (1079) | 6-18 Es | 2223 KPRC-2 Houston (1117) |
| | 1131 WWL-4 New Orleans(1028) | | 2223 KGBT-4 Harlingen (1450) |
| | 1140 KIII-3 Corpus (1295) | 6-24 Es | 2102 KJAC-4 Pt. Arthur Tent. |
| | 1230 KMID-2 Midland (1176) | | 2102 KMID-2 Midland T |
| | 1330 WWAY-3 Wilmington (882) | 6-25 Tr | 0547 CKCO-1-2 Wlarton (315) |
| | 1334 WCBF-2 & WCIV-4 Charleston | MS | 0556 WKTV-2 Utica (620) |
| 6-12 Tr | 2033 W68AA Danville (300) | 6-26 Es | 1026 KALE-5 Alexandria(961) |
| 6-13 Es | 1600 WESH-2 Daytona (1130) | | 1026 WBRZ-2 Baton Rouge(1005) |
| | 1600 WPBT-2 Miami (1372) | | 1026 KATC-3 Lafayette (1026) |
| | 1600 WTVJ-4 Miami | 6-26 Tr | 0552 CKCO-1-2 Wlarton,ONT |
| | 1602 WEDU-3 Tampa (1192) | MS | 0552 WKTV-2 Utica |
| | 1659 WCIX-6 Miami | 6-27 Es | 1800 WCIX-6 Miami (1372) |
| | 1659 WDBO-6 Orlando (1164) | | 1800 WWAY-3 Wilmington |
| | 1700 WPTV-5 Palm Bch.(1305) | | 1800 WJXT-4 Jacksonville(1039) |
| | 1702 WUFT-5 Gainesville(1075) | | 2035 WUNC-4 Chapel Hill (749) |
| | 1801 KBTX-3 Bryan (1079) | | 2040 WNBC-4 New York (740) |

Draeb (continued)

| | | | |
|---------|------------------------------------|---------|-------------------------------------|
| 6-27 Es | 2040 WGBH-2 Boston (840) | 8-21 Tr | 0543 KOMU-8 Columbia (450) |
| | 2100 WEAR-3 Pensacola (986) | | 0546 KPLR-11 St. Louis T |
| | 2100 WCBD-2 Charleston | | 1704 WVVU-2 Morgantown (513) |
| | 2127 WDIQ-2 Dozier, AL (925) | | 1704 WKSO-29 Somerset (538) |
| 7-3 Tr | 2302 WUTV-2 Buffalo (445) | | 1704 WSVN-47 Norton (610) |
| 7-5 MS | 0547 WKTU-2 Utica (620) | | 1704 WOUB-20 Athens, OH (453) |
| | 0553 WLBZ-2 Bangor (925) | | 1905 WTVK-26 Knoxville (626) |
| Tr | 0547 CKCO-1-2 Warton, Ont. | | 1910 WMUL-33 Huntington (498) |
| 7-6 Tr | 0615 CKCO-1-2 Warton | | 1920 KCBJ-17 Columbia (450) |
| 7-7 Tr | 1825 WBRB-28 W-Barre (630) | | 1920 KMTC-27 Springfield (589) |
| | 1825 WMUL-33 Huntington (498) | | 2010 WGSF-31 Newark, OH (395) |
| | 1825 WUTV-29 Buffalo (445) | | 2033 WKPT-19 Kingsport T |
| | 1853 WDAU-22 Scranton (630) | | 2033 WHNT-19 & WHIQ-25 Huntsville T |
| | 1853 WNED-17 Buffalo | | 2044 WMSL-48 Decatur, AL (685) |
| | 1853 WENY-36 Elmira (575) | | 2132 WRGB-53 Bowling Grn. (530) |
| | 1914 WKBS-48 Phila. (705) | 8-22 Tr | 2210 WLLI-12 Urbana (300) |
| | 1945 WHNB-30 N. Britian (767) | | 0615 WHTB-13 Memphis (665) |
| | 2025 WCVN-54 Covington (405) | | 0615 KPVV-12 Cape Girardeau |
| | 2037 KEMA-41 Kansas City (525) | | 0615 KCRG-9 Cedar Rapids |
| | 2037 KCBJ-17 Columbia (450) | | 0622 WGEN-10 Quincy (373) |
| | 2139 WSVN-47 Norton (610) | | 0622 WAAV-31 Huntsville (685) |
| | 2139 WLVT-39 Allentown Tent. | | 0645 WEMG-42 Birmingham (768) |
| | 2139 WPHL-17 Phila. T | | 0645 WMSL-48 Decatur (685) |
| | 2139 WTAZ-29 Phila. T | | 0645 WHNT-19 Huntsville (685) |
| | 2139 WICZ-40 Binghamton T | | 0718 WMAA-29 Jackson (865) |
| | 2139 WNJU-47 Newark T | | 0719 WMAV-18 Oxford, MS (715) |
| | 2139 WNYC-31 New York T | | 0719 WMAO-23 Greenwood (781) |
| 7-8 Tr | 0830 WKBS-48 Philadelphia | | 0719 WMAU-17 Bude, MS (925) |
| | 0830 WTAZ-29 Phila. (705) | | 0719 WMAW-14 Meridian Tent. |
| | 0830 WBRB-28 Wilkes-Barre | | 0719 WMAH-19 Biloxi Tent. |
| | 0830 WMMU-22 Scranton (630) | | 0810 WTVV-9 Tupelo (719) |
| | 0830 WNEP-16 Scranton | | 0839 WRBT-33 Baton Rouge (1002) |
| | 0849 WENY-36 Elmira (575) | | 0839 WGN0-26 New Orleans (1030) |
| | 0913 WVIA-44 Scranton (630) | | 0920 WAPT-16 Jackson (865) |
| Es | 1908 WGBH-2 Boston (830) | | 0940 WVUE-8 New Orleans (1030) |
| | (preceding report 6-10 through 7-8 | | 1000 WAFB-9 Baton Rouge (1002) |
| | was delayed in transfer of this | | 1000 KNOE-8 Monroe (877) |
| | column...sorry for delay, Bill) | | 1200 KCBJ-17 Columbia (450) |
| 8-10 Es | 1130 WTAZ-3 Norfolk (785) | | 1800 WSIU-8 Carbondale, IL (481) |
| | 1130 WCBD-2 & WCIV-4 Charleston | | 1822 WKSO-29 Somerset (538) |
| | 1230 WSAV-3 Savannah (933) | | 1837 WSVN-47 Norton (610) |
| | 1242 WCSC-5 Charleston (916) | | 1837 WUNF-33 Asheville Tent. |
| 8-12 Tr | 2130 W6SAA Danville (300) | | 1847 WTVK-26 Knoxville (626) |
| 8-13 Tr | 0538 CKCO-1-2 (315) | | 1856 WKPT-19 Kingsport |
| 8-14 Tr | 1708 KTSB-27 Topeka (560) | | 1908 WKPI-22 Pikeville Tent. |
| | 1842 KMTC-27 Springfield (589) | | 1908 WMUL-33 Huntington T |
| | 2043 WDSE-8 Duluth (286) | | 1921 WTCG-17 Atlanta T |
| | 2205 WDAZ-8 Devils Lake (600) | | 1934 WKMA-35 Madisonville |
| | 2205 WDIQ-10 Duluth | | 1934 WRGB-53 Bowling Green |
| | 2257 KDSD-16 Aberdeen (538) | | 1934 WDXR-29 Paducah (522) |
| | 2323 KCMT-7 Alexandria (394) | | 2057 WKYH-57 Hazard Tent. |
| 8-19 Tr | 2048 WDSE-8 Duluth | | 2057 WKON-52 Owenton |
| 8-20 Tr | 0545 CKCO-1-2 Warton | | 2030 WHIQ-25 Huntsville (685) |
| | 1907 WDSE-8 Duluth | | 2158 WFIQ-36 Florence, AL T |
| | 2104 CJIC-2 Sault Ste. Marie | | 2028 KETC-9 St. Louis (432) |
| | 2148 CKPR-2 Thunder Bay T | 8-24 Tr | 1611 WFTS-3-12 Elliot Lake (270) |
| | 2318 KOMU-8 Columbia (450) | | 1840 CKNX-8 Wingham, Ont. T |
| | 2318 KCBJ-17 Columbia | | 1902 KTSB-27 Topeka (560) |
| | 2318 KMTC-27 Springfield | | 1902 KEMA-41 Kansas City (525) |
| | 2318 KEMA-41 Kansas City | | 1902 KHNE-29 Hastings (617) |
| | 2318 KUHI-16 Joplin (633) | | 1905 KMEG-14 Sioux City (463) |
| | 2345 KRCJ-13 Jeff City (477) | | 1905 KCPT-19 Kansas City (525) |
| 8-21 Tr | 0530 KPVV-12 Cape Girardeau | | 2020 KVFD-21 Port Dodge (365) |
| | 0530 WHIO-7 Dayton (368) | | 2020 KCBJ-17 Columbia |
| | 0530 WBNS-10 Columbus (395) | | 2029 KYNE-26 Omaha (481) |
| MS | 0537 WLBZ-2 Bangor (925) | | 2102 KXNE-19 Norfolk, NE Tent. |
| | 0538 WKTU-2 Utica (620) | 8-25 Tr | 0730 KCBJ-17 Columbia |

Draeb (continued)

| | | | |
|---------|--------------------------------|---------|------------------------------|
| 8-25 Tr | 1111 KHNE-29 Hastings (617) | 8-26 Tr | 1606 KGLO-3 Mason City |
| | 1702 WUTV-29 Buffalo Tent. | | 1606 KAUS-6 Austin, MN (275) |
| | 2124 KMEG-14 Sioux City (463) | | 1806 WSVN-47 Norton (610) |
| | 2130 KBMA-41 Kansas City (525) | | 1817 WKSO-29 Somerset Tent. |
| 8-26 Tr | 0849 WDXR-29 Paducah (522) | 8-27 Tr | 2046 WUTV-29 Buffalo |
| | 0849 W7LAE LaSalle, IL | | 2046 WNEB-17 Buffalo |
| | 0930 WGEN-10 Quincy (373) | | 2105 CICA-19 Toronto (410) |
| | 0930 KFVS-12 Cape Girardeau | | 2110 CELFT-25 Toronto (410) |
| | 1100 KMEG-14 Sioux City (463) | | 2117 CITY-79 Toronto (410) |
| | 1100 KRNT-8 Des Moines | | 2132 WUOC-44 Cambridge |
| | 1207 KTSF-27 Topeka (560) | | 2139 WNPE-16 Watertown T |
| | 1606 KDSD-16 Aberdeen (538) | | 2147 WGSF-31 Newark, OH |
| | 1606 KVFD-21 Fort Dodge (365) | 8-28 Tr | 0616 CHCH-11 Hamilton (394) |
| | 1606 KTCA-2 St. Paul (280) | | |

If the preceding report seems long, consider the fact that I have omitted Bill's almost daily scatter reception of UHF stations from Lexington, Louisville, St. Louis, Cleveland, Cincinnati, Columbus, Erie, Illinois, Indiana ---at distances from 300 to 500 miles! Bill says the opening the morning of 8-22 was the best he'd ever experienced, with the New Orleans and Baton Rouge (1000 miles plus) stations snowfree....that may well be the best tropo ever worked by a midwest DXer. Log stands at 546.

Rod Luoma, 38540 Five Mile Rd., Livonia, MI 48154 (EDT)

| | | | |
|---------|-------------------------------|---------|---------------------------------|
| 6-18 Es | 1500 KATC-3 Lafayette (970) | 8-27 Tr | 2235 WSYE-18 Elmira (315) |
| 8-4 Es | 1100 unID-3 S-W | | 2235 WBJA-34 Binghamton (380) |
| 8-5 Es | 2040 unID ch 2,3,5 West | | 2235 WENY-36 Elmira |
| 8-15 Tr | 0550 CKGO-1-2 Warton (200) | | 2235 CKGO-13 Kithener |
| 8-23 Tr | 2140 WGVG-35 Grand Rapids | | 2250 South Bend UHF's |
| | 2140 Erie, Youngstown, | | 2250 WFLD-32 Chicago |
| | South Bend UHF's | | 2310 WISN-12 Milwaukee (230) |
| | 2140 WFLD-32 Chicago (240) | | 2350 WSNS-44 Chicago |
| 8-27 Tr | 2200 WSKG-46 Binghamton (380) | | 2350 WVTV-18 Milwaukee |
| | 2200 WICZ-40 Binghamton | 8-28 Tr | 0020 WUOC-44 Cambridge (180) |
| | 2200 CICA-19, CELFT-25, | | 0840 WBRN-28 Wilkes-Barre (400) |
| | CITY-79 Toronto (220) | | 0920 WNEP-16 Scranton (400) |
| | 2200 WUTV-29 Buffalo | | 1000 WVIA-44 Scranton (400) |
| | 2220 CHEX-12 Peterborough | 8-29 Tr | 0001 WLPF-18 Lafayette (240) |
| | 2220 CELT-5 Toronto T | | 0030 WKEF-22 Dayton (190) |

"Log now stands at 250 with 119 UHF. On 7-24 the old Channel-Master Crossfire was retired after many years of service to be replaced with a C-M Quantum #1111 with much better front-to-back ratios, esp. on lo-band."

Gary A. Olson, 1203 Kenton Rd., Deerfield, IL (CMT)

| | | | |
|---------|---------------------------------|---------|---------------------------------|
| 3-24 Tr | 1100 WBGU-57 Bowling Green | 8-23 Tr | 0545-WLWI-13 Indianapolis (195) |
| 5-23 Es | 1955 KFDX-3 Wichita Falls (800) | | 0645 KFVS-12 C. Girardeau (350) |
| | 2000 KACB-3 San Angelo (1000) | | WAAY-31 Huntsville (520) |
| 5-25 Es | 1925 unID ch 2-3 | | WMSL-48 Decatur (520) |
| 6-6 Es | 1849 CKOS-3 Yorkton (1150) | | WMUL-33 Huntington T |
| | 1900 CKNT-4 Moosejaw (1010) | 8-26 Tr | 0550-WHIO-7&WKEF-22 Dayton |
| 6-13 Tr | 0700 W49AA Springfield (180) | | 0700 KPLR-11 St. Louis (300) |
| | 0700 WDHO-24 Toledo (240) | | WLKY-32 Louisville (300) |
| | 0700 WAND-17 Decatur (170) | | WKIX-19&WKRC-12 Cincy |
| 6-18 Es | 2130 KATC-3 Lafayette (860) | | WXON-20 Detroit (280) |
| 6-24 Tr | 2135 WIII-38 Terre Haute (190) | | WEHT-25 Evansville (280) |
| | 2200 W68AA Davenport (140) | 1330 | WEAU-13 Eau Claire (255) |
| 7-3 Tr | 2230 Cleveland, Erie, | | KEYC-12 Mankato |
| | Youngstown UHF's | | KWWL-7 Waterloo |
| 7-12 Tr | 2000 WTVK-26 Knoxville (465) | | 1345 KMEG-14 Sioux City (440) |
| | 2030 WFIE-14 Evansville (280) | | 1800 WAEO-12 Rhinelander |
| | 2030 WEHT-25 Evansville T | | 2100 K74CZ Winona, MN (215) |
| 8-12 Tr | 2100 Cleveland, Detroit, | | 2126 W69AB Darlington, WI (125) |
| | Muncie UHF's | | 2200 W67AC Darlington, WI (125) |
| 8-22 Tr | 2200 WMSL-48 Decatur, AL (520) | | 2205 WLIO-35 Lima (240) |
| | 2200 WHNT-19 Huntsville (520) | | 2215 K79EK Fairmount, MN (340) |
| | 2200 WAAY-31 Huntsville T | | 2225 K70CL Ft. Dodge, IA (325) |

Olson (continued)

8-26 Tr 2230 Cleveland, Detroit U's 8-27 Tr 0500 Detroit VHP's (250)
 2250 K75CJ Redwood Falls(385) 0540 WHEH-25 Evansville (280)
 2305 WXIX-19 Cincinnati (280) 0545 WWUP-10 Ste. St. Marie(340)
 2329 -58--unID KDUB-40 xltr 1900 W7LAE LaSalle, IL (85)
 8-27 Tr 0450 CKLW-9 Windsor (260) 8-28 Tr 1835 W7LAE LaSalle
 0450 WIIC-11 Pittsburgh (410) 1835 K7LCE Ottumwa, IA (245)

"Am sure I missed a lot the last few months due to the increasing demands of new job. Also, skip is generally overlooked if 'the same old stuff' seems to be in. It gets harder all the time to see new skippera since we are saturated with locals (you're telling me!--ed)." Congrats on logging all those translators, Gar....it just goes to show what a lot of us may miss by not taking the time to check up in the translator channels. Log:374.

Don Ruland, 4448 68th Place, Kenosha, WI 53140 (CMT)

8-12 Tr 0550 WKEF-22 Dayton (280) 8-23 MS 0502 WJXT-4 Jacksonville(920)
 0550 WXIX-19 Cincy (300) Tr 0523 WSIX-8 Nashville (450)
 0600 WTVN-6&WBNS-10 Columbus 0527 KPVS-12 Cape Girardeau
 0623 WKEF-61 Cleveland (330) 0533 WAVE-3&WIAS-11 Louisville
 1000 KRNT-8 Des Moines (310) 0545 WHEH-25 Evansville (320)
 8-13 Tr 0437 WKYC-3 Cleveland (330) 0600 WHNT-19 Huntsville (550)
 0500 WCPO-9 Cincy (300) 0610 KTHV-11 Little Rock (600)
 0500 WBNS-10 Columbus (320) 0612 WHBQ-13 Memphis (530)
 0526 WHAS-11 Louisville (330) 8-25 Tr 2000 KMEG-14 Sioux City (430)
 0630 WILKY-32 Louisville 2100 KIDN-11 Des Moines (310)
 0700 WLEX-18&WYTT-27 Lexington 2100 KDSD-16 Aberdeen Tent.
 8-19 Tr 0523 WUAB-43 Lorain (310) 8-26 Tr 0503 WLUC-6 Marquette (280)
 0523 WAKR-23 Akron (340) 0555 KPVS-12 Cape Girardeau
 0545 WTVN-6 Columbus (320) 0623 WTVW-7 Evansville
 0620 WKEF-61 Cleveland 0627 KSTP-5 St. Paul (310)
 0629 KPVS-12 C. Girardeau(370) 0638 W49AA Springfield (220)
 0630 WTVW-7 Evansville (320) 0830 KMEG-14 Sioux City (430)
 0700 KPLR-11 St. Louis (300) 0845 WHO-13 Des Moines
 0900 KEMA-41 Kansas City T 0930 KGIN-11 Grand Island(550)
 0930 KDNL-30 St. Louis 1000 KEYC-12 Mankato (330)
 1800 Indianapolis U's (220) 1200 KAUS-6 Austin, MN (270)
 1800 WIPB-49 Muncie (210) 1230 KELO-11 Sioux Falls(450)
 8-20 MS 0457 WCBS-2 New York (720) 1700 WAEQ-12 Rhinelander(230)
 Tr 0620 WTCN-11 Minneapolis (320) 1700 KIDN-11 Des Moines (310)
 0645 KEYC-12 Mankato (330) 2000 Cleveland, Dayton U's
 0645 KVPD-21 Ft. Dodge (320) 2100 WQLN-54 Erie (400)
 0645 K32AA Waterloo (230) 2200 WOSU-34 Columbus (320)
 8-21 Tr 0613 KMBC-9 Kansas City (430) 8-27 MS 0445 WBZ-4 Boston (850)
 0620 WHO-13 Des Moines (310) Tr 0448 WIIC-11 Pittsburgh (430)
 0645 KCMO-5 Kansas City T 0500 KKA-2 Pittsburgh
 0645 KUHI-16 Joplin T 0530 WTRF-7 Wheeling (420)
 0645 KTSB-27 Topeka T 0550 WWUP-10 Ste. St. Marie
 1605 KDNL-30 St. Louis (300) 0555 WHEH-25 Evansville (320)
 1630 KRCG-13 Jeff. City (360) 0600 WTCN-11 Minneapolis(320)
 1630 KCBJ-17 Columbia (340) 0655 KEYC-12 Mankato (330)
 1710 KOMU-8 Columbia 1830 WQLN-54 Erie (400)
 1730 WQLN-54 Erie (400) 2000 WUTV-29 Buffalo (460)
 8-22 Tr 0455 KMOX-4 St. Louis (300) 2155 WBJA-34 Binghamton (620)
 0520 WHAS-11 Louisville (330) 2201 WICZ-40 Binghamton
 0543 KNOE-8 Monroe (750) 2202 WENY-36 Elmira (570)
 0545 WJTV-12 Jackson (730) 2210 WJET-24 & WSEE-35 Erie
 0545 KPVS-12 Cape Girardeau 8-28 Tr 0430 WIIC-11 Pittsburgh (430)
 0600 Lexington UHP's 0448 WTAJ-10 Altoona (510)
 0602 WHO-13 Des Moines 0503 WKBW-7 Buffalo (460)
 0602 WLBT-3 Jackson(750)--long- 0520 WSYE-18 Elmira (570)
 east low-band tropa) 0521 WERE-28 Wilkes-Barre(620)
 0605 KTHV-11 Little Rock (600) 0600 WPMJ-21&WKBN-27 Y-tow(380)
 0608 WHBQ-13 Memphis (530) 0702 WSEE-35 Erie (400)
 0647 KRCG-13 Jefferson City 0725 WVIA-44 Scranton (630)
 0720 WMAA-29 Jackson (730) 9-2 Tr 0703 WJET-24 Erie (400)
 0724 WMAV-18 Oxford (570) 9-8 Tr 0630 WRFT-27 Roanoke (560)
 0733 WMAU-17 Bude, MS (780) 0800 WETA-26 Washington Tent.
 0737 WMAO-23 Greenwood (640) 9-10 Tr 0457 WSTV-9 Steubenville(410)

WESTERN TV DX

Dennis Park Smith
450 Poplar Ave.
Wasco, CA 93280

October 1973

Deadlines: 5 Oct, 5 Nov

I will be in Eugene, Oregon after mid-September, but I don't yet know my address, so mail must be sent to and forwarded from Wasco for the present.

Not much in the tropo department this month. Late August saw some up to around 400 miles on VHF and UHF in Oklahoma and Texas. Pat Pyer, Glenn Nauser and Richard Allen monitored TV and FM channels for MS DX during this month of the mid-August Perseids meteor shower, though few TV signals were identified. August sporadic-E seemed typically mixed, depending on location.

It was good in south Texas, fair in Oklahoma, and poor further north. Overall, Jun (cont'd) 24 25 26 27 28 29 30 Jul 2
Nr. reporters 3 3 3 2 2 1 2 1 2
Es was down in 2nd half except for 23rd. MUF at least 98.7 108+5 98.7 4 4 106.9 2

| | | | | | | | | | | | | | | | | | | | | | | | | | | | | | |
|------|------|-----|------|---|------|-------|---|----|----|----|------|----|------|------|----|----|------|------|----|----|----|----|----|----|----|----|------|-------|------|
| | 3 | 4 | 5 | 6 | 7 | 8 | 9 | 10 | 11 | 12 | 13 | 14 | 15 | 16 | 17 | 18 | 19 | 20 | 21 | 22 | 23 | 24 | 25 | 26 | 27 | 28 | 29 | | |
| 94.3 | 98.9 | 4.4 | 98.7 | 5 | 98.5 | 107.9 | 4 | 3 | 5 | 4 | 98.5 | 6 | 90.1 | 89.3 | 4 | 6 | 94.1 | 90.9 | 2 | 2 | 2 | 1 | 1 | 2 | 2 | 3 | 95.1 | 107.3 | 91.3 |

| | | | | | | | | | | | | | | | | | | | | | | | | | | | |
|----|-----|---|---|---|------|------|---|---|------|------|------|------|----|----|----|----|----|----|----|----|------|----|------|----|----|----|---|
| 31 | Aug | 1 | 2 | 3 | 4 | 5 | 6 | 7 | 8 | 9 | 10 | 12 | 13 | 14 | 15 | 16 | 17 | 20 | 21 | 22 | 23 | 24 | 25 | 26 | 27 | 28 | |
| 1 | | 1 | 1 | 1 | 1 | 4 | 2 | 1 | 2 | 1 | 2 | 3 | 1 | 3 | 1 | 1 | 1 | 1 | 1 | 1 | 1 | 4 | 1 | 1 | 1 | 1 | 1 |
| 6 | | 4 | 2 | 4 | 90.3 | 94.3 | 4 | 3 | 90.5 | 89.7 | 98.5 | 94.9 | 6 | 6 | 3 | 2 | 3 | 4 | 3 | 6 | 98.9 | 6 | 89.9 | 3+ | 2 | 3 | |

Robert J. Williams, 251 6th Avenue East, Twin Falls, Idaho 83301 (1 Jan - 10 Jun)

Equipment: Curtis-Mathes 21" color TV- (Times are MST to late Apr, then MT) stereo FM- AM combination, Airline B&W portable, 17-el. VHF TV-FM antenna on mast with rotor, vertically-polarized dipole, and various other antennas, and boosters.

| | | | | | | | |
|-----|----|------|--|-----|----|------|----------------------------------|
| Jan | tr | 0036 | KID - 3 Idaho Falls ID | 28 | Es | 1600 | KTVI - 2 St. Louis MO |
| | | 0103 | KBOI- 2 Boise ID | 29 | Es | 2025 | WCCO- 4 Minneapolis MN |
| | | 1549 | KAID- 4 Boise ID (on TP) | Jun | 3 | Es | 1502 WKY - 4 Oklahoma City OK |
| 23 | tr | 1030 | KIFI- 8 Idaho Falls ID (good tropo) | 4 | Es | 1800 | KNKT - 2 Los Angeles CA |
| Feb | | 2115 | KID - 3 Idaho Falls ID (all eve.) | 5 | Es | 2236 | KIWS- 3 Shreveport LA (photo) |
| 16 | tr | 2100 | KBGL-10 Pocatello ID T (mk of Masterpiece Theatre) | 6 | Es | 0024 | CBUT - 2 Vancouver BC (QSL card) |
| | | | | | | 1031 | KTVO 3 Ottumwa IA |
| 20 | tr | 2156 | KID - 3 Idaho Falls ID | | | 1129 | WMT - 2 Cedar Rapids IA |
| Mr | 26 | tr | 1558 KUED 7 Salt Lake City UT (CB)N | | | 1228 | KTVO 3 Ottumwa IA |
| My | 18 | tr | 2300 KID - 3 Idaho Falls ID (photo) | | | 1230 | WCCO- 4 Minneapolis MN |
| 24 | Es | 0900 | KARD- 3 Wichita KS | | | 1331 | WTMJ- 4 Milwaukee WI (QSL card) |
| | | 1101 | KYTV 3 Springfield MO | | | 1403 | WMT - 2 Cedar Rapids IA |
| | | 1200 | KQTV 2 St. Joseph MO (QSL card) | | | tr | 1530 KTVB 7 Boise ID |
| | | 1302 | KMTV 3 Omaha NE (QSL letter)N | | | Es | 2131 KDAL- 3 Duluth MN |
| 26 | Es | 1430 | KWAB 4 Big Spring TX | | | 9 | Es 1859 KACB- 3 San Angelo TX |
| | | 1528 | KACB- 3 San Angelo TX | | | | (1st stn on new color set) |
| | | 1749 | WKY - 4 Oklahoma City OK | | | 10 | Es 2202 KMIP- 2 Midland TX |
| | | 1828 | KDBC- 4 El Paso TX (ex-KROD-) | | | 2215 | WHBF- 4 Rock Island IL (QSL cd.) |
| | | 1831 | KYTV 3 Springfield MO | | | 2226 | KUSD- 2 Vermillion SD (ph, QSL) |
| | | | | | | 2242 | KTVO 3 Ottumwa IA |

The Es season got started a bit late this year, but when it did it was good. So far this season: 3 new states (verified): Illinois, South Dakota and Nebraska. KMTV 3 Omaha sent a program schedule and coverage map along with verie letter. Also, several good fotos, including clear KIWS-3 Shreveport call slide. There was a lull in Es DX in the latter part of July, but it has picked up a bit in August, though. The tropo is very good this time of year, what there is with all the mountains. This year I've logged KBGL-10 along with beautiful color (photoed) on 3 & 8 Idaho Falls. Good DX to all.

Frank E. Aden, Jr., 448 E. Olney Ave, Bend, Oregon 97701 (21 Jun - 14 Aug) (PDT)

For a while I thought things were really crazy here--no Es at all for the last month. But after seeing the August WUD, I see it happened all over the country; no Es. The openings I did get have been short (2-3 hours) at the most and the MUF never seemed to get over 97.1. I noticed in the August WUD that not too many openings were to the northwest also. All added up, it has been a lousy season.

The August 12 MS did real fine here on amount of bursts. I was up from 3 to 7 AM. Saw many bursts, quite a few on ch 2 with color bars. This kept up to about 6 am, then no more bursts. No call letters at all, however. On ch 5 was one color bar & two TP's none with color bars. (Apologies, Frank, for omission in list of alert MSers above. dpe)

Portland OR stations KATU 2 KOIN-6 KGW-8 come on with color bars at 4:30 or 5 AM; they have TP's usually only on hour & 1/2-hour until sign-on. Same with KPTV 12 Portland but it comes on at 6:30 or 7. KVBC-3 Salem runs TP until s/on at 3 PM. KVAL 13 Eugene

runs a TP with no call at 6:30 AM usually. KEZI-9 Eugene runs a regular ID slide at 7 AM. KOAC-7 Corvallis has TP no call at 2:30 PM.

KOIN-6 has reported they will be chopping three CBS programs this fall (no mention of which) to have more time for local programming. KPTV 12 will pick up the three shows.

| | | | | | | | | | |
|-------|------|---------------|----------------|---|----------|------|----------------|-----------------|---|
| 25 Es | 1400 | <u>KLNE-3</u> | Lexington NE | N | (25) Es | 1505 | <u>KNOP-2</u> | North Platte NE | N |
| Jun | 1435 | <u>CBMT</u> | 6 Winnipeg Man | N | | 1930 | <u>KMTV</u> | 3 Omaha NE | N |
| | 1436 | <u>CBMT</u> | 3 Winnipeg Man | N | Jul 6 Es | 2000 | <u>KWGN</u> | 2 Denver CO | N |
| | 1434 | <u>KDIX-2</u> | Dickinson ND | N | | 2030 | <u>KOBI</u> | 5 Medford OR | N |
| | 1437 | <u>KXJB-4</u> | Valley City ND | N | 7 tr | 2045 | <u>KMED</u> | 10 Medford OR | N |
| | 1433 | <u>KOTA-3</u> | Rapid City SD | N | Aug 5 Es | 1200 | <u>KDLO-3</u> | Watertown SD | N |
| | 1435 | <u>KDUH-4</u> | Hay Springs NE | N | 9 tr | 0600 | <u>KVOS-12</u> | Bellingham WA | N |
| | | | | | | 0605 | <u>KING-5</u> | Seattle WA | N |

KVOS-12 was a big surprise—excellent audio, weak video. Just then, KPTV 12 came on. KING-5 was very weak on audio and video.

As I will be going to Oregon State University in Corvallis this September, I might get a chance to visit KOAC-7. 73's.

Dennis Smith, 450 Poplar Avenue, Wasco, California 93280 (1973 to 10 Sept) (PST)

Most of the time, I was in Chico, but was in Wasco for a few days in spring, then for several weeks in summer (though still in and out), late June to departure on 10 Sept morning. The well-worn equipment includes a 1954 Zenith 21" console (Chassis 19L28), a 1962 Blonder-Tongue BTU-2S UHF Converter (the Zenith's UHF tuner quit several years ago), and a 1954 Walsco VHF-UHF 2-bay Stacked-V antenna (though through replacement of elements and crossarms over the years, nothing remains of the original antenna) about 45 feet above ground. Ground elevation is 325 feet above sea level. July:

| | | | | | | | | |
|-------|------|---------------|-----------------------|---------|-----------|---------------------|------------------------------|-----------------------|
| 2 Es | 1512 | f/in ch 2 | | (18) Es | 1250 | t/in ch 2-3 | | |
| | 1530 | <u>CKSA-2</u> | Lloydminster Alta | 1300 | 1300 | <u>KNOP-2</u> | North Platte NE 1100 | |
| | 1405 | <u>CFCN-2</u> | Calgary Alta ? | T1110 | | <u>KWGN</u> | 2 Denver CO 860 | |
| | 1620 | <u>CFRN-3</u> | Edmonton Alta | 1300 | 22 Es | 1130 | t/in ch 2-4 (MUF ch 5 @1135) | |
| | 1640 | f/out | | | 1132 | <u>KMID-2</u> | Midland TX 1050 | |
| 11 Es | 1640 | t/in ch 2 | | | | <u>KWAB</u> | 4 Big Spring TX 1050 | |
| | 1659 | <u>KTWO-2</u> | Casper WY | 860 | | <u>WBAP-5</u> | Ft. Worth (cookshow) T1300 | |
| | 1703 | f/out | | | | | (ch5 f/out 1140) | |
| 16 Es | 1855 | t/in ch 2-4 | 1cl | | 1230 | <u>KMID-2</u> | Midland TX (still in) 1050 | |
| | 1900 | <u>KFDX-3</u> | Wichita Falls TX (mx) | 1220 | | <u>KFDX-3</u> | Wich Falls ("tv-III") 1220 | |
| | 1905 | apx f/out | | | 1300 | <u>KMID-2</u> | (still; I left) 1050 | |
| 17 Es | 1800 | t/in ch 2 | | | 1820 | apx f/in ch 3 (CTV) | (CFRN-?) | |
| | 1800 | <u>KMID-2</u> | Midland TX | 1050 | 1830 | <u>CFAC-2</u> | Calgary Alta 1110 | |
| | 1830 | <u>KWAB</u> | 3 Big Spring TX | 1050 | Aug 22 Es | 1605 | t/in (perhaps f/in) | |
| | 1850 | unId | 6 | | | unId | 2 (Spanish) | |
| | 1900 | <u>WBAP-5</u> | Fort Worth TX | 1300 | | 1700 | <u>XEFE-3</u> | Monterrey NL 1350 |
| | 2030 | (MUF ch 4) | | | | 1800 | <u>KFDX-3</u> | Wichita Falls TX 1220 |
| 18 Es | 0730 | ch 2 traces | | | | 1815 | apx f/out | |

By the time I got to Wasco from Chico to try a bit of DXing, the best part of the Es season had already passed, as usual. Our west-coast inversion condition was quite stable much of the time in August, allowing some FM listening (see FM report) and morning reception of KTXL 40 Sacramento CA (215 mi) but nothing spectacular or unusual. As September began, the stable ducting broke down, at least in the Central Valley. No new lowrings, so the log remains at 148. I left Wasco 10 September, eventually to arrive in Eugene, Oregon for the start of the school year; probably no chance to DX there.

Richard Allen, Billings, Oklahoma 74630 (1 - 27 Aug) (CST)

Receiver: 1969 model Philco-Ford 12-inch black & white

Antenna: Winegard 11-element VHF log & Archer 44-element VHF log, at apx 30 feet

| | | | | | | | | | | |
|-------|------|---------------|-------------------------|-------------------------|-----------|------|---------------|--------------------|-----------------------|-------------------|
| 1 tr | 2130 | <u>K7WPK</u> | 70 Arkansas City KS | 55 | (13) (MS) | 0436 | <u>WBBM-2</u> | Chicago IL | N 630 | |
| | | | (relaying KTVH 12) | | | | tr | 0537 | <u>KLTV</u> | 7 Tyler TX 320 |
| 5 Es | 1830 | <u>CKCK-2</u> | Regina Sask | 1020 | | | | 0541 | <u>WBAP-5</u> | 5 Ft Worth TX 255 |
| | 1850 | <u>CJIC-2</u> | Sault Ste Marie Ont | 970 | 14 Es | 1000 | <u>KBOI-2</u> | Boise ID | N1100 | |
| | 1955 | <u>KUTV</u> | 2 Salt Lake City UT | 840 | 15 tr | 0511 | <u>KCMO-5</u> | Kansas City MO | N 250 | |
| 8 tr | 2258 | <u>KBMA</u> | 41 Kansas City MO | N 250 | 18 tr | 0725 | <u>KXTX</u> | 33 Dallas TX | N 260 | |
| | | | (s/off at 2305) | | | 0800 | <u>KDTV</u> | 39 Dallas TX | N 260 | |
| 11 tr | 0755 | <u>KWU</u> | 11 Topoka KS | N 190 | | | | | (s/on; audio only) | |
| | | | (s/on at 0800) | | 22 MS | 0446 | <u>WLW-D</u> | 2 Dayton OH | 80C | |
| 12 tr | 0900 | <u>KMTC</u> | 27 Springfield MO | 245 | 23 Es | 1832 | <u>XFM-2</u> | 2 Mexico DF | 1175 | |
| | Es | 1700 | <u>XEFE-2</u> | Nuevo Laredo Tams N 620 | | | 1903 | <u>XEFE-2</u> | Nuevo Laredo Tams 620 | |
| 13 MS | 0413 | <u>WLW-D</u> | 2 Dayton OH (aud. only) | 800 | 27 tr | 0545 | <u>KAUZ</u> | 6 Wichita Falls TX | N 190 | |

A new job allows me less time to DX, as I must commute 25 miles to work, in Enid. Es openings have been fewer during August, and TROPO remains rare here. Totals to date are 78 stations (including UHF & 1 translator) from 26 states, 4 provinces and 4 estados. Good DX & 73's.

WESTERN TV-DX

October 1973

| | | |
|-----------------------------------|---------------------------|------------------------------|
| (8)(Es) 1429 WLW-D 2 OH 1050 (LA) | (Es) 1240 f/out | (23)(Es) 2230 f/out |
| 1500 WWAY 3 NC 1240 15 Es | 0910-1135 2,3 unIds | tr 2331 XHAB- 7 Tampt 250 |
| WECT 6 NC T1240 | (often vy choppy fade) | XHAH- 8 Ver T 700 |
| WUND- 2 NC T1340 | 1055 KUTV 2 UT 1055 | XHFV- 9 Tampt 505 |
| 1504 WUNC- 4 NC T1200 | 2135-2225 2,3 unIds | XHBR-11 Tampt 145 |
| WCIV 4 SC T1105 16 Es | 1145 KNXT 2 CA T1190 | XEFB- 3 NL T 270 |
| 1659 WPMY- 2 NC T1160 17 tr | C759 KMID- 2 TX 280 24 tr | C013 XET - 6 NL T 270 |
| 1815 unIds 2,3 (north) | Es 1010-30 2 unIds | XHAJ- 5 Ver T 700 |
| MS 2337 KVOA- 4 AZ T 720 | 1029 KORK- 3 NV 1055 | 0031 XHX -10 NL 270 |
| 2 Es 0700 WESH- 2 FL 1050 | (agn 1820 tent) | 0800 KSEL-28 TX 340 |
| 0720 WEDU 3 FL 975 | 1820-30 KNXT 2 CA 1190 | KCDB-11 TX 340 |
| 0740 KOAI 2 AZ 845 | 2240-2350 2,3 unIds | 0859 KLBK-13 TX 340 |
| 0743 KORK- 3 NV 1055 | 2336 KUTV 2 UT 1055 | 0915 KERA-13 TX T 250 |
| 0758 KNBC- 4 CA T1190 | tr 2335 KRBC- 9 TX 215 | 0931 KXTX-33 TX(s/n)240 |
| 0812 unIds 2-6 20 tr | 0834 KVRL 26 TX 185 | 1450 unIds 2 (brief) |
| (MUF 89.7, spotty) | KPTV 39 TX 185 | 1515-25 2,3 unIds |
| 0827 WCTV 6 FL 860 Es | 1145 WBAV- 2 WI 1150 | 1558 WSAV- 3 GA 1040 |
| 0929 WESH- 2 FL 1050 | 1150 WISC- 3 WI T1035 | 1630 WGBD- 2 SC T1105 |
| 0959 KNXT 2 CA 1190 | 1155 WTMJ- 4 WI T1070 | 1743 WESH- 2 FL 1050 |
| KTVK 3 AZ 830 | 1240 f/out | 1759 WPBT 2 FL 1140 |
| 1050 f/out | 21 Es | 1806 WTJW 4 FL T1140 |
| 10 tr 0510 WBAP- 5 TX 240 | 1300 KDIX- 2 ND 1180 | 1810 WCIX 6 FL 1140 |
| MS:tried,little success. | 1310 KOTA- 3 SD T1005 | 1900 unIds 2 Sp-Cuba? |
| Es 0840-0940 2,3 unIds | 1420 f/out(unIds 2,3) | (to apr 1910) |
| 0850 CKCOI-2 Ont 1380 | 1540-50 2,3 unIds. | 2030-2115 2 a,(choppy, |
| 0859 WBBM- 2 IL 1020 | 1750-1815 2,3 unIds | but doubt Es-TE link |
| MS 1022-26 2-7 unIds | 1759 WPBT 2 FL 1140 | w/solar level so low) |
| (largest bursts since 8-2-72) | MS 2100 WSJK- 2 TN 1000 | tr 2230 KMOM- 9 TX 290 |
| 11 MS 0856-58 2-6 unIds 22 tr | 0812 KVRL 26 TX 185 | tr 0020 KSWs- 8 NM 440 |
| 12 Es 1615 unIds 2-6 | KHTV 39 TX T 185 | 0031 KSWs- 8 NM 440 |
| YSR - 2 ELS.T1200 Es | 0829 KDLO- 3 SD 1025 | Es 1035 WTVY- 4 AL T 790 |
| YSU - 2 ELS.T1200 | unIds 2,3,4,6 | 1059 WDIJ 2 AL 735 |
| TCV - 3 GuatT1200 | 0859 KNOP- 2 NE 785 | WESH- 2 FL 1050 |
| 1715 KTVI 2 MO 760 | KOTA- 3 SD 1005 25 tr | WGBD- 2 SC T1105 |
| 1729 KOTA- 3 SD 1005 | 0929 KTVS 3 CO 790 | WSAV- 3 GA 1040 |
| 1759 KLNE- 3 NE 760 | 0931 KWGN 2 CO T 780 | 1115 WCTV 6 FL T 860 |
| 1800 WCGO- 4 MN T1065 | 0955 KNXT 2 CA T1190 | (MUF 89.9) |
| 1810 KNFL- 6 NE T 760 | 1007 KOAI 2 AZ T 845 | 1150 WTVJ 4 FL T1140 |
| 1829 KMTV 3 NE 795 | 1715-30 ?- 2 Sp,Cuba? | 1155 WPBT 2 FL 1140 |
| (MUF to 94.9) | 1915-25 2 unId | 1357 WSAV- 3 GA 1040 |
| 1859 MUSD- 2 SD 880 23 tr | 0745 KVRL 26 TX 185 | 12-1400 2-4 unIds |
| 1950 KORK- 3 NV T1055 | KLNI-15 LA 395 | (MUF88.5 agnE1420) |
| XHBC- 3 BCN T1020 | WRBT 33 LA 450 | 1431 WLW-D 2 OH 1050 |
| 1959 KTCA- 2 MN 1065 | KHTV 39 TX T 185 | 1502 WJBK- 2 MI 1240 |
| 2030 f/out | KPLC- 7 LA T 320 | 1520 f/out |
| 13 Es 1940 KORK- 3 NV 1055 (23)Es | 1205 unId 2 (w/brief) | 2110-20 2 unIds-na. |
| 1947 KOAI 2 AZ 845 | 1655 unIds 2,4 Spanish | Es 0745-0930 2,3 unIds |
| 2026 XHBC- 3 BCN 1020 | 1810 KWGN 2 CO T 780 | (MUF may be higher |
| 2034 XHAQ- 5 BCN T1020 | 1812 KRMA- 6 CO T 780 | but trop CGI heavy) |
| XETV 6 BCN T1110 | 1900 unIds 2-6(MUF98.9) | 0829 WJBK- 2 MI 1240 |
| 2038 KNXT 2 CA 1190 | 1955 XHBC- 3 BCN 1020 | KTVI 2 MO 760 |
| 2050 f/out | 1959 KNXT 2 CA 1190 26 Es | 27 Es 1805 unId 2 Sp.brief |
| 2135-2200 2,3 agn spotty | 2015 KNBC 4 CA T1190 | 28 Es 1015 unIds 2,3 briefly |
| 14 Es 1029 KDIX- 2 ND 1180 | 2016 KTVK 3 AZ T 830 | |
| 1047 KHPL- 6 NE T 760 | 2059 KORK- 3 NV 1050 | |
| 1050 KDUR- 4 NE T 915 | 21C5 KOAI 2 AZ 845 | |
| 1055 KOTA- 3 SD 1005 | 2120 KVVU 5 NV T1050 | |
| 1129 KTWG- 2 WY 985 | 2145 XHAQ- 5 BCN T1020 | |
| 1159 KWGN 2 CO 780 | (MUFto95.5 agn) | |

Es still giving rather good levels thru August. The last week activity very good somewhat like 1963's long season.

Meteor activity didn't work out as well as expected on TV. Did try some direct visual observations while listening on FM set. Details in FM report.

Have been trying some photo shots with Tri-X film. Results better than previous attempts but a close-up lens is in order when I've only a 6-inch screen for a target.

Might try to put together that pre-amp in Morrie's Ham Radio article. '73, WA5IYX.



VHF UTILITY DX

Pat Dyer
5315 Silvertip Drive
San Antonio, TX 78228
Deadline: 12th of month

OCTOBER 1973

Richard T. Colgan, PO Box 18268-Serna Station, San Antonio, TX 78218
Realistic PRO-2; Midland 13-920; Petersen HL-44; Mon-8 @ 40 ft; GMT
"a representative sample of DX" logged

| | | | |
|--------------|---------------|-------|------------------------------------|
| <u>6-19:</u> | 0301, KDC 337 | 39.90 | Dakota City, NE (sheriff) |
| | 0333, KAD 539 | 39.58 | Alma, KS (sheriff) |
| | 0357, KOG 596 | 45.66 | Salt Lake City, UT (sheriff) |
| <u>20:</u> | 0342, KSB 482 | 39.46 | Baraboo, WI (sheriff) |
| <u>22:</u> | 0001, KLR 411 | 37.26 | Brownsville, TN (police) |
| <u>24:</u> | 1721, KRJ 780 | 39.90 | Springfield, NE (sheriff) |
| | 1733, KKC 519 | 45.10 | Columbus, MS (police) |
| | 2321, KSH 852 | 39.50 | Beardstown, IL (police) |
| | 2339, KAA 288 | 39.46 | Marion, KS (sheriff) |
| <u>26:</u> | 1613, KMD 770 | 45.02 | Los Angeles, CA (state police) |
| | 1802, KME 293 | 46.06 | Garden Grove, CA (fire) |
| | KMD 639 | 46.06 | Orange, CA (county fire) |
| | 1907, KBO 573 | 42.50 | Glendale, CA (state police) |
| | 1958, KOF 527 | 42.82 | Copper Mountain, CA (state police) |
| | 2059, KKU 200 | 33.94 | Metairie, LA (county fire) |
| | KOP 575 | 33.94 | Gretna, LA (fire) |
| | 2136, KIB 473 | 45.06 | Pensacola, FL (state police) |
| | 2159, KIP 708 | 46.06 | Fruitville, FL (fire) |
| | 2205, KSA 771 | 42.42 | Seymour, IN (state police) |
| <u>28:</u> | 1531, KIC 986 | 37.26 | Clinton, TN (sheriff) |
| | 2316, KGT 618 | 45.06 | Madison, FL (sheriff) |
| | 2332, KIB 594 | 42.02 | Tifton, GA (state police) |
| <u>29:</u> | 0048, KIH 863 | 42.10 | Chester, SC (state police) |
| <u>9-10:</u> | 0036, KCB 979 | 33.90 | Norwich, CT (fire) |
| | 0047, KCB 281 | 33.90 | Bridgewater, MA (fire) |

Hank Holbrook, 7211 Chestnut St., Chevy Chase, MD 20015 Regency DR-200; indoor 19" vert for hi, 8' wire for low at Fair Haven cottage; 50' outdoor at Chevy Chase; Regency AR-136D, Blonder Tongue FM Booster, Finco 10-el FM Yagi at cottage; SP-600, 50' long wire each QTH. QSLed DX; GMT

| | | | |
|--------------|---------------|-------|--|
| <u>6-16:</u> | 1713, KSA 973 | 39.50 | Paxton, IL (sheriff; 500 watts) |
| <u>17:</u> | 2105, N77K | 119.7 | ov Naval Academy, Annapolis, MD (William E. Gilbert; Grumman Widgeen Amph.; 1500'; 25 w) |
| <u>24:</u> | 1843, KKD 614 | 39.50 | Covington, LA (sheriff; 300 watts) |
| <u>28:</u> | 0214, KSC 789 | 39.50 | Oquawka, IL (sheriff; 500 watts) |
| <u>29:</u> | 2220, KAA 979 | 37.10 | Oskaloosa, IA (police) |
| | 2223, KAD 447 | 37.10 | Bloomington, IA (sheriff; 100 watts) |
| | 2231, KAM 799 | 37.10 | Burlington, IA (sheriff; 250 watts) |
| <u>7-4:</u> | 1436, N3077D | 123.6 | ov Salisbury, MD (John C. McKellar, Sr.; Cessna 310; 2-engine; 5-seat) |
| <u>7:</u> | 1740, N1012G | 119.7 | ov Severna Park, MD (Hop Flight, Inc.; American 'Yankee' AAL, 1-eng, 2-seat; 2000 ft) |
| | 2130, N5353Q | 122.8 | vic Easton, MD (B&H Flyers; Cessna 150L) |
| <u>10:</u> | 2341, KIC 369 | 37.26 | Cleveland, TN (police) |

Lee Vulgamott, Box 171, Williams, IA 50271 Regency TMR-8H/LM scanner with Antenna Specialist MON-8; offers aid in IDing Iowa police; GMT

| | | | |
|--------------|---------------|-------|-------------------------------|
| <u>2-28:</u> | 2255, KKH 300 | 37.10 | Bentonville, AR (sheriff) |
| <u>6-7:</u> | 1550, KQH 905 | 37.10 | Ann Arbor, MI (sheriff) |
| <u>13:</u> | 1803, KKC 381 | 37.10 | Houston, TX (sheriff) |
| <u>7-12:</u> | 2357, KCA 986 | 37.10 | Clinton, MA (police; QSL) |
| <u>28:</u> | 1423, KEB 301 | 37.10 | White Plains, NY (police) |
| | 1454, KEB 208 | 37.10 | Ossining, NY (police; QSL) |
| <u>8-3:</u> | 1800, KIH 616 | 37.08 | Tallahassee, FL (sheriff) |
| <u>2:</u> | 1313, KCO 378 | 37.10 | Belmar, NJ (local government) |

My loggings. Hallicrafters SX-62 with International Crystal SAX-1 preamps, Allied A-2586, 30-ft indoor random-wire antenna; Es unless noted * F2, ** F2 backscatter; daily peak Latin American F2 MUF noted if 35 MHz or more; new underlined, CST used; solar noise matching SESC report

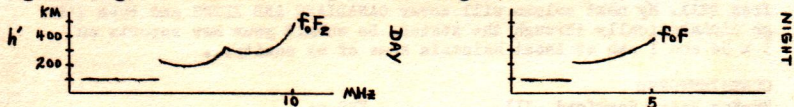
| | | |
|---------------------|---------------------|---------------------|
| 8-15: 0947, KMA 829 | 24: 1652, KSJ 815 | 3: 1932, KLF 527 * |
| 1130, KSC 645 | 1704, KQC 884 | 4: 1525, 36.5 * |
| 1212, L Beach | 2035, KME 438 | 1557, KMA 829 ** |
| 1319, KQC 877 | 2047, L Beach | 5: 1534, KMA 829 ** |
| 16: 1140, KMA 829 | 2053, KMA 829 | 38.7 * |
| 17: 1110, KMA 829 | 25: 2117, KMA 829 | 9: 1726, KKV 690 ** |
| 1802, L Beach | 2119, KQC 884 | 1743, 42.2 * |
| 20: 1041, Madison | 2121, KQC 877 | 1819, KMA 829 ** |
| 1101, KSC 645 | 2127, KQD 607 | 1825, KLR 503 * |
| 1104, KDN 402 | 2131, KSC 645 | 1828, KGE 681 * |
| 1310, KAA 971 | 31: 1310, 36.8 * | 10: 1540, 47.7 * |
| 21: 1325, OK City | 9-1: 1500, 36.3 * | 1643, KLF 527 * |
| 1358, KDN 402 | 2: 1505, 36.9 * | 1658, KKV 690 ** |
| 22: 0937, KDN 402 | 1: 1327, sol. noise | 1700, KMA 829 ** |
| 23: 1806, KLF 527 * | 1721, sol. noise | 1720, KFL 943 ** |
| 24: 1107, KQD 313 | 1730, KKV 690 ** | 11: 1705, 40.9 * |
| 1114, KSC 645 | 1739, OK City ** | 1744, KMA 829 ** |
| 1132, KQD 607 | 1740, 37.4 * | 1805, KKV 690 ** |
| 1530, KIQ 999 | 1913, KFL 943 ** | 12: 1545, 44.6 * |

| | | | |
|---------------|-------------------|----------------|------------------------|
| KAA 971 42.5- | Storm Lake, IA-sp | KQC 877 35 - | Cincinnati, OH |
| KCE 681 35.70 | Rockland, ME-f | KQC 884 35 - | Detroit, MI |
| KDN 402 35.54 | Omaha, NE | KQD 313 35.50 | Dayton, OH |
| KFL 943 35.58 | Las Vegas, NM ** | KQD 607 35.50 | Grand Rapids, MI |
| KIQ 999 35.34 | Mobile, AL | KSC 645 35.58 | Chicago, IL |
| KKV 690 35.62 | Houston, TX | KSJ 815 35.22 | Fort Wayne, IN |
| KLF 527 35.22 | Honolulu, HI ** | - | 35.58 Long Beach, CA * |
| KLR 503 35.02 | Boston, MA-h | - | 35.42 Madison, WI-mp |
| KMA 829 35.58 | San Diego, CA | - | 35.58 OK City, OK * |
| KME 438 35.22 | Orange, CA | (KAA 973 42.58 | Fairfield, IA-sp) |

f-fire; mp-mobile phone; h-hospital; sp-state police; rest are pagers tone except * voice, ** tone message with voice ID

As this column is the only one in the YUD that encounters any great amount of F2 DX, some explanation of that layer and its behavior is felt in order. These will be fitted into the column as space permits.

As far as VHF is concerned, the most striking trait of F2 is that it is a daytime phenomena (though sometimes may peak in late afternoon or early evening with a magnetic storm onset). The difference in day and night ionograms show this best in the figure.



At night the F1 and F2 layers effectively merge. (For figure notations see Dec 1972 YUD, p. 6). Unlike the other lower layers it does not almost completely disappear. This is due to the comparatively low particle density at F2 heights (on the order of one ten-billionth to one trillionth that of sea level) with the fewer free electron collisions slowing recombination.

-to be continued-

TV QSL CORNER

Just got a bundle of BILL MATHEWS old reports when he had the column. I will go through them by state and am starting with, of course, FLA and then ALA. This column will be a little short because I'm packing for a trip to MEXICO this weekend (Sept.15). In the future when you send reports I'd appreciate it if they are printed or typed on 3 x 5 index cards with only one state on each card. This will make my sorting bearable, I hope. Also no repeats unless it's something special like the BMC on ch. B1. All contributors will be listed by initials after the report and listed by name at the bottom.

FLA: WESH ch.2 DAYTONA BEACH, non-specific ltr. sig. WALTER STROUSE, station manager. Time: 9 days. (RH).
WTVT ch.4 MIAMI, ltr. sig. JOE KLINE, director of technical operations. Time: 6 days (JS).
WJXT ch.4 JACKSONVILLE, non-specific pic. post card. sig. GEORGE WETMORE, ce. Time: 13 days. (JH). card. same sig. (DE).
WUFT ch.5 GAINESVILLE, ltr. sig. ROWLAND MEDLER, engineer. (JR). same. (KRS). (I went to school across street from WUFT studios)
WCIX ch.6 HOMESTEAD, ltr. sig. DEBORAH H. BUSSEY. (PL). ltr. (CMS). card. sig. JACK GOWART, chief engineer. (KRS). **THEY OPERATE XLTRES W61AA-Fort Lauderdale; W64AD-Boca Raton; and W69AA-Hollywood.
WCTV ch.6 TALLAHASSEE, ltr. sig. CHARLES CLIFAN, chief engineer. Time: 6 days. (PL). ltr. sig. CHARLES CLIFTON, chief engineer. Time: 21 days. (DE).
WDBO ch.6 ORLANDO, ltr. sig. CHALMERS S. STROMBERG, ce. Time: 16 days. (DE).

**As far as I can tell all FLA stations will QSL somehow. WPTV-5 (my local) is preparing a QSL card in the near future which will show their building and logotype.

ALA: WDTQ ch.2 DOZIER, ltr. and ALA ETV booklet. sig. AL RENFRO, engineering and Technical director. Time: 8 days. (JS). same, Time: 10 days. (JM).
WKRC ch.5 MOBILE, ltr. sig. CURTIS B. WILLARD, ce. Time: 26 days. (PL).
WALA ch.10 201 Government St. MOBILE, 36601, ltr. sig. GRADY JACKSON, ce. (KRS).
WAFI ch.12 BIRMINGHAM, ltr. sig. PAUL D GROSS, ce. Time: 6 weeks. (GH).
WRMG ch.42 BIRMINGHAM, ltr. sig. CHARLES ROUNDTREE, program operations. Time: 11 days. (RLB).

I'm currently going bananas, sorting through the hundred or so reports from Bill. My next column will cover CANADIANS AND XLTRES and then I'll go alphabetically through the states. So submit your new reports on 3 x 5s and I can at least maintain some of my sanity...

CONTRIBUTORS:

| | |
|---|---|
| RH-Ron Hade, Rockford, Ill. | KRS-me |
| JS-John Sally, Wickliff, Ohio | CMS-C.M. Stanbury II, Crystal Beach, Ont. |
| JH-Jeff Hotahkin, Oneota, NY | |
| DE-David Egan, Valleyfield, Que. | JM-Joseph A. Markewicz, Winnipeg, Man. |
| JR-J.J. Rosenberg, Downsview, Ont. | |
| GH-Glenn Hauser, Stillwater, Okla. | |
| ...73's KEN SIMON/528 PILGRIM RD./WEST PALM BEACH/FLA.33405 | |
|keep these letters and cards coming... | |

STATION BREAK *ADS*

CB MAGAZINES, Radio Today (October & December '73 - final issues), S9 October '71 to September '72, included. Total of 14 books. Value \$10. First reasonable offer. J.J. Rosenberg, 47 Pannahill, Downsview, Ontario M3H 4N4

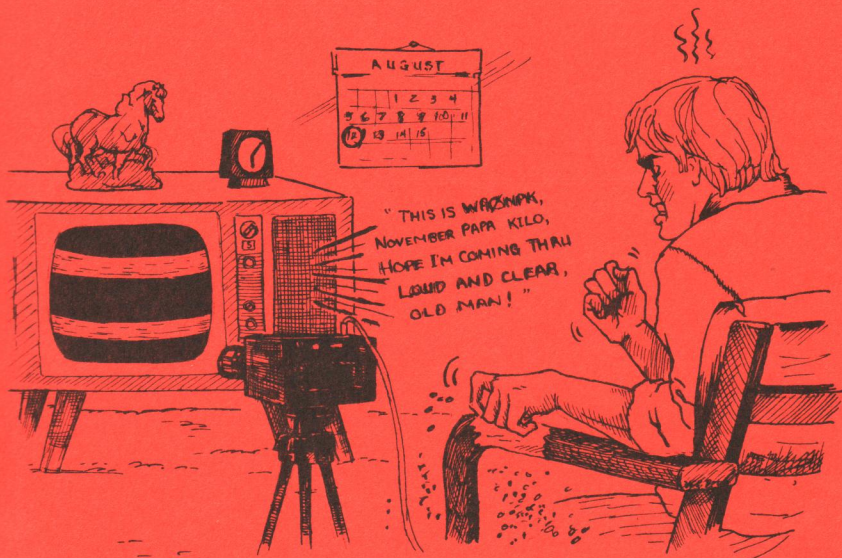
CHANNEL MASTER 7008 traps. Two section; tunable from 50 - 108 MHz. 60 db attenuation w/75 ohms. Excellent for adj. chan. interference problems. Cost \$30, sell for \$20 each. J. Stiles, Carleton College, Northfield, MN 55057

TV FIELD STRENGTH METER. Sencore, model FS-134, brand new and with warranty. Cost \$270, will sell for \$200. Bill Smith, W5TVB, PO Box 18904, Oklahoma City, Oklahoma 73118.

REX-ROTARY ELECTRIC MIMEOGRAPH MACHINE. Silk screen design; fully automatic. As used to publish early VUD's. Write for details if interested. WTFDA, P. O. Box 163, Deerfield, IL 60015.

HALLICRAFTERS S-94 30 to 50 MHz receiver. Sensitive tube-type circuit. In excellent physical and electrical condition, but less squelch circuit. Used to rcv BBC & ORTF audio. \$30. M. Goldman, 5815 N Christiana, Chicago, IL 60659

YOUR non-commercial ad could be here, free of charge! 3 line or 30 word limit. Write: WTFDA, PO Box 163, Deerfield, IL 60015. (ads subject to editing)



DXing the Perseids Meteor Shower

