

VHF-UHF DIGEST

LOOK AT IT
THIS WAY FRED
IT'LL KNOCK OUT
ALL THEM LOCALS YOU'RE
ALWAYS HOLLERIN' ABOUT!



dx-er's
lament

HARRY
J.
HAYES

publishers' notes...

WTFDA HEADQUARTERS, P.O. BOX 163, DEERFIELD, IL 60015 USA

NOTE FROM MORRIE GOLDMAN... Next month will be my final month as VUD editor. Overtime work, Army Reserve obligations, and my start of graduate school this fall (evenings), force me to resign. In recent months, it has become increasingly difficult for me to prepare the VUD. As a side note, this issue is (in part) late because I've been recovering from injuries suffered in an elevated train derailling. Fortunately, my injuries do not appear to have been serious, ^{and} none the less painful. Central TV DX editor, Don Ruland, will take over as VUD editor with the July issue. All editorial material, such as columns, covers and articles, should be mailed directly to Don, at 4448 68th Place, Kenosha, WI 53140. Continue to send all other club business to WTFDA Hq. I will continue dealing with our printer, and plan to remain active in other areas of the club.

FM NORTH EDITOR NEEDED... Our recent efforts to contact Russ Brown and regain the large batch of DX reports in his possession have failed. Frank Merrill has even spoken to Russ, without apparent success. We regret that it would appear that all recently submitted FM North reports are to be considered lost. Furthermore, a new FM North editor is needed now. If you're interested, contact Don Ruland as-soon-as-possible.

SPECIAL BACK ISSUE OFFER... You can now get any of the available back issues at a reduced price. Any four back issues are \$2.50, a 50¢ savings. You can save \$2.50 when you buy any ten back issues for \$5. The single price for back issues is still 75¢ each. You'll find a list of the available back issues on our back cover... A new supply of Log Sheets and Station Report Forms are also on hand. Order now and prepare for the coming season! .. The WTFDA TV TRANSLATOR GUIDE is selling well. In fact, it's moving faster than we had expected. The GUIDE was printed in a small quantity, spiral bound, and a full 8 1/2 x 11. If we need to make a reprint, cost will require that it be shrunk to VUD size. Hint, hint-- order now and get the spiral bound version. It's a great value!!

STATION GUIDE PROGRESS... Many of you have probably given up on wondering when our long, long, overdue TV STATION GUIDE. Believe it or not, the GUIDE may be out soon. The current problem is a lack of (your editor's) time. What remains to be done are corrections and updates to the list and maps. The TV STATION GUIDE should be available within the next two months

MS INFO... The May issue of QST features a very interesting and detailed article on meteor scatter DXing. The author is obviously very experienced in the subject and presents some new conclusions.

BITS... Several members have recently been offering their help, and some have already completed articles or projects. The results will be appearing in the near future in the VUD. All members who have offered their help will be contacted.

73,

Gary and Morrie

Terry Colgan
1605 Mearns Meadow Blvd.
Austin, TX 78758

DX MAILBOX

Greetings! The "Mailbox" is back after several months involving a hundred-mile move in which the movers lost a box containing almost all my radio materials. Now that the errant box has returned, the "Mailbox" is back in business.

Since the WTFDA membership list was published in February, I won't relist new members whose names appeared there. New members since February are:

John Dyer
Dale A. Hagert
Daniel J. Hall
Scott E. Sampson
Robert C. Sawyer
Victor Schmidt
Charles W. Shade
James Thomas
Thomas E. Yeazell

P.O. Box 1151
3881 Serpentine Cr.
5338 West Foster
1025 14th Ave. A
Apt. C-7, 1508 Dickerson Rd.
734 Easley Street
1617 Sue Avenue
P.O. Box 215
4060 Vinedale Ave.

Graham, TX 76046
St. Paul, MN 55122
Chicago, IL 60638
Orion, IL 61273
Nashville, TN 37207
Silver Spring, MD 20910
Miamisburg, OH 45342
Arlington, KS 67514
Cincinnati, OH 45205

Let's see what news we can dig up from the past few months.

BOB FANCHER, Darling, MS, uses a Fisher 500-TX and a 10 el Channel Master antenna at 100 feet, and an RCA TV with a 44 el CM VHF antenna atop a 60-foot tower. WDX3IJJ, better known as EDWARD BARBONI, tunes DX on a Lafayette LR-775, a Winegard SC-650, and an AR-22 rotator.

SCOTT SAMPSON read about WTFDA in Pop'tronics. He and his brother rate WMAH-19, Biloxi, MS as their best reception. Other UHF catches include stations in LA and AL.

Four new members with interests in PSB radio are JEFFREY DRISCOLL (Plainview, CT), STEPHEN MALONE (Teaneck, NJ), ROBERT SAWYER (Nashville, TN), and HERMAN AUDDERSCH (Baltimore, MD).

Computer programmer, THOMAS YEAZELL, listens to the FM band with a Pioneer SX-828 and a Rembrandt antenna.

A Hallicrafters SX-122A, a Realistic DX-150A and a Sears color portable adorn the shack of GEORGE LAPRAY, Minneapolis. George lists his DX interests as BCB, TV, SWBC, and FM, in that order.

DAVID WILCOX, a charter member of the East Lansing (MI) DX Club, stacked two Winegard SC-650 antennas, put them atop a CDR rotator and a 70-foot tower, then hooked them to a JVC VT990 tuner.

Here's a "mini" review of new members' equipment: HOWARD MILLER, Fawnskin, CA, uses a Heathkit SB-313; Lafayette, IN DXer, RANDY SCHNEPP, DXes on an RCA TV and Winegard CW-2002 and U-995 antennas; JAMES THOMAS, Arlington, KS, listens to FM on a Knight 315 am-fm rx; and Philly DXer, HAROLD MUNSHAW, tunes a Hammarlund HQ-145 and a Hallicrafters SX-140.

Several new members hold radio licenses of one kind or another. In fact, HAROLD MUNSHAW is WA3ROV; JOHN FRANCIS is K4MOL; BOB FANCHER holds KEB1661 and KFF488; WA2ZPD is known as RAYMOND NAHL; MARK WARD is WA1OPL; and ANDREW SPIRKA is WBKLL.

Finally, I'd like to welcome BOB HARTMANN, Mayville, NY to another year with WTFDA. Bob mentions plans to visit Europe this fall! Personally, I'll be lucky if I get to Pflugerville (TX)!

Anybody buy any DX gear with his tax refund?

73,
Terry

THE HAUNTING DX

by
Clark W. Golubic

Okay, folks. You say you've heard them all? You know the one about the residents of the British Isles DXing a station which had been off the air for three years? You've read about the guy DXing stations in Venezuela and Colombia with a 1959 clunker and bent-up antenna? Well, you haven't heard anything yet. I've got a story that makes the above two sound like bad "Partridge Family" plots.

My house is being haunted by an unidentified DX.

Yes, fellow DXers, you read that correctly. Moreover, I swear on my stack of V.U.D.'s that it is absolutely and unequivocally true. Every night at precisely 2 A.M. a 400 Hz test tone seeps from the ventilation shafts of my air conditioner.

Don't worry, I know exactly what you're thinking. But before you report me to the local sanitarium, please hear me out. After all, do you think I'd make a complete fool of myself in front of all these readers?

Here's how it all started.....

It was a typical night in late November of last year. As a matter of fact, a pretty lousy night for TV DXing. (Then again, considering I've only got 50 or so stations logged, there aren't too many good nights!) Anyway, I was fiddling with the dial of my 19" RCA New Vista B&W portable TV, trying to find something substantial, when ALL OF A SUDDEN----POW! Talk about meteor scatter! You can keep your pings and bursts---this was a SUPER BURST! Better yet, a SUPER SUPER BURST! The dial was on channel 2 and something very strong was coming in. Tuning it in, I found it to be a color bar test pattern, unidentified, accompanied by a 400 Hz test tone. Almost as soon as I recognized it, it disappeared. (The TP, not the DX.) Nothing but a gray screen. Then a second later, an announcer's voice. This was the moment I had been waiting for! He said: "This is W----" Silence. Snow and interference refilled my screen. Frustration filled my mind. So close! Yet I knew there was little hope for identification.

The whole episode had lasted maybe seven or eight seconds. The mental anguish I experienced must have lasted for several hours. Finally, after gnashing my teeth and pounding the floor for awhile, I decided, it being well after two A.M., that I had better retire. So, turning off my cherished portable, rabbit ears and all, I went to sleep.

The next night at about two A.M. I was surprised to hear a strange noise emanating from the air vents of our air conditioner/furnace. It seemed to be some sort of tone. Getting out of bed, I walked downstairs to investigate, and found the furnace piping away with a tone. Checking it against my signal generator, I identified it as 400 Hz---and the same as my previous DX. Assuming it to be coincidence, I returned to bed. However, I was again startled the next night by this same tone....and the next night..... and the next.....

After about two weeks of test tones and lack of sleep, I decided to call in a serviceman to determine the cause of this mysterious sound. After five hours of dismantling our furnace, he announced that there was absolutely nothing wrong with it, and had I been listening to too much loud music lately? I shuffled him off so that I could resume my DXing, and the only thing that startled me more than the test tone in the morning was the size of his bill. (Cont on page 8.)

XH CD FM

ORMA

KEBA-FM

STEREO iPOP! MUSICA FELIZ

XETIA-FM

Formula Melódica s.a.

MUSICA PARA ENAMORADOS

HEAD FM - HEAD LINE - HEAD BEATS

STEREO ROCK!

ACTION RADIO!

XEHL FM 102.7 Mhz.

Central de Emisoras

XHPA FM

en ACAPULCO GRO.

RADIO

POP MEXICANA

92.5 F.M.

XHZM-FM

La Chica Musical*

94.1 F.M.

PUEBLA, PUE.

x h j e

Mexico

FM UPDATER : MAY 1974
(+ = addition; # = change)

- 88.335 XERED # R. Red x-XERCN; + dp
88.5 XHOM # "R Concierto Moderno";
07-24
- 88.9 XHM # 06-01
- 89.1 XHRA +ABC net mr dp(=EE sound for TV)
- 89.1 XHRZ + 'Estereomundo 89' soon on, 07-21 \$
- 89.7 XEBS + ju
- 90.1 XHXL + 1 kw, soon on, 24h
- 91.3 XHQK # x-XHRSM minute-by-minute time, ads
- 92.5 XHRM # x-99.3; 25 kw
- 93.5 XHNY # not XHYN; isvoio
- 93.7 XHPX # 24h
- 93.7 XEJP # 'R Joya/Tesoro Musical'; not link; /rois
- 93.7 XHPA + isvo
- 93.7 XHNOE # 06-24
- 93.9 XHMO + is
- 94.3 XHRP # 3 kw 07-24
- 95.3 XHSU # CP is on; + ismrss
- 95.7 XHCT + isio
- 95.7 XHQS # x-96.1; 5 kw; CP is on; 'Formula Melódica' ro 24h +
- 96.5 XHTA + 10amau
- 96.5 XHLM + 2kw Cuernavaca Mor; \$; soon on, 07-24; vaioeess
- 96.5 XHRN + soon on
- 96.9 XEW # 07-02
- 96.9 XHNS + Acapulco Gro
- 96.9 XHOD # 0645-; + is
- 96.9 XHTD + 5kw Jalapa Ver soon on
- 97.1 XEBA # isvoioau
- 97.3 XHRE + 'R Ensueño'; # 4 kw
- 97.7 XERC # 'R Hits'; 3kw not link
- 98.1 XHNG + 1kw Cuernavaca Mor
- 98.1 XHMLS + vo
- 98.5 XHPL # ra
- 98.5 XHQK # cf 91.3; 1kw soon on au 'R Amistad'
- 98.9 XHNX + is
- 99.3 XHRM # to 92.5
- 99.3 XHMS # 2kw; + 08-24 jumoss
- 99.3 XHEM # to 103.5
- 99.3 XHPOP # 24h; + mr
- 99.3 XHTL # '\$ Internacional'
- 99.3 XHNK # is on the air
- 99.7 XHPB + io
- 100.1 XHMM 'Maranatha/FM de México'
- 100.1 XHPM # may be on the air
- 100.2 XHSP # 06-24 roof
- 100.5 XHMG + is
- 100.9 XHTO # 20kw; + io
- 101.1 XHMA # '\$ Latina'
- 101.3 XHPR # 'Punto Romántico en FM'; + ro
- 101.7 XEX # '\$ 102' English 07-01 mr
- 102.7 XEHL + h,v; # CBS only
- 103.5 XHEM # x-99.3; 3kw
- 104.5 XEHU # 06-24
- 104.9 XHBS + 'Just for the 2 of us'
- 105.9 XHTB + 'R Primavera' isam
- 106.5 XHDFM + ro \$
- 107.3 XEQR # 3kw, 'R Universal', not link; + ioeerr

rr=rock & roll; other format abbr's may be found in the May 1973 VUD accompanying the original list. Compiled by Glenn Hauser.

XHQK FM

(Antes XHRSM-FM) México, D.F.

XEJP-FM

Radio Joya

XERC-FM

radio hits

XHPOP

STEREO iPOP! MUSICA FELIZ

99.3

ESTEREOFIL XEOY-FM

* integrante: NUCLEO RADIO MIL

stereorey

XHV-FM 102.5 mc.

STEREOBEST

105

XHBS-FM

XEQR-FM

RADIO UNIVERSAL

TOLUCA, MEX.

la ZA

RAVISA FM

XHCT - FM

RADIO FELICIDAD

GRUPO ACIR, S.A.

Add a Detent UHF Tuner-- for under \$10!

by Morrie S. Goldman

For years, TV-DXers have suffered with inaccurately calibrated continuous UHF tuners. Whenever there was a tropo opening, the guessing game began... "UnID educational station noted on channel 29, 30, 31 or 32." The likelihood is that this unID logging could have even been on channel 34. Some DXers have added their own calibration marks on their UHF dials, but many tuners were not suitable for calibrating. Either the tuner had poor resetability or the calibration marks became unreadably close together.

In recent years, a number of 70 channel detent tuners have appeared on the scene. Most of these consist of a continuous UHF tuner with a detent (click stop) mechanism. The detent tuners have been specially designed to track the UHF dial with near perfect linearity. At last, we had a means of tuning the entire UHF-TV band with reasonable accuracy.

At this writing, there are no manufacturers producing a 70 channel detent UHF converter. This limits the TV-DXer to two possible ways of getting "detent accuracy." He can buy a new television set, or replace his existing in-set tuner with a detent type. If you find the first alternative most attractive, stop reading now. On the other hand, if you'd like to modernize your current TV set for under \$10, read on!

Quite a number of manufacturers are now including 70 channel detent tuners in their television sets. Most of these tuners are very similar in design, and are actually manufactured by only about three tuner companies. I chose to use the tuner supplied by Heathkit with their black & white receivers. It is readily available from Heath as a replacement part and lends itself to many mounting variations. In addition, this tuner has excellent performance characteristics. Image rejection and immunity to overload approach that found in a vacuum tube converter, while sensitivity is equal to, or better than, the best solid state converters. At worst, dial accuracy seems to be not more than one half channel off. Any inaccuracy is easily compensated for by using the fine tuning ring.

INSTALLATION

The first step in planning the installation of your detent tuner is to identify all necessary connecting points. For tuners other than the Heath 110-69, it will be necessary to contact the manufacturer for details. A top view of the Heath tuner is shown in Figure 1. The only tuner power connection required is +15 VDC to the tall post, in the upper right corner of the figure. The power source ground can be connected to the tuner case.

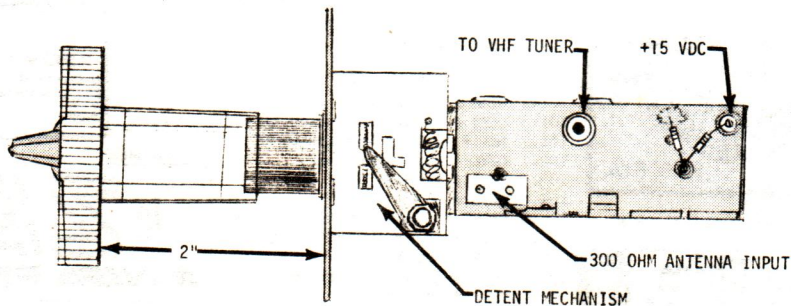


Figure 1

The easiest, quickest and most expensive way to operate the tuner is to attach an external 15 volt power supply. If this is done, the tuner can be operational (but not mounted) in about two minutes. A more practical installation however, would be to replace the set's existing (transistorized) UHF tuner with the new detent tuner, tapping power from the set.

If you plan to replace an existing transistorized in-set tuner with the new detent tuner, examine the connections to the in-set tuner. With the set unplugged, connect the plus terminal of a high impedance voltmeter to the B+ terminal of the existing UHF tuner, and the negative voltmeter lead to chassis ground. Place the

VHF tuner in the UHF position, plug the set in, (use a cheater cord if necessary) switch the set on, and observe the voltmeter reading. If the voltmeter reads between 13 and 17 volts, no B+ changes will be required. Should the voltage be higher, it will be necessary to add a voltage dropping resistor. Remember, with the set in operation, high voltages will be present in several locations. Use only insulated test probes.

The dropping resistor's value can be calculated using Ohm's Law (the tuner draws 13ma @ 15 V), or the voltage can be set using a potentiometer. Just connect the pot as shown in Figure 2. Set the pot (a 10 k control will due, though value is not critical) for maximum resistance. Then gradually reduce the setting and observe the voltmeter reading. Stop when you reach 15 volts. Remember that the tuner must be connected when measuring this voltage.

After the power connections have been finalized, plug in the interconnecting cable from the VHF tuner, connect the antenna, and start DXing!

The Heathkit detent tuner can be ordered as a replacement part from the Heath Company, Parts Dept., Hilltop Road, St. Joseph, Michigan 49085.

UHF detent tuner	110-69	\$7.60
UHF ch. sel. knob	462-235	.65
Ch. indicator	462-903	.75
Control Knob	462-237	.35
		\$9.35

+ postage

The tuner and associated knobs may also be available from your local Heathkit Electronic Center.



FCC NEWS — DATA

Roger H. Brown
1617 Linden St.
E. Lansing, MI 48823

STATION STATUS CHANGES

WWSB-35 Orlando, FL new on air 3-31
KVST-68 Los Angeles new on air 3-29
KOET-9 Ogden, UT off air 4-9

CHANGES IN ACTIVE STATIONS

WHAG-25 Hagerstown, MD 70KW Aur
KCOY-12 Santa Maria, CA 120KW Vis, 25KW Aur (CP)
WEDH-24 Hartford, CT 700KW Vis, 70KW Aur
WTTW-11 Chicago, IL 90KW Vis, 18 KW Aur
1470AAT TX to Sears Tower
WGVC-35 Grand Rapids, MI 1300KW Vis, 270KW Aur (CP)
WTCG-17 Atlanta, GA 1100KW V, 110KW A (CP)

APPLICATIONS FOR NEW STATIONS

Ch.14-Memphis, TN 10KW V, 2KW A 150'AAT (Educ.)

CALL LETTER CHANGES

WFSB-TV (3) Hartford, CT (was WTIC-TV)
WSCT (27) Tallahassee, FL (not on)
KVOF-TV (38) San Francisco, CA (was KUDO)

CPs

Red Oak, IA (Ch 36 ETV) 3900KW V 1900'AAT
Sioux City, IA (Ch 27 ETV) 5000KW V, 1050'AAT
Beaufort, SC (Ch 16 ETV) 1000KW V, 1250' AAT

SELECTED TRANSLATOR INFORMATION

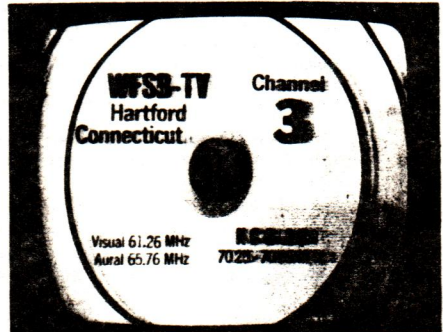
KØ8HT Upper Divide Creek, Co license granted
K65AK E Cottonwood Pass, Co CP 100w (KOA-4)
KØ9LT Mt. Massive Lake, Co CP 1w (KRDO-13)
KØ8HZ, KLØIV, K12JH Capital Reef Natl' Park, Co
all CPs, 1w (KUTV-2, KCPX-4, KSL-5)
K12AX Oven Forks, KY now WØ9AX
K73AU Dodson, Tx CP for 20w
K83AJ Quicy, WA CP
W33AA Miami, FL CP 1000w (WCIX)

MISCELLANEOUS

Group of NJ officials feels that state not receiving kind of service enjoyed by other states has asked FCC to move one of more VHF stations into state. Only station programming to real NJ market is WCNC-40 Wildwood. Only V is WNET-13, ETV for NYC. All commercial Us are designed for NYC or Philly markets. NJ one of most densely populated states in US! (Broadcasting Mar 11, '74)

FCC proposes land-mobile radio services would be able to use ch 14 in Miami, ch 17 in Houston and ch 16 in Dallas. (Bdcst Mar 18'74) (wonder if they considered trans-gulf tropo!?! RB)

Picture below courtesy Bill Grant, Worcester, MA. For you MS bugs.



FCC has been urged to drop Vs into communities where possible, and reserve them for public TV...by group from United Church of Christ (Bdcst Apr 1'74)

From members... Wood notes new Baton Rouge ETC ch 27 will use space on WBRZ tower. Will air late '74. Pomeroy says one "mini-TV stations" in AK in Jan...KØ2HO Unalaska. Thanks for others not used in column (Kelley, Dickerman, Simon.)

It has now been about five months since that unidentifiable burst. In that time, I have called in three more servicemen, all of whom have told me that the furnace is in perfect working order, and all of whom have charged me immense sums of money for that judgment.

The test tone is still whining away every morning at two A.M. without fail. I can see only two solutions: (a) I DX that station again and identify it this time, or (b) I wear cotton in my ears for the rest of my life.



Canadian Radio-Television
Commission

Conseil de la Radio-Télévision
Canadienne

J. JOEL ROSENBERG & MARK L. LEWIS
47 PANNAHILL RD 224 HONITON ST
DOWNSVIEW, ONTARIO
633-1769 -416- 6550086

NORTH OF THE BORDER:

FOR NEWS IN CANADIAN BROADCASTING

MAY 74

TV APPROVALS

GOOSE BAY, LAB CFLA-TV ch. 8 prop: 4.9 kw. EHAAT 62 dir (CBC)
MONTREAL, PQ ch. 29 1100/120 kw. 3rd French language network Target Sept 75
QUEBEC, PQ ch. 2 75/7.5 kw. " " " " " "
MONTREAL, PQ CH. 17 1212/242 kw. RADIO QUEBEC-French language ETV
QUEBEC, PQ ch. 15- 1235/245 kw. " " " " " "

TV APPLICATIONS

EDMONTON, ALTA CITY-TV 325 kw. omni Auth: ch. 7 618' Prop: ch. 13 880' new site (indep)
EDMONTON, ALTA CFRN-TV ch. 3 Pres: 180.3 kw. 441' Prop: 250 kw. !!! 720d new site (CTV)
FLIN FLON, MAN ch. 13 1.04 kw. dir Sat OKY-TV ch. 7 Winnipeg (CTV)
GRAND RAPIDS, MAN ch. 14 10 watts dir Sat CBC
ARBORG, MAN ch 8 1.9 kw. dir Sat OKY
McCUSKER LAKE, MAN ch. 10 .24 kw. dir. SAT CBC
SWIFT CURRENT, SASK ch. 12- 11.5 kw. dir.
THE PAS, MAN ch. 12 1.07 kw dir Sat OKY
THOMPSON, MAN ch. 9 1.1 kw. dir. Sat OKY
WINNEPEG, MAN ch. 9# for 3rd English language service, 3 applications:
325 kw dir; 43.48 kw dir; 325 kw omni

FM APPROVAL

TILLSONBURG, ONT CKOT-FM Pres: 100.5 MHz 1.135 kw. Auth: 101.3 MHz 50 kw. new site

FM APPLICATIONS

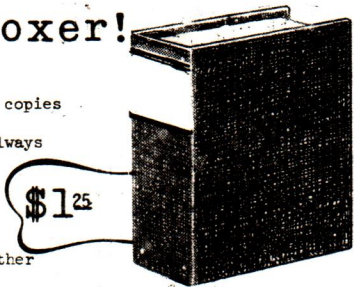
CHICOUTIMI, PQ 105.9 MHz 38 kw. omni French language
CHAMSBORD, PQ 106.7 MHz 1.257 kw. omni Sat of new Chicoutimi stn above
MONTREAL, PQ 99.3 MHz 7.2 watts omni
WINNIPEG, MAN OKY-FM 92.1 MHz 360 kw. omni Pres: EHAAT 388 Prop: 790 new site
INVERMERE, BC 107.1 MHz .91 watt dir Sat. CHFM-FM Calgary ALTA
KITIMAT, BC 101.1 MHz 65 watts omni Sat. CFPR-AM Prince Rupert (CBC ENG AM net)
REGINA, SASK 97.7 MHz 8.5 kw. omni Sat CBC FR AM net
WINNIPEG, MAN 105.5 MHz 3.8 kw. omni U. of Manitoba

Canada is back on DST.

Stop wrestling your VUD's BOX THEM!..

with a VUD boxer!

An ideal way to store your personal copies
of the VHF-UHF DIGEST, neatly and always
ready for easy reference. VUD box-
ers hold about 12 (offset size)
issues each. They're perfect for other
club bulletins as well! ORDER FROM HQ TODAY!



complete with label

FCC FM NEWS

Bruce F. Elving, Editor
Box 24
Adolph MN 55701, U. S. A.

In response to at least one inquiry, the next edition of the FM ATLAS will not be published before December, 1974, and will carry a 1975 copyright date. This means the current issue will be valid for many months to come. I'm in need of continuous information on station format changes, stations adding stereo, etc. Additionally, the next edition will contain FM station network affiliations--in the by-frequency section. So, if you have a little time to spend with your receiver before the DX comes booming in, try to take note of stations in your regular receiving area that carry at least one daily (M-F) network newscast, whether on their own, or when carrying programs of an affiliated AM station. Please differentiate among ABC's four networks and use the following symbols: a = ABC Contemporary; @ = ABC Entertainment; A = ABC FM; A = ABC Information; B = National Black Network; C = CBS; M = Mutual; m = Mutual Black Network; m = Mutual Spanish Network (if, in fact, such a network really exists; it is supposed to, but may still be only a "paper" network); N = NBC radio; P = National Public Radio; U = UPI Audio. Your sending this information will be appreciated, and that which is of general interest will be put in this column on a space available basis.

New Construction Permits

AL Mobile *91.3 10 Spring Hill College
CA Crescent City *90.1 10
CO Pueblo 100.7 100000 h,v; 977'
GA Camilla 105.5 3000 h,v; 300'
GA Tifton 100.3 100000 h,v; 578'
IL Chicago *88.3 10 Northeastern University; 5500 N. St. Louis Ave., presumably not sharing time with WHPK *86.3 Chicago, or the next station;
IL River Grove *88.3 10 [quests KHKE]
IA Cedar Falls *88.1 5500 h,v; 204' [Re-/
MD Baltimore *88.9 12500; 215' Morgan State College. Initial decision:
MD Lexington Park 92.7 3000 h,v; 300'
NM Espanola 102.3 1540 h,v; 436'
NC Moyock [adjacent to Chesapeake VA] 92.1 3000 h,v; 300'
TX Abilene 100.7 100000 h,v; 1275'
TX Dallas *89.1 10

Changes in Existing Stations

AL Decatur WRSA 96.9 50000 (300')
AL Scottsboro WCNA*-FM* 96.3 adds Stereo
GA Russellville WQWE 105.5 3000 h,v; 270' (To a transmitter site in Chattahoochee TN)
ID Idaho Falls KGVM*-FM* 99.1 41000; 580' (reduces coverage). So does this one:
KS Colby KTCC *91.9 10 w (from 3000; 265')

Billboard reports that WTAE-FM 96.1 Pittsburgh PA is to go Stereo and 50000 h,v, 5000' by July 1, 1974, with a rock (oldies) format. Ken Simon, going over his shortwave QSL cards, finds the following not in the '74 WRTVH:

100.1 YWYV-FM R. Juventude Barquisimeto, Venezuela, with Latin pop/rck; and
100.8 TGM-FM 'TGNA' Guatemala City, in English with religion.

WRBB-FM 102.7 Mt. Clemens MI now has ethnic programming in the evenings, WORW *91.9 Port Huron is rock and talk, and WNCO-FM 101.3 Ashland OH is country music.

WUUN 100.1 Marquette MI (see above) has been testing, with an excellent signal some 45 miles away, with a "hit parade" format in stereo. Regular programming was to have begun by April 8. Plagued by equipment delays, WQXO 98.3 Munising was to be on the air sometime in May. Detroit's WCHD became WJZZ (105.9) Mar. 18; all jazz.

(350')
MD Westminster WTRR-FM 100.7 50000 h,v/
MI Cadillac WITW 96.7 295' (3000 h,v)
MI Hastings WBCH-FM 100.1 1550 h,v; 295'
MI Marquette WUUN 100.1 \$ adds v [calls,
NJ Trenton WTSR from *89.7 to *91.3 [too] 1500 watts; 35'
OK Bartlesville KYFM 100.1 3000; 275'
OK Poteau KLCO-FM from 98.3 to 97.9 \$, 100000 h,v; 2000' Maximum coverage!
PA Ebensburg WYQY 99.1 45000 h, 43000 v (520') Anybody know what they program?
TX Midland KBAT 93.3 70000 h,v; 430'
WA Olympia KAOS *89.3 1000; -14'
WY Laramie KOPJ from 98.9 to 102.9 (25000; -195')

Construction Permits Extended (Selected)

FL Miami WEDR 99.1 to 9-15-74
GA Atlanta WCLK *91.9 to 7-1-74
MI Munising WQXO 98.3 to 7-28-74
PA Selinsgrove WQSU *88.9 to 9-22-74

Deletion

MO Moberly KMTS *90.1

Call Letters Assigned

CA Blythe 100.3 KYOR-FM
CA Modesto *89.9 KOAU
CA Riverside 92.7 KCNW (was KACE-FM)

FM INDUSTRY NEWS AND READERS' COMMENTS

WLEC-FM 102.7 Sandusky OH mysteriously giving its power as 50,000 watts, when all references list them as only 5,000. Cany any OH area DXers tell if they're really packing a 50 kw wallop? WWWW 105.7 Cleveland off the air until 4-27-74 due to change of studio or transmitter site. WQLN-FM Erie PA *91.3 now has in-school programs 9-5, and a lot of black programming 5 to 8 p. m. Incredibly, WDBN 94.9 Medina OH calls itself the most powerful radio station in North America. What about WNCI 97.9 Columbus, WJFM, WOOD-FM Grand Rapids MI, WUON, etc.? Some FM stations are obviously guilty of truth in advertising abuses!

WASH 97.1 Washington DC now more rock than MOR music, sans screaming dj's. With WYCR 98.5 York-Hanover PA now \$ rock and separate most of the time from its AM, central PA now has 5 FM rock stations; it had only one several months ago.

CO Denver 103.5 KOAQ (was KOA-FM) rock
CO Pueblo 97.9 KOJQ (was KJKL)
CT New London *91.5 WCNI
DE Hockessin *88.7 WZZE
FL Pensacola 100.7 WJLQ (was WCOA-FM)
HI Honolulu 97.5 KHSS (was KPOI-FM)
IL Danville 102.1 WMBJ (was WDOAN-FM)
IN Crawfordsville 103.9 WLFG
MA Orleans 104.7 WVLC-FM
MS Aberdeen 105.5 WHAY
MO Doniphan 97.7 KOEA
MT Helena 103.1 KCAP-FM
NE Omaha 96.1 KEFM (was KOIL-FM)
NJ Brick Town *91.9 WBGD
NC Asheville *86.1 WUNF*-FM*
OH Columbus 94.7 WVKO-FM (was WSPQ; years earlier, WVKO-FM)
OH Wilmington 102.3 WDHK
OK Duncan 102.3 KRHO-FM ("crud?")
OK Woodward 93.5 KSTW-FM
SC Mullins 107.1 WCIG
TN Union City 104.9 WALR*-FM*
TX Lake Jackson 107.3 KGOI (was KLJT)
TX Wichita Falls 92.9 KBID (" M KGOH)
VT Rutland 97.1 WRUT
VA Lynchburg 98.3 WGOJ (was WLLL-FM)
WV Clarksburg 104.9 WPOX-FM
WI Waupun 99.3 WLEK-FM

Mystery: An ad in Broadcasting, 3-25-74, lists a "KUGR-FM 95" Pullman WA, a progressive rock station. No such station otherwise known to exist; extra-legal?

In Iowa, KHKE *88.1 is reportedly back on the air, which may be illegal, since no indication has been received that they have even gotten their call letters approved, much less program test authority from the FCC. Anyway, according to a KHKE information sheet, KHKE is now running only 2000 watts, which conflicts with the information given above in column 1, and on the air 10 a. m. to midnight. Cedar Falls' giant, KUNI *90.9, broadcasts off-air pickup of WOI-FM *90.1 Ames 7-11 a. m. and 12:30-1 p. m., while KHKE carries WOI-FM 1-8 p. m. and 8:30-midnight.

WLBR-FM 100.1 Lebanon PA is now stereo, and separate from the AM, with "Solid Gold Rock 'n Roll" tapes. The station is having some problems with its automation system, however. WLEV 96.1 Easton now \$, "Hit Parade" (which I classify as rock, altho some say MOR).

WQXA 105.7 York PA now top 40, calling itself "Q-100." The official call letters are used only once per hour [shame!]; monophonic. Another mono station, WPEN-FM 102.9 Philadelphia now signs off at 2 a. m. EDT every night.

Immokalee FL's station is now WKEM-FM 95.9 (was WCOF-FM and/or WCEA), still duplicating AM with country music and Spanish programming. WRYZ-FM 96.7 Jupiter FL now 24 hours/day, Monday-Saturday; rock. WQXK 92.1 Hialeah FL now signs off 9 p. m. Sundays; format now rock and country music. It should change to Spanish in May or June.

WESM 97.5 Martinsburg WV (formerly WPEM-FM) still simulcasts its AM station with MOR; some \$. WNJS 92.7 Prince Frederick MD, mainly country music, carries a Broadway show's music 10 p. m. to midnight. No \$ yet. WRHY 92.7 Starview PA is almost all \$, progressive rock, and on 8 a. m. to 2 a. m., except Sunday (8 a. m. to 11 p. m.). WJMA-FM 96.7 Orange VA now progressive rock 8 p. m. to midnight. WSVS-FM 104.7 Crewe VA simulcasts with AM during the day; separate at night. Rock. WHHI 103.9 Braudock Heights MD is about 75% top 40 rock and 25% country; WYII 95.9 Williamsport MD is all country and on from 6 a. m. to 2 a. m.; WZFM 98.3 Charles Town WV is top 40 to MOR. And a question is raised about the status of WSMO-FM 104.1 La Plata MD. It is reported to be moving to Oxon Hill MD, a suburb of Washington DC. WSMO-FM largely simulcasts its AM affiliate with top 40 music during the day, signing off at 10 p. m. WSMO-FM, with 1.8 kw horizontal at 240', is grossly underpowered for its 50 kw potential frequency.

WSTC-FM 90.7 Stamford CT became WYRS Feb. 19, 1974, MOR, with the slogan, "The Relaxing Sound." No \$. WJAD-FM 98.3 was to have increased its power to 2500 w, h, v; 330', by the end of March and begin separate programming. Format to be automated beautiful music.

WNMR *88.1 Monroe CT (Masuk High School) began operating Jan. 31, 1974. The station is usually on from 7 p. n. to 10 p. m., with rock music and some talk programs involving students and town officials. WRTC *89.3 Hartford CT, which was forced off the air last fall because of a transmitter breakdown, resumed operation Feb. 25. WSWZ Syosset and WPOB Plainville, Long Island, NY, which share time on *88.5, both began operation during 1973.

WHCN 105.9 Hartford has just been sold to the owners of WBLI 105.1 Patience NY for \$525,000. The former owner of WHCN, Concert Network, Inc., got more for WHCN Hartford than they got for WNCN 104.3 New York in 1964, which sold at that time for \$453,000. This shows the growth of FM. And WBCN 104.1 Boston is being sold for around \$3 million. The FCC's year-end report of profit/losses for stations in the nation's top markets shows three FM stations in New Haven (WYCB 94.3, WPLR 99.1 and WKCI 101.3 Hamden CT) made money as a group during 1972, a sign of the times. And in San Diego six AM stations as a group lost \$690,000, while 11 FM's lost only \$280,000.

Cleveland's WELW 107.9 has finally settled into a country and rock schedule Monday through Saturday, with gospel all day Sunday. WNCR 99.5 Cleveland's format change to all country has been successful, from an advertiser acceptance standpoint. Here's something for our Canadian editors: On a verification from CHSC-FM 105.7 St. Catharines, Ont., the power of 50,000 watts was crossed out and "100 kw" written across the QSL. No record otherwise of a power rise for this station, so does anybody know?

In answer to a question in last month's column, Marietta (OH) College's new high power FM *83.3 will be known as

WMRT*-FM." They will have vertical polarization (9200 h, v; 205'); AND "present plans call for retaining WCMO*-FM on *89.3 with 10 watts. WCMO will program mainly to the student body, while WMRT will concentrate on regional coverage."

"Everyone is going bananas over FM" in the Boise area, with KYME (AM) planning a new station to simulcast the AM's rock; KGEM (AM) planning a \$ country station; and KAIN (AM, Nampa ID) plans to get in on the FM act. KFSD (AM) Nampa also is aiming at FM, with a "progressive MOR (2)" format, and hopes to get a construction permit and get on the air by this spring. KBBK 92.3 Boise hopes to be at 44000 h, v; 2500' by June 1, with antenna already installed at Deer Point, where KBXL Caldwell ID has its tower. KBOI-FM 97.9 Boise is lagging in installing its high power gear (they have a permit to go to 45000 h, v; 2500'). Their present power is 17kw, sometimes dropping to as low as 70 watts! "Management is the problem." Boise State University is in the process of filing for an educational FM station, probably on *90.5, with calls requested KBSU.

KMOD 97.5 Tulsa returned to the air Feb. 26 in \$ with a progressive rock format.

KJZZ 102.1 Anchorage AK is reportedly about to ask for an increase in power. KYAK (AM) Anchorage will re-apply for its FM permit, probably on 101.3. Anchorage is expected to double its metro area population of 70,000 within five years to perhaps 200,000 by 1980, with pipeline construction and oil development beginning. This may account for the resurgence of FM activity there. Nome's 10 watt FM application may be turned down because it is not filed by an educational institution per se, and apparently only they can be licensees of 10 watters. Others must apply for higher powers, which apparently KMOD does not want or cannot afford. It seems to me that California's KUSP, which was a 10-watter only recently getting a permit for higher power, is a non-institutional-owned 10-watt station.

Correction: Jan. VUD, p. 4, New Construction Permits. The new station grant in Stratford Springs CO is 96.7 not on 100.9. Rutland VT WSYB was been granted 97.1, using the calls WRUT. Technically, Rutland is in a Class C zone, but a footnote in the FCC rules specifies that Rutland's two high powered channels will be designated as Class B. The new WRUT is a revival of WSYB-FM 107.1 with 100 watts, a CP which was issued and cancelled in 1947. Vermont never had an on-air FM station until WJOY-FM 98.9 Burlington came on the air in '61. There is a class D application for Chinle AZ, an Indian reservation ENE of Flagstaff. The ETV outfit in Toledo has applied for *91.3 FM, the old WTOS Toledo Public Schools frequency; Toledo is one of the few major markets without public FM service. A listeners' group called "Friends of WONO" has organized in Syracuse NY to help WONO to keep its classical music format; most of this help is the best kind--financial. WONO's new location in the Hotel Syracuse is quite an improvement, with brand new equipment, more room, and hopefully by summer a long-awaited power increase. Utica's WZOW 107.3 now rock and country, 24 hours/day; WBCN-FM 102.5 Buffalo now \$; WHFM 98.9 Rochester NY live rock; Stereo. WJTO-FM 95.3 Bath ME now \$; WMBB-FM 100.1 N. Adams MA's has classical music 7:30-10:30 p.m.; easy listening rest of the time.

KFIN 107.9 Jonesboro AR now \$; easy listening music; came on March 3. KARN-FM 103.7 Little Rock AR now KKYK ("K-Kick"), rock continues. Same ownership as KFIN. Memphis State U., seeking *90.3 10 w, and WNJC *90.1 Senatobia MS, seeking a power increase, are heading for an FCC hearing, as their applications are mutually exclusive. Credits to be run next month.

Deadlines:

- 10 May (TVSB, revisions)
- 10 June (14-17, 92 FM)
- 10 July (18-21, FMSB)



Editor:

Glenn Hauser

620 N. Husband

Stillwater OK 74074

F M SCOREBOARD

Dxer, Location	STATIONS				POLITICAL UNITS				YB	As of:	
	Total	88-92	Es	MS	USA	Can	Mex	For			Total
Bruce Elving, Adolph MN	1211	94	521	6	42&	3	1	0	47	48	25 Feb
*John Ebeling, Bloomington MN	771	97	344	12	40&	4	2	0	47	52	26 Dec
Robert Seybold, Dunkirk NY	742	72	274	0	41	4	4	0	49	60	17 Mar
*Richard E. Wood, Baton Rouge LA	733	87	286	15	48&	3	7	2	51	71	25 Nov
*Fred Nordquist, North Syracuse NY	565	73	179	9	38&	2	0	2	43	69	2 Jan
Pat Dyer, San Antonio TX	531	66	380	7	38	2	6	2	48	70	10 Apr
Fred McCormack, Des Lacs ND	514	68	331	15	39&	4	2	0	46	65	7 Apr
Peter Sawatzky, Waterloo Ont	374	37	118	16	33	2	0	0	35	71	19 Jan
Glenn Hauser, Stillwater OK	243	45	19	20	25	1	2	0	28	73	13 Apr
*Wayne Ebeling, Bloomington MN	180	29	19	1	13	0	0	0	13	72	30 Nov
*Joseph Smith Jr, Johnson City NY	164	15			12&	1	0	0	14	71	31 Dec
Gil Morgan, Garden Grove-Santa Ana CA	152	34	33	4	12	0	1	0	13	69	1 Apr
Frank Wheeler, Erie PA	107	6	0	0	4	1	0	0	5	64	14 Mar
Jim Alexander, New Hartford NY	58	9	0	0	4	2	0	0	6	74	3 Apr

*Update required by 10 July. 88-92: All stations, commercial or non, received between 88 and 91.99 MHz. MS: All stations received by meteor (not lightning) scatter, even if also received via other propagation(s). Political Units: USA: States; Canada: Provinces and Territories; Mexico: Estados, Distritos, Territorios; Foreign countries (1 point each). YB: Year Began DXing from the location specified. As of: Date report was compiled.

CHANNEL 13 TROPO TVDX RECORDS

Call	Location	Miles	Dxer, Location	Logos
WAPI-	Birmingham AL	755	Glenn Hauser, Von Ormy TX	WAPITV13
KOLD-	Tucson AZ	870	Ron Pugh, Fort Bragg GA	KOLD TELEVISION 13
KGOV	Los Angeles CA	200	Robert Cooper, Fresno CA	
KOVR	Stockton CA	270	Albright & Wood, Mt Ashland OR	
KELU-	Yuma AZ (CA)	30	Bill Fulton, Yuma AZ	
KRDO-	Colorado Springs CO	500	Carl Dabelstein, Omaha NE	kcop-tv 13
WTVT	Tampa FL	1105	Ken Neal, Hamlin TX	
WZDB	Panama City FL	290	Ron LeBlanc, Marrero LA	wmaz tv 13
WMAB-	Macon GA	785	Henry Marbach, White Plains NY	macon, ga 13
WREX-	Rockford IL	645	Robert Cooper, Oklahoma City OK	
WLVI	Indianapolis IN	685	Robert Cooper, Oklahoma City OK	13 CHANNEL 13 KRDO-TV
WHO-	Des Moines IA	820	Ed Bourgeois, Norco LA	WOKR-TV
KUPK-	Garden City KS	225	Robert Cooper, Oklahoma City OK	Rochester, N.Y.
WLEW-	Topeka KS	895	Robert Seybold, Dunkirk NY	WLAN-TV
WLTW	Bowling Green KY	620	Glenn Hauser, Enid OK	13 CHANNEL 13
KLSE	Monroe LA	200	Ed Bourgeois, Norco LA	BOWLING GREEN TV
WYUE	New Orleans LA	575	B. J. Bingham, Festus MO	WLOX-TV
WGAN-	Portland ME	460	Robert Seybold, Dunkirk NY	TV13
WAAM-	Baltimore MD	620	Denny Cline, Eastport ME	WZZM
WWTW	Cadillac MI	490	B. J. Bingham, Festus MO	GRAND RAPIDS MICHIGAN
WZZM-	Grand Rapids MI	615	Les Prus, Manhattan KS	
WNFB	Marquette MI	485	Robert Seybold, Dunkirk NY	
WIRT	Hibbing MN	410	Fred McCormack, Des Lacs ND	WIRT-13
WLOX-	Biloxi MS	685	Ken Neal, Sayre OK	IRON RANGE
KRCG-	Jefferson City MO	525	Frank Hill, Gallipolis OH	
KTNE	Alliance NE	530	Robert Cooper, Arcadia OK	
KHOL-	Kearney NE	580	Bill Heusmann, Steger IL	
WATV	Newark NJ	755	Tommy Larkings, Clarksville TN	
KGGH-	Albuquerque NM	740	Carl Dabelstein, Omaha NE	
WOKR	Rochester NY	345	Roger Brown, East Lansing MI	
WAST	Troy NY	420	Carlton Howington, Uniontown OH	
KMTV	Utica NY	1135	Bedford Brown, Hot Springs AR	
WLOS-	Asheville NC	815	Robert Cooper, Arcadia OK	
KFME	Fargo ND	240	Fred McCormack, Des Lacs ND	
KXMC-	Minot ND	265	Anthony Markewicz, Camp Morton	
WHIO-	Dayton OH	345	F. J. Glaub, East Moline IL	
WSPD-	Toledo OH	525	Dave Egan, Valleyfield Pa	
KETA	Oklahoma City OK	575	Ron LeBlanc, Marrero LA	
KVAL	Eugene OR	140	Pat Martin, Seaside OR	abc 13

STATISTICS

MAY 1974

KVAL Eugene OR
 KTVR Lagrange OR
 WJAC- Johnstown PA
 WQED Pittsburgh PA
 WBTW Florence SC
 KSOO- Sioux Falls SD
 WHBQ- Memphis TN
 KERA- Dallas TX
 KERP- El Paso TX
 KTRK- Houston TX
 KVTV Laredo TX
 KLBK- Lubbock TX

 WVEC- Hampton VA
 WLVA- Lynchburg VA
 KTWV Tacoma WA

 WHTN- Huntington WV
 WEAU- Eau Claire WI
 CHBC-1 Penticton BC
 "CBLAT" Geraldton Ont
 CKCO- Kitchener Ont
 CJOH- Ottawa Ont (PQ)
 "CBFST1" Sudbury Ont
 "CBCT" Charlottetown PEI
 CKTM- Trois Rivières PQ
 XHST- Mérida Yuc
 CMG- Matanzas Cuba
 (CMAB-) Victoria/Tunas Cuba 1075

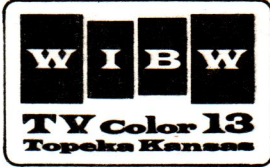
tie Albright & Wood, Mt Ashlant OR
 tie Doris Johnson, Longview WA
 140 Frank Aden, Boise ID
 350 G. W. Lowther, Alexandria IN
 650 Jerry Dee/Easter, Waterloo IA
 720 Gene DeLorenzo, Hyannis MA
 510 Fred Nordquist, Tulsa OK
 655 Bill Draeb, Kewaunee WI →
 1150 Robert Seybold, Dunkirk NY
 35 Fred Nordquist, W.S.M.R. NM
 990 Carlon Howington, Homestead FL
 140 Pat Dyer, San Antonio TX
 730 Clarence Rareshide, New Orleans LA
 tie Ron LeBlanc, Marrero LA
 470 Dave Siddall, Hyannis MA
 460 John Cody, Middletown CT
 115 Ray O'Rear, Zillah WA →
 tie Ed Hepp, Portland OR Channel
 855 Dick Clark, Ft Lauderdale FL
 720 Robert Cooper, Oklahoma City OK
 230 Doris Johnson, Longview WA
 230 Paul Petosky, Ishpeming MI
 395 Gary Olson, Barrington IL
 325 Roger Gravelle, St Thomas Ont
 105 Morris Sorensen, Emsdale Ont
 110 Mike Dunn, Armdale NS
 150 Chislain Girard, Arvida PQ
 805 Glenn Hauser, Von Ormy TX
 725 Clarence Rareshide, New Orleans LA
 B3 Bourgeois, Norco LA



KERA Channel 13
 Public Television Foundation
WVEC-TV 13



KLBK TELEVISION
 LUBBOCK



.....

**beyond
 shortwave**

**just
 \$1**

**an introduction
 to tv, fm and
 vuhf radio dx
 by w.t.f.d.a.**

WESTERN FM DX

EDITOR: ROGER S. HORIE
 P.O. BOX 784
 MISSOULA, MT 59801
 TEL: (406) 549-5365
 DEADLINE: 10th MONTHLY

Reports Are Always Welcome..Support This Column And WFLD

- Fred McCormack, Des Lacs, ND 58733 (Feb-Mar 1974) (CST)
 Heath AR-1500 receiver, JFD 10 element log-periodic antenna....
 2.23 1841 KDCR 91.3 IA Sioux Center wx
 1901 KQHU 104.1 SD Yankton nx
 1955 KESD 88.3 SD Brookings BKB
 2000 KRBSW 91.7 MN Pipestone cl mx
 3.16 Es 2153 WKLH 92.3 AL Montgomery rec offer
 2234 KOTN 92.3 AR Pine Bluff ID
- Pat Dyer, 5315 Silvertip Drive, San Antonio, TX 78228 (Mar-Apr 1974) (CST)
 Allied 426 and Hallicrafters SX-62 (with International Crystal SAX-1 preamp); Archer V-100 antenna at 20 feet with rotor....
 3. 8 2344 KBIM-FM 94.9 NM Roswell MoR 440 3.31 0200 WMEZ 94.1 FL Pensacola EL ID 685
 FM 95 ID hrd thru KBPO
 3.26 FM Es likely in prior to 2045 but TV ap- 0205 WLYF 101.5 FL Miami 1150
 parently Ch 2,3 only with no Ch 4,5 CCI on 0216 WQQM 97.9 FL Clearwater EL ID 960
 locals and then a strong Ch 6 in! 0246 KSPF-FM 95.5 TX Diboll nx ID 255
 2050 WTLN-FM 95.3 FL Apopka 1040 0331 KTAL-FM 98.1 TX Texarkana ID cw 380
 religious PSA's mentioning town 0525 KTRM-FM 95.1 TX Beaumont c&w // 275
 2058 WDBO-FM 92.3 FL Orlando ID 1035 990 kHz
 2100 tent WHOO-FM 96.5 FL Orlando MoR 1000 WUSF 89.7 FL Tampa wx ID prior 985
 2101 WDNJ 94.5 FL Daytona Beach ID 1055 logging by Es only
 2107 FM Es f/out 1001 WSLI-FM 96.3 MS Jackson cx mx 525
 3.27 0954 KLBK-FM 94.5 TX Lubbock ID EL 340 1045 Tent WPCS 89.3 FL Pensacola 685
 3.28 0040 KAFM 92.5 TX Dallas rock ID 250 religious program
 0100 KSCS 96.3 TX Fort Worth cw ID 240 1045 WLYF-FM 94.9 FL Tampa hit parade 985
 3.30 tremendous trop opening MoR only by Es before
 2300 WAFB-FM 98.1 LA Baton Rouge 450 1110 WFLA-FM 93.3 FL Tampa EL ID 985
 sign off 1130 trop finally down-the Florida paths
 2308 WMYQ 96.3 FL Miami rock 1150 lasted longer probably due to the slower
 logged by Es before heating of the near all-water path (com-
 2325 WRNO 99.5 LA New Orleans rock ID 510 pared to land) that breaks up the ducting
 2331 WFLR 96.1 AL Mobile MoR ID psa 630 Likely more FM's could have been logged
 2338 WFLA-FM 93.3 FL Tampa EL ID 985 if my attentions weren't being shared by
 2353 WKXI 94.7 MS Jackson rock 525 the UHF-VHF TV trop into the same area,
 2358 WINZ-FM 94.9 FL Miami Beach 1150 2347 KWKI 97.1 TX Fort Worth ID 240
 MoR prior logging as WOCN-FM on Es local KREZ off
 3.31 0003 WQUE 93.3 LA New Orleans ID EL 510 2350 WPCV 97.5 FL Winter Haven cw ID 1025
 0009 WVMI-FM 93.7 MS Biloxi rock 570 4. 1 0059 WKTZ-FM 96.1 FL Jacksonville 1015
 local ad FM 94 EL ID prior logging by Es only
 0023 WIXO 98.5 LA New Orleans MoR ID 510 0108 WQYF 99.5 FL St Petersburg c&w ID 970
 0059 WEZB 97.1 LA New Orleans EL ID 510 0116 WEZB 97.1 LA New Orleans \$97 ID 510
 0111 WKSJ-FM 94.9 AL Mobile ID ads 630 0200 KLCL-FM 99.5 LA Lake Charles ID EL 325
 0130 KLCL-FM 99.5 LA Lake Charles 325 conditions apparently already on wane,
 ID thru WRNO MoR though some lack due to the many Sunday
 0143 KCAW-FM 93.3 TX Port Arthur c&w 280 night shutdowns likely. Later cold front
 ID thru WQUE moved thru and cut our humidity to 15%..
 0150 KSMB 94.5 LA Lafayette rock ID 395 if cold fronts quit coming about every 2
 0158 KBPO 94.1 TX Beaumont EL ID 375 days ducts may reform for good trop..
- Glenn Hauser, 620 N. Husband, Stillwater, OK 74074 (7 Mar-7 April) (CST)
 3. 7 Tr 1541 WOI 90.1 IA Ames IA nx
 0541 KWMU 90.7 MO St Louis local wx
 0609 KCLO 98.9 KS Leavenworth KS nx 250
 0611 KRNT 102.5 IA Des Moines ID
 0621 KLWN 105.9 KS Lawrence 220 3.16 Gw 1530 KYFM OK Bartlesville 100.1 75
 Kaw Valley Calendar \$106 ID Washington County psa lots of AI
 0835 KCUR 89.3 MO Kansas City NPR 3.17 2105 KWOE 106.9 OK Clinton s/off SSB
 live hearing on cong access to media 3.18 Tr 1128 KGCC 89.7 TX Denison ID
 0840 KXCV 90.5 MO Maryville NPR 1136 KWMM 98.3 TX Stephenville 280
 delayed natl governors conference nx and ads
 0949 KCMW 90.9 MO Warrensburg cl 3.20 Gw 2215 KLOQ 105.5 KS Lyons (KVRO 165
 ID campus calendar exciter on till now, off for power
 3.11 0721 KNUZ 101.5 TX Tyler local nx 280 work) NNW jazz conc ID @2259
 0722 KDSX 101.7 TX Denison 165 3.28 0553 KSWM 100.1 MO Aurora MFA Super-
 Texas Power & Light ad market ad in Mt Vernon mix KYFM
 0725 KSEB 107.1 OK Durant flood nx ID 3.31 Tr 0559 WNOO 89.9 LA New Orleans clmx 585

WESTERN FM DX

3.31 Tr 0604 KFFT 90.1 TX Houston MoR
 0605 WBYU 95.7 LA New Orleans 585
 oil price discussion
 0610 KSLI 96.9 LA Alexandria 430
 very undermodulated MoR ID w/KALB AM
 0627 WQXY 100.7 LA Baton Rouge 515
 "The Velvet Sound...\$100, WQXY"
 0630 WYNK 101.5 LA Baton Rouge 515
 \$ c&w ID

3.31 Tr 0635 WPCS 89.3 FL Pensacola 515
 *hymns - prior logging by MS
 0812 WZZQ 102.9 MS Jackson heavy soul
 slightly \$ vy strong
 0827 WNOE 101.1 LA New Orleans 585
 lutheran px Metalrie sponsor
 0900 WKYV 106.7 MS Vicksburg Jesus
 Name Gospel Lighthouse Chrch px ID
 0903 ?? 106.3 ?? sermon SE not KGOU

MAY 1974
 515

SOUTHERN · FM DX

Editor: Richard E. Wood
 820 Arlington Ave.
 Baton Rouge LA 70806
 Tel. (504) 343-7771
 Deadline: May 13

FEATURING FM DX FROM LOUISIANA TO MARYLAND

Kenneth R. Simon, 528 Pilgrim Rd., West Palm Beach FL 33405

Unfortunately my FM equip is rather meager and I haven't been too enthused...but I have one report...
 21 MAR 74 0700 EDT 90.5 MHz...MoR type Latin mx, w/ letters read in SS and guajiras...Radio Rebelde...by tropo...305 mi. (Havana, REW)
 FM country #2.

Richard E. Wood, 820 Arlington Ave., Baton Rouge LA 70806. CDT.

Spring Es good this year, a fine 3-day opening including my first skip on a day of continuously pouring rain and local flooding; although I realize that it is conditions at the point of the skip-cloud that counts, my previous rule of thumb had been not to look for Es during bad local wx. Not so. Notably, the three days of Es coincided w/ very fine high-latitude, high-m.u.f. F-layer propagation on shortwave and a low sunspot count. The following day showed no Es and a decline in the m.u.f. and hi-lat signals on SW, a higher sunspot count.

In station news, noteworthy is the move of XEJB- ex-96.4 Guadalajara to the normalized channel of 96.3 with possible power increase. There will probably soon be no more split-frequency FM's in Mexico. Also, XEQ-FM has moved from 92.9 to 91.3. A Mexico City stn. is still heard on 92.9 but it is 91.3 which specifically ID's as XEQ-FM. Two countries, Jamaica and long-sought Cuba were added this month, and two estados.

Mar. 31 Tr.

0445-0510 94.5 WDNJ Daytona Beach FL 610 EL auto, KSMB nulled, semi-CL many relogs including:
 0500-0515 96.9 WINK- Ft. Myers FL s/on, \$
 1010 96.1 KLCN- Blytheville AR 385 C&W
 1012 105.9 WEZI Memphis TN 328 EL \$ auto
 1015 93.1 KZAK- Tyler TX 277 religious
 1015 93.9 KBUY- Ft. Worth TX 395 SS LA mx.
 1017 97.5 KWTX- Waco TX 420 carwash, local political ad \$
 2130 92.9 WGOV- Valdosta GA 468 "100,000 w. of Country Power", \$
 2130 95.1 WJAX- Jacksonville FL EL auto \$, excellent
 2136-2200 100.3 WXOS Plantation Key FL 750 (new, first from Keys) local ad's, t/e, EL \$ live
 Apr. 1 Tr.
 0457-0515 105.9 WDLF DeLand FL 598 s/on, ann 67 kHz sub-carrier, 0458 into Carl McIntire
 0505-0515 94.9 WOMA Tallahassee FL 420 state, local nx, wx. New.
 Apr. 6 Tr.
 2228-2245 93.7 KLBJ- Austin TX (ex-KTBC-) 450 state nx, \$. New.
 Apr. 14 Es.
 1737-1810 90.5 (RJR) Spur Tree, Jamaica 1197 "Caribbean Today" show; ad BWI Airways, RJR nx. 1800, SID's, slightly W.I. EE

Dr. Richard E. Wood (Cont.)

1745 92.7 (RJR) Coopers Hill, Jam. 1248 BBC transcription not //90.5
 1755-1805 90.1 Oriente Prov.?, Cuba ? R. Rebelde, hard-line, PSA's, political, nx. 1800, mono. Hitherto unlisted.

1800-1805 88.3 Oriente Prov?, Cuba // above, mono; both good
 1810-1820 91.3 XEQ- México, D.F. 922 t/cs from observatory, ID's, "XEQ ahora en FM", hora Haste
 1815 89.9 unknown, Mexico? ? female ID, "en el 90 de su cuadrante," tango
 1816-1830 88.3 unknown "XERey" ? "XE Rey en su música México de Oro"; t/c; PSA's - greeting affiliate in Acapulco ID as "Radio Rey" (not Stereorey).
 1820-1830 92.5 XHZM Puebla, Pue. 910 "92.5 en Puebla, Pue. XHPM, es Stereo Rey, la máxima dimensión de Radio"; n.b. is not to be confused w/ XHSRO 92.5 also list \$Rey.
 1830-1845 92.9 X... México, D. F. 922 The former XEQ- (see 91.3), noticiero Domecq, greet Acapulco net affiliate.

1822-1828 93.5 XHNY Irapuato, Gto. 940 LA EL, seemed automated
 1820 92.1 XHFO México, D.F. 922 Big Band; relog (unn.)
 1820 95.3 XHSH México, D.F. Other relogs included 96.9 XEW-, 96.1 XEUN-, 95.5 XHRO Guadalajara, Jal., 89.7 XEBS- Méx., 91.3 XHJL Guad., 88.9 XHM Méx., 97.1 XEBA, 97.9 XETIA- both Guad.

1840-1915 89.1 XHRA Guadalajara, Jal. 1018 EE EL/MoR auto, EE ID as "\$ Jet and call," local spots in Ai nx, Ai sports, \$ "Stereo-Tricolor" ID, EL auto
 1851 92.3 XHCD Guadalajara, Jal. MoR, some LA, \$
 1909 98.7 XHLC Guadalajara, Jal. fútbol, live cmntry, local
 1915-1930 100.3 XEAV- Guadalajara, Jal. fútbol, live cmntry, local
 Last stations to fade out: 90.5 XEDA- México D.F. still 2005, 91.3 XHJL Guadalajara same, finally 88.9 XHM México faded by 2025.

Apr. 15 Es
 89.1 Guadalajara heard briefly 1809, nothing else reached FM.

Apr. 16 Es
 1603 88.7 unid., tent. CJOM Windsor, Ont. heavy soul RR
 1604 93.1 WDRQ Detroit MI 933 SID, Soul, Pepsi spot, new
 1706 92.9 KVOR Colorado Springs CO 964 \$ EL/MoR auto; unn.
 1723 90.9 KCSU Ft. Collins CO C&W;unn.
 1723-1745 93.2 KPIK- Colorado Springs CO 964 new freq., ex-94.3 and power boost; // AM, live "Country Gold" but not very C&W
 1730-1800 96.5 KKFM Colorado Springs CO contemp/UG live DJ, new
 1735 95.9 KAVI- Rocky Ford CO 865 C&W, nn., extremely loud
 1744-1805 95.7 KHOW- Denver CO 1007 unn., live EL, state nx
 1754-1830 92.1 KVRH- Salida CO 1015 // AM, Ai nx, sports, new
 1800 91.5 KUNC Greeley CO Public Radio ID, call, NPR,unn.

CENTRAL TV DX

Don Ruland
4448 68th Place
Kenosha, WI
53140

MAY 1974 / DX from WI, IL, IN, MI, OH / Next deadline: May 11th

With the exception of some untimely E-skip seen on March 16 and April 16-17, and a little tropo here and there, DX pretty well avoided the Central scene during the period. However, the April 16-17 Es did provide Paul Petosky of Munising, MI with some double-hop.....that is a nice way to get an early jump on the Spring and Summer skip season!

Rod Luoma, 38540 Five Mile Rd., Livonia, MI 48154 (EDT)

1-16	GW	----	<u>CKGN-22 Cottam(40)</u>	4-1	Tr	1230	WFLD-32	Chicago(220)
1-19	GW	2330	<u>CKGN-6 Paris(170)</u>			1230	WN DU-16	South Bend(150)
1-30	GW	----	<u>CKGN-29 Oil Springs(75)</u>			1230	GWVC-35	Grand Rapids
4-1	Tr	1230	<u>WNEO-45 Alliance(150)</u>			1420	WUTV-29	Buffalo(235)
			1230					Youngstown UHF's(165)

"Log at 259...I've been accumulating parts for building a two stage low-band pre-amp using Siliconix E-300 FET's...am following an article from the August '73 Ham Radio magazine as a guide, along with an article from the June '71 Radio-Electronics by Bob Cooper, Jr...hope to have it going in the next several weeks."

Marvin Shults, R.R. #2, Toulon, IL 61483 (CMT)

3-2	Tr	0800	WLWK-11	Green Bay	3-16	Es	2329	KID-3	Idaho Falls T				
3-16	Tr	2230	KUSD-2	Vermillion T			2330	KUTV-2	Salt Lake City				
			Es	2315	KBOI-2	Boise			3-31	Tr	1300	KEYC-12	Mankato

Paul Gaines, 15941 Fairfield, Detroit, MI 48227 (EDT)

2-15	Tr	2308	WVIZ-25	Cleveland	3-10	Tr	2348	WUAB-43 &	WKBF-61	Clev.			
2-16	Tr	0055	WAKR-23	Akron	3-11	Tr	0027	WEYI-25	Saginaw				
			0114	CKCO-13	Kitchener			0050	WJET-24	Erie			
2-20	Tr	2350	WKBF-61	Cleveland				0140	WANE-15	Pt. Wayne			
2-21	Tr	0002	WUAB-43	Lorain				0141	WPTA-21	Pt. Wayne			
2-22	Tr	0120	CKGN-6	Paris, Ont.				0208	CKCO-13	Kitchener			
3-7	Tr	2243	WUAB-43 &	WKBF-61	Clev.	3-12	Tr	0014	WAKR-23	Akron			
			2246	WSEE-35 &	WQLN-54	Erie			0017	WUAB-43	Lorain/Cleveland		
			2324	WAKR-23	Akron	3-14	Tr	2331	WAKR-23	Akron			
			2330	WEYI-25	Saginaw				2347	WUAB-43 &	WKBF-61	Clev.	
3-8	Tr	0039	WJET-24 &	WICU-12	Erie	3-15	Tr	0100	WSEE-35	Erie			
			0111	CKCO-13	Kitchener	3-17	Tr	0120	WLWC-4	Columbus			
			0222	CHCH-11	Hamilton				0402	CFCH-10	North Bay (T-335)		
3-10	Tr	0227	WLWC-4	Columbus									Log at 50, plus 6 unID's.

Paul E. Petosky, Box 140 Munising, MI 49862 (EDT)

3-7	Tr	2320	WPNE-38	Green Bay(145)	3-23	Au	1850	unID	ch	2-6	from	N			
3-8	Tr	2200	WPNE-38	Green Bay	3-27	Tr	2155	WPNE-38	Green Bay						
			Au	2220	unID	ch	2-6	from	NW						
3-9	Tr	0320	WITI-6	Milwaukee(235)	3-29	Au	2210	unID	ch	2-6	from	N			
3-10	Tr	0145	unID	ch	2-6	from	North								
			Tr	2145	WPNE-38	Green Bay									
3-11	Tr	1915	WPNE-38	Green Bay	3-31	Tr	0135	WTMJ-4	Milwaukee						
			1920	CHFD-4	Thunder Bay(189)				Au	0155	unID	ch	2-6	from	N
			1930	WNEM-5	Bay City(240)	4-1	Tr	2125	WPNE-38	Green Bay					
3-12	Tr	2300	WPNE-38	Green Bay	4-3	Tr	0017	WEYI-25	Saginaw(242)						
3-17	Au	0215	unID	ch	2-6	from	N								
			Tr	0345	CBOFT-9	Timmons(288)	4-5	Tr	2330	WPNE-38	Green Bay				
3-19	Tr	2200	WPNE-38	Green Bay											

Paul also notes seeing the CHELAT-13 VHF satellites on 3-10, 11, 17, 18, 30, and 4-3 & 5. In a late report at press-time Paul relates catching a good E-skip opening from approximately 2300 on 4-16 to 0100 on 4-17....log-gings include WFMY-2 Greensboro, WCBQ-2 Charleston, and double-hop WKAQ-2 San Juan, Puerto Rico.....more details next month!

Bill Draeb, Ellis St., R.R. #2, Kewaunee, WI 54216 (CDT)

3-14 Tr 1918 KDNL-30 St. Louis(432)	3-31 Tr 0837 KDNL-30 St. Louis
3-19 Tr 1708 KDNL-30 St. Louis	1704 WUSI-16 Olney,IL(402)
1708 Cleveland U's (355)	1704 WAND-17 Decatur(315)
1727 WOSU-34 Columbus(395)	1704 WICS-20 Springfield(325)
2018 WHMB-40 Indianapolis(336)	1704 WKYT-27 Lexington(473)
3-23 Tr 1353 KDNL-30 St. Louis	1704 WKYK-32 Louisville(437)
1408 Cleveland U's	1704 W7IAE LaSalle,IL(215)
3-24 Tr 2245 Cleveland U's	1909 Cleveland U's(355)
2245 WAKR-23 Akron (360)	4-2 Tr 1708 KDNL-30 St. Louis
3-25 Tr 1830 Cleveland U's	4-7 MS 0530 WCBS-2 New York(740)
1944 Indianapolis U's	4-8 Tr 1915 Cleveland U's
1950 WKYK-32 Louisville(437)	1915 WKYT-27 Lexington(473)
1950 WOSU-34 Columbus	1915 WOSU-34 Columbus(395)
2209 KDNL-30 St. Louis	1947 WKYK-32 Louisville
3-26 Tr 1918 Dayton U's(368)	4-10 Tr 1907 Dayton U's(368)
1920 WOSU-34 Columbus	1907 WOSU-34 Columbus
1927 KDNL-30 St. Louis	1907 WUSI-16 Olney(402)
1937 WHMB-40 Indianapolis	1907 WICS-20 Springfield
1937 Cleveland U's(355)	2030 WMUL-33 Huntington(498)
3-27 Tr 1641 KDNL-30 St. Louis	2038 Cleveland U's
1653 Cleveland & Dayton U's	4-12 Tr 1733 KDNL-30 St. Louis(432)
1715 WOSU-34 Columbus	1955 WOSU-34 Columbus
1803 WOUC-44 Cambridge(453)	1955 Cleveland U's
1816 WPMJ-21 Youngstown(420)	LS 2020 Erie U's
1816 WKBN-27 Youngstown	Tr 2020 Dayton U's
1903 WIPB-49 Muncie(310)	4-13 Tr 2208 Cleveland U's
1903 Indianapolis U's	2208 WICS-20 Springfield
1903 WKYK-32 Louisville(437)	LS 2208 Peoria U's
1918 WUTV-29 Buffalo(445)	2208 WICD-15 Danville
1930 WVIR-29 Charlottesville T	2208 WICS-20 Springfield
2120 WKYT-27 Lexington(473)	2208 WAND-17 Decatur
3-30 Tr 2238 WIIL-38 Terre Haute(348)	2208 KDNL-30 St. Louis

A late call from Bill also indicates he caught some E-skip on 4-16 from about 1700-1900, including unID Spanish channel 3 in the direction of the Caribbean area...more on this next month. Bill is currently DXing with the following set-ups: For UHF, a Lafayette 7' parabolic dish at 90 feet powered by a combination of Blonder-Tongue CMA-UB (14-69) & CMA-U (53-83), each with separate power-supplies and a Dow-Key #77-263232 relay. From this, the signal is fed into a CADCO UHF-DX-C2 Interdigital amplifier and from there to a Blonder-Tongue BFX-111 converter, and from there to a 1971 Zenith B & W #14N22 TV. As if this weren't enough, Bill is trying to arrange a system whereby he can add a CMA-U (14-59). Now, for high-band VHF: Two 10-element Finco ch 7-13 yagis are stacked vertically and fed with Belden tubular foam-filled 300 ohm lead, and amplified by a Blonder-Tongue AB-3 amp and power supply. This is mounted above the 7' dish at about 100'.....a special ham model rotor is used to rotate both arrays. Bill uses the same 1971 B & W Zenith for high-band VHF. For low-band VHF: Two Finco ch 2-6 yagis are stacked vertically atop a cedar pole about 35' above ground-level, and are rotated by an Alliance rotor. Bill uses the same type 300' ohm lead as used on high-band, but with no pre-amp, and DXes ch 2-6 on a 1966 Zenith B & W #14M23. Add to all of this fine equipment Bill's great location overlooking Lake Michigan, and his years of experience and great devotion to the hobby, and you can see why his reports and log totals are so impressive!

Don Ruland, 4448 68th Place, Kenosha, WI 53140 (CDT)

4-16 Es 1900 unID ch 2-3 from S-SE	4-18 Au 0555 unID ch 2-6 from NE
4-17 Tr 0650 W7IAE LaSalle	4-19 Tr 0730 WOSU-34 Columbus(320)

Finally received the CMA-UB (14-69) and #1526 power-supply, and installed same on 4-13 (replacing CMA-U 14-59 and #1514 power). Noted a slight overall improvement in signal strength, more so on channels 35 and up. However of more importance, is a definite improvement in overloading and cross-modulation. Now all that's needed is some DX....73.....

WESTERN TV DX

May 1974

Dennis Park Smith
2237 1/2 Ceres Avenue
Chico, California 95926
Telephone 916 343-9424
Deadlines: 10 May, 6 Jun

There was an excellent Gulf tropo session centering around 31 March. Glenn Hauser in Oklahoma saw VHF and UHF as far as Louisiana, 515 miles. Pat Dyer in south Texas observed VHF and UHF from Florida, up to 1150 miles (on low-band and high-band VHF as well as UHF). Along with all the tornados, there was some Es activity as might have been expected in connection with turbulent weather. All reporters this time caught some Es.

Sporadic-E	March	2	3	4	5	6	7	9	16	17	21	22	23	26	27	28	Apr	3
Number of reporters	3	2	1	1	2	2	1	3	1	1	1	1	1	1	1	1	1	1
MUF at least (ch/freq)	3	2	4	6	89.7	4	2?	4	3	3	2	2	96.5	2	2	4		

Fred McCormack, Des Lacs, North Dakota 58733 (March) (GDT)
(In the March column, reporting-period dates "1 Jan - 3 Feb" were mistakenly omitted from Fred's report. And, Fred apparently saw no DX in February. dps)
Equipment: Heath color TV GR371MX, Winegard CW-48
Mar 16 Es 2200 WCBH 4 Columbus MS 2233R1220
2229 KARK 4 Little Rock AR 3334R1040

Glenn Hauser, 620 N. Husband, Stillwater, Oklahoma 74074 (8 Mar - 7 Apr) (CST)
Distances are given for new catches. (31)(tr) 0611 WRBT 33 Baton Rouge LA 515
11 tr 0655 KSLA 12 Shreveport LA (WIL77 STL, 0628goodmorningslide)
0930 KERA 13 Dallas TX (o/KETA) 0613 KTRK-13 HoustonTX (SS drama) N 455
0931 KIDZ 24 Wichita Falls TX N 175 0613 KHOU-11 Houston TX N 455
0935 KXTX 39 Dallas TX 0614 unid 7 (somedrag.CCI.Mex?Cuba?)
0619 WBRZ 2 Baton Rouge LA N 515
16 Es 2053 CKCK- 2 Regina Sask?(orCKPR?)T (wx dial scan a la CATV, 0629aud.Id)
2056"CBKMT"4 Moose Jaw Sask ? T 0628 KALB 5 Alexandria LA N 435
(or Thunder Bay newie?) 0629 KTAL 6 Vivian LA N 280
2119 KDAL- 3 Duluth MN (MN wx) N 780 0629 KLTV 7 Tyler TX N 280
21 Es 2025 WCBD 2 Charleston SC ? T 0639 KINI 15 New Iberia LA N 510
2037 WFMY 2 Greensboro NC ? T (full CB; 0659s/on:SSBaud-GMslide)
2053 unid 2 (na? 10 CCI, B.Graham) 0703 WAPT 16 Jackson MS (-4 kHz KUHI)
2312 WESH- 2 Daytona Beach FL N1035 (0810 still in tho other Us out)
31 tr 0547 KJAC 4 PortArthur TX(IdsL) N 455 0848 KNOE- 8 Monroe LA
0549 KVUE 24 Austin TX ? (CB) T 0903 KTHV 11 Little Rock AR
0552 WAFB- 9 Baton Rouge LA N 515 A2: apx 2000: breezes bend mast -30°of UHF/FM.
0552 KSLA 12 ShreveportLA (3/4CBw/GL) 5: took down UHF & FM ants.
0552 KPRC- 2 Houston TX (s/on) N 455 6: put FM back up, moved ch-8 to top, making
0557 KATC 3 LafayetteLA(3/4CBCL)N 500 it rotatable; UHF left off, topheavy air-
0558 unid 26 (lunar s/on, 0600 Bozo) catcher! Until the next, 73 de Glenn.

Dennis Smith, 450 Poplar Avenue, Wasco, California 93280 (7 Apr) (PST)
This was my original DXing address, where I started FM-DXing in 1952 and television in 1954. In more recent years, occasional visits have been made to my mother there and to DX a bit, as it has been the only location at which I've had any real DXing equipment installed. Such was the case when during Easter week I went to Wasco on 6 April. On 7 April morning, I turned on the 1957 Fisher FM-90X mono FM tuner with TAGO 10-element FM yagi 40 feet above ground (ground elevation 325 feet) to check for signals and found everything normal, except for KCSM San Mateo CA (200 mi, cl mx), somewhat stronger than in past and on 91.1 instead of 90.9—probably a frequency change and power increase. I didn't take time to check TV at all. That afternoon, my mother, sister and I went to Santa Barbara to visit relatives. We were in Santa Barbara when on 8 April, the house in Wasco was destroyed by fire. Every piece of electronic equipment was lost, including the FM tuner, the 1954 Zenith 21" 19L28 on which I first started TV-DXing in 1954 and still operable until the fire, and other radio and television gear. A small, inexpensive booster and converter survived. My extensive phonograph record collection was damaged or destroyed; a box of recorded tapes (not really extensive) survived. Practically all of my DX papers (notes, photos, letters, club bulletins, books, magazines) remained intact or with only minor damage, though several years of British Practical Television may have burned. Our old piano perished; a saxophone remains unbound. All furniture and most
(Continued at bottom of next page)

May 1974

Jim Pizzi, 300 Park, Orcutt, California 93454

(6 - 29 Mar) (PDT)

Equipment includes 1969 Zenith color, 10-el. S&A lowband, 10-el. S&A highband,
7-ft Finco UHF w/ Jerrold amp. Most distances are approximate

7 Es 2000 unId 2,3 east (KFDX-3 seen in Taft CA) (20)(tr) 2200 KMST 46 Monterey CA 3325
 10 tr? 1903 unId 56 north (xltr or image??) 21 tr 1208 KTEH 54 San Jose CA 2025
 (of KEYT 3) (gone at 1211)

tr 2014 KHOF-30 San Bernardino CA 2325N 150 1210 K7B??7E north (discuss pgm) 2035(N)
 tr? 2114 (CBS) -57 north (xltr? image?) (56 gone) (of KTEH 54)

15 tr 0015 KBHK 44 San Francisco CA 2335 1212 K81??81 north (exercise pgm) 2135(N)
 0016 KTVU 2 Oakland CA 2044 (of KQED 9)

17 tr 1000 KBHK 44 San Francisco CA 4125 K75??75 north (of KQED 9) 1035
 1022 KTVU 2 Oakland CA 2134 1230, 1300: Ids on above (KQED, KTEH)
 1025 KMST 46 Monterey CA 3445 1915 KMST 46 Monterey CA 5555 150
 1745 KTVU 2 Oakland CA 4344 1925 to 1933 north: (0-offset KBAK-29)
 1750 KQED 9 San Francisco CA 2233 K29AB 29 Monterey CA 4333N 150
 1751 KGO - 7 San Francisco CA 3333 (1-kW-xmtr xltr of KGSC 36)
 1755 KHJ - 9 Los Angeles CA 3233 (Thanks to Les Prus for this one)
 1758 KEMO 20 San Fran (Jap. pgm) 1325 2200 KIXE 9 Redding CA 3233N 435
 1800 KNTV 11 San Jose CA 4445 (PBS; no sign of KQED 9, also PBS)
 1803 KCET 28 Los Angeles CA 1125 2201 KRCR 7 Redding CA 4333N 435
 1805 KFSN 30 Fresno CA 4555 (7R News 2301; weak 0005 on 22nd)
 1806 KMJ -24 Fresno CA 4555 22 tr 0010 KRCR 7 Redding (f/out 0055)
 1815 KCRA - 3 Sacramento CA 3234 25 tr 2105 KRON - 4 San Francisco 2343
 (local KEYT 3 off) 2107 KTVU 2 Oakland CA 3044
 1823 KTXL 40 Sacramento CA 2315N 235 2117 KBHK 44 San Francisco 4225
 1900 KRON - 4 San Francisco 3343 27 tr 2300 KHJ - 9 Los Angeles CA 4555
 (bad cable leak on ch 4) KABC - 7 Los Angeles CA 3554
 20 tr 1335 unId 59 (or 60) north 1035 K10##10 Santa Ynez CA 2044
 1912 KCET 28 Los Angeles CA 3445 (of KCOY-12)

28 Es 1856 CFAC - 2 Calgary Alta (movie) 4144
 tr KTVU 2 Oakland CA 3444
 29 tr 0025 KOVR 13 Stockton CA 3125
 0029 KXTV 10 Sacramento CA 3333
 0031 KGO - 7 San Francisco CA 4433

March was a pretty good month with 7 new, all by trop. Totals now at 137.

My unId on ch 29 3/21 was Ided by Les Prus as K29AB Monterey, on Mt. Toro along with KMST 46. KMST was in like a local at the time.

I've removed my low-band S&A antenna; it had poor FB ratio. I'll replace it with an S&A 10-element ch-3 yagi. I'll also put up 10-el. ch-2, 4 & 5 yagis on tool shed roof for summer Es; ch-3 ant will go on tower. On garage roof, I'll put up 8-el. ACA FM horizontal and 10-el. FM vertical. I hope to have it all up by end of April. 73's.

Dennis Smith (continued)

clothing went. Enough of the house skeleton remained to keep the guy wires and 46-foot antenna mast in place. A few items were elsewhere at the time: my QSLs and Panasonic FM-AM portable in Chico, my Conrac/Dage/IPA-amp. TV receiver in Santa Maria, and a big Akai tape recorder in Santa Barbara.

It is the end of an era, for my own DXing. It is doubtful that the house will be rebuilt, so my signal-chasing from there is apparently finished. This is the last time the above address will appear for any DXing or correspondence. Final Wasco TV totals: 148 stations received (89 Es, 27 UHF); FM totals: 202 stations heard with one new (41 Es, 1 MS). I may eventually get set up for DXing here in Chico, and may continue with some mobile listening. And I am continuing with the Western TV-DX column.

Pat Dyer, 5315 Silvertip Drive, San Antonio, Texas 78228 (7 Mar - 8 Apr) (CST)

Equipment: 1971 model 9-inch black-and-white Penncrest with Archer V-100 and 8-bay bow-tie UHF array at 20 feet with rotor		
7	Es 2115-2150 2,4 unid	(31)(tr) 0404 WCKT 7 Miami FL (last logd '65) 1150
	2130 KUTV 2 Salt Lake City UT 1080	0410 WPLG-10 Miami FL T1150
	2135 KCPX-4 Salt Lake City UT T1080	0433 WLCY-10 Tampa FL (20kHz CCI) T 985
8	tr 2325 KOSA-7 Odessa TX 280	0420 unId 12 (likely FL)
	2326 KBIM-10 Roswell NM 440	0433 WINK-11 Fort Myers FL N1040
9	Es 1010 unId 2	0440 WTVT 13 Tampa FL N 985
16	tr 2250 KOSA-7 Odessa TX 280	0444 WPTV 5 Palm Beach FL N1150
17	tr 0955 KSEL-28 Lubbock TX T 340	0445 WFL-4 New Orleans LA 510
	0959 KCB D-11 Lubbock TX 340	KNOE-8 Monroe LA 440
	KL BK-13 Lubbock TX 340	0452 WSWB-35 Orlando FL N1035
	1002 KSWS-8 Roswell NM (//Ch 11) 440	0512 WEAR-3 Pensacola FL (new mode) 685
Es	1015 unid 2 (brief, n.e.)	0515 WGNO-26 New Orleans LA 510
	1050 unids 2,3 (agn brief, n.e.)	0518 WCIX-6 Miami FL (new mode) 685
tr	2101 KMID-2 Midland TX 275	0519 WVUE 8 New Orleans LA 510
	2111 KOSA-7 Odessa TX 280	KLFY-10 Lafayette LA 395
	2329 KTXS-12 Sweetwater TX 230	0531 WAFB-9 Baton Rouge LA 450
18	tr 0935 KCB D-11 Lubbock TX 340	0549 WXL T 40 Sarasota FL 990
	KSEL-28 Lubbock TX 340	-Tampa area Us (WBBH-20 WXL T 40 WTOG-44) stayed in to some degree until near 1200; evidently the all-water path (not heating as fast as the land) kept the duct intact longer.
	KL BK-13 Lubbock TX 340	1030 KFD M-6 Beaumont TX 275
20	tr 0959 KPLC-7 Lake Charles LA T 325	1730, tropducts beginning to reform to east
21	Es 2315-0000 2,3 unids (vy spotty, n.e.)	WBRZ 2 Baton Rouge LA T 450
22	Es 0000 WLW-D 2 Dayton OH (rather late!) 1075	WAFB-9 Baton Rouge LA T 450
26	Es 1915-2145 2,3,4,6 unids	1800 WRBT 33 Baton Rouge LA 450
	1940 WDIQ 2 Andalusia AL T 730	1830 KLFY-10 Lafayette LA 395
	WSAV-3 Savannah GA T1050	2030 unids 20,40, etal (likely FL agn)
	1945 WCBD 2 Charleston SC 1015	2100 WMAU 17 Bude MS 470
	1953 WCIV 4 Charleston SC T1015	2118 WMAH 19 Biloxi MS T 570
	2029 WEDU 3 Tampa FL 985	2302 WKAB-32 Montgomery AL T 755
	2034 WESH-2 Daytona Beach FL 1055	2310 WCOV-20 Montgomery AL T 755
	2043 WDBO-6 Orlando FL 1035	2314 WAPT 16 Jackson MS 525
	(MUF 96.5 by 2100)	2315 KVRL 26 Houston TX 195
27	tr 0855 KSEL-28 Lubbock TX 340	0010 KNOE-8 Monroe LA 440
	KCB D-11 Lubbock TX 340	0115 WYEA-38 Columbus GA 830
	KL BK-13 Lubbock TX 340	0855 KVRL 26 Houston TX 195
	0929 KOSA-7 Odessa TX 280	KHTV 39 Houston TX 195
Es	1035-1100 KNXT 2 Los Angeles CA T1190	1905 WBRZ 2 Baton Rouge LA T 450
	1425-1440 KNXT 2 Los Angeles CA T1190	WAFB-9 Baton Rouge LA T 450
28	tr 0023 KOAM-7 Pittsburg KS N 590	2020 WAPT 16 Jackson MS T 525
	0028 WBAP-5 Fort Worth TX 240	KLNI-15 Lafayette LA T 395
	2258 KVRL 26 Houston TX 195	2100 KLFY-10 Lafayette LA 395
	KHTV 39 Houston TX 195	2237 WRBT 33 Baton Rouge LA 450
30	tr 2015 KVRL 26 Houston TX 195	2315 KPLC-7 Lake Charles LA 325
	2059 WBBH-20 Fort Myers FL N1040	2 tr 0035 KALB-5 Alexandria LA 385
	2100 WLT V 23 Miami FL N1150	KRGV-5 Weslaco TX 225
	2114 KHTV 39 Houston TX 195	Es 1910 WLW-D 2 Dayton OH (tornado nx) 1075
	2115 WRBT 33 Baton Rouge LA 450	1913 WAVE-3 Louisville KY T 945
	WXL T 40 Sarasota FL 990	1935 KEYT 3 Santa Barbara CA 1270
	2120 KLNI 15 Lafayette LA 395	KNXT 2 Los Angeles CA 1190
	2130 WMAH 19 Biloxi MS 570	KNBC 4 Los Angeles CA T1190
	2143 WKID-51 Fort Lauderdale FL N1150	1940 XHBC-3 Mexicali BCN T1010
	2235 WAPT 16 Jackson MS T 525	1950 f/out
31	tr 0000 WTOG-44 Tampa FL 985	7 tr 2215 WTVT 13 Tampa FL N 985
	0029 WPBT 2 Miami FL (new mode) 1150	
	0030 XHTP-9 Merida Yucatan (se) N 820	
	XHAB-7 Matamoros Tamp T 250	
	0250 WKXS-17 Jacksonville FL N1015	

Mar 30-31 was by far the best trop session since last May. If not for a series of cold fronts (coming through about every 2 days it seems) conditions would have likely re-occurred, but with no chance for the humidity to climb the trop has been limited since.

Es has been running a bit above expected levels for this time of year. The Apr-3 opening into Ohio had bulletins on WLW-D concerning the Xenia tornado.

Jan 5 0124z DX turned out to be KTVM-TV 6 Butte MT (1365 mi). 73, WA5IYX.

EASTERN TVDX

Bill Thompson
1907 Seneca Street
Buffalo, NY 14210

May 1974

Deadline: 10th

The Es season will be well underway by the time this appears in print. I can make this statement confidently since this month's column is being typed up in the midst of a massive skip opening today (April 16). Even a pessimist would have to admit that this is shaping up to be quite a year indeed.

Leslie Price 1710 Church Street Wilmington, North Carolina (EDT)

February 1973 (Feb. times EST)

9 Tr 0730 WJKS-17 Jacksonville FL

5 Tr 0800	WBBA-14 Allendale SC	4 WJCL-22, WBBA-14, WJPM-33,
0800	WHRO-15 Hampton Rhodes VA	WRLK-35, WOLO-25, WRDU-28,
0800	WCCE-18 Charlotte NC	WRFT-36, WCCB-18
0800	WNOK-19 Columbia SC	0800 WNOK-19 Columbia SC 3253
0800	WJCL-22 Savannah GA	0800 WCBD-2 Charleston SC 3443
0800	WOLO-25 Columbia SC	0800 WCIV-4 Charleston 3443
0800	WUNK-25 Greenville SC	0800 WCSC-5 Charleston 3333
0800	WRDU-28 Durham-Raleigh NC	0815 WITV-7 Charleston 4552
0830	WJPM-33 Florence SC	0815 WRAL-5 Raleigh NC 4433
0830	WRFT-36 Charlotte NC	0815 WITN-7 Washington NC 5552
0830	WRLK-35 Columbia SC	0820 WCES-20 Wrens GA 3332
0830	WBCC-16 Salisbury MD	0820 WDCC-15 Colvin GA 1134
0830	WCPB-28 Salisbury MD	0830 WGHP-8 High Point NC 4444
0830	WUNC-58 Concord NC	0830 WNCN-9 Greenville NC 5444

June 1973

29 Es 1930 CKCO-2 (Warton, Ontario)

March 1974

9 Tr 0730 (WATU)-26 Augusta GA

0830 WBTW-13 Florence SC 5554

"Would like to know what happened to WJNS-TV Jacksonville NC. WJNS-TV was authorized Construction Permit several years ago but has not come on the air. It is still listed in White's Radio Log." (It's not listed in the current Services Supplement edition of TV FACTBOOK, but checking back to the 1970-71 edition, the CP was mentioned as having been granted 5-21-69. CP may have expired or been revoked by now. Does anyone have any further info about this one? CP was for ch 19.-bt)

Bob Seybold Bennett Road Dunkirk, New York

January

19 Tr "also late evening of 18th:" CKGN-2 Bancroft Ont, CKGN-22 Windsor, CKGN-29 Dresden, WXON-20 WEYI-25 WKAR-23 WDHO-24 WGTE-30 WUHQ-41 WKBD-50 WTVS-56 WBGU-57 Bowling Green OH, CITY-79 "above average", "also signals to the east--Elmira, Binghamton, Scranton, etc..."

February

"Occasional reception from 22 Windsor and 29 Dresden, not much else observed--did not observe band closely."

March

12 Tr "trops up; excellent signals from:" WUCM-19 WXON-20 CKGN-22 Windsor, WKAR-23 WDHO-24 WEYI-25 CKGN-29 WGTE-30 WUHQ-41 WKBD-50 WTVS-56 WBGU-57 CITY-79 & others

15 Tr CKGN-22 Windsor, CKGN-29 Dresden, "Toledo, Detroit U's..."
"CKGN-22 Uxbridge always in at 120 miles--sometimes good & viewable. However, Windsor 22 has no trouble getting in when conditions are up and both 22's are easily separated under those conditions. Potals now 640--4 new. Hope to attend '74 convention..."

Greg Kelley 108 Archer Street Staunton, Virginia 24401 (EDT)

April

1 Tr 2130 WHRO-15 Hampton VA 4555R "1 Tr 2140 WYAH-27 Portsmouth 1222R

"...often get frame bar r/WDCA-20"
"Still have not got a new antenna...under normal conditions I get 11 VHF stations...with 'slightly better' conditions I get 12 to 16 stations... the whip antenna on the TV brings in ch 12 in Richmond @ 100 miles with light snow...on my simple \$10 VHF antenna, those 11 VHF stations come in ...5 give moderate snow to snow free...hills rise 100' East & West of me. To the West, the mountains reach 4000' at 7 miles, while mountains to the East reach 1600' to 3000' at about 15-25 miles."

John Combs 816 W. Harvard Orlando, Florida 32404 (EDT)

March

				1 Tr	0625	WSB-2	Atlanta GA	N0405		
20	GW	1535	WSWB-35	Orlando FL	N0020	0629	LLFY-10	Lafayette	R0665	
			"3/4 CB test; first sign of them since original planned sign-on in August 1972"							
26	Es	2045	KPRC-2	Houston TX	R0850	0630	MAFB-9	Baton Rouge	N0605	
		2057	WOAI-4	San Antonio	R1045	0631	WTOI-22	Savannah GA	N0245	
		2145	KIII-3	Corpus C.	N0990	0631	WOLC-25	Columbia SC	N0390	
28	MS	0555	WWD-2	Dayton OH	N0810	0632	WTOC-11	Savannah GA	R0245	
29	Tr	2248	WALB-10	Albany GA	R0280	0632	WCSC-5	CharlestonSC	N0325	
		2303	WRBL-3	Columbus GA(AL)	R	0632	WIS-10	Columbia SC	N0390	
		2305	WTVY-4	Dothan AL	R0305	0633	WDBN-18	Dothan AL??	T	
		2310	WRAP-3	Pensacola FL(AL)	R	0635	WALA-10	Mobile AL	R0425	
		2325	WSEA-12	Montgomery	N0390	0636	WCTV-4	CharlestonSC	R0325	
30		0019	WDTB-13,	0030	WJHG-7	FL	0638	WTVM-9	Columbus GA	R0340
		0036	WTOC-11	Savannah GA	R0245	0639	WTBA-38	Huntsville AL??	T	
31		0011	WLVY-23	Miami FL	N0200	0643	WVUE-8	New Orleans	R0535	
		1037	KATC-3	Lafayette LA	R0665	0643	WEBA-14	AllendaleSC	N0310	
		1038	WNL-4	New Orleans	R0535	0647	WRLK-35	Columbia SC	N0390	
		1040	WVUE-8	New Orleans	R0535	0648	WDTB-13	Panama City	R0275	
		1041	WJHG-7,	1042	WDTB-13	FL	0649	WCWB-41	Macon GA??	T
		1110	WLEY-10	LafayetteLA	R0665	0649	WJPT-33	Florence SC	N0420	
						0650	WTVV-29	Greenville	N0450	
						0651	WTL-4	New Orleans	R0535	
						0655	WITV-7	CharlestonSC	R0325	
						0656	WSAV-3	Savannah GA	N0245	
						0659	WTOI-19	Columbia SC	N0390	
						0702	WEAR-3	Pensacola FL??	T	

April

				1 Tr	0621	WRBL-3	Columbus	R0340
					0622	WRDW-12	Augusta GA(FL)	R
					0623	WMAZ-13	Macon GA	R0325

"Overwhelming is the only way to describe the DX here. I got my new receiver (RCA "74 9" B/W with 70-ch detent UHF tuner) just in time for some fantastic tropo. All UHF's were logged on a 5-in. loop antenna (Ha-ha to Cooper, Draeb, et. al.). 29 stations logged in 40 minutes!! Most of them were in with TP's; it seemed like every time I changed the channel I ran head-on into another station! I wonder how I would have fared had I been able to get my 8-bay UHF up in time...WSWB-35 finally on here after a year and a half of delays. They plan to carry a lot of sports as well as usual independent fare (Mr. ED, Lost in Space, Batman, etc.), along with some fine locally produced fare such as "Uncle Hubie's Penthouse Barnyard" (!)...My hiatus from DXing lasted a month and a half. It's a pleasure to be back into it, especially with such great conditions. Who says 1974 is all that bad??"

Tom Yingling, Jr. 221 Pinewood Road Dundalk, Maryland 21222 (EST/EDT)

October

25	Tr	0830	WVIA-44	Scranton PA	N0210
		0900	WNYE-25	New York City	200
			"with WHAG-25 CCI; also other NYC VHF's and Wilkes-Barre's UHF's"		

November

24	MS	0704	WTVQ-2	Terre Haute	N0610
25	Tr	0100	KDKA-2	Pittsburgh	R0200
		0130	WTAB-4	Pittsburgh	R0210
26	MS	0330	KID-3	Idaho FallsID	N1810
		0640	WBBM-2	Chicago	L0600

"Got some real good MS DX from the boob-tube this winter. KID-TV 3 was a tentative report and they verified. Boy, was I shocked to get a reply to that report. Since WTAB-29 went 5 megawatts, I get them all the time. The Jan. 1st skip got the year off to a good start--73s"
Equipment: Sony TV-720U 7" B/W, Finco G-954 UHF preamp, 5' dish, Lafayette 36-element log-periodic.

EASTERN TV-DXers PLEASE TAKE NOTE:

Why not plan to attend this year's WFFDA convention in Topeka? Our club's annual convention is so interesting that once you've been to one, you never want to miss another! This editor had the good fortune of living relatively close to super-DXer Bob Seybold, host of last year's convention. Having been to one convention, I can promise that I'll certainly try to get to Topeka this August; believe me, it's well worth the trip!



VHF UTILITY DX

Fat Dyer
5315 Silvertip Drive
San Antonio, TX 78228
Deadline: 12th of month

MAY 1974

Hank Holbrook, 7211 Chestnut St., Chevy Chase, MD 20015; QSLed, GMT

<u>6-14:</u>	0104, KIK 982	37.30	Bonifay, FL (sheriff; also Car 73)
<u>2-3:</u>	1616, N4080J	122.8	ov Easton, MD (Flight Training, Inc.; Cessna 150: single-engine, 2-seat)
<u>1-1:</u>	2031, KAB 216	37.10	Ames, IA (police, 100 watts)
	2035, KAB 204	37.10	Keokuk, IA (police, 100 watts)
	2049, KAI 795	37.10	Knoxville, IA (police)
	2056, KAA 486	37.10	Sigourney, IA (sheriff)
<u>2:</u>	2004, KRZ 342	37.04	Truman, AR (police; 180 watts)
	2011, KSK 922	37.04	Harrisburg, AR (sheriff; 180 watts)

Now, my loggings. Hallicrafters SX-62 with two 30' wires at 12' (nw-se and ne-sw runs); all are F2 unless noted, * F2 backscatter; daily peak F2 MUF noted for US and foreign if 30 MHz or more; 50-MHz loggings on Swan 250 with 3-element CushCraft horizontal Yagi at 15'; GMT used

<u>2-13:</u>	1900, 37.00 Sp	22:	0520, KSJ 815 (Es)	<u>3:</u>	2040, 33.00 Sp
<u>14:</u>	1945, 37.00 Sp		2058, 37.62	<u>4:</u>	0102, KQD 313 (Es)
<u>15:</u>	1650, 35.28 Sp	<u>23:</u>	2000, 36.55 Sp		0146, L Beach (Es)
<u>16:</u>	2055, 50.02 Sp	<u>24:</u>	1700, 36.45 Sp		0440, KQC 877 (Es)
<u>17:</u>	1915, 37.00 Sp	<u>25:</u>	2110, 35.28 Sp		1937, 37.00
<u>18:</u>	2055, 37.00 Sp	<u>26:</u>	1745, 31.21 rtty	<u>5:</u>	1753, 37.00
	2332, KLF 527	<u>27:</u>	0115, KIY 508 (Es)	<u>6:</u>	1810, 43.70
<u>19:</u>	1637, Los Ang (Es)		1643, Los Ang (Es)	<u>7:</u>	1955, 43.10
	2300, 36.90 Sp		1713, L Beach (Es)	<u>8:</u>	1802, KMA 829 (Es)
<u>20:</u>	2233, KLF 527		1724, KMA 829 (Es)		1832, L Beach (Es)
	2245, 42.30		1804, S Diego (Es)		1850, Los Ang (Es)
	2343, KGP 720		1850, KME 438 (Es)		1918, KFJ 891 (Es)
<u>21:</u>	0112, KDN 407 (Es)		1905, KIN 645 (Es)		2330, 41.01
	0115, KAQ 606 (Es)		1907, KIF 651 (Es)	<u>9:</u>	2127, 45.20
	2030, US 31 +		2125, 35.28 Sp	<u>10:</u>	1838, 43.70
	2105, 50.237	<u>28:</u>	0120, KLF 527		2212, KMA 829 *
	2110, WB4NDT *		2030, 33.00 Sp	<u>11:</u>	2000, 45.90
	2146, KLF 527	<u>29:</u>	1955, 31.26 Sp		2305, KMA 829 *
<u>22:</u>	0313, KMA 829 (Es)	<u>30:</u>	2155, 31.21		2325, KKI 445 *
	0315, KFJ 891 (Es)	<u>4-1:</u>	1828, 35.28 Sp	<u>12:</u>	1945, 42.30
	0446, KSC 645 (Es)		2032, KFL 943 (Es)		(add: <u>4-2:</u> 1920, 30+ Sp)

The night of the midwest tornadoes (Apr 3-4) very heavy 37-MHz activity (mostly police and utility company crews) was in from the stricken area.

New ID's from some rather ancient loggings: (cst)

KQL 885, 33.--, Montville, CT (fire); 11-8-70: 0945; 17: 1135;
12-8: 1432; 3-15-72: 1029; 27: 1634; 10-22: 1419; 29: 1115
KRO 266, 33.78, Lacey Township, NJ (fire); 11-22-70: 1455
KDX 459, 33.50, Medway, MA (fire); 11-22-70: 1340
KSV 810, 33.08, Portland, OR (Emanuel Hospital); 3-15-72: 1224;
10-7: 1015; 10: 1520; 11-9: 1245; 16: 1320; 20: 1320; 21: 1154;
22: 1201; 24: 1240; 26: 1313; 27: 1229; 28: 1244; 2-2-73: 1413;
16: 1532; 20: 1700; 10-27: 1645; 11-4: 1645
KRS 250, 33.04, Martinez, CA (county); 12-29-72: 1305; 11-24-73: 1340
KDU 456, 33.08, Redwood City, CA (Mercy Ambulance); 12-29-72: 1330
KDZ 385, 33.08 Colma, CA (Mercy Ambulance); 12-29-72: 1330

More recently, a lot of h.f. harmonics have been logged, mostly unID. With help from Glenn Hauser some of them are being resolved -

3-7-74: 2000z, BBC 30.52 Ascension Island (relay)

VHF UTILITY DX

MAY 1974

KAQ 606	35.58	Denver, CO	KMA 829	35.58	San Diego, CA
KDN 407	35.22	Col Springs, CO	KME 438	35.22	Orange, CA
KFJ 891	35 +	Columbus, OH	KQC 877	35 +	Cincinnati,
KFL 943	35.58	Las Vegas, NM **	KQD 313	35.50	Dayton, OH
KGP 720	33.70	Petersham, MA-f	KSC 645	35.58	Chicago, IL
KIF 651	35.58	Fort Lauderdale, FL	KSJ 815	35.22	Fort Wayne, IN
KIN 645	43.22	Miami, FL	WB4NLT	50.1	Ft Lauderdale, FL-a
KIY 508	35.22	Orlando, FL *	-	35.58	Long Beach, CA *
KKI 445	35.58	Houston, TX	-	35.38	Los Angeles, CA-mp
KLP 527	35.22	Honolulu, HI **	-	35.46	San Diego, CA-mp

a-amateur; f-fire; mp-mobile phone; rest are tone pagers, except * voice and ** tone messages, voice ID.

4-8 logging of Los Angeles on 35.46 channel

also, 3-27, 1733, KMD 934 42.34 El Centro, CA (state police)

The following table was last run in the May 1973 column, * is a condensed version of previously run ones (Aug 1970 and July of 1971, 1972) From it various relations of Es skip distances and MUF's can be arrived at. These are the M-factors for a non-tilted Es patch at 105 km using the 'Secant Law'.

1400: 1.000	1000: 1.062	600: 1.380	200: 3.087
1300: 1.004	900: 1.105	500: 1.566	150: 3.681
1200: 1.015	800: 1.166	400: 1.849	100: 4.423
1100: 1.033	700: 1.254	300: 2.304	50: 5.207

To use this, suppose you have 40-MHz skip down to 600 miles, then the 1420-mile skip (the maximum for the height assumed here) should be $40 \times 1.38 = 55.2$ MHz. Recall that the Es must be near the path midpoint, so getting short skip in the 30-50 MHz range will not always give you TV skip.

By plotting the above on graph paper, intermediate distance can be interpolated for. From this minimum skip distances for frequencies below the MUF can be found. Additional explanations and data (same as noted in May 1973) for those interested are available for an s.a.s.e.

In the first part of April solar levels reached up to their highest since early last fall. However, the lack of any strong geomagnetic disturbances limited the ionospheric effects. The over-50 MHz MUF's of March 16 and 21 came with a lot less on the sun and were very unexpected.

There is some apparent debate as to the current phase of the sunspot cycle, i.e., has it reached minimum yet or what. Previous predictions have the minimum projected in the late summer of 1975. Based on my own observations of the latter stages of Cycle 19 (1962-1964) this seems still reasonable. In looking to the next cycle (Cycle 21) and its level, the important consideration is just how fast it climbs out of the minimum. Cycle 20 (min. fall 1964) did not develop much life until 1966 (even though the first Cycle 20 spots were on in August of 1962!) and the maximum it reached was far below that of the prior peak (1957-8).

With all this in mind, the coming fall F2 season is likely to be the poorest since 1964. Thus, any F2 DX loggings in 30-50 MHz will be rare specimens for most of the US.

In the meantime, the early signs of Es indicate a rather healthy season for VHF DX propagation.

73, Pat WA5IX

WORLDWIDE TV-FM DX ASSOCIATION



A/C JOHN M. KUSCHILL
FR 470-56-9161
PSC BOX 1166

SERVING THE
VHF-UHF DX
ENTHUSIAST

MALMSTROM A. F. B., MONT. 59402

Mr. Morris S. Goldman
VHF-UHF Digest Editor
Post Office box 163
Deerfield, Illinois 60015

Dear Morris,

Midwest TV DXers now have another good and interesting target --- Amateur Television that's right! A group of hams in the Minneapolis-ST Paul, Minnesota area have been some time now, beaming conventional wide-band tv at each other. The channel is "444 Mhz" which is located in the UHF Ham Band covering 420 thru 450 Mhz, and commonly called the 3/4 Meter Band. To those DXers not familiar with this band, it is sandwiched between Channel 13 and Channel 14 on a regular tv receiver.

Program content varies between "In home tours" to "technical Documentaries". FCC regulations prohibit the transmission of music, so don't expect to see and hear a Saturday Evening concert. All in all, ATV (as we Hams call it) is alot of fun and interesting, both to the Hams and non-Hams.

A standard television receiver and a modified UHF tuner is all that is required coupled to a good horizontally polarized antenna in order for anyone to join in the fun. Several people have pressed into use regular UHF conical antennas which seem to work reasonably well at close ranges.

Transmitting gear is relatively simple, using converted motoral T44 FM rigs that were removed from commercial use. A DXer should try to obtain one thru a local surplus electronic shop, because both audio and video are transmitted on 444 MHz. This was done to prevent excessive expenditures on diplexers. No noticeable intermodulation distortion is seen on the AM modulated video.

To the right of this page, you will find a Poloroid picture of an actual off-the-air transmission. This picture was sent a distance of several blocks with only a twin 6J6, 1 watt video transmitter. Notice the resolution that was obtained.

Military service has prevented me from further experiments with this medium, however I will like to hear from those persons who have DXed any of the stations on 444 MHz. Please mail any reception reports to the above address.

In the meanwhile, Good Dxing to all!

73's,

John M. Kuschill
John M. Kuschill, WBØDSA/7

Editor's Note: We regret the darkness of this photo, however, it is a modified Indian Head TP.



FM QSL CORNER

Georgia Louisville WPEH-FM 92.1- their original reply was mis-addressed and USPS returned it and their remailing went to Mass. (yes) before it got here. ltr w/xmtr-ant info.v/s Sheldon Daitch, CE(WA4MZZ)
Kansas Kansas City KCKN-FM 94.1-sent a one-line ltr. didn't specify if AM or FM. v/s Jim Jett, CE.
Az. Yuma KVOY-FM 93.1-verie note on my returned report.v/s John Gahaury, CE.
Kentucky Owensboro WBKR 92.5-ltr,v/s Harold I. Peters, CE.
Illinois Sterling WJVM 94.3-ltr, contour map-market data sheet. v/s Voigt Smith, Secretary-Treasurer.
California Los Angeles-KLOS 95.5-modified KABC card (AM-FM) that was used in 1971 (and likely before) v/s Arthur Sterman, CE.
Florida Panama City-WGNE 98.5-ltr w/ant-xmtr info.v/s Clyde Hutchinson, CE.
Michigan Ann Arbor-WUOM 91.7- ltr w/xmtr-ant info;v/s Raymond A. Klatt, Jr. Assistant Tech. Director.

The above reports from Pat Dyer of San Antonio, Texas.

NEW YORK Auburn-WRLX 106.9-ltr from Herbert J. House, CE.
Ithaca-WHCU 97.3-mimeographed form ltr.v/s Bob Denison, CE. SASE used.
North Syracuse WEZG-100.9-ltr from Dave Wickham, CE. SASE used.
WEZG # 2 rated Class A station in U.S.
Rome WKAL 95.1-ltr, cm.v/s Gerald W. Prouty, CE.
Seneca Falls WSWF 99.3-ltr & cm from Charles Callear.
Syracuse WCNV 91.3-ltr & cm from S. Paul Barron, Dir of Egr. SASE used.
Syracuse WMHR 102.9-ltr from Glenn H. Bardick, P/M.
Watertown WNCQ 97.5-printed ltr on back of my report from Don Alexander (no relation to me). SASE used.

The above reports from Jim Alexander, New Hartford, New York.

MEXICO XEBS-FM 89.7, Mexico. Attractive post-card with the large, detailed rubber-stamp QSL text of the entire Nucleo Radic Mil (AM/FM/SW), good, specific verification text and station name "La Chica Musical" written in, signed Jorge Garcia R. In 10 months without a follow-up. This network also includes XEOY-FM, 100.9.

Michigan WINL-FM 95.3, Niles. Card, specific, in 7 months without follow-up, from Matt Pierzchala, Dir, Eng.
Tennessee WYNQ Chattanooga, 106.5. ltr, omitted time, CM, promo sheet and calling card from Bob Riley, St. M.

Virginia WXRA Alexandria-105.9. pleasant ltr, specific but omitted time, in seven months with apologies for the delay from Robert W. Tallaferro, Eng. in Charge, who says my report is the farthest. (note...their transmitter is in Woodbridge, Va., and I have noted a much stronger signal....gk....)

The above reports from Richard Wood of Baton Rouge, La. 70803
NEW JERSEY Camden WKDN 106.9-verified my form ltr and sent personal ltr. from John G. Zesewitz, CE in 5 months....Mr. Zesewitz wants to know how I like my Zenith 7000 and beleives I could get their sister station, WFSI 107.9 in Annapolis, Md. (I can)
The above report from me...gk.

Due to the amount of reports received, I am going by names instead of by states. I already have 8 pages typed up like this. If you want me to go back to states method, please send all reports on index cards. (Ken Simon's method is good). Then after all 8 pages are used, I will go back to states. Thanks.....Greg

KY Louisville WKRX 106.9-Keith L. Reising, P. & G.M., claims W. Texas to be their most distance FM report.

(Not verified from Louisville-WLRS 102.3)

MI Gaylord WWRM 106.7-specific verie ltr from ham John D. DeGroot, P. & G.M.

Charlotte WCER 92.7-friendly ltr from David W. Huva KBPTZ CE, verifying my only aurora reception of a class A station, and say my reception at an "air distance of 475 miles is, indeed, a record for reception of the FM signal of WCER."

MO Columbia KBIA #91.3-Roger Karwoski CE, mentions in ltr that they've been picked up in Nova Scotia.

Jefferson City KJFF 106.9-Jim Lipsey, sales M., sends specific, friendly verification on ltrhead of KLIK (AM), on which FM info has been typed.

Jefferson City KLUM #88.9-Gene W. Ormond, communications specialist, Lincoln U. of MO: "We are happy to know someone that far away was listening on the first night of broadcast (Aug. 20, 1973)."

Maryville KXCV #90.5-Rollie Stadlman, G.M., mentions in ltr that my report is from the greatest distance north, although KXCV has been heard in Bakersfield, Ca, NJ, PA, and New Orleans.

Springfield KTXR 101.5-Mrs. Jane A. Meyer, assistant M.: "Your report of KTXR reception was complete and accurate to the most minute detail, including the fact that we were transmitting monophonically at the time you were listening...we have also heard from the states of Louisiana and Arkansas some time ago, but none gave the great in-depth detail which you did."

NE Columbus KTTT 93.5-Joe Stavos, M., furnishes specific QSL ltr.

Lincoln KFMQ 101.9-Steve Agnew, Pgm. Dir. & Engr., mentions in his ltr that when KFMQ was at lower power on 95.3 they received a ltr, "from a guy in Korea, who documented as you did listening to us for about three hours!" This is my first QSL from KFMQ after a half-dozen attempts to verify them when received years before on 95.3

Lincoln KWHG 102.7 (calls have since been changed to KH KS). James E. Kamas, P. verified my report specifically but disagreed with my reporting that they play rock music, which he claims is not their format, Duluth area the greatest distance they have been heard, to his knowledge.

Omaha KVNO #90.7-Frederic A. Leigh, Pgm. Dir., verified, thanking for the extra info I sent on FM DX'ing.

York KAWL-FM 104.9 - specific, friendly ltr, from "David L. Johnson," who says my report is the most distant.

NC Goldsboro WOKN 002.3 "The WOKN disjockies have all read the letter, and they were very surprised to find out that we had really reached as far as we did." Bob Swinson, G.M.

Morehead City WMBL-FM 95.9-short, specific ltr/vs Robert L. Statham, CE.

Wallace WLSE-FM 94.3-Wayne Sumner, pgm, dir., claims my report most distant and thanks for the FM DX sheet.

Wilmington WWIL 97.3-"Just two days before receiving your letter, we received one from Richard E. Wood, in Baton Rouge, LA, which is 813 miles Wilmington, N.C., but yours is the 'cake topper.'" vs Wayne Gilbert, Pgrm. Dir.

Wilmington WAAV 102.7-J.E. Hopkins, Jr. G.M., was grateful "for the unusual FM skip reception," and mentions they are 24 hours.

(not verified from Wilmington: WMFD-FM 100.9) (me too, Bruce-gk)

OK in Glenn Hauser-land, Stillwater KOSU "-FM" #91.7-specific ltr from Ed Paulin, Station M., claiming reception also in Bala, Ontario, and South Plainfield, NJ, sent along prgm. guide.

The above reports are from Bruce Elving, Adolph, Mn.

TV QSL CORNER

MAY '74

With few QSLs to report this month, I'm running the SPANISH REPORT FORM. It was worked on by Dr. Richard Wood, Les Prus and Glenn Hauser. WELL DONE! I would suggest if you have some slight knowledge of Spanish, a pocket dictionary might be of some aid. With all the confusion over DST, I'm not sure of local times in Central and Southern America, except that most of Mexico, with the exceptions of the two Baja Californias use CST. Cuba generally uses EST but is on EDT as of this writing. PLEASE NOTIFY ME OF ANY SUCCESSES WITH THE FORM! I've sent a few to Mexico and am waiting for replies.

Have been trying to get through to WGR to see if we can get them to put date and time on their QSL card. No luck so far. WCBS is almost a dead issue. Lets face it some QSL require a lot of work.

Station addresses can be found in Broadcasting Yearbook, Standard Rate & Data (TV) and in some of the older editions of WRTVH (at least in the 1969). If you strike out there, try phone books. Most local phone companies carry libraries of phone books which are open to the public. Sometimes I've been successful with:

Chief Engineer,
WWW-TV Ch.37
ANYTOWN, ALASKA 99999

Let me also not I've had letters returned marked 'insufficient address' too. As I've said before I can help expedite most Florida stations as Greg Kelley will tell when he got a QSL letter from WPTV-5 about 5 years after logging it. PS. Greg collect sea shells...I'm into stamps and coins, so use commemorative stamps when you write and I'll also trade TVGs....

ON TO THE REPORTS:

AK KETS Ch 2 LITTLE ROCK, ltr. VERNON L. DILLAPAIN, ce. 29 days. (TJY).
ID KID Ch 3 IDAHO FALLS, ltr. & map. BILL JAMES, op.dir. 15 days. (TJY).
KS KCKT Ch 2 GREAT BEN, ltr from KARD-3. MRS. JERRANE HADLEY, promo.mgr. 3 months. on second try. (KRS).
PA WJNL Ch 19 JOHNSTOWN, ltr. & map, JOHN KERSHESKEY, ce. 14 days. (TJY).
WSBA Ch 43 YORK, signed report. JACK SCHUSTER, ce. 1 week on 3rd try. (TJY).

CANADA

SASK CFQC Ch 3 STRANRAER/ CFQC Ch 6 N. BATTLEFORD/ CFQC Ch 8 SASKATOON, one ltr. not mentioning separate stations. L.C. HOSKINS, dir. of eng. 6 days. (JM).
CBKST Ch 9 STRANRAER, ltr. GORDON BROWNE, pr. 10 days. (JM).
CBKST Ch 11 SASKATOON, as above. 12 days. (JM).

LATE REPORTS

GA WTOC Ch 11 SAVANNAH, ltr. & map. KYLE E. GOODMAN, d. of e. 1 week. (KRS).
WYEA Ch 38 COLUMBUS, ltr. V. FRANK HARDMAN, ce. 1 week. (KRS).
SC WNOK Ch 19 COLUMBIA, ltr. JAMES R. KELLY III, tech. op. dir. 1 week. (KRS).
WOLO Ch 25 COLUMBIA, ltr. DAN BROWN, ce. 1 week. (KRS).
TN WSM Ch 4 NASHVILLE, ltr. AARON SHELTON, tech. dir. 1 1/2 days. (JA).
VT WCAX Ch 3 BURLINGTON, ltr. CHARLES A. LIESE, ce. 18 days. (JA).

CANADA

Nfl CJCJN Ch 4 GRAND FALLS, card from CJOX. JOHN C. TESSIER, op. mgr. 12 days. (JA).
Que CFCE Ch 12 MONTREAL, am/fm/tv/sw card, station not specified. Unsigned. After 3 tries. 4 months. (JA).

CONTRIBUTORS--TJY=Tom J. Yingling, Dundalk, Md.; KRS=me; JM=Joseph Markewicz, Camp Alisask, Sask., Canada SOL OAO; JA= Jim Alexander, New Hartford, N.Y.

COMMENTS: Had a fine 'eyeball QSO' with Jim Alexander who was visiting his grandparents in Fort Lauderdale for the Easter vacation (It was in the 80s, eat you heart out!), and he joined me and my wife for din-din. If you are going to be in the area, you're always welcome to pop in for a visit and a meal. If you give my non-DKING wife, Susan, little notice you may end up with pot luck. My phone is: AC 305 585-7415, PLEASE, no collect calls! Of course, while Jim was here, DX was nil, except for a tentative Havana, Cuba ICR-6 on ch.6. Well, 73s until next month and keep them 3 x 5 cards coming!!!!. SUPPORT YOUR CLUB/SUPPORT YOUR CLUB...I know there's more QSLers out there...

73s and gud DX

Ken
KENNETH R. SIMON
528 Pilgrim Road
West Palm Beach, Fla. 33405



PRE-BROADCAST INFORMATION
PITTSBURGH AREA STATIONS-
FOR ALL YOU MS'ERS LIKE ME

from CLARK GOLUBIC
5201 COLEWOOD DR.
PITTSBURGH, PENN. ☺
15236

I have to go along 100% with Ken Simon's suggestion that everybody submit information about pre-broadcast material on their local stations. (Most stations I receive via MS end up in the TV-CCI column.) So, without further ado, here's some info on Pittsburgh area stations, with some legos to help.

STATION	LOCATION	PRE-BROADCAST MATERIAL	APPROX. TIME EDT
KDKA-2	Pittsburgh PA	id slide	0545-0555
WTAE-4	"	id slide with distinctive logo	0640-0650
WDTV-5	Weston WV	unid cb to 0645, then unid RETMA	0635-0655
WJAC-6	Johnstown PA	tp w/id in ul to 0635 then unid cb	0630-0655
WTRF-7	Wheeling WV	tp w/id in ul to 0640 then id cb	0630-0650
WSTV-9	Steubenville OH	id RETMA to 0545 then id slide	0535-0555
WTIC-11	Pittsburgh PA	various tp's, all unid except stn tp with id in center (b&w tp)	0530-0555
WBOY-12	Clarksburg WV	id RETMA to 0650 then id slide	0630-0655
WOED-13	Pittsburgh PA	tp w/id in center & unusual logo	0835-0900
WQEX-16	"	tp w/large "16" in center--very strange educ. stn; airs tp often between programs and from about 1130-1300; b'cast day is from 0900-1500.....	0835-0900
WFMJ-21	Youngstown OH	id RETMA	0630-0655
WVUU-24	Morgantown WV	id retma to 0840, then voice ID, then unid cb.....	0830-0855
WKBN-27	Youngstown OH	id slide and unid cb	0630-0655
WYTV-33	Youngstown OH	color wheel tp w/id at top	0730-0755
WPGH-53	Pittsburgh PA	id cb then id slide	1315-1330

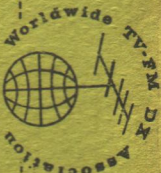
(All cb's mentioned are full cb except WDTV-5 and WPGH-53, which are 3/4)

KDKA-TV 2 13 WOED



SERVING THE
VHF-UHF DX
ENTHUSIAST

P. O. BOX 163
DEERFIELD, ILLINOIS 60015



The VHF-UHF DIGEST is the monthly publication of the Worldwide TV-FM DX Association. WTFDA is a nonprofit organization and a member club in the Association of North American Radio Clubs.

Dues: US and Canada: \$9 Mailed by first class mail.
Overseas: \$8 US funds, by printed matter rate.

VUD Back Issues Available:

(1973) May, June, July, August, September, October, November, Dec.
(1974) January, February, March, April, May
All back issues are 75¢ each, by book rate or first class mail.
SPECIAL!!! Any four back issues: \$2.50. You save 50¢ SAVE EVEN
MORE! Any ten back issues: \$5.00. You save \$2.50!

TM Atlas and Station Directory: \$2.50 3rd class, \$3 1st class.
Latest edition. Now bigger than ever!

Stationery: Features the official WTFDA emblem, printed in blue on bond. Ideal for all your correspondence. 45 sheets: \$1.

Log Sheets: This popular item is great for keeping your running log neat and organized. Purched for a 3 ring binder.
[NOW AVAILABLE AGAIN] Pad of 100: \$2.

VUD Boxes: Your copies of the VHF-UHF DIGEST will stay neat and organized in these attractive cases. A bargain at \$1.25 each! [Boxes are also ideal for storing other bulletins and magazines.]

Station Report Forms: For requesting QSL's from TV or FM stations. Now offset printed. 45 sheets: \$1.

UHF Translator DX guide: An absolute "must" for all TV-DXers. This up-to-date guide features a list of all US translator stations operating in the UHF band. The list includes call, location, power and originating station. An introduction to "DXing the Translators" is also featured. \$2. \$1.50 if order received before May 30, 1974

"BEYOND SHORTWAVE" . . . An Introduction to TV, FM and V-UHF radio. DX. 32 pages: \$1. 75¢ if order received before May 30, 1974.

All persons contributing their efforts for the Worldwide TV-FM DX Association, including editors, writers, artists, reporters and board members do so without any monetary compensation. Dues and all other revenue cover printing, postage and other expenses.

The WTFDA is governed by a five man board of directors. Board members are Dave Janowiak, Bruce Elving, Don Ruland, Gary Olson and Morrie Goldman. VUD Editor: Morrie S. Goldman; Publishers: Gary Olson & Morrie Goldman; Comptroller: Gary Olson; Bookkeeper: Bruce F. Elving; Sample and Supply Processing: David Janowiak.

THIRD CLASS