

VHF-UHF DIGEST



DEC. 1975



publishers' notes...

WTFDA HEADQUARTERS, P.O. BOX 163, DEERFIELD, IL 60015 USA

SUPER TROPO...one of the most productive openings in many months occurred from Nebraska to New York on November 4 and 5. A long east-west stationary front lying across Southern Canada set up a flow of moist but stable air from the Gulf of Mexico and formed a classic duct south of the front. A rare path opened up the morning of October 28 from Coastal New England to the Maritime Provinces, providing some heretofore unseen 500 mile catches for the lucky DXers. Details on both openings in the Eastern and Central TV DX columns.

PATIENCE, PATIENCE, PLEASE...WTFDA publication "Beyond Shortwave" is in the process of being reprinted at this time. All back-orders will be filled very shortly. Our apologies for any inconveniences.

DOUBLE TROUBLE...not really. If any member receives a double mailing on any VUD issue, he should keep it rather than returning same. However, Deerfield headquarters would appreciate being notified.

A NEW CHANNEL FOR PITTSBURGH...Richard and Esperanza Clark, formerly of Ft. Lauderdale, now residing in Pittsburgh, are the proud parents of a 7 lb., 4 oz. baby boy, born Oct. 6 at 5:10 a.m. EDT. Call letters unknown!

FM QSL FOLDS...due primarily to lack of support, Greg Kelley has resigned as editor of the FM QSL column. In addition, we are also without a TV-CCI AIDS column (see comments in John Combs' DX report, pp. 17 & 20). If you would like to edit either column, please contact Don Ruland.

DEADLINES...a note to all VUD column editors: Your finished columns must be mailed to arrive in Kenosha no later than the 20th of the month (i.e., January columns due by Dec. 20th). Unless otherwise indicated by column editors, members reports should arrive at respective editor by 10th.

FEATURE ARTICLES NEEDED...our supply of feature articles is depleting rapidly. Here is your chance to help the WTFDA and have a voice in the club by writing an article on any club-related topic--technical or non-technical oriented. One idea submitted by Statistics editor and feature writer Clark Ingram is to invite DXers (and not just prominent ones) to recount their most memorable DX catch or experience. Please refer to page 26 of the April 1974 VUD, or write to Don Ruland for instructions.

CONVENTION REPORT...a report and photos of the 1975 WTFDA convention appears on pp 5, 18, and 19. Hopefully, a site for 1976 will be announced next month.

WTFDA MAILBOX



John Zondlo
6617 Maryland
Hammond, IN 46323

Greetings. Here's this month's new members.....

David F. Gleason	Calle I, B-8	Torremolinos, Guaynabo, Puerto Rico 00657
Paul Herold	4029 Las Pasas Way	Sacramento, CA 95825
Nyles McKeithan	3115 Central Ave., Apt. B	Charlotte, NC 28205
Gregory S. Neumann	3021 S. Bellaire St.	Denver, CO 80222
Cyril P. Schauer	253 Montgomery	E. Dubuque, IL 61025
Michael D. Schoenfuss	P.O. Box 401	Abbotsford, WI 54405
Paul Wardell	2104 S.E. 28th Pl.	Portland, OR 97214
Gregory Zaker	8315 Idaho Dr.	Fort Wayne, IN 46805

Renewals: John Basehore, Paul Caltagrone, M. Dalton, R. Eddy, A. Harvey
 • R. Hawkins, • James G. Herkimer, Mark Lucas, Kurt A. Nelson, Joel J. Rosenberg, Cp. Michael W. Scheel, Randy D. Schnepf, R. Segalas,
 • R. Stein, Jim White, Dr. Richard E. Wood.

Static and other noise problems on medium wave persuaded DAVID F. GLEASON to try his hand at FM-TV DXing. WTFDA member Bill Grant also played a part in getting Dave to join the club.

Sacramento's PAUL HEROLD is a college instructor who's interested in SW and BCB DX. His gear includes a Collins R-388/URR, a McIntosh MR-78 FM tuner, a Finco FM-46 antenna, an Alliance rotor, and, of course, an FM Atlas.

NYLES MCKEITHAN is an 18 year old college student majoring in electronics (at UNC-Charlotte?-jz). Originally from Lumberton, NC, Nyles uses a Sanyo FM receiver and a Sanyo portable TV with an indoor antenna for DXing.

Along with WTFDA, GREGORY S. NEUMANN is a member of IRCA and NRC. Greg's DX shack features a Pioneer SX 828, Grundig Concertboy, Scott 388B, and a Hammerlund HQ108A. Greg comes in well equipped for the hobby- he's a sound technician.

17 year old CYRIL P. SCHAUER is a high school student whose DX interests include FM, TV, SW, and MW.

From the dairy state comes new member MICHAEL D. SCHOENFUSS. Mike's equipment is registered with the Communications Research Bureau (ID number KWI9AT). His equipment includes a 5 band G.E. receiver, a 4 channel VHF Hi-Lo scanner, and a pocket VHF-Hi/AM radio.

The Summit City's GREGORY ZAKER is a 27 year old engineer whose prime DX interest is TV. His gear is not too bad, either: a Heath GR-2000 TV, Finco F-89-C antenna, Winegard AC-913 preamp, and a 70 foot tower.

Tidbits.....

Frank Wheeler of Erie, PA, is looking forward to next DX season- he just put up a new Archer VU-160 VHF-UHF-FM antenna with an Archer Servo-Rotor. Translators will be his big target next year.

Speaking of new equipment, Detroit member Paul Gaines recently put up a 6 ft. parabolic dish with the help of fellow member Rod Luoma. Mark Lucas writes, "It should be of interest to note that in the next month (hopefully!) I will obtain Electra Bearcat's new fully synthesized 101 scanner. At that time I plan on writing a small article on this unit and its operation so others will have an idea on the newest phase of VHF monitoring. However, an unusual twist to its arrival on store's shelves is apparent now. It seems that the FBI allegedly bought the first 1,000 units and learning that anyone could "program" in FBI channels. So they asked the FCC to withdraw these and other units off the store shelves to have Bearcat modify these units so citizens are unable to receive the FBI frequencies. First time I have heard a federal agency asking another federal agency to help revoke a Bill of Rights giving us freedom of reception of spectrum allotted and financed by US! Who knows what will happen next?!"

WTFDA MAILBOX

Brock Whaley (3535 LaPaloma Ave., Sarasota, FL 33581) is interested in hearing from any club members who chase TA's at 2000 meters. Brock recently left WQSR-FM in Sarasota and is looking for a job outside the Tampa market.

That's about it for this go-round....drop a line this way if you have any news about yourself that you'd like to share with the other club members. Remember, also, to contribute to the many other columns in the VUD. That's the only way we can keep WTFDA going strong. See Y'all whenever.....jz

DÉLÉGATION AUX STATIONS D'OUTREMER
STATION DE SAINT-PIERRE ET MIQUELON



FRANCE REGIONS
FR3

ST. PIERRE ET MIQUELON IS FRANCE'S LAST OUTPOST IN NORTH AMERICA. IT IS LOCATED SOUTH OF THE BURIN PENINSULA OF NEWFOUNDLAND AND IS ONLY TWO HOURS AWAY BY BOAT FROM FORTUNE, Nfld.

IN SEPTEMBER MY WIFE AND I VISITED THE ISLAND OF ST. PIERRE AND I HAD A CHANCE TO SEE THE TV STATION THERE THANKS TO M. JEAN-PAUL GENDRON WHO WAS KIND ENOUGH TO TAKE ME ON A TOUR OF THE STATION FACILITIES. **ALL PROGRAMMING IS B&W AND ON 35MM FILM FLOWN IN FROM FRANCE, WITH THE EXCEPTION OF A LOCAL NEWS SHOW.

**HOURS OF OPERATION RUN FROM 6PM TO 11PM ATLANTIC TIME. TEST PATTERNS ARE RUN FOR ½ AN HOUR BEFORE SIGN ON.

**IF YOU VISIT THERE YOU'LL HAVE FUN FINDING THE STUDIO AS I HAD TO FIND IT BY CIRCLING AROUND AFTER I HAD VISUALLY LOCATED THE TOWER. IT WOULDN'T HURT TO SPEAK FRENCH...MY SPANISH WAS NO HELP.

**THEY ID "FR3" NOT ORTF AND USE THE FRENCH COLONIAL CHANNEL SYSTEM. I WAS TOLD THAT K'4 CAN BE RECEIVED ON AMERICAN SETS WITH SOME ADJUSTMENT MADE FOR THE AUDIO. BOTH FRENCH AND AMERICAN STANDARD SETS ARE IN USE ON THE ISLAND.

**WHILE THERE, I WAS ABLE TO SEE BOTH GRAND BANK STATIONS AND THE POWERFUL STATION AT MARYSTOWN. I'M TOLD THAT FR3 CAN BE SEEN IN FORTUNE AND SOMETIMES IN GRAND BANK.

****STATION LISTING

station	ch.	v/a	notes
ST. PIERRE	K'8	207.25/213.75	50 w. ant. 60 m AAT
CAP A' LAIGLE	K'8		50 w.
CAP A' LAIGLE	K'4	175.25/181.75	50 w.
MIQUELON	K'4		50 w.
MIQUELON	K'6	191.25/197.25	50 w.

****THEIR TELEPHONE NUMBER, SHOULD YOU DESIRE TO CALL THEM, IS 51 52 AND THEIR MAILING ADDRESS IS FR3/ILE DE ST. PIERRE ET MIQUELON. THEY WILL QSL FOR AN IRC TOO.

***WHILE I COULD NOT TAKE ANY PICTURES INSIDE I AM ENCLOSING A COPY OF THEIR LETTERHEAD WHICH CONTAINS THEIR LOGO.

73s & GUD DX
KEN SIMON

CONVENTION 1975

CONVENTION REPORT--AUG 1-3, 1975 WEST PALM BEACH, FLA.

From my point of view, the convention suffered from a few major defects: (a) poor attendance, especially by HQ staff; (b) not enough planned activities and (c) not enough root beer. The latter being the key item. Other than that...all went well. Even E skip cooperated with XEW ch 2 Mexico City and a tentative XHTV ch 4 Mexico City over semilocal WTVJ. This violates the DXers' prime rule, "Skip never shows when you're ready for it!" Even tropes to 170 miles showed with WBBH-20, WMFE-24, WEVU-26, WTVX-34, WSWB-35, WKLT-40 and WTOG-44.

Special thanks goes to Joe Gragg, Richard Barth, Don Erickson, John Combs and my wife, Susan...any everybody else who helped. I also want to thank the Downtown Holiday Inn of West Palm Beach for its cooperation and Bud's Glory Fried Chicken who did the cooking.

I'm sure I've left somebody out, but the roll call included:

Richard Barth, Tom Courtney, Ron LeBlanc, Bill Grant, Bill Thompson, Richard Clark, Jim Hagen, Ronald Fenton, Don Murray, Gary Bernstein, Mike Zall, John Fulford, E.R. Lyons, Joseph Smith Jr., Richard Hill, Don Erickson, Robert Babut, Joe Gragg, Bill Frahm, Ron Schatz, Ron Schiller, Lloyd Scott Jr., Bill Eckberg, Irving Woundy, Leonard Clements, Frank Aden and the speaker, Bob Grove.

Annual awards went to:

FARTHEST AWAY: FRANK ADEN JR., BEAD, ORE.

MOST SLEEP LOST: EVERYONE

MOST HAMBURGERS AT ONE SITTING: JOE GRAGG (6)

MOST COOKIES BOUGHT: DON ERICKSON

PROMISED TO JOIN AND PAY DUES MOST OFTEN: RON SCHATZ

Thanks for the prizes and literature department: WTVJ, WQSR-FM, WKCT, Eastman Kodak, FM Atlas, Inc., Cerro Cable, Motorola Semiconductors, ARRI, Popular Electronics, Belden Cable, A5 magazine, Weatherwise, VHF Communications, Heath, Radio Shack, local Lafayette dealer 'Slim' and 'Vern', Orlando Chamber of Commerce, Lion Country Safari, the Palm Beach Times and Post, NASA, Fair Radio, WJNO-FM, a host of Orlando AAs, FMs and TV stations and anybody else I forgot.

I want to thank Bill Frahm from Boise for bring his 'x' rated P-P-Porky cartoon as well as his clandestine FM 'C75' on 103.1 MHz.

Among the many activities were: tours of WPTV, WJNO-FM, NASA films on space communications setups, Lloyd Scott's fax machine that almost worked (his tty unit was too heavy to bring), BEER DRINKING, an air condition malfunction, a peek at the nearby 'secret' FBI transmitter antenna.

At the Sunday meeting attended by NO HQ PEOPLE, Don Erickson offered a way to cut 10 per cent off the postage bill by buying odd valued stamps at below face value and the suggestion of a master cassette library of DX knowledge was discussed. The mechanics would involve choosing titles and experts to record them, then taping a copy on a blank cassette submitted by a member.

If anyone wants the following material left over or too late for the convention I will send them out on a first come basis for an SASE with 20¢ on it (large size please.) (a) WPBT-2 coverage maps (b) 'Photographing Television Images' Eastman Kodak #AC-10 and (c) Motorola's application note AN-751 'A Disassociated Inter-carrier Television IF Amplifier'.

So, in conclusion...THE END till '76.

KEN SIMON
528 Pilgrim Rd.
West Palm Beach, Fla 33405

(Convention photos on pages 18-19)

FCC FM NEWS

Bruce F. Elving, Editor
Adolph MN 55701

Abbreviations used in this column (save for future referral)

* educational station; † stereo station; v vertical polarization (used in addition to h, the usual horizontal polarization); the use of v enhances considerably car FM radio reception but is an elusive commodity for WFDL reporters to detect); B or DA is a directional transmitting antenna; FM station frequencies are given in mhz (megahertz or "megacycles per second"); FM still stands for "frequency modulation," and our only concern is FM stations broadcasting between 87.75 and 108.0 mhz, both main carrier and SCA (subsidiary communications authorization; usually 67 kHz from the main station's frequency).

Program codes: c classical, e ethnic, g gospel, j jazz, k country, l or t Latin-American music and programming, m middle of the road (including so-called "easy-listening music"), n all news, p progressive rock, r rock oldies and top hits, s soul, t all talk.

Network codes: A ABC-FM, B National Black network, C CBS, E ABC Entertainment, I ABC Information, M Mutual, N NBC, NIS NBC's news and information network, P National Public Radio, S Associated Press Audio, U United Press Audio (the latter two refer to live interconnected audio newscasts, usually carried on the hour, rather than the stations' reading wire copy sent to the stations by such news services), Y ABC Contemporary, Z Mutual Black network. SCA symbols (following a + in the FM Atlas) A ABC networks, F farm news, M or MZ music or Muzak, N NBC news and information network, Q Physicians Radio network, S sports, T or TB talk or talking books for the blind, including instructional programs, X facsimile, slow-scan TV, etc. SCA's exclusively devoted to telemetry are omitted.

New Stations Granted

AZ Bullhead City 102.3 3000(h); -600' mk
AZ Kayenta K292AP 106.38 m (K08-FM 93.3 Albuquerque NM translator), 1 watt, 41°D.
AZ Prescott (all translators of Phoenix stations with 10 m., DA, 30 degrees):
K261AF 100.18 r (K08L-FM 94.5)
K267AH 103.18 r (K08C 98.7) [FCC gives calls as K276AA, but 1 Hist K276AA as in Hatter-Salida CD, unless K276AA is deleted.]
K288BA 105.5 s (KHEP-FM 101.5) U
K296AM 107.1 s & (KNIX 102.5) A
GA Eastman 92.1 1800 h,v; 380' 15 miles primary; 46 miles secondary. [miles
LA Crowley 102.9 100000 h,v; 368' 34, 89/
UT Boulder 107.1 K296AN s (K08-FM 94.1 Butte translator), 1 m., B; 150 degrees. F.
UT Gallatin (Big Sky area: 45-16-27 and 111-23-36 coordinates) K257AE 99.3 s m,

(K08-FM translator), l, 1 m., DA, 95 and 340 degrees azimuth, true North.

NV Hawthorne K240AD s g 95.9 (KNIS 94.7 Carson City NV) 10 m., DA, 60 degrees.

NJ Lawrence Township (40°15'53", 74°43'48") 89.7 10 watts.

NY Stony Brook 90.1 4000 h, 3520 v, 223 13 and 46 miles; granted over interference objections of WHP1 90.3 Westport CT and WBAU 90.3 Garden City NY. FCC said any interference would occur over Long Island Sound (water). WBAU share-timer WHP1 90.3 Garden City NY did not object, which makes me wonder if WHP1 is viable.

NC Wilkesboro 90.1 10 watts

UT Beaver K296AB 107.1 s m (KALL-FM 94.1 Salt Lake City) 10 m., D, 176 degrees, A.

UT Monticello K288AZ 105.5 s m (KSL-FM 100.3 Salt Lake City) 10w, D, 70 s 184°.

UT Richfield K292AQ 106.38 m (KLUB-FM 97.1 Salt Lake City) 10w, D 265 s 345°.

WA Olympia K285AE 104.9 s m (KIXT-FM 95.7 Seattle WA) 10w, DA, 240 and 305, C.

WY Cokeville K296AO 107.1 s & (KSDP-FM 104.3 Salt Lake City UT) 1 m., 220 s 314°

On the Air and DX Ready!

LA Springhill KTKC 92.7 3000 h,v; 175' m

MI Ironwood WIMI 99.7 50000 h,v; 560' s Hit Parade (mr). Also Hit Parade:

MN Sak Rapids WMMH 101.78 3000 h,v; 300' S. WY Philippi WQAB 91.3 10 watts.

On Air with Changes (Selected)
SC Laurens WLBG-FM 100.5 100000 h,v; 450' U.

Deletions

AZ Prescott KEZH 98.3 application back to pending file. [Angeles translator]

CA Barstow K232AB 94.3 (was a KQVE-Los Angeles KFMM 95.9 (presumed deleted)

Facilities Changes

AL Birmingham WDEZ 96.5 930' (50000 h,v)

AZ Phoenix KMCR 91.5 100000 h,v; 1640', 60', 107 miles (previous 180 watt FCC approval was only for auxiliary transmitter), SCA with TB.

CA Bishop K252AA 98.3 rebroadcasts KIIS-FM 102.7, which changed its calls from KIDJ(FM) [Los Angeles CA].

CA Chico KFMF 93.7 adds v

CA St. Helena KYYN from 101.7 to 99.3

CA Santa Rosa KVRE-FM from 99.3 to 101.7

CO Denver KIMN-FM 98.5 25000 h,v(520')
DC Washington WAMU 98.5 v; rc

KY Louisville WNNH 97.5 adds v, NIS

MD Bethesda WHTS 102.3, v, p.

MD Hagerstown WARK-FM 106.9 13500h, 11500v, 840' 33 and 75 miles.

MA Easton WSHL 99.3 adds v (10 watts)

MA Lynn WLYN-FM 101.7 3000(h)(180') 12 miles primary; 42 miles secondary.

MI Bay City WBBN 96.1 360' (97000 h,v)

MI East Lansing WFLK 99.1 28000 h,v; 600' coverage reduced to 32, 75 miles.

MI Grand Rapids WZZM-FM 95.7 50000 h,v; 380', 27 and 70 miles, Dolby equipped.

MS Canton WMLN 101.7 adds v.

NY Endicott WWRV from 105.5 to 105.7, 35000; 400' 28, 74, s, nr (now on the air with this increased power; DX 100')

NY Middletown WAAA-FM 92.7 adds v

NY Utica WTEB-FM 107.3 adds v

PA Palmyra WCFX 92.1 has v (dropping SCA)

SC Sumter WUDN 101.3 100000 h,v; 630' 41 miles primary coverage radius; 94 secondary, 2B, soul, may go s. [420']

TX Port Arthur KYYR-FM 93.3 100000h,v/ WA Houma K910-FM from 103.9 to 95.3.

WI Shawano WTCB-FM list again as 100.1; its move to 99.3 "contingent upon some reassignment action by the Commission. We have no control over the action."

SCA (67 kHz) news

DE Wilmington WJBR 99.5 inactive; delete SCA listing. FL Sarasota WQSR 102.5 "

" ; drops SCA. GA Macon WCRY-FM 107.9 talk. [-ting

IL Paris WACF 98.5 no SCA heard; drop lis/ IN Elkhart WVEZ 100.7 " " " "

IN Ft. Wayne WPTH 94.1 " " " "

IA Storm Lake KAYL-FM 101.5 music; no plans for s on main channel they say.

LA West Monroe KYEA 98.3 Muzak.

MD Ocean City WBOC-FM 104.7 Muzak (they program most of the time out of their Salisbury MD studio, but licensed to OC)

MI Muskegon WUOS-FM 106.9 no SCA heard; drop SCA listing.

MN Moorhead WMMH 98.7 F

NC Black Mountain WMTT 106.9 M

NC Rocky Mount WFLA 100.7 drops 41 kHz SCA with ABC in preparation for going s; retains 67 kHz Muzak.

SC Spartanburg WSPA-FM 98.9 no SCA heard; drop SCA listing.

UT Provo KBYU 98.9 TB.

WI Bargaboo WLVF 94.9 printed matter and telemetry; nothing audible on carrier; delete listing.

Manitoba, Winnipeg CBW-FM 98.3 "bird-chirping" telemetry.

Stations to have Stereo

AK Kodiak (new) 100.1

AZ Flagstaff KCTB 93.9 g

AR Pine Bluff KADL-FM 94.9 expects to be s by Christmas, 1975; claims to have v, but I wonder?

CA Modesto KITA 102.3, Spanish, L.

DE Bethany Beach WTRR 95.9 SCA used only for telemetry; delete SCA listing.

MT Battle Creek WFFF 95.3 kg

MT Clare WCRN-FM 95.3 m (from hr)

NE Gallup KQMG 93.7 m [both these are KGLP 94.5 k f automated

NY Liberty WUOS-FM 95.9

NC Rocky Mount WFLA 100.7 311 k (not km)

PA Lancaster WDAC 94.5 g

UT Ogden K9AB 101.1 [adding Dolby]

UT Stevens Point WSP1-FM 97.9 r (also/

Dual-City Identifications

IN New Castle WMDH 102.5 to add Muncie
Formats/Networks
 AL Athens WJOF 104.3 m (not mk) no \$ plans.
 AL Atmore WATM-FM 104.1 m " " " " " "
 AL Auburn-Opekila WFER 97.7 r (from kr)
 CA San Fernando KVMF 94.3 said to be with ABC, but which of ABC's four radio networks does KVMF actually carry?
 CA San Francisco KSFX 103.7 sr
 CA Santa Rosa KBFF *89.1 P [both p.
 DC Washington WGTB *90.1 and WMAL-FM 107.3
 FL W. Palm Beach WWRN 92.1 m (\$?)
 GA Athens WWSN 95.5 drops C; no network.
 GA Gainesville WFOF 97.1 U (from A; A is still on SCA apparently, however)
 GA Gainesville WVID 106.7 r, drops I and drops Dolby, \$.
 GA Jackson WJGA-FM 92.1 rs (from r)
 GA Marietta WBLE 101.5 M (from I)
 KY Richmond WCBR-FM 101.7 r (from k)
 IN Knox WKVI-FM 99.3 m [night]
 IN Lafayette WXUS 92.7 mc (one hour c per/)
 MD Catonsville WKTK 105.7 p (g Sundays)
 MA Worcester WICN *90.5 dropped by NPR (P)
 MI Battle Creek WKFR 103.3 r (Hit Parade)
 MI Kalamazoo WQLR drops A
 MN Cambridge KAEG 105.5 U
 MN Rochester KWWK 96.7 drops M [location]
 MN St. Cloud KCLD-FM 104.7 fm (100% AM dup)

MO Jefferson City KLMR *88.9 P
 MO Rolla KUMR *88.5 P (WWV on SCA) [AIR!
 NY Binghamton WSKG-FM *89.3 cj, P, \$ ON/
 NY Hudson WHUC-FM 93.5 I
 NY Utica WRUN-FM 104.3 r (still I2)
 NC Chapel Hill WUNC *91.5 no P [Dropped by
 NC Durham WAFR *90.5 no P [NPR?
 OH Bowling Green WBGU *88.1 no P " " ?
 OH Cleveland WBOE *90.3 no P " " ?
 SC Greenville WEPF *90.1 cr
 WUUU-FM 94.5 S
 SC Sumter WMPR *88.1 cr
 TN Johnson City WETS *89.5 \$, cj
 PA Philadelphia WIOQ 102.1 p
 PA Wilkes-Barre WBRE-FM 98.5 NIS; PA
 Pittsburgh WPEZ 94.5 Y
 TN Knoxville WZZK 97.5 S; Muzak, 67 SCA
 TX Commerce KETR *88.9 P
 VA Warrenton WEER-FM 107.7 ar
 VA Winchester WRFL 92.5 I (from Y)
 WA Opportunity KZUN-FM 96.1 r (from m)
 WV Beckley WVPB *91.7 P
 WV Fairmont WFGM 97.9 r; \$?
 WV Fort Gay WFGH *90.7 rg; \$?
 WI Hayward WRLS 92.1 \$, m, I
Call Letters Assigned or Changed
 AL Huntsville *89.3 WLRH
 AR Searcy 99.3 KSER (from KWCK-FM)
 CA Los Angeles 102.7 KIIS-FM (KKDJ)
 CA Santa Paula 96.7 KAAP-FM

CA South Lake Tahoe 100.1 KRLT
 CO Telluride *91.7 KOTO [lege
 IL Chicago *89.3 WKKC Kennedy-King Col-/
 KS Great Bend 104.3 KVGB-FM
 ME Westbrook 100.9 WRON
 MS Brookhaven 92.1 WMRQ
 MS Corinth 95.3 WADI (from WRTX)
 MS Fulton 101.7 WFTA
 NY New York 104.3 WNCN (WQIV) \$, c
 NY Babylon 102.3 WBAB*-FM* (from
 WBAB-FM; AM affiliate now has
 separate call letters); p.
 NC Warrenton *90.9 WMPF (100000 h,v; 320'
 32 and 89 miles)
 OK Tonkawa *90.5 KAYE
 OR Springfield-Eugene 93.1 KNSD (KORE-FM)
 m (from k), \$.
 SC Columbia *91.3 WLTR (when WLTR comes on
 will WUSC *89.9 finally delete?)
 TN Dayton 104.9 WNFH
 TX Atlanta 99.3 KLUK ("cluck?")
 TX Orange 106.1 KIOF ("K-106?")
 TX Sherman 96.7 KIKM-FM (was KSHN)
 VA Bristol 96.9 WFHG-FM (from WKYE-FM);
 apparent change in city of license from
 Bristol TN.
 WV Parkersburg 95.1 WXL
 WI Marinette 95.1 WLST

FM Industry News and Reports from Readers

The FCC has suspended the use of the terrain roughness factor in computing FM station coverage (see VUD, Sept. '75, p. 5), saying the method is not helping to calculate coverages, but they do want stations to use the new curves, which are slightly different from the chart, p. 95, FM Atlas. I am having one of the new charts enlarged so that one of my sliding scales from the old chart can be used, and then will repunch as many cards as necessary to show the new coverages. Miles will still be used for the next edition, at least, but scales of distances with kilometers will be featured.

FCC urges FM licensees to use caution in entering into contracts with music services, saying the musical suppliers cannot dictate non-musical programming of the licensee. Schulke and Bonneville have been especially hard on stations, limiting the amount of news programming they can carry, and they formerly forbade stations to use an SCA so their modulation could be 100% (instead of 85-90%). WMT-FM 96.5 Cedar Rapids, however, carries morning CBS news, while KLYF 100.3 Des Moines, both Schulke formatted, does not have NBC or any other non-Schulke-approved programming.

Soon the FCC is expected to act on expansion of the AM-FM program nonduplication rule to 25% for cities over 100,000 [one person told me "metropolitan areas" not just "cities of license" of this size or more]; 50% of the time in cities between 25,000 and 100,000. In MN this rule change would affect KNCV (applying for call letters KWEB-FM) 101.7 and KROC-FM 106.9 both Rochester, and both stations with 100% duplication, as well as KCLD-FM 104.7 St. Cloud. In WI, the rule would affect WAPL-FM 105.7 Appleton. Can you think of stations in your state that will be hit by this rule?

The National Association of Broadcasters asks FCC to require all/stations (presumably FM) to be carried on cable. I hope this would mean "all-band," forcing them to carry stations on their real frequencies, and not reaching out too far and selectively carrying some FM stations while rejecting others from the same cities. The National Cable "TV" Association objects. In Canada, cable outfits must formally apply for changing FM radio frequencies, adding new stations, etc., while the U. S. FCC seemingly does not care; neither do the zealous-in-other-regards citizens cable "TV" groups!

The Corporation for Public Broadcasting investigates WYEP *91.5 Pittsburgh PA. Station said to be very irresponsibly programmed, with obscenity, distorted news coverage, and programming "limited by the tunnel vision of youth." CPB may ask for return of support money given station if charges, uncovered by a Pittsburgh newspaper lady reporter, are found to be true. It is not known if WYEP carries programs like All Things Considered, or uses CPB only for money. Some CPB-qualified stations like KPFA*94.1 Berkeley CA I do not list as P because they do not carry CPB

programs. Another charge against WYEP is employee kickbacks, whereby employees were allegedly expected to return some of their salary to the station (*Variety*, Oct. 22, '75, p. 141).

An FM Atlas reader who works at WQLR ("clear") 106.5 Kalamazoo MI has glowing words of praise for FM car radio boosters. Stopping by in Duluth from a trip to the west coast, he noted FM reception most of the way, except for an area west of El Paso TX, shielded by a ridge from the El Paso stations, and too far to get Odessa and Fort Stockton stations, and one valley south of Richfield UT. Otherwise, his factory-installed General Motors car with an Antennacraft booster did wonders with its FM stereo radio, including getting KSL-FM 100.3 Salt Lake City at the SW corner of Utah, at the NV and AZ borders directly (no translators), with the signal following a valley leading direct to the KSL-FM transmitting site. He claims the booster adds 20 miles coverage to his own station, WQLR, and that it does not overload much around the local stations. My use of FM car radio boosters is confined to areas away from the local stations, but I find they are a real help, too, for Chrysler factory-installed FM car radios. Ford radios, like Marv Robbins and Morrie Goldman have, apparently don't need boosters. [trend!]

KFMK 97.9 Houston TX goes all gospel music in \$; dumps preaching programs—an inspiring/WSCM *90.7 Collegedale TN heard with talk, programming on SCA matching the station's NPR monitor; however, WSCM tells me they are experimenting with SCA and not yet decided on what use to put it to. WQSU *88.9 Selingsgrove PA on with 5588 watts horizontal only; 620' since Nov. 1, claiming coverage to "nearly 100 miles," which is exaggerated, because they only get out 24 miles primary and 62 miles secondary, p music. WSAE *89.3 Spring Arbor MI on 5:30 pm to Midnight.

CFRO"-FM" 102.7 Vancouver BC now on the air (3717 h & v; 647') with rock, ethnic, talk shows, apparently noncommercial. Not known if \$ or not. WWRN 92.1 W. Palm Beach expected on the air by now; antenna at Port of Palm Beach (should have been on by mid-November).

Domestic satellite broadcasting in the U. S. expected to greatly benefit public radio. Stereo pairs—four of them—would replace single monaural signal now provided by land lines for NPR hook-up. Quality of satellite audio signal said to be three times that of current land-lines signal.

Slogans: WJOI 93.7 Pittsburgh: "In the Renaissance City"; WPEZ 94.5 Pittsburgh: "Stereo Z." WBIZ-FM 100.7 "Z 100." Ugh! Audio pornography with four-letter words, uncensored goes out on WUHY-FM *90.9 Philadelphia's SCA, in addition to MN Public Radio's and WGGG Duluth's SCA. This is based on the theory that blind people have the right to the same material as sighted people. In Sweden, SCA is apparently being used for paging, with paging systems "linked with that country's telephone and FM radio networks to vastly extend the call range." The WI educational network FM stations' SCA now has the Wisconsin Radio Reading Service (WRRS) for the print handicapped on a part-time basis, reading daily from the morning and evening Milwaukee and Madison papers. Still carries music (rock, m, c, k) most of the day, as well as a sprinkling of instructional talk programs (Educational Telephone Network). K224AG Fort Chaffee AR on 92.7 apparently does some local originating, in English and Vietnamese, in addition to carrying KFPW(AM) Ft. Smith AR.

In answer to a question asked previously, WXXW 104.1 Allentown PA is on, but our reporter had to drive within 10 miles of Allentown to hear them, while the others were heard for 50 miles+. "Maybe they are directional so WIBF 103.9 Jenkintown PA doesn't have interference." [WXXW on 1-13-75 filed an application with the FCC for 50,000 h, v; 500'.]

Plattsburgh NY's "do it yourself FM authorization" is a cable station on 91.0; they plan to apply for a regular "open air" FM license on 90.9. Tom Cornell, Kokomo IN, notes WIAN *90.1 Indianapolis has an agreement to go 10000 h, v; 565' near the channel 6 tower. This will finally give central Indiana its badly needed educational FM and will make this station a much better target for DXers. Action expected soon on this application. WBST Muncie has application going back 5 years for 50000 watts on *90.7, but in the face of opposition from Indianapolis channel 6, it's reapplied for 3 kw on 92.1, a commercial channel. Tom then discusses the European radio system:

The European radio system is entirely foreign to ours. In virtually all countries it is a state-run monopoly, with program selection very limited. You'd probably find DXing over there somewhat different, less interesting, too. Britain may be one of the worst examples. On VHF, there are only about four different services. The BBC has three (Radio 1/2, 3 and 4), and there are local stations in many of the larger cities. Radio 1 is rock and pop. Radio 2 is easy listening/MOR. On FM these are combined. Radio 3 is classical and sports (how I hated those long, boring cricket matches. And I wasn't especially impressed with the program quality during the music). Radio 4 is talk. Only 1/2 and 3 are stereo. The AM band has all four services which are exactly the same as on FM. VHF stations are mostly low power (is 120,000 watts low power, Tom?) and obviously not intended for auto reception, but at least you can receive all four services in your home almost anywhere in the country. Things are somewhat more appealing in Germany. The country is broken up into different districts much like the old pre-1900 states, and each has its own network. Owing to the size of the country, you are likely to be able to receive more than one network. There are also local stations giving you up to around seven different programs, typically. FM is probably the dominant medium, too.

November 3, 1975 was the target date for both WXIL 95.1 Parkersburg WV and WMRT *88.3 Marietta OH. WXIL has several billboards in the area: "coming soon, music power WXIL 95.1, 24 hours a day." According to an unofficial comment from a WXIL employee: "We'll be top 40 and also serve the Lord." WFGH *90.7 Fort Gay WV has a fair signal most of the time at 140 miles. They have an irregular schedule between 5 p.m. and midnight; programming is mostly rock with taped gospel and educational features.

The new WSKG-FM *89.3 Binghamton NY is on the air 6 a. m. to midnight every day, P. WRUN-FM 104.3 Utica changed format Oct. 21 without any warning to rock; promoting selves as "KG-104" (except for the legal i.d. on the hour—most likely a call letter change is coming).

WDCS 97.9 Portland ME noted running all night Monday mornings with religious programs. As this is the silent period for WVCD Hazleton PA, DXers half way down the coast have a shot at Maine with this one. Maine is a little difficult in these parts (rough channels—too short for skip, too). Both WNWS 97.1 and WKTU 92.3 New York city have gone all night 7 days/week, eliminating their Monday morning silent periods.

WRSV 92.1 Rocky Mount NC, s, remains mono, no SCA, Z. WCPS-FM 104.3 Tarboro NC temporarily operating with 2500 watts for now until their new building is completed (old destroyed by fire), studios and transmitters now in a trailer behind the old building). When full power, WCPS-FM is only 6940 (h), 260'. Their temporary transmitter loaned to them by WIAM-FM Williamston NC. Format still k at night (mono); duplicates AM during the day; FM sign off is midnight. WVOT-FM/AM Wilson just sold and probably will separate programs when new owners take over. They separate on Sunday mornings now, for 2-3 hours of r music (mono); otherwise 98% AM duplication.

CJOM 88.7 Windsor, Ontario, has done a turn-around after years of progressive rock. They've gone MOR automated. Their automation sounds bad, with occasional mis-cued tapes. "I wonder what the CRTC will say, vis-a-vis the new FM policy which shuns that type of programming. I, for one, would not cry if they lost their license, and left the air for better DX." (CJOM is my only non-verifier from Canada; I wonder if they finally have somebody there who answers mail—B. E.)

The CRTC's new FM radio regulations have apparent holes and flaws, "but what is really frightening is the ability of the CRTC to set higher quotas upon an individual licensee as part of his licensee requirements. This 'ability' of the CRTC is in the policy category, and very hard to appeal via the CRTC as a tribunal, or a court of higher jurisdiction. It is all very Orwellian and 1984-ish. The Commission says 'don't worry, we'll be fair'—but a judge can't take that as evidence in a hearing where the CRTC and a broadcaster are adversaries."

MORE FCC-FM news, held over from previous months:

ON AIR AND DX READY! DE Hockessin WZZE *88.7 10 watts; KS Salina KYES 93.75, m, 100000 h,v; 510'; MO Caruthersville KCRV-FM 103.1 3000 h,v; 195'; NC Mars Hill WVMH-FM *90.5 10; VT Stowe WMTF *91.5 (Calls, too), 10 watts. ON AIR WITH CHANGES: FL Miami WMCU *89.7 100000 h,v; 840', \$, Mutual. Network: VA Arlington WAVA-FM U. VERTICAL POLARIZATION: NY Buffalo WDCX 99.5, \$; OH Paris *90.1 WNCN; WV Fort Gay *90.7 WFGH.

A very strong Mexican readable in Los Angeles on 92.5, despite KFAC-FM 92.3 locally. XHRM Tijuana apparently has increased to a 1,000 foot antenna.

Little KTLX*91.9 Columbus NE (10 w) is on only 9 hours per week, mainly with Christian programs for shut-ins. It is on Sundays and on Wednesday nights from Trinity Lutheran Church. Anybody who wants to look up the April 24, 1975 Wall St. Journal can find all about WVCA 104.9 Gloucester MA, "The Classical Music Abounds on WVCA, If Owner Is in Town. . . If Not, one-man FM station In Massachusetts Closes; 2 Challengers seek License."

KSND 93.1 Springfield-Eugene OR often id's as "KSND FM stereo 93" or "Kay Sound," m. K249AA 97.7 Seaside OR, reported to be off the air, has an application to change its antenna.

CONTRIBUTORS THIS ISSUE: Frank Aden, Jr., Bend OR; Bill Coleman, Jr., Rocky Mount NC; Tom Cornell, Kokomo IN; William D. Dickerman, Williamsport PA; Mike Dornier, Jr., 1900 E. Mark Avenue, Gallup NM 87301 (new address); Jim Duncan, Kalamazoo MI; Robert Eddy, Newport OH; John E. Ebeling, Bloomington MN; Joseph Fela, South Plainfield NJ; Paul L. Gaines, Detroit MI; Glenn Hauser, 8 WILL-FM Urbana IL 61801; Mark Lewis, London, Ontario; Nick Lombardi, Atlanta GA; Eric Norberg, Los Angeles CA; Allen Rockford, Syracuse NY; Ken Simon, West Palm Beach FL; Andy Smith, Hyattsville MD; Joseph Smith, Jr., Johnson City NY; Steven Sprachman, Plattsburgh NY; John Tooley, Milton DE; Steve West, Havertown PA; Brock Whaley, Sarasota FL.

The new WMMH 101.7 Sauk Rapids MN (a suburb of St. Cloud) is completely automated, but they rotate the tapes with the weather forecast and the readings hourly. Format is Hit Parade, \$. Until next month, 73, *Don*

EASTERN TVDX

Bill Thompson
1907 Seneca Street
Buffalo, NY 14210

December 1975

Deadline: 10th

Some really super fall tropo openings finally developed after mid-October. Many great long-haul loggings have been reported; the period from 10-25 to 11-5 was especially good in wide areas of the Northeast. On 10-27, Bob Seybold saw low-power KYNE-26 Omaha NE, and on the following morning (10-28) caught WAPT-16 Jackson MS. Also on 10-28, Massachusetts DXers Roy Barstow and Bill Grant saw an enormous morning opening to the Maritime provinces, with Bill logging CBCT-13 Charlottetown PEI. Both DXers also saw a number of low-power satellites from Nova Scotia. DXers in western New York noted strong ducting to western Iowa and Wisconsin during the evening of 11-4 and the early hours of 11-5. Additionally, Bob Seybold saw UHF from South Dakota and Nebraska that night; details will appear in a later report.

Bill Coleman, Jr. 114 Circle Drive Rocky Mount, North Carolina 27801
"My first report. Use a Zenith model X1620 (B/W), & model D2905 (color) and a Weltron Super Tar Heel Special THS-2A 20 ft. high. Amateur call is WN4AGN, DXer since 1958 on BCE, SW, just started on TV. Age 31. Correspondence & phone calls most welcome prepaid at (919) 443-3116. Best time 0000-0300 daily. Always appreciate hot tips."

October (All times EDT)

24 Tr 0030 WDCA-20 Washington DC	24 Tr 0150 WTOP-9 Washington DC
0045 WTTG-5 Washington DC	"after WNCT s/off"
"on top of WRAL & clear"	0158 WXII-12 Winston Salem NC
0046 WMAL-7 Washington DC	0200 WBAL-11 Baltimore MD
"on top of WTTN & clear"	0210 WGHP-8 High Point NC
0103 WBFF-45 Baltimore MD	0228 WJZ-13 Baltimore MD
WRDU-28 Raleigh-Durham NC	0235 WAVY-10 Portsmouth VA
0105 WLVA-13 Lynchburg VA	0240 WTTG-5 Washington DC
0143 WXXB-8 Richmond VA	"s/off"

Ken Simon 528 Pilgrim Road West Palm Beach, Florida 33405 (EDT/EST)

September

24 Tr 0650 WBBH-20, WEVU-26, WTVX-34, 1 Tr 0715 WTVX-34, WTOG-44 FL
WTOG-44 FL
2145 WBBH-20, WTVX-34 FL
0655 W69AA-69 Hollywood FL
27 0930 WTVX-34, WTOG-44 FL
30 0640 WBBH-20, WTVX-34 FL
"all above w/rotor jammed S."
2300 WBBH-20, WEVU-26, WTVX-34, 4 0800 WBBH-20, WEVU-26, WTVX-34,
WTOG-44 FL
"new rotor in place"
15 0415 WLCY-10 Largo FL
25 1305 WFTV-9 Orlando FL
26 0745 WSWB-35 Orlando FL
1000 WKAQ-2 San Juan PR

October

1 Tr 0635 WBBH-20, WEVU-26, W69AA-69 Es 1000 WKAQ-2 San Juan PR T

"Not exactly what you'd call a winner...73s"

Jim Alexander Box 2 - Bosch Hall Canisius College Buffalo, NY 14208 (EST)

November

4 Tr 1600 WKYC-3 Cleveland OH (170)	4 Tr 2000 WHA-21 Madison WI (515)
"WEWS-5 QRMing CBCT-5"	WEKE-38 Green Bay WI (475)
1800 "upon tune in (returning from supper):"	2030 WKON-20, WKBD-50 Detroit
WUHQ-41 Battle Creek (310)	WTVS-56 Detroit MI (215)
WYTI-25 Saginaw MI (255)	WGPR-62 Detroit MI (215)
both above "like locals"	2100 KHIN-36 Red Oak IA (865)
KRIN-32 Waterloo IA (685)	2400 WNDU-16 South Bend IN (410)
WYVC-35 Grand Rapids (340)	WSBT-22 South Bend IN (410)
"over WSEE"	0010 WJIM-6 Lansing MI (285)
1900 WCRB-23 Freeport IL (540)	WEWS-5 Cleveland OH (170)
1930 WKOW-27 Madison WI (515)	0050 WNEK-5 Bay City MI (255)
WKAR-23 E Lansing MI (280)	0125 WJRT-12 Flint MI (230)
"overloading the receiver;	0130 WITI-6 Milwaukee WI (470)
KRIN-32 snowfree"	0155 WISN-12 Milwaukee WI (470)
	CBCT-9 Windsor Ont (215)
	WILX-10 Jackson MI (280)

Jim is now using an Archer V-75 and 8-bay UHF antenna rotated by a CDE AR40 atop his dorm roof, 75-80 feet above ground. He also noted the new CKC03-42 testing on the afternoon of 11-5, and regrets not being able to list all his loggings for the past month or so due to a busy schedule.

Paul D. Traska 64 Weaver Avenue Buffalo, New York 14206 (EDT/EST)		27 Tr 2155 WFLD-32 Chicago IL		R	
October		WSNS-44 Chicago IL		R	
13 Tr	0120 WTOL-11 Toledo OH	R	2156	"too many logs to list;	
	0121 WIIC-11 Pittsburgh PA	R		good signals on 15, 16, 20, 21,	
	0122 WKRC-12 Cincinnati OH	R		22 (two stations), 23, 29(thru	
15	0015 WNEP-16 Watertown NY	R		local WUTV); 30, 33, 34, 41"	
	WNPT-18 Norwood NY	R		2210 WIEP-49 Muncie IN	R
	2221 WOED-13 Pittsburgh PA	R		2355 WIII-38 Terre Haute IN	R
16	2255 WKBS-48 Philadelphia PA	R		0010 WICS-20 Springfield IL	R
17	0015 WSKG-46 Binghamton NY	R	28	0015 WICD-15 Champaign IL	R
	unID-56 "WSKG-46 xltr"			WANE-15 Ft Wayne IN	R
18	1840 CICO-24 Ottawa Ont	N		0020 WEEK-25 Peoria IL	R
19	0120 CKCO-2 Warton Ont	R		WMBD-31 Peoria IL	R
MS	0401 KTEW-2 Tulsa OK	N		0050 W49AA-49 Springfield IL	N
20	0328 WCBS-2 New York NY	R		0130 WILX-32 Louisville KY	R
	0544 WSB-2 Atlanta GA	R		0131 WSPD-13 Toledo OH	R
	0557 WKTU-2 Utica NY	R		0135 WWJ-4 Detroit MI	R
	0600 WLWC-4 Columbus OH	R		WILX-10 Jackson MI	R
GW	2000 W46AB-46 Brocton "did not			0140 WJRT-12 Flint MI	R
	have WNEP-17's program; a slide			0220 CBOT-4 Ottawa Ont	R
	was seen: "ABC/81, Appalachian			0555 WLWC-4 Columbus OH	R
	Broadcasting Corporation" (ATS		29 MS	1945 WKBS-48 Philadelphia PA	R
	Satellite relay on W46AB? -bt)		30 Tr	1945 W26AA-26 Jamestown NY	R
22 MS	0540 WLWD-2 Dayton OH	R	GW	1945 W46AB-46 Brocton NY	R
Tr	1700 WKBS-48 Philadelphia PA	R		"both with color bars; WNEP-17	
	1730 WGTU-30 Toledo OH	R		with programming"	
	WBGU-57 Lima OH	R		31 Tr 1930 CICO-24 Ottawa Ont	R
	1757 WUHQ-41 Battle Creek MI	R		November	
24	0001 WNEP-16 Watertown NY	R		2 Tr 0240 GHNB-4 North Bay Ont	R
	WNPT-18 Norwood NY	R		CKSO-5 Sudbury Ont	R
MS	0540 WSB-2 Atlanta GA	R		1700 WUHQ-41 Battle Creek MI	R
25 Tr	0001 WJAN-17, WHIZ-18 OH	R	4	1730 WKAR-23 E Lansing MI	R
	0315 WSPD-13 Toledo OH	R		WEYI-25 Saginaw MI	R
	1626 WPEO-42 Portsmouth OH	R		1755 KRIN-32 Waterloo IA	R
	WKYT-27 Lexington KY	R		1800 WKOW-27 Madison WI	R
	1645 WKMR-38 Morehead KY	R		1805 KHIN-36 Red Oak IA	R
	WOSU-34 Columbus OH	R		1808 WFLD-32 Chicago IL	R
	1700 WLKY-32 Louisville KY	R		1820 WGVG-35 Grand Rapids MI	R
	1727 WPAW-15 Parkersburg WV	R		"wiping out WSEE"	
	1820 CICO-24 Ottawa Ont	R		1830 WSNS-44 Chicago IL	R
	1824 WPGH-53 Pittsburgh PA	R		1840 WMA-21 Madison WI	N
	1920 W41AA-41 Wheeling WV	R		1842 WMTV-15 Madison WI	R
	1945 WQEX-16 Pittsburgh PA	R		2100 WUCM-19 Bay City MI	R
	2200 WKMR-38 Morehead KY	R		2155 WPEB-38 Green Bay WI	R
26	2015 W64AB-64 Susquehanna PA	R		2300 CBET-9 Windsor Ont	R
	2106 WCDC-19 Adams MA	R		WOTV-8 Grand Rapids MI	R
	2215 WKBS-48 Philadelphia PA	R		WJRT-12 Flint MI	R
	WNJT-52 Trenton NJ	R		WNEM-5 Bay City MI	R
27	0820 WOSU-34 Columbus OH	R		WILX-10 Jackson MI	R
	W41AA-41 Wheeling WV	R		2305 WCMU-14 Mt Pleasant MI	R
	WLKY-32 Louisville KY	R		2345 WMAV-36 Milwaukee WI	N
	WUHQ-41 Battle Creek MI	R		"South Bend & Ft Wayne &	
	WJAC-6 Johnstown PA	R		many other signals"	
to	WAKR-23 E Lansing MI	R		0001 WTVV-18 Milwaukee WI	R
	WPGH-53 Pittsburgh PA	R	5	0002 WTVV-17 Rockford IL	R
	WKON-52 Owenton KY	R		0040 WJIM-6 Lansing MI	R
	WABO-49 Akron OH	R		0157 WIEP-6 Milwaukee WI	R
	WCET-48 Cincinnati OH	R		0222 KWWL-7 Waterloo IA	R
	0915 WPEO-42 Portsmouth OH	R		0223 unID-6 northwest	
	0945 WMBD-31 Peoria IL	R		0229 WISN-12 Milwaukee WI	R
	1015 WICD-15 Champaign IL	N		1657 CKCO-542 Oll Springs Ont	N
	1020 Ft Wayne U's 15, 21, 33			1658 CKGN-1-22 Cottam Ont	R
	1030 WICS-20 Springfield IL	R		0206 WTRF-7 Wheeling WV	R
	WEEK-25 Peoria IL	N	6	0215 CBOT-4 Ottawa Ont	R
	1058 WCAE-50 St John IN	N		MS 0228 WFBY-2 Greensboro NC	N
	1127 WFLD-32 Chicago IL	R		Tr 0657 WQED-13 Pittsburgh PA	R
	WSNS-44 Chicago IL	R		0900 WJAC-6 Johnstown PA	R
	2115 WFTY-20 Indianapolis IN	R		WTAJ-10 Altoona PA	R
	WMBD-40 Indianapolis IN	R			

Paul D. Traska (continued)November

6 Tr 1900 WIIC-11 Pittsburgh PA R 9 Tr 1600 WKAR-23 E Lansing MI R
 7 0030 WHPB-16 Watertown NY R 11 2045 WKAR-23 E Lansing MI R
 0115 WPHL-17 Philadelphia PA R WETI-25 Saginaw MI R
 WTAP-29 Philadelphia PA R Present log totals: 354
 WKBS-48 Philadelphia PA R

"November 4th was a big, superb tropo opening & came as a surprise. Both UHF & VHF were super. KRIN-32 was so strong that WFID-32 was just barely in. KHIN-36 & WWT-36 were similar. It was a great night. I'm looking forward to the MS months to come. My Sharp TV is finally fixed after two months; fine tuner (UHF) just as good as before. MERRY CHRISTMAS & HAPPY NEW YEAR to ALL..."

Bob Seybold Bennett Road Dunkirk, New YorkSeptember

10 Tr "evening—as mentioned in last report—big opening: WERA-15 WLYH-15 WKBS-48 WPHL-17 WDAU-22 WAPB-22 WHPB-31 WKRP-22 WBSB-22 WKPI-22 WMOU-33 W41AA-41 WTAP-15 WKMR-38 WUVC-44 WKPT-19 WTVK-26 WENB-30 WCDC-19 WSHK-38 WICD-15 WMHD-31 Chicago U's and many translators."

September 11 to October 3: "Not too much in this period. Some openings with Chicago U's in, also Indiana, Ohio, Michigan, Pennsylvania U's on occasions—no real super openings."

October

4 - 5 Tr "good opening—Indiana U's, also KINI-30 St Louis MO; WMHD-31 WICS-20 WKYT-27 WOET-16 WKRP-22 KTSB-27 Topeka KS; WLEX-18 WICD-15 WPHB-14 (rare) & others"

27 Tr "good opening: CICO-24 Ottawa Ont (satellite of CICA-19); WOET-16 WKRP-22 WOSU-34 WRAO-49 Akron OH; WGPB-62 WCET-48 WLEX-19 WANE-15 WLFI-18 KINI-30 WKYT-27 WMOU-33 WBGU-57 WTVS-56 WKHD-50 WKON-20 WGTB-30 WIDH-24 WICD-15 KYNE-26 Omaha NE (850 mi); WTVU-17 WBSB-22 WNDU-16 WUCM-19 WICS-20 WPTA-21 WCBE-23 WRAU-19 WBYI-29 WMHD-31 WCIU-26 WFID-32 WANE-15 WKJG-33 WNIT-34 WHUQ-41 WSNB-44 WKON-52 WTAP-15 WENY-36 WICZ-40 WDAU-22 WWPB-31 WQEX-16 WPGH-53 WTVT-53 WBRB-28 & others."

28 "—another good opening: WAPT-16 Jackson MS (1000 mi); WTVK-26 WKPT-19 WAAY-31 Huntsville AL; WPBO-42 W44AA-44 Martinsburg WV (translator of WVU-24) WUVC-44 WCET-48 WLEX-46 WTVQ-62 (snowfree); WKGB-53 WCVN-54 WLKY-32 WKPC-15 WOET-16 WQEX-16 WNDU-16 WLIX-19 WOUB-20 WPTA-21 WLEX-18 WKRP-22 WKPI-22 WKYT-23 WBYI-25 WKYT-27 WSJV-28 WGSF-31 WKJG-33 WOSU-34 WLIO-35 WKMR-38 WRAO-49 WKMJ-68 WKYH-57 WHIZ-18 & others."

"Log at 680." Bob has mentioned that the high-power translators in his area, W26AA Jamestown and W46AB Brocton, have been off the air on many occasions, allowing some good loggings on their channels. He also reports a couple of unidentified mysteries from earlier loggings. According to an Iowa WTFDAer, Bob's ch 46 ETV loggings on July 6 (August VUD, p. 15) and August 8 (September VUD, p. 16) cannot be an ETV station from Ft Dodge, IA. Also, the unidentified PBS station in his August VUD report seen thru WBGU-57 seemed to peak in the same direction as WBGU. This station was not WGBY-57, or WCVW-57. Can anyone offer suggestions as to the identity of these loggings? If you can, Bob would be glad to hear from you.

Steven Sprachman Macomb Hall Box 319A Plattsburgh, NY 12901 518/564-2573

"Note my new address. I'll be there till at least December. Now then; TV DXing in the S.U.N.Y. at Plattsburgh: it's bad (so far of what I've seen). The college has its own cable (MATV) that connects to the TVs in the lounges...only stations here are WEFZ-22 (ABC), WCAX-3 (CBS), WPTZ-5 (NBC), and WSTK-33 (PBS)...local cable company gets CBFT-2, CBMT-6, CFTM-10, CFCF-12, CHLT-7, WMTW-8, WPIX-11 (via microwave -bt) and locals 3, 5, 22, 33. I don't have a TV set yet. I'm hoping to get one at Thanksgiving. I have had a chance to "play" with a friend's set. Only stations I could get were CBFT-2 Montreal locals WCAX-3 Burlington & WPTZ-5 Plattsburgh. CHLT-7 Sherbrooke, WMTW-8 Poland Springs. Oddly enough, with FM I can hardly get Montreal, but I get Sherbrooke's CHLT-FM almost perfectly. WCFB-57 Plattsburgh say they will be on in the spring. Don't bet on it. Well, that's it for now. I knew I should have gone to S.U.N.Y.-Fredonia." (But there's so much DX down there, you'd never have any time to study, hi! Anyway, best of luck with DXing and academic pursuits at Plattsburgh; tnx for the TV asked -bt)

Bill Thompson 1907 Seneca Street Buffalo, New York 14210 (EDT/EST)

October		27 Tr	1830	CKSO-5 Sudbury Ont (240)
12 MS	0206	KOTV-2 St Joseph MO (850)		(video under CBLT Toronto)
	0240	WLWC-4 Columbus OH (290)	1945	WHMB-40 Indianapolis (420)
14 Tr	2155	Detroit U's weak-fair		WIPB-49 Muncie IN (375)
		hvy CCI on WUTV-29		WUCM-19 Bay City MI (255)
		Toledo U's weak-fair		WKAR-23 E Lansing MI (280)
		WBGU-57 Lima OH (300)		WEYI-25 Saginaw MI (255)
18	2100	CICO-24 Ottawa Ont (230)		WUHQ-41 Battle Creek (310)
22	2000	Toledo U's vy strong		Detroit U's fair-good
		WBGU-57 Lima OH (300)	1950	Toledo U's good
	2130	W. PA stns excellent		WEYI-20 Indianapolis IN T
		WWTW-9 Cadillac MI T	2156	All Detroit U's now in
		hvy CCI on WUTV-29		like locals; CKGN29-29 audio &
	2145	Detroit U's vy strong		video excellent thru local
23	2300	Detroit 50 & 56 weak-fair	28	2330 Ft Wayne U's (345)
24	0000	CJOH-13 Ottawa Ont T	0003	WJIM-6 Lansing MI (280)
		CFCF-12 Montreal (290)	0010	unIDs 15, 25, 30, 31 S.W.
	0052	CKGN29-29 Oil Springs Ont		WAND-17 Decatur IL (555)
	0145	WTAJ-10 PA; 0202 WTRF-7 WV		WLFI-18 Lafayette IN (440)
25	1600	WOSU-34 Columbus OH (290)	0024	WICS-20 Springfield (585)
	1619	WPBO-42 Portsmouth (350)	0030	W49AA-49 Springfield (585)
	1622	WKYT-27 Lexington KY (475)	0033	WLIO-35 Lima OH (300)
	1722	WSTV-9 Steubenville (195)	0035	WNDU-16 S Bend IN (410)
		Pittsburgh area strong	0140	WLVI-13 Indianapolis T
		WBNS-10 Columbus OH (290)	0151	WILX-10 Jackson MI (280)
	1743	WKMR-38 Morehead KY (400)	0200	WRTV-6 Indianapolis (420)
	1815	CICO-24 Ottawa Ont (230)	0222	WXYZ-7 Detroit MI (220)
		WNPE-16 Watertown NY (165)	1050	WKMR-38 Morehead KY (400)
		Syracuse area vy strong		WMUL-33 Huntington (395)
	1910	WPGH-53 Pittsburgh super		WOSU-34 Columbus OH (290)
	1917	W41AA-41 Wheeling WV (220)	29	1820 WUOC-44 Cambridge OH (240)
		WMUL-33 Huntington (395)	31	0823 W41AA-41 Wheeling WV (220)
26	1850	Scranton U's way up	November	
	1945	WUOC-44 Cambridge OH (240)	2 MS	0300 WLWC-4 Columbus OH (290)
	2000	WMUL-33 Huntington (395)	3 Au	0200 unID 2-6 weak
	2011	WOUB-20 Athens OH (260)	4 Tr	2213 tune-in, right in middle
	2045	WCDC-19 Adams MA (300)		of fantastic opening to Iowa!
		Syracuse, Utica areas up	2217	KRIN-32 Waterloo IA (685)
	2345	WOWK-13 Huntington (395)		WUHQ-41 Battle Creek (310)
		WBNS-10 Columbus OH (290)		WUCM-19 Bay City MI (255)
27	0815	WOSU-34 Columbus OH (290)	2230	CBET-9 Windsor like a local
		CICO-24 Ottawa Ont (230)		KCRG-9 IA T (Ø CCI CBET)
		WXIX-19 Cincinnati (390)		WGVC-35 Grand Rapids (340)
	0822	unID-41 3/4 CB S.W.		KRIN-36 Red Oak IA (865)
	0827	WKYT-27 Lexington KY (475)		w/hvy Ø & lite 10 CCI S.W.
	0830	WUOC-44 Cambridge OH (240)		WEYI-25 Saginaw MI (255)
	0841	WKZT-23 Elizabethtown KY T	2300	WKOW-27 Madison WI (515)
	0848	WLKY-32 Louisville (480)		WCMU-14 Mt Pleasant T
		WKON-52 Owenton KY (425)		WHA-21 Madison WI (515)
		WCET-48 Cincinnati (390)		WISN-12 Milwaukee WI (470)
		WKCF-22 Dayton OH (345)	2307	WMTV-15 Madison WI (515)
	0953	WKRC-12 Cincinnati (390)	2310	KSIN-27 Sioux City (880)
	0957	WUHQ-41 Battle Creek (310)		video over WKOW; Ø CCI
		Detroit 50 & 56 weak-fair		Syracuse, Scranton, Utica
	1000	WEYI-25 Saginaw MI (255)		areas way up
		WICS-20 Springfield IL T	2320	WPNE-38 Green Bay WI (475)
		Pittsburgh area vy strong	2324	WAOW-9 Wausau WI (545)
	1010	WICD-15 Champaign IL (510)	2330	WJIM-6 Lansing MI (285)
		(peaked snowfree by 1030)		unID-10 Ø CCI CFPL to W.
		WKAR-23 E Lansing MI (280)		WNEM-5 Bay City MI (255)
		WCAB-50 St John IN T		WMTV-36 Milwaukee WI (470)
	1025	Toledo U's vy strong	5	0000 WWTW-18 Milwaukee WI (470)
		Ft Wayne 21, 33 fair;		WTVO-17 Rockford IL (515)
		WICD-15 buried WANE-15		WSBT-22 South Bend (410)
	1046	WECK-25 Peoria IL (570)	0025	WILX-10 Jackson MI (280)
	1141	WXXW-20 Chicago IL T		WSPD-13 Toledo OH (230)
		WBNS-44 Chicago IL (470)		WNDU-16 South Bend (410)

Bill Thompson (continued)November

5 Tr 0038 WTOL-11 Toledo OH (230)
 0056 WOTV-8 Grand Rapids (340)
 0104 WITI-6 Milwaukee WI (470)
 0134 WZZM-13 Grand Rapids (340)
 0137 WJRT-12 Flint MI (230)
 0202 KCRG-9 Cedar Rapids (670)
 0218 KWWL-7 Waterloo IA (685)
 0616 WYII-25 Saginaw MI (255)
 0618 WUHQ-41 Battle Creek (310)
 1325 Toledo U's & V's strong
 WENS-10 Columbus OH (290)

5 Tr 1325 Detroit U's, CKGN1-22 Ont
 1653 CKCO3-42 Oil Springs (165)
 Testing 3/4 CB; into reg-
 ular programming by 1700
 9 Es 2202 tune in; MUF well into FM
 2230 unID-3 south; CBS
 2240 WEAR-3 Pensacola FL T
 2245 WEDU-3 Tampa (silent films)
 2246 KATC-3 Lafayette LA T
 2258 WDIQ-2 Dozier AL T
 2314 WLBT-3 Jackson MS

(Mississippi radar wx map)

Tropo conditions really started to amount to something after mid-October here. October 27 & 28 were super--the real shocker for me being W49AA Springfield IL, which made it in with WICS-20 only VAFI 4544. The high-light of the entire period was the unforgettable opening on November 4, which I nearly missed out on altogether. In terms of signal strength and distance, it was the best I've ever seen. Highband VHF was a total chaos, and stations such as KRIN-32, WUHQ-41, WKOW-27 stayed snowfree, or near that point, for hours. KHIN-36 from western IA was also quite strong, but WMTV-36 soon took over. KSIN-27 audio never made it over WKOW-27, but bits of IDable video did. Can't understand why WKOW and KSIN have been assigned the same offsets! Out-of-season skip on November 9 was nice.

• Merrill Bancroft 169 South Row Road Townsend, Massachusetts 01469 (EDT)

July
 22 Es 0700 WMT-2 Cedar Rapids IA
 WBAY-2 Green Bay WI

23 Es 2300 WSB-2 Atlanta GA
 2330 WRCP-3 Chattanooga TN
 24 2100 WNGE-2 Nashville TN
 WTTW-2 Terre Haute IN

August

1 Es 1740 WBAY-2 Green Bay WI
 1815 KDAL-3 Duluth MN
 1830 KMTV-3 Omaha NE
 9 1830 WISC-3 Madison WI
 23 2100 KTVI-2 St Louis MO
 2130 WSIL-3 Harrisburg IL
 2200 WPMY-2 Greensboro NC
 2230 KETS-2 Little Rock AR
 WGBI-4 Columbus MS

October

23 Tr 2000 WXTV-41 Patterson NJ
 WLIW-21 Garden City NY
 WTPA-27 Harrisburg PA
 WCTB-71 Bridgeport CT
 to KYW-3 Philadelphia PA
 WNJS-23 Camden NJ
 WNJA-50 Montclair NJ
 2400 WNJB-58 New Brunswick NJ

Bill Grant 67 Brattle Street Worcester, Massachusetts 01606 (EDT/EST)

October

19 Tr 0830 CBFT-2 Montreal PQ
 0900 CBMT-6 Montreal PQ
 27 2100 "most NYC, Philly,
 0000 & NJ UHFers"
 28 0000 WBTB-68 Newark NJ
 0700 CHLT-9 St John NB
 0750 CBHT-2-8 Shelburne NS
 0752 CBHT-3-11 Falmouth NS
 0759 CBCT-13 Charlottetown PEI

28 Tr 0815 unID-8 "ATV net(NB or NS)"
 0818 unID-6 "ATV net(NB or NS)"
 0832 CBHT-3 Halifax NS
 0850 WMBB-12 Orono ME
 0855 WGBB-10 Augusta ME

November

9 Es 2225 KTV-3 Springfield MO
 2227 KTVI-2 St Louis MO
 2307 KTEW-2 Tulsa OK

"Only one good tropo opening noted here during Sept. and Oct. but that one was a dandy. The best catch would have to be CBCT-13 Charlottetown PEI with a very good signal. CHLT-9 and the unID-6 had very strong signals. If Mark, Joel or anyone else can help me with the unIDs, it would be appreciated. CBZF (102.3) St. John NB and CHH (102.7) Halifax NS were also heard during this opening which was still going on when I left for work 1 1/2 hours late. Out of season Es opening here last night (11/9) from 2145 EST tune in--fade out about 2340. MUF reached at least 98.7 MHz at 2145." (Bill has included a copy of his photo of CBCT-13's ID slide.

It's a safe bet that they're about the only way for a DXer to log Prince Edward Island on TV. A super catch, Bill. That coastal tropo is something else when it gets going, and there are lots of Maritime DX targets! -bt) Bill also notes that numerous fast moving cold fronts from the northwest have crossed his region this fall, with much more rain than usual, resulting in much less tropo activity than normal for the time of the year.

Roy Barstow 70 Heritage Circle Teaticket, Massachusetts 02536 (BDT)
 "It's been some time since my last report. I will try to report more often. The E-skip season about average but I did manage to log 4 stations on channel 5, first E-skip that high. Channel 6 blocked by WTEV. But you guys are getting high band skip also. I will have to bide my time and wait. Good tropo finally Oct. 25-28 with the northern coast in as good as southern coastal areas. Reports off to CBHT & CJCH and their sister stations. I was surprised when I picked up WMED-13 Calais, ME. WGAN-13 Portland, ME was in very clear with antenna north but 3 clicks on rotator NE & there was WMED & WGAN gone. My wife was born in Calais, hi. That high band model 1273 Channel Master MATV Super Vector is one hell of an antenna. I just picked up another one & plan to put it on the 70' tower. Well, I hope you all have a good holiday season."

May

4 Tr 1930 WMEG-26 Biddeford ME
 15 Es 1800 KTVI-2 St Louis MO
 22 1700 WSJK-2 Sneedville TN
 1730 WRCB-3 Chattanooga TN
 WNGE-2 Nashville TN
 2030 WDIQ-2 Dozier AL
 2330 WMAB-2 State College MS
 27 2100 WMC-5 Memphis TN
 2115 KSD-5 St Louis MO
 2125 KTVI-3 Ottumwa IA
 2130 WERG-5 Mobile AL
 2330 KETS-2 Little Rock AR
 2345 KYTV-3 Springfield MO
 2346 KQTV-2 St Joseph MO
 2350 KARK-4 Little Rock AR
 28 1200 WEAR-3 Pensacola FL
 1210 WSB-2 Atlanta GA
 2100 WMT-2 Cedar Rapids IA
 29 1200 KQTV-2 St Joseph MO
 KTVI-2 St Louis MO

June

2 Tr 2245 WHRO-15 Hampton VA
 2300 WUNK-25 Greenville NC
 3 0225 WVEC-13 Hampton VA
 8 Es 1230 WJXT-4 Jacksonville FL
 WESH-2 Daytona Beach FL
 18 1830 WKYC-3 Cleveland OH
 1855 WJBK-2 Detroit MI
 1915 WWJ-4 Detroit MI
 1930 WBAY-2 Green Bay WI
 2000 WBBM-2 Chicago IL
 2028 WAGA-5 Atlanta GA
 21 1000 WPBT-2 Miami FL
 25 2330 WMT-2 Cedar Rapids IA
 28 1800 KUSD-2 Vermillion SD
 30 1953 WSM-4 Nashville TN
 2100 KNOX-4 St Louis MO
 2130 KARK-4 Little Rock AR

July

3 Es 2345 CKPR-2 Thunder Bay Ont
 27 Tr 2100 WVTM-4 Windsor VT
 WMEG-26 Biddeford ME

August

1 Es 1830 KDAI-3 Duluth MN

September

2 Tr 1820 WCBB-10 Augusta ME
 1830 WENT-7 Bangor ME

October

15 Tr 2359 CBFT-2 Montreal PQ
 22 1200 WHRO-15 Hampton VA
 1205 WTAH-27 Portsmouth VA
 1241 WCPB-28 Salisbury MD
 23 2200 WHP-21 Harrisburg PA
 WDAU-22 Scranton PA
 WTPA-27 Harrisburg PA
 2230 WSBA-43 York PA
 to WVIA-44 Scranton PA
 WBFF-45 Baltimore MD
 2400 WLYH-15 Lancaster PA
 24 (all "Eastern PA stations,
 day) WVIA, WHP, WNEP, WKBS, etc."
 25 0215 CJCB2-9 Antigonish NS
 "ATV network"
 26 0155 WCAV-3 Burlington VT
 "finally after 4 years"
 27 2030 WCSH-6 Portland ME u/WTEV
 2045 WENT-7 Bangor ME u/WNAC
 2100 WCBB-10 Augusta ME u/WJAR
 WMEB-12 Orono ME u/WPRI
 2130 WMED-13 Calais ME
 28 0015 WABI-5 Bangor ME u/WCVB
 0130 CBHT-3 Halifax NS T
 to CBHT-8 Shelburne NS T
 0315 CBHT-11 Yarmouth NS T
 0330 CJCH-5 Halifax NS T
 0545 CJCH6-6 Caledonia NS T
 0600 CJCB2-9 Antigonish NS
 "s/on, at 0630 show "The Trouble
 With Tracy" snowfree"
 0600 CKCW-2 Moncton NB
 "s/on, CCI with WCBS testing"
 0640 WLBZ-2 Bangor ME "testing,
 snowfree, washing out CKCW, WCBS"
 1800 WMED-13 Calais ME "in &
 out, conditions breaking up"

Greg Kelley 108 Archer Street Staunton, Virginia 24401

"That Es opening on July 20th sure was something! I received a TV station in Wisconsin for the first time, oh 2 in Green Bay, and have a QSL from them! Channels 2-3-4-5-6 were useless most of the time! All this was on my UHF antenna! The FM had Denver, St Paul, and Wisconsin. It was loaded with stations all the way past 108 MHz. I finally got my UHF antenna put up on the roof. It's about 28 ft high but so far haven't noticed any great improvement. But having a rotor sure beats dragging a chair out to turn it." Greg also mentions monitoring TV DX on a recent trip to Maine. Among the highlights: Cadillac Mountain in Maine (1230' ASL) where he logged CHSJ-4 St John NB, Portland, Bangor, and Augusta stations, and WSEK-38 Boston—all with a Panasonic TR 469B with VHF whip and UHF bowtie.

CENTRAL TV-DX

William J. Draeb
Ellis St. R.R.#2
Kewaunee, Wi.
54-216

Deadline: 12th

For the most part this past month was kind of dull for dx. However, Nov. 4 and 5 seemed to be the best days for tropo. There was a bit of Es here on the evening of the 9th while there was a tornado watch in effect for our area. The tornados never materialized here but we did have considerable wind and some rain. It looks like Winter is finally going to make it here(not that I necessarily want to see it) as temperatures in the 70's were replaced by those in the 40's.

Scott Sampson: 126 Weston Hall, URH, Champaign, Il. 61820 (217)-332-1903 CDT

9-2 Tr 2130 WLS-7 Chicago, Il.	9-9 Tr 0830 WRTV-6 Indianapolis
-2200 WQAD-8 Moline, Il.	WQAD-8 4555(165)
WTTW-11 Chicago, Il.	9-19 Tr Super Opening----
Unideds-4,6,7 & 9.	2200 Chicago U's & V's all
9-3 Tr 0800 WQAD-8 Moline, Il.	4555
WLS-7 Chicago, Il.	S.Bend U's all "
WGN-9 " "	Peoria U's
2200 KWWL-7 Waterloo, Ia.	Terre Haute chs.10 & 38
5555(230)	KDNL-30 St. Louis
KCRG-9 Cedar Rapids	WLF1-18 Lafayette
(230)	WKOW-27 Madison
Peoria U's	WUSI-16 Olney
9-4 Tr 2200 Chicago 5,7,9,11,32,44.	10-14 Tr 0830 WLS-7 Chicago
WRTV-6 Indianapolis	WTVW-7 Evansville, In.
WQAD-8 Moline, Il.	10-17 Tr 0800 Chicago V's
9-8 Tr 0830 WLF1-18 Lafayette, In.	WQAD-8 Moline
Peoria, Il. U's	WOC-6 Davenport
Chicago V's	
2200 WUSI-16 Olney, Il.	

"As the new address shows, I'm back to dormedxing at the U. of Illinois. Things are no better than last year---E-Skip seems to be blocked out in some way, because I have never received anything but tropo. My antennas are: (1) Folded dipole in a window facing due North, and (2) UHF loop. Considering this limited set-up, my results on tropo are at least respectable. I haven't tried any meteor scatter dx yet....wonder what the roommate would say to a 4 a.m. session?"(why don't you try it and find out--wd)

Richard Clark: 621 N. Euclid Ave., Pittsburgh, Pa. 15206 EDT

(Thanks to Bill Thompson who forwarded the following report to me--wd)
"Hi, everyone! It's been a long time since my last report in Florida. I am now in Pittsburgh, Pa.(and your report should be sent to me--wd), which is a cousy place to dx. Clarke and I agree that PGH is not a great place to dx anything. I only have indoor antenna, because they won't let me put up a tv ant. I will be moving to El Paso, Tx. in Jan. and if anybody wants Tele-guia? I will be able to get them, very easy. Now for the big tv dx:

10-17 Tr 0930 WNEO-45 Alliance, Oh. 1900 Tr WSWP-9 Grandview, W.Va.

Frank Wheeler: 6589 Wattsburg Road, Erie, Pa. 16509 EDT

10-8 Tr 0230 W4AB Brocton, N.Y. 5555(46)
0222 WNEM-5 Mi. 5555(272) 10-11 Tr 0100 CKGN-29 Ont.4435(113)
0223 WILX-10 Mi. " (236) 10-16 Ma 1301 KQTV-2 Mo. 4332(779)

Dxing equipment includes: Archer VHF-UHF-FM Model VU-160 with a Archer Servo-Rotor. Log totals: 258 received, 210 verified.

Steve Rich: 707 Carson Ct., Kokomo, In. EST 46901

9-4 Tr 0030 WQAD-8 Moline, Il.(235)	9-4 Tr 1157 WPGH-53 Pittsburgh(330)
0100 KDNL-30 St. Louis(252)	10-27 Tr 0755 KDNL-30 St. Louis(252)
0130 WTRF-7 Wheeling, W.Va.(288)	4555
1030 KRIN-32 Waterloo(355)	0759 KFVS-12 Mo. 0222(285)
1059 WREX-13 Rockford(200)	0837 KMTG-27 Mo. 3422(445)
1100 KVFD-21 Ft. Dodge, Ia.(445)	0921 KPLR-11 Mo. 3443(252)
1130 WTVQ-62 Lexington, Ky.(180)	0929 KETC-9 Mo. 4444(")
1150 Youngstown U's(238)	2330 <u>WKSO-29</u> Ky. (245)

Rich; continued--

10-28 Tr 0020 WUSI-16 Olney, Il. (160)

10-27 Tr 2331 WTVF-17 Il. 3443 (185)

0800 WLEX-18 Lexington (180)

10-28 Tr 0000 KMTC-27 Mo. (445)

(before WLFI s/on)

Dxing equipment includes: Admiral 23" color tv; antennas: Channel Master VHF Crossfire @ 32 ft.; Channel Master 6 ft. parabolic dish for UHF @ 40 ft. with C.M. Model 0042 UHF amplifier.

"This is my first report, although I've been interested in dxing radio and television for several years. Maybe that's partly the reason I have two part time jobs in broadcasting. I'm employed at WIOU/WKMO-FM and at WLFI-TV. I do news and dj work on radio and off camera news for television. I also attend college, so my time for dxing is quite limited for now.

Thanks to Jim Gould for acquainting me to this publication and for his other interesting information. Jim really gets me enthused about dxing." (Thanks for the report Steve; hope we hear from you again soon--wd.)

John F. Combs; Box 627, Oberlin College, Oberlin, Oh. 44074 EDT-EST

10-4 Tr 2340 WUTV-29 Buffalo (230)

11-3 Tr 1905 Unided-13 (OC, no sound,

WNED-17

not Toledo...strange...

10-5 Tr 0940 CHCH-11 Hamilton, On. T

11-4 Tr

Phone call from Jim

CKCO-13 Kitchener, On. T

Alexander advised me of

CKGN-29 Oil Springs (105)

cx, but I had already

0945 CKGN-6 Paris, Ont. (125)

noticed that something

10-7 Tr 2307 WJRT-12 Flint, Mi. (145)

unusual was up--he saw

WIIC-11 Pittsburgh (T)

Ia. on UHF---I wasn't

2310 CKGN-29 Oil Springs (105)

quite as lucky, but...)

2314 CKGN-6 Paris, Ont. (125)

2207 WJRT-12 Flint, Mi. (145)

2317 WOTE-30 Toledo, Oh. (80)

2215 CKCO-13 Kitchener (180)

2324 CKCO-13 Kitchener (180)

2250 WJIM-6 Lansing T

2325 WILX-10 Jackson (135)

2259 WKBK-11 Alpena, Mi. (270)

2350 WLIO-35 Lima, Oh. (110)

2329 CKGN-29 Oil Springs (105)

WKNX-25 Saginaw (175)

2334 CKNX-8 Wingham T

10-22 Tr 0800 CKGN-29 Oil Springs (105) 11-5 Tr

0123 Unided-10

10-23 Tr 2321 CHCH-11 Hamilton T

0830 " " CBS

CKCO-13 Kitchener (180)

WJRT-12 Flint (145)

10-24 Tr 2238 CKGN-29 Oil Springs (105)

WSTV-9 Steubenville (105)

2350 WTRF-7 Wheeling (120)

0831 CKGN-6 Paris, Ont. (125)

2356 WICU-12 Erie, Pa. (125)

WSEE-35 Erie, Pa. (125)

10-25 Tr 0036 WSEE-35 " " "

WJET-24 " " "

0050 WSTV-9 Steubenville (105)

CKGN-29 Oil Springs (105)

0110 CKCO-13 Kitchener (180)

0833 WUHQ-41 Battle Creek (170)

0118 KDKA-2 Pittsburgh (T)

0834 WILX-10 Jackson (T)

10-27 Tr 0913 WTRF-7 Wheeling (120)

WICU-12 Erie, Pa. (125)

WIIC-11 Pittsburgh (130)

WIIC-11 Pittsburgh (130)

0916 WTAJ-10 Altoona (T)

0835 WJIM-6 Lansing (155)

0919 WSEE-35 Erie, Pa. T

0840 Unided-30; 3/4 cb.

0920 WSTV-9 Steubenville (105)

0843 WUTV-29 Buffalo (230)

0923 WQED-13 Pittsburgh (130)

0846 Unided-3 ccl

0931 WTAJ-4 " T

0859 WQED-13 Pittsburgh (130)

0932 KDKA-2 " (130)

0901 WGLN-54 Erie, Pa. (125)

0935 WPGH-53 " "

0905 WUCM-19 Bay City (185)

1730 KDKA-2 again...

0909 WKNX-25 Saginaw T

1755 CKCO-13 Kitchener (180)

0917 WKBW-7 Buffalo (230)

1804 CKGN-29 Oil Springs (105)

0922 W4GAB Brocton, N.Y. (165)

10-28 Tr 1058 WKAR-23 E. Lansing T

(no sign of 17 or 29

(under WAKR-23)

from Buffalo)

KDKA-2 Pittsburgh (130)

0932 WOTV-8 Grand Rapids T

1100 WILX-10 Jackson T

2215 Unided-13 (same, strange

10-31 Tr 1025 WIIC-11 Pittsburgh (130)

OC as the 3rd, no sound.)

1026 KDKA-2 " "

11-6 Tr 0905 Unided-11 (same as on 13,

WTRF-7 Wheeling (120)

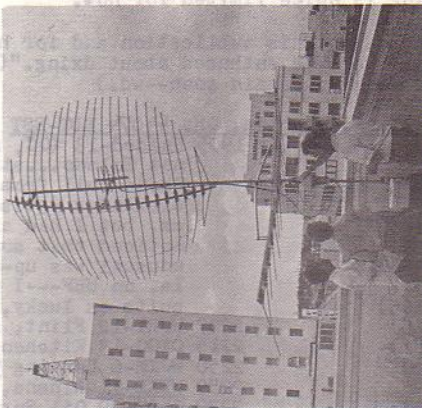
20 khz to WTOL.)

1029 WBOY-12 Clarksburg (175)

"Quite a month, especially the Tr of 11-4/5. Some pretty nice catches for rabbit ears & a loop were made! W4GAB totally shocked me! And when did Alpena ch. 11 come on? (about a month ago--wd) It was a CP last I'd heard...log now at 57...incidentally, many inquiries have been made to me as to what happened to the CCI AIDS Column. The story is this: because of increasing time problems, I was unable to continue the column. I told Ruland to run an announcement in the VUD, but I don't think he did...if anyone wants to take it up, please

PHOTO-NEWS

Jim Alexander, Canisius College,
Box 2 - Bosch Hall, Buffalo NY 14201
December, 1975



photos taken by
Don Murray, K4FMA
(Don works for
WTVJ-4, Miami)

Holiday Inn management allowed WTFDA attendees to mount a 7' dish on the hotel roof. Checking it out are, from the left, Ken Simon, Richard Barth, and Bill Thompson.



At the convention room early Sunday: from left, Bill Frahm, Jim Hagen, Don Murray, Ken Simon (convention host), Bill Thompson, and Bill Grant (under light)



1975 WTFDA Convention site:
West Palm Beach, Florida Holiday Inn



Group photo of attendees taken Saturday afternoon



Ron LeBlanc checking a station list with Bill Frahm



WTFDAer Joe Gragg loosens the ropes holding a dish onto Ken Simon's "TV-DXmobile". Note the 'TV-DX' license plate! By the way, this photo appeared in a West Palm Beach newspaper, and was taken by Ron Lindsey.

Finally, a note concerning your editor's address. Beginning as soon as you read this, please send material for this column to me at 191 North Beverwyck Road, Apartment 8, Lake Hiawatha New Jersey 07034. Anything after January 10 should be sent once again to my Buffalo address. Thanks!

Wishing a joyous holiday season to all...

Jim

Combs; continued---

contact me...strange GW ex here--WN50-45(65mi.) & WJAN-17(55mi.) almost never in. Ch. 49 Akron(40 mi.) has not been seen yet, although a call to their c.e. confirmed that their signal is "even a little snowy in downtown Akron". (I can believe that; one day I saw WNEO-45 nearly snowfree but no sign of ch.49--wd). WCTP-19 is up in the air...apparently nothing has been done in the past several months and no progress is being made...73 and gud dx 2 all!

Marvin Shults: R.R.#1, Toulon, Il. 61483 CPT-CST

8-5 Es 2019 KTWK-3 Phoenix, Az. 10-21 Ms 0440 WCBS-2 New York, N.Y.
 8-8 Tr 2059 CKGN-12 Cottam, On. 0515 WGR-2 Buffalo T
 2247 CKCO-13 Kitchener, On. 0535 WCIV-4 Charleston, S.C.
 8-9 Tr 0433 WEXI-25 Saginaw, Mi. Tr 0600 WLKY-32 Louisville, Ky.
 Ms 0451 WCBS-2 New York, N.Y. Ms 0610 CBMT-6 Winnipeg, Man.
 Tr 0456 CKLW-9(now CBET) Tent. CBC Radio Canada tp
 3/4 cb then IHTP w/no i.d. 10-22 Ms 0415 WCVB-5 Boston, Ma. T
 then 3/4 cb & music, Oh 0423 KYW-3 Philadelphia, Pa.
 Canada then at 0501 Story Theatre with Alan Alda. 0502 WTVR-6 Richmond T
 Tr 0512 WHIO-7 Dayton zero beat w/KWWL which starts testing at 0455 each morning.
 0600 WKBD-50 Detroit, Mi. 0516 WLKY-32 Louisville, Ky.
 8-10 Ms 0503 KYW-3 Philadelphia, Pa. 0620 KYTV-3 Springfield, Mo.
 0542 WESH-2 Daytona Beach 0444 WSB-2 Atlanta, Ga.
 8-12 Ms 0414 WTAR-3 Norfolk, Va. 10-26 Tr 1800 WKBD-50 Detroit, Mi.
 8-14 Es 1331 XHCN-2 Chihuahua, Ch. 10-30 Tr 0615 KYTV-3 Springfield, Mo.
 I.d. slide with picture of dog--Chihuahua dog? 10-31 Tr 0630 WLUK-11 Green Bay, Wi.
 8-22 Tr 0455 WLWD-2 Dayton, Oh. 11-9 Es 2040 WCVB-5 Boston, Ma.
 8-31 Tr 2130 KOPT-19 Kansas City T 2059 WGBH-2 " "
 9-2 Tr 2100 WNEO-45 Alliance, Oh. WFSB-3 Hartford, Ct.
 9-7 Tr 0830 WCHU-14 Mt. Pleasant, Mi. MUF to ch.6
 10-19 Ms 0415 KYW-3 Philadelphia 2115 Heavy wind and rain
 10-20 Ms 0423 " " 2130-2200 WCBS-2 New York
 0440 WCBS-2 New York, N.Y.
 0442 Atlanta, Ga. WSB-2
 0455 WRAL-5 Raleigh, N.C.
 0532 Unided-5 SE.

"For August and September, I listed only new and Ms stations and omitted numerous relogs. As I am writing this report, Es from East Coast are rolling in. Thanks to Bob Baker for the continued update on IEHN. (I'll go along with that--wd.) Nine new stations received during reporting period. Hi-band Ms seemed very low during August Perseids."

Jim Gould: R.R.#3, Kokomo, In. EST (317)-452-9585

10-11 Tr 0900 Des Moines V's(390) 10-27 Tr 2352 KMTC-27 Mo. (445)5545
 10-12 Tr 2304 WBIR-10 Tn. 4542(346) 10-28 Tr 0006 WSRB-43 Pa. 2421(492)
 10-22 Tr 2200 KOLR-10 Mo. under 0700 WPRE-28 Pa. 2535(536)
 WTHI. ccl on chs.43&45 from York and Baltimore, weak, rapid, qsb.
 2240 WAAV-31 Al. 2020(410) 10-29 Tr 2044 WAAV-31 Al. 1413(410)
 10-23 Tr 0735 Huntsville U's; weak. 10-30 Tr 0640 WPRE-28 Pa. 1425(536)
 10-26 Tr 2000 WPRE-28 Pa. (536) thru WSJV. 0645 WHNT-19 Al. 4523(410)
 2222 WENY-36 N.Y. 0225(490) 0725 WCOV-20 Al. 2421 T
 2328 WSVN-47 Va. 2323(317) covered by WICS at 0730
 WPGH-53 Pa. 2535(320) 2030 KDOG-26 Tx. 3511(910)
 2350 WSKG-46 N.Y. 1424(537) (ex-KVRL)
 10-27 Tr 0645 Pittsburgh good; Erie & 2230 KMTC-27 Mo. 3522(445)
 Wilkes-Barre weak. 2300 WKNO-10 Tn. 0530(433)
 0730 WMAV-18 Ms. 2422(472) 2345 KNOE-8 La. 0210(650)
 Vy strong sigs from E. Mo. 11-1 Tr 0230 WTVV-9 Ms. 4533(464)
 Ch.26 Houston still in
 0807 KMTC-27 Mo. 4534(445) 0250 KNOE-8 La. 5523(650)
 1930 WAAV-31 Al. 2423(410) 0303 WAPT-16 Ms. 1435(619)
 2008 WUTV-29 N.Y. 3422(404) 0335 KTRK-13 Tx. 3524(910)
 2230 WPRE-28 Pa. T (536) (Jim sent me a nice photo he took of this one--wd.)
 2233 WSKG-46 N.Y. 1422(537) 0330 KTRB-3 La. 3532(705)
 2300 WKBS-48 Pa. (572) un- 0425 WLAC-5 Tn. 4531(314)
 der WCET.
 2323 KOLR-10 Mo. (445)
 2330 WBEF-45 Md. 3532(508)

CENTRAL TV-DX

Gould; continued---

11-2 Tr 0635 WRBC-3 Tn. 2533(385)
 0637 WLOS-13 N.C. 4534(400)
 0640 WTCG-17 Ga. 1525(485) T
 0700 WKPT-19 Tn. 2515(346)
 0710 WHAE-46 Ga. 1425(485)

Log total now at: 529

Nov. 1, early a.m., when Houston was coming in best, one, and possibly both Global-22 stations were coming in off the back of the antenna, indicating that the duct extended into Canada.
 11-4 Tr 2300 KRCC-10 Mn. 3522(396)
 2315 WAOW-9 Wi. 0520(350)
 2350 CHCH-11 On. 0530(380)

Dec. 1975Paul Gaines: 15920 Puritan St., Detroit, Mi. 48227 EDT-EST

10-10 Tr 0858 WXLX-19 Ky. 4542(240)
 0904 WCET-48 Oh. 2522(235)
 0909 WKON-52 Ky. 1532(275)
 0917 WKLE-46 Ky. 1122(305)
 0926 WTVQ-62 Ky. 1022 "
 0940 WKMR-38 Ky. 1522(290)
 0942 WOSU-34 Oh. 5555(170)
 0946 WQUB-20 Oh. 1522(225)
 0948 WOET-16 Oh. 3544(190)
 0953 WMUB-14 Oh. 1021(220)
 1001 WPEO-42 Oh. 2532(255)
 1020 WMBD-31 Il. 2522(345)
 1023 WTPV-47 Il. 2543 "
 1034 WWSN-44 Il. 2533(225)
 1035 WCIU-26 Il. 1533 "
 1045 WILL-12 Il. 3541(305)
 1047 WISN-12 Wi. 1521(250)
 1049 WIPB-49 In. " (195)
 1108 WLFI-18 In. 5555(220)
 1117 WICS-20 Il. 1022(375)
 1118 WFIY-20 In. 1532(230)
 1126 WTAP-15 W.Va. 3531(235)
 10-12 Tr 2133 WLEX-18 Ky. 1322(305)
 2216 WKYT-27 Ky. 1122 "
 10-13 Tr 0025 WFLD-32 Il. 1022(225)
 0027 WLKY-32 Ky. 1522(310)
 10-27 Tr 0713 WPGH-53 Pa. 2522(190)
 0728 WUTV-29 N.Y. 1022(215)

WN DU-16, WSBT-22, WSJV-28,
 WLIO-35, WOSU-34, WICU-12,
 WSEE-35, WBGU-57, Ft. Wayne
 U's, Youngstown U's
 0751 WLEX-18 Ky. 2522(305)
 0755 WKYT-27 Ky. 1022 "
 0800 WICS-20 Il. 1022(375)
 0837 WTAP-15 W.Va. " (235)
 2253 WOET-16 Oh. 2522(190)
 2254 WNED-17 N.Y. 4533(215)
 2317 WICD-15 Il. 3532(305)
 2321 WLFI-18 In. 3522(220)
 2323 WAND-17 Il. 3521(340)
 WJAN-17, WJET-24, CKCO-13,
 CHCH-11, WISN-12, CFPL-10,
 WMAQ-5, WMUB-14.
 10-28 Tr 0021 WKLF-22 Oh. 1022(190)
 0022 WUTV-29 N.Y. 2522(215)
 0049 WICS-20 Il. 2532(375)

10-28 0230 Sony Tv went on blink---
 changed to Admiral 12"
 color set--had to get used
 to set without detent tuner
 ---reset cameras, tripod,
 etc.
 Tr 0725 WTAP-15 W.Va 3521(235)
 0757 WMUL-33 " 2533(280)
 WJW-8 Oh. 1022(with no ant.
 and 2133 w/fingers on ant.
 terminals)

11-4 Tr 2257 WNED-17 N.Y. 5555(215)
 2307 WTVV-18 Wi. " (250)
 2320 WMTV-15 Wi. 4555(315)
 2324 WKOW-27 Wi. 3553(")
 2330 WHA-21 Wi. 3555(")
 2333 WMTV-36 Wi. 3553(250)
 2338 WPE-38 Wi. 3543(275)
 11-5 Tr 0000 WJET-36 N.Y. 0555(320)
 0014 CITY-79 On. 3553(205)
 0034 W4GAB N.Y. 3034(180)
 0038 WFLA-44 Pa. 4533(385)
 0051 WKBS-48 Pa. 3534(440)
 0129 W62-- N.Y. (WNED) 1032
 0210 WDAU-22 Pa. 1542(385)
 0343 WCIA-3 Il. " (305)
 0609 WTJ-10 Pa. 3544(275)
 0611 WILC-11 Pa. 4531(210)
 0658 WPGH-53 Pa. 4554(")
 0804 WBRB-28 Pa. 3532(380)
 0820 W26AA N.Y. 3543(195)
 0930 KRIN-32 Ia. 4522(450)
 0933 WHLA-31 Wi. 3533(410)
 1030 WKAR-23, WKAR-23, WUHQ-41,
 WNEM-5, WUCM-19, WZZM-13,
 WGVG-35, WKZO-3, WCMU-14,
 WEYI-25, S. Bend U's, Ft.
 Wayne U's, WLWI-13, Mil-
 waukee chs. 4, 6, 12, WITI
 was 5555, WLWT-5, WCPO-9,
 WLWC-4, WTVN-6, WENS-10,
 WLWD-2, WLTO-35, WNED-45,
 Youngstown U's, Erie U's,
 Chicago, etc.
 11-6 Tr 2305 CKCO-2-42 Oil Springs
 4555(60)

Log total: 228

Rod A. Louma: 38540 Five Mile, Livonia, Mi. 48154 EDT

"Well, two beautiful openings were seen here since my 1st report, adding 5 new stations with one being a regular, the channel 42 repeater for CKCO at Oil Springs, Ont. Operation of this repeater has been intermittent since first seen on Nov. 8 after a call from Paul Gaines."

10-27 Tr 1000 WICD-15 Champaign, Il. (335)
 10-28 Tr 0830 WLEX-18 Lexington, Ky. (305)
 WKYT-27 " "
 WKSO-29 Somerset, Ky. (370)
 0835 WKLE-46 Lexington (305)
 WKMR-38 Morehead, Ky.
 0840 WOSU-34 Columbus (170)
 WOET-16 Kettering (180)
 0900 WLKY-32 Louisville 310

CENTRAL-TV-DX

Louma; continued---

10-28 Tr 0950 WENY-36 Elmira(340)
WICZ-40 Binghamton T
WSKG-46 " "
0955 WUTV-29 Buffalo(235)
Unided-21 " "
1000 WSYE-18 Elmira, N.Y.
11-4 Tr 2320 WXXI-21 Rochester(305)
WNED-17 Buffalo, N.Y.
Unid-16; E., educ.
2322 WUTV-29 Buffalo, N.Y.
WBJA-34 Binghamton T
WSEE-35 Erie(170)
WENY-36 Elmira T
WICZ-40 Binghamton
WSKG-46 " T
2340 WBA-21 Madison(305)
WMTV-15 " "
WKOW-27 " "
KMEG-14 Sioux City T

with a due West orientation, then an A-B comparison with local WJBK showed them to be airing the same CBS movie. That was exciting! Also, KRIN-32 had me puzzled for a while as I thought it was WFLD-32, but I couldn't figure out why William Buckley was on with a panel program on Chicago. But their sign off cleared the picture and it was a clear picture about a VAFI 2 with their 5 megawatts!

P.S.--During the leaner winter months maybe it would be interesting if everyone would describe their equipment setups once again and also any unusual techniques used to aid dxing such as Tony Ward described in Oct. WUD. Also, I'd like to see mileages used more often since many of us aren't familiar with other areas of the country and don't realize the distances involved there." (Those are some good ideas Rod, especially at this time of year when reports are lean; we'll see what happens next month when reports are received--wd)

Donald B. Ruland; 4448 68th Place, Kenosha, Wi. 53140 CST-CDT

10-20 Tr 0655 WLKY-32 Louisville(330)
WKMJ-68 " "
WLEX-18 Lexington(360)
10-27 Tr 0530 WLKY-32 Louisville(330)
0600 WLEX-18 Lexington(360)
WKYT-27 " "
WTVQ-62 " "
WXIX-19 Cincinnati(300)
WBHT-25 Evansville(320)
KPLR-11 St. Louis(300)
0630 WJET-24 Erie(400)
WOSU-34 Columbus(320)
WPGH-53 Pittsburgh(430)
0700 WVIZ-25 Cleveland(330)
KDNL-30 St. Louis(300)
10-28 Tr 0555 WLEX-18 Lexington(360)
WXIX-19 Cincinnati(300)
WLKY-32 Louisville(330)
0615 WKYT-27 Lexington(360)
11-4 Tr 1655 WQLN-54 Erie(400)
1700 KHN-36 Red Oak(400)
1800 KOLN-10 Lincoln(460)
1810 KCCI-8 Des Moines(310)
1900 WUTV-29 Buffalo(460)
WNED-17 " "
1930 KUON-12 Lincoln(460)
CITY-79 Toronto(430)
2000 WENY-24 Syracuse(590)
W46AB Brocton, N.Y.(430)
WNEP-16 Scranton(630)
2100 WNPE-16 Watertown(610)

Dec. 1975
11-4 Tr 2340 WPNE-38 Green Bay(270)
11-5 Tr 0002 WKBK-11 Alpena, Mi.(190)
0007 WISN-12 Milwaukee(230)
0010 CITY-79 Toronto, On.(220)
CICA-19 " "
CBFT-25 " "
WTV-18 Milwaukee, Wi.
0040 KMEG-14 Sioux City(660)
0055 WBER-28 Scranton-Wilkes Br.
WNEP-16 " "
0100 KRIN-32 Waterloo(450)
WVIA-44 Wilkes-Barre(390)
WDAU-22 " "
Unid-27 " "
11-8 Tr CKCO-2-42 Oil Springs(75)
"Wow!, I say. KMEG beats my previous UHF haul by 110 miles. Although I never saw their I.D. circumstantial evidence proves the signal was theirs with the Ø offset noted earlier against WCMU
2200 WSEE-35 Erie(400)
2230 WSKG-46 Binghamton(620)
WHRM-20 Wausau, Wi.(170)
2245 WBJA-34 Binghamton(620)
2250 WLV-39 Allentown(640)
2300 CICA-19 Toronto(430)
KMEG-14 Sioux City(430)
2310 WXXI-21 Rochester(520)
2315 WJET-24 Erie(400)
2345 WBER-28 Wilkes-Barre(620)
2350 KVFD-21 Ft. Dodge(320)
11-5 Tr 0010 CKNX-8 Wingham(340)
0020 CKCO-13 Kitchener(380)
0027 WAKR-23 Akron(340)
0445 WKYC-3 Cleveland(330)
WYTV-33 Youngstown(380)
0450 CHCH-11 Hamilton(420)
0500 CFTO-9 Toronto(430)
0530 WKEN-27 Youngstown(380)
WBER-28 Wilkes-Barre(630)
0540 WJET-24 Erie(400)
0555 WSEE-35 " "
0620 KELO-11 Sioux Falls(450)
0625 Buffalo U's(460)
0640 WVIZ-25 Cleveland(330)
0700 KEYC-12 Mankato(330)

Log total: 402

"Nov. 4-5 was best tropo opening seen here in 1975. I have

an idea this one produced a lot of dx for anyone fortunate to have been watching."

CENTRAL TV-DX

Dec. 1975

William J. Draeb: Ellis St. Rt. #2, Kewaunee, Wi. 54216 CDT-CST 4143882350

10-20 Tr 0643 W30AA Ft. Wayne(268) 11-3 Tr 1914 WKSO-29 Somerset(538)
1832 W55AE Manitowish(121) (nearly snow free)
10-22 Tr 1834 WKYT-27 Lexington(473) 11-4 Tr 0537 WHO-13 Des Moines(371)
1841 WOSU-34 Columbus(395) 0552 WAKR-23 Akron(380)
Cleveland U's(355) 1234 KHIN-36 Red Oak(457)
WAKR-23 Akron(380) KYNE-26 Omaha(481)
1858 WMUL-33 Huntington(498) KBIN-32 Council Bluffs T
2006 WPBO-42 Portsmouth(461) (Ø offset; same as WFLD)
WKAS-25 Ashland T 1640 WHIZ-18 Zanesville(400)
Dayton U's(368) Cleveland U's(355)
10-23 Tr 1808 WKYT-27 Lexington(473) WKYT-27 Lexington(473)
1951 WMUL-33 Huntington(498) WJAN-17 Canton(395)
2039 Springfield U's(589) WYTV-33- Youngstown(420)
10-25 Tr 2029 " " " 1712 WFMJ-21 " "
KDNL-30 St. Louis(432) Erie U's(405)
WKYT-27 Lexington(473) 1717 WEAQ-49 Akron(380)
10-26 Tr 0638 CBFT-1-12 Elliot Lake WNEO-45 Alliance(406)
1000 KMTC-27 Springfield(589) 1725 WPGH-53 Pittsburgh(480)
1006 KCBJ-17 Columbia(450) 1733 W46AB Brocton T
1659 WOSU-34 Columbus(395) 1858 KDNL-30 St. Louis(432)
1821 WHRM-20 Wausau(110) 1959 KHIN-36 booming in!!
(+ offset) 2022 W46AB Brocton(409)
1841 WKSO-29 Somerset(538) (photoed)
WKHA-35 Hazard(551) 2044 Buffelo U's(445)
1846 WMUL-33(498)Huntington 11-5 Tr 0530 WAKR-23 Akron(380)
1933 KDNL-30 St. Louis(432) WJET-24 Erie(405)
1937 KOZK-21 Springfield(589) 0545 CKNY-10 N. Bay T
1942 KTVJ-16 Joplin T 0600 WSEE-35 Erie(405)
2143 WKON-52 Owenton(437) WPGH-53 Pittsburgh(480)
2154 WTVQ-62 Lexington(473) 0730 WNED-17 Buffalo(445)
10-27 Tr 0658 WVIZ-25 Cleveland(355) W26AA Jamestown(")
0702 WJET-24 Erie(405) W46AB Brocton(409)
Youngstown U's(420)
WNEO-45 Alliance(406)
WPGH-53 Pittsburgh(480)
0836 WKMA-35 Madisonville(499)
KMTC-27 Springfield(589)
KDNL-30 St. Louis(432)
WKMU-21 Murray T
WUSI-16 Olney(402)
Evansville U's(420)
0845 WVUT-22 Vincennes(405)
WPIU-30 Bloomington(376)
10-30 Tr 1907 WKYT-27 Lexington(473)
KDNL-30 St. Louis(432)
1918 WMUL-33 Huntington(498)
1943 WKSO-29 Somerset(538)
WKHA-35 Hazard(551)
2016 KHIN-36 Red Oak T
10-31 Tr 1959 KDNL-30 St. Louis(432) 11-7 Tr 1547 CKCO-2-42 Oil Springs " (985'a.g.; 1752kw)
2008 KHIN-36 Red Oak T (3/4 color bars)
2012 KMTC-27 Springfield(589) 11-8 Tr 0721 KBMA-41 Kansas City(525)
2018 WKMA-35 Madisonville(499) 0729 KCBJ-17 Columbia(450)
Unided-26; SSW 1100 KTSB-27 Topeka(560)
2023 WKMU-21 Murray T 1703 KDNL-30 St. Louis(432)
2115 WOSU-34 Columbus(395) 11-9 Es 2100 Unided-4(minus); WSW.
Cleveland U's(355) 11-13 Tr 2115 KVFD-21 Ft. Dodge(365)
2117 WMUL-33 Huntington(498) KSIN-27 Sioux City(463)
11-1 Tr 0830 WKYT-27 Lexington(473) KMEG-14 " " T
1818 WJET-24 Erie(405) KHIN-36 Red Oak(457)
WQLN-54 " " KBIN-32 Council Bluffs T
11-3 Tr 0545 CBLAT-1-8 Manitowadge(368) 2137 KXNE-19 Norfolk T
CBFOT-1-12 Kapuskasing(417) 11-14 Tr 0705 KMEG-14 Sioux City
CBLAT-3-9 Wawa(276) KVFD-21 Ft. Dodge
0600 CBFT-1-13 Sudbury(350) 0725 KCBJ-17 Columbia(450)
0835 Uxbridge-22(413) KTSB-27 Topeka(560)
1914 WKYT-27 Lexington(473) KBMA-41 Kansas City(525)
0742 KDNL-30 St. Louis(432)
0746 KHIN-36 Red Oak(457)

CENTRAL TV-DX

Dec. 1975

Draeb; continued---

11-14 Tr 0746	KBIN-32 Council Bluffs(476)	11-15 Tr 0646	KOLN-10 Lincoln T
0826	WLKY-32 Louisville(437)	11-16 Tr 0225	CHLBT-3-9 Wawa(276)
0829	Springfield U's(589)	1733	Erie U's(405)
0833	KTVJ-16 Joplin(633)		Cleveland U's(355)
1240	KDOG-26 Houston T		WKYT-27 Lexington(473)
1921	WMUL-33 Huntington(498)	1744	Youngstown U's(420)
1950	WOSU-34 Columbus(395)	11-17 Tr 1238	KSIN-27 Sioux City
1956	WKYT-27 Lexington(473)	1717	WKYT-27 Lexington
	WKSO-29 Somerset(538)	11-18 Tr 1944	KHIN-36 Red Oak(457)
2001	WKHA-35 Hazard(551)		Log total: 631

John R. Sally; 29926 Truman Ave., Wickliffe, Oh. 44092 EST-EDT (216)-585-1712

"Hi everybody. This is my first report since re-joining back in May some-time, so an intro is in order. I'm 19, single, and am currently in a correspondence school for the airlines. I was in the club for two years back in 72 and 73, but wasn't very active so very few of you would remember me. My main interests are TV and HCB dx'ing. I do some occasional FM dx but have little equipment to speak of. Back in September a new rig went up on the roof here. It's a respectable antenna purchased for \$40 at Lagayette. I don't have a Lafayette catalogue. I don't know the nomenclature of it since I lost the papers that came with it. It's a dual VHF-UHF but works real well. A big improvement over the piece of junk that was up there for 10 years. For the first time in my life I can watch Cleveland locals snow free. A big improvement was noted in semi-local WAKR-23. They have a lot of trouble in my area (5 miles NE of Cleveland proper) making it at all. Most people in this area can't even see them at 40 miles! It's an elevation problem, not the stations. Youngstown U's are barely seen here even with a good rig at 60 miles. WJAN-17 has only been logged once here at 60 miles. South is a poor direction. On the other side of the coin Lake Erie at one mile really boosts Michigan and Ontario DX. I've been dx'ing TV for about 5 years. Totals are as follows: 152 logged: 98 vhf/54 uhf/ 43 E-skip. 24 states, 2 provinces and 3 countries. Totals are low because of little dxing done plus my previous equipment. New catches this past season are as follows:

6-17 Es 2200	KETS-2 Little Rock, Ar.	9-10 Tr 1600	WNEO-45 Alliance, Oh.(50)
6-18 Es 1200	KDLO-3 Watertown, S.D.	1630	WEAO-49 Akron, Oh.(40)
6-21 Es 1200	WEDU-3 Tampa, Fl.	1700	WQED-13 Pittsburgh(105)
	2200	KGFE-2 Grand Forks, N.D.	10-23 Tr 1100
		WPGH-53	" "
6-22 Es 2300	KDFW-4 Dallas, Tx.		

Also logged the following this season without bothering to write down the date: Es WJXT-4; Tr The following Canadian Global's: (Does anyone know their calls if they have any?)(Yes, they all use the same call--CKGN--wd). Tr WICD-15, Tr WLFI-18, Tr WMSH-46, Tr CKCO-2-42(Oil Springs).

The "semi-local" catches above on 9-10 and 10-27 were a result of the new antenna. They would have probably never have been seen otherwise with the elevation problem. WAKR-23 has one of the worst signals around. WAKR-23 is a power house in comparison. Ch. 49 has low power and a bad transmitter location. Pittsburgh 53 was a rough catch. Pgh 13 is seen somewhat regularly now, and to think I never believed they existed. Canada is really going crazy as of late with all the new UHF's popping up and all. The Kitchener 42(xmtr at Oil Springs--wd) came out of nowhere. Does anyone know their calls and city or license? Did anyone catch the final WKBF-61 final s/off? I have it on tape. They ran out of money. WUAB-43 owns the UHF market here now. Maybe someone will take over 61's old facilities. The UHF dial seems empty now. Anyone know anything about the Cleveland channel 19 that has supposed to have been on the air for years now?(they're not on yet--wd). Maybe now with only one independent in Cleveland they'll push it. You'd think so anyway. Not much else. I'm looking for correspondents either via letter or cassette. Dx rap and general B.S. If anyone's interested please drop me a line. Happy Winter. 73's all."

WESTERN TV DX

Dennis Park Smith
50 Manzanita Way
Paradise, California 95669
Telephone 916 877-2875
Headlines: 10th of month

December 1975

DX is down this time. Not many reports.
and little Es, though more MS, in late Oct.
Es on 9 Oct. reported as aurora-induced Es.
(Dates adjusted to local standard time.)

	Es	Oct	9	11	31	Nov	ave
Nr. reporters	1	1	1	1	1	1	1
MUF at least	105.3	2	6	3			

Frank Aden, Jr., 1535 NW Ithaca Ave, Bend OR 97701 (-to 28 Oct) (PDT PST 26 Oct)
At last, I got my TV antennas up. Two ch 2-13 antennas are stacked
at around 30 feet. I saw tropo to south on Oct 25th and I bet it is KIEM-3
Eureka CA but am not really sure until I get it again. If it is, it is the
first tropo to the south I have had. I also get CCI on ch 4 to the south:
I haven't any ideas yet on who it is, but it could be a translator. Cable
interference here is very weak overall, so this looks like a good DX
location. 73's for now.

Fred McCormack, Des Lacs, North Dakota 58733 (October) (CDT; CST 26 Oct)

	AE 2332	Canadians on ch 2-6	(Underlined: new; by new propagation)
10	AE 0015	(MUF 105.3 to Ontario)	21 MS 0628 KMTV 3 Omaha NE 550
	0026 WJMN- 3	Escaami 3433R 715 22	MS 0512 WTAE 4 Pittsburgh PA 1190
	0028 WTOM- 4	ChebgmMI 3334 825	0545 WSM - 4 Nashville TN 1120
	0030 WKYC- 3	ClevidOH 3333 1080	0613 WHEB- 4 Rock Island IL 720
11	tr 0052	CFQC- 8 Saskatoon 4444 355 23	MS 0519 WTVN 6 Columbus OH 1080
	0054	CRKST 11 4444 355 27	0630 WRTV 6 Indianapolis IN 960
	Es 1127	WNGE- 2 Nashville TN 4034 1120	0630 WMAQ 5 Chicago IL 815
	1225	WMAB- 2 St Coll MS 3335 1220 26	MS 0643 WCAJ 3 Champaign IL 835
18	MS 0626	WMT - 2 Cedar Rapids IA 650	0646 WTMJ- 4 Milwaukee WI 750
	0650	WKY - 4 Okla City OK 900 27	MS 0621 WMTV 3 Madison WI 690
	1057	KENW- 3 Portales NM 970	0631 WPRV 5 Green Bay WI N 705

Fat Dyer, 5315 Silvertip Drive, San Antonio TX 78228 (8 Oct- 7 Nov) (CST)

	8 tr 2020	WAPB- 9	Btn Rouge LA T 450	(New underlined: tentative)
	2025	WLPB 27	Btn Rouge LA N 450 21	tr 0710 KAMR 4 Amarillo TX T 440
	2058	WRBT 33	Btn Rouge LA 450	0014 KMCC 28 Lubbock TX 340
	2207	KFDM- 6	Beaumont TX 275	(in past 1250)
0	tr 0905	KMCC 28	Lubbock TX T 340	0018 KCBQ- 11 Lubbock TX 340-2
	0929	KMID- 2	Midland TX 275	0959 KWSB- 8 Roswell NM 340
12	tr 0025	WRBT 33	Btn Rouge LA T 450	1059 KLBK- 13 Lubbock TX 340
	0041	KFDM- 6	Beaumont TX 275 31	Es 1745 WPBT 2 Miami FL 1350
13	tr 2359	KPLC- 7	Lake Charles LA 325	WTVJ 4 Miami FL 1350
14	tr 0003	KXAS- 5	Ft Worth TX 240	1753 WDBO- 6 Orlando FL 1350
		KRGV- 5	Weslaco TX 225	1855 f/out
		2201	WRBT 33 Btn Rouge LA T 450 N4	Es 1040-1950 2:35 unids
		XHPW- 9	Tampico Tam T 505	(Spanish to aet.)

The first Es on the TV since Aug 23. Otherwise, some fair to good
tror conditions, but nothing really big. Meteor rates good for about the
last week. 73, WA5IYX.

And, a note from Don Voegelé, former AIPA member from Lancaster, New
York, and more recently from Santa Barbara, California, where your editor
met him, and now also nearby here, in Chico, California.

Greetings! I am in university at Chico after returning from teaching
in Australia. Through Dennis Smith I saw the first VUD in 5 years and
surprised(!) to see my name in Statistics. I'm here updating in elec-
tronics: thus I especially liked your technical articles.

Unfortunately for me, your '75 convention was in Florida. In August
I visited New York and New England for first time in 5 years.

Warm winter and holiday wishes: see you at convention '76? 73's

Best of DX to all

Dennis

SOUTHERN FMDX

Charles Winters
7 Parsons Drive
Reverly, Mass. 01915
1-617-922-6721

By use of some not so subtle humor, we have garnered up some red-blooded Febs of the South or as in the case of Mike Dalton - a transplant. Hope to hear from the rest of you in the near future. The way the column will be done from now on - is as follows - I don't think it is fair for all of you who have taken your time to make detailed reports to have your data chopped up - but that is the word from the powers that be.

By the way, any of you who can find any good women's basketball players anywhere in the country - I would appreciate it if you would let me know. (High School & up) A little background data would help and feel free to bill me for your time. Thanks.

5-18	1500	WEZI	105.9	TN	366	Ron LeBlanc	2524 Arizona Drive	737
	1800	WKNO	91.1	TN	366		Marrero, La. 70072	
	1900	KASU	91.9	FP	417			
	2000	Houston in KPFT	90.1	KRLY	93.7	KAUM	96.5	KILT 100.3 KHCR 105.7
		KYND	92.5	321	mi.			
	2100	KPST	107.9	TX	580	5-20	KFWN	1914 92.9 NM 1170
	2101	KSTY	93.9	TX	485		WKMS	1959 91.3 KY 475
		KIOU	96.5	TX	485		WBIF	2018 1035 TN 549
	2136	KFLT	94.5	TX	541		WCTA	2100 98.1 AL 248
	2200	KITY	92.9	TX	510		EJLQ	2103 100.7 FL 183
5-19	1651	TGRT	88.8	Guat	1102		FAMI	2115 102.3 AL 246
	1720	Fatustero	88.1	Guat			WOLT	2352 107.3 AL 360
	1205	KASU	91.9	AF	417	5-21	WBKY	2159 91.3 KY 655
	2010	KTMO	98.9	MO	440		WPKU	2204 88.9 KY 630
	2143	WEZI	105.9	TN	366		WDOD	2220 96.5 TN 460
	2232	WMBW	88.9	TN	460		WZZK	2236 104.7 AL 320
	2259	KPTX	92.1				WAPI	2250 94.5 AL 320
							WBQW	2359 91.7 AL 375
5-22	WGOT	0014	106.3	MS	180	6-13	KRSW	1650 91.7 MN 1024
	WKLE	0044	92.3	AL	289	6-16	CJOM	1754 88.7 ONT 945
	WNYE	1846	91.5	NY	1174		KSCU	2355 88.3 TX 455
	WFUV	1850	90.7	NY	1174	6-17	KETR	0004 88.9 TX 390
5-26	KVOR	1857	92.9	CO	1040		KAKC	1825 92.9 OK 555
	KUNC	1859	91.5	CO	1102		KEZE	1828 96.3 TX 990
	KEVL	1903	94.7	CO	1102		WDUX	2041 92.7 WI 990
	KLIF	1912	100.3	CO	1000		WLVE	2046 94.9 WI 922
	KLZ	1914	106.7	CO	1000	6-18	WDOQ	0701 90.5 PA 930
	KVEN	1923	98.9	CO	1000		WYXI	0706 91.5 NY 1149
	KBBC	1925	98.7	AZ	1370		CJPT	0712 91.1 ONT 1125
5-26	KESD	2200	88.3	SD	1059		CKSO	0714 92.7 ONT 1240
6-02	KRWG	2143	90.7	NM	1034		CFMO	0732 93.9 ONT 1304
	KVBI	2202	91.1	CO	1020		CFGR	0748 92.5 ONT 1395
	KBPI	2226	105.4	CO	1000		WCFM	0803 96.5 NY 1149
	KOA	2227	103.5	CO	1000		WBUP	0810 92.9 NY 1098
	KLIF	2233	100.3	CO	1000		CHYM	0817 96.7 ONT 1075
	KLAK	2238	107.5	CO	1000		CKPC	0824 92.1 ONT 1080
	KVMT	2242	104.7	CO	1146		KTAV	1615 92.1 IA 818
	KCFE	2248	90.1	CO	1000		KGGG	1621 94.9 IA 833
	KNFM	2350	92.3	TX	741		WWJ?	1622 96.7
	KNCT	2359	91.3	TX	461		WPYL	1631 93.7 MN 1052
6-03	KDTX	2159	102.9	TX	465		KQPS	1632 92.5 MN 1050
	KNFM	2233	92.3	TX	741		KLEF	1637 95.3 MN 1070
6-04	KVBI	2128	91.1	CO	1021		KCTF	1644 98.1 IA 873
6-06	KVHI	2057	106.3	TX	785		KNOJ	1647 93.1 IN 1012
	KULP	2154	96.9	TX	397		KYSM	1653 103.6 IN 1012
	KULP	2209	92.3	TX	399		KQIC	1701 102.5 IN 1080
6-08	XHPF	0016	101.3	VER	850		WCCO	1703 102.9 IN 1052
	XMTS	0026	102.9	VER	850		MDLS	1705 104.9 IA 855
	XMOX	0036	95.3	TAM	750		KHAK	1712 98.1 IA 832
	WDOF	1251	93.9	WI	1034		KICD	1715 107.7 IA 946
	KKXL	2013	92.3	ND	1282		KQFE	1716 92.1 MN 991
	KESD	2030	88.3	SD	1059			

KCMT 1726 100.7 MN 1125
 KNWC 1831 96.5 SD 1013
 WSCD 1842 92.9 MN 1169
 KDCP 1847 91.3 IA 950
 KWOA 1849 95.1 MN 990
 KSJN 1903 91.1 MN 1052
 KIOV 1906 104.7 SD 1013
 KDLO 1910 96.9 SD 1108
 KWPT 1915 96.1 SD 1112
 KIDA 1920 99.9 MN 1216
 WPYL 1930 93.7 MN 1052
 WDAY 1952 93.7 ND 1216
 6-19 WJFR 1850 96.3 MS 160
 6-21 KDKA 0914 92.9 PA 930
 WCTY 0915 92.1 PA 1030
 WFEM 0922 92.1 PA 922
 WXUS 0923 92.7 IN 743
 WOBN 0928 92.7 NJ 1125
 WCSG 0933 91.3 MG 925
 WQBE 0937 97.5 WV 764
 WGPC 0947 104.5 PA 1080
 WPST 0954 97.5 NJ 1126
 WWSH 1002 105.9 PA 930
 WAPL 1015 105.7 WI 990
 WTAM 1030 92.9 MN 1012
 WSCD 1038 91.7 MN 1169
 KSID 1047 95.3 NE 1056
 6-22 WCHB 1052 105.7 MG 945
 KWYR 0935 93.7 SD 1080
 KKFM 0948 96.5 CO 1040
 KVFM 0953 104.7 CO 1146
 KLIF 1017 100.3 CO 1000
 KFYP 1037 92.9 ND 1282
 KUAD 1100 99.1 CO 1120
 KTOZ 1103 102.9 WY 1170
 KPFC 1110 97.9 WY 1140
 KVVO 1116 106.3 WY 1140
 KUNC 1130 91.5 CO 1102
 WDOR 1212 93.9 WI 1024
 WPYL 1215 93.7 MN 1052
 KLGA 1224 92.7 IA 922
 KSTP 1225 94.5 MN 1052
 KESD 1300 86.3 SD 1059
 WHSA 1301 89.9 WI 1146
 6-28 KELO 1311 92.5 SD 1013
 WEZV 1539 95.1 PA 1124
 6-30 XHJL 1657 91.3 Guad 1050
 KYSM 1716 103.5 MN 1012
 KLUM 1722 88.9 MO 620
 KNXR 1727 97.5 MN 990

KGOR 1729 99.9 NF 856
 KFYC 1737 99.1 MN 1012
 K000 1739 104.5 NF 856
 KMPX 1743 92.7 NF 985
 KCFZ 1744 94.9 MO 686
 WIEW 1747 97.3 KS 720
 KICD 1752 107.7 IA 946
 KNWC 1756 96.5 SD 1013
 KDLC 1758 96.9 SD 1103
 KTNW 1804 107.9 MN 1065
 KHBT 1811 97.7 IA 922
 KYLF 1812 100.3 IA 832
 KJAM 1826 103.1 SD 1036
 KSFT 1828 105.1 MO 741
 WCCO 1835 102.9 MN 1052
 KJAN 1836 103.7 IA 832
 KHUF 1843 105.5 NE 879
 KDCR 1845 91.3 IA 950
 KUSD 1903 89.7 SD 969
 WIFM 1905 94.3
 KWOA 1907 95.1 MN 990
 KBCM 1911 95.5 IA 946
 KOWO 1929 92.1 MN 991
 KFYP 1936 92.9 ND 1282
 KIOV 1940 104.7 SD 1013
 KMHL 2002 100.1 MN 1042
 KLGA 2009 92.7 IA 922
 KGGL 2026 94.9
 WCCO 2033 102.9 MN 1052
 KOFL 2037 92.3 IA 900
 KBRX 2040 92.7 NF 985
 KLYF 2043 100.3 IA 833
 XHJL 2101 91.3 Guad 1040
 KFYP 2117 92.9 IA 876

7-10 TGRT 1834 88.8 Guat 1102

R.Leb.- Rep. 5-22 -7-10, 19 days of skip
 on FM to date. Best 6-2 for 1 1/2 hrs.
 6-21 for 2hrs., 6-22 3 1/2 hrs. & 6-30 4 1/2.
 Since 5-15 - 59 new stations Es and 18
 by Tropo. Totals 733 and 39 states.

Next is Hank Holbrook (Oct. 26, 1975)
 7211 Chestnut Street
 Chevy Chase, Maryland 20015

Since both WTPDA & NNRC FM columns have
 been dormant for most of the year, I will
 list all stations logged so far. (Sm edit)

FM DX fm out at cottage at Fair Haven, Md. - 35 mi. SE of D.C. - over-
 looking Herring & Chesapeake Bays 15 mi. below Annapolis, Md. Main FM rx
 is Scott 310F tuner with 310 C back-up. Tied to Blonder-Tongue FM booster.
 Rotor is (was) CDR but it went up in smoke P.M. 7-19 after logging WCVH
 Flemington, N.J. On the 20th - skip opened SW F & NW - had to get on roof
 and crank it over. Hope to replace it by next spring. DX had halted.
 Antenna is single bay 10 Element Finco FM Yagi and is 110 feet above the
 water as we are on top of hill. Most of tropo is to the NF with Philly and
 NYC heard daily quite well.

5-30 WPRZ 1815 106.7 VA 30
 WMOD 1840 98.7 DC 35
 WFSI 1915 107.9 MD 55
 6-07 WFMF 1130 96.7 MD 25
 6-20 WSPH 1058 88.1 MD 40
 6-21 KETR 1137 88.9 TX 1150
 WPAP 1045 92.5 FL 810
 WHJT 1134 93.5 MS 890
 KHAM 1140 93.5 AP 900
 KFQZ 1159 94.1 AP 920
 KMOX 2045 103.3 MO 740
 KPCG 2059 102.5 MO 990
 6-22 KMOD 2124 97.5 OK 1085
 6-29 WYVA 0654 94.1 VA 125
 7-3 WZZE 2156 88.7 DE 75
 7-19 WCVH 2104 90.5 NJ 130
 7-20 KUSD 1649 89.7 SD 1100
 WQXY 1651 100.7 LA 1005
 KSTP 1654 94.5 MN 960
 FKSI 1440 94.9 AL 860
 WLCY 1452 94.9 FL 835
 10-19 WLRB 0717 92.7 DE 90

BEYOND SHORTWAVE IS
 AGAIN AVAILABLE!
 It's a complete
 introduction to DXing
 TV, FM, and PSB.
 Order today at \$19.95.
 Price will soon rise
 to \$1.25.

Hank reports that he counts call changes as new stations. 3 low powered stations made the season worthwhile. KPCG and WYVA reported the report from Hank was their first. Also WZVE at 35 watts reported likewise. Now at 743 with 34 states and Ont., Que., Man., Cuba, Ber., & P.P.

Mike Dalton 1940 Drew Street Clearwater, Florida

Mike sends a few yuks and stats. Sez that best opening occurred in July. Report of the DX that followed in August plus - follows.

AU 14 1350-2102 hrs. intermittently - all Fs.

KTEP 88.5 El Paso, Tx.	Oct. 11 0925-1210 Almost 2 months
KDNT 91.9 Denton, Tx.	without anything sez Mike!
KTNN 92.7 Tucumcari, NM	

KLLL 96.3 Lubbock, Tx.	WQSP 105.1 Albertville, Al
KNFM 92.3 Midland, Tx.	WMUU 94.5 Greenville, SC
KSVP 92.9 Artesia, NM	WLOS 99.9 Asheville, NC
KSEL 93.7 Lubbock, Tx.	WBT 107.9 Charlotte, NC
KRST 92.3 Albuq., NM	WBAV 91.9 Valdosta, Ga
KBID 92.9 Wich. Fls., Tx	KPEL 99.9 Lafayette, La
KUNM 90.1 Albuq., NM	WTOC 94.1 Savannah, Ga
KTXT 91.9 Lubbock, Tx.	WTAM 102.1 Gulfport, Ms
KSUC 88.3 Keene, Tx.	WQID 92.7 Biloxi, Ms.
KBIF 98.3 Spearman, Tx.	WJIZ 96.3 Albany, Ga.
KTFZ 10.9 Lubbock, Tx.	WMAZ 99.1 Macon, Ga
KFMH 99.7 Muscatine, Tx	WCUP 100.3 Tifton, Ga
KAFF 97.3 Sante Fe, NM	WBIT 106.9 Black Mtn., NC
KRWG 90.7 Las Cruces, NM	WCHY 107.9 Macon, Ga
Aug 16 1014-1113 All Fs.	WFOX 97.1 Gainesville, Ga

KTEA 92.1 Broken Arr., Ok
KYTN 94.7 Grand Forks, ND
KDCR 91.3 Sioux Cent., Ia
WOI 90.1 Ames, Ia
KFSD 88.3 Brookings, SD
KMOW 89.1 Kansas City, MO
KETR 88.9 Commerce, Tx
KXCV 90.5 Maryville, MO

opening appeared and that while all are marked Tr - some may be Es. Complains that there is a chronic shortage of locals. His antenna system consists of two Finco FM3 Yagis stacked about 20 feet; that on top of his "high water Florida elevation of 55 feet!" (You should not complain, Mike - your editor is at 6 feet!) He also claims that the Dx level may be tied into the economy.

Mike sez loggings now approaching 700 - now using SAE mk8 digital tuner - he sez it appears to be good for DX (what happened for the two months?) Mike sez that while he has had trouble getting into the Carolinas in the past, a strange

Brent Manuel P.O. Box 71 Chataignier, La. 70524. 6/21/74 to 11/1/75
Equipment is Panasonic Model RS-257DS with Archer FM 15-1636 at 25'

6/21/74 WBCI 96.5 Williamsburg, Va.	WMHE 92.5 Toledo, O.
7/01/74 KRFM 95.5 Phoenix, Az.	WYSU 88.5 Youngstown, O.
KUPD 97.9 Tempe, Az.	WAUP 88.1 Akron, O.
7/07/74 same as Ol	KMUW 89.1 Wichita, Kan.
8/07/74 KCIV 104.5 The Dalles, Ore.	6/22/75 KEZO 92.3 Omaha, Neb.
4/17/75 WTCB 104.5 Memphis, Tenn.	KFYR 92.9 Bismark, N.D.
5/18/75 WKES 88.9 Chattanooga, Tenn.	6/30/75 WDOM 93.9 Sturgeon Bay, Wis.
5/19/75 WDJN 89.7 Chattanooga, Tenn.	KDPS 88.1 Des Moines, Ia.
5/26/75 KALJ 95.1 Yuma, Az.	WERN 88.7 Madison, Wis.
5/28/75 WGBO 88.3 Newark, N.J.	KFMD 92.9 Dubuque, Ia.
WECR 88.5 Amhearst, Ma.	VLVE 94.9 Baraboo, Wis.
WSOU 89.5 So. Orange, N.J.	KOEL 94.3 Oelwein, Ia.
WPKN 89.5 Bridgeport, Conn.	WRIZ 100.7 Eau Claire, Wis.
WRTI 90.1 Philadelphia, Pa.	KCPI 95.3 Albert Lee, Minn.
WTCB 90.1 Washington, D.C.	WMBI 80.1 Chicago, Ill.
WFUV 90.7 NYC	WIAA 88.3 Interlochen, Minn.
WETA 90.9 Washington, D.C.	7/03/75 WGGL 91.1 Houghton, Mich.
WGTS 91.9 Tacoma Park, Md.	WHLA 90.3 Holmen, Wis.
WCTY 92.1 Palmyra, Pa.	KUMD 89.1 Duluth, Minn.
WLPL 92.3 Baltimore, Md.	KLIZ 95.7 Brainerd, Minn.
5/31/75 WAER 88.3 Syracuse, N.Y.	7/23/75 WEZI 105.9 Memphis, Tenn.

WESTERN FM DX

Steven C. Wiseblood
707 Loma Way
Santa Maria CA 93454
Deadline: 10th

Fred McCormack, Des Lacs ND 58733 (CDT) (October)

10	AE	0015	CKDS..	95.3	Hamilton	ONTARIO	1105
11	Tr	0049	CFMC.	103.9	Saskatoon	SASK.	355

Steven C. Wiseblood, 707 Loma Way, Santa Maria CA 93454 (PST) (16 Oct- 15 Nov)

Antenna: FM-4G @15feet on Rotor. Receiver: Pioneer SM-Q300B

11/2	Tr	0924	XHRM	92.5	Tijuana, BAJA CA.	(NORTE)	245
9	Tr	0958	KEWT	105.1	Sacramento, CA	\$EL, ID	255
15	Tr	1033	KLVE	107.5	Los Angeles, CA	\$SS/Latin mx.,	formerly MoR, ID as "K-Love"
		1036	XHERS	104.5	Tijuana, BCN	"Formula Melodica, Musica para Enamorados",	\$SS

Generally, not much DX to report this month. No Es seen here on TV since mid August. It looks as though its been another average Autumn for Es, with no reports of any since August. Last year October-December was an exceptional period for Es, and was much above average. If there is any Es during December or January on FM please send in your reports.

73's

Steve



SOUTHERN FM DX

6/02/75	KCFR	90.1	Denver, Col.	8/01/75	KEZO	92.3	Omaha, Neb.
	KGRF	92.3	Greeley, Col.		WJPD	92.3	Ishpeming, Minn.
6/17/75	WAFR	90.3	Durham, N.C.		KUNI	90.9	Cedar Falls, Ia.
	WTGM	89.5	Norfolk, Va.		WHSF	89.9	Bruel, Wis.
	WYCS	91.5	Yorktown, Va.	8/06/75	WERN	88.7	Madison, Wis.
	WETA	90.9	Washington, D.C.	8/13/75	WFDD	88.5	Winston-Salem, N.C.
	WAMU	88.5	Washington, D.C.	9/01/75	KWMU	90.7	St. Louis, Mo.
6/18/75	KABG	105.5	Cambridge, Minn.	9/21/75	KLCO	97.9	Poteau, Okl.
	KEYC	99.1	Mankato, Minn.	10/31/75	KWMU	90.7	St. Louis, Mo.
	KYSM	103.5	Mankato, Minn.		KCLC	89.1	St. Charles, Mo.
6/19/75	KWBI	91.1	Morrison, Col.		WSIF	88.7	Edwardsville, Ill.
6/20/75	KMCR	91.5	Phoenix, Az.	11/01/75	KSLQ	98.1	St. Louis, Mo.
	KYTC	92.3	Glendale, Az.		WBNQ	101.5	Bloomington, Ill.
6/21/75	WDYL	92.1	Chester, Va.				
6/21/75	CJOM	88.7	Windsor, Ont.				
	WBJC	91.5	Baltimore, Md.				

Brent relates that he picked up KCIV & WFDD via Ms. Also WERN.

Glad to hear from all of you. Hope to hear from the rest of you.



VHF UTILITY DX

Pat Dyer
5315 Silvertip Drive
San Antonio, TX 78228
Deadline: 12th of month

DECEMBER 1975

Hank Holbrook, 7211 Chestnut St., Chevy Chase, MD 20015 QSLed, GMT

<u>7-21</u>	1600, N223LH	122.8	Cambridge, MD (Crescent Seafood, Inc.; Aero Commander 500B; 2-e, 7-s; 2500 feet) vic Phila. (Swiftlite Aircraft Corp.; North Am. Saberliner; 2-e, 6-s; 10,000'; 25 watts) ov Millville, NJ (Piedmont 53; B-737; 28k'; 25w) (TWA 151; Boeing 727-31C; rte La Guardia-Columbus; 35,000 feet; 25 watts) ov Fire Is., NY (State Street Corp.; Beech King Air 100; 2-engine, 11-seat; 25 watts) 15 mi se Wilmington, DE (Coble Funeral Service, Inc.; Cessna 177RG; 1-e, 4-s; 8000 feet) ov Phila. (Avianca 050; 25 watts) (National 98; MIA-JFK rte; 50 watts) nr Fair Haven, MD (Mulford K. Fisher, Jr.; Piper Aztec; 1-e, 4-s; 9000 feet) (TWA 832; Boeing 707031B; Dul.-JFK; 17k'; 25w) ov Salisbury, MD (Wings North; Piper PA-31 Navajo; 2-engine, 6-seat; 9000 feet) 25 mi se Bal. (John E. Everett, MD; Beech Debonair 35A33; 1-e, 4-s; 4500 feet)
<u>8-20</u>	1640, N3000	121.1	
<u>21</u>	0021, N578	134.0	
	2005, N951ST	133.95	
	2348, N8100H	134.0	
<u>22</u>	2050, N2043Q	128.15	
	2348, HK-724	134.0	
<u>23</u>	2251, N77772	134.35	
<u>24</u>	1547, N6205Y	134.0	
	2139, N8732	134.0	
	2210, N9SG	134.0	
<u>9-14</u>	1717, N252AA	119.7	

Michael D. Schoenfuss, KWI9AT, PO Box 401, Abbotsford, WI 54405 has just recently started at this hobby and would like to have some suggestions for inexpensive but effective antenna systems; GMT, QSLed

<u>5-30</u>	2052, KRS 672	152.03	Wausau, WI (Presto Call; 38 miles)
<u>6-9</u>	0010, KSB 362	159.21	" (Marathon County Police)
<u>10</u>	1932, KSB 915	47.54	Colby, WI (Medford-Colby Veter. Clinic; 1 mi)
<u>11</u>	0014, KTH 688	155.175	Marshfield, WI (Marshfield Clinic; 19 mi)
<u>23</u>	1658, KFK 710	161.73	Abbotsford, WI (WIGM AM/FM remote pickup)
<u>10-10</u>	2030, KSH 719	35.06	" (Abbotsford Oil Company)
<u>21</u>	0030, KVV 683	155.34	Marshfield, WI (St. Joseph's Hospital)

Bob Cooper, Jr., Rt 5 - Box 782, Guthrie, OK 73044 has recently become very interested in the NOAA stations on 162.40/.55; superior correlation has been found with the Wichita (the closest on at this time) signal and VHF-UHF conditions; Kansas City (162.55) gives excellent warning of UHF into Iowa; some 60 new stations are planned for next year (and also a 162.45 channel will be added in 1976-77). The stations run 200-1,000 watts into omni-antennas with ERP's up to 6 kw (the local weather info they provide can also be useful in plotting favorable trop conditions). Bob would like to hear from others using these for trop or Es beacons.

Solar flux/A-Index for Oct 1975 -

<u>1</u>	76/6;	<u>2</u>	78/3;	<u>3</u>	78/7;	<u>4</u>	76/6;	<u>5</u>	76/5;	<u>6</u>	75/20;	<u>7</u>	74/25;	<u>8</u>	74/29
<u>9</u>	76/28;	<u>10</u>	75/21;	<u>11</u>	74/6;	<u>12</u>	74/13;	<u>13</u>	79/7;	<u>14</u>	80/12;	<u>15</u>	81/5;	<u>16</u>	79/6;
<u>17</u>	79/6;	<u>18</u>	80/6;	<u>19</u>	79/2;	<u>20</u>	78/4;	<u>21</u>	76/7;	<u>22</u>	75/5;	<u>23</u>	75/6;	<u>24</u>	74/4;
<u>25</u>	73/3;	<u>26</u>	73/4;	<u>27</u>	73/4;	<u>28</u>	73/4;	<u>29</u>	72/12;	<u>30</u>	73/9;	<u>31</u>	71/14		

avg: 75.8

Nov 1975 - 1 72/6; 2 73/25; 3 74/40; 4 77/32; 5 80/15; 6 82/12; 7 82/8; 8 83/5; 9 80/18; 10 80/10; 11 80/12; 12 81/9; 13 81/4; 14 85/2; 15 86/2; 16 90/6 - the highest solar flux since early Sep and the most active magnetic field since a March storm

Now, my own loggings. Allied A-2586, Hallicrafters SX-62; Hammariund SP-600-JX-10 (with ICM BAX-1 tuned preamp); 30' long-wires at 12', run ne-sw and nw-se; peak F2 MUF noted, bs-backscatter; hi-band with Wards 62-1 with 18-inch whip; GMT used; tr-tropo

10-13	1720, 35.28	24	1600, 32.000	2	2018, KFL 936 bs
14	2100, 36.90	25	1650, 32.000		2025, KKI 445 bs
15	2017, 37.000	26	1728, 32.000		2031, KMA 829 bs
16	2031, 37.000		2254, KKI 445 bs		2040, 40.000
17	1543, KIF 651 (Es)	27	1810, 35.28	3	1510, KHB 41 tr
	1634, KIE 953 (Es)	28	1540, 32.000		1900, 40.000
	2057, 37.62		2350, 35.58 bs	4	1735, 35.28
18	2130, 32.96	29	1655, 35.28	5	1935, 37.000
19	2215, 35.28		1700, 35.62 bs	6	1615, 32.02
20	2023, 37.000		1738, KKJ 460 bs	7	2135, 35.28
21	2130, 35.28	30	1630, 35.28	8	1545, 32.000
	2210, 35.62 bs	31	2120, 35.22		1945, 35.58 bs
22	1915, 35.28	11-1	0512, KME 438 (Es)	9	2055, 38.85
23	1730, 35.28		1705, 32.000	10	2130, 37.15

KFL 936	35.58	(west)	KKI 445	35.58	Houston, TX
KHB 41	162.55	Cor. Christi, TX-w	KKJ 460	35.22	Ft. Worth, TX
KIE 953	35.58	Atlanta, GA	KMA 829	35.58	San Diego, CA
KIP 651	35.58	Ft. Lauderdale, FL	KME 438	35.22	Orange, CA

w-weather; rest are A2 (tone) paging stations

With the lack of solar flux, this fall might turn out to be the poorest for transcontinental F2 MUF's since 1964. In the past few days there has been signs of Canada on 30.02 and 30.42. Since these are probably around 1800-2000 miles, the maximum one-hop of about 2400 miles should be open a few MHz higher than that.

It is for that reason that reports from the east and west coasts concerning the F2 MUF are earnestly desired. Exact station identifications are not required, just the states would do (e.g., the east coast hearing 33-MHz fire departments from California etc.).

The low end of 30-MHz is for government use, and activity (compared to 30.5-32.0) is very sparse. However, this is the spot in which to look for some of those 15-MHz second harmonics (like WYFR on 30.22 here) from the VOA, AFRTS, etc. Often, the MUF will not go beyond 30.5 to bring in the pile of business stations.

If the MUF does climb to 32.0 there is another MHz of government allocation before the medical paging stations on the low end of 33 MHz are reached. Then, with luck, it may spread to the fire departments. Then, still another 1-MHz chunk for government, until the business and paging 35-MHz segment is met. Since starting 30-50 MHz monitoring in 1967, there hasn't yet been a fall when KCC 482 in NH wasn't in at least once on F2. This may well be the year it won't.

So, for those with the scanner receivers, getting a crystal or two for 33.04, 33.70, etc. would provide a very easy way to catch what limited F2 there will be this fall (and perhaps even next).

F2 MUF's can be incredibly sharp (unlike the often "fuzzy" Es MUF) with just a few 100 kHz being the dividing line, so the MUF might be stagnating just under the spot you're tuned to.

73, Pat

WA5IYX



C.C.I.

[UNIDENTIFIED-DX]

Frank Aden, Jr.
1535 NW Ithaca Ave.
Bend, OR 97701

November, 1975

The TV Guide regional offices list below contains information dated 2-74. The list was sent in by Charles M. Pritchett, manager of the Cincinnati regional office. This list does differ somewhat from the list in the WTPDA TV Station Guide.

I suggest that requests for off-sale TV Guides be sent out just twice a year. One for the spring-summer skip season and the other for the fall-winter trope season. A self-addressed stamped envelope, 6 1/2 x 9 1/2 inches. One envelope should be sent for each edition requested. The envelope should be marked second class as which rate magazines are carried. Most offices have indicated they keep editions up to 2 to 3 weeks so the editions sent out should be fairly accurate. The US Post Office now charges 8¢ for the first two ounces and 4¢ each additional ounce. In Canada TV Guides should be sent first class at 20¢ for an average size TV Guide. Most TV Guides weigh around two ounces but see the list for larger editions.

When trading TV Guides remove the glossy pages, and you will be able to save some postage.

CODE EDITION OFFICE POLICY ON OFF-SALE EDITIONS FOR WTPDA MEMBERS

67	Carolina-Tennessee	B. Mohr	
42	North Carolina	1365 Peachtree St. NE	
35	North Georgia	Atlanta GA 30309	
38	Northern Alabama		
43	South Carolina		
55	South Georgia		
40	Southern Alabama		
28	Eastern New England	W. Tobin	
90	Maine	44 Bromfield St.	
30	New Hampshire	Boston, MA 02108	
29	Western New England		
01	Chicago Metropolitan	J. Green	
		401 North Michigan Ave.	
		Chicago, IL 60611	
94	Central Ohio	C. Pritchett	A self-addressed stamped
26	Cincinnati-Dayton	1014 Vine St.	envelope (60¢ postage).
58	Eastern Illinois	Cincinnati OH 45202	should be sent for each
70	Evansville-Paducah		edition requested.
39	Kentucky		
68	Memphis		
69	Nashville		
20	West Virginia		
50	Western Illinois		
17	Central Indiana		
31	Northern Indiana		
10	Cleveland	R. Unterborn	
		14600 Detroit Ave.	
		Lakewood OH 44107	

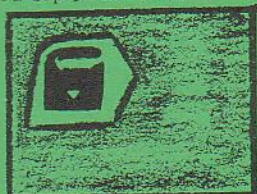
CODE	EDITION	OFFICE	POLICY ON OFF-SALE EDITIONS FOR WFTDA MEMBERS
92 51 71	Dallas-Ft. Worth North Texas West Texas	K. Jeffcott Two Turtle Creek Village Suite 917 Dallas TX 75219	Will send out copies if available for a self-addressed stamped envelope.
27 93	Colorado Denver	Thomas Westing 789 Sherman St. Suite 510 Denver CO 80203	Since both editions are large they request 30 to 40¢ for first class postage.
11 18	Detroit Michigan	C.A. Jones 26555 Evergreen Rd. Southfield MI 48076	Copies not available from this office as they receive few extra copies. Try Kansas City.
59	Hawaii	R. Forster 190 South King St. Honolulu HI 96813	
65 7	South Texas Southeast Texas	P. Coggins 6300 W. Loop South Bellaire TX 77401	
66 16 19 49 32 14	Arkansas Kansas Kansas City Missouri Oklahoma State St. Louis	Terry McGill 800 W. 47th St. Kansas City MO 64112	They will send copies for a self-addressed stamped envelope. They also mention that they might be able to supply a few other editions.
46 04 77 63	Central California Los Angeles Nevada San Diego	R. North 5900 Wilshire Blvd. Suite 400 Los Angeles CA 90036	See San Francisco.
54 41 05	Central Florida Northern Florida Southern Florida	Jack Phillips 300 Biscayne Blvd. Miami FL 33137	Will send copies for a self-addressed stamped envelope.
12 97 56 60 64 57 74	Illinois-Wisconsin Northern Wisconsin Iowa Minneapolis-St. Paul Minnesota State Nebraska North Dakota	Hugh Jones 2430 Dain Tower Minneapolis MN 55402	They will send copies for a self-addressed stamped envelope.
36 53 52 95	Gulf Coast Louisiana Mississippi New Orleans	J. Lovett 225 Baronne St. New Orleans LA 70112	Will send copies for a self-addressed stamped envelope.
06	New York Metropolitan	Barbara Greenberg 1290 Avenue of the Americas New York NY 10019	

CODE	EDITION	OFFICE	POLICY ON OFF-SALE EDITIONS FOR WTFDA MEMBERS
34	New Jersey-Pennsylvania	J. Kelley	
07	Philadelphia Metropolitan	137 West Wayne Ave.	
91	Southeast Pennsylvania	Wayne PA 19087	
72	New Mexico	V. Figarelli	
45	Phoenix	3033 N. Central Ave.	
76	Tucson	Phoenix AZ 85012	
22	Pittsburgh	M. Loper 310 Grant St. Pittsburgh PA 15219	
37	Oregon State	C. Sheldon	
75	Portland	707 SW Washington St. Portland OR 97205	
96	Central New York State	Lane Epstein	A few copies will be set aside for WTFDA members. Send SASE and request to Lin Andrukat. Will send copies for a self-addressed stamped envelope.
61	Eastern New York State	504 Triangle Bldg.	
23	Western New York State	Rochester NY 14604	
7	Idaho	George Bajurin	Will send copies for a self-addressed stamped envelope.
7	Salt Lake City	136 E. South Temple Salt Lake City UT 84111	
13	Northern California	R. O'Connor	Will send copies for a SASE (20¢ postage). Los Angeles Metro can be sent from this office.
25	San Francisco Metropolitan	735 Montgomery St. San Francisco CA 94111	
47	Eastern Washington State	D. Berry	
24	Montana	600 Stewart St.	
78	Western Washington State	Seattle WA 98101	
33	Central Virginia	E. Cassard	
44	Eastern Virginia	5454 Wisconsin Ave.	
02	Washington-Baltimore	Chevy Chase MD 20015	
08	Central Pennsylvania	J. Miller	
21	Pennsylvania-New York State	8 West Market St. Wilkes Barre PA 18701	
83	Montreal-St. Lawrence	J. D. Kopel	Will send copies for a self-addressed stamped envelope with 20¢ Canadian postage.
82	Toronto-Lake Ontario	124 Merton St.	
84	Western Ontario	Toronto ONT M4S 2Z2 Canada	
86	Alberta	Richard Ewald	
81	Eastern British Columbia	2695 Granville St.	
85	Manitoba-Saskatchewan	Vancouver 9 B.C.	
87	Western British Columbia	Canada	

The code numbers in this list are probably out of date due to some of the edition changes such as the split of the Utah-Idaho edition (48 in this list, 69 in Station Guide). It may become better to use a code of our own possibly a letter code. As an example SLC for Salt Lake City edition. The new Vermont Edition will be available from the Rochester Office November 22.

If the policy is blank that office has not yet answered. I plan to have up-dates in the next couple of columns.

Steven C. Wiseblood, 707 Loma Way, Santa Maria, CA 93454 (1975 unids)
 Tue May 27 Es ch 2 1358 MDT--"Bingo", 1400 MDT "Hollywood Squares" PTA: CIV Station
 Wed Jun 4 Es ch 2 1130 CDT--end "The Black Experience", begin "Bookbeat" PTA: Central or Eastern PBS Station.
 ch 2 1335 MDT--"Family Affair" PTA: Canada
 ch 2 1337 MDT--"Hollywood Squares" PTA: Canada
 Thu Jun 5 Es ch 2 0755 MDT--"Captain Kangaroo", KTWQ?KDIX? (not KTVQ or KBCI) or could be WBEM, WBAY or WMT but highly unlikely.
 Sat Jun 14 Es ch 2 1945 MDT--"Hee Haw", KWGN? or others in area.
 Mon Jun 23 Es ch 2 1903 CDT--"Porky the Pig" in Spanish, Canal-5 (Televisa) XHIA?
 Thu Jun 26 Es ch 5 1645 CDT--"Hogan's Heroes" PTA: W. Texas, OK
 Fri Jul 4 Es ch 4 1747 MDT--"Partridge Family" PTA: AT,SK (CKMT.CHAT1?) (CBC)
 Sat Jul 26 Es ch 2 2120 CDT--"Munsters" then "Addams Family". Both in Spanish. Canal-5 XHIA?
 Ken R. Simon, 528 Pilgrim Rd., West Palm Beach, FL 33405 (1975 unids unless noted)
 Tue May 22 Tr ch 3 0730 EDT--(This was in 1973), WLBT/WTIC.(photo A)
 Wed May 1 Es ch 2 1853 EDT--(This was in 1974), KPRC, KBTX, KIII were all in. (photo B)
 Fri May 25 Es ch 3 1715 EDT--(This was in 1973), Slide for "ELKINS INSTITUTE", phone # on slide was 901?-7269762. 901 is Memphis area is probably WREC.
 Mon May 28 Es ch 2 1100 EDT--(This was 1973), Group of slides, one had Charles Nethery Comments, the other an ad for "Menger". KPRC?
 Fri May 25 Es ch 2 1720 EDT--(This was 1973), Dialing For Dollars. Man in the center of a large dollar bill (bill was in background and only the center portion of the bill could be seen. PTA: KY, etc.
 Sat Jun 14 Es ch 3 1255 EDT--unid Monster Movie Matinee. WFSB noted at time.
 Sun Jun 22 Es ch 3 1130 EDT-- CBS with ad for Baskins on Lincoln Square Plaza.
 ch 2 1128 EDT--"Newswatch Colorful ch. 2", WTWO, KTVI, WMT, noted 1130-1230.
 Sun Jul 20 Es ch 3 1430 EDT--Yankees/Minneapolis, KDAL?
 Sat Aug 9 Es ch 2 2225 EDT-- unid PBT over WTHS/WPBT Ø offset, WUND?
 Wed Aug 13 Tr ch 9 1450 EDT--unid digital clock in from 1450-1520, WVAN?
 Fri Sep 5 Gw ch 11 ? EDT--unid WAGM xltr from Edmonston, (on trip).



A



B



C

Ron J. LeBlanc, 2524 Arizona Dr., Marrero, LA 70072 (1975 unids)
 Mon Jun 16 ? ch 5 1719 CDT--weatherman Bob Caudle
 Tue Jun 17 ? ch 5 1737 CDT--"TONIGHT ON 5" (photo C)

Identifications sent in by members

Identifications by Ken Simon for Oct. TV-CCI

Richard Allen, Aug 14, ch 4, WJXT is owned by the Washington Post.
 Clarke Ingram, Jul 20, ch 6, sounds like WCIX with movie.
 Bill Thompson, May 20, ch 3, "Mannix" in Spanish. DEF NOT CUBA.

HAPPY NEW YEAR & MERRY CHRISTMASS

Frank

POST OFFICE BOX 163, DEERFIELD, ILLINOIS 60015 USA
WORLDWIDE TV-FM DX ASSOCIATION



SERVING THE
 VHF-UHF DX
 ENTHUSIAST

DUES: USA and Canada, \$11 (first class); overseas, \$18.

The VHF-UHF Digest is the monthly publication of the Worldwide TV-FM DX Association. WTFDA is a non-profit organization and a member club in the Association of North American Radio Clubs.

All persons contributing their efforts for the Worldwide TV-FM DX Association do so without any monetary compensation. Dues and all other revenue cover printing, postage and other expenses.

The WTFDA is governed by a five-man board of directors.

BOARD MEMBERS: David T. Janowiak	VUD EDITOR: Don Ruland
Bruce F. Elving	PUBLISHERS: G. Olson, M. Goldman
Donald B. Ruland	COMPTROLLER: Gary Olson
Gary A. Olson	BOOKKEEPER: Bruce Elving
Morrie S. Goldman	PROCESSING: Dave Janowiak

 S U P P L I E S and D X L I T E R A T U R E WTFDA member rates only.

VUD Back Issues.....	Available: May 1973 issue to the present. Mailed first class or special book rate.	75¢ each 4/\$2.50
FM Atlas and..... <u>Station Directory</u>	An accurate and detailed FM listing by Dr. Bruce F. Elving, FCC FM News column editor. Latest edition now available.	\$2.50 by 3rd Class, \$3.25 by First C.
UHF Translator..... <u>DX Guide</u>	A complete listing of US UHF translators. Includes call, location, power, and primary. Also features a section on "DXing the Translators" by Bob Cooper. 28 pages.	\$2.00
TV Station Guide....	An accurate listing of North and Central American TV stations, featuring maps for each channel pinpointing their locations.	\$4.00; nonmembers, \$5.00.
Beyond Shortwave....	An introduction to TV, FM, and V-UHF radio DX. Written by Glenn Hauser, Bruce Elving, and Terry Colgan. Illustrated, 31 pages.	\$1.00
WTFDA Stationery....	Features the official WTFDA emblem as at top of this page. Printed in blue on bond.	45 sheets \$1.00
DX Log Sheets..... <u>TIME TO RE-ORDER?</u>	Keep your running DX log in order with these sheets, punched for a 3-ring binder.	Pad of 100 \$2.50
VUD Boxers.....	Attractive cases designed to keep your copies of the VUD neat and organized.	\$1.50 each
Station QSL..... Report Forms	For requesting QSL's (verifications) from TV or FM stations. Now offset printed.	45 sheets \$1.00
DX Column..... Report Forms	For reporting to the various DX columns appearing monthly in the VHF-UHF Digest.	Free for a SASE

All columns and feature articles to appear in the VHF-UHF Digest should be sent to editor Don Ruland in Kenosha, Wisconsin, by the 20th of each month. All information for VUD columns should be sent to the appropriate editors; all club business (supply orders, etc.) should be sent to Deerfield, Ill.

 SUPPORT THE WORLDWIDE TV-FM DX ASSOCIATION BY REPORTING AND BUYING SUPPLIES.